

The Horse WEEKLY **TRADER** MAGAZINE

Classified PG. 31

**Check out our
NEW
Classified Rates!**
PG. 31

Vol. 32 No. 3
APRIL 17, 2025
417-532-9131



Find us on
Facebook

@myweeklytrader
AUCTIONS PG. 6

VISIT OUR WEBSITE! MYWEEKLYTRADER.COM

Serving Central Missouri in 32 counties!



- Benton
- Boone
- Callaway
- Camden
- Christian
- Cole
- Crawford
- Dallas
- Dent
- Douglas
- Franklin
- Fulton
- Gasconade
- Greene
- Hickory
- Howell
- Iron
- Laclede
- Maries
- Miller
- Oregon
- Osage
- Ozark
- Phelps
- Polk
- Pulaski
- St. Clair
- Texas
- Washington
- Webster
- Wright
- Morgan

The logo for Weekly Trader Magazine features the word "WEEKLY" in a yellow, sans-serif font at the top. Below it, the word "TRADER" is written in a large, bold, red serif font with a white outline and a drop shadow. At the bottom, the word "MAGAZINE" is written in a yellow, sans-serif font, similar to "WEEKLY". A red diagonal line runs across the top right corner of the page.

417-532-9131
100 E. Commercial St.,
Lebanon, MO 65536

WWW.MYWEEKLYTRADER.COM



 @myweeklytrader

SURPLUS BUSINESS EQUIPMENT
5 VIEWSONIC 21.5" MONITORS 1920 X 1080P RESOLUTION,
VGA/HDMI CONNECTIONS, INCLUDES VGA AND POWER CABLES,
ALL IN GOOD WORKING ORDER.



\$25 EACH; CALL 417-532-9131

DARDEN PROFESSIONAL TIMBER HARVESTING, BUYING STANDING TIMBER: Great prices, improve wildlife habitat and improve forest health. State Certified & Fully Insured! 573-247-4808. Salem.

CHILTON'S AUTO REPAIR MANUAL: 1969-1976 American cars. \$30. 417-260-0941. Raymondville.

HIGHPOINT GREENHOUSE: Garden Vegetable Plants. Tomato & Pepper Plants. Garden Seeds. 417-741-2793. Open from 9am-6pm, Closed Sundays. Hartville.

2005 CHEVY SILVERADO TRUCK 1500: 4 door, crew cab. 296,000 miles. Jasper transmission at 165,270 miles. \$2,900 OBO. Call only. 417-322-5789. Lebanon.

NEW IN BOX CARLSON EXTRA TALL IN-HOME PET GATE: With walk-through door and built in small 10"x7" pet door. Pressure mount-no holes. Fits 30-41.5" openings, 37" tall. \$30. 417-718-5347. Conway.

10 OR SO BLACK MILK CRATES: \$2.50/each. 573-578-2693. Rolla.

2 BELL BICYCLING HELMETS: white 50-57cm, black 54-61cm, excellent condition. \$25 each. 417-718-5347. Morgan.

WANTED: Hay wagon gears. Green Meadows Farm. 573-247-8055. Salem.

3PT. MIDDLE BUSTER TRACTOR ATTACHMENT: In great shape. \$50. 573-210-8132. Potosi.

HARLEY DAVIDSON: For more information call 417-699-6021 or 417-589-8209. Conway.

LONG ARM QUILTING: 0.015 Cents Per Square Inch. 618-816-5082. Tusculumbia.

32PC TULIP PATTERN CORELLE: \$30. 417-532-2344. Lebanon.



FOR SALE BY OWNER

\$298,000 (FIRM) Includes:

- 1970 sq.ft. Restaurant Building
- Fully Paved, Prime, 22,000 sq. ft. Corner Lot on McCarty St with 3 new driveways
- ALL Inventory, Equipment, Furnishings
- Trademark, Logo, Franchise Rights, Business, and Website

Open, and operating continuously for 68 years, Daisy Delight has always been a successful and respected family-owned restaurant. We have reached life's milestone of retirement, and due to health and age issues, we would like to find a new family (or families) to carry on and enjoy the prosperity of this historic, profitable, Jefferson City landmark business.

The present owners would be fully available to provide their insight and experience to ensure a successful and profitable transition.

A detailed profile of the restaurant's operations can be seen at Daisy Delight's website under the business button of the site menu. (daisydelight.com).

Inquiries can also be sent to:
 (j27152632@yahoo.com)

CALUS LOGGING

20 YEARS EXPERIENCE

Buying Standing Timber
Walnut & Oak

Joe Calus, Owner
417-926-4606 • MTN. GROVE

CERTIFIED

Buildings • Hunter's Cabins • Lawn Furniture

JAMCO BUILDERS

JAMCO Portable Buildings

300-688-2064 • 307 Enterprise Dr. • Seymour, MO • www.jamcobuilders.com

Rent To Own Plan

SURPLUS BUSINESS EQUIPMENT:
5 Viewsonic 21.5" Monitors 1920 x 1080p resolution, VGA/HDMI Connections, includes VGA and Power Cables, All in good working order. \$25 each; Call 417-532-9131.

HIGHPOINT GREENHOUSE: Our Annual Mother's Day Sale runs all week, from May 5th-10th. Lots of flower choices. Live Bouquets for Mom! 417-741-2793. Open from 9am-6pm, Closed Sundays. Hartville.

TOY ACA POODLE PUPPIES FOR SALE: 417-664-5926. Conway.

2022 TRACKER PRO 175 TE, 2022 60 ELPT MERCURY 4 STROKE OUTBOARD MOTOR, 2022 TRAILSTAR BOAT TRAILER: Like new barely used. On it's third tank of fuel. \$20,500. 417-536-9992. Leave a message. Ozark.

COOPER TIRE: LT 265/70/R17. \$40. 417-260-0941. Raymondville.

SINGLE GRAVE SPACE: White Chapel Cemetery. Springfield, Missouri. \$500. 417-894-5733. Springfield.

COMMERCIAL SNAPPER ZERO TURN: 6-foot 7 Iron deck. Kubota gas engine. \$2,250. 573-569-4191. Barnett.

CIVIL WAR BOOK MORGAN'S RAIDERS: 353 pages, hardback. \$12.50. 417-532-2045, leave message. Lebanon.

POULTRY LITTER: Rain and sun processed. Sterilized by UV Rays. Premium quality, light and fluffy, sweet smelling, prairie hay. Farmer discounts! Customer provides containers and loading labor. Can deliver. \$1/3-gallon bucket, \$2/5-gallon bucket, \$3/lick tub or brown bag, \$4/barrel. Pickup and tandem axel dump trucks priced by cu. yard and tractor loader. Poopy buyback program! Free truck wash. Under roof load out. Truck tarps needed for rain and road winds. Mertz Farm, 573-699-4805. By appointment. Phone after dark! High Gate Area.

ECHO SRM-266 GAS WEED EATER: Slightly Used. \$200. 559-260-3883. Willow Springs.

LOOK — true modular building your way, Call 573-657-7040 chateauhomes.net

FOR SALE: Basketball goal with pole. \$25. 417-293-0568. West Plains.

GRACO MAGNUM X7 PAINT SPRAYER: Hoses & Spray included. \$250. 559-260-3883. Willow Springs.

I BUY.....used mobile homes. Call or text 573-338-6250 or email GregS. CDH@outlook.com

ENGLISH BULLDOGS PUPPIES: 9 weeks old, female. Home raised. Fancy puppies. 417-712-4582. Thornfield.

METAL ROOFING: Decks and More. Call Today, Levi Byler Construction. 417-741-0245. Grovespring.

VOTED #1 BEST Preowned Car Dealership

TIM'S USED CARS

(573) 341-3828 • 1334 South Bishop (Hwy. 63) • Rolla, MO
Next to Hwy CC • www.tims-used-cars.com



2013 KIA OPTIMA LIMITED SXL
4cyl, Loaded w/ Options
172,xxx Miles
ONLY \$6,900



2017 FORD FUSION SE
4cyl, Loaded w/ Options
92,xxx Miles
ONLY \$15,900



2017 CHEVY COLORADO Z71
Crew Cab, 4x4, V6,
Power Equipped
118,xxx Miles
ONLY \$19,900



2014 CHEVY MALIBU LS
4cyl, Power Equipped
132,xxx Miles
ONLY \$8,900

LARGE SELECTION OF CARS, TRUCKS, SUVs & VANS!

PLAD PANTRY

DISCOUNT & SURPLUS FOODS FRESH PRODUCE^{LLC}

417-532-4700

Applewood Smoked Bacon	
Pork Loin Filet.....	\$2.59 a lb.
Liquid Egg Product	\$0.99 32 fl. oz.
Raspberry Flavored Sweet Tea	\$2.49 59 fl. oz.
Turkey Sausage Patties	\$1.79 11.1 oz.
Zesty Queso	
Potato Crisps.....	\$1.49 5.5 oz or \$14.75 case of 11.

1571 State Hwy 64 • Tunas, MO 65764
Hours: 8:30 a.m. to 5:30 p.m. • Closed Wed. & Sun.



Call to Order
417-993-3017

Meadowview Dutch Market

Bulk & Surplus Groceries • Prices Subject to Stock on Hand

Sale Dates April 16th, 2025 to
April 22ND, 2025 while supplies last!

DELI SPECIAL

OVEN ROASTED TURKEY REG. \$6.59 LB SALE \$6.19 LB
SMOKED SWISS REG. \$6.49 LB SALE \$5.99 LB

TRY our Fresh Homemade DELI Sandwiches: TURKEY, HAM, ROAST BEEF, ITALIAN,
BLT'S, PULLED PORK AND BLT PULLED PORK (MADE YOUR WAY!)
COME IN OR CALL to order! ALSO Custom Deli trays! Veggie OR FRESH Meat-N-Cheese!

Sliced White
American Cheese

\$8⁹⁹

5 LBS.



Turkey Breast
Golden Brown

99¢

LB.



Philadelphia
Cream Cheese (1/3 LESS FAT)

99¢

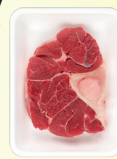
8 OZ.



Beef Hind
Shank

\$1⁹⁹

1 LB.



Sliced
Peaches

\$3⁴⁹

6 LB. 10 OZ. CAN



Artichoke & Jalapeno
Parmesan Dip

99¢

10 OZ.



Sunchips Garden
Salsa

\$1⁶⁹

7 OZ.



Horizon Organic
Strawberry Milk

\$1⁴⁹

6-8 OZ.



We are Closed on
April 18th in observance
of Good Friday!
Will Reopen
on April 19th (Saturday)

417-993-3017

23 Miles West on Hwy 64 • Right on T Hwy
9 miles • Left on E Hwy 1 mile on Left

NOT RESPONSIBLE FOR PRINT ERROR!!

NOW ACCEPTING CREDIT, DEBIT CARDS & EBT

HOURS: MON-THURS 8-5PM
FRI 8-6PM • SAT 8-5PM

Border Collie Solid Red Male

Fully Vaccinated & Dewormed
DOB: 04/20



He is so
sweet and
already
enthusiastic
towards
learning all the
things.

SOLD

Looking for
Love & Adventure

More Pictures & Video
Available Upon Request!

Call Or Text:
(530)580-8334

CKC YORKIE PUPPIES: 3 males. Needs
good home. \$250.00. DOB 01-19-2025. 417-
349-5032. Mountain Grove.

KITCHEN TABLE AND CHAIRS:
Solid oak. \$50 or trade. 573-734-2822.
Bismarck.

SPLASH & DASH: Now accepting new
clients for dog grooming. 417-664-5926 or
417-589-0034. Conway, Missouri.

1957 CHEVY CAR: Being made into
family car. Trade for Model A Ford.
573-734-2822. Bismarck.

GRADER BLADES: For front of truck
and hook ups. Trade for lawn mower.
573-734-2822. Bismarck.

FOR SALE: Full motorcycle helmet with
full face shield, in bag. \$50. 417-260-
0941. Raymondville.

GMC 1986 700 1 1/2 TON SODA TRUCK:
From fire department. 123,000 miles.
Runs good. \$2,950. Call for Pictures.
573-636-8000. Jefferson City.

OZARK LEATHER COMPANY 16" SADDLE: Great saddle in great condition.
6 1/2" Gullet, built up front. \$325. 417-693-
0389. Conway.

BRUSH HOGGING & ROTOTILLING:
\$50 & up. Lebanon area. 417-531-3665.

ALFALFA CLOVER GRASS MIXED:
Square bales \$6.00. Second cutting
\$5.50. 417-345-5634. Long Lane.

TINY CABIN: Homes, Garden Sheds,
Mini Barns, Chicken Coops. 417-741-
0245. Grovespring.

DOGWOOD CABINS LLC: Specializing
In custom portable tiny homes. Rustic
yellow pine D-logs with natural face. Call
for more info. Leave voicemail. No text.
417-701-1372. Hartville.

FOR SALE: Women's Schwinn Bicycle.
\$40. 417-293-0568. West Plains.

CIRCLE Y 15" EQUITATION STYLE SADDLE: Good condition. Built up front
with ornate tooling and silver. Great trail
saddle, fits many horses. 6 1/2" Gullet. \$325.
417-693-0389. Conway.

FOR SALE: 3 corral panels. 16ft. long,
52 inches high. \$50 for all. 417-293-
0568. West Plains.

APPROXIMATELY 4-5 BINDERS OF SPORTS CARDS: \$50. 573-578-2693.
Rolla.



RYAN WILLIAMS
LOGGING
(573) 247-5859
(573) 297-9710
EXPERIENCED, PTH TRAINED, INSURED
BUYING
STANDING TIMBER

Hartman Tractor Repair LLC

- Minor Tractor Repair, Lubrication, Oil Changes, Plugs Etc.
- Pressure Washing
Small Concrete Jobs
- Pick Up & Delivery on Tractors
4000 lbs or less.
- Some Body Work & Paint
- Light To Medium Welding

DANNY BROWN: 580.371.1257

2400 Gallon Septic Tank Truck

**FOR
SALE!**



Call for more info.

417-630-5720

Seymour, MO

NEW, SEALED BOOK: "The Bittersweet Ozarks at a Glance" By Ellen Gray Massey. Great Photos & History of The Ozarks Gift. \$15. 417-718-5347. Conway.

Amega Mobile Homes +Amega Mobile Homes+ Amega Mobile Homes = Savings New & Used 573-657-2176, amegamobilehomes.com

TROXEL 'SPIRIT' YOUTH RIDING HELMET: blue, size small, used once. \$30. 417-718-5347. Conway.

HIGHPOINT GREENHOUSE: Flowers, Flowers, Flowers! Bedding Plants, Hanging Baskets, Planter Combinations, Huge Ferns, Perennials. New This Year, Miniature Roses! 417-741-2793. Open from 9am-6pm, Closed Sundays. Hartville.

2020 HISUN SECTOR 550 SIDE BY SIDE: Power steering, roof, dump bed, 153 hours, 1,070 miles. \$7,000. 660-221-5541. Smithton.

2600 PSI CRAFTSMAN GAS PRESSURE WASHER: Comes with 2 guns and 2 hoses. 573-578-2693. Rolla.

OLDER, ORIGINAL 16" CIRCLE Y TEAM PENNER SADDLE, Heritage Collection with super soft leather, pre twisted & wrapped leathers, rear cinch. Well maintained and excellent condition. \$1400. 417-766-1727. Conway.

BREAKFRONT CABINET: Maple approximately 3ft wide by 5ft height. 2 small drawers and 2 large drawers. \$300. 417-260-0941. Raymondville.

FOR SALE: 2016 14ft. Tracker Jon Boat and Trailer with 2020 Suzuki 9.9 motor with electric start-tilt. \$3,500. (417) 650-0046. Lebanon.

TINY HOMES - Missouri Franchise 573-881-7965.

SPRING OPENING

THE COMMUNITY GARDEN MARKET

5271 LONG ST. HWY Y, CONWAY, MO 65632

OPENING DATE: APRIL 26, 2025

JOIN US ON OUR OPENING DAY, FOR FREE DONUTS & COFFEE

▪ Baked Goods

All week: White and Wheat Bread, Sweet Bread, and Cookies

Friday & Saturday: Cinnamon rolls, Sourdough Bread, & Fried Pies

Saturday: Donuts

▪ Jams & Jellies

▪ Stoneground Grains

Einkorn Flour, Spelt Flour, Raw Rolled Oats & Einkorn Berries

▪ Honey & Maple Syrup

▪ Farm Fresh Eggs

▪ Crafts & Garden Boxes

Picnic Tables, Bird Houses, Bird Feeders, Garden Boxes, Rugs & More

▪ Seasonal Retail Market

▪ Flowers

Hanging Baskets, Cut Flowers & Mums

AVAILABLE IN-SEASON:

- Asparagus
- Blackberries
- Black Raspberries
- Broccoli
- Cabbage
- Cantaloupe
- Carrots
- Cucumbers
- Eggplants
- Garlic
- Green Beans

- Green Onions
- Kale
- Kohlrabi
- Lettuce
- Okra
- Potatoes
- Peppers
- Pumpkins
- Radishes
- Red Beets
- Rhubarb
- Shell Peas
- Spinach

- Strawberries
- Squash
- Sweet Corn
- Sweet Onions
- Sweet Potatoes
- Tomatoes
- Watermelon

FRUITS:

- Apples
- Pears
- Peaches



THE COMMUNITY GARDEN MARKET is a seasonal retail market for fresh local produce, baked goods, homemade crafts, etc. located in Conway, MO. All produce is grown in our community unless otherwise labeled.

OPEN: Monday, Tuesday, Wednesday, Friday, Saturday from 9 AM - 5 PM

CLOSED: Thursday & Sunday. And All Religious Holidays

COIN, CURRENCY & GUN ESTATE AUCTION

Saturday, April 19th, 2025 ~ 10:00 AM

LOCATION: Sheldon Community Building, 6th & Main, Sheldon, MO (Watch For Signs)

Auction For Steve Bell, Also Larry "Buster" Shaw Estates



Guns, Ammo, Knives, Hunting, Bows, Outdoor & Antique Items

Rare Rem 8mm Lebel, Browning BPR 270 Win, Rem 22 Model 550-1 Rifle, Savage Model 64 W/Clip 22 Rifle, Marlin Model 49DL Semi Auto 22, Savage Model 99 Lever Action 308, Springfield 30-06, Marlin Model 30A Lever Action 30-30 W/New Vortex 4-12 x40 Scope, Marlin Model 3080 Lever Action Limited Edition "Trail Rider" 30-30 W/Gold Trigger, 2 NIB Ruger 1022 Semi Auto W/Scope & Case, NIB VSKA AK47 Thunder Ranch 7.62x39, NIB Citadel AR Style 12 Ga W/Extras, New Anderson AM15 W/20" Barrel 5.56/223 Has Peep Site & Carry Handle, American Tactical 6.5 Grandel AR15, Thompson Center Arms 50 Cal Muzzle Loader W/Scope, Bioto O/U 12 Ga Double Barrel, Richland Arms O/U 12 Ga Double Barrel, Savage Model 330 O/U 12 Ga Double Barrel, New Never Fired Stoeger Condor O/U 410 W/Vent Rib, JC Higgins/Sears & Roebuck 28" 16 Ga Double Barrel, LC Smith 32" 12 Ga Double Barrel, CAI 20" 12 Ga Double Barrel, Mossburg Bolt Action 20 Ga, Mossburg Model 500 Pump 12 Ga, Rem Model 870 Express 28" 12 Ga, Springfield/J. Stevens Arms Co 410 Single Shot, Excell 410 Single Shot, Like New Pietta J.H. Dance & Brothers 44 Cap & Ball Revolver, Ruger Vacquer 44 Mag Rev, EAA Made In Germany Bounty Hunter 44 Mag Rev, NIB Heritage "Bar Keep" 22 Rev, 2 NIB Heritage Rough Rider 22 Rev, 2 NIB Taurus 38 Spec Rev, NIB North American Arms 22 Mag Derringer, 2 New In Case High Point 380, 2 New In Case High Point 9mm, 2 NIB Ruger LCP Semi Auto 380, 2 NIB Walther 22 Auto, NIB Springfield Model XD Semi Auto 9mm, Sig Sauer Model Sig Para 9 Semi Auto 9mm W/Grey Pihrana Grips, High Point Semi Auto 9mm, Rare Rock Island Armory Seni Auto 10mm, Prime "Rival" Compound Bow, Bear "Prong Horn Hunter" Compound Bow, Several Collector Knives & Sword, Lg Lot Of Ammo Inc 30-30, 44 Mag, 270, 308, 357 Mag, 38 Special, 9mm, 10mm, 7x57 Mouser, 22, 410, 12 Ga, & Others, Binoculars, Deer Horns, Wood Adv Ammo Boxes, Rem & Win Signs, Rare Speer Bullet Board, Seagram's Gun Display, Military Items,

Old Vintage Toy Guns, Rare Copper Rooster Weather Vane, Rare 1940's Stag Beer Pretzel Bowl, Boulevard Beer Sign, Round Porcelain Texaco Sign, Rare Prohibition Era Anheuser Bush Malt-Nutrine Sign, Old Thermometers, Dietz Little Wizard Coal Oil Lamp, Old Washboard, Gold Pocket Watches Some W/Fobs Other Items Not Listed

Rare Gold, Silver Collector Coins Also Very Rare Currency Items

Approx 8 Oz Of Gold W/Coins Inc 1873S, 1893S, 1894 \$20 Gold Pcs, 2015 Buffalo, 2018 Buffalo & 2022 Kangaroo 1 Oz Gold Coins, Very Key 1892CC, 1881, 1885S, 1893, 1899S, 1911S \$5 Gold Coins, 1855 \$3, 1851 \$1 & Others, Approx 50 Or More Carson City Morgan Dollars Inc Some GSA, 1878CC, 1879CC, 1880CC, 1881CC, 1882CC, 1883CC, 1884CC, 1885CC, 1889CC, 1890CC, 1891CC, 1892CC, 1893CC & Others, Approx 50 Or More Morgan & Peace Dollars Inc 1878S, 1890O, 1880O, 1881S, 1881O, 1882, 1884O, 1888S Very Key, 1887, 1890O, 1890S, 1895O, 1895S, 1898S, Key 1921 Peace, 1923S, 1925 & Others, Trade Dollars Inc 1873, 1874, 1876CC, 1876S, 1877S, 1877, Several Silver Bars, Silver Eagles & Silver Rounds, 1800, 1804, 1806, 1808 & 1809 Half Cents, 1787, 1793, 1794, 1798, 1810, 1814, 1817, & More Lg Cents, Several Indian & Flying Eagle Cents, 1864, 1865, 1871 Two Cent Pcs, 1867, 1868, 1870, 1875, 1881 Three Cent Nickels, 1852, 1853, 1870 Three Cent Silver, 1835, 1841, 1848O, 1857 Seated Half Dimes, 1829, 1832, 1834, 1835, 1836 Bust Half Dimes, Two 1937D Three Leg Buffalo Nickels, 1917S, 1920D, 1921, 1923D, 1924S Mercury Dimes, 1838, 1841O, 1840O, 1853O, 1875CC, 1876CC, 1891S Seated Dimes, Rare 1830/29 1834, 1832, 1836 Bust Dimes, 1831, 1853, 1857O, 1861, 1876, 1876CC Bust & Seated Quarters, 1819, 1830, 1832, 1833, 1834, 1835, 1836 Bust Halves, 1844, 1854O, 1858O, 1876 Seated Halves, 1900, 1906O, 1908D, 1912D Barber Halves, Walking, Franklin & Comm Halves, 1875S Twenty Cent Pc, Currency Inc 1934 \$1,000 Bill, Two 1934 \$500 Bills, Lg Lot Of Horse Blanket Bills Inc Indian Chief, Wood Chopper, Black Eagle Of Different Denominations, Also Several Funny Back Bills Of Different Denominations, Hawaiian Bills, Red Seal & Star Note Bills Of Different Denominations & Many More Rare Currency Pcs

See Website For Full Coin & Currency Listing



Auctioneers Note: It Is An Honor To Be Conducting This Auction For The Bell & Shaw Estates As Both Have Been Serious Collectors Of Guns, Coins & Currency For Many Years. This Is An Outstanding & Amazing Auction With Some Of The Very Best Guns, Coins, Currency & Related Items We Have Ever Offered. This Is A True Rare Opportunity To Purchase Such High Quality Guns, Gold, Silver & Currency At Auction. You Do Not Want To Miss This Auction. Please Plan Now To Attend. **Sale Order: Guns Sell First Then Outdoor, Ammo & Antiques Then Will Move Into Rare Gold, Silver Collector Coins & Currency. See Ya There!!!**

Terms: Cash or check with proper ID. Now accepting most major credit cards. Nothing removed until settled for. Statements made the day of sale takes precedence over printed material. Everything sold as is where is. Not responsible for accidents. Restroom available. Concessions Provided. Check our website for upcoming auctions and for additional pictures!!



NANCE AUCTION SERVICE

No Matter How BIG or small, We Do Them All!!!

Col. Bill Nance 417-214-0093

In God We Trust

Philippians 4:13



Mickey Duckett
CAL, MPPA, AARE, CES

Mickey Duckett Professional Auctioneer

P.O. Box 1575, Ozark, MO 65721

(417) 353-2768

www.mickeyduckettproauction.com



FABULOUS ABSOLUTE REAL ESTATE AUCTION

108-110 E. Main St., Hurley, MO Preview: Sat., April 19th, 10-12

Bidding Ends Fri., April 25th @ 1:07

Located just steps from the famous, trout-filled Spring Creek in the quiet town of Hurley, Missouri, this property features 2 buildings with a combined total of approx. 4,500+/- sq. ft. **108 E. Main** is a turn-key restaurant and includes all restaurant equipment, fixtures and some supplies. **110 E. Main** was used for extra seating, office and storage. These buildings have been thoroughly and meticulously remodeled. They can be used a single business location or as two separate buildings. Let your imagination run wild with the potential applications: retail shops, restaurant, antique shops, repair shops. **The possibilities are endless!! Real Money Makers! Take a look at our catalog.**

Owner: Trey & Nita Young

Auctioneers Note: Terrific property with lots of possibilities!! Take a look at our Online Catalog! For more info, terms and register to bid, go to www.mickeyduckettproauction.com.



SPRING MACHINERY AUCTION

SATURDAY, APRIL 19, 2025 • 9:00 A.M.

MOFFAT AUCTION CENTER

467 CO RD 604, LINN, MO

DIRECTIONS: From Linn, take Hwy. 50 west 1 ½ mi. to Co. Rd. 604, turn left & go 1 mile to building on right, or from Jefferson City, take Hwy. 50 east approx. 18 mi. & turn right on Co. Rd. 604.



TRACTORS

New Holland TS 110 cab, air 5700 hrs, sells w/ Bush Hog 2846 QT Loader – one owner in good condition; 2022 Kubota MX 5400 MFWD 225 hrs, cab, air LA 1065 Loader; Cub Cadet 7260 w/ Loader, diesel, 3 pt; JD 8640 runs & drives, noise in clutch; AC 5040 diesel w/ Loader; JD 50; Ford Jubilee; Ford 800; Ford 9N; Ford 8N; AC D19 gas WF.

FARM MACHINERY

NH 1411 Disk Bine; NH 648 Round Baler Silage Special – 1 owner, always shedded, good condition; NH 474 Hay Bine; NH 256 Rake; NH 520 Manure Spreader – good condition; NH 451 7 ft Sickle Mower; Gooseneck Hay Trailer; Hay Wagons; 6 ft 3pt Blade; 3 pt. Poly Tank Sprayer; Post Driver; 3 pt. 8 Wheel Rake; 7 ft 3 pt Field Cultivator; 12 ft 3 pt Field Cultivator; Danuser Post Hole Digger 3 pt; 3 pt Seeder; Harrows; Oliver 4-16 Semi Mount Plow; 7 ft 3 pt Blade; AC 6 ft Brush Hog Snap; AC 6 ft Blade Snap; 2 Wheel Wagon; Bush Hog 5 ft brush hog; Ford 706 3 pt Scoop; 6 ft 3 pt Disk; 3 pt Boom; 4 Wheel Wagons; Ford 3-16 3 pt Plow; 8 ft 3 pt Chisel Plow; Ford 301 Corn Planter 2 row 3 pt; AC 6 ft Pull Type Brush Hog; Car Dolly; 10 Wheel Pull Type Hay Rake; Hydraulic Livestock Trailer; 3 pt. 30 ft. Sprayer.

NEW SKID STEER ATTACHMENTS

Stout 66-9 Grapple Bucket; Stout 72-3 Grapple Bucket; Wolverine Hydraulic Pallet Forks; 6 ft. Hydraulic Blade; Set of Pallet Forks; Titan 6 ft Brush Hog; Sycle Mower. All items are skid steer quick attach.

RTV, MOWERS, BOAT & 4 WHEELERS

2022 Kubota RTV X1140WA Side by Side – Like new, 1 Owner; 2007 Honda 4 Wheeler Rincon 4x4; Honda 450 4 Wheeler fuel injected; Honda 350 4 Wheeler Rancher ES; Baja Trail Bike; Jon Boat w/ Motor & Trailer; Evinrude Outboard Motors 20HP & 25HP; Kawasaki 500 4 Wheeler; Gravely Zero Turn Mower w/ new 725 CC Kohler Motor.

AUTOS, TRUCKS & TRAILERS

2001 Ford F150 auto 8 cyl; 2003 Ford F350 auto 8 cyl; 2005 Chevrolet 3500 Dually diesel 4x4, runs, needs head gasket; Doolittle 7712 Two Wheel Trailer – like new; 1983 Gooseneck Stock Trailer; Homemade 2 Wheel Trailer; Gooseneck 20 ft Trailer.

CATTLE EQUIPMENT, FARM SUPPLIES, TOOLS & MISC.

Cattle Squeeze Shoot w/ Dolly Caddie; Creek Feeder on Wheels; 13 Section Corral w/ Gate; Gates; Livestock Panels; T Posts; 18.4 x 38 Tractor Tires; Implement Tires; Clamp On Hubs off 4820 JD; Old JD parts; Tools; Hand tools; Toolboxes; Poulan chainsaw; Stihl chainsaw; Lawn cart; ATV Sprayer; Cutting Torch Set; Cherry Picker; Metal Chop Saw; Gas Power Washer; Ladders; Walk boards; Seamless Gutter Machine on Trailer; Garden tools; Iron Rebar; Cement Blocks; Lumber; New Windows; New Doors; Brick & Block saw

Note: This will be a large auction with two auction rings all day. Consignments accepted through Friday. Please see the website for photos. Website will be update daily. Thanks - Rick

Terms: Cash or good check with proper identification. All sales are final. Everything sells as is, where is. Proper identification is necessary to obtain a buyer's number. Announcements day of sale supersede all printed material. Not responsible for accidents. Food on grounds.



RICHARD MOFFAT AUCTION SERVICE



573-761-4293
Jefferson City, MO

Auctioneers:
Richard Moffat & BJ Moffat
www.moffatauction.com

573-690-2823
Linn, MO

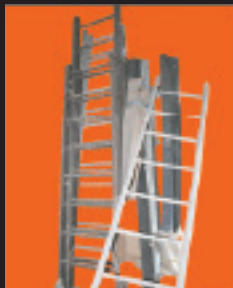
BRYAN ONLINE ESTATE AUCTION

6112 FORSEE ROAD ASHLAND MO 65010

PREVIEW: Thursday, April 17th 3:30 PM to 6:00 PM

BIDDING BEGINS: Sunday, April 20th at 6:00 PM

PICK-UP: Tuesday, April 22nd 2:00 PM to 5:30 PM



TRIPLE S AUCTIONS
LLC

FOR FULL LISTING, TERMS, PHOTOS & DETAILS:
WWW.TRIPLEAUCTIONS.NET

QUESTIONS? EMAIL: KRISTIE@TRIPLESAUCTIONS.NET OR CALL SCOTT 573-881-9950



RESTAURANT EQUIPMENT LIQUIDATION AUCTION

MONDAY, APRIL 21 - 9:30 AM

ZOE SOZO'S & CONSIGNORS

104 W THIRD ST • FAIR PLAY, MO 65649

LOCATION: FROM BOLIVAR, MO; WEST ON HWY 32 APPROX 8 MILES TO FAIR PLAY THEN NORTH ON WALNUT 2 BLOCKS THEN EAST ON THIRD ST. WATCH FOR AUCTION DAY DIRECTIONAL SIGNAGE.

SELLING ➡

HOSHIZAKI & ICE O MATIC 850 LB ICE MACHINES-NORLAKE KEG TAPPER COOLER-VOLLRATH JUICE DISPENSER-2 BLENDTEC SLUSHIE MACHINES-4 REFRIGERATED SANDWICH PREP TABLES-3 CTR MDL SANDWICH PREP UNITS-AVANTCO STAINLESS STEEL 2 DOOR WORKTOP FREEZER, LIKE NEW-APPROX 8 SINGLE, DBL & TRIPLE DOOR REACHIN COOLERS & FREEZERS! AVAMIX COMMCL FOOD PROCESSOR-ATOSA COMBI RANGE W/2 BURNERS & 4' GRILL PLUS DOUBLE OVENS, EXC-VULCAN 6 BURNER RANGE W/OVEN, NICE-SEVERAL POT RANGES-TOASTMASTER 3' NAT GAS GRILL-ALTO SHAAM COOK & HOLD OVEN-SEV HEATED HOLDING CABINETS-CLEVELAND & GROEN 40 GALLON GAS & ELEC TILT SKILLETS-PANINI GRILL-BLODGETT & HOBART DBL STACK CONVECTION OVENS-NUVU CONVECTION OVEN PROOFER COMBO-DEEP FRYERS INCL PITCO 4 BANK W/OIL FILTRATION, NICE, COST OVER \$25,000; DEAN & FRYMASTER FLR MDL GAS & ELEC FRYERS-4 CORNDOG FRYERS-2 CAPTIVE AIRE 10' STAINLESS LONG WATER COMPENSATING WALL EXHAUST HOODS-CMA COMMERCIAL DISHWASHER, 115 VOLT! CMA UNDERCTR SANITIZER, PURCHASED NEW IN 2020 FOR \$5,000, LIKE NEW! STAINLESS STEEL 3 COMP SINK, STAINLESS WORKTABLES INCL FOLDING STAINLESS TABLES & WIRE SHELVEING-SOME SEATING ITEMS INCL TABLES, CHAIRS & BARSTOOLS-25 BRAND NEW LED LIGHTS/RECESSED LUMINAIRES! OTHER RESTAURANT EQUIPMENT & SMALLWARES TOO NUMEROUS TO LIST!

NOTE: THIS IS ONLY A SMALL & PARTIAL LISTING SO BE SURE TO VISIT OUR WEBSITE & CLICK ON THE "AUCTIONS" TAB FOR COMPLETE LISTING AND PHOTOS! FULL LINE OF EQUIPMENT INCL ICE MACHINES, KEGATOR, SANDWICH PREP TABLES, NICE WORKTOP FREEZER, LARGE SELECTION REACHIN COOLERS & FREEZERS PLUS LOTS OF EXCELLENT COOKING ITEMS! MARK YOUR CALENDAR & MAKE PLANS TO ATTEND!



MARON RESTAURANT EQUIPMENT, LLC & AUCTIONS CO.

417-327-5619 • WWW.MARONRESTAURANTEQPT.COM

YOUR RESTAURANT EQUIPMENT AND FOOD SERVICE
LIQUIDATION SPECIALISTS



APRIL 24TH ONLINE AUCTION



2014 DEERE
350G EXCAVATOR



2024 DEERE
324 WHEEL LOADER



2022 JOHN DEERE
331G SKIDSTEER



2014 JOHN DEERE
135G EXCAVATOR



2024 KUBOTA
R640 WHEEL LOADER



2024 KUBOTA
SVL 97-2 SKIDSTEER



2011 JOHN DEERE
6230 TRACTOR

BID NOW!



SEXTONAUCTIONEERS.COM



2023 WACKER NEUSON
EZ36 MINI EXCAVATOR



2016 BOBCAT
E50 MINI EXCAVATOR



2004 HYUNDAI
290LC EXCAVATOR



2016 JOHN DEERE
550K DOZER



2013 CASE
750M DOZER



VERMEER NAVIGATOR
D24X40A BORE MACHINE



2005 KENWORTH
T800 DUMPTRUCK



2006 PETERBILT
335 DUMP TRUCK



2006 STERLING
L9500 SERIES TRUCK



1994 PETERBILT
379 TRUCK



1952 KENWORTH
350 (NON-RUNNER)



2015 PETERBILT
579 DAYCAB



2022 BOBCAT
CT1021 TRACTOR



2020 BOBCAT
CT2035 TRACTOR



1994 JOHN DEERE
6400 TRACTOR



2022 JOHN DEERE
450 BALER



VERMEER
504L BALER



2022 JOHN DEERE
FC15M BRUSH-HOG



1971 DODGE
CHALLENGER



1974 DODGE
CHALLENGER



1946 FORD
CUSTOM



2009 DODGE
RAM PICKUP TRUCK



2022 RAM
2500 PICKUP TRUCK



2019 RAM
1500 CLASSIC PICKUP



ONLINE AUCTION ENDS APRIL 24TH

CALL: **314-529-0124**

Sales@SextonAuctioneers.com

5182 US HWY 63, Pomona, MO 65789

SCAN TO



BID NOW!



Sam CRAWFORD AUCTION SERVICE

Due to the passing of my husband, will sell the following 17 miles East of Clinton or 11 miles West of Warsaw, MO on Hwy. 7 Benton/Henry Co. line, then South 2 miles on SE 1301 to Sky Village. Watch for auction signs.

SATURDAY, APRIL 26TH, 2025 - 10 AM

REAL ESTATE - COLLECTOR CAR - ANTIQUES/COLLECTIBLES - TOOLS - MISC.



REAL ESTATE SELLS 12 NOON

Corner Lot, Approx. 1 Acre. '22 30x50'
Metal Shop Building, Concrete Floor,
Roll-Up Door & Side Door, Like New
Building, Serious Seller

COLLECTOR CAR SELLS AT 12:15

'51 Chevrolet Deluxe Coupe, 6 Cyl. 3
Speed, Shredded, Nice Shape

TOOLS & OTHER

John Deere LA115 19.5 HP Lawn Tractor
John Deere Sabre Lawn Tractor
Toro Zero Turn, 16 HP, Lawn Mower
Generac 6500 Generator
Coleman 5000 Generator
Other Generator
Craftsman 2 Tier Toolbox
Stihl Trimmer
3-4 Blowers
Electric Power Washer
2 Homelite Chainsaws
Tow Bar
Grinder on Stand
Asst. Power Hand Tools
Good Asst. Wrenches, Sockets, Other
Tools
Floor Jack

Pair Alum. Loading Ramps
Fish Cooker
2 Wire Storage Shelves
Handyman Jack
File Cabinet
Oil, Misc.
Gas Can
Other Misc.

ANTIQUES • COLLECTIBLES

Oak Seed Cabinet
Chadwick Spool Cabinet
Barrister Bookcase
Buffet Mirror
Striking Kitchen Oak School Clock
Griante Top Kitchen Cabinet w/Flour
Sifter
Wood Storage Cabinet
Wall Telephone
Gold Scale
2 Tabletop Radios
2 Dazey Churns (1 Bullet Top)
Ships Lamp
Caboose Stove
Brass Bed Frame
3-4 Electrified Oil Lamps
Apple Peeler
Coffee Grinder
Spool Leg Lamp Table
Oil Lamps, Lanterns

Gas Iron
Brass Pieces
Whale Harpoon
Crock Bowls
Misc. Glassware
Set Mini Valentine Kid Plates
5 Gal. Stone Jug
Bowie Knife, Other Kives
Collar & Mirror
Other Misc.

•• Most of the antique pieces
are really nice ••

HOUSEHOLD

Red Leather Couch & Loveseat, Nice
Grandfather Clock
Oak Dining Table, 6 Chairs, 2 Leaves
Hutch
Side Board
World Globe on Stand
Whirlpool Washer & Dryer, Front Load,
White
2 Bookshelves
Reproduction Ice Box
Sound Bars
Hardback Books
Pictures, Wall Decor
2 Handicap Strollers

Sam CRAWFORD Auction Service LLC

1944 **CELEBRATING 81 YEARS** 2025
STARTING 81 YEARS
OF SALES & SERVICE

Sam
417-328-9137

Chase
417-399-1904

TERMS: Cash or good check. Nothing removed until settled for. Not responsible for accidents. Lunch available. Statements made day of sale take precedence over printed matter. All items sell as is. No warranties given or implied.

417-998-6629
Cross Timbers, Mo.

CrawfordAuctionService.com

Chance, CAI
417-298-1751

Tom Poynter
Jack Lancaster



Vickey Maness

R&R AUCTION SERVICE

AUCTION • SATURDAY APRIL 26TH, 9AM

AT 417 NORTH LONE PINE IN SPRINGFIELD, MO

THE ESTATE OF NEOMA ARNOLD, LUCINDA GOETZ EXECUTRIX

THIS HUGE AUCTION IS A PICKERS DREAM.

THE MAGNITUDE OF THIS AUCTION HAS BEEN UNMATCHED THIS YEAR.

The sheer volume of items is amazing, but the quality of collectibles exceeds expectations. Most of the estate has not been touched in decades and there is no way we can list every item. It is a must see.

door knobs, antique cabinet hardware, Pitcher and bowl sets, a colossal amount of antique glassware, Depression glass, Fiestaware, Fenton, Blue Willow, lead crystal, Carnival, Jewel T, and many others, lots of flatware, plateau mirrors, glass lamp shades, antique umbrellas and umbrella stands, antique gun cabinet, large amount of military ammo and other ammunition, reloading supplies, holsters, cases, gun parts, magazines and scopes, wooden ammo boxes, lots of knives from pocket to survival to bayonets, wash boards, many, many antique china dolls, doll furniture, doll clothes, doll buggies, doll parts, lots of cast iron, Antique cast iron bell, lots of baskets of various shapes and sizes, vintage/railroad/modern lanterns, concrete lawn ornaments, ornate cast iron planters, vintage & antique figurines, wooden fretwork, old advertising items, large amount of crock items, brass items, old bottles and jars, vintage metal type writing table, full size butcher block, wooden ice box, oil lamps, vintage electric lamps, Ironstone dishes, Ruby Red, blue glass, Pyrex, Pyrex nesting bowls, Fireking, Corningware, USA pottery, Acrosonic console piano, many bags of new clothing with tags, bags of jeans, men's & women's coats, new hunting vests and camouflage clothing, lots of tools, lots of toys, Razor scooter, Bowflex Max trainer, Vita Master Bio Master treadmill, stair lift chair, lots of new items in box from cookware to toys to shelving and tools, two small electric fireplaces, Whirlpool washer and dryer, upright freezer, rods & reels, fishing lures, lure molds, other fishing items, 48 star 9ft WWII flag, lots of old books including educational, hunting, fishing and more, American Rifle magazines starting in 1959 some leatherbound sets, clocks, lots of apple décor, handicapped items, fireplace set, fireplace grates, andirons, bags of towels and bedding, quilts, Jello molds, metal milk crates, antique hand pump, iron wheels, hen and chick planter, metal lawn swing, metal lawn furniture, shepherds hooks, iron trellis, pet carriers, 5hp MTV chipper shredder, Lawn Chief chain drive tiller, wooden bench, 60 x 32 bathtub wall set NIB, large lighted snowman, ladders, nut and bolt bins, 33 and 45 records, Panasonic stereo with 8 track and turntable, HP Deskjet 2549 printer NIB, scrap material pieces, scrap metal, lumber, fully decorated Christmas tree, Natural Sine India Brass Nautical compass,

Large amount of antique picture frames, vintage prints, braided and area rugs, spice racks, hundreds of showcase items and hundreds of box lots just for a start!

Keep an eye on the photo gallery at rrauctionservice.com as a picture is worth a thousand words!

Parking for this event is a nightmare and space of auction is very limited. We will provide shuttle service from auction site to Pythian street. Please be courteous of peoples driveways.

Lots of quality antique furniture, with everything from oak side by side secretaries, to marble top tables, to Victorian bedroom furniture, and so much more, French Provincial bedroom set with canopy bed, a massive collection of granite ware, large jewelry collection, jewelry cabinets, wicker furniture, Florentine gilded nesting tables, wall pockets, carved antique wall shelves, hundreds of glass stoppers, antique

Depression glass, Fiestaware,



Please keep watch on our website for added photos.

TERMS: Cash, check, or credit card with proper I.D. nothing removed until settled for. A 3% fee will be added to credit card purchases. Not responsible for errors in listing. Any announcement made sale day will take precedence over any printed matter.



For more information contact Professional Auctioneer Russ Weeks at 417-576-7357 or check out www.rrauctionservice.com

Serving this area's auction needs since 1997 with honesty and professionalism.

www.rrauctionservice.com

(417) 576-7357 or (417) 345-4140



MULTI-ESTATE AUCTION OF CHARLES WALLER & JOHN ERVIN

SATURDAY, APRIL 26, 2025 • 10 A.M.

291 WILDCAT ROAD • SEYMOUR, MO 65746

DIRECTIONS: FROM SEYMOUR, WEST ON U.S. 60, THEN RIGHT ON KILLDEER ROAD, THEN RIGHT ON BRUMBACK ROAD, THEN LEFT ON WILDCAT ROAD. AUCTION IS ON THE LEFT.

— WATCH FOR CAPON AUCTION SIGNS —



TRACTORS, TRUCK, FARM EQUIPMENT & SHOP TOOLS:

35 MASSEY FERGUSON 3-PT. PTO, GOOD TRACTOR • 9N FORD TRACTOR, INDUSTRIAL TRACTOR WITH FRONT-END LOADER • 6 FT. BRUSH-HOG • 9N FORD WITH BRUSH GUARD • 4X8 FARM TRAILER, NO TITLE • 5 FT. 3-PT. BRUSH-HOG • 6 FT. 3-PT. BLADE • 3-PT. SCOOP • 3-PT. SICKLE MOWER, 7 FT. BLADE • 3-PT. BALE SPEAR • 2-BOTTOM PLOW • WINCO PTO GENERATOR ON A CART • MANURE SPREADER • FORD SQUARE BALER • FARM WAGON • 3-PT. LIFT • OLD HAY FOR BEDDING • HAY RAKE • SEVERAL CORRAL PANELS • CREEP FEEDER • SQUARE WATER TANK • FIREWOOD CART • RAKING BAR • SPLITTING MAUL • LADDERS • SEVERAL LOG CHAINS • HOT SHOT • CATTLE-WORKING SUPPLIES • FISHING POLES • HOMELITE CHAINSAW • VENTLESS PROPANE HEATERS • SHOP BROOMS • LEAF BLOWER • PET TAXI • SEVERAL PLANTING POTS • SEVERAL T-POSTS • EXTENSION LADDERS • GATES, PUSH MOWERS • D.R. TRIMMER • DOG HOUSE • REAR-TINE TILLER • SMOKER • CRAFTSMAN LT 1000 LAWN MOWER, 42" DECK • CROSS-CUT SAW • HAMMER, PLIERS, NUTS, BOLTS • SKIL SAW • "C" CLAMPS • SHOVELS, RAKES • LOTS OF GARDENING SUPPLIES • WRENCHES • POST-HOLE AUGER • BELT GRINDER • PITCHFORKS • T-POST PULLER • FENCE STRETCHERS • NEW ROLL OF 12-GAUGE BARBED WIRE • 500-GALLON PROPANE TANK • 3-PT. PTO • FORD 600 3-PT. AND PTO • FORD 600 WITH FRONT-END LOADER • POTATO PLOW • LOTS OF CORRAL PANELS • 2 CREEP FEEDERS • LARGE METAL WATER TANK • STAND-UP METAL DESK • SINGLE-BOTTOM PLOW • 3-PT. BOOM LIFT • 3-PT. CARRY ALL • SCOOP • 6 FT. BLADE • 3-PT. 2-BOTTOM PLOW • 3-PT. 7 FT. DISC

HOUSEHOLD ITEMS & MISCELLANEOUS:

KENMORE DRYER • HOTPOINT WASHER • WOOD TABLE W/3 CHAIRS • AMANA WHITE REFRIGERATOR • MAYTAG ELECTRIC STOVE • WOOD COAT RACK • ELECTRIC HEATERS • 4-DRAWER CHEST OF DRAWERS • LIKE-NEW KEROSENE HEATER • SEVERAL CROCS, VARIOUS SIZES • MICROWAVE • POTS & PANS • ANTIQUE CHAIRS • DRESSERS • CHINA HUTCHES • OFFICE DESKS • MAKE-UP DESK • KEROSENE LAMPS • FULL BEDROOM SET • OAK CHEST • QUEEN-SIZE BEDROOM SET • LUGGAGE • ANTIQUE CHEST • ANTIQUE CIRCULAR TABLE • PIPE COLLECTIONS • CANNING JARS • LAWN CHAIRS • LIFTING WEIGHTS • WOOD FURNITURE • COUCHES • CHAIRS • POWER TOOLS • SITE SAFE • METAL TOOL BOXES • PORTABLE TABLE SAW • SHOP LIGHT • EXTENSION CORDS • SHOP VAC • PORTABLE AIR TANK

AUCTIONEER'S NOTE: BOTH ESTATES WILL HAVE A LOT MORE ITEMS THAN LISTED! COME SPEND THE DAY WITH US!

LOTS OF MISCELLANEOUS ITEMS TOO NUMEROUS TO MENTION! WILL HOLD SALE • RAIN OR SHINE



Dusty Capon
Auctioneer
417-830-8623

SEE MORE AT FACEBOOK
& AUCTIONZIP.COM



TERMS & CONDITIONS: CASH OR GOOD CHECK WITH PROPER I.D. ITEMS SOLD AS IS, WHERE IS. NO ITEMS MOVED UNTIL PAID FOR. ANY QUESTIONS, CALL AUCTIONEER AT 417-830-8623. ANNOUNCEMENTS MADE DAY OF SALE TAKE PRECEDENCE OVER PRINTED MATERIAL.

OSAGE COUNTY

Real Estate Auction

SATURDAY, APRIL 26, 2025 AT 10 AM

AUCTION & PROPERTY LOCATION: 127 RADEMANN LANE, WESTPHALIA, MO 65085

DIRECTIONS: At the junction of Highway 63 & Highway 50 east of Jefferson City, Missouri, go south 3 miles to Highway 133, turn right and go west 6 miles to Highway EE (Folk, MO), turn right and go 1/2 mile to the end of Highway EE, continue on the Blacktop 1 1/2 miles to the gravel, continue on 2 miles to Rademann Lane (by green mailbox), turn right and go 3/4 mile to the auction site.

303 +/- ACRES TO BE OFFERED IN A SINGLE TRACT WITH NEARLY A MILE FRONTAGE ON AND BEAUTIFUL VIEW OF THE OSAGE RIVER. LOCATED IN TOWNSHIP 43N, RANGE 11W, SECTION 21 OF OSAGE COUNTY, MO

Offering a beautiful combination farm that has been in the same family for generations and has not been offered at public auction before. It has lots of open land that is being used for permanent pasture and hay production, some ridge tops and some Osage River bottoms, the balance is in mature timber that has never been commercially harvested. The Osage County FSA Office calls for 177.34 acres of open land. The farm has the stone house that was occupied by two generations of the Rademann Family, it is a two-bedroom structure with a full basement. There is a late model hoop building and some other farm structures that are being used for storage and livestock production. The property has a functioning deep well that furnishes water to the homestead.

ALSO SELLING 2022 JD XUV835M GATOR, FULL CAB, AIR, 4WD, ELE./HYD. DUMP BED, GAS, FRONT BRUSH GUARD, 450 HOURS, 2503 MILES, ONE OWNER

SELLER: ELMER C. RADEMANN TRUST

Wheeler 
AUCTIONS & REAL ESTATE

23101 HWY. 24, PARIS, MO 65275 | 660-327-5890
WWW.WHEELERAUCTIONS.COM

CHARLIE NORDWALD | 636-795-4552
WHEELERAUCTIONS.COM



BILL GRATZ | (573) 635-4168
CALLGRATZ.COM



LARGE ESTATE PUBLIC AUCTION ESTATE OF DR. JOHN & MARGARET GRAY

SATURDAY, APRIL 26TH, 2025 @ 9:00 AM
PREVIEW EQUIPMENT ON FRIDAY, APRIL 25TH, 1-4PM
19436 HWY W
CLARKSVILLE, MO 63336

Directions: From Hwy 61, take Hwy WW east, approximately 10 miles.

Turn left onto Hwy W/ Water St. ½ mile to auction site on the left. Look for Allen Auction signs

Jet Engine

-1952 Westinghouse J40WE-6 Non-Afterburner Military jet engine- SN: WE030017 in shipping container with engine logbook

Tractors

-2005 New Holland TL-100A, 2wd with cab, Bush Hog 5045 loader with bucket, 12 speed manual transmission, 2 rear remotes, new rear 18.4x34 Firestone tires, 3700hrs, 2nd owner
 -1995 New Holland 7610S, 2wd with ROPS & Westendorf canopy, loader & bucket, 8x2 manual transmission, 2 rear remotes, new rear 18.4x34 Firestone tires, 1974hrs, 2nd owner
 -1976 Ford 5600, 2wd diesel, open station, loader with bucket & bale spear, 8x2 manual transmission, 2 rear remotes, hours unknown
 -1979 Ford 4600, 2wd, open station, 8x2 manual transmission, 2002 Kubota B2910 HST, 3 speed hydrostatic 4wd with ROPS, power steering, 72" mid-mount mower deck, 3pt hitch, mid and rear PTO, diesel, 1393hrs., 2nd owner

Kubota RTV

-2017 Kubota RTV-X1100CWLH, 2 speed hydrostatic 4wd utility vehicle with cab, heat, air, radio, and turn signals, hydraulic dump bed, diesel, 642hrs/2008miles, one owner

Trailers

-2024 Trailerman Dump Trailer, Tandem, Sides, Heavy Duty Axles, spare tire, remote control, black, Absolutely Like New
 -1987 bumper hitch trailer, 16' tandem axle

Heavy Machinery

-1979 Case 850B track loader dozer with bucket teeth- ROPS, power shift transmission, street cleats, undercarriage 60%-70%

-1987 Case 480E backhoe/loader, 2wd with ROPS, 4 speed hydrostatic transmission, 4190hrs, 18", 24", and 30" backhoe

-Towmotor forklift, hard tires

Skid Steer/ Attachments

-2013 Bobcat Tool Cat 5600, all wheel steer, hydrostatic 4wd utility vehicle with cab, heat, air, and radio, loader with Bob-Tach and smooth bucket, low flow hydraulics, hydraulic dump bed, 2335hrs, 2nd owner
 -Stout 72" grapple bucket
 -Danuser intimidator tree puller
 -pallet forks
 -bale spear

Farm Equipment

-Bush Hog 2615 Legend 15' brush hog, chains, hard tires
 -Bush Hog 287, 3pt., 7' brush hog with dual hard tires
 -New Holland HT152 twin line 10 wheel rake
 -New Holland 256 5-bar rake
 -AgMaxx 9 wheel rake, Model RT-9
 -Brillion S55 Sure Stand seeder, 5 foot, 3pt., like new
 -New Holland 1465 haybine 9' mower conditioner
 -John Deere 1500 power drill, 3pt, 1000 PTO, small seed box
 -John Deere 336 square baler, string tie
 -King Kutter tiller, 3pt, 6'
 -3pt. disk
 -Remlinger row cultivator
 -Ferguson 3pt. cultivator
 -Farmhand 4 wheel rake
 -Danuser post hole digger
 -3pt blade 5'
 -3pt. blade 7'
 -Bush Hog RM75, 3pt., 5-way blade, 8'
 -New Holland 352 grinder/mixer
 -1 bottom plow
 -Bush Hog hydraulic fold disk, 16'

-3pt. row cultivator

-3pt. rotary hoe

-International 4 bottom plow

-Ford 3pt. 3 bottom plow

-Brillion pull-type roller

-Pull-type silage chopper, for parts

-aluminum mineral feeders

-Gannon tumble bug

-3pt. 2 bottom plow

-Martin pull-type equipment trailer

-pull-type 10' disk

-pull-type 10' brush hog

-Ford 2 row planter

-Massey Ferguson Conditioner

-aluminum irrigation pipe, w/ Fittings, 30' pipes

-100gal. fuel tank w/ electric pump

-500gal. fuel tank

-2 grain augers for gravity flow wagons, new

Trucks/ Vehicles/accessories

-2005 Volkswagen Jetta sedan, manual transmission, diesel, silver, 177,216 miles
 -2004 Volkswagen Jetta sedan, automatic transmission, diesel, gold, 126,981 miles
 -2012 Dodge Ram 1500, quad cab, silver, 181,369 miles
 -2001 Volkswagen Jetta TD1 sedan, manual transmission, diesel
 -1998 Volkswagen Jetta GL sedan, manual transmission, diesel
 -1982 Volkswagen diesel truck, manual, 5' bed with cover
 -1970 Volkswagen van, sliding side door
 -1970 Volkswagen bug car
 -1964 Volkswagen van- double side door
 -International B-170 flatbed truck, dually, 5&2 trans
 -1974 International Loadstar 1600 grain truck w/ hoist
 -1969 Ford 600 dually, short wheel-base, 5x3 transmission, winch

-1973 Ford F250, manual transmission

-Volkswagen, rear hatch/ door

-1999 Dodge Ram 1500, quad cab, 2wd, 5.9L, V-8, alloy wheels, silver, 222,139 miles

-1984 Honda Accord 4 door sedan, a/c, cruise control, white, 118,739 actual miles

-1960 International grain truck with hoist

-1953 Ford stock truck

-1951 Ford dump truck with hoist

Lawn & Garden

-STIHL weed eaters, chain saws, & leaf blower
 -DeWalt 12' chainsaw w/ battery & charger, used twice
 -push mowers
 -sod cutter (fits ford tractor)
 -cyclone ATV seeder
 -ATV sprayer
 -push-type brush cutter
 -Gravely 10A commercial cutter, two-wheeled tractor
 -Gravely 5665 brush cutter, two-wheeled tractor
 -Bonzanza mower

Trailers/ Wagons

-EZ Flow wagon, no running gear
 -tag-along tandem axle trailer
 -running gear
 -pintle hitch trailer, metal sides
 -Unverferth gravity flow wagon
 -metal-sided wagon w/ hoist
 -John Deere pull-type wagon
 -wagon running gear

Livestock Equipment & Supplies

-Big Valley cattle chute
 -Huge assortment electric fence and supplies
 -galvanized water troughs
 -1000's of t-posts
 -3 Bohlman concrete cattle waterers, never used

THIS LIST IS SUBJECT TO CHANGE. ANNOUNCEMENTS MADE THE DAY OF THE AUCTION TAKE PRECEDENCE OVER PRIOR ADVERTISING

ALLEN AUCTION & REAL ESTATE SERVICE LLC
(636) 338-4805 • Hawk Point, Mo • www.allenauction.net

Auctioneers, Kyle Allen (636) 236-2344 | Elden Foster (573) 239-6745 | Richard Moffat (573) 690-2823



LARGE ESTATE PUBLIC AUCTION ESTATE OF DR. JOHN & MARGARET GRAY

SATURDAY, APRIL 26TH, 2025 @ 9:00 AM
PREVIEW EQUIPMENT ON FRIDAY, APRIL 25TH, 1-4PM
19436 HWY W
CLARKSVILLE, MO 63336

Directions: From Hwy 61, take Hwy WW east, approximately 10 miles.

Turn left onto Hwy W/ Water St. ½ mile to auction site on the left. Look for Allen Auction signs

- | | | | |
|--|---|--|--|
| <ul style="list-style-type: none"> -concrete cattle bunks -metal barrels -wooden fence posts/ railroad ties -rolls of hogwire -30-40 square straw bales, wire tie -mineral feeders with rubber tops -hog troughs -woven wire -heavy duty 2" pipe gates -round bale feeders -water troughs -livestock panels and gates -chicken feeders -chicken wire -fence stretchers -6 rolls Red brand barbed wire, new -metal cattle feeders <p><u>Stainless steel, aluminum, & steel</u></p> <ul style="list-style-type: none"> -I-beams, steel & aluminum -overhead highway sign posts -C-channel, steel & aluminum -tanks, steel & stainless steel -dip tank, stainless, steel-lined <p><u>Shop Equipment/tools</u></p> <ul style="list-style-type: none"> -500gal. propane tank -lot of clevis | <ul style="list-style-type: none"> -heavy duty chains -generator -culvert pipes -fuel pumps -large cable -18.4x34 tires -forklift barrel grabber -fuel barrel on stands -forklift forks -Screwdrivers/Wrenches/Sockets -Pliers/Snips -Electrical Supplies -Lincoln 225 amp welder -huge assortment of electrical supplies -metal cabinet on wheels -metal buckets -copper fittings -log chains -spools of rope -double bit grinder -hand files -metal crates -hand tools -metal pans -Craftsman 150psi air compressor -Dayton double bit grinder -Atlas shop smith -metal heaters | <ul style="list-style-type: none"> -Organizers -Nuts/bolts -Delta drill press -metal rods -metal rotary cabinets -pipe vises -large shop vises -craftsman shop vac -electric motors -pipe cutter -hand saws -corded saws -bolt cutters -tool boxes -Delta upright band saw -wire -wooden pull organizers <p><u>*Expecting 6-7 Trailer Loads of Tools/Misc.</u></p> <p><u>Recreation/ miscellaneous</u></p> <ul style="list-style-type: none"> -aluminum John boat, 16', Evinrude motor, trolling motor -trampoline -Cushman 3 wheel cart with dump bed & PTO -fishing rods -smoker -tractor lights -tractor cylinders -tractor chains | <ul style="list-style-type: none"> -meat hooks -metal ammo boxes <p><u>Antiques</u></p> <ul style="list-style-type: none"> -Rex cement mixer w/ Stover Mfg. & Engine Co hit & miss motor -coal carts, 2 wheel with dolly wheels -Charm #38 cast iron stove -gas station car lift w/ in-ground cylinder gas station rectangular oil tank w/ hand crank pumps -Iron wheels -metal tractor seats -metal advertising cans -wooden ladders -wooden advertising boxes -hay hooks -wooden 1 row corn planter -license plates -tractor hoods -aluminum wash tubs -glass insulators -cast iron water pump -lot of wire -wooden windows -electrical testers <p>And much more!</p> |
|--|---|--|--|

SPECIAL NOTE: WE WILL HAVE SKID LOADER DAY OF BOTH SATURDAY & SUNDAY FOR LOAD OUT.

WE MAY RUN 2 AUCTION RINGS THE DAY OF THE SALE, PLEASE COME PREPARED WITH EXTRA BIDDERS AND TRAILERS.

THIS LIST IS SUBJECT TO CHANGE. ANNOUNCEMENTS MADE THE DAY OF THE AUCTION TAKE PRECEDENCE OVER PRIOR ADVERTISING

Auctioneers Note: John was an Orthodontist with offices at Northwest Plaza in St. Louis, Hannibal and later in Louisiana. Marge was a Substitute teacher and a rural Mail Carrier for the Post Offices in Curryville and Clarksville. They purchased the former Mae Waters Farm south of Clarksville in 1970 and established Spruce Tree Farm with their four young sons. John and Marge chose the name because they transplanted over 40 Colorado Blue Spruce trees on their new farm that they had grown from seedling trees acquired during John's service in the US Air Force in Colorado in the early 1960's. Their 5 foot tall spruce trees had been growing at their previous home in Ferguson, Missouri. In addition to their trees, John and Marge raised cattle, hogs, chickens and they had two peacocks for a short period. In 1976, they purchased the Thomas Catlin Farm just north of their original farm. Marge loved the farm, her plants and the animals. She bottle fed many baby calves over the years and also became a Master Gardener. John enjoyed many other interests including photography, electronics and anything unusual or different and his lifelong collection reflects those interests. One of his most notable acquisitions is an early 1950's Westinghouse J40WE-6 military jet engine that he and his younger brother brought home while he was still living in Ferguson. That jet engine is still part of his collection today. This sale will definitely have something for everyone!!!

ALLEN AUCTION & REAL ESTATE SERVICE LLC
(636) 338-4805 • Hawk Point, Mo • www.allenauction.net
 Auctioneers, Kyle Allen (636) 236-2344 | Elden Foster (573) 239-6745 | Richard Moffat (573) 690-2823

ESTATE AUCTION ARCOLA, MO

AUCTION

Due to the death of the late Warren Beasley we will sell the following Real Estate, Pickups, Tractor, Trailer, Tools, Collectibles, Household and Misc. At the Home located West of Arcola, Mo. From the intersection of 39 & Y Highway & F.R. Dade 22 in Arcola, Mo. go West ¾ Mile on F.R 22 to the Auction

Sat. April 26, 2025 at 9:00 am

WATCH FOR AUCTION COMPANY SIGNS • LUNCH SERVED

FOR MORE PICTURES GO TO: WWW.BRUCEANDLEANAUCTION.COM

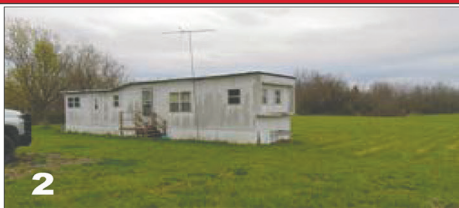
REAL ESTATE - SELLS AT NOON



1

Tract 1: Selling 2 Acres M/L with a 32' X 50' Metal Covered Shop Building W/Concrete Floor and a 32' X 36' Attached Storage Shed. Real Estate is Level, Mostly Open W/Few Scattered Trees, Rural Water Available (located on North side of the Co. Road)

Tract 2: Selling 2 Acres M/L with a 12' X 60' Older Mobile Home, Real Estate is Level, Mostly Open W/Few Trees, Rural Water (This tract is located on the South side of the Co. Road)
Terms: Real Estate terms 10% down day of sale non-refundable set on a 30 day Closing. Real Estate Sells at 12:00 noon at Tract 1 Location, Sells with Owner Confirmation



2



PICKUPS- TRAILER

- 2004 Ford F-150 Pickup, V-6 Motor, 5 Speed Transmission, 161,191 Miles
- 1994 Dodge SLT Ram 2500 Pickup, 4X4, Gas V-8 Motor, Automatic Transmission, 271,421 Miles (no bed)
- 16' Tandem Axle Bumper Trailer W/Ramps
- Alum. Trailer Hitch Carryall

TRACTOR - EQUIPMENT

- 3020 John Deere Gas Open Deck Tractor, W/Westendorf Front-end Loader W/6' Bucket, 3 pt. Hitch, Good Rubber
- J-D 5' Pull Type Brush Hog
- 2-3 pt. Blades
- 3pt. Cultivator
- 3pt. Slip
- 2 Galvanized Calf Sheds
- Sev. 16' Welded Wire Panels
- Sev. Used Steel Post
- Lot of H/D Pipe, Tubing and Flat Steel
- Set of Trailer Axles
- 6 Sets J D Rear Tractor Wheel Weights

4WHEELER - TOOLS - MISC

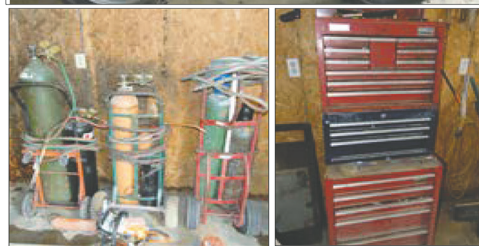
- 2005 Honda Rancher 4-Wheeler W/Front & Rear Racks, 5 Speed Transmission
- Lincoln 225 amp Welder
- 3 of Act. Torch Sets W/Med. Bottles
- Lrg. 220V Air Compressor
- 5hp Electric Air Compressor
- 11hp Gas Air Compressor (motor needs work)
- Motor Stand
- Floor Jacks
- Jack Stands
- Handyman Jack
- 4 ½" Bench Vise
- 110 lb. Taiwan Anvil
- Stihl MS 250 Chain Saw
- Stihl FS-80 Straight Shaft Trimmer
- Bench Drill Press
- 2 Chain Hoist
- 18 Drawer Roll Around Tool Box

TOOLS & MISC. CONT.

- Lg. Lot of Misc. Tool Boxes
- Lg. Lot of Misc. Wrench's and Hand Tools
- Sev. Craftsman Tools
- 1" Air Impact
- Sev. Hand Power Tools
- Pallet Jack Lift
- 20 Ton Bearing Press
- Schmacher 200amp Battery Charger
- Shop Smith Table Saw
- Air Hose Reels
- Sev. Log Chains
- Sev. Gas Jugs
- Chain Boomers
- Hot Blast Wood Furnace
- Ant. Stedder 13hp Riding Garden Tractor W/Plow, Mower, Cultivator
- Ant. Walk Behind Garden Tractor's
- Metal Ant. Gas Pump
- Lincoln Portable Welder no Motor
- One lot Misc. Sheet Metal new & used
- Lot of Copper Wiring
- Barrel Dolly
- Post Drill Press
- 2 Alum. Ext Ladders
- 2 Metal Tool Cabinets
- Large lot of Chilton Tractor Manuals
- Lot of Misc.

COLLECTIBLES - HOUSEHOLD

- 30" Frigidaire Gas Range (New)
- Large lot of Old Toy Trucks and Tractor's
- 25 Plus Toy Tractor's and Trucks in there Boxes (JD, International, Allis, Oliver)
- Ant. Toys
- Toy Models
- Child's Wagon
- Kitchen Table W/4 Chairs
- 4 Drawer Chest



OWNER: ESTATE OF WARREN BEASLEY

TERMS: Everything sells as is, where is. Nothing is to be removed until settled for. Payment of Cash, Check with Proper ID, or Credit Cards. Auction Company or the Owners will not be responsible for loss of items or accidents. Statements made the Day of the Auction take Precedence over Printed Matter.

SALE CONDUCTED BY **BRUCE & Le'AN AUCTION & APPRAISAL, LLC**
THE AUCTION COMPANY THAT APPRECIATES YOUR BUSINESS

For more information and pictures go to our website at www.bruceandleanauction.com

RONNIE BRUCE - Fair Play, MO
417-777-1685 or 417-654-2214
colronbruce@gmail.com

BRANDON BRUCE
Fair Play, MO

BILLY BRUCE - Stockton, MO
417-399-4800
colbbruce@gmail.com



Real Estate & Personal Property Auction

**SATURDAY APRIL 26, 2025 @ 10:00 AM
REAL ESTATE SELLS @ 12:00 NOON SHARP**

Location: 408 Bunch Ave, Ava, MO 65608

REAL ESTATE

Adorable 3 br, 2 ba home in town, with 2 car garage and a nice sized fenced in yard. Just off the back deck, is the concrete tornado bunker. This home also has a brand-new roof.

Don't forget to follow Cheyney Auction Company, LLC on Facebook!



HOUSEHOLD/PREPPER

- Microfiber sofa
- Bookshelves
- Wire storage shelves
- Kitchen table, Chairs, bench, bar stools
- Storage coffee table
- Culligan water dispenser/replacement bottles
- Entertainment center
- 75" VIZIO TV
- Tool kits
- PS4 & games
- Workout equip, weights, bench
- Toaster, toaster oven
- Presto dehydrator
- Blackstone grill
- Fans
- Countertop Ice maker
- Whirlpool washer/dryer set (NICE!)
- Twin bed
- Dressers, shelves
- Queen bed/headboard
- Nightstands
- Gas cans
- Shop vac
- Shark robot vac
- BikeS
- Hart weed eater
- Push lawn mower
- bench grinder
- 9x12" porcelain tile (mesa beige)
- Onn RokuTV
- Tent/camping items
- Sleeping bags
- Cast net
- Ammo boxes
- Compost bin
- Kitchen dishes, pots, pans, utensils, baking pans
- Crock pot, cast iron
- 7- 100w Solar panels NIB
- Rain collection barrels
- Rainwater collection system
- Stocked Med pack/first aid kit
- Gardening items
- Canteens
- Battery bank/light
- Misc shop supplies, paint
- Stack On gun safe
- Vizio (45") TV
- 2000w inverter
- Onn TV
- Professional sound board
- Knives
- Dehumidifier
- Gun socks
- Power strip w/ multiple adapters
- Ozone machine
- Water filtration system
- Misc Electronics
- New hygiene supplies
- USB lights
- Baofeng 2 way radio
- High speed electric water bomb gun
- Meat processor
- Fire proof safe
- Whetstone
- Blackstone grill
- Manual corn mill NIB
- Delorme GPS
- Allen multi cal gun cleaning kit
- In Ground firearm storage containers
- Gas masks
- Tactical vests
- High powered laser pointer
- Ammo crates
- Misc Ammo:
- .22, 9mm, 12 ga, 30-06, 20 ga, .177 pellets
- **Many more items, too numerous to list!**



For More Photos, Visit Our Website CheyneyAuctions.com Or Find Us On Facebook!

Cheyney Auction Company, LLC

Real Estate • Livestock • Farm & Ranch • Equipment • Household • Antiques

Travis Cheyney, Auctioneer • Buddy Boyd, Ringman

417-543-8751 • cheyneyauctions.com

ANNOUNCEMENTS Made Day Of Sale By Auctioneer Take Precedence over any Printed Matter. Not Responsible for Accidents. All items sold as is, where is, with no guarantee. Terms of sale: cash, credit/debit card, or check with valid ID. Real Estate Terms: 10% down day of auction

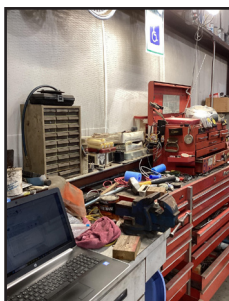
PERSONAL PROPERTY, TOOL & EQUIPMENT AUCTION, ON-SITE ONLY!

5340 SOUTH OLD WIRE RD, BATTLEFIELD, MO 65619

SATURDAY APRIL 26TH, 2025 AT 10AM

INVENTORY LIST:

- **Mahindra Max 225 four-wheel-drive tractor** with loader, has 361 hours, it's a 2022 model
- Mahindra 4 foot three point finish mower
- Mahindra three point rock rake 4 foot
- spartan zero turn mower 60 inch deck 26 hp engine gas
- Mahindra 4 foot brush hog three point
- Mahindra 4 foot three point blade
- 2021 nation craft 16 foot by 7 foot enclosed trailer with drop door on back
- 2017 Mahindra 750 four-wheel-drive 231 hours hydraulic bed
- 2017, 16 foot dovetail flatbed trailer
- 1989 GMC half ton pick up 436 cylinder engine 110 thousand miles
- 65 gallon sprayer tank
- tools, tools, and more
- tools, and then more
- Snap on toolbox
- battery charger
- bench buffer
- rigid pipe, threading equipment
- hand tools
- Signs and banners, oil cans
- Tables
- Drill press
- **AND SO MUCH MORE!**
- **LOTS OF TREASURES YET TO UNBOX!**



FOR MORE INFORMATION GO TO WWW.EASTERLYAUCTIONCO.COM OR CALL EASTERLY'S AT 417-833-9494

EASTERLY AUCTION CO.

Mike Easterly Auctioneer • 417-833-9494

Not Responsible for accidents or theft. For more information call: Easterly Auction Company, Springfield, MO. Auction Terms: Visa, Mastercard, Cash, Cashier's check or checks with proper I.D. Announcements day of sale take precedence over printed material. Auction Notes: Although information is obtained from sources deemed reliable, auctioneer makes no warranty or guarantee expressed or implied. Buyers should themselves take the opportunity to make their own inspection prior to sale.

www.EasterlyAuction.com • auctionzip.com ID#14770



EQUIPMENT AUCTION

Sunday May 4th, 2025 9:00 AM
940 S. Iron Mountain Rd, Fordland, MO 65652
Equipment Sells at Noon
More Added DAILY, Check Website

Outdoor & Tools

Portable Welder Generator, 420 Hours • John Deere X540 Riding Mower, 646 Hrs, 54" Deck • Craftsman 3000 Riding Mower • Park Bench • Saddle Stands • Yard Swing • Feed Bunks • Large Anvil • 4ft Fan • 2 20HP Electric Motors • John Deere Power Washer, 3800lb PSI • Bench Grinder & Stand • Set of New Tires, 275x65R20, Good Tracks • 3 English Saddles • 3 Rolls of 2x4 Fencing • Set of ATV Tires & Wheels, Like New • Air Compressor • Stump Grinder • Lot of Hand Tools • Stihl Concrete Saw • Pipe Wrenches • 24' Ext Ladder • ATV Ramps • Step Ladders • Kerosene Blower Heater • Power Washer • Shop Vac • Hand & Garden Tools • Bolt Cutters • Ext Cords • Chop Saw • Mini Air Compressor • 5th Wheel Hitch • Tool Chest & Tools • Nailers • Carpenters Tools & Boxes

Farm & Equipment

289D Cat Skid Steer w/ Bucket, 2 Speed, Heat & Air Cab • 2022 299D3 Cat Loader, 2 Speed, Heat & Air Cab • P3500 2009 Cat Forklift, 62 Hrs, LP, Like New • Nissan Fork-lift • 2016 QA 48" Trencher • QA 36" Trencher • QA 72" Grapple Bucket • QA 72" Heavy Duty Bucket • QA 48" Hyd Forks • 3pt Grass Seeder

Furniture & Antiques

Rare Zirconia Washing Machine w/ Wood Burning Stove Under • Jacuzzi Jetted Tub, New • Dehumidifiers • Singer Sewing Machine • Antique Rocker • Window Set • Cast Iron Wood Crock Stove • 2 Cast Iron Kitchen Stoves • Antique Oak Mirror • Several Old Carousel Horses • Lot of Assorted Windows • Full Sofa &

Recliner • Samsung 50" TV & Stand • Surround Sound • Stereo w/ Speakers • 2 Desks • Poster Queen Bed & Chest & Nightstands • Round Oak Table & 2 Chairs • Chest of Drawers • Dining Table & 6 Chairs • Washstand • Coffee & End Tables • 20 Folding Chairs • China Cabinets • File Cabinets • Barstools • Glider Rocker • 2 Wing Back Recliners • Scanner Copier • Harvest Dining Table & Chairs • Indoor Grill • Large Curved Glass China Cabinet • Pressure Cooker • Baking Dishes • Antique Ice Box • Bronze Horse Statues • Collectible Horses in Original Boxes • Gun Safe • Telescope • Lot of Glassware

Vehicles & Trailers

2018 Jeep Cherokee, Sunroof, 94k Miles • 2014 Dodge Ram, 8 Cyl, Gas, 2wd, 164k Miles • 2011 Cadillac, 89k Miles • 1999 International Truck w/ 18ft Bed, 7 Speed • 2003 Dorsey 48ft Reefer • 2003 Great Dane 53ft Reefer • 17' Bass Tracker Boat, Mercury 35hp • Arctic Cat TRV 500, 4x4, Low Hours • John Deere Yard Trailer • 2018 5th Wheel • John Deere Disc Mower, 3pt • Rhino 12' Bushhog • 5610 Ford Tractor w/ Front End Loader, 3k Hours • Massey Ferguson 1328 3pt Disc Mower ...and many items too numerous to mention!



Serving the Springfield Metro & Surrounding Areas for 44 YEARS and Counting...

417-767-4345
yutzyrealestateandauction.com

2025 Prairie Grove School Consignment Auction

15th Annual Auction:
Fri May 9th - 10:30 AM | Sat, May 10th - 9 AM



2 Day Sale!

SUGGESTED CONSIGNMENTS

Deadline Thursday 5/8/25

- Tractors & Farm Equipment
 - Cattle Equipment
 - Lawn & Garden
 - ATV's
 - Shop Tools
 - Hand Tools
 - Handmade Quilts
 - New Furniture
 - Antiques
- NO JUNK PLEASE

Friday: Sale Starts - 10:30 AM
Guns starting at - 6:30 PM

Saturday: Breakfast at 7:30 AM
Sale Starts - 9:00 AM
Quilts sell approx. 1:00 PM

Have Something To Consign or Need More Info?

CONTACT:

417.327.4670 Nathan Blosser
417.327.6240 Nathan Kropf
417.733.2560 Lyndal Hostetler
417.327.6348 Eldon Swartzentruber (Vehicles & Guns)
417.299.2056 Bryan Blosser (Farm Equipment)
417.326.9788 Dennis Blosser (Quilts)



Auction held on school grounds:
12 Winding Creek Dr., Buffalo, MO 65622

THE SOONER CONSIGNED, THE BETTER ADVERTISED!

Mobile Home Super Store -Big Chicken in Columbia, 573-499-9993
columbiadiscounthomes.com

2019 FORD ESCAPE: 109,000 miles. \$16,000. Good Condition. 417-462-0039. Grovespring.

LIFE IN PETTIS COUNTY, MO 1815-1973 HISTORY BOOK: by Hazel Lang. 1,112 pages, hardback. \$60. 417-532-2045, leave message. Lebanon.

ARE YOU LOOKING FOR A BETTER WAY TO HEAT? Radiant floor heat is proven to work. We offer custom cut EPS foam, PEX pipe, fittings and more. We install. Dennis Zimmerman. 573-569-4191. Barnett.

FOR SALE PUREBRED BLUE HEALER PUPPIES: 6 weeks old. 417-718-4787. Lebanon.

BUYING OLD BARNS & RECLAIMED LUMBER: Pole Barn Construction. Reasonable Rates. 417-399-2649. Leave Message.

FOR SALE: 2004 Dodge Pickup SRT-10. 10-Cylinder Viper Engine, 56,532 Miles. Red with White Racing Stripes. With New Tires. \$24,500. 309-883-9124. Rolla.

STAIR STEPPER EXERCISE MACHINE: \$50. 417-532-2344. Lebanon.

LARGE QUANTITY OF NURSERY PLANT CONTAINERS: \$10. 636-239-2695 or 314-560-5700. Washington.



MID MISSOURI STOCKYARDS

SALE EVERY THURSDAY 11AM

For Farm Visits, Market Updates, or Trucking
Call **Zach Cox 417-777-1320**

**Competitive Buyers!
Competitive Commission!
Competitive Market!**

Barn: 417-532-9292
I-44 • Exit 123
17505 Route 66, Phillipsburg, MO 65722

www.midmostockyards.com

SELL IT HERE!



WEEKLY
TRADER

417-532-2800 • www.myweeklytrader.com

PUBLIC AUCTION

SATURDAY, APRIL 26, 2025 AT 10 AM

AUCTION LOCATION:
7912 Scrivner Road, Jefferson City, MO 65109

From the south edge of Jefferson City, Missouri, take Highway 54 south 9 miles to West Brazito Road, turn right and go 2.5 miles west to Colonial road, turn right and go 1/2 mile to Scrivner Road, turn right and go 1/2 mile to private driveway on the left.

LIVE AUCTION ON SITE AUCTION ONLY
FOR FULL LISTING AND DETAILS VISIT
[WHEELERAUCTIONS.COM!](http://WHEELERAUCTIONS.COM)

Wheeler

AUCTIONS & REAL ESTATE
2310 HWY. 24, PARIS, MO 65253 • 636-327-5590
WWW.WHEELERAUCTIONS.COM

FOR MORE INFORMATION:
CHARLIE NORDWALD
636-795-4552
WHEELERAUCTIONS.COM



Selling Tractors, Farm Equipment,
Pickup, Trucks, Trailer, ATVs, Wood Splitter,
Lawnmowers, Generator, Misc., Horse
Equipment, Feeders, Corral, Poultry Equip-
ment, Shop Tools & Equipment

Sellers:
David & Zumbahl

BUFFALO LIVESTOCK MARKET LLC

276 Hwy 32 W., Buffalo, MO

April 12th, 2025

Receipts: 1196

REPRESENTATIVE STEERS

200-300 @ 450.00 to 495.00
300-400 @ 385.00 to 432.50
400-500 @ 375.00 to 402.50
500-600 @ 318.00 to 377.00
600-700 @ 295.00 to 332.00
700-800 @ 270.00 to 310.00
800-900 @ 250.00 to 270.00
900-1000 @ 230.00 to 237.00

REPRESENTATIVE HEIFERS

300-400 @ 300.00 to 420.00
400-500 @ 285.00 to 385.00
500-600 @ 275.00 to 352.00
600-700 @ 255.00 to 311.00
700-800 @ 240.00 to 266.00
800-900 @ 231.00 to 245.00
900-1000 @ 195.00 to 225.00

FEEDER BULLS

200-300 @ 445.00 to 490.00
300-400 @ 370.00 to 425.00
400-500 @ -- None Traded --
500-600 @ 295.00 to 365.00
600-700 @ 280.00 to 311.00
700-800 @ 250.00 to 297.00
800-900 @ 230.00 to 260.00
900-1000 @ 190.00 to 225.00

STOCKS COWS

1875.00 to 2775.00

SLAUGHTER BULLS

High Yield 175.00 to 192.00
Low Yield 130.00 to 155.00

SLAUGHTER COWS

Fleshy 138.00 to 147.00
Med Flesh 140.00 to 161.00
Light Flesh 125.00 to 157.00

POOR, CRIPPLE, DOUBTFUL HEALTH
100 Down

COW SALE TUESDAY NIGHT 6:30PM

MON-WED MARKET REPORT

Listen to KJEL 103.7FM • Lebanon or KYOO 99FM • Bolivar

VIEW OUR SALES AT CATTLEUSA.COM

CALL FOR TRUCKING OR ON-FARM VISIT

Lyle Caselman • Owner-Manager
417-345-7876 • mobile 417-533-2944
Leon Caselman • Owner
417-345-4514 • mobile • 417-588-6185

145 ACRES FOR SALE BY OWNER

*Hwy K Falcon, MO.
Mostly wooded.*

*Pond, creek, several planted food plots for hunting. Lots of wildlife.
Easily accessible good trails.*

Borders National Forest on two sides.

\$572,750

Call / text for more info:
717-779-4478

Starnes Auto LLC

22115 Rt. 66 • Lebanon, MO 65536

588-7939 Cell

588-3159 Office

www.starnesauto.com

Worry-Free AUTOMOTIVE PAINT & BODYWORK

Our trained experts and specialized equipment get you the highest quality body repair and paint solutions.



WE DO ALIGNMENTS!

3 BRIDGESTONE WEATHERPEAK 225/60R18 TIRES: approx. 6000 miles on tread, excellent, \$110 each or \$300 for all. 417-718-5347. Conway.

20 LB. PROPANE BOTTLE: For BBQ Grill \$15. 417-532-2344. Lebanon.

OLD TOWN CASTAWAY KAYAK: 12'9"L, green, sit in style, rough with scratches but floats straight, no leaks. \$125. 417-718-5347. Conway.

'05 BUICK RENDEZVOUS: Runs good, 133k miles. Runs good, lots of new parts. '04 Buick Rendezvous included with purchase \$5,300. Text. 469-724-5834. Hartville.

63 LOUIS L'AMOUR PAPERBACK BOOKS: All good condition. \$2 each or all for \$50. 417-532-2045, leave message. Lebanon.

LAND FOR SALE! 42 Acres hunting property, in a secluded area. Lots of trees, with ATV paths and open areas. Wildlife galore. 417-214-8787. Cross Timbers.

GOOD USED APPLIANCES SINCE 1977. Dealers welcome. One month warranty. 417-554-2485. Mansfield.

REECE 2,400 8FT. CUT DRUM MOWER: \$1,500 or best offer. 573-308-5884. Rolla.

NEW XL LIGHTED LEG GAITERS: rechargeable, waterproof, great for hiking, hunting or low light activities. \$50. 417-718-5347. Conway.

HIGHPOINT GREENHOUSE: Our Annual Mother's Day Sale runs all week, from May 5th-10th. Lots of flower choices. Live Bouquets for Mom! 417-741-2793. Open from 9am-6pm, Closed Sundays. Hartville.

TOY ACA POODLE PUPPIES FOR SALE: 417-664-5926. Conway.

COUNTRY CLIPPER COMMERCIAL ZERO-TURN MOWER: New motor, blades. \$4,000, OBO. 417-292-6491. Humansville.

BEEES: Queens & Accessories for Sale. 417-689-0988. Niangua.

FOR SALE: Black Leather, 3/4 length, Large men's coat. \$50. 417-260-0941. Raymondville.

150 BUSCHEL GRAVITY BOX: Mounted on shop-built gooseneck trailer. Good condition. \$600. 573-308-5884. Rolla.

865 INTERNATIONAL TRACTOR: Cab, new interior, new paint, new tires, air conditioning works fine. Ready for the field. \$13,950. 660-492-7191. Osceola.

KENMORE CLOTHES DRYER: \$125.00. 417-630-5720. Seymour.

STIHL 026 CHAINSAW: With extra Chains. \$250. 559-260-3883. Willow Springs.

SEVENTH DAY IS GODS SABBATH EXODUS 20:10. Further discussion. 417-462-0039. Grovesprings.

We know that every little detail matters!



Our talented collision repair team takes great pride in what they do, making sure to pay attention to every part of the process for a fantastic outcome. Whether it's a small scratch or a big dent, new roof or new paint, we treat your RV with the love and expertise it truly deserves. Trust us to provide a repair experience that puts your worries at ease."

Mon – Fri 8AM-5PM
Contact Us At • 573-893-8722
Or Stop By • 1007 Lomo Drive
Jefferson City, MO 65109
www.xtremebodyandpaint.com

Xtreme Body & Paint

25 JANETTE OKE BOOKS: 12 softback & 3 hardback. \$2.50 each or all for \$30. 417-532-2045, leave message. Lebanon.

HIGHPOINT GREENHOUSE: Garden Vegetable Plants. Tomato & Pepper Plants. Garden Seeds. 417-741-2793. Open from 9am-6pm, Closed Sundays. Hartville.

DARDEN PROFESSIONAL TIMBER HARVESTING, BUYING STANDING TIMBER: Great prices, improve wildlife habitat and improve forest health. State Certified & Fully Insured! 573-247-4808. Salem.

CHILTON'S AUTO REPAIR MANUAL: 1969-1976 American cars. \$30. 417-260-0941. Raymondville.

2005 CHEVY SILVERADO TRUCK 1500: 4 door, crew cab. 296,000 miles. Jasper transmission at 165,270 miles. \$2,900 OBO. Call only. 417-322-5789. Lebanon.

STACK OF BOOKS & INFORMATION ON RESTORING MODEL A FORDS: \$25. 417-260-0941. Raymondville.

10 OR SO BLACK MILK CRATES: \$2.50/each. 573-578-2693. Rolla.

SELL IT HERE!



WEEKLY TRADER
MAGAZINE

417-532-2800 • www.myweeklytrader.com

1986 GMC 700 - \$2,950

Jefferson City | 573-636-8000



Soda Truck, from Fire Department, 123,000 Miles, Runs & Drives Good, Excellent for Storage or Hauling

NEW IN BOX CARLSON EXTRA TALL IN-HOME PET GATE: With walk-through door and built in small 10"x7" pet door. Pressure mount-no holes. Fits 30-41.5" openings, 37" tall. \$30. 417-718-5347. Conway.

3PT. MIDDLE BUSTER TRACTOR ATTACHMENT: In great shape. \$50. 573-210-8132. Potosi.

2 BELL BICYCLING HELMETS: white 50-57cm, black 54-61cm, excellent condition. \$25 each. 417-718-5347. Morgan.

WANTED: Hay wagon gears. Green Meadows Farm. 573-247-8055. Salem.

HARLEY DAVIDSON: For more information call 417-699-6021 or 417-589-8209. Conway.

LONG ARM QUILTING: 0.015 Cents Per Square Inch. 618-816-5082. Tuscumbia.

32PC TULIP PATTERN CORELLE: \$30. 417-532-2344. Lebanon.

SURPLUS BUSINESS EQUIPMENT: 5 Viewsonic 21.5" Monitors 1920 x 1080p resolution, VGA/HDMI Connections, includes VGA and Power Cables, All in good working order. \$25 each; Call 417-532-9131.

DEERE SEASON

HERE TO HELP YOU SAVE A BUCK



UP TO
\$3,000 OFF

SELECT TRACTORS,
GATORS AND MOWERS

SCAN TO SAVE



TRACTOR PACKAGES

BUNDLE AND SAVE



DIY DIGGER PACKAGE

1025R TRACTOR

+ Loader
+ Backhoe

DIG INTO YOUR CHORE LIST



WEEKEND WARRIOR PACKAGE

3038E TRACTOR

+ Loader
+ Rotary Cutter
+ 18' Trailer

ENHANCE YOUR PIECE OF PARADISE



CATTLEMAN PACKAGE

5075E TRACTOR

+ Cab
+ Loader

TEND TO YOUR HERD



JOHN DEERE

Heritage
TRACTOR

*Offer expires: 6/02/25. See dealer for details.

HeritageTractor.com/TractorPackages

SCAN TO SAVE



Lebanon (417) 344-2426

HYDRABED **Save Time & Increase Efficiency**

BEDS IN STOCK!



LET US BE YOUR PEOPLE!

WESTGATE **TRAILERS & EQUIP.**

8920 W Bus. 60, Mtn Grove
417-926-7733

7136 W. FR 140, Springfield
417-351-6974

22441 Rt. 66, Lebanon
417-344-3395

www.westgatetrailer.net

● **FULL SERVICE SHOP!** ●

Open Mon-Fri 8AM-5PM & Sat 8-Noon!

COOPER TIRE: LT 265/70/R17. \$40. 417-260-0941. Raymondville.

CIVIL WAR BOOK MORGAN'S RAIDERS: 353 pages, hardback. \$12.50. 417-532-2045, leave message. Lebanon.

SINGLE GRAVE SPACE: White Chapel Cemetery. Springfield, Missouri. \$500. 417-894-5733. Springfield.

GRACO MAGNUM X7 PAINT SPRAYER: Hoses & Spray included. \$250. 559-260-3883. Willow Springs.

COMMERCIAL SNAPPER ZERO TURN: 6-foot 7 Iron deck. Kubota gas engine. \$2,250. 573-569-4191. Barnett.

NEW, SEALED BOOK: "The Bittersweet Ozarks at a Glance" By Ellen Gray Massey. Great Photos & History of The Ozarks Gift. \$15. 417-718-5347. Conway.

LOOK — true modular building your way, Call 573-657-7040 chateauhomes.net

ENGLISH BULLDOGS PUPPIES: 9 weeks old, female. Home raised. Fancy puppies. 417-712-4582. Thornfield.

FOR SALE: Basketball goal with pole. \$25. 417-293-0568. West Plains.

I BUY.....used mobile homes. Call or text 573-338-6250 or email GregS. CDH@outlook.com

KC YORKIE PUPPIES: 3 males. Needs good home. \$250.00. DOB 01-19-2025. 417-349-5032. Mountain Grove.

METAL ROOFING: Decks and More. Call Today, Levi Byler Construction. 417-741-0245. Grovespring.

SPLASH & DASH: Now accepting new clients for dog grooming. 417-664-5926 or 417-589-0034. Conway, Missouri.

KITCHEN TABLE AND CHAIRS: Solid oak. \$50 or trade. 573-734-2822. Bismarck.

1957 CHEVY CAR: Being made into family car. Trade for Model A Ford. 573-734-2822. Bismarck.

GRADER BLADES: For front of truck and hook ups. Trade for lawn mower. 573-734-2822. Bismarck.

ON SALE NOW!

"Route 66: Laclede County Memories 1926-1957," a 96-page collection of local photographs from the Route 66 era, originally published in 2002, has been reprinted by the Laclede County Record in partnership with the Lebanon-Laclede County Route 66 Society.



Books are available at the Laclede County Record and the Lebanon-Laclede County Library for \$10 plus tax. To order by mail, send \$15 (which includes tax and shipping) to the Laclede County Record, P.O. Box 192, Lebanon, MO 65536

\$10.00 plus tax
\$5.00 to ship (Includes tax)



417-532-9131
100 E. Commercial, Lebanon
www.laclederecord.com

WEEKLY TRADER MAGAZINE

We're looking for an **OUTGOING, CREATIVE, MONEY MOTIVATED** individual that wants a career in which they can grow and advance!

Is this YOU?

The Weekly Trader is a 10,000 circulation regional publication delivered to 32 counties primarily in Missouri. We are looking for a digital/print advertising representative to join our team of professionals. Sales experience is an advantage but we have a great training program. Also, knowledge of the auction, agriculture, machinery and vehicle business would be helpful but not necessary. Individual will be given an established account list with plenty of room for growth.

Job includes a base pay of \$25,584 per year, with an additional 10% commission on everything sold, plus mileage.

Apply Today, Send resume to:

Jennifer@laclede record.com

WEEKLY TRADER MAGAZINE



CIRCLE Y 15" EQUITATION STYLE SADDLE: Good condition. Built up front with ornate tooling and silver. Great trail saddle, fits many horses. 6 1/2" Gullet. \$325. 417-693-0389. Conway.

FOR SALE: Full motorcycle helmet with full face shield, in bag. \$50. 417-260-0941. Raymondville.

FOR SALE: Women's Schwinn Bicycle. \$40. 417-293-0568. West Plains.

ALFALFA CLOVER GRASS MIXED: Square bales \$6.00. Second cutting \$5.50. 417-345-5634. Long Lane.

TINY CABIN: Homes, Garden Sheds, Mini Barns, Chicken Coops. 417-741-0245. Grovespring.

DOGWOOD CABINS LLC: Specializing in custom portable tiny homes. Rustic yellow pine D-logs with natural face. Call for more info. Leave voicemail. No text. 417-701-1372. Hartville.

TROXEL 'SPIRIT' YOUTH RIDING HELMET: blue, size small, used once. \$30. 417-718-5347. Conway.

FOR SALE: 3 corral panels. 16ft. long, 52 inches high. \$50 for all. 417-293-0568. West Plains.

Amega Mobile Homes +Amega Mobile Homes+ Amega Mobile Homes = Savings New & Used 573-657-2176, amegamobilehomes.com

NORWOOD TRUSS



TRUSSES ENGINEERED AND DESIGNED TO YOUR SPECS

417-259-9073

2062 S. HWY. E
NORWOOD, MO 65717

NORWOODTRUSS@SLEADATA.COM

25 JANETTE OKE BOOKS: 12 softback & 3 hardback. \$2.50 each or all for \$30. 417-532-2045, leave message. Lebanon.

GMC 1986 700 1 1/2 TON SODA TRUCK: From fire department. 123,000 miles. Runs good. \$2,950. Call for Pictures. 573-636-8000. Jefferson City.

APPROXIMATELY 4-5 BINDERS OF SPORTS CARDS: \$50. 573-578-2693. Rolla.

OZARK LEATHER COMPANY 16" SADDLE: Great saddle in great condition. 6 1/2" Gullet, built up front. \$325. 417-693-0389. Conway.

BRUSH HOGGING & ROTOTILLING: \$50 & up. Lebanon area. 417-531-3665.

SWISHER 52" TRAILCUTTER: 14.5hp, 12V, Kawasaki Commercial Pro Cutter, pull behind side by side or 4 wheeler, gas engine, like new, used 3 times. \$3900. 417-718-5347. Conway.

OFFICIAL TRACTOR OF TOUGH™

INTRODUCING THE ALL-NEW 5100 SERIES



Marshfield Machinery Inc.

222 E. Madison • Marshfield, MO 65706

417-859-2117 • www.marshfieldmachinery.com

*2018 data including all Mahindra group brand sales.
MahindraUSA.com © 2020 Mahindra USA Inc.

NEW MAHINDRA TRACTORS

1120 4WD & LDR 20HP	IN STOCK
2126 4WD & LDR 26HP	IN STOCK
1626 4WD & LDR 26HP	IN STOCK
1635 4WD & LDR 36HP	IN STOCK
1640 4WD & LDR 38HP	IN STOCK
5145 4WD & LDR 45HP	IN STOCK
5155 4WD & LDR 55HP	IN STOCK
4550 4WD & LDR 48HP	IN STOCK
6065 4WD & LDR 62HP	IN STOCK
6075 4WD & LDR 71HP	IN STOCK

USED TRACTORS

MAHINDRA 3550 49HP CAB LDR	25,000
KIOTI CK4010 40HP, 4WD LDR	18,000
LS MT235E 35HP 4WD LDR	14,500
MF 2640 CAB 90HP	14,500
LS MT125 25HP 4WD LDR MWR	11,500
JD 4115 24HP 4WD LDR	11,500
AC 7045 CAB 146 HP	9,500
AC 7000 CAB LDR 106 HP	7,500
IHC 684 LDR 62 HP	6,500
IHC 674 LDR 62 HP	6,500
JD 1010 LDR 36HP	5,500
MF 35 35HP	4,000

USED ROUND BALERS

HESSTON 560 5X6	2,000
HESSTON 5540 4X5	1,500

USED DISC MOWERS

MF 1383 13FT M/C	22,500
NEW IDEA 5512 12FT M/C	8,500

USED MISC.

HAYBUSTER 107C DRILL	20,000
HAYBUSTER 107 DRILL	14,500
BH 2615L 15FT	11,000
BH 2615L 15FT	8,500
HESSTON 8WHL RAKE	2,500
VERMEER 8WHL RAKE	2,250
PANORAMA 8WHL RAKE	1,750
H&S 50 BU MANURE SPREADER	1,750

Marshfield Machinery Inc.

222 E. Madison
Marshfield, MO 65706
417-859-2117
www.marshfieldmachinery.com

Mahindra
Rise.

WE DIG IT, DO YOU?

**UTILITY TRENCHING • EXCAVATION
TREE STUMP REMOVAL • SITE PREP
& SO MUCH MORE!**

CALL TODAY FOR YOUR FREE ESTIMATE



WE DIG OUR JOBS!

GET 2 IT DIRTWORX

EXCAVATOR & MORE

417-818-1175

MARK ALEXANDER | MARSHFIELD, MO



Wright Spray Foam Insulators, LLC
Commercial & Residential
Call for FREE Estimates!

Ervin Gingerich 417-926-2052
B. Eli Yoder 417-746-4932

KUSTER LOGGING
BUYER of Standing Timber Oak and Walnut
Dozing Now Available
417-259-0047
References Available



The Ultimate Wood Heat.

 **Classic Edge™**
Titanium HDX
Outdoor Wood Furnaces

UP TO \$2000 TAX CREDIT*
*On qualifying models and installation. Call for details.

Yarbrough Equipment Sales & Services, Inc.
9776 E. State Hwy OO • Strafford, MO
417-736-2303 • 1-866-286-6901 • www.yarbeq.com



BILLY COOK
Arbuckle Ranch Saddle
#2171

w/ Association Tree,
16" Seat, FQH Bars,
5" Cante,
Flat Plate Rigging
& Original
BC Rear Cinch.



SOLD

\$2000

Excellent,
near new condition.
Never roped off.

417-766-1727
Conway

2020 HISUN SECTOR 550 SIDE BY SIDE: Power steering, roof, dump bed, 153 hours, 1,070 miles. \$7,000. 660-221-5541. Smithton.

2600 PSI CRAFTSMAN GAS PRESSURE WASHER: Comes with 2 guns and 2 hoses. 573-578-2693. Rolla.

OLDER, ORIGINAL 16" CIRCLE Y TEAM PENNER SADDLE, Heritage Collection with super soft leather, pre twisted & wrapped leathers, rear cinch. Well maintained and excellent condition. \$1400. 417-766-1727. Conway.

BREAKFRONT CABINET: Maple approximately 3ft wide by 5ft height. 2 small drawers and 2 large drawers. \$300. 417-260-0941. Raymondville.

FOR SALE: 2016 14ft. Tracker Jon Boat and Trailer with 2020 Suzuki 9.9 motor with electric start-tilt. \$3,500. (417) 650-0046. Lebanon.

TINY HOMES - Missouri Franchise
573-881-7965.

Mobile Home Super Store -Big Chicken in Columbia, 573-499-9993
columbiadiscounthomes.com

HIGHPOINT GREENHOUSE: Flowers, Flowers, Flowers! Bedding Plants, Hanging Baskets, Planter Combinations, Huge Ferns, Perennials. New This Year, Miniature Roses! 417-741-2793. Open from 9am-6pm, Closed Sundays. Hartville.

2019 FORD ESCAPE: 109,000 miles. \$16,000. Good Condition. 417-462-0039. Grovespring.

LIFE IN PETTIS COUNTY, MO 1815-1973 HISTORY BOOK: by Hazel Lang. 1,112 pages, hardback. \$60. 417-532-2045, leave message. Lebanon.

ARE YOU LOOKING FOR A BETTER WAY TO HEAT? Radiant floor heat is proven to work. We offer custom cut EPS foam, PEX pipe, fittings and more. We install. Dennis Zimmerman. 573-569-4191. Barnett.

**Unlock Your Potential
: Skid Steer for SALE!**

**2021 New Holland
C332 Skid Steer**



375 Hours • 74 Hp • Super-Boom
• Standard/Hi Flow • Heat/Air •
Heated Air Ride Seat • Blue Tooth
Radio • 8" Color Display • Back Up
Camera • Smooth Bucket & Hay
Spike • Well Maintained

\$58,500.00
417-718-5347
Conway

WEEKLY TRADER MAGAZINE

New Classified Rates!

Add YELLOW Color For An Additional \$3 Per Reader Ad

FREE ADS – Item must be \$50 or less, ad must list price, 12 words or less, limit to 5 free ads (total) per week.

Free Ads EXCLUDE; Ammo, Guns, Hay, Animals and Firewood

All ads REQUIRE Phone Number and City or Town (Included at no charge)

**ONLY
\$5⁰⁰**

10 words or less!

(1)	(2)	(3)	(4)
(5)	(6)	(7)	(8)
(9)	(10)	Phone Number	City or Town

**ONLY
\$9⁰⁰**

22 words or less!

(1)	(2)	(3)	(4)
(5)	(6)	(7)	(8)
(9)	(10)	(11)	(12)
(13)	(14)	(15)	(16)
(17)	(18)	(19)	(20)
(21)	(22)	Phone Number	City or Town

Over 22 words
**ONLY
30¢**
per additional word
(up to 12 additional words)

(23)	+30¢	(24)	+60¢	(25)	+90¢	(26)	+\$1.20
(27)	+\$1.50	(28)	+\$1.80	(29)	+\$2.10	(30)	+\$2.40
(31)	+\$2.70	(32)	+\$3.00	(33)	+\$3.30	(34)	+\$3.60

CALL FOR SPECIAL PRICING ON LINE ADS OVER 34 WORDS

Buy 3 Weeks - Get 4th Week Free! (Must be same ad)

Place your Classified Ad TODAY!

417-532-9131 | Fax: 417-532-8140 Or Mail To: P.O. Box 192 • Lebanon, MO 65536

For your convenience we accept MasterCard, Visa, Discover or American Express



DEADLINE FOR CLASSIFIED ADS: FRIDAY 4:00PM!

Name _____
Address _____
City _____ Email _____
State _____ Zip Code _____ Phone _____
Ad Total \$ _____ + Yellow Color \$ _____ x # Weeks _____ = Amount Enclosed \$ _____

WEEKLY TRADER MAGAZINE

This is...

WEEKLY TRADER COUNTRY!



417-532-9131 CHECK US OUT ONLINE AT: myweeklytrader.com