

FREE - TAKE ONE!

Check out our
NEW
Classified Rates!
PG. **16**

Vol. 31 No. 45

FEBRUARY 6, 2025

417-532-9131

WEEKLY **TRADER** MAGAZINE



Find us on
Facebook

@myweeklytrader
AUCTIONS PG. 4

VISIT OUR WEBSITE! MYWEEKLYTRADER.COM

**You pull it,
we sell it...**

CHEAP!



Lebanon, MO

22395 Rt. 66

417-588-3555

Fax 417-588-8955



U★PULL★IT

SELF-SERVICE AUTO PARTS

**We also have a large inventory
of used tires and be sure to check
out our used car lot!**

Mon.-Fri. 8:00am-5:00pm • Sat. 8:00am-4:30pm

WWW.SSUPULLIT.COM

Located next to S&S Recycling.



For All Your Metal Recycling Needs

Lebanon, MO

22395 Rt. 66

417-588-3555

Fax 417-588-8955

Mtn. Grove, MO

8930 First Rd

417-926-3360

Fax 417-926-0180

**Roll-off, Trailer, and
Mobile Crushing
Services Available**

**Monday-Friday 8:00am-4:30pm (Closed 12pm-1pm Lunch)
Saturday 8:00am-Noon**

email: contact@ss-recycling.com

Buyer of all types of scrap metal.



Call to Order
417-993-3017

Meadowview Dutch Market

Bulk & Surplus Groceries • Prices Subject to Stock on Hand

Sale Dates February 5TH, 2025 to
February 11TH, 2025 while supplies last!

DELI SPECIAL

SLAB BACON REG. \$5.99 LB SALE \$4.99 LB
HONEY BBQ CHICKEN REG. \$5.99 LB SALE \$5.49 LB
JALAPENO HABANERO CHEESE REG. \$6.99 LB SALE \$6.49 LB

TRY our Fresh Homemade DELI Sandwiches: TURKEY, HAM, ROAST BEEF, ITALIAN,
BLT'S, PULLED PORK AND BLT PULLED PORK (MADE YOUR WAY!)
COME IN OR CALL to order! ALSO Custom Deli trays! Veggie OR FRESH Meat-N-Cheese!



BACON & CHEESE Breakfast Bites



\$1.99 19.5 OZ.

BONE-IN WHOLE Beef Ribeye



\$5.49 LB.

Joe's Sweet Tea

\$9.99 12-12 OZ.



Pork or Chicken Egg Rolls

\$2.49 LB.



Sweet Potato Fries

99¢ 2 LBS. (BAG)

Fully Cooked Chicken Nuggets

\$3.49 24 OZ.



Mixed Fruit Cups

99¢ 4-4 OZ.



Breaded Shrimp

\$11.50 3 LBS.



Pepperoni Pizza

\$4.50 6 CT.



417-993-3017

23 Miles West on Hwy 64 • Right on T Hwy
9 miles • Left on E Hwy 1 mile on Left

NOT RESPONSIBLE FOR PRINT ERROR!!

NOW ACCEPTING CREDIT, DEBIT CARDS & EBT

HOURS: MON-THURS 8-5PM
FRI 8-6PM • SAT 8-5PM

MINIATURE AUSTRALIAN PUPPIES:
For Sale. \$100 each, many colors available.
573-760-5157. Centerville.

1947 FORD RAT ROD: Has a built 454
BBC from Built Right Motors, 350 turbo
transmission. Clean title. Asking \$15,000
OBO. 660-596-3091. Richland.

1960-70s LIONEL TRAIN CARS: 3/\$50,
Choice of Box Cars, Gondolas, Caboose.
573-364-7465. Rolla.

I BUY.....used mobile homes. Call or text
573-338-6250 or email GregS.CDH@
outlook.com

15-20 MICHAEL JORDAN CARDS: In
hard cases. \$50. 573-578-2693. Rolla.

1980 FRISCO RAILROAD CALENDAR:
Last year. Mint original. \$35. 573-364-7465.
Rolla.

**FOR SALE: 2016 14ft. Tracker Jon Boat
and Trailer with 2020 Suzuki 9.9 motor
with electric start-tilt. \$3,800. (417) 650-
0046. Lebanon.**

AIR FILTER LOT: 20-25 different ones.
\$30. 573-578-2693. Rolla.

**WHIRLPOOL REFRIGERATOR
SOLENOID WATER INLET VALVE:**
Part #WPW10179146. \$12. 417-288-2687.
Lebanon.

BLACK & DECKER JACKHAMMER:
With sword jacks. \$50. 573-578-2693. Rolla.

CAMERA: Vivitar PS33, \$25. 417-260-
0941. Raymondville.

**TAILLIGHTS FOR 01 OLDSMOBILE
ALERO:** \$30 for pair. 573-962-1559.
Mountain View.

**STACK OF BOOKS & INFORMATION
ON RESTORING MODEL A FORDS:**
\$25. 417-260-0941. Raymondville.

**1984 BIRMINGHAM 35TON LOWBOY
TRAILER:** 37 Ft. overall length, 20Ft.
well. New tires, new white oak floor, new
30-30 canisters on rear axles. Excellent
condition. \$9,500 417-234-0634. Seymour.

TINY HOMES - Missouri Franchise 573-
881-7965.

CALUS LOGGING

20 YEARS EXPERIENCE

Buying Standing Timber
Walnut & Oak

Joe Calus, Owner
417-926-4606 • MTN. GROVE

CERTIFIED

Buildings • Hunter's Cabins • Lawn Furniture

JAMCO BUILDERS

JAMCO Portable Buildings

800-688-2064 • 307 Enterprise Dr. • Seymour, MO • www.jamcobuilders.com

Rent To Own Plan

TROXEL 'SPIRIT' YOUTH RIDING HELMET: blue, size small, used once. \$40. 417-718-5347. Conway.

JMB LOGGING: Looking to Buy Standing Walnut & Oak Timber. Fully Insured. Call 417-254-0266 for Your Free Estimate. Cabool.

2004 FORD TAURUS TAILLIGHTS: \$30 for pair. 573-962-1559. Mountain View.

MIXED SQUARE BALE HAY FOR SALE: \$6.00 each. A few round bales \$60.00 each. Brome grass. 573-247-4280. Salem.

CHILTON'S AUTO REPAIR MANUAL: American cars & Volkswagen 1969-1976. \$30, will split shipping. 417-260-0941. Raymondville.

METAL ROOFING: Decks and More. Call Today, Levi Byler Construction. 417-741-0245. Grovespring.

2 BELL BICYCLING HELMETS: white 50-57cm, black 54-61cm, excellent condition. \$25 each. 417-718-5347. Morgan.

SPARE TIRE: For 04 Ford Taurus. \$25. 573-962-1559. Mountain View.

100 NET WRAPPED 4X5 ROUND BALES: of good quality grass hay. \$55 per bale. 417-531-1048. Morgan.

96-INCH SEASENSE ALUMINUM KAYAK PADDLE: 2-piece, 3-locking positions, used once. \$45. 417-288-2687. Lebanon.

Contact MiNaya McConnell for all your Real Estate needs!



McNaya McConnell
Realtor®
417.260.1304
minaya@mainkey.net

Main Key Realty
636.937.7727

FOR SALE: 2pc sweat suit. Size XL. \$20. Lebanon. 417-650-5911. Lebanon.

RYOBI BATTERY POWERED LEAF BLOWER: \$50, Call 573-578-2693. Rolla.

DARDEN PROFESSIONAL TIMBER HARVESTING, BUYING STANDING TIMBER: Great prices, improve wildlife habitat and improve forest health. State Certified & Fully Insured! 573-247-4808. Salem.

2013 DODGE RAM 2500: 159k miles, 2 doors, 8ft. bed. Lots of new parts on motor. Runs like new. \$15,900. Call only. 417-241-3653. Hartville.

MALTIPOO PUPPIES: 10 weeks old. Had all shots and wormed. Would be great for Valentine's Day. \$250 males. \$300 females. 417-532-4701, cell 417-531-3336. Lebanon.

TRAILER HOUSE: Needs work. No title. Must Remove. \$2,000 OBO. 660-596-3091. Richland.

HOW TO BUILD A STREET ROD: Street Ride, Street Rodder, Hot Rod Magazine \$25. 417-260-0941. Raymondville.

PREMIUM HAY FOR SALE: 4x5 bales, approximately 1100 lbs., net wrapped, put up dry. Grazon/free. 317-509-8527. Bucyrus/Houston.

VOTED #1 BEST Preowned Car Dealership

TIM'S USED CARS
(573) 341-3828 • 1334 South Bishop (Hwy. 63) • Rolla, MO
Next to Hwy CC • www.tims-used-cars.com

	2013 KIA OPTIMA SX 4cyl, Loaded w/ Options 172,xxx Miles ONLY \$6,900		2016 CHEVY SILVERADO 2500 HD LT Crew Cab, 4x4, 6.6L, Duramax, Power Equipped 106,xxx Miles ONLY \$33,500
	2014 CHEVY CAMARO 2LT RS Convertible, 3.6L V6, Loaded w/ Options 84,xxx miles ONLY \$19,900		2021 CHRYSLER VOYAGER LX 3.6L V6, Power Equipped 103,xxx miles ONLY \$19,500

LARGE SELECTION OF CARS, TRUCKS, SUVs & VANS!

OMAR'S DOZING

- ⇒ Clear land
- ⇒ Clean up woods
- ⇒ Make driveways
- ⇒ Clear property lines
- ⇒ Build ponds
- ⇒ Dig Out Walk-in Basements

Owner-Operated

LEAVE MESSAGE: 417-741-0440 (No Text Messages)
Hartville & Surrounding Areas

NEW IN BOX CARLSON EXTRA TALL IN-HOME PET GATE: With walk-through door and built in small 10"x7" pet door. Pressure mount-no holes. Fits 30-41.5" openings, 37" tall. \$30. 417-718-5347. Conway.

10-11X13 PLASTIC CRATE: \$4 each. 417-532-2344. Lebanon.

R&R AUCTION SERVICE

AUCTION • FRIDAY, FEBRUARY 7TH, AT 6PM

R&R AUCTION HOUSE, 1644 SOUTH ASH IN BUFFALO, MO

WE ARE KICKING OFF THE 2025 YEAR IN THE R&R AUCTION HOUSE WITH A SPECIAL FRIDAY NIGHT ESTATE AUCTION.



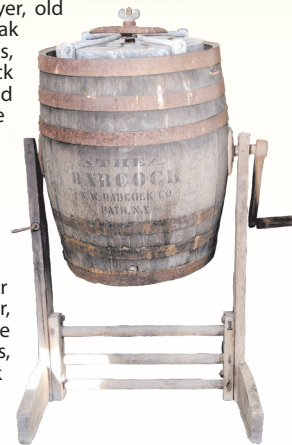
The Fielder/Ambrose Estate has so much to offer it is a must see. Because this is a Single heir dual estate auction there will be no sales tax at this special auction. Some items include the following... Iron and wood pub table, coffee table, end table, night stand, tarps, Sony flat screen, twin size bed, day bed, Bel Aire 60 gallon shop air compressor, Ariens 8hp tiller, Reddy Heater 170T Professional series multi fuel, antique drop front desk, antique treadle sewing machine, antique, sewing machine cabinet, 4 drawer chest of drawers, garage cabinet, old oak curved glass china cabinet, gas jugs, Aqua lily pad, 5 1/2 pieces of Wonderboard Lite concrete boards, small Generac S4002 generator, small Homelite HG 1400 generator, swing case, rolls of insulation, pipe insulation, Snap

On battery charger, Cornwell metal shop cart, stacking chairs, aluminum loading ramps, Stradivara Victrola, Victor motor oil from Victor talking machine company, Antique Victrola needle tins, rakes, shovels, post hole digger, rock bar, Snap On abrasive blast cleaning and finishing system (not complete), Kobalt shop cabinet 2 drawer with stainless peg board back and lighted, 12 gallon 4 1/2 hp Shop Vac, Lasco blower fan, tail dragger cart, Mac Tools shop cart, kerosene heaters, lots of 33 record albums, large amount of automotive parts and tools, lighting, plumbing, electrical, wooden antique rocker, swivel bar stools, antique arm chair and cane bottom chair, commercial oil catch, oil change pans, Lifetime basketball goal on pole, Image 15. OR space saver treadmill, stereo equipment including Sony. Yamaha and JBL sub, Honda 70 mini bike, Robinair refrigerator, recovery, recycling, recharging station, batteries, antique

photo frame curved glass, Rigid compound miter saw on Rigid MSUV space saving cart, large bench vise, Rigid table saw, Humidor with cigars, DeWalt 6" bench grinder, Trouper monster maul, Minn kota trolling motor, 4ft. Unitech magnetic level, metal work table, engine stand, Central Machinery parts washer, fishing pole rack, 2 door storage cabinet, fire extinguishers, tile, cultured marble sink NIB, range hood, Luxury vinyl plank flooring, antique dresser, antique crank telephone, trick bike, kids trampoline, inflatable kids play house, Magnum XR7 paint sprayer, old mechanics manuals, saw horses, punching bags, boxing gloves, flat disk swing, knee board, inner tubes for boating, oak claw feet tables, various tool boxes, Snap On computer wheel balancer with accessories, wrenches, files, mechanics tools, White Clad cabinet, drills, oscillating saw, angle grinder, black light, etching kit, puller kit, new windows and doors, jack stands, 20 ton Kobalt bottle jack, boxes of screws and nails, ratchet straps, new log chain and boom, Snap On flex head torque wrench TQFR100B, air sander, air brush, Everstart 400 watt power inverter, Schumacher 750w power inverter, tile cutter, heat gun, diecast cars, old toys, Rainbow vacuum, minnow bucket, Edu-Science microscope kit, weed eater line, car seat, Coleman heater 3500btu, Kitchen Aid food processor, Parmeco metal canister set, Dallas

Cowboys ceiling fan, Sierra Flax water bag, oil lamps, Black & Decker leaf blower, extension cords, Midnight Special DVD set, cap and ball dueling pistol, pots & pans, Sony 1000 watt power amp

for car stereo, fishing jigs, Hummingbird Pmax fish finder, transmission fluid, portable air tank, antique tobacco cutter, belt/disc sander, Master fuel injector kit, Coleman lanterns including one in case, Winzer hose clamp display rack, Oregon chain saw sharpener, Porter Cable cordless tool kit, Mac Pherson Strut tool, Hitachi air stapler, body hammer kit, Ever Tough thread restoring file, Ever Tough slide hammer, knife & scissor sharpener, Snap On cordless impact, clocks, old dolls, Keurig, old cookie jars, goldware, granite ware, hand crank meat grinder, Precious Moments figurines, Butternut coffee tin, small work out weights, weed eaters, vintage Victorian side by side secretary desk several box lots and much more to be discovered.



TERMS: 10% buyer's premium. Cash, check, or credit card with proper I.D. nothing removed until settled for. A 3% fee will be added to credit card purchases. Not responsible for errors in listing. Any announcement made sale day will take precedence over any printed matter.

WATCH NEXT WEEK'S TRADER FOR OUR FEBRUARY 15TH AUCTION!

SATURDAY FEBRUARY 15TH ABSOLUTE AUCTION BIDDING STARTS AT 9AM

MARK YOUR CALENDARS FOR SATURDAY FEBRUARY 15, as it is sure to be one of the top auctions of 2025. Located at 165 Raintree Road in Buffalo, MO. This 3 bedroom, 2 bath house with living room, kitchen/dining, family room, craft room and more will sell to the highest bidder at noon. The property is approximately 3 acres with a 30 x 40 garage/shop building and another large wood shop building with added enclosed lean to with concrete floor. This is a large auction starting at 9am with a large amount of quality tools, furniture, collectibles and more. Watch next week's Trader for complete listing or check out www.rauctionservice.com



Please keep watch on our website for added photos.



For more information contact Professional Auctioneer Russ Weeks at 417-576-7357 or check out www.rauctionservice.com

Serving this area's auction needs since 1997 with honesty and professionalism.

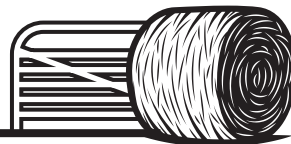
www.rauctionservice.com

(417) 576-7357 or (417) 345-4140





Earl's Hay & Cattle Equipment Auction



SATURDAY, FEBRUARY 8TH 2025, AT 9:00AM

**18627 KELSAY RD., BARNETT, MO 65011
6 MILES EAST OF VERSAILLES OFF HWY C**

CATTLE EQUIPMENT

- 40 - Free Standing 24' Corral Panels
- 20 - Rissler Panels
- 20 - Panels with 2 gates on trailer
- 30 - Continuous Fence Panels
- Trailer Type Bale Unroller
- Rissler Bale Trailer
- Head Gate
- Rissler Creep Feeder (Like New)



••• MORE EXPECTED BY SALE DAY •••

EXPECTED HAY BALES

SM. SQ. BALES

Timothy
Mixed Grass
Alfalfa
Straw

BIG SQ. BALES

Brome
Mixed Grass
E-Free Fescue

BIG BALES

Alfalfa (Wet Wrapped)
Fescue
Fescue Mix
Straw

THIS WILL BE A BIG HAY SALE!

FOR ALL YOUR HAY NEEDS STOP BY, HOPE TO SEE YOU THERE!

Cattle Equipment sells after hay, lots of nearly new cattle equipment

For more information, call Earl R. Zimmerman at 573-378-4335
Not responsible for accidents

ANTIQUE ESTATE AUCTION

Saturday, February 8th, 2025 ~ 10:00 AM

LOCATION: American Legion Building, 710 Locust, Lockwood, MO; (Watch For Signs)

Auction For Gary Rhodd #2 Of 2



Antiques, Collectibles & Primitives

Very Lg Lot Of Approx 100+ Cast Iron Banks Of All Kinds Inc People, Animals, Buildings & Safes, Very Lg Lot Of Ant Tins Of All Kinds, Lg Lot Of Ant Bar Topper Items & Advertising Pcs, Very Lg Lot Of Ant Toys Of All Kinds From Teens To 50's, Ant Hand Carved Wood Figures Of All Kinds, Early 1900's Toy Animals & People Figures, Ant Metal Hat Stand Collection, Lg Lot Of Ant Cast Iron & Metal Toys, Very Lg Lot Of Ant Canes Of All Kinds Some Very Rare, Lg Lot Of Beer & Other Alcohol Advertising Pcs & Related Items (Very Amazing Collection), Ant Bidders Bottles, Ant Church Key Openers W/Figures, Lot Of Black Americana Advertising & Pcs Inc Salt & Pepper, Figures & Other Pcs, Very Lg Lot Of Over 500Pcs Of Elephant Collection From 1800's To Present Inc Marble, Stone, Brass, Copper, Metal, Wood Carved & Others (Very Nice Collection), Complete Set Of GOP Elephant Mugs Very Rare Find (None Are Missing), Lg Lot Of Neat Historical Books Inc Civil War, Western, Political & Others, Rare

Elephant Decanter Collection, Ant Tins Of All Kinds, Ant Political Top Hats (Very Old), Ant 1920's & 1930's Animal Figurines, Ant Aladdin & Other Oil Lamps, Ant Gas & Oil Pcs, Rare Ant Laurel & Hardy Collectible Pcs, Ant Howdy Doody String Puppet, Ant License Plates, Ant Scales, Ant Coffee Grinder, Ant Tube Juice Containers, Ant Meat Hooks, Ant Popcorn Poppers, Ant Grinders & Pitters, Ant Vinegar Cruet Set, Ant Glass Butter Churns, Ant Store Jars, Other Jars & Bottles, Ant Nail Keg, Advertising Store Counter Peanut Jars, Ant Silver Tuba, Ant Bird Pitchers, Hundreds Of Other Sm Antiques, Primitives & Collectible Pcs Not Listed Or Advertised Due To Being Stored In Storage Building, Several Surprises Sale Day

Furniture, Appliances & Housewares

Side By Side Refrigerator, Apt Size Refrigerator, Gas Cook Stove, Washer & Dryer, Stand Up Kitchen Table & Chairs, Fold Up Tables, Sm Kitchen Appliances, Pots, Pans & Dishes, Several Other Sm Houseware & Other Related Items Not Listed Due To Being Stored In Storage Unit



Auctioneers Note: WOW!!! What An Amazing True 1800's & Very Early 1900's Antique Auction. What A Way To Start The New Year. Gary Has Been A Collector Of True Antiques For Many Years. He Bought His First Antique Items In 1971 And Has Been Doing It For Over 50 Years Since. It Is An Honor To Be Conducting This Auction For Gary As He Has Been A Dedicated Customer For Many Years. This Is A True Antique Auction With Many Rare Items. This Is Auction #2 Of 2 And Will Have Many Items Added That Are Not On Sale Bill Listing. Please Plan Now To Attend. **Sale Order: We Will Try To Sell Antique Furniture First But There Will Be Some Small Antique & Primitive Items Within Then Will Move Directly To Small Antiques, Collectibles & Primitives. See Ya There!!!**
Terms: Cash or check with proper ID. Now accepting most major credit cards. Nothing removed until settled for. Statements made the day of sale takes precedence over printed material. Everything sold as is where is. Not responsible for accidents. Restroom available. Concessions Provided. Check our website for upcoming auctions and for additional pictures!!



NANCE AUCTION SERVICE

No Matter How BIG or small, We Do Them All!!!

Col. Bill Nance 417-214-0093

In God We Trust

Philippians 4:13

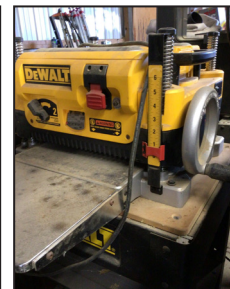
PERSONAL PROPERTY AUCTION

10231 EAST FARM RD 104, STRAFFORD, MO 65757

SATURDAY FEBRUARY 8TH, 2025 AT 10 AM

INVENTORY LIST:

- 2020 EZ – hauler trailer
- 20 foot long double axle built on aluminum frame
- 2005 shadow master double axle trailer 16 foot
- Dewalt table saw
- Dewalt saw
- Vacuum
- Walker 60 inch zero turn mower (B23i)
- STihl , MS170 Chainsaw
- Grizzly 15 drawer tool chest
- Lots of miscellaneous new bolts, nuts, screws, and fasteners
- Lots of mil of D Walt 18 V and 20 V cordless tools
- Nice wooden work benches on rollers
- Trailer ramps
- 2-12V 30 gallon sprayers
- Router bits
- STihl , FS45 trimmer
- T post driver
- Milwaukee saws all
- Misc building materials and trailer jacks
- Miscellaneous building materials
- Thermosafe chest
- Building materials
- Plywood and drywall sheets
- Ladder and saw horses
- Vise
- Electric log splitter
- Building materials
- Hydraulic Pipe bender
- Craftsman metal sawhorses
- Wooden nine drawer cabinet
- Craftsman 6 gallon vacuum
- Building materials
- Little giant foldable ladder
- Numerous long handled tools
- Craftsman metal sawhorses
- Numerous containers full of tools
- Pile of oak 8 inch lumber
- Numerous containers of construction materials, tools, and pipe, and pipe fittings
- Building materials
- Countertop brand new
- Building materials
- Craftsman toolbox
- Numerous handtools
- Building materials and fan
- Rigid spindle Sander
- Set up outdoor patio chairs
- Grizzly 10 inch table saw
- Roller
- FREUD, router table
- Craftsman 10 inch radial arm saw with stand
- Craftsman 12 inch bandsaw , With stand
- DeWalt planer with stand
- Grizzly drill press
- Cobalt new wheel barrel, double tired
- Lawn Mower Jack
- Grizzly drywall Sander
- Grizzly 8 inch jointer
- Grizzly dust collection system
- Wood project table
- Craftsman 6 gallon
- Farm Jack
- Lots and lots of buckets of brand new screws nuts
- Numerous bar clamps
- Hitachi saw
- Bosch laser measure
- Collection of vintage match safes or holders
- Dewalt inspection camera
- Plunge router
- Faucets and case of building materials
- Box and totes with building materials
- Building supplies
- Building supplies
- Set up for craftsman metal sawhorses
- Antique water pump
- 10 rotors plumbing supplies
- Metal yard windmill needs repair
- Two vintage barn lights
- 10 totes plumbing supplies
- Vintage barber chair
- Lot of two by sixes and two by fours
- Electrical wiring with spools
- Homemade pizza oven
- Scrap metal
- Rolling magnetic nail attractor
- Homemade lawn trailer
- Glider chair



FOR MORE INFORMATION GO TO WWW.EASTERLYAUCTIONCO.COM OR CALL EASTERLY'S AT 417-833-9494

EASTERLY

AUCTION CO.

Mike Easterly Auctioneer • 417-833-9494

Not Responsible for accidents or theft. For more information call: Easterly Auction Company, Springfield, MO. Auction Terms: Visa, Mastercard, Cash, Cashier's check or checks with proper I.D. Announcements day of sale take precedence over printed material. Auction Notes: Although information is obtained from sources deemed reliable, auctioneer makes no warranty or guarantee expressed or implied. Buyers should themselves take the opportunity to make their own inspection prior to sale.

www.EasterlyAuction.com • auctionzip.com ID#14770





Mickey Duckett
CAL, MPPA, AARE, CES

Mickey Duckett Professional Auctioneer

P.O. Box 1575, Ozark, MO 65721

(417) 353-2768

www.mickeyduckettproauction.com



AMAZING REAL ESTATE & PERSONAL PROPERTY AUCTION

105 Kelly St., Hurley, MO Preview: Sat., Feb 8th, 10-12

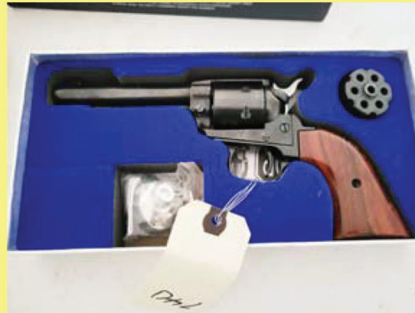
Bidding Ends Fri., Feb 14th @ 1:07 Pickup Sat., Feb 15th 9-1

If you love small-town living and love to fish, this home is for you! Amazing, historic 1910 home is situated on approx. **1.7+/- acres**, and located on the banks of the famous, trout-filled **Spring Creek** in Hurley. This possible 3 bed, 1 ¾ bath, approx. 1,785 sq. ft. home has been completely remodeled with new insulation, walls, flooring, new electric w/200-amp service, updated kitchen with custom cabinets and new farm sink, updated bathrooms with new fixtures, (2) water heaters, new plumbing, new windows and new whole-house Generac system. The quaint Dutch style barn completes the look.

Lots of terrific items incl. 1991 Ford F800 dump truck, 2015 35' Wilderness camper, fully loaded concession trailer, antique horse drawn P & O stalk chopper, Mid-Century furniture & glassware, antique furniture, guns & ammo, lots of collectibles, and **SO MUCH MORE!! Over 800+ items to bid on! Take a look at our catalog and bid today!!**

Owner: Helen Sims, Trust & Trey/Nita Young

Auctioneers Note: Lots of fantastic items to bid on!! Take a look at our Online Catalog! For more info, terms and register to bid, go to www.mickeyduckettproauction.com.



PUBLIC AUCTION

Saturday, February 15, 2025 • 9:00 a.m.

Come Enjoy The Day With Us!
Good Food, Indoors
with Lots of Seating
Now Serving
Soft Serve Ice Cream

SHOW-ME AUCTION CENTER

17829 Shadey Brook Dr. • Versailles, MO 65084

RING 1
9:00 am Antiques
12:30 pm Furniture
RING 2
9:00 am Tools
12:30 pm Outside Items



GUNS

1. Ruger Model 1022, .22 Long
2. Browning Light 12-ga. Semi Auto Belgium
3. Browning 20-ga. Semi Auto Belgium
4. Browning Sweet Sixteen Semi Auto Belgium
5. Milne Rifle 762x54R Russian
6. Mossberg 410 Shotgun, Full Choke
7. Springfield Savage 120 .22
8. Marlin m. 101 Micro Groove Barrel, .22
9. Remington m. 121 .22 Fieldmaster
10. Henry Golden Boy .22 NIB
11. KAHN Arms TP9 Pistol
12. Sig Sauer M11-A1 9mm Pistol w/7 Clips & Case
13. Taylor & Co. Black Powder Revolver

FARM & RANCH

- New Hydraulic Cylinder 4.5"x30"
- Hydraulic Porta Power
- Craftsman 1/2HP Garage Door Opener Kit
- 3 - Angle Grinders
- Post Driver
- 8-Gallon Stainless Steel Pot
- Pack Grass Seeder

FURNITURE

- Oak Office Chair, Padded
- 8' Church Pew
- Oak Buffet, Old, Refinished
- Glass-Front Bookshelves, Nice
- Lawyer's Book Shelves
- Cedar Chair
- Curio Cabinets
- 2 - Small Desks
- Oak Magazine Table
- Oak Desk w/Drop Lid
- White Chest of Drawers
- 4 - Bar Stools
- 5-Piece Bedroom Suite, Queen
- Antique Dresser
- 3 - Dressers/Chests
- 3 - Small Wooden Shelves
- Toy Box
- File Cabinet
- Child's Roll-Top Desk & Chair
- Wash Stand
- Dark, Lighted Hutch, Nice
- Iron Bed, Green
- Brown Floral Couch, Chair
- Brown Electric Recliner, Nice
- Regular Size Memory Foam Box Spring & Mattress

HOUSEHOLD

- Large Lot Fabric/Sewing Notions/Yarn
- Rug Kits/Looms
- Kitchen Aid Mixer
- Apple Peeler
- Lot Pots & Pans
- Lot Tupperware
- Lot Decor
- 3 - Quilts
- Lot Collectible Dolls
- 2 - Large Pressure Canners
- Propane Fish Cooker w/Pot
- Hobart Produce Scales

TOOLS

- Milwaukee Chop Saw Stand
- Lil Giant Ladder
- Milwaukee Fuel Skill Saw
- Hitachi Stick Nailer
- 40-Pc Tap & Die Set
- Craftsman 10' Table Saw
- Sheetrock Walk Bench
- Shop Fan on Stand
- DieHard Battery Charger, 250 Engine Start
- Schumacher Battery charger 225 Engine Start
- Craftsman 2800 psi Pressure Washer
- Jaw Horse
- 2 - Electric Sewer Drain Openers
- Kinetic Water Ram
- Dust Collector
- Enco 15" Commercial Planer
- 2 - Shop Stools
- Sheetrock Hanger, Roll-Around
- Porter Cable Pancake Air Compressor
- Pancake Compressor
- Craftsman Stick Welder
- Craftsman 10-Drawer Toolbox w/Casters
- 3-Ton Floor Jack
- Small Torch Set on Car
- Tradesman 10" Table Saw
- Century 180 Wire-Feed Welder w/Tank
- Craftsman Lathe • 6" Jointer
- 2 - Pintle Hitches
- Columbian 3.5" Vise
- Heavy Duty 6" Vise
- Craftsman Tap & Die Set
- Steel Fish Tape 100'
- 200' Tape Measure
- Electric Shop Heaters
- 2 - Krentz Vent Fans
- Lot Receiver Hitches
- 5 - Chain Binders
- Dewalt Chop Saw, 14"
- Black & Decker Chop Saw, 12"
- Kobalt 2-Drawer Toolbox
- 2" Ratchet Straps
- ARES Bearing Race & Seal Set
- Body Shop Hammer Set
- OMT Ball Joint Press, U-Joint Kit
- Piston Honing Set
- Porter Cable Cordless Tool Set
- Milwaukee Grease Gun
- Milwaukee Band Saw
- Milwaukee Hammer Drill
- Craftsman Professional Electric Impact
- Several Sets Tree Climbers
- Long Welder Extension Cord
- Lot Extension Cards
- 3 - Craftsman Brad Nailer
- Hardwood Floor Nailer
- 2 - Craftsman 26" 7-Drawer Toolboxes
- Lot Electric Breakers
- 2 - Creepers
- Clarke Mig 130EN Wire Feed Welder
- Sears Refranching Set
- Lot Vise Grip Clamps
- Bearing Puller • Air Hoses
- Bench Grinder, Stand
- Ridgid Air Compressor
- Ridgid Pipe Threader 1/2" to 2"
- Lot Pipe Cutters
- Stainless Steel Shop Vac
- Large Display Wire w/Caddy
- Small Sand Blaster
- Black Bull 4 1/2" Metal Band Saw
- Werner Folding Ladder
- Table-top Drill Press

DOLLHOUSES & SLOT MACHINES

- Lot Large Dollhouses
- Kung-Fu Lady Yasama Co. Slot Machines
- Pulsar Traditional Type A Slot Machines



SPORTING GOODS

- Barnett XP40 Crossbow w/Accessories
- Lil Bear Bow compound
- Speed Bag 20 Target
- Tascos 50 Spotting Scope
- Large Animal Live Traps
- Ridgid Fillet Knife
- Large Lot Life Vests & Coolers

ANTIQUES

- Lot Old Silhouette Pictures
- 2 - Green Measuring Cups
- Green Water Pitchers
- Amber Bowls, Plates, Pitchers
- Indian Figurines
- Lot Tree Roots w/Carved Faces
- Lot Popeye Memorabilia
- 3 - China Old Handkerchief Holders
- Lot Hat Pins/Old Pin Cushions
- Metal Match Holders
- Clothes Iron Spinners
- Lot African Masks, Wooden
- Lot African Figurines
- Metal Chickens
- 3 - Mantel Clocks & Wall Clocks
- Brass Indian Warriors, Elephants
- 5 - Salesman Samples Cook Stoves
- Green Fire Ring Bowls, Cups, Sugar, & Creamer
- 30+ Small Red Books in Wood Box
- 10+ Flats Shadow Box Trinkets
- China Tea Sets
- Mounted Bull Horns
- Cow Skull & Horns
- Iron Door Stoppers Dogs, Etc
- 2 - Granite Canister Sets
- Cast Iron Signs, Texaco, Farmall
- Red Fire Chief Peddle Car
- 5 - Runner Sleds
- Lot Puzzles
- 4 - Mini Anvils
- Iron Banks
- Victorian Santa Ornaments
- Thimble Collection
- Sod Irons, Cheese Box
- Head Vase, Hen on Nest
- Several Boxes McDonalds Toys
- Lot Old Cameras, Brownie
- 12 Binoculars - Some Very Old
- Lot Tins
- Metal Dump Truck
- Advertising Bottle Openers
- Victrola
- 12 - Metal Gas Cans
- Pottery Bowls • Lot Steins
- Butter Mold, Glass
- 3 - McCoy Vases, Cookie J
- Glass Bowls w/Glass Fruit
- Green Stem Custard Dishes
- 3 - Cast Iron Pigs
- Handkerchief Boxes
- 5 - Small Carousel Horses, Wooden
- Crystal Glassware, Decanters
- 3 - West German Goebel Dolls
- Wall Pocket Vases
- Old Marble Shooter Game
- Wooden Doll Buggy
- Oil Lamps
- Large Granite Coffee Pot
- Milk Glass Set

APPLIANCES

- Amana Washer & Dryer, Electric, Like New
- Stainless Steel Tub
- Apartment Refrigerator

TRAILERS, RV, JET SKI & ATV

- 18' 1982 Stock Trailer w/Title, Bumper Hitch
- 16' Bumper Hitch Trailer w/Title
- Pick Up Truck Crane
- 20' Car Hauler Trailer w/Ramps, New Tires, Floor, Lights, Title
- Kawasaki Mule, Runs Good, Rough
- Dune Buggy, 2-Seater, Runs
- 2000 Bombardier Sea-Do, 2-Seater, on Trailer
- 99' Fleetwood Motor Home, V10 Ford, Newer Tires, Approx. 26', Runs Good, 87,000 Miles

LAWN & GARDEN

- X300 JD Riding Mower, 42" Cut
- 2 - Craftsman Lawn Mower Lifts
- John Deere Lawn Cart
- Lawn Sweeper, 42"
- Swisher Pull-Behind Finish Mower
- Garden Cart
- MTD Front Tine Tiller, 5HP
- Craftsman Limb Saw
- Stainless Steel Rolling Cart
- 4' Vinyl Table
- Swisher Wheeled Weed Cutter
- 22" High-Wheel Push Mower
- Gas Grill
- 5 - Metal Lawn Chairs
- Wireless Pet Containment w/Collars

AUCTION NOTES: We have lots of good tools, new trusses, good clean antiques and furniture. Enjoy the day inside where it's warm with lots of good items!



For more photos and information, see auctionarrows.com or auctionzip.com (ID 30027)

For More Information:

Owners: WILMER & ANNIE HOOVER
573-789-2215 • 573-789-0010
Sale Day Only 573-788-4908

Auctioneers:

Col. Doug Dieckman - 660-287-1962
Kevin Leinbach - 660-337-6867
Lavon Leinbach - 573-378-6307

Not responsible for accidents. TERMS: Cash or Check with Proper I.D. • All statements made date of sale take precedence over printed material. After 30 days, all items not picked up become auction property.

BUFFALO LIVESTOCK MARKET LLC



276 Hwy 32 W., Buffalo, MO

February 1st, 2025
Receipts: 747

REPRESENTATIVE STEERS

300-400 @ 380.00 to 400.00
400-500 @ 360.00 to 380.00
500-600 @ 310.00 to 337.50
600-700 @ 273.00 to 310.00
700-800 @ 255.00 to 273.00
800-900 @ 240.00 to 261.00

REPRESENTATIVE HEIFERS

300-400 @ 320.00 to 390.00
400-500 @ 320.00 to 352.00
500-600 @ 280.00 to 310.00
600-700 @ 250.00 to 280.00
700-800 @ 227.00 to 250.00
800-900 @ None-Traded

FEEDER BULLS

300-400 @ 370.00 to 390.00
400-500 @ 360.00 to 370.00
500-600 @ 300.00 to 325.00
600-700 @ 265.00 to 300.00
700-800 @ 245.00 to 265.00
800-900 @ 220.00 to 250.00

STOCKS COWS

1875.00 to 3100.00

SLAUGHTER BULLS

High Yield 160.00 to 181.00
Low Yield 130.00 to 152.00

SLAUGHTER COWS

Fleshy 135.00 to 152.00
Med Flesh 120.00 to 146.00
Light Flesh 115.00 to 137.00

POOR, CRIPPLE, & DOUBTFUL HEALTH

80 Down

NEXT WEEK FEBRUARY 8TH
PRE-VAC SALE!

MON-WED MARKET REPORT

Listen to KJEL 103.7FM • Lebanon or KYOO 99FM • Bolivar

VIEW OUR SALES AT CATTLEUSA.COM

CALL FOR TRUCKING OR ON-FARM VISIT

Lyle Caselman • Owner-Manager
417-345-7876 • mobile 417-533-2944
Leon Caselman • Owner
417-345-4514 • mobile • 417-588-6185

**LARGE QUANTITY OF NURSERY
PLANT CONTAINERS:** \$10. 636-239-2695
or 314-560-5700. Washington.

**REGISTERED MULLICAN MOUNTAIN
FEISTS:** 6 months old. They have been
running in a squirrel pen. Will tree. All
shots and wormed. All females. \$300 each.
Plus, two older dog's male and female \$500
each. 417-532-4701, cell 417-531-3336.
Lebanon.

**2005-2007 JEEP GRAND CHEROKEE
FENDER LINER:** Driver side. \$12. 417-
288-2687. Lebanon.

**WANTED TO BUY: MCCORMICK
FARMALL F12 TRACTOR:** Maytag Gas
Motor from the 40s-50s. For Sale: 2 Older
Dewalt and Ryobi Radial Arm Electric Saws
in good condition. 573-759-7268. Dixon.

100 4X5 WHEAT BALEAGE: for \$55/
each. 660-337-6311. Fortuna.

1973 CHRYSLER NEWPORT: V-8. No
title. \$2,000 OBO. 660-596-3091. Richland.

**2021 NEW HOLLAND C332 SKID
STEER:** 74HP, 375 hours, super-boom,
tracks, std/hi flow, heat/air, 8" color
display, back up camera, blue-tooth radio,
heated air ride seat, lap-bar, bucket, hay
spike. Well maintained, excellent condition.
\$58,500.00. 417-718-5347. Conway.

AERMOTOR WINDMILL GEAR BOX;
\$700. 2200 Gallon Steel Water Tank, \$1,000.
Farmall M Wide Front Power Steering
Loader, with spike, \$2,500. 417-531-5952.
Hartville.



**MID
MISSOURI
STOCKYARDS**
**REGULAR SALE EVERY
THURSDAY 11AM**

**SPECIAL COW SALE
ON SATURDAY FEBRUARY 8TH AT 6 PM!**

For Farm Visits, Market Updates, or Trucking
Call Zach Cox 417-777-1320

**Competitive Buyers!
Competitive Commission!
Competitive Market!**

Barn: 417-532-9292
I-44 • Exit 123
17505 Route 66, Phillipsburg, MO 65722
www.midmostockyards.com

AUSTRALIAN SHEPHERD PUPPIES:
10-weeks-old, UTD on shots. For sale or
trade. 417-967-6493. Roby.

**STIHL GAS POWERED LEAF
BLOWER:** Starts right up. \$50. 573-578-
2693. Rolla.

CAMEL CIGARETTE SIGN: From a
service station. 22" x 30". Nice condition.
\$50. 573-364-7465. Rolla.

8 USED 3X3 HOUSE VINYL WINDOWS:
\$30 each, leave a message. 417-859-0625.
Marshfield.

**SOUTHWEST DESIGN, BEADED
BREAST COLLAR, HEADSTALL WITH
REINS, AND WITHER STRAP SET. Has
Aztec design with crosses on it. Used once.
\$85 OBO 417-693-0389. Conway.**

TINY CABIN: Homes, Garden Sheds,
Mini Barns, Chicken Coops. 417-741-0245.
Grovespring.

20 LB. PROPANE BOTTLE: For BBQ
Grill \$15. 417-532-2344. Lebanon.

4X5 NET WRAPPED DRY BALES: Black
plastic covered. Can deliver in Belle and Linn
Area. \$50. 573-694-8872 or 573-821-3031.
Linn.

UNICYCLE: With balance poles. Excellent
condition. \$35. 573-364-7465. Rolla.

**NEW, SEALED BOOK: "The Bittersweet
Ozarks at a Glance" By Ellen Gray
Massey. Great Photos & History of The
Ozarks Gift. \$15. 417-718-5347. Conway.**

The Ultimate Wood Heat.



Classic Edge™
Titanium HDX
Outdoor Wood Furnaces

UP TO
\$2000
TAX CREDIT*

*On qualifying models and
installation. Call for details.



Yarbrough Equipment Sales & Services, Inc.
9776 E. State Hwy OO • Strafford, MO
417-736-2303 • 1-866-286-6901 • www.yarbeq.com

CUSTOM HAULING: Hay, Equipment,
Livestock. Responsible, Respectable,
Reasonable. 417-234-0634. Seymour.

**VINTAGE CHURCHILL HAIR FELT
FEDORA HAT:** Brown 7 1/8. Text for
pictures. \$25. 417-288-2687. Lebanon.

FOR SALE: 40 Spring calving cows,
40 Fall calving cows, 20 Cow calf pairs,
Several bulls. 606-619-5190. Otterville.

MOUNTAIN FEIST PUPS: Great pets, good squirrel dogs. Wormed and shots. \$150. No text, leave a message. 573-796-8343. California.

2022 40FT. PJ GOOSENECK TRAILER: 12K axles, electric/hydraulic disk brakes. 8 new 16-ply tires, 6ft. slide in ramps. Custom built deck over headache rack. Excellent condition. No issues. Ready to go to work. \$12,500. 417-234-0634. Seymour.

BALL-PEEN HAMMER: Stamped Rock Island Lines. \$35. 417-581-7709. Sparta.

2015 FORD ESCAPE: 99,000 miles. Very clean in and out. Needs work. Code light, number two injector needs replaced. \$4,500. 636-388-2742. Leslie.

SWISHER 52" TRAILCUTTER: 14.5hp, 12V, Kawasaki Commercial Pro Cutter, pull behind side by side or 4 wheeler, gas engine, like new, used 3 times. \$3900. 417-718-5347. Conway.

40 YEARS THIS YEAR- we have to be doing something right. Call for quote on any, house new or used, double and single. 573-657-2176 amegamobilehomes.com.

GUN SAFE FOR SALE: Holds 22-Guns. 417-991-8927. Lebanon.

FOR SALE: 1988 Honda Goldwing Trike. Good tires, good battery, 94,000 miles. \$6,995. Call or text. No joy rides. 417-252-4231. Willow Springs.

2007 TOYOTA TUNDRA: 5.7 V-8, 131K miles, 12" lift, 40" tires. Runs and lot drives. Needs a truck bed and body work. Clean title. Asking \$9,000 OBO. 660-596-3091. Richland.

CHEVY 6 LUG WHEEL: With Tire. Great for spare. \$40. 573-962-1559. Mountain View.

JIGSAW PUZZLE COLLECTION: \$1.00 each, good condition. 417-532-2045, leave message. Lebanon.

35 HAYLAGE GRASS CLOVER MIXED: \$55 per bale. 150 4x5 grass clover mix, \$50 per bale. 1500 Square bales, \$6 per bale. 417-345-5634. Long Lane.

1995 3/4 TON 8 LUG WHEEL: Great for a spare. \$30. 573-962-1559. Mountain View.

WE GOT IT - let us bid your mobile home purchase, new and used. 573-499-9993 columbiadiscounthomes.com.

TRIPLE WIDE- moving stock, awesome price. 573-657-7040 chateauhomes.net.



RYAN WILLIAMS LOGGING
(573) 247-5859
(573) 297-9710
EXPERIENCED, PTH TRAINED, INSURED
BUYING STANDING TIMBER

Starnes Auto LLC
22115 Rt. 66 • Lebanon, MO 65536
417.588.7939 Cell
417.588.3159 Office
www.starnesauto.com

Worry-Free WINDSHIELD REPAIRS

Don't let that rock chip turn into a huge problem!



Chip & Crack Repairs | Glass Replacement
WE FILE WITH INSURANCE!

Kilmer Farm Equipment
CONSIGNMENT AUCTION
SATURDAY, MARCH 8 • 9:30 AM
14769 Cattle Lane, Versailles, MO 65084
Directions: At the Intersection of Hwy 5 and Hwy 52 in Versailles, go North on Hwy 5 for 1 mile to Cattle Ln then turn Right or East and go ¾ mile to Sale Site.

AD DEADLINE: TUESDAY, FEBRUARY 11TH
ACCEPTING CONSIGNMENTS ON LOT
Saturday, Feb. 22- Wednesday, March 6 | Closed Sunday

**CONTACT DANIEL OR MARK KILMER TO CONSIGN
OR FOR MORE INFORMATION (573) 378-6615**

**TRACTORS, PLANTERS AND SPRAYERS,
CONSTRUCTION EQUIPMENT, TRUCKS AND TRAILERS,
GRAIN CARTS AND WAGONS, MANURE SPREADERS,
CUTTERS, TILLAGE, COMBINE AND HEADS, FEED MIXERS,
MISC. EQUIPMENT, HAY EQUIPMENT, SILAGE EQUIPMENT**

Wheeler AUCTIONS & REAL ESTATE
23101 HWY. 24, PARIS, MO 65275 | 660-327-5890
WWW.WHEELERAUCTIONS.COM

BID NOW Online Bidding Provided By **Equipmentfacts**

WHEELER LIVE ONLINE BIDDING PLATFORM

KILMER FARM EQUIPMENT, LLC
14270 Hwy. 52, Versailles, MO 65084
(573) 378-6615

For more info and photos:
www.wheelerauctions.com

1993 TY COLLECTOR BEAR: "Baron" in leather flight jacket. In mint condition. \$35. 573-364-7465. Rolla.

1989 LINCOLN MARK VII: No rust. Strong motor, transmission, A/C, wire wheels with centers, title. Bags out. \$1,500. 573-873-5774. Camdenton.

KUSTER LOGGING
BUYER of Standing Timber Oak and Walnut
Dozing Now Available
417-259-0047
References Available



RESISTOL HOOEY DAY MONEY COWBOY HAT: Gray, 7¼. Excellent, clean condition. \$65. 417-288-2687. Lebanon.

SPLASH & DASH: Now accepting new clients for dog grooming. 417-664-5926 or 417-589-0034. Conway, Missouri.

57 PIECE WHITE WITH BROWN BORDER CORELLE: \$50. 417-532-2344. Lebanon.

MINIATURE AUSTRALIAN PUPPIES: For Sale. \$100 each, many colors available. 573-760-5157. Centerville.

1947 FORD RAT ROD: Has a built 454 BBC from Built Right Motors, 350 turbo transmission. Clean title. Asking \$15,000 OBO. 660-596-3091. Richland.

1960-70s LIONEL TRAIN CARS: 3/\$50, Choice of Box Cars, Gondolas, Caboose. 573-364-7465. Rolla.

I BUY.....used mobile homes. Call or text 573-338-6250 or email GregS.CDH@outlook.com

15-20 MICHAEL JORDAN CARDS: In hard cases. \$50. 573-578-2693. Rolla.

1980 FRISCO RAILROAD CALENDAR: Last year. Mint original. \$35. 573-364-7465. Rolla.

FOR SALE: 2016 14ft. Tracker Jon Boat and Trailer with 2020 Suzuki 9.9 motor with electric start-tilt. \$3,800. (417) 650-0046. Lebanon.

AIR FILTER LOT: 20-25 different ones. \$30. 573-578-2693. Rolla.

Absolute Real Estate Auction

Saturday, February 22, Real Estate Sells 12:00 P.M.

Location: 608 S. Cheyenne St. Strafford, Mo. 65757

1260+ Sq.Ft. Ranch Style Home on 1/3 Acre Lot

3-Bedroom, 2-Bath, Living Room w/Gas Log Fireplace, Open Kitchen & Dining Room, w/Appliances, Utility Closet, Sliding Door to Patio, Carpet & Wood Laminate Flooring, 2-Car Garage, 10x12 Storage Shed, Central Heat & Air, City Sewer & Water, Strafford Schools. Nice level yard with mature shade trees & ornamentals. (Large green space behind property) Beautiful, brick & vinyl home, built in 2006, in a nice neighborhood! Move in ready!

Don't miss this one....

Would make a great Home or investment for anyone!

Property Sells Absolute to the Highest Bidder!

Terms: 10% Down, Balance due at closing 45 days or less.

See our website for more pictures and information!

Estate of Wayne & Francis Noe

Shown at Open House Sunday, Feb. 9, (1 - 4)



**Auction Starts At 10:00 AM
Real Estate Sells at NOON!**

FOSTER AUCTION SERVICE
 www.fosterauctionservice.com
 Larry Foster: (417) 839-6860

WHIRLPOOL REFRIGERATOR SOLENOID WATER INLET VALVE: Part #WPW10179146. \$12. 417-288-2687. Lebanon.

BLACK & DECKER JACKHAMMER: With sword jacks. \$50. 573-578-2693. Rolla.

CAMERA: Vivitar PS33, \$25. 417-260-0941. Raymondville.

TAILLIGHTS FOR 01 OLDSMOBILE ALERO: \$30 for pair. 573-962-1559. Mountain View.

STACK OF BOOKS & INFORMATION ON RESTORING MODEL A FORDS: \$25. 417-260-0941. Raymondville.

1984 BIRMINGHAM 35TON LOWBOY TRAILER: 37 Ft. overall length, 20Ft. well. New tires, new white oak floor, new 30-30 canisters on rear axles. Excellent condition. \$9,500 417-234-0634. Seymour.

TINY HOMES - Missouri Franchise 573-881-7965.

TROXEL 'SPIRIT' YOUTH RIDING HELMET: blue, size small, used once. \$40. 417-718-5347. Conway.

JMB LOGGING: Looking to Buy Standing Walnut & Oak Timber. Fully Insured. Call 417-254-0266 for Your Free Estimate. Cabool.

2004 FORD TAURUS TAILLIGHTS: \$30 for pair. 573-962-1559. Mountain View.

METAL ROOFING: Decks and More. Call Today, Levi Byler Construction. 417-741-0245. Grovespring.

MIXED SQUARE BALE HAY FOR SALE: \$6.00 each. A few round bales \$60.00 each. Brome grass. 573-247-4280. Salem.

CHILTON'S AUTO REPAIR MANUAL: American cars & Volkswagen 1969-1976. \$30, will split shipping. 417-260-0941. Raymondville.

2 BELL BICYCLING HELMETS: white 50-57cm, black 54-61cm, excellent condition. \$25 each. 417-718-5347. Morgan.

96-INCH SEASENSE ALUMINUM KAYAK PADDLE: 2-piece, 3-locking positions, used once. \$45. 417-288-2687. Lebanon.

DOGWOOD CABINS LLC

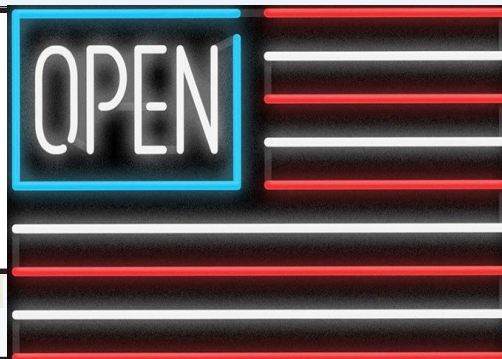


BUILDING YOUR DREAMS

417.701.1372



Sale Ends February 28, 2025
 Seymour, Missouri 417-935-4201



Pole Barn Building Kits!

23'x32'x10' \$6,350 Material Only \$8,750 Labor Included	23'x40'x10' \$7,220 Material Only \$10,200 Labor Included	30'x40'x10' \$8,550 Material Only \$12,400 Labor Included	40'x60'x12' \$15,010 Material Only \$22,980 Labor Included
---	--	--	---

Call for free quote, brochure & color chart.
 Other sizes also available.



NOBODY, BUT NOBODY BEATS OUR PRICES!!!

10 ft. Slider • Engineered Trusses 8' O.C. • 2x6 Treated Bottom Wrap • Screws • 2x10 Top Wrap • 2x4 Purlins • Full 29 Gauge Steel • Plus 3 ft. Entry Door with Lock

OPTIONS: Sidewall Heights on all Buildings 10', 12', 14' & 16'. Overhead Garage Door. Skylights. Insulation. Wainscoting. Insulated Vinyl Windows. Cupolas. Labor Rates Slightly Higher over 50 Miles from Seymour. Call for YOUR FREE QUOTE TODAY!!!!

PAINTED WHITE, GREEN OR TAN METAL\$97.79

10' - \$31.00 12' - \$37.20 16' - \$49.60

MIX & MATCH METALSold Out

8' - Sold Out 10' - Sold Out 12' - Sold Out

GALVALUME METAL\$79.99

10' - \$25.40 12' - \$30.48 16' - \$40.64

GALVANIZED CORRUGATED METAL\$85.39

8'-\$15.92 10'-\$19.90 12'-\$23.88 16'-\$31.84

IN STOCK

40yr Painted Metal
Call!

KNOTTY PINE DOORS

Starting at

\$164.99

****Prices subject to change without notice****

6X6 CEDAR POST LIMITED TIME \$5.87 LN FT

Car Siding!

1x6 White Pine Siding **65¢** in ft

1x8 White Pine Siding **79¢** in ft

* 4 Profiles to choose from!
 Broken Bundles Add 10¢ Per Ft.

4x8 Sheeting

Less than full units Add \$1 per sheet

3/8" Beaded Paneling **\$19.99**

5/8" T111 Siding **\$19.99**

Paneling **\$\$\$OLD**

1/2" Plywood **\$23.99**

3/4" Plywood **\$29.99**

3/16 Pegboard **\$12.99**

LOTS OF MATERIAL AVAILABLE

FOR THOSE IN HOME PROJECTS!

NEW PACKAGE HOMES



Shown with Available Options

Your Choice of either:

Stock 5/8" T111 Siding w/1x4 Pine Window & Door Trim - or -

7/16" OSB & House Wrap ready for other finish options

2x6—16" on center-Exterior Stud Walls

Residential Roof Trusses-2' on center

4/12 pitch with 1' over hang

40 year Painted Metal roofing in 20 Different Colors

Profile Ridge Vent - Ventilated Ridge Cap

Vinyl Center Vent Soffit

Color Matched Metal Fascia & Gable Trim

2 - 3' 6 Panel Entry Doors

4 - 3'x4' Vinyl Insulated Windows

ALL FIGURED FOR SUITABLE CUSTOMER SUPPLIED SLAB OR SUB-FLOOR

Price for Basic Materials Package (No Labor at this Time)

20x24(480 sq. ft.) 20x32(640 sq. ft.) 20x40(800 sq. ft.) 28x40(1120 sq. ft.) 28x48(1344 sq. ft.)
\$9,490 \$10,839 \$12,339 \$15,129 \$18,729

REAL WOOD SIDING

2x6 Log Siding \$1.49 In ft

1x8 Beveled Cedar from- 99¢ In ft

T1-11 Siding from \$19.99

DECK PACKAGES

Materials Only

8x8.....\$299.99

10x10.....\$399.99

12x12.....\$629.99

10x12.....\$479.99

10x16.....\$629.99

12x16.....\$829.99



In STOCK! Quaker Vinyl Windows

2030 \$ 199.99

3040 \$249.99

3040Twin \$559.99

3030 \$229.99

3052 \$269.99

3052Twin \$609.99



LUCKY DISCOUNT LUMBER

417-935-4201

455 State Hwy C • Seymour MO 65746

www.luckydiscountlumber.com



*Some restrictions apply see store for details. Prices subject to change without notice.

**48 Months
Financing Available**



HEATMOR
Stainless Steel Outdoor Furnaces
**Outdoor Wood
Furnace**

as low as **\$289** per month

HEATMOR MIDWEST
Licking, MO 65542 • 573-674-2962

SPARE TIRE: For 04 Ford Taurus. \$25.
573-962-1559. Mountain View.

**100 NET WRAPPED 4X5 ROUND
BALES:** of good quality grass hay. \$55 per
bale. 417-531-1048. Morgan.

FOR SALE: 2pc sweat suit. Size XL. \$20.
Lebanon. 417-650-5911. Lebanon.

**RYOBI BATTERY POWERED LEAF
BLOWER:** \$50, Call 573-578-2693. Rolla.

**DARDEN PROFESSIONAL TIMBER
HARVESTING, BUYING STANDING
TIMBER:** Great prices, improve wildlife
habitat and improve forest health. State
Certified & Fully Insured! 573-247-4808.
Salem.



**Wright Spray Foam
Insulators, LLC**
Commercial & Residential
Call for FREE Estimates!

Ervin Gingerich
417-926-2052
B. Eli Yoder
417-746-4932

2013 DODGE RAM 2500: 159k miles, 2
doors, 8ft. bed. Lots of new parts on motor.
Runs like new. \$15,900. Call only. 417-241-
3653. Hartville.

MALTIPOO PUPPIES: 10 weeks old. Had
all shots and wormed. Would be great for
Valentine's Day. \$250 males. \$300 females.
417-532-4701, cell 417-531-3336. Lebanon.

TRAILER HOUSE: Needs work. No title.
Must Remove. \$2,000 OBO. 660-596-3091.
Richland.

**WANTED TO BUY: MCCORMICK
FARMALL F12 TRACTOR:** Maytag Gas
Motor from the 40s-50s. For Sale: 2 Older
Dewalt and Ryobi Radial Arm Electric Saws
in good condition. 573-759-7268. Dixon.

PLAD PANTRY

**DISCOUNT &
SURPLUS FOODS
FRESH PRODUCE LLC**

417-532-4700



Uncooked Ice	
Glazed Chicken Thighs.....	\$7.99 5 lbs.
American Cheese Slices	\$15.99 5 lbs.
Savory Sage Pork Sausage.....	\$2.29 lb.
Nutter Butter	
Sandwich Cookies.....	\$7.99 10 - 3.5 oz.
Fully Cooked Original Bacon .	\$2.99 2.52 oz.

1571 State Hwy 64 • Tunas, MO 65764
Hours: 8:30 a.m. to 5:30 p.m. • Closed Wed. & Sun.



**HOW TO BUILD A STREET
ROD:** Street Ride, Street Rodder, Hot
Rod Magazine \$25. 417-260-0941.
Raymondville.

PREMIUM HAY FOR SALE: 4x5 bales,
approximately 1100 lbs., net wrapped,
put up dry. Grazon/free. 317-509-8527.
Bucyrus/Houston.

JR'S FABRICATION

Don't Forget Our Annual
Spring Consignment Auction
Saturday March 15

4875 Hwy BB, Hartville MO 65667

CUSTOM WELDING & REPAIR

Buy And Sell New & Used Farm Machinery

MANUFACTURED:
Corral Panels And Gates
Cultimulchers
Forecarts
Yokes And Eveners
Sprayers
Steel Wheels
Rake Hitches

417.741.2312



Garage Door Panels
8' To 18' Long. Works To Insulate
And Line Building. 18" To 24"
Wide Tongue And Groove.
R9 1.20 / Sq. Ft, R19 1.70 / Sq. Ft.



Corral Panels
6' Tall x 10' Long x 6 Bars,
Build Strength to Hold Bulls
Approx. 115 lbs.



Heavy Duty EHE
Hay Tedders - Built To Last!
10' 18' 22' Or 32' Working Width



Bale Carts
Hi-Stacker Bale Cart Can Pickup
1900 lb. or pallets

NEW IN BOX CARLSON EXTRA TALL IN-HOME PET GATE: With walk-through door and built in small 10"x7" pet door. Pressure mount-no holes. Fits 30-41.5" openings, 37" tall. \$30. 417-718-5347. Conway.

10-11X13 PLASTIC CRATE: \$4 each. 417-532-2344. Lebanon.

AERMOTOR WINDMILL GEAR BOX; \$700. 2200 Gallon Steel Water Tank, \$1,000. Farmall M Wide Front Power Steering Loader, with spike, \$2,500. 417-531-5952. Hartville.

LARGE QUANTITY OF NURSERY PLANT CONTAINERS: \$10. 636-239-2695 or 314-560-5700. Washington.

REGISTERED MULLICAN MOUNTAIN FEISTS: 6 months old. They have been running in a squirrel pen. Will tree. All shots and wormed. All females. \$300 each. Plus, two older dog's male and female \$500 each. 417-532-4701, cell 417-531-3336. Lebanon.

2005-2007 JEEP GRAND CHEROKEE FENDER LINER: Driver side. \$12. 417-288-2687. Lebanon.

100 4X5 WHEAT BALEAGE: for \$55/each. 660-337-6311. Fortuna.

STIHL GAS POWERED LEAF BLOWER: Starts right up. \$50. 573-578-2693. Rolla.

2021 NEW HOLLAND C332 SKID STEER: 74HP, 375 hours, super-boom, tracks, std/hi flow, heat/air, 8" color display, back up camera, blue-tooth radio, heated air ride seat, lap-bar, bucket, hay spike. Well maintained, excellent condition. \$58,500.00. 417-718-5347. Conway.

OFFICIAL TRACTOR OF TOUGH™

INTRODUCING THE ALL-NEW 5100 SERIES



Marshfield Machinery Inc.

222 E. Madison • Marshfield, MO 65706
417-859-2117 • www.marshfieldmachinery.com

*2018 data including all Mahindra group brand sales.
MahindraUSA.com © 2020 Mahindra USA Inc.



NEW MAHINDRA TRACTORS

1120 4WD & LDR 20HP	IN STOCK
2126 4WD & LDR 26HP	IN STOCK
1626 4WD & LDR 26HP	IN STOCK
1635 4WD & LDR 36HP	IN STOCK
1640 4WD & LDR 38HP	IN STOCK
5145 4WD & LDR 45HP	IN STOCK
5155 4WD & LDR 55HP	IN STOCK
4550 4WD & LDR 48HP	IN STOCK
6065 4WD & LDR 62HP	IN STOCK
6075 4WD & LDR 71HP	IN STOCK

USED TRACTORS

MF 4710 100HP 4WD CAB LDR	55,000
MAHINDRA 2638 38HP 4WD LDR	22,500
MAHINDRA 4550 48HP 4WD LDR	22,000
MAHINDRA 4025 41HP LDR	14,500
LS MT125 25HP 4WD LDR MWR	11,500
JD 4020 LDR 94HP	9,500
AC 7030 CAB LDR 130 HP	8,500
JD 1010 LDR 36HP	5,500
MF 35 35HP	4,000

USED ROUND BALERS

HESSTON 560 5X6	2,000
HESSTON 5540 4X5	1,500

USED DISC MOWERS

MF 1383 13FT M/C	22,500
NEW IDEA 5512 12FT M/C	8,500
MF 1359 9FT M/C	8,500

USED MISC.

HAYBUSTER 107C DRILL	20,000
HAYBUSTER 107C DRILL	15,000
HESSTON 8WHL RAKE	2,500
VERMEER 8WHL RAKE	2,250
PANORAMA 8WHL RAKE	1,750

Marshfield Machinery Inc.

222 E. Madison
Marshfield, MO 65706
417-859-2117
www.marshfieldmachinery.com

OMAR'S LOGGING

➡ **Oak & Walnut**
➡ **Excellent Prices**
Owner-Operated



1973 CHRYSLER NEWPORT: V-8. No title. \$2,000 OBO. 660-596-3091. Richland.

AUSTRALIAN SHEPHERD PUPPIES: 10-weeks-old, UTD on shots. For sale or trade. 417-967-6493. Roby.

CAMEL CIGARETTE SIGN: From a service station. 22" x 30". Nice condition. \$50. 573-364-7465. Rolla.

8 USED 3X3 HOUSE VINYL WINDOWS: \$30 each, leave a message. 417-859-0625. Marshfield.

SOUTHWEST DESIGN, BEADED BREAST COLLAR, HEADSTALL WITH REINS, AND WITHER STRAP SET. Has Aztec design with crosses on it. Used once. \$85 OBO 417-693-0389. Conway.

TINY CABIN: Homes, Garden Sheds, Mini Barns, Chicken Coops. 417-741-0245. Grovespring.

20 LB. PROPANE BOTTLE: For BBQ Grill \$15. 417-532-2344. Lebanon.

4X5 NET WRAPPED DRY BALES: Black plastic covered. Can deliver in Belle and Linn Area. \$50. 573-694-8872 or 573-821-3031. Linn.

VINTAGE CHURCHILL HAIR FELT FEDORA HAT: Brown 7 1/8. Text for pictures. \$25. 417-288-2687. Lebanon.



New Classified Rates!

Add **YELLOW** Color For An Additional \$3 Per Reader Ad

FREE ADS – Item must be \$50 or less, ad must list price, 12 words or less, limit to 5 free ads (total) per week.

Free Ads EXCLUDE; Ammo, Guns, Hay, Animals and Firewood

All ads REQUIRE Phone Number and City or Town (Included at no charge)

**ONLY
\$5⁰⁰**

10 words or less!

(1)	(2)	(3)	(4)
(5)	(6)	(7)	(8)
(9)	(10)	Phone Number	City or Town

**ONLY
\$9⁰⁰**

22 words or less!

(1)	(2)	(3)	(4)
(5)	(6)	(7)	(8)
(9)	(10)	(11)	(12)
(13)	(14)	(15)	(16)
(17)	(18)	(19)	(20)
(21)	(22)	Phone Number	City or Town

Over 22 words
**ONLY
30¢**

per additional word
(up to 12 additional words)

(23)	+30¢	(24)	+60¢	(25)	+90¢	(26)	+\$1.20
(27)	+\$1.50	(28)	+\$1.80	(29)	+\$2.10	(30)	+\$2.40
(31)	+\$2.70	(32)	+\$3.00	(33)	+\$3.30	(34)	+\$3.60

CALL FOR SPECIAL PRICING ON LINE ADS OVER 34 WORDS

Buy 3 Weeks - Get 4th Week Free! (Must be same ad)

Place your Classified Ad TODAY!

417-532-9131 | Fax: 417-532-8140 Or Mail To: P.O. Box 192 • Lebanon, MO 65536

For your convenience we accept MasterCard, Visa, Discover or American Express



DEADLINE FOR CLASSIFIED ADS: FRIDAY 4:00PM!

Name _____
Address _____
City _____ Email _____
State _____ Zip Code _____ Phone _____
Ad Total \$ _____ + Yellow Color \$ _____ x # Weeks _____ = Amount Enclosed \$ _____