

FREE - TAKE ONE!

Check out our new
Classified Rates
on page 31

Vol. 31 No. 26

SEPTEMBER 26, 2024

417-532-9131

WEEKLY **TRADER** MAGAZINE

 Find us on
Facebook

@myweeklytrader
AUCTIONS PG. 5

VISIT OUR WEBSITE! MYWEEKLYTRADER.COM

Serving Central Missouri! in 32 counties!



- Benton
- Boone
- Callaway
- Camden
- Christian
- Cole
- Crawford
- Dallas
- Dent
- Douglas
- Franklin
- Fulton
- Gasconade
- Greene
- Hickory
- Howell
- Iron
- Laclede
- Maries
- Miller
- Oregon
- Osage
- Ozark
- Phelps
- Polk
- Pulaski
- St. Clair
- Texas
- Washington
- Webster
- Wright
- Morgan

WEEKLY **TRADER** MAGAZINE

417-532-9131
100 E. Commercial St.,
Lebanon, MO 65536

WWW.MYWEEKLYTRADER.COM

 @myweeklytrader

LAND FOR SALE



7.9 ACRES ± | DALLAS CO., MO | \$465,000

- 4,600 Sq foot home on 8 +/- acres in the countryside of Dallas County
- Big views, great curb appeal, and a great location
- Gated entrance with fenced perimeter
- Turn-key custom-built brick home with 5 bedrooms and 4 full bathrooms
- Two living spaces, two kitchens, and two car attached garage. Multiple additional parking areas
- Main level living room with a gas fireplace, porch, and tall ceilings that open to the kitchen and dining room
- Ample space downstairs with a separate kitchen, dining room, living area, washroom, and large nonconforming bedroom
- Primary bedroom on the main level has a bathtub, shower, large walk-in closet, and porch
- Views of the surrounding farm ground and the peaceful quietness of the country living this house offers

BRIAN UTECHT LAND TEAM
SOUTHWEST MISSOURI LAND SPECIALISTS



📞 **417.766.5595**

🌐 brian.utecht@whitetailproperties.com



WHITETAIL PROPERTIES REAL ESTATE

HUNTING | RANCH | FARM | TIMBER

WHITETAILPROPERTIES.COM

Whitetail Properties Real Estate, LLC DBA Whitetail Properties, DBA Whitetail Properties Real Estate. In the States of Nebraska & North Dakota DBA Whitetail Trophy Properties Real Estate LLC. Licensed in CO, MN, ND, SD, TN & WI - Jeffrey Evans, Broker. Licensed in FL, KS & MO - Jefferson Kirk Gilbert, Broker. Licensed in TX & NM - Joey Bellington, Broker. Licensed in IN - Bill Minor, Broker. Licensed in AL, GA, LA, & MS - Sybil Stewart, Broker. Licensed in TN - Tim Burnette, Broker. Licensed in TN & MS - Josh Monk, Broker. Licensed in AR - Anthony Chrisco, Broker. Licensed in NC, SC, VA - Chip Camp, Broker. Licensed in IA, NC - Richard F. Baugh, Broker. Licensed in MI - Edmund Joel Nogaski, Broker. Licensed in IL, MD, WV - Debbie S. Laux, Broker. Licensed in ID, MT, OR, UT, WA, WY & NV - Aaron Milliken, Broker. Licensed in NY - John Myers, Real Estate Broker. Licensed in OK - Dean Anderson, Broker. Licensed in KY - Derek Fisher, Broker. Licensed in OH - Jeremy Schaefer, Principal Broker. Licensed in NE & SD - Jason Schendt, Broker. Licensed in MS - Chipper Gibbs, Broker. Licensed in PA - Jack Brown, Broker.





Call to Order
417-993-3017

Meadowview Dutch Market

Sale Dates September 25th, 2024 to October 1st, 2024 while supplies last!

DELI SPECIAL

Bulk & Surplus Groceries • Prices Subject to Stock on Hand

PEPPERONI.....REG. \$6.29 LBSALE \$5.79 LB
JALAPENO MUNSTER CHEESE.....REG. \$5.99 LBSALE \$5.49 LB

TRY our Fresh Homemade DELI Sandwiches: **TURKEY, HAM, ROAST BEEF, ITALIAN, BLT'S, PULLED PORK AND BLT PULLED PORK (MADE YOUR WAY)!**
COME IN OR CALL to order! ALSO Custom Deli trays! Veggie OR FRESH Meat-N-Cheese!



APPLE DAYS
WILL BE ON
Thursday Oct. 24th
Friday Oct. 25th
LOTS OF VARIETY AND FREE REFRESHMENTS!

Whole Lemon Pepper
Chickens
89¢ LB. APPROX 50 LB. CASE

Walnut Creek
Butter Quarters
\$3⁸⁹ 16 OZ.

Pork
Egg Rolls
\$2⁹⁹ LB.

Double
Cola Soda
\$3⁰⁰ 6PK

Shredded Cheddar
Cheese
\$3⁹⁹ 2 LBS.

Diced New
Potatoes
2 / \$1⁰⁰ 14.8 OZ.

Cooked Pizza
Topping
99¢ LB.

Toasted Wheatfuls
Cereal
\$1⁴⁹ 16.4 OZ.

Fall Decorations
LARGE SQUASH, PUMPKINS, AND GOURDS

MEADOWVIEW DUTCH MARKET
417-993-3017 Hours: Mon-Thurs 8-5pm
Fri 8-6pm • Sat 8-5pm
23 Miles West on Hwy 64 • Right on T Hwy
9 miles • Left on E Hwy 1 mile on Left

NOT RESPONSIBLE FOR PRINT ERROR!!

NOW ACCEPTING CREDIT, DEBIT CARDS & EBT

DUTCH COUNTRY STORE, LLC
573-378-4395
Hours: Mon-Thurs 8-5pm
Fri 8-6pm • Sat 8-5pm
5 miles East of Versailles off Hwy C on Kelsay Road

FOR SALE: Ford 4630 Open Cab Tractor with Loader. Sells with Bucket, Bale Spear and Frontier Disc Mower. \$15,000. 660-596-3091. Richland.

RANCH HAND BRUSH GUARD & RUNNING BOARDS: off of 2015 GMC Extended cab. \$500 for the set. 870-676-6685. Yellville, AR.

ELEVEN BLACK ANGUS COWS & ONE BULL: Six with calves, Five 3rd stage. 573-857-3210. Fairdealing.

EQUALIZER TRAVEL TRAILER HITCH: 12,000 pound equalizer. Travel trailer hitch complete with sway bars, 2 5/16 ball. Used twice. \$350. 573-364-1779. Rolla.

TAURUS MODEL 627 / 357: \$400. Monstrum 6-24X50 scope \$200. Athlon 4-16X40 scope \$175.00. 417-844-8810. Ozark.

STANDARD: Used 2-piece commode complete \$30. 573-692-1492. Richland.

ASHLEY: Brown leather reclining sofa and loveseat. \$500. 573-692-1492. Richland.

VOTED #1 BEST Preowned Car Dealership.

TIM'S USED CARS

(573) 341-3828 • 1334 South Bishop (Hwy. 63) • Rolla, MO
Next to Hwy CC • www.tims-used-cars.com

 <p>2014 JEEP CHEROKEE LIMITED V6, 4X4, Loaded w/ Options Only \$7,900</p>	 <p>2019 CHEVY EQUINOX LT 1.5 L 4cyl, FWD, Power Equipped 68,XXX Miles Only \$16,900</p>	
 <p>2017 DODGE JOURNEY SE 4cyl, Power Equipped, 3rd Row Seating 102,XXX Miles Only \$8,900</p>	 <p>2020 CHRYSLER PACIFICA TOURING V6, Navigation, Power Equipped 122,XXX Miles Only \$18,900</p>	

LARGE SELECTION OF CARS, TRUCKS, SUVs & VANS!

CALUS LOGGING

20 YEARS EXPERIENCE

Buying Standing Timber
Walnut & Oak

Joe Calus, Owner
CERTIFIED 417-926-4606 • MTN. GROVE

LAZYBOY RECLINER: \$100. 573-692-1492. Richland.

GARDEN HARROW: 6', Good condition. \$50. 573-364-1779. Rolla.

TROXEL 'SPIRIT' YOUTH RIDING HELMET: blue, size small, used once. \$40. 417-718-5347. Conway.

Pine Ridge Rustic
Log Home Building Supplies

SPECIAL SALE!

On Pine Log Siding

SERVICES OFFERED!

- Custom Log Home Products
- Pre-finishing available on interior & exterior
- Hand Hewn Sidings Offered

WWW.PINERIDGERUSTIC.COM

523 CR 2410 • Salem, MO 65560 • Phone: 573-729-7226



- Log Siding
- Beveled Siding
- Car Siding • Red Cedar
- Western Cedar • Pine • Timbers • Barnwood

SOUTHWEST DESIGN, BEADED BREAST COLLAR, HEADSTALL WITH REINS, AND WITHER STRAP SET. Has Aztec design with crosses on it. Used once. \$85 OBO 417-693-0389. Conway

FOR SALE: hay rake mower conditioner New Holland 474 Call 573-247-1732. Salem.

HERITAGE PIGS: Weaned, Castrated. Ready to go. Delivered. \$100. 573-604-0674. Salem.

2018 KAWASAKI TERYX 800 CC SIDE-BY-SIDE: 1,020 miles. Perfect Condition. \$11,500. 417-343-0830. Seymour.

HONDA RANCHER: 350 4X4. New tires, runs great. \$2,100. 870-676-6685. Yellville, AR.

ARCHERY SEASON IS HERE!!!
Excalibur Vortex Crossbow, \$750. 10pt. Titan Crossbow, \$400. Bowtech Assassin Compound, \$500. 417-349-0831. Hartville.

200 REMINGTON MAGNUM LARGE RIFLE PRIMERS: \$40. 870-966-3483. Mammoth Spring, AR.

WANTED: Old Convertible Car, Truck, Hearse or El Camino. Running or Not. 573-734-2822. Bismark.

WANTED: Older Model 1-Ton Wrecker. 573-734-2822. Bismark.

16FT GOOSENECK DUMP TRAILER: (use to haul grain, rock, dirt, scrap) 20K plus, titled, newer axles, fast dump, 54" sides, \$8,900. 417-322-0161. Lebanon.

MTD GARDEN TILLER: rear tine, good condition. \$400. 417-322-0161. Lebanon.

WANTED: Zero turn mower in good or fixable condition. 417-322-0161. Lebanon.

VINTAGE PEWTER GOBLETS: Set of 10, 6.5" tall. \$100. 417-718-5347. Conway.

SHOP AIR CLEANER: for metalworking & welding fumes, clean \$800. 417-322-0161. Lebanon.

BECKER KVT-3-100 VACUUM PUMP: for CNC table / other applications. \$400. 417-322-0161. Lebanon.

NEW TOOLS (BENCHTOP): Skill drill press \$120. Skill bandsaw \$120. 417-322-0161. Lebanon.

1965 FORD FALCON: 2-Door, 6 Cylinder, 3-Speed. Runs & Drives Great. New Tires. \$5,900. 660-464-0759. Warsaw.

SHOP OUR TRACTOR Packages

\$0 DOWN + 0% FOR 84 MONTHS



DIY DIGGER PACKAGE
1025R TRACTOR
+ LOADER
+ BACKHOE

\$359/mo*



OZARK PACKAGE
3032E TRACTOR
+ LOADER
+ ROTARY CUTTER

\$405/mo*

HeritageTractor.com/TractorPackages

SCAN TO SHOP




Heritage
TRACTOR

*Offer ends 10/25/2024. See dealer for details.
**Offer ends 02/28/2025. See dealer for details.

HOMETOWN FURNITURE AUCTION

201 HELENA AVE, ROGERSVILLE, MO 65742 | ON-SITE ONLY!

SATURDAY OCTOBER 5TH, 2024 AT 10 A.M.

INVENTORY LIST:

- **Numerous Household Decorations**
- Loveseat And Armed Chair
- Leather Sofa
- Leather Sofa
- Miscellaneous Kitchen Tables
- Coaster Dining Table, Chairs
- Very Nice Wooden Framed Shelving Units With Glass Shelves. There Are Four Units Total., Plus The Home Decor That Is On The Cell Shelving Units Will Be Sold Also
- Light Fixtures
- Lots Of Wall, Art Decorations
- Very Nice Plexiglass Display Shelving
- Touchscreen Information Center
- Electric Insert Fireplace
- Lots Of Box Lots
- Ashley, Electric Fire Cabinet
- Plastic Storage Containers
- Two King Size Wooden Headboards, And One Queen, And A Twin
- Artificial Trees, And Shrubbery
- Pamphlet Display Rack
- Several New King Box Springs
- Lots Of Decorations And Home Decor
- Several Wall Mirrors
- Furniture Warehouse Cart
- Several Pieces Of Sample Leather
- Island With Hard Surface Countertop
- Electric Oil Heaters
- Computers Crow Phone System
- Small Table And Stool Kitchen Set
- Various New Pieces In The Box For Beds, Bed, Platforms, Bed, Frames, Side Rails Under Rails
- Lots Of Fabric Swatches
- 40 Inch Warehouse Fan
- Mattress And Box Spring Cart
- Dyson, Vacuum And Fans
- Display Pillows
- Home Decorations
- Stainless Steel Roll Around Table
- Warehouse Cart
- Hand Trucks
- Lots Of Furniture Blankets
- Painters Ladder And A 1200 Peak Amp Jumpstart
- Double Barn Door, Trolley System With Doors
- Single Barn Door Trolley System With Door
- Dividers
- 5 Foot Stainless Steel Kitchen Work
- Commercial Dishwasher
- Ge Side-By-Side Refrigerator With Water And Ice In The Door Stainless Steel Front
- Lockers
- Table With Two Chairs
- Hand Sanitizer
- Lots Of Wrought Iron Decorative Items
- 1/2 Horse Electric Drill Press
- Lockers
- Numerous Parts Box Boxes
- Safe
- Antique Pinball Machine
- Numerous Electric Hand, Tools And Battery Operated Hand Tools
- Retro Furniture
- – No Description –
- Sofa Table
- Grizzly Pallet Jack
- 14 Foot Tandem Axle Enclosed Trailer, With A 2 Inch Hitch
- Lots Of Pallet Racks
- Troy Bilt Mower 42 Inch Cut
- Lots Of Extra Wood
- More Sofas
- Kioti Ck27 Diesel Tractor With A Kl 130 Loader, Has Front Wheel Assist, A 5 Foot Box Blade And A Belly Mower
- 1/3 Hp 3 Gallon Central Pneumatic Air Compressor
- Electric Forklift Walk Behind
- Tent Steaks
- Lots Of Empty Crates
- Stihl Ms 180 C Chainsaw
- Poland 2000 Ci Wood Boss Chainsaw
- Power Tools
- Numerous Electrical Boxes, Electrical, Wiring, Lumber, Trim, Aluminum Doors, Aluminum Windows,
- Carport
- Warehouse Right Off 60 Highway
- Lot two house with metal shop
- Large showroom with 24+ minus parking spots



FOR MORE INFORMATION GO TO WWW.EASTERLYAUCTIONCO.COM OR CALL EASTERLY'S AT 417-833-9494



Mike Easterly Auctioneer • 417-833-9494

Not Responsible for accidents or theft. For more information call: Easterly Auction Company, Springfield, MO. Auction Terms: Visa, Mastercard, Cash, Cashier's check or checks with proper I.D. Announcements day of sale take precedence over printed material. Auction Notes: Although information is obtained from sources deemed reliable, auctioneer makes no warranty or guarantee expressed or implied. Buyers should themselves take the opportunity to make their own inspection prior to sale.

www.EasterlyAuction.com • auctionzip.com ID#14770



WRIGHT COUNTY SMALL ANIMAL AUCTION

SATURDAY, SEPTEMBER 28 AT 10:00 AM

Location: Grovespring Lions Club 8990 Loring Rd. Grovespring, Mo 65662
1 Mile South of Grovespring on Hwy 5

• VENDOR SPACE AVAILABLE • WE NEED CONSIGNMENTS •

ACCEPTING CONSIGNMENTS FROM 7:00 AM – 10:00 AM MORNING OF SALE



SELLING CAGED ANIMALS ONLY.

HOOF STOCK APPLY TO VENDOR.

**300 - 7-MONTH-OLD LAYING HENS,
15 DIFFERENT BREEDS**

**100 PLUS - 12-WEEK-OLD TURKEYS,
HERITAGE BREED**

100 PLUS - 12-WEEK-OLD GUINEAS, FOUR KINDS

1 PAIR OF PARAKEETS

BUTTONQUAIL

**A GOOD VARIETY ON BANTAMS, DUCKS, PIGEONS,
QUAILS AND RABBITS**

ALL CAGES STAY WITH ANIMALS

ORDER BUYER WILL BE AVAILABLE

FOR QUESTIONS OR CONSIGNMENTS

Call Aaron at 417-741-0516

FOR VENDOR INFO OR OFFICE QUESTIONS

Call Sam at 417-349-0401

LUNCH STAND AVAILABLE

Auctioneers David Glick & Samuel Glick

TERMS & CONDITIONS: All announcements day of sale take precedence of printed material.

NOT RESPONSIBLE for lost or stolen items. NOT RESPONSIBLE for accidents.

Commission 20% min of \$1.00 per cage, Vendors Booth Fee \$6.00.

• Cash or Good Check • Same Day Payout •

Estate Auction



"Christy & the Late Jerry Ehlers"

1103 South Fowler, Cole Camp Mo. 65325

Directions: From the 4way stop intersection in Cole Camp take Maple St. to Butterfield Trail, turn Right onto Butterfield Trail to Fowler, turn Left onto Fowler to Auction on Left. Watch for signs on sale day.

As I am selling my home & moving closer to family, we will sell the following at public Auction on:

SATURDAY, OCTOBER 5TH, 2024 • 10:00AM

2002 Jeep Wrangler Sport 4x4 "Bull Dog" hard top w/sunroof, six cyl, auto, 103k miles new tires (Must SEE) **Mitsubishi** MGE 5800 - 5000watt generator, **Brave** 34ton log splitter, **Stihl** MS 290 & MS 261c chain saws, **HOUSEHOLD & MISC.** Oak leaded glass double curved china hutch (must see), Primitive barnwood kitchen cabinet, Oak pub table w/3 chairs, primitive barn wood kitchen island, hand painted pie safe, pr matching upholstered swivel rockers, lg mirrored dresser, antique gate leg table, spindle leg occ table, sideboard/buffet, glass & wood TV stand, primitive washstand, handmade cedar chest, old drop leaf table, painted picture from Shackelford Mo Catholic church, matching table lamps, **Hermle** mantle clock (form Metcher Farm place), brass floor lamp w/pr. file cabinets, bakers rack, 17 - **Ertle** "Allis Chalmers" die cast tractor collection, Lot misc. glass & pottery, **Shawnee**, cookie jars, crock bowls & pitchers, lot iridescent carnival glass, **Fenton** Vaseline punch bowl set w/8 cups & bowl, APG glass, Pyrex primary bowls set, Tupperware, 7+ - quilts, lot Quilt pieces patterns, books & sewing notions, quilting books, misc. table clothes, placemats, 2 - quilt tops & patterns, Bedsheets, table clothes & linens, 70+ 8' white linen table clothes, Cole Camp fair ribbons in frame, wedding tabletop décor including glass bowls & cake plates, turkey cooker, ele pressure cooker, **Oster** bread maker, **Sony** digital movie camera, 2 - Violins w/ case & bows, Western hats some felt, cookbooks, lot misc. books, lot misc. pictures, mirrors & wall décor, lot floor & table lamps, 15" western saddle & misc. tack, **Rubbermade** water tanks, **Cabela's** cast iron 16" skillet w/lid, Dutch oven & griddle, lot misc. silver plate, lot holiday décor, vintage child's springy horse, luggage, set of 7 "**Lelegard Villedieu France**" tin lined copper staggering pans (Rare), receiver hitch carry-all, HD GPS backup system (NIB), **Weslo** Cadence 78e treadmill, misc. hand tools, 4pc. **Porter Cable** 18v cordless tool set, air bubble, fuel jugs, poly truck cross box, **Senco** portable air compressor, County Line 25gal tow behind ATV sprayer (NIB), Poly water tanks, lot misc. corded power tools, 6" bench grinder, antique push plow, 30' three leg TV tower, **Trek & Schwinn** bicycles, 2 - RV camper 5th wheel hitch's, receiver hitch carry-all, vintage dock dolly, **FIREARMS & AMMO Winchester** 25+ digital combo gun safe, Misc. knives (**Winchester**, **Buck** etc.) Reloading books & manuals, lot ammo boxes, assorted brass, **Barska** spotting scope, Lot **Lyman** reloading equipment, Lot **RCBS & Hornady** Dies (many different calibers), #1 AMT Cal. 22 L.R./HV Stainless & Backup 22 10RD-X - Made USA #2 AMT 380 9MM Rurz/Stainless Made in USA #3 Smith & Wesson .357 Magnum #4 Smith & Wesson 10 MM #5 Smith & Wesson .357 Magnum #6 Smith & Wesson .44 Magnum Performance Center w/McGrd Scope #7 Smith & Wesson 350 Legend #8 Smith & Wesson 460 Magnum Whitetails Unlimited "one of 300" Missouri engraved on The barrel #9 #10 Smith & Wesson 44 Magnum Air Lite PD #11 Colts Government Model .38 Super Caliber #12 Colt .45 Auto Hardballer Recover #13 Colt .45 Iver Johnson Recover/Eagle XL #14 CZ 83 .9 caliber/Browning w/holster #15 Double Tap 9MM w/original box #16 Colt 9MM Luger Series 70 Gold cup match #17 #18 Pietro Beretta Mod. 92F5 - .9 caliber #19 #20 Palmetto 9x19 With Holsun Scope (new) Purchased at Top Gun \$350.00 #21 Desert Eagle Magnum Research Gold stock #22 #23 #24 Desert Eagle 357 Mg. Gold barrel #25 Desert Eagle 50AE w/2 clips #26 Ruger SP101 - 327 mag. #27 Bond's Arms Snake Slayer IV 45 Colt Barrel & Bond Defender 327 barrel Extra barrel - 125.00 #28 Smith & Wesson 460 Magnum #29 Smith & Wesson .22 long rifle handgun #30 Ruger 10 MM Auto #31 Ruger SP101 .22 #32 Ruger GP 100/357 Magnum #33 Ruger .22 Long Rifle Stainless Handgun (long barrel) Extra grips #34 Smith & Wesson .22 long rifle Together in black box #35 Thompson Center Scope & extra for Second barrel #44 Rem Magnum w/ two barrels & Truglo Scope - 223 Rem. Very unusual gun Carrying case & accessories are optional END OF HANDGUNS #36 Thompson Center 460 S&W #37 Ruger Newport, NH/10/22 .22LR #38 Thompson Center Contender 30.30 WIN w/Barska Scope #39 Henry Repeating Arms 45 Cal - 70 GOV'T #40 #41 Ruger 45 - 70 GOV'T #42 Henry Repeating Arms .45 Colt #43 #44 #45 Beretta Tikka T3 30.06 #46 AM Stock Stock #47 #48 Browning Arms A-Bolt .25WSM cal. w/Redfield Scope & hard case #49 #50 #51 #52 Fostech River Rock Arms w/Truglo Scope #53 CZ 512 #54 Ruger M77 - Hawkeye (Ruger 376) #55 #56 #57 Ruger 270 WIN - M77 Mark II - w/Leupold Scope #58 #59 Aero Precision Model M5 - CAL - MUL. #60 Winchester Model 70 - .325 WSM w/Vortex Scope #61 Savage Model 10 - 308 WIN w/Swat IR2 scope #62 Ruger 10/22 - .22 LR w/McGRGD Scope #63 Ruger .22 LR - 22 charger w/Burris site #64 Savage. 22 long 410 bore w/3"chamber #65 Remington 3200 12 GA shotgun (2 3/4 or shorter shells) #66 CZ 628 - #175847A #67 Winchester Model 12 - 16 GA shotgun 2/34 chamber #68 Remington Windmaster/Model 870 LW 4.10 GA for 3" or shorter #69 Benelli Nova Pump Action 20 GA shotgun for 2 3/4 or 3" shell #70 Pedersoli .54 caliber Made in italy #71 Winchester Army Sport National Rifle Asst. 45/70 #72 Pedersoli Black Powder caliber 45-120 #73 Kimber 8400 rifle w/Nikon Scope #74 Winchester Model 70 - 7MM - 08 REM w/Swift Scope #75 Winchester Model 70 - 243 WSSM w/Nikon Scope #76 Thompson Center 209 x 50 Magnum Barrel #77 Thompson Center 35 Encore/ Whelen Barrel w/Leupold Scope #78 Thompson Center 17 H.M.R.F. barrel #79 Thompson Center Encore Barrel - 300 WIN MAG w/Burris Scope #80 HM 35 Wood stock #81 NWTFC Camo stalk #82 Wood Stock Wood stock #83 Synthetic Stock Synthetic Black Stock #84 Synthetic Stock Synthetic Black Stock #85 Synthetic Stock Synthetic Black Stock #86 Synthetic Stock Synthetic Black stock/two tone, **Many More Items Too Numerous to Mention**



AUCTIONEER NOTE: This going to be a GREAT Auction, quality furniture, Antiques & misc. will sell early, Guns, Ammo & Misc. will sell at 12:00pm (Noon) be prepared we will be running TWO rings part of the day. Firearms, ammo & valuables are being stored off sight till day of sale.

*STATEMENTS MADE DAY OF SALE TAKE PRECEDENCE OVER PRINTED MATERIAL.

Concessions provided by "Benton County Good Ole Gals"



JOHNSON AUCTION SERVICE
"Third Generation Family Tradition since 1942"

Russell "Rusty" Johnson (660) 221-4067 • Phillip Yoder (660) 723-3389

For Full Listing, Pictures and Details auctionzip.com (ID# 20300)



Real Estate & Personal Property Auction

SATURDAY OCTOBER 5, 2024 @ 10:00 AM
REAL ESTATE SELLS @ 12 NOON SHARP
Location: 44 Brookfield Dr Theodosia, MO

DIRECTIONS: IN THEODOSIA, TURN NORTH ONTO WINCHESTER. CONTINUE ABOUT 0.5 MI. TURN LEFT ONTO BROOKFIELD. PROPERTY IS ON THE LEFT. WATCH FOR CHEYNEY AUCTION SIGNS!

REAL ESTATE

2 Bed, 1 Bath lake home sitting on 2 lots, with potentially a third lot available as well. Located on a dead end street, in Cedar Hills subdivision. City water/sewer. All electric. Roof is 4 years old. This property is Nice and private, but less than a mile to all of the amenities that Theodosia and Bull Shoals Lake have to offer. Nice sized concrete parking pad. Mature landscaping. A little bit of TLC and this could make the perfect retreat or Air BnB!

PERSONAL PROPERTY

- Patio furniture
- New dog house
- Charcoal BBQ grill
- Murray push mower
- Yard/hand tools
- Hand saws

- Skilsaw
- Cinder blocks
- Sofas
- End tables
- Coffee table
- Antique sewing machine cabinet
- Lamps
- Electric fireplace
- #3 crock
- Stoneware bowl
- Wall décor
- Bamboo accent table
- Recliner
- Bar stool
- Antique china cabinet
- Lighted curio cabinet
- Book shelves
- New DynaGlo gas wall heater
- Samsung TV
- Entertainment stand
- Wooden desk
- Reclining chair
- Rolling cart
- Small wooden bench
- Microwaves
- Coffee pots
- Oil lamps
- Maytag washer
- Kenmore washer
- Hot Point dryer
- Large collection of books
- RCA stereo
- Nostalgia Cotton Candy maker
- Rival electric Ice Cream maker
- Computer desk & chair
- Puzzles
- Best Comfort heater
- Queen bed/headboard/bedding
- Fans
- Dressers
- Decorative storage cabinet
- Filing cabinet
- Sewing cabinet
- Montgomery Ward sewing machine
- Crafting/sewing supplies/yarn
- Corner shelf
- Vintage lamps
- Brand new Twin mattress/box spring
- Quilting frames
- Wheel chair, walker, toilet chair
- Twin bed
- Dresser w/ mirror
- Wooden desk organizer
- Vintage tins
- Misc collectibles/décor/dishes

Auctioneer's Note: Owner Althea Yeager and family have enjoyed this lake home for about 30 years. She has decided it is time to sell so that someone else's family may enjoy this property as much as they did. Location can't be beat, especially with the double lot and quiet street.



For more photos, visit our website cheyneyauctions.com or find us on Facebook!

Cheyney Auction Company, LLC

Real Estate • Livestock • Farm & Ranch • Equipment • Household • Antiques
Travis Cheyney, Auctioneer • Buddy Boyd, Ringman

417-543-8751 • cheyneyauctions.com

ANNOUNCEMENTS Made Day Of Sale By Auctioneer Take Precedence over any Printed Matter. Not Responsible for Accidents. All items sold as is, where is, with no guarantee. Terms of sale: cash, credit/debit card, or check with valid ID. Real Estate Terms: 10% down day of auction

Having sold their farm, **Ron & Jan Johnson** will offer for sale by public auction the following farm equipment and personal property on:

Saturday, Sept. 28, 2024, Beginning at 10:00 a.m.

The auction will be held at 4247 Hwy. EE, Owensville, MO.

Directions: From Hwy. 28 in Owensville, take Hwy. EE approx. 9 mi. to auction site.

Roads will be marked day of sale.

MACHINERY & TOOLS:

1993 Ford 3930, 4-cylinder tractor; 2003 Honda Rincon 4x4 ATV w/650 engine & new battery; 2021 Yamaha, 4x4 ATV; 2020 Honda 450, 4x4 ATV; Squealer SQ172, 6-ft. brush hog; Danuser, hydraulic post hole auger; PTO, balanced head sickle mower, 7-ft., 3-pt. w/extra sickle; Heavy duty, swivel tractor blade; Scoop; Hay fork, 3-pt.

EQUIPMENT/TOOLS:

Gravely Pro-Turn 260, 60-in., 27 hp, zero-turn, commercial lawn mower; Troy-Bilt, rear-tine tiller; Honda, 21-in., battery-start push mower; Honda push mower; Leaf vacuum; Fifteen-gal., battery operated sprayer; Echo, gasoline trimmers; Stihl HT56, 9-ft. pole saw; Stihl MS271 chain saw; Stihl BG56C, gasoline leaf blower; Ohio Steel lawn sweeper; Broadcast seeder; MoJack EZ Lift; Vise; DeWalt electric grinder; Jig saw; Skil sander; Sawzall; Shop Vac; Propane torch; Rigid pipe wrenches – 18" & 24"; Pipe threader; Rigid pipe cutter; "Little Giant" metal ladder; Floor jack; Glue guns; Furno 300 heat gun; Grease guns; Wheel measure Dry wall tools; Hard hats; Bellows; C-Clamps; Floor tool box; Misc. hand tools; Hose reel w/hose; Garden hoses; Head gate; Six, 12-ft., portable cattle panels – 1 w/ walk-thru; Creep feeder; Bunk feeders – 10-ft.; Hay ring; Water tub; Fence feed buckets; Calf bottle feeder; "T" posts; Barbed wire; Fence stretcher; Gas cans; Five-gal. diesel cans; Propane tanks; Log chains; Wooden saw horses River Craft jon boat, 15'x48" w/ boat trailer; Mercury, 3.2 hp. outboard motor.

ANTIQUES/ HOUSEHOLD/ MISC.

"Adolphus Busch", Anheuser-Busch pocketknife; "Budweiser Brewing" wooden box; Stereoscope w/pictures; 1937 Philco, floor model radio; 12-gal. Western Stoneware crock; 25-gal. Western Stoneware crock w/hole for spigot; Three crock bowls; Griswold castiron chicken fryer w/lid; #12 castiron skillet; Unmarked castiron skillet; Torquoise granite coffee pot; Large white granite refrigerator pan w/lid; White granite pot w/lid & bail; "Blue Ridge Bottling Co." wooden crates; Atlas "Ready To Run" train set; "American Flyer" train pieces; HK2305 oriental-style dagger w/sheath; Galvanized tub; Brass blow torch; Log tongs; Kraut cutter; Concrete planter; Shoe laste w/shoes; Singer treadle sewing machine; Beer tapper w/ 1/2 barrel & 2 CO2 tanks; Wooden wine keg w/spigot & stand; Propane fish fryers w/stands; Propane burner; Weber Kettle grill; Hibachi grill; Portable BBQ/smoker trailer w/whole hog rotisserie (see picture!); Leather couch; Diningroom table w/4 chairs; Wooden, drop-leaf serving cart; Swivel rocker; Love seat; Quilt rack; Wooden rocking horse; Hand-made cradle; Singer treadle sewing machine converted to electric; Platform scale; Wrought iron/wood bench; Four patio chairs; Eight plastic lawn chairs; Igloo coolers; Five plastic fold-up tables, 6-ft.; Two wooden tables; Beer steins; Pitcher & bowl; Martha Stewart turkey platter; Pie plates; Papst Blue Ribbon pitcher; Misc. glassware; Tupperware; Triple warming light; Stainless steel bowls; Stainless steel stock pot; Aluminum stock pot; Stainless steel steamer liners; Electric roaster; Bird pictures in round, wooden frames; Metal trash cans; Commercial pedestal floor fan – 3-ft. diameter; Wheelbarrow; Tomato cages; Dog igloo; Portable dog pen; Pet carrier; Two saddles- Circle A & Dakota; Bridles; Lead ropes; Halters; Saddle stands; Portable volleyball poles; Portable/adjustable basketball goal; Bob sled; Men's size 12, steel-toed rubber boots; Men's size 10 rubber boots; Women's size 5, Tinley rubber boots; Size 14, 2-buckle overshoes; Hip waders- size 14; Fishing rods; Fishing tackle; Box traps; Plastic barrels; Four Toyota tires & rims; Gas logs, natural gas, 33,000 BTU; Hen statue; "Scare" owls; Canning jars; Kodak carousel projector, slide holder, projector table & screen; Super Brush & Buccaneer weed killer; 15W-40 engine oil.

Auctioneer Note: Not many small items so machinery will sell as time allows. Come early so you don't miss out! Everything here is quality merchandise.

Lunch will be served • See full listing at Grossauction.com or Auctionzip.com #22263

SALE CONDUCTED BY:

GROSS

AUCTION

Members of
Missouri Professional
Auctioneers Association



Jason Gross,
406 Ahr Strom Drive,
Owensville, MO 65066
573-569-5299

Chas & Phyllis Gross
1863 Hwy 50
Owensville, MO 65066
573-690-1902

www.grossauction.com or www.auctionzip.com

Terms: Cash or "Approved" check. No out of state checks.
Announcements day of sale supercedes printed material.
Everything sells as is. No property to be removed until settled for.
Not responsible for accidents should any occur

ESTATE AUCTION

10 a.m. Saturday, Sept. 28

Real estate & personal property of the late Jim & Betty Sigman.

LOCATION: 1002 Ozark Ave., Cabool, Mo. 65689. **DIRECTIONS:** Follow Business Hwy. 60 at Cabool to Ozark Avenue. Watch for Scheets Auction signs day of auction. **For more pictures, got to www.auctionzip.com.**

Real Estate - To be offered at 12:00 p.m. Two bedroom, two bath, kitchen, dining area, living room, basement, central heat and air conditioning with front porch and back deck. Detached two-car garage with concrete driveway, all sitting on nice corner lot. **Real Estate Terms:** 10 percent down day and location of auction. Taxes prorated. Closing costs split between buyer and seller. Title insurance responsibility of buyer. To close in approximately 30 days. "Sells with owner confirmation."



★ GLASSWARE ★ HOUSEHOLD ★ COLLECTIBLES ★

- Over 400 pieces of Fenton glassware, Royal Albert, Old Country Rose, Franciscan Desert Rose
- Vintage Napkin Ladies • Iris and Herringbone depression glass (both clear and Carnival) • Hummels • Lenox • Lefton • Lladro's • Waterford • Moon & Stars • Austin Studio Statues • Denim Days
- Vintage head vases • Several Longaberger baskets • Vintage pie birds • Bessie Guzman paintings • Several vintage linens and table covers • Vintage cookbooks • Fenton glass will include, but not limited to: Burmese, Lavender, Lotus Mist, White Hobnail, Cranberry, Blue Satin, Vases, Epergnes, Figurines, Seventeen lamps, Several pairs of praying children and more • Several nice pieces of furniture, some like new condition including: recliners, couch, table and chairs, china hutches, bedroom furniture • Washer & dryer • Freezer • Refrigerator • KitchenAid mixer • Misc. pots and pans • Linens • Lots of misc. not listed •

★ COINS ★ JEWELRY ★

- Silver Eagles • Silver Rounds • Gold jewelry • Costume jewelry • Misc.

★ LAWN ★ GARDEN ★ TOOLS ★

We will have several tools, as Jim loved to work outside. Including Lifetime picnic table • Six-piece, wrought-iron patio set • John Deere snow blower • Pressure washer • Push mower • Wheelbarrow • Garden tiller • Tool box • Table saw • Lots of misc hand tools •

Auctioneer's note: Everyone who knew the Sigman's, knew of their love of fine glassware and china with over 400 pieces, plus other totes still to be unpacked. **This will be an extremely well-kept auction.** Plan to spend the day with us, as auction is much larger than listing. For more pictures, go to www.auctionzip.com. Thanks, Darren and Jake.

Darren SCHEETS
AUCTIONS
 (417) 457-6638 • (417) 926-8575
www.scheetsauctions.net



TERMS OF AUCTION: Cash or check with picture ID. Nothing loaded or removed until paid for. Everything sells as is, where is. Not responsible for accidents, lost or stolen items. Auction day announcements take precedence over all previous advertisements. LUNCH ON GROUNDS.



Consignment Auction

SATURDAY SEPT 28, 2024 @ 10:00 AM

Location: 304 Springfield Rd, Ava, MO 65608

DIRECTIONS: FROM THE STOPLIGHT IN AVA, HEAD EAST ABOUT 1/2 MILE. WE ARE ON THE LEFT. WATCH FOR CHEYNEY AUCTION SIGNS!

VEHICLES • TRAILERS • FARM EQUIPMENT • SHOP EQUIPMENT • TOOLS • LAWN MOWERS • FIREARMS

VEHICLES

- 2012 Dodge Challenger
- 1999 Honda Valkyrie
- 2016 Dodge 3500 6.4L Hemi w/ Deweze 660 bolt-on bale unroller
- 1998 Chevy 2500 ext cab 4x4
- 2004 Chevy 2500 crew cab 4x4
- 2010 Chevrolet School bus Duramax -156xxx mi
- 2x 2006 Kawasaki Drifters

TRAILERS

- Titian 20'x6'8" Gooseneck stock combo
- 5th wheel camper
- 2020 24x8 Cargo trailer
- 2006 16' flatbed trailer
- Hillsboro 34' tandem dual flatbed trailer

MOWERS

- Bad Boy 726cc Maverick zero turn mower 54" cut
- John Deere 737 Z-Trak zero turn mower
- Swisher finish mower
- Ariens riding mower

FARM EQUIPMENT

- New Holland BR770 baler
- Vermeer RB20 hay rake
- Hesston 1320 disc bine
- Aluminum horse round bale feeder
- WW panels (5- 14'2- 16'1- ride thru bow gate)
- T posts

FIREARMS

- JC Higgins mod 583.22 20 ga
- Sears mod 66 12 ga
- Interarms mod JW-15 22 LR
- Savage Axis 223 Rem
- Harrington & Richardson 22 revolver

SHOP EQUIPMENT • TOOLS

- US General Pro 5 drawer & 27 drawer tool chests
- Husky 23 drawer & 17 drawer tool chest
- Snap On 11 drawer tool chest & 9 drawer tool box
- Homak 14 drawer tool chest
- Eastwood Tig 200 welder w/ Argon bottle

- Lincoln Wire-matic 250 Mig welder w/ bottle
- Snap On Counselor II diagnostic machine
- Lincoln 140 HD Mig welder w/ bottle
- 12 ton shop press
- Hobart Air force 12 ci Plasma cutter
- Eastwood Versa Cut 60 Plasma cutter
- Tuff pressure washer
- Tuff multifuel forced air heater
- Kobalt truck tool box
- Rockwell 10" Contractor's saw
- Chicago 10" Compound Slide Miter saw
- Biscuit joiner
- Bench top drill press
- Craftsman router
- Oxy Acetylene torch set w/ Harris gauges
- Metal storage cabinets
- Little Giant ladder
- Pro Series Smoke Hollow propane smoker
- 4 1/2" metal band saw
- Central Pneumatic dent puller
- Pittsburgh brake bleeder

- Router table
- Metal storage chest/ bolt bin drawers
- Floor jacks
- Porter Cable finish stapler
- Craftsman 15" drill press (floor mount)
- English wheel kit
- Hot water pressure washer
- Wheel dolly
- Craftsman 12" band saw
- DR trimmer
- Porter Cable pancake air compressor
- 8" bench grinder
- Riding helmets
- Craftsman router
- Craftsman utility sharpener
- Ridgid 18V drill
- Craftsman router bit set
- Chicago Welding stud welder kit
- Chicago Electric hand planer
- Inspection camera
- PTO driven 40,000 kw generator
- Snap On & Craftsman tools
- Numerous chain saws, leaf blowers, weed eaters, etc



Auctioneer's Note: Many more items, too numerous to list! More items expected. Expect a large volume of quality shop & mechanics tools! Accepting quality consignments up to day of auction. Plan to bring a friend and stay all day. We will be running 2 rings.



For more photos, visit our website cheyneyauctions.com or find us on Facebook!

Cheyney Auction Company, LLC

Real Estate • Livestock • Farm & Ranch • Equipment • Household • Antiques

Travis Cheyney, Auctioneer • Buddy Boyd, Ringman

417-543-8751 • cheyneyauctions.com

ANNOUNCEMENTS Made Day Of Sale By Auctioneer Take Precedence over any Printed Matter. Not Responsible for Accidents. All items sold as is, where is, with no guarantee. Terms of sale: cash, credit/debit card, or check with valid ID. Real Estate Terms: 10% down day of auction



ESTATE AUCTION

To settle the estate of Les & Margie Burris we will sell the following on:

Saturday, Sept. 28TH @ 10AM

DIRECTIONS: (15777 CR 8430, Rolla, Mo.) From I-44 Take the 185 Exit Turn Left onto Tim Bradley Way, at the traffic circle use the second exit onto State Hwy E, Travel 6mi on E. Turn left onto Rd 26/CR 8430 1.2 mi to Auction site.

Machinery, Equipment & Travel Trailer: Bobcat 853H Skid Steer/3602hrs ~ John Deere 820 Tractor ~ 1983 Avion by Fleetwood Trailer/VERY NICE, Clean Title ~ 1965 John Deere 110 Mower ~ John Deere X300 Series 4Wheel Steer Mower/688hrs ~ John Deere Brush Hog MX6 (near new) ~ 98 Honda 4 Trax 300 4wheeler ~ Bobcat 709 Backhoe attachment 12" Bucket ~ Yard Trailer ~ Farm Trailer ~ 4x10' Tilt Trailer ~ 3Pt Carry All ~ John Deere Yard Cart ~ Yard aerator ~ 6' Blade ~ Concrete Mixer ~ Disk ~ Plow ~ Bucket

Large Lot of Horse Drawn Equipment including John Deere Mowers #1, #2, #3 & #4, Dain Mower, 1 Row Corn Planter, 1 & 2 Row Corn Planters, 2) 2 Row Plows, Dain & Massie Harris Mowers

Guns: 410 AR15 American Tactical Omni Hybrid ~ 410 Revelation Mod 355Y-410 ~ Marlin Glenfield Mod 10 22 ~ Stevens Mod 820B 12ga ~ New England Arms 44mag SB2-Youth handi rifle ~ Marlin model 763 .22 mag ~ Remington model 870 wingmaster 12 guage

Tools & Misc: Coleman Powermate 6875 Generator ~ Stihl weed Eater ~ Stihl Blower ~ DeWalt Grinder ~ Craftsman Wire Feed Welder ~ Craftsman 15" Drill Press ~ Iron Horse Compressor ~ Large Lot of Misc Tools ~ Free Spirit 16" seat Saddle & Circle Y 15 1/2" Saddle ~ John Deere Chainsaw ~ John Deere Bicycle ~ John Deere Pedal Car #520 ~ Large Lot of John Deere Manuals ~ Survey Level ~ Kayak

Furniture, Household & Misc: Dining Table & 6 Chairs ~ Rocking Chair ~ Couch ~ Coffee & End Tables ~ White Clad Tables ~ Recliner ~ Book Shelves ~ Refrigerator ~ Washer & Dryer ~ Dressers ~ Beds ~ Misc Household including Dishes, Silverware, Pots, Pans, Small Appliances ~ Large lot of Southwest Décor ~ Yard Ornaments including Windmill, Pump, Bench, Wagon Wheel & Bird Bath ~ Patio Furniture

For more pictures check out [Sellers Auction Service on Facebook](#)



Auctioneer's Note: Large clean auction with lots of misc. items not listed

Sellers Auction Service
"We Were Born Sellers"

Complete Auction Service

 @SASRolla

Terms: Cash or Check with proper I.D. Not responsible for accidents or losses. Items will be sold As Is/Where Is with No Guarantees. Nothing to be removed until paid for. Refreshments available. Announcements made on sale day take precedence over any printed materials.



GREGG SELLERS, AUCTIONEER
573-480-4400

VISIT WEBSITE FOR PICTURES

REAL ESTATE & ESTATE SALE

EARLY START!

SATURDAY, SEPT. 28TH - 9:00 A.M.

Location: 8855 Hwy Z, Hartville, MO **Directions:** From Hartville 4 Way Stop take Hwy 5 North approx 1/2 mile to Z Hwy on right. Go approx 10 miles to Auction on left. **WATCH FOR CHADWELL AUCTION SIGNS.** **Payment System:** Cash • Debit Card • Credit Card (Debit/Credit Card Fee Will Apply) Checks approved if known by auction company. **VISIT: WWW.CHADWELLAUCTIONS.COM**

Estate of John & Sandy Davis

REAL ESTATE



3-bedroom 2 1/2-bath custom built home nestled on 40 acres m/l just 10 minutes to town. This beautiful custom built home offers a lot of charm & comfort with features including a large living area w/gas fireplace, large kitchen, dining room/office, sunroom, laundry room, unfinished walk out basement, 2 large porches, & a detached 21'x 28' shop/garage combo. In addition to the home the property is scattered with mature timber, & a small pond creating a stunning, wooded landscape that offers peace & privacy making it a haven for wildlife. This property promises a perfect blend of accessibility and seclusion. Terms: 10% down day of auction, taxes prorated, closing costs split, balance due on closing day. For Viewing Call Shawn 417-830-0209 (shown by appointment only)

ANTIQUES ~ COLLECTIBLES

Old Medicine Bottles • Pitchers • Pyrex • Large Lot of Crock Bowls • Corolle • Blue Ball Jars • Primitive Utensils • 3 Gallon Cedar Cylinder Churn • Assorted Tins • Old Spice Tins • Royal Ironstone China Set • Wooden Chairs • Sad Irons • Maytag Refrigerator • Blue Willow • Secretary w/Pigeon Holes • Drum Table • Seth Thomas Clock • Mantle Clock • Elite Austria Graniteware • Pottery • Butter Molds • Cast Iron Door Stops • Advertising Signs • Large Glass Jar • Marbles • Old Mirrors • Buttons • Vanity Sets • Assorted Glassware • HorseShoe Brand Clothes Wringer • Old Store Jars • Cast Iron Salesman Samples • Advertising Boxes • Fossils • Large Lot of Arrowheads • Mineral Rocks • Vintage Military Safety Pins • Pewter • Elgin Regulator Clock • Wicker • Old Wooden Cabinets • Sea Shells • Wooden Childs Chairs • Wicker Baskets • Frankoma • Foreign Money • Costume Jewelry • Ladies Watches • Buffett • Glass Candy Jars • Oil Lamps • Stained Glass • 5 Gallon Glass Jar • Planters Peanut Jar • Granite • 1 Gallon Seagram 7 Bottle • Wash Boards • Firing • Carnival Glass • Jewel T • Green Depression • License Plates • Cider Press • Refrigerator Dishes • Fiesta Ware Pitchers • Wooden Boxes • Metal Bread Box • Columbia Family Scale • Old Pie Safe • Wooden Church Pews • More Corn No 2 Vintage Fanning Mill • Hen On A Nest • Poultry Food Cabinet • Large Lot of Blue Jars • Salt & Pepper Shakers • Edison Recording Phonograph • Green Mason Jars • Old Water Coolers • Vintage Beer Salt & Pepper Shakers • Large Lot of Granite Ware • Cream Cans • Well Pulleys • Old Wooden Folding Table • Flour Sacks • Kitchen Stool • Old School Desks • Whiskey Crocks • Rolling Pins • Large Copper Pots • Old Fuel Cans • Old Store Paper Hanger • Shoe Lats w/Stands • Primitive Pitch Fork • Old Cabinets • Wooden Benches • RC Cola Cooler • Wooden Corn Planter • Yoke • Dampers • Rug Beater • Home Comfort 1864 Wood Cook Stove • Sunshine Coffee Jar • Vintage Taylor Smith & Taylor Reveuille Yellow Rooster Dishes • Wooden Baby Cradle • Superior Fuel Can on Stand • #28 Solar Comstock Castle & Co Quincy IL 1877 Woodstove • Trunk • Red Mountain Wood Cook Stove • large Lot of Coca Cola • (2) Metal Coca Cola Signs • Barrel Dolly • Large Lot of Meat Grinders • Printer Drawers • Old Fire Extinguishers • Childs Toys • Lighted Beer Signs • Wicker Baskets • Hand Stitched Quilts • Assorted Metal Bed Frames • Road Signs • Vintage Vet Supplies • Wooden Bird Cage • Metal Signage • Modern Cottage Coca Cola • McCoy • USA • Hide Stretchers • Block & Tackle • (2) Standard Computing Scale Co • Screen Doors • Old Windows • Pillely Milk Bottle • Ramons Quality Medicine Jar • Planters Peanut Jars • RR Lantern • Egg Basket • Metal Square Basket w/Handles • Toms Toasted Peanut Jar • Old Cow Kickers • Stone Grinding Wheel • Hay Knife • Nail Keg • Hay Hooks • Old Lawn Mower • Double Wash Vat • Metal Lawn Chair • Shoe Molds • Large Lot of Wash Tubs • Canes • 2 Man Crosscut • Other



60+ Butter Churns (mostly Dazey)

50+ Assorted Crocks (Western Stoneware, Redwing, etc.)

200+ Pieces of Griswold Cast Iron

100+ Pieces of Wagner Cast Iron

2009 Chrysler Town & Country Van (208,xxx miles)

HOUSEHOLD

Oak Table w/6 Chairs • Bakers Rack • Flatware • Assorted Home Decor • Cookbooks • GE Microwave • Assorted Pots & Pans • King Bed • Dresser • Bench • Dehumidifier • Luggage • Linen • Kitchen Cabinet • Small Kitchen Appliances • Chicken Figurines • Tupperware • Hotpoint Gas Range • Wall Mirrors • Wooden Rocker • Assorted Lamps • Telescope • Occasional Chairs • Makeup Table • Queen Bed • Kenmore Washer & Dryer • Harmony Guitar • Office Furniture • Fans • Couch & Loveseat • Entertainment Center • Oak Coffee Table & End Tables • Entry Way Table • 4pc King Bedroom Set • (2) Book Shelves • Flat Screen TVs • Large Lot of Books • Stock Pots • Wine Rack • Oak Curio Cabinet • Roasters • Pressure Cooker • Quilt Rack • Other

OUTDOOR ~ MISCELLANEOUS

Playmate Paddle Boat • Celestron 675x Powerseeker Telescope • Wrought Iron Patio Set • Flower Cart • Yard Ornaments • Small Metal Patio Set • Water Hoses • Murray Push Mower • Flower Pots • Snapper Push Mower • Steel Traps • Garden Supplies • Clay Flower Pots • Hose & Hose Reel • Weber BBQ Grill • Kenmore Small Freezer • Appliance Dolly • Wheelbarrow • Extension Ladders • Yard Carts • Coolers • 30# Propane Cylinder • Trash Cans • Patio Furniture • Bird Bath • 5pc Wicker Patio Set • Smoker • Wrought Iron Patio Table w/Rockers • Fuel Cans • Car Ramps • 10' Fiberglass Ladder • 8' Fiberglass Ladder • 5' Ladder • Long Handle Tools • Yardman Push Mower Chains • Holiday Decor • Yard Seeder • Fishing Tackle • Fishing Rods • Fish Cookers • Live Traps • Stihl MS 170 Chainsaw • B&D Battery Chainsaw • B&D Battery Pole Saw • Other



GUNS ~ AMMO

Assorted Ammo • (3) Pellet Rifles • JC Higgins Model 583.1 Bolt Action 12 Gauge • Hopkins & Allen 12 Gauge Single Shot • Stevens Model 120 22 Bolt Action



SHOP ITEMS

Large Lot of Power Tools • Large Lot of HD Metal Shelving • Assorted Tools • Oils & Solvents • B&D Battery Powered Tools • Nut & Bolt Bins • Assorted Tools • 3 Ton Hydraulic Floor Jack • Tile Cutter • Stihl 039 Chainsaw • Shop vac • Craftsman 12" Bandsaw • Durabilt Air Compressor on Wheels • Chainsaw Chaps • Other

AUCTIONEER'S NOTE: This is an outstanding Real Estate & Collectible Auction! Two Rings will be ran the majority of the day so plan accordingly. Come spend the day with us you are sure to enjoy this Auction! **Thanks, Shawn**

DRIVER'S LICENSE OR PICTURE I.D. REQUIRED • TERMS: CASH OR APPROVED CHECK **OR**

Chadwell
Auction Service, LLC
www.chadwellauctions.com

Auctioneer:
SHAWN CHADWELL
417-830-0209

Ringmen:
Weston Chadwell ~ 417-349-0727

Clerk:
SHELLY CHADWELL
Cell: 417-880-8449

Cashiers:
Marla Reppond • Emily Shaffer
Cassie Collins

PROFESSIONAL SALES MANAGEMENT
LUNCH WAGON • APPRAISAL SERVICE • RAIN OR SHINE
All announcements made day of sale take precedence over any printed matter. Not responsible for lost or stolen merchandise. Not responsible for accidents.

Joe and Laura Kilburn
AUCTION
October 5th at 10:30am

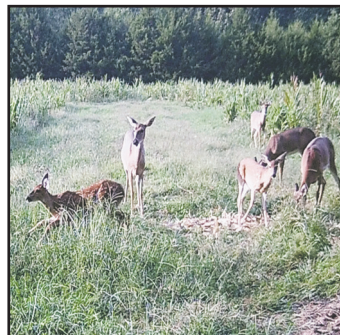
From Marshfield, take Hwy CC towards Niangua and take a right onto HH to the stop sign. Turn left onto Good Springs Road about a half mile on the right. From Conway, take CC to HH and turn left onto HH to Good Springs Road, then left to property on the right.

REAL ESTATE - PERSONAL PROPERTY - FARM EQUIPMENT - TOOLS

25+/- acres with 2400 +/- sq ft 3 bed 3 bath home/ Country living at its finest/This home is spacious and inviting/ Custom built by current owner/Walkout give easy access to pool area/ New Deck/2 Stocked Ponds

REAL ESTATE IS CURRENTLY LISTED ON MLS AND MAYBE SOLD PRIOR TO AUCTION DAY. SET UP YOUR SHOWING TODAY TO BE FIRST TO PLACE OFFER ON THIS FABULOUS PROPERTY.

OPEN HOUSE: 2-4PM SEPTEMBER 29TH



MJ Johnson - sale manager 417.838.0291

Call for appointment to review inventory

Case Auction Co. • 417.859.3204

**info@caseauction.com • www.caseauction.com
 auctionzip.com**



Real Estate & Auction Services

Terms: Announcements made sale day take precedence over all printed material. Neither Case Auction or property owner guarantees the absolute accuracy of supplied information. Not responsible for accidents. All sales final.

Joe and Laura Kilburn
AUCTION
October 5th at 10:30am

From Marshfield, take Hwy CC towards Niangua and take a right onto HH to the stop sign. Turn left onto Good Springs Road about a half mile on the right. From Conway, take CC to HH and turn left onto HH to Good Springs Road, then left to property on the right.

REAL ESTATE - PERSONAL PROPERTY - FARM EQUIPMENT - TOOLS

GUNS

- Berreta Pistol
- 2 double barrrel shotguns
- 410 single shot
- 12 gauge shotgun
- Mauser
- 22 pump action
- Surelock Security Company Gun Safe
- Wooden Gun Cabinet
- 12 gauge shotgun shells
- Loading bullet equipment

HOUSEHOLD / PERSONAL PROPERTY

- Wood Stove
- Microwave x2
- Small Desk
- Small Wood Table
- Coffee Maker Keurig
- Corel dishes
- Casserole dishes
- Turkey Roaster
- Antique Bowl
- Kitchen Table with 2 chairs (wooden)
- Dining table with 6 chairs (wooden)
- Cotton candy machine
- Set of blue china-large
- Blue Recliners x2
- Living room couch
- Green Recliner
- Lift chair
- Antique saw blade

- Crocks
- Butter Churn with paddle (big)
- Antique ice skates
- Glass table lamps electric x2
- Stereo w/speakers-cd,tape,radio
- Bedroom set (bed,dresser,chest of drawers)
- Entertainment center wooden x2
- Antique Bedroom Set (bed,chest of drawers,vanity,stool)
- Corningware
- Pie Plates
- Antique platters
- Small flat screen tv -32in with remote
- Lots of glass oil lamps
- Daisy Churn
- Blue Pitcher and Bowl
- Yellow Pitcher and Bowl
- Quilts
- Baby Afghans/ Crocheted Doilies
- Milk Cans (4)
- Wood Clock
- Tree stand chair
- Standing Quilt rack
- Baby Rocking Chair
- Painted crock
- Set of pink dishes
- Sewing Machine
- Crochet Doll
- Sewing kits(2)

- Crochet baby clothes and shoes
- Flat metal oil lamp
- Lamp holder for wall
- Rocking chairs
- 2 drawer filing cabinet (wood)
- Antique bench with white satin top
- Wall quilt rack
- Entertainment center (black)
- 46in Samsung flatscreen tv
- Swivel cloth chair
- Elliptical exercise bike
- Desk computer-wooden
- Lauras Bedroom Set (bed,dresser,chest of drawers)
- White old chest of drawers
- Piano-wurltizer with bench
- Casio Keyboard
- Mini Fridge-black
- Meat case for storage-glass door
- Lots of Mason Jars
- Queen size mattress (like new)
- 4 post metal head and foot boards
- Couch
- Wooden coffee table
- Antique wood round table
- GE Dryer

- Chest freezer
- Wicker couch-outdoor furniture
- Antique washboards
- Little house on the prairie books-full set
- Black office chairs on wheels
- Electric standing mixer with bowl
- White craft storage cabinet
- Hewlitt packard printer

FARM EQUIPMENT / PICKUP

- Case IH Tractor 2010 with loader
- 2015 Chevrolet pickup-4dr 4x4
- Japanese mini truck - AC-4WD auto trans
- Bushhog
- Plow
- Disc
- Flat bed utility trailer
- Troybuilt Zero turn mower
- Cub Cadet 2024 Lawnmower- only used twice
- Stihl weedeater
- Black & Decker battery operated weedeater
- 2 Antique push plow

TOOLS

- Stihl Chainsaw EZ Start (2yrs old)

- Generator
- Hand tools/wrenches
- Little Giant Ladder
- Metal gas can
- Plastic gas cans
- Garden tools
- Post hole digger
- Table saw
- 4 tire large wheel barrow

MISC/ OUTDOOR RECREATIONS

- Fishing poles
- Metal fish cleaning table with sink
- Seeark Boat with boat trailer- suzuki motor 90horse
- Green metal with trolling motor
- Roller-large concrete yard roller-made by Rost
- Benji Side by Side 5yrd old 2 seater camo color
- Wood Wagon
- New boat ladder
- Deer Blind
- Old black dinner bell
- Electric tiller
- Large Fire Pit
- 2 blue plastic adaronback chair w/ side table



MJ Johnson - sale manager 417.838.0291
Call for appointment to review inventory
Case Auction Co. • 417.859.3204

info@caseauction.com • www.caseauction.com
auctionzip.com



Real Estate & Auction Services

Terms: Announcements made sale day take precedence over all printed material. Neither Case Auction or property owner guarantees the absolute accuracy of supplied information. Not responsible for accidents. All sales final.

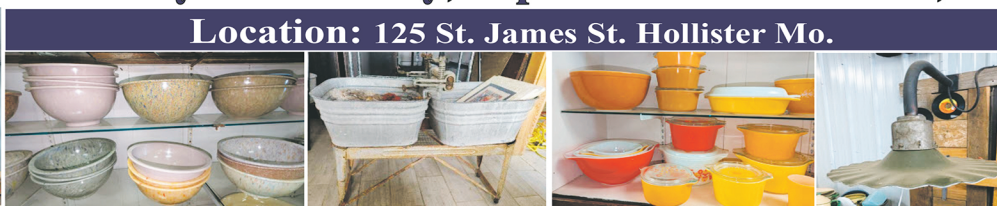
***(500+) Pieces Pyrex * Antique Furniture * Collectibles * Primitives ***



2-DAY Antique Auction

9:00 AM * Friday & Saturday, September 27th & 28th, * 9:00 AM

Location: 125 St. James St. Hollister Mo.



Antiques - Collectible

(6) General Mercantile Store 2 Tier, 8ft. tall x 6ft. wide Display Cabinets; Seed Cabinet;
 (2) Vintage Service Station Island Light Pole Lights (4 light); Old Green Porcelain Outside Lights;
 (500+) Pieces of Pyrex including Bowl Sets, Casserole Sets, Refrigerator Sets, Singles, Lids & more
 in almost every color & pattern; Many Pieces of Fine Antique Furniture including Cabinets,
 Cupboards, Sideboards, Possum Belly & Hoosier style Cabinets, Secretaries, Pie Safe, Brass Hall
 Tree, Highboy Chest, Wardrobes, Bookcases, China & Curio Cabinets, Dressers, Chests, Occasional
 Tables & Stands, Dining Tables & Chairs, Rocking Chairs, Occasional Chairs & Stools, Trunks,
 Floor & Table Lamps, White Clad Wood Ice Box; Tobacco Cabinet & Lots More Furniture Pieces;
 Several Pieces Texas Ware; Lot Fire King Jadeite; Lot nice Fireking Cookware & Dinnerware;
 Huge Lot Milkglass of all kinds; Thousands of Pieces of nice Glass, Pottery & Stoneware of all
 kinds; Juice & Tea Sets; Tumbler Sets; Spice Sets; Tea Pots, Figurines; Powder Boxes; S&P Shakers
 Good Year Tires & Spark Plug Neon Lights; Old Stop Light, Railroad Lamps & Lanterns;
 Unique all Wood Goat Wagon; Ox Yoke Hanging Lamp; Vintage U.S.C.G. Light from Lighthouse;
 Dazey Red Top Butter Churn; Antique Wood Barrel Butter Churn; Several Pieces Nice Graniteware;
 Antique Standard Computing Scale Co. General Store Scale; Vintage Arnold Malt Mixer; Findlay #6
 & #9 Cast Iron Skillets; Cast Iron Tortilla Presses; Fort Dodge Stoneware 20 Gallon Crock Jar,
 Misc. Crock Jugs, Jars & Churns; Brass Rooster Weathervane; Milk Bottles & Carriers;
 (100+) Wood & Iron Ship & Barn Pulley's; Dazey 2 Gallon Metal Butter Churns; Double Washtub
 on Stand; Wood Washing Machine; (2) Spinning Wheels; Singer Featherweight Sewing Machine;
 Old Sleds; Radio Flyer Scooter, Tricycle & Red Wagon; Vintage Service Station Water & Oil Cans;
 (2) Westinghouse D-5 Coke Chest Coolers (working); Lot Glass Soda Fountain Shelf Risers; Lot
 Apothecary Bottles, Morter & Pestles, etc...; Wood Boxes & Crates; Lot Hand Painted Decorative
 Signs; Taxidermy including Deer Heads, Antelope Head, Pheasant; Misc. Vintage Fishing Tackle,
 Tackle Boxes, Minnow Buckets; Wall Phones; Several Vintage Oscillating Cast Iron Base Fans;



Auctioneers Note:

Auction Starts Both Days at 9:00 AM!
 There is so much here there is no way to know for sure what will sell each day!
 Both Days will have a great variety of Pyrex, Antique Furniture, Antiques, Primitives & Collectibles.
 Service Station & Neon Lights will sell Saturday the 28th.

The Store is closed and has NOT been cherry picked at all!

If you are a Collector, Decorator or Dealer You will not to want to miss this Auction

Creek Side Antiques



Foster Auction & Appraisal Service

www.fosterauctionservice.com
Email: bidnewsold@aol.com



Auctioneer: Larry Foster
Galena, Mo
Phone: (417) 723-8329
Cell: (417) 839-6860

R&R AUCTION SERVICE

AUCTION • FRIDAY NIGHT OCTOBER 4TH AT 6PM

R&R AUCTION HOUSE, 1644 SOUTH ASH IN BUFFALO, MO



Several Longaberger baskets, Sheffield Imperial Gold fine china, porcelain dolls, plasma cut metal holiday decor, other seasonal decor, record albums, hardback Readers Digest condensed books, fall and Christmas original Porch Boards welcome signs, carved wood wall hangings, toys, jewelry, pocketknives, Mickey Mouse watches, acoustic guitar, small figurines, Pez dispensers, small table top showcase, bedspreads, comforters, quilt, Vintage chrome chair, Power pressure cooker XL, COKE glasses, brass deer, shoe stretchers, Harley Davidson telephone, flatscreen TV, Egermann glass basket, cut glass items, red rimmed clear glasses, Frankoma, beer stein, carnival glass, 100lb propane bottles, 100lb horizontal propane tanks, much more coming in by sale day. Watch gallery for added photos

TERMS: 10% buyer's premium. Cash, check, or credit card with proper I.D. nothing removed until settled for. A 3% fee will be added to credit card purchases. Not responsible for errors in listing. Any announcement made sale day will take precedence over any printed matter.

STORAGE AUCTION • SATURDAY OCTOBER 5TH AT 10AM

SAC RIVER STORAGE • 3909 FARM ROAD 2, BRIGHTON, MO

4 10'x30' units. CASH ONLY AUCTION

Seals will be cut you can look in but can NOT break perimeter.
\$50 per/unit deposit held until unit is completely cleaned out within 7days.

Please keep watch on our website for added photos.



For more information contact Professional Auctioneer Russ Weeks at 417-576-7357 or check out www.rrauctionservice.com

Serving this area's auction needs since 1997 with honesty and professionalism.
www.rrauctionservice.com

(417) 576-7357 or (417) 345-4140



PUBLIC AUCTION
MORRISVILLE, MO

AUCTION

We will sell the following Real Estate, Household, Collectibles, Mowers, Tools, Car Port and Misc. At the Home located just Southwest of the School in Morrisville, Mo. On

Sat. October 5, 2024 at 9:00 am

WATCH FOR AUCTION COMPANY SIGNS • LUNCH SERVED

FOR MORE PICTURES GO TO: WWW.BRUCEANDLEANAUCTION.COM

REAL ESTATE • SELLS AT NOON



Selling 4 ¼ Acres M/L with a 2 Bedroom, 1 Bath W/Walk-in Shower, Home has 1125 Sq. Ft. W/Open Kitchen/Dining Room Area W/Dish Washer, Utility Room, Propane Heat W/Hvac Unit, Ceiling Fans, Carpet Throughout 2 years old, Home has a 3 year old new Roof, Vinyl Siding, Home has Covered Front & Back Porches, Real Estate is mostly open with scattered shade tree's, W/A 20' X 30' Pole Barn Structure, 3 older small Storage Buildings, Real Estate will sell at 12:00 Noon W/Owner Confirmation Terms: 10% Down Day of Sale Nonrefundable, Balance Upon Closing
Come prepared to Buy as Owner is Motivated to Sell



CARPORT

- 18' Wide X 20' Long Open Metal Carport

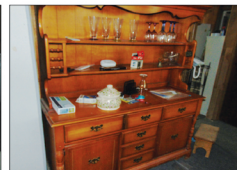
MOWER-TOOLS-MISC.

- Troy-Bilt Mustang 42" Zero Turn Mower W/22hp Kohler Motor
- Craftsman T-1000 Riding Mower W/42" Cut
- 2 Metal Lawn Trailers
- Front Tine Garden Tiller
- 6' Poly Step Ladder
- Misc. Ladders
- Duplex Tool Box
- 16" Delta Scroll Saw
- Alum. Loading Ramps
- App. Dolly
- Misc. Wrenches & Sockets
- Ext. Cords
- Misc. Garden Tools
- Live Trap
- Propane Fish Cooker
- 2 Burner Camp Stove
- Carpenters Wooden Tool Box
- Lawn Roller
- Ammo Box
- 2 Stainless Milker Buckets
- Car Ramps
- 2-3 Pc. Metal Patio Sets
- 5 Pc. Metal Patio Set
- Gas Grill
- One lot of Misc.



HOUSEHOLD-COLLECTIBLES

- Whirlpool 30" Gas Range
- Maytag Washer
- Whirlpool Dryer
- Kitchen Aid older Side by Side Refrigerator/Freezer
- Frigidaire Med. Size Upright Freezer
- Sm. Westbend Microwave
- Brother Sewing Machine
- White Kitchen-Aid Mixer
- 42" Flat Screen TV
- 15 Gallon Western Stone Jar
- 10 Gallon Stone Jar
- Cast Kettle
- Kitchen Table W/4 Chairs
- Maple Hutch
- 2-Foyer Tables
- Wicker What-Not Shelf
- Queen Bed
- Full Size Bed
- 8 Drawer Chest
- 4 & 5 Drawer Chest
- 4' Pine Cabinet
- 3 Kerosene Lamps 1 Wall Mount
- First Act Discovery 6 String Guitar
- Montana Model M28-4 6 String Guitar
- Seiko Lighted Clock
- Misc. Wall Hangings
- Flat Back Trunk
- 7 Drawer Desk
- Electric Heaters



HOUSEHOLD-COLLECTIBLES CONT.

- Coke Pitcher W/5 Glasses
- Misc. Costume Jewelry
- Flatware
- Pots, Pans and Dishes
- Poly Cabinets

OWNER: MRS. BETTY HALL

TERMS: Everything sells as is, where is. Nothing is to be removed until settled for. Payment of Cash, Check with Proper ID, or Credit Cards. Auction Company or the Owners will not be responsible for loss of items or accidents. Statements made the Day of the Auction take Precedence over Printed Matter.

SALE CONDUCTED BY **BRUCE & Le'AN AUCTION & APPRAISAL, LLC**
THE AUCTION COMPANY THAT APPRECIATES YOUR BUSINESS

For more information and pictures go to our website at www.bruceandleanauction.com

RONNIE BRUCE - Fair Play, MO
417-777-1685 or 417-654-2214
colronbruce@gmail.com

BRANDON BRUCE
Fair Play, MO

BILLY BRUCE - Stockton, MO
417-399-4800
colbbruce@gmail.com

ANTIQUe & OUTDOOR AUCTION

Sunday, September 29th, 2024 ~ 1:00 PM

LOCATION: Moore Pavilion, 10th & Poplar, Lamar, MO (Watch For Signs)

Auction For Dani Bogar



Antique, Primitive & Other Furniture

3 Ant Secretaries 1 Unusual, Ant Buffet, Ant Kitchen Table & 5 Chairs, Ant Curio Cabinet, Ant Marble Top Coffee Table, 2 Ant Rockers, 2 Prim White Pie Safes W/Tins, Prim White Chimney Cabinet, Ant Bedframes & Headboards, Prim Green Bolt Bin Cabinet, Prim Yellow Chicken Nesting Box Cabinet, Ant Washstand W/Pitcher & Bowl, Prim Blue Ottoman, 2 Ant Camel Back Trunks, Ant Mantle Clocks, Ant Oak Wall Phone W/Magneto, Ant Fan, Lighted Display Cabinet, Lift Chair Recliner, Regular Recliner, Stereo System, Other Items Not Listed, Just A Partial Listing

Antiques, Primitives & Collectibles

Lots Of Gas & Oil Collectibles Brands Inc Sinclair, Mobile, Skelly, Standard, Wizard, Phillips 66, & Others, Lg Skelly Galvanized Oil Can, Ant Wood Whiskey Barrel, Rare 1942 Shapleigh Hardware W/ Keen Kutter Diamond Edge Advertising Catalog, Lots Of Keen Kutter Collectible Items Inc Pictures, Post Hole Digger, 2 Simmons Scales, Lots Of Old Ant Toys Most Metal Inc Tractors, Trucks, Fisher Price & Others, Ant Wooden Half Egg Crate, Ant Wood Portable Chicken Coop, Ant Brass Spotting Telescope, Lots Of Galvanized & Graniteware Pcs, Ant Signs Inc Lg Polka Dot Bread, Kerns Bread Chalkboard, Coca Cola, Coal, & Other Signs, Ant Radio Flyer Wagons & Scooter, Lg Lot Of Old Marbles, Old Buttons, Ant Dietz Night Watch Red Globe Lantern, 2 Old Chalk Piggy Banks, Ant Copper Boilers, Keen Kutter Hand Grinders, Old License Plates, Old Fredrick Remington Plates, Lot Of Old Window Weights, Old Insulators, Approx 20 Ant Iron Wagon Wheels, Ant Milk & Oil Cans, Ant Carbine Light, Approx 30 Gun & Ammo Pictures, Lg Lot Of Ant Pictures, Alum Grain Scoop, Old Quilts, 5 Ant Metal Yard Chairs, Old Comic Books, Lots Of Old Sports Cards Of Various Kinds, He Man Lunch Box W/Thermos, Happy Days Lunch Box, Old Dolls, Atari Game W/ Box, Vintage Microphone, Daisy Churn Top, 4 Claw Feet For Bathtub, Lg Lot Of JD Rotary Hoe Blades & Planter Pots, Approx 12 Aladdin Glass

Lamps W/Globes Inc Green Colonial, Amber Corinthian Lincoln Drape Milk Glass, Washington Drape, Bee Hive, Rare Pink & Others, Some Aladdin Parts, Lot Of Old Lamps, Lg Lot Of Old Jars Inc Several MFA & Sunshine, Big Glass Jug Jar, Old Milk & Soda Pop Bottles, Lot Of Colored Pyrex Dishes, Lot Of Jewel-T Items, Lot Of Old Piggy Banks, Lot Of Capodimonte Italy Pcs, Old Pottery Inc Roseville & McCoy, Lg Lot Of Salt & Pepper Shakers Inc Shawnee Pigs, Lot Of Old Shawnee Corn Pcs, Old Fire King & Jadite Dishes, Green Depression Glass, Old Carnival Glass, Other Items Not Listed

Over 50+ Pieces Of Cast Iron, Rare Crocks, Knife Collection

Lg Lot Of Cast Iron Inc 30+ Pcs Of Griswold & Waggoner, Rare G.F. Filley Kettle Patton 1863, 3 #14 Griswold Skillets, Rare Griswold Square Fry Pan #768 W/Glass Lid, Griswold High Base Waffle Iron, Griswold #80 Double Skillet, #12 Dutch Oven, Other Items Inc Skillets, Griddles, Cornbread Pans, Fish Fry Pan, Dutch Ovens, Triangle Dinner Bell, Waffle Irons, Cherry Pitter & Muffin Pan, Lot Of Rare Crocks Inc Redwing, Bee Sting, Elephant Ear, Birch Leaf, Salt Glazed, Cobalt Blue Leaf, Louisville & Western, Lg Lot Knife Collection Inc Case 4X, Keen Kutter & Other Collectible Knives, Other Items

Deck Boat, Fishing & Hunting & Tool Related Items

2000 Tracker Tahoe Deck Boat W/1999 Tracker Trailer & Inboard Motor (Doesn't Run But Have Titles), Fishing Poles & Tackle, 2 Crossbows, Hoyt Compound Bow, Some Ammo, Lg Lot Of Steel Traps & Conibears Inc Victor & Others, Tent, Auto Dog Feeder, Husqvarna Push Mower, Rigid Pipe Threader & Cutters, 60's Jeep Truck Hood, Approx 100 Steel Posts, Cattle Panel, Bull Horns, Barrel Dolly, Alum Ramps, Long Handle Tools, Saddle, Plastic & Metal Gas Cans, Lg Outdoor Or Store Trash Bin, Bench Vise, Table Saw, Sm Hand Tools, Log Chain, Receiver Balls, Lots Of Other Shop & Outdoor Related Items Not Listed



Auctioneers Note: It Is An Honor To Be Conducting For The Bogar Family. This Is An Outstanding Antique & Outdoor Auction. If You Are A True Collector Or Dealer You Do Not Want To Miss This Sale. True Cast Iron & Crock Collectors Need To Be There. Amazing Outdoor Items As Well. Please Plan Now To Attend. **Sale Order:** Antique & Primitive Furniture As Well As Antiques, Primitives & Collectibles Will Start Auction. At Approx 3:00 PM Will Sell Cast Iron, Crocks & Knives. At Approx 4:00 PM Will Sell Boat & Large Items. Tools & Outdoor Will Finish Auction. See Ya There!!!

Terms: Cash or check with proper ID. Now accepting most major credit cards. Nothing removed until settled for. Statements made the day of sale takes precedence over printed material. Everything sold as is where is. Not responsible for accidents. Restroom available. Concessions Provided. Check our website for upcoming auctions and for additional pictures!!



NANCE AUCTION SERVICE

No Matter How BIG or small, We Do Them All!!!

Col. Bill Nance 417-214-0093

In God We Trust

Philippians 4:13

FARM ESTATE AUCTION

Saturday, September 28th, 2024 ~ 10:00 AM

LOCATION: 759 North Hwy FF, Liberal, MO; Directions: North Of Lamar On I49 Take Exit 83 To V Hwy Then West On V Hwy Approx 7 Miles To FF At Verdella Free Will Baptist Church Then North On FF To Sale Site. (Watch For Signs)

Auction For Dennis & Joan Wilson



Tractors, Hay Equipment, Tillage Equipment, Grain Truck & Related Items

JD 4840 Cab Diesel Tractor Has Duals & Approx 6500 Hrs, JD 4630 Cab Diesel Tractor W/Duals & 158 Front End Loader Has Approx 8400 Hrs, JD 4520 Diesel Tractor, JD 2840 Diesel Tractor, JD 535 Round Baler, JD 1519 Mower Conditioner, OMI 10 Wheel Hydraulic Lift Ground Driven Rake, New Idea Side Delivery Rake, 3 Pt Bale Carry All, Gooseneck Inline Round Bale Trailer, Bale Spike, 7 Ft Bush Hog Brand Bush Hog, 3 Pt Post Hole Digger W/10" Auger, Extra 18" Post Auger, 10 Ft Hydraulic Box Speed Mover Blade, 3 Pt Carry All, Front End Loader Carry All Or Scaffolding Box, Hydraulic Dump Trailer, Portable Diesel Fuel Tank On Trailer W/Electric Pump, Approx Two 4 Ft Rollers Heavy Duty Sheep's Foot, AC 180 Manure Spreader, JD 4400 Cab Combine, JD 7000 Six Row 14 Ft Planter, 16 Ft IH 510 Grain Drill, JD 230 Hydraulic 30 Ft Batwing Disc W/New Discs, JD 30 Ft Hydraulic Batwing Field Cultivator, Brillion 15 Ft Chisel Roller, 10 Ft Kerause Hydraulic Chisel, 9 Ft Pull Disc, Field Boom Sprayer W/New Pump, Parker Gravity Flow Wagon, 3 Bottom Plow, 3 Section Harr, JD Spray Tank Frame, Mordige Grain Dryer, 2 Augers, 2001 GMC Grain Truck, Implement Tires & Rims, New Hydraulic Hoses, Creep Feeder, 5 Bale Rings, 1000 Gal Hauling Water Tank, 2 Hog Waterers, Cattle Vet Working Items, Fence Supplies, Rolls Of Barbed Wire, Rolls Of New Pex Pipe, Other Items

1948 Studebaker, Trailer, S10 Truck, Zero Turn Mower, Welders, Generators, Shop & Woodworking Tools

1948 Studebaker Farm Truck, 1999 Chevy S10 Truck Needs Work, J&W 16 Ft Flatbed Trailer, JD Z950A Industrial Zero Turn Mower, 3 Lawn



Auctioneers Note: It Is An Honor To Be Conducting This Auction For The Wilson Family As We Have Been Friends For Many Years. If You Are Looking For Tractors & Equipment As Well As Great Tools, Boat & Antique Truck You Do Not Want To Miss This Auction. There Is Most Definitely Something Here For Everyone. Great All Around Farm Auction. Please Plan Now To Attend. **Sale Order:** Auction Will Begin With Smaller Tools & Misc Items Then Move Into Larger Items. At Approx 12:00 Noon Will Offer Boat, Buildings, Trucks, Trailer & Related Items. At Approx 12:30 PM Will Offer Tractors & Large Equipment. Remainder Of Mid Size Equipment & Scrap Will Finish Auction. See Ya There!!!

Terms: Cash or check with proper ID. Now accepting most major credit cards. Nothing removed until settled for. Statements made the day of sale takes precedence over printed material. Everything sold as is where is. Not responsible for accidents. Restroom available. Concessions Provided. Check our website for upcoming auctions and for additional pictures!!



NANCE AUCTION SERVICE

No Matter How BIG or small, We Do Them All!!!

Col. Bill Nance 417-214-0093

In God We Trust

Philippians 4:13



Saturday, September 28, 2024 • 9:00 a.m.

LOCATION: In Licking, Mo., on Hwy. 32 East, next to Hammond Feed & Farm Supply.
 Watch for signs. To view photos, go to auctionzip.com. Auctioneer #28367

Dining Table & 6 Upholstered Chairs
 China Hutch
 Lift Chair
 Recliner
 Flat Screen TV
 TV Stand
 Area Rugs
 Couch, hide-a-bed
 Bookshelf
 Lot Table Lamps
 Wing Back Chairs, green & mauve, recliners
 Swivel Chair
 End Tables
 Lamp Table
 File Cabinet
 Curved Top Chest
 Bed, full size, complete
 Lots Quilts, Sheets, Linens, Afghans
 Picture Frames • Wall Pictures
 Whatnot Shelves
 Tea Cup Rack
 Wall Clocks
 Fans • Fan on Stand
 Hob Nail Vase
 Tea Cup & Saucer Sets
 Carnival Candy Dish & Bowls
 Collection Chickens, Roosters & Plates
 Mikasa Set Dishes, floral pattern
 Green Depression Cups
 Cut & Clear Glass Bowls
 Cake Stands
 Sonnet Set China, gold trim
 Fire King Cups
 National Parks Glasses w/gold trim
 Cookbooks
 Card Table
 Kitchen Table w/6 Chairs
 Breadmaker
 Collector Plates
 Corolle Dishes w/fruit pattern
 Blender • Air Fryer
 Corningware • Tupperware
 Mixing Bowl
 Lots Glasses, sets
 Baking Pans, glass

Pots & Pans
 Sifter • Flatware • Kitchen Utensils
 Cookie Jar, John Deere Tractor
 Hall Table w/Mirror
 Corner Shelf
 Lots Whatnots
 Wooden Rocker
 Red Table Lamps
 Women's Scarves
 Umbrella Vases
 Christmas Decor • Artificial Flowers
 Letter Holders
 Marble Base, Green Stem Scale, glass
 Small Kitchen Appliances
 Roaster
 Metal Kitchen Cabinets, & wooden
 Wooden Wardrobe
 Old Brass Bell
 Electric Roaster
 Corningware Bakeware
 Metal Folding Chairs • TV Trays
 Apple Peeler/Slicer
 NuWave Oven
 Colander
 Aluminum Pans
 Singer Sewing Machine in Cabinet
 Vases
 Robert E. Lee Clock
 Glass Pie Plates, Bundt Pan
 Coffee Maker
 Battery Blower
 Shop Vac
 Hand Vac
 Farm Theme Clocks
 USA Teapot
 Aunt Jemima Bottles
 Air Tank
 Dog House
 Double Rinse Tubs on stand
 Mole Trap
 Duck Collection
 Tapestry
 Adult Walker
 Treadle Sewing Machine
 Black Panther

GUNS & AMMUNITION

Canik 9mm – New
 Taurus .22 pistol - New
 Iver Johnson 12-gauge - Used
 Mossberg 12-gauge - Used
 Mossberg .243 - New
 Charles Daly 12-gauge auto - New
 Charles Daly 20-gauge pump - New
 Remington .30-06 – New
 Remington 350 Legend – New
 Remington 270 – New
 Ruger 6.5 Creedmoor – New
 Ruger 270 – New
 Lots of New Boxes of Ammunition

Globe
 Table & Sewing Machine
 New Home Sewing Machine
 Sleeping Bags
 Frog Planter
 Glass Lamps
 High Chair
 Toilet Safety Frame
 Steins
 Napa Tool Chest
 Tool Caddy
 Step Stool
 Lawn Chairs
 Christmas Tins
 Coolers • Luggage
 2-Wheel Dolly
 Garden Tools
 Wire Veggie Holder
 Shoe Buffer
 Electric Buffer
 Shovels, Tater Fork
 Skil Saw
 Metal Dipper
 Lot Jewelry
 Old Wheelbarrows & Buckets
 Concrete Yard - Horse & Cart, Swan,
 Donkey, Flower Pots
 Auto Horn
 Lots more items not listed, only a
 partial listing.

ESTATE OF ROY & PAULINE CAVANESS

Terms - Cash or Approved Checks. Nothing Removed Until Settled For. Not Responsible For Accidents. Must show ID to get Buyers #.
 All guarantees are between buyers and sellers. Announcements Made Day of Sale Take Precedence Over Printed Matter.

**Buckner & Gately Auction Service
 Auctioneers**

Steve Buckner 573-674-2686

Neal Gately 573-202-3132

ESTATE AUCTION

SATURDAY, SEPTEMBER 28 • 9:00 A.M.

LOCATION: ROLLA, MO - 3387 Dent CR 2050

From Salem or Rolla, take Hwy. 72 to Lake Springs, turn onto CR 3387, follow to auction site. Watch for signs.

HOUSEHOLD • TRACTOR • TOOLS: FARM, ETC. • COLLECTIBLES • MISC.

Correlle Dishes - Stock Pots - Pyrex Bowls
 Kitchenware - China Hutch - Bakeware - Crock Bowls
 Cast Iron Skillets - Half & One Gallon Crock
 Metal Lawn Chairs - Metal Trash Can
 Set of Forks for Skidsteer - 3pt. Bale Mover
 New Holland 4x4 Round Baler, 3pt. - Sod Buster
 100 Gallon Metal Water Tank - Rubber Tub
 Milking Stools - Mice Trap - Pig Feeder - 6-Panel 12' Gate
 Lots of Chicken Feeders & Waterers, Old Purina
 300 Gallon Fuel Tank on Stand, had Diesel in it
 Old Sleds - Cream Cans - New Rolls of Gaucho Wire
 Rolls of Used Wire - Saddles, Some Old Military
 Wooden Barrel - Metal Bed Frame
 Old Metal Coleman Cooler - Metal NFO Sign
 Old Horse Tack - Grass Seed, Fescue
 Mahindra 6500 4x4, 277.6 Hours Showing, Has More
 Than That, ML 265 Loader, Roll Bars, Good Tires, Good
 Tractor, 4 Remote Plug-ins
 Lincoln AC 225 S Welder - Blacksmith Vise - Electric Drill
 Grinder - Skilsaw - Hitch Pins - Scrap Metal - Iron Seats
 Milwaukee 14" Cutoff Saw - Fence Stretchers
 Wrenches - Sausage Stuffers - Porter Cable Sawzall
 Dehorner - Loppers - Rakes - Shovels - Dip Nets
 3' Saw Blade - Wooden John Deere Wagon Tongues
 7' Kean Kutter, 3pt. Rev. Blade - 16", 4" Auger w/Motor
 Approx. 50pc. Pine 1x6x10 Some 2x
 Electric Fence Items
 Briggs 4800 Watt
 Generator
 5' Saw Blade
 6.5' 3pt. Tiller
 3pt. 2-Bottom Plow
 2 Aerators, Pull Behind
 3pt. Cyclone Seeder
 Saddle Rack

28' Fiberglass Ladder
 MTD 20-Ton Wood Splitter - Wooden Ladders
 Craftsman 10" 3hp Table Saw - Homemade Sprayer
 Garage Door Panels - Old Forge - Bikes
 Roll of Used Woven Wire - Lot Hand Tools
 Battery Chargers - Wooden Boxes - Chains
 Grain Dryer Tubes - Honda Rancher 2-VD
 65, 6' T-Posts, Used - New & Used 60+ 5.5' New
 Several Old Iron Wheels Var. Sizes - Water Jars
 Aluminum & Wooden Windows - Lots of Motor Parts
 Double & Single Trees - Steel Traps - DeWalt Miter Saw
 Nails - Worm Driver Skilsaw - Meat Hooks
 Scythes - Husqvarna 240 Chainsaw - Pet Taxi
 BBQ Grill - Aluminum Ramps - Yard Wagon
 Front Tine Tiller - Tomato Cages - Air Compressor
 2 Kids Wagons - Fishing Gear - Baskets
 MTD 42" Riding Mower - Metal Buckets
 Metal Wash Tubs - 3-Ton Floor Jack
 35lb. Tank Fish Fryer - Tree Lounge Deer Stand
 Used Tires - Jack Stands - Gas Cans
 Speed Queen Washer - Maytag Dryer - Sausage Press
 Sika Deer Mount - Elk Mount - Exotic Ram Mount
 White Tail Mounts - Crappie Mounts
 Coyote Shoulder Mount - Hornet Nest - Draw Knife
 Corn Knife - Antlers - Ten Point Crossbow
 Old Allen Compound Bow - End Tables - Kraut Kutter

World Globe - Hen-on-Nest - Ceramic Chickens
 Lot Canning Jars - Old Chest of Drawers - Shop Vac
 Ideal Double Wash Tubs on Stand
 Ammo Boxes - Canteens - Horse Collars & Hanes
 Paint & Brushes - Oil & Grease - Buck Knife
 Apple Baskets - Hand Saws - Camping Supplies
 Cattle Working Items - Concrete & Tile Tools
 Set of Weights - Fairbanks Feed Scale
 Hobart Meat Grinder 1/3hp - LEM Cuber - Meat Slicer
 Plastic Shelves - Hanson 100# Scale - Large Potato Bin
 Cots - Pressure Cooker - Canning Tools
 14' Jon Boat, Has Title - Water Bath Canners - Zinc Lids
 Wood Bench - Dehydrator - Dining Table w/6 Chairs
 Flexsteel Leather Lift Chair - Couch - Sitting Chairs
 TV Stand - Nice Old Oak Table w/4 Chairs
 2, Full Bed Sets, 4pc. - Towels & Linens - Oil Lamps
 Gibson Basket - File Cabinets - Bookshelf
 SS Plated Tableware - Camelback Trunk
 Jar of Old Buttons - Colander - Fans - Old Quilts
 Sewing Machine in Cabinet, Majestic - Typewriters
 Dresser w/Mirror - Queen & Full Beds
 8' Fiberglass Step Ladder - Misc. Lumber

**See you there.
- Tom**



THE ESTATE OF: GEORGE R. & DORIS A. PONZER

ANNOUNCEMENTS AT AUCTION TAKE PRECEDENCE OVER PRINTED MATTER

WULFF AUCTION

TERMS: CASH OR APPROVED CHECK - I.D. REQUIRED
NOTHING REMOVED UNTIL SETTLED FOR

Licensed Appraisals

2334 Highway K, Salem, MO 65560

AUCTIONEERS:

Col. Tom Wulff • John Wisdom

Cell: 573-247-3884 • Cell: 573-247-9563 • Home: 573-729-8476

Clerk: Tracy Strange

Cashier: Nancy Inman

See Wulff Auctions at www.thesalemnews.com/auctions



RAIN OR SHINE OWNER & AUCTION PERSONNEL NOT RESPONSIBLE FOR ACCIDENTS AT SALE SITE

Public Auction

27486 V Hwy. Edwards, MO. 65326

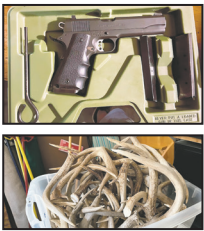
Directions: From Warsaw go South on 65 hwy 6.5 miles to South Hwy 7 turn Left (East) on 7 hwy go 5.5 miles to M hwy turn Left (North) on M hwy. go 4 miles to V hwy. turn Right (East) on V hwy go 2 miles to Auction on Right. Watch & follow signs on sale day.

As we are selling our lake home & moving closer to family, we will sell the following at public Auction on:

SUNDAY OCTOBER 6TH, 2024 • 12:00PM

"Lloyd Hevlin"

1999 Ranger 69 CVS 20' Bass boat & trailer w/175hp Evinrude, live wells, 2 – Humminbird fish finders, Minn-Kota Maxxum trolling motor (Titles for all three) **Barnett** "Wildcat" cross bow w/case & arrows, **Springfield Armory** 1911 .45ACP pistol, **Ruger** .45ACP / .45LC Blackhawk single action revolver, **Remington** 12ga. model 10 Pump Shot Gun, **LMT** AR15 5.56 upper w/knights' armament rails, 500gal propane tank, **Household & Misc.** **GE** chest freezer, **Vissani** stainless steel refrigerator, dual reclining love seat, swivel rocker recliner, 3pc. King size bedroom set, oak antique hutch, dresser, matching leather love seat & sofa, **Stanley** "Young America" convertible crib to full bed set w/dresser & changing table, electric lift chair, oak claw foot dinette set w/ 5 chairs & 2 leaves, glider rocker w/ottoman, knee hole desk, 5 – dorm fridges, **Weber** grill (New), roaster ovens, poly service cart, George Forman grill, microwave, **Members Mark** stainless steel gas grill w/oven & rotisserie, **Traeger** "Tailgate" pellet smoker, Lot antler, Goose, Duck & Fish taxidermy, gas countertop burners, 2 – infrared heaters, **Karcher** pressure washer w/**Subaru** gas motor, unique smoker on HD military wagon (must see), china hutch w/ leaded bev eled glass, hospital bed, wooden day bed, 2 – live traps, deck box, 220v window air conditioner, 2 – insta-pots, misc. coolers, **Farberware** ele. grill, countertop oven, Glass top patio table w/4 chairs, work-mate table, misc. tables, light pallet rack/shelf, 3 – chicken fryers, Enamelware, **Stihl** MS 271, 171, 180c & 025c, chain saws, **Delta** bench top belt sander, **Bostich** nailer, 5' ATV blade, grease guns, wire rack & misc. metal & plastic shelving, appliance dolly, 4 1/2" bench vise, 10' **Werner** fiberglass step ladder, 2 – **Werner** alum. extension ladders, 20' fiberglass extension ladder, **Craftsman** 15gal portable air-compressor, lot fishing poles & tackle, **DeWalt** chop saw on pedestal, 6" & 8" grinders on pedestal, shop-vac, misc. ele. heaters, lot hardware organizers, fish trap, 2000lb **Badlands** wench, 2 – battery chargers, 2 – wheelbarrows, 10' & 12' gates, floor jacks, **Craftsman** roll around tool box, lot mechanics hand tools, lot extension cords, Shepards hooks, Lil giant ladder, Yard wagon, **Kingsford** gas grill, **Kenmore** cross top refrigerator, ATV sprayer, lot long handled tools, receiver hitch carry-all, lot hoses & gas jugs, fillet knives, pressure tank, 2 - dual cassette stereos & speakers, 10" gazing ball, portable air compressor, lot window weights, lot garden hoses, pet carrier, misc. log chains, lot T-post, fuel tank on stand, rebar & lumber, cattle panels, 2 – deer blinds, assorted military body armor, 10" **Port-O-Brake** siding brake, **Snap-On** pipe wrenches, **Proto** dial torque wrench, **Wissota** bench grinder, **Baldor** bench grinder, 4 – **Greenfield** SAE & Metric tap & die sets, **S&K** & **Craftsman** combination wrench set, **Proto** breaker bar ratchet attachment, **STI** ignition set, **Uni-Weld** complete torch set, **B&D** table saw, **Craftsman** 4" planer, **Craftsman** 8" disk/belt sander, lot new router bits, lg wood planers, Deer stands, 40' of 5/8" steel cable, conduit benders, **Wright** 3/4" socket set, 2x lg jaw gear puller, Lg lot **Heli** coil repair sets SAE & Metric, lot sockets many impacts, **Reese** weight distribution hitch 1,200lb tongue weight, **Many More Items Too Numerous to Mention**



Auctioneer Note: This is going to be a GREAT Auction, Many quality items & treasures yet to be discovered.

*STATEMENTS MADE DAY OF SALE TAKE PRECEDENCE OVER PRINTED MATERIAL.

Concessions provided by "Benton County Good Ole Gals"



JOHNSON AUCTION SERVICE

"Third Generation Family Tradition since 1942"

Russell "Rusty" Johnson (660) 221-4067 • Phillip Yoder (660) 723-3389

For Full Listing, Pictures and Details auctionzip.com (ID# 20300)



RYAN WILLIAMS
LOGGING
(573) 247-5859
(573) 297-9710

EXPERIENCED, PTH TRAINED, INSURED

BUYING
STANDING TIMBER

2 FERGUSON SPIN OUT ECCENTRIC PINS: \$50. 636-932-4429. Hermann.

FERGUSON AXLE BRACKETS, SWAY BAR & OTHER: \$50. 636-932-4429. Hermann.

R.N. BUTCHERING: Custom Processing, Beef, Pork, Deer. Home Raised Beef & Pork Available. 573-759-2347. Call 7:30am-8am. Dixon.

FOR SALE: 61" Spartan Lawn Mower. Zero Turn. 8 years old. \$4,000. Phone 417-588-0995. Lebanon.

TINY CABIN: Homes, Garden Sheds, Mini Barns, Run-In Sheds. 417-741-0245. Grovespring.

MEDIUM DOG PET PORTER CRATE: Like new. \$30. 417-589-8807. Conway.

NEW HOOP BUILDINGS: In Crate. 30x40, \$2,550 & 20x30, \$1,000. 573-247-0355 or 573-851-9814. Salem.

RIVAL ELECTRIC 2 QUART ICE CREAM/YOGURT MAKER: Like New in Box with Manual. \$20. 417-718-5347. Conway.

LAKE OF THE OZARKS - Autumn Special – Lots for building, tiny sheds, campers or own for investment, starting at \$5,550.00 - \$150.00 down and \$95.00 per month. Beautiful trees, great fishing, calm water, jet skiing, swimming, boating and relaxing. No credit checks, owner financing, immediate possession. Free lake access and boat ramps. Prices good through October 14, 2024. HWY 135 between Stover and Sunrise Beach, MO. Take lake road 135-12, to the Ivy Bend Land Office. Closed Tuesday and Wednesday Call anytime (573)-372-6493.

JOHN DEERE 2630 DIESEL TRACTOR: Canopy, 70 H.P., with John Deere Loader. \$10,950. 573-765-4406. Richland.

81 FORD 250 4X4 PICKUP: Good Condition, \$4,000. John Deere 420W; To Be Restored Or For Parts, \$1,500. John Deere 620 \$2,500. 417-630-2843, 417-241-5621. Leave Message. Conway.

BUSH HOG 3210 PULL-TYPE BRUSH CUTTER: Big Gear Boxes. \$6,750. 573-765-4406. Richland.

GRIZZLY 3-POINT BACKHOE AH: For Tractor. \$2,500. 573-765-4406. Richland.

90 FORD 800 DIESEL TRUCK: With Bed & Hoist, Single Axle. Good. \$6,750. 573-765-4406. Richland.

AQHA PALOMINO GELDING; 14.3h, Ranch Gelding that's done it all. Super light handle and quick. Excellent Ranch Horse Show Prospect. \$10,500. 573-512-0391. Fremont.

3-POINT PTO SEEDER: \$475. 573-765-4406. Richland.

ROME 8FT OFFSET DISC: \$3,500. 573-765-4406. Richland.

TWO 23.1-26 LOG SKIDDER TIRES: 25% Tread, No Breaks, \$500 for Pair. Complete Log Grapple for Skidder, \$500. Cash. 417-988-8111. Nixa.

FORD 6600 DIESEL TRACTOR: Cab, with Loader. \$6,950. 573-765-4406. Richland.

JOHN DEERE 2955 DIESEL TRACTOR: Cab & Cold Air, with J.D. 720 Loader. \$23,750. 573-765-4406. Richland.

1994 F350 XLT 7.3L. POWER STROKE TURBO DIESEL 5-SPEED DUALY: Fully Serviced, Performance Exhaust, 5th Wheel & Much More. \$8,995. 417-527-8212. Marshfield.

IHC 1086 DIESEL TRACTOR: Cab & Air. \$8,950. 573-765-4406. Richland.

IHC 8FT WHEEL DISC: \$1,900. 573-765-4406. Richland.

BOBCAT 753 DIESEL SKID STEER LOADER: \$11,900. 573-765-4406. Richland.

ALLIS FOLD UP WHEEL DISC: \$1,950. 573-765-4406. Richland.

1994 F350 XLT 7.3L. POWER STROKE TURBO DIESEL 5-SPEED DUALY: Fully Serviced, Performance Exhaust, 5th Wheel & Much More. \$8,995. 417-527-8212. Marshfield.

Firearms Auction

Saturday, October 5th, 2024 • 10 a.m. *Doors open at 8:00 a.m.*

Sale Preview - Friday, October 4th • 6-9 p.m.

The Red Shed

I-44 to exit 179 • 169 Truman St / Hwy T
Doolittle, MO 65550

We will sell the following private collections of firearms without reserve.

Selling 340 Firearms, with Miscellaneous to Follow



For a complete sale bill and pictures of each gun, go to auctionzip.com and enter auctioneer ID #28053. Pictures also on HiBid.com







J & J Sales, LLC

573-341-5450
Office
573-465-4647
Julie Reagan
573-465-0642
JD Roach, Auctioneer
573-762-2227
Sale Day Number

**Mareth Farms
Real Estate &
Liquidation Auction!**

**Saturday, Oct 12th @ 9:00 AM!
7125 FR 2057, Monett, MO 65708
(just outside of Purdy)**

**175+ Acre Dairy Farm,
5BD/3.5BA Home**

Lots of farm machinery &
Equipment

Also selling an additional **150+
Acre Farm Home** located
between Butterfield and Purdy.

More Details Coming Soon!

Contact Southwest Auction Service for more info!
417-652-7540 office or cell: 417-772-8088
(Bob Hughes) for more details!



WESTFIELD 10X61 GRAIN AUGER:
With Drag Hopper. \$2,850. 573-765-4406.
Richland.

**TOSHIBA 42" FLAT SCREEN LED LCD
HD TV:** With remote & owner's manual.
\$25. 210-787-8222. Linn Creek.

ABCA MALE BORDER COLLIE:
Black & White, Born 12/2020. Friendly and
Respectful. \$150. 417-818-1175. Marshfield.

ESTATE AUCTION Henry Copling Estate

401 Shenandoah, Cuba, MO 65453
Due to the death of my husband, **Henry Copling**, I will sell the following personal property at auction located in Cuba, Missouri at 401
Shenandoah. From I-44 exit 208, take Hwy. 19 south to Hwy. PP. Turn left and continue 1/2 mile to Shenandoah. Turn left on
Shenandoah and continue to 401 Shenandoah. Follow Lorts Auction Today signs on

Saturday, September 28, 2024 at 9 a.m. Rain or Shine

SHOP TOOLS • HOUSEHOLD • GUNS • VEHICLES • TRACTOR

TRACTOR, MOWERS, SHOP TOOLS, WOODWORKING TOOLS & RELATED ITEMS: KUBOTA BX235 4WD TRACTOR W/LOADER, PALLET FORK,
BUCKET & BACKHOE ATTACHMENT (80 HOURS) • X304 JOHN DEERE RIDING MOWER W/42 INCH CUT, KAWASAKI ENGINE (750 HOURS) • HUSQVAR-
NA RIDING MOWER W/48 INCH CUT, 24 HP. BRIGGS MOTOR • D100 JOHN DEERE RIDING MOWER W/42 INCH CUT, 75 HP. B&S ENGINE • DR TRIMMER
W/6.75 BRIGGS ENGINE, ELECTRIC START TROY-BILT BRONCO REAR TINE TILLER • 2 WHEEL LAWN CART • COUNTRY TUFF 25 TON WOOD SPLITTER
• PORTABLE GENERATOR • GARDEN TILLER • PORTABLE POWER WASHER • 3 PT. 5 FT. LAND PRIDE BOX BLADE • 110 HYDROPOWER WATER PUMP •
CUMMINGS 8 INCH VICE • 2 WHEEL DOLLY • HOG PANELS • 12 GALLON SHOP VAC • 110 TWIN CYLINDER AIR COMPRESSOR • MITERBOX SAW • 7 FT.
WOODEN STEP LADDER • MCGRAW 8 GALLON AIR COMPRESSOR • METAL SHELVING • HITACHI C10FL TABLE SAW ON WHEELS • GRIZZLEY Z SERIES
PLANNER • GRIZZLEY 6 INCH X 2 INCH JOINTER ON STAND (G0612) • GRIZZLEY OSJ SPINDLE SANDER ON WHEELS (G0538) • GRIZZLEY DUST COLLEC-
TOR SET W/REMOTE CONTROLS • GRIZZLEY SLIDING ROUTER TABLE (G0528) • 5 INCH B&D GRINDER • 7 INCH DELTA GRINDER ON STAND **GUNS:**
MOSSBURG 22 MODEL 1468 W/SCOPE • MOSSBURG 20 GAUGE MODEL 185D • RUGER AMERICAN 308 WINCHESTER W/SCOPE (CAMO) • HENRY
LEVEL ACTION 22 (NIB) • NOBLE PUMP 410 **FORD FAIRLANE, DODGE RAM & TRAILERS** 1963 FORD FAIRLANE 500, V8 ENGINE, 3 SPEED ON THE
COLUMN, DARK SKY BLUE EXTERIOR W/CLOUD WHITE TOP, NEWER TIRES, BABY MOON HUBCAPS (HAS BEEN COMPLETELY RESTORED) • OWNER
HAS RIGHT TO REJECT FINAL BID • 2003 DODGE RAM 2500 4WD 4 DOOR PICKUP W/5.7 LITER HEMI, CAMPER HITCH IN BED, RED EXTERIOR, 186,000
MILES • 2010 WW BOX TRAILER W/8X6 SINGLE AXLE • 6X16 HEARTLAND FLATBED TRAILER W/TANDEM AXLE DROPDOWN TAILGATE

AUCTIONEER'S NOTE: Lots of super clean items on this auction. Wood working tools are in great condition. Ford Fairlane
is a car lover's dream! Mark your calendar for Saturday, September 28 and plan to attend this good auction in Cuba, Missouri!

TERMS: Not responsible for accidents or losses, should they occur. • Nothing removed until
paid for. • No buyers fee. • Cash or check with photo I.D. No debit/credit cards. • Lunch served
ALL ANNOUNCEMENTS MADE SALE DAY TAKE PRECEDENCE OVER ALL PRINTED MATERIALS

SALE CONDUCTED BY **LORTS AUCTION SERVICE** - ST. JAMES, MO 65559 • Licensed and Bonded
AUCTIONEERS: Larry W. Lorts & Gary R. Lorts • 573-263-1509 & 573-263-0243

— Cash or Check with photo I.D. No debit/credit cards. This is an on-site live auction conducted by Lorts Auction Service —

"like" us on Facebook - Lorts
Auction Service or view this
auction online at
www.threeriverspublishing.com
or auctionzip.com
(auctioneer ID #42353)

**11.3 ACRES 5 MILES SOUTH OF
ROLLA, MO:** With Over 700' of Highway
63 Frontage. There Are Endless Possibilities
for This Beautiful Property. Call Roger At
573-680-9183.

**NEW, SEALED BOOK: "The Bittersweet
Ozarks at a Glance" By Ellen Gray
Massey. Great Photos & History of The
Ozarks Gift. \$15. 417-718-5347. Conway.**

I BUY.....used mobile homes. Call or text
573-338-6250 or email GregS.CDH@
outlook.com

**CASE 580B DIESEL BACKHOE
LOADER:** \$9,500. 573-765-4406. Richland.

TINY HOMES - Missouri Franchise 573-
881-7965.

PUZZLES: Good Condition. \$1.00 each.
417-532-2045, Leave message and phone
number. Lebanon.

WEATHERED BARN WOOD SIDING:
10" wide. Call for appointment. 573-729-
7226. www.pineridgerustic.com Salem.

LOG SIDING: 2X8 Pine/Western Cedar.
Call for appointment. 573-729-7226. www.pineridgerustic.com Salem.

**FEMALE TOY AUSSIE PUP: 14-weeks-
old.** 417-733-7062. Long Lane.

40 YEARS THIS YEAR- we have to be
doing something right. Call for quote or any
house new or used, double and single. 573-
657-2176 amegamobilehomes.com.

WE GOT IT - let us bid your mobile home
purchase, new and used. 573-499-9993
columbiadiscounthomes.com.

2 SETS OF LAMPS: 1 set is blue and 1 set
is mauve. Big bottomed base, electric. \$8/set.
417-532-2344. Lebanon.

20 LB PROPANE BOTTLE: for BBQ grill.
\$18. 417-532-2344. Lebanon

**SPECIALIST FROM HARDCRABBLE
BOOK:** By Elbert Crittenden Traw, DDS,
Stoutland-Richland area, hardback. \$8.50.
417-532-2045, Leave message and phone
number. Lebanon.

TRIPLE WIDE- moving stock, awesome
price. 573-657-7040 chateauhomes.net.

**INTERNATIONAL PICKUP TRANSFER
GEARBOX:** \$150. 573-308-5884. Rolla.

**WEEKLY
TRADER
MAGAZINE**



FREE ADS - Item must be \$50 or less, ad must list price, 12
words or less, limit to 5 free ads (total) per week.

Free Ads EXCLUDE:

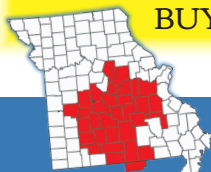
Ammo, Guns, Hay, Animals and Firewood

10 WORDS or Less ONLY \$5!

22 WORDS or Less ONLY \$9!

Add Yellow Color for only \$3 (per ad)

BUY 3 Weeks get the 4th Week FREE!



Serving Central Missouri in 32 counties!

TO ADVERTISE YOUR LISTING, CALL:

417-532-9131

PUBLIC AUCTION

Saturday, September 28, 2024 - 9:00 A.M.

Location: 154 East Wirth Road, Mammoth Spring Arkansas. From Mammoth Spring take Hwy 63 south approx. 4 miles to Wirth Road. Take the black top Wirth Road approx. 6 1/2 miles to Hwy 175. Turn left on Hwy 175 and go approx. 2 1/2 miles to gravel Wirth Road, stay on Wirth Road for approx 1 1/2 miles to the sale. Watch for Lawrence Auction signs.

Howard Biggs Estate (Biggs Hardware and Auto Supply)

HARDWARE STORE CONTENTS-SHOP ITEMS-ANTIQUES

Caterpillar loader IT18 w/bucket and pallet fork extension (good), Eagle ETC 2400 tire changer, Eagle GLO 550 tire changer, Titan 7500 diesel generator, Porter Cable air compressor, Ingersoll Rand air compressor, Rigby hydraulic shear, 670 Fleet battery charger, pallet jack, pallet puller, pipe vise, hardware store contents partial list (brass fittings, nuts and bolts, grinding wheels, piping supplies, nails, filters, 1/2" electric impact wrenches, welding rods, drills, jig saws, Stanley wrench sets, cutting torches, stainless steel sinks, axe handles, large assortment of hand tools, air chucks, copper tubing, wire, rope, regulators, new air hoses, yard tools, floor jacks, plumbing supplies, bar and chain oil, Rotella oil, Fairbanks and Hobart pallet scales, creepers, feed dolly, interchange books, 20 ton press, log chains, pipe threader sets, welding helmets, Griots Garage thermometer, 3/4" drive socket set, several shelves), Antiques (1910's wire tie small cotton baler, cross cut saws, antique hand tools, grand mother clock, wall phone, Native American collectibles, washing machine, rocking horse, old license plates, over 100 cast iron mechanical banks, brass collection, granite ware, blue willow, hen on nest collection, Fenton, blue cobalt, 30 day clock, arrow head collection, oil lamps, old cast boot jacks, gum ball machine, depression glass, mantle clock, red globe lanterns, railroad lanterns, Dazey churn, display cabinets, antique side dresser, carnival glass), large knife collection, several display cabinets.

GUNS

Mauser rifle, Russitke 7.62 rifle, Newport 16ga double barrel shotgun, Winchester model 06-22 pump, black powder rifles,

COINS

Proof sets, Thomas Edison comm coins, over 75 American Eagles, Jamestown comm coins, Bald Eagle comm coins, First French Settlement comm coins, 3 cent pieces, First Flight comm coins, Morgan and Peace dollars, George Washington comm coins, silver certificates, Little Rock Central comm coins, Abe Lincoln comm coins, Vietnam Vet comm coins, John Wayne comm coins, Flying penny, 1925 San Fran silver 1/2 dollar, Indian Head pennies, WestPoint nickel sets, Lewis and Clark comm coins, U.S. Military Academy comm coins, Ben Franklin comm coins, Dolly Madison comm coin, Marine Corp comm coins, plus many more silver coins to be sold), **plus many more items to be sold that we could not list them all.**

Concessions will be available!

Auctioneer's Note: We have been commissioned to offer the items listed above at public auction, please note the early start time of 9am. Huge amount of items from the hardware store, antiques/collectibles and coins to be sold, we will run two rings part of the day. Come prepared to stay all day with us. Thanks for attending, Jeff.

Jeff Lawrence, Auctioneer, LLC

7988 Highway E - Couch, Mo. 65690
Home: 417-938-4394 • Cell: 417-331-5231
Mo. Lic#1929 Ark. Lic#1929

Drivers License Required - All announcements made day of sale take precedence over any printed material - Not responsible for accidents or stolen items.

NEW IN BOX MASTERBUILT ELECTRIC TURKEY FRYER: Up to 14 lbs. Fry, boil or steam. Safe for indoors. \$70. 417-718-5347. Morgan.

1985 ST. LOUIS CARDINALS SIGNED WORLD SERIES BALL: Includes Herzog & Ozzie Smith. PSA/DNA. \$190. Text for pictures. 573-854-8132. Houston.

SOVIET UNION WINTER WEATHER ARMY HAT: Excellent condition. \$ 35. Text for pictures. 573-854-8132. Houston.

ST LOUIS BLUES: autographed full size hockey stick. Brett Hull. Text for pictures. \$149 573-854-8132. Houston.

MISSOURI'S WICKED ROUTE 66: Gangsters and Outlaws on the Mother Road, Bonnie and Clyde, Jesse James, and the Young Brothers. \$12.50. 417-532-2045, Leave message and phone number. Lebanon.

RIFLE CASE: Pelican storm. IM3100 long case like new \$160. Text for pictures. 573-854-8132. Houston.

2011 FORD EXPLORER LIMITED: Black, 4WD, V6, 167,000 miles. Rebuilt title. Good/Very Good Condition. \$7,950. 417-589-3404. Conway.

AB SPORT LOUNGE like new \$35. 210-787-8222. Linn Creek.

NIB (3) SCAG BRAND #482879 MOWER BLADES, 21, Standard Lift with 3-1/2" wing. \$60 417-718-5347. Conway.



REGULAR SALE EVERY THURSDAY 11AM

For Farm Visits, Market Updates, or Trucking
Call Zach Cox 417-777-1320

**Competitive Buyers!
Competitive Commission!
Competitive Market!**

Barn: 417-532-9292
I-44 • Exit 123
17505 Route 66, Phillipsburg, MO 65722

www.midmostockyards.com

BUFFALO LIVESTOCK MARKET LLC



**276 Hwy 32 W. ,Buffalo, MO
September 21st, 2024**

Receipts: 560

REPRESENTATIVE STEERS

300-400 @ 270.00 to 307.50
400-500 @ 260.00 to 305.00
500-600 @ 245.00 to 272.00
600-700 @ 235.00 to 249.00
700-800 @ 225.00 to 239.00
800-900 @ 198.00 to 220.00

REPRESENTATIVE HEIFERS

300-400 @ 250.00 to 280.00
400-500 @ 220.00 to 280.00
500-600 @ 225.00 to 254.00
600-700 @ 220.00 to 235.00
700-800 @ 205.00 to 227.00
800-900 @ 200.00 to 212.00

FEEDER BULLS

300-400 @ 265.00 to 302.00
400-500 @ 235.00 to 275.00
500-600 @ 220.00 to 267.00
600-700 @ 188.00 to 239.00
700-800 @ 192.00 to 227.00
800-900 @ 186.00 to 218.00

STOCKS COWS

1500.00 to 1885.00

SLAUGHTER BULLS

High Yield 155.00 to 172.00
Low Yield 120.00 to 147.00

SLAUGHTER COWS

Fleshy 120.00 to 135.00
Med Flesh 125.00 to 136.00
Light Flesh 105.00 to 120.00

Doubtful Health, Poor, Cripple Cow & Bull Market Cheaper Weakly. We think it will rebound when #'s get short.

**HORSE SALE
SEPTEMBER 26TH @ 6 PM**

MON-WED MARKET REPORT

Listen to KJEL 103.7FM • Lebanon or KY00 99FM • Bolivar

VIEW OUR SALES AT CATTLEUSA.COM

CALL FOR TRUCKING OR ON-FARM VISIT

**Lyle Caselman • Owner-Manager
417-345-7876 • mobile 417-533-2944
Leon Caselman • Owner
417-345-4514 • mobile • 417-588-6185**

KING BUILDERS

We specialize in custom and specialty builds, such as:

- Houses
- Barndominiums
- Shops
- Barns
- Garages

We also do roofing & siding!



Call for a free estimate!

Stevie King | 435 Dickerson Ranch Lane, Conway, MO 65632 | 417-241-3280

POOL TABLES: Installations, moves, recovers, repairs, accessories, etc. 573-646-1700.

DARDEN PROFESSIONAL TIMBER HARVESTING, BUYING STANDING TIMBER: Great prices, improve wildlife habitat and improve forest health. State Certified & Fully Insured! 573-247-4808. Salem.

TIGER WOODS UPPER DECK CARD: #1 mint condition. 573-854-8132. Houston.

IRON WILL MEMORIES OF VINTAGE TRACTORS: Excellent shape. \$20, plus shipping. 417-260-0941. Raymondville.

TWO 1927 ILLINOIS LICENSE PLATES: \$20. 573-308-5884. Rolla.

3 MEN'S COATS: 1 New. XL. \$25/all. 573-453-2777. Salem.

LARGE SQUARE: Bales of straw \$42. **Large Round bales of straw \$52.** 573-539-2060 Versailles.

Wright Spray Foam Insulators, LLC
Commercial & Residential
Call for FREE Estimates!

Ervin Gingerich 417-926-2052
B. Eli Yoder 417-746-4932

BUYING STANDING TIMBER, Paying Daily. Butler Logging, 417-448-9323. Grovespring.

HOW TO BUILD A STREET ROD: Street Ride, Street Rodder, Hot Rod Magazine \$25. 417-260-0941. Raymondville.

CAMERA: Vivitar PS33, \$25. 417-260-0941. Raymondville.

2018 GMC CANYON PICKUP FOR SALE: Very Nice. 115,000 miles. \$13,000. 573-859-6574. Belle.

2019 JOHN DEERE 5055E: With Canopy, Loader, Bucket and Bale Spike, 4WD, block heater, widespread wheels, fluid in rear tires, 193 hours, always shedded, excellent condition. \$36,500. 417-718-5347. Conway.

BYLER FOOD SHACK: 6550 Ely Rd. Hartville. 417-741-1276. Fresh Produce, Farm Fresh Eggs, Canned Goods, Pumpkins & More. Open: Tuesday, Thursday, Friday & Saturday.

The Ultimate Wood Heat.

Classic Edge™ Titanium HDX Outdoor Wood Furnaces

UP TO \$2000 TAX CREDIT*

*On qualifying models and installation. Call for details.

Yarbrough Equipment Sales & Services, Inc.
9776 E. State Hwy OO • Strafford, MO
417-736-2303 • 1-866-286-6901 • www.yarbeq.com

2 BELL BICYCLING HELMETS: white 50-27cm, black 54-61cm, excellent condition. \$25 each. 417-718-5347. Morgan.

MILK GOAT FOR SALE: 573-858-3121. Salem.

2014 IMPALA: 152,000, 3.6L, Clean, Great Mileage. \$7,500. 870-458-3090. Viola.

6 MEN'S WESTERN SHIRTS: XL. \$25/all. 573-453-2777. Salem.

PAIR OF CAMOUFLAGE COVERALLS: XL. \$20. 573-453-2777. Salem.

HUGHESNET WIFI BOOSTER/EXTENDER: \$25. 417-718-5347. Conway.

PAIR OF MEN'S CARHARTT BOOTS: Size 11. \$20. 573-453-2777. Salem.

QUEEN SIZE AIRBED: With Built-in pump. 24" tall. \$40. 573-453-2777. Salem.

SYLVANIA PROJECTOR LAMP BULB; Sun King movie light, Bell & Howell light bar & flood lamps. \$35, plus shipping. 417-260-0941. Raymondville.

NEW IN BOX CARLSON EXTRA TALL IN-HOME PET GATE: With walk-through door and built in small 10"x7" pet door. Pressure mount-no holes. Fits 30-41.5" openings, 37" tall. \$30. 417-718-5347. Conway.

NEW PATIO SLIDING SCREENS: 79x36, on Rollers. \$10 each. 573-604-0674. Salem.

NEW SHUTTERS: Different Sizes/Colors. \$15 a pair. 573-604-0674. Salem.

SEVERAL GOOD USED & NEW TIRES: Price \$25-50. 573-604-0674. Salem.

TWO 23.1-26 LOG SKIDDER TIRES: 25% Tread, No Breaks, \$500 for Pair. Complete Log Grapple for Skidder, \$500. Cash. 417-988-8111. Nixa.

KUSTER LOGGING

BUYER of Standing Timber Oak and Walnut

Dozing Now Available

417-259-0047

References Available

Need a fix-it guy?



Jimmy Rouse
Specializing In Small Jobs

- Drywall Patching
- Interior & Exterior Repairs
- Painting
- Porch Repairs

Affordable And Reliable
417-299-9391

Buildings • Hunter's Cabins • Lawn Furniture



JAMCO BUILDERS

JAMCO Portable Buildings
800-688-2064 • 307 Enterprise Dr. • Seymour, MO • www.jamcobuilders.com

Rent To Own Plan

32 PIECE SET of Pink Heart Corelle dishes \$25. 417-532-2344. Lebanon.

81 FORD 250 4X4 PICKUP: Good Condition, \$4,000. John Deere 420W; To Be Restored Or For Parts, \$1,500. John Deere 620 \$2,500. 417-630-2843, 417-241-5621. Leave Message. Conway.

GRIZZLY 3-POINT BACKHOE AH: For Tractor. \$2,500. 573-765-4406. Richland.

90 FORD 800 DIESEL TRUCK: With Bed & Hoist, Single Axle. Good. \$6,750. 573-765-4406. Richland.

AQHA PALOMINO GELDING; 14.3h, Ranch Gelding that's done it all. Super light handle and quick. Excellent Ranch Horse Show Prospect. \$10,500. 573-512-0391. Fremont.

BUSH HOG 3210 PULL-TYPE BRUSH CUTTER: Big Gear Boxes. \$6,750. 573-765-4406. Richland.

1994 F350 XLT 7.3L. POWER STROKE TURBO DIESEL 5-SPEED DUALY: Fully Serviced, Performance Exhaust, 5th Wheel & Much More. \$8,995. 417-527-8212. Marshfield.

3-POINT PTO SEEDER: \$475. 573-765-4406. Richland.

ROME 8FT OFFSET DISC: \$3,500. 573-765-4406. Richland.

FORD 6600 DIESEL TRACTOR: Cab, with Loader. \$6,950. 573-765-4406. Richland.

IHC 1086 DIESEL TRACTOR: Cab & Air. \$8,950. 573-765-4406. Richland.

JOHN DEERE 2955 DIESEL TRACTOR: Cab & Cold Air, with J.D. 720 Loader. \$23,750. 573-765-4406. Richland.

IHC 8FT WHEEL DISC: \$1,900. 573-765-4406. Richland.

ALLIS FOLD UP WHEEL DISC: \$1,950. 573-765-4406. Richland.

JOHN DEERE 2630 DIESEL TRACTOR: Canopy, 70 H.P., with John Deere Loader. \$10,950. 573-765-4406. Richland.

BOBCAT 753 DIESEL SKID STEER LOADER: \$11,900. 573-765-4406. Richland.

1994 F350 XLT 7.3L. POWER STROKE TURBO DIESEL 5-SPEED DUALY: Fully Serviced, Performance Exhaust, 5th Wheel & Much More. \$8,995. 417-527-8212. Marshfield.

WESTFIELD 10X61 GRAIN AUGER: With Drag Hopper. \$2,850. 573-765-4406. Richland.

CASE 580B DIESEL BACKHOE LOADER: \$9,500. 573-765-4406. Richland.

ABCA MALE BORDER COLLIE: Black & White, Born 12/2020. Friendly and Respectful. \$150. 417-818-1175. Marshfield.

BECKER KVT-3-100 VACUUM PUMP: for CNC table / other applications. \$400. 417-322-0161. Lebanon.

FOR SALE



2023 Assembled Title 389 Peterbilt. 3406E CAT 550 HP 18 SPD 3:36 rears 3 yr unlimited miles warranty on these components. Have full list of upgrades. \$150,000. 417-291-6718 Joplin, Mo

PLAD PANTRY

DISCOUNT & SURPLUS FOODS FRESH PRODUCE LLC
417-532-4700

Hershey's Factory Favorites Candy Assortment	\$12.99 68.7 oz.
Organic Roaring Pineapple Kombucha	\$1.19 12 oz.
Frozen Tater Tots	\$3.49 32 oz.
Kodiak Muffin Power Cups.....	\$7.49 12 - 2.36 oz.
Peach or Mixed Berry Drinkable Yogurts	\$3.99 8 - 7oz.

1571 State Hwy 64 • Tunas, MO 65764
Hours: 8:30 a.m. to 5:30 p.m. • Closed Wed. & Sun.





FRIDAY
OCT 4
9:00 A.M. - 5:00 P.M.

SATURDAY
OCT 5
9:00 A.M. - 5:00 P.M.

SUNDAY
OCT 6
9:00 A.M. - 4:00 P.M.
EVENT IS HELD RAIN OR SHINE

OVER 1,200 AG & RURAL LIVING EXHIBITS

OZARK EMPIRE FAIRGROUNDS • SPRINGFIELD, MO

FREE ADMISSION & FREE PARKING

COME CHECK OUT THE NEW WILSON LOGISTICS ARENA



OVER 350 INDOOR AGRICULTURAL & RURAL LIVING DISPLAYS IN THE WILSON LOGISTICS ARENA AND THE ED & CAROL PINEGAR AG LEARNING CENTER



- OVER 450 OUTDOOR AG EXHIBITS ON DISPLAY
- OVER 600 HEAD OF LIVESTOCK ON DISPLAY
- OVER 400 INDOOR AG & RURAL LIVING DISPLAYS IN THE E-PLEX BUILDING

Register to Win!

\$1,000

SHOPPING SPREE

TO BE REDEEMED WITH ANY OZARK FALL FARMFEST EXHIBITOR BY NOV. 30, 2024

PROMOTED BY
OZARK EMPIRE FAIR



3001 N. GRANT • SPRINGFIELD, MO 65803
620-423-2355 • 417-833-2660
OZARKFALLFARMFEST.COM

NEW GRIZZLY SANDBLASTER: (in cabinet) needs parts. \$50 417-322-0161 Lebanon.

WANTED: Self dumping Hopper. Must be 3yd or bigger. 417-322-0161. Lebanon.

ROLLER STAND: single adjustable roller with base, heavy built. \$30. 417-322-0161. Lebanon.

WANTED CASE 1030 TRACTOR: Shedded, cab less, no junk. 573-943-6868, Leave Message. Linn.

2010 WINNEBAGO ITASCA IMPULSE RV: 42,xxx, two slides. Great condition. Ready to travel! Located in St. James. \$39,000 OBO. Serious inquires only. 573-248-9487. St. James.

ROCKWELL SABER SAW: (benchtop) new, \$50. 417-322-0161. Lebanon.

4 INCH GALVANIZED DUCT PIPE: with fittings. Whole lot - \$40. 417-322-0161. Lebanon.

Six Civil War General Commemorative Beer Steins: \$40. 660-464-0759. Warsaw.

SCROLL SAW: deep throat, on stand \$50. 417-322-0161. Lebanon.

GRAY WALKING HORSE GELDING; 16 hands. More "whoa" than "go." Sure-footed with very smooth gaits. Walks slow with a loose rein. Excellent ground manners. 13 yrs. \$5,500 OBO. 417-693-0389. Conway.

OLD ANTIQUE BOX WAGON: On rubber tires. \$475. 636-932-4429. Hermann.

2 USED POLARIS TIRES: Size 26x9x12. \$50. 636-932-4429. Hermann.

Starnes Auto LLC
 22115 Rt. 66 • Lebanon, MO 65536
 588-7939 Cell
 588-3159 Office
 www.starnesauto.com

Worry-Free
VEHICLE ALIGNMENTS

With our state-of-the-art computerized equipment
 Front End | Rear End | Four Wheel Drive | Thrust Alignments | Both Foreign and Domestic Vehicles



DON'T FORGET TO CHECK OUT OUR CARS FOR SALE!
WE DO ALIGNMENTS!

OFFICIAL TRACTOR OF TOUGH™

INTRODUCING THE ALL-NEW 5100 SERIES



NEW MAHINDRA TRACTORS

1120 4WD & LDR 20HP	IN STOCK
2126 4WD & LDR 26HP	IN STOCK
1626 4WD & LDR 26HP	IN STOCK
1635 4WD & LDR 36HP	IN STOCK
1640 4WD & LDR 38HP	IN STOCK
2645 4WD & LDR 45HP	IN STOCK
5145 4WD & LDR 45HP	IN STOCK
5155 4WD & LDR 55HP	IN STOCK
4550 4WD & LDR 48HP	IN STOCK
6065 4WD & LDR 62HP	IN STOCK
6075 4WD & LDR 71HP	IN STOCK

USED TRACTORS

JD 5075E 75HP 4WD CAB LDR	40,000
MF 5445 90HP 4WD CAB LDR	39,500
MF 2606 65HP 4WD LDR	29,500
MF 5455 95HP 4WD CAB LDR	29,500
MAHINDRA 8560 85HP CAB LDR	24,500
MAHINDRA 2555 55HP CAB LDR	24,500
MAHINDRA 2638 38HP 4WD LDR	22,500
MAHINDRA 4035 40HP 4WD LDR	15,000
MF 1135 120HP CAB LDR	10,500
LONG 2510 49HP 4WD LDR	7,500
JD 1010 LDR 36HP	5,500
IHC 504 46HP	4,000

USED ROUND BALERS

HESSTON 560 5X6	2,000
-----------------	-------

USED DISC MOWERS

NEW IDEA 5512 12FT M/C	8,500
------------------------	-------

USED MISC.

HAYBUSTER 107C DRILL	20,000
HESSTON 8WHL RAKE	2,500
VERMEER 8WHL RAKE	2,250
PANORAMA 8WHL RAKE	1,750

Marshfield Machinery Inc.
 222 E. Madison • Marshfield, MO 65706
 417-859-2117 • www.marshfieldmachinery.com

*2018 data including all Mahindra group brand sales. MahindraUSA.com © 2020 Mahindra USA Inc.

Mahindra Rise.

Marshfield Machinery Inc.
 222 E. Madison
 Marshfield, MO 65706
 417-859-2117
 www.marshfieldmachinery.com



New Classified Rates!

Add **YELLOW** Color For An Additional \$3 Per Reader Ad

FREE ADS – Item must be \$50 or less, ad must list price, 12 words or less, limit to 5 free ads (total) per week.

Free Ads **EXCLUDE**; Ammo, Guns, Hay, Animals and Firewood

All ads REQUIRE Phone Number and City or Town (Included at no charge)

ONLY \$5.00

10 words or less!

(1) _____	(2) _____	(3) _____	(4) _____
(5) _____	(6) _____	(7) _____	(8) _____
(9) _____	(10) _____	Phone Number _____	City or Town _____

ONLY \$9.00

22 words or less!

(1) _____	(2) _____	(3) _____	(4) _____
(5) _____	(6) _____	(7) _____	(8) _____
(9) _____	(10) _____	(11) _____	(12) _____
(13) _____	(14) _____	(15) _____	(16) _____
(17) _____	(18) _____	(19) _____	(20) _____
(21) _____	(22) _____	Phone Number _____	City or Town _____

Over 22 words
ONLY 30¢

per additional word
(up to 12 additional words)

(23) _____	+30¢	(24) _____	+60¢	(25) _____	+90¢	(26) _____	+\$1.20
(27) _____	+\$1.50	(28) _____	+\$1.80	(29) _____	+\$2.10	(30) _____	+\$2.40
(31) _____	+\$2.70	(32) _____	+\$3.00	(33) _____	+\$3.30	(34) _____	+\$3.60

CALL FOR SPECIAL PRICING ON LINE ADS OVER 34 WORDS

Buy 3 Weeks - Get 4th Week Free! (Must be same ad)

Place your Classified Ad TODAY!

417-532-9131 | Fax: 417-532-8140 Or Mail To: P.O. Box 192 • Lebanon, MO 65536

For your convenience we accept MasterCard, Visa, Discover or American Express



DEADLINE FOR CLASSIFIED ADS: FRIDAY 4:00PM!

Name _____

Address _____

City _____ Email _____

State _____ Zip Code _____ Phone _____

Ad Total \$ _____ + Yellow Color \$ _____ X # Weeks _____ = Amount Enclosed \$ _____

Quarles Supply
3251 S Springfield Ave, Bolivar, MO 65613
417-777-2391

Kubota of Lebanon
22330 Hwy MM, Lebanon, MO 65536
417-532-0888

*Your hometown
Kubota dealer
of choice.*



**#1 SELLING
TRACTOR
UNDER 200 HP***

L02 SERIES

Double digit to-do lists have met their match.

Dependable. Powerful. Versatile. When you need increased comfort, and reliable high performance under a steel hood, you can count on the Kubota L02 Series.

L2502DT Tractor and Loader \$21,595 | 0% for 60 Months

Visit your Kubota dealer today for a demo!

KubotaUSA.com



0% Down, 0% A.P.R. financing for up to 60 months on purchases of select new Kubota L2502DT equipment from participating dealers' in stock inventory is available to qualified purchasers through Kubota Credit Corporation, U.S.A.; subject to credit approval. Example: 60 monthly payments of \$11.90 per \$1,000 financed. Some exceptions apply. Terms subject to change. Offers expire 09/30/2024. This material is for descriptive purposes only. Kubota disclaims all representations and warranties, express or implied, or any liability from the use of this material. For more information, see Dealer or go to KubotaUSA.com.