

FREE - TAKE ONE!

Vol. 31 No. 11

JUNE 13, 2024

417-532-9131

WEEKLY **TRADER** **MAGAZINE**

 Find us on Facebook
[@myweeklytrader](https://www.facebook.com/myweeklytrader)
AUCTIONS PG. 6

VISIT OUR NEW WEBSITE! MYWEEKLYTRADER.COM

Serving Central Missouri!

in 34 counties!



- Benton
- Boone
- Callaway
- Camden
- Cedar
- Christian
- Cole
- Crawford
- Dallas
- Dent
- Douglas
- Franklin
- Gasconade
- Greene
- Henry
- Hickory
- Howell
- Iron
- Laclede
- Maries
- Miller
- Montgomery
- Oregon
- Osage
- Ozark
- Phelps
- Polk
- Pulaski
- St. Clair
- Texas
- Washington
- Webster
- Wright
- Morgan

WEEKLY **TRADER** **MAGAZINE**

417-532-9131
100 E. Commercial St.,
Lebanon, MO 65536

WWW.MYWEEKLYTRADER.COM

 [@myweeklytrader](https://www.facebook.com/myweeklytrader)

LAND FOR SALE



445 ACRES ± | HICKORY CO., MO | \$1,250,000

- Turn key hunting ranch in a great location with big buck history
- Truman Reservoir is just a 1/2 mile away for fantastic fishing and duck hunting
- Class 2 soils along creek with impressive food plot each year
- Cabin has great sunset views from the backporch and underneath the gazebo
- 12 double ladder stands and 2 single ladder stands
- 4 Redneck blinds with 10 ft platforms
- 3 Bank blinds on platforms
- Multiple other metal blinds and wooden blinds
- Proven big whitetail farm with tower stands, multiple bow set ups and numerous food plots
- Spring fed Brushy Creek laces through the center of the property
- Mature hardwoods, brushy thickets, numerous ridges and drainages, along with million dollar views
- Farm is bordered by a 4,000-acre tract on the East side and Truman Lakes - Army Corp of Engineer frontage on the west
- Nice rustic cabin and two shops.
- Nicely manicured trails provide access through the entire property. Close to 10 miles of trails
- Property has been under a strict wildlife management program and has TSI ready to be burned
- Two good access points on north and south side provided by a well-maintained country road
- Property is 120 miles from Kansas City and 45 miles from Springfield
- Abundance of water features on the property and all around the property
- 2 miles of transmission line on edge of property for great hunting with food plots in place
- Hunting cabin is tucked back into property and secluded with no sounds of neighbors
- Dedicated sanctuary areas for wildlife that have been untouched for numerous years

BRIAN UTECHT LAND TEAM SOUTHWEST MISSOURI LAND SPECIALISTS



📞 417.766.5595

🌐 brian.utecht@whitetailproperties.com



WHITETAIL PROPERTIES REAL ESTATE

HUNTING | RANCH | FARM | TIMBER

WHITETAILPROPERTIES.COM

Whitetail Properties Real Estate, LLC DBA Whitetail Properties, DBA Whitetail Properties Real Estate. In the States of Nebraska & North Dakota DBA Whitetail Trophy Properties Real Estate LLC. Licensed in CO, MN, ND, SD, TN & WI - Jeffrey Evans, Broker. Licensed in FL, KS & MO - Jefferson Kirk Gilbert, Broker. Licensed in TX & NM - Joey Bellington, Broker. Licensed in IN - Bill Minor, Broker. Licensed in AL, GA, LA, & MS - Sybil Stewart, Broker. Licensed in TN - Tim Burnette, Broker. Licensed in TN & MS - Josh Monk, Broker. Licensed in AR - Anthony Chrisco, Broker. Licensed in NC, SC, VA - Chip Camp, Broker. Licensed in IA, NC - Richard F. Baugh, Broker. Licensed in MI - Edmund Joel Nogaski, Broker. Licensed in IL, MD, WV - Debbie S. Laux, Broker. Licensed in ID, MT, OR, UT, WA, WY & NV - Aaron Milliken, Broker. Licensed in NY - John Myers, Real Estate Broker. Licensed in OK - Dean Anderson, Broker. Licensed in KY - Derek Fisher, Broker. Licensed in OH - Jeremy Schaefer, Principal Broker. Licensed in NE & SD - Jason Schendt, Broker. Licensed in MS - Chipper Gibbs, Broker. Licensed in PA - Jack Brown, Broker.



THE TRAIL OF TEARS ACROSS MISSOURI: By Joan Gilbert, 122 pages, \$10. 417-532-2045, Leave message and phone number. Lebanon.

ED BARN WOOD SIDING: 10" wide. Call for appointment 573-729-7226. www.pineridgerustic.com Salem.

LOG SIDING: 2X8 Pine/Western Cedar. Call for appointment 573-729-7226. www.pineridgerustic.com Salem.

TRIPLE WIDE- moving stock, awesome price. 573-657-7040 chateauhomes.net.

40 YEARS THIS YEAR- we have to be doing something right. Call for quote or any house new or used, double and single. 573-657-2176 amegamobilehomes.com.

NEW SQUARE D RAINPROOF 50AMP DISCONNECT: \$120. 636-239-2695 or 314-560-5700. Washington.

OPERATORS MANUALS: IT, Jensales, & Case IH. Call for details, \$20 each. 636-239-2695 or 314-560-5700. Washington.

I BUY.....used mobile homes. Call or text 573-338-6250 or email GregS.CDH@outlook.com

AB SPORT LOUNGE like new \$35. 210-787-8222 Linn Creek.

RUBBER & LEATHER BOOTS AND 5-BUCKLE OVER SHOES: Men's 11, Women's 7, some insulated. \$12-\$35 obo. 636-239-2695. Washington.

TOSHIBA 42" FLAT SCREEN LED LCD HD TV: With remote & owner's manual. \$50. 210-787-8222. Linn Creek.

SOVIET UNION WINTER WEATHER ARMY HAT: Excellent condition. \$ 35. Text for pictures. 573-854-8132. Houston.

The Ultimate Wood Heat. 23-0701



Classic Edge™ Titanium HDX Outdoor Wood Furnaces

UP TO \$2000 TAX CREDIT*

*On qualifying models and installation. Call for details.

Yarbrough Equipment Sales & Services, Inc.
9776 E. State Hwy OO • Strafford, MO
417-736-2303 • 1-866-286-6901 • www.yarbeq.com

CALUS LOGGING

20 YEARS EXPERIENCE

Buying Standing Timber
Walnut & Oak

Joe Calus, Owner
417-926-4606 • MTN. GROVE

CERTIFIED

Starnes Auto LLC

22115 Rt. 66 • Lebanon, MO 65536

417.588.7939 Cell
417.588.3159 Office
www.starnesauto.com

TINY HOMES - Missouri Franchise 573-881-7965.

WE GOT IT - let us bid your mobile home purchase, new and used. 573-499-9993 columbiadiscountohomes.com.

SPORTSET BY SARGENT: Fishing pliers in leather sheath. Like a multi-tool. \$15. 636-239-2695 or 314-560-5700. Washington.

BLACK METAL TUBULAR BRACKET: Scrolling and a stainless bracket. \$8. Call for pictures. 636-239-2695 or 314-560-5700. Washington.

'85 FORD PICKUP PARTS: Passenger door with window glass & mirror \$30. Also, Tailgate for '85 Ford pickup \$25. 573-308-5884. Rolla.

INTERNATIONAL PICKUP TRANSFER GEARBOX: \$150. 573-308-5884. Rolla.

Worry-Free WINDSHIELD REPAIRS

Don't let that rock chip turn into a huge problem!



Chip & Crack Repairs | Glass Replacement
WE FILE WITH INSURANCE!

VOTED #1 BEST Preowned Car Dealership

TIM'S USED CARS
(573) 341-3828 • 1334 South Bishop (Hwy. 63) • Rolla, MO
Next to Hwy CC • www.tims-used-cars.com

	2021 CHRYSLER VOYAGER LX 3.6L V6, Power Equipped, 103,XXX Miles Only \$19,500		2006 NISSAN TITAN LE EXTENDED CAB, 4X4, 5.6L V8, Leather, Power Equipped, 117,XXX Miles Only \$10,500
	2012 FORD F350 XL CREW CAB 4X4, 6.2L V8, Power Equipped, 187,XXX Miles Only \$13,900		2012 RAM 2500 LARAMIE LONGHORN CREW CAB, 4X4, 5.7L V8, Loaded with Options, 120,XXX Miles Only \$24,900

LARGE SELECTION OF CARS, TRUCKS, SUVs & VANS!

OFFICIAL TRACTOR OF TOUGH™

INTRODUCING THE ALL-NEW 5100 SERIES



Marshfield Machinery Inc.

222 E. Madison • Marshfield, MO 65706
417-859-2117 • www.marshfieldmachinery.com

*2018 data including all Mahindra group brand sales.
MahindraUSA.com © 2020 Mahindra USA Inc.



NEW MAHINDRA TRACTORS	
1626 4WD & LDR 26HP	IN STOCK
2126 4WD & LDR 26HP	IN STOCK
1635 4WD & LDR 36HP	IN STOCK
1640 4WD & LDR 38HP	IN STOCK
2638 4WD & LDR 38HP	IN STOCK
2645 4WD & LDR 45HP	IN STOCK
5145 4WD \$ LDR 45HP	IN STOCK
5155 4WD & LDR 55HP	IN STOCK
4550 4WD & LDR 48HP	IN STOCK
6065 4WD & LDR 62HP	IN STOCK
6075 4WD & LDR 71HP	IN STOCK
6075 4WD CAB & LDR 71HP	IN STOCK
USED TRACTORS	
MF 4710 100HP CAB LDR	58,000
MF 4609M 90HP CAB LDR	45,000
NHT 4.75 74HP 4WD LDR	32,500
LONG 2510 49HP 4WD LDR	7,500
MF 1528 28HP 4WD	6,500
JD 1010 LDR 36HP	5,500
USED ROUND BALERS	
MF 2946A 4X6 MESH	35,000
HESSTON 560 5X6	2,000
USED DISC MOWERS	
AGCO 3309 9FT M/C	11,000
NEW IDEA 5512 12FT M/C	8,500
KUHN 9FT 3PT	4,000
USED MISC.	
BUSH HOG 3715 15FT	13,500
JD 1815 15FT	9,500
BUSH HOG 10WHL RAKE	4,500
BUSH HOG 10WHL RAKE	4,000
BUSH HOG 17FT TEDDER	3,500

Marshfield Machinery Inc.

222 E. Madison
Marshfield, MO 65706
417-859-2117
www.marshfieldmachinery.com

NEW IN BOX MASTERBUILT ELECTRIC TURKEY FRYER: Up to 14 lbs. Fry, boil or steam. Safe for indoors. \$80. 417-718-5347. Morgan.

1985 ST. LOUIS CARDINALS SIGNED WORLD SERIES BALL: Includes Herzog & Ozzie Smith. PSA/DNA. \$190. Text for pictures. 573-854-8132. Houston.

ST LOUIS BLUES: autographed full size hockey stick. Brett Hull. Text for pictures. \$149 573-854-8132. Houston.

RIFLE CASE: Pelican storm. IM3100 long case like new \$160. Text for pictures. 573-854-8132. Houston.

GUNSMITHING-Older Rifles, Shotguns, Handguns, all 22LRs. Any make, any model, estate appraisals. Camdenton. 573-363-5801.

3 ARMY CANTEENS: Mess kit, belt & duffel bag. Best offer for all. 417-260-0941. Raymondville.

3 1950s BASEBALL MITTS: \$60. 417-260-0941. Raymondville.

40 PIECE SET OF CORELLE & GLASSES: \$35. 417-532-2344.

TABLE LAMPS: Small, Medium & Large. \$5-7/each. 417-532-2344.

20 LB PROPANE BOTTLE: for BBQ grill. \$20. 417-532-2344.

BREWER LOGGING: Looking to buy standing walnut & oak timber. If you want to turn your trees into Benjamins, Call 417-254-0266, for a free estimate.

Pine Ridge Rustic

Log Home Building Supplies

SPECIAL SALE!

On Pine Log Siding

SERVICES OFFERED!

- Custom Log Home Products
- Pre-finishing available on interior & exterior
- Hand Hewn Sidings Offered

WWW.PINERIDGERUSTIC.COM

523 CR 2410 • Salem, MO 65560 • Phone: 573-729-7226



- Log Siding
- Beveled Siding
- Car Siding • Red Cedar
- Western Cedar • Pine • Timbers • Barnwood

PLAD PANTRY

DISCOUNT & SURPLUS FOODS
FRESH PRODUCE LLC

417-532-4700

Uncooked, Ice Glazed Chicken Thighs.....	\$6.99 5 lbs.
Bone-In Brown Sugar Glazed Ham	\$1.59 a lb.
Shredded Mild Cheddar & Monterey Jack Cheese	\$14.99 5 lbs.
Turkey Sausage Links.....	\$3.99 28.8 oz.
Berry Crunch Cereal	\$2.29 20 oz.

1571 State Hwy 64 • Tunas, MO 65764
Hours: 8:30 a.m. to 5:30 p.m. • Closed Wed. & Sun.





Call to Order
417-993-3017

Meadowview Dutch Market

Sale Dates June 12th, 2024 to
June 18th, 2024 while supplies last!

DELI SPECIAL

Bulk & Surplus Groceries • Prices Subject to Stock on Hand

EXTRA SHARP CHEDDARREG. \$5.95 LBSALE \$5.45 LB
LIVERWURSTREG. \$4.75 LBSALE \$4.25 LB
VIRGINA HAMREG. \$5.99 LBSALE \$5.49 LB

TRY our Fresh Homemade DELI Sandwiches: TURKEY, HAM, ROAST BEEF, ITALIAN, BLT'S, PULLED PORK AND BLT PULLED PORK (MADE YOUR WAY)! COME IN OR CALL to order! ALSO Custom Deli trays! Veggie OR FRESH Meat-N-Cheese!



GEORGIA PEACHES

\$19⁹⁹
1/2 BUSHEL



GEORGIA FRESH CANTALOUPE

80/20 GROUND BEEF

\$1⁸⁵
10 OZ.



Boneless Skinless
Chicken Breast
\$1⁹⁹
LB.



Seasonal Grill Marked
Chicken Chunks
\$1⁹⁹
LB.



Sliced American
Cheese
\$7⁹⁹
5 LB. BLOCK



Mini
Oreos
99¢
3.5 OZ.



Pizza
Lunchables
2/\$1⁰⁰

Viennetta Vanilla
Dessert Cake
\$1⁹⁹
21.9 OZ.

MEADOWVIEW DUTCH MARKET

417-993-3017 Hours: Mon-Thurs 8-5pm
Fri 8-6pm • Sat 8-5pm
23 Miles West on Hwy 64 • Right on T Hwy
9 miles • Left on E Hwy 1 mile on Left

NOT RESPONSIBLE FOR PRINT ERROR!!

NOW ACCEPTING CREDIT, DEBIT CARDS & EBT

DUTCH COUNTRY STORE, LLC

573-378-4395
Hours: Mon-Thurs 8-5pm
Fri 8-6pm • Sat 8-5pm
5 miles East of Versailles off Hwy C on Kelsay Road

TIGER WOODS UPPER DECK CARD: #1 mint condition. 573-854-8132. Houston.

JUMBO FLOAT: 95" long x 80" wide x 10" high. Heavy gauge vinyl, Safety valve, 2 screw valves, 12 rope holders, water plug, nylon rope around it. Like new. \$150. 210-787-8222. Linn Creek.

DARDEN PROFESSIONAL TIMBER HARVESTING, BUYING STANDING TIMBER: Great prices, improve wildlife habitat and improve forest health. State Certified & Fully Insured! 573-247-4808. Salem.

SCHNOODLES FOR SALE: 417-718-6609.

WE BUILD: houses, cabins, garages, & pole barns. Yoders Outdoors. 573-759-3851. Mornings 8 - 8:30 a.m.

PRETTY REGISTERED DACHSHUND PUPPIES FOR SALE: Shots & Wormed. Males & Females. 573-247-6273.

KING BUILDERS



We specialize in custom and specialty builds, such as:

- Houses
- Barndominiums
- Shops
- Barns
- Garages

We also do roofing & siding!

Call for a free estimate!

Stevie King | 435 Dickerson Ranch Lane, Conway, MO 65632 | 417-241-3280

Buying Standing Timber

References Available.

BUTLER LOGGING



NIANGUA, MO
417-448-9323

BUYING PRE 1970: BEER SIGNS, CANS, BOTTLES, ADVERTISING. FALSTAFF, LEMP, HAMMS, PABST, SCHLITZ, CAPITOL, BUDWEISER, & MORE. 573-680-5377.

HIGHPOINT GREENHOUSE: Clearance sale all through June. 417-741-2793.

PERSONAL PROPERTY AUCTION

1318 STORMY POINT RD, BRANSON, MO

SATURDAY, JUNE 15TH, 2024 AT 10:00 AM CDT

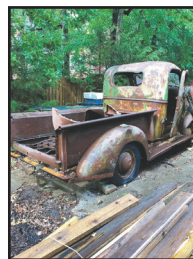
INVENTORY LIST:

Dresser Model 200 Tracked Loader, 59 Cummins
 1980 Chevy Dump Truck, 6L Or 366 Engine,
 Aqua Glide, Large Trampoline
 1999 Ford F Series Box Truck, Cummins Diesel
 Multiple Commercial Trash Cans
 Easy Go Electric Golf Cart Utility Vehicle
 Metal Benches, And Tables
 Dear Antler Chandelier
 Four Very Large Driftwood Frames Around 4 1/2' X
 Hundreds And Hundreds Of Fishing Poles
 Fiberglass Water Tank, Looks To Be About 200
 Looks To Be 75 To 100 Patio Lounge Chairs
 Hundreds Of Wooden Shaft Golf Clubs
 Patio Chairs, Multiple Log Bed, Headboard, And Footboard Sets
 Patio Chairs, Handmade Cedar Bed Frame
 Jet Bathtubs, Dear Scene Hat Racks, Coat Racks
 Enormous Amount Of Artwork
 Copper Pails Copper Ladles
 Large Wooden Bin Cabinet
 Five Pallets Of Armstrong Ceiling Tile
 Two Large Decorative Mirrors
 Antique Croquet Game
 Pallet Of Germs Be Gone Hand Sanitizer 24 / 4
 Lots Of Ornate Lighting
 Hand Car, Wooden Decorative Bookshelf
 Lots Of Decorative Frames
 Wooden Hand Carved

Decorative Cabinet
 Lots Of Antique Luggage And Chest
 A Pair Of Metal Decorative Doors
 Several Sets Of Living Room Furniture, Some Of
 125 Foot Long, Fiberglass Slide, With Pump
 Buckeye Apple Press
 There Are Five Cases Of LED Down lights
 Antique Sporting Accessories
 Wooden Dresser
 Vintage Five Drawer Wooden Cabinet
 Vintage Wooden Radio Case
 Antique Wooden Canoe Shelf
 Outside Air Conditioning Unit
 Beautiful Hand Carved Wooden Shelving
 Several Pieces Of Wooden Furniture
 Antique Trikes, And Scooters
 Large Wooden Tree Trunk Display
 Several Nice Upholstery Chairs That Are Cleaned Up
 A Lot Of Nautical Items
 The Computing Scale Company Dayton, Ohio
 Lots Of Wooden Chairs, Bar Height, Chairs
 Several Pallets Of Cedar Planks
 Lots Of Antique Fishing Gear, Minnow, Buckets,
 Vintage Wooden Bathtub With Metal Liner Inside On
 A Lot Of Woven Baskets
 Vintage Wood Burning Cook Stove
 Weather Saddle
 Portable Gasoline Powered

Air Compressor
 Old Doors, Chandeliers, Signs Or Menu Holders
 Duck Decoys, Lots Of Dishes, And Cooking Ware
 Vintage Wooden Sleds
 Lots Of Signage
 Replica Dock Post
 Wooden Crab Trap
 Driftwood Tables
 Vintage Railroad Carts
 Vintage Wooden Chairs
 Large Bear Playing The Harmonica 4 Foot Tall
 Vintage Bar Stools
 Vintage Looking Cabinets
 Five Large Rolls Of New Commercial Carpeting
 Vintage Cabinet
 Two Large Dining Room Tables
 Vintage Desk Longhorn Skull With Horns
 Vintage Display Case
 Circular Wood Shelving Tear
 Three Large Heavy Duty Cabinets On Rollers
 Taxidermy Duck In Case
 Vintage Whitney Jensen Metal Stamper
 Vintage Excelsior Tool Company Metal Stamper
 Couch Needs Cleaned
 Harvest Tables even Antique Outboard Motors
 And Finding More Pictures
 Nice Vintage Counter
 Vintage Outboard Motor Oil Cans
 Old Sleds Vintage Tobacco Tin
 Several Bundles Of New 5/8" OSB Plywood
 Wooden Sculls, Competitive

Rowing Boat Holds
 Gas Powered Golf Cart, Ez Go
 Three Boat Stands
 500-Gallon Propane Tank
 1949? Chevy Truck, No Title
 Lots Of Miscellaneous Outdoor Chairs
 Lumber Outdoor Playground Set
 tons of Bass pro decorations
 And More!



FOR MORE INFORMATION GO TO WWW.EASTERLYAUCTIONCO.COM OR CALL EASTERLY'S AT 417-833-9494



Mike Easterly Auctioneer • 417-833-9494

Not Responsible for accidents or theft. For more information call: Easterly Auction Company, Springfield, MO. Auction Terms: Visa, Mastercard, Cash, Cashier's check or checks with proper I.D. Announcements day of sale take precedence over printed material. Auction Notes: Although information is obtained from sources deemed reliable, auctioneer makes no warranty or guarantee expressed or implied. Buyers should themselves take the opportunity to make their own inspection prior to sale.

www.EasterlyAuction.com • auctionzip.com ID#14770



Sam CRAWFORD AUCTION SERVICE LLC

As we have sold our farm & moving, will sell the following located from Wheatland, MO
7 miles South on Hwy. 83 to Elkton, MO, then West 1 mile on Hwy. H to Co. Rd. 143, then South 1 mile.
Watch for auction signs.

SATURDAY, JUNE 22ND, 2024 - 9:30 A.M.

MACHINERY - FARM MISC. - TOOLS - HOUSEHOLD - MISC.



MACHINERY

SELLS NEAR 12 NOON

- NH 640 Auto Wrap Round Bales, Shedded, Looks Good
- Hesston 1006 3 Pt. Disc Mower, 9', Works
- IH 10' Pull Brush Cutter, Works
- Vermeer 605J Round Baler, Twine, Works
- Bumper Hitch 16' Utility Trailer, Needs Floor
- Older Pick-Up Bed Trailer

TOOLS - FARM MISC.

- 22 Ton Wood Splitter
- Gravely Zero Turn Mower, 44", Needs Some Work
- Lincoln 225 Electric Welder
- Craftsman Lawn Tractor
- Stihl Chainsaw
- Yard Cart
- Mantis Type Tiller
- 12V Sprayer
- Cordless Trimmer
- Long Handle Tools
- 3 Alum. Ext. Ladders
- 6' Fiberglass Step Ladder
- Go-Cart
- Asst. Power Hand Tools
- Wrenches, Sockets
- Sev. Rods/Reels
- 5-6 Bicycles
- Comm. Painter

- 2 Pick-Up Toolboxes
- Steel Posts
- 3 Bale Rings (1 Horse)
- 4-5 Poly Feed Bunks
- 5-6 Port. Panels
- 2 Pony Carts
- Horse Blankets, Bridles, Asst. Tack
- 8x8 Chainlink Dog Pen
- Galv. Tub
- Cistern Pump
- Other Misc.

HOUSEHOLD

- GE Washer & Dryer (1 Yr. Old)
- Dryer
- Whirlpool Double Door Refrigerator, Bottom Freezer
- Maytag Refrigerator, Bottom Freezer
- Kenmore Chest Freezer
- Oak Dining Table, 6 Chairs, Hutch, Nice
- Roll Top Desk
- 2 Bar Stools
- Ant. Desk
- Couch, Chair/Ottoman
- Rustic Pine Twin Bed & Dresser
- Cedar Chest
- Ant. Copper Boiler
- 2-3 Chest of Drawers
- Oak Coffee Table & End Tables
- Lamps
- Ant. Framed Pictures
- Rustic Pine End Table
- Singer Treadle Sewing Machine



- Couch
- 2 Recliners
- TV Cabinet
- Coffee Table
- Some Antique Dishes
- Catering Pots & Burners
- Wilton Cake Pans
- Glass Cannister Set
- Lot Christmas Decorations
- New Ceiling Lights
- 2 Concrete Yard Benches
- Lg. Chest of Drawers
- Ant. Lamp Table
- 2 Upholstered Chairs
- Walnut Drop Leaf Table
- Ant. Oak Dining Table & 4 Chairs (Dr. Briggs, Wheatland)
- Window AC
- Walker, Wheelchair, Other Items
- Lodge Decorations
- 3-4 McCoy Planters
- Jewelry Cabinet
- Other Household Misc.



Sam 417-328-9137 Chase 417-399-1904 Chance, CAI 417-298-1751 Tom Poynter Jack Lancaster

TERMS: Cash or good check. Nothing removed until settled for. Not responsible for accidents. Lunch available. Statements made day of sale take precedence over printed matter. All items sell as is. No warranties given or implied.

417-998-6629
 Cross Timbers, Mo.
CrawfordAuctionService.com



David & Amanda Roberts

PUBLIC AUCTION

Saturday, June 15th at 10:00 a.m.

2400 County Road 5840, Willow Springs, Mo 65793

Directions from Willow Springs: 76 Hwy West 0.8 Mile to County Road 5250 (5250 turns into Split Oak Road), right on CR 5250 for 1 Mile then left on 5840. Watch for Reid Auction signs.

There will be something for everyone at this auction.

Truck-Building-Tools-Misc. 2018 GMC Sierra 4x4 w/44836 Miles, 12x21 Storage Building w/Loft, Birdhouse on Stand, Gas BBQ Grill, Lots of Yard Ornaments, Generac 7000 Watt Generator, Miller Arc Welder, Bostitch Air Compressor, Lincoln Arc Welder, Battery Charger, TV Antenna Tower, Lots of Nuts, Bolts, Screws, Misc. Oils, Paints and Shop Supplies, Oil Cans, Gas Jugs, Porter Cable Power Washer, Stanley Twin Tank Air Compressor, Work Light, Delta 12" Planer, Radial Arm Saw, Drills, Sanders, Routers, Hand Saws, Ladders, DeWalt Bench Grinder, 3/4 Inch Drive Socket Set, Large Open End Wrenches, Lawn Cart, Lawn Sweeper, 2 Ton Chain Hoist, Garden Tools, Coolers, Boomers, ATV Sprayer, Stihl B686C Leaf Blower, Stihl MM55 Tiller, Truck Ladder Rack, Truck Ladder Rack w/Tool Boxes, Lawn Roller, Metal Saw Horses, 2 Wheel Lawn Cart, Cultipacker, Barn Tin....much more not listed. **Furniture-Household-Etc.** Red Head 20 Gun Safe, GE Chest Freezer, Oak Table & Chairs, Cherry 4 Post Queen Bed with Matching 7 Drawer Highboy, Round Oak Coffee Table, 2 Full Oak Bed Sets, Oak Dresser w/Mirror, Oak Trunk, 3 Drawer Oak File Cabinet, Oak Wardrobe, Oak Coat Rack w/Beveled Mirror, Wood Inlaid Quilt Top Block Table, Oak Podium, Oak Floor Mirror, 4 Black Barstools, 4 Cast Iron Tractor Seat Barstools, Pie Safe, Small Pie Safe, Round Front Curio Cabinet, Quarter-sawn Oak Buffet, Quarter-sawn Dresser w/Beveled Mirror, Kitchen Island w/Stainless Top, Small Wood Bench, Small Roll Top Desk, Jewelry Cabinet, Magazine Rack, Like New Sofa & Love Seat, Striped Chairs w/Matching Footstools, Rocker Console Reclining Love Seat, 3 Wash Basins w/Towel Racks, Round Table w/4 Chairs, Wooden Easel, Roll Top Desk, Wood Rocking Chair, Several Wall Shelves, White 2 Drawer Side Table, White Vanity, Lots of Wall Art, Several Hand Painted Items, Painted by Karen Owens, Lots of Glass Art, Lots of Southwest and Indian Decor, 2 Western End Tables, Lots of Figurines, Samsung Flat Screen TV, White Plastic Shelf, Area Rugs, Several Small Tables, Hospital Bed, Folding Chairs, Crock Bowls, Corning Ware, Canister Sets, Pig Cookie Jar, Pyrex Bowls, Baking Dishes, Cooking Sheets, Stainless Stock Pots, Several Small Appliances, Air Fryer, Bread Maker, Pioneer Woman Dishes, Pressure Cookers, Several Canning Jars, Misc. Cups, Saucers, Glasses & Plates, Several Cow, Pig & Rabbit Items, Clothes Hamper, Embroidered Tea Towels, Decorated Christmas Tree, Plants and Plant Stands, Toys, Basket Weaving Supplies, Lots of Painting Supplies. This is just a partial list, there are too many items to list each individually. **Antiques-Collectibles** Willow Springs Collectibles including a set of Star Theater Seats refurbished with Redwood backs and seats, Baker U Save Oil Company Ice Scraper, Ogle's Sinclair Ice Scraper, Bennett's Shoe Store Shoe Horn, Square Double Wash Tub w/Flowers, Several Antique Sewing Bases made into Tables, Old Fire Extinguisher, 2 Mantle Clocks (one Gilbert 1807, 1 Sunbeam), Perfume Bottles, Spoon Collection, Old Razors & Shaving Mugs, Aladdin Lamps, Howard Miller Grandfather Clock, 2 Enamel Top Tables, Old Kerosene Lamps, Old Lamps, #2 Crock, #10 Crock, Wooden Baskets, Some Longaberger, Old Scales, Old Floor Lamp, Hurricane Lamps, Horse Weathervane, Brass Blow Torch, Powder Horns, Sheep Cast Iron Door Stop, Rooster Cast Iron Door Stop, Old Bottles, Brass Pinecones, Quilts, Walking Sticks, Old Suitcase, Old Ladies High Top Shoes, Minuteman Lamps, Pitchers & Bowls, Two Hornets Nests, Decorated Horse Collar, Iron Bed W/Mattress, John Deere Lunch Box, Lionel Train Lunch Boxes, Lionel Train Clock, Old Wooden Rocker, Glass Insulators, Large Wood Embroidery/Quilt Hoops, Stained Glass Window, Sewing Machine Base w/Penny & Acrylic Top, Lots of Old Advertising Pieces, Hay Forks, Jars of Buttons, Jars of Marbles, Radio Flyer Wagon w/Flowers, Ice Tongs, Gas Iron, Broad Ax, Bottle Capper, Sunshine Coffee Jars, Spittoons, Miniatures & Shadowbox, #2 Crock Butter Churn, Coffee Grinder, Beveled Hand Mirrors, Crock Jugs, Glass Refrigerator Dishes, Old Push Plow, Redwing Stone Jar, Ammo Boxes, Fire King Dishes, Metal Canister Set, Cream Separator, Duck Boot Scraper, Arbucks Wood Box, Velveeta Cheese Wood Box, Galvanized Watering Cans, Cow Bells, Wash Tub, Metal Razorback, Railroad Lanterns, Old Metal Round Flare, Lots of Decorator Plates w/Hangers, Butter Paddles, Kraut Cutter, Cream Can, Grinding/Sharpening Stones, Wood Dippers, Pyrex Jugs, Decorative Clear & Pink Glass, Milk Bottles, Pillsbury Dough Boy Cookie Jar, Cast Iron Pots w/Flowers, Cabbage & Corn Covered Pieces, Prince Albert Cans, Whiz Soap Can, Betty Ann Oiled Polishes Mop Tin, Yankee Clipper Oilstone, Metal Ice Cube Tray, Nut Grinder, Cow Creamer, Metal Donut Cutter, Wood Cutting Boards, Antique Curling Irons, Chamber Pot w/Lid, Skinning Boards Horse Shoe Art. Please look at the pictures and you will surely see something I have missed in the listing!

ESTATE OF THE LATE DWAYNE & KAREN OWENS

Reid Auction Service

Randy Reid 417-257-3911 • Rex Reid 417-372-1866 Ark. Lisc. #2606 • Ted Reid 417-256-6661

Concessions available. Come early and let Barb & Chuck fix your lunch. Bathroom on site.

Not responsible for Accidents, Lost, Stolen or Misplaced items. Any announcements made day of sale supersedes any prior written or oral communications. Cash and checks accepted no Credit Cards.



The following real estate and personal property of **Terry & Carol Nowack** will be offered for sale by public auction on:

Saturday, June 15th, 2024, Beginning at 10:00 am.

The auction will be held at: **3802 S. Fourth Street, Owensville, MO.,**

REAL ESTATE:

This real estate offering is approximately 87 acres, half wooded and half fenced pasture. The property sports 2 ponds and 2 lakes, one with a rustic cabin. The house is a 2,340 sq. ft., ranch-style, 3-yr.-old home w/walk-out composite deck. The basement is roughed in for a bar and full bathroom and includes a storm shelter. The main floor of the house has 3 bedrooms, 2 ½ baths & an open kitchen/ living room/ dining room floor plan. There are 4 outbuildings—a pull-through garage, 32'x27' workshop w/concrete floor, 56'x62' pole barn, 30'x20' shed. \$2,500 earnest money down day of sale. Remainder due at closing. **For more information call 573-291-5468.**

TOOLS/ CONSTRUCTION EQUIP.:

Electric concrete mixer; Scaffolding; Craftsman planer/joiner; Delta, 8" table saw; Router; Paslode framing nailer; Homeline Square D circuit breaker box, 100 amp-NIB; Sinks; SS vent hood; Toilets; Ceramic tile; Wooden columns; Glass blocks (corner & square); (2) 8-ft tales on wheels.

HOUSEHOLD/ COLLECTIBLES/ MISC

Boat trailer; Jon boat, 14.ft. w/live well; 20# cylinders; Chain saws; Brinkman electric smoker; Amana refrigerator /freezer; Bee hive; 120-gal. fish tank on stand; Air hockey table; Foosball table; "Gulf" gas pump topper; "Schlafly", 2-sided, metal sign; Swing on frame; Grandmother clock; (2) wooden 55-gal. barrels; (2) wooden 10-gal. barrels.

Also offered for sale at the same location and date the following personal property of **the late Jim & Jane Leimkuehler.**

HOUSEHOLD/ COLLECTIBLES:

Wash stand; marble-top dresser w/mirror; Ice cream table w/4 chairs; Regulator clock w/key; Costume jewelry; Yo-yo quilt; LeRoy Gross baskets & umbrella holder; 1802 Webster Primary Dictionary; JD truck banks; Ertl Farmall A toy tractors (NIB); JD toy tractor (NIB); Oliver 770 toy tractor; Oliver Super 77 tractor; Ertl horse & wagon bank; Numerous "Barbie" items.

Many, many more items too numerous to mention.



Lunch will be served by Home-Style Eats • See pictures at www.grossauction.com or Auction Zip #22263

SALE CONDUCTED BY:

GROSS

AUCTION

Members of
**Missouri Professional
 Auctioneers Association**



Jason Gross,
 406 Ahr Strom Drive,
 Owensville, MO 65066
 573-569-5299

Chas & Phyllis Gross
 1863 Hwy 50
 Owensville, MO 65066
 573-437-3631

www.grossauction.com or www.auctionzip.com

**Terms: Cash or "Approved" check. No out of state checks.
 Announcements day of sale supercedes printed material.
 Everything sells as is. No property to be removed until settled for.
 Not responsible for accidents should any occur**

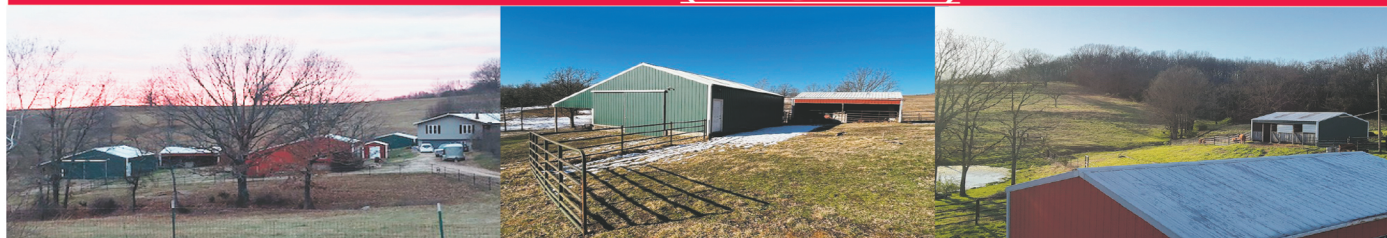
REAL ESTATE & PERSONAL PROPERTY

SATURDAY, JUNE 15TH - 10:00 A.M.

Location: CR 5-413, Ava, MO **Directions:** From Casey's at 4-way Stop (Hwy 5 South & 76) Continue heading South for about 9 miles until reaching CR 5-413 with the big auction sign (just past Fannon's Cemetery and across the way from Pentecostal temple) Turn right at 5-413 and head about 1 mile. Property at the top of the road (mailbox on left, driveway on right). **WATCH FOR CHADWELL AUCTION SIGNS.** **Payment System:** Cash • Debit Card • Credit Card (Debit/Credit Card Fee Will Apply) Checks approved if known by auction company. **VISIT: WWW.CHADWELLAUCTIONS.COM**

William & Alicia Sankuer

REAL ESTATE (Sells @ NOON)



If you are looking for country living in the Ozarks, this is the place for you! 30 acres m/l with a nice 4bd 3 bath ranch style home that features a kitchen, dining room, large living room with fireplace, utility room, partial basement that offers a kitchenette & large storage area. This home also offers multiple heating sources, central air, & solar panels which make for low electric bills. This property is something you and your family are sure to enjoy. The acreage is 90 % open with good fences and cross fences, live water year round, a small orchard, & a nice garden spot. Outside there is a 30'x40' equipment shed with an attached 14'x40' lean to, a 24'x32' horse barn w/tack room, a 24'x30' equipment shed, a 10'x12' utility building, and a 24'x32' detached garage. All buildings have power and are in great condition. The property also features pasture, hay land, pipe fencing, and a nice cattle working facility. There is a second house site w/ electric, well, & septic. This is a nice hobby farm that is move in ready. Terms: 10% down day of Auction taxes prorated, closing costs split, balance due at closing For showing call Shawn 417-830-0209



"One of the nicest and cleanest auctions you will attend"

NH TC35D w/ NH 16LA Quick Detach Loader hydrostat trans 540 PTO 4x4 505hrs (like new)



LARGE LOT OF CANNED FOOD

FARM RELATED

Chicken Feeders • Web Wire • Lick Tubs • Hog Panels • Tartar bale Ring • Metal Stock tanks • (2) 10' Poly Feed Bunks • Rabbit Cages • Large Lot of Rabbit Supplies • Portable Chicken Coop • Kenco Electric Fence Chargers • 8' Gate • Other

HOUSEHOLD

Chest of Drawers • Double Reclining Couch • Oversize Chair • Kitchen Table • Pots & Pans • Aluminum Table • Large Stock Pot • Pressure Cookers • Maytag Stand Up Deep Freezer • Whirlpool Stainless Refrigerator • Recliner • Vanity (NIB) • Air Mattress • Prep Table • SS Pot • 7' Wheeled Utility Desk • Other

FARM EQUIPMENT

NH 256 5 Bar Rake • NH 460 Sickle Mower • 6' Angle Blade • Howse 5' Bushhog • NH 275 Square Baler

TRUCK ~ TRAILERS

2011 GMC 4dr 2wd 138,000 miles (loaded) 12' Bumper Hitch Horse Trailer • 5'x10' Metal Floor Utility Trailer



GUNS ~ AMMO

Marlin XT .22 Bolt • Rem Wingmaster 870 Pump .12 Gauge 2 3/4 • Ruger Min .30 Tactical Rifle w/tasco scope (new) • Tasco Scope • 100 Rounds Win .12 Gauge • .762 Ammo • Game Camera • Night Vision Scope • Gamo .177 Pellet Rifle w/ Center Point Scope • Sig Sauer Sp 2022 9mm Pistol

SHOP ITEMS

Knife Forge • Anvil • Oils & Solvents • Punch Bar • 10' Assembly Line Rollers • Plastic Storage Cabinet • Stand Light • Metal Racks • Ext Cords • Power Washer 1800 PSI • Rigid Shop Vac • Hyd Pipe Bender • Craftsman Tool Box on Castors • Jack Stands • 5' Vice • Electric Power Tools (large lot) • Dewalt hammer Drill • Sawzall • Tool Boxes • Creepers • Wood Clamps • Saw Horses • Appliance Dolly • Stand Fans • Stand Cart • Delta Miter Saw • Chicago Router Table • Husky Light • Other

OUTDOOR ~ MISC

48" Husqvarna Lawn Mower 205 hrs • 20 Ton Wood Splitter (needs work) • 455 Husqvarna Chain Saw • 24' Extension Ladder • Fish Cooker • Yard Cart • Organic Clay • Yard Seeder • 38" Yard Sweeper • Electric Roll Up Fence • Misc Tin • Poly Buckets • Misc Chains • T Posts • Electric Fence Wire • Metal Conduit • Fence Stretchers • Long Handle Tools • 250 Gallon Tubs • 55 Gallon Plastic Tubs • ATV Aluminum Ramps • Igloo Dog Houses • Large Lot of Wood Pallets • Assorted Lumber • Bird Feeder • Patio Furniture • Patio Swing • Commercial Gas Grill • Canning Supplies • MRE Box Food • Hunting Gear • Large Lot of Arrows • (2) Electric Incubators • Board Games • Books • Wonder Electric Grain Mill • Live Trap • Concrete Blocks • Metal Trash Cans • Pet Taxi • Cattle Hot Shot • Grape Netting • 3 Rick Season Wood • Yard & Garden Materials • Diesel Fuel Cans • Fish Net • Coolers • Weed Burner • Fishing Poles • Bag Chairs • Rem Electric Pole Saw • PVC Pipe • 2 Wheel Yard Cart • 3' Chainlink Yard Gate • T Post Driver • Trampoline • Other

AUCTIONEER'S NOTE: This is a beautiful 30 acre m/l farm nestled in the Ozarks. Property has been very well maintained and is turn key ready. The property is 5 miles from the county stockyard in Squires, 10 mins from Ava, and 15 miles from the Fox Trotter Headquarters. The area is due to be connected to fiber optic internet sometime this year (just waiting on the power company for completion Make Plans to Attend! **Thanks, Shawn**

DRIVER'S LICENSE OR PICTURE I.D. REQUIRED • TERMS: CASH OR APPROVED CHECK **OR DISCOVER**

Chadwell

Auction Service, LLC

www.chadwellauctions.com

Auctioneer:
SHAWN CHADWELL
417-830-0209

Ringmen:
Weston Chadwell ~ 417-349-0727

Clerk:
SHELLY CHADWELL
Cell: 417-880-8449

Cashiers:
Marla Reppond • Emily Shaffer
Cassie Collins

PROFESSIONAL SALES MANAGEMENT

LUNCH WAGON • APPRAISAL SERVICE • RAIN OR SHINE
All announcements made day of sale take precedence over any printed matter. Not responsible for lost or stolen merchandise. Not responsible for accidents.

ONLINE AUCTION • ONLINE AUCTION • ONLINE AUCTION • ONLINE AUCTION • ONLINE AUCTION • ONLINE AUCTION

ONLINE LIQUIDATION AUCTIONS OF QSS ELECTRIC

ATTENTION: Contractors, Builders, Electricians and any planning projects. 2 huge auctions!
1st is liquidation of inventory (10-20 June) - Thousands of circuit breakers, panel boxes, all types of conduit, tools, all sizes & types of wire & cable, benders, cable pullers, ladders, PPE, etc.
2nd auction will be the fixtures and larger equipment (17-27 June) - backhoe, telehandler, semi box trailers (used for storage), pallet shelving, office supplies, desks, copiers, etc.

Inventory Auction will begin to close on Thursday, June 20th at 6:00pm.
Preview date is Monday, June 17th, 3-6pm. Fixture/Equipment Auction will begin to close Thursday, June 27th at 6:00pm. Preview date Monday, June 24th, 3-6pm.

BIDDING OPEN NOW!

Inventory pickup on Fri & Sat, June 21 & 22, 9AM-Noon.
Equipment/Fixtures pickup is Fri & Sat, June 28 & 29, 9AM-Noon.
Location: 14972 Hwy Z, St Robert, MO 65584.

Register and bid here: www.wardenauction.bid or <https://www.apro.bid/affiliate/ed-warden-1990/>



TERMS
Cash, Credit,
Debit or Approved
Check
ID Required for
Bid Number

WARDEN AUCTION & MORE

(573) 528-0729



Ed Warden – Licensed Auctioneer/Real Estate Broker
www.wardenauction.com



TERMS
Not Responsible
For Accidents
or Losses
Nothing Removed
Until Settled For

ONLINE AUCTION • ONLINE AUCTION • ONLINE AUCTION • ONLINE AUCTION • ONLINE AUCTION • ONLINE AUCTION

ONLINE AUCTION • ONLINE AUCTION • ONLINE AUCTION • ONLINE AUCTION • ONLINE AUCTION • ONLINE AUCTION

ONLINE AUCTION • ONLINE AUCTION • ONLINE AUCTION • ONLINE AUCTION • ONLINE AUCTION • ONLINE AUCTION

R&R AUCTION SERVICE

PRETTY PONY RANCH DISPERSAL SATURDAY JUNE 15TH AT 10AM

26 STATE HWY DD, BUFFALO, MO

A LIFETIME OF HORSE AND BUGGY. That's what this auction for Jim and Julie Osborn has to offer and a whole lot more. If you are an equestrian, you won't want to miss this auction. Wagon wheels, wheels and wagon parts, wagon shafts and poles, wagon hardware, lots of cart wheels/tires, pony wagon ,horse drawn plow, road cart for 12 to 13 hand pony (show quality), lots of pony collars, pony hames, harness from miniature pony to full size horse, 2 sets of parade harness for an A or B size miniature, harness hardware chain lengths, snaps, hooks, etc., large amounts of halters, various sizes, lunge lines, driving whips, lead ropes, several bits, bridles, wooden wagon hub, winter horse blankets, miniature horse slinkys, 2 miniature saddles, lots of other saddles including but not limited to, Bona Allen Plantation saddle, Tucker Trooper saddle, working and pleasure saddles, Arabian costume saddle with head stall, two 1904 McClellan saddles one with horse hair girth, other costume saddle, saddle stands and rack including a 4 tier rack, feed bags, several horse clippers, old wooden toboggan, wooden wagon, toy horse, large amount of Christmas decor including reindeer, sleigh bells, rope lights, metal hay manger, bale rings, heated water buckets and pans, inner locking rubber flooring, fence chargers, step in electric fencing supplies, feed buckets and tubs, 7 panel double stud stall , each stall is 12 x 12, stall mats, manure spreader, carry all, drag, roller, 3 pt. blade, plastic water transport tank, first & second cuttings of last years hay, square bales, approx. 285 total, 12ft aluminum john boat and trailer, a dozen or more corral panels, 3 or more tree stands, carry all for Reese hitch, small electric tools and hand tools, 2 band saws, work table, rods and reels, reload press, brass and bullets for .223, 12 ga. shotgun shells, cast iron pot, 5 Thomasville chairs, full size bed, head board foot board and night stand, several beer steins, lots of collectible glassware, fine china and various other household items, pump filter and hose for a koi pond, Paragon 22 amp. porcelain kiln with kiln furniture and cones and so much more!



Please keep watch on our website for added photos.

TERMS: Cash, check, or credit card with proper I.D. nothing removed until settled for. A 3% fee will be added to credit card purchases. Not responsible for errors in listing. Any announcement made sale day will take precedence over any printed matter.

GENERAL AUCTIONEERS
Auction & Appraisals
AUCTION SERVICE

For more information contact Professional Auctioneer Russ Weeks at 417-576-7357 or check out www.rrauctionservice.com

Serving this area's auction needs since 1997 with honesty and professionalism.
www.rrauctionservice.com
(417) 576-7357 or (417) 345-4140



REAL ESTATE AUCTION

Akers Family Trust

Saturday June 22nd 10:00 AM

21010 State Hwy DD Crocker, MO 65452

Real Estate to Sell @ 10:30 AM

10% Down Day of Sale Balance Due at Closing (30 Days)

4 Bedroom Country Home on 56+ Acres

w/ big garage, Pole Barn, 2 Ponds, fenced and cross fenced, and Lots of pasture



Antiques and Houshold

Ice Cream Freezer * Sofa Loveseat & Chair * Luggage * Visio 25" TV * Purses * Afghans * Walker on Wheels * Glider Rocker * Hospital Bed * Glider Rocker * Metal Curio Cabinet * Refrigerator * Dinette table and Chairs * Window Air Conditioner * Cookware * Chest of Drawers * Hand And Needle Work * Turkey Roaster * Bed Chest and Dresser * Pots and Pans * Antique Metal Dental Cabinet * Rainbow Vacuum * 2 Antique Fans * Fishing Poles * Sofa & 2 Chairs * Apartment Sized Fridge * Hand Cultivator * Microwave * Gas Circulator * Sprayer * Fan * Office Chair * Vacuum Cleaner * Upright Freezer * Dresser & Mirror * Chest of Drawers * Hand & Needle Work * Hamilton Beach Mixer * Turkey Roaster * Pots & Pans * Electric Heater * Bed, Chest, and Dresser * Yard Sprayer * Washer & Dryer

Sells at Above Address @ 11:00 AM

116 Acres

Visit Glenworth.com for All Pictures & Updates.

From DD Hwy Take Buttercup Rd North Across the River then Left on Cortez Rd to Property
On Both Sides of Cortez Rd. Includes two Creeks (Middle & Sewell)



Auction Conducted by:

Glenworth

**Auction Service & Realty
Glen Yutzy, Auctioneer/Broker**

Member of:



Phone: (417) 767-4345

Fax: (417) 767-4222

Not responsible for accidents. Announcements made day of sale take precedence over any printed matter.
Terms: CASH or CHECK Visit our website for more information at www.glenworth.com Lunch available

ONLINE AUCTION

BIDDING OPEN NOW THROUGH JUNE 19TH, 2024 @ 7:00 P.M.

**Outstanding Woodworking Tools - Walnut Lumber -
Welders - Professional Photography Equipment -
Collectors Knives - Fishing & Hunting Items**



TRIPLE S AUCTIONS
LLC

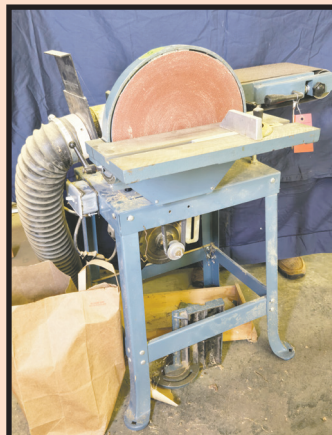
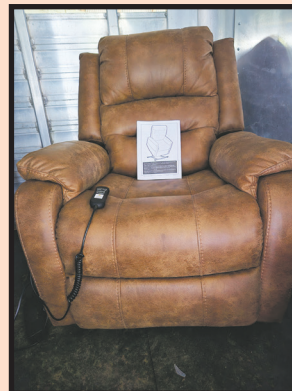
573-881-9950 | kristie@triplesauctions.net

**9951 E Route H
Ashland, MO 65010**

PREVIEW: June 18th, 2024
at 4:00 p.m. to 6:00 p.m.

PICKUP: June 20th, 2024,
3:30 p.m. through 6:00 p.m.

**Go to auction:
www.triplesauctions.net**



Estate Auction



103 South Broadway, Houstonia Mo. 65333

Directions: From 65 & 50 hwy intersection in Sedalia go North on 65 hwy 11.5 miles to intersection of J & D hwy's Turn Left (West) on D hwy go 8 miles to Houstonia & Auction on Right watch for signs on sale day.

We will sell the following at public Auction on:

SATURDAY JUNE 22ND, 2024 • 9:00AM

"Joyce & the Late John McFatrigh"

2001 GMC ½ ton extended cab 2x4 5.3 liter Vortec V8 auto 245k miles, 14' bumper hitch trailer, **LAWN TRACTORS, PARTS, TOOLS & SUPPLIES**
2 - International Harvester pulling garden tractors one with duals & 42" blade (MUST SEE), **IH** pulling garden tractor w/Case sheet metal, **Ranch King** mower 18.5hp 46" cut, **Cub Cadet** 71 lawn tractor, **Cub Cadet** 10+ wheel weights & misc. parts, **Cub Cadet** 2166 lawn tractor, **Lawn Kraft** riding mower 18.5hp 46" cut, LARGE lot push mowers, **Swisher** walk behind string trimmer, **Stihl** blower, **Troybilt** (matis style) tiller, 2 – lawn aerators, lawn cart, **Commander** 900 42" blade, Cub Cadet (IH) 42" blade, **Troy-Bilt** flail chopper, garden cultivator, (HUGE) lot chain saws various brands & conditions, lot NEW iron (angle, channel, flat, tubing, bar), **Snap-on** toolbox, large lot **Snap-on** wrenches, **MAC** roll around toolbox, **US General** toolbox, Montezuma (Stainless Steel tool box w/butcher block top, Dethatcher, wheelbarrow, 42" lawn sweeper, aluminum ATV ramps, lg lot reel mowers, lawn roller, walking plow, expanded metal lawn wagon, ATV sprayer, Lot floor jacks (all sizes), 24' fiberglass extension ladder, 6' & 8' fiberglass step ladder, 4+ – large heavy built welding tables, chop saw, LARGE lot small engines & parts, Lot misc. gas string trimmers all brands, gas hedge trimmers, portable hose reel, 6 – pressed metal lawn chairs, lot long handled tools, lot log chains & boomers, lot garden tractor tires, Lg chain hoist, pancake compressor, 220v "Classic" 5hp air compressor, **Belsaw** grinder on stand, **Coats** 310 tire machine, **Continental** cherry picker, metal band saw, **Textu** shear on stand, 5" JET vise, motor stand, portable 20gal air compressor, **Wilton** bench top drill press, large 14" disk sander, 2 – motorcycle jacks, 6' wooden work bench, 3 - chain saw sharpeners (one **Oregon**), lot NEW chain, car ramps, lot misc. electric hand tools, Lot misc. nuts bolts & assorted hardware, **Delta** spindle sander, 12" benchtop drill press, bench top jointer, Delta disk/belt sander, DeWalt miter saw, power sliding miter saw on portable stand, Craftsman router & table, Lot canning jars, lot misc. used T-post, 30ton **Continental** shop press, 30" metal brake, **Victor** oxy/Acetylene torch set on cart, **Hobart** TR-250 stick welder, sand blast cabinet, parts washer, **HOUSEHOLD & MISC. Kenmore** washer & dryer, 5pc. Queen size bedroom set, 4pc. Queen size bedroom set, china hutch, Love seat & ottoman, Quilt cabinet, upholstered recliner, dining room table w/2 leaves & 6 chairs, small dinette set, Floral sofa, curio cabinet, coffee & end table set, lot floor & table lamps, Metal corner desk, wooden corner cabinets, 5+ bookshelves, JD tractor touch lamps, Lot vintage toys, vintage baby bed, lot doll collection, Royal typewriter (Sedalia Typewriter Co.), Lot pots pans & kitchenware, misc. small kitchen appliances, Singer sewing machines & notions, Kirby sweeper & attachments, lot pictures, mirrors & wall decore, Guardian ware, Cast iron, bakeware, horse clock, deer figurines, lot misc. glass & collectibles, Milk glass, lot misc. costume jewelry, oak wall phone, martin gourds, metal tractor seats, LARGE lot 30+ antique iron implement wheels, 32" iron rendering pot, file cabinets, heavy concrete picnic table, lot pallet shelving, lot metal shelving, metal sawhorses, lot misc. lawn furniture, fire pit, raised planter boxes, lot flowerpots, and **Many More Items Too Numerous to Mention.**



Auctioneer Note: This is a HUGE sale & we WILL be running two rings a portion of the day, too much more not listed.

*STATEMENTS MADE DAY OF SALE TAKE PRECEDENCE OVER PRINTED MATERIAL.

Concessions provided by "Benton County Good Ole Gals"



JOHNSON AUCTION SERVICE
 "Third Generation Family Tradition since 1942"

Russell "Rusty" Johnson (660) 221-4067 • Phillip Yoder (660) 723-3389

For Full Listing, Pictures and Details auctionzip.com (ID# 20300)



SEXTON AUCTIONEERS

JUNE 27TH ONLINE AUCTION



John Deere 225C LC



Caterpillar 950 Wheel Loader



2015 New Holland L228

Qty. 4



1967 Chevrolet Chevelle



1967 Chevrolet Chevelle



John Deere 643H Feller Buncher



Komatsu PC 228US LC

BID NOW AT SEXTONAUCTIONEERS.COM



John Deere 135G



John Deere 450G LC



Kubota KX165



Komatsu PC60



caterpillar 938G Series II Wheel Loader



1987 Caterpillar 953A Track Loader



JCB 3CX Backhoe



JCB 409 T4



Komatsu PC60



2015 New Holland L228

QTY.4



2013 Terex PT-110 Forestry



1985 Caterpillar 926 Wheel Loader



TTigercat 718 Feller Buncher



John Deere 648 G3 Grapple Skidder



Caterpillar D7 Crawler Dozer with Garwood Scraper



Caterpillar 613B Scraper



2017 John Deere 5100E



2007 Peterbilt 340 Dump Truck



2006 Mack Roll Off Truck



2018 Volvo VNR64T Day Cab

Qty. 2



2007 Mana 48' Flatbed trailer



2021 Big Tex Gooseneck Trailer



Pup Trailer



2000 Diamond C 28' Gooseneck Trailer



ONLINE AUCTION ENDS JUNE 27TH

314-529-0124

Sales@SEXTONAUCTIONEERS.COM

5182 US Hwy 63, Pomona, MO 65789 | Next Online Auction: Thursday, June 27th

SCAN QR CODE TO BID NOW!



ANTIQUE ESTATE AUCTION

Saturday, June 15th, 2024 ~ 10:00 AM

LOCATION: Sheldon Community Building, 6th & Main, Sheldon, MO (Watch For Signs)

Auction For Ron & Debbie Mawson



Antique Furniture, Also Antiques, Collectibles & Primitives

Rare Oak German Beer Garden Table, 2 Child's Ant Rocking Chairs, Adult Wood Ant Rocking Chairs, Wood Desk, Old Setting Chairs, Old Wall Clocks, Ant Pictures Inc Rare Lg Pictures Of Horse In Ornate Frame, Lg White & Black Cabinet W/Shelves, Oak Double Pedestal Table W/2 Leaves & 6 Chairs, End Tables, Lg Wooden Lap Desk, Oak Bed, Old Wood Ironing Board, Very Old McClusky Accountant Register, Old Oil Lamps, Lots Of Old Toys Inc Kids Pedal Metal Merry Go Round, Gyroscopes, Spinning Tops, Yo-Yos, Pedal Tricycles, Bongo Balance Board Toy, Metal & Other Toys, Old Marbles Inc Inlaid Sulphide Elephant, Sulphide Angel & Lg Swirl, Lg Lot Of Blue & White Dishes, Teapot Collection, Old Glassware Inc Cobalt Blue, Green & Others, Lots Of Very Old Advertising Bullet & Other Pencils, Old Cigarette Lighters, Miller Beer Triangle Light, Zippo Lighter Electric Display, RxR 4 Way Light, Wooden Shaft Golf Clubs, Several Old Crocks Inc Pittsburg & Others, Rare Heavy Old Iron Fruit Press, Cast Iron Implement Seat Collection, Old Quilts, Old Cans, Old Bikes Inc Schwinn Tricycle, Adv Ag Coffee Cups & Ag Adv Ball Caps, Vintage Hats, Dandy Churn, Old Beer Can & Bottle Openers, Old Padlocks & Keys, Old Jars, Old Letter Openers, Old Records, Old Comic Books, Neat Native American Collectible Items, Old Prim Tools, Coca Cola Collectible Items, Old Baby Toys & Stuffed Animals, Lots Of Fast Food Collector Toys Inc McDonalds, Tonka Toys Most Never Opened, Old Books, Key Chain Collection, Decks Of Playing Card Collection, Lots Of Sports Cards, Schroester Brothers Show Co Pecan Nut Cracker, Imperial Skateboard, Lg Battery Operated Riding Firetruck, Old Pool Cue Rack W/Balls, New Idea White Square Yardstick & Others, Lots Of Vintage Christmas Items, Old Kitchen Ware Collectibles, Other Items Not Listed

Anvils, Cast Iron, Tools & Outdoor Items

Lg Anvils Inc Joshua Wilkinson, Church Window, Mouse Hole & 2 Others, Cast Iron Inc #14 Skillet, #12 Camp Griddle, Other Cast Iron Skillets & Trivets, Lg 10 Ft Long By 39 Inch Wide Heavy Workbench, Steel Table W/Vise, Old Wooden 2 Wheel Dolly, Craftsman Standing Drill Press, Craftsman Skill Saw, Other Vises, Toolboxes, Air Tank, Lg Lot Of Sm Hand Tools Inc

Wrenches, Sockets, Hammers, Screwdrivers, Most Major Brands, Sm Electric Tools, Harley Davidson Motorcycle Helmet, Only A Partial Listing In This Category

Instruments, Coins & Jewelry

Hawaiian Style Banjo In Box, Guitars Inc Classical Guitar In Hard Case, Rare Doctor Martin Shoes Crate Strato Caster Style Guitar, Acoustic Guitar, 2 Video Game Guitars, Keyboards, Jewelry Inc 14 Kt Diamond Brooch W/Stone, 14 Kt Gold Amethyst Seed Pearl Ring, 14 Kt Gold Rubies & Opals Dome Shape, Gold Ladies Watch, Men's Working Watches, Beautiful Assort Of Broaches, Rings & Other Costume Jewelry, Coins Inc Silver Morgan & Peace Dollars, Silver Barber, Walking, Franklin & Kennedy Halves, Several Silver Quarters & Dimes, Several Type Coins Inc Lg Cents, Seated Barber & Liberties, Lots Of Foreign Coins & Currency, See Website For Full Coin List

Guns, Knives, Hunting & Fishing Items

Ruger 7.62x39 W/Bushnell Scope, Ruger 30/06 Speck W/Leopold Scope, Win Model 03 Auto 22, Ant 22 W/Hex Barrel, M44 Russian CIA 7.62x54R Rifle, Wards Western Field Model 62 Bolt Action 22, Wards Western Field Model 87-SB87 TA Auto 22, Marlin Glenfield 22 Model 60 W/Weaver Scope, Browning Auto 12 Ga, Mossberg Model 500 Pump 12 Ga, Stevens/Savage Arms Model 770 Pump 12 Ga, MW & Cc Western Field Model 130 Pump 12 Ga, Enders Special Service 410 Double Barrel, J. Stevens Model 5-94 Bolt Action 410, Liberty Arms Break Over Single Shot 12 Ga, Barra Model 1866 BB/Pellet Rifle W/Box, Ruger SP101 Magnum 357, Ruger LCP II In Box 22, Taurus TCP 380 In Box, Taurus PT-22 Pistol, S&W CTG S&W 38, S&W CTG 38 Special, H&R 38 S&W CTGE Auto Inj 38, 4 Hand Arms Co 32, Martin Com 6.35 MAB Pistol, Glock 43 In Box 9x19, Howard Arms Co 32, Jennings J22 Firearms Inc 22, 4 Hand & Wadsworth 32, American Tactical 19-11 German Sport 22 In Case, Lots Of Various Kinds Of Ammo, Gun Cases & Holsters, Knives Inc Case XX, USA 1836 Davey Crocket Etched, Win #1624 Knife IN Frame, Other Knives Inc Keen Kutter, Gerber Case & Others, Lots Of Fishing Poles & Tackle Inc Lots Of Old Wood Lures & Lg Baits, Other Outdoor Items Not Listed



Auctioneers Note: It Is An Honor To be Conducting A Second Auction For Mr. & Mrs. Mawson. This Is A Very Outstanding Antique & Collectors Auction With Something Here For Everyone. As The Mawson's Have Collectors Of Unique Items For Many, Many Years. Not Very Much Common Everyday Items Here Most Antique Or Collectible. Please Plan Now To Attend. **Sale Order: Antique Furniture, Antiques & Primitives Will Start Auction. At Approx 12:30 PM Will Offer Coins & Jewelry Then Anvils Then Guns, Knives, Hunting & Fishing Items. Tools Will Finish Auction. See Ya There!!!**

Terms: Cash or check with proper ID. Now accepting most major credit cards. Nothing removed until settled for. Statements made the day of sale takes precedence over printed material. Everything sold as is where is. Not responsible for accidents. Restroom available. Concessions Provided. Check our website for upcoming auctions and for additional pictures!!



NANCE AUCTION SERVICE

No Matter How BIG or small, We Do Them All!!!

Col. Bill Nance 417-214-0093

In God We Trust

Philippians 4:13

ESTATE AUCTION

DUNNEGAN, MO

AUCTION

Due to the Death of the late Donnie Gannaway we will sell the following Trucks, Tractor's, Trailers, Equipment, Propane Tanks, Tools, Guns, Household, Collectibles and Misc.

At the Farm located 3 ¼ miles West of Dunnegan, Mo. On A hwy to F.R. 2425 go South to the Auction on

Sat. June 22, 2024 at 9:00 am

WATCH FOR AUCTION COMPANY SIGNS • LUNCH SERVED

FOR MORE PICTURES GO TO: WWW.BRUCEANDLEANAUCTION.COM



CAR-TRUCKS-TRAILERS

- 2017 Ford 350-XL Dually one ton Truck W/Model 684 DewEze Bale Bed, One Owner 20,824 miles, 6.2L V-8 Gas Motor, Automatic Trans, PW, PL, HDX Grill Guard, Good Rubber
- 1998 Chevy Lumina 4 door Car, V-6 3100, Automatic Trans. 129,000 miles
- 1994 Gooseneck 20' X 6' Bar Top Stock Trailer, One Divide Gate, Butter Fly Back Gates
- Gooseneck 5 Bale In-line Bale Trailer
- 6' X 10' Single Axle Bumper Trailer W/Drop End Gate
- Tandem Axle Pendle Hitch 24' Trailer W/Dove Tail (needs work)
- Tandem Axle 24' Flatbed Gooseneck Trailer 7'6" wide
- Older Chevy C-40 Dump Truck V-8 (not running)
- Older GMC 2 ton Truck (not running)
- 2 Wheel Pickup Bed Trailer
- GWS 1 ½ Ton Portable Feed Bin on Rubber
- Back Pack UTV Cube Feeder
- Older Starcraft Fishing Boat W/85 hp Evinrude Motor (been sitting no title)

TRACTORS-EQUIPMENT CONT.

- 6' 3pt. Box Blade
- 3pt. Bale Unroller
- 8' Concrete Filled Roller
- 3pt. Cultivator
- IHC 37 Square Baler
- Older Allied Grinder/Mixer
- Ford 3pt. Mower
- 3pt. Cement Mixer
- Pallet Forks
- 3pt. Brush Hog Screen
- 12V 55 Gallon Sprayer W/Boom

GUNS-4-WHEELER

- Yamaha Bruin 350cc 4-Wheeler (farm used)
- 2-Remington Model 742 Semi-Automatic 30.06 Rifles
- Browning Light 12 Semi-Automatic 12 Ga. Shotgun W/Extra Barrel
- Winchester Model 1897 Pump 12 Ga. Shotgun
- Remington Semi-Automatic 22 Rifle
- Remington Model 67 Bolt Action 22 Rifle
- Remington Model 4 SS 22 Rifle
- Stevens 12 Ga. Model 820B Shotgun
- Stevens Model 124C 12 Ga Shotgun (rough)
- 2-22 Cal. Rifles
- Cross Bow
- Lot of Misc. Ammo

PROPANE TANKS-TOOLS-MISC. CONT.

- Electric Fencing Items
- 200 Gallon Stainless Bulk Tank
- 3 Fuel Tanks on Stands
- 55 Gallon 12v Pump Portable Fuel Tank
- Com-a-longs
- 8hp Generator
- 40" X 6' Welding Table
- Husqvarna Rear Tine Tiller
- Several Iron Wheels & Metal Seats
- Older Butcher Shop Meat Grinder-Meat Saw & More
- Lot of Misc. Fishing Rods, Reels & Tackle
- 12' Alum Flat Bottom Boat
- Set Alum 4-Wheeler Ramps
- 2 Old Gas Pumps (1-Standard Oil)
- Large lot of Scrap Copper Wiring
- Large lot of Scrap Iron
- Lot of Misc.

TRACTORS-EQUIPMENT

- Ford 7700 Cab Tractor 90hp 7374 hrs, 4 Speed W/High-Low Trans. W/Koyker Frontend Loader
- Ford/New Holland 7635 Cab Tractor 90hp, 3 Speed/4Speed Trans. W/Frontend Loader, Good Rear Rubber, (new tach hour meter)
- John Deere 4020 Diesel open deck Tractor W/Canopy W/ Frontend Loader Syncro Trans.
- John Deere 450-B Track Loader
- Ford 550 Backhoe 7' Front Bucket, 2' Rear Bucket
- 8-N Ford Tractor 3pt. (recently tuned up running good)
- 2 Older 600 Series Ford Tractors (have been sitting)
- 2015 John Deere 469 Mega Wide Plus Round Baler (one owner 2963 bales) Lrg. Tires
- 2 Rolls 51" Net Wrap
- John Deere Model 926 Disc-bine Flayel Conditioner
- Krone AM-283-S 3pt. Disc. Mower
- Sitrex Explorer MX8-10 Wheel Rake
- John Deere 756 Twin Row Tedder
- Rhino PT-10 Pulltype Aerator
- Brush Hog 3210 2pt. 10' HD Brush Hog
- Older 15' Pull Type Brush Hog
- 3pt. Hyd. Post Driver
- 3pt. Post Hole Digger
- 3pt. 200 Gallon Sprayer
- 3pt. 8' HD Blade
- 7' Pull Type Disc. Plow

PROPANE TANKS-TOOLS-MISC.

- 2-500 Gallon Propane Tanks
- Toro Time Cutter Zero Turn MX5060 Mower 23hp 50" Cut
- Act./Propane Torch Set
- Lincoln Ranger GXT 250w Welder W/99 Hours
- Forney 170amp Older Welder
- Snap On 8 Drawer Roll-around Tool Box
- Set of Snap On Wrench's
- Cherry Picker
- Bearing Press
- 75 Lb.+ Anvil
- Bench Vise's
- Milwaukee Chop Saw
- Battery Chargers
- Log Chains
- Lot of Hand & Garden Tools
- Stihl MS 460 & 251c Chain Saws
- TS-400 Stihl Concrete
- Air Compressor's
- Spinning Jenny

HOUSEHOLD-COLLECTIBLES

- Kenmore Refrigerator
- Kenmore Electric Range
- Older Kenmore Washer & Dryer
- GE Upright Freezer
- Med. Chest Freezer
- Like New 3 Cushion Electric Dual Recliner
- Rocker Recliner
- 2-3pc Full Bedroom Sets
- Jenny Lind Bed
- Single Door Ant. Ice Box
- Ant 4 Drawer Dresser
- 9 Drawer Pine Chest
- Magazine Stand
- Misc. Sewing Items
- 2 Flat Screen TV's
- Misc. Pots, Pans and Dishes
- Fruit Jars
- 3 Cast Kettles
- 25 plus Milk Cans
- Lrg. Lot of Primitives
- Treddle Sewing Machine
- Galv. Tubs & Buckets
- 2-lg. Log Lifting Hooks
- Bradley Seed Cleaner
- Deer Horns
- Parts Wall Crank Phone

AUCTIONEER'S NOTE

This is a very large Auction several items in like new condition, Lots of Primitives and Collectibles something for everybody. Guns and Bigs to sell close to noon.

OWNER: ESTATE OF DONNIE GANNAWAY

TERMS: Everything sells as is, where is. Nothing is to be removed until settled for. Payment of Cash, Check with Proper ID, or Credit Cards. Auction Company or the Owners will not be responsible for loss of items or accidents. Statements made the Day of the Auction take Precedence over Printed Matter.

SALE CONDUCTED BY **BRUCE & Le'AN AUCTION & APPRAISAL, LLC**
THE AUCTION COMPANY THAT APPRECIATES YOUR BUSINESS

For more information and pictures go to our website at www.bruceandleanauction.com

RONNIE BRUCE - Fair Play, MO
417-777-1685 or 417-654-2214
colonbruce@gmail.com

BRANDON BRUCE
Fair Play, MO

BILLY BRUCE - Stockton, MO
417-399-4800
colbbruce@gmail.com

2003 GMC 2500 TRUCK: Duramax Diesel. 369,016 miles. \$9,500 OBO. 417-664-7430.

WANTED LANDSTAR UTV: 417-630-1775.

GRAVITY WAGON: 330 bushels 10.00X20 inch wheels. Good shape \$2,000. 573-378-5180.

GRAVITY WAGON MW: Approximately 400 bushels. Big flotation tires, roll over truck tarp, excellent condition. \$5,500 573-378-5180.

1002 NEW HOLLAND STACKLINER: For square bales, \$1200. 417-345-5634.

TAKING ORDERS: For round & square bales. 417-345-5634.

FOR SALE: 3½-year-old Male Kiko. 3-year-old Nubian female with two 6-week-old kids. Remington 22. Stevens 12 Gauge Shotgun. Lap Harp. 573-858-3121.

CHRISTIAN COUNTY, MO HISTORY: It's First 100 Years, Printed 1959, 222 pages, H.B., \$25. HISTORY OF WEBSTER COUNTY, MO by Floy Watters George, 264 pages, printed 1955. \$25. 417-532-2045, Leave message and phone number. Lebanon.

WALK BEHIND 1 HORSE PLOW: \$100. 417-260-0941.



MID MISSOURI STOCKYARDS

REGULAR SALE EVERY THURSDAY 11AM

WATCH OUR WEEKLY SALE IN REAL TIME ON DVAUCTION.COM

For Farm Visits, Market Updates, or Trucking
Call **Zach Cox 417-777-1320**


**Competitive Buyers!
Competitive Commission!
Competitive Market!**

Barn: 417-532-9292 
1-44 • Exit 123 "just outside of Lebanon"
17505 Route 66, Phillipsburg, MO 65722
 For weekly market updates, visit us at www.midmostockyards.com

POOL TABLES: Installations, moves, recovers, repairs, accessories, etc. 573-646-1700.

WANTED: 1-Ton Wrecker, Hearse, Pickup Truck or Old Car to Restore. 573-734-2822.

ELECTRIC WELDER & CUT TORCH OUTFIT; both \$200 or Trade. 573-734-2822.



BUFFALO LIVESTOCK MARKET LLC

276 Hwy 32 W., Buffalo, MO

June, 8th, 2024
Receipts: 1255

REPRESENTATIVE STEERS
 300-400 @ 340.00 to 360.00
 400-500 @ 320.00 to 360.00
 500-600 @ 295.00 to 336.00
 600-700 @ 270.00 to 296.00
 700-800 @ 245.00 to 264.00
 800-900 @ 219.00 to 230.00

REPRESENTATIVE HEIFERS
 300-400 @ 285.00 to 347.00
 400-500 @ 275.00 to 337.00
 500-600 @ 245.00 to 280.00
 600-700 @ 235.00 to 252.00
 700-800 @ 200.00 to 235.00
 800-900 @ 198.00 to 208.00

FEEDER BULLS
 300-400 @ 270.00 to 330.00
 400-500 @ 265.00 to 330.00
 500-600 @ 230.00 to 287.00
 600-700 @ 230.00 to 262.00
 700-800 @ 226.00 to 234.00
 800-900 @ 180.00 to 220.00

STOCKS COWS
 Bred Cows 1475.00 to 2225.00

SLAUGHTER BULLS
 High Yield 175.00 to 195.00
 Low Yield 145.00 to 170.00

SLAUGHTER COWS
 Fleishy 135.00 to 157.00
 Med Fleish 130.00 to 154.00
 Light Fleish 120.00 to 132.00

HOL/HOLX STR
 400-700 @ 130.00 to 210.00

LIGHT CARCASS, POOR COWS, & DOUBTFUL HEALTH
 80 Down

SUMMER HEAT IS HERE, HIGH HUMIDITY CAUSING LARGE DEDUCTIONS IN:
 Fat, Sore Eyes, Long Hair Cattle;
 Be Mindful Of The Weather
 If You Have These To Sell!
Plain Cattle , Poor Quality, or LHX Cattle Not Mentioned In This Report!

MON-WED MARKET REPORT
 Listen to KJEL 103.7FM • Lebanon or KY00 99FM • Bolivar

VIEW OUR SALES AT CATTLEUSA.COM

CALL FOR TRUCKING OR ON-FARM VISIT

Lyle Caselman • Owner-Manager
 417-345-7876 • mobile 417-533-2944
Leon Caselman • Owner
 417-345-4514 • mobile • 417-588-6185

PUBLIC AUCTION

Saturday, June 22, 2024 - 10:00 A.M.

Location: 693 CR 202 Alton, Mo. From Alton take highway 160 east 4 miles to county road 202. Watch for Lawrence Auction signs.

Owners: Ed & Shirley Torrey

VEHICLES-SHOP ITEMS-TOOLS

1956 Ford pickup w/Lincoln V8 motor & transmission, 1951 Ford two door car w/crate motor, 1962 Ford Thunderbird, 1976 Ninety Eight Oldsmobile two door car, Craftsman tool chests, Huskey tool chests, 37" metal lathe, Craftsman 25 gal. air compressor, Campbell Haus Feld 7 1/2 hr air compressor, Craftsman drill press, Lasko shop fan, Delta table saw, English wheel, Lincoln electric pro mig 140 welder, Miller 250 welder, 40 lb. air abrasive blaster, industrial compressor, Craftsman 12" band saw, Craftsman table saw, Snap-on scanner, Snap-on vantage diagnostic data base, Lincoln stick welder, transmission jack, Grizzly brake & roll, throat less shear, chain & hoist, cutting torch set, Pegasus sign, hand tools, power tools, hex key sets, pipe wrenches, Pittsburg tool set, Craftsman wrenches, Kobalt tool chest, air hammers, tap & dyes sets, Mac tool chest, pipe benders, tire changer, work bench, jack stands, anvil, vise, engine stand, upright lights, Hereford high back mule saddle, double wire dog crate, paint shaker, sand blaster, bumpers, hoods, doors, fenders, Ford tailgate, Rally plus riding lawnmower, JD riding lawnmower, push mowers, 1953 hub caps, new hub caps, Skill drill press, Craftsman engine jack, Ford tires & rims, metal lockers, tubbing roller, Everlast inverter, chop saw, floor jack, large assort of automotive parts, yard cart, yard seeder, wheel barrel, cream cans, tarps, wide selection of nuts & bolts, wiring, large assort misc scrap metal, plus shop full of tools and misc items too numerous to mention.

Concessions will be available

Auctioneer's Note: We have been commissioned to offer the items listed above at public auction. Ed has decided to slow down and disperse his automotive collection and shop items. The vehicles will be offered at noon. This is a very clean and nice set of tools, shop items and vehicles that will be offered. Come prepared to stay all day with us. Thanks for attending, Jeff.

Jeff Lawrence, Auctioneer, LLC

7988 Highway E - Couch, Mo. 65690
 Home: 417-938-4394 • Cell: 417-331-5231
 Mo. Lic#1929 Ark. Lic#1929

Drivers License Required - All announcements made day of sale take precedence over any printed material - Not responsible for accidents or stolen items.

IRON WILL MEMORIES OF VINTAGE TRACTORS: Excellent shape. \$20 you pay shipping. 417-260-0941.

FOR SALE ENOROSI 4-BASKET TEDDER: Also, one for parts. \$2,250 OBO. 573-690-3092. Freeburg.

2 KITCHEN TABLES AND CHAIRS: Good Shape. \$100. 573-734-2822.

2009 TRAILBLAZER 4X4: excellent tires, drives but needs a battery, approximately 200,000 miles. Engine lite is on, minor front end damage. \$800. 636-638-7694.

1 YR OLD MALE BELGIAN MALINOIS: Free to a good ranch / home, needs room to run & a job. 573-205-4935.

7 GRAVE LOTS FOR SALE: Pilgrims Rest. \$200 per lot. 573-858-3121.

A BUNCH OF MOVIES: Various genres, some never played. \$150. 417-217-8504.

TORNADO SHELTER SAFE ROOMS: delivered & installed since 2003. Call Jeff for free brochure & site visit. 417-894-3159.

EQUIPMENT LIQUIDATION AUCTION

TUESDAY, JUNE 18, 2024 AT 10 AM

AUCTION LOCATION:

41 Highway K, Iberia, MO 65486

SELLING TRACTORS, HAY EQUIPMENT, SILAGE & TILLAGE EQUIPMENT, CONSTRUCTION EQUIPMENT, TRUCKS & TRAILERS, UTV & ATV, FARM ATTACHMENTS & MISC. FARM EQUIPMENT



FOR FULL LISTING AND DETAILS VISIT WHEELERAUCTIONS.COM!

LIVE ON-SITE BIDDING WITH ONLINE BIDDING AVAILABLE



ONLINE BIDDING PLATFORM



Online Bidding Provided By **Equipmentfacts**

SELLERS: PROPERTY OF THE FORMER CIRCLE A RANCH SOUTH

Wheeler AUCTIONS & REAL ESTATE

23101 HWY. 24, PARIS, MO 65275 | 660-327-5890
WWW.WHEELERAUCTIONS.COM

For more information
Brett Sayre | 573-881-1876
Visit our website at
wheelerauctions.com.



PRODUCTION WORKER (ROTATING SHIFTS)

\$21.54/HR STARTING PAY PLUS \$0.70/HR SHIFT PAY

Location: 21200 Maries Rd 314 Belle, MO 65013

Great Benefits FROM DAY ONE Including:

- Medical, Dental & Vision Insurance
- Paid vacation, holidays and flex time off
- Variable annual incentive pay up to 9%
- 401(k) with matching up to 10% after first year
- Paid parental leave

JOIN OUR TALENT POOL



Equal Opportunity Employer including disability/veterans

TAYLOR TRUCKS & EQUIPMENT

417-924-2026 • 2676 Hwy. 5, Mansfield, MO

★ INTIMIDATOR TREE PULLER ★

★ 3 POINT TILLERS ★

TRAILER PARTS & REPAIR
MD144 Bat Wing in stock!

Milwaukee Cordless Tools

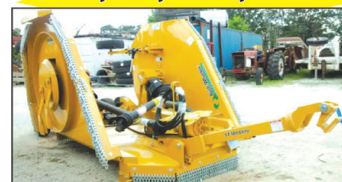
DANUSER DEALER

T3 Post Driver & Other Attachments
New Mowers! Bush-Whacker, Big Bee
Storage Containers & Dry Vans - 20' - 53',

BUSH-WHACKER HD SKIDSTEER BRUSH CUTTER

Portable Generators, Farm Tires, New Semi Tires, PTO's & Parts for Rotary Mowers, Farm Tractor Implements, Plows, Used 15" Bush-Whacker Now In Stock, Discs, and More Skidsteer Attachments: Pallet Forks, Buckets, Grapples, Hay Spears, RR Ties

Bush-Whacker Heavy Duty Rotary Cutter



We Invite you To Come By & Look Us Over! Located 2.5 Miles North Of Mansfield, MO On Hwy 5

OMAR'S LOGGING & DOZING WORK

⇒ Oak & Walnut
⇒ Excellent Prices
Amish Owned & Operated



LEAVE MESSAGE: 417-741-0440
Hartville & Surrounding Areas



Wright Spray Foam Insulators, LLC
Commercial & Residential
Call for FREE Estimates!

Ervin Gingerich 417-926-2052
B. Eli Yoder 417-746-4932

Apple Mobile Storage

Storage Containers for sale or rent.
Delivery available.



Lowest prices in the area!
573-208-0848 call or text.

KMJ AUCTIONS: Online only auction of general merchandise. Bidding open now. First auction starts closing at 5:00pm, June 24th. Next auctions: July 8th & July 22nd. See website for more details and register to bid. kmjauctions.com

REESE DRUM MOWER MODEL 2400: 8ft. Cut. With owner's manual. \$1,600. 573-308-5884. Rolla.

TWO 1972 ILLINOIS LICENSE PLATES: \$20. 573-308-5884. Rolla.

SWEDISH BLACK & PEKIN DUCKS, POULTRY FENCE & 6X10 ALUMI COOP FOR SALE: 2 Drakes, 11 Hens \$7 OBO. \$150 for fence. \$2,000 for coop. 270-213-1689. Tunas.

4400 JOHN DEER COMBINE: for sale \$1500. 417-770-1158.

4 BASKET HAY TEDDER: Durabilt brand. Heavy duty frame, hydraulic fold. Model # G4V-520 PTH. Ready to go to work. Asking \$5750. 573-378-6383.

ROD & REELS: for sale \$5 & up. 417-589-8200.

NEED HANDLES: for your reels? \$1 & up. Call me 417-589-8200.

FORD 7600 DIESEL TRACTOR: Cab & Air, 84 H.P. \$8,100. 573-765-4406. Richland.

PASTURE SPRAYER: Single Jet, 750 Gallon. \$2,500. 573-765-4406. Richland.

JOHN DEERE HX15 HYD. FOLD 15FT BRUSH CUTTER: \$11,500. 573-765-4406. Richland.

IHC 986 DIESEL TRACTOR: Cab & Air, 100 H.P., with IHC 2350 Loader. \$15,750. 573-765-4406. Richland.

JOHN DEERE 2955 DIESEL TRACTOR: Cab & Air, with J.D. 720 Loader. \$23,750. 573-765-4406. Richland.

JOHN DEERE 2630 DIESEL TRACTOR: 70 H.P., Canopy with J.D. 146 Loader. \$10,950. 573-765-4406. Richland.

4.99%* FOR 84 MONTHS *W.A.C.



2024 Bad Boy 1025 Tractor W/Loader & Belly Mower PACKAGE DEAL
-4' BRUSH CUTTER -4' BOX BLADE
-16'+2' TRAILER W/STAKE POCKET RAMPS
MSRP \$33,784
PROMO PRICE \$24,848 + TAX If Applicable
TOTAL SAVINGS \$8,936
PRICE INCLUDES FREE 4' BRUSH CUTTER PROMOTION



2024 Bad Boy 4025 W/Loader & Backhoe PACKAGE DEAL
-5' HD BRUSH CUTTER -5' HD BOX BLADE
-16'+2' TRAILER W/STAKE POCKET RAMPS
MSRP \$47,325
PROMO PRICE \$36,309 + TAX If Applicable
TOTAL SAVINGS \$11,016
PRICE INCLUDES FREE 5' BRUSH CUTTER PROMOTION



2023 Bad Boy 4035 Cab Tractor W/Loader PACKAGE DEAL
-5' HD BRUSH CUTTER -5' HD BOX BLADE
-16'+2' TRAILER W/STAKE POCKET RAMPS
MSRP \$51,373
PROMO PRICE \$39,486 + TAX If Applicable
TOTAL SAVINGS \$11,887
PRICE INCLUDES FREE 5' BRUSH CUTTER PROMOTION



2024 Bad Boy 4035 Tractor W/Loader PACKAGE DEAL
-5' HD BRUSH CUTTER -5' HD BOX BLADE
-16'+2' TRAILER W/STAKE POCKET RAMPS
MSRP \$42,726
PROMO PRICE \$32,495 + TAX If Applicable
TOTAL SAVINGS \$10,231
PRICE INCLUDES FREE 5' BRUSH CUTTER PROMOTION

RECEIVE THIS TRAILER WITH YOUR TRACTOR PACKAGE
While Supplies Last.





2024 Bad Boy MZ Magnum 54" W/Kawasaki
MSRP \$5,369
PROMO PRICE \$4,886 + TAX



2024 Bad Boy Maverick 60" W/Kohler
MSRP \$8,589
PROMO PRICE \$7,851 + TAX

ZERO DOWN AT 0% FOR 48 MONTHS
*W.A.C.
While Supplies Last.



2024 Bad Boy Rebel X 61" W/ Vanguard EFI & Rear Tweels
MSRP \$14,999
PROMO PRICE \$13,644 + TAX

Experience the Bad Boy Difference at




SALES • SERVICE • PARTS
BOBCATOFROLLA.COM
573-364-0179



Missouri Land Service

- Farm and Ranch Fencing
- Large Acreage Stump Grinding
- Cattle Pens
- Logging Cleanup
- Electric Gate Installation
- Rock Crushing/ Fire Breaks/ Small Food Plots
- Farm Ponds/ Small Lake Construction
- Forestry Mulching
- Custom Entrances
- Bulldozing

We return phone calls and our hour meter is exact. We aren't cheap, but our work is excellent.

We'd love to visit with you about your property! (830) 998-8547

FORD 6610 DIESEL CAB & COLD AIR TRACTOR: 4,200 hours. \$10,250. 573-765-4406. Richland.

BRUSH HOG 10FT PULL TYPE BRUSHCUTTER: \$1,650. 573-765-4406. Richland.

2 NEW HOLLAND BAR RAKES: Both for \$2,200. 573-765-4406. Richland.

MASSEY FERGUSON 1330 10FT DISK MOWER: \$7,250. 573-765-4406. Richland.

JOHN DEERE 275 9FT DISK MOWER: \$4,850. 573-765-4406. Richland.

SITREX 10-WHEEL BY FOLD RAKE: Good. \$5,850. 573-765-4406. Richland.

JOHN DEERE 567 ROUND BALER: Monitor, kicker, net wrap, wide pickup. \$8,950. 573-765-4406. Richland.

OIL PAINTINGS/BEAUTIFUL COLLECTION OF APPROXIMATELY 35+: Take all. Local artist passed away. All proceeds go to charity. 573-208-0848, can text photos if requested. Decaturville.

A.C. 185 DIESEL TRACTOR: With A.C. Loader, good rubber. \$6,950. 573-765-4406. Richland.

FOR SALE: 3½-year-old Male Kiko. 3-year-old Nubian female with two 6-week-old kids. Remington 22. Stevens 12 Gauge Shotgun. Lap Harp. 573-858-3121.

GRAVITY WAGON MW: Approximately 400 bushels. Big flotation tires, roll over truck tarp, excellent condition. \$5,500 573-378-5180.

TAKING ORDERS: For round & square bales. 417-345-5634.

POOL TABLES: Installations, moves, recovers, repairs, accessories, etc. 573-646-1700.

IRON WILL MEMORIES OF VINTAGE TRACTORS: Excellent shape. \$20 you pay shipping. 417-260-0941.

FOR SALE ENOROSI 4-BASKET TEDDER: Also, one for parts. \$2,250 OBO. 573-690-3092. Freeburg.

Buildings • Hunter's Cabins • Lawn Furniture

JAMCO Portable Buildings
800-688-2064 • 307 Enterprise Dr. • Seymour, MO • www.jamcobuilders.com

Rent To Own Plan

KUSTER LOGGING

BUYER of Standing Timber
Oak and Walnut

Dozing Now Available

417-259-0047

References Available

BYLER SUPPLY

The Builder's Choice!

CALL TODAY FOR NEXT DAY SERVICE!
Call for Details

Ask About Our Quick Service.

Over 20 Colors and Several Styles To Choose!

**CUT TO LENGTH PANELS
GALVALUME METAL UNPAINTED
25 YEAR WARRANTY
#1 Standard Panels, 29 Ga.**

\$78.90 sq.



HEAVY 29 Ga. METAL #1
Limited LIFETIME WARRANTY
29 Ga. & 26 Ga. Painted



Reg. Pole Frame Buildings Are Heavy 29 Ga. Metal, Three 2"x6" T&G Splashboards, All Poles 5"x5" Or Larger, CCA Treated, Fully Trimmed With One 3'x6' Walk-Through Door & One Large Sliding Door.

CALL US FOR CURRENT PRICING

Spring Project Supplies!



BYLER BUILDING SUPPLY, LLC



2 1/2 Miles East of Seymour On 60, 1/4 Mile North at the Peewee Crossing \ Star Road Intersection

877-556-8855 · MON.-FRI. 7:30-5 SAT. 8-12 · 417-771-3100

VISIT US AT WWW.BYLERSUPPLY.COM

Quarles Supply
3251 S Springfield Ave, Bolivar, MO 65613
417-777-2391

Kubota of Lebanon
22330 Hwy MM, Lebanon, MO 65536
417-532-0888

*Your hometown
Kubota dealer
of choice.*



#1 SELLING
TRACTOR
UNDER 200 HP

L02 SERIES

Double digit to-do lists have met their match.

Dependable. Powerful. Versatile. When you need increased comfort, and reliable high performance under a steel hood, you can count on the Kubota L02 Series.

L2502DT Tractor and Loader \$19,995 | 0% for 84 Months

Visit your Kubota dealer today for a demo!

KubotaUSA.com



0% Down, 0% A.P.R. financing for up to 84 months on purchases of select new Kubota L2502DT equipment from participating dealers' in stock inventory is available to qualified purchasers through Kubota Credit Corporation, U.S.A.; subject to credit approval. Example: 84 monthly payments of \$11.90 per \$1,000 financed. Some exceptions apply. Terms subject to change. Offers expire 06/30/2024. This material is for descriptive purposes only. Kubota disclaims all representations and warranties, express or implied, or any liability from the use of this material. For more information, see Dealer or go to KubotaUSA.com.