

FREE - TAKE ONE!

Vol. 31 No. 6

MAY 9, 2024

417-532-9131

WEEKLY TRADER MAGAZINE



Find us on
Facebook

@myweeklytrader
AUCTIONS PG. 10

VISIT OUR NEW WEBSITE! MYWEEKLYTRADER.COM

Quarles Supply

3251 S Springfield Ave, Bolivar, MO 65613
417-777-2391

Kubota of Lebanon

22330 Hwy MM, Lebanon, MO 65536
417-532-0888



**#1 SELLING
TRACTOR
UNDER 200 HP**

L02 SERIES

*Your hometown
Kubota dealer
of choice.*

Double digit to-do lists have met their match.

Dependable. Powerful. Versatile. When you need increased comfort, and reliable high performance under a steel hood, you can count on the Kubota L02 Series.

L2502DT Tractor and Loader \$19,995 | 0% for 84 Months

Visit your Kubota dealer today for a demo!

KubotaUSA.com



0% Down, 0% A.P.R. financing for up to 84 months on purchases of select new Kubota L2502DT equipment from participating dealers' in stock inventory is available to qualified purchasers through Kubota Credit Corporation, U.S.A.; subject to credit approval. Example: 84 monthly payments of \$11.90 per \$1,000 financed. Some exceptions apply. Terms subject to change. Offers expire 06/30/2024. This material is for descriptive purposes only. Kubota disclaims all representations and warranties, express or implied, or any liability from the use of this material. For more information, see Dealer or go to KubotaUSA.com.

LAND FOR SALE



44 ACRES ± | HICKORY CO., MO | \$235,000

- All the comforts of home in a new cabin
- 3 food plots
- Very active wildlife pond
- 3 stands convey with the property
- Trails access the property
- Morel mushrooms

BRIAN UTECHT LAND TEAM
SOUTHWEST MISSOURI LAND SPECIALISTS



📞 **417.766.5595**

🌐 brian.utecht@whitetailproperties.com



WHITETAIL PROPERTIES REAL ESTATE

HUNTING | RANCH | FARM | TIMBER

WHITETAILPROPERTIES.COM

Whitetail Properties Real Estate, LLC DBA Whitetail Properties, DBA Whitetail Properties Real Estate. In the States of Nebraska & North Dakota DBA Whitetail Trophy Properties Real Estate LLC. Licensed in CO, MN, ND, SD, TN & WI - Jeffrey Evans, Broker. Licensed in FL, KS & MO - Jefferson Kirk Gilbert, Broker. Licensed in TX & NM - Joey Bellington, Broker. Licensed in IN - Bill Minor, Broker. Licensed in AL, GA, LA, & MS - Sybil Stewart, Broker. Licensed in TN - Tim Burnette, Broker. Licensed in TN & MS - Josh Monk, Broker. Licensed in AR - Anthony Chrisco, Broker. Licensed in NC, SC, VA - Chip Camp, Broker. Licensed in IA, NC - Richard F. Baugh, Broker. Licensed in MI - Edmund Joel Nogaski, Broker. Licensed in IL, MD, WV - Debbie S. Laux, Broker. Licensed in ID, MT, OR, UT, WA, WY & NV - Aaron Milliken, Broker. Licensed in NY - John Myers, Real Estate Broker. Licensed in OK - Dean Anderson, Broker. Licensed in KY - Derek Fisher, Broker. Licensed in OH - Jeremy Schaefer, Principal Broker. Licensed in NE & SD - Jason Schendt, Broker. Licensed in MS - Chipper Gibbs, Broker. Licensed in PA - Jack Brown, Broker.



Buying Standing Timber
References Available.
BUTLER LOGGING

NIANGUA, MO
417-448-9323

CHRISTIAN COUNTY, MO HISTORY: It's First 100 Years, Printed 1959, 222 pages, H.B., \$25. **HISTORY OF WEBSTER COUNTY, MO** by Floy Watters George, 264 pages, printed 1955. \$25. 417-532-2045, Leave message and phone number. Lebanon.

WEATHERED BARN WOOD SIDING: 10" wide. Call for appointment 573-729-7226. www.pineridgerustic.com Salem.

LOG SIDING: 2X8 Pine/Western Cedar. Call for appointment 573-729-7226. www.pineridgerustic.com Salem.

40 YEARS THIS YEAR- we have to be doing something right. Call for quote or any house new or used, double and single. 573-657-2176 amegamobilehomes.com.

WE GOT IT - let us bid your mobile home purchase, new and used. 573-499-9993 columbiadiscountshomes.com.

SPORTSET BY SARGENT: Fishing pliers in leather sheath. Like a multi-tool. \$15. 636-239-2695 or 314-560-5700. Washington.

KING BUILDERS
We specialize in custom and specialty builds, such as:

- Houses
- Barndominiums
- Shops
- Barns
- Garages

We also do roofing & siding!

Call for a free estimate!

Stevie King | 435 Dickerson Ranch Lane, Conway, MO 65632 | 417-241-3280

TRIPLE WIDE- moving stock, awesome price. 573-657-7040 chateauhomes.net.

TINY HOMES - Missouri Franchise 573-881-7965.

I BUY.....used mobile homes. Call or text 573-338-6250 or email GregS.CDH@outlook.com

NEW SQUARE D RAINPROOF 50AMP DISCONNECT: \$120. 636-239-2695 or 314-560-5700. Washington.

2020 RV TRAVEL TRAILER: 35' Rockwood Ultra Lite. Like new many upgrades. 620-224-9694. Lebanon.

OPERATORS MANUALS: IT, Jensales, & Case IH. Call for details, \$20 each. 636-239-2695 or 314-560-5700. Washington.

BLACK METAL TUBULAR BRACKET: Scrolling and a stainless bracket. \$8. Call for pictures. 636-239-2695 or 314-560-5700. Washington.

RUBBER & LEATHER BOOTS AND 5- BUCKLE OVER SHOES: Men's 11, Women's 7, some insulated. \$12-\$35 obo. 636-239-2695. Washington.

WANTED MILK GOAT: 660-598-4019.

ANTIQUA 4 HP ENGINE: Built by Continental Motors Corporation. \$150 OBO. 573-308-5884. Rolla.

'85 FORD PICKUP PARTS: Passenger door with window glass & mirror \$30. Also, Tailgate for '85 Ford pickup \$25. 573-308-5884. Rolla.

NEW IN BOX MASTERBUILT ELECTRIC TURKEY FRYER: Up to 14 lbs. Fry, boil or steam. Safe for indoors. \$80. 417-718-5347. Morgan.

1985 ST. LOUIS CARDINALS SIGNED WORLD SERIES BALL: Includes Herzog & Ozzie Smith. PSA/DNA. \$190. Text for pictures. 573-854-8132. Houston.

SOVIET UNION WINTER WEATHER ARMY HAT: Excellent condition. \$35. Text for pictures. 573-854-8132. Houston.

PALLET RACKING: 12 ft high, 93" shelves. Reasonable price. Call 816-289-9580 NO TEXT. Sunrise Beach Area.

VOTED #1 BEST Preowned Car Dealership

TIM'S USED CARS
(573) 341-3828 • 1334 South Bishop (Hwy. 63) • Rolla, MO
Next to Hwy CC • www.tims-used-cars.com

	2019 FORD ESCAPE S FWD, 2.5, 4 Cyl., Power Equipped, 65,xxx Miles Only \$14,900		2011 CHEVY CAMARO LS V-6, 6 Speed, Manual, Power Equipped, 118,xxx Miles Only \$11,500
	2015 KIA SOUL 4 Cyl. Auto, Power Equipped, 110,xxx Miles Only \$8,500		2017 RAM 2500 SLT Crew Cab, 4x4, 6.4 V-8, Power Equipped, 128,xxx Miles Only \$29,500

LARGE SELECTION OF CARS, TRUCKS, SUVs & VANS!

4.99%* FOR 84 MONTHS *W.A.C.



2024 Bad Boy 1025 Tractor W/Loader & Belly Mower PACKAGE DEAL

-4' BRUSH CUTTER -4' BOX BLADE
-16'+2' TRAILER W/STAKE POCKET RAMPS

MSRP \$33,784

PROMO PRICE \$24,848 + TAX If Applicable

TOTAL SAVINGS \$8,936

PRICE INCLUDES FREE 4' BRUSH CUTTER PROMOTION

\$352 MO*



2024 Bad Boy 4025 W/Loader & Backhoe PACKAGE DEAL

-5' HD BRUSH CUTTER -5' HD BOX BLADE
-16'+2' TRAILER W/STAKE POCKET RAMPS

MSRP \$47,325

PROMO PRICE \$36,309 + TAX If Applicable

TOTAL SAVINGS \$11,016

PRICE INCLUDES FREE 5' BRUSH CUTTER PROMOTION

\$514 MO*



2023 Bad Boy 4035 Cab Tractor W/Loader PACKAGE DEAL

-5' HD BRUSH CUTTER -5' HD BOX BLADE
-16'+2' TRAILER W/STAKE POCKET RAMPS

MSRP \$51,373

PROMO PRICE \$39,486 + TAX If Applicable

TOTAL SAVINGS \$11,887

PRICE INCLUDES FREE 5' BRUSH CUTTER PROMOTION

\$558 MO*



2024 Bad Boy 4035 Tractor W/Loader PACKAGE DEAL

-5' HD BRUSH CUTTER -5' HD BOX BLADE
-16'+2' TRAILER W/STAKE POCKET RAMPS

MSRP \$42,726

PROMO PRICE \$32,495 + TAX If Applicable

TOTAL SAVINGS \$10,231

PRICE INCLUDES FREE 5' BRUSH CUTTER PROMOTION

\$460 MO*



RECEIVE THIS TRAILER WITH YOUR TRACTOR PACKAGE

While Supplies Last.



2024 Bad Boy MZ Magnum 54" W/Kawasaki

MSRP \$5,369

PROMO PRICE \$4,886 + TAX

2024 Bad Boy Maverick 60" W/Kohler

MSRP \$8,589

PROMO PRICE \$7,851 + TAX

ZERO DOWN AT 0% FOR 48 MONTHS

*W.A.C.

While Supplies Last.



2024 Bad Boy Rebel X 61" W/Vanguard EFI & Rear Tweels

MSRP \$14,999

PROMO PRICE \$13,644 + TAX

Experience the Bad Boy Difference at



Bobcat

OF ROLLA, MO.

SALES • SERVICE • PARTS
BOBCATOFFROLLA.COM
573-364-0179

ST LOUIS BLUES: autographed full size hockey stick. Brett Hull. Text for pictures. \$149 573-854-8132. Houston.

RIFLE CASE: Pelican storm. IM3100 long case like new \$160. Text for pictures. 573-854-8132. Houston.

GUNSMITHING-Older Rifles, Shotguns, Handguns, all 22LRs. Any make, any model, estate appraisals. Camdenton. 573-363-5801.

3 ARMY CANTEENS: Mess kit, belt & duffel bag. Best offer for all. 417-260-0941. Raymondville.

INTERNATIONAL PICKUP TRANSFER GEARBOX: \$150. 573-308-5884. Rolla.

TOSHIBA 42" FLAT SCREEN LED LCD HD TV: With remote & owner's manual. \$50. 210-787-8222. Linn Creek.

AB SPORT LOUNGE like new \$35. 210-787-8222 Linn Creek.

3 BW: motorcycle magazines 2008 Free. 417-260-0941. Raymondville.

CHILTONS AUTO REPAIR MANUAL: all American cars & Volkswagen 1969-1976. \$30 plus shipping. 417-260-0941. Raymondville.

3 BASEBALL MITTS: From the 1950s. \$60. 417-260-0941. Raymondville.

WANTED WOOD STOVE MAGIC HEAT EXCHANGER: 660-598-4019.

REGISTERED DACHSHUND PUPPIES & 2 DOXIEPOOS. 573-247-6273.

YOUTH BED: in good condition \$15. 417-532-2344.

20 LB PROPANE TANK: with OPD valve \$20. 417-532-2344.

WE BUY White Oak Logs!

- Top prices for your logs • Experienced log buyers
- Professional service

Chad Cook | Salem Mill
417.718.2950

5 miles north of Salem, MO on Hwy 19



www.independentstavecompany.com



Martin's

Floral & Home Decor



martinsfloralthomedecor.com



New Styles!



609109

100's in Stock!

MEMORIAL HEADSTONE SPRAYS

Starting At...

\$29.99

Excellent Quality



SPRING AND SUMMER BUSHES

30% OFF!!



DECORATED CEMETERY VASES

Starting At...

\$12.99



WEIGHTED MEMORIAL BASKETS

Starting At...

\$24.99



7-BLOOM CEMETERY BUSHES

Starting at ...

\$1.39

Thousands In Stock!



CEMETERY VASES

Foam Filled

\$1.99

Great Price!!

LEBANON 1801 S. Jefferson Ave.

- MARSHFIELD 420 Washington St.
- SPRINGFIELD 3910 S. Campbell
- OZARK 4072 N. 20th. St.
- WEST PLAINS 1625 Gibson St.

CUSTOM ORDERS AVAILABLE

CASH, CHECK, CREDIT CARDS

WELCOME!

BYLER SUPPLY

The Builder's Choice!

CALL TODAY FOR NEXT DAY SERVICE!
Call for Details

Ask About Our Quick Service.

Over 20 Colors and Several Styles To Choose!

CUT TO LENGTH PANELS GALVALUME METAL UNPAINTED 25 YEAR WARRANTY #1 Standard Panels, 29 Ga.

\$78.90 sq.



HEAVY 29 Ga. METAL #1
Limited LIFETIME WARRANTY
29 Ga. & 26 Ga. Painted



Reg. Pole Frame Buildings Are Heavy 29 Ga. Metal, Three 2"x6" T&G Splashboards, All Poles 5"x5" Or Larger, CCA Treated, Fully Trimmed With One 3'x6' Walk-Through Door & One Large Sliding Door.

CALL US FOR CURRENT PRICING

Spring Project Supplies!



BYLER BUILDING SUPPLY, LLC



2 1/2 Miles East of Seymour On 60, 1/4 Mile North at the Peewee Crossing \ Star Road Intersection

877-556-8855 · MON.-FRI. 7:30-5 SAT. 8-12 · 417-771-3100

VISIT US AT WWW.BYLERSUPPLY.COM

2-DRAWER FILE CABINET: Pink. In good condition. \$15. 417-532-2344.

DEAN'S CREEK MOBILE WELDING LLC: Noah Downing, Certified Welder Serving Central Missouri. 573-842-7281.

DODGE BENCH SEAT: 2nd gen needs TLC \$100. 417-288-9861 Hazelgreen.

JUMBO FLOAT: 95" long x 80" wide x 10" high. Heavy gauge vinyl, Safety valve, 2 screw valves, 12 rope holders, water plug, nylon rope around it. Like new. \$150. 210-787-8222. Linn Creek.

BREWER LOGGING: Looking to buy standard walnut & oak standing timber. Call 417-254-0266, for a free quote.

TIGER WOODS UPPER DECK CARD: #1 mint condition. 573-854-8132. Houston.

PUREBRED FAINTING GOATS: Big variety! Some great deals and packages available. Lake Of The Ozarks. 573-216-7796.

TRACTOR TIRE: 16.9 X 34 goodyear. \$150. 417-288-9861 Hazelgreen.

TAYLOR TRUCKS & EQUIPMENT

417-924-2026 • 2676 Hwy. 5, Mansfield, MO

★ INTIMIDATOR TREE PULLER ★

★ 3 POINT TILLERS ★

TRAILER PARTS & REPAIR
MD144 Bat Wing in stock!

Milwaukee Cordless Tools

DANUSER DEALER

T3 Post Driver & Other Attachments
New Mowers! Bush-Whacker, Big Bee
Storage Containers & Dry Vans - 20' - 53',

BUSH-WHACKER HD
SKIDSTEER BRUSH CUTTER

Portable Generators, Farm Tires, New Semi Tires,
PTO's & Parts for Rotary Mowers, Farm Tractor
Implements, Plows, Used 15" Bush-Whacker Now In
Stock, Discs, and More Skidsteer Attachments: Pallet
Forks, Buckets, Grapples, Hay Spears, RR Ties

Bush-Whacker
Heavy Duty Rotary Cutter



We invite you To Come By & Look
Us Over! Located 2.5 Miles North
Of Mansfield, MO On Hwy 5

METAL BANDSAW: up to 6" pipe. \$175.
417-288-9861 Hazelgreen.

**DISABLED 83-YEAR-OLD US
VETERAN NEEDING LIGHT WEIGHT
BATTERY POWERED MOBILITY
SCOOTER:** 573-699-4351. St. James.

PLAD PANTRY

DISCOUNT &
SURPLUS FOODS
FRESH PRODUCE LLC
417-532-4700

Unsalted Butter Quarters.....**\$3.79** 1 lb.
Beef Bottom Round Pot Roast.....**\$2.99** a lb.
Cotton Candy
Flavored Ice Cream.....**\$16.99** 3 gal.
No Sugar Added
Tomato Ketchup.....**\$2.49** 29.5 oz.
Caramel Vanilla
Triple Shot Coffee Drink**\$10.99** 12-15 oz.

1571 State Hwy 64 • Tunas, MO 65764
Hours: 8:30 a.m. to 5:30 p.m. • Closed Wed. & Sun.



OFFICIAL TRACTOR OF TOUGH™

INTRODUCING THE ALL-NEW 5100 SERIES



Marshfield Machinery Inc.

222 E. Madison • Marshfield, MO 65706

417-859-2117 • www.marshfieldmachinery.com

*2018 data including all Mahindra group brand sales.
MahindraUSA.com © 2020 Mahindra USA Inc.

Mahindra
Rise.

NEW MAHINDRA TRACTORS

1626 4WD & LDR 26HP	IN STOCK
2126 4WD & LDR 26HP	IN STOCK
1635 4WD & LDR 36HP	IN STOCK
1640 4WD & LDR 38HP	IN STOCK
2638 4WD & LDR 38HP	IN STOCK
2645 4WD & LDR 45HP	IN STOCK
5145 4WD & LDR 45HP	IN STOCK
5155 4WD & LDR 55HP	IN STOCK
4550 4WD & LDR 48HP	IN STOCK
6065 4WD & LDR 62HP	IN STOCK
6075 4WD & LDR 71HP	IN STOCK
6075 4WD CAB & LDR 71HP	IN STOCK

USED TRACTORS

MF 4609M 90HP CAB LDR	45,000
MF 4609M 90HP CAB LDR	45,000
MF 5445 75HP 4WD CAB LDR	42,500
NHT4.75 74HP 4WD LDR	32,500
MF 290 65 HP	8,500
MF 1528 28HP 4WD	6,500

USED ROUND BALERS

MF 2946A 4X6 MESH	35,000
HESSTON 560 5X6	2,000

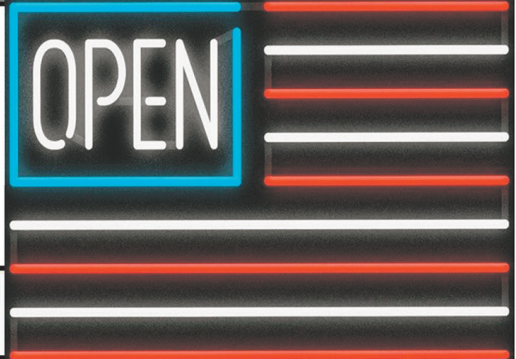
USED MISC.

BUSH HOG 3715 15FT	13,500
BUSH HOG 2615L 15FT	10,500
JD 1815 15FT	9,500
HESSTON 8 WHEEL RAKE	2,500
OMI 8 WHEEL RAKE	2,500
RHINO 8 WHEEL RAKE	1,500

Marshfield Machinery Inc.

222 E. Madison
Marshfield, MO 65706
417-859-2117

www.marshfieldmachinery.com



Sale Ends May 31, 2024
 Seymour, Missouri 417-935-4201

Pole Barn Building Kits!

23'x32'x10' \$6,688 Material Only \$8,888 Labor Included	23'x40'x10' \$7,600 Material Only \$10,320 Labor Included	30'x40'x10' \$9,000 Material Only \$12,500 Labor Included	40'x60'x12' \$15,800 Material Only \$23,050 Labor Included
---	--	--	---

Call for free quote, brochure & color chart.
 Other sizes also available.



NOBODY, BUT NOBODY BEATS OUR PRICES!!!

10 ft. Slider • Engineered Trusses 8' O.C. • 2x6 Treated Bottom Wrap • Screws • 2x10 Top Wrap • 2x4 Purlins • Full 29 Gauge Steel • Plus 3 ft. Entry Door with Lock
 OPTIONS: Sidewall Heights on all Buildings 10', 12', 14' & 16'. Overhead Garage Door. Skylights. Insulation. Wainscoting. Insulated Vinyl Windows. Cupolas. Labor Rates Slightly Higher over 50 Miles from Seymour. Call for YOUR FREE QUOTE TODAY!!!!

PAINTED WHITE, GREEN OR TAN METAL	\$97.79
10' - \$31.00 12' - \$37.20 16' - \$49.60	
MIX & MATCH METAL	\$59.99
8' - \$15.20 10' - \$19.00 12' - \$22.80	
GALVALUME METAL	\$79.99
10' - \$25.40 12' - \$30.48 16' - \$40.64	
GALVANIZED CORRUGATED METAL	\$85.39
8' - \$15.92 10' - \$19.90 12' - \$23.88 16' - \$31.84	

IN STOCK

40yr Painted Metal
Call!

KNOTTY PINE DOORS
 Starting at
\$164.99

Prices subject to change without notice
6X6 CEDAR POST LIMITED TIME \$5.87 LN FT

Car Siding!
 1x6 White Pine Siding **69¢** in ft
 1x8 White Pine Siding **99¢** in ft
 * 4 Profiles to choose from!
 Broken Bundles Add 10¢ Per Ft.

4x8 Sheeting
 Less than full units Add \$1 per sheet
 3/8" Beaded Paneling \$19.99
 5/8" T111 Siding \$19.99
 Paneling **\$SOLD**
 1/2" Plywood \$23.99
 3/4" Plywood \$29.99
 3/16 Pegboard \$12.99

**LOTS OF MATERIAL AVAILABLE
 FOR THOSE IN HOME PROJECTS!**

REAL WOOD SIDING
 2x6 Log Siding \$1.49 in ft
 1x8 Beveled Cedar from- 99¢ in ft
 T1-11 Siding from \$19.99

NEW PACKAGE HOMES

2x6—16" on center-Exterior Stud Walls
 Residential Roof Trusses-2' on center
 4/12 pitch with 1' over hang
 40 year Painted Metal roofing in 20 Different Colors
 Profile Ridge Vent - Ventilated Ridge Cap
 Vinyl Center Vent Soffit
 Color Matched Metal Fascia & Gable Trim
 2 - 3' 6 Panel Entry Doors
 4 - 3'x4' Vinyl Insulated Windows
ALL FIGURED FOR SUITABLE CUSTOMER SUPPLIED SLAB OR SUB-FLOOR

Shown with Available Options
 Your Choice of either:
 Stock 5/8" T111 Siding w/1x4 Pine Window & Door Trim - or -
 7/16" OSB & House Wrap ready for other finish options

Price for Basic Materials Package (No Labor at this Time)

20x24(490 sq. ft.)	20x32(640 sq. ft.)	20x40(800 sq. ft.)	28x40(1120 sq. ft.)	28x48(1344 sq. ft.)
\$9,490	\$10,839	\$12,339	\$15,129	\$18,729

DECK PACKAGES
Materials Only
 8x8.....\$349.00 10x12.....\$699.00
 10x10.....\$499.00 10x16.....\$899.00
 12x12.....\$899.00 12x16..\$1179.00

QUAKER In STOCK! Quaker Vinyl Windows

2030 \$ 196.99	3030 \$224.99
3040 \$244.99	3052 \$289.99
3040Twin \$545.99	3052Twin \$592.99



LUCKY DISCOUNT LUMBER
 417-935-4201
 455 State Hwy C • Seymour MO 65746
 www.luckydiscountlumber.com



*Some restrictions apply see store for details. Prices subject to change without notice.

ZIMMERMAN STANDING SEAM ROLL FORMER: with lots of small tooling and swanson snap lock table. 417-255-0951

METAL PATIO SWING: Nice cushions. \$125. 417-288-2205.

TROY-BILT PUSH MOWER: \$200. 417-288-2205.

TROY-BILT WEED EATER: \$125. 417-288-2205.

BULLS FOR RENT: 1 black with white face, Angus Hereford Cross. \$600. 1 Registered Red Angus \$700. PPC genetics. Built right, good disposition. Also, Angus Bulls for sale out of these two bulls. Grass fed. Also, replacement Ewes for sale; Katahdin with a little Dorper. All grass fed. Very few parasites. For more info, write Jonas Beechy 730 E. 310 Rd. Flemington, MO 65650. 417-307-9461, please leave message.

SET OF TITAN 16.9-38 TRACTOR TIRES: \$400 for the set, OBO. 573-690-3092. Freeburg.

PARTI MINIATURE SCHNAUZER/TOY POODLE MIX: Weigh 8-12 lbs. 417-664-5926.

WHITE DORPER EWES FOR SALE: Some breeding ages, various sizes. 417-464-0002. Seymour.



Meadowview Dutch Market

Bulk & Surplus Groceries • Prices Subject to Stock on Hand

Call to Order
417-993-3017

Sale Dates May 8th, 2024 to
May 14th, 2024 while supplies last!

DELI SPECIAL

PEPPERONI.....REG. \$6.29 LBSALE \$5.79 LB
DESERT FIRE CHEESE.....REG. \$5.49 LBSALE \$4.99 LB

TRY our Fresh Homemade DELI Sandwiches: TURKEY, HAM, ROAST BEEF, ITALIAN, BLT'S, PULLED PORK AND BLT PULLED PORK (MADE YOUR WAY)! COME IN OR CALL to order! ALSO Custom Deli trays! Veggie OR FRESH Meat-N-Cheese!

Sausage Kolaches



\$99 LB.

Dot's Pretzels



\$149 50Z.

Fresh Boneless Beef Chuck Roast (Sliced)



\$399 LB.

Fully Cooked Bacon Bits



\$249 LB.

Dairy Fresh Cheese Shreds



15% OFF

Fully Cooked Meatballs



\$199 LB.

HAM & SWISS LUNCHABLES

2/\$100
OR **\$699** 16CT. CASE



WE WILL BE CLOSED THURSDAY MAY 9TH IN OBSERVANCE OF ASCENSION DAY WE WILL REOPEN FRIDAY MAY 10TH

MEADOWVIEW DUTCH MARKET
417-993-3017 Hours: Mon-Thurs 8-5pm
Fri 8-6pm • Sat 8-5pm
23 Miles West on Hwy 64 • Right on T Hwy
9 miles • Left on E Hwy 1 mile on Left

NOT RESPONSIBLE FOR PRINT ERROR!!

NOW ACCEPTING CREDIT, DEBIT CARDS & EBT

DUTCH COUNTRY STORE, LLC
573-378-4395
Hours: Mon-Thurs 8-5pm
Fri 8-6pm • Sat 8-5pm
5 miles East of Versailles off Hwy C on Kelsay Road

LEFTY'S FABRICATION: Continuous panels & gates. Corral panels & custom welding. 417-589-0864. Conway.

1967 MUSTANG: 6-cylinder, no rust. \$7,900. 573-636-8000. Jefferson City.

LAKE OF THE OZARKS- 2 Lot Special starting at \$6,495. Owner financing \$175 down and \$100, a month. No credit checks, no gimmicks, build, camp, or own for investment. Beautiful trees, lots of wildlife, fun boating and swimming. Free lake access and boat ramps. Prices good through May 20, 2024. Hwy 135 between Stover and Laurie MO. Take Lake Rd. 135-12 to the Ivy Bend Land Office. Open Thursday through Monday. Call 573-372-6493.

'97 JEEP WRANGLER: Needs work. \$2,500. 573-525-8883.

REGISTERED PUREBRED GERMAN SHEPHERD PUPPIES: 417-741-0175. Hartville.

FARM/LANDSCAPING TRAILER: w/ sides and ramp, new hubs/tires, 20' x 6.5', 2-year-old deck, Bill of sale, \$2,450 or trade? 417-650-7069. Lebanon.

FOR SALE ENOROSSI 4-BASKET TEDDER: Also, one for parts. \$2,350 OBO. 573-690-3092. Freeburg.

PINNACLE RANCH YEARLING RED ANGUS: bulls for sale. 417-679-4269. Gainesville.

'98 FORD RANGER XLT: 63,280 miles. 636-359-5007. Rolla.

STORM SHELTER SAFE ROOMS: Scratch & Dent Sale. Big savings. Call for details, 417-894-3159.

BUYING SCRAP METAL: All kinds, can torch, Heavy Equipment Call for prices, 40 years' experience. 573-308-6739.

LEGO RETIRED TECHNIC MODLES: NIB Volvo track hoe #42121. Mobile crane #42108. HD tow truck #42128. 573-263-0212. Rolla.

WANTED JERSEY MILK COW: 660-598-4019.

RAPP ESTATE FARM AUCTION

LIVE AUCTION



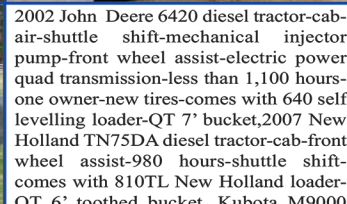
Cynthia Rapp will sell her and the late Carl Rapp's farm equipment at public auction on:

Saturday, May 11th 2024, Beginning at 9:00 AM

Location: 2415 Denmark Road Union Mo 63084

Direction: From Interstate 44, take Exit #247-Highway 50 West. Immediately turn left and get on North Service Road-Westbound, go 1 mile, turn right on Denmark Road .3 miles to auction. Roads will be marked day of sale.

TRACTORS / BOBCAT UTILITY VEHICLES (will sell 12:00 Noon)



2002 John Deere 6420 diesel tractor-cab-air-shuttle shift-mechanical injector pump-front wheel assist-electric power quad transmission-less than 1,100 hours-one owner-new tires-comes with 640 self levelling loader-QT 7' bucket, 2007 New Holland TN75DA diesel tractor-cab-front wheel assist-980 hours-shuttle shift-comes with 810TL New Holland loader-QT 6' toothed bucket, Kubota M9000 diesel tractor-canopy-front wheel assist-shuttle shift-605 hours-comes with LA 1251 loader-QT 7' toothed bucket-one owner, **BOBCATS;** Bobcat 5600 Toolcat utility vehicle-cab-AC-heat-QT Bob Tach attachments-hydraulic latches, all wheel steering-light bar-receiver hitch-dump bed-570 hours, Bobcat 5610 same as 5600 but with rear PTO-3 point hitch-4x4, 815 hours

MOWERS / YARDTOOLS / FARM SUPPLIES



John Deere 997 Z Trak zero turn mower-diesel-roll bar-60" deck, Scag turbo diesel Saber Tooth Tiger-zero turn mower-6' deck, Troy Bilt 5 Hp rear tine tiller, Honda FR750 rear tine tiller, Stihl Wood Boss 028 AV chain saw, Stihl MS290 chainsaw, Homelite chainsaw, Stihl HS80 gas hedge trimmer, brush chopper, brush scythes, tampo, rakes, shovels, scoop shovel, post hole digger, ice chippers, axes, chain binders, lot log chains, tow straps, ratchet straps, 12 volt sprayer, **FENCING;** ornate 8'x14' (2 piece) entry gates, automatic gate opener-FAAC 400-NIB, Priefert horse stall fronts-with windows, used T post, T post driver, fence, wire, baler twine, truck bed water tank, fuel tank on stand, filters, floor jack, oils-fluids, gas cans, wooden posts, step-extension ladders, extendable walk board, lumber, tires-wheels, storage box-9'x7'x8", double dog kennel-heavy duty-6' tall-5'x10', dog house, oil pans, (2) 10'x20' garage pavilions-NIB, coolers, heavy duty shelving, indoor-outdoor carpeting, come-a-long, 3.5 ton floor jack, double propane top heater, barrel wet-dry vac, copper ground wire, wagon jack, portable air tank, car ramps, 2 wheel dolly, floor fan



SKID STEER ATTACHMENTS / FARM IMPLEMENTS / TRAILERS



Bobcat 7' heavy duty grapple, Bobcat 8' angle snow blade, Bobcat 80" toothed bucket, 5'6" smooth bucket, 8' pallet forks, Brush Wolf 7200 brush hog, Cat 48" pallet forks, 7' arena circular drag, EZ Spot UR pole setter, Long RBM round bale mover skid steer attachment, 3 point wood splitter, **FARM;** John Deere 457 mega wide silage baler with kicker, John Deere 702 8 wheel V rake, Durabilt 4 basket hydraulic lift tedder, John Deere 348 square baler, JD front loader bale spear, heavy duty 3 point 8' blade, Woods 840 7' brush hog-hvy duty with safety chains, Cadet 72 brush hog, 2009 Bush Hog 3210 10' cutter w/large gear boxes, 2016 New Holland H6830 pull type disc mower, JD 920 MOCO disc conditioner, 2 basket tedder, 3 pt 7' field cultivator, Frontier LR1072 6' rock rake, New Holland bale spear, 3 pt tub seeder, **TRAILERS;** Sundowner Sunlite 5th wheel 3 horse slant trailer-tandem axle-tack room, 22'x7' tandem axle flatbed trailer-5th wheel, Haulmark box trailer-tandem axle-side door-ramp-25'x7'-bumper hitch, 16' homemade tandem axle flatbed-bumper hitch-rear hay rack, **HAY WAGONS;** (4) EZ Trail 18'x9' hay wagons, heavy 12 volt winch, JD tractor weights



TOOLS / SHOP TOOLS



Shopsmith multi tool system, (2) 2 ton rolling cranes, Ingersoll Rand upright compressor, Cornwell large rolling tool cabinet, Snap On tool cabinet, lot rolling tool chests-cabinets, heavy work tables, Lincoln Weld Pak 100, welding helmets, **SNAP ON TOOLS;** Snap On computer Smart battery charger, Snap On Plasma 25 cutter, Snap On MM250SL welder, 4' digital torque wrench, 2 smaller torque wrenches, cordless drill sets, Snap On 18 and 14.4 volt impact wrenches, cordless grease gun, Snap On swivel sockets-sockets-extensions, Snap On tool boxes, Bosch hammer drill, Craftsman cordless tool set, Dewalt reciprocating saw, 9" metal cutting circular saw, Blue Point flexible wrench set, 12"-32" forged steel L clamps-NIB, cabinet 1/4-3/8-1/2" Craftsman socket set, huge bit set, mechanic tool set, adjustable wrench set, lot wrenches, orbital pad sander, air hose reels, air tools, work lights, bolt cutters, ratchet hoist, extension cords, large bench vise, tool boxes, sockets, ratchets, lot chisels-Dewalt chisels, hack saws, Irwin auger bit sets, plumb bobs, castors, levels, heavy bottle jacks, pliers, hole saws, car creeper, squares, clamps, drill bits, punches, hex wrenches, crescent wrenches, screw drivers, bar clamps, 14" cut off wheels, lot hardware, 300' tape, jump box



LUNCH WILL BE SERVED BY BEAUFORT LIONS CLUB

VIEW OUR PHOTO GALLERY ON www.breheauction.com

BREHE AUCTIONEERING SERVICE, LLC
 Union, MO: (636) 583-0841 Owensville, MO: (573) 437-3454
www.breheauction.com
 LICENSED AUCTIONEERS:
 Kerry Brehe 314.954.3798 Josh Brehe 314.603.3129 Nick Brehe 314.560.7737
 Harry Engelhart 636.399.3743

Announcements made day of sale supersede all printed material.
 TERMS: CASH, PERSONAL CHECKS WITH PROPER I.D., BUSINESS CHECKS WITH BANK LETTER AND NO OUT OF STATE CHECKS UNLESS APPROVED BY SELLER. Email Us At kkcauction@sbgglobal.net
 Everything sells as is with no guarantees. Not responsible for accidents.

LIVING ESTATE AUCTION

Saturday, May 11th, 2024 ~ 10:00 AM

LOCATION: 29910 State Hwy YY, Carl Junction, MO; Directions: From Carl Junction Go West On YY Hwy 1 Mile To Sale Site (Watch For Signs)

Auction For Fred & Tressa Hobson



Antique, Modern Furniture, Also Antiques & Households

Ant Rocking Chair, Ant Setting Chair, Ant Barn Wood End Table & Nightstand, 2 Sets Of Oak Bar Stools, Oak Kitchen Table W/Lg Leaf & Claw Feet, Oak Kitchen Chairs, Oak Coffee & End Table, Several Lamps, Dual Recliner Couch, 2 Recliners, Pictures, 3 Pc Bedroom Suite Inc Queen Bed, Chest Of Drawers, Nightstand, Several Folding Tables, Stereo, Vizio TV, Outdoor Table & Chairs, Stuffed Hollywood Rooster, Fish & Deer Mounts, Sigma Banjo, Ant 11GFP Wood Fiddle W/Ant Wood Case, Franklin Mint Toy Train Set, Some Old Toys, Beer Wolf Beer Advertising Mirror, Gumball Machine, Two 8 Pc China Sets, Sm Kitchen Appliances, Lots Of Other Sm Ant Items & Also Household Items

Coins, Jewelry, Guns, Knives & Outdoor

Win Model 1890 Pump 22 W/Hex Barrel, Rare 1742 P&S Rem Ohio Fowler 50 Cal Black Powder Rifle, Rare Long Hill From England Wells Fargo Stagecoach Gun, Iver Johnson Stainless Model Stryker Tactical 12 Ga Shotgun W/Clip, Rem Model 870 Mag 12 Ga Pump Shotgun W/Engravings, Savage Model 64 Semi Auto 22, NIB Heritage Rough Rider Small Bore 22 Revolver W/ Rare 16" Barrell & Gambler Joker Handles, NIB Cobra Model CB9 Derringer Style 8mm Pistol, Colt Moder DA32 Revolver, Browning Made In Belgium 22 Luger Pistol, High Standard Model M101 Duramatic 22 Luger Pistol, Victor S&W GTGF 38 Revolver, Some Ammo, Spotting Scope, Tactical Scope, 2 Compound Bows, Lg Lot Of Collector & Old Pocket Knives & Hunting Knives, 2 Bayonets, Black Powder Supplies, Gun Holsters & Cases, Lots Of Lead, Lg Lot Of Fishing Poles & Tackle, Camping Supplies Inc New Air Mattresses, 2 Dog Alum Dog Box, Other Items Not Listed, Coins To Inc 1883CC Morgan Dollar Graded

MS60, Rare 1875S Trade Dollar, Rare 1871S Half Dime, Rare 1842 & 1857 Seated Halves, 1875S Twenty Cent Pc, Over 25 Slabbed Coins, Over 30 Indian Head Cents, Several Silver Coins, Civil War Token, Mint Sets, Coin Sets, See Website For Full Coin Lot List, Gold & Silver Jewelry

Harley Motorcycle, Corvette, Autos, Trailer, Camper, Tools & Related Items

Rare 2011 Harley FXD WG2 Motorcycle Has Lg Motor Inc Crimson Red W/24 CT Gold Flames, Has Custom Ostrich Seats Only 300 Made Around The World, This One Is Number 39 W/Only 9,300 Miles, Always Stored Inside, 1975 Canary Yellow Corvette Stingray W/Factory T-Tops, Has 350 Stock Motor, Automatic 400 Turbo Trans, 2011 Ford F150 Truck Has V6 Motor, Auto Trans Also Has Camper On Bed, Approx 150,000 Miles, 2013 Cadillac SRX 3.6 SUV Fully Loaded & Runs, Need Front End Work Due To Being Hit By A Deer, 12 Ft Box Utility Trailer, 14 Ft Jayco Series JA Electric Pop Up Camper, Troy Bilt Gas Pressure Washer, Shoemaker Wire Fed Welder, Troy Bilt Pony Rear Tine Tiller, Mantis Type Tiller, Yar Utility Dump Trailer, Lg Craftsman Upright Air Compressor, Roll Around Air Compressor, Jack Hammer, Stihl Concrete Saw, Bosch Hammer Drill W/Bits, Air Tools, Concrete Tools, Bull Float, Tile Saw, Transit In Box, 2 Stihl Chainsaws, Craftsman Table Saw, Shop Vac, Chop Saw, Sm Hand Tools, Lg Lot Of Sm Electric & Battery Operated Tools, Wheelbarrow, Trimmers & Edgers, Electric Cords, Alum Ramps, 2 Shop Carts, Toolboxes, Roofing Tools, Construction Tools, Saw Horses, Log Chains, Dolly Redi Heater, Shop Shelves, Plumbing & Electric Supplies, Some Scrap Iron & Copper, Other Items Not Listed

Auctioneers Note: It Is An Honor To Be Conducting This Auction For The Hobson Family. They Are A Very Well Respected Christian Family In The Community. This Will Be A Very Large Auction. We Will Have Something Here For Everyone. Furniture, Antiques & Households To Guns, Coins, Outdoor To Autos, Motorcycle, Lg Lot Of Tools & Related Items. You Do Not Want To Miss This Auction. **Sale Order:** Furniture, Antique & Household Items Will Sell First Then Move Directly Into Small Tools & Misc Items. At Approx 12:3 PM Will Offer Motorcycle, Autos, Trailer & Large Items. At Approx 1:00 PM Will Offer Guns, Coins & Jewelry. Remainder Of Tools & Outdoor Will Finish Auction. See Ya There!!!

Terms: Cash or check with proper ID. Now accepting most major credit cards. Nothing removed until settled for. Statements made the day of sale takes precedence over printed material. Everything sold as is where is. Not responsible for accidents. Restroom available. Concessions Provided. Check our website for upcoming auctions and for additional pictures!!



NANCE AUCTION SERVICE

No Matter How BIG or small, We Do Them All!!!



Col. Bill Nance 417-214-0093 In God We Trust Philippians 4:13 Sean Beazley 417-247-6754

Sam CRAWFORD AUCTION SERVICE LLC

Due to health, will sell the following located 1 mile South of Pittsburg, MO on Hwy. 64 to Hwy. RA, then East 1 mile. Watch for auction signs.

SATURDAY, MAY 18TH, 2024 - 9:30 A.M.

64+/- ACRES - 4 BR HOME & SHOP - VEHICLES - TRACTOR & EQUIP. - HOUSEHOLD



REAL ESTATE - SELLS 12 NOON

64+/- Acres • Mostly Timber • Large Pond • Fenced on 2 Sides • 4 Bedroom, 3 Bath Home • Built in '98 Walk-Out Basement 1/2 Finished (w/ 2 BR & 1 BA Down) • Plus 1 Car Garage Down & Storage Area Attached 2 Car Garage 24x26' • Rear Deck • All Electric • Ground Source Heat & Air • Well-Septic Rock Fireplace Down • 3114 Sq. Ft. w/Basement & Garage • 30x50' Barn/Shop w/Office Area Built in '97 w/ Carport on Front • Rolling Door & 2 Side Doors • Small Chicken House • Really Nice Property Great Location w/Short Distance to Lake Pomme De Terre & Boat Launch Area • Plenty of Wildlife Room to Ride Your ATV • Owner Has Moved & Wants to Sell • Shown by Appt. w/Auctioneers

VEHICLES - TRACTOR - EQUIPMENT SELL NEAR 12:30

'02 Chevrolet HD 3/4 Diesel, Crew Cab, Auto, Leather, w/Camper Shell, 130K
2000 Mercury Villager Mini Van, Leather, 200K, Shedded
Case IH 585 Diesel w/Case IH 2250 Loader
These 3 Items Are Not Running at Listing Date
Sidewinder 3 Pt. 6' Brushcutter
3 Pt. Ford Post Hole Digger
3 Pt. 6' Disk
3 Pt. 2 Bottom Plow
Speeco Woodsplitter
Small 2 Wheel Trailer
Bumper Hitch 12' Utility Trailer
Older Terry 20' Fifth Wheel Travel Trailer
Yamaha Grizzly 600 4x4 4 Wheeler

YARD ORNAMENTS

Old Dump Rake
IH Horse Drawn Mower
2 Corn Planters
Riding Plow 1 Bottom
Sev. Asst. Iron Wheels
Sev. Bird Baths & Asst. Concrete Ornaments, Planters, 3 Deer Router

TOOLS & OTHER

2 Tier Craftsman Toolbox
Rockwell Table Saw
Craftsman Radial Arm Saw
13" 5 Speed Drill Press
Disc/Belt Sander
DeWalt Cordless Trimmer
Black & Decker 1/2" Drill Press
Some Wrenches, Hand Tools
Long Handle Tools
Stihl Blower, 3-4 Trimmers, Chainsaw, Cordless Trimmer

Troy Bilt Blower
Electric Welder
Cutting Torch, Complete
Push Trimmer
Push Mower/Shredder
Toro ZTR Mower
Craftsman 26HP Lawn Tractor
Troy Bilt "Pony" Tiller
Troy Bilt Power Washer
Pull Type Lawn Vac
Lawn Trailer
Portable Generator 8 HP
Pick-Up Toolbox
6" Vise
Workbenches, Shelves
Ext. Cords, Chain Saw Sharpener
Alum. Folding Ramps
3-4 Implement Seats
Some Bricks & Blocks
Chainlink Dog Pen 10x16'
4 Alum. 5 Hole Wheels
5th Wheel Hitch
8-10 Plastic Pallets
Some Metal Roofing
Yard Wagon
Sev. Rods & Reels
3-4 Standing Metal Lockers
2 Alum. Ext. Ladders
Some Walnut Lumber
2 Shop Vacs
Ant. Platform Feed Scale
3 Picnic Tables
Lot Other Misc.

ANTIQUES & COLLECTIBLES

Sev. Boxes Hallmark Decorations
Sev. Precious Moments Figurines
Lot Other Figurines
Sev. Musical Carousels
Sev. Pcs. Green Depression
Other Dishes, Comingware

6 & 10 Gal. Crocks
Collection of Decanters
Painted Round & Cross-Cut Saw Blades
Round Oak Dining Table & Chairs
Misc. Dining & Kitchen Chairs
Mockers Roll Top Desk
Dining Table & 6 Chairs
Drop Front Secretary
School Desk
Oak Lamp Table, Oak Dresser
3 Camel Back Trunks
2 Barrister Bookcases
Washstand, Double Rinse Tub
Lg. Iron Kettle, Cast Iron Pot
Thermo Wood Heating Stove
Cedar Chest
2 Wood Doors
Speed Queen Wringer Washer
Lg. Floor Safe
5-6 Metal Lawn Chairs
2 Metal Porch Gliders
Old Records & Albums
Magnavox Table Top Record Player

HOUSEHOLD

Leather Lift Chair
2 Leather Recliners
2 Couches
Vizio Flat Screen TV
Radios, Fans, Heaters
King Bed
3 Dressers
Full Bed
5-6 Bookcases
Oak Sofa Table
2 Sets Coffee Tables/End Tables
Other Tables
Lg. Wood Gun Cabinet
Lamps, Mirrors
Pictures
Asst. Wall Decor



Coyote Hide
2 Coon, Sev. Fish
Deer Horns
Wild Turkey Mount
Wood Desk
Hyla Sweeper
Other Sweepers
Treadmill
Compound Bow
Asst. Sm. Appliances
Lot Asst. Pots & Pans, Glassware, Utensils
Lot Asst. Books, Records, Tapes, Movies
Sev. Totes Christmas Decorations
Sev. Boxes & Totes Household Misc.
Sev. Potted Cactus
Wicker Patio Set
BBQ Grill
Coolers, Ice Chests
Lot Other Misc.

MUSIC EQUIP.

Martin DCXIE Acoustic Guitar & Case
Michael Kelly Valor Creston Elect. Guitar
Peavey Port. Escort Sound System
2 Peavey Amps
Fender DEC3 Amp
Mics, Music Stand, Cords, Misc.

Murray is well-known for a wide area around Hickory & Polk Co. performing with his band at lots & lots of benefits & other functions. Large auction with lots of good items. Will be running 2 rings most of the morning. Don't miss the real estate if your needing a good acreage close to the lake.

1944 **CELEBRATING 80 YEARS** 2024
STARTING 80 YEARS OF SALES & SERVICE

TERMS: Cash or good check. Nothing removed until settled for. Not responsible for accidents. Lunch available. Statements made day of sale take precedence over printed matter. All items sell as is. No warranties given or implied.

417-998-6629
Cross Timbers, Mo.

CrawfordAuctionService.com

Sam
417-328-9137

Chase
417-399-1904

Chance, CAI
417-298-1751

Tom Poynter
Jack Lancaster

Murray Stewart

Outstanding FARM DISPERSAL

TRACTORS - PLOWS EQUIPMENT SUPPLIES



New Holland T4.120 (1,788 Hours)



Case International 5140 (3,594 Hours)



Grapple Rake



10' Field Roller



Minneapolis Molin "R"



SATURDAY, MAY 11 - 10AM

4590 Hwy M, Cabool, MO



GARY SEXTON
Auctioneers / Real Estate

Auctioneers:
Will Jett
Todd Hornback

FOR COMPLETE LISTING AND MORE PHOTOS, VISIT

GARYSEXTON.COM

REAL ESTATE AUCTION

Friday, May 17th, 2024~ 6:00 PM

LOCATION: 2735 Fairview Road, Sparta, MO (Watch For Signs)

Auction For Back To Good Farms LLC



This Is A Once In A Lifetime Opportunity To Own A Piece Of History And Nature's Bounty! Nestled Adjacent To The Iconic Mark Twain National Forest, This Extraordinary 40 Acre Property Offers A Rare Chance To Be Surrounded By The Pristine Beauty Of Nature. The Property Seamlessly Touches The Edges Of The Mark Twain National Forest, Known For Its Sprawling Landscapes, Diverse Wildlife And Recreational Opportunities Becomes An Extension Of Your Backyard. If You Are An ATV/UTV Enthusiast You Will Revel In The Extensive Riding Trails That Weave Through The Property. The Centerpiece Of This Remarkable Property Is A Delightful 2 Bedroom Home Perfect For A Dream Residence, Vacation Getaway Or Hunting Cabin. Though The House Is In Need Of A Little TLC It Showcases A Sturdy And Well Maintained Roof. Property Sets On 4 Separate Tracts Of Land So There Are Multiple Opportunities For The Buyer. Two Natural Springs Continually Flow And Cascade Creating A Serene Touch To The Already Enchanting Surroundings. Numerous Cliffs Stand As Sentinels Providing A Breathtaking Backdrop To Your Daily Adventures. A Well Designed Corral Adds An Extra Layer Of Versatility To The Property. Approaching The Property, A Private Drive Ensures Seclusion And Tranquility Leading You To A Destination That Feels Like A World Of Its Own. The Convenience Of A Paved Road Enhances Accessibility.

To Preview Contact Bill At 417-214-0093.

Terms: 10% Down Day Of Sale With Signed Contract And Balance Due In 45 Days Or When Closing Date Set By Abstract Office. Seller Has The Right To Accept Or Reject Any And All Bids. **Never A Buyers Premium At Our Real Estate Auction!!!**



NANCE AUCTION SERVICE

No Matter How **BIG** or small, We Do Them All!!!
www.nanceauctionservice.com



Col. Bill Nance 417-214-0093 In God We Trust Philippians 4:13 Sean Beazley 417-247-6754

VISIT WEBSITE FOR PICTURES

ESTATE AUCTION

SATURDAY, MAY 11TH - 10:00 A.M.

Location: 3235 Adamson Rd, Mansfield, MO **Directions:** From Mansfield take Hwy 5 North approx 4 miles to AB Hwy go approx 8/10 mile to Adamson Rd on left to Auction at first place on the left. **WATCH FOR CHADWELL AUCTION SIGNS.** **Payment System:** Cash • Debit Card • Credit Card (Debit / Credit Card Fee Will Apply) Checks approved if known by auction company. **VISIT: WWW.CHADWELLAUCTIONS.COM**

Estate of Dortha CRAIN

Large Lot of Shot Glasses (500+)



(2) 8x12 Portable Buildings



HOUSEHOLD

Table & Chairs • Pots & Pans • New Lift Chair • Assorted Dishes • Christmas Decor • Childs Table & Chairs • Assorted Silverware • New Silverware in Case (gold) • Tupperware • Large Lot of Wooden Shadow Boxes • Side by Side Refrigerator • Other

OUTDOOR ~ MISCELLANEOUS

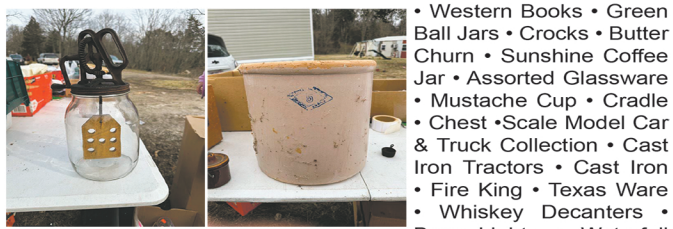
Poulan & Homelite Chainsaws • Picnic Tables • Outdoor Furniture • Assorted Yard Ornaments • Childs Picnic Table • (2) Wooden Picnic Tables • Wooden Adirondack Chairs • Cast Iron Patio Chairs • Cast Iron Swing • Fuel Cans • Horse Shoe Wall Hangers • Fish Cookers • Bag Chairs • Yard Machine Garden Tiller • Metal Barrels • Long Handle Tools • Metal Yard Cart • Windchimes • Assorted Bird Houses • Yard Windmill • (2) Cast Iron Bells • Other

SHOP ITEMS

Propane Cylinders • Campbell Hausfeld 225 Stick Welder on Wheels • Jack Stands • Welding Helmet • Metal Work Bench • Air Tanks • Grinding Wheel • Little Giant Ladder • Torpedo Heater • HI Lift jack • 5500 Watt Generator • Assorted Tools • Chest Metal Tool Box • Misc Nuts & Bolts • Misc Electric Wire • Torch Set • Extension Cords • Other

ANTIQUES ~ COLLECTIBLES

Marvel Cream Separator • Sad Irons • Old Quilts • 1964 Comic Books



• Western Books • Green Ball Jars • Crocks • Butter Churn • Sunshine Coffee Jar • Assorted Glassware • Mustache Cup • Cradle • Chest • Scale Model Car & Truck Collection • Cast Iron Tractors • Cast Iron • Fire King • Texas Ware • Whiskey Decanters • Beer Lights • Waterfall Dresser & Vanity • Wagon • Sears Childs Kitchen Set • Tractor Seats • Pyrex • Old Oil Reclaimer • Tractor Seat Chairs • Costume Jewelry • Little Golden Books • Oil Lamps • Cast Iron Napkin Cow Holder • Corelle Ware • Winston Wall Clock • Coors Beer Light • Colt Beer Sign • Pink Depression • Old Pie Safe • Marbles • Old Cupboard • Hornets Nests • Wash Board • Hand Saws • Well Bucket • Seeder • Primitive Tools • Hay Knife • Cream Separator w/Stand • Antique Locks • 1880 Enterprise Cherry Stone Tobacco Cutter • Steel Wheels • Old Corn Planter • Cross Cut Saw • Minnow Trap • Minnow Bucket • Wooden Canes • Ice Picks • Cream Cans • Slot Machine & Tokens • Other

TRACTORS



- Farmall C
- (2) Farmall H
- Farmall F20 (parts only)
- Small Antique Tractor

FARM EQUIPMENT ~ TRAILERS

Pickup Bed Trailer • 16' Homemade Stock Trailer • 5' Brush Hog • Bale Spike • Livestock Chute • (2) Homemade Trailers • Ideal Stock Tank • Other

AUCTIONEER'S NOTE: Lots of Treasurers at this Auction! Make Plans to Attend. **Thanks, Shawn**

DRIVER'S LICENSE OR PICTURE I.D. REQUIRED • TERMS: CASH OR APPROVED CHECK **OR**

Chadwell Auction Service, LLC
www.chadwellauctions.com

Auctioneer: **SHAWN CHADWELL** 417-830-0209
Ringmen: **Weston Chadwell ~ 417-349-0727**

Clerk: **SHELLY CHADWELL** Cell: 417-880-8449
Cashiers: **Marla Chadwell • Emily Shaffer • Cassie Collins**

PROFESSIONAL SALES MANAGEMENT
LUNCH WAGON • APPRAISAL SERVICE • RAIN OR SHINE
All announcements made day of sale take precedence over any printed matter. Not responsible for lost or stolen merchandise. Not responsible for accidents.

PUBLIC AUCTION

Saturday, May 11th at 10:00 a.m.

1006 East 5th Street, Mountain View, MO 65548 | Watch for Reid Auction signs

Furniture~Collectibles~Misc. Kenmore Washer & Dryer, Speed Queen Washer, Amana Dryer, GE Side by Side Refrigerator, Gibson Gas Range, Small Chest Freezer, Microwaves, Vizio TV, Black Sofa & Love Seat, White Sofas, Glass Top Coffee & End Tables, Wine Rack, Bar Stools, Table w/2 Chairs, Metal Bakers Rack, Hutch, Old Secretary, End Tables, Desk, Glass Top Table & Chairs, Pub Table w/2 Stools, 2 King Complete Beds, 2 Wooden Rockers, Dresser w/ Mirror & Matching Chest, Several Chest Drawers, White Chest & Desk, 2 Black Metal Round Shelves, Cafe Table & Benches, Oriental Chest, Cedar Chest, Blanket chest, Free Standing Bar, Drop Leaf Table w/2 Chairs, Day Bed w/Mattress, Aluminum Stock Pots, Several Punch Bowl Sets (different colors), Ruby Red Pieces Carnival Pieces, Corn Design Pieces, Amber Pitcher & Glasses, #60 Dazey Churn, Griswold & Wagner Cast Iron Skillets, Cast Iron Dutch Oven, Cast Iron Tea Kettle, Misc. Cast Iron Pieces, Corn Sheller, Metal Lawn Chairs, Several Iron Wheels, Flat Irons, Child's Accordion, Blue Carnival Pitcher, Barn Cookie Jar, Horse Shoe Plant Stand, Fire King Dishes, Nutcracker, Granite Chamber Pot w/Lid, Cream Cans, Granite Coffee Pots, Granite Water Pitcher, Vintage View Masters, Kerosene Lamps, Missouri Decanter, Wood Butter Mold, Bushel Baskets, Old Water Pump, Boiler Wash Tub w/Lid, Equipment Seats, Double Shovel & Laying Off Plows, Corn Meal Grinder, Lard Press, Wood Plane, Singer Treadle Sewing Machine, Single Trees, Steel Traps, Hay Forks, Old Hanging Scales, Old Metal Blade Fan, Trunk, Hand Meat Saw, Time Card Machine, Several Sets of Wrought Iron Yard Furniture, 4 Piece Salterini Wrought Iron Set, Brass Wall Plates, Chicken Cookie Jar w/Small Chickens, Large Gold Framed Mirrors, Blue Bottles & Glass, Amber Iris Vase, Pitcher & Bowl Sets, White Racks, Amber Bottles, Red Standing Ashtray, Shot Glasses, Gold Hen w/Gold Flatware, Pink Bowls, Red Vases, Umbrella Stand, Dolls, Daisy BB Gun, Oriental Figurines, Wicker Chair, Red Foot Stool, Rose Design Dishes, Several Cake Plates, Deer Antlers, Lots of Costume Jewelry, Binoculars, Several Pairs of Boots including Tony Lama, Cowboy Hats, Denim Jackets, Leather Jackets, Western Clothing, Old Stadium Scoreboards, Traffic Signs, Coal Bucket, Guitar, Plant Stands, Soft & Hard Gun Cases, Several Yard Items, Gigs & Poles, Coca Cola Bicycle, Towels.....and much more not listed..... **Saddles~Tack~LawnMowers~Trailers~Tools** 6 Saddles & Stands, Halters, Bridles, Saddle Blankets, Saddle Pad w/Stirrups, Curry Combs, MTD Yard Machine 42 Inch Cut Riding Mower, Poulan Pro 46 Inch Riding Mower, 2 Poulan Pro Push Mowers, 5x9 Trailer (NO title), 8x16 Homemade Trailer (NO title), G Model Allis Chalmers w/Plow, Coleman 5000 Watt Generator, Black & Decker Generator, Air Compressor, Leaf Blower, Battery Charger, Diamond Plate Truck Tool Box, Grinder w/Stand, End Wrenches, Screwdrivers, Clamps, Bars, Rasps, Bolts & Screws, Work Bench w/Vise & Grinder, Stihl Weed Eater, Gas Power Washer, Hobart Wire Feed Welder, Lincoln 225 Welder, Welding Helmets, Wheel Barrows (one with iron wheel), Yard Carts, Live Trap, Craftsman 150 psi Air Compressor, Wilton Chicago 14 USA Vise, 3/4 Drive Socket Set, Metal Cutoff Saw, Grease Guns, Skil Saws, Hand Saws, Small Floor Jack, Rakes, Shovels, Picks, Coolers, Bench Drill Press, Oil Cans, Funnels, Hand Drill, Extension Cords....All the buildings and house are full, this is just a partial list, impossible to list it all.

JERRY & PATSY HILL ; COMPLETE ESTATE AUCTION

Reid Auction Service

Randy Reid 417-257-3911 • Rex Reid 417-372-1866 Ark. Lisc. #2606 • Ted Reid 417-256-6661

Concessions available. Come early and let Barb & Chuck fix your breakfast and lunch. Bathroom on site. Not responsible for Accidents, Lost, Stolen or Misplaced items. Any announcements made day of sale supersedes any prior written or oral communications. Cash and checks accepted no Credit Cards.



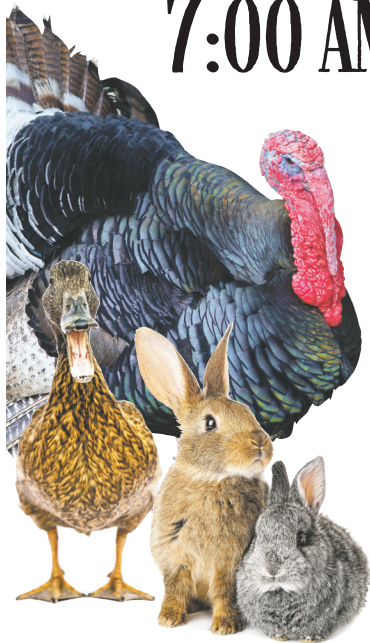
WRIGHT COUNTY SMALL ANIMAL AUCTION

1ST SALE · SATURDAY, MAY 18 AT 10:00 AM · 1ST SALE

Location: Grovespring Lions Club 8990 Loring Rd. Grovespring, Mo 65662
1 Mile South of Grovespring on Hwy 5

· VENDOR SPACE AVAILABLE · WE NEED CONSIGNMENTS ·

ACCEPTING CONSIGNMENTS FROM 7:00 AM – 10:00 AM MORNING OF SALE



**SELLING CAGED ANIMALS ONLY.
HOOF STOCK APPLY TO VENDOR.**

Already Consigned – Turkeys, Geese, Quail,
Pheasants, Chickens, Rabbits, Guineas,
Pigeons, and Ducks

FOR QUESTIONS OR CONSIGNMENTS

Call Aaron at 417-741-0516

FOR VENDOR INFO OR OFFICE QUESTIONS

Call Sam at 417-349-0401

**VENDOR COMING WITH
FLOWER AND VEGETABLE PLANTS**



Auctioneers David Glick & Samuel Glick

Cash or Good Check · Same Day Payout · Lunch Stand Available

TERMS & CONDITIONS: All announcements day of sale take precedence of printed material.

NOT RESPONSIBLE for lost or stolen items. NOT RESPONSIBLE for accidents.

Commission 15% min of \$1.50 per cage, Vendors Booth Fee \$6.00.

PERSONAL PROPERTY AUCTION

1389 SOUTH FARM RD 219, ROGERSVILLE, MO 65742 | ON-SITE ONLY

SATURDAY, MAY 11TH, 2024 AT 10:00 AM CDT

INVENTORY LIST:

2009 Kia Sportage Ex Awd
 Antique Fans
 Makita Tablesaw
 Tractor Seats
 Ramps
 Aluminum Ladders
 Rockwell Tablesaw
 Wood Clamps
 Vintage Car Parts
 Wheelbarrels
 Ariens Weed Trimmer
 Wagon
 Honda Push Mower
 Two Wheel Trucks
 Old Watering Can
 Reese Hitch Rack
 John Deere Lawnmower Trailer
 Hand Wagon
 Wash Tub
 Air Tank
 Car Ramps
 Large Attic Fan
 Blue Danube Plates
 Cups And Bowls

Casserole Dishes And Measuring Cups
 Wagner Skillet And Other Cast-Iron
 Vintage Coleman Lantern In Box
 Oil Lamps And Lanterns
 Coffee Grinder
 Cast Iron Floor Lamp
 Vintage Stepstool
 Vintage Crocks
 Corning Ware
 Lots Of Kitchenware
 Ge Microwave Browner
 Cake Plate
 Haywood Wakefield Style Cabinet
 Haviland Bavaria
 Hoover Shop Vac
 Old Rocking Chair
 Baskets
 Couch
 Beautiful Glass Birds

Extremely Beautiful Zenith Radio And Record
 Large Globe
 Small Cabinet
 Vintage Christmas Ornaments And Decorations
 Old Stools
 Curio Cabinet
 Vintage Christmas Tree
 Beautiful Cabinet
 Nutcrackers
 Trains And Other Toys
 Cast Iron Horse Bell
 Beautiful Old Vanity
 Metal Folding Chairs
 Beautiful Wall Table
 Vintage Cameras
 Dressers
 Wooden Box
 Vintage Hat
 Writing Desk
 Lots Of Vintage Lamps

Like That Maybe Large Chandelier
 Vintage Radios
 Small Antique Fan
 Humidor And Pipes
 Fields Wc
 Old Records
 Sears Silvertone Record Player
 This auction will have lots of nice surprises and a majority of it is still in boxes waiting to be unpacked day of the sale.



FOR MORE INFORMATION GO TO WWW.EASTERLYAUCTIONCO.COM OR CALL EASTERLY'S AT 417-833-9494



Mike Easterly Auctioneer • 417-833-9494

Not Responsible for accidents or theft. For more information call: Easterly Auction Company, Springfield, MO. Auction Terms: Visa, Mastercard, Cash, Cashier's check or checks with proper I.D. Announcements day of sale take precedence over printed material. Auction Notes: Although information is obtained from sources deemed reliable, auctioneer makes no warranty or guarantee expressed or implied. Buyers should themselves take the opportunity to make their own inspection prior to sale.

www.EasterlyAuction.com • auctionzip.com ID#14770



Public Auction



"Rob & Belinda Banaszak"

12942 Bell Island Rd, Warsaw Mo 65355

Directions: From Warsaw go West on 7 hwy (across mile long bridge) 4 mile to Bell Island Rd. on Left. Watch & follow signs on sale day.

As we are selling our Lake Home & moving to warmer climate, we will sell the following at public Auction:

SATURDAY MAY 11TH, 2024 • 10:00AM

1980 Harley Davidson Wide Glide "Shovel Head" motorcycle 29k miles previously pictured in Easy Rider magazine (not running – Must See) 3 – sets HD gas tanks nice graphics, **Bush Master** XM-15 .223 or 5.56 decked out w/green laser, flashlight holographic sight, bi-pod, strap, Lot AR – 10,20 & 30rd magazines, AR 100rd C-Mag, **Remington** 12ga 870 Super Mag 3 1/2" w/adjustable choke, **Ruger** 22cal 10/22 semi auto w/scope original mag, Chinese SKS w/30rd magazine, Japanese rifle w/chrysanthemum stamp (no firing pin) **Sentinel** 12 gun safe, WWII dummy training rifle, Kronicle cross bow w/spare arrows & quiver, PSE compound bow, Yukon advanced spotting scope, paintball pistol & accessories, Reloading equipment – Quick-N-EZ tumbler, lg lot brass, lg lot primers 30-06 to .223, LEE dyes 30-06, .380, 30-30, .308, .357, 9mm, .223, .454 casull, 800rds .223 ammo, **HOUSEHOLD, ANTIQUES, TOOLS & MISC.** **Frigidaire** upright freezer, Frigidaire dorm fridge, Cuisinart pizza oven/grill, 55" Emerson TV, 55" Aquos TV, king size bed, chest of drawers & dresser, full size iron bed, blonde cedar chest, glass curio, spoil top coffee table, smoking stand, 8+ wire shelves, four tier barrister bookcase, bent glass oak china cabinet, side board, old parking meter autographed Willard Bowsky 1940 "Popeye" drawing, candle stick phone, 9 – antique oil jars w/tin spouts & wire carrying rack, Victor Victrola talking machine & records, vintage cast iron plant stand, lg "Betty Boop" collection, 18' Grain bin top disassembled w/new bolts, primitive horse drawn wagon, vintage police call box, lg German "cut to clear" leaded glass serving set, Lot misc. figurines & diecast toys, lg lot pink depression glass, **Dazey** one gal churn, several German beer steins, old baby shoes, old school desk, 1930 calendar, lot jars of old marbles, lot sad irons, Lot pots pans & kitchen wear, lot **Harley Davidson** collectibles, **HD** lg canvas wall picture, **HD** popcorn machine on wheels, **HD** die cast motorcycle collection, **HD** truck 8' bed tonneau cover, **HD** goggles & gloves, vintage galvanized gas station cans, two-man crosscut saw, old scyth w/cradle, monkey pod fruit basket, 3 – die cast banks, lot license plates, kraut cutter, minnow traps, Pitt boss "Brunswick" electric smoker, **Char-Griller** grill/smoker, 2 – bar stools, 3 – barn pulleys, several hand stitched quilts & runners (good condition), **Raikes Bears**, vintage 60s movie camera, upholstered chair and end tables, lot ceramic "Bob Travers" deer sculpture collection, patio table w/umbrella & 4 chairs, porch umbrella, antique pressed metal glider, Meilk wall safe, misc. crocks, misc. primitives, unique handmade hat rack, oak wall phone, "**American Girl**" dolls, Elvis **McCormick** decanters, classic & vintage toys, kitchen scale, X-treme power stationary bike, treadmill, 20' aluminum extension ladder, Turkey blind & decoys, **Husqvarna** "Viking" H-class sewing machine, Singer portable sewing machine, Treadle Singer sewing machine, Quilting cutting table w/cover, lot quilting boards, huge lot quilting fabric, Lot linens, Lot spools, buttons & notions, lg lot Christmas & holiday decor, lot canning jars & lids, plastic rain barrel, Soft top for Jeep "TJ", Camaro car cover, **Black Max** 60gal upright air compressor, **Craftsman** 6,000 watt generator, **Craftsman** 3-tier roll around toolbox, alum. ATV ramps, **Craftsman** 2,700psi pressure washer, **Craftsman** 10" table saw, Lg lot hand tools, **Craftsman** 6" bench top joiner, 12ton shop press, power miter saw, **Craftsman** scroll saw, **Delta** air tools, **Senco** pneumatic framing gun, Bauer 12" planer, LOT oak & walnut live edge boards 10' x 2" – 3" thick dried 3 yrs, 2 – torpedo heaters, garage door opener, 50" LED light, **Stone Master** tow bar w/stabilizer, Receiver hitch carry-all, lot long handled tools, Alaskan chain sawmill, motorcycle jack, deer cart, **Snapper** cordless hedge trimmer, biscuit joiner, 6" belt/disk sander, **Rancho 5000** control for air shocks, **Rotozip**, **Wagner** paint sprayer, **Craftsman** hammer drill, Bosch hammer drill, mini English wheel, **Craftsman** bench top drill press, lot iron fencing, lot seasoned firewood & used lumber, **Many More Items Too Numerous to Mention**



Auctioneer Note: Going to be a GREAT sale, parking will be a premium please stage trailers elsewhere. We will have a shuttle available.

*STATEMENTS MADE DAY OF SALE TAKE PRECEDENCE OVER PRINTED MATERIAL.

Concessions provided by "Benton County Good Ole Gals"



JOHNSON AUCTION SERVICE

"Third Generation Family Tradition since 1942"

Russell "Rusty" Johnson (660) 221-4067 • Phillip Yoder (660) 723-3389

For Full Listing, Pictures and Details auctionzip.com (ID# 20300)

Public Auction



"Brandon & Robin Bishop"

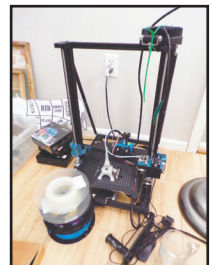
2475 South Haven Drive, Sedalia Mo. 65301

Directions: From 50 & 65 hwy intersection in Sedalia go East on Broadway (50 hwy) 3 mile to Marshall Ave. turn Right (South) on Marshall go 2 mile to South Haven & Auction on Right. Watch for signs on sale day.

We will sell the following at public Auction on:

SUNDAY MAY 19TH, 2024 • NOON

2004 Jeep Wrangler "TJ" 4x4 V-8 fuel injected, aftermarket stereo, 35-12-50 Halo alloy wheels (Not a Toy, MUST SEE) 2020 14' **Norstar** "Iron Bull" bumper hitch tandem axel dump trailer (like new), 4 – **US General** toolboxes, 8 – heavy metal shelves, **Lincoln** 175 square wave tig welder w/bottle & leads, **Lincoln** 260 Power Mig welder w/ bottle & leads, **Hypertherm** "powermax 65" plasma cutter 25' leads (single or 3phase), lot electric hand & power tools, Oxy / Acetylene torch & bottle set on dolly, 110lb sand blaster, **Grizzly** 8" grinder on pedestal, **Avanti** airless sprayer, 30gal **Campbell Hausfeld** upright air compressor, wet tile saw, **Predator** 8750watt inverter, **Central Machine** milling & drilling machine, **JET** horizontal band saw, hyd. pipe bender & attachments, 20ton shop press, **12,000lb X-Bull** winch w/synthetic rope, **Greenworks** 80v cordless pole saw, 15gal tintable spray-in bedliner w/2 spray guns, lot hardware & organizers, huge lot extension cords, **DeWalt** propane torpedo heater, **Bull Dog** 2500lb ele winch, 12" magnetic machinist vise, Refrigeration vacuum pump & gauges, **Hitachi** laser 12" sliding compound miter saw on stand, Rockwell "Jaw Horse", lot misc. air hose, lot grease & automotive fluids, 150' auto-retract water hose reel, 2 – 600watt LED outdoor lights, 13" **Delta** planer, 36" barrel fan, Delta scroll saw, **Louisville** fiberglass 10' stepladder & 20' extension ladder, Anderson ultimate 5th wheel connection hitch, **CURT** Ball & safety chain loops for Dodge Ram, lot misc. straps, wrenches & tools, Lot **Craftsman & Milwaukee** M-18v cordless power tools w/batteries & chargers, **DeWalt** cordless tools, Bradnailers, 24pc. router bit set, lot drill bits & drivers, **DASHAP** TCT 23pc. commercial hole saw kit, 4102K **Ingersoll** rand surface finish kit, assorted tap & die sets, **Tacklife** ele. tiller, receiver hitch carry-all, **Shop-Fox** W1670 free standing drill press, alum ATV ramps, lg lot hunting knives, lot swords, lot live edge Walnut, white oak, hedge & pecan lumber, **HOUSEHOLD & MISC.** **Samsung** stainless steel cross bottom refrigerator (less than yr old), **Maytag** stainless steel washer & dryer (less than yr old), dining room table w/8 chairs, **Ashley** upholstered U-shape sectional w/ottoman, King size captains bed w/hideaway storage, **Frigidaire** chest freezer, **Samsung** 65" & 50" TVs, TV stand w/matching end tables, 2 – sofa tables w/ele plugs & UHVs, beveled glass mirror, lot pots, pans & misc. household glass, **Louisiana** pellet smoker grill, Chiminea on stand, handmade tall corner shelf, 5pc Polly-wicker patio set, 3pc metal patio breakfast set, patio box, Lg lot costume jewelry, 2 – metal & wood bar stools, 1935 **chevy** grill, antique license plates, **Master force** tall metal bladed fan, 6 – vintage motor oil cans, lot vintage pressed metal & die cast toys, 2 – Adirondack chairs, 9' prelit Christmas tree, lot vintage cast iron banks, 150' outdoor party lights, home cinema laser projector w/indoor & outdoor screens, Karaoke machine, 18"x18" 3-D printer, lot misc. wall art & decor, **Brother** portable sewing machine, Lg ceramic pumpkin, 50 +/- metal beer signs, fishing poles & tackle, composite porch swing, **Diamond Back** 11spd. Mountain Bike, **Smith machine** style home gym w/600lbs weights, **Funmily** treadmill, Lg lot seasonal decor, 2 – sets metal clothing racks, lot firewood, **Many More Items Too Numerous to Mention**



Auctioneer Note: OMG if we had written "Like New" everywhere it is warranted it would have been on EVERY item.

This is a small overview of a LARGE sale you do not want to miss this one.

*STATEMENTS MADE DAY OF SALE TAKE PRECEDENCE OVER PRINTED MATERIAL.

Concessions provided by "Benton County Good Ole Gals"



JOHNSON AUCTION SERVICE

"Third Generation Family Tradition since 1942"

Russell "Rusty" Johnson (660) 221-4067 • Phillip Yoder (660) 723-3389

For Full Listing, Pictures and Details auctionzip.com (ID# 20300)

REAL ESTATE & PERSONAL PROPERTY AUCTION

7435 WEST FARM RD 140, SPRINGFIELD, MO 65802 | ON-SITE ONLY

SATURDAY, MAY 18TH, 2024 AT 10:00 AM CDT

Open viewing May 5th from 2-4 pm

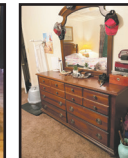
Legal: SEC 22 TWN 29N RNG 23W

Taxes: \$ 1,531.45

Terms: 10% down day of auction with balance due at closing possession at closing. Closing in 45 days or less from the auction date.

Real Estate will sell at 12 P.M.

Welcome to this home in the Willard School District! This cozy three-bedroom, two-bathroom house sits on around 3 acres of beautiful land. Inside, there's a unique sunroom and an open kitchen and dining area, perfect for spending time with family and friends. You'll also find a handy mud/laundry room for keeping things organized. Stay comfortable all year with central heating and air conditioning. Plus, there's a big detached garage for parking and storage, and it has a new roof on all buildings. This home is the perfect blend of comfort and country charm, ready for you to make it your own.



INVENTORY LIST:

- | | | | |
|---|-------------------------------------|---|---|
| 24 Foot Gooseneck Trailer With Homesteader Box | Portapower Bore Scope Camera | Cashman 10 Inch Table Saw | Tractor Implements, 4 Foot Brush Hog And A 5 Foot |
| Jewelry Making Tools | Forney Mig Welder Box Blade | Brand New Pit Boss Smoker With Wi-Fi App | Leather Couch, Loveseat, And Chair |
| Gmc 6500 And Parts Trucks | Onan Generator Trailer | Nitrogen Bottle | In Table And Lamps |
| 18 Foot Car Hauler Trailer | Vice Washer And Dryer | Torque Wrench | Flatscreen 32 Inch Tv |
| 8 Foot Utility Trailer | Portable Sand Blaster | Wagon Wheels | Awa Stereo System |
| Two Bottom Plow Ford | Mace Creeper | Milk Cans | Queen Bedroom Set |
| 2004 Kia Sorrento X Needs Timing Belt It Is | Three Phase End Mill | 02 C6500 Parts Only Truck | Nightstands And Lamps |
| Matco Rolling Toolbox 6 1/2 Wide 28 Inches Deep 6 | Lincoln Stick Welder | Wood Working Equipment | Cat And Cummings Tools |
| Mace Stack Toolbox | Hoffman & Heartt Lathe 3 Phrase | Drill Press | Bird Bath |
| Hall Rolling Toolbox Homac | Bead Blaster | Bench Grinder | 2005 16ft Utility Trailer |
| Parts Cleaner | Smitty Table Top Lathe | 40 Years Of Diesel, Mechanic Tools, Lots Of | Cub Cadet Riding Mower |
| Air Impact Tools | Grizzly 12 1/2 Inch Portable Planer | Lots Of Specialty Tools | Mantis Tiller |
| Ac Equipment | Ryobi Router | Large Lot Of All Kinds Of Diesel Mechanic Tools | 40 Years Of Accumulation Of Diesel Mechanic Tools And Equipment |
| Roll Around Tool Carts | Oklahoma Joe's Smoker Like New | Scrape Metal | |
| | Grizzly Jointer | Big Truck Tires And Wheels | |
| | | Yard Ornaments | |

FOR MORE INFORMATION GO TO WWW.EASTERLYAUCTIONCO.COM OR CALL EASTERLY'S AT 417-833-9494



Mike Easterly Auctioneer • 417-833-9494

Not Responsible for accidents or theft. For more information call: Easterly Auction Company, Springfield, MO. Auction Terms: Visa, Mastercard, Cash, Cashier's check or checks with proper I.D. Announcements day of sale take precedence over printed material. Auction Notes: Although information is obtained from sources deemed reliable, auctioneer makes no warranty or guarantee expressed or implied. Buyers should themselves take the opportunity to make their own inspection prior to sale.

www.EasterlyAuction.com • auctionzip.com ID#14770





LIVE HOTEL & MOTEL FURNITURE & DÉCOR AUCTION

MONDAY, MAY 13 - 1:00 PM

(PREVIEW BEGINS AT 11:30 AM)

HOLIDAY INN EXPRESS & SUITES 605 STATE HIGHWAY Z • ST ROBERT, MO 65584

LOCATION: FROM I-44, EXIT 161 THEN SOUTH TO EAST OUTER RD THEN EAST.
WATCH FOR AUCTION DAY DIRECTIONAL SIGNAGE.

SELLING →

QUALITY FURNISHINGS & DÉCOR • CONTENTS OF 31 ROOMS & SUITES

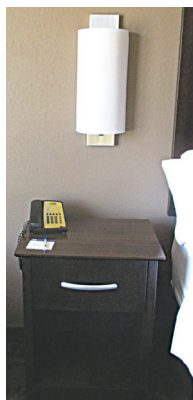
INCLUDING BUT NOT LIMITED TO KING & QUEEN SIZE BEDS, SOFAS, OCCASIONAL CHAIRS, NIGHT STANDS, ARMORIES & ENTERTAINMENT CENTERS, END TABLES, SIDE TABLES, ROOM TABLES & CHAIRS, GRANITE TOP DESKS, DESK CHAIRS, TABLE LAMPS, FLOOR LAMPS, WALL SCONCES & OTHER LIGHT FIXTURES, PICTURES, MIRRORS, GRANITE TOP CABINETRY, FLAT SCREEN TELEVISIONS WITH REMOTES, GRANITE TOP FREESTANDING VANITIES WITH VESSEL SINKS, CURTAINS & DRAPERIES, MUCH MUCH MORE!

31 ROOMS INCLUDING 3 KING SIZE SUITES, 5 DOUBLE QUEEN SUITES, 7 KING STANDARD ROOMS & 16 DOUBLE QUEEN STANDARD ROOMS

NOTE: VISIT OUR WEBSITE & CLICK ON THE "AUCTIONS" TAB FOR LISTING AND PHOTOS. VERY NICE, QUALITY FURNITURE & DÉCOR ITEMS. ROOMS WILL BE SOLD IN THEIR ENTIRETY AND OPEN FOR INSPECTION AT 11:30 DAY OF AUCTION. SUCCESSFUL BIDDERS WILL HAVE THE PRIVILEGE OF SELECTING MULTIPLE ROOMS AT WINNING BID AMOUNT UNTIL ALL 31 ROOMS AND SUITES HAVE BEEN SOLD. REMOVAL OF PURCHASED

ITEMS MAY BEGIN ON AUCTION DAY THROUGH SATURDAY, MAY 18 DURING THE HOURS OF 11 AM UNTIL 3 PM ONLY, NO EXCEPTIONS. THIS FIRST AUCTION IS FOR THE ENTIRE THIRD FLOOR AND ELEVATOR IS AVAILABLE FOR USE DURING THE SPECIFIED DAYS & TIMES OF LOAD-OUT. BUYERS ARE RESPONSIBLE FOR REMOVAL

OF PURCHASED ITEMS IN A BUSINESS-LIKE MANNER WITH RESPECT FOR THE PROPERTY AS WELL AS HOTEL GUESTS. PURCHASES MUST EXIT THE HOTEL THROUGH THE EAST SIDE ENTRANCE. DON'T MISS THIS EXCELLENT AUCTION!



MARON RESTAURANT EQUIPMENT, LLC & AUCTIONS CO.

417-327-5619 • WWW.MARONRESTAURANTEQPT.COM

**YOUR RESTAURANT EQUIPMENT AND FOOD SERVICE
LIQUIDATION SPECIALISTS**

PUBLIC AUCTION

WALNUT GROVE, MO

AUCTION

Due to the Death of my Husband the Late Stanley McHaffie we will sell the following Tractors, Van, Trailers, Equipment, Tools, Golf Cart, Household, Collectibles and Misc. At the Home located 2 ¼ miles South of Walnut Grove, Mo. On 123 Hwy. To F.R. 53 go Southwest 3 miles to the Auction on

Sat. May 18, 2024 at 9:00 am

WATCH FOR AUCTION COMPANY SIGNS • LUNCH SERVED

FOR MORE PICTURES GO TO: WWW.BRUCEANDLEANAUCTION.COM



TRACTORS-EQUIPMENT

- New Holland Model TL-90 Diesel 80hp Open Deck Tractor W/Bush Hog M446 Quick Att. Frontend Loader W/Joy Stick, 7' Bucket. Tractor has 3139 Hrs. 3 Speed/4 Speed Trans. 3 sets Hyd. Outlets
- Ford 3000 Diesel Tractor W/Frontend Loader (has been sitting not running)
- Kubota L1500 Diesel Tractor (has been sitting not running)
- Older 20' X 6' Gooseneck Stock Trailer
- Older Stidham 18' Bumper Stock Trailer
- New Set of Frontend Loader Quick Att. Bale Forks
- Ford 7410 Frontend Loader W/Bale Forks
- Older Model 2615 Bat Wing Brush Hog
- New Holland 277 Sq. Baler
- New Holland 411 Discbine
- N.H. Model 259 Rake
- N.H. 5 Bar Dolly Wheel Rake
- Ford 3pt Model 917 Flail Tiller
- 3 sets 3pt Bale Forks
- 7' 3pt Blade
- 12' HD Drag
- Older Yanmar 3pt. Backhoe Att.
- 3pt Cultivator & Disk
- 2 & 3 Bottom 3pt Plows
- Pickup Bed Trailer
- 100 Plus Used Steel Post
- 25 Plus 16' Welded Wire Panels
- 8-Gates & Corral Panels
- Lot of Used Barb Wire

MOWER-TOOLS-MISC.

- Cub Cadet 50" Zero Turn Riding Mower
- Wheel Horse Model 312-8 older Riding Mower
- Troy-Bilt 8hp Pressure Washer
- 3 Stihl Gas Weeders
- 3 Stihl Chain Saws Models 026, 041, 34
- Poulan Pro PR4218 Chain Saw
- Stihl Gas Blower
- Electric Limb Saw
- DeWalt Compound Miter Saw
- Ryobi Router W/Table
- Delta 12" Planer
- Floor Model Drill Press
- 36" Shop Fan
- Craftsman 10" Radial Arm Saw
- 2-12" Band Saws
- Table Saw
- Chop Saw
- Bench Top Scroll Saw
- Chicago 110v Wire Welder
- Bench Vise's
- 10' Work Bench on Rollers
- Several Battery Hand Drills & Tools
- Several Electric Hand Tools
- Concrete Mixer W/Electric Motor
- Act. Torch Gauges & Hoses
- 1 ½ Gallon Air Compressor
- Upright Air Compressor (needs work)
- ½" Impact Sockets
- Lot of Misc. Hand Tools
- Battery Charger
- Fencing Tools
- Post Puller
- Bolt Bins
- Lot of Oil & Fluids
- Log Chains
- Sev. Ladders
- Ext. Cords
- Lrg. Garden Hose Reel
- Coleman Lanterns
- Sm. Tail Gator Generator

MOWER-TOOLS-MISC. CONT.

- Predator 212cc Motor (NIB)
- Live Trap
- Gas Grill
- 36" X 20" Member Mark Stainless Flat Top Gas Grill
- 4' X 3' Water Filled Roller
- 4 Stock Saddles & Misc. Tack
- Large Lot of Scrap Iron, Alum. and Copper
- 6 Scrap Batteries
- Lot of New & Used Lumber
- Parts of 2 Molasses Mills
- Lot of Boxed Items unseen at Listing

HOUSEHOLD-COLLECTIBLES

- Oak Pump Organ W/Beveled Mirror, Ornate Carving
- Marble Top Library Table
- Rockers
- Futon Couch
- Book Shelves
- Office Desk
- Kenmore Portable Sewing Machine
- Lot of Misc. Kitchen App
- Lot of Pots, Pans & Dishes
- Sm. GE Refrigerator
- Bose AM/FM/CD Wave Radio
- Sports Afield 18 Gun Combination Gun Safe
- Lrg. Upright Older Freezer
- 6 Poly Rockers
- Poly Love Seat
- Lawn Chairs
- Cast Cook Stove
- Lrg Lot of Cast Iron Stove Parts
- White Mountain Ice Cream Freezer
- Black Hawk Corn Sheller
- Milk Cans
- Galv. Tubs
- 2 Wheel Ant Feed Dolly
- Misc. Iron Wheels
- Fruit Jars
- Child's Sled

VAN-GOLF CART

- 2006 Chrysler Van 3.8L V-6 Motor, Automatic Trans, PW, PL, Approx. 190,000 Miles
- Ford Battery Operated Golf Cart W/Top, Windshield and Title

OWNER: MRS. LORRAINE McHAFFIE

TERMS: Everything sells as is, where is. Nothing is to be removed until settled for. Payment of Cash, Check with Proper ID, or Credit Cards. Auction Company or the Owners will not be responsible for loss of items or accidents. Statements made the Day of the Auction take Precedence over Printed Matter.

SALE CONDUCTED BY **BRUCE & Le'AN AUCTION & APPRAISAL, LLC**
THE AUCTION COMPANY THAT APPRECIATES YOUR BUSINESS

For more information and pictures go to our website at www.bruceandleanauction.com

RONNIE BRUCE - Fair Play, MO
417-777-1685 or 417-654-2214
colronbruce@gmail.com

BRANDON BRUCE
Fair Play, MO

BILLY BRUCE - Stockton, MO
417-399-4800
colbbruce@gmail.com

ANTIQUE ESTATE AUCTION

Friday, May 10th, 2024 ~ 10:00 AM

LOCATION: 1144 Military Avenue, Baxter Springs, KS (Watch For Signs)

Auction For Antique Estate



Antique Furniture, Also Rare Antiques, Collectibles & Primitives

Rare Cupola From Lenexa, KS Barn, Rare Carousel Style Horse From The Old Halls On The Plaza, Ant Oak 4 Stack Barrister Bookcase, Ant Oak 5 Stack Barrister Bookcase, Ant Oak Knock Down Wardrobe, Ant Walnut Step Back Cupboard W/ Glass Paned Doors, Ant Early Walnut Plantation Desk, Ant Pine Open Front Cupboard, Ant 16 Tin Pie Safe On Turned Legs, Several Ant Oak Great Condition Church Pews, Rare Ant Oak Claw Foot Parlor Table, Rare Parlor Corner Chair, Several Unique Ant Mantle & Kitchen Clocks, Ant Table Top Victrola, Ant Oak Buffet, Harvest Tables, Several Small Ant Tables Some W/Marble Top, Ant Oak Washstand W/Towel Bar, Several Other Ant Furniture Pcs Not Listed Added Sale Day, Several Very Rare Decorated Crocks Some Are Unusual Brands, Several Salt Glaze Almost All Rare, Lg Lot Of Old Gas Station Oil Cans, Lg Lot Of Old Brass Buckets Of All Kinds, Very Lg

Copper Rendering Kettle, Lots Of Steam Powered Toys, Ant Wood Trencher, Ant Buggy Seat In Excellent Condition, Several Utility Pitchers, Lots Of Ant Art Pottery Of Various Kinds, Ant Quilts & Linens, Ant Sewing Machine Drawers, Rare Ant Hog Oiler, Ant Shutters, Old Galvanized Pcs, Ant Weather Vanes, Ant Coffee Grinder, Several Ant Sugar Buckets, Ant Store Coffee Grinder, Ant Metal Butter Churns, Ant Lard Press, Ant Pitcher Pump, 2 Ant Wicker Baby Buggies 1 In Like New Condition, Ant Childs Pcs Inc Rare Sled/Cart, Ant Toy Cash Register & Other Toys, Caboose Lantern, Old Marbles, Ant Glassware, Very Lg Lot Of Small Ant & Prim Items Not Listed

This Is Only A Partial Listing As Store Is Very Full & Unable To List & Picture All Items. Several Surprises Sale Day. This Is A True Antique Auction With No Common Household Or Type Items!!!



Auctioneers Note: This Antique Estate Auction Is A One Of A Kind As This Family Has Traveled All Over The World Collecting Rare Antiques. This Is A Note From The Family: Due To Losing The Lease On Our Building And Never Being Open We Have Decided To Employ Nance Auction Service To Liquidate The Contents Of Our Store. We Have Been Buying Some Very Nice Antiques And Will Now Be Forced To Liquidate Them Through An Auction So Don't Miss An Opportunity To Buy At Your Price. This Is Truly An Auction You Do Not Want To Miss. Please Plan Now To Attend. **Sale Order: Due To Items Scattered All Throughout The Store There Will Be No Particular Sale Order But Will Try To Sell Furniture Items First As Always. See Ya There!!!**

Terms: Cash or check with proper ID. Now accepting most major credit cards. Nothing removed until settled for. Statements made the day of sale takes precedence over printed material. Everything sold as is where is. Not responsible for accidents. Restroom available. Concessions Provided. Check our website for upcoming auctions and for additional pictures!!



NANCE AUCTION SERVICE



No Matter How BIG or small, We Do Them All!!!

Col. Bill Nance 417-214-0093 In God We Trust Philipians 4:13 Sean Beazley 417-247-6754



Wright Spray Foam Insulators, LLC
Commercial & Residential
Call for FREE Estimates!

Ervin Gingerich
417-926-2052
B. Eli Yoder
417-746-4932

The Ultimate Wood Heat.



Classic Edge™ Titanium HDX Outdoor Wood Furnaces

UP TO \$2000 TAX CREDIT*

*On qualifying models and installation. Call for details.

Yarbrough Equipment Sales & Services, Inc.
9776 E. State Hwy 00 • Strafford, MO
417-736-2303 • 1-866-286-6901 • www.yarbecq.com

KUSTER LOGGING

BUYER of Standing Timber Oak and Walnut

Dozing Now Available

417-259-0047

References Available



FOR SALE: 30 ft 5th wheel camper 3 slide outs. 417-322-8172. Lebanon.

3 BOWL CONCRETE FOUNTAIN SET: with decorative spout and pump. Bottom bowl weighs 300 lbs \$200 417-288-2760. Conway.

CONCRETE TABLETOP SET: with 3 benches. Tabletop weighs approx 200 lbs. 417-288-2760. Conway.

DARDEN PROFESSIONAL TIMBER HARVESTING, BUYING STANDING TIMBER: Great prices, improve wildlife habitat and improve forest health. State Certified & Fully Insured! 573-247-4808. Salem.

HIGHPOINT GREENHOUSE MOTHER'S DAY SALE: All week, May 6th-11th. 9am-6pm, Monday-Saturday. Closed Sundays. 9337 Warner Rd., Hartville.

MASSEY FERGUSON 135: 4-cylinder, gas, 1,100 original hours, \$4,500. 6FT King Kutter Finish Mower, \$1,250. 6FT Woods Finish Mower, \$950. 880 Oliver Diesel, \$4,000. 417-839-5248. Springfield.

DODGE BENCH SEAT: 2nd gen needs TLC \$100. 417-288-9861 Hazelgreen.

JUMBO FLOAT: 95" long x 80" wide x 10" high. Heavy gauge vinyl, Safety valve, 2 screw valves, 12 rope holders, water plug, nylon rope around it. Like new. \$150. 210-787-8222. Linn Creek.

BREWER LOGGING: Looking to buy standard walnut & oak standing timber. Call 417-254-0266, for a free quote.

TIGER WOODS UPPER DECK CARD: #1 mint condition. 573-854-8132. Houston.

PUREBRED FAINTING GOATS: Big variety! Some great deals and packages available. Lake Of The Ozarks. 573-216-7796.

TRACTOR TIRE: 16.9 X 34 goodyear. \$150. 417-288-9861 Hazelgreen.

ZIMMERMAN STANDING SEAM ROLL FORMER: with lots of small tooling and swanson snap lock table. 417-255-0951

ESTATE AUCTION

THURSDAY, MAY 16, 2024

Address: 3267 E. State Hwy 28 • Eucha, OK 74342

Directions: From South Side of Langley, OK @ Jct of Hwy 82 & Hwy 28. Take Hwy 28 East approx 6mi. Auction on Right. (From Pensacola Dam approx 4 1/2 miles) Lots of Pasture Parking Available.

STARTS @ 9:03AM

For More Info and Pics
www.chuppsauction.com

TRACTORS, HIT & MISS ENGINE w/ SAWMILL TABLE & ACC'S, SAWMILL, TOYOTA PRIUS, BUGGY, TRAILERS, BUSH HOG, 4-WHEELERS, CATTLE FEEDERS, FARM IMPLEMENTS, HAY EQUIPMENT & FEEDERS, STORAGE CONTAINER, PROPANE TANK, FENCING MATERIALS, POWER TOOLS, VEHICLES for PARTS, VINTAGE TOOLS, CLOCKS, ALADDIN LAMPS & VINTAGE COLLECTIBLES

AUCTION STARTS @ 9:03^{am} - LIVE ONSITE & ONLINE BIDDING STARTS @ 11:15^{am} with LOTS 63 - 90 FOLLOWED BY LOTS 2 - 62

ESTATE OF: Chris Bolton
OWNER: Bolton Trust

Auctioneer's Note: PLAN NOW TO ATTEND THIS AUCTION! Lots of Vintage & Unique Items not listed or pictured - MUST SEE TO APPRECIATE! Follow us on Facebook or visit our website for more info and pictures at www.chuppsauction.com

TERMS: Cash - Credit Cards - Check with Proper ID - OK Sales Tax Applies unless exemption is shown. NOT RESPONSIBLE FOR ACCIDENTS. ANY ANNOUNCEMENTS DAY OF SALE SUPERSEDES PREVIOUS ADVERTISING.

CHUPPS AUCTION & REAL ESTATE

Stan Chupp (918) 638-1157
Dale Chupp, Realtor Coldwell Banker -Select (918) 630-0495
Jonathan Miller (918) 237-7582

PUBLIC AUTO AUCTION

MON. MAY 27TH AT 10:30 AM

(Corner of US63 and MO17 in Houston, MO 65483)

SELL YOUR CAR AT OUR AUCTION

We will offer your vehicle to local buyers and bidders all over the USA. Last sale, we sold 80% of all vehicles and 100% of all estate items. Deadline to secure your entry is Monday May 20th.

CALL TODAY!! (417) 217-2023

Offering
CARS / PICKUPS / SUVs / VANS / GUNS

ALL GUNS will be sold at NO RESERVE.

Most vehicles will be sold at **NO RESERVE.**

Vehicle buyers must be at least 18 to bid. Gun buyers must be at least 21, a Missouri resident, and adhere to all Federal, State and local gun laws to purchase firearms. A 5% bidder's premium will be added to all sales.

Online Bidding At Hibid.com
www.purvisauctions.com

Find Us On Facebook

Something for everyone! *Coming Soon* **BUY** **SELL** **TRADE** *Vendors Wanted* **Look** **\$5** Per Vehicle **Good For Both Days**

PRAIRIE SWAP

Friday, May 24, 2024 & Saturday, May 25, 2024
Gates open: 8 a.m. to 4 p.m. (rain or shine)

- ◆ Poultry ◆ Small Animals ◆ New And Used Items ◆
- ◆ Antiques ◆ Tools ◆ Crafts ◆ Seasonal Goods ◆
- ◆ Apparel ◆ Handmade Items ◆
- ◆ And Much More! ◆

Just west of Wheatland, MO
on Highway 54

Questions?
Email: prairieswap@gmail.com
Phone: 417-327-6623

OMAR'S LOGGING & DOZING WORK

⇒ **Oak & Walnut**
⇒ **Excellent Prices**
Amish Owned & Operated

LEAVE MESSAGE: 417-741-0440
Hartville & Surrounding Areas

METAL BANDSAW: up to 6" pipe. \$175. 417-288-9861 Hazelgreen.

METAL PATIO SWING: Nice cushions. \$125. 417-288-2205.

TROY-BILT PUSH MOWER: \$200. 417-288-2205.

TROY-BILT WEED EATER: \$125. 417-288-2205.

LEFTY'S FABRICATION: Continuous panels & gates. Corral panels & custom welding. 417-589-0864. Conway.

1967 MUSTANG: 6-cylinder, no rust. \$7,900. 573-636-8000. Jefferson City.

LAKE OF THE OZARKS- 2 Lot Special starting at \$6,495. Owner financing \$175 down and \$100, a month. No credit checks, no gimmicks, build, camp, or own for investment. Beautiful trees, lots of wildlife, fun boating and swimming. Free lake access and boat ramps. Prices good through May 20, 2024. Hwy 135 between Stover and Laurie MO. Take Lake Rd. 135-12 to the Ivy Bend Land Office. Open Thursday through Monday. Call 573-372-6493.

'97 JEEP WRANGLER: Needs work. \$2,500. 573-525-8883.

DISABLED 83-YEAR-OLD US VETERAN NEEDING LIGHT WEIGHT BATTERY POWERED MOBILITY SCOOTER: 573-699-4351. St. James.

BULLS FOR RENT: 1 black with white face, Angus Hereford Cross. \$600. 1 Registered Red Angus \$700. PPC genetics. Built right, good disposition. Also, Angus Bulls for sale out of these two bulls. Grass fed. Also, replacement Ewes for sale; Katahdin with a little Dorper. All grass fed. Very few parasites. For more info, write Jonas Beechy 730 E. 310 Rd. Flemington, MO 65650. 417-307-9461, please leave message.

REGISTERED PUREBRED GERMAN SHEPHERD PUPPIES: 417-741-0175. Hartville.

CONCRETE TABLETOP SET: with 3 benches. Tabletop weighs approx 200 lbs. 417-288-2760. Conway.

PUBLIC AUCTION

Saturday, May 11, 2024 - 10:00 A.M.

Location: 2732 W Hwy, Thayer, Mo. 65791. From Thayer Missouri take W highway 3 miles to the sale. Watch for Lawrence Auction signs.

Owners: Vicki and the late Kenneth Ragan

REAL-ESTATE

3000 sq ft brick home with 4 bedrooms and 3 full baths. Property sets on 10 acres more or less, located only a few miles from Thayer Missouri on W highway. The residence has a living room, family room, and full kitchen. There is also a 5 years old above ground swimming pool, screened in outdoor kitchen, patio, 2 bay carport. The home has a 2022 York heat pump, new roof, septic system and well. The property has 2 outbuildings. **Terms: 10 percent down day of the sale balance due at closing. Closing 60 days or sooner. Highest bid will be submitted for approval.**

UTV-TRAILER-MACHINE SHOP ITEMS

2023 4X4 Can-Am Defender UTV (30 miles, 52Hp), 6'x24' bumper hitch trailer, Husky 20 ton press, Wilton 3130 finishing machine, 80 gallon industrial air compressor, Miller spot welder, Generac XT 8500 EFI generator, new plasma cutter LTP 5000D, Grizzly extreme G0640X table saw, Smithy BZ-239 gearhead lathe w/attachments, Millermatic 130 welder and 185 welder, Lincoln stick welder, Grizzly 60463 milling machine, Craftsman 10" radial saw, Craftsman 10" & 20" drill press, Extreme Power jackhammer, 2 vises, wood work benches, Grizzly 6" & 8" bench grinder, Porter cable Sawzall & air gun, DeWalt air gun, sheet metal bender, Stihl weed eater and leaf blower, Chief wood splitter, Woods 5' box blade, McCormick pull type mower, 4'-3pt bush hog, 1930's Chevy car (as is), Huskey tool chest, Grizzly combination sander, Pittsburg engine stand, Wilton saw, Model A parts, DeWalt chop saws, assortment of power tools, 1& 2 Hp motors, new wood tools, shop is full of items too numerous to mention that will be sold (extremely clean shop items and UTV).

HOUSEHOLD-ANTIQUES

Kitchen table/chairs, antique cabinet, Eden electric fireplace, player piano, king size bedroom suite, antique queen bedroom suite, cast iron skillet, pots & pans, dishware, bakers rack, wood book shelves, end tables, motorized antenna (new in box), advertising signs, coke items, RR lanterns, Ace Garrett metal detector, apartment fridge, old locker, antique gas pump, yard tools, antique wood ammo box, lanterns, collection of model toys, canopy, Cybertron workout station, Century punching bag, GE freezer, cots, doll house, Antique ringer washer, old toys, antique pullies, Pepsi thermometer, plus many more items too numerous to mention in the house.

Concessions will be available!

Auctioneer's Note: We have been commissioned to offer the items listed above at public auction. Real Estate will be offered at 12:00 noon, UTV and trailer will be sold after the real estate. This will be an all-day sale. **Thanks for attending, Jeff.** Due to misprint last week, this sale bill represents items to be sold.

Jeff Lawrence, Auctioneer, LLC

7988 Highway E - Couch, Mo. 65690

Home: 417-938-4394 • Cell: 417-331-5231

Mo. Lic#1929

Ark. Lic#1929

Driver's License Required

All announcements made day of sale take precedence over any printed material
Not responsible for accidents or stolen items.

BUFFALO LIVESTOCK MARKET LLC



276 Hwy 32 W., Buffalo, MO

May, 4th, 2024

Receipts: 763

COW SALE: MAY 21ST

REPRESENTATIVE STEERS

300-400 @ 370.00 to 398.00
400-500 @ 310.00 to 365.00
500-600 @ 290.00 to 325.00
600-700 @ 255.00 to 270.00
700-800 @ 235.00 to 247.00
800-900 @ 225.00 to 232.00

REPRESENTATIVE HEIFERS

300-400 @ 275.00 to 342.00
400-500 @ 255.00 to 297.00
500-600 @ 240.00 to 277.00
600-700 @ 209.00 to 250.00
700-800 @ 218.00 to 230.00
800-900 @ 192.00 to 209.00

FEEDER BULLS

300-400 @ 297.00 to 390.00
400-500 @ 245.00 to 377.00
500-600 @ 250.00 to 300.00
600-700 @ 225.00 to 275.00
700-800 @ 200.00 to 224.00
800-900 @ 170.00 to 199.00

STOCKS COWS

Bred Cows 1675.00 to 2000.00

SLAUGHTER BULLS

High Yield 155.00 to 170.00
Low Yield 130.00 to 155.00

SLAUGHTER COWS

Fleshy 135.00 to 147.00
Med Flesh 120.00 to 140.00
Light Flesh 110.00 to 138.00

HOL/HOLX STR

400-700 @ 170.00 to 192.00

CRIPPLE, DOUBTFUL HEALTH COWS

70 Down

MON-WED MARKET REPORT

Listen to KJEL 103.7FM • Lebanon or KY00 99FM • Bolivar

VIEW OUR SALES AT CATTLEUSA.COM

CALL FOR TRUCKING OR ON-FARM VISIT

Lyle Caselman • Owner-Manager
417-345-7876 • mobile 417-533-2944
Leon Caselman • Owner
417-345-4514 • mobile • 417-588-6185

FARM/LANDSCAPING TRAILER: w/ sides and ramp, new hubs/tires, 20' x 6.5', 2-year-old deck, Bill of sale, \$2,450 or trade? 417-650-7069. Lebanon.

FOR SALE ENOROSI 4-BASKET TEDDER: Also, one for parts. \$2,350 OBO. 573-690-3092. Freeburg.

PINNACLE RANCH YEARLING RED ANGUS: bulls for sale. 417-679-4269. Gainesville.

WANTED WOOD STOVE MAGIC HEAT EXCHANGER: 660-598-4019.

SET OF TITAN 16.9-38 TRACTOR TIRES: \$400 for the set, OBO. 573-690-3092. Freeburg.

PARTI MINIATURE SCHNAUZER/TOY POODLE MIX: Weigh 8-12 lbs. 417-664-5926.

WHITE DORPER EWES FOR SALE: Some breeding ages, various sizes. 417-464-0002. Seymour.

AB SPORT LOUNGE like new \$35. 210-787-8222 Linn Creek.

'98 FORD RANGER XLT: 63,280 miles. 636-359-5007. Rolla.

STORM SHELTER SAFE ROOMS: Scratch & Dent Sale. Big savings. Call for details, 417-894-3159.

BUYING SCRAP METAL: All kinds, can torch, Heavy Equipment Call for prices, 40 years' experience. 573-308-6739.



REGULAR SALE EVERY THURSDAY 11AM

WATCH OUR WEEKLY SALE IN REAL TIME ON DVAUCTION.COM

For Farm Visits, Market Updates, or Trucking
Call **Zach Cox 417-777-1320**

**Competitive Buyers!
Competitive Commission!
Competitive Market!**

Barn: 417-532-9292
1-44 • Exit 123 "just outside of Lebanon"
17505 Route 66, Phillipsburg, MO 65722
For weekly market updates, visit us at
www.midmostockyards.com

LEGO RETIRED TECHNIC MODLES: NIB Volvo track hoe #42121. Mobile crane #42108. HD tow truck #42128. 573-263-0212. Rolla.

WANTED JERSEY MILK COW: 660-598-4019.

3 BOWL CONCRETE FOUNTAIN SET: with decorative spout and pump. Bottom bowl weighs 300 lbs \$200 417-288-2760. Conway.

DARDEN PROFESSIONAL TIMBER HARVESTING, BUYING STANDING TIMBER: Great prices, improve wildlife habitat and improve forest health. State Certified & Fully Insured! 573-247-4808. Salem.

HIGHPOINT GREENHOUSE MOTHER'S DAY SALE: All week, May 6th-11th. 9am-6pm, Monday-Saturday. Closed Sundays. 9337 Warner Rd., Hartville.

MASSEY FERGUSON 135: 4-cylinder, gas, 1,100 original hours, \$4,500. 6FT King Kutter Finish Mower, \$1,250. 6FT Woods Finish Mower, \$950. 880 Oliver Diesel, \$4,000. 417-839-5248. Springfield.

CHRISTIAN COUNTY, MO HISTORY: It's First 100 Years, Printed 1959, 222 pages, H.B., \$25. HISTORY OF WEBSTER COUNTY, MO by Floy Watters George, 264 pages, printed 1955. \$25. 417-532-2045, Leave message and phone number. Lebanon.

WEATHERED BARN WOOD SIDING: 10" wide. Call for appointment 573-729-7226. www.pineridgerustic.com Salem.

LOG SIDING: 2X8 Pine/Western Cedar. Call for appointment 573-729-7226. www.pineridgerustic.com Salem.

40 YEARS THIS YEAR- we have to be doing something right. Call for quote or any house new or used, double and single. 573-657-2176 amegamobilehomes.com.

WE GOT IT - let us bid your mobile home purchase, new and used. 573-499-9993 columbiadiscountohomes.com.

SPORTSET BY SARGENT: Fishing pliers in leather sheath. Like a multi-tool. \$15. 636-239-2695 or 314-560-5700. Washington.

TRIPLE WIDE- moving stock, awesome price. 573-657-7040 chateauhomes.net.

I BUY.....used mobile homes. Call or text 573-338-6250 or email GregS.CDH@outlook.com

0% for 4 Years

HEATMOR
 Stainless Steel Outdoor Furnaces
Outdoor Wood Furnace
 as low as **\$238** per month
HEATMOR MIDWEST
 Licking, MO 65542 • 573-674-2962

TINY HOMES - Missouri Franchise 573-881-7965.

NEW SQUARE D RAINPROOF 50AMP DISCONNECT: \$120. 636-239-2695 or 314-560-5700. Washington.

2020 RV TRAVEL TRAILER: 35' Rockwood Ultra Lite. Like new many upgrades. 620-224-9694. Lebanon.

OPERATORS MANUALS: IT, Jensales, & Case IH. Call for details, \$20 each. 636-239-2695 or 314-560-5700. Washington.

BLACK METAL TUBULAR BRACKET: Scrolling and a stainless bracket. \$8. Call for pictures. 636-239-2695 or 314-560-5700. Washington.



J&L METAL ROOFING
 Specializing in Re-Roofing | Free Estimates
 Phone: (573)-759-3880
 Phone Answered on Monday & Friday 6:30pm-7:00pm
 20371 Maries County Road 635, Dixon, Missouri 65459

RUBBER & LEATHER BOOTS AND 5- BUCKLE OVER SHOES: Men's 11, Women's 7, some insulated. \$12-\$35 obo. 636-239-2695. Washington.

WANTED MILK GOAT: 660-598-4019.

ANTIQUA 4 HP ENGINE: Built by Continental Motors Corporation. \$150 OBO. 573-308-5884. Rolla.

'85 FORD PICKUP PARTS: Passenger door with window glass & mirror \$30. Also, Tailgate for '85 Ford pickup \$25. 573-308-5884. Rolla.

CALUS LOGGING

20 YEARS EXPERIENCE
Buying Standing Timber
 Walnut & Oak
Joe Calus, Owner
CERTIFIED 417-926-4606 • MTN. GROVE

NEW IN BOX MASTERBUILT ELECTRIC TURKEY FRYER: Up to 14 lbs. Fry, boil or steam. Safe for indoors. \$80. 417-718-5347. Morgan.

1985 ST. LOUIS CARDINALS SIGNED WORLD SERIES BALL: Includes Herzog & Ozzie Smith. PSA/DNA. \$190. Text for pictures. 573-854-8132. Houston.

3 BW: motorcycle magazines 2008 Free. 417-260-0941. Raymondville.

SOVIET UNION WINTER WEATHER ARMY HAT: Excellent condition. \$ 35. Text for pictures. 573-854-8132. Houston.

PALLET RACKING: 12 ft high, 93" shelves. Reasonable price. Call 816-289-9580 NO TEXT. Sunrise Beach Area.

Pine Ridge Rustic Log Home Building Supplies

SPECIAL SALE! On Pine Log Siding
SERVICES OFFERED!

- Custom Log Home Products
- Pre-finishing available on interior & exterior
- Hand Hewn Sidings Offered

WWW.PINERIDGERUSTIC.COM
523 CR 2410 • Salem, MO 65560 • Phone: 573-729-7226

ST LOUIS BLUES: autographed full size hockey stick. Brett Hull. Text for pictures. \$149 573-854-8132. Houston.

RIFLE CASE: Pelican storm. IM3100 long case like new \$160. Text for pictures. 573-854-8132. Houston.

GUNSMITHING-Older Rifles, Shotguns, Handguns, all 22LRs. Any make, any model, estate appraisals. Camdenton. 573-363-5801.

3 ARMY CANTEENS: Mess kit, belt & duffel bag. Best offer for all. 417-260-0941. Raymondville.

WE BUY AND SELL
 new and used mobile homes

(417) 501-1061

INTERNATIONAL PICKUP TRANSFER GEARBOX: \$150. 573-308-5884. Rolla.

CHILTONS AUTO REPAIR MANUAL: all American cars & Volkswagen 1969-1976. \$30 plus shipping. 417-260-0941. Raymondville.

3 BASEBALL MITTS: From the 1950s. \$60. 417-260-0941. Raymondville.

REGISTERED DACHSHUND PUPPIES & 2 DOXIEPOOS. 573-247-6273.

YOUTH BED: in good condition \$15. 417-532-2344.

TOSHIBA 42" FLAT SCREEN LED LCD HD TV: With remote & owner's manual. \$50. 210-787-8222. Linn Creek.

20 LB PROPANE TANK: with OPD valve \$20. 417-532-2344.

REGISTERED PUREBRED GERMAN SHEPHERD PUPPIES: 417-741-0175. Hartville.

BREWER LOGGING: Looking to buy standard walnut & oak standing timber. Call 417-254-0266, for a free quote.

2-DRAWER FILE CABINET: Pink. In good condition. \$15. 417-532-2344.

DEAN'S CREEK MOBILE WELDING LLC: Noah Downing, Certified Welder Serving Central Missouri. 573-842-7281.

DODGE BENCH SEAT: 2nd gen needs TLC \$100. 417-288-9861 Hazelgreen.

JUMBO FLOAT: 95" long x 80" wide x 10" high. Heavy gauge vinyl, Safety valve, 2 screw valves, 12 rope holders, water plug, nylon rope around it. Like new. \$150. 210-787-8222. Linn Creek.

TIGER WOODS UPPER DECK CARD: #1 mint condition. 573-854-8132. Houston.

PUREBRED FAINTING GOATS: Big variety! Some great deals and packages available. Lake Of The Ozarks. 573-216-7796.

FOR SALE ENOROSI 4-BASKET TEDDER: Also, one for parts. \$2,350 OBO. 573-690-3092. Freeburg.

TRACTOR TIRE: 16.9 X 34 goodyear. \$150. 417-288-9861 Hazelgreen.

LAKE OF THE OZARKS- 2 Lot Special starting at \$6,495. Owner financing \$175 down and \$100, a month. No credit checks, no gimmicks, build, camp, or own for investment. Beautiful trees, lots of wildlife, fun boating and swimming. Free lake access and boat ramps. Prices good through May 20, 2024. Hwy 135 between Stover and Laurie MO. Take Lake Rd. 135-12 to the Ivy Bend Land Office. Open Thursday through Monday. Call 573-372-6493.

PARTI MINIATURE SCHNAUZER/TOY POODLE MIX: Weigh 8-12 lbs. 417-664-5926.

Starnes Auto LLC
22115 Rt. 66 • Lebanon, MO 65536
588-7939 Cell
588-3159 Office
www.starnesauto.com

Worry-Free VEHICLE ALIGNMENTS

With our state-of-the-art computerized equipment

Front End | Rear End | Four Wheel Drive | Thrust
Alignments | Both Foreign and Domestic Vehicles



**DON'T FORGET TO CHECK
OUT OUR CARS FOR SALE!**

WE DO ALIGNMENTS!

Buildings • Hunter's Cabins • Lawn Furniture

JAMCO Portable Buildings
800-688-2064 • 307 Enterprise Dr. • Seymour, MO • www.jamcobuilders.com

Rent To Own Plan

METAL BANDSAW: up to 6" pipe. \$175. 417-288-9861 Hazelgreen.

DISABLED 83-YEAR-OLD US VETERAN NEEDING LIGHT WEIGHT BATTERY POWERED MOBILITY SCOOTER: 573-699-4351. St. James.

ZIMMERMAN STANDING SEAM ROLL FORMER: with lots of small tooling and swanson snap lock table. 417-255-0951

METAL PATIO SWING: Nice cushions. \$125. 417-288-2205.

TROY-BILT PUSH MOWER: \$200. 417-288-2205.

TROY-BILT WEED EATER: \$125. 417-288-2205.

PINNACLE RANCH YEARLING RED ANGUS: bulls for sale. 417-679-4269. Gainesville.

LEFTY'S FABRICATION: Continuous panels & gates. Corral panels & custom welding. 417-589-0864. Conway.

1967 MUSTANG: 6-cylinder, no rust. \$7,900. 573-636-8000. Jefferson City.

WHITE DORPER EWES FOR SALE: Some breeding ages, various sizes. 417-464-0002. Seymour.

BULLS FOR RENT: 1 black with white face, Angus Hereford Cross. \$600. 1 Registered Red Angus \$700. PPC genetics. Built right, good disposition. Also, Angus Bulls for sale out of these two bulls. Grass fed. Also, replacement Ewes for sale; Katahdin with a little Dorper. All grass fed. Very few parasites. For more info, write Jonas Beechy 730 E. 310 Rd. Flemington, MO 65650. 417-307-9461, please leave message.

'97 JEEP WRANGLER: Needs work. \$2,500. 573-525-8883.

FARM/LANDSCAPING TRAILER: w/ sides and ramp, new hubs/tires, 20' x 6.5', 2-year-old deck, Bill of sale, \$2,450 or trade? 417-650-7069. Lebanon.

SET OF TITAN 16.9-38 TRACTOR TIRES: \$400 for the set, OBO. 573-690-3092. Freeburg.

'98 FORD RANGER XLT: 63,280 miles. 636-359-5007. Rolla.

STORM SHELTER SAFE ROOMS: Scratch & Dent Sale. Big savings. Call for details, 417-894-3159.

HIGHPOINT GREENHOUSE MOTHER'S DAY SALE: All week, May 6th-11th. 9am-6pm, Monday-Saturday. Closed Sundays. 9337 Warner Rd., Hartville.

GRAND OPENING

THE COMMUNITY GARDEN MARKET

5271 LONG ST. HWY Y, CONWAY, MO 65632

OPENING DATE: MAY 18, 2024

JOIN US ON OUR OPENING DAY, FOR FREE DONUTS & COFFEE

▪ Baked Goods

All week: White and Wheat Bread, Sweet Bread, and Cookies

Friday & Saturday: Cinnamon rolls, Pies, Sourdough Bread, Fried Pies & Donuts

▪ Jams & Jellies

▪ Stoneground Grains

Einkorn Flour, Spelt Flour, Raw Rolled Oats & Einkorn Berries

▪ Honey & Maple Syrup

▪ Farm Fresh Eggs

▪ Crafts & Garden Boxes

Picnic Tables, Bird Houses, Bird Feeders, Garden Boxes, Rugs & More

▪ Seasonal Retail Market

▪ Flowers

Hanging Baskets, Cut Flowers & Mums

AVAILABLE IN-SEASON:

- Asparagus
- Blackberries
- Black Raspberries
- Broccoli
- Cabbage
- Cantaloupe
- Carrots
- Cucumbers
- Eggplants
- Garlic
- Green Beans

- Green Onions
- Kale
- Kohlrabi
- Lettuce
- Okra
- Potatoes
- Peppers
- Pumpkins
- Radishes
- Red Beets
- Rhubarb
- Shell Peas
- Spinach
- Strawberries

- Squash
- Sweet Corn
- Sweet Onions
- Sweet Potatoes
- Tomatoes
- Watermelon

FRUITS:

- Apples
- Pears
- Peaches



THE COMMUNITY GARDEN MARKET is a seasonal retail market for fresh local produce, baked goods, homemade crafts, etc. located in Conway, MO. All produce is grown in our community unless otherwise labeled

OPEN: Monday, Tuesday, Wednesday, Friday, Saturday from 9 AM - 5 PM **CLOSED:** Thursday & Sunday. And All Religious Holidays

WCT FARM AND LAWN • CALL TODAY 417-859-4311



TYM TRACTORS

**MENTION THIS AD
TO GET**

**FREE Tire Fluid
With a
NEW TYM**

Tractor Purchase*



**T754C 74 HP
\$47,912 ~~\$46,162~~**

GET PRE-QUALIFIED



SHEFFIELD
FINANCIAL

**0% INTEREST FINANCING
AVAILABLE ON SELECT MODELS**



**T25
25 HP
\$19,210 ~~\$18,210~~**

SAVE UP TO \$2000*



w/ TYM's Spring Cash Rebate



**3515R
35 HP \$25,312 ~~\$24,312~~**



**T474
47 HP
\$27,120 ~~\$26,120~~**



**T574
55 HP
\$31,301 ~~\$30,301~~**



**T654C 67 HP
\$43,731 ~~\$42,231~~**

*Offers available for a limited time only. Offer only valid upon purchase of a new qualifying tractor from a participating dealer's in-stock inventory. Some exceptions apply.



WCT Farm & Lawn
417-859-4311
SALES • SERVICE • PARTS
3299 EVERGREEN ROAD
STRAFFORD, MO 65757
www.wctfarmandlawn.com