

FREE - TAKE ONE!

Vol. 31 No. 3

APRIL 18, 2024

417-532-9131

WEEKLY TRADER MAGAZINE



Find us on Facebook

@myweeklytrader
AUCTIONS PG. 6

VISIT OUR NEW WEBSITE! MYWEEKLYTRADER.COM

Quarles Supply

3251 S Springfield Ave, Bolivar, MO 65613
417-777-2391

Kubota of Lebanon

22330 Hwy MM, Lebanon, MO 65536
417-532-0888



**#1 SELLING
TRACTOR
UNDER 200 HP**

L02 SERIES

*Your hometown
Kubota dealer
of choice.*

Double digit to-do lists have met their match.

Dependable. Powerful. Versatile. When you need increased comfort, and reliable high performance under a steel hood, you can count on the Kubota L02 Series.

L2502DT Tractor and Loader \$19,995 | 0% for 84 Months

Visit your Kubota dealer today for a demo!

KubotaUSA.com



0% Down, 0% A.P.R. financing for up to 84 months on purchases of select new Kubota L2502DT equipment from participating dealers' in stock inventory is available to qualified purchasers through Kubota Credit Corporation, U.S.A.; subject to credit approval. Example: 84 monthly payments of \$11.90 per \$1,000 financed. Some exceptions apply. Terms subject to change. Offers expire 06/30/2024. This material is for descriptive purposes only. Kubota disclaims all representations and warranties, express or implied, or any liability from the use of this material. For more information, see Dealer or go to KubotaUSA.com.

LAND FOR SALE



363.05 ACRES ± | WEBSTER CO., MO | \$2,699,000

- Two miles of private access to the Osage Fork of the Gasconade River
- Improvements consist of a barndominium, a modern rustic cabin, multiple large barns, a Golden Grain bin with dryer, nice pipe cattle working corrals and good fencing, large fuel tanks, and other outbuildings
- Large panoramic views
- Income-producing ground
- 2 bedroom 2 bath barndominium with additional multi-use room and a nice insulated shop with two fourteen foot overhead doors
- Nice one bed one bathroom cabin with a rustic finish and huge views of the river bottoms
- Three entrances to farm and miles of nice trails
- River has multiple access points and area to launch boat or canoes
- 3/4 mile of private slough
- Multiple springs and wet weather creeks
- 180+ pipe panels for a nice cattle corral system
- Automatic cattle waterers
- Grain bin with dryer - installed in 2020
- Machine shed
- 50x100 barn for great storage
- 100x130 barn with water
- Large fuel tank
- Underground electric to barndominium
- Two water wells
- Silage pit
- Great hunting locations with natural travel corridors and secluded openings for food plots
- Property will produce over 1400 bales while running a rotational cattle rotation system
- Class 2 and 3 soils if next owner wanted to cultivate crops
- 9 cross fenced pastures with three automatic waterers
- One tapped spring fed waterer
- Multiple bridges to launch/pick up from for 5 mile floats through farm
- 270 open acres and nearly 100 timber
- Conway and Niangua Schools
- Chicken coop with run
- Loafing shed with tack room
- 20 miles from Marshfield and Lebanon

BRIAN UTECHT LAND TEAM SOUTHWEST MISSOURI LAND SPECIALISTS



📞 417.766.5595

🌐 brian.utecht@whitetailproperties.com



WHITETAIL PROPERTIES REAL ESTATE

HUNTING | RANCH | FARM | TIMBER

WHITETAILPROPERTIES.COM

Whitetail Properties Real Estate, LLC DBA Whitetail Properties, DBA Whitetail Properties Real Estate. In the States of Nebraska & North Dakota DBA Whitetail Trophy Properties Real Estate LLC. Licensed in CO, MN, ND, SD, TN & WI - Jeffrey Evans, Broker. Licensed in FL, KS & MO - Jefferson Kirk Gilbert, Broker. Licensed in TX & NM - Joey Bellington, Broker. Licensed in IN - Bill Minor, Broker. Licensed in AL, GA, LA, & MS - Sybil Stewart, Broker. Licensed in TN - Tim Burnette, Broker. Licensed in TN & MS - Josh Monk, Broker. Licensed in AR - Anthony Chrisco, Broker. Licensed in NC, SC, VA - Chip Camp, Broker. Licensed in IA, NC - Richard F. Baugh, Broker. Licensed in MI - Edmund Joel Nogaski, Broker. Licensed in IL, MD, WV - Debbie S. Laux, Broker. Licensed in ID, MT, OR, UT, WA, WY & NV - Aaron Milliken, Broker. Licensed in NY - John Myers, Real Estate Broker. Licensed in OK - Dean Anderson, Broker. Licensed in KY - Derek Fisher, Broker. Licensed in OH - Jeremy Schaefer, Principal Broker. Licensed in NE & SD - Jason Schendt, Broker. Licensed in MS - Chipper Gibbs, Broker. Licensed in PA - Jack Brown, Broker.



WEATHERED BARN WOOD SIDING: 10" wide. Call for appointment 573-729-7226. www.pineridgerustic.com Salem.

LOG SIDING: 2X8 Pine/Western Cedar. Call for appointment 573-729-7226. www.pineridgerustic.com Salem.

40 YEARS THIS YEAR- we have to be doing something right. Call for quote or any house new or used, double and single. 573-657-2176 amegamobilehomes.com.

WE GOT IT - let us bid your mobile home purchase, new and used. 573-499-9993 columbiadiscountshomes.com.

TRIPLE WIDE- moving stock, awesome price. 573-657-7040 chateauhomes.net.

TINY HOMES - Missouri Franchise 573-881-7965.

I BUY.....used mobile homes. Call or text 573-338-6250 or email GregS.CDH@outlook.com

DARDEN PROFESSIONAL TIMBER HARVESTING, BUYING STANDING TIMBER: Great prices, improve wildlife habitat and improve forest health. State Certified & Fully Insured! 573-247-4808. Salem.

BLACK METAL TUBULAR BRACKET: Scrolling and a stainless bracket. \$8. Call for pictures. 636-239-2695 or 314-560-5700. Washington.

RUBBER & LEATHER BOOTS AND 5- BUCKLE OVER SHOES: Men's 11, Women's 7, some insulated. \$12-\$35 obo. 636-239-2695. Washington.

ANTIQUE 4 HP ENGINE: Built by Continental Motors Corporation. \$150 OBO. 573-308-5884. Rolla.

INTERNATIONAL PICKUP TRANSFER GEARBOX: \$150. 573-308-5884. Rolla.

Is Your Log Home Starting To Look **UGLY?**

Call Pine Ridge Rustic Log Home Building Supplies

- Professional Log Home Maintenance & Restoration
- Staining • Chinking/Caulking • Log Replacement • Media Blasting



573-729-7226 www.pineridgerustic.com

WE BUY AND SELL
new and used mobile homes



(417) 501-1061

SPORTSET BY SARGENT: Fishing pliers in leather sheath. Like a multi-tool. \$15. 636-239-2695 or 314-560-5700. Washington.

NEW SQUARE D RAINPROOF 50AMP DISCONNECT: \$150. 636-239-2695 or 314-560-5700. Washington.

'85 FORD PICKUP PARTS: Passenger door with window glass & mirror \$30. Also, Tailgate for '85 Ford pickup \$25. 573-308-5884. Rolla.

USED JET HOME POLLUTION CONTROL PANEL: Model CP700. \$50. 636-239-2695 or 314-560-5700. Washington.

1 PAIR OF KEY BRAND MEN'S JEANS: Waist 38, Length 34. \$8. 636-239-2695 or 314-560-5700. Washington.

2-DRAWER FILE CABINET: Pink. In good condition. \$15. 417-532-2344.

VOTED #1 BEST Preowned Car Dealership

TIM'S USED CARS
(573) 341-3828 • 1334 South Bishop (Hwy. 63) • Rolla, MO
Next to Hwy CC • www.tims-used-cars.com

 <p>2012 CHEVY COLORADO LT Crew Cab, 2WD, 2.9 LT, Power Equipped, 113,xxx Miles Only \$11,500</p>	 <p>2016 BUICK CASCADA PREMIUM Convertible, 1.6 4 Cyl, Loaded w/ Options 65,xxx Miles Only \$15,900</p>
 <p>2016 FORD F350 XL Dually, 4x4, 6.7 Diesel, Power Equipped 92,xxx Miles Only \$29,900</p>	 <p>2019 CAN-AM DEFENDER XT HD8, Full Cab, Heater, Power Windows, 925 Hours Only \$15,900</p>

LARGE SELECTION OF CARS, TRUCKS, SUVs & VANS!

KUSTER LOGGING
BUYER of Standing Timber Oak and Walnut
Dozing Now Available
417-259-0047
References Available



NEW JELD WEN 5' LEFT HAND SLIDING GLASS DOOR WITH SUNSTABLE INTERIOR BLINDS: Clear tempered glass, Desert Sand trim/hardware. Retails \$2655 Sell \$900. 417-693-0389. Conway.

20 LB PROPANE TANK: with OPD valve \$20. 417-532-2344.

TOSHIBA 42" FLAT SCREEN LED LCD HD TV: With remote & owner's manual. \$50. 210-787-8222. Linn Creek.

16FT RIVER JON: electric trolling motor. 5hp, air cooled outboard. \$1500. 417-527-2740.

1985 ST. LOUIS CARDINALS SIGNED WORLD SERIES BALL: Includes Herzog & Ozzie Smith. PSA/DNA. \$190. Text for pictures. 573-854-8132. Houston.

AB SPORT LOUNGE like new \$35. 210-787-8222 Linn Creek.

ROOMMATE NEEDED, COUNTRY LIVING: Near highway. 15 minutes to Ft. Leonard Wood & 15 minutes to Lebanon. Entire 2nd floor of farmhouse on acreage. \$600/month, includes all utilities. No cats. Call Kurt at 906-396-5877.

Buildings • Hunter's Cabins • Lawn Furniture



JAMCO Portable Buildings
800-688-2064 • 307 Enterprise Dr. • Seymour, MO • www.jamcobuilders.com

Rent To Own Plan

CALUS LOGGING

20 YEARS EXPERIENCE

Buying Standing Timber
Walnut & Oak

Joe Calus, Owner
417-926-4606 • MTN. GROVE

CERTIFIED

NEW IN BOX MASTERBUILT ELECTRIC TURKEY FRYER: Up to 14 lbs. Fry, boil or steam. Safe for indoors. \$80. 417-718-5347. Morgan.

JUMBO FLOAT: 95" long x 80" wide x 10" high. Heavy gauge vinyl, Safety valve, 2 screw valves, 12 rope holders, water plug, nylon rope around it. Like new. \$150. 210-787-8222. Linn Creek.

SOVIET UNION WINTER WEATHER ARMY HAT: Excellent condition. \$35. Text for pictures. 573-854-8132. Houston.

ST LOUIS BLUES: autographed full size hockey stick. Brett Hull. Text for pictures. \$149 573-854-8132. Houston.

HAY FOR SALE: Alfalfa & grass mix. 4x5 round bales. 417-343-4958. Seymour.

RIFLE CASE: Pelican storm. IM3100 long case like new \$160. Text for pictures. 573-854-8132. Houston.

GUNSMITHING-Older Rifles, Shotguns, Handguns, all 22LRs. Any make, any model, estate appraisals. Camdenton. 573-363-5801.

3 BW: motorcycle magazines 2008 Free. 417-260-0941. Raymondville.



Call to Order 417-993-3017

Meadowview Dutch Market

Bulk & Surplus Groceries • Prices Subject to Stock on Hand

DELI SPECIAL		BACON & CHEDDAR ANGUS PATTIES	
SWISS AND RYE CHEESEREG. \$5.89 LBSALE \$5.39 LB	ROAST BEEFREG. \$7.49 LBSALE \$6.99 LB	 <p>\$2.49 LB.</p>	
<p>TRY our Fresh Homemade DELI Sandwiches: TURKEY, HAM, ROAST BEEF, ITALIAN, BLT'S, PULLED PORK AND BLT PULLED PORK (MADE YOUR WAY)! COME IN OR CALL to order! ALSO Custom Deli trays! Veggie OR FRESH Meat-N-Cheese!</p>			
Jalapeno & Cheese Beef Franks 5 LBS. \$5.99	Yellow Cheddar Cheese 5 LBS. \$9.99	Slow Roasted Turkey Breast 8 OZ. 2/\$1.00	Radishes 10 OZ. 4/\$1.00
Shredded Hashbrowns LB. 69¢	Mott's Apple Juice 64 OZ. 75¢	Breaded Onion Rings 35 OZ. \$2.99	Jalapeno Cheddar Popcorn CASE 6-1 OZ. \$1.00

MEADOWVIEW DUTCH MARKET
417-993-3017 Hours: Mon-Thurs 8-5pm
Fri 8-6pm • Sat 8-5pm
23 Miles West on Hwy 64 • Right on T Hwy
9 miles • Left on E Hwy 1 mile on Left

NOT RESPONSIBLE FOR PRINT ERROR!!

NOW ACCEPTING CREDIT, DEBIT CARDS & EBT

DUTCH COUNTRY STORE, LLC
573-378-4395
Hours: Mon-Thurs 8-5pm
Fri 8-6pm • Sat 8-5pm
5 miles East of Versailles off Hwy C on Kelsay Road

3 ARMY CANTEENS: Mess kit, belt & duffel bag. Best offer for all. 417-260-0941. Raymondville.

CHILTONS AUTO REPAIR MANUAL: all American cars & Volkswagen 1969-1976. \$30 plus shipping. 417-260-0941. Raymondville.

YOUTH BED: in good condition \$15. 417-532-2344.

DEAN'S CREEK MOBILE WELDING LLC: Noah Downing, Certified Welder Serving Central Missouri. 573-842-7281.

BREWER LOGGING: Looking to buy standard walnut & oak standing timber. Call 417-254-0266, for a free quote.

CASH FOR COMICS, SPORTS CARDS, RELATED ITEMS, TOYS: Over 35 years of experience as a collector/dealer. Call or text 636-667-0391.

150HP MERCURY OPTIMAX: \$1,500. 417-527-2740.

FREE PUPPIES: Great Pyrenees/Collie Mix. Very cute. 417-718-8584, leave message. Conway.



J&L METAL ROOFING

Specializing in Re-Roofing | Free Estimates

Phone: (573)-759-3880

Phone Answered on Monday & Friday 6:30pm-7:00pm
20371 Maries County Road 635, Dixon, Missouri 65459

Starnes Auto LLC
22115 Rt. 66 • Lebanon, MO 65536
417.588.7939 Call
417.588.3159 Office
www.starnesauto.com

Worry-Free WINDSHIELD REPAIRS

Don't let that rock chip turn into a huge problem!



Chip & Crack Repairs | Glass Replacement
WE FILE WITH INSURANCE!

**OFFICIAL
TRACTOR
OF TOUGH™**

INTRODUCING THE ALL-NEW 5100 SERIES



Marshfield Machinery Inc.

222 E. Madison • Marshfield, MO 65706

417-859-2117 • www.marshfieldmachinery.com

*2018 data including all Mahindra group brand sales.
MahindraUSA.com © 2020 Mahindra USA Inc.

Mahindra
Rise.

NEW MAHINDRA TRACTORS	
1626 4WD & LDR 26HP	IN STOCK
1635 4WD & LDR 36HP	IN STOCK
1640 4WD & LDR 40HP	IN STOCK
2645 4WD & LDR 45HP	IN STOCK
5145 4WD & LDR 45HP	IN STOCK
5155 4WD & LDR 55HP	IN STOCK
4550 4WD & LDR 48HP	IN STOCK

USED TRACTORS	
MF 4609M 90HP CAB LDR	45,000
MF 5445 75HP 4WD CAB LDR	42,500
NH T4.75 74HP 4WD LDR	32,500
MF 290 65 HP	8,500
MF 1528 28HP 4WD	6,500

USED ROUND BALERS	
MF 2946A 4X6 MESH	35,000
HESSTON 560 5X6	2,000

USED MISC.	
BUSH HOG 3715 15FT	13,500
BUSH HOG 2615L 15FT	10,500
JD 1815 15FT	9,500
HESSTON 8 WHEEL RAKE	2,500
OMI 8 WHEEL RAKE	2,500
RHINO 8 WHEEL RAKE	1,500
RHINO 5FT FINISH MOWER	850

Marshfield Machinery Inc.
222 E. Madison
Marshfield, MO 65706
417-859-2117
www.marshfieldmachinery.com

AUCTION

Tuesday, April 23 • 10 a.m.

Owner Larry Crawford (Selling Farm)

Location: 2991 Bado Rd. Cabool, Mo. 65689 • Directions: Off Business Hwy. 60 in Cabool, Mo., take Pine Street, go 1 1/4 miles to Bado Rd., go 1 1/4 miles to auction. Watch for Rick Dixon Auction signs. Visit us on our website: www.rickdixonauctions.com.

• TRACTOR • MACHINERY • UTV • TRUCK • TRAILERS • FARM ITEMS •

• Kioti Cab tractor DK 4710SE with Kioti 5521 loader, 4x4, air, low hours, like new
 • 6' 3 pt Woods bushhog • S & H 14' stock trailer • 1995 Ford F250 with haybed
 • Several sets of corral panels • 6'x8' trailer • 8'x12' storage building • Several gates
 • 16' car hauler • Kawasaki ProMax side-by-side UTV w/power steering • Spartan RZ XTF54 zero-turn mower • Troybilt TB 30R riding mower • Troybilt power washer 3000 psi • Craftsman air compressor • Country Cut pull-behind Quad Boss mower w/44" cut, like new • BBQ grill • Ladders • Straps • Tools • Gas cans
 • Dog kennels • Hoses • Several saddles • Lots of tack • Square bales of hay •

• GUNS •

• Henry Golden Boy 45.70 cal, new, never fired • Savage 6.5 Creedmor with scope • Mossberg 25.06 with scope • Keltec pistol with clips •

• FURNITURE • HOUSEHOLD •

• Kitchen table & chairs • Magic Chef upright freezer • Washer & dryer • Wooden bench • Leather dual recliner • Gun cabinet • Desk • Vizio TV • Recliner • Pots & pans • Dishes • China cabinet • Several vacuum cleaners • Lamps • Coffee table • Full-size bed • Several TVs • End tables • Dressers • File cabinets • Queen-size bedroom set • Microwave • Game cameras • Blender • Coffee pots • Knife sets • Keurig • LOTS OF PREPPER ITEMS, INCLUDING SURVIVAL FOOD • Lots more •

Auctioneers Note: Please make plans to be with us for this Quality Auction. Note the date and time Tuesday April 23rd 10 a.m. There will be lots more. Thanks for your attendance. Rick



Rick Dixon Auction Service LLC
www.rickdixonauctions.com

Rick Dixon
417-967-6604

Len Clayton
417-464-0374

Josh Dixon
417-217-9627

Jeff Browning
417-260-5176

Sam CRAWFORD AUCTION SERVICE LLC

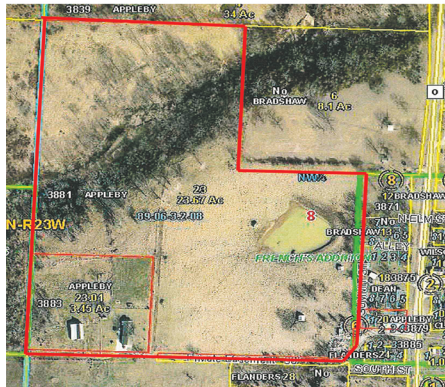
Will sell the following located 4 miles North of Bolivar, MO on Hwy. 13 to Hwy. B, then East 1/2 mile to Hwy. O, then North 2 miles to Cliquot, MO, then West up drive. Watch for auction signs.

Saturday, April 27th, 2024 - 10 am

REAL ESTATE - HOUSEHOLD - ANTIQUES - MISC.

REAL ESTATE - SELLS 12 NOON

Old Cliquot Store Building w/.027 Acres Lot - Well & Septic, Fronts O Hwy. - Trailer Hook-Up On West Side Lots of Potention with Fix-Up - Store Building & Lot Sells Absolute



Parcel 1 - 3 BR, 2 BA, 2046 Sq. Ft. Home Built in 1975 - Attached 2 Car Garage Wood Rear Patio & Gazebo - Fireplace Lg. Appliances Stay - Storage Shed Well & Septic - 60x20' Machine Shed/Barn Newer Heat Pump in House - 3.45 Fenced

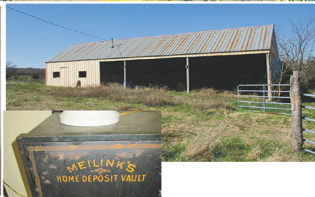
Parcel 2 - 12 +/- Acres

Mostly Open Pasture Land - Fenced West Fork Creek Runs Thru North Side Large Scattered Oak Trees Great Building Site on Hill Above Creek

Parcel 3 - 5 +/- Acres - Open Pasture Land w/Older Well & Septic - Small Storage Shed - Fenced 2 Sides

Parcel 4 - 6 +/- Acres - Open Pasture Land Lg. Pond - Newer Well - Fenced 3 Sides - Storage Shed

Parcels 1-4 will be offered seperately & combined. Road easement will be offered on 2-3-4 if sold seperately. Great chance to own small acreage in the county. Bolivar Schools - Serious Seller - Shown by appt. with auctioneers.



HOUSEHOLD

- Rd. Oak Table & 8 Chairs
- Modern Oak Glass Front Dish Hutch
- Whirlpool Washer & Dryer, Newer
- Oak Glass Top Coffee Table & End Tables, Other Small Tables
- Lift Chair
- Rocker/Recliner
- Grandfather Clock
- 2 Wing Back Chairs, Couch
- Queen Bed w/Side Cabinet & Mirror Headboard
- Full Bed
- Sharp 48" Flatscreen TV & Stand

- Floor Lamps, Other Lamps
- Framed Pictures
- Wall Decor
- 4 Drawer File Cabinet
- Sewing Cabinet
- Store Showcase
- Set Crown Ming China for 12
- Arthur Court Aluminum Pieces
- Asst. Pots, Pans, Glassware
- Some Small Kitchen Appliances
- Asst. Figurines
- Wexford & Other Glassware
- 4-5 Baskets
- Some Quilts, Afghans
- Bedding

ANTIQUES - COLLECTIBLES

- Oak Buffet
- Wall Telephone
- Lg. Striking Wall Clock

- 2 Mantle Clocks
- Coo Coo Clock
- Chest of Drawers w/Marble Insert
- Walnut Chest of Drawers
- 2 Chest of Drawers
- Spool Leg Lamp Table
- 2 Other Lamp Tables
- Pair Twin Beds
- Oak Framed Mirror
- "Gramer" Upright Piano
- Meilinke Home Floor Safe
- Blanket Chest
- 4-5 Cast Iron Skillets
- Wood Jointed Doll
- 5-6 Dolls
- 6-8 Kerosene Lamps
- 3 Sad Irons
- 2 Sleds
- Figurines

- Lg. Ceramic Frog
- Horse Collar
- Set of Harnesses
- Other Items

MISC.

- Pair HD Jack Stands
- 2 Dollies
- Western Saddle
- Lawn Chairs
- Mesh Patio Table, 4 Chairs
- Porch Swing
- Planters, Yard Ornaments
- 5-6 Plastic Barrels
- Some Scrap
- Old 4 Wheel Wagon
- Single Axle Fert. Spreader, Scrap
- Toro ZTR, Not Running
- 2 Wheelbarrows
- Other Misc.

Sam CRAWFORD Auction Service LLC



TERMS: Cash or good check. Nothing removed until settled for. Not responsible for accidents. Lunch available. Statements made day of sale take precedence over printed matter. All items sell as is. No warranties given or implied.

417-998-6629
Cross Timbers, Mo.

CrawfordAuctionService.com



Sam
417-328-9137

Chase
417-399-1904

Chance, CAI
417-298-1751

Tom Poynter
Jack Lancaster

Shirley Appleby & Family

NOTE EARLY START

3-FAMILY LIVING ESTATE AUCTION

Indoor • Seating Available • Climate Controlled

Saturday, April 20 - 9 a.m.

Auction Location: Houston Chamber of Commerce building, Texas County Fairgrounds, 1585 N. Hwy. 63, Houston, Mo. **Directions:** From Houston at Hwy. 63 & Hwy. 17 stoplight, go north on Hwy. 63 one mile to auction location.

Watch for Bruce Scheets auction signs. Visit www.brucescheetsauctions.com to view photos. Payment System: Cash • Checks accepted with proper identification. MasterCard, Visa, Discover (3% fee applies)

**Living Estates of
Larry & Beverly Mace
Connie & the late Ronnie Wade
Charlotte & the late
Duane Sutton**

• GOLD COINS \$20, \$10, \$5 \$2 1/2 •

1882-CC Silver dollar, nice • 1883-CC Silver dollar, nice • 1890-CC Silver dollar, nice • 1890-CC Silver dollar • (2) 2016 Silver Eagles • 2024 Silver Eagle • 2024 Silver Eagle • 1903 2 1/2 dollar Liberty gold • 1887-S Five dollar Liberty gold • 1901-P Ten dollar gold, choice • 1882-S Twenty dollar Liberty gold, nice BU • Other

**ARTIC CAT 500
FOUR WHEELER
ONLY 2,600 MILES
ADULT RIDDEN (NICE)**



**2006 MERCEDES
CONVERTIBLE CLK
350, ONLY 86,500 MILES,
LOADED, MINT CONDITION,
(GARAGE KEPT)**

16 FT. TANDEM AXEL UTILITY TRAILER W/RAMP (NICE)

GUNS

Ruger M77 Mark II 280 cal. bolt action w/Nikko scope • Winchester 1200 12 ga. pump • Beeman Sportsman 22 cal. pellet rifle • Ammo • Other

ANTIQUES AND COLLECTIBLES

Walnut washstand w/towel bar • Cavalier cedar chest • Wicker chest • Spindle-back chair w/cane bottom • Largetel unopened Match Box cars • Quilts • Doilies & crochet items • Coleman lantern • Crosscut saw • #2 Galvanized tub • Longaberger baskets • Other

APPLIANCES

Whirlpool double-door refrigerator w/ice & water in door • Whirlpool Flat-top range • Whirlpool dish washer • Whirlpool microwave • Hamilton Beach microwave NIB • Speed Queen matching washer/dryer, like new • Other

FURNITURE

Round oak pedestal table w/3 leaves & 6 chairs • 60" Sony flat-screen TV • King-size bed complete w/metal frame • King-size bed complete w/maple frame • Wicker queen-size bed & dresser • Dining room table & hutch • Round glass-top table, metal frame • Two upholstered couches • End tables • Two matching upholstered rocker gliders, one ottoman • 5 Drawer dresser • Oak cabinet • Husqvarna sewing machine • Serge sewing machine, material & accessories • Dell computer • HP Envy copier w/photo copier • Small office desk • Bar stools • 4 Spindle-back dining chairs • Glassware • Lamps • Mirrors • Paintings • Wall decor • Other

OUTDOOR and MISC.

16" and 17" NEW tires (Still have paper stickers) • Ground blind NIB • 14 ft. Alum. flat-bottom boat & trailer (title for the trailer) • 12 ft. Alum. flat-bottom boat • Gig lights & boat seats • Mr. Heater • Turkey fryer (new) • Gas fish cooker • Stihl weed eater • Stihl 025 chain saw • Poulan leaf blower • Poulan Pro 46 chain saw • Wayne utility pump • Lawn seeder • Step ladders • Fourteen 17" used tires • Steel Craft H/D front bumper • 20-Gall. sprayer • Log chains & boomers • Metal detector NIB • Step ladders & ext. ladders • 6 ft. Tilt-bed trailer • 1995 Chevy 1/2 ton 4x4, not running, no title • **3 Pt 6 ft. Tandem disc • 3 Pt. One-bottom plow** • Other

**1982 CHRYSLER
LEBARON CONVERTIBLE,
ONLY 55,490 MILES,
2.6 ENGINE (SLICK)**



CARPENTER AND GARAGE TOOLS

Honda 2000 generator • Bostitch air framing nailer NIB • Two boxes 2 1/2 & 3 1/4 x 120 nails • Crain tile cutter • Black & Decker chain saw • Stanley Bostitch staple gun S325 • Makita power planer model 1900B • DeWalt hammer drill • Milwaukee hammer drill • Makita skill saw • B & D router • Craftsman belt sanders • Makita Sawzall • Makita impact drill • Sears Craftsman grinder • Makita impact drill • Chicago grinder • Makita quick drive deck drill • Black & Decker saw • 2 Makita small drills • Makita spot light • Delta table saw • Craftsman planer • DeWalt miter saw • Grizzly ban saw • Poulan Pro leaf blower • 2 1/2 ton floor jack • Portable air compressor • Extension ladders • Other



**1995 GMC
1/2 TON
4X4**

Auctioneer's Note: Quality brand-name merchandise. Something for everyone. Look forward to seeing you on auction day! Bruce

DRIVER'S LICENSE OR PICTURE I.D. REQUIRED • TERMS: CASH OR APPROVED CHECK  OR  DISCOVER

BRUCE SCHEETS AUCTIONS

www.brucescheetsauctions.com • HOUSTON, MO • We Accept Mastercard, Visa & Discover

Auctioneers:

COL. BRUCE SCHEETS Cell: 417-260-2118
Col. Travis Tooley: 417-293-6909
Col. Josh Wheeler: 417-349-0265
Col. Ervin Bontrager: 417-260-0464



All announcements made day of sale take precedence over any printed matter. Not responsible for lost or stolen merchandise. Not responsible for accidents.

• LUNCH WAGON • APPRAISAL SERVICE
• RAIN OR SHINE

Cashiers / Clerks:

Andi Scheets
Shelly Mutzebaugh, Suzanne Smith,
Lena Walsh



SEXTON AUCTIONEERS

APRIL 25TH ONLINE AUCTION



1998 Peterbilt 379 Dump Truck



1988 Freightliner Dump Truck



Qty. 3
2005-08 Sterling Dump Trucks



2006 Peterbilt 335 Tri-Axle Dump Truck



1998 Kenworth W900L



1997 Peterbilt 378 Day Cab



1996 Kenworth W900 Day Cab

BID NOW AT SEXTONAUCTIONEERS.COM



2016 Peterbilt 389



2020 Mack Anthem



2013 Peterbilt 389



2007 Peterbilt 379



2000 International 4700



2021 Reitnauer Trailers Big Bubba Drop Deck



2022 Bobcat S66 Skid Steer
JUST 38 HOURS!



2022 New Holland C332 Skid Steer
JUST 44 HOURS!



2019 Caterpillar 262D3 Skid Steer



2018 Caterpillar 299D2 Skid Steer



2016 Kubota M5-11 Tractor



2021 John Deere 6120E



1999 Komatsu PC400LC Excavator



2014 JCB T4i III TM320 Telescopic Wheel Loader



2018 Caterpillar D4K2 XL Dozer



1998 Caterpillar 963B Crawler Loader



2010 4-Horse Bison Trail Express Trailer



2014 Lakota Charger Horse Trailer



2021 Forest River Georgetown RV



2000 Monaco Motorhome RV



1999 Fleetwood Discovery



2019 Forest River Artic Wolf Cherokee Limited Camper



2011 Ford F-550
SELLING TO THE HIGHEST BIDDER!



1971 Chevrolet C10 Cheyenne



ONLINE AUCTION ENDS APRIL 25TH

314-529-0124

Sales@SEXTONAUCTIONEERS.COM

5182 US Hwy 63, Pomona, MO 65789 | Next Online Auction: Thursday, June 27

SCAN QR CODE TO BID NOW!





ESTATE OF DONALD MICHAEL MEYER

SATURDAY, APRIL 20TH @ 9:30 AM

490 State Hwy 47 • Hawk Point, MO, 63349

Directions: From Hawk Point, MO, Take Hwy 47 South Approx 3 miles, Auction Facility on left hand side. From Warrenton, MO, Take Hwy 47 North Approx. 7 Miles, Auction facility on right hand side. Watch for Allen Auction Signs Day of the Sale.

Trucks & Cars

2012 Chevrolet Colorado
Truck, 4x4, 4 Door, White,
Auto, LT model, 58,000
miles
1985 Chevrolet Elcamino
Car, 48,000 miles
1973 Volkswagen Beetle Car,
49,000 miles

Milling Machine & Lathes

Grizzly G0731 Commercial
Lathe/Milling Machine,
w/ Power Feed, Upright,
SN:193112, Like New
KBC Grip 918-A Lathe

Woodworking Equipment

Grizzly Upright Model G1073
16" Band Saw
Jet Angle Wood Grinder
Jet Dust Collector
Jet Benchtop Oscillating
Spindle Sander
Delta Dust Collector
Pro-Tech 3303 Jig Saw on a
Stand
Lots of Craftsman Hand
Routers
Belt & Disk Sanders
Rigid Table Saw
Dewalt 12 1/2" Planer
Dewalt Corded Drills
GMC Dust Collector
Pipe Rollers

Shop Equipment & Tools

Large US General Flat Chest
Tool Box, Roll Around
Large US General Upright
Tool Box, Roll Around, Nice!
Central Pneumatic Sand
Blasting Cabinet
Pipe Cutters
Lincoln 225 Amp Stick
Welder
Welding Tips/Bits

LAC Torch Set on Roll
Around Cart, 2 Tanks
Craftsman Fan Cooled
Wire Feed Welder on Roll
Around Cart
7-Piece Body/Fender Repair
Kit
Stack On Upright Tool Box
Lot of Air Grease Guns
Hand Angle Wrenches
Large Table Vise
Breaker Bars
9-Piece Hex Socket Set
Nice Selection of Wrenches
(Craftsman, Snap On, S &
K, Etc)

Craftsman 8" Drill Press
Hand Oilers
Ultradraft Upright Drill Press
Jack Stands
Roll Around Creepers
Pipe Tire Changer
Central Pneumatic Air Nailer
Hand Clamps
Hand Sanders
Hand Vise, Multiple
Lot of Tape Measures
Bench Grinder, 8"
Bend Grinder, 6"
Lots of Small Organizers
Stubby Combination
Wrench Sets
Work Benches
Century Battery Charger
Roll Around Shop Bench
Seats
Huge Assortment of Screws,
Nuts, Bolts, Etc.
Craftsman Hand Sanders
Baur Cordless Drill/Impact
Sets w/ Chargers
2-Pittsburgh 880 lb. Chain
Hoists
Lot of Hammers

Lot of Drill Bits
Lot of Shop Vacs
Large Upright Electrical
Spool/Wire Roller
Lot of Levels
Lot of Furniture Clamps
Heavy Duty Crow Bars
Lot of Pry Bars
Lot of Socket Extensions
Bearing Separators
Robin Generator
Deep Well Sockets
Rivet Sets
CenTech Roll Around Battery
Charger
Air Paint Sprayers
Rigid Shop Vacs
Lot of Screwdrivers, Nut
Drivers, Allen Wrenches
Huge Assortment of Saw-
Zall Blades
Lot of Plyer Sets
Channel Locks
C-Clamps
Lot of Crescent Wrenches
Chalk Lines
Ball Hammers & Mallets
40-Piece Tap & Die Sets
(Standard & Metric)
Air Hand Nailers
2-Piece Jaw Puller Sets
Bolt Cutters
Lot of Pipe Wrenches
AC Gauge Set
Pittsburgh Puller Set
Pittsburgh Strat Spring
Compressor Set
Hyd Wire Cremping Set
Lot of Angle Grinders
Lot of Hand Saws
Lawn Mowers
Hustler Fast Trak 60" Zero
Turn Mower, Like New

John Deere X584 Riding
Mower, Like New
Gravelly 144 Zero Turn
Mower
Kubota Z723 zero turn
mower
John Deere 445 riding
mower
John Deere GX255 riding
mower
John Deere D130 riding
mower

Lawn Equipment & Scooters

Elite E5 Electrical Scooter
Electrical 4-Wheel Bike/
Scooter
Lot of Trailer Ball Hitches
Echo Gas Weedeater
RYOBI 40V Push Mower,
Electric
Tow Straps
Fiberglass Ladders
Pole Chain Saw
2500lb ATV Winch
Karcher Power Washer
Mr. Heater Torpedo Heater
Pump Sprayers
Mini-Motor Trolling Motor
Trailers
Small Tag Along Trailers, No
Titles
Trails West 2 horse slant
trailer
Stout Skidloader
Attachments
Quick attach pallet forks
Quick attach stump bucket
HD 69-3 quick attach bucket
84" brush grapple
72" HD grapple bucket
66" HD grapple bucket

Auctioneers Note: To settle the Estate of Donald Michael Meyer, we will sell the following at public auction. Don ran "Sarges Repair Shop," and very well known around the Foley/Troy, MO area for automotive, truck, and his specialty was clock repair. Due to parking, we are moving this sale to our facility in Hawk Point, MO. Note the early start time, plan on bringing your trailers. Thank you, Kyle

ALLEN AUCTION & REAL ESTATE SERVICE LLC
(636) 338-4805 • Hawk Point, Mo • www.allenauction.net

Auctioneers, Kyle Allen (636) 236-2344 | Elden Foster (573) 239-6745 | Richard Moffat (573) 690-2823

ESTATE AUCTION

PLEASANT HOPE, MO

AUCTION

Due to the death of the late Vester Choate we will sell the following Absolute Real Estate, Automobiles, Tractor, Mowers, Tools, Household, Collectibles and Misc. At the Home located one Block Southwest of downtown Pleasant Hope, Mo. On

Sat. April 27, 2024 at 9:00 a.m.

WATCH FOR AUCTION COMPANY SIGNS • LUNCH SERVED

FOR MORE PICTURES GO TO: WWW.BRUCEANDLEANAUCTION.COM

ABSOLUTE REAL ESTATE • SELLS AT NOON



Selling a 2 Bedroom, 2 Bath Home of Approx. 1100 Sq. Ft. Home has Kitchen area W/ good Cabinet space, Open Dining/Living Room Combination, Utility Room, Home has Electric Heat, Vinyl Siding, Good Roof, 13' X 16' Open Back Porch W/Walking Ramp. Real Estate has a one car unattached 15' X 30' Garage/Shop Combination, 36' X 45' Barn with Sheds, 2 Metal Storage Buildings 10' X 20' and 10' X 15', Home has City water and sewer. Real Estate is on a good level lot of 132' Wide X 320' Deep (just short of one acre) Property is in good repair and has been kept up, Real Estate sells Absolute at 12:00 noon. Terms 10% down day of Auction (non Refundable) balance upon closing



PICKUPS

- 1994 Dodge Ram Laramie SLT 1500 4X4 Pickup V-8 Motor, Automatic Trans, PW, PL, 179,210 Miles
- 1985 Dodge Ram 1500 Pickup 5.2 V-8 Motor, Automatic Trans. 94,429 Miles

TRACTOR-MOWERS-EQUIP.

- 8-N Ford Tractor 3pt. Hitch New Rear Tires
- 2- Model 782 International Cub Cadet Riding Mowers
- Wheel Horse C-160 Automatic Riding Mower
- John Deere Model 112 Riding Mower (has been sitting)
- International Model 100 Cub Cadet Lawn Tractor (has been sitting)
- 8' Water Filled Roller
- 6' Box Blade 3pt. W/Ripper Teeth
- 3pt. Bale Lifter
- 5' 3pt. Brush Hog
- 13' X 5' Bumper Trailer Sm Tires
- Homemade Wood Splitter
- Pickup Flatbed

HOUSEHOLD-COLLECTIBLES

- Whirlpool Refrigerator
- Amana 20" 4 Burner Gas Range (like new)
- Hot Point 30" Electric Range
- Whirlpool med size Upright Freezer
- Maytag Washer
- Whirlpool Electric Dryer
- Sm. Microwave & Kitchen Apps.
- 8' Glass Fronted Hutch
- Kitchen Table W/Chairs
- 3 Cushion Couch
- Occasional Chairs
- 2 Door Metal Cabinet
- Poster Bed
- 4 and 5 Drawer Chest
- Entertainment Center
- Foldout Sewing Cabinet
- Sewing Machine Cabinet
- Cabinet Sewing Machine
- Pictures
- 3 pc. Ant. Bedroom set
- 6 Drawer High Boy Chest
- Sm. Camel Back Trunk

HOUSEHOLD-COLLECTIBLES CONT.

- Cedar Quilt Box
- Sm. Quilt Box
- 4' Cedar Bench
- Old Hand & Machine Sewn Quilts
- 6 Gal. Acorn Stone Jar
- New Haven 2 Weight Clock
- White Mountain Crank Ice Cream Freezer
- Sad Irons
- Pocket Knives
- Lot of Misc. Collectibles
- Wood Circulator Stove
- Wringer Washer
- Misc. Pots, Pans and Dishes
- Misc. Grocery Items
- Poly Card Table
- Men's Clothing Items
- Misc. Linens & Bedding
- Misc. Galv. Tubs & Buckets

PROPANE TANK

- 500 Gallon Propane Tank W/80 % Propane

TOOLS-MISC.

- Harris Act. Torch set W/Med Bottles
- 200 amp older Lincoln 4 cyc. Welder on Cart
- 6" H.D. Bench Vise
- 6' X 6' H.D. Welding Table on Skids
- Portable Air Compressor
- 11hp. Gas Twin Cyc. Older Air Compressor
- Delta Floor Model Drill Press
- 6" Craftsman Double Stone Grinder
- 8 & 11 Drawer Tool Boxes
- Several Sm. Tool Boxes
- Lot of Hand Power Tools
- 12 Ton Pipe Bender
- 2 Manual Tire Changers
- 2 Sections of like new Scaffolding
- 24' Poly Ext. Ladder
- 22' Alum. Scaffle Board
- Poly Step Ladders 6'-10'
- Floor Jacks
- Bearing Press
- Power Pruner Gas Limb Saw



TOOLS-MISC. CONT.

- 2 Husq. Chain Saws
- Echo Chain Saw
- Echo Straight Shaft Trimmer
- Wheel String Trimmer
- Cherry Picker
- Homelite Mud Buster Pressure Washer
- 2300psi Pressure Washer
- Lot of Misc. Wrench's & Hand Tools
- Fencing Tools
- Lrg. Roll Chicken Wire
- Steel Traps
- 2 Log Lifting Hooks
- Roll 4pt Barb Wire
- Log Chains & Boomers
- Battery Chargers
- 12' X 12' Pupup Canopy
- Gas Cans
- Dolly's
- 2 Sm. Safes
- Lot of Organizer Cabinets
- 2 V-8 Motors
- 3-4 cyl. Motors
- Sev. Sm. Gas Motors
- Small Ant. Mercury Boat Motor
- Lot of Shop Misc.
- Lot of Scrap Iron

AUCTIONEER'S NOTE

Here is a nice piece of Real Estate that has been well maintained and taken care of, ready to move in. Vester & his Brother Ed have lived in the Community for many years, very nice fellows. Lots of nice items on this Auction so come and be with us for this offering

ESTATE OF VESTER CHOATE

TERMS: Everything sells as is, where is. Nothing is to be removed until settled for. Payment of Cash, Check with Proper ID, or Credit Cards. Auction Company or the Owners will not be responsible for loss of items or accidents. Statements made the Day of the Auction take Precedence over Printed Matter.

SALE CONDUCTED BY **BRUCE & Le'AN AUCTION & APPRAISAL, LLC**
THE AUCTION COMPANY THAT APPRECIATES YOUR BUSINESS

For more information and pictures go to our website at www.bruceandleanauction.com

RONNIE BRUCE - Fair Play, MO
417-777-1685 or 417-654-2214
colronbruce@gmail.com

BRANDON BRUCE
Fair Play, MO

BILLY BRUCE - Stockton, MO
417-399-4800
colbbruce@gmail.com

FARM EQUIPMENT & PERSONAL PROPERTY AUCTION

SATURDAY, APRIL 27TH AT 9 AM

Address: 1920 Zoller Rd. Billings, MO 65610

Directions: From Hwy 14 and S. Metzleitein Rd. (at Christian County Vet Clinic) turn South on S. Metzleitein Rd. and follow 1 mile to Zoller Rd., turn right. Follow Zoller Rd. approx. 1.7 miles to property. Look for Essick Auction Signs!

Owner: David Payne

2 Rings Expected! Bring a friend!

Tractors/Implements/Farm Items:

- International 686 diesel tractor w/ Buhler 595 loader, quick attach bucket & forks, 6,792 hrs., 312 motor, canopy, 2 sets rear remotes, 540 PTO
- 2020 John Deere 3025 E Tractor w/300 E front end loader, 370 B backhoe attachment, hydrostat transmission, 4WD, shows 84.1 hrs., Vin #1LV3025ECKK137187, Great shape!
- John Deere 955 diesel tractor w/70A loader, 4WD, shows 804 hrs. (meter works), solid tractor
- John Deere MX10 pull type bush hog, laminated wheels
- 2000 Chevy 1500 truck w/long bed & 3 tool boxes, 4.3L V6, 2WD, 212,493 miles, 1 owner
- 16' utility trailer, NO TITLE, w/ramps
- WW portable squeeze chute w/ automatic head catch
- Several WW portable panels, bow gates, tub sweep, alley, pulp cage
- 2 - 16' heavy duty gates
- Great Bend model 78A 3 pt. bushhog
- Husqvarna CRT 53 rear tine tiller
- Woods HSS 60 3 pt. 5' bushhog
- Danuser 3 pt. auger
- 3 pt. disc
- Frontier finish mower

- 2 sets of screw on forks
- Superior 3 pt. bale spike
- 3 pt. bale unroller
- King Cutter 3 pt. single plow
- 60 gal. boomless sprayer w/new pump
- 3 - New B&W metal feed troughs, 10'
- Craftsman tiller
- Misc older T posts
- Misc. barn lumber
- Misc. scrap
- Cub Cadet CC3435 power washer, 3400 psi, Honda 200 motor
- Misc. dog crates
- Craftsman 10" compact slide/miter saw, like new!
- 40' ext. ladder
- Little Giant ladder
- 8' fiberglass step ladder
- Dremel multi tool
- Misc. herbicide chemicals
- Craftsman 6300 watt generator
- Several Misc. hand tools, nuts, bolts, etc.- too much to list!

Antiques/Furniture/Household:

- Several antique dressers
- Several antique trunks
- Vintage armoire
- Roll Top desk
- Antique tiger oak rocking chair - good shape!

- Antique Crystal Star gas stove
- Antique bed frames
- Several antique lamps
- Crocks
- Several antique crates/boxes
- Lots of misc. baskets
- Antique china sets
- Lots of glassware - too much to list, boxes not sorted yet!
- Lots of costume jewelry and 14 K jewelry
- Lots of plastic shelving
- Misc. Fireking green glassware
- Several misc. rugs
- Misc. quilts
- Copper kettle
- Several vintage doors
- Cast iron fountain
- Old cast iron tub
- Cast iron garden bench & chairs
- Lots of wire baskets
- Oak file cabinet
- Metal plant stand
- Lots of household items and boxes still to go through! Something for everyone! Lots of barn finds still to sort! Don't miss this auction!



Auction Terms: Cash/Check/CC (3.5% fee) accepted. Announcements made on sale day will take precedence over any other printed materials. Not responsible for accidents, lost or stolen articles on or near sale site. All items sold as/where is! Large ticket items may be held until checks clear.

ESSICK
AUCTION & REALTY



Dusty Essick - Auctioneer/Realtor
Phone: 417.883.SOLD
www.essickauction.com
Dusty@essickauction.com



ESTATE AUCTION

SATURDAY, APRIL 20TH - 10:00 A.M.

Location: 393 Clingan Ave, Willow Springs, MO **Directions:** From Willow Springs 4 Way Stop Go West 6/10 mile to Davis Drive on left, go 4/10 mile to Pinegrove Rd, go 1/8 mile on Pinegrove Rd to Auction on right. **WATCH FOR CHADWELL AUCTION SIGNS.** **Payment System:** Cash • Debit Card • Credit Card (Debit / Credit Card Fee Will Apply) Checks approved if known by auction company. **VISIT: WWW.CHADWELLAUCTIONS.COM**

Estate of Siah & Joan DAVIS



~ Kioti CK 30 HST Diesel w/KL 130 Joystick Loader Single Remote 540 PTO 791hrs ~ Kioti KG 2054 Grapple

LAWN TRACTORS

265 JD Hydrostat Lawn Tractor 48" w/Bagger • 175 JD 38" Hydrostat Lawn Tractor • Snapper NXT 46" Lawn Tractor

HOUSEHOLD

Cutting Boards • Rapala Filet Knife • Frigidaire Upright Freezer • Conservator Washer & Dryer • Wooden Filing Cabinet • Office Chair • Wooden Office Desk • Windsor Office Chair • Canister Set • Kenmore 16spd Mixer • Rolling Pin • Flatware • Hot Plate • Pots & Pans • Stock Pots • Dishes • Cake Plates • Figurines • Oak Bar Stools • Oak Table w/6 Chairs • Willow Tree Figurines • Pine Corner Hutch • Table Cloths • Wing Back Chairs • Oak End Tables • Oak Coffee Tables • Couch • (2) Lazy Boy Rocker Recliners • Drop Leaf End Tables • Stand Light • Vizio 60" Flatscreen TV • Entertainment Center • Wall Pictures • Wall Mirror • Juicer • Oak Quilt Rack • Cedar Chest • 4pc Full Bedroom Set • 4pc Queen Bedroom Set • Sewing Box • Wooden Jewelry Box • Luggage • Linens • Canon & Nikon Cameras • Large Lot of Assorted Books • Bookcase • Matching Couch, 2 Chairs & Ottomans • Canvas Wall Paintings • (2) Lazy Boy Recliners • Small Drop Leaf Table

• Dining Table • Century Safe • Oak Entertainment Center • Board Games & Puzzles • Oak Footstool • Oak Display Case • 5qt Cast Iron Dutch Oven (NIB) • Pine Cabinet • Couch • Roll Top Desk • Table w/4 Chairs • Food Dehydrator • Oak Hutch • Dehumidifier • Stack On Gun Safe • Other

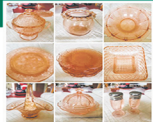


OUTDOOR ~ MISCELLANEOUS

Stihl MSA 120 Battery Powered Chainsaw • Stihl MS 251 C Chainsaw • Stihl MS 170 Chainsaw • Stihl FS 91r Weedeater • Stihl MH 132 PoleSaw • Stihl BG 8G Leaf Blower • Stihl FS 44 Brush Trimmer • Misc Fishing Poles & tackle • Wrought Iron Patio Set • Wrought Iron Chairs • Concrete Bird Bath • Wind Chimes • Life Jackets • Dip Nets • Western Saddle 16" Seat • Coolers • Electric Heaters • XPS Filet Knife Battery • Large Lot of Hunting & Fishing Supplies • Packing Blankets • Windmill • Halloween & Christmas Decor • Gas Lamps • large Lot of Hunting Boots & Clothing • New Turkey Blind • Spotlight • Turkey & Game Calls • Blackout Chairs • 15 gallon Steel Drums • Bag Chairs • Turkey Decoys • Fish & Turkey Alum Pots • Motorguide Stealth 300 Trolling Motor • Large Lot of Misc Lumber • 20' Werner Ext Ladder • 2 Wheel Dolly • Concrete Blocks • Wheel Barrow • Saw Horses • Wooden Bird Feeders • Live Traps • Brinkman Smoker • Garden Soil • Troybilt Rear Tine Garden Tiller • Fuel Cans • 3pt Seeder • Metal Trash Cans • 55 Gallon Plastic Barrels • 6' Alum Step Ladder • Weed Burner • Long Handle Tools • Hand Sprayers • Frog Gig • Steel Snares & Traps • Minnow Traps • Assorted Log Chains • Garden Hose • Other

ANTIQUES ~ COLLECTIBLES

Assorted Pocket Knives • Spoon Collection • Mc Coy Creamer • Buttermold • Sad Iron • Old Electric Iron • Corelle • Pyrex • Comingware • Cookbooks • Cookie Jar • Meat Grinders • No 1 Sausage Stuffer • Granite Pitcher • Tea Pots • Assorted Glassware • Ladder Back Chairs • Buffet • Oil Lamps • Pink Depression • Marigold Glassware • Arrowhead Collection • Secretary Cabinet • Beer Stein • Old Piggy Banks • 1 Man Crosscut Saw • Bow Saw • Large Lot of Costume Jewelry • Barrel Chair • Musial Jersey in Case • Assorted Signed Baseballs • Hockey Pucks • Assorted Sports Memorabilia • Powder-horn • Crocks • Bull Horns • Wooden Swivel Chair • 101 Dalmation Toys • Cow Bell • Large Lot of Deer Horns • Dietz Lantern • Wooden Ironing Boards • Hanson Scales • Stanley Thermos • Other



AMMO

Large Lot of .22, .22LR, .22mag, .22TCM • 222 • .35 • .38 special • 357 mag • 17 HMR 9mm • 40 S&W 12 ga. • 50 cal Muzzleloader • .12 gauge • 20 gauge • rifle ammo • .44 • .38 • .358 • Large Lot of Reloading Supplies • All Size Ammo Boxes • Gun Cleaning Kits • 1907 Wilkinson Bayonett • Gun Powder • Gun Vise • & much more

GUNS (Not on Premises)

2 - Keltec PMR 30 22 mag • PSE Bow Crossbow • Savage Model 11 .260 w/Nikon 3x9 BDC Scope • Savage Model 11 .223 w/Nikon 4x12 BDC Scope • Savage Axis 6.5 Creedmore • Savage Axis .243 w/Nitex 3x9 Scope • Remington 700 NRA 7mm-08 w/Nitex 3x9 Scope • Marlin Model 25 .22Mag • Ruger 45-70 Gov w/Nikon 4x12 Scope • Kel Tec Cp33 22LR • Rock Island (.22TCM) Model 1911A2FSMM 9mm Barel Also • S&W Model 29-10 .44Mag • S&W Ole Rusty .38 • Chippa Model SSA 17-10 .17HMR • Dan Wesson 12" Barrel .357 • Remington Model 887 .12 Gauge • Winchester 300 Waterfowl 12 Gauge • Mossberg Model 8 3.5 Ultra Mag 12 Gauge w/Extra Slug Barrel • Stevens Model 320 .20 Gauge • Interstate Arms 762x30 • Cabelas Hawkin .50Cal Black Powder • Thompson Hawkin .50Cal Black Powder • Thompson Omega .50Cal Muzzleloader • Knight ML .50Cal Muzzleloader

FARM EQUIPMENT ~ FARM RELATED

3pt 7' Rock Rake • Approx 100 T-Posts • 3pt Hitch w/Ball • Cattle Rubs • Fence Stretchers • Howse 3pt 12" Post Auger • Howse 5' 3pt Bush Hog • 3pt Carry All • ATV Spreader • Gaucho Barbed Wire • Mineral Tubs • 3pt 8' HD Angle Blade • 3pt 7' HD Box Blade • 3pt 2 Bottom Plow • 3pt 6' HD Chisel Plow • 3pt 8' Disc • 2 12"x16" Tin Horns • Other



SHOP ITEMS

DeWalt Miter Saw w/Stand • Barrel Pump • 10" Craftsman Table Saw • Top Links • 3 Ton Floor Jack • Champion 5000 Watt Generator (like new) • All Power 2000 Watt Generator • Predator 13,500 Generator Electric Start (like new) • Troybilt 2800 PSI Power Washer • Oils & Solvents • Com A Longs • Jumper Cables • Large Lot of Nuts & Bolts • Large Lot of Ratchet Straps • Load Jacks • Boomers • 30# Propane Cylinder • Large Lot of Assorted Tools • Levels • Drill Bits • Drills • Porter Cable Finish Nailers • (2) Roll Around Nut & Bolt Bins • 1/3 HP Utility Pump • Craftsman Skil Saw • Tool Boxes • Ryobi 12v Auto Hammer • Spray Gun • Bauer 20v Drill w/Battery & Accessories • Craftsman Ratchet Wrenches • Tire Chains • Electrical Wire • Mr heater (NIB) • Craftsman Sawzall • Large Asst of Hammers • Drop Light • Grease Guns • Pole Saw • Large Asst Craftsman Tools • Bottle Torch • Power Tools • Rock Island 3" Vise • Portable Air Tank • HD Ext Cords • Central Pneumatic 125 PSI 8 Gallon Air Compressor • 200' Tape Measure • Angle Grinders • Oil Cans • Other



AUCTIONEER'S NOTE: This will be one of the cleanest auctions you will ever attend. Come spend the day with us. *Thanks, Shawn*

DRIVER'S LICENSE OR PICTURE I.D. REQUIRED • TERMS: CASH OR APPROVED CHECK **OR**

Chadwell
Auction Service, LLC
www.chadwellauctions.com

Auctioneer:
SHAWN CHADWELL
417-830-0209
Ringmen:
Weston Chadwell ~ 417-349-0727

Clark:
SHELLY CHADWELL
Cell: 417-880-8449
Cashiers:
Marla Chadwell • Emily Shaffer
Cassie Collins

PROFESSIONAL SALES MANAGEMENT
LUNCH WAGON • APPRAISAL SERVICE • RAIN OR SHINE
All announcements made day of sale take precedence over any printed matter.
Not responsible for lost or stolen merchandise. Not responsible for accidents.

PUBLIC AUCTION

Saturday, April 20th at 10:00 a.m.

7808 State Route T, Birch Tree MO 65438 | Watch for Reid Auction signs

Guns~Hunting~Etc. Hiawatha Model 130 410 Pump, Ithca Model 600 Double Barrel 12 gauge, Nod Condor Double Barrel 3" Chamber 12 Gauge, Western Field Model 02-22 22 Caliber, Wolf 50 Caliber Black Powder, Charles Daly 22-250 Caliber, Rossi Model S41 410 Gauge, Mossberg Bore 24 in full choke 410 Gauge, JC Higgins Model 290 12 Gauge, Ruger 357 Magnum w/Holster, Ruger 44 Magnum Carbine, Stevens Model 87E 22 Caliber, Stevens Model 15 22 Caliber, Marlin Model 925M Micro Grooved Barrel 22 Caliber, Marlin Model 783 Micro Grooved Barrel 22 Caliber, Winchester Model 97 12 Gauge Pump, Winchester Model 1400 20 Gauge, Winchester Model 22 Caliber, Winchester Model 1807 351 Caliber, 2-Remington Fieldmaster 572 22 Pump, Remington Gamemaster 760 30-06 Pump, Remington Speedmaster Model 552 22 Caliber, Remington Muzzle Loader, Remington Model 550-1 22 Caliber, Remington Model 870 12 Gauge **NOTE: NO guns will be on premises till morning of sale** Ammo, Gun Cabinet, Gun Racks, Gun Scopes, Bear Compound Bow, Barnett Youth Tom Cat Bow, Turkey Feathers, Turkey Calls, Game Cameras, Hunting Clothes, Several Pairs of Binoculars (2 Bushnell), Deer Feeders, Deer Skulls w/Antlers, Mounted Deer Racks, Mounted Fish, Mounted Pheasant, Rods & Reels, Fish Cooker, Tackle Boxes, Small Propane Tanks, Live Traps, Several Coleman Lanterns (one in hard case), BBQ Grill, Lawn Chairs, 4 Metal Lawn Chairs, Gourd Birdhouses, Wooden Bench, Park Bench, Wind Chimes, Patio Set w/4 Chairs.... **Tractors~Mower~Equipment~Shop Misc.** 1975 John Deere 2640 w/ Loader, 1950 Cub Tractor, X370 John Deere Mower, Craftsman Push Mower, 2018 Kawasaki Mule, Badland 2500 ATV Winch, Generac GP15000E Generator, EM 6500SX Honda Generator, 2 Power Washers, Craftsman Table Saw, Craftsman Drill Press, Craftsman Band Saw, Shopsmith Lathe, Craftsman 10" Radial Arm Saw, Stihl Leaf Blower, 3 Small Air Compressors, Husqvarna Garden Tiller, Kerosene Heater, Several Buddy Heaters, Honda Water Pump, Battery Charger, Work Bench w/Vise, Hand Tools, Saws, Screwdrivers, Hammers, Grease Guns, Sockets, 3/4 Billings Socket Set, Chain Saws, Shop Light, Maul, Weed Burner, Drill Bit Sharpener, Iron Wedge, Nuts & Bolts, Bolt Bins, Tap & Die Set, Torpedo Heater, Generator Cords, Chains, Boomers, Post Hole Auger, Seeder, Wheelbarrow, Yard Cart, Shop Vac, Belt Sander, Pole Saw, Ladders, Old Hay Rake, Field Tiller, 2 Bottom Plow, Cattle Panels, 2 Bale Spikes, 7' King Kutter Bush Hog, Disc, 8' Roller, Water Tank, Drag.... **Furniture~Household~Collectibles~Misc.** Lift Chair w/Vibrate, Huntley Full Bed Set w/Nightstand & Tall Chest, Book Case, Heart Cabinet, 3 Piece Bedroom Set, Phillips TV, Hall Tree, Complete Bed, Coat Rack, Drop-leaf Table w/4 Chairs, Cedar Lined Chest, 2 Rocker Recliners, TV Stand, 2 End Tables, Rolltop Desk, Floor Lamp, Sofa, Table w/6 Chairs, Hide A Bed, Night Stands, Floor Lamp, Humidifier, TV Trays, Magazine Rack, Rugs, Pillows, Bedding, Handmade Quilt, Roll A Way Bed, Twin Bed Frame, Bakers Rack, File Cabinet, Wicker & Metal Shelf, Mirror, Flower Arrangement, Oneida Silverware, Mini Fridge, Misc Dishes, Cook Books, Canister Set w/Cookie Jar, Pioneer Woman Cast Iron, Baking Dishes, Knives w/Block, Electric Skillet, Electric Knife, Cold Packer, Electric Heater, Security Box w/Key, Infrared Heater, Coffee Pot, Granite Cooker, White Wood Cabinet, Metal Shelving, Cabinet w/Glass, Old Cabinet Base, Oliver Mower/Iron Wheels, Coal Bucket, Fire Tite Wood Stove, Padded Chevy Stool, Galvanized Tub, Railroad Light, Model A Wheel, Cast Iron Pots, Cream Cans, Kerosene Lamp, Aladdin Lamp, Blue Jar Lamp, Little Red Wagon, Plant Stand Tricycle, Porch Glider, Rocking Chair, Concrete Flower Pots, Golf Clubs, Longaberger Baskets, Butler Furniture Cast Iron Skillet Ash Tray, Misc Christmas, Wire Milk Crate, Nut Picker, Flower Trellis's, Pet Crate

Auctioneers note: Guns, Tractors and Side x Side will start selling at noon!

DELAINE & THE LATE IVAN SMOTHERMAN, OWNER

Reid Auction Service

Randy Reid 417-257-3911 • Rex Reid 417-372-1866 Ark. Lisc. #2606 • Ted Reid 417-256-6661

Concessions available. Come early and let Barb and her crew fix your breakfast or lunch. Bathroom on site. Not responsible for Accidents, Lost, Stolen or Misplaced items. Any announcements made day of sale supersedes any prior written or oral communications. Cash and checks accepted no Credit Cards.



LIVING ESTATE GUN AUCTION

22980 MATHER RD SEDALIA, MO

WE WILL SELL THE FOLLOWING FIREARM COLLECTION AND RELATED ITEMS AT THE SOUTH 65 EVENT BARN LOCATED 7 MILES SOUTH OF SEDALIA, MO. ON HWY 65 ON:

SATURDAY, APRIL 27TH AT 12:30 PM • NOTE TIME!!!

HANDGUNS Colt Army Issue 1909 45 double action w/sling swivel; Colt Army 45 single action revolver, pat 1871; Colt Diamond Back 38 double action; Colt Diamond Back 22 double action revolver; Colt Python 357 double action



Revolver; Colt "The Woodsman" 22 5" barrel; Colt New Frontier 22 revolver, w/extra 22 mag cylinder; Colt Police Positive Spec 32-20 double action; Colt Official Police 22 double action; **Browning (Belgium)** 22lr semi auto; **Smith & Wesson** model 14-4 38 Special double action; **Smith & Wesson** model 17-8 22 revolver; **Thompson 45 Colt 410 LONG GUNS KIMBERS:** Kimber model 84 Super America 223, w/ Nikon scope, w/Box; Kimber model 82 Super America 22 bolt w/clip **BROWNING:** Browning (Belgium) 410 o/u Superposed, made for Abercrombie and Fitch, w/hard case, **exceptionally nice!**; Browning (Belgium) 20 ga ribbed barrel, gold trigger, extra barrel; Browning (Belgium) 20 ga 3" mag, ribbed barrel; Browning (Belgium) Sweet 16 ga, ribbed barrel, gold trigger; Browning (Belgium) Special steel, 12 ga mag, gold trigger; Browning (Belgium) Light 12 ga, ribbed barrel, gold trigger; Browning (Belgium) 30-06, Engraved elk and sheep scenes, w/scope; Browning (Belgium) 7 mag w/ Leupold scope; Browning (Belgium) 22 lr grade 1 1962 **WINCHESTERS:** Winchester mod 23 Classic double barrel Side x side 410, gold trigger, **NIB, never shot**; Winchester mod 42 pump .410 3", ribbed barrel; Winchester mod 9410 .410 lever; Winchester mod 37 .410; Winchester mod 1892 32 wcf 32-20, hex barrel, lever action **late 1800's**; Winchester mod 62A 22 pump; Winchester model 61 22 pump; Winchester mod 61 22 mag pump; Winchester mod 9422 22 lever action, w/Redfield scope; Winchester mod 9422 XTR Classic 22lever action; Winchester mod 67 22; Winchester mod 94 30-30 Win lever action (1957); Winchester mod 70 Featherweight 270 bolt, checkered stock, w/Burris scope **REMINGTON:** Remington mod 1148 .410 semi-auto, ribbed barrel; Remington mod 1100 .410 semi-auto, ribbed barrel; Remington Wingmaster mod 870 .410pump, ribbed barrel; Remington mod 1148 28 ga, semi auto ribbed barrel; Remington Nylon 66 22, semi-auto; Remington Speedmaster mod 552 22 semi-auto w/Bushnell scope; Remington Speedmaster mod 241 22 semi- auto; Remington mod 7 7mm-08rem,bolt action, laminate stock, w/Leupold scope; Remington mod 7 243 Win bolt w/Leupold scope **JANSSEN** double barrel .410, dual hammers, late 1800-early 1900's, w/3 brass cased shells **1943 Military Carbine** 30 cal General Motors Inland Mfg, Division w/Case bayonet **CHARLES DALY** .410 o/u, ribbed barrel **IVER JOHNSON** Champion 410 single lever action **MARLINS:** Marlin #1678 .410 lever made 1929-1932, given as an incentive to stock buyers to generate income after the depression; Marlin Golden 39A Mountie 22, lever action, Simmons scope, sling; Marlin Golden 39A 22, lever action **gold trigger**; Marlin mod 90 .410 o/u ribbed barrel, dual trigger; Marlin mod 336 30-30 tube fed, lever action **SAVAGES:** Savage Fox BSE .410 double barrel, single trigger; Savage mod 24 .410-22 o/u **STEVENS:** Stevens mod 240 .410 dual triggers and hammers; Stevens mod 311A Series H.410 double barrel side x side, dual trigger; Stevens mod 311A 410 double barrel; Stevens mod 87B 22 tube fed **MOSSBERGS:** Mossberg Mod 352K 22, synthetic fore-end; Mossberg mod 352 KA 22, synthetic fore-end; Mossberg Mod 142K 22, bolt action, vinyl fore-end **CHIPMUNK** by Rogue Rifle Co 22, **NIB, never shot** **WEATHERBY** Mark XXII 22lr, semi-auto w/clip, fancy checkering **DAISY** mod 8 single shot bolt action 22 in orig. box ; 3-Red Rider bb guns, 2000 Millenium edition, NRA 125 yr commemorative, others in orig. boxes **SAFES & CABINET:** Winchester gun safe, holds 50 long guns and has two shelves; Small Sentry 1250 safe; Oak gun cabinet, 14 long guns, 5 pistol pegs, lower ammo storage **HUNTING DOG ITEMS:** "The Dog Box" Diamond plate pickup dog carrier, 3'x 4' w/top storage; Garmin DC 30 dog tracking system; Tritronics Trashbreaker G3 Exp training collars set

ALSO: Several hard- and soft-shell gun cases; ammo; some knives and related items.

For individual pictures, check out the web site www.drenonauction.com or auction Zip ID#37721



Note: This private collection of nice guns took many years to put together. Some have original boxes, some shot very little or not at all, and all are in good to excellent condition. Doors will open at 10 am day of auction for viewing, and guns will NOT be onsite prior to that time. Small items will sell first, but there's not a lot, so be on time if you don't want to miss the guns! When we start on the firearms, the handguns will sell first. **Terms:** Picture ID required to obtain buyer's number. Cash or credit/debit card. (Convenience fee of 4% will be added to card purchases. Nothing to be removed until settled for. Not responsible for accidents. Statements made day of sale take precedence over printed material.

DRENON
Auction Service

Since 1969

www.DrenonAuction.com

Larry Laramie Lacey Cooper

660-596-8515 660-221-4386 660-723-1104 660-723-2221

Terms: Picture ID required to obtain buyer's number. Cash or credit/debit card. (Convenience fee of 4% will be added to card purchases). Nothing to be removed until settled for. Not responsible for accidents. Statements made day of sale take precedence over printed material.

FIREARMS AUCTION

We will sell the following firearms at public auction located at the Montrose Community Building (Knights of Columbus Hall), 415 Missouri Ave, Montrose, MO 64770

SATURDAY, APRIL 27, 2024 10:00 A.M.

RIFLES

Cogswell & Harrison .300 ROOK Walnut Stock, Varmint Rifle (made in England)
 Ruger #1 .220 Swift Bull target w/Bausch & Lomb Scope
 Ruger M77 Hawkeye SS Laminated 7mm Rem Mag w/Scope
 Ruger 10/22 Semi SS .22lr
 Howa Mod. 1500 Gamepro 6.5PRC w/scope NIB
 Howa Mod. 1500 .223 Camo NIB
 Howa Mod. 1500 375Ruger Walnut NIB
 Remington Mod. 700 Long Range 7mm Rem Mag NIB
 Remington Mod. 700 Long Range .25-06 NIB
 Remington Mod. 700 Tactical .308 win. w/Scope
 Remington Mod. 700 BDL SS .243 win.
 Remington Mod. 700 BDL SS Walnut 7mm Remington Ultra Mag (Distributor Exclusive)
 Remington Mod. 7400 .270 win
 Remington Mod. 600 .35 Remington 1of 3000 made
 Remington Mod. 7600 .35 Remington 1 of 250 made
 Remington Nylon 77 .22lr semi
 Remington Mod. 6 Improved .22lr
 Bergara B14 Ridge .300PRC NIB
 Bergara B14 Hunter .7mm Rem Mag NIB
 Bergara BMR .22lr NIB
 Bergara BMR .22wmr NIB
 Savage 10T Tactical .308 Like New w/Box
 Savage Mod. 14 .270WSM Walnut/blued New (no box)
 Savage MKII 17HMR NIB
 Savage Mod. 99 .308 Lever
 Stevens Marksman .22lr Single Shot

Savage Mod. 10ML .50 cal blackpowder SS w/Scope
 Savage Mod. 93 .22wmr semi laminated w/scope
 Weatherby Vanguard Deluxe .257 WBY NIB
 Weatherby Vanguard Synthetic .257 WBY NIB
 CZ Mod. 455 SS Synthetic .17HMR w/.22wmr & .22lr SS interchangeable barrels
 CZ Mod. 527 Carbine 7.62x39 Walnut
 CZ Mod. 512 Walnut .22wmr NIB
 AR-15 .450 Bushmaster NIB
 AR-15 Upper Only 6.5 Grendel NIB
 Norinco SKS 7.62x39 Poly Stock w/Ultralux Scope
 Norinco SKS 7.62x39 Wood w/Bayonet
 (2) Springfield Mod. 1898 30-40 Krag
 Winchester Mod. 121 .22 short or long w/Scope
 Winchester Mod. 94 30-30 Golden Spike
 Winchester Mod. 61 .22 pump
 Winchester Mod. 62A .22 pump
 Winchester Mod. 94 30-30 STEYR Mod 95 8mm
 Mas M1949-56 7.5 Cal semi
 CZECH BRNO Mauser 8mm
 Marlin Mod. 1894 .357 mag Lever
 Browning Lever .22lr
 Browning Mod. 22 semi .22lr Japan
 Browning Buck Mark .22 Rifle unfired w/Scope
 Browning Mod. 22 semi .22lr Belgium

SHOTGUNS

New Haven Mossberg Mod. 283 3" .410Ga.
 Mossberg Mod. 500 12Ga. Turkey Special Camo
 Winchester Mod. 1897 12Ga. Pump

Winchester Mod. 1911 12Ga Semi-auto
 Winchester Mod. 12 Trench 12Ga. Pump
 Winchester Mod. 1911 12Ga. Semi-auto
 Winchester Mod. 12 16Ga Improved Cylinder
 Marlin Lever Action .410Ga.
 Marlin Mod. 21 12Ga.
 FIE Mod. SB .410 Ga. Full
 Remington Mohawk 48 12ga semi w/extended tube
 Remington Mod. 870 Express Magnum 3" 20Ga Youth
 Remington Wingmaster Mod. 870 LW .28Ga Improved
 Browning Mod. 2000 12Ga. Magnum 3" Full
 Belgium Browning A5 20Ga.
 Belgium Browning A5 12Ga.
 IGA Gaucha 12Ga. SxS DU Edition 3" Never Fired
 Foremost Savage Mod. 6647 12Ga Single shot
 Ithica Mod. 37 Featherlight 20Ga. Pump Improved
 Ithica Mod. 37 12Ga. 3" Pump
 SKB Mod. 685 .28Ga.
 Benelli Super Black Eagle 12Ga.
 J.C. Higgins Mod. 583 12Ga. Poly Choke

PISTOLS

CVA Scout V2 6.5 Grendel w/Scope Like New w/box
 CVA Scout V2 .300 AAC Blackout w/Scope NIB
 Glock Mod. 27 .40cal w/4mags
 Ruger MKII .22 semi
 Ruger Single Six .22lr
 Lorcen Mod. L380 .380 SS
 (2) .32 cal SS Revolvers
 Deutsche Worke 7.65 m-germany
 S&W .38 special
 Kimber Stainless Pro Raptor II .45 Auto

AMMUNITION

Ammunition to Include: 8mm, 7.62x39, 7.62 Russ, .220 Swift



AUCTIONEERS NOTE: ALL OUT OF STATE BUYERS ARE WELCOME BUT WILL FOLLOW FFL GUIDELINES FOR OUT OF STATE PURCHASES ON REQUIRED FIREARMS.



Auctioneers Note: All these firearms are well cared for or in New condition or Gently used condition. Mark this date and be sure to attend.

TERMS OF SALE: Cash or good check w/ proper ID. Nothing to be removed until settled for. Not responsible for accidents or stolen merchandise. Statements made day of sale takes precedence over printed materials. Lunch served and toilets on site.

Sale Conducted by:



COL. KEVIN WADE MOBILE 660-492-3279
 COL. BRYAN WADE MOBILE 660-492-3740
 TYLER WADE MOBILE 660-492-7764
 CLERKS: NORRIS, IRBY & WADE
 TO VIEW AD ONLINE GO TO
WWW.AUCTIONZIP.COM
 AUCTIONEER ID: 24103



14th Annual Spring Consignment Auction

Prairie Grove Amish Mennonite School



*Previous Auction Pictures

Friday, May 10th

Sale starts at 1:00 PM

Gun sale starts at 6:30 PM

Saturday, May 11th

Breakfast - 7:30 AM

Sale starts at 9:00 AM

2024

SUGGESTED CONSIGNMENTS

Deadline Thursday 5/9/24

- Tractors & Farm Equipment
- Cattle Equipment
- Lawn & Garden
- ATV's
- Shop Tools
- Hand Tools
- Handmade Quilts
- New Furniture
- Antiques

NO JUNK PLEASE



Auction held on school grounds.
12 Winding Creek Dr., Buffalo, MO 65622



To consign or for more information, contact

- 417.327.4670 Nathan Blosser
- 417.327.6240 Nathan Kropf
- 417.733.2560 Lyndal Hostetler
- 417.733.2914 Delbert Blosser (Farm Equipment)
- 417.327.6348 Eldon Swartzentruber (Vehicles & Guns)
- 417.299.2056 Bryan Blosser (Farm Equipment)
- 417.326.9788 Dennis Blosser (Quilts)

THE SOONER CONSIGNED, THE BETTER ADVERTISED!

BUFFALO LIVESTOCK MARKET LLC



276 Hwy 32 W. ,Buffalo, MO

April 13th, 2024

Receipts: 1174

REPRESENTATIVE STEERS

300-400 @ 322.00 to 365.00
 400-500 @ 305.00 to 335.00
 500-600 @ 275.00 to 322.00
 600-700 @ 250.00 to 275.00
 700-800 @ 225.00 to 252.00
 800-900 @ 191.00 to 220.00

REPRESENTATIVE HEIFERS

300-400 @ 270.00 to 360.00
 400-500 @ 220.00 to 297.00
 500-600 @ 220.00 to 290.00
 600-700 @ 210.00 to 238.00
 700-800 @ 190.00 to 221.00
 800-900 @ 190.00 to 200.00

FEEDER BULLS

300-400 @ 300.00 to 360.00
 400-500 @ 280.00 to 340.00
 500-600 @ 220.00 to 299.00
 600-700 @ 220.00 to 267.00
 700-800 @ 190.00 to 228.00
 800-900 @ 170.00 to 185.00

STOCKS COWS

Bred Cows 1745.00 to 2225.00

SLAUGHTER BULLS

High Yield 160.00 to 180.00
 Low Yield 130.00 to 150.00

SLAUGHTER COWS

Fleshy 128.00 to 141.00
 Med Flesh 125.00 to 139.00
 Light Flesh 105.00 to 132.00

CRIPPLE, DOUBTFUL HEALTH COWS

70 Down

Poor Quality, Plain, LHX or Dairy Cross
 Cattle will be under this market!

MON-WED MARKET REPORT

Listen to KJEL 103.7FM • Lebanon or KYOO 99FM • Bolivar

VIEW OUR SALES AT CATTLEUSA.COM

CALL FOR TRUCKING OR ON-FARM VISIT

Lyle Caselman • Owner-Manager
 417-345-7876 • mobile 417-533-2944
 Leon Caselman • Owner
 417-345-4514 • mobile • 417-588-6185

FINALLY REALIZED ITS TIME TO GET A STORM SHELTER? Call Jeff @ safeplacestormshelter 417-894-3159. Professional storm shelter consultant for 20 years.

2002 F150: 4-door, 4x4, 89,xxx miles. \$5,000. 417-527-2740.

3-JOHN DEERE MOWERS: \$600. 417-527-2740.

PUREBRED FAINTING GOATS: A variety from adults to kids \$200 & up. Lake Of The Ozarks. 573-216-7796.

REGISTERED: Mini-Poodle puppies \$100. 417-741-2793. Hartville

1995 JD 850B DOZER: 4,000 hours on motor, 800 hours on tracks, 95% undercarriage. \$31,000 OBO. 660-596-3091. Richland.

JD 495A CORN PLANTER: with dry fertilizer & insecticide. Lots of spare parts. \$500 OBO. 573-308-5884.

REGISTERED PUREBRED GERMAN SHEPHERD PUPPIES: 417-741-0175. Hartville.

10.5 +/- ACRES IN ASHLAND, MO 4 BEDROOM HOME, WORKSHOP AND BARN WITH STABLES



- Perfect for a Small Hobby Farm! • 10.5 +/- Acres in Southern Boone County
 - 4,200 +/- Sq. Ft. Finished • 4 Bedrooms, 3 Bathrooms
- Spacious Family Room and 4 Season Great Rooms • Office Space on Upper Level
 - Finished Walkout Basement • Private Lot with Shared Pond
 - Additional Workshops and Barn with Stables
- Southern Boone County School District • Less than 10 Minutes to Highway 63

Open House Dates:

Thursday, April 18 | 4:30-5:30 p.m. & Thursday, April 25 | 12-1 p.m.

Online Bidding Opens: Friday, April 19

Online Bidding Ends: Thursday, May 2 | 12:30 p.m.

12985 S. Bob Veach Road, Ashland, MO



contactus@atterberryauction.com
ATTERBERRY
 AUCTION & REALTY COMPANY
 Your Real Estate at Auction Specialists

Check it out & Bid at
www.AtterberrySells.com
 573-474-9295

TIGER WOODS UPPER DECK CARD: #1 mint condition. 573-854-8132. Houston.

2016 KUBOTA KX040-4: 1850 hours, 2 speed, 4 way blade, exceptionally clean, aux hydraulics w/thumb, pattern changer, solid undercarriage, Kubota quick connect 18" digging bucket. 40hp D1803-GR-TE4 3cyl Kubota engine with fresh oil change and engine and hydraulic oil analysis reports. \$39,400 Gravois Mills 630-917-2376.

SPLENDIMOL LELY 240L MOWER PARTS OR REPAIR: \$175. 417-589-6203. Conway.

6FT T-POSTS: 50+. \$4.00 each, used / some newer. 417-288-9861 Hazelgreen.

DODGE BENCH SEAT: 2nd gen needs TLC \$100. 417-288-9861 Hazelgreen.

TRACTOR TIRE: 16.9 X 28 goodyear. \$150. 417-288-9861 Hazelgreen.

METAL BANDSAW: up to 6" pipe. \$175. 417-288-9861 Hazelgreen.

LEFTY'S FABRICATION: Continuous panels & gates. Corral panels & custom welding. 417-589-0864. Conway.



SALEM LIVESTOCK AUCTION
SATURDAY APRIL 20TH AT 1PM
SPECIAL COW SALE

- 101 BLK & HEREFORD COWS 3YRS-SS
- 80 W/ CALVES BAL 2ND & 3RD STAGE BRED TO ANGUS BULLS - SELL OUT
- 28 BLK & RED COWS 3-6 YRS 2ND & 3RD STAGE
- 3 W/ CALVES BAL BRED TO BLK BULL - SELL OUT
- 1 ANGUS BULL
- 36 BLK COW 3-6 YRS - 9 W/ CALVES BAL 3RD STAGE - SELL OUT
- 1 ANGUS BULL
- 57 MOSTLY BLK COWS REST WILL BE RED & CHAR 3-7 YRS OLD
- 34 CALVES BAL 2ND & 3RD STAGE BRED TO BLK OR RED BULLS COMPLETE SELL OUT
- 52 MIX COWS 3-5S - 32W/ CALVES REST WILL BE 3RD STAGE BRED TO REGISTERED HORNED HEREFORD BULLS
- 65 BLK COWS 6-5S WEIGHING 1250# W/ A NGUS SIRE BULLS ALL CALVES EARTAGGED TO MATCH COWS COWS ARE OPEN - CALVES BORN FEB & MARCH
- 20 RED COWS 6-5S WEIGHING 1250# W/ ANGUS SIRE CALVES ALL CALVES EARTAGGED TO MATCH COWS COWS ARE OPEN - CALVES BORN FEB & MARCH
- 16 BLK COWS 3-7 YRS ALL W/ BLK CALVES RUNNING BACK W/ REG STATFORD ANGUS BULLS
- 1 BLK ANGUS BULL 3 YRS - LOW BIRTH WEIGHT
- 10 REGISTERED ANGUS BULLS 20 MONTHS OLD SEMEN CHECKED - WILL HAVE PAPERS
- 52 BLACK COWS 3-6YRS - 3/4 WITH CALVES, BALANCE 3RD STAGE BRED TO ANGUS BULLS, HOME RAISED - FANCY COMPLETE SELL OUT

- Feeder Calves to Sell every Monday @ 12pm
- Butcher & Stock Cows Following
- Goat, Hog, & Sheep Sale 2nd Tuesday every month @ 6pm

Allen Thompson Renee Lauderdale
 417-932-4097 417-926-2682
 Chuck Thompson Brandon Barton
 417-257-5610 417-259-1597



Bryce Lauderdale
 417-255-5124

Terms of Sale: Cash or Approved Check!

Hwy. 32 Salem, MO • 573-729-8880
Over 40 Years in the Livestock Business

TWO GREAT INVESTMENT OPPORTUNITIES!
Bed & Breakfast On The Katy Trail with Hwy. 94
Frontage AND/OR Development Lots In Paradise
Lakeshore Association in South Callaway School District



LOT 1:

- Bluffton Barn- Mile 110.8 On The Katy Is Ready for New Owners after 30 Years
- 4+ Acres in Montgomery County
- Costly Infrastructure Already In Place: Deep Well and Septic System
- Continue The B&B Legacy OR Turn Your Vision into Reality

HOUSE:

- 2 Story Home Built in 1900s
- 3 Bedrooms, 2 Bathrooms
- Recent Rental Rates: \$50-\$75/ Person/ Night

METAL BUILDING:

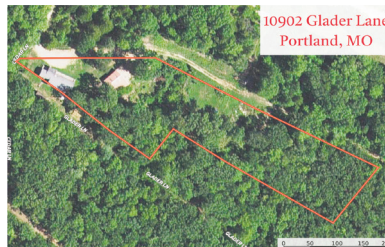
- Main Floor and Upstairs Living Quarters
- Recent Upstairs Rental Rates: \$125- \$200/Person/Night
- Camping: \$10/ Night

173 Hwy. 94, Rhineland, MO
Seller: Doug Rendleman

LOT 2:

- 4 Tracts (made up of 12 platted lots) in Paradise Lakeshore Association Near Hwy. 94
- South Callaway School District
- 2 Miles to the Gorgeous Katy Trail Portland Trailhead
- Single Wide Trailer with 2 Bedrooms, 1 Bathroom
- 30' x 35' Shop with Lean-To (Concrete Floor in Shop Area)
- Deep Well with New Pump & Appurtenances in 2023
- Recent Rental Rate: \$525/ Month

10902 Glader Lane, Portland, MO
Seller: Dry Dock Rentals, LLC



Open House Date for Both Properties: Tuesday, April 23 | 4:00-5:30 p.m.

Online Bidding Ends: Tuesday, April 30 | 12:30 p.m.

***Note: This auction will use extend-one-extend-all bidding. Bidding will continue on both properties until no more bids have been placed on either.**

contactus@atterberryauction.com

ATTERBERRY
 AUCTION & REALTY COMPANY
 Your Real Estate at Auction Specialists

Check it out & Bid at
www.AtterberrySells.com
573-474-9295



FREE INTERACTIVE MORGAN HORSE FUN! Selfies with Morgan horses, kids activities, videos, painting, educational, demos, & carriage rides. **Laura Ingalls Wilder** door prizes, history. **#meetthemorgan** in Facebook for more information. Held at 5555 South State Highway NN, Rogersville.

TROY-BILT PUSH MOWER: \$200. 417-288-2205.

A.C. 6060 DIESEL TRACTOR: with A.C. Loader. 80 H.P., good tires. \$11,250. 573-765-4406. Richland.

LAKE OF THE OZARKS- Lots for sale starting at \$4,995 each, owner financing \$130.00 down and \$69 per month. No credit checks, no gimmicks, build, camp, or own for investment. Cool shaded areas, beautiful trees, wildlife, fun boating and swimming. Free lake access and boat ramps. Prices good through April 29, 2024. Hwy 135 between Stover and Laurie MO. Take Lake Rd. 135-12 to the Ivy Bend Land Office. Open Thursday through Monday, or by appointment. Call 573-372-6493.

TROY-BILT WEED EATER: \$125. 417-288-2205.

PUBLIC AUTO AUCTION
MON. MAY 27TH AT
10:30 AM

(Corner of US63 and MO17 in Houston, MO 65483)

SELL YOUR CAR AT OUR AUCTION

We will offer your vehicle to local buyers and bidders all over the USA. Last sale, we sold 80% of all vehicles and 100% of all estate items. Deadline to secure your entry is Monday May 20th.

CALL TODAY!! (417) 217-2023

Offering
CARS / PICKUPS / SUVs / VANS / GUNS

ALL GUNS will be sold at
NO RESERVE.

Most vehicles will be sold at
NO RESERVE.

Vehicle buyers must be at least 18 to bid. Gun buyers must be at least 21, a Missouri resident, and adhere to all Federal, State and local gun laws to purchase firearms. A 5% bidder's premium will be added to all sales.

Online Bidding At Hibid.com

www.purvisauctions.com

METAL PATIO SWING: Nice cushions. \$125. 417-288-2205.

1967 MUSTANG: 6-cylinder, no rust. \$7,900. 573-636-8000. Jefferson City.

REGISTERED DACHSHUND PUPPIES & 2 DOXIEPOOS. 573-247-6273.

'97 JEEP WRANGLER: Needs work. \$2,500. 573-525-8883.

BUYING SCRAP METAL: All kinds, can torch, Heavy Equipment Call for prices, 40 years' experience. 573-308-6739.

PINNACLE RANCH YEARLING RED ANGUS: bulls for sale. 417-679-4269. Gainesville.

Get in the Seat

0% FINANCING FOR 72 MONTHS
on select compact tractors, mowers and gators.



LOT FOR A LITTLE PACKAGE

1023E TRACTOR
+ Loader
+ Mower Deck



X739 MOWER

X739
+ 48in Mower Deck
+ 4 Year Warranty



XUV835M GATOR

XUV835M
+ Tows up to 4,000lbs
+ 4WD

\$314/mo*



Heritage
TRACTOR



*Offer ends 4/30/24. See dealer for details.

HeritageTractor.com/Specials-Get-In-The-Seat



Buying Standing Timber
References Available.
BUTLER LOGGING

NIANGUA, MO
417-448-9323



MID MISSOURI STOCKYARDS

REGULAR SALE EVERY THURSDAY 11AM

WATCH OUR WEEKLY SALE IN REAL TIME ON DVAUCTION.COM

For Farm Visits, Market Updates, or Trucking
Call **Zach Cox 417-777-1320**
Dan Romine 573-578-4939

**Competitive Buyers!
Competitive Commission!
Competitive Market!**

Barn: 417-532-9292  Like on Facebook

**I-44 • Exit 123 "just outside of Lebanon"
17505 Route 66, Phillipsburg, MO 65722**
For weekly market updates, visit us at www.midmostockyards.com

JOHN DEERE HX15 HYD. FOLD BRUSH CUTTER: \$11,500. 573-765-4406. Richland.

NUBIAN & KIKO GOATS: 1-year-old. 573-858-3124.

MOTOR, TRANSMISSION & PARTS FOR SATURN VUE: 573-858-3124.

FORD 6610 DIESEL TRACTOR: With Nice Quick Tach Loader. \$20,750. 573-765-4406. Richland.

FARM/LANDSCAPING TRAILER: w/ sides and ramp, new hubs/tires, 20' x 6.5', 2-year-old deck, Bill of sale, \$2,995 or trade? 417-650-7069. Lebanon.



• Excavation & Grading • Land Prep & Clearing

Bradley Cloyd Construction

• Flatwork Concrete

Free Estimates! **417-630-2288**

FORD 4630 DIESEL TRACTOR: Turbo, shuttle, 700 Hrs., 50 H.P. \$9,750. 573-765-4406. Richland.

FORD 7600 DIESEL TRACTOR: Cab & Air, 85 H.P. \$8,100. 573-765-4406. Richland.

CASE IH MD92 DISK MOWER: 9FT. \$5,250. 573-765-4406. Richland.

IHC 1086 DIESEL TRACTOR: Cab & Air, 135 H.P., with Quick Tach Loader \$15,000. 573-765-4406. Richland.

JOHN DEERE 2955 DIESEL TRACTOR: Cab & Air, John Deere 720 Loader. Nice. \$23,750. 573-765-4406. Richland.

JOHN DEERE 920 DISCBINE: With rollers. \$7,500. 573-765-4406. Richland.

JOHN DEERE 466 ROUND BALER: Monitor, Kicker, 4x6. \$4,750. 573-765-4406. Richland.

IHC 175B DIESEL TRACK LOADER: 120 H.P., good. \$16,500. 573-765-4406. Richland.

BOBCAT 753 DIESEL SKID STEER LOADER: \$12,500. 573-765-4406. Richland.

JOHN DEERE 854 SILAGE SPECIAL ROUND BALER: 4x5, Monitor, kicker, net wrap. Nice. \$15,500. 573-765-4406. Richland.

OLIVER 1755 DIESEL TRACTOR: With nearly new Brush Hog loader. \$13,950. 573-765-4406. Richland.

2003 FORD ESCAPE: \$1,500, OBO. 573-858-3124.

'67 FORD F100: \$2,500, OBO. 573-858-3124.

Real Estate & Liquidation Auction!

Saturday, April 27th @10:00 AM!
636 Wilderness Way, Anderson, MO

Selling 40 Acres M/L; fully remodeled berm home & shop building. Very secluded and quiet; hunters paradise! Several vehicles, trucks and equipment will be selling as well. Flyer and details coming soon!

Contact Southwest Auction Service for more info!
417-652-7540 office or cell: 417-772-8088
(Bob Hughes) for more details!




SOUTHWEST AUCTION SERVICE & MARKETING
www.swaauction.com

We rebuild diesel engines



Workin' on everything from a garden tractor to a dozer!



Workin' on:
Diesel Engines
Hydraulic Cylinders
Haying Equip
Construction Equip
And Everything Else!

417-589-0346
483 Starvey Creek Rd • Conway, MO
Bring in your equipment today!

PLAD PANTRY

DISCOUNT & SURPLUS FOODS FRESH PRODUCE LLC
417-532-4700



Peanut Butter Blast Ice Cream..... **\$2.99** 1.5 qts.
 Zero Sugar Citrus
 Peach Powerade**\$12.99** 15 - 28 oz.
 Mesquite Smoked Turkey Breast... **\$1.49** 9 oz
 Hebrew National Beef Franks **\$9.99** 5 lbs.
 No Pulp 100% Orange Juice... **\$2.29** 59 fl. oz.

1571 State Hwy 64 • Tunas, MO 65764
 Hours: 8:30 a.m. to 5:30 p.m. • Closed Wed. & Sun.



WEATHERED BARN WOOD SIDING: 10" wide. Call for appointment 573-729-7226. www.pineridergustic.com Salem.

LOG SIDING: 2X8 Pine/Western Cedar. Call for appointment 573-729-7226. www.pineridergustic.com Salem.

DARDEN PROFESSIONAL TIMBER HARVESTING, BUYING STANDING TIMBER: Great prices, improve wildlife habitat and improve forest health. State Certified & Fully Insured! 573-247-4808. Salem.

WE GOT IT - let us bid your mobile home purchase, new and used. 573-499-9993 columbiadiscountshomes.com.

OMAR'S LOGGING & DOING WORK

⇒ **Oak & Walnut**
 ⇒ **Excellent Prices**
Amish Owned & Operated



LEAVE MESSAGE: 417-741-0440
 Hartville & Surrounding Areas

NEW JELD WEN 5' LEFT HAND SLIDING GLASS DOOR WITH SUNSTABLE INTERIOR BLINDS: Clear tempered glass, Desert Sand trim/hardware. Retail \$2655 Sell \$900. 417-693-0389. Conway.

INTERNATIONAL PICKUP TRANSFER GEARBOX: \$150. 573-308-5884. Rolla.

40 YEARS THIS YEAR- we have to be doing something right. Call for quote or any house new or used, double and single. 573-657-2176 amegamobilehomes.com.

RUBBER & LEATHER BOOTS AND 5- BUCKLE OVER SHOES: Men's 11, Women's 7, some insulated. \$12-\$35 obo. 636-239-2695. Washington.

The Ultimate Wood Heat.



Classic Edge™ Titanium HDX Outdoor Wood Furnaces

UP TO \$2000 TAX CREDIT*
*On qualifying models and installation. Call for details.

Yarbrough Equipment Sales & Services, Inc.
 9776 E. State Hwy OO • Strafford, MO
 417-736-2303 • 1-866-286-6901 • www.yarbeq.com

TRIPLE WIDE- moving stock, awesome price. 573-657-7040 chateauhomes.net.

TINY HOMES - Missouri Franchise 573-881-7965.

I BUY.....used mobile homes. Call or text 573-338-6250 or email GregS.CDH@outlook.com

SPORTSET BY SARGENT: Fishing pliers in leather sheath. Like a multi-tool. \$15. 636-239-2695 or 314-560-5700. Washington.

'85 FORD PICKUP PARTS: Passenger door with window glass & mirror \$30. Also, Tailgate for '85 Ford pickup \$25. 573-308-5884. Rolla.

NEW SQUARE D RAINPROOF 50AMP DISCONNECT: \$150. 636-239-2695 or 314-560-5700. Washington.

AB SPORT LOUNGE like new \$35. 210-787-8222 Linn Creek.

HAY FOR SALE: Alfalfa & grass mix. 4x5 round bales. 417-343-4958. Seymour.



Wright Spray Foam Insulators, LLC
 Commercial & Residential
Call for FREE Estimates!

Ervin Gingerich 417-926-2052
B. Eli Yoder 417-746-4932

USED JET HOME POLLUTION CONTROL PANEL: Model CP700. \$50. 636-239-2695 or 314-560-5700. Washington.

1 PAIR OF KEY BRAND MEN'S JEANS: Waist 38, Length 34. \$8. 636-239-2695 or 314-560-5700. Washington.

BLACK METAL TUBULAR BRACKET: Scrolling and a stainless bracket. \$8. Call for pictures. 636-239-2695 or 314-560-5700. Washington.

JUMBO FLOAT: 95" long x 80" wide x 10" high. Heavy gauge vinyl, Safety valve, 2 screw valves, 12 rope holders, water plug, nylon rope around it. Like new. \$150. 210-787-8222. Linn Creek.

KING BUILDERS

We specialize in custom and specialty builds, such as:

- Houses
- Barndominiums
- Shops
- Barns
- Garages

We also do roofing & siding!

Call for a free estimate!

Stevie King | 435 Dickerson Ranch Lane, Conway, MO 65632 | 417-241-3280

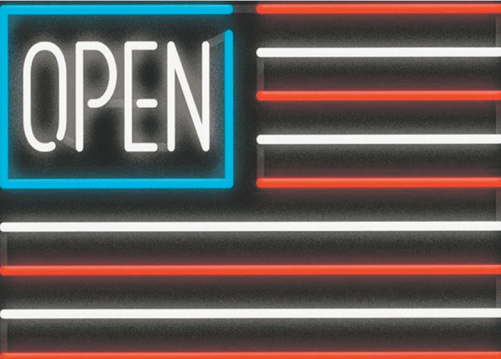




NOBODY BEATS OUR PRICES

Sale Ends April 30, 2024

Seymour, Missouri 417-935-4201



Pole Barn Building Kits!

Call for free quote, brochure & color chart. Other sizes also available.

23'x32'x10' \$6,688 Material Only \$8,888 Labor Included	23'x40'x10' \$7,600 Material Only \$10,320 Labor Included	30'x40'x10' \$9,000 Material Only \$12,500 Labor Included	40'x60'x12' \$15,800 Material Only \$23,050 Labor Included
--	---	---	--



NOBODY, BUT NOBODY BEATS OUR PRICES!!!

10 ft. Slider • Engineered Trusses 8' O.C. • 2x6 Treated Bottom Wrap • Screws • 2x10 Top Wrap • 2x4 Purlins • Full 29 Gauge Steel • Plus 3 ft. Entry Door with Lock

OPTIONS: Sidewall Heights on all Buildings 10', 12', 14' & 16'. Overhead Garage Door. Skylights. Insulation. Wainscoting. Insulated Vinyl Windows. Cupolas. Labor Rates Slightly Higher over 50 Miles from Seymour. Call for YOUR FREE QUOTE TODAY!!!!

PAINTED WHITE, GREEN OR TAN METAL	\$97.79
10' - \$31.00 12' - \$37.20 16' - \$49.60	
MIX & MATCH METAL	\$59.99
8' - \$15.20 10' - \$19.00 12' - \$22.80	
GALVALUME METAL	\$79.99
10' - \$25.40 12' - \$30.48 16' - \$40.64	
GALVANIZED CORRUGATED METAL	\$85.39
8' - \$15.92 10' - \$19.90 12' - \$23.88 16' - \$31.84	

IN STOCK

40yr Painted Metal
Call!

KNOTTY PINE DOORS
Starting at
\$164.99

Prices subject to change without notice
6X6 CEDAR POST LIMITED TIME \$5.87 LN FT

Car Siding!
1x6 White Pine Siding **69¢** in ft
1x8 White Pine Siding **99¢** in ft
* 4 Profiles to choose from!
Broken Bundles Add 10¢ Per Ft.

4x8 Sheeting
Less than full units Add \$1 per sheet
3/8" Beaded Paneling \$19.99
5/8" T111 Siding \$19.99
Paneling \$SOLD
1/2" Plywood \$23.99
3/4" Plywood \$29.99
3/16 Pegboard \$12.99

LOTS OF MATERIAL AVAILABLE FOR THOSE IN HOME PROJECTS!

NEW PACKAGE HOMES



2x6—16" on center-Exterior Stud Walls
Residential Roof Trusses-2' on center
4/12 pitch with 1' over hang
40 year Painted Metal roofing in 20 Different Colors
Profile Ridge Vent - Ventilated Ridge Cap
Vinyl Center Vent Soffit
Color Matched Metal Fascia & Gable Trim
2 - 3' 6 Panel Entry Doors
4 - 3'x4' Vinyl Insulated Windows

Shown with Available Options
Your Choice of either:
Stock 5/8" T111 Siding w/1x4 Pine Window & Door Trim - OR -
7/16" OSB & House Wrap ready for other finish options

ALL FIGURED FOR SUITABLE CUSTOMER SUPPLIED SLAB OR SUB-FLOOR

Price for Basic Materials Package (No Labor at this Time)

20x24(480 sq. ft.)	20x32(640 sq. ft.)	20x40(800 sq. ft.)	25x40(1120 sq. ft.)	25x48(1344 sq. ft.)
\$9,490	\$10,839	\$12,339	\$15,129	\$18,729

REAL WOOD SIDING
2x6 Log Siding \$1.76 In ft
1x8 Beveled Cedar from— 99¢ In ft
T1-11 Siding from \$19.99

DECK PACKAGES
Materials Only
8x8.....\$349.00 10x12.....\$699.00
10x10.....\$499.00 10x16.....\$899.00
12x12.....\$899.00 12x16..\$1179.00

QUAKER In STOCK! Quaker Vinyl Windows
2030 \$ 196.99 3030 \$224.99
3040 \$244.99 3052 \$289.99
3040Twin \$545.99 3052Twin \$592.99



LUCKY DISCOUNT LUMBER

417-935-4201

455 State Hwy C • Seymour MO 65746

www.luckydiscountlumber.com



*Some restrictions apply see store for details. Prices subject to change without notice.

R&R AUCTION SERVICE

GREAT SPRING AUCTION SATURDAY APRIL 20TH, 10AM 2041 HWY 65 IN BUFFALO, MO (THOMASVILLE AREA)



Items include but are not limited to... 1997 20' Stratos Bass boat with Evinrude 200hp motor and trailer, 2020 COTC utility trailer 5'x8', 200 lb. axle with 3' fold down gate, Troy BILT 7 speed Pony Riding mower, Scott's lawn seeder, hand seeder, wooden step ladder, aluminum extension ladder, lawn furniture, t- posts, fence ties, gas jugs, plastic storage box, plastic bird bath, misc. scrap lumber, BBQ propane tank, level, 4 way, screws, nails, hand tools, rakes, shovels, clippers, crow bar, Weber BBQ grill, Charbroil BBQ grill with accessories, extension cords, tarp, jack stands, Halogen work lights, Exide Battery charger, Shauer battery charger, Coleman water cooler, hummingbird feeders, dip nets including large one, minnow buckets, life jackets, fish basket, fishing rods, reels and tackle, router table, Kawasaki 19.2 volt drill, Ryobi RTF 10 table saw, Fire Storm Black & Decker saws all, Homelite Ranger S56 chain saw, HF360 Fish Hunter inflatable boat, portable air tank, Craftsman motorized 4" belt, 6" disc sander bench combo, Black Max 4 cycle weed eater, Bullseye washer game, hand sprayer, drills, clamps, furniture clamps, big post driver, hammock on stand, garden hoses, Preciseft lawn mower trailer, 6 cu. ft, Servicestar wheel barrow, plywood, concrete blocks, scrap, saw horses, tape measure, air hose, planters, totes, various paint, caulk gun, saw blades, heat gun, fountain pump, Craftsman Shop toolbox on wheels, screwdrivers, sockets, tin snips, pipe wrenches, Black Jack 2 ton capacity floor jack, Dremel 4000, Homelite backpack blower BP 250, Pro Tech bench grinder, Craftsman 3 hp wet/dry vac, Skil saw, pop up canopy, Sanborn pancake air compressor, electric weed eater, Old Pal metal tacklebox, cameras, Sony Walkman FDL-22, Black & Decker jig saws, Handy 18 volt cut out tool, Westinghouse wireless intercom system, old metal lunchbox, electric filet knife, sea shells, 2 plastic storage cabinets, plastic shelving, metal shelving, wood cabinets, new Coleman lantern, old lantern, small log chain, Tiki torches, Black & Decker vibrating sander, old hay hook, wooden sled, misc. decor including Halloween, Easter, Christmas and household, room darkening blinds, Blue Hawk 2 in 1 under layment, styrofoam cooler, Igloo cooler, Schumacher 15 amp rapid charger, Schumacher speed charger, Porter Cable angle grinder, milk crates, rope, light fixtures, Craftsman 3100psi 2.4gpm premium gas pressure washer, bungee cords, nut and bolt bin, zip ties, baseballs, router bits, Powers P1000 hammer actuated powder tool, coping saw, hack saw, hand saw, Skil plunge router, tool belts, grinding wheel, 14 ft and 16 ft, van box containers, horse drawn plow, Ashton oak vinyl planks, Delta scroll saw, Allpower 20" snow blower, combination vise, bowling balls, Pro Tech table saw, paint brushes, outlet covers, can light beauty rings, electric boxes, switches, outlets, peg hook assortment, rivets, 12" bits, hand plane, Intermatic low voltage transformer, old Chevy hubcap, large work table, small windows, tractor spinner, misc. wire, 2 old tractor seats, 2 drain snakes, stingers, Emerson Seabreeze electric fan on stand, kerosene heater, paint rollers, Hypertough 3.7 amp 20" hedge trimmer in box, bug zapper, Brinkman gourmet charcoal smoker, Performance max sander, 20 ft. Blue Hawk landscape edging, galvanized trash can, Budweiser pool table light, Budweiser light, large collection of Budweiser steins, 1982 World Champion Cardinals Coke bottle never opened, 2006 World Series Budweiser bottle never opened, gold clubs, golf balls, plastic round swimming pool, 2 Eskimo box fans, wooden TV trays, cigarette lighter air compressor, old metal fan, solar lights, wooden cane, Singer treadle sewing machine, portable Brother sewing machine, Rogers silverplate set, Cardinals Texas Hold 'Em poker set, red rotary telephone, Giant St. Louis Cardinals Budweiser bottle, St. Louis Blues stein, camcorders, tri pod, dart board, printer, shoe shine kit, Liberty Bell China, Wagner electric paint sprayer, cooking pots, model trains, track and accessories, collectible liquor bottles, wooden cigar box, pictures, child's chair, wooden toy box, Ertl metal toy dump truck, American Camper horseshoe set, wooden picnic table.



OWNER: Sheila Karpowecz | Please keep watch on our website for added photos.

TERMS: Cash, check, or credit card with proper I.D. nothing removed until settled for. A 3% fee will be added to credit card purchases. Not responsible for errors in listing. Any announcement made sale day will take precedence over any printed matter.



For more information contact Professional Auctioneer Russ Weeks at 417-576-7357 or check out www.rrauctionservice.com

Serving this area's auction needs since 1997 with honesty and professionalism.
www.rrauctionservice.com
(417) 576-7357 or (417) 345-4140

