

FREE - TAKE ONE!

Vol. 31 No. 2

APRIL 11, 2024

417-532-9131

WEEKLY TRADER MAGAZINE



Find us on Facebook

@myweeklytrader
AUCTIONS PG. 6

VISIT OUR NEW WEBSITE! MYWEEKLYTRADER.COM

Quarles Supply

3251 S Springfield Ave, Bolivar, MO 65613
417-777-2391

Kubota of Lebanon

22330 Hwy MM, Lebanon, MO 65536
417-532-0888



#1 SELLING
TRACTOR
UNDER 200 HP*

L02 SERIES

Your hometown
Kubota dealer
of choice.

Double digit to-do lists have met their match.

Dependable. Powerful. Versatile. When you need increased comfort, and reliable high performance under a steel hood, you can count on the Kubota L02 Series.

L2502DT Tractor and Loader \$19,995 | 0% for 84 Months

Visit your Kubota dealer today for a demo!

KubotaUSA.com



0% Down, 0% A.P.R. financing for up to 84 months on purchases of select new Kubota L2502DT equipment from participating dealers' in stock inventory is available to qualified purchasers through Kubota Credit Corporation, U.S.A.; subject to credit approval. Example: 84 monthly payments of \$11.90 per \$1,000 financed. Some exceptions apply. Terms subject to change. Offers expire 06/30/2024. This material is for descriptive purposes only. Kubota disclaims all representations and warranties, express or implied, or any liability from the use of this material. For more information, see Dealer or go to KubotaUSA.com.

LAND FOR SALE



2200 ACRES ± | WEBSTER CO., MO | \$16,500,000

- M3 Hilltop Ranch offers an array of features and masterfully combines incredible one of a kind beauty and first-class agricultural productivity in a great location.
- Property is easily accessible and located 10 miles from Marshfield and 35 miles from Springfield with easy access to multiple stockyards and US HWY 60 and I-44.
- Nice internal road system and easy access to all corners of ranch with multiple gated entrances and over 7 miles of road frontage. The main ranch entrance is beautiful.
- The ranch encompasses an impressive 1400 acres of Class 2 soils, with over 500 acres dedicated to crop cultivation, and the remainder used for high-output hay production, livestock grazing, harvesting fescue seed, and great hunting. The remaining soil classes are mostly class 3.
- Property consists of two continuous tracts measuring approximately 844.5+/- acres and 1,356+/- acres easily accessible between the two within a mile in distance.
- Four sets of world class cattle working facilities strategically placed throughout the ranch consisting of 120x60 cattle shelter with Arrowquip hydraulic chute and alleyway, portable loading chute, large tub, pipe sorting pens, med pens, and large hay yard. Additional covered working area with Rancher Hydraulic chute, large tub, and multiple other nice features with auto waterers, lighted working areas, and concrete surfaces for feeding. Two other nice covered working facilities on the ranch.
- The ranch is self-sufficient with no outsourcing needed. From water, silage, hay, grass, and more there's an abundance of it allowing a strong ROI on the ranch. The income producing features are cattle, silage, seed sales, hay sales, and income on the airBNB and event center.
- The land has been meticulously cared for by the owner worth noting 500 tons of lime and 200 tons of fertilizer were recently invested back into the land and new fencing and cattle facilities making the operation turn key and high level.

BRIAN UTECHT LAND TEAM SOUTHWEST MISSOURI LAND SPECIALISTS



📞 417.766.5595

🌐 brian.utecht@whitetailproperties.com



WHITETAIL PROPERTIES REAL ESTATE

HUNTING | RANCH | FARM | TIMBER

WHITETAILPROPERTIES.COM

Whitetail Properties Real Estate, LLC DBA Whitetail Properties, DBA Whitetail Properties Real Estate. In the States of Nebraska & North Dakota DBA Whitetail Trophy Properties Real Estate LLC. Licensed in CO, MN, ND, SD, TN & WI - Jeffrey Evans, Broker. Licensed in FL, KS & MO - Jefferson Kirk Gilbert, Broker. Licensed in TX & NM - Joey Bellington, Broker. Licensed in IN - Bill Minor, Broker. Licensed in AL, GA, LA, & MS - Sybil Stewart, Broker. Licensed in TN - Tim Burnette, Broker. Licensed in TN & MS - Josh Monk, Broker. Licensed in AR - Anthony Chrisco, Broker. Licensed in NC, SC, VA - Chip Camp, Broker. Licensed in IA, NC - Richard F. Baugh, Broker. Licensed in MI - Edmund Joel Nogaski, Broker. Licensed in IL, MD, WV - Debbie S. Laux, Broker. Licensed in ID, MT, OR, UT, WA, WY & NV - Aaron Milliken, Broker. Licensed in NY - John Myers, Real Estate Broker. Licensed in OK - Dean Anderson, Broker. Licensed in KY - Derek Fisher, Broker. Licensed in OH - Jeremy Schaefer, Principal Broker. Licensed in NE & SD - Jason Schendt, Broker. Licensed in MS - Chipper Gibbs, Broker. Licensed in PA - Jack Brown, Broker.



KING BUILDERS

We specialize in custom and specialty builds, such as:

- Houses
- Barndominiums
- Shops
- Barns
- Garages

We also do roofing & siding!



Call for a free estimate!

Stevie King | 435 Dickerson Ranch Lane, Conway, MO 65632 | 417-241-3280

WEATHERED BARN WOOD SIDING: 10" wide. Call for appointment 573-729-7226. www.pineridgerustic.com Salem.

LOG SIDING: 2X8 Pine/Western Cedar. Call for appointment 573-729-7226. www.pineridgerustic.com Salem.

DARDEN PROFESSIONAL TIMBER HARVESTING, BUYING STANDING TIMBER: Great prices, improve wildlife habitat and improve forest health. State Certified & Fully Insured! 573-247-4808. Salem.

WE GOT IT - let us bid your mobile home purchase, new and used. 573-499-9993 columbiadiscountshomes.com.

TRIPLE WIDE- moving stock, awesome price. 573-657-7040 chateauhomes.net.

40 YEARS THIS YEAR- we have to be doing something right. Call for quote or any house new or used, double and single. 573-657-2176 amegamobilehomes.com.

TINY HOMES - Missouri Franchise 573-881-7965.

I BUY.....used mobile homes. Call or text 573-338-6250 or email GregS.CDH@outlook.com

SPORTSET BY SARGENT: Fishing pliers in leather sheath. Like a multi-tool. \$15. 636-239-2695 or 314-560-5700. Washington.

NEW SQUARE D RAINPROOF 50AMP DISCONNECT: \$150. 636-239-2695 or 314-560-5700. Washington.

INTERNATIONAL PICKUP TRANSFER GEARBOX: \$150. 573-308-5884. Rolla.

AB SPORT LOUNGE like new \$35. 210-787-8222 Linn Creek.

OMAR'S LOGGING & DOING WORK

⇒ Oak & Walnut

⇒ Excellent Prices

Amish Owned & Operated



LEAVE MESSAGE: 417-741-0440
Hartville & Surrounding Areas

USED JET HOME POLLUTION CONTROL PANEL: Model CP700. \$50. 636-239-2695 or 314-560-5700. Washington.

'85 FORD PICKUP PARTS: Passenger door with window glass & mirror \$30. Also, Tailgate for '85 Ford pickup \$25. 573-308-5884. Rolla.

BLACK METAL TUBULAR BRACKET: Scrolling and a stainless bracket. \$8. Call for pictures. 636-239-2695 or 314-560-5700. Washington.

RUBBER & LEATHER BOOTS AND 5- BUCKLE OVER SHOES: Men's 11, Women's 7, some insulated. \$12-\$35 obo. 636-239-2695. Washington.





TIM'S USED CARS

(573) 341-3828 • 1334 South Bishop (Hwy. 63) • Rolla, MO
Next to Hwy CC • www.tims-used-cars.com

 <p>2003 DODGE 1500 SLT Quad Cab, 4x4, 4.7 V-8, Power Equipped, 184,xxx Miles Only \$8,900</p>	 <p>2016 FORD F250 XLT X-Cab, 4x4, Longbed, 6.2 V-8, Power Equipped, 148,xxx Miles Only \$22,900</p>
 <p>2021 HARLEY DAVIDSON 883 Iron Sportster Blackout 6,xxx Miles Only \$7,900</p>	 <p>2017 RAM 2500 SLT Crew Cab, 4x4, 6.4 V-8, Power Equipped, 128,xxx Miles Only \$29,500</p>

LARGE SELECTION OF CARS, TRUCKS, SUVs & VANS!

Buying Standing Timber

References Available.

BUTLER LOGGING



NIANGUA, MO
417-448-9323

NEW IN BOX MASTERBUILT ELECTRIC TURKEY FRYER: Up to 14 lbs. Fry, boil or steam. Safe for indoors. \$80. 417-718-5347. Morgan.

ANTIQU 4 HP ENGINE: Built by Continental Motors Corporation. \$150 OBO. 573-308-5884. Rolla.

Pine Ridge Rustic
Log Home Building Supplies



Services Offered!

- Custom Log Home Products
- Pre-finishing available on interior & exterior
- Hand Hewn Sidings Offered

www.pineridgerustic.com

CALL FOR APPOINTMENT

523 CR 2410 • Salem, MO 65560 • Ph: 573-729-7226

- Log Siding
- Beveled Siding
- Car Siding • Red Cedar
- Western Cedar • Pine • Timbers • Barnwood

WE BUY AND SELL
new and used mobile homes



(417) 501-1061

1 PAIR OF KEY BRAND MEN'S JEANS: Waist 38, Length 34. \$8. 636-239-2695 or 314-560-5700. Washington.

1985 ST. LOUIS CARDINALS SIGNED WORLD SERIES BALL: Includes Herzog & Ozzie Smith. PSA/DNA. \$190. Text for pictures. 573-854-8132. Houston.

TOSHIBA 42" FLAT SCREEN LED LCD HD TV: With remote & owner's manual. \$50. 210-787-8222. Linn Creek.

• Excavation & Grading  • Land Prep & Clearing

Bradley Cloyd Construction

• Flatwork Concrete

Free Estimates! 417-630-2288

The Ultimate Wood Heat.

 **Classic Edge™ Titanium HDX Outdoor Wood Furnaces**

UP TO **\$2000 TAX CREDIT***

*On qualifying models and installation. Call for details.

Yarbrough Equipment Sales & Services, Inc.
9776 E. State Hwy OO • Strafford, MO
417-736-2303 • 1-866-286-6901 • www.yarbeq.com



HAY FOR SALE: Alfalfa & grass mix. 4x5 round bales. 417-343-4958. Seymour.

NEW JELD WEN 5' LEFT HAND SLIDING GLASS DOOR WITH SUNSTABLE INTERIOR BLINDS: Clear tempered glass, Desert Sand trim/hardware. Retail \$2655 Sell \$900. 417-693-0389. Conway.

3 BW: motorcycle magazines 2008 Free. 417-260-0941. Raymondville.

150HP MERCURY OPTIMAX: \$1,500. 417-527-2740.

3PT FINISH MOWER: \$100. 417-527-2740.

Meadowview Variety
Bulk Foods - Fabric - Shoes & More

1205 Bluegrass Rd
Conway, MO 65632
417-589-0076

Baked Goods
Fridays and Saturdays

Garden seeds now available including some heirloom varieties!



Hours: 8:00am to 5:00pm Mon - Wed, Fri & Sat | Closed Thur & Sun

J&L METAL ROOFING

Specializing in Re-Roofing | Free Estimates
Phone: (573)-759-3880
Phone Answered on Monday & Friday 6:30pm-7:00pm
20371 Maries County Road 635, Dixon, Missouri 65459



SOVIET UNION WINTER WEATHER ARMY HAT: Excellent condition. \$ 35. Text for pictures. 573-854-8132. Houston.

BAMBOO FLY RODS: \$50. Trout season is coming. 417-589-8200. Conway.



Call to Order
417-993-3017

Meadowview Dutch Market

Sale Dates April 10th, 2024 to
April 16th, 2024 while supplies last!

DELI SPECIAL

Bulk & Surplus Groceries • Prices Subject to Stock on Hand

VIRGINIA HAMREG. \$5.99 LBSALE \$5.49 LB
SMOKED GREEN ONION CHEESE.....REG. \$6.99 LBSALE \$6.49 LB

TRY our Fresh Homemade DELI Sandwiches: TURKEY, HAM, ROAST BEEF,
ITALIAN, BLT'S, PULLED PORK AND BLT PULLED PORK (MADE YOUR WAY)!
COME IN OR CALL to order! ALSO Custom Deli trays! Veggie OR FRESH Meat-N-Cheese!



BLUEBERRY CRAN SNACK MEDLEY

99¢ ^{5oz.} OR 10% OFF
A CASE

Small
Red Beans
\$3⁹⁹
108 OZ.



Fully Cooked
Beef Strips
\$2³⁹
LB.

Fully Cooked
Deluxe Meatballs
\$1⁹⁹
LB.



Chili
Sauce
\$3⁹⁹
2.84 LITERS



Cream
Cheese
99¢
8 OZ.



Himalayan
Salt
\$24⁹⁹
25 LBS.



SHREDDED CHEDDAR CHEESE WITH PEPPER

\$1⁵⁰
LB.



MEADOWVIEW DUTCH MARKET
417-993-3017 Hours: Mon-Thurs 8-5pm
Fri 8-6pm • Sat 8-5pm
23 Miles West on Hwy 64 • Right on T Hwy
9 miles • Left on E Hwy 1 mile on Left

NOT RESPONSIBLE FOR PRINT ERROR!!

NOW ACCEPTING CREDIT, DEBIT CARDS & EBT

DUTCH COUNTRY STORE, LLC
573-378-4395
Hours: Mon-Thurs 8-5pm
Fri 8-6pm • Sat 8-5pm
5 miles East of Versailles off Hwy C on Kelsay Road



Visit us at www.washingtonbullion.com

BUYING SILVER & GOLD COINS

• SILVER DOLLARS • SILVER EAGLES • GOLD COINS

PAYING FOR PRE 1964

DIMES\$1.60*
QUARTERS.....\$4.00*
HALVES\$8.00*
HALVES (1965-1970).....\$2.50*
SILVER DOLLARS\$20.00*
GOLD (1 OUNCE)\$2,150.00*

FOR BEST SILVER
PRICE NATIONWIDE
SCAN CODE BELOW:



WASHINGTON BULLION

636-744-8181



*Spot Prices Fluctuate

311 East Main St., Union MO 63084



SEXTON AUCTIONEERS

APRIL 25TH ONLINE AUCTION



1998 Peterbilt 379 Dump Truck



1988 Freightliner Dump Truck



Qty. 3
2005-08 Sterling Dump Trucks



2006 Peterbilt 335 Tri-Axle Dump Truck



1998 Kenworth W900L



1997 Peterbilt 378 Day Cab



1996 Kenworth W900 Day Cab

BID NOW AT SEXTONAUCTIONEERS.COM



2016 Peterbilt 389



2020 Mack Anthem



2013 Peterbilt 389



2007 Peterbilt 379



2000 International 4700



2021 Reitnauer Trailers Big Bubba Drop Deck



2022 Bobcat S66 Skid Steer
JUST 38 HOURS!



2022 New Holland C332 Skid Steer
JUST 44 HOURS!



2019 Caterpillar 262D3 Skid Steer



2018 Caterpillar 299D2 Skid Steer



2016 Kubota M5-11 Tractor



2021 John Deere 6120E



1999 Komatsu PC400LC Excavator



2014 JCB T4i III TM320 Telescopic Wheel Loader



2018 Caterpillar D4K2 XL Dozer



1998 Caterpillar 963B Crawler Loader



2010 4-Horse Bison Trail Express Trailer



2014 Lakota Charger Horse Trailer



2021 Forest River Georgetown RV



2000 Monaco Motorhome RV



1999 Fleetwood Discovery



2019 Forest River Artic Wolf Cherokee Limited Camper



2011 Ford F-550
SELLING TO THE HIGHEST BIDDER!



1971 Chevrolet C10 Cheyenne



ONLINE AUCTION ENDS APRIL 25TH

314-529-0124

Sales@SEXTONAUCTIONEERS.COM

5182 US Hwy 63, Pomona, MO 65789 | Next Online Auction: Thursday, June 27

SCAN QR CODE TO BID NOW!



Floyd Estate - Real Estate-Personal Property

AUCTION

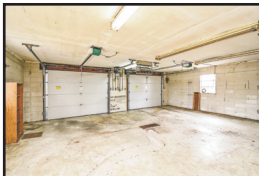
Saturday April 13th at 10 am

Open House April 7th 2-4pm or can be shown any time

Directions: From Marshfield follow HWY 38 east 3 miles to Hwy P. Turn south 1.5 miles to auction site 1100 Long State Hwy P Marshfield, MO. 65706.



1235 +/- sq ft 3-bedroom home with 4 +/- acres purchased in 1948. Located on State Hwy P and Cedar Valley Dr. Home has been in the same family for over 70 years. Home is vacant and in very good condition with many updates. Washer/Dryer, Refrigerator, Oven, Couch, and Propane Tank sell with the property. Detached oversized two car garage with room for vehicles and small shop area. 1440 +/- sq ft shop building, plus 950 +/- sq ft building along with two other storage buildings. A large pond completes the rural setting of this fantastic property.



- 951 Cat Dozer with Clam Shell Bucket (very good condition)
- Allis Chalmers B Tractor*
- Compressor
- Electric wire Rolls
- LP Tank
- Misc. gas engines
- 3 pt/ Plow for Garden Tractor
- Propane Bottle
- Electric coolers
- Caster wheels
- Squirrel cage fan
- Forge
- Hydraulic Hoses
- Electric Boxes
- Misc. Lumber
- Steele wheel
- railroad wagon
- Electrical cords
- Windmill (approx. 40ft with generator)
- Craftman Garden Tractor 18.5 HP 46in Cut
- Cabinet
- Four door cooler
- Queen size Bedroom Set
- Misc. household
- Picnic Table
- Wheel burrows
- Chest Freezer
- Weedeaters
- Lawn Tools
- Landscape blocks
- Coolers
- Creeper
- Floor Jack
- Fishing Supplies
- Car Ramps
- Bottle jacks
- Small Bench Vise
- Cabinet
- Chain Hoist
- Compressor Ingersole
- Small Chainsaw
- Sears Lawn Tractor 14 HP
- Craftsman Push Mower 6.75 HP
- Power washer
- Grease Can & Pump
- Gan case 5 gallon
- Misc. Steel & Pipe
- Misc. Plumbing Valves etc.
- Wooden Step Ladders
- Electric motors
- Firewood
- Jon Boat
- Sheets Tread Plate
- DC Welder Self Contained
- Stand Fan
- Misc. Starters & Generators
- Electric Motors
- Sausage Press
- Large lot of Plastic and Metal Milk Crates
- 2ft Wooden Kegs
- Large sheet of Diamon Plate
- Milk Cans
- Large Lot lumber including some oak beams
- 5 ft Bush Hog BBX60 (LIKE NEW)
- 10FT HYD Cylinder for dump truck
- Pickup Tool Box
- Heavy Duty Scissor jacks
- 16ft Trailer with ramps
- 8ft Utility Trailer
- RT60G Bush Hog 3pt 5ft Tiller (used 3 times)
- Sears 12 HD SS12 Garden Tractor w/Mower Deck & 3pt



MJ Johnson - sale manager 417.838.0291
Case Auction Co. • 417.859.3204
info@caseauction.com • www.caseauction.com
auctionzip.com

Terms: Announcements made sale day take precedence over all printed material. Neither Case Auction or property owner guarantees the absolute accuracy of supplied information.

PUBLIC AUCTION

Saturday, April 13, beginning at 9:30 A.M.

Located at 23315 St. Hwy 156, LaPlata, MO 63549. From LaPlata: 6 miles west on Hwy 156. From Calio: Hwy 3 north 20 miles to Hwy 156 and 3 Jct to auction site north side of Hwy. Watch for auction today signs.

HORSES

1. Hanson 7 yr old std br. Stud
2. Bell 7 yr old Belg. Mare broke in foal due 4-18-24
3. Sydney 9 yr old Belg. Mare registered open
4. Karissa 6 yr old Reg. Belg. Mare in foal due 5-31-24, broke to everything
5. Katurah 6 yr old Reg. Belg. Mare in foal due 3-27-24
6. Lillie 6 yr old std. Br. Mare in foal due 3-22-24
7. Cindy 4 yr old std. Br. Mare in foal due 4-7-24
8. Lady 4 yr old std. Br. Mare in foal 8-20-24, broke
9. Dorey 4 yr old std. Br. Mare in foal due 4-15-24, broke
10. Rita 7 yr old std. Br. Mare in foal due 4-23-24, broke
11. Rockie yearling colt std. Br. Cross born 8-12-22
12. Rose yearling filly std. Br. Cross born 8-17-22
13. Bob Belg. Stud colt born 6-11-23
14. Belle Belg. Filly born 6-18-23
15. Arlow Belg. Stud colt born 7-7-23
16. Kelsey Belg. Stud colt born 6-22-23
17. Leres yearling std. Br. Filly born 4-10-23
18. Connie yearling std. Br. Filly born 4-27-23
19. Half Moon std. Br. Stud colt born 5-14-23
20. Diego std. Br. Stud colt born 5-5-23
21. 2 socks std. Br. Filly born 4-28-23
22. John Henry std. Mustang cross stud colt born 5-31-23
23. Sebastian Belg. Stud colt born 9-23-23

HORSE DRAWN MACHINERY

- John Deere corn binder (used very little)
- Case manure spreader
- New Holland side delivery hay rake
- 10' John Deere single disc (very nice)
- 28" Case thrashing machine w/ complete set belts, very good condition, with 16' bundle carrier extension
- 12 Drop grain drill on steel wheels
- Box wagon steel wheels
- Hay rack — Go Devil cultivator
- 6 Bar mm. hay loader (good condition)
- 1 Bottom Case plow — JD disc cultivator
- John Deere 2 row corn planter
- John Deere 1240 4 row corn planter
- John Deere cultivator
- John Deere Big 4 mower 6' bar dollie wheel (rebuilt)
- 3 - John Deere 2 bottom plows
- Emerson 2 bottom plow
- 2 - John Deere #4 mowers 6' bars dollies (rebuilt)
- 2 - John Deere 1 bottom plows
- 1 - #9 McCormick mower 6' bar
- 1 - #9 McCormick 7' bar (rebuilt)
- 1 Wagon load misc. items
- 2 and 4 horse eveners



LIVESTOCK EQUIP, MISC FARM ITEMS

- 2 - 100 gallon stock tanks
- 1 - 1000 gallon fiberglass water tank
- 1 - 400 gallon water tank
- 2 - 100' garden hoses
- Small lot used lumber
- 16 - Wagon and mower tongues (very good)
- Hoes — Rakes — Shovels
- New and used halters and harness
- New plow handles
- 4 - 12' steel panels
- Block and tackle — Pullies
- Many misc. items



The Sorell family will offer the above listed items of good quality for your consideration at public auction. Free pancake breakfast from 7:30-9. Lunch will also be available on grounds. There will be a loader available day of sale. Hope to see you at the auction.

Owners: Larry & Madonna Sorell

Auctioneers
**Larry Martin, Loren Martin
 & Mel Yoder**



Thanks, Larry

For more auctions go to www.auctionzip.com ID # 47012

Terms: Cash or check with ID. Not responsible for accidents. Statements made day of auction take precedence over printed material

R&R AUCTION SERVICE

GREAT SPRING AUCTION

FRIDAY APRIL 5TH, 6PM

SATURDAY APRIL 20TH AT 10AM, 2041 HWY 65 IN BUFFALO, MO (THOMASVILLE AREA)



Items include but are not limited to... 1997 20' Stratos Bass boat with Evinrude 200hp motor and trailer, 2020 COTC utility trailer 5'x8', 200 lb. axle with 3' fold down gate, Troy BILT 7 speed Pony Riding mower, Scott's lawn seeder, hand seeder, wooden step ladder, aluminum extension ladder, lawn furniture, t- posts, fence ties, gas jugs, plastic storage box, plastic bird bath, misc. scrap lumber, BBQ propane tank, level, 4 way, screws, nails, hand tools, rakes, shovels, clippers, crow bar, Weber BBQ grill, Charbroil BBQ grill with accessories, extension cords, tarp, jack stands, Halogen work lights, Exide Battery charger, Shauer battery charger, Coleman water cooler, hummingbird feeders, dip nets including large one, minnow buckets, life jackets, fish basket, fishing rods, reels and tackle, router table, Kawasaki 19.2 volt drill, Ryobi RTF 10 table saw, Fire Storm Black & Decker saws all, Homelite Ranger S56 chain saw, HF360 Fish Hunter inflatable boat, portable air tank, Craftsman motorized 4" belt, 6" disc sander combo, Black Max 4 cycle weed eater, Bullseye washer game, hand sprayer, drills, clamps, furniture clamps, big post driver, hammock on stand, garden hoses, Preciseft lawn mower trailer, 6 cu, ft, Servicestar wheel barrow, plywood, concrete blocks, scrap, saw horses, tape measure, air hose, planters, totes, various paint, caulk gun, saw blades, heat gun, fountain pump, Craftsman Shop toolbox on wheels, screwdrivers, sockets, tin snips, pipe wrenches, Black Jack 2 ton capacity floor jack, Dremel 4000, Homelite backpack blower BP 250, Pro Tech bench grinder, Craftsman 3 hp wet/dry vac, Skil saw, pop up canopy, Sanborn pancake air compressor, electric weed eater, Old Pal metal tacklebox, cameras, Sony Walkman FDL-22, Black & Decker jig saws, Handy 18 volt cut out tool, Westinghouse wireless intercom system, old metal lunchbox, electric filet knife, sea shells, 2 plastic storage cabinets, plastic shelving, metal shelving, wood cabinets, new Coleman lantern, old lantern, small log chain, Tiki torches, Black & Decker vibrating sander, old hay hook, wooden sled, misc. decor including Halloween, Easter, Christmas and household, room darkening blinds, Blue Hawk 2 in 1 under layment, styrofoam cooler, Igloo cooler, Schumacher 15 amp rapid charger, Schumacher speed charger, Porter Cable angle grinder, milk crates, rope, light fixtures, Craftsman 3100psi 2.4gpm premium gas pressure washer, bungee cords, nut and bolt bin, zip ties, baseballs, router bits, Powers P1000 hammer actuated powder tool, coping saw, hack saw, hand saw, Skil plunge router, tool belts, grinding wheel, 14 ft and 16 ft, van box containers, horse drawn box, Ashton oak vinyl planks, Delta scroll saw, Allpower 20" snow blower, combination vise, bowling balls, Pro Tech table saw, paint brushes, outlet covers, can light beauty rings, electric boxes, switches, outlets, peg hook assortment, rivets, 12" bits, hand plane, Intermatic low voltage transformer, old Chevy hubcap, large work table, small windows, tractor spinner, misc. wire, 2 old tractor seats, 2 drain snakes, stingers, Emerson Seabreeze electric fan on stand, kerosene heater, paint rollers, Hypertough 3.7 amp 20" hedge trimmer in box, bug zapper, Brinkman gourmet charcoal smoker, Performance max sander, 20 ft. Blue Hawk landscape edging, galvanized trash can, Budweiser pool table light, Budweiser light, large collection of Budweiser steins, 1982 World Champion Cardinals Coke bottle never opened, 2006 World Series Budweiser bottle never opened, gold clubs, golf balls, plastic round swimming pool, 2 Eskimo box fans, wooden TV trays, cigarette lighter air compressor, old metal fan, solar lights, wooden cane, Singer treadle sewing machine, portable Brother sewing machine, Rogers silverplate set, Cardinals Texas Hold 'Em poker set, red rotary telephone, Giant St. Louis Cardinals Budweiser bottle, St. Louis Blues stein, camcorders, tri pod, dart board, printer, shoe shine kit, Liberty Bell China, Wagner electric paint sprayer, cooking pots, model trains, track and accessories, collectible liquor bottles, wooden cigar box, pictures, child's chair, wooden toy box, Ertl metal toy dump truck, American Camper horseshoe set, wooden picnic table.



OWNER: Sheila Karpowecz | Please keep watch on our website for added photos.

TERMS: Cash, check, or credit card with proper I.D. nothing removed until settled for. A 3% fee will be added to credit card purchases. Not responsible for errors in listing. Any announcement made sale day will take precedence over any printed matter.

DON'T FORGET ABOUT OUR GREAT BARN FINDS AUCTION APRIL 13TH IN THE R&R AUCTION HOUSE.



For more information contact Professional Auctioneer Russ Weeks at 417-576-7357 or check out www.rrauctionservice.com

Serving this area's auction needs since 1997 with honesty and professionalism.
www.rrauctionservice.com
(417) 576-7357 or (417) 345-4140



4x4 Pickup - Guns - Zero Turn Mower - Fishing Tackle - Tools - Furniture - Misc

Auction

See our Website
For more
Pictures & Info!

9:00 AM * Saturday April 13th * 9:00 AM

Location: 2403 s. Farm Road 221 Rogersville, Mo. 65742

Directions: From Rogersville take Hwy 60 west 3 1/2 mi. then north on Hwy 125, 3 mi. then right on F.R. 156, 1 1/2 mi. then right on F.R. 221 to Sale. ***Watch for Signs* Lunch & Restrooms Available**

Antique - Collectible

Coca Cola model CS 96 Square Top Coke Machine, All Original & Very Nice (Works);
All Brass National Cash Register model 38 1/4, sn# 462669 (1905) w/ Original Top Sign;
NATIONAL BISCUIT CO. Embossed Country Store Cracker Jar (old);
NATIONAL BISCUIT CO. Dove Tail Wood Box;
1 Gallon Hand Crank Butter Churn;
(2) Old Wood Fireplace Bellows;
Wood Coke Crate;
(43) Pieces Tuttle "Onslow" Sterling Flatware;
Misc. Gorham & Other Silver Plate Items;
Set Lenox Interlude China;
Lg. Kitchen Craft Mixing Bowl;
Art Deco, Enterprise "Flamingo" Drip-O-Lator;
Few Pcs. Fiesta Ware;
(2) 6ft. Wooden Nutcracker Statues;
(12)+ Wooden Nutcracker Figures 12" to 20";
More Nice Collectibles not listed;



Furniture - Piano - Appliances

Baby Grand Piano (Black) w/ new soundboard (No Idea on Maker);
Howard Miller Grandfather Clock;
Old Railroad Cart Coffee Table;
Antique Oak Glass Door Bakers Cabinet (very nice);
Metal Pantry Table w/ Drawer & Porcelain Top;
Antique Glass Front Tiger Oak Bookcase;
Antique Glass Front Mirror Back China Cabinet;
Old Dry Sink;
(2) Round Dining Tables w/ 4 Chairs each;
Federal Style Corner China Cabinet (beautiful);
Nice Neutral Sofa;
Upholstered Log Chair;
Live Edge Log Coffee Table;
Queen 4 Post Bedroom Suite incl. Bed, Dresser, Chest & Highboy Chest;
King Bed w/ Nice Mattress;
Full Bed;
Pair twin Beds with Ornate Headboards;
Several Nice Misc. Dressers, Chests & Nightstands;
(4) Nice Armoires/Wardrobes;
Antique Marble Top Vanity Dresser;
Several Nice Tables, Chests, Stands, Shelves, Chairs;
(4) Antler Table Lamps & Antler Floor Lamp;
Art Deco Floor Lamps;
Ornate Brass Fireplace Surround;
4 Drawer Wood File Cabinet;
(2) Tanned Cow Hides;
Area Rugs;
Nice Flatscreen Televisions;

DRIVE model 15544H Electric Hospital Bed with Gravity 7 Long Term Care Mattress (all nice & clean)
Go-Go Ultra X 3 Wheel Travel Scooter by Pride;
Maytag Washer & Whirlpool Dryer;
Whirlpool Upright Freezer;
Apartment size Refrigerator;
(New in box) Jenn-Air 36" Stainless Gas Cooktop;
Lot Extra Nice & Clean Pots, Pans, Cookware,
Dishes, Small Appliances & More;
Misc. Bed & Bath Linen;
This Large home is full of nice Furniture & Deco that is selling at this Auction;



Tools - Outdoor

Electric Smoker made from Wood Whiskey Barrel;
Misc. Lawn & Patio Furniture;
Troy-Bilt 6hp. 2 Wheel String Trimmer;
Craftsman 4 Stroke Mini Tiller;
Stihl Gas Weedeaters;
Cordless & Electric Weedeaters;
25 Gallon 12v ATV Lawn & Garden Sprayer;
Ryobi ZRRAP200 Airless Paint Station (NIB);
Tool Shop Compound Miter Saw on Portable Stand;
Craftsman 5 Drawer Roll Around Tool Box;
Large Shop Fan on Stand;
6" Bench Grinder;
Large Roll Around Shop Table with Vise;
SpeedAire & Craftsman Portable Air Compressors;
Air Tank;
Small Floor Jack;
(2) Coleman 6250w. Gas Generators;
Shop Vac;
Extension Cords;
Ladders;
L.P. Bottles;
3pt. Carry All Frame;
Lot misc. good Hand & Power Tools;
Lot Misc. Shelves;
Misc. Coolers & Totes;
6 ft. Aluminum Mower/ATV Ramps;
Lot Good Lawn & Garden Tools;
Lot Misc. Shop Related Items;



Auctioneers Note

Some boxes were in storage so expect some surprises!
Clean Quality Auction with something for everyone!
See our website for a full listing & pictures



Pickup - Zero Turn Mower

2014 F-150 4x4 Ford Lariat Super Crew Cab, Ecoboost, Leather, Sony Sound, Sun Roof, All the Bells & Whistles w/ 168,000 mi.;
Exmark Lazer Z X Series Zero Turn Mower,
Kawasaki 25.5 HP, 60" Deck, (only 47 Hours);

Guns - Hunting - Fishing

Browning A5 Sweet Sixteen 16ga., Grade II, 27" Smooth Barrel (Belgium 1968);
Browning Light Twelve 12ga., Grade II, 27" Vent Rib Barrel (Belgium 1952);
Winchester model 37A Youth .410;
(2) Winchester model 67A .22;
Winchester model 69 .22 Short;
Remington Fieldmaster model 121 .22;
Savage Springfield model 120 .22;
H&R model 088 .20ga. 3" Single Shot;
Revelation model 325BA .20ga. Bolt Action;
Sears model 41/Marlin 101 .22;
S&W Safety Hammerless 1st mod. .32, Nickel (Very Tight Lemon Squeezer);
Old Forehand Double Barrel Wall Hanger;
300 lb. "Chocolate" Black Bear Rug (Very Nice);
Mallard Duck Taxidermy;
Misc. Ammo;
Steiner Binoculars;
Hundreds of Good Duck & Goose Decoys & Shells;
Lot Misc. Waterfowl Hunting Supplies;
Lot Good Camo. Clothing & Hunting Boots 12/13;
Neoprene Waders;
Live Trap;
Johnson 6 Hp. Outboard Motor & Stand (Nice);
Minnkot Maxxum Trolling Motor for Pontoon Boat;
(2) 12v Trolling Motors;
Lot Baitcast & Spinning Rods & Reels;
Ambassadeur Baitcast Reels;
Few Older Baitcast Reels
Lots Misc Bass & Crappie Fishing Tackle;
Boat Dry Bags;
Lots & Lots Misc. Hunting & Fishing related Items;



Dog Kennel

Very Nice 2 Run Indoor/Outdoor Kennel, Welded Wire, Inside & Outside Gates;
Igloo Dog Houses;
Lg Pet Carrier;



Foster Auction & Appraisal Service

www.fosterauctionservice.com
Email: bidnowsold@aol.com



Auctioneer: Larry Foster
Galena, Mo
Phone: (417) 723-8329
Cell: (417) 839-6860



Mickey Duckett
CAL MPPA, AARE, CES

Mickey Duckett Professional Auctioneer

P.O. Box 1575, Ozark, MO 65721

(417) 353-2768

www.mickeyduckettproauction.com



PRESTIGIOUS REAL ESTATE AUCTION

Lots 2, 3, 5, & 6-8 Grand Pointe, Branson, MO

Online Bidding Ends Fri., April 19th @ 1:07

Located in the tranquil gated community of *Grandview By The Lake* in Branson, these tracts range from just over an acre to over 6 acres. **We have multiple building sites available that's away from the hustle & bustle of Branson, but close to all your business, shopping and entertainment needs!** These tracts have underground utilities, community water and situated in the Branson School District. Overlooking Table Rock Lake, you have either seasonal or year 'round lake views and access to all the boating, swimming and fishing that you can handle. **PLUS** there are boat slips nearby for rent or purchase. **This land is priced to sell!!**

Owner: DDE Enterprises, Jeff Daum

Auctioneer Note: Beautiful acreage for your new home! For auction terms, photos and register to bid, go to our website at www.mickeyduckettproauction.com.



Sam LLC CRAWFORD AUCTION SERVICE

As I am downsizing, will sell the following items I no longer use or need at my farm located at the North edge of Lebanon on Hwy. 5 to Hwy. YY, then East on Hwy. YY 4 miles. Watch for auction signs.

WEDNESDAY, APRIL 17TH, 2024 - 9:30 A.M.

GUNS - TRACTORS - TRAILERS - MACHINERY - MISC.



GUNS - SELL AT 9:30

Weatherby MK V 340 WSM Left Hand, Scope, USA
 Weatherby MK V 300 WSM Left Hand, Scope, Japan
 Weatherby MK V 30/06 Scope, Japan
 Weatherby Athena 12 Ga. O/U, Japan
 2 Remington 550-1 22
 Remington 870 Wingmaster, Left Hand, 12 Ga.
 Remington 1100 Left Hand 12 Ga.
 Remington Targetmaster 22
 Remington Nylon 66 22 Black
 Remington 592 M, 5mm Mag, Scope
 Remington 700, 22/250, Scope, Syn. Stock
 Marlin 917V, 17 HMR, Scope
 Marlin 25MN 22 WMR Scope
 Savage 99 300 w/Scope
 H & R Plainsman 22
 Survival .22 Rifle
 Antique Russian Military Rifle
 Ithaca 22 Single Shot, Lever
 Sears 21 410 Pump
 Savage Sporter 22

**VEHICLES & TRAILER
SELL NEAR 12 NOON**

'81 Chevrolet Corvette, 350 Auto, T-Tops, 51K, Shedded & Clean
 Set Wire Spoke Wheels for Corvette, Sell Separate
 '99 GMC ¾, 4x4, Gas, Auto, 98K, w/Dew Eze Bed
 '97 GMC ½ Ton, 4x4, Gas, Lift Kit
 '86 Dodge ¾, 4x4, Gas, 4 Speed w/Dew Eze Bed
 '96 Geo Tracker, 5 Speed, 4x4
 '85 GMC ½ Ton, 2x4, No Motor
 Shop Built Gooseneck 32' Low Profile Flatbed Trailer w/Ramps, Tandem Duals, HD
 Starcraft 12' Pop-Up Camper

MACHINERY

MF 1330 3 Pt. 10' Disc Mower, Shedded, Nice
 NH BR 7090 Round Baler, Net Wrap, (Low Bales on S & H Shop Visit), Shedded, Nice
 NH 1012 Sq. Bale Wagon
 NH 56 & 256 Side Rakes
 Bush Hog 20' Folding Cutter
 JD 1630 10' Cutting Wheel Disk
 Older 12' Wheel Disk w/2' Wings
 Pull Type 12½' Rock Rake, Hyd. Lift
 8' 3 Pt. HD Box Blade
 3 Pt. 6' Box Blade
 Ford 3 Pt. Post Hole Digger
 3 Pt. Light Duty Post Hole Digger
 Shaver 3 Pt. Hyd. Post Driver
 IH 4 Bottom Semi-Mt. Plow
 3 Pt. 5' Bush Hog
 5' Shop Built Roller
 7' Loader Bucket
 4 Wheel Wagon Gear
 2 - 2 Wheel Farm Trailers
 3 Pt. Boom Pole
 Gas Good Splitter
 Shop Built Bumper Hitch Dump Trailer
 Shop Built Tree Shear For Skid Steer



PISTOLS

Smith & Wesson 357 Mag
 Smith & Wesson M & P 380 Shield
 Ruger Charger 22 New, LR
 Beretta 950 22 Short
 Beretta 92 FS 9mm
 Beretta U22 LR
 Kahr 45 ACP
 Hi Point JWP 45 ACP
 Taurus Tracker 22
 Interarms Virginian 45 Colt
 Sev. Boxes of 22/250 Ammo
 Sev. Boxes 300 Weatherly Ammo
 3 Compound Bows
 Mec Shotgun Reloader
 Dies, Presses, Scales
 Shotgun Hulls
 50-60 Case White Flyer Clay Targets
 Laport 185 Electronic Target Thrower
 Range Finder
 Lot Snap On Cups & Clock

**YELLOW IRON
SELL NEAR 12:45 AFTER
VEHICLES/TRAILER**

'05 "CAT" 953C Track Loader, Clam Shell Loader, Cab, Air, Runs Good
 "CAT" 120G Grader 5100 Hrs., Looks Good, Runs Good
 "CAT" T12 Rubber Tire Loader, Diesel, Bucket & Forks, Runs Good
 IH 3850 Rubber Tire Loader, Gas, Bucket & Forks, Runs Good
 Case 1840 Diesel, Skid Loader, Bucket & Forks, 2100 Hrs., Runs Good

MISCELLANEOUS

8550 Portable Generator
 Poly 500 Gal. Water Tank
 2 Job Boxes
 Lg. Storage Box 7½ Tall x 6½x18"
 Hyd. Feed Box for Pick-Up
 Military 14' Metal Truck Bed
 Wagon Hoist
 A-Frame on Rollers
 Port. Squeeze Chute
 2 - 17.5x25 Loader Tires, New
 30.5x32 Pulling Tractor Tire
 Older IH Cab
 Pair Cast IH Rear Hubs (56 Series)
 3 Backhoe Buckets
 Set Metal Tracks For Skid Steer
 Ant. Pull Road Grader
 4 - 24' Metal Light Poles
 Approx. 15 - 24' Bar Joists Trusses
 Lg. Pile Used Metal Roofing
 Asst. Pick-Up Truck Tires & Wheels
 Metal Pick-Up Flatbed
 Pair Aluminum Ramps
 9' HD Fork Ext. For Loader
 Other Misc.

**TRACTORS
SELL NEAR 12:45 AFTER
VEHICLES/TRAILER**

IH 5088 Cab/Air, 136 PTO HP, 5326 Hrs., Shedded, Nice
 IH 3088 Cab/Air 81 PTO HP, (PTO Needs Work)
 IH 3688 Cab/Air, 113 PTO HP, Shedded, Sharp, Hyd. Pump Out
 IH 756 Diesel, Canopy, Farmhand Loader, Shedded & Sharp, No Torque on Low Side
 IH 444 Propane, Runs Good
 IH 354 Gas, Runs Good
 Allis Chalmers WD45 W/F, Runs Good
 Massey Ferguson 150 Diesel, 2700 Hrs., Shedded, Nice
 Massey Ferguson 204 Gas w/Loader, Shuttle, Runs Good
 Harry Ferguson TO, Runs Good
 ** A Letter of Credit Needed on CAT 953 Loader, CAT Grader & Corvette If Not Known By Auctioneers **

Large Farm Auction For Long Time, Well-Known Lebanon Area Resident. Major Items Have All Been Well-Maintained & Good Care. Loader on Site & Trucking Available.

SAM
CRAWFORD LLC
Auction Service

1944  2024
STARTING 80 YEARS OF SALES & SERVICE

Sam 417-328-9137 Chase 417-399-1904

TERMS: Cash or good check. Nothing removed until settled for. Not responsible for accidents. Lunch available. Statements made day of sale take precedence over printed matter. All items sell as is. No warranties given or implied.

417-998-6629
Cross Timbers, Mo.

CrawfordAuctionService.com

Chance, CAI 417-298-1751 Tom Poynter Jack Lancaster

Charley Steinmark

Sam **CRAWFORD AUCTION SERVICE** LLC

Will sell the following located 3 miles East of Buffalo, MO on Hwy. 32. (Parking behind)
Watch for auction signs.

SATURDAY, APRIL 20TH, 2024 - 10:00 A.M.

HOUSEHOLD • VEHICLES • SKID STEER • TOOLS • MISC.
GUNS • SELL 10 A.M.

Winchester 94 30/30
Rossi 20 Ga. Single Shot
2 - Palmetto State Armory AR 15 223
GSG 1911 22
Ruger SR 22
Matthews Solo Compound Bow

Mossberg 20 Ga. Pump
Marlin 22 Semi-Auto, Scope
Springfield Armory XD 40 40 Cal.
Kimber Micro 9mm
Taurus 9mm



HOUSEHOLD & MISC.

Lot Home Interior & Decorator Items
2 - Xbox Games, Playstation

Asst. Furniture
Lot Misc.



VEHICLES

'09 Chevrolet HD 3/4 LTZ Crew Cab, 6.0, Gas, Auto, 4x4, 183K
'99 Dodge 1 Ton SRW Diesel, Auto, 4x4, Ext Cab, Flatbed w/Bale Spear, 267K, Runs Good
'05 Ford 150 XLT Crew Cab, 5.4, 4x4
'05 Ford 3/4, Auto, Gas, 2x4, Service Bed, Motor Misses
'10 Ford 3/4, 6.4, Diesel, Ext Cab, Auto, Service Bed, 4x4
'14 Chevrolet 1/2 Ton, Crew Cab, 2x4, 5.3, Gas, Leather, Loaded, Lifted, 148K, Nice
'97 Chevrolet Suburban 2x4, V8, 3rd Row Seating, Runs Good
'06 Dodge Durango 4.7, 4x4, 253K, Runs, Drives
Chevrolet Cobalt, Needs Motor
'99 Chevrolet S-10, 4 Cyl., 5 Speed, 2x4, Runs & Drives



Project Vehicles

'72 Chevrolet LWB 2x4, 1/2 Ton, No Motor
'41 IH 2x4 1/2 Ton
'52 Studebaker 1/2 Ton
'63 Chevrolet 1/2 Ton 2x4, LWB
'41 Chevrolet Deluxe Car



MISCELLANEOUS

'06 Case 440 Skid Steer & Bucket, 89 HP Cummins, Tire Machine, 9500 Hrs.
2 Post Hole Digger Bits For Skid Steer Digger
2 - Golf Gas Carts, 2 & 4 Stroke, 1 w/Hard Top
MonArk 16' Aluminum Boat & Trailer, Console Steering, 50 HP Mercury
'19 Hustler ZTR Mower, 23 HP Kawasaki, 52"
Johnson 35 HP J Motor, Needs Some Work
Swisher 44" Pull Behind Mower for ATV
Lot Wrenches, Sockets, Other Tools
Asst. Power Hand Tools
Used Tires, Asst. Sizes



Sam **CRAWFORD** LLC
Auction Service



TERMS: Cash or good check. Nothing removed until settled for. Not responsible for accidents. Lunch available. Statements made day of sale take precedence over printed matter. All items sell as is. No warranties given or implied.

417-998-6629
Cross Timbers, Mo.

CrawfordAuctionService.com

Sam
417-328-9137

Chase
417-399-1904

Chance, CAI
417-298-1751

Tom Poynter
Jack Lancaster

Jerry Allen & Neighbors

Estate Auction



"Gail & the Late Steve Mann"

"Knights of Columbus" 1708 Elm Hills Blvd., Sedalia Mo. 65301

This is the First of TWO very nice Auctions, the second will be at the Family home located at **36240 Rawhide Ave. Edwards Mo. 65326** On Saturday April 27th 10:00am 2024

Due to the loss of my husband, we will sell the following at public Auction on:

SATURDAY APRIL 13TH, 2024 • 10:00AM

Aluminum "model C" **Aladdin** Lamp, 8gal crock "**Superior Sanitary Churn**" on stand, New Style - White Cedar 3gal wooden barrel churn, **DAZEY, BLOW & MISC. UTENSILS** Dazey (small bevel edge mini), 3 - **Dazey** 1qt churns, **Dazey** 3qt churn, 3 - **Dazey** 4qt. Churns, **Dazey** #8 churn, **Dazey** #10 (bevel edge), 4 - **Dazey** #20 churns, 3 - **Dazey** #30, 2 - **Dazey** #40 churns, **Dazey** #60 churn, **Dazey** #80 churn, **Dazey** 1gal. Red Ball, **Dazey** ele. 1gal churn, **Dazey** floating dairy thermometer, **Blow** 1qt churn, **Blow** 2qt. churn, **Blow** 4qt. churn, **Blow** Blue Ball N40 churn, **Blow** "Imperial" 6, **Red Ball** churn, **Dandy** Red Top churn, **Dandy** Ice Cream freezer, 1gal churn **Anchor Hocking** jar, #3 butter churn, **Universal** churn #15 & 25, **Wards** "Whipper" 6qt churn, **Fries** metal churn, 8qt churn, 4 - Elgin iron & tin butter churns, wooden "**Bentwood Churn**", **Dwight's Soda** "The Cow Brand" barrel w/lid, gal jar fly trap, Glass eggbeater, lot RR lamps, **GE** refrigerator water jars, pink depression glass, McCoy planters, syrup pitcher collection, Cast iron floor lamp, **Brighton** washing machine wringer (great graphics), 5 gal. Red Wing crock, Conestoga wagon grease bucket, two wooden barrels, wooden toy box, 15 +/- handmade quilts, lot Afghans, treadle sewing machine, lot misc. fabric & sewing notions, sewing baskets, lot jars of buttons, Postal scale, metal **Postum** drink sign, **Shell** motor oil jar (paper label), Daisy 1881 kerosene jar, enamel pitcher & bowl, **HUGE LOT KITCHEN GADGETS, CHOPPERS, UTENSILS, MIXERS, COFFEE GRINDERS** Nora, Universal, Canister Coffee Mill, Wilmot, Castle Co., Arcade Crystal, Speed-E-Whipper, Eureka, 2 - Western oil mayonnaise makers, Holt Lyon Co., Fassenhaut coffee grinder, Tin breadbox, 6 - Kraut cutters w/cradles, rooster butter mold, Bakelite hand mirror, **Mixers** - ZIP-WHIP, Dainty Whirl, Ladd, Dover, Androck, Kohler D&S Co., Lyon, Mammoth Dover, New Britain, Royal Supreme, countertop, Whip-O-Matic, Speed & Whip, Americana, Horlicks, EZ, Gem Dandy, full vision beater whips, tip & whip, Pyrex, Anchor Hocking, **Coffee tins & jars** - Folgers, Bokar, Borax, Flemings, Hills Bros, Butternut, Mustard, enamel coffee pot, Ben Hur, Blue Ribbon, Manhattan, Butternut, Shasta, Folgers Comrade coffee cans, **Tins** - Sunshine, Junior Butter Crackers, Manor, Swifts Lard, Union Leader, Folgers, Cherry pitters various styles, Silver Cup coffee, New & True coffee, Cheerio, Betsy Ross tea, Campfire Marshmallow, lg Folgers, **Straight Razors** - huge lot 125+ GH Wayer, Wade & Butcher, Heckel Bros., Clark Bros., Spike & MANY more, Lot Coffee memorabilia, **Wolverine & Sunny Suzy** child's toy washers, vintage children's toys, HO train set, Refrigerator dishes, Midget glass wash board, lot handi work, misc. flour bags, misc. blankets & linen, Rag rugs, Eclipse bread/dough mixer (1802), universal cake maker, Vintage "**Universal**" dough mixer, **Coffee Grinders** - Arcade, Crystal #3 & #4, Universal, None-Such, Old Oak, Golden Rule, Steinfeld, Pocket watches & jewelry - Southbend, Waltham, Elgin, Illinois, lot turquoise jewelry, **Many More Items Too Numerous to Mention**



Auctioneer Note: We are honored to have the opportunity to conduct an Auction of this Quality. This is an abbreviated list dropped many names not near as many as we could have. There will be TVs & seating available for this sale.

*STATEMENTS MADE DAY OF SALE TAKE PRECEDENCE OVER PRINTED MATERIAL.

Concessions provided by "Benton County Good Ole Gals"



JOHNSON AUCTION SERVICE

"Third Generation Family Tradition since 1942"

Russell "Rusty" Johnson (660) 221-4067 • Phillip Yoder (660) 723-3389

For Full Listing, Pictures and Details auctionzip.com (ID# 20300)

TURNER AUCTION SERVICES SPRING CONSIGNMENT AUCTION

**RAIN OR
SHINE**

Saturday, April 13, 2022 • 10:00 A.M.

**RAIN OR
SHINE**

Valley Lions Club, Belgrade, Missouri (1 mile west of Belgrade)

Accepting consignments until Friday, April 12 at 8PM

Tractors/Backhoe/ Vehicles/Trailers

2003 Dodge 2500 (5.9 cummins, crew cab, flat bed, 6speed, 266k miles)
2015 Honda Pioneer 500 side by side
2017 Cub Cadet Challenger 750 side by side
John Deere Gator
2023 Kaufman bumper pull 24ft tilt trailer (17000gvwr, 17.5 wheels, 16ply tires)
2006 Retco gooseneck 22ft flatbed tilt trailer (12,000lb winch)
Loadmaster 16ft bumper pull trailer
Homemade 16ft+2ft flatbed bumper pull trailer (8 lug axles, fold up ramps, winch)
Mahindra 8560 tractor and loader (1300hours, 4wd, 83hp, cab)
Farmall 706
International 504 (diesel, loader)
International 250 series A backhoe
Belarus 250

Hay Equipment

Kubota DMC 8028T disc mower conditioner (9ft)
Krone AM 283s disc mower
Ford 501 sickle mower
Sovema 2 basket tedder
8 wheel rake
New Holand 853 round baler

Farm Equipment/ NEW Skid steer Attachments

Titan 10ft pull type brush hog
Massey Ferguson 3pt 7ft brush hog
3pt 5ft brush hog
Ford 951A 3pt 5ft brush hog
Krone 3pt 6ft finish mower
Woods 3pt 5ft finish mower
3pt Mackissic wood Chipper/Shreader
Mel-Cam 410 rock picker
John Deere manure spreader (pto)
Bush Hog loader with bucket & spike
Allis Chalmers 3pt 1 row planter
6ft pull type disc
Ferguson 3pt 6ft disc
3pt 6ft disc
Dearborne 3pt 2 bottom plow
Kingkutter 3pt 6ft box blade
Farmliner 3pt 8ft rock rake
3pt 6ft blade
3pt 6ft blade
3pt Farmstar post auger
Danhusser 3pt post auger
3pt post auger
3pt seeder
Pull type sprayer
Harrow
NEW JCT skid steer brush hog
NEW JCT skid steer tiller
NEW JCT skid steer trencher
NEW JCT skid steer sickle mower
NEW skid steer pallet forks
NEW skid steer grapple bucket
NEW skid steer post auger
NEW Fork extensions

Livestock Equipment/ Fence Supplies/Pipe

Lot of NEW 24ft freestanding corral panels (1 with gate)
Lot of NEW Woven wire
Lot of NEW 2x4 Welded wire
Lot of NEW barbed wire
Lot of NEW Heavy Duty 10ft corral panels
Lot of NEW Heavy Duty 10ft portable gates
Lot of NEW Heavy Duty 5ft portable gates
Lot of 3 1/2" pipe
Lot of 2 7/8" pipe
Lot of 1 7/8" pipe
Lot of 1.66" pipe
Lot of NEW Tarter mineral feeders
Lot of NEW rubber 110 gallon water tanks
Lot of NEW 16qt Fortiflex hook over feeders
Lot of NEW 20qt buckets
Lot of NEW feed scoops
Head chute
Portable Head chute

Lawn/Garden/Shop

Murray 16.5 hp lawn mower with sprayer
Huskee 26hp lawn mower
Husqvarna garden tiller
Craftsman lawn vacuum
Log splitter
Torch set
Lincoln AC225 welder
Clark 130EN mig welder
Air compressor
Direct Flow 7.0 gas trash pump
Pittsburgh 1ton gantry crane
2ton engine hoist

Estate Guns/Sporting Goods

Savage 110 Precision 338 Lapua
Thompson Center Oncore pistol set (357mag, 30 carbine, 22lr, 410/45, 45-70, 44mag, and 30-30 barrels)
Ruger 10/22 Rancher edition CZ 527 6.5grendel with Leupold scope
Savage 10 204 with scope
NEW Savage Axis 7mm 0-8 with scope
NEW Savage Axis 25-06
Stevens 200 22-250 with scope
(2) Oviido Factory Mauser 7mm mauser
Palmetto Arms AR-15 5.56
Rem 870 Wingmaster 12ga
Rem 887 12ga 3 1/2"
Winchester mod 1904 22
Savage mod 4c 22
NEW Trail Blazer Lifecard 22wmmr pistol
Ruger SR40C 40 S&W pistol
NEW SCCY cpx 9mm pistol
Titan II 380 pistol
Iver Johnson 32cal pistol
Rigarmi Brescia 25 auto pistol
Howard Arms 35cal pistol
Lot of Ammo
Cow Hides

**PLUS LOTS
MORE!!!!**

COMPLETE LISTING AT WWW.AUCTIONZIP.COM AUCTIONEER ID 43766

TA TURNER AUCTION SERVICES

For more information, call Andrew Turner at 573-760-3755

Auctioneer: Col Andrew Turner

Terms & Conditions: Cash or Good Check - proper ID required -
Not Responsible for accidents or stolen articles.

All announcements made on sale day take precedence over printed material.

"No Alcohol" Lunch Provided by Vally Lions Club

LARGE FARM AUCTION

SATURDAY, APRIL 13th - 9:00 A.M.

Location: 2868 Hwy EE, Mansfield, MO **Directions:** From Mansfield / Ava Exit on Hwy 60 take Hwy EE North go approx 3 miles to Auction on right.
WATCH FOR CHADWELL AUCTION SIGNS.
Payment System: Cash • Debit Card • Credit Card (Debit / Credit Card Fee Will Apply)
 Checks approved if known by auction company. **VISIT: WWW.CHADWELLAUCTIONS.COM**



**TCM FCG Forklift
Propane 430hrs**

**16'x16' Tiny Home w/
Loft (excellent condition)**

**2006 Western Star Semi
Lo Max w/ Stratosphere
Sleeper 270" Wheel Base original
motor is bad will be sold with extra
motor that has 480,000 miles**



**Zetor Proxima 120 4x4 Cab w/ Zetor TL 120
4x4 Cab w/ Zetor
TL 120 SLX Joystick
Quick Detach Loader
Power Shift 540 &
1000 PTO Loaded
900hrs (like new)**

SEMI ITEMS

Brush Guards • Side Boxes • Trucking Straps & Securement Equipment (large lot) • Tarps • Tri Pak APU • Semi Tire & Wheels • Semi Stacks • Large Lot of Semi Boxes Alum Diamond Plated Headache Racks • Other

12'x16' Portable Building

**Extra Large Lot of
Assorted
Name Brand Tools**



SHOP ITEMS

Contractor Tool Box • Large Lot of Work Benches • Assorted Tri Plex Wire • Snap On Plasma Cutter • Small Arbor Press • Jumper Cables • Lincoln Power Mig 210 Welder • Forney Spit Fire Arc Welder w/ Cart • 80 gallon Air Compressor • 22 Ton Trans Jack • (3) Torch Sets • Grizzly Band Saw • Bench Grinders • Steel Work Benches • Drill Bits • Torch Accessories • Oils & Solvents • Battery Chargers • Acetylene Torch Bottles • Makita Chop Saw • Vise w/Table Work Bench • Large Lot of Assorted Tool Boxes • Grizzly Industrial Drill Press • Troybilt 5500 Watt Generator • Snap On Tool Chest on Castors • Nut & Bolts • Nut & Bolt Bins • Craftsman Tool Box on Castors • Homak Tool Box on Castors • Milwaukee Band Saw • Large Lot of Power Tools • Socket Sets • Bolt Cutters • Bottle Jacks • Large Lot of Air Hoses • Hitch Pins • Levels • Romex Wire • Electrical Wire • Electrical Supplies • Com A Long • Shop Stand Fan • Rigid Compound Miter Saw • Roller Stand • Dolly • Reese Hitches • Hydraulic Press • Generac GP 3250 • Ratchet Boomers • US General Tool Box on Castors • Craftsman Drill Press • Pallet Racking • Chain Hoist • 14' Alum Car Ramps • Other

VEHICLES

1963 Ford Falcon Ranchero 2 Spd Trans 260 V8 • 1983 Ford F600

FARM EQUIPMENT

2007 JD 458 Mega Wide Net Wrap Baler/ Approx 5100 Bales • JD 926 MOCO Disc Mower w/Flails 10' Cut • Skid Steer Attachment Tree Puller • Clark Fork Lift (needs work) • Danuser 3pt Post Driver • 5' Pull Type Bushhog • 6' Box Blade • 10' Brush Hog • Frontier 4' Box Blade • (2) 12' Drag Type Brush Hog (need work) • 3pt 8' Angle Blade • 3pt Boom Sprayer • 8 Wheel V Rake • 10 Bale Hay Trailer • 5' Drag Type Sidewinder • 10' Smoothing Disc (needs work) • Pull Type 6' Finish Mower • 256 Side Delivery Rake NH • Other



FARM RELATED

(14) 12' WW HD Cattle Panels • (2) 5' Walk Thru Bow Gate • 4' Walk Thru Bow Gate • 4x5 Net Wrap Rolls • Large Lot of Misc Steel • Poly Water Troughs • Coats 1050 Direct Drive Tire Balancer • Semi Automatic 110 Tire Changer • Hydraulic Pickup Bale Spike • Top Links • Fimco ATV Sprayer (new) • 300 Gallon Fuel Tank on Stand • 2 Wheel 4x8 Trailer • 3pt Hay Forks • Tire Drag • Industrial Water Tank Tires • Stock Tank • Steel Truck Bed • Koyker 210 Loader • Bale Ring Feeders • Concrete Feed Bunks • 2 1/2 Ton Creep Feeders • 300 Gallon Liquid Feeder Homemade • Blue Mule Head Chute • Danuser Post Hole Digger • Woven Wire • Fence Posts • Other

TRACTORS

80hp International Tractor • Kubota B80200 4x4 w/BF300-A Loader 3spd w/9spd Trans 540 PTO Diesel 737hrs • 574 International 4spd hi lo 540 PTO Dual Hydraulic (needs work) • 1989 F450 5spd 2x4 7.3 Diesel w/Steel Flat Bed • 1999 Freight-Liner FLD 120 Single Axle (needs motor)

TRAILERS

Ponderosa 14' Stock Trailer • 16' Car Hauling Trailer (no title) • 20' HD Car Hauling Trailer w/Dove Tail & Ramps (no title) • 14' Flatbed Homemade Bumper Trailer • 22' Bumper Trailer 2 Axle (needs floor) • 22' Bumper Trailer w/ Fold Down Ramps • 28' Gooseneck 2 Axle w/Dovetail Trailer • 24' Gooseneck Stock Trailer (needs floor no title) • Hay Trailer • 28' Pup Trailer for Storage • 24' Gooseneck Flatbed Trailer (no title) • 5'x12' Utility Trailer w/ Steel Floor • (2) Pickup Bed Trailers

OUTDOOR ~ MISCELLANEOUS

Cub Cadet 25 Ton Log Splitter • Husqvarna 455 Rancher Chainsaw • Husqvarna Leaf Blower • Large Lot of Appliances • ATV Sprayer • Ramps • Assorted Step Ladders • Pry Bars • Fuel Cans • Log Chains • Reddy Heater • Long Handle Tools • Barbed Tires • 105 gallon Transfer tank w/Pump • Assorted Lumber • Metal & Plastic 55 gallon Drums • Implement & Car Rims • (2) Wood Stoves & Blowers • Metal Yard Cart • Scaffolding • Pet taxis • Assorted Coolers • C Chanel Steel • Large Lot of 2 7/8 Steel Pipe • Large Lot of Load Steel • Pallet of Misc Hand Sanitizer & Wipes • Misc Truck Tarps • Snapper 30" Lawn Mower • White Poly Fence Rails & Posts • Wheel Barrow • John Deere LA115 38" Riding Mower • Eye Beams • Other

AUCTIONEER'S NOTE: Two Auction Rings will be conducted majority of the day. This Auction is very large with good quality items, many items will have more than one in quantity. Make Plans to Attend! **Thanks, Shawn**

DRIVER'S LICENSE OR PICTURE I.D. REQUIRED • TERMS: CASH OR APPROVED CHECK **OR**

Chadwell
Auction Service, LLC
www.chadwellauctions.com

Auctioneer:
SHAWN CHADWELL
417-830-0209

Ringmen:
Weston Chadwell ~ 417-349-0727

Clerk:
SHELLY CHADWELL
Cell: 417-880-8449

Cashiers:
Marla Reppond • Emily Shaffer
Cassie Collins

PROFESSIONAL SALES MANAGEMENT
LUNCH WAGON • APPRAISAL SERVICE • RAIN OR SHINE
All announcements made day of sale take precedence over any printed matter.
Not responsible for lost or stolen merchandise. Not responsible for accidents.

14th Annual Spring Consignment Auction

Prairie Grove Amish Mennonite School



*Previous Auction Pictures

Friday, May 10th

Sale starts at 1:00 PM

Gun sale starts at 6:30 PM

Saturday, May 11th

Breakfast - 7:30 AM

Sale starts at 9:00 AM

2024

SUGGESTED CONSIGNMENTS

Deadline Thursday 5/9/24

- Tractors & Farm Equipment
- Cattle Equipment
- Lawn & Garden
- ATV's
- Shop Tools
- Hand Tools
- Handmade Quilts
- New Furniture
- Antiques

NO JUNK PLEASE



Auction held on school grounds.
12 Winding Creek Dr., Buffalo, MO 65622



To consign or for more information, contact

417.327.4670 Nathan Blosser
417.327.6240 Nathan Kropf
417.733.2560 Lyndal Hostetler
417.733.2914 Delbert Blosser (Farm Equipment)
417.327.6348 Eldon Swartzentruber (Vehicles & Guns)
417.299.2056 Bryan Blosser (Farm Equipment)
417.326.9788 Dennis Blosser (Quilts)

THE SOONER CONIGNED, THE BETTER ADVERTISED!

BUFFALO LIVESTOCK MARKET LLC



276 Hwy 32 W., Buffalo, MO

April 6th, 2024

Receipts: 924

REPRESENTATIVE STEERS

300-400 @ 340.00 to 400.00
 400-500 @ 330.00 to 365.00
 500-600 @ 270.00 to 353.00
 600-700 @ 255.00 to 269.00
 700-800 @ 235.00 to 265.00
 800-900 @ 210.00 to 237.00

REPRESENTATIVE HEIFERS

300-400 @ 260.00 to 340.00
 400-500 @ 250.00 to 319.00
 500-600 @ 230.00 to 269.00
 600-700 @ 220.00 to 239.00
 700-800 @ 210.00 to 240.00
 800-900 @ 179.00 to 195.00

FEEDER BULLS

300-400 @ 265.00 to 392.00
 400-500 @ 245.00 to 352.00
 500-600 @ 230.00 to 299.00
 600-700 @ 225.00 to 269.50
 700-800 @ 207.00 to 230.00
 800-900 @ 191.00 to 206.00

STOCKS COWS

Bred Cows 2000.00 to 2450.00

SLAUGHTER BULLS

High Yield 165.00 to 180.00
 Low Yield 130.00 to 155.00

SLAUGHTER COWS

Fleshy 130.00 to 152.00
 Med Flesh 125.00 to 147.00
 Light Flesh 110.00 to 127.00

HOL/HOLX STEERS

400-700 @ 150.00 to 205.00

CRIPPLE, DOUBTFUL HEALTH COWS

80 Down

Poor Quality, Plain, LH or DairyX Cattle will be under this market!

MON-WED MARKET REPORT

Listen to KJEL 103.7FM • Lebanon or KYOO 99FM • Bolivar

VIEW OUR SALES AT CATTLEUSA.COM

CALL FOR TRUCKING OR ON-FARM VISIT

Lyle Caselman • Owner-Manager
 417-345-7876 • mobile 417-533-2944
 Leon Caselman • Owner
 417-345-4514 • mobile • 417-588-6185

0% for 4 Years
HEATMOR
 Stainless Steel Outdoor Furnaces
Outdoor Wood Furnace
 as low as **\$238** per month
HEATMOR MIDWEST
 Licking, MO 65542 • 573-674-2962

ST LOUIS BLUES: autographed full size hockey stick. Brett Hull. Text for pictures. \$149 573-854-8132. Houston.

RIFLE CASE: Pelican storm. IM3100 long case like new \$160. Text for pictures. 573-854-8132. Houston.

GUNSMITHING-Older Rifles, Shotguns, Handguns, all 22LRs. Any make, any model, estate appraisals. Camdenton. 573-363-5801.

DEAN'S CREEK MOBILE WELDING LLC: Noah Downing, Certified Welder Serving Central Missouri. 573-842-7281.

FISHING SEASONS COMING: Get your rod and reels, \$15 and up. 417-589-8200. Conway.

TAYLOR TRUCKS & EQUIPMENT
 417-924-2026 • 2676 Hwy. 5, Mansfield, MO

- ★ INTIMIDATOR TREE PULLER ★
- ★ 3 POINT TILLERS ★

TRAILER PARTS & REPAIR
 MD144 Bat Wing in stock!
 Milwaukee Cordless Tools

DANUSER DEALER
 T3 Post Driver & Other Attachments
 New Mowers! Bush-Whacker, Big Bee
 Storage Containers & Dry Vans - 20' - 53',

BUSH-WHACKER HD SKIDSTEER BRUSH CUTTER
 Portable Generators, Farm Tires, New Semi Tires, PTO's & Parts for Rotary Mowers, Farm Tractor Implements, Plows, Used 15" Bush-Whacker Now In Stock, Discs, and More Skidsteer Attachments: Pallet Forks, Buckets, Grapples, Hay Spears, RR Ties

Bush-Whacker Heavy Duty Rotary Cutter

We Invite you To Come By & Look Us Over! Located 2.5 Miles North Of Mansfield, MO On Hwy 5

Wright Spray Foam Insulators, LLC
 Commercial & Residential
Call for FREE Estimates!

Ervin Gingerich 417-926-2052
 B. Eli Yoder 417-746-4932

FISHING REEL SPOOLS FOR SALE: I've got what you need. \$3/each. 417-589-8200. Conway.

SNAGGING SEASON IS UPON US: Snagging rods \$35 & up. Rods & reels with line. 417-589-8200. Conway.

WANTED WOOD STOVE MAGIC HEAT EXCHANGER: 660-598-4019.

3 ARMY CANTEENS: Mess kit, belt & duffel bag. Best offer for all. 417-260-0941. Raymondville.

CHILTONS AUTO REPAIR MANUAL: all American cars & Volkswagen 1969-1976. \$30 plus shipping. 417-260-0941. Raymondville.

Real Estate & Liquidation Auction!

Saturday, April 27th @10:00 AM!
 636 Wilderness Way, Anderson, MO

Selling 40 Acres M/L; fully remodeled berm home & shop building. Very secluded and quiet; hunters paradise! Several vehicles, trucks and equipment will be selling as well. Flyer and details coming soon!

Contact Southwest Auction Service for more info!
 417-652-7540 office or cell: 417-772-8088
 (Bob Hughes) for more details!

Bob Hughes
 Auctioneer Since 1988

SOUTHWEST AUCTION SERVICE & MARKETING
 www.swaauction.com

STIHL CHAINSAWS: New/used parts & repairs. Chamois, MO. Dennis Brandt 573-763-5615.

YOUTH BED: in good condition \$15. 417-532-2344.

20 LB PROPANE TANK: with OPD valve \$20. 417-532-2344.

2-DRAWER FILE CABINET: Pink. In good condition. \$15. 417-532-2344.

CATTLE PANELS FOR SALE: Approximately 40. \$20/each. 573-247-4280. Salem.

2006 HARLEY DAVIDSON DYNA STREET BOB: 16,413 miles, 88 cubic inch. Thousands in extras. Call for details. \$8,000. 573-544-8059. Belle, MO.

AUSTRALIAN PUPPIES FOR SALE OR TRADE: UTD on shots. Ready to go. Out of working parents. 417-967-6493.

2 PICKUP BED TRAILERS: \$75. 417-527-2740.

5' BUSHHOG: old; works. \$100. 417-527-2740.

16FT RIVER JON: electric trolling motor. 5hp, air cooled outboard. \$1500. 417-527-2740.

WANTED JERSEY MILK COW: 660-598-4019.

NEED A GOOD FARM TRUCK?
2002 F-350 FORD POWERSTROKE DIESEL 7.3L, POWER TOOLS, HUNTING GEAR & LOTS MORE IN ASHLAND, MO



- 2002 F-350 Ford Powerstroke Diesel 7.3L
- 2014 Maxwell Gooseneck Trailer
- 1998 Ranger XLT
- Concrete Tools
- Hand Tools
- Power Tools
- Hunting & Trapping Gear

Preview Date:

Monday, April 15th | 3:30 p.m. - 5:30 p.m.

Auction End:

Tuesday, April 16th | Starting at 12:30 p.m.

Pickup:

Wednesday, April 17th | By Appointment Only

Address Will Be Posted Prior To Preview, Ashland, MO

Check it out & Bid at www.AtterberrySells.com
573-474-9295



contactus@atterberryauction.com



PLAD PANTRY
DISCOUNT & SURPLUS FOODS
FRESH PRODUCE^{LLC}
417-532-4700

Organic Mozzarella String Cheese.. **\$1.99** 8 oz.
Chicken Drumsticks.....**\$6.99** 5 lbs.
Jalapeno Cheddar Smoked Sausage.....**\$2.29** 14 oz
Vanilla Sugar Wafers.....**79¢** 8 oz. **\$8.49** case of 12
Golden Waffle Fries..... **\$2.49** 22 oz.

1571 State Hwy 64 • Tunas, MO 65764
Hours: 8:30 a.m. to 5:30 p.m. • Closed Wed. & Sun.

BUYING SCRAP METAL: All kinds, can torch, Heavy Equipment Call for prices, 40 years' experience. 573-308-6739.

WANTED MILK GOAT: 660-598-4019.

FREE TO GOOD HOME: 1-year-old Male Corgi. 417-259-9738. Hartville.

JUMBO FLOAT: 95" long x 80" wide x 10" high. Heavy gauge vinyl, Safety valve, 2 screw valves, 12 rope holders, water plug, nylon rope around it. Like new. \$150. 210-787-8222. Linn Creek.

BREWER LOGGING: Looking to buy standard walnut & oak standing timber. Call 417-254-0266, for a free quote.

1995 JD 850B DOZER: 4,000 hours on motor, 800 hours on tracks, 95% undercarriage. \$31,000 OBO. 660-596-3091. Richland.

CASH FOR COMICS, SPORTS CARDS, RELATED ITEMS, TOYS: Over 35 years of experience as a collector/dealer. Call or text 636-667-0391.

MID MISSOURI STOCKYARDS

REGULAR SALE EVERY THURSDAY 11 AM

WATCH OUR WEEKLY SALE IN REAL TIME ON DVAUCTION.COM

For Farm Visits, Market Updates, or Trucking
Call **Zach Cox 417-777-1320**
Dan Romine 573-578-4939

**Competitive Buyers!
Competitive Commission!
Competitive Market!**

Barn: 417-532-9292

I-44 • Exit 123 "just outside of Lebanon"
17505 Route 66, Phillipsburg, MO 65722

For weekly market updates, visit us at www.midmostockyards.com

ROOMMATE NEEDED, COUNTRY LIVING: Near highway. 15 minutes to Ft. Leonard Wood & 15 minutes to Lebanon. Entire 2nd floor of farmhouse on acreage. \$600/month, includes all utilities. No cats. Call Kurt at 906-396-5877.

2002 F150: 4-door, 4x4, 89,xxx miles. \$5,000. 417-527-2740.

2016 KUBOTA KX040-4: 1850 hours, 2 speed, 4 way blade, exceptionally clean, aux hydraulics w/thumb, pattern changer, solid undercarriage, Kubota quick connect 18" digging bucket. 40hp D1803-GR-TE4 3cyl Kubota engine with fresh oil change and engine and hydraulic oil analysis reports. \$39,400 Gravois Mills 630-917-2376.

3-JOHN DEERE MOWERS: \$600. 417-527-2740.

REGISTERED: Mini-Poodle puppies \$100. 417-741-2793. Hartville

FREE PUPPIES: Great Pyrenees/Collie Mix. Very cute. 417-718-8584, leave message. Conway.

JD 495A CORN PLANTER: with dry fertilizer & insecticide. Lots of spare parts. \$500 OBO. 573-308-5884.

FINALLY REALIZED ITS TIME TO GET A STORM SHELTER? Call Jeff @ safeplacestormshelter 417-894-3159. Professional storm shelter consultant for 20 years.

TIGER WOODS UPPER DECK CARD: #1 mint condition. 573-854-8132. Houston.

PUREBRED FAINTING GOATS: A variety from adults to kids \$200 & up. Lake Of The Ozarks. 573-216-7796.

WEATHERED BARN WOOD SIDING: 10" wide. Call for appointment 573-729-7226. www.pineridgerustic.com Salem.

1985 ST. LOUIS CARDINALS SIGNED WORLD SERIES BALL: Includes Herzog & Ozzie Smith. PSA/DNA. \$190. Text for pictures. 573-854-8132. Houston.

DARDEN PROFESSIONAL TIMBER HARVESTING, BUYING STANDING TIMBER: Great prices, improve wildlife habitat and improve forest health. State Certified & Fully Insured! 573-247-4808. Salem.

WE GOT IT - let us bid your mobile home purchase, new and used. 573-499-9993 columbiadiscounthomes.com.

TRIPLE WIDE- moving stock, awesome price. 573-657-7040 chateauhomes.net.

Buildings • Hunter's Cabins • Lawn Furniture

JAMCO BUILDERS

JAMCO Portable Buildings

800-688-2064 • 307 Enterprise Dr. • Seymour, MO • www.jamcobuilders.com

Rent To Own Plan

KUSTER LOGGING

BUYER of Standing Timber Oak and Walnut

Dozing Now Available

417-259-0047

References Available

JOHN DEER X304 LAWNMOWER: 4 wheel steering, 17 HP Kawasaki, 2 pedal hydrostat, 396 hrs. Has a broken hood but runs and mows good. \$1,000 417-830-9090 Conway.

6FT T-POSTS: 50+. \$4.00 each, used / some newer. 417-288-9861 Hazelgreen.

DODGE BENCH SEAT: 2nd gen needs TLC \$100. 417-288-9861 Hazelgreen.

TRACTOR TIRE: 16.9 X 28 goodyear. \$150. 417-288-9861 Hazelgreen.

LOG SIDING: 2X8 Pine/Western Cedar. Call for appointment 573-729-7226. www.pineridgerustic.com Salem.

40 YEARS THIS YEAR- we have to be doing something right. Call for quote or any house new or used, double and single. 573-657-2176 amegamobilehomes.com.

BAMBOO FLY RODS: \$50. Trout season is coming. 417-589-8200. Conway.

HAY FOR SALE: Alfalfa & grass mix. 4x5 round bales. 417-343-4958. Seymour.

TINY HOMES - Missouri Franchise 573-881-7965.

I BUY.....used mobile homes. Call or text 573-338-6250 or email GregS.CDH@outlook.com

SPORTSET BY SARGENT: Fishing pliers in leather sheath. Like a multi-tool. \$15. 636-239-2695 or 314-560-5700. Washington.

NEW SQUARE D RAINPROOF 50AMP DISCONNECT: \$150. 636-239-2695 or 314-560-5700. Washington.

CALUS LOGGING

20 YEARS EXPERIENCE

Buying Standing Timber Walnut & Oak

Joe Calus, Owner

CERTIFIED 417-926-4606 • MTN. GROVE

METAL BANDSAW: up to 6" pipe. \$175. 417-288-9861 Hazelgreen.

REGISTERED PUREBRED GERMAN SHEPHERD PUPPIES: 417-741-0175. Hartville.

MOSSBURG 71ST 22LR AUTO: Like new \$240. 417-844-2058. Conway.

WE BUY White Oak Logs!

- Top prices for your logs • Experienced log buyers
- Professional service

Chad Cook | Salem Mill

417.718.2950

5 miles north of Salem, MO on Hwy 19

INDEPENDENT STAVE COMPANY
Log Procurement & Sales

www.independentstavecompany.com

BYLER SUPPLY

The Builder's Choice!

CALL TODAY FOR NEXT DAY SERVICE!
Call for Details

Ask About Our Quick Service.

Over 20 Colors and Several Styles To Choose!

**CUT TO LENGTH PANELS
GALVALUME METAL UNPAINTED
25 YEAR WARRANTY
#1 Standard Panels, 29 Ga.**

\$78.90 sq.



HEAVY 29 Ga. METAL #1
Limited LIFETIME WARRANTY
29 Ga. & 26 Ga. Painted



Reg. Pole Frame Buildings Are Heavy 29 Ga. Metal, Three 2"x6" T&G Splashboards, All Poles 5"x5" Or Larger, CCA Treated, Fully Trimmed With One 3'x6' Walk-Through Door & One Large Sliding Door.

CALL US FOR CURRENT PRICING

Spring Project Supplies!



BYLER BUILDING SUPPLY, LLC



2 1/2 Miles East of Seymour On 60, 1/4 Mile North at the Peewee Crossing \ Star Road Intersection

877-556-8855 · MON.-FRI. 7:30-5 SAT. 8-12 · 417-771-3100

VISIT US AT WWW.BYLERSUPPLY.COM

USED JET HOME POLLUTION CONTROL PANEL: Model CP700. \$50. 636-239-2695 or 314-560-5700. Washington.

1 PAIR OF KEY BRAND MEN'S JEANS: Waist 38, Length 34. \$8. 636-239-2695 or 314-560-5700. Washington.

BLACK METAL TUBULAR BRACKET: Scrolling and a stainless bracket. \$8. Call for pictures. 636-239-2695 or 314-560-5700. Washington.

RUBBER & LEATHER BOOTS AND 5- BUCKLE OVER SHOES: Men's 11,

Women's 7, some insulated. \$12-\$35 obo. 636-239-2695. Washington.

ANTIQU 4 HP ENGINE: Built by Continental Motors Corporation. \$150 OBO. 573-308-5884. Rolla.

'85 FORD PICKUP PARTS: Passenger door with window glass & mirror \$30. Also, Tailgate for '85 Ford pickup \$25. 573-308-5884. Rolla.

FISHING SEASONS COMING: Get your rod and reels, \$15 and up. 417-589-8200. Conway.

NEW JELD WEN 5' LEFT HAND SLIDING GLASS DOOR WITH SUNSTABLE INTERIOR BLINDS: Clear tempered glass, Desert Sand trim/hardware. Retails \$2655 Sell \$900. 417-693-0389. Conway.

TOSHIBA 42" FLAT SCREEN LED LCD HD TV: With remote & owner's manual. \$50. 210-787-8222. Linn Creek.

NEW IN BOX MASTERBUILT ELECTRIC TURKEY FRYER: Up to 14 lbs. Fry, boil or steam. Safe for indoors. \$80. 417-718-5347. Morgan.

OFFICIAL TRACTOR OF TOUGH™

INTRODUCING THE ALL-NEW 5100 SERIES



Marshfield Machinery Inc.

222 E. Madison • Marshfield, MO 65706
417-859-2117 • www.marshfieldmachinery.com

*2018 data including all Mahindra group brand sales.
MahindraUSA.com © 2020 Mahindra USA Inc.



NEW MAHINDRA TRACTORS

1626 4WD & LDR 26HP	IN STOCK
1635 4WD & LDR 36HP	IN STOCK
1640 4WD & LDR 40HP	IN STOCK
2645 4WD & LDR 45HP	IN STOCK
5145 4WD \$ LDR 45HP	IN STOCK
5155 4WD & LDR 55HP	IN STOCK
4550 4WD & LDR 48HP	IN STOCK
6065 4WD & LDR 65HP	IN STOCK
6075 4WD CAB & LDR 71HP	IN STOCK

USED TRACTORS

MF 4609M 90HP CAB LDR	45,000
MF 5445 75HP 4WD CAB LDR	42,500
NHT 4.75 74HP 4WD LDR	32,500
MF 383 72HP CAB LDR	22,500
JD 5303 64HP 4WD LDR	21,500
MAHINDRA 6530 65HP 4WD LDR	19,500
MAHINDRA 2638 38HP 4WD LDR	19,000
JD 1025R 25HP 4WD LDR MWR	14,500
AC 7010 106HP CAB	9,500
MF 1528 28HP 4WD	6,500

USED ROUND BALERS

MMF 2946A 4X6 MESH	35,000
HESSTON 560 5X6	2,000

USED MISC.

BUSH HOG 3715 15FT	13,500
BUSH HOG 2615L 15FT	10,500
JD 1815 15FT	9,500
BUSH HOG 8WHEEL RAKE	4,000
HESSTON 8 WHEEL RAKE	3,000
HESSTON 8 WHEEL RAKE	2,500
OMI 8 WHEEL RAKE	2,500
RHINO 8 WHEEL RAKE	1,500
RHINO 5FT FINISH MOWER	850

Marshfield Machinery Inc.
222 E. Madison
Marshfield, MO 65706
417-859-2117
www.marshfieldmachinery.com

Starnes Auto LLC

22115 Rt. 66 • Lebanon, MO 65536
588-7939 Cell
588-3159 Office
www.starnesauto.com

Worry-Free
VEHICLE ALIGNMENTS

With our state-of-the-art computerized equipment
Front End | Rear End | Four Wheel Drive | Thrust Alignments | Both Foreign and Domestic Vehicles



DON'T FORGET TO CHECK OUT OUR CARS FOR SALE!

WE DO ALIGNMENTS!

CALL WCT TODAY 417-859-4311

LS Tractor

**MENTION THIS AD TO GET
FREE Tire Fluid With a
NEW LS Tractor Purchase***



**LOW RATE
FINANCING
AVAILABLE**



**As low as ...
\$599 per month***



MT573 73hp Cab

MT342H 42hp



**As low as ...
\$325 per month***

MT347 47hp



**As low as ...
\$320 per month***

**As low as ...
\$233 per month**



MT235HE 35hp

**As low as ...
\$182 per month**



MT225s 25hp

**As low as ...
\$170 per month***



XJ2025 25hp

*Monthly payment estimated based on 0 down, 120 month terms, with approved credit for qualified buyers. Offers available for a limited time only. Offer only valid on purchase of new, in-stock, qualifying tractor. Some exceptions apply.



WCT Farm & Lawn
417-859-4311
SALES • SERVICE • PARTS
3299 EVERGREEN ROAD
STRAFFORD, MO 65757
www.wctfarmandlawn.com