

FREE-TAKE ONE!

Vol. 31 No. 1

APRIL 4, 2024

417-532-9131

WEEKLY TRADER MAGAZINE



Find us on Facebook

@myweeklytrader
AUCTIONS PG. 5

VISIT OUR NEW WEBSITE! MYWEEKLYTRADER.COM

**You pull it,
we sell it...**

CHEAP!



Lebanon, MO

22395 Rt. 66

417-588-3555

Fax 417-588-8955



U★PULL★IT

SELF-SERVICE AUTO PARTS

We also have a large inventory of used tires and be sure to check out our used car lot!

Mon.-Fri. 8:00am-5:00pm • Sat. 8:00am-4:30pm

WWW.SSUPULLIT.COM

Located next to S&S Recycling.



Roll-off, Trailer, and Mobile Crushing Services Available

For All Your Metal Recycling Needs

Lebanon, MO

22395 Rt. 66

417-588-3555

Fax 417-588-8955

Mtn. Grove, MO

8930 First Rd

417-926-3360

Fax 417-926-0180

Monday-Friday 8:00am-4:30pm (Closed 12pm-1pm Lunch)
Saturday 8:00am-Noon

email: contact@ss-recycling.com

Buyer of all types of scrap metal.

LAND FOR SALE



40.85 ACRES ± | WEBSTER CO., MO | \$475,000

- Nice location of a mostly open 41 acres with a 1,850 livable sq ft house and great views
- House built in 1962 with some renovations in the kitchen, with total of 2,570 sq ft including unfinished basement
- 3 bedrooms and 2 bathrooms with a nice dining room attached to kitchen and large living room
- Large stocked 3-acre lake for boating, livestock water source, and fishing use
- Gently rolling topography with four crossed fenced pastures and a healthy grass stand
- Incredible views all over the property
- Multiple water hydrants at old dairy farm barns
- Great quality perimeter and cross fencing
- Easy access off blacktop roads
- Lots of parking
- Secluded and quiet area just minutes from Marshfield
- Two sides of road frontage with additional great building locations
- Conway School District

BRIAN UTECHT LAND TEAM
SOUTHWEST MISSOURI LAND SPECIALISTS



📞 **417.766.5595**

🌐 brian.utecht@whitetailproperties.com



WHITETAIL PROPERTIES REAL ESTATE

HUNTING | RANCH | FARM | TIMBER

WHITETAILPROPERTIES.COM

Whitetail Properties Real Estate, LLC DBA Whitetail Properties, DBA Whitetail Properties Real Estate. In the States of Nebraska & North Dakota DBA Whitetail Trophy Properties Real Estate LLC. Licensed in CO, MN, ND, SD, TN & WI - Jeffrey Evans, Broker. Licensed in FL, KS & MO - Jefferson Kirk Gilbert, Broker. Licensed in TX & NM - Joey Bellington, Broker. Licensed in IN - Bill Minor, Broker. Licensed in AL, GA, LA, & MS - Sybil Stewart, Broker. Licensed in TN - Tim Burnette, Broker. Licensed in TN & MS - Josh Monk, Broker. Licensed in AR - Anthony Chrisco, Broker. Licensed in NC, SC, VA - Chip Camp, Broker. Licensed in IA, NC - Richard F. Baugh, Broker. Licensed in MI - Edmund Joel Nogasko, Broker. Licensed in IL, MD, WV - Debbie S. Lax, Broker. Licensed in ID, MT, OR, UT, WA, WY & NV - Aaron Milliken, Broker. Licensed in NY - John Myers, Real Estate Broker. Licensed in OK - Dean Anderson, Broker. Licensed in KY - Derek Fisher, Broker. Licensed in OH - Jeremy Schaefer, Principal Broker. Licensed in NE & SD - Jason Schendt, Broker. Licensed in MS - Chipper Gibbs, Broker. Licensed in PA - Jack Brown, Broker.





RC37 SERIES

ROTARY CUTTERS
50-160 HP 15' Width



- 3" Cut capacity
- Cat. 6 main CV driveline
- 10 Gauge sloped deck
- Cast steel greaseable wing hinges
- New heavier wheel bearing seals

Getting Chores Done
LAND PRIDE
does that.



www.landpride.com

For Outstanding Products & Service

AGRI-ENTERPRISES

1-1/2 Miles South Of Licking, MO On Hwy 63
573-674-2203 • 1-800-653-7152 • www.agri-enterprises.com

HISTORY OF SCHOOLS IN THE MERAMEC VALLEY OF MISSOURI: Many old photos, hardback, \$20. 417-532-2045, Lebanon. Leave message and phone number.

TRIPLE WIDE- moving stock, awesome price. 573-657-7040 chateauhomes.net.

TINY HOMES - Missouri Franchise 573-881-7965.

CENTENNIAL OF IMMANUEL LUTHERAN CHURCH & RADER FAMILIES 1871-1971 BOOK: Out of print book. \$25. 417-532-2045, Lebanon. Leave message and phone number.

WEATHERED BARN WOOD SIDING: 10" wide. Call for appointment 573-729-7226. www.pineridgerustic.com Salem.

LOG SIDING: 2X8 Pine/Western Cedar. Call for appointment 573-729-7226. www.pineridgerustic.com Salem.

LAKE OF THE OZARKS-SPRING SPECIAL Lots starting at \$4,995-\$125 down \$69 per month. Build, camp, or own for investment also acreage tracts. Beautiful wooded area, free lake access and boat ramps, lots are a short distance away from the lake, no credit checks, owner financing, and immediate possession. Missouri conservation boat ramp with a covered dock and rest rooms close by. **Prices good through April 9th, 2024.** Hwy 135 between Stover and Sunrise Beach, MO. Take lake road 135-12 to the Ivy Bend Land Office. Closed Tuesdays and Wednesdays Call anytime 573-372-6493.

40 YEARS THIS YEAR- we have to be doing something right. Call for quote or any house new or used, double and single. 573-657-2176 amegamobilehomes.com.

BAMBOO FLY RODS: \$50. Trout season is coming. 417-589-8200. Conway.

HAY FOR SALE: Alfalfa & grass mix. 4x5 round bales. 417-343-4958. Seymour.

VOTED #1 BEST Preowned Car Dealership

TIM'S USED CARS
(573) 341-3828 • 1334 South Bishop (Hwy. 63) • Rolla, MO
Next to Hwy CC • www.tims-used-cars.com

 <p>2003 DODGE 1500 SLT Quad Cab, 4x4, 4.7 V-8, Power Equipped, 184,xxx Miles Only \$8,900</p>	 <p>2016 FORD F250 XLT X-Cab, 4x4, Longbed, 6.2 V-8, Power Equipped, 148,xxx Miles Only \$22,900</p>
 <p>2013 RAM 1500 EXPRESS Quad Cab, 4x4, 5.7 V-8, Power Equipped, 134,xxx Miles Only \$14,500</p>	 <p>2017 RAM 2500 SLT Crew Cab, 4x4, 6.4 V-8, Power Equipped, 128,xxx Miles Only \$29,500</p>

LARGE SELECTION OF CARS, TRUCKS, SUVs & VANS!

WE GOT IT - let us bid your mobile home purchase, new and used. 573-499-9993 columbiadiscountshomes.com.

I BUY.....used mobile homes. Call or text 573-338-6250 or email GregS.CDH@outlook.com

HIGHPOINT GREENHOUSE OPEN FOR THE SEASON: Flowers, bedding plants, hanging baskets, succulents. New for this year Easter combinations. Hours 9am-6pm Monday-Saturday. Closed Sunday. 9337 Warner Rd. Hartville. 417-741-2793.

BLACK METAL TUBULAR BRACKET: Scrolling and a stainless bracket. \$8. Call for pictures. 636-239-2695 or 314-560-5700. Washington.


RUBBER & LEATHER BOOTS AND 5- BUCKLE OVER SHOES: Men's 11, Women's 7, some insulated. \$12-\$35 obo. 636-239-2695. Washington.

KATAHDIN EWES: Hopping Genetics, Parasite resistance, Pasture lambing, Never grain, No hoof rot, No trimming, Due to lamb in April. 417-322-0161. Lebanon.

NEW JELD WEN 5' LEFT HAND SLIDING GLASS DOOR WITH SUNSTABLE INTERIOR BLINDS: Clear tempered glass, Desert Sand trim/hardware. Retails \$2655 Sell \$900. 417-693-0389. Conway.

GUNSMITHING-Older Rifles, Shotguns, Handguns, all 22LRs. Any make, any model, estate appraisals. Camdenton. 573-363-5801.

1 PAIR OF KEY BRAND MEN'S JEANS: Waist 38, Length 34. \$8. 636-239-2695 or 314-560-5700. Washington.



Meadowview Dutch Market

Bulk & Surplus Groceries • Prices Subject to Stock on Hand

Call to Order
417-993-3017

Sale Dates April 3rd, 2024 to
April 9th, 2024 while supplies last!

DELI SPECIAL

LEBANON BOLOGNAREG. \$6.99 LBSALE \$6.49 LB
BACON CHEESEREG. \$5.89 LBSALE \$5.39 LB

TRY our Fresh Homemade DELI Sandwiches: TURKEY, HAM, ROAST BEEF, ITALIAN, BLT'S, PULLED PORK AND BLT PULLED PORK (MADE YOUR WAY)! COME IN OR CALL to order! ALSO Custom Deli trays! Veggie OR FRESH Meat-N-Cheese!

Premium Sage
Pork Sausage
\$1⁹⁹
16 OZ.

Mini
Hashbrowns
89¢
LB.

Beef Tri-Tip
Roast
\$3⁹⁹
LB.

Unsalted
Butter Quarters
\$2⁹⁹
LB.

50# Russet Potatoes
\$14⁹⁹

Tapioca
Pudding
\$2⁴⁹
4 LBS.

Organic Toasted
Oat Cereal
\$1²⁵
15 OZ.

MEADOWVIEW DUTCH MARKET
417-993-3017 Hours: Mon-Thurs 8-5pm
Fri 8-6pm • Sat 8-5pm
23 Miles West on Hwy 64 • Right on T Hwy
9 miles • Left on E Hwy 1 mile on Left

DUTCH COUNTRY STORE, LLC
573-378-4395
Hours: Mon-Thurs 8-5pm
Fri 8-6pm • Sat 8-5pm
5 miles East of Versailles off Hwy C on Kelsay Road

NOT RESPONSIBLE FOR PRINT ERROR!!

NOW ACCEPTING CREDIT, DEBIT CARDS & EBT

TROYER CHEESE SALE
MARBLE, PEPPER JACK, COLBY, LIGHTNING JACK
\$2⁴⁹ **\$2⁹⁹**
LB. APPROX GLB. BLOCK LB. SLICED

SPORTSET BY SARGENT: Fishing pliers in leather sheath. Like a multi-tool. \$15. 636-239-2695 or 314-560-5700. Washington.

NEW SQUARE D RAINPROOF 50AMP DISCONNECT: \$150. 636-239-2695 or 314-560-5700. Washington.

USED JET HOME POLLUTION CONTROL PANEL: Model CP700. \$50. 636-239-2695 or 314-560-5700. Washington.

1995 JD 850B DOZER: 4,000 hours on motor, 800 hours on tracks, 95% undercarriage. \$31,000 OBO. 660-596-3091. Richland.

ANTIQUE 4 HP ENGINE: Built by Continental Motors Corporation. \$150 OBO. 573-308-5884. Rolla.

'85 FORD PICKUP PARTS: Passenger door with window glass & mirror \$30. Also, Tailgate for '85 Ford pickup \$25. 573-308-5884. Rolla.

INTERNATIONAL PICKUP TRANSFER GEARBOX: \$150. 573-308-5884. Rolla.

1985 ST. LOUIS CARDINALS SIGNED WORLD SERIES BALL: Includes Herzog & Ozzie Smith. PSA/DNA. \$190. Text for pictures. 573-854-8132. Houston.

DARDEN PROFESSIONAL TIMBER HARVESTING, BUYING STANDING TIMBER: Great prices, improve wildlife habitat and improve forest health. State Certified & Fully Insured! 573-247-4808. Salem.

TOSHIBA 42" FLAT SCREEN LED LCD HD TV: With remote & owner's manual. \$50. 210-787-8222. Linn Creek.

WE BUILD CABINS, HOUSES & GARAGES: With top quality materials at reasonable prices. Call Daniel with Yoder's Outdoors for a quote. 573-759-3851 Mornings 8-8:30. Dixon.

SOVIET UNION WINTER WEATHER ARMY HAT: Excellent condition. \$ 35. Text for pictures. 573-854-8132. Houston.

ST LOUIS BLUES: autographed full size hockey stick. Brett Hull. Text for pictures. \$149 573-854-8132. Houston.

RIFLE CASE: Pelican storm. IM3100 long case like new \$160. Text for pictures. 573-854-8132. Houston.

AB SPORT LOUNGE like new \$35. 210-787-8222 Linn Creek.

SNAGGING SEASON IS UPON US: Snagging rods \$35 & up. Rods & reels with line. 417-589-8200. Conway.

HIGHPOINT GREENHOUSE OPEN FOR THE SEASON: New asparagus roots, strawberry plants & rhubarb roots. Hours 9am-6pm Monday-Saturday. Closed Sunday. 9337 Warner Rd. Hartville. 417-741-2793.

TRACTORS: Massey Harris "30" (two to choose from) cheap brush-hogging tractors, one is \$1,500 the other is \$2,000. 417-848-8754. Battlefield.

LEFTY'S FABRICATION: Continuous panels & gates. Corral panels & custom welding. 4175-589-0864. Conway.

DO YOU BELIEVE IN HELL? If so why? Bible study P.O.BOX 863 Lebanon, MO 65536.

MINIATURE GOLDENDOODLE PUPPIES: \$250. 417-741-0185. Grovespring.

YOUTH BED: in good condition \$15. 417-532-2344.

Visit us at www.washingtonbullion.com

BUYING SILVER & GOLD COINS

• SILVER DOLLARS • SILVER EAGLES • GOLD COINS

PAYING FOR PRE 1964

DIMES.....	\$1.60*
QUARTERS.....	\$4.00*
HALVES.....	\$8.00*
HALVES (1965-1970).....	\$2.50*
SILVER DOLLARS	\$20.00*
GOLD (1 OUNCE)	\$2,150.00*

WASHINGTON BULLION
636-744-8181

311 East Main St., Union MO 63084

*Spot Prices Fluctuate

BORDER COLLIES/HEALER PUPS: Shots & Wormed. Call 573-694-9159. Russellville.

FISHING SEASONS COMING: Get your rod and reels, \$15 and up. 417-589-8200. Conway.

FISHING REEL SPOOLS FOR SALE: I've got what you need. \$3/each. 417-589-8200. Conway.

NEW IN BOX MASTERBUILT ELECTRIC TURKEY FRYER: Up to 14 lbs. Fry, boil or steam. Safe for indoors. \$80. 417-718-5347. Morgan.

3 ARMY CANTEENS: Mess kit, belt & duffel bag. Best offer for all. 417-260-0941. Raymondville.

3 BW: motorcycle magazines 2008 Free. 417-260-0941. Raymondville.

STIHL CHAINSAWS: New/used parts & repairs. Chamois, MO. Dennis Brandt 573-763-5615.

FRUIT TREES: Apple, Peach, Cherry, Plum & Pear. \$25. 417-664-0742. Lebanon.

20 LB PROPANE TANK: with OPD valve \$20. 417-532-2344.

HIGHPOINT GREENHOUSE OPEN FOR THE SEASON: Vegetable plants, garden seeds, onion plants & sets, seed potatoes. Hours 9am-6pm Monday-Saturday. Closed Sunday. 9337 Warner Rd. Hartville. 417-741-2793.

2-DRAWER FILE CABINET: Pink. In good condition. \$15. 417-532-2344.

CATTLE PANELS FOR SALE: Approximately 40. \$20/each. 573-247-4280. Salem.

30-30 WINCHESTER RIFLE: with 2 boxes of shells. 636-388-2742.

BUYING SCRAP METAL: All kinds, can torch, Heavy Equipment Call for prices, 40 years' experience. 573-308-6739.

2006 HARLEY DAVIDSON DYNA STREET BOB: 16,413 miles, 88 cubic inch. Thousands in extras. Call for details. \$8,000. 573-544-8059. Belle, MO.

DEAN'S CREEK MOBILE WELDING LLC: Noah Downing, Certified Welder Serving Central Missouri. 573-842-7281.

2 PICKUP BED TRAILERS: \$75. 417-527-2740.

CHILTONS AUTO REPAIR MANUAL: all American cars & Volkswagen 1969-1976. \$30 plus shipping. 417-260-0941. Raymondville.

5' BUSHHOG: old; works. \$100. 417-527-2740.

150HP MERCURY OPTIMAX: \$1,500. 417-527-2740.

AUSTRALIAN PUPPIES FOR SALE OR TRADE: UTD on shots. Ready to go. Out of working parents. 417-967-6493.

WANTED MILK GOAT: 660-598-4019.

FREE TO GOOD HOME: 1-year-old Male Corgi. 417-259-9738. Hartville.

3-JOHN DEERE MOWERS: \$600. 417-527-2740.

MOTORIZED WHEELCHAIR: joystick controlled. Brand new batteries. 573-205-4045.

REGISTERED: Mini-Poodle puppies \$100. 417-741-2793. Hartville

2 YEARLING STEERS: 1 Jersey & 1 Dexter/Jersey. Weighing approximately 600lbs. Asking \$1,200 each, cash. 573-775-2564. Steelville.

2002 F150: 4-door, 4x4, 89,xxx miles. \$5,000. 417-527-2740.

CASH FOR COMICS, SPORTS CARDS, RELATED ITEMS, TOYS: Over 35 years of experience as a collector/dealer. Call or text 636-667-0391.

16FT RIVER JON: electric trolling motor. 5hp, air cooled outboard. \$1500. 417-527-2740.

3PT FINISH MOWER: \$100. 417-527-2740.

FREE PUPPIES: Great Pyrenees/Collie Mix. Very cute. 417-718-8584, leave message. Conway.

JD 495A CORN PLANTER: with dry fertilizer & insecticide. Lots of spare parts. \$500 OBO. 573-308-5884.

ROOMMATE NEEDED, COUNTRY LIVING: Near highway. 15 minutes to Ft. Leonard Wood & 15 minutes to Lebanon. Entire 2nd floor of farmhouse on acreage. \$600/month, includes all utilities. No cats. Call Kurt at 906-396-5877.

Frozen 10" Pumpkin Pie	\$2.99	2.5 lbs.
Lobster Bisque	\$3.49	4 lbs.
Double Chocolate Chex Mix Bars	\$2.69	13.56 oz. \$9.69 case of 4
Pork Chorizo	\$5.99	5 lbs.
Extra Sharp Cheddar Cheese Cracker Cuts.....	\$1.99	10 oz.

1571 State Hwy 64 • Tunas, MO 65764
Hours: 8:30 a.m. to 5:30 p.m. • Closed Wed. & Sun.

JUMBO FLOAT: 95" long x 80" wide x 10" high. Heavy gauge vinyl, Safety valve, 2 screw valves, 12 rope holders, water plug, nylon rope around it. Like new. \$150. 210-787-8222. Linn Creek.

BREWER LOGGING: Looking to buy standard walnut & oak standing timber. Call 417-254-0266, for a free quote.

FINALLY REALIZED ITS TIME TO GET A STORM SHELTER? Call Jeff @ safeplacestormshelter 417-894-3159. Professional storm shelter consultant for 20 years.

WE GOT IT - let us bid your mobile home purchase, new and used. 573-499-9993 columbiadiscounthomes.com.

TIGER WOODS UPPER DECK CARD:
#1 mint condition. 573-854-8132. Houston.

HISTORY OF SCHOOLS IN THE MERAMEC VALLEY OF MISSOURI:
Many old photos, hardback, \$20. 417-532-2045, Lebanon. Leave message and phone number.

LOG SIDING: 2X8 Pine/Western Cedar. Call for appointment 573-729-7226. www.pineridgerustic.com Salem.

TINY HOMES - Missouri Franchise 573-881-7965.

CENTENNIAL OF IMMANUEL LUTHERAN CHURCH & RADER FAMILIES 1871-1971 BOOK: Out of print book. \$25. 417-532-2045, Lebanon. Leave message and phone number.

HIGHPOINT GREENHOUSE OPEN FOR THE SEASON: Flowers, bedding plants, hanging baskets, succulents. New for this year Easter combinations. Hours 9am-6pm Monday-Saturday. Closed Sunday. 9337 Warner Rd. Hartville. 417-741-2793.

TRIPLE WIDE- moving stock, awesome price. 573-657-7040 chateauhomes.net.

WEATHERED BARN WOOD SIDING: 10” wide. Call for appointment 573-729-7226. www.pineridgerustic.com Salem.

40 YEARS THIS YEAR- we have to be doing something right. Call for quote or any house new or used, double and single. 573-657-2176 amegamobilehomes.com.

I BUY.....used mobile homes. Call or text 573-338-6250 or email GregS.CDH@outlook.com

AB SPORT LOUNGE like new \$35. 210-787-8222 Linn Creek.

Serving Central Missouri!

in 34 counties!

- Benton
- Boone
- Callaway
- Camden
- Cedar
- Christian
- Cole
- Crawford
- Dallas
- Dent
- Douglas
- Franklin
- Gasconade
- Greene
- Henry
- Hickory
- Howell

- Iron
- Laclede
- Maries
- Miller
- Montgomery
- Oregon
- Osage
- Ozark
- Phelps
- Polk
- Pulaski
- St. Clair
- Texas
- Washington
- Webster
- Wright
- Morgan

WEEKLY TRADER

MAGAZINE

417-532-9131
100 E. Commercial St.,
Lebanon, MO 65536

WWW.MYWEEKLYTRADER.COM @myweeklytrader

Sam CRAWFORD AUCTION SERVICE LLC

As I am downsizing, will sell the following items I no longer use or need at my farm located at the North edge of Lebanon on Hwy. 5 to Hwy. YY, then East on Hwy. YY 4 miles. Watch for auction signs.

WEDNESDAY, APRIL 17TH, 2024 - 9:30 A.M.

GUNS - TRACTORS - TRAILERS - MACHINERY - MISC.



GUNS - SELL AT 9:30

Weatherby MK V 340 WSM Left Hand, Scope, USA
 Weatherby MK V 300 WSM Left Hand, Scope, Japan
 Weatherby MK V 30/06 Scope, Japan
 Weatherby Athena 12 Ga. O/U, Japan
 2 Remington 550-1 22
 Remington 870 Wingmaster, Left Hand, 12 Ga.
 Remington 1100 Left Hand 12 Ga.
 Remington Targetmaster 22
 Remington Nylon 66 22 Black
 Remington 592 M, 5mm Mag, Scope
 Remington 700, 22/250, Scope, Syn. Stock
 Marlin 917V, 17 HMR, Scope
 Marlin 25MN 22 WMR Scope
 Savage 99 300 w/Scope
 H & R Plainsman 22
 Survival .22 Rifle
 Antique Russian Military Rifle
 Ithaca 22 Single Shot, Lever
 Sears 21 410 Pump
 Savage Sporter 22

PISTOLS

Smith & Wesson 357 Mag
 Smith & Wesson M & P 380 Shield
 Ruger Charger 22 New, LR
 Beretta 950 22 Short
 Beretta 92 FS 9mm
 Beretta U22 LR
 Kahr 45 ACP
 Hi Point JWP 45 ACP
 Taurus Tracker 22
 Interarms Virginian 45 Colt
 Sev. Boxes of 22/250 Ammo
 Sev. Boxes 300 Weatherly Ammo
 3 Compound Bows
 Mec Shotgun Reloader
 Dies, Presses, Scales
 Shotgun Hulls
 50-60 Case White Flyer Clay Targets
 Laport 185 Electronic Target Thrower
 Range Finder
 Lot Snap On Cups & Clock

**VEHICLES & TRAILER
SELL NEAR 12 NOON**

'81 Chevrolet Corvette, 350 Auto, T-Tops, 51K, Sheddied & Clean
 Set Wire Spoke Wheels for Corvette, Sell Separately
 '99 GMC ¾, 4x4, Gas, Auto, 98K, w/Dew Eze Bed
 '97 GMC ½ Ton, 4x4, Gas, Lift Kit
 '86 Dodge ¾, 4x4, Gas, 4 Speed w/Dew Eze Bed
 '96 Geo Tracker, 5 Speed, 4x4
 '85 GMC ½ Ton, 2x4, No Motor
 Shop Built Gooseneck 32' Low Profile Flatbed Trailer w/Ramps, Tandem Duals, HD
 Starcraft 12' Pop-Up Camper

**YELLOW IRON
SELL NEAR 12:45 AFTER
VEHICLES/TRAILER**

'05 "CAT" 953C Track Loader, Clam Shell Loader, Cab, Air, Runs Good
 "CAT" 120G Grader 5100 Hrs., Looks Good, Runs Good
 "CAT" T12 Rubber Tire Loader, Diesel, Bucket & Forks, Runs Good
 IH 3850 Rubber Tire Loader, Gas, Bucket & Forks, Runs Good
 Case 1840 Diesel, Skid Loader, Bucket & Forks, 2100 Hrs., Runs Good

**TRACTORS
SELL NEAR 12:45 AFTER
VEHICLES/TRAILER**

IH 5088 Cab/Air, 136 PTO HP, 5326 Hrs., Sheddied, Nice
 IH 3088 Cab/Air 81 PTO HP, (PTO Needs Work)
 IH 3688 Cab/Air, 113 PTO HP, Sheddied, Sharp, Hyd. Pump Out
 IH 756 Diesel, Canopy, Farmhand Loader, Sheddied & Sharp, No Torque on Low Side
 IH 444 Propane, Runs Good
 IH 354 Gas, Runs Good
 Allis Chalmers WD45 W/F, Runs Good
 Massey Ferguson 150 Diesel, 2700 Hrs., Sheddied, Nice
 Massey Ferguson 204 Gas w/Loader, Shuttle, Runs Good
 Harry Ferguson TO, Runs Good
 •• A Letter of Credit Needed on CAT 953 Loader, CAT Grader & Corvette If Not Known By Auctioneers ••

MACHINERY

MF 1330 3 Pt. 10' Disc Mower, Sheddied, Nice
 NH BR 7090 Round Baler, Net Wrap, (Low Bales on S & H Shop Visit), Sheddied, Nice
 NH 1012 Sq. Bale Wagon
 NH 56 & 256 Side Rakes
 Bush Hog 20' Folding Cutter
 JD 1630 10' Cutting Wheel Disk
 Older 12' Wheel Disk w/2' Wings
 Pull Type 12½' Rock Rake, Hyd. Lift
 8' 3 Pt. HD Box Blade
 3 Pt. 6' Box Blade
 Ford 3 Pt. Post Hole Digger
 3 Pt. Light Duty Post Hole Digger
 Shaver 3 Pt. Hyd. Post Driver
 IH 4 Bottom Semi-Mt. Plow
 3 Pt. 5' Bush Hog
 5' Shop Built Roller
 7' Loader Bucket
 4 Wheel Wagon Gear
 2 - 2 Wheel Farm Trailers
 3 Pt. Boom Pole
 Gas Good Splitter
 Shop Built Bumper Hitch Dump Trailer
 Shop Built Tree Shear For Skid Steer

MISCELLANEOUS

8550 Portable Generator
 Poly 500 Gal. Water Tank
 2 Job Boxes
 Lg. Storage Box 7½ Tall x 6½x18"
 Hyd. Feed Box for Pick-Up
 Military 14' Metal Truck Bed
 Wagon Hoist
 A-Frame on Rollers
 Port. Squeeze Chute
 2 - 17.5x25 Loader Tires, New
 30.5x32 Pulling Tractor Tire
 Older IH Cab
 Pair Cast IH Rear Hubs (56 Series)
 3 Backhoe Buckets
 Set Metal Tracks For Skid Steer
 Ant. Pull Road Grader
 4 - 24' Metal Light Poles
 Approx. 15 - 24' Bar Joists Trusses
 Lg. Pile Used Metal Roofing
 Asst. Pick-Up Truck Tires & Wheels
 Metal Pick-Up Flatbed
 Pair Aluminum Ramps
 9' HD Fork Ext. For Loader
 Other Misc.



Large Farm Auction For Long Time, Well-Known Lebanon Area Resident. Major Items Have All Been Well-Maintained & Good Care. Loader on Site & Trucking Available.

SAM CRAWFORD Auction Service LLC



TERMS: Cash or good check. Nothing removed until settled for. Not responsible for accidents. Lunch available. Statements made day of sale take precedence over printed matter. All items sell as is. No warranties given or implied.

417-998-6629
Cross Timbers, Mo.

CrawfordAuctionService.com

Sam
417-328-9137

Chase
417-399-1904

Chance, CAI
417-298-1751

Tom Poynter
Jack Lancaster

Charley Steinmark



SPRING CONSIGNMENT

THE FOLLOWING ITEMS WILL BE OFFERED AT PUBLIC AUCTION LOCATED AT 8035 NW HWY AA, APPLETON CITY, MO 64724. FROM APPLETON CITY GO EAST 2 MILES ON 52 HWY TO A, GO SOUTH ON A HWY 1/4 MILE TO AA. THEN EAST ON AA HWY TO AUCTION.

SATURDAY, APRIL 6, 2023 10:00 A.M.

**FIREARMS & HUNTING
(SELL @ 10:00 AM)**

Remington Mod. 700 BDL .243 w/Nikon Scope
 Remington Mod. 700 BDL 30-06
 Remington Mod. 700 BDL Deluxe 30-06 (made in 1971)
 Remington Mod. 700 ADL 30-06 Sportsman Barrel
 Remington Mod. 700 Classic .35 Whelen
 Remington Mod. 700 Classic .338win mag
 Remington Mod. 700 ADL .270win w/Bushnell Scope
 Remington Nylon 66 .22lr
 Remington Mod. 740 30-06
 Remington Mod. 783 30-06 w/scope
 Remington Mod. 770 .308 w/scope
 Remington Mod. 552 Speedmaster .22lr w/Weaver scope
 Remington Mod. 597 .22lr
 Remington Mod. 511 Scoremaster .22lr
 Remington Mod. 1100 12ga 3" mag vent rib
 Remington Mod. 11-48 28ga 2 3/4" full choke
 Remington Mod. 870 Wingmaster 12ga vent rib
 Remington Mod. 870 Express 3" mag 12ga
 Remington Mod. 48 Sportsman 16ga Pedersoli Sharps 45/70 govt. w/Tangent Sight 34" barrel
 Winchester Mod. 12 12ga 2 3/4" full choke vent rib
 Winchester Mod. 12 12ga 3" full choke vent rib
 Winchester Mod. 12 12ga. 3"
 Winchester Mod. 1890 .22lr
 Winchester Mod. 6 .22 s,l,r (made in 1949)
 Winchester Mod. 12 16ga.
 Antonio Zoli .222/16ga O/U
 CZ 527 7.62x39 Carbine
 Chiappa M1-22 .22lr w/scope & 2 mags
 Bushmaster Mod. XM-15 -E2S .223/556 w/4 mags, scope & case
 Anderson AR-15 w/Black Rain Internals .223 Hawke Scope
 Ruger M77 Red Pad Tang Safety .270 win w/scope
 Ruger 10/22 Breakdown .22lr w/case & box
 (2) Ruger MKIII 22/45
 Ruger Single Six 22/22 mag.
 Ruger MKII .22lr 6" barrel
 Ruger Standard .22lr 4 3/4" barrel
 Ruger Wrangler .22lr
 Marlin Mod. 39 .22lr Octagon Barrel (made 1926)
 Savage Mod. 93R17 17HMR Heavy Barrel (New)

Savage Mod. 93R17 17HMR w/scope
 Savage Mod. 93R17 17HMR w/accu
 Savage Mod. 111 30-06 w/26" McGowan Heavy Barrel
 Savage Axis 6.5 Creedmoor w/scope
 Savage Axis SS .308win w/scope
 Savage Axis 25-06 w/scope
 Savage Axis .243win. w/scope
 Savage Mod. 64 .22lr Heavy Barrel w/Boyd's Thumbhole stock, scope & bipod
 L.C. Smith Double 12ga. (wall hanger)
 Parker Double 12ga Hammerless
 Stevens Mod. 59 .410 3" bolt
 New England SB1 .20ga 3"
 Browning BPS .28ga screw in chokes
 Henry H001 .22lr w/scope
 Henry Golden Boy .22lr
 Henry Golden Boy .22lr (Friends of the NRA edition)
 Rossi R22 .22lr
 Mosin Nagant 91/30 7.62x54 w/Scope & approx. 800 rds
 Mossberg Mod. 88 .20ga youth
 Springfield Mod. 1944 .20ga youth
 Colt 1877 .38 Lightning (made in 1963)
 S&W Mod. 22A .22lr 7" barrel, w/Bushnell Red Dot, 3 mags, case & box
 Cricket .22lr w/Red Dot
 Hatfield SGL .410 single shot
 Citadel Tracker .22win mag w/scope
 S&W SW40V .40 S&W
 Glock 19 9mm
 Glock 23 .40S&W
 (2) Heritage 6 shot Cocobolo .22lr/22 mag
 Heritage 6 shot case hardened 6 1/2" 22lr/22 mag
 Hi-Point Mod. JCP .40S&W
 Hi-Point Mod. CF-380 .380 auto
 Cobra Mod. CA-280 .380 auto
 SCCY CPX-1 9mm
 Bersa Thunder .380 auto
 EAA Bounty Hunter .22lr/22 mag
 Taurus Slim 40 .40S&W

TRACTORS & EQUIPMENT

1945 H Farmall converted 12V, new tires, NF, original owner manual, parade ready
 Ford 2000 500 hrs, new tires, 3pt, 540 PTO
 JD 750 15' Drill
 JD 700 Rake
 NH BR780 5x6 Baler Twine 540 PTO
 1999 Vermeer 605L Baler Twine Tie
 Vermeer 604H 4x5 Baler Manual Twine Tie
 Vermeer SC252 Stump Grinder w/newer Kohler engine
 JD 672 Side Delivery Rake
 10 Wheel V-Rake
 Side Delivery Rake (Model Unknown)
 30' Rolling Basket & Harrow (Off Sunflower field Cultivator)

Rear Hitch (Off Sunflower Cultivator)
 (3) Danuser Post Hole Diggers w/Bits
 Krause 1900 18" Disc
 International 10' Pull type disc
 9' Big Ox 2-way Box Blade
 BH 12' Rigid Brush Hog 540 PTO
 300 gal. Slide in Sprayer w/45' booms
 3pt Box Blade
 Quick Attach Hay Spike
 JD Quick Attach Hay Spike
 3pt Bale Spike
 Global Double TR Spike
 John Blue Ground Drive Pump & Mechanism
 Parker 300 Bushell Gravity wagon w/new tires
 JD 4 bottom plow
 Gooseneck slide over bale spike elec/hydraulic
 International #10 Auger Wagon
 Ford 501 7' Sickle mower
 Homemade header wagon

VEHICLES, TRAILERS & UTV

2006 Ford F250 4x4 XLT 172,000 m/1 5.4 V8 auto, pw/l newer tires, b&w hitch
 2012 Nissan Juke AWD 1.6L Turbo 206,000 m/1
 2003 Ford F250 4x4 5.4 V8 5 spd 153,000 m/1 Flatbed
 1997 Buick Park Avenue 3800 Series II, pw/l, heated seats, 161,400 m/1
 1996 Suzuki Sidekick JX 1.6L 4x4 (mileage unknown)
 2002 Ford Windstar 237k miles
 1970 Chevy C90 10-wheeler 671 Detroit, 10 spd. Parkhurst 20" bed w/rollover tarp, hoist, air tag
 1980 Ford F700 2-ton grain truck, 5+2, 370 engine, 16" Parkhurst Steel bed 103k miles
 King Mfg. 6 bale tipper trailer, bumper hitch
 1978 20' Gooseneck Stock Trailer
 Triple Trailerhouse Axle 20' Gooseneck 6x10 Tilt Trailer
 5x10 Utility Trailer
 2015 Polaris RZR 170 EFI w/Underglow, Roof & Windshield

LIVESTOCK EQUIPMENT

GWS 3-Ton Portable Bulk Bin
 3/4 Working Tub w/Alley
 750 + 5 & 6' T-Post (Some Like New)
 (40) Corral Panels
 (16) Gates (Various Lengths)
 Mineral Feeders
 Self-Catching Head Gate
 6 Bar Gates (8'-16')
 (3) Walkthrough Bow Gates
 Assorted Steel Pipe
 Galvanized Water Tank
 Hi-Tensile Wire
 Approx. 2 miles used barbed wire (rolled on wire roller)
 (2) MFA 145 Creep Feeder

4 Hole Mirafount Waterer
 (4) Johnson Waterers
 Bulk Bin (Needs Work)
 Heavy Square Baler Twine
 (6) 16' Cattle Panels
 Patriot Solar Fencer
 New Rolls Woven Wire

LAWN/GARDEN, TOOLS & MISC.

Wright Stand-On 52" Mower Kawasaki
 Engine 2000 hrs
 Husqvarna 46" Riding Lawnmower
 Craftsman Reartine Garden Tiller
 Finco Sprayer
 (2) New Jones Red Chainsaws
 SS Cabinet on wheels
 Steel Containment Bunkers (For 1000-gal fuel tanks)
 Large Truck Bed Transfer Tank
 Apprx 200 Linear Foot 3 Rail Vinyl Fencing (NEW)
 Delta Tablesaw
 Homelite Hotsaw
 Old Gas Station Fuel Pump
 Several Cases Harvest King Grease
 Several ATV & Dirtbike Tires (Some New)

47"x47" Exhaust Fan
 Air Ratchets
 Hammett AC/DC Welder
 Engine Stands
 1/2" Electric Impact
 Coats 10/10 Tire Machine
 Husky Powerwasher
 Generator/Alternator Tester
 8-Ton Cherry Picker
 14" Chopsaw
 R&D Parts Washer
 Coleman gas Generator
 20-ton Press
 Misc. Power Tools
 Log Chains
 Saddle Trees
 8' Aluminum Step Ladder
 Several (New) Oil Filters
 Several Brake Kits
 Transmission Filters
 Carburetor Kits
 JD Gator Wheels
 Walnut Lumber
 Misc. Framing Lumber
 Misc. Vet Supplies
 Misc. Hand Tools
 Commercial Grade Stainless Steel Cookware
 Other Items Too Numerous to mention



AUCTIONEERS NOTE: THIS IS A GREAT LINEUP OF FIREARMS & TOOLS AS WELL OF EQUIPMENT & VEHICLES. WE EXPECT THIS LIST TO GROW & HAVE MANY MORE ITEMS BY SALEDAY!

TERMS OF SALE: Cash or good check w/ proper ID. Nothing to be removed until settled for. Statements made day of sale take Precedence over printed materials. Lunch served and toilets on site.

COL. KEVIN WADE MOBILE 660-492-3279
 COL. BRYAN WADE MOBILE 660-492-3740
 TYLER WADE MOBILE 660-492-7764
 CLERKS: NORRIS, IRBY & WADE
 TO VIEW AD ONLINE GO TO
WWW.AUCTIONZIP.COM
 AUCTIONEER ID: 24103



WADE



AUCTION SERVICE
 APPLETON CITY, MO
 660-492-3279

ABSOLUTE AUCTION FOR THE TANEY COUNTY SHRINE CLUB

1741 FORSYTH TANEYVILLE RD, FORSYTH MO, 65653 | ONLINE AND ON-SITE
SATURDAY, APRIL 6, 2024 AT 1:00 PM CDT



1996 Single Wide Trailer
Cozy and spacious 1996 single wide trailer, perfect for those looking for comfortable living in a classic style. With two bedrooms, two baths, and an open concept living area, this trailer offers plenty of room to relax and entertain. The carport provides additional convenience and protection for your vehicle.
(Bolt on Hitch and No axles)
Trailer has to be moved from location
Open House March 24th 2-4 | 1741 Forsyth Taneyville RD, Forsyth MO, 65653
Proceeds are for the benefit of Abou Ben Adhem Shriners Taney County Shrine Club activities. Payments are not deductible as charitable contributions. Entrants agree to hold harmless Taney County Shrine Club and Abou Ben Adhem Shriners from any loss, damage or injuries.

FOR MORE INFORMATION GO TO WWW.EASTERLYAUCTIONCO.COM OR CALL EASTERLY'S AT 417-833-9494



Mike Easterly Auctioneer • 417-833-9494

Not Responsible for accidents or theft. For more information call: Easterly Auction Company, Springfield, MO. Auction Terms: Visa, Mastercard, Cash, Cashier's check or checks with proper I.D. Announcements day of sale take precedence over printed material. Auction Notes: Although information is obtained from sources deemed reliable, auctioneer makes no warranty or guarantee expressed or implied. Buyers should themselves take the opportunity to make their own inspection prior to sale.

www.EasterlyAuction.com • auctionzip.com ID#14770



PERSONAL PROPERTY AUCTION

ONLINE ONLY

THURSDAY, APRIL 11, 2024 AT 6:00 PM CDT

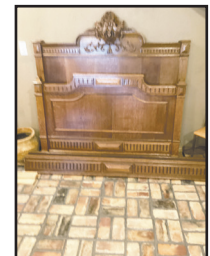
INVENTORY LIST:

Lot: 1 - Armoire 62 inches wide 104 inches tall | Pick up ONLY
 Lot: 2 - Curved curio cabinet tiger, oak 48 inches wide, 73 inches tall | Pick up ONLY
 Lot: 3 - 38 inches wide by 24 inches deep by 29 inches tall Tiger oak | Pick up ONLY
 Lot: 4 - Tiger oak 50 wide 20 deep by 79 tall | Pick up ONLY
 Lot: 5 - Beveled glass tiger oak hall tree 60 inches wide 20 inches deep 92 tall | Pick up ONLY
 Lot: 6 - 125 inches sectional six pieces some damage with pillows | Pick up ONLY
 Lot: 7 - set of arm chairs cloth fabric | Pick up ONLY
 Lot: 8 - Rye tiger, oak dining room table with two leaves 75 1/2 inches with the leaves and 52 1/2 inches without the leaves, table is in good condition the leaves do you have some damage | Pick up ONLY
 Lot: 9 - Purple cloth loveseat, and arm chair zippers on cushions are in op | Pick up ONLY
 Lot: 10 - French style arm chairs | Pick up ONLY
 Lot: 11 - 48 inches wide 20 inches deep 81 inches tall wardrobe | Pick up ONLY
 Lot: 12 - 49 wide 18 deep by 82 tall tiger oak hall tree hall tree | Pick up ONLY
 Lot: 13 - Small wooden cart | Pick up ONLY
 Lot: 14 - Full-size tiger, oak bed with headboard, footboard and rails | Pick up ONLY
 Lot: 15 - 52 wide 17 inches deep, 94 tall wardrobe | Pick up ONLY
 Lot: 16 - Kansas City neon light needs work Kansas city, Chiefs, Miller light lamp needs work neon | Pick up ONLY
 Lot: 17 - Route iron, twin bed with rails | Pick up ONLY
 Lot: 18 - Three. Retro barstools. | Pick up ONLY
 Lot: 19 - SMS, Lynn, Berg, bear and mini basketball | Pick up ONLY
 Lot: 20 - Wells Fargo Xpress, San Francisco, division spit tune | Pick up ONLY

Lot: 21 - Antique fire, depression | Pick up ONLY
 Lot: 22 - Three kitchen appliances | Pick up ONLY
 Lot: 23 - Fruit ornament, possibly in scent | Pick up ONLY
 Lot: 24 - Frog made of pottery | Pick up ONLY
 Lot: 25 - Pottery vase | Pick up ONLY
 Lot: 26 - Flower, arrangements, decorations | Pick up ONLY
 Lot: 27 - Bedding, lot and decoration pillows | Pick up ONLY
 Lot: 28 - Fenton vase | Pick up ONLY
 Lot: 29 - wicker, end table | Pick up ONLY
 Lot: 30 - Large Santa Claus decoration | Pick up ONLY
 Lot: 31 - A Mixed glass lot With two lamps | Pick up ONLY
 Lot: 32 - Wicker chest with books | Pick up ONLY
 Lot: 33 - Eminem taxi dispenser | Pick up ONLY
 Lot: 34 - Marano glass bowl with tag | Pick up ONLY
 Lot: 35 - Miscellaneous glass and decorative lot everything on the table | Pick up ONLY
 Lot: 36 - 44 inch tiger oak dining table with six chairs fabric may need some repair | Pick up ONLY
 Lot: 37 - Dale Earnhardt, 1995 official Monte Carlo race car | Pick up ONLY
 Lot: 38 - Dale Earnhardt Chevrolet suburban | Pick up ONLY
 Lot: 39 - Dale Earnhardt Chevrolet Tahoe truck bank diecast | Pick up ONLY
 Lot: 40 - Dale Earnhardt brickyard 400 Indianapolis speedway, diecast car and sports card 1995 | Pick up ONLY
 Lot: 41 - The Winston select May 20, 1995, Dale Earnhardt desk set | Pick up ONLY
 Lot: 42 - 3 1 to 64 scale, diecast race team transporters | Pick up ONLY
 Lot: 43 - Dale Earnhardt 1994 premium edition and Jeff Gordon, 1994 premium edition | Pick up ONLY

Lot: 44 - Eight premium edition, 1993 NASCAR racers | Pick up ONLY
 Lot: 45 - 1993 NASCAR trucks | Pick up ONLY
 Lot: 46 - Eight matchbook NASCAR | Pick up ONLY
 Lot: 47 - Six NASCAR | Pick up ONLY
 Lot: 48 - NASCAR knives and collectibles | Pick up ONLY
 Lot: 49 - Limited addition Dale Earnhardt diecast truck, side collection, Montecarlo race, car, Chevy crew, cab and car trailer | Pick up ONLY
 Lot: 50 - 1955 Ford Fairlane crown Victoria diecast | Pick up ONLY
 Lot: 51 - 1993 Indianapolis 500 official truck, Chevrolet suburban metal diecast replica bank | Pick up ONLY
 Lot: 52 - Dale Earnhardt suburban cast iron bank | Pick up ONLY
 Lot: 53 - Cast iron transport with premium stock car Jeff Gordon, 1995 champion | Pick up ONLY
 Lot: 54 - Premier edition, 1/18 scale, diecast stock car with opening hood and engine | Pick up ONLY
 Lot: 55 - Dale Earnhardt pitstop showcase | Pick up ONLY
 Lot: 56 - Jeff Gordon pitstop showcase | Pick up ONLY
 Lot: 57 - Matchbox set of Allen Kulwicki NASCAR | Pick up ONLY
 Lot: 58 - The set of 7 Earnhardt cars | Pick up ONLY
 Lot: 59 - 1994 Dale Earnhardt, champion pendant I have never seen one | Pick up ONLY
 Lot: 60 - Two NASCAR trucks trailers | Pick up ONLY
 Lot: 61 - Eight NASCAR cars | Pick up ONLY
 Lot: 62 - NASCAR collection of the decade of dominance, Dale Earnhardt collector cards, cornflakes poster | Pick up ONLY
 Lot: 63 - Dale Earnhardt and Jeff Gordon double pack two cars | Pick up ONLY

AND SO MUCH MORE!



FOR MORE INFORMATION GO TO WWW.EASTERLYAUCTIONCO.COM OR CALL EASTERLY'S AT 417-833-9494



Mike Easterly Auctioneer • 417-833-9494

Not Responsible for accidents or theft. For more information call: Easterly Auction Company, Springfield, MO. Auction Terms: Visa, Mastercard, Cash, Cashier's check or checks with proper I.D. Announcements day of sale take precedence over printed material. Auction Notes: Although information is obtained from sources deemed reliable, auctioneer makes no warranty or guarantee expressed or implied. Buyers should themselves take the opportunity to make their own inspection prior to sale.

www.EasterlyAuction.com • auctionzip.com ID#14770



REAL ESTATE & PERSONAL PROPERTY AUCTION

1326 WEST MCGEE STREET, SPRINGFIELD, MO 65807 | ON-SITE ONLY
SATURDAY, APRIL 13, 2024 AT 10:00 AM CDT

Open viewing April 7th , 2024 from 2-4 pm

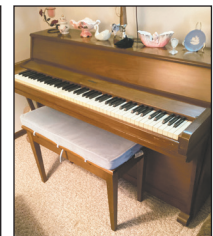
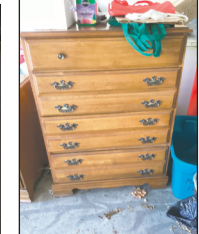
Legal: Lindon Sperry Sycamore Wells Sub 2nd Add Lot 4

Taxes: \$ 1386.46

Terms: 10% down day of auction with balance due at closing possession at closing. Closing in 45 days or less from the auction date.

Real Estate will sell at 12 P.M.

Welcome to this charming 3-bedroom, 2-bathroom 1,439 sq ft home! Step inside and be greeted by the warmth of the wood fireplace in the living room, perfect for cozy evenings. The master bedroom boasts an en suite bathroom and a spacious walk-in closet, providing a luxurious retreat. The open concept kitchen and dining room create an inviting space for meals and gatherings. Enjoy the outdoors on the screened-in porch with a sun deck, where you can relax and take in the fresh air. This home also includes a convenient 2-car garage, ensuring ample space for your vehicles and storage. Don't miss the chance to make this wonderful house your dream home!



INVENTORY LIST:

- 2008 Cadillac CTS
- 3.6, 38,800 miles, Black Interior
- Leather, Moonroof
- Whirlpool, washer and dryer
- Coco Chanel perfumes
- Electric crock pot
- Radio
- Panasonic microwave
- Full bedroom set with dresser and chest of
- Dishes and cookware
- Mirror
- Child wooden chair
- End table
- Lamp
- Coffee pots
- Disney ears
- Pictures
- Whirlpool refrigerator
- freezer icemaker
- Tea cup collection
- Filigree mirror
- Wood TV trays
- Pioneer and JVC stereo equipment
- Spoon collection
- Table and eight chairs with extra leaf
- Dutch oil lamp
- Lots of decorations
- Cardinals gnomes
- Cardinals memorabilia
- Cast iron small seat
- Replica phone
- Signed basketball
- Melodigrand piano and bench
- Thimble collection
- Lots of figurines
- Small figurines
- Sewing box
- SMSU Clock
- Flashlights
- VHS and DVD
- Grocery cart
- Chair
- Globe nice wooden stand
- Scale
- Fireplace tools
- Shredder
- Elite flatscreen TV and stand
- Sanyo tv
- Two recliners
- DVD and VHS player
- Small entertainment console on wheels
- Sofa
- Coffee table and end tables with lamps
- Landline phones
- End tables
- Keychain collection
- Collectibles
- Patio furniture
- Rocking Recliner
- Filing cabinets
- Barbie Childs chair
- Barbecue grill
- Desk
- Printer
- Dressers
- Radio
- Books
- Antique wrought iron headboard with frame
- Shelving
- Yard tools
- Whirl, pool, deep freeze
- Metal racks and small items
- Decorations
- Cast iron pot

FOR MORE INFORMATION GO TO WWW.EASTERLYAUCTIONCO.COM OR CALL EASTERLY'S AT 417-833-9494



Mike Easterly Auctioneer • 417-833-9494

Not Responsible for accidents or theft. For more information call: Easterly Auction Company, Springfield, MO. Auction Terms: Visa, Mastercard, Cash, Cashier's check or checks with proper I.D. Announcements day of sale take precedence over printed material. Auction Notes: Although information is obtained from sources deemed reliable, auctioneer makes no warranty or guarantee expressed or implied. Buyers should themselves take the opportunity to make their own inspection prior to sale.

www.EasterlyAuction.com • auctionzip.com ID#14770



PUBLIC AUCTION

Saturday, April 6th at 9:00 AM - (NOTE EARLY START TIME!!)

Location: 107 West Broadway Street, West Plains, Mo. Located at the corner of Washington Ave and Broadway Ave.

ANTIQUES

100-year-old 44in Oak Dining table, vintage make-up table (tiger oak), wood windows, decorative frames, sling blades, walk behind cycle mower with motor, school desk and a vintage AM/FM radio, vintage oak wardrobe, dressers, children's dressers, rocking chairs, bottles, slinger sewing machine, and a child's bouncy horse, Signature vintage porcelain sink and base, all brass table decorative 46"x29", furniture parts, wood ladder, westing house vintage fan.

FURNITURE-HOUSEHOLD ITEMS

Tons of end tables, beautiful hurricane lamps, electric sewing machine, wood wash stand, office chairs, 2 box scrolls piano, milk glasses, crystal depression, capital Italian pottery, lots of cast iron, several metal and wooden office desks, 3 glass display cases, ornate children chairs, slate top tables, lots of wooden chairs, gas log fireplace inserts, plastic washtub, swivel lazy Susan, coffee table, end tables, ice cream parlor table, singer pedal sewing machine and box, 4 camel back trunks, chandeliers, metal shelving, mirrors, show-walker executive desk, tons of picture frames, Royal typewriter w/table, Barely twist desk and tables, 2 waterfall dressers, galvanized mop bucket, spindles/bases/legs/pedestals, floor lamps, 4 cedar trunks, 1906 world's fair oriental mirror and stand and 3 cases of hurricane lamp globes. 20 sets of antique table and chairs, brass bed/headboard/footboard, metal filing cabinet, wooden wall phone, Mahogany highboy dresser, several headboard and footboard sets, wood table with marble top, corner seat chair.

SHOP-MISC

1982 John Deere electric 90 lawn mower, 8-gun cabinet, gun racks, Maytag wringer washer, table saw, 5 salamander heater, neon open sign, router table, 1959 burpee can seal, copper lined cigar humidior, John Pils St. Louis Station #109 (signed), lots of brass items, box of keys, Military Post Office box 36 slot, two ton floor jack, Nutrena metal sign, funks, metal sign, Johnny West Comanche, Breyer horse sets, Clydesdale horse sets, reloading supplies, Bimbo Hollywood hall tree and umbrella, display racks, chicken weather copper, 2 wood ladders, sharp cash register, AC charging machine, misc. stove parts, collection of Beyer horses, 1980's Avon collection, Martin House, Porta-Power, Davis Phonograph with 58 records, metal toolboxes, sawhorses, bicycles with basket, vintage snatch block, hubcaps, wood workbenches, brave and bits, 3 peddle cars.

AUCTIONEER NOTES- Broadway Furniture was in business for over 40 years! 9000 square feet completely FULL of antiques, furniture, collectibles, tools, and more! Make plans to attend this fine auction something for everyone, watch for pictures on website and Facebook!

Owner: Former Broadway Furniture

BILLY SEXTON AUCTIONEERS

683 Missouri Avenue, West Plains, MO • Office: 417-255-2744

Billy Sexton 417-257-4595 • Ark. License # 2749 • www.sextonauctions.com

Justin Kraft 417-274-0073 • Ark. License # 2745



ONLINE AUCTION

BID NOW! BIDDING CLOSSES SAT, APRIL 13TH



ITEM INSPECTION:
 Bidders will be able to inspect and view items Monday-Friday (8am-4pm) and Saturdays (8am-noon) while the auction is open for bidding at 4177 HWY VV, Berger, MO 63014

870+ LOTS



All items sell regardless of price. All items start at only \$1. BID TODAY!

Farm Equipment

- Unused 2023 New Holland 120 Powerstar tractor with loader
- 2011 JD 6330 4x4 tractor with loader
- 2015 Kubota M6-141 tractor with loader
- 2-IH 1206 turbo diesel tractors
- JD 2940 tractor with loader
- JD HX15 15' brush hog
- NH 575 square baler
- JD 4210 tractor with loader
- 2-JD 4420 combines
- JD 2550 tractor
- Vermee 5410 & 5400 Rebel round balers
- Kuhn Speedrake SR108Gil 8 wheel hay rake
- IH 544 diesel tractor
- Several NH 256 hay rakes
- JD 7720 turbo combine
- Ford 2000 & 3000 gas tractors
- JD 1508 15' brush hog
- MF 275 diesel tractor
- IH 2404 industrial utility tractor
- Kubota B2620 compact tractor
- AC 5015 compact tractor
- IH Farmall B tractor
- Wilmar Spray-Coupe self propelled sprayer
- Kubota L275 tractor with loader
- JD grain & corn heads
- Hundreds of pull type & 3-pt. tractor attachments

Construction Equipment

- 2015 Caterpillar 311FL RR excavator
- 2007 JCB 926 4x4 rough terrain forklift
- 2018 Vermeer RTX450 4x4 trencher
- JD 555-A crawler loader
- JD 548D Turbo log skidder
- JD 260 skid steer loader
- 2006 Lull 944E-42 telehandler
- 2014 Skyjack SJIII 4632 32' electric man lift
- 2016 Bobcat E32 mini excavator
- Prime Mover LL-40 rough terrain forklift
- Case W20C wheel loader
- 6-JCB mini excavators
- 2008 Genie S-40 boom lift
- 2-Atlas Copco XAS66 diesel powered air compressors
- Magnum MLT3060M light tower generator
- New & used skid steer attachments

Vehicles

- 2021 Ram 5500 regular cab 4x4 flatbed
- 2019 & 2018 Ford F150 extended cab 4x4
- 2005 Chevrolet C6500 dump truck

- 1998 GMC 3500 4x4 crew cab flatbed
- 1994 Chevrolet 3500 4x4 flatbed
- 1994 IH 8100 dump truck
- 2006 GMC 5500 crew cab flatbed
- 2013 Chevrolet Avalanche LTZ Black Diamond
- 2002 Chevrolet 2500HD 4x4 pickup
- 2005 IH 7600 tandem axle truck tractor
- 1995 IH 8200 tandem axle truck tractor
- 2014 GMC Acadia Denali AWD
- 1986 GMC High Sierra 1500 4x4 pickup
- 2002 Mercedes SLK320 convertible
- 2013 Dodge Durango Crew
- 2009 Mini Cooper John Cooper edition
- 2013 Dodge Ram 3500 crew cab 4x4
- 1984 Chevrolet C70 flatbed truck with hoist
- 1974 Chevrolet C60 dump truck
- 1984 IH S1900 dump truck
- 2002 Freightliner Century single axle truck tractor
- 2004 International 4400 single axle truck tractor
- 2016 Ford Edge AWD
- 2006 Ford F150 crew cab 4x4 pickup
- 2007 Chevrolet 3500 service truck
- 2005 Ford F450 flatbed
- 1997 Dodge Ram 2500 4x4
- 1994 Geo Tracker 4x4 SUV

RVs & Boats

- 2017 Forest River Vengeance 40' 5th wheel toy hauler
- 2016 KZRV Connect Spree 241 22' travel trailer
- 2018 Forest River R-Pod RP18 17' travel trailer
- 10' fiberglass sport boat with trailer
- 2013 Tracker Nitro Sport Z-7 19' fiberglass fishing boat
- 1978 Cruiser Rally 19' fiberglass ski boat
- 2004 Yamaha 25 4-stroke outboard motor
- 2001 Coleman Tacoma 12' pop-up camper
- 1992 Landau 18' alum. jon boat
- 1997 Lowe 17' alum. fishing boat

UTVs, ATVs, Golf Carts, Motorcycles

- 2019 JDGator XUV590M Anniversary Edition UTV
- 2015 JD Gator 625I UTV
- 2004 Honda Goldwing GL1800 motorcycle
- Cub Cadet Big Country UTV
- 2019 Honda Foreman 4x4 ATV
- 2002 EZ-GO electric golf cart
- 2014 Honda Rancher ES 4-wheeler

- Yamaha Grizzly 660 ATV with snow plow
- Yamaha Sun Classic gas powered golf cart
- 1989 Honda Fourtrax 4x2 ATV
- 1998 Polaris Magnum 425 4x4 ATV
- 2004 Polaris Sportsman 700 AWD ATV
- 2-2021 Trailmaster 125 dirt bikes

Trailers

- 2019 Calico 16' GN stock
- 2007 ATC 32' enclosed GN cargo trailer
- EZ-Haul 26' side dump bale
- 2015 PJ 36' GN flatbed
- 2017 Trailerman 27' GN flatbed
- 2007 Rice 27' flatbed GN
- 2005 Corn Pro 12' stock
- 2016 & 2019 Sure-Trac 20' flatbed
- 2017 Calico 14' stock
- Large selection of 12'-18' flatbed
- 2006 Tri-Star 25' GN flatbed
- 2-Steel car dollies
- Wilson 37' alum. grain
- 1993 Kiefer 6' x 16' GN stock
- 1995 Trail King TKT40 24' tilt bed
- 1990 Diamond D 20' GN stock
- 2004 Great Dane 44' flatbed semi
- 2-Trailmobile 53' semi vans
- 2001 US Cargo 4'x6' enclosed cargo

Lawn Mowers

- IH Cub Cadet 129
- 2004 Kubota BX2230 tractor with mower
- Husqvarna LGT2650
- JD G100
- JD D130
- Kubota B8200 tractor with belly mower
- JD LA145
- JD 345
- Husqvarna YTH24V48
- JD 455 diesel
- JD Z445 zero turn
- 2020 Exmark Metro comm. walk behind
- JD Z945M zero turn
- Cub Cadet LTX1042
- Toro Timecutter zero turn

Shop Equipment & Miscellaneous

- 3-Miller Trailblazer 325EFI welder - generators
- 2-Unused 19' portable cabins with restroom
- Unused & used storage containers 8'-40'
- Antique Aeromotor windmill
- Unused hoop buildings

More items listed at SchneiderAuctioneers.com

SCHNEIDER
 Auctioneers LLC
 573-834-2207 • 573-291-8075
www.SchneiderAuctioneers.com

R&R AUCTION SERVICE

AMAZING BARN FINDS AUCTION

SATURDAY APRIL 13TH, 10AM

R&R AUCTION HOUSE - 1644 SOUTH ASH IN BUFFALO, MO

THIS 1 DAY AUCTION IS A PICKERS DREAM.

Although it's nearly impossible to list every item, here's just a partial listing of what you will find. Pabst Blue Ribbon Thermometer, Dr. Pepper signs, 1994 Bud Sign, Miller sign, Coors light, Budweiser Cold Beer lighted sign, Neon Budweiser Bottle sign, Keep Off sign, Swisher Sweets sign, Longhorn sign, Beechnut, Clabber Girl sign, 3 Bud Light Bottles sign, Century tire sign, Marlboro, Chesterfield sign, Lark sign, Wooden Route 66 sign, Pioneer Well Services double sided sign, Enderes cast iron sign, Double sided credit card sign with mounting clamps, 1 quart oil bottle, old keys, old lamp, Multimixer milkshake machine from Buffalo Burger, 1961 Ford books, 1979 & 81 Ford owners manuals, childs china, brass bell on anchor mount, Budweiser select & Bud Lite Lime rubber bar mats, original light fixture from the Eastside Tavern, Sinclair 120lb grease can, antique post hole digger, old outboard motor, antique pulling horse shoes, antique school hanging lights, boat prop, Coleman 18 watt solar panel model 5803 ,Brass "pocket change" trivet, 17 & 19" saw blades, pocketknives including but not limited to Case, Buck, Remington, Old Timer and more, pocket watches including but not limited to Bulova 17 jewel 17A from 1920's, Wyler enamel covered ladies pocket watch, National watch company key wind 1870 Dueber Silverine, antique silver open faced Waltham wiper display unit ANCO by Anderson, 1981 Rolling Stone poster, model train cars, trunk, pedal grinder wheel, Fawn cigarette dispensing machine, Coors pool table lights, Phone booth from Taney County Courthouse still works, decanters, leather Saints jacket, Cardinals Jacket, Complete colorized state quarters 20th century, war nickels, Buffalo nickels, 1988D black nickel, Indian head pennies, wheat pennies, foreign coins and other collectible coins, old spurs, McDonalds collection of plastic Furby's, Harley Davidson oil never opened, old license plates, CAT Ertl dealer exclusive diecast, curved glass china cabinet, old mailbox lamp with slag glass shade, globes, Edison Victrola, Meteor Victrola, metal picnic basket, Big Wonderbread metal sign, beer mirrors, Coke mirror, wooden Nehi pop cooler, 2 movie theater seats, International grill with lights, Dr. Pepper cooler, wooden ice cream freezer, steel traps, small steel wheels, 2 cast iron cauldrons, old fan, kraut cutter, lots of jewelry , silver, gold and costume, marbles, Yuma Arizona ball and chain, cast iron butterfly bank, toy safe bank, old parking meters, large lock and key property of New York insane asylum, antique wringer that mounts on wash tub, bassinet, Hot Wheels, Matchbox, Star Wars, Michelin 18 wheeler diecast NIB, Sports related Bobbleheads, Beansies, 1000's of Baseball cards, many complete year set of Topps in boxes and highly collectible old cards, baseballs, Hallmark ornament, Starting lineup Cooperstown collection dolls, Pez dispensers, old scales, brass boat bank, vintage oil pitchers, porcelain door knobs, several Zippo lighters including 70th anniversary Zippo lighter NOS, old gun stock with bayonet and so much more we are still running across in this amazing collection. Absentee bidding on a select number of items will be available at <http://www.rrauctionservice.com> Keep watch on website for added pics.



Please keep watch on our website for added photos.

TERMS: 10% buyer's premium. Cash, check, or credit card with proper I.D. nothing removed until settled for. A 3% fee will be added to credit card purchases. Not responsible for errors in listing. Any announcement made sale day will take precedence over any printed matter. There will be no sales tax at this in house auction as it is not a consignment but a single owner collection.

GENERAL AUCTIONEERS

AUCTION

R&R

SERVICE

Auction & Appraisals

For more information contact Professional Auctioneer Russ Weeks at 417-576-7357 or check out www.rrauctionservice.com

Serving this area's auction needs since 1997 with honesty and professionalism.
www.rrauctionservice.com
(417) 576-7357 or (417) 345-4140



PUBLIC AUCTION

Saturday April 6th at 10:00 a.m.

7776 County Road 3850, Peace Valley, MO 65788

Directions from West Plains: East Hwy 160 Nine miles to County Road 3730. Left on CR 3730 to County Road 1280. Right on CR 1280 to County Road 3850, Left to auction.

Watch for Reid Auction signs

Guns~Propane Tank Savage Axis 243 w/Scope, Savage Axis 243 Muddy Girl w/Scope, Mossberg Patriot 6.5 Creedmoor, Ruger Aamerican 22-250 w/Scope, CVA 50 Caliber Camo, Remington Model 770 300 WinMag w/Scope, Misc Ammo, 1000 Gallon Propane Tank, Several Boxes of Assorted Ammo

Tractors~Equipment~Misc. Kubota M8540 Tractor w/Loader, Cab Heat & Air, 1800+ Hours, (used daily), 530 Case Tractor, Krone Round Baler V1500 (4x5 bales), 256 New Holland Rake, Frontier 28 Foot Wheel Rake, DM2032 Kubota Disc Mower w/Quick Change Blades, ST520 Hay Tedder, Majestic Sprayer, 30 Foot Boom Sprayer, 3 Point Seeder, Post Driver, Hay Unroller, 6 Foot Rotary Tiller, Field Drag, Field 2 Row Corn Planter, McCormick Manure Spreader, 6 Foot Offset Wheel Disc, 10 Foot Water Filled Field Roller, 7 Foot Concrete Field Roller, 8 Foot 3 Point Disc, 14 Foot Bush Hog, 6 Foot Cultivator, 4 Foot Ripper, John Deere 10 Foot Disc, 20 Foot Gooseneck Trailer, Bale Spike, New Easy Bale Unroller, Set of Tractor Forks, 120 Gallon Pickup Fuel Tank w/Pump, 300 Gallon Fuel Tank, 14 Foot Trailer Panels, Head Chute & Runway, Motor A Frame, Pond Scoop, Several T Posts, 3 Inch Steel Pipe Corner Posts, Homemade Wood Furnace, Deer Feeders, Deer Stands, Gates, Plastic Barrels, Glass Top Patio Table w/Chairs, Child's Picnic Table, Triple Lined Pipe, Ramps.

KENNY PHILLIPS, OWNER



Reid Auction Service

Randy Reid 417-257-3911 • Rex Reid 417-372-1866 Ark. Lisc. #2606 • Ted Reid 417-256-6661

Concessions available. Come early and let Barb and her crew fix your breakfast or lunch. Bathroom on site. Not responsible for Accidents, Lost, Stolen or Misplaced items. Any announcements made day of sale supersedes any prior written or oral communications. Cash and checks accepted no Credit Cards.

ESTATE & ANTIQUE AUCTION

Sunday, April 7th, 2024 ~ 1:00 PM

LOCATION: 706 Broadway, Lamar, MO (Watch For Signs)
Auction For Donna & The Late Ivan Long Estate



Antique, Modern Furniture & Appliances

Ant Oval Library Table W/Drawer, Ant End Table W/Drawer, Ant Square Oak Table W/Glass Claw & Ball Feet, Prim Coffee Table, Ant Metal Stools, Prim Wood Shelves, Ant Child's Furniture, Old Sugar Bucket Table, Oak Corner Cabinet, Retro Dresser W/Mirror, Full Bed, Several Hand Painted Pictures Of All Kinds Most Are Originals From Famous Local Artist Dan McWilliams, Old Locker Set, Oak Glider/Rocker, Leather Couch & Loveseat, Kitchen Table & Chairs, Glass Top End Tables, Swivel Chair, Loveseat, Fireplace Type Heater, 2 Sewing Machines, 12 Cu Ft Chest Deep Freeze, Amana Dryer, Other Furniture Pcs Added Sale Day Not Listed

Antiques, Collectibles & Households

Old Cocks Of Various Kinds, Ant Brass Spittoon, Lg Lot Of Rare & Unusual Ant Jars & Bottles, Ant Washboards, Ant Wood Adv Boxes, Ant Cream Separator Base, Old Cistern Pump, Ant Hay Trolley, 2 Ant Sharpening Stands W/Stones, Ant Sulky Rake, Ant Tractor Scoop, Old Sm Metal Whiskey Still, Old Iron Wheels, Old Table Top Scales, Ant Mule Muzzle, Ant Coffee Grinder, Ant Collection Of Cast Iron Banks & Other Banks, Old Cow Bells, Old Shoe Lasp Pcs, Ant Metal Egg Basket, Old Marbles, Ant Oil Lamps Inc Aladdin, Ant Chinese Glass Fish Floats, Ant Razor Strap,

Ant Stainless Cream Can, Old Cast Iron Pcs, Ant Galvanized & Graniteware Pcs, Ant Apple Scoop, Ant Metal Book End Holders, Old Galvanized Cans, Ant Copper Boiler & Fire Extinguisher, Lg Lot Of Old Adv Tins, Old Feed Scoops, Ant Glass Butter Churn, Old Gold & Silver Jewelry Inc Key Coins, Old Postcards, Old Lines Inc Hand Dones, Lots Of Quilting & Sewing Supplies, Colored Pyrex Dishes, Old Kitchen Utensils, Several 1800's Books & Other Old Books, Indian Rock Pcs, Old Pottery Inc Weller & Some RxR Memorabilia, Old Well Pulleys, Ant Washtub On Stand, Old Bells, Old Baskets, Old Cookbooks, Lots Of Old Glassware Of Various Kinds Inc Green, Red, Blue, Clear & Others, Corningware, Sm Kitchen Appliances, Pots, Pans, Dishes, Many Other Items Not Listed

Storage Building, Mowers, Generator, Tools & Outdoor Items

10x10 Metal Storage Building, JD Hydro D130 Riding Mower, 2 Push Mowers Inc 1 Lawn Boy From Lamar, MO, Weed Eaters, Leaf Blowers, Electric Chainsaws, Gas Generator, Shop Vac, Sm Electric Tools, Metal Bolt Bin, Sm Hand Tools, Fiberglass Ladder, Long Handle Tools, Coolers, Fishing Poles & Tackle, Metal Detector, Lg Gas BBQ Grill, Concrete & Other Outdoor Décor, Other Items Not Listed



Auctioneers Note: It Is An Honor To Be Conducting This Auction For The Long Family. This Auction Will Be Loaded With Something for Everyone. We Will Have Excellent Antique & Primitive Items To Offer. Lots Of Rare & Unique Items Also. Everything Is Very Clean & Outstanding. Mower, Shop & Outdoor Items Are Excellent As Well. Please Plan Now To Attend. **Sale Order: Antique & Modern Furniture & Appliances Will Sell First Followed By Antiques, Collectibles & Households. At Approx 1:00 PM Will Offer Building, Mower, Generator & Large Items. Remainder Of Tools & Outdoor Will Finish Auction. See Ya There!!**
 Terms: Cash or check with proper ID. Now accepting most major credit cards. Nothing removed until settled for. Statements made the day of sale takes precedence over printed material. Everything sold as is where is. Not responsible for accidents. Restroom available. Concessions Provided. Check our website for upcoming auctions and for additional pictures!!



NANCE AUCTION SERVICE

No Matter How BIG or small, We Do Them All!!!



Col. Bill Nance 417-214-0093 In God We Trust Philippians 4:13 Sean Beazley 417-247-6754

ANTIQUA AUCTION

Saturday, April 6th, 2024 ~ 10:00 AM

LOCATION: Sheldon Community Building, 6th & Main, Sheldon, MO (Watch For Signs)

Auction For Loyd & Pam Straw



Antique & Primitive Furniture

Ant Belding Brothers & Co Spool Cabinet, Ant Dr. Pepper Mountain Herbs 8 Day Regulator Clock, Ant Oak Ice Box, Ant 3 Stack Lawyers Bookcase, Ant Prim Dough Box, Ant Pie Safe, Ant Kitchen Cabinet, Ant Farmhouse Kitchen Cabinet On 2 Shelf Wood Base, Ant 6 Shelf Bakers/Cobblers Rack, 1800's Ant GRM 4 Section Bookcase That Breaks Down, Ant Library Table, Ant Open Front Cabinet W/ Bead Board Back & 3 Drawers, Ant Ethan Allen Dry Sink W/Copper Insert, Ant Child's Table W/4 Chairs Handmade, Prim 1800's Sims & Hurt Cabinet Made In Clinton, MO, Prim Pie Safe, Prim Chippy White Table, Prim White Beadboard Cabinet, Prim White Kitchen Cabinet, Prim Knock Down Shelf, Prim Barnwood Loading Ramp, Vintage Solid Wood Sm White Table, Vintage 2 Tier White Side Table, Ant Treadle Sewing Machine Base W/Marble Top, Ant Medicine Cabinet, Vintage Chippy Cabinet W/ Enamel Top, Ant Bentwood & Cane Highchair, Ant Child's Chairs, Ant Bentwood Chairs, Ant Miniature Curio W/Curved Front, Ant Sewing Rocker, Ant White Iron Full Size Bed, Ant Window Display Cabinet, Vintage Distressed Iron Baby Bed, Ant Drying Racks, Vintage Chrome Table W/Leaf Stored Underneath, Yaman & Erbe File Cabinet, Ant Treadle Sewing Machine Bases, Ant Child's Camel Back Trunk, Several Rare Ant Pictures & Paintings Some Very Unusual, Prim Doors & Windows, Several Ant & Prim Bookshelves, Tables & Other Ant Furniture

Antiques, Primitives, Toys, & Other Rare Items

Ant R XR Cart, Several Ant Rare Washboards, Several Crock Inc Pittsburg #20, Blue Band #10, #5 Crock W/Handles, Douglas County Stoneware Crock & Others, Ant Army Items Inc Locker W/ Packing Instructions On Lid & Cot, Ant Adv Wood Boxes Of All Kinds, Ant Nail Kegs, Ant Wood Toolboxes & Carpenter Trays, Ant Wood Ladders, Old Baskets Inc Rare A. Backus Jr. & Sons Woven Wood Early 1900's, Ant Snow Shoes, Ant Snow Sleds, Ant Ice Skates, Several Rare Limited Edition Lithograph Books, Lots Of Other Child's & Other Books Inc 1800's & Early 1900's, Ant Cream Milk Cans, Ant Reed Cream Separator, Ant Metal Crates

Inc Milk, Soda & Others, Old Adv Milk, Soda & Other Bottles, Lots Of Ant Old Jars Of Various Kinds, Ant Forest Green Hoosier Cabinet Jars, 3 Ant Daisy Butter Churns Inc Rare #6, Ant Owens, IL 1 Gal Churn, Lots Of Green & Pink Depression Glass Of All Kinds, Several Ant Glass Flower Frogs, Prim Tools Inc Saws, Pulleys, Sythes & Others, Old Quilts, Very Lg Lot Over 200+ Hand Done Hankies, Old Linens & Aprons, Ant Adv Feed Sacks, Ant Toys Of All Kinds From Metal, Cast, To Wood To Die Cast Inc Tractors, Cars, Scooters, Ovens, Board Games, Train Set, 7 Others (Excellent Toy Collection), Old Marbles, Old Buttons, Old Adv Yardsticks & Rulers, Ant Adv Metal Gas Cans, Lg Lot Of Vintage Adv Pencils, Old Records, Old Photos & Paper Goods, Old Cookbooks, Ant Copper Fire Extinguisher, Galvanized & Granite Pcs, Vintage Suitcases, Ant Adv Ashtrays, Old Matchbooks, 1900's Radium Ore Refrigerator Watercooler, Coca Cola Collect, Rare Hoosier Coffee Jar, Old Sad Irons, Cast Iron Pcs Inc Waggoner & Griswold, Ant Kitchen Utensils, Lg Lot Of Ant Glassware Of Various Kinds, Rare 1930's Copper Bowl By Arrow Metal Co, Rare National Cash Register, Several Metal & Porcelain Signs, Several Cast Iron & Other Vintage Banks, Old R XR Lanterns, Old Collector Canes, Hand Pitcher Pumps, Lg Lot Of Adv Tins, Vintage Rolling Pins, Old Oil Lamps Inc Aladdin, Vintage Purses, Rare Southwestern Bell Yellow Pages Gumball Machine, Pyrex Colored Mixing Bowls, Ant Kellogg Candlestick Phone, Rare Griffins Milk Glass Spice Jar Set, Old Matchbox & Hot Wheel Cars, 2 Metal Mannequins, Ant Wood Grain Tester, Several Crock Bowls, Old Candy Dishes, Oil & Gas Collectible Pcs, Old Christmas & Other Holiday Décor, Old Cookie Cutters, Old License Plates, Old Cookie Jars, Hundreds Of Other Sm Ant & Prim Items Added Sale Day, Only A Partial Listing, Very Lg Auction!!!



Auctioneers Note: It Is An Honor To Be Conducting This Auction For Mr. & Mrs. Straw As We Worked With Both Of Them At O'Sullivan Industries & Have Been Friends For Many Years. Pam Has Decided To Step Back From Collecting & Selling Antiques So Her & Loyd Can Do Other Endeavors. This Is A True Blue Excellent Antique Auction With Very Rare & Great Pieces. Not Many Low End Items In This Sale. Sale Held Indoors Rain Or Shine. Please Plan Now To Attend. **Sale Order: Antique & Primitive Furniture Will Sell First Then Move In To Antiques & Primitives With Some Items Mixed In Furniture. See Ya There!!!**
 Terms: Cash or check with proper ID. Now accepting most major credit cards. Nothing removed until settled for. Statements made the day of sale takes precedence over printed material. Everything sold as is where is. Not responsible for accidents. Restroom available. Concessions Provided. Check our website for upcoming auctions and for additional pictures!!!



NANCE AUCTION SERVICE

No Matter How BIG or small, We Do Them All!!!



Col. Bill Nance 417-214-0093 In God We Trust Philippians 4:13 Sean Beazley 417-247-6754

ONLINE FARM EQUIPMENT AUCTION

IMAN AUCTION CENTER - 31614 HIGHWAY 24, SALISBURY, MO

BID NOW - BIDDING STARTS CLOSING: SUNDAY, APRIL 7 @ 6 PM



BID NOW @ IMANAUCTION.COM

Selling 1100+ Lots * This Is a General Listing * 35 Tractors to include 2019 Case IH Magnum 340 w/ only 296 hrs - JD 7830 w/ loader - Case IH 140 Maxxum w/ loader - 2 JD 7800's - JD 4430, 4320, 4020's 3020's, 3010, 2030 - IH 1466 1 owner - Ford 876 & JD 8560 4x4 tractors - Case, AC, MF, IH & Moline antique tractors - JD 9570 STS & 7720 combines - JD Grain platforms - Bobcat S76 R Series, Takeuchi TL250, Case TR310 & 450CT skid loaders - New Skid Steer attachments - Nice JD Gators, Polaris Ranger Crew w/ A/C cab - Kubota & Mule side x sides - Several good 4 wheelers - 3 Kinze planters rebuilt 2600 & 2 3600's - JD Planters, 1760, 7240, 2 row 7000 - Grain carts - JD, Case IH, Hesston, Vermeer & New Holland round balers - JD, IH, Deutz sq balers - Hay Rakes - JD, Kuhn & Case Mower conditioners - Disc Mowers & sickle mowers - Several field cultivators & single pass tools - Manure Spreaders - 2016 Peterbilt, 98 Freightliner & 98 Kenworth road tractors - Hopper bottom grain & flatbed semi-trailers - 20 Trucks I.E. Late model Dodge, Ford, Chevy & GMC diesel trucks, 2 w/ bale beds, 2 w/ flatbeds - Work trucks w/ utility beds - 2 Nice Big Tex GN trailers & new dump trailer - Krause, JD, Case & Sunflower disk's - Phoenix harrow - 4 Pasture harrows - Case IH & JD drills - Cat D6C dozer - Komatsu PC120 track hoe - Case 580SK - JD & Bush Hog batwing shredders - JD Silage wagons - Several Small brush hogs - 2 to 6 Bottom plows - 3 Pt equipment, mowers, tillers, plows, etc - Cattle equipment, waterers, gates, panels, post, wire - 17 Lawn mowers, JD, Cub Cadet, Husqvarna & more - Lots of rear tine tillers - Lawn care equipment - Like new Miller wire welder - Torches - HD Shop tools - Hand tools & much more! Bidding w/ detailed photos & complete listing @ ImanAuction.com



IMAN AUCTION COMPANY | 660-388-6235 | ImanAuction.com

REAL ESTATE & PERSONAL PROPERTY AUCTION SATURDAY, APRIL 6, 2024 • 10:00 A.M.

ESTATE OF WAYNE WALLENDER

218 S. 9TH AVENUE, OZARK, MO 65721

DIRECTIONS: FROM BUSINESS 65, TURN ONTO EAST OAK STREET, LEFT ON SOUTH 9TH AVENUE AND IMMEDIATELY TURN RIGHT INTO THE DRIVEWAY.

— WATCH FOR **CAPON AUCTION SIGNS** —

REAL ESTATE SELLS AT 10:30 A.M.



Here is your rare chance to own a true modern-day beautiful home on nearly 22 acres inside the city limits of Ozark, Missouri! This home was constructed to withstand all types of weather conditions along with true craftsmanship exterior and interior finishes throughout the entire home! This beauty consists of an open and split floorplan offering an elegant kitchen with all stainless appliances, granite countertops and tile backsplash. Living area with a stone fireplace and slanted vaulted ceilings. Master suite includes a walk-in shower, split vanities, dual walk-in closets and windows gazing over the wonderful view of the property and pool. Two other bedrooms and their own private bathroom located on the main level along with a pantry, mudroom, private office and 4-car split, attached garage spaces. Basement consists of a kitchenette, second living area with a warming wood stove and tons of storage. This home sits down a very private driveway with an amazing view overlooking an open pasture with tons of wildlife and a live-water stream. An amazing inground swimming pool with a cover, diving board, landscaping and is fenced. This estate is truly remarkable and truly a "one-in-a-million" property. This property will be offered at auction to sell to the highest bidder. Seller has decided it's time to downsize ... *and here is your opportunity to own this amazing Ozark property!*

CONTACT AUCTIONEER FOR YOUR OWN PRIVATE SHOWING! SHOWINGS CAN BE DONE VIRTUALLY. OFFERS CAN BE MADE PRIOR TO AUCTION OR THE DAY OF THE AUCTION BY E-MAIL OR PHONE. CONTACT DUSTY CAPON 417-830-8623 FOR DETAILS!

SEE BACK SIDE FOR MANY MORE PHOTOGRAPHS!

TRACTOR • BATWING BRUSHHOG • BOAT • FARM EQUIPMENT

NEW HOLLAND TRACTOR, POWER STAR 75 WITH A 655TL JOYSTICK LOADER, 4-WHEEL DRIVE, DUAL REMOTES, 630 HOURS, 2022 SCAMP FIFTH-WHEEL DELUXE CAMPING TRAILER, LIKE NEW • RHINO T510 12' BATWING BRUSHHOG, 3-PT, 8' BOX BLADE • MARY MAC WOODCHIPPER • QUICK-ATTACH PALLET FORKS • QUICK-ATTACH GRAPPLE BUCKET, HEAVY DUTY, 72 INCH, 3-POINT BASKET CARRY ALL, 3-POINT REAR QUICK ATTACH, 3-POINT SINGLE-BOTTOM PLOW • 50-GAL. DIESEL FUEL TANK • 2019 10' DUMP TRAILER • 2003 TOYOTA TACOMA, 6 CYLINDER, 3.4L ENGINE, AUTOMATIC TRANSMISSION, 4-WHEEL DRIVE, 4 DOOR, COMPLETELY RHINO-LINED BODY WITH BACKUP CAMERA • 1994 CAJUN BOAT WITH AN UPGRADED 250 MOTOR, INCLUDING 2 HUMMINGBIRD FISH-FINDERS AND NEW TRAILER

GUNS & AMMUNITION

SMITH & WESSON .44 MAG REVOLVER, STAINLESS 8" BARREL • .300 BLACKOUT TACTICAL SOLUTIONS WITH SUPPRESSOR • RUGER 10-22 .22-CALIBER LEVER-ACTION RIFLE • NOVA 12-GAUGE PUMP MADE BY BENELLI ARMS SHOTGUN • SMITH & WESSON .357 MAG REVOLVER • BUCKMASTER .223 MODEL M-15, ES2 STAINLESS FULL BARREL WITH CUSTOM TRIGGER, HARRIS BIPOD, BURRIS SUPER SNIPER SCOPE • SCHROD CRIMSON TRACE RED-DOT SCOPE, .223 CALIBER • .350 MAG • .177-CALIBER PELLET RIFLE WITH SWIFT SCOPE • REMINGTON SEMI-AUTOMATIC .22 LONG RIFLE WITH REDFIELD SCOPE • NEW ENGLAND FIREARMS, 12-GAUGE SINGLE SHOT • .357 MAG/.357 SPECIAL HAND LOAD & FACTORY AMMO, 1,000 ROUNDS • .38 SPECIAL, 125-GRAIN AMMO • .44 MAG SPECIAL, 500 ROUNDS OF HORNADAY AMMUNITION • .44 MAG, 240-GRAIN BULLETS • EIGHT BOXES, .308 AMMO • WINCHESTER, 168-GRAIN AMMO • SEVERAL PRIMERS • 12-, 28- & .410-GAUGE MECHANICAL RELOADERS

SHOP TOOLS • 30X40 SHOP BUILDING TO DISASSEMBLE • MISC. ITEMS

30'X40' SHOP BUILDING TO DISASSEMBLE BUILDING MUST BE REMOVED WITHIN 60 DAYS AFTER AUCTION • LOTS OF GOOD METAL AND LUMBER • WHIRLPOOL REFRIGERATOR • BERKEY WATER PURIFYING SYSTEM FOR CAMPING • GRIZZLY AIR CIRCULATOR • BOSCH PORTABLE TABLE SAW • COBALT MITER SAW WITH STAND, LIKE NEW • SKIL BAND SAW, LIKE NEW • LOTS OF ANTIQUE INSULATORS • DRONE WITH GoPro • CO2 BOTTLES • KEG BOTTLES • COPPER POTS • PICO AUTO BREW MAKING MACHINE • (9) 5X15.5, CASE IH FRONT TRACTOR TIRES • 6' T-POSTS • SKY TOPPER LIFT FOR CAMPER SHELLS

WILL HOLD SALE, RAIN OR SHINE. TERMS ARE 10% DOWN, BALANCE IN 30 DAYS



Dusty Capon
Auctioneer
417-830-8623



Each Office Is Independently Owned And Operated. 1619 E. Independence St., Springfield, MO 65804 • 417.883.4900

REAL ESTATE & PERSONAL PROPERTY AUCTION
SATURDAY, APRIL 6, 2024 • 10:00 A.M.

ESTATE OF WAYNE WALLENDER

218 S. 9TH AVENUE, OZARK, MO 65721

DIRECTIONS: FROM BUSINESS 65, TURN ONTO EAST OAK STREET, LEFT ON SOUTH 9TH AVENUE AND IMMEDIATELY TURN RIGHT INTO THE DRIVEWAY.

— WATCH FOR CAPON AUCTION SIGNS —

REAL ESTATE SELLS AT 10:30 A.M.



Dusty Capon
Auctioneer
417-830-8623



Each Office Is Independently Owned And Operated. 1619 E. Independence St., Springfield, MO 65804 • 417.883.4900

#1 AUCTION SOURCE IN CENTRAL MISSOURI

SERVING 34 COUNTIES!

FREE - TAKE ONE!
WEEKLY TRADER MAGAZINE
 Vol. 28 No. 27
 SEPTEMBER 30, 2021
 800-543-8271 • 800-665-8875
 Find us on Facebook @myweeklytrader AUCTIONS PG. 9
 VISIT OUR NEW WEBSITE! MYWEEKLYTRADER.COM

THE WALL STREET CATTLE DIFFERENCE

COME JOIN US
 Saturday, October 30, 2021

Next production sale! We are selling next production females and 40 breeding two-year-olds. of the best

SA
 gus - Brangus - Ultrablacks
 1603 HIGHWAY KK, LEBANON, MO
 417-288-4444 • WSCRANCHES.COM

MACHINERY & FARM EQUIPMENT CONSIGNMENT AUCTION
 SATURDAY, MAY 1, 2021
 9:30 AM
 CROSS TIMBERS, MO

ONLINE ONLY EQUIPMENT AUCTION
 THURSDAY, FEBRUARY 25, 2021
 Bidding closes at 11:00 am CST

www.SextonAuctioneers.com BID NOW!
 Much more equipment online!

WEEKLY TRADER MAGAZINE
 Serving Central Missouri's 34 counties!
 Auctions Auto Tractors Real Estate ATVs/Motorcycles Building Supplies Miscellaneous E-Editors Features

417-532-9131
 100 Commercial St.
 Lebanon, MO 65536
 #1myweeklytrader

This week's ads

CLASSIFIED ADS

FEATURED ADVERTISER
 A heavy-duty offer for a heavy-duty tractor

IN PRINT & ONLINE!

TO ADVERTISE YOUR AUCTION, CALL 417-532-9131

WEEKLY TRADER MAGAZINE

100 E. Commercial, Lebanon
www.myweeklytrader.com
www.facebook.com/myweeklytrader

Floyd Estate - Real Estate-Personal Property

AUCTION

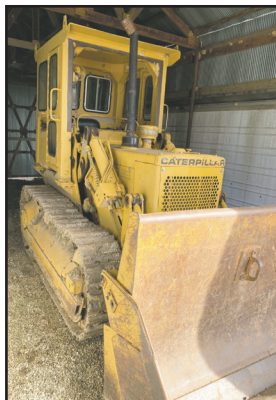
Saturday April 13th at 10 am

Open House April 7th 2-4pm or can be shown any time

Directions: From Marshfield follow HWY 38 east 3 miles to Hwy P. Turn south 1.5 miles to auction site 1100 Long State Hwy P Marshfield, MO. 65706.



1235 +/- sq ft 3-bedroom home with 4 +/- acres purchased in 1948. Located on State Hwy P and Cedar Valley Dr. Home has been in the same family for over 70 years. Home is vacant and in very good condition with many updates. Washer/ Dryer, Refrigerator, Oven, Couch, and Propane Tank sell with the property. Detached oversize two car garage with room for vehicles and small shop area. 1440 +/- sq ft shop building, plus 950 +/- sq ft building along with two other storage buildings. A large pond completes the rural setting of this fantastic property.



- 951 Cat Dozer with Clam Shell Bucket (very good condition)
- Allis Chalmers B Tractor*
- Compressor
- Electric wire Rolls
- LP Tank
- Misc. gas engines
- 3 pt/ P/low for Garden Tractor
- Propane Bottle
- Electric coolers
- Caster wheels
- Squirrel cage fan
- Forge
- Hydraulic Hoses
- Electric Boxes
- Misc. Lumber
- Steele wheel
- railroad wagon
- Electrical cords
- Windmill (approx. 40ft with generator)
- Craftman Garden Tractor 18.5 HP 46in Cut
- Cabinet
- Four door cooler
- Queen size Bedroom Set
- Misc. household
- Picnic Table
- Wheel burrows
- Chest Freezer
- Weed eaters
- Lawn Tools
- Landscape blocks
- Coolers
- Creeper
- Floor Jack
- Fishing Supplies
- Car Ramps
- Bottle jacks
- Small Bench Vise
- Cabinet
- Chain Hoist
- Compressor Ingersole
- Small Chainsaw
- Sears Lawn Tractor 14 HP
- Craftsman Push Mower 6.75 HP
- Power washer
- Grease Can & Pump
- Gan case 5 gallon
- Misc. Steel & Pipe
- Misc. Plumbing Valves etc.
- Wooden Step Ladders
- Electric motors
- Firewood
- Jon Boat
- Sheets Tread Plate
- DC Welder Self Contained
- Stand Fan
- Misc. Starters & Generators
- Electric Motors
- Sausage Press
- Large lot of Plastic and Metal Milk Crates
- 2ft Wooden Kegs
- Large sheet of Diamon Plate
- Milk Cans
- Large Lot lumber including some oak beams
- 5 ft Bush Hog BBX60 (LIKE NEW)
- 10FT HYD Cylinder for dump truck
- Pickup Tool Box
- Heavy Duty Scissor jacks
- 16ft Trailer with ramps
- 8ft Utility Trailer
- RT60G Bush Hog 3pt 5ft Tiller (used 3 times)
- Sears 12 HD SS12 Garden Tractor w/Mower Deck & 3pt

MJ Johnson - sale manager 417.838.0291
Case Auction Co. • 417.859.3204

info@caseauction.com • www.caseauction.com
auctionzip.com



Real Estate & Auction Services

Terms: Announcements made sale day take precedence over all printed material. Neither Case Auction or property owner guarantees the absolute accuracy of supplied information.

14th Annual Spring Consignment Auction

Prairie Grove Amish Mennonite School



Friday, May 10th

Sale Starts at 1:00 PM

Gun sale starting at 6:30 PM

Saturday, May 11th

Breakfast - 7:30 AM

Sale Starts at 9:00 AM

SUGGESTED CONSIGNMENTS

Deadline Thursday 5/9/24

- Tractors & Farm Equipment
- Cattle Equipment
- Lawn & Garden
- ATV's
- Shop Tools
- Hand Tools
- Handmade Quilts
- New Furniture
- Antiques

NO JUNK PLEASE



Auction held on school grounds.
12 Winding Creek Dr., Buffalo, MO 65622



To consign or for more information, contact

- 417.327.4670 Nathan Blosser
- 417.327.6240 Nathan Kropf
- 417.733.2560 Lyndal Hostetler
- 417.733.2914 Delbert Blosser (Farm Equipment)
- 417.327.6348 Eldon Swartzentruber (Vehicles & Guns)
- 417.299.2056 Bryan Blosser (Farm Equipment)
- 417.326.9788 Dennis Blosser (Quilts)

THE SOONER CONSIGNED, THE BETTER ADVERTISED!



Saturday, April 6, 2024 • 9:00 a.m.

LOCATION: In Licking, Mo., on Hwy. 32 East, at old Livestock Auction site, next to Hammond Feed & Farm. Watch for signs.

To view photos, go to auctionzip.com. Auctioneer #28367

Furniture

- Hall Tree with Bench, large
- Cedar Chest on base, heavy, large
- Curio Cabinets, rounded glass
- Corner Curio Cabinet
- Roll Top Desk
- Vintage China Cabinet on legs
- China Cabinet, glass doors
- Dining Tables & Chairs, Bench
- Wooden Cabinet
- Recliners, tan, burgundy
- Couch, reclines
- Coffee & End Tables
- Entertainment Center
- Vizio Flat Screen TV
- Bed, full size, complete
- Bedroom Set, 4 pc.
- Dresser, Queen Bed, complete
- Sewing Machine in Cabinet
- Fern Stand
- Table Lamps
- Magazine Rack
- Room Divider with picture frames

Collectibles & Vintage

- Icyco Refrigerator/Ice Box, oak exterior, metal lined, nice
- Crock, Western Stoneware Co., Maple Leaf, #20, with handles, made in Illinois, very nice
- Crock #5 Buckeye
- 31 day Wall Clocks, 1 small, 1 large
- Small Crock
- Crock Percolator
- Coffee Drip-o-lator with metal top
- Fraunfelter China drip-o-lator with metal top
- Lot Tea Pots and Tea Sets
- Hall Tea Pot
- Kerosene Lamps
- Collection Die Cast Cars & Trucks, Ertl, approx. 80, several different makes/models
- Dash Churn w/duck on side
- Lot Porcelain Dolls
- Metal Matchbox Holder
- Fenton Glassware of various colors/patterns - Vases, Baskets, Shoes, Rolling Pins, Dish with 3 horns

- McCoy - Cookie Jars, Planters, Gondola Boat
- Roseville pieces
- McCoy Floraline - Pedestal Bowl #430 green & lt. green Fluted Vase #407, olive green Planter & Vase
- Depression Dishes - Mayfair open rose pink Candy Dish, Plates, Bowls, Butter Dish
- Ice Box Dish
- Homer Laughlin China eggshell, blue trim
- Indian Plates - 31 total
- Carnival Glass
- Franklin Mint
- Bradbury Mint
- Set of China with flower design, several accessory pieces, large set
- Elvis Plates & misc. items
- 1847 Rogers Bro. silver Plate, daffodil pattern, in box
- Clemens Dinnerware
- Emmett Kelly Jr. figurines, Emmett Sr. whiskey decanter, signed Joey Kelly picture
- Vintage Avon Bottles
- Chicken Figurines
- Glass Lamps
- Corningware Dishes
- Teapot & Cups
- Metal Cookie Cutters
- Costume Jewelry, Gold Chains & more
- Metal Tins
- Coca Cola Tray

Household & Misc.

- Wall Shelves
- Pictures
- Lot Whatnots
- Sewing Supplies & Material
- Canister Set, Snak Sets
- Ironstone Dishes
- Currier & Ives Dishes, blue & white
- Pyrex Baking Pans, Tupperware
- Kitchen Utensils, Egg Plates
- Bells, Angels, Flower Arrangements
- Small Kitchen Appliances
- Mirrors
- Salt & Pepper Shakers, Veggies & Burro
- Soup Tureen

- Apple Peeler
- Giraffe Figurines
- Grandpa & Grandma Figurines
- Folding Chairs
- Bedspreads, Sheets, Doilies
- Lot Books - Glass Collections, Elvis book & Cookbook

Coins

- Wheat Pennies 1940-1950s, lots
- Old Mexican Silver Dollar
- Kennedy Half Dollars approx 60 from 1970s to 2000s
- Kennedy Silver Dollar 1971
- Foreign countries' Coins
- 1987 One Dollar fine silver
- One troy oz. Silver Dollar
- 1945-S Nickel
- Set 1968 uncirculated Mint Set
- Eisenhower One Dollar - 1974, 1977, 1978
- 1879 Silver One Dollar cc
- 1921 Silver One Dollar
- Collection State Quarters
- Old Dimes
- Historical One Cent collection
- 1958 Jefferson Nickel
- Brass Coin Queen Mary commissioned 1936
- 1891 Coin
- 1924 Coin
- Confederate States of America \$20 & \$1
- Silver Certificate 1953A \$5, 1957A \$1
- National Collectors Mint \$2 Silver Certificate
- More Coins not listed

Equipment & Mowers

- 5 ft. Box Blades - 2
- 3 pt. Blade - 7 ft.
- Post Hole Auger, 9 in. & 12 in.
- 2 bottom Ford Plow
- Bush Hog 7 ft.
- Old Tiller
- Bird Bath
- Push Weedeater
- John Deere Riding Mowers - 2
- Lawn Mower Trailer
- Lots more items not listed

Note: Lots of nice glassware & collectibles. Come spend the day with us. Thanks, Steve & Neal

Estate of Mary Ayers/Estate of Raymond & Joan Wells

Terms - Cash or Approved Checks. Nothing Removed Until Settled For. Not Responsible For Accidents. Must show ID to get Buyers #. All guarantees are between buyers and sellers. Announcements Made Day of Sale Take Precedence Over Printed Matter.

**Buckner & Gately Auction Service
Auctioneers**

Steve Buckner 573-674-2686

Neal Gately 573-202-3132

THE BEST OF ALL WORLDS SALE REGISTERED ANGUS, CHAROLAIS & SIMMENTAL

Farmington Regional Stockyards
April 6, 2024 • 1:00 P.M.
(Just Before Special Cow Sale)

ABBOTT FARMS

Williamsville, MO
Four 18-20 month old
Charolais bulls.

TURNER FARMS

Belgrade, MO
Ten 14 month old
bulls, plus Registered
Angus cow/calf pairs

HUITT FARMS

Bismarck, MO
Five Registered
Simmental Bulls

**Cattle will be available for viewing at the sale barn
from 11:00 A.M. to 1:00 P.M. Saturday before the sale.**

WWW.TURNERANGUS.FARM

For more information contact

ANGUS: Jon Turner (314) 606-0064 or (573) 210-1216

SIMMENTAL: Roy Huitt (573) 366-8323

CHAROLAIS: Willard Abbott (573) 785-2789

EMAIL: ma_jturner@hotmail.com

GO TO THE AUCTION • GO TO THE AUCTION • GO TO THE AUCTION • GO TO THE AUCTION •

PUBLIC AUCTION

SATURDAY, APRIL 6, 2024

Starting at 9:30 AM

Location: 2239 Tower Road, Lebanon, MO 65536

Directions: In Lebanon, take Hwy 32 East to Tower Road and turn south. Follow to the sale site.

HOUSEHOLD

Oak look entertainment center
 2-Sofas
 Pedestal coffee & end tables, 3 Recliners
 2 Full beds
 Small drop leaf writing desk
 5 Drawer chest of drawers
 Tall Wood/Glass display shelf
 Jewelry Armoire
 Serving buffet w/ 2 drop leaves
 EdenPure heater
 Maytag Washer (white)
 Roper Dryer (white)
 Emerson Stereo w/ turntable
 Hall cabinet
 Pro-Form 490GS treadmill
 Ski Machine exerciser
 Samsung flat panel TV
 Padded Chair
 Ping Pong table

Christmas decorations
 Sears Kenmore sewing machine
 Sewing notions
 Humidifier
 Vanity w/ stool & mirror
 Night stand
 Chest of drawers
 Dresser w/ mirror
 2 Dehumidifiers
 Pedestal Dining table w/ 6 chairs (nice)
 Dining Room Buffet w/ hutch
 Dyson "Ball" vacuum
 Eureka "Boss" vacuum
 Flat panel TV on stand
 Glider rocker

COLLECTIBLES

Several quilts
 Lot of LP records
 2 handpainted handsaws
 Disston Level w/ brass ends (24in)
 10point Buck shoulder mount

Small crock
 Wooden rolling pins
 Wooden box w/ bird dog etching
 Crosscut saw
 Hames
 Draw knife
 Arrowheads (framed displays)
 Horse & Buggy weathervane

OUTDOOR & SHOP

Black metal patio table w/ 4 chairs
 Assorted hand tools
 Shop Vac
 Several rods & reels (some heavy snagging rods & reels)
 Some tackle
 Trot Line on spool
 Wood & metal outdoor glider
 Concrete yard décor (birdbath, basket, etc.)
 Outdoor double swing
 Metal Rooster
 Small live trap

2 cycle hedge trimmers
 Craftsman push mower
 Bench grinder
 Belt drive bench grinder
 Full size folding picnic table
 Aluminum ladder

LoweLine 17ft Aluminum square stern canoe

GUNS

Marlin model 25MN .22WMR rifle w/ scope

Winchester Model 12 .12 shotgun w/ Weaver choke

Refreshments available from Cindy's Lunch Bucket!

Many more items too numerous to mention.

Seller: Mr & Mrs Clyde Chambers

"ANNOUNCEMENTS DAY OF AUCTION TAKE PRECEDENCE OVER ANY OTHER ADVERTISING"

3% Convenience fee added to all credit/debit card transactions

Sale Conducted By

WARDEN AUCTION & MORE

(573) 528-0729

Ed Warden - Auctioneer/Licensed Broker

www.wardenauction.com

TERMS
Cash, Credit, Debit or Approved Check
Valid ID Required for Bid Number



TERMS
Not Responsible For Accidents or Losses
Nothing Removed Until Settled For

GO TO THE AUCTION • GO TO THE AUCTION • GO TO THE AUCTION • GO TO THE AUCTION •

GO TO THE AUCTION • GO TO THE AUCTION • GO TO THE AUCTION • GO TO THE AUCTION •

GO TO THE AUCTION • GO TO THE AUCTION • GO TO THE AUCTION • GO TO THE AUCTION •

Estate Auction



37606 Jackman Ave. Warsaw Mo. 65355

Directions: From Warsaw go South on 65 Hwy 10 miles to Jackman Ave. turn Left (East) on Jackman go 1 mile to Auction on Right. Watch for signs on sale day.

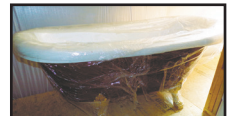
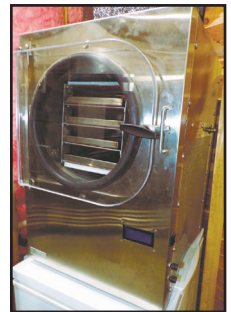
Due to the loss of my husband, we will sell the following at public Auction on:

WEDNESDAY APRIL 10TH, 2024 • 10:00AM

"Lonnie
& the Late
Mike Taylor"

2 – 20'x8' shipping containers, **Cub Cadet** rear tine tiller with Honda GC190 engine, 2 – lg fuel tanks on stands, **FIREARMS & AMMO Sig Sauer** AR15 5.56cal rifle, **Ruger** 10-22 Semi-auto .22cal rifle, **Taurus** "Circuit Judge" revolver / rifle w/truglo "red-dot" scope .22LR/.22mag, **Benelli** M1 "Super 90" Semi-auto 12ga, **Beretta** A302model Semi-auto 12ga, **avage** 308win model10 bolt action w/Nikon 3x9, **Ruger** "Air-Magnum" pellet rifle 5.5mm, **Gamogo** "Little Cat" pellet rifle, **Smith & Wesson** 380 "Bodyguard" pistol, **Beretta** 950BS Min X .22cal pistol, **Big Horn** Classic 30gun gun safe w/digital lock, Lg lot Ammo – 1,000+ 12ga., 5.56x45 800+, 4 – **Remington** .22cal "Bucket O'bullets" 1,400 each, **Harvest Right** four tray freeze dryer, **LEM** Maxvac Pro Stainless Steel Food Vacuum sealer (New in Box), **Food Saver** Vacuum food saver system, Excalibur food dehydrator 9 tray model D95055, 6 – lg pickle jars, 24+/- storage buckets w/**Gamma seal** food grade lids, lot 100+ canning jars (many NEW), Lot coolers, **HOUSEHOLD, ANTIQUES & MISC.** Kenmore cross bottom refrigerator, Keurig 2.0 (NIB), wooden futon, stainless steel table, Butcher block table, **Archias** wooden seed store box from Sedalia, Lift chair, Lot Quilts some hand stitched, **DM Ferry & Co.** flour seed wooden box w/seed packets, Bee Keeping supplies (hive smoker, suit, etc.), pizza grilling stone, primitive wooden bench, Kitcheneer meat grinder/salad maker, 2 - **Martha Stewart** tiered stand w/planters, Decriptive copper milk cans, **Wesko** microscope, **Sputnik** weather station thermometer barometer, lot dinner plates & platters (**Royal Stafford, Spode, Naif, Williamsburg, Fitz & Floyd, Villeroy & Bosh**) Lg vintage Italian platters, 12 - playing card plates, lot wine Bormioli glasses, lot crystal (**Lenox, Kosta Boda, Rosenthal "Germany", Orrefors**), **Mancer** Italian sheep dishes, new flags, vintage four wheel dock cart, old wall clock, butter press, cast iron (lodge, Griswold & wagner) 4 – lg wooden unique butcher block style animals, collapsible wooden folding picnic table, **Singer** treadle sewing machine, 4 – rolls antique yard fence, 2 – 3' gates, 2 – 6' gates, Copper oven box, 133lb Anvil, predator security light, 2 - Advantage hay trolleys, hay rope, Cast iron & enamel utility sink, double deer stand, **TOOLS, HARDWARE & CONSTRUCTION SUPPLIES** Reproduction fiberglass claw foot soaking tub (NEW), 4 – sets scaffolding & braces, 6 – aluminum walk boards, 2 – sets casters, **Babco** 5" bench vise, Lot Pallet racks 4 – 16'x8' w/5 shelves each, 1 – 9'x10' w/3 shelves, **DeWalt** 13" two speed planer, **DeWalt** biscuit joiner, **DeWalt** 20v four battery charger model DCD104 **DeWalt** portable air compressor, **Makita** 12" power miter saw, Oxy & Acetylene torch & bottle set on cart, **Bosch** battery charging bay, **Bosch** 10" power compound sliding miter saw on portable work stand, **Nords** 18ga flooring nailer, retractable air hose reel, 4 – ATV sprayers, **Porter Cable** 8" bench grinder, **Wagner** paint sprayer, **Ramset** concrete nail gun, transfer punches, roll around service cart, **Snap On** tap & die set (Metric & SAE), pneumatic fan clutch wrench set, torque wrench in case, lot Craftsman sockets ratchets & hand tools, router bits, 2 - **Paslode** cordless 16ga angle finish nailers, drill DR, **Bosch** power planer, **Bosch** plunge router w/attachments, pipe vise, **Rigid** 300 electric pipe threader, lot long handled tools, 2 – poly carts, MK wet tile saw, **Kwikset** 1381990 door installation kit, **Senco** Dura Spin model SG2510, **Milwaukee** right angle ½" drill, **Milwaukee** 14" chop saw, **Senco** finish nailer, 2 – Worm drive circular saws, **Bosch** router w/bits, **Milwaukee** 9" side grinder, **Greenlee** 767 knock out driver set, **Hitachi** pneumatic frame nail gun, **Bosch** commercial jig saw, **Husqvarna** 445 chain saw, pallet jack, chain boomers, lg lot nails screws & hardware, lg lot electrical wire, lot electrical cords, lot ratchet & tow straps, lot casters of all sizes, Large lot electrical hardware, drill bits, clamps of all sizes & styles, new 16' garage door w/hardware, Appliance dolly, two wheel dolly, 2 – wall safes, expanded metal yard cart, 4'x7' utility trailer (no title), ATV ramps, 4 – LED flood lights, several set collapsible sawhorses, shop vac, 10'x100' roll plastic, Misc. halogen work lights & tripods, 10ga. heavy electrical wire 75'+, propane space heater, huge lot plumbing supplies & fittings, sump pump, lot misc. Lumber, 100+ used T-post, temporary construction power distribution box, **Husqvarna** straight shaft string trimmer, roller stands, 2 – 6' levels, lot copper tubing, house jack, pump dog, live trap, transit, old wagon frame, four wheeled garden wagon, 3 – 6' step ladders, **Many More Items Too Numerous to Mention**

Auctioneer Note: This is a small sample of a LARGE Auction. There are so many quality tools & supplies not listed & yet to be discovered, Mike was a truly skilled & talented craftsman as anyone who knew him can attest, all items are clean & well cared for. Hope to see you there.



*STATEMENTS MADE
DAY OF SALE TAKE
PRECEDENCE OVER
PRINTED MATERIAL.

Concessions provided by
"Benton County Good
Ole Gals"



JOHNSON AUCTION SERVICE

"Third Generation Family Tradition since 1942"

Russell "Rusty" Johnson (660) 221-4067 • Phillip Yoder (660) 723-3389

For Full Listing,
Pictures
and Details
auctionzip.com
(ID# 20300)

VISIT WEBSITE FOR PICTURES

ANNUAL SPRING CONSIGNMENT AUCTION

SATURDAY, APRIL 6TH-9:00 A.M.

EARLY START!

Location: Norwood Producers Auction Yards, 1910 South Hwy E, Norwood, MO • **Directions:** From Hwy 60: Take Norwood offramp, turn on Hwy E to Auction Yard, across from Truck Stop • **WATCH FOR CHADWELL AUCTIONS SIGNS.** • **Payment System:** Cash • Checks (With proper identification) Debit Card • Credit Card (Debit / Credit Card Fee Will Apply) • Visit www.chadwellauctions.com to view additional pictures!

LARGE LOT OVERSTOCK AUTOMOTIVE STORE ITEMS

SHOP ITEMS

Delta 14" Drill Press • Air Hose • Fuel Cans • Lincoln Electric 5500 • Lincoln 225 AC Charger • Chop Saw • Simpson Power Washer • Dolly • Press for Bearings • Wooden Tool Box • Metal Tool Box • Jack • Pipe Bender • Heater • Sand Blaster • Metal Shelving • 4Wheel Dolly • Welding Helmet • Shop Light • Mule Tape • Skil Saw • Hy Gard Trans Oil

FARM RELATED

Frost Freeze Hydrants (3) • Honda Four Wheeler (needs work) • Misc Cattle Working Supplies • Post Driver • Angle Blade • Head Gate • Carry All • Bale Spike • Troy Blit Wood Splitter • Diamond Plated Fuel Tank • Wench • Metal Creep Feeder • Concrete Feed Bunks • Gravity Feed Bin on Wheels • Round Bale Feeders • John Deere Disc • Plow • New T Posts • Used T Posts • Hog Waterer • Woven Wire • NH V Rake • Drag Type Bushhog • Misc Old Implements (scrap) • Angle Blade • Head Gate • (3) 10' Panels • (2) Walk Thru Gates • (5) 10' HD Galvanized Panels • (3) 4' HD Galvanized Panels • (1) 10' Walk Thru gate • (1) 8' HD Galvanized Panel • Hardi 300 Gallon Sprayer • Galvanized Tubs • Barbed Wire • 150 Gallon Fuel Tank • Metal Cattle Feeder • Cattle Chute • Stock Tanks • Spinning Jenny • Metal Perlings • I Beams • Large Animal Cage • Assorted Fencing Supplies • Shaver 3pt Hydraulic Post Driver • Aluminum Loading Ramps • 250 Gallon Lick Tank • Powder River Squeeze Chute • 100 Gallon Transfer Diesel Tank • 20 Poly Feed Bunks (like new) • My D Handy Automatic Squeeze Chute • 150 T Posts • 8' New Corral Panels • 3pt Bale Unroller • 3pt 10' HD Angle Blade • (4) HD 12'x7' Horse Stall Divider Panels • (4) 16'x7' HD Horse Panels w/4' Gate • 8 Ton Truck Bed Hoist w/8GPM elec/hyd Military Pump • 12' hay Rack on NH Running Gears • Hydraulic Lift & Pump • Miller Bobcat 250 10,500 watt Generator Welder on Trailer



FARM EQUIPMENT

(2) NH 256 Rake • JD HX15 Batwing Bushhog (like new) • NH 450 Silage Special Round Baler Roll Belt Net Wrap • Tube Line TLR 5000 AX2 Bale Wrapper • 3pt Krone 9' Disc Mower • Strauss Hay Hand 36 Hydraulic Bale Accumulator • NH 1412 Disc Bine w/ Flailies • JCT 6' Skid Steer Brush Hog Attachment • (2) NH 1411 10' Disc Bins w/Rollers 540 PTO • JD 460M Silage Baler • 2015 NH 450 Utility Baler (3000 bales) • 2007 Mx8 JD 8' Bushhog Pull Type (like new) • 10' Brushhog • 7' 3pt Bushhog • 3pt 6' Disc • 3pt 5' Box Blade w/ Teeth • 5' HD Water Filled Roller • House 3pt 6' Disc • NH Hayliner 320 Square Baler (excellent condition) • 3pt Hyd Bale Unroller • 504 Vermeer M Classic 4x5 Net Wrap Round Baler (9000 bales) • NH 853 Chain Baler • 5' Pulltype Brushhog • 8' Pulltype Brushhog • 2020 NH Roll-Belt 450 Silage Special Baler (6400 bales) • 1000 Montana Post Driver for Skid Steer w/Trex T Post Driver • JD 285 3pt 10' Disc Mower • Kubota Dm 2028 3pt 10' Disc Mower • HCl 10 Durabilt 10 Wheel V Rake • NH 489 Haybine • 2013 Ag Wrap 3pt Bale Wrapper w/ skid steer mount, self loading, & electric controls • John Deere 926 10' Disc Bine w/flailies (good condition) • 3pt 120 Gallon Ag Sprayer w/20' Booms • 3pt 5' Woods Brushhog HD • NH 853 Chain Baler w/ extra parts • Coleman AT125 4 Wheeler • Other



TRAILERS

2014 Wilson Alum 24' Stock Trailer • 2016 Diamond C 22' Lowboy Gooseneck Flatbed Trailer w/Ramps • 2001 Tri Star 24' Gooseneck Flatbed Trailer w/Dovetail • (2) 16' Bumper Hitch Stock Trailer • 24' Lazy A Gooseneck Stock Trailer • 5'x8' Tilt trailer • 2016 Bales 24' Gooseneck Stock Trailer • 2008 Utility 53' Reefer Semi Trailer • Other



VEHICLES

1998 Camaro Convertible w/Leather Interior V6 (loaded) 26,xxx miles (mint condition) • 2015 Buick Enclave (loaded) 180,000 miles • 1989 Jeep Wrangler 6cyl 5spd • 2012 Ford Edge w/Panoramic Sunroof FWD 6 Cylinder 202,xxx Miles (loaded) • 2004 Pontiac Sunfire 5spd 4 Cylinder 216, xxx miles • Other

TRACTORS ~ SKID STEERS

2018 NH Powerstar 120 w/665TL Joystick Loader 4x4 Sunroof, Buddy Seat, Left Hand Reverser, 12spd Trans., Dual Hydraulic 540 PTO (2175hrs) • JD 6130M w/620R Joystick Loader 130hp (loaded) Triple Remotes 540 & 1000 PTO 16spd Trans 908hrs (like new) • JD 6100D w/563 Joystick Loader 4x4 w/ Left Hand Reverse (cab heat & air) 2300hrs • John Deere A Tractor • Farmall Tractor • JD 4040 Quad Range Trans 90hp 9800hrs (cab heat & air) • 1700HD Scat Trak Skid Steer w/ Foot Control & Quick Detach Tooth Bucket • 2014 Cat 289D Standard Flow Track Skid Steer 2spd • 885 Case w/ Loader 540 PTO 4spd w/hi lo range • Valtra 800 w/ Canopy 4x4 Triple Hydraulic 12spd 540 PTO 100hp Right Hand shuttle 6200hrs • L185 Kubota Diesel 540 PTO 3pt Hitch 2145hrs • 820 JD 4273hrs • 3010 JD Dual Remotes w/ 3020 engine kit • FarmAll Tractor • 7420 John Deere w/741 Joystick Loader 4x4 Power Quad Trans. 540 & 1000 PTO 135hp cab heat air 9500hrs • Farm Tractor 300 ETC w/5145 Joystick Loader 4x4 3cyl diesel 1153hrs • Massey Ferguson 50 Tractor 5500hrs (good condition)



35kw STATIONERY GENERAC GENERATOR (200hrs)

TRUCKS

2011 Ford F350 King Ranch 4dr Dually 4x4 Powerstroke 206,xxx miles (needs work) • 2000 Chevrolet 3/4 ton Auto 4x4 (needs work) • 1952 GMC 3/4 ton w/Wooden Stock Racks (does not run) • 1972 Chevrolet Custom 10 39,xxx miles (excellent condition) • 2005 Ford 1/2 Ton Ext Cab Auto 4x4 186,xxx miles • 1995 GMC Top Kick w/Grain Bed 366 Cid-5spd Trans. New Rubber 111,xxx miles (nice) • 1992 8100 International Truck w/LT Cummins Engine 10sp w/Bradford Flatbed 300,xxx Miles • 2008 Dodge 1 Ton 4dr 4x4 Auto Trans. 60, xxx miles on complete over haul (loaded) w/Diesel Transfer Tank • 1994 Ford 4x4 4spd Straight, 6 cyl • 2000 Ford F250 4x4 Auto, Ext Cab w/ Utility Bed 30,xxx miles on rebuilt engine

SEMI(S)

1989 Freightliner Toter Home w/ 315 Cummins Diesel Generator (loaded) • 2017 International Prostar Max Force 13/Auto/Eaton 156,xxx miles • 2017 International Prostar Max Force 13/Auto/Eaton 619,xxx miles • 2017 International same as previous 683,xxx miles • 2014 Freightliner Cascadia DD15/Eaton 10 spd 834,xxx miles

ANTIQUES ~ COLLECTIBLES

Wooden Cigar Store Indian • Old Mercury Tricycle • WW2 Military Vehicle Sirean • 8x10 Framed & Signed Photos of Mickey Mantle, Tom Brady, Kobe Bryant, Pete Rose, Mike Schmidt, & Muhammad Ali



~ OUTDOOR ~ ~ MISCELLANEOUS

8x10 Chainlink Dog Pen • Sabre 38: cut 145hp Hydrostat Trans Lawn Mower • Snapper 38" Zero Turn Mower • Gravely ZTX-42 Zero Turn Mower (141hrs) • Horse Weather Vane • Colt 1855 Anvil • Other

GUNS ~ AMMO ~ BOWS ~ KNIVES

Rem Model 1100 .12ga • Colt(pre ban) AR 15 .223 • Stevens 73 .22L • Siegers Ten Point 410 Crossbow w/Exvo Scope (new) • Swiss Arms Single Action Pellet Rifle w/ Scope • Glenfield Model 25 .22 cal Bolt Action Rifle • EAA Bounty Hunter .44 mag Pistol w/ Holster • Remington Model 700 Bolt Action .300 Win Mag w/ 4-16x40 Scope • 200 Rounds of 300 Win Mag Ammo • Judge 45LC/410 • Rossi r92 357 mag/38 SPL • Henry Golden Boy .22 LR • H&R 12ga. Wild Turkey Federation Edition • Winchester M70 270wsm Leopold Opic • Heritage Rough Rider .22wmr • Winchester M70 7mm Rem Mag Stainless • Mossberg .22 Plinkster • Win M12 12ga Full • Mossberg 341 .22LR • Custom AR15 5.56 Timney Trigger Night SI • BCA 300BLK Pistol 12.5in Trigger Tech • Springfield XDM 10MM Stream Light • Rock Island 206 .38SPL • Armanius Arms 32 ss. Spl • Taurus Judge 45/410 • H&R 12 ga Pump • Harrington Richardson .410-44cal S&S • US Springfield Sporterized 30-06 • Glock 26 9mm • Keltec sub 2000 9mm • Charter Arms Bulldog .44 Special • EAA Witness w/.45 & .22 Cal Uppers • (2) hermitage Arms 3 1/2 Barrel w/.22 & .22 mag cylinder Broad Head Grp • 1800 rounds 5.56/.223 • 1750 rounds .300 BLK • 550 rounds 10mm • Lakefield .22 WM • Savage 110 .243 • Savage 340 30-30 • Stevens 940E 16gauge • Night Vision Binoculars • (5) Damascus Knives • Other

Auctioneers Note: THIS IS JUST A PARTIAL LISTING AS WE ARE TAKING CONSIGNMENTS UP UNTIL AUCTION DAY! PLEASE VISIT WEBSITE FOR PICTURES! WE WILL RUN 2 RINGS MOST OF THE DAY! Thanks, Shawn

DRIVER'S LICENSE OR PICTURE I.D. REQUIRED • TERMS: CASH OR APPROVED CHECK **OR**

Auction Service, LLC

www.chadwellauctions.com

Auctioneer:
SHAWN CHADWELL
417-830-0209

Ringmen:
Weston Chadwell ~ 417-349-0727

Clerk:
SHELLY CHADWELL
Cell: 417-880-8449

Cashiers:
Marla Reppond • Emily Shaffer
Cassie Collins

PROFESSIONAL SALES MANAGEMENT
 LUNCH WAGON • APPRAISAL SERVICE • RAIN OR SHINE
 All announcements made day of sale take precedence over any printed matter.
 Not responsible for lost or stolen merchandise. Not responsible for accidents.

PUBLIC AUCTION

10 a.m. Saturday, April 6

Owners: Bob and Alice Lynch Estate

LOCATION: 8373 Hwy. 63, Houston, Mo. 65483 **DIRECTIONS:** From Houston - Take Hwy. 63 north 2 miles to auction. Watch for Scheets auction signs.

★ TRACTOR ★ TRAILERS ★ EQUIPMENT ★ MISC ★

8N Ford Tractor • 5 Ft. Bushhog • Box blade • 2 Bottom plow • 3 pt. Pond scoop • Rock rake • Two small trailers • Air compressors • Wheelbarrows • Storm windows and doors • Misc. tools not listed •

HOUSEHOLD ★ FURNITURE ★ ANTIQUES ★ COLLECTIBLES

Two electric-lift chairs • Two flat-screen TVs • Dining table • Washing machine • Massage chair • Antique tables • Antique desk • Gun cabinet • Bar stools • End tables • Several floor lamps • Book cases • Vanities • Free-standing jewelry box • Misc. mirrors • Bathroom cabinets • Couches • Several chairs, some vintage • Curio cabinet • One-gallon butter churn • Crocks small to extra large • Depression glass • Carnival glass • Two Fenton lamps • Vintage hand-crank record player • Records • Vintage canning jars with zinc lids • Wooden chicken nester & misc. • Christmas decorations • Heaters • Flower trellis • Chandeliers • Painting supplies • Misc. kitchenware • 1800s Copper candy pot • Antique decorative plates • Misc. serving silver • Corning Ware • Misc. glassware • Accent pillows • Books, some signed • Linens • Misc. items not listed •

Auctioneer's note: Auctioneers Note: Come see a lifetime collection with more still in boxes. Lots of items to be added. Come see what we find. Thanks, Darren and Jake.

Darren SCHEETS

AUCTIONS


(417) 457-6638 • (417) 926-8575

www.scheetsauctions.net



TERMS OF AUCTION: Cash or check with picture ID. Nothing loaded or removed until paid for. Everything sells as is, where is. Not responsible for accidents, lost or stolen items. Auction day announcements take precedence over all previous advertisements. LUNCH ON GROUNDS.

BUFFALO LIVESTOCK MARKET LLC



276 Hwy 32 W., Buffalo, MO

March 20th, 2024

Receipts: 838

REPRESENTATIVE STEERS

300-400 @ 320.00 to 397.00
 400-500 @ 305.00 to 355.00
 500-600 @ 275.00 to 320.00
 600-700 @ 245.00 to 287.00
 700-800 @ 220.00 to 247.00
 800-900 @ 220.00 to 228.00

REPRESENTATIVE HEIFERS

300-400 @ 270.00 to 345.00
 400-500 @ 260.00 to 311.00
 500-600 @ 220.00 to 290.00
 600-700 @ 210.00 to 242.00
 700-800 @ 202.00 to 225.00
 800-900 @ 193.00 to 202.00

FEEDER BULLS

300-400 @ 290.00 to 367.00
 400-500 @ 285.00 to 335.00
 500-600 @ 250.00 to 287.00
 600-700 @ 210.00 to 250.00
 700-800 @ 200.00 to 210.00
 800-900 @ 173.00 to 196.00

STOCKS COWS

Bred Cows 2000.00 to 2400.00

SLAUGHTER BULLS

High Yield 170.00 to 182.00
 Low Yield 157.00 to 168.00

SLAUGHTER COWS

Fleshy 135.00 to 150.00
 Med Flesh 125.00 to 147.00
 Light Flesh 115.00 to 135.00

CRIPPLE, DOUBTFUL HEALTH COWS

70 Down

Poor Quality, Plain, LH or DairyX Cattle will not be on this market

Happy Easter!!! He has Risen!!!

Enjoy your Family, Friends, and Faith!!!

MON-WED MARKET REPORT

Listen to KJEL 103.7FM • Lebanon or KYOO 99FM • Bolivar

VIEW OUR SALES AT CATTLEUSA.COM

CALL FOR TRUCKING OR ON-FARM VISIT

Lyle Caselman • Owner-Manager
 417-345-7876 • mobile 417-533-2944

Leon Caselman • Owner
 417-345-4514 • mobile • 417-588-6185

SPORTSET BY SARGENT: Fishing pliers in leather sheath. Like a multi-tool. \$15. 636-239-2695 or 314-560-5700. Washington.

NEW SQUARE D RAINPROOF 50AMP DISCONNECT: \$150. 636-239-2695 or 314-560-5700. Washington.

USED JET HOME POLLUTION CONTROL PANEL: Model CP700. \$50. 636-239-2695 or 314-560-5700. Washington.

1 PAIR OF KEY BRAND MEN'S JEANS: Waist 38, Length 34. \$8. 636-239-2695 or 314-560-5700. Washington.

DARDEN PROFESSIONAL TIMBER HARVESTING, BUYING STANDING TIMBER: Great prices, improve wildlife habitat and improve forest health. State Certified & Fully Insured! 573-247-4808. Salem.

BLACK METAL TUBULAR BRACKET: Scrolling and a stainless bracket. \$8. Call for pictures. 636-239-2695 or 314-560-5700. Washington.

RUBBER & LEATHER BOOTS AND 5- BUCKLE OVER SHOES: Men's 11, Women's 7, some insulated. \$12-\$35 obo. 636-239-2695. Washington.

ANTIQU 4 HP ENGINE: Built by Continental Motors Corporation. \$150 OBO. 573-308-5884. Rolla.

INTERNATIONAL PICKUP TRANSFER GEARBOX: \$150. 573-308-5884. Rolla.

'85 FORD PICKUP PARTS: Passenger door with window glass & mirror \$30. Also, Tailgate for '85 Ford pickup \$25. 573-308-5884. Rolla.

NEW JELD WEN 5' LEFT HAND SLIDING GLASS DOOR WITH SUNSTABLE INTERIOR BLINDS: Clear tempered glass, Desert Sand trim/hardware. Retail \$2655 Sell \$900. 417-693-0389. Conway.

TOSHIBA 42" FLAT SCREEN LED LCD HD TV: With remote & owner's manual. \$50. 210-787-8222. Linn Creek.

NEW IN BOX MASTERBUILT ELECTRIC TURKEY FRYER: Up to 14 lbs. Fry, boil or steam. Safe for indoors. \$80. 417-718-5347. Morgan.

1985 ST. LOUIS CARDINALS SIGNED WORLD SERIES BALL: Includes Herzog & Ozzie Smith. PSA/DNA. \$190. Text for pictures. 573-854-8132. Houston.

Real Estate & Liquidation Auction!


Saturday, April 27th @ 10:00 AM!
636 Wilderness Way, Anderson, MO

Selling 40 Acres M/L; fully remodeled berm home & shop building. Very secluded and quiet; hunters paradise! Several vehicles, trucks and equipment will be selling as well. Flyer and details coming soon!

Contact Southwest Auction Service for more info!
417-652-7540 office or cell: 417-772-8088
(Bob Hughes) for more details!




www.swaauction.com



MID MISSOURI STOCKYARDS


REGULAR SALE EVERY THURSDAY 11 AM

COW SALE • APRIL 6TH AT 6PM

WATCH OUR WEEKLY SALE IN REAL TIME ON DVAUCTION.COM

For Farm Visits, Market Updates, or Trucking
 Call **Zach Cox 417-777-1320**
Dan Romine 573-578-4939

Competitive Buyers!
 Competitive Commission!
 Competitive Market!

Barn: 417-532-9292 

I-44 • Exit 123 "just outside of Lebanon"
 17505 Route 66, Phillipsburg, MO 65722

For weekly market updates, visit us at www.midmostockyards.com

SOVIET UNION WINTER WEATHER ARMY HAT: Excellent condition. \$ 35. Text for pictures. 573-854-8132. Houston.

TRACTORS: Massey Harris "30" (two to choose from) cheap brush-hogging tractors, one is \$1,500 the other is \$2,000. 417-848-8754. Battlefield.

ST LOUIS BLUES: autographed full size hockey stick. Brett Hull. Text for pictures. \$149 573-854-8132. Houston.

RIFLE CASE: Pelican storm. IM3100 long case like new \$160. Text for pictures. 573-854-8132. Houston.

GUNSMITHING-Older Rifles, Shotguns, Handguns, all 22LRs. Any make, any model, estate appraisals. Camdenton. 573-363-5801.

BORDER COLLIES/HEALER PUPS: Shots & Wormed. Call 573-694-9159. Russellville.

BAMBOO FLY RODS: \$50. Trout season is coming. 417-589-8200. Conway.

HAY FOR SALE: Alfalfa & grass mix. 4x5 round bales. 417-343-4958. Seymour.

HIGHPOINT GREENHOUSE OPEN FOR THE SEASON: New asparagus roots, strawberry plants & rhubarb roots. Hours 9am-6pm Monday-Saturday. Closed Sunday. 9337 Warner Rd. Hartville. 417-741-2793.

3 ARMY CANTEENS: Mess kit, belt & duffel bag. Best offer for all. 417-260-0941. Raymondville.

FRUIT TREES: Apple, Peach, Cherry, Plum & Pear. \$25. 417-664-0742. Lebanon.

LEFTY'S FABRICATION: Continuous panels & gates. Corral panels & custom welding. 4175-589-0864. Conway.

DO YOU BELIEVE IN HELL? If so why? Bible study P.O.BOX 863 Lebanon, MO 65536.

KATAHDIN EWES: Hopping Genetics, Parasite resistance, Pasture lambing, Never grain, No hoof rot, No trimming, Due to lamb in April. 417-322-0161. Lebanon.

AUSTRALIAN PUPPIES FOR SALE OR TRADE: UTD on shots. Ready to go. Out of working parents. 417-967-6493.

• Excavation & Grading

• Land Prep & Clearing

Bradley Cloyd Construction

• Flatwork Concrete

Free Estimates! 417-630-2288

LAKE OF THE OZARKS-SPRING SPECIAL Lots starting at \$4,995-\$125 down \$69 per month. Build, camp, or own for investment also acreage tracts. Beautiful wooded area, free lake access and boat ramps, lots are a short distance away from the lake, no credit checks, owner financing, and immediate possession. Missouri conservation boat ramp with a covered dock and rest rooms close by. **Prices good through April 9th, 2024.** Hwy 135 between Stover and Sunrise Beach, MO. Take lake road 135-12 to the Ivy Bend Land Office. Closed Tuesdays and Wednesdays Call anytime 573-372-6493.

FISHING SEASONS COMING: Get your rod and reels, \$15 and up. 417-589-8200. Conway.

3 BW: motorcycle magazines 2008 Free. 417-260-0941. Raymondville.

FISHING REEL SPOOLS FOR SALE: I've got what you need. \$3/each. 417-589-8200. Conway.

YOUTH BED: in good condition \$15. 417-532-2344.

20 LB PROPANE TANK: with OPD valve \$20. 417-532-2344.

CHILTONS AUTO REPAIR MANUAL: all American cars & Volkswagen 1969-1976. \$30 plus shipping. 417-260-0941. Raymondville.

MINIATURE GOLDENDOODLE PUPPIES: \$250. 417-741-0185. Grovespring.

WE BUILD CABINS, HOUSES & GARAGES: With top quality materials at reasonable prices. Call Daniel with Yoder's Outdoors for a quote. 573-759-3851 Mornings 8-8:30. Dixon.

Is Your Log Home Starting To Look **UGLY?**

Call Pine Ridge Rustic Log Home Building Supplies

• Professional Log Home Maintenance & Restoration
• Staining • Chinking/Caulking • Log Replacement • Media Blasting

573-729-7226

www.pineridgerustic.com

HIGHPOINT GREENHOUSE OPEN FOR THE SEASON: Vegetable plants, garden seeds, onion plants & sets, seed potatoes. Hours 9am-6pm Monday-Saturday. Closed Sunday. 9337 Warner Rd. Hartville. 417-741-2793.

2-DRAWER FILE CABINET: Pink. In good condition. \$15. 417-532-2344.

2006 HARLEY DAVIDSON DYNA STREET BOB: 16,413 miles, 88 cubic inch. Thousands in extras. Call for details. \$8,000. 573-544-8059. Belle, MO.

SNAGGING SEASON IS UPON US: Snagging rods \$35 & up. Rods & reels with line. 417-589-8200. Conway.

STIHL CHAINSAWS: New/used parts & repairs. Chamois, MO. Dennis Brandt 573-763-5615.

DEAN'S CREEK MOBILE WELDING LLC: Noah Downing, Certified Welder Serving Central Missouri. 573-842-7281.

CATTLE PANELS FOR SALE: Approximately 40. \$20/each. 573-247-4280. Salem.

BUYING SCRAP METAL: All kinds, can torch, Heavy Equipment Call for prices, 40 years' experience. 573-308-6739.

FREE PUPPIES: Great Pyrenees/Collie Mix. Very cute. 417-718-8584, leave message. Conway.

WANTED MILK GOAT: 660-598-4019.

FREE TO GOOD HOME: 1-year-old Male Corgi. 417-259-9738. Hartville.

2 YEARLING STEERS: 1 Jersey & 1 Dexter/Jersey. Weighing approximately 600lbs. Asking \$1,200 each, cash. 573-775-2564. Steelville.

JUMBO FLOAT: 95" long x 80" wide x 10" high. Heavy gauge vinyl, Safety valve, 2 screw valves, 12 rope holders, water plug, nylon rope around it. Like new. \$150. 210-787-8222. Linn Creek.

BREWER LOGGING: Looking to buy standard walnut & oak standing timber. Call 417-254-0266, for a free quote.

30-30 WINCHESTER RIFLE: with 2 boxes of shells. 636-388-2742.

CASH FOR COMICS, SPORTS CARDS, RELATED ITEMS, TOYS: Over 35 years of experience as a collector/dealer. Call or text 636-667-0391.

2 PICKUP BED TRAILERS: \$75. 417-527-2740.

5' BUSHHOG: old; works. \$100. 417-527-2740.

FINALLY REALIZED ITS TIME TO GET A STORM SHELTER? Call Jeff @ safeplacestormshelter 417-894-3159. Professional storm shelter consultant for 20 years.

16FT RIVER JON: electric trolling motor. 5hp, air cooled outboard. \$1500. 417-527-2740.

150HP MERCURY OPTIMAX: \$1,500. 417-527-2740.

3PT FINISH MOWER: \$100. 417-527-2740.

MOTORIZED WHEELCHAIR: joystick controlled. Brand new batteries. 573-205-4045.

2002 F150: 4-door, 4x4, 89,xxx miles. \$5,000. 417-527-2740.

3-JOHN DEERE MOWERS: \$600. 417-527-2740.

REGISTERED: Mini-Poodle puppies \$100. 417-741-2793. Hartville

1995 JD 850B DOZER: 4,000 hours on motor, 800 hours on tracks, 95% undercarriage. \$31,000 OBO. 660-596-3091. Richland.

JD 495A CORN PLANTER: with dry fertilizer & insecticide. Lots of spare parts. \$500 OBO. 573-308-5884.

HAY FOR SALE: Alfalfa & grass mix. 4x5 round bales. 417-343-4958. Seymour.

TIGER WOODS UPPER DECK CARD: #1 mint condition. 573-854-8132. Houston.

HISTORY OF SCHOOLS IN THE MERAMEC VALLEY OF MISSOURI: Many old photos, hardback, \$20. 417-532-2045, Lebanon. Leave message and phone number.

CENTENNIAL OF IMMANUEL LUTHERAN CHURCH & RADER FAMILIES 1871-1971 BOOK: Out of print book. \$25. 417-532-2045, Lebanon. Leave message and phone number.

WEATHERED BARN WOOD SIDING: 10" wide. Call for appointment 573-729-7226. www.pineridgerustic.com Salem.

LOG SIDING: 2X8 Pine/Western Cedar. Call for appointment 573-729-7226. www.pineridgerustic.com Salem.

WANTED MILK GOAT: 660-598-4019.

APRIL fool's SALE

NO GIMMICKS, NO WHOOPEE CUSHIONS

NO INTEREST FOR 72 MO.

LOT FOR A LITTLE PACKAGE

1023E TRACTOR
+ Loader
+ Mower Deck

\$314/mo*

BUFFALO PACKAGE

3038E TRACTOR
+ Loader

\$449/mo*

SCAN TO SAVE



*Offer ends 4/6/24. See dealer for details.

HeritageTractor.com/Specials-April-Fools

40 YEARS THIS YEAR- we have to be doing something right. Call for quote or any house new or used, double and single. 573-657-2176 amegamobilehomes.com.

WE GOT IT - let us bid your mobile home purchase, new and used. 573-499-9993 columbiadiscountshomes.com.

TRIPLE WIDE- moving stock, awesome price. 573-657-7040 chateauhomes.net.

1 PAIR OF KEY BRAND MEN'S JEANS: Waist 38, Length 34. \$8. 636-239-2695 or 314-560-5700. Washington.

I BUY.....used mobile homes. Call or text 573-338-6250 or email GregS.CDH@outlook.com

1985 ST. LOUIS CARDINALS SIGNED WORLD SERIES BALL: Includes Herzog & Ozzie Smith. PSA/DNA. \$190. Text for pictures. 573-854-8132. Houston.

HIGHPOINT GREENHOUSE OPEN FOR THE SEASON: Flowers, bedding plants, hanging baskets, succulents. New for this year Easter combinations. Hours 9am-6pm Monday-Saturday. Closed Sunday. 9337 Warner Rd. Hartville. 417-741-2793.

NEW JELD WEN 5' LEFT HAND SLIDING GLASS DOOR WITH SUNSTABLE INTERIOR BLINDS: Clear tempered glass, Desert Sand trim/hardware. Retails \$2655 Sell \$900. 417-693-0389. Conway.

TOSHIBA 42" FLAT SCREEN LED LCD HD TV: With remote & owner's manual. \$50. 210-787-8222. Linn Creek.

NEW IN BOX MASTERBUILT ELECTRIC TURKEY FRYER: Up to 14 lbs. Fry, boil or steam. Safe for indoors. \$80. 417-718-5347. Morgan.

Starnes Auto LLC
 22115 Rt. 66 • Lebanon, MO 65536
 588-7939 Cell
 588-3159 Office
 www.starnesauto.com

Worry-Free
AUTOMOTIVE PAINT & BODYWORK

Our trained experts and specialized equipment get you the highest quality body repair and paint solutions.



WE DO ALIGNMENTS!

Buildings • Hunter's Cabins • Lawn Furniture

JAMCO Portable Buildings
 800-688-2064 • 307 Enterprise Dr. • Seymour, MO • www.jamcobuilders.com

Rent To Own Plan

SPORTSET BY SARGENT: Fishing pliers in leather sheath. Like a multi-tool. \$15. 636-239-2695 or 314-560-5700. Washington.

NEW SQUARE D RAINPROOF 50AMP DISCONNECT: \$150. 636-239-2695 or 314-560-5700. Washington.

TINY HOMES - Missouri Franchise 573-881-7965.

USED JET HOME POLLUTION CONTROL PANEL: Model CP700. \$50. 636-239-2695 or 314-560-5700. Washington.

BLACK METAL TUBULAR BRACKET: Scrolling and a stainless bracket. \$8. Call for pictures. 636-239-2695 or 314-560-5700. Washington.

RUBBER & LEATHER BOOTS AND 5- BUCKLE OVER SHOES: Men's 11, Women's 7, some insulated. \$12-\$35 obo. 636-239-2695. Washington.

ANTIQU 4 HP ENGINE: Built by Continental Motors Corporation. \$150 OBO. 573-308-5884. Rolla.

'85 FORD PICKUP PARTS: Passenger door with window glass & mirror \$30. Also, Tailgate for '85 Ford pickup \$25. 573-308-5884. Rolla.

INTERNATIONAL PICKUP TRANSFER GEARBOX: \$150. 573-308-5884. Rolla.

SOVIET UNION WINTER WEATHER ARMY HAT: Excellent condition. \$ 35. Text for pictures. 573-854-8132. Houston.

ST LOUIS BLUES: autographed full size hockey stick. Brett Hull. Text for pictures. \$149 573-854-8132. Houston.

DARDEN PROFESSIONAL TIMBER HARVESTING, BUYING STANDING TIMBER: Great prices, improve wildlife habitat and improve forest health. State Certified & Fully Insured! 573-247-4808. Salem.

RIFLE CASE: Pelican storm. IM3100 long case like new \$160. Text for pictures. 573-854-8132. Houston.

GUNSMITHING-Older Rifles, Shotguns, Handguns, all 22LRs. Any make, any model, estate appraisals. Camdenton. 573-363-5801.

AB SPORT LOUNGE like new \$35. 210-787-8222 Linn Creek.

BORDER COLLIES/HEALER PUPS: Shots & Wormed. Call 573-694-9159. Russellville.

FISHING SEASONS COMING: Get your rod and reels, \$15 and up. 417-589-8200. Conway.

3 BW: motorcycle magazines 2008 Free. 417-260-0941. Raymondville.

FISHING REEL SPOOLS FOR SALE:
I've got what you need. \$3/each. 417-589-8200. Conway.

ROOMMATE NEEDED, COUNTRY LIVING: Near highway. 15 minutes to Ft. Leonard Wood & 15 minutes to Lebanon. Entire 2nd floor of farmhouse on acreage. \$600/month, includes all utilities. No cats. Call Kurt at 906-396-5877.

SNAGGING SEASON IS UPON US:
Snagging rods \$35 & up. Rods & reels with line. 417-589-8200. Conway.

BAMBOO FLY RODS: \$50. Trout season is coming. 417-589-8200. Conway.

LAKE OF THE OZARKS-SPRING SPECIAL Lots starting at \$4,995-\$125 down \$69 per month. Build, camp, or own for investment also acreage tracts. Beautiful wooded area, free lake access and boat ramps, lots are a short distance away from the lake, no credit checks, owner financing, and immediate possession. Missouri conservation boat ramp with a covered dock and rest rooms close by. **Prices good through April 9th, 2024.** Hwy 135 between Stover and Sunrise Beach, MO. Take lake road 135-12 to the Ivy Bend Land Office. Closed Tuesdays and Wednesdays Call anytime 573-372-6493.

DO YOU BELIEVE IN HELL? If so why?
Bible study P.O.BOX 863 Lebanon, MO 65536.

HIGHPOINT GREENHOUSE OPEN FOR THE SEASON: New asparagus roots, strawberry plants & rhubarb roots. Hours 9am-6pm Monday-Saturday. Closed Sunday. 9337 Warner Rd. Hartville. 417-741-2793.

3 ARMY CANTEENS: Mess kit, belt & duffel bag. Best offer for all. 417-260-0941. Raymondville.

CHILTONS AUTO REPAIR MANUAL: all American cars & Volkswagen 1969-1976. \$30 plus shipping. 417-260-0941. Raymondville.

STIHL CHAINSAWS: New/used parts & repairs. Chamois, MO. Dennis Brandt 573-763-5615.

FRUIT TREES: Apple, Peach, Cherry, Plum & Pear. \$25. 417-664-0742. Lebanon.

LEFTY'S FABRICATION: Continuous panels & gates. Corral panels & custom welding. 4175-589-0864. Conway.

TRACTORS: Massey Harris "30" (two to choose from) cheap brush-hogging tractors, one is \$1,500 the other is \$2,000. 417-848-8754. Battlefield.

WE BUILD CABINS, HOUSES & GARAGES: With top quality materials at reasonable prices. Call Daniel with Yoder's Outdoors for a quote. 573-759-3851 Mornings 8-8:30. Dixon.

KATAHDIN EWES: Hopping Genetics, Parasite resistance, Pasture lambing, Never grain, No hoof rot, No trimming, Due to lamb in April. 417-322-0161. Lebanon.



J&L METAL ROOFING
Specializing in Re-Roofing | Free Estimates
Phone: (573)-759-3880
Phone Answered on Monday & Friday 6:30pm-7:00pm
20371 Maries County Road 635, Dixon, Missouri 65459

MINIATURE GOLDENDOODLE PUPPIES: \$250. 417-741-0185. Grovespring.

HIGHPOINT GREENHOUSE OPEN FOR THE SEASON: Vegetable plants, garden seeds, onion plants & sets, seed potatoes. Hours 9am-6pm Monday-Saturday. Closed Sunday. 9337 Warner Rd. Hartville. 417-741-2793.

YOUTH BED: in good condition \$15. 417-532-2344.

20 LB PROPANE TANK: with OPD valve \$20. 417-532-2344.

2-DRAWER FILE CABINET: Pink. In good condition. \$15. 417-532-2344.

2006 HARLEY DAVIDSON DYNA STREET BOB: 16,413 miles, 88 cubic inch. Thousands in extras. Call for details. \$8,000. 573-544-8059. Belle, MO.



WE BUY AND SELL
new and used mobile homes
(417) 501-1061

DEAN'S CREEK MOBILE WELDING LLC: Noah Downing, Certified Welder Serving Central Missouri. 573-842-7281.

CATTLE PANELS FOR SALE: Approximately 40. \$20/each. 573-247-4280. Salem.

FINALLY REALIZED ITS TIME TO GET A STORM SHELTER? Call Jeff @ safeplacestormshelter 417-894-3159. Professional storm shelter consultant for 20 years.



KING BUILDERS
We specialize in custom and specialty builds, such as:

- Houses
- Barndominiums
- Shops
- Barns
- Garages

We also do roofing & siding!

Call for a free estimate!

Stevie King | 435 Dickerson Ranch Lane, Conway, MO 65632 | 417-241-3280

AUSTRALIAN PUPPIES FOR SALE OR TRADE: UTD on shots. Ready to go. Out of working parents. 417-967-6493.

BUYING SCRAP METAL: All kinds, can torch, Heavy Equipment Call for prices, 40 years' experience. 573-308-6739.

FREE TO GOOD HOME: 1-year-old Male Corgi. 417-259-9738. Hartville.

CASH FOR COMICS, SPORTS CARDS, RELATED ITEMS, TOYS: Over 35 years of experience as a collector/dealer. Call or text 636-667-0391.

2 PICKUP BED TRAILERS: \$75. 417-527-2740.

5' BUSHHOG: old; works. \$100. 417-527-2740.

3-JOHN DEERE MOWERS: \$600. 417-527-2740.

REGISTERED: Mini-Poodle puppies \$100. 417-741-2793. Hartville

MOTORIZED WHEELCHAIR: joystick controlled. Brand new batteries. 573-205-4045.

OMAR'S LOGGING
& Dozing Work
 ➔ Oak & Walnut
 ➔ Excellent Prices
Amish Owned & Operated



LEAVE MESSAGE: 417-741-0440
 Hartville & Surrounding Areas



Wright Spray Foam Insulators, LLC
 Commercial & Residential
Call for FREE Estimates!

Ervin Gingerich 417-926-2052
 B. Eli Yoder 417-746-4932

Buying Standing Timber
References Available.
BUTLER LOGGING



NIANGUA, MO
417-448-9323

2 YEARLING STEERS: 1 Jersey & 1 Dexter/Jersey. Weighing approximately 600lbs. Asking \$1,200 each, cash. 573-775-2564. Steelville.

JUMBO FLOAT: 95" long x 80" wide x 10" high. Heavy gauge vinyl, Safety valve, 2 screw valves, 12 rope holders, water plug, nylon rope around it. Like new. \$150. 210-787-8222. Linn Creek.

BREWER LOGGING: Looking to buy standard walnut & oak standing timber. Call 417-254-0266, for a free quote.

30-30 WINCHESTER RIFLE: with 2 boxes of shells. 636-388-2742.

16FT RIVER JON: electric trolling motor. 5hp, air cooled outboard. \$1500. 417-527-2740.

150HP MERCURY OPTIMAX: \$1,500. 417-527-2740.

3PT FINISH MOWER: \$100. 417-527-2740.

1995 JD 850B DOZER: 4,000 hours on motor, 800 hours on tracks, 95% undercarriage. \$31,000 OBO. 660-596-3091. Richland.

2002 F150: 4-door, 4x4, 89,xxx miles. \$5,000. 417-527-2740.

FREE PUPPIES: Great Pyrenees/Collie Mix. Very cute. 417-718-8584, leave message. Conway.

JD 495A CORN PLANTER: with dry fertilizer & insecticide. Lots of spare parts. \$500 OBO. 573-308-5884.

ROOMMATE NEEDED, COUNTRY LIVING: Near highway. 15 minutes to Ft. Leonard Wood & 15 minutes to Lebanon. Entire 2nd floor of farmhouse on acreage. \$600/month, includes all utilities. No cats. Call Kurt at 906-396-5877.

TIGER WOODS UPPER DECK CARD: #1 mint condition. 573-854-8132. Houston.

We rebuild diesel engines



Workin' on everything from a garden tractor to a dozer!



Workin' on:
 Diesel Engines
 Hydraulic Cylinders
 Haying Equip
 Construction Equip
 And Everything Else!

417-589-0346
 483 Starvey Creek Rd • Conway, MO
 Bring in your equipment today!

CENTENNIAL OF IMMANUEL LUTHERAN CHURCH & RADER FAMILIES 1871-1971 BOOK: Out of print book. \$25. 417-532-2045, Lebanon. Leave message and phone number.

WEATHERED BARN WOOD SIDING: 10" wide. Call for appointment 573-729-7226. www.pineridgerustic.com Salem.

LOG SIDING: 2X8 Pine/Western Cedar. Call for appointment 573-729-7226. www.pineridgerustic.com Salem.

HISTORY OF SCHOOLS IN THE MERAMEC VALLEY OF MISSOURI: Many old photos, hardback, \$20. 417-532-2045, Lebanon. Leave message and phone number.

40 YEARS THIS YEAR- we have to be doing something right. Call for quote or any house new or used, double and single. 573-657-2176 amegamobilehomes.com.



YOUR AD GOES HERE!

Add YELLOW Color For An Additional \$3 Per Reader Ad

All ads will include Phone Number (unless requested to be deleted by advertiser) and City Or Town, Phone Number with Area Code counts as one word. City or Town counts as one word.

RATE: 80¢ Per Word. All Classified Ads Require Payment Before Print.

(1)	80¢	(2)	\$1.60	(3)	\$2.40	(4)	\$3.20
(5)	\$4.00	(6)	\$4.80	(7)	\$5.60	(8)	\$6.40
(9)	\$7.20	(10)	\$8.00	(11)	\$8.80	(12)	\$9.60
(13)	\$10.40	(14)	\$11.20	(15)	\$12.00	(16)	\$12.80
(17)	\$13.60	(18)	\$14.40	(19)	\$15.20	(20)	\$16.00
(21)	\$16.80	(22)	\$17.60	(23)	\$18.40	(24)	\$19.20
(25)	\$20.00	(26)	\$20.80	(27)	\$21.60	(28)	\$22.40
(29)	\$23.20	(30)	\$24.00	(31)	\$24.80	(32)	\$25.60
(33)	\$26.40	(34)	\$27.20	(35)	\$28.00	(36)	\$28.80
(37)	\$29.60	(38)	\$30.40	(39)	\$31.20	(40)	\$32.00

Buy 3 Weeks - Get 4th Week Free! (Must be same ad)

Place your Classified Ad TODAY!

417-532-9131

Fax: 417-532-8140

Or Mail To: P.O. Box 192 • Lebanon, MO 65536

For your convenience we accept MasterCard, Visa, Discover or American Express



DEADLINE FOR CLASSIFIED ADS: FRIDAY 4:00PM!

Name _____

Address _____

City _____ Email _____

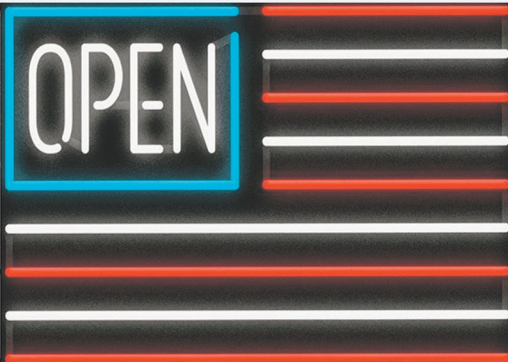
State _____ Zip Code _____ Phone _____

Ad Total \$ _____ X # Weeks _____ = Amount Enclosed \$ _____



LUCKY DISCOUNT LUMBER
NOBODY BEATS OUR PRICES

Sale Ends April 30, 2024
 Seymour, Missouri 417-935-4201



Pole Barn Building Kits!

23'x32'x10' \$6,688 Material Only \$8,888 Labor Included	23'x40'x10' \$7,600 Material Only \$10,320 Labor Included	30'x40'x10' \$9,000 Material Only \$12,500 Labor Included	40'x60'x12' \$15,800 Material Only \$23,050 Labor Included
---	--	--	---

Call for free quote, brochure & color chart.
 Other sizes also available.



NOBODY, BUT NOBODY BEATS OUR PRICES!!!

10 ft. Slider • Engineered Trusses 8' O.C. • 2x6 Treated Bottom Wrap • Screws • 2x10 Top Wrap • 2x4 Purlins • Full 29 Gauge Steel • Plus 3 ft. Entry Door with Lock

OPTIONS: Sidewall Heights on all Buildings 10', 12', 14' & 16'. Overhead Garage Door. Skylights. Insulation. Wainscoting. Insulated Vinyl Windows. Cupolas. Labor Rates Slightly Higher over 50 Miles from Seymour. Call for YOUR FREE QUOTE TODAY!!!

PAINTED WHITE, GREEN OR TAN METAL\$97.79	IN STOCK
10' - \$31.00 12' - \$37.20 16' - \$49.60	
MIX & MATCH METAL\$59.99	
8' - \$15.20 10' - \$19.00 12' - \$22.80	
GALVALUME METAL\$79.99	
10' - \$25.40 12' - \$30.48 16' - \$40.64	
GALVANIZED CORRUGATED METAL\$85.39	
8' - \$15.92 10' - \$19.90 12' - \$23.88 16' - \$31.84	

40yr Painted Metal
Call!

KNOTTY PINE DOORS
 Starting at
\$164.99

Prices subject to change without notice
6X6 CEDAR POST LIMITED TIME \$5.87 LN FT

Car Siding!

1x6 White Pine Siding **69¢** in ft
 1x8 White Pine Siding **99¢** in ft

* 4 Profiles to choose from!
 Broken Bundles Add 10¢ Per Ft.

4x8 Sheeting
 Less than full units Add \$1 per sheet

3/8" Beaded Paneling	\$19.99
5/8" T111 Siding	\$19.99
Paneling	\$SOLD
1/2" Plywood	\$23.99
3/4" Plywood	\$29.99
3/16 Pegboard	\$12.99

LOTS OF MATERIAL AVAILABLE
FOR THOSE IN HOME PROJECTS!

NEW PACKAGE HOMES



2x6—16" on center-Exterior Stud Walls
 Residential Roof Trusses-2' on center
 4/12 pitch with 1' over hang
 40 year Painted Metal roofing in 20 Different Colors
 Profile Ridge Vent - Ventilated Ridge Cap
 Vinyl Center Vent Soffit
 Color Matched Metal Fascia & Gable Trim
 2 - 3' 6 Panel Entry Doors
 4 - 3'x4' Vinyl Insulated Windows

Shown with Available Options
 Your Choice of either:
 Stock 5/8" T111 Siding w/1x4 Pine Window & Door Trim - or -
 7/16" OSB & House Wrap ready for other finish options

ALL FIGURED FOR SUITABLE CUSTOMER SUPPLIED SLAB OR SUB-FLOOR

Price for Basic Materials Package (No Labor at this Time)

20x24(480 sq. ft.)	20x32(640 sq. ft.)	20x40(800 sq. ft.)	28x40(1120 sq. ft.)	28x48(1344 sq. ft.)
\$9,490	\$10,839	\$12,339	\$15,129	\$18,729

REAL WOOD SIDING

2x6 Log Siding **\$1.76** in ft
 1x8 Beveled Cedar from- **99¢** in ft
T1-11 Siding from \$19.99

DECK PACKAGES

Materials Only

8x8.....\$349.00	10x12.....\$699.00
10x10.....\$499.00	10x16.....\$899.00
12x12.....\$899.00	12x16..\$1179.00

QUAKER In STOCK! Quaker Vinyl Windows

2030 \$ 196.99	3030 \$224.99
3040 \$244.99	3052 \$289.99
3040Twin \$545.99	3052Twin \$592.99



LUCKY DISCOUNT LUMBER
 417-935-4201
 455 State Hwy C • Seymour MO 65746
 www.luckydiscountlumber.com



*Some restrictions apply see store for details. Prices subject to change without notice.

WE GOT IT - let us bid your mobile home purchase, new and used. 573-499-9993 columbiadiscountshomes.com.

TRIPLE WIDE- moving stock, awesome price. 573-657-7040 chateauhomes.net.

TINY HOMES - Missouri Franchise 573-881-7965.

I BUY.....used mobile homes. Call or text 573-338-6250 or email GregS.CDH@outlook.com

HIGHPOINT GREENHOUSE OPEN FOR THE SEASON: Flowers, bedding plants, hanging baskets, succulents. New for this year Easter combinations. Hours 9am-6pm Monday-Saturday. Closed Sunday. 9337 Warner Rd. Hartville. 417-741-2793.

SPORTSET BY SARGENT: Fishing pliers in leather sheath. Like a multi-tool. \$15. 636-239-2695 or 314-560-5700. Washington.

NEW SQUARE D RAINPROOF 50AMP DISCONNECT: \$150. 636-239-2695 or 314-560-5700. Washington.

USED JET HOME POLLUTION CONTROL PANEL: Model CP700. \$50. 636-239-2695 or 314-560-5700. Washington.

1 PAIR OF KEY BRAND MEN'S JEANS: Waist 38, Length 34. \$8. 636-239-2695 or 314-560-5700. Washington.

BLACK METAL TUBULAR BRACKET: Scrolling and a stainless bracket. \$8. Call for pictures. 636-239-2695 or 314-560-5700. Washington.

RUBBER & LEATHER BOOTS AND 5- BUCKLE OVER SHOES: Men's 11, Women's 7, some insulated. \$12-\$35 obo. 636-239-2695. Washington.

ANTIQUA 4 HP ENGINE: Built by Continental Motors Corporation. \$150 OBO. 573-308-5884. Rolla.

'85 FORD PICKUP PARTS: Passenger door with window glass & mirror \$30. Also, Tailgate for '85 Ford pickup \$25. 573-308-5884. Rolla.

INTERNATIONAL PICKUP TRANSFER GEARBOX: \$150. 573-308-5884. Rolla.

NEW JELD WEN 5' LEFT HAND SLIDING GLASS DOOR WITH SUNSTABLE INTERIOR BLINDS: Clear tempered glass, Desert Sand trim/hardware. Retail \$2655 Sell \$900. 417-693-0389. Conway.

DARDEN PROFESSIONAL TIMBER

HARVESTING, BUYING STANDING TIMBER: Great prices, improve wildlife habitat and improve forest health. State Certified & Fully Insured! 573-247-4808. Salem.

TOSHIBA 42" FLAT SCREEN LED LCD HD TV: With remote & owner's manual. \$50. 210-787-8222. Linn Creek.

NEW IN BOX MASTERBUILT ELECTRIC TURKEY FRYER: Up to 14 lbs. Fry, boil or steam. Safe for indoors. \$80. 417-718-5347. Morgan.

1985 ST. LOUIS CARDINALS SIGNED WORLD SERIES BALL: Includes Herzog & Ozzie Smith. PSA/DNA. \$190. Text for pictures. 573-854-8132. Houston.

SOVIET UNION WINTER WEATHER ARMY HAT: Excellent condition. \$ 35. Text for pictures. 573-854-8132. Houston.

ST LOUIS BLUES: autographed full size hockey stick. Brett Hull. Text for pictures. \$149 573-854-8132. Houston.

RIFLE CASE: Pelican storm. IM3100 long case like new \$160. Text for pictures. 573-

OFFICIAL TRACTOR OF TOUGH™

INTRODUCING THE ALL-NEW 5100 SERIES



Marshfield Machinery Inc.

222 E. Madison • Marshfield, MO 65706
417-859-2117 • www.marshfieldmachinery.com

*2018 data including all Mahindra group brand sales. MahindraUSA.com © 2020 Mahindra USA Inc.



NEW MAHINDRA TRACTORS	
1626 4WD & LDR 26HP	IN STOCK
1635 4WD & LDR 36HP	IN STOCK
1640 4WD & LDR 40HP	IN STOCK
2645 4WD & LDR 45HP	IN STOCK
5145 4WD & LDR 45HP	IN STOCK
5155 4WD & LDR 55HP	IN STOCK
4550 4WD & LDR 48HP	IN STOCK
6065 4WD & LDR 65HP	IN STOCK
6075 4WD CAB & LDR 71HP	IN STOCK
USED TRACTORS	
MF 4609M 90HP CAB LDR	45,000
MF 5445 75HP 4WD CAB LDR	42,500
NH T4.75 74HP 4WD LDR	32,500
MF 383 72HP CAB LDR	22,500
JD 5303 64HP 4WD LDR	21,500
MAHINDRA 6530 65HP 4WD LDR	19,500
MAHINDRA 2638 38HP 4WD LDR	19,000
JD 1025R 25HP 4WD LDR MWR	14,500
AC 7010 106HP CAB	9,500
MF 1528 28HP 4WD	6,500
USED ROUND BALERS	
MMF 2946A 4X6 MESH	35,000
HESSTON 560 5X6	2,000
USED MISC.	
BUSH HOG 3715 15FT	13,500
BUSH HOG 2615L 15FT	10,500
JD 1815 15FT	9,500
BUSH HOG 8WHEEL RAKE	4,000
HESSTON 8 WHEEL RAKE	3,000
HESSTON 8 WHEEL RAKE	2,500
OMI 8 WHEEL RAKE	2,500
RHINO 8 WHEEL RAKE	1,500
RHINO 5FT FINISH MOWER	850

Marshfield Machinery Inc.

222 E. Madison
Marshfield, MO 65706
417-859-2117
www.marshfieldmachinery.com

Quarles Supply

3251 S Springfield Ave, Bolivar, MO 65613
417-777-2391

Kubota of Lebanon

22330 Hwy MM, Lebanon, MO 65536
417-532-0888

*Your hometown
Kubota dealer
of choice.*



#1 SELLING
TRACTOR
UNDER 200 HP

L02 SERIES

Double digit to-do lists have met their match.

Dependable. Powerful. Versatile. When you need increased comfort, and reliable high performance under a steel hood, you can count on the Kubota L02 Series.

L2502DT Tractor and Loader \$19,995 | 0% for 84 Months

Visit your Kubota dealer today for a demo!

KubotaUSA.com



0% Down, 0% A.P.R. financing for up to 84 months on purchases of select new Kubota L2502DT equipment from participating dealers' in stock inventory is available to qualified purchasers through Kubota Credit Corporation, U.S.A.; subject to credit approval. Example: 84 monthly payments of \$11.90 per \$1,000 financed. Some exceptions apply. Terms subject to change. Offers expire 06/30/2024. This material is for descriptive purposes only. Kubota disclaims all representations and warranties, express or implied, or any liability from the use of this material. For more information, see Dealer or go to KubotaUSA.com.