

FREE - TAKE ONE!

Vol. 30 No. 52

MARCH 28, 2024

417-532-9131

WEEKLY **TRADER** MAGAZINE



Find us on
Facebook

@myweeklytrader
AUCTIONS PG. 5

VISIT OUR NEW WEBSITE! MYWEEKLYTRADER.COM



TRUCK MONTH



 Together let's drive™

Backed By **Morse**

WE WANT YOUR TRADE.

ED MORSE
CHEVROLET
BUICK GMC

100 Fairgrounds Rd., Rolla, MO

573-364-1002

EdMorseChevroletBuickGMCRolla.com

ROLLA

LAND FOR SALE



40.85 ACRES ± | WEBSTER CO., MO | \$475,000

- Nice location of a mostly open 41 acres with a 1,850 livable sq ft house and great views
- House built in 1962 with some renovations in the kitchen, with total of 2,570 sq ft including unfinished basement
- 3 bedrooms and 2 bathrooms with a nice dining room attached to kitchen and large living room
- Large stocked 3-acre lake for boating, livestock water source, and fishing use
- Gently rolling topography with four crossed fenced pastures and a healthy grass stand
- Incredible views all over the property
- Multiple water hydrants at old dairy farm barns
- Great quality perimeter and cross fencing
- Easy access off blacktop roads
- Lots of parking
- Secluded and quiet area just minutes from Marshfield
- Two sides of road frontage with additional great building locations
- Conway School District

BRIAN UTECHT LAND TEAM
SOUTHWEST MISSOURI LAND SPECIALISTS



📞 **417.766.5595**

🌐 brian.utecht@whitetailproperties.com



WHITETAIL PROPERTIES REAL ESTATE

HUNTING | RANCH | FARM | TIMBER

WHITETAILPROPERTIES.COM

Whitetail Properties Real Estate, LLC DBA Whitetail Properties, DBA Whitetail Properties Real Estate. In the States of Nebraska & North Dakota DBA Whitetail Trophy Properties Real Estate LLC. Licensed in CO, MN, ND, SD, TN & WI - Jeffrey Evans, Broker. Licensed in FL, KS & MO - Jefferson Kirk Gilbert, Broker. Licensed in TX & NM - Joey Bellington, Broker. Licensed in IN - Bill Minor, Broker. Licensed in AL, GA, LA, & MS - Sybil Stewart, Broker. Licensed in TN - Tim Burnette, Broker. Licensed in TN & MS - Josh Monk, Broker. Licensed in AR - Anthony Chrisco, Broker. Licensed in NC, SC, VA - Chip Camp, Broker. Licensed in IA, NC - Richard F. Baugh, Broker. Licensed in MI - Edmund Joel Nogaski, Broker. Licensed in IL, MD, WV - Debbie S. Laux, Broker. Licensed in ID, MT, OR, UT, WA, WY & NV - Aaron Milliken, Broker. Licensed in NY - John Myers, Real Estate Broker. Licensed in OK - Dean Anderson, Broker. Licensed in KY - Derek Fisher, Broker. Licensed in OH - Jeremy Schaefer, Principal Broker. Licensed in NE & SD - Jason Schendt, Broker. Licensed in MS - Chipper Gibbs, Broker. Licensed in PA - Jack Brown, Broker.



KING BUILDERS

We specialize in custom and specialty builds, such as:

- Houses
- Barndominiums
- Shops
- Barns
- Garages

We also do roofing & siding!



Call for a free estimate!

Stevie King | 435 Dickerson Ranch Lane, Conway, MO 65632 | 417-241-3280

HISTORY OF SCHOOLS IN THE MERAMEC VALLEY OF MISSOURI: Many old photos, hardback, \$20. 417-532-2045, Lebanon. Leave message and phone number.

WEATHERED BARN WOOD SIDING: 10" wide. Call for appointment 573-729-7226. www.pineridgerustic.com Salem.

LOG SIDING: 2X8 Pine/Western Cedar. Call for appointment 573-729-7226. www.pineridgerustic.com Salem.

40 YEARS THIS YEAR- we have to be doing something right. Call for quote or any house new or used, double and single. 573-657-2176 amegamobilehomes.com.

WE GOT IT - let us bid your mobile home purchase, new and used. 573-499-9993 columbiadiscountohomes.com.

TRIPLE WIDE- moving stock, awesome price. 573-657-7040 chateauhomes.net.

TINY HOMES - Missouri Franchise 573-881-7965.

CENTENNIAL OF IMMANUEL LUTHERAN CHURCH & RADER FAMILIES 1871-1971 BOOK: Out of print book. \$25. 417-532-2045, Lebanon. Leave message and phone number.

INTERNATIONAL PICKUP TRANSFER GEARBOX: \$150. 573-308-5884. Rolla.

WE BUILD CABINS, HOUSES & GARAGES: With top quality materials at reasonable prices. Call Daniel with Yoder's Outdoors for a quote. 573-759-3851 Mornings 8-8:30. Dixon.

I BUY.....used mobile homes. Call or text 573-338-6250 or email GregS.CDH@outlook.com

The Ultimate Wood Heat.



Classic Edge[™]
Titanium HDX
Outdoor Wood Furnaces

UP TO

\$2000

TAX CREDIT*

*On qualifying models and installation. Call for details.



Yarbrough Equipment Sales & Services, Inc.
9776 E. State Hwy OO • Strafford, MO
417-736-2303 • 1-866-286-6901 • www.yarbeq.com

LAKE OF THE OZARKS-SPRING SPECIAL Lots starting at \$4,995-\$125 down \$69 per month. Build, camp, or own for investment also acreage tracts. Beautiful wooded area, free lake access and boat ramps, lots are a short distance away from the lake, no credit checks, owner financing, and immediate possession. Missouri conservation boat ramp with a covered dock and rest rooms close by. **Prices good through April 9th, 2024.** Hwy 135 between Stover and Sunrise Beach, MO. Take lake road 135-12 to the Ivy Bend Land Office. Closed Tuesdays and Wednesdays Call anytime 573-372-6493.

SPORTSET BY SARGENT: Fishing pliers in leather sheath. Like a multi-tool. \$15. 636-239-2695 or 314-560-5700. Washington.





TIM'S USED CARS

(573) 341-3828 • 1334 South Bishop (Hwy. 63) • Rolla, MO
Next to Hwy CC • www.tims-used-cars.com

 <p style="font-weight: bold; font-size: 18px;">2013 RAM 1500 LARAMIE</p> <p style="font-size: 14px;">Crew Cab, 4x4, 5.7 V-8, Loaded w/ Options, 158,xxx Miles</p> <p style="font-weight: bold; color: red; font-size: 18px;">Only \$17,500</p>	 <p style="font-weight: bold; font-size: 18px;">2017 CHEVY SILVERADO 1500 LT</p> <p style="font-size: 14px;">Crew Cab, 4x4, 5.3 V-8, Power Equipped, 75,xxx Miles</p> <p style="font-weight: bold; color: red; font-size: 18px;">Only \$29,500</p>	 <p style="font-weight: bold; font-size: 18px;">2017 CHEVY TAHOE LT</p> <p style="font-size: 14px;">4x4, Loaded w/ Options, 124,xxx Miles</p> <p style="font-weight: bold; color: red; font-size: 18px;">Only \$28,500</p>
 <p style="font-weight: bold; font-size: 18px;">2018 RAM 1500 EXPRESS</p> <p style="font-size: 14px;">Crew Cab, 4x4, 5.7 V-8, Power Equipped, 77,xxx Miles</p> <p style="font-weight: bold; color: red; font-size: 18px;">Only \$24,900</p>		

LARGE SELECTION OF CARS, TRUCKS, SUVs & VANS!

KUSTER LOGGING

BUYER of Standing Timber

Oak and Walnut

Dozing Now Available

417-259-0047

References Available



NEW SQUARE D RAINPROOF 50AMP DISCONNECT: \$150. 636-239-2695 or 314-560-5700. Washington.

WANTED WOOD STOVE MAGIC HEAT EXCHANGER: 660-598-4019.

AB SPORT LOUNGE like new \$35. 210-787-8222 Linn Creek.

USED JET HOME POLLUTION CONTROL PANEL: Model CP700. \$50. 636-239-2695 or 314-560-5700. Washington.

1 PAIR OF KEY BRAND MEN'S JEANS: Waist 38, Length 34. \$8. 636-239-2695 or 314-560-5700. Washington.

BLACK METAL TUBULAR BRACKET: Scrolling and a stainless bracket. \$8. Call for pictures. 636-239-2695 or 314-560-5700. Washington.

3 BW: motorcycle magazines 2008 Free. 417-260-0941. Raymondville.

RUBBER & LEATHER BOOTS AND 5-Buckle OVER SHOES: Men's 11, Women's 7, some insulated. \$12-\$35 obo. 636-239-2695. Washington.

BARN LUMBER: \$1-2.50 per board foot. 417-468-2255.

OMAR'S LOGGING & DOING WORK

⇒ Oak & Walnut
⇒ Excellent Prices

Amish Owned & Operated



LEAVE MESSAGE: 417-741-0440
Hartville & Surrounding Areas



Wright Spray Foam Insulators, LLC
Commercial & Residential
Call for **FREE** Estimates!

Ervin Gingerich 417-926-2052
B. Eli Yoder 417-746-4932

Buying Standing Timber
References Available.

BUTLER LOGGING



NIANGUA, MO
417-448-9323

DARDEN PROFESSIONAL TIMBER HARVESTING, BUYING STANDING TIMBER: Great prices, improve wildlife habitat and improve forest health. State Certified & Fully Insured! 573-247-4808. Salem.

TOSHIBA 42" FLAT SCREEN LED LCD HD TV: With remote & owner's manual. \$50. 210-787-8222. Linn Creek.

ANTIQUE 4 HP ENGINE: Built by Continental Motors Corporation. \$150 OBO. 573-308-5884. Rolla.

SOVIET UNION WINTER WEATHER ARMY HAT: Excellent condition. \$ 35. Text for pictures. 573-854-8132. Houston.

HIGHPOINT GREENHOUSE OPEN FOR THE SEASON: New asparagus roots, strawberry plants & rhubarb roots. Hours 9am-6pm Monday-Saturday. Closed Sunday. 9337 Warner Rd. Hartville. 417-741-2793.

'85 FORD PICKUP PARTS: Passenger door with window glass & mirror \$30. Also, Tailgate for '85 Ford pickup \$25. 573-308-5884. Rolla.

BARN BEAMS: \$125. 417-468-2255.



Call to Order 417-993-3017

Meadowview Dutch Market

Bulk & Surplus Groceries • Prices Subject to Stock on Hand

DELI SPECIAL

OVEN ROASTED TURKEYREG. \$6.29 LBSALE \$5.79 LB
VEGGIE FARMER'S CHEESEREG. \$5.85 LBSALE \$5.35 LB

TRY our Fresh Homemade DELI Sandwiches: TURKEY, HAM, ROAST BEEF, ITALIAN, BLT'S, PULLED PORK AND BLT PULLED PORK (MADE YOUR WAY)!
 COME IN OR CALL to order! ALSO Custom Deli trays! Veggie OR FRESH Meat-N-Cheese!



Sale Dates March 27th, 2024 to April 2nd, 2024 while supplies last!

MRS. MILLER'S NOODLES
10% OFF REG PRICE

<p>Hand Sanitizer</p>  <p>99¢ 16 OZ. BUY 1 GET 1 FREE</p>	<p>Tri-Color Tortellini</p> <p>\$7.99 5 LB. BAG</p>	<p>Fully Cooked Breaded Chicken Breast</p> <p>\$1.69 LB.</p> 	<p>Cinnamon Oat Crunch Cereal</p> <p>\$1.99 31 OZ.</p>
<p>Hot Cocoa Mix</p> <p>99¢ 32 OZ.</p>	<p>Shredded Hashbrowns</p> <p>69¢ LB.</p> 	<p>Spiral Sliced Ham</p> <p>99¢ LB.</p> 	<p>Strawberry Yogurt</p> <p>\$1.99 5 LB.</p> 

MEADOWVIEW DUTCH MARKET
417-993-3017 Hours: Mon-Thurs 8-5pm
Fri 8-6pm • Sat 8-5pm
23 Miles West on Hwy 64 • Right on T Hwy
9 miles • Left on E Hwy 1 mile on Left

NOT RESPONSIBLE FOR PRINT ERROR!!

NOW ACCEPTING CREDIT, DEBIT CARDS & EBT

DUTCH COUNTRY STORE, LLC
573-378-4395
Hours: Mon-Thurs 8-5pm
Fri 8-6pm • Sat 8-5pm
5 miles East of Versailles off Hwy C on Kelsay Road

TRACTORS | TRUCKS | TRAILERS | MISC. FARM EQUIPMENT



WRIGHT COUNTY
LIVESTOCK AUCTION, LLC

CONSIGNMENT AUCTION

8915 BUSINESS HIGHWAY 60, MOUNTAIN GROVE, MO

SATURDAY, MARCH 30TH AT 10:30 AM

Consignments

NO ADVERTISING FEE!

- REMINGTON 742 30-06 WITH SCOPE
- 2012 F 350 4 DOOR DIESEL - WHITE
- 6140M JOHN DEERE TRACTOR
- SINGLE AXLE MAC SEMI - LOW MILEAGE EXCELLENT CONDITION
- SINGLE AXLE PETERBILT SEMI - LOW MILEAGE EXCELLENT CONDITION
- 20 FT GOOSENECK STOCK TRAILER
- 28 FT GOOSENECK STOCK TRAILER
- 6615 JOHN DEERE CAB TRACTOR W/LOADER - 125 HP
- 20 - 24 FT FREESTANDING CORRAL PANELS
- 28 - 10 FT PORTABLE PANELS
- SQUEEZE CHUTE
- FULL SET OF HAY EQUIPMENT - CUTTER, RAKE, & BALER
- 2010 JEEP LIBERTY
- FEED MIXER
- JD 3150 3X3 W/LOADER 6800 HRS
- 2006 26X7.5 COOSE STOCK TRAILER
- 12 FT GOOSENECK STOCK TRAILER - NEW WOOD FLOOR
- 16 FT BUMP HITCH STOCK TRAILER - BRAND NEW!
- 3 HP 3 PHASE ELECTRIC MOTOR - NEW
- 7.5 HP 3 PHASE ELECTRIC MOTOR - NEW
- MISC GATES & PANELS
- JOHN DEERE 332 SKID STEER TRACK LOADER - RUBBER TRACK - CAB
- 2010 STARLIGHT FLATBED LOW-PROFILE DOVETAIL
- 32 X 6.8 FT LIVESTOCK TRAILER
- GROUND DRIVEN FERTILIZER CART 4 TON
- TORO ZERO TURN
- LA 150 JOHN DEERE 54INCH CUT RIDER
- 16 FOOT TOOL TRAILER GOOSENECK
- 7X20 METAL TOP RUBBER FLOOR GOOSENECK BRAND
- PANEL TRAILER & PANELS
- DIAMOND W/ PORTAL CORRAL ON WHEELS - WILL HOLD 100 CALVES
- NEW HOLLAND MANUER SPREADER
- AGCO 8610 TRACTOR 4X4 CAB/AIR/LOADER 820 HRS
- 2017 F-250 SILVER PICKUP BED
- 14 FT BUMPER STOCK TRAILER
- MISC GATES
- SQUEEZE CHUTE
- Z365R JOHN DEERE LAWN MOWER - 42 IN DECK
- 2 - 20 FT GATES - AMISH MADE W/ HORSE PANEL
- SHEEP EQUIPMENT SELL OUT
 - 5 WALK-THRU GATES - 6 FT WIDE X 3 FT TALL
 - 2 WALK-THRU GATES - 6.5 FT WIDE X 4 FT TALL
 - 73 - 6 FT WIDE X 4 FT TALL PANELS
 - 4 HEAD CATCH PANEL W/ 3 FT WALK-THRU GATE 6X3
 - 34 - 6.5 WIDE X 3 FT TALL PANELS
 - 10 FEEDERS - 17 FT LONG, 8 IN TROUGH
 - KETCHAM 32 FT ALLEYWAY, FOLD DOWN SIDES, 16 FT SWEEP TUB W/ HEAD CHUTE
- 14 FT HOMEMADE LIVESTOCK TRAILER SINGLE AXLE
- MY-D HAN-D FEED BOX
- RB 460 NEW HOLLAND SILAGE SPECIAL
 - 32 FOOT TRI AXEL FLATBED TRAILER



QUESTIONS OR CONSIGNMENTS, GIVE US A CALL!
SALE BARN - 417.926.3640

BRYCE- 417.255.5124 • LUKE- 417.259.0036 • TRACY- 573.247.8519
CHUCK- 417.257.5610 • BRANDON- 417.259.1597



Mark your calendar!
123rd *Semi-Annual Sale*

**CENTRAL MISSOURI
POLLED HEREFORD
BREEDERS ASSOCIATION**

April 13, 2024 • NOON

Interstate Regional Stockyards • Cuba, MO

*Offering 70+ lots of bulls, cow-calf pairs, bred and open heifers,
and Hereford influenced commercial females*

View and bid online!



For more information contact:

Larry Day, Sales Manager

Central Missouri Polled Hereford Breeders Association

660-834-4678 **Home** | 660-621-0812 **Cell**

Email: *cmphba@gmail.com*

www.centralmissouripolledherefords.com



Sam LLC **CRAWFORD AUCTION SERVICE**

Will sell the following located 2½ miles South of Pittsburg, MO on Hwy. 64 to Hwy. TT, then 4 Miles West in Ski Harbor. Watch for auction signs.

SATURDAY, APRIL 6TH, 2024 - 10:00 A.M.

GOLF CART - DUNE BUGGY - COLLECTIBLES - MISC.



Golf Cart • Dune Buggy
4-Wheeler
Lawn Tractor • Motorcycle
Sell Near 12 Noon

Yamaha Gas Golf Cart
 Baha Dune Buggy
 Yamaha 350 4-Wheeler
 John Deere D110 Lawn Tractor
 Honda Gold Wing Motorcycle, Not Running

Tools

2 Plastic Kayaks
 Aluminum Canoe
 Delta 18" Scroll Saw
 Job Site Air Compressor
 Ryobi Table Saw
 Craftsman 12" Band Saw
 Makita Planer
 Wood Lathe
 Bench Grinder
 2 Delta Routers
 Makita Table Saw
 Hawk Scroll Saw
 Table Top Drill Press
 Craftsman 2 Tier Toolbox

Some Asst. Wrenches, Hand Tools
 Century Electric Welder
 4' Lawn Sweep, New
 Wheelbarrow, New
 5-6 Weedeaters
 Small Sand Blaster
 Approx. 15 - 10 Gal. Milk Cans
 2 Milk Buckets, 5 Gal.
 2 Ant. Galvanized Gas Cans, 5 Gal.
 Galvanized Tub
 2 Push Garden Plows
 5 Bicycles
 Basketball Goal & Stand
 Coleman Metal Ice Chest
 Craftsman Chipper/Shredder
 Poly Tool Box
 Aluminum Extension Ladder
 Long Handle Tools
 Crouquet Set
 2-3 Dollies
 2-3 Storm Doors
 Workbench w/Wood Vise
 Water Skis
 Water Toys
 2-3 Folding Tables
 Mop Bucket
 4-5 Shelves
 2 Pick-Up Loads Wood Trim
 Other Misc. Lumber
 Crosscut Saw



Copper Apple Butter Kettle
 Cast Iron Boiler
 3 Gal. Crock
 Sewing Machine Frame
 2 Iron Wheels
 Cast Iron Pot #8
 40-50 Totes & Boxes of Household
 Other



TERMS: Cash or good check. Nothing removed until settled for. Not responsible for accidents. Lunch available. Statements made day of sale take precedence over printed matter. All items sell as is. No warranties given or implied.

417-998-6629
 Cross Timbers, Mo.

CrawfordAuctionService.com



Sam
417-328-9137

Chase
417-399-1904

Chance, CAI
417-298-1751

Tom Poynter
Jack Lancaster

Betty Mons

REAL ESTATE AUCTION

Thursday, April 4, 12:00 NOON • 309 E. Hill St., Norwood, MO



3 Bedroom Home on Large Corner Lot

DIRECTIONS: From Hwy 60 & C at Norwood, MO exit go South on Hwy C thru town to Hill St. Watch for signs.

FOR MORE INFO CALL BOB KOLLMEIER 417-882-5664

FOR PHOTOS ON WEB: BOBKAUCTIONS.COM OR AUCTIONZIP.COM

REAL ESTATE – OPEN, SUNDAY, MARCH 24, 2-4PM

SELLS AT 12:00 NOON! With a little TLC this ranch style home on a large corner lots would make a great residence, flipper or investment. Features include 3 bedrooms, 2 baths, large 24'x24' living room, kitchen, dining room and utility area and detached garage. Home has central air and heat, vinyl and composite siding and metal roof.

SQ.FT.: APPROX. 1,656. LOT SIZE: 0.53 ACRES. YR BUILT: 1978. TAXES: \$825.41.

PARCEL NO 23-6.0-13-4-024-003.00

TERMS: 10% down auction day, balance due on or before 30 days after auction. REAL ESTATE SELLS "as is, where is". If buyer desires home inspection prior to auction call office at 417-882- 5664.

YOUR Real Estate Auction Specialist



Bob Kollmeier
 AUCTIONS / REAL ESTATE
 CAI, CAGA
417.882.5664



STEVE WEST
AUCTIONEER
417.616.9517



RICHARD JEAN
AUCTIONEER
417.299.8401



RUSS SMITH
AUCTIONEER/SET UP MANAGER
417.844.0205

REAL ESTATE, DOCK & PERSONAL PROPERTY AUCTION

Saturday, April 6, 10:00 AM • 181 Velma Rd., Protem, MO



Randall B Jackson Trust
2 Bedroom Lake Cabin & 2 Stall Boat Dock, 2021 Polaris Ranger, Tracker Bass Boat & Trailer, Mower, Tools, Antiques, Furniture & Household

(LITTLE CEDAR COVE AREA) DIRECTIONS: From Protem, MO at General Store (Pioneer Store) go E on 125 approx. 3 mi. to Clarkson Rd. then L on Clarkson Rd. 2.2mi to Velma Rd. Watch for signs!

AUCTIONEER'S NOTE: Real Estate & dock sell 1st at 10AM sharp followed by tools, furniture & household. Bass boat, Polaris, trailer & mower sell at 11AM. Small auction, be on time.

NOTE: WE WILL BE OFFERING THE LAKE CABIN & BOAT DOCK INDIVIDUALLY THEN IN COMBINATION AND SELL WHICHEVER WAY BRINGS THE MOST FOR THE TRUST.

REAL ESTATE OPEN SUNDAY, MARCH 24, 2-4PM

TERMS: 10% down auction day, balance due on or before 30 days after auction. REAL ESTATE SELLS "as is, where is". If buyer desires home inspection prior to auction call office at 417-882- 5664.



YOUR Real Estate Auction Specialist



Bob Kollmeier
AUCTIONS / REAL ESTATE
CAI, CAGA
417.882.5664



STEVE WEST
AUCTIONEER
417.616.9517



RICHARD JEAN
AUCTIONEER
417.299.8401



RUSS SMITH
AUCTIONEER/SET UP MANAGER
417.844.0205



Larry & Clara Taylor
Lifetime Estate Collection
From their start as school teachers on a Kings Reservation until they retired in the Ozarks, the Taylors were prolific collectors of many rare and wonderful items.



AUCTIONS

ESTATE AUCTION

The Estate of Clara & Larry Taylor
50 years of Collecting, piled to the ceiling & hanging in the rafters. It is too packed to move. We plan to sell it as we unload it. Like an archaeological dig, Come see what we dig out!

ONE ESTATE - A SERIES OF AUCTIONS:

Saturday, April 6th, 10:00 am. (The weekend before the Eclipse)

Location: 3504 Pleasant Valley Rd, Mammoth Spring, AR

The 2nd few feet of Larry's Barn. As much as we can pull out. Including, Vintage Petroliana/Gas Collectibles, Advertising Signs & Collectibles, ePhemera/Paper Items, Ammo, Automotive Collectibles, Vintage Bicycles, Collectible Fans, Old Records, Vintage General Store Items, Real Farm House Decor, primitive boxes and much, much more! (Which is an understatement.)

Saturday, April 13th @ 10 a.m. (tentatively)

Location: Onsite, 3504 Pleasant Valley Rd, Mammoth Spring, AR.

(If needed, providing that we haven't finished selling everything in Mr. Larry's barn.) Watch for announcements online closer to the time.

Online auction:

Tuesday, April 23rd. Ending @ 6 p.m.

Online, Keep watching the website for announcements and updates. The exact location is to be announced. (Miscellaneous, collectibles, advertising, and rarities from the Taylor collection that have been stored offsite). (10% buyers premium for online only.)



Col. Ken Cotham, Auctioneer On-Site Auction Specialization

Auction every MON. & FRIDAY in Mammoth Spring, Ark. 870-625-7423

37 YEARS EXP.

COTHAM'S AUCTIONEERING

Leading Consignment & Estate Auction Co. in Ark. & Mo.

WEEKLY PHOTOS & INFO
COTHAMS AUCTION



AALB#1022



870-236-6117 All info & terms at: WWW.SOLDASAP.COM

Stay tuned.....more photos and descriptions will be added closer to auction dates.

Owners & Auctioneers: John & Tasabah Malone
#1440 REALTOR®, CAI, PRI, CR 2013
#1315 REALTOR®, Broker, CAI, CES, GRI, CPPA
CELL: 870-215-1794

Soldasap, LLC
413 W. Court St,
Paragould, AR 72450



VISIT WEBSITE FOR PICTURES

LIVING ESTATE AUCTION

SATURDAY, MARCH 30TH - 10:00 A.M.

Location: 7103 Reaves Rd, Mountain Grove, MO **Directions:** From Norwood take North Hwy E approx 9 miles to Owens Road on right go approx 2 miles to Reaves Rd on left go approx 1/2 mile to Auction on left. **WATCH FOR CHADWELL AUCTION SIGNS.** **Payment System:** Cash • Debit Card • Credit Card (Debit / Credit Card Fee Will Apply) Checks approved if known by auction company. **VISIT: WWW.CHADWELLAUCTIONS.COM**

Estate of George BEAVER

Liberty Gun Safe (40 gun) w/Lights



VEHICLES ~ ATV

2000 Dodge Ram 2500 Laramie SLT 24valve Turbo 4x4 w/Utility Bed 500,xxx miles • 2002 Jeep Grand Cherokee Auto 4.0 liter (loaded) • Polaris 4 Wheel Magnum 4x4 (needs work)



~ OUTDOOR ~ ~ MISC ~

Stihl HT 131 Pole Saw • Stihl MS 271 Chainsaw • Stihl FS 56RC Brush Trimmer • Craftsman 17" Rear Tine Tiller • 42" Husqvarna YTH 22 Lawn Mower (223hrs) • Assorted Hand Tools • Bird Feeders • Wheel Barrow • Fuel Cans • 6" & 8" Step Ladder • Craftsman Yard Cart • Yard Seeder • Yard Roller • Alum Loading Ramps • Hand Sprayer • Old Piano • Post Driver • Misc Fishing Equip • 24" Alum Ext Ladder • Live Trap • Electric Cement Mixer • Concrete Rake • Rubber Tire Cart w/Seat • Steel Targets • Craftsman Weed Trimmer (needs work) • Shephard Hooks • Grillman BBQ Grill • Concrete Fountain • Metal Trash Cans • 9 Panel Chain Link Dog Pen • Chainlink & Posts • Patio Table w/Chairs • Yamaha Stereo System • Aquarium • Rubbermaid Storage Cabinets • Apple Picker • Pet Taxis • Canning Jars • Christmas Decor • Keyed Candy Dispensers • Old Wood Stove • Plastic Shelving • Books • Other

GUNS ~ AMMO

British 303 made by Winchester (needs work) • Black Powder Rifle Kit • CVA Valley Arms .50cal Black Powder Muzzle Loader • Winchester Model 94, 30/30 Golden Spike Commemorative • Remington 742 Woodmaster 30/06 w/ Weaver K4 Scope • Rock Island 1911 .38 Super • AMT Backup 380acp • Ammo

ANTIQUES ~ COLLECTIBLES

Vintage Measuring Spoon Wall Pocket Flower Pot • Roseville "Zephyr Lily" Wall Pockets • Redwing Yellow Baker Cookie Jar • Apple Franciscan Cookie Jar • Vintage Griffith's Kitchen Spice rack w/10 Jars • Old Wooden Benches • Wagon Wheels • Large Yard Bell • Myers Single Rail Trolley • Large Wood Chopping Block • Metal Tea Cart • Stained Glass • Smoke Stand • The Sessions Mantle Clock • Vasoline Glass • Carnival Glass • Old Medicine Bottles • Large Lot of Assorted Glassware • Old Classic Rock Albums • Old Dominos • Aladdin Lamps • Wooden Monks • Childs Chair • Brass Fire Extinguisher • Green Wingtail Duck Mounts • Wooden School Desk • Wooden Harp Tables (3pc) • Beer Steins • Humidor Pipe Holder • Pipes • Childs Park Bench • COO COO Clock (needs work) • Wooden Secretary w/Pigeon Holes • #3 Butter Churn • Wash Board • Old Nut Cracker • Primitive Kitchen Utensils • Table Vanity Sets • Wooden Wash Stand • Dresser • Old vanity • Granite Ware • Assorted Franklin Mint Jello Molds • Costume Jewelry • Tiffany Lamp • Crock • Copper Tea Kettles • Vintage Perfume including "Delicious" Beverly Hills • Other



AUCTIONEER'S NOTE: This Auction has a lot of unique items & excellent wood working equipment. Come spend the day with us. *Thanks, Shawn*

DRIVER'S LICENSE OR PICTURE I.D. REQUIRED • TERMS: CASH OR APPROVED CHECK **OR**

Chadwell
Auction Service, LLC
www.chadwellauctions.com

Auctioneer:
SHAWN CHADWELL
417-830-0209

Ringmen:
Weston Chadwell ~ 417-349-0727

Clerk:
SHELLY CHADWELL
Cell: 417-880-8449

Cashiers:
Marla Reppond • Emily Shaffer
Cassie Collins

PROFESSIONAL SALES MANAGEMENT
LUNCH WAGON • APPRAISAL SERVICE • RAIN OR SHINE
All announcements made day of sale take precedence over any printed matter.
Not responsible for lost or stolen merchandise. Not responsible for accidents.



SPRING CONSIGNMENT

THE FOLLOWING ITEMS WILL BE OFFERED AT PUBLIC AUCTION LOCATED AT 8035 NW HWY AA, APPLETON CITY, MO 64724. FROM APPLETON CITY GO EAST 2 MILES ON 52 HWY TO A, GO SOUTH ON A HWY 1/4 MILE TO AA. THEN EAST ON AA HWY TO AUCTION.

SATURDAY, APRIL 6, 2023 10:00 A.M.

**FIREARMS & HUNTING
(SELL @ 10:00 AM)**

Remington Mod. 700 BDL .243 w/Nikon Scope
 Remington Mod. 700 BDL 30-06
 Remington Mod. 700 BDL Deluxe 30-06 (made in 1971)
 Remington Mod. 700 ADL 30-06 Sportsman Barrel
 Remington Mod. 700 Classic .35 Whelen
 Remington Mod. 700 Classic .338win mag
 Remington Mod. 700 ADL .270win w/Bushnell Scope
 Remington Nylon 66 .22lr
 Remington Mod. 740 30-06
 Remington Mod. 783 30-06 w/scope
 Remington Mod. 770 .308 w/scope
 Remington Mod. 552 Speedmaster .22lr w/Weaver scope
 Remington Mod. 597 .22lr
 Remington Mod. 511 Scoremaster .22lr
 Remington Mod. 1100 12ga 3" mag vent rib
 Remington Mod. 11-48 28ga 2 3/4" full choke
 Remington Mod. 870 Wingmaster 12ga vent rib
 Remington Mod. 870 Express 3" mag 12ga
 Remington Mod. 48 Sportsman 16ga
 Pedersoli Sharps 45/70 gov. w/Tangent Sight 34" barrel
 Winchester Mod. 12 12ga 2 3/4" full choke vent rib
 Winchester Mod. 12 12ga 3" full choke vent rib
 Winchester Mod. 12 12ga. 3"
 Winchester Mod. 1890 .22lr
 Winchester Mod. 6 .22 s,l,r (made in 1949)
 Winchester Mod. 12 16ga.
 Antonio Zoli .222/16ga O/U
 CZ 527 7.62x39 Carbine
 Chiappa M1-22 .22lr w/scope & 2 mags
 Bushmaster Mod. XM-15 -E2S .223/556 w/4 mags, scope & case
 Anderson AR-15 w/Black Rain Internals .223 Hawke Scope
 Ruger M77 Red Pad Tang Safety .270 win w/scope
 Ruger 10/22 Breakdown .22lr w/case & box
 (2) Ruger MKIII 22/45
 Ruger Single Six 22/22 mag.
 Ruger MKII .22lr 6" barrel
 Ruger Standard .22lr 4 3/4" barrel
 Ruger Wrangler .22lr
 Marlin Mod. 39 .22lr Octagon Barrel (made 1926)
 Savage Mod. 93R17 17HMR Heavy Barrel (New)

Savage Mod. 93R17 17HMR w/scope
 Savage Mod. 93R17 17HMR w/accu
 Savage Mod. 111 30-06 w/26" McGowan Heavy Barrel
 Savage Axis 6.5 Creedmoor w/scope
 Savage Axis SS .308win w/scope
 Savage Axis 25-06 w/scope
 Savage Axis .243win. w/scope
 Savage Mod. 64 .22lr Heavy Barrel w/Boyd's Thumbhole stock, scope & bipod
 L.C. Smith Double 12ga. (wall hanger)
 Parker Double 12ga Hammerless
 Stevens Mod. 59 .410 3" bolt
 New England SB1 .20ga 3"
 Browning BPS .28ga screw in chokes
 Henry H001 .22lr w/scope
 Henry Golden Boy .22lr
 Henry Golden Boy .22lr (Friends of the NRA edition)
 Rossi R22 .22lr
 Mosin Nagant 91/30 7.62x54 w/Scope & approx. 800 rds
 Mossberg Mod. 88 .20ga youth
 Springfield Mod. 1944 .20ga youth
 Colt 1877 .38 Lightning (made in 1963)
 S&W Mod. 22A .22lr 7" barrel, w/Bushnell Red Dot, 3 mags, case & box
 Cricket .22lr w/Red Dot
 Hatfield SGL .410 single shot
 Citadel Tracker .22win mag w/scope
 S&W SW40V .40 S&W
 Glock 19 9mm
 Glock 23 .40S&W
 (2) Heritage 6 shot Cocobolo .22lr/22 mag
 Heritage 6 shot case hardened 6 1/2" .22lr/22 mag
 Hi-Point Mod. JCP .40S&W
 Hi-Point Mod. CF-380 .380 auto
 Cobra Mod. CA-280 .380 auto
 SCCY CPX-1 9mm
 Bersa Thunder .380 auto
 EAA Bounty Hunter .22lr/22 mag
 Taurus Slim 40 .40S&W

TRACTORS & EQUIPMENT

1945 H Farmall converted 12V, new tires, NF, original owner manual, parade ready
 Ford 2000 500 hrs, new tires, 3pt, 540 PTO
 JD 750 15" Drill
 JD 700 Rake
 NH BR780 5x6 Baler Twine 540 PTO
 1999 Vermeer 605L Baler Twine Tie
 Vermeer 604H 4x5 Baler Manual Twine Tie
 Vermeer SC252 Stump Grinder w/newer Kohler engine
 JD 672 Side Delivery Rake
 10 Wheel V-Rake
 Side Delivery Rake (Model Unknown)
 30" Rolling Basket & Harrow (Off Sunflower field Cultivator)

Rear Hitch (Off Sunflower Cultivator)
 (3) Danuser Post Hole Diggers w/Bits
 Krause 1900 18' Disc
 International 10' Pull type disc
 9' Big Ox 2-way Box Blade
 BH 12' Rigid Brush Hog 540 PTO
 300 gal. Slide in Sprayer w/45' booms
 3pt Box Blade
 Quick Attach Hay Spike
 JD Quick Attach Hay Spike
 3pt Bale Spike
 Global Double TR Spike
 John Blue Ground Drive Pump & Mechanism
 Parker 300 Bushell Gravity wagon w/new tires
 JD 4 bottom plow
 Gooseneck slide over bale spike elee/hydraulic
 International #10 Auger Wagon
 Ford 501 7' Sickle mower
 Homemade header wagon

VEHICLES, TRAILERS & UTV

2006 Ford F250 4x4 XLT 172,000 m/1 5.4 V8 auto, pw/l newer tires, b&w hitch
 2012 Nissan Juke AWD 1.6L Turbo 206,000 m/1
 2003 Ford F250 4x4 5.4 V8 5 spd 153,000 m/1 Flatbed
 1997 Buick Park Avenue 3800 Series II, pw/l, heated seats, 161,400 m/1
 1996 Suzuki Sidekick JX 1.6L 4x4 (mileage unknown)
 2002 Ford Windstar 237k miles
 1970 Chevy C90 10-wheeler 671 Detroit, 10 spd. Parkhurst 20" bed w/rollover tarp, hoist, air tag
 1980 Ford F700 2-ton grain truck, 5+2, 370 engine, 16" Parkhurst Steel bed 103k miles
 King Mfg. 6 bale tipper trailer, bumper hitch
 1978 20' Gooseneck Stock Trailer
 Triple Trailerhouse Axle 20' Gooseneck 6x10 Tilt Trailer
 5x10 Utility Trailer
 2015 Polaris RZR 170 EFI w/Underglow, Roof & Windshield
LIVESTOCK EQUIPMENT
 GWS 3-Ton Portable Bulk Bin
 3/4 Working Tub w/Alley
 750 + 5 & 6' T-Post (Some Like New)
 (40) Corral Panels
 (16) Gates (Various Lengths)
 Mineral Feeders
 Self-Catching Head Gate
 6 Bar Gates (8'-16")
 (3) Walkthrough Bow Gates
 Assorted Steel Pipe
 Galvanized Water Tank
 Hi-Tensile Wire
 Approx. 2 miles used barbed wire (rolled on wire roller)
 (2) MFA 145 Creep Feeder

4 Hole Mirafount Waterer
 (4) Johnson Waterers
 Bulk Bin (Needs Work)
 Heavy Square Baler Twine
 (6) 16' Cattle Panels
 Patriot Solar Fencer
 New Rolls Woven Wire

LAWN/GARDEN, TOOLS & MISC.

Wright Stand-On 52" Mower Kawasaki Engine 2000 hrs
 Husqvarna 46" Riding Lawnmower
 Craftsman Reartine Garden Tiller
 Finco Sprayer
 (2) New Jones Red Chainsaws
 SS Cabinet on wheels
 Steel Containment Bunkers (For 1000-gal fuel tanks)
 Large Truck Bed Transfer Tank
 Apprx 200 Linear Foot 3 Rail Vinyl Fencing (NEW)
 Delta Tablesaw
 Homelite Hotsaw
 Old Gas Station Fuel Pump
 Several Cases Harvest King Grease
 Several ATV & Dirtbike Tires (Some New)

47"x47" Exhaust Fan
 Air Ratchets
 Hammett AC/DC Welder
 Engine Stands
 1/2" Electric Impact
 Coats 10/10 Tire Machine
 Husky Powerwasher
 Generator/Alternator Tester
 8-Ton Chery Picker
 14" Chopsaw
 R&D Parts Washer
 Coleman Gas Generator
 20-ton Press
 Misc. Power Tools
 Log Chains
 Saddle Trees
 8' Aluminum Step Ladder
 Several (New) Oil Filters
 Several Brake Kits
 Transmission Filters
 Carburetor Kits
 JD Gator Wheels
 Walnut Lumber
 Misc. Framing Lumber
 Misc. Vet Supplies
 Misc. Hand Tools
 Commercial Grade Stainless Steel Cookware
 Other Items Too Numerous to mention



AUCTIONEERS NOTE: THIS IS A GREAT LINEUP OF FIREARMS & TOOLS AS WELL OF EQUIPMENT & VEHICLES. WE EXPECT THIS LIST TO GROW & HAVE MANY MORE ITEMS BY SALEDAY!

TERMS OF SALE: Cash or good check w/ proper ID. Nothing to be removed until settled for. Statements made day of sale take precedence over printed materials. Lunch served and toilets on site.

COL. KEVIN WADE MOBILE 660-492-3279
 COL. BRYAN WADE MOBILE 660-492-3740
 TYLER WADE MOBILE 660-492-7764
 CLERKS: NORRIS, IRBY & WADE
 TO VIEW AD ONLINE GO TO
WWW.AUCTIONZIP.COM
 AUCTIONEER ID: 24103



WADE

AUCTION SERVICE

APPLETON CITY, MO

660-492-3279



R&R AUCTION SERVICE

AUCTION

FRIDAY APRIL 5TH, 6PM

R&R AUCTION HOUSE - 1644 SOUTH ASH IN BUFFALO, MO

IT'S RAINING AWESOME ITEMS FOR OUR APRIL AUCTION.

Small hand tools, clamps, levels, nuts, bolts, screws, bits, wire nuts, Homeline load center HOM2-4L70 70 amp., 2 burner portable electric cooker, Singer portable sewing machine, clocks, hedge trimmer, Black & Decker leaf blower, Weed Eater gas powered leaf blower, bench grinder, soldering iron, router and router table, Ryobi miter saw, John Deere JS30 push mower, Western Auto 3 1/2hp push mower, Craftsman 7.25 self propelled push mower, Toro 22" front drive recycler mower, Campbell Hausfeld 1150 volt flux core wire feed welder, power converter, old pipe wrenches, wooden clothes hangers, deer yard ornaments, jewelry, Captain Hook and Mickey watches, jewelry box, quilts, wooden swivel bar stools, bamboo high back chairs, glider, high top round oak table, oil lamps, oak cup and saucer shelf, Brentwood, Stoneware set, pillows, bedding, Z coil shoes, override clutch for PTO, electric impact, Stihl weed eater, wooden shelves, bed, porch glider, plant stand, 43" LG UHD AI Thing flat screen tv, Vizio V55X-G1 flat screen tv, rods, reels, tackle, empty totes, old scissors, pocketknives, Bink air brush sprayer, dishes, Black & Decker Power hand planer, COKE products, John Deere Lunch box, toy china tea set, Kid Connection battery powered railroad engine and track, old Shurfine buttermilk biscuit bank, very old child's bicycle with training wheels, Tasco scope, Marksman repeater BB pistol, two Daisy BB guns, 66 Power Master pellet/BB rifle, electric meter box, Franklin heavy duty scaffolding, old crank telephone guts, steel traps, camp stove, toys, adjustable lumber rack for Reese hitch, lots of Christmas lights, ThunderBay quick start gas post hole auger, old Skelly gas can, Curt trailer hitch, and much more.



Please keep watch on our website for added photos.

TERMS: 10% buyer's premium. Cash, check, or credit card with proper I.D. nothing removed until settled for. A 3% fee will be added to credit card purchases. Not responsible for errors in listing. Any announcement made sale day will take precedence over any printed matter.

GENERAL AUCTIONEERS

Auction & Appraisals SERVICE

For more information contact Professional Auctioneer Russ Weeks at 417-576-7357 or check out www.rrauctionservice.com

Serving this area's auction needs since 1997 with honesty and professionalism.

www.rrauctionservice.com

(417) 576-7357 or (417) 345-4140



GUN & COIN ESTATE AUCTION

Saturday, March 30th, 2024 ~ 10:00 AM

LOCATION: Sheldon Community Building, 6th & Main, Sheldon, MO (Watch For Signs)

Auction For Kenneth Hartworth Estate

Doors Will Not Be Open Until 8:30 AM



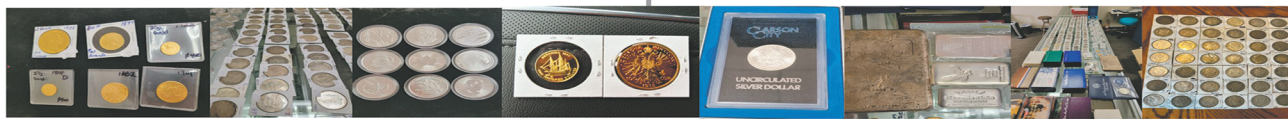
Guns & Ammo Sell First At 10:00 AM

NIB Henry Golden Boy Lever Action 17 HMR, NIB Henry Golden Boy Lever Action 22 Mag, NIB Henry US Survival Gun 22 Long Rifle, NIB Henry Golden Boy Lever Action 22 Mag, NIB Rossi Stainless Lever Action 44 Mag 10 Shot, NIB Rossi Stainless Lever Action 44 Mag 8 Shot, NIB American Tactical 5.56-223 AR 30 Round, Win Model 100 Semi Auto 308 W/Wide Angle Bushnell Scope & Sling, Win Model 74 Semi Auto 22 Rifle, Win Pre 64 Model M70 Bolt Action 375, Win Model 121Y Bolt Action 22, Ruger 1022 W/Fancy Stock, Savage Model 93R17 Bolt Action 17HMR W/ Scope, Marlin Model 92 Lever Action 32, Springfield Model 53B Bolt Action 22, Stevens Model 56 Bolt Action 22, Ariszka Custom 243 Rifle, Ruger 1022 Rifle, Crossman 160 Pellet Gun W/Fancy Sites, Rare NIB Rem Model 1100 Pump 16 Ga, Very Rare Browning Recoiless 12 Ga Single Shot Trap Gun Only 2,000 Made, Browning Model BS5 Double Barrel 12 Ga, Rare Stevens 28 Ga Single Shot, NIB Citadel Boss A.R. Still 12 Ga, Win Model 12 Pump 16 Ga, Win Model 97 Pump 12 Ga, Win Model 37 Breakover 16 Ga, Win Model 41 Bolt Action 410, Ithaca Model 66 Lever Action 12 Ga, Stevens Model 320 Pump 12 Ga, Stevens Model 320 Pump 20 Ga, Mossberg Model 510 Pump 410, Rare Stevens 22 Parlor Pistol, Rare H&R Trapper 22 Revolver W/Long Hex Barrel, S&W Model 29 Revolver 44 Mag W/Blue 6" Barrel, S&W Model 61 Semi Auto 22 Pistol, Ruger PC Charger 9mm Pistol, NIB Bersa Thunder 380 Auto, NIB Glock 22 Auto Pistol, NIB Rock Island 38 Special Revolver, NIB Stoeger STR-9 Semi Auto 9mm, NIB Heritage 22/22Mag Revolver, NIB Heritage 22/22 Mag Flag Series Revolver, Heritage 22/22 Mag Revolver, S&W

MP Shield 45 Auto Pistol, VTG Luger Semi Auto 22 Pistol, Ammo To Inc 9mm, 45, 30/06, 22, 12 GA & Others

Gold, Silver & Collector Coins, Also Silver Rounds & Bars

Gold Coins To Inc Bermuda 1977 \$100 Gold Pc, Australia 1915 \$100 Corona Gold Pc, 1882 & 1901 \$10 Gold Pcs, 1995 \$5 Gold Pc, 1925D 2 1/2 Gold Pc, 1914D 2 1/2 Gold Pc, 1928 2 1/2 Gold Pc, 1915 2 1/2 Gold Pc, 4- 2015 1/10 Oz Canada Gold Pcs, 1990 1/20 Oz Australia Gold Pc, 2010 1/10 Oz Platinum, Over 150 Silver Dollars Inc 1883CC GSA, 1878CC, 1890CC, 1878 W/7TF, 1878 Rev Of 79, 1849 Seated \$, 1879S, 1880S, 1897S, 1891S, 1903S, 1887S, 1890S, 1883O, 1899O, 1984O, 1879O, 1885O, 1926D, 1926S, 1928S, & Over 100 Other Good Dates, Over 25 Silver Rounds Inc "Don't Tread On Me", Buffalo, Eagle & Flag, Morgan Canada Maple Leaves W/Maple Privy, Several Silver Bars Inc A Large 102.98 Bar, Engle Hard Bar, Prospector Silver Bar & Others, Key Collector Coins Inc Hard To Get Lg Cents Inc 1794, 1802, 1822, 1825, Several Key Coins Inc 1866/66 Indian, 1869/69 Indian, Key 1908S Indian, 1854 Half Cent, 1780 Mother Teresia, 1916D Walking Half, 61837 Reeded Edge Half, 1909 VDB, 1912D, 1923S, 1924D, 1926s, & 1931D Pennies, Key Date Buffalos, Dimes, Quarters, & Halves, Copper Coins Inc 1787 Connec, 1855 slanted 5's & Others, Several Commemorative Halves, Several Mint & Proof Sets, See Website For Complete Listing



Auctioneers Note: It Is An Honor To Be Conducting This Outstanding Gun & Coin Auction For The Hartworth Estate. If You Are A True Gun Collector Or Enthusiast You Do Not Want To Miss This Auction As We Have Several Rare Guns As Well As Many New In Box (NIB) Never Fired Collector Guns. Also If You Are A True Gold, Silver & Collector Coin Enthusiast You Do Not Want To Miss This Auction Either As There Are Several Outstanding Gold Coins As Well As Large Lot Of Silver & Outstanding Collector Coins. This Is An Auction You Do Not Want To Miss. Please Plan Now To Attend. **Sale Order: Guns & Ammo Sell First Then Move Directly Into Gold, Silver & Collector Coins. Doors Will Not Be Open Until 8:30 AM. See Ya There!!!**

Terms: Cash or check with proper ID. Now accepting most major credit cards. Nothing removed until settled for. Statements made the day of sale takes precedence over printed material. Everything sold as is where is. Not responsible for accidents. Restroom available. Concessions Provided. Check our website for upcoming auctions and for additional pictures!!



NANCE AUCTION SERVICE

No Matter How BIG or small, We Do Them All!!!



Col. Bill Nance 417-214-0093 In God We Trust Philippians 4:13 Sean Beazley 417-247-6754

Floyd Estate - Real Estate-Personal Property

AUCTION

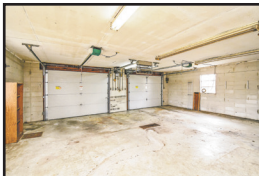
Saturday April 13th at 10 am

Open House April 7th 2-4pm or can be shown any time

Directions: From Marshfield follow HWY 38 east 3 miles to Hwy P. Turn south 1.5 miles to auction site 1100 Long State Hwy P Marshfield, MO. 65706.



1235 +/- sq ft 3-bedroom home with 4 +/- acres purchased in 1948. Located on State Hwy P and Cedar Valley Dr. Home has been in the same family for over 70 years. Home is vacant and in very good condition with many updates. Washer/Dryer, Refrigerator, Oven, Couch, and Propane Tank sell with the property. Detached oversized two car garage with room for vehicles and small shop area. 1440 +/- sq ft shop building, plus 950 +/- sq ft building along with two other storage buildings. A large pond completes the rural setting of this fantastic property.



- 951 Cat Dozer with Clam Shell Bucket (very good condition)
- Allis Chalmers B Tractor*
- Compressor
- Electric wire Rolls
- LP Tank
- Misc. gas engines
- 3 pt/ Plow for Garden Tractor
- Propane Bottle
- Electric coolers
- Caster wheels
- Squirrel cage fan
- Forge
- Hydraulic Hoses
- Electric Boxes
- Misc. Lumber
- Steele wheel
- railroad wagon
- Electrical cords
- Windmill (approx. 40ft with generator)
- Craftman Garden Tractor 18.5 HP 46in Cut
- Cabinet
- Four door cooler
- Queen size Bedroom Set
- Misc. household
- Picnic Table
- Wheel burrows
- Chest Freezer
- Weedeaters
- Lawn Tools
- Landscape blocks
- Coolers
- Creeper
- Floor Jack
- Fishing Supplies
- Car Ramps
- Bottle jacks
- Small Bench Vise
- Cabinet
- Chain Hoist
- Compressor Ingersole
- Small Chainsaw
- Sears Lawn Tractor 14 HP
- Craftsman Push Mower 6.75 HP
- Power washer
- Grease Can & Pump
- Gan case 5 gallon
- Misc. Steel & Pipe
- Misc. Plumbing Valves etc.
- Wooden Step Ladders
- Electric motors
- Firewood
- Jon Boat
- Sheets Tread Plate
- DC Welder Self Contained
- Stand Fan
- Misc. Starters & Generators
- Electric Motors
- Sausage Press
- Large lot of Plastic and Metal Milk Crates
- 2ft Wooden Kegs
- Large sheet of Diamon Plate
- Milk Cans
- Large Lot lumber including some oak beams
- 5 ft Bush Hog BBX60 (LIKE NEW)
- 10FT HYD Cylinder for dump truck
- Pickup Tool Box
- Heavy Duty Scissor jacks
- 16ft Trailer with ramps
- 8ft Utility Trailer
- RT60G Bush Hog 3pt 5ft Tiller (used 3 times)
- Sears 12 HD SS12 Garden Tractor w/Mower Deck & 3pt



MJ Johnson - sale manager 417.838.0291
Case Auction Co. • 417.859.3204
info@caseauction.com • www.caseauction.com
auCTIONzip.com

Terms: Announcements made sale day take precedence over all printed material. Neither Case Auction or property owner guarantees the absolute accuracy of supplied information.

Living Estate



Auction

"Sharon Scarpitta"

19282 James Street, (Grandview Beach) Warsaw Mo. 65355

Directions: Warsaw - at intersection of East Main St & Grandview Beach Road (Across from new Sheriffs office) take Grandview Beach road to Auction watch & follow signs on sale day.

As I am selling my Lake Home & moving closer to family, we will sell the following at public Auction on:

"GOOD FRIDAY" MARCH 29TH, 2024 • 10:00AM

2007 GMC Canyon Z85 4x4 auto pickup 150k, **1999 Lowe "SunCruiser"** 20' pontoon & trailer, 90hp Johnson out board, live well, seats 10 (Must See), **John Deere LA145** riding lawn mower, **John Deere D105** auto 100 series riding lawn mower 42" deck, **John Deere L110** auto riding lawn mower 42" deck, **John Deere 8Y** pull type yard cart, **John Deere 46"** snow blade, **2013 C&C** Bumper hitch 12'x6' utility trailer w/2' expanded metal side racks & ramp gate, Bumper hitch 5x8 utility trailer w/ramp gate, **HOUSEHOLD & MISC. Kenmore** Elite 24 cu ft chest deepfreeze, **Pronto** "sure step" mobility scooter, **HUGE "Pioneer Woman"** collection many new in Boxes, 40" Vizio TV, 4-head VCR, 2 - buffets, wooden futon, set coffee & end tables, overstuffed chair & ottoman, Lot floor & table lamps, antique cherry secretary, lot misc. occ tables, stained glass angel collection, assorted wooden & metal shelving, chest of drawers, antique china hutch & matching side board, antique china cabinet, bow front cherry secretary, **Duncan Phyfe** mahogany drop leaf table, 2 - nightstands, maple dresser, pair wooden bar stools, 1920s **art deco** cast iron radio bench, **Singer** treadle sewing machine, **LARGE** lot old quilts (family believes 100+), button collection, Lot miscellaneous kitchenware, glassware & pottery, lot small appliances, lot craft decor & wall art, Oil lamps, several large area rugs assorted sizes, **Sharp** boom box, **HP** computer & **Canon** printer, Pub height patio table w/5 chairs, vintage expanded metal lounge chair, wheelchair, Several bird baths & lawn decor, picnic table, BBQ smoker, Poly two wheel wheelbarrow, two wheel dolly, **Many More Items Too Numerous to Mention.**



Auctioneer Note: A GREAT sale on "Good Friday" you do NOT want to miss out on this one. Something for everyone. Pickup, Boat, mowers & trailers will sell at 12:00 (Noon)



*STATEMENTS MADE DAY OF SALE TAKE PRECEDENCE OVER PRINTED MATERIAL.

Concessions provided by "Benton County Good Ole Gals"



JOHNSON AUCTION SERVICE

"Third Generation Family Tradition since 1942"

Russell "Rusty" Johnson (660) 221-4067 • Phillip Yoder (660) 723-3389

For Full Listing, Pictures and Details auctionzip.com (ID# 20300)

Public Auction



24642 JC Park Road, Cole Camp Mo. 65325

Directions: From Cole Camp at the intersection of F & 52hwy take F hwy South 3 miles to JC Park Road turn Right (West) on JC Park Road go 1 mile to Auction on Left. Watch & follow signs on sale day.

Due to the loss of my husband, I have sold the farm & moving closer to family, we will sell the following at public Auction on:

SATURDAY APRIL 6TH, 2024 • 10:00AM

"Marlene & The Late Darrel Ehlers"

2012 Ford F-250 Super Duty Crew Cab leather & loaded, auto, 6.7L Power Stroke Diesel, 4x4, lockouts, one owner, garage kept, regularly serviced (one owner) 104k miles, **2002 John Deere** 6320 cab tractor w/620 loader (6' bucket & bale spike) 3,398hrs. new tires in last couple yrs. Great shape (one owner) **MUST SEE 1981 John Deere** 2150 tractor w/175 loader 5' bucket (one owner), **John Deere** HX15 batwing rotary mower, **John Deere** 709 3pt 7' rotary mower, **2011 Frontier Equipment** MS1117 manure spreader 540-PTO (like NEW), **Ponderosa** "Air Dyne" 16' stock trailer, goose neck (new Floor) **MUST SEE, 2015 Starlite** 14' bumper hitch trailer w/dove tail & drop ramp tailgate, **2017 John Deere** X300 lawn tractor 42" cut 275hrs, **1940s Allis Chalmers** WD tractor, **2008 Delta** 24' chain harrow cart, Bumper hitch 8 bale, bale trailer, 2 – **John Deere** 14' hay wagons w/hoist & steel floors, 2 – **S01 Priefert** portable squeeze chutes (2014 & 1996), 20+/- 10' heavy tubing livestock panels, 16+/- 12' livestock pipe panels w/5' walk through gate, **3pt Land Pride** RTA3576 – 6' rotary tiller 10' pull type tandem disk w/cylinder, **Danuser** F-8 post hole digger w/12" & 10" augers, **Danuser** MD-6 post driver, **New Holland** 256 side delivery rake, **John Deere** 14" 3pt 3-bottom plow, 3pt Bale unroller w/cylinder, **McCormick** 200 manure spreader, **2013 Yamaha** EF12000DE Generator 9,500watt 4-stroke V-twin, 2 – **Balemaster** 3pt bale spikes, 3pt 8' blade, 3pt bale/pallet forks, Fuel transfer tank w/ele pump, 3pt spreader/seed, 3 section harrow, 90+ NEW 6' green steel T post, Lot 35+/- used steel T post, 6 – rolls "Red Barb" four point barbwire, 25+/- ele. fence post, 2 – FS90 **Stihl** string trimmers, **Stihl** 026 chainsaw, **Stihl** HT101 pole saw, Lg lot used lumber (in barn), lot used woven wire, **Craftsman** roll around toolbox, lot misc. hand tools, **Craftsman** floor jack, **Farmhand** 20gal air compressor, Honda GC 190 pressure washer, LARGE lot **Pittsburg Corning** "Foamglas" 2'x4' commercial insulation, vintage porch swing, 2 – spring type patio chairs, 90s ford tailgate, 5gal plastic fuel jugs (10+), lot electric fencers, several, Ariens front tine tiller, Farm Jack, pr of tractor Wheel weights, "Parkhurst" wooden racks (modified for 91 ford pickup), 5' galvanized stock tank, lot long handled tools, **HOUSEHOLD & MISC.** Antique oak chifforobe chest w/mirror, upholstered wing back chair, 2 - china hutches, round table w/leaf, floral "Flex Steel" sofa, upholstered overstuffed **Lay-Z-Boy** recliner, dinette set w/6 chairs, small wardrobe, oak oval coffee table, wash stand, jelly cabinet, **Bissell** "Big Green" carpet cleaner, small **Kenmore** chest freezer, Cast iron parlor stove, misc. floor & table lamps, 3pc. luggage, globe, shelves, nightstand, misc. old toys & children books, lot linens & throws, misc. pictures, mirrors & wall décor, assorted glass pots, pans & kitchenware, quilt teddy bear, picnic table, wooden (Amish made) patio glider, vintage croquet set, lot iron wheels, vintage metal gas cans, **Monitor** ZA pump jack, old enamel wood stove, lot milk cans, **Many More Items Too Numerous to Mention.**



Auctioneer Note: We are extremely honored to conduct this Auction & can NOT overstate how well maintained & cared for the equipment & truck are on this Auction, Most was bought new & serviced regularly. There are many more items not listed & yet to be discovered.

*STATEMENTS MADE DAY OF SALE TAKE PRECEDENCE OVER PRINTED MATERIAL.

Concessions provided by "Benton County Good Ole Gals"



JOHNSON AUCTION SERVICE

"Third Generation Family Tradition since 1942"

Russell "Rusty" Johnson (660) 221-4067 • Phillip Yoder (660) 723-3389

For Full Listing, Pictures and Details auctionzip.com (ID# 20300)

14th Annual Spring Consignment Auction

Prairie Grove Amish Mennonite School



*Previous Auction Pictures



Friday, May 10th

Sale Starts at 1:00 PM

Gun sale starting at 6:30 PM

Saturday, May 11th

Breakfast - 7:30 AM

Sale Starts at 9:00 AM

SUGGESTED CONSIGNMENTS

Deadline Thursday 5/9/24

- Tractors & Farm Equipment
- Cattle Equipment
- Lawn & Garden
- ATV's
- Shop Tools
- Hand Tools
- Handmade Quilts
- New Furniture
- Antiques

NO JUNK PLEASE



Auction held on school grounds.
12 Winding Creek Dr., Buffalo, MO 65622



To consign or for more information, contact

- 417.327.4670 Nathan Blosser
- 417.327.6240 Nathan Kropf
- 417.733.2560 Lyndal Hostetler
- 417.733.2914 Delbert Blosser (Farm Equipment)
- 417.327.6348 Eldon Swartzentruber (Vehicles & Guns)
- 417.299.2056 Bryan Blosser (Farm Equipment)
- 417.326.9788 Dennis Blosser (Quilts)

THE SOONER CONSIGNED, THE BETTER ADVERTISED!

NEW IN BOX MASTERBUILT ELECTRIC TURKEY FRYER: Up to 14 lbs. Fry, boil or steam. Safe for indoors. \$80. 417-718-5347. Morgan.

LIFETIME COLLECTION OF 256 CASSETTE TAPES: Patsy Cline, Alabama, Merle Haggard, Willie Nelson, Johnny Cash, Charlie Rich, Hank Williams, George Strait, Reba McEntire, The Judds, Jim Reeves, & many more \$100. 210-787-8222 Linn Creek.

WANTED JERSEY MILK COW: 660-598-4019.

1985 ST. LOUIS CARDINALS SIGNED WORLD SERIES BALL: Includes Herzog & Ozzie Smith. PSA/DNA. \$190. Text for pictures. 573-854-8132. Houston.

ST LOUIS BLUES: autographed full size hockey stick. Brett Hull. Text for pictures. \$149 573-854-8132. Houston.

RIFLE CASE: Pelican storm. IM3100 long case like new \$160. Text for pictures. 573-854-8132. Houston.

FIREPLACE MANTLES: \$75. 417-468-2255.

BUFFALO LIVESTOCK MARKET LLC



276 Hwy 32 W., Buffalo, MO

March 23rd, 2024

Receipts: 964

REPRESENTATIVE STEERS

300-400 @ 300.00 to 352.00
 400-500 @ 280.00 to 338.00
 500-600 @ 275.00 to 314.00
 600-700 @ 255.00 to 285.00
 700-800 @ 245.00 to 255.00
 800-900 @ 213.00 to 240.00

REPRESENTATIVE HEIFERS

300-400 @ 250.00 to 318.00
 400-500 @ 240.00 to 307.00
 500-600 @ 232.00 to 270.00
 600-700 @ 210.00 to 250.00
 700-800 @ 200.00 to 227.00
 800-900 @ 206.00 to 216.00

FEEDER BULLS

300-400 @ 275.00 to 335.00
 400-500 @ 265.00 to 300.00
 500-600 @ 238.00 to 300.00
 600-700 @ 210.00 to 253.00
 700-800 @ 209.00 to 230.00
 800-900 @ 171.00 to 200.00

STOCKS COWS

Bred Cows 1475.00 to 2100.00

SLAUGHTER BULLS

High Yield 151.00 to 172.00
 Low Yield 115.00 to 140.00

SLAUGHTER COWS

Fleshy 130.00 to 145.00
 Med Flesh 120.00 to 141.00
 Light Flesh 105.00 to 125.00

CRIPPLE, DOUBTFUL HEALTH COWS

90 Down

Poor Quality, Plain, DairyX or LHS Cattle will be below market.

MON-WED MARKET REPORT

Listen to KJEL 103.7FM • Lebanon or KY00 99FM • Bolivar

VIEW OUR SALES AT CATTLEUSA.COM

CALL FOR TRUCKING OR ON-FARM VISIT

Lyle Caselman • Owner-Manager
 417-345-7876 • mobile 417-533-2944
Leon Caselman • Owner
 417-345-4514 • mobile • 417-588-6185



OFFICIAL TRACTOR OF TOUGH™

INTRODUCING THE ALL-NEW 5100 SERIES



Marshfield Machinery Inc.
 222 E. Madison • Marshfield, MO 65706
 417-859-2117 • www.marshfieldmachinery.com

*2018 data including all Mahindra group brand sales. MahindraUSA.com © 2020 Mahindra USA Inc.



NEW MAHINDRA TRACTORS

1626 4WD & LDR 26HP	IN STOCK
1635 4WD & LDR 36HP	IN STOCK
1640 4WD & LDR 40HP	IN STOCK
2645 4WD & LDR 45HP	IN STOCK
5145 4WD & LDR 45HP	IN STOCK
5155 4WD & LDR 55HP	IN STOCK
4550 4WD & LDR 48HP	IN STOCK
6065 4WD & LDR 65HP	IN STOCK
6075 4WD CAB & LDR 71HPIN	STOCK

USED TRACTORS

MF 4708 80HP 4WD CAB LDR	55,000
MF 4609M 90HP CAB LDR	45,000
MF 5445 75HP 4WD CAB LDR	42,500
NHT 4.75 74HP 4WD LDR	32,500
MF 383 72HP CAB LDR	22,500
MF 2604H 45HP 4WD LDR	22,500
JD 5303 64HP 4WD LDR	21,500
MAHINDRA 2638 38HP 4WD LDR	19,000
JD 1025R 25HP 4WD LDR MWR	14,500
AC 7010 106HP CAB	9,500
MF 1528 28HP 4WD	6,500
KUBOTA L175 17HP W/ MOWER	3,000

USED ROUND BALERS

MF 2946A 4X6 MESH	35,000
HESSTON 560 5X6	2,000

USED MISC.

BUSH HOG 3715 15FT	13,500
BUSH HOG 2615L 15FT	10,500
JD 1815 15FT	9,500
BUSH HOG 3210 10FT	8,500
HESSTON 8 WHEEL RAKE	3,000
HESSTON 8 WHEEL RAKE	2,500
OMI 8 WHEEL RAKE	2,500
RHINO 8 WHEEL RAKE	1,500
RHINO 5FT FINISH MOWER	850

Marshfield Machinery Inc.
 222 E. Madison
 Marshfield, MO 65706
 417-859-2117
 www.marshfieldmachinery.com



MID MISSOURI STOCKYARDS

REGULAR SALE EVERY THURSDAY 11AM

COW SALE • APRIL 6TH AT 6PM

WATCH OUR WEEKLY SALE IN REAL TIME ON DVAUCTION.COM

For Farm Visits, Market Updates, or Trucking
Call **Zach Cox 417-777-1320**
Dan Romine 573-578-4939

**Competitive Buyers!
Competitive Commission!
Competitive Market!**

Barn: 417-532-9292 
I-44 • Exit 123 "just outside of Lebanon"
17505 Route 66, Phillipsburg, MO 65722
For weekly market updates, visit us at www.midmoststockyards.com

BORDER COLLIES/HEALER PUPS:
Shots & Wormed. Call 573-694-9159.
Russellville.

KATAHDIN EWES: Hopping Genetics,
Parasite resistance, Pasture lambing, Never
grain, No hoof rot, No trimming, Due to lamb
in April. 417-322-0161. Lebanon.

CALUS LOGGING

20 YEARS EXPERIENCE

Buying Standing Timber
Walnut & Oak

Joe Calus, Owner
417-926-4606 • MTN. GROVE

CERTIFIED



FISHING SEASONS COMING: Get your
rod and reels, \$15 and up. 417-589-8200.
Conway.

**2006 HARLEY DAVIDSON DYNA
STREET BOB:** 16,413 miles, 88 cubic inch.
Thousands in extras. Call for details. \$8,000.
573-544-8059. Belle, MO.

0% for 4 Years

HEATMOR
Stainless Steel Outdoor Furnaces
Outdoor Wood Furnace
as low as **\$238** per month

HEATMOR MIDWEST
Licking, MO 65542 • 573-674-2962



CHILTONS AUTO REPAIR MANUAL:
all American cars & Volkswagen 1969-
1976. \$30 plus shipping. 417-260-0941.
Raymondville.

**16 GALLON VINTAGE VALVOLINE
OIL DRUM:** good grey color, good for man
cave, excellent condition. \$120. Text for
pictures. 573-854-8132

**NEW JELD WEN 5' LEFT HAND
SLIDING GLASS DOOR WITH
SUNSTABLE INTERIOR BLINDS:**
Clear tempered glass, Desert Sand trim/
hardware. Retail \$2655 Sell \$900. 417-
693-0389. Conway.

BAMBOO FLY RODS: \$50. Trout season
is coming. 417-589-8200. Conway.

YOUTH BED: in good condition \$15. 417-
532-2344.

20 LB PROPANE TANK: with OPD valve
\$20. 417-532-2344.

FISHING REEL SPOOLS FOR SALE:
I've got what you need. \$3/each. 417-589-
8200. Conway.

**Real Estate &
Liquidation Auction!**

Saturday, April 27th @10:00 AM!
636 Wilderness Way, Anderson, MO

Selling 40 Acres M/L; fully
remodeled berm home & shop
building. Very secluded and
quiet; hunters paradise!
Several vehicles, trucks and
equipment will be selling as well.
Flyer and details coming soon!

Contact Southwest Auction Service for more info!
417-652-7540 office or cell: 417-772-8088
(Bob Hughes) for more details!

Bob Hughes
Professional Auctioneers since 1988

**SOUTHWEST
AUCTION SERVICE
& MARKETING**
www.swaauktion.com



PUBLIC AUTO AUCTION
SAT. MARCH 30TH AT
10:30 AM
(Corner of US63 and MO17 in
Houston, MO 65483)

CARS / PICKUPS / SUVs / VANS / GUNS

ALL GUNS will be sold at
NO RESERVE.
Most vehicles will be sold at
NO RESERVE.

MUST BE REGISTERED TO BID
A 5% bidder's premium will be
added to all sales.
Vehicle buyers must be at least 18 to bid.
Gun buyers must be at least 21, a Missouri
resident, and adhere to all Federal, State
and local gun laws to purchase firearms.
More info at our website!

WANT TO SELL YOUR CAR??
We will offer your vehicle to local buyers
and bidders all over the USA. Available
lot numbers are limited.

Deadline to sell is Thursday, March 21st.
CALL TODAY!! (417) 217-2023

www.purvisauctions.com

**TAYLOR TRUCKS
& EQUIPMENT**

417-924-2026 • 2676 Hwy. 5, Mansfield, MO

★ INTIMIDATOR TREE PULLER ★

★ **3 POINT TILLERS** ★

TRAILER PARTS & REPAIR
MD144 Bat Wing in stock!

Milwaukee Cordless Tools

DANUSER DEALER
T3 Post Driver & Other Attachments
New Mowers! Bush-Whacker, Big Bee
Storage Containers & Dry Vans - 20' - 53',
**BUSH-WHACKER HD
SKIDSTEER BRUSH CUTTER**
Portable Generators, Farm Tires, New Semi Tires,
PTO's & Parts for Rotary Mowers, Farm Tractor
Implements, Plows, Used 15" Bush-Whacker Now In
Stock, Discs, and More Skidsteer Attachments: Pallet
Forks, Buckets, Grapples, Hay Spears, RR Ties

**Bush-Whacker
Heavy Duty Rotary Cutter**



**We Invite you To Come By & Look
Us Over! Located 2.5 Miles North
Of Mansfield, MO On Hwy 5**

GUNSMITHING-Older Rifles, Shotguns, Handguns, all 22LRs. Any make, any model, estate appraisals. Camdenton. 573-363-5801.

SNAGGING SEASON IS UPON US: Snagging rods \$35 & up. Rods & reels with line. 417-589-8200. Conway.

3 ARMY CANTEENS: Mess kit, belt & duffel bag. Best offer for all. 417-260-0941. Raymondville.

JD WC 1103 WOODCHIPPER: like new. PTO drive \$2,100. Bourbon area. 314-960-6652.

CONCRETE TABLE SET: with 3 concrete benches. \$200. 417-288-2760. Conway.

2014 DODGE RAM: Extended cab, 4wd, 87,000 miles. \$16,000. Past salvage title. 417-532-4701.

1002 NEW HOLLAND STACKLINER: for square bales. 417-345-5634.

ACCUMULATOR FOR SQUARE BALES: 417-345-5634.

93 CHEVROLET SHORT BED PICKUP ½ TON: 417-345-5634.

8-WEEK-OLD MORKIES: 2 males \$400 & 2 females \$500. Great for Easter. All shots & wormed. 417-532-4701.

54-INCH ROUND GLASSTOP TABLE: with 4 chairs for \$40. 417-532-2344.

REGISTERED DACHSHUND PUPPIES & 2 DOXIEPOOS. 573-247-6273.

FRUIT TREES: Apple, Peach, Cherry, Plum & Pear. \$25. 417-664-0742. Lebanon.

SIG SAUER P220 PISTOL (2015): With 2 clips, 2 holsters & case. Text 573-619-6651.

• Excavation & Grading  • Land Prep & Clearing

Bradley Cloyd Construction

• Flatwork Concrete

Free Estimates! 417-630-2288

HAY FOR SALE: Alfalfa & grass mix. 4x5 round bales. 417-343-4958. Seymour.

3-PHASE, 7-HORSE ELECTRIC MOTOR: \$200. 573-247-4280. Salem.

TRACTORS: Massey Harris "30" (two to choose from) cheap brush-hogging tractors, one is \$1,500 the other is \$2,000. 417-848-8754. Battlefield.

FOR SALE: 98 Grand Marquis 134,000 miles \$3,500. 417-345-5634.

STIHL CHAINSAWS: New/used parts & repairs. Chamois, MO. Dennis Brandt 573-763-5615.

LEFTY'S FABRICATION: Continuous panels & gates. Corral panels & custom welding. 4175-589-0864. Conway.

Buildings • Hunter's Cabins • Lawn Furniture



JAMCO Portable Buildings

800-688-2064 • 307 Enterprise Dr. • Seymour, MO • www.jamcobuilders.com

Rent To Own Plan

2 HOSPITAL BEDS FOR SALE: \$100. 573-247-4280. Salem.

100 BALES GRASS HAY FOR SALE: \$6/bale. 400 bales of Straw for sale, \$6/bale. 573-247-4280. Salem.

MINIATURE GOLDENDOODLE PUPPIES: \$250. 417-741-0185. Grovespring.

DO YOU BELIEVE IN HELL? If so why? Bible study P.O.BOX 863 Lebanon, MO 65536.

HIGHPOINT GREENHOUSE OPEN FOR THE SEASON: Vegetable plants, garden seeds, onion plants & sets, seed potatoes. Hours 9am-6pm Monday-Saturday. Closed Sunday. 9337 Warner Rd. Hartville. 417-741-2793.

Starnes Auto LLC

22115 Rt. 66 • Lebanon, MO 65536


588-7939 Cell
588-3159 Office

www.starnesauto.com

Worry-Free AUTO REPAIRS

Don't ignore the signs!

We will diagnose the problem, and get you back up and running again.



WE DO ALIGNMENTS!

CATTLE PANELS FOR SALE:
Approximately 40. \$20/each. 573-247-4280. Salem.

FREE TO GOOD HOME: 1-year-old Male Corgi. 417-259-9738. Hartville.

WE BUY AND SELL
new and used mobile homes



(417) 501-1061

DEAN'S CREEK MOBILE WELDING LLC: Noah Downing, Certified Welder Serving Central Missouri. 573-842-7281.

WANTED MILK GOAT: 660-598-4019.

MAN FOR HIRE: Building fence, fixing fence, clearing brush, cutting out fence rows, lawn and garden work, outdoor work, etc. 573-337-3286.

WE BUY
White Oak Logs!

- Top prices for your logs • Experienced log buyers
- Professional service

Chad Cook | Salem Mill
417.718.2950
5 miles north of Salem, MO on Hwy 19




INDEPENDENT STAVE COMPANY
Log Procurement & Sales

www.independentstavecompany.com

BUYING SCRAP METAL: All kinds, can torch, Heavy Equipment Call for prices, 40 years' experience. 573-308-6739.

AUSTRALIAN PUPPIES FOR SALE OR TRADE: UTD on shots. Ready to go. Out of working parents. 417-967-6493.

BAMBOO FLY RODS: \$50. Trout season is coming. 417-589-8200. Conway.

3 TIER CONCRETE WATER FOUNTAIN: with decorative waterspout. \$200. 417-288-2760. Conway.

TINY HOMES - Missouri Franchise 573-881-7965.

SPORTSET BY SARGENT: Fishing pliers in leather sheath. Like a multi-tool. \$15. 636-239-2695 or 314-560-5700. Washington.

Visit us at www.washingtonbullion.com

BUYING SILVER & GOLD COINS

- SILVER DOLLARS • SILVER EAGLES • GOLD COINS

PAYING FOR PRE 1964

DIMES.....	\$1.60*
QUARTERS.....	\$4.00*
HALVES.....	\$8.00*
HALVES (1965-1970).....	\$2.50*
SILVER DOLLARS.....	\$20.00*
GOLD (1 OUNCE).....	\$2,150.00*



WASHINGTON BULLION
636-744-8181

311 East Main St., Union MO 63084

*Spot Prices Fluctuate

HISTORY OF SCHOOLS IN THE MERAMEC VALLEY OF MISSOURI: Many old photos, hardback, \$20. 417-532-2045, Lebanon. Leave message and phone number.

1985 ST. LOUIS CARDINALS SIGNED WORLD SERIES BALL: Includes Herzog & Ozzie Smith. PSA/DNA. \$190. Text for pictures. 573-854-8132. Houston.

WE GOT IT - let us bid your mobile home purchase, new and used. 573-499-9993 columbiadiscounthomes.com.

TRIPLE WIDE- moving stock, awesome price. 573-657-7040 chateauhomes.net.

I BUY.....used mobile homes. Call or text 573-338-6250 or email GregS.CDH@outlook.com

CENTENNIAL OF IMMANUEL LUTHERAN CHURCH & RADER FAMILIES 1871-1971 BOOK: Out of print book. \$25. 417-532-2045, Lebanon. Leave message and phone number.

'85 FORD PICKUP PARTS: Passenger door with window glass & mirror \$30. Also, Tailgate for '85 Ford pickup \$25. 573-308-5884. Rolla.



J&L METAL ROOFING
Specializing in Re-Roofing | Free Estimates
Phone: (573)-759-3880
Phone Answered on Monday & Friday 6:30pm-7:00pm
20371 Maries County Road 635, Dixon, Missouri 65459



Pine Ridge Rustic
Log Home Building Supplies

Services Offered!

- Custom Log Home Products
- Pre-finishing available on interior & exterior
- Hand Hewn Sidings Offered

• Log Siding
• Beveled Siding
• Car Siding • Red Cedar
• Western Cedar • Pine • Timbers • Barnwood

www.pineridgerustic.com
523 CR 2410 • Salem, MO 65560 • Ph: 573-729-7226
CALL FOR APPOINTMENT

LOG SIDING: 2X8 Pine/Western Cedar. Call for appointment 573-729-7226. www.pineridgerustic.com Salem.

40 YEARS THIS YEAR- we have to be doing something right. Call for quote or any house new or used, double and single. 573-657-2176 amegamobilehomes.com.

2 YEARLING STEERS: 1 Jersey & 1 Dexter/Jersey. Weighing approximately 600lbs. Asking \$1,200 each, cash. 573-775-2564. Steelville.

HIGHPOINT GREENHOUSE OPEN FOR THE SEASON: Flowers, bedding plants, hanging baskets, succulents. New for this year Easter combinations. Hours 9am-6pm Monday-Saturday. Closed Sunday. 9337 Warner Rd. Hartville. 417-741-2793.

DARDEN PROFESSIONAL TIMBER HARVESTING, BUYING STANDING TIMBER: Great prices, improve wildlife habitat and improve forest health. State Certified & Fully Insured! 573-247-4808. Salem.

NEW JELD WEN 5' LEFT HAND SLIDING GLASS DOOR WITH SUNSTABLE INTERIOR BLINDS: Clear tempered glass, Desert Sand trim/hardware. Retail \$2655 Sell \$900. 417-693-0389. Conway.

2 HOSPITAL BEDS FOR SALE: \$100. 573-247-4280. Salem.

WEATHERED BARN WOOD SIDING: 10" wide. Call for appointment 573-729-7226. www.pineridgerustic.com Salem.



PLAD PANTRY
DISCOUNT & SURPLUS FOODS
FRESH PRODUCE LLC
417-532-4700

BBQ Pork Rib Sandwiches.....**99¢** ea. **\$10.69** case of 12
Extra Heavy Mayonnaise.....**\$4.99** 1 gal.
Pecan Turtle Trail Ice Cream..... **\$2.99** 1.5 qts.
Baked Potato Soup..... **\$1.29** 16 oz.
Honey Vanilla Cheerios..... **\$1.79** 18.1 oz.

1571 State Hwy 64 • Tunas, MO 65764
Hours: 8:30 a.m. to 5:30 p.m. • Closed Wed. & Sun.



Meadowview Variety
Bulk Foods - Fabric - Shoes & More

1205 Bluegrass Rd
Conway, MO 65632
417-589-0076

Baked Goods
Fridays and Saturdays

Garden seeds now available including some heirloom varieties!

Hours: 8:00am to 5:00pm Mon - Wed, Fri & Sat | Closed Thur & Sun

Quarles Supply
3251 S Springfield Ave, Bolivar, MO 65613
417-777-2391

Kubota of Lebanon
22330 Hwy MM, Lebanon, MO 65536
417-532-0888

*Your hometown
Kubota dealer
of choice.*



**#1 SELLING
TRACTOR
UNDER 200 HP***

L02 SERIES

Double digit to-do lists have met their match.

Dependable. Powerful. Versatile. When you need increased comfort, and reliable high performance under a steel hood, you can count on the Kubota L02 Series.

L2502DT Tractor and Loader \$19,995 | 0% for 84 Months

Visit your Kubota dealer today for a demo!

KubotaUSA.com



0% Down, 0% A.P.R. financing for up to 84 months on purchases of select new Kubota L2502DT equipment from participating dealers' in stock inventory is available to qualified purchasers through Kubota Credit Corporation, U.S.A.; subject to credit approval. Example: 84 monthly payments of \$11.90 per \$1,000 financed. Some exceptions apply. Terms subject to change. Offers expire 06/30/2024. This material is for descriptive purposes only. Kubota disclaims all representations and warranties, express or implied, or any liability from the use of this material. For more information, see Dealer or go to KubotaUSA.com.