

FREE - TAKE ONE!

Vol. 30 No. 49

MARCH 7, 2024

417-532-9131

WEEKLY **TRADER** MAGAZINE



Find us on
Facebook

@myweeklytrader
AUCTIONS PG. 7

VISIT OUR NEW WEBSITE! MYWEEKLYTRADER.COM

**You pull it,
we sell it...
CHEAP!**



Lebanon, MO
22395 Rt. 66
417-588-3555
Fax 417-588-8955



U★PULL★IT SELF-SERVICE AUTO PARTS

We also have a large inventory
of used tires and be sure to check
out our used car lot!

Mon.-Fri. 8:00am-5:00pm • Sat. 8:00am-4:30pm

WWW.SSUPULLIT.COM

Located next to S&S Recycling.



For All Your Metal Recycling Needs

Lebanon, MO

22395 Rt. 66

417-588-3555

Fax 417-588-8955

Mtn. Grove, MO

8930 First Rd

417-926-3360

Fax 417-926-0180

**Roll-off, Trailer, and
Mobile Crushing
Services Available**

Monday-Friday 8:00am-4:30pm (Closed 12pm-1pm Lunch)
Saturday 8:00am-Noon

email: contact@ss-recycling.com

Buyer of all types of scrap metal.

LAND FOR SALE



20.2 ACRES ± | HICKORY CO., MO | \$99,500

- Abundant active deer and other wildlife populations
- Great funnel contouring
- Wet weather creek
- Redneck tower blind, stands, and feeder included
- Solid easement access
- Close to Truman and Pomme De Terre Lakes

BRIAN UTECHT LAND TEAM
SOUTHWEST MISSOURI LAND SPECIALISTS



📞 **417.766.5595**

🌐 brian.utecht@whitetailproperties.com



WHITETAIL PROPERTIES REAL ESTATE

HUNTING | RANCH | FARM | TIMBER

WHITETAILPROPERTIES.COM

Whitetail Properties Real Estate, LLC DBA Whitetail Properties, DBA Whitetail Properties Real Estate. In the States of Nebraska & North Dakota DBA Whitetail Trophy Properties Real Estate LLC. Licensed in CO, MN, ND, SD, TN & WI - Jeffrey Evans, Broker. Licensed in FL, KS & MO - Jefferson Kirk Gilbert, Broker. Licensed in TX & NM - Joey Bellington, Broker. Licensed in IN - Bill Minor, Broker. Licensed in AL, GA, LA, & MS - Sybil Stewart, Broker. Licensed in TN - Tim Burnette, Broker. Licensed in TN & MS - Josh Monk, Broker. Licensed in AR - Anthony Chrisco, Broker. Licensed in NC, SC, VA - Chip Camp, Broker. Licensed in IA, NC - Richard F. Baugh, Broker. Licensed in MI - Edmund Joel Nogaski, Broker. Licensed in IL, MD, WV - Debbie S. Laux, Broker. Licensed in ID, MT, OR, UT, WA, WY & NV - Aaron Milliken, Broker. Licensed in NY - John Myers, Real Estate Broker. Licensed in OK - Dean Anderson, Broker. Licensed in KY - Derek Fisher, Broker. Licensed in OH - Jeremy Schaefer, Principal Broker. Licensed in NE & SD - Jason Schendt, Broker. Licensed in MS - Chipper Gibbs, Broker. Licensed in PA - Jack Brown, Broker.





RB16 SERIES

REAR BLADES
20-40 HP 60", 74", 84" Widths

- Cat. 1 hitch
- 7 Forward angles; 3 Reverse angles
- 5 Tilt positions
- 12" Offset left or right
- 14" Moldboard height
- 1/4" Moldboard thickness
- Landscape Rake adaptable

Getting Chores Done
LAND PRIDE
does that.



www.landpride.com

For Outstanding Products & Service

AGRI-ENTERPRISES

1-1/2 Miles South Of Licking, MO On Hwy 63

573-674-2203 • 1-800-653-7152 • www.agri-enterprises.com

HISTORY OF SCHOOLS IN THE MERAMEC VALLEY OF MISSOURI: Many old photos, hardback, \$20. 417-532-2045, Lebanon. Leave message and phone number.

TRIPLE WIDE- moving stock, awesome price. 573-657-7040 chateauhomes.net.

WEATHERED BARN WOOD SIDING: 10" wide. Call for appointment 573-729-7226. www.pineridgerustic.com Salem.

40 YEARS THIS YEAR- we have to be doing something right. Call for quote or any house new or used, double and single. 573-657-2176 amegamobilehomes.com.

LOG SIDING: 2X8 Pine/Western Cedar. Call for appointment 573-729-7226. www.pineridgerustic.com Salem.

RUBBER & LEATHER BOOTS AND 5-Buckle OVER SHOES: Men's 11, Women's 7, some insulated. \$12-\$35 obo. 636-239-2695. Washington.



VOTED #1 BEST Preowned Car Dealership



TIM'S USED CARS

(573) 341-3828 • 1334 South Bishop (Hwy. 63) • Rolla, MO
Next to Hwy CC • www.tims-used-cars.com

 <p>2013 FORD E250 4.6 V-8, Power Equipped, 152,xxx Miles Only \$15,900</p>	 <p>2014 GMC TERRAIN SLE-2 FWD, 4 Cyl, Auto, 86,xxx Miles Only \$11,900</p>
 <p>2013 RAM 1500 BIG HORN Quad Cab, 4x4, 5.7 Hemi, Power Equipped, 166,xxx Miles Only \$13,900</p>	 <p>2016 FORD F150 XL 2wd, 3.5 V-6, Auto, 55,xxx Miles Only \$19,800</p>

LARGE SELECTION OF CARS, TRUCKS, SUVs & VANS!

OMAR'S LOGGING

& Downwork

➡ **Oak & Walnut**

➡ **Excellent Prices**

Amish Owned & Operated



LEAVE MESSAGE: 417-741-0440
Hartville & Surrounding Areas

WE GOT IT - let us bid your mobile home purchase, new and used. 573-499-9993 columbiadiscountohomes.com.

CENTENNIAL OF IMMANUEL LUTHERAN CHURCH & RADER FAMILIES 1871-1971 BOOK: Out of print book. \$25. 417-532-2045, Lebanon. Leave message and phone number.

FOR SALE



2023 Assembled Title 389 Peterbilt. 3406E CAT 550 HP
18 SPD 3:36 rears 3 yr unlimited miles warranty on these
components. Have full list of upgrades. \$200,000.
417-291-6718 Joplin, Mo

NEW SQUARE D RAINPROOF 50AMP DISCONNECT: \$150. 636-239-2695 or 314-560-5700. Washington.

'85 FORD PICKUP PARTS: Passenger door with window glass & mirror \$30. Also, Tailgate for '85 Ford pickup \$25. 573-308-5884. Rolla.

KUSTER LOGGING

**BUYER of Standing
Timber
Oak and Walnut**

Dozing Now Available

417-259-0047

References Available



TINY HOMES - Missouri Franchise 573-881-7965.

I BUY.....used mobile homes. Call or text 573-338-6250 or email GregS.CDH@outlook.com

ELECTRIC WELDER: runs on 220. \$100 or trade. 573-734-2822.

INTERNATIONAL PICKUP TRANSFER GEARBOX: \$150. 573-308-5884. Rolla.

DARDEN PROFESSIONAL TIMBER HARVESTING, BUYING STANDING TIMBER: Great prices, improve wildlife habitat and improve forest health. State Certified & Fully Insured! 573-247-4808. Salem.

NEW JELD WEN 5' LEFT HAND SLIDING GLASS DOOR WITH SUNSTABLE INTERIOR BLINDS: Clear tempered glass, Desert Sand trim/hardware. Retail \$2655 Sell \$900. 417-693-0389. Conway.

CUTTING TORCH OUTFIT: \$100. 573-734-2822.



Meadowview Dutch Market

Bulk & Surplus Groceries • Prices Subject to Stock on Hand

Call to Order
417-993-3017

Sale Dates March 6th, 2024 to
March 12th, 2024 while supplies last!

DELI SPECIAL

BEEF BOLOGNA	REG. \$6.59 LB	SALE \$6.09 LB
BIG EYE SWISS	REG. \$5.85 LB	SALE \$5.35 LB

TRY our Fresh Homemade DELI Sandwiches: TURKEY, HAM, ROAST BEEF, ITALIAN, BLT'S, PULLED PORK AND BLT PULLED PORK (MADE YOUR WAY)! COME IN OR CALL to order! ALSO Custom Deli trays! Veggie OR FRESH Meat-N-Cheese!

Bonus Special
Spiral Cut Hams
99¢ LB.



Pollock Fillets
\$2²⁹ LB.



Crinkle Cut Fries
\$1⁰⁹ LB.



Gouda Cheese
\$2⁴⁹ LB.



Ben and Jerry Non-Dairy Ice Cream
99¢ A PINT



Yellow American Sliced Cheese
89¢ 8 OZ.



Chicken Lovers Variety Pack Cat Food
\$4⁵⁰ 12-2.8 OZ. CUPS



NOT RESPONSIBLE FOR PRINT ERROR!!

NOW ACCEPTING CREDIT, DEBIT CARDS & EBT

MEADOWVIEW DUTCH MARKET

417-993-3017 Hours: Mon-Thurs 8-5pm
Fri 8-6pm • Sat 8-5pm
23 Miles West on Hwy 64 • Right on T Hwy
9 miles • Left on E Hwy 1 mile on Left

DUTCH COUNTRY STORE, LLC

573-378-4395
Hours: Mon-Thurs 8-5pm
Fri 8-6pm • Sat 8-5pm
5 miles East of Versailles off Hwy C on Kelsay Road

WE WILL BE CLOSED ON
**THURSDAY,
MARCH 14TH**
WILL REOPEN ON
FRIDAY, MARCH 15TH

80/20
GROUND BEEF

\$2⁹⁹

A LB. APPROX 5LB.



SPORTSET BY SARGENT: Fishing pliers in leather sheath. Like a multi-tool. \$15. 636-239-2695 or 314-560-5700. Washington.

USED JET HOME POLLUTION CONTROL PANNEL: Model CP700. \$50. 636-239-2695 or 314-560-5700. Washington.

1 PAIR OF KEY BRAND MEN'S JEANS: Waist 38, Length 34. \$8. 636-239-2695 or 314-560-5700. Washington.

4 PEAVEY SPEAKERS: two: 16 x 26, two: wedge floor monitors 65 watt. Asking \$200 OBO 573-732-3557.

SOVIET UNION WINTER WEATHER ARMY HAT: Excellent condition. \$ 35. Text for pictures. 573-854-8132. Houston.

ST LOUIS BLUES: autographed full size hockey stick. Brett Hull. Text for pictures. \$149 573-854-8132. Houston.

RIFLE CASE: Pelican storm. IM3100 long case like new \$160. Text for pictures. 573-854-8132. Houston.

BERKSHIRE BUTCHER HOGS: \$1.00/lb. delivered. Angus Beef \$1.80/lb. 800-807-9612.

SPLIT SEASONED FIREWOOD: No Delivery. Vichy area. Call 573-261-1611

GUNSMITHING-Older Rifles, Shotguns, Handguns, all 22LRs. Any make, any model, estate appraisals. Camdenton. 573-363-5801.

WANTED: older model 1-ton wrecker. 573-734-2822.

2 ANTIQUE GARAGE CABINETS: wall mount \$125. 573-734-2822.

BUYING OLD BARNs & LUMBER: 417-307-2814, leave message.

PLAD PANTRY

DISCOUNT & SURPLUS FOODS FRESH PRODUCE LLC

417-532-4700

Pancakes with Bacon & Syrup Breakfast Combo..... **\$4.79** 6-2.83 oz.

Frozen Fudge Iced Brownies..... **\$3.29** 16 oz.

Mountain Dew..... **\$7.49** 12-16.9 oz.

Strawberry Yogurt Gogurts **\$2.49** 16-2 oz. tubes

Fruity Dyno-Bites Cereal..... **\$2.99** 32 oz.

1571 State Hwy 64 • Tunas, MO 65764
Hours: 8:30 a.m. to 5:30 p.m. • Closed Wed. & Sun.



BLACK METAL TUBULAR BRACKET: Scrolling and a stainless bracket. \$8. Call for pictures. 636-239-2695 or 314-560-5700. Washington.

ANTIQU 4 HP ENGINE: Built by Continental Motors Corporation. \$150 OBO. 573-308-5884. Rolla.

TOSHIBA 42" FLAT SCREEN LED LCD HD TV: With remote & owner's manual. \$50. 210-787-8222. Linn Creek.

NEW IN BOX MASTERBUILT ELECTRIC TURKEY FRYER: Up to 14 lbs. Fry, boil or steam. Safe for indoors. \$80. 417-718-5347. Morgan.

1985 ST. LOUIS CARDINALS SIGNED WORLD SERIES BALL: Includes Herzog & Ozzie Smith. PSA/DNA. \$190. Text for pictures. 573-854-8132. Houston.

OLD TIME COCA COLA COOLER: \$100 or trade. 573-734-2822.

OFFICIAL TRACTOR OF TOUGH™

INTRODUCING THE ALL-NEW 5100 SERIES



Marshfield Machinery Inc.

222 E. Madison • Marshfield, MO 65706
417-859-2117 • www.marshfieldmachinery.com

*2018 data including all Mahindra group brand sales.
MahindraUSA.com © 2020 Mahindra USA Inc.

NEW MAHINDRA TRACTORS

1626 4WD & LDR 26HP	IN STOCK
1635 4WD & LDR 36HP	IN STOCK
1640 4WD & LDR 40HP	IN STOCK
2645 4WD & LDR 45HP	IN STOCK
5145 4WD & LDR 45HP	IN STOCK
5155 4WD & LDR 55HP	IN STOCK
4550 4WD & LDR 48HP	IN STOCK
6065 4WD & LDR 65HP	IN STOCK
6075 4WD CAB & LDR 71HP	IN STOCK

USED TRACTORS

MF 4708 80HP 4WD CAB LDR	55,000
MF 4609M 90HP CAB LDR	45,000
MF 5445 75HP 4WD CAB LDR	42,500
NH T4.75 74HP 4WD LDR	32,500
MF 383 72HP CAB LDR	22,500
MF 2604H 45HP 4WD LDR	22,500
MAHINDRA 2555 55HP 4WD LDR	20,000
MAHINDRA 2638 38HP 4WD LDR	19,000
JD 1025R 25HP 4WD LDR MWR	14,500
AC 7010 106HP CAB	9,500
MF 1528 28HP 4WD	6,500
KUBOTA L175 17HP W/ MOWER	3,000

USED ROUND BALERS

MF 2946A 4X6 MES	H35,000
HESSTON 560 5X6	2,000

USED MISC.

BUSH HOG 3715 15FT	13,500
BUSH HOG 2615L 15FT	10,500
JD 1815 15FT	9,500
BUSH HOG 3210 10FT	8,500
HESSTON 8 WHEEL RAKE	3,000
HESSTON 8 WHEEL RAKE	2,500
OWI 8 WHEEL RAKE	2,500
RHINO 8 WHEEL RAKE	1,500
RHINO 5FT FINISH MOWER	850

Marshfield Machinery Inc.
222 E. Madison
Marshfield, MO 65706
417-859-2117
www.marshfieldmachinery.com



A-2 A-2 SPRINGER HEIFERS; New Holland 256 Rake \$1,200. 417-307-2814, leave message.

WANTED: Driver's Side Door for 1995 Dodge Truck ¾ ton, Single Cab, 4x4. 573-612-4351.



Wright Spray Foam Insulators, LLC
Commercial & Residential
Call for **FREE** Estimates!

Ervin Gingerich
417-926-2052
B. Eli Yoder
417-746-4932

REFURBISHED 1985 JEEP CJ7: new metal panels & new red paint looks nice. 20K miles on old factory rebuilt engine. Aamco freshly rebuilt 5 speed transmission. New carburetor & other parts. Freshly serviced, needs minor tweaks. \$9,995 bargain. 573-759-7143 Vienna.



CLASSIC EDGE
TITANIUM HDX
26% Tax Credit on EPA certified Central Boiler Classic Edge HDX models and installation. Call today to learn more!

Outdoor Wood Furnace CentralBoiler.com

Yarbrough Equipment Sales & Services, Inc.
9776 E. State Hwy OO • Strafford, MO
417-736-2303 • 1-866-286-6901 • www.yarbeq.com

2020 GMC TERRAIN RIMS: \$300 like new. 1-660-537-3624.

16 GALLON VINTAGE VALVOLINE OIL DRUM: good grey color, good for man cave, excellent condition. \$120. Text for pictures. 573-854-8132



CALUS LOGGING

20 YEARS EXPERIENCE

Buying Standing Timber
Walnut & Oak

Joe Calus, Owner
417-926-4606 • MTN. GROVE

CERTIFIED

99 4X4 CHEVY TRUCK: Rough. 454; with title. For parts. \$1,500 or trade. 573-734-2822.

WANTED: Old Hearse. 573-734-2822.

PARTING OUT ALLIS CHALMERS: WD; WD45; D-14, 15, 17, 19. 573-690-9406. Jefferson City.

PUREBRED FAINTING GOATS: Kids are \$200 and up will make a great Easter present. Lake of the Ozarks. 573-216-7796.

TRUCK KNOCKED RV OFF JACKS: 32 ft with 3 slides. Make offer. 417-827-7655.

FOR SALE: twin bed with headboard. \$175. 575-915-4026.

NICE 1991 CHEVY: 2 door pickup. 4WD V-8 AT 165K miles \$5,000. 573-759-7143 Vienna.

AB SPORT LOUNGE like new \$35. 210-787-8222 Linn Creek.

LIFETIME COLLECTION OF 256 CASSETTE TAPES: Patsy Cline, Alabama, Merle Haggard, Willie Nelson, Johnny Cash, Charlie Rich, Hank Williams, George Strait, Reba Macentire, The Judds, Jim Reeves, & many more \$100. 210-787-8222 Linn Creek.

COMING SOON 0% FINANCING WAC ON SAFE PLACE STORM SHELTERS! Text or call your name & address for a free brochure. 417-894-3159.

2016 GMC TERRAIN 74,000 MILES. Runs good, may trade. \$16,000 OBO 1-660-537-3624.

FREE: 6 sweet Corgi Cross puppies. Very cute. 417-741-0265, leave message. Hartville.

HAY FOR SALE: Excellent 2nd & 3rd cut Alfalfa/Orchard Grass, \$12/bale. Straw, \$6/ bale. 417-532-1113, No Sunday Calls. Tunas.

5-PIECE PATIO SET: \$50 575-915-4026.

BORDER COLLIES/HEALER PUPS: Shots & Wormed. Call 573-694-9159. Russellville.

FISHING SEASONS COMING: Get your rod and reels, \$15 and up. 417-589-8200. Conway.

FISHING REEL SPOOLS FOR SALE: I've got what you need. \$3/each. 417-589-8200. Conway.

SNAGGING SEASON IS UPON US: Snagging rods \$35 & up. Rods & reels with line. 417-589-8200. Conway.

LAKE OF THE OZARKS-SPRING SPECIAL Lots starting at \$4,995-\$125 down \$69 per month. Build, camp, or own for investment also acreage tracts. Beautiful wooded area, free lake access and boat ramps, lots are a short distance away from the lake, no credit checks, owner financing, and immediate possession. Missouri conservation boat ramp with a covered dock and rest rooms close by. Prices good through March 19th, 2024. Hwy 135 between Stover and Sunrise Beach, MO. Take lake road 135-12 to the Ivy Bend Land Office. Closed Tuesdays and Wednesdays Call anytime 573-372-6493.



We rebuild diesel engines

Workin' on everything from a garden tractor to a dozer!



Workin' on:
Diesel Engines
Hydrolic Cylinders
Haying Equip
Construction Equip
And Everything Else!

417-589-0346
483 Starvey Creek Rd • Conway, MO
Bring in your equipment today!

GUN & AMMO AUCTION

10 a.m. Saturday, March 9

NEW LOCATION! **The Scheets Building** at 8373 N. Hwy. 63, Houston, Mo.
Directions: From Houston city limits, travel approximately 2 miles north on US 63 to auction.

★ SHOTGUNS ★

Marlin mod. 55 12-ga. Magnum Goose Gun • Mossberg 500A 12-ga. pump • Mossberg 500A 12-ga. pump 3" vent rib • Remington mod. 9 20-ga. top break side cock • Remington mod. 10A 12-ga. pump • Remington 870 Express 12-ga. pump 3" vent rib • Remington mod. 1100 12-ga. vent rib • Smith & Wesson mod. 916A 12-ga. 3" pump • Western Field mod. EMN 175 12-ga. bolt action • Harrington Richardson Bay State 12-ga. top break • S.S. Kresge 151 20-ga. top break • Stevens mod. 320 12-ga. pump, pistol grip • Winchester mod. 1897 12-ga. pump • Winchester 1897 16-ga. pump • Winchester 1912 12-ga. pump • Winchester 1912 16-ga. pump • Winchester 1912 20-ga. pump vent rib • Winchester 1911BL 12-ga. • Browning A5 Real Tree Maxx 12-ga. semi 3 ½ inch armor coat vent rib • Remington 1187 12 ga. vent rib • Browning Citori 12 ga. over and under 3 ½" • Old Winchester • Western Field 16-ga. • Winchester 1300 Turkey 12-ga. • Remington 12 ga. •

★ RIFLES ★

Stevens mod. 200 22-250 Rem w/scope • Savage mod. 93R17 17HMR w/scope and bipod • Remington 710 30-06 Spr. w/scope • Toyko Arsenal Series 2 260 REM w/scope • M93 7mm Mauser • M93 7mm Mauser • Long Branch No4 MKI 303 British • U.S. Remington 03-A3 30-06 • Springfield 1898 30-40 Krag • Winchester mod. 94 30WCF lever • Winchester mod. 94 30-30 lever action • Smith & Wesson 5.56 mod. MP15TS • Ruger American 17HMR Compact • Steyr Pro Hunter 3 223 **new unfired** with 6x24x44 scope • 5.7x28 Rock **new unfired** • Remington 700 30-06 • T/C Encore Pro Hunter w/25-06 barrel and 50 cal. muzzle loader • 336 Marlin 450 Marlin cal. • Ruger FTW Hunter 30-06 • CZ600 ALPHA 270 • Kimber Pro Disolve Black 308 • Kimber Hunter 6.5 Creedmoor • Savage 93 17HMR bull barrel • Omega AR15 350 Legend • Keltec Sub2000 9 mm • Remington 700 6 mm Remington • Browning BBR 25-06 • Ruger Hawkeye 25-06 •

★ 22 RIFLES ★

Savage 6D Deluxe • Marlin 81-DL Deluxe Bolt 22 • Marlin Golden 39A Lever-Action 22 • Marlin 39 Article II Lever-Action NRA 100 year • Winchester 190 Semi Auto • Winchester 290 Semi Auto • Winchester 290 Semi Auto w/Scope • Winchester 06 Pump • Winchester 1904 Bolt • HM Quackenbush Safety Rifle Swing Block • Marlin Glenfield mod. 60 • Savage mod. 4C • Marlin 22 • Savage 62 22 LR • Cricket 22 LR • Cricket 22 Mag •

★ HANDGUNS & BLACK POWDER ★

Ruger 50th Anniversary, Match Set 357 & 44 magnum matching serial number • Taurus 9mm new • Harper Ferry Muzzle Loader • Astra mod. 600/43 Parabellum 9mm • T/C Omega 50 cal. Muzzle Loader • Remington 700 50cal. Muzzle Loader • Smith & Wesson 38 Special, air weight w/Crimson Trace • Ruger P95 w/three mags & case • Berretta PX4 Storm 40SW • S & W M & P 380 EZ • S & W Custom Shop 380 EZ • Palmetto State Armory dagger 9 mm w/ Red Dot • Thomas Center White Mountain Carbine 50 cal. • H & R Huntsman 45 cal. • Sig Sauer P238 380 • S & W 637-2 38 Special •

★ AMMUNITION ★ MISC ★

Lots of ammunition • Holsters • Accessories • Pocket knives •

Auctioneer's note: Expecting 30 more handguns and rifles. Don't miss a chance to own some good quality firearms and a chance to stock up on ammo. Thanks, Darren and Jake.

Darren SCHEETS

AUCTIONS

(417) 457-6638 • (417) 926-8575
www.scheetsauctions.net



TERMS OF AUCTION: Cash or check with picture ID. Nothing loaded or removed until paid for. Everything sells as is, where is. Not responsible for accidents, lost or stolen items. Auction day announcements take precedence over all previous advertisements. LUNCH ON GROUNDS.

#1 AUCTION SOURCE IN CENTRAL MISSOURI

SERVING 34 COUNTIES!



IN PRINT & ONLINE!

TO ADVERTISE YOUR AUCTION, CALL 417-532-9131

WEEKLY TRADER MAGAZINE

100 E. Commercial, Lebanon
www.myweeklytrader.com
www.facebook.com/myweeklytrader

VOGELGESANG TIRE & AUTO AUCTION



Find us on Facebook



Vogelgesang Tire & Auto, having sold their real estate, will sell business equipment and tools at public auction on:

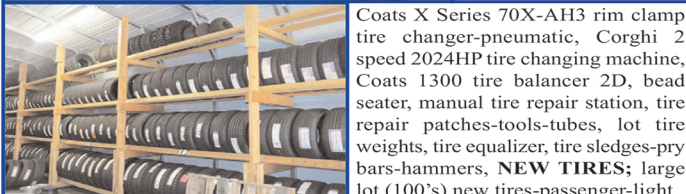
Saturday, March 9th 2024, Beginning at 9:00 AM

Location: 8290 Highway 47 (Exit #240) St Clair Mo 63077

Direction: At Northeast corner of Highway 47 and Interstate 44. Exit #240 from the Interstate. Roads will be marked day of sale.

TIRE TOOLS/ACCESSORIES/NEW TIRES/WHEELS

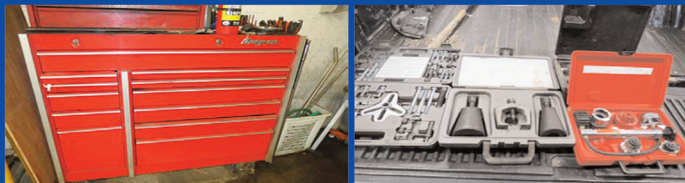
(Sales tax will be charged on new inventory items)



Coats X Series 70X-AH3 rim clamp tire changer-pneumatic, Corghi 2 speed 2024HP tire changing machine, Coats 1300 tire balancer 2D, bead seater, manual tire repair station, tire repair patches-tools-tubes, lot tire weights, tire equalizer, tire sledges-pry bars-hammers, **NEW TIRES**; large lot (100's) new tires-passenger-light

truck-SUV-large truck-highway-all terrain-all sizes all tread types-14"-22", ATV tires-8"-12", lot mower tires 4"-12"-all treads, skid steer tires, front tractor tires, trailer tires, **WHEELS**; sets of four tire rims-15"-16"-17"-aluminum-chrome-alloy-5/6 lug, lot asst. wheels, semi wheels, dual tire remover, hubs, wheel covers, semi tire tools, tire dolly

SNAPON / SHOP TOOLS

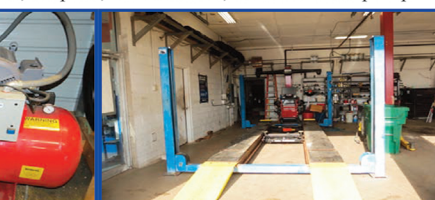


4x4 rolling tool chest, top tool box, parts washer, lug nut remover, diagnostic scanner, coolant pressure tester, Super 550 battery charger, re-threader, swivel wrench set, wrenches, screwdrivers, 1/2" cordless impact wrench, open-box end wrench sets, ratchet wrenches, stubby wrenches, crows foot wrenches, offset wrench set, ratchets-sockets, swivel sockets, screwdrivers, screw extractor, floor dryer-fan, **OTHER TOOLS**; Solar 2175 wire feed welder, porta-power, rolling battery charger, Schumacher rolling battery charger, Delta bench grinder, 20 ton hydraulic press, Lincoln cordless grease gun, Dewalt pneumatic grease gun, Matco sockets, cordless tools-grinder-drills-reciprocating saw, Matco 1/4"-3/8"-1/2" torque wrenches, Matco bench vises, other bench vises, Matco wrench set, tin snips, Matco tool box, rolling tool boxes, Matco screwdrivers, large wrenches-open-box end, large crescent wrenches, pipe wrenches, impact sockets, ratchets-Matco-Craftsman, extensions-breakers, deep well sockets, 1" impact wrench, 3/4" impact sockets, very large sockets, sockets, vise grips, hammers, nut drivers, bits, hex wrenches, punches, 22 ton truck jack, lot floor jacks, work stool, rolling tool cart, pneumatic cut off-chisels-drills-wrenches, pneumatic deep well sockets, snap ring pliers, channel locks, specialty pliers, nippers, wire strippers, plumb bob, hole saw, drill bits, drill Dr, bolt cutter, C clamps, micrometer, hardware-nuts-bolts, cotter pins, hose connectors, lot parts bins, lug nuts, tap-die sets, Stihl gas blower, lot air hose reels, air hose, chains, trailer plugs-wiring

AUTO LIFTS / SPECIALTY AUTO SHOP MACHINES TOOLS / PARTS / FLUIDS



Atlas 12,000 LB four post lift, Launch-Tech 10,000 LB 2 post lift, **COMPRESSOR**; Schrader SA37580H1 compressor-7.5 HP-230 Volt single phase-175 PSI, **SPECIALTY AUTO MACHINES**; Hunter Engine Co alignment machine-computer updated, R-12 refrigerant recovery machine, R-134 refrigerant machine, lot #30 LB and small cans R-12 and R-134 refrigerant, coolant pressure gauges, Matco smoke -leak tester, transmission jack, floor transmission jack, engine cherry picker, engine stand, Sun tune up tester, Sun VAT40 battery tester, Prism Pro refrigerant identifier, caliper rescue tool, 8 pc transmission disconnect set, stud remover set, oil pressure check, UV AC light, 4WD front hub puller, brake shoe hold down, hydraulic flaring tool, ball joint replacement tools set, AC compressor clutch remover, lug stud installer, battery load tester, fuel injector cleaning kit, TPM analyzers, Matco spindle re-thread kit, Hubsamer wheel bearing tool set, ball joint puller, body tools, serpentine belt tool, strut ring compressor, muffler jacks, Maxi Sys auto scanner, pressure test kit, wheel torque sockets, compression tester, bearing press, **PARTS**; water pumps, spark plugs, oil filters, brake parts, fuel filters, wiper blades, fuel hose, hose clamps, **OIL**; cases motor oil-10w-30, 5w-20, gallons 10w-30, 15w-40, 5w-40, 5w-30, cases refrigerant-cooler, grease, power steering fluid, lot service manuals-Chilton manuals, auto creepers, jack stands, car ramps, bumper hitch carryalls, 24 volt jump boxes, oil pans, oil wrenches, oil drum hand pump



MULE / SHED / STORAGE TRAILER / SIGNAGE

(Mule and auto lifts will sell at 12:00 Noon)



2000 550 Mule service vehicle-manual dump bed, 120'X30' shop/shed with sides-30 days to move, 45' semi-trailer with pallet racking-shelving, **SIGNS**; 12'x3' BF Goodrich sign, 8' Tire Auto sign, 8' Vogelgesang sign, 8' scrolling message sign, 18'x3' Cooper Tire sign, BF Goodrich sign, Coke bottle cooler, R2-D2 4' store cooler, Interstate Battery rack, Check-A-Thread cards-metric-standard, (2) 17'X17" square base sign posts-50'-60' tall, sign posts, (2) 8" square 20' tall posts, large 4 post service station canopy, used panels chain link privacy fence-6' tall, 1,000 water tank, scrap iron, used batteries, **LADDERS**; (3) rolling warehouse ladders, step ladders, wheelbarrow, dolly, warehouse cart, rolling tool cart, portable air tank, torpedo heaters, work lights, office supplies, file cabinets, desks, waiting room chairs, table, shelving, heaters, Mandel hand crank phonograph, large barrel-barn fans



LUNCH WILL BE SERVED BY BEAUFORT LIONS CLUB

VIEW OUR PHOTO GALLERY ON www.breheauction.com

BREHE AUCTIONEERING SERVICE, LLC
 Union, MO: (636) 583-0841 Owensville, MO: (573) 437-3454
www.breheauction.com
 LICENSED AUCTIONEERS:
 Kerry Brehe 314.954.3798 Josh Brehe 314.603.3129 Nick Brehe 314.560.7737
 Harry Engelhart 636.999.3743
 MPAIA
 Announcements made day of sale supersede all printed material.
 TERMS: CASH, PERSONAL CHECKS WITH PROPER I.D., BUSINESS CHECKS WITH BANK LETTER AND NO OUT OF STATE CHECKS UNLESS APPROVED BY SELLER. Email Us At kkauction@breglobal.net
 Everything sells as is with no guarantees. Not responsible for accidents.

Sam CRAWFORD AUCTION SERVICE LLC

Will sell the following located 10 miles West of Osceola, MO on Hwy. 82 to Roscoe, then South on Co. Rd. SW151. Watch for auction signs.

SATURDAY, MARCH 16TH, 2024 - 10:00 A.M.

LOADER - TRAILERS - TRUCKS - TOOLS - MISC.



**LOADER - TRUCKS
CAR - TRAILERS**

- '95 Komatsu 066S Track Loader, Cab, Shedded
- '01 Freightliner Classic "Cat" 550 6NZ, 13 Speed
- '98 Ford Ranger XL Step Side, Ex. Cab, 4x4, 174K
- '06 Ford Fusion, Some Front Damage
- Cherokee 48' Double Drop Semi Hay Trailer
- 26' Pintle Hitch Tandem Duals, Equip. Trailer

MACHINERY - MISCELLANEOUS

- Allis Chalmers D-17, Gas, W/F
- Allis Chalmers 330 Sq. Baler, Shedded
- 3 Pt. Blade
- 3 Pt. PTO Tiller - 3 Pt. Bale Mower
- 3 Pt. Finish Mower

- 12' Pull Type Box Blade
- David Brown Diesel, Needs Work
- 6' Pull Type Offset Disk
- Older John Deere & Vicon 3 Pt. Disc Mowers
- Older IH Sickle Rake
- Old Rhino 10' Cutter, Needs Work
- 10' IH Disk
- 2 Pickup Bed Trailers
- Older Pull Type Air Compressor - For Parts
- 8' & 10' Steel Flatbed Truck Beds
- Old Grain Auger, 6"
- 200 Gal. Sq. Fuel Tank
- 75+ Concrete Blocks
- 2 - 24.5 Aluminum Wheels
- Hyd. Bead Buster for Tractor Tires
- Calcium Pump for Tractor Tires
- Pile Metal Roofing - New?
- Some H & I Beams

- Sev. Bicycles, Misc. Tools
- Antique HD Drill Press, 7' Tall
- Homemade Cut Off Saw
- Other Misc.

Consigned By Neighbors:

- '99 Peterbilt 379, 500 Detroit, 10 Speed
- '75 Chevy Dump Truck 14' Bed, 427 Gas, 5 & 3 Speed
- '53 West Flatbed Semi-Trailer
- '02 GMC Ext. Cab, 3/4, 4x4, GN Hitch
- JD 260 3 Pt. Disc Mower
- Vicon 240 3 Pt. Disc Mower, Good Shape
- Vermeer 605 K Big Baler, Twine, Monitor
- 8 Wheel V Rake
- Diesel Tank w/Hand Pump
- Exhaust System for "Ram", New
- 4000 Watt Generator, Snow Blower
- Sev. Trolling Motor
- Sev. Rods & Reels

Sam CRAWFORD Auction Service LLC



TERMS: Cash or good check. Nothing removed until settled for. Not responsible for accidents. Lunch available. Statements made day of sale take precedence over printed matter. All items sell as is. No warranties given or implied.

417-998-6629
Cross Timbers, Mo.

CrawfordAuctionService.com



Sam
417-328-9137

Chase
417-399-1904

Chance, CAI
417-298-1751

Tom Poynter
Jack Lancaster

LARRY DUTCHER

15th Annual Spring CONSIGNMENT AUCTION Saturday, March 16, 2024 at 9:30 A.M.

SALE LOCATION: 1551 14000 Road, Altamont, KS 67330 DIRECTIONS: 1.5 miles east of Altamont, KS or 9 miles west of Oswego, KS on Hwy. 160.

NOTE: WE ARE ALWAYS CLOSED ON SUNDAY!

Tractors

- 14 JD 8245R, CHA, 4709 hrs, MFWD, PS 16F/5R, AutoTrac, 5 SCV, duals
- 03 JD 8320, CHA, 5956 hrs MFWD, PS 16F/4R, 2-owner, 4 SCV, duals
- 84 JD 8450, CHA, 11K hrs, 4x4, JD reman engine 300 hrs. ago, new tires & hyd. pump 100 hrs. ago bareback
- 94 JD 7800, CHA, 6548 hrs MFWD, PS 19F/7R, 3 SCV, new tires, duals
- 17 JD 6175R, CHA, 948 hrs MFWD, 24 sp. AutoTrac 1-owner, 4 SCV, duals
- 19 JD 6175R, CHA, 4054 hrs MFWD, 20 sp. 1 owner, 3 SCV with JD H360 loader, 3rd function
- 18 JD 6155R, CHA, 4153 hrs MFWD, 20 sp. 1 owner, 3 SCV ILS, GreenStar, with JD 640R SL loader, 3rd function
- 22 JD 6155M, CHA, 402 hrs MFWD, 20 sp. 3 SCV, with JD 640R loader, 3rd function
- 19 JD 6155M, CHA, 3326 hrs MFWD, 20 sp. 1 owner, 3 SCV with JD 640R loader, 3rd function
- 13 JD 6150R, CHA, 4052 hrs MFWD, I/V, 4 SCV, with JD H360 SL loader, 3rd function
- 21 JD 6130R, CHA, 936 hrs MFWD, 24 sp. 1 owner, 3 SCV with JD 620R SL loader
- 18 JD 6130R, CHA, 1786 hrs MFWD, 24 sp. 2 CV, with JD 640R SL loader, 3rd function
- 09 JD 6430 Premium, CHA, 2494 hrs, MFWD, 16 sp. 1 owner, 3 SCV, with JD 673 loader
- 98 White 8410, CHA, 3064 hrs 2-wd, PS, 3 SCV
- 03 JD 7220, OROP, 7224 hrs. 2-wd, 16 speed, 2 SCV
- 15 CH 125 Maxxum, CHA, 970 hrs., MFWD, 17 sp. 1-owner, 3 SCV, with CH L755 loader
- 16 NH T4.110, CHA, 1355 hrs MFWD, 12 sp. with NH 655TL loader
- 18 JD 4044M, OROP, 414 hrs MFWD, LHR, with JD 400 loader
- NHT L100A, CHA, 2-wd, with BH M546 loader
- 2000 NH TL80, CHA, 5838 hrs. 2-wd, 12 sp. with NH 7310 loader
- 85 JD 850, Open station, 2-wd, 3pt.

Combine

- 12 Case IH 6130, 2675/2046 hrs, 4x4, Pro 700 monitor, yield monitor, field tracker, 30.5X32 wide flotation tires, electric bin extension, leather heated seat

Farm Equipment

- 04 JD 1790 planter, 12/23 row CCS, Yetter row cleaners & twister closing wheels, corn & bean plates, pneumatic down pressure, 1/2 width shut off, JD 250 monitor
- JD 1700 MaxEmerge planter, 8R 30, 3pt. Precision E-set corn meters, Keaton seed firmers Yetter row cleaners, nice
- 02 JD 1560 no-till grain drill, 15' wide, 7.5" spacings, small seed boxes, nice
- JD 7000 planter, 6R 30", all new openers, press & gauge wheels and tires
- Concord 1100 air seeder tank, 100 bushel, complete with distributors & hitch
- 13 Speed King 240 seed tender triple axle, remote control, Honda motor
- Meridian 240RT seed tender tan-

- dem axle, scales, remote control, Honda motor
- 20 Great Plains 3500 Turbo Max vertical till, 35' width, 1 owner excellent condition
- 14 Great Plains 4000 Turbo Max vertical till, 40' width, 1 owner excellent condition
- Willmar Super 800 fertilizer spreader 1-owner, hyd. disengage, 540 PTO, tarp, like new
- Industrias America 2224X 9.5' tandem disk, 22' blades, new
- Industrias America 2228X 10.5' tandem disk, 22' blades, new
- 17 Adams 200 lime/litter spreader 32" web, flotation tires, 1000 PTO, nice
- H&S 3143 manure spreader, top beater, slog gate, 1000 PTO
- NH 512 manure spreader, single axle, top beater
- Mauer HT30 30' header trailer dolly wheel
- Best Way Field Pro III sprayer 1000 gal. tank, 60' booms
- Grass Works WWF40 25' weed wiper, 3pt, hyd. drive & fold, cab controller, nice
- Krause 20' pull-type field cultivator manual fold
- Houme 12' 3pt. chisel
- Krause 15' 3pt. stalk chopper/cover crop roller
- Blu-Jet 12 row, 30" anhydrous applicator, 3pt, good couders
- United Farm Tools 500 grain cart IA F12 12 pull-type box blade with side tilt, new
- Danuser 3pt. post driver
- 2-Danuser 3pt. post hole diggers
- Shaver 8" 3pt. hydraulic post driver
- Fimco 2000-gallon 3pt. sprayer boomless nozzle
- NI 101 10' EZ flow spreader, nice
- 22 JD 560M round baler, 6159 bales, net, 1000 PTO
- 20 JD 560M round baler, 4936 bales, net, 1000 PTO
- 22 JD 460M round baler, 412 bales, net, 540 PTO
- 19 JD 460M round baler, 10,371 bales, net, 1000 PTO
- 21 JD 460M round baler, 11,183 bales, net, 540 PTO
- JD 469 round baler, 13k bales, net 540 PTO, new belts & chains last year
- 18 Vermeer 504R round baler 1775 bales, net, 540 PTO
- 02 JD 567 round baler, 17,961 bales, net & twine, 540 PTO
- JD 468 round baler, 24k bales, net & twine, 540 PTO
- NH BR7090 round baler, 19k bales net, 1000 PTO
- 98 NH 654 round baler, 19,948 bales, net, 540 PTO
- 22 CH 5B541C square baler, hyd. pickup & tension, twine, 540 PTO
- JD 348 square baler, wire tie, 540 PTO, unused
- JD 348 square baler, twine, hyd. winding & pickup, 540 PTO
- 06 JD 348 square baler, wire tie hyd. pickup & swing, 540 PTO
- JD 336 square baler, wire tie, one owner, 540 PTO
- 14 JD 635 MoCo discbine, impellers 11' 6" cut, hyd. swing, 1000 PTO
- 14 Kuhn FC283TC discbine impellers, 9'2" cut, hyd. snow 540 PTO
- 12 NH H7450 discbine, rubber

- rollers, 13' cut, 1000 PTO, nice
- NH 1465 haybine, rubber rollers
- 18 JD 310R disc mower, 10' 6" cut 540 PTO, nice
- JD R280 disc mower, 9' 2" cut, 3 pt. 540 PTO
- Kuhn GMD800 disc mower, 10' 6" cut, 3 pt. 540 PTO
- Kuhn GMD700 disc mower, 9' 2" cut, 3 pt. 540 PTO
- 21 Frontier WR3110 10-wheel v-rake, kicker wheel, never used
- 15 Vermeer VR1022 10 wheel v-rake, very nice
- Ogden 10-wheel v-rake
- Kuhn SR112 12-wheel v-rake
- 13 Anderson RB680 single bale wrapper, hyd. operated, very nice, low use
- H&S RTS200 4 basket tedder, hyd. fold, 540 PTO
- KMC 4755 disc mower caddy
- Cimaron disc mower caddy
- Krone AM4035 disc mower, parts only

Cutters

- 22 JD R15 pull-type cutter, 540 PTO, nice
- JD HX10 pull-type cutter, one owner, 540 PTO
- Bush Hog 2510 pull-type cutter 540 PTO
- Terrain King 15' pull-type cutter 540 PTO

Construction Equipment

- 22 JD 331G track skid steer, CHA 619 hrs, high flow, 2 speed, 1 owner
- 18 JD 325G track skid steer, CHA 420 hrs, high flow, 2 speed, 1 owner
- 21 JD 317G track skid steer, CHA 233 hrs, 1 owner
- 21 Cat 279D3 track skid steer CHA, 777 hrs, 2 speed, 1 owner
- 15 Cat 289D XPS track skid steer CHA, 2744 hrs, high flow, 2 speed
- 18 Cat 289D track skid steer, CHA 4800 hrs, 2 speed
- 18 Bobcat T870 track skid steer CHA, 3720 hrs, high flow, 2 speed, no bucket
- 16 NH C238 track skid steer, CHA 869 hrs, high flow, 2 speed, 1 owner
- 19 Kubota SVL65-2 track skid steer, CHA, 465 hrs, 2 speed 1 owner
- 17 Vermeer RTX200 walk behind trencher, 22X hrs, rubber tracks 36" digging depth
- 20 Suihe vibratory rock grizzly topsoil & rock screener, unused

Skid Steer Attachments

- CL Fabrication Dominator tree puller
- Nortec PS800 soil conditioner 96" wide
- Jenkins tree pullers, new
- Hy-Reach tree shear
- Jenkins backhoe with 12" bucket new
- Several 5500 lb. 4' pallet forks walk-thru, new
- Several new & used buckets
- Several new 2-prong bale spikes
- Several new blank plates and receiver hitches
- 2- GB sets of fork extensions
- 4- GB hyd. rock bucket, 66", 72" 78", 84" wide
- 8- GB heavy 78" brush/root grapple
- 3- GB 6' rotary tillers
- 5- GB 86" hyd. snow blades
- Titan woodchipper, needs work

- Stump bucket with grapple
 - Rock bucket
- ### Trucks
- 10 International TranStar truck day cab, single axle, 327K miles, Maxx Force diesel, Eaton
 - 10 spd automatic or manual transmission, air brakes & ride like new tires
 - 09 KW T370 truck, day cab, single axle, 6.7 Cummins Paccar diesel 6 spd manual transmission
- ### Trailers
- 93 Jet 2' hopper bottom trailer bottom or side dump, good tarp
 - 21 Load Trail 20'+2 equipment trailer, tandem 7k axles, fold up ramps, like new
 - 03 Gooseneck BH 6'x12' stock trailer, tandem axle, swing gate like new
 - 05 Friesen GN 18'+2' flatbed trailer tandem axle, ramps
 - PJ GN 24' flatbed trailer, tandem axle, ramps
 - 06 MEBT BH 18'+2 equipment trailer, tandem 7k axles, fold up ramps
 - Homemade 7x16 BH combo trailer with stock racks, 1 cut gate
 - IA 500 fuel trailer with fuel pump new
 - IA 990 fuel trailer with fuel pump new
 - IA FT7014R BH hyd. dump trailer 7'x14', ramps, tarp, new
- ### Feeding Equipment
- Pro Welding 3pt. bale unrollers handles 4' & 5' bales, new
 - Several grapples for tractor buckets
- ### Livestock Equipment Etc.
- Corbin Steel portable alley, tub, and chute combo, used 4 times, like new
 - Stock Pro H2200 premium hydraulic chute palation cage, new
 - Stock Pro M1200 premium chute, palation cage, new
 - DH 1-ton and 2-ton portable feed bins, slide gate brand new
 - J&K Mfg. 2-ton portable feed bin
 - King Ag 3-ton creep feeder with creep gates
 - Several 24' HD free standing corral panels, new
 - Several gates, T-posts, feed bunks, etc.
- ### Large Misc. Items
- 2- 40' high cube metal container, 4 double doors on side & one on end
 - 12' cube metal container, double door, new
 - 4- 8' & 9' cube metal container, double door, new
 - Bastone 110V portable toilet with shower
 - 2- Bastone 110V portable toilet with 2- stools
 - 12- sets of Great Bear 20' Bi-Parting wrought iron gates, new
 - 4- sets of Great Bear 14' Bi-Parting wrought iron gates, new
 - 3- GM hoop storage shelter, 30'x65'x15' 30'x40'x15', 20'x30'x12', new
 - 5- GM hoop container shelter, 2- 20'x40', 40'x40' 20'x20', new
 - Generac 30KW generator, 4 cyl. diesel motor good motor but generator needs work
- ### Small Misc. Items
- 10- 3/8"x20' G70 log chains & 5-ratchet chain binders

- 5- 5/16"x20' G70 log chains & 5-ratchet chain binders
 - 1- 5/16" 7' G80 chain sling
 - 1- 250-Safety highway cones
 - 4- 1 cubic yard self-dumping hoppers
- ### Shop Items
- 2- Steelman 10' work benches, 15 drawer, new
 - 7- Steelman 7' work benches, 10-35 drawer, new
- ### UTV's & Lawn Mowers
- 22 Kubota RTV-XG850 UTV, 41 hrs, 1 owner warranty, PS, like new
 - JD 835R UTV, cab, heat, & air, 4x4, 500 hrs.
 - 09 Polaris Ranger XP700 UTV, 4x4, 537 hrs.
 - 10 Polaris Ranger XP800 UTV, crew cab, 4x4, 588 hrs.
 - Frontier FM2115R pull-type 15' triple deck finish mower, 540 PTO, hyd. fold
 - Bush Hog HDTH6 3pt. finish mower, 6' cut, nice
 - Hustler Raptor zero turn, 48" cut, 24 hp. Kohler motor
 - Grasshopper 928D zero turn mower, 1196 hrs 72" cut, Kubota 3-cylinder diesel motor
 - Grasshopper 718 zero turn mower, 1832 hrs, 54" cut, new 20 hp. Predator motor
 - 21 Kubota Z251 zero turn mower, 47 hrs, 1 owner, 54" cut, 25 hp. Kohler motor
 - 15 JD X730 lawn mower, 1043 hrs, hydro, 54" cut, Kawasaki motor
 - Exmark Laser Z zero turn mower, 474 hrs, 46" cut
- ### Johnson Farm Reduction
- 21 JD N542C air seeder, 42' wide, scales, 7735 acres, one owner, 7.5" spacing, 4-section shut off, like new
 - 10 Great Plains 4000 turbo chopper, 40' wide
 - 11 Stoughton 42' grain hopper bottom, ag hoppers, roll-over tarp
 - 70 Cat D6 dozer, 10' 4-way blade, winch, complete engine overhaul in 2021
 - 93 Load Boy 52' 5th wheel, self-contained hyd. neck, tri-axle, out riggers
 - 21 WW BH 12' livestock trailer, tandem axle, like new
 - 09 Par-Kan 275 seed tender, tri-axle 18 JD 560M round baler, 9k bales, net, 1000 PTO
 - 21 JD R310 3point disc mower
 - 21 Frontier DC1000 disc mower caddy
- ### Norton Farm Sellout
- Ford 6610 tractor, OROP, 2-WD, with Bush Hog
 - QT2426 loader & bucket
 - Rhino SR-15 pull-type mower, 540 PTO
 - Honda Rancher 420 UTV
 - Older ground driven manure spreader
 - Danuser 3pt. posthole digger, 12" & 24" augers
 - Fimco 3pt. boomless sprayer
 - Brave 3pt. wood splitter
 - Automatic Mains headgate

- Lots of smaller items including gates, panels and hand tools
- ### Buffington Farm Sellout
- JD R ground driven manure spreader, nice
 - JD 68 auger feed wagon
 - 4-wheel farm wagon
 - Pioneer horse drawn fore cart, brakes, 2-seater, like new
 - Frontier Equestrian 4-wheel pony cart, like new
 - King Cutter 5' 3pt. angle blade
 - King Cutter 7' 3pt. cutter
 - 2 horse evener, wagon tongue
 - Large lot of gates and panels
- ### Garner Diesel Sellout
- 2004 Ford F250 pickup, 423k miles, 2-wd. crew cab, long bed
 - 1998 Bumper hitch car hauler trailer, tandem axle, ramps
 - Several 3-pt. items including cultivator, box & angle blade, & dirt scoop
 - 10 name brand tool boxes, some on casters
 - 5 roll around toolboxes full of name brand tools including Snap On, Mac, Craftsman & etc.
 - 100's & 100's of wrenches, sockets, ratchets, tools of all kinds!
 - Included will be almost any tool you can imagine being used in a mechanic shop. Mr. Garner has retired and is selling all his hand tools!
 - There will be at least a 38' trailer load of tools. All the tools will sell in Ring 2 and online bidding will not be available.
- ### Ammann Farm Sellout
- 1991 GN 24'+4' flatbed trailer, tandem duals, ramps, no title
 - JD 400 rotary hoe, 3pt. nice
 - Buffalo 6 row cultivator, 3pt
 - Goosen Industries bale chopper, 3pt. 540 PTO
 - Ford 906 3pt. mower, 7' width, 540 PTO
 - Cub Cadet 1650 lawn mower, 54" cut, runs
 - Ford YT 16 lawn mower
 - Ford YT 12.5 lawn mower
 - 2- Ford LT 18H lawn mower
 - Snow blower



Online Bidding starts at 9:30am on select items @circleeauction.com

Concessions available including homemade pies and baked goods, biscuits & gravy!



Auctioneer's Note: We will have a very nice line of items to sell. Almost every item is right off the farm. Something for everyone. Most of the items will sell with **No Reserve**. Since sale bills are printed 3 weeks in advance, we usually have a lot more items than listed. We will be selling in two rings at the same time, so bring a friend. Because we rely on the word of others, **ALL items are subject to prior sale and/or no show. If driving a distance for a single item, please call.**

NOTE: 9.25% Sales Tax will be added to all items that are not used for agriculture. All dealers must bring a copy of your resale sales tax license. **You can still consign to this auction!** We are open 8:00-5:00 Monday-Friday and on Saturday by appointment only to check-in and unload your items. We are always closed on Sunday! To have your equipment available for online bidding, your equipment MUST be on our lot by Tuesday, March 12th @ 5:00 pm. NO consignments taken after 5:00 pm Thursday, March 14, 2024! For questions or to consign call Ervin at 417-310-0812 or Merlin 417-310-3324 or e-mail us at circleeallc@gmail.com. View pictures @ circleeauction.com. Everything must be removed in 14 days. After 14 days there will be a storage fee of \$25 per item, per day. Any items left after 30 days

Circle E Auction LLC
Your Farm Auction Specialists!
620-778-9966
1551 14000 Road
Altamont, KS 67330

Auctioneer Ervin Eicher
Auctioneer Merlin Eicher

GO TO THE AUCTION • GO TO THE AUCTION • GO TO THE AUCTION • GO TO THE AUCTION •

PUBLIC AUCTION

SATURDAY, MARCH 9, 2024

Starting at 9:30 AM

Location: 16174 Hwy 28, Dixon, MO 65459

Directions: From I-44 take Exit 163, follow Hwy 28 toward Dixon.
Located next to the Gashopper Store.

Kenmore Fridge, Black, Botton Freezer	Shop Vac	Elec. Stapler	Several Tile Saws
Microwave, Black	4 Wheel Garden Cart	Mower Lift	Generators
Built-in Dishwasher, Black	Air Compressor	Troy Bilt, Super	Rolls Carpet Pad
Flat Panel TV	Pressure Washers	Bronco, Garden Tiller	Lots of Tile
Water Softener	Elec. Cement Mixer	DeWalt Drill &	Extension Ladder
Vinyl Plank Flooring	Underlayment Rolls	Attachments	4X8 Sheets Rigid
Canning Jars	Wet Tile Saws	Lot 1" Lumber	Insulation
Cabinets	New Rolls 12/2 wire	New Composite	Conduit
Gas Range	100 gal. LP Bottle	Kitchen Sink w/pull	Farm Tack
Claw Foot Tub	Truck Toolbox	out Spray Faucet	Metal Lawn Chair
Dorm Fridge	Battery Charger	4 Cub Cadet Riding	Push Plow
Chest Freezer	Ramps, ATV/Lawn	Mowers	Vinyl Flooring Roller
NIP Reciprocating	Mower	Cherry Picker Engine	Poly Tanks
Saw Blades	Miter Saw Stand	Hoist	Metal Siding
Levels, 1 Dremel	¾" Drive Socket Set	Hardwood Flooring	Werner Step Ladder
Air Compressor, small	2" Brad Nailer, Pneumatic	Stihl Weed Trimmer	1980 Ford Van
	Bosch Elec. Hammer	Battery Chargers	SALEM BUMPER
	Drill	5th Wheel Hitch	PULL CAMPER
		2 Wheel Lawn Cart	Utility Trailer

**Many more items too numerous to mention.
Unopened trailers full of job site tools we were unable to view.**

Seller: Jeannie Cardin

"ANNOUNCEMENTS DAY OF AUCTION TAKE PRECEDENCE OVER ANY OTHER ADVERTISING"

3% Convenience fee added to all credit/debit card transactions

Sale Conducted By

WARDEN AUCTION & MORE

(573) 528-0729

Ed Warden - Auctioneer/Licensed Broker
www.wardenauction.com



TERMS

Cash, Credit, Debit
or
Approved Check

Valid ID Required
for Bid Number

TERMS

Not Responsible For
Accidents or Losses

Nothing Removed
Until Settled For

GO TO THE AUCTION • GO TO THE AUCTION • GO TO THE AUCTION • GO TO THE AUCTION •

GO TO THE AUCTION • GO TO THE AUCTION • GO TO THE AUCTION • GO TO THE AUCTION •

PUBLIC AUCTION

TUESDAY, MARCH 12, 2024

Starting at 1:00 P.M.

Location: 14976 Hwy Z, St Robert, MO 65584

Directions: Sale site is on Hwy Z (South Outer Road) between Exits 161 & 163 across from Ozark Ready Mix.

We will be selling the contents of 10 storage units. Below are some of the items to be sold. This will NOT be a "Storage Wars" type event! Units will be opened and sold by small lot or by piece. Listing is subject to change as renters may redeem their property prior to auction. Come see us! Let's see what we find!

Household

Flat screen TV
 Washers and dryer
 Couches
 Tables and chairs
 King size bed
 Queen bed
 Dressers
 Nightstands
 Hall table
 Lot artwork
 Hover Board
 Area rugs
 Table, cherrywood
 Chair
 Buffets
 Bar stools
 Curio Cabinet
 Elliptical
 Airbed
 Bratz chairs
 Hall table
 Pictures & Plants
 Ottomans

Restaurant ware
 Indian Banjo, ten string
 Lot Dolls
 Plastic organizer
 Small bookshelf
 Chest of drawers
 Baker's rack
 Childrens rocker
 Shelves
 Wine Rack
 DVDs / Wii games
 Tables
 Luggage
 Toshiba transistor
 inverters
 Toybox
 Sewing machines
 Corner Cabinet
 Drafting desk
 Shadowbox
Shop & Outdoor
 Pipe insulation
 Ductwork
 4ft overhead fluorescent

lights
 Sanyo split unit
 Insulated ductwork
 PVC pipe
 Steel pipe
 Dampers
 Galvanized ductwork
 material
 Totes
 Prehung door
 Loppers
 Ball hitch
 Wire rack
 Golf clubs
 weights / weight machine
 Aluminum wheels
 Metal Rack
 Totes
 Garden & Hand Tools
 Snow shovel
 Tonneau Cover
 Hitches
 Die Cast NASCAR
 Plastic lunch boxes

Lock box
 Total Gym 1500
 Mini trampoline
 Military trunk
 Lawn mower
 Push plow
 Park bench
 Wet/dry vacuum
 Cast Iron Rodeo hanger
 Jumper cables
 Loppers
 Cat II hitch
 Wooden boxes
 Metal fuel can
 Coolers, Pelican Box
 Lawn chairs
 Glass rock fire pit
 Military surplus
 Tool bucket
 Marine fuel tank

Many more items, too numerous to mention.

Owners: HTH Companies, Inc Self Storage-St Robert

"ANNOUNCEMENTS DAY OF AUCTION TAKE PRECEDENCE OVER ANY OTHER ADVERTISING"

3% Convenience fee added to all credit/debit card transactions

Sale Conducted By

WARDEN AUCTION & MORE

(573) 528-0729

Ed Warden - Auctioneer/Licensed Broker
www.wardenauction.com



TERMS
 Cash, Credit, Debit
 or
 Approved Check
 Valid ID Required
 for Bid Number

TERMS
 Not Responsible For
 Accidents or Losses
 Nothing Removed
 Until Settled For

GO TO THE AUCTION • GO TO THE AUCTION • GO TO THE AUCTION • GO TO THE AUCTION •

GO TO THE AUCTION • GO TO THE AUCTION • GO TO THE AUCTION • GO TO THE AUCTION •

GO TO THE AUCTION • GO TO THE AUCTION • GO TO THE AUCTION • GO TO THE AUCTION •

PUBLIC AUCTION

STOCKTON, MO

AUCTION

As we have sold part of our Farm and we are down sizing we will sell the following Household, Collectibles, Tractors, Cattle Equipment, UTV, Trailers, Tools and Misc. At the Farm located East of Stockton, Mo. 2 ½ miles to M hwy. Go

Northeast 2 miles to E.R. 1300 go East 2 ¼ miles to the Auction on

Sat. March 9, 2024 at 9:00 am

WATCH FOR AUCTION COMPANY SIGNS • LUNCH SERVED

FOR MORE PICTURES GO TO: WWW.BRUCEANDLEANAUCTION.COM



TRACTORS-IMPLEMENTS

- Ford/New Holland Model 7740 Cab Tractor W/Great Bend GB770 Joy Stick Frontend Loader W/ Bucket & Bale Forks, 2171 Hrs. W/12 Speed High, Med. Low Trans. W/Clutch Forward-Reverser Trans, Good Rubber
- John Deere 4440 Cab 140hp Tractor 6629 Hrs. 8 Speed Trans, AC,
- Set of Duals for JD Tractors
- John Deere HX20 20' Brush Hog 540rpm,
- Delta by Rem 20' Foldup Chain Harrow
- Bush Hog 8' 6" Pull Type Disk Plow
- Belltec Quick Attach Hyd. Post Hole Digger W/9" Auger
- Wheatheart 3pt. Hyd. Post Driver
- Lrg. 3pt. Herd PTO Grass Seeder Model 1200c
- 3pt. Hyd. Bale Unroller
- 3pt. Bale Spike
- Quick Att. Grapple Bucket
- Quick Att Pallet Forks
- 3pt Quick Attachment Cat. 3
- 8' 3pt Blade
- 7' 2 Wheel Trailer

TRAILERS-UTV-CATTLE EQUIP. CONT.

- Electric Fence Wire Reels
- Spinning Jenny Wire Unroller
- Barbwire Roller
- 9' Calf Creep Gate
- Calf Pullers (NIB)
- Air Hand Held Post Driver

PROPANE TANK-TOOLS-MISC.

- 500 Gallon Propane Tank
- 16' Fiberglass Canoe (no title)
- Lincoln Ranger 8 Welder W/Kohler Command 20 Motor, 438 Hours, W/Leads and new Battery
- Hobart Handler 210 MVP Wire Welder 110v on Cart
- Blue Star Act Torch Set W/Lrg Bottles & Cart
- Heavy Duty 4' X 6' Welding Table
- Grizzly Model G4030 Metal Band Saw (Like New)
- MK Tile Cutter
- DeWalt Compound Miter Saw
- DeWalt Portable Folding Table Saw
- DeWalt Worm Drive Saw
- DeWalt ½" Joist Drill
- DeWalt Volt Drill & Battery Tools
- 2 Senco Air Nailers
- Porter Cable Multi Tool
- Berger Transit W/Tri Pod
- Electric Paint Sprayer
- Michelin 3 Ton Floor Jack
- Stihl KM131R Tree Limb Saw, Blower, Weed Eater (Like New)
- Coats Manual Tire Changer
- Craftsman Double Stone Grinder
- Several Hand Power Tools
- Dake Arbor Press
- Pittsburg 20,000 Porta Power
- Air Tools
- 2 Propane Heaters
- H/D Metal Saw Horses
- Moultrie Deer Feeder
- 2-12 Volt 25 Gallon Sprayers one with Booms
- Metal Roll Around Tool Boxes
- 2-40 Hole Bolt Bin Organizers
- Ext. Cords
- Kobalt Hole Saw Drill Bits



PROPANE TANK-TOOLS-MISC. CONT.

- Alum. Folding Loading Ramps
- Mr. Heater 30,000btu Open Face Wall Heater (NIB)
- 12 Volt Poly Tub Grass Seeder
- Snapper Z Rider 60" Zero Turn Diesel Riding Mower (Needs Work)
- 2 Wheel Dolly
- Small Portable Air Compressor
- Misc. Building Items (New Framed Doors, Used Doors, Used Windows and Misc. Items)
- Metal 3 Step
- One Lot of Misc. Hand & Garden Tools
- One Lot of Misc.

HOUSEHOLD-COLLECTIBLES

- 6' Glass Fronted Hutch
- 2pc. 2 Cushion Sleeper Divan W/Matching Lrg. Sleeper Chair
- Black & White Porcelain Top Table
- Round Oak Dining Table W/Extra Leaves
- 6 Oak Dining Chairs
- 2 pc. Claw Footed Divan & Chair
- Royal Manual Typewriter
- 3pc Blue & Tan Samsonite Luggage Set
- Vanity W/Chair
- Electric Fireplace Style Heater
- Inverter Incline Table
- Exercise Equipment
- 26" Sanyo Flat Screen TV
- 3 Sets of Elk Horns
- Several Sets of Deer Horns
- Acorn Granite Ant. Cook Stove
- Milk Cans

OWNER: SAM & KRISTY WILSON

TERMS: Everything sells as is, where is. Nothing is to be removed until settled for. Payment of Cash, Check with Proper ID, or Credit Cards. Auction Company or the Owners will not be responsible for loss of items or accidents. Statements made the Day of the Auction take Precedence over Printed Matter.

SALE CONDUCTED BY **BRUCE & Le'AN AUCTION & APPRAISAL, LLC**
THE AUCTION COMPANY THAT APPRECIATES YOUR BUSINESS

For more information and pictures go to our website at www.bruceandleanauction.com

RONNIE BRUCE - Fair Play, MO
417-777-1685 or 417-654-2214
colronbruce@gmail.com

BRANDON BRUCE
Fair Play, MO

BILLY BRUCE - Stockton, MO
417-399-4800
colbbruce@gmail.com

GUN, FISHING & ANTIQUE AUCTION

Saturday, March 9th, 2024 ~ 10:00 AM

LOCATION: Sheldon Community Building, 6th & Main, Sheldon, MO (Watch For Signs)

Auction For Tucker G. Morris Sale #2



Antiques, Collectibles & Misc.

Ant Tiger Oak Judges Chair From Bates County Courthouse, Ant Steel Indian Figure Table, Old Trunk, 1950's Coca Cola Box Used On RxR Cars, Sleepy Eye Pitcher & Other Old Pitchers, Old Jars W/Marbles, Beer Adv Pcs Inc Falstaff Beer Glasses, Beer Steins, Budweiser Gumball Machine, & Other Pcs, Old Sugar Bucket, Old Valentines & Postcards Some 1907, Old Books & Magazines Inc Playboy, Field & Stream, Rolling Stone & Others, Lot Of Old Vintage Shears & Scissors, Old Cigar Boxes, Old Weather Vane, Old Barn Hay Fork, Old Toys Inc Hot Wheels, Die Cast Cars, & Other Old Toys, Old Comic Books, Slot Machine Bank, Old Baseball Cards, Several Wood & Ammo Adv Boxes, Cigarette Cutting Machine, Old Milk Can, Autographed Pictures & Pcs By George Brett, Nixon, Danforth, Old Pipes, Old Tins, Old Crocks Inc Crock Jug, Old 30" Lead Ladle, 2 Coca Cola Clocks, Retro Drinking Glasses From 60's, Old Silverware, Lots Of Old JD Parts & Operators Manuals, Several Old Elephant Figurines, Larry Gura Bobblehead & Other Bobbleheads, Old Cast Iron Skillets, Old Birdhouses, Old Retro Needles In Pkgs, Brass Elk Candleholder, KC Royals Glasses & Memorabilia, Metal Signs, Ant Ice O Matic Machine, Old Bow & Ice Saw & Other Old Saws, Prim Tools, Some Political Memorabilia, Old Oil Cans, Old Cola Wall Bottle Openers, Custom Metal Toy Car From 60's, 1950's Sprite Boy & Coca Cola Coasters, Disney Memorabilia, Gyro Scope, Lazer Tag Guns, Metal Coffee Bar (Like New), Miromatic Pans, Some Dishes & Households, New Croissant Panini Press, Other Items Not Listed

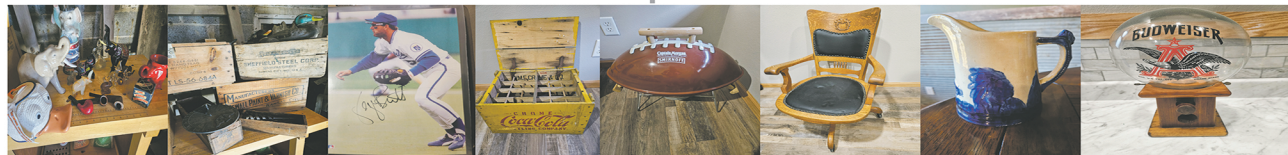
Guns, Ammo, Bows, Knives & Hunting Related Items

Ruger American Bolt Action 300 Win Mag W/Scope, Noreen ARD 308 Rifle W/Scope, Ruger 1022 Rifle, Marlin Model 25 Bolt Action 22 Mag, Marlin Model 60 Semi Auto 22, Marlin Model 100G Single Shot 22, Norinco SKS W/Scope, Frenchi Affinity 3.5 Semi Auto 12 Ga, Win Model 50 Semi Auto 12 Ga, Win Model 12 Pump 16 Ga, Weatherby Model 92 Pump 12 Ga, Rem Model 11-48 Semi Auto 12 Ga, Marlin Model 1896 Pump 16 Ga, Mossberg Model 500 Pump 12 Ga, Springfield Model 18 Bolt Action 410 W/Clip, Stoger Fowler Over/Under 12 Ga, Sargrilmaz Semi Auto 12

Ga, Westerfield Model 560 16 Ga Pump, New England (H&R) Model 870 Look Alike 12 Ga Pump, H&R Single Shot 16 Ga, Breakover 12 Ga Shotgun, Traditions Tracker 50 Cal Muzzle Loader, NIB Hawkin 50 Cal Rifle, CVA Wolfe 50 Cal W/Scope, Huntsman 50 Cal W/Scope, Made In Italy 1800's Style 36 Cal Pistol, 1800's Style 44 Cal Pistol, Matthews No Cam HTR Compound Bow Fully Loaded, Eva Shockley Ladies Bow Tech Bow, Caldwell Dead Shot Field Pod, Some Misc Ammo, Gun Parts & Magazines, Carbon Arrows & Some Bow Items, BB Gun, Daisy Air Pistol, Old Shell Boxes, Tactical Range Bags, Old Knives Inc Winchester Knife Set, Steel Traps, Deer Antlers, Duck, Turkey & Other Decoys, Turkey, Duck, Deer & Wild Hog Calls, Gun Holsters & Gun Cases, Trail Cameras, Coleman Tent Ceiling Fan, Coleman Camp Stove & Camping Supplies, Hunting Boots, Case Guard Shell Box, Shooting Vests, Coolers, Other Items Not Listed

Fishing, Outdoor, Tools & Related Items

Lg Lot Of Fishing Lures Inc Some Very Old Wooden & Collector Lures Also Bagleys, Rapala, Heddon, Smith Wick, Storm, Zara, Spooks, Spinner Baits, Bomber, Jig Heads, Terminal Tackle, Crappie, Paufis Lures, Several Collector Fishing Poles & Reels Inc Abugarcia, Zebco, Mitchell, Quantum, South Bend 1140 Fly Reel, Penn Reels, Ambassador, & Others, Rods Inc Shimano, Eagle Claw, Crappie Dipping Rods, Several Bamboo Fly Rods, Action Rod In Case, Lg Lot Of Fishing Supplies Inc Tackleboxes (Some Ant), Plastic Baits New In Pkg, Fish Gaffs & Fish Spears, Fish Finder, Trout Fishing Supplies, Flipping Sticks, Snagging Rods & Supplies, Lead Weights, Fishing Bags & Nets, Plano & Possum Belly Tackleboxes, Cast Iron Perch Pan, Filet Knives, Swedish Fish Cooker In Box, Stihl MS290 Saw, Craftsman Tool Bench (Like New), Tool Boxes, Several Boxes Of Tools, Wood Drill Bits, Garden Tools, Bobby Flay Tablecloth, Scott Lawn Seeder, Golf Balls, NIB Bug Zapper, New Football Grill, New Old Fashion Barrel Pump Fountain, Other Items Not Listed



Auctioneers Note: It Is An Honor To Be Conducting This 2nd Of 3 Auctions For The Tucker G. Morris Estate. This Auction Is Amazing & Larger Than Appears. If You Are A Gun, Hunting, Fishing Or Outdoor Enthusiast You Do Not Want To Miss This Auction. There Are Excellent Antiques & Collectibles As Well. Top Of The Line Auction. **Sale Order: Antiques & Collectibles Will Sell First Then Move Directly Into Outdoor, Hunting & Fishing Items. At Approx 1:00 PM Will Offer Guns, Ammo & Related Items. Remainder Of Hunting, Fishing & Outdoor Will Finish Auction. See Ya There!!!**

Terms: Cash or check with proper ID. Now accepting most major credit cards. Nothing removed until settled for. Statements made the day of sale takes precedence over printed material. Everything sold as is where is. Not responsible for accidents. Restroom available. Concessions Provided. Check our website for upcoming auctions and for additional pictures!!



NANCE AUCTION SERVICE

No Matter How BIG or small, We Do Them All!!!



Col. Bill Nance 417-214-0093 In God We Trust Philippians 4:13 Sean Beazley 417-247-6754

**PUBLIC AUTO AUCTION
SAT. MARCH 30TH AT
10:30 AM**

(Corner of US63 and MO17 in
Houston, MO 65483)

CARS / PICKUPS / SUVs / VANS / GUNS

ALL GUNS will be sold at
NO RESERVE.

Many vehicles will be sold at
NO RESERVE.

WANT TO SELL YOUR CAR??

We will offer your vehicle to local buyers
and bidders all over the USA. Available
lot numbers are limited. Get your lot
number reserved NOW, while they last.

CALL TODAY!! (417) 217-2023

MUST BE REGISTERED TO BID

A 5% bidder's premium will be
added to all sales.

Vehicle buyers must be at least 18 to bid.

ALL GUNS will be sold at **NO RESERVE**

More info at our website!

www.purvisauctions.com

**REVELATION IS SELDOM TAUGHT
IN CHURCHES:** It is necessary you
understand the end of this Earth Age. For
a printed study, mail a SASE & a small
donation, if possible to: Occupant 1028 S.
Bishop PMB #106 Rolla, MO 65401-5438.

HAY FOR SALE: Alfalfa & grass mix. 4x5
round bales. 417-343-4958. Seymour.

3 BW: motorcycle magazines 2008 Free.
417-260-0941. Raymondville.

**3-PHASE, 7-HORSE ELECTRIC
MOTOR:** \$200. 573-247-4280. Salem.

NEED LEFT BREAK HUB: For Cub
Cadet UTV Model #414. 573-368-8179.
Rolla.

BAMBOO FLY RODS: \$50. Trout season
is coming. 417-589-8200. Conway.

2 HOSPITAL BEDS FOR SALE: \$100.
573-247-4280. Salem.

CONCRETE TABLE SET: with 3 concrete
benches. \$200. 417-288-2760. Conway.

BARN LUMBER: \$1-2.50 per board foot.
417-468-2255.

Economy Buildings in Stock Now!!

Custom Built, Meeting Your Storage Needs

Come check out our double wides!! Sizes 32'x52' available

Come Visit Us Near You!

For Display Locations in Waynesville, Sunrise Beach, & Camdenton, Call 573-346-3030

BENNETT SPRINGS BUILDING CENTER

2519 Hwy 65 • Louisburg, MO • Buy or Rent to Own Storage Buildings • 417-532-8338

**FOR SALE 1996 3 BED 2 BATH
DOUBLE WIDE:** You move off out land,
need some repair. 417-277-5224

CHILTONS AUTO REPAIR MANUAL:
all American cars & Volkswagen 1969-
1976. \$30 plus shipping. 417-260-0941.
Raymondville.

1002 NEW HOLLAND STACKLINER:
for square bales. 417-345-5634.

JD WC 1103 WOODCHIPPER: like new.
PTO drive \$2,100. Bourbon area. 314-960-
6652.

BARN BEAMS: \$125. 417-468-2255.

3 ARMY CANTEENS: Mess kit, belt &
duffel bag. Best offer for all. 417-260-0941.
Raymondville.

FLATBED GOOSENECK TRAILER: 17
½ ft long. Pulls good \$700. 417-321-1928.
Osceola.

PUBLIC AUCTION

SATURDAY, MARCH 9 - 10 AM

127 Rademann Lane, Westphalia, MO 65085

At the junction of Highway 63 & Highway 50 east of Jefferson City, MO go south 3 miles to
Highway 133, turn right and go west 6 miles to Highway EE (Folk, MO), turn right and go 1/2
mile to the end of Highway EE, continue on the blacktop 1 1/2 mile to the gravel, continue on 2
miles to Rademann Lane (by green mailbox), turn right and go 3/4 mile to the site.



**TRACTORS - HIGH LIFT - BACKHOE - COMBINE, FARM
EQUIPMENT, TRUCKS - CAR - TRAILERS, SAW MILL -
SHOP TOOLS - LAWNMOWER - BOAT, CANOPY - WOOD
FURNACE - COLLECTIBLES - MISC.**

**SELLER: ELMER C. RADEMANN
JAMES A. WILSON & RICHARD L. KAUFFMAN,
PERSONAL REPRESENTATIVES**



For more information
Charlie Norwald | 636-795-4552 or Bill Gratz | 573-635-4168
or visit www.wheelerauctions.com



**REGULAR SALE EVERY
THURSDAY 11 AM**

WATCH OUR WEEKLY SALE IN REAL TIME ON DVAUCTION.COM

For Farm Visits, Market Updates, or Trucking
Call **Zach Cox 417-777-1320**
Dan Romine 573-578-4939

**Competitive Buyers!
Competitive Commission!
Competitive Market!**

Barn: 417-532-9292
I-44 • Exit 123 "just outside of Lebanon"
17505 Route 66, Phillipsburg, MO 65722

For weekly market updates, visit us at
www.midmostockyards.com

FOR SALE COWGIRL CORGIS: (corgi/healer cross). 8 weeks old, UTD on shots. \$75. 417-256-1627.

SKID STEER TRAILER: \$1,400. 417-321-1928. Osceola.

FIREPLACE MANTLES: \$75. 417-468-2255.

ACCUMULATOR FOR SQUARE BALES: 417-345-5634.

93 CHEVROLET SHORT BED PICKUP 1/2 TON: 417-345-5634.

100 BALES GRASS HAY FOR SALE: \$6/bale. 400 bales of Straw for sale, \$6/bale. 573-247-4280. Salem.

3 TIER CONCRETE WATER FOUNTAIN: with decorative waterspout. \$200. 417-288-2760. Conway.

FOR SALE: 98 Grand Marquis 134,000 miles \$3,500. 417-345-5634

'85 FORD PICKUP PARTS: Passenger door with window glass & mirror \$30. Also, Tailgate for '85 Ford pickup \$25. 573-308-5884. Rolla.

BUFFALO LIVESTOCK MARKET LLC



276 Hwy 32 W., Buffalo, MO

March 2nd, 2024

Receipts: 986

REPRESENTATIVE STEERS

300-400 @ 325.00 to 390.00
 400-500 @ 310.00 to 360.00
 500-600 @ 275.00 to 314.00
 600-700 @ 260.00 to 292.00
 700-800 @ 200.00 to 269.00
 800-900 @ 201.00 to 240.00

REPRESENTATIVE HEIFERS

300-400 @ 270.00 to 330.00
 400-500 @ 250.00 to 300.00
 500-600 @ 240.00 to 281.00
 600-700 @ 230.00 to 246.00
 700-800 @ 180.00 to 211.00
 800-900 @ 155.00 to 195.00

FEEDER BULLS

300-400 @ 310.00 to 362.00
 400-500 @ 280.00 to 337.00
 500-600 @ 235.00 to 304.00
 600-700 @ 218.00 to 254.00
 700-800 @ 193.00 to 239.00
 800-900 @ 208.00 to 214.00

STOCKS COWS

Bred Cows 1875.00 to 2225.00

SLAUGHTER BULLS

High Yield 135.00 to 155.50
 Low Yield 120.00 to 130.00

SLAUGHTER COWS

Fleshy 110.00 to 120.00
 Med Flesh 115.00 to 131.00
 Light Flesh 90.00 to 112.00

CRIPPLE, DOUBTFUL HEALTH COWS

70 Down

Lower quality, light flesh cows lost a buyer this week world over. There will be a domino effect on what they are worth. Bad, cripple, sick, poor cows will be turned down!!

MON-WED MARKET REPORT

Listen to KJEL 103.7FM • Lebanon or KYOO 99FM • Bolivar

VIEW OUR SALES AT CATTLEUSA.COM

CALL FOR TRUCKING OR ON-FARM VISIT

Lyle Caselman • Owner-Manager
 417-345-7876 • mobile 417-533-2944
 Leon Caselman • Owner
 417-345-4514 • mobile • 417-588-6185

186 +/- BEAUTIFUL ACRES- TILLABLE AND PASTURE WITH BRICK HOME - OFFERED IN 6 TRACTS OR ENTIRETY IN GASCONADE COUNTY, MO



- 186 +/- Acres Sells in 6 Tracts or Entirety
- Very Well Cared For Brick Ranch Style Home
 - Livestock Barn
- Machine Shed & Hay Barns
 - Fenced For Livestock
- Hard Surface Road Frontage On 2 Sides of Property
- Hay/Pasture & Row Crop Acreage
- Gasconade County R-2 (Ownesville)



Tract split is approximate. Will be finalized by 3/11/2024. See Atterberrysells.com for final tract map

Open House Dates:

Saturday, March 9 | 10-12:00 p.m.
 Tuesday, March 19 | 4-6 p.m.

Online Bidding Ends:

Thursday, March 28 | 12:30 p.m.

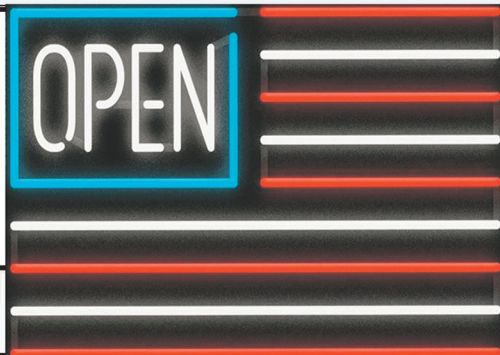
1504 Hwy 28 Bland, MO 65014



contactus@atterberryauction.com
ATTERBERRY
 AUCTION & REALTY COMPANY
 Your Real Estate at Auction Specialists

Check it out & Bid at
www.AtterberrySells.com
 573-474-9295





Sale Ends March 30, 2024
 Seymour, Missouri 417-935-4201

Pole Barn Building Kits!

Call for free quote, brochure & color chart.
 Other sizes also available.

23'x32'x10' \$6,688 Material Only \$8,888 Labor Included	23'x40'x10' \$7,600 Material Only \$10,320 Labor Included	30'x40'x10' \$9,000 Material Only \$12,500 Labor Included	40'x60'x12' \$15,800 Material Only \$23,050 Labor Included
---	--	--	---



NOBODY, BUT NOBODY BEATS OUR PRICES!!

10 ft. Slider • Engineered Trusses 8' O.C. • 2x6 Treated Bottom Wrap • Screws • 2x10 Top Wrap • 2x4 Purlins • Full 29 Gauge Steel • Plus 3 ft. Entry Door with Lock

OPTIONS: Sidewall Heights on all Buildings 10', 12', 14' & 16'. Overhead Garage Door, Skylights, Insulation, Wainscoting, Insulated Vinyl Windows, Cupolas. Labor Rates Slightly Higher over 50 Miles from Seymour. Call for YOUR FREE QUOTE TODAY!!!!

PAINTED WHITE, GREEN OR TAN METAL	\$97.79
10' - \$31.00 12' - \$37.20 16' - \$49.60	
MIX & MATCH METAL	\$59.99
8' - \$15.20 10' - \$19.00 12' - \$22.80	
GALVALUME METAL	\$79.99
10' - \$25.40 12' - \$30.48 16' - \$40.64	
GALVANIZED CORRUGATED METAL	\$85.39
8' - \$15.92 10' - \$19.90 12' - \$23.88 16' - \$31.84	

IN STOCK

40yr Painted Metal
Call!

KNOTTY PINE DOORS
 Starting at
\$164.99

Prices subject to change without notice
6X6 CEDAR POST LIMITED TIME \$5.87 LN FT

Car Siding!
 1x6 White Pine Siding **69¢** in ft
 1x8 White Pine Siding **99¢** in ft
 * 4 Profiles to choose from!
 Broken Bundles Add 10¢ Per Ft.

4x8 Sheeting
 Less than full units Add \$1 per sheet

3/8" Beaded Paneling	\$19.99
5/8" T111 Siding	\$19.99
Paneling	\$SOLD
1/2" Plywood	\$23.99
3/4" Plywood	\$29.99
3/16 Pegboard	\$12.99

**LOTS OF MATERIAL AVAILABLE
 FOR THOSE IN HOME PROJECTS!**

NEW PACKAGE HOMES



2x6—16" on center-Exterior Stud Walls
 Residential Roof Trusses-2' on center
 4/12 pitch with 1' over hang
 40 year Painted Metal roofing in 20 Different Colors
 Profile Ridge Vent - Ventilated Ridge Cap
 Vinyl Center Vent Soffit
 Color Matched Metal Fascia & Gable Trim
 2 - 3' 6 Panel Entry Doors
 4 - 3'x4' Vinyl Insulated Windows

Shown with Available Options
 Your Choice of either:
 Stock 5/8" T111 Siding w/1x4 Pine Window & Door Trim -OR-
 7/16" OSB & House Wrap ready for other finish options

ALL FIGURED FOR SUITABLE CUSTOMER SUPPLIED SLAB OR SUB-FLOOR

Price for Basic Materials Package (No Labor at this Time)

20x24(480 sq. ft.)	20x32(640 sq. ft.)	20x40(800 sq. ft.)	28x40(1120 sq. ft.)	28x48(1344 sq. ft.)
\$9,490	\$10,839	\$12,339	\$15,129	\$18,729

REAL WOOD SIDING
 2x6 Log Siding **\$1.76** in ft
 1x8 Beveled Cedar from— **99¢** in ft
T1-11 Siding from \$19.99

DECK PACKAGES
 Materials Only

8x8.....\$349.00	10x12.....\$699.00
10x10.....\$499.00	10x16.....\$899.00
12x12.....\$899.00	12x16..\$1179.00

QUAKER In STOCK! Quaker Vinyl Windows

2030 \$ 163.99	3030 \$189.99
3040 \$206.99	3052 \$225.99
3040Twin \$453.99	3052Twin \$497.99



LUCKY DISCOUNT LUMBER
 417-935-4201
 455 State Hwy C • Seymour MO 65746
 www.luckydiscountlumber.com



*Some restrictions apply see store for details. Prices subject to change without notice.

HISTORY OF SCHOOLS IN THE MERAMEC VALLEY OF MISSOURI: Many old photos, hardback, \$20. 417-532-2045, Lebanon. Leave message and phone number.

RUBBER & LEATHER BOOTS AND 5-Buckle OVER SHOES: Men's 11, Women's 7, some insulated. \$12-\$35 obo. 636-239-2695. Washington.

BLACK METAL TUBULAR BRACKET: Scrolling and a stainless bracket. \$8. Call for pictures. 636-239-2695 or 314-560-5700. Washington.

WEATHERED BARN WOOD SIDING: 10" wide. Call for appointment 573-729-7226. www.pineridgerustic.com Salem.

LOG SIDING: 2X8 Pine/Western Cedar. Call for appointment 573-729-7226. www.pineridgerustic.com Salem.

40 YEARS THIS YEAR- we have to be doing something right. Call for quote or any house new or used, double and single. 573-657-2176 amegamobilehomes.com.

INTERNATIONAL PICKUP TRANSFER GEARBOX: \$150. 573-308-5884. Rolla.

WE GOT IT - let us bid your mobile home purchase, new and used. 573-499-9993 columbiadiscountshomes.com.

SPORTSET BY SARGENT: Fishing pliers in leather sheath. Like a multi-tool. \$15. 636-239-2695 or 314-560-5700. Washington.

NEW SQUARE D RAINPROOF 50AMP DISCONNECT: \$150. 636-239-2695 or 314-560-5700. Washington.

USED JET HOME POLLUTION CONTROL PANNEL: Model CP700. \$50. 636-239-2695 or 314-560-5700. Washington.

Is Your Log Home Starting To Look **UGLY?**

Call Pine Ridge Rustic Log Home Building Supplies

- Professional Log Home Maintenance & Restoration
- Staining • Chinking/Caulking • Log Replacement • Media Blasting

573-729-7226 www.pineridgerustic.com



CENTENNIAL OF IMMANUEL LUTHERAN CHURCH & RADER FAMILIES 1871-1971 BOOK: Out of print book. \$25. 417-532-2045, Lebanon. Leave message and phone number.

TRIPLE WIDE- moving stock, awesome price. 573-657-7040 chateauhomes.net.

I BUY.....used mobile homes. Call or text 573-338-6250 or email GregS.CDH@outlook.com

NEW IN BOX MASTERBUILT ELECTRIC TURKEY FRYER: Up to 14 lbs. Fry, boil or steam. Safe for indoors. \$80. 417-718-5347. Morgan.

Buildings • Hunter's Cabins • Lawn Furniture

JAMCO BUILDERS

JAMCO Portable Buildings

800-688-2064 • 307 Enterprise Dr. • Seymour, MO • www.jamcobuilders.com

Rent To Own Plan



DARDEN PROFESSIONAL TIMBER HARVESTING, BUYING STANDING TIMBER: Great prices, improve wildlife habitat and improve forest health. State Certified & Fully Insured! 573-247-4808. Salem.

TINY HOMES - Missouri Franchise 573-881-7965.

WANTED: older model 1-ton wrecker. 573-734-2822.

NEW JELD WEN 5' LEFT HAND SLIDING GLASS DOOR WITH SUNSTABLE INTERIOR BLINDS: Clear tempered glass, Desert Sand trim/hardware. Retail \$2655 Sell \$900. 417-693-0389. Conway.

Starnes Auto LLC

22115 Rt. 66 • Lebanon, MO 65536

588-7939 Cell
588-3159 Office
www.starnesauto.com

Worry-Free
AUTOMOTIVE PAINT & BODYWORK

Our trained experts and specialized equipment get you the highest quality body repair and paint solutions.



WE DO ALIGNMENTS!

1 PAIR OF KEY BRAND MEN'S JEANS: Waist 38, Length 34. \$8. 636-239-2695 or 314-560-5700. Washington.

ANTIQU 4 HP ENGINE: Built by Continental Motors Corporation. \$150 OBO. 573-308-5884. Rolla.

TOSHIBA 42" FLAT SCREEN LED LCD HD TV: With remote & owner's manual. \$50. 210-787-8222. Linn Creek.

SOVIET UNION WINTER WEATHER ARMY HAT: Excellent condition. \$ 35. Text for pictures. 573-854-8132. Houston.

1985 ST. LOUIS CARDINALS SIGNED WORLD SERIES BALL: Includes Herzog & Ozzie Smith. PSA/DNA. \$190. Text for pictures. 573-854-8132. Houston.

ST LOUIS BLUES: autographed full size hockey stick. Brett Hull. Text for pictures. \$149 573-854-8132. Houston.

RIFLE CASE: Pelican storm. IM3100 long case like new \$160. Text for pictures. 573-854-8132. Houston.

SPLIT SEASONED FIREWOOD: No Delivery. Vichy area. Call 573-261-1611

4 PEAVEY SPEAKERS: two: 16 x 26, two: wedge floor monitors 65 watt. Asking \$200 OBO 573-732-3557.

GUNSMITHING-Older Rifles, Shotguns, Handguns, all 22LRs. Any make, any model, estate appraisals. Camdenton. 573-363-5801.

LAKE OF THE OZARKS-SPRING SPECIAL Lots starting at \$4,995-\$125 down \$69 per month. Build, camp, or own for investment also acreage tracts. Beautiful wooded area, free lake access and boat ramps, lots are a short distance away from the lake, no credit checks, owner financing, and immediate possession. Missouri conservation boat ramp with a covered dock and rest rooms close by. Prices good through March 19th, 2024. Hwy 135 between Stover and Sunrise Beach, MO. Take lake road 135-12 to the Ivy Bend Land Office. Closed Tuesdays and Wednesdays Call anytime 573-372-6493.

BERKSHIRE BUTCHER HOGS: \$1.00/lb. delivered. Angus Beef \$1.80/lb. 800-807-9612.

ELECTRIC WELDER: runs on 220. \$100 or trade. 573-734-2822.

CUTTING TORCH OUTFIT: \$100. 573-734-2822.

OLD TIME COCA COLA COOLER: \$100 or trade. 573-734-2822.

2 ANTIQUE GARAGE CABINETS: wall mount \$125. 573-734-2822.

REVELATION IS SELDOM TAUGHT IN CHURCHES: It is necessary you understand the end of this Earth Age. For a printed study, mail a SASE & a small donation, if possible to: Occupant 1028 S. Bishop PMB #106 Rolla, MO 65401-5438.

BUYING OLD BARNS & LUMBER: 417-307-2814, leave message.

A-2 A-2 SPRINGER HEIFERS; New Holland 256 Rake \$1,200. 417-307-2814, leave message.

WANTED: Driver's Side Door for 1995 Dodge Truck ¾ ton, Single Cab, 4x4. 573-612-4351.

99 4X4 CHEVY TRUCK: Rough. 454; with title. For parts. \$1,500 or trade. 573-734-2822.

WANTED: Old Hearse. 573-734-2822.

PARTING OUT ALLIS CHALMERS: WD; WD45; D-14, 15, 17, 19. 573-690-9406. Jefferson City.

GREEN UP Sale

0% FINANCING

NO HIDDEN FEES



STARTER PACKAGE

1023E TRACTOR

+ Loader
+ Insurance

\$241/mo*



Z315E ZTRAK MOWER

Z315E

+ 42in deck
+ 3 Year Warranty

\$177/mo*



Heritage TRACTOR

SCAN TO SHOP



*Offer ends 3/16/24. See dealer for details.

PUREBRED FAINTING GOATS: Kids are \$200 and up will make a great Easter present. Lake of the Ozarks. 573-216-7796.

REFURBISHED 1985 JEEP CJ7: new metal panels & new red paint looks nice. 20K miles on old factory rebuilt engine. Aamco freshly rebuilt 5 speed transmission. New carburetor & other parts. Freshly serviced, needs minor tweaks. \$9,995 bargain. 573-759-7143 Vienna.

16 GALLON VINTAGE VALVOLINE OIL DRUM: good grey color, good for man cave, excellent condition. \$120. Text for pictures. 573-854-8132

2016 GMC TERRAIN 74,000 MILES. Runs good, may trade. \$16,000 OBO 1-660-537-3624.

FREE: 6 sweet Corgi Cross puppies. Very cute. 417-741-0265, leave message. Hartville.

FISHING REEL SPOOLS FOR SALE: I've got what you need. \$3/each. 417-589-8200. Conway.

SNAGGING SEASON IS UPON US: Snagging rods \$35 & up. Rods & reels with line. 417-589-8200. Conway.

FOR SALE 1996 3 BED 2 BATH DOUBLE WIDE: You move off out land, need some repair. 417-277-5224

NEIGHBORHOOD'S HOME IMPROVEMENT STORE

Where QUALITY doesn't cost MORE!

417-533-5080 • 19850 Houston Road • Lebanon
Mon.-Fri. 8am-5pm • Sat. 8am-3pm
neighborhoods-inc.com

DID YOU KNOW?

Besides cabinets, flooring and countertops, we also do custom showers & vanity tops by Onyxcollection.com

Buying Standing Timber

References Available.

BUTLER LOGGING

NIANGUA, MO

417-448-9323

NICE 1991 CHEVY: 2 door pickup. 4WD V-8 AT 165K miles \$5,000. 573-759-7143 Vienna.

AB SPORT LOUNGE like new \$35. 210-787-8222 Linn Creek.

LIFETIME COLLECTION OF 256 CASSETTE TAPES: Patsy Cline, Alabama, Merle Haggard, Willie Nelson, Johnny Cash, Charlie Rich, Hank Williams, George Strait, Reba Macentire, The Judds, Jim Reeves, & many more \$100. 210-787-8222 Linn Creek.

HAY FOR SALE: Excellent 2nd & 3rd cut Alfalfa/Orchard Grass, \$12/bale. Straw, \$6/bale. 417-532-1113, No Sunday Calls. Tunas.

2020 GMC TERRAIN RIMS: \$300 like new. 1-660-537-3624.

TRUCK KNOCKED RV OFF JACKS: 32 ft with 3 slides. Make offer. 417-827-7655.

FOR SALE: twin bed with headboard. \$175. 575-915-4026.

5-PIECE PATIO SET: \$50 575-915-4026.

BAMBOO FLY RODS: \$50. Trout season is coming. 417-589-8200. Conway.

HAY FOR SALE: Alfalfa & grass mix. 4x5 round bales. 417-343-4958. Seymour.

JD WC 1103 WOODCHIPPER: like new. PTO drive \$2,100. Bourbon area. 314-960-6652.

3-PHASE, 7-HORSE ELECTRIC MOTOR: \$200. 573-247-4280. Salem.

BARN BEAMS: \$125. 417-468-2255.

Larry Heisel Rentals

HEISEL 573-779-1500
RENTAL SALES & SERVICE 636-432-9460
Larry's Cell

We Deliver!

Crawler Loaders
Excavators, Backhoes

Call Larry!
Rental Available in 636 or 573 Area Codes

573-779-1500

J&L METAL ROOFING

Specializing in Re-Roofing | Free Estimates
Phone: (573)-759-3880
Phone Answered on Monday & Friday 6:30pm-7:00pm
20371 Maries County Road 635, Dixon, Missouri 65459

WE BUY AND SELL
new and used mobile homes

(417) 501-1061

FISHING SEASONS COMING: Get your rod and reels, \$15 and up. 417-589-8200. Conway.

BORDER COLLIES/HEALER PUPS: Shots & Wormed. Call 573-694-9159. Russellville.

NEED LEFT BREAK HUB: For Cub Cadet UTV Model #414. 573-368-8179. Rolla.

COMING SOON 0% FINANCING WAC ON SAFE PLACE STORM SHELTERS! Text or call your name & address for a free brochure. 417-894-3159.

CHILTONS AUTO REPAIR MANUAL: all American cars & Volkswagen 1969-1976. \$30 plus shipping. 417-260-0941. Raymondville.

BLACK METAL TUBULAR BRACKET: Scrolling and a stainless bracket. \$8. Call for pictures. 636-239-2695 or 314-560-5700. Washington.



YOUR AD GOES HERE!

Add YELLOW Color For An Additional \$3 Per Reader Ad

All ads will include Phone Number (unless requested to be deleted by advertiser) and City Or Town, Phone Number with Area Code counts as one word. City or Town counts as one word.

RATE: 80¢ Per Word. All Classified Ads Require Payment Before Print.

(1) 80¢	(2) \$1.60	(3) \$2.40	(4) \$3.20
(5) \$4.00	(6) \$4.80	(7) \$5.60	(8) \$6.40
(9) \$7.20	(10) \$8.00	(11) \$8.80	(12) \$9.60
(13) \$10.40	(14) \$11.20	(15) \$12.00	(16) \$12.80
(17) \$13.60	(18) \$14.40	(19) \$15.20	(20) \$16.00
(21) \$16.80	(22) \$17.60	(23) \$18.40	(24) \$19.20
(25) \$20.00	(26) \$20.80	(27) \$21.60	(28) \$22.40
(29) \$23.20	(30) \$24.00	(31) \$24.80	(32) \$25.60
(33) \$26.40	(34) \$27.20	(35) \$28.00	(36) \$28.80
(37) \$29.60	(38) \$30.40	(39) \$31.20	(40) \$32.00

Buy 3 Weeks - Get 4th Week Free! (Must be same ad)

Place your Classified Ad TODAY!

417-532-9131

Fax: 417-532-8140

Or Mail To: P.O. Box 192 • Lebanon, MO 65536

For your convenience we accept MasterCard, Visa, Discover or American Express



DEADLINE FOR CLASSIFIED ADS: FRIDAY 4:00PM!

Name _____

Address _____

City _____ Email _____

State _____ Zip Code _____ Phone _____

Ad Total \$ _____ X # Weeks _____ = Amount Enclosed \$ _____

Quarles Supply

3251 S Springfield Ave, Bolivar, MO 65613
417-777-2391

Kubota of Lebanon

22330 Hwy MM, Lebanon, MO 65536
417-532-0888

*Your hometown
Kubota dealer
of choice.*



**#1 SELLING
TRACTOR
UNDER 200 HP***

L02 SERIES

Double digit to-do lists have met their match.

Dependable. Powerful. Versatile. When you need increased comfort, and reliable high performance under a steel hood, you can count on the Kubota L02 Series.

L2502DT Tractor and Loader \$19,995 | 0% for 84 Months

Visit your Kubota dealer today for a demo!

KubotaUSA.com



0% Down, 0% A.P.R. financing for up to 84 months on purchases of select new Kubota L2502DT equipment from participating dealers' in stock inventory is available to qualified purchasers through Kubota Credit Corporation, U.S.A.; subject to credit approval. Example: 84 monthly payments of \$11.90 per \$1,000 financed. Some exceptions apply. Terms subject to change. Offers expire 06/30/2024. This material is for descriptive purposes only. Kubota disclaims all representations and warranties, express or implied, or any liability from the use of this material. For more information, see Dealer or go to KubotaUSA.com.