

FREE - TAKE ONE!

Vol. 30 No. 43

JANUARY 25, 2024

417-532-9131

WEEKLY TRADER MAGAZINE



Find us on
Facebook

@myweeklytrader
AUCTIONS PG. 5

VISIT OUR NEW WEBSITE! MYWEEKLYTRADER.COM

START THE NEW YEAR RIGHT IN ROLLA!



Backed By
Morse



CHEVROLET

FIND NEW ROADS™

WE WANT YOUR TRADE.

ED MORSE
CHEVROLET
BUICK GMC

ROLLA

100 Fairgrounds Rd., Rolla, MO

573-364-1002

EdMorseChevroletBuickGMCRolla.com

UTECHT LAND TEAM

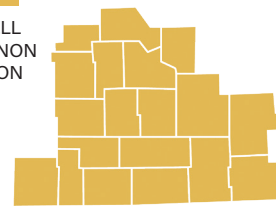
MISSOURI'S TOP LAND SPECIALIST SINCE 2014

Dear Friends, We hope this letter finds you well. As we reflect on 2023 and look forward to 2024, we want to let you know that we are thinking of you and thankful for what God is doing in all our lives. Our team has had a fulfilling year with many exciting updates we would like to share with you. Here is a snapshot of what's been happening with the Utecht Land Team.

Some of our transactions this year have included the Wallace Ranch, Dr. Jeff Gowers farm on East Sunshine

OUR TERRITORY

| | | |
|-----------|---------|---------|
| HICKORY | DALLAS | HOWELL |
| POLK | WEBSTER | SHANNON |
| GREENE | LACLEDE | OREGON |
| CHRISTIAN | PULASKI | |
| BARRY | WRIGHT | |
| STONE | DOUGLAS | |
| TANEY | OZARK | |
| CAMDEN | TEXAS | |



UTECHT FAMILY

BRIAN UTECHT: Brian continues to lead his team with passion and innovation. He was honored as the top agent in the nation and state of Missouri at the 2023 national sales meeting, compliments of his leadership of our amazing team. Brian also achieved his ALC (Accredited Land Consultant) in 2023, adding to his arsenal for offering our clients the best possible representation with buying and selling land. Brian and his wife, Jill, have purchased a new farm on Table Rock Lake where they are building a home. They greatly enjoy family time with their son, Brock, and daughter, Brianna, at the lake and their farm. They also continue to have fun traveling and watching their daughter compete in college track and field.

MIKE HARRIS: Mike has been integral with helping Brian get the auction side of the business up and running this past year. We have had several successful land auctions in 2023 coordinated by Mike and featured Ranch & Farm Auctions, a division of Whitetail Properties. Mike and his wife, Beth, are enjoying time with their family, especially their beautiful new granddaughter. Mike continues to work with his Hereford cows and enjoys watching the herd grow. He just wrapped up his 11th year as a volunteer outfitter for Cross Trail Outfitters, taking kids on hunting and fishing trips throughout the year.

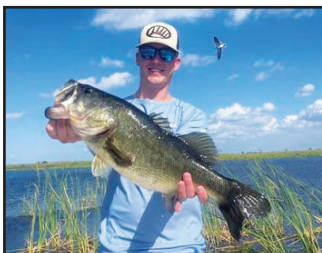


MIKE HARRIS

BROCK UTECHT: With an unwavering enthusiasm that resonates throughout our team, Brock wraps up the year with a remarkable achievement—45 land sales that reflect his dedication and passion. With strong roots in Marshfield, MO, where he acquired his first home, Brock thoughtfully positions himself closer to both family and our Whitetail Properties office. Beyond his professional endeavors, Brock finds joy working on our farms and sharing moments at Mizzou football games with his family—a tradition that holds special significance since his graduation in 2022 with a Bachelor's degree in business. Committed to ongoing growth, he is currently pursuing an MBA at Missouri State, with anticipated completion this August.

DARIN JENKINS: Darin has been excited to take on the role of representing the sales of luxury, country and waterfront homes. He and his wife, Alicia, enjoy spending time in the great outdoors with their two wonderful children.

GORDON CLIFT: Gordon continues to bring our team success with his knowledge and expertise of habitat management, exceptional hunting properties across the state of Missouri and experience as a general contractor for new construction. He has enjoyed another successful deer season and is already thinking about putting in spring food plots for clients.



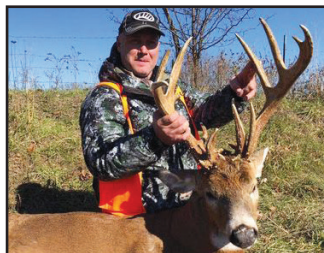
BROCK UTECHT

JILL UTECHT: After retiring from 25 years as an occupational therapist, Jill has been a welcomed member of our team behind the scenes, helping with advertising and office work. She is greatly enjoying her new position. She also enjoys spending time with her family and riding her horses.

We have had another record year and anticipate 2024 to be an abundantly blessed year as we continue to work hard for our clients. We wish you a Happy and Healthy 2024
Utecht Land Team



JENKINS FAMILY



GORDON CLIFT



JILL UTECHT

— OVER —
\$188 MILLION
240 TRANSACTIONS
& 35,000 ACRES SOLD
IN LAST 3 YEARS



WHITETAIL PROPERTIES REAL ESTATE

HUNTING | RANCH | FARM | TIMBER

WHITETAILPROPERTIES.COM

Whitetail Properties Real Estate, LLC DBA Whitetail Properties, DBA Whitetail Properties Real Estate. In the States of Nebraska & North Dakota DBA Whitetail Trophy Properties Real Estate LLC. Licensed in CO, MN, ND, SD, TN & WI - Jeffrey Evans, Broker. Licensed in FL, KS & MD - Jefferson Kirk Gilbert, Broker. Licensed in TX & NM - Joey Bellington, Broker. Licensed in IN - Bill Minor, Broker. Licensed in AL, GA, LA, & MS - Sybil Stewart, Broker. Licensed in TN - Tim Burnette, Broker. Licensed in TN & MS - Josh Monk, Broker. Licensed in AR - Anthony Onisso, Broker. Licensed in NC, SC, VA - Chip Camp, Broker. Licensed in IA, MO - Richard F. Baugh, Broker. Licensed in MI - Edmund Joel Nogaski, Broker. Licensed in IL, MD, WV - Debbie S. Laux, Broker. Licensed in ID, MT, OR, UT, WA, WY & NV - Aaron Milliken, Broker. Licensed in NY - John Myers, Real Estate Broker. Licensed in OK - Dean Anderson, Broker. Licensed in KY - Derek Fisher, Broker. Licensed in OH - Jeremy Schaefer, Principal Broker. Licensed in NE & SD - Jason Schendt, Broker. Licensed in MS - Chipper Gibbs, Broker. Licensed in PA - Jack Brown, Broker.





RB16 SERIES

REAR BLADES
20-40 HP 60", 74", 84" Widths

- Cat. 1 hitch
- 7 Forward angles; 3 Reverse angles
- 5 Tilt positions
- 12" Offset left or right
- 14" Moldboard height
- 1/4" Moldboard thickness
- Landscape Rake adaptable

Getting Chores Done LAND PRIDE does that.



www.landpride.com

For Outstanding Products & Service
AGRI-ENTERPRISES
 1-1/2 Miles South Of Licking, MO On Hwy 63
573-674-2203 • 1-800-653-7152 • www.agri-enterprises.com

40 YEARS IN A MISSOURI CLASSROOM BOOK: by Grace Bacon Ferrer in Osage and Gasconade counties, \$ 10. 417-532-2045. Lebanon. (Leave message and phone number.)

TINY HOMES – Missouri Franchise 573-881-7965

WEATHERED BARN WOOD SIDING: 10" wide. Call for appointment 573-729-7226. www.pineridgerustic.com Salem.

LOG SIDING: 2X8 Pine/Western Cedar. Call for appointment 573-729-7226. www.pineridgerustic.com Salem.

NEW INVENTORY - \$59,900 Delivered and setup, Hurry! Call Adam 573-657-2176 amegamobilehomes.com

NEW MOBILE HOMES – prices start at \$64,900 delivered and setup 573-499-9993 columbiadiscountohomes.com



VOTED #1 BEST Preowned Car Dealership



TIM'S USED CARS

(573) 341-3828 • 1334 South Bishop (Hwy. 63) • Rolla, MO
Next to Hwy CC • www.tims-used-cars.com

| | | |
|---|---|--|
|  <p>2015 FORD F250 LARIAT Ext cab, 4x4, 6.7 LT Powerstroke, power equipped, 196,xxx Miles Only \$26,500</p> |  <p>2012 RAM 2500 ST Crew cab, 4x4, 6.7 diesel, power equipped, 91,xxx Miles Only \$29,700</p> |  <p>2019 RAM 2500 BIG HORN Crew cab, 4x4, 6.4 V-8, power equipped, 60,xxx Miles Only \$34,500</p> |
|  <p>2006 DODGE RAM 2500 SPORT Quad cab, 4x4, 5.9 diesel, auto, 114,xxx Miles Only \$25,900</p> | | |

LARGE SELECTION OF CARS, TRUCKS, SUVs & VANS!

CALUS LOGGING

20 YEARS EXPERIENCE



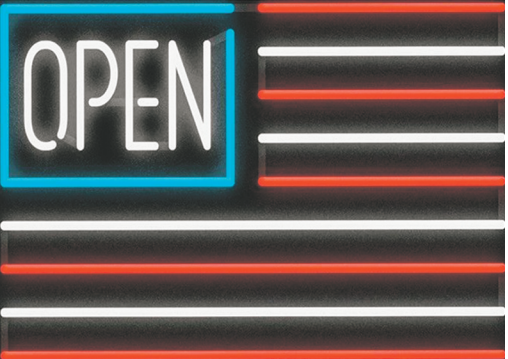
Buying Standing Timber
Walnut & Oak

Joe Calus, Owner
417-926-4606 • MTN. GROVE

CERTIFIED

BASEMENT READY TRUE MODS- instock ready for delivery 573-657-7040 chateauhomes.net

RUBBER & LEATHER BOOTS AND 5-Buckle OVER SHOES: Men's 11, Women's 7, some insulated. \$12-\$35 obo. 636-239-2695. Washington.



Sale Ends January 31, 2024
 Seymour, Missouri 417-935-4201

Pole Barn Building Kits!

Call for free quote, brochure & color chart.
 Other sizes also available.

| | | | |
|---|--|--|---|
| 23'x32'x10' \$6,688 Material Only \$8,888 Labor Included | 23'x40'x10' \$7,600 Material Only \$10,320 Labor Included | 30'x40'x10' \$9,000 Material Only \$12,500 Labor Included | 40'x60'x12' \$15,800 Material Only \$23,050 Labor Included |
|---|--|--|---|



NOBODY, BUT NOBODY BEATS OUR PRICES!!!

10 ft. Slider • Engineered Trusses 8' O.C. • 2x6 Treated Bottom Wrap • Screws • 2x10 Top Wrap • 2x4 Purlins • Full 29 Gauge Steel • Plus 3 ft. Entry Door with Lock
 OPTIONS: Sidewall Heights on all Buildings 10', 12', 14' & 16'. Overhead Garage Door. Skylights. Insulation. Wainscoting. Insulated Vinyl Windows. Cupolas. Labor Rates Slightly Higher over 50 Miles from Seymour. Call for YOUR FREE QUOTE TODAY!!!

| | |
|--|---------|
| PAINTED WHITE, GREEN OR TAN METAL | \$97.79 |
| 10' - \$31.00 12' - \$37.20 16' - \$49.60 | |
| MIX & MATCH METAL | \$59.99 |
| 8' - \$15.20 10' - \$19.00 12' - \$22.80 | |
| GALVALUME METAL | \$79.99 |
| 10' - \$25.40 12' - \$30.48 16' - \$40.64 | |
| GALVANIZED CORRUGATED METAL | \$85.39 |
| 8' - \$15.92 10' - \$19.90 12' - \$23.88 16' - \$31.84 | |

IN STOCK

40yr Painted Metal
Call!

KNOTTY PINE DOORS
 Starting at
\$164.99

****Prices subject to change without notice****
6X6 CEDAR POST LIMITED TIME \$5.87 LN FT

Car Siding!
 1x6 White Pine Siding **69¢** in ft
 1x8 White Pine Siding **99¢** in ft
 * 4 Profiles to choose from!
 Broken Bundles Add 10¢ Per Ft.

4x8 Sheeting
 Less than full units Add \$1 per sheet

| | |
|----------------------|---------|
| 3/8" Beaded Paneling | \$19.99 |
| 5/8" T111 Siding | \$19.99 |
| Paneling | \$SOLD |
| 1/2" Plywood | \$23.99 |
| 3/4" Plywood | \$29.99 |
| 3/16 Pegboard | \$12.99 |

LOTS OF MATERIAL AVAILABLE
FOR THOSE IN HOME PROJECTS!

NEW PACKAGE HOMES



2x6—16" on center—Exterior Stud Walls
 Residential Roof Trusses-2' on center
 4/12 pitch with 1' over hang
 40 year Painted Metal roofing in 20 Different Colors
 Profile Ridge Vent - Ventilated Ridge Cap
 Vinyl Center Vent Soffit
 Color Matched Metal Fascia & Gable Trim
 2 - 3' 6 Panel Entry Doors
 4 - 3'x4' Vinyl Insulated Windows
ALL FIGURED FOR SUITABLE CUSTOMER SUPPLIED SLAB OR SUB-FLOOR

Shown with Available Options
 Your Choice of either:
 Stock 5/8" T111 Siding w/1x4 Pine Window & Door Trim -or-
 7/16" OSB & House Wrap ready for other finish options

Price for Basic Materials Package (No Labor at this Time)

| | | | | |
|--------------------|--------------------|--------------------|---------------------|---------------------|
| 20x24(480 sq. ft.) | 20x32(640 sq. ft.) | 20x40(800 sq. ft.) | 28x40(1120 sq. ft.) | 28x48(1344 sq. ft.) |
| \$9,490 | \$10,839 | \$12,339 | \$15,129 | \$18,729 |

REAL WOOD SIDING
 2x6 Log Siding **\$1.76** in ft
 1x8 Beveled Cedar from— **99¢** in ft
T1-11 Siding from \$19.99

DECK PACKAGES
Materials Only

| | |
|--------------------|--------------------|
| 8x8.....\$349.00 | 10x12.....\$699.00 |
| 10x10.....\$499.00 | 10x16.....\$899.00 |
| 12x12.....\$899.00 | 12x16..\$1179.00 |

QUAKER In STOCK! Quaker Vinyl Windows

| | |
|-------------------|-------------------|
| 2030 \$ 163.99 | 3030 \$189.99 |
| 3040 \$206.99 | 3052 \$225.99 |
| 3040Twin \$453.99 | 3052Twin \$497.99 |



LUCKY DISCOUNT LUMBER
 417-935-4201
 455 State Hwy C • Seymour MO 65746
 www.luckydiscountlumber.com



*Some restrictions apply see store for details. Prices subject to change without notice.

ANNUAL JANUARY CONSIGNMENT AUCTION

SATURDAY, JANUARY 27, 2024 AT 8 AM WHEELER AUCTIONS LOT, 23101 HWY. 24, PARIS, MO



RECEIVING MACHINERY DAILY STARTING:

Monday, January 8 until Thursday, January 25 at Noon

8 A.M. - 5 P.M. (M-F) | 9 A.M. - 3 P.M. (Sat. & Sun.)

3000+ PIECES OF MACHINERY



WHEELER LIVE ONLINE BIDDING PLATFORM



BID NOW Online Bidding Provided By **Equipmentfacts**
Powered by TractorHouse.com, MachineryTrader.com, TruckPaper.com & MarketBook.com

**FROM AREA FARMERS
AND DEALERS!**

Wheeler

AUCTIONS & REAL ESTATE

Visit wheelerauctions.com
for view full listing and photos!

23101 HWY. 24, PARIS, MO 65275 | 660-327-5890
WWW.WHEELERAUCTIONS.COM

CRANMER AUTOMOTIVE ELECTRICAL SERVICE ALTERNATORS-GENERATORS-STARTERS FOR CARS-TRUCKS-TRACTORS-TOOLS AUCTION

SATURDAY JANUARY 27, 2024 10:00 AM

LOCATED: 7565 STATE HWY 176 WALNUT SHADE MO
10 MILES NORTH OF BRANSON ON HWY 65 TO STATE HWY 176, TURN RIGHT (EAST) GO 3 MILE TO AUCTION ON RIGHT. RESTROOMS & CONCESSIONS AVAILABLE

FOR PICTURES SEE WEBSITE OR AUCTION ZIP.COM

BANK LETTER OF CREDIT ADDRESSED TO MELTON AUCTION & REALTY REQUIRED FOR PURCHASE OVER \$5000

AUTOMOTIVE-ELECTRICAL-WOOD SPLITTER-LIFT-JACKS-TOOLS

WOOD SPLITTER—TEAM LIFT INC MODEL 7P09H, 9000 LB 2 POST LIFT—LINCOLN 4 TON AIR FLOOR JACK—LINCOLN 4 TON FLOOR JACK—COATS 10-10 TIRE MACHINE—MICRO WHEEL BALANCER—MILLER 35 WIRE FEED WELDER W/BOTTLE—LG OXYGEN ACETYLENE TORCH W/WELDING AND CUTTING TIPS—AC DELCO CHERRY PICKER 2 TON—EXCEL ENGINE STAND—WATSCO REFRIGERANT RECOVERY SYSTEM—ROBONAIR REFRIGERANT CHARGING CYLINDER—FREEZE 12 FREON—134A FREON—SNAP ON FAST BATTERY CHARGER—MARQUETTE POWER FAST BATTERY CHARGER—ACE CRANKING CHARGING SYSTEM TESTER—REMINGTON 100 PORTABLE FORCED AIR HEATER—HIGH PRESSURE INFLATOR BLASTER—6 TON JACK STANDS—CENTRAL MACHINERY 10" GRINDER ON STAND—BENCH MOUNT TURRET PRESS—CRAFTSMAN 10 DRAWER TOOL BOX—2 DRAWER TOOL BOX—SEVERAL TOOL BOXES—BLACK HAWK 100 TON PRESS—ORSCHELIN 1/2" DRILL PRESS—SAYLOR-BEALL MODEL 735-80 5 HP AIR COMPRESSOR W/80 GAL TANK—CRAFTSMAN METAL LATHE 36" BED—CRUMBLISS STARTER LOAD TESTER #2480—CRUMBLISS CONVERTER #2487—STARTER-ALTERNATORS-GENERATOR TEST STAND—SANDBLASTER CABINET—CRAFTSMAN 10" RADIAL SAW—DURACRAFT 10" TABLE SAW—SORENSEN ELECTRONIC ENGINE TESTER—JIMCO VOLTAGE TESTER—MARQUETTE GROWLER—SUN BATTERY STARTER TESTER—RYOBI 14" CHOP SAW—SNAP ON, CRAFTSMAN, S-K WAYNE WRENCHES, SOCKETS, RATCHETS—CHANNEL LOCKS—VISE GRIPS—WIRE STRIPPERS, SCREWDRIVERS, NUT DRIVERS, HAMMERS, TORQUE WRENCH, MEASURING TAPE, GEAR PULLERS, 4 WAY LUG WRENCHES, GREASE GUNS—CROWSFOOT WRENCHES—ALLEN SOCKETS—TORX PUNCHES—CHISELS—LEVELS—DRILL BITS—TROUBLE LIGHTS—CORDLESS DRILLS—RYOBI CORDLESS SAWS & DRILL KIT—B&D 7 1/4 SKILL SAW—CHICAGO SAWZALL—HYPER TOUGH 1/2" DRILL—DURACRAFT DISC & BELT SANDER COMBO—GRIZZLY CONCRETE DRILL—JUMPER CABLES—WOOD CLAMPS—BOLT CUTTERS—CRIMPING TOOLS—LG WOOD DRILL BITS—LG VISE (2) 6", (1) 5"—MACHINIST DRILL PRESS VISE—BOTTLE JACKS—SOLDER GUNS—1/2, 3/8 AIR IMPACT—AIR SAW—AIR CHISEL—DIE GRINDER—AIR SANDER—AUTOMOTIVE CHEMICALS—FAN BELTS—BOLT BINS—MCCULLOCH 20" BAR CHAIN SAW—CHAIN SAW SHARPENER—HOMELITE GAS WEED EATER—CARBON DIOXIDE BOTTLE—2 WHEEL DOLLY—LONG HANDLE TOOLS, SHOVELS, RAKES—BRAKE ROTORS—WIPER BLADES—AUTO FUSES—LITE BULBS AUTO & SHOP—MUFFLER CLAMPS—YARD VACUUM SYSTEM TRAILER—LOTS OF SCRAP METAL—CONCRETE MIXER—ALL KINDS OF NEW & REBUILT STARTERS, GENERATORS, ALTERNATORS FOR CARS, TRUCKS, TRACTORS, DOZENS IN BOXES—ALL KINDS OF PARTS TO REBUILD STARTERS, GENERATORS, & ALTERNATORS CONSISTING OF CASES, ARMATURES, COILS, REGULATORS, DIODES, BEARINGS, PULLEYS, NOSE CONES, STARTER DRIVES—MOTOR REPAIR MANUALS, CHILTON MANUALS—2 & 4 DOOR FILING CABINETS—OFFICE CHAIRS—CRATE AMPLIFIER—SENTRY SM OFFICE SAFE—MUSIC STAND—MICROPHONES—**TOO MANY ITEMS TO NUMEROUS TO LIST**



OWNER: JERRY & RUBY CRANMER

ANNOUNCEMENTS MADE ON SALE DAY WILL TAKE PRECEDENCE OVER ANY OTHER PRINTED MATERIALS. NOT RESPONSIBLE FOR ACCIDENTS OR LOSS OF ARTICLES ON OR NEAR SALE SITE.

MELTON AUCTION & REALTY CO LLC



meltonauctionrealty.com | roger@meltonauctionrealty.com
Roger Melton | Nixa, MO | 417-830-0153 or 417-725-1801
Brad Cole | Nixa, MO | 417-840-2950
Hal White | Nixa, MO | 417-343-2334
Tanner Foster | Galena, MO | 417-840-5519

AUCTION

RAIN OR SHINE • WATCH FOR AND FOLLOW DANAHY AUCTION SIGNS

SATURDAY, JANUARY 27TH • 10:00 AM

2305 COUNTY ROAD 2870, MOUNTAIN VIEW, MO

DIRECTIONS: FROM MOUNTAIN VIEW MO., TRAVEL WEST ON STATE HWY 60 2 1/5 MILES TO COUNTY ROAD 2990 THEN LEFT FOR 1 MILE TO COUNTY ROAD 3080 THEN RIGHT FOR 1/2 MILE THEN LEFT ON COUNTY ROAD 2870 FOR 3 TENTHS MILE TO AUCTION ON THE LEFT.

HOUSEHOLD - GUNS AND AMMO LIKE NEW HOT POINT WASHER AND DRYER; TRUNDLE BED; FULL SIZE BED; DRESSERS; CHEST OF DRAWERS; NIGHT STANDS; OSIM ELECTRIC MASSAGE RECLINING CHAIR; WOODEN ENTERTAINMENT CENTER; GLIDER ROCKER WITH OTTOMAN; TATER BIN; RECLINERS; HUNDREDS OF BOOKS SUCH AS (LOUIS L'AMOUR, DAVID BALDACCI, NORA ROBERTS, BILL O'REILY); END TABLES; COFFEE TABLES; NUMEROUS PICTURES; BOWL & PITCHER; SEVERAL DECORATIVE FLORAL LAMPS; COUCH; LOVSEAT; WOODEN TV TRAYS; SANYO FLATSCREEN TV; FLOOR LAMPS; TABLE LAMPS; CHERRY PITTERS; WOODEN PATIO FURNITURE; SMALL ROUND BISTRO (TEA SET) TABLE; KITCHEN UTENSILS; POTS AND PANS; BRAND NEW SCHWINN EXERCISE BIKE; UNIFLAME STAINLESS STEEL PROPANE GRILL; RUGER LCP; SMITH AND WESSON 9MM PISTOL; SEVERAL BOXES OF 38 SPECIAL; 270; 243; 9MM; 223; SEVERAL BOXES OF 38 SPC BRASS.

TRACTOR - IMPLEMENTS - AUTO 450 McCORMICK FARMALL WITH TRICYCLE FRONT END, LOADER AND BUCKET; INTERNATIONAL MODEL H TRACTOR WITH TRICYCLE FRONT END AND GOOD RUBBER; TWO 3 POINT DISKS; DRAG TYPE BUSH HOG; 3 POINT 2 BOTTOM DISK PLOW; 3 POINT BLADE; 1990 1/2 TON CHEVROLET PICKUP WITH FIBERGLASS TOPPER AND RUNNING BOARDS; FIERO GT, BLACK IN COLOR PROJECT CAR; SMALL UTILITY TWO WHEEL TRAILER.

MOWER - TOOLS JOHN DEERE RIDING LAWN MOWER X304 42" CUT; CRAFTSMAN LAWN TRAILER; MURRAY RIDING MOWER; STIHL 031 AV CHAINSAW; STIHL MS 180C CHAINSAW; CENTRAL MACHINERY 14 X 40 WOOD LATHE; CRAFTSMAN 10" TABLESAW; 3 HP PORTABLE AIR COMPRESSOR; ROBIN AIR VACUUM PUMP; CUMMINS 5/8 DRILL PRESS; DREMEL SCROLL SAW; EDGER PLANER; CENTRAL MACHINERY 9" BENCHTOP BAND SAW; 6" BENCH GRINDER; CLARKE MIG WELDER 130 EN; MIDER SAW; COMPOUND MIDER SAW; TORCH SET; 2 HP 14" CHOP SAW; 20 TON SHOP PRESS; FOLDING CHERRY PICKER; HDC 4" BELT SANDER; 4" VICE; SMALL ANVIL; AC GUAGES AND HOSES; NUMEROUS HAND TOOLS, WRENCHES, SOCKETS; STACKABLE CRAFTSMAN TOOLBOXES; ALUMINUM EXTENSION LADDERS; CRAFTSMAN 2400 GENERATOR; ALUMINUM LOADING RAMPS; PTO DRIVEN SPRAYER PUMP; 6 1/2 HP PRESSER WASHER; 10 HP COLEMAN GENERATOR; CRAFTSMAN 2600 PSI PRESSURE WASHER; FLOOR JACKS; BOOMERS; CHAINS; ROPE; TIRE CHANGER; WHEEL BALANCER; NUMEROUS STACKABLE TOOLBOXES; WOODEN SHELVES WITH DRAWERS; WEED EATER; REAR TINE TILLER; FIBERGLASS STEPLADDER; NUMEROUS NUTS, BOLTS AND TOOL CADDYS; C CLAMPS; BATTERY CHARGERS; KENMORE REFRIGERATOR; LINCOLN 223 STICK WELDER; 12 VOLT SPOT SPRAYER; GARDEN HOSE; WHEEL BARROWS; LIVE TRAP; DOG KENNEL FOLDABLE WIRE; LAWN AND GARDEN TOOLS; SOME RELOADING SUPPLIES; TUMBLER; SCALES; FISHING RODS; COMPOUND BOWS; FILE CABINETS; ROUND GALVANIZED WATER TANK; 2 WHEEL PORTABLE WOOD SPLITTER; BOAT MOTOR AND TRAILER; SYLVIAN ALUMINUM BOAT ON A SHORELINE TRAILER WITH A 25 HP MERCURY MOTOR.

ANTIQUES - COLLECTIBLES ENTERPRISE CAST IRON CHERRY STONER; 2 PITTERS; METAL TRUNK; SMALL CAST IRON WOOD COOK STOVE MADE BY MONTGOMERY WARD AND COMPANY; WOODEN BARREL; SHIPS TIME NAUTICAL CLOCK; ENAMEL COFFEE POT; ANTIQUE SECRETARY LAMP; CREEL BASKET; SMALL BRASS FLAG SHIP; SKYLINE MOVIE PROJECTOR; WOODEN CLOTHES WRINGER; GALVANIZED WASH TUB AND STAND; GALVANIZED TRACTOR FUNNELS; TIRE CHANGER; HANSON MODEL #8910 SCALES; CHEVROLET HEATER AND DEFROSTER; WOODEN BLOCK AND TACKLE; WOODEN TOOLBOX; CROSS CUT SAWS; METAL COSTCO STEP STOOL; IRON IMPLEMENT WHEELS; SEVERAL OLD STANDARD TRANSMISSIONS; HAND CRANK CAST IRON 996 FORGE BLOWER; CREAM SEPARATOR; MILK CAN.

AUCTION NOTE: THE TSCHUDY'S HAVE SOLD THEIR HOME AND WILL BE MOVING OUT OF STATE. THEY HAVE ASK US TO SELL THEIR PERSONAL PROPERTY. THIS WILL BE A LARGE CLEAN AUCTION WITH MORE BEING ADDED DAILY. GO TO AUCTIONZIP.COM FOR OVER A HUNDRED PICTURES.

OWNER: DEAN AND MILLIE TSCHUDY

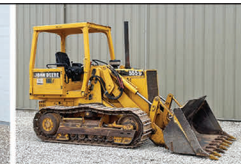
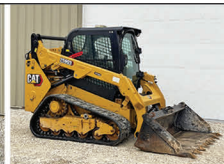
TERMS: GOOD CHECK OR CASH.

Danahy Auction Service

For All Your Auction Needs • Terry Danahy, Auctioneer

417-256-9667 • Ark. License: #2269 • 417-372-1648

Not Responsible For Accidents • Everything Sold As Is



ONLINE AUCTION

BID NOW! BIDDING CLOSES FEBRUARY 3RD



Construction Equipment

- 2020 Kubota SVL65-2 skid steer loader
- 2021 Cat 259D3 skid steer loader
- JD 555G Series IV crawler loader
- 2016 Cat 312F GC excavator
- 2021 Komatsu PC80MR-5 excavator
- 2006 Komatsu PC35MR excavator
- 2019 Bobcat E20 mini excavator
- MG model MG7 skid steer paving machine
- 30+ unused skid steer attachments

Farm Equipment

- JD 9500 combine
- 2000 JD 4500 4x4 tractor
- Storage containers 8' to 40'
- Rogator 854 self propelled sprayer
- Unused portable hoop buildings
- MP 230 gas tractor
- Unused corral & fence panels
- Sunflower 14' wing disc
- IH 26' field cultivator
- Top Air 1100 pull type sprayer
- JD 6620 Turbo combine
- Westfield MK 100-61 transport auger
- Sitrex QR10 10-wheel V-hay rake
- IH 1086 tractor
- IH 674 tractor
- Bush Hog 15' brush hog
- 60+ unused 24' freestanding fence panels
- IH 5100 grain drill
- JD 725 quick attach loader
- MP TO-35 tractor
- MP 65 gas tractor
- Knight 8024 manure spreader
- NH 67 square baler
- IH 190 manure spreader
- Ford 3000 gas tractor
- Ferguson TO20 tractor
- B-Z Trail 500 grain cart
- NH 1003 Stackliner bale wagon
- AC CA tractor
- Hardi 550M sprayer
- JD 1326 discbine

AGWAY small square bale accumulator

- 50+ 3-point tractor attachments
- JD 643 6-row corn head
- JD 216 16' grain head
- IH 1190 9' mower conditioner
- Hesston 4-basket 3-pt. hay tedder
- Hesston 9' 3-pt. disc mower
- Antique pull type road grader
- Westendorf loader off of JD 4430
- Belsaw A14D belt drive sawmill
- Kewanee 12' chisel plow
- Brush Bandit chipper
- 8' trailer type creep feeder
- JD 444 6-row corn head
- JD 920 20' grain head
- Farmhand 22C quick attach loader
- Rossi GALPE 4-basket hay tedder
- JD EB-B 7' grain drill
- Dannser intimidator skid steer tree puller
- Dannser D-6 3-pt. post driver
- Ag-Max G2LP 2 basket hay tedder

UTVs, ATVs, Boats

- 2011 JD Gator 825I UTV
- 2014 Kubota RTV 1120D UTV
- 2016 Polaris Ranger 1000 XP UTV
- 2013 Polaris Ranger 900 XP UTV
- 2015 Polaris Ranger 570 UTV
- 2006 Polaris Ranger 700 XP UTV
- 2013 Kawasaki Mule 4010 UTV
- 2007 Bush Hog TH4400 Trail Hand UTV
- 2002 Yamaha Grizzly 660 4x4 ATV
- 1962 Duracraft 15' ski boat
- JD Gator 4x2 UTV

Vehicles

- 2008 Ford F650 crew cab w/ service body
- 2004 International 4400 single axle road tractor
- 1999 Ford F550 dump truck
- 2000 Ford F350 crew cab 4x4 flatbed
- 1997 Ford F250 ext cab 4x4 pickup
- 2000 GMC 3500 conversion van

- 2011 Chevrolet Equinox LTZ
- 1985 Ford L9000 grain truck
- 1977 Chevrolet C70 grain truck
- 2015 Ram 1500 quad cab 4x4 Eco Diesel
- 1976 Chevrolet C10 pickup
- 1999 Ford Ranger ext cab 4x4
- 2004 Ford Escape limited
- 2012 Ford F250 4x4 pickup
- 1990 GMC 3500 dump truck
- 1923 Ford Model T coupe

Trailers

- CMC 34' alum. semi dump
- 2018 Sure-Trac 20' flatbed
- Doollittle 35' gooseneck flatbed
- Doollittle 20' passenger tram
- 2022 H&H 14' flatbed utility
- Utility 28' refrigerated semi
- 13' pup dump for dump truck
- CTC 16' flatbed
- WW 2-horse straight load
- PJ gooseneck w/ mounted 20' container
- 4-semi van trailers 48'-53'
- Ravens 41.5' alum. flatbed semi trailer
- Budd semi 40' container trailer
- Kaufmann 22' tilt flatbed trailer

Lawn & Garden

- 2 Vermeer 620 trailer mounted chippers
- Finn B40 straw blower on trailer
- Wheel Horse 606 garden tractor w/ grader blade
- 8 chainsaws

Shop Equipment & Miscellaneous

- Unused portable cabins & restrooms
- Sinclair 6' round porcelain sign
- 2 Miller Trailblazer 325EPI welder generators
- 2 unused Husqvarna K770 concrete saws
- 40+ unused toolbox workbenches
- Walnut, ash, pecan & cedar rough sawn lumber
- Wood-Mizer LT30 sawmill
- Unused gravel screener
- Dan Hudson SM16 sawmill
- Groups of pallet racking

More items listed at SchneiderAuctioneers.com

ITEM INSPECTION:
Bidders will be able to inspect and view items Monday-Friday (8am-4pm) and Saturdays (8am-noon) while the auction is open for bidding at 4177 HWY VV, Berger, MO 63014

768 LOTS



All items sell regardless of price. All items start at only \$1. BID TODAY!



SCHNEIDER
Auctioneers LLC
573-834-2207 • 573-291-8075
www.SchneiderAuctioneers.com

Wheeler Livestock Auction, Inc.

Osceola, MO 64776

Special Stock Cow Sale

SATURDAY JAN 27TH, 6:00 P.M.

Expecting 800 Bred Cows, Cow Calf Pairs & Breeding Bulls

Leon Jones-

- 3 y/o Charolais bull- (calves off bull selling tonight)

Anderson Acres-

- 1 Reg 2 y/o Registered Blk Angus bull, great genetics

Baxter Farms-

- Coming 2 y/o Polled Hereford bull

Howlett Farm-

- 50 Fancy Blk Ang Hfrs 1100# 3rd P / 10 Fancy BWF Hfrs 1100# 3rd P / Above 60 Hfrs are confirmed AI Bred to Rainfall CE Angus calving Feb 15th for 20 days Complete Health Program

D-L Dispersal-

- 45 Char cows 3-6 y/o 1300# bred 3rd to Red Ang or Blk Ang bulls. These cows are home-raised, gentle and good calf raisers

Reynolds Farm-

- 40 Yellow Char & Red cows 3 y/o 1150# These 40 are all sisters raised 1st calf, coming 2nd -bred in 3rd to Ascherman Charolais.

Leon Jones-

- 15 Char X cows 5-7 y/o 1300# with 300# calves on side. Cows bred back to Charolais bull (selling tonight) Nov 1st. Cows & calves all worked

Naylor Farm Dispersal-

- 30 Blk & BWF cows 3-6 y/o 1250# / 20 Ang-Brng X cows 3-6 y/o 1250# The above 50 cows have 8 calves now, rest bred 3rd to Ang or Char bull

Jackson Farm-

- 85 Fancy Blk & BWF Sim Ang X cows 3-6 y/o 1300# to start calving March 1st. Bred to Top Hereford or Sim Ang bulls – cows are gentle & good, complete health program

4-D Farm-

- 40 Blk & BWF cows 3-6 y/o 1250# / 10 Yel Char X & Red cows 3-6 y/o 1200# / The above 50 cows have 6 calves on ground, bred 3rd to Top Bulls- good, gentle cows -Selling due to hay shortage

Taylor Farm-

- 7 Blk Cows 5-7 y/o with calves 250# , bred back to Ang bull

Neil Grass and Livestock-

- 7 Fancy Ang cows 5y/o 1300# bred to Ang bull to calve March 1st.

Tom Engeman Dispersal of Spring Calvers-

- 20 Fancy Blk Balancer cows 5 y/o-BM 1350# bred to top Ang bulls to calve March 1st. All cows home-raised, gentle, complete health program.

D-C Farm-

- 30 Red Ang & Red Ang Char X cows, 5y/o 1300# bred 3rd to Char or Hereford bull. These cows are all home-raised & good calf raisers.

S & P Farm-

- 40 Blk cows 3-5 y/o 1200# with 20 Ang calves, rest bred 3rd to Ang bull

**FOR CONSIGNMENTS PICS/VIDEO-WEBSITE AND FACEBOOK
wheelerlivestock.com/search Wheeler Livestock Auction on FB**

Feeder Sale- Thursdays at 11 a.m. central

Special Feeder Sales are 2/1-15-29/2024

February Stock Cow Sale- Feb 24th, 2024 at 6 p.m. central

Byron Wheeler - Owner 417-777-0897

**Austin Shelby, Barn Manager
417-309-1350**

FIELD REPS

**Darwin Hearting 417-296-1029
Burleigh Wheeler 417-840-6561
Lyndon Ropp 918-325-1616
Kevin Wade 660-492-3279**



**Tim Sherrer 573-855-1951
Denver McGinnis 417-399-2701
Sam Francka 417-399-7113
Red Whistance 417-276-7909
Les Tennis 417-466-8786
Sue Hemenway Marketing
417-839-9316**

Osceola, MO • 685 SE 13 Hwy., PO Box 560 • BARN 417-646-8102

Bid online on CattleUSA • www.wheelerlivestock.com • Like us on Facebook-Wheeler Livestock Auction

ESTATE AUCTION

Saturday, January 27th 2024 ~ 10:00 AM

LOCATION: 1361 Stacey Drive, Flemington, MO; Directions: From Flemington Go North On 83 Hwy To East 318 Rd Then 2.5 Miles To Fishing Hole Rd Then 2 Tenths Mile To Stacey Rd Then East To Sale Site (Watch For Signs)

Auction For David & Millie York Estate



Antique, Modern Furniture & Appliances, Also Antiques & Households

Ant Prayer Bench, Ant Rocking Chair, Ant Oval Table, Retro Full Bed & Dresser W/ Mirror, Wood Fold Top Desk W/Drawers, Oak Hall Tree, Wood & Iron Half Moon Table, Leather Lift Chair, 4 Recliners, Loveseat W/ Ottoman, Sectional Couch, 3 Cushion Hide A Bed, Roll Away Bed, Wood Bunk Beds, Wood Armoire, Nice 3 Pc Bedroom Suite, Computer Hutch Desk, High End Office Chair, 4 Drawer Wood File Cabinet, Wood Truck, Roll Around Island Table, Queen Bed, Nightstand, Kitchen Table & 4 Chairs, Lamps, Foosball Table, Flat Screen TV, Cast Iron Wood Heat Stove, New Flooring, Window A/C Unit, Like New Lg Washer & Dryer, 25 Cu Ft Chest Deep Freeze, Electric Cook Stove, 2 Refrigerators, 2 Rainbow Vacuum Sweepers, Ant Bike, Galvanized Washtub, Ant Croquet Set, Silver Pcs, Beer Memorabilia, Sm Kitchen Appliances, Some Pots, Pans, Dishes & Sm Household Items, Other Items Not Listed

Van, Golf Cart, Zero Turn Mower, Boat, Tillers, Greenhouse Items, Tools, Outdoor & Fishing Related Items

2006 Chrysler Town & Country Van That Is Fully Loaded, Has V6 Motor, Auto Trans, Dual Side Doors & Approx 188,000 Miles, EZ Go Golf Cart W/Charger, Discovery 12 Ft Flat Bottom Boat, Hustler SD Raptor 60" Zero Turn Mower, Troy Bilt Bronco Front Tine Tiller, Mantis Tiller, Electric DR Wood Splitter, DR Big Wheel Trimmer, Push Mower, Sno Joe Snow Blower, 2 Chainsaws, Stihl Gas Weed Eater, Long Box Yard Utility Dump Wagon, 3 Ft Yard Roller, Sm Utility Trailer, Cement Mixer, Bags Of Cement, Yard Pull Wagon, Fluid Tank, Jump Start Box, Air Compressor, Air Tanks, Craftsman Pressure Washer, Shop Vac, Grinder, 2 Wheelbarrows, Craftsman Band Saw, Saw Horses, Sm Hand Tools, Sm Electric Tools, Vise, Concrete Blocks, Greenhouse Supplies & Tools, Lg Lot Of Clay Bricks, Shop Shelves, Patio Table & Chairs, Other Patio Furniture, Yard Porch Swing, Concrete Outdoor Décor, Picnic Table, Stainless BBQ Grill, Goldfish Pond Pump, Fish Cooker W/Pot, Ant 2 Horse Boat Motor, Sm Boat Tank, Lifejackets, Fishing Trout Line Jugs, Fishing Supplies, Deep Sea Fishing Pole Guide, Camping Supplies, Mountain Backpacks, Deer Stands, Other Items



Auctioneers Note: It Is An Honor To Be Conducting This Auction For The York Family As Jeff & I Worked At O'Sullivan Industries & Have Been Friends For Many Years. This Will Be An Outstanding Very, Very Clean Auction With Something Here For Everyone. There Will Be Very Excellent Clean Furniture & Appliances. Small Items Will Be Added Sale Day. Van, Mower, Golf Cart & Large Items Are All In Excellent Working Order. Will Be Greenhouse Related Items Also That Are Not Listed. Tools & Outdoor Are Excellent As Well. Please Plan Now To Attend. **Sale Order: Antique, Modern Furniture & Appliances Sell First Then Antique & Small Household Items. At Approx 12:30 PM Will Offer Van, Golf Cart, Mower, Boat & Large Items. Tools & Outdoor Items Will Finish Auction. See Ya There!!!**

Terms: Cash or check with proper ID. Now accepting most major credit cards. Nothing removed until settled for. Statements made the day of sale takes precedence over printed material. Everything sold as is where is. Not responsible for accidents. Restroom available. Concessions Provided. Check our website for upcoming auctions and for additional pictures!!



NANCE AUCTION SERVICE

No Matter How BIG or small, We Do Them All!!!



Col. Bill Nance 417-214-0093 In God We Trust Philippians 4:13 Sean Beazley 417-247-6754

R&R AUCTION SERVICE

AUCTION FRIDAY, FEB 2ND, 6PM

R&R Auction House - 1644 South Ash in Buffalo MO



2006 Kings Ranch Ford Expedition (229,000 miles)

Firearms including but not limited to...

Remington 308 Win with custom Boyd stock and Hawke scope, Hatfield single shot 410, Palmetto PS AK 47 in 7.62 x 39 mm Bear Creek model BCA 10 AR 10 in 6.5 Creedmoor, Barra 1911 air BB pistol, Colt official police 38 special, Savage model 93 22 WMR NR Davis and Sons double barrel 12 gauge, Winchester model 670 30 06, Savage Axis 308 Win, Carl Gustafs Stabs Gevarsfaktori Mauser rifle, Smith & Wesson M & P 40 cal pistol, T/C Compass 270 Win, T/C Compass 223 Rem, New England Arms 22-250 single shot, Remington model 798 7mm rem mag, Savage model 11 7mm - 08, Ruger American 350 Legend, gun cases

Old coins including but not limited to:

Franklin halves, Walking Liberty halves, Silver Washington quarters, 1804 half cent, Morgan and Peace dollars, lots of foreign coins, Games of the XXIIIrd Olympiad Los Angeles 1984 collector coin set, Presidential Hall of Fame coin set, Ghost Error nickels and much more! Old crank telephone, rotary telephone, milk glass hen on a nest, lots of Corningware, extremely large collection of Fiestaware, bulletin boards, large metal letters, stereo equipment, recliner sofa, bushel basket, lots of misc. items still rolling in, so keep a watch on www.rrauctionservice.com



Please keep watch on our website for added photos.

TERMS: 10% buyer's premium. Cash, check or credit card with proper ID, nothing removed until settled for. A 3% fee will be added to credit card purchases. Not responsible for errors in listing. Any announcement made sale day will take precedence over any printed matter.

GENERAL AUCTIONEERS

Auction & Appraisals SERVICE

For more information contact Professional Auctioneer Russ Weeks at 417-576-7357 or check out www.rrauctionservice.com

Serving this area's auction needs since 1997 with honesty and professionalism.
www.rrauctionservice.com
(417) 576-7357 or (417) 345-4140



Owners : Steve Custer & Becki Lansdown



SATURDAY
JANUARY 27
@ 10 AM

Directions: 3006 Sunset Road, Hartville Mo. From Hartville Go North On 5 Hwy 7 Miles To TT, Right 3 Miles To Sunset, Left 1.5 Miles To Sale. From Grovespring Go South On 5 To Sunset, Left To Sale. FOLLOW SIGNS. BRING YOUR OWN BOXES!!

TRACTOR & EQUIPMENT

Tractor 2010 New Holland, T4.75, 4x4 Tractor, With A 655 TI Loader, 600 Hours With Dual Remotes, Standard Shift. Super Nice Tractor, One Owner And Always Sheded. 5' Heavy Duty Skid Steer Mount Grapple Rake. Precision Heavy Duty Extendable Tree Pincher W Remotes And Skid Steer Type Mount, Called A Tele Clipper. Extra Heavy Duty 10' Pull Type Bush Hog, Heavy Gear Boxes. All Above Equipment Is Like New, Also Includes Older Two Bottom Plow * Old Drag Type Disc * 4 Pt Carry All * 3 Pt Blade *

TOOLS * FURNITURE * MISCELLANEOUS

Several Flat Wick Kerosene Lamps, Oak Table, Wicker Furniture, Flat Top Trunk, 2 Church Pews, Wood Rocking Elephant, Gas Powered Weed Eater, Antique Wringer Washer, Old Military Spoons, Stamp Collection, Large Lot of Books, Wicker Baskets, Lots Jars, Handicap Items, Household Dishes, Nice Wicker Table, Glass Chess Set, Cassette Tapes, Wood Shelves, Glass Table , Gossip Bench, Luggage, 5 Tier Wood Shelf, Lot Old Porcelain Thimble's, Recliner, Buffett, Outdoor Wicker Set, Avon Bottles, Lot Ball Caps, Wooden Utility Cabinets, Misc. Pictures, Washboard, Chest Of Drawers & Dressers, Golf Clubs, Chain Saw Sharpener, Lg. Work Bench, Skill Saw, CB Radio, Step Ladder, Lot Of Coolers, Dremel Scroll Saw, Long Work Bench, Metal Shelves, 2 Wheel Barrows , Sears Craftsman Table Saw, Car Ramps, Several Gas Cans, BBQ Smoker, Yard Cart, Shop Cart, Long Handle Tools, Bee Working Equipment, LOTS OF BOXES OF MISCELLANEOUS.

All items sell as is where is and must be paid for in full before removed. 3.25% clerk charge on any card transaction, CASH, check accepted if known to the family. All buyers must provide Missouri Driver's License or MO ID to get a bidders number. Port a pot should be available. Crowd is encouraged to wear a mask and maintain social distancing.

AUCTIONS BY MIKE SHERMAN AUCTION 417/872/6405



ONLINE GUN & AMMO AUCTION

IMAN AUCTION CENTER - 34614 HIGHWAY 24, SALISBURY, MO

BIDDING OPENS FRIDAY, JANUARY 26, 2024 | FIRST LOT CLOSES SUNDAY, FEBRUARY 4, 2024 @ 6 PM

- Gun Collection From The Late Glen Bryan of Columbia, MO and Others -
ONLINE BIDDING @ IMANAUCTION.COM

300+ GUNS

200,000 ROUNDS OF AMMO

AUCTION PREVIEW
Friday, Feb. 2, 2024 | 1-5 PM



IMAN AUCTION COMPANY

Office: 660-388-6235 | Greg 660-788-4298 | Ian - 660-414-7967

CHECK OUT OUR FULL AUCTION SCHEDULE @ IMANAUCTION.COM



ANNUAL SPRING CONSIGNMENT AUCTION

SATURDAY, FEBRUARY 24, 2024 @ 9:00 AM

Allen Auction Sale's Lot 490 S. Hwy 47, Hawk Point, MO, 63349

Directions: Allen Auction Sale's Lot. From Hawk Point, MO, Take Hwy 47 South 2.5 miles, Auction on Left Side. Watch for Signs Day of Auction.

We will be accepting:

COMBINES & HEADS • TRACTORS • FARM EQUIPMENT • SKID LOADER EQUIPMENT • VEHICLES • CONSTRUCTION • HAY EQUIPMENT • TRAILERS & WAGONS • LIVESTOCK EQUIPMENT & SUPPLIES • RECREATION • LAWN & GARDEN

NO VEHICLE TIRES!

Auctioneers Note: We will be running 3 auction rings. Any questions on any of the equipment, feel free to give us a call at the office. Thanks - Kyle

- Accepting consignments by appointment until Friday, February 9, 5pm

- Weekend check-in: Saturday, February 10, 9am-3pm & Sunday, February 11, 10am-3pm

- Check in daily February 12th-February 22, 8am-5pm

Deadline for newspaper advertising February 12

ALLEN AUCTION & REAL ESTATE SERVICE LLC

(636) 338-4805 • Hawk Point, MO • www.allenauction.net

The Auctioneers:
 Kyle Allen: (636) 236-2344
 Elden Foster: (573) 239-6745
 Email: office@allenauction.net

REGISTERED HEREFORD & ANGUS BULLS: Home raised, Some Show-Me Select Qualified. 573-701-7828. Belgrade.

SPORTSET BY SARGENT: Fishing pliers in leather sheath. Like a multi-tool. \$15. 636-239-2695 or 314-560-5700. Washington.

NEW SQUARE D RAINPROOF 50AMP DISCONNECT: \$150. 636-239-2695 or 314-560-5700. Washington.

USED JET HOME POLLUTION CONTROL PANNEL: Model CP700. \$50. 636-239-2695 or 314-560-5700. Washington.

INTERNATIONAL PICKUP TRANSFER GEARBOX: \$150. 573-308-5884. Rolla.

1 PAIR OF KEY BRAND MEN'S JEANS: Waist 38, Length 34. \$8. 636-239-2695 or 314-560-5700. Washington.

BLACK METAL TUBULAR BRACKET: Scrolling and a stainless bracket. \$8. Call for pictures. 636-239-2695 or 314-560-5700. Washington.

ANTIQUE 4 HP ENGINE: Built by Continental Motors Corporation. \$150 OBO. 573-308-5884. Rolla.

'85 FORD PICKUP PARTS: Passenger door with window glass & mirror \$30. Also, Tailgate for '85 Ford pickup \$25. 573-308-5884. Rolla.

BUFFALO LIVESTOCK MARKET LLC



276 Hwy 32 W., Buffalo, MO

January 20th, 2024

Receipts: 971

REPRESENTATIVE STEERS

300-400 @ 280.00 to 329.00
 400-500 @ 277.00 to 323.00
 500-600 @ 257.00 to 301.50
 600-700 @ 225.00 to 264.50
 700-800 @ 200.00 to 227.00
 800-900 @ 190.00 to 212.00

REPRESENTATIVE HEIFERS

300-400 @ 195.00 to 250.00
 400-500 @ 180.00 to 260.00
 500-600 @ 175.00 to 220.00
 600-700 @ 155.00 to 212.00
 700-800 @ 145.00 to 174.00
 800-900 @ 149.00 to 157.00

FEEDER BULLS

300-400 @ 250.00 to 292.50
 400-500 @ 240.00 to 280.00
 500-600 @ 220.00 to 257.00
 600-700 @ 200.00 to 244.00
 700-800 @ 170.00 to 210.00
 800-900 @ 177.00 to 183.00

HOL/HOLX STR

NT

STOCKS COWS

Bred Cows 1450.00 to 2200.00

SLAUGHTER BULLS

High Yield 120.00 to 135.00
 Low Yield 100.00 to 118.00

SLAUGHTER COWS

Fleshy 102.00 to 115.00
 Med Flesh 95.00 to 112.00
 Light Flesh 90.00 to 106.00

Weaned Vacc Cattle Today in Hot Demand

Weigh Cows & Bulls ON FIRE

MON-WED MARKET REPORT

Listen to KJEL 103.7FM • Lebanon or KYOO 99FM • Bolivar

VIEW OUR SALES AT CATTLEUSA.COM

CALL FOR TRUCKING OR ON-FARM VISIT

Lyle Caselman • Owner-Manager
 417-345-7876 • mobile 417-533-2944
 Leon Caselman • Owner
 417-345-4514 • mobile • 417-588-6185

KILMER FARM EQUIPMENT Consignment Auction
SATURDAY, MARCH 2, 2024 • 9:30 AM
AUCTION LOCATION: 14769 Cattle Lane, Versailles, MO 65084
 Directions: At the Intersection of Hwy 5 and Hwy 52 in Versailles, go North on Hwy 5 for 1 mile to Cattle Ln then turn Right or East and go ¼ mile to Sale Site.

AD DEADLINE: TUESDAY, FEB. 6, 2024
ACCEPTING CONSIGNMENTS ON LOT
 Saturday, Feb 17 - Wednesday, Feb. 28
NO ITEMS WILL BE ACCEPTED AFTER FEB. 28 AT 5 PM
CONTACT DANIEL OR MARK KILMER TO CONSIGN OR FOR MORE INFORMATION (573) 378-6615

TRACTORS, PLANTERS AND SPRAYERS,
 CONSTRUCTION EQUIPMENT, TRUCKS AND TRAILERS,
 GRAIN CARTS AND WAGONS, MANURE SPREADERS,
 CUTTERS, TILLAGE, COMBINE AND HEADS, FEED MIXERS,
 MISC. EQUIPMENT, HAY EQUIPMENT, SILAGE EQUIPMENT

Wheeler AUCTIONS & REAL ESTATE
 23101 HWY. 24, PARIS, MO 65273 • 660-327-5890
WWW.WHEELERAUCTIONS.COM

For more info and photos:
www.wheelerauctions.com

KILMER FARM EQUIPMENT, LLC
 14270 Hwy. 52, Versailles, MO 65084
(573) 378-6615

NEW JELD WEN 5' LEFT HAND SLIDING GLASS DOOR WITH SUNSTABLE INTERIOR BLINDS: Clear tempered glass, Desert Sand trim/hardware. Retail \$2655 Sell \$900. 417-693-0389. Conway.

FOR SALE: 2 Dayco motorcycle covers for Harley or other big bikes. \$50 each. 417-260-0941. Raymondville.

TOSHIBA 42" FLAT SCREEN LED LCD HD TV: With remote & owner's manual. \$75. 210-787-8222. Linn Creek.

3 ARMY CANTEENS: Mess kit, belt & duffel bag. \$60 for all. 417-260-0941. Raymondville.

DARDEN PROFESSIONAL TIMBER HARVESTING, BUYING STANDING TIMBER: Great prices, improve wildlife habitat and improve forest health. State Certified & Fully Insured! 573-247-4808. Salem.

GUNSMITHING-Older Rifles, Shotguns, Handguns, all 22LRs. Any make, any model, estate appraisals. Camdenton. 573-363-5801.

PLAYBOY MAGAZINES LIFETIME COLLECTION: Over 224 editions plus others. Starting in 1973-2003, Including Donald Trump, Barbi Twins, Madona, Bo Derek, Farrah Fawcett, Cindy Crawford, Goldie Hawn, Marilyn Monroe. With collector & anniversary editions. Take all \$200. 210-787-8222 Linn Creek

DRAFTING TABLE: 6' steel with extra storage unit. 3' black lateral 3 drawer steel file cabinet. 10 drawer wood flat map storage cabinet \$350.00 each 573-897-3093. Linn.

Gun Show
Sat. February 3rd • 9am-5pm
Sun. February 4th • 9am-3pm
 The Red Shed Event Center
 Exit 179 Doolittle, MO

Come to the Gun Show!
 Buy • Sell • Trade

Admission \$5.00 Cash or Check (10 and under free).

For More information call 573-341-5450 or 573-465-0642

MAC'S TIEDOWN STRAPS: Like New. \$80. 417-260-0941. Raymondville.

KC CHIEFS RED JERSEY MARCUS ALLEN: Everything sewn on. Autographed JSA COA. \$109. 573-854-8132. Text for pics. Houston.

NEW IN BOX MASTERBUILT ELECTRIC TURKEY FRYER: Up to 14 lbs. Fry, boil or steam. Safe for indoors. \$80. 417-718-5347. Morgan.

DALLAS COWBOYS TONY DORSETT AUTOGRAPHED JERSEY: Everything sewn on. JSA COA. Professionally matted & framed. \$ 199. Text for pictures. 573-854-8132. Houston.

SPLIT SEASONED FIREWOOD FOR SALE: 573-759-2125. Dixon, MO area. Must pick up, no delivery.

DIXON ZEETER ZERO TURN: B&S, BHP. \$150. 417-322-0812. Eldridge.

40 ACRE FARM: Along with 18 head of cattle. Fairdealing, MO. \$300,000. 573-857-3210.

POOL TABLES: Installations, moves, recovers, repairs, accessories, etc. 573-646-1700.

HAY FOR SALE: alfalfa & alfalfa/orchard grass \$10-\$12 a bale horse quality. Clean Wheat Straw \$4.50 per bale. Versailles. 573-378-7326.

72 GUNSMOKE DVDS: \$100. 573-764-4435. Gerald.

ESTATE OF RICHARD F. SORRELS
Gear Up for These Vintage Tools



LOTS of vintage tools

- Dodge Brothers
- Ford
- Stanley
- Craftsman
- Walworth
- Bessey
- Diamon

Proto

- Molding Planes
- Snap-on
- And Others.
- Dietz, Jupiter,
- Shapleigh and other
- Kerosene Lanterns

Preview:
 Monday, Jan. 29th | 3:00 p.m. - 5:30 p.m.

Auction Ends:
 Tuesday, Jan. 30th | Starting at 12:30 p.m.

Pick-Up
 Wednesday, Jan. 31st | By Appointment Only

Atterberry Auction & Realty Co. Office
 7912 I-70 Drive S.E., Columbia, MO 65201

Check it out & Bid at
www.AtterberrySells.com
 573-474-9295



contactus@atterberryauction.com
ATTERBERRY
 AUCTION & REALTY COMPANY
 Your Real Estate at Auction Specialists

MID MISSOURI STOCKYARDS

REGULAR SALE EVERY THURSDAY 11AM

WATCH OUR WEEKLY SALE IN REAL TIME ON DVAUCTION.COM

For Farm Visits, Market Updates, or Trucking
 Call Zach Cox 417-777-1320
 Dan Romine 573-578-4939

**Competitive Buyers!
 Competitive Commission!
 Competitive Market!**

Barn: 417-532-9292 Like us on Facebook
 I-44 • Exit 123 "just outside of Lebanon"
 17505 Route 66, Phillipsburg, MO 65722
 For weekly market updates, visit us at
www.midmostockyards.com

LAKE OF THE OZARKS – New Years Special camping lots starting at \$4,950 - \$125 down \$69 per month. Also building and acreage tracts. Beautiful wooded areas, great fishing, free lake access and boat ramps. No credit checks, owner financing, immediate possession or own for investment. Also, Conservation boat ramp close by. **Prices good through January 29, 2024.** Hwy 135 between Stover and Laire, MO. Take lake road 135-12 to the Ivy Bend Land Office. Closed Tuesdays and Wednesdays Call anytime 573-372-6493.

ST LOUIS BLUES: autographed full size hockey stick. Bobby Hull. Text for pictures. \$149 573-854-8132. Houston.

SEASONED FIREWOOD: Franklin County MO. 1-636-234-7275

BORDER COLLIE/HEALER PUPS: Shots & wormed \$100.00 573-694-9159. Russellville.

MARBLE SLABS: old from state capitol 750 square feet, make offer. 573-897-3093. Linn

2000 GMC COKE TRUCK: with bed, diesel, automatic. Runs & drives good. Possible trade \$3,500. 417-321-1928.

WANTED 16X80 TRAILER HOUSE: Good condition. 573-392-0441

MILO STUBLE: 4ft X 70in bales net wrapped. \$55. 417-321-1928.

PYRENEES/ANATOLIAN PUPPIES FOR SALE: 8 weeks old from working parents livestock guardians. \$200. 573-363-5213 Eldridge.



Meadowview Dutch Market

Bulk & Surplus Groceries • Prices Subject to Stock on Hand

Call to Order
417-993-3017

DELI SPECIAL

HONEY TURKEYREG. \$6.29 LBSALE \$5.79 LB
COLBY/SWISSREG. \$5.99 LBSALE \$5.49 LB

TRY our Fresh Homemade DELI Sandwiches: TURKEY, HAM, ROAST BEEF, ITALIAN, BLT'S, PULLED PORK AND BLT PULLED PORK (MADE YOUR WAY)! COME IN OR CALL to order! ALSO Custom Deli trays! Veggie OR FRESH Meat-N-Cheese!

Sale Dates January 24th, 2024 to January 30th, 2024 while supplies last!

Reduced Fat Sliced Cheddar Cheese

\$5.99
4.5 LB BLOCK



10% OFF SURPLUS SNACKS

Pepperoni and American Cheese Lunch Makers
4/\$1.00
2.0Z.

Caramel & Cheddar Popcorn
4/\$1.00
3.5OZ

Yogurt Covered Pretzels
\$1.29
LB

Fill Your Snack Bag!!
ONLY \$3.99
EA.

Farmer Jon Pork Sausage
89¢
EA.

Texas Oranges
\$8.99
10 LB BAG

Fully Cooked Beef Crumbles
99¢
LB

NOT RESPONSIBLE FOR PRINT ERROR!!

BONUS SPECIAL Spiral Sliced Ham
\$1.29
LB

MEADOWVIEW DUTCH MARKET
417-993-3017 Hours: Mon-Thurs 8-5pm
Fri 8-6pm • Sat 8-5pm
23 Miles West on Hwy 64 • Right on T Hwy
9 miles • Left on E Hwy 1 mile on Left

NOW ACCEPTING CREDIT, DEBIT CARDS & EBT

DUTCH COUNTRY STORE, LLC
573-378-4395
Hours: Mon-Thurs 8-5pm
Fri 8-6pm • Sat 8-5pm
5 miles East of Versailles off Hwy C on Kelsay Road

2017 BOBCAT S650: 1820hrs, 74hp, hi-flow, heat/ac, radio, two speed, new tires, 72" smooth bucket. Runs great no issues. \$35,800. 573-789-9853. Iberia MO

FOR SALE: 8 galvanized metal tables. 24ft long, 8 ft wide. Make excellent porch supports, outdoor signs, building rectangular enclosures, greenhouse tables. They will make forms for flat concrete. \$1,500 per table OBO. 417-546-7986 & 417-546-0275, Forsyth.

SOVIET UNION WINTER WEATHER ARMY HAT: Excellent condition. Text for pictures. \$35. 573-854-8132. Houston.

STEEL ENTRY DOORS: 3' wide with glass, some with frames. \$45.00 each. 573-897-3093. Linn.

SPLIT SEASONED FIREWOOD: No Delivery. Vichy area. Call 573-261-1611

HORSE HAY: top quality. Small squares \$12.00 per bale. 573-247-8715. Salem

LHASA POO PUPPIES: 8 weeks old current on all shots. Call for more information. 417-288-2291. Lebanon

FOR SALE: Lincon 250-amp, 250-volt wire welder \$500 573-392-0441

WANTED TO BUY ALLIS-CHALMERS 190XT OR 200 WITH LOADER: Must be in really good condition. 608-792-8861.

BUTCHER HOGS FOR SALE: Bell, MO. 573-205-1177.

GET YOUR WEBSITE STARTED TODAY! We specialize in small businesses. www.franklincountywebsites.com text – 636-221-0524.

4 PEAVEY SPEAKERS: two: 16 x 26, two: wedge floor monitors 65 watt. Asking \$200 OBO 573-732-3557.

PEPSI COLA BOTTLE CAP SIGN: 36" across \$400 OBO 573-732-3557.

FOR SALE. HAY, CORN SILAGE, & WHEATLAGE. Hay 4X5 bales 1st & 2nd cutting \$40-\$65 per bale depending on quality. Corn silage \$70 per ton or \$60 per if you take all (780 tons). Wheatlage \$40 per ton. Silage & Wheatlage bagged. 573-453-4150.

WEATHERED BARN WOOD SIDING: 10" wide. Call for appointment 573-729-7226. www.pineridgerustic.com Salem.

NEW 1500LB PULL SUZUKI WINCH: With brackets. \$150. 573-764-4435. Gerald.

STRAW FOR SALE: Large square bales, \$45/each. Small square bales, \$4.50/each. 573-539-2060. Versailles.

HAY FOR SALE: big squares and big rounds. Call for pricing. 417-589-0022.

CATTLE & HAY HELP NEEDED: 1 bedroom house furnished. Pay is based on what you know. In Maynard Arkansas area. Contact Mike 501-658-5508.

LOG SIDING: 2X8 Pine/Western Cedar. Call for appointment 573-729-7226. www.pineridgerustic.com Salem.

NEW INVENTORY - \$59,900 Delivered and setup, Hurry! Call Adam 573-657-2176 amegamobilehomes.com

NEW MOBILE HOMES – prices start at \$64,900 delivered and setup 573-499-9993 columbiadiscounthomes.com

BASEMENT READY TRUE MODS- instock ready for delivery 573-657-7040 chateauhomes.net

OFFICIAL TRACTOR OF TOUGH™

INTRODUCING THE ALL-NEW 5100 SERIES



Marshfield Machinery Inc.

222 E. Madison • Marshfield, MO 65706
417-859-2117 • www.marshfieldmachinery.com

*2018 data including all Mahindra group brand sales.
MahindraUSA.com © 2020 Mahindra USA Inc.



| NEW MAHINDRA TRACTORS | |
|-------------------------------|----------|
| 1626 4WD & LDR 26HP | IN STOCK |
| 1635 4WD & LDR 36HP | IN STOCK |
| 1640 4WD & LDR 40HP | IN STOCK |
| 2645 4WD & LDR 45HP | IN STOCK |
| 5145 4WD & LDR 45HP | IN STOCK |
| 5155 4WD & LDR 55HP | IN STOCK |
| 4550 4WD & LDR 48HP | IN STOCK |
| 6065 4WD & LDR 65HP | IN |
| STOCK 6075 4WD CAB & LDR 71HP | IN STOCK |
| USED TRACTORS | |
| MF 4708 80HP 4WD CAB LDR | 55,000 |
| MF 4609M 90HP CAB LDR | 45,000 |
| MF 5445 75HP 4WD CAB LDR | 42,500 |
| NHT4.75 74HP 4WD LDR | 32,500 |
| MF 6170 97HP CAB LDR | 24,500 |
| MAHINDRA 4540 41HP 4WD LDR | 21,500 |
| MAHINDRA 2638 38HP 4WD LDR | 19,000 |
| MAHINDRA 4035 40HP 4WD LDR | 15,000 |
| JD 5325 67HP | 13,500 |
| AC 7010 106HP CAB | 9,500 |
| MF 1528 28HP 4WD | 6,500 |
| MF 285 81HP CAB LDR | 6,500 |
| KUBOTA L175 17HPW/ MOWER | 3,000 |
| USED ROUND BALERS | |
| MF 2946A 4X6 MESH | 35,000 |
| HESSTON 550 4X6 | 2,500 |
| HESSTON 560 5X6 | 2,000 |
| USED MISC. | |
| BUSH HOG 2815 15FT | 18,500 |
| BUSH HOG 3715 15FT | 13,500 |
| BUSH HOG 2615L 15FT | 10,500 |
| JD 1815 15FT | 9,500 |
| BUSH HOG 3210 10FT | 8,500 |
| HESSTON 8 WHEEL RAKE | 3,000 |
| HESSTON 8 WHEEL RAKE | 2,500 |
| OMI 8 WHEEL RAKE | 2,500 |
| RHINO 8 WHEEL RAKE | 1,500 |
| RHINO 5FT FINISH MOWER | 850 |

Marshfield Machinery Inc.

222 E. Madison
Marshfield, MO 65706
417-859-2117
www.marshfieldmachinery.com



Wright Spray Foam Insulators, LLC
Commercial & Residential
Call for FREE Estimates!

Ervin Gingerich
417-926-2052
B. Eli Yoder
417-818-5539

TINY HOMES – Missouri Franchise 573-881-7965

REGISTERED HERFORD & ANGUS BULLS: Home raised, Some Show-Me Select Qualified. 573-701-7828. Belgrade.

SPORTSET BY SARGENT: Fishing pliers in leather sheath. Like a multi-tool. \$15. 636-239-2695 or 314-560-5700. Washington.

NEW SQUARE D RAINPROOF 50AMP DISCONNECT: \$150. 636-239-2695 or 314-560-5700. Washington.

USED JET HOME POLLUTION CONTROL PANNEL: Model CP700. \$50. 636-239-2695 or 314-560-5700. Washington.

1 PAIR OF KEY BRAND MEN'S JEANS: Waist 38, Length 34. \$8. 636-239-2695 or 314-560-5700. Washington.

BLACK METAL TUBULAR BRACKET: Scrolling and a stainless bracket. \$8. Call for pictures. 636-239-2695 or 314-560-5700. Washington.

RUBBER & LEATHER BOOTS AND 5-Buckle OVER SHOES: Men's 11, Women's 7, some insulated. \$12-\$35 obo. 636-239-2695. Washington.

ANTIQU 4 HP ENGINE: Built by Continental Motors Corporation. \$150 OBO. 573-308-5884. Rolla.

'85 FORD PICKUP PARTS: Passenger door with window glass & mirror \$30. Also, Tailgate for '85 Ford pickup \$25. 573-308-5884. Rolla.

INTERNATIONAL PICKUP TRANSFER GEARBOX: \$150. 573-308-5884. Rolla.

NEW JELD WEN 5' LEFT HAND SLIDING GLASS DOOR WITH SUNSTABLE INTERIOR BLINDS: Clear tempered glass, Desert Sand trim/hardware. Retail \$2655 Sell \$900. 417-693-0389. Conway.

FOR SALE: 2 Dayco motorcycle covers for Harley or other big bikes. \$50 each. 417-260-0941. Raymondville.

MAC'S TIEDOWN STRAPS: Like New. \$80. 417-260-0941. Raymondville.

3 ARMY CANTEENS: Mess kit, belt & duffel bag. \$60 for all. 417-260-0941. Raymondville.

DARDEN PROFESSIONAL TIMBER HARVESTING, BUYING STANDING TIMBER: Great prices, improve wildlife habitat and improve forest health. State Certified & Fully Insured! 573-247-4808. Salem.

GUNSMITHING-Older Rifles, Shotguns, Handguns, all 22LRs. Any make, any model, estate appraisals. Camdenton. 573-363-5801.

TOSHIBA 42" FLAT SCREEN LED LCD HD TV: With remote & owner's manual. \$75. 210-787-8222. Linn Creek.

NEW IN BOX MASTERBUILT ELECTRIC TURKEY FRYER: Up to 14 lbs. Fry, boil or steam. Safe for indoors. \$80. 417-718-5347. Morgan.

KC CHIEFS RED JERSEY MARCUS ALLEN: Everything sewn on. Autographed JSA COA. \$109. 573-854-8132. Text for pics. Houston.

DALLAS COWBOYS TONY DORSETT AUTOGRAPHED JERSEY: Everything sewn on. JSA COA. Professionally matted & framed. \$ 199. Text for pictures. 573-854-8132. Houston.

SPLIT SEASONED FIREWOOD FOR SALE: 573-759-2125. Dixon, MO area. Must pick up, no delivery.

DIXON ZEETER ZERO TURN: B&S, BHP. \$150. 417-322-0812. Eldridge.

SEASONED FIREWOOD: Franklin County MO. 1-636-234-7275

Buildings • Hunter's Cabins • Lawn Furniture

JAMCO Portable Buildings
800-688-2064 • 307 Enterprise Dr. • Seymour, MO • www.jamcobuilders.com

Rent To Own Plan

JOHN DEERE | *Heritage* TRACTOR

TRUCKLOAD Sale!

SCAN TO SAVE

Z370R with 42" Deck Z530M with 54" Deck X570 with 54" Deck

SAVE BIG WITH OUR Winter Service Sale

SCHEDULE NOW FOR 33% OFF

Come test drive today!

Anderson
(417) 436-3333

Joplin
(417) 781-5556

*Restrictions apply. Ends 3/2/2024 with approved credit through John Deere Financial.

ST LOUIS BLUES: autographed full size hockey stick. Bobby Hull. Text for pictures. \$149 573-854-8132. Houston.

40 ACRE FARM: Along with 18 head of cattle. Fairdealing, MO. \$300,000. 573-857-3210.

POOL TABLES: Installations, moves, recovers, repairs, accessories, etc. 573-646-1700.

HAY FOR SALE: alfalfa & alfalfa/orchard grass \$10-\$12 a bale horse quality. Clean Wheat Straw \$4.50 per bale. Versailles. 573-378-7326.

PLAYBOY MAGAZINES LIFETIME COLLECTION: Over 224 editions plus others. Starting in 1973-2003, Including Donald Trump, Barbi Twins, Madonna, Bo Derek, Farrah Fawcett, Cindy Crawford, Goldie Hawn, Marilyn Monroe. With collector & anniversary editions. Take all \$200. 210-787-8222 Linn Creek

FOR SALE: 8 galvanized metal tables. 24ft long, 8 ft wide. Make excellent porch supports, outdoor signs, building rectangular enclosures, greenhouse tables. They will make forms for flat concrete. \$1,500 per table OBO. 417-546-7986 & 417-546-0275, Forsyth.

TAYLOR TRUCKS & EQUIPMENT

417-924-2026 • 2676 Hwy. 5, Mansfield, MO

★ INTIMIDATOR TREE PULLER ★

★ 3 POINT TILLERS ★

TRAILER PARTS & REPAIR
MD144 Bat Wing in stock!


Milwaukee Cordless Tools

DANUSER DEALER

T3 Post Driver & Other Attachments
New Mowers! Bush-Whacker, Big Bee
Storage Containers & Dry Vans - 20' - 53',

BUSH-WHACKER HD
SKIDSTEER BRUSH CUTTER

Portable Generators, Farm Tires, New Semi Tires,
PTO's & Parts for Rotary Mowers, Farm Tractor
Implements, Plows, Used 15" Bush-Whacker Now In
Stock, Discs, and More Skidsteer Attachments: Pallet
Forks, Buckets, Grapples, Hay Spears, RR Ties



Bush-Whacker
Heavy Duty Rotary Cutter

We Invite you To Come By & Look
Us Over! Located 2.5 Miles North
Of Mansfield, MO On Hwy 5

LAKE OF THE OZARKS – New Years Special camping lots starting at \$4,950 - \$125 down \$69 per month. Also building and acreage tracts. Beautiful wooded areas, great fishing, free lake access and boat ramps. No credit checks, owner financing, immediate possession or own for investment. Also, Conservation boat ramp close by. **Prices good through January 29, 2024.** Hwy 135 between Stover and Laurie, MO. Take lake road 135-12 to the Ivy Bend Land Office. Closed Tuesdays and Wednesdays Call anytime 573-372-6493.

2017 BOBCAT S650: 1820hrs, 74hp, hi-flow, heat/ac, radio, two speed, new tires, 72" smooth bucket. Runs great no issues. \$35,800. 573-789-9853. Iberia MO

SOVIET UNION WINTER WEATHER ARMY HAT: Excellent condition. Text for pictures. \$35. 573-854-8132. Houston.

BORDER COLLIE/HEALER PUPS: Shots & wormed \$100.00 573-694-9159. Russellville.

MARBLE SLABS: old from state capitol 750 square feet, make offer. 573-897-3093. Linn

STEEL ENTRY DOORS: 3' wide with glass, some with frames. \$45.00 each. 573-897-3093. Linn.

DRAFTING TABLE: 6' steel with extra storage unit. 3' black lateral 3 drawer steel file cabinet. 10 drawer wood flat map storage cabinet \$350.00 each 573-897-3093. Linn.

SPLIT SEASONED FIREWOOD: No Delivery. Vichy area. Call 573-261-1611

HORSE HAY: top quality. Small squares \$12.00 per bale. 573-247-8715.Salem

LHASA POO PUPPIES: 8 weeks old current on all shots. Call for more information. 417-288-2291. Lebanon

FOR SALE: Lincon 250-amp, 250-volt wire welder \$500 573-392-0441

2000 GMC COKE TRUCK: with bed, diesel, automatic. Runs & drives good. Possible trade \$3,500. 417-321-1928.

WANTED 16X80 TRAILER HOUSE: Good condition. 573-392-0441

MILO STUBLE: 4ft X 70in bales net wrapped. \$55. 417-321-1928.

PYRENEES/ANATOLIAN PUPPIES FOR SALE: 8 weeks old from working parents livestock guardians. \$200. 573-363-5213 Eldridge.

WANTED TO BUY ALLIS-CHALMERS 190XT OR 200 WITH LOADER: Must be in really good condition. 608-792-8861.

BUTCHER HOGS FOR SALE: Bell, MO. 573-205-1177.

GET YOUR WEBSITE STARTED TODAY! We specialize in small businesses. www.franklincountywebsites.com text – 636-221-0524.

4 PEAVEY SPEAKERS: two: 16 x 26, two: wedge floor monitors 65 watt. Asking \$200 OBO 573-732-3557.

Starnes Auto LLC

22115 Rt. 66 • Lebanon, MO 65536

417.588.7939 Cell
417.588.3159 Office
www.starnesauto.com

Worry-Free

WINDSHIELD REPAIRS

Don't let that rock chip turn into a huge problem!



Chip & Crack Repairs | Glass Replacement

WE FILE WITH INSURANCE!

PEPSI COLA BOTTLE CAP SIGN: 36" across \$400 OBO 573-732-3557.

FOR SALE. HAY, CORN SILAGE, & WHEATLAGE. Hay 4X5 bales 1st & 2nd cutting \$40-\$65 per bale depending on quality. Corn silage \$70 per ton or \$60 per if you take all (780 tons). Wheatlage \$40 per ton. Silage & Wheatlage bagged. 573-453-4150.

72 GUNSMOKE DVDS: \$100. 573-764-4435. Gerald.

BASEMENT READY TRUE MODS- instock ready for delivery 573-657-7040 chateauhomes.net

STRAW FOR SALE: Large square bales, \$45/each. Small square bales, \$4.50/each. 573-539-2060. Versailles.

HAY FOR SALE: big squares and big rounds. Call for pricing. 417-589-0022.

CATTLE & HAY HELP NEEDED: 1 bedroom house furnished. Pay is based on what you know. In Maynard Arkansas area. Contact Mike 501-658-5508.

WEATHERED BARN WOOD SIDING: 10" wide. Call for appointment 573-729-7226. www.pineridgerustic.com Salem.

LOG SIDING: 2X8 Pine/Western Cedar. Call for appointment 573-729-7226. www.pineridgerustic.com Salem.

NEW INVENTORY - \$59,900 Delivered and setup, Hurry! Call Adam 573-657-2176 amegamobilehomes.com

NEW MOBILE HOMES – prices start at \$64,900 delivered and setup 573-499-9993 columbiadiscountshomes.com

TINY HOMES – Missouri Franchise 573-881-7965

REGISTERED HEREFORD & ANGUS BULLS: Home raised, Some Show-Me Select Qualified. 573-701-7828. Belgrade.

SPORTSET BY SARGENT: Fishing pliers in leather sheath. Like a multi-tool. \$15. 636-239-2695 or 314-560-5700. Washington.

NEW SQUARE D RAINPROOF 50AMP DISCONNECT: \$150. 636-239-2695 or 314-560-5700. Washington.

40 YEARS IN A MISSOURI CLASSROOM BOOK: by Grace Bacon Ferrier in Osage and Gasconade counties, \$ 10. 417-532-2045. Lebanon. (Leave message and phone number.)

USED JET HOME POLLUTION CONTROL PANNEL: Model CP700. \$50. 636-239-2695 or 314-560-5700. Washington.

1 PAIR OF KEY BRAND MEN'S JEANS: Waist 38, Length 34. \$8. 636-239-2695 or 314-560-5700. Washington.

BLACK METAL TUBULAR BRACKET: Scrolling and a stainless bracket. \$8. Call for pictures. 636-239-2695 or 314-560-5700. Washington.

RUBBER & LEATHER BOOTS AND 5-Buckle OVER SHOES: Men's 11, Women's 7, some insulated. \$12-\$35 obo. 636-239-2695. Washington.

INTERNATIONAL PICKUP TRANSFER GEARBOX: \$150. 573-308-5884. Rolla.

NEW JELD WEN 5' LEFT HAND SLIDING GLASS DOOR WITH SUNSTABLE INTERIOR BLINDS: Clear tempered glass, Desert Sand trim/hardware. Retail \$2655 Sell \$900. 417-693-0389. Conway.

FOR SALE: 2 Dayco motorcycle covers for Harley or other big bikes. \$50 each. 417-260-0941. Raymondville.

POOL TABLES: Installations, moves, recovers, repairs, accessories, etc. 573-646-1700.

40 ACRE FARM: Along with 18 head of cattle. Fairdealing, MO. \$300,000. 573-857-3210.

3 ARMY CANTEENS: Mess kit, belt & duffle bag. \$60 for all. 417-260-0941. Raymondville.

DARDEN PROFESSIONAL TIMBER HARVESTING, BUYING STANDING TIMBER: Great prices, improve wildlife habitat and improve forest health. State Certified & Fully Insured! 573-247-4808. Salem.

GUNSMITHING-Older Rifles, Shotguns, Handguns, all 22LRs. Any make, any model, estate appraisals. Camdenton. 573-363-5801.

TOSHIBA 42" FLAT SCREEN LED LCD HD TV: With remote & owner's manual. \$75. 210-787-8222. Linn Creek.

PLAD PANTRY

DISCOUNT & SURPLUS FOODS FRESH PRODUCE LLC

417-532-4700

| | |
|--|-----------------------|
| Irregular Sliced Honey Ham | \$7.99 3 lbs. |
| Cookies n' Cream Klondike Cones..... | \$2.49 15 oz. |
| Cheese Party Pizza | \$1.99 9.8 oz. |
| Sliced Potatoes..... | \$3.99 10 lbs. |
| Peanut Butter Sandwich Creme Cookies | \$1.69 25 oz. |

1571 State Hwy 64 • Tunas, MO 65764
Hours: 8:30 a.m. to 5:30 p.m. • Closed Wed. & Sun.

CENTRAL BOILER

CLASSIC EDGE

TITANIUM HDX

26% Tax Credit on EPA certified Central Boiler Classic Edge HDX models and installation. Call today to learn more!

Outdoor Wood Furnace CentralBoiler.com

Yarbrough Equipment Sales & Services, Inc.
9776 E. State Hwy 00 • Strafford, MO
417-736-2303 • 1-866-286-6901 • www.yarbeq.com

The Classic Edge 360, 560 and 760 HDX are U.S. EPA Certified

ANTIQU 4 HP ENGINE: Built by Continental Motors Corporation. \$150 OBO. 573-308-5884. Rolla.

'85 FORD PICKUP PARTS: Passenger door with window glass & mirror \$30. Also, Tailgate for '85 Ford pickup \$25. 573-308-5884. Rolla.

Buying Standing Timber

References Available.

BUTLER LOGGING

NIANGUA, MO

417-448-9323

NEW IN BOX MASTERBUILT ELECTRIC TURKEY FRYER: Up to 14 lbs. Fry, boil or steam. Safe for indoors. \$80. 417-718-5347. Morgan.

KC CHIEFS RED JERSEY MARCUS ALLEN: Everything sewn on. Autographed JSA COA. \$109. 573-854-8132. Text for pics. Houston.

WE BUY AND SELL
new and used mobile homes



(417) 501-1061

Larry Heisel Rentals
Have Rock? How about 3,500 lbs. of Hammer



Call Larry! We Deliver!

573-779-1500
www.larryheiselequipment.com
Rental Available in 636 or 573 area code

DALLAS COWBOYS TONY DORSETT AUTOGRAPHED JERSEY: Everything sewn on. JSA COA. Professionally matted & framed. \$ 199. Text for pictures. 573-854-8132. Houston.

SPLIT SEASONED FIREWOOD FOR SALE: 573-759-2125. Dixon, MO area. Must pick up, no delivery.

DIXON ZEETER ZERO TURN: B&S, BHP. \$150. 417-322-0812. Eldridge.

NEW 1500LB PULL SUZUKI WINCH: With brackets. \$150. 573-764-4435. Gerald.

STEEL ENTRY DOORS: 3' wide with glass, some with frames. \$45.00 each. 573-897-3093. Linn.

HAY FOR SALE: alfalfa & alfalfa/orchard grass \$10-\$12 a bale horse quality. Clean Wheat Straw \$4.50 per bale. Versailles. 573-378-7326.

PLAYBOY MAGAZINES LIFETIME COLLECTION: Over 224 editions plus others. Starting in 1973-2003, Including Donald Trump, Barbi Twins, Madonna, Bo Derek, Farrah Fawcett, Cindy Crawford, Goldie Hawn, Marilyn Monroe. With collector & anniversary editions. Take all \$200. 210-787-8222 Linn Creek

LAKE OF THE OZARKS – New Years Special camping lots starting at \$4,950 - \$125 down \$69 per month. Also building and acreage tracts. Beautiful wooded areas, great fishing, free lake access and boat ramps. No credit checks, owner financing, immediate possession or own for investment. Also, Conservation boat ramp close by. **Prices good through January 29, 2024.** Hwy 135 between Stover and Laurie, MO. Take lake road 135-12 to the Ivy Bend Land Office. Closed Tuesdays and Wednesdays Call anytime 573-372-6493.

FOR SALE: 8 galvanized metal tables. 24ft long, 8 ft wide. Make excellent porch supports, outdoor signs, building rectangular enclosures, greenhouse tables. They will make forms for flat concrete. \$1,500 per table OBO. 417-546-7986 & 417-546-0275, Forsyth.

SOVIET UNION WINTER WEATHER ARMY HAT: Excellent condition. Text for pictures. \$35. 573-854-8132. Houston.

2017 BOBCAT S650: 1820hrs, 74hp, hi-flow, heat/ac, radio, two speed, new tires, 72" smooth bucket. Runs great no issues. \$35,800. 573-789-9853. Iberia MO

ST LOUIS BLUES: autographed full size hockey stick. Bobby Hull. Text for pictures. \$149 573-854-8132. Houston.

SEASONED FIREWOOD: Franklin County MO. 1-636-234-7275

MAC'S TIEDOWN STRAPS: Like New. \$80. 417-260-0941. Raymondville.

BORDER COLLIE/HEALER PUPS: Shots & wormed \$100.00 573-694-9159. Russellville.

MARBLE SLABS: old from state capitol 750 square feet, make offer. 573-897-3093. Linn

DRAFTING TABLE: 6' steel with extra storage unit. 3' black lateral 3 drawer steel file cabinet. 10 drawer wood flat map storage cabinet \$350.00 each 573-897-3093. Linn.

SPLIT SEASONED FIREWOOD: No Delivery. Vichy area. Call 573-261-1611

BASEMENT READY TRUE MODS- instock ready for delivery 573-657-7040 chateauhomes.net

HORSE HAY: top quality. Small squares \$12.00 per bale. 573-247-8715. Salem

LHASA POO PUPPIES: 8 weeks old current on all shots. Call for more information. 417-288-2291. Lebanon

FOR SALE: Lincon 250-amp, 250-volt wire welder \$500 573-392-0441

PYRENEES/ANATOLIAN PUPPIES FOR SALE: 8 weeks old from working parents livestock guardians. \$200. 573-363-5213 Eldridge.

GET YOUR WEBSITE STARTED TODAY! We specialize in small businesses. www.franklincountywebsites.com text – 636-221-0524.

Is Your Log Home Starting To Look **UGLY?**

Call Pine Ridge Rustic Log Home Building Supplies

- Professional Log Home Maintenance & Restoration
- Staining • Chinking/Caulking • Log Replacement • Media Blasting



573-729-7226 www.pineridgerustic.com

MILO STUBBLE: 4ft X 70in bales net wrapped. \$55. 417-321-1928.

WANTED TO BUY ALLIS-CHALMERS 190XT OR 200 WITH LOADER: Must be in really good condition. 608-792-8861.

BUTCHER HOGS FOR SALE: Bell, MO. 573-205-1177.

2000 GMC COKE TRUCK: with bed, diesel, automatic. Runs & drives good. Possible trade \$3,500. 417-321-1928.

WANTED 16X80 TRAILER HOUSE:**Good condition. 573-392-0441****4 PEAVEY SPEAKERS:** two: 16 x 26, two: wedge floor monitors 65 watt. Asking \$200 OBO 573-732-3557.**PEPSI COLA BOTTLE CAP SIGN:** 36" across \$400 OBO 573-732-3557.**FOR SALE. HAY, CORN SILAGE, & WHEATLAGE.** Hay 4X5 bales 1st & 2nd cutting \$40-\$65 per bale depending on quality. Corn silage \$70 per ton or \$60 per if you take all (780 tons). Wheatlage \$40 per ton. Silage & Wheatlage bagged. 573-453-4150.**72 GUNSMOKE DVDS:** \$100. 573-764-4435. Gerald.**NEW 1500LB PULL SUZUKI WINCH:** With brackets. \$150. 573-764-4435. Gerald.**STRAW FOR SALE:** Large square bales, \$45/each. Small square bales, \$4.50/each. 573-539-2060. Versailles.**HAY FOR SALE:** big squares and big rounds. Call for pricing. 417-589-0022.**CATTLE & HAY HELP NEEDED: 1 bedroom house furnished.** Pay is based on what you know. In Maynard Arkansas area. Contact Mike 501-658-5508.**WEATHERED BARN WOOD SIDING:** 10" wide. Call for appointment 573-729-7226. www.pineridgerustic.com Salem.**TINY HOMES** – Missouri Franchise 573-881-7965**LOG SIDING:** 2X8 Pine/Western Cedar. Call for appointment 573-729-7226. www.pineridgerustic.com Salem.**NEW INVENTORY** - \$59,900 Delivered and setup, Hurry! Call Adam 573-657-2176 amegamobilehomes.com**NEW MOBILE HOMES** – prices start at \$64,900 delivered and setup 573-499-9993 columbiadiscountohomes.com**'85 FORD PICKUP PARTS:** Passenger door with window glass & mirror \$30. Also, Tailgate for '85 Ford pickup \$25. 573-308-5884. Rolla.**REGISTERED HEREFORD & ANGUS BULLS:** Home raised, Some Show-Me Select Qualified. 573-701-7828. Belgrade.**SPORTSET BY SARGENT:** Fishing pliers in leather sheath. Like a multi-tool. \$15. 636-239-2695 or 314-560-5700. Washington.**NEW SQUARE D RAINPROOF 50AMP DISCONNECT:** \$150. 636-239-2695 or 314-560-5700. Washington.**USED JET HOME POLLUTION CONTROL PANNEL:** Model CP700. \$50. 636-239-2695 or 314-560-5700. Washington.**1 PAIR OF KEY BRAND MEN'S JEANS:** Waist 38, Length 34. \$8. 636-239-2695 or 314-560-5700. Washington.**BLACK METAL TUBULAR BRACKET:** Scrolling and a stainless bracket. \$8. Call for pictures. 636-239-2695 or 314-560-5700. Washington.**RUBBER & LEATHER BOOTS AND 5-Buckle OVER SHOES:** Men's 11, Women's 7, some insulated. \$12-\$35 obo. 636-239-2695. Washington.**ANTIQU 4 HP ENGINE:** Built by Continental Motors Corporation. \$150 OBO. 573-308-5884. Rolla.**INTERNATIONAL PICKUP TRANSFER GEARBOX:** \$150. 573-308-5884. Rolla.**NEW JELD WEN 5' LEFT HAND SLIDING GLASS DOOR WITH SUNSTABLE INTERIOR BLINDS:** Clear tempered glass, Desert Sand trim/hardware. Retails \$2655 Sell \$900. 417-693-0389. Conway.**FOR SALE:** 2 Dayco motorcycle covers for Harley or other big bikes. \$50 each. 417-260-0941. Raymondville.**MAC'S TIEDOWN STRAPS:** Like New. \$80. 417-260-0941. Raymondville.**3 ARMY CANTEENS:** Mess kit, belt & duffel bag. \$60 for all. 417-260-0941. Raymondville.**DARDEN PROFESSIONAL TIMBER HARVESTING, BUYING STANDING TIMBER:** Great prices, improve wildlife habitat and improve forest health. State Certified & Fully Insured! 573-247-4808. Salem.**GUNSMITHING**—Older Rifles, Shotguns, Handguns, all 22LRs. Any make, any model, estate appraisals. Camdenton. 573-363-5801.

KING BUILDERS



We specialize in custom and specialty builds, such as:

- Houses
- Barndominiums
- Shops
- Barns
- Garages

We also do roofing & siding!

Call for a free estimate!

Stevie King | 435 Dickerson Ranch Lane, Conway, MO 65632 | 417-241-3280

KUSTER LOGGING

BUYER of Standing Timber
Oak and Walnut

Dozing Now Available

417-259-0047

References Available



TOSHIBA 42" FLAT SCREEN LED LCD HD TV: With remote & owner's manual. \$75. 210-787-8222. Linn Creek.**NEW IN BOX MASTERBUILT ELECTRIC TURKEY FRYER:** Up to 14 lbs. Fry, boil or steam. Safe for indoors. \$80. 417-718-5347. Morgan.



YOUR AD GOES HERE!

Add YELLOW Color For An Additional \$3 Per Reader Ad

All ads will include Phone Number (unless requested to be deleted by advertiser) and City Or Town, Phone Number with Area Code counts as one word. City or Town counts as one word.

RATE: 80¢ Per Word. All Classified Ads Require Payment Before Print.

| | | | |
|--------------|--------------|--------------|--------------|
| (1) 80¢ | (2) \$1.60 | (3) \$2.40 | (4) \$3.20 |
| (5) \$4.00 | (6) \$4.80 | (7) \$5.60 | (8) \$6.40 |
| (9) \$7.20 | (10) \$8.00 | (11) \$8.80 | (12) \$9.60 |
| (13) \$10.40 | (14) \$11.20 | (15) \$12.00 | (16) \$12.80 |
| (17) \$13.60 | (18) \$14.40 | (19) \$15.20 | (20) \$16.00 |
| (21) \$16.80 | (22) \$17.60 | (23) \$18.40 | (24) \$19.20 |
| (25) \$20.00 | (26) \$20.80 | (27) \$21.60 | (28) \$22.40 |
| (29) \$23.20 | (30) \$24.00 | (31) \$24.80 | (32) \$25.60 |
| (33) \$26.40 | (34) \$27.20 | (35) \$28.00 | (36) \$28.80 |
| (37) \$29.60 | (38) \$30.40 | (39) \$31.20 | (40) \$32.00 |

Buy 3 Weeks - Get 4th Week Free! (Must be same ad)

Place your Classified Ad TODAY!

417-532-9131

Fax: 417-532-8140

Or Mail To: P.O. Box 192 • Lebanon, MO 65536

For your convenience we accept MasterCard, Visa, Discover or American Express



DEADLINE FOR CLASSIFIED ADS: FRIDAY 4:00PM!

Name _____

Address _____

City _____ Email _____

State _____ Zip Code _____ Phone _____

Ad Total \$ _____ X # Weeks _____ = Amount Enclosed \$ _____

Built to do all the hard work. And make it look easy.



SVL Series Durable Kubota engine Comfortable cab



The toughest jobs call for equipment that doesn't back down. Stop by your local dealer to get a great deal on the comfortable, reliable SVL97-2 track loader.

\$0 DOWN 0% APR UP TO 36 MONTHS
OR
SAVE UP TO \$4,000

VISIT US TODAY FOR THIS LIMITED-TIME OFFER



Quarles Supply Kubota of Lebanon

3251 S Springfield Ave
Bolivar, MO 65613
417-777-2391

22330 Hwy MM
Lebanon, MO 65536
417-532-0888

KubotaUSA.com

© Kubota Tractor Corporation, 2024. \$0 Down, 0% A.P.R. financing for up to 36 months or a customer instant rebate of \$4,000 is available on purchases of new Kubota SVL97 equipment from participating dealers' in-stock inventory. Promotional rate available to qualified purchasers through Kubota Credit Corporation, U.S.A.; subject to credit approval. Example: 36 monthly payments of \$27.78 per \$1,000 financed. Rebates not available with 0% A.P.R. or other promotional financing. Offers expire 06/30/24. Terms subject to change. This material is for descriptive purposes only. Kubota disclaims all representations and warranties, express or implied, or any liability from the use of this material. For complete warranty, disclaimer, safety, incentive offer and product information, consult your Dealer or KubotaUSA.com.