

FREE - TAKE ONE!

Vol. 30 No. 35

NOVEMBER 23, 2023

417-532-9131

WEEKLY TRADER MAGAZINE



Find us on Facebook

@myweeklytrader
AUCTIONS PG. 8

VISIT OUR NEW WEBSITE! MYWEEKLYTRADER.COM

BLACK FRIDAY

STARTS NOW

Backed By
Morse



CHEVROLET

FIND NEW ROADS™



LARGEST SELECTION IN YEARS AND MORE ON THE WAY

WE WANT YOUR TRADE.

ED MORSE
CHEVROLET
BUICK GMC

ROLLA

100 Fairgrounds Rd., Rolla, MO

573-364-1002

EdMorseChevroletBuickGMCRolla.com

WCT FARM AND LAWN • CALL US TODAY 417-859-4311



TYM
TRACTORS



0% for 84mo FINANCING
on the 2515 for a limited time



25 HP Gear
2,200lb. Lift Capacity

4.99% for 84mo FINANCING
AVAILABLE on ALL MODELS under 55 horsepower



COME SEE OUR STOCK OF TYM TRACTORS



T25
25 HP
\$260 /month



T474H
47 HP
\$394 /month



T574
55 HP
\$435 /month

*Offers available for a limited time only. Offer only valid upon purchase of a new qualifying tractor from a participating dealer's in-stock inventory. Some exceptions apply.



WCT Farm & Lawn
417-859-4311
SALES • SERVICE • PARTS
3299 EVERGREEN ROAD
STRAFFORD, MO 65757
www.wctfarmandlawn.com

The Ultimate Wood Heat.



UP TO \$2000 TAX CREDIT*

*On qualifying models and installation. Call for details.

Yarbrough Equipment Sales & Services, Inc.
9776 E. State Hwy OO • Strafford, MO
417-736-2303 • 1-866-286-6901 • www.yarbeq.com

MISSOURI OZARKS BOOKS: Backroads of Missouri, \$10; When Isom Was Sheriff of Webster County, Enoch Isaac Cunningham, \$14; Ozark Mountain Folk-They Were The Last by Townsend Godsey, \$14. 417-532-2045. Lebanon. (Leave message and phone number.)

WEATHERED BARN WOOD SIDING: 10" wide. Call for appointment 573-729-7226. www.pineridgerustic.com Salem.

LOG SIDING: 2X8 Pine/Western Cedar. Call for appointment 573-729-7226. www.pineridgerustic.com Salem.

"THAT'S THE WAY IT WAS" BOOK: Camden County History by Buford Foster. \$20. 417-532-2045. Lebanon. (Leave message and phone number.)

NEW INVENTORY - \$59,900 Delivered and setup, Hurry! Call Adam 573-657-2176 amegamobilehomes.com

NEW MOBILE HOMES - prices start at \$64,900 delivered and setup 573-499-9993 columbiadiscountshomes.com

PASTURE RAISED CHICKENS & PASTURE RAISED THANKSGIVING TURKEYS: 417-741-2446.

BASEMENT READY TRUE MODS- instock ready for delivery 573-657-7040 chateauhomes.net

TINY HOMES - Missouri Franchise 573-881-7965

REGISTERED HEREFORD & ANGUS BULLS: Home raised, Some Show-Me Select Qualified. 573-701-7828. Belgrade.

LIGHTLY EXPERIENCED GOLF BALLS: \$3 a dozen. 417-818-3469. Strafford.

FOR SALE TUNIS RAMS: Ready for service. Call Gary Marsh 785-691-7656. Lawrence, KS.

SLIGHTLY USED PUZZLES: Will sell or trade. 417-818-3469. Strafford.

LIONEL TRAIN SET: Steam engine, tender, caboose and other car, track, and transformer. \$195. 573-364-7465. Rolla.

MODEL 1911 FRAME 8-SHOT C02 PISTOL: Like new, in box with C02 cartridges, 4 clips, pellets & all paperwork. \$95. 573-364-7465. Rolla.

1970s KIDS METAL STOVE & FRIDGE: Nice Lithographic paint, 18" wide x 36" high. \$75. 573-364-7465. Rolla.

3 GENTS WITTNAUER WRIST WATCHES: 10k gold + 23J. All \$200. 573-764-3517. Call in P.M.

KUSTER LOGGING

BUYER of Standing Timber Oak and Walnut

Dozing Now Available

417-259-0047

References Available



HARLEY FAT BOBS: Custom flame paint w/ gas caps + lines. \$100. 573-764-3517. Call in P.M.

COLT REVOLVER DEALER CATALOGS: Circa 1950's + 1960's. All for \$100. 573-764-3517. Call in P.M.

110 PORCELAIN POCKET WATCH DIALS: Perfect for arts & crafts. \$100. 573-764-3517. Call in PM.

1890 GOLD TESTING KIT: Glass acid beakers + antique wooden case. \$100. 573-764-3517. Call in PM.

1500 VINTAGE WRISTWATCH DIALS: \$100. 573-764-3517. Call in PM.

TAYLOR TRUCKS & EQUIPMENT

417-924-2026 • 2676 Hwy. 5, Mansfield, MO

★ INTIMIDATOR TREE PULLER ★

★ 3 POINT TILLERS ★


TRAILER PARTS & REPAIR
MD144 Bat Wing in stock!

Milwaukee Cordless Tools

DANUSER DEALER
T3 Post Driver & Other Attachments
New Mowers! Bush-Whacker, Big Bee
Storage Containers & Dry Vans - 20' - 53',
BUSH-WHACKER HD
SKIDSTEER BRUSH CUTTER

Portable Generators, Farm Tires, New Semi Tires,
PTO's & Parts for Rotary Mowers, Farm Tractor
Implements, Plows, Used 15" Bush-Whacker Now In
Stock, Discs, and More Skidsteer Attachments: Pallet
Forks, Buckets, Grapples, Hay Spears, RR Ties

Bush-Whacker Heavy Duty Rotary Cutter



We Invite you To Come By & Look Us Over! Located 2.5 Miles North Of Mansfield, MO On Hwy 5

VOTED #1 BEST Preowned Car Dealership

TIM'S USED CARS

(573) 341-3828 • 1334 South Bishop (Hwy. 63) • Rolla, MO
Next to Hwy CC • www.tims-used-cars.com



2016 FORD 150 XL
2WD, 3.5 V-6, auto,
55,xxx Miles
Only \$19,900



2016 DODGE GRAND CARAVAN
SXT, V-6, Power equipped,
134,xxx Miles
Only \$8,900



2017 CHEVY 1500 LT
Crew cab, 4x4,
5.3 V-8, power equipped,
75,xxx Miles
Only \$30,900



2018 FIAT 500 POP
power equipped, 4 cyl, auto,
67,xxx Miles
Only \$12,800

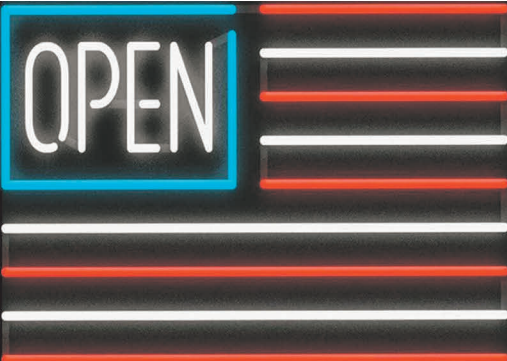
LARGE SELECTION OF CARS, TRUCKS, SUVs & VANS!



NOBODY BEATS OUR PRICES

Sale Ends November 30, 2023

Seymour, Missouri 417-935-4201



Pole Barn Building Kits!

23'x32'x10' \$6,399 Material Only \$8,599 Labor Included	23'x40'x10' \$7,299 Material Only \$10,019 Labor Included	30'x40'x10' \$8,669 Material Only \$12,175 Labor Included	40'x60'x12' \$16,745 Material Only \$23,985 Labor Included
--	---	---	--

Call for free quote, brochure & color chart.
Other sizes also available.



Due to increased demand for our quality product we are currently hiring new barn construction crews. Contact Jeff

NOBODY, BUT NOBODY BEATS OUR PRICES!!!

10 ft. Slider • Engineered Trusses 8' O.C. • 2x6 Treated Bottom Wrap • Screws • 2x10 Top Wrap • 2x4 Purlins • Full 29 Gauge Steel • Plus 3 ft. Entry Door with Lock
 OPTIONS: Sidewall Heights on all Buildings 10', 12', 14' & 16'. Overhead Garage Door, Skylights, Insulation, Wainscoting, Insulated Vinyl Windows, Cupolas, Labor Rates Slightly Higher over 50 Miles from Seymour.
 Call for YOUR FREE QUOTE TODAY!!!!

PAINTED WHITE, GREEN OR TAN METAL\$97.79
10' - \$31.00 12' - \$37.20 16' - \$49.60
MIX & MATCH METAL\$59.99
8' - \$15.20 10' - \$19.00 12' - \$22.80
GALVALUME METAL\$79.99
10' - \$25.40 12' - \$30.48 16' - \$40.64
GALVANIZED CORRUGATED METAL SOLD OUT!
8' - \$9.84 10' - \$12.30 12' - \$14.75 16' - \$19.67

IN STOCK

40yr Painted Metal
99.99^{Sq}

KNOTTY PINE DOORS
Starting at
\$164.99

Prices subject to change without notice
6X6 CEDAR POST LIMITED TIME \$5.87 LN FT

Car Siding!
1x6 White Pine Siding **69¢** in ft
1x8 White Pine Siding **99¢** in ft
* 4 Profiles to choose from!
Broken Bundles Add 10¢ Per Ft.

4x8 Sheeting
Less than full units Add \$1 per sheet
3/8" Beaded Panelling \$19.99
5/8" T111 Siding \$19.99
Panelling \$SOLD
1/2" Plywood \$23.99
3/4" Plywood \$29.99
3/16 Pegboard \$12.99

**LOTS OF MATERIAL AVAILABLE
FOR THOSE IN HOME PROJECTS!**

NEW PACKAGE HOMES



2x6—16" on center-Exterior Stud Walls
Residential Roof Trusses-2' on center
4/12 pitch with 1' over hang
40 year Painted Metal roofing in 20 Different Colors
Profile Ridge Vent - Ventilated Ridge Cap
Vinyl Center Vent Soffit
Color Matched Metal Fascia & Gable Trim
2 - 3' 6 Panel Entry Doors
4 - 3'x4' Vinyl Insulated Windows

Shown with Available Options
Your Choice of either:
Stock 5/8" T111 Siding w/1x4 Pine Window & Door Trim - or -
7/16" OSB & House Wrap ready for other finish options

ALL FIGURED FOR SUITABLE CUSTOMER SUPPLIED SLAB OR SUB-FLOOR

Price for Basic Materials Package (No Labor at this Time)

20x24(480 sq. ft.)	20x32(640 sq. ft.)	20x40(800 sq. ft.)	28x40(1120 sq. ft.)	28x48(1344 sq. ft.)
\$9,490	\$10,839	\$12,339	\$15,129	\$18,729

REAL WOOD SIDING
2x6 Log Siding **\$1.76** in ft
1x8 Beveled Cedar from- **99¢** in ft
T1-11 Siding from **\$19.99**

DECK PACKAGES
Materials Only
8x8.....\$349.00 10x12.....\$699.00
10x10.....\$499.00 10x16.....\$899.00
12x12.....\$899.00 12x16..\$1179.00

QUAKER Now Stocking Quaker Vinyl Windows
2030 \$ 163.99 3030 \$189.99
3040 \$206.99 3052 \$225.99
3040Twin \$453.99 3052Twin \$497.99



LUCKY DISCOUNT LUMBER

417-935-4201

455 State Hwy C • Seymour MO 65746

www.luckydiscountlumber.com



*Some restrictions apply see store for details. Prices subject to change without notice.

TAKE ADVANTAGE OF SECTION 179 WITH A **BIG TAX BREAK** FOR SMALL BUSINESSES

EXPIRES DECEMBER 31

\$0 DOWN! FOR 84 MONTHS!

ON ALL TRACTOR MODELS W.A.C.



EXPERIENCE THE BAD BOY DIFFERENCE AT



Bobcat®

OF ROLLA, MO.

SALES • SERVICE • PARTS

BOBCATOFFROLLA.COM

573-364-0179

SPLIT SEASONED FIREWOOD FOR SALE: 573-759-2125 Dixon MO area. Must pick up, no delivery.

'85 FORD PICKUP PARTS: Passenger door with window glass & mirror \$30. Also, Tailgate for '85 Ford pickup \$25. 573-308-5884. Rolla.

HARLEY 45 SOLO: factory rear brake drum + sprocket. \$150. 573-764-3517. Call in PM.

HARLEY PANHEAD DISTRIBUTOR: original, chrome + complete. \$125. 573-764-3517. Call in PM.

1962 HARLEY SPORTSTER 900CC: original distributor. \$50. 573-764-3517. Call in PM.

SPORTSET BY SARGENT: Fishing pliers in leather sheath. Like a multi-tool. \$20. 636-239-2695 or 314-560-5700. Washington.

NEW SQUARE D RAINPROOF 50AMP DISCONNECT: \$160. 636-239-2695 or 314-560-5700. Washington.

USED JET HOME POLLUTION CONTROL PANNEL: Model CP700. \$65. 636-239-2695 or 314-560-5700. Washington.

1 PAIR OF KEY BRAND MEN'S JEANS: Waist 38, Length 34. \$10. 636-239-2695 or 314-560-5700. Washington.

BLACK METAL TUBULAR BRACKET: Scrolling and a stainless bracket. \$10. Call for pictures. 636-239-2695 or 314-560-5700. Washington.

RUBBER & LEATHER BOOTS AND 5-Buckle OVER SHOES: Men's 11, Women's 7, some insulated. \$15-\$40 obo. 636-239-2695. Washington.

ANTIQU 4 HP ENGINE: Built by Continental Motors Corporation. \$150 OBO. 573-308-5884. Rolla.

3 ARMY CANTEENS: Mess kit, belt & duffle bag. \$60 for all. 417-260-0941. Raymondville.

NEW JELD WEN 5' LEFT HAND SLIDING GLASS DOOR WITH SUNSTABLE INTERIOR BLINDS: Clear tempered glass, Desert Sand trim/hardware. Retail \$2655 Sell \$900. 417-693-0389. Conway.

FOR SALE: 2 Dayco motorcycle covers for Harley or other big bikes. \$50 each. 417-260-0941. Raymondville.

FISHING SEASONS COMING: Get your rod and reels, \$5 and up. 417-589-8200. Conway.0

PITTSBURGH HEAVY DUTY 3-TON FLOOR JACK: Never used. \$195. 417-260-0941. Raymondville.

PLAD PANTRY

DISCOUNT & SURPLUS FOODS FRESH PRODUCE LLC

417-532-4700

Spicy Fried Mushrooms.....	\$5.99 3 lbs.
Organic White Jasmine Rice	\$1.99 2 lbs.
Shredded Mozzarella Cheese	\$14.99 5 lbs.
Spicy Chicken Nuggets.....	\$0.49 3.5 oz.
Bacon Cheddar Cheese Crisps.....	\$6.99 6 - 2.25 oz.

1571 State Hwy 64 • Tunas, MO 65764
Hours: 8:30 a.m. to 5:30 p.m. • Closed Wed. & Sun.



ALFALFA & GRASS HAY FOR SALE: 4X5 round bales. 417-343-4958. Seymour.

INTERNATIONAL PICKUP TRANSFER GEARBOX: \$150. 573-308-5884. Rolla.

STAIR STEPPER: In good condition. \$65. 417-532-2344.

MISC. MECHANICAL TOOLS: Small set \$25. & Large set \$35. 417-532-2344.

CUTTING TORCH OUTFIT: \$100. 573-734-2822, leave message due to telemarketers.

WE BUY AND SELL
new and used mobile homes



(417) 501-1061

STORM SHELTERS: New & used. All sizes & types. Since 2003 - Call me today, Jeff at 417-894-3159

LARGE COCA-COLA NOVELTY SET/ GROUP: \$50. 417-532-2344.

SCROLL SAW: On Stand, Heavy Duty. \$50. 417-322-0161.

KC CHIEFS RED: Jersey Marcus Allen. Autographed JSA COA. \$119. 573-854-8132. Text for pics. Houston.

PAIR OF ANTIQUE: 12 spoke cart/wagon wheels. Cast iron. \$140 for both. 573-854-8132. Text for pics. Houston

ANTIQUe METAL MIRRORED MEDICINE CABINETS: Wall mount, recessed. \$100/pair or \$60/each. 573-854-8132. Text for pics. Houston

BUYING PRE 1970 BEER SIGNS: FALSTAFF, GRIESEDIECK, BUDWEISER, STAG CAPITOL, ETC. 573-680-5377.

2001 COACHMAN CATALINA 5TH WHEEL: Great shape, new tires, 28 1/2 foot. Recently winterized. Everything works. Large living/kitchen slide out. 5th wheel hitch included. \$8,500. 573-308-5515. Dixon.

COMPLETE SET OF 8FT SYMON CONCRETE FORMS: 417-532-9267. Lebanon.

23 HIGH QUALITY HOME RAISED BRED HEIFERS: Black Angus & Angus/ Beefmaster. AI'D to Gar Home Free. Can start calving February 12th. \$2,850/each. 417-880-7586. Strafford.

PLAN YOUR FAMILYS SAFE PLACE NOW.: Safe rooms & concrete storm shelters. Since 2003-call Jeff today 417-894-3159. Ask about "The Beast!"

FOR SALE: 13.6x28 Tractor Tire. \$50. 573-437-3221. Cuba.

BUYING SCRAP METAL: All kinds, can torch heavy equipment. Call for prices. 40 years experience. 573-308-6739. Newburg.

FOUR SCHNAUZER PUPPIES: 10-weeks-old. Can send pictures. 417-967-6639. Salem.

GUNSMITHING-Older Rifles, Shotguns, Handguns, all 22LRs. Any make, any model, estate appraisals. Camdenton. 573-363-5801.

Pine Ridge Rustic
Log Home Building Supplies



Services Offered!

- Custom Log Home Products
- Pre-finishing available on interior & exterior
- Hand Hewn Sidings Offered

www.pineridgerustic.com

CALL FOR APPOINTMENT

523 CR 2410 • Salem, MO 65560 • Ph: 573-729-7226

• Log Siding
• Beveled Siding
• Car Siding • Red Cedar
• Western Cedar • Pine • Timbers • Barnwood

JOHN DEERE SRX75: Starts and runs well. Blades do not engage. Belt is off, deck has dropped. Should be repairable, or remove deck and use as utility. Possible go-kart engine. \$200 OBO. 815-739-2739.

DARDEN PROFESSIONAL TIMBER HARVESTING, BUYING STANDING TIMBER: Great prices, improve wildlife habitat and improve forest health. State Certified & Fully Insured! 573-247-4808. Salem.

BRIDGESTONE TIRES: 255/65R/18. Good Tread. Set of 4. \$80. 417-924-8840. Mansfield.

LONGWOOD WOOD STOVE: For Shop/ Garage. \$400. 417-322-0161.

NEW, HEAVY, 6-BAR WELDON GATE: 12Ft. \$120. 417-322-0161.

WHIRLWIND UPCUT SAW: \$1,200. 417-322-0161.

PRIME KATAHDIN EWES: Parasite Resistance, Easy Lambing, Hoof Health, Never Grain. \$300. 417-322-0161.

NEW GRIZZLY SANDBLASTER WITH CABINET: Needs Parts. \$100. 417-322-0161.

30 OR MORE CATTLE PANELS: \$20/ each. Also, 1 Cattle Head Catch, \$100. 573-247-4280. Salem.

TRACTOR: Massey-Harris "30" (About same horsepower as Farmall "H") Original. Complete Service. \$2,000. 417-848-8754. Brookline.

18 INCH RIMS: \$50. 660-337-6311.

WANTED: 1948-1954 Chevy or Ford Pickup, Old Hearse, Convertible Car, or Chevrolet Wrecker in any condition. 573-734-2822, leave message due to telemarketers.

ELECTRIC WELDER: \$150, Sell or trade for anything. 573-734-2822, leave message due to telemarketers.

OLD ANTIQUE JOHN WAYNE PICTURE: In Cowboy Outfit. \$200. 573-734-2822, leave message due to telemarketers.

2014 Jeep Wrangler: 180,000 miles. \$19,900. www.jimsmotorsrolla.com for Carfax. 573-467-0189.

2 REAR FENDERS FOR 1946 CHEVY COUPE: \$150. 573-734-2822, leave message due to telemarketers.

MAC'S TIEDOWN STRAPS: Like New. \$80. 417-260-0941. Raymondville.

FISHING REEL SPOOLS FOR SALE: I've got what you need. \$3/each. 417-589-8200. Conway.

2015 Ford Expedition Platinum: 166,606 miles. \$18,900. www.jimsmotorsrolla.com for Carfax. 573-467-0189.

LINCOLN WELDER: Gas powered, 225-amp, good condition. \$1,800. 573-759-3851. Dixon.

CRAFTSMAN SNOWBLOWER: 11HP, 30". Like new. \$700. 573-864-2611.

SADDLES, TACK, HARNESS, HORSE BLANKETS, PONY CART, DOG SUPPLIES AND HUGE INVENTORY!!! Triple S Harness, 578 Hwy V, Seymour, MO 65746.

WANTED: 500 Gallon Propane Tank. 573-690-2786.

WANTED: 1995 Dodge Ram driver's side truck door. ¾ ton. 573-612-4351. Rolla.

MODEL SIG SAUER P220 (2015) PISTOL: Includes case, (2) clips, (2) holster. (No Trade) Text 573-619-6651.

WEATHERED BARN WOOD SIDING: 10" wide. Call for appointment 573-729-7226. www.pineridgerustic.com Salem.

LOG SIDING: 2X8 Pine/Western Cedar. Call for appointment 573-729-7226. www.pineridgerustic.com Salem.

NEW INVENTORY - \$59,900 Delivered and setup, Hurry! Call Adam 573-657-2176 amegamobilehomes.com

Buildings • Hunter's Cabins • Lawn Furniture

JAMCO BUILDERS

JAMCO Portable Buildings

800-688-2064 • 307 Enterprise Dr. • Seymour, MO • www.jamcobuilders.com

Rent To Own Plan

CASH FOR COMICS, SPORTS CARDS & RELATED ITEMS: Over 35 years of experience as a collector/dealer. Call or text 636-667-0391.

???CDL LICENSE??? FAST & ECONOMICAL: Meets all requirements of the new ELDT Law. 2 days training. \$100 rebate with this ad. You need a learner's permit & ability to drive a manual. Jefferson City, Strafford & Willow Springs, Missouri. Please call 573-353-2853. www.capitaltruckdrivinginstitute.com.

BUYING OLD BARNS & LUMBER. A2/A2 SPRINGER HEIFERS: \$1,600. John 417-307-2814, leave message.

BEAGLE PUPPIES FOR SALE: 573-796-8343 or 573-584-1181. California, MO.

2017 Chrysler Pacifica: 96,000 miles. \$19,900. www.jimsmotorsrolla.com for Carfax. 573-467-0189.

2006 TOYOTA TACOMA: V6, automatic, 4x4. Crew cab. 220,xxx miles. \$5,100. 573-864-2611.

TWO SPINOUT ECCENTRIC BOLTS: and other Ferguson Pins and front Axle Bolts. \$50. Hermann. 636-932-4429.

STIHL CHAINSAW: MS C181. \$195. 573-864-2611.

FOR SALE: 30 Heavy Laying Hens. 573-612-4351. Rolla.

COWBOY CORGIS!!! UTD on shots & wormer. DOB 9-02-23. \$150 OBO. 417-349-0831. Hartville.

225/65/R17 TIRE: 95% tread. \$10. 210-787-8222. Linn Creek.

225/65/R17 TIRE: 95% tread. \$10. 210-787-8222. Linn Creek.

TWO POLARIS TIRES: Size 26x9x12 \$50. Hermann. 636-932-4429.

NEW IN BOX MASTERBUILT ELECTRIC TURKEY FRYER: Up to 14 lbs. Fry, boil or steam. Safe for indoors. \$80. 417-718-5347. Morgan.

LAKE OF THE OZARKS-END OF SEASON SPECIAL-Lots starting at \$4,995, \$125 Down, \$69 per month. Build, camp, or own for investment. Also acreage tracts. Beautiful wooded areas, free lake access and boat ramps. Lots are a short distance from the lake, no credit checks, owner financing and immediate possession. Large Missouri conservation boat ramp with a covered dock and rest rooms. Prices good through December 18, 2023. Hwy 135 between Stover and Laurie MO. Take lake road 135-12, follow the signs to the Ivy Bend Land Office. Closed Tuesdays and Wednesdays. Call anytime 573-372-6493.

Starnes Auto LLC

22115 Rt. 66 • Lebanon, MO 65536

588-7939 Cell
588-3159 Office

www.starnesauto.com

Worry-Free

VEHICLE ALIGNMENTS

With our state-of-the-art computerized equipment

Front End | Rear End | Four Wheel Drive | Thrust Alignments | Both Foreign and Domestic Vehicles



DON'T FORGET TO CHECK OUT OUR CARS FOR SALE!

WE DO ALIGNMENTS!

ANNUAL THANKSGIVING WEEKEND AUCTION

SUN., NOV. 26, 2023 • 9:00 A.M.

MOFFAT AUCTION CENTER 467 CO RD 604, LINN, MO

DIRECTIONS: From Linn, take Hwy. 50 west 1 ½ mi. to Co. Rd. 604, turn left & go 1 mile to building on right, or from Jeff City, take Hwy. 50 east approx. 18 mi. & turn right on Co. Rd. 604.

PREVIEW: SAT., NOV. 25, 2023 12:00 PM TO 2:00 PM

ANTIQUES, COLLECTIBLES & MISC.

John Deere 20 pedal tractor; NH 6640 Pedal tractor; 6 Metal Tonka trucks; 40 Pieces of Cast Iron – Skillets, Muffin pans & Dutch Ovens; Large C/I Black Jockey; 10 Crocks & Jugs; 3 Foot Wood cigar Indian; Guitars; 10 50 Precious Moments; Blue & White Graniteware; Blue Jars; Washtubs; 4 Quart Butter Churn; Marbles; C/I Oliver tractor seat; Other C/I Implement seats; Bottles; Smoking stand; Green Malt Mixer; Shot Gun shell boxes; Sprinkler can; Wood advertising boxes; Old Photos; Splint baskets; Wire baskets; 1920's and 1930's License Plates; Marx Union Pacific train; Ball cards; Postcards; Christmas Blow Molds – Mary, Joseph & Jesus & Santa Sled with Reindeer; Nativity Set; 2 Six Foot Aluminum Christmas trees; 2 Color Wheels; Lots of Christmas décor; Wood duck decoys; Old Tools; Shapleigh-Keen Kutter catalog; Ink pens; GI Joe; Marx Fort Apache Stockade toy; Erector set; Roy Rogers Rodeo Ranch toy; 2 Oak wall phones; Fishing reels; Pocketknives; Aladin Hanging lamp; Toy tractors; Corn shellers; Vintage typewriter; Texas Ware; Pyrex; Fireking; Silverplate flatware sets; Xbox 360 System w/ games; Old records; Wood rocking horse; MU glasses; Pioneer tuner; Bose speakers; Wii Fit; Several Legos New In Box; Child sled; Several Hand Stitched Quilts; Porcelain Light fixtures; Lots of Hand Tools & Garden Tools; Lots of Misc Household Items; Lots of Books.

MODERN & ANTIQUE FURNITURE & APPLIANCES

Walnut marble top washstand; Glove box dresser w/ mirror; Drop front writing desk; 3 Piece maple full size bedroom set; Victorian Walnut loveseat & chair; Lighted curio cabinet; Hide-a-bed sofa; Burgandy recliner; Brown sofa; Lamps; Mission Oak game table; Oak coffee & end tables; Kenmore washer & dryer; Frigidaire refrigerator; Maytag Upright Freezer F20; Frigidaire Upright Freezer 17 CF; Large GE Chest Freezer; Kimbal Spinet Piano; Glider rocker; Cherry 2 Piece China Cabinet; Cherry Buffet; French Provincial Chest; Twin Beds; Ethan Allen Maple Table w/ 6 Chairs; Maple 2 Piece Hutch; Cherry Lighted Curio Cabinet; Maple Rocker

ADVERTISING SIGNS & 15 GUNS

1940'S Tin Coca Cola sign 56 in v 32 in; 1950's Tin 7 Up "Fresh Up" sign 47 in x 17 in; Mountain Valley Water sign 27 in x 19 in; Tin Pepsi Menu "Special Today" 30 in x 20 in; Cardboard Griesedieck sign; Tin Canfields Beverage 10 in x 25 in; Custers Last Fight; Budweiser Beer clock; Stroh Light; Floor model Pepsi cooler; Coca Cola display rack; Coca Cola galvanized ice tub; Porcelain Standard White Crown sign 15 in x 12 in; Tin Dad's Draft Root beer thermometer 27 in; Tin Dekalb sign 16 in x 24 in., See website for gun listing.

CAR & TRACTOR

2003 Cadillac Deville 96000 miles; Case BAC tractor NF 3 pt; Pull Type 5 ft Brush Hog; 16 ft Hay Elevator.



Note: This will be a large Holiday Auction with two auction rings all day. Some of our best merchandise is at our holiday sales. Both barns and outside will be full. Please see the website for photos. Thanks Rick **Terms:** Cash or good check with proper identification. All sales are final. Everything sells as is, where is. Proper identification is necessary to obtain a buyer's number. Announcements day of sale supersede all printed material. Food on grounds.

RICHARD MOFFAT AUCTION SERVICE



573-761-4293
Jefferson City, MO

Auctioneers
Richard Moffat & BJ Moffat
www.moffatauction.com

573-690-2823
Linn, MO

Public Auction

See our Website For More Pictures & Info!

9:00 A.M. * Saturday, November 25th, * 9:00 A.M. 2023

Location: 16327 Lawrence 1135, Mt. Vernon Mo. 65712

Directions: From Mt. Vernon take Hwy 39 south 4mi. then west on Lawrence 2160 2 mi. then left on Lawrence 4692 1/4 mi to Auction *Watch for Signs -- Breakfast & Lunch Available*



Hit & Miss - Antique Engines - Buggy - Saddles

The Galloway 5hp. Hit & Miss (Runs very well) on Nice 2 Wheel Trailer;
 John Deere type E, 1 1/2 hp. Hit & Miss, on Cart;
 International Harvester type LB, 3-5hp. Hit & Miss, on Cart;
 International Harvester type LB, 1 1/2-2 1/2 hp. Hit & Miss, on Cart;
 Economy model E, #86518, 5hp. Hit & Miss w/Cart;
 Sattley by Montgomery Ward #73535 1 1/2hp. Hit & Miss on Cart;
 Stover type K, 2hp. Hit & Miss on Cart;
 Fairbanks Morse Z, 2hp. Hit & Miss on Cart;
 Fairbanks Morse style C self oiling 3hp. Hit & Miss on Cart;
 Monitor type VJ 1 1/4hp. Hit & Miss Pump Jack Motor (Runs) with Water Pump on Cart;
 New Way model D type F 4hp. Gas Engine, Air Cooled with Clutch on Cart;
 Wisconsin mod AENLD 3x3 1/4, Gas Engine w/ Cart;
 Antique Delco 32v Light Plant (needs Coil);
 A.Y. Mcdonald series 600 Deep Well Pump;
 Babson Bros. Surge RV2 Vacuum Pump;
 Nice Horse Drawn Doctors Buggy (no top);
 Nice Set Pony Harness;
 (2) 15" Leather & Synthetic Trail Saddles by Courts;
 15" & 13" All Leather (unmarked) Saddles;



Guns & Ammo

Henry Golden Big Boy model H006C .45LC in Box;
 Winchester model 70 .300WSM, synthetic;
 Springfield Armory 1898 30-40 Krag;
 Winchester model 12 Defender 12ga. Shotgun;
 Marlin model 1898 12ga. Pump Shotgun;
 Henry model H001 .22 Lever Action (Like New);
 Springfield Armory XD-9 9mm (N.I.B.);
 Canik, TP9-SF 9mm (N.I.B.);
 SAR, SAR-9T 9mm (N.I.B.);
 (3) Heritage Rough Rider Barkeep .22 Revolvers;
 (2) Heritage Rough Rider .22 Revolvers (N.I.B.);
 1918 Military Rifle Scabbard;

(9) Boxes Winchester 170gr. 30-30 Ammo;
 (14) Boxes Rem. 125,150 & 180gr. 30/06 Ammo;
 (4) Boxes Remington 300WSM Ammo;
 (1500+) Rounds Federal .22 Ammo;
 (2) Boxes 38spl. Ammo;
 (32) Boxes Misc. 12ga. Shotgun Shells;
 1918 Military Rifle Scabbard;

Trailers - Portable Buildings Propane Tank - Farm

14ft. Tandem Axle Flatbed Trailer;
 20ft. X 7ft. Heavy Built Flatbed Trailer, Single Axle;
 Good 500 Gallon Propane Tank w/ Tag;
 8ft. X 8ft. Barn Style Wood Portable Building;
 11ft x 12ft. Galvanized Quonset Hut;
 Round Bale Feeder;
 (5) 16ft. Cattle Panels;
 (10) Steel Posts;
 (17) Square Bales Straw;
 Pile Scrap Metal;



Anvil's - Tools - Generator

Good Cutting Torch Set with Cart & Bottles;
 Elec. Start Honda 11hp. Air Compressor;
 Duetz 2 cyl. 32hp Diesel Motor on Worthington BN size 6, 3 Stage Air Compressor (Runs Good);
 500 & 300 Gallon Air Tanks;
 250 Gallon Air Tank (leaks);
 Woofer model 111 Wood Spindle Maker, Gas Motor;
 Parks 12" Planer (Gas Motor);
 Belsaw 12" Planer (Gas Motor);
 American #1, 19" Table Saw (Gas Motor);
 Craftsman 10" Table Saw (Air Motor);
 Grizzly Floor model Drill Press (Air Motor);
 Flapper Sander;
 Shop Built Turning Lathe;;
 Craftsman 12" Band Saw (electric);
 1 Ton Air Hoist on Hercules Pallet Stacker;
 3 ton & 1 ton Chain Hoists;
 (2) Good Pallet Jacks;
 Coleman 2500 PSI Power Washer (Honda Motor);
 Poulan Push Mower (Honda Motor);
 Stihl Gas Weedeater;
 Armstrong Pipe Threader Set & Rigid Pipe Cutter;
 Bohn Combi Strapmaster Punch;
 Good Leg Vise;
 Handy Man & Hi Lift Jacks;
 Stove Pipe Crimper;
 Log Chains & Step Ladders;
 Misc. Hand Tools;
 Misc. Lawn & Garden Tools;
 (2) 4ft. Adjustable Height Tables;
 Metal & Plastic 55 Gallon Barrels;
 Misc. Tools & Shop Related Items Not Listed;
 Old 140 lb. & 20 lb Anvils



Lumber - Wood

700 Bd. Ft. Cedar Lumber;
 60 Bd. Ft. Cherry Lumber;
 (200+) 3&4" x 8ft. Pine Poles & (60+) 5&6" Pine Poles x 9ft. for Making Rustic Log Furniture;
 Lots & Lots of Peeled Cedar Poles;
 Misc. Cedars Logs
 Approx. 8 Rick Seasoned Firewood;

Antique - Collectible - Primitives

(2) Coleman Red Gas Lanterns;
 Antique Kerosene Lamps;
 Antique Kerosene Wall Lamp w/ Cast Iron Hanger;
 (2) Coleman Gas Irons;
 (2) Old Mountain Dew Bottles Filled by Stan & Claire and Filled by Ed & Gene;
 Toy Cast Iron Sad Iron, Anvil & Skillet;
 Singer 28K Hand Crank Sewing Machine (beautiful) Singer Treadle Sewing Machine;
 Gotham Sewing Machine (elec, convertible to belt);
 (2) Old Metal Lawn Chairs (Good);
 Very Old Heavy 16 Drawer Wood Work Bench;
 Old Metal Mail Sorting Workstation;
 3 Wheel Wood Toy Riding Horse;
 Wood Toy Box;
 Old Valor Kerosene Heater;
 Few Old Iron Implement Wheels;
 Nice all Metal Push Plow;
 Iron Buggy Steps & Seat Brackets;
 Red Carnival Glass Cream Pitcher;
 Flour Sacks & Quilt Books;
 Harold Bell Wright Books;
 Amish Made Cedar Decor including Childs Picnic Tables, Doll Cradles, Spring Seat, Buggy Jack, Night Stand, Half Log Bench, Towel Holders & More;
 Unique Coffee Table;
 (2) Singer Sewing Machine Stands w/ Cedar Tops;
 Stainless Milk Bucket;
 Old Leather Harness;



Furniture - Appliances - Misc.

Beautiful Corner China Cabinet;
 Very Old 3 Drawer Cabinet/Night Stand;
 Roll Top Desk;
 Lazy Boy Recliner;
 Glass Top Patio Table & 2 Chairs;
 Cunningham # 203 Wood Heating Stove with Jacket;
 King Wood Heating Stove from Shop;
 1 Burner New Perfection Oil Heater;
 Americana 4 Burner Gas Cookstove;
 E-Z Freeze 18 cu.ft. Propane Refrigerator;
 E-Z Freeze 22 cu.ft. Propane Upright Freezer;
 Wood & Metal Outside Bench;
 96" X 27" Stainless Triple Sink with Faucet;
 72" x 30" & 72" x 24" Stainless Prep Tables;
 Noodle Cutter & Small Pressure Cooker;
 Lots Lots more not Listed



Auctioneers Note:

The Yoder's are moving out of state.
 See our website: fosterauctionservice.com
 for a full List & Lots of pictures

Owners: Henry & Ruby Yoder

Foster Auction & Appraisal Service
www.fosterauctionservice.com
 Email: bidnowsold@aol.com



Auctioneer: Larry Foster
 Galena, Mo
 Phone: (417) 723-8329
 Cell: (417) 839-6860

Living Estate



Auction

"Knights of Columbus" 1708 Elm Hills Blvd., Sedalia Mo. 65301

Directions: From 50 & 65 hwy intersection in Sedalia, Go South on 65 hwy 2.3 miles to Auction on Left. Watch for signs on Sale Day.

As we are downsizing, we will sell the following at public Auction on:

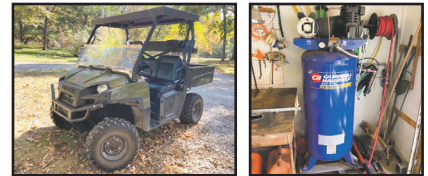
SATURDAY NOV. 25TH 2023 • 10:00AM

"Joe & Dianne Bode"

This Auction will begin at 10:00am with Firearms, Ammo & Misc.

At 1:00pm Kubota Tractor, Polaris Ranger, Trailers, Welders & equipment misc. tools etc. will sell.

FIREARMS & AMMO SELL AT 10:00AM Custom Flaigs .243 rifle, Bishop stock w/Leupold 6.5x20 scope, Savage 22-250 model 12 bull barrel, Boyd stock Bushnell engage 6x24 scope, Ruger .223 model M-77 MarkII Simmons Aetec 6x20 scope, Savage .223 model 12 stainless barrel Nikon 6x18 scope, Savage 30-06 model 110 w/Boyd thumbhole stock Simmons 6.5x20 scope, Remington .223 model 799 w/Simmons Aetec 4x14 scope, Thompson Center Encore 30-06 w/ Simmons Aetec 4x14 scope, TC .223 barrel w/Simmons 6x18 scope, TC 7mm mag barrel w/Simmons 4x14 scope, Remington nylon 66 .22cal w/4power scope, 2 - Savage 22-410 model 24s, Marlin 30-30 model 336RC, Marlin .22mag model 783 w/3x9 Redfield scope, Marlin .22cal model 99 MI semi auto w/ Weaver K3 scope, Remington 700 VS fluted stainless barrel w/Nikon 4x16 scope, Ruger 10-22 custom stock w/Simmons Midway heavy match barrel 4x16 scope, Savage Mark II .22lr w/Mueller 4.5x14 scope, Mossberg .22cal model 142-A w/ Simmons 3x9 scope, 2 - Ruger 10-22s .22cal, Remington 513T .22cal w/Redfield 3x9 scope, Marlin model 17vs .17cal stainless w/Simmons Aetec 3.5x12 scope, Savage model 93 .22mag w/Simmons 4x16 scope, Savage MSR-15 .223 (AR-15) w/ TruGlow OMNIA 6, Savage .204 model 12 LRP bull barrel (left ejection) w/Bushnell scope, **SHOTGUNS** Remington 20ga model 870 skeet (extra barrels), Remington 11-87 12ga Special Purpose +5 choke tubes, Remington 1100 TB trap 150th Anniversary, Remington 1100 improved cylinder, Remington 870 SC skeet 12ga 30" full, Remington 1100 .410 skeet, Remington 1100 .28 skeet, Iver Johnson .410 single shot, Winchester 1300 12ga. turkey +choke tubes, New England partner model SB2 10ga single shot, JC Higgins model 20 12ga. **BLACK POWDER** Thompson Center Encore 50cal. Black powder w/thumbhole & regular stocks, Thompson Center Hawken .45cal, Thompson Center .50cal, Thompson Center Seneca .36cal, Thompson Center .50cal Omega w/Tasco 3x9 scope, Thompson Center .50cal Hawken, **PISTOLS** Ruger Super Black Hawk .44mag (new model) stainless 10" barrel w/Weaver 2.5x8 scope & holster, Ruger LCR .38 special, Ruger Mark III target .22cal w/TruGlo Omnia scope, High Standard .22cal model 107 military tournament, H&R .22cal Sportsman 999, Smith & Wesson .44mag stainless Mountain Gun, Barretta 9mm model 92F, Star 9mm PN, Lyman plains 54cal black powder pistol, Home Made .50cal black powder pistol, **Large Lot Rifle & Pistol Ammo EQUIPMENT, TOOLS & MISC. SELL AT 1:00PM** BX2200 Kubota diesel lawn Tractor 4x4 w/LA211 loader, 60" belly mower, grass catcher & 3pt. (613hrs) Polaris Ranger XP 800EFI 4x4 UTV side by side w/dump bed (1577 hrs), 12' bumper hitch utility trailer w/treadplate floor & ramp tailgate, 10' bumper hitch utility trailer w/ramp tailgate, 8' bumper hitch utility trailer w/three foot side racks, Miller Matic 35 wire mig welder w/gas bottle, ESAB PCM-500I Plasma cutter, Century 125GL flux-core wire welder, Oxy & acetylene torch & bottle set, Campbell Hausfeld 60gal upright air compressor, welding table on wheels, Dura Craft benchtop drill press, Stihl MS210 & 211 chain saws, Homelite super XL chainsaw, lot hand tools, lot electrical hand tools, ele impact, brad nailer, 3/4" socket set, Emerson horizontal metal band-saw, 3 & 4 hp JOHNSON outboard boat motors w/titles, Craftsman belt disk sander on pedestal, grinder on pedestal, Delta bench grinder on stand, 12 drawer HD work bench on wheels w/wood top, Tradesman miter saw, Lot misc. gas jugs, 2 - portable air tanks, Kobalt 3 ton floor jack, 10" Power Kraft table saw, 6" bench vise, pull type ATV sprayer, heavy metal shelf, 2 - auto darkening welding helmets, 50+ foot 220v HD cord for welder, lot misc. hardware, lot long handled tools, small scaffold w/walk boards, Poulan-Pro leaf blower, Clark dual 2gal tank portable air compressor, Ryobi chop saw, Allied 31pc Marine tool set in case, Yard cart, gas BBQ grill, smoker, small pull typ disk, harrow, Grayline 30gal live bait tank, lg lot 40+ fishing poles many custom made catfish poles, Lot fishing tackle & lures, Crappy jigs, lead heads, lot plastic skirts, several shad bait nets, trotlines, dip nets, **Many More Items Too Numerous to Mention**



Auctioneer Note: This is going to put a cherry on Thanksgiving weekend, EVERYTHING has been extremely well cared for & maintained.

*STATEMENTS MADE DAY OF SALE TAKE PRECEDENCE OVER PRINTED MATERIAL.

Concessions provided by "Rolling Smoke BBQ & Catering" Steve Riska (660) 609-1918



JOHNSON AUCTION SERVICE

"Third Generation Family Tradition since 1942"

Russell "Rusty" Johnson (660) 221-4067 • Phillip Yoder (660) 723-3389

For Full Listing, Pictures and Details auctionzip.com (ID# 20300)

Estate Auction



"Rudy &
Lillian
Rehmer"

33001 Ringen School Rd. Smithton Mo. 65350

Directions: From Sedalia 50 & 65 hwy intersection go East on 50 hwy (Broadway) 2.5 miles to M hwy. turn Right (South) on M hwy go 9 miles to W hwy turn left on W 1.3 miles to Ringen School Rd. on Right go 1.3 mile to Auction on Right. Watch for signs on Sale Day.

Due to the loss of our parents, we will sell the following at public Auction on:

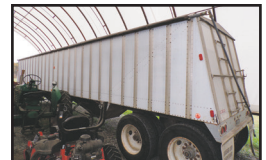
SATURDAY DEC. 2ND 2023 • 10:00AM

This is HUGE Auction • WILL be running 2 rings, bring a friend & be prepared.

The Home is FULL & many items already packed & to be unpacked, going to be a big day.

2020 33' Surveyor Legend (by Forest River) Travel Trailer bumper hitch, w/single slide out, outdoor kitchen, outdoor shower, retractable awning, sleeps 10, excellent condition MUST SEE. **Fire Chief 1600** outdoor wood furnace w/squirrel cage fan, **HOUSEHOLD, ANTIQUES & COLLECTIBLES**, Large lot local advertising pieces, Lg lot Tullis-Hall, MFA, Emma Creamery, Freeze & Rissler Dairy, Matching leather sofa & chair, blonde mirrored dresser & chest of drawers, blonde Lane cedar chest, 2 - spindle leg tables, corner cabinet, antique mirrored dresser, lg display cabinet, hospital bed, Queen size Serta adjustable bed, HD ele grinder from Smithton grocery, lot milk bottles & tops, Hoosier cabinet, antique high back bed, bow front mirrored dresser, lot misc. floor & table lamps, matching chest of drawers & mirrored dresser, Horizontal four drawer file cabinet, knee hole desk, **Hay Budden** 80# Anvil, 10gal "Blue Ribbon" crock, 5gal Western churn, lot misc. crocks, lot misc. iron implement wheels, Well pump, misc. wooden ladders, lot sawmill blades, Cl rendering pot, meat band saw, commercial meat hand saw, misc. meat processing items, lg lot vintage glass all types Pink & Green depression, Milk, crystal, APG, lg set china, blue Moon & Stars, **Pyrex**, lot hand painted plates & glasses, 2 - Miss Missouri State Fair Sedalia dolls (in boxes), retro aluminum canister set, lot glass blocks, Tandy leather tool set, Milk can collection 20+, Enterprise lard press, egg basket, galvanized manual washing machine, 3 - Kayaks (Pelican, Ascend, Sundolphin), **Flying "O"** toy pedal tractor, lot old Tonka toys, Wash tub on stand, salesman sample "Loom", Large primitive loom from Germany, handmade toddlers' bed, **Coronado** chest freezer, SS table, Vintage Frigidaire refrigerator, Singer ele sewing machine, vintage violin in case w/bow, cream separator, Nor-Lake 6'x6' freezer / storage unit (with window unit), **2001 Ford Expedition XLT 5.4 Triton V8 3 row seating 159k miles, CASE 1835C Skid Steer diesel w/grouser tracks, bale spear, smooth & tooth buckets, 3,981hrs., 1987 GMC "Brigadier" L10 Cummins air brakes 7spd trans. New injectors & front tires 169k miles, 1982 Merritt 42' hopper trailer lights work like new tarp, 1980 38' Drop Deck trailer w/fold out ramps, 1985 International Harvester 1460 "Axio-flow" combine w/bean chaf spreader 4884hrs. International Harvester 863 6-row corn head, International Harvester 1020 20' platform head, John Deere 220 20' platform head, JD to International adapter plate **KINZE 611** planter 6-split row Precision e-set corn & soybean meters w/Sensor 1 digital monitor, 1996 Case IH 8465T round baler w/monitor, \$3,000 spent on parts, new bearings chains & sprockets etc. (net wrap able), M&W V-rake 8 wheel w/hyds, 1950s Caterpillar D4, John Deere 400bu. grain cart new gear box 1000 PTO w/tarp, 1086 International 1976 cabbed tractor new/ clutch, injection pump, AC fan & front tires, rebuilt front end dual hyd. All lights work, 1973 Ford 3000 gas tractor (1-owner), 1959 Farmall 560 narrow front w/loader, blade, bale spike & bucket, Farmall 460 narrow front, new clutch, PTO drive, TA, gauges & seat, 1941 Farmall "B" Cultivision tractor, 1940s Farmall "B" Cultivision tractor, 1946 Farmall "M" runs good, Case VAC w/6' Woods belly mower, Farmall M single front, less than 50hrs on engine overhaul, 784 International tractor diesel good tires, Westendorph WL44 loader w/bucket, Vermeer 605 Super G Round Baler, 2021 3pt. 6' Bush Hog (like new), Ford 3pt 16' rotary hoe, Kewanee chisel plow 3pt. 11 shank, New Holland 273 Hayliner square baler, 3 - hay wagons factory running gears (needs floors), Cub Cadet 1330 riding lawn mower, Cub Cadet Riding Mower, King Kutter 3pt. 6' finish mower, bale mover 3pt or fast hitch, 3pt hyd. Post driver, New Idea side delivery hay rake, Side Winder 15' batwing mower (splines stripped from one stump jumper), White 273 winged disk 20', Allis Chalmers 1200 winged field cultivator 20', Case International 130PTO manurer spreader, Case / International 3206 sickle bar 7' mower, 3pt hyd. Bale unroller, **EQUIPMENT & VEHICLES FOR PARTS & RESTORATION** 1959 Ford F-100 pickup 223 6cyl. (has title), 1983 Ford pickup 6cyl. 3spd on column 2x4 200k+ miles, (has title), 1939 Oliver 90 restoration project (complete), 560 Farmall rear end & transmission, 1460 International Combine overhauled engine under 500 hrs (hydro pulled) 303 International Combine engine stuck, Gleaner "Allis-Chalmers" CII combine (good engine), 1960 Ford F-350 grain truck four speed 223ci 6 cyl., 1956 Ford F-600 grain truck 292ci 4+2, (has title) 1964 International 1 1/2 ton grain truck model 1300 w/hoist & 5spd., 1997 Ford F-150 extended cab short bed 4x4 200k+ miles (has title), 1959 Farmall 460 most complete, Lot Misc. tractor & equipment parts, 3pt assembly for M or H Farmall, Farmall "M" complete, International 1190 haybine, Vermeer 605B round baler, Oliver dump rake, International 9' sickle bar mower model 100, Misc. spare tires & wheels, 5' pull type rotary mower, 15' bumper hitch tandem axle trailer (no title), 16' bumper hitch tandem axle homemade trailer fold-up ramps, Dearborn 3pt two-bottom plow, International 416 3pt. four bottom plow, MM pull type 3 bottom plow, 3pt 6' blade, 3pt bale spike, Loader w/1850 Oliver mounts w/smooth bucket & bale spear, bale wagon hauls 8 with 3pt spike, 3pt. Danuser & 2pt International posthole diggers, 3pt tumble bugs, pull type tumble bug, 3pt boom, 2 - sets pickup bed racks, Tobb MFA 2-ton grain bin, 3pt disk 6', bumper hitch bale spike wagon, portable "A" frame, King Kutter carry-all, Troy-Bilt "Pony" rear tine tiller, Troy-Bilt "mantis style" tiller, Lawn-Scout front tine tiller, 2006 Eton Vector 250cc four-wheeler, small utility wagon, Wonderwood wood stove, 2 - wood stoves, Coleman 2500watt generator, Stihl MS180c "Easy Start" chainsaw, Sachs Dolmar chain saw, belt drive cement mixer, HUGE lot misc. scrap iron, Wilmer super 600 Fertilizer cart (scrap), **Many More Items Too Numerous to Mention****

Auctioneer Note: Over 100 year family collection SO many items yet to be discovered



*STATEMENTS MADE
DAY OF SALE TAKE
PRECEDENCE OVER
PRINTED MATERIAL.

Concessions provided by
"Benton County Good
Ole Gals"



JOHNSON AUCTION SERVICE

"Third Generation Family Tradition since 1942"

Russell "Rusty" Johnson (660) 221-4067 • Phillip Yoder (660) 723-3389

For Full Listing,
Pictures
and Details
auctionzip.com
(ID# 20300)

Diamond Luncheon & Jewelry Auction



Sunday November 26th at 2 P.M. | In-Person at 2350 N Clifton Ave, Springfield, MO 65803 & Online

Get your ticket for \$20 to enter for a chance to win a diamond worth up to \$750! Enjoy a glass of champagne with a strawberry and indulge in a delicious filet mignon lunch. Join us for the diamond lunch starting at 1 pm! Call (417) 882-4676 to RSVP for the lunch.



No ticket purchase required for auction! Join us at the diamond lunch and support our veterans with every lunch purchase!

www.easterlyauction.com

FOR MORE INFORMATION GO TO WWW.EASTERLYAUCTIONCO.COM OR CALL EASTERLY'S AT 417-833-9494

EASTERLY AUCTION CO.

Mike Easterly Auctioneer • 417-833-9494

Not Responsible for accidents or theft. For more information call: Easterly Auction Company, Springfield, MO. Auction Terms: Visa, Mastercard, Cash, Cashier's check or checks with proper I.D. Announcements day of sale take precedence over printed material. Auction Notes: Although information is obtained from sources deemed reliable, auctioneer makes no warranty or guarantee expressed or implied. Buyers should themselves take the opportunity to make their own inspection prior to sale.

www.EasterlyAuction.com • auctionzip.com ID#14770



PUBLIC AUCTION

Saturday, November 25, beginning at 9:30 A.M.

Located at 61429 Hwy F, California, MO 65018. Directions from California take Hwy 87 South 3 miles to Hwy F, right on F, then 1 mile to auction site on left. Watch for auction today signs.

GUNS & SPORTING GOODS

Rem model 7400 30-06 semi auto
 Rem model 700 syn. Bolt action 270 cal.
 Weatherby Vanguard 7mm mag bolt action
 Sig Sauer 9mm with 2 magazines, holster
 IJ double action model 1900 32
 Smith Wesson 38
 Black powder 44 cal. Revolver S.S.
 7mm mag. Ammo
 270 ammo
 30-06 ammo
 Old box Rem Kleanbore 35 Rem Express
 Lee reloading dies and powder
 Reloading press, scale, 222 and 7x57 dies
 Black powder — Ball — Empty brass
 Gun cases
 Game cart
 Ground blind
 Deer feeder
 Shooting rest
 Fishing rod reels
 Tree stands



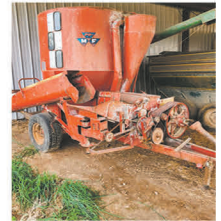
TRAILERS & FARM MACHINERY

2002 Goose stock trailer 24'x 7 1/2' goose neck
 16'x 7' stock trailer goose neck
 16' flatbed trailer bumper hitch
 6065 White tractor 4 wheel drive
 2- WD Allis tractors
 2840 Bush Hog loader qt.
 7' 3pt hitch Bush Hog brush hog
 Several gravity flow wagons
 Hyd. Knight feeder wagon 2250 reel Auggie
 3 pt. Hyd. Bale unroller
 MF grinder mixer
 Grain-o-vator auger feed wagon
 2-Older auger wagons
 2-Side delivery rakes
 Grain elevator
 JD 3 pt. field cultivator
 Ford sickle mower



HAY, CORN SILAGE, FARM MISC.

10-Big round bales wheat hay
 90-Tons corn silage
 12-Ton bulk feed bin
 6-Ton bulk feed bin
 18-Ton bulk feed bin (needs repair)
 12' Cattle guard
 Lot panels and gates
 Ritchie hog waterers
 Used woven and barbed wire
 Large roll rubber belting
 Cattle head catch
 Small head catch hog or calves
 Hedge posts
 Snow plow
 Older 3 pt. blade
 Draw bar seeder
 1" and 2" hedge lumber
 Lot misc lumber
 White metal roofing
 Big Husky and Franklin waterers
 Small livestock scale
 5-Calf huts
 24' Fiberglass ext. ladder (like new)
 Torch cart, hoses, gauges
 Tool boxes, bolts, nuts, nails
 Fence chargers
 3 wheeled bikes
 Gas cans
 Axes
 Shovels
 Tools
 Halogen work light
 Craftsman battery powered tool set
 Samsung flat screen tv
 Smoker grill
 Misc. household items



After many years of feeding cattle Dale has made the decision to downsize. We will have lots of shed space to sell small and misc. items in case of inclement weather. Many misc. items not listed. Hope to see you at the auction!

Thanks, Larry

Owners: Dale & Margaret Bilyeu

Auctioneers
 Larry Martin, Loren Martin
 & Mel Yoder



MARTIN AUCTIONS

660-337-6471

For more auctions go to www.auctionzip.com ID # 47012

Terms: Cash or check with ID. Not responsible for accidents. Statements made day of auction take precedence over printed material



Wheeler Livestock Auction, Inc.

Osceola, MO 64776

Special Stock Cow Sale

SATURDAY NOV 25TH, 6:00 P.M.

Expecting 20 Breeding Bulls | 1000 Bred Cows & Cow Calf Pairs

Bracher-

• 3 Reg. Angus Bulls 20 months, 1 Reg Polled Hereford Bull 20 months

CRH Farm-

• 2 Red Balancer Bulls 21 months, 1 CE Heifer bull – 1 Growth bull

Chad Foster-

• 2 AI sired Red Ang Bulls CE, ABS No Worries Genetics 2 yr

Ron Dent-

• 2 Blk Lim-Flex Bulls 20months

Troy and Kristi Thompson-

• 1 Blk Ang bull 3 yrs, 1 Hereford bull 2 yrs, 2 Ang Hfrs 2 yrs bred 3rd to Ang bull

Thomas Farms-

• 85 Fancy Angus Hfrs 2 yrs 1050# with 85 Angus sired calves 150#. The above 85 Angus sired hfrs are home-raised, all sisters, sired by Top Bulls. Calves are tagged to match, hfrs are open, have not been with bull. Calves sired by Lucas Ranch Genetics.

Ridgeview Ranch-

• 18 Fancy Ang Hfrs 2 yrs with 18 Ang calves 200# Hfrs are Shauff Ang Genetics, calves are sired by Worthington Ang. Hfrs are open. All Hfrs & calves are tagged to match & worked. 7 Ang Hfrs 2 yrs bred 2nd to Mushrush Red Ang bull.

Randy Moore-

• 32 Fancy Angus Hfrs 1050# bred to CE Angus bull, 11 BWF Sim/Ang Hfrs. 1050# bred to CE Ang bull, 17 Yel Char Hfrs 1100# bred to CE Red Ang bull. The above 60 hfrs will calve Feb 1st for 60 days. All hfrs are pelvic measured, complete mineral and health program

Rodney Sullins-

• 80 Blk Hfrs 2 yrs 1000#, 10 Red Hfrs 2 yrs 1000#
The above 90 hfrs are all bred to Meade Farms CE Blk Ang bulls. All pelvic measured, complete health program

Kori Kimes-

• 40 Blk Ang Hfrs 1000# bred to CE Ang bull to calve Feb 1/60 days
All hfrs home-raised, gentle complete health program

Mark Wilson Dispersal-

• 20 Blk Sim/Ang X cows 4-6 yrs with 20 BWF calves 200#, 10 mix cows 4-6 years with 200# calves, 1- 4 yr old Horded Hereford Bull

Max & Trevor Howlett-

• 40 Blk cows 5-BM 1300# bred 2nd-3rd, 45 Yel Char & Red cows 5-BM 1300# bred 2nd-3rd. The above 85 cws are bred to Ascherman Char bulls, 15 Blk & BWF cows 5-BM 1250# bred 2nd-3rd, 15 mix cows 5-BM 1200# bred 2nd-3rd. These 30 cows are bred Blk or Red Angus. The above 115 cows are all good calf-raisers bred to Top Bulls, complete health and mineral programs

Jackson Farm-

• 40 Fancy Blk Ang & Sim Ang cows 3-6 years 1300# bred to Top Bulls. These cows are gentle and good with a complete health program

Brett Ranch-

• 36 mix cows, 3-5 yrs., 1250# cows bred 2nd & 3rd to Top Bulls. Cows worked and ready to go!

Lockhard Farm-

• Spring Calving Dispersal . 30 Blk & BWF cows 5-BM 1200#, 10 Mix cows 5-BM 1200#. The above 40 cows bred Blk Bull calve Feb

S&S Farms-

• 20 Brng Cows 5-7 yrs, bred Ang bull to calve March 1st. These cows are all home-raised and gentle

W-W Farm-

• 40 Purebred Hereford cows 3-6 y/o 1150# bred 2nd & 3rd to Ang or Hereford bull

Minnich Farm-

• 20 Big Fancy cows 5 yrs, bred to Top Ang bulls to calve Feb 15th, good gentle calf-raisers

Smaller Consignments-

• 200 mix cows 3yrs-BM 2nd and 3rd period.

FOR CONSIGNMENTS PICS/VIDEO-WEBSITE AND FACEBOOK
wheelerlivestock.com/search Wheeler Livestock Auction on FB

Feeder Sale- Thursdays at 11 a.m. central
Special Feeder Sales are 11/30, 12/7, 12/14 -2023
WE WILL BE OPEN EVERY THURSDAY IN DECEMBER
December Stock Cow Sale- Dec 30th 2023 at 6 p.m. central

Byron Wheeler-417-777-0897

Austin Shelby, Barn Manager-
417-309-1350

Darwin Hearting, Field Rep-
417-296-1029

Sue Hemenway, Marketing Manager-
417-839-9316

Lolly Sheldon-417-296-4258

WHEELER
LIVESTOCK
AUCTION
INC.



Osceola, MO • 685 SE 13 Hwy., PO Box 560 • BARN 417-646-8102

Bid online on CattleUSA • www.wheelerlivestock.com • Like us on Facebook-Wheeler Livestock Auction

Lyndon Ropp-918-325-1616

Kevin Wade-660-492-3279

Denver McGinnis-417-399-2701

Sam Francka-417-399-7113

Tim Sherrer-573-855-1951

Burleigh Wheeler-417-840-6561

Red Whistance 417-276-7909

Les Tennis 417-466-8786

TRACTOR-POLARIS RANGER-TRAILER-GUNS-TOOLS-FURNITURE-MISC AUCTION**SATURDAY NOVEMBER 25, 2023 10:00 AM****LOCATED: 302 BRIAR RIDGE CT, NIXA MO**

FROM MAIN ST & HWY 14 NIXA MO GO EAST 2.3 MILES TURN LEFT (N) ON COMBS RD GO ½ MILE TURN RIGHT ON BRIAR RIDGE CT TO AUCTION ON RIGHT. CONCESSIONS & RESTROOMS AVAILABLE.

FOR PICTURES SEE WEBSITE OR AUCTION ZIP.COM**TO PREVIEW CALL 417-830-0153****BANK LETTER OF CREDIT ADDRESSED TO MELTON AUCTION & REALTY REQUIRED FOR PURCHASE OVER \$5000****NO GUNS ON PREMISES UNTIL AUCTION DAY! GUNS SELL @ 12:00****TRACTOR-POLARIS RANGER-TRAILER-MOWER**

KIOTI CS2410 COMPACT TRACTOR W/KIOTI SL2410 LOADER, 4 WHEEL DRIVE, HYDRA STATIC DRIVE, WHEEL WEIGHTS, INDUSTRIAL TIRES, ROW BAR, W/6' BELLY MOWER—WOODS RBS60 5' BLADE—2021 POLARIS RANGER 1000 SINGLE OVERHEAD CAM, TOP & WINDSHIELD, HARD & SOFT DOORS, DUMP BED 81.2 HRS LIKE NEW—SPARTAN RT-PRO 747CC 54" ZERO TURN MOWER W/KOHLER 7000 SERIES PRO 26 HP, 369.7 HRS—2021 LOAD TRAIL UTILITY TRAILER 3500 LBS AXLES, BRAKE ON ONE AXLE, FOLD DOWN RAMP ON REAR, ADJ HEIGHT ON HITCH, REMOVABLE RAIL ON ALL SIDES, ALUM FENDERS—COSMO SEEDER 3 PT 540 PTO RPM DRIVEN—AG SPRAYER 45 GAL EXTRA HEADS, SWIVEL BOOM 10-12 FT WAND—8 FT CHAIN HARROW

GUNS

- WARDS WESTERN FIELD MOD 45 STAINLESS 22 MAG SHORT, L, & LR W/BUSHNELL SCOPE SPORTVIEW 3X7X20MM
 - JC HIGGINS STAINLESS BOLT ACTION MOD 10313 22 SHORT, L & LR
 - WINCHESTER MOD 74 LONG RIFLE SER 201553A
 - MOSSBERG 500 APT 12 GA 2-3/4 & 3" BARRELS FULL & MODIFIED SER H946350
 - MOSSBERG 500 APT 12 GA 2-3/4 & 3" BARRELS FULL & MODIFIED SER H866265
 - MOSSBERG 500 APT 12 GA 2-3/4 & 3" BARRELS FULL & MODIFIED SER H946584
 - RANGER M34 USA 22 SHORT, L, LR BOLT ACTION
 - CHINESE AIR RIFLE .177 CAL
 - 760 PUMP MASTER .177 CAL & BB
 - KIMBER MICRO 9MM SER PBO303128 W/3 CLIPS
 - KIMBER MICRO 9MM RAPIDE SER PBO341608 W/2 CLIPS
 - S&W K-FRAME 38 CAL
 - FIE MOD 28 25 CAL ACP DK24185
 - LLAMA E SPECIAL 25 CAL
 - BUTLER 22 SHORT 50479
 26. 25 CAL AUTO PISTOL 2145
- AMMO 20 GA, 16 GA, 12 GA, SOME 38 SPECIAL & JACKETS

TOOLS

TRUE TEMPER WHEEL BARROW NEVER RUN FLAT TIRE—WERNER FOLDING ADJ ALUM LADDER—10' FIBERGLASS STEP LADDER—4" CRAFTSMAN VISE—CRAFTSMAN 19.2 DRILL—CRAFTSMAN 7 ¼" WORM DRIVE SKIL SAW—CRAFTSMAN JIG SAW—CENTURY BATTERY CHARGER—DEWALT ¼ SHEET SANDER—B&D SCREWDRIVER—BOSCH MULTI PURPOSE CUTTER—SOLDERING GUN—DREMEL TOOL—KOBALT SAW HORSES—CRAFTSMAN WRENCHES—SOCKETS, PIPE & CRESCENT WRENCHES—FILES, EXT CORDS, PRY BAR, HAND SAW—5 TON HYD JACK—HACK SAWS—FILES—NIPPERS—SHEARS—FURNITURE CLAMPS—LONG HANDLE TOOLS, MISC GARDEN TOOLS—2.5 GAL SHOP VAC—STIHL BG55 BLOWER—STIHL MS181C CHAIN SAW—TOW STRAP, LOG CHAIN—6' FIBERGLASS LADDER—CREEPER—SAFETY CABLE WIRE—POLARIS OIL CHANGE KIT—T POST—GAS CANS—GARDEN HOSE, OIL, ANTI FREEZE, CHEMICALS—GREASE GUNS—ROPES—TARPS—POST DRIVER—SCREWS, FASTENERS, ORGANIZER—MISC LUMBER—

OWNER: EDWARD & CHARLENE GILMAN

HARDWARE CLOTH—LANDSCAPING MESH—WOODEN BOXES—LANDSCAPE ROCKS

FURNITURE

KENMORE S/S FRIDGE—3 PC ETHAN ALLEN COFFEE/END TABLE SET—(2) 6 SHELF OAK BOOK SHELVES—ANTQ STORAGE BENCH—ANTQ LIBRARY DESK—ANTQ OAK LOWBOY DRESSER W/BEVEL MIRROR—ANT OAK GENTLEMAN'S PC W/BEVEL MIRROR—GENTLEMAN'S VALET—PR NIGHT STANDS—LIBRARY TABLE—6 PC CORNER DINETTE SET—LEATHER SECTIONAL W/3 RECLINERS—LG WALL CLOCK—OAK CURIO CABINET W/SLIDING FRONT DOOR—7 PC KELLER FURNITURE DINETTE SET W/2 CAPTAIN CHAIRS, 2 EXTRA LEAVES, LG MATCHING HUTCH—WINE RACK, MARBLE TOP TABLE—CORNER CURIO CABINET ART DECO STYLE—LG OAK DESK—2 PC MATCHING CREDENZA'S—OFFICE CHAIR—PRINTER TABLE—2 SETS OF 2 BAR STOOLS—5 PC GLASS TOP DINETTE SET—BAKERS RACK—4 ANTO KITCHEN CHAIRS—3 NESTING TABLES—LEATHER ROCKING LOVE SEAT W/RECLINERS—LEATHER, MICROFIBER SOFA—ELEPHANT FLOOR LAMP—OTTOMAN—OCC CHAIR—QN OAK BED MADE BY NORMANS FURNITURE—NIGHT STAND—LAMP TABLE—SM SQ ANT TABLE—ARMOIRE CHEST W/JEWELRY DRAWER, CEDAR LINED—KG HEAD BOARD—VIZIO 70" FLAT SCREEN TV—MAKEUP/JEWELRY TABLE—BISSEL PRO HEAT STEAM CLEANER—9 PC PATIO SET W/UMBRELLA—2 PATIO LOUNGERS—PARK BENCH—4 PC GLIDER, CHAIRS, TABLE PATIO SET W/CUSHIONS—2 PATIO STORAGE BOXES—WALL PICTURES, METAL WALL ART, DISNEY WALL PICTURES, WALL SIGNS—KAMADO JOE CERAMIC COOLER W/ACCESSORIES—3 FT BLACKSTONE GRILL ON STAND—SEVERAL RUGS SOME WITH PADDING—YARD ORNAMENTS

KITCHEN WARE-PRIMITIVES-DECOR-MISC

FIESTA WARE VINTAGE & MODERN—4 GAL CROCK W/HANDLES—REDWING 3 GAL CROCK—CABELA'S DEEP FRYER—3 GAL POTTERY JUG—PELOUZE SCALE—SWISS COW BELL—COKE BOX W/WOOD COKE TRUCKS—SOME CAST, BAKING PANS—RAZOR STRAPS—1928 LAB KIT—DIVET REPAIR TOOL W/MARKER—LONGABERGER BASKET—LAZY SUSAN—MISC GLASSWARE—OIL LAMPS—SILVERWARE SET SERVICE FOR 8, 1881—2 CHILDREN'S FORKS & SPOONS—PLANTER BOX—SIDEWALK LIGHTS—TOMATO CAGES—LAWN CHEMICALS, LUMP CHARCOAL—CUSHIONS & POOL TOYS—RANGE MAXX SHOOTING TARGET—WAHL & OSTER SHEARS—SERTA QN BLOW UP MATTRESS—MENS & WOMENS BOOTS & HATS, OSTRICH, SEA TURTLE—CARHARTT BIB OVERALLS—GOLF CLUBS—BIKES, SCHWINN, HUFFY, O ZONE, BIKE HELMET—POCKET KNIVES, LIGHTERS—BUG ZAPPER—FLOWER POTS—1 LOT BOOKS, LINENS—LG LOT CHRISTMAS & SEASONAL DECOR, BALSAM HILL 7' CHRISTMAS TREE, CHRISTMAS VILLAGES, DOOR HANGER

AUCTIONEER NOTES: ED & CHAR HAVE SOLD THEIR HOME AND DOWNSIZING, THIS IS AN EXCEPTIONALLY CLEAN AND VERY GOOD QUALITY FURNITURE & EQUIPMENT. YOU WON'T WANT TO MISS THIS GREAT AUCTION!!

ANNOUNCEMENTS MADE ON SALE DAY WILL TAKE PRECEDENCE OVER ANY OTHER PRINTED MATERIALS. NOT RESPONSIBLE FOR ACCIDENTS OR LOSS OF ARTICLES ON OR NEAR SALE SITE.

MELTON AUCTION & REALTY CO LLC
meltonauctionrealty.com | roger@meltonauctionrealty.com

Roger Melton | Nixa, MO | 417-830-0153 or 417-725-1801

Brad Cole | Nixa, MO | 417-840-2950

Hal White | Nixa, MO | 417-343-2334

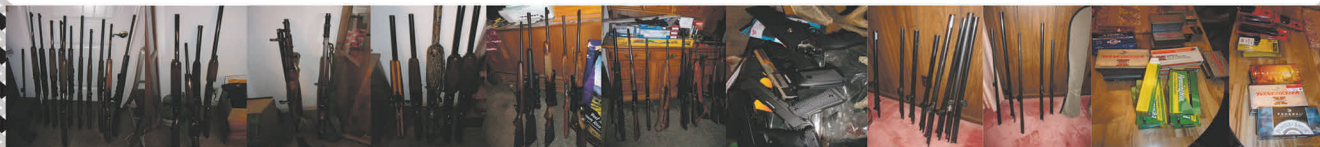
Tanner Foster | Galena, MO | 417-840-5519

GUN & KNIFE ESTATE AUCTION

Friday, November 24th, 2023 ~ 10:00 AM

LOCATION: Sheldon Community Building, 6th & Main, Sheldon, MO (Watch For Signs)

Auction For Virgil Josephson Estate



Approx 60 Guns Will Sell First

Browning Bar 338 Safari Semi Auto Rifle,
 Browning Bar 300 Win Mag Semi Auto Rifle,
 Browning Bar 270 Win Semi Auto W/Scope,
 Browning Bar 243 Win Safari Semi Auto W/
 Scope, Browning Bar Mark II Zenith Model
 270 Win Semi Auto W/Scope, Browning 1886
 Lever Action 45-70 Cal Rifle, Browning 1886
 Lever Action 45-70 Cal Carbine, Browning
 1885 Single Shot 45-70 Cal, Browning Lever
 Action Centennial 44 Rem Mag, Browning
 Model 1895 Lever Action 30-06, Browning
 BLR Lever Action 243, Browning A Bolt AB3
 Bolt Action 243 Win, Browning BPR 30-06
 Pump Rifle, Browning A Bolt 22 Hornet Bolt
 Action, Browning SA Grade 3 Lever Action 22
 Rifle, Browning A Bolt LR 22 Bolt Action,
 Weatherby Mark V Bolt Action 270 Weatherby
 Mag, Ruger Model 77 Bolt Action 7mm Mag
 Rifle, Ruger 223 Semi Auto Ranch Rifle, Rem
 Model 788 Bolt Action 30/30 Win, Rem Model
 670 Bolt Action 350 Rem, Western Field
 Model 712 Bolt Action 30/30, Western Field
 Lever Action 30/30, Mossberg Patriot Bolt
 Action Model 450 Bush Master Rifle, Ruger
 Semi Auto 40 S&W, High Point Semi Auto
 Carbine 40 S&W, Rusk 7.62 x 39 SKS W/
 Bayonet, Rusk 7.62 x 54 Bolt Action W/
 Bayonet, Marlin M512 Bolt Action Slug Gun,
 Rare Weatherby Orion Over/Under 12 Ga
 Shotgun, Raikal MP94 Over/Under 12 Ga-308,
 Rem SPT Semi Auto 10 Ga Shotgun, Ithica 37

Pump 12 Ga, Rem Model 1100 Semi Auto 16
 Ga Shotgun, Browning 2000 Semi Auto 12 Ga,
 Browning B B80 Semi Auto 20 Ga, Browning
 Silver 12 Ga Semi Auto Slug Gun, Browning
 Gold Evolve 12 Ga Semi Auto Shotgun,
 Browning BPS Pump 12 Ga Shotgun,
 Browning Auto 5 Mag, Semi Auto 12 Ga
 Shotgun, S&W 1076 Semi Auto 10 MM,
 Browning Model 1911 Semi Auto 22 Pistol,
 Ruger Model SR9 Semi Auto 9MM, Ruger
 Model GP100 Stainless 357 Revolver, Glock
 Model 20 Semi Auto 10MM Pistol, Rock
 Island Model 1911 Semi Auto 10MM Pistol,
 High Point Model JCP Semi Auto 40 S&W,
 Several Of The Guns Listed Will Have
 Original Boxes With Them, Possibly Other
 Guns Added Sale Day Not Listed

Ammo & Gun Items

Lots Of Ammo Of Various Kinds, Extra
 Barrels For Some Guns Will Sell Separately &
 Other Gun Parts, New Clips & Magazines,
 Some Gun Cases & Other Related Items

Collector Knives

Approx 100 Collector Pocket Knives & Long
 Knives Inc Case, Buck, Unika, Robinson, Old
 Timer, Tree Band Bokers, Schrade, Cut
 Master, Also Several Hand Made And Long
 Knives

**Perfect Opportunity To Do Your
 Christmas Shopping Done For
 Those Than You Know Like &
 Collect Guns & Knives**

Auctioneers Note: It Is An Honor To Be Conducting This Auction For The Josephson Estate . If You Are A Browning Collector You Do Not Want To Miss This Auction. One Of The Best Opportunities We Have Ever Had In Browning Guns. There Are Several Other Amazing Collector Guns Of Other Brands. This Is A Top Of The Line, Clean & Straight Honest Gun Collection. An Auction You Do Not Want To Miss. Collector Knives Are Name Brands & Excellent As Well If You Are A True Collector. Good Ammo Also. This Is A Perfect Opportunity To Get Your Christmas Shopping Done For Those That You Know Like & Collect Guns & Knives. **Sale Order: Guns Will Sell First Then Ammo & Gun Parts & Related Items Then Move Into Collector Knives. See Ya There!!!**

Terms: Cash or check with proper ID. Now accepting most major credit cards. Nothing removed until settled for. Statements made the day of sale takes precedence over printed material. Everything sold as is where is. Not responsible for accidents. Restroom available. Concessions Provided. Check our website for upcoming auctions and for additional pictures!!



NANCE AUCTION SERVICE

No Matter How BIG or small, We Do Them All!!!



Col. Bill Nance 417-214-0093 In God We Trust Philippians 4:13 Col. Sean Beazley 417-247-6754

ESTATE AUCTION

Sunday, November 26th, 2023 ~ 1:00 PM

LOCATION: Sheldon Community Building, 6th & Main, Sheldon, MO (Watch For Signs)

Auction For Don & Shauneen Miller Estate

Also William Neilson Estate



1800's Antique Furniture, Also Antique, Primitive & Modern Furniture

Rare 1800's Corticelli Silk Spool Cabinet, Rare J&P Coats 1800's Oak Spool Cabinet, 1800's 3 Section Ant Drop Front Secretary W/2 Lawyers Bookcases Built In Also W/Drawers & Mirror, 2 Ant Ornate Oak Halltrees 1 W/Wide Bottom, 1 Rare Slim W/Umbrella Holder, 1800's Buffet W/Lead Glass Doors & Rare Triple Mirror, 1800's GEO W. Williams Safe, Ant Oak Serpentine Front Gentlemen's High Boy, Early 1900's Ant Kitchen Cabinet, Early 1900's Ant 4 Side Glass Store Display, Ant 1800's Knock Down 2 Door Wardrobe, Ant RxR Desk, Ant 1910 Highchair, Ant Slim Cherry Sideboard Buffet, Ant Oak Stickley Rocker, Limbert Ant Rocker W/Footstool, Ant Hickory Shaker Rocker, Rare Lg Ant Walnut Trunk, Childs Ant Hickory Chair & Rocker, Ant Child's Cradle, Ant Mission Clock In Original Finish, 1930's German Wall Clock W/Black Oak Beveled Glass, Vintage Black Marble Mantle Clock, Ant Blue Painted Doctors Medical Cabinet, Ant 5 Ft Oak Bookcase W/Shelves, 6 Ant Oak Dining Chairs, Ant Sewing Machine Base Table, Ant Cedar Chest, Several Ant Trunks, Ant Metal Store Bread Rack, Old Drop Leaf Coffee Table, Rare RM Metal Fan, Ant Soda Pop Or Gas Station Stools, Ant Slag Glass Hanging Light, Rare Yard Long Black & White Picture Of Tamko Asphalt Products Co. Of Black Memorabilia, Ant Dancing Bears Picture, Several Other Ant Pictures & Paintings Inc Oil On Canvas & Others, White Dresser & Nightstand, Oak Kitchen Table & 4 Oak Chairs, Office Chair, Microwave & Stand, Other Items Not Listed Stored In Storage Container

Approx 100+ Pieces Of Cast Iron

#14 Griswold Lg Block Skillet, #14 Griswold Lid, Griswold #3, #6, #7 #8 Skillets, Griswold #11 Waffle Iron, Griswold #18 Muffin Pan, Griswold Cast Iron Scone Pan, Griswold #109 Skillet Griddle, Griswold #8 Caldron Campfire Hanging Gypsy, Griswold #10 Cast Iron 949 Muffin Pan, Puritan #1270 Cornbread Pan, Several Waggoner & Other Brand Cast Iron, Also

Several Dutch Ovens, Griddles, & Other Items Most Waggoner & Griswold, Cast Iron Ship, Goodnight Elf & Iron Horse Doorstops, Sad Irons Inc Star 6, Mrs. Potts #1, Rockdale Iron Co & Others, Cast Iron IR & F Co. Anniston AL 3 Way Anvil, Other Cast Items

Guns, Bayonets, Rare Antiques, Collectibles, Primitives & Misc Items

Very Rare Nortiner Double Barrel, Double Trigger Stagecoach 12 Ga Shotgun, Rare Union Fire Arm Co 1897 Pump Shotgun W/ Safety Trigger, Long Tom Breakover 12 GA? Shotgun, 1899 US Bayonet W/ Sheath, 1917 Rem Bayonet, Bayonet Scabbard, Rare 1800's Complete Shoe Cobblers Set In Original Wood Adv Box, Cobblers Shoe Stretcher, Rare Coca Cola Store Door Pull, Early Griswold Star Tobacco Cutter, Rare Stoneware Blue Labeled 1800's Crock & Other Crock Pcs, Ant Metal Grocery Store Pepsi Door Push, Lionel Train Set, Vintage Coca Cola 6 Pack W/Alum Carrier, Tom's Roasted Peanut Jar, Lance Peanut Jar, Planter's Peanut Jar, Vintage Miss Toy Washing Machine By CG Wood Co, Child's Clothesline, PET Child's Washer W/Wringer, XL Crazy Quilt, 4 Ant Wood Sugar Buckets, Lg Basket W/Covers, Lg Oval Ant Basket, Ant Rare Cream Cans, Ant 1930's Car Trunks, Ant Bar Hay Forks, Ant Metal Adv Signs, Old Metal Toys, Lg Lot Of Old Collector Jars Some Rare, Old Wood Adv Boxes, 2 Glass Daisy Butter Churns, Colored & Patterned Pyrex Dishes, Granite Ware & Galvanized Pcs, Ant Kerosene Heaters, Old & Costume Jewelry, Ant Fire Extinguishers, Old Character Cartoon Glasses, Old Paper Goods, Ant Grain File Cart, Ant Iron Wheels Inc 1 Rare Set Of Bain Tin Cast Tag, Ant Post Anvil, Ant Post Vise, Ant RXR Jack, 2 Ant Buggy Tongs 1 W/2 Double Trees, Rare High End 50+ Handmade Buyers Christmas Carolers Collection Of People & Other Pcs Inc Horse & Buggy W/Driver & Passenger (Very Rare Items!), Ant Drafting Set, Ant Coke Box, Havealin China Set, Collector Adv Tins, Old Civil War Books & Civil War Collector Items, Old Cookbooks, Old Knick Knacks, Old Glassware, Bitcoin, Sm Kitchen Appliances, Pots, Pans & Dishes, Other Items Not Listed

Auctioneers Note: It Is An Honor To Be Conducting This Auction For Both The Miller & Neilson Estates. Both Families Are Very Well Respected Members Of The Fort Scott Community & Both Known For Being Historians. This Is A Top Of The Line Antique & Estate Auction With Excellent, Rare Antiques & Great Clean Common Items. You Do Not Want To Miss This Auction Held Indoors Rain Or Shine. Please Plan Now To Attend. **Sale Order: Antique & Modern Furniture Sells First Then Move Directly Into Antiques, Collectibles, Primitives & Households. At Approx 3:30 PM Will Offer Guns, Bayonets & Larger Unique Items. See Ya There!!!**
Terms: Cash or check with proper ID. Now accepting most major credit cards. Nothing removed until settled for. Statements made the day of sale takes precedence over printed material. Everything sold as is where is. Not responsible for accidents. Restroom available. Concessions Provided. Check our website for upcoming auctions and for additional pictures!!



NANCE AUCTION SERVICE

No Matter How BIG or small, We Do Them All!!!



Col. Bill Nance 417-214-0093 In God We Trust Philippians 4:13 Col. Sean Beazley 417-247-6754

REAL ESTATE-GUNS-FURNITURE-TOOLS-PRIMITIVES-MISC AUCTION

SATURDAY DECEMBER 2, 2023 10:00 AM

LOCATED: 8941 W. FARM RD 104 WILLARD, MO

FROM HWY 160 & HWY AB WILLARD GO SOUTH ON HWY AB 1.3 MILES, THEN WEST ON W. FARM RD 94 GO 1 MILE TURN LEFT ON N. FR RD 91 GO ½ MILE, TURN RIGHT ON W. FR RD 100 GO 2/10 MILE TURN LEFT ON N. FR. RD. 89 GO ½ MILE, TURN RIGHT ON W. FR. RD 104 GO 8/10 MILE TO AUCTION. RESTROOMS & CONCESSIONS AVAILABLE

FOR PICTURES SEE WEBSITE OR AUCTION ZIP.COM

TO PREVIEW CALL 417-830-0153

**BANK LETTER OF CREDIT ADDRESSED TO MELTON AUCTION & REALTY REQUIRED FOR PURCHASE OVER \$5000
NO GUNS ON PREMISES UNTIL AUCTION DAY! GUNS SELL @ 12:00**

**TERMS: 10% DOWN DAY OF AUCTION, BALANCE @ CLOSING WITHIN 30 DAYS OR BEFORE
REAL ESTATE SELLS @ 11:00 - LINK TO VIEW HOME: <https://my.matterport.com/show/?m=L4Kb78w8kfa&mIs=1>
GUNS SELLS @ 12:00 NO GUNS ON PREMISES UNTIL SALE DATE**

REAL ESTATE

APPROX 2186 SQ FT ASSESSOR RECORDS, 4 BED, 3 ½ BATH OVER SIZED DOUBLE CAR GARAGE, BASEMENT PARTIALLY FINISHED, OPEN LARGE KITCHEN, DINING, LIVING FLOOR PLAN, PROPANE FIREPLACE, CH/CA. BRICK & VINYL SIDING, LARGE DECK, DETACHED 24 X 32 SHOP/GARAGE, BEAUTIFUL SITTING ON APPROX 5.4 ACRES, ASH GROVE SCHOOL DISTRICT, 2023 TAXES \$2198.47

GUNS

1. ITHACA 70-0223-33 SER 01257
2. NEW ENGLAND HORNET 22 CAL AUTO RIFLE SER NC231556
3. RUGER MOD 10-22 22 LR CAL AUTO SER 253-42 462
4. STEVENS 20 GA SINGLE SHOT SHOTGUN 2 ¾" CHAMBER
5. WINCHESTER 243 SER 1004327 W/WEAVER SCOPE
6. MARLIN MOD 17V CAL 17 HMR BOLT ACTION SER 98687101 W/SIMMONS SCOPE 3X9X32
7. COLT 38 SPECIAL OFFICIAL POLICE PISTOL 6 SHOT
AMMO 100 RDS 38 SPECIAL 158 GRAIN, 100 RDS 130 GRAIN, 50 RDS 17 HMR HOLLOW POINT

FURNITURE

FRIGIDAIRE S/S FRIDGE W/ICE/WATER IN DOOR—MAYTAG MATCHING WASHER/ DRYER—MICROWAVE—IDYLIS CHEST FREEZER—6 PC KG MID CENTURY MODERN BEDROOM SET W/MATCHING MIRROR—OAK 3 SHELF LAWYER BOOKSHELF—CHEST—WICKER GLASS TOP COFFEE TABLE—PLANT STAND—4 DRAWER CHEST—ELEPHANT GLASS TOP TABLE—ROLL TOP DESK—PINE CORNER SHELF—METAL QN BED—WICKER PLANTER—WALNUT CORNER SHELF—CONCRETE PLANTER—TRIPLE DRESSER W/ MIRROR—OAK HAT/COAT RACK—EMPIRE STYLE ENTRY TABLE—ENTRY MIRROR—METAL PLANTER—WALL PICTURES—GLASS TOP W/PEDESTALS—LASKO HEATER—2 CHINA CLOCKS—BAKERS RACK—OAK WASH STAND—CHINA HUTCH—4 PC OAK TABLE—LIFT CHAIR—BAR STOOL—COFFEE & END TABLE—FOOT STOOL—3 FLAT SCREEN TV'S—WOODEN ROCKER—SM CHILD'S ROCKER & BENCH—TV STAND—CURIO CABINET—SQ OAK TABLE—FIGURINE TABLE—BUFFET—CHINA HUTCH—7 PC DINETTE SET—

VACUUM & CARPET CLEANERS—HOSPITAL BED FRAME—BOOK SHELVES—4 PC PATIO SET—SCHOOL DESK—8 FT POOL TABLE W/ACCESSORIES—UNIFLAME GAS GRILL—BOX FANS—YAMAHA PSR-6 KEYBOARD—WORLD GLOBE ON STAND—BIRD BATH—WALL CLOCKS—JEWELRY BOXES—QUAIL SHADOW BOX

TOOLS

ESTATE TRIMMER W/BRIGGS & STRATTON 5.0 MOTOR—KOBALT BATTERY POWER PUSH MOWER 20 IN CUT—CENTRAL PNEUMATIC 3 GAL AIR COMPRESSOR—5 GAL SHOP VAC—BATTERY CHARGER—HOMDOX SM PRESSURE WASHER—2 TOOL BOXES—GAS CANS—EXT CORDS—POPULAR MECHANIC TOOL CHEST—LONG HANDLE TOOLS—STEP STOOL—B&D WEED EATER & BLOWER BATTERY POWERED—16 GAL SHOP VAC—2 WHEEL DOLLY—TABLE TOP PLANER—JIG SAW—BAND SAW—WHEEL BARROW—SM VICE—WOODEN TOOL BOX CARRIER—IRON WAGON WHEELS

PRIMITIVES-GLASSWARE-CHRISTMAS-NEW CLOTHING-MISC

DAISY #40 CHURN—CROCK BOWLS—SM LOT PRIMITIVES—ROOSTER COLLECTION—OIL LAMPS—LOT BLUE GLASSWARE—DISH SETS—SM KITCHEN APPLIANCES—SILVERWARE—UTENSILS—BAKING PANS—GLASSWARE—COLLECTIBLE DOLLS INCLUDE HOME INTERIOR—ANIMAL FIGURINES—BARBIE DOLLS—CHARLIE MCCARTHY VENTRILOQUIST DOLL—AVON GLASS CAR COLLECTION—1 LOT CERAMIC FIGURINES—1 LOT CERAMIC MOLDS—SM KILN—CERAMIC PAINT & SUPPLIES—ROCKING HORSE—VERY LG LOT CHRISTMAS INCLUDING INFLATABLE SNOW GLOBE, FIBER OPTIC 32" SNOWMAN, LIGHTED REINDEER, SNOWMAN COLLECTION, CHRISTMAS METAL FIREPLACE SCREEN, CHRISTMAS TREES, HOME INTERIOR CHRISTMAS DECOR, NATIVITY SETS—COVERALLS, NEW CLOTHING, 2 FUR COATS, WORK GLOVES—BOOKS—PUZZLES, GAMES—CROCHET ITEMS, THREAD, YARN BUTTONS, SEWING SUPPLIES—SINGER TINY SERGER MACHINE, JANOME SEWING MACHINE—CONCRETE DONKEY & CART—CANNING JARS—WOOD STOVE—CORN SHELLER

ANNOUNCEMENTS MADE ON SALE DAY WILL TAKE PRECEDENCE OVER ANY OTHER PRINTED MATERIALS. NOT RESPONSIBLE FOR ACCIDENTS OR LOSS OF ARTICLES ON OR NEAR SALE SITE.

OWNER: ESTATE OF MARYLYN KAY SMITH

MELTON AUCTION & REALTY CO LLC



meltonauctionrealty.com | roger@meltonauctionrealty.com

Roger Melton | Nixa, MO | 417-830-0153 or 417-725-1801

Brad Cole | Nixa, MO | 417-840-2950

Hal White | Nixa, MO | 417-343-2334

Tanner Foster | Galena, MO | 417-840-5519

R&R AUCTION SERVICE

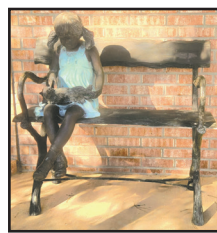
AUCTION SATURDAY NOVEMBER 25TH, 10AM

153 Chicago Road, Elkland MO

Driving directions from Buffalo, MO: Go East on 32 to H Hwy, take H to Chicago Road and follow auction signs.



Vintage cedar chest, wicker box, De Martini chair, oil lamp, lamps, crock, office chairs, Sheridan 3 legged table, metal pig, lots of books, collectibles such as Mickey Mouse, dolls, figurines, Lladro, vases, pottery, ceramic, crystal butter dish, Indian art work and items, metal ware, 1934 humidor cabinet, costume jewelry, Christmas decorations, pet carriers, wooden ladder, clothes racks, portable cabinet, reproduction claw foot table, wall décor, twisted metal sleigh and reindeer, dresser, arrowheads, book cases, bench, Nordic track and other exercise equipment, file cabinets, antique cabinet, copper coal bucket, patio set, maple French provincial table, baskets, magazine racks, cooking stuff, candles and candle holders, new horse tack, printer, small drop leaf table, empty totes, old chairs, Ethan Allen glass top entry table, 5 piece queen bed set, Bronze bench with girl, plant rack, plastic lawn chair, Reddi heater, BBQ propane bottles, Honda pressure washer, t posts, ATV sprayer, BR400 Stihl backpack blower, air tank, small Poulan Woodesman chain saw, antique buck saw, mailbox, animal cage, wire bins, metal bench, copper coffee pot, Barbies, 1996 W-W bumper hitch stock trailer, lots of misc. hand tools, high lift jack, Campbell Hausfeld 5hp shop air compressor, Montgomery Ward welder, wooden boxes, oxygen acetylene set, small power tools, tool boxes, Rockwell model 9 Homecraft table saw, glass washboard, truck toolbox, various clamps and vise grips, several saddle stands, saddle blankets, roping saddle, step ladder, wheel barrow, large set of shop shelves, welding hood, nuts and bolts bin, plastic and metal gas cans, galvanized gate, old tractor seat, 12' trailer with sides and fold down tailgate, agri-cutter brush hog, John Deere 5425 cab tractor with 553 front end loader only 762 hours, bush hog 15' bat wing needs one gear box, John Deere bale spike for tractor front end loader or skid steer, 3 pt. bale spike, 2001 tandem flatbed 16' plus 2' dove tail 10,000 pound axles excellent condition, feed bunks, stock tank, decorative wooden



airplane, sockets and wrenches, Honda 5hp power washer, boat gas tanks, milk barn heater, gravely 260Z, No crossing metal railroad sign and much much more sure to be found by auction day!

Please keep watch on our website for added photos.

TERMS: Cash, check, or credit card with proper I.D. nothing removed until settled for. A 3% fee will be added to credit card purchases. Purchase of Real estate requires 10% down day of sale with balance at closing. Not responsible for errors in listing. Any announcement made sale day will take precedence over any printed matter.

GENERAL AUCTIONEERS

Auction & Appraisals

AUCTION SERVICE

For more information contact Professional Auctioneer Russ Weeks at 417-576-7357 or check out www.rrauctionservice.com

Serving this area's auction needs since 1997 with honesty and professionalism.

www.rrauctionservice.com

(417) 576-7357 or (417) 345-4140

CAGA CERTIFIED APPRAISER

PUBLIC AUCTION

HALFWAY, MO

AUCTION

Due to my health we will sell the following Automobiles, Trailers, Tractor's, Equipment, Tools, Parts, Household and Misc. From Halfway, Mo.

Go South 3 ¼ Miles on H Hwy. to the Junction of H & YY Highway to the Auction on

Sat. Dec. 2, 2023 at 9:00 AM

WATCH FOR AUCTION COMPANY SIGNS • LUNCH SERVED

FOR MORE PICTURES GO TO: WWW.BRUCEANDLEANAUCTION.COM



MOTOR HOME-CAMPER TRAILER

- 1999 Windsor Monaco 38' Motor Home W/Diesel Motor, 58,072 Miles, 15' Slideout, Rollout Awnings, Kitchen W/ Stove, New Refrigerator, Bathroom, Good Condition
- 1991 Carlite Model 2905 5th Wheel 28' Camper Trailer Roll Out Awnings

AUTOMOBILES-TRAILERS

- 1989 Ford Bronco XLT, 2nd Owner 60,995 Miles, 2.9 Motor, Automatic Transmission, PW, PL, Grill Guard
- 1985 Ford F-250 XLT Lariat Pickup, 53,000 Miles, 460 V-8 Motor, Grill Guard
- 1998 Ford Mustang Convertible V-6 3.8 Motor, Automatic Transmission
- 1986 Ford F-250 Pickup, 4X4 V-8 460 Motor 4 Speed Trans, Flatbed (been sitting not running)
- 1985 Ford F-150 XLT 302 Motor, Automatic Transmission, 52,400 miles (not running)
- 1992 Ford F-250 Ext. Cab XLT Pickup 275,000 Miles
- 1984 Ford F150 6cyl. Motor, Automatic Transmission
- 1990 Ford Cargo 8000 Diesel Truck
- 1982 Ford Dually Pickup W/Flatbed, V-8 Motor (not running)
- 1992 Chevy Suburban 2500, V-8 Motor, 4 Speed Transmission
- 2005 Ford SEL 4 Door AWD SUV 200,000 Miles
- 1993 International Dump Truck 13' Bed (not running)
- 1974 Chevy C-60 Dump Truck (not running)
- 42' Semi Box Trailer
- 22' Tandem Axle Flatbed Trailer
- 10' HD Truck Flatbed W/12V Winch W/Tool Boxes
- 2 Wheel Car Dolly

FORKLIFTS-TRACTORS-SKID STEER

- Clark C-500 Propane 4500lb Forklift
- U-Haul FG-25 Yam 2500lb Gas Forklift
- Clark Clipper 2000lb Gas Forklift
- Liftall 5000 Forklift (not running)
- Hyster Model H60H Forklift (not running)
- Clark Clipper Forklift (not running)
- Terex PT-100 Forestry Skid Steer W/New Motor (Under Rebuild Now), Rubber Tracks, W/Bucket
- 4 Ford 8 & 9-N Tractors (2 Running, 2 Not Running)
- 3 Sets of Extra Forklift Forks

CAR LIFT-TOOLS

- Bendpak 4 Post Electric/Hyd 14,000 Lb. Car Lift
- Matco Special Edition 22 Drawer Tool Box 5' Long, 4' Tall, 2' Deep
- Coats Model 50X-AF-2 Rim Clamp X Series Tire Changer
- Lincoln SP170T Arc Welder 220v W/Bottle & Cart
- Lincoln 225 Welder
- Act. Torch Set W/Small Bottles
- Landa Diesel PHW 2-1100 Pressure Washer
- Miller Trailblazer 302 11,000 Watt Generator
- Craftsman 10hp 5600 watt Generator
- Porta Cable 80 Gallon 7 ½ hp 220v Upright Air Compressor
- 400amp Fleet Battery Charger
- Cherry Picker
- Motor Stand
- Bearing Press
- Parts Washer
- 4 Ton Floor Jack
- Floor Jacks & Jack Stands
- Floor & Bench Model Drill Press's
- 12 Ton Press
- Hitachi Chop Saw
- Grizzly Sand Blaster Cabinet
- Snap on Tool Cart
- 4-3' X 8' HD Metal Tables on Wheels
- 8' HD Shop Bench
- Large Lot of Misc. Wrench's, Socket Sets & Misc. Hand Tools (Snap on, Craftsman & Others
- Lot of Misc. Hand Power Tools
- ¼ Drive Socket Set
- Lot of Vise Grips
- Lot of Air Tools
- Air Hose Reel
- Double Stone Grinder
- Bench Vise's
- Stihl TS420 Concrete Saw
- Log Chains
- Chain Boomers
- Large Lot of Ratchet Straps
- Air Hoses
- 42" Shop Fan on Wheels
- 2 Wheel Alum. Dolly

MOWER-GOLF CART-MISC.

- Bad Boy Elite Series 60" 27hp Zero Turn Mower 268 Hrs.
- Western Battery Golf Cart W/Charger, & Top
- EZ Go 3 Wheel Battery Golf Cart W/Charger
- Older Kawasaki Mule W/Bar Top, 2520 Hours, Dump Bed

MOWER-GOLF CART-MISC. CONT.

- Child's Gas 4-Wheeler W/Rear Rack
- 5 Polaris 4 Wheeler Tires & Wheels
- Jenny Stove/Furnace Waste Oil Stove
- Dayton Propane Gas Heater 100,000 BTU
- Hot Blast Wood Furnace
- 2-Universal 350 Gallon Fuel/Used Oil Tanks
- 3 Alum. Semi Fuel Tanks 100 Gallon Plus
- 300 Gallon Rubbermaid Stock Tank
- IHC Tractor Sheet Metal Parts
- 2' Wide 13' Long Alum. Loading Ramp
- Several Du-ally Truck Axles
- Lot of Misc. Tires
- NIB JD Replacement Seat Cushion Set
- Lot of Misc. Electric Wiring
- 8 Plus V-8 Motors (Ford, Chevy, Others)
- 466 International Motor
- Lot of Misc. Fluids & Oils
- NIB Independent Front Suspension 1928-1934
- Large Lot of Misc. Engine Parts (New & Used)
- Shop & Service Manuals
- One Lot of Misc.
- One Lot of Scrap Iron

HOUSEHOLD

- Kitchen Aid Side by Side Refrigerator/Freezer
- Frigidaire Med. Upright Freezer
- Frigidaire Refrigerator
- 30" Kenmore Electric Range
- 2 Sets Whirlpool Automatic Washer & Dryer
- 36" & 31" Vizio TV's
- TV Stand
- Leather Sectional W/Dual Electric Recliners
- 3 Cushion Leather Couch
- Full size Hollywood Bed
- Chest Drawers
- Glass Fronted Cabinet
- Hand Made 2 Door 8 Gun Cabinet (Nice)
- 3 Bar Stools
- Kitchen Table W/4 Chairs
- Metal Patio Set W/4 Chairs
- Pots, Pans & Dishes
- Nice Clean Furniture
- Child's Ford Metal Model 7740 Pedal Tractor
- Approx. 25 Boxes of unseen Household Misc.

OWNER: BEN CUNARD

TERMS: Everything sells as is, where is. Nothing is to be removed until settled for. Payment of Cash, Check with Proper ID, or Credit Cards. Auction Company or the Owners will not be responsible for loss of items or accidents. Statements made the Day of the Auction take Precedence over Printed Matter.

SALE CONDUCTED BY **BRUCE & Le'AN AUCTION & APPRAISAL, LLC**
THE AUCTION COMPANY THAT APPRECIATES YOUR BUSINESS

For more information and pictures go to our website at www.bruceandleanauction.com

RONNIE BRUCE - Fair Play, MO
417-777-1685 or 417-654-2214
colonbruce@gmail.com

BRANDON BRUCE
Fair Play, MO

BILLY BRUCE - Stockton, MO
417-399-4800
colbbruce@gmail.com

3 RIFLE SCOPES: 1 new Simmons Whitetail Classic 3-9x40, 1 Tasco 3-9x32 & 1 Dead Ringer 3-9x40. Take all three \$150. 210-787-8222. Linn Creek.

“THAT’S THE WAY IT WAS” BOOK: Camden County History by Buford Foster. \$20. 417-532-2045. Lebanon. (Leave message and phone number.)

NEW MOBILE HOMES – prices start at \$64,900 delivered and setup 573-499-9993 columbiadiscountshomes.com

PASTURE RAISED CHICKENS & PASTURE RAISED THANKSGIVING TURKEYS: 417-741-2446.

BASEMENT READY TRUE MODS- instock ready for delivery 573-657-7040 chateauhomes.net

TINY HOMES – Missouri Franchise 573-881-7965

REGISTERED HEREFORD & ANGUS BULLS: Home raised, Some Show-Me Select Qualified. 573-701-7828. Belgrade.

LIGHTLY EXPERIENCED GOLF BALLS: \$3 a dozen. 417-818-3469. Strafford.

FOR SALE TUNIS RAMS: Ready for service. Call Gary Marsh 785-691-7656. Lawrence, KS.

SLIGHTLY USED PUZZLES: Will sell or trade. 417-818-3469. Strafford.

STIHL CHAINSAW: MS C181. \$195. 573-864-2611.

LIONEL TRAIN SET: Steam engine, tender, caboose and other car, track, and transformer. \$195. 573-364-7465. Rolla.

MODEL 1911 FRAME 8-SHOT C02 PISTOL: Like new, in box with C02 cartridges, 4 clips, pellets & all paperwork. \$95. 573-364-7465. Rolla.

1970s KIDS METAL STOVE & FRIDGE: Nice Lithographic paint, 18” wide x 36” high. \$75. 573-364-7465. Rolla.

3 GENTS WITTNAUER WRIST WATCHES: 10k gold + 23J. All \$200. 573-764-3517. Call in P.M.

HARLEY FAT BOBS: Custom flame paint w/ gas caps + lines. \$100. 573-764-3517. Call in P.M.

COLT REVOLVER DEALER CATALOGS: Circa 1950’s + 1960’s. All for \$100. 573-764-3517. Call in P.M.

110 PORCELAIN POCKET WATCH DIALS: Perfect for arts & crafts. \$100. 573-764-3517. Call in PM.

1890 GOLD TESTING KIT: Glass acid beakers + antique wooden case. \$100. 573-764-3517. Call in PM.

1500 VINTAGE WRISTWATCH DIALS: \$100. 573-764-3517. Call in PM.

SPLIT SEASONED FIREWOOD FOR SALE: 573-759-2125 Dixon MO area. **Must pick up, no delivery.**

LARGE COCA-COLA NOVELTY SET/ GROUP: \$50. 417-532-2344.

ESTATE AUCTION

SATURDAY, DEC. 2, 2023 • 9 a.m.

Location: 8686 N. U.S. 63, Houston, Mo. 65483.

Directions: From Houston, Mo., take U.S. 63 north 2 1/2 miles to auction. Watch for Rick Dixon auction signs.

REAL ESTATE: 16.72 acres with restaurant and shop buildings with lots of potential and major U.S. 63 highway frontage.

- ALSO SELLING:** Restaurant Equipment • Shop Tools
- Hand Tools • Body Shop Tools • Automobiles
 - Automobiles for Scrap • Scrap Iron • Guns

For full listing see upcoming Nov. 30 Messenger or visit our website: www.rickdixonauctions.com.

The late Cliff and Mike Morton

Rick Dixon Auction Service LLC
www.rickdixonauctions.com
 Rick Dixon Len Clayton Josh Dixon
 417-967-6604 417-464-0374 417-217-9627



**276 Hwy 32 West
Buffalo, Missouri**

**HAVE A
HAPPY & SAFE
THANKSGIVING!**



Market report for Saturday, November 18th not available due to Weekly Trader early deadline.

MON-WED MARKET REPORT
 Listen to KJEL 103.7FM • Lebanon or KYOO 99FM • Bolivar

**VIEW OUR SALES AT CATTLEUSA.COM
 CALL FOR TRUCKING OR ON-FARM VISIT**

Lyle Caselman • Owner-Manager
 417-345-7876 • mobile 417-533-2944
Leon Caselman • Owner
 417-345-4514 • mobile • 417-588-6185



HARLEY 45 SOLO: factory rear brake drum + sprocket. \$150. 573-764-3517. Call in PM.

HARLEY PANHEAD DISTRIBUTOR: original, chrome + complete. \$125. 573-764-3517. Call in PM.

1962 HARLEY SPORTSTER 900CC: original distributor. \$50. 573-764-3517. Call in PM.

SPORTSET BY SARGENT: Fishing pliers in leather sheath. Like a multi-tool. \$20. 636-239-2695 or 314-560-5700. Washington.

NEW SQUARE D RAINPROOF 50AMP DISCONNECT: \$160. 636-239-2695 or 314-560-5700. Washington.

USED JET HOME POLLUTION CONTROL PANNEL: Model CP700. \$65. 636-239-2695 or 314-560-5700. Washington.

1 PAIR OF KEY BRAND MEN'S JEANS: Waist 38, Length 34. \$10. 636-239-2695 or 314-560-5700. Washington.

BLACK METAL TUBULAR BRACKET: Scrolling and a stainless bracket. \$10. Call for pictures. 636-239-2695 or 314-560-5700. Washington.

RUBBER & LEATHER BOOTS AND 5-Buckle OVER SHOES: Men's 11, Women's 7, some insulated. \$15-\$40 obo. 636-239-2695. Washington.

ANTIQUE 4 HP ENGINE: Built by Continental Motors Corporation. \$150 OBO. 573-308-5884. Rolla.

'85 FORD PICKUP PARTS: Passenger door with window glass & mirror \$30. Also, Tailgate for '85 Ford pickup \$25. 573-308-5884. Rolla.

INTERNATIONAL PICKUP TRANSFER GEARBOX: \$150. 573-308-5884. Rolla.

NEW JELD WEN 5' LEFT HAND SLIDING GLASS DOOR WITH SUNSTABLE INTERIOR BLINDS: Clear tempered glass, Desert Sand trim/hardware. Retails \$2655 Sell \$900. 417-693-0389. Conway.

FOR SALE: 2 Dayco motorcycle covers for Harley or other big bikes. \$50 each. 417-260-0941. Raymondville.

MAC'S TIEDOWN STRAPS: Like New. \$80. 417-260-0941. Raymondville.

3 ARMY CANTEENS: Mess kit, belt & duffel bag. \$60 for all. 417-260-0941. Raymondville.

PITTSBURGH HEAVY DUTY 3-TON FLOOR JACK: Never used. \$195. 417-260-0941. Raymondville.

ALFALFA & GRASS HAY FOR SALE: 4X5 round bales. 417-343-4958. Seymour.

FISHING SEASONS COMING: Get your rod and reels, \$5 and up. 417-589-8200. Conway.0

KC CHIEFS RED: Jersey Marcus Allen. Autographed JSA COA. \$119. 573-854-8132. Text for pics. Houston.

STAIR STEPPER: In good condition. \$65. 417-532-2344.

MISC. MECHANICAL TOOLS: Small set \$25. & Large set \$35. 417-532-2344.

STORM SHELTERS: New & used. All sizes & types. Since 2003 - Call me today, Jeff at 417-894-3159

BUYING SCRAP METAL: All kinds, can torch heavy equipment. Call for prices. 40 years experience. 573-308-6739. Newburg.

PAIR OF ANTIQUE: 12 spoke cart/wagon wheels. Cast iron. \$140 for both. 573-854-8132. Text for pics. Houston

ANTIQUE METAL MIRRORED MEDICINE CABINETS: Wall mount, recessed. \$100/pair or \$60/each. 573-854-8132. Text for pics. Houston


BUYING PRE 1970 BEER SIGNS: FALSTAFF, GRIESEDECK, BUDWEISER, STAG CAPITOL, ETC. 573-680-5377.

2001 COACHMAN CATALINA 5TH WHEEL: Great shape, new tires, 28 1/2 foot. Recently winterized. Everything works. Large living/kitchen slide out. 5th wheel hitch included. \$8,500. 573-308-5515. Dixon.

COMPLETE SET OF 8FT SYMON CONCRETE FORMS: 417-532-9267. Lebanon.

CASH FOR COMICS, SPORTS CARDS & RELATED ITEMS: Over 35 years of experience as a collector/dealer. Call or text 636-667-0391.

Over 600 Lots of Edged Weapons! A Carefully Curated Lifetime Collection



Spears, Daggers, Swords, Bayonets, Civil War, WWI, WWII, Tribal, Spanish, German, European, Japanese, Chinese, Trident, Officer's Swords, Kris, Bolo, Bowie, Pike, Shields

So Many Choices!!!!!!

Jerry Patrick Harlan's lifelong passion for history, particularly in the context of edged weapons, is evident in his 70-year journey of curating a collection of over 600 pieces. His analytical & "architectural mind" allowed him to deeply appreciate the antiquity & construct of each weapon, adding a unique & unusual perspective to his collection. It is important to note that, while Mr. Harlan's great array of bladed weapons is impressive, there are no warranties or guarantees regarding the descriptions provided by the trust, trustees or Atterberry Auction & Realty Co. To ensure transparency, buyers are encouraged to join us for Preview to view the items. There are no letters of authenticity provided.





Preview:
Tuesday, Nov. 28th | from 3:00 p.m. - 5:00 p.m.

Auction Ends:
Wednesday, Nov. 29th | Starting at 12:30 p.m.

Pick-Up:
Thursday, Nov. 30th | By Apt. Only
ADDRESS WILL BE POSTED PRIOR TO PREVIEW

Check it out & Bid at
www.AtterberrySells.com

573-474-9295

contactus@atterberryauction.com

ATTERBERRY
— AUCTION & REALTY COMPANY —
Your Real Estate at Auction Specialists

MID MISSOURI STOCKYARDS

REGULAR SALE EVERY THURSDAY 11AM

WATCH OUR WEEKLY SALE IN REAL TIME ON DVAUCTION.COM

For Farm Visits, Market Updates, or Trucking
Call **Zach Cox 417-777-1320**
Dan Romine 573-578-4939

**Competitive Buyers!
Competitive Commission!
Competitive Market!**

Barn: 417-532-9292
1-44 • Exit 123 "just outside of Lebanon"
17505 Route 66, Phillipsburg, MO 65722
For weekly market updates, visit us at www.midmostockyards.com

23 HIGH QUALITY HOME RAISED BRED HEIFERS: Black Angus & Angus/Beefmaster. AI'D to Gar Home Free. Can start calving February 12th. \$2,850/each. 417-880-7586. Strafford.

PLAN YOUR FAMILYS SAFE PLACE NOW.: Safe rooms & concrete storm shelters. Since 2003-call Jeff today 417-894-3159. Ask about "The Beast!"

JOHN DEERE SRX75: Starts and runs well. Blades do not engage. Belt is off, deck has dropped. Should be repairable, or remove deck and use as utility. Possible go-kart engine. \$200 OBO. 815-739-2739.

DARDEN PROFESSIONAL TIMBER HARVESTING, BUYING STANDING TIMBER: Great prices, improve wildlife habitat and improve forest health. State Certified & Fully Insured! 573-247-4808. Salem.

BRIDGESTONE TIRES: 255/65R/18. Good Tread. Set of 4. \$80. 417-924-8840. Mansfield.

SCROLL SAW: On Stand, Heavy Duty. \$50. 417-322-0161.

LONGWOOD WOOD STOVE: For Shop/Garage. \$400. 417-322-0161.

NEW, HEAVY, 6-BAR WELDON GATE: 12Ft. \$120. 417-322-0161.

WHIRLWIND UPCUT SAW: \$1,200. 417-322-0161.

PRIME KATAHDIN EWES: Parasite Resistance, Easy Lambing, Hoof Health, Never Grain. \$300. 417-322-0161.

FOR SALE: 13.6x28 Tractor Tire. \$50. 573-437-3221. Cuba.

NEW GRIZZLY SANDBLASTER WITH CABINET: Needs Parts. \$100. 417-322-0161.

FOUR SCHNAUZER PUPPIES: 10-weeks-old. Can send pictures. 417-967-6639. Salem.

GUNSMITHING-Older Rifles, Shotguns, Handguns, all 22LRs. Any make, any model, estate appraisals. Camdenton. 573-363-5801.

30 OR MORE CATTLE PANELS: \$20/each. Also, 1 Cattle Head Catch, \$100. 573-247-4280. Salem.

TRACTOR: Massey-Harris "30" (About same horsepower as Farmall "H") Original. Complete Service. \$2,000. 417-848-8754. Brookline.

18 INCH RIMS: \$50. 660-337-6311.

WANTED: 1948-1954 Chevy or Ford Pickup, Old Hearse, Convertible Car, or Chevrolet Wrecker in any condition. 573-734-2822, leave message due to telemarketers.

ELECTRIC WELDER: \$150, Sell or trade for anything. 573-734-2822, leave message due to telemarketers.

2 KITCHEN TABLES & CHAIRS: \$100. 573-734-2822, leave message due to telemarketers.

OLD ANTIQUE JOHN WAYNE PICTURE: In Cowboy Outfit. \$200. 573-734-2822, leave message due to telemarketers.

2014 Jeep Wrangler: 180,000 miles. \$19,900. www.jimsmotorsrolla.com for Carfax. 573-467-0189.

2 REAR FENDERS FOR 1946 CHEVY COUPE: \$150. 573-734-2822, leave message due to telemarketers.

CUTTING TORCH OUTFIT: \$100. 573-734-2822, leave message due to telemarketers.

FISHING REEL SPOOLS FOR SALE: I've got what you need. \$3/each. 417-589-8200. Conway.

2015 Ford Expedition Platinum: 166,606 miles. \$18,900. www.jimsmotorsrolla.com for Carfax. 573-467-0189.

LINCOLN WELDER: Gas powered, 225-amp, good condition. \$1,800. 573-759-3851. Dixon.

??CDL LICENSE?? FAST & ECONOMICAL: Meets all requirements of the new ELDT Law. 2 days training. \$100 rebate with this ad. You need a learner's permit & ability to drive a manual. Jefferson City, Strafford & Willow Springs, Missouri. Please call 573-353-2853. www.capitaltruckdrivinginstitute.com.

BUYING OLD BARNs & LUMBER. A2/A2 SPRINGER HEIFERS: \$1,600. John 417-307-2814, leave message.

BEAGLE PUPPIES FOR SALE: 573-796-8343 or 573-584-1181. California, MO.

2017 Chrysler Pacifica: 96,000 miles. \$19,900. www.jimsmotorsrolla.com for Carfax. 573-467-0189.

FOR SALE: 30 Heavy Laying Hens. 573-612-4351. Rolla.

2006 TOYOTA TACOMA: V6, automatic, 4x4. Crew cab. 220,xxx miles. \$5,100. 573-864-2611.

CRAFTSMAN SNOWBLOWER: 11HP, 30". Like new. \$700. 573-864-2611.

SADDLES, TACK, HARNESS, HORSE BLANKETS, PONY CART, DOG SUPPLIES AND HUGE INVENTORY!!! Triple S Harness, 578 Hwy V, Seymour, MO 65746.

WANTED: 500 Gallon Propane Tank. 573-690-2786.

STEEL FABRICATION BUSINESS RETIREMENT AUCTION

**LOTS of Steel,
2 Freightliners, Heavy Equipment,
Welding Tools & More**



**Freightliner Road Tractors
Transcraft Flatbed Trailer
New Holland Skid Steer
Hobart Welder
LOTS OF STEEL
Welding Tools
Shop Tools**

Preview:
Monday, Nov. 27th | from 3-5 p.m.
Auction Ends:
Tuesday, Nov. 28th | Starting at 12:30 p.m.
Pick-Up Days - by appointment only
Wednesday, Nov. 29th
Thursday, Nov. 30th
4614 Hwy. 763 North, Building B, Columbia, MO

**Check it out & Bid at
www.AtterberrySells.com
573-474-9295**



contactus@atterberryauction.com



ATTERBERRY
— AUCTION & REALTY COMPANY —

Your Real Estate at Auction Specialists

WANTED: 1995 Dodge Ram driver's side truck door. ¾ ton. 573-612-4351. Rolla.

COWBOY CORGIS!!! UTD on shots & wormer. DOB 9-02-23. \$150 OBO. 417-349-0831. Hartville.

MODEL SIG SAUER P220 (2015) PISTOL: Includes case, (2) clips, (2) holster. (No Trade) Text 573-619-6651.

3 RIFLE SCOPES: 1 new Simmons Whitetail Classic 3-9x40, 1Tasco 3-9x32 & 1 Dead Ringer 3-9x40. Take all three \$150. 210-787-8222. Linn Creek.

MISSOURI OZARKS BOOKS: Backroads of Missouri, \$10; When Isom Was Sheriff of Webster County, Enoch Isaac Cunningham, \$14; Ozark Mountain Folk-They Were The Last by Townsend Godsey, \$14. 417-532-2045. Lebanon. (Leave message and phone number.)

TWO SPINOUT ECCENTRIC BOLTS: and other Ferguson Pins and front Axle Bolts. \$50. Hermann. 636-932-4429.

TWO POLARIS TIRES: Size 26x9x12 \$50. Hermann. 636-932-4429.

NEW IN BOX MASTERBUILT ELECTRIC TURKEY FRYER: Up to 14 lbs. Fry, boil or steam. Safe for indoors. \$80. 417-718-5347. Morgan.

LAKE OF THE OZARKS-END OF SEASON SPECIAL-Lots starting at \$4,995, \$125 Down, \$69 per month. Build, camp, or own for investment. Also acreage tracts. Beautiful wooded areas, free lake access and boat ramps. Lots are a short distance from the lake, no credit checks, owner financing and immediate possession. Large Missouri conservation boat ramp with a covered dock and rest rooms. Prices good through December 18, 2023. Hwy 135 between Stover and Laurie MO. Take lake road 135-12, follow the signs to the Ivy Bend Land Office. Closed Tuesdays and Wednesdays. Call anytime 573-372-6493.

MISSOURI OZARKS BOOKS: Backroads of Missouri, \$10; When Isom Was Sheriff of Webster County, Enoch Isaac Cunningham, \$14; Ozark Mountain Folk-They Were The Last by Townsend Godsey, \$14. 417-532-2045. Lebanon. (Leave message and phone number.)

WEATHERED BARN WOOD SIDING: 10" wide. Call for appointment 573-729-7226. www.pineridgerustic.com Salem.

LOG SIDING: 2X8 Pine/Western Cedar. Call for appointment 573-729-7226. www.pineridgerustic.com Salem.

"THAT'S THE WAY IT WAS" BOOK: Camden County History by Buford Foster. \$20. 417-532-2045. Lebanon. (Leave message and phone number.)

NEW INVENTORY - \$59,900 Delivered and setup, Hurry! Call Adam 573-657-2176 amegamobilehomes.com

NEW MOBILE HOMES – prices start at \$64,900 delivered and setup 573-499-9993 columbiadiscountohomes.com

TINY HOMES – Missouri Franchise 573-881-7965

PASTURE RAISED CHICKENS & PASTURE RAISED THANKSGIVING TURKEYS: 417-741-2446.

BASEMENT READY TRUE MODS- instock ready for delivery 573-657-7040 chateauhomes.net

REGISTERED HEREFORD & ANGUS BULLS: Home raised, Some Show-Me Select Qualified. 573-701-7828. Belgrade.

LIGHTLY EXPERIENCED GOLF BALLS: \$3 a dozen. 417-818-3469. Stafford.

OFFICIAL TRACTOR OF TOUGH™

INTRODUCING THE ALL-NEW 5100 SERIES

Marshfield Machinery Inc.
222 E. Madison • Marshfield, MO 65706
417-859-2117 • www.marshfieldmachinery.com

*2018 data including all Mahindra group brand sales.
MahindraUSA.com © 2020 Mahindra USA Inc.

Mahindra Rise.

NEW MAHINDRA TRACTORS	
1626 4WD & LDR 26HP	IN STOCK
1635 4WD & LDR 36HP	IN STOCK
2638 4WD & LDR 38HP	IN STOCK
1640 4WD & LDR 40HP	IN STOCK
2645 4WD & LDR 45H	IN STOCK
5145 4WD & LDR 45HP	IN STOCK
5155 4WD & LDR 55HP	IN STOCK
4550 4WD & LDR 48HP	IN STOCK
2660 4WD & LDR CAB 60 HP	IN STOCK
6065 4WD & LDR 65HP	IN STOCK
USED TRACTORS	
MF 4708 80HP 4WD CAB LDR	58,500
MF 4609M 90HP CAB LDR	47,500
MF 5445 75HP 4WD CAB LDR	45,000
MF 6170 97HP CAB LDR	24,500
MF 383 70HP CAB LDR	24,000
MAHINDRA 4540 41HP 4WD LDR	23,500
MAHINDRA 2638 38HP 4WD LDR	20,000
AC 7010 106HP CAB	9,500
MF 1528 28HP 4WD	7,500
CUB CADET 7205 20HP 4WD	4,250
KUBOTA L175 17HP W/ MOWER	3,000
USED ROUND BALERS	
MF 2946A 4X6 MESH	35,000
NH RB450 4X5 MESH	24,000
MF 1745 4X5	9,500
HESSTON 550 4X6	2,500
HESSTON 560 5X6	2,000
USED MISC.	
BUSH HOG 2815 15FT	18,500
JD 1815 15FT	9,500
BUSH HOG 3210 10FT	8,500
HESSTON 8 WHEEL RAKE	2,500
OMI 8 WHEEL RAKE	2,500
HESSTON 1091 MWR/ COND	1,750
RHINO 8 WHEEL RAKE	1,500
RHINO 5FT FINISH MOWER	850

Marshfield Machinery Inc.
222 E. Madison
Marshfield, MO 65706
417-859-2117
www.marshfieldmachinery.com

FOR SALE TUNIS RAMS: Ready for service. Call Gary Marsh 785-691-7656. Lawrence, KS.

SLIGHTLY USED PUZZLES: Will sell or trade. 417-818-3469. Strafford.

LIONEL TRAIN SET: Steam engine, tender, caboose and other car, track, and transformer. \$195. 573-364-7465. Rolla.

MODEL 1911 FRAME 8-SHOT C02 PISTOL: Like new, in box with C02 cartridges, 4 clips, pellets & all paperwork. \$95. 573-364-7465. Rolla.

1970s KIDS METAL STOVE & FRIDGE: Nice Lithographic paint, 18" wide x 36" high. \$75. 573-364-7465. Rolla.

3 GENTS WITTNAUER WRIST WATCHES: 10k gold + 23J. All \$200. 573-764-3517. Call in P.M.

HARLEY FAT BOBS: Custom flame paint w/ gas caps + lines. \$100. 573-764-3517. Call in P.M.

COLT REVOLVER DEALER CATALOGS: Circa 1950's + 1960's. All for \$100. 573-764-3517. Call in P.M.

110 PORCELAIN POCKET WATCH DIALS: Perfect for arts & crafts. \$100. 573-764-3517. Call in P.M.

1890 GOLD TESTING KIT: Glass acid beakers + antique wooden case. \$100. 573-764-3517. Call in P.M.

1500 VINTAGE WRISTWATCH DIALS: \$100. 573-764-3517. Call in P.M.



Larry Heisel Rentals
Have Rock?
How about 3,500 lbs. of Hammer
Call Larry!
573-779-1500
www.larryheiselequipment.com
Rental Available in 636 or 573 area code

SPLIT SEASONED FIREWOOD FOR SALE: 573-759-2125 Dixon MO area. Must pick up, no delivery.

INTERNATIONAL PICKUP TRANSFER GEARBOX: \$150. 573-308-5884. Rolla.

HARLEY 45 SOLO: factory rear brake drum + sprocket. \$150. 573-764-3517. Call in P.M.

HARLEY PANHEAD DISTRIBUTOR: original, chrome + complete. \$125. 573-764-3517. Call in P.M.

1962 HARLEY SPORTSTER 900CC: original distributor. \$50. 573-764-3517. Call in P.M.

SPORTSET BY SARGENT: Fishing pliers in leather sheath. Like a multi-tool. \$20. 636-239-2695 or 314-560-5700. Washington.

NEW SQUARE D RAINPROOF 50AMP DISCONNECT: \$160. 636-239-2695 or 314-560-5700. Washington.

USED JET HOME POLLUTION CONTROL PANNEL: Model CP700. \$65. 636-239-2695 or 314-560-5700. Washington.

1 PAIR OF KEY BRAND MEN'S JEANS: Waist 38, Length 34. \$10. 636-239-2695 or 314-560-5700. Washington.

BLACK METAL TUBULAR BRACKET: Scrolling and a stainless bracket. \$10. Call for pictures. 636-239-2695 or 314-560-5700. Washington.

RUBBER & LEATHER BOOTS AND 5-Buckle OVER SHOES: Men's 11, Women's 7, some insulated. \$15-\$40 obo. 636-239-2695. Washington.

ANTIQUE 4 HP ENGINE: Built by Continental Motors Corporation. \$150 OBO. 573-308-5884. Rolla.

'85 FORD PICKUP PARTS: Passenger door with window glass & mirror \$30. Also, Tailgate for '85 Ford pickup \$25. 573-308-5884. Rolla.

NEW JELD WEN 5' LEFT HAND SLIDING GLASS DOOR WITH SUNSTABLE INTERIOR BLINDS: Clear tempered glass, Desert Sand trim/hardware. Retail \$2655 Sell \$900. 417-693-0389. Conway.

FOR SALE: 2 Dayco motorcycle covers for Harley or other big bikes. \$50 each. 417-260-0941. Raymondville.

MAC'S TIEDOWN STRAPS: Like New. \$80. 417-260-0941. Raymondville.

3 ARMY CANTEENS: Mess kit, belt & duffle bag. \$60 for all. 417-260-0941. Raymondville.

PITTSBURGH HEAVY DUTY 3-TON FLOOR JACK: Never used. \$195. 417-260-0941. Raymondville.

ALFALFA & GRASS HAY FOR SALE: 4X5 round bales. 417-343-4958. Seymour.

FISHING SEASONS COMING: Get your rod and reels, \$5 and up. 417-589-8200. Conway.0

STAIR STEPPER: In good condition. \$65. 417-532-2344.

MISC. MECHANICAL TOOLS: Small set \$25. & Large set \$35. 417-532-2344.

LARGE COCA-COLA NOVELTY SET/ GROUP: \$50. 417-532-2344.

KING BUILDERS



We specialize in custom and specialty builds, such as:

- Houses
- Barndominiums
- Shops
- Barns
- Garages

We also do roofing & siding!

Call for a free estimate!

Stevie King | 435 Dickerson Ranch Lane, Conway, MO 65632 | 417-241-3280

STORM SHELTERS: New & used. All sizes & types. Since 2003 - Call me today, Jeff at 417-894-3159

BUYING SCRAP METAL: All kinds, can torch heavy equipment. Call for prices. 40 years experience. 573-308-6739. Newburg.

OLD ANTIQUE JOHN WAYNE PICTURE: In Cowboy Outfit. \$200. 573-734-2822, leave message due to telemarketers.

PAIR OF ANTIQUE: 12 spoke cart/wagon wheels. Cast iron. \$140 for both. 573-854-8132. Text for pics. Houston

ANTIQUe METAL MIRRORED MEDICINE CABINETS: Wall mount, recessed. \$100/pair or \$60/each. 573-854-8132. Text for pics. Houston

BUYING PRE 1970 BEER SIGNS: FALSTAFF, GRIESEDIECK, BUDWEISER, STAG CAPITOL, ETC. 573-680-5377.

2001 COACHMAN CATALINA 5TH WHEEL: Great shape, new tires, 28 ½ foot. Recently winterized. Everything works. Large living/kitchen slide out. 5th wheel hitch included. \$8,500. 573-308-5515. Dixon.

CALUS LOGGING
20 YEARS EXPERIENCE
Buying Standing Timber
Walnut & Oak
Joe Calus, Owner
417-926-4606 • MTN. GROVE
CERTIFIED

COMPLETE SET OF 8FT SYMON CONCRETE FORMS: 417-532-9267. Lebanon.

23 HIGH QUALITY HOME RAISED BRED HEIFERS: Black Angus & Angus/Beefmaster. AI'D to Gar Home Free. Can start calving February 12th. \$2,850/each. 417-880-7586. Strafford.

PLAN YOUR FAMILYS SAFE PLACE NOW.: Safe rooms & concrete storm shelters. Since 2003-call Jeff today 417-894-3159. Ask about "The Beast!"

TRACTOR: Massey-Harris "30" (About same horsepower as Farmall "H") Original. Complete Service. \$2,000. 417-848-8754. Brookline.

JOHN DEERE SRX75: Starts and runs well. Blades do not engage. Belt is off, deck has dropped. Should be repairable, or remove deck and use as utility. Possible go-kart engine. \$200 OBO. 815-739-2739.

DARDEN PROFESSIONAL TIMBER HARVESTING, BUYING STANDING TIMBER: Great prices, improve wildlife habitat and improve forest health. State Certified & Fully Insured! 573-247-4808. Salem.

BRIDGESTONE TIRES: 255/65R/18. Good Tread. Set of 4. \$80. 417-924-8840. Mansfield.

SCROLL SAW: On Stand, Heavy Duty. \$50. 417-322-0161.

KC CHIEFS RED: Jersey Marcus Allen. Autographed JSA COA. \$119. 573-854-8132. Text for pics. Houston.

LONGWOOD WOOD STOVE: For Shop/Garage. \$400. 417-322-0161.

NEW, HEAVY, 6-BAR WELDON GATE: 12Ft. \$120. 417-322-0161.

WHIRLWIND UPCUT SAW: \$1,200. 417-322-0161.

0% for 4 Years
HEATMOR
 Stainless Steel Outdoor Furnaces
Outdoor Wood Furnace
 as low as **\$238** per month
HEATMOR MIDWEST
 Licking, MO 65542 • 573-674-2962

PRIME KATAHDIN EWES: Parasite Resistance, Easy Lambing, Hoof Health, Never Grain. \$300. 417-322-0161.

FOR SALE: 13.6x28 Tractor Tire. \$50. 573-437-3221. Cuba.

NEW GRIZZLY SANDBLASTER WITH CABINET: Needs Parts. \$100. 417-322-0161.

FOUR SCHNAUZER PUPPIES: 10-weeks-old. Can send pictures. 417-967-6639. Salem.

GUNSMITHING-Older Rifles, Shotguns, Handguns, all 22LRs. Any make, any model, estate appraisals. Camdenton. 573-363-5801.

30 OR MORE CATTLE PANELS: \$20/each. Also, 1 Cattle Head Catch, \$100. 573-247-4280. Salem.

BEAGLE PUPPIES FOR SALE: 573-796-8343 or 573-584-1181. California, MO.

WANTED: 1948-1954 Chevy or Ford Pickup, Old Hearse, Convertible Car, or Chevrolet Wrecker in any condition. 573-734-2822, leave message due to telemarketers.

ELECTRIC WELDER: \$150, Sell or trade for anything. 573-734-2822, leave message due to telemarketers.

2 KITCHEN TABLES & CHAIRS: \$100. 573-734-2822, leave message due to telemarketers.

2014 Jeep Wrangler: 180,000 miles. \$19,900. www.jimsmotorsrolla.com for Carfax. 573-467-0189.

2 REAR FENDERS FOR 1946 CHEVY COUPE: \$150. 573-734-2822, leave message due to telemarketers.

CUTTING TORCH OUTFIT: \$100. 573-734-2822, leave message due to telemarketers.

Wright Spray Foam Insulators, LLC
 Commercial & Residential
Call for FREE Estimates!
Ervin Gingerich 417-926-2052
B. Eli Yoder 417-746-4932

FISHING REEL SPOOLS FOR SALE: I've got what you need. \$3/each. 417-589-8200. Conway.

2015 Ford Expedition Platinum: 166,606 miles. \$18,900. www.jimsmotorsrolla.com for Carfax. 573-467-0189.

LINCOLN WELDER: Gas powered, 225-amp, good condition. \$1,800. 573-759-3851. Dixon.

CASH FOR COMICS, SPORTS CARDS & RELATED ITEMS: Over 35 years of experience as a collector/dealer. Call or text 636-667-0391.

STIHL CHAINSAW: MS C181. \$195. 573-864-2611.

???CDL LICENSE??? FAST & ECONOMICAL: Meets all requirements of the new ELDT Law. 2 days training. \$100 rebate with this ad. You need a learner's permit & ability to drive a manual. Jefferson City, Strafford & Willow Springs, Missouri. Please call 573-353-2853. www.capitaltruckdrivinginstitute.com.

BUYING OLD BARNS & LUMBER. A2/ A2 SPRINGER HEIFERS: \$1,600. John 417-307-2814, leave message.

2017 Chrysler Pacifica: 96,000 miles. \$19,900. www.jimsmotorsrolla.com for Carfax. 573-467-0189.

2006 TOYOTA TACOMA: V6, automatic, 4x4. Crew cab. 220,xxx miles. \$5,100. 573-864-2611.

CRAFTSMAN SNOWBLOWER: 11HP, 30". Like new. \$700. 573-864-2611.

SADDLES, TACK, HARNESS, HORSE BLANKETS, PONY CART, DOG SUPPLIES AND HUGE INVENTORY!!! Triple S Harness, 578 Hwy V, Seymour, MO 65746.

WANTED: 500 Gallon Propane Tank. 573-690-2786.

WANTED: 1995 Dodge Ram driver's side truck door. ¾ ton. 573-612-4351. Rolla.

FOR SALE: 30 Heavy Laying Hens. 573-612-4351. Rolla.

COWBOY CORGIS!!! UTD on shots & wormer. DOB 9-02-23. \$150 OBO. 417-349-0831. Hartville.

225/65/R17 TIRE: 95% tread. \$10. 210-787-8222. Linn Creek.

3 RIFLE SCOPES: 1 new Simmons Whitetail Classic 3-9x40, 1 Tasco 3-9x32 & 1 Dead Ringer 3-9x40. Take all three \$150. 210-787-8222. Linn Creek.

TWO SPINOUT ECCENTRIC BOLTS: and other Ferguson Pins and front Axle Bolts. \$50. Hermann. 636-932-4429.

TWO POLARIS TIRES: Size 26x9x12 \$50. Hermann. 636-932-4429.

NEW IN BOX MASTERBUILT ELECTRIC TURKEY FRYER: Up to 14 lbs. Fry, boil or steam. Safe for indoors. \$80. 417-718-5347. Morgan.

NEW INVENTORY - \$59,900 Delivered and setup, Hurry! Call Adam 573-657-2176 amegamobilehomes.com

LAKE OF THE OZARKS-END OF WEATHERED BARN WOOD SIDING: 10" wide. Call for appointment 573-729-7226. www.pineridgerustic.com Salem.

SEASON SPECIAL-Lots starting at \$4,995, \$125 Down, \$69 per month. Build, camp, or own for investment. Also acreage tracts. Beautiful wooded areas, free lake access and boat ramps. Lots are a short distance from the lake, no credit checks, owner financing and immediate possession. Large Missouri conservation boat ramp with a covered dock and rest rooms. Prices good through December 18, 2023. Hwy 135 between Stover and Laurie MO. Take lake road 135-12, follow the signs to the Ivy Bend Land Office. Closed Tuesdays and Wednesdays. Call anytime 573-372-6493.

MODEL SIG SAUER P220 (2015) PISTOL: Includes case, (2) clips, (2) holster. (No Trade) Text 573-619-6651.

18 INCH RIMS: \$50. 660-337-6311.

MISSOURI OZARKS BOOKS: Backroads of Missouri, \$10; When Isom Was Sheriff of Webster County, Enoch Isaac Cunningham, \$14; Ozark Mountain Folk-They Were The Last by Townsend Godsey, \$14. 417-532-2045. Lebanon. (Leave message and phone number.)

TAKE ADVANTAGE OF SECTION 179 WITH A BIG TAX BREAK FOR SMALL BUSINESSES & AG EXPIRES DECEMBER 31

\$0 DOWN! 0% FOR 84 MONTHS! ON ALL TRACTOR MODELS W.A.C.



Bobcat®
OF ROLLA, MO.

SALES • SERVICE • PARTS

BOBCATOFFROLLA.COM

573-364-0179

Offer ends 12/31/2023. Available at participating and eligible dealers only. Offer may vary by product type, series, model and select units in dealer's current inventory. Must take delivery from dealer stock by 12/31/2023. Offer available on new equipment in US and Canada only. Some restrictions apply. Length of contract and rate may vary. Monthly payment subject to change. Prior purchases not eligible. See dealer for details. Financing provided on approval of credit by authorized Bobcat finance providers to well-qualified buyers. All finance programs and rates are subject to final approval by the applicable Bobcat finance provider and are subject to change at any time without notice. Administrative fees may apply. Offer not available to government accounts, national accounts and municipal utility end customers. Bobcat Company reserves the right to extend or discontinue any of these programs at any time without prior notice.

LOG SIDING: 2X8 Pine/Western Cedar. Call for appointment 573-729-7226. www.pineridgerustic.com Salem.

"THAT'S THE WAY IT WAS" BOOK: Camden County History by Buford Foster. \$20. 417-532-2045. Lebanon. (Leave message and phone number.)

NEW MOBILE HOMES – prices start at \$64,900 delivered and setup 573-499-9993 columbiadiscounthomes.com

PASTURE RAISED CHICKENS & PASTURE RAISED THANKSGIVING TURKEYS: 417-741-2446.

BASEMENT READY TRUE MODS – instock ready for delivery 573-657-7040 chateauhomes.net

TINY HOMES – Missouri Franchise 573-881-7965

REGISTERED HEREFORD & ANGUS BULLS: Home raised, Some Show-Me Select Qualified. 573-701-7828. Belgrade.

LIGHTLY EXPERIENCED GOLF BALLS: \$3 a dozen. 417-818-3469. Strafford.

FOR SALE TUNIS RAMS: Ready for service. Call Gary Marsh 785-691-7656. Lawrence, KS.

SLIGHTLY USED PUZZLES: Will sell or trade. 417-818-3469. Strafford.

LIONEL TRAIN SET: Steam engine, tender, caboose and other car, track, and transformer. \$195. 573-364-7465. Rolla.

MODEL 1911 FRAME 8-SHOT C02 PISTOL: Like new, in box with C02 cartridges, 4 clips, pellets & all paperwork. \$95. 573-364-7465. Rolla.

1970s KIDS METAL STOVE & FRIDGE: Nice Lithographic paint, 18" wide x 36" high. \$75. 573-364-7465. Rolla.

3 GENTS WITTNAUER WRIST WATCHES: 10k gold + 23J. All \$200. 573-764-3517. Call in P.M.

HARLEY FAT BOBS: Custom flame paint w/ gas caps + lines. \$100. 573-764-3517. Call in P.M.

COLT REVOLVER DEALER CATALOGS: Circa 1950's + 1960's. All for \$100. 573-764-3517. Call in P.M.

110 PORCELAIN POCKET WATCH DIALS: Perfect for arts & crafts. \$100. 573-764-3517. Call in P.M.

1890 GOLD TESTING KIT: Glass acid beakers + antique wooden case. \$100. 573-764-3517. Call in P.M.

1500 VINTAGE WRISTWATCH DIALS: \$100. 573-764-3517. Call in P.M.

SPLIT SEASONED FIREWOOD FOR SALE: 573-759-2125 Dixon MO area. Must pick up, no delivery.

HARLEY 45 SOLO: factory rear brake drum + sprocket. \$150. 573-764-3517. Call in P.M.

INTERNATIONAL PICKUP TRANSFER GEARBOX: \$150. 573-308-5884. Rolla.

HARLEY PANHEAD DISTRIBUTOR: original, chrome + complete. \$125. 573-764-3517. Call in P.M.

1962 HARLEY SPORTSTER 900CC: original distributor. \$50. 573-764-3517. Call in P.M.

SPORTSET BY SARGENT: Fishing pliers in leather sheath. Like a multi-tool. \$20. 636-239-2695 or 314-560-5700. Washington.

NEW SQUARE D RAINPROOF 50AMP DISCONNECT: \$160. 636-239-2695 or 314-560-5700. Washington.

USED JET HOME POLLUTION CONTROL PANNEL: Model CP700. \$65. 636-239-2695 or 314-560-5700. Washington.

1 PAIR OF KEY BRAND MEN'S JEANS: Waist 38, Length 34. \$10. 636-239-2695 or 314-560-5700. Washington.

BLACK METAL TUBULAR BRACKET: Scrolling and a stainless bracket. \$10. Call for pictures. 636-239-2695 or 314-560-5700. Washington.

RUBBER & LEATHER BOOTS AND 5-Buckle OVER SHOES: Men's 11, Women's 7, some insulated. \$15-\$40 obo. 636-239-2695. Washington.

ANTIQUA 4 HP ENGINE: Built by Continental Motors Corporation. \$150 OBO. 573-308-5884. Rolla.

'85 FORD PICKUP PARTS: Passenger door with window glass & mirror \$30. Also, Tailgate for '85 Ford pickup \$25. 573-308-5884. Rolla.

NEW JELD WEN 5' LEFT HAND SLIDING GLASS DOOR WITH SUNSTABLE INTERIOR BLINDS: Clear tempered glass, Desert Sand trim/hardware. Retails \$2655 Sell \$900. 417-693-0389. Conway.

FOR SALE: 2 Dayco motorcycle covers for Harley or other big bikes. \$50 each. 417-260-0941. Raymondville.

MAC'S TIEDOWN STRAPS: Like New. \$80. 417-260-0941. Raymondville.

3 ARMY CANTEENS: Mess kit, belt & duffle bag. \$60 for all. 417-260-0941. Raymondville.

PITTSBURGH HEAVY DUTY 3-TON FLOOR JACK: Never used. \$195. 417-260-0941. Raymondville.

ALFALFA & GRASS HAY FOR SALE: 4X5 round bales. 417-343-4958. Seymour.

WE BUY

White Oak Logs!

- Top prices for your logs
- Experienced log buyers
- Professional service

Chad Cook | Salem Wood Products

417.718.2950

5 miles north of Salem, MO on Hwy 19

INDEPENDENT STAVE COMPANY
Log Procurement & Sales

www.independentstavecompany.com



YOUR AD GOES HERE!

Add YELLOW Color For An Additional \$3 Per Reader Ad

All ads will include Phone Number (unless requested to be deleted by advertiser) and City Or Town, Phone Number with Area Code counts as one word. City or Town counts as one word.

RATE: 80¢ Per Word. All Classified Ads Require Payment Before Print.

(1) 80¢	(2) \$1.60	(3) \$2.40	(4) \$3.20
(5) \$4.00	(6) \$4.80	(7) \$5.60	(8) \$6.40
(9) \$7.20	(10) \$8.00	(11) \$8.80	(12) \$9.60
(13) \$10.40	(14) \$11.20	(15) \$12.00	(16) \$12.80
(17) \$13.60	(18) \$14.40	(19) \$15.20	(20) \$16.00
(21) \$16.80	(22) \$17.60	(23) \$18.40	(24) \$19.20
(25) \$20.00	(26) \$20.80	(27) \$21.60	(28) \$22.40
(29) \$23.20	(30) \$24.00	(31) \$24.80	(32) \$25.60
(33) \$26.40	(34) \$27.20	(35) \$28.00	(36) \$28.80
(37) \$29.60	(38) \$30.40	(39) \$31.20	(40) \$32.00

Buy 3 Weeks - Get 4th Week Free! (Must be same ad)

Place your Classified Ad TODAY!

417-532-9131

Fax: 417-532-8140

Or Mail To: P.O. Box 192 • Lebanon, MO 65536

For your convenience we accept MasterCard, Visa, Discover or American Express



DEADLINE FOR CLASSIFIED ADS: FRIDAY 4:00PM!

Name _____

Address _____

City _____ Email _____

State _____ Zip Code _____ Phone _____

Ad Total \$ _____ X # Weeks _____ = Amount Enclosed \$ _____

Buying Standing Timber
References Available.
BUTLER LOGGING

NIANGUA, MO
417-448-9323

FISHING SEASONS COMING: Get your rod and reels, \$5 and up. 417-589-8200. Conway.0

STAIR STEPPER: In good condition. \$65. 417-532-2344.

MISC. MECHANICAL TOOLS: Small set \$25. & Large set \$35. 417-532-2344.

STORM SHELTERS: New & used. All sizes & types. Since 2003 - Call me today, Jeff at 417-894-3159

LARGE COCA-COLA NOVELTY SET/ GROUP: \$50. 417-532-2344.

SCROLL SAW: On Stand, Heavy Duty. \$50. 417-322-0161.

BUYING SCRAP METAL: All kinds, can torch heavy equipment. Call for prices. 40 years experience. 573-308-6739. Newburg.

KC CHIEFS RED: Jersey Marcus Allen. Autographed JSA COA. \$119. 573-854-8132. Text for pics. Houston.

CASH FOR COMICS, SPORTS CARDS & RELATED ITEMS: Over 35 years of experience as a collector/dealer. Call or text 636-667-0391.

ANTIQUe METAL MIRRORED MEDICINE CABINETS: Wall mount, recessed. \$100/pair or \$60/each. 573-854-8132. Text for pics. Houston

BUYING PRE 1970 BEER SIGNS: FALSTAFF, GRIESE DIECK, BUDWEISER, STAG CAPITOL, ETC. 573-680-5377.

2001 COACHMAN CATALINA 5TH WHEEL: Great shape, new tires, 28 1/2 foot. Recently winterized. Everything works. Large living/kitchen slide out. 5th wheel hitch included. \$8,500. 573-308-5515. Dixon.

COMPLETE SET OF 8FT SYMON CONCRETE FORMS: 417-532-9267. Lebanon.

OMAR'S LOGGING

⇒ **Oak & Walnut**
⇒ **Excellent Prices**
Amish Owned & Operated



LEAVE MESSAGE: 417-741-0440
Hartville & Surrounding Areas

23 HIGH QUALITY HOME RAISED BRED HEIFERS: Black Angus & Angus/ Beefmaster. AI'D to Gar Home Free. Can start calving February 12th. \$2,850/each. 417-880-7586. Strafford.

PLAN YOUR FAMILY'S SAFE PLACE NOW.: Safe rooms & concrete storm shelters. Since 2003-call Jeff today 417-894-3159. Ask about "The Beast!"

JOHN DEERE SRX75: Starts and runs well. Blades do not engage. Belt is off, deck has dropped. Should be repairable, or remove deck and use as utility. Possible go-kart engine. \$200 OBO. 815-739-2739.

WHIRLWIND UPCUT SAW: \$1,200. 417-322-0161.



Call to Order 417-993-3017

Meadowview Dutch Market

Bulk & Surplus Groceries • Prices Subject to Stock on Hand

DELI SPECIAL

CAROLINA REAPER CHEESE.....REG. \$8.99 LBSALE \$8.49 LB
GERMAN BOLOGNA.....REG. \$4.99 LBSALE \$4.49 LB

TRY our Fresh Homemade DELI Sandwiches: TURKEY, HAM, ROAST BEEF, ITALIAN, BLT'S, PULLED PORK AND BLT PULLED PORK (MADE YOUR WAY)! COME IN OR CALL to order! ALSO Custom Deli trays! Veggie OR FRESH Meat-N-Cheese!

Walnut Creek Cinnamon Rolls 10% OFF Reg Price		Premium Ranch Dressing \$5⁹⁹ 1 GAL.		Roasted and Salted Peanuts in Shell \$1⁹⁹ LB.	
Uncooked Chicken Nuggets \$1⁶⁹ LB.		Premium Frying Cheese 99¢ 10 OZ.		Land-O-Lakes Margarine 99¢ 1 LB.	

CLOSED THANKSGIVING DAY

See you on Friday!!!

MEADOWVIEW DUTCH MARKET
417-993-3017 Hours: Mon-Thurs 8-5pm
Fri 8-6pm • Sat 8-5pm
23 Miles West on Hwy 64 • Right on T Hwy
9 miles • Left on E Hwy 1 mile on Left

NOT RESPONSIBLE FOR PRINT ERROR!!

NOW ACCEPTING CREDIT, DEBIT CARDS & EBT

DUTCH COUNTRY STORE, LLC
573-378-4395
Hours: Mon-Thurs 8-5pm
Fri 8-6pm • Sat 8-5pm
5 miles East of Versailles off Hwy C on Kelsay Road

Sale Dates November 22nd, 2023 to November 28th, 2023 while supplies last!

BONUS SPECIAL

 **St. Louis Style Spareribs \$1⁷⁹** LB.

LAND FOR SALE



313 ACRES ± | DALLAS CO., MO | \$1,675,000

- Over 3600 square foot log cabin house, fully furnished with very nice finishes throughout (approximately 2600 square feet above ground plus approximately 1000 square feet in the basement)
- Home includes 5 bedrooms (2 non-conforming), 2 full baths, two 3/4 baths, and one 1/2 bath
- 2 fireplaces, finished basement, wraparound deck, covered front porch, fire pit, and security system
- Plenty of storage space with many closets and storage lockers throughout the house
- Large 40'x62' three-bay (five car) garage with a propane heater, workbenches, and concrete floor
- John Deere 5065E Tractor with front end loader, rotary cutter, blade, and seeder
- Polaris Ranger 570 4x4 UTV
- 20'x30' utility building for extra storage
- 12'x15' pole shed for animals complete with a steel post corral
- Large external GE Generator for backup power
- Four ponds · One large hayfield · Wildlife food plots · Five deer protein feeders (4 large, one small)
- 5 fenced pastures great for horses, a few cattle, or other farm animals
- Gated entrance
- A long blacktop driveway that begins at the property boundary
- 50-yard archery range, pistol/small arms range, 300-yard rifle range
- One large hayfield
- Wildlife food plots
- Five deer protein feeders (4 large, one small)
- Three different gated access points for the property
- Quality whitetail habitat within a large tract of timber, featuring slightly rolling topography with hardwoods and green fields
- The property's three access points make it huntable with any wind direction
- Aerial topographic maps identify distinct saddles, pinch points and transition zones revealing ideal stand and ambush sites
- Land characteristics include mixed mature hardwoods, cedar thickets, security thermal cover and abundance of edge
- A trail system throughout the property makes travel easily accessible by foot, vehicle or ATV
- Recreational activities are not only limited to this property, as the property is located near many lakes and rivers

BRIAN UTECHT LAND TEAM
SOUTHWEST MISSOURI LAND SPECIALISTS



📞 **417.766.5595**

🌐 brian.utecht@whitetailproperties.com



WHITETAIL PROPERTIES REAL ESTATE

HUNTING | RANCH | FARM | TIMBER

WHITETAILPROPERTIES.COM

Whitetail Properties Real Estate, LLC DBA Whitetail Properties, DBA Whitetail Properties Real Estate. In the States of Nebraska & North Dakota DBA Whitetail Trophy Properties Real Estate LLC. Licensed in CO, MN, ND, SD, TN & WI - Jeffrey Evans, Broker. Licensed in FL, KS & MO - Jefferson Kirk Gilbert, Broker. Licensed in TX & NM - Joey Bellington, Broker. Licensed in IN - Bill Minor, Broker. Licensed in AL, GA, LA, & MS - Sybil Stewart, Broker. Licensed in TN - Tim Burnette, Broker. Licensed in TN & MS - Josh Monk, Broker. Licensed in AR - Anthony Chrisco, Broker. Licensed in NC, SC, VA - Chip Camp, Broker. Licensed in IA, NC - Richard F. Baugh, Broker. Licensed in MI - Edmund Joel Nogaski, Broker. Licensed in IL, MD, WV - Debbie S. Laux, Broker. Licensed in ID, MT, OR, UT, WA, WY & NV - Aaron Milliken, Broker. Licensed in NY - John Myers, Real Estate Broker. Licensed in OK - Dean Anderson, Broker. Licensed in KY - Derek Fisher, Broker. Licensed in OH - Jeremy Schaefer, Principal Broker. Licensed in NE & SD - Jason Schendt, Broker. Licensed in MS - Chipper Gibbs, Broker. Licensed in PA - Jack Brown, Broker.



Get a great deal on getting more done.



Save big on select compact and sub-compact tractors. Versatile, reliable and part of the #1 rated tractor brand for durability and owner experience in the U.S.* Stop in today for a demo.**

\$0 DOWN 0% APR 84 MONTHS

VISIT US TODAY FOR THIS LIMITED-TIME OFFER



Quarles Supply Kubota of Lebanon

3251 S Springfield Ave
Bolivar, MO 65613
417-777-2391

22330 Hwy MM
Lebanon, MO 65536
417-532-0888

KubotaUSA.com

*Award based on 2021 Progressive Farmer Reader Insights Tractor Study **Subject to availability. © Kubota Tractor Corporation, 2023. \$0 Down, 0% A.P.R. financing for up to 84 months on purchases of new Kubota BX2680, L2501 and LX2610SU equipment from participating dealers' in-stock inventory is available to qualified purchasers through Kubota Credit Corporation, U.S.A.; subject to credit approval. Example: 84 monthly payments of \$11.90 per \$1,000 financed. Customer instant rebates include Orange Plus Attachment Instant Rebate of \$300 with purchase of the second qualifying new implement and \$500 for the third new qualifying implement. Some exceptions apply. There is no rebate on the first implement purchased. Offers expire 12/31/23. Terms subject to change. This material is for descriptive purposes only. Kubota disclaims all representations and warranties, express or implied, or any liability from the use of this material. For complete warranty, disclaimer, safety, incentive offer and product information, consult your Dealer or KubotaUSA.com.

