

FREE - TAKE ONE!

Vol. 30 No. 31

OCTOBER 26, 2023

417-532-9131

WEEKLY **TRADER** MAGAZINE



Find us on
Facebook

@myweeklytrader
AUCTIONS PG. 8

VISIT OUR NEW WEBSITE! MYWEEKLYTRADER.COM

**Backed By
Morse**

TRUCK SEASON



CHEVROLET

FIND NEW ROADS™



LARGEST SELECTION IN YEARS AND MORE ON THE WAY

WE WANT YOUR TRADE.

**ED MORSE
CHEVROLET
BUICK·GMC**

ROLLA

100 Fairgrounds Rd., Rolla, MO

573-364-1002

EdMorseChevroletBuickGMCRolla.com

WCT FARM AND LAWN • CALL US TODAY 417-859-4311



TYM
TRACTORS



0% for 84mo FINANCING
on the 2515 for a limited time



25 HP Gear
\$255 /month @ 0%
2,200lb. Lift Capacity

4.99% for 84mo FINANCING
AVAILABLE on ALL MODELS under 55 horsepower



COME SEE OUR STOCK OF TYM TRACTORS



T25
25 HP
\$260 /month



T474H
47 HP
\$394 /month



T574
55 HP
\$435 /month

*Offers available for a limited time only. Offer only valid upon purchase of a new qualifying tractor from a participating dealer's in-stock inventory. Some exceptions apply.



WCT Farm & Lawn
417-859-4311
SALES • SERVICE • PARTS
3299 EVERGREEN ROAD
STRAFFORD, MO 65757
www.wctfarmandlawn.com



RC37 SERIES

ROTARY CUTTERS
50-160 HP 15' Width



- 3" Cut capacity
- Cat. 6 main CV driveline
- 10 Gauge sloped deck
- Cast steel greaseable wing hinges
- New heavier wheel bearing seals

Getting Chores Done
LAND PRIDE
does that.



www.landpride.com

For Outstanding Products & Service

AGRI-ENTERPRISES

1-1/2 Miles South Of Licking, MO On Hwy 63

573-674-2203 • 1-800-653-7152 • www.agri-enterprises.com

PASTURE RAISED CHICKENS & PASTURE RAISED THANKSGIVING TURKEYS: 417-741-2446.

WEATHERED BARN WOOD SIDING: 10" wide. Call for appointment 573-729-7226. www.pineridgerustic.com Salem.

LOG SIDING: 2X8 Pine/Western Cedar. Call for appointment 573-729-7226. www.pineridgerustic.com Salem.

NEW INVENTORY - \$59,900 Delivered and setup, Hurry! Call Adam 573-657-2176 amegamobilehomes.com

NEW MOBILE HOMES – prices start at \$64,900 delivered and setup 573-499-9993 columbiadiscounthomes.com

BASEMENT READY TRUE MODS- instock ready for delivery 573-657-7040 chateauhomes.net

VOTED #1 BEST Preowned Car Dealership

TIM'S USED CARS

(573) 341-3828 • 1334 South Bishop (Hwy. 63) • Rolla, MO
Next to Hwy CC • www.tims-used-cars.com

<p>2021 RAM 1500 CLASSIC Crew cab, 4x4, V-6, power equipped, 52,xxx Miles Only \$29,900</p>	<p>2016 JEEP CHEROKEE SPORT 4x4,4 cyl auto, power equipped, 59,xxx Miles Only \$16,900</p>
<p>2014 CHEVY CRUZE 1.4 4 cyl, power equipped, 116,xxx Miles Only \$8,900</p>	<p>2011 FORD EXPLORER XLT 3.5 V-6, power equipped, 142,xxx Miles Only \$9,500</p>

LARGE SELECTION OF CARS, TRUCKS, SUVs & VANS!

WE BUY AND SELL

new and used mobile homes

(417) 501-1061

TINY HOMES – Missouri Franchise 573-881-7965

REGISTERED HEREFORD & ANGUS BULLS: Home raised, Some Show-Me Select Qualified. 573-701-7828. Belgrade.

Pine Ridge Rustic

Log Home Building Supplies

Services Offered!

- Custom Log Home Products
- Pre-finishing available on interior & exterior
- Hand Hewn Sidings Offered

www.pineridgerustic.com

523 CR 2410 • Salem, MO 65560 • Ph: 573-729-7226



- Log Siding
- Beveled Siding
- Car Siding • Red Cedar
- Western Cedar • Pine • Timbers • Barnwood

CALL FOR APPOINTMENT

110 PORCELAIN POCKET WATCH DIALS: Perfect for arts & crafts. \$100. 573-764-3517. Call in PM.

1890 GOLD TESTING KIT: Glass acid beakers + antique wooden case. \$100. 573-764-3517. Call in PM.

1500 VINTAGE WRISTWATCH DIALS: \$100. 573-764-3517. Call in PM.

HARLEY 45 SOLO: factory rear brake drum + sprocket. \$150. 573-764-3517. Call in PM.

HARLEY PANHEAD DISTRIBUTOR: original, chrome + complete. \$125. 573-764-3517. Call in PM.

1962 HARLEY SPORTSTER 900CC: original distributor. \$50. 573-764-3517. Call in PM.

2002 CHEVY 3500 CAMPER VAN: V8. Fridge, sink, microwave & awning. 30 amp. New tires. Excellent condition. 136,xxx miles. \$17,000. 417-650-7069. Lebanon.

LIGHTLY EXPERIENCED GOLF BALLS: \$3 a dozen. 417-818-3469. Strafford.

SLIGHTLY USED PUZZLES: Will sell or trade. 417-818-3469. Strafford.

LIONEL TRAIN SET: Steam engine, tender, caboose and other car, track, and transformer. \$195. 573-364-7465. Rolla.

MODEL 1911 FRAME 8-SHOT C02 PISTOL: Like new, in box with C02 cartridges, 4 clips, pellets & all paperwork. \$95. 573-364-7465. Rolla.

1970s KIDS METAL STOVE & FRIDGE: Nice Lithographic paint, 18" wide x 36" high. \$75. 573-364-7465. Rolla.

3 GENTS WITTNAUER WRIST WATCHES: 10k gold + 23J. All \$200. 573-764-3517. Call in P.M.

HARLEY FAT BOBS: Custom flame paint w/ gas caps + lines. \$100. 573-764-3517. Call in P.M.

COLT REVOLVER DEALER CATALOGS: Circa 1950's + 1960's. All for \$100. 573-764-3517. Call in P.M.

SPORTSET BY SARGENT: Fishing pliers in leather sheath. Like a multi-tool. \$20. 636-239-2695 or 314-560-5700. Washington.



Meadowview Dutch Market

Bulk & Surplus Groceries • Prices Subject to Stock on Hand

Call to Order
417-993-3017

Sale Dates October 25th, 2023 to October 31st, 2023 while supplies last!

DELI SPECIAL

SMOKEHOUSE HAM.....REG. \$5.99 LBSALE \$5.49 LB
JALAPENO MUNSTER CHEESE.....REG. \$5.99 LBSALE \$5.49 LB

TRY our Fresh Homemade DELI Sandwiches: TURKEY, HAM, ROAST BEEF, ITALIAN, BLT'S, PULLED PORK AND BLT PULLED PORK (MADE YOUR WAY)! COME IN OR CALL to order! ALSO Custom Deli trays! Veggie OR FRESH Meat-N-Cheese!

Bark Thins Dark Chocolate Mint **99¢** 4.7 OZ.

Mini Marshmallows **99¢** LB OR **\$9.99** 20 LB CASE

Peach Blend Yogurt **\$2.50** 12-4 OZ

Hash Brown Patties **\$5.49** 2 LB.

Premium Margarine Quarters **\$1.39** 16 OZ

Buffalo Style Chicken Breast **99¢** LB

BONUS SPECIAL Shredded American Cheese **\$1.59** LB

Fully Cooked Honey BBQ Beef Patties **89¢** LB

Uncooked Chicken Nuggets **\$1.49** LB







APPLE DAYS THIS WEEK!!!

26th & 27th 2Days Only 49¢ LB. Thursday and Friday

Free Refreshments

Mix and Match your Apples
Honeycrisp, Cortland, Golden Delicious, McIntosh, Gala, Fuji, Johnathan, Jona Gold, Red Delicious

** 49¢ lb **

MEADOWVIEW DUTCH MARKET
417-993-3017 Hours: Mon-Thurs 8-5pm
Fri 8-6pm • Sat 8-5pm
23 Miles West on Hwy 64 • Right on T Hwy
9 miles • Left on E Hwy 1 mile on Left

NOT RESPONSIBLE FOR PRINT ERROR!!

NOW ACCEPTING CREDIT, DEBIT CARDS & EBT

DUTCH COUNTRY STORE, LLC
573-378-4395
Hours: Mon-Thurs 8-5pm
Fri 8-6pm • Sat 8-5pm
5 miles East of Versailles off Hwy C on Kelsay Road

NEW SQUARE D RAINPROOF 50AMP DISCONNECT: \$160. 636-239-2695 or 314-560-5700. Washington.

BLACK METAL TUBULAR BRACKET: Scrolling and a stainless bracket. \$10. Call for pictures. 636-239-2695 or 314-560-5700. Washington.

KUSTER LOGGING
BUYER of Standing Timber Oak and Walnut
Dozing Now Available
417-259-0047
 References Available



USED JET HOME POLLUTION CONTROL PANNEL: Model CP700. \$65. 636-239-2695 or 314-560-5700. Washington.

1 PAIR OF KEY BRAND MEN'S JEANS: Waist 38, Length 34. \$10. 636-239-2695 or 314-560-5700. Washington.

RUBBER & LEATHER BOOTS AND 5-Buckle OVER SHOES: Men's 11, Women's 7, some insulated. \$15-\$40 obo. 636-239-2695. Washington.

ANTIQU 4 HP ENGINE: Built by Continental Motors Corporation. \$150 OBO. 573-308-5884. Rolla.

'85 FORD PICKUP PARTS: Passenger door with window glass & mirror \$30. Also, Tailgate for '85 Ford pickup \$25. 573-308-5884. Rolla.

PITTSBURGH HEAVY DUTY 3-TON FLOOR JACK: Never used. \$195. 417-260-0941. Raymondville.

OZARKS' COIN CLUB
Coin and Stamp Show Springfield, MO
October 27th & 28th, 2023
 Friday Noon-6pm & Saturday 10am-6pm
Relics Antique Mall Event Center
 2015 W. Battlefield Rd – Just West of Kansas Expressway
 – **BUY • SELL • TRADE** –
FREE ADMISSION
 Door Prizes Every Hour • Special Programs for Children
 24 Hour Security Provided
 For more information contact Jim at 417-877-0233




INTERNATIONAL PICKUP TRANSFER GEARBOX: \$150. 573-308-5884. Rolla.

NEW JELD WEN 5' LEFT HAND SLIDING GLASS DOOR WITH SUNSTABLE INTERIOR BLINDS: Clear tempered glass, Desert Sand trim/hardware. Retails \$2655 Sell \$900. 417-693-0389. Conway.

FOR SALE: 2 Dayco motorcycle covers for Harley or other big bikes. \$50 each. 417-260-0941. Raymondville.

MAC'S TIEDOWN STRAPS: Like New. \$80. 417-260-0941. Raymondville.

3 ARMY CANTEENS: Mess kit, belt & duffel bag. \$60 for all. 417-260-0941. Raymondville.

MAPLE HUTCH CABINET: 3'W X 5.5' T X 15.25" D 2 small drawers 2 large drawers. \$300 417-260-0941. Raymondville.

DARDEN PROFESSIONAL TIMBER HARVESTING, BUYING STANDING TIMBER: Great prices, improve wildlife habitat and improve forest health. State Certified & Fully Insured! 573-247-4808. Salem.

SMALL DANBY CHEST FREEZER: \$50. 417-718-2529. Lebanon.

FOR SALE: Speed controlled pet nail grinder. \$15. 417-718-2529. Lebanon.

FOR SALE: Snap Kit for setting western snaps. \$20. 417-718-2529. Lebanon.

FOR SALE: New Indoor/Outdoor Digital Antenna. \$15. 417-718-2529. Lebanon.

FOR SALE: Jensen Tabletop Stereo with 2 speakers. \$45. 417-718-2529. Lebanon.

ATTENTION ROOT DIGGERS: We will be buying ginseng & goldenseal throughout the season. Schofield Roots in Theodosia, MO 417-683-7922.

YOUR FULL SERVICE AUTO BODY SHOP

Call today for an appointment or estimate!

Restorations, insurance jobs, and more!





DAVIDSON'S Customs
 417-288-1589

417-288-1589 • 115 Lincoln St., Buffalo, MO •  @DavidsonCustoms

2 HOSPITAL BEDS: \$200 each. 573-247-4280 or 573-247-4281. Salem.

850 MASSEY FERGUSON COMBINE: With both heads. Ready to go. \$6,000. 573-247-4280 or 573-247-4281. Salem.

APPROXIMATELY 500 BALES OF STRAW: \$6/bale. 573-247-4280 or 573-247-4281. Salem.

200 SQUARE BALES OF GRASS HAY: \$7/bale. 573-247-4280 or 573-247-4281. Salem.

JENSEN TABLETOP STEREO: With two detachable speakers. \$45. 417-718-2529. Lebanon.

INDOOR/OUTDOOR DIGITAL TV ANTENNA: \$18. 417-718-2529. Lebanon.

FOR SALE TUNIS RAMS: Ready for service. Call Gary Marsh 785-691-7356. Lawrence, KS.

WOODLANDLAKESNEWS.COM: know before you go! --The Weekly Trader & associated entities are not associated with this website.

JUMBO FLOAT: 95" long x 80" wide x 10" high. Heavy gauge vinyl, Safety valve, 2 screw valves, 12 rope holders, water plug, nylon rope around it. Like new. \$150. 210-787-8222. Linn Creek.

225/65/R17 TIRE: 95% tread/ \$15. 210-787-8222. Linn Creek.

6FT 3-POINT DISC: \$400. 200-Gallon Fuel Tank with stand, \$300. Foot Pedal Grindstone, \$300. 80lb. Anvil, \$500. 3-Bottom Allis-Chalmers Plow, \$200. 573-280-8230. Camdenton.



OFFICIAL TRACTOR OF TOUGH™

INTRODUCING THE ALL-NEW 5100 SERIES



Marshfield Machinery Inc.
 222 E. Madison • Marshfield, MO 65706
 417-859-2117 • www.marshfieldmachinery.com

*2018 data including all Mahindra group brand sales. MahindraUSA.com © 2020 Mahindra USA Inc.



NEW MAHINDRA TRACTORS

1635 4WD & LDR 36HP	IN STOCK
2638 4WD & LDR 38HP	IN STOCK
2645 4WD & LDR 45HP	IN STOCK
2660 4WD & LDR CAB 60 HP	IN STOCK

USED TRACTORS

MF 4708 80HP 4WD CAB LDR	58,500
MF 4609M 90HP CAB LDR	47,500
JD 5055E 59HP CAB LDR	32,500
MF 383 70HP CAB LDR	24,000
MAHINDRA 4540 41HP 4WD LDR	23,500
MAHINDRA 2638 38HP 4WD LDR	20,000
MF 4243 75HP CAB LDR	20,000
MAHINDRA 1635 35HP 4WD LDR	19,500
MAHINDRA 4540 41HP LDR	16,000
AC 7010 106HP CAB	9,500
MF 1528 28HP 4WD	7,500
CUB CADET 7205 20HP 4WD	4,250
KUBOTA L175 17HPW/MOWER	3,000

USED ROUND BALERS

NH RB450 4X5 MESH	24,000
MF 1745 4X5	9,500
HESSTON 550 4X6	2,500
HESSTON 560 5X6	2,000

USED MISC.

OMI 8 WHEEL RAKE	2,500
RHINO 8 WHEEL RAKE	1,500
RHINO 5FT FINISH MOWER	850
ROLLINS 5FT BLADE	250

Marshfield Machinery Inc.
 222 E. Madison
 Marshfield, MO 65706
 417-859-2117
 www.marshfieldmachinery.com



CUSTOM DEER PROCESSING
 Please come check me out
 417-589-0022 - Conway, MO

WANTED USED KITCHEN CABINETS: in good condition. 417-741-2186.

1980 CHEVY SILVERADO: 1 owner, bought brand new in 1980. Very clean, nice truck. \$17,500. 417-288-2760.

SPLIT SEASONED FIREWOOD FOR SALE: 573-759-2125 Dixon MO area. Must pick up, no delivery.

Blue Healer Puppies: UTD on all shots. 417-349-0919. Plato, MO

BLACK REGISTERED LIMOUSIN BULLS: 19-months-old, semen checked, very gentle, hand fed. 573-694-0164. Jefferson City.

CRAFTSMAN TILLER: 5-years-old, new carburetor. \$75. 417-345-8616.

YEARLING JERSEY HEIFERS: A2A2. \$850. 417-733-2625. Louisburg.

FISHING SEASONS COMING: Get your rod and reels, \$5 and up. 417-589-8200. Conway, MO

ALFALFA & GRASS HAY FOR SALE: 4X5 round bales. 417-343-4958. Seymour.

LAKE OF THE OZARKS-Halloween Season Special-Lots starting at \$4,995 - \$125 down \$69 per month. Build, camp, or own for investment also acreage tracts. Beautiful wooded area, free lake access and boat ramps, lots are a short distance from the lake, no credit checks, owner financing, and immediate possession. Missouri conservation boat ramp with a covered dock and rest rooms close by. Prices good through November 13th, 2023. Hwy 135 between Stover and Sunrise Beach, MO. Take lake road 135-12 to the Ivy Bend Land Office. Closed Tuesdays and Wednesdays. Call anytime 573-372-6493.

Lincoln Arc Welder: \$100. Cutting Torch: Victor Gauges & Torch with Tanks, \$500. Miller Cricket XL Bolt Wire Welder: with Tank & Gauges, \$500. Cherry Picker: \$300. Two 1620 Poulan Chainsaws, \$75/each. Milwaukee Impact Hammer, \$250. 417-527-3087. Branson.

EXERCISE BIKE: In good condition. \$65. 417-532-2344.

FOR SALE: 4' 2-wheel Dump Utility Trailer. \$110. 573-729-3297. Salem.

MISC. MECHANICAL TOOLS: Small set \$25. & Large set \$35. 417-532-2344.

LARGE COCA-COLA NOVELTY SET/ GROUP: \$50. 417-532-2344.

DACHSHUND PUPPIES: Registered, shots & wormed. 573-247-6273.

LOOKING FOR: driver side truck door 1995 ¾ ton Dodge Ram 4X4 573-612-4351. Rolla.

FOUR WHEELS WITH TIRES: for 2004 Ranger. Good condition, size 16. 573-612-4351. Rolla

TOY AUSSIES: 1 male, 1 female, both blue merle. 417-733-7062 Conway

1000 SQ FT: good, used, gray vinyl siding. 4 white corners. \$100. 417-217-0534 or 417-457-1015.

2020 25RBHL RV: Forest River. Only used 7 times. 352-346-8843.

2018 DODGE CARAVAN: 161,000 miles. Has maintenance record. \$10,900 573-467-0189 carfax@jimsmotorsrolla.com.

BUYING SCRAP METAL: All kinds, can torch heavy equipment. Call for prices. 40 years experience. 573-308-6739. Newburg.

"Goose Grease" Time for cold & flu season. Order today. 417-840-2554.

KING BUILDERS



We specialize in custom and specialty builds, such as:

- Houses
- Barndominiums
- Shops
- Barns
- Garages

We also do roofing & siding!

Call for a free estimate!

Stevie King | 435 Dickerson Ranch Lane, Conway, MO 65632 | 417-241-3280

TOY POODLE/MINIATURE SCHNAUZER CROSS PUPPIES FOR SALE: 2 chocolate, 4 white. Will have vet check. Average weight 8-11 pounds. 417-664-5926.

FOR SALE 1992 ½ TON CHEVY TRUCK: 350 Engine, 4WD, automatic, towing hitch, high miles. \$1,500. 417-260-0464. Licking.

PAIR OF ANTIQUE: 12 spoke cart/wagon wheels. Cast iron. \$140 for both. 573-854-8132 Text for pics. Houston

KC CHIEFS RED: Jersey Marcus Allen. Autographed JSA COA. 573-854-8132 Text for pics. Houston.

Martin Hunting Blinds

Versailles, MO

573-378-5808

- Eight Tinted Sliding Windows
- Platform 5'x8', 8' High
- Lumber is treated material



- Locally Made
- \$1800.00
- Stand Included

Some assembly required

SIESS ESTATE COIN & HOUSEHOLD AUCTION



The Jerome (Jerry) Siess Estate will sell coins and personal property of the Estate at public auction on:

LIVE AUCTION

Saturday, Oct. 28, 2023, Beginning at 9:00 AM

Location: 321 Lakeview Drive, Catawissa Mo 63015

Directions: From Interstate 44 Eastbound, take Exit #256 and go East on Osage (RT 66) to light at First Street (Hwy F) and go right (South). Go out of town 4 miles, then left onto Highway NN. Go 1,1 miles, then right on AP (Nike Base) .4 miles right on Evergreen, right on Lakeview to auction. Roads will be marked day of sale.

ONLINE REAL ESTATE AUCTION



Starting Bid:\$279,000. Bidding runs October 27-November 4th. Open House: October 29th 12-2 PM Beautiful brick ranch home with a very nice 30x40 workshop. Visit www.breheauction.com for a full listing!

COINS (will sell in second ring beginning at 10:00 AM)

GOLD; 1915s double Eagle MS63, 1992 \$25 Eagle MS68, 2005 \$25 Eagle MS69, (2) 2008 1/10 oz Eagles, 20 African mini Krugrand set-1/10-1/20-1/50 oz PF69 50th Anniversary set, **MORGAN DOLLARS;** over 100 Morgan silver dollars from 1878-1921 various mint marks-lot BU coins, Peace dollars-5 1922 BU, **HALF DOLLARS;** 5 rolls Walking Liberty half dollars, 60+ rolls 1964 Kennedy half dollars-most BU, **QUARTERS;** 5 rolls Washington silver quarters, **SILVER EAGLES;** **GRADED EAGLES-**(4) 2015w SP70 First Day, (5) 2009 MS70 First Strike, (8) 2018 MS70, (10) 2017 PR70, (5) 2014s MS69, (20) 2012 MS69, (10) 2014 MS70, (20) 2015 MS69, (4) 2015w PR70 DCAM, (40) 2014 MS70 First Release, (8) 2012 MS69, (20) 2014 MS70, (20) 2010MS70 25th Anniversary, (20) 2011 MS70, Uncirculated Eagles, (15) rolls raw Eagles dates from 2003-2017, colorized Eagles, (5) 5 coin sets 1 Oz-Maple Leaf-Eagles-Pandas-Irish-Kooks, **FOREIGN BULLION COINS;** **PANDAS;** (20) 2010 MS70, (20) 2011 MS70/2016 MS69, (6) 2009 UNC, 2009, (20) 2012 Gem BU First Strike Pandas, **OTHERS;** (5) 2017 50th Anniversary SP70 silver Krugrands, (10) 2016 Australian Gem Proof, (10) 2014 MS70 Australian Wedge Tailed Eagles, (20) 2011 MS69 Koalas, **SPECIAL COINS;** (15) 2014 Kennedy 50th Anniversary 4 coin sets, SS Republic shipwreck 1860s Seated Half in display, 2016 Rio Olympics 3 and 4 pc silver coin sets-PF69, (10) 2014 Sochi Olympics Hockey coins Gem Proof, 2009 Canadian 5 pc coin sets in display PF69, Susan B/Sacajawea coin sets, (36) 12 pc Presidential dollars in rolls and cased, framed Presidential dollars, (500) 2005 Buffalo nickels UNC in ingot boxes, volumes of state quarters and America the Beautiful quarters in albums w/fact sheets, **SILVER ROUNDS/TOKENS;** Free the Eagle rds, 1999 silver proof set, (5) 1992 First Russian Rep coins, (10) 2016 Shark Week rds, Super Bowl XXV coins, Johnson Matthey bar-rds, 24 pc Trump tokens-24kt layered, \$2 bills, 10 troy lb bags Mexican pesos-60's, some coin books-Dansco Morgan album

MOWERS / OUTDOOR TOOLS



Hustler Z 52" cut zero turn mower-Kawasaki 23 HP engine, push mower, weed eater, Stihl 041 AV chainsaw, Remington gas limb trimmer pole, Homelite 3816C chainsaw, Poulan electric chainsaw, electric leaf blower, Power Horse 3200 PSI power washer, Generac 2400 PSI 2.5 GPM pressure washer, pneumatic tire spreader, tow lawn cart,

wheelbarrows, 12 volt ATV sprayers, lot pump sprayers, backpack sprayer, portable air tank, potato forks, silage fork shovels, pitch fork, sledge, hatchets, scoop shovels, rakes, hoes, picks, tamper, limb trimmer, pruners, ladders-6' step-8' step, ladder jacks, long walk board, small rolling scaffold set, saw horses, extension ladder, water hose-reels, sprinklers

LUNCH WILL BE SERVED BY BEAUFORT LIONS CLUB

VIEW OUR PHOTO GALLERY ON www.breheauction.com

BREHE AUCTIONEERING SERVICE, LLC
Union, MO: (636) 583-0841 Owensville, MO: (573) 437-3454
www.breheauction.com
LICENSED AUCTIONEERS:
Kerry Brehe 314.954.3798 Josh Brehe 314.603.3129 Nick Brehe 314.560.7737
Harry Engelhart 636.399.3743

Announcements made day of sale supersede all printed material.
TERMS: CASH, PERSONAL CHECKS WITH PROPER I.D., BUSINESS CHECKS WITH BANK LETTER AND NO OUT OF STATE CHECKS UNLESS APPROVED BY SELLER. Email Us At kkauction@sbcglobal.net
Everything sells as is with no guarantees. Not responsible for accidents.

GUNS / OUTDOOR (guns will sell at 12:00 Noon)



Remington Model 870 12 gauge Mag, Mauser Modelo Argentino 1909 Duetsche Waffen Und Berlin, Belgian Browning .22 semi-auto, Belgian Browning BAR III 30-06, Revalation 220 .308, Weatherby Vanguard 6.5 prc, Mossberg Patriot Youth .243, Savage Axis Youth .243, Winchester Eddystone (WWI) 30-06, **PISTOLS;** Stern Ruger

200th Centennial .22 Single Six revolver w/extra cylinder, Beetta APX 9MM, Ruger EC9s 9MM, Sig Sauer P250 9MM, Glock 23 .40, CO2 pistol, tackle boxes, lures, fishing rods-reels, live baskets, minnow buckets, trot lines, boat seats, trolling motor, NIB Buck knife set, bowie knife, pocket knives, fillet knife, hunting knife, some ammo, gun cabinet, gas grill, propane tanks, propane camp stove, couple arrowheads, whitetail mount, deer skull mount

TOOLS



Clarke Weld Mig 130EN mig welder, Miller Thunderbolt AC/DC welder, Honda EG3500 roll around generator, 6 ton shop press, power shear, angle grinder, Rockwell Sonicrafter, Drill Dr, pneumatic 3 piece nailer set, portable air compressor, small Craftsman miter saw, bench top drill press, Milwaukee rotary hammer, power planer, mini power saw, Ryobi cordless tool set, Craftsman roto tool cutter, belt sander, 3/4 HP rolling compressor, 21 pc 3/4" socket set, oxy-acetylene gas tanks, 14" cut off saw, bench grinders, ratchet wrenches, socket sets, vise grips, pipe wrenches, crescent wrenches, hand saws, hack saws, spring clamps, lot C clamps, large bench vise, squares, levels, hand drills, lot drill bits, tin snips, wooden work bench, tool boxes, pipe vise, pipe cutters, long drill bits, chisels, air hose, articulating sockets, ratchets, circular saw, screwdrivers, flat bars, wood plane, parts cabinets, lot hardware-bolts, large hardware bins, motors, lot lumber, peg board, sheeting, siding-parts, insulation, lot carpets, drop lights, work lights, extension cords, lot electric wire, electric supplies, hard hats, glasses, **SHELVING;** heavy duty 8"x10 long pallet racking, shelving units, hvy commercial battery shelf, paint sprayer, rollers, paint supplies, drop clothes, 2 wheel dollies, shop vacs, **AUTO;** parts, belts, fluids, cleaners, oil, 3 ton floor jack, car ramps, gas cans, wagon jack, battery cables, torque wrench, receiver hitch, battery chargers, battery tester, hose clamps, heaters

FURNITURE / HOUSEHOLD / COLLECTIBLES

End tables, coffee table sets, reclining massage chair, power recliner, china cabinet-sliding glass door top, curio cabinet, small bookshelf, round dining table-metal chairs, formica steel table, counter stools, chairs, brass style queen bed, chest-dresser set-serpentine front, bedroom set-queen-dresser-chest, plant tables, magazine tables, hall trees, kitchen cabinet, storage cabinets, dresser, drop side table, typewriter desks, office desk, file cabinets, computer-printer, Sony flatscreen, stereo system, turntable, entertainment center, albums, easy chair-ottoman, rocker, side chairs, book shelves, couch, folding table-chairs, table lamps, lot floral, framed artwork, candles, massage mat, bedding, exercycle, treadmill, weights, senior-walkers-canes-shower chair, crutches, TV trays, Christmas decorations-yard displays, luggage, vacuums, sewing supplies, buttons, Singer Handy Stitch, **APPLIANCES;** chest freezer, upright freezer, washer-dryer set, all types small appliances, stack washer-dryer, Kimball Syntha Swinger 1500 organ, vaporizer, **KITCHEN;** Pfaltzgraff dish set, Noritake china dish set "Lucia", silverplate serving pcs, lot clear glass dishes, mugs, stemware, flatware, utensils, knife blocks, canisters, wooden dishes, "copper" dishes-molds, iron skillets, **COLLECTIBLES;** 50 State handmade quilt, French Knot Spread, lot Danbury Mint-Bradford Exchange collector plates, Avon collectible statues-Presidents Club, lot religious statuary, antique floor lamps, old oval dresser mirror, comics, J Deere tractor toys, Nylint Fire Dept 33 toy truck, Sharp multi-band radio, Stomach Bitter bottles, 905 beer case, 3 section gym locker, round wooden box, lot statues-figurines, large Thai flatware set



ONLINE AUCTION

BID NOW! BIDDING CLOSES NOVEMBER 6TH



Construction Equipment

- 2015 JCB 531-70 telehandler
- 2014 JCB 531-70 telehandler
- Unused 2021 Kubota U56-5 excavator
- 2020 Cat 279D3 skid steer loader 30+ skid steer attachments
- 2016 Bobcat E20 mini excavator
- 3-2018 JCB 15C-1 mini excavators
- 2020 Volvo L20H wheel loader
- 2019 Doosan DX63-3 excavator
- 2018 Hyundai 25Z mini excavator
- 2016 Snorkel S4726E electric man-lift
- 2017 Snorkel S3219E electric man-lift
- Cat 977H crawler loader
- 3-2018 JCB 8008 CTS mini excavators
- Bobcat 610 skid steer loader
- Case 586C rough terrain forklift
- 3-unused auger for mini excavators

Choice of Two

- Unused 3-pt. hydraulic bale un-roller
- Hahn S-9000 Big Boy fertilizer spreader
- NH 451 7' 3-pt. sickle mower
- IH 60 13' conser-fill disc chisel
- Kinze 4-row 30" no-till planter
- Ford 7412 quick attach loader
- UFT 400 grain cart
- A&L 425 grain cart
- Durabilt V-hay rake
- Kuhn GA 300 GM 3-pt. rotary hay rake
- NH 256 hay rake with dolly wheels
- NH 260TL quick attach loader
- Danuser 3-pt. hydraulic post driver
- Bush Hog 406 3-pt. brush hog
- JD 643 6-row corn head

2009 Chrysler Town & Country wheelchair van

- 2012 GMC Acadia SLT
- Lawn & Garden**
- 2023 John Deere Z315E zero turn mower
- Unused DR 30" offset disc for ATV
- Unused DR leaf & lawn Vac
- 10+ chainsaws
- Unused DR Roto-Hog 3' pull type power tiller
- Unused DR walk behind stump grinder
- 2016 Ferris IS 3200Z zero turn mower
- DR walk behind field & brush mower
- Unused Champion 19" rear tine tiller
- Husqvarna YTH1542XP riding mower
- John Deere F525 riding mower
- Husqvarna RZ 461 zero turn mower
- Craftsman T1400 riding mower

UTVs, ATVs, Motorcycles

- 2015 Kubota RTV X1140 UTV
- 2013 Polaris Ranger 900XP UTV
- 2013 Yamaha Grizzly 300 4 wheeler
- 2015 Honda Rancher TRX420 4 wheeler
- 2005 Harley Davidson Sportster 883 motorcycle
- 2012 Kawasaki Mule 4010 Trans 4x4 UTV
- 2002 Polaris Magnum 325 4 wheeler
- 3-John Deere 6x4 gators
- 2007 Yamaha Star motorcycle
- 1997 Honda Fourtrax TRX200D 4 wheeler
- E-Z-Go golf cart
- John Deere Gator 4x2 UTV
- 2013 John Deere Gator 825I UTV
- 1985 Suzuki 4 wheeler
- 1995 Honda TRX 300 4 wheeler
- Honda Rancher 350 ES 4 wheeler
- Yamaha 80 4 wheeler

Trailers

- 2020 PJ 25' gn flatbed trailer
- 2008 Banens 24' gn stock trailer
- 2023 H&H 16' gn dump trailer
- 1993 Kiefer 16' stock trailer
- 1985 Brooks Brothers 16' dump trailer
- 2007 Stillwater 24' flatbed trailer
- 1999 Calico 12' steel stock trailer
- 2006 Belshe T18 19' flatbed trailer

Farm Equipment

- IH 686 diesel tractor
- IH 544 gas tractor
- IH 504 diesel tractor
- 2013 MF 2680 tractor with loader
- 2-JD 2440 tractor with loader
- 2015 JD 2032R tractor w/loader
- JD 6620 Titan II combine
- Vermeer 605L round baler
- JD MX8 8' 3-pt. brush hog
- IH 1460 4x4 combine
- Pipe Hup HD 10' pull type roller
- 1956 IH 300 tractor
- Antique New-Way 4.5 hp hit & miss engine
- MH 30 tractor
- JD 1010 gas tractor
- Ferguson TO-35 tractor
- MM model U tractor
- Antique Aeromotor windmill
- International 986 tractor
- Bush Hog 2615 15' brush hog
- MM M5 gas tractor
- Ag-Tronic 15P1 15kw PTO driven generator
- Ford 2600 gas tractor
- Brush Hogs 5'-15'
- NH 518 manure spreader
- Westendorf WLA2 loader
- NH 3930 tractor
- NI #10 & #7 1-row corn pickers
- JD horse drawn manure spreader
- JD 4010 diesel tractor
- Kubota B7100 4wd tractor
- Killbros 25' header wagon
- 2-Economy hit & miss engines
- JD wagon running gear
- Kubota L175 tractor with belly mower
- IH 1063 6-row corn head
- IH 820 17' grain head
- Ford 4000 diesel tractor
- Grader blades of all sizes
- Ford 2-row 3-pt. corn planter
- JD 10' wheel disc

Trucks, Cars, Motorhomes

- 1992 International 4700 dump truck
- 1993 GMC 7500 TopKick dump truck
- 1966 Ford F250 pickup
- 2013 Ford Edge SEL AWD
- 2005 Ford F250 regular cab pickup
- 1977 Ford F350 van truck
- 2000 Safari Zanzibar 37' motorhome
- 2015 Ford F350 ext cab flatbed
- 2012 Ford F350 regular cab flatbed
- 2004 Ford F350 crew cab
- 1987 GMC C70 with mounted crane
- 1988 Cadillac Allante Pininfarina convertible
- 2001 Ford F650 dump truck
- 2004 Jeep Grand Cherokee 4x4
- 2000 GMC 2500 service truck
- 2012 Chevrolet Traverse LT AWD
- 2003 Chevrolet 2500 Suburban
- Unused storage containers 7'-40'
- Unused portable hoop shelters
- Unused portable restroom/showers units
- 25+ unused workbench tool boxes
- Unused 9.5' mobile office pod
- Lincoln Ranger 10,000 welder generator
- 3-Sinclair porcelain advertising signs
- Miller Trailblazer 325 EFI welder generator
- 80+ steel corral panels
- 4-unused 105 gallon poly fuel transfer tanks
- 1,000 gal. fuel tank with pump
- Grizzly G0900 spindle shaper
- Sawstop 3 hp table saw
- Grizzly G0856 8" dovetail jointer
- Unused Lincoln AC225 arc welder
- Walnut, ash, cedar & sycamore lumber
- Stihl TS800 concrete saw
- 40- unused 19.5' x 4' steel continuous fence panels
- Cabelas 30 lb. sausage stuffer
- Cabelas commercial meat grinder
- Grizzly G0513X2 bandsaw
- Grizzly G1021Z planer
- Grizzly G1035 shaper
- Grizzly G1026 HD shaper
- Grizzly G0611X dovetail machine

ITEM PREVIEW DAYS:
 Bidders will be able to inspect and view items Monday-Friday (8am-4pm) and Saturdays (8am-noon) while the auction is open for bidding at 4177 HWY VV, Berger, MO 63014

670 LOTS



Choice of Three

All items sell regardless of price. All items start at only \$1. **BID TODAY!**

SCHNEIDER Auctioneers LLC
 573-834-2207 • 573-291-8075
www.SchneiderAuctioneers.com

More items listed at SchneiderAuctioneers.com

REAL ESTATE AUCTION

Saturday October 28th, 2023 10:00 AM

25898 E Hwy 32 Lebanon, MO 65536

Estate of Vess "Decd" & Jewel Williams

Real Estate Sells at 10:30AM

From Hwy 5, Take 32 Hwy E 5 Miles To Property.



2 Bed, 1 Bath Home on 2 Acres. Central Heat & Air, Large Living Area, Wood Furnace, Garage, Covered Front & Back Porch, Covered Carport, 1/2 Walkout Basement 30x70 3 Car Garage, Insulated w/ Concrete Floors & Wood Furnace. Store Front.

Terms: 10% Down at Auction With Balance Due in 30 Days Or Less At Closing.



Tools Step Ladder* Craftsman String Trimmer* MS 170 Stihl Chainsaw* Hyd Floor Jack* Hardware & Crafts* Bench Grinder* 14" Band Saw* Aluminum Ext Ladder* Tools* Walking Cultivator* Wheelbarrow* Huskee LT4200 Riding Mower* Craftsman T110 Riding Mower* Lawn Mower Trailer* Gas Cans* Roll Around Work Bench* Floor Model Drill Press* Electric Cords* Hand Grinder* 3 Mini Air Nailers* Pancake Air Compressor* Floor Sander* 10" Craftsman Table Saw*

Furniture Roll Top Desk* TV Stand* Full Bed w/ Dresser* 2 Armoires* Cast Iron Skillets* 3 Drawer Chest w/ Desk* Ceramics* King Bed Set w/ Dresser, Chest, & 2 Night Stands* Dining Table & Chairs* Pots & Pans* Small Freezer Chest* Washer & Dryer Set* Patio Table & 4 Chairs* Full Size Sleigh Bed* Love Seats* Horseshoe Gun Rack* 4 Folding Tables* Set of 8 Barrel Back Chairs* 2 Benches* Sheets & Throws* Wishing Well* 2- 4 Drawer Chests* Commercial Electric Sewing Machine* Electric Heater*

Auction Conducted by:

Glenworth
Auction Service & Realty
Glen Yutzy, Auctioneer/Broker
(417) 767-4345

Plus more!
glenworth.com

RESTORED TRACTOR & PERSONAL PROPERTY AUCTION

1037 WILD ROSE LOOP STRAFFORD, MO 65757 | ON-SITE
SATURDAY OCTOBER 28TH, 2023 AT 10 A.M.

THERE ARE TRACTOR MANUALS FOR MOST OF THE TRACTORS

INVENTORY LIST:

- | | | |
|--|--|---|
| <p>All electric club car 2 wheel drive, made in USA</p> <p>International McCormick Cub</p> <p>F-20 McCormick Deering Farmall, Rebuilt out of frame ,New tires</p> <p>Model A John Deere Not rebuilt Has the long good</p> <p>Cultivar-Vision A McCormick Farmall, Out of frame rebuild New clutch Belt pulley New tires Tool box</p> <p>Multi-Vision B McCormick Farmall, New tires Tricycle front end Out of frame rebuild New seat Belt pulley</p> <p>H McCormick Farmall, Tricycle front end New tires New seat Belt pulley No rebuild</p> <p>H McCormick Farmall, In out of frame re build Belt pulley New seat</p> <p>H McCormick farmall, Out of frame rebuild New tires New seat Belt pulley</p> <p>C McCormick Farmall, In frame rebuild</p> | <p>New tires New seat Belt pulley</p> <p>Super H McCormick Farmall, No rebuild New tires Belt pulley New seat</p> <p>H McCormick Farmall, No rebuild New tires New seat Belt pulley</p> <p>M McCormick Farmall, Rebuild in frame New tires New seat Belt pulley Hydraulics on back</p> <p>Super c McCormick Farmall, In frame rebuild Hydraulics on back New seat Used to farm with</p> <p>M McCormick Farmall, No rebuild New tires New seat Belt pulley</p> <p>Coleman PowerMate 60 gallon air compressor</p> <p>Rolls of Bobwire</p> <p>Old license plates</p> <p>Old gas cans</p> <p>Pepsi-Cola crate</p> <p>Old tacklebox with vintage lures</p> <p>Old large bucket</p> <p>Old Tonka truck</p> <p>Golden 500 wagon</p> <p>Contico truck box</p> <p>Walnut rake</p> | <p>Little yard tractor plow</p> <p>Bushel baskets</p> <p>T post</p> <p>Old plumbers box</p> <p>Old water can</p> <p>Vintage tractor parts and tires</p> <p>Snoopy lunchbox</p> <p>Vintage motor oil cans</p> <p>Wash tubs</p> <p>Cloverleaf milk jugs</p> <p>Old screen doors</p> <p>Extension cords</p> <p>Yard Seed spreader</p> <p>Old plow</p> <p>slip buck scraper</p> <p>Old Implement wheels and axles</p> <p>Three point blade</p> <p>Old plow</p> <p>16 foot hay Wagon</p> <p>Pull behind disc</p> <p>Small pull behind disk</p> <p>Vintage John Deere mower</p> <p>Farmall thermometer</p> <p>metal tractor signs</p> <p>Snapper lawnmower Rebuilt engine</p> <p>Tool cabinet</p> <p>Chain link panels</p> <p>Skeet thrower</p> <p>Old log roller</p> |
|--|--|---|

- 24 foot extension ladder
- Pipe wrenches
- Sniper tripod stand still in box
- Metal implement wheels
- Old international Harvester refrigerator
- Canopy
- Miter Delta saw
- Hitachi compound miter saw
- Metal tractor seat
- Miscellaneous vintage tractor parts
- Cream can
- Metal patio chair
- Folding table
- Wood toy farmall tractors
- Wood toy John Deere tractor
- Farmall 560 scale tractor Dryersville Iowa
- Trailer
- Farmall wall clock
- Tractor Photo Books
- Tractor magazines

AND MORE!!!



FOR MORE INFORMATION GO TO WWW.EASTERLYAUCTIONCO.COM OR CALL EASTERLY'S AT 417-833-9494



Mike Easterly Auctioneer • 417-833-9494

Not Responsible for accidents or theft. For more information call: Easterly Auction Company, Springfield, MO. Auction Terms: Visa, Mastercard, Cash, Cashier's check or checks with proper I.D. Announcements day of sale take precedence over printed material. Auction Notes: Although information is obtained from sources deemed reliable, auctioneer makes no warranty or guarantee expressed or implied. Buyers should themselves take the opportunity to make their own inspection prior to sale.

www.EasterlyAuction.com • auctionzip.com ID#14770



BUILDING MATERIAL AUCTION



SATURDAY, OCT 28TH • 9:30 AM

BAXTER SPRINGS, KS

2404 Cleveland • Baxter Springs, KS • Corner of 24th & Cleveland, 3 blocks E of 69A on 24th St
SALE HELD INSIDE REGARDLESS OF WEATHER

IMPORTANT NOTICE: DUE TO ROAD CONSTRUCTION THERE IS CURRENTLY A DETOUR YOU MUST FOLLOW IF YOU ARE COMING IN OFF I-44 USING EXIT 1 OR EXIT 4. AT THE US-166 W/US-400 W/KS-26 N JUNCTION, CONTINUE ONTO KS-26 N. AT THE 1ST STOPLIGHT IN GALENA, TURN LEFT ONTO KS-66 W/W 7TH ST/US RT 66. AT THE TRAFFIC CIRCLE (ROUND-A-BOUNT), TAKE THE 3RD EXIT ONTO US-400 E/US-69 ALT S. CONTINUE TO FOLLOW US-69 ALT S INTO BAXTER SPRINGS, TURN LEFT ONTO E 24TH ST (ACROSS FROM CASEY'S). If the detour has been removed prior to the auction date, we will update Auction Zip and Facebook to notify you.

◊ **DIMENSIONAL LUMBER** – watch Auction Zip for additional details **CEDAR** - 5/4x4" Radius Edge ◊ **POSTS – WESTERN CEDAR** – 6x6's ◊ **PINE** – 1x6 T&G Shiplap, **COMPOSITE DECKING** in multiple colors ◊ **OSB SMART SIDE** – 4x8 sheets – used for board and batt or soffit ◊ **RIM BOARD** ◊ **WHITE PINE** – 1x10 and 1x12 ◊ **LVLs** - various sizes ◊ **SHEET GOODS** – 7/16" HIGH PERFORMANCE OSB 4x10 sheets ◊ **VERSETTA STONE** ◊ **CULTURED STONE** - nice selection of colors and styles ◊ **PINE LOG SIDING** – milled from 2x8, various lengths ◊ **JAMES HARDY SIDING** – 6 1/4" wide – A Grade – Warranty; also also 7 1/4" wide ◊ **PREFINISHED FIBER CEMENT SHAKE SIDING** ◊ **SM@ART SHAKES** ◊ **JAMES HARDIE TRIM BOARDS** – 5/4x6" ◊ **PVC TRIM BOARDS** – 5/4" in various widths ◊ **COMPOSITE DECK TILES** - 12x12s ◊ **MINI SPLITS** ◊ **ICE AND WATER SHIELD** ◊ **CLAY ROOF TILES** ◊ **HOUSE WRAP** ◊ **INSULATION** ◊ **TOILETS** ◊ **FAUCETS** - DELTA, MOEN, PFISTER, and **HOME IMPRESSION brands** - Vanity and Kitchen, including pulldown kitchen faucets – NIB – large selection to choose from ◊ **APPLIANCES** - NEW – as well as Shelf Pulls and Scratch and Dent ◊ **WIRE CLOSET SHELVING** ◊ **LIGHTING** - large variety of nice lighting fixtures – including some high end lighting ◊ **WINDOWS** ◊ **KITCHEN CABINETS** - multiple sets of cabinets – option of all wood or carpenter grade in stained or painted finishes, including: Shaker Style in Dark Gray, Light Gray, Espresso and White – all prefinished. Straight and L shaped sets with some sets also including pantry

– some sets also include soft close doors & dovetailed drawers ◊ **VANITIES** - nice selection of vanities including colors matching Kitchen Cabinets – variety of sizes, up to 5', some including granite tops ◊ **PORCELAIN AND CERAMIC TILE** - over 20,000 sq ft, with great selection of sizes and colors of tile to choose from including ◊ **MOSAIC** - nice selection with new inventory **TRAVERTINE – MARBLE – STONE** - including **SUBWAY TILE** ◊ **WOOD LOOK TILE** - nice selection of styles and colors in various lengths and widths ◊ **HARDWOOD FLOORING** - new snap lock real wood 5 1/2" wide ◊ ◊ **PREFINISHED PLANK WOOD FLOORING** - some hand scraped ◊ **SNAP AND LOCK LAMINATE** - in small lots ◊ **LVT** - great selection, including new inventory, of glue down LVT as well as **RIGID CORE SNAP LOCK** with pad ◊ **INTERIOR DOORS** including **SOLID CORE SANTE FE PINE DOORS** ◊ **TRIM – BASE – CASING – CROWN**: pre-primed -various widths and lengths; as well as **OAK** quarter round, corners, chair rail, cove, base shoe and door stop ◊ **STAIRCASE HANDRAILS** ◊ **ENTRY – PASSAGE – PRIVACY DOOR KNOBS AND LOCKS** ◊ **3CM QUARTZ** Maple White in various sizes – countertops – island panels, with & w/o sink cutouts ◊ **GRANITE countertops** ◊ **KITCHEN SINKS** - in single and double bowl options ◊ **BATHROOM SINKS** very nice variety in multiple styles ◊ **FREESTANDING BATHTUBS** ◊ **CEILING FANS** - nice selection ◊ **PEDESTAL SINKS** ◊ **TOWEL BARS AND RINGS, TOILET PAPER HOLDERS, ROBE HOOKS, TOOTHBRUSH HOLDERS**

MT VERNON AUCTION CENTER

No Buyer's Premium

COME FOR THE DAY AND SAVE LOTS AND LOTS OF \$. MORE COMING IN DAILY - check sites often
For pictures see Mt. Vernon Auction Co on Auctionzip.com (enter Auctioneer ID#29728) or Facebook
CELL 870-754-4428 • 870-754-5479 • 870-715-2326 (text only)

All items not picked up day of sale or during one of our posted, scheduled, and announced pick up times following the auction will be forfeited. Thank you!!

All announcements made the day of the auction will supersede previous advertising.

INTEGRITY OUTLET

CONTACTS - CALL OR TEXT MIKE @ 870-754-4428 • TEXT ONLY @ 870-715-5479 or 870-715-2326



All announcements made the day of auction will supersede previous advertising.

AUCTION! AUCTION! AUCTION!

Farm Equipment • Vehicles • Misc.



12 Ft Brillion Seeder	Head Shoot	International 950 Mixer
Sucker Rod	40+ Sheet Metal, 20ft.	1 - Ranger Trail Master
Miscellaneous Scrap	'96 Chevy Van	Ranger 481V Boat
9 - Lights: High Pressure & Sodium Vapor	Johnson 150 Fast Strike Boat Motor	1946 Ford Flat Head V8 Engine
1 - Canoe	2001 Chevy Pickup	2 - 2 Ton A/C Units
Exercise Bike	Little Green Wagon	1 - 4 Ton A/C Unit
Boat	Lots of Hand Tools	Corn Fodder Chopper
Post Hole Digger - 12" Auger	Frontier DM5070 10ft. Cutter	John Deere 535 Round Bailer - Bails 5x6
175 Bushel Gravity Wagon	94 Chevy Cavalier Wagon	4 - Round Bale Feeders
Kuhn SpeedRake SR110	Ford 4 Bottom Plow	3 - Mobile Homes
		Lots & Lots of Misc.



BUY
•
SELL
•
TRADE

COMMISSION:
\$1⁰⁰ - \$500⁰⁰ - 15%
\$501 - \$1,000 - 12%
\$1,001 - \$5,000 - 6%
\$5,001 - Up - 5%

ESTATES
•
FARMS
•
RANCHES
•
HOMES



DW WALKER & ASSOCIATES
HELPING BRING LIFE TOGETHER FOR YOU

SATURDAY, OCTOBER 28TH • 10AM 1136 Highway MM • Leasburg, MO

Auctioneer: D.W. Walker
(417) 332-7521

Follow us on Facebook:
Integrity Appraisal Experts Auction & Realty Group





OUTSTANDING RESTAURANT & BAR AUCTION

MONDAY, OCT. 30 - 10:00 AM

COLTON'S STEAK HOUSE & GRILL

4001 PARKVIEW DR
PITTSBURG, KS 66762

SELLING →



BALLY 8'X8' WALKIN COOLER, SINGLE PHASE, LIKE NEW! BALLY 8 1/2'X40' COMBINATION WALKIN COOLER FREEZER, LIKE NEW, CAN BE USED OUTSIDE OR INSIDE! SCOTSMAN 1,600 LB CUBE ICE MACHINE-TRUE SS DBL HALF DOOR REACHIN COOLER FREEZER COMBO-VICTORY STAINLESS STEEL 2 DOOR REACHIN COOLER-ARCTIC AIRS SS 2 DOOR REACHIN FREEZER-MCCALL 3 DOOR REACHIN COOLER-SGL & DBL DOOR WORKTOP COOLERS & FREEZERS-2017 CONTINENTAL FOUR DRAWER WORKTOP FREEZER, EXC-PERKLUCK KEG TAPPER COOLER (KEGERATOR), EXCELLENT, LIKE NEW! 2 TRUE MUG CHILLERS-BAR SINK & OTHER BAR ITEMS-TURBO AIR REFRIG 84" CHEF'S BASE-SILVER KING LETTUCE/SALAD CRISPER-ICE CREAM DIPPING CABINET FREEZER & FLAVOR RAIL STATION-HOBART MEAT GRINDER-JACCARD MEAT TENDERIZER-BLODGETT SS DBL STACK NAT GAS CONVECTION OVENS-VULCAN COOK & HOLD OVEN-GARLAND 4 BURNER RANGE W/12" GRILL & OVEN, LIKE NEW-VULCAN 4 BURNER CTR MDL RANGE-VULCAN 4' ELEC THERMO CONTROLLED FLAT GRILL, GOOD-TEC NAT GAS 42" CHARBROILER W/STAND, EXC-VULCAN ELEC TILT SKILLET, NICE-PITCO TWO BANK FLR MDL NAT GAS FRYER-FRY WARMER DUMP STATION-VULCAN SGL & DBL DOOR CONVECTION STEAMERS, NICE-ALTO SHAAM & METRO HEATED HOLDING CABINETS-VULCAN 36" ELEC CHEESE MELTER BROILER-FANTASTIC CAPTIVE AIRE EXHAUST HOOD SYSTEM W/2-CAPTIVE AIRE 12' EXHAUST HOODS, CAPTIVE AIRE 6' LOW PROFILE HOOD, MAKEUP AIR PLENUMS, 2 HEATED MAKEUP AIR UNITS, EXHAUST FANS & ANSUL FIRE SUPPRESSION SYSTEM, COST OVER \$40,000! BERNER AIR CURTAIN-HOBART CL44E DBL RACK SS COMMERCIAL DISHWASHER SYSTEM W/LEFT & RIGHT SIDE DRAIN TABLES, NICE-CAPTIVE AIRE 8' HEAT OR VAPOR HOOD W/FAN, NICE-WORK ISLAND-STAINLESS STEEL WORKTABLE-LARGE AMOUNT WIRE SHELVING UNITS, CANTILEVER RACK & WALL SHELVES-2 CONCRETE PITT STATE GORILLAS! (YOUR NEIGHBORS WON'T HAVE ONE) 7 LG FLATSCREEN TELEVISIONS-LOT OF SOUTHWEST & WESTERN DÉCOR ITEMS-SOME TOOLS & MAINTENANCE EQPT-OTHER RESTAURANT EQUIPMENT & SMALLWARES TOO NUMEROUS TO LIST!!

NOTE: THIS IS ONLY A SMALL & PARTIAL LISTING SO VISIT OUR WEBSITE & CLICK ON THE "AUCTIONS" TAB FOR DETAILED LISTING AND PHOTOS! RESTAURANT WAS ONLY OPEN 6 YEARS SO MOST EQUIPMENT LIKE NEW! EXCELLENT WALKIN COOLER & COOLER FREEZER COMBO, ICE MACHINE, KEGERATOR, REFRIGERATION AND COOKING EQUIPMENT! FANTASTIC STAINLESS STEEL EXHAUST HOOD SYSTEM! POSSIBILITY OF TWO AUCTION RINGS SO BRING A FRIEND AND DON'T MISS THIS GREAT AUCTION! ALL ITEMS MUST BE REMOVED BY FRIDAY, NOVEMBER 3 AT 5 PM SO COME PREPARED TO START DISASSEMBLING, DISCONNECTING AND LOADING. MARK YOUR CALENDAR & MAKE PLANS TO ATTEND THIS EXCELLENT AUCTION!



MARON RESTAURANT EQUIPMENT, LLC & AUCTIONS CO.
417-327-5619 • WWW.MARONRESTAURANTEQPT.COM
YOUR RESTAURANT EQUIPMENT AND FOOD SERVICE LIQUIDATION SPECIALISTS

REAL ESTATE & PERSONAL PROPERTY AUCTION

11715 N. FR 119, BRIGHTON, MO 65617 | ON-SITE
SUNDAY OCTOBER 29TH, 2023 AT 2 P.M.

REAL ESTATE DESCRIPTION:

Brighton is a beautifully situated country community nestled in the Ozarks. The quaint town of Brighton offers all that nature has to offer as well as spacious homes, beautiful parks and shopping opportunities. This is a great place for raising a family or just enjoying the peace and quiet of life in nature. The property offers 1,268 sqft with 3 bedrooms, 1 bathroom, unfinished basement and a new roof. This home also has had it's ducks cleaned professionally this year, along with the septic service cleaned – this house is move-in ready!

LEGAL: SE COR NW1/4 SE1/4

TAXES: \$889.78

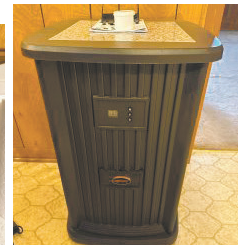
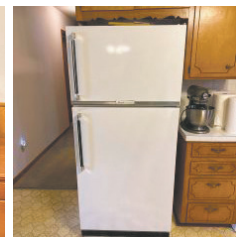
TERMS: 10% DOWN DAY OF AUCTION WITH BALANCE DUE AT CLOSING. POSSESSION AT CLOSING WITH CLOSING IN 45 DAYS OR LESS FROM AUCTION DATE.

Open Viewing: October 22nd 2P.M.-4 P.M.



INVENTORY LIST:

- | | | | |
|--|---|---|--|
| Air care humidifier | Metal two door cabinet | condition | Vintage Western Flyer bicycle |
| Vintage toys | Rocking recliner | Wooden Picture stand | Wooden Coca-Cola crate with various old bottles |
| Microwave | Lot of Decoration flowers | Samsung TV | Wooden chest |
| Wooden Filing cabinet | Floor lamp | Vintage pipe stands | Various boxes with old Christmas items, pots |
| Rolling wooden cart | Pink lamp with flowers | Entertainment Center | Matching bedroom dresser/ mirror and night stand |
| Kitchen Table | Air pig | Enamel top table with pull outs on both sides | Decor Rugs |
| Whirlpool no frost refrigerator | Side table | Dremel scroll saw | New in the box dish sets, the tea rose collection |
| Grass hog electric weedeater | 2 matching end tables | Like new Frigidaire dehumidifier | Queen bed wooden Matching dresser set / mirror and night stand |
| Kitchen aid mixer | Like new walker | Wooden Full Bed | Maytag heavy-duty to speed super capacity nine |
| Radio super vintage wagon | Two matching clear glass lamps | Matching dressers / with mirror | Whirl pool three cycle dryer |
| Corning ware | New in the box Brass spit tune | Vintage lamps, vintage heat lamp, lots of | Vintage luggage |
| Vintage rope in double Pulley set | Floral couch | Wooden bench | AND MORE!!! |
| Kitchen plates, cups, mixing bowls, plans, etc | New in the Box 1963 Coleman lantern | Shark vacuum | |
| Craftsman toolbox | Grey rocking recliner | Oil lamp | |
| 10 gallon shop back | Sewing basket | Cast iron iron | |
| Kitchen machines | Bun coffee maker | Vintage metal lawn chairs | |
| Electric heater new in the box | Rocking chair with foot rest | Small bookshelf | |
| Vintage wooden keg | Swivel chair | Heater | |
| Clock | Vintage see years tricycle in excellent | Christmas | |
| Wall decorations | | | |



FOR MORE INFORMATION GO TO WWW.EASTERLYAUCTIONCO.COM OR CALL EASTERLY'S AT 417-833-9494



Mike Easterly Auctioneer • 417-833-9494

Not Responsible for accidents or theft. For more information call: Easterly Auction Company, Springfield, MO. Auction Terms: Visa, Mastercard, Cash, Cashier's check or checks with proper I.D. Announcements day of sale take precedence over printed material. Auction Notes: Although information is obtained from sources deemed reliable, auctioneer makes no warranty or guarantee expressed or implied. Buyers should themselves take the opportunity to make their own inspection prior to sale.

www.EasterlyAuction.com • auctionzip.com ID#14770



PUBLIC AUCTION

DADEVILLE, MO

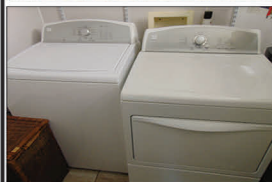
AUCTION

As we have sold our Home and are moving we will sell the following Automobile, Trailer, Household, Collectibles, Mower, Guns, Coins Tools & Misc. At the Home located just East and South of the Junction of W & 245 Highway in Dadeville, Mo On

Sat. Nov. 4, 2023 at 9:00 am

WATCH FOR AUCTION COMPANY SIGNS • LUNCH SERVED

FOR MORE PICTURES GO TO: WWW.BRUCEANDLEANAUCTION.COM



AUTOMOBILE-TRAILERS

- 2013 Honda CRV AWD 4 Door SUV 2.4L 4cyc Motor, Automatic, PW, PL, Black Leather Interior, Sunroof, Good Rubber, Regular Maintenance . @ Honda
- 2004 Pace Work Sport 12' X 6' Wide X 5' Tall Single Axle Cargo Box Trailer, (minor damage on the front)

GUNS-COINS-SPORTING

- Triumph Single Shot 410 Shot Gun
- Savage Arms Fox Model B 12 ga Double Barrel Shotgun
- Winchester Model 12 Feather Weight 12 Ga. Pump Shotgun Mod. Barrel (needs a couple screws in the pump action)
- 12 Silver Dollars (1881-1935)
- 5 Silver One Oc. Bars
- Half Dollar Silver Coins
- Sev. Proof Sets
- American Eagle 5 Dollar Gold Coin
- Several Foreign Coins Several Silver
- Buffalo Nickels, Indian Head Coins
- Several Pocket Knives (Case, Old Timer, Others)
- Misc. Rods & Reels
- Tackle Boxes W/Several older Fishing Plugs
- Water Ski's
- 2 Propane Fish Cookers

HOUSEHOLD-COLLECTIBLES

- Vizio Flat Screen 46" TV W/Wall Mount
- Vizio Flat Screen 42" TV
- Vizio Flat Screen 25" TV W/Wall Mount
- Kenmore Washer & Dryer
- GE Lrg. Upright Freezer
- Queen Size Metal Water Fall Style Bed W/Mattress
- 3 Cushion Divan W/Large Ottoman
- 2 Occasional Chairs
- Oak Desk/Table
- Round Glass Curio Cabinet
- Sev. Stand Tables
- 3 Padded Bar Stools
- Dual White Leather Recliner

HOUSEHOLD-COLLECTIBLES CONT.

- Twin Bed W/Pillow Top Mattress
- Necchi Sewing Machine
- iRobot Sweeper
- 2 Cedar Chest
- Oak Kitchen Table W/4 Chairs
- 3 Pc. Blonde Dresser, 4 Drawer Chest & Dressing Table
- Zenith Cabinet AM Radio
- 11" Griswald Cast Skillet
- Floor Lamp
- Glass Top Dining Table W/6 Poly Wicker Chairs
- Mens Western Hats
- Lot of Costume Jewelry
- Quilt Collection
- Westmoreland Assorted Purple Dishes
- Nippon Camel Glassware
- Frederic Remington Cowboy Statue & Picture
- Lot of Campbell Collectibles (Dolls, Figurines, Plates, Ornaments)
- Misc. Pots, Pans & Dishes

GRILL/SMOKER-PATIO FURNITURE

- Bayou Classic Ceramic Cypress Grill/Smoker (Green Egg Style) on Rolling Cart W/Folding Mounted Tables
- Glass Top Metal Frame Patio Table W/Chairs
- Metal Patio Table W/Umbrella & 4 Chairs
- 3 Poly Wicker Patio Chairs W/Cushions
- Metal Patio Table W/2 Chairs
- Metal Patio Chairs
- Metal Frame Picnic Table
- Metal Glider
- Cedar Garden Table/Bench
- 2 Galv. Tub Planters

MOWERS-TOOLS-MISC.

- Toro Zero Turn SS500 Time Cutter Mower 23hp, 50" Cut
- Husqvarna LE221R Battery Push Mower
- Masport Push Mower
- Stihl BG 56C Blower
- Husqvarner Model 51 Chain Saw

MOWERS-TOOLS-MISC. CONT.

- Power Pro 5hp 60 Gallon Upright Air Compressor (runs needs new switch)
- Makita DXT Compound Miter Saw
- Delta Folding Saw Stand Table
- Senco Air Framing Nailer
- DeWalt Worm Drive Skill Saw
- Grizzly 1 hp Drum/Flap Floor Model Sander
- Lot of Router Bits
- Misc. Hand Power Tools
- DeWalt Jointer
- Craftsman 1/2" Hammer Drill (NIB)
- Porter Cable 1/2" Drill (NIB)
- Iron Horse 6.5 Gallon Air Compressor
- 30"X40" Drafting Table
- Shop Work Table
- 2 Section 6' Scaffolding on Rollers
- 4' Wheel Cart
- Craftsman 6hp Shop Vacc.
- Propane Space Heater
- Lot of Seasoned Wood (Oak, Cedar, Walnut)
- Shop Fans
- 2 Wheel Lawn Trailer
- Metal Wheel Wagon
- Sm. Campbell Air Compressor
- Concrete Bird Bath
- Schwinn 10 Speed Bike
- 2 Ricks Seasoned Split Firewood
- Misc. Lawn & Garden Tools
- Ladders
- Metal Shelving
- Lot of Misc.

OWNERS: SCOTT & MARTHA GEDSTAD

TERMS: Everything sells as is, where is. Nothing is to be removed until settled for. Payment of Cash, Check with Proper ID, or Credit Cards. Auction Company or the Owners will not be responsible for loss of items or accidents. Statements made the Day of the Auction take Precedence over Printed Matter.

SALE CONDUCTED BY **BRUCE & Le'AN AUCTION & APPRAISAL, LLC**
THE AUCTION COMPANY THAT APPRECIATES YOUR BUSINESS

For more information and pictures go to our website at www.bruceandleanauction.com

RONNIE BRUCE - Fair Play, MO
417-777-1685 or 417-654-2214
colonbruce@gmail.com

BRANDON BRUCE
Fair Play, MO

BILLY BRUCE - Stockton, MO
417-399-4800
colbbruce@gmail.com

R&R AUCTION SERVICE

ABSOLUTE AUCTION FRIDAY OCTOBER 27TH AT 10AM

747 South Locust Street in Buffalo, MO
Estate of Shirley Lejeune



3 bedroom, 1 1/2 bathroom, living, kitchen/dining with utility area, single car garage and storage area. 3 out buildings in fantastic neighborhood in beautiful Buffalo, MO. Sold to the highest bidder as soon as personal property is sold. This will be a short auction so don't be late if you are interested in real estate. Appliances and propane tank will sell following sale of real estate. Personal property includes but is not limited to...

Sharp flat screen tv, corner shelf, chicken and duck décor, large amount of artificial flowers, trunks, oscillating fans, end tables, DVD's, plastic storage bins, shoes, queen size bed, king size bed, lamps, decorative bowls, old bottles, pictures, wood rocker, bamboo chair, plastic folding tables, afghans, 4 drawer file cabinet, portable sewing machine, Keystone Targetronic auto focus projector, two rocker recliners, pitchers, wicker planter, step ladder, vacuum, covered cake plate, glass swan, GE upright freezer, wall clocks, Amana washer, Amana dryer, Hamilton Beach microwave, toaster oven, Amana gas stove, Frigidaire refrigerator, pots and pans, cookware, dishes, cookie jars, entry table, milk can, shop cabinet, dishwasher, scrap lumber, stove pipe, wood ironing boards, pump up hand sprayer, black plastic, Char Broil BBQ grill and there is sure to be more found during set up. Keep a close watch on the gallery!



Please keep watch on our website for added photos.

TERMS: Cash, check, or credit card with proper I.D. nothing removed until settled for. A 3% fee will be added to credit card purchases. Purchase of Real estate requires 10% down day of sale with balance at closing. Not responsible for errors in listing. Any announcement made sale day will take precedence over any printed matter.

GENERAL AUCTIONEERS

Auction & Appraisals

AUCTION SERVICE

For more information contact Professional Auctioneer Russ Weeks at 417-576-7357 or check out www.rrauctionservice.com

Serving this area's auction needs since 1997 with honesty and professionalism.
www.rrauctionservice.com
(417) 576-7357 or (417) 345-4140



ESTATE AUCTION

TRACTORS ~ UTV'S ~ MOWER ~ SHOP ITEMS ~ ANTIQUES/COLLECTIBLES ~ FARM EQUIP. ~ OUTDOOR/MISC. ~ HOUSEHOLD

SATURDAY, OCTOBER 28TH- 10:00 A.M.

Location: 6115 Hwy Z, Hartville, MO **Directions:** From Hartville 4 Way Stop Take Hwy 5 North approx 1/2 mile to Hwy Z on right, go approx 1.5 miles to Auction on left.
WATCH FOR CHADWELL AUCTION SIGNS. **Payment System:** Cash • Debit Card • Credit Card (Debit / Credit Card Fee Will Apply) Checks approved if known by auction company.
VISIT: WWW.CHADWELLAUCTIONS.COM

Estate of Ike & Judy
ARNALL

(2) Semi Trailers Full of Unopened Boxes (Lots of Unlisted Items)

2755 JD Tractor w/245 JD Loader
2wd Dual Remotes
Quad Trans 88hp 540 PTO Diesel



UTV'S

2008 JD 620i Gator XUV 4x4 w/Dump Bed, Cab, & Heat • 550 Kawasaki Mule w/ Manual Dump 2290hrs



VEHICLES

2014 Chrysler Town & Country Loaded 56,xxx miles • 2007 Ford Five Hundred 141,xxx miles • 2002 Chrysler Town & Country Mini van (salvage)

8'x16' Portable Building

8'x12' Chicken Coop

OUTDOOR ~ MISCELLANEOUS

Large Green Egg • (2) 500 Gallon Propane Tanks • Large Lot of Coolers • Large Lot of Canning Jars • (5) SS Milk Buckets • Troybilt Leaf Blower • Heaters • Heat Lamp • Fence Clips • Wooden Bench • Sheppard Hooks •



Old Wringer Washers for Yard Ornaments • Weedeater 42" Cut Lawn Tractor (needs work) • Lawn Cart • (2) Fuel Tanks 300 Gallon w/Stands • Large Lot of Stepping Stone Blocks • 100# Propane Cylinder • Lawn & Garden Tools • Fuel Cans • Furniture Dolly • Electric Bug Zapper • Small Dog Crates • Hand Sprayers • Chicken Feeders • Misc Steel • Wheel Chair Lift for Vehicle • Assorted Lumber • PVC Pipe • Bird Bath • Wooden Porch Rocker • Other

~ FARM EQUIP ~ ~ FARM RELATED ~

3 Ton Feed Bin • Steel Post Driver • 500 Gallon Fuel Tank w/Electric Pump • Parmak Fence Charger • (2) Concrete Water Troughs • Danuser 3pt Post Auger • 3pt 6" Angle Blade • Used T Posts • 300 Gallon SS Tank • 3pt Danuser Post Driver • 10' Bushhog (needs work) • 10' Water Filled Roller • Concrete Feeders • Self Catch Head Gate • 2 - 20' Pipe Gates • Other



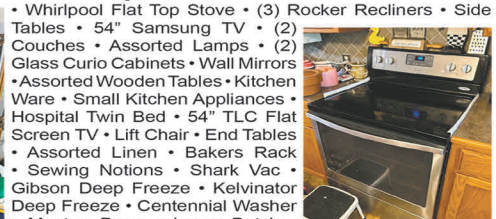
ANTIQUES & COLLECTIBLES

Pitcher Collection • Cow Collection • Assorted Glassware • Kitchen Stool • Lanterns • Aladdin Lamps • Hen on Nests • Oatmeal Dishes • Small Scales • Hobnail Fenton • Green & Pink Depression • Sat Irons • Cow Bells • Large Assortment of Oil Lamps • FireKing • Singer Sewing Machine • Dazey Butter Churns • Dietz Lantern • Embury Lantern • Primitive Kitchen Utensils • Binoculars • Metal Childs Toys • Salt & Pepper Shakers • Assorted Butter Churns • Old Store Jars • Blue Ball Jars • Assorted Crocks • Cast Iron • Coffee Jars (sunshine & mfa) • Atlas Jars • Cast Iron Salesman Samples • Flour Sifters • Wooden Childs Chairs • Large Glass Jug • Swan & Duck Collection • Old Model Car Collection • Corning Ware • Assorted Tins • Art Deco Dresser w/ Mirror • Pitche & Bowl • Flexible Flyer Bed • Rolling Pin Collection • Old Dressers • Large Lot of Quilts • Queen Iron Bed • Coleman Lantern • Curio Cabinet • Small Wooden Trunk • Dresser w/Wooden Castors • Wash Boards • Dutch Oven • Corelle • SS Buckets • Nut Cracker • Well Bucket • Well Bucket • Push Plow • Galvanized Tubs • Cream Cans • Tractor Seats • Horse Drawn Sickle Mower • (2) Old Feed Scales • 10 Gallon Galvanized Cans • 1886 #2 Yoke Bell • Wagon Wheel • (2) Singer Sewing Machines • Ash Bucket • Cream Separator • Other



HOUSEHOLD

Oak Bar Stools • Flatware • Oak Table w/6 Chairs • (2) Sets of Saladmaster Pots & Pans • Cook Books • Assorted Pots & Pans • Large Lot of Electric Skillets • GE Microwave • Whirlpool Stainless Refrigerator • Assorted Dishes • Kitchen Aid Mixer • Whirlpool Flat Top Stove • (3) Rocker Recliners • Side Tables • 54" Samsung TV • (2) Couches • Assorted Lamps • (2) Glass Curio Cabinets • Wall Mirrors • Assorted Wooden Tables • Kitchen Ware • Small Kitchen Appliances • Hospital Twin Bed • 54" TLC Flat Screen TV • Lift Chair • End Tables • Assorted Linen • Bakers Rack • Sewing Notions • Shark Vac • Gibson Deep Freeze • Kelvinator Deep Freeze • Centennial Washer • Maytag Dryer • Large Butcher Block • Small Deep Freezer • Metal Stools • Sentry Safe • Samsung 60" TV • Large Lot of Quilt Pieces • Potato Bin • Whirlpool Refrigerator • Other



SHOP ITEMS

Tool Boxes • Misc Tools • Furniture Dolly • Car Ramps • Bottle Jacks • Welding Helmet • Top Links • 2 Wheel Dolly • Misc Shop Items • 6" Vise • Wooden Work Bench • Sockets • Craftsman Tool Box on Castors • Bench Grinder • Draw Bars • Carry All • Receiver Hitch • Electric Tools • 2000# Chain Hoist • Sanborn Air Compressor 60 Gallon • Other

TRAILERS

53' Semi Box Aluminum Trailer • Bumper Hitch Box Trailer • 48' Drop Deck Flat Bed Trailer w/4' Extensions • 8x15 Storage Box • 28' Semi Wabash Box Trailer • 28' Semi Box Trailer

AUCTIONEER'S NOTE: A lifetime accumulation with many unopened boxes. Come spend the day with us! **Thanks, Shawn**

DRIVER'S LICENSE OR PICTURE I.D. REQUIRED • TERMS: CASH OR APPROVED CHECK **OR**

Chadwell
Auction Service, LLC
www.chadwellauctions.com

Auctioneer:
SHAWN CHADWELL
417-830-0209

Clerk:
SHELLY CHADWELL
Cell: 417-880-8449

Ringmen:
Weston Chadwell ~ 417-349-0727

Cashiers:
Marla Chadwell • Emily Shaffer
Cassie Collins

PROFESSIONAL SALES MANAGEMENT
LUNCH WAGON • APPRAISAL SERVICE • RAIN OR SHINE
 All announcements made day of sale take precedence over any printed matter. Not responsible for lost or stolen merchandise. Not responsible for accidents.

FALL EQUIPMENT & OUTDOOR CONSIGNMENT!!

Auction

SATURDAY OCTOBER 28, 2023 AT 10 AM

Location: 304 Springfield Rd, Ava, MO 65608

DIRECTIONS: ACROSS THE STREET FROM TOWN & COUNTRY SUPERMARKET IN AVA, MO

VEHICLES • TRACTORS • EQUIPMENT • TRAILERS • TOOLS • FIREARMS

BIGGEST CONSIGNMENT AUCTION OF THE YEAR! Firearms sell at 12 Noon sharp! High likelihood of running 2 rings!

VEHICLES

- 2019 Ford XLT, 6.2L gas, 4 door, cab & chassis, w/ 2019 model Deweze 784 pivot bed
- 2014 Ford F350, ext cab, diesel, 4wd
- 1993 Ford F350, diesel, 4wd
- 2007 Ford F150 Lariat, ext cab, 4wd
- 2009 Chevy 2500, ext cab, Duramax diesel, 4wd
- 2007 Chevy, ext cab, 4.8, 2wd
- 2001 Ford Crown Victoria LX- low miles
- 2006 GMC Envoy- low miles
- (2) 2012 Ford box trucks
- 1998 Freightliner delivery truck
- 1967 Ford ½ ton long bed camper special w/ camper

TRACTORS/EQUIPMENT

- 2021 New Holland 450RB round baler
- Woods 84 6' Brush hog
- Kubota M6800 tractor w/ QT2446 front end loader
- New Holland BR740A Silage special baler
- John Deere 2940 tractor w/ loader
- John Deere 2010 tractor
- 8 wheel V rake
- Kubota B21 4wd tractor w/ backhoe
- Mahindra 6500 4 wd tractor w/ loader
- Massey Ferguson 97 tractor
- (2) McCormick Farmall cub tractors
- 3 pt bale unroller
- International 444 tractor
- Ford 8N tractor w/ sickle bar cutter
- 6' angle blade
- Squeeze chute w/ dolly
- 5' 3 pt bush hog
- Swisher 22 ton log splitter
- Nissan 4000 lb LP Forklift

UTVs/MOTORCYCLES

- 2016 Honda Pioneer 700 4wd UTV
- 2022 Sector 750 crew UTV
- Polaris Ranger 500 UTV
- (2) 2006 Kawasaki Vulcan Drifters
- 2004 Kawasaki Vulcan Classic
- Yamaha Kodiak 4x4 4wheeler

TRAILERS/CAMPERS

- 2017 Keystone Laredo bumper pull camper
- 16' flatbed utility trailer w/ folding tailgate
- 16' flatbed utility trailer w/ ramps
- 24' enclosed box trailer
- 16' enclosed box trailer
- 2013 Coose 32' stock trailer
- 16' Gooseneck stock trailer
- 20' Gooseneck stock trailer
- (2) 5x8 flatbed trailers

FIREARMS

- Beretta A400 Upland 20 ga
- Beretta Multi Target A400 Xcel 12 ga
- Browning 9mm- Made in Belgium
- DPMS AR15 .223/.556
- Anderson AR15 .556 NATO
- Marlin mod. 336 30-30
- Marlin mod. 70P .22 LR
- Remington mod. 33 .22
- Remington Woodmaster mod. 742 30-06
- Ruger mod. M77 .243
- Remington Magnum Wingmaster mod. 870 12 ga
- Remington Sportsman 58 20 ga
- Remington 1187 Sportsmanfield 12 ga
- Harrington & Richards Topper mod. 158 20 ga
- Brownells Inc mod. BRN-15 .223/.556
- Brownells Inc mod. BRN-601 .556
- Brownells Inc mod. BRN-601 .556 w/ Sig Sauer Red Dot scope
- Ruger American 308 w/ Nikon Prostaff 3x9
- Westernfield mod. 58 .22
- Spikes Tactical mod ST15 .223/.556
- Harrington & Richards Topper Jr mod. 88 .410
- Glenfield mod. 25 .22
- Winchester mod. 60A .22
- Ruger Mini 14 .223
- Ruger Gunsite Scout .308 w/ EZ Accushot 3x12
- Gammo TSX Extreme Air rifle .177
- Tri Star 12 ga over & under

- Universal Arms 12 ga over & under
- Charles Daly mod. 335 12 ga
- Remington Sportsman 48 12 ga
- Mossberg mod. 500 12 ga
- Mossberg Maverick mod. 88 12 ga
- Remington mod. 597 .22
- Remington mod. 770 30-06
- Mossberg mod. 100 ATR 30-06
- Smith & Wesson M&P 9 Shield Plus
- Ruger P85 9mm
- Ruger P95 9mm
- Ruger mod. 1873 45 Colt
- Hi Point mod. C9 9mm
- Taurus Millennium 45 ACP
- Iver Johnson Champion 410
- Marlin mod. 100G .22
- Ranger mod. 34A .22
- Winchester mod. 1890 .22 WRF
- Ranger mod. 36 .22
- Remington mod. 24 .22
- Wards Westernfield mod. 87 .22
- JC Higgins mod. 10116 .22
- H. Pieperliege Belgium Rolling block .22
- Stevens Favorite .22
- Stevens Favorite 32 Long
- Savage mod. 116 30-06
- Stevens Crack shot 26 .22
- Stevens Favorite .22
- Rossi w/ multiple barrels (.410, .22, .22, 20 ga)
- Rossi 243 w/ Nikon Prostaff 3x9

Many more items, too numerous to mention!

Still accepting consignments up to day of auction!



FOR MORE PHOTOS, VISIT OUR WEBSITE CHEYNEYAUCTIONS.COM OR FIND US ON FACEBOOK!

Cheyney Auction Company, LLC

Real Estate • Livestock • Farm & Ranch • Equipment • Household • Antiques
 Travis Cheyney, Auctioneer • Buddy Boyd, Ringman

417-543-8751 • cheyneyauctions.com

ANNOUNCEMENTS Made Day Of Sale By Auctioneer Take Precedence over any Printed Matter. Not Responsible for Accidents. All items sold as is, where is, with no guarantee. Terms of sale: cash, credit/debit card, or check with valid ID.

AUCTION! ONLINE BIDDING ONLY

SUNDAY OCTOBER 29 @ 1 PM

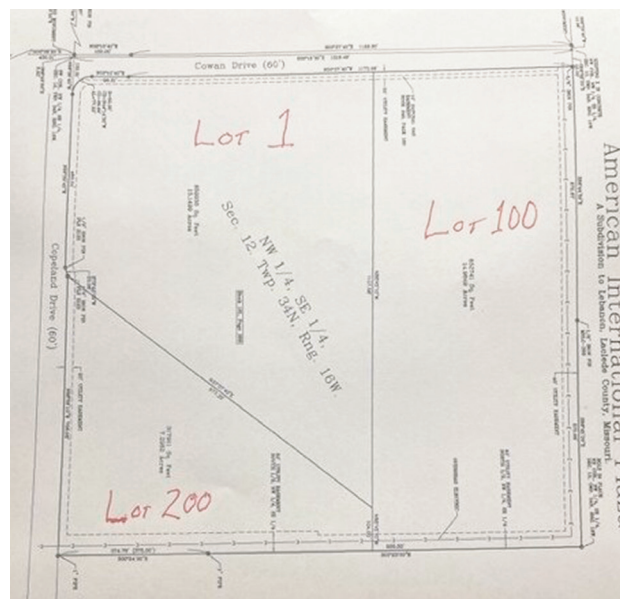


A great offering of commercial property! To be offered in 3 tracts totalling approximately 37 acres m/l. Located on the corner of Cowan Dr and Copeland Dr with close proximity to Interstate 44, Lake Regional Health, Mercy Hospital and the US Post Office Annex. Also two large manufacturers, G-3 Boats and Emerson Electric are a stones throw away! If you believe that location, location, location matter it does not get any better than this! Call 417-532-7497 with questions.

Lot 1 15.1499 acres, large corner lot!

Lot 100 14.9849 acres, deep lot!

Lot 200 7.2982 acres



Sale By
KNIGHT AUCTION SERVICE, LLC
417-532-7497 Lebanon, MO
"Complete Sale Service"

Terms on all lots 10% down sale day or Monday Oct 30 by 5 pm, with balance due at closing within 45 days. A buyers premium of \$2,000 on Lots 1 & 100 and \$1,000 on lot 200 is also due sale day.

WWW.KNIGHTAUCTIONSERVICE.COM



Saturday, October 28, 2023 • 9:00 a.m.

LOCATION: In Licking, Mo., on Hwy. 32 East, next to Hammond Feed & Farm Supply.
 Watch for signs. To view photos, go to auctionzip.com. Auctioneer #28367

Vehicle & Guns

- .22 Long Rifle Remington Model 241 The Speedmaster
- 12 ga. pump Winchester Model 97, full choke
- 9mm Pistol
- GMC Terrain SLE, 2016, 54,395 miles
- Stevens 410 Shotgun**
- Bernelli 12 gauge Shotgun**
- Pump-Shoots 2-3/4", 3", or 3-1/2" Shells**

- Lots Wheat Pennies
- Indian Dolls, large Dolls
- Cast Iron Model Tractor
- M&M Dispensers
- Queen Bedroom Set
- Full Bedroom Set
- Twin Size Headboard
- Curio Cabinet
- Red Chair/Rocker
- Lamps
- Quilt Rack
- Wooden Dining Table & Chairs
- Kitchen table & 4 Chairs, swivel, on casters
- Table & Chairs
- French Doors
- Baskets
- Small Shelf w/sliding glass doors
- 2 End Tables
- Coffee Table
- TV Stand
- Coat Rack
- Shelves
- Entertainment Center and matching Curio Cabinets
- Wooden Chair
- Electric Roaster
- Vases • Decanters
- Stock Pots • Pots & Pans
- Crockpot • Toaster
- Lots Figurines, Whatnots
- Pink Depression Glass
- Red Pitcher, Glasses, Goblets
- Sandwich Plates
- Jars of Marbles

- Pitcher and Glasses, cut glass
- Lenox Set China
- Baking Dishes
- Flintstones Glasses
- Carnival Pitcher
- Glass Basket
- Hobnail Sugar Bowl
- Lot Christmas Bears
- Precious Moments Figurines
- Powder Dish
- Old Soda Bottles
- Lot Salt & Pepper Shakers
- Glass Banks
- Barometer Clocks
- Bird Figurines & Chickens
- Avon Salt & Pepper, Decanters
- Wild Turkey Decanters
- Electric Griddle
- Stanley Thermos
- Cake Stands
- Metal Mixing Bowls
- Glass Fruit & Veggies
- Green Sherbet Glasses
- Toaster Oven
- Coffee Pot
- Lot Cookie Jars – Chicken, Lighthouse, Santas & more
- John Deere Cookie Jars, Salt & Pepper
- Mr. & Mrs. Santa Figurines
- Antique Butter Churn
- Microwaves
- Flat Red Vase
- Ruby Red Glasses & Pitcher
- Cape Cod set Dishes, Cake Stand, approx. 40 pcs.
- Griswold 14 in. Cast Iron Skillet
- American Camper Dutch Oven on legs, large
- Small Kitchen Appliances
- Longaberger Glass Jars
- Metal Match Holders
- Wooden John Deere Tractor
- Glass Canisters w/metal lids
- 1/2 Bushel Basket

- Lot Pillsbury Dough Boy collection, some Danbury Mint
- Coca Cola Pitcher & Bowls
- Budweiser Holiday Steins
- Wooden Thread Spools
- Lot Brass Animal Figurines
- Lot Die Cast Cars – 1955 Ford, Thunderbird, Mustang, more
- Guitar
- Glass Jug – 2 gal.
- Glass Bells
- Tape Case & Tapes
- Glass Canister Set
- 3-Burner Cooker
- Cast Iron Dutch Ovens, #8, 10 & 12
- Books/Cookbooks
- Magazine Rack
- Lot Pictures
- Christmas Decorations, Bears, Lights, Tree, large lot
- Pictures/Signs
- Rugs
- Dishes
- Milk Glass Dishes
- Bedding
- Lots Home Decor
- Lots Glassware
- Tupperware
- Knives
- Jewelry
- Kerosene Lamps
- Light Fixtures
- Mirrors
- Lot CDs - Country, Bluegrass, Gospel, Elvis
- Upright vacuums
- Adult Walker
- Hunting Knives, Pocket Knives – Winchester, Old Timer, Buck, handmade
- Ammo 12 ga. - turkey load
- Fishing Lures, Rod & Reels and Rack, Zebco, Shakespear, Ambassadeur

- Telescoping Fish Pole w/Range Finder
- Tackle Cases
- Wooden Boat Paddles
- Paperback Western Books
- Poulan Pro Chainsaw
- Electric Chainsaws – Poulan & Craftsman
- Air Hose
- Stihl Weedeater
- Bug Zapper
- Twine
- Spray Paint
- Bookins Metal Can, long neck w/gauge
- Rabbit Hutch
- Large Stuffed Polar Bear
- Motor Oil
- Puzzles
- BBQ Grill
- Dolly
- Iron Wheel
- Cub Cadet Trimmer Mower
- Dog Playpen
- Shop Vac
- T-Post Driver
- 2 Model T Wheels
- Mailbox
- Wooden Ladder
- Tackle Box
- Craftsman Router
- Lawn Seeder
- Stove Pipe
- Cutting Torch Dolly
- Snap On Toolbox full of tools
- Sockets
- Open End Wrenches, Wrenches
- Drop Light
- Large lot Hand Tools
- Tools
- Wooden Planters
- Landscaping Fence
- Lots more items not listed, come and take a look.

Harrell & Pat Patterson, Owner

Terms - Cash or Approved Checks. Nothing Removed Until Settled For. Not Responsible For Accidents.
 Nothing removed until settled for. Must show ID to get Buyers #. All guarantees are between buyers and sellers.
 Announcements Made Day of Sale Take Precedence Over Printed Matter.

Buckner & Gately Auction Service
Auctioneers

Steve Buckner 573-674-2686

Neal Gately 573-202-3132

PUBLIC AUCTION

SAT., OCT. 28, 2023 • 10:00 A.M.

MOFFAT AUCTION CENTER
467 CO RD 604, LINN, MO

DIRECTIONS: From Linn, take Hwy. 50 west 1 1/2 mi. to Co. Rd. 604, turn left & go 1 mile to building on right, or from Jefferson City, take Hwy. 50 east approx. 18 mi. & turn right on Co. Rd. 604. (**Note:** Guns Will Be Brought To Auction Morning of Sale. Doors Will Open at 8:30 a.m. Morning of Auction.)

GUNS & GUNS SAFES We will be selling 118 Long and Hand Guns from the Ida Wolf Estate: Marlin Mod. 1894 45 Colt, Marlin Mod. 1894 S 44 Rem Mag, Marlin Mod. 1894 S 44, Marlin Mod. 336 CS 30/30 Win Rem Mag or 44 SPL, Winchester Mod. 9422M 22 Win Mag, Marlin Mod. 1895G 4570 GOV, Marlin Mod. 1895GV 45 70 GOV, Marlin Mod. 1895GV 45 70 GOV, Marlin Mod 1894 CP 357 Mag or 38 SPL, Marlin Mod 336 30/30 Win, Marlin Mod. 740A 30/30, Marlin Mod. 39A 22 cal., 29., Browning Arms Mod. 92 44 Rem Mag, Marlin Mod. 882SS 22 WMR w/ Glenfield 4 x 15 Scope, Marlin Mod. 882SS 22 WMR w/ Weaver Marksman Scope, Marlin Mod. 882SS 22 WMR w/ Simmons Scope, Rossi Mod. M59 22 Mag., Marlin Mod. 9 – 9 MM, Marlin Mod. 9 – 9 MM, Marlin Mod. 45 – 45 Auto, Marlin Model 922M 22 WMRF, Marlin Model 9 – 9 MM, Ruger 223 w/ Tasco Scope, Savage Mod. 11 270 Win Short w/ Scope, Remington Mod. 7400 270 Win Semi, Remington Mod. 7400 270 Win Semi, Ruger 223, Daisy Red Rider BB Gun, Germain Air Rifle Mod. 45 177 RWS, Savage Mod. 116 270 Win w/ Nikon Pro Staff Scope, Remington 7400 30/06 SPRG, Savage Mod. 116 30/06 SPRG w/ Bushnell Scope, Remington Mod. 7400 30/06 SPRG, Ruger All Weather 77-44 44 Rem Mag, Savage Mod. 111 30/06, Ruger 77-44 44 Rem Mag, Browning A-Bolt 300 Win Mag w/ Burris Signature Scope, Traditions Black Powder 50 ca, CVA Black Powder 50 ca, Traditions Black Powder 50 ca., Traditions Buck Hunter Pro Black Powder 50 ca., Traditions Buck Hunter Pro Black Powder 50 ca., Thompson Center 209 x 50 Magnum Black Powder, Traditions Black Powder 50 ca., Traditions Black Powder 54 ca., Traditions Black Powder 50 ca., Traditions Black Powder 50 ca., Traditions N-Line Pistol 50 ca., Traditions N-Line Pistol 50 ca., Traditions N-Line Pistol 54 ca., Traditions N-Line Pistol 50 ca., Italy 44 ca. Black Powder Pistol, Italy 44 ca. Black Powder Pistol, Traditions Trapper 50 ca., Traditions Black Powder 50 ca., Italy 44 ca. Black Powder Pistol, Italy 44 ca. Black Powder Pistol, H&R Mod. 922 22 Pistol, Interarms 44 Mag Pistol, Interarms 44 Mag Pistol, Ruger Super Blackhawk 44 Mag Pistol, Ruger New Model Super Blackhawk 44 Mag Pistol, Ruger Vaquer 44 Mag Pistol, Ruger New Model Super Blackhawk 44 Mag Pistol, Ruger New Model Blackhawk 357 Mag Pistol, Ruger Vaquer 44 Mag Pistol, Taurus 357 Mag Pistol, Colt Single Action Frontier Scout 22 LR Pistol, Stoeger 357 Mag Mod. 1873 Pistol, Taurus Single Action 45 Pistol, Taurus 22 Mag Pistol, GSG 922 22 LR Pistol, GSG 22 LR Pistol, S&W 9 MM Parabellum Pistol, GSG Firefly 22 LR Pistol, Rock Island Armory M 1911 A2 22 TCM Pistol w/ 9 MM Barrel, Para Ordinance P16 40 S&W Pistol, S&W Mod 5906 9 MM Pistol, Parahicap 45 ACP Big Hog Pistol, Parahicap 45 ACP Gun Rights Pistol, Parahicap 45 ACP Big Hog Pistol, Para 1911 45 ACP Pistol, Para 1911 45 ACP Pistol, Bersa 5A 9 x 19 MM Pistol, FNP 45 Tactical 45 ACP Pistol, Colt Series 80 Colt 45 Auto Pistol, Taurus PT 92 AFS 9 MM Pistol, Kel-tec PMR 30 22 Mag Pistol, Kel-tec PMR 30 22 WMR Pistol, Glock 22 40 SW Pistol, Para P14 45 ACP Pistol, Para P10 45 ACP Pistol, S&W 1006 10 MM Pistol, S&W 4006 40 S&W Pistol, S&W 1006 10 MM Pistol, S&W 5906 9 MM Pistol, S&W 4506 45 Auto Pistol, S&W 1006 10 MM Pistol, S&W 1006 10 MM Pistol, S&W SW1911 45 Auto Pistol, Kel-tec Sub 2000 9 MM Pistol, Thompson Hawkin 45 ca Black Powder. Also selling 6 Gun Safes, Gun Cases, Hunting Knives & 4 Bows

ANTIQUES, COLLECTIBLES, HOUSEHOLD & TOOLS Amish Made King Size Oak Bed & Dresser; Amish Made Queen Size Bed & Night Stands; 3 Oak Bookcases; Maple Bed & Dresser; Cool Master Portable Air Conditioner; Amish Large Oak Entertainment Center; Panasonic HD TV's 54 in; Maytag Washer & Dryer Heavy Duty; Walnut 2 Drawer Drop Leaf Table; Oak End Tables; Oak Sessions Kitchen Clock; Costume Jewelry; Oil Lamps; Hens on Nest; Dishes; Pots & Pans; Microwave; Small Kitchen Appliances; Linens; Sheets; Towels; Technics Stereo System; Pioneer Turn Table; Patio Table & 4 Chairs; 8 HP Rear Tyne Tiller Made in Italy HD in Good Cond.; Weedeater; Egg baskets; Camping Supplies; Garden Tools; 20 ft. Extension Ladder; Webber Grill; ATV Ramps; Fishing; Shindaiwa Chain Saw 488; Shelving; Lots of Household & Misc. Not Listed.

OWNER: ESTATE OF IDA WOLF, CALIFORNIA, MO

SEE WWW.MOFFATAUCTION.COM FOR PHOTOS



Note: Ida's late son Steve Wolf was an avid gun collector. Most of the guns are new or like new with original box. Steve Wolf never missed a gun show or sale. Due to Ida's passing, the guns will be sold at public auction. No out-of-state gun sales will be allowed. **Terms:** Cash or good check with proper identification. All sales are final. Everything sells as is, where is. Proper identification is necessary to obtain a buyer's number. Announcements day of sale supersede all printed material. Food on grounds.

RICHARD MOFFAT AUCTION SERVICE



573-761-4293
Jefferson City, MO

Auctioneers
Richard Moffat & BJ Moffat
www.moffatauction.com

573-690-2823
Linn, MO

PUBLIC AUCTION

SATURDAY, OCT. 28 @ 10:00 A.M.

LOCATION: Salem, MO - 11 miles South of Salem on Hwy. 19 past Gladden to CR 6250 on right, go 1/4 mile to sale on left. Watch for signs.

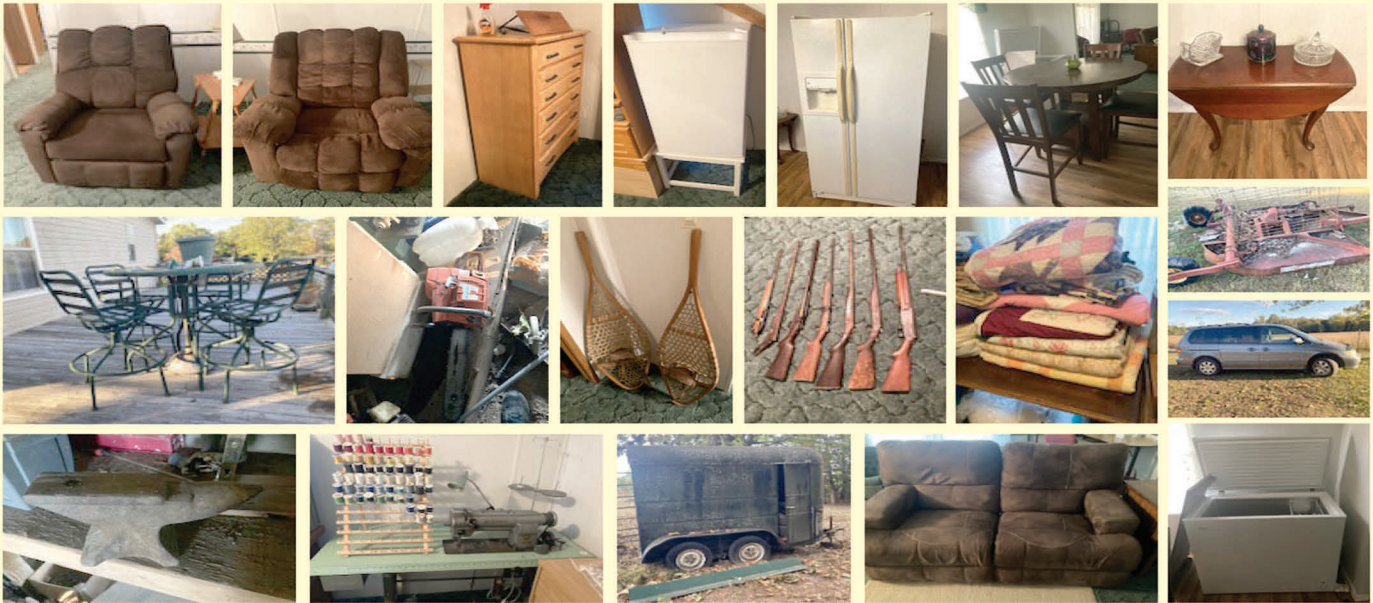
TOOLS • HOUSEHOLD • OUTDOOR • GUNS • MISC. ITEMS

Small Hot Point Chest Freezer
 © Coachmen Catalina 5th Wheel Camper
 Big Iron Kettle - Deer Antlers
 2002 Honda Mini Van
 Husqvarna YTH 24X48 Briggs Engine
 Wire Basket - 5' Alum. Step Ladder
 100 lb Propane Bottles
 Charbroil Gas Grill - Small Smoker
 Patio Table & 4 Chairs
 Lawn Chairs - Mineral Tubs
 7' Pull Type Bushhog Brand Bushhog
 H-Farmall Tractor Needs Work
 Push Plow - Wheel Barrow
 5th Wheel Hitch - Old 2 Bottom Plow
 Old Town 18' Canoe
 18 Ft. Trailed Frame - Old Bud Cooler
 Snowmobile - Chains - Boomers
 2 Horse Trailer - Kitchen Island
 Hen On Nest - Extension Cords
 Air Hose - Iron Bench Frame
 Dip Nets - Wheel Rings - Dog Box
 Rakes - Shovels - Car Ramps
 Bumper Jack - Grinder On Stand
 Pet Crate - Bird Feeder - Pitch Fork

Thermos Fire & Ice Grill/Cooler
 Cant Hook - 7' I-Beam - Chop Saw
 Skil Saws - Gear Pullers
 Welding Helmet
 Coleman 30 Gal. Air Compressor
 Grinders
 Craftsman Wrenches & Sockets
 Pipe Cutters - 4' Level
 Camp Stove - Drop Light
 Craftsman 3.2 Volt Drill - Shop Vac
 Router - Porter Cable Carpenter Tools
 Pump Sprayer - Tool Boxes
 Fence Charger - Hammers
 Ryobi Sawzall
 Aluminum Pipe Wrenches
 Fish Cooker
 Lincoln Battery Grease Gun
 Husqvarna 395 Chainsaw
 Seeder - Jack Stands - Rods & Reels
 Squares - Honda Power Washer
 Honda Air Compressor - Tool Buddy
 Scroll Saw - Weed Eater
 Craftsman Band Saw - Post Bar
 Small Wood Stove - Wire Stretchers
 Bolt Cutters - Chain - Tool Belts

Craftsman 12" Planer - Table Saw
 Lag Bolts - Nails - Organizers
 Steel Traps - Propane Heater
 Bottle Jacks - Glider - Yard Wagon
 Baskets - Frigidaire Upright Freezer
 Round Table & 2 Chairs - Glassware
 Curio Cabinet - Oil Lamps - Toaster
 Small Oak Cabinet - VHS Tapes
 Electric Skillet - Steamer - Food Slicer
 Seal-a-Meal - Fry Daddy - Crock Pot
 Pots & Pans - Iron Skillets
 Round Table & 4 Chairs
 3 Pc Full Bed Set - Small Upright Freezer
 Shelves - Treadmill - 2 Dressers
 4 Drawer Metal File Cabinet
 Stained Glass - Nice Towels
 Drop Leaf Table - Carnival Glass Jar
 Coffee & Lamp Tables - Roll Top Desk
 Kid's Recliner - Computer Desk
 Suede Electric Dual Recliners
 3 Recliners - Swivel Chair
 Knick Knacks - Stereo System
 Marble Top Dresser - Copper Pots
 Shoe Racks - Quilt Tops
 Handmade Blankets

Singer Industrial Sewing Machine
 Sewing Items - Card Table
 Folding Table - Secretary
 Dresser With Mirror - Storage Bins
 Winchester Semi-auto 12 Ga. Needs Work
 Diamond Arms Single Shot 12 Ga. Rough
 Winchester 67 .22 Rough
 Stevens Double Barnel 12 Ga.
 Marlin 600 .22 Parts
 Pine Gun Cabinet
 Decorative Ladder - Single Bed
 4 Gun Rack - Snow Shoes
 Folding Chairs - Pro 450 Meat Grinder
 Chest Of Drawers
See you there! - Tom



OWNER: ARD

ANNOUNCEMENTS AT AUCTION TAKE PRECEDENCE OVER PRINTED MATTER

WULFF AUCTION

TERMS: CASH OR APPROVED CHECK - I.D. REQUIRED
 NOTHING REMOVED UNTIL SETTLED FOR

Licensed Appraisals

2334 Highway K, Salem, MO 65560

AUCTIONEERS:

Col. Tom Wulff • John Wisdom

Cell: 573-247-3884 • Cell: 573-247-9563 • Home: 573-729-8476

Clerk: Tracy Strange Cashier: Nancy Inman



RAIN OR SHINE
 OWNER & AUCTION
 PERSONNEL NOT
 RESPONSIBLE FOR
 ACCIDENTS AT
 SALE SITE

See Wulff Auctions at www.thesalemnewsonline.com/auctions

Wheeler Livestock Auction, Inc.

Osceola, MO 64776

Special Stock Cow Sale

SATURDAY OCT 28TH, 6:00 P.M.

Expecting 50 Breeding Bulls • 700 Bred Cows & Cow Calf Pairs

Emerald Lane Angus-

- 10 Reg Blk Ang Bulls, 18 months. Very good bulls & good genetics!

Burkholder-

- 1 Blk Sim Ang Bull, 3yrs

Gary Mitchell-

- 2 Reg Blk Gelv Bulls, 20 months old, 68 & 71# BW. Very good EPD's & good bulls!

Howard Hart-

- 1 Reg Red Gelb Bull, 19 months, 68# BW, home raised & gentle.

McMillan Farms-

- 3 Purebred Char Bulls, 16-18 months old.

Peterman-

- 1 Red Balancer Bull, 2yrs, CE, Judd Ranch Genetics.

Zimmerman-

- 1 Reg Ang Bull, 2yrs., 1 Reg Sim Ang Bull, 14 months, CE., 1 Reg Char Bull, 16 months.

Jim Temple-

- 5 Blk Sim/Ang bulls 18-24 mo

Joe Smith-

- 1 Purebred Char Bull 22 mo - 1 Red Ang/CharX bull 18 mo.

Welch Farms-

- 50 Fancy Blk hfrs, 2yrs with 50 Ang Sired calves 150#. Hfrs & calves tagged to match, Complete Health Program, Hfrs are open. All Home Raised & Gentle. 36 Blk cows 4-6yrs with 28 Ang Sired calves, rest bred 3rd.

Bryan Bell-

- 14 Fancy Blk Sim Ang Hfrs, 2yrs, 1050#, bred to CE Blk Sim Bull to calve Feb. CE-16.1 BW-2.3

Monroe Farms-

- 55 Blk & Bwf cows, 1300#, 3-5yrs., 35 Red Ang X cows, 1300#, 3-5yrs. The above 90 cows have 30 calves, rest bred 3rd, Complete Health & Mineral Program, bred to top bulls. Outstanding set of calf raising cows!

Dwain Banner-

- 40 Blk cows, 7yrs-BM, 1300#, bred 2nd to Ang Bull. 2 Blk Ang Bulls, 2yrs.

David Smallwood-

- 14 Char cows, 4-6 yrs with 11 Char calves up to 450#. Rest of cows bred 2nd & 3rd to Char bull. 1 Char bull, 4 yrs. These cows are all home raised & gentle. Dean McMillan genetics.

Daxton Beem Dispersal-

- 34 Ang cows, 7yrs-SS, 1250#, with 8 Bwf calves up to 300#. Rest cows bred 2nd period to Horned Hereford Bull. Good calf raising cows!

Bar M Farm Dispersal-

- 50 Purebred Char cows, 3-7 yrs, 1300#. 10 Yel Char cows 3-7yrs, 1300# The above 60 cows all home raised & bred to Red Ang Bull, calve Feb 20th for 60 days. Selling due to no water.

Grey Farm Dispersal-

- 25 Fancy Blk cows, 3-5yrs, 1300# with 25 Blk calves up to 150#. Cows are open. 26 Blk cows 3-5yrs, 1200# bred 2nd to Ang & Char Bull.

Minnich Farm Dispersal-

- 30 Blk Ang & Brng X cows, 3-6yrs, 1250# with calves up to 400#. Cows bred back to Char bull. 25 Red & Char X cows, 3-6yrs, 1100# with calves up to 400#, cows bred back to Char Bull.

BC Cattle-

- 80 Fancy Angus cows 3-5 yrs 1250lbs bred 2nd calving Feb. bred to Top Sim/Ang bulls

Pending Consignment-

- 200 Mix Cow Calf Pairs, 5yrs-BM, calves 300#, cows bred back to Red Ang Bulls.

FOR CONSIGNMENTS PICS/VIDEO-WEBSITE AND FACEBOOK
wheelerlivestock.com/search Wheeler Livestock Auction on FB

Red Reward Sale- November 4th

Feeder Sale-November 2nd, 9th, 16th, 30th at 11 a.m. central

November Stock Cow Sale-November 25th at 6 p.m. central

Byron Wheeler-417-777-0897

Austin Shelby, Barn Manager-
417-309-1350

Darwin Hearting, Field Rep-
417-296-1029

Sue Hemenway, Marketing Manager-
417-839-9316

Lolly Sheldon-417-296-4258

WHEELER
LIVESTOCK
AUCTION
INC.



OSCEOLA, MISSOURI

Lyndon Ropp-918-325-1616
Kevin Wade-660-492-3279
Denver McGinnis-417-399-2701
Sam Francka-417-399-7113
Tim Sherrer-573-855-1951
Burleigh Wheeler-417-840-6561
Red Whistance 417-276-7909
Les Tennis 417-466-8786

Osceola, MO • 685 SE 13 Hwy., PO Box 560 • BARN 417-646-8102

Bid online on CattleUSA • www.wheelerlivestock.com • Like us on Facebook-Wheeler Livestock Auction

BUFFALO LIVESTOCK MARKET LLC



276 Hwy 32 W., Buffalo, MO

October 21st, 2023

Receipts: 930

REPRESENTATIVE STEERS

- 300-400 @ 220.00 to 310.00
- 400-500 @ 220.00 to 300.00
- 500-600 @ 235.00 to 264.00
- 600-700 @ 200.00 to 250.00
- 700-800 @ 220.00 to 230.00
- 800-900 @ 200.00 to 220.00

REPRESENTATIVE HEIFERS

- 300-400 @ 200.00 to 291.00
- 400-500 @ 200.00 to 237.00
- 500-600 @ 180.00 to 246.00
- 600-700 @ 175.00 to 230.00
- 700-800 @ 160.00 to 215.00
- 800-900 @ 150.00 to 175.00

FEEDER BULLS

- 300-400 @ 220.00 to 280.00
- 400-500 @ 205.00 to 280.00
- 500-600 @ 295.00 to 252.00
- 600-700 @ 150.00 to 202.00
- 700-800 @ 176.00 to 188.00
- 800-900 @ 158.00 to 165.00

HOL/HOLX STR

- 400-700 @ 150.00 to 182.00

STOCKS COWS

- Bred Cows 1275.00 to 1925.00

SLAUGHTER BULLS

- High Yield 115.00 to 132.00
- Low Yield 90.00 to 112.00

SLAUGHTER COWS

- Fleshy 95.00 to 118.00
- Med Flesh 95.00 to 108.00
- Light Flesh 75.00 to 112.00

CRIPPLE/SHELLY

65 Down

Market would be **SHARPLY** lower on unweaned cattle. Lots of \$40-\$70 spreads between good weaned vacc and fress off cow!

Nov 18th Wean Vacc Sale featuring RED ANGUS sire and RED ANGUS certified cattle IN

MON-WED MARKET REPORT

Listen to KJEL 103.7FM • Lebanon or KYOO 99FM • Bolivar

VIEW OUR SALES AT CATTLEUSA.COM

CALL FOR TRUCKING OR ON-FARM VISIT

Lyle Caselman • Owner-Manager
417-345-7876 • mobile 417-533-2944
Leon Caselman • Owner
417-345-4514 • mobile • 417-588-6185

2011 FORD TRANSIT: Automatic, 124,000 miles. Contact 573-467-0189 \$7,995. Rolla

FOR SALE: Big Round Bales of Mixed Grass Hay. 417-589-0022. Conway.

FOR SALE FARMALL SUPER C: One owner. Includes; plow, brush hog, blade, hay spike, & disk. \$3,000. 417-527-3087

FOR SALE: Outdoor Forced Air Wood Furnace. Excellent condition. \$1,800. 573-392-6451. Barnett.

2004 LINCON NAVIGATOR: Luxury AWD 3rd row seating 158,729 miles. \$7900. 573-467-0189. Rolla.

STAN MUSIEL CANCELED CHECK: Full signature with authenticity. Mint condition. \$55. text for pictures. 573-854-8132. Houston.

MISSOURI OZARKS BOOKS: Made in Timber, Fort Wood Settlement History, \$12.50; Backroads of Missouri, \$10; When Isom Was Sheriff of Webster County, Enoch Isaac Cunningham, \$14; Ozark Mountain Folk-They Were The Last by Townsend Godsey, \$14. 417-532-2045. Lebanon. (Leave message and phone number.)



REGULAR SALE EVERY THURSDAY 11 AM

WATCH OUR WEEKLY SALE IN REAL TIME ON DVAUCTION.COM

For Farm Visits, Market Updates, or Trucking
Call **Zach Cox 417-777-1320**
Dan Romine 573-578-4939

**Competitive Buyers!
Competitive Commission!
Competitive Market!**

Barn: 417-532-9292
1-44 • Exit 123 "just outside of Lebanon"
17505 Route 66, Phillipsburg, MO 65722
For weekly market updates, visit us at
www.midmostockyards.com

PASTURE RAISED CHICKENS & PASTURE RAISED THANKSGIVING TURKEYS: 417-741-2446.

MODEL 1911 FRAME 8-SHOT C02 PISTOL: Like new, in box with C02 cartridges, 4 clips, pellets & all paperwork. \$95. 573-364-7465. Rolla.



60 Gun Auction

Friday Oct 27, 5:30 P.M.



Location: 65006 Morgan Rd, Barnet, MO 65011

26 Mi West of Jeff on Rt C or East of Versailles on Rt C

- Taurus 357 Mag,
- 22 Cal Pistols,
- Henry 45-70 / 22 Lever Guns,
- Browning 300 SM Leopold ,
- Browning 12 Ga,
- Remington 1100's 12 Ga (410-28 Ga Matching),
- Rem 22 Nylon 66,
- Browning 10 Ga Pump,
- 30-30 Marlin Lever,
- 243 Savages, 30-06 Rem,
- 410 Single Stevens,
- 223 Ruger – 10-22s,
- 22-250 Savage & 308,
- 7 MM Ruger M77 Scope,
- Several 22 Cal,

Lot New & Like New Guns

****See List on AuctionArrows.com****

Glen Fahrni Auction Service 573-789-1447

WEATHERED BARN WOOD SIDING: 10" wide. Call for appointment 573-729-7226. www.pineridgerustic.com Salem.

LOG SIDING: 2X8 Pine/Western Cedar. Call for appointment 573-729-7226. www.pineridgerustic.com Salem.

NEW INVENTORY - \$59,900 Delivered and setup, Hurry! Call Adam 573-657-2176 amegamobilehomes.com

NEW MOBILE HOMES – prices start at \$64,900 delivered and setup 573-499-9993 columbiadiscountnhomes.com

BASEMENT READY TRUE MODS- instock ready for delivery 573-657-7040 chateauhomes.net

TINY HOMES – Missouri Franchise 573-881-7965

REGISTERED HEREFORD & ANGUS BULLS: Home raised. Some Show-Me Select Qualified. 573-701-7828. Belgrade.

LIGHTLY EXPERIENCED GOLF BALLS: \$3 a dozen. 417-818-3469. Strafford.

SLIGHTLY USED PUZZLES: Will sell or trade. 417-818-3469. Strafford.

LIONEL TRAIN SET: Steam engine, tender, caboose and other car, track, and transformer. \$195. 573-364-7465. Rolla.

1970s KIDS METAL STOVE & FRIDGE: Nice Lithographic paint, 18" wide x 36" high. \$75. 573-364-7465. Rolla.

3 GENTS WITTNAUER WRIST WATCHES: 10k gold + 23J. All \$200. 573-764-3517. Call in P.M.

HARLEY FAT BOBS: Custom flame paint w/ gas caps + lines. \$100. 573-764-3517. Call in P.M.

COLT REVOLVER DEALER CATALOGS: Circa 1950's + 1960's. All for \$100. 573-764-3517. Call in P.M.

110 PORCELAIN POCKET WATCH DIALS: Perfect for arts & crafts. \$100. 573-764-3517. Call in P.M.

1890 GOLD TESTING KIT: Glass acid beakers + antique wooden case. \$100. 573-764-3517. Call in P.M.

1500 VINTAGE WRISTWATCH DIALS: \$100. 573-764-3517. Call in P.M.

SMALL DANBY CHEST FREEZER: \$50. 417-718-2529. Lebanon.

HARLEY 45 SOLO: factory rear brake drum + sprocket. \$150. 573-764-3517. Call in P.M.

HARLEY PANHEAD DISTRIBUTOR: original, chrome + complete. \$125. 573-764-3517. Call in P.M.

1962 HARLEY SPORTSTER 900CC: original distributor. \$50. 573-764-3517. Call in P.M.

NEW SQUARE D RAINPROOF 50AMP DISCONNECT: \$160. 636-239-2695 or 314-560-5700. Washington.

Dream Property for Hunting & Outdoor Enthusiasts

180 +/- Acres of Southern Boone County Land with Lots of Timber, A Cave, Creeks, Home & Shop!!



The opportunities with this property are endless... Hunting Lodge, VRBO/ Airbnb, Build Your Dream Home!!

Located at the End of a Private Road & Less Than 5 Miles to Hwy. 63 and in Southern Boone County School District

Details • Custom Built, One Owner Home Tucked Away in Endless Privacy • Turn off Hwy 63 onto Minor Hill Road Across from the Road Side Park in Ashland • Main Level Master Bedroom Plus Two Potential Upper-Level Bedrooms • Unfinished Walkout Basement • Bilt-Rite Building with Concrete Floor & Electric • Wildlife Galore • Potential Marketable Timber

Land Preview/Open House:
Saturday, October 28th | 9:00 - 11:00 A.M.
Online Bidding Opens:
Wednesday, November 1st
Online Bidding Ends:
Wednesday, November 15th | 12:30 P.M.
2350 E. Biggs Rd., Ashland, MO

Please Note Due to narrow private road accessing the property, the sellers have requested the property only be accessed with a representative from Atterberry Auction or a licensed realtor. Please contact Atterberry Auction and Realty Company if you have any questions. For the Open House, we will have side-by-sides available to take people through the property.

Check it out & Bid at
www.AtterberrySells.com
 573-474-9295



contactus@atterberryauction.com



ATTERBERRY
 AUCTION & REALTY COMPANY

Your Real Estate at Auction Specialists

Absolute PUBLIC AUCTION

WEDNESDAY, NOVEMBER 8, 2023 AT 10 AM

AUCTION LOCATION:
10851 HIGHWAY WW, COLUMBIA, MO 65201

Directions: From Millersburg, Mo take Hwy. WW west 3 miles
 OR from Columbia take Hwy. WW east 7 miles to sale.



**TRACTORS & FARM EQUIPMENT, TRUCK CRANE,
 WORLD WAR II MILITARY VEHICLE, CAR & CAR HAULER,
 SHOP TOOLS & MISC, HOUSEHOLD, FURNITURE & COLLECTIBLES,
 UTV, GOLF CART, BOATS & BIKES, RAILCAR,
 AND PORTABLE BUILDING**

SELLER: BILL ECKHOFF



Wheeler AUCTIONS & REAL ESTATE
 23101 HWY. 24, PARIS, MO 65275 | 660-327-5890
WWW.WHEELERAUCTIONS.COM

CHARLIE NORDWALD | 636-795-4552
WHEELER AUCTIONS | 660-327-5890
WWW.WHEELERAUCTIONS.COM

2002 CHEVY 3500 CAMPER VAN:
V8. Fridge, sink, microwave & awning.
30 amp. New tires. Excellent condition.
136,xxx miles. \$17,000. 417-650-7069.
Lebanon.

SPORTSET BY SARGENT: Fishing pliers in leather sheath. Like a multi-tool. \$20. 636-239-2695 or 314-560-5700. Washington.

BLACK METAL TUBULAR BRACKET: Scrolling and a stainless bracket. \$10. Call for pictures. 636-239-2695 or 314-560-5700. Washington.

USED JET HOME POLLUTION CONTROL PANNEL: Model CP700. \$65. 636-239-2695 or 314-560-5700. Washington.

1 PAIR OF KEY BRAND MEN'S JEANS: Waist 38, Length 34. \$10. 636-239-2695 or 314-560-5700. Washington.

RUBBER & LEATHER BOOTS AND 5-Buckle OVER SHOES: Men's 11, Women's 7, some insulated. \$15-\$40 obo. 636-239-2695. Washington.

ANTIQU 4 HP ENGINE: Built by Continental Motors Corporation. \$150 OBO. 573-308-5884. Rolla.

'85 FORD PICKUP PARTS: Passenger door with window glass & mirror \$30. Also, Tailgate for '85 Ford pickup \$25. 573-308-5884. Rolla.

3 ARMY CANTEENS: Mess kit, belt & duffel bag. \$60 for all. 417-260-0941. Raymondville.

NEW JELD WEN 5' LEFT HAND SLIDING GLASS DOOR WITH SUNSTABLE INTERIOR BLINDS: Clear tempered glass, Desert Sand trim/hardware. Retails \$2655 Sell \$900. 417-693-0389. Conway.

FOR SALE: 2 Dayco motorcycle covers for Harley or other big bikes. \$50 each. 417-260-0941. Raymondville.

MAC'S TIEDOWN STRAPS: Like New. \$80. 417-260-0941. Raymondville.

MAPLE HUTCH CABINET: 3'W X 5.5' T X 15.25" D 2 small drawers 2 large drawers. \$300 417-260-0941. Raymondville.

PITTSBURGH HEAVY DUTY 3-TON FLOOR JACK: Never used. \$195. 417-260-0941. Raymondville.

DARDEN PROFESSIONAL TIMBER HARVESTING, BUYING STANDING TIMBER: Great prices, improve wildlife habitat and improve forest health. State Certified & Fully Insured! 573-247-4808. Salem.

FOR SALE: Speed controlled pet nail grinder. \$15. 417-718-2529. Lebanon.

FOR SALE: Snap Kit for setting western snaps. \$20. 417-718-2529. Lebanon.

1000 SQ FT: good, used, gray vinyl siding. 4 white corners. \$100. 417-217-0534 or 417-457-1015.

Online Estes Toy Auction and Firearm Auction

HUGE Toy Car Collection Hot Wheels, Matchbox, Tinka & More! With outbuildings & Kitchenware! Lots to see in Kingdom City, MO



Preview:
 Monday, Oct. 30th | from 3:00 p.m. - 5:00 p.m.
Auction Ends:
 Tuesday, Oct. 31st | Starting at 12:30 p.m.
Pick-Up:
 Thursday, Nov. 2nd | By Appointment Only
For more details visit:
www.atterberryauction.com/auction/personal-property-10312023-68537/details

Savage, Mossberg, Remington, Taurus, Ammo, Optics & Many More Reasons to Check Out This Auction in Kingdom City, MO



Preview:
 Monday, Oct. 30th | from 3:30 p.m. - 5:30 p.m.
Auction Ends:
 Wednesday, Nov. 1st | Starting at 12:30 p.m.
Pick-Up:
 Thursday, Nov. 2nd | By Appointment Only
For more details visit:
www.atterberryauction.com/auction/personal-property-10312023-68538/details

Check it out & Bid at www.AtterberrySells.com
 573-474-9295

NAA METAL MarkNet ALLIANCE f

contactus@atterberryauction.com

ATTERBERRY
 AUCTION & REALTY COMPANY
 Your Real Estate at Auction Specialists

ONLINE REAL ESTATE AUCTION

295 ACRE MARIES COUNTY FARM
32271 MARIES CO. RD. 213, VIENNA, MO

DIRECTIONS: From Hwy 63, take Co. Rd. 213 (Ballpark Rd.) west about 2.2 miles to farm on left.

ONLINE AUCTION CLOSES:
MONDAY, NOVEMBER 20, 2023 12:30 P.M.
SEE WWW.MOFFATAUCTION.COM TO BID

OPEN HOUSE DATES:
SUN, OCT. 29TH- 11:00 A.M. TO 12:30 P.M.
FRIDAY, NOV. 10TH - 11:00 A.M. TO 12:30 P.M.



This farm is a Century Farm that has been in the Kaiser Family for the last 140 years. There is a 6 room frame farmhouse with various outbuildings. There are 6 ponds. The Maries River runs through the property. There is a deep well on the farm. The farm is very scenic and private. The farm is about 60% wooded and 40% open. There is a 20 acre bottom field that currently has crops on it. Seldom does acreage come up for sale in this area.

The Farm is being sold in One Tract by the acre times 295 acres.

OWNER: KAISER FAMILY
SEE WWW.MOFFATAUCTION.COM FOR TERMS & DETAILS.

RICHARD MOFFAT AUCTION SERVICE

Auctioneers-
 Richard Moffat & BJ Moffat
www.moffatauction.com

573-761-4293
 Jefferson City, MO

573-690-2823
 Lin, MO



FOR SALE: New Indoor/Outdoor Digital Antenna. \$15. 417-718-2529. Lebanon.

FOR SALE: Jensen Tabletop Stereo with 2 speakers. \$45. 417-718-2529. Lebanon.

ATTENTION ROOT DIGGERS: We will be buying ginseng & goldenseal throughout the season. Schofield Roots in Theodosia, MO 417-683-7922.

FOUR WHEELS WITH TIRES: for 2004 Ranger. Good condition, size 16. 573-612-4351. Rolla

225/65/R17 TIRE: 95% tread/ \$15. 210-787-8222. Linn Creek.

6FT 3-POINT DISC: \$400. 200-Gallon Fuel Tank with stand, \$300. Foot Pedal Grindstone, \$300. 80lb. Anvil, \$500. 3-Bottom Allis-Chalmers Plow, \$200. 573-280-8230. Camdenton.

WANTED USED KITCHEN CABINETS: in good condition. 417-741-2186.

EXERCISE BIKE: In good condition. \$65. 417-532-2344.

Lincoln Arc Welder: \$100. Cutting Torch: Victor Gauges & Torch with Tanks, \$500. Miller Cricket XL Bolt Wire Welder: with Tank & Gauges, \$500. Cherry Picker: \$300. Two 1620 Poulan Chainsaws, \$75/ each. Milwaukee Impact Hammer, \$250. 417-527-3087. Branson.

FISHING SEASONS COMING: Get your rod and reels, \$5 and up. 417-589-8200. Conway.0

MISC. MECHANICAL TOOLS: Small set \$25. & Large set \$35. 417-532-2344.

Buildings • Hunter's Cabins • Lawn Furniture

JAMCO BUILDERS

JAMCO Portable Buildings

800-688-2064 • 307 Enterprise Dr. • Seymour, MO • www.jamcobuilders.com

Rent To Own Plan

2 HOSPITAL BEDS: \$200 each. 573-247-4280 or 573-247-4281. Salem.

850 MASSEY FERGUSON COMBINE: With both heads. Ready to go. \$6,000. 573-247-4280 or 573-247-4281. Salem.

APPROXIMATELY 500 BALES OF STRAW: \$6/bale. 573-247-4280 or 573-247-4281. Salem.

200 SQUARE BALES OF GRASS HAY: \$7/bale. 573-247-4280 or 573-247-4281. Salem.

JENSEN TABLETOP STEREO: With two detachable speakers. \$45. 417-718-2529. Lebanon.

PAIR OF ANTIQUE: 12 spoke cart/wagon wheels. Cast iron. \$140 for both. 573-854-8132 Text for pics. Houston

INDOOR/OUTDOOR DIGITAL TV ANTENNA: \$18. 417-718-2529. Lebanon.

FOR SALE TUNIS RAMS: Ready for service. Call Gary Marsh 785-691-7356. Lawrence, KS.

JUMBO FLOAT: 95" long x 80" wide x 10" high. Heavy gauge vinyl, Safety valve, 2 screw valves, 12 rope holders, water plug, nylon rope around it. Like new. \$150. 210-787-8222. Linn Creek.

2020 25RBHL RV: Forest River. Only used 7 times. 352-346-8843.

SPLIT SEASONED FIREWOOD FOR SALE: 573-759-2125 Dixon MO area. Must pick up, no delivery.

Blue Healer Puppies: UTD on all shots. 417-349-0919. Plato, MO

BLACK REGISTERED LIMOUSIN BULLS: 19-months-old, semen checked, very gentle, hand fed. 573-694-0164. Jefferson City.

CRAFTSMAN TILLER: 5-years-old, new carburetor. \$75. 417-345-8616.

ALFALFA & GRASS HAY FOR SALE: 4X5 round bales. 417-343-4958. Seymour.

LAKE OF THE OZARKS-Halloween Season Special-Lots starting at \$4,995 - \$125 down \$69 per month. Build, camp, or own for investment also acreage tracts. Beautiful wooded area, free lake access and boat ramps, lots are a short distance from the lake, no credit checks, owner financing, and immediate possession. Missouri conservation boat ramp with a covered dock and rest rooms close by. Prices good through November 13th, 2023. Hwy 135 between Stover and Sunrise Beach, MO. Take lake road 135-12 to the Ivy Bend Land Office. Closed Tuesdays and Wednesdays. Call anytime 573-372-6493.

Starnes Auto LLC

22115 Rt. 66 • Lebanon, MO 65536

588-7939 Cell
588-3159 Office

www.starnesauto.com

Worry-Free
**VEHICLE
ALIGNMENTS**

With our state-of-the-art computerized equipment

Front End | Rear End | Four Wheel Drive | Thrust Alignments | Both Foreign and Domestic Vehicles



**DON'T FORGET TO CHECK
OUT OUR CARS FOR SALE!**

WE DO ALIGNMENTS!

PLAD PANTRY

DISCOUNT & SURPLUS FOODS FRESH PRODUCE LLC
417-532-4700



Chocolate Flavored French Silk Pie.....	\$4.99 40 oz.
Strawberry Tonic Kombucha.....	\$0.99 12 oz.
88/12 100% Pure Ground Beef.....	\$18.99 5 LBS.
Cheese Wieners with Chicken and Pork.....	\$1.59 12 oz.
Banana Muffin Mix.....	\$3.99 5 LBS.

1571 State Hwy 64 • Tunas, MO 65764
 Hours: 8:30 a.m. to 5:30 p.m. • Closed Wed. & Sun.



LARGE COCA-COLA NOVELTY SET/ GROUP: \$50. 417-532-2344.

DACHSHUND PUPPIES: Registered, shots & wormed. 573-247-6273.

LOOKING FOR: driver side truck door 1995 ¾ ton Dodge Ram 4X4 573-612-4351. Rolla.

TAYLOR TRUCKS & EQUIPMENT

417-924-2026 • 2676 Hwy. 5, Mansfield, MO

- ★ INTIMIDATOR TREE PULLER ★
- ★ 3 POINT TILLERS ★


TRAILER PARTS & REPAIR
 MD144 Bat Wing in stock!

Milwaukee Cordless Tools

DANUSER DEALER
 T3 Post Driver & Other Attachments
 New Mowers! Bush-Whacker, Big Bee
 Storage Containers & Dry Vans - 20' - 53';

BUSH-WHACKER HD SKIDSTEER BRUSH CUTTER
 Portable Generators, Farm Tires, New Semi Tires,
 PTO's & Parts for Rotary Mowers, Farm Tractor
 Implements, Plows, Used 15" Bush-Whacker Now In
 Stock, Discs, and More Skidsteer Attachments: Pallet
 Forks, Buckets, Grapples, Hay Spears, RR Ties

Bush-Whacker Heavy Duty Rotary Cutter



We Invite you To Come By & Look Us Over! Located 2.5 Miles North Of Mansfield, MO On Hwy 5

TOY AUSSIES: 1 male, 1 female, both blue merle. 417-733-7062 Conway

1980 CHEVY SILVERADO: 1 owner, bought brand new in 1980. Very clean, nice truck. \$17,500. 417-288-2760.

2018 DODGE CARAVAN: 161,000 miles. Has maintenance record. \$10,900 573-467-0189 carfax@jimsmotorsrolla.com.

BUYING SCRAP METAL: All kinds, can torch heavy equipment. Call for prices. 40 years experience. 573-308-6739. Newburg.

"Goose Grease" Time for cold & flu season. Order today. 417-840-2554.

TOY POODLE/MINIATURE SCHNAUZER CROSS PUPPIES FOR SALE: 2 chocolate, 4 white. Will have vet check. Average weight 8-11 pounds. 417-664-5926.

FOR SALE 1992 ½ TON CHEVY TRUCK: 350 Engine, 4WD, automatic, towing hitch, high miles. \$1,500. 417-260-0464. Licking.

NEW INVENTORY - \$59,900 Delivered and setup. Hurry! Call Adam 573-657-2176 amegamobilehomes.com

OMAR'S LOGGING

⇒ Oak & Walnut
 ⇒ Excellent Prices
 Amish Owned & Operated



LEAVE MESSAGE: 417-741-0440 Hartville & Surrounding Areas

LOG SIDING: 2X8 Pine/Western Cedar. Call for appointment 573-729-7226. www.pineridgerustic.com Salem.

FOR SALE FARMALL SUPER C: One owner. Includes; plow, brush hog, blade, hay spike, & disk. \$3,000. 417-527-3087

FOR SALE: Outdoor Forced Air Wood Furnace. Excellent condition. \$1,800. 573-392-6451. Barnett.

2011 FORD TRANSIT: Automatic, 124,000 miles. Contact 573-467-0189 \$7,995. Rolla

KC CHIEFS RED: Jersey Marcus Allen. Autographed JSA COA. 573-854-8132 Text for pics. Houston.

2004 LINCON NAVIGATOR: Luxury AWD 3rd row seating 158,729 miles. \$7900. 573-467-0189. Rolla.

STAN MUSIEL CANCELED CHECK: Full signature with authenticity. Mint condition. \$55. text for pictures. 573-854-8132. Houston.

MISSOURI OZARKS BOOKS: Made in Timber, Fort Wood Settlement History, \$12.50; Backroads of Missouri, \$10; When Isom Was Sheriff of Webster County, Enoch Isaac Cunningham, \$14; Ozark Mountain Folk-They Were The Last by Townsend Godsey, \$14. 417-532-2045. Lebanon. (Leave message and phone number.)

INTERNATIONAL PICKUP TRANSFER GEARBOX: \$150. 573-308-5884. Rolla.

YEARLING JERSEY HEIFERS: A2A2. \$850. 417-733-2625. Louisburg.

WOODLANDLAKESNEWS.COM: know before you go! --The Weekly Trader & associated entities are not associated with this website.

FOR SALE: 4' 2-wheel Dump Utility Trailer. \$110. 573-729-3297. Salem.

The Ultimate Wood Heat.

CENTRAL WOODS Classic Edge™ Titanium HDX Outdoor Wood Furnaces

UP TO **\$2000 TAX CREDIT***
*On qualifying models and installation. Call for details.



Yarborough Equipment Sales & Services, Inc.
 9776 E. State Hwy OO • Strafford, MO
 417-736-2303 • 1-866-286-6901 • www.yarbeq.com

WEATHERED BARN WOOD SIDING: 10" wide. Call for appointment 573-729-7226. www.pineridgerustic.com Salem.

PASTURE RAISED CHICKENS & PASTURE RAISED THANKSGIVING TURKEYS: 417-741-2446.

NEW MOBILE HOMES – prices start at \$64,900 delivered and setup 573-499-9993 columbiadiscounthomes.com

BASEMENT READY TRUE MODS- instock ready for delivery 573-657-7040 chateauhomes.net

TINY HOMES – Missouri Franchise 573-881-7965

0% for 4 Years
HEATMOR
 Stainless Steel Outdoor Furnaces
Outdoor Wood Furnace
 as low as **\$238** per month
HEATMOR MIDWEST
 Licking, MO 65542 • 573-674-2962



Wright Spray Foam Insulators, LLC
 Commercial & Residential
Call for FREE Estimates!

Ervin Gingerich 417-926-2052
 B. Eli Yoder 417-746-4932



CALUS LOGGING
20 YEARS EXPERIENCE
Buying Standing Timber
 Walnut & Oak
Joe Calus, Owner
CERTIFIED 417-926-4606 • MTN. GROVE



REGISTERED HEREFORD & ANGUS BULLS: Home raised, Some Show-Me Select Qualified. 573-701-7828. Belgrade.

LIGHTLY EXPERIENCED GOLF BALLS: \$3 a dozen. 417-818-3469. Strafford.

1890 GOLD TESTING KIT: Glass acid beakers + antique wooden case. \$100. 573-764-3517. Call in PM.

LIONEL TRAIN SET: Steam engine, tender, caboose and other car, track, and transformer. \$195. 573-364-7465. Rolla.

MODEL 1911 FRAME 8-SHOT C02 PISTOL: Like new, in box with C02 cartridges, 4 clips, pellets & all paperwork. \$95. 573-364-7465. Rolla.

1970s KIDS METAL STOVE & FRIDGE: Nice Lithographic paint, 18" wide x 36" high. \$75. 573-364-7465. Rolla.

3 GENTS WITTNAUER WRIST WATCHES: 10k gold + 23J. All \$200. 573-764-3517. Call in P.M.

COLT REVOLVER DEALER CATALOGS: Circa 1950's + 1960's. All for \$100. 573-764-3517. Call in P.M.

110 PORCELAIN POCKET WATCH DIALS: Perfect for arts & crafts. \$100. 573-764-3517. Call in PM.

1500 VINTAGE WRISTWATCH DIALS: \$100. 573-764-3517. Call in PM.

HARLEY 45 SOLO: factory rear brake drum + sprocket. \$150. 573-764-3517. Call in PM.

HARLEY PANHEAD DISTRIBUTOR: original, chrome + complete. \$125. 573-764-3517. Call in PM.

1962 HARLEY SPORTSTER 900CC: original distributor. \$50. 573-764-3517. Call in PM.

2002 CHEVY 3500 CAMPER VAN: V8. Fridge, sink, microwave & awning. 30 amp. New tires. Excellent condition. 136,xxx miles. \$17,000. 417-650-7069. Lebanon.

SPORTSET BY SARGENT: Fishing pliers in leather sheath. Like a multi-tool. \$20. 636-239-2695 or 314-560-5700. Washington.

NEW SQUARE D RAINPROOF 50AMP DISCONNECT: \$160. 636-239-2695 or 314-560-5700. Washington.

USED JET HOME POLLUTION CONTROL PANNEL: Model CP700. \$65. 636-239-2695 or 314-560-5700. Washington.

1 PAIR OF KEY BRAND MEN'S JEANS: Waist 38, Length 34. \$10. 636-239-2695 or 314-560-5700. Washington.

BLACK METAL TUBULAR BRACKET: Scrolling and a stainless bracket. \$10. Call for pictures. 636-239-2695 or 314-560-5700. Washington.

RUBBER & LEATHER BOOTS AND 5-Buckle OVER SHOES: Men's 11, Women's 7, some insulated. \$15-\$40 obo. 636-239-2695. Washington.

ANTIQUE 4 HP ENGINE: Built by Continental Motors Corporation. \$150 OBO. 573-308-5884. Rolla.

Larry Heisel Rentals
 Have Rock?
 How about 3,500 lbs. of Hammer
 Call Larry!
573-779-1500
 www.larryheiselequipment.com
 Rental Available in 636 or 573 area code



WE BUY White Oak Logs!

- ✓ Top prices for your logs
- ✓ Experienced log buyers
- ✓ Professional service

Chad Cook | Salem Wood Products
417.718.2950
 5 miles north of Salem, MO on Hwy 19

INDEPENDENT STAVE COMPANY
 Log Procurement & Sales

www.independentstavecompany.com



FOR SALE: Big Round Bales of Mixed Grass Hay. 417-589-0022. Conway.

HARLEY FAT BOBS: Custom flame paint w/ gas caps + lines. \$100. 573-764-3517. Call in P.M.

LAND AUCTION



90.02 ACRES ± | 6 TRACTS | PULASKI CO, MO

Transitional land opportunity located just out of the Saint Robert MO city limits. Unrestricted land ready for development. The rolling landscape offers convenience to town, 2 live water ponds, and seclusion. 6 tracts to be offered, each with unique character and an abundance of wildlife, mature hardwoods, and scenery. Excellent land for developing into residential, RV campground, or recreational use. You have a dream, this land has the potential to help you realize it.

AUCTION DATE: 11/07/23

AUCTION TIME: 4:00 PM

AUCTION TO BE HELD AT:

Community Center,
114 J.H. Williamson Drive, St.
Robert, MO 65584

and online at Ranchandfarmauctions.com



IN COOPERATION WITH WHITETAIL PROPERTIES REAL ESTATE, LLC
Contact the Utecht Land Team | 417-234-7654 | mike.harris@whitetailproperties.com

RANCHANDFARMAUCTIONS.COM

GO TO RANCHANDFARMAUCTIONS.COM FOR ADDITIONAL INFORMATION,
PHOTOS, SOIL MAPS AND TERMS.

Get a great deal on getting more done.



Save big on select compact and sub-compact tractors. Versatile, reliable and part of the #1 rated tractor brand for durability and owner experience in the U.S.* Stop in today for a demo.**

\$0 DOWN **0%** APR **84** MONTHS

VISIT US TODAY FOR THIS LIMITED-TIME OFFER



Quarles Supply

3251 S Springfield Ave
Bolivar, MO 65613
417-777-2391

KubotaUSA.com

*Award based on 2021 Progressive Farmer Reader Insights Tractor Study **Subject to availability. © Kubota Tractor Corporation, 2023. \$0 Down, 0% A.P.R. financing for up to 84 months on purchases of new Kubota BX2680, L2501 and LX2610SU equipment from participating dealers' in-stock inventory is available to qualified purchasers through Kubota Credit Corporation, U.S.A.; subject to credit approval. Example: 84 monthly payments of \$11.90 per \$1,000 financed. Customer instant rebates include Orange Plus Attachment Instant Rebate of \$300 with purchase of the second qualifying new implement and \$500 for the third new qualifying implement. Some exceptions apply. There is no rebate on the first implement purchased. Offers expire 09/30/23. Terms subject to change. This material is for descriptive purposes only. Kubota disclaims all representations and warranties, express or implied, or any liability from the use of this material. For complete warranty, disclaimer, safety, incentive offer and product information, consult your Dealer or KubotaUSA.com.

