

FREE - TAKE ONE!

Vol. 30 No. 30

OCTOBER 19, 2023

417-532-9131

WEEKLY TRADER MAGAZINE



Find us on Facebook

@myweeklytrader
AUCTIONS PG. 8

VISIT OUR NEW WEBSITE! MYWEEKLYTRADER.COM

Get a great deal on getting more done.



Kubota Together we do more.®

Save big on select compact and sub-compact tractors. Versatile, reliable and part of the #1 rated tractor brand for durability and owner experience in the U.S.* Stop in today for a demo.**

\$0 DOWN

0% APR

84 MONTHS

VISIT US TODAY FOR THIS LIMITED-TIME OFFER



Kubota®

Quarles Supply

3251 S Springfield Ave
Bolivar, MO 65613
417-777-2391

KubotaUSA.com

*Award based on 2021 Progressive Farmer Reader Insights Tractor Study **Subject to availability. © Kubota Tractor Corporation, 2023. \$0 Down, 0% A.P.R. financing for up to 84 months on purchases of new Kubota BX2680, L2501 and LX2610SU equipment from participating dealers' in-stock inventory is available to qualified purchasers through Kubota Credit Corporation, U.S.A.; subject to credit approval. Example: 84 monthly payments of \$11.90 per \$1,000 financed. Customer instant rebates include Orange Plus Attachment Instant Rebate of \$300 with purchase of the second qualifying new implement and \$500 for the third new qualifying implement. Some exceptions apply. There is no rebate on the first implement purchased. Offers expire 09/30/23. Terms subject to change. This material is for descriptive purposes only. Kubota disclaims all representations and warranties, express or implied, or any liability from the use of this material. For complete warranty, disclaimer, safety, incentive offer and product information, consult your Dealer or KubotaUSA.com.

Progressive
FARMER
READER INSIGHTS

LAND AUCTION



90.02 ACRES ± | 6 TRACTS | PULASKI CO, MO

Transitional land opportunity located just out of the Saint Robert MO city limits. Unrestricted land ready for development. The rolling landscape offers convenience to town, 2 live water ponds, and seclusion. 6 tracts to be offered, each with unique character and an abundance of wildlife, mature hardwoods, and scenery. Excellent land for developing into residential, RV campground, or recreational use. You have a dream, this land has the potential to help you realize it.

AUCTION DATE: 11/07/23

AUTION TIME: 4:00 PM

AUCTION TO BE HELD AT:

Community Center,
114 J.H. Williamson Drive, St.
Robert, MO 65584

and online at Ranchandfarmauctions.com



IN COOPERATION WITH WHITETAIL PROPERTIES REAL ESTATE, LLC
Contact the Utecht Land Team | 417-234-7654 | mike.harris@whitetailproperties.com

RANCHANDFARMAUCTIONS.COM

GO TO RANCHANDFARMAUCTIONS.COM FOR ADDITIONAL INFORMATION,
PHOTOS, SOIL MAPS AND TERMS.



RC37 SERIES

ROTARY CUTTERS
50-160 HP 15' Width



- 3" Cut capacity
- Cat. 6 main CV driveline
- 10 Gauge sloped deck
- Cast steel greaseable wing hinges
- New heavier wheel bearing seals

Getting Chores Done LAND PRIDE does that.



www.landpride.com

For Outstanding Products & Service
AGRI-ENTERPRISES
 1-1/2 Miles South Of Licking, MO On Hwy 63
 573-674-2203 • 1-800-653-7152 • www.agri-enterprises.com

Route 66 MOTHER ROAD BOOK: by Michael Wallis, \$12.50. 417-532-2045. Lebanon. (Leave message and phone number.)

LOG SIDING: 2X8 Pine/Western Cedar. Call for appointment 573-729-7226. www.pineridgerustic.com Salem.

NEW INVENTORY - \$59,900 Delivered and setup, Hurry! Call Adam 573-657-2176 amegamobilehomes.com

WEATHERED BARN WOOD SIDING: 10" wide. Call for appointment 573-729-7226. www.pineridgerustic.com Salem.

VINTAGE CAPPER'S WEEKLY SEARCHLIGHT RECIPE BOOK: \$12.50. 417-532-2045. Lebanon. (Leave message and phone number.)

NEW MOBILE HOMES – prices start at \$64,900 delivered and setup 573-499-9993 columbiadiscountohomes.com





TIM'S USED CARS

(573) 341-3828 • 1334 South Bishop (Hwy. 63) • Rolla, MO
Next to Hwy CC • www.tims-used-cars.com

 <p>2012 CHEVY 1500 4x4, WT, 5.3 V-8, Auto, 132,xxx Miles Only \$12,900</p>	 <p>2010 HONDA PILOT TOURING 4x4, V-6 auto, loaded w/options Only \$7,400</p>	 <p>2011 CHRYSLER 300 LIMITED V-6, leather, 149,xxx Miles Only \$7,900</p>
 <p>2019 RAM 2500 HD Crew cab, 4x4, Big Horn, 6.4 V-8, power equipped, 60,xxx Miles Only \$36,500</p>		

LARGE SELECTION OF CARS, TRUCKS, SUVs & VANS!

OMAR'S LOGGING

⇒ **Oak & Walnut**
⇒ **Excellent Prices**
Amish Owned & Operated



LEAVE MESSAGE: 417-741-0440
Hartville & Surrounding Areas

1908 SEARS ROEBUCK CATALOGUE REPRODUCTION: 1,185 pages, \$12.50. 417-532-2045. Lebanon. (Leave message and phone number.)

BASEMENT READY TRUE MODS-instock ready for delivery 573-657-7040 chateauhomes.net

TINY HOMES – Missouri Franchise 573-881-7965

REGISTERED HEREFORD & ANGUS BULLS: Home raised, Some Show-Me Select Qualified. 573-701-7828. Belgrade.

LIGHTLY EXPERIENCED GOLF BALLS: \$3 a dozen. 417-818-3469. Strafford.

COLT REVOLVER DEALER CATALOGS: Circa 1950's + 1960's. All for \$100. 573-764-3517. Call in P.M.

FOR SALE: 4' 2-wheel Dump Utility Trailer. \$110. 573-729-3297. Salem.

3 GENTS WITTNAUER WRIST WATCHES: 10k gold + 23J. All \$200. 573-764-3517. Call in P.M.

HARLEY FAT BOBS: Custom flame paint w/ gas caps + lines. \$100. 573-764-3517. Call in P.M.

PASTURE RAISED CHICKENS & PASTURE RAISED THANKSGIVING TURKEYS: 417-741-2446.

HARLEY 45 SOLO: factory rear brake drum + sprocket. \$150. 573-764-3517. Call in PM.

HARLEY PANHEAD DISTRIBUTOR: original, chrome + complete. \$125. 573-764-3517. Call in PM.

1962 HARLEY SPORTSTER 900CC: original distributor. \$50. 573-764-3517. Call in PM.

SPORTSET BY SARGENT: Fishing pliers in leather sheath. Like a multi-tool. \$20. 636-239-2695 or 314-560-5700. Washington.



Meadowview Dutch Market

Bulk & Surplus Groceries • Prices Subject to Stock on Hand

Call to Order
417-993-3017

Sale Dates October 18th, 2023 to
October 24th, 2023 while supplies last!

DELI SPECIAL

JOHN F. MARTIN TAVERN HAMREG. \$4.99 LBSALE \$4.49 LB
SMOKED PROVOLONE CHEESEREG. \$6.89 LBSALE \$6.39 LB

TRY our Fresh Homemade DELI Sandwiches: TURKEY, HAM, ROAST BEEF, ITALIAN, BLT'S, PULLED PORK AND BLT PULLED PORK (MADE YOUR WAY)! COME IN OR CALL to order! ALSO Custom Deli trays! Veggie OR FRESH Meat-N-Cheese!



Uncooked 8 Pieces
Chicken
99¢
LB.



BONUS SPECIAL
Caramel Chocolate Crunch
Ice Cream
\$15.99
3 GALLON

White Cheddar
Chipotle Cheese
\$2.49
LB.

Swai
Fillet
\$5.49
2 LB.



Onion Ring
Snack
\$1.40
2.75 OZ



Italian
Meatballs
\$1.99
16 OZ



Fully Cooked
Spicy Chicken Fritters
\$1.29
LB



Cashews
Halves and Pieces
\$2.49
8 OZ



NOT RESPONSIBLE FOR PRINT ERROR!!

MEADOWVIEW DUTCH MARKET
417-993-3017 Hours: Mon-Thurs 8-5pm
Fri 8-6pm • Sat 8-5pm
23 Miles West on Hwy 64 • Right on T Hwy
9 miles • Left on E Hwy 1 mile on Left

DUTCH COUNTRY STORE, LLC
573-378-4395
Hours: Mon-Thurs 8-5pm
Fri 8-6pm • Sat 8-5pm
5 miles East of Versailles off Hwy C on Kelsay Road

NOW ACCEPTING CREDIT, DEBIT CARDS & EBT

APPLE DAYS!!!

Free Refreshments **49¢** LB.

Thursday Oct. 26th & Friday Oct. 27th
2 Days Only

Mix and Match your apples. Honeycrisp, Cortland, Golden Delicious, McIntosh, Gala, Fuji, Johnathan, Jona Gold, Red Delicious



SLIGHTLY USED PUZZLES: Will sell or trade. 417-818-3469. Strafford.

LIONEL TRAIN SET: Steam engine, tender, caboose and other car, track, and transformer. \$195. 573-364-7465. Rolla.

MODEL 1911 FRAME 8-SHOT C02 PISTOL: Like new, in box with C02 cartridges, 4 clips, pellets & all paperwork. \$95. 573-364-7465. Rolla.

1970s KIDS METAL STOVE & FRIDGE: Nice Lithographic paint, 18" wide x 36" high. \$75. 573-364-7465. Rolla.

110 PORCELAIN POCKET WATCH DIALS: Perfect for arts & crafts. \$100. 573-764-3517. Call in PM.

1890 GOLD TESTING KIT: Glass acid beakers + antique wooden case. \$100. 573-764-3517. Call in PM.

1500 VINTAGE WRISTWATCH DIALS: \$100. 573-764-3517. Call in PM.

2002 CHEVY 3500 CAMPER VAN: V8. Fridge, sink, microwave & awning. 30 amp. New tires. Excellent condition. 136,xxx miles. \$17,000. 417-650-7069. Lebanon.

NEW SQUARE D RAINPROOF 50AMP DISCONNECT: \$160. 636-239-2695 or 314-560-5700. Washington.

USED JET HOME POLLUTION CONTROL PANNEL: Model CP700. \$65. 636-239-2695 or 314-560-5700. Washington.

1 PAIR OF KEY BRAND MEN'S JEANS: Waist 38, Length 34. \$10. 636-239-2695 or 314-560-5700. Washington.

BLACK METAL TUBULAR BRACKET: Scrolling and a stainless bracket. \$10. Call for pictures. 636-239-2695 or 314-560-5700. Washington.

RUBBER & LEATHER BOOTS AND 5-Buckle OVER SHOES: Men's 11, Women's 7, some insulated. \$15-\$40 obo. 636-239-2695. Washington.

SET OF 4 ST. LOUIS CARDINALS COLLECTABLE GLASSES: Gibson, McGwire, Brock & Ozzie. Mint condition. \$20. Text for pics. 573-854-8132. Houston.

'85 FORD PICKUP PARTS: Passenger door with window glass & mirror \$30. Also, Tailgate for '85 Ford pickup \$25. 573-308-5884. Rolla.

INTERNATIONAL PICKUP TRANSFER GEARBOX: \$150. 573-308-5884. Rolla.

NEW JELD WEN 5' LEFT HAND SLIDING GLASS DOOR WITH SUNSTABLE INTERIOR BLINDS: Clear tempered glass, Desert Sand trim/hardware. Retail \$2655 Sell \$900. 417-693-0389. Conway.

WOODLANDLAKESNEWS.COM: know before you go! --The Weekly Trader & associated entities are not associated with this website.

FOR SALE: 2 Dayco motorcycle covers for Harley or other big bikes. \$50 each. 417-260-0941. Raymondville.

GUNSMITHING-Older Rifles, Shotguns, Handguns, all 22LRs. Any make, any model, estate appraisals. Camdenton. 573-363-5801.

3 ARMY CANTEENS: Mess kit, belt & duffle bag. \$60 for all. 417-260-0941. Raymondville.

ANTIQUE 4 HP ENGINE: Built by Continental Motors Corporation. \$150 OBO. 573-308-5884. Rolla.

OFFICIAL TRACTOR OF TOUGH™

INTRODUCING THE ALL-NEW 5100 SERIES



Marshfield Machinery Inc.

222 E. Madison • Marshfield, MO 65706
417-859-2117 • www.marshfieldmachinery.com

*2018 data including all Mahindra group brand sales.
MahindraUSA.com © 2020 Mahindra USA Inc.



NEW MAHINDRA TRACTORS	
1635 4WD & LDR 36HP	IN STOCK
2638 4WD & LDR 38HP	IN STOCK
2645 4WD & LDR 45HP	IN STOCK
2660 4WD & LDR CAB 60 HP	IN STOCK
USED TRACTORS	
MF 4708 80HP 4WD CAB LDR	58,500
MF 4609M 90HP CAB LDR	47,500
JD 5055E 59HP CAB LDR	32,500
MF 383 70HP CAB LDR	24,000
MAHINDRA 4540 41HP 4WD LDR	23,500
MAHINDRA 2638 38HP 4WD LDR	20,000
MF 4243 75HP CAB LDR	20,000
MAHINDRA 1635 35HP 4WD LDR	19,500
MAHINDRA 4540 41HP LDR	16,000
AC 7010 106HP CAB	9,500
MF 1528 28HP 4WD	7,500
CUB CADET 7205 20HP 4WD	4,250
KUBOTA L175 17HP W/MOWER	3,000
USED ROUND BALERS	
NH RB450 4X5 MESH	24,000
MF 1745 4X5	9,500
HESSTON 550 4X6	2,500
HESSTON 560 5X6	2,000
USED MISC.	
OMI 8 WHEEL RAKE	2,500
RHINO 8 WHEEL RAKE	1,500
RHINO 5FT FINISH MOWER	850
ROLLINS 5FT BLADE	250

Marshfield Machinery Inc.

222 E. Madison
Marshfield, MO 65706
417-859-2117
www.marshfieldmachinery.com

Larry Heisel Rentals

LARGE or SMALL...



We Rent!

Crawler Loaders • Excavators • Backhoes

Call Larry!

573-779-1500

www.larryheiselequipment.com

Rental Available in 636 or 573 area code

PITTSBURGH HEAVY DUTY 3-TON FLOOR JACK: Never used. \$195. 417-260-0941. Raymondville.

RUBBERMAID 10 CUBIC FOOT PULL BEHIND DUMP CART: \$200. 417-718-5347. Conway.

EXCAVATOR MOUNTED FORESTRY MULCHING FOR UNDERBRUSH CLEARING: Call Nathan @ 417-259-2785.

DARDEN PROFESSIONAL TIMBER HARVESTING, BUYING STANDING TIMBER: Great prices, improve wildlife habitat and improve forest health. State Certified & Fully Insured! 573-247-4808. Salem.

SMALL DANBY CHEST FREEZER: \$50. 417-718-2529. Lebanon.

FOR SALE: Speed controlled pet nail grinder. \$15. 417-718-2529. Lebanon.

200 SQUARE BALES OF GRASS HAY: \$7/bale. 573-247-4280 or 573-247-4281. Salem.

FOR SALE: Snap Kit for setting western snaps. \$20. 417-718-2529. Lebanon.

YOUR FULL SERVICE AUTO BODY SHOP

Call today for an appointment or estimate!



DAVIDSON'S *Customs*

417-288-1589

Restorations, insurance jobs, and more!



417-288-1589 • 115 Lincoln St., Buffalo, MO • [f](#) @DavidsonCustoms

FOR SALE: New Indoor/Outdoor Digital Antenna. \$15. 417-718-2529. Lebanon.

FOR SALE: Jensen Tabletop Stereo with 2 speakers. \$45. 417-718-2529. Lebanon.

DACHSHUND PUPPIES: Registered, shots & wormed. 573-247-6273.

2017 KANSAS CITY CHIEFS RED FRIDAY FLAG: Mahomes rookie year. \$40. Text for pics. 573-854-8132. Houston.

TOY SCHNOODLES FOR SALE: 2 chocolate, 4 white, 7-10 lbs. 417-664-5926.

STAN MUSIEL CANCELED CHECK: Full signature with authenticity. Mint condition. \$55. text for pictures. 573-854-8132. Houston.

MAC'S TIEDOWN STRAPS: Like New. \$80. 417-260-0941. Raymondville.

ATTENTION ROOT DIGGERS: We will be buying ginseng & goldenseal throughout the season. Schofield Roots in Theodosia, MO 417-683-7922.

2005 ROCKWOOD TRAVEL TRAILER: 26FT Long with slide out. \$6,500. 417-531-1048. Morgan.

BUYING SCRAP METAL: All kinds, can torch heavy equipment. Call for prices. 40 years experience. 573-308-6739. Newburg.

2 HOSPITAL BEDS: \$200 each. 573-247-4280 or 573-247-4281. Salem.

225/65/R17 TIRE: 95% tread/ \$15. 210-787-8222. Linn Creek.

TENPOINT CROSSBOW ELITE Q X4: With ACU draw. Flambeau hard case. TenPoint scope. 1 dozen plus bolts, new & used. Field points, different weights. Broadheads, different kinds. Crossbow target & 2 extra strings. Package deal, \$775. 636-232-7046.

APPROXIMATELY 500 BALES OF STRAW: \$6/bale. 573-247-4280 or 573-247-4281. Salem.

COWBOY CORGIS!!! UTD on shots & wormer. DOB 9-02-23. \$150 OBO. 417-349-0831. Hartville.

JENSEN TABLETOP STEREO: With two detachable speakers. \$45. 417-718-2529. Lebanon.

INDOOR/OUTDOOR DIGITAL TV ANTENNA: \$18. 417-718-2529. Lebanon.

FOR SALE TUNIS RAMS: Ready for service. Call Gary Marsh 785-691-7356. Lawrence, KS.

JUMBO FLOAT: 95" long x 80" wide x 10" high. Heavy gauge vinyl, Safety valve, 2 screw valves, 12 rope holders, water plug, nylon rope around it. Like new. \$150. 210-787-8222. Linn Creek.

6FT 3-POINT DISC: \$400. 200-Gallon Fuel Tank with stand, \$300. Foot Pedal Grindstone, \$300. 80lb. Anvil, \$500. 3-Bottom Allis-Chalmers Plow, \$200. 573-280-8230. Camdenton.

WANTED USED KITCHEN CABINETS: in good condition. 417-741-2186.

2009 Honda Accord LX-S: Excellent condition. 2.4 L, 4 cyl., 21/30 m/g. 57,000 miles. \$10,500. Call 417-588-9812. Lebanon.

Blue Healer Puppies: UTD on all shots. 417-349-0919. Plato, MO

ALFALFA & GRASS HAY FOR SALE: 4X5 round bales. 417-343-4958. Seymour.

FULL SIZE BET SET: clean & good \$20. 417-830-5309 Bruner, MO. Leave message.

OFFICE DESK & CHAIR: \$20 417-830-5309 Bruner, MO. Leave message

SPLIT SEASONED FIREWOOD FOR SALE: 573-759-2125 Dixon MO area. Must pick up, no delivery.

2 FRISCO 1980 CALENDARS: \$10 each. 417-830-5309 Bruner, MO. Leave message

4 OAK KITCHEN CHAIRS \$80. 417-830-5309 Bruner, MO. Leave message

GRAVE LOT: White Chapel Memorial Gardens. \$500. 417-894-5733. No texting.

CRAFTSMAN TILLER: 5-years-old, new carburetor. \$75. 417-345-8616.

5FT SOLID FRONT END BUCKET: for Ferguson or International tractor. \$275. 417-345-8616.

15 CU FT UPRIGHT FREEZER: Works good. \$100. 417-894-5733. No texting.

PLAD PANTRY

DISCOUNT & SURPLUS FOODS
FRESH PRODUCE LLC

417-532-4700



Uncooked Pork Sausage Links.....	\$16.99 10 lbs.
Cream Cheese Fruit Dip.....	\$1.79 13.5 oz.
Chocolate Coated Vanilla Ice Cream Bars.....	\$1.99 15 oz.
Original Pork Chorizo.....	\$1.29 14 oz.
Organic Milk Chocolate Bars.....	\$4.99 12 - 1.55 oz.

1571 State Hwy 64 • Tunas, MO 65764
Hours: 8:30 a.m. to 5:30 p.m. • Closed Wed. & Sun.



Buildings • Hunter's Cabins • Lawn Furniture

JAMCO Portable Buildings
800-688-2064 • 307 Enterprise Dr. • Seymour, MO • www.jamcobuilders.com

Rent To Own Plan

YEARLING JERSEY HEIFERS: A2A2. \$850. 417-733-2625. Louisburg.

FISHING SEASONS COMING: Get your rod and reels, \$5 and up. 417-589-8200. Conway.

CATAHOULA LEOPARD PUPS: Great hunting, guard, and companion dogs. 30 year bloodline. \$150. 417-543-4816. Rockbridge.

LAKE OF THE OZARKS-Spooktacular Season Special-Lots starting at \$4,995 - \$125 down \$69 per month. Build, camp, or own for investment also acreage tracts. Beautiful wooded area, free lake access and boat ramps, lots are a short distance from the lake, no credit checks, owner financing, and immediate possession. Missouri conservation boat ramp with a covered dock and rest rooms close by. Prices good through November 6th, 2023. Hwy 135 between Stover and Sunrise Beach, MO. Take lake road 135-12 to the Ivy Bend Land Office. Closed Tuesdays and Wednesdays. Call anytime 573-372-6493.

Lincoln Arc Welder: \$100. Cutting Torch: Victor Gauges & Torch with Tanks, \$500. Miller Cricket XL Bolt Wire Welder: with Tank & Gauges, \$500. Cherry Picker: \$300. Two 1620 Poulan Chainsaws, \$75/ each. Milwaukee Impact Hammer, \$250. 417-527-3087. Branson.

2005 F150: 5.4 v8, 4x4, 83,000 miles. Salvage title. Good mechanical condition. Some rust & other. \$4,500. Call 417-588-9812. Lebanon.

BLACK REGISTERED LIMOUSIN BULLS: 19-months-old, semen checked, very gentle, hand fed. 573-694-0164. Jefferson City.

EXERCISE BIKE: In good condition. \$65. 417-532-2344.

MISC. MECHANICAL TOOLS: Small set \$25. & Large set \$35. 417-532-2344.

LARGE COCA-COLA NOVELTY SET/ GROUP: \$50. 417-532-2344.

WELDER: Lincoln Eagle, 99 hours, 573-743-3569. Salem.

850 MASSEY FERGUSON COMBINE: With both heads. Ready to go. \$6,000. 573-247-4280 or 573-247-4281. Salem.

1980 CHEVY SILVERADO: 1 owner, bought brand new in 1980. Very clean, nice truck. \$17,500. 417-288-2760.

Route 66 MOTHER ROAD BOOK: by Michael Wallis, \$12.50. 417-532-2045. Lebanon. (Leave message and phone number.)

WEATHERED BARN WOOD SIDING: 10" wide. Call for appointment 573-729-7226. www.pineridgerustic.com Salem.

LOG SIDING: 2X8 Pine/Western Cedar. Call for appointment 573-729-7226. www.pineridgerustic.com Salem.

VINTAGE CAPPER'S WEEKLY SEARCHLIGHT RECIPE BOOK: \$12.50. 417-532-2045. Lebanon. (Leave message and phone number.)

NEW INVENTORY - \$59,900 Delivered and setup, Hurry! Call Adam 573-657-2176 amegamobilehomes.com

NEW MOBILE HOMES - prices start at \$64,900 delivered and setup 573-499-9993 columbiadiscounthomes.com

1908 SEARS ROEBUCK CATALOGUE REPRODUCTION: 1,185 pages, \$12.50. 417-532-2045. Lebanon. (Leave message and phone number.)

BASEMENT READY TRUE MODS- instock ready for delivery 573-657-7040 chateauhomes.net

TINY HOMES - Missouri Franchise 573-881-7965

REGISTERED HEREFORD & ANGUS BULLS: Home raised, Some Show-Me Select Qualified. 573-701-7828. Belgrade.

LIGHTLY EXPERIENCED GOLF BALLS: \$3 a dozen. 417-818-3469. Strafford.

SLIGHTLY USED PUZZLES: Will sell or trade. 417-818-3469. Strafford.

LIONEL TRAIN SET: Steam engine, tender, caboose and other car, track, and transformer. \$195. 573-364-7465. Rolla.

MODEL 1911 FRAME 8-SHOT C02 PISTOL: Like new, in box with C02 cartridges, 4 clips, pellets & all paperwork. \$95. 573-364-7465. Rolla.

1970s KIDS METAL STOVE & FRIDGE: Nice Lithographic paint, 18" wide x 36" high. \$75. 573-364-7465. Rolla.

FOR SALE: 4' 2-wheel Dump Utility Trailer. \$110. 573-729-3297. Salem.

3 GENTS WITTNAUER WRIST WATCHES: 10k gold + 23J. All \$200. 573-764-3517. Call in P.M.

HARLEY FAT BOBS: Custom flame paint w/ gas caps + lines. \$100. 573-764-3517. Call in P.M.

COLT REVOLVER DEALER CATALOGS: Circa 1950's + 1960's. All for \$100. 573-764-3517. Call in P.M.

Is Your Log Home Starting To Look UGLY?

Call Pine Ridge Rustic Log Home Building Supplies

- Professional Log Home Maintenance & Restoration
- Staining • Chinking/Caulking • Log Replacement • Media Blasting

573-729-7226

www.pineridgerustic.com

2 DAY AUCTION - DAY 1 - FRIDAY OCTOBER 20, 2023 10:00 AM

101 COUNTRY HILLS LN, REEDS SPRING MO: FROM HWY 13 & OLD WILDERNESS RD REEDS SPRING TURN LEFT ON OLD WILDERNESS RD GO 1.4 MILE THEN LEFT ON SPRING ST, GO 4/10 MILE TURN RIGHT ON COUNTRY HILLS LN GO 1/10 MILE TO AUCTION ON LEFT.

FOR PICTURES SEE WEBSITE OR AUCTION ZIP.COM
BANK LETTER OF CREDIT ADDRESSED TO MELTON AUCTION & REALTY REQUIRED FOR PURCHASE OVER \$5000

ANTIQUES-FURNITURE-HOUSEHOLD

ANTQ BEDROOM SET DOUBLE BED--VANITY W/MIRROR & DRESSER--ANTQ HUTCH--7 PC DINETTE SET W/2 LEAVES--ANTQ MANTLE CLOCKS--RECLINERS--MISC CHAIRS--SECRETARY & LEATHER OFFICE CHAIRS--4 DRAWER FILE CABINETS--CORNER CURIO CABINET--FOLDING TABLES & CHAIRS--LOG BED FRAME--DISPLAY CASE--ANTQ GAS LAMPS--WHEEL CHAIR--VINTAGE DISH SETS--144 PC VINTAGE BAMBOO FLATWARE SET--NIB--CAST IRON POTS & PANS--COLORED GLASSWARE--PITCHERS W/GOBLET--1 LOT BEDDING, LINEN--SLEEPING BAGS--DELL COMPUTER W/PRINTER--VCR/DVD PLAYERS--COMPUTER PROJECTORS--POLYCOM FULL CONFERENCE PHONE STATION--VOLTAGE INVERTERS 12V-110V--REMOTE SPEAKERS--16' HANDICAP ENTRANCE RAMP, BEDSIDE COMMODE

MUSICAL INSTRUMENTS

¼ & ½ SIZE VIOLIN W/CASES--LOAR MANDOLIN W/CASE--MORGAN MONROE 5 STRING & 6 STRING BANJO'S W/CASES--JAY TURSER ACOUSTIC ELECT GUITAR W/GIG BAG--KAY VIN ADD ELECT GUITAR W/CASE--SM SPEAKERS (PHONE OR COMPUTER)--FENDER BIG TWIN TUBE AMPLIFIER

ANTIQUES-PRIMITIVES-COLLECTIBLES

1 & 2 MAN CROSSCUT SAWS--ICE SAW--SWEDE BOW SAW--BOW SAW--RAILROAD LANTERNS--HORSE DRAWN WALKING PLOWS--HORSE HAMES--HORSE DRAWN SEEDER--BUZZ SAW--CAST CATERPILLAR MODEL TOYS FROM WEST GERMANY--MODEL TRUCKS--LOWBOYS--OTHER MODEL TOYS--LIONEL ELECT TRAIN SETS--MISC SM TRAIN SETS--LG LOT PRECIOUS MOMENT FIGURINES SOME SIGNED--SET LEATHER BOUND LOUIE LAMORE BOOKS

TOOLS-MISC

METAL TRUCK TOOL BOX--ALUMN TRUCK TOOL/FUEL TANK--ENGINE STANDS--REVOLVING ENGINE STANDS--REESE FIFTH WHEEL HITCH--REESE 12,000 LB BUMPER HITCH--1 LOT MISC POWER/HAND TOOLS, BISCUIT JOINER, CHICAGO 12" COMPOUND MITER BOX--VICTOR ACETYLENE TORCH SET W/CART--LG 10 HP AIR COMPRESSOR W/TANK--PORTABLE AIR COMPRESSOR--AIR COMPRESSOR PUMP--SHEET ROCK JACK--SAFEWAY STACKABLE SCAFFOLD--BAKERS SCAFFOLD--PORTABLE GENERATORS, GENERAC 5000 WT, NORTH STAR 8000 PPG--LG COM SANDBLASTING POT--AIR NAILERS--AIR FLOORING NAILERS--ALUM STEP & EXT LADDERS--BINKS #7 PAINT GUNS--PAINT POTS--PROPANE SALAMANDER TYPE HEATERS--FIBERGLASS SHOP SINK--20, 30, 40 # PROPANE BOTTLES--1" PVC PIPE--PEX PIPE CRIMPING TOOL & PIPE FITTINGS--3/8 CHAINS--LOAD BINDERS--600X16 FRONT TRACTOR TIRES--JANSERD 70E CHAIN SAWS--LG LOT FISHING RODS/REELS, AMBASSADEUR, ZEBCO AND MORE

OWNER: ALLAN JOHNSON

ANNOUNCEMENTS MADE ON SALE DAY WILL TAKE PRECEDENCE OVER ANY OTHER PRINTED MATERIALS. NOT RESPONSIBLE FOR ACCIDENTS OR LOSS OF ARTICLES ON OR NEAR SALE SITE.

meltonauctionrealty.com | roger@meltonauctionrealty.com

Roger Melton | Nixa, MO | 417-830-0153 or 417-725-1801

Brad Cole | Nixa, MO | 417-840-2950

Hal White | Nixa, MO | 417-343-2334

Tanner Foster | Galena, MO | 417-840-5519

MELTON AUCTION & REALTY CO LLC



PASTURE RAISED CHICKENS & PASTURE RAISED THANKSGIVING TURKEYS: 417-741-2446.

110 PORCELAIN POCKET WATCH DIALS: Perfect for arts & crafts. \$100. 573-764-3517. Call in PM.

1890 GOLD TESTING KIT: Glass acid beakers + antique wooden case. \$100. 573-764-3517. Call in PM.

1500 VINTAGE WRISTWATCH DIALS: \$100. 573-764-3517. Call in PM.

2002 CHEVY 3500 CAMPER VAN: V8. Fridge, sink, microwave & awning. 30 amp. New tires. Excellent condition. 136,xxx miles. \$17,000. 417-650-7069. Lebanon.

HARLEY 45 SOLO: factory rear brake drum + sprocket. \$150. 573-764-3517. Call in PM.

HARLEY PANHEAD DISTRIBUTOR: original, chrome + complete. \$125. 573-764-3517. Call in PM.

1962 HARLEY SPORTSTER 900CC: original distributor. \$50. 573-764-3517. Call in PM.

SPORTSET BY SARGENT: Fishing pliers in leather sheath. Like a multi-tool. \$20. 636-239-2695 or 314-560-5700. Washington.

NEW SQUARE D RAINPROOF 50AMP DISCONNECT: \$160. 636-239-2695 or 314-560-5700. Washington.

USED JET HOME POLLUTION CONTROL PANNEL: Model CP700. \$65. 636-239-2695 or 314-560-5700. Washington.

1 PAIR OF KEY BRAND MEN'S JEANS: Waist 38, Length 34. \$10. 636-239-2695 or 314-560-5700. Washington.

Maries County PUBLIC AUCTION

SATURDAY, OCTOBER 21, 2023 • 10 AM

41170 Maries Road 633, Dixon, MO 65459

SELLER: JERRY WELSCHMEYER

AUCTION LOCATION:

41170 Maries Road 633, Dixon, MO 65459

SELLER: JERRY WELSCHMEYER

Selling:

20+ OLIVER TRACTORS,
OLIVER COMBINE AND OTHER
OLIVER FARM EQUIPMENT

Also Selling:
HAY EQUIPMENT, OTHER FARM EQUIPMENT,
CONSTRUCTION EQUIPMENT,
VEHICLES & CAMPER

ONLINE BIDDING AVAILABLE THROUGH

VISIT WHEELERAUCTIONS.COM
FOR FULL LISTING AND PHOTOS!

23101 HWY. 24, PARIS, MO 65275 | 660-327-5890
WWW.WHEELERAUCTIONS.COM

2 DAY AUCTION - DAY 2 -SATURDAY OCTOBER 21, 2023 10:00 AM

101 COUNTRY HILLS LN, REEDS SPRING MO: FROM HWY 13 & OLD WILDERNESS RD REEDS SPRING TURN LEFT ON OLD WILDERNESS RD GO 1.4 MILE THEN LEFT ON SPRING ST, GO 4/10 MILE TURN RIGHT ON COUNTRY HILLS LN GO 1/10 MILE TO AUCTION ON LEFT.

**FOR PICTURES SEE WEBSITE OR AUCTION ZIP.COM
BANK LETTER OF CREDIT ADDRESSED TO MELTON AUCTION & REALTY REQUIRED FOR PURCHASE OVER \$5000**

CLASSIC CARS-CAR PARTS-GUNS-AMMO-HUNTING MISC

CLASSIC CARS-BOATS-TRAILERS-CAR PARTS

1929 MERCEDES GAZELLE KIT CAR, VW CHASSIS & ENGINE, NEW BURGUNDY UPHOLSTERY, ADJ SEATS, FRESH TUNE UP---1936 FORD PICKUP SITS ON A 78 FORD THUNDERBIRD SUSPENSION, LINCOLN ZEPHER V-12 ENGINE, 3-2 BBL CARBS, HEADERS, DUEL EXHAUST, PS, HYD CLUTCH, JUICE BRAKES, 12 VT SYSTEM, NEW CUSTOM UPHOLSTERY, WALNUT BED FLOOR, STAINLESS BED STRIPS, HALO HEADLINER, PURPLE HALO HEADLIGHTS, UNDER FENDER LIGHTS, PLUM CRAZY PURPLE---1956 FORD F-100PICKUP 351 CLEVELAND COBRA JET ENGINE, REBUILT C-6 TRANSMISSION, 9" NODULAR DIFFERENTIAL, SHORT STEP SIDE BOX, OAK FLOOR W/SS STRIPS, MOPAR FRONT SUSPENSION, CUSTOM ILLUMINATED TAILGATE, LEATHER POWER BUCKET SEATS, PB, PS, NEW WIDE CHROME DEEP DISH WHEELS, WIDE OVAL TIRES, BABY MOONS, CENTER CONSOLE, HALO HEADLIGHTS, FENDER WELL LIGHTS, BLUE ME AWAY BLUE---1971 VOLKSWAGEN BEETLE, TEXAS CAR, 88,000 MILES, NEW WIRING ON ENGINE, RECENT TUNEUP, NICE UPHOLSTERY, GOOD RUNNER---1969 CAMARO, COMPLETE FRESH 416 BB ENGINE, 850 HOLLY DBL PUMPER 4 BBL CARB, COMPETITION CAM, 7.1 ROCKERS, NEW FLOOR & TRUNK PAN, NEW CUSTOM UPHOLSTERY, NEW RUBBER, FRESH BLUE ME AWAY PAINT---1957 CHRYSLER (PROJECT) 2 DR HARD TOP, 392 HEMI ENGINE, DUEL QUAD CARB INTAKE, HUGGER HEADERS, NEW BRAKE SYSTEM NEW FLOOR PAN, 90% BODY WORK COMPLETED, KANSAS CAR NEEDS REASSEMBLY COMPLETED, DONOR CAR INCLUDED---1959 PONTIAC BONNEVILLE (PROJECT) 389 ENGINE BORED TO 400 CI, CRANE CAM, TRI POWER, EZ FLOW HEADERS, DUAL COUPLING HYDROMATIC, NEW TRUNK PAN, COMPLETE EXTRA DASH, EXTRA SET BODY MOLDINGS, NEW UPHOLSTERY IN TRI COLOR, 85% BODY WORK COMPLETED, ARIZONA CAR, ENGINE BUILT BY A SPEED SHOP IN DENVER CO, CAR NEEDS REASSEMBLY COMPLETED---1961 STUDEBAKER SILVER HAWK (PROJECT) 289 V8, NEW RINGS, VALVES RESEATED, HAS TO BE REASSEMBLED, INCLUDES ALL PARTS TO ASSEMBLE, BODY WORK 95% COMPLETED---1983 FORD F-150 PICKUP FRESH 302 ENGINE, NEW PISTONS, RINGS, BEARINGS, HOWARD "MOMMA RATTLER" CAM, EDELBROCK 600 CFM 4 BBL CARB, NEW RUBBER, MINIMUM RUST, TOPPER---1994 CHEVY 1500 Z71 4X4 EXTENDED CAB W/TOPPER, 5.7 AUTO, 93,265 MILES---1988 JEEP WRANGLER, 5 SPD, 6 CYL, HARD TOP, GOOD RUBBER 114,308 MILES---2008 7'X16' HAULMARK CARGO TRAILER---12' FLATBED TRAILER W/RAMP---1993 20' CRESTLINER PONTOON W/50 HP EVINRUDE , TANDEM AXLE PONTOON TRAILER W/WINCH---17' GRIZZLY BASS TRACKER BOAT W/18 HP EVINRUDE, W/TRAIL STAR TRAILER---14' ALUMACRAFT ALUMINUM ROW BOAT W/TRAILER NO TITL- 1957 CHRYSLER 354 CI ENGINE---1957 CHRYSLER 392 HEMI ENGINE---1947 LINCOLN V12 ENGINE---MISC FORD FLATHEAD PARTS---MISC CAR/ PICKUP RADIATORS---OLD FORD ASSOC TRANSMISSIONS---CHRYSLER TORQUE FLITE TRANSMISSIONS---35/36 FORD SPOKE WHEELS---35/36 FORD HOODS---90'S OBS FORD COMPLETE DASH---1959 389 PONTIAC ENGINE NEEDS REBUILT

GUNS

BROWNING BAR 1 30-06 AUTO W/LEUPOLD 3X9 SCOPE SER 20545M70 - BROWNING BAR 11 7MM MAG W/BURRIS 4.5X14 SCOPE SER 78751M70 - BROWNING BAR 300 - WINCHESTER SHORT MAG W/LEUPOLD 4X12 SCOPE SER 311MP08094 - BROWNING BAR SAFARI 300 WIN MAG W/NIKON 3.5X10 SCOPE SER 107NT22071 - BROWNING BLR 243 WIN LEVER W/REDFIELD 2.5X7 SCOPE SER 02527RR127 - BROWNING A-5 LIGHT 12 GA AUTO FULL CHOKE SER 38135 - BROWNING A-5 SWEET SIXTEEN 16 GA AUTO FULL CHOKE SER 58327 - BROWNING MOD 12.. 20 GA PUMP FULL VR SER 01279-PN - BROWNING MOD 12.. 28 GA PUMP FULL VR SER 01279-NM87.2 - BROWNING MOD 12..410 GA PUMP FULL VR SER 01279-NZ882 - BROWNING MODEL B-80 12 GA PUMP FULL VR SER 421PT11336 - REM MOD 700 BDL 700MM MAG BOLT W/BURRIS FULLFIELD 3X9 SCOPE SER 83669 - REM MOD 700 BDL 30-06 BOLT W/3X9 TASC0 SCOPE SER 6886319 - REM MOD FOUR 30-06 AUTO W/BURRIS FULLFIELD 3X9 SCOPE & SLING SER A4050340 - REM MOD FOUR 270 AUTO W/NIKON II 3X9 BUCKMASTER SCOPE SER A4067109 - REM MOD FOUR 30-06 AUTO SER LE810405 - REM MOD 7400..270 WINCHESTER AUTO W/SIMMONS 3X10 SCOPE SER 8584517 - REM MOD

740.30-06 SEMI AUTO SER 31470 - REM MOD 740..244 SEMI AUTO W/CENTERPOINT 4X16 SCOPE SER 155184 - REM MOD 241 SPEEDSTER 22 CAL AUTO SER 123553 - REM MOD 121 FIELDMASTER 22 CAL PUMP SER 13970 - REM MOD PUMP 22 CAL SER 396937 - REM MOD 11-48 28 GA SEMI AUTO SER 4019844 - REM MOD SPORTSMAN 12 GA AUTO SER 790047 - REM MOD 11-48 410 AUTO SER 4141714 - ROMANIAN MOD AK-47 SEMI AUTO SER 1983-A1225 - ROMANIAN MOD AK-47 SEMI AUTO SER 1966-VX0117 - ROMANIAN MOD AK-47 SEMI AUTO SER 19815-A10221 - RUGER MINI 14..223 CAL SER 185-32747 - RUGER 1022 SS 22 CAL SEMI AUTO SER 259-82121 - HENRY PUMP 22 CAL SER 04373P - HENRY PUMP 22 MAG SER P04148TM - HENRY LEVER RIFLE 38-55 CAL SER 3855CC02411 - ROSSI GALLERY GUN 22 CAL PUMP SER B09787 - ROSSI RANCH HAND 45 LC M-RH 92 SER AM214639 - MARLIN MOD 1895..45-70 SER 8007359 - MARLIN MOD 375 WIN SER 20065282 - MARLIN MOD 60 SB STAINLESS AUTO SER 94440520 - MARLIN/GLENFIELD M-60 22 CAL AUTO SER 21336982 - STEVENS MOD 73 22 CAL SGL SHOT N/S - SEARS 410 SINGLE SHOT 410 GA N/S - RUSSION SINGLE SHOT 410 GA N/S - HAWKIN 50 CAL BLK POWDER MUZZEL LOADER SER 74728 - WEATHERBY 12 GA PUMP SER 92-09549 - ITHACA SKB 20 GA AUTO SER 52905596 - FRANCHI MOD 48A 12 GA AUTO SER 157929 - STEVENS 410 GA SINGLE SHOT SER P580812 - ELFAISON 410 DOUBLE BARREL STAINLESS OS HAMMERS N/S - POS 10 GA 3 1/2" MAG DOUBLE BARREL SER 43362 - MOSSBERG MOD 500A RIOT GUN 12 GA SER T467613 - JC HIGGINS MOD 101.1 410 GA SGL SHOT N/S - WIN MOD 94 30-30 XTR LEVER ACTION SER 4993864 - WIN MOD 94 375 XTR BIG BORE LEVER ACTION SER BB048869 - WIN MOD 94 375XTR AMERICAN BALD EAGLE COMM SER AB8116 - WIN MOD 100 243 AUTO SER 191126 - WIN MOD 94 CLASSIC 30-30 LEVER SER 3014377 - WIN MOD 94 30-30 CARBINE SER 3818113 - WIN MOD 94 30-30 CARBINE SER 3158151 - WIN MOD 9422M 22 MAG W/4X12 VORTEC SCOPE SER F293573 - WIN MOD 101 SELECT FIELD SER 13AMR03677 - WIN MOD 12 GA PUMP SER 1732213 - WIN MOD 12 16 GA SER 595232 - WIN MOD 12 20 GA SER 16794 - WIN MOD 37A 20 GA SGL SHOT SER C518828 - HAND GUNS - RUGER SUPER BLACK HAWK 44 MAG STAINLESS SER 87-48388 - RUGER BLACK HAWK 45 LC SER 45-11889 - RUGER SINGLE SIX 22/22 MAG SER 260-93406 - RUGER BEARCAT 22 CAL SER 110521 - DAKOTA 45 LONG COLT SER 45338 - HIGH STANDARD DBL 9 NICKEL SER 1138436 - HIGH STANDARD DBL 9 NICKEL SER 1521727 - HIGH STANDARD DBL 9 W-104 SER 1144761 - HIGH STANDARD DBL 9 E-101 SER 1108980 - COLT FRONTIER SCOUT 62 22/22 MAG SER 37862P - HERITAGE ROUGH RIDER 22 CAL SER F91680 - BROWNING CHALLENGER 22 AUTO SER 6552Y01183 - 1895 RUSSIAN 7.62 CAL REVOLVER SER AA183 - THE REGENT 22 CAL REV SER R48214 - MARTIN DERRINGER 32 CAL REV SER 1878 - MAUSER MOD HSC 7.65 (32) CAL SER 736978 - HERITAGE I REV 6 SHOT 45-70 CAL SER 509 - S & W LADY SMITH 357/38 SPEC STAINLESS SER CCE0896 COMMEMORATIVE - COLT GOVERNMENT MOD 1911 45 COLT AUTO "AMERICA REMEMBERS" - COLT MOD 1911 45 COLT AUTO "THIS WE'LL DEFEND" - COLT BUNTLINE SPC 45 LC GOLD PLATED SER 92556 #9 OF 950 - M-16 PARATROOPER MOD EA-15 AIRBORN SER ABN245 - WIN/COLT COMM 44-40 CAL - WIN MOD 1894 SER 113WC COLT 44-40 CAL SER 113WC - BROWNING DEER HUNTER COMM CAL 1895 45-70 SER 02611N247 #29 OF 100 - A. GUARDIAN OF THE PLAINS 44 WCF SER W87156 - BLACK POWDER REVOLVERS - 90. TRADITIONS ARMY 1858 44 CAL BALL NICKEL/GOLD PLATED - 91. PIETTA ARMY 1858 44 CAL BALL 6 SHOT REV SER R185165 - 92. TRADITIONS ARMY 1851 44 CAL GOLD/NICKEL PLATED SER 483278 - 93. RUGER OLD ARMY STAINLESS 45 CAL SER 145-33697 - 94. PIETTA ARMY 1851 SCROLLED W/BRASS REC 44 CAL SER 670848 - 95. PIETTA BUFFALO 1858 44 CAL BRASS REC 12" BARREL SER R478128

AMMO-HUNTING-MISC

APPROX 76 BOXES SHOTGUN AMMO INCLUDING 10, 12, 16, 20 28, 410 GAUGE, APPROX 200 BOXES 22, 223, 6MM, 270, 7MM, 30-30, 300, 30-06, 32 CAL, 357, 38-55, 38 SPL, 380, 44 MAG, 44-40, 45 LONG COLT, 45-79---MEC MOD 650 20 GA LOADER---CALDWELL ADJ BENCH REST (NIB)---GUN CASES HARD & SOFT--ASSORTMENT FOLDING BLADE KNIVES & FIXED BLADE KNIVES---#15 BLACK BEAR TRAP---#16 GRIZZLY BEAR TRAP---LONG SPRING TRAPS #0'S-#5'S

OWNER: ALLAN JOHNSON

ANNOUNCEMENTS MADE ON SALE DAY WILL TAKE PRECEDENCE OVER ANY OTHER PRINTED MATERIALS. NOT RESPONSIBLE FOR ACCIDENTS OR LOSS OF ARTICLES ON OR NEAR SALE SITE.

meltonauctionrealty.com | roger@meltonauctionrealty.com
Roger Melton | Nixa, MO | 417-830-0153 or 417-725-1801
Brad Cole | Nixa, MO | 417-840-2950
Hal White | Nixa, MO | 417-343-2334
Tanner Foster | Galena, MO | 417-840-5519

MELTON AUCTION & REALTY CO LLC



ANTIQUQUE STORE LIQUIDATION AUCTION

Saturday Oct. 21st at 10 A.M.

Address: 25939 Mo-64, Pittsburg, MO



We will be offering these two one-of-a-kind pieces of commercial real estate that are located on highway 64 with great visibility and only minutes from the lake access.

These two properties have an approximate combined square footage of 3,456.

The real estate tax for both properties in 2022 was only \$743.53.

COLLECTIBLE'S:

PYREX COLLECTION, FIRE-KING, DEPRESSION GLASS, HAND PAINTED NIPPON, SIGNED INDIAN POTTERY BY M.G. NAVAJO, REDWING CROCK (NO CRACKS AND HAS ORIGINAL HANDLES), VINTAGE HOT WHEELS, OIL LAMPS, NICK-NACKS, JEWELRY, CANISTER SETS, DVD'S, CANDY MACHINE, CAP GUNS, COOKIE JARS, CROSLY SELECT RADIO, BAR LAMP, MICKEY MOUSE CLOCK, MY SIZE BRIDE BARBIE, POCKET KNIVES (BRANDS INCLUDING CASE, BUCK, IMPERIL), COPPER BOILER WITH COPPER LID, BEER SIGNS, VINTAGE WATER PUMPS, MILK CANS, BIRD CAGE, VINTAGE TOYS, VINTAGE BIKES, BOOKS, TOOLS, VINTAGE ASHTRAYS, CLOCKS, VINTAGE LAMPS, AND VINTAGE CLOTHING.



FURNITURE

RARE ANTIQUE LARGE SIZE OVAL TILT TOP DINING TABLE VICTORIAN FLAMING, GUN CABINETS, VINTAGE CHAIRS, ANTIQUE HOOSIER CABINET, MULTIPLE GLASS DISPLAY CABINETS, SPAIN 18TH CENTURY BRAZIER, NIGHTSTANDS, VINTAGE ASHTRAY STAND WITH ASHTRAYS, DRESSERS, CHEST OF DRAWERS, VINTAGE COUCH, CHINA HUTCH, ANTIQUE TABLES, PAIR OF MEDIEVAL CHAIRS, VINTAGE FIRE PIT, VINTAGE TABLE AND CHAIR SETS, CLOTHING RACKS AND MUCH MORE. DON'T MISS OUT, COME CHECK OUT THIS AMAZING AUCTION!



PLEASE CHECK OUT AUCTIONZIP OR OUR FACEBOOK PAGE FOR MORE PICTURES AND INFORMATION ON THE MERCHANDISE BEING SOLD!

All items sold as is – where is. Accepted Payment Forms: Cash or Good Check.

Check out our online listing at www.auctionzip.com — Auctioneer ID# 30607 or find us on Facebook!



JON JOYCE Auctioneer, Licensed Agent | Lic. #200

Joyce

Auctioneering & Real Estate



(417) 859-2700 - Business | (417) 859-2724 - Fax
 (417) 207-5412 - Cell | jjoyce24.jj@gmail.com



SEXTON AUCTIONEERS

OCT. 26 ONLINE AUCTION

SEXTONAUCTIONEERS.COM
BID NOW!
 Online Auction Ends Thursday, Oct. 26

Auctions Start Closing Oct. 26 at 11am CST
 Bid Now! Timed Online Auction



2015 Caterpillar 316EL Excavator



1995 John Deere 690E LC Excavator



AGROTK QH12 Mini Excavator Qty. 6



1969 Chevrolet Chevelle



1967 Ford Bronco



1955 Ford Thunderbird



2016 Western Star 4700SF Dump Truck

2000 Kenworth T800 Dump Truck

SEXTON AUCTIONEERS

HUGE LINEUP OF HEAVY EQUIPMENT



2006 Mack Roll Off Truck



2016 Western Star Dump Truck



2000 Kenworth T800 Dump Truck



2012 Caterpillar CT660 Dump Truck



1996 Ford F800 Dump Truck



1998 Ford LT9513 Dump Truck



1994 Caterpillar D5H LGP Crawler Dozer



1987 Caterpillar 963 Track Loader



1985 CASE 850D Crawler Dozer



Volvo 120 Wheel Loader



Volvo L70F Wheel Loader



2008 4x4 Mauldin 413xt Motor Grader



2019 CASE TV370 Skid Steer



2018 Bobcat T650 Skid Steer



2006 Caterpillar 248B Skid Steer



2008 Caterpillar 242B2 Skid Steer



1996 CASE 1840 Skid Steer



2012 Bobcat 5185 Skid Steer



2020 Chevrolet Silverado 2500



1953 Chevrolet 3100



2006 Peterbilt 379



2016 Peterbilt 579



2015 Chevrolet Silverado 3500HD Service Truck



1991-1997 Mack DMM69065 Cement Mixer Trucks Qty. 4



BID NOW AT SEXTONAUCTIONEERS.COM

314-529-0124

Sales@SEXTONAUCTIONEERS.COM

Sell at your location or at our auction yard at 5182 US Hwy 63, Pomona, MO 65789

SCAN QR CODE TO BID NOW!



Pickup * SUV * Trailers * Forklift * Portable Building * Fishing Tackle * Pellet Stove * Tools

Auction Public

See our Website For More Pictures & Info!

10:00 A.M. * Saturday, October 21st. * 10:00 A.M.

Location: 1021 Red Hill Dr. Crane Mo. 65633

Directions: From Crane take D hwy. south 1/2 mi. then left on Muskydime Rd. 1/2 mi. then left on Red Hill Rd. 3/4 mi. to Sale



Pickup - SUV

2014 Chevy Captiva Sport LT, 2wd, Leather, 1 Owner (only 131,xxx);
2004 Chevy Extended Cab, Short Bed 4x4 Pickup, 6.0, Auto, Runs Good (217,xxx mi.);



Forklift - Trailers - Mowers

2001 Caterpillar GP25K, 5000lb. Forklift Gas, Pneumatic Tires, (runs & operates good);
1998 Blue Diamond 20,000 lb. 25ft., 20' + 5ft. Dove Tail Flatbed Equipment Trailer, Pintle Hitch, Good Tires;
2016 Road Boss 18ft., 16ft + 2ft Dovetail Trailer;
Scag Wildcat Zero Turn Mower, 61" Cut, 26hp. Kawasaki, Runs & Mows Good, New Blades & Fresh Oil Change (hours unknown);
Brute 6.25 hp. 22" Push Mower;
12000lb 12v Winch;



Portable Building - Farm

14ft. X 14 ft. X 8ft. Portable Building with Metal Siding;
Harley T6 3pt. PTO Power Box Rake;
8 ft. 3pt. Angle/Tilt Blade;
3 Ton Portable Creep Feeder;
(40)+ Used 6ft. Steel Posts;
105 Gallon L shape Transfer Fuel Tank with 12v. Pump;
(10) 275 gallon IBC totes with metal cages forklift/ tractor stackable;
150 Gallon Poly Stock Tank;
2 Hole Pig Feeder;
Misc. Farm Related not Listed;



Tools

New Sunex 1" Drive Air Impact Gun;
New I. R. 1" Drive Impact Sockets;
(2) Good 1/2" Impact Guns;
New 1 3/8" to 2" Wrench Set;
Lot Misc. Power & Hand Tools;
Hitachi Frame Nailer;
Heavy Extension Cords;
WEN 1800w. Generator;
Shop Smith 4" Jointer;
Hitachi 10" Miter Saw;
Delta Shopmaster Table Saw;
Bench Grinder on Stand;
Heavy Red Seal Bench Vice;

Schumacher Digital Battery Charger;
Black Max 2700 PSI, Power Washer, Honda Motor;
3 Ton Floor Jack;
Craftsman Stainless Shop Vacuum;
Remington Gas Pole Saw (Like New);
Poulan Gas Weedeater;
Step & Extension Ladders;
Rubbermaid Lawn Cart;
Come -A -Longs;
Log Chains;
Lot Good Lawn & Garden Tools;
100 lb. Propane Tank;
Carpet Laying Tools incl. Stretchers & Irons;
Lot Tools & Shop Related not Listed;



Fishing Tackle - Outdoor

Several Nice Reels including Lewys, Garcia, Shimano Curado's, Ambassadeur & More;
Several Nice Rods including Lewys, Loomis, Falcon, Browning, Bass Pro & More;
B&M Crappie Rods;
Lot Crank Baits, Spinnerbaits & More;
Few Good Steel Traps;
Old Hand Made Steel Trap;
Live Trap;
Old Deer Head Mount;
Misc. Hunting & Pocket Knives;

Saddle - Antique - Misc.

- Pellet Stove

R.H. Horton, Circle A, Roping Saddle (Nice);
Few Cast Iron Skillets & Griddles;
Old Barn Lantern;
Old Wood & Iron Pulley;
King Free Standing Pellet Stove (very nice) with Remote;
Lawn Chairs;
Coffee & End Tables;
Wood Rocking Chair;
(2) Dining Table s with Chairs;
Singer Sewing Machine;
Poly Shop Cabinet;
(2) Outdoor Rockers;
Many Items of all kinds not Listed;



Foster Auction & Appraisal Service

www.fosterauctionservice.com
Email: bidnewsold@aol.com



Auctioneer: Larry Foster
Galena, Mo
Phone: (417) 723-8329
Cell: (417) 839-6860



OUTSTANDING RESTAURANT AUCTION

MONDAY, OCT. 23 - 10:00 AM

2 RESTAURANTS MOVED TO 1 LOCATION!

MISSOURI MIKE'S & DELI MIKE'S

1724 E BATTLEFIELD RD
SPRINGFIELD, MO 65804



LOCATION: AT THE CORNER OF GLENSTONE & BATTLEFIELD, IN THE SHOPPING CENTER BEHIND BARNES & NOBLE (RESTAURANT IN BETWEEN HOBBY LOBBY & UPTOWN CHEAPSKATE).

REASON: DUE TO CONCENTRATING ON THE CHESTNUT EXPWY LOCATION AND EXPANDING HIS CATERING BUSINESS, MIKE WILL SELL EQUIPMENT OF THE BATTLEFIELD LOCATION AND THE DELI LOCATION WHICH WAS OPEN JUST 6 MONTHS WITH ALL EQUIPMENT LIKE NEW!

SELLING →



MANITOWOC 1,020 LB CUBE ICE MACHINE, 208-230 VOLT, 1 PH, AIR COOLED, EXCELLENT! TRUE 4' SANDWICH PREP TABLE-COMplete SANDWICH PREP LINE W/HOT & COLD, NICE! ATOSA LATE MODEL 72" REFRIGERATED CHEF'S BASE-MARCHIA CTR MDL DESSERT/SANDWICH/SALAD DISPLAY COOLER, 6 MOS OLD! HATCO GLASS DISPLAY HOT FOOD MERCHANDISER DISPLAY WARMER-WHIRLPOOL 20 CU FT & 2 INSIGNIA 7 CU FT UPRIGHT DEEP FREEZERS, ALL JUST 6 MOS OLD! KITCHEN AID 5 QT MIXER-HOBART 1712 AUTOMATIC MEAT SLICER-COOKSHACK 250 FLOOR MODEL SGL DOOR ELECTRIC SMOKER-ALTO SHAAM & WINSTON CVAP ELEC COOK & HOLD OVENS, LIKE NEW! BLODGETT NAT GAS CONVECTION OVEN-VULCAN SNORKEL NAT GAS 6 BURNER RANGE W/CONVECTION OVEN-2 LATE MODEL 36" NAT GAS GRILLS (FELUX & COOK RITE BRANDS), NICE-CHARBROILERS-3 FLR MDL NAT GAS DEEP FRYERS-TURBO CHEF RAPID COOK VENTLESS OVEN-2 PANINI SANDWICH GRILLS-NAT GAS 3' CHEESE MELTER BROILER-LARKIN 8' EXHAUST HOOD W/EXHAUST FAN & ANSUL DBL BOTTLE FIRE SUPPRESSION SYSTEM-2 STAINLESS 3 COMPARTMENT SINKS-TWO COMP SINK-HAND SINKS-DISHWASHER DRAIN TABLES-SEVERAL HEAVY DUTY STAINLESS STEEL WORKTABLES-PASTRY RACKS-HUGE AMOUNT LIKE NEW COATED & WIRE SHELVING UNITS! RESTAURANT SEATING INCL TABLES, CHAIRS & BOOTHS-SUPER NICE OUTDOOR WONDERS CUSTOM POLY INTERIOR OR PATIO SEATING INCL HI TOP TABLES, BARSTOOLS, DINING TABLES & CHAIRS, JUST 6 MONTHS OLD!! TELEVISION-CUSTOM ART & DECOR ITEMS-OTHER RESTAURANT EQUIPMENT & SMALLWARES TOO NUMEROUS TO LIST!

NOTE: THIS IS ONLY A PARTIAL & VERY SMALL LISTING! VISIT OUR WEBSITE & CLICK ON THE "AUCTIONS" TAB FOR COMPLETE LISTING AND PHOTOS. SURE TO BE SOME ADDITIONS AS RENOVATIONS TO THE CHESTNUT LOCATION CONTINUE. EXCELLENT, LARGE RESTAURANT AUCTION YOU WON'T WANT TO MISS! WE HAVE MOVED ALL EQUIPMENT FROM DELI MIKE'S TO THE MISSOURI MIKE'S LOCATION. ALL EQUIPMENT FROM DELI MIKE'S WAS PURCHASED NEW LESS THAN 6 MONTHS AGO! BOTH LOCATIONS FEATURED A FULL LINE OF QUALITY REFRIGERATION, SUPER COOKING AND PREP ITEMS, SMOKER, COOK & HOLD OVENS, STAINLESS SINKS AND WORKTABLES PLUS A HUGE QUANTITY OF WIRE SHELVING AND SUPPORT ITEMS. EXCELLENT ICE MACHINE, NICE EXHAUST HOOD & MUCH, MUCH MORE TOO NUMEROUS TO LIST! MARK YOUR CALENDAR & MAKE PLANS TO ATTEND THIS EXCEPTIONAL AUCTION!



MARON RESTAURANT EQUIPMENT, LLC & AUCTIONS CO.
 417-327-5619 • WWW.MARONRESTAURANTEQPT.COM
 YOUR RESTAURANT EQUIPMENT AND FOOD SERVICE
 LIQUIDATION SPECIALISTS

130+ Guns * Ammo. * Gold & Silver Coins * (80)+ Pocket Knives * Blazer Jet Boat * Arrowheads

Auction

See our Website
For More Info. &
Pictures!

1:00 P.M. * Sunday, October 22nd * 1:00 P.M. (2023)

Location: 1030 Peaceful Dr., Galena, Mo. (Crane Area)

Directions: From Crane take D hwy. south 1/2 mi. then left on Muskydime Rd. 1/2 mi. then left on Red Hill Rd. 1/2 mi. then left on Peaceful Dr. to Sale

Watch for Signs -- Lunch Available

Rifles

Winchester 1886 Extra Light, 45-70 (modern);
Winchester mod. 94AE Saddle Ring Trapper 100th Anniversary .44 magnum (1994, M.I.B.);
Winchester mod. 94AE .45 L.C. (M.I.B.);
Winchester mod. 94AE .357 (M.I.B.);
Winchester 94 NRA Centennial Musket 30-30 MIB;
Winchester 94 NRA Centennial Rifle 30-30 MIB;
Winchester 94 Canadian Centennial Cooomorative 30-30 (1967, NO BOX)
Winchester 94 Buffalo Bill Commemorative 30-30 (1968, NO BOX);
Winchester 94 Illinois Centennial Commemorative 30-30 (1968, NO BOX);
Browning 1885 High Wall .22-250, Leupold Scope; Savage model 99A .243 w/ Weaver Scope (1978);
Weatherby Mark V Weathermark Bronze Cerakote, 6.5 Weatherby RPM;
Browning A-Bolt III, 7mm Mag. (In Box);
Remington 700 BDL 7mm Magnum;
Remington 700 Classic 30/06;
Remington 700 Classic 338 Win. Mag. (1987);
Remington 700 Classic 300 Weatherby Mag (1989)
Remington 700 Classic 220 Swift (1992);
Remington 700 Classic 8mm Rem. Mag. (1998);
Remington 700 Classic cal. 300 Savage (2003);
Remington 700 ADL Deluxe Carbine 22" .270;
Remington 700 ADL 7mm Magnum;
Remington 700 25-06 Bull Barrel, Synthetic (Mint);
Remington 700 30-06 Synthetic Stock;
Remington 788 .308 Rifle;
(2) Remington 788 .6mm Rifles;
Remington 788 .234 Carbine;
Remington 742 semi-auto 30-06;
Remington 597 Magnum .17HMR,
Laminate Thumbhole Left Hand Stock for the 597;
NEF Sportster .17HMR single shot;
Henry Big Bore Mares Leg .45LC (M.I.B.)
Henry Big Bore H012M .357;
Ruger M77 MKII, .308 Varmint, Heavy Gray Stainless Barrel, Brown Laminate Stock ;
Ruger M77 MKII, .243 Varmint, Heavy Stainless Barrel, Blue Action, Brown Laminate Stock ;
Ruger M77 .25-06, Tang Safety;
Howa model 1500 Hogue, 22-250;
Savage model 12, 6.5 Creedmore w/ Millet 3x9x44 Scope (Like New);
Mossberg Patriot 6.5 Creedmore, Fluted, Camo; Savage model 11 .204 Ruger, synthetic;
BSA 30/06 Bolt Action;
Custom Sporter with Mauser Action & Tang Safety;
DPMS LR-308, .308 w/ Millet 4-16x56 Scope;
Ruger AR-556 5.56 cal.;
GPI SLR-15, Multi-Cal w/ Tacfire Optics;;

.22 Cal.

Browning BL22 .22 Lever Action (M.I.B.);
Iver Johnson Wagonmaster .22 Lever Action;
Winchester mod. 1906 .22 (1912);
Winchester mod. 90 .22WRF (1914);
Winchester mod 62 .22 (1946);
(2) Henry H001Y .22 Youth (M.I.B.);
Remington 552 Speedmaster .22 (very nice);
CZ 455 .22 Magnum, Stainless, Synthetic;

CZ 457 .22 Magnum, Blue, Wood, Bull Barrel;
Remington model 1902 Falling Block .22;
Remington 12-A .22 Pump;
Remington Nylon 66 .22 semi-auto;
Marlin 783, .22 Magnum;
Stevens Little Scout 14 1/2 .22;
Keystone Cricket .22 (M.I.B.);
Ruger 10-22 .22 Sporter;
Ruger 10-22 .22 Stainless, Green Laminate Stock;
Ruger 10-22 .22 Stainless, Black Synthetic Stock;

Shotguns

Browning A5 Light 12, 12ga, Belgium, Vent Rib;
Browning A5 Sweet Sixteen 16ga. Belgium;
Winchester mod 42 .410 smooth Skeet barrel (1936);
Winchester mod 23XTR Pigeon Grade 12ga. Double Barrel, in original fitted Case;
Savage 24S-E 22/410 O/U;
Beretta 686 White Onyx 12ga. O/U, Case & Chokes;
Franchi Raptor 712 12ga Weathercoat Stock M.I.B.;
Stoeger Condor O/U, 12ga. w/ Chokes;
Mossberg Onyx Reserve O/U, 12ga. w/Chokes;
Winchester mod. 50 12ga.(1959);
Berika FEDARM FBS-12 12ga. Bullpup Tactical;
Mossberg 835 12ga. Camo, Screw in Chokes;
Mossberg Maverick 88 12ga. Extended Magazine;
Winchester 1400 12ga. Vent Rib & Win-Chokes;
Winchester 1300 12ga. Vent Rib & Win Chokes;
Coast to Coast Master Mag 20ga. Pump, Vent Rib;
Winchester mod. 37A .410;
Winchester mod 37A Youth 20ga;
Stevens 311 double barrel .410;
Stevens 311 .20ga. 18 1/2" Barrels;
New Haven 283TB .410 Bolt Action;
Stevens single shot .410
FIE single shot .410;

Handguns

Kimber Pro Carry II .45;
Kimber Custom II 1911 .45, Two Tone;
Kimber Custom LW 1911 Shadow Ghost .45;
Kimber Micro 9 Stainless, 9mm;
Browning Hi-Power 9mm (1972);
Browning Buckmark .22 semi-auto;
Colt New Police .32 (1906)
Colt Official Police .38 (1962);
Colt Police Positive Special 32-20 1st issue (1908);
Colt New Frontier .22/.22 Mag 2 cyl. M.I.B. (1974);
Colt Woodsman .22, 2nd series (1949);
(2) Colt MK IV series 70, 1911 competition series, .45, Blue (both Mint in Box);
Colt M1991-A1 MKIV series 80 .45 Blue;
Colt All American 2000, 9mm (1993);
Ruger Blackhawk .44 Mag, Stainless 9 1/2 Barrel;
Ruger Blackhawk .357 (2) cylinders;
Ruger Mark I .22 (1954);
Ruger Mark IV .22 Stainless Target (in box)
Enfield no2 MKII .38S&W;
Masterpiece Arms Defender 9mm semi-auto;
S&W SW9VE .9mm semi-auto;
S&W Airweight .38spl;
S&W mod. 36, 38 spl., 2" barrel;
S&W mod. 10-7, 38 spl., 2" barrel;
S&W mod. 10-8, Stainless, 38 spl., 4" barrel;
S&W mod.15-5, Nickel, 357 Mag. 6" barrel;

Glock mod.42, .380;
Sig Sauer 1911-22, .22 semi-auto;
Beretta mod.98A1, .40 cal;
Tangfoglio EAA Witness .45ACP & .22LR Barrel/Slide;
Springfield Armory 1911-A1 .45;
Springfield Armory XD-S 3.3 .45;
Kahr CW9, 9mm;
Hi-Point C9 9mm;
Intratec Scorpion .22 semi-Auto;
Jennings mod. 48, Nickel .380;
AMT AutoMag II .22 Magnum, Stainless;
Taurus 941, .22 Magnum, Stainless, 8 shot Revolver;
(2) Heritage Rough Rider .22 Revolvers (M.I.B.);

Black Powder

Pietta Lemat Army, Blue .44 cal./20ga. (M.I.B.);
Pietta 1851 Navy U.S. Marshall .44 cal. Stainless, Engraved Mint;
Pietta 1851 Navy U.S. Marshall, .44 cal. Nickel, Engraved Mint;
Pietta 1851 Navy .44 cal. Brass & Blue;
High Standard American Bicentennial 1851 Navy .44 cal. Brass & Blue in Box w/ Buckle;
ASM 1851 Navy .36 cal. engraved Brass & Blue;
Thompson Center Omega Z5 .50cal w/ Nikon Scope;

Jet Boat

2003 Blazer Sport 17x52 Flat Bottom Jet Boat w/ 1999 Yamaha 55 Jet Motor, Trolling Motor & Trailer (Boat Motor & Trailer are like new with very hours);

Gold & Silver Coins

1879 & 1915 \$10.00 US Liberty Head Gold Coins;
1897 & 1905-S \$5.00 US Liberty Head Gold Coins;
1910 \$5.00 US Indian Head Gold Coin;
1903 \$2.50 US Liberty Head Gold Coin;
1926 \$2.50 US Indian Head Gold Coin;
(10) Morgan & Peace Silver Dollars incl. 1881-O, 1896-O, 1899, 1900, 1922, 1923 & 1925;

Knives - Arrowheads

(80) + Good Pocket Knives including, Case, Boker, Remington, Winchester, Camillus, Old Timer, Buck, Puma, Henckles, & More;
Case XX Jim Bowie Anniversary 1790-1990 (MIB);
Buck #119 Stag Handle (MIB);
(1500)+ Arrowheads mounted on 20 vintage display boards, **All found locally**, (will be sold by the board)

Ammo - Reloading - Misc.

Leupold VX-III 6.5 x 20 x50 Scope
Leupold VX-I, 4x12x40 Scope;
Burriss 4X Scope;
Misc. Scopes, Magazines, Holsters & Slings;
1000+ Rds 7.62 x 39 Ammo;
2600+ Rds. 9mm Ammo;
6 Boxes 6.5 Weatherby RPM Ammo;
Misc Ammo incl. .22, 7mm-08, 357 Mag., 40S&W, 32 Short, 20ga., 410, & more;
18 Boxes 20ga. Shotgun Shells;
Misc. Hunting & Pocket Knives;
Lot Misc. Gun, Hunting & Outdoor Items;

Auctioneers Note

Coins, Knives & Arrowheads sell at 1:00,
Guns start at 2:00, Boat Sells at 3:00
There may be a few more guns added by sale!

Foster Auction & Appraisal Service

www.fosterauctionservice.com
Email: bidnowsold@aol.com



Auctioneer: Larry Foster Galena, Mo

Phone: (417) 723-8329
Cell: (417) 839-6860

VISIT WEBSITE FOR PICTURES

REAL ESTATE AUCTION

FRIDAY, OCTOBER 20TH- 10:00 A.M.

Location: Junction of Outer Road & Thomas Road Norwood, MO • **Directions:** From Hwy 60: Take Norwood Exit (Hwy E), turn South across bridge, take outer Road on right to Auction.
 • **WATCH FOR CHADWELL AUCTIONS SIGNS.** • **Payment System:** Cash • Checks (With proper identification) Debit Card • Credit Card (Debit / Credit Card Fee Will Apply)
 • Visit www.chadwell auctions.com

Republic Partners, LLC

7 Very Nice 5.0 m/l acre lots (Lot #1 - #7) of photo below. Will be sold separately and combined as a whole. Terms: 10% down day of Auction, Taxes prorated, closing costs split, balance due at closing. For more info call Shawn: 417-830-0209



AUCTIONEER'S NOTE: This is an Outstanding Real Estate Opportunity, Excellent Building Site. Make plans to Attend. **Thanks, Shawn**

DRIVER'S LICENSE OR PICTURE I.D. REQUIRED • TERMS: CASH OR APPROVED CHECK OR

Chadwell
 Auction Service, LLC
www.chadwellauctions.com

Auctioneer:
SHAWN CHADWELL
 417-830-0209

Ringmen:
 Weston Chadwell ~ 417-349-0727

Clerk:
SHELLY CHADWELL
 Cell: 417-880-8449

Cashiers:
 Marla Chadwell • Emily Shaffer
 Cassie Collins

PROFESSIONAL SALES MANAGEMENT

LUNCH WAGON • APPRAISAL SERVICE • RAIN OR SHINE
 All announcements made day of sale take precedence over any printed matter.
 Not responsible for lost or stolen merchandise. Not responsible for accidents.



ONLINE AUCTION

BID NOW! BIDDING CLOSSES NOVEMBER 6TH



Construction Equipment

- 2015 JCB 531-70 telehandler
- 2014 JCB 531-70 telehandler
- Unused 2021 Kubota U56-5 excavator
- 2020 Cat 279D3 skid steer loader 30+ skid steer attachments
- 2016 Bobcat E20 mini excavator
- 3-2018 JCB 15C-1 mini excavators
- 2020 Volvo L20H wheel loader
- 2019 Doosan DX63-3 excavator
- 2018 Hyundai 25Z mini excavator
- 2016 Snorkel S4726E electric man-lift
- 2017 Snorkel S3219E electric man-lift
- Cat 977H crawler loader
- 3-2018 JCB 8008 CTS mini excavators
- Bobcat 610 skid steer loader
- Case 586C rough terrain forklift
- 3-unused auger for mini excavators

Farm Equipment

- IH 686 diesel tractor
- IH 544 gas tractor
- IH 504 diesel tractor
- 2013 MF 2680 tractor with loader
- 2-JD 2440 tractor with loader
- 2015 JD 2032R tractor w/loader
- JD 6620 Titan II combine
- Vermeer 605L round baler
- JD MX8 8' 3-pt. brush hog
- IH 1460 4x4 combine
- Pipe Hush HD 10' pull type roller
- 1956 IH 300 tractor
- Antique New-Way 4.5 hp hit & miss engine
- MH 30 tractor
- JD 1010 gas tractor
- Ferguson TO-35 tractor
- MM model U tractor
- Antique Aeromotor windmill
- International 986 tractor
- Bush Hog 2615 15' brush hog
- MM M5 gas tractor
- Ag-Tronic 15P1 15kw PTO driven generator
- Ford 2600 gas tractor
- Brush Hogs 5'-15'
- NH 518 manure spreader
- Westendorf WLA2 loader
- NH 3930 tractor
- NI #10 & #7 1-row corn pickers
- JD horse drawn manure spreader
- JD 4010 diesel tractor
- Kubota B7100 4wd tractor
- Killbros 25' header wagon
- 2-Economy hit & miss engines
- JD wagon running gear
- Kubota L175 tractor with belly mower
- IH 1063 6-row corn head
- IH 820 17' grain head
- Ford 4000 diesel tractor
- Grader blades of all sizes
- Ford 2-row 3-pt. corn planter
- JD 10' wheel disc

Choice of Two

- Unused 3-pt. hydraulic bale un-roller
- Hahn S-9000 Big Boy fertilizer spreader
- NH 451 7' 3-pt. sickle mower
- IH 60 13' conser-till disc chisel
- Kinze 4-row 30" no-till planter
- Ford 7412 quick attach loader
- UFT 400 grain cart
- A&L 425 grain cart
- Durabilt V-hay rake
- Kuhn GA 300 GM 3-pt. rotary hay rake
- NH 256 hay rake with dolly wheels
- NH 260TL quick attach loader
- Danuser 3-pt. hydraulic post driver
- Bush Hog 406 3-pt. brush hog
- JD 643 6-row corn head

UTVs, ATVs, Motorcycles

- 2015 Kubota RTV X1140 UTV
- 2013 Polaris Ranger 900XP UTV
- 2013 Yamaha Grizzly 300 4 wheeler
- 2015 Honda Rancher TRX420 4 wheeler
- 2005 Harley Davidson Sportster 883 motorcycle
- 2012 Kawasaki Mule 4010 Trans 4x4 UTV
- 2002 Polaris Magnum 325 4 wheeler
- 3-John Deere 6x4 gators
- 2007 Yamaha Star motorcycle
- 1997 Honda Fourtrax TRX200D 4 wheeler
- E-Z-Go golf cart
- John Deere Gator 4x2 UTV
- 2013 John Deere Gator 825I UTV
- 1985 Suzuki 4 wheeler
- 1995 Honda TRX 300 4 wheeler
- Honda Rancher 350 ES 4 wheeler
- Yamaha 80 4 wheeler

Trucks, Cars, Motorhomes

- 1992 International 4700 dump truck
- 1993 GMC 7500 TopKick dump truck
- 1966 Ford F250 pickup
- 2013 Ford Edge SEL AWD
- 2005 Ford F250 regular cab pickup
- 1977 Ford F350 van truck
- 2000 Safari Zanzibar 37' motorhome
- 2015 Ford F350 ext cab flatbed
- 2012 Ford F350 regular cab flatbed
- 2004 Ford F350 crew cab
- 1987 GMC C70 with mounted crane
- 1988 Cadillac Allante Pininfarina convertible
- 2001 Ford F650 dump truck
- 2004 Jeep Grand Cherokee 4x4
- 2000 GMC 2500 service truck
- 2012 Chevrolet Traverse LT AWD
- 2003 Chevrolet 2500 Suburban

2009 Chrysler Town & Country wheelchair van

- 2012 GMC Acadia SLT
- Lawn & Garden**
- 2023 John Deere Z315E zero turn mower
- Unused DR 30" offset disc for ATV
- Unused DR leaf & lawn Vac
- 10+ chainsaws
- Unused DR Roto-Hog 3' pull type power tiller
- Unused DR walk behind stump grinder
- 2016 Ferris IS 3200Z zero turn mower
- DR walk behind field & brush mower
- Unused Champion 19" rear tine tiller
- Husqvarna YTH1542XP riding mower
- John Deere F525 riding mower
- Husqvarna RZ 461 zero turn mower
- Craftsman T1400 riding mower

Trailers

- 2020 PJ 25' gn flatbed trailer
- 2008 Banens 24' gn stock trailer
- 2023 H&H 16' gn dump trailer
- 1993 Kiefer 16' stock trailer
- 1985 Brooks Brothers 16' dump trailer
- 2007 Stillwater 24' flatbed trailer
- 1999 Calico 12' steel stock trailer
- 2006 Belshe T18 19' flatbed trailer

Shop Equipment & Miscellaneous

- Unused storage containers 7'-40'
- Unused portable hoop shelters
- Unused portable restroom/show-er units
- 25+ unused workbench tool boxes
- Unused 9.5' mobile office pod
- Lincoln Ranger 10,000 welder generator
- 3-Sinclair porcelain advertising signs
- Miller Trailblazer 325 EFI welder generator
- 80+ steel corral panels
- 4-unused 105 gallon poly fuel transfer tanks
- 1,000 gal. fuel tank with pump
- Grizzly G0900 spindle shaper
- Sawstop 3 hp table saw
- Grizzly G0856 8" dovetail jointer
- Unused Lincoln AC225 arc welder
- Walnut, ash, cedar & sycamore lumber
- Stihl TS800 concrete saw
- 40- unused 19.5' x 4' steel continuous fence panels
- Cabelas 30 lb. sausage stuffer
- Cabelas commercial meat grinder
- Grizzly G0513K2 handsaw
- Grizzly G1021Z planer
- Grizzly G1035 shaper
- Grizzly G1026 1HD shaper
- Grizzly G0611X dovetail machine

More items listed at SchneiderAuctioneers.com

ITEM PREVIEW DAYS:
 Bidders will be able to inspect and view items
 Monday-Friday (8am-4pm) and Saturdays
 (8am-noon) while the auction is open for bidding at
 4177 HWY VV, Berger, MO 63014

670 LOTS



Choice of Three

All items sell regardless of price.
 All items start at only \$1.
BID TODAY!

SCHNEIDER
 Auctioneers LLC

573-834-2207 • 573-291-8075

www.SchneiderAuctioneers.com

BUILDING MATERIAL AUCTION



SATURDAY, OCT 28TH • 9:30 AM

BAXTER SPRINGS, KS

**2404 Cleveland • Baxter Springs, KS • Corner of 24th & Cleveland, 3 blocks E of 69A on 24th St
SALE HELD INSIDE REGARDLESS OF WEATHER**

IMPORTANT NOTICE: DUE TO ROAD CONSTRUCTION THERE IS CURRENTLY A DETOUR YOU MUST FOLLOW IF YOU ARE COMING IN OFF I-44 USING EXIT 1 OR EXIT 4. AT THE US-166 W/US-400 W/KS-26 N JUNCTION, CONTINUE ONTO KS-26 N. AT THE 1ST STOPLIGHT IN GALENA, TURN LEFT ONTO KS-66 W/W 7TH ST/US RT 66. AT THE TRAFFIC CIRCLE (ROUND-A-BOUNT), TAKE THE 3RD EXIT ONTO US-400 E/US-69 ALT S. CONTINUE TO FOLLOW US-69 ALT S INTO BAXTER SPRINGS, TURN LEFT ONTO E 24TH ST (ACROSS FROM CASEY'S). If the detour has been removed prior to the auction date, we will update Auction Zip and Facebook to notify you.

◊ **DIMENSIONAL LUMBER** – watch Auction Zip for additional details **CEDAR** - 5/4x4" Radius Edge ◊ **POSTS – WESTERN CEDAR** – 6x6's ◊ **PINE** – 1x6 T&G Shiplap, **COMPOSITE DECKING** in multiple colors ◊ **OSB SMART SIDE** – 4x8 sheets – used for board and batt or soffit ◊ **RIM BOARD** ◊ **WHITE PINE** – 1x10 and 1x12 ◊ **LVLs** - various sizes ◊ **SHEET GOODS** – 7/16" HIGH PERFORMANCE OSB 4x10 sheets ◊ **VERSETTA STONE** ◊ **CULTURED STONE** - nice selection of colors and styles ◊ **PINE LOG SIDING** – milled from 2x8, various lengths ◊ **JAMES HARDY SIDING** – 6 1/4" wide – A Grade – Warranty; also also 7 1/4" wide ◊ **PREFINISHED FIBER CEMENT SHAKE SIDING** ◊ **SM@ART SHAKES** ◊ **JAMES HARDIE TRIM BOARDS** – 5/4x6" ◊ **PVC TRIM BOARDS** – 5/4" in various widths ◊ **COMPOSITE DECK TILES** - 12x12s ◊ **MINI SPLITS** ◊ **ICE AND WATER SHIELD** ◊ **CLAY ROOF TILES** ◊ **HOUSE WRAP** ◊ **INSULATION** ◊ **TOILETS** ◊ **FAUCETS** - DELTA, MOEN, PFISTER, and **HOME IMPRESSION brands** - Vanity and Kitchen, including pulldown kitchen faucets – NIB – large selection to choose from ◊ **APPLIANCES** - NEW – as well as Shelf Pulls and Scratch and Dent ◊ **WIRE CLOSET SHELVING** ◊ **LIGHTING** - large variety of nice lighting fixtures – including some high end lighting ◊ **WINDOWS** ◊ **KITCHEN CABINETS** – multiple sets of cabinets – option of all wood or carpenter grade in stained or painted finishes, including: Shaker Style in Dark Gray, Light Gray, Espresso and White – all prefinished. Straight and L shaped sets with some sets also including pantry

– some sets also include soft close doors & dovetailed drawers ◊ **VANITIES** - nice selection of vanities including colors matching Kitchen Cabinets – variety of sizes, up to 5'; some including granite tops ◊ **PORCELAIN AND CERAMIC TILE** - over 20,000 sq ft, with great selection of sizes and colors of tile to choose from including ◊ **MOSAIC** - nice selection with new inventory **TRAVERTINE – MARBLE – STONE** - including **SUBWAY TILE** ◊ **WOOD LOOK TILE** - nice selection of styles and colors in various lengths and widths ◊ **HARDWOOD FLOORING** - new snap lock real wood 5 1/2" wide ◊ ◊ **PREFINISHED PLANK WOOD FLOORING** - some hand scraped ◊ **SNAP AND LOCK LAMINATE** - in small lots ◊ **LVT** - great selection, including new inventory, of glue down LVT as well as **RIGID CORE SNAP LOCK** with pad ◊ **INTERIOR DOORS** including **SOLID CORE SANTE FE PINE DOORS** ◊ **TRIM – BASE – CASING – CROWN**: pre-primed -various widths and lengths; as well as **OAK** quarter round, corners, chair rail, cove, base shoe and door stop ◊ **STAIRCASE HANDRAILS** ◊ **ENTRY – PASSAGE – PRIVACY DOOR KNOBS AND LOCKS** ◊ **3CM QUARTZ** Maple White in various sizes – countertops – island panels, with & w/o sink cutouts ◊ **GRANITE countertops** ◊ **KITCHEN SINKS** - in single and double bowl options ◊ **BATHROOM SINKS** very nice variety in multiple styles ◊ **FREESTANDING BATHTUBS** ◊ **CEILING FANS** - nice selection ◊ **PEDESTAL SINKS** ◊ **TOWEL BARS AND RINGS, TOILET PAPER HOLDERS, ROBE HOOKS, TOOTHBRUSH HOLDERS**

MT VERNON AUCTION CENTER

No Buyer's Premium

**COME FOR THE DAY AND SAVE LOTS AND LOTS OF \$. MORE COMING IN DAILY - check sites often
For pictures see Mt. Vernon Auction Co on Auctionzip.com (enter Auctioneer ID#29728) or Facebook**

CELL 870-754-4428 • 870-754-5479 • 870-715-2326 (text only)

All items not picked up day of sale or during one of our posted, scheduled, and announced pick up times following the auction will be forfeited. Thank you!!

All announcements made the day of the auction will supersede previous advertising.

INTEGRITY OUTLET

CONTACTS - CALL OR TEXT MIKE @ 870-754-4428 • TEXT ONLY @ 870-715-5479 or 870-715-2326



All announcements made the day of auction will supersede previous advertising.

PUBLIC AUCTION

DUNNEGAN, MO

AUCTION

As we are down sizing we will sell the following Trucks, Trailers, Tractor, Guns, Tools, Implements and Misc. At the Home located West of Dunnegan, Mo. On A hwy. ¾ mile to E.R. 20 go North ¼ mile to E.R. 377 go West to the Auction on

Sat. Oct. 28, 2023 at 9:00 am

WATCH FOR AUCTION COMPANY SIGNS • LUNCH SERVED

FOR MORE PICTURES GO TO: WWW.BRUCEANDLEANAUCTION.COM



GUNS-AMMO

- Colt 45 Hartford CT Model Revolver Pistol
- Smith & Wesson Model MP-40 Semi-Automatic 40 Cal. Pistol
- Bearman Model BB-G9 Semi-Automatic 9mm Pistol
- Taurus Model G2C Semi-Automatic 9mm Pistol
- Forehand Arms 38 Cal. Revolver Pistol
- Dan Wesson Arms 357 Cal. Revolver Double Action Pistol
- HWM German 357 Revolver Pistol
- Walther PK-380 Semi-Automatic Pistol
- Ruger New Model Single Six 22/22 Mag. Stainless Revolver Pistol w/Ivory Grips
- Ruger New Model Single 6 22/22 Mag Revolver Pistol
- Ruger 8 Wrangler 22 Cal. Revolver Pistol
- H-P Sportsman Double Action 22 Cal. Revolver
- Heritage Rough Rider 22/22 Mag Revolver Pistol
- Model CDM 22 Short Revolver Pistol
- Cobra Model CB380 Stainless 380 Cal. Derringer
- Henry Golden Boy Single Shot NRA Rifle 45-70 Cal. (NEW)
- Henry Golden Boy Model H001 John Wayne Lever Action Big Loop 22 Cal. Rifle (NEW)
- Henry Golden Boy 22 Cal. Lever Action Rifle (NEW)
- Henry Golden Boy 22 Mag. Lever Action Rifle (NEW)
- Henry Golden Boy 22 Cal. Lever Action Rifle
- Remington Fieldmaster Model 572 Pump 22 Cal. Rifle
- Remington Fieldmaster Model 572 Pump 22 Cal. Rifle w/Scope
- Ithaca Model 72 Lever Action 22 Cal. Saddle Gun
- Winchester Model 06 Pump 22 Cal. Rifle
- Remington Model 550-1 22 Cal. Rifle
- Stevens Pump 22 Cal. Rifle
- German SS Military Rifle
- Optima 50 Cal. Black Powder Rifle w/Scope & Poly Stock
- Ruger I Bolt Action 25.06 Rifle w/Leupold Scope
- Remington Model 700 Bolt Action 270 Cal. Rifle (NEW)
- Remington Model 700 Stainless Bolt Action 25.06 Poly Stock Rifle (NEW)
- Ruger Model M77 Mark II Bolt Action 30.06 Rifle w/Leupold (NEW)
- Browning Bolt Action Stainless 300 Mag Rifle w/Leupold Scope
- Savage Model 93 R17 Bolt Action Rifle (NEW)
- Winchester Model 70 Bolt Action 300 Mag w/Scope
- Winchester Pre-64 Lever Action 30-30 Rifle
- CIMMG Incorp. NRA 9mm Semi-Automatic Rifle
- Weatherby Vanguard Youth Bolt Action 7mm-08 Rifle
- Savage Model 93R17 Bolt Action 17 Cal. Rifle w/Scope
- Tradition Youth Single Shot 410 Shotgun w/Rib
- Browning Field Model 22 Invector 3" Pump Shotgun w/Rib
- Remington Model 870 Special Purpose 3 ½" Super

GUNS-AMMO CONT.

- Mag. Camo Shotgun
- Remington Model 870 LW 410ga Pump Shotgun w/Rib 3"
- Remington Model 1100 Blk. Matt. Poly Stock 12 ga Shotgun w/Rib
- Winchester SXP 12 Ga. 3" Pump Shotgun w/Rib
- G-Force Arms 12ga Pump Shotgun 3"
- Brazil Model 251 SS 410ga Shotgun
- Spencer 12ga SS Shotgun
- JP Lower 12ga Double Barrel Hammer Shotgun
- Sporting Arms Co. 30-06 Sporterized Military Rifle
- British Wall Hanger Rifle (no bolt)
- Combination Gun Safe
- 6 Boxes of 25.06 Shells
- 12 Boxes of 45 Long Colt Shells
- 5 Boxes of 357 Mag. Shells
- Misc. Ammo 45-70, 300, 270, 32 cal, 40 cal, 44 Mag.
- Colt NRA Hunting Knife (New)
- Misc. Hunting & Pocket Knives Several New
- 2 Roy Rogers Rubber Lucky Horse Shoes
- Climbing Deer Stand
- Misc. 12 ga Reloaders
- Misc. Fishing Tackle

TRUCKS-TRAILERS

- 1996 Ford F-350 XLT 4X4 Pickup w/Model 378 Dew Eze Bale Bed, Power Stroke Diesel, Standard Trans. PW, PL, 265,000 miles
- 1960 Chevy Truck w/13' Hyd. Dump Bed, 6 cyl. Motor, Standard/2 Speed Trans, Good Floor
- 1984 Coose Solid Top 20' X 6' Gooseneck Stock Trailer W/One Divide Gate, New Floor, New Brakes, New Lights, New Tires
- 1993 WW 24' Flatbed Gooseneck Trailer
- 2 Wheel Pickup Bed Bumper Trailer w/Title
- 20' X 6' 6" Gooseneck Bar Top Stock Trailer one Divide Gate (No Title)
- 7 Bale Bumper Hitch Side Load Big Bale Trailer
- 20' X 6' Bumper Hitch Flatbed Trailer (No Title)

TRACTOR-EQUIPMENT

- Massey Ferguson Model 1135 Cab 125hp Tractor w/MF Model 246 Frontend Loader w/Bucket & Bale Spike 5153 hrs.
- 5 New 12' Grey 6 Bar Cattle Panels
- 3 New 10' Grey 6 Bar Cattle Panels
- 7 Used 10' Red 6 Bar Corral Panels
- New Holland Model 456 Sickle Bar Mower 9'
- New Holland Model 256 Hay Rake 5 Bar
- 6' BMB 3 Pt. Brush Hog
- 7 3 Pt. Blade
- 2 & 3 Bottom 3 Pt. Plow
- 2 Disc. Plows
- 8' Harrow
- 3 Pt. Cultivator

TRACTOR-EQUIPMENT CONT.

- 6' Disk
- Walk Thru. Cattle Sprayer
- 2 Rolls 50' X 6' Tall New Chain Link Fencing
- 1 Roll 50' X 5' Tall New Chain Link Fencing
- Approx. 100 Used Steel Post
- Air Hand Held Post Driver

TOOLS

- Forney Act Torch Set w/Lrg. Bottles & Cart
- Act. Torch Set w/Small Bottles
- Misc. Act Torch Gauges & Parts
- Century 230/140amp Welder
- 110v Wire Welder
- Gen Power II Electric Start Generator
- Coleman 8000 Watt Generator
- Boestkch Pancake Air Compressor
- Avanti Airless Paint Sprayer
- 2 Floor Jacks
- Floor Jack w/Standa
- DeWalt Compound Miter Saw
- 2 Chop Saws
- Troy-Bilt 8hp Pressure Washer
- Several Hand Power Tools
- Ext Cords
- Several Fencing Tools & Diggers
- Wooden & Alum Ladders
- Poulan Chain Saws
- Still FS 38 Weed Eater
- Transit on Stand
- 10' X 18' Retractable Welding Gate Frame/Table
- Log Chains & Boomers
- HD Receiver Hitch w/Sway Bars

COLLECTIBLES-MISC.

- Dazey Glass Butter Churn
- 10 Cent Coke Pop Bottle Machine
- Estedan 6 String Electric Guitar
- Pulsar Electric Slot Machine
- 2 White Porcelain old Cook Stoves
- 2 Wooden Cabinet Radio's
- Flat Back Trunk
- Kerosene Heater
- Quilt Box
- 3pc Wicker Frame Furniture
- Amish made Log Yard Swing
- Folding Gambling Table Top
- Lot of Misc.

AUCTIONEER'S NOTE

This is a Large Auction with a very nice set of New & Used Guns that will sell close to the noon Hour. Auction will start with the Collectibles & Misc. Followed by Tools, there is not a lot of Household Misc. For more info Contact Auction Co.

OWNER: BERRY LORD

TERMS: Everything sells as is, where is. Nothing is to be removed until settled for. Payment of Cash, Check with Proper ID, or Credit Cards. Auction Company or the Owners will not be responsible for loss of items or accidents. Statements made the Day of the Auction take Precedence over Printed Matter.

SALE CONDUCTED BY **BRUCE & Le'AN AUCTION & APPRAISAL, LLC**
THE AUCTION COMPANY THAT APPRECIATES YOUR BUSINESS

For more information and pictures go to our website at www.bruceandleanauction.com

RONNIE BRUCE - Fair Play, MO
417-777-1685 or 417-654-2214
colonbruce@gmail.com

BRANDON BRUCE
Fair Play, MO

BILLY BRUCE - Stockton, MO
417-399-4800
colbbruce@gmail.com

PERSONAL PROPERTY AUCTION 10 a.m. Saturday, Oct. 21

Location: 1585 N. Hwy. 63, at the Texas County Fairgrounds, one mile north of Houston, Mo. 65483. Watch for Darren Scheets auction signs the day of sale.

★ TRACTORS ★ TRAILERS ★ SKIDSTEER ★

John Deere 5300 Tractor w/520 JD loader, 2600 hours • Front bale spike • Pallet forks • Farm King six-foot box blade • 5-foot King Cutter blade • Tractor PTO shaft and draw bar • 2002 Camping Trailer 27' pull type • 16 Foot Flat-Bottom Boat w/trailer • Gooseneck 20 ft. flatbed w/32 inch dovetail • 12 foot Homemade Trailer, no title • Case 1845 Skidsteer •



★ TOOLS ★ MISCELLANEOUS ★



Craftsman 5.5 HP 25-gallon air compressor • Craftsman Roll Around Tool Box • Craftsman grinder • Craftsman router table • DeWalt 20 Volt grease gun • DeWalt heat gun • Craftsman 21-piece wrench set • Milwaukee heavy-duty sawzall • Air impact • Wel-Bilt pallet jack • Iron-ton buffer • Ratchet straps • Sump pump • Carpenter pouches • Lots of misc. tools including Craftsman and Snap On • Electric fencing supplies •

★ GUNS ★ AMMO ★

Ruger 10-22 w/scope • Remington 870 20 ga. • Stevens Model 311 double barrel 410 • Mossberg 183 D 410 with 3 inch choke • J.Stevens single shot 410 • Marlin Model 25 22 WMR • Plains Master Model 865 22 cal. • Stevens Model 77 12 ga. • Remington Model 33 22 cal. • Llama E Special 22 pistol • H & R Sportsman 22 pistol • Smith and Wesson 32 Winchester pistol • S & W 38 Special • Savage B Mag 17 Win Super Mag • Springfield Model 120 A 22 cal. • Iver Johnson 410 single shot • Marlin Model 390 22 cal. • Revelation R310C 20 ga. • Belgium Browning 380 ACP • Winchester Super X pump 12 ga. • Remington Model 740 30-06 • 2-Ruger 22 pistols white frame • Ruger lc9 9mm pistol • Rossi 357 2-inch barrel • Canik 9mm • Tristar 9mm • Canik Tp9 9mm • Walther ccp 9mm • Walther creed 9mm • Magnum reserve 9mm • 2-Tristar t-100 9mm • 2-Canik Tp9 • Desert 9mm • Taurus pt24-7-9mm • Ruger SR9c 9mm • Taurus 24-7 9mm • Glock G42-.380 • Keltec Pf9 9mm • Mossberg 22 rifle w/ green dot scope • Mossberg 243 bolt action w/scope • 270 Single action break down • Harrington & Richards Partner 12 ga. pump • **Misc. ammo including:** 8 MM Mauser • 410 shotgun shells • 30-06 • 13 boxes .38 special 50 count • Four boxes Remington 38 special H.P self defense •

★ SADDLES ★ ERTL TOY TRACTORS ★



4 Saddles including handmade and youth saddles • Misc. tack and horse supplies • More than 50 Ertl Toys - Farmall Tractors, new in box •



★ ★ COINS ★ ★

1889 S Morgan Silver Dollar • 1994 Silver American Eagle One Dollar • 1992, 1994, 1996, 2000, 2014, 2016 Silver American Eagle One Dollar Proof one ounce uncirculated • 1991 United States USA Silver Dollar Proof • 1989 Two Coin Proof Set United Congressional Coins w/COA •

★ ANTIQUE SEWING MACHINES ★

See all photos on www.scheetsauctions.com

Auctioneer's Note: Don't miss out on these good tools, equipment and lifetime collection of Ertl toy tractors. Several of the firearms are new. Thanks, Darren and Jake.

Darren SCHEETS
AUCTIONS
(417) 457-6638 • (417) 926-8575
www.scheetsauctions.net



TERMS OF AUCTION: Cash or check with picture ID. Nothing loaded or removed until paid for. Everything sells as is, where is. Not responsible for accidents, lost or stolen items. Auction day announcements take precedence over all previous advertisements. LUNCH ON GROUNDS.

ESTATE AUCTION

Sunday, October 22nd, 2023 ~ 1:00 PM

LOCATION: 25116 East Whipsaw Rd, Sheldon, MO; **Directions:** From Sheldon Go East On B Hwy Approx 7 Miles To DD Hwy Then Go North On DD Hwy Approx 2 Miles To Whipsaw Rd Sale Site Will Be On Left. GPS Will Get You There (Watch For Signs)

Auction For Bob Heib



Furniture & Appliances

Recliners, Oak End Table, Bookcases, Oak Record Stand, Wing Back Oak Sitting Chair, Oak Ottoman, Oak Shelves, Wooden Entry Bench, Tall Sitting Chair, Kitchen Table & Chairs, 1700's Hand Made Replica Candle Stand, Cherry Handmade Hanging Light, Handmade Wooden Fold Up Tables, Hand Made Wine Rack, & Other Handmade Furniture, Lamps & Floor Lamps, Handmade Sconces, Hand Made Gun Racks, White Couch, Loveseat Sofa Bed, Vinyl Chair, Entertainment Center, Office Chair, Desk, Media Chest Freezer, Refrigerator, Smart TV & Other TV's, Paintings, Pictures & Other Wall Décor, Display Cases, Card Table, Easel, Bushnell Telescope, Other Items Not Listed

Antiques, Collectibles & Households

Portable Working Victrola, Brass Union Pacific Spittoon, Ant 1780 Spice Grinder, 1800's Wooden Sugar Mold, Early 1800's Crock, Kasper Cigar Box, Crocks & Crock Jugs, Wooden Advertising Boxes, Replica Samuiri Sword, Santa On Harley Davidson Motorcycle Toy, Huff Women's Bicycle, Colored Pyrex Bowl, Copper Canister Set, Griddle & Other Sm Kitchen Appliances, Glass Pyrex Measuring Cups & Bakeware, Cast Iron Pcs, Kitchen Aide Mixer, Pots, Pans, Hand Made Renaissance Pottery Pcs, Brass Bowl & Other Brass Pcs, Oil Lamps, Canning Jars, Books, DVD's, Several Other Items Not Listed

Model Trains & Reenactment Items

Lg Lot Of Train Engines, Approx 100+ Train Cars, Lg Lot Of Train Track Building & Scenery Pcs, Lg Lot Of Track Pcs, Model Train Hardware & Pcs, Train Wiring, Train Turn Table, Train Track & Model Decals, Train & Lights Voltage Tester, Switches, Tyco Steam Whistle, Train Track Décor Pcs, Indian Flute Handmade By Indian, Handmade Indian Fur Satchel, Indian Blankets, Animal Furs, Wooden Storage Boxes, Wooden Water Barrel, Lanterns, Handmade Wooden Lantern, 10 Ft X 10 Ft Marque Tent W/5 Ft Extension, 12 Ft One Pole White Man Tee Pee, Other Items

Moped, Tools, Refrigerant Items,

Outdoor Items

1978 Vespa Paggio Ciao Moped (Runs), 110 Ld Anvil, Leak Detector Gauge, Refrigerant Scale, Recovery Unit, Freon Tanks, CO2 Nitrogen Bottles, Gauges, Refrigerant Hand Tool, Clamps, Hand Plane, Hand Drawn Draw Knife, Hand Tools, Tile Saw, Pipe Threader, Snap On Tool Cabinet, Ryobi Battery Tool Set, Ryobi Compound Miter Saw, Electric Chainsaw, Craftsman 10 Inch Radial Arm Saw, Wagner Power Painter, Long Handle Tools, Kennedy Toolbox, Dolly, Ladder, Wooden Shop Tables, Electrical Tools, Prim Tools, Gas Cans, Nuts, Bolts & Other Hardware, Building Jigs For Wooden Board Games, Copper Tubing, Lumber, Carpentry & Cabin Building Books, Polaris Snow Plow Blade, Fishing Poles, Ammo Boxes, Misc Motorcycle Items Inc Helmets, Chaps, Boots, Masterbuilt Smoker, Propane Lanterns, Coolers, Camp Stove, Propane Grill, Shepherds Hook, Outdoor Décor, Gas Cans, Mobile Home For Scrap, Other Items



Auctioneers Note: It Is An Honor To Be Conducting This Auction For Mr. Heib. This Will Be An Amazing Auction With Good Furniture, Appliances, Antiques, Collectibles & Households. There Will Be Very Unique Reenactment & Camping Items Along With A Very Large Lot Of Model Trains & Model Train Building Pieces. Please Plan Now To Attend. **Sale Order: Furniture & Appliances Will Sell First Followed By Antiques, Collectibles & Households. At Approx 3:00 PM Will Offer Moped, Model Train & Reenactment Items With Tools & Outdoor Items To Finish Auction. See Ya There!!!**

Terms: Cash or check with proper ID. Now accepting most major credit cards. Nothing removed until settled for. Statements made the day of sale takes precedence over printed material. Everything sold as is where is. Not responsible for accidents. Restroom available. Concessions Provided. Check our website for upcoming auctions and for additional pictures!!



NANCE AUCTION SERVICE

No Matter How BIG or small, We Do Them All!!!



Col. Bill Nance 417-214-0093 In God We Trust Philippians 4:13 Col. Sean Beazley 417-247-6754

ESTATE AUCTION

Tuesday, October 24th, 2023 ~ 10:00 AM
LOCATION: 507 Garfield, Greenfield, MO (Watch For Signs)
Auction For George & Charlene Ulrick



Antique, Modern Furniture & Appliances

Ant Table, Ant Floor Lamp, Ant Oak Highchair/Walker, Oak Stone Top Curio Cabinet, End Table & Round Coffee Table, Oak Desk, Oak Buffet W/ Glass Doors, Oak Rocking Chair, Kitchen Table W/8 Chairs, Sitting Chairs, Bookcases, Pine Chest Of Drawers, Couch, Loveseat, Ottomans W/ Storage, Futons, Stand Up Jewelry Cabinet, Plant Stands, Floor Lamps, Pictures & Wall Décor, Plastic Shelving, TV Trays, TV, Entertainment Center, Office Desk, Filing Cabinet, 7 Cu Ft Deep Freeze, Apt Size Refrigerator, Portable A/C Unit, Other Items Not Listed

Collectibles & Households

Indian Pottery, Knick Knacks, Christmas Items, 1/18th Scale Cars, Handmade Household Items, Quilting & Yarn Items, Handmade Quilt, Quilt Tops, Toaster, Sm Kitchen Appliances, Canning Jars, Canning Items, Kitchen Dish Set, Digital Camera, De Humidifier, Sm Household Electrical Items, Approx 200+ Handmade Wooden Picture & Décor Pcs, Other Items Not Listed

Guns, Riding Mower, Tools & Outdoor Items

Connecticut Valley Arms 50 Cal Bobcat Black Powder Rifle, Monarch 45 Cal Black Powder Pistol, Olympic Style 22 Cal Pellet Gun, Daisy Red

Rider BB Gun, BB Guns & Pistols, Binoculars, Handmade Wood Gun Cabinet, Lee 50 Cal & 45 Cal Bullet Molds, Lead Melter, Ammo Boxes, Black Powder Supplies, BB Target, Replica Samuairi Sword, Knives, 4" Central Vacuum, Work Mate Bench, Router Table & Routers, Craftsman 6 1/8 Inch Jointer/Planer, 40" Wood Lathe & Tool, 6" Surface Grinder, Poulan Chainsaw, 3/4 Inch Drive Socket Set, Saw Blade Sharpener, Compound Miter Saw, 55 Lb Anvil, Skill Saw, Other Electric Tools, Router Bits, Wood Workbench, Stand W/Rollers, Wood Clamps, C-Clamps, Concrete Tools, Hand Plane, Hand Tools, Vise, Ladders, Saw Horses, T-Posts, Chain Link Fence, Electric Fence Posts, Truck Loading Ramps, Extension Cords, Electric Leaf Blower, Rolls Of Woven Wire, Wheelbarrow, Leather & Leather Working Tools, Picture Frame Clamps, Craftsman 46" Cut Riding Mower W/Approx 108 Hours, Lawn Mower Rear Blade, Lawn Mower Jack, Pull Behind Lawn Mower Dump Trailer, Like New Earthquake 16" Rear Tine Tiller, Patio Chairs, Stock Tanks W/Fish, Water Hose Reel, Outdoor & Garden Décor, Fairy Garden Items, Coolers, BBQ Grill, Steel Wheel, Mineral Buckets, Flower Pots, Outdoor Bench, Metal Patio Tables, Live Trap, Bags Of Cedar Mulch, Other Items Not Listed



Auctioneers Note: It Is An Honor To Be Conducting This Auction For The Ulrick Family. This Will Be A Very Clean Auction With Something For Everyone. There Will Be Good Furniture, Collectibles & Households Along With Guns, Outdoor & Outstanding Woodworking Tools & Handmade Wooden Items. Please Plan Now To Attend. **Sale Order: Antique, Modern Furniture & Appliances Will Sell First Followed By Collectibles & Households. At Approx 1:00 PM Will Sell Guns, Mower, Tiller And Large Tools Items. Small Tools & Outdoor Will Finish Auction. See Ya There!!!**

Terms: Cash or check with proper ID. Now accepting most major credit cards. Nothing removed until settled for. Statements made the day of sale takes precedence over printed material. Everything sold as is where is. Not responsible for accidents. Restroom available. Concessions Provided. Check our website for upcoming auctions and for additional pictures!!



NANCE AUCTION SERVICE

No Matter How BIG or small, We Do Them All!!!



Col. Bill Nance 417-214-0093 In God We Trust Philippians 4:13 Col. Sean Beazley 417-247-6754

Sam **CRAWFORD AUCTION SERVICE** LLC

As we're selling our farm, will sell the following located 5 miles South of Buffalo, MO on Hwy. 65 to Rocksdale Rd., then East 1/2 mile to Alamo Rd., then North 1/4 mile. Watch for auction signs.

SATURDAY, OCTOBER 28TH, 2023 - 10:00 A.M.

HOUSEHOLD - TOOLS - TRUCK - TRAILERS - MISC.



Truck & Trailers
Sell At Noon

'98 Chevy 1/2 Ton, 2x4, 170K
Older 2 Horse Trailer
Single Axle 7x10' Utility Trailer,
Tilts

Household

Grandfather Clock
2 Cedar Benches
Lg. Cedar Coffee Table
Leather Recliner
Leather Livingroom Chair
Couch
Drop Front Secretary
Bookcase
Sofa Table
Small Table
4 Poster Bed, King
Lg. Dresser
Amana Washer, Newer
Kenmore Dryer
Frigidaire Upright Freezer
Heaters, Fans

Electric Fireplace
3-4 Vacuums
Small Dorm Refrigerator
Horse Weathervane
Wood Porch Bench
Asst. Small Kitchen Appliances
Asst. Pots & Pans
Some Dishes
Barbie Tree Ornaments
10-15 Barbie Dolls
Other Dolls
Doll Clothes
Sev. Jim Shore Curios
Crafts Supplies
Trophy Belt Buckles, William
Shatner
Walker
Wall Decor
Pictures, Mirrors
Lamps
Home Safe
Antique Wood Yoke
Wood Windlass
Lg. Windchimes
Weight Machine
2 Office Chairs
Other Misc.

Tools & Misc.

Husqvarna 42" Lawn Tractor, 18.5
HP
2 Lawncarts
Push Trimmer
Older Walk-Behind Mower/Cutter
Aluminum Extension Ladder
Lg. Wheelbarrow
Stihl MS170 Chainsaw
Electric Power Washer
2-3 Flattop Trunks
Lg. Poly Storage Tank
Cordless Trimmer & Blower
4-5 Farm Gates
2 Chainlink Dog Pens
Other Chainlink
2 Poly Dog Cages
Dog Carriers
Dog Bathtub
Sev. Horse Bridles
Misc. Tack
Bridle Hangers
4-5 Wall Mount Hay Racks
Poly Water Buckets
2 Pony Carts, Rough
Gas Cans
Dolly
10 Gal. Milk Can
Other Misc.

SAM **CRAWFORD** LLC
Auction Service



TERMS: Cash or good check. Nothing removed until settled for. Not responsible for accidents. Lunch available. Statements made day of sale take precedence over printed matter. All items sell as is. No warranties given or implied.

417-998-6629
Cross Timbers, Mo.

CrawfordAuctionService.com



Sam
417-328-9137

Chase
417-399-1904

Chance, CAI
417-298-1751

Tom Poynter
Jack Lancaster

LARRY & KAY GEGNER



AUCTION

Jeff & Karen Zelasko will be selling the following personal property on:

Saturday, October 21ST @ 10AM

DIRECTIONS: (12650 Private Dr 7085 • Rolla, MO) From hwy 72 & Bishop Ave. go South on Bishop Ave 1.4mi. to CC, go right on CC for 1.8mi, then go left onto Private Dr 7085 for 600ft to auction on the left... Watch for Sellers Auction signs on sale day...

Trailers & Lift: 2007 16ft Doolittle Enclosed Cargo Trailer
~ 16ft Car Hauling Trailer ~ Genie GS 2023 Scissor Lift

Tools & Machinery: Graco G-Max 7900 Gas Powered Paint Sprayer ~ Gas Powered Auger ~ Power liner 4000 Paint Stripper ~ Dayton 6000wt Generator ~ Big Cat Concrete Mixer ~ 12" Portable Plainer ~ Felker TM-75 Tile Saw ~ 2) JD 3800PSI Pressure Washers ~ DeWalt Compound Miter Saw ~ Porter Cable Wet/Dry Vac & Sander ~ Lg Lot of Extension Ladders including a 40ft Werner ~ Lg Lot of Step Ladders From 4' to 10' ~ Several Walk Boards including 14" x 16ft aluminum & 12"x24' Aluminum ~ Scaffolding ~ Reddy Heater 170T ~ Paint Sprayer ~ Husqvarna 455 Chainsaw ~ 5000lb Lift Rite Pallet Jack ~ Troy Bilt Tiller ~ Delta Frame & Trim Saw ~ Wood Joiner ~ Cap Spray Air Coat ~ Caulk Gun ~ Paint Sprayers ~ 5' Knaack Job Box ~ DeWalt Decking Drill

Misc Items: Large Fans ~ Sprayers ~ Large Lot of Paint Supplies including Cases of Painters Tape, New Brushes, Rollers & Drop Clothes ~ Air Tools ~ Drills ~ Sanders ~ Sawzaws ~ Routers ~ Shop Vac Air Mover ~ Long Handled Tools ~ Schrader Wood Stove ~ 2) 16' Canoes ~ Ext Cords ~ Air Hose ~ Many More Items to numerous too Mention!!!



Auctioneer's Note: Mr. Zelasko was in the painting business for 38 years and only bought the best tools. Plan on attending this well taken care of tool auction.

Sellers Auction Service
"We Were Born Sellers"

Complete Auction Service

www.sellersauctionservice.com

Terms: Cash or Check with proper I.D. Not responsible for accidents or losses. Items will be sold As Is/Where Is with No Guarantees. Nothing to be removed until paid for. Refreshments available. Announcements made on sale day take precedence over any printed materials.



GREGG SELLERS, AUCTIONEER
573-480-4400

ESTATE OF JERRY ALLMON REAL ESTATE & PERSONAL PROPERTY AUCTION

SATURDAY • OCT. 21, 2023 • 10 A.M.

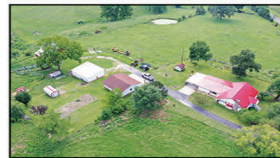
16696 E. STATE HWY. 14, AVA, MO 65608

DIRECTIONS: FROM AVA TAKE EAST HWY. 14 FROM THE SQUARE, APPROXIMATELY 3 MILES TO AUCTION ON LEFT.

— WATCH FOR CAPON AUCTION SIGNS —

CALL AUCTIONEER FOR PRIVATE SHOWING AT 417-830-8623

REAL ESTATE SELLS AT 11 A.M.



BEAUTIFUL 3-BEDROOM, 2-BATH COUNTRY HOME WITH WALKOUT BASEMENT SITTING ON 37 ROLLING ACRES! TONS OF GRASS, HAY FIELDS, (5) PONDS, (2) WELLS, (3) BARN, FRUIT TREES AND SO MUCH MORE!



TRACTOR TRAILER, HAY EQUIPMENT, FOUR-WHEELER:

6610 NEW HOLLAND TRACTOR WITH 7210 JOYSTICK FRONT END LOADER WITH 3-POINT LIFT AND PTO, REALLY A GOOD TRACTOR • 50 MASSEY FERGUSON GAS TRACTOR • 3-POINT LIFT PTO • 2020 STAG 16' BUMPER HITCH TRAILER WITH FOLD UP RAMP • QUICK ATTACH BALE SPIKE • 504 VERMEER ROUND BALER • 256 NEW HOLLAND SIDE DELIVERY HAY RAKE • BAIRDS HAY TROLLEY WITH A KUHN 9' DISC HAY MOWER • 7' SIDEWINDER PULL-TYPE PTO BRUSH HOG • 3-POINT BALE SPIKE • SUZUKI 4-WHEELER • LOWE PONTOON BOAT 88 MODEL WITH TITLE AND TRAILER • YAMAHA 400 4-WHEELER.

HAY, SHOP AND FARM SUPPLIES:

(50) 4x5 STRING-TIED FIRST-CUTTING ROUND BALES AND POSSIBLY HAVING SECOND-CUTTING BALES BY TIME OF THE AUCTION • 9' CATTLE SWEEP WITH (8) 4' SWEEP SECTIONS • (6) 10' PANELS WITH SLIDING ALLEYWAY GATE • (3) ALLEYWAY CONNECTORS • FEED TROUGH • TABLESAW • MERCURY BOAT MOTOR • DEERSTAND • BARN METAL • IRON PORCH TABLE AND CHAIR • SEVERAL HORSE PANELS • 16' LONG ROUND BALE FEEDERS • FREE RANGE CHICKEN COOP ON WHEEL • CATTLE WORKING CHUTE • SEVERAL METAL SHELVES • SHOP LIGHTS • BATTERY CHARGER • SMALL DOG CAGE • ELECTRIC FENCE CHARGER • CALF BOTTLES • SMALL SHOP VISE • ELECTRIC BENCH GRINDER • 3/4" SOCKET SET • HUSQVARNA CHAINSAW • SEVERAL SCREWS, NUTS, BOLTS, ETC., SCREWDRIVERS, WRENCHES • GAS CANS • CRAFTSMAN TOOLBOX ON WHEELS • ELECTRIC DRILLS • SKIL SAWS • JUMPER CABLES • C CLAMPS • FISH COOKER • TURKEY ROASTER • VICTOR TORCH SET WITH BOTH BOTTLES AND CART • COOLER • 5000 WATT POWERBACK GENERATOR • CHICAGO ELECTRIC 150 PSI AIR COMPRESSOR • LINCOLN 225 AMP WELDER • BRAVE WOOD SPLITTER WITH PREDATOR ENGINE 22 TON • JOHN DEERE MOWER FOR PARTS ONLY • TROLLING MOTOR • TROY BUILT WEEDEATER • SHOVEL • ESTATE DEEP FREEZE • TIRES AND WHEELS • PUMP UP SPRAYER • SEVERAL NEW AND USED T-POSTS • POST HOLE DIGGERS • COME-A-LONG • FENCE STRETCHERS • ELECTRIC FENCE POSTS • T-POST DRIVERS • ALUMINUM RAMPS • RED BRAND BARBWIRE • ALUMINUM LADDERS • EXTENSION LADDER.

HOUSEHOLD ITEMS:

SIDE-BY-SIDE KENMORE REFRIGERATOR • KITCHEN TABLE WITH 6 CHAIRS • OAK CHINA HUTCH • ENTERTAINMENT CENTER • OFFICE CHAIR • RECLINER • END TABLES • VACUUM CLEANERS • (2) COUCHES BOTH WITH MATCHING LOVESEATS • RECLINER • VIZIO 42" TV • 6-GUN GUN CABINET WITH 2-STORAGE DRAWERS • FULL-SIZE BEDROOM SET WITH CHEST OF DRAWERS AND CHEST OF DRAWER WITH MIRROR • FULL-SIZE BED WITH 2 MATCHING BEDSIDE TABLES • HAMPER • HUTCH FOR THE BATHROOM • WASHER AND DRYER • COFFEE TABLE • DEHUMIDIFIER • WATER SOFTENER.

LOTS OF MISCELLANEOUS ITEMS TOO NUMEROUS TO MENTION! WILL HOLD SALE • RAIN OR SHINE

**CAPON
REALTY
AUCTION
COMPANY**

**Dusty Capon
Auctioneer
417-830-8623**

SEE MORE AT FACEBOOK
& AUCTIONZIP.COM



TERMS & CONDITIONS: CASH OR GOOD CHECK WITH PROPER I.D. ITEMS SOLD AS IS • WHERE IS. NO ITEMS MOVED UNTIL PAID FOR. ANY QUESTIONS • CALL AUCTIONEER AT 417-830-8623. ANNOUNCEMENTS MADE DAY OF SALE TAKE PRECEDENCE OVER PRINTED MATERIAL.

REAL ESTATE & PERSONAL PROPERTY AUCTION

11715 N. FR 119, BRIGHTON, MO 65617 | ON-SITE
SUNDAY OCTOBER 29TH, 2023 AT 2 P.M.

REAL ESTATE DESCRIPTION:

Brighton is a beautifully situated country community nestled in the Ozarks. The quaint town of Brighton offers all that nature has to offer as well as spacious homes, beautiful parks and shopping opportunities. This is a great place for raising a family or just enjoying the peace and quiet of life in nature. The property offers 1,268 sqft with 3 bedrooms, 1 bathroom, unfinished basement and a new roof. This home also has had it's ducks cleaned professionally this year, along with the septic service cleaned – this house is move-in ready!

LEGAL: SE COR NW1/4 SE1/4

TAXES: \$889.78

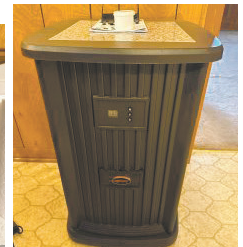
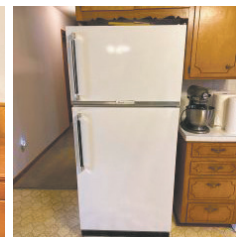
TERMS: 10% DOWN DAY OF AUCTION WITH BALANCE DUE AT CLOSING. POSSESSION AT CLOSING WITH CLOSING IN 45 DAYS OR LESS FROM AUCTION DATE.

Open Viewing: October 22nd 2P.M.-4 P.M.



INVENTORY LIST:

- | | | | |
|--|---|---|--|
| Air care humidifier | Metal two door cabinet | condition | Vintage Western Flyer bicycle |
| Vintage toys | Rocking recliner | Wooden Picture stand | Wooden Coca-Cola crate with various old bottles |
| Microwave | Lot of Decoration flowers | Samsung TV | Wooden chest |
| Wooden Filing cabinet | Floor lamp | Vintage pipe stands | Various boxes with old Christmas items, pots |
| Rolling wooden cart | Pink lamp with flowers | Entertainment Center | Matching bedroom dresser/ mirror and night stand |
| Kitchen Table | Air pig | Enamel top table with pull outs on both sides | Decor Rugs |
| Whirlpool no frost refrigerator | Side table | Dremel scroll saw | New in the box dish sets, the tea rose collection |
| Grass hog electric weedeater | 2 matching end tables | Like new Frigidaire dehumidifier | Queen bed wooden Matching dresser set / mirror and night stand |
| Kitchen aid mixer | Like new walker | Wooden Full Bed | Maytag heavy-duty to speed super capacity nine |
| Radio super vintage wagon | Two matching clear glass lamps | Matching dressers / with mirror | Whirl pool three cycle dryer |
| Corning ware | New in the box Brass spit tune | Vintage lamps, vintage heat lamp, lots of | Vintage luggage |
| Vintage rope in double Pulley set | Floral couch | Wooden bench | AND MORE!!! |
| Kitchen plates, cups, mixing bowls, plans, etc | New in the Box 1963 Coleman lantern | Shark vacuum | |
| Craftsman toolbox | Grey rocking recliner | Oil lamp | |
| 10 gallon shop back | Sewing basket | Cast iron iron | |
| Kitchen machines | Bun coffee maker | Vintage metal lawn chairs | |
| Electric heater new in the box | Rocking chair with foot rest | Small bookshelf | |
| Vintage wooden keg | Swivel chair | Heater | |
| Clock | Vintage see years tricycle in excellent | Christmas | |
| Wall decorations | | | |



FOR MORE INFORMATION GO TO WWW.EASTERLYAUCTIONCO.COM OR CALL EASTERLY'S AT 417-833-9494



Mike Easterly Auctioneer • 417-833-9494

Not Responsible for accidents or theft. For more information call: Easterly Auction Company, Springfield, MO. Auction Terms: Visa, Mastercard, Cash, Cashier's check or checks with proper I.D. Announcements day of sale take precedence over printed material. Auction Notes: Although information is obtained from sources deemed reliable, auctioneer makes no warranty or guarantee expressed or implied. Buyers should themselves take the opportunity to make their own inspection prior to sale.

www.EasterlyAuction.com • auctionzip.com ID#14770



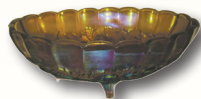
R&R AUCTION SERVICE

ARTHUR AND FAYE HOWE ESTATE AUCTION SATURDAY, OCTOBER 21ST AT 10AM

502 South Pear Street. Buffalo, MO



1987 Fiberglass 17' fishing boat with 115 Mercury motor and trailer, Craftsman and Snap On toolboxes, lots of mechanics tools, Speedaire compressor, bench grinder on stand, Xtreme contractor series generator, shop cabinets, lawn ornaments, planters, lots of holiday decor, gas range, washer and dryer, Whirlpool side by side refrigerator with ice and water in door, lots of old dishes, including but not limited to carnival, green depression, 4 nesting bowl set, vintage glass sets and more, old toys, antique baby stroller, wheel barrow, lots of fishing gear, USA made bench vise, jack stands, old train set (rough), cordless Ryobi tool set, Snapper riding lawn mower, John Deere 425 riding mower, truck tool box, aluminum loading ramps, large metal clothes racks, chimney sweep, Creeper, small floor jack, ash bucket, galvanized watering can, old metal gas cans, fluid cans, Cen-tech 3 in 1 portable power pack, metal milk crate, glass milk bottles, misc. old car parts, motorcycle helmet, push mower, hand saws, aluminum extension ladder, park bench, water skis, 500 gallon propane tank recently filled, milk can, recliners, glider, Vizio flat screen tv, beds, dressers, misc. other furniture, sofa, and a large amount of misc. sure to be found during set up



Please keep watch on our website for added photos.

TERMS: Cash, check, or credit card with proper I.D. nothing removed until settled for A 3% fee will be added to credit card purchases. Not responsible for errors in listing. Any announcement made sale day will take precedence over any printed matter.

GENERAL AUCTIONEERS

Auction & Appraisals

AUCTION SERVICE

For more information contact Professional Auctioneer Russ Weeks at 417-576-7357 or check out www.rrauctionservice.com

Serving this area's auction needs since 1997 with honesty and professionalism.
www.rrauctionservice.com
(417) 576-7357 or (417) 345-4140



ESTATE AUCTION

SAT., OCT. 21, 2023 • 10:00 A.M.
1463 CO. RD. 738, BELLE, MO 65013
DAVID L. PRACHT ESTATE

TRACTOR, TRAILER & EQUIPMENT

New Holland Boomer 40 tractor 4WD 3PT Rear Hyd, Sells w/ Boomer 250 TL loader, good condition; 16 ft Bumper Hitch trailer w/ ramps; 3 Pt seeder; 3 Pt disk; 3 pt Brush Hog 6 ft.; 3 pt. Tiller 6 ft.

4 WHEELER, ZERO TURN MOWER, LAWN & GARDEN

Bombardier Rotax 650 4 x 4; Exmark Zero Turn Mower Lazer 52 in. Kohler, 794 hours; Cyclone rake Classic Bac 6HP; Craftsman 5HP rear tyne tiller; Yard Machine mini tiller; Jonsred Walk Behind line trimmer; Stihl BR 550 Back Pack Blower; Echo line trimmer; Husqvarna line trimmer; Stihl FS55 line trimmer; Garden planter; Garden tools; Stihl MS250 chainsaw; Stihl 170 chainsaw; Husqvarna 435 chainsaw; Echo chainsaw; Fimco ATV sprayer; Dog pen.

TOOLS

2 pc. Toolbox; Sockets; Wrenches; Hand tools; Small plumbers torch set; Vacuum pumps; Pancake air compressor; 48 in pipe wrench; Pipe vice; Dewalt Sawzall; Dewalt 200 psi air compressor; Yellow Jacket reclaimr YHLTE; Fish tape; Shop vac; Reddy heater 55; Floor jack; Delta chop saw; Shop light; Ladders; Dewalt circular saw; Dewalt 24 Volt hammer drill; Paslode nailers; Extension cords; AC gauges; Hydraulic jacks; Wheelbarrow; Numerous power tools; Lots of quality hand tools not listed.

GUNS & FISHING EQUIPMENT

Baikal 20 ga; Henry 22 LR; 2 Remington 572 Field Master .22; Smith & Wesson 1000 12 ga; Remington 870 Magnum 12 ga; Remington 1100 12 ga; Remington Wing Master 870 12 ga; Hatfield 12 ga; Hatfield 20 ga; Mossberg Mod 59 20 ga; Traditions Muzzle Loader 55 ca; Camo Air Rifle; Misc. Hunting Supplies; Fishing Rods & Reels; Fishing Tackle.

HOUSEHOLD

Refrigerator; Eagle figurines; 17 folding chairs; Dishes; Pots & pans; Bar stools; Coolers; Stock pot; High chair; Christmas decorations; Lamps; Roaster oven; Misc. household.

REAL ESTATE - 12:00 PM NOON

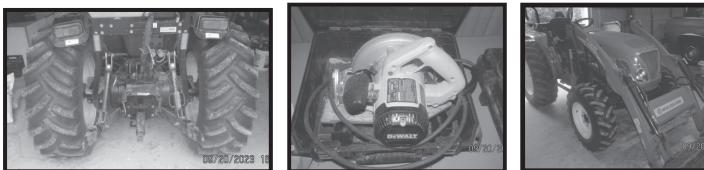


3 Bedroom home on 67+ acres, 2 Bath, Full Basement, 2 car attached garage

Large Lake, Very scenic, 30 x 50 Shop w/ 3 Garage Doors.

Property borders Belle City Limits on West Side of Property.

See www.moffatauction.com for Terms & Details.



Note: This is a nice estate auction with lots of good tools to be sold. Please come join us. Thanks Rick **Terms:** Cash or good check with proper identification. All sales are final. Everything sells as is, where is. Proper identification is necessary to obtain a buyer's number. Announcements day of sale supersede all printed material. Food on grounds.

RICHARD MOFFAT AUCTION SERVICE



573-761-4293
 Jefferson City, MO

Auctioneers-
 Richard Moffat & BJ Moffat
www.moffatauction.com

573-690-2823
 Linn, MO

ESTATE AUCTION

SATURDAY, OCT. 21 @ 9:30 A.M. & SUNDAY, OCT. 22 @ 11:00 A.M.

LOCATION: Salem, MO - 303 Franklin Street at Coopers. Watch for signs.

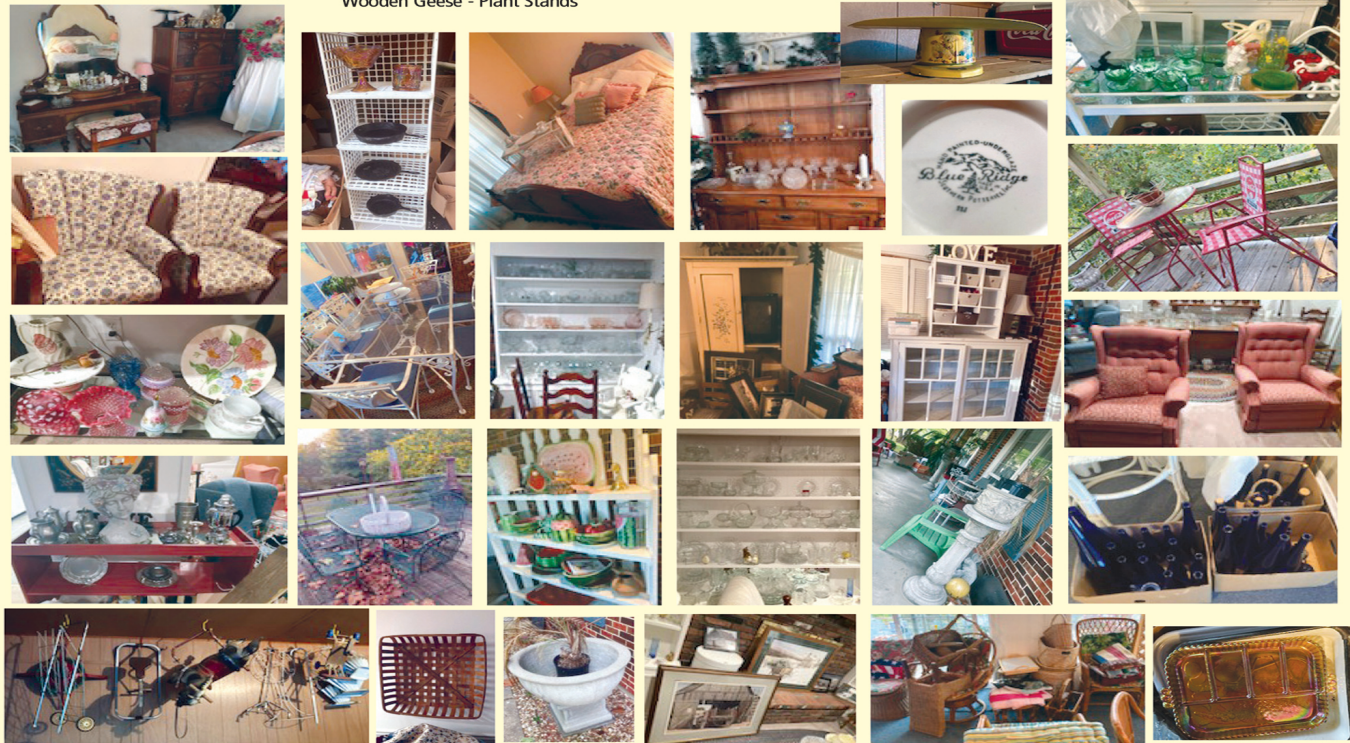
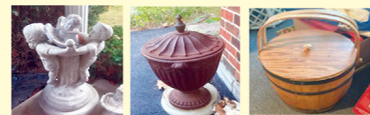
HOUSEHOLD • COLLECTIBLES • OUTDOOR • MISC. ITEMS

Old Kitchen Hutch
 Bird Cage on Stand - Record Cabinet
 Hall Tables - Granite Stoneware
 Small Desk & Chair
 Lots Clear Glassware
 Round Table & Chairs
 Brick Oven Stoneware, 12 pc. Set
 Hen on Nests - Pig Planters
 Royal Granite, John Madock & Sons
 Blue Ridge Hand Painted Under Glaze
 Dishes
 Lead Crystal - Glass Baskets
 Nice Harvest Table & Chairs
 Wall Decor - Cake Plates
 Several Nice Pieces of Green Depression
 Glass
 Pewter Pieces - Corner Shelf
 Table Lamps - Loveseat - Couch
 Wing Back Chairs - End Tables
 Tobacco Basket - Kids Rocker - Vases

Recliners - Rooster Lamp - Baskets
 Fenton Glassware - Nice Barn Pictures
 Rugs - Small Drop Leaf Tables
 Several Pieces of Milk Glass
 Christmas Decor - Armoire
 2, Big Local Hand Made Corner Cabinets,
 Made by Steve Amrheir
 Lots of Silver Pieces - China Hutch
 Hobnail Glass - Wicker Bed Set
 Iron Bed Frame, Full Bed
 Lot Easter Decor - Head Vases
 Very Nice Antique Full Bed, Chest of
 drawers
 Nice Make Up Table & Chair
 Nice Queen Bed, 5 pc. Set
 Quilts - Luggage - Nice Desk & Chair
 Blue Bottles - Sewing Basket
 Iron Glass Top Table, 6 Chairs
 Decorative Bird Houses
 Vizio Flat Screen TV - Mantel
 Wooden Geese - Plant Stands

Glass Decor Cabinet
 Lance Cookie Jar - Watermelon Decor
 Metal Tea Carts - Shelves
 4th of July Decor - Wicker Chairs
 Highback Sitting Chairs
 Round Wicker Table Set - Patio Chairs
 Outdoor Chimney
 Patio Set w/Spring Chairs
 Outdoor Storage Boxes
 Lounge Chairs
 Several Hi-Top Tables w/2 Chairs
 Wind Chimes - Iron Brackets
 Galvanized Tubs - Plant Stands
 Watering Cans - Shepherd Hooks
 Old Kid Toys - Small Metal Fan
 Metal Shelving - Wine Rack
 Ice Cream Maker - Picnic Baskets
 White & Gray Granite
 Picture Frames - Bakeware
 Sewing Material - Oriental Glass

Aluminum Step Ladder
 Cast Iron Skillets
 Concrete Outdoor Decor
 Plastic Lawn Chairs
AUCTIONEER'S NOTE: these sales are full of fine glassware collected for years, Super clean sale. Both days will have a mix of items on the sale bill. Saturday we will sell all of the outside furniture and yard items. Wicker will all be sold on Sunday. Any questions please call. **See you there! - Tom**



ESTATE OF CHARLES & SHIRLEY WHITMIRE

ANNOUNCEMENTS AT AUCTION TAKE PRECEDENCE OVER PRINTED MATTER

WULFF AUCTION

TERMS: CASH OR APPROVED CHECK - I.D. REQUIRED
 NOTHING REMOVED UNTIL SETTLED FOR

Licensed Appraisals

2334 Highway K, Salem, MO 65560

AUCTIONEERS:

Col. Tom Wulff • John Wisdom

Cell: 573-247-3884 • Cell: 573-247-9563 • Home: 573-729-8476

Clerk: Tracy Strange

Cashier: Nancy Inman

See Wulff Auctions at www.thesalemnewsonline.com/auctions



RAIN OR SHINE OWNER & AUCTION PERSONNEL NOT RESPONSIBLE FOR ACCIDENTS AT SALE SITE

RETIREMENT AUCTION

Thursday, October 26, beginning at 9:00 A.M.

Located at 1173 SE. Hwy WW, Windsor, MO 65360. From Windsor take Hwy WW North 2 1/4 miles to auction site on the right.

Watch for auction today signs.

MACHINERY & FARM MISC.

John Deere 12 hole drill with grass seed attach
 No. 9 Mc 6ft mowers, several No. 9s for parts or rebuilt
 1- I & J 8ft ground drive mower
 2- Int. corn binder
 John Deere 8ft grain binder
 Gehl C4 silage cutter, 1 for parts
 2- I & J 2 row cultivator with rolling fenders
 2- Older 2 row cultivator w/ liquid fertilizer
 1- 22in McDeering thrashing machine seed recleaner
 McDeering steel wheel wagon gear — 1- Rosenthal shredder
 2- Int. 2 row corn planter pull type
 1- No. 35 Int. hay rake — 8' tandem disc w/ clutch
 2- New Holland 56 hay rake
 1- New Holland 55 hay rake
 1- 8ft tandem disk — 1- 6ft tandem disk
 Field sprayer with 150 gal poly tank
 1- 40ft Kewanee elevator with drag
 1- 48ft Kewanee elevator with drag — 2 speed jacks for elevator
 2- New Idea 10A manure spreader
 1- New Idea manure spreader for rebuilt
 1- John Deere E manure spreader
 1- Spring tooth harrow — 1- Spike harrow 4 section
 1- John Deere 336 square baler with 20 Hp Honda
 1- New Holland 68 with Kohler engine
 Oliver 2-12 plows pull type 1-2-14 Oliver
 Perkins 6 cyl 150Hp motor w/ clutch, 540 pto & pulley access
 on New Holland gear — 1,000# platform scales
 1- John Deere sulky — Pioneer forecart
 Farmhand grinder mixer as is
 60 Hp 4 cyl Deutz power unit on steel running gear
 2 Wheel hand crank round bale stinger shop built
 2- Flat bed wagons with bolster springs
 2- 8ft field cultivators — 5-40' steel trusses
 2- Cultipackers — Livestock trailer
 John Deere No. 7 corn sheller as is
 20' x 6" grain auger on 2 wheel
 2 Wheel fertilizer spreader — Gandy applicator
 4 row 3 point cultivator for parts — Several wagons misc. parts
 1- Hog feeder — 2- Buzz saws as is — Endless flat belt

Owners: Norman and Marvin Yoder

CATTLE SUPPLIES

Feed troughs
 Cattle sweep
 Adjustable cattle alley
 12-Heavy duty corral panels
 Rissler cattle chute
 Log chains
 1- 2 ton chain hoist
 1- 5 ton chain hoist

BUGGIES AND MISC. ITEMS

1- Single top — 1- Two seated top surrey
 Heat exchanger stainless steel
 16 pieces 4' wide 16' long 8" thick Styrofoam for boat dock
 Aluminum boat — Used T posts
 Poly wire and reels
 Complete weaving loom
 Several Honda engines
 Diesel fuel tank 300 gal
 Some steel eveners
 Harness — Cider press
 2- Stainless tanks for water, 1 on wheels
 1- 300 gal sunset working
 1- 300 and 700 gal in working order
 Bee supplies
 2-Honey extractors

HOUSEHOLD

3 burner Perfection oil stove
 Triola wood cookstove w/ water front
 Coleman lanterns — Kerosene water heater
 Stainless steel milk pails and strainers
 2- Gas irons
 Knee hole desk — Bed frames
 6- Wooden chairs
 2- Chest of drawers
 Dresser with mirror
 Rocker — Night stand
 Love seat
 Lots old wooden buggy wheels and steel wagon wheels
 Norman and Marvin Yoder are retiring and will offer the above items of good quality for your consideration at public auction. Finding many more items as setting up. Lunch will be available by the local Amish ladies. Hope to see you at the auction.

Thanks, Larry

Auctioneers
 Larry Martin, Loren Martin
 & Mel Yoder



MARTIN AUCTIONS

660-337-6471

For more auctions go to www.auctionzip.com ID # 47012

Terms: Cash or check with ID. Not responsible for accidents. Statements made day of auction take precedence over printed material




AUCTION! AUCTION! AUCTION!

FALL FARM EQUIPMENT SALE



— NOW TAKING — CONSIGNMENTS



Tractors	Mowers	Dozers
Trailers	Lawn Equipment	Brush Hogs
Trucks	Skid Steers	Grain Bins
Feeders	Fencing	Feed Mixers
Hay Equipment	Backhoes	ATV's
Tools	Fork Lifts	Motor Homes
Machinery	New/Used Equip.	RV's
Truck Beds	New Trailers	Box Trucks
Stock Trailers	Barn Metal	Pipe
Cargo Trailers	 DW WALKER & ASSOCIATES <small>HELPING BRING LIFE TOGETHER FOR YOU</small>	
Heavy Equipment		



ESTATES

•

FARMS

•

RANCHES

•

HOMES

BUY

•

SELL

•

TRADE

COMMISSION:

- \$100 - \$500⁰⁰ - 15%
- \$501 - \$1,000 - 12%
- \$1,001 - \$5,000 - 6%
- \$5,001 - Up - 5%

SATURDAY, OCTOBER 21ST • 10AM

5125 W. 7th St., • Joplin, MO

DW Walker
417-607-6300
Realtor/Appraiser
Auctioneer

DW@DWWalkerAssociates.com

 **United Country**
Real Estate

Lake Area Properties & Auction, LLC

Serving Missouri From
Jefferson City To Joplin &
Surrounding Areas

www.LakeAreaSold.com



 1083 W US Hwy 54
Camdenton, MO 65020
Ph(573) 346-2822

Auctioneer: D.W. Walker
(417) 332-7521

WEEKLY AUCTIONS HELD EVERY TUESDAY • 5PM

**We can haul your equipment to
our location if needed**

**Follow us on Facebook:
Integrity Appraisal Experts Auction & Realty Group**

DW Walker
417-332-7521
5125 W 7th St
Joplin MO 64801

Integrity Appraisal
Experts
Auction & Realty Group
DW@DWWalkerAssociates.com


417-607-6300



FALL EQUIPMENT & OUTDOOR CONSIGNMENT

Auction

SATURDAY OCTOBER 28, 2023 AT 10 AM

REAL ESTATE SELLS AT 12 NOON SHARP

Location: 304 Springfield Rd, Ava, MO 65608

DIRECTIONS: ACROSS FROM TOWN & COUNTRY SUPERMARKET IN AVA, MO

TRACTORS, VEHICLES, FARM IMPLEMENTS, TRAILERS, TOOLS, FIREARMS



STILL ACCEPTING QUALITY CONSIGNMENTS



FOR MORE PHOTOS, VISIT OUR WEBSITE CHEYNEYAUCTIONS.COM OR FIND US ON FACEBOOK!

Cheyney Auction Company, LLC

Real Estate • Livestock • Farm & Ranch • Equipment • Household • Antiques

Travis Cheyney, Auctioneer • Buddy Boyd, Ringman

417-543-8751 • cheyneyauctions.com

ANNOUNCEMENTS Made Day Of Sale By Auctioneer Take Precedence over any Printed Matter. Not Responsible for Accidents. All items sold as is, where is, with no guarantee. Terms of sale: Cash, credit/debit card, or check with valid ID. Real estate terms: 10% down day of auction

RESTORED TRACTOR & PERSONAL PROPERTY AUCTION

1037 WILD ROSE LOOP STRAFFORD, MO 65757 | ON-SITE & ONLINE!
SATURDAY OCTOBER 28TH, 2023 AT 10 A.M.

THERE ARE TRACTOR MANUALS FOR MOST OF THE TRACTORS

INVENTORY LIST:

- | | | | |
|--|---|----------------------------------|--|
| All electric club car 2 wheel drive, made in USA | New tires New seat Belt pulley | Little yard tractor plow | 24 foot extension ladder |
| International McCormick Cub | Super H McCormick Farmall, No rebuild New tires Belt pulley New seat | Bushel baskets | Pipe wrenches |
| F-20 McCormick Deering Farmall, Rebuilt out of frame ,New tires | H McCormick Farmall, No rebuild New tires New seat Belt pulley | T post | Sniper tripod stand still in box |
| Model A John Deere Not rebuilt Has the long good | M McCormick Farmall, Rebuild in frame New tires New seat Belt pulley Hydraulics on back | Old plumbers box | Metal implement wheels |
| Cultivar-Vision A McCormick Farmall, Out of frame rebuild New clutch Belt pulley New tires Tool box | Super c McCormick Farmall, In frame rebuild Hydraulics on back New seat Used to farm with | Old water can | Old international Harvester refrigerator |
| Multi-Vision B McCormick Farmall, New tires Tricycle front end Out of frame rebuild New seat Belt pulley | M McCormick Farmall, No rebuild New tires New seat Belt pulley | Vintage tractor parts and tires | Canopy |
| H McCormick Farmall, Tricycle front end New tires New seat Belt pulley No rebuild | Coleman PowerMate 60 gallon air compressor | Snoopy lunchbox | Miter Delta saw |
| H McCormick Farmall, In out of frame re build Belt pulley New seat | Rolls of Bobwire | Vintage motor oil cans | Hitachi compound miter saw |
| H McCormick farmall, Out of frame rebuild New tires New seat Belt pulley | Old license plates | Wash tubs | Metal tractor seat |
| C McCormick Farmall, In frame rebuild | Old gas cans | Cloverleaf milk jugs | Miscellaneous vintage tractor parts |
| | Pepsi-Cola crate | Old screen doors | Cream can |
| | Old tacklebox with vintage lures | Extension cords | Metal patio chair |
| | Old large bucket | Yard Seed spreader | Folding table |
| | Old Tonka truck | Old plow | Wood toy farmall tractors |
| | Golden 500 wagon | slip buck scraper | Wood toy John Deere tractor |
| | Contico truck box | Old Implement wheels and axles | Farmall 560 scale tractor Dryersville Iowa |
| | Walnut rake | Three point blade | Trailer |
| | | Old plow | Farmall wall clock |
| | | 16 foot hay Wagon | Tractor Photo Books |
| | | Pull behind disc | |
| | | Small pull behind disk | |
| | | Vintage John Deere mower | |
| | | Farmall thermometer | |
| | | metal tractor signs | |
| | | Snapper lawnmower Rebuilt engine | |
| | | Tool cabinet | |
| | | Chain link panels | |
| | | Skeet thrower | |
| | | Old log roller | |



AND MORE!!!

FOR MORE INFORMATION GO TO WWW.EASTERLYAUCTIONCO.COM OR CALL EASTERLY'S AT 417-833-9494



Mike Easterly Auctioneer • 417-833-9494

Not Responsible for accidents or theft. For more information call: Easterly Auction Company, Springfield, MO. Auction Terms: Visa, Mastercard, Cash, Cashier's check or checks with proper I.D. Announcements day of sale take precedence over printed material. Auction Notes: Although information is obtained from sources deemed reliable, auctioneer makes no warranty or guarantee expressed or implied. Buyers should themselves take the opportunity to make their own inspection prior to sale.

www.EasterlyAuction.com • auctionzip.com ID#14770



BUFFALO LIVESTOCK MARKET LLC



276 Hwy 32 W. ,Buffalo, MO

October 14th, 2023
Receipts: 1018

REPRESENTATIVE STEERS

300-400 @ 260.00 to 315.00
 400-500 @ 270.00 to 312.00
 500-600 @ 235.00 to 261.00
 600-700 @ 230.00 to 266.00
 700-800 @ 220.00 to 246.00
 800-900 @ 205.00 to 237.00

REPRESENTATIVE HEIFERS

300-400 @ 230.00 to 289.00
 400-500 @ 220.00 to 277.00
 500-600 @ 200.00 to 242.00
 600-700 @ 180.00 to 210.00
 700-800 @ 165.00 to 229.00
 800-900 @ 155.00 to 200.00

FEEDER BULLS

300-400 @ 240.00 to 282.00
 400-500 @ 220.00 to 265.00
 500-600 @ 219.00 to 255.00
 600-700 @ 200.00 to 231.00
 700-800 @ 145.00 to 210.00
 800-900 @ 125.00 to 154.00

HOL/HOLX STR

400-700 @ 125.00 to 155.00

STOCKS COWS

Bred Cows 1300.00 to 2100.00

SLAUGHTER BULLS

High Yield 120.00 to 132.00
 Low Yield 90.00 to 115.00

SLAUGHTER COWS

Fleshy 95.00 to 112.00
 Med Flesh 94.00 to 105.00
 Light Flesh 80.00 to 102.00

CRIPPLE/CANNERS

65 Down

MON-WED MARKET REPORT

Listen to KJEL 103.7FM • Lebanon or KYOO 99FM • Bolivar

VIEW OUR SALES AT CATTLEUSA.COM

CALL FOR TRUCKING OR ON-FARM VISIT

Lyle Caselman • Owner-Manager
 417-345-7876 • mobile 417-533-2944
Leon Caselman • Owner
 417-345-4514 • mobile • 417-588-6185

BLACK METAL TUBULAR BRACKET: Scrolling and a stainless bracket. \$10. Call for pictures. 636-239-2695 or 314-560-5700. Washington.

RUBBER & LEATHER BOOTS AND 5-Buckle OVER SHOES: Men's 11, Women's 7, some insulated. \$15-\$40 obo. 636-239-2695. Washington.

ANTIQU 4 HP ENGINE: Built by Continental Motors Corporation. \$150 OBO. 573-308-5884. Rolla.

'85 FORD PICKUP PARTS: Passenger door with window glass & mirror \$30. Also, Tailgate for '85 Ford pickup \$25. 573-308-5884. Rolla.

INTERNATIONAL PICKUP TRANSFER GEARBOX: \$150. 573-308-5884. Rolla.

NEW JELD WEN 5' LEFT HAND SLIDING GLASS DOOR WITH SUNSTABLE INTERIOR BLINDS: Clear tempered glass, Desert Sand trim/hardware. Retail \$2655 Sell \$900. 417-693-0389. Conway.

FOR SALE: 2 Dayco motorcycle covers for Harley or other big bikes. \$50 each. 417-260-0941. Raymondville.

MAC'S TIEDOWN STRAPS: Like New. \$80. 417-260-0941. Raymondville.

3 ARMY CANTEENS: Mess kit, belt & duffel bag. \$60 for all. 417-260-0941. Raymondville.

PITTSBURGH HEAVY DUTY 3-TON FLOOR JACK: Never used. \$195. 417-260-0941. Raymondville.

RUBBERMAID 10 CUBIC FOOT PULL BEHIND DUMP CART: \$200. 417-718-5347. Conway.

GUNSMITHING-Older Rifles, Shotguns, Handguns, all 22LRs. Any make, any model, estate appraisals. Camdenton. 573-363-5801.

EXCAVATOR MOUNTED FORESTRY MULCHING FOR UNDERBRUSH CLEARING: Call Nathan @ 417-259-2785.

DARDEN PROFESSIONAL TIMBER HARVESTING, BUYING STANDING TIMBER: Great prices, improve wildlife habitat and improve forest health. State Certified & Fully Insured! 573-247-4808. Salem.

2017 KANSAS CITY CHIEFS RED FRIDAY FLAG: Mahomes rookie year. \$40. Text for pics. 573-854-8132. Houston.

FOR SALE: Speed controlled pet nail grinder. \$15. 417-718-2529. Lebanon.

FOR SALE: Snap Kit for setting western snaps. \$20. 417-718-2529. Lebanon.

FOR SALE: New Indoor/Outdoor Digital Antenna. \$15. 417-718-2529. Lebanon.

FOR SALE: Jensen Tabletop Stereo with 2 speakers. \$45. 417-718-2529. Lebanon.

SET OF 4 ST. LOUIS CARDINALS COLLECTABLE GLASSES: Gibson, McGwire, Brock & Ozzie. Mint condition. \$20. Text for pics. 573-854-8132. Houston.

DACHSHUND PUPPIES: Registered, shots & wormed. 573-247-6273.

SMALL DANBY CHEST FREEZER: \$50. 417-718-2529. Lebanon.

TOY SCHNOODLES FOR SALE: 2 chocolate, 4 white, 7-10 lbs. 417-664-5926.

STAN MUSIEL CANCELED CHECK: Full signature with authenticity. Mint condition. \$55. text for pictures. 573-854-8132. Houston.

ATTENTION ROOT DIGGERS: We will be buying ginseng & goldenseal throughout the season. Schofield Roots in Theodosia, MO 417-683-7922.

2005 ROCKWOOD TRAVEL TRAILER: 26FT Long with slide out. \$6,500. 417-531-1048. Morgan.

225/65/R17 TIRE: 95% tread/ \$15. 210-787-8222. Linn Creek.



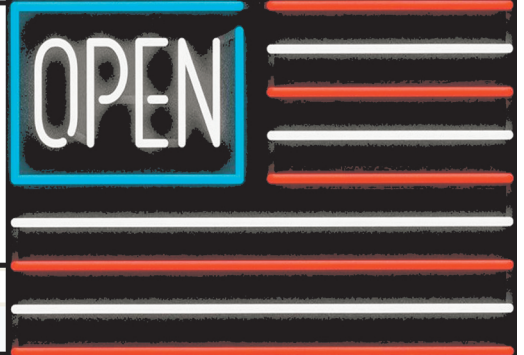
REGULAR SALE EVERY THURSDAY 11AM

WATCH OUR WEEKLY SALE IN REAL TIME ON DVAUCTION.COM

For Farm Visits, Market Updates, or Trucking
 Call **Zach Cox 417-777-1320**
Dan Romine 573-578-4939

**Competitive Buyers!
 Competitive Commission!
 Competitive Market!**

Barn: 417-532-9292
1-44 • Exit 123 "just outside of Lebanon"
17505 Route 66, Phillipsburg, MO 65722
 For weekly market updates, visit us at
www.midmostockyards.com



Sale Ends October 31, 2023
 Seymour, Missouri 417-935-4201

Pole Barn Building Kits!

23'x32'x10' \$6,399 Material Only \$8,599 Labor Included	23'x40'x10' \$7,299 Material Only \$10,019 Labor Included	30'x40'x10' \$8,669 Material Only \$12,175 Labor Included	40'x60'x12' \$16,745 Material Only \$23,985 Labor Included
---	--	--	---

Call for free quote, brochure & color chart.
 Other sizes also available.



Due to increased demand for our quality product we are currently hiring new barn construction crews. Contact Jeff

NOBODY, BUT NOBODY BEATS OUR PRICES!!!

10 ft. Slider • Engineered Trusses 8' O.C. • 2x6 Treated Bottom Wrap • Screws • 2x10 Top Wrap • 2x4 Purlins • Full 29 Gauge Steel • Plus 3 ft. Entry Door with Lock
 OPTIONS: Sidewall Heights on all Buildings 10', 12', 14' & 16'. Overhead Garage Door. Skylights. Insulation. Wainscoting. Insulated Vinyl Windows. Cupolas. Labor Rates Slightly Higher over 50 Miles from Seymour. Call for YOUR FREE QUOTE TODAY!!!!

PAINTED WHITE, GREEN OR TAN METAL\$97.79	IN STOCK
10' - \$31.00 12' - \$37.20 16' - \$49.60	
MIX & MATCH METAL\$59.99	
8' - \$15.20 10' - \$19.00 12' - \$22.80	
GALVALUME METAL\$79.99	
10' - \$25.40 12' - \$30.48 16' - \$40.64	
GALVANIZED CORRUGATED METAL SOLD OUT!	
8' - \$9.84 10' - \$12.30 12' - \$14.75 16' - \$19.67	

40yr Painted Metal
99.99^{Sq}

KNOTTY PINE DOORS
 Starting at
\$164.99

Prices subject to change without notice
6X6 CEDAR POST LIMITED TIME \$5.87 LN FT

Car Siding!

1x6 White Pine Siding	69¢^{In ft}
1x8 White Pine Siding	99¢^{In ft}

* 4 Profiles to choose from!
 Broken Bundles Add 10¢ Per Ft.

4x8 Sheeting
 Less than full units Add \$1 per sheet

3/8" Beaded Paneling	\$19.99
5/8" T111 Siding Paneling	\$19.99
1/2" Plywood	\$23.99
3/4" Plywood	\$29.99
3/16 Pegboard	\$12.99

LOTS OF MATERIAL AVAILABLE FOR THOSE IN HOME PROJECTS!

REAL WOOD SIDING

2x6 Log Siding \$1.76 In ft

1x8 Beveled Cedar from- 99¢ In ft

T1-11 Siding from \$19.99

DECK PACKAGES

Materials Only

8x8.....\$349.00	10x12.....\$699.00
10x10.....\$499.00	10x16.....\$899.00
12x12.....\$899.00	12x16..\$1179.00

QUAKER Now Stocking Quaker Vinyl Windows

2030 \$ 163.99	3030 \$189.99
3040 \$206.99	3052 \$225.99
3040Twin \$453.99	3052Twin \$497.99

NEW PACKAGE HOMES

2x6—16" on center-Exterior Stud Walls
 Residential Roof Trusses-2' on center
 4/12 pitch with 1' over hang
 40 year Painted Metal roofing in 20 Different Colors
 Profile Ridge Vent - Ventilated Ridge Cap
 Vinyl Center Vent Soffit
 Color Matched Metal Fascia & Gable Trim
 2 - 3' 6 Panel Entry Doors
 4 - 3'x4' Vinyl Insulated Windows

ALL FIGURED FOR SUITABLE CUSTOMER SUPPLIED SLAB OR SUB-FLOOR

Stock 5/8" T111 Siding w/1x4 Pine Window & Door Trim - or -
 7/16" OSB & House Wrap ready for other finish options

Shown with Available Options
 Your Choice of either:

Price for Basic Materials Package (No Labor at this Time)

20x24(490 sq. ft.)	20x32(640 sq. ft.)	20x40(800 sq. ft.)	28x40(1120 sq. ft.)	28x48(1344 sq. ft.)
\$9,490	\$10,839	\$12,339	\$15,129	\$18,729



LUCKY DISCOUNT LUMBER
 417-935-4201
 455 State Hwy C • Seymour MO 65746
 www.luckydiscountlumber.com



*Some restrictions apply see store for details. Prices subject to change without notice.

BUYING SCRAP METAL: All kinds, can torch heavy equipment. Call for prices. 40 years experience. 573-308-6739. Newburg.

2 HOSPITAL BEDS: \$200 each. 573-247-4280 or 573-247-4281. Salem.

850 MASSEY FERGUSON COMBINE: With both heads. Ready to go. \$6,000. 573-247-4280 or 573-247-4281. Salem.

TENPOINT CROSSBOW ELITE Q X4: With ACU draw. Flambeau hard case. TenPoint scope. 1 dozen plus bolts, new & used. Field points, different weights. Broadheads, different kinds. Crossbow target & 2 extra strings. Package deal, \$775. 636-232-7046.

APPROXIMATELY 500 BALES OF STRAW: \$6/bale. 573-247-4280 or 573-247-4281. Salem.

200 SQUARE BALES OF GRASS HAY: \$7/bale. 573-247-4280 or 573-247-4281. Salem.

COWBOY CORGIS!!! UTD on shots & wormer. DOB 9-02-23. \$150 OBO. 417-349-0831. Hartville.

Blue Healer Puppies: UTD on all shots. 417-349-0919. Plato, MO

KING BUILDERS



We specialize in custom and specialty builds, such as:

- Houses
- Barndominiums
- Shops
- Barns
- Garages

We also do roofing & siding!

Call for a free estimate!

Stevie King | 435 Dickerson Ranch Lane, Conway, MO 65632 | 417-241-3280

JENSEN TABLETOP STEREO: With two detachable speakers. \$45. 417-718-2529. Lebanon.

INDOOR/OUTDOOR DIGITAL TV ANTENNA: \$18. 417-718-2529. Lebanon.

OFFICE DESK & CHAIR: \$20 417-830-5309 Bruner, MO. Leave message

FOR SALE TUNIS RAMS: Ready for service. Call Gary Marsh 785-691-7356. Lawrence, KS.

JUMBO FLOAT: 95" long x 80" wide x 10" high. Heavy gauge vinyl, Safety valve, 2 screw valves, 12 rope holders, water plug, nylon rope around it. Like new. \$150. 210-787-8222. Linn Creek.

6FT 3-POINT DISC: \$400. 200-Gallon Fuel Tank with stand, \$300. Foot Pedal Grindstone, \$300. 80lb. Anvil, \$500. 3-Bottom Allis-Chalmers Plow, \$200. 573-280-8230. Camdenton.

WANTED USED KITCHEN CABINETS: in good condition. 417-741-2186.

1980 CHEVY SILVERADO: 1 owner, bought brand new in 1980. Very clean, nice truck. \$17,500. 417-288-2760.

ALFALFA & GRASS HAY FOR SALE: 4X5 round bales. 417-343-4958. Seymour.

FULL SIZE BET SET: clean & good \$20. 417-830-5309 Bruner, MO. Leave message.

SPLIT SEASONED FIREWOOD FOR SALE: 573-759-2125 Dixon MO area. Must pick up, no delivery.

2 FRISCO 1980 CALENDARS: \$10 each. 417-830-5309 Bruner, MO. Leave message

4 OAK KITCHEN CHAIRS \$80. 417-830-5309 Bruner, MO. Leave message

CRAFTSMAN TILLER: 5-years-old, new carburetor. \$75. 417-345-8616.

Martin Hunting Blinds

Versailles, MO
573-378-5808

- Eight Tinted Sliding Windows
- Platform 5'x8', 8' High
- Lumber is treated material



- Locally Made
- \$1800.00
- Stand Included

Some assembly required

WOODLANDLAKESNEWS.COM: know before you go! --The Weekly Trader & associated entities are not associated with this website.

GRAVE LOT: White Chapel Memorial Gardens. \$500. 417-894-5733. No texting.

5FT SOLID FRONT END BUCKET: for Ferguson or International tractor. \$275. 417-345-8616.

15 CU FT UPRIGHT FREEZER: Works good. \$100. 417-894-5733. No texting.

YEARLING JERSEY HEIFERS: A2A2. \$850. 417-733-2625. Louisburg.

FISHING SEASONS COMING: Get your rod and reels, \$5 and up. 417-589-8200. Conway.

FISHING SEASONS COMING: Get your rod and reels, \$5 and up. 417-589-8200. Conway.

KUSTER LOGGING

BUYER of Standing
Timber
Oak and Walnut

Dozing Now Available

417-259-0047

References Available



CATAHOULA LEOPARD PUPS: Great hunting, guard, and companion dogs. 30 year bloodline. \$150. 417-543-4816. Rockbridge.

LAKE OF THE OZARKS-Spooktacular Season Special-Lots starting at \$4,995 - \$125 down \$69 per month. Build, camp, or own for investment also acreage tracts. Beautiful wooded area, free lake access and boat ramps, lots are a short distance from the lake, no credit checks, owner financing, and immediate possession. Missouri conservation boat ramp with a covered dock and rest rooms close by. Prices good through November 6th, 2023. Hwy 135 between Stover and Sunrise Beach, MO. Take lake road 135-12 to the Ivy Bend Land Office. Closed Tuesdays and Wednesdays. Call anytime 573-372-6493.

BLACK METAL TUBULAR BRACKET: Scrolling and a stainless bracket. \$10. Call for pictures. 636-239-2695 or 314-560-5700. Washington.

Lincoln Arc Welder: \$100. Cutting Torch: Victor Gauges & Torch with Tanks, \$500. Miller Cricket XL Bolt Wire Welder: with Tank & Gauges, \$500. Cherry Picker: \$300. Two 1620 Poulan Chainsaws, \$75/each. Milwaukee Impact Hammer, \$250. 417-527-3087. Branson.

2009 Honda Accord LX-S: Excellent condition. 2.4 L, 4 cyl., 21/30 m/g. 57,000 miles. \$10,500. Call 417-588-9812. Lebanon.

2005 F150: 5.4 v8, 4x4, 83,000 miles. Salvage title. Good mechanical condition. Some rust & other. \$4,500. Call 417-588-9812. Lebanon.

BLACK REGISTERED LIMOUSIN BULLS: 19-months-old, semen checked, very gentle, hand fed. 573-694-0164. Jefferson City.

EXERCISE BIKE: In good condition. \$65. 417-532-2344.



Ervin Gingerich
417-926-2052
B. Eli Yoder
417-746-4932

Wright Spray Foam Insulators, LLC
Commercial & Residential
Call for FREE Estimates!

MISC. MECHANICAL TOOLS: Small set \$25. & Large set \$35. 417-532-2344.

LARGE COCA-COLA NOVELTY SET/ GROUP: \$50. 417-532-2344.

WELDER: Lincoln Eagle, 99 hours, 573-743-3569. Salem.

WEATHERED BARN WOOD SIDING: 10" wide. Call for appointment 573-729-7226. www.pineriderrustic.com Salem.

LOG SIDING: 2X8 Pine/Western Cedar. Call for appointment 573-729-7226. www.pineriderrustic.com Salem.

VINTAGE CAPPER'S WEEKLY SEARCHLIGHT RECIPE BOOK: \$12.50. 417-532-2045. Lebanon. (Leave message and phone number.)

NEW INVENTORY - \$59,900 Delivered and setup, Hurry! Call Adam 573-657-2176 amegamobilehomes.com

NEW MOBILE HOMES – prices start at \$64,900 delivered and setup 573-499-9993 columbiadiscountshomes.com

1908 SEARS ROEBUCK CATALOGUE REPRODUCTION: 1,185 pages, \$12.50. 417-532-2045. Lebanon. (Leave message and phone number.)

BASEMENT READY TRUE MODS- instock ready for delivery 573-657-7040 chateauhomes.net

110 PORCELAIN POCKET WATCH DIALS: Perfect for arts & crafts. \$100. 573-764-3517. Call in PM.

REGISTERED HEREFORD & ANGUS BULLS: Home raised, Some Show-Me Select Qualified. 573-701-7828. Belgrade.

LIGHTLY EXPERIENCED GOLF BALLS: \$3 a dozen. 417-818-3469. Strafford.

23-0701

The Ultimate
Wood Heat.



Classic Edge™
Titanium HDX
Outdoor Wood Furnaces



UP TO
\$2000
TAX CREDIT*

*On qualifying models and installation. Call for details.

Yarbrough Equipment Sales & Services, Inc.
9776 E. State Hwy OO • Strafford, MO
417-736-2303 • 1-866-286-6901 • www.yarbeq.com

Route 66 MOTHER ROAD BOOK: by Michael Wallis, \$12.50. 417-532-2045. Lebanon. (Leave message and phone number.)

HARLEY FAT BOBS: Custom flame paint w/ gas caps + lines. \$100. 573-764-3517. Call in P.M.

USED JET HOME POLLUTION CONTROL PANNEL: Model CP700. \$65. 636-239-2695 or 314-560-5700. Washington.

LIONEL TRAIN SET: Steam engine, tender, caboose and other car, track, and transformer. \$195. 573-364-7465. Rolla.

MODEL 1911 FRAME 8-SHOT C02 PISTOL: Like new, in box with C02 cartridges, 4 clips, pellets & all paperwork. \$95. 573-364-7465. Rolla.

1970s KIDS METAL STOVE & FRIDGE: Nice Lithographic paint, 18" wide x 36" high. \$75. 573-364-7465. Rolla.

FOR SALE: 4' 2-wheel Dump Utility Trailer. \$110. 573-729-3297. Salem.

3 GENTS WITTNAUER WRIST WATCHES: 10k gold + 23J. All \$200. 573-764-3517. Call in P.M.

3 ARMY CANTEENS: Mess kit, belt & duffel bag. \$60 for all. 417-260-0941. Raymondville.

COLT REVOLVER DEALER CATALOGS: Circa 1950's + 1960's. All for \$100. 573-764-3517. Call in P.M.

PASTURE RAISED CHICKENS & PASTURE RAISED THANKSGIVING TURKEYS: 417-741-2446.

1890 GOLD TESTING KIT: Glass acid beakers + antique wooden case. \$100. 573-764-3517. Call in PM.

1500 VINTAGE WRISTWATCH DIALS: \$100. 573-764-3517. Call in PM.

2002 CHEVY 3500 CAMPER VAN: V8. Fridge, sink, microwave & awning. 30 amp. New tires. Excellent condition. 136,xxx miles. \$17,000. 417-650-7069. Lebanon.

HARLEY 45 SOLO: factory rear brake drum + sprocket. \$150. 573-764-3517. Call in PM.

SLIGHTLY USED PUZZLES: Will sell or trade. 417-818-3469. Strafford.

HARLEY PANHEAD DISTRIBUTOR: original, chrome + complete. \$125. 573-764-3517. Call in PM.

1962 HARLEY SPORTSTER 900CC: original distributor. \$50. 573-764-3517. Call in PM.

SPORTSET BY SARGENT: Fishing pliers in leather sheath. Like a multi-tool. \$20. 636-239-2695 or 314-560-5700. Washington.

NEW SQUARE D RAINPROOF 50AMP DISCONNECT: \$160. 636-239-2695 or 314-560-5700. Washington.

1 PAIR OF KEY BRAND MEN'S JEANS: Waist 38, Length 34. \$10. 636-239-2695 or 314-560-5700. Washington.

RUBBER & LEATHER BOOTS AND 5-Buckle OVER SHOES: Men's 11, Women's 7, some insulated. \$15-\$40 obo. 636-239-2695. Washington.

FOR SALE: Speed controlled pet nail grinder. \$15. 417-718-2529. Lebanon.

ANTIQU 4 HP ENGINE: Built by Continental Motors Corporation. \$150 OBO. 573-308-5884. Rolla.

'85 FORD PICKUP PARTS: Passenger door with window glass & mirror \$30. Also, Tailgate for '85 Ford pickup \$25. 573-308-5884. Rolla.

TINY HOMES – Missouri Franchise 573-881-7965

INTERNATIONAL PICKUP TRANSFER GEARBOX: \$150. 573-308-5884. Rolla.

NEW JELD WEN 5' LEFT HAND SLIDING GLASS DOOR WITH SUNSTABLE INTERIOR BLINDS: Clear tempered glass, Desert Sand trim/hardware. Retails \$2655 Sell \$900. 417-693-0389. Conway.

FOR SALE: 2 Dayco motorcycle covers for Harley or other big bikes. \$50 each. 417-260-0941. Raymondville.

GUNSMITHING—Older Rifles, Shotguns, Handguns, all 22LRs. Any make, any model, estate appraisals. Camdenton. 573-363-5801.

Starnes Auto LLC
 22115 Rt. 66 • Lebanon, MO 65536
 588-7939 Cell
 588-3159 Office
 www.starnesauto.com

Worry-Free
AUTOMOTIVE PAINT & BODYWORK

Our trained experts and specialized equipment get you the highest quality body repair and paint solutions.



WE DO ALIGNMENTS!

CALUS LOGGING
 20 YEARS EXPERIENCE
 Buying Standing Timber
 Walnut & Oak
 Joe Calus, Owner
 CERTIFIED 417-926-4606 • MTN. GROVE

MAC'S TIEDOWN STRAPS: Like New. \$80. 417-260-0941. Raymondville.

PITTSBURGH HEAVY DUTY 3-TON FLOOR JACK: Never used. \$195. 417-260-0941. Raymondville.

RUBBERMAID 10 CUBIC FOOT PULL BEHIND DUMP CART: \$200. 417-718-5347. Conway.

EXCAVATOR MOUNTED FORESTRY MULCHING FOR UNDERBRUSH CLEARING: Call Nathan @ 417-259-2785.

SET OF 4 ST. LOUIS CARDINALS COLLECTABLE GLASSES: Gibson, McGwire, Brock & Ozzie. Mint condition. \$20. Text for pics. 573-854-8132. Houston.

WE BUY AND SELL
 new and used mobile homes

(417) 501-1061

WEEKLY TRADER MAGAZINE

YOUR AD GOES HERE!

Add YELLOW Color For An Additional \$3 Per Reader Ad

All ads will include Phone Number (unless requested to be deleted by advertiser) and City Or Town, Phone Number with Area Code counts as one word. City or Town counts as one word.

RATE: 80¢ Per Word. All Classified Ads Require Payment Before Print.

(1) 80¢	(2) \$1.60	(3) \$2.40	(4) \$3.20
(5) \$4.00	(6) \$4.80	(7) \$5.60	(8) \$6.40
(9) \$7.20	(10) \$8.00	(11) \$8.80	(12) \$9.60
(13) \$10.40	(14) \$11.20	(15) \$12.00	(16) \$12.80
(17) \$13.60	(18) \$14.40	(19) \$15.20	(20) \$16.00
(21) \$16.80	(22) \$17.60	(23) \$18.40	(24) \$19.20
(25) \$20.00	(26) \$20.80	(27) \$21.60	(28) \$22.40
(29) \$23.20	(30) \$24.00	(31) \$24.80	(32) \$25.60
(33) \$26.40	(34) \$27.20	(35) \$28.00	(36) \$28.80
(37) \$29.60	(38) \$30.40	(39) \$31.20	(40) \$32.00

Buy 3 Weeks - Get 4th Week Free! (Must be same ad)

Place your Classified Ad TODAY!

417-532-9131 • 800-665-8875

Fax: 417-532-8140

Or Mail To: P.O. Box 192 • Lebanon, MO 65536

For your convenience we accept MasterCard, Visa, Discover or American Express



DEADLINE FOR CLASSIFIED ADS: FRIDAY 4:00PM!

Name _____

Address _____

City _____ Email _____

State _____ Zip Code _____ Phone _____

Ad Total \$ _____ X # Weeks _____ = Amount Enclosed \$ _____

DARDEN PROFESSIONAL TIMBER HARVESTING, BUYING STANDING TIMBER: Great prices, improve wildlife habitat and improve forest health. State Certified & Fully Insured! 573-247-4808. Salem.

SMALL DANBY CHEST FREEZER: \$50. 417-718-2529. Lebanon.

FOR SALE: Snap Kit for setting western snaps. \$20. 417-718-2529. Lebanon.

FOR SALE: New Indoor/Outdoor Digital Antenna. \$15. 417-718-2529. Lebanon.

FOR SALE: Jensen Tabletop Stereo with 2 speakers. \$45. 417-718-2529. Lebanon.

DACHSHUND PUPPIES: Registered, shots & wormed. 573-247-6273.

2017 KANSAS CITY CHIEFS RED FRIDAY FLAG: Mahomes rookie year. \$40. Text for pics. 573-854-8132. Houston.

TOY SCHNOODLES FOR SALE: 2 chocolate, 4 white, 7-10 lbs. 417-664-5926.

INDOOR/OUTDOOR DIGITAL TV ANTENNA: \$18. 417-718-2529. Lebanon.

STAN MUSIEL CANCELED CHECK: Full signature with authenticity. Mint condition. \$55. text for pictures. 573-854-8132. Houston.

ATTENTION ROOT DIGGERS: We will be buying ginseng & goldenseal throughout the season. Schofield Roots in Theodosia, MO 417-683-7922.

2005 ROCKWOOD TRAVEL TRAILER: 26FT Long with slide out. \$6,500. 417-531-1048. Morgan.

BUYING SCRAP METAL: All kinds, can torch heavy equipment. Call for prices. 40 years experience. 573-308-6739. Newburg.

2 HOSPITAL BEDS: \$200 each. 573-247-4280 or 573-247-4281. Salem.

850 MASSEY FERGUSON COMBINE: With both heads. Ready to go. \$6,000. 573-247-4280 or 573-247-4281. Salem.

TENPOINT CROSSBOW ELITE Q X4: With ACU draw. Flambeau hard case. TenPoint scope. 1 dozen plus bolts, new & used. Field points, different weights. Broadheads, different kinds. Crossbow target & 2 extra strings. Package deal, \$775. 636-232-7046.

225/65/R17 TIRE: 95% tread/ \$15. 210-787-8222. Linn Creek.

APPROXIMATELY 500 BALES OF STRAW: \$6/bale. 573-247-4280 or 573-247-4281. Salem.

200 SQUARE BALES OF GRASS HAY: \$7/bale. 573-247-4280 or 573-247-4281. Salem.

COWBOY CORGIS!!! UTD on shots & wormer. DOB 9-02-23. \$150 OBO. 417-349-0831. Hartville.

JENSEN TABLETOP STEREO: With two detachable speakers. \$45. 417-718-2529. Lebanon.

Blue Healer Puppies: UTD on all shots. 417-349-0919. Plato, MO

FOR SALE TUNIS RAMS: Ready for service. Call Gary Marsh 785-691-7356. Lawrence, KS.

JUMBO FLOAT: 95" long x 80" wide x 10" high. Heavy gauge vinyl, Safety valve, 2 screw valves, 12 rope holders, water plug, nylon rope around it. Like new. \$150. 210-787-8222. Linn Creek.

OFFICE DESK & CHAIR: \$20 417-830-5309 Bruner, MO. Leave message

6FT 3-POINT DISC: \$400. 200-Gallon Fuel Tank with stand, \$300. Foot Pedal Grindstone, \$300. 80lb. Anvil, \$500. 3-Bottom Allis-Chalmers Plow, \$200. 573-280-8230. Camdenton.

WANTED USED KITCHEN CABINETS: in good condition. 417-741-2186.

1980 CHEVY SILVERADO: 1 owner, bought brand new in 1980. Very clean, nice truck. \$17,500. 417-288-2760.

ALFALFA & GRASS HAY FOR SALE: 4X5 round bales. 417-343-4958. Seymour.

FULL SIZE BET SET: clean & good \$20. 417-830-5309 Bruner, MO. Leave message.

SPLIT SEASONED FIREWOOD FOR SALE: 573-759-2125 Dixon MO area. **Must pick up, no delivery.**

2 FRISCO 1980 CALENDARS: \$10 each. 417-830-5309 Bruner, MO. Leave message

4 OAK KITCHEN CHAIRS \$80. 417-830-5309 Bruner, MO. Leave message

WOODLANDLAKESNEWS.COM: know before you go! --The Weekly Trader & associated entities are not associated with this website.

GRAVE LOT: White Chapel Memorial Gardens. \$500. 417-894-5733. No texting.

CRAFTSMAN TILLER: 5-years-old, new carburetor. \$75. 417-345-8616.

5FT SOLID FRONT END BUCKET: for Ferguson or International tractor. \$275. 417-345-8616.

15 CU FT UPRIGHT FREEZER: Works good. \$100. 417-894-5733. No texting.

YEARLING JERSEY HEIFERS: A2A2. \$850. 417-733-2625. Louisburg.

OZARKS' COIN CLUB

Coin and Stamp Show Springfield, MO

October 27th & 28th, 2023

Friday Noon-6pm & Saturday 10am-6pm

Relics Antique Mall Event Center

2015 W. Battlefield Rd – Just West of Kansas Expressway

– **BUY • SELL • TRADE** –

FREE ADMISSION

Door Prizes Every Hour • Special Programs for Children
24 Hour Security Provided
For more information contact Jim at 417-877-0233




T WEEKLY **TRADER** MAGAZINE

October 5th - 26th
HALLOWEEN
PRICE
SLASH

A graphic featuring three red, jagged, claw-like slashes that appear to tear through the text. A small jack-o'-lantern icon is positioned above the 'E' in 'HALLOWEEN'.

50% OFF Weekly Trader
classified line ads
Call Kaitlyn today to place your ad
417-532-9131

***All new line ads can be placed for \$0.40 per
word for ads running Oct. 5th - Oct. 26th, 2023**