

**FREE - TAKE ONE!**

Vol. 30 No. 26

**SEPTEMBER 21, 2023**

417-532-9131

# WEEKLY **TRADER** MAGAZINE



Find us on  
**Facebook**

@myweeklytrader  
**AUCTIONS PG. 9**

**VISIT OUR NEW WEBSITE! MYWEEKLYTRADER.COM**

Get a great deal on  
getting more done.



**Kubota** Together we do more!

Save big on select compact and sub-compact tractors. Versatile, reliable and part of the #1 rated tractor brand for durability and owner experience in the U.S.\* Stop in today for a demo.\*\*

**\$0 DOWN 0% APR 84 MONTHS**

VISIT US TODAY FOR THIS LIMITED-TIME OFFER



**Kubota**

**Quarles Supply**

3251 S Springfield Ave  
Bolivar, MO 65613  
417-777-2391

KubotaUSA.com

\*Award based on 2021 Progressive Farmer Reader Insights Tractor Study \*\*Subject to availability. © Kubota Tractor Corporation, 2023. \$0 Down, 0% A.P.R. financing for up to 84 months on purchases of new Kubota BX2680, L2501 and LX2610SU equipment from participating dealers' in-stock inventory is available to qualified purchasers through Kubota Credit Corporation, U.S.A.; subject to credit approval. Example: 84 monthly payments of \$11.90 per \$1,000 financed. Customer instant rebates include Orange Plus Attachment Instant Rebate of \$300 with purchase of the second qualifying new implement and \$500 for the third new qualifying implement. Some exceptions apply. There is no rebate on the first implement purchased. Offers expire 09/30/23. Terms subject to change. This material is for descriptive purposes only. Kubota disclaims all representations and warranties, express or implied, or any liability from the use of this material. For complete warranty, disclaimer, safety, incentive offer and product information, consult your Dealer or KubotaUSA.com.

*Progressive*  
**FARMER**  
READER INSIGHTS

# LAND FOR SALE



## 106 ACRES ± | WEBSTER CO., MO | \$1,200,000

- The home is 4 bedrooms, 2 bathrooms, with an open layout, fireplace, large porches, sauna, and 2-car attached garage
- Comfortable and nice brick home with great views and seclusion
- Amazing views from house and multiple other locations on the farm
- Nice porches with outdoor ceiling fans
- Large barn with tall trusses and two shop buildings with utilities and concrete floors
- Beautiful year-round live water with Cantrell Creek access
- Pipe gated entrance with scenic driveway off of blacktop roads

**BRIAN UTECHT LAND TEAM**  
SOUTHWEST MISSOURI LAND SPECIALISTS



📞 417.766.5595

🌐 [brian.utecht@whitetailproperties.com](mailto:brian.utecht@whitetailproperties.com)



WHITETAIL PROPERTIES REAL ESTATE

HUNTING | RANCH | FARM | TIMBER

**WHITETAILPROPERTIES.COM**

Whitetail Properties Real Estate, LLC DBA Whitetail Properties, DBA Whitetail Properties Real Estate. In the States of Nebraska & North Dakota DBA Whitetail Trophy Properties Real Estate LLC. Licensed in CO, MN, ND, SD, TN & WI - Jeffrey Evans, Broker. Licensed in FL, KS & MO - Jefferson Kirk Gilbert, Broker. Licensed in TX & NM - Joey Bellington, Broker. Licensed in IN - Bill Minor, Broker. Licensed in AL, GA, LA, & MS - Sybil Stewart, Broker. Licensed in TN - Tim Burnette, Broker. Licensed in TN & MS - Josh Monk, Broker. Licensed in AR - Anthony Chrisco, Broker. Licensed in NC, SC, VA - Chip Camp, Broker. Licensed in IA, NC - Richard F. Baugh, Broker. Licensed in MI - Edmund Joel Nogaski, Broker. Licensed in IL, MD, WV - Debbie S. Laux, Broker. Licensed in ID, MT, OR, UT, WA, WY & NV - Aaron Milliken, Broker. Licensed in NY - John Myers, Real Estate Broker. Licensed in OK - Dean Anderson, Broker. Licensed in KY - Derek Fisher, Broker. Licensed in OH - Jeremy Schaefer, Principal Broker. Licensed in NE & SD - Jason Schendt, Broker. Licensed in MS - Chipper Gibbs, Broker. Licensed in PA - Jack Brown, Broker.



# TIME FOR PRECISION

Hustler's residential mowers are built stronger and perform faster, allowing you to quickly maneuver around obstacles with ease. Tackle your lawn in record time with unparalleled precision, and use the time you save to do the things you love.



Ask Dealer About  
**FALL SALES EVENT**  
**2023**

*For Outstanding Products & Service*  
**AGRI-ENTERPRISES**

1-1/2 Miles South Of Licking, MO On Hwy 63  
**573-674-2203 • 1-800-653-7152 • www.agri-enterprises.com**

**60 HIKES WITH 60 MILES ST. LOUIS BOOK:** including Sullivan, Potosi and Farmington, \$8.50. 417-532-2045. Lebanon. (Leave message and phone number.)

**Route 66 MOTHER ROAD BOOK:** by Michael Wallis, \$12.50. 417-532-2045. Lebanon. (Leave message and phone number.)

**1908 SEARS ROEBUCK CATALOGUE REPRODUCTION:** 1,185 pages, \$12.50. 417-532-2045. Lebanon. (Leave message and phone number.)

**1500 VINTAGE WRISTWATCH DIALS:** \$100. 573-764-3517. Call in PM.

**WEATHERED BARN WOOD SIDING:** 10" wide. Call for appointment 573-729-7226. [www.pineridgerustic.com](http://www.pineridgerustic.com) Salem.

**LOG SIDING:** 2X8 Pine/Western Cedar. Call for appointment 573-729-7226. [www.pineridgerustic.com](http://www.pineridgerustic.com) Salem.

**VOTED #1 BEST Preowned Car Dealership**

## TIM'S USED CARS

(573) 341-3828 • 1334 South Bishop (Hwy. 63) • Rolla, MO  
 Next to Hwy CC • [www.tims-used-cars.com](http://www.tims-used-cars.com)

<p><b>2011 JD GATOR 625I</b>                  4x4, cab &amp; heater, 2100 hrs  <b>Only \$9,800</b></p>	<p><b>2018 JEEP RENEGADE LATITUDE</b>                  4 cyl auto, 43,xxx Miles  <b>Only \$19,800</b></p>
<p><b>2014 JEEP CHEROKEE LIMITED</b>                  FWD, V-6 loaded w/options, 98,xxx Miles  <b>Only \$14,900</b></p>	<p><b>2021 RAM 1500 CLASSIC</b>                  Crew cab, 4x4, V-6 auto, power equipped 52,xxx Miles  <b>Priced to Sell!</b></p>

**LARGE SELECTION OF CARS, TRUCKS, SUVs & VANS!**

## OMAR'S LOGGING

⇒ Oak & Walnut

⇒ Excellent Prices

*Amish Owned & Operated*

**LEAVE MESSAGE: 417-741-0440**  
 Hartville & Surrounding Areas

**NEW INVENTORY** - \$59,900 Delivered and setup, Hurry! Call Adam 573-657-2176 [amegamobilehomes.com](http://amegamobilehomes.com)

**BLACK METAL TUBULAR BRACKET:** Scrolling and a stainless bracket. \$10. Call for pictures. 636-239-2695 or 314-560-5700. Washington.

# YOUR FULL SERVICE AUTO BODY SHOP

Call today for an appointment or estimate!



**Restorations, insurance jobs, and more!**




**DAVIDSON'S Customs**  
417-288-1589

**417-288-1589 • 115 Lincoln St., Buffalo, MO • @DavidsonCustoms**

**NEW MOBILE HOMES** – prices start at \$64,900 delivered and setup 573-499-9993 columbiadiscountshomes.com

**BASEMENT READY TRUE MODS**- instock ready for delivery 573-657-7040 chateauhomes.net

**LIONEL TRAIN SET:** Steam engine, tender, caboose and other car, track, and transformer. \$195. 573-364-7465. Rolla.

**REGISTERED HEREFORD & ANGUS BULLS:** Home raised, Some Show-Me Select Qualified. 573-701-7828. Belgrade.

**LIGHTLY EXPERIENCED GOLF BALLS:** \$3 a dozen. 417-818-3469. Strafford.

**SLIGHTLY USED PUZZLES:** Will sell or trade. 417-818-3469. Strafford.

**MODEL 1911 FRAME 8-SHOT C02 PISTOL:** Like new, in box with C02 cartridges, 4 clips, pellets & all paperwork. \$95. 573-364-7465. Rolla.

**1970s KIDS METAL STOVE & FRIDGE:** Nice Lithographic paint, 18" wide x 36" high. \$75. 573-364-7465. Rolla.

**3 GENTS WITNAUER WRIST WATCHES:** 10k gold + 23J. All \$200. 573-764-3517. Call in P.M.

**HARLEY FAT BOBS:** Custom flame paint w/ gas caps + lines. \$100. 573-764-3517. Call in P.M.

**COLT REVOLVER DEALER CATALOGS:** Circa 1950's + 1960's. All for \$100. 573-764-3517. Call in P.M.

**110 PORCELAIN POCKET WATCH DIALS:** Perfect for arts & crafts. \$100. 573-764-3517. Call in P.M.



## Meadowview Dutch Market

Bulk & Surplus Groceries • Prices Subject to Stock on Hand

**Call to Order**  
417-993-3017

**DELI SPECIAL**


SUPERIORS TAVERN HAM.....REG. \$4.49 LB .....SALE \$3.49 LB  
 SMOKED HORSE RADISH CHEESE .....REG. \$6.99 LB .....SALE \$5.99 LB

**TRY our Fresh Homemade DELI Sandwiches: TURKEY, HAM, ROAST BEEF, ITALIAN, BLT'S, PULLED PORK AND BLT PULLED PORK (MADE YOUR WAY)! COME IN OR CALL to order! ALSO Custom Deli trays! Veggie OR FRESH Meat-N-Cheese!**

Sale Dates September 20<sup>th</sup>, 2023 to September 26<sup>th</sup>, 2023 while supplies last!


**APPLE DAYS**

**THURSDAY, OCT 26TH AND FRIDAY, OCT 27TH**



**STRAWBERRY ACTIVIA YOGURT**


**\$1.99**  
CASE OF 24 - 4 OZ



*Seattle's Best*  
**K-Cup Coffee**  
**\$3.90**  
10 CT.

*Assorted*  
**Pet Toys**  
**25% OFF**  
REG. PRICE

*Mesquite Smoked*  
**Turkey Breast**  
**\$1.19**  
LB.



*Spiral Sliced*  
**Ham**  
**\$1.19**  
LB.



*Golden Puff*  
**Cereal**  
**\$1.69**  
23.5 OZ.

*Cheese-N-Caramel*  
**Mix Popcorn**  
**4/\$1.00**  
1.5 OZ.

*Bone-In*  
**Ham Steaks**  
**\$1.49**  
LB



*Ice Cream Factory*  
**Ice Cream**  
**99¢**  
12 OZ.



**MEADOWVIEW DUTCH MARKET**  
417-993-3017 Hours: Mon-Thurs 8-5pm  
Fri 8-6pm • Sat 8-5pm  
23 Miles West on Hwy 64 • Right on T Hwy  
9 miles • Left on E Hwy 1 mile on Left

**NOW ACCEPTING CREDIT, DEBIT CARDS & EBT**

**DUTCH COUNTRY STORE, LLC**  
573-378-4395  
Hours: Mon-Thurs 8-5pm  
Fri 8-6pm • Sat 8-5pm  
5 miles East of Versailles off Hwy C on Kelsay Road

**1890 GOLD TESTING KIT:** Glass acid beakers + antique wooden case. \$100. 573-764-3517. Call in PM.

**HARLEY 45 SOLO:** factory rear brake drum + sprocket. \$150. 573-764-3517. Call in PM.

**HARLEY PANHEAD DISTRIBUTOR:** original, chrome + complete. \$125. 573-764-3517. Call in PM.

**1962 HARLEY SPORTSTER 900CC:** original distributor. \$50. 573-764-3517. Call in PM.

**SPORTSET BY SARGENT:** Fishing pliers in leather sheath. Like a multi-tool. \$20. 636-239-2695 or 314-560-5700. Washington.

**NEW SQUARE D RAINPROOF 50AMP DISCONNECT:** \$160. 636-239-2695 or 314-560-5700. Washington.

**USED JET HOME POLLUTION CONTROL PANNEL:** Model CP700. \$65. 636-239-2695 or 314-560-5700. Washington.

**TINY HOMES** – Missouri Franchise 573-881-7965

**HEARTH CRAFT GLASS BI-FOLD FIREPLACE DOORS PURCHASED AT FORSHAW'S FIREPLACE:** Antique brass. \$160 obo. 636-239-2695 or 314-560-5700. Washington.

**1 PAIR OF KEY BRAND MEN'S JEANS:** Waist 38, Length 34. \$10. 636-239-2695 or 314-560-5700. Washington.

**FREE 4 CUTE KITTENS & MOTHER:** To be given away to loving & caring homes. If interested call for more information. 417-469-2123. Mountain View.

# OFFICIAL TRACTOR OF TOUGH™

**INTRODUCING THE ALL-NEW 5100 SERIES**



**NEW MAHINDRA TRACTORS**

1635 4WD & LDR 36HP	IN STOCK
2638 4WD & LDR 38HP	IN STOCK
2645 4WD & LDR 45HP	IN STOCK
2660 4WD & LDR CAB 60 HP	IN STOCK

**USED TRACTORS**

MF 4708 80HP 4WD CAB LDR	58,500
MF 5455 100HP 4WD CAB LDR	45,000
JD 5055E 59HP CAB LDR	32,500
MAHINDRA 4540 41HP 4WD LDR	23,500
MF 4243 75HP CAB LDR	20,000
MAHINDRA 1635 35HP 4WD LDR	19,500
MAHINDRA 4540 41HP LDR	16,000
IHC 5088 CAB 135 HP	13,500
MF 1080 81 HP LOADER	8,500
MF 1528 28HP 4WD	7,500
MAHINDRA 6500 65HP LDR	6,500
MF 275 67HP	6,000
CUB CADET 7205 20HP 4WD	4,250
KUBOTA L175 17HP W/ MOWER	3,000

**USED ROUND BALERS**

NH RB450 4X5 MESH	24,000
MF 2946A 4X6 MESH	20,000
MF 1745 4X5	9,500
HESSTON 550 4X6	2,500
HESSTON 560 5X6	2,000

**USED MISC.**

OMI 8 WHEEL RAKE	2,500
RHINO 8 WHEEL RAKE	1,500
RHINO 5FT FINISH MOWER	850

**Marshfield Machinery Inc.**  
 222 E. Madison • Marshfield, MO 65706  
 417-859-2117 • [www.marshfieldmachinery.com](http://www.marshfieldmachinery.com)

\*2018 data including all Mahindra group brand sales. MahindraUSA.com © 2020 Mahindra USA Inc.

**Marshfield Machinery Inc.**  
 222 E. Madison  
 Marshfield, MO 65706  
 417-859-2117  
[www.marshfieldmachinery.com](http://www.marshfieldmachinery.com)



# Starnes Auto LLC

22115 Rt. 66 • Lebanon, MO 65536

588-7939 Cell  
588-3159 Office

[www.starnesauto.com](http://www.starnesauto.com)

Worry-Free

## AUTOMOTIVE PAINT & BODYWORK

Our trained experts and specialized equipment get you the highest quality body repair and paint solutions.



## WE DO ALIGNMENTS!

**OUTDOOR WOOD FURNACE:** Heats 3,000 sq. ft. & water. \$7,500, plus tax, plus installation. 573-201-6453.

**ANTIQUÉ 4 HP ENGINE:** Built by Continental Motors Corporation. \$150 OBO. 573-308-5884. Rolla.

**TRAILER HOUSE RIMS:** \$10 each. 573-308-5884. Rolla.

**'85 FORD PICKUP PARTS:** Passenger door with window glass & mirror \$30. Also, Tailgate for '85 Ford pickup \$25. 573-308-5884. Rolla.

**INTERNATIONAL PICKUP TRANSFER GEARBOX:** \$150. 573-308-5884. Rolla.

**NEW JELD WEN 5' LEFT HAND SLIDING GLASS DOOR WITH SUNSTABLE INTERIOR BLINDS:** Clear tempered glass, Desert Sand trim/hardware. Retail \$2655 Sell \$900. 417-693-0389. Conway.

**FOR SALE:** 2 Dayco motorcycle covers for Harley or other big bikes. \$50 each. 417-260-0941. Raymondville.

**CHILTON'S AUTO REPAIR MANUAL:** American & Volkswagen Cars 1969-1976. \$35. 417-260-0941. Raymondville.



**BYLER FOOD SHACK**

**6550 ELY RD.  
HARTVILLE, MO**

**PASTURE-RAISED FRYERS (FROZEN)**

**FARM FRESH EGGS**

**PUMPKINS**

**TOMATOES**

**SORGHUM MOLASSES**

**HONEY**



**Buildings • Hunter's Cabins • Lawn Furniture**

**JAMCO BUILDERS**

**JAMCO Portable Buildings**  
800-688-2064 • 307 Enterprise Dr. • Seymour, MO • www.jamcobuilders.com

**Rent To Own Plan**

**COUNTRY GARDENS  
GREENHOUSE**



**Now open for the fall season!!**

Over 50 varieties of pumpkins, gourds, and winter squash to choose from

Mums - Single, tri-colored, and hanging baskets

Fall planters • Fall pansy baskets

Indian corn • Broom corn • Corn shocks • Mini strawbales

Succulents • Houseplants

Homemade jams and jellies, pickles, and relishes

Fresh Produce

Lux Craft Poly Lawn Furniture

Pick your own Pumpkin Patch



**Open Mon - Fri 8:30 - 5:00 Sat 8:30 - 4:00**

Directions:

Hwy 73 to Tunas - 4 miles east on E

3/4 mile north on E.

then 1/2 mile west on gravel road

**17 Sunset Dr, Tunas, MO 65764**

**Is Your Log Home Starting To Look UGLY?**

**Call Pine Ridge Rustic Log Home Building Supplies**

- Professional Log Home Maintenance & Restoration
- Staining • Chinking/Caulking • Log Replacement • Media Blasting

573-729-7226

[www.pineridgerustic.com](http://www.pineridgerustic.com)



**SADDLE: 20" Buffalo Saddlery with suede padded seat. \$350. 417-718-5347. Conway.**

**MAC'S TIEDOWN STRAPS:** Like New. \$80. 417-260-0941. Raymondville.

**3 ARMY CANTEENS:** Mess kit, belt & duffle bag. \$60 for all. 417-260-0941. Raymondville.

**PITTSBURGH HEAVY DUTY 3-TON FLOOR JACK:** Never used. \$195. 417-260-0941. Raymondville.

**RUBBERMAID 10 CUBIC FOOT PULL BEHIND DUMP CART:** \$200. 417-718-5347. Conway.

**BUTLER LOGGING:** Making landowners happy is my number one goal. Paying top dollar on all your timber. Call me 417-448-9323. And see what I can do for you.

**MISC. MECHANICAL TOOLS:** Small set \$25. & Large set \$35. 417-532-2344.

**PASTURE RAISED CHICKENS & PASTURE RAISED THANKSGIVING TURKEYS:** 417-741-2446.

**80 ACRES IN MACKS CREEK:** Power, water, artesian wells, good hunting. \$2,500 per acre, as is. Text 573-836-6414.

**GUNSMITHING-**Older Rifles, Shotguns, Handguns, all 22LRs. Any make, any model, estate appraisals. Camdenton. 573-363-5801.

**2001 FORD 3500 BLACKOUT VAN:** New tires, battery, brakes. Custom interior, mechanically sound & solid. Clear title, 2 owners, no smoke. 170,XXX miles. \$8,950 or trade. 417-650-7069.

**EXCAVATOR MOUNTED FORESTRY MULCHING FOR UNDERBRUSH CLEARING:** Call Nathan @ 417-259-2785.

**FOUR 4-WHEELER SIDE-BY-SIDE TIRES:** Good shape. \$100 or trade for tools. 573-734-2822.

**DARDEN PROFESSIONAL TIMBER HARVESTING, BUYING STANDING TIMBER:** Great prices, improve wildlife habitat and improve forest health. State Certified & Fully Insured! 573-247-4808. Salem.

**POOL TABLES:** Installations, moves, recovers, repairs, accessories, etc. 573-646-1700.

**Darrell McClanahan for Governor of this great state of Missouri 2024.** Find me at [darrell4gov.com](http://darrell4gov.com) advocating for [fija.org](http://fija.org). This is being paid for by Darrell McClanahan. April Miller-McClanahan, Treasurer.

**FOR SALE:** 2 rolls of 100, Forever Postage Stamps. \$60 each. 573-453-2777. Salem.

**EXERCISE BIKE:** In good condition. \$65. 417-532-2344.

**LARGE COCA-COLA NOVELTY SET/ GROUP:** \$50. 417-532-2344.

**WANTED OLDER MODEL 1-TON WRECKER:** Any condition. 573-734-2822.

**SERIOUS INQUIRIES ONLY:** Small chest freezer for sale: like new. \$150 firm. 573-647-3139.

# KING BUILDERS

We specialize in custom and specialty builds, such as:

- Houses
- Barndominiums
- Shops
- Barns
- Garages

We also do roofing & siding!

Call for a free estimate!

---

Stevie King | 435 Dickerson Ranch Lane, Conway, MO 65632 | 417-241-3280



## TAYLOR TRUCKS & EQUIPMENT

417-924-2026 • 2676 Hwy. 5, Mansfield, MO

- ★ INTIMIDATOR TREE PULLER ★
- ★ 3 POINT TILLERS ★

TRAILER PARTS & REPAIR  
MD144 Bat Wing in stock!

Milwaukee Cordless Tools


DANUSER DEALER

T3 Post Driver & Other Attachments  
New Mowers! Bush-Whacker, Big Bee  
Storage Containers & Dry Vans - 20' - 53',

BUSH-WHACKER HD  
SKIDSTEER BRUSH CUTTER

Portable Generators, Farm Tires, New Semi Tires,  
PTO's & Parts for Rotary Mowers, Farm Tractor  
Implements, Plows, Used 15" Bush-Whacker Now In  
Stock, Discs, and More Skidsteer Attachments: Pallet  
Forks, Buckets, Grapples, Hay Spears, RR Tires

Bush-Whacker  
Heavy Duty Rotary Cutter



We Invite you To Come By & Look Us Over! Located 2.5 Miles North Of Mansfield, MO On Hwy 5

## OMAR'S DOZING

- ⇒ Clear land
- ⇒ Clean up woods
- ⇒ Make driveways
- ⇒ Clear property lines
- ⇒ Build ponds

*Amish Owned & Operated*

**LEAVE MESSAGE: 417-741-0440**  
Hartville & Surrounding Areas

**SERIOUS INQUIRIES ONLY:** Whirlpool dryer for sale. Works great. \$100 firm. 573-647-3139.

**SERIOUS INQUIRIES ONLY:** Lots of antique mason jars for canning. Lids & caps. 50-60 jars. \$200 firm. 573-647-3139.

**SERIOUS INQUIRIES ONLY:** 60" Smart Television. \$200 firm. 573-647-3139.

**SERIOUS INQUIRIES ONLY:** Antique Dresser from early 1900's, comes with mirror. \$200 firm. 573-647-3139.

**SERIOUS INQUIRIES ONLY:** Kitchen Table, 2 captain chairs & 4 regular chairs. Has a leaf. Black, wood. Was \$1,500 will take \$200 firm. 573-647-3139.

**MARLIN 357/38 LEVER ACTION:** Late 70s model. Hasn't been fired since late 70s. \$1,500 Firm. 417-718-0517. Lebanon.

**SADDLE FOR SALE:** Excellent condition, 17" seat, Roper Style. \$600. 417-259-0396. Mt. Grove.

## Larry Heisel Rentals

LARGE or SMALL...

**We Rent!**

Crawler Loaders • Excavators • Backhoes

Call Larry! **We Deliver!**

# 573-779-1500

[www.larryheiselequipment.com](http://www.larryheiselequipment.com)

Rental Available in 636 or 573 area code

**HAY FOR SALE: 2<sup>nd</sup> Cutting Round Bales, \$85 per bale. 2<sup>nd</sup> cutting square bales, \$7-7.50 per bale. 417-345-5634 or 417-322-0041.**

**2 ZEBU HEIFERS:** \$600 each. Also, 2-year-old Blue Roan Saddlebred Percheron Stallion. 417-741-0516. Hartville.

**COMPLETE FULL SIZE ANTIQUE IRON BED:** With like new mattress, box springs & comforter set. \$400. Call or text 417-350-3892. Willard.

**BREED SELLOUT STANDARD POODLES:** 4 Adults, 7 Puppies. All red in color. 417-661-1438. Lebanon.

**SMALL DANBY CHEST FREEZER:** \$50. 417-718-2529. Lebanon.

**SET OF 2 DALLAS COWBOYS FOOTBALL SHAPED DRINKING GLASSES:** Mint condition. \$20. Text for pics. 573-854-8132. Houston.

## PLAD PANTRY

**DISCOUNT & SURPLUS FOODS**  
**FRESH PRODUCE LLC**

**417-532-4700**

Hot Premium Pork Sausage.....	<b>\$1.79</b> 1 lb.
Colby & Monterey Jack Cheese Sticks.....	<b>\$1.49</b> 9 oz.
Vanilla Fudge Ice Cream Cones.....	<b>\$2.79</b> 18.4 oz.
Hot & Spicy Pickle Bites.....	<b>\$3.49</b> 12-3.25 oz.
Jalapeno Flavored Potato Chips.....	<b>\$7.99</b> 24-1.875 oz.

1571 State Hwy 64 • Tunas, MO 65764  
Hours: 8:30 a.m. to 5:30 p.m. • Closed Wed. & Sun.

**1980 M.F. Diesel Tractor:** 38 HP. Perfect for small acreage. Original owner since new. Unable to get on anymore. \$4,350. OBO. Reduced. Call Gary 612-600-1631. Gainesville.

**EXCALIBUR CROSSBOW GRIZZLY 2:** Quiver, scope & arrows. Like new. \$350. 573-858-3215. Salem.

**26 YOUNG BLACK COWS:** Calving now. 9 calves on ground already. \$2,700 each. 660-553-2333. Sedalia.

**VINTAGE NEVER WORN REMINGTON BRAND BELT BUCKLES:** \$40. 417-309-3912. Osceola.

## PRIME PROPERTY FOR SALE



**11.3 acres of prime property with over 700' hwy 63 frontage 4.5 miles south of Rolla, MO. This property is located on the left right past hwy W. There is a large for sale sign on the property. This is a beautiful piece of property with endless possibilities. The price is \$200000 PLEASE CONTACT ROGER AT 573-680-9183 FOR MORE INFORMATION.**

## KUSTER LOGGING

**BUYER of Standing Timber**  
**Oak and Walnut**

**Dozing Now Available**

# 417-259-0047

References Available



**24' TRAIL KING 20-TON TANDEM FLATBED TRAILER:** with 4' beaver tail, ramps, air, pintle hitch \$7,900. New John Deere Bucket 24" fits 9310 and 9000 backhoes \$900. Skid steer Bradco backhoe buckets 24" and 18" \$350 each. (6) Michelin Radial Tires 16 ply 275/70 22.5, great shape, \$200 each. Call 573-216-1228. Laurie.

## CLASSIC EDGE

TITANIUM HDX

26% Tax Credit on EPA certified Central Boiler Classic Edge HDX models and installation. Call today to learn more!

**Outdoor Wood Furnace**  
**CentralBoiler.com**



Yarbrough Equipment Sales & Services, Inc.  
9776 E. State Hwy 00 • Strafford, MO  
417-736-2303 • 1-866-286-6901 • [www.yarbeq.com](http://www.yarbeq.com)

The Classic Edge 360, 560 and 760 HDX are U.S. EPA Certified

**AKC BEAGLE PUPS:** Blue Tick & Tri colors. 16-weeks-old. \$250 each. 573-627-2309. Sullivan.

**SET OF 4 ST. LOUIS CARDINALS COLLECTABLE GLASSES:** Gibson, McGwire, Brock & Ozzie. Mint condition. \$20. Text for pics. 573-854-8132. Houston.



**ABSOLUTE  
REAL ESTATE & PERSONAL PROPERTY**

*Auction*

**SATURDAY SEPTEMBER 23, 2023 AT 10 AM  
REAL ESTATE SELLS @ 12 NOON SHARP!**

**Location: 399 Stafford Ln, Seymour, MO 65746**

**DIRECTIONS: FROM US-60 HWY IN SEYMOUR, TURN NORTH ONTO N DIGGINS MAIN ST. TURN RIGHT AT FIRST CROSS STREET ONTO E SPRINGFIELD AVE. TURN LEFT ONTO N DIGGINS MAIN ST. TURN RIGHT ONTO STAFFORD LN. WATCH FOR CHEYNEY AUCTION SIGNS!**

**TOOLS • SHOP • HOUSEHOLD • FURNITURE • ANTIQUES**

**REAL ESTATE** 3 BR, 1 BA home on 1.9 ac m/l. The home has a newer metal roof & vinyl siding. There is a 2 car detached garage and storage shed. Property is hooked up to city utilities with the option of natural gas. Paved driveway, private country setting w/ mature trees. Excellent location, minutes from US-60. Close to Springfield! Would be a great fixer upper, first time home, or investment/rental property!

**LAWN & GARDEN/SHOP** Craftsman riding lawn mower, Craftsman EZ Walk push mower, 8x12 portable building, Farmall C parts tractor, Antique rake & plows, Antique buzz saw, Approx 2 ricks firewood, Large assortment new & used lumber, various dimensions, Reddy shop heater, Craftsman table saw, Craftsman router table, Misc shop tools & equip, Large 21"x14" cast iron church or school bell, 500 gal propane tank,

**HOUSEHOLD/ANTIQUES** Vintage Schwinn exercise bike, Antique high chair, Cedar dresser & armoire, Piano, Dining table, 2- bedroom sets, Large collection Home Interiors still in box, Large collection of Avon collectibles, Vintage lamps, Kerosene lamps, Fire King, Corningware, Tupperware, Libbey, Pyrex, Milk glass, Antique miner's flashlight, Knick knack shelf, Wall décor, mirrors, Antique ladder back chairs, Wooden wash stand, Rocking chairs, Victrola, Vintage metal kitchen cart, Vintage bread box, Antique buffet, Antiques, furniture, glassware, primitives!

**AUCTIONEER'S NOTE:** Many more items, too numerous to mention! 56 years of accumulation in this household! Many more items will be discovered as we prepare for the auction!



**FOR MORE PHOTOS, VISIT OUR WEBSITE CHEYNEYAUCTIONS.COM OR FIND US ON FACEBOOK!**

**Cheyney Auction Company, LLC**

Real Estate • Livestock • Farm & Ranch • Equipment • Household • Antiques

**Travis Cheyney, Auctioneer • Buddy Boyd, Ringman**

**417-543-8751 • cheyneyauctions.com**

*Real Estate Terms: 10% down day of auction w/ Bank letter. ANNOUNCEMENTS Made Day Of Sale By Auctioneer Take Precedence over any Printed Matter. Not Responsible for Accidents. All items sold as is, where is, with no guarantee. Terms of sale: cash, credit/debit card, or check with valid ID.*

# UNNERSTALL TRUST AUCTION

**LIVE AUCTION**

Post us on Facebook

Eugene J Unnerstall Revocable Trust will sell personal property and farm equipment of the Trust at public auction on:



## Saturday, September 23rd, 2023, beginning at 9:00 AM.

Location: 4206 North Four Mile Road, Washington Mo 63090

Directions: From Interstate 44, take Exit #251-Highway 100 West and go 11 miles. Turn left on Highway A and go 3 miles, then go right on North Four Mile Road to auction. Roads will be marked day of sale.

### TRACTORS (will sell at 12:00 Noon-after guns)



2013 New Holland T475 Powerstar diesel tractor-251 actual hours-75 HP-front wheel assist-cab-AC-heat-radio-sunroof-buddy seat with New Holland 655TL QT loader-6' bucket-skid steer attachment-one owner (sells as unit), 1974 International 666 tractor-gas-wide front end-TA-new rear tires-3 point dual hydraulics with Great Bend QT loader-6' bucket, Ford 801 Powermaster tractor-gas-live power-standard transmission, Ferguson TO-35 gas tractor-live power-rear weights, **4 WHEELER**; Polaris Scrambler 50 4 wheeler



### FARM EQUIPMENT / HORSE DRAWN IMPLEMENTS



Bush Hog 278 8' 3 point brush hog w 2 gear boxes, Side Winder 5' 3 point brush hog, 5.5' pull type Side Winder brush hog, New Holland 477 7' haybine, New Holland 275 square baler, New Holland 451 7' sickle mower, Ferguson 3 pt hay rake, Dearborn 3 pt 2-14" plow, Ford 903 3 pt post hole digger, tractor chains, 28-30" tires, 3 pt 6' blade, Case pull type manure spreader, 14'-4" grain auger, 3 pt PTO grass seeder, 3 pt tractor wood splitter, 3 pt 5' disc-good blades, 3 pt 35 gallon electric pump sprayer, 3 pt carryalls, pin-on front bale spear, 3 pt slip scoop, 3 pt 5' pasture renovator, Ferguson 3 pt disc-good blades, Ferguson 3 pt harrow, **TRAILERS**; Stalite 12' tandem axle trailer, Wards 12 hay and grain wagon, cattle racks for Chevy truck, slide in livestock rack for 12' trailer, livestock loading chute, 3'x8' bumper hitch trailer, 5th wheel camper hitch, **PRIMITIVE IMPLEMENTS**; 1800's seed drill, clipper fan mill, walking plows, McCormick Deering 22" threshing machine, (4) riding cultivators, horse drawn John Deere 2 row planter, McCormick #4sickle mower, McCormick #6 sickle mower, slip scoop, haxle cutter, single riding plow, drag harrows, (2) dump rakes, 2 bottom drag plows, lot steel wheels

### FARM - LIVESTOCK SUPPLIES

(20) cattle panels, (8) corral panels, 150 new 6' T posts, (30) 6.5' T posts, used T posts, 3+ rolls barbed wire, electric fence posts, smooth wire spools, 12'-14' pipe gates, wooden feed bunks, automatic head chutes, (2)round bale feeders, 50 square bales hay, 3 level rabbit cages w/pans, dog crates, wooden dog house, hand crank bulk oil tanks, 8' cedar-walnut lumber, Field Pak portable tank

LUNCH WILL BE SERVED BY BEAUFORT LIONS CLUB

VIEW OUR PHOTO GALLERY ON [www.breheauction.com](http://www.breheauction.com)

### GUNS / AMMO (will sell at Noon)



Winchester Model 69A .22 bolt action, J C Higgins M 583 20 ga bolt action shotgun, Browning BAR 30-06, Weatherby MK V .270 mag, Savage 24 20/.22, Marlin 226 30-30, FN Belgium 98 30-06, LC Smith Field 12 ga, Heritage R-R .22 Walther Creed 9MM, Springfield XD-9, Ruger EC9s 9MM,

Glock 26 9MM, **AMMUNITION**; .22-.250 box 50, 2 boxes 30-30, 2 boxes .308, 2 boxes .270, 3 boxes .32 win spl, 3 boxes 410 gauge, meat saw, meat grinder

### ANTIQUES / FURNITURE / HOUSEHOLD



Anvil-Brooklyn NY, Blacksmith drill, cast iron kettle, Griswold #8 and #6 skillets, meat cleaver, hay knife, beam scale, wooden shoe co crates, croquet set, galvanized sprinkling can, galvanized square tub, double wash tubs on stand, enamel pots, enamel buckets, **CROCKS**; #8 Ruckels and #5 Ruckels w/handles, brown top crock jugs, crock mixing bowl, SS oil lamp, Shiny Brite ornaments, 5 ga MFA can, oil lamp, metal springy lawn chairs, pair wrought iron chairs, school desk chairs, tractor manuals, advertising yardsticks, pendulum wall clock, pendulum mantle clock, collector plates, bird figurines, Denim Days figurines, steins, old cameras, **FURNITURE**; dining table-chairs, maple china cabinet, couch-chair set, sofa, recliner, oak rocker, end tables, side chairs, bedroom set-dresser w/shelves-chest, full bed, night stands, foot stool, metal cabinet, formica kitchen cabinet, brocade couch-chair, cedar bench, fire cabinets, Montgomery Ward #9041 floor safe, kitchen cart, step stool, old stenciled dining chairs, lamps, **APPLIANCES**; Whirlpool refrigerator, microwave, Speed Queen wringer washer, washer-dryer, **DISHES/GLASSWARE**; carnival glass candy dish, blue glass candy dish, pitcher-bowl set, Style House Japanese china dish set, ruby red Avon dishes, Pfaltzgraff dishes, Fire King jadeite bowl, Glasbake dish, electric skillet, cooking dishes, hand mixer, stemware, water glasses-pitchers, Corelle, lot Guardianware pots, cartoon glasses, Mizou glasses, canning jars-lids, cookie press, granite pans, silverware, cookie jar, vegetable bowls, mugs, utensils, cake pans, bread pans, food processor, coolers, framed artwork, table linens, bedding, embroidery, Christmas decorations, Nativity scene, books, Pfaff 362 portable sewing machine, kerosene heater

### TOOLS / YARD TOOLS / MOWER



Delta 12" portable planer, Dewalt 12" miter saw, Craftsman 4" jointer-planer, Craftsman 10" contractors table saw, Dewalt-Porter Cable cordless drills, drill press, 4,000 watt Coleman generator, compressor, Craftsman 10" radial arm saw, Paslode air staplers-framing nailers, Dewalt laser level,

Makita hammer drill, Dewalt 18 volt cordless saw-reciprocating saw set, Milwaukee cordless tool set, 3/4" socket set, wrenches, drills, 1/2" drill, circular saw, sanders, Stanley Handyman router, angle grinder, Craftsman table saw molding head blade, 4'-6' levels sockets-ratchets, hand sledges, flat bas, hack saw, 100' tape, concrete hand tools, folding rulers, chisels, cope saws, files, punches, hand drill, tool boxes, large threading machine-tri-pod, pipe cutter, drill bits, hole saws, saw blades, pliers, vise grips, bit set, screwdrivers, gear puller, tin snips, pipe wrenches, C clamps, crescent wrenches, bolt cutter, bar clamps, bench grinder, saw horses, stock rollers, bench vise, wooden work bench-12 drawers, parts bins, metal shelving, lot nails, all types hardware-nuts-bolts-washers, rope, tarps, hvy castors, Wagner paint sprayer, jig saw, extension cords, **MOWER/YARD TOOLS**; Cub Cadet EFI riding mower-679CC-V twin, Stihl 011 AVT chainsaw, Stihl Mini Boss chainsaw, log splitter, chainsaws, tow chains, pump sprayers, shoulder seeder, drop seeder, dbl ax, rakes, shovels, pitch forks, hoes, cultivating fork, post hole digger, cement mixer, extension and step ladders, water hose, battery charger, funnel

**BREHE AUCTIONEERING SERVICE, L.L.C.**  
 Union, MO: (636) 583-0841 Owensville, MO: (573) 437-3454  
[www.breheauction.com](http://www.breheauction.com)  
 LICENSED AUCTIONEERS:  
 Kerry Brehe 314.954.3798 Josh Brehe 314.603.3129 Nick Brehe 314.560.7737  
 Harry Engelhart 636.399.3743

Announcements made day of sale supersede all printed material.  
TERMS: CASH. PERSONAL CHECKS WITH PROPER I.D. BUSINESS CHECKS WITH BANK LETTER AND NO OUT OF STATE CHECKS UNLESS APPROVED BY SELLER. Email Us At [kkauction@sbcglobal.net](mailto:kkauction@sbcglobal.net)  
Everything sells as is with no guarantees. Not responsible for accidents.

# Tractor - Implements - Farm - Trailers - Bucket Truck - UTV - Guns - Tools - Misc

# Auction

See our Website  
For more  
Pictures & Info!

**9:00 AM \* Saturday September 23rd. \* 9:00 AM**

**Location: 1219 Carob Rd. Clever, Mo.**

**Directions:** From Clever take hwy. 14 east 4 mi. then south on N hwy. 4 mi. to Carob Rd. then east 1 mi to Sale.

**\*Watch for Signs\* Lunch & Restrooms Available**



## Tractor - Trailers - Equipment Farm

2018 New Holland Workmaster 75 open station 4x4 Tractor with Quick Attach Loader, L.H. Shuttle, 3rd function hyd., 75hp.  
(Extra Clean 1 owner Tractor with only 372 hours);  
2019 Bush Hog 1812, 12 ft. Bat Wing Brush Hog, Smooth Top, Front & Rear Chains,  
(Very Nice like new Cutter);  
WoodMaxx WM8600 3pt., 9ft. Backhoe Attachment (Heavy Duty & Like New with 2 Buckets);  
Vermeer TD200 4 Basket Hay Tedder;  
Quick Attach Brute 7ft Brush Grapple (Never Used);  
Quick Attach Forks;  
Quick Attach Bale Spike;  
6ft. 3pt. King Kutter II PTO Rotary Tiller;  
7ft. 3pt. Farm Star Box Blade;  
3pt. 2 Bottom Plow;  
3pt. Bale Spike;  
8ft. I-Beam Field Drag;  
4 ft. X 6 ft. Fiberglass Work Basket for Tractor;



2006 Delta 16ft. Gooseneck Stock Trailer, Crowd Gate, Good Floor;  
10 ft. X 5 ft Flatbed Tilt Trailer (Steel Floor);  
Ag Spray 12v. 45 Gallon UTV Boomless Sprayer;  
30 Gallon 12v ATV Boomless Sprayer;  
(40+) New 20ft. Continuous Fence Panels;  
(24) 22ft. X 2 3/8 Pipe;  
(3) New Pre Made Pipe Corners;  
(150+) Good Used 6ft. Steel Posts;  
(10) Rolls New Barbed Wire;  
Several Good 8, 10, 12 & 14 ft. Tube Gates;  
(18) 10 ft. Corral Panels;  
(14) 12 ft. Corral Panels;  
Misc. Corral Panel Ride/Drive & Walk thru Gates;  
(4) 20 ft. X 4 in. C Channel Iron;  
Lot Good I Beam & Misc. Structural Iron;  
Lot misc. Welding Iron;  
(200+) ft. Good Fiberglass Structural 3" Angle;  
(3) 10 ft. Poly Feed Bunks (good);  
(2) Round Bale Feeders;  
300 Gallon Rubbermaid Stock Tank;  
300 Gal. Farm Fuel Tank on Stand;  
MiraFont 2 Hole Cattle Waterer;  
Misc. Wood Corner Posts & Used Lumber;

## UTV - Bucket Truck - Mowers - Tools

2016 Kawasaki Mule PRO-DX, Diesel, 4x4 UTV, Dump Bed (1 owner with only 701 mi. 167 hours.);  
1997 Ford F-350 1 Ton 4x4, 7.3 Diesel, Auto. with Waldon Sky Jacker JGW 38 HM 33ft. Ariel Bucket (Truck Runs & Operates Good);



Kubota ZD321 Diesel Zero Turn Mower, 54" Deck (Operates Perfect with 1049 hrs.)  
DR PRO XL60TF 60-Inch 14.5HP Finish Cut  
Tow-Behind Mower (Like New);  
Cub Cadet Super LT 1554 Riding Mower, 54" Cut;  
Weedeater 22" Push Mower;  
Stihl HT-101 4 Stroke Pole Saw;  
Stihl KM-131R 4 Stroke KombiSystem, Tiller, Weedeater, Hedge Trimmer;  
Bolens BL-160 Weedeater;  
Stihl MS261C Chainsaw;  
Stihl 028 AV Super Chainsaw;  
Stihl & Ryobi Gas Blowers;  
Miller Bobcat 225G Generator/ Welder (Runs Good)  
Honda 6000E Generator, Elec Start 11 hp. Honda;  
Lincoln 225 AC-DC Welder;  
Cutting Torch Set with Bottles & Cart;  
Keef Welding Rod Oven;  
Misc. Good Welding Rod;  
New Auto Darkening Welding Helmet;  
Good Metal Welding Table;  
Misc Welding Related Items;  
Schumacher SE1520 Battery Booster/Charger;  
Porter Cable 30 Gal. Portable Air Compressor;  
Clarke 16 spd. Drill Press;  
Chicago Cut Off Saw;  
Black & Decker Bench Top Band Saw;  
Tile Saw on Portable Stand;  
(2) Good Shop Vac's;  
Craftsman Roll Around Tool Box  
55 lb. Anvil;  
(3) Good American Made Bench Vises;  
Misc. Good Hand Tools;  
3/4" Drive Socket Set;  
Good Saws, Grinders, Drills, Sanders, Router, etc...;  
Air Framing & Roofing Nail Guns;  
Spectra Precision LT52G Multi-Purpose Laser Tool;  
Extension & Step Ladders;  
Huge Bolt & Parts Bins full of new Stock;  
Log Chains & Boomers;  
New 30000 - 60000 BTU Propane Space Heater;  
Craftsman 2300 PSI Power Washer;

Rubbermaid 2 Wheel Lawn Cart;  
Wheelbarrow;  
Lot Good Lawn & Garden Tools;  
Lots & Lots Misc. Shop Related Items;  
(150+) ft. New TC-ER 3/C-2AWG Copper Wire;  
Misc. New Copper Wire;

## Guns - Knives - Saddles

Ruger M-77, 308, Tang Safety, w/Scope;  
Marlin mod. 336, 30-30 Lever Action;  
Browning A5, 12ga. Vent Rib, (Belgium);  
Mossberg 500E, .410, Pump;  
Stevens mod. 887, .22 semi-auto.;  
Small Lot Ammo;  
Few good Pocket Knives, Case, Buck, Old Timer etc;  
Few Rod & Reels;  
Small Sentry #1250 Safe;  
Very Nice Circle Y Saddle 16" Seat;  
Very Nice Tucker Saddle 16" Seat;  
Misc. Bridles, Halters, Blankets & Horse Care Items;  
(2) Sets Riding Spurs;  
Good Carhart Outdoor Wear;



## Antique - Appliances - Furniture - Misc.

Antique W & LE Gurley Surveyors Transit (Nice);  
Old Griswood #7033 3 Burner Gas Camp Stove;  
(2) Milk Cans;  
(3) Nice Old Hand Made Quilts;  
Whirlpool Duet model Front Load Washer & Dryer;  
Whirlpool Chest Freezer (Like New);  
Countertop Blackstone L.P. Grill;  
Nice Charcoal Grill;  
Small Heavy Built Camp Grill/Smoker;  
Good Pressure Cookers;  
Several Dozen Good Clean Fruit Jars;  
Foodsaver Vacuum Sealer;  
Old Gateleg Dining Table;  
Wood Rocker;  
Misc. Older Wood Chairs;  
Small 5 Drawer Wardrobe Dresser;  
Computer Desk;  
Small Bookshelf;  
(2) Twin Beds;  
Small Lot Nice Clean Household Items;  
Lots misc. Landscape Blocks & Stones;  
Pool Ladder;  
Schwinn 460 Elliptical Trainer (Nice);  
Lots not Listed;



## Auctioneers Note

Clean Quality Auction with something for everyone!  
See our website for a full listing & pictures

Foster Auction &  
Appraisal Service

[www.fosterauctionservice.com](http://www.fosterauctionservice.com)

Email: [bidnowsold@aol.com](mailto:bidnowsold@aol.com)



Auctioneer: Larry Foster  
Galena, Mo

Phone: (417) 723-8329

Cell: (417) 839-6860

*Sam* LLC  
**CRAWFORD AUCTION SERVICE**

As we are selling our farm, will sell the following located from Cross Timbers, MO 7 miles East on Hwy. P to Co. Rd. 66 then East 2 miles to Co. Rd. 525, then South 1/2 mile to Co. Rd. 96, then East. Watch for auction signs.

**WEDNESDAY, SEPTEMBER 27<sup>TH</sup>, 2023 - 10 AM**

**ATV - ANTIQUE CAR - HOUSEHOLD - TOOLS - MISC.**

CAR

'49 Plymouth "Special Deluxe" 6 Cyl., 3 Spd., 4 Door, Good Body & Interior, Extra parts, Stored Inside

ATV

'99 Yamaha Grizzly 600  
 '98 Yamaha Grizzly 600  
 4 New 12" Tires & Wheels for ATV, 5 Hole

TOOLS - MISC.

12V Sprayer  
 HD Cherry Picker  
 Dayton Air Compressor  
 Older DeWalt Radial Arm Saw  
 Elect. Cement Mixer  
 ATV Jack  
 Gas Wood Splitter, 10 HP  
 Cutting Torch, Complete  
 Table Saw  
 Craftsman 12" Wood Lathe  
 Craftsman Table Top Tool Cabinet  
 Older Tool Cabinet Base  
 Craftsman Bench Grinder  
 3/4 Socket Set, Metric Socket Set  
 Asst. Sockets & Wrenches  
 Air Tools, 3-4 Asst. Cabinets  
 Space Heater, Push Mower  
 2 Chainsaws, Weed Burner  
 Bar Clamps, Alum. Ext. Ladder  
 Wheel Barrow  
 Galv. Tub & 2-3 Buckets  
 2 Brass Blow Torches  
 Rods & Reels  
 Drywall Sander  
 Lot Sand Paper Discs, 12"  
 Long Handle Tools  
 Sev. Gas Cans

Garden Hoses, Some Scrap  
 Asst. Power Hand Tools  
 4 New Seats (For Power Scooter)  
 Other Misc.

HOUSEHOLD

Leather Recliners  
 Sofa, Loveseat  
 2 - 40" Flat Screen TVs  
 5 Rolls Carpet, New  
 3 Pc. Bedroom Set, King  
 Oak Pub Table, 4 Chairs  
 Leather Zero Gravity Chair  
 Amana Refrigerator, Bottom Freezer  
 Norge Upright Freezer  
 Maytag Gas Dryer, Washer  
 Dehumidifier, Kirby Vac  
 Gas Wall Heater, 20K BTU  
 3-4 Kitchen Chairs, 2 Interior Doors  
 4 Pc. Patio Set  
 Charbroil Gas Grill, Smoker  
 Asst. Small Kitchen Appliances  
 Lot Bedding, Hall Tree, Fans, Heaters  
 Pictures, Wall Decor, Lamps  
 Lot Books, Other Misc.

ANTIQUES - COLLECTIBLES

17 Barbie Dolls, Most New In Box  
 Sev. Striking Mantle Clocks  
 Coo Coo Clock, Grandmother Clock  
 3 Mastercraft Electric Clocks  
 Miller Light Neon Sign, Wood Desk  
 Oak Drop Front Secretary w/Side Storage  
 Oak Chest of Drawers, Lamp Table  
 Thomasville Dining Table, 6 Chairs  
 Buffet, Cedar Chest  
 Coffee Table w/Magazine Racks on Ends  
 Some Toys



*Sam*  
**CRAWFORD**  
 Auction Service LLC



TERMS: Cash or good check. Nothing removed until settled for. Not responsible for accidents. Lunch available. Statements made day of sale take precedence over printed matter. All items sell as is. No warranties given or implied.

**417-998-6629**  
 Cross Timbers, Mo.

[CrawfordAuctionService.com](http://CrawfordAuctionService.com)



Sam  
 417-328-9137

Chase  
 417-399-1904

Chance, CAI  
 417-298-1751

Tom Poynter  
 Jack Lancaster

**JOHN & RUTH STRATON**

*Sam* **CRAWFORD AUCTION SERVICE** LLC

Due to the passing of my wife Joan & my health, will sell the following located 1 mile North of Pittsburg, MO on Hwy. 64 to Co. Rd. 296L, then West to Co. Rd. 292A, then right to Bluebird Ln. Watch for auction signs.

**SATURDAY, SEPTEMBER 30<sup>TH</sup>, 2023 - 9:30 AM**

**GUNS - MULE ATV - TOOLS - Misc.**



**GUNS - SELL AT 9:30**

- Winchester 1907 351 Semi-Auto
- Winchester 12 12 Ga. Pump
- Winchester 70 Featherlight 30-06 Bolt Scope
- Browning Lever Action 22 Scope, Japan
- Marlin 30 AS 30-30 Scope
- Remington 870 Pump 12 Ga.
- Mossberg 935 12 Ga. 3 & 3½, Camo, Semi-Auto
- Mossberg 410 3"
- AMberg 1894 WWII Bolt
- Stevens 15A 22 Single Shot Pellet Rifle
- Some Asst. Ammo
- Game Call
- Walkie Talkies
- Hunting Knives
- 2 Pr. Binoculars
- Browning "Special Edition" Gun Safe
- Lg. Wooden Gun Cabinet
- Asst. Hunting Clothes
- 3-4 Deer Stands
- Deer Carrier

**MULE - SELLS AT NOON**

- Kawasaki 810 Mule, 4x4, 1735 Hrs., Runs Good

**TOOLS - OTHER**

- Cub Cadet LTX1042 Lawn Tractor, 20 HP
- AgriFab Trailer Lawn Vac
- Wood Splitter, 8.75 Hrs., 20 Ton
- 10' 2 Wheel Trailer w/Wood Sides
- 5x10' 2 Wheel Utility Trailer
- Stihl MS 250 Chainsaw
- Stihl Pole Saw
- Stihl Hedge Trimmer
- Stihl & Echo Backpack Blowers
- 6.75 HP Power Washer
- Yard Roller, Yard Aerator
- Lawn Cart, Mantis Tiller
- Elect. Cement Mixer
- 3 Pt. 2 Bottom Plow
- 2 Dollies, 2 Sets Car Ramps
- Folding Ramp
- Lawn Mower Jack
- Alum. Ext. Ladder
- 2 Wood Step Ladders
- Ex. Lg. Log Chain
- Yard Windmill
- Chain Ratchet
- Small Compressor
- Delta 10" Table Saw & 9" Bandsaw
- Black & Decker Radial Arm Saw
- Miter Saw, Router & Table
- Asst. Power Hand Tools
- Good Asst. Wrenches - Sockets
- Pipe & Crescent Wrenches
- Long Handle Tools

- Sev. Bar Clamps
- 12-15 Rods & Reels
- Tackle Boxes & Fishing Misc.
- Life Jackets
- Coleman Lantern
- Shop Vac
- Lot Asst. Bolts, Nails, Screws, Oil
- Plastic Asst. Cabinets
- Lg. Metal Storage Cabinet
- Extension Cords
- 6-8 Steel Posts
- Wood Boxes
- Metal Milk Crates
- Hay Fork
- Part of Hay Fork Trolley
- Asst. Antique Hand Tools
- 3-4 Steel Traps
- Guys Potato Chip Tin
- Imp. Seat
- Push Garden Plow
- Gas Range
- Refrigerator
- Chest Freezer, Med.
- Lawn Chairs
- Wood Picnic Table
- 4-5 Ice Chests
- 3-4 Bird Baths
- Hand Well Pump
- Reel Mower
- Other Yard Ornaments
- 5-6 Boxes Sewing Misc.
- Christmas Decorations
- Other Misc.

*Sam*  
**CRAWFORD** LLC  
**Auction Service**

1944 **CELEBRATING 79 YEARS** 2023  
STARTING 79 YEARS OF SALES & SERVICE

TERMS: Cash or good check. Nothing removed until settled for. Not responsible for accidents. Lunch available. Statements made day of sale take precedence over printed matter. All items sell as is. No warranties given or implied.

**417-998-6629**  
Cross Timbers, Mo.

[CrawfordAuctionService.com](http://CrawfordAuctionService.com)

Sam  
417-328-9137

Chase  
417-399-1904

Chance, CAI  
417-298-1751

Tom Poynter  
Jack Lancaster

**TOM POWELL**

# ESTATE AUCTION

## SATURDAY, SEPT. 16 & 23 @ 9:00 A.M.

**Directions:** Salem, MO From Salem take Hwy. 72 North to FF, take FF for 3 miles to Co Rd 3080, take 3080 2 miles to sale site. Watch for signs.

### FARM EQUIPMENT • ANTIQUES • HOUSEHOLD YARD EQUIPMENT • COLLECTIBLES

#### Sept. 16 Sale

Heavy Welding Table & Parts  
Lots of Metal - Gas Cans  
Tanks & Torches, No Papers  
Come Alongs - Wire Stretchers  
Shovels - Clean Outs - Shelving  
String Trimmers - Grease & Oils  
Nuts & Bolts - Dip Nets  
Extension Ladder  
Generac 4000 XL Generator  
Set of Folding Aluminum Ramps  
Fiberglass 4' & 8' ladders  
Large Pet Crates - Reese Hitch Haul  
1/2 Sheet Stamped Steel  
Craftsman 3000 PSI Pressure Washer  
Full Roll Gaucho Wire - Log Chains  
John Deere Trimmer - Loose Lumber  
Ford 3000 Diesel Tractor  
Scrap Metal - Yard Wagons  
3pt. Bale Spike - 60 Gal. Water Tank  
Mineral Tubs - Boat Trailer  
Rhino TWI 6' 3pt. Bush Hog  
8'-10' Corral Panels - Railroad Ties  
4' Pull Type Bush Hog

10' Cattle Guard - 6x4' Farm Wagon  
Old Iron Wheels-Lots - Trellis  
20lb. Propane Bottles  
15x6' Bumper Pull Horse Trailer  
Yard Decor-Concrete Items  
Wind Chimes - Big Old Water Pump  
Rocking Chairs - Chain link Dog Pen  
Plastic Dog House - Picnic Table  
Lawn Chairs - Stock Tanks  
100lb. Propane Tank  
Troy Bilt 42" Riding Mower  
Water Hose - Extension Cords  
Metal Wagons  
Troy Bilt Push Mower  
Galvanized Wash Tubs - Cow Skulls  
Stihl 85C Leaf Blower  
Metal Patio Set - Metal Lawn Chairs  
Wood Carved Bears - Fish Cooker  
Masterbuilt Smoker  
Weber Gas Grill - Well Pulleys  
Iron Kettle - Plastic Storage Box  
Live Traps - Small Whiskey Barrels  
Lots of Oil Lamps - Canning Jars  
Stihl FSE 60 Electric Trimmer  
Stihl B6E 60 Electric Blower

Several Guns as Pictured: Colt and Remington

#### Sept. 23 Sale

Cool Squirrel Mount - Otter Mount  
Black Bear Shoulder Mount  
Deer Mounts - Raccoon Mount  
Lots of Horse Figurines  
Lots of Hen on Nest  
Butter Churns - Texas Ware Bowls  
Graniteware - Old Coffee Grinder  
Lots of Old Knick Knacks  
Kitchenware - Pony Saddle  
Superior Wood Cook Stove  
#8 Redwing Crock - #6 Crock  
Whiskey Jugs - Old Paintings  
Lots of Cocks  
Lots of Cast Iron, All Types  
Blue Ball Jars - Pyrex Bowls  
Clawfoot End Tables - Baskets  
Lot of Rods & Reels - Nice Cookers  
Neat Old Jenny Wagon  
Darby Upright Freezer  
Iron Full Bed - Chest Freezer  
Big Frigidaire Upright Freezer  
Canning Jars & Lids

Homemade Crib - Old Hanging Scale  
Camping Supplies  
Shop Vacs - Wooden Wagon Wheel  
5 Gal. Glass Water Bottles  
Ornate Mirrored Chest of Drawers  
4 Post Bed, Full - Old Quilts  
Old Violin - Leather Belts - Marbles  
Ornate Singer Sewing Machine Cabinet  
Pickle Jars - Bedding - Cow Horns  
Playboy Magazines  
Old Church Window Painting

**Several Cast Iron Collectibles:**  
**Pots, Pans, Kettles, & Dutch Ovens - Wagner and Lots of Griswold. There will be several each sale.**

**So Many Collectibles!**  
**This will be 2 FULL Saturdays of selling. Some of the finest collectibles and primitives. Please don't miss this one.**

**See you there! - Tom**



To be offered at 12:00 noon at Sept. 23 sale. Nice ranch, rock and wood 3 bedroom, 1 1/2 bath home. The home features an open floor plan with full basement and covered carport overlooking 80 acres. The land is mostly pasture that is crossfenced with waterers and rolling hills. This is a very nice one-of-a-kind piece of property off a quiet county road.



**Call for viewing**

### ESTATE OF BERNIECE MADORE

ANNOUNCEMENTS AT AUCTION TAKE PRECEDENCE OVER PRINTED MATTER

## WULFF AUCTION

Licensed Appraisals

2334 Highway K, Salem, MO 65560

**AUCTIONEERS:** Col. Tom Wulff Cell: 573-247-3884 • John Wisdom Cell: 573-247-9563

See Wulff Auctions at [www.thesalemnewsonline.com/auctions](http://www.thesalemnewsonline.com/auctions) Clerk: Tracy Strange Cashier: Nancy Inman

TERMS: CASH OR APPROVED CHECK - I.D. REQUIRED - NOTHING REMOVED UNTIL SETTLED FOR - RAIN OR SHINE OWNER & AUCTION PERSONNEL NOT RESPONSIBLE FOR ACCIDENTS AT SALE SITE



# LIVING ESTATE AUCTION

## Sunday, Sept. 24 • 1 p.m.

**Owner: John Yerby**

**LOCATION:** 7476 Hwy. 17, Houston, Mo. 65483. **DIRECTIONS:** From Houston, Mo. off U.S. 63, take Hwy. 17 west 2 miles to auction. Watch for Rick Dixon Auction signs day of auction.

### • REAL ESTATE •

3.1 ac with 2 story home and shop building. Close to town. Home needs lots of TLC, but should be affordable! Sells absolute to the highest bidder, regardless of price. **Terms:** 10% down day of auction, balance due upon closing, to close within 30 days. Sells "as is" with no contingencies. Closing costs paid for by the buyers. Taxes prorated.

### • GUNS •

• Glenfield model 50, 12 ga., s/n 27424965 • Savage model 64, .22, s/n 1342258 • Savage model 64, .22 s/n 2665522 • Phoenix Arms model HP22A, .22 lr pistol & 2 mags, s/n 4401535 • Remington model 700 22-250, Bushnell Optic, s/n 6884660 • Remington model 700 .270, no optic, s/n A6630822 • Weatherby Vanguard .300 Weatherby mag, BSA catseye optic, s/n Vs94917 • Savage model 12 .223 ss bull barrel w/accu-trigger, s/n H379254, no optic • Savage Model 93R17 .17 HMR, BSA Sweet 17 optic, s/n 0315706 • Winchester Model 70 .300 WSM, no optic, s/n G2414571 • Rock River Arms LAR-8 7.62mm (.308) no optic, s/n ACM004826 • SKS Norinco MC-5D 7.62x39, s/n 9372641N • SKS Norinco DP 7.62x39, s/n 240L075 • Assorted SKS magazines • Assorted ammo •

### • TRACTOR • MOWER • AUTOS • TOOLS • HOUSEHOLD •

• Mahindra 4110 tractor w/loader • Bad Boy 725cc Magnum Zero turn lawn mower • 2002 Chevy Blazer • 2003 Chevy 4x4 pickup • Millermatic 250 mig welder w/bottle • 3 welding helmets • Bush hog • Box blade • 2-Row corn planter • PTO grass cutter • 2-Bottom plow • Disc • Water tank • Homemade bale spike • Auger • Craftsman YT3000 riding lawn mower • Small acetylene torch & carrier • Husqvarna 435 x-torq chain saw w/extra chains • DeWalt 18v power tools & batteries - Battery charger, Sawzall, Circular saw, Screw gun, 2 Drills • Poulan Pro gas hedge trimmer • Poulan Pro pole saw • Harbor Breeze 52" Sailor Bay ceiling fan • Dining table & 4 chairs • Roll-top desk • Wood book shelves • Night stands • End tables • Coffee table • Hutch • King-size bed • Full-size beds • Dressers • Chest of drawers • Desk • Vacuum • TV • Microwaves • Stoves • Refrigerator • Roasting pan • Dehydrator • Thermos • Coffee pot • Figurines • Mount • Guitar • Cot • Ext. cords • Fishing poles • Tackle boxes • Reels • Wooden boat paddle • Fishing nets • Trolling motor • Gun cases • Live trap • Fish cooker • Bow and arrows • Gas cans • Leaf blower • BBQ grill • Golf clubs • Weed eaters • Vise • Water cooler • Scrap metal • Propane bottles • Push lawn mower • 2-Car carport • 6x10 Wooden shed • Portable metal shed • Tandem axle trailer • Trailer w/welder • Other misc. items •



**Rick Dixon Auction Service LLC**  
[www.rickdixonauctions.com](http://www.rickdixonauctions.com)

**Rick Dixon**  
417-967-6604

**Len Clayton**  
417-464-0374

**Josh Dixon**  
417-217-9627

# LIVING ESTATE AUCTION 10 a.m. Saturday, Sept. 23

Owners: Brad and Becky Eidson

**Location:** 7805 Westwood Dr., Houston, MO 65483. **Directions:** Take Hwy. 17 West to Hamrick, turn right; go to Hawthorne, turn left; go to Westwood Drive. Turn right and follow Westwood Drive to auction. Watch for Darren Scheets Auction signs the day of sale.

## ★ FURNITURE ★ HOUSEHOLD ★ ANTIQUES ★ MISC. ★

Victor Safe from Hubert Lay Law Office • Tell City Maple Kitchen Table w/Hutch and 6 Chairs • Antique Drop-Leaf Table • Antique Curved Glass Oak China Cabinet • Oak Hoosier Cabinet • Camel-Back Trunk • Ant. Oak Wall Clock • Cedar Chest • Desk from Old Train Station at Willow Springs • Two Matching Highland House Camel-Back Loveseats • Oak Thomasville Armoire • Ant. Oak Bonitere' • Queen Bed w/Brass Head and Footboard • Duncan Phyfe Card Table • King-Size Headboard • Ant. Sitting Chair • Vanity Stool • Oak Ant. Coat Rack • Suntwin Heater • Wood Toy Kitchen & Cradle Made by Roy McKinney • Two Wood Spool Cabinets • Oak Library Table • Ant. Cane-Bottom Chairs • Inlaid Table • Ant. Slat-Back School Bench • Spool-Leg Table • Table w/Claw Foot & Glass Ball • Ant. Oak Secretary • Six Ant. Oak Chairs • Four Queen Anne Chairs • Area Rugs • Ant. Butter Molds • Several Nice Ant. Pictures • Crock Churn • Several Longaberger Baskets • Longaberger Hamper • Ant. Sugar Bucket • La-Z-Boy Recliner • Copper Boiler w/Lid • Antique Typewriter Table w/Typewriter • Pink Depression Crystal • Jadite • McCoy • Roseville • Shawnee • Piano Babies • Swanky Swigs from 1934 • Ant. Sugar & Creamer Collection • #60 Dazey Churn • Kids Wooden Chairs • Quail Unlimited Pictures • Ducks Unlimited Picture • Norman Rockwell Pictures from the Eidson Ford Dealership, Mtn. View • Silver Ice Bucket and Other Misc. Silver • Quilt • Beanie Baby Collection • 3 Large Ball Blue Jars • Sunshine Jar • St. Louis Glass Washboard • Misc. Copper Pieces • Ellen McVay Ant. Etching, Signed & Numbered • Lots of Hallmark Sports Ornaments • Ant. Carved Oak Fire Screen • Lamps • 3 Parlor Chairs • Oak Pressed Pattern Chairs • Metronome • 2 Bar Stools • "3 is a Crowd" in original frame 1892 Copyright • Large Ant. Iron • Coca-Cola Crates • Bridges of Madison County Framed Picture • Ant. Office Chair • Ant. Mahogany Filing Cabinet & Kennedy Picture from Hubert Lay Office • 2 Ant. Lg. Mirrors • Old Costume Jewelry • 2 Ant. Kerosene Lamps • Lots of Misc. Not Listed •



## ★ BINELLI 12 GAUGE VENTRIB SHOTGUN WITH BOX ★

## ★ LAWN ★ GARDEN ★ TOOLS ★ MISC. ★

Kubota TG186 Diesel Lawn Tractor with Power Steering • Yard Cart • Lawn Roller • Craftsman Lawn Sweeper • Toro Reartine Tiller • Yard Machine Front-Tine Tiller • Yard Thatcher • Pull-Type Seeder • Push Lawn Seeder • Hand Push Plow • Post Puller • Post Driver • Kerosene and Diesel Cans • Misc. Hand Tools • Firewood Cart • Chimney Cap • Tomato Cages • Troybilt Weedeater • Old Town Canoe • Antique Honda Kick Scooter • Antique Sled • Work Table • Cooler • Golf Bag • 4 Concrete Planters & 2 Statues • Chimney Brush • Sq. Patio Table • Several Lg. Urns w/Plants •

**Auctioneer's Note:** Brad and Becky have sold their home and will be offering some really nice and clean items with lots of collectibles. This is a sale you don't want to miss. Thanks, Darren and Jake.

# Darren SCHEETS AUCTIONS

(417) 457-6638 • (417) 926-8575

[www.scheetsauctions.net](http://www.scheetsauctions.net)



**TERMS OF AUCTION:** Cash or check with picture ID. Nothing loaded or removed until paid for. Everything sells as is, where is. Not responsible for accidents, lost or stolen items. Auction day announcements take precedence over all previous advertisements. LUNCH ON GROUNDS.



**ABSOLUTE REAL ESTATE- FURNITURE-TOOLS-COLLECTIBLES-MISC AUCTION****SATURDAY SEPTEMBER 23, 2023 10:00 AM****LOCATED: 2615 BAIRD RD, NIXA MO**

FROM OZARK GO WEST ON HWY 14, 1 MILE, THEN LEFT ON 32ND ST, GO 3/10 MILE, TURN LEFT ON MCCAULEY RD GO 3/10 MILE TURN LEFT ON BAIRD RD TO AUCTION ON LEFT.

**FOR PICTURES SEE WEBSITE OR AUCTION ZIP.COM****TO PREVIEW CALL 417-830-0153****BANK LETTER OF CREDIT ADDRESSED TO MELTON AUCTION & REALTY REQUIRED FOR PURCHASE OVER \$5000****TERMS: 10% DOWN DAY OF AUCTION, BALANCE @ CLOSING WITHIN 30 DAYS OR BEFORE****REAL ESTATE - SELLS AT 11:00**

4 BEDROOM, 1 BATH APPROX 2100 SQ FT HOME SITTING ON 3 ACRES, ALSO 30' X 60' SHOP W/2 OVER HEAD DOORS, 20' X 40' BARN PLUS OTHER PORTABLE STORAGE BUILDINGS, WELL &amp; SEPTIC, MATURE SHADE TREES IN A WELL SOUGHT AFTER OZARK SCHOOL DISTRICT, CLOSE TO TOWN WITH THE COUNTRY ATMOSPHERE, 2022 TAXES \$1012.31

**ANTIQUES-FURNITURE**

GE MATCHING WASHER/DRYER—KENMORE FRENCH DOOR REFRIGERATOR W/WATER/ICE IN DOOR—FRIGIDAIRE FLAT TOP COOK STOVE—MICROWAVE—KENMORE FRIDGE—IDYLIS SM CHEST FREEZER—SEVERAL CHINA CABINETS—BLONDE DRESSER &amp; CHEST—3 LIFT CHAIRS—MICROWAVE CART—ANTQ WOOD DINING TABLE—WOOD TRASH BIN—RECLINER—ANTQ HUTCH—ANTQ HIGH CHAIR—KITCHEN UTILITY CHAIR—TWIN HEAD &amp; FOOT BOARD—3 ANTQ TRUNKS—5 PC QN BEDROOM SET—QUILT RACK—DISPLAY STORAGE CABINET—LADDER SHELF—HOLMES HEATER—HANDMADE WARDROBE—DRESSMAKER SEWING MACHINE—4 DRAWER FILE CABINET—ANTQ SINGER SEWING MACHINE—(2) HOVEROUND MOTORIZED WHEEL CHAIRS, WORKS-FAN—VACUUMS—MISC CHAIRS—4 WHEEL STOOLS—PORCH SWING—FOLDING WHEEL CHAIR

**PROPANE TANK-TOOLS**

500 GAL PROPANE TANK W/70 PERCENT FUEL—CRAFTSMAN 50" CUT 24 HP KOHLER LAWN TRACTOR—4 WHEEL LAWN CART—HOMELITE WEED EATER—YARD MACHINE TILLER—PUSH BEHIND STRING TRIMMER—HEDGE TRIMMER—GRIZZLY INDUSTRIAL DUST SYSTEM—EUTECTIC WELDER—WHEEL BARROW—6' ALUM LADDER—CONDUIT BENDERS—ELECTRICAL CORDS—LONG HANDLE TOOLS—FENCE CHARGERS—BATTERY CHARGERS—AIR TANK—GAS CANS—METAL OIL CANS—METAL FUNNELS—SEVERAL TOOL BOXES—VACUUM GAUGE—SCREWDRIVERS, PLIERS, SOCKETS, VISE GRIPS, WOOD CHISELS, MEASURING TAPES—PRY BARS—HACK SAWS—LEVELS—GREASE GUNS—SKIL SAWS—BELT SANDERS—PLANER—JIG SAWS—STAPLE &amp; SOLDERING GUNS—DRILLS, GRINDERS—PLATE JOINER—ROUTER TABLE—ORGANIZERS—1 LG LOT LANTERNS—ANTQ BELT SANDER—8" GRINDER—15 GAL ELECT SPRAYER 12VOLT—ANTQ BAND SAW—ELECTRIC WET STONE—PRIMITIVE TOOLS—SHELVE—METAL &amp; GALVANIZE TUBS—METAL STORAGE CABINET—METAL LOCKER

**ANTIQUES-COLLECTIBLES-MISC**

WIZARD WESTERN AUTO PEDAL TRACTOR—HUGE LOT OIL LAMPS ALL SIZES—LG LOT KNICK KNACKS—1 LOT SHOT GLASSES—1 LOT BELLS—HEN ON NEST—1 LOT GLASSWARE—SPOON COLLECTIONS—HAND PAINTED CROSS CUT SAW—1 LOT QUILTS—1 LOT VILLAGE HOUSES—1 LOT EAGLES—METAL TRACTORS &amp; IMPLEMENTS—TIN CANS—1 LOT BOOKS—RECORDS—CHILDREN CERAMIC PLANTERS—STEINS—MARBLES—ELVIS DECANTERS—SWEET BURLEY TOBACCO TIN—A&amp;W GLASSES—GRANITE WARE—SWAG LAMP—SHOE LAST—INSULATORS—#12 CROCK—SLED—WOODEN WHISKEY BARREL—STORAGE TUBS—SM KITCHEN APPLIANCES—1 LOT VHS TAPES—CHILD'S BIKE

**OWNER: ESTATE OF CHARLIE & LOIS HELDENBRAND**

ANNOUNCEMENTS MADE ON SALE DAY WILL TAKE PRECEDENCE OVER ANY OTHER PRINTED MATERIALS. NOT RESPONSIBLE FOR ACCIDENTS OR LOSS OF ARTICLES ON OR NEAR SALE SITE.

**MELTON AUCTION  
& REALTY CO LLC**meltonauctionrealty.com | roger@meltonauctionrealty.com  
Roger Melton | Nixa, MO | 417-830-0153 or 417-725-1801  
Brad Cole | Nixa, MO | 417-840-2950  
Hal White | Nixa, MO | 417-343-2334  
Tanner Foster | Galena, MO | 417-840-5519

**(30) Antique & Classic Cars, Trucks & Projects \* Parts \* Trailers \* Tractors \* Tools**

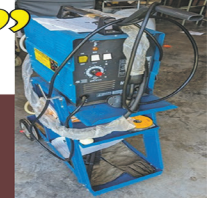


# Public Auction, "Day 1"

9:00 AM \* Saturday, September 30th. \* 9:00 AM

**Location:** 21021 Hwy. PP, Pierce City, Mo. 65723

**Directions:** From Pierce City take hwy. 37 south 2.5 mi. then north on hwy PP 2 mi. to sale.  
From Monett take Hwy 37 north 3.5 mi. then north Hwy PP 2 mi. to Sale



**Cars -Pickups-Trucks -Parts**  
 1926 Chevy 4 dr. Sedan, Runs & Drives Good 90% original new Tires;  
 1976 Corvette L82, 350, 4 spd., Runs & Drives Good, (shows 22,xxx mi);  
 1966 Chevelle Malibu Convertible, Rolling Chassis Project, original 6 cyl- auto Car, (lots of rust);  
 1966 Chevelle Malibu, 2 dr, ht, V8, Floor Shift, Rolling Chassis Project;  
 1964 Chevelle Malibu, 2 dr, ht, V8, Shift, Rolling Chassis Project;  
 1963 Chevy Nova II, Convertible Rolling Chassis Project, (lots of rust);  
 1966 Chevy Corvair, Complete Solid Project (no title);  
 2000 Chevy Camero, V-6, Auto, T-Tops (needs head gasket);  
 1968 Mercury Cyclone GT, Rolling Chassis Project (no title);  
 1965 Ford Galaxie 500 2 dr. Convertible, (Runs, no title, Solid California Car);  
 1963 Ford Galaxie 500 Convertible, (good project with motor & trans.);  
 1964 Ford Galaxie 500 2dr, (no title, Solid California Car, motor & trans.);  
 1967 Ford Thunderbird, bucket seats (complete, looks & runs good);  
 1963 Ford Thunderbird Convertible (Parts or Project Car, no title);  
 1973 Mustang Mach I, (Rolling Chassis Project);  
 1973 Mustang Mach I (Rolling Chassis Project w/ motor & trans);  
 1969 Mustang Hardtop, (Rolling Chassis Project with motor & trans.);  
 1972 Ford Mustang Hardtop, (Rolling Chassis Project with motor & trans.);  
 1965 Chevy C-10 Pickup, SWB, (Good Rolling Chassis Project, no title);  
 1966 Chevy C-10 Pickup, LWB, V-8 (Good Rolling Chassis Project);  
 1968 Ford F-250 Pickup Camper Special 2wd. auto., (Runs & Drives Good);  
 1967 Ford F-100 Pickup, V-8, Auto, Air (Good Project with motor & trans.);  
 1972 Ford F-100 Pickup, V-8, Auto, Air (Solid Project with motor & trans, no title);  
 1972 Ford F-100 Pickup, V-8, Auto, (Solid Project with motor & trans.);  
 1965 AMC Ramble Marlin, V-8, Auto. (Good Complete Project Car);  
 1953 Ford F-600, 2 Ton Truck Cab & Chassis with Motor;

1965 Pontiac Bonneville Convertible, Rolling Chassis (no title);  
 1979 International S-series Truck, V-8 gas motor, with older Cable type Dump Bed (not working);  
 1997 Ford F-250 4x4, SWB, Ext Cab, (runs with 335,xxx mi);  
 1986 Ford Ranger Rolling Chassis; 3 Deuce Intake #9775088 with Carburetors for 1964 Pontiac 348; 3 Deuce Intake #1472225 with Carburetors for 1959 Cadillac 390; 1964 Ford Galaxy Center Console (automatic, red, very nice);  
 2 Sets 14" Chevy SS Hub Cabs; Bumpers, Trim, Instrument Clusters & Lots & Lots more Parts not listed;

**Lot Air Tools** including Impacts, D.A Sanders, Ratchets, Chisels, Die Grinders; Lots & Lots of Mechanics Hand Tools, way too much to list;  
 Lot Misc. Power Tools;  
 Lot & Lots & Lots not Listed;  
**Trailers & Buildings still full we could not see so expect surprises & to spend the day & bring your trailers.**



**Trailers - Tractor Equipment - Tools - Misc**

Ford 8-N Farm Tractor, Looks & Runs Good, Good Rubber, 12v;  
 Ford 8-N Farm Tractor, Looks & Runs Good, Good Rubber, 6v;  
 Big Bee 72 6ft. 3pt. Finish Mower; Woods RM59, 5ft., 3pt. Finish Mower; Old Yazoo 23hp. 3 Wheel Mower; Kodiak 16ft. X 81" Flatbed Trailer; (2) Good 20ft. X 7ft. Heavy Built Single Axle Trailers;  
 14ft. Load Runner Cargo Trailer with Ramp Gate (needs work, salvage title);  
 1984 Sundowner 12ft. Cargo Trailer; 2004 Homemade 14ft. Flatbed Trailer with Steel Floor;  
 2008 12ft. X 5ft. Flatbed Tilt Trailer; Chicago Electric 151 Mig Welder (New); Lincoln 225 amp Stick Welder; Misc. Welding Supplies; Cutting Torch Set with small Bottles; Duralast 200 Battery Charger/Booster; Oil Drain Tank Stand; Floor Jack;  
 Milwaukee Cut Off Saw; Greenworks 2000psi elec. Power Washer (2) Engine Hoists; Engine Stand; Stihl MS171 Chainsaw; Stihl Farm Boss Chainsaw; Aluminum Folding Mower/ATV Ramps; Aluminum Truck Toolboxes; Older 15 Drawer Craftsman Mechanics Toolbox; 8 Drawer Mechanics Toolbox; Milwaukee 1/2 in. Angle Drill;



**Auctioneers Note:** Online bidding will be available on Vehicles and a few Parts only!

See full catalog of items available for online bidding at [fosterauctionservice.hibid.com](http://fosterauctionservice.hibid.com)!

For information on vehicles call Jerry at 417-489-0809

There is no way to list all of the Cars, Trucks, Parts, Tools & Related Items in this auction.

Be sure to see our website for a complete list & 100's of pictures.

Some Vehicles have Titles, Some Do Not, and will be sold with bill of sale.

See reverse side for Sunday Sale Items!

**Foster Auction & Appraisal Service**

www.fosterauctionservice.com  
Email: bidnowsold@aol.com



**Auctioneer: Larry Foster**  
Galena, Mo  
Phone: (417) 723-8329  
Cell: (417) 839-6860

**Pontoon Boat \* Guns \* Knives \* Tonka & Ertl Toys \* Antique & Collectibles \* Misc.**



**Public Auction "Day 2"**

**1:00 PM \* Sunday, October 1st \* 1:00 PM**

**Location: 21021 Hwy. PP, Pierce City Mo. 65723**

**Directions:** From Pierce City take hwy. 37 south 2.5 mi. then north on hwy PP 2 mi. to sale.  
From Monett take Hwy 37 north 3.5 mi. then north Hwy PP 2 mi. to Sale

**Boat - Guns - Knives**

1986 Sun Tracker 24 ft. Party Barge  
Pontoon Boat with 1998 Johnson 90 hp  
Outboard Motor & Trailer;  
Henry Golden Boy .22 Octagon Barrel-  
Lever Action Rifle;  
Winchester mod. 74 .22 semi-auto;  
Winchester mod. 67 .22 single shot;  
Remington mod. 510 .22 single shot;  
Marlin mod. 60 .22 semi-auto;  
Springfield mod. 120 .22 single shot;  
Coat to Coast mod. 320 .22 single shot;  
Mauser 16ga. Bolt action Shotgun with  
Beautiful Stock;  
Chiappa mod. 1873 .22 Revolver;  
Heritage Rough Rider .22 Revolver;  
Herbert Schmidt .22 Revolver;  
Traditions Pursuit LP .50 ca. Muzzle  
Loader (Stainless & Camo);  
Denix Peacemaker .Replica non-firing  
.45 revolver;  
Colt Defender Co2 Pellet Pistol;  
Kenton Gene Autry C. I. Cap Gun;  
(2) Tie Down Holster Gun Belts;  
Misc. Good Pocket Knives by Case,  
Buck, Schrade & others;

**Antique - Collectible  
Toys**

Structo Toyland Garage 24 Hour  
Towing Service Truck 1954;  
R.G. LeTourneau #1700 "Tournhauler"  
Toy Truck & Trailer by Nylint;  
Nylint NAPA Truck & Trailer;  
Buddy L 1950's GMC Dump Truck;  
1960's Nylint U-Haul Ford Pickup  
Truck & Enclosed Moving Trailer Set;  
Vintage Brown & Bigelow Texaco Jet  
Fuel Delivery Tanker;  
1936 Wyandotte Pressed Steel Cord  
Coffin Nose Coupe Toy Car;  
Nylint T-24 MICHIGAN Crane;  
Kraft & Coast to Coast Tractor/Trailers;  
Conrad 1:50 Scale 3094-Volvo-  
Schwing Concrete Pump Truck;  
1/25th Scale Yorkshire Co. Bell System  
Telephone Co Die Cast Vehicles;  
Hubley #504 Bell Telephone Truck;  
1950s Tonka Toy Transport Truck Semi  
Tractor Trailer;  
Vintage 1978 Tonka MR-970 Pressed  
Steel Bell System Bucket Truck;  
Misc. Smaller Tonka Bell System  
Trucks & Vans;  
Tonka #620 Concrete Mixer Truck;  
Tonka Giant Bulldozer (orange, MINT);  
Tonka Road Grader (orange);  
Tonka Road Grader;  
1960's Tonka Car Transport Carrier;  
Tonka Mighty Shovel;  
Tonka Sand Loader Conveyor;  
Tonka all metal Dump Truck;  
Tonka Turbo Diesel Crane Truck;  
Tonka Pink JEEP, Mini-Camper;  
Tonka White Jeep Pickup;  
(2) Tonka Fire Trucks;  
Lot Tonka Trucks & Toys;  
Older Ertl I.H. Tractor;  
(2) 1/16 Ertl International Harvester  
Square Balers;  
Ertl Plow, Disc & Elevator (red);  
Tru-Scale Feed Wagon;  
Lot small Ertl John Deere Items;

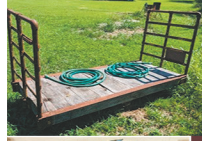
Lot Die Cast Construction Equipment;  
Jada Toys Muscle Hyperchargers RC  
Cars (Mint in Boxes);  
**100's of mint in Box Die Cast Toy  
Cars & Trucks by Ertl, First Gear,  
Jada, Burago, Crown Premiums,  
Racing Champions, Hot Wheels &  
many others in all Scales;**  
Mark "Super Service Center" Tin  
Garage Pay Set;  
NASCAR Collectibles;  
LEGO City "NASA" Store Display;  
LEGO "Hidden Side" Store Display;  
Early #8 1/2 Electric Erector Set.  
Marx Fort Apache Playset;  
Misc Toy Train Engines, Cars & Parts;  
John Deere Pay Phone (Works);  
Standard Oil Co. 1 Gallon Safety Can;  
Old Railroad Baggage/Freight Cart;  
Snap-on Pinup Girl Advertising Clock;  
Vintage Style Ladies Bicycle;  
Reproduction Metal Signs;  
N.O.S. Champion Horse Drawn Plow  
from the East Purdy Store;  
Jars Old Marbles;  
(2) Old Childs Wood Scooter/Walkers.  
Separable 2022-2023 Kansas City  
Chiefs Ring/Pendant Necklace;  
Lots & Lots Nice Metal & Die Cast  
Cars, Trucks & Collectibles not Listed

**Instruments - Records**

Cortini Accordion;  
Nice Autoharp;  
Old Saxophone, Trumpet, Clarinet &  
Flute;  
Several hundred Records of all types;

**Misc.**

Rustic Wagon Wheel Bench;  
Wood & Metal Porch Glider;  
Sport Dog SDR-AXF Receiver;  
Wireless Trailer Camera (NEW);  
Aluminum Carryall / Mobility Chair  
Hauler with Ramp for Reese Hitch;  
Jazzy 1120 Mobility Chair;  
Jazzy 1113 Chair;  
Lots & Lots not Listed;



**Auctioneers Note:** There is no way to list all of the Nice Toys & Collectibles in this Auction!  
Be sure to see our website for 100's of pictures.  
*Please note start time & bring a friend as we may be selling 2 rings part of each day.*  
**YOU WON'T WANT TO MISS EITHER DAY OF THIS AUCTION!**

**See Reverse Side For  
Saturday Day 1  
Auction Items!**

**Foster Auction &  
Appraisal Service**  
www.fosterauctionservice.com  
Email: bidnowsold@aol.com



**Auctioneer: Larry Foster**  
Galena, Mo  
Phone: (417) 723-8329  
Cell: (417) 839-6860

# REAL ESTATE & ESTATE AUCTION

**Friday, September 22nd, 2023 ~ 10:00 AM**

LOCATION: 79 West Dade 82, Greenfield, MO; Directions: From Greenfield Go North On 39 Hwy Approx 3 Miles Then West 1 Mile To Sale Site. GPS Will Get You There. (Watch For Signs)

## Auction For The Late Gareth & Emily Stockton



### Real Estate Will Sell First At 10:00 AM

Real Estate Offers 2 Story 2400 Sq Ft Home Setting On Approx 40 Acres M/L Overlooking A Large Fully Stocked Pond Located At Front Of Property, House Has Kitchen, 2 Bedrooms, Living Room, 1 Bath On Upper Floor W/Walk Out Enclosed Porch. Lower Level Has Living Room, 1 Bedroom, Office, 1 Bath W/Sunroom & Covered Porch. Home Has Central Air, Propane Heat That Has Recently Been Updated & Serviced, Working Fireplace For Both Floors & Has 12 KW Automatic Generac Generator, Home Also Has Less Than 2 Yr Old Roof, Also Covered Back Patio, Three Bay Pole Barn W/Lg Tack Room, Working Barn W/Loafing Shed, Rolling Hill & Flat Ground Pasture That Is Fenced & Cross Fenced, Also Has Excellent Shade & Timber Areas. Perfect Working Cattle &/Or Horse Farm. Great Opportunity!!!

To Preview Contact Bill At 417-214-0093 Or Sean At 417-247-6754

Terms: 10% Down Day Of Sale With Signed Contract And Balance Due In 45 Days Or When Closing Date Set By Abstract Office. Seller Has The Right To Accept Or Reject Any And All Bids.

### Antique, Modern Furniture & Appliances

Ant Oak China Cabinet, Ant Oak Kitchen Table & Chairs, Ant Jenny Lind Flat Top Hotel Washstand, Sm Ant Onion Bin, Ant Dresser W/Oxen Trail Pattern, Ant Dresser W/Mirror, Ant Full Size Bed, Ant Oak Sitting Chairs, Ant Cedar Chest, Ant Sm Dry Sink W/Tin Front, Ant White Dresser, Ant Twin Beds, Oak Sofa Table, Oak Coffee & End Tables, Howard Miller Grandfather Clock, Couch, Recliners, Cedar Chest, Globe, Oak Bookshelf, Oak Twin Beds, Oak Dresser W/Mirror, Oak 4 Stack

Lawyers Bookcase W/Lead Glass Front, Oak Chest Of Drawers, Wagon Wheel Night Stand, Thomas Orchestral Presences Organ, Oak Microwave Stand, Oak Sewing Cabinet W/Bernina Sewing Machine, Oak Hall Tree, Metal Prim Cabinets, Lamps & Floor Lamps, Flat Screen TV's, Area Rugs, Pictures & Wall Décor, Retro Chairs, Office Desk, Office Chair, Oak Cabinet, Thomas Collectors Edition Radio, Whirlpool & Gibson Upright Freezers, Kenmore Washer, Whirlpool Gas Dryer, Other Items Not Listed

### Antiques, Collectibles & Households

Lg Ant Bolt Bin, Cast Iron Pcs, Jars, Vintage Bottle Cap Press, Kitchen Aide Mixer & Other Sm Kitchen Appliances, Microwave, Texas Ware Bowls, Pots, Pans, Corning Ware, China Set, Dishes, Spice Rack, Books, Lot Of High End Victorian Dolls, Lot Of Paradise Valley Indian Dolls, Doctor Scale, Clocks, Pilgrim Glass, Sears Telescope, Desktop Computer, Other Electronics, Lg Lot Of Quilting Supplies, Galvanized Trash Can & Other Galvanized Pcs, Exercise Equipment, Handicap Items, Other Items Not Listed

### Carpport, Storage Building, Trailer, Tools & Outdoor Items

2 Car Carpport, Portable Storage Building, 16 Ft 2011 Yuba Bumper Pull Stock Trailer W/Dual Axels & Like New Tires In Excellent Shape, Black Max Air Compressor, Bench Grinder, Sprayer, T-Posts, Wire Panels, Mineral Feeder & Tubs, Horse Drawn Disc, Husqvarna Push Mower, Weed Eater, Truck Tool Box, Weber Gas Grill, Brickman Smoker, Aero Gardens, Wicker Patio Furniture, Metal Patio Lounger, Coolers, Live Pomegranate, Lemon & Orange Trees, Other Items Not Listed



**Auctioneers Note:** WOW!!What An Amazing Auction. If You Are Looking For A Prime & Great Real Estate Home & Property You Do Not Want To Miss This Opportunity. A Beautiful Nestled Farm In The Hills, Valleys & Flat Ground. This Auction Will Have Something For Everyone From Antique, Modern Furniture & Appliances To Antiques, Collectibles & Clean Households. Very Nice Carpport, Excellent Stock Trailer & Good Tools & Outdoor. Please Plan Now To Attend. **Sale Order: Real Estate Sells First At 10:00 AM Followed By Appliances, Antique & Modern Furniture Then Move Directly Into Antiques, Collectibles & Households. At Approx 12:30 PM Will Offer Carpport, Storage Building & Stock Trailer. Tools & Outdoor Will Finish Auction. See Ya There!!!**

Terms: Cash or check with proper ID. Now accepting most major credit cards. Nothing removed until settled for. Statements made the day of sale takes precedence over printed material. Everything sold as is where is. Not responsible for accidents. Restroom available. Concessions Provided. Check our website for upcoming auctions and for additional pictures!!



# NANCE AUCTION SERVICE

No Matter How BIG or small, We Do Them All!!!



Col. Bill Nance 417-214-0093 In God We Trust Philippians 4:13 Col. Sean Beazley 417-247-6754

# ANTIQUe ESTATE AUCTION

**Saturday, September 23rd, 2023 ~ 10:00 AM**

LOCATION: Sheldon Community Building, 6th & Main, Sheldon, MO (Watch For Signs)

**Auction For George & Kathy Bentley Estate**



**Antique Furniture**

Rare 1800's Qtr Saw Oak Double Sided Shelf & Tall Middle Shelf, Drop Front Secretary W/Bottom Drawers & Mirror, Rare 1800's Qtr Saw Oak Ladies Low Boy Dresser W/2 Hatboxes & Lg Center Mirror, Rare 1800's Oak Buffet W/3 Mirror Top, Lead Glass Doors & Queen Anne Leg Claw Feet, Rare 1800's Qtr Saw Oak Ornate Side Buffet W/Round Glass Side Doors & Lg Mirror, Rare 1800's Oak Double Person RxR Desk, 1800's Qtr Saw Oak Bench Hall Tree W/Lg Beveled Mirror & Ornate Carvings, Rare 1800's Oak Slim Bench Hall Tree W/Brass Umbrella Holder, 1800's Qtr Saw Oak Round Front Curio Cabinet, 1800's Qtr Oak Pot Belly Front Drop Front Secretary, 1800's Qtr Saw Oak Square 5 Leg Ornate Kitchen Table, 1800's Dark Oak Round Front Curio Cabinet, 1800's Dark Oak Ornate Slim Buffet, 1800's Qtr Saw Oak Lg Wide Bottom Bench Hall Tree W/Round Mirror, 1800's Oak Parlor Chair, 1800's Qtr Saw Oak Ornate High Boy W/Mirror & 2 Hat Drawers, Ant Oak Hotel Lobby Setting Chairs, Ant Ornate Side Board Buffet Top, Ant 2 Stack Lg Door Lawyer Bookcase, Rare Ant Oak Yaman & Erve Stand Up Courthouse 43 Drawer File Cabinet On Legs, Ant Oak Library File Boxes, Ant White Paint Oak Washstand/Dresser, Ant Wood Slot Sorter Shelf, Ant Icebox/Shelf Unit, Ant Oak Library Table W/Storage Sides, Ant Oak Stand Up Library File From The Wabash Cabinet Co., Ant Stand Up Store Display Cabinet, Ant Lg Base &

Tall Top Oak Kitchen Cabinet, Ant Oak Bank Depot Desk, Ant Oak Serpentine Front High Boy Dresser W/Hat Box, Ant Qtr Saw Oak Washstand W/Yoke, Ant Wood Highchair, Ant Oak Buffet Top, Ant Kitchen Cabinet, Ant Oak Queen Claw Foot Chairs, Ant Oak Kitchen Cabinet Base, Ant Medicine Cabinet, Ant/Prim Evenkold Wood Icebox, Ant Roll Top Desk Dresser Top, 2 Ant Oak Washstands 1 Dark, 1 Light, Ant Funeral Home Doors, Ant Wood Shelves, Ant Oak Mantle Clock, Sm Ant Spinning Wheel, Old Printers Drawers, Ant Lamps, Other Items Not Listed

**Antiques & Primitives**

Ant Murray Big 4 Track 3 Wheel Metal Pedal Tractor W/Wagon, Ant Glass Cream Content Measurer, Approx 15 Old Crock Bowls Inc McCoy, Watt & Others, Crock Pitchers, Other Crock Inc Rare Water Jug, #5 Blue Stripe Water Crock, Lots Of Rare Granite/Enamel Ware Inc Blue Swirl, Brown Swirl, Gray, & Others, Ant Cookie Jars Inc Mccoy, Hull & Others, Shawnee Corn Pcs, Ant Oxen Skin African Drum, Ant Silver Pickle Castor, Ant Vintage Bake Lite Style Zenith & GE Radios, Ant Vintage Portable Red Record Player, Old Pyrex & Fire King Dishes, Old Costume Jewelry, Ant Fire Extinguisher, Ant & Prim Art Décor Pcs, Old Washboard, Old Jars & Bottles, Ant Red Top Spice Containers, Ant Dolls, Old Pottery, Old Sad Irons, Old Baskets, Old Wood Planes, Lots Of Old Ant Glass Inc Red, Milk, Blue & Others, Old Collectors Plates, Other Items Not Listed



**Auctioneers Note:** WOW What An Amazing Antique Auction!!! The Bentley's Have Been High End Collectors Of High End Antique Furniture & Antique Pcs For Over 50 Years. This Auction Is Outstanding. Most Items Are Good & ready to Go With Just A Few Need To Be Worked On Pcs. Just An All Around Amazing Auction. Good Small Antique Pcs As Well. You Do Not Want To Miss. Please Plan Now To Attend. **Sale Order: Antique Furniture Sells First Then Antiques & Primitives. See Ya There!!!**  
 Terms: Cash or check with proper ID. Now accepting most major credit cards. Nothing removed until settled for. Statements made the day of sale takes precedence over printed material. Everything sold as is where is. Not responsible for accidents. Restroom available. Concessions Provided. Check our website for upcoming auctions and for additional pictures!!



## NANCE AUCTION SERVICE

No Matter How BIG or small, We Do Them All!!!



Col. Bill Nance 417-214-0093 In God We Trust Philippians 4:13 Col. Sean Beazley 417-247-6754

**VISIT WEBSITE FOR PICTURES**

# ESTATE AUCTION

**SATURDAY, SEPTEMBER 23<sup>RD</sup>- 10:00 A.M.**

**Location:** RR4 Box 658, Ava, MO 65608 **Directions:** From 4 way stop at Ava take Hwy 5 South 5.6 miles to A Hwy on right go 1.3 miles to CR-406 on right go 7/10 mile to Auction on Right.  
**WATCH FOR CHADWELL AUCTION SIGNS. Payment System:** Cash • Debit Card • Credit Card (Debit / Credit Card Fee Will Apply) Checks approved if known by auction company.  
**VISIT: WWW.CHADWELLAUCTIONS.COM**

**Estate of JR & Virginia (Marie) HUFF**

**25 - 4x5 Net Wrap Hay in Barn**



**VEHICLES**

1993 GMC Truck 454 5 Speed 4x4 w/280 Deweze Bed • 2010 Ford Taurus SEL Automatic v-6 loaded • 2006 Chevrolet Ext Cab 4x4 1/2 Ton 5.3 Vortec Engine 174,xxx



**TRACTORS**

Case 870 w/Cab Dual Hydraulics Gas • 656 Farmall w/Loader single hydraulic 540 PTO diesel (needs work) • Farmall Super M • H Farmall Tractor (needs work)

**SHOP ITEMS**

Bench Grinder • Numerous Tool Boxes • Assorted Tools • Air Compressor on Wheels • Century Arc Welder • Torch Set • Other

**16' King Fisher Boat w/ Mercury 90hp Motor**

**HOUSEHOLD**

Kenmore Chest Type Deep Freezer • Wooden Cabinet • Sectional Couch • Assorted Wall Pictures • Lazy Boy Rocker Recliner • Wooden Desk Chair • Lift Chair • Seiko Wall Clock • End Tables • Flat Screen Tv's • Pfaff Sewing Machine • DVD'S & VHS • Oak Kitchen Table w/6 Chairs • Assorted Dishes • Hutch • Dison Vac • Figurines • Chest of Drawers • Oak Quilt rack • Oak Dresser • Wall Gun Rack • Full Size Bed • Amana Microwave • Pots & Pans • Kitchen Aid Mixer • Cutlery • Frigidaire Electric Flat Top Stove • Kenmore Stainless Side by Side Refrigerator • Whirlpool Front Load Washer & Dryer • Fisher Wood Stove • Filing Cabinet • Small Kitchen Appliances • Other

**Remington 30-06 w/ Scope • Remington 870 12 Gauge Express Mag Pump**

**FARM EQUIPMENT ~ TRAILERS**

Vermeer 504 String Tie Baler • 8 Wheel Rake Hydraulic • 92- John Deere 9' Disc Mower 540 PTO w/Flails • 20' Gooseneck Cattle Trailer • 3pt 3 Bottom Plow • 18x8 Tilt Trailer w/Metal Floor • 8' Water Filled Roller • 3 Pt Hydraulic Wood Splitter • SMT 3pt Boomless Sprayer 110 Gallon • Mineral Feeder Tub • 920 John Deere MOCO Disc Mower (parts only) • 300 Gallon Fuel Tank • Old hay Tedder (parts only) • Other



**OUTDOOR ~ MISCELLANEOUS**

Stihl Ms 251 Chainsaw • Fishing Poles • Minnow Bucket • Motorguide 30# Trolling Motor • Mercury Trolling Motor • Bag Chairs • Pet Carrier • Dog House Igloo • Misc Scrap Iron • 16" Pleasure Saddle • Saddles • Other

**ANTIQUES ~ COLLECTIBLES**

Trunk • Foster Laundry Stove • Assorted Quilts • Records • Magnavox Console Stereo • Carnival Glass • Dressing Table • Costume Jewelry • Kerosene Lamps • Marble Top Wall Tables • Crock Bowls • Cast Iron Skillet • Serving Cart • Precious Moments Figurine • Pyrex • Kitchen Scale • Other



**AUCTIONEERS NOTE:** Nice Estate Auction. Come spend the day with us! **Thanks, Shawn**  
**DRIVER'S LICENSE OR PICTURE I.D. REQUIRED • TERMS: CASH OR APPROVED CHECK** **OR**

**Chadwell**  
**Auction Service, LLC**  
**www.chadwellauctions.com**

**Auctioneer:** SHAWN CHADWELL 417-830-0209  
**Ringmen:** Weston Chadwell ~ 417-349-0727

**Clerk:** SHELLY CHADWELL Cell: 417-880-8449  
**Cashiers:** Maria Chadwell • Emily Shaffer Cassie Collins

**PROFESSIONAL SALES MANAGEMENT**  
**LUNCH WAGON • APPRAISAL SERVICE • RAIN OR SHINE**  
 All announcements made day of sale take precedence over any printed matter. Not responsible for lost or stolen merchandise. Not responsible for accidents.

# PUBLIC AUCTION **AUCTION** BOLIVAR, MO

As we are moving we will sell the following Household, Collectibles, Guns, Knives, RR Items, Tools, Mower and Misc. At the Home located in the West part of Bolivar, Mo. From the Intersection of 32 Hwy. And Killingsworth Ave.

Go South to College Street then go West to the Auction on

**Sat. Sept. 30, 2023 at 9:00 am**

**WATCH FOR AUCTION COMPANY SIGNS • LUNCH SERVED**

**FOR MORE PICTURES GO TO: WWW.BRUCEANDLEANAUCTION.COM**



**GUNS-KNIVES**

- Savage Model 110 Bolt Action 243 Rifle W/ Poly Stock & Red Field Ascent
- 6-24X40 Scope
- Snake Charmer II Stainless 410 SS Shotgun W/Poly Stock
- Brazilian Model SB 3" SS 410 Shotgun
- Miss. Arms SS 16 ga Shotgun
- German Model 86 S.A. 22 Cal. Revolver
- Arms & Co. 22 Cal. Revolver W/Box & Book
- Clerke 22 Cal. Chrome Plated Revolver W/Box & Book
- Davis Ind. Model D38 Cal Derringer
- Model RG-26 Single Action 25 Cal. Pistol
- Smith & Wesson Model SD9-VE 9mm Semi-Automatic Pistol
- Pellet Rifle
- Pocket Knife Collection (Western, Imperial, Sabre, Schrade, Camilus and Others)
- Hunting & Fillet Knives
- 2 Gun Cabinets 6 & 10 Gun

**HOUSEHOLD**

- Samsung Stainless 4 Door Refrigerator
- Samsung 30" Smooth Top Electric Range
- Whirlpool Small Refrigerator
- Sharp & Hamilton Beach Microwave's
- White Kitchen-Aid Mixer
- Several Sm. Electric App.
- 4' Oak Bar
- 6' Glass Fronted Hutch
- Oak Entertainment Center
- 3 Cushion Divan
- Rocker/Recliner
- 6' Glass Fronted Curio Cabinet
- Med Size Roll Top Desk
- 7' Oak Cabinet
- Coffee & End Tables
- Queen Hollywood Bed Frame
- Base Electric Twin Adjustable Bed
- 6 Drawer Chest
- Corner Cabinet
- Round Oak Kitchen Table W/4 Roll Around Padded Chairs
- Metal Frame Bar Stools
- AM, FM Stereo System
- VCR & DVD Players
- Lot of VCR & DVD's
- Office Chair
- Lrg. 5 Drawer Metal File Cabinet
- 6 Metal File Cabinets
- Lot of Misc. Pots, Pans & Dishes
- Towels, Bedding & Linens
- Lot of Kids Toys



**COLLECTIBLES & RAILROAD ITEMS**

- Oak Wash Stand
- 4 Kitchen Chairs
- Ingrahm Kitchen Clock
- Coca Cola Clock
- Kerosene Lamp
- 2 Railroad Lanterns
- Burlington Northern Plate Collection
- Large Lot of Frisco, Burlington Northern and other Railroads Calender's, Maps, Printed Items, Books and More
- Frisco Metal Item Tags
- Railroad Clocks & Wall Hangings
- Toy Train Set
- Rooster & Hen on Nest Collection
- Brown Stone Jug
- Costume Jewelry
- Set of Louis Lamour Hard Back Books
- Dozen Plus Boxed Collector Cars 1/18, 1/24 Scale & Others
- Lot of Misc. Collector Cars not boxed
- Belt Buckle Collection
- 2 Mickey Mouse Phones
- Lot of Records
- Metal Chess Set
- Lot of Misc. Glassware
- Lrg. Framed Beveled Mirror
- Lot of Primitives & Collectibles

**MOWERS-TOOLS-MISC.**

- Troy Bilt 30" Riding Mower
- Troy Bilt Flower Bed Tiller
- Sm. Air Compressor
- Shop Vacc.
- Misc. Hand Power Tools
- Misc. Hand Tools
- Garden Tools
- Metal Patio Table W/2 Chairs
- Folding Tables
- Coleman Propane Camp Stove
- Flower Pots
- Pet Totes
- One Lot of Misc

**OWNERS: MR. & MRS. MARVIN ASHLOCK**

TERMS: Everything sells as is, where is. Nothing is to be removed until settled for. Payment of Cash, Check with Proper ID, or Credit Cards. Auction Company or the Owners will not be responsible for loss of items or accidents. Statements made the Day of the Auction take Precedence over Printed Matter.

SALE CONDUCTED BY **BRUCE & Le'AN AUCTION & APPRAISAL, LLC**  
THE AUCTION COMPANY THAT APPRECIATES YOUR BUSINESS

For more information and pictures go to our website at [www.bruceandleanauction.com](http://www.bruceandleanauction.com)

RONNIE BRUCE - Fair Play, MO  
417-777-1685 or 417-654-2214  
colronbruce@gmail.com

BRANDON BRUCE  
Fair Play, MO

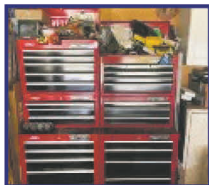
BILLY BRUCE - Stockton, MO  
417-399-4800  
colbbruce@gmail.com

# Tommy Shaw

# AUCTION

**September 23, 2023 – 9:30 am**  
**American Muffler and Tire, Jct of 72 and 32, Salem, MO**

**TOOLS** – Air compressors (2-3 phase, 3-220), Craftsman rolling toolboxes, Craftsman 5 drawer top box, small tool boxes, large lot wrenches & sockets, Worx electric pole saw, battery charger, floor jack, jack stands, mig welder, Coleman generator, DeWalt cordless circular saw, DeWalt drill sets, Skil saw, Craftsman jig saw, DeWalt reciprocating saw, miter saws, drill presses, band saw, air nailers, Protech table saw, aluminum ramps, truck tool boxes, extension ladders, Husqvarna 240 chainsaw, Husqvarna 125b leaf blower, 8ft rotating metal table, lot of chains, shop vac **EQUIPMENT & VEHICLES** – Husqvarna 54 in mower, Gravely ZT48XL zero turn mower, Cyclone rake classic, 82 Kubota 185 2 wheel drive, Woods 5ft finish mower, John Deere 5ft pull type brush hog, portable creep feeder, Super M wide front, 3pt auger, box blade, grader blade, gin pole, John Deere kwik attach forks, 5 ft brush hog, 3pt kwik attach, Clark 620 gas bobcat, John Deere forklift, Hyster 10-ton lift (needs brakes), \* 2005 Kawaski Mule 3010, boom with short bed & winch, Magnum 4000 series gold hot water pressure washer, Buchheit 3pt 25 ton wood splitter, Bendpak 2 post 10,000 lift, 2-Bendpak 12,000 lifts, 22 ft homemade kingpin flatbed trailer, lawn detacher, \* 86 C70 single axle dump truck 9,300 miles, 72 Chevy C/50 with title, storage trailer with and without axles, lawn carts, lot of truck tires and wheels, tractor tires, semi bumpers and steps, tire balancer, 20ft gooseneck flatbed (needs floor), **HOUSEHOLD & MISCELLANEOUS** – Wooden rocker, 2 sets of 3 lockers, file cabinets, wrought iron patio set, Christmas decorations, table & chairs, Coleman self-contained heat/ac unit, antique large saw blade with no teeth, wagon wheels, wood oil furnace, outdoor wood furnace, metal desks, buckets of used wheel weights, 500-gallon propane tanks (no good), metal culvert, 2.5 and 3” fire hose, lot of scrap metal, **GUNS** – Colt M-4 Carbine new in box, Remington youth model 20 gauge, more may be added



Tommy has decided to downsize and move the shop to a new location. Many items still being added.

Pictures will be added to our Facebook page.

See you there - Raymond

**Follow us on Facebook: Quick Auction Service LLC**

# QUICK Auction Service

Col. Raymond Quick (573) 247-3834 [ray\\_quick1964@yahoo.com](mailto:ray_quick1964@yahoo.com) – Col. Brady Hagler

TERMS: Cash or Approved check . Nothing removed until settled for. Not Responsible for accidents. Refreshments available

**ANNOUNCEMENTS AT AUCTION TAKE PRECEDENCE OVER PRINTED MATTER**



# R&R AUCTION SERVICE

## ABSOLUTE AUCTION SATURDAY, SEPTEMBER 23RD AT 10AM

718 Hooker drive in Buffalo MO

Real Estate will be sold in 2 tracks. 1st track will include 3 bed, 1 bath home with living room, kitchen/dining, utility, and additional room from enclosed back porch, 2 car garage and breeze way. all outbuildings behind house. The 2nd track is a large building lot that adjoins property #1. Home appliances and propane tank will sell following real estate. This will be a short auction so don't be late.



200 gallon propane tank, metal truck tool box, stinger. Windmill, planters, cast iron kettle planter, BBQ grill, folding table, patio swing and lounger, 2 Red Ryder BB guns, rock bar, pitch fork, rake, bow saw, snow shovel, shovel, 4 way, hand saws, post hole digger, spade, hammers, scoop shovel, tape measure, limb saw, log chain, several pullers, level, rubber mallet, jack stands, top link, torque wrench, single bit axe, square, cross cut saw, Craftsman toolbox, Craftsman 9" table saw, bench grinder, Cen-tech battery charger, Davidson aluminum step ladder, Wooden step ladder, tap and dye set, pipe wrenches, Sandborn air impact, grease gun,



Sandborn air power grease gun, Rigid pipe cutter, Central pneumatic air nailer, gas cans, 7 pc body fender set, large vise, Campbell Hausfeld work horse air compressor 3.5 hp, air hose on reel, Craftsman 8" drill press, 4 wheel furniture dolly, 2 wheel dolly, hand crank sharpening grinder, Stihl FS45 weed eater, hand made shop fan, oscillating fans, Rigid shop vac, Craftsman 18" 42cc chain saw, tarps, hand sprayers, Contico pro tough bin 37"x21"x20", vintage roll around metal cart, antique copper kettle, small Western Flyer wagon, Old Western clipper sled, wheel barrow, lawn mower trailer with ramp 5 x 8, hoe, mattock, galvanized buckets, trash barrels, push plow, car ramps, wooden wagon, Cub Cadet zero turn 42" 17 hp mower, Yard Machine 21" cut push mower, rubber boots, metal shelving, bolt bins, Herbrand large socket set up to 2", Sears Roto-spader tiller, Toro leaf blower, Chicago chainsaw sharpener, small scale, small shelf, 2100 psi Ex-Cell pressure washer, brass bed post balls, croquet set, Kenmore window ac unit, 2 twin beds, full size bed, Estate Dryer, Whirlpool washer, Bissell quik steamer, futon, t posts, rope, 1/2 bushel basket, office chair, pool accessories, water can, file cabinets, lots of shop fluids, Whirlpool refrigerator freezer, cookie jar, cot, lawn chairs, rocks, dining table with leaf and 4 chairs on wheels, pie safe, Crossley gas range, Magic Chef microwave, Whirlpool refrigerator with ice and water in door, Hoover wind tunnel vacuum, sad iron, granite pot, jello molds, 2 portable wardrobes, lots of extension cords, clock, small secretary desk, electric wire, wooden shelves, milkglass vase, and miscellaneous.



ESTATE OF JOHN AND LEOTA DULL

Please keep watch on our website for added photos.

TERMS: Cash, check, or credit card with proper I.D. nothing removed until settled for A 3% fee will be added to credit card purchases. Not responsible for errors in listing. Any announcement made sale day will take precedence over any printed matter.



For more information contact Professional Auctioneer Russ Weeks at 417-576-7357 or check out [www.rrauctionservice.com](http://www.rrauctionservice.com)

Serving this area's auction needs since 1997 with honesty and professionalism.  
[www.rrauctionservice.com](http://www.rrauctionservice.com)  
(417) 576-7357 or (417) 345-4140



# HELLING 34TH ANNUAL FALL FARM MACHINERY CONSIGNMENT AUCTION

**SUNDAY SEPT 24TH 2023 9:30 AM - 636-303-5105**  
**AUCTION HELD AT HELLING FARM 3548 HWY C LESLIE, MO 63056**

**LOCATION:** FROM HERMANN MO TAKE HWY 100 15 MILES TO NEW HAVEN MO . THEN TURN RIGHT ON HWY C GO 8 MILES TO FARM ON LEFT HAND SIDE. FROM GERALD MO TAKE HWY C 4 MILES TO FARM ON RIGHT. FROM UNION MO TAKE HWY 50 WEST 17 MILES THEN TURN RIGHT ON HWY C GO 3 MILES TO FARM ON RIGHT HAND SIDE. THIS IS A PARTIAL LISTING WATCH FOR UPDATES AND PHOTOS ON WEBSITE

**TRACTORS & INDUSTRIAL EQUIPMENT**

CASE 450 HI LIFT RUNS GOOD USED IT LAST FALL AND THIS SPRING GOOD UNDER CARRIAGE DIESEL 4-1 BUCKET  
 GEHL 6635 SKIDSTEER  
 MF 230 TRACTOR DIESEL POWER STEERING 3PT RUNS GOOD  
 9N FORD RUNS GOOD 3PT WORKS GOOD  
 IH 574 TRACTOR 3PT DIESEL RUNS GOOD  
 JD 520 TRACTOR 3PT GAS  
 MF 285 TRACTOR DIESEL 3PT RUNS GOOD  
 8N FORD TRACTOR  
 JD 60 TRACTOR NEEDS WORK  
 8N FORD FOR PARTS MOTOR NOT LOCK UP  
 JD BACKHOE

**AUCTION NOTE :COMPACT TRACTORS WILL SELL IN LAWN & GARDEN MANY MORE BY SELL DAY**

**HAY EQUIPMENT**

MF 725 HAYBINE 7FT WORKS  
 JD 24T SQUARE BALER WORKS GOOD USED THIS YEAR  
 3PT BALE FORK  
 8 WHEEL V RAKE  
 JD HAY RAKE

**GUNS & BOW and Arrow - SELLS EARLY THAT MORNING**

1-LOT OF GUNS & ACCESSORIES  
 & YOUTH BOW AND ARROW SET

**FARM EQUIPMENT**

5FT DISC 3PT  
 2BTM PLOW 3PT  
 3BTM PLOW 3PT  
 1H 3BTM PLOW 3PT  
 5FT HOWSE BRUSH HOG 3PT  
 6FT BLADE 3PT  
 7FT KING KUTTER BLADE 3PT  
 2- 3PT DIRT SCOOPS  
 6FT BRUSH HOG 3PT  
 5FT DISC 3PT  
 10FT DISC PULLTYPE  
 8FT BOX BALDE  
 POST HOLE DIGGER 3PT  
 ROTARY HOE  
 BOOM POLE FOR TRACTOR  
 SET MF WEIGHTS  
 MF 4BTM PLOW 3PT  
 QUICK HITCH  
 1H FAST HITCH  
 POST DRIVERS  
 AC QUICK HITCH 3BTM PLOW  
 4 ROW CULTIVATOR  
 2 ROW CULTIVATOR  
 15FT BRUSH HOG  
 JD 3 BTM PLOW PULL TYPE  
 JD WHEEL WEIGHTS

**LAWN AND GARDEN**

JD 2021 KAWASAKI TERYX 4  
 500 POLARIS 4 WHEELER 4X4  
 CRAFTSMAN RIDING MOWER 46" CUT  
 PUSH MOWERS  
 JD ZERO TURN MOWER 54" CUT  
 EXMARK BIG COMMERCIAL ZERO TURN MOWER 60" CUT  
 KAWASAKI 4 WHEELER 4X4 RUNS GOOD  
 REAR TINE TILLER

**HUSQVARANA RIDING**

MOWER 48' CUT  
 KABOTA ZERO TURN  
 HUSQVARANA RIDING MOWER 46 CUT  
 HONDA 4-WHEELER  
 SEVERAL MORE RIDING MOWERS COMING WILL LIST THEM AS THEY COME IN  
 GENERATORS  
 HOUSE GENERATOR  
 HOBATA WELDER  
 4FT BLADE  
 5FT BLADE FOR MOWER

**TRUCKS, CARS, TRAILERS**

1925 MODEL T TRUCK DOES RUN  
 JUST NEED TO BE RESTORE  
 1971 INTERNATIONAL GRAIN TRUCK  
 W/14FT DUMP BED W/TITLE  
 2003 CHEV SUBURBAN W/TITLE  
 16 FT TRAILER BUMPER HITCH NO TITLE  
 2007 18FT BUMPER HITCH TRAILER  
 NICE HAS CLEAN TITLE  
 2009 18FT CAR HAULER TRAILER NICE  
 CAMPER 18FT BUMPER HITCH  
 2003 VW BUG 110,000  
 2008 CHEV P/U 1/2 4X4 4DR  
 1980? FORD CAR 4DR NOT RUNNING  
 2006 PONTIAC AZTER  
 1989 FLEETWOOD CAMPER  
 20FT BUMPER HITCH

**1-LOT OF MISC**

ROUND STOCK TANK  
 SEVERAL WAGONS OF MISC

**ITEMS**

USED TRACTOR TIRES  
 TOTER TRASH CANS  
 GAS CANS  
 LADDERS SEVERAL SIZES  
 WEIGHTS  
 STRAPS  
 PATIO CHAIRS AND TABLE  
 TOMMY LIFT  
 WHEEL BARROWS  
 10-22.5 STEEL WHEELS  
 STAINLESS TABLE  
 BOAT TANKS  
 30 GAL OIL DRUM  
 USED TOOLS , SOCKET SETS  
 CHAINS AND BINDERS  
 AND ECT  
 CORRAL PANELS SET

**1-LOT ANTIQUES & HORSE DRAWN EQUIPMENT & HIT & MISS GAS ENGINES**

**POTATO PLOWS**  
 3-1 BTM PLOWS ,  
**2 CULTIVATOR**  
**FAIR BANKS 1 1/2 HP NOT LOCK UP**  
**IH 3HP RUNS**  
 2- HORSE SADDLES

**1-LOT OF TOOLS & DECORATIONS**

**MANY LAWN ITEMS**

**MANY MORE ITEMS BY SALE DAY - WATCH FOR UPDATES**



**RAIN OR SHINE - LUNCH WILL BE SERVED - WE WILL BE RUNNING 3 AUCTIONEERS ALL DAY SO COME PREPARED - MANY MORE ITEMS BY SALE DAY - WATCH FOR UPDATES & PHOTOS ON WEBSITE**

**TERMS:** CASH OR GOOD CHECK WITH PROPER IDENTIFICATION. NO OUT OF STATE CHECKS WITH OUT APPROVE BY OWNER OF AUCTION .NOTHING TO BE REMOVED UNTIL SETTLE FOR MUST HAVE PAID TICKET BEFORE LOADING ITEMS!!! NOT RESPONSIBLE FOR ACCIDENTS, OR LOSES ,. ANNOUNCEMENT ON SALE DAY.

**AUCTION NOTE:** WE WILL BE RUNNING TWO OR 3 AUCTION RINGS THAT DAY **SO COME EARLY!! LITTLE SOMETHING FOR EVERYONE.**

THESE BILLS ARE MADE 2WKS IN ADVANCE OF AUCTION DATE& COULD HAVE DELETIONS & MANY MANY MORE ITEMS BY AUCTION TIME. TERMS CASH OR GOOD CHECK WITH PROPER IDENTIFICATION. NO OUT OF STATE CHECKS WITH OUT APPROVE BY OWNER OF AUCTION .NOTHING TO BE REMOVED UNTIL SETTLE FOR MUST HAVE PAID TICKET BEFORE LOADING ITEMS!!! NOT RESPONSIBLE FOR ACCIDENTS, OR LOSES. ANNOUNCEMENT ON SALE DAY.

**COME WHERE YOUR MONEY COUNTS!!!**

ALL ITEMS MUST BE REMOVED IN 10 DAYS. NO HOUSEHOLD GLASS WARE OR SINKS ,TOILETS OR BATH TUBS UNLESS STAINLESS STEEL, NO JUNK TIRES. DUE TO THE COVID -19 WE WILL BE FOLLOWING THE CDC GUIDELINES AND PRACTICING SOCIAL DISTANCING . HAND SANITIZER WILL BE AVAILABLE AND ANY PPE YOU DESIRE TO WEAR IS OK. **AUCTION NOTE :** WE WILL BE GIVING OUT BUYERS BID CARDS THE WEEK OF THE AUCTION, FOR ANYONE WHO WOULD LIKE TO GET THEIR NUMBER EARLY THANK YOU

**FOR INFORMATION  
CALL DEANNA HELLING 636-303-5105**

*As always we appreciate your business  
Helling Farm Auction*

**WEBSITE: HELLINGSFARMAUCTION.COM**

**EMAIL ADDRESS: HELLINGSFARMAUCTION@YAHOO.COM**

**AUCTION!! AUCTION!! AUCTION!!**

*Auction*

**SATURDAY OCTOBER 7, 2023 AT 10 AM**

**Location: 3702 W St Hwy 14, Seymour, MO 65746**

**DIRECTIONS: FROM THE STOPLIGHT IN AVA, FOLLOW 14 WEST APPROX. 13 MILES. AUCTION IS ON THE LEFT. WATCH FOR CHEYNEY AUCTION SIGNS!**

**FARM EQUIPMENT • LIVESTOCK • HAY • TRUCK • TOOLS • HOUSEHOLD**

**LIVESTOCK** \*black & red fancy running age\*, 9 bred cows, 11 calves, 1 bull

**HAY** 42 bales- 4x5 Net wrap barn stored Hay

**TRACTOR** Massey Ferguson 290 w/ Front end Loader

**FARM EQUIPMENT** 6' Brush hog, 3 pt Auger, Approx. 45 10', Corral panels, 16' Bumper pull Stock trailer, 6' T posts, Feed bunks, 8' Field roller, 2- Creep feeders, 4- Round bale rings, 5' Angle blade, 6' Harrow, 2 Bottom plow, 3 pt Carry all, 40 gal ATV sprayer

**TRUCK** 1999 Ford F250 4WD,

**TOOLS/SHOP/LAWN** Craftsman DYS 4500 riding mower, Yard Machine rear tine Tiller, Sears Craftsman AC DC Welder, 15" Roping saddle, Log chains, Handyman Jack, Hand saws, Fence stretchers, Poulan Pro 35cc Chainsaw, Misc Power tools, Fish cooker, Misc hand tools, Assortment garden/yard tools, Empty lick tubs, Barn metal/siding, Pet crate, Coleman lantern,

**ANTIQUES/PRIMITIVES/HOUSEHOLD** 48" saw blade, Large pulley, Antique scale, Double tree, Large cast iron pot, Ice cream makers, Antique Mission style oak sideboard buffet w/ mirror, China hutch, Dining table w/ 6 chairs, Entertainment center, Metal daybed, Sofa, Vintage Victor Victrola, 4 large wooden bookshelves, Kenmore 5 burner gas stove, Hamilton Beach roaster w/ base, Dressers/ Chest of drawers, Full size bed, Antique Secretary desk, Vintage Crib, Rocking chair, Bookshelves, Canning jars, Whirlpool elec. Stove, Deep freezer, Wrought iron patio table w/ 4 chairs, Cast iron outdoor table w/ 2 chairs, Misc décor, Variety of knick knacks and collectibles



**Many more items, too numerous to mention!**

**Owners: Bob & Linda Myers**



**FOR MORE PHOTOS, VISIT OUR WEBSITE CHEYNEAUCTIONS.COM OR FIND US ON FACEBOOK!**

**Cheyney Auction Company, LLC**

Real Estate • Livestock • Farm & Ranch • Equipment • Household • Antiques

**Travis Cheyney, Auctioneer • Buddy Boyd, Ringman**

**417-543-8751 • cheyneyauctions.com**

ANNOUNCEMENTS Made Day Of Sale By Auctioneer Take Precedence over any Printed Matter. Not Responsible for Accidents. All items sold as is, where is, with no guarantee. Terms of sale: cash, credit/debit card, or check with valid ID.



# HUGE OUTSTANDING RESTAURANT & BAR LIQUIDATION AUCTION

## MONDAY, OCT. 2 - 10:00 AM

RICK'S PLACE  
 2402 E WASHINGTON ST  
 FREDONIA, KS 66736

SELLING ➡



2004 LINCOLN STRETCH LIMOUSINE-8'X40' METAL CARGO OR STORAGE CONTAINER-ICS 8'X15' PRECON WALK IN COOLER-2019 ICS 10'X14' PRECON WALK IN FREEZER W/FLR, 1 PH! ABSOLUTELY LIKE NEW! MANITOWOC 400 LB ICE MACHINE-SANDWICH & PIZZA REFRIG PREP TABLES-REACHIN COOLERS & FREEZERS-KEG TAPPER COOLER-BOTTLE BOX COOLER-REFRIG CHEF'S BASES-PORTABLE BAR-BAR SINKS, ICE BINS, GLASS STATIONS & OTHER BAR ITEMS-MEAT BANDSAW-HOBART MEAT TENDERIZER-GLOBE MEAT SLICER-GLOBE 20 QT DOUGH MIXER-2 LINCOLN IMPINGER MDL 1116 NAT GAS CONVEYOR PIZZA OVENS-2 SETS DBL STACK CONVECTION OVENS-PROOFER-RANGE-GRILL-CHARBROILER-FRYMASTER 2 BANK & DEAN SGL DEEP FRYERS W/BUILTIN OIL FILTRATION-STEAMTABLES-3 EXHAUST HOODS, FANS, MAKEUP AIR UNITS & FIRE SUPPRESSION SYSTEM-STAINLESS STEEL SINKS, DISHWASHER DRAIN TABLES, WORKTABLES & EQUIPMENT STANDS-WIRE SHELVING UNITS & WALL SHELVES-EXCELLENT DINING ROOM & BAR SEATING FOR APPROX 200 INCL TABLES, CHAIRS, BARSTOOLS & BOOTHS! POS SYSTEM-WAITRESS PAGING SYSTEM-TELEVISIONS, CUSTOM ARTWORK & DÉCOR-OFFICE & EXTERIOR ITEMS-OTHER RESTAURANT & BAR EQUIPMENT TOO NUMEROUS TO LIST!

**NOTE: THIS IS ONLY A SMALL & PARTIAL LISTING. HUGE, OUTSTANDING AUCTION WITH MOST EQUIPMENT PURCHASED NEW IN 2018! VISIT OUR WEBSITE & CLICK ON THE "AUCTIONS" TAB FOR DETAILED LISTING AND PHOTOS! EXCELLENT WALKIN COOLER & FREEZER, LIMOUSINE & STORAGE CONTAINER! FANTASTIC BAR, REFRIGERATION, PREP, AND COOKING EQUIPMENT WHICH WILL BE HOOKED UP & WORKING ON AUCTION DAY! ATTRACTIVE, QUALITY DINING ROOM AND BAR SEATING! WE WILL BE RUNNING TWO AUCTION RINGS MOST OF THE DAY SO BRING A FRIEND! MARK YOUR CALENDAR AND MAKE PLANS TO ATTEND THIS FANTASTIC AUCTION AS IT IS ONE YOU WON'T WANT TO MISS!**

**MARON RESTAURANT EQUIPMENT, LLC & AUCTIONS CO.**

**417-327-5619 • WWW.MARONRESTAURANTEQPT.COM**

**YOUR RESTAURANT EQUIPMENT AND FOOD SERVICE LIQUIDATION SPECIALISTS**

**LAND AUCTION**  
SATURDAY, OCTOBER 7 AT 12PM

**354 ACRES - DOUGLAS COUNTY**  
ATTENTION ALL:  
INVESTORS | FORESTERS | HUNTERS



**LAND TOUR**  
SUN OCT 1  
1-2PM

Join Us In-Person For LIVE Auction with Internet Bidding!

**GARY SEXTON**  
*Auctioneers / Real Estate*

**417-255-7001** | [GARYSEXTON.COM](http://GARYSEXTON.COM)

**OUTSTANDING UNCUT TIMBER**



**LITTLE BRUSH CREEK SPRINGS**



WITH LIVE! ONLINE BIDDING

**HARMAN 68 AUTO IGNITE:** Works like new. Heats 2,800-3,000 sq. ft. home. Pipes & ash vacuum included. Used about 3 years. 2 1/2 tons of pellets. \$3,700. 417-934-2312. Mt. View.

**STAN MUSIEL CANCELED CHECK:** Full signature with authenticity. Mint condition. \$55. text for pictures. 573-854-8132. Houston.

**9 COWS WITH 3 CALVES THE REST SHOULD BE 3<sup>RD</sup> STAGE & BULL:** These are prime farm raised cattle. \$3,000/each. 573-857-3210 or 573-707-9494.

**GENTLE ARABIAN MARE FOR SALE:** \$1,000. 573-263-4749. St. James.

**ATTENTION ROOT DIGGERS:** We will be buying ginseng & goldenseal throughout the season. Schofield Roots in Theodosia, MO 417-683-7922.

**STANDARD POODLE PUPPIES: 16 weeks, ACA.** Text 417-718-9868. Macks Creek, MO.

**???CDL LICENSE??? FAST & ECONOMICAL:** Meets all requirements of the new ELDT Law. 2 days training. \$100 rebate with this ad. You need a learner's permit & ability to drive a manual. Jefferson City, Strafford & Willow Springs, Missouri. Please call 573-353-2853. [www.capitaltruckdrivinginstitute.com](http://www.capitaltruckdrivinginstitute.com).

**FARM AUCTION**  
SATURDAY, SEPTEMBER 23, 2023 AT 9AM - \*MORNING SALE\*

Due to downsizing, I will sell the following personal property at auction, located from St. James, Missouri, take Hwy. 68 west 9 miles to CR 444. Follow CR 444 2 miles to auction or from Vichy, Missouri, take CR 444 2 miles to auction. Follow Lorts Auction Today signs on

**TRUCKS & FARM MACHINERY** 2000 Chevrolet 1 ton truck w/Bester 3200 bale bed & 454 automatic, 1999 Chevy 3500 1 ton truck w/Meyers snowplow, 4 door, 4x4, 459 automatic, 1995 Ford 3/4 ton pickup truck w/flatbed, 4x4, 5 speed, gas motor, D-17 AC tractor series IV (not running), 1978 C-65 2 ton truck w/366 motor, 5 & 2 w/P.T.O, no bed (20 ft. bed will fit), 3 pt. 5 ft. box blade — 3 pt. hay fork, 3 pt. 5 ft. bush hog, 3 pt. post hole digger, John Deere 13 hole Van Brunt grain drill, 2 wheel 3/4 ton pickup bed farm trailer, John Deere 4 wheel wagon gear #953, Westerdorf tractor loader w/ bale spike & bucket (off 1066 International), **MANY MORE ARTICLES TOO NUMEROUS TO MENTION**

**OWNER: JIM FLESHMAN • 21194 CR 444, VICHY, MO 65580**

Due to selling my home, I will sell the following items at the Flesham auction located at 21194 CR 444 in Vichy, Missouri.

**SHOP TOOLS & VEHICLE ITEMS** Cyclone classic rake w/B&S 6.5 engine, Aluminum Reese hitch carrier w/ramp, Cobalt aluminum truck toolbox, 2 wheel dolly — Car ramps, Century 80 wire feed welder, DeWalt 15 gallon air compressor, Sears Craftsman toolboxes, Craftsman roll around toolbox, Assorted pliers, sockets & screwdrivers, Open end wrenches — B&D jigsaw, Bostitch staple gun, Jack stands — Shovels & rakes, Rolling shop carts, Pipe wrenches — Gear pullers, Measuring tapes — Squares & levels, Earthway fertilizer seeder, Skil 6 inch grinder, Electric blowers — Shop fans, Chicago miter box saw, Delta miter box saw, B&D drill press, 275-65 R18 truck tires, 2007 Saturn Sky aluminum wheels, 6 hole aluminum wheels (off F150), Undercover trifold fiberglass tonneau cover, (off 2011 Dodge Ram 1 ton), Fiberglass running boards (off 2016 Ford F150), Ryobi 9 inch band saw, Plumbing supplies, Extension cords — Shop vacs, DeWalt power tools — Toolboxes, Troy-Bilt power washer, 20 gallon Craftsman wet/dry vac, Splitting maul — Motorcycle jack, Craftsman toolbox w/table top, Boat seats — Shop fans, Rolling dollies — Tire breaker, 6 ft. step ladder — Lots of hardware Rolling coolers — Bar clamps, Bruno handicap lift (made to mount on SUV w/12 volt), Pry bars — Tarps — Dip net


**MANY MORE ARTICLES TOO NUMEROUS TO MENTION OWNER: DARRYL MOORE • ROLLA, MO 65401**

**AUCTIONEER'S NOTE:** We're combining two auctions into one on Saturday, September 23. Lots of good usable items and shop tools. Mark your calendar and plan to attend! - Lorts Auction Service

**TERMS:** Not responsible for accidents or losses, should they occur. • Nothing removed until paid for. • No buyers fee. Lunch Served — ALL ANNOUNCEMENTS MADE SALE DAY TAKE PRECEDENCE OVER ALL PRINTED MATERIALS —

SALE CONDUCTED BY LORTS AUCTION SERVICE ST. JAMES, MO 65559  
AUCTIONEERS: Larry W. Lorts & Gary R. Lorts Licensed and Bonded • 573-263-1509 & 573-263-0243  
"like" us on Facebook- Lorts Auction Service or view this auction on line at [www.threeneverspublishing.com](http://www.threeneverspublishing.com) or [Auctionzip.com](http://Auctionzip.com) (auctioneer ID # 42353)

**- THIS IS AN ON-SITE LIVE AUCTION CONDUCTED BY LORTS AUCTION SERVICE -**



**ALLEN AUCTION & REAL ESTATE SERVICE LLC**

**LARGE PUBLIC FARM AUCTION**  
**"CHARLIE HAWKINS FARM AUCTION"**  
**SATURDAY, SEPTEMBER 23, 2023**  
**@ 10:00 AM**  
**1805 HWY E • Bellflower, MO 63333**

Directions: From Olney, MO, Take Hwy E West approx. 3.9 Miles, Auction on Right side. From Bellflower, MO, Take Hwy E North approx. 5.5 Miles, Auction on Left side. Watch for Allen Auction signs day of sale.

**\*This is a partial list, check website for complete list. The list changes daily\***  
**\*Watch for Signs the day of auction\***

**Tractor**  
- FORD 7740 diesel tractor, w/ Farmhand GL520 loader, Cab, smooth bucket and bale spear, 3175 hours, 18.4 x 34 tires, Nice Farm Tractor

**Farm Equipment**  
- Bush Hog 3210 brush hog, chains, hard tires  
- 3pt Bush Hog BH17 brush hog, chains, hard tires  
- Bush Hog 121 hydraulic blade  
- 3pt log splitter  
- 3pt box blade with teeth  
- Tag along disk with cylinder, notched blades  
- 3pt FORD 4-bottom plow  
- JOHN DEERE 1240 Corn Planter  
- 3pt Ferguson 3-bottom plow  
- 3pt seeder  
- NEW HOLLAND grinder/ mixer  
- 3pt. Tiller

**John Deer Gator**  
- 2019 JD XUJ835M, cab, AC/Heat, 4x4, approximately 800 hours, Great Condition

**Hay Equipment**  
- NEW HOLLAND 855 round baler/ auto wrap  
- NEW HOLLAND 256 rake with dolly wheel  
- Hay wagon on heavy running gear  
- JOHN DEERE 1460 Hay Mower conditioner  
- 3pt. bale movers (2)  
- Hay wagon with sides, hoist  
- Hay wagon with sides

**Round Bale Hay**  
- 22 round bales (5x6) clover/alfalfa/grass (mostly clover)

**Cattle & Cattle Equipment**  
- Selling 10 Cows & 11 Calves. Hereford Genetics. Calves are out of Falling Timber Bull. 5-9 years old Cows. Very Gentle & an ideal addition to anyone's herd.  
- metal cattle feed bunks  
- Bale rings  
- STULL Auger Fed Feeder for UTV  
- cattle water tanks  
- t-posts  
- gates

**Lawn & Garden**  
- HUSQVARNA MZ61 zero turn mower, Briggs and Stratton 27hp engine  
- STIHL MS210C chainsaw  
- Hand tools (shovels, rakes, pitch forks, etc)  
- TROY BILT horse rear tine garden tiller  
- RYOBI battery powered string trimmers

**Antiques, Primitives & Household Shop Equipment**

**Special Note: We will have 2-3 trailer loads of shop equipment & tools. All wood working equipment is in good condition.**

**Visit website for full list and photos.**

**Auctioneers Note:** We have the wonderful opportunity to sell a great lineup of farm machinery, John Deere Gator, shop equipment/tools, cows & calves, and antiques/ primitives at public auction. Charlie Hawkins was very well known in the Olney/ Bellflower area & it is our privilege to conduct their auction. Plenty of parking & bring your trailers. See you Saturday, September 23rd. Thanks, Kyle.

**ALLEN AUCTION & REAL ESTATE SERVICE LLC**  
**(636) 338-4805 • Hawk Point, Mo • www.allenauction.net**  
**The Auctioneer, Kyle Allen (636) 236-2344**



**MID MISSOURI STOCKYARDS**

**REGULAR SALE EVERY THURSDAY 11AM**

WATCH OUR WEEKLY SALE IN REAL TIME ON [DVAUCTION.COM](http://DVAUCTION.COM)

For Farm Visits, Market Updates, or Trucking  
Call **Zach Cox 417-777-1320**  
**Dan Romine 573-578-4939**

**Competitive Buyers!  
Competitive Commission!  
Competitive Market!**

Barn: 417-532-9292 

**I-44 • Exit 123 "just outside of Lebanon"  
17505 Route 66, Phillipsburg, MO 65722**

For weekly market updates, visit us at [www.midmostockyards.com](http://www.midmostockyards.com)

**MINI AUSTRALIAN SHEPHERD BREEDING STOCK: ASDR.** Selling as a group only. Text 417-718-9868. Macks Creek, MO.

**SET OF MISSOURI DUCK STAMPS:** 1980-1996. All new, never used. \$200. 573-453-2777. Salem.

**MINI AUSTRALIAN SHEPHERD PUPPIES:** Ready soon, ASDR. Text 417-718-9868. Macks Creek, MO.

**2011 VICTORY CROSS COUNTRY:** Full dress, FREE with bike Cherokee Village Arkansas Lot. \$13,500. 417-741-9523.

**FOR SALE 22FT. FLATBED GOOSENECK TRAILER:** 14,000 lb. tandem double axle, with dovetail. \$6,500. 417-217-3572 or leave message. Grovespring.

**2005 5<sup>TH</sup> WHEEL 41' TRAILER BY KZ TOY HAULER:** Well appointed. \$12,500. 417-372-0402. West Plains.

**2005 ROCKWOOD TRAVEL TRAILER:** 26FT Long with slide out. \$6,500. 417-531-1048. Morgan.

**WEATHERED BARN WOOD SIDING:** 10" wide. Call for appointment 573-729-7226. [www.pineridgerustic.com](http://www.pineridgerustic.com) Salem.

**LOG SIDING:** 2X8 Pine/Western Cedar. Call for appointment 573-729-7226. [www.pineridgerustic.com](http://www.pineridgerustic.com) Salem.

**NEW INVENTORY** - \$59,900 Delivered and setup, Hurry! Call Adam 573-657-2176 [amegamobilehomes.com](http://amegamobilehomes.com)



**BUFFALO LIVESTOCK MARKET LLC**

**276 Hwy 32 W. ,Buffalo, MO  
September 16<sup>th</sup>, 2023**

**Receipts: 1155**

**REPRESENTATIVE STEERS**  
300-400 @ 275.00 to 335.00  
400-500 @ 270.00 to 310.00  
500-600 @ 255.00 to 272.00  
600-700 @ 245.00 to 257.00  
700-800 @ 235.00 to 246.00  
800-900 @ 225.00 to 238.00

**REPRESENTATIVE HEIFERS**  
300-400 @ 250.00 to 277.00  
400-500 @ 240.00 to 265.00  
500-600 @ 220.00 to 248.00  
600-700 @ 225.00 to 242.00  
700-800 @ 215.00 to 235.00  
800-900 @ 185.00 to 210.00

**FEEDER BULLS**  
300-400 @ 260.00 to 310.00  
400-500 @ 265.00 to 305.00  
500-600 @ 240.00 to 265.00  
600-700 @ 235.00 to 245.00  
700-800 @ 220.00 to 230.00  
800-900 @ 190.00 to 210.00

**STOCKS COWS**  
Bred Cows 1475.00 to 1985.00  
Cow/Calf Pairs 1775.00 to 2100.00

**SLAUGHTER BULLS**  
High Yield 128.00 to 132.00  
Low Yield 110.00 to 125.00

**SLAUGHTER COWS**  
Fleshy 112.00 to 125.00  
Med Flesh 110.00 to 120.00  
Light Flesh 95.00 to 112.00

**QUESTIONABLE HEALTH OR CRIPPLE COWS**  
70 Down  
Plain, Poor Quality, Cattle will be in under this market!!  
Fleshy, unwean cattle starting to take deductions in the market with weather changes!

**TUES NIGHT 6:30PM SPECIAL COW & BULL SALE!!!**

**MON-WED MARKET REPORT**  
Listen to KJEL 103.7FM • Lebanon or KYOO 99FM • Bolivar

**VIEW OUR SALES AT [CATTLEUSA.COM](http://CATTLEUSA.COM)**

**CALL FOR TRUCKING OR ON-FARM VISIT**  
Lyle Caselman • Owner-Manager  
417-345-7876 • mobile 417-533-2944  
Leon Caselman • Owner  
417-345-4514 • mobile • 417-588-6185

**Firearms Auction** **The Red Shed**  
I-44 to exit 179 • 169 Truman St / Hwy T Doolittle, MO 65550

Saturday, October 7th, 2023 • 10 a.m. Doors open at 8:00 a.m.  
Sale Preview - Friday, October 6th • 6-9 p.m.

We will sell the following private collections of firearms without reserve.

**Selling Over 300 Firearms & Large Lot Of Ammo and Miscellaneous**

For a complete sale bill and pictures of each gun, go to [auctionzip.com](http://auctionzip.com) and enter auctioneer ID #28053. Pictures also on [HiBid.com](http://HiBid.com)



**J & J Sales, LLC**  
573-341-5450 Office    573-465-4647 Julie Reagan    573-465-0642 JD Roach, Auctioneer    573-762-2227 Sale Day Number

**WE BUY AND SELL**  
new and used mobile homes



**(417) 501-1061**

**NEW MOBILE HOMES** – prices start at \$64,900 delivered and setup 573-499-9993 columbiadiscountshomes.com

**BASEMENT READY TRUE MODS**– instock ready for delivery 573-657-7040 chateauhomes.net

**SET OF MISSOURI DUCK STAMPS:** 1980-1996. All new, never used. \$200. 573-453-2777. Salem.

**REGISTERED HEREFORD & ANGUS BULLS:** Home raised, Some Show-Me Select Qualified. 573-701-7828. Belgrade.



**Wright Spray Foam Insulators, LLC**  
Commercial & Residential  
Call for **FREE Estimates!**

Ervin Gingerich 417-926-2052  
B. Eli Yoder 417-746-4932

**LIGHTLY EXPERIENCED GOLF BALLS:** \$3 a dozen. 417-818-3469. Strafford.

**SLIGHTLY USED PUZZLES:** Will sell or trade. 417-818-3469. Strafford.

**LIONEL TRAIN SET:** Steam engine, tender, caboose and other car, track, and transformer. \$195. 573-364-7465. Rolla.

**MODEL 1911 FRAME 8-SHOT C02 PISTOL:** Like new, in box with C02 cartridges, 4 clips, pellets & all paperwork. \$95. 573-364-7465. Rolla.

**1970s KIDS METAL STOVE & FRIDGE:** Nice Lithographic paint, 18” wide x 36” high. \$75. 573-364-7465. Rolla.

**3 GENTS WITTNAUER WRIST WATCHES:** 10k gold + 23J. All \$200. 573-764-3517. Call in P.M.

**HARLEY FAT BOBS:** Custom flame paint w/ gas caps + lines. \$100. 573-764-3517. Call in P.M.

**COLT REVOLVER DEALER CATALOGS:** Circa 1950’s + 1960’s. All for \$100. 573-764-3517. Call in P.M.

**110 PORCELAIN POCKET WATCH DIALS:** Perfect for arts & crafts. \$100. 573-764-3517. Call in PM.

**CALUS LOGGING**

**20 YEARS EXPERIENCE**

**Buying Standing Timber**  
Walnut & Oak

**Joe Calus, Owner**  
417-926-4606 • MTN. GROVE

**CERTIFIED**

**1890 GOLD TESTING KIT:** Glass acid beakers + antique wooden case. \$100. 573-764-3517. Call in PM.

**1500 VINTAGE WRISTWATCH DIALS:** \$100. 573-764-3517. Call in PM.

**HARLEY 45 SOLO:** factory rear brake drum + sprocket. \$150. 573-764-3517. Call in PM.

**HARLEY PANHEAD DISTRIBUTOR:** original, chrome + complete. \$125. 573-764-3517. Call in PM.

**1962 HARLEY SPORTSTER 900CC:** original distributor. \$50. 573-764-3517. Call in PM.

**SPORTSET BY SARGENT:** Fishing pliers in leather sheath. Like a multi-tool. \$20. 636-239-2695 or 314-560-5700. Washington.

**NEW SQUARE D RAINPROOF 50AMP DISCONNECT:** \$160. 636-239-2695 or 314-560-5700. Washington.

**USED JET HOME POLLUTION CONTROL PANNEL:** Model CP700. \$65. 636-239-2695 or 314-560-5700. Washington.

**HEARTH CRAFT GLASS BI-FOLD FIREPLACE DOORS PURCHASED AT FORSHAW’S FIREPLACE:** Antique brass. \$160 obo. 636-239-2695 or 314-560-5700. Washington.

**FALL EQUIPMENT & CONSIGNMENT Auction!**

**FRIDAY, SEPT 29th @ 9:00 am**  
**SW Auction Pavilion in Wheaton, MO!**  
**151 Ste Hwy 76, Rocky Comfort, MO**

Taking consignments on Farm Machinery, Vehicles, Trucks, Trailers, Shop Equip, Tools, Firearms (FFL applies) & more!

Early consignments will be photographed and included on auction flyer!

Contact Southwest Auction Service for more info!  
417-652-7540 or email: kathy@swaauction.com  
Website: www.swaauction.com

**Bob Hughes**  
417-652-7540

**SOUTHWEST AUCTION SERVICE & MARKETING**  
www.swaauction.com

**THE TIRES YOU NEED FOR ALL SEASONS**

With brands like:

**NEXEN** **YOKOHAMA**

**ATTEBERRY MFA TIRE & AUTO CENTER**

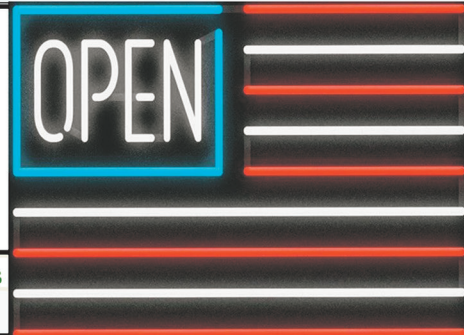
333 E. BROADWAY • BOLIVAR, MO  
DUANE ATTEBERRY • 417-326-6286

**ASE**





**LUCKY DISCOUNT LUMBER**  
**NOBODY BEATS OUR PRICES**  
 Sale Ends September 30, 2023  
 Seymour, Missouri 417-935-4201



**Pole Barns & Post Framed Buildings!**

Call for free quote, brochure & color chart. Other sizes also available.

<b>23'x32'x10'</b> \$6,399 Material Only \$8,599 Labor Included	<b>23'x40'x10'</b> \$7,299 Material Only \$10,019 Labor Included	<b>30'x40'x10'</b> \$8,669 Material Only \$12,175 Labor Included	<b>40'x60'x12'</b> \$16,745 Material Only \$23,985 Labor Included
---	--	--	---



**NOBODY, BUT NOBODY BEATS OUR PRICES!!!**

10 ft. Slider • Engineered Trusses 8' O.C. • 2x6 Treated Bottom Wrap • Screws • 2x10 Top Wrap • 2x4 Purlins • Full 29 Gauge Steel • Plus 3 ft. Entry Door with Lock  
 OPTIONS: Sidewall Heights on all Buildings 10', 12', 14' & 16'. Overhead Garage Door. Skylights. Insulation. Wainscoting. Insulated Vinyl Windows. Cupolas. Labor Rates Slightly Higher over 50 Miles from Seymour. Call for YOUR FREE QUOTE TODAY!!!

**PAINTED WHITE, GREEN OR TAN METAL** .....\$97.79  
 10' - \$31.00    12' - \$37.20    16' - \$49.60

**MIX & MATCH METAL** .....\$59.99  
 8' - \$15.20    10' - \$19.00    12' - \$22.80

**GALVALUME METAL** .....\$79.99  
 10' - \$25.40    12' - \$30.48    16' - \$40.64

**GALVANIZED CORRUGATED METAL SOLD OUT!**  
 8' - \$9.84    10' - \$12.30    12' - \$14.75    16' - \$19.67

**IN STOCK**

<b>40yr Painted Metal</b> 99.99 <sup>Sq</sup>	<b>KNOTTY PINE DOORS</b> Starting at <b>\$164.99</b>
--	--

\*\*Prices subject to change without notice\*\*  
**6X6 CEDAR POST LIMITED TIME \$5.87 LN FT**

<b>Car Siding!</b> 1x6 White Pine Siding <b>69¢</b> In ft 1x8 White Pine Siding <b>99¢</b> In ft * 4 Profiles to choose from! Broken Bundles Add 10¢ Per Ft.	<b>4x8 Sheeting</b> Less than full units Add \$1 per sheet 3/8" Beaded Panelling \$24.99 5/8" T111 Siding \$19.99 Panelling <b>SSOLD</b> 1/2" Plywood <b>SSOLD</b> 3/4" Plywood \$29.99 3/16 Pegboard \$12.99
--	--

**LOTS OF MATERIAL AVAILABLE FOR THOSE IN HOME PROJECTS!**

**REAL WOOD SIDING**  
 2x6 Log Siding \$1.76 In ft  
 1x8 Beveled Cedar from- 99¢ In ft  
 T1-11 Siding from \$19.99

**NEW PACKAGE HOMES**



2x6—16" on center-Exterior Stud Walls  
 Residential Roof Trusses-2' on center  
 4/12 pitch with 1' over hang  
 40 year Painted Metal roofing in 20 Different Colors  
 Profile Ridge Vent - Ventilated Ridge Cap  
 Vinyl Center Vent Soffit  
 Color Matched Metal Fascia & Gable Trim  
 2 - 3' 6 Panel Entry Doors  
 4 - 3'x4' Vinyl Insulated Windows  
**ALL FIGURED FOR SUITABLE CUSTOMER SUPPLIED SLAB OR SUB-FLOOR**

Your Choice of either:  
 Stock 5/8" T111 Siding w/1x4 Pine Window & Door Trim - or -  
 7/16" OSB & House Wrap ready for other finish options

**Price for Basic Materials Package (No Labor at this Time)**

20x24(480 sq. ft.)	20x32(640 sq. ft.)	20x40(800 sq. ft.)	28x40(1120 sq. ft.)	28x48(1344 sq. ft.)
<b>\$9,490</b>	<b>\$10,839</b>	<b>\$12,339</b>	<b>\$15,129</b>	<b>\$18,729</b>

**DECK PACKAGES**

**Materials Only**

8x8.....\$349.00	10x12.....\$699.00
10x10.....\$499.00	10x16.....\$899.00
12x12.....\$899.00	12x16..\$1179.00

**QUAKER** Now Stocking Quaker Vinyl Windows

2030 \$ 163.99	3030 \$189.99
3040 \$206.99	3052 \$225.99
3040Twin \$453.99	3052Twin \$497.99

**LUCKY DISCOUNT LUMBER**  
 417-935-4201  
 455 State Hwy C • Seymour MO 65746  
 www.luckydiscountlumber.com




\*Some restrictions apply see store for details. Prices subject to change without notice.