

**FREE - TAKE ONE!**

Vol. 30 No. 25

**SEPTEMBER 14, 2023**

417-532-9131

# **T** WEEKLY **TRADER** MAGAZINE



Find us on  
**Facebook**

@myweeklytrader  
AUCTIONS PG. 9

**VISIT OUR NEW WEBSITE! MYWEEKLYTRADER.COM**

**Backed By  
Morse**

# TRUCK SEASON



CHEVROLET

FIND NEW ROADS™



**LARGEST SELECTION IN YEARS AND MORE ON THE WAY**

**WE WANT YOUR TRADE.**

**ED MORSE**  
**CHEVROLET**  
**BUICK GMC**

ROLLA

100 Fairgrounds Rd., Rolla, MO

**573-364-1002**

EdMorseChevroletBuickGMCRolla.com

High horsepower.  
High performance.  
Low financing.



Save big on our L2501HST with Kubota loader. Part of our tractor lineup rated #1 for durability and owner experience in the U.S.\* Stop in for a demo and to claim this offer today.

L2501HST W/ KUBOTA LOADER **ONLY \$22,995**

**0% APR FOR 72 MONTHS**

VISIT US TODAY FOR THIS LIMITED-TIME OFFER



**Quarles Supply**

3251 S Springfield Ave  
Bolivar, MO 65613  
417-777-2391

KubotaUSA.com

0% Down, 0% A.P.R. financing for up to 72 months on purchases of select new Kubota L2501HST equipment from participating dealers' in stock inventory is available to qualified purchasers through Kubota Credit Corporation, U.S.A.; subject to credit approval. Example: 72 monthly payments of \$13.89 per \$1,000 financed. Some exceptions apply. Terms subject to change. Offers expire 09/30/23. This material is for descriptive purposes only. Kubota disclaims all representations and warranties, express or implied, or any liability from the use of this material. For more information, see Dealer or go to KubotaUSA.com.

*Progressive*  
**FARMER**  
READER INSIGHTS



**RC37 SERIES**

ROTARY CUTTERS  
50-160 HP 15' Width



- 3" Cut capacity
- Cat. 6 main CV driveline
- 10 Gauge sloped deck
- Cast steel greaseable wing hinges
- New heavier wheel bearing seals

Getting Chores Done  
**LAND PRIDE**  
does that.



[www.landpride.com](http://www.landpride.com)

For Outstanding Products & Service

**AGRI-ENTERPRISES**

1-1/2 Miles South Of Licking, MO On Hwy 63  
573-674-2203 • 1-800-653-7152 • [www.agri-enterprises.com](http://www.agri-enterprises.com)

**60 HIKES WITH 60 MILES ST. LOUIS BOOK:** including Sullivan, Potosi and Farmington, \$8.50. 417-532-2045. Lebanon. (Leave message and phone number.)

**SLIGHTLY USED PUZZLES:** Will sell or trade. 417-818-3469. Strafford.

**WEATHERED BARN WOOD SIDING:** 10" wide. Call for appointment 573-729-7226. [www.pineridgerustic.com](http://www.pineridgerustic.com) Salem.

**LOG SIDING:** 2X8 Pine/Western Cedar. Call for appointment 573-729-7226. [www.pineridgerustic.com](http://www.pineridgerustic.com) Salem.

**NEW INVENTORY** - \$59,900 Delivered and setup, Hurry! Call Adam 573-657-2176 [amegamobilehomes.com](http://amegamobilehomes.com)

**1908 SEARS ROEBUCK CATALOGUE REPRODUCTION:** 1,185 pages, \$12.50. 417-532-2045. Lebanon. (Leave message and phone number.)

**VOTED #1 BEST Preowned Car Dealership**

**TIM'S USED CARS**  
(573) 341-3828 • 1334 South Bishop (Hwy. 63) • Rolla, MO  
Next to Hwy CC • [www.tims-used-cars.com](http://www.tims-used-cars.com)

 <p><b>2010 CHEVY 2500 HD</b> Worktruck, 2WD, 6.0 V-8, auto, A/C 114,xxx Miles <b>Only \$13,500</b></p>	 <p><b>2014 CHEVY TAHOE LTZ</b> 4x4, 5.3 V-8, loaded w/ options, 3rd row seating, 143,xxx Miles <b>Only \$19,500</b></p>
 <p><b>2018 RAM 1500 EXPRESS</b> Crew cab, 4x4, 5.7 V-8 power equipped, 77,xxx Miles <b>Only \$28,900</b></p>	 <p><b>2003 BUICK LESABRE CUSTOM</b> 3.8 V-6, power equipped, 105,xxx Miles <b>MUST SEE!</b></p>

**LARGE SELECTION OF CARS, TRUCKS, SUVs & VANS!**

**WE BUY AND SELL**

new and used mobile homes

(417) 501-1061

**NEW MOBILE HOMES** – prices start at \$64,900 delivered and setup 573-499-9993 [columbiadiscounthomes.com](http://columbiadiscounthomes.com)

**TINY HOMES** – Missouri Franchise 573-881-7965

# YOUR FULL SERVICE AUTO BODY SHOP

Call today for an appointment or estimate!



**Restorations, insurance jobs, and more!**



**DAVIDSON'S** *Customs*  
417-288-1589

**417-288-1589 • 115 Lincoln St., Buffalo, MO •** **@DavidsonCustoms**

**BASEMENT READY TRUE MODS-** instock ready for delivery 573-657-7040 chateauhomes.net

**Route 66 MOTHER ROAD BOOK:** by Michael Wallis, \$12.50. 417-532-2045. Lebanon. (Leave message and phone number.)

**REGISTERED HEREFORD & ANGUS BULLS:** Home raised, Some Show-Me Select Qualified. 573-701-7828. Belgrade.

**LIGHTLY EXPERIENCED GOLF BALLS:** \$3 a dozen. 417-818-3469. Strafford.

**LIONEL TRAIN SET:** Steam engine, tender, caboose and other car, track, and transformer. \$195. 573-364-7465. Rolla.

**MODEL 1911 FRAME 8-SHOT C02 PISTOL:** Like new, in box with C02 cartridges, 4 clips, pellets & all paperwork. \$95. 573-364-7465. Rolla.

**1970s KIDS METAL STOVE & FRIDGE:** Nice Lithographic paint, 18" wide x 36" high. \$75. 573-364-7465. Rolla.

**3 GENTS WITTNAUER WRIST WATCHES:** 10k gold + 23J. All \$200. 573-764-3517. Call in P.M.

**HARLEY FAT BOBS:** Custom flame paint w/ gas caps + lines. \$100. 573-764-3517. Call in P.M.

**COLT REVOLVER DEALER CATALOGS:** Circa 1950's + 1960's. All for \$100. 573-764-3517. Call in P.M.

**OUTDOOR WOOD FURNACE:** Heats 3,000 sq. ft. & water. \$7,500, plus tax, plus installation. 573-201-6453.

**110 PORCELAIN POCKET WATCH DIALS:** Perfect for arts & crafts. \$100. 573-764-3517. Call in P.M.



## Meadowview Dutch Market

Bulk & Surplus Groceries • Prices Subject to Stock on Hand

Call to Order  
417-993-3017

DELI SPECIAL

CHOPPED HAM .....REG. \$3.95 LB .....SALE \$3.45 LB  
BACON CHEESE .....REG. \$5.89 LB .....SALE \$5.39 LB

**TRY our Fresh Homemade DELI Sandwiches: TURKEY, HAM, ROAST BEEF, ITALIAN, BLT'S, PULLED PORK AND BLT PULLED PORK (MADE YOUR WAY)! COME IN OR CALL to order! ALSO Custom Deli trays! Veggie OR FRESH Meat-N-Cheese!**

APPLE DAYS

THURSDAY AND FRIDAY  
OCT. 26TH AND 27TH  
2023



BONUS SPECIAL!!

FULLY COOKED  
SPICY CHICKEN  
BREAST FRITTERS \$1.19 LB.



Missouri Apples are Here!!

Yellow Cheddar Cheese \$1.99  
LB. APPROX. 5LB. BLOCK



BONUS SPECIAL

Rice Pudding 99¢  
12-4OZ PKGS.



Macaroni and Cheese

99¢ LB.



Uncooked Chicken Wings \$1.69 LB.



Caramel Chocolate Crunch Ice Cream \$16.99 3 GALLON.

MEADOWVIEW DUTCH MARKET

417-993-3017 Hours: Mon-Thurs 8-5pm  
Fri 8-6pm • Sat 8-5pm  
23 Miles West on Hwy 64 • Right on T Hwy  
9 miles • Left on E Hwy 1 mile on Left

DUTCH COUNTRY STORE, LLC

573-378-4395  
Hours: Mon-Thurs 8-5pm  
Fri 8-6pm • Sat 8-5pm  
5 miles East of Versailles off Hwy C on Kelsay Road

NOW ACCEPTING CREDIT, DEBIT CARDS & EBT

**1890 GOLD TESTING KIT:** Glass acid beakers + antique wooden case. \$100. 573-764-3517. Call in PM.

**NEW SQUARE D RAINPROOF 50AMP DISCONNECT:** \$160. 636-239-2695 or 314-560-5700. Washington.

**HARLEY 45 SOLO:** factory rear brake drum + sprocket. \$150. 573-764-3517. Call in PM.

**PASTURE RAISED CHICKENS & PASTURE RAISED THANKSGIVING TURKEYS:** 417-741-2446.

**HARLEY PANHEAD DISTRIBUTOR:** original, chrome + complete. \$125. 573-764-3517. Call in PM.

**1962 HARLEY SPORTSTER 900CC:** original distributor. \$50. 573-764-3517. Call in PM.

**SPORTSET BY SARGENT:** Fishing pliers in leather sheath. Like a multi-tool. \$20. 636-239-2695 or 314-560-5700. Washington.

**RUBBERMAID 10 CUBIC FOOT PULL BEHIND DUMP CART:** \$200. 417-718-5347. Conway.

**USED JET HOME POLLUTION CONTROL PANNEL:** Model CP700. \$65. 636-239-2695 or 314-560-5700. Washington.

**HEARTH CRAFT GLASS BI-FOLD FIREPLACE DOORS PURCHASED AT FORSHAW'S FIREPLACE:** Antique brass. \$160 obo. 636-239-2695 or 314-560-5700. Washington.

**RAMBO PURSUIT ELECTRIC HARDTAIL FATBIKE:** Model 750-26. Like new. Approximately 30 miles ridden. Includes added back Rambo rack. \$1,950. 417-650-7069. Lebanon.

**\$0 DOWN AND 0% FOR 72 MONTHS**

## BUILD YOUR OWN 1025R *Package*

1025R  
TRACTOR

ORIGINAL PRICE: ~~\$18,369~~

SALE PRICE: **\$15,500\***

OR FINANCE FOR AS LOW AS  
**\$219/MO\***



Then add on any implement you need to get the job done.  
**Choose any 3 and save an additional \$300!**



**120R  
LOADER**  
ONLY \$69/MO



**60D MOWER  
DECK**  
ONLY \$65/MO



**ROTARY  
CUTTER**  
ONLY \$33/MO



**BOX  
BLADE**  
ONLY \$16/MO



Scan Here  
To Shop Now



\*Offer ends September 30, 2023. See dealer for details.

*Larry* **Heisel Rentals**



**HEISEL** 573-779-1500  
RENTAL SALES & SERVICE. Larry's Cell 636-432-9460

**Crawler Loaders  
Excavators, Backhoes**

*Call Larry!* **We Deliver!**

Rental Available in 636 or 573 Area Codes  
**573-779-1500**

**1 PAIR OF KEY BRAND MEN'S JEANS:** Waist 38, Length 34. \$10. 636-239-2695 or 314-560-5700. Washington.

**BLACK METAL TUBULAR BRACKET:** Scrolling and a stainless bracket. \$10. Call for pictures. 636-239-2695 or 314-560-5700. Washington.

**ANTIQUE 4 HP ENGINE:** Built by Continental Motors Corporation. \$150 OBO. 573-308-5884. Rolla.

**TRAILER HOUSE RIMS:** \$10 each. 573-308-5884. Rolla.

**1500 VINTAGE WRISTWATCH DIALS:** \$100. 573-764-3517. Call in PM.

## OMAR'S LOGGING

⇒ Oak & Walnut  
⇒ Excellent Prices  
Amish Owned & Operated



**LEAVE MESSAGE: 417-741-0440**  
Hartville & Surrounding Areas

**'85 FORD PICKUP PARTS:** Passenger door with window glass & mirror \$30. Also, Tailgate for '85 Ford pickup \$25. 573-308-5884. Rolla.

**INTERNATIONAL PICKUP TRANSFER GEARBOX:** \$150. 573-308-5884. Rolla.

**NEW JELD WEN 5' LEFT HAND SLIDING GLASS DOOR WITH SUNSTABLE INTERIOR BLINDS:** Clear tempered glass, Desert Sand trim/hardware. Retail \$2655 Sell \$900. 417-693-0389. Conway.

**FOR SALE:** 2 Dayco motorcycle covers for Harley or other big bikes. \$50 each. 417-260-0941. Raymondville.

**CHILTON'S AUTO REPAIR MANUAL:** American & Volkswagen Cars 1969-1976. \$35. 417-260-0941. Raymondville.

**SADDLE:** 20" Buffalo Saddlery with suede padded seat. \$350. 417-718-5347. Conway.

**PITTSBURGH HEAVY DUTY 3-TON FLOOR JACK:** Never used. \$195. 417-260-0941. Raymondville.

**MAC'S TIEDOWN STRAPS:** Like New. \$80. 417-260-0941. Raymondville.

**3 ARMY CANTEENS:** Mess kit, belt & duffel bag. \$60 for all. 417-260-0941. Raymondville.

**2001 FORD 3500 BLACKOUT VAN:** New tires, battery, brakes. Custom interior, mechanically sound & solid. Clear title, 2 owners, no smoke. 170,XXX miles. \$8,950 or trade. 417-650-7069.

**WANTED OLDER MODEL 1-TON WRECKER:** Any condition. 573-734-2822.

# COUNTRY GARDENS GREENHOUSE



## Now open for the fall season!!

Over 50 varieties of pumpkins, gourds, and winter squash to choose from

Mums - Single, tri-colored, and hanging baskets

Fall planters • Fall pansy baskets

Indian corn • Broom corn • Corn shocks • Mini strawbales

Succulents • Houseplants

Homemade jams and jellies, pickles, and relishes

Fresh Produce

Lux Craft Poly Lawn Furniture

Pick your own Pumpkin Patch



Open Mon - Fri 8:30 - 5:00 Sat 8:30 - 4:00

Directions:

Hwy 73 to Tunas - 4 miles east on E

3/4 mile north on E.

then 1/2 mile west on gravel road

17 Sunset Dr, Tunas, MO 65764



**Wright Spray Foam Insulators, LLC**  
Commercial & Residential  
Call for FREE Estimates!

**Ervin Gingerich** 417-926-2052  
**B. Eli Yoder** 417-746-4932

**BUTLER LOGGING:** Making landowners happy is my number one goal. Paying top dollar on all your timber. Call me 417-448-9323. And see what I can do for you.

**80 ACRES IN MACKS CREEK:** Power, water, artesian wells, good hunting. \$2,500 per acre, as is. Text 573-836-6414.

**GUNSMITHING-**Older Rifles, Shotguns, Handguns, all 22LRs. Any make, any model, estate appraisals. Camdenton. 573-363-5801.

**EXCAVATOR MOUNTED FORESTRY MULCHING FOR UNDERBRUSH CLEARING:** Call Nathan @ 417-259-2785.

**FREE 4 CUTE KITTENS & MOTHER:** To be given away to loving & caring homes. If interested call for more information. 417-469-2123. Mountain View.

## CALUS LOGGING

**20 YEARS EXPERIENCE**

**Buying Standing Timber**  
Walnut & Oak

**Joe Calus, Owner**  
417-926-4606 • MTN. GROVE

CERTIFIED



**DARDEN PROFESSIONAL TIMBER HARVESTING, BUYING STANDING TIMBER:** Great prices, improve wildlife habitat and improve forest health. State Certified & Fully Insured! 573-247-4808. Salem.

**POOL TABLES:** Installations, moves, recovers, repairs, accessories, etc. 573-646-1700.

**SERIOUS INQUIRIES ONLY:** Kitchen Table, 2 captain chairs & 4 regular chairs. Has a leaf. Black, wood. Was \$1,500 will take \$200 firm. 573-647-3139.

**EXERCISE BIKE:** In good condition. \$65. 417-532-2344.

**MISC. MECHANICAL TOOLS:** Small set \$25. & Large set \$35. 417-532-2344.

**LARGE COCA-COLA NOVELTY SET/ GROUP:** \$50. 417-532-2344.

**FOUR 4-WHEELER SIDE-BY-SIDE TIRES:** Good shape. \$100 or trade for tools. 573-734-2822.

**FOR SALE:** Patio Table with 2 chairs. \$35. 417-718-2529. Lebanon.

**FOR SALE:** Speed Controlled Pet Nail Grinder. \$15. 417-718-2529. Lebanon.

**S-N-A-P LETTER KIT:** \$35. 417-718-2529. Lebanon.

**FOR SALE:** 3-Shelf Bookcase. \$5. 417-718-2529. Lebanon.

**SERIOUS INQUIRIES ONLY:** Small chest freezer for sale: like new. \$150 firm. 573-647-3139.

**SERIOUS INQUIRIES ONLY:** 60" Smart Television. \$200 firm. 573-647-3139.



**CENTRAL BOILER CLASSIC EDGE**  
TITANIUM HDX

26% Tax Credit on EPA certified Central Boiler Classic Edge HDX models and installation. Call today to learn more!

**Outdoor Wood Furnace CentralBoiler.com**

The Classic Edge 360, 560 and 760 HDX are U.S. EPA Certified

Yarbrough Equipment Sales & Services, Inc.  
9776 E. State Hwy 00 • Strafford, MO  
417-736-2303 • 1-866-286-6901 • www.yarbeq.com

**Darrell McClanahan for Governor of this great state of Missouri 2024. Find me on X @MBattleflag advocating for fija.org. This is being paid for by Darrell McClanahan. April Miller-McClanahan, Treasurer.**

**INDOOR/OUTDOOR DIGITAL ANTENNA:** New. Asking \$18. 417-650-4190.

**JOHN DEERE COMBINE 6620 TITAN II:** 16ft. header, 4-wheel-drive. \$14,000. 573-598-4547 or 573-718-9719.

**KILLBROS GRAIN CART 475:** \$5,500. 573-598-4547 or 573-718-9719.

**JOHN DEERE GRAIN CART:** 450 bushel. \$4,000. 573-598-4547 or 573-718-9719.

**FOR SALE:** 2 rolls of 100, Forever Postage Stamps. \$60 each. 573-453-2777. Salem.

**OMAR'S DOZING**

- ⇒ Clear land
- ⇒ Clean up woods
- ⇒ Make driveways
- ⇒ Clear property lines
- ⇒ Build ponds

Amish Owned & Operated

**LEAVE MESSAGE: 417-741-0440**  
Hartville & Surrounding Areas

**OFFICIAL TRACTOR OF TOUGH™**

**INTRODUCING THE ALL-NEW 5100 SERIES**



**Marshfield Machinery Inc.**  
222 E. Madison • Marshfield, MO 65706  
417-859-2117 • www.marshfieldmachinery.com

\*2018 data including all Mahindra group brand sales. MahindraUSA.com © 2020 Mahindra USA Inc.

**Mahindra Rise.**

**NEW MAHINDRA TRACTORS**

1635 4WD & LDR 36HP	IN STOCK
2638 4WD & LDR 38HP	IN STOCK
2645 4WD & LDR 45HP	IN STOCK
2660 4WD & LDR CAB 60 HP	IN STOCK

**USED TRACTORS**

MF 4708 80HP 4WD CAB LDR	58,500
MF 5455 100HP 4WD CAB LDR	45,000
JD 5055E 59HP CAB LDR	32,500
MAHINDRA 4540 41HP 4WD LDR	23,500
MAHINDRA 2638 38HP 4WD LDR	20,000
MAHINDRA 1635 35HP 4WD LDR	19,500
MAHINDRA 4540 41HP LDR	16,000
IHC 5088 CAB 135 HP	13,500
MF 1080 81 HP LOADER	8,500
MF 1528 28HP 4WD	7,500
MAHINDRA 6500 65HP LDR	6,500
CUB CADET 7205 20HP 4WD	4,250
KUBOTA L175 17HP	
W/ MOWER	3,000

**USED ROUND BALERS**

NH RB450 4X5 MESH	24,000
MF 2946A 4X6 MESH	20,000
HESSTON 550 4X6	2,500
HESSTON 560 5X6	2,000

**USED MISC.**

BUSH HOG 3308 8FT	5,500
M&W 8 WHEEL RAKE	1,250
RHINO 5FT FINISH MOWER	850
ROLLINS 5FT BLADE	250

**Marshfield Machinery Inc.**  
222 E. Madison  
Marshfield, MO 65706  
417-859-2117  
www.marshfieldmachinery.com

# BYLER SUPPLY

*The Builder's Choice!*

## Fall Project Supplies!

**CALL TODAY FOR NEXT DAY SERVICE!**  
Call for Details



*Reg. Pole Frame Buildings Are Heavy 29 Ga. Metal, Three 2"x6" T&G Splashboards, All Poles 5"x5" Or Larger, CCA Treated, Fully Trimmed With One 3'x6' Walk-Through Door & One Large Sliding Door.*

**CALL US FOR CURRENT PRICING**

**CUT TO LENGTH PANELS  
GALVALUME METAL UNPAINTED  
25 YEAR WARRANTY  
#1 Standard Panels, 29 Ga.**

*Ask About Our Quick Service.*

*Over **20** Colors and Several Styles To Choose!*

**\$71.61 sq.**



**HEAVY 29 Ga. METAL #1**  
Limited LIFETIME WARRANTY  
29 Ga. & 26 Ga. Painted



## BYLER BUILDING SUPPLY, LLC



2 1/2 Miles East of Seymour On 60, 1/4 Mile North at the Peewee Crossing\Star Road Intersection

877-556-8855 • MON.-FRI. 7:30-5 SAT. 8-12 • 417-771-3100

VISIT US AT [WWW.BYLERSUPPLY.COM](http://WWW.BYLERSUPPLY.COM)



**ABSOLUTE REAL ESTATE & PERSONAL PROPERTY** *Auction*

**SATURDAY SEPTEMBER 23, 2023 AT 10 AM  
REAL ESTATE SELLS @ 12 NOON SHARP!**

**Location: 399 Stafford Ln, Seymour, MO 65746**

**DIRECTIONS: FROM US-60 HWY IN SEYMOUR, TURN NORTH ONTO N DIGGINS MAIN ST. TURN RIGHT AT FIRST CROSS STREET ONTO E SPRINGFIELD AVE. TURN LEFT ONTO N DIGGINS MAIN ST. TURN RIGHT ONTO STAFFORD LN. WATCH FOR CHEYNEY AUCTION SIGNS!**

**TOOLS • SHOP • HOUSEHOLD • FURNITURE • ANTIQUES**

**REAL ESTATE** 3 BR, 1 BA home on 1.9 ac m/l. The home has a newer metal roof & vinyl siding. There is a 2 car detached garage and storage shed. Property is hooked up to city utilities with the option of natural gas. Paved driveway, private country setting w/ mature trees. Excellent location, minutes from US-60. Close to Springfield! Would be a great fixer upper, first time home, or investment/rental property!

**LAWN & GARDEN/SHOP** Craftsman riding lawn mower, Craftsman EZ Walk push mower, 8x12 portable building, Farmall C parts tractor, Antique rake & plows, Antique buzz saw, Approx 2 ricks firewood, Large assortment new & used lumber, various dimensions, Reddy shop heater, Craftsman table saw, Craftsman router table, Misc shop tools & equip, Large 21"x14" cast iron church or school bell, 500 gal propane tank,

**HOUSEHOLD/ANTIQUES** Vintage Schwinn exercise bike, Antique high chair, Cedar dresser & armoire, Piano, Dining table, 2- bedroom sets, Large collection Home Interiors still in box, Large collection of Avon collectibles, Vintage lamps, Kerosene lamps, Fire King, Corningware, Tupperware, Libbey, Pyrex, Milk glass, Antique miner's flashlight, Knick knack shelf, Wall décor, mirrors, Antique ladder back chairs, Wooden wash stand, Rocking chairs, Victrola, Vintage metal kitchen cart, Vintage bread box, Antique buffet, Antiques, furniture, glassware, primitives!

**AUCTIONEER'S NOTE:** Many more items, too numerous to mention! 56 years of accumulation in this household! Many more items will be discovered as we prepare for the auction!



**FOR MORE PHOTOS, VISIT OUR WEBSITE CHEYNEYAUCTIONS.COM OR FIND US ON FACEBOOK!**

**Cheyney Auction Company, LLC**  
Real Estate • Livestock • Farm & Ranch • Equipment • Household • Antiques  
**Travis Cheyney, Auctioneer • Buddy Boyd, Ringman**  
**417-543-8751 • cheyneyauctions.com**

*Real Estate Terms: 10% down day of auction w/ Bank letter. ANNOUNCEMENTS Made Day Of Sale By Auctioneer Take Precedence over any Printed Matter. Not Responsible for Accidents. All items sold as is, where is, with no guarantee. Terms of sale: cash, credit/debit card, or check with valid ID.*

# ESTATE AUCTION

## SATURDAY, SEPT. 16 & 23 @ 9:00 A.M.

**Directions:** Salem, MO From Salem take Hwy. 72 North to FF, take FF for 3 miles to Co Rd 3080, take 3080 2 miles to sale site. Watch for signs.

### FARM EQUIPMENT • ANTIQUES • HOUSEHOLD YARD EQUIPMENT • COLLECTIBLES

#### Sept. 16 Sale

Heavy Welding Table & Parts  
Lots of Metal - Gas Cans  
Tanks & Torches, No Papers  
Come Alongs - Wire Stretchers  
Shovels - Clean Outs - Shelving  
String Trimmers - Grease & Oils  
Nuts & Bolts - Dip Nets  
Extension Ladder  
Generac 4000 XL Generator  
Set of Folding Aluminum Ramps  
Fiberglass 4' & 8' ladders  
Large Pet Crates - Reese Hitch Haul  
1/2 Sheet Stamped Steel  
Craftsman 3000 PSI Pressure Washer  
Full Roll Gaucho Wire - Log Chains  
John Deere Trimmer - Loose Lumber  
Ford 3000 Diesel Tractor  
Scrap Metal - Yard Wagons  
3pt. Bale Spike - 60 Gal. Water Tank  
Mineral Tubs - Boat Trailer  
Rhino TWI 6' 3pt. Bush Hog  
8'-10' Corral Panels - Railroad Ties  
4' Pull Type Bush Hog

10' Cattle Guard - 6x4' Farm Wagon  
Old Iron Wheels-Lots - Trellis  
20lb. Propane Bottles  
15x6' Bumper Pull Horse Trailer  
Yard Decor-Concrete Items  
Wind Chimes - Big Old Water Pump  
Rocking Chairs - Chain link Dog Pen  
Plastic Dog House - Picnic Table  
Lawn Chairs - Stock Tanks  
100lb. Propane Tank  
Troy Bilt 42" Riding Mower  
Water Hose - Extension Cords  
Metal Wagons  
Troy Bilt Push Mower  
Galvanized Wash Tubs - Cow Skulls  
Stihl 85C Leaf Blower  
Metal Patio Set - Metal Lawn Chairs  
Wood Carved Bears - Fish Cooker  
Masterbuilt Smoker  
Weber Gas Grill - Well Pulleys  
Iron Kettle - Plastic Storage Box  
Live Traps - Small Whiskey Barrels  
Lots of Oil Lamps - Canning Jars  
Stihl FSE 60 Electric Trimmer  
Stihl B6E 60 Electric Blower

Several Guns as Pictured: Colt and Remington

#### Sept. 23 Sale

Cool Squirrel Mount - Otter Mount  
Black Bear Shoulder Mount  
Deer Mounts - Raccoon Mount  
Lots of Horse Figurines  
Lots of Hen on Nest  
Butter Churns - Texas Ware Bowls  
Graniteware - Old Coffee Grinder  
Lots of Old Knick Knacks  
Kitchenware - Pony Saddle  
Superior Wood Cook Stove  
#8 Redwing Crock - #6 Crock  
Whiskey Jugs - Old Paintings  
Lots of Cocks  
Lots of Cast Iron, All Types  
Blue Ball Jars - Pyrex Bowls  
Clawfoot End Tables - Baskets  
Lot of Rods & Reels - Nice Cookers  
Neat Old Jenny Wagon  
Darby Upright Freezer  
Iron Full Bed - Chest Freezer  
Big Frigidaire Upright Freezer  
Canning Jars & Lids

Homemade Crib - Old Hanging Scale  
Camping Supplies  
Shop Vacs - Wooden Wagon Wheel  
5 Gal. Glass Water Bottles  
Ornate Mirrored Chest of Drawers  
4 Post Bed, Full - Old Quilts  
Old Violin - Leather Belts - Marbles  
Ornate Singer Sewing Machine Cabinet  
Pickle Jars - Bedding - Cow Horns  
Playboy Magazines  
Old Church Window Painting

**Several Cast Iron Collectibles:**  
**Pots, Pans, Kettles, & Dutch Ovens - Wagner and Lots of Griswold. There will be several each sale.**

**So Many Collectibles!**  
**This will be 2 FULL Saturdays of selling. Some of the finest collectibles and primitives. Please don't miss this one.**

**See you there! - Tom**



To be offered at 12:00 noon at Sept. 23 sale. Nice ranch, rock and wood 3 bedroom, 1 1/2 bath home. The home features an open floor plan with full basement and covered carport overlooking 80 acres. The land is mostly pasture that is crossfenced with waterers and rolling hills. This is a very nice one-of-a-kind piece of property off a quiet county road.



**Call for viewing**

### ESTATE OF BERNIECE MADORE

ANNOUNCEMENTS AT AUCTION TAKE PRECEDENCE OVER PRINTED MATTER

## WULFF AUCTION

Licensed Appraisals

2334 Highway K, Salem, MO 65560

**AUCTIONEERS:** Col. Tom Wulff Cell: 573-247-3884 • John Wisdom Cell: 573-247-9563

See Wulff Auctions at [www.thesalemnewsonline.com/auctions](http://www.thesalemnewsonline.com/auctions) Clerk: Tracy Strange Cashier: Nancy Inman

TERMS: CASH OR APPROVED CHECK - I.D. REQUIRED - NOTHING REMOVED UNTIL SETTLED FOR - RAIN OR SHINE OWNER & AUCTION PERSONNEL NOT RESPONSIBLE FOR ACCIDENTS AT SALE SITE



# GARY SEXTON AUCTION

## Outstanding Real Estate Auction - Ranch Style - 12 Acres



Join us in-person and online for an exciting Real Estate Auction on

**SATURDAY, SEPTEMBER 16 - 10AM**

**611 COUNTY ROAD 107 ALTON, MO, 65606**

**Directions:** From Alton take 19N Approximately 6 miles to #109 Right then ¼ Mile to #108 Right, Approximately ¼ Mile then Left at T Property On Left: Watch for Auction Signs

Located in the beautiful Ozark Hills of Oregon County, MO, this 3 bedroom, 3 bath, basement is brimming with charm! While enjoying fresh Country living that includes an enchanting 12 acres, Horse/Cattle Barn, Arena area, Fenced Perimeter, Well + Pressure System! Built in approximately 1992, this home features an array of amenities including: Geothermal Heat Cooling, Carport, and approximately 1980 sq. ft of living space!

**OPEN HOUSE:** Sunday, September 3 + September 10, 1:00 - 2:00pm

**TRUCKS - ATVs - TRAILERS - SUPPLIES** Antique Dishes + Sets of China galore! Household Appliances, Furniture, Home Decor, File Cabinets, Kawasaki 610 Side by Side with 700 Hours, 2016 Honda Rancher with 200 Miles, 2001 Kawasaki Mule 2 Seater, 2003 Honda Rancher 350, 90's John Deere Gator Turf Machine, 550 Hesston 52 HP Tractor With Westondorph Loader, and Nice 2020 Cub Cadet 550 4x4! 9N Ford Tractor, 2017 Ram 1500 Big Horn Crew Cab Pickup Truck with 98,000 Miles, 2007 FeatherLite 24' Aluminum Stock Trailer in good condition! Ford Ranger 4x4 with 300,000 miles, 1976 32-foot Gooseneck Trailer with Aluminum floor, 10' Bush Hog Drag Type Brush Cutter, 2020 500 Gallon Sprayer 60-foot boom, 300 5+6' Galvanized Stock Panels, 2 Sets of Aluminum Bleacher 6 Arena Lights, 8'x16' Announcer Stand, 2 Wheel Pony Cart, Saddle Rack, 15 ½ foot Hereford Roping Saddle, Youth Saddles, 4 Picnic Tables, Horse Tack, Barrels & Poles, Feed Troughs, 4" Steel Pipe, Concrete Blocks, Tools, Lawn Mowers, Camp Equipment, Fish Cookers, Rods/Reels & Tackle, AR 15 223 Caliber American Tactical New in the Box! Mossberg 22 Plinkster, Cross Man Rifle, 50 Caliber Black Powder, Scopes, Ammo, Marlin 17 With Scope. **Years of Accumulation - Impossible to List All! See all photos at GarySexton.com**

**\*Internet Simulcast Bidding is for Real Estate Property Only**

**Terms:** 10% Down day of Auction. Payment due in 30 days. Real Estate Auction goes LIVE Simulcast at 11am

**Conditions:** Any fair reasonable offer will be accepted. Real Estate Sells at Approximately 11am.

**For Inquiries:** For Appointment, Contact Todd Hornback at 417-270-0681, Sandy Ross of CENTURY 21 Combs & Associates Real Estate at 417-270-0854 or Gary Sexton at 417-255-7001 and visit GarySexton.com

**OWNERS: JEFF & MICHELLE HOLMAN**

This listing subject to additions/deletions

## Todd Hornback & Gary Sexton, Auctioneers

Additional photos at [www.GarySexton.com](http://www.GarySexton.com)

Gary Sexton: 417-255-7001 • [Gary@Garysexton.com](mailto:Gary@Garysexton.com)



# PUBLIC AUCTION

## SAT, Sept. 23 @ 10:00 AM

2338 Mud Creek Rd., Morrison, MO 65061

*Directions: From Highway 50 at Freedom, take Rte. N to Rte. KK at Hope, to Mud Creek Rd then left to the Grain Bins.*



### PROPERTY OF JAMES KRUEGER FAMILY

**FARM MACHINERY** 3 NH TR70 Combines w/ Ford engines & Std. Trans, NH TR75 Combine w/ Ford Eng. Hydro, JD 643 Head, low tin, Various Corn Head parts, 3 Bish Head changers, NH 962 Corn Head 6-30 (works), 3 NH 962 Row Units (good), 2 NH 962 Row Units for parts, NH 960 15 foot head, NH Heads for Parts, NH TR70 straw chopper, NH TR70 w/ Cat Diesel Hydro, NH TR75 Ford Engine Std. Trans w/ 16 Ft Head, JD 20' Grain Head w/ Trailer, Good NH 960 20' Head and Trailer, Cat 955H High Lift w/ GP Bucket (860 hours on Engine Overhaul), Steiger ST251 Four Wheel tractor 23.1-34 Duals, 290 Cummins 20 speed w/ 3 pt fast hitch, and four sets of remotes, Case 2290 (80 model) 5,228 hours 4 post 8 speed, 460 85R-38 w/ duals, 3 PT and dual PTO, Case 1175 (72) 3,083 hrs., 460 85R-38 w/ Cab 3 PT dual PTO, Case 1070 (1976) hours unknown, 8 speed 4 posts 18438 w/ G.B. 900 Loader w/ Bale Spear only, Case 1030 (1968) w/ Cab 18.4-38 tires 7,013 hours 3 PT. 540 PTO, Case 1470 w/ Cab 4 wheel drive, 4 wheel steer, 3 PT w/arts way 5,000 loader and 9' bucket, Case 1470 w/ Cab 4 WHL drive 4 WHL STR, 3 PT and PTO, Case 1470 w Cab 4 wheel drive 2 wheel steer 3 PT. Case 1070 w/ Cab (1976) Power shift, extra rear weights, Case 930 (1966) diesel tractor, Case 2670 w/ cab w/ 10' Walden Front Blade 3734 hrs., Numerous Case parts, Case D.O.T. 21' Disc 22" blades, JD 230 22 foot disc, JD 330 20' disc 24" blades, IH. 468 Seed Bed Conditioner w/ JD FC Shanks 20 ft, JD 515 Drill Accuplant Openers needs assembly/repair, JD 530 Drill/Planter Hitch w/ markers has 7 hydraulic Cylinders, JD 7100 Planter 6-30 Ausherman (no-till), JD 7000 tool bar only, JD 7000 Planter w/ JD no till coulters mounted behind furrower attachment, JD Planter Plates, 8-JD 71 Flex - Planter units (still made by Yetter Mfg.), JD 400 15 foot rotary hoe, Yetter 20 foot rotary hoe, extra rotary hoe wheels, NH 488 and 479 9' hay bines, extra sickles, NH 451 7 foot 3 PT mower, NH 256 Hay Rake, Gehl 308 8 wheel 3 PT Hay Rake, NH 851 baler HYD Tie, NH 850 baler Electric Tie, NH 851 baler auto wrap, NH 851 baler HYD Tie, NH 56 hay rake 3 PT bale unroller, DMI HYDRA wide 4 bottom adjustable width plow, Case 4000 8 bottom 16" plow, on land new tires, 3 Farm Hand 810 grinder mixers, Gehl CB 600 Silage chopper 2 row 30", Cobey Covered Silage wagon w/ 15 Ton Truck Hoist, KB375 Gravity Wagon on 10 Ton running gear, Kinze 400 Auger cart w/ extensions 500 BU (needs lower Auger liner) Bale Trailer, Bush Hog 13 Ft pull type rotary cutter, DC Welder w/ Wisconsin Engine, Honda Big Red, Sioux loader 7 Ft Bucket, Bale Spear for front loader or 3 PT, 3 PT Quick Hitches, 3-PT PTO ditcher, JD RG-6-30 Row Crop Cultivator, Bush Hog DM 9 FT disc mower, Krone AM281 disc mower, KB350 Gravity Bed, Westfield 8x61 Swing Auger, Mayrath 8x61 Swing Auger, Mayrath 8x56 Auger, Kewanee Flat Elevator 40 FT, 40 BU Hog Feeder, CAT D7 3T Cable Dozer w/ angle & tilt blade, new corner bits and cutting edge, good SEGMENT sprockets and under carriage, LeTourneau Cable Scraper, Westinghouse 8 Yard. Scraper converted to Hyd. (works), Fox 2 row 30" Silage chopper, and 1470 Case Cab Tractor w/ 3 PT for parts. **IRRIGATION EQUIPMENT AND GRAIN BINS** 16- 30 Foot Ring Lock, All aluminum pipes 8", 19-Aluminum 30' 8" pipes w/ steel ends, 34-8" Twist Lock all aluminum 30' pipes, 6" 30' Suction Tube, Hale 1000 GPM 1000 RPM PTO irrigation pump - needs shaft and hitch installed, and Irrigation Pump w/ 3 PH motor (locked), 1 Skunk Trap, 2-18" diameter butler grain bins w/ base rings (disassembled 3750 BU each w/ no floors), 1 18' all aluminum grain bin, steel drying floor and plenum, (buyer must remove) 4-24" Bin fans for parts, WW90-M Water Winch traveling irrigation gun w/ 600 +/- ft soft hose dual reel, extra soft hose (unknown length), and WW9000 Water Winch traveling irrigation gun for parts. **TRUCKS AND TRAILERS** 1981 GMC General Cab and Chassis, 300 Cummins Twin Screw (Old Fire Tanker Truck has pump and controls) will take an 18' bed, International Transtar II tandem road tractor, 350 Cummins, 12513 transmission, Shop made Std 5th wheel goose neck trailer, 44' -Air over hydraulic brakes, Various used International Trucks, Cars, School Buses and Pickups most are not running and most w/ Titles. White Cab w/ 250 Cummins and Transmission w/ no rear end. **SCRAP METAL** Large Lot of Aluminum, Cast and Mild Steel

### PROPERTY OF JAMES KRUEGER ESTATEA - JAMES KRUEGER PR

2006 Prius has some storm damage, JD 165 Hydro Riding Lawn Mower, Snapper Rear Tine Tiller, Troy-Bilt "Tuffy", Stihl MS170 Chain Saw, US General Stack Tool Chest, Craftsman 6 Horse 16 gallon wet and Dry Vac, Multi ladders, Louisville 4' Step Ladder, Low Profile Floor Creeper, 20 Ton Shop Press, Appliance Dolly, 100' Heavy Extension Cord, 2.5 HP 21 Gallon Air Compressor, Cable Chairlift, Various Hand Tools, Spades, Forks, Shovels, Drills, Saws, Wrenches, Air Tools, Tool Chest, Hoses, Weights and Weight Bench, Havahart small live trap, T posts, Sheet Metal, Paint, and Cleaning Supplies.



Visit the Gratz Real Estate and Auctioneering Website for more details and images. [www.callgratz.com](http://www.callgratz.com)

TERMS: Cash, Credit Cards, or Approved Checks. A 3% surcharge will be charged on all credit card purchases. A \$25 Fee will be charged for any returned checks. Not Responsible for Accidents, Theft, or Loss. Buyer must register for bidder's number day of Auction and show proof of proper identification. Photo required. Announcements the day of Auction take precedence over printed matter. Auctioneers are licensed in Cole County, Missouri.

**GRATZ REAL ESTATE & AUCTIONEERING**  
**BILL GRATZ 690-0477 | CRAIG GRATZ 694-3001 | LOGAN GRATZ | 690-0296**  
**5718 WARDSVILLE RD., JEFFERSON CITY, MO 65101 | [CALLGRATZ.COM](http://CALLGRATZ.COM)**



# DRENON AUCTION

24280 COUNTY RD 50 CROSS TIMBERS, MO

DUE TO THE PASSING OF MY HUSBAND, I HAVE SOLD MY FARM AND WILL SELL THE FOLLOWING AT AUCTION LOCATED FROM CROSS TIMBERS SOUTH ON HWY 65, GO ¼ MILE TO U BLACKTOP, THEN 2.8 MILES ON U TO COUNTY ROAD 64, THEN 3.8 MILES ON CO RD 64 TO COUNTY ROAD 50, RIGHT ON CO RD 50 TO SALE ON

## SAT. SEPT. 23rd, 2023 at 10am

**LUND BOAT Like new!!** 2020 Lund 2025 Impact XS 20' Aluminum Semi-V boat w Mercury 200 hp outboard, Mercury 15 hp Kicker motor, tandem axle trailer. Luxury package comes with Air ride pedestal seats, Bow bait station, Bunk trailer upgrade, hydraulic steering w/ tilt, Mercury analog gauges, Rockford stereo, Snap in Marine mat flooring, Sport top w/walkway curtain, SS prop, Travel cover. Added access inc: 4 Interstate batteries, Link Fish Finders, Fender hangers w/rod holders w/ext. Beautiful Cobalt Blue with black bottom. Classic 50 motor, Garmin trolling motor, trailer **Note: The Connelys bought this brand new in 2020, used one season before Shawn got ill, and used it very little after that. They kept the boat in a covered boat storage and properly maintained and winterized it as needed.**

**TRACTOR & EQUIPMENT** John Deere 5075E utility tractor w/John Deere H240 loader, canopy, 4x4, **only** 430 hours. One owner! Regularly serviced and maintained! ~ John Deere MX7 brush cutter ~ Frontier 7' hyd Box Blade, like new ~ Farm Star Post hole digger, 12" auger bit ~ 3 pt Countyline tandem 6 ½' disk ~ Country Tough 35 ton Woodsplitter, v&h ~ 8' Pull type disk  
**KAYAKS New!** 2- 12' Cabelas Advanced Anglers desert camo kayaks w/ matching paddles  
**GUNS** Ruger American 22 bolt action ~ Tradewinds model H150 Breslia Italy 12 ga, 2 ¾ ~ Paragon model CS 16 ga ~ CVA optima v2 50 cal Black Powder, w/Konuspro 3.9x40 scope, camo stock ~ Red Head camo rifle case, leather rifle case, nylon rifle case ~ 8 boxes 12ga Dove and Quail loads  
**UTILITY TRAILER** CarryOn Corp single axle utility trailer, 5x8, pull-down ramp  
**BICYCLE** Giant Hybrid Twist Freedom DX commuter bike, aluminum w/Shimano Nexus works  
**LAWN TRACTOR** John Deere D170 lawn tractor 54" cut

**FARM & LAWN** County Line 40 gal tank sprayer on cart ~ Groundwork 80# pull-behind seeder ~ Steel lawn roller, 920lb ~ Scotts edge guard seed spreader ~ Stihl 025 chainsaw, in case like new ~ Stihl MS250 chainsaw in case, like new ~ Stihl MS291 chainsaw in case, like new ~ Troybilt 2450 psi pressure washer ~ 25 new 6' Steel posts ~ 2 Rolls Red Brand #80 4 pt Barbed wire ~ New roll Red brand welded wire fencing ~ 8' Roll Barrier woven netting ~ Pro Lift Lawnmower lift, 500# ~ Toro leaf rake and vac ~ Stihl FS131R straight shaft weed trimmer ~ Poulan Pro gas weed trimmer ~ Craftsman gas weed trimmer ~ McCulloch FR48" clutch drive gas weed trimmer ~ Stihl HT133 telescoping limb saw ~ Murray gas leaf blower ~ Bushwacker 20" Hedge trimmer ~ B&D electric hedge trimmer ~ Fiskars X27 splitting axe, powertooth saw ~ Sev. Tomato stakes ~ Post hole digger, spade, shovels, etc ~ Purple Martin house and pole, NIB ~ 2- 8' x 8" square posts  
**BEAR RUG, DEER MOUNTS, DÉCOR** Lg black bear rug w/full head and feet w/claws ~ Shoulder mount 10 pt buck ~ Head mount 8 pt buck ~ Deer skulls with antlers, cleaned ~ Sets of deer antlers ~ Bev Doolittle "Season of the Eagle" signed print, framed ~ Resin bear lamp and statue ~ Native American décor

**HUNTING, CAMPING, GOLFING** Ironhide port big game tree stand ~ 8x8' Dome tent in bag ~ 10x10 Dome canopy ~ Deer hanger, rope, and pully ~ Clay pigeon thrower ~ Block Invasion Bow target ~ 2 Timber Ridge loungers ~ Bushnell and Browning trail cams ~ 4- 26x8 Carlisle ATV tires and rims ~ Hunting jackets and clothes ~ Red Head waders, size 7, new ~ Red Head EXP boots, size 11, new ~ Red Head waders, size 11, new ~ Live traps ~ 2 Golf Club sets, bags ~ 4 cycle engine oil and other oil ~ Life jackets ~ Fishing tackle and tackle boxes ~ Fish cleaning station top ~ 56" Stainless steel sink with prep area ~ Bug-a-salt bug shooter ~ Brinkman smoker grill ~ Weber grill

**HOUSEHOLD & COLLECTIBLES** Ashley leather double reclining sofa, like new ~ Ashley leather recliner, like new ~ GE SxS refrigerator, 23 cu ft, Bisque ~ Maytag Skybox soda fridge ~ Oak glider rocker, blue cushions ~ Wicker love seat ~ Oak coffee and end tables ~ Vizio 42" flatscreen tv ~ 2 Queen beds ~ Antique painted dining table and chairs ~ Bookcase, Dressers, night stand, misc furniture ~ Western 1 gal jug, Schneiders crock jug ~ Magic Chef microwave ~ Misc dishes, cookware, glassware ~ John Deere lantern ~ Regulator wall clock ~ 3 seat Cushioned Swing, NIB ~ Lg Outdoor nativity set, other Christmas décor ~ Springfield ceiling fan/light, NIB ~ Wood desk ~ Ford Racing office chair ~ Floor lamp w/Tiffany stained glass globe ~ Brother XL2600 Sewing machine ~ Several quilts

**SHOP EQUIP & TOOLS** Dewalt miter saw ~ Delta 10" miter saw ~ Craftsman air compressor ~ Grip Rite framing nailer ~ 16 & 18' Aluminum ext ladders ~ Werner 8' Step ladder ~ Alum. Step ladder ~ Task Force table top tool box ~ Craftsman 9 gal shop vac ~ BE & OE wrenches, Greas guns, Several hand tools ~ 1 ½ ton Alum. Floor jack ~ Cosco alum dolly ~ ½ and ¾" plywood ~ 2-30'x 4" Tow straps ~ Ratchet straps ~ Rubbermaid utility closet ~ 18 drawer parts cabinet ~ Aluminum fold-up ramps ~ 11 sticks new 9'x1" Angle iron ~ Reese hitch ~ Furniture dollies



For pictures, check out the website [www.DrenonAuction.com](http://www.DrenonAuction.com)  
**Owner Teri Connely**

**Note:** Everything offered on this auction has been well taken care of, and most items are in like-new condition. The boat, tractor and implements are all one-owner have been used very little. The quality furniture is in top condition. Guns will sell at 10 am. Tractor, boat and implements will sell between noon and 1. Be sure to join us for this nice sale!

# Larry DRENON AUCTION

Larry Laramie  
660-596-8515 660-221-4386  
Lacey Cooper  
660-723-1104 660-723-2221

Office: 660-723-6188  
[www.DrenonAuction.com](http://www.DrenonAuction.com)

**Terms:** Cash, approved check, debit/credit card (convenience fee applied to card purchases), Nothing to be removed until settled for. Not responsible for any accidents. Statements made day of sale take precedence over printed material. Lunch served.

# ABSOLUTE ESTATE AUCTION & PERSONAL PROPERTY

# Auction

## SATURDAY OCTOBER 14, 2023 AT 10 AM REAL ESTATE SELLS @ 12 NOON SHARP!

### Location: 1102 Golf Course Rd, Ava, MO 65608

**DIRECTIONS:** FROM THE STOP LIGHT IN AVA, FOLLOW 5 HWY SOUTH ABOUT 0.6 MI. TURN RIGHT ONTO GOLF COURSE RD. HOUSE IS ON THE RIGHT. WATCH FOR CHEYNEY AUCTION SIGNS!

**REAL ESTATE • TOOLS • OUTDOOR • HUNTING • FISHING • HOUSEHOLD • COLLECTIBLES**

**REAL ESTATE** 2 acres m/l corner lot featuring a 3 bedroom home, with walkout basement. This property has LOTS of potential!! Cinder block walls and concrete floor for a shop already started. Would make a great investment property or fixer upper.

**TOOLS/OUTDOOR/HUNTING/FISHING** Sig Sauer 1600 6x22 mm Range finder, Browning Gold Prosteel gun safe , Various lots ammo, Misc scopes, Bow/archery accessories, Hunting supplies, Large vintage knife collection- Case, Buck, Kershaw, Barlow, Imperial, Camillus, Schrade, etc, Fishing tackle- lures, jigs, crank baits, Heddon, Charlie Campbell, Jimmy Houston, Bill Lewis custom baits, Fishing rods & reels, New duck decoys, Gen. Fibre Co Vintage duck decoys, John Deere lawn mower, Bench top grinders, Bolt bins, Yard tools, Metal shelving, Dewalt miter saw, Craftsman 8" benchtop drill press, Craftsman 16" scroll saw, Porter Cable 14" chop saw, Tradesman 15" scroll saw, Craftsman 10" bandsaw, Craftsman 6" disc sander, Misc power tools, Kennedy rolling tool box, Craftsman 6 drawer tool chest, New windows, Briggs & Stratton power washer, Extension cords, Misc mechanic tools, Razor electric scooter, Antique handheld hay rake

**HOUSEHOLD/COLLECTIBLES** Vintage Tonka toys, Vintage Mickey Mouse collectibles, Nolan Ryan ball card , Ken Griffey Jr card, Michael Jordan card, Dining table & chairs, Toaster oven, Microwave, Amana refrigerator, Presto fryer, Canister set, Spice rack, Pots/pans, Dish sets, Corningware, Glasbake, Wood side tables, Google security cameras, Floor lamps, Antique rocking chair, Vintage/antique Storage trunks, Piano, Sanyo TV, Entertainment stand, Wooden dressers, Mirrors, Deep freeze, Propane patio heater NEW, Antique wrought iron full size bed, Wall clocks, VHS player, Antique vanity, Magazine rack side table, Gibson dryer, Gun cabinet, Russel Wright ceramic dish set

**AUCTIONEER'S NOTE:** Prime piece of real estate located in the middle of town on state highway 5, with road frontage on 2 sides. Large assortment of tools, firearms, knives and hunting items as well as household collectibles.

Assortment of firearms not yet listed- see website/Facebook for updates!

## Estate of Ronnie Allen



**FOR MORE PHOTOS, VISIT OUR WEBSITE CHEYNEYAUCTIONS.COM OR FIND US ON FACEBOOK!**

### Cheyney Auction Company, LLC

Real Estate • Livestock • Farm & Ranch • Equipment • Household • Antiques

**Travis Cheyney, Auctioneer • Buddy Boyd, Ringman**

**417-543-8751 • cheyneyauctions.com**

Real Estate Terms: 10% down day of auction w/ Bank letter. ANNOUNCEMENTS Made Day Of Sale By Auctioneer Take Precedence over any Printed Matter. Not Responsible for Accidents. All items sold as is, where is, with no guarantee. Terms of sale: cash, credit/debit card, or check with valid ID.

# DOERR FARM AUCTION

**LIVE AUCTION**

Post us on Facebook



Jeff and Connie Doerr are quitting farming and will sell their farm equipment & personal property & also property of the Leroy Diekmann Trust at public auction on:

**Saturday, September 16th 2023, Beginning at 9:00 AM**

Location: 1117 Highway E Hermann Mo 65041 (Stony Hill Area)

Directions: From Interstate 44, take Exit #251-Highway 100 and go North 30 miles. In New Haven, go left on Highway E 10 miles to auction. From Highway 50 in Drake, go North on Highway 19 to right on Highway E 2 miles to auction. Roads will be marked day of sale.

## FARM FRESH CATTLE (cattle selling at Noon)



Simmental Angus, Black/White face, Red Angus cross, (9) 6-year-old cows, (2) 7 year olds, (5) 8 year olds, (6) 10+ year old cows, **NOTE; July 15th Gerloff Angus bull was added to the herd. August 10th were pregnancy tested and aged. Cattle worked by Hermann Vet Clinic.**

## TRACTOR / TRUCK / TRAILERS / AUTO

(tractor-vehicles sell after cattle at Noon)



Kubota M8540 open station diesel-85 HP-3930 hours-front wheel assist-hydraulic shuttle shift-with LA1353 QT loader and bucket-sells as unit, Kubota bale spear, GMC 2 ton service truck-350 engine, **TRAILERS**; Shelby 20' goose-neck livestock trailer, heavy duty 15 bale round bale trailer, 2011 flatbed utility trailer, Reece 5th wheel hitch, receiver hitches, large storage container, **AUTO**; 2005 Buick LeSabre 4 door-V6 engine-automatic, (2) boat motors, Mercury 115 HP outboard motor

## HAY EQUIPMENT / FARM / CATTLE EQUIPMENT



John Deere 925 MoCo discbine-rubber rollers, Gehl 1870 5'x6' round baler, 10 wheel hydraulic V rake, 2 basket hay tedder, new roller chains for baler, **FARM**; New Holland 320 PTO manure spreader, 3 point bale fork, 3 point 3-14" plow, 3 pt Tree Hog stump cutter-20" diameter, (2) 3,000 bushel grain bins with blower-buyer has 60 days to move bins, 2 ton bulk bin, (4) round bale feeders, 10 bale round bale push feeder, (20) 12' heavy duty corral panels, 6' T posts, lot gates, barbed wire, CO2 fly spray gun, animal dart gun, 2 compartment dog box



VIEW OUR PHOTO GALLERY ON [www.breheauction.com](http://www.breheauction.com)

**Auctioneers Note:** We will be selling with 2 rings, starting 9:00AM with tools. 2nd ring begins 9:30AM household, antiques.

## GUNS / OUTDOOR / COINS (guns will sell at 11:00 AM)



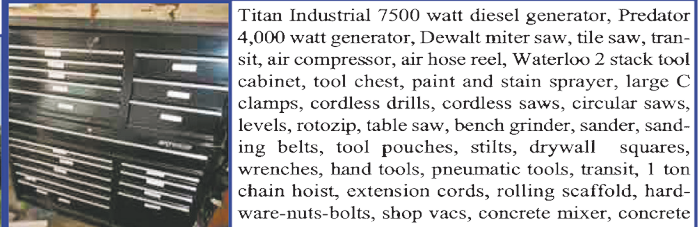
Lefever 12 ga double barrel stage coach-20" Damascus steel double barrel, Winchester Model 94-30-30-pre 1964, Winchester M 1300 12 ga 3", Browning Belgian Auto 5 12 ga, Browning 16 ga Belgian semi-auto shotgun, Browning 12 ga Belgian shotgun, Remington 12 ga pump, Remington M 11 12 ga semi-auto, Remington 12 ga-poly choke, Stevens M 320 20 ga pump, Kassner 12 ga single shot, Stevens M 311 12 ga double barrel, Wingmaster 870 16 ga pump, Ithaca M 66 Super single 20 ga single shot, Mossberg 835 Ultra Mag 12 ga camo pump, Savage 24-50 over-under .22 cal/410 ga, Topper M 48 H&R single shot 12 ga, Centurian 98 Sportsman .270 bolt action, lot fishing equipment, old lures, duck decoys, arrowheads, hornets nest, deer antlers, **COINS**; Eisenhower dollars, Susan B, 12 Walking Liberty half dollars, 27 Franklin half dollars, few V nickels-Buffalos, wheat pennies, US and foreign stamps

## ANTIQUES / COLLECTIBLES / HOUSEHOLD



Wooden buggy wheels, oak wine barrels, tobacco cutter, sausage stuffer, church pews, antique safe, coffee jar, old bottles, blue canning jars, marbles, cheese box, spice tins, tins, granite coffee pots, decanters, steins, porcelain dolls, red wagon, train set, harmonica, violin, blue glass vases, Rams bobbleheads, **CROCKS**; 20 ga Monmouth, 12 ga Western, 3 GALLON Blue Band, 2 ga Blue band, 5 ga Western, (2) 3 ga Western-1 w floral, 2 ga brown top, 5 ga Mo Pottery Co, 3 blue band small crocks, **JUGS**; 5 ga blue band, 5 ga Western, (2) 2 ga Western, 1 ga Western, lot other smaller jugs, crock bowls, **FURNITURE**; old wardrobes, Grandfather clock, wash stand, ice cream table-chairs set, organ, sewing machine, antique wooden table, formica table-chair set, carved wooden chair, **HOUSEHOLD**; Gaudianware pot, cast iron skillet, meat slicer, scale, dehydrator, sheet sets, floral, games, toys, Nerf, VHS Disney, books, vacuum cleaners, foosball table, Igloo drink coolers, **YARD**; 2 person sauna, porch swing-glider, walk in coolers

## TOOLS / MOWERS / YARD TOOLS



Titan Industrial 7500 watt diesel generator, Predator 4,000 watt generator, Dewalt miter saw, tile saw, transit, air compressor, air hose reel, Waterloo 2 stack tool cabinet, tool chest, paint and stain sprayer, large C clamps, cordless drills, cordless saws, circular saws, levels, rotozip, table saw, bench grinder, sander, sanding belts, tool pouches, stilts, drywall squares, wrenches, hand tools, pneumatic tools, transit, 1 ton chain hoist, extension cords, rolling scaffold, hardware-nuts-bolts, shop vacs, concrete mixer, concrete tools, torpedo heater, electric motors, **BUILDING SUPPLIES**; new Quacker windows, barn siding, old tongue-groove flooring, barn boards, sandstone foundation stones, ceramic-porcelain tile, sump pump, floor buffer, appliance parts, pressure sprayer pumps-parts, electrical supplies, plumbing supplies, electric wires, misc. laminate flooring, lot door knobs, spray paint, caulk, commercial spray painters, old **MOWER**; John Deere riding mower, ATV 4' 12.5 HP pull behind mower, **YARD**; 3 point PTO wood splitter, Stihl chainsaws, Stihl weed eaters, Husqvarna chainsaws, lot chains-saw parts, step ladders, extension ladders, rakes, shovels, pole saws, with heater and fans

**BREHE AUCTIONEERING SERVICE, L.L.C.**  
 Union, MO: (636) 583-0841 Owensville, MO: (573) 437-3454  
[www.breheauction.com](http://www.breheauction.com)  
**LICENSED AUCTIONEERS:**  
 Kerry Brehe 314.954.3798 Josh Brehe 314.603.3129 Nick Brehe 314.560.7737  
 Harry Engelhart 636.399.3743  
 Announcements made day of sale supersede all printed material.  
 TERMS: CASH, PERSONAL CHECKS WITH PROPER I.D., BUSINESS CHECKS WITH BANK LETTER AND NO OUT OF STATE CHECKS UNLESS APPROVED BY SELLER. Email Us At [kkauction@bbglobo.net](mailto:kkauction@bbglobo.net)  
 Everything sells as is with no guarantees. Not responsible for accidents.

LUNCH WILL BE SERVED BY OLD DUTCH MILL

# R&R AUCTION SERVICE

## AUCTION

### FRIDAY, SEPTEMBER 15TH AT 6PM

in the R&R Auction House - 1644 South Ash in Buffalo, MO

**This is gonna be a great night for treasure hunting!**

Much of this merchandise has been sitting in storage for 3 decades and we just have a sample to list as of now so keep an eye on our photo gallery as we uncover much more during set up!

1983 Honda CB Custom 1000 motorcycle only 2,459 original miles, 1972 Honda CB 100 motorcycle only 5,886 original miles, desks, fishing poles, dip net, Yard Machine 13hp 38" cut, New Walking Dead books, New Nightmare before Christmas products, metal racks, Magic Chef food steamer, thermos & cup set, Sewmor sewing machine in cabinet, backpacks, bags, 2 twin size iron beds, sofa, recliners, china dolls, Craftsman table saw, gun cabinet, coffee table, glass top coffee table, glass top end table, metal wardrobe, metal cabinets, doll bed, metal gas cans, boat gas cans, shop cabinet, plywood, vases, record albums, games, Hot Wheels, leather belts, hunting orange coveralls, scythe, iron wheel, glassware, berry set, Ballerina dishes, sun tea gallon jars, tables, small dolls, Craftsman table saw, gun cabinet, coffee table, gun rack, wreaths, pool cue, Tupperware, Playskool Snoopy puzzle, 2 Gold nesting bowls, White Fireking mixing bowl, bayonet, pocketknives, hand tools, old metal high chair, old metal Coleman Cooler, lawn mower blades, 4 wood chairs with woven bottoms, ammo can, cast iron kettle, dehydrator, galvanized bucket, ping pong table, 2 old wrought iron kids chairs, Ab lounge, Troy Bilt pressure washer 7.25hp 3000psi, window fans, RCA refrigerator, new door, mini fridge, microwave cart, Western Auto push mower, plastic lawn chairs, glass COKE bottles, baskets, rug, old sink, oars, 25' sewer tape, grinders, lopers, old post hole diggers, aluminum wire, trailer hitch, weed eaters, Craftsman shaper, Foley belt saw, hall tree, oil change pans, Craftsman band saw, Craftsman joiner planer, Big Red 2 ton floor jack, air tank, Delta scroll saw, wooden shop table, 8 ft long wooden cabinet, electric Homelite XEL chainsaw, Schwinn Air Dyne, Ascend Kayak FS128T, table with umbrella, and so much more.



Watch next week's trader for complete listing of absolute auction of Dull estate at 718 Hooker drive in Buffalo on September 23rd.

Please keep watch on our website for added photos.

TERMS: 10% buyer's premium. Cash, check, or credit card with proper I.D. nothing removed until settled for a 3% fee will be added to credit card purchases. Not responsible for errors in listing. Any announcement made sale day will take precedence over any printed matter.

GENERAL AUCTIONEERS

**AUCTION**

**R&R**

**SERVICE**

Auction & Appraisals

For more information contact Professional Auctioneer Russ Weeks at 417-576-7357 or check out [www.rrauctionservice.com](http://www.rrauctionservice.com)

Serving this area's auction needs since 1997 with honesty and professionalism.

[www.rrauctionservice.com](http://www.rrauctionservice.com)

(417) 576-7357 or (417) 345-4140

**CAGA**  
CERTIFIED APPRAISER

MPAA



*Sam* **CRAWFORD AUCTION SERVICE** LLC  
**ESTATE AUCTION**

Will sell the following in Camdenton, MO at 144 Sunset Dr. (Hwy. 54/Business Hwy. 5 4-Way Stop, then North 8/10 mile on Business 5 to Dawson Rd., then West 3/10 mile to Sunset). Watch for auction signs.

**SATURDAY, SEPTEMBER 23<sup>RD</sup>, 2023 - 10:00 AM**

**TRAILER - TOOLS - HOUSEHOLD - Misc.**

**TRAILER**

Older Bumper Hitch Utility Trailer w/Side Tools Boxes & MTO Concrete Mixer

**TOOLS & MISC.**

Cub Cadet CC 30 H 30" Lawn Tractor, New  
 Stihl Weedeater  
 Toro Push Mower  
 Clipper Masonry Saw  
 Dayton Electric Winch  
 Assorted Power Hand Tools  
 Some Wrenches & Sockets  
 Long Handle Tools  
 CST Laser Level & Tri-Pod  
 Assorted Masonry Tools - Float  
 14 Pair Scaffolding & Walk Boards  
 2 HD Wheelbarrows  
 3-4 HD Extension Cords  
 Misc. Electrical & Plumbing  
 Lot 5 Gal. Buckets  
 Gas Cans  
 55K Space Heater  
 5-6 Boxes Ceramic Tile  
 Nails  
 6-8 Wire Milk Crates  
 Push Garden Plow  
 Metal Imp. Seat  
 3 Hydraulic Jacks  
 12' Flatbottom Boat  
 Aluminum Extension Ladder  
 2 Wood Benches  
 Mongoose Mountain Bike  
 Golf Clubs, 3 Buckets  
 Golfballs & Tennisballs  
 Tennis Rackets  
 Antique Boat Motor - Elgin?  
 Garrett Metal Detector  
 Gold Pan  
 Falcon Quad Drone, NIB  
 Western Saddle - Heiser, Denver, CO  
 Mule Deer Head Mount  
 2 Compound Bows  
 Hunting Tent

Sleeping Bags  
 Asst. Camping Supplies  
 Coleman Camp Stove, 2 Lanterns  
 Some Reloading Supplies  
 Ex. Large Ice Cooler  
 Igloo Water Cooler  
 4-5 Rods/Reels - Reels  
 Misc. Fishing Supplies  
 Mens Hunting Clothes, Coats, Boots  
 Lg. Wood Gun Cabinet  
 2 Gun Stocks  
 Other Misc.

**HOUSEHOLD - COLLECTIBLES**

Antique Metal Kitchen Cabinet  
 Antique Wash Stand  
 Antique Chest of Drawers  
 Antique Cabinet w/Side Cases  
 Antique Framed Pictures: Custers Last Stand, Anheuser Busch Browing Assoc.  
 Framed Western Ammo Bird Dog, Quail, Other Hunting Pics.  
 Sanyo Flat Screen TV  
 TV Stand  
 Turntable, Speakers  
 3-4 Chest of Drawers  
 2 Full Beds  
 Breakfast Table, 4 Chairs  
 Baker's Rack  
 Bookcase  
 Hide-A-Bed  
 Loveseat, Couch  
 Assorted Small Kitchen Appliances  
 Misc. Glassware/Utensils  
 Bedding/Towels  
 Cameras  
 Lot Hardback Books Most @ The West, Cowboys, Hunting  
 Fans, Heaters, Lamps  
 Other Misc.

**GUITARS**

Fender 1505 Accoustic w/Case  
 Epiphone by Gibson, Elec. w/Case  
 Laney Amp



*Sam* **CRAWFORD** LLC  
**Auction Service**



**TERMS:** Cash or good check. Nothing removed until settled for. Not responsible for accidents. Lunch available. Statements made day of sale take precedence over printed matter. All items sell as is. No warranties given or implied.

**417-998-6629**  
 Cross Timbers, Mo.

[CrawfordAuctionService.com](http://CrawfordAuctionService.com)

Sam  
 417-328-9137

Chase  
 417-399-1904

Chance, CAI  
 417-298-1751

Tom Poynter  
 Jack Lancaster

**ESTATE OF JERRY L. LIBBY**

# PUBLIC AUCTION

FAIR PLAY, MO

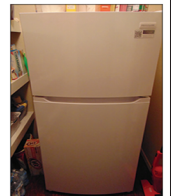
# AUCTION

As we have sold our home and are moving out of State we will sell the following Pickup, Guns, Mower's, Tools, Household, Collectibles and Misc. At the Home located one Block North of 32 Hwy. On Everett Street in the West part of Fair Play, Mo. On

## Saturday, Sept. 23, 2023 at 9:00 am

WATCH FOR AUCTION COMPANY SIGNS • LUNCH SERVED

FOR MORE PICTURES GO TO: [WWW.BRUCEANDLEANAUCTION.COM](http://WWW.BRUCEANDLEANAUCTION.COM)



### PICKUP

- 2017 Dodge Ram 1500 Pickup, 3.6 L V-6, Automatic Transmission, 57,400 Miles, PW, PL, Good Rubber, Bed Cover & Liner, Grill Guard (Nice Truck in good Condition)

### GUNS-SPORTING-MOUNTS

- Smith & Wesson Model 5904 Semi-Automatic 9mm Pistol
- Ruger 22-45 Semi-Automatic 22 Cal. Target Pistol, Bull Barrel (extra clip)
- Cobra Model C Chrome Plated 32 Cal. Derringer NIB
- Cricket USA Single Shot Bolt Action 22 Cal. Rifle Poly Stock, Scope (shot 2 times)
- Umarex Fusion 177 Cal. Poly Stock Pellet Rifle
- Benjamin Model 397PA 177 Pellet Rifle
- Misc. Ammo
- 3 Duck Mounts
- 5 Fish Mounts
- 1 older Bob Cat Mount
- Misc. Taxidermy Items for Birds & Fish
- Misc. Fishing Poles & Tackle
- 2 Live Traps
- Deer Horns
- Ladles Leather Carry & Conceal Purse

### HOUSEHOLD COLLECTIBLES

- Frigidaire Med. Size Refrigerator W/Cross top Freezer like new
- GE small Chest Freezer
- Corner Curio Cabinet Glass Fronted, Mirrored Back

### HOUSEHOLD COLLECTIBLES CONT.

- 2 Cushion Leather Love Seat
- King Bed W/Mattress
- 4 Pc. Bedroom Items (Dresser, Chest, 2 Night Stands)
- Sm. Drop Leaf Table W/4 Chairs
- 3 & 4 Drawer Chest
- Occasional Chairs
- Western Electric Crank Wall Telephone
- Zither Instrument By American Guitar Co.
- Daulson 6 String Banjo
- Milk Cans
- 4 Sm. Stone Jugs
- Wooden Apple Crates
- Guardian-ware Pans
- Pink & Green Depression Glass
- Wheat Pattern Dishes & Glasses
- Cook Book Collection
- Misc. Pots, Pans and Dishes
- Linens & Bedding

### MOWERS-TOOLS-MISC.

- Cub Cadet Hydro Drive 30" Cut Riding Mower
- Cub Cadet Push Mower
- Craftsman 5hp Garden Tiller
- Craftsman Flower Bed Tiller
- 2 String Trimmers Ryobi & Craftsman
- Remington Electric Chain Saw
- Toro Electric Vacc & Blower
- Bostitch Sm. Air Compressor
- Ryobi Electric 1700psi Pressure Washer
- Craftsman 10" Miter Saw on Stand
- Numax Framing Nailer
- 2-Finish Nailers



### MOWERS-TOOLS-MISC CONT.

- Back Pack Sprayer
- Misc. Hand Power Tools
- Double Stone Grinder
- Ext. Cords
- 2 Electric Paint Sprayers
- Misc. Hand & Garden Tools
- Step & Ext. Ladders
- Dyna Glo Propane Grill
- Master-built Pro Electric Smoker
- 3 pc. Metal Patio Set
- Propane Fish Cooker
- Chicken Feeders & Waters
- Fruit Jars
- Wine Making Items
- 2 Wheel Dolly
- Poly Yard Christmas Ornaments
- Lot of Misc.

## OWNER: LARRY & KATHY DANIELS

TERMS: Everything sells as is, where is. Nothing is to be removed until settled for. Payment of Cash, Check with Proper ID, or Credit Cards. Auction Company or the Owners will not be responsible for loss of items or accidents. Statements made the Day of the Auction take Precedence over Printed Matter.

SALE CONDUCTED BY **BRUCE & Le'AN AUCTION & APPRAISAL, LLC**  
THE AUCTION COMPANY THAT APPRECIATES YOUR BUSINESS

For more information and pictures go to our website at [www.bruceandleanauction.com](http://www.bruceandleanauction.com)

RONNIE BRUCE - Fair Play, MO  
417-777-1685 or 417-654-2214  
colronbruce@gmail.com

BRANDON BRUCE  
Fair Play, MO

BILLY BRUCE - Stockton, MO  
417-399-4800  
colbbruce@gmail.com

**PUBLIC AUCTION**  
**ALDRICH, MO**

**AUCTION**

As we are moving we will sell the following Pickup, UTV, Trailers, Mower, Tools, Household, Sporting and Farm Misc.  
At the Farm located 4 ¼ Miles South of Aldrich, Mo. At the Junction of Farm Road 525 and 123 Hwy. On

**Sunday, Sept. 24, 2023 at 12:30 pm**

**WATCH FOR AUCTION COMPANY SIGNS • LUNCH SERVED**

**FOR MORE PICTURES GO TO: WWW.BRUCEANDLEANAUCTION.COM**



**UTV-MOWER**

- 2023 Polaris Ranger 1000 UTV 4X4, Double Seat 6 Passenger, 663 Miles, Automatic Trans. With Dump Bed
- Gravely Pro Turn 152 Commercial Zero Turn Mower, X-Factor Deck, Kohler ZT730 Engine, 265 One Owner Hours, Adj. Seat

**PICKUP-TRAILERS**

- 2001 Dodge Ram 2500 4X4 Pickup, V-8 Magnum Gas Motor, 5 Speed Transmission, 190,342 Miles, W/8' Winkel Flatbed W/Bale Forks
- 1999 Tandem Axle 16' Flat Bed Home Made Bumper Trailer 90" Wide (with Title)
- 1997 Single Axle 12' Tilt Bumper Hitch Trailer 76" Wide (with title)

**KAYAKS & SPORTING**

- Heritage Angler 10' Fishing Kayak
- Pelican Challenger 10' Kayak
- 3 Spitfire Kids Kayaks
- Misc. Fishing Poles & Tackle Boxes
- 15' Metal Deer Stand
- Small Deer Stand
- 3 Kids Bows
- Bikes
- Bounce Pro 13' Trampoline
- Misc. Sporting Items
- Life Jackets

**HOUSEHOLD CONT.**

- Frigidaire Garage Refrigerator
- Frigidaire Sm. Chest Freezer
- 3 Cushion Microfiber Couch
- Electric Fireplace/TV Stand
- Matching Foyer Table, Coffee Table, End & Stand Tables
- 6' Book Shelf
- Corner Computer Desk
- Futon
- Ocean Chair
- Vanity W/Mirror
- Chest of Drawers
- Twin Bed W/Bottom Chest (no mattress)
- Fruit Jars

**TOOLS-MISC.**

- Husqvarna Back Pack Blower
- Echo SRM-225 Gas Trimmer
- Troy-Bilt 8 HP Pressure Washer
- 28' Poly Ext. Ladder
- 16' Alum Ext. Ladder
- 40 Gallon 12volt Boom & Hand Sprayer
- 16 Gallon Shop Vacc.
- Bench Grinder
- Craftsman 3hp 15 Gallon Air Compressor
- Misc. Hand & Garden Tools
- Poly Tool Box
- Porch Rockers
- Metal Porch Gilder
- 5 Poly Lawn Chairs & Lounge
- Wood Rack
- Misc. Fire Wood

**HAY-FEEDERS**

- 8 Sm. 4'X4' Misc. Grass Hay 2022 & 23
- Portable Chicken Coop W/5' X 5' Enclosed House & 5' X 12' Run
- Chicken Brooder Box
- Chicken Feeders & Waters
- Phoenix Metal 2 Ton Double Sided Calf Creep Feeder on Rubber
- 12 Pcs. 3' Metal Sectional Fence Panels
- Sm. Galv. Stock Tank
- Sheep/Goat Hay Feeder
- Misc. Feeders
- Misc. Electric Fencing
- Misc. Fencing
- Dog Houses
- Lot of Misc.

**OWNER: RYAN & VICTORIA SWANIGAN**

TERMS: Everything sells as is, where is. Nothing is to be removed until settled for. Payment of Cash, Check with Proper ID, or Credit Cards. Auction Company or the Owners will not be responsible for loss of items or accidents. Statements made the Day of the Auction take Precedence over Printed Matter.

SALE CONDUCTED BY **BRUCE & Le'AN AUCTION & APPRAISAL, LLC**  
THE AUCTION COMPANY THAT APPRECIATES YOUR BUSINESS

For more information and pictures go to our website at [www.bruceandleanauction.com](http://www.bruceandleanauction.com)

RONNIE BRUCE - Fair Play, MO  
417-777-1685 or 417-654-2214  
colronbruce@gmail.com

BRANDON BRUCE  
Fair Play, MO

BILLY BRUCE - Stockton, MO  
417-399-4800  
colbbruce@gmail.com

**VISIT WEBSITE FOR PICTURES**

# ESTATE AUCTION

**SATURDAY, SEPTEMBER 16<sup>TH</sup>- 10:00 A.M.**

**Location:** 402 North Elm Street, Mansfield, MO 65704 **Directions:** From Mansfield Square go East on Business 60 3/10 mile to North Elm St. on left go approx 2/10 mile to Auction. **WATCH FOR CHADWELL AUCTION SIGNS.** **Payment System:** Cash • Debit Card • Credit Card (Debit / Credit Card Fee Will Apply) Checks approved if known by auction company. **VISIT: WWW.CHADWELLAUCTIONS.COM**

**Estate of Bill & Margret GHAN**



**23 Ton Yard Machine Wood Splitter**

**HOUSEHOLD**  
 4pc Queen Oak Bedroom Set • Chest of Drawers • Couch • Loveseat • Chair • Leather Lift Chair • Table w/6 Chairs • Assorted Dishes • Assorted Lamps • Wall Pictures • La z Boy Rocker Recliner • Entertainment Center • Large Lot of DVD's • Coffee Table & End Tables • Maple 2pc Bedroom Set • Singer Sewing Machines • Filing Cabinet • Vac Sweeper • Christmas Decor • Large Cedar Chest • Computer Table • Pine Bed • Assorted Cameras • Rocking Chairs • La Z Boy Double rocker/Recliner • Popcorn Popper • Cedar Chests • Fireplace Set • Roll Away Bed • Sentry Fireproof Safe • Stock Pot • Couch • Microwave • Tupperware • Cutlery • Other

**ANTIQUES ~ COLLECTIBLES**

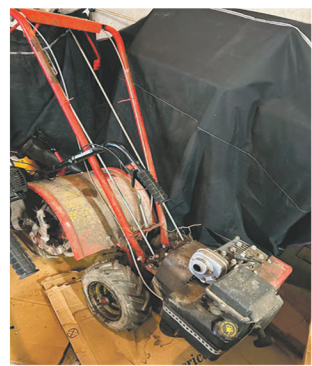
Jesse Barnes Canvas • Oil Lamps • Robert Wood Print • Hen on Nest • Steam Engine Lantern • Kimball Organ • Wall Phone • Silver Platter • Hanson Baby Scales • Old Daisy Pump BB gun • Keane Pictures • REO Western Auto Mower • Stained Glass • Army Boxes • Water Cooler • Sled • Other



**2009 Kawasaki Mule 600 w/396hrs (like new)**

**OUTDOOR ~ MISCELLANEOUS**

42" Cub Cadet Riding Mower • 42" Bad Boy Zero Turn Mower (needs work) • Homemade Airplane Lights • Sleeping Bag • Coolers • Lawn Seeder • Fishing Tackle • Turkey Decoys • Live Animal Trap • Bag Chairs • Jennings Bow • Gun Cleaning Kit • Hunting Apparel • Insulation • Lawn Chairs • Large Lot of Camping Supplies • 6' Wooden Step Ladder • Hunting Equipment • Large Lot of fishing Rods & Equipment • Sythe • Weedeaters • Gas Tiller • Leaf Blower • Bbq Grill • Gas Smoker • Long Handle Tools • Inversion Table • Medical Scooter • Steel Posts • Werner 8' Step Ladder • Loading Ramps • Fuel Cans • ATV Sprayer • Assorted Lumber • Gas cans • Hide Skinner • Propane tanks • Snow Blower • Ryobi Leaf Blower • Steel Post Driver • Air Plane Weather Vane • Water Hoses • Other



**SHOP ITEMS**

Assorted Tools • Cutting Torch (NIB) • Electric Heaters • Tool Box • StainGlass Polishing Glass Saw Diamond Max • Electric Cords • Oils & Solvents • Assorted Tools • Metal Detector • 200' Tape Measure • Shop Vac • Pipe Wrench • Glass Cutter • Saw Horses • Creeper • Shop Light • Air Tank • Router Table • Delta Miter Saw • 800 Watt Generator • Torpedo Heater • Oil Cleaners • Craftsman Router Table • Other

**AUCTIONEERS NOTE:** Many years of accumulation. Many unopened boxes. Make plans to attend! Thanks, Shawn  
**DRIVER'S LICENSE OR PICTURE I.D. REQUIRED • TERMS: CASH OR APPROVED CHECK** **OR**

**Chadwell**  
 Auction Service, LLC  
 www.chadwellauctions.com

Auctioneer:  
**SHAWN CHADWELL**  
 417-830-0209

Clerk:  
**SHELLY CHADWELL**  
 Cell: 417-880-8449

Ringmen:  
**Weston Chadwell ~ 417-349-0727**

Cashiers:  
**Marla Chadwell • Emily Shaffer**  
**Cassie Collins**

**PROFESSIONAL SALES MANAGEMENT**  
 LUNCH WAGON • APPRAISAL SERVICE • RAIN OR SHINE  
 All announcements made day of sale take precedence over any printed matter.  
 Not responsible for lost or stolen merchandise. Not responsible for accidents.

# ESTATE AUCTION

## of the late Jay & Martha Waggoner

**SATURDAY SEPTEMBER 16TH, 2023 - 9 AM**

**LOCATION:** 1585 North Highway 63 Houston, MO 65483 (Texas County Fairgrounds)

**Directions:** Travel north on highway 63 from Houston to the fairgrounds on right just at the north edge of town

**Payment:** Cash, Check, Debit/Credit Card (Debit/Credit card convenience fees of 3.75% will apply)

For photos go to: [www.auctionzip.com/Listings/3841998.html](http://www.auctionzip.com/Listings/3841998.html)

### ANTIQUES, COLLECTIBLES, HOUSEHOLD

Fire truck pedal car; metal coleman cooler; nail kegs; vintage trunk; galvanized buckets; vintage wooden & metal 2 wheel dolly; vintage bicycles; scythe; garden push plow; sets of A & W glasses; set of Star Wars glasses; set of stars & stripes Coke glasses; ice tongs; hay trolley; buck saw; hay harpoon; 2 man crosscut saws; roselane pottery; hobnail, carnival & depression glass; lots of barbie dolls (NIB); vintage cameras; brass fireplace set; wash stand w/mirror; fur coats; vintage suitcases; lots of Beanie Babies (NIB); Coca-Cola wall print; McDonald's happy meal toys (unopened); well over 1200 vinyl records; over 1500 books (Louis Lamar, Dana Fuller Ross, Readers Digest to name a few); vintage road maps; lots of marbles; vintage board games; oil lamps; mini slot machine; Russian nesting dolls; world wide dolls & figures; cream cans (small & large); miniature cast iron figures; cast iron nut cracker; all kinds of miniature porcelain figures; costume jewelry; jewelry boxes; all kinds of quilt & embroidery blocks; all kinds of QRS player piano word rolls; Grandfather clock; wardrobe/armoire cabinet; cake plates; glass juicers; Hyceia measuring glasses; Fiesta; punch bowls; metal kitchen canister set; drop leaf table w/4 chairs; 2 hutches; end tables; lamps; rocking chair; desk; china cabinet; TV; VCR; DVD player; stereos; pressure canner; Christmas trees & décor; fall décor; lots of puzzles; storage cabinets; plastic shelving units; live trap; lots of kitchen ware (pots, pans, silverware, glasses, sets of dishes, corning ware, bowl, measuring cups and more; lots of items not seen and too numerous to mention

**Auctioneers note:** An honor to conduct this auction for the Waggoner family. Years of accumulation. Come spend the day with us and enjoy this good clean auction. Travis



## Tooley Auction Services, LLC

**417-293-6909**

[tooleyauctions@gmail.com](mailto:tooleyauctions@gmail.com)

Follow us on Facebook - Tooley Auction Services, LLC

Travis Tooley, Auctioneer  
417-293-6909  
Bruce Scheets, Auctioneer  
417-260-2118  
Josh Wheeler, Auctioneer  
417-349-0265



**Clerks & Cashiers:**  
Shelly Caldwell, Barb Schumacher, Lena  
Walsh, Kim Wheeler  
Ringmen: Vance Farmer,  
Terry McCallister, Justin Wheeler



Drivers license or photo ID. Cash, check and credit/debit cards (3.75% fee applies on cards).  
Announcements made on the day of the sale take precedence over any printed material.  
Not responsible for accidents, theft or lost articles.

# NATIVE AMERICAN & OPAL AUCTION

## 2 DAY SALE! - BID ONLINE

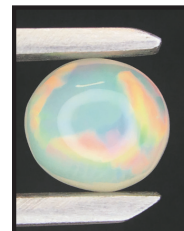
### TUE. SEPT. 19TH & WED. SEPT. 20, 2023 AT 6:00 PM

#### INVENTORY LIST:

Navajo handmade earrings  
 Southwest style pendant  
 Artisan made ring  
 Navajo handmade necklace  
 Handmade ring  
 Navajo handmade cuff bracelet  
 Navajo handmade earrings  
 Southwest style pendant  
 Opal 1.25 ct  
 Southwest style earrings  
 Zuni handmade ring  
 Native artisan made bracelet  
 Navajo handmade sterling silver cuff with multi stone  
 Navajo handmade sterling silver necklace with Opal stone  
 Cabochon cut Opal from Ethiopia. 1.50 ct.  
 Sterling silver earrings with multiple stone inlay  
 Large cross shaped sterling pendant with turquoise center stone  
 Sterling silver pendant with spiny and turquoise stone

Sterling silver stud earrings with turquoise stones  
 Artisan made heishi necklace with sterling clasps  
 Sterling silver ring with turquoise stone  
 Coyote shaped sterling silver brooch with turquoise stone  
 Cabochon cut Opal from Ethiopia. 1.05 ct.  
 Working Wyler watch with sterling silver band  
 Sterling silver ring with turquoise stone  
 Navajo handmade sterling silver earrings with lapis  
 Sterling silver ring with opal gemstones  
 Cabochon cut Opal from Ethiopia. 1.60 ct.  
 Vintage Pewter cuff  
 Sterling silver ring with multiple turquoise stones  
 Navajo handmade beaded cuff  
 Sterling silver pendant with Kingman turquoise  
 Sterling silver ring with large turquoise stone  
 Southwest style multi

inlay sterling silver earrings  
 Sterling silver pendant with Kingman turquoise stone  
 Sterling silver ring with turquoise and lapis stones  
 Handmade beaded cuff  
 Navajo handmade Sterling silver earrings with Kingman turquoise stones  
 Southwest style sterling silver multi stone earrings  
 Cabochon cut Opal from Ethiopia. 1.35 ct.  
 Navajo handmade Sterling silver kokopelli earrings  
 Matching necklace and bracelet combo.  
 Sterling silver with Navajo pearls and turquoise beads  
 Navajo handmade Sterling silver Opal earrings  
 Navajo handmade Sterling silver turquoise stone bracelet  
 Sterling silver ring with turquoise stones  
 AND MORE!!!



FOR MORE INFORMATION GO TO [WWW.EASTERLYAUCTIONCO.COM](http://WWW.EASTERLYAUCTIONCO.COM) OR CALL EASTERLY'S AT 417-833-9494



**Mike Easterly Auctioneer • 417-833-9494**

Not Responsible for accidents or theft. For more information call: Easterly Auction Company, Springfield, MO. Auction Terms: Visa, Mastercard, Cash, Cashier's check or checks with proper I.D. Announcements day of sale take precedence over printed material. Auction Notes: Although information is obtained from sources deemed reliable, auctioneer makes no warranty or guarantee expressed or implied. Buyers should themselves take the opportunity to make their own inspection prior to sale.

[www.EasterlyAuction.com](http://www.EasterlyAuction.com) • [auctionzip.com](http://auctionzip.com) ID#14770





# PERSONAL PROPERTY AUCTION

62 HICKORY LANE, GALENA, MO

SATURDAY, SEPTEMBER 23, 2023 AT 10:00 AM

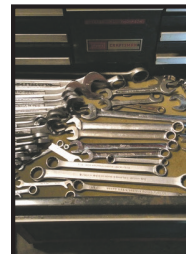
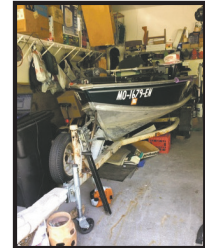
## INVENTORY LIST:

2021 Toyota Highlander XLE AWD 24900 Miles  
 1999 Rebel Lund 14 1/2 foot aluminum boat 25hp  
 Lawn chairs  
 Sears craftsman air compressor  
 Shovels And yard tools  
 Extension cords  
 Excell XR2500 pressure washer  
 Vintage fishing equipment  
 Skil saw's  
 Craftsman toolbox 5 drawer  
 Swisher yard sweep  
 13 drawer craftsman toolbox  
 Socket and ratchet  
 Punches  
 Pliers  
 Allen wrenches  
 Vice grips in adjustable wrenches  
 Hammers screwdrivers and miscellaneous  
 Vintage tacklebox with Fishing reels  
 Fenwick tacklebox  
 Lots of fishing rods and

reels  
 Fishing string and bait  
 Lots of miscellaneous  
 Plano tacklebox and lots of various Fishing Lures  
 Vintage Fishing Lures  
 Jigs and other lures  
 Old minnow bucket  
 Vintage Murray bicycle  
 Mongoose bicycle  
 Huffy bicycle  
 Murray Phoenix bicycle  
 Armoire  
 #3 crock  
 Old crock jugs  
 Beautiful hutch  
 Stemware  
 West Moreland  
 Vintage milk glass and plates  
 LE Smith basket  
 Curio cabinet  
 Vintage Crystal  
 Carnival glass  
 Small curio cabinet  
 Bird collection  
 Gold cup and saucer set collection  
 Old bottles and jars  
 Crock jugs

Blue rocking chair  
 White couch  
 Recliner rocker  
 Beautiful wall art  
 Kitchen island  
 Maytag washer  
 Maytag dryer  
 Jewel tea pitcher  
 Oster mixer  
 Hatch  
 Glasses  
 milk glass  
 Corning ware  
 Pfaltzgraff collection  
 Dresser and mirror  
 Hope chest  
 Double bed  
 Double wedding ring pattern quit  
 Wood chest  
 Old chair  
 Decorative plates  
 Computer desk  
 Singer Sewing machine

AND MORE!!!



FOR MORE INFORMATION GO TO [WWW.EASTERLYAUCTIONCO.COM](http://WWW.EASTERLYAUCTIONCO.COM) OR CALL EASTERLY'S AT 417-833-9494



Mike Easterly Auctioneer • 417-833-9494

Not Responsible for accidents or theft. For more information call: Easterly Auction Company, Springfield, MO. Auction Terms: Visa, Mastercard, Cash, Cashier's check or checks with proper I.D. Announcements day of sale take precedence over printed material. Auction Notes: Although information is obtained from sources deemed reliable, auctioneer makes no warranty or guarantee expressed or implied. Buyers should themselves take the opportunity to make their own inspection prior to sale.

[www.EasterlyAuction.com](http://www.EasterlyAuction.com) • [auctionzip.com](http://auctionzip.com) ID#14770



**SERIOUS INQUIRIES ONLY:** Whirlpool dryer for sale. Works great. \$100 firm. 573-647-3139.

**SERIOUS INQUIRIES ONLY:** Lots of antique mason jars for canning. Lids & caps. 50-60 jars. \$200 firm. 573-647-3139.

**SERIOUS INQUIRIES ONLY:** Antique Dresser from early 1900's, comes with mirror. \$200 firm. 573-647-3139.

**LOOKING FOR THE MAGAZINE HAPPIER:** It was given away in St. James Drug Store. Looking for more. 573-265-3645.

**MARLIN 357/38 LEVER ACTION:** Late 70s model. Hasn't been fired since late 70s. \$1,500 Firm. 417-718-0517. Lebanon.

**SADDLE FOR SALE:** Excellent condition, 17" seat, Roper Style. \$600. 417-259-0396. Mt. Grove.

**2 ZEBU HEIFERS:** \$600 each. Also, 2-year-old Blue Roan Saddlebred Percheron Stallion. 417-741-0516. Hartville.

**SET OF 2 DALLAS COWBOYS FOOTBALL SHAPED DRINKING GLASSES:** Mint condition. \$20. Text for pics. 573-854-8132. Houston.

## GARY SEXTON AUCTION

*Douglas County Land Auction - Drury Community Timber*

### SATURDAY, OCTOBER 7<sup>TH</sup> 2023, AT 12 NOON

**From Gentryville, MO - East on 14 approx. 3 miles to CR#252 then left approx. 2 miles to property. From West Plains, MO - West on 14 approx. 37 miles to CR#252 (Drury) then 2 miles. Watch for auction signs.**

At Public Auction: Approx. 354 acres (more/less) homestead of the family of Dave & Mabel Uhlmann - First time ever offered - this property was "homesteaded." Features - Old home place - utilities - Little brushy Creek Springs - plus approx. 200-225 (more/less) uncut timber! Starting bid \$1,000/acre. **Terms:** 10% day of auction live - Internet escrow money due by 5:00pm Tuesday, Oct 10. Checks payable to Brill Title Co. Information, Gene Summers 417-293-2751. **Conditions:** Highest bid to be submitted to heirs of the Estate (recent Appraisal completed by Ryan Joe Hamby). **Inspection:** Drive by welcome - Sunday, Oct. 1<sup>st</sup> 1:00-2:00 **Land Tour,** Gary Sexton 417-255-7001. **Auctioneer's Notes:** Absolute gorgeous lifetime holding of Dave & Mabel Uhlmann! **Attention Investors - Foresters - Hunters!** For Photos - drone, email Gary: gary@garysexton.com.

**OWNER: UHLMANN ESTATE**

[www.GarySexton.com](http://www.GarySexton.com)

**Main Office Location:**  
Main Office Location: 1028 Porter Wagoner Blvd. West Plains, MO 65775  
Gary Sexton: 417-255-7001 • Gary@garysexton.com

**LIVE & INTERNET BIDDING**





# ANTIQUE AUCTION

Due to the spring storms that destroyed our home, we are downsizing and rebuilding. We will be selling the contents of our home and more at public auction. From Vichy, Missouri, take Hwy. 63 north 4 miles to Maries Road 340, follow Maries Road 340 1 mile to Maries Road 339 and continue 1 1/2 miles to auction or from Vienna, Missouri, take Hwy. 63 south 7 miles to Maries Road 340, follow Maries Road 340 1 mile to Maries Road 339 and continue 1 1/2 miles to auction. Follow Lorts Auction Today signs on

## Saturday, Sept. 16, 2023

Morning Sale — Sale to start 9:00 a.m. — Rain or Shine

HOUSEHOLD · ANTIQUES/COLLECTIBLES · ANIMAL KENNEL SUPPLIES

Oak Furniture, Antiques & Household Items

General Electric antique refrigerator (motor on top), Antique pedestal sink - Milk cans Vintage wall pictures, Longaberger baskets, Oak buffet w/carving & mirror, Oak wash stand w/carving, Oak dresser w/side closet & mirror door, Oak kitchen cabinet - Oak rocker Oak dresser w/carving, Straight back upholstered chair Oak secretary w/carving, Oak secretary w/carving & mirror Oak full size bed w/tall headboard Oak wood frame porch bench, Wood school desk - Cedar table Coca Cola stool - Sears doctor scale Small roll top desk w/chair, Various wood chairs, Assortment of stools, Round & square oak end tables Wash stand (converted to bathroom vanity), Oak secretary w/tall top mirror Bubble gum machine, Oak China cabinet w/some lead, glass, Regulator wind up wall clock Several wall mirrors - Church pew Wood frame rocking chair w/upholstered seat, Oak blanket chest - Fainting couch Tall oak dresser w/side closet Dark wood chest of drawers w/carving, Dry sink - Red painted wardrobe Singer treadle type sewing machine, Oak dresser w/side closet, mirror & carving, Oak corner display - White hall tree Oval braided rug - Electric fireplace Sears Kenmore washer, Frigidaire dryers - Painted pie safe Octagon game table w/chairs Round oak table w/chairs, Antique oak frame couch Aluminum Pepsi Cola cooler Meridian electric bicycle

Many more articles too numerous to mention

**AUCTIONEER'S NOTE:** Lots of very nice high quality antique furniture on this auction. Most items were packed away quickly due to tornado damage to home so there won't be photos on our Facebook page. You're welcome to come the day before the auction to view any items. Sale will be held in shop buildings in case of inclement weather. Antique collections DO NOT miss this auction! - Larry & Gary Lorts

Lawn Mowers, Scooter & Home/Farm Related Items

John Deere LX173 riding mower w/grass catcher, Craftsman LT4000 w/Kohler engine Skaggs shop wood furnace Rascoal 600 handicap scooter (needs battery), Wood 6 panel doors, Oak kitchen cabinets, Oak bathroom cabinets Beckwood wood insert, Shower units - Buck wood stove Lot of pet crates & wire, Dog feeders - Animal feeders Wrought iron patio furniture Brower electric cattle waterers

Owners: Joe & Julie Bufalo

12443 Maries Road 339, Vienna, MO 65582

**TERMS:** Not responsible for accidents or losses, should they occur. • Nothing removed until paid for. • **No buyers fee.** Lunch served — ALL ANNOUNCEMENTS MADE SALE DAY TAKE PRECEDENCE OVER ALL PRINTED MATERIALS —

SALE CONDUCTED BY **LORTS AUCTION SERVICE** • ST. JAMES, MO 65559 • Licensed and Bonded AUCTIONEERS: Larry W. Lorts & Gary R. Lorts • 573-263-1509 & 573-263-0243

— This is an on-site live auction conducted by Lorts Auction Service —

**CATTLE HERD SELL OUT:** To be sold at Salem Bred Cow Sale September 16<sup>th</sup>. 40 head, some with calves. Most cows are black. Angus Charolais Herford cross, running with a Black Angus Bull. Approximately 20 cows are young. Home Raised. These cows are all in a rotating grazing system and are used to being moved. Come see them at Reuben Swartzentruber 5013 Marquis Rd. Summersville, MO 65571. Evenings preferred, no Sunday tours.

**BREED SELLOUT STANDARD POODLES:** 4 Adults, 7 Puppies. All red in color. 417-661-1438. Lebanon.

**HAY FOR SALE:** 2<sup>nd</sup> Cutting Round Bales, \$85 per bale. 2<sup>nd</sup> cutting square bales, \$7.50 per bale. 417-345-5634 or 417-322-0041.

**COMPLETE FULL SIZE ANTIQUE IRON BED:** With like new mattress, box springs & comforter set. \$400. Call or text 417-350-3892. Willard.

**FOR SALE AUSSIEPOOS:** DOB 6-7-23, UTD on worming & vaccinations. Vet checked & microchipped. \$250. 573-864-4266. Salem.

**SMALL DANBY CHEST FREEZER:** \$50. 417-718-2529. Lebanon.

**NEEDING SOMEONE TO COME IN A COUPLE OF TIMES A WEEK TO CHECK ON ELDERLY PERSON:** Mountain Grove area. 417-746-4444.

**1980 M.F. Diesel Tractor:** 38 HP. Perfect for small acreage. Original owner since new. Unable to get on anymore. \$4,350. OBO. Reduced. Call Gary 612-600-1631. Gainesville.



**KUSTER LOGGING**  
**BUYER of Standing Timber Oak and Walnut**  
*Dozing Now Available*  
**417-259-0047**  
 References Available



**24' TRAIL KING 20-TON TANDEM FLATBED TRAILER:** with 4' beaver tail, ramps, air, pintle hitch \$7,900. New John Deere Bucket 24" fits 9310 and 9000 backhoes \$900. Skid steer Bradco backhoe buckets 24" and 18" \$350 each. (6) Michelin Radial Tires 16 ply 275/70 22.5, great shape, \$200 each. Call 573-216-1228. Laurie.

**EXCALIBUR CROSSBOW GRIZZLY 2:** Quiver, scope & arrows. Like new. \$350. 573-858-3215. Salem.

**26 YOUNG BLACK COWS:** Calving now. 9 calves on ground already. \$2,700 each. 660-553-2333. Sedalia.

**TINY HOMES** – Missouri Franchise 573-881-7965

**VINTAGE NEVER WORN REMINGTON BRAND BELT BUCKLES:** \$40. 417-309-3912. Osceola.

**WANTED RIGHT SIDE FRONT AXLE:** Dana 44 30 spline 78 Ford F250. 573-259-4801. Bourbon.

**AKC BEAGLE PUPS:** Blue Tick & Tri colors. 16-weeks-old. \$250 each. 573-627-2309. Sullivan.

**STAN MUSIEL CANCELED CHECK:** Full signature with authenticity. Mint condition. \$55. text for pictures. 573-854-8132. Houston

**60 HIKES WITH 60 MILES ST. LOUIS BOOK:** including Sullivan, Potosi and Farmington, \$8.50. 417-532-2045. Lebanon. (Leave message and phone number.)

**WEATHERED BARN WOOD SIDING:** 10" wide. Call for appointment 573-729-7226. [www.pineridgerustic.com](http://www.pineridgerustic.com) Salem.

**LOG SIDING:** 2X8 Pine/Western Cedar. Call for appointment 573-729-7226. [www.pineridgerustic.com](http://www.pineridgerustic.com) Salem.

**SLIGHTLY USED PUZZLES:** Will sell or trade. 417-818-3469. Strafford.

**0% for 4 Years**  
**HEATMOR**  
 Stainless Steel Outdoor Furnaces  
**Outdoor Wood Furnace**  
 as low as **\$238** per month  
**HEATMOR MIDWEST**  
 Licking, MO 65542 • 573-674-2962



**NEW INVENTORY** - \$59,900 Delivered and setup, Hurry! Call Adam 573-657-2176 [amegamobilehomes.com](http://amegamobilehomes.com)

**1908 SEARS ROEBUCK CATALOGUE REPRODUCTION:** 1,185 pages, \$12.50. 417-532-2045. Lebanon. (Leave message and phone number.)

**NEW MOBILE HOMES** – prices start at \$64,900 delivered and setup 573-499-9993 [columbiadiscounthomes.com](http://columbiadiscounthomes.com)

**BASEMENT READY TRUE MODS-** instock ready for delivery 573-657-7040 [chateauhomes.net](http://chateauhomes.net)

**Route 66 MOTHER ROAD BOOK:** by Michael Wallis, \$12.50. 417-532-2045. Lebanon. (Leave message and phone number.)

**REGISTERED HEREFORD & ANGUS BULLS:** Home raised, Some Show-Me Select Qualified. 573-701-7828. Belgrade.

**LIGHTLY EXPERIENCED GOLF BALLS:** \$3 a dozen. 417-818-3469. Strafford.

**LIONEL TRAIN SET:** Steam engine, tender, caboose and other car, track, and transformer. \$195. 573-364-7465. Rolla.

**MODEL 1911 FRAME 8-SHOT C02 PISTOL:** Like new, in box with C02 cartridges, 4 clips, pellets & all paperwork. \$95. 573-364-7465. Rolla.

**1970s KIDS METAL STOVE & FRIDGE:** Nice Lithographic paint, 18" wide x 36" high. \$75. 573-364-7465. Rolla.

**3 GENTS WITTNAUER WRIST WATCHES:** 10k gold + 23J. All \$200. 573-764-3517. Call in P.M.

**HARLEY FAT BOBS:** Custom flame paint w/ gas caps + lines. \$100. 573-764-3517. Call in P.M.

**TRAILER HOUSE RIMS:** \$10 each. 573-308-5884. Rolla.

**Kelly Thomas, guardian and conservator for the estate of Jerry Lee Mason will offer for sale by public auction the following real estate and personal property on**

**Saturday, September 23, 2023 • 10:00 a.m.**

The auction will be held at 1000 Mason Dr., Bland, MO. Directions: From Hwy. 28 in Bland, turn north on N. Service Rd. Proceed to St. Louis Ave., turn left. Continue to Mason Rd. (Roads will be marked day of sale).

**REAL ESTATE:** Will be offered at 12:00 noon. (Sale of property is contingent upon approval by the Gasconade County Probate Court.) Property consists of 8.8 acres, a 68'x32', 3-bedroom, 2003 Fairmont modular home, 24'x25' double car garage and 30'x56' shed. Shed & garage have concrete floors. Home has city water & sewer. **TERMS:** 10% down day of sale. Closing in 30 days. To view property, contact Kelly Thomas at 573-619-6906.

**VEHICLES/MACHINERY:** 2003 Chevy ½ ton pickup; 2017 Chevy Cruze; 2009 Chevy Cobalt; 1971 Honda motorcycle; Bandsaw saw mill; Montana Limited tractor; Tandem axle trailer; Brush hog; Cherry picker.

**COINS / MONEY / HOUSEHOLD / ANTIQUES / TOOLS / MISCELLANEOUS**

See full listing and pictures at [www.grossauction.com](http://www.grossauction.com) or [auctionzip.com](http://auctionzip.com) #22263  
 Sale conducted by Gross Auction. Lunch will be served by Home-Style Eats

**SALE CONDUCTED BY:**

 Members of Missouri Professional Auctioneers Association 	Chas & Phyllis Gross	Jason Gross,
	1863 Hwy 50	2839 Brinkman Rd.,
	Owensville, MO 65066	Owensville, MO 65066
573-437-3631	573-437-6165	
<a href="http://www.grossauction.com">www.grossauction.com</a> or <a href="http://www.auctionzip.com">www.auctionzip.com</a>		

**Terms:** Cash or "Approved" check. No out of state checks. Announcements day of sale supercedes printed material. Everything sells as is. No property to be removed until settled for. Not responsible for accidents should any occur

# BUFFALO LIVESTOCK MARKET LLC



276 Hwy 32 W., Buffalo, MO

September 2<sup>nd</sup>, 2023  
Receipts: 696

## REPRESENTATIVE STEERS

300-400 @ 285.00 to 320.00  
400-500 @ 285.00 to 300.00  
500-600 @ 270.00 to 299.00  
600-700 @ 257.00 to 268.00  
700-800 @ 235.00 to 255.00  
800-900 @ 220.00 to 235.00

## REPRESENTATIVE HEIFERS

300-400 @ 250.00 to 300.00  
400-500 @ 240.00 to 265.00  
500-600 @ 230.00 to 250.00  
600-700 @ 225.00 to 230.00  
700-800 @ 215.00 to 225.00  
800-900 @ 175.00 to 210.00

## FEEDER BULLS

300-400 @ 270.00 to 317.00  
400-500 @ 265.00 to 295.00  
500-600 @ 240.00 to 285.00  
600-700 @ 225.00 to 235.00  
700-800 @ 185.00 to 220.00  
800-900 @ 145.00 to 195.00

## STOCKS COWS

Bred Cows 1425.00 to 2125.00  
Cow/Calf Pairs 2100.00 to 2425

## SLAUGHTER BULLS

High Yield 128.00 to 141.00  
Low Yield 115.00 to 125.00

## SLAUGHTER COWS

Fleshy 120.00 to 131.00  
Med Flesh 115.00 to 128.00  
Light Flesh 95.00 to 121.00

## HOLS STRS

400-600 @ 160.00 to 177.50

## QUESTIONABLE HEALTH OR CRIPPLE COWS

70 Down

Plain Quality, Dairy X, Long Horn X  
Cattle will not be in this market.

## MON-WED MARKET REPORT

Listen to KJEL 103.7FM • Lebanon or KYOO 99FM • Bolivar

VIEW OUR SALES AT [CATTLEUSA.COM](http://CATTLEUSA.COM)

CALL FOR TRUCKING OR ON-FARM VISIT

Lyle Caselman • Owner-Manager  
417-345-7876 • mobile 417-533-2944  
Leon Caselman • Owner  
417-345-4514 • mobile • 417-588-6185

## COLT REVOLVER DEALER

CATALOGS: Circa 1950's + 1960's. All for \$100. 573-764-3517. Call in P.M.

**OUTDOOR WOOD FURNACE: Heats 3,000 sq. ft. & water. \$7,500, plus tax, plus installation. 573-201-6453.**

## 110 PORCELAIN POCKET WATCH

DIALS: Perfect for arts & crafts. \$100. 573-764-3517. Call in PM.

**1890 GOLD TESTING KIT:** Glass acid beakers + antique wooden case. \$100. 573-764-3517. Call in PM.

**1500 VINTAGE WRISTWATCH DIALS:** \$100. 573-764-3517. Call in PM.

**HARLEY 45 SOLO:** factory rear brake drum + sprocket. \$150. 573-764-3517. Call in PM.

**PASTURE RAISED CHICKENS & PASTURE RAISED THANKSGIVING TURKEYS: 417-741-2446.**

## HARLEY PANHEAD DISTRIBUTOR:

original, chrome + complete. \$125. 573-764-3517. Call in PM.

## 1962 HARLEY SPORTSTER 900CC:

original distributor. \$50. 573-764-3517. Call in PM.

**SPORTSET BY SARGENT:** Fishing pliers in leather sheath. Like a multi-tool. \$20. 636-239-2695 or 314-560-5700. Washington.

**NEW SQUARE D RAINPROOF 50AMP DISCONNECT:** \$160. 636-239-2695 or 314-560-5700. Washington.

**RUBBERMAID 10 CUBIC FOOT PULL BEHIND DUMP CART: \$200. 417-718-5347. Conway.**

**USED JET HOME POLLUTION CONTROL PANNEL:** Model CP700. \$65. 636-239-2695 or 314-560-5700. Washington.

## HEARTH CRAFT GLASS BI-FOLD FIREPLACE DOORS PURCHASED

AT FORSHAW'S FIREPLACE: Antique brass. \$160 obo. 636-239-2695 or 314-560-5700. Washington.

**RAMBO PURSUIT ELECTRIC HARDTAIL FATBIKE: Model 750-26. Like new. Approximately 30 miles ridden. Includes added back Rambo rack. \$1,950. 417-650-7069. Lebanon.**

**1 PAIR OF KEY BRAND MEN'S JEANS:** Waist 38, Length 34. \$10. 636-239-2695 or 314-560-5700. Washington.

**BLACK METAL TUBULAR BRACKET:** Scrolling and a stainless bracket. \$10. Call for pictures. 636-239-2695 or 314-560-5700. Washington.

**ANTIQU 4 HP ENGINE:** Built by Continental Motors Corporation. \$150 OBO. 573-308-5884. Rolla.

**'85 FORD PICKUP PARTS:** Passenger door with window glass & mirror \$30. Also, Tailgate for '85 Ford pickup \$25. 573-308-5884. Rolla.

**INTERNATIONAL PICKUP TRANSFER GEARBOX:** \$150. 573-308-5884. Rolla.

**NEW JELD WEN 5' LEFT HAND SLIDING GLASS DOOR WITH SUNSTABLE INTERIOR BLINDS:** Clear tempered glass, Desert Sand trim/hardware. Retails \$2655 Sell \$900. 417-693-0389. Conway.

**FOR SALE:** 2 Dayco motorcycle covers for Harley or other big bikes. \$50 each. 417-260-0941. Raymondville.

**CHILTON'S AUTO REPAIR MANUAL:** American & Volkswagen Cars 1969-1976. \$35. 417-260-0941. Raymondville.

**SADDLE: 20" Buffalo Saddlery with suede padded seat. \$350. 417-718-5347. Conway.**

**MAC'S TIEDOWN STRAPS:** Like New. \$80. 417-260-0941. Raymondville.

**3 ARMY CANTEENS:** Mess kit, belt & duffle bag. \$60 for all. 417-260-0941. Raymondville.

**PITTSBURGH HEAVY DUTY 3-TON FLOOR JACK:** Never used. \$195. 417-260-0941. Raymondville.

**2001 FORD 3500 BLACKOUT VAN:** New tires, battery, brakes. Custom interior, mechanically sound & solid. Clear title, 2 owners, no smoke. 170,XXX miles. \$8,950 or trade. 417-650-7069.

**BUTLER LOGGING:** Making landowners happy is my number one goal. Paying top dollar on all your timber. Call me 417-448-9323. And see what I can do for you.

**80 ACRES IN MACKS CREEK:** Power, water, artesian wells, good hunting. \$2,500 per acre, as is. Text 573-836-6414.

**GUNSMITHING-**Older Rifles, Shotguns, Handguns, all 22LRs. Any make, any model, estate appraisals. Camdenton. 573-363-5801.

**JOHN DEERE GRAIN CART:** 450 bushel. \$4,000. 573-598-4547 or 573-718-9719.

**EXCAVATOR MOUNTED FORESTRY MULCHING FOR UNDERBRUSH CLEARING:** Call Nathan @ 417-259-2785.

**DARDEN PROFESSIONAL TIMBER HARVESTING, BUYING STANDING TIMBER:** Great prices, improve wildlife habitat and improve forest health. State Certified & Fully Insured! 573-247-4808. Salem.

**POOL TABLES:** Installations, moves, recovers, repairs, accessories, etc. 573-646-1700.

**Darrell McClanahan for Governor of this great state of Missouri 2024. Find me on X @MBattleflag advocating for fija.org. This is being paid for by Darrell McClanahan. April Miller-McClanahan, Treasurer.**

**INDOOR/OUTDOOR DIGITAL ANTENNA:** New. Asking \$18. 417-650-4190.

**JOHN DEERE COMBINE 6620 TITAN II:** 16ft. header, 4-wheel-drive. \$14,000. 573-598-4547 or 573-718-9719.

**KILLBROS GRAIN CART 475:** \$5,500. 573-598-4547 or 573-718-9719.

**FOR SALE:** 2 rolls of 100, Forever Postage Stamps. \$60 each. 573-453-2777. Salem.

**EXERCISE BIKE:** In good condition. \$65. 417-532-2344.

**MISC. MECHANICAL TOOLS:** Small set \$25. & Large set \$35. 417-532-2344.

**LARGE COCA-COLA NOVELTY SET/ GROUP:** \$50. 417-532-2344.

**FREE 4 CUTE KITTENS & MOTHER:** To be given away to loving & caring homes. If interested call for more information. 417-469-2123. Mountain View.

**FOUR 4-WHEELER SIDE-BY-SIDE TIRES:** Good shape. \$100 or trade for tools. 573-734-2822.

**WANTED OLDER MODEL 1-TON WRECKER:** Any condition. 573-734-2822.

**FOR SALE:** Patio Table with 2 chairs. \$35. 417-718-2529. Lebanon.

**FOR SALE:** Speed Controlled Pet Nail Grinder. \$15. 417-718-2529. Lebanon.

**S-N-A-P LETTER KIT:** \$35. 417-718-2529. Lebanon.

**FOR SALE:** 3-Shelf Bookcase. \$5. 417-718-2529. Lebanon.

**SERIOUS INQUIRIES ONLY:** Small chest freezer for sale: like new. \$150 firm. 573-647-3139.

**SERIOUS INQUIRIES ONLY:** Whirlpool dryer for sale. Works great. \$100 firm. 573-647-3139.

**SERIOUS INQUIRIES ONLY:** Lots of antique mason jars for canning. Lids & caps. 50-60 jars. \$200 firm. 573-647-3139.

**SERIOUS INQUIRIES ONLY:** 60" Smart Television. \$200 firm. 573-647-3139.

**SERIOUS INQUIRIES ONLY:** Antique Dresser from early 1900's, comes with mirror. \$200 firm. 573-647-3139.

**SERIOUS INQUIRIES ONLY:** Kitchen Table, 2 captain chairs & 4 regular chairs. Has a leaf. Black, wood. Was \$1,500 will take \$200 firm. 573-647-3139.

## Salem Livestock Auction

Hwy. 32 Salem, MO • 573-729-8880  
Over 40 Years in the Livestock Business

### Special Cow Sale

Saturday, Sept. 16<sup>th</sup> • 1:00pm

**12** Mix Cows running ages, 2 w/calves bal Bred to BWF Bull - Complete Sell Out

**60** Blk & Bwf Cows 4-7 yrs old, 20 w/calves, Bal 2nd & 3rd stage bred to SIM Angus Bulls - Fancy

**25** Red Angus Cows 3 yrs, 23 w/calves - Running Back w/Char Bull,xc Home Raised / Health Program / Fancy Set

**39** Mix Cows, running ages, some w/calves, baby - 400LB - Cows are bred to Blk Bull - Herd Dispersal / Very gentle,

**1** Blk Bull

**42** Blk Cows running ages 20 w/calves, bal 2nd & 3rd stage Bred to Blk Bull

**16** Blk Cows 5-7 yrs 8 w/calves, bal Bred to Blk Bull - Sell Out,

**1** Blk Bull

**29** Char X Cows, 6 yrs - BM All w/big calves - Cows have been running back w/ Char Bull

**78** Blk Cows 4 yrs-SS 30 w/calves, bal 2nd & 3rd Stage Bred to Blk Bull - Herd dispersal

**50** Mix Cows, 2-6 yrs, 40 w/300-450LB calves, bal bred to Blk Bull - Complete Sell Out

**36** Blk 1st calf heifers 2 w/calves, bal bred to low birth weight Angus Bulls - Complete Health Program

---

• Feeder Calves to Sell every Monday @ 12pm  
• Butcher & Stock Cows Following

• Goat, Hog, & Sheep Sale 2nd Tuesday every month @ 6pm

Allen Thompson	Renee Lauderdale
417-932-4097	417-926-2682
Chuck Thompson	Brandon Barton
417-257-5610	417-259-1597
Bryce Lauderdale	
417-255-5124	

SALEM LIVESTOCK AUCTION  
SALEM, MO

Terms of Sale: Cash or Approved Check!

## FALL EQUIPMENT CONSIGNMENT Auction!

**FRIDAY, SEPT 29th @ 9:00 am**  
**SW Auction Pavilion in Wheaton, MO!**  
**151 Ste Hwy 76, Rocky Comfort, MO**

Taking consignments on Farm Machinery, Vehicles, Trucks, Trailers, Shop Equip, Tools, Firearms (FFL applies) & more!

Early consignments will be photographed and included on auction flyer!

Contact Southwest Auction Service for more info!  
417-652-7540 or email: kathy@swaauktion.com  
Website: www.swaauktion.com

**Bob Hughes**  
417-652-7540

**SOUTHWEST AUCTION SERVICE & MARKETING**  
www.swaauktion.com

## MID MISSOURI STOCKYARDS

REGULAR SALE EVERY THURSDAY 11 AM

WATCH OUR WEEKLY SALE IN REAL TIME ON DVAUCTION.COM

For Farm Visits, Market Updates, or Trucking  
Call **Zach Cox 417-777-1320**  
**Dan Romine 573-578-4939**

Competitive Buyers!  
Competitive Commission!  
Competitive Market!

Barn: 417-532-9292  
I-44 • Exit 123 "just outside of Lebanon"  
17505 Route 66, Phillipsburg, MO 65722  
For weekly market updates, visit us at  
www.midmostockyards.com

**LOOKING FOR THE MAGAZINE**

**HAPPIER:** It was given away in St. James Drug Store. Looking for more. 573-265-3645.

**MARLIN 357/38 LEVER ACTION:** Late 70s model. Hasn't been fired since late 70s. \$1,500 Firm. 417-718-0517. Lebanon.

**SADDLE FOR SALE:** Excellent condition, 17" seat, Roper Style. \$600. 417-259-0396. Mt. Grove.

**2 ZEBU HEIFERS:** \$600 each. Also, 2-year-old Blue Roan Saddlebred Percheron Stallion. 417-741-0516. Hartville.

**CATTLE HERD SELL OUT:** To be sold at Salem Bred Cow Sale September 16<sup>th</sup>. 40 head, some with calves. Most cows are black. Angus Charolais Herford cross, running with a Black Angus Bull. Approximately 20 cows are young. Home Raised. These cows are all in a rotating grazing system and are used to being moved. Come see them at Reuben Swartzentruber 5013 Marquis Rd. Summersville, MO 65571. Evenings preferred, no Sunday tours.

**HAY FOR SALE:** 2<sup>nd</sup> Cutting Round Bales, \$85 per bale. 2<sup>nd</sup> cutting square bales, \$7.50 per bale. 417-345-5634 or 417-322-0041.

**FOR SALE AUSSIEPOOS:** DOB 6-7-23, UTD on worming & vaccinations. Vet checked & microchipped. \$250. 573-864-4266. Salem.

**SET OF 2 DALLAS COWBOYS FOOTBALL SHAPED DRINKING GLASSES:** Mint condition. \$20. Text for pics. 573-854-8132. Houston.

**NEEDING SOMEONE TO COME IN A COUPLE OF TIMES A WEEK TO CHECK ON ELDERLY PERSON:** Mountain Grove area. 417-746-4444.

**Pine Ridge Rustic**  
Log Home Building Supplies

Services Offered!

- Custom Log Home Products
- Pre-finishing available on interior & exterior
- Hand Hewn Sidings Offered

www.pineridgerustic.com

CALL FOR APPOINTMENT

523 CR 2410 • Salem, MO 65560 • Ph: 573-729-7226

- Log Siding
- Beveled Siding
- Car Siding • Red Cedar
- Western Cedar • Pine • Timbers • Barnwood

**BREED SELLOUT STANDARD POODLES:** 4 Adults, 7 Puppies. All red in color. 417-661-1438. Lebanon.

**FOUR CAPTAINS SEATS:** For 2005 Chrysler Grand Caravan. \$100 for all. Very good condition. 573-345-4710. Climax Springs, MO.

**COMPLETE FULL SIZE ANTIQUE IRON BED:** With like new mattress, box springs & comforter set. \$400. Call or text 417-350-3892. Willard.

**AKC BEAGLE PUPS:** Blue Tick & Tri colors. 16-weeks-old. \$250 each. 573-627-2309. Sullivan.

**KING BUILDERS**

We specialize in custom and specialty builds, such as:

- Houses
- Barndominiums
- Shops
- Barns
- Garages

We also do roofing & siding!

Call for a free estimate!

Stevie King | 435 Dickerson Ranch Lane, Conway, MO 65632 | 417-241-3280

**Starnes Auto LLC**  
22115 Rt. 66 • Lebanon, MO 65536  
588-7939 Cell  
588-3159 Office  
www.starnesauto.com

*Worry-Free*  
**AUTO REPAIRS**

Don't ignore the signs!

We will diagnose the problem, and get you back up and running again.

**WE DO ALIGNMENTS!**

**Buildings • Hunter's Cabins • Lawn Furniture**

**JAMCO Portable Buildings**  
800-688-2064 • 307 Enterprise Dr. • Seymour, MO • www.jamcobuilders.com

**Rent To Own Plan**

**24' TRAIL KING 20-TON TANDEM FLATBED TRAILER:** with 4' beaver tail, ramps, air, pintle hitch \$7,900. New John Deere Bucket 24" fits 9310 and 9000 backhoes \$900. Skid steer Bradco backhoe buckets 24" and 18" \$350 each. (6) Michelin Radial Tires 16 ply 275/70 22.5, great shape, \$200 each. Call 573-216-1228. Laurie.

**26 YOUNG BLACK COWS:** Calving now. 9 calves on ground already. \$2,700 each. 660-553-2333. Sedalia.

**VINTAGE NEVER WORN REMINGTON BRAND BELT BUCKLES:** \$40. 417-309-3912. Osceola.

**TINY HOMES** – Missouri Franchise 573-881-7965

**1980 M.F. Diesel Tractor:** 38 HP. Perfect for small acreage. Original owner since new. Unable to get on anymore. \$4,350. OBO. Reduced. Call Gary 612-600-1631. Gainesville.

**60 HIKES WITH 60 MILES ST. LOUIS BOOK:** including Sullivan, Potosi and Farmington, \$8.50. 417-532-2045. Lebanon. (Leave message and phone number.)

**WEATHERED BARN WOOD SIDING:** 10" wide. Call for appointment 573-729-7226. www.pineridgerustic.com Salem.

**LOG SIDING:** 2X8 Pine/Western Cedar. Call for appointment 573-729-7226. www.pineridgerustic.com Salem.

**NEW INVENTORY** - \$59,900 Delivered and setup, Hurry! Call Adam 573-657-2176 amegamobilehomes.com

**1908 SEARS ROEBUCK CATALOGUE REPRODUCTION:** 1,185 pages, \$12.50. 417-532-2045. Lebanon. (Leave message and phone number.)

**NEW MOBILE HOMES** – prices start at \$64,900 delivered and setup 573-499-9993 columbiadiscountnhomes.com

**BASEMENT READY TRUE MODS-** instock ready for delivery 573-657-7040 chateauhomes.net

**Route 66 MOTHER ROAD BOOK:** by Michael Wallis, \$12.50. 417-532-2045. Lebanon. (Leave message and phone number.)

**THE TIRES YOU NEED FOR ALL SEASONS**

With brands like:

**NEXEN**  
NEXEN TIRE

**YOKOHAMA**

**ATTEBERRY MFA TIRE & AUTO CENTER**  
333 E. BROADWAY • BOLIVAR, MO  
DUANE ATTEBERRY • 417-326-6286

**ASE**

**SMALL DANBY CHEST FREEZER:** \$50. 417-718-2529. Lebanon.

**WANTED RIGHT SIDE FRONT AXLE:** Dana 44 30 spline 78 Ford F250. 573-259-4801. Bourbon.

**SET OF 4 ST. LOUIS CARDINALS COLLECTABLE GLASSES:** Gibson, McGwire, Brock & Ozzie. Mint condition. \$20. Text for pics. 573-854-8132. Houston.

**STAN MUSIEL CANCELED CHECK:** Full signature with authenticity. Mint condition. \$55. text for pictures. 573-854-8132. Houston

**EXCALIBUR CROSSBOW GRIZZLY 2:** Quiver, scope & arrows. Like new. \$350. 573-858-3215. Salem.

**SLIGHTLY USED PUZZLES:** Will sell or trade. 417-818-3469. Strafford.

**REGISTERED HEREFORD & ANGUS BULLS:** Home raised, Some Show-Me Select Qualified. 573-701-7828. Belgrade.

**LIGHTLY EXPERIENCED GOLF BALLS:** \$3 a dozen. 417-818-3469. Strafford.

**LIONEL TRAIN SET:** Steam engine, tender, caboose and other car, track, and transformer. \$195. 573-364-7465. Rolla.

**MODEL 1911 FRAME 8-SHOT C02 PISTOL:** Like new, in box with C02 cartridges, 4 clips, pellets & all paperwork. \$95. 573-364-7465. Rolla.

**1970s KIDS METAL STOVE & FRIDGE:** Nice Lithographic paint, 18" wide x 36" high. \$75. 573-364-7465. Rolla.

**3 GENTS WITTNAUER WRIST WATCHES:** 10k gold + 23J. All \$200. 573-764-3517. Call in P.M.

Something for everyone!

Find Us On Facebook

Coming Soon BUY SELL TRADE LOOK Vendors Wanted

Just west of Wheatland, MO on Highway 54

**PRAIRIE SWAP**

Friday, Sept. 15 ♦ Saturday, Sept. 16 ♦ Sunday, Sept. 17 2023

Gates open: 8 a.m. to 4 p.m. (rain or shine)

♦ Poultry ♦ Small Animals ♦ New and Used Items  
♦ Antiques ♦ Tools ♦ Crafts ♦ Seasonal Goods  
♦ Apparel ♦ And much, much more!

**\$5 per vehicle - good all 3 days**

Questions? Email: prairieswap@gmail.com Phone: 417-327-6623

# WE BUY White Oak Logs!

- ✓ Top prices for your logs
- ✓ Experienced log buyers
- ✓ Professional service

**Chad Cook | Salem Wood Products**  
**417.718.2950**  
5 miles north of Salem, MO on Hwy 19



**INDEPENDENT STAVE COMPANY**  
*Log Procurement & Sales*

[www.independentstavecompany.com](http://www.independentstavecompany.com)

## PLAD PANTRY

**DISCOUNT & SURPLUS FOODS  
FRESH PRODUCE<sup>LLC</sup>**  
**417-532-4700**

Boneless Pork Loins .....	<b>\$2.49</b> a lb.
Southern Homestyle Buttermilk Biscuits.....	<b>\$1.59</b> 16.3 oz.
Chex Snack Mix.....	<b>\$6.49</b> 8 - 3.75 oz.
Mexican Style Sour Cream .....	<b>\$2.49</b> 24 oz.
Crunchy Granola Raisin Bran.....	<b>\$1.99</b> 18.2 oz.

**1571 State Hwy 64 • Tunas, MO 65764**  
Hours: 8:30 a.m. to 5:30 p.m. • Closed Wed. & Sun.

**HARLEY FAT BOBS:** Custom flame paint w/ gas caps + lines. \$100. 573-764-3517. Call in P.M.

**OUTDOOR WOOD FURNACE:** Heats 3,000 sq. ft. & water. \$7,500, plus tax, plus installation. 573-201-6453.

**110 PORCELAIN POCKET WATCH DIALS:** Perfect for arts & crafts. \$100. 573-764-3517. Call in P.M.

**HEARTH CRAFT GLASS BI-FOLD FIREPLACE DOORS PURCHASED AT FORSHAW'S FIREPLACE:** Antique brass. \$160 obo. 636-239-2695 or 314-560-5700. Washington.

**BLACK METAL TUBULAR BRACKET:** Scrolling and a stainless bracket. \$10. Call for pictures. 636-239-2695 or 314-560-5700. Washington.

**'85 FORD PICKUP PARTS:** Passenger door with window glass & mirror \$30. Also, Tailgate for '85 Ford pickup \$25. 573-308-5884. Rolla.

### PRIME PROPERTY FOR SALE



**11.3 acres of prime property with over 700' hwy 63 frontage 4.5 miles south of Rolla, MO. This property is located on the left right past hwy W. There is a large for sale sign on the property. This is a beautiful piece of property with endless possibilities. The price is \$200000 PLEASE CONTACT ROGER AT 573-680-9183 FOR MORE INFORMATION.**

**COLT REVOLVER DEALER CATALOGS:** Circa 1950's + 1960's. All for \$100. 573-764-3517. Call in P.M.

**SPORTSET BY SARGENT:** Fishing pliers in leather sheath. Like a multi-tool. \$20. 636-239-2695 or 314-560-5700. Washington.

## TAYLOR TRUCKS & EQUIPMENT

417-924-2026 • 2676 Hwy. 5, Mansfield, MO

- ★ INTIMIDATOR TREE PULLER ★
- ★ **3 POINT TILLERS** ★

**TRAILER PARTS & REPAIR**  
**MD144 Bat Wing in stock!**  
Milwaukee Cordless Tools

**DANUSER DEALER**  
T3 Post Driver & Other Attachments  
New Mowers! Bush-Whacker, Big Bee  
Storage Containers & Dry Vans - 20' - 53',

**BUSH-WHACKER HD**  
**SKIDSTEER BRUSH CUTTER**

Portable Generators, Farm Tires, New Semi Tires,  
PTO's & Parts for Rotary Mowers, Farm Tractor  
Implements, Plows, Used 15" Bush-Whacker Now In  
Stock, Discs, and More Skidsteer Attachments: Pallet  
Forks, Buckets, Grapples, Hay Spears, RR Ties



**Bush-Whacker**  
*Heavy Duty Rotary Cutter*

**We Invite you To Come By & Look Us Over! Located 2.5 Miles North Of Mansfield, MO On Hwy 5**



## BYLER FOOD SHACK

**6550 ELY RD.  
HARTVILLE, MO**

**PASTURE-RAISED FRYERS (FROZEN)**  
**FARM FRESH EGGS**  
**PUMPKINS**  
**TOMATOES**  
**SORGHUM MOLASSES**  
**HONEY**



# LAND FOR SALE



## 168.36 ACRES ± | DALLAS CO., MO | \$519,000

- Gated entrance with nice trails through property
- Half mile of live water with Jakes Creek
- Three nice size ponds, two with small islands
- Electric service access on property
- Massive views
- Mature walnuts
- Nice bottom pasture ground that is mostly fenced
- Abundance of wildlife present on property
- Secluded setting

**BRIAN UTECHT LAND TEAM**  
SOUTHWEST MISSOURI LAND SPECIALISTS



📞 417.766.5595

🌐 [brian.utecht@whitetailproperties.com](mailto:brian.utecht@whitetailproperties.com)



**WHITETAIL PROPERTIES REAL ESTATE**

HUNTING | RANCH | FARM | TIMBER

**WHITETAILPROPERTIES.COM**

Whitetail Properties Real Estate, LLC DBA Whitetail Properties, DBA Whitetail Properties Real Estate. In the States of Nebraska & North Dakota DBA Whitetail Trophy Properties Real Estate LLC. Licensed in CO, MN, ND, SD, TN & WI - Jeffrey Evans, Broker. Licensed in FL, KS & MO - Jefferson Kirk Gilbert, Broker. Licensed in TX & NM - Joey Ballington, Broker. Licensed in IN - Bill Minor, Broker. Licensed in AL, GA, LA, & MS - Sybil Stewart, Broker. Licensed in TN - Tim Burnette, Broker. Licensed in TN & MS - Josh Monk, Broker. Licensed in AR - Anthony Chisco, Broker. Licensed in NC, SC, VA - Chip Camp, Broker. Licensed in IA, NC - Richard F. Baugh, Broker. Licensed in MI - Edmund Joel Nogaski, Broker. Licensed in IL, MD, WV - Debbie S. Laux, Broker. Licensed in ID, MT, OR, UT, WA, WY & NV - Aaron Milliken, Broker. Licensed in NY - John Myers, Real Estate Broker. Licensed in OK - Dean Anderson, Broker. Licensed in KY - Derek Fisher, Broker. Licensed in OH - Jeremy Schaefer, Principal Broker. Licensed in NE & SD - Jason Schendt, Broker. Licensed in MS - Chipper Gibbs, Broker. Licensed in PA - Jack Brown, Broker.



**WCT FARM AND LAWN • CALL US TODAY 417-859-4311**



**TYM  
TRACTORS**

**4.99% for 84mo FINANCING AVAILABLE**

GET PRE-QUALIFIED



**SHEFFIELD**  
FINANCIAL SERVICES



**T264H**  
25 HP  
\$243 /month



**T25**  
25 HP  
\$260 /month



**2515**  
24 HP \$303 /month



**T394H**  
37 HP  
\$369 /month



**T474**  
48 HP  
\$377 /month



**T474H**  
47 HP  
\$394 /month



**T574**  
55 HP  
\$435 /month



**T574H**  
55 HP  
\$452 /month



**T574H**  
55 HP \$526 /month

\*Offers available for a limited time only. Offer only valid upon purchase of a new qualifying tractor from a participating dealer's in-stock inventory. Some exceptions apply.



**WCT Farm & Lawn**  
**417-859-4311**  
**SALES • SERVICE • PARTS**  
**3299 EVERGREEN ROAD**  
**STRAFFORD, MO 65757**  
**www.wctfarmandlawn.com**