

**FREE - TAKE ONE!**

# WEEKLY **TRADER** MAGAZINE

Vol. 30 No. 23

**AUGUST 31, 2023**

417-532-9131



Find us on  
**Facebook**

@myweeklytrader  
**AUCTIONS PG. 9**

**VISIT OUR NEW WEBSITE! MYWEEKLYTRADER.COM**

High horsepower.  
High performance.  
Low financing.



Save big on our L2501HST with Kubota loader. Part of our tractor lineup rated #1 for durability and owner experience in the U.S.\* Stop in for a demo and to claim this offer today.

**L2501HST W/ KUBOTA LOADER ONLY \$22,995**

**0% APR FOR 72 MONTHS**

VISIT US TODAY FOR THIS LIMITED-TIME OFFER



**Quarles Supply**

3251 S Springfield Ave  
Bolivar, MO 65613  
417-777-2391

KubotaUSA.com

0% Down, 0% A.P.R. financing for up to 72 months on purchases of select new Kubota L2501HST equipment from participating dealers' in stock inventory is available to qualified purchasers through Kubota Credit Corporation, U.S.A.; subject to credit approval. Example: 72 monthly payments of \$13.89 per \$1,000 financed. Some exceptions apply. Terms subject to change. Offers expire 09/30/23. This material is for descriptive purposes only. Kubota disclaims all representations and warranties, express or implied, or any liability from the use of this material. For more information, see Dealer or go to KubotaUSA.com.

*Progressive*  
**FARMER**  
READER INSIGHTS



# AMERICAN LANDMASTER



**L4, 4x4, 429cc  
w/Roof & Windshield  
\$11,300**



**L3, 279cc  
w/Roof & Windshield  
\$8,169**



**QUIET RIDE  
4x4 Trail Package  
\$21,500  
\$19,950**

Power Steering, Winch, Roof, Windshield, CV Guards, USB Port  
Low-maintenance. No fumes, can be used indoors and outdoors.

## LS TRACTOR

**CALL US TODAY 417-859-4311**



**MT342H \$30,820**



**MT357PCTC  
\$40,320**



**\$29,430  
\$25,810**

**MT125 PACKAGE**

**with TRAILER, BOX BLADE, and  
BACKHOE!**

\*Offers available for a limited time only. Offer only valid upon purchase of a new qualifying tractor from a participating dealer's in-stock inventory. Some exceptions apply.



**WCT Farm & Lawn**  
**417-859-4311**  
**SALES • SERVICE • PARTS**  
**3299 EVERGREEN ROAD**  
**STRAFFORD, MO 65757**  
**www.wctfarmandlawn.com**



### RC37 SERIES

ROTARY CUTTERS  
50-160 HP 15' Width



- 3" Cut capacity
- Cat. 6 main CV driveline
- 10 Gauge sloped deck
- Cast steel greaseable wing hinges
- New heavier wheel bearing seals

# Getting Chores Done LAND PRIDE does that.



[www.landpride.com](http://www.landpride.com)

For Outstanding Products & Service

# AGRI-ENTERPRISES

1-1/2 Miles South Of Licking, MO On Hwy 63  
573-674-2203 • 1-800-653-7152 • [www.agri-enterprises.com](http://www.agri-enterprises.com)

**60 HIKES WITH 60 MILES ST. LOUIS BOOK:** including Sullivan, Potosi and Farmington, \$8.50. 417-532-2045. Lebanon. (Leave message and phone number.)

**TIRE:** 225x65R17 Valera HT Primewell. 95% tread. \$15. 210-787-8222. Linn Creek.

**WEATHERED BARN WOOD SIDING:** 10" wide. Call for appointment 573-729-7226. [www.pineridgerustic.com](http://www.pineridgerustic.com) Salem.

**LOG SIDING:** 2X8 Pine/Western Cedar. Call for appointment 573-729-7226. [www.pineridgerustic.com](http://www.pineridgerustic.com) Salem.

**NEW INVENTORY** - \$59,900 Delivered and setup, Hurry! Call Adam 573-657-2176 [amegamobilehomes.com](http://amegamobilehomes.com)

**MENNONITE COMMUNITY COOKBOOK:** by Mary Emma Showalter, 494 pages, \$8.50. Mennonite Family Cookbook, 144 pages, \$6.50. 417-532-2045. Lebanon. (Leave message and phone number.)

**BLACK METAL TUBULAR BRACKET:** Scrolling and a stainless bracket. \$10. Call for pictures. 636-239-2695 or 314-560-5700. Washington.

**VOTED #1 BEST Preowned Car Dealership**

## TIM'S USED CARS

(573) 341-3828 • 1334 South Bishop (Hwy. 63) • Rolla, MO  
Next to Hwy CC • [www.tims-used-cars.com](http://www.tims-used-cars.com)

	<b>2003 BUICK LESABRE CUSTOM</b> 3.8 V-6, power equipped 105,xxx Miles <b>Only \$6,900</b>		<b>2019 FORD ESCAPE SE</b> 2.0 4 cyl, power equipped, 72,xxx Miles <b>Only \$18,900</b>
	<b>2019 DODGE GRAND CARAVAN SE</b> V-6, power equipped, 108,xxx Miles <b>Only \$15,900</b>		<b>2017 RAM 1500</b> Crew cab, sport, 4x4, 5.7 Hemi, leather, power equipped 147,xxx Miles <b>Only \$28,900</b>

**LARGE SELECTION OF CARS, TRUCKS, SUVs & VANS!**

## WE BUY AND SELL new and used mobile homes



**(417) 501-1061**

**NEW MOBILE HOMES** – prices start at \$64,900 delivered and setup 573-499-9993 columbiadiscountshomes.com

**BASEMENT READY TRUE MODS**- instock ready for delivery 573-657-7040 chateauhomes.net

**1908 SEARS ROEBUCK CATALOGUE REPRODUCTION: 1,185 pages, \$12.50. 417-532-2045. Lebanon. (Leave message and phone number.)**

**TINY HOMES** – Missouri Franchise 573-881-7965

**LIONEL TRAIN SET:** Steam engine, tender, caboose and other car, track, and transformer. \$195. 573-364-7465. Rolla.

**MODEL 1911 FRAME 8-SHOT C02 PISTOL:** Like new, in box with C02 cartridges, 4 clips, pellets & all paperwork. \$95. 573-364-7465. Rolla.

**1970s KIDS METAL STOVE & FRIDGE:** Nice Lithographic paint, 18” wide x 36” high. \$75. 573-364-7465. Rolla.


**50 EWES: 1-5 years old. \$225 a piece. 417-733-2625. Louisburg.**

**110 PORCELAIN POCKET WATCH DIALS:** Perfect for arts & crafts. \$100. 573-764-3517. Call in PM.

**1890 GOLD TESTING KIT:** Glass acid beakers + antique wooden case. \$100. 573-764-3517. Call in PM.

**1500 VINTAGE WRISTWATCH DIALS:** \$100. 573-764-3517. Call in PM.

**HARLEY 45 SOLO:** factory rear brake drum + sprocket. \$150. 573-764-3517. Call in PM.



## Meadowview Dutch Market

Bulk & Surplus Groceries • Prices Subject to Stock on Hand

**Call to Order**  
417-993-3017


Sale Dates August 23<sup>rd</sup>, 2023 to August 29<sup>th</sup>, 2023 while supplies last!

**DELI SPECIAL**


**SHARP CHEDDAR CHEESE** .....REG. \$6.59 LB .....SALE \$6.09 LB  
**SMOKEHOUSE HAM** .....REG. \$5.99 LB .....SALE \$5.49 LB

**TRY our Fresh Homemade DELI Sandwiches: TURKEY, HAM, ROAST BEEF, ITALIAN, BLT'S, PULLED PORK AND BLT PULLED PORK (MADE YOUR WAY)! COME IN OR CALL to order! ALSO Custom Deli trays! Veggie OR FRESH Meat-N-Cheese!**


*Tomato*  
**Ketchup**  
\$1<sup>29</sup>  
20 OZ.




*Dakota*  
**Red Franks**  
\$2<sup>79</sup>  
2 LB.




*Classic*  
**Round Crackers**  
75¢  
8.5 OZ.




*Swai*  
**Fillets**  
\$4<sup>59</sup>  
2 LBS.




*Beef Sirloin*  
**Steak**  
\$3<sup>49</sup>  
LB.




*Butter Finger*  
**Candy Bars**  
2/\$1<sup>00</sup>  
6 PK.




*88/12*  
**Ground Beef**  
\$2<sup>29</sup>  
APPROX. 5 LB. TRAY




*Cortland*  
**Apples**  
\$6<sup>99</sup>  
BU.



*Miscut Bone-In*  
**Pork Chops**  
\$9<sup>99</sup>  
10 LB. CASE



**TAKING ORDERS**  
FOR  
**NEW YORK CONCORD GRAPES**  
\$15<sup>50</sup>  
18 LB BOX  
**CALL TO ORDER**  
417-993-3017



**WE ARE OPEN**  
**SEPT. 4th**  
**LABOR DAY**

**MEADOWVIEW DUTCH MARKET**  
417-993-3017 Hours: Mon-Thurs 8-5pm  
Fri 8-6pm • Sat 8-5pm  
23 Miles West on Hwy 64 • Right on T Hwy  
9 miles • Left on E Hwy 1 mile on Left

**DUTCH COUNTRY STORE, LLC**  
573-378-4395  
Hours: Mon-Thurs 8-5pm  
Fri 8-6pm • Sat 8-5pm  
5 miles East of Versailles off Hwy C on Kelsay Road

**NOW ACCEPTING CREDIT, DEBIT CARDS & EBT**

**REGISTERED HEREFORD & ANGUS BULLS:** Home raised, Some Show-Me Select Qualified. 573-701-7828. Belgrade.

**LIGHTLY EXPERIENCED GOLF BALLS:** \$3 a dozen. 417-818-3469. Strafford.

**SLIGHTLY USED PUZZLES:** Will sell or trade. 417-818-3469. Strafford.

**Route 66 MOTHER ROAD BOOK: by Michael Wallis, \$12.50. 417-532-2045. Lebanon. (Leave message and phone number.)**

**1962 HARLEY SPORTSTER 900CC:** original distributor. \$50. 573-764-3517. Call in PM.

**3 GENTS WITTNAUER WRIST WATCHES:** 10k gold + 23J. All \$200. 573-764-3517. Call in P.M.

**HARLEY FAT BOBS:** Custom flame paint w/ gas caps + lines. \$100. 573-764-3517. Call in P.M.

**COLT REVOLVER DEALER CATALOGS:** Circa 1950's + 1960's. All for \$100. 573-764-3517. Call in P.M.

**'85 FORD PICKUP PARTS:** Passenger door with window glass & mirror \$30. Also, Tailgate for '85 Ford pickup \$25. 573-308-5884. Rolla.

**SADDLE: 20" Buffalo Saddlery with suede padded seat. \$350. 417-718-5347. Conway.**

**SPORTSET BY SARGENT:** Fishing pliers in leather sheath. Like a multi-tool. \$20. 636-239-2695 or 314-560-5700. Washington.

**NEW SQUARE D RAINPROOF 50AMP DISCONNECT:** \$160. 636-239-2695 or 314-560-5700. Washington.

**USED JET HOME POLLUTION CONTROL PANNEL:** Model CP700. \$65. 636-239-2695 or 314-560-5700. Washington.

**HARLEY PANHEAD DISTRIBUTOR:** original, chrome + complete. \$125. 573-764-3517. Call in PM.

**HEARTH CRAFT GLASS BI-FOLD FIREPLACE DOORS PURCHASED AT FORSHAW'S FIREPLACE:** Antique brass. \$160 obo. 636-239-2695 or 314-560-5700. Washington.

**RUBBERMAID 10 CUBIC FOOT PULL BEHIND DUMP CART:** \$200. 417-718-5347. Conway.

**1 PAIR OF KEY BRAND MEN'S JEANS:** Waist 38, Length 34. \$10. 636-239-2695 or 314-560-5700. Washington.

**ANTIQUA 4 HP ENGINE:** Built by Continental Motors Corporation. \$150 OBO. 573-308-5884. Rolla.

**CHILTON'S AUTO REPAIR MANUAL:** American & Volkswagen Cars 1969-1976. \$35. 417-260-0941. Raymondville.

**MAC'S TIEDOWN STRAPS:** Like New. \$80. 417-260-0941. Raymondville.

**3 ARMY CANTEENS:** Mess kit, belt & duffel bag. \$60 for all. 417-260-0941. Raymondville.

**PITTSBURGH HEAVY DUTY 3-TON FLOOR JACK:** Never used. \$195. 417-260-0941. Raymondville.

**???CDL LICENSE??? FAST & ECONOMICAL:** Meets all requirements of the new ELDT Law. 2 days training. Total cost of \$1,500. \$100 rebate with this ad. You need a learner's permit & ability to drive a manual. Jefferson City, Strafford & Willow Springs, Missouri. Please call 573-353-2853. [www.capitaltruckdrivinginstitute.com](http://www.capitaltruckdrivinginstitute.com).

**80 ACRES IN MACKS CREEK:** Power, water, artesian wells, good hunting. \$2,500 per acre, as is. Text 573-836-6414.

**BRINKMANN 8-QT. OUTDOOR PROPANE GAS FISH FRYER:** Big aluminum pan. Excellent condition. \$40. 210-787-8222. Linn Creek.

**JUMBO FLOAT:** 95" long x 80" wide x 10" high. Heavy gauge vinyl, Safety valve, 2 screw valves, 12 rope holders, water plug, nylon rope around it. Like new. \$150. 210-787-8222. Linn Creek.

**GUNSMITHING-**Older Rifles, Shotguns, Handguns, all 22LRs. Any make, any model, estate appraisals. Camdenton. 573-363-5801.

**EXCAVATOR MOUNTED FORESTRY MULCHING FOR UNDERBRUSH CLEARING:** Call Nathan @ 417-259-2785.

**2 TIRES:** 225/75R16, Mud & snow, 90%. \$80. 636-828-4330. Marthasville.

**OMAR'S DOZING**

- ➡ Clear land
- ➡ Clean up woods
- ➡ Make driveways
- ➡ Clear property lines
- ➡ Build ponds

*Amish Owned & Operated*

**LEAVE MESSAGE: 417-741-0440**  
Hartville & Surrounding Areas

**CENTRAL BOILER CLASSIC EDGE**  
TITANIUM HDX

26% Tax Credit on EPA certified Central Boiler Classic Edge HDX models and installation. Call today to learn more!

**Outdoor Wood Furnace CentralBoiler.com**

The Classic Edge 360, 560 and 760 HDX are U.S. EPA Certified

Yarbrough Equipment Sales & Services, Inc.  
9776 E. State Hwy 00 • Strafford, MO  
417-736-2303 • 1-866-286-6901 • [www.yarbeq.com](http://www.yarbeq.com)

**Wright Spray Foam Insulators, LLC**  
Commercial & Residential  
Call for FREE Estimates!

Ervin Gingerich 417-926-2052  
B. Eli Yoder 417-746-4932

**WANTED 730 OR 830 CASE TRACTOR:** In any condition. 573-308-5884. Rolla.

**OUTDOOR WOOD FURNACE:** Heats 3,000 sq. ft. & water. \$7,500, plus tax, plus installation. 573-201-6453.

**TRAILER HOUSE RIMS:** \$10 each. 573-308-5884. Rolla.

**INTERNATIONAL PICKUP TRANSFER GEARBOX:** \$150. 573-308-5884. Rolla.

**NEW JELD WEN 5' LEFT HAND SLIDING GLASS DOOR WITH SUNSTABLE INTERIOR BLINDS:** Clear tempered glass, Desert Sand trim/hardware. Retail \$2655 Sell \$900. 417-693-0389. Conway.

**FOR SALE:** 2 Dayco motorcycle covers for Harley or other big bikes. \$50 each. 417-260-0941. Raymondville.

**LARGE COCA-COLA NOVELTY SET/ GROUP:** \$50. 417-532-2344.

**2001 FORD 3500 BLACKOUT VAN:** New tires, battery, brakes. Custom interior, mechanically sound & solid. Clear title, 2 owners, no smoke. 170,XXX miles. \$8,950 or trade. 417-650-7069.

**BUTLER LOGGING:** Making landowners happy is my number one goal. Paying top dollar on all your timber. Call me 417-448-9323. And see what I can do for you.

**RAMBO PURSUIT ELECTRIC HARDTAIL FATBIKE:** Model 750-26. Like new. Approximately 30 miles ridden. Includes added back Rambo rack. \$2,200. 417-650-7069. Lebanon.

**16X80 BUCC TRAILER HOUSE:** New in 1996. Has new roof, 3 bedrooms, 2 bath, skirting and title. \$10,000.00. Located at 22740 Pin Oak Ln. Summersville, MO. Buddy Bird 417-331-9501 or Pam 417-331-9038, evening or weekend.

**HOSPITAL BED:** Very good. \$400. 636-828-4330. Marthasville.

**CATERPILLAR 277C SKID-STEER:** 2918.7 hours, new tracks & 78" bucket. Enclosed cab, air. Good condition. \$30,000 Cash, OBO. No trades. 314-420-3308. Potosi.

**POOL TABLES:** Installations, moves, recovers, repairs, accessories, etc. 573-646-1700.

**Darrell McClanahan for Governor of this great state of Missouri 2024. Find me on X @MBattleflag advocating for fija.org. This is being paid for by Darrell McClanahan. April Miller-McClanahan, Treasurer.**

**4 GOOD USED SIDE-BY-SIDE/4-WHEELER TIRES:** \$100 or trade. 573-734-2822, leave message.

**2 REAR FENDERS FOR 1946-1948 CHEVROLET CAR:** \$200 or trade. 573-734-2822, leave message.

**PEMBROKE WELSH CORGIES:** Price reduction, only 2 males left. 417-259-9738.

**PASTURE RAISED CHICKENS & PASTURE RAISED THANKSGIVING TURKEYS: 417-741-2446.**

**ELECTRIC WELDER:** \$150 or trade. 573-734-2822, leave message.

**4-ANTIQUE WHITE WOODEN CHAIRS:** With cloth backs& cushions. \$50 a piece. 417-532-2291.

**JOHN DEERE COMBINE 6620 TITAN II:** 16ft. header, 4-wheel-drive. \$14,000. 573-598-4547 or 573-718-9719.

**INDOOR/OUTDOOR DIGITAL ANTENNA:** New. Asking \$18. 417-650-4190.

**WANT TO BUY PONTOON:** with or without motor, trailer, damaged one ok, needing work ok, I have good pontoons, has to have a Missouri title. I'm looking for a winter project. 417-926-2127.

**DACHSHUND PUPPIES:** Registered, shots, wormed. Long haired males piebald and female short hair red. 417-260-1917. Raymondville.

**2006 FORD F-550 DIESEL:** 16' Flatbed, 86,000 miles. 928-587-8725. Pomona.

**TOY AUSSIEDOODLE:** 8 weeks old male, will weigh 5-7 lbs. Call 417-664-5926.

**WANTED:** Remington 552 Speedmaster 22. 573-280-1762.

**DARDEN PROFESSIONAL TIMBER HARVESTING, BUYING STANDING TIMBER:** Great prices, improve wildlife habitat and improve forest health. State Certified & Fully Insured! 573-247-4808. Salem.

# OFFICIAL TRACTOR OF TOUGH™

**INTRODUCING THE ALL-NEW 5100 SERIES**



## Marshfield Machinery Inc.

222 E. Madison • Marshfield, MO 65706  
417-859-2117 • [www.marshfieldmachinery.com](http://www.marshfieldmachinery.com)

\*2018 data including all Mahindra group brand sales. MahindraUSA.com © 2020 Mahindra USA Inc.



<b>NEW MAHINDRA TRACTORS</b>	
1635 4WD & LDR 36HP	IN STOCK
2638 4WD & LDR 38HP	IN STOCK
4550 4WD & LDR 48 HP	IN STOCK
2660 4WD & LDR CAB 60 HP	IN STOCK
<b>USED TRACTORS</b>	
MF 4708 80HP 4WD CAB LDR	58,500
MF 2850M 49HP BACKHOE LDR	42,500
JD 5055E 59HP CAB LDR	32,500
MAHINDRA 2638 38HP 4WD LDR	20,000
MAHINDRA 1635 35HP 4WD LDR	19,500
MAHINDRA 4540 41HP LDR	16,000
IHC 5088 CAB 135 HP	13,500
MF 1080 81 HP LOADER	8,500
MF 1528 28HP 4WD	7,500
CUB CADET 7205 20HP 4WD	4,250
KUBOTA L175 17HPW/MOWER	3,000
<b>USED ROUND BALERS</b>	
NH RB450 4X5 MESH	24,000
MF 1745 4X5 MESH	24,000
MF 2946A 4X6 MESH	20,000
HESSTON 550 4X6	2,500
HESSTON 560 5X6	2,000
<b>USED MISC.</b>	
M&W 8 WHEEL RAKE	1,250
RHINO 5FT FINISH MOWER	850
LAND PRIDE 5FT CUTTER	500
ROLLINS 5FT BLADE	250

**Marshfield Machinery Inc.**  
222 E. Madison  
Marshfield, MO 65706  
417-859-2117  
[www.marshfieldmachinery.com](http://www.marshfieldmachinery.com)

## Larry Heisel Rentals

**Have Rock?**



How about 3,500 lbs. of Hammer

*Call Larry!*

# 573-779-1500

[www.larryheiselequipment.com](http://www.larryheiselequipment.com)

Rental Available in 636 or 573 area code

*We Deliver!*

**KILLBROS GRAIN CART 475:** \$5,500. 573-598-4547 or 573-718-9719.

**JOHN DEERE GRAIN CART:** 450 bushel. \$4,000. 573-598-4547 or 573-718-9719.

**FOR SALE:** 2 rolls of 100, Forever Postage Stamps. \$60 each. 573-453-2777. Salem.

**2002 CREW CAB DODGE PICKUP:** White, 4 new tires, new seat covers. 80,000 miles. Needs some work. \$4,500. 417-664-0405. Lebanon.

**8 HOLE DOG PEN:** New, never used. \$500. 417-532-4701 preferably evenings. Lebanon.

**2 POMAPOO & 1 MALTIPOO PUPPIES:** Males, 3-months old. \$100 each. 417-532-4701 preferably evenings. Lebanon.

**EXERCISE BIKE:** In good condition. \$65. 417-532-2344.

**MALTIPOO PUPPIES & REGISTERED DOXIN PUPPIES:** 573-247-6273.

**MISC. MECHANICAL TOOLS:** Small set \$25. & Large set \$35. 417-532-2344.

**AKC BEAGLE PUPS:** Blue Tick & Tri colors. 16-weeks-old. \$250 each. 573-627-2309. Sullivan.

**FOR SALE COPPER APPLE BUTTER KETTLE:** with stand & stirrer. 573-437-2944.

**2012 FORD LARIAT:** 4-door, 4WD, 231,000 miles, all leather interior, tires-75%, v6 with turbo. \$8,500. 660-492-7191.

**FOR SALE 1964 F100:** Runs. For sale or trade. 417-426-5353 or 417-664-0094. Eldridge.

**FOUR 4-WHEELER SIDE-BY-SIDE TIRES:** Good shape. \$100 or trade for tools. 573-734-2822.

**FOR SALE:** 3-Shelf Bookcase. \$5. 417-718-2529. Lebanon.

**60 HIKES WITH 60 MILES ST. LOUIS BOOK:** including Sullivan, Potosi and Farmington, \$8.50. 417-532-2045. Lebanon. (Leave message and phone number.)

**WEATHERED BARN WOOD SIDING:** 10" wide. Call for appointment 573-729-7226. [www.pineridgerustic.com](http://www.pineridgerustic.com) Salem.

**LOG SIDING:** 2X8 Pine/Western Cedar. Call for appointment 573-729-7226. [www.pineridgerustic.com](http://www.pineridgerustic.com) Salem.

**MENNONITE COMMUNITY COOKBOOK:** by Mary Emma Showalter, 494 pages, \$8.50. Mennonite Family Cookbook, 144 pages, \$6.50. 417-532-2045. Lebanon. (Leave message and phone number.)

**BLACK METAL TUBULAR BRACKET:** Scrolling and a stainless bracket. \$10. Call for pictures. 636-239-2695 or 314-560-5700. Washington.

**NEW MOBILE HOMES** – prices start at \$64,900 delivered and setup 573-499-9993 [columbiadiscounthomes.com](http://columbiadiscounthomes.com)

**0% for 4 Years**



**HEATMOR**  
Stainless Steel Outdoor Furnaces  
**Outdoor Wood Furnace**

as low as **\$238** per month

**HEATMOR MIDWEST**  
Licking, MO 65542 • 573-674-2962

**FOR SALE AUSSIEPOOS:** DOB 6-7-23, UTD on worming & vaccinations. Vet checked & microchipped. \$250. 573-864-4266. Salem.

**FOR RENT:** 3 Bedroom, 1 & 3/4 bath, 2-car garage. No pets. \$1,200/month. 417-531-5738.

**5.3 CHEVY ENGINE:** 186,000 miles. \$800. 417-362-0142. Mountain View, MO.

**FREE 4 CUTE KITTENS & MOTHER:** To be given away to loving & caring homes. If interested call for more information. 417-469-2123. Mountain View.

**BLUE HEELER PUPPIES:** 417-349-0919. Plato.

**WANTED OLDER MODEL 1-TON WRECKER:** Any condition. 573-734-2822.

**FOR SALE:** Patio Table with 2 chairs. \$35. 417-718-2529. Lebanon.

**FOR SALE:** Speed Controlled Pet Nail Grinder. \$15. 417-718-2529. Lebanon.

**S-N-A-P LETTER KIT:** \$35. 417-718-2529. Lebanon.

**NEW INVENTORY** - \$59,900 Delivered and setup, Hurry! Call Adam 573-657-2176 [amegamobilehomes.com](http://amegamobilehomes.com)

**\$0 DOWN AND 0% FOR 72 MONTHS**

**BUILD YOUR OWN**

**1025R Package**



**1025R TRACTOR**

ORIGINAL PRICE: ~~\$18,369~~

SALE PRICE: **\$15,500\***

OR FINANCE FOR AS LOW AS **\$219/MO\***

Then add on any implement you need to get the job done.

**Choose any 3 and save an additional \$300!**

 <b>120R LOADER</b> ONLY \$69/MO	 <b>60D MOWER DECK</b> ONLY \$65/MO	 <b>ROTARY CUTTER</b> ONLY \$33/MO	 <b>BOX BLADE</b> ONLY \$16/MO
---	---	---	---

 **Heritage TRACTOR**

Scan Here To Shop Now 

*\*Offer ends September 30, 2023. See dealer for details.*

**BASEMENT READY TRUE MODS-**  
instock ready for delivery 573-657-7040  
chateauhomes.net

**1908 SEARS ROEBUCK CATALOGUE  
REPRODUCTION: 1,185 pages, \$12.50.  
417-532-2045. Lebanon. (Leave message  
and phone number.)**

**TINY HOMES** – Missouri Franchise 573-  
881-7965

**REGISTERED HEREFORD & ANGUS  
BULLS:** Home raised, Some Show-Me  
Select Qualified. 573-701-7828. Belgrade.

**LIGHTLY EXPERIENCED GOLF  
BALLS:** \$3 a dozen. 417-818-3469.  
Strafford.

**SLIGHTLY USED PUZZLES:** Will sell or  
trade. 417-818-3469. Strafford.

**Route 66 MOTHER ROAD BOOK: by  
Michael Wallis, \$12.50. 417-532-2045.  
Lebanon. (Leave message and phone  
number.)**

**LIONEL TRAIN SET:** Steam engine,  
tender, caboose and other car, track, and  
transformer. \$195. 573-364-7465. Rolla.

**MODEL 1911 FRAME 8-SHOT C02  
PISTOL:** Like new, in box with C02  
cartridges, 4 clips, pellets & all paperwork.  
\$95. 573-364-7465. Rolla.

**1970s KIDS METAL STOVE & FRIDGE:**  
Nice Lithographic paint, 18” wide x 36” high.  
\$75. 573-364-7465. Rolla.

**3 GENTS WITTMAYER WRIST  
WATCHES:** 10k gold + 23J. All \$200. 573-  
764-3517. Call in P.M.

**WANTED 730 OR 830 CASE TRACTOR:**  
In any condition. 573-308-5884. Rolla.

**COUNTRY GARDENS  
GREENHOUSE**



**Now opened for the fall season!!  
Open House Sept 2**

**Free homemade ice cream and pumpkin pie  
10% off mums**

**Free small pumpkins to children 10 yrs and under**

Over 50 varieties of pumpkins, gourds, and winter squash to choose from

- Mums - Single, tri-colored, and hanging baskets
- Fall planters • Fall pansy baskets
- Indian corn • Broom corn • Corn shocks • Mini strawbales
- Succulents • Houseplants
- Homemade jams and jellies, pickles, and relishes
- Fresh Produce
- Lux Craft Poly Lawn Furniture

Pick your own Pumpkin Patch

**Open Mon - Fri 8:30 - 5:00 Sat 8:30 - 4:00**

Directions:  
Hwy 73 to Tunas - 4 miles east on E  
3/4 mile north on E.  
then 1/2 mile west on gravel road  
**17 Sunset Dr, Tunas, MO 65764**



**OMAR'S LOGGING**

⇒ **Oak & Walnut**  
⇒ **Excellent Prices**  
*Amish Owned & Operated*



**LEAVE MESSAGE: 417-741-0440**  
Hartville & Surrounding Areas

**HARLEY FAT BOBS:** Custom flame paint  
w/ gas caps + lines. \$100. 573-764-3517. Call  
in P.M.

**COLT REVOLVER DEALER  
CATALOGS:** Circa 1950's + 1960's. All for  
\$100. 573-764-3517. Call in P.M.

**110 PORCELAIN POCKET WATCH  
DIALS:** Perfect for arts & crafts. \$100. 573-  
764-3517. Call in PM.

**1890 GOLD TESTING KIT:** Glass acid  
beakers + antique wooden case. \$100. 573-  
764-3517. Call in PM.

**1500 VINTAGE WRISTWATCH DIALS:**  
\$100. 573-764-3517. Call in PM.

**HARLEY 45 SOLO:** factory rear brake  
drum + sprocket. \$150. 573-764-3517. Call  
in PM.

**KUSTER LOGGING**

**BUYER of Standing  
Timber  
Oak and Walnut**

**Dozing Now Available**

**417-259-0047**

**References Available**





**PUBLIC AUCTION**  
PLEASANT HOPE, MO

**AUCTION**

As I am moving we will sell the following Pickup, Trailer, Mower, Guns, Sporting Items, Tools, Household, Collectibles and Misc. At the Home located 6 miles East of Pleasant Hope, Mo. On 215 hwy. (just East of Tin Town) on

**Sat. September 9, 2023 at 9:00 am**

**WATCH FOR AUCTION COMPANY SIGNS • LUNCH SERVED**

**FOR MORE PICTURES GO TO: WWW.BRUCEANDLEANAUCTION.COM**



**PICKUP-TRAILER**

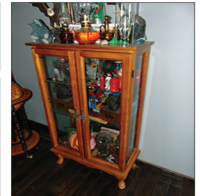
- 2016 Dodge Ram 2500 Heavy Duty 4X4 Ext. Cab 4 Door Pickup W/ 6.4 Liter Hemi Gas Motor, Automatic Trans, PW, PL, Power Seats, 160,000 Miles
- 16' Tandem Axle Bumper Trailer 76" Wide

**MOWER-TOOLS**

- Ariens Ikon XD 52 Zero Turn 23hp Riding Mower 95 Hours
- Stihl MS250 Chain Saw
- Stihl FS-56-RC Straight Shaft Weed Eater
- DeWalt 20 Volt Cordless Drills, Impacts, Sanders and other Tools
- DeWalt Chop Saw
- Industrial Grayco 395 Ultra Paint Sprayer (like new)
- Industrial Grayco 395 Paint Sprayer (like new)
- Titan 440 Paint Sprayer
- B & D Grinder on Stand
- Campbell-Hausfeld Sm. Air Compressor
- Poly & Alum. Ext Ladders
- Sm. Tool Boxes
- Misc. Hand Tools
- Jack Stands
- 2 Wheel Dolly

**GUNS-RELOADING-SPORTING CONT.**

- Bowtech Reign 6 Compound Bow W/Hard Case
- Summit Viper Metal Climbing Deer Stand
- Autographed Turkey Calls
- 3 Full Body Turkey Mounts
- Approx. 15 Mounted Turkey Fan Tails
- Grand Slam Fan Mounts
- Hornets Nest
- Hunting Clothes
- Coolers
- 2-Metal Gun Boxes one with Key Lock
- Hard Gun Cases
- NWTF Neon Light
- NWTF Wall Hangings
- Approx. 12 Sets of Deer Horns
- Misc. Fishing Poles & Tackle Boxes
- Late 1980's—Early 1990's Baseball Cards (Topp's, Floor, Score and Others)
- Misc. Camping Equip.
- Live Trap
- Sm. Buddy Heater
- Mitchell 6 String Guitar (Model DIZ0BK)



**HOUSEHOLD-GRILLS-MISC.**

- Samsung Front Load Automatic Washer & Electric Dryer (Maroon Color)
- LG Microwave Oven
- Lrg. 5 Seat Grey Metal Microfiber Sectional W/3 Power Recliners (like new condition)
- Samsung 63" Flat Screen TV
- Samsung 58" Flat Screen TV
- i-Robot Vacc. & Mop
- King Size Bed W/Mattress
- Queen Size Poster Bed W/Mattress
- Metal Framed Bunk Beds
- 2-Armour Chest
- 4' Glass Fronted Curio Cabinet
- Wooden-Padded NWTF Rocker
- Sec. Desk

**HOUSEHOLD-GRILLS-MISC. CONT.**

- Cedar Chest
- Oak Stand Table
- 3'X7' Hand Made Table
- 6' Stainless Adj. Shelving Unit
- 3 Cushion Hid-a-bed
- World Globe on Stand
- Kitchen Aid Mixer
- Butterball Electric Turkey Fryer
- Misc. Pots, Pans & Dishes
- Presto Pressure Cooker
- St of Ant. Metropole China
- Lot of Linens & Bedding
- Blackstone Adventure Gas Grill
- Pit-Boss Pellet Smoker/Grill
- Oklahoma Joe's Propane/Charcoal Grill & Smoker
- Metal Fire Pit
- Propane Fish Cooker
- Sm. Propane Bottles
- Lawn Chairs
- Lot of Misc.

**OWNER: ERICH HIGGINS**

TERMS: Everything sells as is, where is. Nothing is to be removed until settled for. Payment of Cash, Check with Proper ID, or Credit Cards. Auction Company or the Owners will not be responsible for loss of items or accidents. Statements made the Day of the Auction take Precedence over Printed Matter.

SALE CONDUCTED BY **BRUCE & Le'AN AUCTION & APPRAISAL, LLC**  
THE AUCTION COMPANY THAT APPRECIATES YOUR BUSINESS

For more information and pictures go to our website at [www.bruceandleanauction.com](http://www.bruceandleanauction.com)

RONNIE BRUCE - Fair Play, MO  
417-777-1685 or 417-654-2214  
colronbruce@gmail.com

BRANDON BRUCE  
Fair Play, MO

BILLY BRUCE - Stockton, MO  
417-399-4800  
colbbruce@gmail.com

*Sam* **CRAWFORD AUCTION SERVICE** LLC

Due to the death of my husband, Dennis Eagon, will sell the following located from Pittsburg, MO 1 mile South on Hwy. 64 to Hwy. RA, then East 2 miles. Watch for auction signs.

**THURSDAY, SEPTEMBER 7<sup>TH</sup>, 2023 - 9:30 AM**

*TOOLS - HOUSEHOLD - Misc.*



***HOUSHEOLD - OTHER***

- Round Oak Dining Table & 6 Chairs
- 5 Pc. 4 Poster Oak King Size Bed, Ex. Nice
- Curio Cabinet
- Lamps
- 100+ Beanie Babies, Most in Cases
- 3 Millennium Bears
- Crown Royal Chair
- Pair Bernini Bags
- Window AC
- Home Interior Items
- Sev. Boxes Household Misc.
- 2 Karaoke Machines
- Radios
- Fans, Heaters
- Other Misc.

***TOOLS - OTHER***

- 2 Craftsman 2 Tier Toolboxes
- Popular Mechanics 2 Tier Toolbox
- ESAB Mig Welder
- Hobart Mig 250 Welder
- Lincoln 225 Elect. Welder
- Cutting Torch, Complete
- Milwaukee Cut-Off Saw
- Rockwell Miter Saw
- Campbell-Hausfeld Air Compressor

- Shop Lights
- Delta Table Saw
- Lot Cordless Tools, Most Milwaukee
- Lot Asst. Power Hand Tools
- Lot Vise Grips, C-Clamps
- Lot Asst. Wrenches, Sockets, Most Craftsman
- Asst. Air Tools
- Lot Long Handle Tools
- Handyman Jack
- Sev. Metal Drawers For Storage
- Rolling Tool Cart w/Vise
- Other Rolling Tables & Benches
- Section of Scaffolding
- 4-5 Alum. Ladders
- Storage Cabinets & Shelves
- 3-4 CB's
- Ext. Cords
- Deer Stand
- 2 Pr. Motorcycle Saddle Bags
- Plumbing & Electrical Misc.
- Lot Gas Cans
- 4-5 100# Gas Bottles
- 12-15 Gas BBQ Bottles
- Camping Misc.
- 5-6 Cutting Torch Bottles
- Oil - Anti-Freeze - Other
- 2 Jeep Roll Bars, Jeep Chasis

- Part of Motorcycle Frame
- Scrap Iron
- 7 Older Riding Mowers - Most Run
- Kawasaki KZ1000 Motorcycle, Not Running
- Older Fiberglass Bass Boat & Trailer
- Force 50 HP Outboard Motor
- Older Evinrude & Elgin Motors
- Homemade 12' Flatbed
- Homemade Trailer w/Wood Sides for Storage
- Trailer Axle
- 250 Gal. Propane Tank
- 4 - 6x5 14' & Other Lumber
- Used Tires & Wheels
- 2-3 Sets Car Ramps
- Reese Hitches, Jack Stand
- Receiver Hitch Carrier
- Lg. Locker
- Ratchet Straps
- Concrete Float & Jitterbug
- Hose Reel & Hoses
- Lot Misc.
- Lots of Good Tools



**TERMS:** Cash or good check. Nothing removed until settled for. Not responsible for accidents. Lunch available. Statements made day of sale take precedence over printed matter. All items sell as is. No warranties given or implied.

**417-998-6629**  
Cross Timbers, Mo.

[CrawfordAuctionService.com](http://CrawfordAuctionService.com)

Sam  
417-328-9137

Chase  
417-399-1904

Chance, CAI  
417-298-1751

Tom Poynter  
Jack Lancaster

**SHEREE EAGON**

*15th Annual Fall*  
**CONSIGNMENT AUCTION**  
**Saturday, September 9, 2023 at 9:30 A.M.**

**SALE LOCATION: 1551 14000 Road, Altamont, KS 67330 DIRECTIONS: 1.5 miles east of Altamont, KS**  
 or 9 miles west of Oswego, KS on Hwy. 160.

**NOTE: WE ARE ALWAYS CLOSED ON SUNDAY!**



**TRACTORS**

JD 6130R, CHA, 936 hrs. MFWD, 24 sp. P.Q. 3 outlets, 1 owner, JD 620R loader  
 JD 6155M, CHA, 1270 hrs. MFWD, 20 sp. P.Q. 3 outlets, JD 640R loader, 3rd. function  
 JD 6150M, CHA, 499 hrs. MFWD, 20 sp. P.Q. 3 outlets, JD H360 loader, bucket/grapple  
 JD 7220, CHA, 1602 hrs. MFWD, 18 sp. P.Q. 2 outlets, 1 owner, JD 7415L loader  
 JD 7810, CHA, 6711 hrs. MFWD, 16 sp. P.Q. 3 outlets, 1 owner, duals  
 JD 8520, CHA, 7755 hrs. MFWD, 16/4R sp. PS. 4 outlets, ILS, auto steer, duals  
 JD 6120E, CHA, 1270 hrs. MFWD, 24 sp. 2 outlets, 1 owner, JD H310 SL loader  
 JD 6120E, CHA, 2250 hrs. MFWD, 24 sp. 3 outlets, 1 owner, JD H310 loader  
 Case IH Maxxum 140, CHA, 3035 hrs. MFWD, 16sp. 3 outlets, 1 owner, CIH L765 loader  
 Case IH 90C, CHA, 1409 hrs. MFWD, 12 sp. 2 outlets, CIH L630 loader  
 JD 4055, CHA, 7297 hrs. 2-wd. 16sp. QR, 2 outlets, JD 725 loader  
 JD 6410, CHA, MFWD, 6085 hrs. 16 sp. 2 outlets, JD 640 loader  
 JD 4044M, OROPS, 267 hrs. MFWD, 12 sp. LHR, JD 400E loader  
 Case IH 595, OROPS, 1682 hrs. 2-wd. 8 sp. 1 outlet, CIH 2255 loader  
 JD 8630, CHA, 3K hrs. on overhead, 4-wd. 4 outlets, 3pt, PTO  
 JD 5105, OROPS, 2000 hrs. 2-wd. 2 outlets, new rear tires

**COMBINE & HEAD**

JD 8820 Titan II, 6500 hrs. 4-wd. hydro, new tires  
 JD 925 flex head, good poly, on Gehl 25' header trailer

**HAY EQUIPMENT**

JD 569 baler, 5x6, net, 11,020 bales, 1000 PTO  
 JD 348 square baler, twine, nice Hoelscher bale accumulator  
 Kuhn GMD 310HD disc mower, 3pt, 10'6" cut, new tarp, nice  
 JD 275 disc mower, 3pt, 9'2" cut, new tarp  
 Reese 3400 drum mower, 11'2" cut, pull-type  
 Vermeer 605XL round baler, 540 PTO, twine, monitor  
 Heaton 5580 round baler, 540 PTO, twine, monitor

**HAY**

100 - 5x5.5 bales of fescue, net wrapped

**DON'T MISS THIS SALE!**

**FARM EQUIPMENT**

Kuhn Knight 5143 vertical mixer, 430 CF. 1 owner, scales, 540 PTO, RH discharge, nice  
 Great Plains 4000TC Turbo Chopper, 40", 13" blades, 10" spacing, nice  
 DMI 32' field cultivator, 4 row line harrow, new shovels & teeth  
 McFarlane HDL1134-16 harrow, 34", 16 bar, only 400 acres, 1 owner, nice  
 Unverferth 1225 37' pull-type rolling harrow  
 J&M 375ST seed tender, 375 bu. digital scales, roll over tarp, Honda gas motor  
 Kinzie 2200 12R 30" planter, 1-owner, corn & bean plates, flex frame, KM300 monitor  
 Great Plains SS10 10' no-till grain drill, small seed, 2154 acres, new disc openers, coulters  
 JD 7000 6R30" planter, lots of new parts  
 Brent 472 grain cart, roll over tarp, like new  
 United Farm Tools 500 grain cart, 15' hyd. side auger, tarp, very little wear  
 Pequea SP550 litter/lime spreader, 22", 16 ton, tandem axle, dual spinner  
 NI 3622 manure spreader, single axle, slop gate, 540 PTO  
 NH 329 manure spreader, single axle, slop gate, 540 PTO  
 Glencoe 9 13' pull-type chisel, spring reset  
 Blu Jet 3pt. 25" 16R shank 20" spacing anhydrous applicator  
 Custom Wiede 10' head roller, 3x10x12", water filled, greaseable bearings  
 Ag Spray 500-gallon pull-type sprayer, 50' boomless, 540 PTO  
 IA 2428X 10' pull-type offset disk, new  
 IA 2228X 10' pull-type finish disk, new  
 IA 2224X 9' pull-type finish disk, new  
 IA 1824X 7' 3pt. finish disk, new  
 Several New IA pull-type box blades  
 JD 414 15' rotary hoe  
 Bush Hog post hole digger, 3pt. 540 PTO, 11" auger  
 Several IA 740G & 96G weld/bolt on grapples for buckets, new Hydraulic fill auger off JD 750 no-tilt drill  
 Case IH L775 front-end loader, self-leveling, 3rd. function

**CUTTERS**

2023 Titan 3515 15' batwing cutter, 540 PTO, deck rings, brand new JD MX10 10' pull-type cutter, 540 PTO, like new  
 Rhino FN15 15' batwing mower, big 1000 PTO

**LIVESTOCK EQUIPMENT**

Rewhite Portable Corral, Large Processor with head gate, 160-200 yearlings, new  
 50 - 24' HD 2-5/8" free standing corral panels, some with gates, new  
 2 - IA 24' 84R hay & silage feeder wagons, new  
 Stock Pro H2200 Premium hyd. chute, with palpation cage, gas or electric motor, new  
 Stock Pro M1200 Premium manual chute with palpation chute, new  
 Stock Pro A880 chute with auto catch head gate, new  
 Pro Works 3pt. bale unroller, new

**CONSTRUCTION EQUIPMENT**

2016 Cat 308E2 CR mini-excavator, 1553 hrs. CHA, 18" steel tracks, 2-sp. 28" bucket  
 2016 Cat 304E2 CR mini-excavator, 105 hrs. CHA, 1-owner, 2-sp. 24" bucket, like new!  
 2017 Kubota SVL95-2 skid steer, 2255 hrs. CHA, HF hyd. 2-sp. SJC, tracks  
 2018 Kubota SVL75-2 skid steer, 334 hrs. CHA, HF hyd. 1-owner, 2-sp. SJC, tracks, nice  
 2019 Kubota SVL75-2 skid steer, 657 hrs. OROPS, HF hyd. 2-sp. SJC, tracks, nice  
 2014 Takeuchi TL8 skid steer, 856 hrs. CHA, 2-sp. P.Q. SJC, tracks  
 2016 Bobcat 2710 skid steer, 2127 hrs. CHA, SJC, new tracks  
 2018 Cat 289D skid steer, 2780 hrs. CHA, 2-sp. SJC, tracks  
 2009 Cat 289C skid steer, 3198 hrs. CHA, 2-sp. SJC, tracks  
 2019 JD 333G skid steer, 3035 hrs. CHA, HF hyd. 2-sp. SJC, tracks  
 2020 JD 317G skid steer, 1610 hrs. OROPS, SJC, 1-owner, wide tracks  
 2020 JD 324G skid steer, 27 hrs. OROPS, SJC, 2-sp. like new!  
 2004 Gehl 5640 skid steer, 2659 hrs. OROPS, foot controls

**SKID STEER ATTACHMENTS**

Jenkins 72" & 78" HD debris grapples, new  
 Jenkins 8.5' backhoe attachment, 12" bucket, new  
 Jenkins 10' angle snow blade, new  
 Jenkins wood splitter, new  
 Jenkins HD 5500# 4' cartage with 5' pallet forks, new  
 Jenkins HD 5500# 4' cartage with 4' pallet forks, new  
 3-Agrotek 48" pallet forks  
 4-Mower King 6' mowers  
 BH766 backhoe attachment  
 Jenkins tree puller, Easy Man tree/post pullers & tree shears, new  
 Jenkins 74" & 84" HD buckets with teeth, new  
 Several Easy Man 72", 78" & 84" buckets, new  
 Several 2-prong bale spikes  
 Several used SS buckets,  
 Several blank plates & receiver hitches  
 Several Mower King mounting frames

**VEHICLES & TRAILERS**

1996 Traveling Weekender, 3 horse trailer, tack room, living quarters, title  
 Gooseneck 6'x26" stock trailer, 2-7K axles, 2-cut gates, good floor, no title  
 Pro Welding FDT7014R hyd. dump trailer, 7x14', 2-7K axles, ramps, new  
 IA 750-gallon fuel trailer, 12-volt pump & hose, new  
 IA 500-gallon fuel trailer, 12-volt pump & hose, new  
 Flipper 32' gooseneck inline hay trailer  
 2004 Ford F150 pickup, does not run, title  
 1997 Chevy C2500 pickup, reg bed, 2WD, gas, title  
 1998 Dodge 2500 pickup, diesel, 4x4, title  
 Small BH trailer, no title

**UTV'S**

2007 Polaris Ranger 700, 4x4  
 2006 Polaris Sportsman Touring 500, 2-seater, 4x4, 4K miles

**GUNS**

Winchester Super X pump, 12 ga. 2 1/4" & 3", 28" barrel, NIB  
 Olympia 22LR pistol, auto, in box

**MISC. ITEMS**

Kit Container 108" long X 86" wide X 98" tall, double doors, walk door, window, new  
 Kit Container 97" long X 80" wide X 89" tall, double doors, walk door, window, new  
 Handi-Cap scooter, new batteries, runs good  
 Several horse tack items, including saddle, halter, etc.  
 75 Safety cones  
 Several ratchet straps

**TRUCKS & SEMI-TRAILERS**

2005 Chevy C7500 dump truck, 30,850 mi. Cat diesel, Allison automatic, air brakes, 10' gravel bed, electric tarp, super nice  
 1993 Kenworth T450 semi tractor, 164K miles, Cummins L10, Eaton 10 sp. tandem axle, twin screw, wet kit, AC needs work  
 1979 IH Loadstar 1600, 68K mi. tandem axle with electric/hyd. tag axle, V-8 MV 404 gas, 5-2 trans. 20' grain bed

**McNICKLE ESTATE**

1995 Barrott aluminum stock trailer, 7'x24', 2 cut gates, 2-7K axles, nice, nice  
 2006 2-3 CN equipment trailer, 82'x18'x2' dove, ramps, 2-6K axles, title  
 John Deere 5310 tractor, unknown hours, 2-wd. 9 sp. sync shuttle, 2 outlets, nice  
 Kilbros 350 gravity wagon  
 Terminator 100-gallon 3pt mist sprayer  
 Bush Hog HDTH6 72" 3pt. finish mower  
 King Kutter 3pt pond scoop  
 2 - Advantage 160HD 3N1 self-loaders  
 HMC 2-ton portable feed bin on wheels  
 Creep feeder on wheels



**Online Bidding starts at 9:30 AM on select items @ circleeaauction.com**

**Concessions available including homemade pies and baked goods, biscuits & gravy!**

**Auctioneer's Note:** We will have a very nice line of items to sell. Almost every item is right off the farm. Something for everyone. Most of the items will sell with No Reserves. At our last auction, we sold over 90% of the items consigned. Since sale bids are printed 3 weeks in advance, we usually have a lot more items than listed. We will be selling in two rings at the same time, so bring a friend. Because we rely on the word of others, ALL items are subject to prior sale and/or no show. If driving a distance for a single item, please call.  
**NOTE: 9.25% Sales Tax** will be added to all items that are not used for agriculture. All dealers must bring a copy of your resale sales tax license.  
**If you have items to sell, you can still consign to this auction!** We are open 8:00-5:00 Monday-Friday and on Saturday by appointment only to check-in and unload your items. We will be open on Monday, September 4 (Labor Day). We are always closed on Sunday! To have your equipment available for online bidding, your equipment MUST be on our lot by Tuesday, September 5th @ 5:00 pm. NO consignments taken after 5:00 pm Thursday, September 7, 2023! For questions or to consign call Ervin at 417-310-0812 or Merlin 417-310-3324 or e-mail us at [circleeaa@gmail.com](mailto:circleeaa@gmail.com) View pictures @ [circleeaauction.com](https://www.circleeaauction.com).  
 Everything must be removed in 14 days. After 14 days there will be a storage fee of \$25 per item, per day. Any items left after 30 days will be considered abandoned and will become the property of Circle E Auction.

Terms: Cash or Good Check with Photo ID - All Buyers Unknown to Circle E Auction MUST Furnish a Current Bank Letter of Credit if Paying by Check. Not Responsible in Case of Accident or Sickness on Premises. Everything Sells AS IS-WHERE IS with No Warranty Actual or Implied. Not Responsible for Stolen Items or Loss of Items. Nothing Removed Until Settled For. All Announcements Day of Sale Supersede Any Printed Material.

**Circle E Auction LLC**  
 Your Farm Auction Specialists!  
**620-778-9966**  
 Auctioneer Ervin Eicher 417-310-0812 | Auctioneer Merlin Eicher 417-310-3324  
 1551 14000 Road Altamont, KS 67330



# OZARK EQUIPMENT AUCTION

## September 22, 9 AM CDT

2026 US 60, Birch Tree, MO 65438

Bright Star Auctions specializes in complete liquidations along with scheduled monthly online and consignment auctions. Contact Loren Graber to consign your equipment to a Bright Star Auction today!

**Call or text Loren Graber 417.247.1746**  
[loreng@brightstarauctions.com](mailto:loreng@brightstarauctions.com)



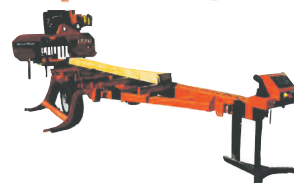
### Bidding Options

- [Brightstarauctions.com](http://Brightstarauctions.com)
- [Equipmentfacts.com](http://Equipmentfacts.com)
- [Proxibid.com](http://Proxibid.com)
- The Bright Star Bid Book is a descriptive catalog that we send to our buyers that do not have internet and wish to bid over the phone.



**FREE Global Advertising!**

Quality Consignments Wanted of Heavy Equipment, Excavation, Construction, Forestry & Sawmill!



**Monthly Virtual Consignment**



**AC32100007**

### Bright Star's consignment auction yards:

- **Michiana Equipment Auction**  
11751 CR 12 Middlebury, IN 46540
- **Ozark Equipment Auction**  
2026 US 60 Birch Tree, MO 65438
- **Appalachian Equipment Auction**  
260 Elkin Wildlife Rd. Elkin, NC 28621
- **Ohio Central Equipment Auction**  
416 McQuaid Rd. Wooster, OH 44691
- **Lake Erie Equipment Auction**  
16989 Kinsman Rd. Middlefield, OH 44062

*Most pictures are from past auctions and will not necessarily be in this auction*

**See [brightstarauctions.com](http://brightstarauctions.com) for more information...**



*Sam* LLC  
**CRAWFORD AUCTION SERVICE**

As I've sold my farm, will sell the following located 7 miles East of Buffalo, MO on Hwy. 32 to Hwy. JJ, then 4 miles South to Forest Trail. Watch for auction signs.

**SATURDAY, SEPTEMBER 9<sup>TH</sup>, 2023 - 10:00 AM**

*TRUCK - TRAILER - TOOLS - FARM MISC.*



**TRUCK - TRAILER -- SELLS AT NOON**

'97 Chevrolet 1/2 Ton, 350, Auto, 4x4, Ext. Cab, 130K, Shedded, Good

16' Bumper Hitch Stock Trailer, Shedded, Good

**FARM MISC.**

3 Concrete Feed Bunks

1 Poly Bottom & 1 Steel Feed Bunk

3 Hay Rings - 2 Poly Water Tanks

2 Wood Mineral Feeders

10-12 Corral Panels 10' & Walk Through

John Deere 6' Belly Mower for Compact Tractor

12V Sprayer - Used Steel Posts

**TOOLS & MISC.**

Cub Cadet Zero Turn Lawn Mower

Kawasaki Prairie 360 4-Wheeler

Gas Power Washer, 1800 psi

Hobart 135 Mig Welder

Lincoln 225 Electric Welder

Upright 6.5 HP Air Compressor

Porter Cable Pancake Compressor - Small Compressor

Yard Machine Front Tiller

Yard Wagon & Yard Cart

Tracker 10' Flat Bottom Boat

Delta Miter Saw - Delta Chop Saw

Table Top Drill Press

Other Asst. Power Hand Tools

2 Jack Stands - Ladders - Long Handle Tools

3-4 Toolboxes - Asst. Wrenches & Sockets

Chain Hoist - Live Trap - Plastic Car Ramps

5 Gal. Milk Can - Gas Cans - 2 Workmates

Treadle Sewing Machine Frame - Wheelbarrow

Bolts, Nuts, Screws, Etc. - Lots Other Misc.

*Sam*  
**CRAWFORD** LLC  
**Auction Service**



TERMS: Cash or good check. Nothing removed until settled for. Not responsible for accidents. Lunch available. Statements made day of sale take precedence over printed matter. All items sell as is. No warranties given or implied.

**417-998-6629**  
 Cross Timbers, Mo.

[CrawfordAuctionService.com](http://CrawfordAuctionService.com)



Sam  
417-328-9137

Chase  
417-399-1904

Chance, CAI  
417-298-1751

Tom Poynter  
Jack Lancaster

**Loreta Meyer Irrevocable Trust**

# ANTIQUe & ESTATE AUCTION

**Monday, September 4th, 2023 ~ 10:00 AM**

LOCATION: Sheldon Community Building, 6th & Main, Sheldon, MO (Watch For Signs)

**Auction For Richard "Guy" Simpson**



**Antique & Primitive Furniture**

Rare Ant Corner Parlor Chair, Ant Red & Chrome Table W/2 Chairs, 2 Ant Qtr Saw Oak Washstands 1 Is Hotel, Ant Store Countertop Tobacco Display Cases, 2 Ant Oak & Glass Store Counter Displays, Ant Oak Library Table, Ant Oak Icebox, Ant 50's Metal Refrigerator, Ant Eastlake Rocker, Ant Qtr Saw Oak Square Table W/ Glass Claw Feet, Ant Wall & Mantle Clocks, Ant Child's Rolltop Desk, Ant Oak Library Drawer Cabinet, Ant Cabinet Drawers, Ant Singer Sewing Machine, Prim Jelly Cabinet, Prim Tables, Prim Stools & Benches, Old Wicker Furniture, Other Items

**Antique Gas & Oil & Related Memorabilia**

Rare Standard Gas Engine 1 Gal Can, Rare Polarine Lubricant BB Can W/Original Crate, Rare Zerolene F For Ford Can, Very Rare Shell Motor Oil Bottle, Rare Tiolene Motor Oil Bottle, Very Rare Bartles Northland Penn 1 Gal Can, Very Rare Nourse Dark Nentshine Harvest Oil 1 Gal Can, Rare Thresher Hard Oil 25 Gal Can, Very Rare Axle Grease Cans, Rare Eureka Oil Cans, Rare Standard Oil Top C Lube Metal Dispenser, Very Rare Horse Drawn Fuel Wagon Measuring Counter, Very Rare Eureka Harness Oil Sign, Ant Oil Company Padlocks, Kenwood Motor Oil 2 Gal Can, Standard Polarine C ISO-Vis 1 Qt Glass Bottles, Texaco Oil 1/2 Gal Oil Can, Semdral Liquid Glass 1 Gal Can, Ant Metal Oil Bottle Carrier, Old Atlantic Amco Mobile Oil Gargoyle Oil Bottles, Standard Oil Sample Bottles, Kendall 2000 Motor Oil 1 Qt Glass Jars, Ant Glass Mineral Oil Bottles, Red Crown Gal Polarine Oil Wood Gas Measures Ant Mirrors, Ant Wood Sleeve Oil Cans, Phillips 66 Standard Skelly 5 Gal Oil Jugs, Ant Wood Gas Gauges Socony, Amoco, Ant Oil Company Wood Crates, Standard Oil Metal Caution Sign, Socony Oil Wood Crate, Old Oil Barrel Dolly's Phillips 66 Memorabilia 10L Gold Pendant, Several Metal Sinclair & Other Gas Station Oil Pour Cans, Very Old Granite Harvest Oil W/Wood Crate, Several Other Items Not Listed

**Antiques & Primitives**

Ant Aldon RxR Train Car Mover, Ant Well Draw Bucket, Lg Lot Of Approx 100+ Ant Jars Most Rare Inc Lightening, Globe, Smally, Dorling, Woodberry, Heroe, Colored Mason & Others, Rare Ant Brass & Metal Weather Vanes, Rare Ant Lightening Rods & Extra

Bulbs, Ant Cast Iron Banks, Lots Of Old Cast Iron Inc Griswold & Waggoner, Ant Metal & Porcelain Signs, Very Old Marbles, Lots Of Old Metal Toys Inc Trucks, Semis & Others, Several Old Wood Adv Boxes Inc Winchester & Others, Ant Toy Steam Engine W/ Original Box, Ant Pocket Watches, Several Ant Adv Yardsticks, Rare Ant Suitcase Style Metal Coke Cooler, Ant Steam/Train Engine Parts, Ant Wood Bouncy Horse, Ant Coffee Grinder, Ant Metal Complete Erector Set, Ant Glass #6, #8 & Tulip Bottom Butter Churns, Ant Candy Store Scales, Several Ant Crocks Inc Redwing, Western & Others, Several Galvanized Pce Inc Ant Round Washtub On Stand, Ant Wood & Wire Egg Baskets, Ant Carpenters Box Complete & Loaded W/Tools, Ant Porcelain Light Covers, Several Prim Tools, Graniteware Pcs, Old Baskets, Hens On Nests, Old Silverware Set, Other Items

**Antique Baseball Cards, Coins & Related Items**

Very Rare Tobacco Cards From 1909-1911 Inc Ty Cobb, Cy Young, Walter Johnson, Christy Mathewson, Tris Speaker, Nap Lajoie, Clark Griffith & Other Hall Of Fame Players, Rare Tobacco Minor League Cards From 1909 (Lg Lot Of These Ballcards Have Been Graded & Authenticated To Be Real), Lg Lot Of 30's, 40's, 50's & 60's Baseball & Football Cards W/Major Players, Many Old Kansas City Chiefs Cards, Several Ant Baseball Gloves Inc Rare Winchesters, Rare Win Bat, 1879 & 1904O Morgan Dollars, 1909 VDB Lincoln Cent, Graded 1964 & 1970 Kennedy Half Dollars, Several Liberty "V" & Buffalo Nickels, Lots Of Indian Head Pennies

**Guns, Vintage Fishing, Antique Knives & Related Items**

2 Win Model 90 Hexagon Barrel Pump 22 WRF Rifles, Win Model 94AE Lever Action 30/30 W/Scope, Win Model 100 Semi Auto 243 W/Scope, Win Model 1400 Pump 12 Ga, 2 Win Model 1200 Pump 20 Ga, JC Higgins Model 5831 Bolt Action 12 Ga, Old Ammo Boxes Full Inc Rem, Victor, Western & Others, Old Gun Powder Tins, Ant Pocket Knives Inc Win, Keen Kutter, D.E., Case, & Others, Old Fishing Lures, Reels & Supplies, Ant Glass Minnow Trap, Ant Lead Molds, Ant Lg Boat Fishnet W/Wood Floats, Other Items Not Listed



**Auctioneers Note:** This Is An Amazing True Blue Antique & Collectors Auction. This Will Be Auction 1 Of 2 For The Guy Simpson Estate. Mr. Simpson Was An Avid Collector Of Rare Antiques, Gas & Oil Memorabilia, Rare & Vintage Baseball Cards & Items, Antique Jars As Well As Knives, Hunting & Fishing. This Will Be An Auction You Do Not Want To Miss. **Sale Order: Antique Furniture Sells First Then Baseball Cards & Coins Then Move Directly Into Gas, Oil & Antique Items. At Approx 1:00 PM Will Offer Guns, Fishing & Related Items. Remainder Of Antiques & Primitives Will Finish Auction. See Ya There!!!**

Terms: Cash or check with proper ID. Now accepting most major credit cards. Nothing removed until settled for. Statements made the day of sale takes precedence over printed material. Everything sold as is where is. Not responsible for accidents. Restroom available. Concessions Provided. Check our website for upcoming auctions and for additional pictures!!



## NANCE AUCTION SERVICE

No Matter How BIG or small, We Do Them All!!!



Col. Bill Nance 417-214-0093 In God We Trust Philippians 4:13 Col. Sean Beazley 417-247-6754

# Sam LLC CRAWFORD AUCTION SERVICE

Will sell the following 5 miles North of Cross Timbers, MO on Hwy. 65.  
Watch for auction signs.

## MONDAY, SEPT. 4<sup>TH</sup>, 2023 - 9:00 AM

**GUNS - COINS - TRACTORS - VEHICLES - MACHINERY - TOOLS - MISC.**



**COINS & GUNS - SELL AT 9 AM**

**Coins:**

- 1838 Large Cent
- 1954 Seated Liberty Quarter
- 16-Standing Liberty Quarters
- 1898-1914 Barber Quarters
- 11-1935 \$1 Silver Certificate & 1 - \$5 Dollar 1935
- 1992-2017 Silver Eagles
- 1879-84-85-86-89 P Silver Dollars
- 1883-90 CC Silver Dollars, Other Silver Dollars
- 1881&1906P Five Dollar Gold

**Guns:**

- 1891 Mauser 8mm
- 19-Radikal Shot Guns, All New In Box
- 10-12 Ga. Pumps
- 9-12 Ga. Semi-Automatic

**TRACTORS - SKID LOADERS**

- John Deere 2840 Diesel, w/Front Loader
- John Deere 4230 Diesel, Cab w/Front Loader
- John Deere 4020 Diesel, Power Shift w/Front Loader
- IH 260A Industrial Tractor & Loader, Diesel, 3 Pt., PTO
- Ford Jubilee, Not Running
- International 300, Tricycle Front
- Case 1835 B Diesel Skid Loader
- Ford CL40 Skid Steer Loader
- JCT Hyd. Drive Rotary Cutter
- 2 - JCT Hyd. Drive Tillers
- 4 - JCT Grapple Buckets & Smooth Buckets
- Hay Forks - Pallet Forks

**VEHICLES & TRAILERS**

- 1983 M923A1 5 Ton Military Flatbed Truck, Cummins Power, Allison Auto, New 49" Run Flat Michelin Tires, 33,500 Original Miles
- '13 Cargo Mate 24' Bumper Hitch Cargo Trailer, Roof Air, 1/2 Bath, Full Rear Door, 2 Side Doors, Power Tongue Jack, Sheddled, Used Little, Nice
- '93 Jayco Pop-Up Camper, Nice
- Bumper Hitch 18' Utility Trailer
- 2004 16' Utility Trailer
- Shop Built 16' Gooseneck Flatbed
- 12' Bumper Hitch Enclosed Trailer
- Gooseneck 20' Stock Trailer
- 2006 Kawasaki Bayou 250, Nice
- 2019 Trailmaster Side by Side, 200cc, 75 Hrs., Like New
- '21 Hisun Sector 750 Crew, Side by Side, 4x4, 1280 Hrs.
- '72 IH 2 Ton Grain Truck, 16' Bed & Hoist, Gas, 4-2 Speed, 50K, Sheddled, Good



- '86 2 Ton Gas w/Shop Built Dump Bed
- 2006 Chevy 1 Ton Crew Cab, Diesel, 4x4, Dual Wheels, Flat Bed, Over 200K
- '01 Chevy HD 3/4 Gas, 4x4, w/Dew EZE Hay Bed, Farm Truck
- '97 Ford 450 School Bus, Gas, Automatic
- '01 Chevy HD 3/4 4x4, Ext. Cab, Diesel

**MACHINERY**

- John Deere HX15 Folding Brush Cutter
- Land Pride 10' Brush Cutter HD
- 3 Pt. Keen Kutter 6' Cutter
- 3 Pt. HD 7' Blade
- 3 Pt. 6' Blade
- John Deere 3 Pt. PTO Tiller
- 3 Pt. PTO Sprayer 60 Gal.
- 2 Quick Hitches
- 3 Pt. Post Hole Digger
- 2 - 3 Pt. Wood Splitters
- 3 Pt. Woodsaw

**FARM MISC. & OTHER**

- |  |  |
|--|--|
| <ul style="list-style-type: none"> <li>10-24' Free Standing Panels</li> <li>WW Squeeze Chute, Ex. Good</li> <li>2 Handyman Jacks</li> <li>Stihl 028 Chainsaw</li> <li>Window AC</li> <li>Hutch</li> <li>2 Western Saddles</li> </ul> | <ul style="list-style-type: none"> <li>Other Panels, Gates</li> <li>Galvanized Water Tank</li> <li>2 Space Heaters</li> <li>2 Pair Wheel Weights</li> <li>Roll Top Desk</li> <li>Bedroom Set</li> <li>Other Misc.</li> </ul> |
|--|--|

**Larry & Linda Nelson - Selling Farm**

- '20 Kubota L2501 4x4 w/LA525 Loader, QT Bucket, 245 Hrs., Like New
- Land Pride 5' 3 Pt. Brush Cutter
- 3 Pt. 6' Blade
- 2 Wheel Trailer, Mesh Floor (3x6x?)
- 2 Walk Thru's
- 4-5 Farm Gates
- 2 Rolls Barb Wire, New
- Wagon Wheel Picnic Table
- Pallet Forks
- 12-15 10' Port. Panels
- Older Squeeze Cute
- 25-6" Steel Posts, New
- Lincoln 225 Elect. Welder
- Other Misc.



TERMS: Cash or good check. Nothing removed until settled. Not responsible for accidents. Watch available. Photo-mata made dry of sale take pre-vidence over printed matter. All items sell as is. No warranties given or implied.

417-998-6629

Cross Timbers, Mo.

CrawfordAuctionService.com

Sam 417-328-9137	Chase 417-399-1904	Chance, CAI 417-298-1751	Tom Poynter Jack Lancaster
---------------------	-----------------------	-----------------------------	-------------------------------

JoAnn's Printing 660-347239

# REAL ESTATE & PERSONAL PROPERTY

# Auction

## SATURDAY SEPTEMBER 9, 2023 AT 10 AM

### REAL ESTATE SELLS AT 12 NOON SHARP

\*\*REAL ESTATE IS AVAILABLE PRIOR TO AUCTION!

## Location: 31478 CR 95-150, Mountain Grove, MO 65711

**DIRECTIONS: FROM AVA, FOLLOW E 76 APPROX 23.3 MI. TURN LEFT ONTO MO-95 N. TRAVEL ABOUT 4.1 MI TO COUNTY RD 95-150, TURN LEFT. CONTINUE 2.7 MI. DRIVEWAY IS ON THE LEFT WITH RED GATE.**

**FROM MTN GROVE, FOLLOW MO-95 S 5.0 MI. TAKE RIGHT ONTO STATE HWY AE. CONTINUE APPROX 4 MI. TURN LEFT ONTO COUNTY RD AE-153, CONTINUE 0.8 MI. TURN LEFT AGAIN ONTO COUNTY RD 95-150. DRIVE IS ON RIGHT.**

**WATCH FOR CHEYNEY AUCTION SIGNS!**

**REAL ESTATE** Beautiful 50 acres m/l farm located on a private setting in Eastern Douglas County. If you are looking for seclusion or privacy for your own piece of paradise, this may be the perfect opportunity for you. 2br, 2ba ranch style home with rustic features, large porches and sunroom. Property is fenced and cross fenced with barb wire and welded steel corners, gated entrance and ready for cattle or horses. Good hayfields and pasture, running water and 2 spring fed ponds that are stocked with bass, catfish and bluegill, with a good mixture of mature timber throughout. Wildlife is abundant with plenty of deer and turkey if you're a hunter or just enjoy watching the wildlife from the front porch. A large approximately 40x40 shop building that is insulated, has electric and concrete floor. Also has a smaller barn/animal shelter. **AUTOS** 2018 Toyota 4 Runner—TRD Pro Package \*55K miles, NEW wheels/tires, extra floor mats **TRACTOR** Kubota

**M4-071 Tractor** \*220 hrs w/ Kubota LA1154 Loader **EQUIPMENT** Bush Hog 3510—10' \*pull type • Kawasaki Mule ProFXR—Glass windshield, Hardtop, Rear glass, Rear bumper \*2500 mi • Yazoo Kees Midmax Zero turn Mower—Commercial grade \*48" cut \*New belt & blades **BEEHIVES** 7 hives w/ Carnolian Bees • Smoker • 6 Frame Electric Honey Extractor •

**TOOLS/EQUIPMENT/OUTDOOR** Softub Jacuzzi • Craftsman 42" Riding Mower • Troybilt Super Bronco rear-tine tiller • 3 pt pto 10" auger • 3 pt pto Euroc seeder \*300 lb • Original tires (NEW) off 4 Runner • Ariens FT524R front tine tiller • PowerBoss pressure washer • Delta 10" table saw • Stihl MS 390 chainsaw • Dewalt 1.6 hp 15 gal air compressor • Portable AC • 3 ton floor jack • Misc assorted tools • Large assortment Pneumatic air tools • Misc T posts • Aluminum extension ladder • Chicken wire • Buck stove • Saddle rack • Vehicle body work tools • Misc electrical/plumbing • Misc yard tools • Adirondack chairs • Big Green Egg cooker • Antique metal outdoor chairs • Army cot • Nesting box • Electric grill • Astrolon telescope 525x **FIREARMS** Kimber 45 1911 Platform • Colt 45 1911 Govt. model, dual springs, adjustable sites • Winchester model 70XTR .22-250 circa 70s w/ Bushnell 6x18-50mm scope • Thompson Center Renegade 50 cal • Rossi 410 • Italian made 44 black powder • Traditions "Springfield Classic" black powder 50 cal • 2- Black powder parts guns • 177 cal Remington Air-soft

**DYES (RCBS, LYMAN, & HORNADY) & RELOADING SUPPLIES** 9mm • 35 Remington • 257 Roberts • 4570 • 30-06 • 357 Mag • 7mm WSM • 500 S&W • 7mm 08 • 22 Hornet • 300 Win Mag • 243 • 303 British • 300 Weatherby Mag • .22-250 • 45 ACP • 270 • 25-06 • Lyman manual press • Tumbler • Pistol primers- large & small • Small rifle primers • IMR 4831 smokeless powder (3 lbs) • Winchester 760 powder • Nosler, Barnes, Spear reloading manuals **NEW & ONCE FIRED BRASS** 22-250 • 270 • 7mm Mag • 25-06 • 30-06 • 357 Mag • 500 S & W • 243 • 303 British • 300 Win Mag • 30-30 • 7m-08 • 7mm WSM • 9mm • 45 • 40 cal • 45 Auto • Misc bullets • **Scopes**- 3x9 Redfield • Tasco Pronghorn 3x9 • Bases & rings

**HOUSEHOLD** Round table w/ 4 chairs • Leather sofa, loveseat, arm chair w/ ottoman • Wood coffee tables, end tables, TV stand • Queen bed/ headboard • Dresser w/ mirror, matching armoire • Nightstand w/ drawers • Antique side table

• Matching chest of drawers, ottoman, small dresser • Corner cabinet/ TV stand • Antique washstand • Jewelry armoire • Western floor lamp • Kenmore Washer & Dryer • Samsung refrigerator • Large coffee/food servers • Canning pot • Vintage National Chair Co. Table w/ 6 chairs • Toaster oven, Crock pots, Food dehydrator • Deep freezer • Roaster oven • Deep fryer • Waffle maker • Panasonic plasma TV • Sanyo flat screen TV



**FOR MORE PHOTOS, VISIT OUR WEBSITE CHEYNEYAUCTIONS.COM OR FIND US ON FACEBOOK!**

## Cheyney Auction Company, LLC

Real Estate • Livestock • Farm & Ranch • Equipment • Household • Antiques

Travis Cheyney, Auctioneer • Buddy Boyd, Ringman

417-543-8751 • cheyneyauctions.com

Real Estate Terms: 10% down day of auction w/ Bank letter. ANNOUNCEMENTS Made Day Of Sale By Auctioneer Take Precedence over any Printed Matter. Not Responsible For Accidents. All items sold as is, where is, with no guarantee. Terms of sale: cash, credit/debit card, or check with valid ID.



# LABOR DAY AUCTION

**MON., SEPT. 4, 2023 • 9:00 A.M.**

**THE MOFFAT CENTER**

**467 CO RD 604, LINN, MO**

**DIRECTIONS:** FROM LINN, TAKE HWY. 50 WEST 1 ½ MI. TO CO. RD. 604, TURN LEFT & GO 1 MILE TO BUILDING ON RIGHT, OR FROM JEFFERSON CITY, TAKE HWY. 50 EAST APPROX. 18 MI. & TURN RIGHT ON CO. RD. 604.

**PAT SCHROEDER & THE WILSON FAMILY**

**\*\*PREVIEW - SUNDAY SEPT. 3RD 1:00pm to 4:00pm\*\***

### LAWN & GARDEN, 4 WHEELER, WAVE RUNNER

JD 400 mower w/ hyd. deck & front blade, 3 pt; Cub Cadet 2206 mower shaft drive; Craftsman YT 4000 w/ bagger & front blade 24 HP; Craftsman 26 in. snow blower L/N 7 HP; Bombardia Seadoo GTS Wave Runner; Yamaha 350 Ultramatic 4 Wheeler.

### TRAILERS

5 X 8 2 wheel trailer; 5 x 8 enclosed trailer; 6 x 14 2 wheel trailer

### HOUSEHOLD

Samsung Active Wash washer & dryer w/ steam; Frigidaire side by side refrigerator black; Kenmore upright freezer; Oak table & chairs; Pine hutch; 2 Door cabinet; Queen size bed w/ Sleep Number mattress – nice; Jewelry armoire; Leather type sofa; Recliners; Patio furniture; Wing back chairs; Nightstands; Dressers; Chests; End tables; Sewing supplies; Sewing machine; Lots of craft items; Large amount household & décor items.

### ANTIQUES & COLLECTIBLES

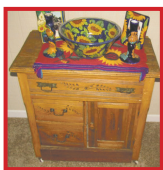
Cider press; Large wood barrels; Cream cans; Old RR stepstool; Singer treadle sewing machine; Oak curved glass china cabinet; Glove box dresser w/ marble insert; C/I iron dinner bell; Walnut table; Large amount costume jewelry; Oak stand table; Kraut cutter; Wood adv boxes; Wash boards; Corn shellers; C/I tea kettle; Sausage stuffer; Over 100 pcs. American Pottery – McCoy, Redwing, Van Briggle, Brush, USA & others; JD pedal tractor; 100+ pcs brass décor; Pyrex; C/I skillets; Guitar; Goose TV light; Quilts; Granite coffee boilers – blue & grey; Brunswick table top victrola; Waterbury double dial calendar clock; Coffee grinders; 25+ pcs. Fenton glass incl: 3 lamps; animals, dolphins; vases, baskets; Carnival glass – Amethyst & marigold; Carnival water set; HP chins; Crocks; Lots of antiques & collectibles not listed.

### TOOLS & MISC.

Upright air compressor; Radial arm saw; Drill press; Wood miter saw; Thickness planer; Large amt wood working tools; Power tools; Clamps; Air hose; Air tools; Backpack Leaf blower; Weed eaters; Wrenches; Hand tools; Socket sets; Hyd. lawn mower lift; Ext cords; 3 hole stainless sink; ATV ramps; Small Standard Gas pump; Gas trash pump; Power washer.

### GUNS - SELL AT 12 NOON

Winchester 1886 38-56 Oct barrel; Winchester 1887 10 ga. Lever; Winchester Mod 42 pt. 410 pump; Winchester Mod 1892 carbine 2520; Winchester 1873 oct barrel 22 long; Winchester Mod 36 9mm shotgun; Box of 9mm shotguns shells – sells separate; Springfield Krag 30-40; Springfield Mod 1868 50-70; Remington 870 12 ga; Remington 1877 Smoot pistol; Hudson 410 single; Winchester 94 32 WIN SP pre-64; LC Smith 12 ga double 30 in.; Remington Speed Master 22 auto; Crescent Arms 20 ga. Double 26 in.; Winchester 67A 22 ca. single; Springfield 58 ca musket; Colt Series 80 1911 gold cup; Browning auto 5 12 ga Belgium; Interarms Mark X 338 Win mag; Custom Steyr Manicher 270 bolt; Marlin matching serial numbers 100th anniversary 30-30 & 22 lever action rifles; Browning 12 ga gold auto Belgium w inv. chokes; Browning 12 ga auto B80 rare, inv. chokes; Moss 410 pump; Marlin 30-30 lever; Winchester 290 deluxe 22 auto; 2-CZ 9mm x 18 auto pistols; Rem Mod 742 243; Glenfiled 22 LR; Henry Special Edition 22 LR; Ammo for some of above guns; Pistol safe; Holster; Slings; Ranger finder. Note: Guns will be brought to auction location by the family. They can be viewed at auction location after 8:00 a.m. day of auction.



**Note:** This is a large auction. Pat is selling her home at the Lake of the Ozarks due to her husband's passing. She has lots of nice things to be sold. Her husband had a shop full of tools. As always, our holiday auctions have some of our better merchandise. We will run 3 auction rings most of the day. See pictures at [www.moffatauction.com](http://www.moffatauction.com). Pease make plans to attend. Rick **Terms:** Cash or good check with proper identification. All sales are final. Everything sells as is, where is. Proper identification is necessary to obtain a buyer's number. Announcements day of sale supersede all printed material. Food on grounds.

## RICHARD MOFFAT AUCTION SERVICE



573-761-4293  
Jefferson City, MO

Auctioneers-  
Richard Moffat & BJ Moffat  
[www.moffatauction.com](http://www.moffatauction.com)

573-690-2823  
Linn, MO

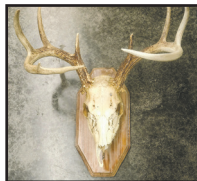
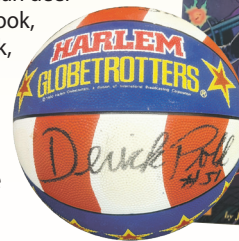
# R&R AUCTION SERVICE

## AUCTION FRIDAY, SEPTEMBER 1ST AT 6PM

in the R&R Auction House - 1644 South Ash in Buffalo, MO



Quilts, afghans, pocket knives, sheath knives, NASCAR, ball cards, tools, ratchet straps, tool boxes, arrows, crossbow, compound bows, holster, gun cases, powder horn, Hot Wheels, dozen Silver Eagles, lots of proof sets, bags of old pennies, lots of \$1 silver certificates, foreign coins, Peace dollars, stained glass, brass figurines, brass cat bank, iron wheels, chicken waterer, old plows, metal gas and kerosene cans, old Texaco lubricant barrel, DVD's, coasters, comic books, ammo including 30-06, 17HMR, 300 BLK, 12 ga., 9 mm, 22, 45 auto and more, Wall hanger revolver, Wards 12 ga. Single shot, binoculars, game cam, old hand school bells, old scales, autographed Louisville Slugger bat, autographed Harlem Globetrotters basketballs, McCoy cookie jar, Professional 2 piece pool cue, old campaign buttons, antique shaving mirror, The Billy Kid Stetson hat, cutting board, lighters, European deer mount, Eddie Arnold songbook, Judy Canova song folio book, lots of hand lawn tools, glassware, and more yet to come so keep a watch on [www.rrauctionservice.com](http://www.rrauctionservice.com) for new pics As there is sure to be more great items added.



Please keep watch on our website for added photos.

**TERMS:** 10% buyer's premium. Cash, check, or credit card with proper I.D. nothing removed until settled for A 3% fee will be added to credit card purchases. Not responsible for errors in listing. Any announcement made sale day will take precedence over any printed matter.

GENERAL AUCTIONEERS

Auction & Appraisals SERVICE

For more information contact Professional Auctioneer Russ Weeks at 417-576-7357 or check out [www.rrauctionservice.com](http://www.rrauctionservice.com)

Serving this area's auction needs since 1997 with honesty and professionalism.  
[www.rrauctionservice.com](http://www.rrauctionservice.com)  
(417) 576-7357 or (417) 345-4140



# 7th ANNUAL FFA CONSIGNMENT AUCTION

**Friday, September 1st, 2023 ~ 10:00 AM**

**LOCATION: 18808 State Hwy 83, Wheatland, MO; Empty Lot Near High School Gym At Wheatland School (Watch For Signs)**

**Auction For Wheatland FFA**



### Furniture

Oak Desk Chair, End Tables, Iron Bed Frames, Cedar Chest, Hope Chest, Storage Bench, Wagon Bench Seat, King Size Bed Frame, Toddler Bed, Several Light Fixtures, His & Hers Bathroom Vanity Top, Queen Bed, Twin Blow Up Bed, Singer Surger Machine, New Home Sewing Machine, Kids Art Station, Several Pictures, Wood Frame Grouse Pictures, Cot W/Cushions, Baby Crib, Gas Lite Fireplace Insert, Thread Organizer, Jar Organizer, Ant Picture Frames, Carpet Tack Strips, Front Door, Elliptical, Other Items Not Listed

### Antiques, Collectibles & Households

2 Gal Adv Whiskey Jug, Cast Iron Signs Inc Farmall, Massey Ferguson, Pennzoil, Champion Spark Plugs, Old Cast Iron Banks, Porcelain Signs, Ant Jars & Bottles, Black Americana Porcelain Figurines, Ant Doll, Ant Checker Board, Cast Iron Store Coffee Grinder, Other Cast Iron Pcs, Fiesta Ware, Pitchers & Pcs, Ant Thermometer, Ant Glassware Of Various Kinds, Glass & Porcelain Figurines, Precious Moments Collectibles In Original Boxes, Old Teapots, Lots Of Old Souvenir Signs, Concert Posters, Old Doilies, Approx

300 Yds Of Various Style Material, Sewing Supplies, Remnant Rugs, 5 Boxes Of Crafts & Cookbooks, Pots, Pans, Dishes & Household Items, Other Items Not Listed

### Tools & Outdoor Items

Power Washer, Chainsaws, Weed Eater, Air Compressor, Dewalt Sawsall, Ladders, Vacuum Pump, Shop Lights, Black Smith Tools & Stamp Sets, T-Post Drivers, Torch Head, Dewalt Tool Bags, Dewalt 20 Volt Chargers, New Band Saw Blade, Welding Rods, Electric Chainsaw, Hand Saws, Sm Hand Tools, Space Heaters, Assortment Of Nuts & Bolts Organizers, Bully Step Bars & Brackets For Truck, Tires & Rims Inc Four 235/65R16 Tires & Rims For A Ford Ranger, Four 235/70R16 Hancock Tires Only, One P205/70R15 Trailer Tire Like New, One 235/80R16 On A 8 Hole Rim, One 225/75R15 Tire & Rim, One 225/75R15 Tire & Rim, One 5.30x12 Like New Boat Tire & Rim, One 205/70D15 Tire Like New, Mountain Bike, 5 Speed Bike, Bicycle Trailer, Bicycle Parts, Boat Anchor, Deer Antlers, Turkey Calls, High Country Compound Bow, Pearson Youth Compound Bow, Knives, Sword, Other Items



**Auctioneers Note:** Again It Is An Honor To Be Conducting This Auction For The Wheatland FFA Program. As Always 100% Of All Commission Money Goes Directly To The FFA Chapter So Checks Will Be Made To Wheatland FFA. Again As Always There Will Be Hundreds Of Items Added Sale Day Not On Sale Listing As Last Minute Consigners Bring Items Day Before Auction. Please Plan Now To Attend & Be Surprised With Us. **Sale Order: Normally We Try To Start With Furniture First But As Consigners Bring Different Items Will Be Mixed Auction Order. See Ya There!!!**

Terms: Cash or check with proper ID. Now accepting most major credit cards. Nothing removed until settled for. Statements made the day of sale takes precedence over printed material. Everything sold as is where is. Not responsible for accidents. Restroom available. Concessions Provided. Check our website for upcoming auctions and for additional pictures!!



## NANCE AUCTION SERVICE

**No Matter How BIG or small, We Do Them All!!!**



**Col. Bill Nance 417-214-0093 In God We Trust Philippians 4:13 Col. Sean Beazley 417-247-6754**

The following property from the estate of **Darlene Mullen** will be offered for sale by public auction on

**Saturday & Monday, September 2 & 4, 2023**  
**9:00 a.m. on Saturday and 10:00 a.m. on Monday**

The auction will be held at 822 Beamer Lane, Cuba, MO. **Directions:** From Hwy. 19 in Cuba, take Washington St. (Old Hwy. 66 also Hwy. ZZ) 4 miles west to Beamer Lane. Turn right, proceed to auction site. Roads will be marked the day of sale.

**TO BE SOLD ON SATURDAY - COLLECTIBLE & HOUSEHOLD:** Crosley juke box (works); Pump organ; Plymouth, windup mantle clock; "Pepsi" battery pendulum clock; "Crawford County Creamery" ¼ pint cream bottle; WWI & WWII Cuba Community Service Record book; 1949, '61, '62, '69, '70 & '72 Cuba Jaguar year books; 1935 Cuba school banner; Cuba, MO, metal vehicle tax plates; Lot of "Rainbow Motel" door keys; Quarter Collector Map w/some quarters; A. Pujols, F. Vina, J.D. Drew, J. Edmonds bobble heads; St. Louis Cardinals memorabilia; Egg scale; One-gal. crock; Wooden Coca Cola case w/18 bottles; "Breakstone" wooden cheese box; Old "Eureka Springs" cup; "Phillips 66" button; 45 rpm records; US 66 refrigerator magnets; Farm house table, 6 ft., w/6 chairs; Magnavox home theater; Dining room table, 6 ft., w/ 4 regular chairs & 2 captain chairs; Three pedestal tables w/4 chairs each; Buffet, lighted china cabinet & table w/ 6 chairs; ONN 65" flat screen TV w/roku; TCL flat screen TV, 50" w/roku; TCL flat screen TV, 32"; Hide-a-bed couch; Sofa table; End tables; Standing writing desk w/beveled mirror; Wooden desk; Entertainment center; Lighted display cabinet; Two-piece hutch; Three lighted, glass-door china cabinets; Display cabinets; Secretary; Howard Miller, moon phase grandfather clock; Small oak wardrobe w/beveled mirror; Armoire; Oak, gentlemen's dresser; Bedroom suite-queen bed, dresser w/mirror, chest-of-drawers, night stand; Queen sleigh bed; Oak cupboard; Wooden jewelry chest; Plant stand; Wooden lectern; Occasional tables; 1964 Cardinal World Series beer glasses; Small Budweiser beer glasses; "John Deere" toy tractors; "Ford" toy tow truck; Costume jewelry; "Protectors of Peace" figurines; Cookie jars; Disney/Bradford collectors' plates; Lenox glass pieces; Fenton glass pieces; Pink Depression pieces; Salt & pepper shakers; Pitcher & glass set; Beer steins; Tea pots; Misc. glassware; Lasko ceramic heaters; EdinPURE infra-red heater; Thermal Blaster propane heater; Bird cage w/singing bird; Seiko musical clock; Large lot replica gas pumps; Large lot Coca Cola items. **MISCELLANEOUS:** Box trailer for storage, 40-ft. (no axle); Shelving; String trimmer; 55-gal. metal barrels; Large "Pepsi" trash can on wheels; Radio Shack weather alert radio; Mannequins; Large lot Christmas decorations; Easter decorations. **TO BE SOLD ON MONDAY - CATERING EQUIPMENT:** Two-door commercial cooler; DCS, SS, 6-burner, gas range w/grill & double oven; Apprx. twelve 8-ft., "LifeTime" plastic-top tables; Apprx. eight 6-ft., plastic-top tables; Two 4-ft. tables; Three, 6-ft. fold-up picnic tables; Apprx. 100 "LifeTime" folding chairs; Metal folding chairs; Restaurant high chairs; Mobile island; SS kitchen racks; Bakers' rack; Sharp microwave; Large "Master Built" electric deep fryer; Electric griddles; Electric wok; Electric knives; Five chafing service stands w/fuel; Chafing service pans; Chocolate fountain; 100-cup coffee pot; Bunn coffee maker; Electric roasters; SS skillets; Kitchenaid mixer; Hand mixer; Waffle irons; SS and aluminum stock pots; Coolers; SS bowls; Plastic salad bowls; Serving bowls; Tupperware bowls w/lids; Gallon plastic pitchers; Drink dispensers; Serving trays; Serving frames for disposable pans; Three-tiered buffet server; Kitchen & serving utensils; Knives; Flatware; Salt & peppers (New); Deep glass pie plates; Springform pans (New); Bakeware; Chargers; Cutting boards; Aprons & towels; Tablecloths & placemats. **SOUND EQUIPMENT:** Pioneer Pro laser karaoke machine; XR560, 200 amp mixer; Ibanez guitar amp; Atry UHF cordless mike system; Sound Tech speakers w/stand; Ion Bluetooth speaker; Microphone stands; Pioneer, 2-disc disc player; Panasonic stereo. **MISCELLANEOUS:** "Mobilgas Special" gas pump; Games; Sewing box & notions; Pictures; Wall decorations; Light bulbs; "Hersey Kiss" dispenser (New); Collector pocket watches; Collector pocket knives; Cookie jars; Pandigital 7", 64 MB picture frame; Decorator radios; Crosley radio/CD player/turntable; Hoover upright vacuum; Power strips; Extension cords; Mop bucket w/mop; "Savor Pro" gas grill w/side burner; Electric grill; 55-gal. metal barrels; Lot of Lincoln pennies; Large lot Missouri .05 tax tokens & mills. **YARD ORNAMENTS:** Five-foot, metal-art rooster; Military, airplane bomb (deactivated); Wooden Tweety Bird cutout; Small, metal-wheel wheelbarrow; Wishing wells; Bird bath; Gazing ball on stand; "Welcome" signs; Concrete bench; Concrete & resin items: Dutch boy & girl, cardinal, pr. tom turkeys, fox w/kits, parrot on stand, donkey, collie dog, chickens; JD plow, basket, misc. small items.

**Many more items too numerous to mention on both days.**

**AUCTIONEER'S NOTE:** Please note the early starting time on Saturday. There is so much here for everyone. This will be a two-day sale with mainly household & collectables on Saturday and mostly catering items on Monday. I promise there is something for everyone. See you Labor Day Weekend.

**Lunch will be served by Jim Smith and Home-Style Eats • See pictures at [www.grossauction.com](http://www.grossauction.com) or Auction Zip #22263**

<b>SALE CONDUCTED BY:</b>	
	Chas & Phyllis Gross 1863 Hwy 50 Owensville, MO 65066 573-437-3631 <a href="http://www.grossauction.com">www.grossauction.com</a> or <a href="http://www.auctionzip.com">www.auctionzip.com</a>
	Jason Gross, 2839 Brinkman Rd., Owensville, MO 65066 573-437-6165 <a href="http://www.grossauction.com">www.grossauction.com</a> or <a href="http://www.auctionzip.com">www.auctionzip.com</a>
Members of Missouri Professional Auctioneers Association 	
Terms: Cash or "Approved" check. No out of state checks. Announcements day of sale supercedes printed material. Everything sells as is. No property to be removed until settled for. Not responsible for accidents should any occur	

# LARGE VEHICLE CONSIGNMENT AUCTION

**SATURDAY, OCTOBER 14, 2023 AT 10 AM**  
**WHEELER AUCTIONS LOT, 23101 HWY. 24, PARIS, MO 65275**



**AD DEADLINE: Friday, Sept. 22, 2023**  
 Call 660-327-5890 or email [ads@wheelerauctions.com](mailto:ads@wheelerauctions.com)  
 to have vehicle listed in the advertisement.

**RECEIVING VEHICLES ON WHEELER AUCTIONS LOT**  
 Monday, October 2 – Thursday, October 12  
 Monday – Friday, 8 am to 5 pm, Sat & Sun 9 am – 2 pm

**AUCTION TERMS**

- 8% Commission
- \$50 Non-Refundable Title Fee Due When Titled Vehicle or Trailer is Dropped Off at Wheeler Auctions
- All Vehicles will be sold AS IS. Consignors are encouraged to disclose all known issues with vehicle
  - Internet Buyers Premium 7% with \$1500 Cap
- All Titles must be applicable for vehicles to be sold



**Wheeler**  
 AUCTIONS & REAL ESTATE

23101 HWY. 24, PARIS, MO 65275 | 660-327-5890  
 WWW.WHEELERAUCTIONS.COM

**HARLEY PANHEAD DISTRIBUTOR:**  
 original, chrome + complete. \$125. 573-764-3517. Call in PM.

**1962 HARLEY SPORTSTER 900CC:**  
 original distributor. \$50. 573-764-3517. Call in PM.

**SADDLE: 20" Buffalo Saddlery with suede padded seat. \$350. 417-718-5347. Conway.**

**SPORTSET BY SARGENT:** Fishing pliers in leather sheath. Like a multi-tool. \$20. 636-239-2695 or 314-560-5700. Washington.

**NEW SQUARE D RAINPROOF 50AMP DISCONNECT:** \$160. 636-239-2695 or 314-560-5700. Washington.

**USED JET HOME POLLUTION CONTROL PANNEL:** Model CP700. \$65. 636-239-2695 or 314-560-5700. Washington.

**HEARTH CRAFT GLASS BI-FOLD FIREPLACE DOORS PURCHASED AT FORSHAW'S FIREPLACE:** Antique brass. \$160 obo. 636-239-2695 or 314-560-5700. Washington.

**RUBBERMAID 10 CUBIC FOOT PULL BEHIND DUMP CART: \$200. 417-718-5347. Conway.**

**1 PAIR OF KEY BRAND MEN'S JEANS:** Waist 38, Length 34. \$10. 636-239-2695 or 314-560-5700. Washington.

**ANTIQU 4 HP ENGINE:** Built by Continental Motors Corporation. \$150 OBO. 573-308-5884. Rolla.

**OUTDOOR WOOD FURNACE:** Heats 3,000 sq. ft. & water. \$7,500, plus tax, plus installation. 573-201-6453.

**TRAILER HOUSE RIMS:** \$10 each. 573-308-5884. Rolla.

**'85 FORD PICKUP PARTS:** Passenger door with window glass & mirror \$30. Also, Tailgate for '85 Ford pickup \$25. 573-308-5884. Rolla.

**INTERNATIONAL PICKUP TRANSFER GEARBOX:** \$150. 573-308-5884. Rolla.

**NEW JELD WEN 5' LEFT HAND SLIDING GLASS DOOR WITH SUNSTABLE INTERIOR BLINDS:** Clear tempered glass, Desert Sand trim/hardware. Retail \$2655 Sell \$900. 417-693-0389. Conway.

## BUFFALO LIVESTOCK MARKET LLC



276 Hwy 32 W., Buffalo, MO

**August 26<sup>th</sup>, 2023**  
**Receipts: 407**

**REPRESENTATIVE STEERS**

300-400 @	265.00 to 322.00
400-500 @	255.00 to 295.00
500-600 @	235.50 to 254.00
600-700 @	235.00 to 245.00
700-800 @	225.00 to 237.00
800-900 @	205.00 to 227.00

**REPRESENTATIVE HEIFERS**

300-400 @	260.00 to 280.00
400-500 @	240.00 to 255.00
500-600 @	240.00 to 260.00
600-700 @	220.00 to 240.00
700-800 @	215.00 to 233.00
800-900 @	175.00 to 210.00

**FEEDER BULLS**

300-400 @	240.00 to 285.00
400-500 @	235.00 to 270.00
500-600 @	220.00 to 245.00
600-700 @	215.00 to 230.00
700-800 @	200.00 to 217.00
800-900 @	180.00 to 205.00

**STOCKS COWS**

Bred Cows 1400.00 to 1775.00  
 Cow/Calf Pairs NT

**SLAUGHTER BULLS**

High Yield 130.00 to 132.00  
 Low Yield 105.00 to 118.00

**SLAUGHTER COWS**

Fleshy 105.00 to 128.00  
 Med Flesh 104.00 to 118.00  
 Light Flesh 95.00 to 115.00

**QUESTIONABLE HEALTH OR CRIPPLE COWS**

70 Down

**Poor Quality, Dairy X, Long Horn X Cattle will not be reported**

**MON-WED MARKET REPORT**  
 Listen to KJEL 103.7FM • Lebanon or KYOO 99FM • Bolivar

**VIEW OUR SALES AT CATTLEUSA.COM**

**CALL FOR TRUCKING OR ON-FARM VISIT**

**Lyle Caselman • Owner-Manager**  
 417-345-7876 • mobile 417-533-2944  
**Leon Caselman • Owner**  
 417-345-4514 • mobile • 417-588-6185



## MID MISSOURI STOCKYARDS

REGULAR SALE EVERY  
THURSDAY 11AM

WATCH OUR WEEKLY SALE IN REAL TIME ON [DVAUCTION.COM](http://DVAUCTION.COM)

For Farm Visits, Market Updates, or Trucking  
 Call **Zach Cox 417-777-1320**  
**Dan Romine 573-578-4939**

**Competitive Buyers!**  
**Competitive Commission!**  
**Competitive Market!**

Barn: 417-532-9292 [Facebook](https://www.facebook.com/midmostockyards)

I-44 • Exit 123 "just outside of Lebanon"  
 17505 Route 66, Phillipsburg, MO 65722

For weekly market updates, visit us at  
[www.midmostockyards.com](http://www.midmostockyards.com)

**FOR SALE:** 2 Dayco motorcycle covers for Harley or other big bikes. \$50 each. 417-260-0941. Raymondville.

**CHILTON'S AUTO REPAIR MANUAL:** American & Volkswagen Cars 1969-1976. \$35. 417-260-0941. Raymondville.

**MAC'S TIEDOWN STRAPS:** Like New. \$80. 417-260-0941. Raymondville.

**3 ARMY CANTEENS:** Mess kit, belt & duffle bag. \$60 for all. 417-260-0941. Raymondville.

**PITTSBURGH HEAVY DUTY 3-TON FLOOR JACK:** Never used. \$195. 417-260-0941. Raymondville.

**???CDL LICENSE??? FAST & ECONOMICAL:** Meets all requirements of the new ELDT Law. 2 days training. Total cost of \$1,500. \$100 rebate with this ad. You need a learner's permit & ability to drive a manual. Jefferson City, Strafford & Willow Springs, Missouri. Please call 573-353-2853. [www.capitaltruckdrivinginstitute.com](http://www.capitaltruckdrivinginstitute.com).

**TOY AUSSIEDOODLE:** 8 weeks old male, will weigh 5-7 lbs. Call 417-664-5926.

**2001 FORD 3500 BLACKOUT VAN:** New tires, battery, brakes. Custom interior, mechanically sound & solid. Clear title, 2 owners, no smoke. 170,XXX miles. \$8,950 or trade. 417-650-7069.

**BUTLER LOGGING:** Making landowners happy is my number one goal. Paying top dollar on all your timber. Call me 417-448-9323. And see what I can do for you.

**RAMBO PURSUIT ELECTRIC HARDTAIL FATBIKE:** Model 750-26. Like new. Approximately 30 miles ridden. Includes added back Rambo rack. \$2,200. 417-650-7069. Lebanon.

**16X80 BUCC TRAILER HOUSE:** New in 1996. Has new roof, 3 bedrooms, 2 bath, skirting and title. \$10,000.00. Located at 22740 Pin Oak Ln. Summersville, MO. Buddy Bird 417-331-9501 or Pam 417-331-9038, evening or weekend.

**80 ACRES IN MACKS CREEK:** Power, water, artesian wells, good hunting. \$2,500 per acre, as is. Text 573-836-6414.

**BRINKMANN 8-QT. OUTDOOR PROPANE GAS FISH FRYER:** Big aluminum pan. Excellent condition. \$40. 210-787-8222. Linn Creek.

**JUMBO FLOAT:** 95" long x 80" wide x 10" high. Heavy gauge vinyl, Safety valve, 2 screw valves, 12 rope holders, water plug, nylon rope around it. Like new. \$150. 210-787-8222. Linn Creek.

**2012 FORD LARIAT:** 4-door, 4WD, 231,000 miles, all leather interior, tires-75%, v6 with turbo. \$8,500. 660-492-7191.

**GUNSMITHING-**Older Rifles, Shotguns, Handguns, all 22LRs. Any make, any model, estate appraisals. Camdenton. 573-363-5801.

**EXCAVATOR MOUNTED FORESTRY MULCHING FOR UNDERBRUSH CLEARING:** Call Nathan @ 417-259-2785.

**CATERPILLAR 277C SKID-STEER:** 2918.7 hours, new tracks & 78" bucket. Enclosed cab, air. Good condition. \$30,000 Cash, OBO. No trades. 314-420-3308. Potosi.

**TIRE:** 225x65R17 Valera HT Primewell. 95% tread. \$15. 210-787-8222. Linn Creek.

**DARDEN PROFESSIONAL TIMBER HARVESTING, BUYING STANDING TIMBER:** Great prices, improve wildlife habitat and improve forest health. State Certified & Fully Insured! 573-247-4808. Salem.

**2023 FALL** Lebanon Community **GARAGE SALE & MARKETPLACE**

at the **Cowan Civic Center**  
500 E. Elm St. Lebanon MO 65536

<b>FRIDAY</b>		<b>SATURDAY</b>
<b>09/01/23</b>		<b>09/02/23</b>
<b>9am-4pm</b>		<b>9am-4pm</b>

**OVER 150 BOOTHS**

Featuring a mix of both old & new items

**FREE ADMISSON TO SHOP**

**GARAGE SALE-FLIPS- FINDS-CRAFTS**  
**BOUTIQUES- ANTIQUES-COLLECTIBLES**  
**OVERTSTOCKS-BUYOUTS & MORE**

**FREE GOODIE BAGS**  
to the first 50 shoppers daily!



**FOR SALE AUSSIEPOOS:** DOB 6-7-23, UTD on worming & vaccinations. Vet checked & microchipped. \$250. 573-864-4266. Salem.

**Darrell McClanahan for Governor of this great state of Missouri 2024. Find me on X @MBattleflag advocating for fija.org. This is being paid for by Darrell McClanahan. April Miller-McClanahan, Treasurer.**

**4 GOOD USED SIDE-BY-SIDE/4-WHEELER TIRES:** \$100 or trade. 573-734-2822, leave message.

**2 REAR FENDERS FOR 1946-1948 CHEVROLET CAR:** \$200 or trade. 573-734-2822, leave message.

**PASTURE RAISED CHICKENS & PASTURE RAISED THANKSGIVING TURKEYS:** 417-741-2446.

**DACHSHUND PUPPIES:** Registered, shots, wormed. Long haired males piebald and female short hair red. 417-260-1917. Raymondville.

**HOSPITAL BED:** Very good. \$400. 636-828-4330. Marthasville.

**50 EWES: 1-5 years old. \$225 a piece. 417-733-2625. Louisburg.**

**2 TIRES: 225/75R16, Mud & snow, 90%. \$80. 636-828-4330. Marthasville.**

**2006 FORD F-550 DIESEL: 16' Flatbed, 86,000 miles. 928-587-8725. Pomona.**

**FREE 4 CUTE KITTENS & MOTHER:** To be given away to loving & caring homes. If interested call for more information. 417-469-2123. Mountain View.

**EXERCISE BIKE:** In good condition. \$65. 417-532-2344.

**MALTIPOO PUPPIES & REGISTERED DOXIN PUPPIES:** 573-247-6273.

**MISC. MECHANICAL TOOLS:** Small set \$25. & Large set \$35. 417-532-2344.

**LARGE COCA-COLA NOVELTY SET/ GROUP:** \$50. 417-532-2344.

**AKC BEAGLE PUPS:** Blue Tick & Tri colors. 16-weeks-old. \$250 each. 573-627-2309. Sullivan.

**FOR SALE COPPER APPLE BUTTER KETTLE:** with stand & stirrer. 573-437-2944.

**FOR SALE 1964 F100:** Runs. For sale or trade. 417-426-5353 or 417-664-0094. Eldridge.

## YOUR FULL SERVICE AUTO BODY SHOP

Call today for an appointment or estimate!



Restorations, insurance jobs, and more!



417-288-1589 • 115 Lincoln St., Buffalo, MO • [f @DavidsonCustoms](#)

**ELECTRIC WELDER:** \$150 or trade. 573-734-2822, leave message.

**4-ANTIQUE WHITE WOODEN CHAIRS:** With cloth backs& cushions. \$50 a piece. 417-532-2291.

**WANTED:** Remington 552 Speedmaster 22. 573-280-1762.

**WANT TO BUY PONTOON:** with or without motor, trailer, damaged one ok, needing work ok, I have good pontoons, has to have a Missouri title. I'm looking for a winter project. 417-926-2127.

**PEMBROKE WELSH CORGIES:** Price reduction, only 2 males left. 417-259-9738.

**POOL TABLES:** Installations, moves, recovers, repairs, accessories, etc. 573-646-1700.

**FOR SALE:** 2 rolls of 100, Forever Postage Stamps. \$60 each. 573-453-2777. Salem.

**INDOOR/OUTDOOR DIGITAL ANTENNA:** New. Asking \$18. 417-650-4190.

**JOHN DEERE COMBINE 6620 TITAN II:** 16ft. header, 4-wheel-drive. \$14,000. 573-598-4547 or 573-718-9719.

**KILLBROS GRAIN CART 475:** \$5,500. 573-598-4547 or 573-718-9719.

**JOHN DEERE GRAIN CART:** 450 bushel. \$4,000. 573-598-4547 or 573-718-9719.

**2002 CREW CAB DODGE PICKUP:** White, 4 new tires, new seat covers. 80,000 miles. Needs some work. \$4,500. 417-664-0405. Lebanon.

**8 HOLE DOG PEN:** New, never used. \$500. 417-532-4701 preferably evenings. Lebanon.

**2 POMAPOO & 1 MALTIPOO PUPPIES:** Males, 3-months old. \$100 each. 417-532-4701 preferably evenings. Lebanon.

**FOR RENT: 3 Bedroom, 1 & 3/4 bath, 2-car garage. No pets. \$1,200/month. 417-531-5738.**

**5.3 CHEVY ENGINE:** 186,000 miles. \$800. 417-362-0142. Mountain View, MO.

**BLUE HEELER PUPPIES:** 417-349-0919. Plato.

**FOUR 4-WHEELER SIDE-BY-SIDE TIRES:** Good shape. \$100 or trade for tools. 573-734-2822.

**WANTED OLDER MODEL 1-TON WRECKER:** Any condition. 573-734-2822.

**FOR SALE:** Patio Table with 2 chairs. \$35. 417-718-2529. Lebanon.

**FOR SALE:** Speed Controlled Pet Nail Grinder. \$15. 417-718-2529. Lebanon.

**S-N-A-P LETTER KIT:** \$35. 417-718-2529. Lebanon.

# #1 AUCTION SOURCE IN CENTRAL MISSOURI

## SERVING 34 COUNTIES!



### IN PRINT & ONLINE!

# TO ADVERTISE YOUR AUCTION, CALL 417-532-9131

# WEEKLY TRADER MAGAZINE

100 E. Commercial, Lebanon  
[www.myweeklytrader.com](http://www.myweeklytrader.com)  
[www.facebook.com/myweeklytrader](https://www.facebook.com/myweeklytrader)



**FOR SALE:** 3-Shelf Bookcase. \$5. 417-718-2529. Lebanon.

**60 HIKES WITH 60 MILES ST. LOUIS BOOK:** including Sullivan, Potosi and Farmington, \$8.50. 417-532-2045. Lebanon. (Leave message and phone number.)

**WEATHERED BARN WOOD SIDING:** 10" wide. Call for appointment 573-729-7226. [www.pineridgerustic.com](http://www.pineridgerustic.com) Salem.

**LOG SIDING:** 2X8 Pine/Western Cedar. Call for appointment 573-729-7226. [www.pineridgerustic.com](http://www.pineridgerustic.com) Salem.

**NEW INVENTORY** - \$59,900 Delivered and setup, Hurry! Call Adam 573-657-2176 [amegamobilehomes.com](http://amegamobilehomes.com)

**MENNONITE COMMUNITY COOKBOOK:** by Mary Emma Showalter, 494 pages, \$8.50. Mennonite Family Cookbook, 144 pages, \$6.50. 417-532-2045. Lebanon. (Leave message and phone number.)

**NEW MOBILE HOMES** – prices start at \$64,900 delivered and setup 573-499-9993 [columbiadiscountshomes.com](http://columbiadiscountshomes.com)

**BASEMENT READY TRUE MODS-** instock ready for delivery 573-657-7040 [chateauhomes.net](http://chateauhomes.net)

**1908 SEARS ROEBUCK CATALOGUE REPRODUCTION:** 1,185 pages, \$12.50. 417-532-2045. Lebanon. (Leave message and phone number.)

**TINY HOMES** – Missouri Franchise 573-881-7965

**REGISTERED HEREFORD & ANGUS BULLS:** Home raised, Some Show-Me Select Qualified. 573-701-7828. Belgrade.

**LIGHTLY EXPERIENCED GOLF BALLS:** \$3 a dozen. 417-818-3469. Strafford.

**SLIGHTLY USED PUZZLES:** Will sell or trade. 417-818-3469. Strafford.

**Route 66 MOTHER ROAD BOOK:** by Michael Wallis, \$12.50. 417-532-2045. Lebanon. (Leave message and phone number.)

**LIONEL TRAIN SET:** Steam engine, tender, caboose and other car, track, and transformer. \$195. 573-364-7465. Rolla.

**3 GENTS WITTNAUER WRIST WATCHES:** 10k gold + 23J. All \$200. 573-764-3517. Call in P.M.

# KING BUILDERS



We specialize in custom and specialty builds, such as:

- Houses
- Barndominiums
- Shops
- Barns
- Garages

**We also do roofing & siding!**

## Call for a free estimate!

---

Stevie King | 435 Dickerson Ranch Lane, Conway, MO 65632 | 417-241-3280

**MODEL 1911 FRAME 8-SHOT C02 PISTOL:** Like new, in box with C02 cartridges, 4 clips, pellets & all paperwork. \$95. 573-364-7465. Rolla.

**1970s KIDS METAL STOVE & FRIDGE:** Nice Lithographic paint, 18" wide x 36" high. \$75. 573-364-7465. Rolla.

**HARLEY FAT BOBS:** Custom flame paint w/ gas caps + lines. \$100. 573-764-3517. Call in P.M.

**'85 FORD PICKUP PARTS:** Passenger door with window glass & mirror \$30. Also, Tailgate for '85 Ford pickup \$25. 573-308-5884. Rolla.

**COLT REVOLVER DEALER CATALOGS:** Circa 1950's + 1960's. All for \$100. 573-764-3517. Call in P.M.

**110 PORCELAIN POCKET WATCH DIALS:** Perfect for arts & crafts. \$100. 573-764-3517. Call in P.M.

**1890 GOLD TESTING KIT:** Glass acid beakers + antique wooden case. \$100. 573-764-3517. Call in P.M.

**1500 VINTAGE WRISTWATCH DIALS:** \$100. 573-764-3517. Call in P.M.

**HARLEY 45 SOLO:** factory rear brake drum + sprocket. \$150. 573-764-3517. Call in P.M.

## WE BUY

# White Oak Logs!



Top prices for your logs



Experienced log buyers



Professional service

Chad Cook | Salem Wood Products

### 417.718.2950

5 miles north of Salem, MO on Hwy 19



**INDEPENDENT STAVE COMPANY**  
*Log Procurement & Sales*

[www.independentstavecompany.com](http://www.independentstavecompany.com)

**Sue's Greenhouse 5th Annual  
Fall Flower Fest**  
Saturday, September 2nd  
8:00 am to 3:00pm



**Sue's wonderful Mums and other Fall Foliage, pumpkins, gourds, squash and so much more!**

Come join us for a day of family fun! Huge variety of handcrafted items, Pony cart rides, homemade lemonade, 30+ vendors, pancake & sausage breakfast (by donation) that benefits the Eagles Nest Amish School, bake sale, games, budget friendly foods and activities

**Sue's Greenhouse, LLC**  
5 miles North of Norwood on Highway E.  
(3495 South Highway E, Norwood, MO 65717)  
**417-746-0220**

**HARLEY PANHEAD DISTRIBUTOR:** original, chrome + complete. \$125. 573-764-3517. Call in PM.

**1962 HARLEY SPORTSTER 900CC:** original distributor. \$50. 573-764-3517. Call in PM.

**SADDLE: 20" Buffalo Saddlery with suede padded seat. \$350. 417-718-5347. Conway.**

**SPORTSET BY SARGENT:** Fishing pliers in leather sheath. Like a multi-tool. \$20. 636-239-2695 or 314-560-5700. Washington.

**NEW SQUARE D RAINPROOF 50AMP DISCONNECT:** \$160. 636-239-2695 or 314-560-5700. Washington.

**USED JET HOME POLLUTION CONTROL PANNEL:** Model CP700. \$65. 636-239-2695 or 314-560-5700. Washington.

**ANTIQUE 4 HP ENGINE:** Built by Continental Motors Corporation. \$150 OBO. 573-308-5884. Rolla.

**HEARTH CRAFT GLASS BI-FOLD FIREPLACE DOORS PURCHASED AT FORSHAW'S FIREPLACE:** Antique brass. \$160 obo. 636-239-2695 or 314-560-5700. Washington.

**RUBBERMAID 10 CUBIC FOOT PULL BEHIND DUMP CART: \$200. 417-718-5347. Conway.**

**1 PAIR OF KEY BRAND MEN'S JEANS:** Waist 38, Length 34. \$10. 636-239-2695 or 314-560-5700. Washington.

**BLACK METAL TUBULAR BRACKET:** Scrolling and a stainless bracket. \$10. Call for pictures. 636-239-2695 or 314-560-5700. Washington.

**WANTED 730 OR 830 CASE TRACTOR:** In any condition. 573-308-5884. Rolla.

**OUTDOOR WOOD FURNACE: Heats 3,000 sq. ft. & water. \$7,500, plus tax, plus installation. 573-201-6453.**

**TRAILER HOUSE RIMS:** \$10 each. 573-308-5884. Rolla.

**INTERNATIONAL PICKUP TRANSFER GEARBOX:** \$150. 573-308-5884. Rolla.

**NEW JELD WEN 5' LEFT HAND SLIDING GLASS DOOR WITH SUNSTABLE INTERIOR BLINDS:** Clear tempered glass, Desert Sand trim/hardware. Retails \$2655 Sell \$900. 417-693-0389. Conway.

**FOR SALE:** 2 Dayco motorcycle covers for Harley or other big bikes. \$50 each. 417-260-0941. Raymondville.

**CHILTON'S AUTO REPAIR MANUAL:** American & Volkswagen Cars 1969-1976. \$35. 417-260-0941. Raymondville.

**MAC'S TIEDOWN STRAPS:** Like New. \$80. 417-260-0941. Raymondville.

**3 ARMY CANTEENS:** Mess kit, belt & duffie bag. \$60 for all. 417-260-0941. Raymondville.

**PITTSBURGH HEAVY DUTY 3-TON FLOOR JACK:** Never used. \$195. 417-260-0941. Raymondville.

**???CDL LICENSE??? FAST & ECONOMICAL:** Meets all requirements of the new ELDT Law. 2 days training. Total cost of \$1,500. \$100 rebate with this ad. You need a learner's permit & ability to drive a manual. Jefferson City, Strafford & Willow Springs, Missouri. Please call 573-353-2853. [www.capitaltruckdrivinginstitute.com](http://www.capitaltruckdrivinginstitute.com).

**2001 FORD 3500 BLACKOUT VAN:** New tires, battery, brakes. Custom interior, mechanically sound & solid. Clear title, 2 owners, no smoke. 170,XXX miles. \$8,950 or trade. 417-650-7069.

**BUTLER LOGGING:** Making landowners happy is my number one goal. Paying top dollar on all your timber. Call me 417-448-9323. And see what I can do for you.

**RAMBO PURSUIT ELECTRIC HARDTAIL FATBIKE:** Model 750-26. Like new. Approximately 30 miles ridden. Includes added back Rambo rack. \$2,200. 417-650-7069. Lebanon.

**16X80 BUCC TRAILER HOUSE:** New in 1996. Has new roof, 3 bedrooms, 2 bath, skirting and title. \$10,000.00. Located at 22740 Pin Oak Ln. Summersville, MO. Buddy Bird 417-331-9501 or Pam 417-331-9038, evening or weekend.

**WANTED:** Remington 552 Speedmaster 22. 573-280-1762.

**Pine Ridge Rustic**  
Log Home Building Supplies



**Services Offered!**

- Custom Log Home Products
- Pre-finishing available on interior & exterior
- Hand Hewn Sidings Offered

- Log Siding
- Beveled Siding
- Car Siding • Red Cedar
- Western Cedar • Pine • Timbers • Barnwood

[www.pineridgerustic.com](http://www.pineridgerustic.com)

**CALL FOR APPOINTMENT**

523 CR 2410 • Salem, MO 65560 • Ph: 573-729-7226

**80 ACRES IN MACKS CREEK:** Power, water, artesian wells, good hunting. \$2,500 per acre, as is. Text 573-836-6414.

**BRINKMANN 8-QT. OUTDOOR PROPANE GAS FISH FRYER:** Big aluminum pan. Excellent condition. \$40. 210-787-8222. Linn Creek.

**JUMBO FLOAT:** 95" long x 80" wide x 10" high. Heavy gauge vinyl, Safety valve, 2 screw valves, 12 rope holders, water plug, nylon rope around it. Like new. \$150. 210-787-8222. Linn Creek.

**2012 FORD LARIAT: 4-door, 4WD, 231,000 miles, all leather interior, tires-75%, v6 with turbo. \$8,500. 660-492-7191.**

**GUNSMITHING-**Older Rifles, Shotguns, Handguns, all 22LRs. Any make, any model, estate appraisals. Camdenton. 573-363-5801.

**EXCAVATOR MOUNTED FORESTRY MULCHING FOR UNDERBRUSH CLEARING:** Call Nathan @ 417-259-2785.

**CATERPILLAR 277C SKID-STEER:** 2918.7 hours, new tracks & 78" bucket. Enclosed cab, air. Good condition. \$30,000 Cash, OBO. No trades. 314-420-3308. Potosi.

**TIRE:** 225x65R17 Valera HT Primewell. 95% tread. \$15. 210-787-8222. Linn Creek.

**DARDEN PROFESSIONAL TIMBER HARVESTING, BUYING STANDING TIMBER:** Great prices, improve wildlife habitat and improve forest health. State Certified & Fully Insured! 573-247-4808. Salem.

**POOL TABLES:** Installations, moves, recovers, repairs, accessories, etc. 573-646-1700.

**Darrell McClanahan for Governor of this great state of Missouri 2024. Find me on X @MBattleflag advocating for fija.org. This is being paid for by Darrell McClanahan. April Miller-McClanahan, Treasurer.**

**2002 CREW CAB DODGE PICKUP:** White, 4 new tires, new seat covers. 80,000 miles. Needs some work. \$4,500. 417-664-0405. Lebanon.

**4 GOOD USED SIDE-BY-SIDE/4-WHEELER TIRES:** \$100 or trade. 573-734-2822, leave message.

**2 REAR FENDERS FOR 1946-1948 CHEVROLET CAR:** \$200 or trade. 573-734-2822, leave message.



Just west of Wheatland, MO on Highway 54

Friday, Sept. 15 ♦ Saturday, Sept. 16 ♦ Sunday, Sept. 17 2023  
Gates open: 8 a.m. to 4 p.m. (rain or shine)

- ♦ Poultry ♦ Small Animals ♦ New and Used Items
- ♦ Antiques ♦ Tools ♦ Crafts ♦ Seasonal Goods
- ♦ Apparel ♦ And much, much more!

**\$5 per vehicle -**  
♦ good all 3 days ♦

Questions? Email: prairieswap@gmail.com Phone: 417-327-6623

**PASTURE RAISED CHICKENS & PASTURE RAISED THANKSGIVING TURKEYS:** 417-741-2446.

**ELECTRIC WELDER:** \$150 or trade. 573-734-2822, leave message.

**4-ANTIQUe WHITE WOODEN CHAIRS:** With cloth backs& cushions. \$50 a piece. 417-532-2291.

**WANT TO BUY PONTOON:** with or without motor, trailer, damaged one ok, needing work ok, I have good pontoons, has to have a Missouri title. I'm looking for a winter project. 417-926-2127.

**PEMBROKE WELSH CORGIES:** Price reduction, only 2 males left. 417-259-9738.

**DACHSHUND PUPPIES:** Registered, shots, wormed. Long haired males piebald and female short hair red. 417-260-1917. Raymondville.

**HOSPITAL BED:** Very good. \$400. 636-828-4330. Marthasville.

**50 EWES:** 1-5 years old. \$225 a piece. 417-733-2625. Louisburg.

**2 TIRES:** 225/75R16, Mud & snow, 90%. \$80. 636-828-4330. Marthasville.

**2006 FORD F-550 DIESEL:** 16' Flatbed, 86,000 miles. 928-587-8725. Pomona.

**TOY AUSSIEDOODLE:** 8 weeks old male, will weigh 5-7 lbs. Call 417-664-5926.

**INDOOR/OUTDOOR DIGITAL ANTENNA:** New. Asking \$18. 417-650-4190.

**JOHN DEERE COMBINE 6620 TITAN II:** 16ft. header, 4-wheel-drive. \$14,000. 573-598-4547 or 573-718-9719.

**KILLBROS GRAIN CART 475:** \$5,500. 573-598-4547 or 573-718-9719.

**JOHN DEERE GRAIN CART:** 450 bushel. \$4,000. 573-598-4547 or 573-718-9719.

**FOR SALE:** 2 rolls of 100, Forever Postage Stamps. \$60 each. 573-453-2777. Salem.

**8 HOLE DOG PEN:** New, never used. \$500. 417-532-4701 preferably evenings. Lebanon.

**2 POMAPOO & 1 MALTIPOO PUPPIES:** Males, 3-months old. \$100 each. 417-532-4701 preferably evenings. Lebanon.

**EXERCISE BIKE:** In good condition. \$65. 417-532-2344.

**MALTIPOO PUPPIES & REGISTERED DOXIN PUPPIES:** 573-247-6273.

**MISC. MECHANICAL TOOLS:** Small set \$25. & Large set \$35. 417-532-2344.

**LARGE COCA-COLA NOVELTY SET/ GROUP:** \$50. 417-532-2344.

**AKC BEAGLE PUPS:** Blue Tick & Tri colors. 16-weeks-old. \$250 each. 573-627-2309. Sullivan.

**CALUS LOGGING**  
**20 YEARS EXPERIENCE**  
**Buying Standing Timber**  
**Walnut & Oak**  
**Joe Calus, Owner**  
**417-926-4606 - MTN. GROVE**  
**CERTIFIED**

**FOR SALE COPPER APPLE BUTTER KETTLE:** with stand & stirrer. 573-437-2944.

**FOR SALE 1964 F100:** Runs. For sale or trade. 417-426-5353 or 417-664-0094. Eldridge.

**FOR SALE AUSSIEPOOS:** DOB 6-7-23, UTD on worming & vaccinations. Vet checked & microchipped. \$250. 573-864-4266. Salem.

**FOR RENT: 3 Bedroom, 1 & 3/4 bath, 2-car garage. No pets. \$1,200/month. 417-531-5738.**

**5.3 CHEVY ENGINE:** 186,000 miles. \$800. 417-362-0142. Mountain View, MO.

**FREE 4 CUTE KITTENS & MOTHER:** To be given away to loving & caring homes. If interested call for more information. 417-469-2123. Mountain View.

**BLUE HEELER PUPPIES:** 417-349-0919. Plato.

**FOUR 4-WHEELER SIDE-BY-SIDE TIRES:** Good shape. \$100 or trade for tools. 573-734-2822.

**WANTED OLDER MODEL 1-TON WRECKER:** Any condition. 573-734-2822.

**FOR SALE:** Patio Table with 2 chairs. \$35. 417-718-2529. Lebanon.

**FOR SALE:** Speed Controlled Pet Nail Grinder. \$15. 417-718-2529. Lebanon.

**S-N-A-P LETTER KIT:** \$35. 417-718-2529. Lebanon.

**1970s KIDS METAL STOVE & FRIDGE:** Nice Lithographic paint, 18" wide x 36" high. \$75. 573-364-7465. Rolla.

**60 HIKES WITH 60 MILES ST. LOUIS BOOK:** including Sullivan, Potosi and Farmington, \$8.50. 417-532-2045. Lebanon. (Leave message and phone number.)

**WEATHERED BARN WOOD SIDING:** 10" wide. Call for appointment 573-729-7226. [www.pineridgerustic.com](http://www.pineridgerustic.com) Salem.

**LOG SIDING:** 2X8 Pine/Western Cedar. Call for appointment 573-729-7226. [www.pineridgerustic.com](http://www.pineridgerustic.com) Salem.

**NEW INVENTORY** - \$59,900 Delivered and setup, Hurry! Call Adam 573-657-2176 [amegamobilehomes.com](http://amegamobilehomes.com)

**MENNONITE COMMUNITY COOKBOOK:** by Mary Emma Showalter, 494 pages, \$8.50. Mennonite Family Cookbook, 144 pages, \$6.50. 417-532-2045. Lebanon. (Leave message and phone number.)

**NEW MOBILE HOMES** – prices start at \$64,900 delivered and setup 573-499-9993 [columbiadiscountshomes.com](http://columbiadiscountshomes.com)

**BASEMENT READY TRUE MODS-** instock ready for delivery 573-657-7040 [chateauhomes.net](http://chateauhomes.net)

**1908 SEARS ROEBUCK CATALOGUE REPRODUCTION:** 1,185 pages, \$12.50. 417-532-2045. Lebanon. (Leave message and phone number.)

**TINY HOMES** – Missouri Franchise 573-881-7965

**REGISTERED HEREFORD & ANGUS BULLS:** Home raised, Some Show-Me Select Qualified. 573-701-7828. Belgrade.

**LIGHTLY EXPERIENCED GOLF BALLS:** \$3 a dozen. 417-818-3469. Strafford.

**SLIGHTLY USED PUZZLES:** Will sell or trade. 417-818-3469. Strafford.

**Route 66 MOTHER ROAD BOOK:** by Michael Wallis, \$12.50. 417-532-2045. Lebanon. (Leave message and phone number.)

**LIONEL TRAIN SET:** Steam engine, tender, caboose and other car, track, and transformer. \$195. 573-364-7465. Rolla.

**MODEL 1911 FRAME 8-SHOT C02 PISTOL:** Like new, in box with C02 cartridges, 4 clips, pellets & all paperwork. \$95. 573-364-7465. Rolla.

**3 GENTS WITTNAUER WRIST WATCHES:** 10k gold + 23J. All \$200. 573-764-3517. Call in P.M.

**HARLEY FAT BOBS:** Custom flame paint w/ gas caps + lines. \$100. 573-764-3517. Call in P.M.

**COLT REVOLVER DEALER CATALOGS:** Circa 1950's + 1960's. All for \$100. 573-764-3517. Call in P.M.

**110 PORCELAIN POCKET WATCH DIALS:** Perfect for arts & crafts. \$100. 573-764-3517. Call in P.M.

**1890 GOLD TESTING KIT:** Glass acid beakers + antique wooden case. \$100. 573-764-3517. Call in P.M.

**1500 VINTAGE WRISTWATCH DIALS:** \$100. 573-764-3517. Call in P.M.

**HARLEY 45 SOLO:** factory rear brake drum + sprocket. \$150. 573-764-3517. Call in P.M.

**HARLEY PANHEAD DISTRIBUTOR:** original, chrome + complete. \$125. 573-764-3517. Call in P.M.

**1962 HARLEY SPORTSTER 900CC:** original distributor. \$50. 573-764-3517. Call in P.M.

**SADDLE:** 20" Buffalo Saddlery with suede padded seat. \$350. 417-718-5347. Conway.

**SPORTSET BY SARGENT:** Fishing pliers in leather sheath. Like a multi-tool. \$20. 636-239-2695 or 314-560-5700. Washington.

**NEW SQUARE D RAINPROOF 50AMP DISCONNECT:** \$160. 636-239-2695 or 314-560-5700. Washington.

**USED JET HOME POLLUTION CONTROL PANNEL:** Model CP700. \$65. 636-239-2695 or 314-560-5700. Washington.

**PLAD PANTRY**  
**DISCOUNT & SURPLUS FOODS**  
**FRESH PRODUCE LLC**  
**417-532-4700**

Frozen Hash Brown Patties.....	<b>\$5.49</b> 3.5 lbs.
Creamy Ranch & Habanero Potato Chips.....	<b>\$9.99</b> 24- 1.5 oz.
Original Refrigerated Meat Snack Links.....	<b>\$6.99</b> 8- 4oz.
Peeled Hard Boiled Eggs.....	<b>\$1.49</b> 18 ct.
Fun Size Butterfinger Candy Bars.....	<b>\$0.79</b> 3.9 oz.
	<b>\$15.99</b> case of 24

1571 State Hwy 64 • Tunas, MO 65764  
 Hours: 8:30 a.m. to 5:30 p.m. • Closed Wed. & Sun.



**YOUR AD GOES HERE!**

**Add YELLOW Color For An Additional \$3 Per Reader Ad**

*All ads will include Phone Number (unless requested to be deleted by advertiser) and City Or Town, Phone Number with Area Code counts as one word. City or Town counts as one word.*

**RATE: 80¢ Per Word. All Classified Ads Require Payment Before Print.**

(1)	80¢	(2)	\$1.60	(3)	\$2.40	(4)	\$3.20
(5)	\$4.00	(6)	\$4.80	(7)	\$5.60	(8)	\$6.40
(9)	\$7.20	(10)	\$8.00	(11)	\$8.80	(12)	\$9.60
(13)	\$10.40	(14)	\$11.20	(15)	\$12.00	(16)	\$12.80
(17)	\$13.60	(18)	\$14.40	(19)	\$15.20	(20)	\$16.00
(21)	\$16.80	(22)	\$17.60	(23)	\$18.40	(24)	\$19.20
(25)	\$20.00	(26)	\$20.80	(27)	\$21.60	(28)	\$22.40
(29)	\$23.20	(30)	\$24.00	(31)	\$24.80	(32)	\$25.60
(33)	\$26.40	(34)	\$27.20	(35)	\$28.00	(36)	\$28.80
(37)	\$29.60	(38)	\$30.40	(39)	\$31.20	(40)	\$32.00

**Buy 3 Weeks - Get 4th Week Free! (Must be same ad)**

**Place your Classified Ad TODAY!**

**417-532-9131 • 800-665-8875**

**Fax: 417-532-8140**

**Or Mail To: P.O. Box 192 • Lebanon, MO 65536**

For your convenience we accept MasterCard, Visa, Discover or American Express



**DEADLINE FOR CLASSIFIED ADS: FRIDAY 4:00PM!**

Name \_\_\_\_\_

Address \_\_\_\_\_

City \_\_\_\_\_ Email \_\_\_\_\_

State \_\_\_\_\_ Zip Code \_\_\_\_\_ Phone \_\_\_\_\_

**Ad Total \$ \_\_\_\_\_ X # Weeks \_\_\_\_\_ = Amount Enclosed \$ \_\_\_\_\_**

**HEARTH CRAFT GLASS BI-FOLD FIREPLACE DOORS PURCHASED AT FORSHAW'S FIREPLACE:** Antique brass. \$160 obo. 636-239-2695 or 314-560-5700. Washington.

**RUBBERMAID 10 CUBIC FOOT PULL BEHIND DUMP CART:** \$200. 417-718-5347. Conway.

**BRINKMANN 8-QT. OUTDOOR PROPANE GAS FISH FRYER:** Big aluminum pan. Excellent condition. \$40. 210-787-8222. Linn Creek.

**1 PAIR OF KEY BRAND MEN'S JEANS:** Waist 38, Length 34. \$10. 636-239-2695 or 314-560-5700. Washington.

**FOR SALE:** 3-Shelf Bookcase. \$5. 417-718-2529. Lebanon.

**BLACK METAL TUBULAR BRACKET:** Scrolling and a stainless bracket. \$10. Call for pictures. 636-239-2695 or 314-560-5700. Washington.

**ANTIQU 4 HP ENGINE:** Built by Continental Motors Corporation. \$150 OBO. 573-308-5884. Rolla.

**WANTED 730 OR 830 CASE TRACTOR:** In any condition. 573-308-5884. Rolla.

**OUTDOOR WOOD FURNACE:** Heats 3,000 sq. ft. & water. \$7,500, plus tax, plus installation. 573-201-6453.

**TRAILER HOUSE RIMS:** \$10 each. 573-308-5884. Rolla.

**'85 FORD PICKUP PARTS:** Passenger door with window glass & mirror \$30. Also, Tailgate for '85 Ford pickup \$25. 573-308-5884. Rolla.

**INTERNATIONAL PICKUP TRANSFER GEARBOX:** \$150. 573-308-5884. Rolla.

**NEW JELD WEN 5' LEFT HAND SLIDING GLASS DOOR WITH SUNSTABLE INTERIOR BLINDS:** Clear tempered glass, Desert Sand trim/hardware. Retail \$2655 Sell \$900. 417-693-0389. Conway.

**FOR SALE:** 2 Dayco motorcycle covers for Harley or other big bikes. \$50 each. 417-260-0941. Raymondville.

**CHILTON'S AUTO REPAIR MANUAL:** American & Volkswagen Cars 1969-1976. \$35. 417-260-0941. Raymondville.

**INDOOR/OUTDOOR DIGITAL ANTENNA:** New. Asking \$18. 417-650-4190.

**3 ARMY CANTEENS:** Mess kit, belt & duffle bag. \$60 for all. 417-260-0941. Raymondville.

**PITTSBURGH HEAVY DUTY 3-TON FLOOR JACK:** Never used. \$195. 417-260-0941. Raymondville.

**2001 FORD 3500 BLACKOUT VAN:** New tires, battery, brakes. Custom interior, mechanically sound & solid. Clear title, 2 owners, no smoke. 170,XXX miles. \$8,950 or trade. 417-650-7069.

**BUTLER LOGGING:** Making landowners happy is my number one goal. Paying top dollar on all your timber. Call me 417-448-9323. And see what I can do for you.

**RAMBO PURSUIT ELECTRIC HARDTAIL FATBIKE:** Model 750-26. Like new. Approximately 30 miles ridden. Includes added back Rambo rack. \$2,200. 417-650-7069. Lebanon.

**16X80 BUCC TRAILER HOUSE:** New in 1996. Has new roof, 3 bedrooms, 2 bath, skirting and title. \$10,000.00. Located at 22740 Pin Oak Ln. Summersville, MO. Buddy Bird 417-331-9501 or Pam 417-331-9038, evening or weekend.

**80 ACRES IN MACKS CREEK:** Power, water, artesian wells, good hunting. \$2,500 per acre, as is. Text 573-836-6414.

**JUMBO FLOAT:** 95" long x 80" wide x 10" high. Heavy gauge vinyl, Safety valve, 2 screw valves, 12 rope holders, water plug, nylon rope around it. Like new. \$150. 210-787-8222. Linn Creek.

**2012 FORD LARIAT:** 4-door, 4WD, 231,000 miles, all leather interior, tires-75%, v6 with turbo. \$8,500. 660-492-7191.

**GUNSMITHING-**Older Rifles, Shotguns, Handguns, all 22LRs. Any make, any model, estate appraisals. Camdenton. 573-363-5801.

**EXCAVATOR MOUNTED FORESTRY MULCHING FOR UNDERBRUSH CLEARING:** Call Nathan @ 417-259-2785.

**CATERPILLAR 277C SKID-STEER:** 2918.7 hours, new tracks & 78" bucket. Enclosed cab, air. Good condition. \$30,000 Cash, OBO. No trades. 314-420-3308. Potosi.

**TIRE:** 225x65R17 Valera HT Primewell. 95% tread. \$15. 210-787-8222. Linn Creek.

**DARDEN PROFESSIONAL TIMBER HARVESTING, BUYING STANDING TIMBER:** Great prices, improve wildlife habitat and improve forest health. State Certified & Fully Insured! 573-247-4808. Salem.

**POOL TABLES:** Installations, moves, recovers, repairs, accessories, etc. 573-646-1700.

Darrell McClanahan for Governor of this great state of Missouri 2024. Find me on X @MBattleflag advocating for fija.org. This is being paid for by Darrell McClanahan. April Miller-McClanahan, Treasurer.

**Starnes Auto LLC**  
 22115 Rt. 66 • Lebanon, MO 65536  
 588-7939 Cell  
 588-3159 Office  
 www.starnesauto.com

*Worry-Free*  
**VEHICLE ALIGNMENTS**

With our state-of-the-art computerized equipment  
 Front End | Rear End | Four Wheel Drive | Thrust Alignments | Both Foreign and Domestic Vehicles



**DON'T FORGET TO CHECK OUT OUR CARS FOR SALE!**  
**WE DO ALIGNMENTS!**

# LAND AUCTION



**174.34 AC± | 10 TRACTS | GREENE CO, MO**

Dr. Jeff Gower is thrilled to offer this Rare Springfield transitional land opportunity: 174.34 acres with excellent access. Property is located on East Sunshine and Farm Road 199 and 142 encompassing 1.80 miles of black top frontage. This is one of the last properties to develop in the area. The tracts will make great home, multi-use or development property. Located on a four-way corner with traffic counts around 40,000 +/- cars daily. Location, Location. Remember, buy land, they're not making it anymore. Boundary lines are approximate and will be subject to a final survey.

**AUCTION DATE: 9/8/23**

**AUCTION TIME: 1:00 PM**

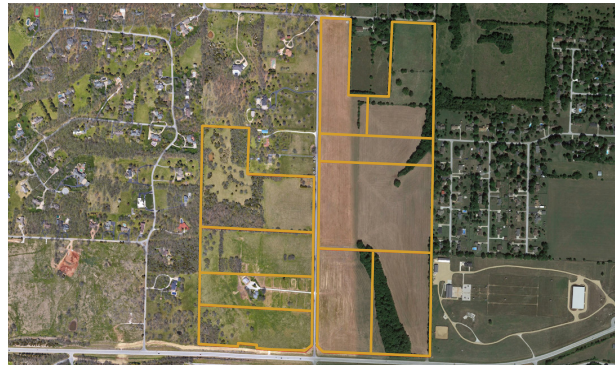
**AUCTION TO BE HELD AT:**

SOARING EAGLE FARM

EVENT CENTER

1865 S BERKSHIRE,

SPRINGFIELD, MO 65809



**IN COOPERATION WITH WHITETAIL PROPERTIES REAL ESTATE, LLC**

Contact the Utecht Land Team | 417-234-7654 | [mike.harris@whitetailproperties.com](mailto:mike.harris@whitetailproperties.com)

**RANCHANDFARMAUCTIONS.COM**

GO TO [RANCHANDFARMAUCTIONS.COM](http://RANCHANDFARMAUCTIONS.COM) FOR ADDITIONAL INFORMATION,  
PHOTOS, SOIL MAPS AND TERMS.

# Serving Central Missouri

# in 34 counties!



- Benton**
- Boone**
- Callaway**
- Camden**
- Cedar**
- Christian**
- Cole**
- Crawford**
- Dallas**
- Dent**
- Douglas**
- Franklin**
- Gasconade**
- Greene**
- Henry**
- Hickory**
- Howell**
- Iron**
- Laclede**
- Maries**
- Miller**
- Montgomery**
- Oregon**
- Osage**
- Ozark**
- Phelps**
- Polk**
- Pulaski**
- St. Clair**
- Texas**
- Washington**
- Webster**
- Wright**
- Morgan**

# WEEKLY TRADER MAGAZINE

**417-532-9131**  
**100 E. Commercial St.,**  
**Lebanon, MO 65536**

**WWW.MYWEEKLYTRADER.COM**

**f @myweeklytrader**