

FREE - TAKE ONE!

WEEKLY **TRADER** MAGAZINE

Vol. 30 No. 21
AUGUST 17, 2023
417-532-9131



Find us on
Facebook

@myweeklytrader
AUCTIONS PG. 9

VISIT OUR NEW WEBSITE! MYWEEKLYTRADER.COM

High horsepower.
High performance.
Low financing.



Kubota Together we do more.®

Save big on our L2501HST with Kubota loader. Part of our tractor lineup rated #1 for durability and owner experience in the U.S.* Stop in for a demo and to claim this offer today.

L2501HST W/ KUBOTA LOADER **ONLY \$22,995**

0% APR FOR 72 MONTHS

VISIT US TODAY FOR THIS LIMITED-TIME OFFER



Kubota®

Quarles Supply

3251 S Springfield Ave
Bolivar, MO 65613
417-777-2391

KubotaUSA.com

0% Down, 0% A.P.R. financing for up to 72 months on purchases of select new Kubota L2501HST equipment from participating dealers' in stock inventory is available to qualified purchasers through Kubota Credit Corporation, U.S.A.; subject to credit approval. Example: 72 monthly payments of \$13.89 per \$1,000 financed. Some exceptions apply. Terms subject to change. Offers expire 09/30/23. This material is for descriptive purposes only. Kubota disclaims all representations and warranties, express or implied, or any liability from the use of this material. For more information, see Dealer or go to KubotaUSA.com.

Progressive
FARMER
READER INSIGHTS

LS TRACTOR

ZERO DOWN, 0% FINANCING AVAILABLE*

WITH DEALER PARTICIPATION FEE

OR Take Advantage of INSTANT **CASH REBATES** during the month of AUGUST 2023

CALL US TODAY 417-859-4311



MT342H \$30,820
w/ \$1200 CASH REBATE
\$29,620



MT357PCTC \$40,320
w/ \$1200 CASH REBATE **\$39,120**



MT125 PACKAGE \$29,430
\$25,810

with TRAILER, BOX BLADE, and BACKHOE!



TYM TRACTORS

CHECK OUT THESE SPECIALS ON TYM TRACTORS



TYM 2515 \$21,411 GEAR SALE: 20,411
\$22,581 HYDRO SALE: 21,581

THE 2515 BACK IN STOCK! 24 hp w/2200 Lift Capacity



T474H \$27,846
\$26,596



T574H \$31,941
\$30,941

*Offers available for a limited time only Offer only valid upon purchase of a new qualifying tractor from a participating dealer's in-stock inventory. Some exceptions apply.



WCT Farm & Lawn
417-859-4311
SALES • SERVICE • PARTS
3299 EVERGREEN ROAD
STRAFFORD, MO 65757
www.wctfarmandlawn.com

TIME FOR PRECISION

Hustler's residential mowers are built stronger and perform faster, allowing you to quickly maneuver around obstacles with ease. Tackle your lawn in record time with unparalleled precision, and use the time you save to do the things you love.



For Outstanding Products & Service AGRI-ENTERPRISES

1-1/2 Miles South Of Licking, MO On Hwy 63
573-674-2203 • 1-800-653-7152 • www.agri-enterprises.com

WILLOW SPRINGS & SURROUNDING COMMUNITIES BOOK: 1869-1969, HB, 454 pages by Ella Lilly Horak, \$40. Perfect Condition. 417-532-2045. Lebanon. (Leave message and phone number.)

TINY HOMES – Missouri Franchise 573-881-7965

WEATHERED BARN WOOD SIDING: 10" wide. Call for appointment 573-729-7226. www.pineridgerustic.com Salem.

LOG SIDING: 2X8 Pine/Western Cedar. Call for appointment 573-729-7226. www.pineridgerustic.com Salem.

Route 66 MOTHER ROAD BOOK: by Michael Wallis, \$12.50. 417-532-2045. Lebanon. (Leave message and phone number.)

NEW INVENTORY - \$59,900 Delivered and setup, Hurry! Call Adam 573-657-2176 amegamobilehomes.com

NEW MOBILE HOMES – prices start at \$64,900 delivered and setup 573-499-9993 columbiadiscounthomes.com

BASEMENT READY TRUE MODS- instock ready for delivery 573-657-7040 chateauhomes.net

VOTED #1 BEST Preowned Car Dealership

TIM'S USED CARS

(573) 341-3828 • 1334 South Bishop (Hwy. 63) • Rolla, MO
Next to Hwy CC • www.tims-used-cars.com

	2017 NISSAN TITAN SV Crew cab, 4x4, 5.6 V-8, power equipped 131,xxx Miles Only \$21,900		2014 CHEVY TAHOE LTZ 5.3 V-8, loaded w/options, 143,xxx Miles Only \$19,500
	2021 RAM 1500 CLASSIC Crew cab, 4x4, power equipped, 3.6 V-6, 52,xxx Miles Only \$32,500		2012 DODGE GRAND CARAVAN SXT V-6, power equipped, 114,xxx Miles Only \$8,900

LARGE SELECTION OF CARS, TRUCKS, SUVs & VANS!

WE BUY AND SELL new and used mobile homes



(417) 501-1061

1908 SEARS ROEBUCK CATALOGUE REPRODUCTION: 1,185 pages, \$12.50. 417-532-2045. Lebanon. (Leave message and phone number.)

REGISTERED HEREFORD & ANGUS BULLS: Home raised, Some Show-Me Select Qualified. 573-701-7828. Belgrade.

LIGHTLY EXPERIENCED GOLF BALLS: \$3 a dozen. 417-818-3469. Strafford.

SLIGHTLY USED PUZZLES: Will sell or trade. 417-818-3469. Strafford.

LIONEL TRAIN SET: Steam engine, tender, caboose and other car, track, and transformer. \$195. 573-364-7465. Rolla.

MODEL 1911 FRAME 8-SHOT C02 PISTOL: Like new, in box with C02 cartridges, 4 clips, pellets & all paperwork. \$95. 573-364-7465. Rolla.

1970s KIDS METAL STOVE & FRIDGE: Nice Lithographic paint, 18" wide x 36" high. \$75. 573-364-7465. Rolla.

3 GENTS WITTNAUER WRIST WATCHES: 10k gold + 23J. All \$200. 573-764-3517. Call in P.M.

WE BUY White Oak Logs!

- ✓ Top prices for your logs
- ✓ Experienced log buyers
- ✓ Professional service

Chad Cook | Salem Wood Products
417.718.2950
5 miles north of Salem, MO on Hwy 19



INDEPENDENT STAVE COMPANY
Log Procurement & Sales

www.independentstavecompany.com

HARLEY FAT BOBS: Custom flame paint w/ gas caps + lines. \$100. 573-764-3517. Call in P.M.

COLT REVOLVER DEALER CATALOGS: Circa 1950's + 1960's. All for \$100. 573-764-3517. Call in P.M.

BLACK METAL TUBULAR BRACKET: Scrolling and a stainless bracket. \$10. Call for pictures. 636-239-2695 or 314-560-5700. Washington.

'85 FORD PICKUP PARTS: Passenger door with window glass & mirror \$30. Also, Tailgate for '85 Ford pickup \$25. 573-308-5884. Rolla.



Meadowview Dutch Market

Bulk & Surplus Groceries • Prices Subject to Stock on Hand

Call to Order
417-993-3017

Sale Dates August 16th, 2023 to August 22nd, 2023 while supplies last!

DELI SPECIAL

FRIED CHICKEN BREASTREG. \$7.05 LBSALE \$6.85 LB
PROVOLONE CHEESEREG. \$4.99 LBSALE \$4.49 LB

TRY our Fresh Homemade DELI Sandwiches: TURKEY, HAM, ROAST BEEF, ITALIAN, BLT'S, PULLED PORK AND BLT PULLED PORK (MADE YOUR WAY)! COME IN OR CALL to order! ALSO Custom Deli trays! Veggie OR FRESH Meat-N-Cheese!

Almond Raisin Granola

25¢ 2.4 OZ. OR **\$1.76** 8 CT. CASE

Sea Salt Veggie Chips

99¢ 5 OZ.

Activia Strawberry Yogurt

\$2.99 24-40Z.

Straight Cut Fries

99¢ LB.

Italian Meatballs

\$1.99 16 OZ.

10% Off

Grilling Pellets

Sliced White American Cheese

\$8.99 5 LBS.

Large Fully Cooked Taco

\$1.49 LB.

TAKING ORDERS

FOR

NEW YORK CONCORD GRAPES



\$15.50

APPROX. 18 LB BOX

BONUS SPECIAL

FULLY COOKED SPICY CHICKEN BREAST FRITTERS

\$1.25

LB.



MEADOWVIEW DUTCH MARKET

417-993-3017 Hours: Mon-Thurs 8-5pm
Fri 8-6pm • Sat 8-5pm
23 Miles West on Hwy 64 • Right on T Hwy
9 miles • Left on E Hwy 1 mile on Left

NOW ACCEPTING CREDIT, DEBIT CARDS & EBT

DUTCH COUNTRY STORE, LLC

573-378-4395
Hours: Mon-Thurs 8-5pm
Fri 8-6pm • Sat 8-5pm
5 miles East of Versailles off Hwy C on Kelsay Road

110 PORCELAIN POCKET WATCH DIALS: Perfect for arts & crafts. \$100. 573-764-3517. Call in PM.

1890 GOLD TESTING KIT: Glass acid beakers + antique wooden case. \$100. 573-764-3517. Call in PM.

1500 VINTAGE WRISTWATCH DIALS: \$100. 573-764-3517. Call in PM.

HARLEY 45 SOLO: factory rear brake drum + sprocket. \$150. 573-764-3517. Call in PM.

HARLEY PANHEAD DISTRIBUTOR: original, chrome + complete. \$125. 573-764-3517. Call in PM.

1962 HARLEY SPORTSTER 900CC: original distributor. \$50. 573-764-3517. Call in PM.

SPORTSET BY SARGENT: Fishing pliers in leather sheath. Like a multi-tool. \$20. 636-239-2695 or 314-560-5700. Washington.

NEW SQUARE D RAINPROOF 50AMP DISCONNECT: \$160. 636-239-2695 or 314-560-5700. Washington.

USED JET HOME POLLUTION CONTROL PANNEL: Model CP700. \$65. 636-239-2695 or 314-560-5700. Washington.

HEARTH CRAFT GLASS BI-FOLD FIREPLACE DOORS PURCHASED AT FORSHAW'S FIREPLACE: Antique brass. \$160 obo. 636-239-2695 or 314-560-5700. Washington.

JUMBO FLOAT: 95" long x 80" wide x 10" high. Heavy gauge vinyl, Safety valve, 2 screw valves, 12 rope holders, water plug, nylon rope around it. Like new. \$150. 210-787-8222. Linn Creek.

OFFICIAL TRACTOR OF TOUGH™

INTRODUCING THE ALL-NEW 5100 SERIES



Marshfield Machinery Inc.

222 E. Madison • Marshfield, MO 65706
417-859-2117 • www.marshfieldmachinery.com

*2018 data including all Mahindra group brand sales.
MahindraUSA.com © 2020 Mahindra USA Inc.



NEW MAHINDRA TRACTORS

1635 4WD & LDR 36HP	IN STOCK
2638 4WD & LDR 38HP	IN STOCK
4550 4WD & LDR 48 HP	IN STOCK
2660 4WD & LDR CAB 60 HP	IN STOCK

USED TRACTORS

MF 4708 80HP 4WD CAB LDR	58,500
MF 2850M 49HP BACKHOE LDR	42,500
JD 5055E 59HP CAB LDR	32,500

MAHINDRA 2638 38HP 4WD LDR	20,000
MAHINDRA 1635 35HP 4WD LDR	19,500
MAHINDRA 4540 41HP LDR	16,000
IHC 5088 CAB 135 HP	13,500
MF 1080 81 HP LOADER	8,500
MF 1528 28HP 4WD	7,500
CUB CADET 7205 20HP 4WD	4,250
KUBOTA L175 17HPW/MOWER	3,000

USED ROUND BALERS

NH RB450 4X5 MESH	24,000
MF 1745 4X5 MESH	24,000
MF 2946A 4X6 MESH	20,000
HESSTON 550 4X6	2,500
HESSTON 560 5X6	2,000

USED MISC.

M&W 8 WHEEL RAKE	1,250
RHINO 5FT FINISH MOWER	850
LAND PRIDE 5FT CUTTER	500
ROLLINS 5FT BLADE	250

Marshfield Machinery Inc.
222 E. Madison
Marshfield, MO 65706
417-859-2117
www.marshfieldmachinery.com

KUSTER LOGGING

BUYER of Standing Timber Oak and Walnut

Dozing Now Available

417-259-0047

References Available



NEW JELD WEN 5' LEFT HAND SLIDING GLASS DOOR WITH SUNSTABLE INTERIOR BLINDS: Clear tempered glass, Desert Sand trim/hardware. Retail \$2655 Sell \$900. 417-693-0389. Conway.

1 PAIR OF KEY BRAND MEN'S JEANS: Waist 38, Length 34. \$10. 636-239-2695 or 314-560-5700. Washington.

ANTIQU 4 HP ENGINE: Built by Continental Motors Corporation. \$150 OBO. 573-308-5884. Rolla.

WANTED 730 OR 830 CASE TRACTOR: In any condition. 573-308-5884. Rolla.

TRAILER HOUSE RIMS: \$10 each. 573-308-5884. Rolla.

RUBBERMAID 10 CUBIC FOOT PULL BEHIND DUMP CART: \$200. 417-718-5347. Conway.

INTERNATIONAL PICKUP TRANSFER GEARBOX: \$150. 573-308-5884. Rolla.

OUTDOOR WOOD FURNACE: Heats 3,000 sq. ft. & water. \$7,500, plus tax, plus installation. 573-201-6453.

4 GOODYEAR WRANGLER TIRES: Kevlar LT245/70R17, all terrain, \$185. 417-417-260-0941. Raymondville.

FOR SALE: 2 Dayco motorcycle covers for Harley or other big bikes. \$50 each. 417-260-0941. Raymondville.

CHILTON'S AUTO REPAIR MANUAL: American & Volkswagen Cars 1969-1976. \$35. 417-260-0941. Raymondville.

SADDLE: 20" Buffalo Saddlery with suede padded seat. \$350. 417-718-5347. Conway.

MAC'S TIEDOWN STRAPS: Like New. \$80. 417-260-0941. Raymondville.

2 WHEEL TRAILER: With 6x10 wagon bed. \$300. 573-308-5884. Rolla.

3 ARMY CANTEENS: Mess kit, belt & duffle bag. \$60 for all. 417-260-0941. Raymondville.

???CDL LICENSE??? FAST & ECONOMICAL: Meets all requirements of the new ELDT Law. 2 days training. Total cost of \$1,500. \$100 rebate with this ad. You need a learner's permit & ability to drive a manual. Jefferson City, Strafford & Willow Springs, Missouri. Please call 573-353-2853. www.capitaltruckdrivinginstitute.com.

LEVI BYLER CONSTRUCTION LLC: Roofing, Siding, Decks and More. 417-741-0245

2001 FORD 3500 BLACKOUT VAN: New tires, battery, brakes. Custom interior, mechanically sound & solid. Clear title, 2 owners, no smoke. 170,XXX miles. \$12,000 or trade. 417-650-7069.

OLD 7X14 MILITARY WAGON: 3FT high sides. \$400. 573-308-5884. Rolla.

BUTLER LOGGING: Making landowners happy is my number one goal. Paying top dollar on all your timber. Call me 417-448-9323. And see what I can do for you.

RAMBO PURSUIT ELECTRIC HARDTAIL FATBIKE: Model 750-26. Like new. Approximately 30 miles ridden. Includes added back Rambo rack. \$2,200. 417-650-7069. Lebanon.

16X80 BUCC TRAILER HOUSE: New in 1996. Has new roof, 3 bedrooms, 2 bath, skirting and title. \$10,000.00. Located at 22740 Pin Oak Ln. Summersville, MO. Buddy Bird 417-331-9501 or Pam 417-331-9038, evening or weekend.

PASTURE RAISED CHICKENS & PASTURE RAISED THANKSGIVING TURKEYS: 417-741-2446.

3 FT 6 PANEL METAL DOOR: No frame \$15. 417-531-5630 Conway.

2 TIRES SIZE 235 X 50 X R18: Fair tread \$20 for the pair. 417-531-5630 Conway.

80 ACRES IN MACKS CREEK: Power, water, artesian wells, good hunting. \$2,500 per acre, as is. Text 573-836-6414.

FREE 5 CUTE KITTENS & MOTHER: To be given away to loving & caring homes. If interested call for more information. 417-469-2123.

BRINKMANN 8-QT. OUTDOOR PROPANE GAS FISH FRYER: Big aluminum pan. Excellent condition. \$40. 210-787-8222. Linn Creek.

2015 JEEP CHEROKEE: 4WD, 111,000 miles. \$15,900. For Details go to www.jimsmotorsrolla.com 573-467-0189.

1974 CHEVY C-30: Needs work. 417-217-8551.

STANDING FIREWOOD: \$10/Tree. 951-288-4654. Pershing.

GUNSMITHING-Older Rifles, Shotguns, Handguns, all 22LRs. Any make, any model, estate appraisals. Camdenton. 573-363-5801.

2 TIRES: 225/75R16, Mud & snow, 90%. \$80. 636-828-4330. Marthasville.

\$0 DOWN AND 0% FOR 72 MONTHS

BUILD YOUR OWN 1025R *Package*

**1025R
TRACTOR**

ORIGINAL PRICE: ~~\$18,369~~

SALE PRICE: **\$15,500***

OR FINANCE FOR AS LOW AS
\$219/MO*



**Then add on any implement you need to get the job done.
Choose any 3 and save an additional \$300!**



**120R
LOADER**
ONLY \$69/MO



**60D MOWER
DECK**
ONLY \$65/MO



**ROTARY
CUTTER**
ONLY \$33/MO



**BOX
BLADE**
ONLY \$16/MO



Scan Here
To Shop Now



*Offer ends September 30, 2023. See dealer for details.



\$55,995
2022 Deere 317G *UNUSED*
OROPS, Loaded! IN-STOCK



Over 500 Attachments IN STOCK!
We ship NATIONWIDE!

Craig Equipment
2681 W. Pearce Blvd | Wentzville, MO 63385
636-856-8555
www.CraigEquipment.com



\$79,900
2018 Kubota SVL95-2 & Fecon Mulching Head
HiFlow, Loaded!



2007 Deere CT322 66hp, 1233 hrs, AC/
Cab, foot controls\$32,500



2017 Deere 333E * 100hp 3529hrs AC/Cab
Joystx 2sp\$44,900



2015 Deere 319E 69hp, 1874hr, Joystx,
NEW Trax.....\$34,900



2016 Deere 326E *HiFlow* 2300hr AC
Joystx 2sp, NEW Tires.....\$39,900



2006 Bobcat 5600 Toolcat 59hp 2048hrs
Cab/AC 4x4 AWS, 2speed, hydraulic dump,
NEWER Turf Tires\$37,500



2004 New Holland LS180 67hp 1046hr
Cab, Foot controls, 2sp.....\$19,900



2000 Bobcat 763 *LIKE NEW* 106 HOURS,
Clean & NEW Tires*.....\$34,900



2021 Bobcat T870 *HiFlow* 540hrs, AC/Cab,
Joystx, Warranty!*.....\$84,900



2021 Bobcat T770 *HiFlow* 733hr AC/Cab
Joystx *Warranty*.....\$72,500



2009 Bobcat T190 *HiFlow* *ONLY
627hr* AC/Cab, Joystx.....\$49,900



2006 Bobcat T300 81hp 2992hrs AC/Cab
ISO/H Joystx A+Trax.....\$42,500



2023 Agrotk LBT23 23hp less than 1hr!
Ride-on, 'Dingo' mount.....\$12,500



2014 Case TR270 74hp 2163hr, Cab/AC
Joystx 2sp, Pwr Bkt Chngr.....\$39,900



2021 Case TR270B B *74hp *ONLY 511hrs*
Cab/AC Joystx Backup Camera Power Bucket
Changer & Auto Leveler, WRNTY.....\$52,500



2006 Cat 257B **ONLY 399HR** 62hp AC/
Cab, Joystx.....\$49,900



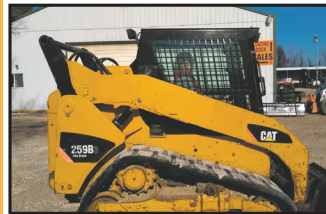
2006 Cat 252B 73hp, 3566hrs, AC/Cab
Joystx, Pwr Bkt Chngr.....\$29,900



2015 Kubota SVL90 92hp, 2943hrs, AC/
Cab, Joystx, 2sp, Pwr Bkt Chngr.....\$42,500



2018 Kubota SVL75 *1 owner* 74hp,
1768hrs, AC/Cab, Joystx, Pwr Bkt
Chngr.....\$47,500



2011 Cat 259B3 75hp, AC/Cab, Joystx 2sp
NICE.....\$34,900



2010 Gehl CTL75 83hp, 1435hrs, AC/Cab,
Joystx, 2sp.....\$42,500

YOUR LAND AND FARM EXPERTS!



Ray Co-34 Acres - \$299,500

This is a beautiful piece of property out in the country but still not too far away from the things you enjoy. The acreage has two access points from existing subdivisions so it makes sense someone might buy this property for a future development property or housing addition. There is public water, sewer and electric available to this land, making it a lot more appealing. It is in the Excelsior Springs school district. The property lays nice with some nice timber along the creek and tons of wildlife here, been here twice and saw deer all over the place. The fields are cut for hay and will get another cutting in this fall. It would make a great development for custom homes on bigger acreages. Some great views from most of the property and some very secluded areas and little pocket fields. Do not miss out on this one. Call Mike Stoner at 573-774-9775 Cell



Morgan Co-33.5 Acres - \$165,000

This is a very nice piece of property close to Lake of the Ozarks in Morgan county. This 33.5 acres has a lot going for it. It has highway frontage along Hwy WW. There is a 24 x 36 metal building shop with concrete floor. It has a 10 ft and a 3 ft walk in door. There is a drilled well that has water lines ran up to the campsite. The campsite includes a 2002 Montana 28 ft fifth wheel with two slides. The owner installed a nice awning over the camper to keep it out of the weather. There is septic there and electric hookups for the camper. Looks like a park setting. The trail leads off the hill into the timber, there is a small pond for the wildlife and the trail goes through some very nice timber down to a wet weather creek. This bottom just screams a lot of deer use this property. The timber is mature and hasn't been cut in a long time. I think the hunting here will be super. Just down the road is Hiawatha marina where you can put in a boat or rent a boat slip for the year. Take a look at it for yourself, you won't be disappointed. Call Mike Stoner at 573-774-9775



Benton Co-1.11 Acres - \$49,500

This gently sloping gorgeous property is located in the Ivy Bend area of Lake of the Ozarks! These 4 Contiguous lots are joined together and include a total of 1.11 Acres + or -, There is a Beautiful seasonal Lake view from this property! Only a short walking distance to Marina, Swimming Beach and Boat launch! Located on well maintained Road in a quiet and peaceful area of the Lake! Electric is at the edge of the property for convenient hookup! Priced at \$49,500 Call Chubb at 417-630-9347



Dallas Co-30 Acres - \$169,250

This is a great laying 30-acre tract just off Hwy 65 in Louisburg a couple miles. This land is all open and fenced for pasture and or hay ground. You won't find a better piece of property for building a new house or you could even crop this land. Booth rd is the address and it is a paved road so no dusty road here! Springfield is less than an hour away. There is also deer here and lots of them. Set up a box blind here and you will see some good deer. Electric is available on the property. Owner has used it in the past to cut hay and it makes a lot of hay. Call Mike Stoner for more information 573-774-9775



Cole Camp Office:
14884 Centerline Ave.,
Cole Camp
660-668-4868

www.missourilandco.com • 660-668-HUNT



Mickey Duckett
CAL, MPPA, AARE, CES

Mickey Duckett Professional Auctioneer

P.O. Box 1575, Ozark, MO 65721

(417) 353-2768

www.mickeyduckettproauction.com



ABSOLUTE REAL ESTATE & PERSONAL PROPERTY AUCTION

222 W. Hawthorne, Aurora, MO

Ends Fri., Aug 25th @ 1:07

Preview: Sat., Aug 19th, 10-12

Pick up: Sat., Aug. 26th, 10-12

Lovely 3 bed/ 1.5 bath home located in the quaint town of Aurora, MO. This approx. 2,000 sq. ft. home is situated on approx. .56 acre with spacious formal living room, large island kitchen, family room, game room, sunroom and a large shed that can be easily converted to a she-shed or man cave. Plenty of mature trees offer lots of shade for the summer months and it has city water, city sewer and city gas. This home is perfect for first time home buyers, investment property or for anyone wanting to downsize. **ABSOLUTE AUCTION, SOLD TO THE HIGHEST BIDDER REGARDLESS OF PRICE!!**

PLUS there's over 500+ lots of beautiful antiques, collectibles, and household items being sold. Take a look at our catalog!!

Owner: Annora Todd Living Estate

Auctioneer Note: Lovely real estate and over 500+ lots to bid on! For auction terms, photos and register to bid, go to our website at www.mickeyduckettproauction.com





SEXTON AUCTIONEERS

AUG. 31 ONLINE AUCTION

Auctions Start Closing Aug. 31 at 11am CST
Timed Selling In Online Auction Only

SEXTONAUCTIONEERS.COM

BID NOW!

Scan QR Code Below - Register To Bid Now!



2019 Peterbilt 389



2016 Peterbilt 389



1996 Kenworth W900L Dump Truck



2022 Takeuchi Skid Steers: TL12R2 & TL12V2 Qty. 2



CASE Wheel Loaders: 721C & 821C Qty. 4



2000-08 Caterpillar Skid Steers: 248, 248B & 242B2 Qty. 4



2020 Caterpillar D6 LGP Crawler Dozer

Call us at: 314-529-0124

2020 Caterpillar D6 LGP Crawler Dozer, 10,415 Hours.....Bid Now at SextonAuctioneers.com

HUGE SELECTION OF HEAVY EQUIPMENT



2008 Caterpillar 963D



2010 Volvo ECR305CL Excavator



1998 Caterpillar 953C Crawler Loader



2010 Volvo ECR305CL Excavator



John Deere 35G Mini-Excavator



2007 Caterpillar 420E Backhoe



2006 Ingersoll Rand WL440 Wheel Loader



2005 John Deere 3105G Backhoe



2002 Geo-Boy Mulcher



120 Caterpillar Road Grader



2011 Bobcat SV205 Skid Steer



Hyster H80XL Forklift



2019 John Deere 5090M Tractor



2007 Kenworth T300 Service Truck



2005 Sterling L9500 Tri-Axle Dump Truck



2007 Sterling L9500 Tri-Axle Dump Truck



1986 Kenworth W900



2023 Utility Flatbed Trailer



1967 Chevrolet Camaro



1956 Chevrolet 210 Delray



1934 Ford Coupe



1965 Pontiac GTO Hardtop



1967 Chevrolet Camaro



2019 Ford F-350



SEXTON AUCTIONEERS

SEXTONAUCTIONEERS.COM

314-529-0124

Sales@SEXTONAUCTIONEERS.COM

BID NOW! >>

Sell at your location or at our auction yard at 5182 US Hwy 63, Pomona, MO 65789



REAL ESTATE & PERSONAL PROPERTY

Auction

SATURDAY SEPTEMBER 9, 2023 AT 10 AM

REAL ESTATE SELLS AT 12 NOON SHARP

****REAL ESTATE IS AVAILABLE PRIOR TO AUCTION!**

Location: 31478 CR 95-150, Mountain Grove, MO 65711

DIRECTIONS: FROM AVA, FOLLOW E 76 APPROX 23.3 MI. TURN LEFT ONTO MO-95 N. TRAVEL ABOUT 4.1 MI TO COUNTY RD 95-150, TURN LEFT. CONTINUE 2.7 MI. DRIVEWAY IS ON THE LEFT WITH RED GATE.

FROM MTN GROVE, FOLLOW MO-95 S 5.0 MI. TAKE RIGHT ONTO STATE HWY AE. CONTINUE APPROX 4 MI. TURN LEFT ONTO COUNTY RD AE-153, CONTINUE 0.8 MI. TURN LEFT AGAIN ONTO COUNTY RD 95-150. DRIVE IS ON RIGHT.

WATCH FOR CHEYNEY AUCTION SIGNS!

REAL ESTATE Beautiful 50 acres m/l farm located on a private setting in Eastern Douglas County. If you are looking for seclusion or privacy for your own piece of paradise, this may be the perfect opportunity for you. 2br, 2ba ranch style home with rustic features, large porches and sunroom. Property is fenced and cross fenced with barb wire and welded steel corners, gated entrance and ready for cattle or horses. Good hayfields and pasture, running water and 2 spring fed ponds that are stocked with bass, catfish and bluegill, with a good mixture of mature timber throughout. Wildlife is abundant with plenty of deer and turkey if you're a hunter or just enjoy watching the wildlife from the front porch. A large approximately 40x40 shop building that is insulated, has electric and concrete floor. Also has a smaller barn/animal shelter. **AUTOS** 2018 Toyota 4 Runner—TRD Pro Package *55K miles, NEW wheels/tires, extra floor mats **TRACTOR** Kubota M4-071 Tractor *220 hrs w/ Kubota LA1154 Loader **EQUIPMENT** Bush Hog 3510—10' *pull type • Kawasaki Mule ProFXR—Glass windshield, Hardtop, Rear glass, Rear bumper *2500 mi • Yazoo Kees Midmax Zero turn Mower—Commercial grade *48" cut *New belt & blades **BEEHIVES** 7 hives w/ Carnolian Bees • Smoker • 6 Frame Electric Honey Extractor • **TOOLS/EQUIPMENT/OUTDOOR** Softub Jacuzzi • Craftsman 42" Riding Mower • Troybilt Super Bronco rear-tine tiller • 3 pt pto 10" auger • 3 pt pto Euroc seeder *300 lb • Original tires (NEW) off 4 Runner • Ariens FT524R front tine tiller • PowerBoss pressure washer • Delta 10" table saw • Stihl MS 390 chainsaw • Dewalt 1.6 hp 15 gal air compressor • Portable AC • 3 ton floor jack • Misc assorted tools • Large assortment Pneumatic air tools • Misc T posts • Aluminum extension ladder • Chicken wire • Buck stove • Saddle rack • Vehicle body work tools • Misc electrical/plumbing • Misc yard tools • Adirondack chairs • Big Green Egg cooker • Antique metal outdoor chairs • Army cot • Nesting box • Electric grill • Astrolon telescope 525x **FIREARMS** Kimber 45 1911 Platform • Colt 45 1911 Govt. model, dual springs, adjustable sites • Winchester model 70XTR .22-250 circa 70s w/ Bushnell 6x18-50mm scope • Thompson Center Renegade 50 cal • Rossi 410 • Italian made 44 black powder • Traditions "Springfield Classic" black powder 50 cal • 2- Black powder parts guns • 177 cal Remington Air-soft **DYES (RCBS, LYMAN, & HORNADY) & RELOADING SUPPLIES** 9mm • 35 Remington • 257 Roberts • 4570 • 30-06 • 357 Mag • 7mm WSM • 500 S&W • 7mm 08 • 22 Hornet • 300 Win Mag • 243 • 303 British • 300 Weatherby Mag • .22-250 • 45 ACP • 270 • 25-06 • Lyman manual press • Tumbler • Pistol primers- large & small • Small rifle primers • IMR 4831 smokeless powder (3 lbs) • Winchester 760 powder • Nosler, Barnes, Spear reloading manuals **NEW & ONCE FIRED BRASS** 22-250 • 270 • 7mm Mag • 25-06 • 30-06 • 357 Mag • 500 S & W • 243 • 303 British • 300 Win Mag • 30-30 • 7m-08 • 7mm WSM • 9mm • 45 • 40 cal • 45 Auto • Misc bullets • **Scopes**- 3x9 Redfield • Tasco Pronghorn 3x9 • Bases & rings **HOUSEHOLD** Round table w/ 4 chairs • Leather sofa, loveseat, arm chair w/ ottoman • Wood coffee tables, end tables, TV stand • Queen bed/ headboard • Dresser w/ mirror, matching armoire • Nightstand w/ drawers • Antique side table

- Matching chest of drawers, ottoman, small dresser • Corner cabinet/ TV stand • Antique washstand • Jewelry armoire • Western floor lamp • Kenmore Washer & Dryer • Samsung refrigerator • Large coffee/food servers • Canning pot • Vintage National Chair Co. Table w/ 6 chairs • Toaster oven, Crock pots, Food dehydrator • Deep freezer • Roaster oven • Deep fryer • Waffle maker • Panasonic plasma TV • Sanyo flat screen TV



FOR MORE PHOTOS, VISIT OUR WEBSITE CHEYNEYAUCTIONS.COM OR FIND US ON FACEBOOK!

Cheyney Auction Company, LLC

Real Estate • Livestock • Farm & Ranch • Equipment • Household • Antiques

Travis Cheyney, Auctioneer • Buddy Boyd, Ringman

417-543-8751 • cheyneyauctions.com

Real Estate Terms: 10% down day of auction w/ Bank letter. ANNOUNCEMENTS Made Day Of Sale By Auctioneer Take Precedence over any Printed Matter. Not Responsible For Accidents. All items sold as is, where is, with no guarantee. Terms of sale: cash, credit/debit card, or check with valid ID.

REAL ESTATE & ESTATE AUCTION

Saturday, August 19th, 2023 ~ 9:00 AM

LOCATION: 27688 East 54 Hwy, El Dorado Springs, MO; Directions: From El Dorado Springs Go West On 54 Hwy Aprox 7 Miles Or From Nevada Go East On 54 Hwy Aprox 13 Miles To Sale Site. GPS Will Get You There (Watch For Signs)

Auction For Charles & Edith Winfiel



Real Estate Will Sell First At 9:00 AM

Two Homes Setting On Aprox 13 Acres M/L. Home 1 Is 3 Bedroom, 1 Bath W/Kitchen, Living, Family & Sun Rooms, Has Central Heat & Air, Ceiling Fans, 1/2 Basement & Attic, Has Wrap Around Deck, Basement Entry, Good Roof & Fenced Back Yard. Nice Home, Does Need A Little Update But Is Livable Now. Home 2 Is A 2 Bedroom, 1 Lg Bath W/Kitchen, Living, Utility & 1 Lg Open Room That Could Be Developed & Used For Any Purpose, Has Central Heat & Air & Covered Patio On Back. Would Make A Great Starter Home. As Stated Both Homes Are Setting On 13 Acres M/L W/20x30 Shop That Has Electric & Concrete Floor, 2 Car Garage, 2 Other Outbuildings, Open Bottom Ground W/Some Timber, Has Lots Of Deer, Turkey & Wildlife, Very Nice View & Setting From Deck & Patio. Both Home & Land Will Be Sold As 1 Complete Tract Or Unit.

To Preview Contact Bill At 417-214-0093.

Terms: 10% Down Day Of Sale With Signed Contract And Balance Due In 45 Days Or When Closing Date Set By Abstract Office. Seller Has The Right To Accept Or Reject Any And All Bids.

Antique, Modern Furniture & Appliances

Ant China Cabinet, Ant Eastlake Glider, Ant Vanity W/ Wall Mirror, Ant Cedar Chest, Ant Chest Of Drawers, Ant Store Display Tables, Ant Record Slot Sorter Cabinet, Ant Iron Fireplace Front, Grandfathers Clock, Old Rockers, Lg Hutch, Sm Roll Top Desk, Sm Cedar Table, Oak Standing Jewelry Box, 2 Oak Gliders, Oversized Oak Glider, Prim Doors & Windows, Prim Metal Cabinets, Ant Plant Stands, Ant & Prim Wood Chairs, Very Lg Lot Of Pictures & Paintings, Metal Locker, Kitchen Hutch, Old Console Stereo, Several Sm Ant & Prim Tables, Other Prim Furniture, Sofa Table, Old Lamps, End Tables, Bakers Rack, Full Bed, Couch, Loveseat, Bookshelves, New Steamer, Vacuum Sweeper, Exercise Equipment, 10 Boxes Of New Flooring, Side By Side Refrigerator, Regular Refrigerator, Flat Top Electric Cook Stove, Washer & Dryer, Other Items Not Listed

Antiques, Collectibles, & Households

White Eagle Porcelain Gas Sign, 2 Hornets Nests, Ant Child's Wagons, #8 Buckeye Crock & Other Cocks, Old Cast & Other Banks, Rare Ant Humidor, 2 Ant

Croquet Sets, Lots Of Old Toys Some Metal, Old Spittoon, Several Old Wicker & Metal Baskets, Old Galvanized & Granite Ware Pcs, Old Marbles, Old Jars & Bottles, Old Tins, Ant Scale, Stand Up Globe, Old Records, Old Washboards, Old Paper Goods, Lg Lot Of Old Linens & Sewing Supplies, Ant Corn Planter, Old Hay Hooks, Old Ammo Boxes, Old Cream Cans, Ant Ice Cream Maker, Ant Hay Knife, Old RxR Jacks, Old Iron Wheels, Old License Plates, Old Wrought Iron Porch Posts, Brass Pcs, Old Glass Doorknobs, Full Set Of Ant El Dorado Springs Plates, Lot Of Ant Watt Pottery Pcs, Carnival Glass, Ant Moon Stone Glass, Lots Of Old Glassware Of All Kinds Stored In Totes & Boxes, Lg Lot Of Old Books, Very Old Dolls, Ant Barbies In Original Boxes, Some Porcelain, Ant Scale Head, 2 Ant BB Guns, Ant Fire Extinguishers, Angel Collection, Old Christmas & Holiday Décor, Tupperware, Kitchen Appliances, Pots, Pans & Dishes, Other Items Not Listed

Car, Storage Building, Tractor, Equipment, Tools & Outdoor Items

2002 Oldsmobile Sil Howette Van W/V6 Motor, Auto Trans, Aprox 243,000 Miles, 10x16 Portable Storage Building, 8N Ford Tractor, 3 Pt 5 Ft Bush Hog Brand Bush Hog, Truck Toolbox, Cattle Wire Panels, Dozer Clevis, Log Chains, Steel Posts, Water Tank, Alum Fold Up Loading Ramps, Air Compressor, Scaffolding, 3 Push Mowers 2 Are Self Propelled, Big Wheel Trimmer, 2 Gas Power Washers, Yard Cart, Chainsaw, Gas Weed Eater, Wheelbarrow, Roll Around Toolbox, Radial Arm Saw, Table Saw, Band Saw, Scroll Saw, Chop Saw, Sm Electric & Battery Operated Tools, Air Tools, Lg Lot Of Sm Hand Tools & Long Handle Tools, Lot Of Construction Tools, Workmate Benches & Saw Horses, Ladders, Organizers, Metal Shop Shelves, Dollies, Some Lumber, Some Scrap Iron, Electric Wire, Electric & Plumbing Supplies, Sm Propane Tanks, Vented Gas Cans, Metal Detector, Bikes, Blue Rock Thrower, Hunting Supplies, Camping Supplies, Fishing Poles & Tackle, Outdoor Chairs, Outdoor Décor, Good Flat Décor Rocks, Martin House, Other Items Not Listed. Both Houses Are Full Of Boxes Unopened & Not Gone Through.

We Will Run 2 Rings So Bring A Friend!!!

Auctioneers Note: As The Winfiel's Have Decided To sell Their Property & Relocate Due To Health Reasons We Will Offer A Very Large And Outstanding Auction With Something Here For Everyone. Both Houses & 13 Acres Will Sell As 1 Unit. Excellent Antiques, & Primitives, Great Tractor, Car, Tools & Outdoor As Well. An Auction You Do Not Want To Miss. Please Plan Now To Attend. **Sale Order: Real Estate Will Sell First At 9:00 AM Followed By Appliances, Antique & Modern Furniture Then Will Split Into 2 Rings With 1 Ring Selling Antiques, Collectibles, Households The Other Ring Selling Tools & Outdoor Items. At Aprox 12:30 PM Will Offer Tractor, Equipment, Storage Building & Van. See Ya There!!!**
Terms: Cash or check with proper ID. Now accepting most major credit cards. Nothing removed until settled for. Statements made the day of sale takes precedence over printed material. Everything sold as is where is. Not responsible for accidents. Restroom available. Concessions Provided. Check our website for upcoming auctions and for additional pictures!!



NANCE AUCTION SERVICE

No Matter How BIG or small, We Do Them All!!!



Col. Bill Nance 417-214-0093 In God We Trust Philippians 4:13 Col. Sean Beazley 417-247-6754

REAL ESTATE & PERSONAL PROPERTY

Auction

SATURDAY AUGUST 19, 2023 AT 9 AM

REAL ESTATE SELLS AT 12 NOON SHARP

Location: 9372 Co Rd PP-521, Ava, MO 65608

DIRECTIONS: TAKE HWY 76 WEST FROM AVA, TURN RIGHT ONTO HWY PP, FOLLOW TO END OF PAVEMENT. CONTINUE STRAIGHT. TURN LEFT AT NEXT COUNTY ROAD. CROSS THE BRIDGE, AND PROPERTY IS ON THE RIGHT. WATCH FOR CHEYNEY AUCTION SIGNS!

REAL ESTATE Historic home, Country Store, Large barn/shop and 19 ac m/l with waterfront view of Cowskin Creek in Douglas County. Property is completely renovated, including solar panel system on both the home and store, while still maintaining the original style of back in the day!

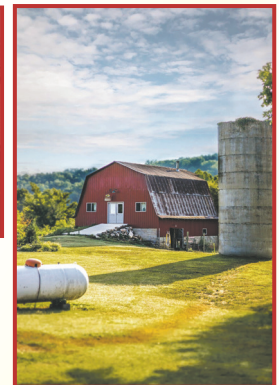
SHOP/WOODWORKING Dewalt 12" Chopsaw w/ stand• Shop Smith w/ new motor, accessories, & tool storage• Sanding station w/ Dust Right 750 Dust collector & storage• Craftsman scroll saw on cart• Gerstner Machinest Tool chest• 19th Century fully restored cabinet maker's bench w/ added tool rack• Large pedestal shop fan• Veritas cabinet maker's bench• Dietzgen Engineer/Architect's drafting table• 1977 restored Bose 601 speakers• 1800s rope making machine• 19th Century Disston & Sons hand saws, specialty saws, recut teeth. HSB & Co OVB saw• Honda EU2000i Generator• Wood router table w/ Porter Cable Speedmatic model #75361• Delta Rockwell Radial Drill Press w/ Inkra table• Dynaglo kerosene heater• Stereo equipment, speakers, subwoofers, theater speakers• Stihl MS 290 chainsaw• Stihl MS 311 chainsaw• Porter Cable 18" Omni Dovetail jig w/ Porter Cable router• Porter Cable dovetail jig• Tool boxes—Kennedy & Craftsman• Dorman Automotive storage cabinets/drawers• Large assortment of clamps—Hinge, C clamps, Bar• Clamp storage rack• FW Barnes Sash Mortiser *Museum Quality!!• Antique bar clamps• Antique & modern parallel Jaw Clamps• Stanley #45 molding planes w/ Cutters & box• Shelix Powermatic Jointer 6", Carbide helical cutter, Shelix cutter head• Woodmaster 712 Molder, Sander, Planer & accessories. Works perfect!• Turn of the Century Carpenter's bench• 10" Dewalt Radial Arm saw w/ Work bench• Powermatic 14" Band saw• Drafter's table, 19th Century, fully functional• Various Kerosene lamps—3 Aladdins• 1850 Bullseye Barn lantern• Collection of Coleman lanterns, stoves, cases—most of them restored• WWII Military equipment box• BriteLyt XL kerosene lantern, Rapid 829/500 CP• Large assortment jigs• Delta Pedestal grinder• Delta 2 HP Dust Collector model 50-851 w/ extra hoses, floor & bench sweepers• 10" Disc sander w/ table• Swisher 34 ton splitting force Wood Splitter w/ 4 way split• Powermatic 10" model 66 Cabinet saw (52" rip) w/ table & Accufence• Delta Tenoning jig• Professional saw blades• Vika Work table• Delta Sliding Miter jig for table saw• Precision miter gauge• Dewalt miter gauge• Black & Decker workmate bench• Woodmaster Molding profile knives• Shaper Powermatic model 26• Lathe Powermatic model 90• Bandsaw Powermatic model 141• Epson Projector Powerlite Pro G5450WU w/ screen & outdoor screen• **TRAILER** 16' Heavy Duty Utility trailer, dovetail & ramps• **FIREARMS** Marlin Foremost model 2035 .22 cal • Ruger model 10-22 Carbine w/ Weaver Marksman 4x scope • WW Large Custom 500 cal Percussion, • Model 1859 Berdan Sharps 54 cal Percussion (Creedmore sight)—dropblock w/ double set triggers • Western Field model 550 AB 12 ga • Wesson Box Lock 50 cal competitive shooter

ANTIQUES/HOUSEHOLD LARGE COLLECTION OF CIVIL WAR ERA ITEMS & MEMORABILIA! Large primitive storage cabinet• Wall hang wooden medicine cabinet• Wooden wall cabinet• Primitive wooden chairs & benches• Silverware• Zinc lined copper fry pan• 1700s Pennsylvania Dutch dough box• Various cast iron—Griswold, Wagner• Copper boiler• Butcher block island table• General store grain bin• Possum belly table• Large General store cabinet• Large wooden blanket chest• Large primitive dining table w/ 10 chairs• Rocking chairs• Large storage cabinet (top is original to Arno Gen Store, bottom redone)• Large wooden hutch/cabinet• Wooden Immigrant's chest• Ideal Patent Aug 3, 1897 bread pan• 5 Star Handy Tool (NEW in box)• Hand stitched quilts• Royal Ironstone China dishes• Crocks various sizes• Large Enamelware drink dispenser• Misc cast iron kitchenware• Civil War reproduction tin basins• Regulator wall clock• Betty lamp• Mountain dulcimer• Dough proofing trough• Hand

woven rugs, various sizes• Wall hang quilt rack• Collection of Pink Pyrex• Kitchen buffet storage cabinet• Rocking chair w/ mother of pearl inlay• Handmade Cherry stool/storage box• Icarian communal dining chair reproduction• Walnut dresser w/ attached mirror• Night stands/end tables/cabinets• Double wash stand w/ enamel top• Oak bench w/ enamel top• Oak log bench from 1800s log cabin• Wood sleigh• Copper boiler kettles• Cast Iron "Spider" soldier issue—Civil War era• Covered wagon toolbox• Metal restaurant/freezer carts• **OUTDOOR/LAWN & GARDEN** BCS 730 Walk-Behind tractor (made in Italy) w/ attachments *Blade Runner 75 flail mower *36" tiller * Ground Blaster rotary plow• Husqvarna MZ5225 Zero turn Mower *fabricated deck *Kohler 25 hp Courage Pro engine• Husqvarna FT 900 front tine tiller 26"• Mantis tiller w/ Honda 4 stroke engine• Honda self-propelled push mower• Craftsman self-propelled push mower• Stihl FS 70R weed eater• Stihl FS 44 weed eater• Stihl FS 90 weed eater• Stihl BG 86 leaf blower• Craftsman GCV 160 power washer *2800 psi• Old Town Saranac 146 Canoe (LIKE NEW)• Augason Farms Water storage barrel & pump kit• Weber propane BBQ grills• Blackstone 24" griddle• Zero gravity chairs• White oak porch swing• Cracker Barrel rocking chair• Hose carts w/ hose• 10- 5 gal Military issue Jerry cans• 3- Hardigg protective cases - **AND MORE, TOO MANY TO MENTION!**

AUCTIONEER'S NOTE: EARLY START!! Starting at 9 AM so make sure and set your alarms! This will be a fantastic auction, with so many beautiful pieces. If you are a collector of any kind, you won't want to miss this one. There are too many items to list, so bring a chair and find some shade and spend the day with us.

Real estate available prior to auction



FOR MORE PHOTOS, VISIT OUR WEBSITE CHEYNEAUCTIONS.COM OR FIND US ON FACEBOOK!

Cheyney Auction Company, LLC

Real Estate • Livestock • Farm & Ranch • Equipment • Household • Antiques

Travis Cheyney, Auctioneer • Buddy Boyd, Ringman

417-543-8751 • cheyneyauctions.com

Real Estate Terms: 10% down day of auction w/ Bank letter. ANNOUNCEMENTS Made Day Of Sale By Auctioneer Take Precedence over any Printed Matter. Not Responsible For Accidents. All items sold as is, where is, with no guarantee. Terms of sale: cash, credit/debit card, or check with valid ID.

VISIT WEBSITE FOR PICTURES

Real Estate & Estate AUCTION

SATURDAY, AUGUST 19TH- 9:00 A.M.

Location: RR 61 Box 80, Macomb, MO 65702 **Directions:** From Norwood 4 way stop take North Eagle Street approx 3/10 mile to C Hwy on left. Go approx 3.7 miles to Hwy YY on right go 1.7 miles to Co Rd YY-120 on right go approx 1 mile to CO Rd 117 on left. Auction on left. (GPA Address) 25842 CO RD 117, Macomb, MO 65702 **WATCH FOR CHADWELL AUCTION SIGNS.** **Payment System:** Cash • Debit Card • Credit Card (Debit / Credit Card Fee Will Apply) Checks approved if known by auction company. **VISIT: WWW.CHADWELLAUCTIONS.COM**

Estate of David STOKES

REAL ESTATE ~ Sells at 11:00 am



203 acre m/l working grass farm with lots of potential. This farm features a 3 bedroom, 2 bath modular home with a nice 24'x 32' shop building built in 2009, a beautiful 44 x 60 1940's red barn, a 40 x 60 quonset hut, & several other outbuildings. This farm is currently running cattle and produces approx. 200 bales of hay each year. If you love a remote location that is still close to Hwy 60 this would be the farm for you. Lots of wildlife can be seen daily. Such a peaceful place with so many great building spots. **TERMS:** 10% down day of Auction, taxes prorated, closing costs split, balance due at closing (sale subject to court approval) for viewing call Shawn 417-830-0209

10' x 20' Storage Building

FARM EQUIPMENT ~ FARM RELATED

7' Drag Type Bushhog • JD 916 8' MOCO Disc Mower w/failes • NH 648 4x5 String Baler (needs work) • 3pt Bale Spike • 6" Bucket for Tractor • Cattle Rubs • Electric Fence Supplies • Steel Posts • Portable Hay Feeder on Skids • 100 Gallon Rubbermaid Stock Tank • 2 Wheel Pony Cart • Livestock Troughs • Round Bale Feeders • Pallet Forks • 336 JD Square Baler w/Kicker • 3pt 4' Garden Roto Tiller • 3pt 2 Bottom Plow • 3pt 100 Gallon Boom Sprayer • Wire Cattle Panels • (3) 4 Wheel hay Wagons w/Sides • Hay Elevators • (2) 5 Bar NH Side Delivery Rakes • Other

12' x 30' Hunting Cabin/Tiny House on skids

VEHICLES ~ TRAILERS

2011 Ford Escape AWD 147,xxx miles • 1995 Ford 1 ton F350 Double Cab Extended Bed V8 138,xxx miles • 1981 Ford F250 4wd 4spd (needs work) • 1981 Ford 1 Ton Dually 2wd w/8x14 Rollback Bed (needs work) • 1989 16' Ponderosa Trailer • Black Smith Trailer • 1997 20' Flatbed Bumper Trailer w/ ramps • 1996 Cherokee Gooseneck Cattle Trailer w/Rubber Mat on Floors • Chevy Nova (scrap only) • Other



610 Kawasaki Mule 4wd w/Dump Bed 350hrs

150# Anvil Centaur Burlington WI Co

HOUSEHOLD ~ ANTIQUES

Frigidaire Refrigerator • Assorted Wooden Chairs • 3pc Bedroom Set • Christmas Decor • Wooden Gun Cabinet • Pressure Cooker • Filing Cabinet • Assorted Wooden Chairs • Dishes • Glassware • Cookbooks • Old Ice Skates • 2 Man Cross Cut Saws • Wooden Sled • Old Tractor Seat • Budweiser Clock • Budweiser Sign • Wooden Table w/Chairs • Old Bell • Pepsi & Coca Cola Signs • Coleman Lanterns • Coleman Lantern In Case • USA #3 Crock • Sofa • Whirlpool Washer • Books & Movies • Eden Pure Heaters • Chest of Drawers • Full Bedroom Set • Glider Rocker • Other

Approx 150 Bales of 4x5 Net Wrap Hay (this year) 45+ Bales (last year)

TRACTORS

485 Case International Diesel w/110 Loader & Canopy 4spd hi lo range 540 PTO 4000hrs • 685 Case International Diesel w/2250 Case Loader 4spd hi lo dual remotes 540 PTO • Allis Chalmers WD 45 (needs work) • 830 Case Comfort King (needs work) • 300 International Utility Tractor (needs work)



OUTDOOR ~ MISC ~ TACK

42" Cub Cadet Mower • Camping Cot • Little Red Wagon • Horse Shoes • Storage Totes • Smoker • Coolers • Pet Taxi • Fuel Cans • Long Handle Tools • Husqvarna 225 Weed Eater • Battery Powered Stihl Weed Eater • 8' Fiberglass Ladder • Misc Pipe • 2 Wheel Dump Yard Cart • Stihl 025 Chainsaw • Heaters • Clipper Blade Sharpening Tools • Oster Show Clippers • Large Lot of Horse Tack • Faulkners Handmade Saddle • Siegfried Extra Saddle • Stubben English Saddle • Kids Saddle • Assorted Saddle • Barbed Wire • Spinning Jenny • Smooth Wire • Large Lot of 25 Gallon Blue Barrels • Tractor Chains • Live Animal Traps • Assorted Ladders • Other

SHOP ITEMS

800 Watt Chicago Electric Generator • Metal Shelving • Bosch Nail Gun • Hi Lift Jack • Generac 2800 PSI Power Washer • Chain Boomers • Com A Longs • Oils & Solvents • Barrel Pump • Hydraulic Cylinders • Drop Cords • Air Tank • Concrete Tools • Ratchet Straps • 3 Ton Floor Jacks • 2 Ton Floor Jacks • Electric Wench • Nuts & Bolts • Nut & Bolt Bins • Roller Stands • Dewalt Elec Hammer Drill • Power Tools • Nailers • Wooden Saw Horses • Dewalt Sawzall • Appliance Dolly • Welding Rod • 200' Tape Measure • Assorted Tools • Pipe Wrenches • Delta Stand Grinder • Delta 14" Drill Press • Jack Stands • Acetylene Torch w/Cart • Wood Clamps • Milwaukee Chop Saw • Lincoln 225 Arc Welder w/Cart • Steel Shop Table w/Casters • Vise • Miller Matic 250 Arc Wire Feed Welder w/Bottle • C Clamps • Shop Lights • Central Pneumatic 125 PSI Air Compressor • Jumper Cables • Level • Campbell Hausfeld Portable Generator • Post Driver • Chain Hoist • Receiver Hitch • Ryobi Power Drill • Dewalt Miter Saw • 10" Table Saw • Other

AUCTIONEER'S NOTE: This would make someone a great farm! Come Spend the day with us. **Thanks, Shawn**

DRIVER'S LICENSE OR PICTURE I.D. REQUIRED • TERMS: CASH OR APPROVED CHECK **OR**

Chadwell Auction Service, LLC
www.chadwellauctions.com

Auctioneer: **SHAWN CHADWELL** 417-830-0209
Ringmen: **Weston Chadwell** ~ 417-349-0727

Clerk: **SHELLY CHADWELL** Cell: 417-880-8449
Cashiers: **Marla Chadwell • Emily Shaffer • Cassie Collins**

PROFESSIONAL SALES MANAGEMENT
LUNCH WAGON • APPRAISAL SERVICE • RAIN OR SHINE
All announcements made day of sale take precedence over any printed matter. Not responsible for lost or stolen merchandise. Not responsible for accidents.

Public Auction

24725 CR 294, Urbana Mo. 65767

Directions: From Urbana HH & 65 hwy intersection take HH West 3 miles to County Road 316 turn Right go 2 miles to County Road 363 turn Right go 1/2 mile to County Road 294 turn Left to Auction on Right watch & follow signs on sale day.

We will sell the following at public Auction on:

SATURDAY AUGUST 19TH 2023 • 9:00AM

"Donald Modlin"

FIREARMS, WINCHESTER model 1912 20ga. Pump, **Savage** .270 model 110 w/Simmons scope, **Remington** 670 Express 12ga pump, **Spiegel Huntmaster** model 128 bolt action 12ga, **H&R** 9 shot 22 special revolver, 5 **TRACTORS, TRAILERS, EQUIPMENT & TOOLS** **Kawasaki** Mule 4010 4x4 side by side **Case 1030** "Comfort King" 101 hp. diesel tractor w/loader & bucket, wheel weights & pallet fork attachment **1978 Ford** 5000 gas tractor w/loader bucket & bale spike attachment **Country Clipper** zero turn mower 50" cut 24hp **Kawasaki**, Long diesel tractor LDT 360D w/5140 loader, front wheel assist. (turns over won't run), 6'x17' bumper hitch tandem axle trailer w/ramps & title, 6'x9' utility trailer w/title, 2 - pickup bed trailers, 3pt. tractor boom, 3 - 3pt. blades (6,'7' & 8'), 4' tandem pull type disk, Champion 3pt. posthole digger, 3pt. 3pt walking plow, 5' 3pt. rotary mower, 5' 3pt. rock rake, 2 - ATV sprayers, ATV/mower snowblade, 36" lawn aerator, 42" yard roller, concrete mixer, Sanborn 60gal. upright air compressor, **Clarke Mig** 130EN wire welder, oxy-acetylene torch & bottle set on cart **Makita** chop saw, **Master-Force** portable air compressor, **Elite series** compressor 5500watt generator, **Craftsman** table saw, house jacks, boomers & chains, gas string trimmers, **Lincoln** AC welder, 12ton shop press, **Black Max** 2500psi pressure washer, **Cen-Tech** battery charger/starter, bench top drill press, **Husqvarna** backpack leaf blower, roll around toolbox, ele. Pole saw, 8" bench grinder, Lot organizers, **Little Giant** alum. ladder, chain saw sharpener, machinist vise, Lot scrap iron, chain hoist lot long handled tools, lg lot electric hand tools, extension cords, gas cans, 6' **Werner** fiberglass step ladder, air bottle, furniture dolly's, roll 220v ele. Wire, Misc. plastic & metal shelves, deer stands, 20' alum. extension ladder, Black stone 29" griddle, 2 - implement seat stools, lot fishing poles & tackle **HOUSEHOLD & MISC.** **Frigidaire** stainless steel side by side refrigerator, **Whirlpool** glass top oven/range, **GE** washer (8 months old), **Maytag** "Bravos" dryer, 2 - chest freezers, 2 - queen size beds, dressers, 3 - chest of drawers, Ninja countertop oven, lot misc. glass, Kitchen cart, futon, early American Dining room table w/leaf & 6 chairs, china hutch, window AC unit, inversion table, treadmill, computer desk, lot Real Tree camo & hunting clothes, **Many More Items Too Numerous to Mention**



*STATEMENTS MADE DAY OF SALE TAKE PRECEDENCE OVER PRINTED MATERIAL.

Concessions provided by "Benton County Good Ole Gals"



JOHNSON AUCTION SERVICE

"Third Generation Family Tradition since 1942"

Russell "Rusty" Johnson (660) 221-4067 • Phillip Yoder (660) 723-3389

For Full Listing, Pictures and Details auctionzip.com (ID# 20300)



Saturday, August 19, 2023 • 9:00 a.m.

**LOCATION: In Licking, Mo., on Hwy. 32 East, next to Hammond Feed & Farm Supply.
Watch for signs. To view photos, go to auctionzip.com. Auctioneer #28367**

We will be running two rings so bring a friend and spend the day with us. This is NOT a complete listing, we have approximately 100+ boxes to still unpack. Come and take a look.

FURNITURE & HOUSEHOLD

Tan Love Seat, leather, Natuzzi
Oak Dresser, swivel mirror
Chest of Drawers
Swivel Chairs
Desk
File Cabinets, wooden
Small Tables, several, wooden
Frigidaire Upright Freezer
Bookcase
T.V. Cabinet
Floral Couch
Floor Lamps, marble base
Wooden Rocker & Chair
Round marble top Table
Cedar Chest
Cabinet Stereo
Singer Table-treadle style
China Cabinets
Glass door Case
Wooden Shelf
Office Chair
Table & Chairs w/rollers
Body Rider exerciser
Bissell & Dyson vacuums
Lot Table Lamps
Flat screen T.V.
Bedroom Set 3 pc., king, adjustable
Full size Bed Frame
Jenny Lind bed
Leather Swivel Chair
Desk, wooden, nice
Woven bottom Rockers
4 Captain's Chairs
Couch, striped
Bar Stool
Large lot Linens, Bedding, Throw Pillows,
Towels, Material, Table Cloths, Rugs
Child's Chair, metal frame
Wooden Cabinet
Curved front China Cabinet
Hall Tree
Oak Chest
Glass door Cabinet
Lot Quilts, some hand quilted & tacked
Fenton Glassware, white, green
Green Depression Dishes
Lead Crystal vases
Marble Lions on bases
Juicers
Shaving Mug & Brush
Kerosene Lamps, Aladdin
Tea Pots
Shawnee Pitcher
Lot Figurines, Birds, Animals, People
Cake Stands & Covers
Glass Minnow Jug from Chocotah, OK
Lot Cut Glass & Pressed Glassware
Cast Iron Corn Bread Pan & Egg Poacher
Wooden Rolling Pins
Ceramic Shortbread Pan

Lots Vases, Pitchers, Glasses
Glass Refrigerator Dishes
Cast Iron Dog & Pipe
Salt & Pepper Shakers
Frankoma Pitcher
Stemmed Glasses
Fire King Cups
Crock Salt Holder
Wooden Salad Set
Lots Jewelry, large
Singer Serger, Material, Thread
Tea Towels, Embroidery
Lot Pyrex & Corning Ware, Corelle Pan
Flatware & Knives
Apple Peeler
Punch Bowl Set
Stock Pots
McCoy Pitcher
Jars, gallon & quart
Fans
Lot Pictures
Luggage
Kitchen Utensils
Baking Pans, Pots & Pans, Angel Food Pan
Glass Canisters
Small Kitchen Appliances
Lots Cookbooks
Pressure Canners
Cold Packers
Irons, Toaster Oven
Indoor Grill, Bread Machine, Food Processor
Copper Molds
Cast Iron Pan & Lid
Pyrex Glass Measuring Cup
Colored Plastic Dishes
Chip & Dip Set
Crock
Holiday Décor - Easter, Christmas,
Thanksgiving
Brass Bell
Old Man Captain & Ship Wheel Figurine
USA Bowl & Lid
Sterling Silver Pieces
Hand Crank Grain Grinder
Enamel Pan
Colored Glass Hanging Light
Record Player, Stereo Equipment
Cameras & Equipment
Concrete Frogs
Metal Holder w/Metal Tobacco Cans
Barometers
Lot Brass Item
Metal Milk Bucket
Pfaff Sewing Machine
Large Lot Books, VCR Tapes, Cassettes
Wooden Cutting Boards
Large Lot Tupperware

Dehydrated Foods

Old Mill Inn Dehydrated Food, 60 serving/box
variety of meat/veggie/fruit – total 143 boxes

Dehydrated Potato, Greens, Corn, 20 pouches
per bucket, total 14 buckets
Food Supply, dehydrated, 275 Servings per
bucket, total 39 buckets
3 – 6 gal. buckets Of Old Mill Inn Winter Wheat

VEHICLES

1995 GMC Vandura Conversion Van, king size
bed, TV, CVR, 5.0 engine, 104,000 actual mi
1994 Jeep Cherokee AWD, 4.0, 6 cyl, like new
tires, brakes, shocks, reverse does not work
Kayak – one seat
Camper Shells – fits 1993 Dodge Dakota

TOOLS, LAWN & GARDEN

Hammers
Flare Nut Wrenches
Wooden Rules
Tape Measure
Plumb Bob
Garden Hand Tools
Pliers
Socket Sets
Tool Boxes
Levels
Planes
Punches
Files
Drill Bits, wood and metal
Ratchet Wrenches
Tack Hammer
Pipe Wrenches
Shop Lights
Pulley
Corner Clamps
Torque Wrenches
Speed Square
C- Clamps
Kerosene Can
Wood Bucket
Lots of Bolts & Nuts
Ammo Cans
Gun Cleaning Kit
Organizer
Wire
Bug Light
Metal Single Tree
Chain
Bottle Jacks
Milwaukee Hand Grinders & Drill
Skill Saws
Wash Tub
Feed Bucket
Solo Sprayer
Stihl BG 55 Leaf Blower
Coal Bucket
Gas Cans
Jack Stand
Duracraft Bench Grinder
Block & Pulley
20 X 50 mm. Binoculars

50' Steel Tape
Copper Pipe
Vise
Ratchet Straps
Wood Clamps
Craftsman Router
Pocket Knives
Vise Grips
Big Insulators
Shoe Shine Kit
Electric Fence Chargers
Husqvarna 15 S Riding Mower, Rear Steering
Husqvarna Push Mower with Bagger
Craftsman Lawn Sweep
Mantis Tiller
Seeder
Shop Vac
Shovels
Husqvarna 128 LD Weed Eater
Rakes
Limb Saw
Weed Hooks
Bolt Cutters
Picks
Pipe Bender
Boat Paddles
Boat Oars
Bifold Doors
Plastic Shelves
Wooden Work Benches
Metal Shelves
Ladders, Step
Etc Ladders
Wooden Benches
Firestone Cruiser Wagon
Coolers
Wooden Trunks
Propane Tanks
Metal Trash Cans
Wheel Barrow
Lots of Canning Jars
Gas Cans
Evinrude 9.5 Hp Boat Motor
Minn Kota Trolling Motor
Fish Net
Fishing Poles
Fish Attractor Light
Reels
Minnow Buckets
Lead Mold
Lead Pot & Ladle
Lead
Lots of Fishing Lures
Tackle Boxes
Boat Seats
Lanterns
Thermos
Wood Boxes
Dehumidifier
Kerosene heater
Gear pullers

Ken Rozar - Owner

Terms - Cash or Approved Checks. Nothing Removed Until Settled For. Not Responsible For Accidents.
Must show ID to get Buyers #. Announcements Made Day Of Sale Take Precedence Over Printed Matter.

Buckner & Gately Auction Service
Auctioneers

Steve Buckner 573-674-2686

Neal Gately 573-202-3132

PUBLIC AUCTION STOCKON, MO AUCTION

Due to the Death of my Husband the late Doug Crosby we will sell the following Travel Trailer, UTV's, Tools, Household, Collectibles and Misc. At the Home located 7 ¼ miles West of Stockton, Mo. On 32 hwy.

To the intersection of CC hwy. & F.R. 825 go South on 825 7/10 mile to F.R. 1250 go West to the Auction on

Sat. August 26, 2023 at 9:00 am

WATCH FOR AUCTION COMPANY SIGNS • LUNCH SERVED

FOR MORE PICTURES GO TO: WWW.BRUCEANDLEANAUCTION.COM



TRAVEL TRAILER-UTV'S

- 2021 Transcend Xplor 200 MK 25' Bumper Hitch Camper Trailer 1 Slide Out, Rollout Awning (like new condition used very little, stored under cover)
- 2017 Polaris S70 EFI 4X4 Pro Start Ranger, Windshield, Top, Front & Rear Light Bars, Dump Bed
- 2005 Polaris 330 Magnum 4 Wheeler, on Demand AWD, Front & Rear Racks
- 2015 Starlite 16' Flatbed Tandem Axle Bumper Trailer W/2' Dove Tail
- 2 Wheel 3' Bumper Hitch UTV Trailer

HOUSEHOLD-COLLECTIBLES CONT.

- Milk Can
- 3 Lrg. Iron Rake Wheels
- Child's Metal Tractor
- Chiefs & Ford Metal Signs

CARPORT-MOWER-WOOD SPLITTER

- Metal Carport 12' Tall, 34' Long (Partially Covered on one Side, Like New, Yr & Half Old)
- Predator 20 Ton 212cc Wood Splitter
- Husqvarna Model YTH-24-K48 Riding Mower 265 hrs.
- Blue Hawk Lawn Trailer
- Huskee 25 Gallon Pull Type 12 Volt Sprayer

HOUSEHOLD-COLLECTIBLES

- Frigidaire Refrigerator (black)
- Frigidaire Upright Deep Freeze
- Samsung 72" Flat Screen TV
- TV Stand
- Harman/Kardon Stereo System
- Lazy Boy 3 Cushlon Dlvn
- Lazy Boy 2 Cushion Love Seat
- 2 Leather Rocker Recliners
- Kitchen Table W/6 Chairs
- Misc. Sm. Kitchen App.
- Oak King Size Bed W/9 Drawer Chest Under Mattress
- Oak Queen Poster Bed W/Like new Mattress & Springs
- Queen Size Metal Framed Bed W/Like New Mattress
- 2 White Clad Simmons Hardware Side Tables
- 2-6 Drawer Oak Chest
- 2 Cedar Lined Side Tables
- 12 Drawer Oak Chest W/Mirror
- Furton
- Office Desk & Chair
- Book Case
- Metal Cowboy Decor Items
- Christmas & Santa Collection
- Misc. Dishes

TOOLS-MISC

- Craftsman 11 Drawer Tool Box
- Tradesman 10" Table Saw
- Ryobi Table Saw
- Craftsman 15" 1hp Drill Press
- Craftsman ¼ HP Bench Grinder
- Husky 8 Gallon Air Compressor
- 10 Gallon 4hp Shop Vac
- Extension & Step Ladders
- Echo CS-400 Chain Saw
- Atlas 40v Battery Powdered Pole Saw
- Stihl BR-200 Back Pack Blower
- Echo Gas Trimmer
- 75,000 BTU Space Heater
- 12 Volt 15 Gallon Sprayer
- Sun Joe Electric Pressure Washer
- Lot of Misc. Hand Tools & Wrenches
- Garden Tools
- 12 Ton Jack
- Daytona 3 Ton Floor Jack
- Milwaukee HD Sawzall
- Battery Chargers & Jump Starters
- 2-7' Work Bench's Wooden & Metal
- Maxx Round Fan
- Camping Supplies

TOOLS-MISC CONT.

- 2 Blackstone Bar-B-Q Grills (1-small-1large)
- Yard Wind Mill
- Patio Furniture
- Patio Table W/6 Chairs
- Lawn Chairs
- Coolers
- Wicker Lounge Chair
- Misc. Fishing Poles & Tackle
- Roll 12-2 Electric Wire
- Misc. Tack
- Horse Hay Ring
- Approx. 30 used Steel Post
- Misc. Barb Wire
- 100 Gallon Poly Water Tank
- Misc. XL Men's Clothing
- 3 Boxes Vinyl Plank Flooring
- Lot of Misc.

AUCTIONEER'S NOTE

This is a very nice and clean auction with lots of items in like new condition that have been well cared for, Trailers, UTVs, Car Port will sell close to noon.

OWNER: MRS. DOUG "TAMI" CROSBY

TERMS: Everything sells as is, where is. Nothing is to be removed until settled for. Payment of Cash, Check with Proper ID, or Credit Cards. Auction Company or the Owners will not be responsible for loss of items or accidents. Statements made the Day of the Auction take Precedence over Printed Matter.

SALE CONDUCTED BY **BRUCE & Le'AN AUCTION & APPRAISAL, LLC**
THE AUCTION COMPANY THAT APPRECIATES YOUR BUSINESS

For more information and pictures go to our website at www.bruceandleanauction.com

RONNIE BRUCE - Fair Play, MO
417-777-1685 or 417-654-2214
colronbruce@gmail.com

BRANDON BRUCE
Fair Play, MO

BILLY BRUCE - Stockton, MO
417-399-4800
colbbruce@gmail.com

September 6,7,8, 2023



BOONE COUNTY DRAFT & QUARTER HORSE SALE LLC

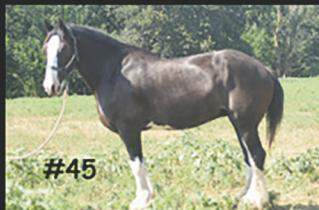
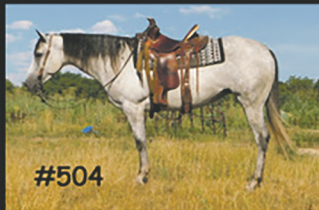
Located at the Missouri State Fairgrounds, Sedalia MO

For a complete schedule,
Online Catalog,
& Pictures visit our
website and

There's over 600 hd in the catalog for the 2 days, And a wonderful selection to pick from! Teams, Draft Crosses, Quarters, Ponies, from finished broke horses to young prospects. Thanks to all the consignors! Make plans to spend several days in Sedalia this fall.
God Bless....



Online Bidding with DV Auctions!



Fall Schedule

Wed. September 6th -
Tack, Antiques,
Carriages, Harness,
Saddles, etc.

Thurs. September 7th -
Draft Horses, Draft
Crosses, Friesians,
Gypsies, Haflingers

Fri. September 8th -
Quarter Horses,
Ponies,
Gaited Horses,
Mules & Donkeys

Joe Raber
719-431-3137

Joe's email: boonecountyhorseauction@gmail.com
Lonnie's email: lrmler5717@yahoo.com
Website: www.BooneCountyHorseSale.com

Lonnie Miller
260-350-4637

BOONE COUNTY DRAFT & QUARTER HORSE SALE

Located at the Missouri State Fairgrounds, Sedalia MO

Wed. September 8, 2023

Antiques, Carriages,
Tack, Saddles,
etc.



Auction Zip ID
49295



Joe Raber
719-431-3137

Joe's email: boonecountyhorseauction@gmail.com
Lonnie's email: lrmler5717@yahoo.com
Website: www.BooneCountyHorseSale.com

Lonnie Miller
260-350-4637

PUBLIC AUCTION

SATURDAY, AUGUST 19 @ 10:00 A.M.

Directions: SALEM, MO - #20 West Wood (behind Walmart.) Watch for signs.

TOOLS • HOUSEHOLD • MISCELLANEOUS

Hand Saws - Wrenches
 Nuts & Bolts - Fire Extinguisher
 Bench Vise - Gas Leaf Blower
 Husqvarna 136 Chainsaw
 Electric Trimmer - Painting Supplies
 Barbie Dolls in Unopened Boxes
 Pegboard Pegs - Heat Lamps
 Metal Gas Cans
 Craftsman 5.5hp Wet/Dry Vac
 Old Hickory Knives - Pitch Fork
 Yard Rakes - Axes - Shovels - Chains
 Heavy Duty Extension Cord
 Folding Lawn Chairs
 Metal Buckets - Apple Baskets
 Work Bucket - Push Plow
 Ruby Red Dishes - Milk Glass
 Pink Carnival Glass - Draw Knife
 Metal Wash Tubs - Inversion Table
 Treadmill - Weslo DX10
 Nordic Track Elliptical CX938
 McCoy Cookie Jars
 Bolens Edgar, Tecumseh Engine, Like New
 5 Gal. Air Compressor
 Graniteware - Gun Case
 Metal Desk - Lawn Chairs
 Nice Old Rocking Chairs
 7' Wide x 12' Long Tilt Trailer
 Walnut Lumber - Wheelbarrow
 Seeder - Foot Locker - Toddler Toys
 Old Typewriter - Globe
 John Deere LA100 5-Speed, 42", Very Nice
 Push Mower - Hose & Reel
 Wooden Step Ladder
 Weedeater Trimmers - Stock Pot
 Manure Fork - Lawn Aerator

Old Paper Dispenser
 2-Ton Floor Jack - 3 Gal. Crock
 Electric Pressure Washer - Walkers
 Small Haier Deep Freeze
 Crock Jars - #2 Crock - Sad Irons
 Blue Ball Jars - Coffee Grinder
 Coke Tray - Butter Molds
 Nice Microfiber Sofa, Chair, & Ottoman
 Wingback Chair - End Table
 Queen Ann China Set
 Nice Oak Table w/6 Chairs & Hutch
 Pictures - Knick-Knacks
 Lots of Nice Carnival Glass, Grape Pattern
 Cookware - Carnival Hen-on-Nest
 Big Set of Corelle Dishes
 Pyrex Bowls - Metal Porch Swing
 Metal Glider - Oil Lamps
 Nice Full-size Bed, Night Stand, Chest of Drawers, & Mirror
 Magazine Racks - Table Lamps
 HotPoint HD Washer & Dryer
 Recliner - Makeup Table
 Full Length Mirror
 Cedar Lined Chest
 Bathroom Shelves (over toilet)
 Folding Table - Organ Stool
 Cross-Cut Saw - Come-Along
 Air Tank - Post Driver - Arbor Seat
 New Queen-size Mattress & Boxsprings



See you there! - Tom!

**ANNOUNCEMENTS AT AUCTION TAKE
PRECEDENCE OVER PRINTED MATTER**

**LIVING ESTATE OF:
JOHN & CHARLOTTE CRANDELL**

WULFF AUCTION

TERMS: CASH OR APPROVED CHECK - I.D. REQUIRED
NOTHING REMOVED UNTIL SETTLED FOR

LICENSED APPRAISALS

2334 Highway K, Salem, MO 65560
AUCTIONEERS: Col. Tom Wulff • John Wisdom
Cell: 573-247-3884 • Cell: 573-247-9563



Clerk: Tracy Strange Home: 573-729-8476 Cashier: Nancy Inman
See Wulff Auctions at www.thesalemnewsonline.com/auctions

RAIN OR SHINE OWNER & AUCTION PERSONNEL NOT RESPONSIBLE FOR ACCIDENTS AT SALE SITE

MULTI ESTATE

Auction

SATURDAY AUGUST 26, 2023 AT 10 AM

Location: 304 Springfield Rd, Ava, MO 65608

DIRECTIONS: ACROSS THE STREET FROM TOWN & COUNTRY SUPERMARKET IN AVA, MO

TOOLS • SHOP • HOUSEHOLD • FURNITURE • ANTIQUES

TRACTOR 1984 Massey Ferguson 240 Diesel 50Hp Tractor (new front steer tires) w/ 451 New Holland sickle mower- 7' cut with extra sickle bar, sections & guards **VEHICLE** 1998 Ford F350 2wd Power Stroke 7.3 diesel, 5spd, flatbed w/ gooseneck hookup **TOOLS/ SHOP/ OUTDOOR** Stihl FS40C Weed eater, Stihl BG50 Leaf blower, Stihl MS170 Chainsaw, Craftsman 42cc Chainsaw w/ 18" bar, Stihl MS180C Chainsaw, Makita DCS 6401 Chainsaw, Pioneer P26 Chainsaw, Husaqvarna 36 Chainsaw, Chicago Electric 4" Biscuit joiner, Craftsman 3x21" Belt sander, Dewalt Palm sander, Tile cutter, Pneumatic nail gun, Master Force Elec Smoker, Jack stands, Work table, EZ Up Awning, Ozark Trail camp stove, Earthway Precision Garden seeder, Livestock heated water buckets, Fence staves, Antique hardware scale, Climbing Tree stand, Garden hose reels, 5 panel ventless heater, Bostitch coil nail gun, Gallagher elec fence charger, Elec fence insulators, Shop vac, Approx 25 steel traps, Elec concrete mixer, Grizzly Industrial 10" Table saw, Wheel barrow, Hitachi 15" Miter saw, Pipe conduit bender, Pipe clamps, 3 ton bottle jack, Large assortment long handled yard tools, Portable air tank, Fish cooker, Skil Sawzall, Various carpentry hand tools, Various length levels, Extension cords, Coil roofing nails, Black & Decker bench top grinder, Block & tackle, Large assortment fishing lures, tackle, rods & reels, nets, Waders, Minnow trap, Wire chicken cage, Fluorescent light bulbs/fixtures, Bathroom vanities, Laminate hardwood flooring, Smart siding NIB multiple bundles, Cedar shake siding NIB- 5 boxes, Sold wood ext door, 1 box new soffit, Formica countertops x2, Central pneumatic 20 lb sandblaster, Charbroil smoker **HOUSEHOLD/FURNITURE** Full size wooden headboard/ bed frame, Cherry wood bedroom set, Dresser w/ mirror, TV armoire dresser, 2 nightstands, Oak full size bedroom set, Chest of drawers, Dresser, 2 night stands, Wooden gun cabinet, Wicker furniture set, Antique iron wagon wheels, MCM wooden dresser, Counter height bar stools x3, Dining chairs, Lighted hutch, Wrought iron patio table & chairs, Mahogany end table, coffee table, magazine rack table matching set, Sewing machine end table, Wooden filing cabinet, Misc rugs, Glass top outdoor table, Outdoor chairs, Wooden kitchen island cart, 8 ft dining table, Misc recliners/arm chairs, love seats, sofas, Folding metal chairs, Antique console radio, Dining table w leaf & 6 chairs, Leather recliner, Wooden sofa table, Many end tables & side tables & coffee tables, Brass finish shelf & coat tree, Vintage sofa & arm chair, Papasan chair, Grandfather clock, Metal storage shelf, Wooden bookshelf, Misc glassware/barware/ kitchenware, Misc décor, Carnival glass, Depression glass, Kitchen utensils/cookware, Vinyl record collection, Vintage Kodak Carousel 750H projector, Antique violins, Various board games



FOR MORE PHOTOS, VISIT OUR WEBSITE CHEYNEAUCTIONS.COM OR FIND US ON FACEBOOK!

Cheyney Auction Company, LLC

Real Estate • Livestock • Farm & Ranch • Equipment • Household • Antiques

Travis Cheyney, Auctioneer • Buddy Boyd, Ringman

417-543-8751 • cheyneyauctions.com

ANNOUNCEMENTS Made Day Of Sale By Auctioneer Take Precedence over any Printed Matter. Not Responsible for Accidents. All items sold as is, where is, with no guarantee. Terms of sale: cash, credit/debit card, or check with valid ID.



ONLINE AUCTION

BID NOW! BIDDING CLOSES AUGUST 19TH



ITEM PREVIEW DAYS:
 Bidders will be able to inspect and view items Monday-Friday (8am-4pm) and Saturdays (8am-noon) while the auction is open for bidding at 4177 HWY VV, Berger, MO 63014

820 LOTS



All items sell regardless of price. All items start at only \$1. BID TODAY!

Construction Equipment

- Unused 2020 Doosan DX62R excavator
- 2022 Doosan DX63 excavator
- 2-2017 JCB 535-95 telehandlers
- 2002 JD 410G 4x4 backhoe
- 2021 Bobcat T66 skid steer
- 2021 Bobcat T550 skid steer
- 2020 Caterpillar 279D3 skid steer
- 2016 Bobcat T630 skid steer
- 2002 Bobcat A300 skid steer
- Caterpillar 226 skid steer
- 2019 Caterpillar 312F GC excavator
- 2018 JCB 131LC excavator
- 2018 Bobcat E85 excavator
- 2015 Kubota KX080-4 excavator
- 30+ unused skid steer attachments
- 2016 IH 35N excavator
- Unused Wallenstein skid steer or 3-pt. backhoe
- JD Pro911 skid steer backhoe
- Ford 4500 backhoe
- JLG 1932RS electric scissor lift

Farm Equipment

- Unused 2022 Mahindra 5145 tractor with loader
- Unused 2022 Mahindra 4540 tractor with loader
- 2015 John Deere 1023E tractor with mower
- NH BR770A round baler
- JD 3038E 4x4 tractor with loader
- JD M tractor with snow plow
- Vermeer 5400 Rebel round baler
- Kubota L3450 tractor with loader
- 3-NH 7' haybines
- JD 620 tractor
- Ford 9N tractor
- NH 1033 square bale stack wagon
- 5-manure spreaders
- Unused Rhino PT207 hay tedder
- Unused Tar River 3-pt tillers
- JD 720 loader
- JD 6620 Turbo 4x4 combine
- JD 336 square baler
- IH 5100 11.5' grain drill
- 4 cattle chutes with catch gates
- 24' pasture harrow on cart
- Land Pride 15' brush hog
- Unused 24' freestanding fence panels
- Ferguson TO20 tractor
- Westendorf WL24 loader for IH 1206
- Bush Hog SC9000 18" soil conditioner

2-Farmall Cub tractors with belly mower

- JD 430 tractor
- MF 65 gas tractor
- 3-pt. plows and disc plows
- Farmall A tractor with belly mower
- Ford 3400 diesel tractor with loader
- Deutz D13006 tractor
- 3-pt. & pull type brush hogs
- 3-pt. & pull type tillage equipment
- Farmall Super M tractor
- Case IH 245 tractor with belly mower
- International 584 diesel tractor
- NH 273 square baler
- Sunflower 5230 23' field cultivator
- NH Super 717 forage harvester
- Krause 730A 18' chisel plow
- Custom 350 gal. sprayer with 45' boom
- 3-pt. finish mowers
- Ferguson 35 tractor
- NH 68 square baler
- Kubota B6200 tractor with belly mower

Ag-Rain Water-Reel E37-1220 irrigation gun

- 3-pt grader blades 5'-8'
- NH 258 hay rake with dolly wheels
- 3-pt. & pull type sickle mowers

Vehicles

- 1999 Sterling LT9511 dump truck
- 1997 Ford F250 pickup
- 2008 Ford F450 4x4 dump truck
- 2004 Ford Excursion XLT 4x4
- 1979 Ford 700 grain truck
- 1998 Dodge Ram 2500 4x4 flatbed
- 2008 Ford F250 4x4 XL pickup
- 2005 Ford F450 4x4 with dump bed
- 2006 Ford F250 4x4 with snow plow
- 1996 Dodge Ram 2500 4x4 service truck
- 2005 GMC 2500HD crew cab 4x4
- 2012 Ford Fusion SE sedan
- 2001 Ford Ranger 4x4 extended cab
- 1976 Chevrolet C65 grain truck
- 1990 GMC Topkick with 14' Sudenga feed bed

Trailers & Campers

- 3-Unused 2022 Liberty 14' dump trailers
- 2021 Crossroads 252BH Zinger Lite camper

2013 Kodiak 24' gooseneck stock trailer

- Calico 6'x12' stock trailer
- 2012 Trailerman 30' flatbed gooseneck
- 2013 Stillwater 28' flatbed gooseneck
- Hillsboro 28' flatbed trailer
- 2008 Bales 25' flatbed gooseneck
- 2012 Homesteader 6'x12' enclosed
- 12' trailer for making kettle corn
- 5-semi van trailers for storage

UTVs, ATVs, Motorcycles, and Mowers

- 2018 JD Gator XUV 835R UTV
- 2001 Harley Davidson motorcycle
- Kawasaki Mule 2510 4x4 UTV
- Grasshopper 428D diesel zero turn mower
- Trailmaster Blazer 200R go-cart
- Hustler Raptor zero turn mower
- Polaris Razor 1000XP UTV
- Polaris Ranger 500 4x4 UTV
- Yamaha Rhino 4x4 UTV
- 2002 Kawasaki Vulcan Drifter motorcycle
- DR walk behind brush mower
- Yamaha Timberwolf 4 wheeler

Shop Equipment & Miscellaneous

- 10 unused shipping containers 7'-40'
- Unused 13'x20' portable cabin
- 15 Unused hoop buildings up to 40'x80'
- 2-unused Uprock screens
- 6-unused Upro portable restrooms
- 2-unused Hillsboro SLT steel truck beds
- Unused Scag TL20W-29BV leaf vac
- Antique doctor's buggy
- Rough cut lumber incl. walnut
- 2-Hobart meat band saws
- Antique Aeromotor windmill
- 8'x18' walk in cooler/freezer
- 20+ unused toolbox workbenches
- Large group of concrete forms
- 11-Miller Bobcat & Lincoln welder generators

More items listed at SchneiderAuctioneers.com

SCHNEIDER Auctioneers LLC
 573-834-2207 • 573-291-8075
www.SchneiderAuctioneers.com

EXCAVATOR MOUNTED FORESTRY MULCHING FOR UNDERBRUSH CLEARING: Call Nathan @ 417-259-2785.

CATERPILLAR 277C SKID-STEER: 2918.7 hours, new tracks & 78" bucket. Enclosed cab, air. Good condition. \$30,000 Cash, OBO. No trades. 314-420-3308. Potosi.

TIRE: 225x65R17 Valera HT Primewell. 95% tread. \$40. 210-787-8222. Linn Creek.

13 BAGS OF 13 COLORS UNUSED YARN: \$50 for all 417-288-6714.

50 EWES: 1-5 years old. \$225 a piece. 417-733-2625. Louisburg.

POOL TABLES: Installations, moves, recovers, repairs, accessories, etc. 573-646-1700.

Darrell McClanahan for Governor of this great state of Missouri 2024. Find me on X @MBattleflag advocating for fija.org. This is being paid for by Darrell McClanahan. April Miller-McClanahan, Treasurer.

4 GOOD USED SIDE-BY-SIDE/4-WHEELER TIRES: \$100 or trade. 573-734-2822, leave message.

2 REAR FENDERS FOR 1946-1948 CHEVROLET CAR: \$200 or trade. 573-734-2822, leave message.

ELECTRIC WELDER: \$150 or trade. 573-734-2822, leave message.

4-ANTIQUÉ WHITE WOODEN CHAIRS: With cloth backs& cushions. \$50 a piece. 417-532-2291.

2012 FORD LARIAT: 4-door, 4WD, 231,000 miles, all leather interior, tires-75%, v6 with turbo. \$8,500. 660-492-7191.

WANTED: Remington 552 Speedmaster 22. 573-280-1762.

FOR SALE TWO 2002 FORDS; One is a two-wheel drive and the other is a 4wd; both have the good 7.3 engine. 573-247-9655. Salem, MO.

HAVE SIXTEEN RIDING MOWERS FOR SALE: Asking \$500. Four to five, nine to sixteen HP engines, turn free, asking \$200. 660-438-5360. Warsaw.

WANT TO BUY PONTOON: with or without motor, trailer, damaged one ok, needing work ok, I have good pontoons, has to have a Missouri title. I'm looking for a winter project. 417-426-2127.

FOR SALE 1993 FORD F250: 4x4, flatbed, 5.8 motor, 5-speed manual. Runs & drives. \$1,450. Call 417-322-5470. Falcon.

PEMBROKE WELSH CORGIES: Price reduction, only 2 males left. 417-259-9738.

2006 FORD F-550 DIESEL: 16' Flatbed, 86,000 miles. 928-587-8725. Pomona.

DACHSHUND PUPPIES: Registered, shots, wormed. Long haired males piebald and female short hair red. 417-260-1917. Raymondville.

HOSPITAL BED: Very good. \$400. 636-828-4330. Marthasville.

2022 NISSAN FRONTIER KING CAB: 4x4, automatic v6, 3,500 miles. For Details go to www.jimsmotorsrolla.com 573-467-0189.

TOY AUSSIEDOODLE: 8 weeks old male, will weigh 5-7 lbs. Call 417-664-5926.

VAC CASE TRACTOR 1951: Good tires. Good running condition. \$750. 618-304-6687 or 573-759-7268.

12 GAUGE DOUBLE BARREL FOX MODEL B-SE: Single trigger, ejectors, vent rib, select walnut w/ checkering. Manufactured early 70s. Like new. \$700 Cash. 573-280-3222. Kaiser.

2015 FORD EXPEDITION EL PLATINUM: 4WD, 165,000 miles. Extra warranty intact. \$19,900. www.jimsmotorsrolla.com 573-467-0189.

INDOOR/OUTDOOR DIGITAL ANTENNA: New. Asking \$18. 417-650-4190.

DARDEN PROFESSIONAL TIMBER HARVESTING, BUYING STANDING TIMBER: Great prices, improve wildlife habitat and improve forest health. State Certified & Fully Insured! 573-247-4808. Salem.

WEATHERED BARN WOOD SIDING: 10" wide. Call for appointment 573-729-7226. www.pineridgerustic.com Salem.

LOG SIDING: 2X8 Pine/Western Cedar. Call for appointment 573-729-7226. www.pineridgerustic.com Salem.

Route 66 MOTHER ROAD BOOK: by Michael Wallis, \$12.50. 417-532-2045. Lebanon. (Leave message and phone number.)

TINY HOMES – Missouri Franchise 573-881-7965



MID MISSOURI STOCKYARDS

REGULAR SALE EVERY THURSDAY 11 AM

WATCH OUR WEEKLY SALE IN REAL TIME ON DVAUCTION.COM

For Farm Visits, Market Updates, or Trucking
Call **Zach Cox 417-777-1320**
Dan Romine 573-578-4939

**Competitive Buyers!
Competitive Commission!
Competitive Market!**

Barn: 417-532-9292 

1-44 • Exit 123 "just outside of Lebanon"
17505 Route 66, Phillipsburg, MO 65722
For weekly market updates, visit us at www.midmostockyards.com

NEW INVENTORY - \$59,900 Delivered and setup, Hurry! Call Adam 573-657-2176 amegamobilehomes.com

MODEL 1911 FRAME 8-SHOT C02 PISTOL: Like new, in box with C02 cartridges, 4 clips, pellets & all paperwork. \$95. 573-364-7465. Rolla.

Cole Liquidation Auction!

Friday, August 25th @ 10:00 am
2857 FR 2100, Purdy, MO 65734

Estate liquidation of Shop Tools & Equipment, Farm Machinery, Outdoor Items, Household furniture & appliances, lots of misc!

Call Southwest Auction Service for more info! Pictures and flyer will be posted on website soon!

Contact Southwest Auction Service for more info!
417-652-7540 or email: kathy@swaauction.com
Website: www.swaauction.com

Bob Hughes
417-652-7540



SOUTHWEST AUCTION SERVICE & MARKETING
www.swaauction.com

BUFFALO LIVESTOCK MARKET LLC



276 Hwy 32 W., Buffalo, MO

August 12th, 2023
Receipts: 937

REPRESENTATIVE STEERS

300-400 @ 270.00 to 335.00
400-500 @ 275.00 to 325.00
500-600 @ 265.50 to 320.00
600-700 @ 245.00 to 2882.00
700-800 @ 235.00 to 251.00
800-900 @ 117.00 to 237.00

REPRESENTATIVE HEIFERS

300-400 @ 240.00 to 319.00
400-500 @ 240.00 to 282.00
500-600 @ 240.00 to 272.00
600-700 @ 237.00 to 263.00
700-800 @ 225.00 to 245.00
800-900 @ 185.00 to 228.00

FEEDER BULLS

300-400 @ 280.00 to 317.00
400-500 @ 240.00 to 325.00
500-600 @ 255.00 to 282.00
600-700 @ 220.00 to 263.00
700-800 @ 180.00 to 209.00
800-900 @ 165.00 to 198.00

STOCKS COWS

Bred Cows 1400.00 to 1875.00
Cow/Calf Pairs 1675.00 to 2225.00

SLAUGHTER BULLS

High Yield 128.00 to 1437.00
Low Yield 105.00 to 120.00

SLAUGHTER COWS

Fleshy 115.00 to 126.00
Med Flesh 105.00 to 124.00
Light Flesh 85.00 to 115.00

QUESTIONABLE HEALTH OR CRIPPLE COWS

70 Down

Plain Quality, Unweaned, LHX, Dairy Cross
Cattle will be below this market!!

COW & BULL SALE
Tues Night 6:30pm
Lots of consignments
Expecting 500+

MON-WED MARKET REPORT

Listen to KJEL 103.7FM • Lebanon or KYOO 99FM • Bolivar

VIEW OUR SALES AT CATTLEUSA.COM

CALL FOR TRUCKING OR ON-FARM VISIT

Lyle Caselman • Owner-Manager
417-345-7876 • mobile 417-533-2944
Leon Caselman • Owner
417-345-4514 • mobile • 417-588-6185

NEW MOBILE HOMES – prices start at \$64,900 delivered and setup 573-499-9993 columbiadiscountshomes.com

BASEMENT READY TRUE MODS- instock ready for delivery 573-657-7040 chateauhomes.net

1908 SEARS ROEBUCK CATALOGUE REPRODUCTION: 1,185 pages, \$12.50. 417-532-2045. Lebanon. (Leave message and phone number.)

REGISTERED HEREFORD & ANGUS BULLS: Home raised, Some Show-Me Select Qualified. 573-701-7828. Belgrade.

LIGHTLY EXPERIENCED GOLF BALLS: \$3 a dozen. 417-818-3469. Strafford.

WILLOW SPRINGS & SURROUNDING COMMUNITIES BOOK: 1869-1969, HB, 454 pages by Ella Lilly Horak, \$40. Perfect Condition. 417-532-2045. Lebanon. (Leave message and phone number.)

SLIGHTLY USED PUZZLES: Will sell or trade. 417-818-3469. Strafford.

LIONEL TRAIN SET: Steam engine, tender, caboose and other car, track, and transformer. \$195. 573-364-7465. Rolla.

1970s KIDS METAL STOVE & FRIDGE: Nice Lithographic paint, 18” wide x 36” high. \$75. 573-364-7465. Rolla.

3 GENTS WITNAUER WRIST WATCHES: 10k gold + 23J. All \$200. 573-764-3517. Call in P.M.

HARLEY FAT BOBS: Custom flame paint w/ gas caps + lines. \$100. 573-764-3517. Call in P.M.

COLT REVOLVER DEALER CATALOGS: Circa 1950’s + 1960’s. All for \$100. 573-764-3517. Call in P.M.

110 PORCELAIN POCKET WATCH DIALS: Perfect for arts & crafts. \$100. 573-764-3517. Call in P.M.

1890 GOLD TESTING KIT: Glass acid beakers + antique wooden case. \$100. 573-764-3517. Call in P.M.

1500 VINTAGE WRISTWATCH DIALS: \$100. 573-764-3517. Call in P.M.

HARLEY 45 SOLO: factory rear brake drum + sprocket. \$150. 573-764-3517. Call in P.M.

WANTED 730 OR 830 CASE TRACTOR: In any condition. 573-308-5884. Rolla.

KILMER FARM EQUIPMENT CONSIGNMENT AUCTION

Saturday, August 26 • 9:30 AM

14769 Cattle Lane, Versailles, MO 65084

Directions: at the Intersection of Hwy 5 and Hwy 52 in Versailles, go North on Hwy 5 for 1 mile to Cattle Ln then turn Right or East and go 3/4 mile to Sale Site.



1000+ Pieces of Farm Equipment and Related Items!



TRACTORS, CONSTRUCTION EQUIPMENT, TRUCKS AND TRAILERS, GRAIN CARTS AND WAGONS, CUTTERS, TILLAGE, COMBINE AND HEADS, FEED MIXERS, MISC. EQUIPMENT, HAY EQUIPMENT, SILAGE EQUIPMENT



KILMER FARM EQUIPMENT, LLC
14270 Hwy. 52
Versailles, MO 65084
(573) 378-6615



For more info and photos:
www.wheelerauctions.com

#1 AUCTION SOURCE IN CENTRAL MISSOURI

SERVING 34 COUNTIES!

FREE - TAKE ONE!
WEEKLY TRADER MAGAZINE
Vol. 28 No. 27
SEPTEMBER 30, 2021
800-543-8271 • 800-665-8875
Find us on Facebook @myweeklytrader AUCTIONS PG. 9
VISIT OUR NEW WEBSITE! MYWEEKLYTRADER.COM

THE WALL STREET CATTLE DIFFERENCE

COME JOIN US
Saturday, October 30, 2021

Next production sale! We are selling next production females and 40 breeding two-year-olds. of the best

SA
gus - Brangus - Ultrablacks
1603 HIGHWAY KK, LEBANON, MO
417-288-4444 • WSCRANCHES.COM

MACHINERY & FARM EQUIPMENT CONSIGNMENT AUCTION
SATURDAY, MAY 1, 2021
9:30 AM
CROSS TIMBERS, MO

ONLINE ONLY EQUIPMENT AUCTION
THURSDAY, FEBRUARY 25, 2021
Bidding closes at 11:00 am CST

www.SextonAuctioneers.com BID NOW!
Much more equipment online!

THE SMALL TRACTOR THAT'S MADE TO HANDLE MORE.

WEEKLY TRADER MAGAZINE
Serving Central Missouri's 34 counties!
Auctions • Auto • Tractors • Real Estate • ATVs • Motorcycles • Building Supplies • Miscellaneous • E-Editors • Features

417-532-9131
100 Commercial St.
Lebanon, MO 65536
#1myweeklytrader

This week's ads

THIS WEEK'S CLASSIFIED ADS

FEATURED ADVERTISER
A heavy-duty offer for a heavy-duty tractor.

IN PRINT & ONLINE!

TO ADVERTISE YOUR AUCTION, CALL 417-532-9131

WEEKLY TRADER MAGAZINE

100 E. Commercial, Lebanon
www.myweeklytrader.com
www.facebook.com/myweeklytrader

YOUR FULL SERVICE AUTO BODY SHOP

Call today for an appointment or estimate!



DAVIDSON'S *Customs*

417-288-1589

Restorations, insurance jobs, and more!



417-288-1589 • 115 Lincoln St., Buffalo, MO • [f @DavidsonCustoms](#)

HARLEY PANHEAD DISTRIBUTOR: original, chrome + complete. \$125. 573-764-3517. Call in PM.

1962 HARLEY SPORTSTER 900CC: original distributor. \$50. 573-764-3517. Call in PM.

SPORTSET BY SARGENT: Fishing pliers in leather sheath. Like a multi-tool. \$20. 636-239-2695 or 314-560-5700. Washington.

NEW SQUARE D RAINPROOF 50AMP DISCONNECT: \$160. 636-239-2695 or 314-560-5700. Washington.

USED JET HOME POLLUTION CONTROL PANNEL: Model CP700. \$65. 636-239-2695 or 314-560-5700. Washington.

HEARTH CRAFT GLASS BI-FOLD FIREPLACE DOORS PURCHASED AT FORSHAW'S FIREPLACE: Antique brass. \$160 obo. 636-239-2695 or 314-560-5700. Washington.

NEW JELD WEN 5' LEFT HAND SLIDING GLASS DOOR WITH SUNSTABLE INTERIOR BLINDS: Clear tempered glass, Desert Sand trim/hardware. Retail \$2655 Sell \$900. 417-693-0389. Conway.

1 PAIR OF KEY BRAND MEN'S JEANS: Waist 38, Length 34. \$10. 636-239-2695 or 314-560-5700. Washington.

BLACK METAL TUBULAR BRACKET: Scrolling and a stainless bracket. \$10. Call for pictures. 636-239-2695 or 314-560-5700. Washington.

ANTIQUE 4 HP ENGINE: Built by Continental Motors Corporation. \$150 OBO. 573-308-5884. Rolla.

TRAILER HOUSE RIMS: \$10 each. 573-308-5884. Rolla.

INTERNATIONAL PICKUP TRANSFER GEARBOX: \$150. 573-308-5884. Rolla.

RUBBERMAID 10 CUBIC FOOT PULL BEHIND DUMP CART: \$200. 417-718-5347. Conway.

'85 FORD PICKUP PARTS: Passenger door with window glass & mirror \$30. Also, Tailgate for '85 Ford pickup \$25. 573-308-5884. Rolla.

OUTDOOR WOOD FURNACE: Heats 3,000 sq. ft. & water. \$7,500, plus tax, plus installation. 573-201-6453.

4 GOODYEAR WRANGLER TIRES: Kevlar LT245/70R17, all terrain, \$185. 417-417-260-0941. Raymondville.

CHILTON'S AUTO REPAIR MANUAL: American & Volkswagen Cars 1969-1976. \$35. 417-260-0941. Raymondville.

3 ARMY CANTEENS: Mess kit, belt & duffle bag. \$60 for all. 417-260-0941. Raymondville.

CALUS LOGGING

20
YEARS
EXPERIENCE

Buying
Standing
Timber
Walnut & Oak

Joe Calus, Owner

417-926-4606 • MTN. GROVE

CERTIFIED

JUMBO FLOAT: 95" long x 80" wide x 10" high. Heavy gauge vinyl, Safety valve, 2 screw valves, 12 rope holders, water plug, nylon rope around it. Like new. \$150. 210-787-8222. Linn Creek.

FOR SALE: 2 Dayco motorcycle covers for Harley or other big bikes. \$50 each. 417-260-0941. Raymondville.

KING BUILDERS



We specialize in custom and specialty builds, such as:

- Houses
- Barndominiums
- Shops
- Barns
- Garages

We also do roofing & siding!

Call for a free estimate!

Stevie King | 435 Dickerson Ranch Lane, Conway, MO 65632 | 417-241-3280

BYLER SUPPLY

The Builder's Choice!

Summer Project Supplies!

CALL TODAY FOR NEXT DAY SERVICE!
Call for Details



Reg. Pole Frame Buildings Are Heavy 29 Ga. Metal, Three 2"x6" T&G Splashboards, All Poles 5"x5" Or Larger, CCA Treated, Fully Trimmed With One 3'x6' Walk-Through Door & One Large Sliding Door.

CALL US FOR CURRENT PRICING

**CUT TO LENGTH PANELS
GALVALUME METAL UNPAINTED
25 YEAR WARRANTY
#1 Standard Panels, 29 Ga.**

Ask About Our Quick Service.

*Over **20** Colors and Several Styles To Choose!*

\$71.61 sq.



HEAVY 29 Ga. METAL #1
Limited LIFETIME WARRANTY
29 Ga. & 26 Ga. Painted



BYLER BUILDING SUPPLY, LLC



2 1/2 Miles East of Seymour On 60, 1/4 Mile North at the Peewee Crossing\Star Road Intersection

877-556-8855 • MON.-FRI. 7:30-5 SAT. 8-12 • 417-771-3100

VISIT US AT WWW.BYLERSUPPLY.COM

SADDLE: 20" Buffalo Saddlery with suede padded seat. \$350. 417-718-5347. Conway.

MAC'S TIEDOWN STRAPS: Like New. \$80. 417-260-0941. Raymondville.

???CDL LICENSE??? FAST & ECONOMICAL: Meets all requirements of the new ELDT Law. 2 days training. Total cost of \$1,500. \$100 rebate with this ad. You need a learner's permit & ability to drive a manual. Jefferson City, Strafford & Willow Springs, Missouri. Please call 573-353-2853. www.capitaltruckdrivinginstitute.com.

2001 FORD 3500 BLACKOUT VAN: New tires, battery, brakes. Custom interior, mechanically sound & solid. Clear title, 2 owners, no smoke. 170,XXX miles. \$12,000 or trade. 417-650-7069.

OLD 7X14 MILITARY WAGON: 3FT high sides. \$400. 573-308-5884. Rolla.

2 WHEEL TRAILER: With 6x10 wagon bed. \$300. 573-308-5884. Rolla.

BUTLER LOGGING: Making landowners happy is my number one goal. Paying top dollar on all your timber. Call me 417-448-9323. And see what I can do for you.

RAMBO PURSUIT ELECTRIC HARDTAIL FATBIKE: Model 750-26. Like new. Approximately 30 miles ridden. Includes added back Rambo rack. \$2,200. 417-650-7069. Lebanon.

16X80 BUCC TRAILER HOUSE: New in 1996. Has new roof, 3 bedrooms, 2 bath, skirting and title. \$10,000.00. Located at 22740 Pin Oak Ln. Summersville, MO. Buddy Bird 417-331-9501 or Pam 417-331-9038, evening or weekend.

DACHSHUND PUPPIES: Registered, shots, wormed. Long haired males piebald and female short hair red. 417-260-1917. Raymondville.

LEVI BYLER CONSTRUCTION LLC: Roofing, Siding, Decks and More. 417-741-0245

PASTURE RAISED CHICKENS & PASTURE RAISED THANKSGIVING TURKEYS: 417-741-2446.

3 FT 6 PANEL METAL DOOR: No frame \$15. 417-531-5630 Conway.

2 TIRES SIZE 235 X 50 X R18: Fair tread \$20 for the pair. 417-531-5630 Conway.

80 ACRES IN MACKS CREEK: Power, water, artesian wells, good hunting. \$2,500 per acre, as is. Text 573-836-6414.

FREE 5 CUTE KITTENS & MOTHER: To be given away to loving & caring homes. If interested call for more information. 417-469-2123.

BRINKMANN 8-QT. OUTDOOR PROPANE GAS FISH FRYER: Big aluminum pan. Excellent condition. \$40. 210-787-8222. Linn Creek.

2015 JEEP CHEROKEE: 4WD, 111,000 miles. \$15,900. For Details go to www.jimsmotorsrolla.com 573-467-0189.

VAC CASE TRACTOR 1951: Good tires. Good running condition. \$750. 618-304-6687 or 573-759-7268.

1974 CHEVY C-30: Needs work. 417-217-8551.

STANDING FIREWOOD: \$10/Tree. 951-288-4654. Pershing.

GUNSMITHING-Older Rifles, Shotguns, Handguns, all 22LRs. Any make, any model, estate appraisals. Camdenton. 573-363-5801.

EXCAVATOR MOUNTED FORESTRY MULCHING FOR UNDERBRUSH CLEARING: Call Nathan @ 417-259-2785.

CATERPILLAR 277C SKID-STEER: 2918.7 hours, new tracks & 78" bucket. Enclosed cab, air. Good condition. \$30,000 Cash, OBO. No trades. 314-420-3308. Potosi.

TIRE: 225x65R17 Valera HT Primewell. 95% tread. \$40. 210-787-8222. Linn Creek.

13 BAGS OF 13 COLORS UNUSED YARN: \$50 for all 417-288-6714.

50 EWES: 1-5 years old. \$225 a piece. 417-733-2625. Louisburg.

POOL TABLES: Installations, moves, recovers, repairs, accessories, etc. 573-646-1700.

Darrell McClanahan for Governor of this great state of Missouri 2024. Find me on X @MBattleflag advocating for fija.org. This is being paid for by Darrell McClanahan. April Miller-McClanahan, Treasurer.

4 GOOD USED SIDE-BY-SIDE/4-WHEELER TIRES: \$100 or trade. 573-734-2822, leave message.

2 REAR FENDERS FOR 1946-1948 CHEVROLET CAR: \$200 or trade. 573-734-2822, leave message.

ELECTRIC WELDER: \$150 or trade. 573-734-2822, leave message.

4-ANTIQUE WHITE WOODEN CHAIRS: With cloth backs& cushions. \$50 a piece. 417-532-2291.

2012 FORD LARIAT: 4-door, 4WD, 231,000 miles, all leather interior, tires-75%, v6 with turbo. \$8,500. 660-492-7191.

WANTED: Remington 552 Speedmaster 22. 573-280-1762.

FOR SALE TWO 2002 FORDS; One is a two-wheel drive and the other is a 4wd; both have the good 7.3 engine. 573-247-9655. Salem, MO.

HOSPITAL BED: Very good. \$400. 636-828-4330. Marthasville.

HAVE SIXTEEN RIDING MOWERS FOR SALE: Asking \$500. Four to five, nine to sixteen HP engines, turn free, asking \$200. 660-438-5360. Warsaw.

WANT TO BUY PONTOON: with or without motor, trailer, damaged one ok, needing work ok, I have good pontoons, has to have a Missouri title. I'm looking for a winter project. 417-426-2127.

FOR SALE 1993 FORD F250: 4x4, flatbed, 5.8 motor, 5-speed manual. Runs & drives. \$1,450. Call 417-322-5470. Falcon.

PEMBROKE WELSH CORGIES: Price reduction, only 2 males left. 417-259-9738.

2006 FORD F-550 DIESEL: 16' Flatbed, 86,000 miles. 928-587-8725. Pomona.

2 TIRES: 225/75R16, Mud & snow, 90%. \$80. 636-828-4330. Marthasville.

2022 NISSAN FRONTIER KING CAB: 4x4, automatic v6, 3,500 miles. For Details go to www.jimsmotorsrolla.com 573-467-0189.

TOY AUSSIEDOODLE: 8 weeks old male, will weigh 5-7 lbs. Call 417-664-5926.

12 GAUGE DOUBLE BARREL FOX MODEL B-SE: Single trigger, ejectors, vent rib, select walnut w/ checkering. Manufactured early 70s. Like new. \$700 Cash. 573-280-3222. Kaiser.

2015 FORD EXPEDITION EL PLATINUM: 4WD, 165,000 miles. Extra warranty intact. \$19,900. www.jimsmotorsrolla.com 573-467-0189.

INDOOR/OUTDOOR DIGITAL ANTENNA: New. Asking \$18. 417-650-4190.

DARDEN PROFESSIONAL TIMBER HARVESTING, BUYING STANDING TIMBER: Great prices, improve wildlife habitat and improve forest health. State Certified & Fully Insured! 573-247-4808. Salem.

WEATHERED BARN WOOD SIDING: 10" wide. Call for appointment 573-729-7226. www.pineridgerustic.com Salem.

LOG SIDING: 2X8 Pine/Western Cedar. Call for appointment 573-729-7226. www.pineridgerustic.com Salem.

Route 66 MOTHER ROAD BOOK: by Michael Wallis, \$12.50. 417-532-2045. Lebanon. (Leave message and phone number.)

NEW INVENTORY - \$59,900 Delivered and setup, Hurry! Call Adam 573-657-2176 amegamobilehomes.com

NEW MOBILE HOMES - prices start at \$64,900 delivered and setup 573-499-9993 columbiadiscounthomes.com

BASEMENT READY TRUE MODS- instock ready for delivery 573-657-7040 chateauhomes.net

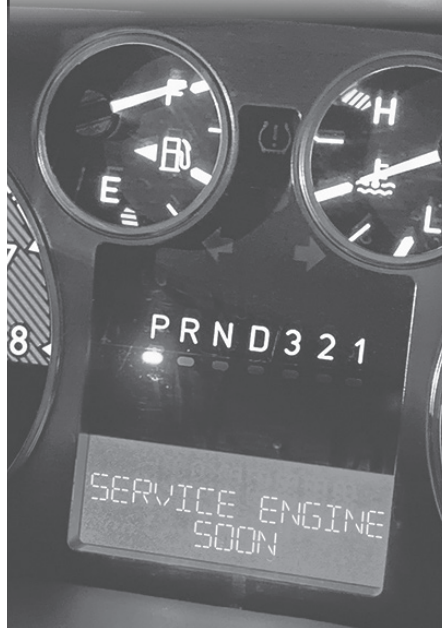
REGISTERED HEREFORD & ANGUS BULLS: Home raised, Some Show-Me Select Qualified. 573-701-7828. Belgrade.

Starnes Auto LLC
 22115 Rt. 66 • Lebanon, MO 65536
 588-7939 Cell
 588-3159 Office
www.starnesauto.com

Worry-Free AUTO REPAIRS

Don't ignore the signs!

We will diagnose the problem, and get you back up and running again.



WE DO ALIGNMENTS!

Larry Heisel Rentals

573-779-1500
 636-432-9460

**Crawler Loaders
 Excavators, Backhoes**

We Deliver!

Call Larry!
 Rental Available in 636 or 573 Area Codes
573-779-1500

1908 SEARS ROEBUCK CATALOGUE REPRODUCTION: 1,185 pages, \$12.50. 417-532-2045. Lebanon. (Leave message and phone number.)

TINY HOMES - Missouri Franchise 573-881-7965

PLAD PANTRY

**DISCOUNT & SURPLUS FOODS
 FRESH PRODUCE LLC**

417-532-4700

Original Pork Sausage	\$2.99 2 lbs.
Sliced White American Cheese Product.....	\$12.99 5 lbs.
Reese's Take 5 Candy Bars.....	\$2.99 19.5 oz.
Seasoned Beef Taco Meat	\$8.99 5 lbs.
Sliced Pepperoni	\$2.79 a lb.

1571 State Hwy 64 • Tunas, MO 65764
 Hours: 8:30 a.m. to 5:30 p.m. • Closed Wed. & Sun.

LIGHTLY EXPERIENCED GOLF BALLS: \$3 a dozen. 417-818-3469. Strafford.

WILLOW SPRINGS & SURROUNDING COMMUNITIES BOOK: 1869-1969, HB, 454 pages by Ella Lilly Horak, \$40. Perfect Condition. 417-532-2045. Lebanon. (Leave message and phone number.)

SLIGHTLY USED PUZZLES: Will sell or trade. 417-818-3469. Strafford.

LIONEL TRAIN SET: Steam engine, tender, caboose and other car, track, and transformer. \$195. 573-364-7465. Rolla.

HARLEY FAT BOBS: Custom flame paint w/ gas caps + lines. \$100. 573-764-3517. Call in P.M.

COLT REVOLVER DEALER CATALOGS: Circa 1950's + 1960's. All for \$100. 573-764-3517. Call in P.M.

110 PORCELAIN POCKET WATCH DIALS: Perfect for arts & crafts. \$100. 573-764-3517. Call in PM.

'85 FORD PICKUP PARTS: Passenger door with window glass & mirror \$30. Also, Tailgate for '85 Ford pickup \$25. 573-308-5884. Rolla.

SPORTSET BY SARGENT: Fishing pliers in leather sheath. Like a multi-tool. \$20. 636-239-2695 or 314-560-5700. Washington.

NEW SQUARE D RAINPROOF 50AMP DISCONNECT: \$160. 636-239-2695 or 314-560-5700. Washington.

USED JET HOME POLLUTION CONTROL PANNEL: Model CP700. \$65. 636-239-2695 or 314-560-5700. Washington.

HEARTH CRAFT GLASS BI-FOLD FIREPLACE DOORS PURCHASED AT FORSHAW'S FIREPLACE: Antique brass. \$160 obo. 636-239-2695 or 314-560-5700. Washington.

MODEL 1911 FRAME 8-SHOT C02 PISTOL: Like new, in box with C02 cartridges, 4 clips, pellets & all paperwork. \$95. 573-364-7465. Rolla.

1970s KIDS METAL STOVE & FRIDGE: Nice Lithographic paint, 18" wide x 36" high. \$75. 573-364-7465. Rolla.

3 GENTS WITTNAUER WRIST WATCHES: 10k gold + 23J. All \$200. 573-764-3517. Call in P.M.

BLACK METAL TUBULAR BRACKET: Scrolling and a stainless bracket. \$10. Call for pictures. 636-239-2695 or 314-560-5700. Washington.

1890 GOLD TESTING KIT: Glass acid beakers + antique wooden case. \$100. 573-764-3517. Call in PM.

1500 VINTAGE WRISTWATCH DIALS: \$100. 573-764-3517. Call in PM.

HARLEY 45 SOLO: factory rear brake drum + sprocket. \$150. 573-764-3517. Call in PM.

HARLEY PANHEAD DISTRIBUTOR: original, chrome + complete. \$125. 573-764-3517. Call in PM.

1962 HARLEY SPORTSTER 900CC: original distributor. \$50. 573-764-3517. Call in PM.

NEW JELD WEN 5' LEFT HAND SLIDING GLASS DOOR WITH SUNSTABLE INTERIOR BLINDS: Clear tempered glass, Desert Sand trim/hardware. Retail \$2655 Sell \$900. 417-693-0389. Conway.

1 PAIR OF KEY BRAND MEN'S JEANS: Waist 38, Length 34. \$10. 636-239-2695 or 314-560-5700. Washington.

ANTIQUE 4 HP ENGINE: Built by Continental Motors Corporation. \$150 OBO. 573-308-5884. Rolla.

WANTED 730 OR 830 CASE TRACTOR: In any condition. 573-308-5884. Rolla.

TRAILER HOUSE RIMS: \$10 each. 573-308-5884. Rolla.

RUBBERMAID 10 CUBIC FOOT PULL BEHIND DUMP CART: \$200. 417-718-5347. Conway.

INTERNATIONAL PICKUP TRANSFER GEARBOX: \$150. 573-308-5884. Rolla.

OUTDOOR WOOD FURNACE: Heats 3,000 sq. ft. & water. \$7,500, plus tax, plus installation. 573-201-6453.

4 GOODYEAR WRANGLER TIRES: Kevlar LT245/70R17, all terrain, \$185. 417-417-260-0941. Raymondville.

LAND FOR SALE



106 ACRES ± | WEBSTER CO., MO | \$1,200,000

- The home is 4 bedrooms, 2 bathrooms, with an open layout, fireplace, large porches, sauna, and 2-car attached garage
- Comfortable and nice brick home with great views and seclusion
- Amazing views from house and multiple other locations on the farm
- Nice porches with outdoor ceiling fans
- Large barn with tall trusses and two shop buildings with utilities and concrete floors
- Beautiful year-round live water with Cantrell Creek access
- Pipe gated entrance with scenic driveway off of blacktop roads

BRIAN UTECHT LAND TEAM 
 SOUTHWEST MISSOURI LAND SPECIALISTS **VETERAN**

📞 417.766.5595

🌐 brian.utecht@whitetailproperties.com



WHITETAIL PROPERTIES REAL ESTATE

HUNTING | RANCH | FARM | TIMBER

WHITETAILPROPERTIES.COM

Whitetail Properties Real Estate, LLC DBA Whitetail Properties, DBA Whitetail Properties Real Estate. In the States of Nebraska & North Dakota DBA Whitetail Trophy Properties Real Estate LLC. Licensed in CO, MN, ND, SD, TN & WI - Jeffrey Evans, Broker. Licensed in FL, KS & MO - Jefferson Kirk Gilbert, Broker. Licensed in TX & NM - Joey Bellington, Broker. Licensed in IN - Bill Minor, Broker. Licensed in AL, GA, LA, & MS - Sybil Stewart, Broker. Licensed in TN - Tim Burnette, Broker. Licensed in TN & MS - Josh Monk, Broker. Licensed in AR - Anthony Chrisco, Broker. Licensed in NC, SC, VA - Chip Camp, Broker. Licensed in IA, NC - Richard F. Baugh, Broker. Licensed in MI - Edmund Joel Nogaski, Broker. Licensed in IL, MD, WV - Debbie S. Laux, Broker. Licensed in ID, MT, OR, UT, WA, WY & NV - Aaron Milliken, Broker. Licensed in NY - John Myers, Real Estate Broker. Licensed in OK - Dean Anderson, Broker. Licensed in KY - Derek Fisher, Broker. Licensed in OH - Jeremy Schaefer, Principal Broker. Licensed in NE & SD - Jason Schendt, Broker. Licensed in MS - Chipper Gibbs, Broker. Licensed in PA - Jack Brown, Broker.

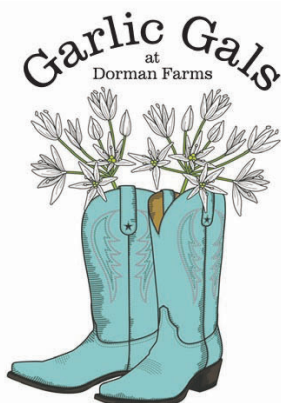


Your Source for Quality Garlic



- Limited quantities of seed and culinary garlic
- Multiple Varieties of hardneck and softneck garlic
- Varieties such as Chesnok Red, Carpathian, Khabar, Music, and Red Toch

No pesticides, herbicides, or chemicals



*Call or email
for appointment or inquiries*

Garlic_gals@yahoo.com

Follow us on  



417-827-2939