

**FREE - TAKE ONE!**

Vol. 30 No. 20

**AUGUST 10, 2023**

417-532-9131

# WEEKLY **TRADER** MAGAZINE



Find us on  
**Facebook**

@myweeklytrader  
AUCTIONS PG. 10

**VISIT OUR NEW WEBSITE! MYWEEKLYTRADER.COM**



CHEVROLET FIND NEW ROADS™

**GREAT DEALS ON A HUGE SELECTION  
OF CHEVY SILVERADOS**



**Backed By  
Morse**

**WE WANT YOUR TRADE.**

**ED MORSE  
CHEVROLET  
BUICK·GMC**

ROLLA

100 Fairgrounds Rd., Rolla, MO

**573-364-1002**

EdMorseChevroletBuickGMCRolla.com



# LAND FOR SALE



## 27.79 ACRES ± | DALLAS CO., MO | \$325,000

- 1,680 sq/ft home with three bedrooms, two bathrooms, office, one car garage, and mudroom
- 60 x 60 barn with stalls, tack room, electric and water, large doors, and covered feeding area for livestock
- Metal building with an overhead door for storing machinery or equipment
- Off of blocatop road frontage with gated entrance and fencing/crossfencing
- Nice open areas for livestock grazing and hay production
- Livestock waterer for three different paddocks
- Nice timber with creek and pond for recreational enjoyment and hunting

**BRIAN UTECHT LAND TEAM**  
SOUTHWEST MISSOURI LAND SPECIALISTS



📞 **417.766.5595**

🌐 [brian.utecht@whitetailproperties.com](mailto:brian.utecht@whitetailproperties.com)



**WHITETAIL PROPERTIES REAL ESTATE**

HUNTING | RANCH | FARM | TIMBER

**WHITETAILPROPERTIES.COM**

Whitetail Properties Real Estate, LLC DBA Whitetail Properties, DBA Whitetail Properties Real Estate. In the States of Nebraska & North Dakota DBA Whitetail Trophy Properties Real Estate LLC. Licensed in CO, MN, ND, SD, TN & WI - Jeffrey Evans, Broker. Licensed in FL, KS & MO - Jefferson Kirk Gilbert, Broker. Licensed in TX & NM - Joey Bellington, Broker. Licensed in IN - Bill Minor, Broker. Licensed in AL, GA, LA, & MS - Sybil Stewart, Broker. Licensed in TN - Tim Burnette, Broker. Licensed in TN & MS - Josh Monk, Broker. Licensed in AR - Anthony Chrisco, Broker. Licensed in NC, SC, VA - Chip Camp, Broker. Licensed in IA, NC - Richard F. Baugh, Broker. Licensed in MI - Edmund Joel Nogaski, Broker. Licensed in IL, MD, WV - Debbie S. Laux, Broker. Licensed in ID, MT, OR, UT, WA, WY & NV - Aaron Milliken, Broker. Licensed in NY - John Myers, Real Estate Broker. Licensed in OK - Dean Anderson, Broker. Licensed in KY - Derek Fisher, Broker. Licensed in OH - Jeremy Schaefer, Principal Broker. Licensed in NE & SD - Jason Schendt, Broker. Licensed in MS - Chipper Gibbs, Broker. Licensed in PA - Jack Brown, Broker.







### RB16 SERIES

REAR BLADES  
20-40 HP 60", 74", 84" Widths

- Cat. 1 hitch
- 7 Forward angles; 3 Reverse angles
- 5 Tilt positions
- 12" Offset left or right
- 14" Moldboard height
- 1/4" Moldboard thickness
- Landscape Rake adaptable

## Getting Chores Done LAND PRIDE does that.



[www.landpride.com](http://www.landpride.com)

For Outstanding Products & Service

# AGRI-ENTERPRISES

1-1/2 Miles South Of Licking, MO On Hwy 63  
573-674-2203 • 1-800-653-7152 • [www.agri-enterprises.com](http://www.agri-enterprises.com)

**WILLOW SPRINGS & SURROUNDING COMMUNITIES BOOK: 1869-1969, HB, 454 pages by Ella Lilly Horak, \$40. Perfect Condition. 417-532-2045. Lebanon. (Leave message and phone number.)**

**TINY HOMES** – Missouri Franchise 573-881-7965

**WEATHERED BARN WOOD SIDING:** 10" wide. Call for appointment 573-729-7226. [www.pineridgerustic.com](http://www.pineridgerustic.com) Salem.

**LOG SIDING:** 2X8 Pine/Western Cedar. Call for appointment 573-729-7226. [www.pineridgerustic.com](http://www.pineridgerustic.com) Salem.

**NEW INVENTORY** - \$59,900 Delivered and setup, Hurry! Call Adam 573-657-2176 [amegamobilehomes.com](http://amegamobilehomes.com)

**Route 66 MOTHER ROAD BOOK: by Michael Wallis, \$12.50. 417-532-2045. Lebanon. (Leave message and phone number.)**

**NEW MOBILE HOMES** – prices start at \$64,900 delivered and setup 573-499-9993 [columbiadiscounthomes.com](http://columbiadiscounthomes.com)

**BASEMENT READY TRUE MODS** - instock ready for delivery 573-657-7040 [chateauhomes.net](http://chateauhomes.net)

**VOTED #1 BEST Preowned Car Dealership**

## TIM'S USED CARS

(573) 341-3828 • 1334 South Bishop (Hwy. 63) • Rolla, MO  
Next to Hwy CC • [www.tims-used-cars.com](http://www.tims-used-cars.com)

	<p><b>2016 BUICK CASCADA PREMIUM CONVERTIBLE</b></p> <p>1.6 6 cyl, leather, navigation, 65,xxx Miles</p> <p><b>Only \$18,900</b></p>		<p><b>2017 RAM 3500 LARAMIE</b></p> <p>Crew cab, 4x4, 6.7 diesel, loaded w/options, 238,xxx Miles</p> <p><b>Only \$36,900</b></p>
	<p><b>2018 RAM 1500 EXPRESS</b></p> <p>Crew cab, 4x4, 5.7 V-8, power equipped, 77,xxx Miles</p> <p><b>Only \$28,900</b></p>		<p><b>2016 FORD F150 XL</b></p> <p>3.5 V-6, auto, A/C, 2WD, 55,xxx Miles</p> <p><b>Only \$21,800</b></p>

**LARGE SELECTION OF CARS, TRUCKS, SUVs & VANS!**

## WE BUY AND SELL new and used mobile homes

**(417) 501-1061**





\$55,995  
2022 Deere 317G \*UNUSED\*  
OROPS, Loaded! IN-STOCK



**Over 500 Attachments IN STOCK!**  
**We ship NATIONWIDE!**

**Craig Equipment**  
2681 W. Pearce Blvd | Wentzville, MO 63385  
**636-856-8555**  
www.CraigEquipment.com



\$79,900  
2018 Kubota SVL95-2 & Fecon Mulching Head  
HiFlow, Loaded!



2007 Deere CT322 66hp, 1233 hrs, AC/  
Cab, foot controls .....\$32,500



2017 Deere 333E \* 100hp 3529hrs AC/Cab  
Joystx 2sp .....\$44,900



2015 Deere 319E 69hp, 1874hr, Joystx,  
NEW Trax.....\$34,900



2016 Deere 326E \*HiFlow\* 2300hr AC  
Joystx 2sp, NEW Tires.....\$39,900



2007 New Holland L185 82hp 2688hrs  
OROPS, Foot Controls & Foam Filled Tires  
.....\$22,500



2004 New Holland LS180 67hp 1046hr  
Cab, Foot controls, 2sp.....\$19,900



2000 Bobcat 763 \*LIKE NEW\* 106 HOURS,  
Clean & NEW Tires\*.....\$34,900



2021 Bobcat T870 \*HiFlow\* 540hrs, AC/Cab,  
Joystx, Warranty!\*.....\$84,900



2021 Bobcat T770 \*HiFlow\* 733hr AC/Cab  
Joystx \*Warranty\*.....\$72,500



2009 Bobcat T190 \*HiFlow\* \*ONLY  
627hr\* AC/Cab, Joystx.....\$49,900



2006 Bobcat T300 81hp 2992hrs AC/Cab  
ISO/H Joystx A+Trax.....\$42,500



2023 Agrotk LBT23 23hp less than 1hr!  
Ride-on, 'Dingo' mount.....\$12,500



2014 Case TR270 74hp 2163hr, Cab/AC  
Joystx 2sp, Pwr Bkt Chngr.....\$39,900



Bale Accumulator Grapple.....\$4,825



2006 Cat 257B \*\*ONLY 399HR\*\* 62hp AC/  
Cab, Joystx.....\$49,900



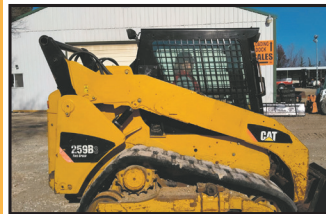
2006 Cat 252B 73hp, 3566hrs, AC/Cab  
Joystx, Pwr Bkt Chngr.....\$29,900



2015 Kubota SVL90 92hp, 2943hrs, AC/  
Cab, Joystx, 2sp, Pwr Bkt Chngr.....\$42,500



2018 Kubota SVL75 \*1 owner\* 74hp,  
1768hrs, AC/Cab, Joystx, Pwr Bkt  
Chngr.....\$47,500

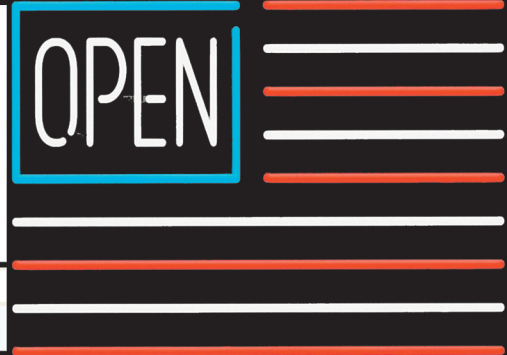


2011 Cat 259B3 75hp, AC/Cab, Joystx 2sp  
NICE.....\$34,900



2010 Gehl CTL75 83hp, 1435hrs, AC/Cab,  
Joystx, 2sp.....\$42,500





**Sale Ends August 31, 2023**  
 Seymour, Missouri 417-935-4201

**Pole Barns & Post Framed Buildings!**

Call for free quote, brochure & color chart.  
 Other sizes also available.

<b>23'x32'x10'</b> \$6,399 Material Only \$8,599 Labor Included	<b>23'x40'x10'</b> \$7,299 Material Only \$10,019 Labor Included	<b>30'x40'x10'</b> \$8,669 Material Only \$12,175 Labor Included	<b>40'x60'x12'</b> \$16,745 Material Only \$23,985 Labor Included
---	--	--	---



Due to increased demand for our quality product we are currently hiring new barn construction crews. Contact Jeff

**NOBODY, BUT NOBODY BEATS OUR PRICES!!!**

10 ft. Slider • Engineered Trusses 8' O.C. • 2x6 Treated Bottom Wrap • Screws • 2x10 Top Wrap • 2x4 Purlins • Full 29 Gauge Steel • Plus 3 ft. Entry Door with Lock  
 OPTIONS: Sidewall Heights on all Buildings 10', 12', 14' & 16'. Overhead Garage Door. Skylights. Insulation. Wainscoting. Insulated Vinyl Windows. Cupolas. Labor Rates Slightly Higher over 50 Miles from Seymour. Call for YOUR FREE QUOTE TODAY!!!

<b>PAINTED WHITE, GREEN OR TAN METAL</b> .....\$97.79
10' - \$31.00    12' - \$37.20    16' - \$49.60
<b>MIX &amp; MATCH METAL</b> .....\$59.99
8' - \$15.20    10' - \$19.00    12' - \$22.80
<b>GALVALUME METAL</b> .....\$79.99
10' - \$25.40    12' - \$30.48    16' - \$40.64
<b>GALVANIZED CORRUGATED METAL SOLD OUT!</b>
8' - \$9.84    10' - \$12.30    12' - \$14.75    16' - \$19.67

**IN STOCK**

**40yr Painted Metal**  
**\$105.59<sub>Sq</sub>**

**KNOTTY PINE DOORS**  
 Starting at  
**\$164.99**

\*\*Prices subject to change without notice\*\*  
**6X6 CEDAR POST LIMITED TIME \$5.87 LN FT**

<b>Car Siding!</b>	<b>4x8 Sheeting</b>
1x6 White Pine Siding <b>69¢</b> in ft	Less than full units Add \$1 per sheet
1x8 White Pine Siding <b>99¢</b> in ft	3/8" Beaded Paneling \$24.99
* 4 Profiles to choose from!	5/8" T111 Siding \$19.99
Broken Bundles Add 10¢ Per Ft.	Paneling \$SOLD
	1/2" Plywood \$SOLD
	3/4" Plywood \$29.99
	3/16 Pegboard \$12.99

**LOTS OF MATERIAL AVAILABLE FOR THOSE IN HOME PROJECTS!**

**REAL WOOD SIDING**

2x6 Log Siding \$1.76 in ft
1x8 Beveled Cedar from- 99¢ in ft
T1-11 Siding from \$19.99

**NEW PACKAGE HOMES**

Shown with Available Options

Your Choice of either:  
 Stock 5/8" T111 Siding w/1x4 Pine Window & Door Trim - or -  
 7/16" OSB & House Wrap ready for other finish options

2x6—16" on center-Exterior Stud Walls  
 Residential Roof Trusses-2' on center  
 4/12 pitch with 1' over hang  
 40 year Painted Metal roofing in 20 Different Colors  
 Profile Ridge Vent - Ventilated Ridge Cap  
 Vinyl Center Vent Soffit  
 Color Matched Metal Fascia & Gable Trim  
 2 - 3' 6 Panel Entry Doors  
 4 - 3'x4' Vinyl Insulated Windows

**ALL FIGURED FOR SUITABLE CUSTOMER SUPPLIED SLAB OR SUB-FLOOR**

Price for Basic Materials Package (No Labor at this Time)

20x24(480 sq. ft.)	20x32(640 sq. ft.)	20x40(800 sq. ft.)	28x40(1120 sq. ft.)	28x48(1344 sq. ft.)
\$9,490	\$10,839	\$12,339	\$15,129	\$18,729

**DECK PACKAGES**

Materials Only

8x8.....\$349.00	10x12.....\$699.00
10x10.....\$499.00	10x16.....\$899.00
12x12.....\$899.00	12x16..\$1179.00

**QUAKER** Now Stocking Quaker Vinyl Windows

2030 \$ 163.99	3030 \$189.99
3040 \$206.99	3052 \$225.99
3040Twin \$453.99	3052Twin \$497.99

**LUCKY DISCOUNT LUMBER**  
 417-935-4201  
 455 State Hwy C • Seymour MO 65746  
 www.luckydiscountlumber.com

\*Some restrictions apply see store for details. Prices subject to change without notice.



**1908 SEARS ROEBUCK CATALOGUE REPRODUCTION:** 1,185 pages, \$12.50. 417-532-2045. Lebanon. (Leave message and phone number.)

**REGISTERED HEREFORD & ANGUS BULLS:** Home raised, Some Show-Me Select Qualified. 573-701-7828. Belgrade.

**LIGHTLY EXPERIENCED GOLF BALLS:** \$3 a dozen. 417-818-3469. Strafford.

**SLIGHTLY USED PUZZLES:** Will sell or trade. 417-818-3469. Strafford.

**HARLEY FAT BOBS:** Custom flame paint w/ gas caps + lines. \$100. 573-764-3517. Call in P.M.

**COLT REVOLVER DEALER CATALOGS:** Circa 1950's + 1960's. All for \$100. 573-764-3517. Call in P.M.

**110 PORCELAIN POCKET WATCH DIALS:** Perfect for arts & crafts. \$100. 573-764-3517. Call in PM.

**1890 GOLD TESTING KIT:** Glass acid beakers + antique wooden case. \$100. 573-764-3517. Call in PM.

**SPORTSET BY SARGENT:** Fishing pliers in leather sheath. Like a multi-tool. \$20. 636-239-2695 or 314-560-5700. Washington.

**NEW SQUARE D RAINPROOF 50AMP DISCONNECT:** \$160. 636-239-2695 or 314-560-5700. Washington.

**1500 VINTAGE WRISTWATCH DIALS:** \$100. 573-764-3517. Call in PM.

**ANTIQUE 4 HP ENGINE:** Built by Continental Motors Corporation. \$150 OBO. 573-308-5884. Rolla.



## Meadowview Dutch Market

Bulk & Surplus Groceries • Prices Subject to Stock on Hand

**Call to Order**  
417-993-3017

Sale Dates August 9<sup>th</sup>, 2023 to August 15<sup>th</sup>, 2023 while supplies last!

**DELI SPECIAL**

**SMOKED CHEDDAR CHEESE**.....REG. \$5.99 LB .....SALE \$5.49 LB  
**SLAB BACON** .....REG. \$5.99 LB .....SALE \$4.99 LB

**TRY our Fresh Homemade DELI Sandwiches: TURKEY, HAM, ROAST BEEF, ITALIAN, BLT'S, PULLED PORK AND BLT PULLED PORK (MADE YOUR WAY)! COME IN OR CALL to order! ALSO Custom Deli trays! Veggie OR FRESH Meat-N-Cheese!**

*1/4 lb.*  
**Beef Patties**



**\$1<sup>99</sup>**  
LB.

*Potato Dipper*  
**Fries**



**59¢**  
LB

*Vanilla*  
**Cold Brew Coffee**

**2 FOR \$1<sup>50</sup>**  
32 OZ.

*Premium*  
**Frying Cheese**



**\$1<sup>09</sup>**  
10 OZ.

*Fully Cooked*  
**Sausage Patty**



**\$6<sup>99</sup>**  
4 LB.

*IQF*  
**Pollock Fillets**



**\$2<sup>19</sup>**  
LB.

*Smoked*  
**Pork Chops**



**\$1<sup>99</sup>**  
LB.

*Golden Puff*  
**Cereal**

**99¢**  
23.5 OZ.

**MEADOWVIEW DUTCH MARKET**  
417-993-3017 Hours: Mon-Thurs 8-5pm  
Fri 8-6pm • Sat 8-5pm  
23 Miles West on Hwy 64 • Right on T Hwy  
9 miles • Left on E Hwy 1 mile on Left

NOW ACCEPTING CREDIT, DEBIT CARDS & EBT

**DUTCH COUNTRY STORE, LLC**  
573-378-4395  
Hours: Mon-Thurs 8-5pm  
Fri 8-6pm • Sat 8-5pm  
5 miles East of Versailles off Hwy C on Kelsay Road

**TAKING ORDERS FOR NEW YORK CONCORD GRAPES**



**\$15<sup>50</sup>**  
APPROX. 18 LB BOX  
**CALL 417-993-3017**

**BONUS SPECIAL**

**FANCY SHREDDED CO-JACK CHEESE**



**\$1<sup>99</sup>**  
LB.

**LIONEL TRAIN SET:** Steam engine, tender, caboose and other car, track, and transformer. \$195. 573-364-7465. Rolla.

**MODEL 1911 FRAME 8-SHOT C02 PISTOL:** Like new, in box with C02 cartridges, 4 clips, pellets & all paperwork. \$95. 573-364-7465. Rolla.

**1970s KIDS METAL STOVE & FRIDGE:** Nice Lithographic paint, 18" wide x 36" high. \$75. 573-364-7465. Rolla.

**3 GENTS WITTNAUER WRIST WATCHES:** 10k gold + 23J. All \$200. 573-764-3517. Call in P.M.

**CHILTON'S AUTO REPAIR MANUAL:** American & Volkswagen Cars 1969-1976. \$35. 417-260-0941. Raymondville.

**HARLEY 45 SOLO:** factory rear brake drum + sprocket. \$150. 573-764-3517. Call in PM.

**HARLEY PANHEAD DISTRIBUTOR:** original, chrome + complete. \$125. 573-764-3517. Call in PM.

**1962 HARLEY SPORTSTER 900CC:** original distributor. \$50. 573-764-3517. Call in PM.

**USED JET HOME POLLUTION CONTROL PANNEL:** Model CP700. \$65. 636-239-2695 or 314-560-5700. Washington.

**HEARTH CRAFT GLASS BI-FOLD FIREPLACE DOORS PURCHASED AT FORSHAW'S FIREPLACE:** Antique brass. \$160 obo. 636-239-2695 or 314-560-5700. Washington.

**1 PAIR OF KEY BRAND MEN'S JEANS:** Waist 38, Length 34. \$10. 636-239-2695 or 314-560-5700. Washington.

**SADDLE: 20" Buffalo Saddlery with suede padded seat. \$350. 417-718-5347. Conway.**



**BLACK METAL TUBULAR BRACKET:** Scrolling and a stainless bracket. \$10. Call for pictures. 636-239-2695 or 314-560-5700. Washington.

**WANTED 730 OR 830 CASE TRACTOR:** In any condition. 573-308-5884. Rolla.

**TRAILER HOUSE RIMS:** \$10 each. 573-308-5884. Rolla.

**'85 FORD PICKUP PARTS:** Passenger door with window glass & mirror \$30. Also, Tailgate for '85 Ford pickup \$25. 573-308-5884. Rolla.

**INTERNATIONAL PICKUP TRANSFER GEARBOX:** \$150. 573-308-5884. Rolla.

**BUTLER LOGGING:** Making landowners happy is my number one goal. Paying top dollar on all your timber. Call me 417-448-9323. And see what I can do for you.

**MALTIPOO PUPPIES:** 8-weeks-old, All shots & wormed. \$300 each. 417-532-4701. Can send pictures.

**BEAUTIFUL CHIHUAHUA PUPPY:** Female, 11-weeks-old. Also, adult male Chihuahua dogs. Call for pricing & pictures. 417-349-3058. Mt. Grove.

**WOOD CATTLE RACK:** Fits standard size pickups. \$105. 417-668-7793, Landline, do not text. Falcon.

**STANDARD BRED/PERCHERON CROSS BAY GELDING:** 1yr., trots, 14.1 hands. Maynard, Arkansas. 262-290-1619.

**16X18 BUCC TRAILER HOUSE:** New in 1996. Has new roof, 3 bedrooms, 2 bath, skirting and title. \$10,000.00. Located at 22740 Pin Oak Ln. Summersville, MO. Buddy Bird 417-331-9501 or Pam 417-331-9038, evening or weekend.

**2 WHEEL TRAILER:** With 6x10 wagon bed. \$300. 573-308-5884. Rolla.

**RAMBO PURSUIT ELECTRIC HARDTAIL FATBIKE:** Model 750-26. Like new. Approximately 30 miles ridden. Includes added back Rambo rack. \$2,200. 417-650-7069. Lebanon.

**LAKE OF THE OZARK-GREAT FISHING AREA AND WEEKEND FUN SPECIAL:** Lots \$4,895 - \$125 down, \$69 per month. Beautiful trees, free lake access and boat ramps, lots are a short distance from the lake, no credit checks, owner financing, immediate possession or own for investment. Missouri conservation boat ramp with a covered dock and rest rooms, also acreage tracts. Prices good through August 14<sup>th</sup>, 2023. Hwy 135 between Stover and Sunrise Beach, MO. Take Lake Road 135-12 to the Ivy Bend Land Office. Closed Tuesdays and Wednesdays Call anytime 573-372-6493.

## YOUR FULL SERVICE AUTO BODY SHOP

Call today for an appointment or estimate!

Restorations, insurance jobs, and more!





417-288-1589 • 115 Lincoln St., Buffalo, MO • [f](#) @DavidsonCustoms

**NEW JELD WEN 5' LEFT HAND SLIDING GLASS DOOR WITH SUNSTABLE INTERIOR BLINDS:** Clear tempered glass, Desert Sand trim/hardware. Retail \$2655 Sell \$900. 417-693-0389. Conway.

**4 GOODYEAR WRANGLER TIRES:** Kevlar LT245/70R17, all terrain, \$185. 417-417-260-0941. Raymondville.

**FOR SALE:** 2 Dayco motorcycle covers for Harley or other big bikes. \$50 each. 417-260-0941. Raymondville.

**MAC'S TIEDOWN STRAPS:** Like New. \$80. 417-260-0941. Raymondville.

**OUTDOOR WOOD FURNACE:** Heats 3,000 sq. ft. & water. \$7,500, plus tax, plus installation. 573-201-6453.

**3 ARMY CANTEENS:** Mess kit, belt & duffle bag. \$60 for all. 417-260-0941. Raymondville.

**???CDL LICENSE??? FAST & ECONOMICAL:** Meets all requirements of the new ELDT Law. 2 days training. Total cost of \$1,500. \$100 rebate with this ad. You need a learner's permit & ability to drive a manual. Jefferson City, Strafford & Willow Springs, Missouri. Please call 573-353-2853. [www.capitaltruckdrivinginstitute.com](http://www.capitaltruckdrivinginstitute.com).

**LEVI BYLER CONSTRUCTION LLC:** Roofing, Siding, Decks and More. 417-741-0245

**RUBBERMAID 10 CUBIC FOOT PULL BEHIND DUMP CART:** \$200. 417-718-5347. Conway.

**2001 FORD 3500 BLACKOUT VAN:** New tires, battery, brakes. Custom interior, mechanically sound & solid. Clear title, 2 owners, no smoke. 170,XXX miles. \$12,000 or trade. 417-650-7069.

**OLD 7X14 MILITARY WAGON:** 3FT high sides. \$400. 573-308-5884. Rolla.

**PASTURE RAISED CHICKENS & PASTURE RAISED THANKSGIVING TURKEYS:** 417-741-2446.

**3 FT 6 PANEL METAL DOOR:** No frame \$15. 417-531-5630 Conway.

**2 TIRES SIZE 235 X 50 X R18:** Fair tread \$20 for the pair. 417-531-5630 Conway.

**40 PAPERBACK WESTERN BOOKS:** Several Louis L'mour \$15 for all 417-531-5630 Conway.

**80 ACRES IN MACKS CREEK:** Power, water, artesian wells, good hunting. \$2,500 per acre, as is. Text 573-836-6414.

**FREE 5 CUTE KITTENS & MOTHER:** To be given away to loving & caring homes. If interested call for more information. 417-469-2123.

**STANDING FIREWOOD:** \$10/Tree. 951-288-4654. Pershing.



**BRINKMANN 8-QT. OUTDOOR PROPANE GAS FISH FRYER:** Big aluminum pan. Excellent condition. \$40. 210-787-8222. Linn Creek.

**JUMBO FLOAT:** 95" long x 80" wide x 10" high. Heavy gauge vinyl, Safety valve, 2 screw valves, 12 rope holders, water plug, nylon rope around it. Like new. \$150. 210-787-8222. Linn Creek.

**1974 CHEVY C-30:** Needs work. 417-217-8551.

**MOBILE HOME FOR SALE:** 1992,

3-bedroom, 2-bath. 16'x80'. \$35,000. Double insulated walls & roof. Located in Ozark Highlands Trailer Park in Springfield. 417-877-8390.

**CUCKOO CLOCK:** Black forest design, battery operated pendulum action. \$130 new, asking \$40. 417-877-8390. Springfield.

**CHEST FREEZER:** 5 cubic feet. \$100. 417-877-8390. Springfield.

**2000 SUZUKI INTRUDER 1500:** Fully dressed, perfect shape. \$3,000 OBO. 314-497-1898. Leasburg.

**2012 FORD LARIAT: 4-door, 4WD, 231,000 miles, all leather interior, tires-75%, v6 with turbo. \$8,500. 660-492-7191.**

**GUNSMITHING-**Older Rifles, Shotguns, Handguns, all 22LRs. Any make, any model, estate appraisals. Camdenton. 573-363-5801.

**EXCAVATOR MOUNTED FORESTRY MULCHING FOR UNDERBRUSH CLEARING:** Call Nathan @ 417-259-2785.

**AKC BASSET PUPPIES:** 417-349-0919.

# OFFICIAL TRACTOR OF TOUGH™

**INTRODUCING THE ALL-NEW 5100 SERIES**



**Marshfield Machinery Inc.**  
 222 E. Madison • Marshfield, MO 65706  
 417-859-2117 • [www.marshfieldmachinery.com](http://www.marshfieldmachinery.com)

\*2018 data including all Mahindra group brand sales. MahindraUSA.com © 2020 Mahindra USA Inc.



<b>NEW MAHINDRA TRACTORS</b>	
1635 4WD & LDR 36HP	IN STOCK
2638 4WD & LDR 38HP	IN STOCK
4550 4WD & LDR 48 HP	IN STOCK
2660 4WD & LDR CAB 60 HP	IN STOCK
<b>USED TRACTORS</b>	
MF 4708 80HP 4WD CAB LDR	58,500
MF 2850M 49HP BACKHOE LDR	42,500
JD 5055E 59HP CAB LDR	32,500
MAHINDRA 2638 38HP 4WD LDR	20,000
MAHINDRA 1635 35HP 4WD LDR	19,500
MAHINDRA 4540 41HP LDR	16,000
IHC 5088 CAB 135 HP	13,500
MF 1080 81 HP LOADER	8,500
MF 1528 28HP 4WD	7,500
CUB CADET 7205 20HP 4WD	4,250
KUBOTA L175 17HP W/ MOWER	3,000
<b>USED ROUND BALERS</b>	
NH RB450 4X5 MESH	24,000
MF 1745 4X5 MESH	24,000
MF 2946A 4X6 MESH	20,000
HESSTON 550 4X6	2,500
HESSTON 560 5X6	2,000
<b>USED MISC.</b>	
M&W 8 WHEEL RAKE	1,250
RHINO SFT FINISH MOWER	850
LAND PRIDE SFT CUTTER	500
ROLLINS 5FT BLADE	250
<b>Marshfield Machinery Inc.</b>	
222 E. Madison	
Marshfield, MO 65706	
417-859-2117	
<a href="http://www.marshfieldmachinery.com">www.marshfieldmachinery.com</a>	

## CALUS LOGGING



20 YEARS EXPERIENCE

Buying Standing Timber  
Walnut & Oak

Joe Calus, Owner  
 CERTIFIED 417-926-4606 • MTN. GROVE

**TIRE:** 225x65R17 Valera HT Primewell. 95% tread. \$40. 210-787-8222. Linn Creek.

**CATERPILLAR 277C SKID-STEER:** 2918.7 hours, new tracks & 78" bucket. Enclosed cab, air. Good condition. \$30,000 Cash, OBO. No trades. 314-420-3308. Potosi.

**2000 GMC 7500 TRUCK:** Automatic 3126-Cat, single axle. Runs & drives good. \$4,000. 417-32-1928.

**GOOSENECK FLATBED TRAILER:** 17ft. 6in. long, 7ft 10in wide. Lights, brakes, decent floor, pulls good. \$1,200. 417-321-1928.

**2022 NISSAN FRONTIER KING CAB:** 4x4, automatic v6, 3,500 miles. For Details go to [www.jimsmotorsrolla.com](http://www.jimsmotorsrolla.com) 573-467-0189.

**13 BAGS OF 13 COLORS UNUSED YARN:** \$50 for all 417-288-6714.

**MULTIPOO PUPPIES & REGISTERED DOXIN PUPPIES:** 573-247-6273.

**SIG SAUER P220 45 AUTO PISTOL:** With case, 2 clips, 2 holsters. 573-619-6651. Owensville.

**4-ANTIQUE WHITE WOODEN CHAIRS:** With cloth backs& cushions. \$50 a piece. 417-532-2291.



**2015 FORD TRANSIT 250 WHITE VAN:** Ladder racks, shelving. \$19,990. For Details go to [www.jimsmotorsrolla.com](http://www.jimsmotorsrolla.com) 573-467-0189.

**2002 Kubota Tractor:** 4x4, 25 H.P., front loader. 5' Land Pride cutter. 2016 GMC Terrain, AWD. 2013 Ford F-150, Loaded. 1-573-729-3325.

**DARDEN PROFESSIONAL TIMBER HARVESTING, BUYING STANDING TIMBER:** Great prices, improve wildlife habitat and improve forest health. State Certified & Fully Insured! 573-247-4808. Salem.

**POOL TABLES:** Installations, moves, recovers, repairs, accessories, etc. 573-646-1700.

**Darrell McClanahan for Governor of this great state of Missouri 2024.** Find me on X @MBattleflag advocating for fija.org. This is being paid for by Darrell McClanahan. April Miller-McClanahan, Treasurer.

**BLUE & RED HEELER PUPPIES:** 417-349-0919.

**4 GOOD USED SIDE-BY-SIDE/4-WHEELER TIRES:** \$100 or trade. 573-734-2822, leave message.

**50 EWES:** 1-5 years old. \$225 a piece. 417-733-2625. Louisburg

**2 REAR FENDERS FOR 1946-1948 CHEVROLET CAR:** \$200 or trade. 573-734-2822, leave message.

**ELECTRIC WELDER:** \$150 or trade. 573-734-2822, leave message.

**WW RANCH SWAP & SELL HOMESTEAD MARKET:** 8386 West Highway 32 Salem, MO. Aug 12th 8AM-1PM. 573-247-5177. Salem.

**WEATHERED BARN WOOD SIDING:** 10" wide. Call for appointment 573-729-7226. [www.pineridgerustic.com](http://www.pineridgerustic.com) Salem.

**LOG SIDING:** 2X8 Pine/Western Cedar. Call for appointment 573-729-7226. [www.pineridgerustic.com](http://www.pineridgerustic.com) Salem.

**WILLOW SPRINGS & SURROUNDING COMMUNITIES BOOK:** 1869-1969, HB, 454 pages by Ella Lilly Horak, \$40. Perfect Condition. 417-532-2045. Lebanon. (Leave message and phone number.)

**NEW INVENTORY** - \$59,900 Delivered and setup. Hurry! Call Adam 573-657-2176 [amegamobilehomes.com](http://amegamobilehomes.com)

**Route 66 MOTHER ROAD BOOK:** by Michael Wallis, \$12.50. 417-532-2045. Lebanon. (Leave message and phone number.)

**NEW MOBILE HOMES** – prices start at \$64,900 delivered and setup 573-499-9993 [columbiadiscountshomes.com](http://columbiadiscountshomes.com)

**BASEMENT READY TRUE MODS-** instock ready for delivery 573-657-7040 [chateauhomes.net](http://chateauhomes.net)

**TINY HOMES** – Missouri Franchise 573-881-7965

**1908 SEARS ROEBUCK CATALOGUE REPRODUCTION:** 1,185 pages, \$12.50. 417-532-2045. Lebanon. (Leave message and phone number.)

**REGISTERED HEREFORD & ANGUS BULLS:** Home raised, Some Show-Me Select Qualified. 573-701-7828. Belgrade.

**LIGHTLY EXPERIENCED GOLF BALLS:** \$3 a dozen. 417-818-3469. Strafford.

**SLIGHTLY USED PUZZLES:** Will sell or trade. 417-818-3469. Strafford.

**INTERNATIONAL PICKUP TRANSFER GEARBOX:** \$150. 573-308-5884. Rolla.

## PLAD PANTRY

**DISCOUNT & SURPLUS FOODS FRESH PRODUCE<sup>LLC</sup>**

**417-532-4700**



Oven Roasted Sliced Turkey Breast.....	<b>\$1.99</b> 16 oz.
Shredded Mozzarella Cheese.....	<b>\$12.99</b> 5 lbs.
Mesquite BBQ Pork Tenderloins.....	<b>\$2.59</b> a lb.
Strawberry Sugar Wafers.....	<b>\$3.99</b> 12 - 2.75 oz.
Original No Pulp Orange Juice .....	<b>\$4.99</b> 1 gal.

**1571 State Hwy 64 • Tunas, MO 65764**  
Hours: 8:30 a.m. to 5:30 p.m. • Closed Wed. & Sun.



**LIONEL TRAIN SET:** Steam engine, tender, caboose and other car, track, and transformer. \$195. 573-364-7465. Rolla.

**MODEL 1911 FRAME 8-SHOT C02 PISTOL:** Like new, in box with C02 cartridges, 4 clips, pellets & all paperwork. \$95. 573-364-7465. Rolla.

**1970s KIDS METAL STOVE & FRIDGE:** Nice Lithographic paint, 18" wide x 36" high. \$75. 573-364-7465. Rolla.

**3 GENTS WITTNAUER WRIST WATCHES:** 10k gold + 23J. All \$200. 573-764-3517. Call in P.M.

**HARLEY FAT BOBS:** Custom flame paint w/ gas caps + lines. \$100. 573-764-3517. Call in P.M.

**COLT REVOLVER DEALER CATALOGS:** Circa 1950's + 1960's. All for \$100. 573-764-3517. Call in P.M.

**110 PORCELAIN POCKET WATCH DIALS:** Perfect for arts & crafts. \$100. 573-764-3517. Call in PM.

**1890 GOLD TESTING KIT:** Glass acid beakers + antique wooden case. \$100. 573-764-3517. Call in PM.

**1500 VINTAGE WRISTWATCH DIALS:** \$100. 573-764-3517. Call in PM.

**HARLEY 45 SOLO:** factory rear brake drum + sprocket. \$150. 573-764-3517. Call in PM.

**HARLEY PANHEAD DISTRIBUTOR:** original, chrome + complete. \$125. 573-764-3517. Call in PM.

## Your Source for Quality Garlic



- Limited quantities of seed and culinary garlic
- Multiple Varieties of hardneck and softneck garlic
- Varieties such as Chesnok Red, Carpathian, Khabar, Music, and Red Toch

*No pesticides, herbicides, or chemicals*



**Call or email for appointment or inquiries**

**417-827-2939**

[Garlic\\_gals@yahoo.com](mailto:Garlic_gals@yahoo.com)

Follow us on



# BACK HOE-TRACTOR-TRAILER-CAR-GUNS-TOOLS AUCTION

## SATURDAY, AUGUST 12, 2023 at 9:00 AM

### LOCATED: 412 N DELAWARE TOWN RD, NIXA MO

FROM HWY 14 & HWY 160 NIXA GO WEST ON HWY 14, 5.4 MILES TURN RIGHT (NORTH) ON DELAWARE TOWN RD TO 1ST DRIVE ON RIGHT. RESTROOM & CONCESSIONS AVAILABLE

FOR PICTURES SEE WEBSITE OR AUCTION ZIP.COM

TO PREVIEW CALL 417-830-0153

BANK LETTER OF CREDIT ADDRESSED TO MELTON AUCTION & REALTY REQUIRED FOR PURCHASE OVER \$5000

#### BACK HOE-TRACTOR-TRAILER-CAR

1985 JOHN DEERE 310B BACKHOE W/BUCKETS & FORKS, NEW TIRES, HYD PUMP, RADIATOR, OIL COOLER, 4013 HRS—FORD 3000, 66 MODEL DIESEL TRACTOR W/ BELLY PAN, NEW RUBBER, 3 PT LIVE POWER GOOD CONDT—2007 CAR HAULER TRAILER 17' W/3' DOVE, BRAKES ON BOTH AXLES—3 CYCLE MOTORCYCLE TRAILER—YARD TRAILER—1972 COMET GT LIME GREEN ORIGINAL MOTOR 53,000 MILES, PS, PB, A/C PARTIALLY RESTORED—5' BRUSH HOG—4' 3 PT DIGGER—7' FERGUSON 3 PT DIGGER—5' 3 PT DISC—HORSE DRAWN PLOW—2 ANTO CULTIVATOR/SEEDER PLOWS—1984 HONDA BIG RED 3 WHEELER, NEW TIRES, NEW STARTER

#### GUNS

HAWKINS 50 CAL BLACK POWDER  
REMINGTON 30-06 AUTO  
NEW ENGLAND 410 SINGLE SHOT  
22 SPECIAL PUMP OCTAGON BARREL 1921  
TAMER MODEL 410 SINGLE SHOT  
JC HIGGINS 12 GA BOLT ACTION  
(2) REMINGTON 550-1 22 AUTO  
REMINGTON 28 GA PUMP VENTED RIB

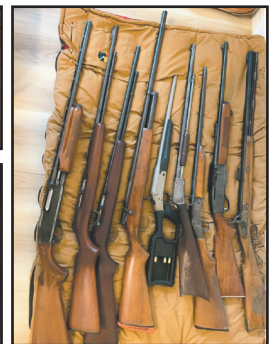
#### TOOLS

CUB CADET LT 1024 HYDRO STATIC DRIVE, 50" CUT, 24 HP BRIGGS & STRATTON ENGINE RIDING MOWER—JOHN DEERE SELF PROPELLED PUSH MOWER—020 STIHL CHAIN SAW—STIHL MS362 CHAIN SAW—POULAN PRO 16" CHAIN SAW—POULAN 40CC 18" BAR CHAIN SAW—WHEEL BARROW—DELTA 9" TABLE SAW—SCOTTS YARD SEEDERS—AIR TANKS—LONG HANDLE TOOLS—SEVERAL EXT & STEP LADDERS—MARQUETTE 32-140 BATTERY CHARGER—ANTQ TIRE CHANGER & TIRE TOOLS—RAILROAD VISE 350-400 LB PRENTISS VISE CO—124 LB ANVIL—2 SET ACETYLENE TORCHES—COME ALONG, BOOMERS—PIPE WRENCHES—WILSON VISE—20 & 30 TON HEAVY DUTY BOTTLE JACKS—8 TON SNAP ON BOTTLE JACK—STEEL WORK TABLE—DEWALT CHOP SAW—B&D MITER SAW—3 HOUSE JACKS—ELECTRIC HAND TOOLS, SANDERS, SKIL SAWS, SAW ZALL—SCREW DRIVERS, WRENCHES, SOCKETS—LOG CHAINS—LINCOLN 225 AMP WELDER—ROLL AROUND TOOL BOXES—SEVERAL GEAR PULLERS—WOOD LATHE W/2 SETS TOOLS—DURACRAFT ¾ HP BENCH GRINDER—AIR CHISEL—2 FLOOR JACKS—GRADE STICK—SPEED AIRE 5 HP 3 PHASE AIR COMPRESSOR 200 PSI—MISC ELECTRIC MOTORS—TRANSMISSION TABLE--(2) REAR END PUMPS—GRINDER ON TABLES—CHICAGO MITER SAW—295 AMPERAGE STICK WELDER MOD 2.95 ADT—POWERMATIC DRILL PRESS—BLACK HAWK ½" DRILL PRESS—MILWAUKEE M18 IMPACT WRENCH CORDLESS—HYPER TOUGH 6 ½" SKIL SAW—LP TANKS—MISC OILS ALL KINDS—FLAME THROWER—SOME STEEL

**OWNER: RICKY ALLEN**

#### BOAT MOTORS-FURNITURE-MISC

1972 EVENRUDE 25 HP BOAT MOTOR W/TITLE—1972 6 HP FISHERMAN BOAT MOTOR, NO TITLE—1983-84 TROLLING MOTOR—215-70R-14 USED TIRES—ROAD STOP SIGN—MISC LUMBER—WATER SKIS—ANIMAL TRAP—10'X30' DOG PEN & ALUM COOP—TOLEDO PORCELAIN SCALES—WOOD BURNING SHOP STOVE—ANTQ SCALES—ANTQ SAFE—MILKERS--HALLS CO SAFE - ANTQ TABLE—SLATE TOP POOL TABLE—SESSIONS MANTLE CLOCK—RIVER GRILLE SMOKER—RECORDS--DINETTE SET—BAKERS RACK—FRIGIDAIRE S/S FRIDGE—METAL LAWN CHAIRS, TRIPLE SEAT GLIDER—LG CLAY POT—CAST SKILLETS, LODGE, WAGNER—MILK CANS—EGG HATCHER—LANDSCAPE ROCKS, BLOCKS—RODS & REELS—DEER CLIMBER STAND



ANNOUNCEMENTS MADE ON SALE DAY WILL TAKE PRECEDENCE OVER ANY OTHER PRINTED MATERIALS. NOT RESPONSIBLE FOR ACCIDENTS OR LOSS OF ARTICLES ON OR NEAR SALE SITE.

# MELTON AUCTION & REALTY CO LLC



[meltonauctionrealty.com](http://meltonauctionrealty.com) | [roger@meltonauctionrealty.com](mailto:roger@meltonauctionrealty.com)  
Roger Melton | Nixa, MO | 417-830-0153 or 417-725-1801  
Brad Cole | Nixa, MO | 417-840-2950  
Hal White | Nixa, MO | 417-343-2334  
Tanner Foster | Galena, MO | 417-840-5519



# PUBLIC AUCTION

## Woodworking Shop & Logging Liquidation

**Saturday, August 12, beginning at 9:00 A.M.**  
**Located at 3330 West Arrow St in Marshall, MO 65340**

### LOGGING EQUIPMENT, ETC.

JD 648G Log Skidder SN. DW548S550168  
 511 Ex Hydro-Ax SN.5962 model 20 cutter  
 2005 Manitou forklift 5000 lb cap. 16' reach model mlt 523  
 TMU w/ forks, 7' grapple bucket  
 2006 Chevy Duramax 3500 work truck flatbed aluminum,  
 tool boxes, approx. 400,000 miles, starts and runs  
 Arctic Cat 650 Twin 4 wheeler  
 EverRide zero turn riding mower 54" deck

### WOODWORKING TOOLS

Baker Wood Wizz model BWW 4m" 220 volt, 11' x 5' deck  
 SN. 16-007  
 Grizzly 19" band saw model GO514x2 extreme series  
 Grizzly GO562ZP polar bear series dust collector  
 Grizzly belt and disc sander  
 Quincy 5 Hp. 80 gallon compressor  
 20" x 60" work bench w/ vise  
 Delta unisaw 10" table saw  
 DeWalt 13" 2 speed planer  
 Router table w/ router  
 Grizzly hyd lift table  
 16 speed floor model drill press  
 Metabo hpt compound miter saw  
 Lot bar clamps  
 Complete Nyle L 200 M dehumidification wood dry kiln



### STORAGE TRUCK BOXES, MISC. ITEMS

8' x 28' Van box wired w/ lights, exhaust fans  
 AC. Set up as finish room  
 8' x 22' storage truck box  
 8' x 40' storage box trailer  
 Winchester gun safe that holds 24 guns  
 Metal and wood file cabinets  
 Office desk, rolling file  
 Steel shop shelving units  
 Chairs— Table  
 Dining table w/ 4 charrs



### TOOLS AND MISC.

Miller Bobact 250 welder generator w/ leads  
 5 drawer roll around tool box w/ top box  
 Banding cart w/ tools — 2-Cutting torches  
 2—200,000 btu propane heaters  
 2 Hp. 8 gallon compressor — Buddy Heater  
 Collo crimp model T-400 hyd hose crimper  
 2—Bins hyd hose fittings, some new hose  
 4 and 10 ton porta powers  
 1" drive air impact, 36" exhaust fan  
 Oregon chain saw sharpener — Floor jack  
 3/4" air impact — 1/2" air impact  
 Gear wrenches — Sockets — Open end wrenches  
 36" pipe wrench — Drills — Saw blade sharpener  
 Planer knives — Sander belts — Drill bits  
 Leaf blower — 4 in 1 sharpening system  
 Tap and die set — Screw extractors  
 2—Bench vises — Lot power tools  
 3/4" drive socket set — Bench grinder  
 5—Metal bolt bins w/ bolts, nuts, washers  
 6—4 drawer hardware cabinets loaded w/ hardware  
 6 drawer tool box — Shop fans  
 Lots—screws and fasteners — Shop vac  
 Shop built hyd. Wood splitter  
 Blue Giant Elect. Pallet 1000 lb lift model MA58  
 Tree 400 lb electronic scale 38" x 20"  
 Shumaker 200 amp battery charger 6-12 volt  
 Ext. ladder — DeWalt chop saw — Shop carts  
 Roller conveyer — Saw horses — Shop dolly



### LUMBER

6,000 board feet kiln dried 4 quarters walnut, lumber  
 stored inside  
 Lot—live edge slabs walnut, pecan, soft maple, spalted ma-  
 ple, locust  
 12—6" x 6" bass wood 8' long

**Due to the death of Cecil Williams we will be selling the listed  
 above items at public auction. Many more small and miscellane-  
 ous items not mentioned. Hope to see you there.**

**Owner: Sandra Williams**

**Auctioneers**  
**Larry Martin , Loren Martin**  
**& Mel Yoder**



**MARTIN AUCTIONS**  
**660-337-6471**



*Thanks, Larry*





# ONLINE AUCTION

**BID NOW! BIDDING CLOSES AUGUST 19<sup>TH</sup>**



**ITEM PREVIEW DAYS:**  
 Bidders will be able to inspect and view items Monday-Friday (8am-4pm) and Saturdays (8am-noon) while the auction is open for bidding at 4177 HWY VV, Berger, MO 63014

**820 LOTS**



**All items sell regardless of price. All items start at only \$1. BID TODAY!**

## Construction Equipment

- Unused 2020 Doosan DX62R excavator
- 2022 Doosan DX63 excavator
- 2-2017 JCB 535-95 telehandlers
- 2002 JD 410G 4x4 backhoe
- 2021 Bobcat T66 skid steer
- 2021 Bobcat T550 skid steer
- 2020 Caterpillar 279D3 skid steer
- 2016 Bobcat T630 skid steer
- 2002 Bobcat A300 skid steer
- Caterpillar 226 skid steer
- 2019 Caterpillar 312F GC excavator
- 2018 JCB 131LC excavator
- 2018 Bobcat E85 excavator
- 2015 Kubota KX080-4 excavator
- 30+ unused skid steer attachments
- 2016 IHI 35N excavator
- Unused Wallenstein skid steer or 3-pt. backhoe
- JD Pro911 skid steer backhoe
- Ford 4500 backhoe
- JLG 1932RS electric scissor lift

## Farm Equipment

- Unused 2022 Mahindra 5145 tractor with loader
- Unused 2022 Mahindra 4540 tractor with loader
- 2015 John Deere 1023E tractor with mower
- NH BR770A round baler
- JD 3038E 4x4 tractor with loader
- JD M tractor with snow plow
- Vermeer 5400 Rebel round baler
- Kubota L3450 tractor with loader
- 3-NH 7' haybines
- JD 620 tractor
- Ford 9N tractor
- NH 1033 square bale stack wagon
- 5-manure spreaders
- Unused Rhino PT207 hay tedder
- Unused Tar River 3-pt tillers
- 6'-7" 3-pt. box blades
- JD 720 loader
- JD 6620 Turbo 4x4 combine
- JD 336 square baler
- IH 5100 11.5' grain drill
- 4 cattle chutes with catch gates
- 24' pasture harrow on cart
- Land Pride 15' brush hog
- Unused 24' freestanding fence panels
- Ferguson TO20 tractor
- Westendorf WL24 loader for IH 1206
- Bush Hog SC9000 18' soil conditioner

- 2-Farmall Cub tractors with belly mower
- JD 430 tractor
- MF 65 gas tractor
- 3-pt. plows and disc plows
- Farmall A tractor with belly mower
- Ford 3400 diesel tractor with loader
- Deutz D13006 tractor
- 3-pt. & pull type brush hogs
- 3-pt. & pull type tillage equipment
- Farmall Super M tractor
- Case IH 245 tractor with belly mower
- International 584 diesel tractor
- NH 273 square baler
- Sunflower 5230 23' field cultivator
- NH Super 717 forage harvester
- Krause 730A 18' chisel plow
- Custom 350 gal. sprayer with 45' boom
- 3-pt. finish mowers
- Ferguson 35 tractor
- NH 68 square baler
- Kubota B6200 tractor with belly mower
- Ag-Rain Water-Reel E37-1220 irrigation gun
- 3-pt grader blades 5'-8'
- NH 258 hay rake with dolly wheels
- 3-pt. & pull type sickle mowers

## Vehicles

- 1999 Sterling LT9511 dump truck
- 1997 Ford F250 pickup
- 2008 Ford F450 4x4 dump truck
- 2004 Ford Excursion XLT 4x4
- 1979 Ford 700 grain truck
- 1998 Dodge Ram 2500 4x4 flatbed
- 2008 Ford F250 4x4 XL pickup
- 2005 Ford F450 4x4 with dump bed
- 2006 Ford F250 4x4 with snow plow
- 1996 Dodge Ram 2500 4x4 service truck
- 2005 GMC 2500HD crew cab 4x4
- 2012 Ford Fusion SE sedan
- 2001 Ford Ranger 4x4 extended cab
- 1976 Chevrolet C65 grain truck
- 1990 GMC Topkick with 14' Sudenga feed bed

## Trailers & Campers

- 3-Unused 2022 Liberty 14' dump trailers
- 2021 Crossroads 252BH Zinger Lite camper

- 2013 Kodiak 24' gooseneck stock trailer
- Calico 6'x12' stock trailer
- 2012 Trailerman 30' flatbed gooseneck
- 2013 Stillwater 28' flatbed gooseneck
- Hillsboro 28' flatbed trailer
- 2008 Bales 25' flatbed gooseneck
- 2012 Homesteader 6'x12' enclosed
- 12' trailer for making kettle corn
- 5-semi van trailers for storage

## UTVs, ATVs, Motorcycles, and Mowers

- 2018 JD Gator XUV 835R UTV
- 2001 Harley Davidson motorcycle
- Kawasaki Mule 2510 4x4 UTV
- Grasshopper 428D diesel zero turn mower
- Trailmaster Blazer 200R go-cart
- Hustler Raptor zero turn mower
- Polaris Razor 1000XP UTV
- Polaris Ranger 500 4x4 UTV
- Yamaha Rhino 4x4 UTV
- 2002 Kawasaki Vulcan Drifter motorcycle
- DR walk behind brush mower
- Yamaha Timberwolf 4 wheeler

## Shop Equipment & Miscellaneous

- 10 unused shipping containers 7'-40'
- Unused 13'x20' portable cabin
- 15 Unused hoop buildings up to 40'x80'
- 2-unused Upro rock screens
- 6-unused Upro portable restrooms
- 2-unused Hillsboro SLT steel truck beds
- Unused Scag TL20W-29BV leaf vac
- Antique doctor's buggy
- Rough cut lumber incl. walnut
- 2-Hobart meat band saws
- Antique Aeromotor windmill
- 8'x18' walk in cooler/freezer
- 20+ unused toolbox workbenches
- Large group of concrete forms
- 11-Miller Bobcat & Lincoln welder generators

More items listed at [SchneiderAuctioneers.com](http://SchneiderAuctioneers.com)

**SCHNEIDER Auctioneers LLC**  
 573-834-2207 • 573-291-8075  
[www.SchneiderAuctioneers.com](http://www.SchneiderAuctioneers.com)



# ESTATE AUCTION

FAIR PLAY, MO

# AUCTION

Due to the death of the Late David Robinson we will sell the following Pickup, Tractor, Implements, Motorcycles, Cattle Panels, Tools, Smoker/Grill and Misc. At the Home located 1 ¼ miles East of Fair Play, Mo. on 32 Hwy. To E.R. S-50 go South and East 1 ¼ miles to E.R. S-53 go South to the Auction on

**Sat. August 12, 2023 at 9:00 am**

**WATCH FOR AUCTION COMPANY SIGNS • LUNCH SERVED**

**FOR MORE PICTURES GO TO: WWW.BRUCEANDLEANAUCTION.COM**



### PICKUP-MOTORCYCLES

- 1988 Chevy 4X4 Silverado 2500 Pickup, V-8 5.7 Motor, Automatic Trans. 152,661 miles, Good Rubber
- Kawasaki KLX 300cc Dirt Bike
- Kawasaki KLX 125cc Dirt Bike

### SMOKER GRILL

- Commercial Style Charcoal Smoker/Grill on a Tandem Axle Covered Trailer, Foldout Awning, 3' X 8' Cooking Grid

### TRACTOR-IMPLEMENTS

- Kubota L225 Diesel 24hp Tractor, 3 pt. Hitch (has been sitting)
- 3pt. 6' Rock Rake
- 3pt. 4' Rear Tine Tiller
- 4' Pull Type Disk
- 3pt. King Kutter 48" older Mower
- 3pt. 6' older Brush Hog

### CATTLE PANELS-GATES

- 12-10' 6 Bar Corral Panels
- 10' Corral Alley Way W/Head Gate & Floor
- 6-16' Pipe Gates
- 5-12' Pipe Gates
- 10' Framed Gates
- Approx. 20-16' Welded Wire Panels
- Misc. Post & Barb Wire

### TOOLS-MISC.

- Alkota Steam/Pressure Washer
- DeWalt 3000 PSI Pressure Washer
- Schumacher Battery Charger
- Craftsman Table Top Table Saw
- Central Pneumatic 2 ½ Gallon Air Compressor
- 48" Box Floor Fan
- Craftsman Belt Sander
- Several Tool Boxes
- Ext. Cords
- ATV/Motor Cycle Jack
- Misc. Hand Held Power Tools
- 18"-36" Pipe Wrenches
- Alum. Ext. Ladder
- Step Ladders
- Grasshopper Model 120 Zero Turn 48", 20hp Riding Mower (has been sitting)
- Several Wrenches & Hand Tools
- Grease Guns
- Air Tank
- Large lot of Plank Flooring
- Alum Loading Ramps
- Act. Torch Cart
- Youth Compound Bow
- Metal Deer Stand
- Lot of Misc. Fishing Poles & Tackle
- Golf Clubs
- Child's Sled
- Lot of Misc. Lumber



### TOOLS-MISC CONT.

- Hand & Garden Tools
- Misc. Copper Wire
- Concrete Blocks
- Coolers
- Pet Totes/Cages
- Child's Yamaha 12v 4-Wheeler
- Misc. Sporting Items
- Wooden Dining Table W/4 Chairs
- Misc. Household Items
- One Lot of Unseen Misc. Items at Listing

**OWNER: MRS. SUSAN ROBINSON**

TERMS: Everything sells as is, where is. Nothing is to be removed until settled for. Payment of Cash, Check with Proper ID, or Credit Cards. Auction Company or the Owners will not be responsible for loss of items or accidents. Statements made the Day of the Auction take Precedence over Printed Matter.

SALE CONDUCTED BY **BRUCE & Le'AN AUCTION & APPRAISAL, LLC**  
 THE AUCTION COMPANY THAT APPRECIATES YOUR BUSINESS

For more information and pictures go to our website at [www.bruceandleanauction.com](http://www.bruceandleanauction.com)

RONNIE BRUCE - Fair Play, MO  
 417-777-1685 or 417-654-2214  
 colronbruce@gmail.com

BRANDON BRUCE  
 Fair Play, MO

BILLY BRUCE - Stockton, MO  
 417-399-4800  
 colbbruce@gmail.com



**PUBLIC AUCTION STOCKON, MO**

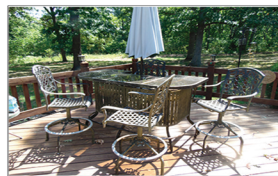
**AUCTION**

As I have sold my Home and am moving we will sell the following UTV, Tractor, Household, Collectibles, Tools, and Misc. At the Home located 3 1/2 Miles South of Stockton, MO., On 39 Hwy. To 215 Hwy. Go East 1 1/2 Miles on 215 Hwy. to the Auction on

**Sat. August 19, 2023 at 9:00 am**

**WATCH FOR AUCTION COMPANY SIGNS • LUNCH SERVED**

**FOR MORE PICTURES GO TO: WWW.BRUCEANDLEANAUCTION.COM**



**TRACTOR-UTV**

- Long 510 Diesel 50hp Tractor Wide Front, 3pt Hitch
- 2020 Polaris XP1000 Ranger 4963 Miles, Top, Windshield and Dump Bed (regularly serviced every 50 hrs.)
- 3pt. 6' Brush Hog

**HOUSEHOLD**

- Kitchen Aid side by side Garage Refrigerator
- Whirlpool Cabrio Automatic Washer & Dryer W/Stainless Tub
- Brown Leather 3 Cushion Divan W/Matching Chair
- 2 Tan Cloth Electric Lift Chairs
- Brown Vinyl Recliner Lift Chair (some wear)
- Oak C Roll Top Desk (med. Size)
- Large Modern S Roll Top Desk (like new)
- Small Painted Roll Top Desk
- Wooden File Cabinets
- Swivel Office Chair
- 4pc Queen Bedroom Set (Bed, Dresser, Armour, Night Stand, no mattress)
- Wooden Frame Day Bed
- TV Stand
- 2 Metal Swivel Bar Stools
- Misc. Linens & Bedding
- Misc. Kitchen Items
- Wall Hangings & Mirrors
- YTE Cordless Vacc.

**ANTIQUES-COLLECTIBLES**

- Oak Wash Stand
- 30" Square, 30" Tall Solid Butcher Block Table
- Car Siding Shelving Cabinet
- 5 Blue Band Stone Jars (10-8-6-2-2 Gallon Jars)
- 3 Blue Band Stone Jugs (5-3-1 Gallon Jugs)

**ANTIQUES-COLLECTIBLES CONT.**

- Camel Back Trunk
- Metal 7up Pop Cooler
- Fire Wood Box
- 2 Child's Steds
- 2 Cast Kettles
- 8pc. Setting Rogers Flat Ware
- 10 Gold Colored Fire King Cups
- Refrigerator Dishes
- Ice Cream Parlor Chair
- Huffy (Nel Lusso) Girls Bike
- 1/16 Scale John Deere Tractor NIB
- 2-1957 Chevy Metal Cars 1/16 Scale (Convertible, Hard Top, Like New)
- Lrg. Car Siding Bird House
- Beechcraft by Hartzell 3 Blade 40" Air Plane Prop

**TOOLS-MISC.**

- Kobalt Compound Miter Saw
- Central Machinery Floor Model Drill Press
- Double Stone Bench Grinder
- 9hp Vangaurd Generator
- Stanley Shop Vacc
- Werner 8' Poly Step Ladder
- Craftsman 6 3/4hp Pressure Washer
- Misc. Hand Power Tools
- Hand Tools
- Small Floor Jack
- Organizer Cabinets
- Air Hose Reel
- Misc. Air Tools
- Knife Sharpener
- Stihl BR-350 Back Pack Blower
- Remington 5' Electric Pole Saw
- Brinly 6 1/2 hp pull type Yard Vac.
- Tractor & Car Service Manuals

**TOOLS-MISC CONT.**

- Misc. Fluids & Oils
- Gas Cans
- Live Trap
- Misc. Fishing Poles & Tackle Boxes
- Brown Bear Compound Bow
- Simmons Spotting Scope
- Radio Shack Metal Detector
- 36" Metal Yard Gate
- Lot of Electric Wire & Cords
- Car Ramps
- Creeper
- 11 Boxes of Shaw Laminate Flooring
- Several Lawn Ornaments
- Glass Top Patio Bar/Table W/4 Metal Framed Swivel Chairs
- Bird Bath
- One Lot of Misc.

**OWNER: ANGELA THOMSON**

TERMS: Everything sells as is, where is. Nothing is to be removed until settled for. Payment of Cash, Check with Proper ID, or Credit Cards. Auction Company or the Owners will not be responsible for loss of items or accidents. Statements made the Day of the Auction take Precedence over Printed Matter.

SALE CONDUCTED BY **BRUCE & Le'AN AUCTION & APPRAISAL, LLC**  
THE AUCTION COMPANY THAT APPRECIATES YOUR BUSINESS

For more information and pictures go to our website at [www.bruceandleanauction.com](http://www.bruceandleanauction.com)

RONNIE BRUCE - Fair Play, MO  
417-777-1685 or 417-654-2214  
colronbruce@gmail.com

BRANDON BRUCE  
Fair Play, MO

BILLY BRUCE - Stockton, MO  
417-399-4800  
colbbruce@gmail.com



# REAL ESTATE & FARM AUCTION

**Saturday, August 12th, 2023 ~ 9:00 AM**

LOCATION: 727 North Dade 107, Greenfield, Mo; Directions: From Greenfield Go Approx 6 Miles North On Hwy 39 To County Road 54 Then Turn West 1/2 Mile To Sale Site (Watch For Signs)

**Auction For Sean & Kiaya Beazley**



**Real Estate Will Sell First At 9:00 AM**

Real Estates Consists Of Approx 2300 Sq Ft Home Sitting On 20 Acres M/L, Home Is A 3 Bedroom, 2 1/4 Bathrooms, Living Room, Family Room, Formal Dining Room, Eat In Kitchen, Also Has Pantry, Laundry Room, Covered Front Porch, 2 Car Attached Garage & Ample Amount Of Storage. House Has Less Than 3 Yr Old Vinyl Siding & Energy Efficient Windows. Also Has Less Than 1 Yr Old Tankless Hot Water Heater, Cooling & Heat Pump Are Less Than 5 Yrs Old, Also Propane Heat, 1 Newly Remodeled Bathroom Less Than 6 Months Old, Also Has New Floors Throughout Most Of The House, Chain Link Backyard. Real Estate Also Has 51 Ft X 38 Ft Shop W/Newly Added Lean To Approx 51 Ft X 16 Ft, Real Estate Also Has 2 Corrals, Working Alleyway & Load Out Alleyway Made W/ Piped Fencing. Land Is Fully Fenced W/Cross Fence & Spring Fed Pond. Acreage Is Approx 1/2 Pasture, 1/2 Wooded. To Preview Contact Sean At 417-247-6754. Terms: 10% Down Day Of Sale With Signed Contract And Balance Due In 45 Days Or When Closing Date Set By Abstract Office. Seller Has The Right To Accept Or Reject Any And All Bids.

**Antique, Modern Furniture & Appliances**

Ant Oak Library Table, Ant Tiger Oak Table, Ant Kitchen Table, Ant 2 Sided Leather Top Kids Desk & Chairs, Ant Cherry High Back Sitting Chairs, Ant Oak Display Cabinet, Ant Trunk, Ant Ship Shuffle Board Game, Ant Gentleman's Dresser, Ant School Desk, Toledo Store Scales, Cash Register, High Chair, Nightstand, Military Trunks, Prim Metal & Wood Cabinets, Barstools, Pool Table Foosball Table, Galaga Arcade Game, ESPN Basketball Game, Recliner, Coffee Table, TV's, Floor Lamps, Oak Roll Top Desk, Shelving, Coffee Bar/Bufet, Farmers Market Cabinet, White 4 Sided Spinning Shelf W/Mirror, Oak Nightstand & Chest Of Drawers, White Dresser W/ Mirror, Modern Black Dresser, Handmade Cedar Chest, Toybox Bench, Rustic Halltree Bench, Roll Around Laundry Cart, Bravo XT Washer (Needs Work) & Electric Dryer, Sm Chest Deep Freezer, Refrigerator, Fisher Wood Stove Fireplace Insert, Other Items

**Antiques, Primitives, Households**

Adv Boxes & Tins, Green Uranium Glass Beaters, Lg Lot Of Colored Pyrex Approx 50-70 Pcs, Character

Glasses, Glass Bottles & Jars, Wheaties Boxes, Beatle Baily & Rin Tin Comics, Pitcher Pump, Cast Iron Banks, Cast Iron Skillets, Cream Can, Steel Wheels, Galvanized Wash Tub & Other Galvanized Pcs, Crocks, Prim Roll Around Cart, Copper Tub & Lid, Graniteware, Feed Scales, Sm Kitchen Appliances, Pots, Pans, Dishes, Brother Sewing & Embroidery Machine, Lg Lot Of Crafting Items, Potato Sacks, Lg Lot Of Adult & Kids Books, Lg Lot Of Toys & Games, Other Items Not Listed

**Truck, Equipment, Cattle Equipment, Tools & Outdoor Items**

L2950 Kubota 4x4 Diesel Tractor & Loader, Allis Chalmers WD45 Gas Tractor W/Wide Front & Front End Loader, 2 Wheel Trailer W/Heavy Duty Grate Floors, Hay Forks, Tumble Bug Dirt Mover, 3 Pt Drag, 3 Pt Carry Alls, 3 Pt Dirt Mover, 3 Pt Chisel, 3 Pt Hay Spike, 3 Pt Blade, 3 Pt Seeder, Big Bee 5 Ft Bush Hog, JD 3N Sickle Mower, 4 Wheel Side Delivery Hay Rake, Hay Rack Running Gear, JD 24T Twine Square Baler, 2 Pc Harrow, 2012 Polaris 500 EFI Ranger 4x4, 2019 Elite 32 Ft Gooseneck Flatbed W/Max Ramps, 1979 Hale 20 Ft Gooseneck Stock Trailer W/1 Cut Gate, 18 Ft 2 Axle Homemade Bumper Pull Flatbed Trailer, 6 Big Bale Wagon, 16 Ft 2 Axle Trailer, 2001 Ford Ranger 4x4 W/V6 Motor, Extended Cab & Step Side Bed, Prefert S01 Squeeze Chute W/Auto Head Gate, Grain Bin, Concrete Feed Bunks, Hay Ring, Mineral Bunk, Water Troughs, 5 Round Bales, New Cattle Scale & Platform, Calf Puller, Show Cattle Portable Chute, Sm Barn/Shelter, Feed Shed, Hay Feeder, Metal Gates, Cattle Panels, Portable 325 Gal Water Tank, Cattle Working Supplies, Cub Cadet Tiller W/Honda Motor, Craftsman Push Mower, Stihl Weed Eater, Husqvarna Push Weed Eater, Rugid Riding Mower Trailer, Craftsman Miter Saw, MW Welder, Stand Up Air Compressor, Bench Grinder & Other Power Tools, Vise, Jacks, Wheelbarrow, Ladders, Hand Tools, Long Handle Tools, Prim Tools, Steel Barrel Shop Stove, Kerosene Heater, Shop Shelves, Lumber, Steel Wheel Picnic Table, Deck Storage Tote, Metal Patio Furniture, Wooden Playhouse & Swings, Compost Tumbler, Pit Boss Pellet Smoker & Grill, Knives, Hunting Clothes, Tents, Camping Items, Log Chains, Tie Downs, Other Items Not Listed



**Auctioneers Note:** As Sean & Kiaya Have Decided To Stop Farming & Concentrate On Building Their Future In The Auction Business We Will Offer A Very Outstanding & Excellent Real Estate Farm, Tool, Antique & Household Auction. There Will Most Definitely Be Something Here For Everyone Real Estate Is A Prime Small Acreage Farm For Anyone. Tractor, Equipment & Farm Related Items Will Work For Anyone. Definitely Some Neat & Good Antiques, Furniture & Household Items As Well. We Will Run 2 Rings So Bring A Friend. You Do Not Want To Miss This Auction. Please Plan Now To Attend. **Sale Order: Real Estate Sells First Followed By Antique, Modern Furniture & Appliances The We Will Split Into 2 Rings One Selling Antiques, Primitives & Households The Other Selling Tools & Outdoor Items. At Approx 12:00 Noon Will Offer Tractor, Truck, Farm & Cattle Equipment. See Ya There!!** Terms: Cash or check with proper ID. Now accepting most major credit cards. Nothing removed until settled for. Statements made the day of sale takes precedence over printed material. Everything sold as is where is. Not responsible for accidents. Restroom available. Concessions Provided. Check our website for upcoming auctions and for additional pictures!!



## NANCE AUCTION SERVICE

No Matter How BIG or small, We Do Them All!!!



Col. Bill Nance 417-214-0093 In God We Trust Philippians 4:13 Col. Sean Beazley 417-247-6754



# R&R AUCTION SERVICE

## AUCTION SATURDAY, AUGUST 12TH AT 10AM

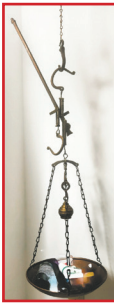
72 Watermill in Buffalo, MO

**Directions: from Buffalo take Highway 73 to DD, follow to Watermill Road, watch for signs**

This is by far the nicest, cleanest, neatest auction we have had this year.

The Rodney's are moving and must downsize in a BIG way. They will sell the following at public auction to the highest bidder. Items include but are not limited to...

Wicker chair, Wicker stool, Coleman lanterns, wood twin bed, end table, chest of drawers, wood child's rocker, Vizio flat screen, lots of pictures and wall décor, night stand, Big vase, Crystal, curtains, nick nacks, big candles, scale, table 4 chairs and bench, school desk, bakers rack, red granite pitcher and cups, baskets, sausage crock, McCoy cookie jar, patio furniture, metal stacking baskets, air fryer, wood rocking chair, round table with 2 leaves 6 chairs, thermometer, minnow bucket, fishing poles, fishing items, dip nets, oars, bottle capper, old plane, old wooden levels, old sifter, wooden boxes, live well, Case knife set, carved wood door, wooden swivel bar stools, dehydrator, microwave, still, cheese box, John Deere cup & plate, weathervane, couch and love seat, lamp, tv stand, 2 dehumidifiers, ATV sprayer, folding tables, Stihl MLS 290 chainsaw, Yamaha Rhino 660 4 x 4, Stihl BG86C leaf blower, Briggs & Stratton 7.75 power washer used 3 times, Troy Bilt generator used once, Skil 5.0 drill, metal chairs, life jackets, lots of bag chairs, coolers, aluminum extension ladder, reloader, Camilus corn knife, chain sharpener, double shop light, corn hole game, shoulder gard rifle rest, propane bottles, propane tanks, rifle press reloader, lead, powder, thrower & clay targets, jack stands, crawdad trap, potting mix, topsoil, planters, metal chairs, metal gliders, teak table 4 chairs & bench, milk cans, smudge pot, smoker grill, hen & chicks, 2 Radio Flyer wagons, storage box, bug zapper, 2 bags R-19 insulation, tater fork, croquet set, camp fuel, electric wire, spade, egg basket, minnow seine, come along, bundle of plaster slats, camp grill, seeder, hand crank meat grinder, air tank, axe, weed hooks, Coleman shop cabinets, rock, Hook up connecting crock pot, air purifiers, antique dishes, 2 plastic Black & Decker storage cabinets, lots of Christmas, lots of canning jars, Cobalt 5.5 gal air compressor, blue jars, plastic buckets with lids, chimney sweep brushes, gas cans, hose holder, wood bench, concrete planters **and much much more.**



**Please keep watch on our website for added photos.**

**TERMS:** Cash, check, or credit card with proper I.D. nothing removed until settled for A 3% fee will be added to credit card purchases. Not responsible for errors in listing. Any announcement made sale day will take precedence over any printed matter.

**For more information contact Professional Auctioneer Russ Weeks at 417-576-7357 or check out [www.rrauctionservice.com](http://www.rrauctionservice.com)**

Serving this area's auction needs since 1997 with honesty and professionalism.  
[www.rrauctionservice.com](http://www.rrauctionservice.com)  
**(417) 576-7357 or (417) 345-4140**

GENERAL AUCTIONEERS  
**AUCTION SERVICE**  
Auction & Appraisals





**1962 HARLEY SPORTSTER 900CC:** original distributor. \$50. 573-764-3517. Call in PM.

**SPORTSET BY SARGENT:** Fishing pliers in leather sheath. Like a multi-tool. \$20. 636-239-2695 or 314-560-5700. Washington.

**NEW SQUARE D RAINPROOF 50AMP DISCONNECT:** \$160. 636-239-2695 or 314-560-5700. Washington.

**USED JET HOME POLLUTION CONTROL PANNEL:** Model CP700. \$65. 636-239-2695 or 314-560-5700. Washington.

**HEARTH CRAFT GLASS BI-FOLD FIREPLACE DOORS PURCHASED AT FORSHAW'S FIREPLACE:** Antique brass. \$160 obo. 636-239-2695 or 314-560-5700. Washington.

**1 PAIR OF KEY BRAND MEN'S JEANS:** Waist 38, Length 34. \$10. 636-239-2695 or 314-560-5700. Washington.

**SADDLE: 20" Buffalo Saddlery with suede padded seat. \$350. 417-718-5347. Conway.**

**BLACK METAL TUBULAR BRACKET:** Scrolling and a stainless bracket. \$10. Call for pictures. 636-239-2695 or 314-560-5700. Washington.

**WANTED 730 OR 830 CASE TRACTOR:** In any condition. 573-308-5884. Rolla.

**TRAILER HOUSE RIMS:** \$10 each. 573-308-5884. Rolla.

**'85 FORD PICKUP PARTS:** Passenger door with window glass & mirror \$30. Also, Tailgate for '85 Ford pickup \$25. 573-308-5884. Rolla.

**NEW JELD WEN 5' LEFT HAND SLIDING GLASS DOOR WITH SUNSTABLE INTERIOR BLINDS:** Clear tempered glass, Desert Sand trim/hardware. Retail \$2655 Sell \$900. 417-693-0389. Conway.

**4 GOODYEAR WRANGLER TIRES:** Kevlar LT245/70R17, all terrain, \$185. 417-417-260-0941. Raymondville.

**CHILTON'S AUTO REPAIR MANUAL:** American & Volkswagen Cars 1969-1976. \$35. 417-260-0941. Raymondville.

**MAC'S TIEDOWN STRAPS:** Like New. \$80. 417-260-0941. Raymondville.

**OUTDOOR WOOD FURNACE:** Heats 3,000 sq. ft. & water. \$7,500, plus tax, plus installation. 573-201-6453.

**3 ARMY CANTEENS:** Mess kit, belt & duffle bag. \$60 for all. 417-260-0941. Raymondville.

**BEAUTIFUL CHIHUAHUA PUPPY:** Female, 11-weeks-old. Also, adult male Chihuahua dogs. Call for pricing & pictures. 417-349-3058. Mt. Grove.

**WOOD CATTLE RACK:** Fits standard size pickups. \$105. 417-668-7793, Landline, do not text. Falcon.

**STANDARD BRED/PERCHERON CROSS BAY GELDING:** 1yr., trots, 14.1 hands. Maynard, Arkansas. 262-290-1619.

**???CDL LICENSE??? FAST & ECONOMICAL:** Meets all requirements of the new ELDT Law. 2 days training. Total cost of \$1,500. \$100 rebate with this ad. You need a learner's permit & ability to drive a manual. Jefferson City, Strafford & Willow Springs, Missouri. Please call 573-353-2853. [www.capitaltruckdrivinginstitute.com](http://www.capitaltruckdrivinginstitute.com).

**RUBBERMAID 10 CUBIC FOOT PULL BEHIND DUMP CART:** \$200. 417-718-5347. Conway.

**OLD 7X14 MILITARY WAGON:** 3FT high sides. \$400. 573-308-5884. Rolla.



**MID MISSOURI STOCKYARDS**

**REGULAR SALE EVERY THURSDAY 11AM**

WATCH OUR WEEKLY SALE IN REAL TIME ON [DVAUCTION.COM](http://DVAUCTION.COM)

For Farm Visits, Market Updates, or Trucking  
Call Zach Cox 417-777-1320  
Dan Romine 573-578-4939

**Competitive Buyers!  
Competitive Commission!  
Competitive Market!**

Barn: 417-532-9292 

I-44 • Exit 123 "just outside of Lebanon"  
17505 Route 66, Phillipsburg, MO 65722

For weekly market updates, visit us at [www.midmostockyards.com](http://www.midmostockyards.com)

**KILMER FARM EQUIPMENT CONSIGNMENT AUCTION**

**Saturday, August 26 • 9:30 AM**

**14769 Cattle Lane, Versailles, MO 65084**

Directions: at the Intersection of Hwy 5 and Hwy 52 in Versailles, go North on Hwy 5 for 1 mile to Cattle Ln then turn Right or East and go 3/4 mile to Sale Site.



**1000+ Pieces of Farm Equipment and Related Items!**

**TRACTORS, CONSTRUCTION EQUIPMENT, TRUCKS AND TRAILERS, GRAIN CARTS AND WAGONS, CUTTERS, TILLAGE, COMBINE AND HEADS, FEED MIXERS, MISC. EQUIPMENT, HAY EQUIPMENT, SILAGE EQUIPMENT**

  Online Bidding Provided By **Equipmentfacts**

**KILMER FARM EQUIPMENT, LLC**  
14270 Hwy. 52  
Versailles, MO 65084  
(573) 378-6615

**Wheeler AUCTIONS & REAL ESTATE**  
23101 HWY. 24, PARIS, MO 65275 | 660-327-5890  
[WWW.WHEELERAUCTIONS.COM](http://WWW.WHEELERAUCTIONS.COM)

For more info and photos:  
[www.wheelerauctions.com](http://www.wheelerauctions.com)

**ANTIQU 4 HP ENGINE:** Built by Continental Motors Corporation. \$150 OBO. 573-308-5884. Rolla.

**FOR SALE:** 2 Dayco motorcycle covers for Harley or other big bikes. \$50 each. 417-260-0941. Raymondville.

# BUFFALO LIVESTOCK MARKET LLC



276 Hwy 32 W., Buffalo, MO

**August 5<sup>th</sup>, 2023**  
Receipts: 600

**REPRESENTATIVE STEERS**

200-300 @ 275.00 to 312.00  
300-400 @ 270.00 to 289.00  
400-500 @ 235.00 to 270.00  
500-600 @ 237.50 to 274.00  
600-700 @ 220.00 to 242.00  
700-800 @ 230.00 to 242.00  
800-900 @ 191.00 to 229.00  
900-1000 @ 184.00 to 191.00

**REPRESENTATIVE HEIFERS**

300-400 @ 265.00 to 292.00  
400-500 @ 240.00 to 265.00  
500-600 @ 240.00 to 256.00  
600-700 @ 225.00 to 256.00  
700-800 @ 186.00 to 220.00  
800-900 @ 170.00 to 186.00

**FEEDER BULLS**

300-400 @ 260.00 to 286.00  
400-500 @ 250.00 to 280.00  
500-600 @ 220.00 to 235.00  
600-700 @ 215.00 to 220.00  
700-800 @ 190.00 to 210.00  
800-900 @ 165.00 to 192.00

**STOCKS COWS**

Bred Cows 1475.00 to 1900.00  
Cow/Calf Pairs 1785.00 to 2325.00

**SLAUGHTER BULLS**

High Yield 130.00 to 143.50  
Low Yield 95.00 to 120.00

**SLAUGHTER COWS**

Fleshy 125.00 to 132.00  
Med Flesh 115.00 to 121.00  
Light Flesh 100.00 to 117.00

**QUESTIONABLE HEALTH OR CRIPPLE COWS**

75 Down

**MON-WED MARKET REPORT**

Listen to KJEL 103.7FM • Lebanon or KY00 99FM • Bolivar

**VIEW OUR SALES AT CATTLEUSA.COM**

**CALL FOR TRUCKING OR ON-FARM VISIT**

Lyle Caselman • Owner-Manager  
417-345-7876 • mobile 417-533-2944  
Leon Caselman • Owner  
417-345-4514 • mobile • 417-588-6185

**2 WHEEL TRAILER:** With 6x10 wagon bed. \$300. 573-308-5884. Rolla.

**MALTIPOO PUPPIES:** 8-weeks-old, All shots & wormed. \$300 each. 417-532-4701. Can send pictures.

**2001 FORD 3500 BLACKOUT VAN:** New tires, battery, brakes. Custom interior, mechanically sound & solid. Clear title, 2 owners, no smoke. 170,XXX miles. \$12,000 or trade. 417-650-7069.

**BUTLER LOGGING:** Making landowners happy is my number one goal. Paying top dollar on all your timber. Call me 417-448-9323. And see what I can do for you.

**RAMBO PURSUIT ELECTRIC HARDTAIL FATBIKE:** Model 750-26. Like new. Approximately 30 miles ridden. Includes added back Rambo rack. \$2,200. 417-650-7069. Lebanon.

**16X18 BUCC TRAILER HOUSE:** New in 1996. Has new roof, 3 bedrooms, 2 bath, skirting and title. \$10,000.00. Located at 22740 Pin Oak Ln. Summersville, MO. Buddy Bird 417-331-9501 or Pam 417-331-9038, evening or weekend.

**LAKE OF THE OZARK-GREAT FISHING AREA AND WEEKEND FUN SPECIAL:** Lots \$4,895 - \$125 down, \$69 per month. Beautiful trees, free lake access and boat ramps, lots are a short distance from the lake, no credit checks, owner financing, immediate possession or own for investment. Missouri conservation boat ramp with a covered dock and rest rooms, also acreage tracts. Prices good through August 14<sup>th</sup>, 2023. Hwy 135 between Stover and Sunrise Beach, MO. Take Lake Road 135-12 to the Ivy Bend Land Office. Closed Tuesdays and Wednesdays Call anytime 573-372-6493.

**LEVI BYLER CONSTRUCTION LLC:** Roofing, Siding, Decks and More. 417-741-0245

**PASTURE RAISED CHICKENS & PASTURE RAISED THANKSGIVING TURKEYS:** 417-741-2446.

**3 FT 6 PANEL METAL DOOR:** No frame \$15. 417-531-5630 Conway.

**2 TIRES SIZE 235 X 50 X R18:** Fair tread \$20 for the pair. 417-531-5630 Conway.

**40 PAPERBACK WESTERN BOOKS:** Several Louis L'mour \$15 for all 417-531-5630 Conway.

**80 ACRES IN MACKS CREEK:** Power, water, artesian wells, good hunting. \$2,500 per acre, as is. Text 573-836-6414.

**FREE 5 CUTE KITTENS & MOTHER:** To be given away to loving & caring homes. If interested call for more information. 417-469-2123.

**BRINKMANN 8-QT. OUTDOOR PROPANE GAS FISH FRYER:** Big aluminum pan. Excellent condition. \$40. 210-787-8222. Linn Creek.

**JUMBO FLOAT:** 95" long x 80" wide x 10" high. Heavy gauge vinyl, Safety valve, 2 screw valves, 12 rope holders, water plug, nylon rope around it. Like new. \$150. 210-787-8222. Linn Creek.

**1974 CHEVY C-30:** Needs work. 417-217-8551.

**MOBILE HOME FOR SALE:** 1992, 3-bedroom, 2-bath. 16'x80'. \$35,000. Double insulated walls & roof. Located in Ozark Highlands Trailer Park in Springfield. 417-877-8390.

**CUCKOO CLOCK:** Black forest design, battery operated pendulum action. \$130 new, asking \$40. 417-877-8390. Springfield.

**GUNSMITHING-**Older Rifles, Shotguns, Handguns, all 22LRs. Any make, any model, estate appraisals. Camdenton. 573-363-5801.

## Cole Liquidation Auction!

**Friday, August 25th @ 10:00 am**  
**2857 FR 2100, Purdy, MO 65734**

Estate liquidation of Shop Tools & Equipment, Farm Machinery, Outdoor Items, Household furniture & appliances, lots of misc!

Call Southwest Auction Service for more info! Pictures and flyer will be posted on website soon!

Contact Southwest Auction Service for more info!  
417-652-7540 or email: kathy@swaauction.com  
Website: www.swaauction.com

**Bob Hughes**  
417-652-7540



www.swaauction.com



**THE TIRES YOU NEED FOR ALL SEASONS**

With brands like:

**NEXEN** **YOKOHAMA**

**ATTEBERRY MFA**  
**TIRE & AUTO CENTER**

333 E. BROADWAY • BOLIVAR, MO  
DUANE ATTEBERRY • 417-326-6286



**CHEST FREEZER:** 5 cubic feet. \$100. 417-877-8390. Springfield.

**2012 FORD LARIAT:** 4-door, 4WD, 231,000 miles, all leather interior, tires-75%, v6 with turbo. \$8,500. 660-492-7191.

**STANDING FIREWOOD:** \$10/Tree. 951-288-4654. Pershing.

**EXCAVATOR MOUNTED FORESTRY MULCHING FOR UNDERBRUSH CLEARING:** Call Nathan @ 417-259-2785.

**2000 SUZUKI INTRUDER 1500:** Fully dressed, perfect shape. \$3,000 OBO. 314-497-1898. Leasburg.

**CATERPILLAR 277C SKID-STEER:** 2918.7 hours, new tracks & 78" bucket. Enclosed cab, air. Good condition. \$30,000 Cash, OBO. No trades. 314-420-3308. Potosi.

**TIRE:** 225x65R17 Valera HT Primewell. 95% tread. \$40. 210-787-8222. Linn Creek.

**2000 GMC 7500 TRUCK:** Automatic 3126-Cat, single axle. Runs & drives good. \$4,000. 417-32-1928.

**GOOSENECK FLATBED TRAILER:** 17ft. 6in. long, 7ft 10in wide. Lights, brakes, decent floor, pulls good. \$1,200. 417-321-1928.

**2022 NISSAN FRONTIER KING CAB:** 4x4, automatic v6, 3,500 miles. For Details go to [www.jimsmotorsrolla.com](http://www.jimsmotorsrolla.com) 573-467-0189.

**13 BAGS OF 13 COLORS UNUSED YARN:** \$50 for all 417-288-6714.

**MULTIPOO PUPPIES & REGISTERED DOXIN PUPPIES:** 573-247-6273.

**BLUE & RED HEELER PUPPIES:** 417-349-0919.

**SIG SAUER P220 45 AUTO PISTOL:** With case, 2 clips, 2 holsters. 573-619-6651. Owensville.

**2015 FORD TRANSIT 250 WHITE VAN:** Ladder racks, shelving. \$19,990. For Details go to [www.jimsmotorsrolla.com](http://www.jimsmotorsrolla.com) 573-467-0189.

**2002 Kubota Tractor:** 4x4, 25 H.P., front loader. 5' Land Pride cutter. 2016 GMC Terrain, AWD. 2013 Ford F-150, Loaded. 1-573-729-3325.

**DARDEN PROFESSIONAL TIMBER HARVESTING, BUYING STANDING TIMBER:** Great prices, improve wildlife habitat and improve forest health. State Certified & Fully Insured! 573-247-4808. Salem.

**POOL TABLES:** Installations, moves, recovers, repairs, accessories, etc. 573-646-1700.

Darrell McClanahan for Governor of this great state of Missouri 2024. Find me on X @MBattleflag advocating for fija.org. This is being paid for by Darrell McClanahan. April Miller-McClanahan, Treasurer.

**AKC BASSET PUPPIES:** 417-349-0919.

**4 GOOD USED SIDE-BY-SIDE/4-WHEELER TIRES:** \$100 or trade. 573-734-2822, leave message.

**50 EWES:** 1-5 years old. \$225 a piece. 417-733-2625. Louisburg

**2 REAR FENDERS FOR 1946-1948 CHEVROLET CAR:** \$200 or trade. 573-734-2822, leave message.

**ELECTRIC WELDER:** \$150 or trade. 573-734-2822, leave message.

**4-ANTIQUE WHITE WOODEN CHAIRS:** With cloth backs& cushions. \$50 a piece. 417-532-2291.

**WW RANCH SWAP & SELL HOMESTEAD MARKET:** 8386 West Highway 32 Salem, MO. Aug 12th 8AM-1PM. 573-247-5177. Salem.

**WILLOW SPRINGS & SURROUNDING COMMUNITIES BOOK:** 1869-1969, HB, 454 pages by Ella Lilly Horak, \$40. Perfect Condition. 417-532-2045. Lebanon. (Leave message and phone number.)

**WEATHERED BARN WOOD SIDING:** 10" wide. Call for appointment 573-729-7226. [www.pineridgerustic.com](http://www.pineridgerustic.com) Salem.

**KING BUILDERS**

We specialize in custom and specialty builds, such as:

- Houses
- Barndominiums
- Shops
- Barns
- Garages

We also do roofing & siding!

**Call for a free estimate!**

Stevie King | 435 Dickerson Ranch Lane, Conway, MO 65632 | 417-241-3280



**KUSTER LOGGING**  
**BUYER of Standing Timber Oak and Walnut**  
*Dozing Now Available*  
**417-259-0047**  
**References Available**



**Buildings • Hunter's Cabins • Lawn Furniture**



**JAMCO Portable Buildings**  
 800-688-2064 • 307 Enterprise Dr. • Seymour, MO • [www.jamcobuilders.com](http://www.jamcobuilders.com)

**Rent To Own Plan**

**LOG SIDING:** 2X8 Pine/Western Cedar. Call for appointment 573-729-7226. [www.pineridgerustic.com](http://www.pineridgerustic.com) Salem.

**NEW INVENTORY** - \$59,900 Delivered and setup, Hurry! Call Adam 573-657-2176 [amegamobilehomes.com](http://amegamobilehomes.com)

**Route 66 MOTHER ROAD BOOK:** by Michael Wallis, \$12.50. 417-532-2045. Lebanon. (Leave message and phone number.)

**NEW MOBILE HOMES** – prices start at \$64,900 delivered and setup 573-499-9993 [columbiadiscountohomes.com](http://columbiadiscountohomes.com)

**BASEMENT READY TRUE MODS**- instock ready for delivery 573-657-7040 [chateauhomes.net](http://chateauhomes.net)

**TINY HOMES** – Missouri Franchise 573-881-7965

**1908 SEARS ROEBUCK CATALOGUE REPRODUCTION:** 1,185 pages, \$12.50. 417-532-2045. Lebanon. (Leave message and phone number.)

**REGISTERED HEREFORD & ANGUS BULLS:** Home raised, Some Show-Me Select Qualified. 573-701-7828. Belgrade.

**LIGHTLY EXPERIENCED GOLF BALLS:** \$3 a dozen. 417-818-3469. Strafford.

**SLIGHTLY USED PUZZLES:** Will sell or trade. 417-818-3469. Strafford.

**LIONEL TRAIN SET:** Steam engine, tender, caboose and other car, track, and transformer. \$195. 573-364-7465. Rolla.

**MODEL 1911 FRAME 8-SHOT C02 PISTOL:** Like new, in box with C02 cartridges, 4 clips, pellets & all paperwork. \$95. 573-364-7465. Rolla.

**1970s KIDS METAL STOVE & FRIDGE:** Nice Lithographic paint, 18" wide x 36" high. \$75. 573-364-7465. Rolla.

**3 GENTS WITTNAUER WRIST WATCHES:** 10k gold + 23J. All \$200. 573-764-3517. Call in P.M.

**HARLEY FAT BOBS:** Custom flame paint w/ gas caps + lines. \$100. 573-764-3517. Call in P.M.

**COLT REVOLVER DEALER CATALOGS:** Circa 1950's + 1960's. All for \$100. 573-764-3517. Call in P.M.

**110 PORCELAIN POCKET WATCH DIALS:** Perfect for arts & crafts. \$100. 573-764-3517. Call in PM.

**1890 GOLD TESTING KIT:** Glass acid beakers + antique wooden case. \$100. 573-764-3517. Call in PM.

**1500 VINTAGE WRISTWATCH DIALS:** \$100. 573-764-3517. Call in PM.

**HARLEY 45 SOLO:** factory rear brake drum + sprocket. \$150. 573-764-3517. Call in PM.

**HARLEY PANHEAD DISTRIBUTOR:** original, chrome + complete. \$125. 573-764-3517. Call in PM.

**1962 HARLEY SPORTSTER 900CC:** original distributor. \$50. 573-764-3517. Call in PM.

**WANTED 730 OR 830 CASE TRACTOR:** In any condition. 573-308-5884. Rolla.

**SPORTSET BY SARGENT:** Fishing pliers in leather sheath. Like a multi-tool. \$20. 636-239-2695 or 314-560-5700. Washington.

**NEW SQUARE D RAINPROOF 50AMP DISCONNECT:** \$160. 636-239-2695 or 314-560-5700. Washington.

**USED JET HOME POLLUTION CONTROL PANNEL:** Model CP700. \$65. 636-239-2695 or 314-560-5700. Washington.

**HEARTH CRAFT GLASS BI-FOLD FIREPLACE DOORS PURCHASED AT FORSHAW'S FIREPLACE:** Antique brass. \$160 obo. 636-239-2695 or 314-560-5700. Washington.

**1 PAIR OF KEY BRAND MEN'S JEANS:** Waist 38, Length 34. \$10. 636-239-2695 or 314-560-5700. Washington.

**SADDLE:** 20" Buffalo Saddlery with suede padded seat. \$350. 417-718-5347. Conway.

**BLACK METAL TUBULAR BRACKET:** Scrolling and a stainless bracket. \$10. Call for pictures. 636-239-2695 or 314-560-5700. Washington.

**ANTIQUA 4 HP ENGINE:** Built by Continental Motors Corporation. \$150 OBO. 573-308-5884. Rolla.

**TRAILER HOUSE RIMS:** \$10 each. 573-308-5884. Rolla.

**Is Your Log Home Starting To Look UGLY?**

**Call Pine Ridge Rustic Log Home Building Supplies**

- Professional Log Home Maintenance & Restoration
- Staining • Chinking/Caulking • Log Replacement • Media Blasting

**573-729-7226** [www.pineridgerustic.com](http://www.pineridgerustic.com)





**'85 FORD PICKUP PARTS:** Passenger door with window glass & mirror \$30. Also, Tailgate for '85 Ford pickup \$25. 573-308-5884. Rolla.

**INTERNATIONAL PICKUP TRANSFER GEARBOX:** \$150. 573-308-5884. Rolla.

**NEW JELD WEN 5' LEFT HAND SLIDING GLASS DOOR WITH SUNSTABLE INTERIOR BLINDS:** Clear tempered glass, Desert Sand trim/hardware. Retail \$2655 Sell \$900. 417-693-0389. Conway.

**4 GOODYEAR WRANGLER TIRES:** Kevlar LT245/70R17, all terrain, \$185. 417-417-260-0941. Raymondville.

**FOR SALE:** 2 Dayco motorcycle covers for Harley or other big bikes. \$50 each. 417-260-0941. Raymondville.

**CHILTON'S AUTO REPAIR MANUAL:** American & Volkswagen Cars 1969-1976. \$35. 417-260-0941. Raymondville.

**MAC'S TIEDOWN STRAPS:** Like New. \$80. 417-260-0941. Raymondville.

**OUTDOOR WOOD FURNACE:** Heats 3,000 sq. ft. & water. \$7,500, plus tax, plus installation. 573-201-6453.

**3 ARMY CANTEENS:** Mess kit, belt & duffle bag. \$60 for all. 417-260-0941. Raymondville.

**BEAUTIFUL CHIHUAHUA PUPPY:** Female, 11-weeks-old. Also, adult male Chihuahua dogs. Call for pricing & pictures. 417-349-3058. Mt. Grove.

**WOOD CATTLE RACK:** Fits standard size pickups. \$105. 417-668-7793, Landline, do not text. Falcon.

**STANDARD BRED/PERCHERON CROSS BAY GELDING:** 1yr., trots, 14.1 hands. Maynard, Arkansas. 262-290-1619.

**???CDL LICENSE??? FAST & ECONOMICAL:** Meets all requirements of the new ELDT Law. 2 days training. Total cost of \$1,500. \$100 rebate with this ad. You need a learner's permit & ability to drive a manual. Jefferson City, Strafford & Willow Springs, Missouri. Please call 573-353-2853. [www.capitaltruckdrivinginstitute.com](http://www.capitaltruckdrivinginstitute.com).

**RUBBERMAID 10 CUBIC FOOT PULL BEHIND DUMP CART:** \$200. 417-718-5347. Conway.

**2001 FORD 3500 BLACKOUT VAN:** New tires, battery, brakes. Custom interior, mechanically sound & solid. Clear title, 2 owners, no smoke. 170,XXX miles. \$12,000 or trade. 417-650-7069.

**OLD 7X14 MILITARY WAGON:** 3FT high sides. \$400. 573-308-5884. Rolla.

**2 WHEEL TRAILER:** With 6x10 wagon bed. \$300. 573-308-5884. Rolla.

**MALTIPOO PUPPIES:** 8-weeks-old, All shots & wormed. \$300 each. 417-532-4701. Can send pictures.

**BUTLER LOGGING:** Making landowners happy is my number one goal. Paying top

dollar on all your timber. Call me 417-448-9323. And see what I can do for you.

**RAMBO PURSUIT ELECTRIC HARDTAIL FATBIKE:** Model 750-26. Like new. Approximately 30 miles ridden. Includes added back Rambo rack. \$2,200. 417-650-7069. Lebanon.

**16X18 BUCC TRAILER HOUSE:** New in 1996. Has new roof, 3 bedrooms, 2 bath, skirting and title. \$10,000.00. Located at 22740 Pin Oak Ln. Summersville, MO. Buddy Bird 417-331-9501 or Pam 417-331-9038, evening or weekend.

**LAKE OF THE OZARK-GREAT FISHING AREA AND WEEKEND FUN SPECIAL:** Lots \$4,895 - \$125 down, \$69 per month. Beautiful trees, free lake access and boat ramps, lots are a short distance from the lake, no credit checks, owner financing, immediate possession or own for investment. Missouri conservation boat ramp with a covered dock and rest rooms, also acreage tracts. Prices good through August 14<sup>th</sup>, 2023. Hwy 135 between Stover and Sunrise Beach, MO. Take Lake Road 135-12 to the Ivy Bend Land Office. Closed Tuesdays and Wednesdays Call anytime 573-372-6493.

**LEVI BYLER CONSTRUCTION LLC:** Roofing, Siding, Decks and More. 417-741-0245

**PASTURE RAISED CHICKENS & PASTURE RAISED THANKSGIVING TURKEYS:** 417-741-2446.

**3 FT 6 PANEL METAL DOOR:** No frame \$15. 417-531-5630 Conway.

**2 TIRES SIZE 235 X 50 X R18:** Fair tread \$20 for the pair. 417-531-5630 Conway.

**CHEST FREEZER:** 5 cubic feet. \$100. 417-877-8390. Springfield.

**80 ACRES IN MACKS CREEK:** Power, water, artesian wells, good hunting. \$2,500 per acre, as is. Text 573-836-6414.

**FREE 5 CUTE KITTENS & MOTHER:** To be given away to loving & caring homes. If interested call for more information. 417-469-2123.

**BRINKMANN 8-QT. OUTDOOR PROPANE GAS FISH FRYER:** Big aluminum pan. Excellent condition. \$40. 210-787-8222. Linn Creek.

**JUMBO FLOAT:** 95" long x 80" wide x 10" high. Heavy gauge vinyl, Safety valve, 2 screw valves, 12 rope holders, water plug, nylon rope around it. Like new. \$150. 210-787-8222. Linn Creek.

**Starnes Auto LLC**  
 22115 Rt. 66 • Lebanon, MO 65536  
 588-7939 Cell  
 588-3159 Office  
[www.starnesauto.com](http://www.starnesauto.com)

*Worry-Free*  
**VEHICLE ALIGNMENTS**

With our state-of-the-art computerized equipment  
 Front End | Rear End | Four Wheel Drive | Thrust Alignments | Both Foreign and Domestic Vehicles



**DON'T FORGET TO CHECK OUT OUR CARS FOR SALE!**

**WE DO ALIGNMENTS!**

**1974 CHEVY C-30:** Needs work. 417-217-8551.

**MOBILE HOME FOR SALE:** 1992, 3-bedroom, 2-bath. 16'x80'. \$35,000. Double insulated walls & roof. Located in Ozark Highlands Trailer Park in Springfield. 417-877-8390.

**40 PAPERBACK WESTERN BOOKS:** Several Louis L'mour \$15 for all 417-531-5630 Conway.

**CUCKOO CLOCK:** Black forest design, battery operated pendulum action. \$130 new, asking \$40. 417-877-8390. Springfield.

**2012 FORD LARIAT: 4-door, 4WD, 231,000 miles, all leather interior, tires-75%, v6 with turbo. \$8,500. 660-492-7191.**

**STANDING FIREWOOD:** \$10/Tree. 951-288-4654. Pershing.

**GUNSMITHING-**Older Rifles, Shotguns, Handguns, all 22LRs. Any make, any model, estate appraisals. Camdenton. 573-363-5801.

**EXCAVATOR MOUNTED FORESTRY MULCHING FOR UNDERBRUSH CLEARING:** Call Nathan @ 417-259-2785.

**2000 SUZUKI INTRUDER 1500:** Fully dressed, perfect shape. \$3,000 OBO. 314-497-1898. Leasburg.

**CATERPILLAR 277C SKID-STEER:** 2918.7 hours, new tracks & 78" bucket. Enclosed cab, air. Good condition. \$30,000 Cash, OBO. No trades. 314-420-3308. Potosi.

**TIRE:** 225x65R17 Valera HT Primewell. 95% tread. \$40. 210-787-8222. Linn Creek.

**2000 GMC 7500 TRUCK:** Automatic 3126-Cat, single axle. Runs & drives good. \$4,000. 417-32-1928.

**GOOSENECK FLATBED TRAILER:** 17ft. 6in. long, 7ft 10in wide. Lights, brakes, decent floor, pulls good. \$1,200. 417-321-1928.

**2022 NISSAN FRONTIER KING CAB:** 4x4, automatic v6, 3,500 miles. For Details go to [www.jimsmotorsrolla.com](http://www.jimsmotorsrolla.com) 573-467-0189.

**13 BAGS OF 13 COLORS UNUSED YARN:** \$50 for all 417-288-6714.

**MULTIPOO PUPPIES & REGISTERED DOXIN PUPPIES:** 573-247-6273.

**Larry Heisel Rentals**

**We Rent!**



**Call Larry!**

Rental Available in 636 or 573 Area Codes

**573-779-1500**

[www.larryheiselequipment.com](http://www.larryheiselequipment.com)

**POOL TABLES:** Installations, moves, recovers, repairs, accessories, etc. 573-646-1700.

**Darrell McClanahan for Governor of this great state of Missouri 2024. Find me on X @MBattleflag advocating for fija.org. This is being paid for by Darrell McClanahan. April Miller-McClanahan, Treasurer.**

**BLUE & RED HEELER PUPPIES:** 417-349-0919.

**4-ANTIQUE WHITE WOODEN CHAIRS:** With cloth backs& cushions. \$50 a piece. 417-532-2291.

**TAYLOR TRUCKS & EQUIPMENT**

417-924-2026 • 2676 Hwy. 5, Mansfield, MO

★ INTIMIDATOR TREE PULLER ★

★ 3 POINT TILLERS ★


TRAILER PARTS & REPAIR  
MD144 Bat Wing in stock!

Milwaukee Cordless Tools

**DANUSER DEALER**  
T3 Post Driver & Other Attachments  
New Mowers! Bush-Whacker, Big Bee  
Storage Containers & Dry Vans - 20' - 53',

**BUSH-WHACKER HD SKIDSTEER BRUSH CUTTER**  
Portable Generators, Farm Tires, New Semi Tires, PTO's & Parts for Rotary Mowers, Farm Tractor Implements, Plows, Used 15" Bush-Whacker Now In Stock, Discs, and More Skidsteer Attachments: Pallet Forks, Buckets, Grapples, Hay Spears, RR Ties

**Bush-Whacker Heavy Duty Rotary Cutter**



**We Invite you To Come By & Look Us Over! Located 2.5 Miles North Of Mansfield, MO On Hwy 5**

**CENTRAL BOILER**

**CLASSIC EDGE**  
TITANIUM HDX

26% Tax Credit on EPA certified Central Boiler Classic Edge HDX models and installation. Call today to learn more!

**Outdoor Wood Furnace CentralBoiler.com**

Yarbrough Equipment Sales & Services, Inc.  
9776 E. State Hwy 00 • Strafford, MO  
417-736-2303 • 1-866-286-6901 • [www.yarbeq.com](http://www.yarbeq.com)

The Classic Edge 360, 560 and 760 HDX are U.S. EPA Certified



**SIG SAUER P220 45 AUTO PISTOL:** With case, 2 clips, 2 holsters. 573-619-6651. Owensville.

**2015 FORD TRANSIT 250 WHITE VAN:** Ladder racks, shelving. \$19,990. For Details go to [www.jimsmotorsrolla.com](http://www.jimsmotorsrolla.com) 573-467-0189.

**2002 Kubota Tractor:** 4x4, 25 H.P., front loader. 5' Land Pride cutter. 2016 GMC Terrain, AWD. 2013 Ford F-150, Loaded. 1-573-729-3325.

**GOOSENECK FLATBED TRAILER:** 17ft. 6in. long, 7ft 10in wide. Lights, brakes, decent floor, pulls good. \$1,200. 417-321-1928.



**Wright Spray Foam Insulators, LLC**  
Commercial & Residential  
Call for FREE Estimates!

Ervin Gingerich 417-926-2052  
B. Eli Yoder 417-746-4932

**AKC BASSET PUPPIES:** 417-349-0919.

**4 GOOD USED SIDE-BY-SIDE/4-WHEELER TIRES:** \$100 or trade. 573-734-2822, leave message.

**50 EWES:** 1-5 years old. \$225 a piece. 417-733-2625. Louisburg

**2 REAR FENDERS FOR 1946-1948 CHEVROLET CAR:** \$200 or trade. 573-734-2822, leave message.

**HOMESTEAD MARKET:** 8386 West Highway 32 Salem, MO. Aug 12th 8AM-1PM. 573-247-5177. Salem.

**CHILTON'S AUTO REPAIR MANUAL:** American & Volkswagen Cars 1969-1976. \$35. 417-260-0941. Raymondville.



## Jr's 7th Semi-Annual Horse & Machinery Consignment Auction

Taking consignments for horses, farm machinery, antiques, guns and households. Please no electrical appliances and household box lots. We reserve the right to refuse poor quality items.

**Commission rates:** \$1.50 per ticket 20% up to \$50.00  
 15% from \$51.00 to \$100 .00  
 10% from \$101.00 to \$500.00  
 7% for items over \$500.00  
 Commission Cap of \$300.00 on horses  
 \$50 no sale fee for horses  
 \$25 Coggins test



**MARTIN AUCTIONS**  
1-660-337-6471



**Advertising deadline:** Saturday, August 12th

To advertise call 417-741-2070  
or 417-741-2312

**WILLOW SPRINGS & SURROUNDING COMMUNITIES BOOK:** 1869-1969, HB, 454 pages by Ella Lilly Horak, \$40. Perfect Condition. 417-532-2045. Lebanon. (Leave message and phone number.)

**WEATHERED BARN WOOD SIDING:** 10" wide. Call for appointment 573-729-7226. [www.pineridgerustic.com](http://www.pineridgerustic.com) Salem.

**LOG SIDING:** 2X8 Pine/Western Cedar. Call for appointment 573-729-7226. [www.pineridgerustic.com](http://www.pineridgerustic.com) Salem.

**NEW INVENTORY** - \$59,900 Delivered and setup, Hurry! Call Adam 573-657-2176 [amegmobilehomes.com](http://amegmobilehomes.com)

**Route 66 MOTHER ROAD BOOK:** by Michael Wallis, \$12.50. 417-532-2045. Lebanon. (Leave message and phone number.)

**NEW MOBILE HOMES** – prices start at \$64,900 delivered and setup 573-499-9993 [columbiadiscountshomes.com](http://columbiadiscountshomes.com)

**BASEMENT READY TRUE MODS**- instock ready for delivery 573-657-7040 [chateauhomes.net](http://chateauhomes.net)

**TINY HOMES** – Missouri Franchise 573-881-7965

**1908 SEARS ROEBUCK CATALOGUE REPRODUCTION:** 1,185 pages, \$12.50. 417-532-2045. Lebanon. (Leave message and phone number.)

**REGISTERED HEREFORD & ANGUS BULLS:** Home raised, Some Show-Me Select Qualified. 573-701-7828. Belgrade.

**LIGHTLY EXPERIENCED GOLF BALLS:** \$3 a dozen. 417-818-3469. Strafford.

**SLIGHTLY USED PUZZLES:** Will sell or trade. 417-818-3469. Strafford.

# Serving Central Missouri

## in 34 counties!

- Benton
- Boone
- Callaway
- Camden
- Cedar
- Christian
- Cole
- Crawford
- Dallas
- Dent
- Douglas
- Franklin
- Gasconade
- Greene
- Henry
- Hickory
- Howell
- Iron
- Laclede
- Maries
- Miller
- Montgomery
- Oregon
- Osage
- Ozark
- Phelps
- Polk
- Pulaski
- St. Clair
- Texas
- Washington
- Webster
- Wright
- Morgan

# WEEKLY TRADER MAGAZINE

[WWW.MYWEEKLYTRADER.COM](http://WWW.MYWEEKLYTRADER.COM) @myweeklytrader

**417-532-9131**  
**100 E. Commercial St.,**  
**Lebanon, MO 65536**

High horsepower.  
High performance.  
Low financing.



 **Kubota** Together we do more.

Save big on our L2501HST with Kubota loader. Part of our tractor lineup rated #1 for durability and owner experience in the U.S.\* Stop in for a demo and to claim this offer today.

L2501HST W/ KUBOTA LOADER **ONLY \$22,995**

**0% APR FOR 72 MONTHS**

VISIT US TODAY FOR THIS LIMITED-TIME OFFER

 **Kubota**

**Quarles Supply**

3251 S Springfield Ave  
Bolivar, MO 65613  
417-777-2391

[KubotaUSA.com](http://KubotaUSA.com)

0% Down, 0% A.P.R. financing for up to 72 months on purchases of select new Kubota L2501HST equipment from participating dealers\* in stock inventory is available to qualified purchasers through Kubota Credit Corporation, U.S.A.; subject to credit approval. Example: 72 monthly payments of \$13.89 per \$1,000 financed. Some exceptions apply. Terms subject to change. Offers expire 09/30/23. This material is for descriptive purposes only. Kubota disclaims all representations and warranties, express or implied, or any liability from the use of this material. For more information, see Dealer or go to [KubotaUSA.com](http://KubotaUSA.com).

*Progressive*  
**FARMER**  
READER INSIGHTS