

FREE - TAKE ONE!

Vol. 30 No. 12
JUNE 8, 2023
417-532-9131

WEEKLY TRADER MAGAZINE



Find us on
Facebook

@myweeklytrader
AUCTIONS PG. 7

VISIT OUR NEW WEBSITE! MYWEEKLYTRADER.COM

A deal designed to help you get the job done right.



MX Series 55.5-63.4 HP Factory cab available



Kubota Together we do more.

Save big on the comfort and versatility of the MX Series, part of our tractor lineup rated #1 for durability and owner experience in the U.S.* Stop in for a demo and to claim this great offer today.

\$0 DOWN 0% APR UP TO 60 MONTHS
PLUS
SAVE UP TO \$800

VISIT US TODAY FOR THIS LIMITED-TIME OFFER



Kubota

KubotaUSA.com

*Award based on 2021 Progressive Farmer Reader Insights Tractor Study. © Kubota Tractor Corporation, 2023. \$0 Down, 0% A.P.R. financing for up to 60 months on purchases of new Kubota MX Series equipment from participating dealers' in-stock inventory is available to qualified purchasers through Kubota Credit Corporation, U.S.A.; subject to credit approval. Example: 60 monthly payments of \$16.67 per \$1,000 financed. Customer rebates include Orange Plus Attachment Instant Rebate of \$300 with purchase of the second qualifying new implement and \$500 for the third new qualifying implement. Some exceptions apply. There is no rebate on the first implement purchased. Offers expire 06/30/23. Terms subject to change. This material is for descriptive purposes only. Kubota disclaims all representations and warranties, express or implied, or any liability from the use of this material. For complete warranty, disclaimer, safety, incentive offer and product information, consult your Dealer or KubotaUSA.com.

Quarles Supply

3251 S Springfield Ave
Bolivar, MO 65613
417-777-2391

Progressive
FARMER
READER INSIGHTS

Land

For Sale

Clever Co., Mo • 31.6 Acres +/-



\$785,000

The home built in 2018 has a total square footage of 3,721 sq ft climate-controlled 3 bedrooms, 2.5 bathrooms, an office, a nice open layout with tall ceilings, an outdoor kitchen, large porches, a comfortable living room with a wood stove, dining room attached to the kitchen, three multi-use rooms downstairs, John Deere room, and mudroom

- Custom finishes throughout house
- Beautiful views from every window
- Covered boat dock
- Pond is stocked with carp, bluegill, and bass
- Water source comes from the Wolfden Branch where you will see plenty of whitetail getting a drink from on the land
- Nice outbuilding that serves as a well house, tool shed, and a chicken coop with run
- This is a rare opportunity to find a property with this much to offer in a desirable location
- 6 acres of pasture can be used for a herd of livestock and the creek runs through it year-round for a good water source.
- Private retreat setting
- Beautiful setting and views
- Clever School District



WHITETAIL PROPERTIES REAL ESTATE

HUNTING | RANCH | FARM | TIMBER

Brian Utecht | 417-766-5595

Brian.Utecht@whitetailproperties.com

WHITETAILPROPERTIES.COM



Missouri's Top Land Specialist in 2014, 2015, 2016, 2017, 2018, 2019, 2020 and 2021



HUSTLER®

For Outstanding Products & Service

AGRI-ENTERPRISES

1-1/2 Miles South Of Licking, MO On Hwy 63
 573-674-2203 • 1-800-653-7152 • www.agri-enterprises.com

AT YOUR LOCAL HUSTLER DEALER



SPRING SALES

20 EVENT 23

SAVE \$200 OR MORE

ON RAPTOR MOWERS

*Offer applies to Hustler Raptor Series Zero-turn mowers only. Valid 4/1/23 to 6/30/23, only at participating US dealers. Inventory varies by dealer offer subject to availability at individual dealer. May not be combined with any other discount or offer and does not apply to prior purchases or purchases made before or after the promotion dates. Discount does not apply to tax, shipping and handling, or setup. If you return the merchandise, the value of this promotion is not refunded or credited to your account. No cash value, except where prohibited by law.

Route 66 MOTHER ROAD BOOK: by Michael Wallis, \$12.50. 417-532-2045. Lebanon. (Leave message and phone number.)

WEATHERED BARN WOOD SIDING: 10" wide. 573-729-7226. www.pineridgerustic.com Salem.


DISCOUNT NEW MOBILE HOMES – we will beat any price on any home **GUARANTEED**. Financing, 573-499-9993 columbiadiscountnhomes.com

LOG SIDING: 2X8 Pine/Western Cedar www.pineridgerustic.com 573-729-7226. Salem.

BASEMENT READY USED DOUBLE-WIDE – 3 bdr, 2 bath, Financing Call for info 573-657-2176 amegamobilehomes.com


MISSOURI CURIOSITY BOOK: Quirky, characters, roadside oddities and other offbeat stuff, 200 pages, \$9.75. 417-532-2045. Lebanon. (Leave message and phone number.)

VOTED #1 BEST Preowned Car Dealership




TIM'S USED CARS


(573) 341-3828 • 1334 South Bishop (Hwy. 63) • Rolla, MO
 Next to Hwy CC • www.tims-used-cars.com




2018 CHEVY 1500 LT
 Crew cab, 4x4, 5.3 V-8, power equipped
 140,xxx Miles
Only \$31,900



2015 RAM 2500 OUTDOORSMAN
 Crew Cab, short bed, 4x4, 6.4 V-8, power equipped, sunroof
 153,xxx Miles
Only \$28,500



2017 FORD F-150 XLT
 Crew cab, 4x4, 5.0 V-8, power equipped, navigation
 99,xxx Miles
Only \$30,900



2011 FORD E-350 SUPER DUTY
 5.4 V-8,
 135,xxx Miles
Only \$18,900

LARGE SELECTION OF CARS, TRUCKS, SUVs & VANS!

PLAD PANTRY

DISCOUNT & SURPLUS FOODS
FRESH PRODUCE LLC
417-532-4700



Hardwood Smoked Sliced Bacon.....	\$3.49 1 lb.
Original Goat Cheese.....	\$0.79 4 oz.
Fully Cooked Original Breakfast Sausages.....	\$1.49 9.6 oz.
Beef Pot Roast.....	\$2.99 a lb.
Oven Baked Parm Cheese Crisps.....	\$5.99 12 - 1.75 oz.

1571 State Hwy 64 • Tunas, MO 65764
 Hours: 8:30 a.m. to 5:30 p.m. • Closed Wed. & Sun.



BASEMENT READY TRUE MODS-
instock ready for delivery 573-657-7040
chateauhomes.net

TINY HOMES – Missouri Franchise 573-881-7965

I BUY.....used mobile homes. Call or text 573-338-6250 or email GregS.CDH@outlook.com

REGISTERED HEREFORD & ANGUS BULLS: Home raised, Some Show-Me Select Qualified. 573-701-7828. Belgrade.

LIGHTLY EXPERIENCED GOLF BALLS: \$3 a dozen. 417-818-3469. Strafford.

SLIGHTLY USED PUZZLES: Will sell or trade. 417-818-3469. Strafford.

LIONEL TRAIN SET: Steam engine, tender, caboose and other car, track, and transformer. \$195. 573-364-7465. Rolla.

110 PORCELAIN POCKET WATCH DIALS: Perfect for arts & crafts. \$100. 573-764-3517. Call in PM.

1890 GOLD TESTING KIT: Glass acid beakers + antique wooden case. \$100. 573-764-3517. Call in PM.

1500 VINTAGE WRISTWATCH DIALS: \$100. 573-764-3517. Call in PM.

HARLEY 45 SOLO: factory rear brake drum + sprocket. \$150. 573-764-3517. Call in PM.

HARLEY PANHEAD DISTRIBUTOR: original, chrome + complete. \$125. 573-764-3517. Call in PM.

1962 HARLEY SPORTSTER 900CC: original distributor. \$50. 573-764-3517. Call in PM.

FISHING SEASON COMING: Get your rod and reels. \$15 & up. 417-589-8200.

ANTIQUE HOG OILER: \$35. 573-308-5884. Rolla.

TRAILER HOUSE RIMS: \$10 each. 573-308-5884. Rolla.

NEIGHBORHOODS HOME IMPROVEMENT STORE: 417-533-5080. Lebanon.

2 ELECTRIC MOTORS: Diehl 1/3 horsepower and Wagner Electric 3/4 horsepower, includes 21 pulleys various sizes and widths. \$45. 210-787-8222. Linn Creek.

VINTAGE WORKING 1967 ELECTRIC SINGER SEWING MACHINE: Special zigzag model 638 in cabinet with original instruction book. \$50. 210-787-8222. Linn Creek.

TROLLING MOTOR: MotorGuide 71 lb. thrust, 24-volt. Excellent condition. \$150. 210-787-8222. Linn Creek.

CALUS LOGGING
20 YEARS EXPERIENCE
Buying Standing Timber
Walnut & Oak
Joe Calus, Owner
CERTIFIED
417-926-4606 - MTN. GROVE

OMAR'S DOZING
⇒ Clear land
⇒ Clean up woods
⇒ Make driveways
⇒ Clear property lines
⇒ Build ponds
Amish Owned & Operated
LEAVE MESSAGE: 417-741-0440
Hartville & Surrounding Areas

Wright Spray Foam Insulators, LLC
Commercial & Residential
Call for FREE Estimates!
Ervin Gingerich
417-926-2052
B. Eli Yoder
417-746-4932

MODEL 1911 FRAME 8-SHOT C02 PISTOL: Like new, in box with C02 cartridges, 4 clips, pellets & all paperwork. \$95. 573-364-7465. Rolla.

BLACK METAL TUBULAR BRACKET: Scrolling and a stainless bracket. \$10. Call for pictures. 636-239-2695 or 314-560-5700. Washington.

1970s KIDS METAL STOVE & FRIDGE: Nice Lithographic paint, 18" wide x 36" high. \$75. 573-364-7465. Rolla.

3 GENTS WITTNAUER WRIST WATCHES: 10k gold + 23J. All \$200. 573-764-3517. Call in P.M.

HARLEY FAT BOBS: Custom flame paint w/ gas caps + lines. \$100. 573-764-3517. Call in P.M.

COLT REVOLVER DEALER CATALOGS: Circa 1950's + 1960's. All for \$100. 573-764-3517. Call in P.M.

DRYWALL TAPING TOOLS: 12" pan, pan holder, tape roller. \$25. 636-239-2695 or 314-560-5700. Washington.

NEW SQUARE D RAINPROOF 50AMP DISCONNECT: \$160. 636-239-2695 or 314-560-5700. Washington.

USED JET HOME POLLUTION CONTROL PANNEL: Model CP700. \$65. 636-239-2695 or 314-560-5700. Washington.

FOR SALE: Transmission for 56 & 06 series International tractors. \$675. 636-239-2695 or 314-560-5700. Washington.

HEARTH CRAFT GLASS BI-FOLD FIREPLACE DOORS PURCHASED AT FORSHAW'S FIREPLACE: Antique brass. \$160 obo. 636-239-2695 or 314-560-5700. Washington.

1 PAIR OF KEY BRAND MEN'S JEANS: Waist 38, Length 34. \$10. 636-239-2695 or 314-560-5700. Washington.

BAMBOO FLY RODS: \$50. 417-589-8200.

AKC WELSH CORGI PUPS: DOB 4/21/23. \$300. 417-259-9738.

4 GOODYEAR WRANGLER TIRES: Kevlar LT245/70R17, all terrain, \$100 for a pair. 417-417-260-0941. Raymondville.

FOR SALE: 2 Dayco motorcycle covers for Harley or other big bikes. \$50 each. 417-260-0941. Raymondville.

NEW JELD WEN 5' LEFT HAND SLIDING GLASS DOOR WITH SUNSTABLE INTERIOR BLINDS: Clear tempered glass, Desert Sand trim/hardware. Retail \$2655 Sell \$900. 417-693-0389. Conway.

CHILTON'S AUTO REPAIR MANUAL: American & Volkswagen Cars 1969-1976. \$35. 417-260-0941. Raymondville.

MAC'S TIEDOWN STRAPS: Like New. \$80. 417-260-0941. Raymondville.

THE TIRES YOU NEED FOR ALL SEASONS

With brands like:



NEXEN TIRE



YOKOHAMA

ATTEBERRY MFA TIRE & AUTO CENTER

333 E. BROADWAY • BOLIVAR, MO
DUANE ATTEBERRY • 417-326-6286





OMAR'S LOGGING

⇒ Oak & Walnut

⇒ Excellent Prices

Amish Owned & Operated



LEAVE MESSAGE: 417-741-0440
Hartville & Surrounding Areas

BRAND NEW SMOKER: \$100. 573-647-3139. Bourbon.

NEED A NEW ROOF? CALL LAPP CONSTRUCTION: 417-664-8913. We do metal or shingle roofs. Also new homes, garages, pole barns, siding and decks.

BUYING SCRAP METAL: All kinds, can torch heavy equipment. Call for prices. 40 years experience. 573-308-6739. Newburg.

ADORABLE SIAMESE KITTENS: Litter trained. \$125. 417-205-6899.

5 Black Stallion Walter Farley Books: Also, 5 Terhune Collie books. \$10 each. 417-260-0941. Raymondville.

PAIR OF CAR OR PICKUP RAMPS: 70" tall on end and 16" wide \$45. 417-260-0941. Raymondville.

WOODEN KITCHEN TABLE WITH 6 CHAIRS: 2 are captain chairs, black, leaf, heavy duty. \$200 or open to trades. 573-647-3139. Bourbon.

DARDEN PROFESSIONAL TIMBER HARVESTING, BUYING STANDING TIMBER: Great prices, improve wildlife habitat and improve forest health. State Certified & Fully Insured! 573-247-4808. Salem.


'85 FORD PICKUP PARTS: Passenger door with window glass & mirror \$30. Also, Tailgate for '85 Ford pickup \$25. 573-308-5884. Rolla.

INTERNATIONAL PICKUP TRANSFER GEARBOX: \$150. 573-308-5884. Rolla.

50-60 T-POST FOR SALE: Excellent shape. \$5/each. 573-647-3139. Bourbon.

ANTIQUE DRESSER: With mirror. \$200. 573-647-3139. Bourbon.

ELECTRIC DRYER: \$125. 573-647-3139. Bourbon.



Meadowview Dutch Market

Bulk & Surplus Groceries • Prices Subject to Stock on Hand

Call to Order
417-993-3017

Sale Dates June 14th, 2023 to
June 20th, 2023 while supplies last!

DELI SPECIAL

SMOKED HOT PEPPER CHEESE.....REG. \$5.39 LBSALE \$4.89 LB

OFF THE BONE HONEY HAM.....REG. \$5.99 LBSALE \$5.49 LB

TRY our Fresh Homemade DELI Sandwiches: TURKEY, HAM, ROAST BEEF, ITALIAN, BLT'S, PULLED PORK AND BLT PULLED PORK (MADE YOUR WAY)!
COME IN OR CALL to order! ALSO Custom Deli trays! Veggie OR FRESH Meat-N-Cheese!

Grass Fed
Sirloin Steak

\$375
LB.



Premium
Frying Cheese

\$125
10 OZ.


Rebel
Cookie Dough

99¢
PINT




Seasoned
Chicken Breast

\$175
LB.



Golden
Puffed Cereal

99¢
16 OZ.




Marshmallow
Mateys

89¢
11.3 OZ.



Elbow
Macaroni

69¢
LB.



BONUS SPECIAL
SLICED BACON

\$25⁹⁹


1.5 LB CASE



FULLY COOKED
PORK SAUSAGE LINKS

89¢

9.6 OZ



MEADOWVIEW DUTCH MARKET
417-993-3017 Hours: Mon-Thurs 8-5pm
Fri 8-6pm • Sat 8-5pm
23 Miles West on Hwy 64 • Right on T Hwy
9 miles • Left on E Hwy 1 mile on Left

NOW ACCEPTING CREDIT, DEBIT CARDS & EBT

DUTCH COUNTRY STORE, LLC
573-378-4395
Hours: Mon-Thurs 8-5pm
Fri 8-6pm • Sat 8-5pm
5 miles East of Versailles off Hwy C on Kelsay Road

Is Your Log Home Starting To Look **UGLY?**

Call Pine Ridge Rustic
Log Home Building Supplies

- Professional Log Home Maintenance & Restoration
- Staining • Chinking/Caulking • Log Replacement • Media Blasting



573-729-7226 www.pineridgerustic.com

WE BUY AND SELL
new and used mobile homes



(417) 501-1061

PRIDE HANDICAP SCOOTER: \$150. 417-991-9036. Richland.

WANTED HAY ELEVATOR: For small squares, skeleton type. 573-378-5180. Versailles.

EXERCISE BIKE: In good condition. \$65. 417-532-2344.

MISC. MECHANICAL TOOLS: Small set \$25. & Large set \$35. 417-532-2344.

LARGE COCA-COLA NOVELTY SET/ GROUP: \$50. 417-532-2344.

LAKE OF THE OZARK-Special: Lots \$4,950 - \$125 down, \$69 per month. Beautiful trees, free lake access and boat ramps, lots are a short distance from the lake, no credit checks, owner financing, immediate possession or own for investment. Missouri conservation boat ramp with a covered dock and rest rooms, also acreage tracts. Prices good through June 12th, 2023. Hwy 135 between Stover and Sunrise Beach, MO. Take Lake Road 135-12 to the Ivy Bend Land Office. Closed Tuesdays and Wednesdays Call anytime 573-372-6493.

For Sale: 45" in diameter Patio Table. \$75. 573-453-2777. Salem.

NEED YOUR CDL???? We furnish the truck & trailer. We teach all requirements for ELDT & skills test. We go to the state highway patrol with our truck. Requires only 2 days of in person training. Much cheaper way to get CDL. Jefferson City MO, Willow Springs MO, Strafford MO, 573-353-2853. For more info www.capitaltruckdrivinginstitute.com

SMALL SQUARE BALES OF HAY: for \$6.50, round bales available. 417-345-5634.

LIVESTOCK GUARDIAN PUPPIES: & Nigerian dwarf goats for sale. 573-302-8275

Kentucky-31 Tall Fescue Producers

ADD PROFIT TO YOUR OPERATION

\$0.90 per lb., Dry Seed



WITH OVER 30 BUYING STATIONS, THERE'S ONE NEAR YOU!

CALL for the Pennington Seed Fescue Buying Station nearest you

417.456.3338

24/7 Harvest # 417.456.3338
303 S. Grand St., Greenfield, MO
THE PREFERRED FESCUE SEED BUYER since 1972

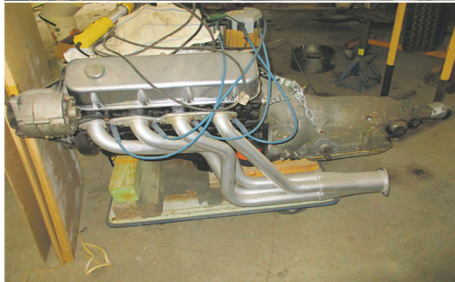


Sam LLC **CRAWFORD AUCTION SERVICE**

As we are selling our home, will sell the following located from Hermitage, MO 2½ mi. South on Hwy. 254 to Co. Red. 210L to Co. Rd. 210 then East. Watch for auction signs.

SATURDAY, JUNE 24th, 2023 - 10:00 AM

CHEVELLE • TRACTORS • TOOLS • MISC.



CAR • TRACTOR
EQUIP.
SELL AT 12 NOON

'67 Chevrolet Malibu 300, Under Restoration, w/Hi Performance, Like New, 454 V-8 & Transmission
Kubota R2320 w/LA 304 Loader, 4x4, 72 Hrs., Like New
3 Pt. Land Pride 52" PTO Tiller, Like New
3 Pt. Frontier 4' Brush Cutter, Like New

TOOLS & MISC.

Plumbers Torch
Grizzly Port. Planer
Grizzly Metal Bandsaw
Lincoln Weld Pak 100 Wire Welder
Lincoln 225 Elect. Welder
5 Spd. Drill Press
Chicago 14" Chop Saw, NIB
10" Tablesaw
Power Washer, Honda Motor

Parts Washer
Bench Grinder
2 Vises
Drill Press Vise
100# Anvil
2 Key Cutters
Spray Paint Guns
Calipers & Gauges
Good Asst. Wrenches & Sockets
Gear Pullers
2 Stainless Work Tables
2 Wood Top Work Benches
Welding Table
Proto 2 Tier Toolbox
Good Asst. Power Hand Tools, Air Tools, Body Shop Tools
Long Handle Tools
Chain Hoist
Car Ramps, Pair Wheel Dollies
GM Starters
3/4 HP Electric Motor, New
New Headers for Big Block Chevy
Heated Welding Rod Box

Drill Bits
Garden Seeder
Garden Tools & Accessories
2-3 Battery Chargers
Castors, 3 Ton Floor Jack
Spot Welder
Blue Streak Wall Cabinet
Alternator Re-Build Kit
Storage Cabinet w/Drawers, 4' T
Electric Furnace
Bar Clamps, Jack Stands
Log Chains, Boomers
Porta Power
Rigid Threaders, Pipe Cutters
Motor Stand, Cherry Picker
12V Sprayer, Welder Ext. Cord
Electrical Misc.
Pair Clothes Line Poles
Alum. Dog Box, Shooters Bench
Black Poly Culvert 10"x12' Long
4 Section TV Tower
20 Tomato Cages
Elect. Cement Mixer
10-15 New Steel Posts

19 Boxes Ceramic Tile
Shop Vac
4-5 Lg. Stainless Cooking Pots
2 Fish Cookers
Ice Chests
Hand Gun Case
Meat Grinder & Mixer, NIB
Antique Granite Top Kitchen Cabinet, Under Paint
Kenmore 23 Chest Freezer
Lawn Table & Chairs
Small Gun Safe
22 Qt. Canner
Pool Table, Slate Top
Tackle Box & Old Lures
Asst. Beer Signs & Mirrors
"Bud" Team & Wagon Clock
Troy Bilt "Horse" Tiller, Honda Motor
John Deere D170 Lawn Tractor, 25 HP, 54", Bagger
DR Chipper/Shredder, New
WALK-IN COOLER
7x7' Walk-In Cooler, Good Shape

Sam
CRAWFORD LLC
Auction Service

1944 2023
 CELEBRATING 79 YEARS
 STARTING 79 YEARS
 OF SALES & SERVICE

TERMS: Cash or good check. Nothing removed until settled for. Not responsible for accidents. Lunch available. Statements made day of sale take precedence over printed matter. All items sell as is. No warranties given or implied.

417-998-6629
Cross Timbers, Mo.

CrawfordAuctionService.com



Sam
417-328-9137

Chase
417-399-1904

Chance, CAI
417-298-1751

Tom Poynter
Jack Lancaster

BOB & LORRAINE BUNCH

LAWRENCE COUNTY REAL ESTATE AUCTION

THURSDAY, JUNE 22, 2023 AT 10 AM

AUCTION & PROPERTY LOCATION: 3447 HIGHWAY, MILLER, MO 65707

From Springfield, MO go west 20 miles on I-44 to Highway 96 at Exit 57, hold to the right and continue west 5 miles on Highway 96 to Highway M, turn right and go north 3 miles to the Wilson Property on the left. OR From Miller, MO at the Junction of Highway 39 and Highway 96 take Highway M east 10 miles, turn left and go north 3 miles to the Wilson Property.

212 +/- ACRES TOTAL WITH 120 +/- ACRES LOCATED IN TOWNSHIP 29, RANGE 26, SECTION 13 AND 105 +/- ACRES IN TOWNSHIP 29, RANGE 25, SECTION 18, ALL IN LAWRENCE COUNTY MISSOURI. THE TRACT SIZES RANGE FROM 3 +/- ACRES TO 72 +/- ACRES ALL WITH HIGHWAY M FRONTAGE AND ACCESS.

TRACT 1 consists of 3.25 +/- acres with frontage and access from Highway M that runs the entire length of the east side. Tract 1 has an all brick 2,347 sq. ft. ranch style house built in 1964. The house is currently occupied, has a 3-year-old shingle roof, Anderson thermal pane doors and windows and an attached two-car garage. The house has a covered front porch and brick flower bed. The yard has large trees, an asphalt circle driveway and sidewalks. In addition, there is a detached garage/ shop that is a 24' x 36' pole frame structure, insulated roof, wired with asphalt floor. It has a 10' x 20' metal roll-up door with electric opener.

TRACT 2 consists of 5 +/- acres and has frontage and access directly off Highway M and joins Tract 1 along the east side. Tract 2 has some really great agri/commercial improvements, including a 75' x 100' red iron structure that is open to the east and south, perfect for hay and/or machinery storage. There is also a 60' x 108' red iron totally enclosed building with roll-back door, a concrete footing and foundation. Once again perfect for hay and/or machinery storage. Tract 2 also has the original Wilson milking parlor on it with all the milking equipment still intact. Also, there is a 30' x 90' building on Tract 2 that has an enclosed shop area and open front storage. There are other farmstead improvements on Tract 2 including some ag building for livestock and a pipe corral system which will accommodate approximately 120 cows. Tract 2 also has its own deep well and pump system.

TRACT3 consists of 68 +/- acres that has frontage and access off Highway M along the south and east side. It is primarily all open and currently is alfalfa with the exception of a wood draw that runs across it.

TRACT4 consists of 72 +/- acres with access and frontage off Highway M that runs along the entire east side, it is currently being used for row crop and alfalfa hay production. The balance is in timber and Turnsback Creek bank that run along the north side.

TRACT5 consists of 64 +/- acres and is the only tract that lies on the east side of Highway M that runs along the west side of the tract. (The house on that side of Highway M is not included in the auction.) Tract 5 is open on both the west and east ends and is currently being used for crop production. The balance is in waterways and wooded creek banks.



SELLERS: RONALD & PAM WILSON

Wheeler 
AUCTIONS & REAL ESTATE

23101 HWY. 24, PARIS, MO 65275 | 660-327-5890
WWW.WHEELERAUCTIONS.COM

Visit wheelerauctions.com
for more information!

For more information call Charlie Nordwald
at 636-795-4552 or visit wheelerauctions.com.

SMITH ESTATE AUCTION

LIVE AUCTION

Post us on Facebook



Jesse Smith, Personal Representative of the David A Smith Sr Estate, will sell personal property of the Estate at public auction on:

Saturday, June 17th 2023, Beginning at 9:00 AM

Location: 2268 Highway V Owensville Mo 65066

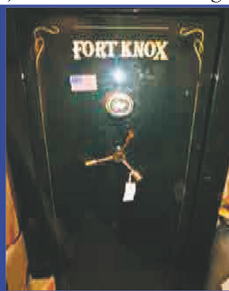
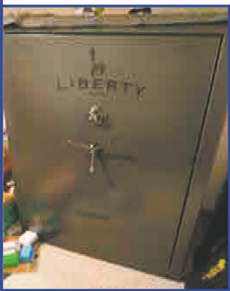
Directions: From Interstate 44, take Exit #247-Highway 50, West. Go 30 miles, then left on Highway 28 to Owensville. Go South on Highway 19 then left on Highway V to auction or from Rosebud take Hwy T to Hwy V at the corner of Block Branch Rd. and Hwy V, Roads will be marked day of sale.

GUNS / AMMO / SAFES / SHOOTING RELOADING (guns will sell 12:00 Noon)



Winchester Model 70 Super Grade .338 rifle w/Leopold scope, Remington M700 .22-.250 Environment w/12x24 Leopold scope, Marlin M98 .22 LR bolt action-synthetic stock, Fox MB double barrel 410-3", Henry .22 octagon barrel-new, Winchester 94 (pre 64) .32 Win Special, Winchester 88 (pre 64) .308 w/scope, Sears 200 12 gauge, Winchester M12 12ga, ER Amontio Uplander 12 ga-3'-side by side, Ithaca M Featherlight 12 ga, Winchester M190 .22 semi-auto rifle, Remington M11 12 ga-poly choke-semi auto, Remington Woodmaster M742-30-06, Harrington & Richardson 22-.250 single shot/scope, Savage M110 7MM bolt action w/scope,

PISTOLS; Smith & Wesson 500 Mag revolver, German Walther .22 semi auto-SS and same in black, Smith & Wesson .380, Virginia Dragoon .357 revolver, Standard .22 semi auto, S&W M19 .357 Mag, Glock M23 .40 caliber, Heritage Rough Rider .22, Ruger EC9s 9MM, Norinco M213 9x19MM, Jimenez Arms JA 9MM, Bryco 38 .380, **AMMO;** huge amount all types ammo-all calibers-500 S&W-lot .22 caliber, 7MM, 5.4, .243,357, .38 sp, 30-30, .45 Colt, lot .40, .25 auto, lot others, shotgun shells, **RELOADING;** powder measure, scale, case tumblers, trimmers, dies-all calibers, press, lot books, ammo boxes, gun case, **SHOOTING;** Leopold scopes, Leopold binoculars, gun rests, tripods, targets, Barnett Ghost crossbow, lot broadheads, old decoys, **KNIVES;** lot hunting knives-Buck knives-sportsman set-rosewood Damascus ulu-Spanish Hen Rooster-German knives, Case, Samurai sword, antlers, turkey fryer, Cabela dehydrator, Danner hunting boots-NIB, game calls, tackle boxes, fishing rods-reels, **SAFES;** Liberty Safe 24 gun-shelves-pistol holder on door, Fort Knox 15 gun safe-shelves, Freedom gun safe, **COINS** (4) 1921 Morgan dollars, Ike dollars, (3) 2011-1 oz Canadian silver dollars, (2) 1 oz China Pandas, Washington Commemorative 1/2 dollars, lot **ARROWHEADS**-grooved axe head



TOOLS YARD EQUIPMENT / TOOLS / SUPPLIES

Land Pride FDR 1672 grooming mower, Cosmo 180 bumper pull tub seeder, Honda GX240 Series Coleman generator-8 HP, Clean Machine pressure washer-2500 PSI-7.3 GPM, extra hose-wand extension, John Deere AMT600 yard trailer, Jonsered chainsaws-2036 Turbo-CS2159C, Stihl weed eater, 4 HP Kohler engine, concrete mixer, disc, cultivator, push mower, scoop shovel, pick, potato fork, garden rake, broom, post hole digger, sledge hammer, hand pole trimmer, water hose, pruner, wheelbarrows, axes, hand yard tools, 12 volt sprayer, **AUTO;** jack stands, receiver hitch, tow straps, ratchet straps, jumper cables, Mobil 15w40 oil, lot fluids-oils, hand winch, gas cans, trailer jack, draw bar, ATV tire chains, 4'x4' metal grates, barrels, scrap iron, ladders, wooden ext ladder

LUNCH WILL BE SERVED BY BEAUFORT LIONS CLUB

VIEW OUR PHOTO GALLERY ON www.breheauction.com

TOOLS



Craftsman Industrial Series huge tool box on rolling cabinet-5' tall, Lincoln 225 stick welder, Millermatic 130 mig welder, welding helmets-rods-wire-gloves-tank set, Ryobi bench top drill press, sand blaster, Dewalt grinder, large upright compressor, air hoses, air blowers, Delta 12" band saw, grinder on stand, Dewalt material clamp, Cummins rotary tool, Freud Forstner bit set, Wilton bench vise, small cut off miter saw, Dewalt 1/2" hammer drill, Dewalt 3HP plunge router, Stanley pneumatic stick nailer, Snap On 1/4" socket set, lot Snap On sockets-body hammers, bench grinder, quick grip clamps, C clamps, work lights, **MACHINIST TOOLS;**

machinists tool box-micrometers-shims-calipers-levels-Starrett-Lufkin wooden mic box-machinists handbooks, Rigid palm sander, Dewalt circular saw, hack saws, lot sockets-pneumatic-deep well, ratchets, channel locks, nippers, pliers, cold chisels, mallets, pneumatic tools-sander, lg sockets, chalk lines, measuring tapes, pipe wrenches, tubing cutters, flaring tools, pry bars, large crescent wrenches, brass hammer, tin snips-shears, plumb bobs, hammers, sharpeners, drill bits, 4' wooden level, framing square, sheets 1/2" plywood, sheets wall sheathing, lot misc lumber, lot cable, warehouse ladder, work benches, roll flashing, extension cords, hvv ext cord, lot ropes, tool box, electrical wire, outlet boxes, 6.5 ga shop vac



ANTIQUES / COLLECTIBLES



Glacier Sanitary enamel ice box-nice condition, well hand pump, implement steel wheels, galvanized wash tub-buckets, pedal whetstone on stand, (8) oil jars w/spouts and carrier, Valvoline barrel, Quacker State grease can, Skelly 5 ga can, push cultivators, Deere Mansur planter lid, log carrier, wooden sleds, Plumb dbl ax, brush scythe, wooden pulley, nice 2 drawer wooden tool box, coffee mill, Emerson brass blade fan, paper roll dispenser, sausage stuffer, milk crate, JD road sign, shoe last, military shovels, porcelain bath fixtures, straight razors-hones, John Deere collectibles, JD vinyl stool, JD diecast airplane banks-others, yard windmill, milk-cream cans, spring scales, sad irons, feed scoop, shaving set, **CROCKS;** #1 Western crock jugs, Western #3 crock jug, 1 ga crocks, Blue Band jug, floral crock, **CAST IRON;** iron kettle, (2) #3 Wagner skillet, (3) Griswold stick pans, (2) #3 Griswold skillet, Griswold #8 skillet, Griswold deep skillet, lead pot, boot jack

FURNITURE / HOUSEHOLD

Cedar chest, bedroom set-dresser-chest-night stand, recliner, lamp tables, rocker, end tables, oak rocker, room heater, adjustable bed, oak dining table-stencils, dining chairs, drop leaf table, microwave cart, 2 drawer file cabinet, Gravity Edge Stepper, camp chairs, albums-45's, desk, vacuums, office supplies, desk chair, walker, wheel chair, towels, linens, bedding, Christmas decorations, hummingbird feeders, **KITCHEN;** cleaver, carving knives, crock bowl, beer glasses, Pepsi glasses, SS pans, SS bowls, flatware, utensils, cake plate, dishes, **APPLIANCES;** bread maker, microwave, counter fryer, toaster, Samsung flatscreen TV, Samsung home theater system

BREHE AUCTIONEERING SERVICE, LLC
 Union, MO: (636) 583-0841 Owensville, MO: (573) 437-3454
www.breheauction.com
 LICENSED AUCTIONEERS:
 Kerry Brehe 314.954.3798 Josh Brehe 314.603.3129 Nick Brehe 314.560.7737
 Harry Engelhart 636.399.3743
 Announcements made day of sale supersede all printed material.
 TERMS: CASH, PERSONAL CHECKS WITH PROPER I.D., BUSINESS CHECKS WITH BANK LETTER AND NO OUT OF STATE CHECKS UNLESS APPROVED BY SELLER. Email Us At kkauction@sbcglobal.net
 Everything sells as is with no guarantees. Not responsible for accidents.

FIREARMS AUCTION

We will sell the following firearms at public auction located at the Montrose Community Building (Knights of Columbus Hall), 415 Missouri Ave, Montrose, MO 64770

SATURDAY, JUNE 17, 2023 10:00 A.M.

PISTOLS

S&W Model 57 41 mag, Blued 3" Barrel
 S&W 64-3 SS,38 Special 6 1/2" Barrel w/Scope Mounts
 Para Xpert 1911 45 ACP SS – In Box
 S&W 15-3 38 Special snub nose
 S&W Lemon Squeeze 38
 Colt Single Action Army 45 cal Harden Case
 Consecutive Serial #
 Colt Single Action Army 45 cal Harden Case
 Consecutive Serial #
 Dan Wesson 357 mag w/2", 4", 6", 8" barrels
 Colt Anaconda 44 Mag ss 8" In box
 Colt Diamond Back 38 Special 3 1/2" blued
 Colt Python 357 4" blued
 Colt King Cobra 4 1/4" barrel, 10 shot, 22LR ss – NIB
 S&W Model 57 41 mag, SS, 6" barrel, In Box
 Beretta Model 21A 22LR In Box
 Colt Ace Service Model 22LR, In Box
 Ruger New Model Super Black Hawk 44 mag SS, 4" Barrel
 S&W 629-6 SS, 44 mag, 6" Barrel, Deer Head inlay Grips
 S&W 19-4 SS, 357, 6" Barrel
 Colt Mark II Series 90 Double Eagle 10mm
 Ruger New Model Single Six, SS 22
 H&R Model 903 22LR, 6" Barrel
 Beretta Model 950 BS, 22 Short
 Beretta Model 950 BS, 22 Short
 Ruger GP 100 357 mag, SS, 6" Barrel In Box
 Charter Arms Bulldog Pug 44 Special 2" Barrel

Colt Frontier Scout 22LR
 1863 Idaho Territorial Centennial, Blued, SS
 Cylinder, Pearl Grip #503 of 902 made.
 Colt Frontier Scout 1867 Nebraska Centennial, Gold Plate, Blued Cylinder w/Pearl Grip
 AMT Auto II 22 Rim fire mag, In Box
 S&W Model 645 45 Auto, SS
 Ruger Black Hawk 41 mag, 6" Barrel, Blued
 Ruger SR 1911 9mm Luger SS
 In Box
 Kimber Micro 9 Rapid 9mm SS
 S&W 657-5 Performance Center 44 mag, 2" Barrel
 Nickle
 P Beretta Model 92A1 9mm, 3 mags In Box
 S&W 29-8 Performance Center 44 mag 6" blued
 American Tactical GSG 1911 22LR
 S&W 48-7 22MRF, 6 shot, 6" Barrel
 S&W Model 57, 41 mag, 4" Barrel, Blued
 S&W 27-2 357 mag, 8" Barrel, Blued
 S&W 439 9mm, SS, 2 mags – In Box
 Springfield Army Garrison 1911 45, Auto, 5" Barrel – In box
 Colt Python Target 38 Special, 8" Barrel, Blued
 S&W Model 57, 41 mag, 4" Barrel, Blued – In Wooden Box
 Colt Python 357, 4" Barrel, Blued
 Colt Python 357 mag, SS – NIB
 Colt Gov't Model Comp. Series 45 Auto – In Box
 S&W 60-14 SS, 357, 2" Barrel
 S&W 629-4 SS, Classic 44 mag, 6" Barrel, Wood Grips

LONG GUNS

Ruger #1 204 w/Nikon Monarch 3 Scope
 Cooper Arms Model 21 223 Remington heavy barrel w/ Leupold 4x6 Scope
 Ruger American 17 HMR Threaded Barrel w/Burris Droptine scope
 Marlin 336 CS 35 rem
 Marlin 336 SC 35 rem
 Benelli SBE2 12 ga 3 1/2" – Shadow Grass
 Franchi Affinity 20 ga. 3" – Real Tree Camo
 Ruger #1 35 Whelen – NIB
 Christianson Arms Ruger 22LR w/Vortex Scope
 Bushmaster XM 15-E25 556/223
 Remington 722 257 Roberts w/Leupold VXII Freedom Scope
 Stevens Model 512 12 ga, 3" Vent Rib, o/u
 Marlin 1895 45/70 w/Burris 4 power scope
 Savage Model 110, 7mm, rem mag, w/Nikon Scope
 Savage Model 12 223, SS, Bull Barrel w/Bushnell Trophy Scope
 Remington Wingmaster 12 ga, 2 1/4" Vent Rib
 Tikka T3x 22/250 w/Bushnell Elite Scope
 Remington Model 722-222 Rem.
 Browning X Bolt 300-win mag, Heavy Barrel, laminated stock
 Remington 700, 7mm, Rem mag, w/Weaver scope with Sun shield
 Franchi Affinity 12 ga, 3", Max 4 Camo
 CZ 527 204 Ruger w/Bushnell Elite Scope
 Thompson Center Super 16 223 Barrel ONLY w/Tasco prong horn Scope

AMMUNITION

Large Lot of Ammunition to Include: .22lr, 223, 12ga, 20ga, 204, 308, 41 mag, 45/70, 17 HMR, 30-06, 357, 22 WMR, 38 Super, 22 Rem Jet Mag, 44 mag, 22-250, 9mm, 7.62x51, 10mm, 25 auto, 222 rem, 45 colt, 45 ACP plus others.

GUN SAFE

Stack-On 24 Gun Safe

SCOPES & OPTICS

Sig Sauer Tango 4 4-16x44 NIB
 Nikon Monarch 3 3-12x42
 Hawk Vantage SF 3-12x44 NIB
 Zeiss Conquest 4-16x44 NIB
 Bushnell Elite 3200
 Leupold Vari X2 3-9x50
 Leupold VX3 1.5-5x20
 Weaver Grand Slam 4.5-14x40
 Bushnell Trophy XLT 3-9x40
 Bushnell Banner Dusk & Dawn 6-24x50 AOE
 BSA Binoculars
 Bushnell Binoculars
 Many other scopes including
 Bushnell, Redfield, Burris, Tasco, Weaver

FIREARM MISC.

Colt Grips
 Holsters
 Hard/Soft Cases
 Magazines
 Misc. Gun Parts
 Scope Mounts
 Wooden Colt & S&W Boxes
 Cardboard Targets
 Misc. Choke Tubes
 Shooting Earmuffs
 Other items too numerous to mention.

AUCTIONEERS NOTE: ALL OUT OF STATE BUYERS ARE WELCOME BUT WILL FOLLOW FFL GUIDELINES FOR OUT OF STATE PURCHASES ON REQUIRED FIREARMS.



Auctioneers Note: This is a great opportunity to purchase well cared for, hard to find firearms from a personal collection. Mark this date and be sure to attend.

TERMS OF SALE: Cash or good check w/ proper ID. Nothing to be removed until settled for. Not responsible for accidents or stolen merchandise. Statements made day of sale takes precedence over printed materials. Lunch served and toilets on site.

OWNERS: THE ESTATE OF FRANK SMITH

Sale Conducted by:



COL. KEVIN WADE MOBILE 660-492-3279
COL. BRYAN WADE MOBILE 660-492-3740
TYLER WADE MOBILE 660-492-7764
CLERKS: SHERMAN, NORRIS, IRBY & WADE
 TO VIEW AD ONLINE GO TO
WWW.AUCTIONZIP.COM
 AUCTIONEER ID: 24103



FISHING SUPPLIES AUCTION

ONLINE ONLY!

WEDNESDAY, JUNE 21ST, 2023 AT 6:00 PM CDT

INVENTORY LIST:

Hellbender With box
Collection of crank bait Lures
Box of flies
box of jigs and miscellaneous
Box of rooster tails
Box of flies and jigs
Box of vintage lures
Jigs and miscellaneous lures
Bobbers, hooks and miscellaneous
Rubber lures
Lot full of spinners
Rooster tails and jigs
Box full of miscellaneous fishing Lures
Jig skirts
Stainless steel fillet knife and hook out
Jig lot
Hook sharpener, knife and knife sharpener
Fillet knife
Fly lot
Box of hooks
Fly tying vise and items
Fishing pliers
Multitool lot
Line clippers and miscellaneous tools
Fly tying tools
Fly tying vice
flying tying tools in items
Partial bottles of lure paint
Roll of jig skirt material

Miscellaneous tools
Box of rooster tails
Penn 209 level wind reel
Shakespeare and Zebco Gold
Shakespeare and Daiwa reel
Shimano Sienna reel
Lashless Bronson fishing reel
Vintage Roland Martin glasses
Zebco RT 601
Shakespeare stingray
South Bend XTC 88
Muzzy fishing reel
Abu Garcia and Genesis reel I
Spoon lot
Miscellaneous lure lot
Shakespeare Alpha
Eagle claw 5560
Do it molds jig mold
Ament jig mold
Palmer sinker molds
Two sinker molds
Steel jig mold
4 jig molds
5 jig molds
Shakespeare and master reels
Shakespeare tigers
Shakespeare and quantum Reels
Shimano and Garcia reels
Zebco and Mitchel reels
Fly tying feathers

Jig skirt material
Partial containers of jig paint
Miscellaneous fishing items
Zep fishing knife
Pork puller jigs
Grab bag box of miscellaneous fishing items
Vintage whopper stopper bayou boogie color 6010
Whopper stopper hellbender lure
Whopper stopper Bayou boogie
Vintage Wood Lure
Wood Smithwick Devil horse
Bayou boogie whopper stopper
Smithwick rogue
Wood bomber lure
Heddon Tiny crazy crawler
Vintage Heddon river runner spook sinker
Wood DI dipper Tulsa Oklahoma
Vintage worth flutter Fin lure
Vintage wood water dog bomber
Suzicca 6 Jointed swimbait
Midge-Oreno South Bend

AND MORE!!!



FOR MORE INFORMATION GO TO WWW.EASTERLYAUCTIONCO.COM OR CALL EASTERLY'S AT 417-833-9494



Mike Easterly Auctioneer • 417-833-9494

Not Responsible for accidents or theft. For more information call: Easterly Auction Company, Springfield, MO. Auction Terms: Visa, Mastercard, Cash, Cashier's check or checks with proper I.D. Announcements day of sale take precedence over printed material. Auction Notes: Although information is obtained from sources deemed reliable, auctioneer makes no warranty or guarantee expressed or implied. Buyers should themselves take the opportunity to make their own inspection prior to sale.

www.EasterlyAuction.com • auctionzip.com ID#14770



BUSINESS LIQUIDATION AUCTION ON-SITE ONLY!

6390 N 19TH ST. OZARK, MO 65721

SATURDAY, JUNE 24TH, 2023 AT 10 A.M.

INVENTORY LIST:

2012 Denali by Dutchman
28 foot

2019 Tesla model 3, 20,000
miles salvage title, project
needs key

97 Freightliner FL 70 box
truck

Lots of scrap

Car dolly

Service bed

Yamaha WaveRunner 1100
triple

Tires and wheels

Trailer

Pallet racks

Headache rack

Power-V XT plow

Old truck chassis

Hoyer lift

Motor cherry picker

Box bed

Lazer Z mower

06 Ford escape

2014 dodge journey

2010 Nissan pathfinder

05 Dodge charger

07 avalanche

2011 E350 Ford 150,000
miles 15 passenger

4 x matching 3 person wave
runners

Enclosed Service bed

05 international DT 466
automatic 150,000,
rollback

02 Dodge Ram pickup

08 Honda Accord

GMC with enclosed service

bed

79 Chevy big 10 custom
deluxe one family-owned,
44,000 original miles

4 barstools

Old coin operated course
retrofitted with switch

Waiting chairs

Multiple desk and desk
chairs

Wall art

1959 Chevy advertisement

Jeep advertisement sign

Chevrolet parts and service
sign

Office sets

80 gallon 5 horse industrial
Gold service, compressor

Yale forklift

Large safe

Guardian power drill Press

Heavy duty gas powered
jump box

Ball hitch

Large lot of shelving

Lots of Jack's handtools
racking

Large lathe

20 ton hydraulic air Jack

Tune town hydraulic jack

2000 pound electric winch

Hose reels

Coats 5040 a tire changer

20 drawer torin toolbox

6 foot extreme tools toolbox
on wheels

LT 5000D plasma cutter

Wilton vice

2 15ft foot benches with
nice metal toolboxes as,
pedestals

Several lots of wrenches

Lots of aluminum pipe
wrenches tools Salz
pencils, grinding wheels
etc.

C clamps

Too many tools to take all
pictures of

Several lots of sockets

9000 pound lift by forward

Refrigerant gages

Jumper cables

John Deere replica gas pump

220 extension cord

Large barrel fan

Metal shelving

Hose reel

Several lots of miscellaneous
mechanic tools

Ex-cell power washer

Jackstands

2009 Dodge Ram 1500 crew
cab 4wd. 200k

Snap on tool box grill

1997 GMC 1500 SWB.
Southern California built.
305 V8, automatic, air, CD,
all steel cowl hood, custom
Cadillac taillights, roll pan,
lowered and 22in wheels.
Truck runs, rides great and
drives perfect.

Wagon

Plus More from Cox Auto
Group!



FOR MORE INFORMATION GO TO WWW.EASTERLYAUCTIONCO.COM OR CALL EASTERLY'S AT 417-833-9494



Mike Easterly Auctioneer • 417-833-9494

Not Responsible for accidents or theft. For more information call: Easterly Auction Company, Springfield, MO. Auction Terms: Visa, Mastercard, Cash, Cashier's check or checks with proper I.D. Announcements day of sale take precedence over printed material. Auction Notes: Although information is obtained from sources deemed reliable, auctioneer makes no warranty or guarantee expressed or implied. Buyers should themselves take the opportunity to make their own inspection prior to sale.

www.EasterlyAuction.com • auctionzip.com ID#14770



DECLUTTERING BUSINESS AUCTION

ON-SITE ONLY!

2359 E KEARNEY ST, SPRINGFIELD, MO 65803

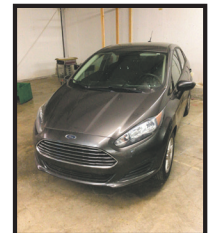
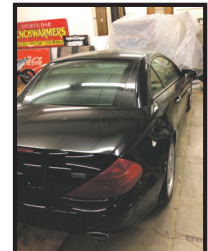
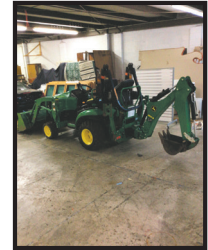
SATURDAY, JUNE 17TH, 2023 AT 10:00 AM

INVENTORY LIST:

- 1025R John Deere 2021
254 hours
- John Deere three point
box blade
- 2005 Mercedes SL 500
- 2020 SYXMoto
motorcycle
- Coleman minibike
- Set of good
LT245/75/16
- Vintage Texaco gas
pump
- Sunoco dynafuel gas
pump
- Mobilegas fuel pump
- Shell Gas station sign
- Conoco sign
- Snapper sign
- Vintage old Coke signs
- Dr. pepper clock
- Mr. good wrench clock
- Mini Cooper 2013
with 118,000 miles
automatic
- 2019 Ford fiesta
- Patio loungers
- Patio utility box
- Patio chairs and
umbrella
- Patio bar
- NexGrill
- Wicker couch two
chairs
- Two wicker swivel
chairs and endtable
- Six chair wicker patio
dining table
- Leather sectional
- Leather recliner
- End of bed couch
- Fainting couch large
mirror artwork
- Bridgestone sign
- Kenmore front load
washers
- Kenmore dryer
- Barber chairs
- Kansas City Chiefs chair
- Cardinals world
champion 1967
album
- St. Louis Cardinals
1964 world champion
album
- Wayne's world extreme
close-up movie poster
- Old Yale helmet
- Auto racing shoes
- Duramax generator
- Hose reel
- Car seat
- Miller light Rusty
Wallace sign
- Shifter kart
- Do not enter sign
- 250 Arcticat
- 8 seat EZ go golf cart
- Go kart
- 1996 SL500 Mercedes
convertible

- Apco sign
- Porter cable drill press
- Torch set
- Briggs & Stratton
power washer
- Gravity feed gas tank
- Custom made skid track
- 1997 SeaRay 215
express cruiser
- Coca-Cola tailgaters
sign
- Electric wheelchair
- Goodyear tires vintage
metal sign
- Vintage star tobacco
metal sign
- Phillips 66 premium
motor oil sign
- Lighted Chrysler sign
- Van body Truck 2015
E350 160XXX
- F150 crew cab 2020 XLT
4X4 148XXX miles
- Mercedes Coupe E350
- 2 parolim "monsa"
racing karts both are
powered by Yamaha
kt-100 2cycle motors
both carts are 2017
- Pusher motor home
- 1996 DS cross country
coachman 2 slides

AND MORE!!!



FOR MORE INFORMATION GO TO WWW.EASTERLYAUCTIONCO.COM OR CALL EASTERLY'S AT 417-833-9494



Mike Easterly Auctioneer • 417-833-9494

Not Responsible for accidents or theft. For more information call: Easterly Auction Company, Springfield, MO. Auction Terms: Visa, Mastercard, Cash, Cashier's check or checks with proper I.D. Announcements day of sale take precedence over printed material. Auction Notes: Although information is obtained from sources deemed reliable, auctioneer makes no warranty or guarantee expressed or implied. Buyers should themselves take the opportunity to make their own inspection prior to sale.

www.EasterlyAuction.com • auctionzip.com ID#14770



GUNS, TOOLS, & MORE AUCTION

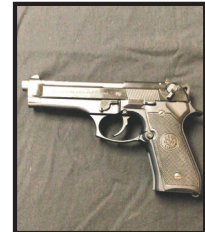
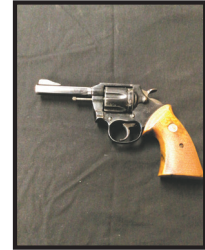
ON-SITE ONLY!

2350 N CLIFTON AVE, SPRINGFIELD, MO 65803

SUNDAY, JUNE 25TH, 2023 AT 1:00 PM

INVENTORY LIST:

- | | |
|--|--|
| Colt government model delta elite
10 mm | Miscellaneous mags |
| Smith and Wesson 44 mag | Miscellaneous holsters |
| Smith and Wesson 357 magnum | The Discover Bausch and Lomb 60
mm spotting scope |
| Beretta model 94f9 9mm | Samurai sword |
| Beretta 96 40 Cal | Cane sword |
| Beretta brigadier 40 Smith &
Wesson | Field sport red dot scope |
| Sig sauer P210 9 mm | ClimateLineAir |
| Sig Sauer P232 9mm kurz | Dream station 2 |
| Sig sauer P226 40cal | Ruger 22/45 MK3 target model
22cal. Long rifle |
| Colt official police MKIII 38 special | Coleman Powermate 5500 power
washer |
| Ruger SR22 22cal | Craftsman riding mower |
| Ruger EC9 9mm | Garden wagon |
| Sig sauer P229 9mm | Chimineia |
| PMR 30 Kel Tec 22 mag | Belt sander |
| Beretta 22 LR | Tile saw |
| Kimber 357 K6S | Highland Park Lapidary Slab saw |
| HK 45 | Makita Leaf blower |
| Marlin model 25 22 mag | Southland edger |
| Ruger 10-22 | Char Griller |
| Mossberg Maverick 12 gauge | Echo Weed eater |
| Marlin model 70 22LR | Mantis tiller |
| Remington model 700 synthetic
stock | |
| 5 mm pellet gun | AND MORE!!! |



FOR MORE INFORMATION GO TO WWW.EASTERLYAUCTIONCO.COM OR CALL EASTERLY'S AT 417-833-9494



Mike Easterly Auctioneer • 417-833-9494

Not Responsible for accidents or theft. For more information call: Easterly Auction Company, Springfield, MO. Auction Terms: Visa, Mastercard, Cash, Cashier's check or checks with proper I.D. Announcements day of sale take precedence over printed material. Auction Notes: Although information is obtained from sources deemed reliable, auctioneer makes no warranty or guarantee expressed or implied. Buyers should themselves take the opportunity to make their own inspection prior to sale.

www.EasterlyAuction.com • auctionzip.com ID#14770

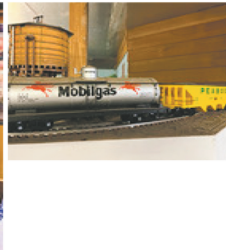


Sam CRAWFORD AUCTION SERVICE LLC

As the Parsons family have decided to sell their home, will sell the following items at 1903 Chelsea Dr., Clinton, Missouri. Watch for auction signs.

WEDNESDAY JUNE 21ST, 2023 - 9:30 AM

BEER MEMORABILIA • PINBALL MACHINE • HOUSEHOLD • MISC.



BEER MEMORABILIA, SIGNS, COLLECTIBLES, PINBALL MACHINE

Hamm's 4' electric sign with clock
 Neon signs & wall clocks, all working. Brands include: Pabst, Falstaff, Lone Star, Old Milwaukee, Busch, Bud Light, Hamm's, Greisedeck Bros., Heineken, Michelob, Miller Genuine Draft, Miller High Life, Strohs
 Lg. Assort. authentic beer bottles, cans, salt & pepper shakers, & bottle openers.
 Lg. selection of vintage liquor decanters, some unopened, very rare ones
 "Skylab" Vintage pinball machine, made by Williams, coin-opp, good condition
 Lg. assort. knives, pocketknives, & fillet knives. Many Case & Old Timers
 Collection Vintage Key Chains
 Collection vintage vacation refrigerator magnets
 8-track & vinyl record collection, mostly country
 Console record player
 Antique Disney & Comic children's miniature books
 Cast iron longhorn dinner bell
 Men's golf club set, Callaway & Titleist Drivers, Ping Irons
 Custom G-Scale train set, to be disassembled
 Lots of colored glassware pieces, Fenton, Moon & Stars
 Clear glassware, some Wexford
 Antique dolls
FURNITURE, HOUSEHOLD ITEMS, OTHER
 5-Piece bedroom set, queen bed, 2 end tables, dresser, chest of drawers
 4-piece bedroom suite, dress with mirror, chest of drawers, nightstand, queen
 Dressing mirror
 Matching twin beds
 3-piece antique sitting set—couch, love seat, chair
 3-piece living room table set—matching end tables, glass top coffee table
 3-piece living room set—matching sofa, love seat, recliner
 3-piece matching black leather sitting set, love seat and 2 chairs, brass tacks
 3 matching barstools

Many assorted antique accent tables
 Matching leather electric recliner & double reclining couch, nice
 40" Samsung flatscreen television on TV stand
 Baldwin upright piano with stool, very nice
 Antique Plymouth mantle clock
 Large wall hanging striking clock, antique
 Antique standing striking clock
 Antique walnut headboard & frame, nice
 White wicker bench & chair
 Vintage matching dresser & chest of drawers
 Antique dresser w/ wishbone mirror
 Antique wash pitcher & basin
 Antique washstand w/ wishbone mirror
 Antique small rocking chair
 Small antique cast iron stove
 Antique kitchen décor, scales, colander, coffee tins
 Cloth wingback chair
 Lots assorted framed prints, wall art
 Vintage cedar hope chest
 Assorted metal filing cabinets
 Liberty gun safe, 20-gun
 Small round kitchen table, 5 chairs
 Lg. vintage Santa Claus blow mold
 Desktop computer, computer desk
 HP Printer, Kodak digital camera
 Lg. assortment luggage pieces
 Pots, pans, small assorted appliances, glassware
 Folding table & 4 chairs
 Lots of assorted folding chairs
 Hotpoint electric range stove
 Lg. Kenmore chest freezer, like new
 Matching Speed Queen Washer & Dryer Set
 Fireplace style electric heater, like new
 Blue speckled small crocks
 Assorted fans, box fans
 Plastic Rubbermaid shelving
 Garden trellis materials
 3-4 nice folding step ladders
 Lots house plants, real & artificial
 Lots assorted baskets, Lots stuffed animals
 Lg. assortment of Christmas & holiday decorations
 Lg. assortment of men's dress & athletic clothing, golfing clothes
 Lots assorted ceramic and glass figurines
 Assorted hardback books
 Dyson sweeper, like new

TOOLS, MOWER, MISCELLANEOUS ITEMS

John Deere Z445 ZTR mower, 54" cut, nice condition
 Milwaukee Bench Grinder
 Small wood lathe
 Craftsman lathe knives
 Assorted electric motors
 Craftsman table saw on stand
 Small vise
 Good assortment Craftsman power tools
 Assortment of small hardware, bolts, finish nails, wood screws
 Assorted hand tools
 Lots of box fans, floor fans
 Wood stock for Ruger 10/22
 2 hardshell gun cases
 Pool cue sticks with hard cases
 Lot Wrenches, Screw drivers, pliers, most Craftsman and name brands
 Husqvarna 240 chainsaw, nice
 Champion generator, 1800 W, like new
 Mr. Heater Buddy heater
 Stackling Craftsman bench top toolbox, nice
 Lot long handled tools
 8" Craftsman double wheel grinder
 Stihl leaf blower, gas
 Large poly wheelbarrow, nice
 John Deere yard seeder, large push type
 Lot BBQ propane bottles
 Lot plant stands and planters
 Chain hoist
 Small portable air compressor
 Lots extension cords, garden hose
 Many nice concrete yard ornaments, statues, birdbaths
 Other Misc.
Auctioneer's note: Mr. and Mrs. Parsons have been lifelong members of the Clinton community. Both were involved with many organizations in the community. Mr. Parsons' collection of vintage beer lights, signs, and memorabilia is one of the best we have ever sold. Nearly all of the signs are in good working condition. Nice and clean auction, with very high-quality items.

Sam CRAWFORD Auction Service LLC

1944 2023
 CELEBRATING 79 YEARS
 STARTING 79 YEARS OF SALES & SERVICE

Sam 417-328-9137 Chase 417-399-1904

TERMS: Cash or good check. Nothing removed until settled for. Not responsible for accidents. Lunch available. Statements made day of sale take precedence over printed matter. All items sell as is. No warranties given or implied.

417-998-6629
 Cross Timbers, Mo.
CrawfordAuctionService.com

Chance, CAI 417-298-1751 Tom Poynter Jack Lancaster

Jim & Carol Parsons Estate

R&R AUCTION SERVICE

ABSOLUTE ESTATE AUCTION SATURDAY JUNE 17TH, 10AM 12 Tanglewood Lane, Buffalo, MO

Real property located at 12 Tanglewood Lane, Buffalo, MO including 2.99 acres, 1987 14 x 80 mobile home (bad roof, no HVAC) with two decks, 2 outbuildings. Legal: Lot five (5) and Lot Eight (8) of Tanglewood Estates, a Subdivision in Dallas County, Missouri, being a part of the NE 1/4 of the NW 1/4 of Section (28), Township (32) North, Range (20) West, according to the recorded plat thereof.



Other auction items include but are not limited to...2008 Jeep Patriot Utility, 1996 Ford F 150 XL, 2007 flatbed trailer (needs floor), King Kutter 5 ft brush hog, concrete blocks, t posts, several load locks, dishes, garden tool holder stand, old wooden Coke crates, 10" Craftsman electronic radial arm saw, antique portable sewing machine, Coleman lantern, Coleman camp stove, diesel jugs, gas jugs, boat gas tank, garden hose, tool box, Craftsman Router template set, totes, Coleman catalytic heater 5 ft box blade, aluminum loading ramps, car ramps, plastic barrels, FS 56C Stihl weed eaters, concrete bird bath, Cub Cadet LTX 1045 hydrostat, Mahindra 2615 HST tractor with a ML106 front end loader, portable air tank metal patio table and chair, 3 speed 13mil drill press, coolers, jumper cables, pry bars, wrenches up to 2" sockets, ext. cords, air hose Black & Decker angle grinder, Black & Decker vibrating sander, Shop vac, weed hook Rigid 18" aluminum pipe wrench, grease guns, Power Stroke 3000psi pressure washer, hub caps, Craftsman belt sander 1 hp, Stihl 029 super chainsaw with no bar, Poulen 42cc chain saw in case, nuts, bolts, nails, clamps, HB tools 3/4 hp bench grinder, 10" table top band saw, Campbell Hausfeld pancake compressor, 16" Craftsman scroll saw, maul, sledge hammer, socket sets, axes, drills, Troybilt 5550 watt generator, decorative rock, chairs, planters, horse shoes, FS 56RC Stihl weed eater, lawn and garden tools, rubber boots, Phillips flat screen, old treadle sewing machines including Singer, metal wall hangings, DVDs, nick nacks, figurines, 2 cap mini cast wood stove #11 from Rockwell Stove company Tennessee, rocker recliner, wiss inlaid USA 20 antique scissors, leather vest, bar stools, clocks, Hart battery operated leaf blower, refrigerator freezer, Tappan electric stove, Pyrex bowl, GE microwave, Gold Star and Panasonic microwaves,

Amana washer and dryer, wooden train, oscillating fan, twin iron bed, portable dish washer, Signature refrigerator freezer, trunk, antique dresser and chest of drawers, corner shelf, wicker shelf, pet taxi, checkerboard top table, Husky hatchet, Ryobi 31cc 18" easy pull weed eater, 67A Winchester 22, stereo equipment, kerosene heaters, Porter Cable scroll saw on stand, Delta Shop master table saw, western sheath knife, Dremel 4000 in stand, cabinets, wooden rocker Tasco binoculars, sad iron, and much more sure to be found by auction day!

Driving Directions: From Buffalo, MO go South on Hwy 65 approximately 11 1/2 miles to 65-280 then East to Tanglewood Lane, follow to 2nd drive on left.



Please keep watch on our website for added photos.

TERMS: Cash, check, or credit card with proper I.D. nothing removed until settled for A 3% fee will be added to credit card purchases. Not responsible for errors in listing. Any announcement made sale day will take precedence over any printed matter.

GENERAL AUCTIONEERS

Auction & Appraisals SERVICE

For more information contact Professional Auctioneer Russ Weeks at 417-576-7357 or check out www.rrauctionservice.com

Serving this area's auction needs since 1997 with honesty and professionalism.
www.rrauctionservice.com
(417) 576-7357 or (417) 345-4140



REAL ESTATE & ESTATE AUCTION

Saturday, June 17th, 2023 ~ 10:00 AM

LOCATION: 113 S Vernon St, Moundville, MO (Watch For Signs)

Auction For Larry & Betty Ledford Estate



Real Estate Will Sell First At 10:00 AM

Tract 1: 1054 Sq Ft Home Has 2 Bedroom, 1 Bath, Kitchen, Dining, Living & Family Rooms, Also Has Walk In Room From Porch That Could Be Utility Room. Home Has Window Air & Gas Furnace Heat. Home Also Has Metal Roof & Halfway Around Screen Porch. Very Nice Clean Older Home Setting On Approx 6 Lots, Has 2 Bay Barn W/Loft, Chicken House, Smoke House & A Doll/Storage Building & A Great Get Away She Shed Or Man Cave Building. Neat Setup For A Relaxing Home With Many Possibilities.

Tract 2: Large Lot Of Open Ground That Is Approx 6 Lots. Ground Has 1 Large Barn On It. Would Be Great For Building On Or Leave Open To Fence For Horses Or Small Livestock. Nice Property.

Tract 3: We Will Put Tracts 1 & 2 Together & Offer It As A Whole.

To Preview Contact Bill At 417-214-0093.

Terms: 10% Down Day Of Sale With Signed Contract And Balance Due In 45 Days Or When Closing Date Set By Abstract Office. Seller Has The Right To Accept Or Reject Any And All Bids.

Antique, Modern Furniture & Appliances

Ant Walnut Long Lawyers Table, Ant Walnut Marble Top Stand W/Drawer & Door, Ant Walnut Washstand, Ant Walnut Wall Clock, Ant Walnut Marble Top Table W/2 Drawers, Ant Walnut Child's Kitchen Cabinet, Ant Walnut Round Table W/Drawer, Ant Oak Pie Safe/Jelly Cabinet, Ant Oak Serpentine Drawer Front Drop Front Secretary, Ant Oak Sofa Table, Ant Oak Telephone/Magazine Table, Ant Oak Oval Music Table, Ant Oak Lawyer Type Bookshelf, Ant Oak Stool, Ant Oak Round Kitchen Table, Ant Oak Kitchen Chairs, Ant Oak Smoker Table, Ant Oak Needle Point Ottoman, Several Sm Ant Oak Tables Of Various Kinds, Ant Jenny Lind Style Corner Table, Ant Double Drop Leaf End Table W/2 Drawers, Ant Prim Barnwood Kitchen Cabinet, Ant Oak & Granite Top Kitchen Cabinet Base, Ant Wood Shelves, Sm Kitchen Jelly Cabinet, Ant Long Bench,

Retro Wood Gossip Bench, Ant Chest Of Drawers, Ant Plant Stands, Ant & Ornate Lamps Inc An Electric Aladdin, 2 Retro Queen Back & Leg Chairs, Several Ant Pictures & Paintings Some Unusual & Ornate, Ant & Modern Area Rugs, Ant Mantle Clocks, 2 Twin Beds, Oak Corner Curio Cabinet, Like New Recliner, Like New Loveseat, Couch, Refrigerator, Microwave, Other Items Not Listed

Antiques, Primitives & Households

Old Crock Pcs Inc Crocks, Bowls, Pitchers & Others, Very Old Blue Willow Dishes, Several Sleepy Eye Pitchers, Ant Wood Butter Churn, Old Galvanized & Graniteware Pcs, Ant Towel Drying Racks, Old Child's Kitchen Utensils, Lots Of Old Toys, Black Americana Collectibles, Very Lg Lot Of Rooster & Hen Collectibles, Lg Lot Of Bird Collectibles, Birdhouse Collection, Old Tins, Lots Of Campbell Soup Collectibles, Ant China Set, Lg Lot Of Longaberger Baskets, Old Jars & Bottles, Ant Pitchers, Ant Hand Painted Pcs, Lg Lot Of Ant Glassware Of Various Kinds, Lg Lot Of Ant Knick Knacks Of Various Kinds, Old Pottery, Ant Telephone, Ant Shadow Pictures, Old Linens Inc Quilts, Ant Well Jack, Ant Yard Fence, Ant Cast Kettle, Ant Metal Outdoor Chairs, Lg Lot Of Sm Antiques & Prim, Corningware, Pots, Pans & Dishes, Sm Kitchen Wares, Other Items Not Listed

Mowers, Tools & Outdoor Décor Items

Two 42" Cut Riding Mowers, Coleman Yard Utility Trailer, Yard Utility Dump Trailer, Like New Lawn Mower Lift Jack, Gas & Electric Weed Eaters, 2 Metal Wheelbarrows, Electric & Gas Edgers, Leaf Blower, Sm Electric Pressure Washer, Dual Grinder, Sm Hand Tools, Sm Electric Tools, 6 Ft & 8 Ft Warner Step Ladders, Dolly, Extension Ladder, Lg Lot Of New Floor Tile, New Light Fixtures, Some Lumber & Plywood, Pile Of White Tin, Several Outdoor Benches, Lots Of Concrete Outdoor Décor, Ant Birdbath, Ant Iron Outdoor Pcs, Ant Metal Yard Swing, 2 Sm Windmills, 2 Arbors, Other Items Not Listed

Auctioneers Note: It Is An Honor To Be Conducting This Auction For The Ledford Estate. This Is One Of The Very Nicest Real Estate Properties In Moundville In A Great Location. This Is A Great Property Located Between Bronaugh & Nevada So Easy Access To School & Town For Shopping & Other Activities. An Amazing Amount Of Excellent Walnut & Oak Antique Furniture Also Excellent Like New Modern Furniture Too As Well As Excellent Small Antiques, Primitives, Collectibles & Rooster & Hen Collection. Amazing Outdoor Pcs As Well. Good Mowers & Tools Also. An All Around Excellent Auction. Please Plan Now To Attend. **Sale Order: Real Estate Sells First Followed By Antique, Modern Furniture & Appliances Then Antiques, Primitives & Households. Mowers, Trailers, Tools & Outdoor Will Finish Auction. See Ya There!!!**

Terms: Cash or check with proper ID. Now accepting most major credit cards. Nothing removed until settled for. Statements made the day of sale takes precedence over printed material. Everything sold as is where is. Not responsible for accidents. Restroom available. Concessions Provided. Check our website for upcoming auctions and for additional pictures!!



NANCE AUCTION SERVICE

No Matter How BIG or small, We Do Them All!!!



Col. Bill Nance 417-214-0093 In God We Trust Philippians 4:13 Sean Beazley 417-247-6754

ESTATE AUCTION

In order to settle the estate of Frank Smith, the following personal property will be sold at public auction located at 8035 NW Hwy AA, Appleton City, MO 64724

SATURDAY, JUNE 24, 2023 10:00 A.M.



FIREARMS

CZ 457 17HMR w/Tasco Scope
 Ruger American 22LR w/Tasco Scope
 Browning A Bolt 223/556, Laminated Stock w/Leupold Mark IV Scope
 Beretta A400 Xplorer 12 ga. 3 1/2", Wood Stock
 Mossberg 500A 12 ga., Vent Rib, 3" Duck's Unlimited
 CZ American 550, 270 cal. w/Nikon Scope
 Ruger 10/22 Carbine w/ Banana Clip
 Remington 1100 2 3/4" 12 ga., Vent Rib & Full Choke
 GSG American Tactical 1911 OD Green 22LR, Consecutive Serial #
 GSG American Tactical 1911 OD Green 22LR, Consecutive Serial #
 GSG American Tactical 1911 OD Green 22LR, Consecutive Serial #
 Heritage Rough Rider 22 cal. Olympia TT 22 cal.
 Colt Python 357 mag, 3" barrel, SS - NIB
 S&W Model 57, 41 mag, 4" barrel, Blued
 Colt D.A41, 41 cal.



S&W 10-6 38 Special, 4" barrel, Blued
 S&W Model 57, 41 mag, 6" barrel, Blued - In Box
 S&W Model 57, 41 mag, 8" barrel, Blued - In Box
 SCCY CPI 9mm, Pink - In Box

AMMUNITION & OPTICS

Large Lot of Ammunition to Include:
 .22lr, 223, 12ga, 20ga, 204, 41 mag, 45/70, 17 HMR, 357, 22 WMR, 44 mag, 9mm, 7.62x51, 270win. plus others.

Hawke Rimfire 3-9x40
 (2) Weaver K4
 BSA Catseye 1.5-4.5x32
 Bushnell Banner 4x
 Bushnell Elite 3200 3-9x40 Silver
 Nikon ProStaff 4-12x40 MilDot
 Burris Fulfield E1
 Redfield 4x
 Burris Fulfield E1 6.5-20x50
 Hawke Vantage 3-12x50
 Weaver Kaspas Series
 Weaver Marksman 4x
 Other misc. scopes too numerous to mention.

GUN SAFES

Sovereign 60 Gun Safe
 Stack On 50 Gun Safe

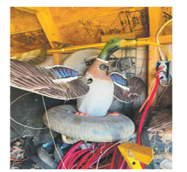
UTV'S

2015 Polaris Ranger HD900 Crew ProStar 197hrs m/1 1,300 miles m/1

2017 Honda Pioneer 700 4x4 240hrs m/1 1000 miles m/1

BOAT & TRAILERS

1996 Lowe Roughneck 1760 Front Console, motorguide trolling motor, 50HP oil injected Evinrude w/power trim, Roughneck single axle trailer



14' Semi V Aluminum Jon Boat
 Bulldog 6x12 Tilt Trailer
 6x10 Tilt Trailer

HUNTING & FISHING GEAR

Large Lot Duck Decoys
 Goose Decoys
 NIB GHG Field Mallards
 Higdon Splasher Decoys
 New Field Decoy Stands
 Turkey Decoys
 Dog Vest
 DT Training Collars
 DT Dummy Launcher
 Avery SportDog Dog Blind
 Duck & Goose Calls
 Ice Eater/Breaker
 Shooting Muffs
 Several Sets of Waders
 Boot Dryer
 Decoy Poles
 Blind Heaters
 Large Lot Mojos
 Shooting Bench Bags
 Haybale Blind NIB
 Rangemax Magnum Shooting Rest NIB
 UTV Case (Camo) NIB
 Gun Cleaning Kits
 Hummingbird Helix 5 Depth Finder
 New Grass Mats
 Bear Compound Bowfishing Setup
 Browning Xcaliber Compound Bow w/Case
 Martin M44 Firecat Compound Bow
 Shooting Table
 Snagging Rods
 Catfish Rods & Reels
 Crappie Rods & Reels
 Trot line Gear
 Catfishing Noodles

Frabill Bait Cooler
 Electric Fillet Knives
 Large Lot Misc. Fishing Supplies
 New Fishing Lures & Jigs
 Minnow Traps
 Several Tackle Boxes Fully Loaded
 Misc. Hunting Clothes
 Soft & Hard Gun Cases

TOOLS & OUTDOOR MISC.

Clarke Miller 180 Wire Welder w/Cart & Bottle
 Miller Welding Table - Like New
 Fournery Arc Welder
 Torch Bottles w/Cart
 Miniature Torch Set
 Honda 3000-Watt Generator/Inverter
 Honda 1500 Portable Generator
 2' Trash Pump
 Honda Pushmower w/Bagger
 Honda Reartine Garden Tiller
 Chipper Shredder
 Pull behind lawn sprayer
 Aluminum ATV Ramps
 (3) Trolling Motors
 Dog Crates
 Dog Feeders
 Rubbermaid Water Tank
 Metal Ammo Boxes
 Knives
 Life Jackets
 Other Misc. too numerous to mention

Auctioneers Note: Frank was known around the area to be a avid outdoorsman, many items are very well taken care of and in like new condition. Mark this date and be sure to attend.

TERMS OF SALE: Cash or good check w/ proper ID. Nothing to be removed until settled for. Not responsible for accidents or stolen merchandise. Statements made day of sale takes precedence over printed materials. Lunch served and toilets on site.

OWNERS: THE ESTATE OF FRANK SMITH

Sale Conducted by:



COL. KEVIN WADE MOBILE 660-492-3279
 COL. BRYAN WADE MOBILE 660-492-3740
 TYLER WADE MOBILE 660-492-7764
 CLERKS: NORRIS, IRBY & WADE
 TO VIEW AD ONLINE GO TO
WWW.AUCTIONZIP.COM
 AUCTIONEER ID: 24103



ESTATE AUCTION

10 a.m. Saturday, June 17

Estate of Eldon Reiners

Location: 10198 Flat Rock Rd., Bucyrus, Mo. 65444. **Directions:** From Houston, take Hwy. 17 west to Hwy. AN to Roubidoux Road, go right approximately 2 miles, take Flat Rock Road 1/2 mile to sale. Watch for auction signs day of sale.

TRACTORS ★ FARM EQUIPMENT ★ TRUCKS

1990 Chevy 3500 4 x 4 flatbed - needs work • 1949 Chevy 4400 dump, hoist motor locked • 2011 Chevy Colorado 2WD • 1985 S-10 4 X 4 pickup • 1978 Datsun • 1969 Ford one ton • EZ Haul 8-bale hay trailer • 1928 Chevy Doodlebug • 1928 Fordson Doodlebug • 1926 Model T • Model T truck in parts, needs reassembled • 4020 John Deere power-shift tractor • John Deere X360 lawn mower w/hydraulic lift & power steering • TM 600 Vermeer Trail mower, like new • New Holland 450 Roll Belt round baler- GOOD • D17 Allis Chalmer w/loader & rear wheel weights • WC Allis Chalmer • D14 Allis Tractor • WD Allis Chalmer • 60 Oliver Row Crop tractor, previously owned by Paul Hancock • D14 parts tractor • Case parts tractor • 185 Allis Chalmer tractor, needs injector pump • JD 2-row corn planter w/attachments • Farm wagon • AC steel wheels • JD steel wheels • JD fenders • Lots of old plows • Minneapolis Moline R • Oliver manure spreader • Pull-type grader • Allis Chalmer pull-type plow • Model T motors • Lots of Model T parts • Old radiators • Old saw-mill w/blades • Lots & lots of scrap • Several tools not listed •



★ ANTIQUES ★ COLLECTIBLES ★ TOOLS ★ MISC ★

Two hit & miss engines • Hit & miss engine cart • Copper kettle • Lots of old metal toys • JD memorabilia • Tractor seats • Several steel wheels • Old signs • Feed dolly • JD corn sheller • Radio Flyer wagon • Old cow bells • Platform scales • Radio Flyer Town and Country wagon • COOP Feed sign • Pedal car • Trapper boards • Broad ax • Crescent tool display • Lots of crescents • Fulton corn sheller • Old wooden crates • Crocks & crock jugs • Tonka toys • Cast iron kids set • Large collection of oil cans • Royal Crown & Coca-Cola signage • Pulleys • Lanterns • Grinding stone on stand • Hay fork • Old trunk • Cream cans • Old license plates • BB guns • Old gas cans • Seed cleaner • 12 1/2 HP Grizzly planer • Speed Queen wringer washer • Reel-type lawn mowers • Double tree • Lots of rough-sawed lumber • Small iron bridge for yard • String trimmer on wheels • Buffalo hide blankets • Pillsbury Dough Boy • Water-Fall bedroom set • JD cookie jar • Foxfire books • 250-Gallon propane tank • Chicken house • Carport • Concrete yard ornaments • Live traps • Lots of misc. not listed •

Auctioneer's Note: Auction is much larger than listing. Scrap will be sold in large quantities. Darren

Darren SCHEETS

AUCTIONS

(417) 457-6638 • (417) 926-8575
www.scheetsauctions.net



TERMS OF AUCTION: Cash or check with picture ID. Nothing loaded or removed until paid for. Everything sells as is, where is. Not responsible for accidents, lost or stolen items. Auction day announcements take precedence over all previous advertisements. LUNCH ON GROUNDS.

REAL ESTATE-BOAT-AUTO-MOWER-IMPLEMENTS-TOOLS-FURNITURE-MISC AUCTION

SATURDAY JUNE 17, 2023 10:00AM

LOCATED: 23157 FARM RD 2035, CRANE, MO

FROM CRANE MO GO SOUTH ON HWY D 1.8 MILE THEN WEST ON HWY TT 1.9 MILE, THEN SOUTH ON HWY 1240 FOR 6/10 MILE, THEN WEST ON FARM RD 2035 (ACROSS FROM MARS HILL CEMETERY) FOR 1.3 MILE TO AUCTION ON LEFT. CONCESSIONS AVAILABLE

FOR PICTURES SEE WEBSITE OR AUCTION ZIP.COM

TO PREVIEW CALL 417-830-0153

BANK LETTER OF CREDIT ADDRESSED TO MELTON AUCTION & REALTY REQUIRED FOR PURCHASE OVER \$5000

REAL ESTATE - SELLS AT 11:00

APPROX 1056 SQ FT 2 BEDROOM 1 1/2 BATH FARM HOME BUILT IN 1957 AND APPROX 10 ACRES M/L WITH GAS LOG FIREPLACE, CARPORT, CENTRAL AIR, UNDER GROUND HEAT SOURCE, WELL, SEPTIC, STORM CELLAR, GUARDIAN BY GENERAC GENERATOR RUN BY PROPANE FOR HOUSE & ALL BUILDINGS, ALSO INCLUDED 46'X50' BUILDING ORIGINALLY USED FOR HORSE SHOE TOURNAMENTS W/(2) 1/2 BATH'S, CONCRETE FLOORS, ELECTRIC, KITCHENETTE, 30'X56' BUILDING W/LEAN-TO, ELECTRIC, 11'X24' BUILDING W/2 OVER HEAD DOORS FOR DRIVE THRU, CONCRETE FLOOR, ELECTRIC, 12'X14' STORAGE SHED, ELECTRIC, CONCRETE FLOOR, (2) 8'X10' STORAGE SHEDS

BOAT-AUTO-FISHING-AMMO-MISC

1991 FISHERMAN 690 RANGER 18' SINGLE CONSOLE W/150 SUZUKI 4 STROKE ENGINE NEW IN 2017, 272 HRS, MINNKOTA ULTERRA FULLY AUTO TROLLING MOTOR, 24 VOLT 2 YR OLD, HUMMINBIRD 1199 GRAFT FISH FINDER, LOWRANCE ELITE 7-HDI FISH FINDER, (3) 12 VOLT BATTERIES, ON BOARD BATTERY CHARGER, ELECTRIC WINCH FOR ANCHOR, (1) 56 GAL & (1) 32 GAL WATER LIVE WELL W/1993 RANGER TRAIL SINGLE AXLE TRAILER—2004 GMC YUKON DENALI TRIM PACKAGE, NEW TRANSMISSION, 275,000 MILES—997 HUMMINBIRD GPS—HELIX HUMMINGBIRD 7—(4) SPINNING RODS & REELS ALL SHIMANO REELS—(2) BAIT CASTER ROD & REELS—AQUA-VU FISH VIDEO—14 EXTRA SPOOLS FOR SPINNING REELS—3 SHIMANO SPINNING REELS—6 TACKLE BOXES OF LURES—HOOKS, SINKERS, JIG HEADS—8 SPOOLS LINE 2-10 LB—LINE STRIPPER—HOOK SHARPENER—9 BAG PLASTIC LURES—7 NEW LURES—WOODEN LURES—NUMEROUS SPINNING BAITS—2 TACKLE BOXES, CLOTH 1 PLANO 1 CABELLA—FISHERMANS BAROMETER—BOX BOAT TOOLS—3 LIFE JACKETS—2 PC RAIN SUIT—FULL FACE MASK FOR BOATING—38, 9 MM, 22, 22 MAG AMMO—REDHEAD SPOTTING SCOPE—

IMPLEMENTS-MOWERS-DR TRIMMERS-GENERATOR-TOOLS

3 POINT 6' ROCK RAKE—3' WATER FILLED ROLLER—5' CULTIVATOR—3 PT SOD BUSTER—ANTQ HAY RAKE—TURNING PLOW—3 PT CARRY ALL—6' 3 PT KING KUTTER ROTO TILLER—2019 HUSQVARNA YT48DXLS RIDING MOWER W/23 HP KAWASAKI ENGINE 145.9 HRS, 48" CUT LIKE NEW—PILOT DR TRIMMER OHV 174CC—DR TRIMMER 625 SERIES—MURRAY 20" 3 HP PUSH MOWER—TRUE VALUE WOOD CHIPPER—CAMPBELL HAUSFELD IRON FORCE SERIES 22 GAL 5.5 HP 200 PSI AIR COMPRESSOR—2000 PSI HONDA POWER WASHER—LAWN AERATOR—LAWN SEEDER—PULL TYPE LAWN SPRAYER—B&D HEDGER & LEAF BLOWER—GENERAC GENERATOR 5500—WHEEL BARROW—8' WERNER FIBERGLASS LADDER—18' DAVIDSON FIBERGLASS EXT LADDER—BUFFALO 8" BENCH GRINDER—5" VISE—B&D DRILL PRESS—1 1/2 HP CRAFTSMAN ROUTER & TABLE—CRAFTSMAN 10" COMPOUND MITER SAW—CHICAGO RECIPROCATING SAW LIKE NEW—CRAFTSMAN BUFFER/POLISHER—CROW BAR—BOLT CUTTERS—1 HP SHOP VAC—CRAFTSMAN 10" DIRECT DRIVE TABLE SAW—CRAFTSMAN 12 GAL SHOP VAC—DAYTON 15 AMP BATTERY CHARGER—SCHUMACHER 10 AMP BATTERY CHARGER—GAS CANS, SOME NEW—MISC

TOOLS—LAWN HOSES—WOOD LATHE—ATWOODS AIR COMPRESSOR—METAL BAND SAW—GUARDIAN DRILL PRESS—6" BENCH GRINDERS—METAL WORK TABLE—12 VT SPRAYER—SM AIR COMPRESSOR—ANVIL—MATERIAL ROLLER STANDS—ATLAS METAL LATHE—DREMEL JIG SAW—CRAFTSMAN BELT SANDER—B&D, SKIL 7 1/4" SKIL SAWS—2 SECTIONS SCAFFOLDING—MILWAUKEE SAW ZALL—(2) SKIL & B&D 3/8" DRILLS—B&D SANDER/POLISHER—MAKITA 4" GRINDER—B&D 5" GRINDER—WAGNER HOT AIR GUN—DRILL BITS—MANSFIELD, CRAFTSMAN, B&D 12 VT CORDLESS DRILLS—(2) WEN SOLDERING GUNS—LENOX HOLE SAW KIT—B&D MOUSE SANDER—12 VT LOAD TESTER—CRAFTSMAN AIR SPRAY GUN—DWELL METER—VOLT OHM METER—LEVELS—(2) OSTER CLIP MASTER CLIPPERS—ORGANIZER—DREMEL TOOL—B&D HEDGE TRIMMER—REMINGTON ELECT CHAIN SAW—POULAN CHAIN SAW—AC DELCO PORTABLE STOOL—2 WHEEL DOLLY—AIR TANK—HYD JACKS—CHAIN FALLS—HAND SAWS—LOG CHAINS—JUMPER STRAPS—RATCHET STRAPS—LOG PULLERS—GREASE GUNS—GAS CANS—WIRE ROPE—CONCRETE TRIALS—CEMENT MIXER—GAS LANTERN—LONG HANDLE TOOLS—EXT CORDS, AIR HOSES—REMINGTON POLE SAW—CLIMBING BELTS & SPIKES—TRACTOR ARMS—ELECTRIC FENCE WIRE—4' T POST—WHEEL BARROW—LAWN SEEDER—5', 6' & 8' WOODEN STEP LADDERS—LAWN TRAILER—PLIERS—SCRAP STEEL—TAP & DYE SET

FUNRITURE-MISC

WHIRLPOOL FRONT LOAD WASHER/DRYER W/PEDESTALS—WHIRLPOOL FRIDGE—GE ELECTRIC RANGE—MICROWAVES—2 RECLINERS—SOFA & LOVE SEAT—(2) 3 PC BEDROOM QN SETS—3 LEG ENTRY TABLE—TV STAND—GLASS TOP COFFEE TABLE—END TABLES—DESK—OFFICE CHAIR—BOOK SHELF—TABLE & FLOOR LAMPS—UTILITY STOOL—CABINET W/TIN FRONT DOORS—ENGLAND PELLET STOVE—FOLDING CHAIRS & CARD TABLES—VIZIO 55" FLAT SCREEN TV—CHROME TABLE W/MATCHING CHAIRS—WALL PICTURES—TRUNK—BAR STOOLS—ELECTRIC FANS

MISC

DUMMY 1R CAMERA, NEW—CORNINGWARE—TEA KETTLES—WORLD GLOBE—BASKETS—PLASTIC ORGANIZERS—INDIAN POTTERY—TURTLE COLLECTION—MAYFAIR FROSTED COOKIE JAR—OIL LAMP—FROSTED CARNIVAL BOWL—CORELLE DISHES—BAKEWARE—KING KOOKER TURKEY POT—MISC WATCHES & COSTUME JEWELRY—METAL SIGNS—CREAM CAN—GALVANIZED WASH TUB, OBLONG TUB, BUCKET—WALNUT PICKER—COOLERS—RADIO FLYER WAGON—GARDEN & CLEANING CHEMICALS—HANDICAP WALKER—CONCRETE FLOWER PLANTERS—PLANT COVERS FOR STRAWBERRIES—BIRD HOUSES—ROAD SIGN—HORSE SHOES

OWNER: ESTATE OF FRANK & RUTH HUDSON

ANNOUNCEMENTS MADE ON SALE DAY WILL TAKE PRECEDENCE OVER ANY OTHER PRINTED MATERIALS. NOT RESPONSIBLE FOR ACCIDENTS OR LOSS OF ARTICLES ON OR NEAR SALE SITE.

**MELTON AUCTION
& REALTY CO LLC**



meltonauctionrealty.com | roger@meltonauctionrealty.com
Roger Melton | Nixa, MO | 417-830-0153 or 417-725-1801
Brad Cole | Nixa, MO | 417-840-2950
Hal White | Nixa, MO | 417-343-2334
Tanner Foster | Galena, MO | 417-840-5519

AUCTION

ESTATE SALE

GENE AND LATE JACKIE STANLEY

SATURDAY JUNE 17, 2023 10:00AM

FROM CONWAY - TAKE Y WEST 5 MILES TO BLUE GRASS ROAD 1/2 MILE ON LEFT
777 BLUE GRASS ROAD CONWAY, MO WATCH FOR SIGNS

GENE & JACKIE TOOK VERY GOOD CARE OF EVERYTHING, MOST ITEMS LIKE NEW



TRACTOR • TRUCK • TRAILER

2008 KIOTI 35HP FRONT END LOADER TRACTOR, 2000 HRS, 4WD
2 CRAFTSMEN UTILITY TRAILERS • BUSH HOG, 5FT • 16 FT TRAILER, FLAT BED
1997 FORD F350, DIESEL TRUCK, 180,000 MILES, 2WD, POWER STROKE, AUTOMATIC

LAWN MOWER & SHOP

HUSQVARNA ZERO TURN LAWN MOWER • FIRE PIT • KOHLER TRIMMER
PRESSURE WASHER • PATIO SET • AIR COMPRESSOR, 5.5 HP, 30 GALLON,
CRAFTSMAN • STIHL 170 CHAIN SAW • PORTABLE AIR TANK • 8HP GENERATOR
PORTABLE SPRAYER • LARGE TOOL BOXES • LADDERS

LOTS OF HAND TOOLS, ELECTRIC



HOUSEHOLD • FURNITURE

2 FULL BEDROOM SETS, 1 QUEEN 1 DOUBLE • 2 TWIN BEDS • ANTIQUE CHINA CABINET
COUCH AND LOVE SEAT • END TABLE • COFFEE TABLE • DINING TABLE SET, 6 CHAIRS •
2 CHINA CABINETS • 2 LARGE BOOK CASES • LARGE TV STAND



APPLIANCES

WASHER DRYER SET, KENMORE • GLASS TOP RANGE, WHIRLPOOL • SIDE BY SIDE
REFRIGERATOR, KENMORE • LOTS OF SMALL KITCHEN APPLIANCES, TUPPERWARE,
COOKWARE, BAKEWARE

Terms Cash or Approved Check Lunch on Grounds Not Responsible for Accidents

SALE CONDUCTED BY MASSEY AUCTION SERVICE

**CLINT MASSEY
589-8134**

PHILLIPSBURG

**WESLEY MASSEY
594-0843**

JUNE CONSIGNMENT

Auction

SATURDAY, JUNE 24, 2023 AT 10 AM

FIREARMS SELL AT 12 NOON SHARP

Location: 304 Springfield Rd, Ava, MO 65608

DIRECTIONS: ACROSS THE STREET FROM TOWN & COUNTRY SUPERMARKET IN AVA, MO WATCH FOR CHEYNEY AUCTION SIGNS.

****STILL ACCEPTING OUTDOOR CONSIGNMENTS—TOOLS, EQUIPMENT, FARM, VEHICLES, ETC!****

Large amount of firearms not yet listed!

VEHICLES/ ATVS/MOTORCYCLES 1989 Freightliner Dump Truck—3406 CAT •2006 Jayco Jayfeather 30' Bumper Pull Camper—NEW tires, kept in storage! •1988 Chevy Suburban 4x4—NEW transmission! • 2003 Chevy Duramax Crew Cab 4x4 • 2—Ford F-350 Box Trucks • Freightliner Delivery Truck • 20' WW Gooseneck Enclosed Trailer • 2—2008 Kawasaki Vulcan Drifter 800 motorcycles • 2004 Kawasaki Vulcan Classic 1600 motorcycle • 2016 Yamaha FZ-09 900cc motorcycle • 2019 KYMCO 700 Euro 4-wheeler

TRACTOR/EQUIPMENT Ford 8N Tractor • Tarter Cattle Master Heavy Duty Squeeze Chute w/ Palpate cage • Woods 5' Brush hog • 5' Angle blade • Vermeer Rebel TM700—9 ft Mower • Vermeer Super I Baler—4x5 net wrap (NEW sprockets, chains, belts) • 30' 5th wheel Trailer • Rattler LXT 1-seater Go-Cart

LAWN & GARDEN Cub Cadet XT1 Enduro series—54" • 5'x8' Utility Trailer • Stihl FS 56RC Weed-eater • Stihl FS 55R Weed-eater • Honda push mower • Craftsman push mower • Husqvarna XT722FE push mower • 2—Yard Machine front tine Tillers • Earthquake Mini

cultivator tiller • Ariens front tine tiller
SHOP EQUIPMENT/TOOLS
 12" Ridgid Planer • Grizzly Industrial Radial drill press • Craftsman 14 drawer Double stack Tool box • 12" Admiral Compound Miter saw • Victor Torch set • Black & Decker 1 ¼ hp Router • Yard/garden trailer • HK 150 Parts cleaning station • Sand blasting booth • 1/3 hp bench top drill press • 45 W solar panel kit • 5—16' heavy duty gates • 12' heavy duty gate • 10' heavy duty gate • 8' heavy duty gate • Cattle panels • Shop Smith wood Lathe w/ attachments • Coleman Powermate generator • Barrel stove • 100 lb anvil • Black Smith forge • Engine stand

HOUSEHOLD Misc furniture • Kitchenware • Vintage glassware—Fire King, Pyrex, Corningware, Fostoria, Depression, Carnival • Antique oil lamps

SCAN ME!



Scan with your phone's camera to be directed to our website for more photos and info!



FOR MORE PHOTOS, VISIT OUR WEBSITE CHEYNEYAUCTIONS.COM OR FIND US ON FACEBOOK!



Cheyney Auction Company, LLC
 Real Estate • Livestock • Farm & Ranch • Equipment • Household • Antiques
Travis Cheyney, Auctioneer • Buddy Boyd, Ringman
417-543-8751 • cheyneyauctions.com

ANNOUNCEMENTS Made Day Of Sale By Auctioneer Take Precedence over any Printed Matter. Not Responsible For Accidents. All items sold as is, where is, with no guarantee. Terms of sale: cash, credit/debit card, or check with valid ID.



Online Only Equipment Auction
ENDS THURSDAY, JUNE 29, 2023
Auctions Start Closing At 11am CST

SEXTONAUCTIONEERS.COM
BID NOW!
Scan QR Code Below To Browse June 29 Auction



1971 Plymouth Cuda



1966 Chevrolet Chevelle



1967 Chevrolet Malibu



1967 Chevrolet Camaro



1941 Lincoln Continental Street Rod



1947 Ford Street Rod



2020 PETERBILT 389

Call us at:
314-529-0124

2020 Peterbilt 389: 402,914 Miles, Paccar L6 12.9L Engine, 485 Horsepower, Eaton 18 Speed Transmission, Espar Heater, 5th Wheel King Pin Release And Air Slide.....Bid Now at SextonAuctioneers.com

CLASSIC CARS | HEAVY EQUIPMENT | SEMIS | RVs & MORE!



1966 Ford F100



1972 Chevy Cheyenne 10



1972 Chevrolet Custom 10



1955 Ford Crown Victoria



1999 Caterpillar 950G Wheel Loader



2007 Hyundai Robex 210LC-7



2008 Komatsu PC 200 LC-8 Excavator



2018 Hyundai 35z-9A Mini Excavator



1992 Caterpillar D8N Dozer



1998 Caterpillar 953C Crawler Loader



2002 Caterpillar D6R XL



2016 Bobcat S650 Skid Steer



Caterpillar 242B Skid Steer



New Holland T5060 Tractor



2019 John Deere 5065E



2022 Kubota L4701DT Tractor



2012 Caterpillar CT660 Dump Truck



1993 Kenworth T800 Dump Truck



2017 Freightliner Coronado Boom Truck



2005 Rogers Lowboy



Cherry Ind 40 Foot High Cube Canister



2015 Can-Am Maverick x2 1000R



2019 Polaris RZR XP TURBO SIDE BY SIDE



Registered Red/Black Angus Bulls



SEXTONAUCTIONEERS.COM

314-529-0124

Sales@SEXTONAUCTIONEERS.COM

BID NOW! >>



Sell at your location or at our auction yard at 5182 US Hwy 63, Pomona, MO 65789

BUFFALO LIVESTOCK MARKET LLC
 276 Hwy 32 W. ,Buffalo, MO



We will see you all back June 17th for our monthly PreVac sale, starting @ 12 noon.

There was NO SALE on Saturday, June 10th, as we were networking with marketing groups at the LMA convention to be able to better serve our customers and bring useful information back home.

MON-WED MARKET REPORT

Listen to KJEL 103.7FM • Lebanon or KYOO 99FM • Bolivar

VIEW OUR SALES AT CATTLEUSA.COM

CALL FOR TRUCKING OR ON-FARM VISIT

Lyle Caselman • Owner-Manager
 417-345-7876 • mobile 417-533-2944
Leon Caselman • Owner
 417-345-4514 • mobile • 417-588-6185

WANTED WHOLESALE BUYER FOR QUAIL: \$3.00 each. 417-349-1496. Norwood.

BARKO 275A LOG LOADER: Mounted on semi-trailer. Cummins engine. Strong engine & hydraulics. Designed for tree length logs. \$6,999. 573-453-6710 or 573-247-7161. Lebanon.

PUREBRED FAINTING GOATS: Great discounts on multiple purchases. 7 bucklings left to sale. Call/Text 573-216-7796. www.greenacresvillage.com. Lake of the Ozarks.

PYRENEES PUPPIES FOR SALE: 9-weeks-old. From working parents. \$300. 573-363-5213. Eldridge.

WANTED TO BUY 120 4X5 ROUND BALES: This years hay of good quality. Delivery if possible. Gainesville area. 636-225-2985.

FOR SALE: New Holland Baler Model 630. New Holland Mower-Conditioner Model 489. New Holland Rake Model 56. \$5,000 for All. 573-689-2708.

WANTED OLDER 1 TON MODEL WRECKER: Car or truck to restore. 573-734-2822 Bismarck.



REGULAR SALE EVERY THURSDAY 11AM

WATCH OUR WEEKLY SALE IN REAL TIME ON DVAUCTION.COM

For Farm Visits, Market Updates, or Trucking
 Call **Zach Cox 417-777-1320**
Dan Romine 573-578-4939

**Competitive Buyers!
 Competitive Commission!
 Competitive Market!**

Barn: 417-532-9292 
1-44 • Exit 123 "just outside of Lebanon"
17505 Route 66, Phillipsburg, MO 65722
 For weekly market updates, visit us at www.midmoststockyards.com

POOL TABLES: Installations, moves, recovers, repairs, accessories, etc. 573-646-1700.

270 WINCHESTER SHORT MAG MODEL 70: Leupold scope, strap \$825. Cape Cod series Patio Base Lamp (electric) \$70. Text 573-619-6651. Owensville.

FARM/RETIREMENT AUCTION THURSDAY, JUNE 22, 2023 STARTS @ 9:31AM

Address: 34470 S. 4400 Rd., Big Cabin, OK 74322

Directions: From Adair, OK @ Jnct of Hwy 28 & Hwy 69, Take Hwy 28 E 6 mi to Road 4400. Turn Left (N). Go 4 1/2 mi to Auction site on Right, OR From Vinita, OK @ Jnct of Hwy 66 & 4400 Rd., Take 4400 Rd South 6 1/2 mi to Auction Site on Left.

GUNS, VEHICLES, JEEPS, TRACTORS, HAY EQUIPMENT, TRAILERS, BOAT, SIDE BY SIDE, LAWNMOWERS, LOADERS, HORSE TACK, OVERHEAD FEED BIN, CATTLE FEEDERS, CATTLE PANELS, FENCING SUPPLIES, WELDERS, WELDING SUPPLIES, AIR COMPRESSORS, TIRES & RIMS, TIRE MACHINE, HUNTING / FISHING GEAR, TOOL BOXES & TOOLS



AUCTION STARTS @ 9:31 am — ONLINE BIDDING on LOTS 1-60 STARTS @ 11:01 am

OWNER: Brent & Melanie McSpadden/McSpadden Farms



Auctioneer's Note: Brent is retiring and getting out of the farming business. Some Hay Equipment included from the Kelo Kennedy Estate. Equipment is in Great Condition! Follow us on Facebook or visit our website for pictures at www.chuppsauction.com

TERMS: Cash – Credit Cards – Check with Proper ID – OK Sales Tax Applies unless exemption is shown. NOT RESPONSIBLE FOR ACCIDENTS. ANY ANNOUNCEMENTS DAY OF SALE SUPERSEDES PREVIOUS ADVERTISING.

CHUPPS AUCTION & REAL ESTATE

Stan Chupp
 (918) 638-1157

Dale Chupp, Realtor
 Coldwell Banker Neokla Select
 (918) 630-0495

Jonathan Miller
 (918) 237-7582

#1 AUCTION SOURCE IN CENTRAL MISSOURI

SERVING 34 COUNTIES!



IN PRINT & ONLINE!

TO ADVERTISE YOUR AUCTION, CALL 417-532-9131

WEEKLY TRADER MAGAZINE

100 E. Commercial, Lebanon
 www.myweeklytrader.com
 www.facebook.com/myweeklytrader

YOUR LAND AND FARM EXPERTS!



MISSOURI LAND COMPANY **NEW LISTING**

Morgan Co-151 Acres - \$679,500

This is a beautiful 151-acre property in Morgan county. It has everything needed to make this a hunter's paradise. 6 secluded fields that lay mainly in bottom ground and good dirt for hay production, cattle or food plots. This would also make a good Vital farm for a free-range chicken farm. This area is known for them and this one has plenty of open fields and big enough for several barns. This farm is loaded with deer and turkey! There are deer beds all over in the fields. I jumped at least 6 deer and a flock of turkeys while out taking pictures. There is a nice live creek that runs through the farm that usually has water even in the driest months. Also, a pond on the property. Seller is leaving a hunting cabin that is on the property and with a little cleanup it will be a great deer camp. There is a well also on the east side of the property. It has Co-Mo power and high-speed internet. Very secluded and private at the end of the road. This property doesn't touch any county roads, so you will not have to worry about road hunting. Close to Lake of the Ozarks and only 20 minutes to Sedalia. For more information call Mike Stoner at 573-774-9775 Cell



MISSOURI LAND COMPANY **NEW LISTING**

Morgan Co-45 Acres - \$199,500

I have been selling land for 10 years and have never seen a better laid out hunting tract! These 46 acres has everything needed to kill big deer year after year. Surrounded by crop fields lies this super secluded honey hole. There is a recorded easement that runs back to this property from Manito Lake Rd and is over a mile long to get back in there. Once you get to the property there is a locked gate and property is fenced as well. Over 3 1/2 miles of nice trails to get around the property. A nice big open food plot is already there with an older box blind to kill that big buck. Also, a nice pond in the middle of the property for wildlife and should also attract some waterfowl. Previous owner said that it was never a problem to kill nice bucks and always got his turkeys here. It's been surveyed and new buyer will get a copy. Manito lake is within a few miles of this tract that has a 77-acre lake for fishing and another 871 acres to explore on for more room to roam. This tract has good quality dirt on it, so this is crop ground around it, not rocks and clay that is in the southern part of Morgan County. This is close to the Moniteau county line, close to Tipton and Fortuna. The quality of timber here is amazing, with big mature white oak that has never seen a chain saw. So ,several thousand dollars in marketable timber is on this tract. Call Mike Stoner for more information 573-774-9775. Agent is also owner.



MISSOURI LAND COMPANY **NEW LISTING**

Camden Co-40.8 Acres - \$179,500

If you are looking for property in the Lake of the Ozarks area, consider this Camden County property. It is 40 deeded acres located on Cable Ridge Road at the confluence of Rainy and Spring Valley creeks in the headwaters of Lake of the Ozarks. The property is entirely wooded with mostly mature, mixed hardwoods with a few open spaces and some thicker areas that offer bedding spots for white-tailed deer. There is abundant wildlife from whitetail deer and turkeys to bald eagles and waterfowl. An active bald eagle nest was observed while touring the property with the owner. The current owner and his family have had years of successful deer hunts and numerous rubs were observed while walking the property. Although it has no utilities, there is a nice 12' X 24' insulated cabin finished with wood floors for the new owners to conveniently stay on the property during their weekend or longer recreational trips. Electricity is available at Cable Ridge Road if there is a desire to build on the property. Access to Lake of the Ozarks is available for canoes, kayaks and smaller watercraft via the fore-mentioned creeks. If you like stream fishing for smallmouth bass and other species where larger boats won't bother you, this place is ideal. This is a very nice property, which the owners are selling only to buy property closer to family property in another county. The city of Climax Springs is only a few miles from the property. For more information or to schedule a showing, please call or text Tim Banek at (573) 826-9590 or by email at timbanek@missourilandco.com.



MISSOURI LAND COMPANY **NEW LISTING**

Camden Co-60 Acres - \$275,000

60 acres out in the country and is a very nice place. The home was built in the 90's and is a 2-bedroom one bathroom with wood floors throughout. Right at 1000 sq ft. Rustic on the outside seller used log siding, looks just like a log home. The outside decks are big and there is 800 sq ft of decks. Sitting on a crawlspace. Has its own well and lagoon for septic. The shop is nice it's a 30 x 40 with a 10x 40 overhang. 8-inch concrete floor for that heavy equipment. One big garage door and walk in door. The yard is big better have a zero turn; it looks like a park setting. The property lays very nice, very gentle. Has a nice little pond, trails all through the woods to get around. Timber is nice and I know there will be some great hunting here. This would also make a great hunting camp for a group. Only a short drive to Richland city limits maybe 6-7 minutes. This is priced right and will not last long! Call Mike Stoner at 573-774-9775 Cell



Cole Camp Office:
14884 Centerline Ave.,
Cole Camp
660-668-4868

www.missourilandco.com • 660-668-HUNT

ROOMMATE NEEDED: Near the highway 15 min to Fort Lennard Wood, 15 Min to Lebanon. Entire 2nd floor of farmhouse on acreage. Roommate will get 2 private bedrooms with private bath. 500/month includes utilities. Call Kurt @ 573-528-0234.

AMERICAN FLYER TRAIN SETS: \$300. Call John 417-581-6135.

BLACK CHERRY TREE LOG: 22FT long, 16 DBH, on the ground, make offer. 636-390-8598. Labadie.

KOI GOLDFISH: waterlilies, aquatic plants. Call John 417-581-6135.

1974 CHEVY 4X4 C30: Needs work. Good to fix up. \$3,900. 417-217-8551. Cabool.

NORWEGIAN ELKHOUND PUPPIES: 10-weeks-old on June 5th \$200 O.B.O. Elkhound crossed puppies \$50 O.B.O. Cute, adorable, social. Parents on farm. Great predator protection. 417-241-0394. Hartville.

565 NEW HOLLAND SQUARE BALER: Stored in the barn. \$7,500. 417-531-2790. Mt. Grove.

25 ACRES SOUTH OF FLW!: Highway frontage, well, power, flat building site, national forest on 2 sides, Pond, established food plots, 10 minutes from convenience store. Appraised at 104K. Asking 95K. 573-855-5222. Leave message.

KIRBY 100TH YEAR ANNIVERSARY VACUUM: With case and all attachments. \$400. 417-353-2665.

COLEMAN HOT TUB/SPA: 4-person, 120 jets, like new, complete with platform & cover, ready to set up & enjoy. \$400. 417-286-3212.

OFFICIAL TRACTOR OF TOUGH™

INTRODUCING THE ALL-NEW 5100 SERIES



Marshfield Machinery Inc.

222 E. Madison • Marshfield, MO 65706
417-859-2117 • www.marshfieldmachinery.com

*2018 data including all Mahindra group brand sales.
MahindraUSA.com © 2020 Mahindra USA Inc.



NEW MAHINDRA TRACTORS	
2638 4WD & LDR 38HP	IN STOCK
2645 4WD & LDR 45HP	IN STOCK
4550 4WD & LDR 48 HP	IN STOCK
USED TRACTORS	
MF 4708 80HP 4WD CAB LDR	58,500
MF 4710 99HP 4WD CAB LDR	52,500
MF 4609 90HP 4WD CAB LDR	47,500
MAHINDRA M85P 4WD CAB LDR	29,500
MAHINDRA 2638 38HP 4WD LDR	21,000
MAHINDRA 2638 38HP 4WD LDR	20,000
MAHINDRA 1635 35HP 4WD LDR	19,500
JD 2210 23HP LDR, MOWER	10,000
AGCO ALLIS 4660 52 HP	6,500
MF 1085 81HP	6,500
CUB CADET 7205 20HP 4WD	4,250
FORD 2000 31 HP	3,500
KUBOTA L175 17HP W/ MOWER	3,000
MF 135 36 HP	2,750
FORD 861 45 HP	2,500
USED ROUND BALERS	
NH RB450 4X5 MESH	24,000
JD 466 4X6 MESH	10,000
HESSTON 550 4X6	2,500
HESSTON 560 5X6	2,000
USED MISC.	
MF 1383 13FT MOWER/COND	19,500
SITREX 8 WHEEL RAKE	1,750
LELY 8 WHEEL RAKE	1,750
BH RDTH 60 FINISH MOWER	850
RHINO 5FT FINISH MOWER	850
LAND PRIDE 5FT CUTTER	500
ROLLINS 5FT BLADE	250

Marshfield Machinery Inc.

222 E. Madison
Marshfield, MO 65706
417-859-2117
www.marshfieldmachinery.com

KUSTER LOGGING

BUYER of Standing Timber
Oak and Walnut

Dozing Now Available

417-259-0047

References Available



FOR SALE A.I. SIRE 2 & 3 YR OLD ANGUS BULLS.: Low birth weight, high growth from closed herd of 27 yrs. Gentle & on complete health program. See our website @ jbcattle.com. Call 573-578-3086.

Farmall "H" Tractor: 3-Point lift. Older restoration-Sharp! Excellent rubber. \$2,500 Firm. 417-848-8754. Springfield.

IHC FARMALL "M" TRACTOR: Strong engine, clutch & brakes. Good rubber. Average looks. \$1,250. 417-848-8754. Springfield.

2008 KING RANCH FORD EXPEDITION: Beautiful vehicle, loaded. \$7,500. 573-291-4039.

BLUE HEELER PUPPIES: D.O.B. 4-26-23. Tails docked. Ready for new home. 417-718-4707. Lebanon.



CLASSIC EDGE

TITANIUM HDX

26% Tax Credit on EPA certified Central Boiler Classic Edge HDX models and installation. Call today to learn more!

Outdoor Wood Furnace
CentralBoiler.com



The Classic Edge 360, 560 and 760 HDX are U.S. EPA Certified

Yarbrough Equipment Sales & Services, Inc.
9776 E. State Hwy 00 • Strafford, MO
417-736-2303 • 1-866-286-6901 • www.yarbeq.com

FOR SALE: 2004 Excursion 4x4, auto, runs good. \$2,500. 1998 Chevy 4x4, auto, v6, runs good. \$2,800. 417-962-0710 or 417-217-1854. Cabool.

NEW HOLLAND 210R DISCBINE: \$23,000. **New Holland 570 Square Baler** \$11,500. 573-368-6239.

JACOBS 4-HORN SHEEP: 2 Rams 1 1/2-years-old. 1 Ewe 1-year-old with Ewe Lamb. 417-718-47870

SLIGHTLY USED PUZZLES: Will sell or trade. 417-818-3469. Strafford.

TINY HOMES – Missouri Franchise 573-881-7965

I BUY.....used mobile homes. Call or text 573-338-6250 or email GregS.CDH@outlook.com

REGISTERED HEREFORD & ANGUS BULLS: Home raised, Some Show-Me Select Qualified. 573-701-7828. Belgrade.

LIGHTLY EXPERIENCED GOLF BALLS: \$3 a dozen. 417-818-3469. Strafford.

HARLEY PANHEAD DISTRIBUTOR: original, chrome + complete. \$125. 573-764-3517. Call in PM.

1962 HARLEY SPORTSTER 900CC: original distributor. \$50. 573-764-3517. Call in PM.

DRYWALL TAPING TOOLS: 12” pan, pan holder, tape roller. \$25. 636-239-2695 or 314-560-5700. Washington.

NEW SQUARE D RAINPROOF 50AMP DISCONNECT: \$160. 636-239-2695 or 314-560-5700. Washington.

Buildings • Hunter's Cabins • Lawn Furniture

JAMCO BUILDERS

JAMCO Portable Buildings

800-688-2064 • 307 Enterprise Dr. • Seymour, MO • www.jamcobuilders.com

Rent To Own Plan

Route 66 MOTHER ROAD BOOK: by Michael Wallis, \$12.50. 417-532-2045. Lebanon. (Leave message and phone number.)

WEATHERED BARN WOOD SIDING: 10” wide. 573-729-7226. www.pineridgerustic.com Salem.

LOG SIDING: 2X8 Pine/Western Cedar www.pineridgerustic.com 573-729-7226. Salem.

BASEMENT READY USED DOUBLE-WIDE – 3 bdr, 2 bath, Financing Call for info 573-657-2176 amegamobilehomes.com

MISSOURI CURIOSITY BOOK: Quirky, characters, roadside oddities and other offbeat stuff, 200 pages, \$9.75. 417-532-2045. Lebanon. (Leave message and phone number.)

DISCOUNT NEW MOBILE HOMES – we will beat any price on any home **GUARANTEED.** Financing, 573-499-9993 columbiadiscounthomes.com

BASEMENT READY TRUE MODS- instock ready for delivery 573-657-7040 chateauhomes.net

1890 GOLD TESTING KIT: Glass acid beakers + antique wooden case. \$100. 573-764-3517. Call in PM.

LIONEL TRAIN SET: Steam engine, tender, caboose and other car, track, and transformer. \$195. 573-364-7465. Rolla.

MODEL 1911 FRAME 8-SHOT C02 PISTOL: Like new, in box with C02 cartridges, 4 clips, pellets & all paperwork. \$95. 573-364-7465. Rolla.

1970s KIDS METAL STOVE & FRIDGE: Nice Lithographic paint, 18” wide x 36” high. \$75. 573-364-7465. Rolla.

3 GENTS WITTNAUER WRIST WATCHES: 10k gold + 23J. All \$200. 573-764-3517. Call in P.M.

HARLEY FAT BOBS: Custom flame paint w/ gas caps + lines. \$100. 573-764-3517. Call in P.M.

COLT REVOLVER DEALER CATALOGS: Circa 1950’s + 1960’s. All for \$100. 573-764-3517. Call in P.M.

110 PORCELAIN POCKET WATCH DIALS: Perfect for arts & crafts. \$100. 573-764-3517. Call in PM.

1500 VINTAGE WRISTWATCH DIALS: \$100. 573-764-3517. Call in PM.

HARLEY 45 SOLO: factory rear brake drum + sprocket. \$150. 573-764-3517. Call in PM.

Starnes Auto LLC

22115 Rt. 66 • Lebanon, MO 65536

588-7939 Cell
588-3159 Office

www.starnesauto.com

Worry-Free

AUTOMOTIVE PAINT & BODYWORK

Our trained experts and specialized equipment get you the highest quality body repair and paint solutions.



WE DO ALIGNMENTS!



LUCKY DISCOUNT LUMBER
NOBODY BEATS OUR PRICES

Sale Ends June 30, 2023

Seymour, Missouri 417-935-4201



Pole Barns & Post Framed Buildings!

23'x32'x10' \$6,888 Material Only \$9,090 Labor Included	23'x40'x10' \$7,885 Material Only \$10,600 Labor Included	30'x40'x10' \$9,595 Material Only \$13,100 Labor Included	40'x60'x12' \$16,745 Material Only \$23,985 Labor Included
--	---	---	--

Call for free quote, brochure & color chart.
Other sizes also available.



NOBODY, BUT NOBODY BEATS OUR PRICES!!!

10 ft. Slider • Engineered Trusses 8' O.C. • 2x6 Treated Bottom Wrap • Screws • 2x10 Top Wrap • 2x4 Purlins • Full 29 Gauge Steel • Plus 3 ft. Entry Door with Lock
 OPTIONS: Sidewall Heights on all Buildings 10', 12', 14' & 16'. Overhead Garage Door. Skylights. Insulation. Wainscoting. Insulated Vinyl Windows. Cupolas. Labor Rates Slightly Higher over 50 Miles from Seymour.
 Call for YOUR FREE QUOTE TODAY!!!

PAINTED WHITE, GREEN OR TAN METAL\$97.79	IN STOCK
10' - \$31.00 12' - \$37.20 16' - \$49.60	
MIX & MATCH METAL\$59.99	
8' - \$15.20 10' - \$19.00 12' - \$22.80	
GALVALUME METAL\$79.99	
10' - \$25.40 12' - \$30.48 16' - \$40.64	
GALVANIZED CORRUGATED METAL SOLD OUT!	
8' - \$9.84 10' - \$12.30 12' - \$14.75 16' - \$19.67	

40yr Painted Metal
\$105.59^{Sq}

KNOTTY PINE DOORS
Starting at
\$164.99

Prices subject to change without notice
6X6 CEDAR POST LIMITED TIME \$5.87 LN FT

Car Siding!

1x6 White Pine Siding **69¢ In ft**
1x8 White Pine Siding **99¢ In ft**
* 4 Profiles to choose from!
Broken Bundles Add 10¢ Per Ft.

4x8 Sheeting
Less than full units Add \$1 per sheet

3/8" Beaded Paneling	\$24.99
5/8" T111 Siding Paneling	\$19.99
1/2" Plywood	\$SOLD
3/4" Plywood	\$29.99
3/16 Pegboard	\$12.99

LOTS OF MATERIAL AVAILABLE FOR THOSE IN HOME PROJECTS!

REAL WOOD SIDING

2x6 Log Siding **\$1.76 In ft**
1x8 Beveled Cedar from **99¢ In ft**
T1-11 Siding from **\$19.99**

NEW PACKAGE HOMES



2x6—16" on center-Exterior Stud Walls
Residential Roof Trusses-2' on center
4/12 pitch with 1' over hang
40 year Painted Metal roofing in 20 Different Colors
Profile Ridge Vent - Ventilated Ridge Cap
Vinyl Center Vent Soffit
Color Matched Metal Fascia & Gable Trim
2 - 3' 6 Panel Entry Doors
4 - 3'x4' Vinyl Insulated Windows

Your Choice of either:
Stock 5/8" T111 Siding w/1x4 Pine Window & Door Trim - or -
7/16" OSB & House Wrap ready for other finish options

ALL FIGURED FOR SUITABLE CUSTOMER SUPPLIED SLAB OR SUB-FLOOR

Price for Basic Materials Package (No Labor at this Time)

20x24(480 sq. ft.)	20x32(640 sq. ft.)	20x40(800 sq. ft.)	28x40(1120 sq. ft.)	28x48(1344 sq. ft.)
\$9,490	\$10,839	\$12,339	\$15,129	\$18,729

DECK PACKAGES

Materials Only

8x8.....\$349.00	10x12.....\$699.00
10x10.....\$499.00	10x16.....\$899.00
12x12.....\$899.00	12x16..\$1179.00

QUAKER Now Stocking Quaker Vinyl Windows

2030 \$ 163.99	3030 \$189.99
3040 \$206.99	3052 \$225.99
3040Twin \$453.99	3052Twin \$497.99



LUCKY DISCOUNT LUMBER
417-935-4201
455 State Hwy C • Seymour MO 65746
www.luckydiscountlumber.com



*Some restrictions apply see store for details. Prices subject to change without notice.

2 ELECTRIC MOTORS: Diehl 1/3 horsepower and Wagner Electric 3/4 horsepower, includes 21 pulleys various sizes and widths. \$45. 210-787-8222. Linn Creek.

USED JET HOME POLLUTION CONTROL PANNEL: Model CP700. \$65. 636-239-2695 or 314-560-5700. Washington.

1 PAIR OF KEY BRAND MEN'S JEANS: Waist 38, Length 34. \$10. 636-239-2695 or 314-560-5700. Washington.

BLACK METAL TUBULAR BRACKET: Scrolling and a stainless bracket. \$10. Call for pictures. 636-239-2695 or 314-560-5700. Washington.

CHILTON'S AUTO REPAIR MANUAL: American & Volkswagen Cars 1969-1976. \$35. 417-260-0941. Raymondville.

BAMBOO FLY RODS: \$50. 417-589-8200.

AKC WELSH CORGI PUPS: DOB 4/21/23. \$300. 417-259-9738.

YOUR FULL SERVICE AUTO BODY SHOP

Call today for an appointment or estimate!

Restorations, insurance jobs, and more!

DAVIDSON'S Customs
417-288-1589

417-288-1589 • 115 Lincoln St., Buffalo, MO • @DavidsonCustoms

FOR SALE: Transmission for 56 & 06 series International tractors. \$675. 636-239-2695 or 314-560-5700. Washington.

HEARTH CRAFT GLASS BI-FOLD FIREPLACE DOORS PURCHASED AT FORSHAW'S FIREPLACE: Antique brass. \$160 obo. 636-239-2695 or 314-560-5700. Washington.

ANTIQUE HOG OILER: \$35. 573-308-5884. Rolla.

TRAILER HOUSE RIMS: \$10 each. 573-308-5884. Rolla.

NEIGHBORHOODS HOME IMPROVEMENT STORE: 417-533-5080. Lebanon.

FISHING SEASON COMING: Get your rod and reels. \$15 & up. 417-589-8200.

4 GOODYEAR WRANGLER TIRES: Kevlar LT245/70R17, all terrain, \$100 for a pair. 417-417-260-0941. Raymondville.

FOR SALE: 2 Dayco motorcycle covers for Harley or other big bikes. \$50 each. 417-260-0941. Raymondville.

Cedar Ridge Truss LLC

ENGINEERED TRUSSES

Satisfaction is our goal

Mention this ad when calling!

417-259-9788
Fax 417-701-0021

4952 N Hwy. E
Hartville, MO 65667

Larry Heisel Rentals

LARGE or SMALL...

We Rent!

Crawler Loaders • Excavators • Backhoes

Call Larry! **We Deliver!**

573-779-1500

www.larryheiselequipment.com

Rental Available in 636 or 573 area code

'85 FORD PICKUP PARTS: Passenger door with window glass & mirror \$30. Also, Tailgate for '85 Ford pickup \$25. 573-308-5884. Rolla.

COLEMAN HOT TUB/SPA: 4-person, 120 jets, like new, complete with platform & cover, ready to set up & enjoy. \$400. 417-286-3212.

VINTAGE WORKING 1967 ELECTRIC SINGER SEWING MACHINE: Special zigzag model 638 in cabinet with original instruction book. \$50. 210-787-8222. Linn Creek.

TROLLING MOTOR: MotorGuide 71 lb. thrust, 24-volt. Excellent condition. \$150. 210-787-8222. Linn Creek.

NEW JELD WEN 5' LEFT HAND SLIDING GLASS DOOR WITH SUNSTABLE INTERIOR BLINDS: Clear tempered glass, Desert Sand trim/hardware. Retail \$2655 Sell \$900. 417-693-0389. Conway.

MAC'S TIEDOWN STRAPS: Like New. \$80. 417-260-0941. Raymondville.



Starting at \$57,500
2022 Deere 317G *UNUSED*
Cab&OROPS, Loaded! IN-STOCK



Over 500 Attachments IN STOCK!
We ship NATIONWIDE!

Craig Equipment
2681 W. Pearce Blvd | Wentzville, MO 63385
636-856-8555
www.CraigEquipment.com
*Availability & Price subject to change without notice



Starting at \$94,995
2022 Deere 333G *UNUSED*
LOADED! IN-STOCK



2022 Deere 325G *UNUSED* Warranty
Loaded! IN-STOCK.....\$69,995



2019 Deere 333G *HiFlow* 1855hrs
Warranty PolyDoor AC/Cab
Joystix.....\$58,900



2017 Deere 333E 100hp 3529hrs AC/Cab
Joystix 2sp.....\$44,900



2015 Deere 319E 69hp, 1874hr, Joystx, NEW
Trax.....\$34,900



2016 Deere 326E *HiFlow* 2300hr AC
Joystx 2speed NEW Tires.....\$39,900



2016 Bobcat T750 85hp 3231hrs AC/Cab
2sp.....\$39,900



2021 Bobcat T870 *HiFlow* 540hrs, AC/Cab,
Joystx, Warranty!*.....\$84,900



2021 Bobcat T770 *HiFlow* 733hr AC/Cab
Joystx *Warranty*.....\$69,900



2009 Bobcat T190 *HiFlow* *ONLY
627hr* AC/Cab Joystx.....\$49,900



2006 Bobcat T300 81hp 2992hrs AC/Cab
ISO/H Joystx A+Trax.....\$42,500



2015 Bobcat T770 0 *HiFlow* 92hp Kubota
2258hrs AC/Cab Joystx.....\$49,900



2000 Bobcat 763 *LIKE NEW* 106 HOURS,
Clean & NEW Tires.....\$34,900



2016 Bobcat S570 61hp 1548hr AC/Cab Ft
Controls PwrBkt Chngr.....\$31,900



2014 Bobcat S70 24hp 1201hrs 36" smooth
bkt included.....\$19,995



2006 Cat 257B **ONLY 399HR** 62hp AC/
Cab Joystx.....\$49,900



2006 Cat 252B 73hp 3566hrs AC/Cab
Joystix, PwrBkt Chngr.....\$29,900



2011 Cat 259B 75hp AC/Cab Joystx 2sp
NICE.....\$34,900



2018 Kubota SVL75 *1 owner* 74hp,
1768hrs, AC/Cab, Joystx, PwrBkt
Chngr.....\$48,900



2015 Kubota SVL190 92hp, 2943hrs, AC/
Cab, Joystx, 2sp, Pwr Bkt Chngr.....\$42,500



2010 Gehl CTL75 *83hp, 1435hrs, AC/Cab,
Joystx, 2sp.....\$42,500

BYLER SUPPLY

The Builder's Choice!

Summer Project Supplies!

CALL TODAY FOR NEXT DAY SERVICE!

Call for Details



HEAVY 29 Ga. METAL #1
Limited LIFETIME WARRANTY
29 Ga. & 26 Ga. Painted

**CUT TO LENGTH PANELS
GALVALUME METAL UNPAINTED
25 YEAR WARRANTY
#1 Standard Panels, 29 Ga.**

\$71.61 sq.

Ask About Our Quick Service.



Over 20 Colors and Several Styles To Choose!



Reg. Pole Frame Buildings Are Heavy 29 Ga. Metal, Three 2"x6" T&G Splashboards, All Poles 5"x5" Or Larger, CCA Treated, Fully Trimmed With One 3'x6' Walk-Through Door & One Large Sliding Door.

CALL US FOR CURRENT PRICING



BYLER BUILDING SUPPLY, LLC



2 1/2 Miles East of Seymour On 60, 1/4 Mile North at the Peewee Crossing\Star Road Intersection

877-556-8855 • MON.-FRI. 7:30-5 SAT. 8-12 • 417-771-3100

VISIT US AT WWW.BYLERSUPPLY.COM