

**FREE - TAKE ONE!**

Vol. 30 No. 10

**JUNE 1, 2023**

417-532-9131

# WEEKLY TRADER MAGAZINE



Find us on Facebook

@myweeklytrader  
AUCTIONS PG. 7

**VISIT OUR NEW WEBSITE! MYWEEKLYTRADER.COM**

**You pull it,  
we sell it...**

**CHEAP!**



**Lebanon, MO**

22395 Rt. 66

**417-588-3555**

Fax 417-588-8955



## U★PULL★IT

SELF-SERVICE AUTO PARTS

We also have a large inventory of used tires and be sure to check out our used car lot!

Mon.-Fri. 8:00am-6:00pm • Sat. 8:00am-4:30pm

**WWW.SSUPULLIT.COM**

Located next to S&S Recycling.



**For All Your Metal Recycling Needs**

**Lebanon, MO**

22395 Rt. 66

**417-588-3555**

Fax 417-588-8955

**Mtn. Grove, MO**

8930 First Rd

**417-926-3360**

Fax 417-926-0180

**Roll-off, Trailer, and  
Mobile Crushing  
Services Available**

Monday-Friday 8:00am-4:30pm (Closed 12pm-1pm Lunch)  
Saturday 8:00am-Noon

email: [contact@ss-recycling.com](mailto:contact@ss-recycling.com)

**Buyer of all types of scrap metal.**

# Land

For Sale

Greene Co., Mo • 113 Acres +/-



**\$2,999,000**

Over a half mile of phenomenal accessible James River water frontage  
 Two miles from East Springfield and all amenities the city offers  
 Great location for building your future home with a picturesque landscape  
 Close proximity to city but secluded and quiet atmosphere

- Amazing views from every inch of property
- Great fishing in the James River on property
- 6 cross-fenced pastures
- Nice 5 strand barbed wire fence
- Feeding alleyways between pastures
- Livestock barn with individual catching pens for each stall
- Large barn for equipment and livestock

- Two grain bins
- Fuel tank with pump
- 17 acres planted in alfalfa
- Multiple automatic cattle waterers and tanked pond waterer
- Pond
- Water well and electric on property
- Blacktop access



**WHITETAIL PROPERTIES REAL ESTATE**

HUNTING | RANCH | FARM | TIMBER

**Brian Utecht | 417-766-5595**

[Brian.Utecht@whitetailproperties.com](mailto:Brian.Utecht@whitetailproperties.com)

[WHITETAILPROPERTIES.COM](http://WHITETAILPROPERTIES.COM)



Missouri's Top Land Specialist in 2014, 2015, 2016, 2017, 2018, 2019, 2020 and 2021





## RB16 SERIES

REAR BLADES  
20-40 HP 60", 74", 84" Widths

- Cat. 1 hitch
- 7 Forward angles; 3 Reverse angles
- 5 Tilt positions
- 12" Offset left or right
- 14" Moldboard height
- 1/4" Moldboard thickness
- Landscape Rake adaptable

Getting Chores Done  
**LAND PRIDE**  
*does that.*



[www.landpride.com](http://www.landpride.com)

For Outstanding Products & Service

# AGRI-ENTERPRISES

1-1/2 Miles South Of Licking, MO On Hwy 63  
573-674-2203 • 1-800-653-7152 • [www.agri-enterprises.com](http://www.agri-enterprises.com)

**Route 66 MOTHER ROAD BOOK:** by Michael Wallis, \$12.50. 417-532-2045. Lebanon. (Leave message and phone number.)

**WEATHERED BARN WOOD SIDING:** 10" wide. 573-729-7226. [www.pineridgerustic.com](http://www.pineridgerustic.com) Salem.


**LOG SIDING:** 2X8 Pine/Western Cedar [www.pineridgerustic.com](http://www.pineridgerustic.com) 573-729-7226. Salem.

**BASEMENT READY USED DOUBLE-WIDE** – 3 bdr, 2 bath, Financing Call for info 573-657-2176 [amegamobilehomes.com](http://amegamobilehomes.com)


**DISCOUNT NEW MOBILE HOMES** – we will beat any price on any home **GUARANTEED**, Financing, 573-499-9993 [columbiadiscounthomes.com](http://columbiadiscounthomes.com)

**DOWN IN THE HOLLER: A Gallery of Ozark Folk Speech** by Vance Randolph with dust jacket, rare book, 320 pages, first edition 1953, \$25. 417-532-2045. Lebanon. (Leave message and phone number.)

**RUBBER & LEATHER BOOTS AND 5-Buckle OVER SHOES:** Men's 11, Women's 7, some insulated. \$15-\$40 obo. 636-239-2695 or 314-560-5700. Washington.







**VOTED  
#1 BEST  
Preowned Car  
Dealership**



## TIM'S USED CARS

(573) 341-3828 • 1334 South Bishop (Hwy. 63) • Rolla, MO  
Next to Hwy CC • [www.tims-used-cars.com](http://www.tims-used-cars.com)

 <p><b>2016 FORD TAURUS SE</b> 3.5 V-6, power equipped 41,xxx Miles <b>Only \$16,900</b></p>	 <p><b>2016 CADILLAC ESCALADE LUXURY</b> AWD, 6.2 V-8, loaded w/options 138,xxx Miles <b>Only \$29,800</b></p>	 <p><b>2019 RAM 1500</b> Big Horn, quad cab, 4x4,3.6 V-6, power equipped, 92,xxx Miles <b>Only \$29,900</b></p>
 <p><b>2018 FORD FUSION SE</b> 2.5 4 cyl., power equipped, 44,xxx Miles <b>Only \$19,900</b></p>		

LARGE SELECTION OF CARS, TRUCKS, SUVs & VANS!





**HEISEL** 573-779-1500  
Larry's Cell 636-432-9460  
RENTAL SALES & SERVICE

**Crawler Loaders  
Excavators, Backhoes**

*Call Larry!*

Rental Available in 636 or 573 Area Codes

## 573-779-1500



**BASEMENT READY TRUE MODS-**  
instock ready for delivery 573-657-7040  
chateauhomes.net

**TINY HOMES** – Missouri Franchise 573-881-7965

**I BUY**.....used mobile homes. Call or text 573-338-6250 or email GregS.CDH@outlook.com

**REGISTERED HEREFORD & ANGUS BULLS:** Home raised, Some Show-Me Select Qualified. 573-701-7828. Belgrade.

**1970s KIDS METAL STOVE & FRIDGE:**  
Nice Lithographic paint, 18” wide x 36” high. \$75. 573-364-7465. Rolla.

**3 GENTS WITTNAUER WRIST WATCHES:** 10k gold + 23J. All \$200. 573-764-3517. Call in P.M.

**HARLEY FAT BOBS:** Custom flame paint w/ gas caps + lines. \$100. 573-764-3517. Call in P.M.

**COLT REVOLVER DEALER CATALOGS:** Circa 1950’s + 1960’s. All for \$100. 573-764-3517. Call in P.M.

**THE TIRES YOU NEED FOR ALL SEASONS**

With brands like:

**NEXEN**  
NEXEN TIRE

**YOKOHAMA**

**ATTEBERRY MFA**  
**TIRE & AUTO CENTER**  
333 E. BROADWAY • BOLIVAR, MO  
DUANE ATTEBERRY • 417-326-6286

**ASE**

**LIGHTLY EXPERIENCED GOLF BALLS:** \$3 a dozen. 417-818-3469. Strafford.

**SLIGHTLY USED PUZZLES:** Will sell or trade. 417-818-3469. Strafford.

**LIONEL TRAIN SET:** Steam engine, tender, caboose and other car, track, and transformer. \$195. 573-364-7465. Rolla.

**MODEL 1911 FRAME 8-SHOT C02 PISTOL:** Like new, in box with C02 cartridges, 4 clips, pellets & all paperwork. \$95. 573-364-7465. Rolla.

**110 PORCELAIN POCKET WATCH DIALS:** Perfect for arts & crafts. \$100. 573-764-3517. Call in PM.

**1890 GOLD TESTING KIT:** Glass acid beakers + antique wooden case. \$100. 573-764-3517. Call in PM.

**USED JET HOME POLLUTION CONTROL PANNEL:** Model CP700. \$65. 636-239-2695 or 314-560-5700. Washington.

**HARLEY 45 SOLO:** factory rear brake drum + sprocket. \$150. 573-764-3517. Call in PM.

**TAYLOR TRUCKS & EQUIPMENT**

**417-924-2026 • 2676 Hwy. 5, Mansfield, MO**

★ INTIMIDATOR TREE PULLER ★

★ 3 POINT TILLERS ★

**TRAILER PARTS & REPAIR**  
**MD144 Bat Wing in stock!**

**Milwaukee Cordless Tools**

**DANUSER DEALER**  
T3 Post Driver & Other Attachments  
New Mowers! Bush-Whacker, Big Bee  
Storage Containers & Dry Vans - 20' - 53',

**BUSH-WHACKER HD**  
**SKIDSTEER BRUSH CUTTER**

Portable Generators, Farm Tires, New Semi Tires, PTO's & Parts for Rotary Mowers, Farm Tractor Implements, Plows, Used 15" Bush-Whacker Now In Stock, Discs, and More Skidsteer Attachments: Pallet Forks, Buckets, Grapples, Hay Spears, RR Tires

**Bush-Whacker**  
**Heavy Duty Rotary Cutter**

**We invite you To Come By & Look Us Over! Located 2.5 Miles North Of Mansfield, MO On Hwy 5**

**HARLEY PANHEAD DISTRIBUTOR:** original, chrome + complete. \$125. 573-764-3517. Call in PM.

**1962 HARLEY SPORTSTER 900CC:** original distributor. \$50. 573-764-3517. Call in PM.

**NEW SQUARE D RAINPROOF 50AMP DISCONNECT:** \$160. 636-239-2695 or 314-560-5700. Washington.

**FOR SALE: Transmission for 56 & 06 series International tractors. \$675. 636-239-2695 or 314-560-5700. Washington.**

**YOUR FULL SERVICE AUTO BODY SHOP**

Call today for an appointment or estimate!

**Restorations, insurance jobs, and more!**

**DAVIDSON'S Customs**  
417-288-1589


**417-288-1589 • 115 Lincoln St., Buffalo, MO • @DavidsonCustoms**

**WE BUY AND SELL**  
new and used mobile homes



**(417) 501-1061**

**Cedar Ridge Truss LLC**



ENGINEERED TRUSSES  
*Satisfaction is our goal*

Mention this ad when calling!

417-259-9788  
Fax 417-701-0021

4952 N Hwy. E  
Hartville, MO 65667

**HEARTH CRAFT GLASS BI-FOLD FIREPLACE DOORS PURCHASED AT FORSHAW'S FIREPLACE:** Antique brass. \$160 obo. 636-239-2695 or 314-560-5700. Washington.

**1 PAIR OF KEY BRAND MEN'S JEANS:** Waist 38, Length 34. \$10. 636-239-2695 or 314-560-5700. Washington.

**ANTIQUE HOG OILER:** \$35. 573-308-5884. Rolla.

**TRAILER HOUSE RIMS:** \$10 each. 573-308-5884. Rolla.

**NOW BUYING STANDING RED AND WHITE OAK TIMBER:** All slash will be trimmed to lay flat or placed in tidy piles for wildlife. No scarred-up trees or ruts from heavy logging equipment. We use low impact compact track loaders to minimize disturbance in your forest. Missouri Land Service LLC. 417-991-9280.

**1500 VINTAGE WRISTWATCH DIALS:** \$100. 573-764-3517. Call in PM.

**2 ELECTRIC MOTORS:** Diehl 1/3 horsepower and Wagner Electric 3/4 horsepower, includes 21 pulleys various sizes and widths. \$45. 210-787-8222. Linn Creek.

**CUSTOM HAY HARVESTING:** or put up in shares. 4x5 Net Wrap Tight JD Bales. \*Reasonable Rates\* Reliable Service Larger Acreages Desired. Book early to beat the rush. For a Free Quote call Josh \*573-247-8715\* Green Meadows Farm: Servicing Dent, Texas, and surrounding counties.

**NEW JELD WEN 5' LEFT HAND SLIDING GLASS DOOR WITH SUNSTABLE INTERIOR BLINDS:** Clear tempered glass, Desert Sand trim/hardware. Retail \$2655 Sell \$900. 417-693-0389. Conway.

**BAMBOO FLY RODS:** \$50. 417-589-8200.



**Call to Order 417-993-3017**

**Meadowview Dutch Market**

Bulk & Surplus Groceries • Prices Subject to Stock on Hand

**DELI SPECIAL**

HABANERO JALAPENO CHEESE.....REG. \$6.49 LB .....SALE \$5.99 LB

GERMAN BOLOGNA.....REG. \$4.99 LB .....SALE \$4.49 LB

**TRY our Fresh Homemade DELI Sandwiches: TURKEY, HAM, ROAST BEEF, ITALIAN, BLT'S, PULLED PORK AND BLT PULLED PORK (MADE YOUR WAY)! COME IN OR CALL to order! ALSO Custom Deli trays! Veggie OR FRESH Meat-N-Cheese!**

<p>Mesquite Smoked Turkey Breast</p> <p><b>99¢</b> LB.</p> 	<p>Bone-In Ribeye Steaks</p> <p><b>\$6.49</b> LB., APPROX. 10 LB CASE</p> 	<p>BBQ Beef Patty Fully Cooked</p> <p><b>\$9.99</b> 17.5 LB CASE</p> 	<p>Cheddar Cheese 40 LB Block</p> <p><b>\$1.99</b> LB</p>
<p>Chocolate Pudding</p> <p><b>2 FOR \$1.50</b> 22 OZ.</p> 	<p>Tapioca Pudding</p> <p><b>2 FOR \$1.50</b> 22 OZ.</p>	<p>Natural Bliss Creamer</p> <p><b>2 FOR \$1.00</b> 16 OZ.</p>	

**Sale Dates May 31<sup>st</sup>, 2023 to June 6<sup>th</sup>, 2023 while supplies last!**

**BULK MEAT SALE!!**

**FULLY COOKED DRUMSTICK FRITTERS**

**\$17.50** 20 LB CASE

---

**FULLY COOKED CHICKEN STRIP FRITTERS**

**\$24.99** 20 LB CASE

**MEADOWVIEW DUTCH MARKET**  
417-993-3017 Hours: Mon-Thurs 8-5pm  
Fri 8-6pm • Sat 8-5pm  
23 Miles West on Hwy 64 • Right on T Hwy  
9 miles • Left on E Hwy 1 mile on Left

**NOW ACCEPTING CREDIT, DEBIT CARDS & EBT**

**DUTCH COUNTRY STORE, LLC**  
573-378-4395  
Hours: Mon-Thurs 8-5pm  
Fri 8-6pm • Sat 8-5pm  
5 miles East of Versailles off Hwy C on Kelsay Road

**2023 Missouri Junker Days**  
**June 9th 9-4pm & June 10th 9-3pm**  
**Marketplace-Antiques-Garage Sale**

**150+ booths**

- BOUTIQUES • ANTIQUES
- CRAFTS • COLLECTIBLES
- GARAGE SALE • FLIPS
- FINDS • VINTAGE

**FREE GOODIE BAGS TO THE FIRST 50 EACH DAY**

*Come Shop with us*

Located in Climate Controlled E-Plex Ozark Empire Fairgrounds  
 3001 N Grant Ave  
 Springfield Mo 65803

**\$5 GENERAL ADMISSION. GOOD FOR BOTH DAYS. KIDS 12 & UNDER FREE**

**Forked Road Events**  
**FORKEDROADEVENTS.COM**

**FRESH SHEEP MILK & CHEESE:** For more info call 417-741.2186. Hartville.

**FISHING SEASON COMING:** Get your rod and reels. \$15 & up. 417-589-8200.

**4 GOODYEAR WRANGLER TIRES:** Kevlar LT245/70R17, all terrain, \$100 for a pair. 417-417-260-0941. Raymondville.

**FOR SALE: 10 Bred Angus Heifers, 16 Bred Angus Cows & 1 Angus Bull 2-years-old.** 314-306-6345 Call or text. Drake/Owensville.

**VINTAGE WORKING 1967 ELECTRIC SINGER SEWING MACHINE:** Special zigzag model 638 in cabinet with original instruction book. \$50. 210-787-8222. Linn Creek.

**NEIGHBORHOODS HOME IMPROVEMENT STORE:** 417-533-5080. Lebanon.

**TINY HOMES** – Missouri Franchise 573-881-7965

**OMAR'S DOZING**

- ⇒ Clear land
- ⇒ Clean up woods
- ⇒ Make driveways
- ⇒ Clear property lines
- ⇒ Build ponds

*Amish Owned & Operated*

**LEAVE MESSAGE: 417-741-0440**  
 Hartville & Surrounding Areas

**Wright Spray Foam Insulators, LLC**  
 Commercial & Residential  
**Call for FREE Estimates!**

Ervin Gingerich 417-926-2052  
 B. Eli Yoder 417-746-4932

**WANTED:** 1971 or 1972 Cadillac Sedan Deville, blue in color, must be in excellent running and driving condition. 573-280-9475.

**TROLLING MOTOR:** MotorGuide 71 lb. thrust, 24-volt. Excellent condition. \$150. 210-787-8222. Linn Creek.

**BAMBOO FLY RODS:** \$50. 417-589-8200.

**Economy Buildings in Stock Now!!**  
**Custom Built, Meeting Your Storage Needs**

**Come check out our double wides!! Sizes 32'x52' available**

**Come Visit Us Near You!**  
 For Display Locations in Waynesville, Sunrise Beach, & Camdenton, Call 573-346-3030

**BENNETT SPRINGS BUILDING CENTER**  
 2519 Hwy 65 • Louisburg, MO • Buy or Rent to Own Storage Buildings • 417-532-8338

**We Will Never Forget: Freedom Is Not Free**

As we pay tribute to the brave military veterans who made the ultimate sacrifice in service to our country. We are forever grateful for their service, and we will always honor their memories.

**Starnes Auto Body & Glass**  
 588-7939 • 588-3159  
 22115 RT. 66 • LEBANON, MO

Like us on Facebook

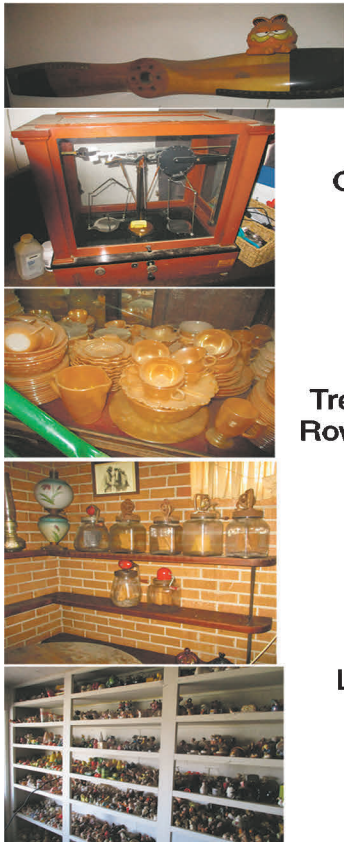
*Sam* **CRAWFORD AUCTION SERVICE** LLC

Due to the death of my husband, Bill Gibson, will sell the following at our farm located from Osceola, MO 3 mi. South on Hwy. 13 to Hwy TT, then East 9½ mi. to Co. Rd. SE 1379 then Southwest 1 mi. Watch for auction signs.

**SATURDAY, JUNE 10<sup>th</sup>, 2023 - 9:30 AM**

**REAL ESTATE • ANTIQUES • COLLECTIBLES**

*ANTIQUES & COLLECTIBLES*



- “Buck” Cook Wood Stove, Grey & Chrome • Wall Telephone
- Coo Coo Clocks • Pull Down Wall Maps • Regulator Wall Clock
- Grandfather Clock • Howard Miller “World Times” Clocks
- Wood Airplane Propeller • 2 Small Wood Ship Wheels • 2 Ship Clocks
- Tabletop Jewelers Scale • 7 Dazey Churns • RR Lanterns, Electric
- Other Lanterns • 4-5 Aladdin “Lincoln Drape” Lamps • 4-5 Maytag Motors
- 4-5 Corn Shellers • Cast Iron Bell • Sev. Pcs. Cast Iron
- Ice Tongs • Cast Iron Kettle
- Transit w/Wood Case • Audie Murphy WWII Framed Pictures
- Round Display Cabinet, Scroll Edge • Lamp Table, Scroll Edge
- Drop Front Secretary, Scroll Edge • Blanket Chest • Lg. Cedar Chest
- Curved Glass Cabinet 4’ Tall • Victrola Curved Front China Cabinet
- Treadle Sewing Machine • Commercial Sewing Machine • 2 GI Foot Lockers
- Rowe Jukebox • Set Lg. Steer Horns • Trainset • Popcorn Machine on Wheels
- 5-6 Wood Kitchen Chairs • Sofa Table • Wood Dynamite Box
- 2 Front Glass Store Showcases • Wood Heater • Wardrobe
- Story & Clark Console Piano • Dresser w/Wishbone Mirror
- Metal ice Box, 2 Door, Green & White • 3-4 Sq. Curio Cabinets
- 5-6 Oval Framed Pictures • 4-5 Lg. Sombreros • PacMan Game Table
- Turkey Mounts • 2 Bobcats • 2 Deer Heads • Fish
- 15-20 Wild Turkey Decanters • Lot Corningware
- Lg. Collection Anheuser Bush Steins • 500+ Sets Salt & Pepper Shakers
- Set Gold Rim Limoge China
- Ex-large Set Gold Lustre Dishes
- Carvinal Galss • Old Kitchen Utensils • Cookie & Biscuit Cutters
- Lg. Stianless Rolling Pin • Wood Chainsaw Carving • Other Misc.

**REAL ESTATE - SELLS AT NOON**

181 Acres +/- • Approx. 20% Open in Pasture • Well  
 Balance is Timber • 3 Ponds • Hunter’s Paradis With Lots of Deer & Turkey  
 Partially Fenced • Frontage on Hwy. TT • St. Clair Co. • Osceola School  
 12’x18’ Cedar Hunter’s Cabin • 30’x50’ Barn  
 Great Get-Away, Hunting Place



In Between Truman, Pomme de Terre & Stockton Lakes  
 Serious Seller, Make Plans To Be A Buyer. Shown By Appt. With Auctioneer’s  
 Will Be Sold From The Main Auction Location

*SAM*  
**CRAWFORD** LLC  
**Auction Service**

1944 **CELEBRATING 79 YEARS** 2023  
 STARTING 79 YEARS OF SALES & SERVICE

**TERMS:** Cash or good check. Nothing removed until settled for. Not responsible for accidents. Lunch available. Statements made day of sale take precedence over printed matter. All items sell as is. No warranties given or implied.

**417-998-6629**  
 Cross Timbers, Mo.

[CrawfordAuctionService.com](http://CrawfordAuctionService.com)

Sam  
 417-328-9137

Chase  
 417-399-1904

Chance, CAI  
 417-298-1751

Tom Poynter  
 Jack Lancaster

**SHERRY GIBSON**

# HOT WHEELS AUCTION

ONLINE ONLY!

SUNDAY, JUNE 4TH, 2023 AT 6:00 PM CDT

## INVENTORY LIST:

Hot wheels pavement pounder 40th desert team  
 Hot wheels pavement pounder  
 Hot wheels pavement pounder HW skate  
 Hot wheels new deluxe haulers  
 Hot wheels new deluxe haulers special edition  
 Hot wheels haulers solar power  
 Hot wheels airborne ranger monster jam  
 Hot wheels haulers short circuit  
 Hot wheels haulers  
 Hot wheels haulers Rock and Rod  
 Hot wheels haulers super bubble  
 Matchbox Elvis  
 Matchbox Elvis Graceland collection  
 Winner circle micromachines Jeff Gordon  
 Micromachines garage icons  
 Micro machines race team  
 Micro machines Jeff Gordon green flag series  
 Micro machines NASCAR draft pack  
 The blues brothers 1974 dodge Monaco  
 Johnny lightning Austin

powers  
 Johnny lightning Vallery Irons  
 Hot wheels kar keepers 10 pack  
 Hot wheels license plate frame with two hot wheels  
 Hot wheels the Museum of American heritage  
 Matchbox Lamborghini countach  
 Johnny lightning James Bond 007  
 Demolition man GM ultralite  
 Racing champions blues brothers  
 Ertl Fourth anniversary 1993 Chevy Corvette  
 Hot wheels Elliot handler memorial ride  
 1966 Green Chevrolet fleetside  
 1984 orange Corvette  
 James Bond 007 Austin Martin die cast  
 1979 red Corvette  
 1992 Corvette special edition Ertl  
 Ertl 1992 Corvette special edition  
 Corgi James Bond 007 1882 Corvette  
 Hot wheels color shifters  
 Matchbox Ferrari testarossa  
 63 split window Hot wheels

Demolition Man hot wheels  
 Hot wheels Limited Edition hummer  
 Hot wheels license plate cover with Cars  
 Johnny lightning James Bond 007 goldeneye  
 Johnny lightning James Bond 007 goldeneye  
 Star car matchbox  
 Micromachines micro city and race team  
 Hot wheels color shifters  
 Revell Steve McQueen bullitt  
 Hot wheels color shifters drift tech  
 Hot wheels Ferrari F 40  
 Hot wheels color shifters jaded  
 Hot wheels high speed wheels  
 Hot wheels car keepers  
 Hot wheels Franken Berry  
 Hot wheels Wheaties  
 Matchbox working Rigs  
 Hot wheels High Speed Toyota off-road  
 Hot wheels boo berry  
 Hot wheels bedlam  
 Hot wheels High Speed wheels 84 Pontiac  
 Color shifters hot wheels  
 Cockney cab II hot wheels color shifters

AND MORE!!!



FOR MORE INFORMATION GO TO [WWW.EASTERLYAUCTIONCO.COM](http://WWW.EASTERLYAUCTIONCO.COM) OR CALL EASTERLY'S AT 417-833-9494



Mike Easterly Auctioneer • 417-833-9494

Not Responsible for accidents or theft. For more information call: Easterly Auction Company, Springfield, MO. Auction Terms: Visa, Mastercard, Cash, Cashier's check or checks with proper I.D. Announcements day of sale take precedence over printed material. Auction Notes: Although information is obtained from sources deemed reliable, auctioneer makes no warranty or guarantee expressed or implied. Buyers should themselves take the opportunity to make their own inspection prior to sale.

[www.EasterlyAuction.com](http://www.EasterlyAuction.com) • [auctionzip.com](http://auctionzip.com) ID#14770





# LIVENGOOD ESTATE AUCTION

**LIVE AUCTION**



Phyllis Livengood will sell her and the late Ronnie Livengood's personal property at public auction on:

**Saturday, June 3rd 2023, Beginning at 9:00 AM**

Location: 603 Highway WW Sullivan Mo 3080

Directions: From Interstate 44, take Exit 285-Sullivan Exit and continue Westbound on North Service Road. Go 1.5 miles, then turn right on Highway WW and go 1.9 miles to auction. Roads will be marked day of sale.

## ZERO TURN MOWERS / YARD TOOLS

(mowers will sell at Noon)



Cub Cadet Commercial zero turn mower-60" deck, Ferris IS 2000Z zero turn mower, Poulan 5 HP rear tine tiller, Stihl BG55 blower, Stihl 2 cycle cultivator, Husqvarna gas blower, Stihl weed eater, gas weed eaters, Poulan Wild chain saw, Echo broadcast spreader-NIB, drop spreader, pull behind spreaders, push mower, 3200 PSI 4 GPM 11 HP power washer-Honda engine, set 7' ramps, multi position ladder, ladders, section scaffold, bumper hitch carrier, gas cans, oil pans, funnels, propane tanks, shovels, rakes, pick, post hole digger, come-a-long, garden weasel, bow saw, shoulder seeder, barbed wire stretcher, fluid, oils, underground hose, pole saw, propane weed burner, hose reel, barrel stove, scrap metal, rope

## GATOR / PULLING TRACTOR / TRAILER

(will sell at 12 Noon)



John Deere Gator utility vehicle-side by side-4x4-manual dump bed-roll cage, International 560 Farmall tractor-Light Limited Pro Stock-pulling tractor-HS300 block engine-water cooled-roll cage, TRAILER; 16' bumper pull trailer-2' beaver tail-ramps-7,000 LB tandem axle, boat trailers, Firestone 24.5-32 wheels-tires-pulling tractor, 12 suitcase tractor weights-smaller tractor weights, tractor umbrella, chains-binders, ratchet straps, tow straps, load lock bars, IMPLEMENTS; single bottom plow, small cultivator, yard roller, 5th wheel trailer mount

## TOOLS / SHOP TOOLS / MILLING TOOL & ANVIL



Bridgeport adjustable speed milling machine, Johnson Model J industrial horizontal band saw, drill press on stand, Dayton 6" bench grinder on stand, 295 stick welder, Dewalt 20 volt grease gun, Rigid miter saw, Rigid portable miter saw stand, Schumacher rolling battery charger-starter, Grizzley buffer on stand, small table saw on stand, 16 ton hydraulic pipe bender, Wilton bench vise, bench grinder-polisher, Craftsman small belt sander, rolling welding table, welding clamps, pneumatic tools-impacts-ratchets-grinders, bench top belt sander, Quick Grip clamps, C clamps, roller stand, Craftsman shop vac, 16 gallon wet-dry vac, small compressor, grease guns, Snap On wrenches-sockets, star bits, hex keys, crescent wrenches, wrenches, large wrenches, channel locks, pliers, vise grips, sockets, drill bits, mallets, cold chisels, plumb bob, screw drivers, snap ring pliers, ratchets, Craftsman wrenches-ratchets, extensions, swivel sockets, large sockets, pneumatic sockets, pipe wrenches, gear pullers, O rings, cotter pins, grease fittings, hitch pins, rolling tool cabinet, body tools, squares, hvy riveter, tire repair kit, grinders, jig saw, drills, Sawzall, Bostitch impact nailer, solder gun, single strand wire, portable band saw, Dremel tool-lot bits, Bostitch coil nailer, hack saws, 16" laser level, buffing wheels, tool set, drill press vise, calipers-micrometers, car creeper-NIB, car creeper, work stool, engine repair ladder, hvy floor jack, chain hoists, jack stands, gauge set, cordless drill, bearing pusher set, bit set, large channel locks, saw horses, 2 wheel dolly, wagon jack, kerosene heater, lot metal stock, lot misc. lumber, parts bins, work light, tool belt, circular saw, nails, screws, hardware, belts, 100-300" tape measures, 3' bolt cutter, extension cords, ANVIL; Peter Wright large anvil

## ANTIQUE FURNITURE / FURNITURE & HOUSEHOLD / SLOT MACHINE



Nice complete hoosier cabinet-enamel top-floor bin-clock, hoosier cabinet base-enamel top-pull out boards, smaller nice ornate side-board cabinet, pair upholstered side chairs-one rocker, dining table-rolling cushioned chairs, bunk bed-single top-full base, rolltop desk, desk chair, file cabinets, chest of drawers, pair end tables, vacuum, Total Body Workout exerciser, inversion table, paper shredder, candles, dolls, artwork, wall decorations, knick-knacks, canning pots, pt-qt canning jars, picture frames, craft supplies, gardening books, ANTIQUES; Mills 50 slot machine-works-keys, upright wooden clothes ringer, Countryside Wedgewood china dish set, steam iron, buttons, old bottles, milk bottle, implement wheels, APPLIANCES; upright freezer, side-by-side refrigerator, microwave-stove set, stereo system, CD's, TV-w/VCR player, fireplace room heater, Canon EOS 40D camera, tripods, binoculars, DRONE; DJI Phantom 4 drone w/camera, RC car, OUTDOOR; deer feeder, hunting camouflage-coats-backpack-cushion, antlers, holsters, fishing nets, tackle box, propane fish fryers-pots, smoker, propane grill, coolers, live trap



VIEW OUR PHOTO GALLERY ON [www.breheauction.com](http://www.breheauction.com)

**BREHE AUCTIONEERING SERVICE, LLC**  
 Union, MO: (636) 583-0841 Owensville, MO: (573) 437-3454  
[www.breheauction.com](http://www.breheauction.com)  
 LICENSED AUCTIONEERS:  
 Kerry Brehe 314.954.3798 Josh Brehe 314.603.3129 Nick Brehe 314.560.7737  
 Harry Engelhart 636.399.3743

Announcements made day of sale supersede all printed material.  
 TERMS: CASH, PERSONAL CHECKS WITH PROPER I.D., BUSINESS CHECKS WITH BANK LETTER AND NO OUT OF STATE CHECKS UNLESS APPROVED BY SELLER. Email Us At [kkauction@sbcglobal.net](mailto:kkauction@sbcglobal.net)  
 Everything sells as is with no guarantees. Not responsible for accidents.

LUNCH WILL BE SERVED BY BEAUFORT LIONS CLUB

# ESTATE AUCTION

The late John H. Stenger

**SATURDAY, JUNE 3, 2023 • 9:30 a.m.**

**LOCATION:** 1135 John St., Houston, Mo. 65483

**DIRECTIONS:** In Houston, Mo., take Hwy 17 west 3/4 mile to Airport Rd., go 1/2 mile to John St. to auction. Watch for signs. Visit us on the web at [www.rickdixonauctions.com](http://www.rickdixonauctions.com).

**• ANTIQUES • FURNITURE • HOUSEHOLD ITEMS • TOOLS •  
• WOOD WORKING TOOLS • GUNS • 12 FT. UTILITY TRAILER •**

3 Chest-type deep freezers • 42" Flat-screen TV • 32" Sanyo TV • 2 King-size beds • Oak table & 6 chairs • Kenmore 30" gas cookstove • Maytag washer and dryer • End tables • Small wooden desk • Cedar chest • Dressers • Antique oak table and chairs, Eden Pure Heater • Vacuum • Old Montclair console stereo • DVD player • Humidifiers • Recliners • Metal filing cabinets • Rugs • Towels • Sheets • Pillow cases • Linens • Misc. household items • Material • Leather material • Pressure cooker • Dishes • Old antique sled • Antique wash stand • Quilts • Antique glassware • Old clock • Cast iron antique headboard • Old kitchen utensils • Coffee grinder • Porcelain pans • Antique Kenmore pants press • Old alarm clock • Wooden spinning wheel • Old lamps • Old metal fan • Antique pool cues • Pool balls • Foot locker • Ice cream freezer • Cigar boxes • Oil lamps • Old glass 4-gallon jar • Wooden plant stand • Old wooden shoes • Mirrors • Crock • Old wooden boxes • Old board games • Coca Cola wooden crate • Old toys • Old hand-held pinball machine • Lyndell guitar • Texas Co. MO Historical Books • Wooden bushel baskets • Cast-iron pot, large • Charley Weaver Bar Tender, antique metal • Handicap walker • Invacare Scooter • Acorn Super Glide 130 stair lift • Weed Eaters • Hand saws • American flags • Appliance dolly • Campbell Hausfeld air compressor NEW • Copper and scrap iron • Coolers • Wood lathe tools • Bird houses • Squirrel feeders • Copper blow torch • Railroad lanterns • Glue clamps • C clamps • Metal outdoor table and 2 chairs • Trolling motor • Jon boat • Water hose • Dinner bell • Small cast-iron wheels • Lumber 1" pine and maple • 15-Gallon sprayer • Pull-behind seeders • Lawn mower blades • Craftsman chipper 8-horse motor • Radial arm saw • Poulan riding lawn mower • Lawn trailer • Saw horse • Chain hoist • Metal oil can • Concrete bird bath • Power Craft wood lathe • Squirrel Cage blower • Sprunger drill press • Heavy drill press on stand • Power Craft band saw • Shop Craft belt sander • Wooden outdoor benches • Router and bits • Garden chemicals • Copper wire • Levels • Bolts and bolt bins • Wooden ladders • New Ryobi drill and saw 18 volt • Old push plow • Hand seeders • Shop vac • Rods and reels • Pellet gun • JC Higgins 12 gauge 583.1 • Boat paddles, wooden • Pump-up sprayer • Poulan chain saw • Cast-iron wheels • Mechanic tools • Hand tools • Battery chargers • 12" Planer • Air tank • Cotton scale • Electric fence charger • Extension ladder • 1,000 Watt generator • Compressor • Gas cans • Trash cans • Metal shop cabinets • Creeper • Golf clubs • New leather gloves • Craftsman tote • Metal folding table and chairs • New 12-ft. Utility trailer with gate •

**AUCTIONEER'S NOTE:** Lots of antiques and small items here, as John was 99 years old and kept about everything! Thank you for your attendance. *Thanks, Rick.*

**TERMS:** Cash or good check. Major credit cards accepted with 5% convenience fee. **Driver's license or picture identification required to obtain bid number, which must match check. If not known to the auctioneers or the owner — Have a bank letter of credit addressed to Rick Dixon Auction Service. No exceptions!** Nothing loaded or removed until paid for, and everything sells where is, as is. Not responsible for accidents, lost, stolen or broken items. List subject to additions or deletions. Nothing sold before auction; please do not ask. Auction day announcements take precedence over all previous advertisements.



**Rick Dixon Auction Service LLC**  
[www.rickdixonauctions.com](http://www.rickdixonauctions.com)

**Rick Dixon**  
417-967-6604

**Josh Dixon**  
417-217-9627

# R&R AUCTION SERVICE

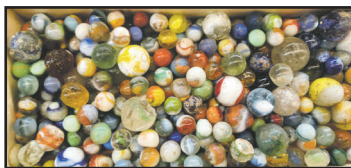
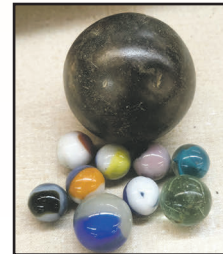
## COLOSSAL COLLECTIBLE AUCTION FRIDAY JUNE 2ND @ 6PM

in the R&R Auction House, 1644 South Ash, Buffalo, MO



This is a massive collectible auction!  
From Bottles to Bridge plates we have so many antique collectible items you won't believe your eyes!

Huge collection of bottles and jars, Minolta camera, old insulators, crock items, ice picks, brass plumb bob, large collection of marbles, 33 record albums, Jadite, huge collection of stamps first day of issue, old coins, carnival glass, fishing lures and other items, stereo systems, CDs, DVDs, cassette tapes, 1903 iron bridge sign, glass jar tops, lots of old milk bottles, empty totes, copper ore, arrowheads, glass beakers, nice old wooden boxes, watches, pocket knives, old Post office box tower, Homelite 4400 watt generator, Smith's A-C welder, genuine Tonkin bamboo fly rod with 2 tips, antique Lucky Strike bamboo fly rod, rock saw, actual piece of the Berlin wall, metronome, old ash trays, old pictures, old paper weights, old tins, type set trays, antique glass slides, lots of old keys, antique maps including Missouri St. Joe and Kansas City, old paper documents, old books, clippers, fog machine, old tools, glassware, aluminum extension ladder, glass bottle stoppers, more items being unboxed daily so keep a watch on our gallery for added pics and make plans to attend this awesome auction



Please keep watch on our website for added photos.

TERMS: 10% Buyers premium. Cash, check, or credit card with proper I.D. nothing removed until settled for A 3% fee will be added to credit card purchases. Not responsible for errors in listing. Any announcement made sale day will take precedence over any printed matter.

GENERAL AUCTIONEERS

Auction & Appraisals SERVICE

For more information contact Professional Auctioneer Russ Weeks at 417-576-7357 or check out [www.rrauctionservice.com](http://www.rrauctionservice.com)

Serving this area's auction needs since 1997 with honesty and professionalism.  
[www.rrauctionservice.com](http://www.rrauctionservice.com)  
(417) 576-7357 or (417) 345-4140

CAGA CERTIFIED APPRAISER

# ESTATE AUCTION

**Saturday, June 3rd, 2023 ~ 10:00 AM**

LOCATION: 26 Sage Trail, Long Lane, MO; Directions: In Long Lane At Jct Of 32 & P Hwys Go On P Hwy 1/2 Mile To Blue Grass Rd Then Turn On Blue Grass Rd Go 1/4 Mile To Sage Trail Then Turn On Sage Trail To Sale Site (Watch For Signs)

**Auction For Paul & Valerie Carroll**



### Tractor, Equipment, Flat Bed Equipment Hauling Trailer, Boat, Tools & Outdoor

Kubota L2501 Diesel 4x4 Tractor W/LA525 Loader, Canopy & Quick Attach, Like New Only 30 Hrs On Tractor, Land Pride RCR1260 Like New 6 Ft Bush Hog, 3 Pt 5 Ft Ripper Box Blade, Front End Loader Pallet Forks, 2018 Diamond C 20 Ft Heavy Duty Equipment Hauling Trailer W/Winch & 5200 Lb Axels Only Pulled 8 Times, 4x5 Utility Trailer, 8 Ft Flat Bottom Alum Boat, Gas Powered Portable Log Splitter On Trailer, Truck Fuel Barrel, Construction Office Type Camp Trailer, Chevy Short Bed Tonto Cover, Wire Cattle Panels, Saddle Rack, Barbed Wire, Top Links, Torch Bottles, Upright Air Compressor, Chainsaw, Shop Roll Around Hydraulic Table W/Welding Top & Vise, Approx 10 Dog Pen Panels, Barrel Dolly, Sm Hand Tools, Air Tools, Sm Electric Tools, Cummings Diesel Parts, Drone, Lots Of Scrap Iron, Bricks, Building Materials, Picnic Table, Outdoor Movie Theater Screen, School Bus Seats, Metal Detectors, Hundreds Of Other Items Added Sale Day

### Antique, Modern Furniture, Appliances, Also Antiques, Collectibles & Households

Oak Dresser W/Wing Back Mirror, Lg Oak Headboard Set, Prim Buffet, Prim Cabinet, Prim Shelves, Sofa Table, End Tables, Oak Lift Top Coffee Table, Shoe Bench, Wall Shelves, Lg Mirror, Massaging Recliner, Metal Lockers, Lg Lot Of Restaurant Style Tables, Lg Lot Of Store Display Pcs, Lg Lot Of Boutique Store Clothes Racks, Other Boutique Items, Stainless Restaurant Style Shelf, File Cabinet, Lg Lot Of Home School Supplies, Toys, Workout Equipment, Like New Lg Capacity Washer & Dryer, Black Side By Side Frigidaire Refrigerator, Black Maytag Flat Top Cook Stove, Metal Western Style Décor Items, Ant Dual Barn Sink Tubs, Black & Decker Advertising Shelves, Deer Antlers, There Are 2 Barn Buildings Completely Full Of Boxes & Totes That Are Unable To See What Is In Them, Family Says Full Of Antiques, Collectibles, Household Items & Tools As Well, Also In These 2 Buildings Are Lots Of Furniture Unable To List & See, Hundreds Of Surprises Sale Day!!!



**Auctioneers Note:** As The Carroll's Have Sold Their Home & Will Be Relocating Due To Health Reasons As Paul Has Been Diagnosed With Cancer And Valerie Being Diagnosed With A Terminal Back. We Will Offer A Very Large Auction With A Very Small Listing. If You Are An Auction Enthusiast This Is The Type Of Auction You Come To For Surprises. If Not For Health Reasons We Would Not Be Conducting This Auction. Please Come Support This Family In this Trying Time. Tractor & Equipment Are Just Like New. Equipment Trailer Is Outstanding As Well. This Will Be An Excellent Auction. Please Plan Now To Attend. **Sale Order: Furniture, Appliances & Household Items Will Start Auction. At Approx 12:30 PM Will Offer Tractor, Equipment Trailer & Large Items. Tools & Outdoor Items Will Finish Auction. See Ya There!!!**

Terms: Cash or check with proper ID. Now accepting most major credit cards. Nothing removed until settled for. Statements made the day of sale takes precedence over printed material. Everything sold as is where is. Not responsible for accidents. Restroom available. Concessions Provided. Check our website for upcoming auctions and for additional pictures!!



## NANCE AUCTION SERVICE

No Matter How BIG or small, We Do Them All!!!



Col. Bill Nance 417-214-0093 In God We Trust Philippians 4:13 Sean Beazley 417-247-6754

# WHEELER AUCTION SERVICE

## Saturday, June 10, 2023 @ 10:00 a.m.

**DON'T MISS  
THIS AUCTION!**

5498 NE 501 Rd, Osceola, MO 64776  
Directions - CC Hwy to 501 Rd, South 1/2mi

**"Watch for Wheeler Auction Signs"**

### HOUSEHOLD

Large secretary desk  
46"x32" table  
2 beds, 1 half bed  
2 dressers  
Pioneer Princess wood cook stove-Good condition  
Stainless steel 40gal Kettle  
Stainless steel canners  
Stainless steel cooking ware  
Lots of dishes and glassware  
Lots of canning jars—2 quarts, 1 quart, pints, ½ pints  
Pyrex dishes  
Pressure cookers  
Large crock  
Large pink McCoy bowl  
3 hand crank meat slicers  
Oil Lamps  
Coffee pots  
Sad Irons  
Several butter churns  
Several windup clocks  
Several suitcases  
Dutch oven  
Cast iron fish cooker  
Small gris mill  
Oil stove & parts  
Several sewing machine heads  
Old marbles  
Old Maytag ringer washing machines & parts

### HORSES & HORSE DRAWN MACHINERY

Coming 2 y/o Belgium-Percheron-Gelding  
11 y/o Grey Percheron-QuarterX-Gelding  
15 y/o Standard bred-Gelding  
Top buggy & open buggy  
Wagon running gear  
Heavy duty cattle wagon  
1 horse garden cultivator  
Fertilizer spreader  
Field sprayer  
Pioneer walking plow—Potato plow  
Soil master riding plow  
Old 2 row John Deere corn planter  
Lots of John Deere corn planter plates  
McCormick Deering riding cultivator  
Walking cultivator  
8' cultipacker  
5' heavy duty disk  
8' disk  
10' disk  
10' 2 section spike tooth harrow

No 9 High gear McCormick hay mower  
New idea hay rake  
New Idea 6 bar hay loader  
John Deere 14T hay baler  
Steel wheels for John Deere baler  
McCormick manure spreader  
NOTICE: Some of this machinery will need to be fixed before it can be used.

### HUNTING & FISHING

Revelation 12ga pump shotgun  
Newport single shot 410 shotgun  
Remington Model 1100 semi-automatic 20ga shotgun  
Marlin 30-30 Model 30AS  
Marlin 30-30 Model 336  
Barnett Quad 400 crossbow  
Whitetail classic compound bow  
Polaris compound bow  
Fishing tackle boxes & tackle  
Rods & reels  
35 plus new pocket & hunting knives  
Clay pigeon thrower  
Ice chests  
12' V bottom boat  
Very old Bamboo rod & reel

### SHOP & OTHER TOOLS

Intergram 6" jointer  
Craftsman 12" bandsaw  
Some glue clamps  
Several yankee screw drivers  
Several breast drills  
Old 5 drawer tool chest  
3 drawer work shop tool box  
2-7 drawer tool boxes

25+ tool boxes with tools  
Tool box w/brace & bits  
No.5529 OK Jr die set USA  
No. 5499 Craftsman tap & die set USA  
Large adjustable reliable die set USA  
Some smaller top & die sets USA  
Lots of wrenches-ratchets-sockets  
Screw drivers-pipe wrenches  
Chain hoist  
Come-along, air hoses  
Post vise-Anvil-Trash pump  
Sheet rock tools  
Sheet rock scaffold  
Concrete tools-Bull float  
16' folding ladder  
30' Extension ladder  
13' Extension ladder

Horse shoeing box  
Several cross cut saws  
Long handle tools  
Large heavy duty pump jack  
Small pump jack  
Hand push garden planter  
Metal junk bin-Old junk steel pipes

Brush saw  
Hammer mill  
Hand crank corn sheller  
Heavy railroad jack  
Toledo hanging scale  
Loose hay hook  
Barrels w/lids  
6 ½" flat pulley for power unit  
2 steel wheeled kids wagons  
Lap robes for buggy  
Bull binder

*There will be something for everyone, so be sure and be there. We will not be responsible for accidents or theft. Statements made day of sale take precedence.*

**\*Several more items  
too numerous to  
mention\***

**OWNERS:** Ammon & Ida Gingerich RETIREMENT SALE

**WHEELER AUCTION SERVICE**

**Selling Livestock • Farm • Household Sales**

Byron Wheeler, Auctioneer • 417-777-0897

*TERMS OF SALE: Cash or Check with Proper ID, not responsible for Accidents, Statements made day of sale take precedence over printed items.*

*The Index, HERMITAGE, MISSOURI 65668*

**PUBLIC AUCTION**  
**ARCOLA, MO**

**AUCTION**

As we have sold our Farm we will sell the following Automobiles, Tractors, Four Wheelers, Tools, Household and Misc.  
At the Farm located 3 1/2 miles East of Arcola, Mo. On Y Hwy. On

**Sun. June 11, 2023 at 12:30 pm**

**WATCH FOR AUCTION COMPANY SIGNS • LUNCH SERVED**

**FOR MORE PICTURES GO TO: WWW.BRUCEANDLEANAUCTION.COM**



**TRACTOR-MOWERS**

- Ford 72hp Diesel, Model 5610 Open Deck Tractor W/Koyker K2 Front End Loader W/8' Bucket, 1335 Second Owner Hours, 8 Speed High/Low Transmission
- Good Rubber
- 2 Case 446 Riding Mower Style Tractors one is a Model J46, other Onon Performer 18, one has Canopy & Snow Blower
- 6' 3pt older Brush Hog
- Wagon Running Gears
- 12' Gate
- Metal Stock Racks
- 2 older Bale Rings
- 300 Gallon Fuel Tank on Stand
- Misc. Scrap Iron

**WELDERS-TOOLS-MISC.**

- Lincoln 225amp. Electric Welder
- Lincoln Welder W/Gas Engine
- Hobart Handler 175 Wire Welder w/Bottle & Cart
- Victor Act. Torch Outfit W/Large Bottles
- Big Fours NPR Manual Tire Changer
- 13 Drawer Roll Around Tool Box
- 6 Drawer Power Kraft Tool Box
- Bearing Press
- 2 Ton Cherry Picker
- Small Sand Blaster Cabinet
- Motor Stand
- Floor Model Drill Press
- Battery Charger
- Bench Vise
- Chop Saw
- Several Hand Power Tools
- 3/4" Air Impact
- Air Tools
- Parts Washer
- Craftsman Bench Grinder
- Misc. Wrenches & Hand Tools
- Craftsman Shop Vacc.
- 2-72 Bin Organizer Cabinets
- Metal Shelving
- Floor Jack
- Jack Stands
- Log Chains
- Hay Lift
- 2-12 Volt Sprayers
- Org. Cabinets
- Ladders
- Propane Fish Cooker
- Wood Stove
- Lot of Misc.



**AUTOMOBILES**

- 2013 Chevy Equinox AWD 4 Door SUV, One Owner, 2.4 Liter Engine, Automatic Transmission PW, PL, 118,000 Miles, Power Seats
- 1995 Chevy Ext. Cab 3500 Diesel 4X4 Pickup, 98,000 Miles, Automatic Transmission, PW, PL, Bed Cover

**FOUR WHEELERS-TRAILER**

- Honda Rancher ES 4 Wheeler W/Front & Rear Racks
- Honda Recon Four Wheeler W/Front & Rear Racks
- 16' Tandem Axle Flat Bed Bumper Trailer W/Title
- Honda ATC 185cc 3 Wheeler for parts

**WOOD SPLITTER-CHAIN SAWS**

- Swisher 34 Ton 11.5 HP. Wood Splitter
- Stihl 028 Chain Saw
- Husqvarna 460 Rancher Chain Saw
- Chain Saw Sharpener

**HOUSEHOLD-COLLECTIBLES**

- Roper Refrigerator
- 2 Glass Fronted Dish Cabinets
- Wash Stand Bottom
- 5' Glass Fronted Cabinet
- 2 Well Buckets
- 2 Milk Cans
- 2-3 Gallon Stone Jars
- Dual Camper Recliner
- Misc. Chairs
- Sm. Kitchen App.
- Lot of Misc. Dishes
- Lot of Books

**OWNERS: LARRY & VERA BEACH**

TERMS: Everything sells as is, where is. Nothing is to be removed until settled for. Payment of Cash, Check with Proper ID, or Credit Cards. Auction Company or the Owners will not be responsible for loss of items or accidents. Statements made the Day of the Auction take Precedence over Printed Matter.

SALE CONDUCTED BY **BRUCE & Le'AN AUCTION & APPRAISAL, LLC**  
THE AUCTION COMPANY THAT APPRECIATES YOUR BUSINESS

For more information and pictures go to our website at [www.bruceandleanauction.com](http://www.bruceandleanauction.com)

RONNIE BRUCE - Fair Play, MO  
417-777-1685 or 417-654-2214  
colronbruce@gmail.com

BRANDON BRUCE  
Fair Play, MO

BILLY BRUCE - Stockton, MO  
417-399-4800  
colbbruce@gmail.com

# ESTATE AUCTION

HUMANSVILLE, MO

# AUCTION

We will sell the following Real Estate, Propane Tank, Household, Collectibles, Guns, Knives, Tools and Misc. at 205 East English Street in the South Part of Humansville, MO on **Sat. June 10, 2023 at 9:00 am**

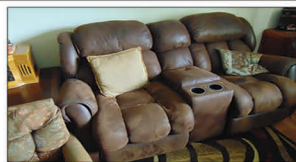
**WATCH FOR AUCTION COMPANY SIGNS • LUNCH SERVED**

**FOR MORE PICTURES GO TO: WWW.BRUCEANDLEANAUCTION.COM**



## REAL ESTATE • SELLS AT NOON

Selling a 4 Bedroom, 2 Bath home of approx. 1664 sq ft well maintained home. Home has a spacious living room with a gas fireplace, dining/kitchen area with good cabinetry, enclosed back porch sunroom area, hardwood, tile and vinyl flooring throughout. Home also offers a partial basement and storm shelter. Outside you will find a 1 car attached carport, extra storage in the detached shed of approx. 350 sq ft with heat and air, 1 detached garage of approx 750 sq ft with attached workshop. This property is setting on 0.89 m/1 acres with established shade trees. This property is move-in ready. Real Estate sells with owner confirmation, come prepared to buy as the family is ready to settle the estate. For more information and pictures visit our website.  
Real Estate sells at 12:00 noon



### HOUSEHOLD-COLLECTIBLES

- Frigidaire Refrigerator
- Kenmore Electric Dryer
- Whirlpool Washing Machine
- Englander Automatic Pellet Stove
- 48" TCL Flat Screen TV
- 48" Vizio Flat Screen TV
- Roku 30" Flat Screen TV
- TV Stand
- Kenwood Stereo System
- Whirlpool Window Heat & Air Unit 220v
- Couch & Love Seat Dual Recliners
- Coke Collection (Glasses, Cups, Signs, Cooke Jars and more)
- 2- Queen Beds W/Mattress
- Marble Top 3 Drawer Dresser W/ Ornate Carving
- Oak Wash Stand
- 6' Glass Door Pie Safe
- Sm. Drop Front Desk
- 2 White Wicker Chairs
- Oct. Top Stand Table
- Chicago Oak Wall Telephone Box
- Cradle Rocker W/Stool
- 2 Leather Inlay End Tables
- Dresser Bottom
- 4' China Cabinet
- 2 Singer Treadle Machine Bottoms
- Wooden Egg Crate
- 3 pc. Love Seat Set W/Ornate Carving
- Victrola Cabinet
- Misc. Chairs
- Sm. School Desk
- Collector Car Collection
- Metal Toys, Trucks and Tractors
- Pop Crates
- 2 Busch Neon Signs
- Hay Forks W/Racks
- 6 & 8 Gallon Stone Jars
- M. Hohner Accordion
- 2 R-R Lanterns
- 2 One Gallon Glass Minnow Traps
- 5' Glass Display Cabinet
- Iron Wheels
- Child's Sled
- Misc. Pots, Pans and Dishes

### GUNS-HUNTING

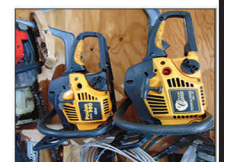
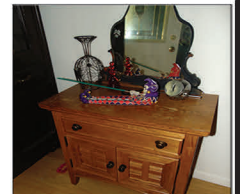
- Remington 12 ga. Model 870 Pump Shot Gun
- Remington Model 58 Semi-Automatic 12 ga. Shot Gun W/Vent Rib
- Knife Collection (Pocket & Hunting)
- Lrg. Set of 6 by 6 Elk Horns
- Deer Horns
- Swords
- Set of Western Shackles
- Few Arrowheads
- Misc. Fishing

### PROPANE TANK

- 500 Gallon Propane Tank W/ 75% Fuel

### TOOLS-MISC.

- Snap-on YA217 Mig Welder 110v
- Stihl MS170 Chain Saw
- Stihl 028 Chain Saw
- Husq. 136 Chain Saw
- 2 Poulan Pro Chain Saws
- Misc. Battery & Electric Hand Power Tools
- B & D Electric Limb Saw
- Rikon Band Saw
- Gas Weed Eaters
- Mantis Flower Bed Tiller
- Misc. Garden Tools
- Steel Post
- Ladders
- UTV Ramps
- Pickup Tool Boxes
- Jack Stands
- 6' Metal Wind Mill (NIB)
- Concrete Bench's & Planters
- Wheel Walker
- Propane Wall Heaters
- Mongoose Motorized Bike
- Motorcycle Helmets
- Homemade 3 Wheeler Frame W/Rearend
- Metal Shelves
- One lot of Misc.



## OWNER: WINGER ESTATE

TERMS: Everything sells as is, where is. Nothing is to be removed until settled for. Payment of Cash, Check with Proper ID, or Credit Cards. Auction Company or the Owners will not be responsible for loss of items or accidents. Statements made the Day of the Auction take Precedence over Printed Matter.

SALE CONDUCTED BY **BRUCE & Le'AN AUCTION & APPRAISAL, LLC**  
THE AUCTION COMPANY THAT APPRECIATES YOUR BUSINESS

For more information and pictures go to our website at [www.bruceandleanauction.com](http://www.bruceandleanauction.com)

RONNIE BRUCE - Fair Play, MO  
417-777-1685 or 417-654-2214  
colronbruce@gmail.com

BRANDON BRUCE  
Fair Play, MO

BILLY BRUCE - Stockton, MO  
417-399-4800  
colbbruce@gmail.com

**GUNS-TRACTOR-TOOLS-FURNITURE-HOUSEHOLD-MISC AUCTION****SATURDAY JUNE 3, 2023 10:00AM****LOCATED: 16399 S 2125 RD/RANCH RD STOCKTON, MO**

FROM STOCKTON @ INTERSECTION OF HWY 32 &amp; HWY J GO EAST 7 MILES THEN SOUTH ON FARM RD S 2125/RANCH RD, GO ¼ MILE TO AUCTION ON LEFT. CONCESSION &amp; RESTROOM AVAILABLE

**FOR PICTURES SEE WEBSITE OR AUCTION ZIP.COM****BANK LETTER OF CREDIT REQUIRED FOR PURCHASE OVER \$5000 ADDRESSED TO MELTON AUCTION & REALTY****NO FIREARMS ON PREMISE UNTIL AUCTION DAY****GUNS SELL @ 10:00****GUNS**

1. REMINGTON SHOTGUN MOD 1100LH S/N M143031V 12 GA LH
2. HIGH STANDARD SHOTGUN S/N 3137015 PROOF TESTED 20 GA CHAMBERED FOR 2 ¾" & 3" SHELLS
3. SPRINGFIELD SHOTGUN MOD 67F SAVAGE ARMS CORP S/N NONE PROOF TESTED FOR 20 GA 3" CHAMBERED
4. REMINGTON RIFLE GAME MASTER MOD 760 S/N 265649 CAL 270 WIN
5. REMINGTON RIFLE GAME MASTER MOD 760 S/N B6987756 CAL 270 WIN
6. REMINGTON RIFLE WOODSMAN MOD 742 S/N B7354029 CAL 243 WIN
7. MAUSER RIFLE ESPANOL MODELO 1893 S/N G6351 CAL 7X57MM MADE 1896

**TRACTOR-TRAILER-TOOLS**

LONG 2360 TRACTOR DIESEL W/CANOPY 1063 HRS—5X9 HOMEMADE UTILITY TRAILER—6' BUSH HOG FINISH MOWER FTH720—LAND PRIDE 6' FINISH MOWER—RHINO 6' FINISH MOWER—SIDE WINDER 5' BUSH HOG NEEDS REPAIR—3 PT SPRAYER—3 PT CARRY ALL—3 PT QUICK HITCH—3 PT BOOM POLE—5' BUSH HOG PARTS ONLY—3 PT 5" BLADE—55 GAL BARREL DOLLY—1 LOT SCRAP IRON—MILLER BOBCAT 225 WELDER/GENERATOR, KOCHLER MOTOR ON TRAILER 99 HRS—MILLER 35 WIRE FEED WELDER—MILLER THUNDER BOLT STICK WELDER—CRAFTSMAN REAR TINE TILLER—KARCHER 2400 PSI POWER WASHER—SACHS DOLMAR 20" BAR CHAIN SAW—CRAFTSMAN HEDGE TRIMMER—STIHL BR320 BACK PACK BLOWER—FIMCO LAWN SPRAYER ON TRAILER—STIHL 025 CHAIN SAW NOT COMPLETE—WHEEL BARROW—2 WHEEL DOLLY—MAKITA 14" CHOP SAW—DEWALT HAMMER DRILL—DEWALT JIG SAW—CRAFTSMAN JIG SAW—CRAFTSMAN SANDERS—MAKITA SANDERS—ELECTRICIAN DRILL BITS—SOLDERING GUN—CHAIN SAW SHARPENER—10' FIBERGLASS LADDER—SAW HORSES—LONG HANDLE TOOLS—GARDEN PLANTER—WELDING RODS—HITCHES—SLEDGE HAMMERS—BELT SANDER—4 ½" & 7 ½" ANGLE GRINDERS—SKIL SAWS—1/2" DRILL—3/8" MILWAUKEE DRILL—PORTA BAND SAW—ELECT IMPACT WRENCH—WIRE ROPE SLINGS—CONCRETE JITTER BUG—SOCKETS, WRENCHES, SCREWDRIVERS, PLIERS, SIDE CUTTERS, TIN SNIPS, VICE GRIPS, CHANEL LOCKS, PIPE WRENCHES, ALLEN WRENCHES, TUBING CUTTERS, BOLT CUTTERS, TRI SQUARES, HOLE SAWS, CHALK LINE, MEASURING TAPES—WHITNEY PUNCH—HAND RIVETER—FISH TAPE—AIR NAIL GUNS—AIR NAILS—1 LOT BOLTS, NUTS—20 TON SHOP PRESS—5" VISE—PIPE CUTTERS—C CLAMPS—WELDING TABLE—LEVELS—TOOL POUCHES—WINCH—EXT CORDS—TROUBLE LIGHTS—SAW BLADES—PIPE BENDERS—PIPE THREADERS—OXYGEN ACETYLENE TORCH—2 SAND BLASTERS—CABLE COME ALONGS—LOG CHAINS—CHAIN BOOMERS—TARPS—TILE SAW—ELECT WIRE—(2) 6" BENCH GRINDERS—(2) MATERIAL ROLLERS—3 ½ TON FLOOR JACK—JACK STANDS—CRAFTSMAN DRILL PRESS—6' WOOD LADDER—CRAFTSMAN 6" BELT SANDER—DEWALT 12" MITER BOX ON STAND—CRAFTSMAN ROUTER TABLE—CRAFTSMAN 6" SCROLL

SAW—BLUE OX TOW BAR—DELTA 10" TABLE SAW—SHOP VAC 6 ¼ HP 22 GAL—BATTERY CHARGER—3/4" SOCKET SET—WET STONE—ROPE—GAS BOTTLES—HAND SAWS—2" RECEIVER HITCH WINCH—GREENLEE KNOCK OUT PUNCH—DREMEL TOOL—MISC BRASS FITTINGS—ELECTRICAL FITTINGS—BREAKERS—2 NEW TRACTOR TIRES & TUBES—CAR RAMPS

**FURNITURE & HOUSEHOLD-COLLECTIBLES**

4 PC DRESSER, CHEST, NIGHT STANDS—BRASS KING SZ BED FRAME—SITTING STOOL—3 SHELF BOOK CASE—2 VICTORIAN CHAIRS—GLASSTOP LAMP/PLANT STAND—TABLE & FLOOR LAMPS—LANE CEDAR CHEST—(2) 2 DRAWER FILE CABINETS—BRASS SHELF—SHADOW BOXES—ANTQ HALL TREE—STORAGE CABINET—ANTQ SIDE TABLE—8 DRAWER CABINET—RECORD CABINET—(2) LIBRARY TABLES—CHINA HUTCH—SEWING MACHINE CABINET—3 PC ENTERTAINMENT CENTER—VCR/DVD COMBO—RECORD PLAYER/RADIO—SM WOODEN KNEE HOLE DESK—OFFICE CHAIR—NESTING TABLES—2 MATCHING SOFA & END TABLES—BLACK TABLE—WARDROBE—BAKERS RACK—RED ROLL AROUND CART—5 PC OAK DINETTE SET W/LEAF—3 DRAWER CHEST W/MIRROR—(2) 5 SHELF BOOKSHELVES—SPEED QUEEN WASHER/DRYER—MAYTAG S/S FRIDGE—MICROWAVE—AREA RUG—VIKING SEWING MACHINE—BABY LOCK SERGER—SINGER SEWING MACHINE—RECHARGEABLE LAMP—HURRICANE ELECT LAMPS—HORSE PICTURES, LOT OF WALL PICTURES—KITCHEN WALL DECOR—PIONEER SPEAKERS—3 OIL LAMPS—MADE IN JAPAN GLASSWARE—PYREX—FORTECRISA SET GLASSWARE—BRASS CANDLE HOLDERS & MISC—RED GLASSWARE—WOODEN BOXES—NESTING BASKETS—ROOSTER DECOR—8 PC SETTING TIENSHAN MAGNOLIA CHINA—HEIRLOOM BY ONEIDA SILVERWARE—MISC BASKETS—SERVING TRAYS—CANDLES—PLACE MATS, TABLE LINEN—MINIATURE SHADOW BOX TRINKETS—HAND MADE DOLLS, 3 FACE DOLL—1 LOT THREAD—STAIN GLASS—MISC FIGURINES—1 LOT LINEN & TOWELS—IRON WALL DECOR—MACHINE SEWN QUILT, QUILT TOP—MINIATURE RADIO FLYER—COWBOY BOOTS—VASE FROM PHILIPPINES—1 LOT CD'S, RECORDS, WHITE ALBUM BEETLES, MANY MORE—MISC WALL SHELVES—DECORATIVE PLATES—COOK BOOKS—MCDONALDS GLASS MUGS, COKE GLASS—ROOSTERS—COFFEE GRINDERS—TIN CANS—TEA KETTLES—KRAFT CHEESE BOX—MISC GLASSES & CUPS—CROCK JUG—DISH TAILGATER—B&D TOASTER OVEN—GEORGE FOREMAN—NINJA FOODI—GAMES—WASH BOARDS—SADD IRONS—OLD BOTTLES—PRINCE ALBERT CANS—INSULATORS—SM KITCHEN APPLIANCES—PRESSURE COOKER—PANS—WOKS—COFFEE POT—1 LOT CHRISTMAS DECOR—WALKER—FLOWER POTS—WAGON WHEELS—WELL PUMP—OLD TRACTOR SEATS—WELL BUCKET—ANTQ BUCKETS & GAS CANS—MEAT SAWS—AMMO CAN—OIL LANTERNS—SINGLE TREES—WELL PUMP—CREAM CAN—ANTQ HORSE COLLAR—ANTQ SLED—PET TAXIS—DEER HORNS—COLEMAN STOVES & LANTERNS—COOLERS—MISC WOOD—FISHING POLES & TACKLE BOXES

**OWNER: ESTATE OF CHUCK BLANTON**

ANNOUNCEMENTS MADE ON SALE DAY WILL TAKE PRECEDENCE OVER ANY OTHER PRINTED MATERIALS. NOT RESPONSIBLE FOR ACCIDENTS OR LOSS OF ARTICLES ON OR NEAR SALE SITE.

**MELTON AUCTION  
& REALTY CO LLC****meltonauctionrealty.com | roger@meltonauctionrealty.com**

Roger Melton | Nixa, MO | 417-830-0153 or 417-725-1801

Brad Cole | Nixa, MO | 417-840-2950

Hal White | Nixa, MO | 417-343-2334

Tanner Foster | Galena, MO | 417-840-5519



# LIQUIDATION OF KIDS 2 LLC FORK LIFT-TRAILER-INDUSTRIAL SEWING MACHINES AUCTION

**FRIDAY JUNE 2, 2023 9:00AM**

**LOCATED: 1125 N 20TH ST OZARK, MO**

FROM HWY 14 & N. 20TH ST OZARK MO GO NORTH ON N. 20TH ST 4/10 MILE TO AUCTION ON LEFT. RESTROOM & CONCESSIONS AVAILABLE

**FOR PICTURES SEE WEBSITE OR AUCTION ZIP.COM**

**BANK LETTER OF CREDIT ADDRESSED TO MELTON AUCTION & REALTY REQUIRED FOR PURCHASE OVER \$5000**

## **FORKLIFT-TRAILER-CARGO CONTAINERS-AIR COMPRESSOR**

CLARK GPS15 PROPANE FORK LIFT, 580 HRS—KING COBRA 28' CARGO BUMPER TRAILER W/RAMP DOOR ON REAR, 4' SIDE DOOR, 6000 LB AXLES--(3) 40' CARGO CONTAINERS—CURTIS TOLEDO CHALLENGE AIR MOD E57 AIR COMPRESSOR 10HP, 3 PHASE

## **INDUSTRIAL SEWING MACHINES**

SWF AUTOMATIC TUBULAR EMBROIDERY MACHINE MOD SWF/K-SERIES—BROTHER PR-620 EMBROIDERY MACHINE—USM COMMERCIAL SCREEN PRINT MACHINE—GEMSY JEASEW STRAIGHT KNIFE CUTTER CUTTING MACHINE—BLUE STREAK II STRAIGHT KNIFE CUTTER SER# F78052—COMMERCIAL STUFFING MACHINE--(7) INDUSTRIAL BROTHER SEWING MACHINES SER #S6200A-403, 1 INDUSTRIAL BROTHER SER #S7000DD-403—INDUSTRIAL SINGER SEWING MACHINE MOD 20-33, SINGER MOD 20U33—INDUSTRIAL JUKI SEWING MACHINE MOD 67145--(5) INDUSTRIAL BROTHER SEWING MACHINES MOD DB2-B737-933—MISC SEWING MACHINES UNABLE TO GET MODEL—BONIS 3000 SEWING MACHINE—MERROW 18-S CROCHET MACHINE SER# 261144--SILVER STAR STEAM BOILER IRON SB400—HUEBSCH ORIGINATOR DRY STAR 75 COMMERCIAL DRYER—IMPULSE FOOT OPERATED SEALER MOD A1E455FL—GUILLO MAX PAPER CUTTER—SMALL PAPER CUTTER—(5) HERCULES FABRIC CUTTERS MOD AS-100K

## **CHILDRENS CLOTHING-ACCESSORIES-FABRIC-THREAD-RIBBON**

LARGE LOT CHILDREN & BABY CLOTHING—KIDS PURSES, BACK PACKS—HAIR BOWS—SOCKS--BABY BIBS—APRONS--CHRISTMAS STOCKINGS—FEATHER BOA'S—1 LOT FABRIC, THREAD, STUFFING, RIBBON—SANTA HATS—STICK HORSES—CRIB SHEETS—COVERED 3 RING BINDERS—1 LOT STUFFED SOCK MONKEYS, CHENILLE RABBITS

## **ROLL AROUND LADDERS-CARTS-SHELVING-TOOLS-MISC**

ROLLING LADDERS DIFFERENT SIZES—6' & 7' FIBERGLASS STEP LADDERS—WOODEN STEP LADDERS—1 LOT STEEL SHELVING ALL SIZES & KINDS—MATERIAL LAY OUT TABLES—SEVERAL LAUNDRY CARTS—SHOP FOX DRILL PRESS—SHOP FAN, PEDESTAL FANS—2 WHEEL DOLLY—SAW HORSES—WIRE RACKS—6' & 8' FOLDING TABLES—LOCKING CABINETS—TABLE CART—WOODEN BARRELS—DECORATIVE 4 WHEEL WAGON- 1 LOT CLOTHES RACKS, HANGERS—MISC CHAIRS & STOOLS—LIGHTING--FILE CABINETS—MINI FRIDGE—CASH REGISTERS--(2) BAKERS PRIDE GRIDDLES 3' & 5'--IRON BABY BED—1 LOT TOTES, LAUNDRY BASKETS—1 LOT READY TO MAKE BOXES—MOTOR CYCLE HELMETS

**TOO MANY ITEMS TOO NUMEROUS TO MENTION**

**OWNER: KIDS 2 LLC-CHRISTY KINNEY**

ANNOUNCEMENTS MADE ON SALE DAY WILL TAKE PRECEDENCE OVER ANY OTHER PRINTED MATERIALS. NOT RESPONSIBLE FOR ACCIDENTS OR LOSS OF ARTICLES ON OR NEAR SALE SITE.

**MELTON AUCTION  
& REALTY CO LLC**



[meltonauctionrealty.com](http://meltonauctionrealty.com) | [roger@meltonauctionrealty.com](mailto:roger@meltonauctionrealty.com)  
 Roger Melton | Nixa, MO | 417-830-0153 or 417-725-1801  
 Brad Cole | Nixa, MO | 417-840-2950  
 Hal White | Nixa, MO | 417-343-2334  
 Tanner Foster | Galena, MO | 417-840-5519

VISIT WEBSITE FOR PICTURES

# ESTATE AUCTION

SATURDAY, JUNE 3<sup>RD</sup> - 10:00 A.M.

**Location:** RR-61, Box 80-4, Macomb, MO **Directions:** From Norwood 4 way stop Take N. Eagle Street 3/10 mile to C Hwy on Left. Go approx 3.7 miles to Hwy YY on Right go 1.7 miles to Co Rd YY-120 on Right go approx 1 mile to Co Rd 117 to the left. Go 1.1 mile to Auction on Right. **WATCH FOR CHADWELL AUCTION SIGNS.** **Payment System:** Cash • Debit Card • Credit Card (Debit / Credit Card Fee Will Apply) Checks approved if known by auction company. **VISIT: WWW.CHADWELLAUCTIONS.COM**

**Estate of Tony & Joyce  
LOOTENS**

**LARGE LOT OF COLLECTIBLE PLATES**  
(Voyage of Ulysses, Newellware, Kaiser, Charles Gehm, Mother Goose Series, Rockwell Heritage Coll., Studio Dante Di Volteradici)

**KIOTI DK 65C  
w/KIOTI KL 1730  
JOYSTICK LOADER  
4x4 12/12 Trans  
Dual Remotes 540  
PTO (725hrs)**



**NH L180 SKID STEER  
w/6' Bucket & Foot Control (1300hrs)**



**NH WORKMASTER  
55 w/4505 JOYSTICK  
LOADER 4x4 540 PTO  
Left Hand Reverse (445hrs like new)**

**GUNS ~ KNIVES ~ AMMO**

C.A.I Georgia 9MM Pistol • FB Random VIS Model .35-9mm Pistol • Walther P38 • Walther P38 1956 • Taurus PT 92 9mm • (2) Japanese Arisaka 7mm • Model .44 Mosin Nagant 7.65 Russian • Model .91 Mosin Nagant • M48 8mm Yugoslavia Mouser • K98 Germany 8mm Mouser • British Infield Model #5 Mk-2 • Romania Dragonoff 7.62 X 54 R w/ Scope • Russian SKS 1953 7.62x39 • Revolution Mod 150M .22 w/Scope • Winchester Mod 1300 Defender 12 Gauge Pump • US Rock Island Arsenal Mod

1903 • Gar 8mm Bolt Action • Moesberg 12 Gauge Pump 3in • Misc Gun Parts & Scope • Bayonet • Rebel Edge Hunting Knife • Ulysses S Grant Knife • Magazine • Silng • Woodmans Pal Knife • K Bar Bowie Knife • Tomahawk Survival Knife • Grace USA Gun Tools • Caldwell Shooting Bags • Laser Bore Sight • Large Lot of 9mm (4000 mds) • 6.5 X 55 (300 mds) • 303 British (3000 mds) • 22-250 (400 mds) • 357 (800 mds) • Large Lot of Bandoleers • Midway USA Model 1292 Tumbler • Caldwell Shooting Rest • Large Lot of Magazines • Tipton Gun Vise • Field Target Holder • Large Lot of Lead • Large Lot of Reloading Equipment • Gun Cases • Other

**FARM RELATED**

Hog Panels • Fencing Supplies • New Poly Round Bale Feeder • Metal Round Bale Feeder • 300 Gallon Fuel Tank on Stand • WW Sweep & Alley • 3pt Rhino Post Auger • Large Lot of Log Chains • 12' Poly Feed Bunks • Hog Feeders • Chicken Feeders • Hay Elevator • 3pt Back Bale Spike • Pallet Forks • Front Bale Spike • Large Lot of Mineral Tube • T Posts & Fencing Equipment • Other

**OUTDOOR ~ MISCELLANEOUS**

JD 212 Garden Tractor 38" Cut • JD Lawn Cart • Stihl FS 38 Weed Trimmer • Stihl Battery Weed Trimmer • JD Weed Trimmer w/Blade • Husqvarna FT 900 Front Tine Tiller (like new) • Stihl 029 Chainsaw w/Case • Stihl MS 250 Chainsaw • Stihl MS 180 Chainsaw • Fuel Cans • Yard Seeder • Mailbox • Hand Sprayers • Coolers • Folding Tables • Folding Chairs • Heat Lamps • Electric Cement Mixer (new) • Large Lot Canning Jars • Portable Heat Mate Heater • Solar Fence Charger • Dog Crate • Brinkman Gas Grill • Wheel Barrows • Step Ladders • Fire Ring • Chicken Waterer • 10'x20' Chainlink Dog Pen • Chicken Feeders • Fishing Equipment • Camping Supplies • Camping Gear • Alum Loading Ramps • Lawn & Garden Tools • Honda Self Propelled Push Mowers • Poulan Pro Weed Trimmer on Wheels • Deer Cart on Wheels • 3pt Hyd Wood Splitter • Wallenstein BX 625 3pt PTO Wood Chipper • Brave 26 Ton Hyd. Wood Splitter • Live Traps • Hose Reel • Other

**HOUSEHOLD**

Table w/6 Chairs • 24" Samsung TV • Bar Stools • Insta-Pot • Glass Ware • Dishes • Pots & Pans • Flatware • 4 Pc Bedroom Set • Wooden Ship • Handicap Supplies • Large Lot of Puzzles • Couch & Chair • Card Table • New Electric Fireplace • Ceiling Fans • Sony Stereo System • Stand fan • Wall Decor • Full Beds • Whirlpool Refrigerator • Craftsman Workbench • Small Chest Freezer • Wooden Cupboard • Crockpot • Small Kitchen Appliances • Whirlpool Washer • Whirlpool Gas Dryer • Wall Pictures • 4 Rocker Recliners • End Tables • Misc Lamps • Grandfather Clock • Office Chairs • Folding Tables • Large Lot of DVD's • Oak Entertainment Center • Figurines • LG 55" Flatscreen TV • DVD Storage • 9 Gun Gun Cabinet • 3pc Queen Bedroom Set • Rolltop Desk • Dyson Bagless Vac • Electric Fireplace • Linen • 4pc Queen Pine Bedroom Set • Other

**SHOP ITEMS**

Rockwell Table Saw • Saw Horses • Wood Clamps • 18V Circular Saw • Drill Bit Sharpener • Power Drill • Cordless Drill • Tool Boxes • New Makita 4" Angle Grinder • Craftsman 4 Gallon Air Compressor (like new) • 2 Electric Chainsaw Sharpeners • Oils & Solvents • Jack Stands • Craftsman Work Bench • Coleman Powermate 5000 Watt Generator • Sears HD Bench Grinder • Schumacher 12V battery Charger • Craftsman Belt Sander • Craftsman Miter Saw • 20 Ton Jack • 3 Ton Hyd Floor Jack • Craftsman Power Drill • 14" Craftsman Chop Saw • Craftsman Tool Chest on Castors • Parts Washer • Large Lot of Craftsman Tools • Creeper • General 3200 PSI Power Washer • HD Air Compressor • Generac 3500XL Generator • 8 Gal Shop Vac • Dewalt Cordless Sawzall • Bolt Bins • Pipe Cutters • Extension Cords • Com A Longs • Appliance Dolly • Draw Bar • Air Tank • Stand Grinder • Schumacher 200Amp Starter/Charger • Lincoln 220 Welder • Chain Boomers • Ratchet Straps • 16spd Drill Press • Acetylene Torch Set • Other

**ANTIQUES ~ COLLECTIBLES**

Wooden Box • Antique Corn Grinder • Wilson Tobacco Cutter • Drawknife • Cowbell • Wooden Nail Keg • Purex Jug • Wooden Yoke • Sat Iron • Leather Strap • Ammo Boxes • Fire King • Carnival Glass • Pyrex • M&M Cookie Jars • Iron Tractor • Salt & Pepper Shakers • Pocket Watches (Hamlet/Waltham/Hampton) • Old Compass • Old Pocket Knives • Sears Toy Truck (NIB) • Costume Jewelry • Dump Rake • Other

**TRAILERS**

2013 20' Dovetail HD Car Hauler Trailer w/ramps • 2003 Pro Stock 16' Bumper Stock Trailer (excellent)

**FARM EQUIPMENT**

New Holland Roll Belt 450 Utility Round Baler (like new) • Massey Ferguson 725 7' Haybine • New Holland 316 Hayliner Square Baler • Bush Hog 60-07 HD Box/ Angle Blade • NH 256 Side Delivery Rake • AG Cutter 3pt 6' Bushhog • Bushhog 3008 8' Pull Type Bushhog • 3pt 110 Gallon Boomless Ag Sprayer • Other



**AUCTIONEER'S NOTE:** This is going to be a very clean estate auction with lots of quality merchandise. Come prepared to spend the day with us! **Thanks, Shawn**

DRIVER'S LICENSE OR PICTURE I.D. REQUIRED • TERMS: CASH OR APPROVED CHECK OR

Auction Service, LLC

www.chadwellauctions.com

Auctioneer:  
**SHAWN CHADWELL**  
417-830-0209

Ringmen:  
Weston Chadwell ~ 417-349-0727

Clerk:  
**SHELLY CHADWELL**  
Cell: 417-880-8449

Cashiers:  
Maria Chadwell • Emily Shaffer  
Cassie Collins

**PROFESSIONAL SALES MANAGEMENT**  
 LUNCH WAGON • APPRAISAL SERVICE • RAIN OR SHINE  
 All announcements made day of sale take precedence over any printed matter.  
 Not responsible for lost or stolen merchandise. Not responsible for accidents.

# LAWRENCE COUNTY REAL ESTATE AUCTION

THURSDAY, JUNE 22, 2023 AT 10 AM

**AUCTION & PROPERTY LOCATION:**  
3447 HIGHWAY, MILLER, MO 65707

**PROPERTY LOCATION:** From Springfield, MO go west 20 miles on I-44 to Highway 96 at Exit 57, hold to the right and continue west 5 miles on Highway 96 to Highway M, turn right and go north 3 miles to the Wilson property on the left. OR from Miller, MO at the Junction of Highway 39 and Highway 96 take Highway M east 10 miles, turn left and go north 3 miles to the Wilson Property.

**212 +/- ACRES TOTAL WITH 120 +/- ACRES LOCATED IN TOWNSHIP 29, RANGE 26, SECTION 13 and 105 +/- ACRES IN TOWNSHIP 29, RANGE 25, SECTION 18, ALL IN LAWRENCE COUNTY MISSOURI. THE TRACT SIZES RANGE FROM 3 +/- ACRES TO 72 +/- ACRES ALL WITH HIGHWAY M FRONTAGE AND ACCESS.**

**PRE-AUCTION PROPERTY VIEWING**  
Thursday, June 8 from 4 PM to 6 PM

**TRACT 1** consists of 3.25 +/- acres with frontage and access from Highway M that runs the entire length of the east side. Tract 1 has an all brick 2,347 sq. ft. ranch style house built in 1964. In addition, there is a detached garage/shop that is a 24' x 36' pole frame structure, insulated roof, wired with asphalt floor. It has a 10' x 20' metal roll-up door with electric opener.

**TRACT 2** consists of 5 +/- acres and has frontage and access directly off Highway M and joins Tract 1 along the east side. Tract 2 has some really great agri/commercial improvements, including a 75' x 100' red iron structure that is open to the east and south, perfect for hay and/or machinery storage. There is also a 60' x 108' red iron totally enclosed building with roll-back door, a concrete footing and foundation. Tract 2 also has the original Wilson milking parlor on it with all the milking equipment still intact. Also, there is a 30' x 90' building on Tract 2 that has an enclosed shop area and open front storage. There are other farmstead improvements on Tract 2 including some ag building for livestock and a pipe coral system which will accommodate approximately 120 cows. Tract 2 also has its own deep well and pump system.

**TRACT 3** consists of 68 +/- acres that has frontage and access off Highway M along the south and east side. It is primarily all open and currently is alfalfa with the exception of a wood draw that runs across it.

**TRACT 4** consists of 72 +/- acres with access and frontage off Highway M that runs along the entire east side, it is currently being used for row crop and alfalfa hay production. The balance is in timber and Turnsback Creek bank that run along the north side.

**TRACT 5** consists of 64 +/- acres and is the only tract that lies on the east side of Highway M that runs along the west side of the tract. (The house on that side of Highway M is not included in the auction.) Tract 5 is open on both the west and east ends and is currently being used for crop production. The balance is in waterways and wooded creek banks.

**SELLERS: RONALD & PAM WILSON**

**Wheeler AUCTIONS & REAL ESTATE**  
2101 HWY 24, PARIS, MO 65275 | 660-327-5890  
WWW.WHEELERAUCTIONS.COM

CHARLIE NORDWALD | 636-795-4552  
WHEELER AUCTIONS | 660-327-5890  
WWW.WHEELERAUCTIONS.COM

**SINGER SEWING MACHINE:** Pump style excellent condition. \$125. 573-346-0612 or 573-286-6585.

**FAINTING GOATS:** Looking for an economical way to begin raising purebred fainters? Start with 2 bucklings as pets. Offering 2 for the regular price of 1. Call/ Text 573-216-7796. [www.greenacresvillage.com](http://www.greenacresvillage.com). Lake of the Ozarks.

**GREAT PYRENEES PUPPIES: 2 males, 2 females. UTD on shots and wormer. Ready now. \$150. 417-589-0227. Conway.**

**'85 FORD PICKUP PARTS:** Passenger door with window glass & mirror \$30. Also, Tailgate for '85 Ford pickup \$25. 573-308-5884. Rolla.

**1993 RED GMC 3/4 TON PICKUP:** 2WD, V8, 5-speed. "Mechanically Restored" including factory rebuilt engine & many new parts. Over 10k of recent reputable mechanical work done. Nicely detailed inside & out. Asking \$8,000. 573-759-7143. Vienna.

**RED AND BLUE HEELER PUPPIES:** \$100. 417-322-8027.

## Farm and Gun Auction in Rhineland, MO



Farm Equipment, Trailers, Lots of Tools, Saddles, Cast Iron, Appliances, Antique Furniture, Outdoor Furniture, Concrete Statues, Pottery, Pool Table



Remington, Mossberg, Glenfield, Ruger, Marlin & Savage Firearms, Pursuit & Barnett Crossbows, Buck, Browning, Winchester, Schrade, & Many More Knives, Hunting Accessories, Ammo, Paddle Boat, Trail Cameras

**Preview:**

Tuesday, June 6th | from 3:00 p.m. - 6:00 p.m.

**Auction Ends:**

Wednesday, June 7th | Starting at 12:30 p.m.

**Pick-Up:**

Thursday, June 8th | By Apt. Only

161 Red Hawk Lane Rhineland, MO 65069

Check it out & Bid at  
[www.AtterberrySells.com](http://www.AtterberrySells.com)  
573-474-9295



contactus@atterberryauction.com



**ATTERBERRY**  
AUCTION & REALTY COMPANY

Your Real Estate at Auction Specialists

## PUBLIC AUCTION

SUN., JUNE 4, 2023 • 11:00 A.M.  
HOLTS SUMMIT, MO  
2325 MASSEY LANE

**DIRECTIONS:** FROM HWY 94 TAKE COUNTY ROAD 4037 NORTH (BY RAILWOOD GOLF CLUB) 2.6 MILES TO COUNTY ROAD 4030. TURN LEFT ONTO 4030 TO MASSEY LANE TO THE HOME ON THE RIGHT. FROM HOLTS SUMMIT TAKE HALIFAX TO COUNTY ROAD 4037 TO COUNTY ROAD 4030..

**MASSEY HARRIS TRACTORS & EQUIPMENT, MASSEY HARRIS TOYS, TOOLS, LAWN & GARDEN, 1990 DODGE RAM TRUCK & 2006 KIA SPORTAGE, HOUSEHOLD, ANTIQUES & COLLECTIBLES, 50 GUNS**

**OWNERS: CARL "BUTCH" & RITA SIMMONS**

**SEE WWW.MOFFATAUCTION.COM FOR DETAILED AUCTION LISTING AND PHOTOS.**

**NOTE:** BUTCH COLLECTED MASSEY HARRIS TRACTORS. HE ALSO HAS A NICE GUN COLLECTION.

**TERMS:** CASH OR GOOD CHECK WITH PROPER IDENTIFICATION. ALL SALES ARE FINAL. EVERYTHING SELLS AS IS, WHERE IS. PROPER IDENTIFICATION IS NECESSARY TO OBTAIN A BUYER'S NUMBER. ANNOUNCEMENTS DAY OF SALE SUPERSEDE ALL PRINTED MATERIAL. FOOD ON GROUNDS.

**Auctioneers:**  
Richard Moffat & BJ Moffat  
[www.moffatauction.com](http://www.moffatauction.com)

573-690-2823 573-761-4293  
Linn, MO Jefferson City, MO



**RICHARD MOFFAT AUCTION SERVICE**



*Remembering*

## Their Service & Sacrifice

*In memory of* many and in honor of all, we proudly salute our nation's veterans today and every day.

We hope you enjoyed extra time with your family.

**Next Sale  
June 3rd @ Noon**

**BUFFALO LIVESTOCK MARKET LLC**  
276 Hwy 32 W. ,Buffalo, MO



### MON-WED MARKET REPORT

Listen to KJEL 103.7FM • Lebanon or KYOO 99FM • Bolivar

**VIEW OUR SALES AT CATTLEUSA.COM**

**CALL FOR TRUCKING OR ON-FARM VISIT**

Lyle Caselman • Owner-Manager  
417-345-7876 • mobile 417-533-2944  
Leon Caselman • Owner  
417-345-4514 • mobile • 417-588-6185



**MID MISSOURI STOCKYARDS**

**REGULAR SALE EVERY THURSDAY 11AM**

WATCH OUR WEEKLY SALE IN REAL TIME ON DVAUCTION.COM

For Farm Visits, Market Updates, or Trucking  
Call **Zach Cox 417-777-1320**  
**Dan Romine 573-578-4939**

**Competitive Buyers!  
Competitive Commission!  
Competitive Market!**

Barn: 417-532-9292



**1-44 • Exit 123 "just outside of Lebanon"**  
**17505 Route 66, Phillipsburg, MO 65722**

For weekly market updates, visit us at  
[www.midmostockyards.com](http://www.midmostockyards.com)

**FOR SALE:** 2 Dayco motorcycle covers for Harley or other big bikes. \$50 each. 417-260-0941. Raymondville.

**AKC WELSH CORGI PUPS: DOB 4/21/23. \$300. 417-259-9738.**

**EXERCISE BIKE:** In good condition. \$65. 417-532-2344.

**CHILTON'S AUTO REPAIR MANUAL:** American & Volkswagen Cars 1969-1976. \$35. 417-260-0941. Raymondville.

**MAC'S TIEDOWN STRAPS:** Like New. \$80. 417-260-0941. Raymondville.

**ANTIQUE DRESSER:** With mirror. \$200. 573-647-3139. Bourbon.

## KUSTER LOGGING

**BUYER of Standing Timber  
Oak and Walnut**

**Dozing Now Available**

**417-259-0047**

**References Available**



**PAIR OF CAR OR PICKUP RAMPS:** 70" tall on end and 16" wide \$45. 417-260-0941. Raymondville.

**COLT REVOLVER DEALER CATALOGS:** Circa 1950's + 1960's. All for \$100. 573-764-3517. Call in P.M.

## Firearms Auction

**The Red Shed**  
I-44 to exit 179 • 169 Truman St / Hwy T  
Doolittle, MO 65550

**Saturday, June 3rd, 2023 • 10 a.m.** Doors open at 8:00 a.m.  
*Sale Preview - Friday, June 2nd • 6-9 p.m.*

We will sell the following private collections of firearms without reserve.

## Selling Over 300 Firearms & Small Lot Of Ammo and Miscellaneous



For a complete sale bill and pictures of each gun, go to [auctionzip.com](http://auctionzip.com) and enter auctioneer ID #28053. Pictures also on [HiBid.com](http://HiBid.com)



## J & J Sales, LLC

573-341-5450  
Office

573-465-4647  
Julie Reagan

573-465-0642  
JD Roach, Auctioneer

573-762-2227  
Sale Day Number

**ELECTRIC DRYER:** \$125. 573-647-3139. Bourbon.

**5 BLACK STALLION WALTER FARLEY BOOKS:** Also, 5 Terhune Collie books. \$10 each. 417-260-0941. Raymondville.

**TAKING OUT GARDEN, YOU TAKE DOWN FREE FENCE, POST & GATE:** Roughly 22' 8" L x 13' 10" W. 417-260-0941. Raymondville.

**PRIDE HANDICAP SCOOTER:** \$150. 417-991-9036. Richland.

**BRAND NEW SMOKER:** \$100. 573-647-3139. Bourbon.

**WOODEN KITCHEN TABLE WITH 6 CHAIRS:** 2 are captain chairs, black, leaf, heavy duty. \$200 or open to trades. 573-647-3139. Bourbon.

**BUYING SCRAP METAL:** All kinds, can torch heavy equipment. Call for prices. 40 years experience. 573-308-6739. Newburg.

**ADORABLE SIAMESE KITTENS:** Litter trained. \$125. 417-205-6899.

**SLIGHTLY USED PUZZLES:** Will sell or trade. 417-818-3469. Strafford.

**BAMBOO FLY RODS:** \$50. 417-589-8200.

**BUFF ORPINGTON CHICKS:** Hatched 5/15/23. \$7.50. 417-588-7378. Eldridge.

**BASEMENT READY USED DOUBLE-WIDE** – 3 bdr, 2 bath, Financing Call for info 573-657-2176 amegamobilehomes.com

**1500 VINTAGE WRISTWATCH DIALS:** \$100. 573-764-3517. Call in PM.

**Buildings • Hunter's Cabins • Lawn Furniture**

**JAMCO BUILDERS**

**JAMCO Portable Buildings**

800-688-2064 • 307 Enterprise Dr. • Seymour, MO • www.jamcobuilders.com

**Rent To Own Plan**

**CALUS LOGGING**

**20 YEARS EXPERIENCE**

**Buying Standing Timber**  
Walnut & Oak

**Joe Calus, Owner**

**CERTIFIED 417-926-4606 • MTN. GROVE**

**DARDEN PROFESSIONAL TIMBER HARVESTING, BUYING STANDING TIMBER:** Great prices, improve wildlife habitat and improve forest health. State Certified & Fully Insured! 573-247-4808. Salem.

**LIGHTLY EXPERIENCED GOLF BALLS:** \$3 a dozen. 417-818-3469. Strafford.

**WANTED HAY ELEVATOR:** For small squares, skeleton type. 573-378-5180. Versailles.

**MISC. MECHANICAL TOOLS:** Small set \$25. & Large set \$35. 417-532-2344.

**HARLEY FAT BOBS:** Custom flame paint w/ gas caps + lines. \$100. 573-764-3517. Call in P.M.

**TRAILER HOUSE RIMS:** \$10 each. 573-308-5884. Rolla.

**MODEL 1911 FRAME 8-SHOT C02 PISTOL:** Like new, in box with C02 cartridges, 4 clips, pellets & all paperwork. \$95. 573-364-7465. Rolla.

**I BUY.....used mobile homes.** Call or text 573-338-6250 or email GregS.CDH@outlook.com

**Is Your Log Home Starting To Look UGLY?**

**Call Pine Ridge Rustic Log Home Building Supplies**

- Professional Log Home Maintenance & Restoration
- Staining • Chinking/Caulking • Log Replacement • Media Blasting

**573-729-7226**

[www.pineridgerustic.com](http://www.pineridgerustic.com)

**INTERNATIONAL PICKUP TRANSFER GEARBOX:** \$150. 573-308-5884. Rolla.

**50-60 T-POST FOR SALE:** Excellent shape. \$5/each. 573-647-3139. Bourbon.

**LARGE COCA-COLA NOVELTY SET/ GROUP:** \$50. 417-532-2344.

**TINY HOMES** – Missouri Franchise 573-881-7965

**PLAD PANTRY**

**DISCOUNT & SURPLUS FOODS FRESH PRODUCE LLC**

**417-532-4700**

Strawberry/Peach/Blueberry Yogurt Cups.....	<b>\$3.49</b> 24 - 4 oz.
Smoked Uncured Chicken Sausages.....	<b>\$1.79</b> 15 oz.
Spicy Fried Mushrooms.....	<b>\$5.99</b> 3 lbs.
Turkey Franks.....	<b>\$4.99</b> 3 lbs.
Frosted Mini Spooners Cereal.....	<b>\$3.19</b> 40 oz.

1571 State Hwy 64 • Tunas, MO 65764  
Hours: 8:30 a.m. to 5:30 p.m. • Closed Wed. & Sun.

**NEED YOUR CDL????? We furnish the truck & trailer. We teach all requirements for ELDT & skills test. We go to the state highway patrol with our truck. Requires only 2 days of in person training. Much cheaper way to get CDL. Jefferson City MO, Willow Springs MO, Strafford MO, 573-353-2853. For more info [www.capitaltruckdrivinginstitute.com](http://www.capitaltruckdrivinginstitute.com)**

**TAKING OUT GARDEN, YOU TAKE DOWN FREE FENCE, POST & GATE:** Roughly 22' 8" L x 13' 10" W. 417-260-0941. Raymondville.

**BAMBOO FLY RODS:** \$50. 417-589-8200.

**FOR SALE: D17 Allis Chalmers Tractor rebuilt motor series 2. \$2,200. No Sunday Calls. 417-733-2068. Buffalo.**

**WEATHERED BARN WOOD SIDING:** 10" wide. 573-729-7226. [www.pineridgerustic.com](http://www.pineridgerustic.com) Salem.

**1890 GOLD TESTING KIT:** Glass acid beakers + antique wooden case. \$100. 573-764-3517. Call in PM.

**LOG SIDING:** 2X8 Pine/Western Cedar [www.pineridgerustic.com](http://www.pineridgerustic.com) 573-729-7226. Salem.

**DOWN IN THE HOLLER: A Gallery of Ozark Folk Speech by Vance Randolph with dust jacket, rare book, 320 pages, first edition 1953, \$25. 417-532-2045. Lebanon. (Leave message and phone number.)**

**RUBBER & LEATHER BOOTS AND 5-Buckle OVER SHOES:** Men's 11, Women's 7, some insulated. \$15-\$40 obo. 636-239-2695 or 314-560-5700. Washington.

**OMAR'S LOGGING**

⇒ Oak & Walnut  
⇒ Excellent Prices  
*Amish Owned & Operated*



**LEAVE MESSAGE: 417-741-0440**  
Hartville & Surrounding Areas

**3 GENTS WITTNAUER WRIST WATCHES:** 10k gold + 23J. All \$200. 573-764-3517. Call in P.M.

**1970s KIDS METAL STOVE & FRIDGE:** Nice Lithographic paint, 18" wide x 36" high. \$75. 573-364-7465. Rolla.

**LAKE OF THE OZARK-Special:** Lots \$4,950 - \$125 down, \$69 per month. Beautiful trees, free lake access and boat ramps, lots are a short distance from the lake, no credit checks, owner financing, immediate possession or own for investment. Missouri conservation boat ramp with a covered dock and rest rooms, also acreage tracts. Prices good through June 12<sup>th</sup>, 2023. Hwy 135 between Stover and Sunrise Beach, MO. Take Lake Road 135-12 to the Ivy Bend Land Office. Closed Tuesdays and Wednesdays Call anytime 573-372-6493.



**CLASSIC EDGE**  
TITANIUM HDX

26% Tax Credit on EPA certified Central Boiler Classic Edge HDX models and installation. Call today to learn more!



**Outdoor Wood Furnace CentralBoiler.com**

The Classic Edge 360, 560 and 760 HDX are U.S. EPA Certified

**Yarbrough Equipment Sales & Services, Inc.**  
9776 E. State Hwy 00 • Strafford, MO  
417-736-2303 • 1-866-286-6901 • [www.yarbeq.com](http://www.yarbeq.com)

**OFFICIAL TRACTOR OF TOUGH™**

**INTRODUCING THE ALL-NEW 5100 SERIES**



**NEW MAHINDRA TRACTORS**

1626 4WD & LDR 26HP	IN STOCK
2638 4WD & LDR 38HP	IN STOCK
2645 4WD & LDR 45HP	IN STOCK
4550 4WD & LDR 48 HP	IN STOCK

**USED TRACTORS**

MAHINDRA M85P 4WD CAB	LDR 29,500
MAHINDRA 2638 38HP 4WD	LDR 21,000
MAHINDRA 1635 35HP 4WD	LDR 19,500
MAHINDRA 1635 35HP 4WD	LDR 19,500
MF 2675 100HP CAB	LDR 9,500
AGCO ALLIS 4660 52 HP	6,500
INC 574 52HP W/LDR	6,500
CUB CADET 7205 20HP 4WD	4,250
FORD 2000 31 HP	3,500
KUBOTA L175 17HP W/ MOWER	3,000
MF 135 36 HP	2,750
FORD 861 45 HP	2,500

**USED ROUND BALERS**

NH RB450 4X5 MESH	24,000
NH RB780A 5X6 MESH	7,500
HESSTON 550 4X6	2,500
HESSTON 560 5X6	2,000

**USED MISC.**

SITREX 8 WHEEL RAKE	1,750
LELY 8 WHEEL RAKE	1,750
INTERNATIONAL 10FT CUTTER	1,250
BH RDTH 60 FINISH MOWER	850
RHINO 5FT FINISH MOWER	850
LAND PRIDE 5FT CUTTER	500
ROLLINS 5FT BLADE	250

**Marshfield Machinery Inc.**  
222 E. Madison • Marshfield, MO 65706  
417-859-2117 • [www.marshfieldmachinery.com](http://www.marshfieldmachinery.com)

\*2018 data including all Mahindra group brand sales. MahindraUSA.com © 2020 Mahindra USA Inc.

**Marshfield Machinery Inc.**  
222 E. Madison  
Marshfield, MO 65706  
417-859-2117  
[www.marshfieldmachinery.com](http://www.marshfieldmachinery.com)

**Mahindra Rise.**



Starting at \$57,500  
2022 Deere 317G \*UNUSED\*  
Cab&OROPS, Loaded! IN-STOCK



Over 500 Attachments IN STOCK!  
We ship NATIONWIDE!

**Craig Equipment**  
2681 W. Pearce Blvd | Wentzville, MO 63385  
**636-856-8555**  
www.CraigEquipment.com  
\*Availability & Price subject to change without notice



Starting at \$94,995  
2022 Deere 333G \*UNUSED\*  
LOADED! IN-STOCK



2022 Deere 325G \*UNUSED\* Warranty Loaded! IN-STOCK.....\$69,995



2019 Deere 333G \*HiFlow\* 1855hrs \*Warranty\* PolyDoor AC/Cab Joystix.....\$58,900



2017 Deere 317G 65hp 1284hrs OROPS Joystix 2sp.....\$34,900



2015 Deere 319E 69hp, 1874hr, Joystx, NEW Trax.....\$34,900



2016 Deere 326E \*HiFlow\* 2300hr AC Joystx 2speed NEW Tires.....\$39,900



2017 Deere 333E 100hp 3529hrs AC/Cab Joystx 2sp!.....\$48,500



2021 Bobcat T870 \*HiFlow\* 540hrs, AC/Cab, Joystx, Warranty!\*.....\$84,900



2021 Bobcat T770 \*HiFlow\* 733hr AC/Cab Joystx \*Warranty\*.....\$69,900



2015 Bobcat T650 74hp 1264hr AC/Cab 2sp Foot Controls.....\$44,900



2006 Bobcat T300 81hp 2992hrs AC/Cab ISO/H Joystx A+Trax.....\$42,500



2008 Bobcat T250 \*HiFlow\* 81hp 3739hrs AC/Cab Joystx.....\$39,900



2000 Bobcat 763 \*LIKE NEW\* 106 HOURS, Clean & NEW Tires.....\$34,900



2016 Bobcat S570 661hp 1548hr AC/Cab Ft Controls PwrBkt Chngr.....\$31,900



2014 Bobcat S70 24hp 1201hrs 36" smooth bkt included.....\$19,995



2000 Case 1840 54hp 967hrs H CONTROLS New Tires.....\$26,900



2006 Cat 252B 73hp 3566hrs AC/Cab Joystix, PwrBkt Chngr.....\$29,900



2018 Kubota SVL75 \*1 owner\* 74hp, 1768hrs, AC/Cab, Joystx, PwrBkt Chngr.....\$48,900



2015 Kubota SVL90 92hp, 2943hrs, AC/Cab, Joystx, 2sp, Pwr Bkt Chngr.....\$42,500



2010 Gehl CTL75 \*83hp, 1435hrs, AC/Cab, Joystx, 2sp.....\$42,500



2005 Gehl 6640 82hp, ONLY 710hrs, T-BAR controls.....\$29,900

# A deal designed to help you get the job done right.



MX Series 55.5-63.4 HP Factory cab available



Save big on the comfort and versatility of the MX Series, part of our tractor lineup rated #1 for durability and owner experience in the U.S.\* Stop in for a demo and to claim this great offer today.

**\$0 DOWN 0% APR UP TO 60 MONTHS**

PLUS

**SAVE UP TO \$800**

VISIT US TODAY FOR THIS LIMITED-TIME OFFER



## Quarles Supply

3251 S Springfield Ave  
Bolivar, MO 65613  
417-777-2391

KubotaUSA.com

\*Award based on 2021 Progressive Farmer Reader Insights Tractor Study. © Kubota Tractor Corporation, 2023. \$0 Down, 0% A.P.R. financing for up to 60 months on purchases of new Kubota MX Series equipment from participating dealers' in-stock inventory is available to qualified purchasers through Kubota Credit Corporation, U.S.A.; subject to credit approval. Example: 60 monthly payments of \$16.67 per \$1,000 financed. Customer rebates include Orange Plus Attachment Instant Rebate of \$300 with purchase of the second qualifying new implement and \$500 for the third new qualifying implement. Some exceptions apply. There is no rebate on the first implement purchased. Offers expire 06/30/23. Terms subject to change. This material is for descriptive purposes only. Kubota disclaims all representations and warranties, express or implied, or any liability from the use of this material. For complete warranty, disclaimer, safety, incentive offer and product information, consult your Dealer or KubotaUSA.com.

*Progressive*  
**FARMER**  
READER INSIGHTS