

**FREE - TAKE ONE!**

Vol. 30 No. 9

**MAY 25, 2023**

417-532-9131

# WEEKLY **TRADER** MAGAZINE



Find us on  
**Facebook**

@myweeklytrader  
**AUCTIONS PG. 8**

**VISIT OUR NEW WEBSITE! MYWEEKLYTRADER.COM**

**GREAT DEALS ON A HUGE SELECTION  
OF CHEVY SILVERADOS**



**Backed By  
Morse**

**WE WANT YOUR TRADE.**

**ED MORSE  
CHEVROLET  
BUICK·GMC**

**ROLLA**

**FORMERLY FAIRGROUNDS AUTO PLAZA  
NEW NAME. SAME TEAM.**

**100 Fairgrounds Rd., Rolla, MO**

**573-364-1002**

**EdMorseChevroletBuickGMCRolla.com**



# LS TRACTOR

**ZERO DOWN, 0% FINANCING AVAILABLE**  
WITH DEALER PARTICIPATION FEE

**CALL US TODAY 417-859-4311**



**MT342H \$30,820**



**MT357PCTC \$40,320**



**MT125 PACKAGE**  
**\$29,430**  
**\$25,810**

**with TRAILER, BOX BLADE, and BACKHOE!**



**TYM**  
TRACTORS

**CHECK OUT THESE SPECIALS ON TYM TRACTORS**



**TYM 2515**  
**\$20,879 GEAR**  
**SALE: 19,979**  
**\$22,009-HYDRO**  
**SALE: 21,109**

**THE 2515 HAS ARRIVED! 24 hp w/2200 Lift Capacity**



**T474g \$26,164**  
**\$24,914**



**T574g \$30,119**  
**\$28,869**



**WCT Farm & Lawn**  
**417-859-4311**  
**SALES • SERVICE • PARTS**  
**3299 E. EVERGREEN ROAD**  
**STRAFFORD, MO**





# HUSTLER®

AT YOUR LOCAL  
HUSTLER DEALER



\*Offer applies to Hustler Raptor Series Zero-turn mowers only. Valid 4/1/23 to 5/31/23, only at participating US dealers. Inventory varies by dealer; offer subject to availability at individual dealer. May not be combined with any other discount or offer and does not apply to prior purchases or purchases made before or after the promotion dates. Discount does not apply to tax, shipping and handling, or setup. If you return the merchandise, the value of this promotion is not refunded or credited to your account. No cash value, except where prohibited by law.

For Outstanding Products & Service  
**AGRI-ENTERPRISES**

1-1/2 Miles South Of Licking, MO On Hwy 63  
573-674-2203 • 1-800-653-7152 • [www.agri-enterprises.com](http://www.agri-enterprises.com)

## SPRING SALES

20 EVENT 23

**SAVE \$200 OR MORE ON RAPTOR MOWERS**

**Route 66 MOTHER ROAD BOOK:** by Michael Wallis, \$12.50. 417-532-2045. Lebanon. (Leave message and phone number.)

**WEATHERED BARN WOOD SIDING:** 10" wide. 573-729-7226. [www.pineridgerustic.com](http://www.pineridgerustic.com) Salem.

**LOG SIDING:** 2X8 Pine/Western Cedar [www.pineridgerustic.com](http://www.pineridgerustic.com) 573-729-7226. Salem.

**SLIGHTLY USED PUZZLES:** Will sell or trade. 417-818-3469. Strafford.

**TINY HOMES** – Missouri Franchise 573-881-7965

**BASEMENT READY USED DOUBLE-WIDE** – 3 bdr, 2 bath, Financing Call for info 573-657-2176 [amegamobilehomes.com](http://amegamobilehomes.com)

**DISCOUNT NEW MOBILE HOMES** – we will beat any price on any home **GUARANTEED**, Financing, 573-499-9993 [columbiadiscountmobilehomes.com](http://columbiadiscountmobilehomes.com)

**BASEMENT READY TRUE MODS-** instock ready for delivery 573-657-7040 [chateauhomes.net](http://chateauhomes.net)


**2 GELBVIEH BULLS FOR SALE:** 12 & 14-months-old. \$2,400 each. 417-531-1048. Morgan.

**I BUY.....used mobile homes.** Call or text 573-338-6250 or email [GregS.CDH@outlook.com](mailto:GregS.CDH@outlook.com)

**REGISTERED HEREFORD & ANGUS BULLS:** Home raised, Some Show-Me Select Qualified. 573-701-7828. Belgrade.





**LIGHTLY EXPERIENCED GOLF BALLS:** \$3 a dozen. 417-818-3469. Strafford.

**TAKING OUT GARDEN, YOU TAKE DOWN FREE FENCE, POST & GATE:** Roughly 22' 8" L x 13' 10" W. 417-260-0941. Raymondville.



## TIM'S USED CARS

(573) 341-3828 • 1334 South Bishop (Hwy. 63) • Rolla, MO  
Next to Hwy CC • [www.tims-used-cars.com](http://www.tims-used-cars.com)

 <p><b>2016 FORD TAURUS SE</b> 3.5 V-6, power equipped 41,xxx Miles <b>Only \$16,900</b></p>	 <p><b>2016 CADILLAC ESCALADE LUXURY</b> AWD, 6.2 V-8, loaded w/options 138,xxx Miles <b>Only \$29,800</b></p>
 <p><b>2018 FORD FUSION SE</b> 2.5 4 cyl., power equipped, 44,xxx Miles <b>Only \$19,900</b></p>	 <p><b>2011 FORD F250 KING RANCH</b> Crew cab, short bed, 4x4, 6.7 diesel, loaded w/options, 134,xxx Miles <b>Only \$31,500</b></p>

**LARGE SELECTION OF CARS, TRUCKS, SUVs & VANS!**



**LIONEL TRAIN SET:** Steam engine, tender, caboose and other car, track, and transformer. \$195. 573-364-7465. Rolla.

### MODEL 1911 FRAME 8-SHOT C02

**PISTOL:** Like new, in box with C02 cartridges, 4 clips, pellets & all paperwork. \$95. 573-364-7465. Rolla.

**1970s KIDS METAL STOVE & FRIDGE:** Nice Lithographic paint, 18" wide x 36" high. \$75. 573-364-7465. Rolla.

### 3 GENTS WITTNAUER WRIST

**WATCHES:** 10k gold + 23J. All \$200. 573-764-3517. Call in P.M.

**HARLEY FAT BOBS:** Custom flame paint w/ gas caps + lines. \$100. 573-764-3517. Call in P.M.

### COLT REVOLVER DEALER

**CATALOGS:** Circa 1950's + 1960's. All for \$100. 573-764-3517. Call in P.M.

### 110 PORCELAIN POCKET WATCH

**DIALS:** Perfect for arts & crafts. \$100. 573-764-3517. Call in PM.

**1890 GOLD TESTING KIT:** Glass acid beakers + antique wooden case. \$100. 573-764-3517. Call in PM.

**1500 VINTAGE WRISTWATCH DIALS:** \$100. 573-764-3517. Call in PM.

**HARLEY 45 SOLO:** factory rear brake drum + sprocket. \$150. 573-764-3517. Call in PM.

**HARLEY PANHEAD DISTRIBUTOR:** original, chrome + complete. \$125. 573-764-3517. Call in PM.

**1962 HARLEY SPORTSTER 900CC:** original distributor. \$50. 573-764-3517. Call in PM.

**RUBBER & LEATHER BOOTS AND 5-Buckle OVER SHOES:** Men's 11, Women's 7, some insulated. \$15-\$40 obo. 636-239-2695 or 314-560-5700. Washington.

**NEW SQUARE D RAINPROOF 50AMP DISCONNECT:** \$160. 636-239-2695 or 314-560-5700. Washington.

### USED JET HOME POLLUTION

**CONTROL PANNEL:** Model CP700. \$65. 636-239-2695 or 314-560-5700. Washington.

**FOR SALE:** Transmission for 56 & 06 series International tractors. \$675. 636-239-2695 or 314-560-5700. Washington.

**TRAILER HOUSE RIMS:** \$10 each. 573-308-5884. Rolla.

**HEARTH CRAFT GLASS BI-FOLD FIREPLACE DOORS PURCHASED AT FORSHAW'S FIREPLACE:** Antique brass. \$160 obo. 636-239-2695 or 314-560-5700. Washington.

**ANTIQUE HOG OILER:** \$35. 573-308-5884. Rolla.

**Introducing our New Collection!**

**Best quality and the best prices around!**

Let us measure your space for a Free Estimate!

- Luxury Vinyl Planks • Tile • Cabinets • Granite & Quartz Countertops • And Much More!

**NEIGHBORHOODS HOME IMPROVEMENT STORE**  
Where QUALITY doesn't cost more!

417-533-5080 • 19850 Houston Road • Lebanon  
Mon.-Fri. 8am-5pm • Sat. 8am-3pm  
neighborhoods-inc.com

**Waypoint**  
LIVING SPACES

**NO SUPPLY CHAIN ISSUES!**

### 1 PAIR OF KEY BRAND MEN'S JEANS:

Waist 38, Length 34. \$10. 636-239-2695 or 314-560-5700. Washington.

**NOW BUYING STANDING RED AND WHITE OAK TIMBER:** All slash will be trimmed to lay flat or placed in tidy piles for wildlife. No scarred-up trees or ruts from heavy logging equipment. We use low impact compact track loaders to minimize disturbance in your forest. Missouri Land Service LLC. 417-991-9280.

**METAL ROOFS:** We repair leaky metal roofs with warranty. Also, flat roofs. Very affordable. Cover all of state. 573-338-1148. Jefferson City.

**CUSTOM HAY HARVESTING:** or put up in shares. 4x5 Net Wrap Tight JD Bales. \*Reasonable Rates\* Reliable Service Larger Acreages Desired. Book early to beat the rush. For a Free Quote call Josh \*573-247-8715\* Green Meadows Farm: Servicing Dent, Texas, and surrounding counties.

### NEIGHBORHOODS HOME

**IMPROVEMENT STORE: 417-533-5080. Lebanon**

### STAN MUSIEL CANCELED CHECK:

full signature with authenticity \$55, txt for pictures. Mint condition. 573-854-8132

**NEW JELD WEN 5' LEFT HAND SLIDING GLASS DOOR WITH SUNSTABLE INTERIOR BLINDS:** Clear tempered glass, Desert Sand trim/hardware. Retail \$2655 Sell \$900. 417-693-0389. Conway.

**120 WHITE TRACTOR:** 7317 Hours, 140 H.P. \$26,000. Excellent Condition. 636-239-4921. Washington.

**WE BUY**

# White Oak Logs!

- ✓ Top prices for your logs
- ✓ Experienced log buyers
- ✓ Professional service

Chad Cook | Salem Wood Products  
**417.718.2950**  
5 miles north of Salem, MO on Hwy 19

**INDEPENDENT STAVE COMPANY**  
Log Procurement & Sales

[www.independentstavecompany.com](http://www.independentstavecompany.com)



**JOE THEISMANN AUTOGRAPHED CAREER STAT JERSEY:** JSA COA. Text for pictures. \$95 573-854-8132. Licking.

**K.C. CHIEFS SUPERBOWL 2019 DAMIEN WILLIAMS AUTOGRAPHED JERSEY:** JSA COA. Text for pictures. \$135. 573-854-8132. Licking.

**2 ELECTRIC MOTORS:** Diehl 1/3 horsepower and Wagner Electric 3/4 horsepower, includes 21 pulleys various sizes and widths. \$45. 210-787-8222. Linn Creek.

**VINTAGE WORKING 1967 ELECTRIC SINGER SEWING MACHINE:** Special zigzag model 638 in cabinet with original instruction book. \$50. 210-787-8222. Linn Creek.

**TROLLING MOTOR:** MotorGuide 71 lb. thrust, 24-volt. Excellent condition. \$150. 210-787-8222. Linn Creek.

**2007 QUALITY BUILT SINGLE HORSE TRAILER:** Good floor with mats, good tires. Nice clean trailer. \$3,500 or will consider cash offer. 417-599-8089. Willard.

**2017 JEEP RENEGADE:** 57,000 miles, garage kept. 417-935-2635. Seymour.

**FISHING SEASON COMING:** Get your rod and reels. \$15 & up. 417-589-8200.

**FRESH SHEEP MILK & CHEESE:** For more info call 417-741.2186. Hartville.

**BAMBOO FLY RODS:** \$50. 417-589-8200.

**RED AND BLUE HEELER PUPPIES:** \$100. 417-322-8027.

**FOR SALE: 10 Bred Angus Heifers, 16 Bred Angus Cows & 1 Angus Bull 2-years-old. 314-306-6345 Call or text. Drake/Owensville.**

**SINGER SEWING MACHINE:** Pump style excellent condition. \$125. 573-346-0612 or 573-286-6585.

**FAINTING GOATS:** Looking for an economical way to begin raising purebred fainters? Start with 2 bucklings as pets. Offering 2 for the regular price of 1. Call/Text 573-216-7796. [www.greenacresvillage.com](http://www.greenacresvillage.com). Lake of the Ozarks.

**2004 CHEVY TRAILBLAZER:** AWD, Runs & drives good. Good tires & battery. Heat & air works. 184,000 miles. \$2,250 OBO. 573-435-6987. Leave Message.

**GREAT PYRENEES PUPPIES: 2 males, 2 females. UTD on shots and wormer. Ready now. \$150. 417-589-0227. Conway.**

**1993 RED GMC 3/4 TON PICKUP:** 2WD, V8, 5-speed. "Mechanically Restored" including factory rebuilt engine & many new parts. Over 10k of recent reputable mechanical work done. Nicely detailed inside & out. Asking \$8,000. 573-759-7143. Vienna.

**2005 RAM QUAD CAB CUMMINGS DIESEL:** Automatic transmission, 4x4, long bed, 272,000 miles. Engine and transmission have low miles. \$15,500 or consider cash offer. 417-599-8089. Willard.

**4 GOODYEAR WRANGLER TIRES:** Kevlar LT245/70R17, all terrain, \$100 for a pair. 417-417-260-0941. Raymondville.

**FOR SALE:** 2 Dayco motorcycle covers for Harley or other big bikes. \$50 each. 417-260-0941. Raymondville.

**CHILTON'S AUTO REPAIR MANUAL:** American & Volkswagen Cars 1969-1976. \$35. 417-260-0941. Raymondville.

**MAC'S TIEDOWN STRAPS:** Like New. \$80. 417-260-0941. Raymondville.

**PAIR OF CAR OR PICKUP RAMPS:** 70" tall on end and 16" wide \$45. 417-260-0941. Raymondville.



Call to Order  
417-993-3017

Meadowview Dutch Market

Bulk & Surplus Groceries • Prices Subject to Stock on Hand

## DELI SPECIAL

SMOKEHOUSE HAM.....REG. \$5.99 LB .....SALE \$5.49 LB

SMOKED SWISS CHEESE .....REG. \$6.49 LB .....SALE \$5.99 LB

TRY our Fresh Homemade DELI Sandwiches: TURKEY, HAM, ROAST BEEF, ITALIAN, BLT'S, PULLED PORK AND BLT PULLED PORK (MADE YOUR WAY)! COME IN OR CALL to order! ALSO Custom Deli trays! Veggie OR FRESH Meat-N-Cheese!



We are open on  
Memorial Day!

Arizona  
Kiwi Strawberry Tea  
**75¢**  
23 OZ.

Whole Grain  
Corn Dogs  
**\$1.69**  
LB.

Bone-In  
Pork Chops  
**\$14.99**  
10 LB. CASE

Italian  
Meatballs  
**\$1.99**  
16 OZ.

Shrimp  
Egg Rolls  
**\$2.79**  
LB.

Shasta  
Tonic Water  
**2 FOR \$1.00**  
1 LITER

Sliced Yellow  
American Cheese  
**\$7.49**  
3 LBS.



Sale Dates May 24<sup>th</sup>, 2023 to  
May 30<sup>th</sup>, 2023 while supplies last!

12 INCH  
PEPPERONI OR SAUSAGE

**\$1.99**  
EACH



FRESH FLORIDA  
SEEDLESS AND  
SEEDED WATERMELON



MEADOWVIEW DUTCH MARKET  
417-993-3017 Hours: Mon-Thurs 8-5pm  
Fri 8-6pm • Sat 8-5pm  
23 Miles West on Hwy 64 • Right on T Hwy  
9 miles • Left on E Hwy 1 mile on Left

NOW ACCEPTING CREDIT, DEBIT CARDS & EBT

DUTCH COUNTRY STORE, LLC  
573-378-4395  
Hours: Mon-Thurs 8-5pm  
Fri 8-6pm • Sat 8-5pm  
5 miles East of Versailles off Hwy C on Kelsay Road



**AKC WELSH CORGI PUPS: DOB 4/21/23. \$300. 417-259-9738.**

**5 BLACK STALLION WALTER FARLEY BOOKS:** Also, 5 Terhune Collie books. \$10 each. 417-260-0941. Raymondville.

**GLOCK 42 380 AUTO:** Never fired. \$390 Firm. 417-260-0941. Raymondville.

**DARDEN PROFESSIONAL TIMBER HARVESTING, BUYING STANDING TIMBER:** Great prices, improve wildlife habitat and improve forest health. State Certified & Fully Insured! 573-247-4808. Salem.

**WANTED BULLHEAD CATFISH:** Live, any size, Farm Pond raised. 573-699-4805. St. James.

**'85 FORD PICKUP PARTS:** Passenger door with window glass & mirror \$30. Also, Tailgate for '85 Ford pickup \$25. 573-308-5884. Rolla.

**INTERNATIONAL PICKUP TRANSFER GEARBOX:** \$150. 573-308-5884. Rolla.

**GAITED RIDING HORSE:** Broke, 15yrs. \$1,500. 573-759-3851 8-8:30AM.

**50-60 T-POST FOR SALE:** Excellent shape. \$5/each. 573-647-3139. Bourbon.

**ANTIQUE DRESSER:** With mirror. \$200. 573-647-3139. Bourbon.

**ELECTRIC DRYER:** \$125. 573-647-3139. Bourbon.

**BRAND NEW SMOKER:** \$100. 573-647-3139. Bourbon.

**WOODEN KITCHEN TABLE WITH 6 CHAIRS:** 2 are captain chairs, black, leaf, heavy duty. \$200 or open to trades. 573-647-3139. Bourbon.

**GERMAN SHEPHERD CROSS PUPPIES FOR SALE:** 10-weeks-old. \$35 OBO. 417-741-0476.

**BUYING SCRAP METAL:** All kinds, can torch heavy equipment. Call for prices. 40 years experience. 573-308-6739. Newburg.

**IN THE BOX NEW SET OF HORSESHOES:** \$50. 417-532-6561. Phillipsburg.

**LARGE GRASS SEEDER:** On wheels, pull behind tractor. \$500. 417-532-6561. Phillipsburg.

**ADORABLE SIAMESE KITTENS:** Litter trained. \$125. 417-205-6899.

**AERMOTOR FARM WINDMILL:** 30Ft. tower. \$2,000. 417-991-9036. Richland.

**185 SUZUKI FOUR-WHEELER:** Good condition, 454 miles. \$800. 417-991-9036. Richland.

**PRIDE HANDICAP SCOOTER:** \$150. 417-991-9036. Richland.

**WANTED HAY ELEVATOR:** For small squares, skeleton type. 573-378-5180. Versailles.

**WWW.MYWEEKLYTRADER.COM**

**COLEMAN HOT TUB/SPA:** 4-person, 120 jets, like new, complete with platform & cover, ready to set up & enjoy. \$450. 417-286-3212.

**EXERCISE BIKE:** In good condition. \$65. 417-532-2344.

**MISC. MECHANICAL TOOLS:** Small set \$25. & Large set \$35. 417-532-2344.

**LARGE COCA-COLA NOVELTY SET/ GROUP:** \$50. 417-532-2344.

**JOHN DEERE 920 DISCBINE:** With rollers. \$7,500. 573-765-4406. Richland.

**0% FOR 72 MONTHS**

**FREE ROTARY CUTTER ON SELECT**

# Tractor Packages

 <p><b>FREE ROTARY CUTTER</b></p> <p><b>25 HORSEPOWER PACKAGE</b></p> <p>1025R JOHN DEERE TRACTOR + 120R LOADER + RC4048 ROTARY CUTTER + INSURANCE INCLUDED</p> <p><b>ONLY \$309/MO</b></p>	 <p><b>FREE ROTARY CUTTER</b></p> <p><b>HEAVY DUTY PACKAGE</b></p> <p>3025D JOHN DEERE TRACTOR + 300E LOADER + RC4060 ROTARY CUTTER + INSURANCE INCLUDED</p> <p><b>ONLY \$345/MO</b></p>	 <p><b>FREE ROTARY CUTTER</b></p> <p><b>CURB APPEAL</b></p> <p>3025E JOHN DEERE TRACTOR + 300E LOADER + RC4060 ROTARY CUTTER + INSURANCE INCLUDED</p> <p><b>ONLY \$364/MO</b></p>
---	---	---



**FATHER'S DAY *Gift***

**\$200 OFF**

ON SELECT TRAEGER GRILLS

GET ROLLIN' WITH OUR

## HAY *Sale*

**12% OFF**

SELECT ATTACHMENTS\*

\*Offer ends 5/31/2023. Some restrictions apply.





*Heritage*  
**TRACTOR**

**Scan Here for Savings**



Exclusions apply. See dealer for details. Offer ends 6.10.23



# #1 AUCTION SOURCE IN CENTRAL MISSOURI

## SERVING 34 COUNTIES!



**IN PRINT  
& ONLINE!**

# TO ADVERTISE YOUR AUCTION, CALL 417-532-9131

**WEEKLY  
TRADER  
MAGAZINE**

100 E. Commercial, Lebanon  
www.myweeklytrader.com  
www.facebook.com/myweeklytrader



# Sam CRAWFORD AUCTION SERVICE LLC

Due to the death of my husband, Bill Gibson, will sell the following at our farm located from Osceola, MO 3 mi. South on Hwy. 13 to Hwy TT, then East 9½ mi. to Co. Rd. SE 1379 then Southwest 1 mi. Watch for auction signs.

## SATURDAY, JUNE 3<sup>rd</sup>, 2023 - 9:30 AM

### TRACTORS • MACHINERY • TRUCK • VEHICLES • TRAILERS • TOOLS

#### TOOLS & MISC.

Miller XMT 300 Welder  
Lincoln AC/DC Elec. Welder, Like New  
Hobart Port. Champion 16 Welder, Works?  
Champion 12" Wood Lathe  
Lg. Commercial Air Compressor  
Workmaster 12" & 20" Planers  
Craftsman Radial Arm Saw  
3-4 Older Craftsman Table Saws  
Craftsman 12" Band Saw  
6" Planer/Jointer  
Craftsman Standing Drill Press  
Craftsman Miter Saw  
Smithy CB1220 XL Metal Lathe/Drill Press  
Delta Scroll Saw • 3 Hand Held Bandsaws  
Old Metal Band Saw • Hydraulic Press  
Ryobi Tile Saw w/Stand  
3 Small Air Compressors  
Lot Asst. Power Hand Tools  
Air Nailers • Sev. Bar Clamps  
Long Handle Tools • 3/4 Socket Set  
Lots Wrenches/Sockets • Air Hose, Ext. Cords  
Crosscut Saws  
Concrete Vibrator  
Toolboxes • Tackle Boxes  
Sev. Rods & Reels  
Craftsman 3½ Ton Floor Jack  
2 Vises  
Forge Blower  
Stihl 290-250-251-170 & Other Chainsaws  
2 Rear Tine Tillers • 2 Kohler Motors  
John Deere 110 Lawn Tractor  
Cub Cadet Lawn Tractor  
Older 30 HP Outboard Motor & Stand  
30' HD Shelving  
US Steel Quonset Building, New in Bundle, Unknown on Size

Kawasaki 700 4 Wheeler  
Polaris 4 Wheeler  
CF Moto 4 Wheeler  
Massimo 500 Side By Side 4x4  
All need Work or For Parts

#### TRACTORS • SELL NEAR 12:30

John Deere 2640, Diesel, 38" Rear Tires, Runs  
John Deere 70 Gas, Wide Front, Power Steering, Power Trol  
John Deere B, No Rear Wheels  
John Deere 70 Diesel, Wheatland W/F, Looks Good, Working on PTO  
John Deere B Power Trol, Elect. Start  
John Deere B Elect. Start, Add on 3 Pt.  
John Deere A Unstyled, Flat Spike on Rear Wheels, Part of Motor Gone  
John Deere D on Steel, Transmission Top Gone

John Deere D Wheatland, Propane  
John Deere 420 Crawler, Gas, Hyd. Blade

John Deere 520 3 Pt. Power Steering  
John Deere A, Narrow Front, Rear Steel, Power Trol  
John Deere 60, Narrow Front, Power Steering, 3 Pt.  
Farmall A For Parts  
Farmall B For Parts  
Farmall Super H Narrow Front, Part of Hood & Gas Tank Gone  
Ferguson TO  
Oliver 1650 Diesel, Wide Front  
Oliver 1800 Diesel  
Allis Chalmers B  
Case 350 Trackloader, Brush Cab Ripper Bar or Rear, Looks Good, Not Running  
**Majority of these tractors have been kept inside and look good but will probably not be running sale day.**

#### MACHINERY

Haybuster No Till Drill 10', May Work  
Older John Deere 12' Disk  
Old Drag Disk  
Bush Hog 10' Brush Cutter, Pull Type  
Older Bush Hog, 7' Pull Type  
Bush Hog 12', Pull Type, For Parts  
Farm Wagon Gear  
Bale Fork for QT Loader  
3 Pt. Bale Spear & Fork  
2 Section Rotary Hoe  
3 Old Hesston Round Balers, For Parts  
Old MF 3 Pt. 9' Sickle Mower  
Parts & Pieces of Machinery For Salvage  
**Machinery is all rough.**

#### SAWMILL • TRAILERS SELL AT 12 NOON

'90 Wood Mizer Portable Band Sawmill, Shows 407 Hrs.  
Gooseneck Lo Pro 18' HD Flatbed  
'95 W/ Ro 2 Horse Trailer  
Old 16' Bumper Hitch Utility Trailer  
Old 5th Wheel Trailer Frame, 40+ Ft.  
Homemade Gooseneck 16' Utility Trailer  
Small 2 Wheel Trailer

#### VEHICLES

#### TO RESTORE OR SALVAGE SELL AFTER TRACTORS

Ford Model T - In Barn, Complete  
'58? Ford Ranchero, 6 Cyl., 3 Spd, To Restore  
'63? Ford ½ Ton, 4 Spd, Long Bed  
'55? Ford F100 Stepside  
'55 Chevy 3200 Stepside, 4 Spd, Supposed to Run  
'69? Chev. ½ Ton, Cab & Chassis  
'69 Chev. El Camino, To Restore  
'70-'71 Chevy 1 ton Cab & Chassis  
'80's Ford 150 Ext Cab, LWB, Salvage  
'70 Ford Econoline, Salvage  
'70's Jeep Wagoneer, Salvage  
Buick Regal, Salvage  
Chev. Cavalier, Salvage  
'70's Dodge ½ Ton, Salvage  
'94 Fiero GT

2 - '48-'49 Studebaker Champion & Land Cruiser, Good Bodies  
'60's GMC 400 2 Ton 16' Bed & Holst  
'56? Chev. G400 Cab & Chassis  
'90 GMC Topkick Single Axle Gas, 5-2, 10' Hell Dump Bed  
70's Chev. C-70 Cab & Chassis  
Kia Spartan, Salvage  
Pontiac GT, Salvage  
'14 Subaru Impreza AWD Salvage  
6-8 V8 Motors, Other Parts  
'05 Ford 350 Crew Cab Diesel, 4x4, Auto, Front End Damage

#### GUNS • SELL AT 9:30

Marlin 444 Single Shot  
Winchester 43 22 Hornet  
Winchester 22 Mag RF  
H & R 45/70 Single Shot  
2 - Smith Corona 03A3  
Mausier 8 MM Yugoslavia  
2 - Springfield 1898 30-06  
Mas Mie 1936  
Remington 71 275 Camo  
Remington 03A3  
2 - Remington .22  
Wards 04M .22  
Marlin 16 .22  
4-5 B/P 50 Cal. Rifles  
Sleko 222 Rifle  
22 Long Rifle  
2 - 45/70  
Scout 22 LR Pistol  
2 - Smith & Wesson BFR 500 Pistols  
Smith & Wesson 45 Semi-Auto  
Ruger 22 LR Pistol  
Colt 22  
Colt 45  
1903 Springfield Pistol  
H & S 22 LR  
**Barrels:**  
Win 70 250/300 Savage  
Rem. 35  
Win 94 30/30, Wells Fargo 1852-1977  
Ruger 22/250  
Rem. 7 MM Mag

Thompson Contender 30/30  
Thompson Center Encore Barrels: 45/70 Govt., 30/06 Springfield, 22/250 Rem., 204 Ruger, 308  
Ruger 416 Rigby Stainless Barrel  
Remington 12 Ga. Barrel

Reloading Dies, 7MM, 444, 25/06, 7x57, 220 Swift, 300 Withby, 257 Withby, Others  
Misc. Reloading Equip.  
Asst. Ammo, Blackpowder, Brass, Other Reloading Supplies, Gun Books  
Wood Gun Cabinet

**Large auction with lots of interesting items, possibly 2 rings part of the morning. Loader on site day of sale**

Sam CRAWFORD Auction Service LLC

1944 CELEBRATING 79 YEARS 2023  
STARTING 79 YEARS OF SALES & SERVICE

Sam  
417-328-9137

Chase  
417-399-1904

Chance, CAI  
417-298-1751

Tom Poynter  
Jack Lancaster

CrawfordAuctionService.com

417-998-6629  
Cross Timbers, Mo.

# SHERRY GIBSON



# REAL ESTATE & ESTATE AUCTION

**Friday, May 26th, 2023 ~ 10:00 AM**

LOCATION: 23374 Norway Rd, Granby, MO; Directions: From 86 Hwy At East Newton School Go 2 Miles South To Norway Road Then East 1/4 Mile To Sale Site. GPS Will Get You There (Watch For Signs)

## Auction For George & Velda Eads Estate



### Real Estate Sells First At 10:00 AM

Tract 1: Double Wide Mobile Home Approx 1600 Sq Ft With 3 Bedrooms, 3 Bath, Living, Kitchen, Dining, Utility Rooms With Built On Sun Room Sitting On 3 Acres M/L With Barn, Shop & 5 Other Outbuildings. Has Central Air & Propane Heat. Tract 2: Approx 42 x 80 Unfinished Shop/House Setting On 4 Acres M/L, Has 2 Bedroom, 2 1/2 Bath, Living & Kitchen Areas. Framed Up With Electric & Plumbing Partially Completed. Shop Area Is Approx 1200 Sq Ft, Living Area Approx 2100 Sq Ft, Has 12 Ft Wood Frame Walls. Both Tracts Share One Well. Water Rights Must Be Split Among Both Purchasers.

To Preview Contact Bill At 417-214-0093.

Terms: 10% Down Day Of Sale With Signed Contract And Balance Due In 45 Days Or When Closing Date Set By Abstract Office. Seller Has The Right To Accept Or Reject Any And All Bids.

### Antique, Modern Furniture & Appliances

Ant Oak Chest Of Drawers, Ant Trunk, Parlor Stove, Prim Metal Cabinet, Prim Metal Wardrobe, Chest Of Drawers, End Tables, Oak Roll Top Desk, Yamaha Organ, Handicap Items, Art Easels, Fisher Metal Wood Stove, Kelvinator Stand Up Freezer, Maytag Washer, Kenmore & Frigidaire Electric Dryers, Electric Hot Water Heater, Microwave, Hot Point Refrigerator, Magic Chef Gas Stove, Other Items Not Listed

### Antiques & Households

Ant Knitting Machine, Ant Kitchen Stove, Brass RxR Bell, Globe, Oil Lamps, Cast Iron Horse Weather Vane, Vintage Clothes, Several Porcelain Dolls, Barbies, Train Items, Several Hand Painted Paintings, Other Items Not Listed

### Truck, Trailers, Equipment, Carport, Storage Buildings

1990 Top Kick GMC Diesel 7000 Truck 7 Speed W/236,975 Miles, W/Caterpillar Engine & Wet Kit Installed, 18 Ft Dove Tail Trailer W/Ramps & Dual 3500 Lb Axels, Homemade Lawn Mower Trailer, Caterpillar V50D Liquid Propane 5000 Lb Fork Lift, Bobcat 56 Mini Excavator (Needs Work), Cub Cadet Zero Turn 50" Cut Lawn Mower W/Approx 665 Hours, Homemade 3 Wheeler Cart W/Snow Mobile Motor, 2 Car Carport, 8x10 Steel Siding Storage Building, U-Haul Converted Into Storage Building, Insulated Truck Bed Insert W/Camper Shell, Auxiliary Fuel Tanks, Other Items Not Listed

### Mill, Tool & Outdoor Items

Vertical Mill, 60 Gal Standing Air Compressor, 30 Gal Kobalt Standing Air Compressor, Tin Break, Coleman 5KW Generator W/Subaru Engine, Air Jack, Power Mate 70 Wire Feed Welder, Hobart Beta Mig 250 Welder, Plasma Cutter, Torch Set & Gas Bottles, Drill Press, Bench Grinder, Press, Parts Washer, Double Head Drill Press, Robin Village Pump, Stihl Chainsaw, Lg Lot Of Hand Tools & Electric Tools, Roll Around Toolbox, Chains, Boomers, Log Chains, Lg Lot Of Clamps Inc Bar Clamps, Vise, Welding Tables, Metal Stands, Dolly, Battery Powered Tools, Work Mate Table, Long Handle Tools, Shop Shelves, Shop Fans, Ladders, Step Ladders, Live Trap, Camping Items, Other Items Not Listed

**Auctioneers Note:** It Is An Honor To Be Conducting This Final Auction For The Eads Family. There Will Be Something Here For Everyone From Outstanding Real Estate, Antique & Modern Furniture, Appliances, Truck, Trailers, Carport, Storage Building, Tools & Outdoor. Please Plan Now To Attend. **Sale Order: Real Estate Sells First Then Appliances Then Move Directly Into Furniture, Antiques, Households. At Approx 1:00 PM Will Offer Truck, Trailers, Storage Buildings, Carport & Larger Items. Tools & Outdoor Items Will Finish Auction. See Ya There!!!**

Terms: Cash or check with proper ID. Now accepting most major credit cards. Nothing removed until settled for. Statements made the day of sale takes precedence over printed material. Everything sold as is where is. Not responsible for accidents. Restroom available. Concessions Provided. Check our website for upcoming auctions and for additional pictures!!



## NANCE AUCTION SERVICE

**No Matter How BIG or small, We Do Them All!!!**



**Col. Bill Nance 417-214-0093 In God We Trust Philippians 4:13 Sean Beazley 417-247-6754**



# WHEELER AUCTION SERVICE

## Saturday, June 3, 2023 @ 10:00 a.m.

**DON'T MISS  
THIS AUCTION!**

2 mi South of Lowry City to 700Rd,  
Go East 1/4mi.

**"Watch for Wheeler Auction Signs"**

1-24 y/o Belgium gelding in good health. Kids can ride him. Broke to all machinery, single or double. Needs Stage 2 bit. Nylon draft harness-used  
Large draft collar  
Reconditioned roping saddle  
Saddle pad and stand included  
Will try to have a couple sets of new nylon harnesses by sale day.

### MACHINERY

Very good McCormack 9 bar hay loader  
#715 White Horse riding plow-12" Keystone bottom-Nearly new  
1-horse 25 bushel powerline equipment manure spreader—Nearly new  
1-Horse powerline equipment cultimulcher  
3'-Nearly new  
Flat bed Wagon pioneer 6 ton. Hay rack included (steel wheels)  
1 Horse pioneer wagon needs new shaft fronts  
1 pr new wheels to fit above wagon  
All steel for cart—2 horse  
1 Row McCormack cultivator  
1 Row Minnesota cultivator  
1 Horse JD Garden cultivator  
8' single cultipacker  
Single Disc w/tongue (needs bushings)  
New Idea 5' Hay mower (Needs oil seal replaced)  
Chattanooga slat-wing walking plow  
Potatoe plow-walk behind  
McCormack hand crank corn sheller  
Motor driven circular brush saw-on wheels  
3 horse Evenner 2 horse eveners single trees  
Neck Yokes  
Open-2 seater surry/hack wooden wheels Good condition

### MISC

Several pieces 3'x8' blue metal siding-Used  
Pile of used soffit  
Metal scrap pile  
Vinyl siding (White Dutchlap)  
Several sheets 7/16" OSB—New  
Wooden hay rope pulleys  
Metal pulleys  
Meyer's Hay track carrier-Universal type. Has latch and track bolts included for wooden track.  
Metal hay ring  
A couple cattle panels  
Hay grapple hook

### SHOP TOOLS

Large vise  
Vise type belt lacer  
Belt lacing  
Tachometer  
75lb NC shoer's Anvil—Good condition  
Handyman Jack  
Hydraulic jacks  
Log chains  
Crosscut saws  
Oneman crosscuts  
Hand-crank Metal cutter/Beader—w/a set of dies—Nearly new  
Barrel lid cutter—Nearly new  
2 ton chain hoist  
Platform scales  
Wooden carpenters tool box  
Hand fuel pump  
Electric motors  
Several boxes odd & end nails  
Shovels-Rakes-Hoes  
Post hole diggers  
Weed slingers  
Brush blade  
Picks-Bars-Bow saws  
Circular brush saw blades  
Jack stands  
Fence stretcher  
1 set horse shoeing tools  
Roll around shoeing box  
Shoeing Apron  
Cement tamper  
Tree pruners  
Aluminum ladders  
Wooden ladder  
Hand scythe  
Roll around tool box w/ drawers  
Old socket set  
Metal post driver  
Grease guns  
Wheel barrow  
6" craftsman Jointer  
10" older tyle table saw  
Loggin tongs  
Lumber bander (for synthetic banding)  
Ladder jacks  
Clamping stand for sharpening cross cut saws  
Push type seed spreader  
Cultivator shovel clamps  
Small power horse wood splitter (needs repair)  
Small engines for parts  
Manure forks & hay forks  
Twisted wire fence spacers  
Calf bander

Dehorner  
Hog scrapers  
Meat hooks

### HOUSEHOLD

#32 star meat grinder w/pulley  
50 gal SS kettle w/jacket  
Old store scales-works  
Heavy fisher wood stove-1 door Smaller heating stove  
2-Large SS vats. One waterproof  
SS canner  
Bed frames  
Dresser  
Sewing machine stands  
Old sewing machine heads  
Oak-wood box  
2-double hung vinyl windows  
Gravity cream separator  
2 Gal country ice cream freezer  
1 Gal white mountain ice cream freezer  
Wooden butter churn

### CONSIGNEE ITEMS

3 burner perfection oil stove  
Aluminum canoe  
Hand crank cream separator

### GUNS & FISHING GEAR

Savage Model 110-30-06 bolt action rifle has  
3-9x50 Simmons scope  
Ruger model M77 Hawkeye 30-06 Bolt action rifle  
4-12x40 Millet scope  
12 gauge Western field 565 shotgun- pump  
Inline 50 caliber muzzle  
Loader stag horn hair trigger  
Tree climber deer stand  
10' Sun Dolphin Kayak  
12' Lowe line flat bottom boat  
Clay Pigeon thrower  
Several rods & reels

**\*Several more items  
too numerous to  
mention\***

**OWNERS:** Roman M. Gingerich RETIREMENT SALE

# WHEELER AUCTION SERVICE

**Selling Livestock • Farm • Household Sales**

Byron Wheeler, Auctioneer • 417-777-0897

TERMS OF SALE: Cash or Check with Proper ID, not responsible for Accidents,  
Statements made day of sale take precedence over printed items.

*The Index, HERMITAGE, MISSOURI 65668*



# ESTATE AUCTION

**Saturday, May 27th, 2023 ~ 10:00 AM**

LOCATION: 1401 Rosewood St. Monett, MO; GPS Will Get You There (Watch For Signs)

## Auction For Joe & Ester Miller Estate



### Antique & Modern Furniture

Ant Ornate Rare Walnut Etagere, Ant Walnut Nut Pull Marble Top Table, Ant High Back Ornate Carved Walnut Bed, Ant Walnut High Boy Chest Of Drawers, Ant Walnut Dresser Top Mirror W/ Drawers, Ant Walnut Child's Desk/Table & Chairs, Ant Oak English Ornate Buffet, Ant Country Of Greece Carved Ant Round Table, Ant 1800's Ornate Mantle Clock, Ant Sm Curved Round Front Oriental Style Buffet, Ant Ornate Carved Last Supper Wood Trunk, Ant Oak Carved Library Table, Ant Oak 1800's Square Table & Several Other Ant Oak & Other Tables, Ornate Hanging Lamps Inc RxR, Several Ant Ornate Table Lamps Many 1800's Style & One Tiffany?, Several Ant Rare Paintings & Pictures, Ant Rocking Chair, Ant Metal Fan, 2 Ant Safes, Ant Metal Lockers, Ant Metal Yard Chairs, Oak China Cabinet, Oak Round Table, Oak Kitchen Chairs, Rooster Décor Wood Trunk, Dresser W/Mirror, Wood Gun Cabinet, Dryer, Other Items Not Listed

### Antiques, Collectibles, Primitives & Households

Rare Watch Made From Salvage Metal Of The Titanic Taken At 12,600 Ft Off Of The Ocean Floor (No Other Items Are Allowed To Be Removed From Titanic Ever Again), Ant RxR Caboose Pot Heat Stove, Ant Store Scales, Ant Lanterns & Lamps, Ant Spittoon, Ant Advertising Clocks, Lots Of Beer Memorabilia Inc Nice Griesedieck Light Up Sign, Ant Outdoor Décor Inc Concrete Lions, Ornate Fountain, Ornate Iron Bench & Others, Ant Metal Wall Hanging Planes, Lots Of Old Cast Iron Pcs Inc Horse Head, Ant Busts, Ant Camel Saddle, Old Brass Pcs, Ant Mustache

Cup Collection, Ant Barometer, Pearl Inlay Oriental Pictures & Lg Lot Of Very Rare & Unique Oriental Pcs, Lg Lot Of Ivory Or Type Knick Knack Décor Pcs, Ant Wood Masks & Other Ant Wood Carved Pcs, Lg Lot Of Religious Collectibles Most Very Old, Ant Wringer Washer Top, Coisonae Pcs, Blue Willow Dishes, Carnival Glass, Lg Lot Of Art Deco Glass Inc Rd, Green, Pink, Blue, Milk & Others, Hand Painted Dishes Inc Nippon & R. S. Prussia, Old Pottery Inc Roseville, McCoy, Hull & Others, Graniteware, Galvanized Pcs, Ant Ladies Hat Pins, Ant Bottles & Jars, Ant Pocket Watches (Some Gold?), Over 50+ Old Beer Steins, Monett, MO Collectibles, Vintage Stamp Collection, Old Toys Inc Disney, McDonald's & Others, 1959 Barbie, Old Bank Collection, Over 200+ Dolls, Baseball Cards, Crafts & Quilting Fabric, Handmade Wool Rugs, Lady Di Memorabilia, Other Items Not Listed

### Coins & Currency Sell At 1:00 PM

Over 300 Rolls Of Pennies Some Uncirculated, Some Bank Rolled & Others, Hundreds Of Ike Dollars, Hundreds Of Half Dollars, Very Lg Lot Of Proof Sets, Silver Panda & Canadian Coins, Bicentennial Sets, Lots Of Quarters, Lots Of Foreign Coins & Currency (Some Silver), Over 300 Currency Notes Inc Pkt Of 100 Consecutive 1963B \$1 Notes, 1928D \$2 & 1934A \$5 Mule Notes, 1935A Hawaiian \$1 Bill, Several Error & Star Notes, Morgan Dollars Inc 1878 & 1921, Silver Rounds, Several Savings Bond & Other Unique Notes, See Website For Complete Listing

### Storage Building, Riding Mower, Tools & Outdoor Items

10x16 Portable Storage Building, JD LA110 Hydro Riding Mower, Push Mower, Lg Shop Fan, Sm Tools, Yard Cart Wagon, Shop Shelves, Outdoor Furniture, New & Vintage Fishing Poles & Items, Other Items Not Listed

**Auctioneers Note:** It Is An Honor To Be Conducting This Auction For The Miller Estate. This Is A Very Large Auction With Hundreds Of Small Hard To Find Unique Pieces. Antique Furniture Is Amazing!!! Hundreds Upon Hundreds Of Items Stored In Boxes Unable To See So There Will Be Good Surprises Sale Day. Good Storage Building & Mowers As Well. Great Collection Of Coins As Well. If You Are A Penny Or Half Dollar Or Currency Collector You Do Not Want To Miss This Auction. Please Plan Now To Attend. **Sale Order: Antique & Modern Furniture Will Sell First Then Move Directly Into Antiques, Collectibles, Primitives & Households. At 1:00 PM We Will Split Into 2 Rings With 1 Ring Selling Antiques The Other Ring Selling Coins. When Coins Are Done Will Come Back Together. Building & Mower Will Sell After Coins. Tools & Outdoor Will Finish Auction. See Ya There!!!**

Terms: Cash or check with proper ID. Now accepting most major credit cards. Nothing removed until settled for. Statements made the day of sale takes precedence over printed material. Everything sold as is where is. Not responsible for accidents. Restroom available. Concessions Provided. Check our website for upcoming auctions and for additional pictures!!!



# NANCE AUCTION SERVICE

**No Matter How BIG or small, We Do Them All!!!**



**Col. Bill Nance 417-214-0093 In God We Trust Philippians 4:13 Sean Beazley 417-247-6754**





## JR KELLEY LIQUIDATION AUCTION!

**FRIDAY, MAY 26th @ 10:00 AM!**  
**To be held at 12940 Memory Lane, Neosho MO**  
**(just off I-49/US Hwy 71)**

**Featuring Tractors, Farm Implements, Vintage Trucks & Vehicle parts,  
 Shop, Tools, Firearms & More!**

**For more info, contact Southwest Auction Service**  
**Office: 417-652-7540 Website: [www.swaauction.com](http://www.swaauction.com)**



### **DIRECTIONS TO AUCTION: 12940 Memory Lane, Neosho, MO (right behind Premier Truck Group Shop)**

From I-44 Joplin, MO: Take I-49 South towards: Neosho/Ft Smith. Take Exit 27 for I-49 Bus: MO-86 toward Neosho/Racine. Turn Right onto MO-86W to Memory Lane. Turn Right and auction site will be on left hand side (right behind Premier Truck Group Shop).

From Monett, MO: Take Hwy 60 West towards: Neosho. Stay on 60 West to I-49. Turn Right onto I-49 to Exit 27-Hwy 86. Turn Left on Hwy 86 to Memory Lane. Go Right on Memory Lane, auction site on left hand side.

From Anderson, MO: Take I-49 North to Neosho to Exit 27/Hwy 86. Turn Left on Hwy 86 (at Love's Truck Stop) to Memory Lane. Go Right on Memory Lane to auction site on left hand side.

### **TRACTORS:**

**Massey Ferguson 65-complete overhaul, new tires**  
**Massey Ferguson 50 w/ 7163 hrs**  
**International 444 w/2534 hrs**  
**Ford 1100 & Ford 4000**  
**Allis Chalmers 5040 AC w/ front end loader & bucket**  
**John Deere 254 w/ PCB 170 front end loader**  
**Ford 3000**  
**Long 2310 w/ front end loader & bucket**  
**Case 3220 Diesel w/ front end loader & bucket**  
**Zen NoH ZL 1801**

### **FARM IMPLEMENTS & MACHINERY:**

**MF front end loader & bucket, Midwest front end loader & bucket, Alo Maskiner front end loader w/ bale spike**  
**Several front end loaders for tractors, Large tractor Buckets, JD Bucket, Bale spikes, 5', 6' & 7' Bushhogs**  
**Big Bee Bushhog, Tuffy Bushhog, Howse Finish Mower**  
**Case Finish Mower, Ford 930B finish mower**  
**Koyker front end loader, Several tractor wheels & seats, Pintle hitch trailer.**

### **VINTAGE TRUCKS & CAR PARTS:**

**'47 International Pickup-chopped 4", 454 engine-almost new, elec/hydraulic tilt hood, 4 speed.**  
**'51 Chevy Pickup-Mopar motor & trans, stained oak bed, custom seats & interior, new gauges & wiring (not installed), new tires/wheels, '59 Cadillac tail lights.**  
**'55-56 Ford Convertible Frame, seats & parts**  
**'61-62 Chevy or Pontiac convertible seats, windshield & parts.**  
**'56 Ford convertible frame, '97 Jimmy SLE SUV, 4WD, 20,000 frame off-newer motor-5000 mi.**  
**'64 Ford Pickup-totally restored-super clean!**  
**Several misc car parts, bucket seats, tires, wheels, bumpers, grill guard.**

### **SHOP & TOOLS:**

**2 Post Car Lift, Yale Forklift, Central Pneumatic 2.5 HP/21 gal Air Compressor, Black Diamond 60 gal air compressor, Delta 80 gal 175 psi air compressor, Craftsman 2450 psi Pressure Washer, Cherry picker, Jobsmart Parts Cleaner, Sway bars, Jack stands, Remington 135 Tube Heater, Miller Welder, Hobart Stick welder-like new! Acetylene Torches & bottles, welding hoods & rods, Engine hoist, Craftsman Rolling tool box, Grinders, Bench vise, several tool boxes-wrenches, sockets, hand & power tools. 4 Ton floor jack, propane bottles, post drivers, rakes, water hoses, ext cords, cutters, shovels, brooms, Oil drain pans, log chains, levels, oil drain stand, ladders, battery cores, porta jacks, Sand blaster, metal tables, come-a-longs, Complete Paint Booth & supplies: paint guns, paint rack, paint respirators. Electrical wire testers, tire gauges, brake tools, Fimco sprayer, trailer hitches, air tanks and much more misc!**

**FIREARMS: H&R Model 158 30-30 w/ scope, Liama 1911 Compact .45 ACP, Ruger 10-22, German Comm. Model 88 Custom .45 ACP, Mauser Geta .16 ga w/ timney trigger, Springfield Model 87A .22 semi auto, Tradition .50 cal muzzleloader, Rem 30-06, AR Rifles-.22 cal semi auto.**

**MISC: Spacemaker Washer, Microwave, Tablesaw mounted on wooden bench, wheelchairs, lamps, desks, TV's, computer monitors, file cabinets, Vintage dresser & nite stands, mirrors, weed eaters, barb wire, fence posts and more misc!**



### **TERMS OF THE AUCTION:**

At this sale, we accept CASH & GOOD CHECK WITH PROPER ID & Visa or MasterCard (5% convenience fee). WE ARE NOT RESPONSIBLE FOR ACCIDENTS TO MAN, WOMAN, CHILD OR ANIMAL. WE ARE NOT RESPONSIBLE FOR LOST, STOLEN OR DAMAGED ARTICLES OR PROPERTY! All Accounts must be settled prior to removal of auction item! Statements made day of Auction take precedence over all printed materials! ALL GUARANTEES ARE BETWEEN BUYER & SELLER! For more pictures, visit our website: [www.swaauction.com](http://www.swaauction.com)

**Bob Hughes**  
 417-652-7540



[www.swaauction.com](http://www.swaauction.com)

**417.652.7540**



# MEMORIAL DAY ESTATE AUCTION

**Monday, May 29th, 2023 ~ 10:00 AM**

**LOCATION:** 7468 North Farm Road 109, Willard MO; **Directions:** At Round About By McDonalds At 160 Hwy Take Farm Road 103 Approx 2 Miles To FR 54 Turn Right Go 1/4 Mile To FR 109 Then On FR 109 To Sale Site (Watch For Signs)

**Auction For Marlene & The Late Don Smith**



## Antique, Modern Furniture & Appliances

Ant Library Table, Sm Ant Table W/Drawer, 2 Ant Oak Low Boy Dressers, Ant Chest Of Drawers, Lg China Display Cabinet, Oak China Hutch, Sm Oak Curio Cabinet, Wood Rocking Chair, Retro Vanity Mirror, Prim Kitchen Chairs, Ant Pictures & Paintings, Ornate & Other Lamps, Prim Wood Shelves, 3 Pc Bedroom Suite Inc Queen Bed, Wardrobe, Nightstand, Kitchen Table W/6 Chairs 2 Chairs Are Captains Chairs, Wood End Tables, Quilt Rack, Wicker Stand, Leather 3 Cushion Couch, 3 Lazy Boy Recliners, Flat Screen TV, Washer & Electric Dryer, Other Items Not Listed

## Antiques, Glassware, Toys & Households

Lots Of Green & Vaseline Glass, Carnival Glass, Pink Depression, Cobalt Blue Glass, Ant Chadwick Glass, Milk Glass, Red Glass, Ant Glass Pitchers, Ant Charm Isright Glass, Ant Glass Hens On Nest, Ant Horse Statues, Lg Lot Of Old Marbles, Old Jars, Old Insulators, Ant Juice Glasses, Old Collectors Plates, Old Copper Pcs, Griswold & Waggoner Skillets, Old Graniteware, Old Books, Rare Chance Of Complete Set Of Vince Flynn

Books, Louis Lamour Books, Old Linens, Approx 200 Scale Semi Truck & Trailer & Also Tractor & Implement Toys Most In Original Boxes Never Opened, Decorated Christmas Tree & Other Items, Pots, Pans & Dishes & Other Household Items Not Listed

## Portable Building, Gas Powered Golf Cart, Zero Turn Mower, Tools & Outdoor Items

12x20? Portable Storage Building W/Loft, Yamaha Gas Powered Golf Cart W/Lg Tires, Cub Cadet 48" Cut Zero Turn Mower, Ranch King Riding Mower, Push Mower, Yard Roller, Weed Eater, Leaf Blower, Electric Tank Sprayer, Seders, Lg Wheel Barrow, Honda Generator, Transfer Pump, Air Compressor, Diamond Plate Alum Truck Toolbox, Plastic Truck Toolbox, Sm Hand Tools, Sm Electrical Tools, 2 lg Fiberglass Extension Ladders, Creeper, Shop Shelves & Cabinets, Long Handle Tools, Gardening & Potting Supplies, Some Concrete Yard Decor Inc 2 Bird Baths, Bikes, Lg Pet Cage, Lg Dog Gate, Fence Stretcher, Sm Cattle Water Tank, Other Items Not Listed



**Auctioneers Note:** It Is An Honor To Be Conducting This Auction For The Smith Family. Marlene Has Been A Great Customer & Friend For Many Years. Auction Due To Selling Her Home & Relocating. There Is Some Excellent & Outstanding Glassware As Well As Outstanding Antiques & Collectibles In This Auction. Very Excellent & Clean Sale. Great Storage Building, Golf Cart & Mowers. Don't Forget About The Excellent Scale Toys As Well. This Is An Auction You Do Not Want To Miss. Ther els Something Here For Everyone. Please Plan Now To Attend. **Sale Order: Furniture & Appliances Will Sell First Then Move To Outstanding Glassware & Antiques & Collectibles. At Approx 1:00 PM Will Offer Scale Toys Then Storage Building, Golf Cart, Mowers & Large Items. Tools & Outdoor Will Finish Auction. See Ya There!!!**

Terms: Cash or check with proper ID. Now accepting most major credit cards. Nothing removed until settled for. Statements made the day of sale takes precedence over printed material. Everything sold as is where is. Not responsible for accidents. Restroom available. Concessions Provided. Check our website for upcoming auctions and for additional pictures!!



# NANCE AUCTION SERVICE

**No Matter How BIG or small, We Do Them All!!!**



**Col. Bill Nance 417-214-0093 In God We Trust Philippians 4:13 Sean Beazley 417-247-6754**



# MEMORIAL DAY AUCTION

**MON., MAY 29, 2023 • 9:00 A.M.**

**THE MOFFAT CENTER  
467 CO RD 604, LINN, MO**

**DIRECTIONS:** FROM LINN, TAKE HWY. 50 WEST 1 ½ MI. TO CO. RD. 604, TURN LEFT & GO 1 MILE TO BUILDING ON RIGHT, OR FROM JEFFERSON CITY, TAKE HWY. 50 EAST APPROX. 18 MI. & TURN RIGHT ON CO. RD. 604.

## TAXIDERMY MOUNTS

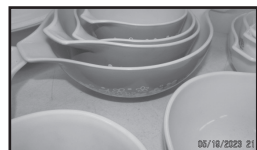
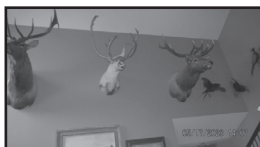
Taxidermy mounts incl: moose, elk, whitetail deer, zebra head, pheasant, buffalo, fox, fish & others.

## ANTIQUES, COLLECTIBLES, TOOLS & HOUSEHOLD

Thomasville 9 pc. Dining room set; 5 pc. Thomasville Queen size bedroom set; 9 pc. Deco dining room set; 4 pc. Cherry Queen size bedroom set; Sofas; Recliners; Antique furniture incl: Oak china buffet w/ leaded glass; Oak 4 stack bookcase with leaded glass; Oak knock down wardrobe; 30 pcs Griswold cast iron; 30 pcs. Pyrex; Quilts; Crocks; Fenton glass; Large amount of Antiques & Collectibles, Craftsman riding mower, Hand and Power tools; Table saw; Band saw; Lots of household, Tools & misc.; Glassware; Lots of small antiques.



**SEE PICTURES AND FULL LISTING ON  
[WWW.MOFFATAUCTION.COM](http://WWW.MOFFATAUCTION.COM)**



**Note:** This is a large auction. We will run 3 auction rings most of the day. See full listing and pictures at [www.moffatauction.com](http://www.moffatauction.com). Please make plans to attend. Rick **Terms:** Cash or good check with proper identification. All sales are final. Everything sells as is, where is. Proper identification is necessary to obtain a buyer's number. Announcements day of sale supersede all printed material. Food on grounds.

## **RICHARD MOFFAT AUCTION SERVICE**



573-761-4293  
Jefferson City, MO

Auctioneers  
Richard Moffat & BJ Moffat  
[www.moffatauction.com](http://www.moffatauction.com)

573-690-2823  
Linn, MO

VISIT  
WEBSITE  
FOR  
PICTURES

# ESTATE AUCTION

**SATURDAY, MAY 27<sup>TH</sup> - 10:00 A.M.**

**Location:** 97 Mill Dam Rd., Strafford, MO **Directions:** From Wild Animal Safari go East on Holman approx 1 mile to Mill Dam Rd on left. 2nd driveway on left to Auction.  
**WATCH FOR CHADWELL AUCTION SIGNS.** **Payment System:** Cash • Debit Card • Credit Card (Debit / Credit Card Fee Will Apply) Checks approved if known by auction company. **VISIT: [WWW.CHADWELLAUCTIONS.COM](http://WWW.CHADWELLAUCTIONS.COM)**

**Estate of Karla  
& the late Richard  
WALKER**

## 27' Springdale Camper by Keystone (no title)



## (3) 12x20 Car Ports

## OUTDOOR ~ MISCELLANEOUS

Assorted Long Handle Tools • Log Chains • Live Traps • Fishing Rods • Hand Sprayer • Rebar • Bag Chairs • Fish Cooker • Oliver Tractor Grill • Ladders • Caution Cones • Warm Morning Gas Stove • Load Jacks • Sleeping Bags • Camping Supplies • Water Hoses • Assorted Copper • Ford Tractor Fenders • Assorted Tractor Batteries • ATV Sprayer • Wire • Turkey Fryers • Golf Cart Plex Glass, Tarps, Tires & Wheels • Tail Gate BBQ Grill • Brinkman Smoker • Motorcycle Helmet • Christmas Decor • Alum Ramps • Fuel Cans • Plastic Barrels • Yard Vac • Lawn Seeders • Saw Horses • Troybilt Pressure Washer • 250 Gallon Propane Tank (65% full)

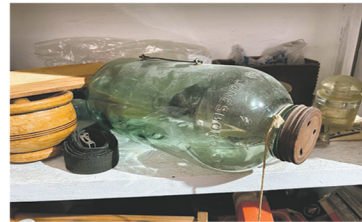
## SHOP ITEMS

Large Lot of Craftsman Tools • Snap On Tools • SKS Large Socket Set • Various Large Body Tools • Tap & Dye Set • Large Shop Tool Boxes on Castors • 60 Gallon Air Compressor • Bottle jacks • Tow Bars • 130 EN Mig Welder w/Car • Lincoln Stick Welder w/Car • Metal Work Bench • Air Tools • Welding Supplies • HD Hand Grinders • Electric Band Saw • Misc Steel • Crescent Wrenches • 2.5 Ton Floor Jack • 2 Wheel Dolly • Chop Saw • Stand Grinders • Large Lot of Jack Stands • Extension Cords • Torch Set w/Car • Welding Leads • Craftsman 15" Drill Press • C Clamps • Shop Fans • High Lift Jack • Air Hoses • Com A Longs • 3 Ton Floor Jacks • Oils & Solvents • Air Compressors • Pro Force 3125 Watt Generator • Grease Guns • Large Work Bench on Wheels • Oil Buckets • Motor Stand • Air Sanders • 12 Ton Hydraulic Pipe Bender • Motor Stand • Tool Boxes • Pipe Threader • Craftsman Paint Gun • Skil Saws • large Lot of Gear Pullers • Buffer Machine • HD Press • 4 Ton Portable Hydraulic Ram System • Receiver Hitches • Metal Shelving • Stand Lights • Large Lot of Nut & Bolt Bins • Ratchet Straps • Jumper Cables • Shop Tools • Troybilt 8000 Watt Generator • Craftsman 2700 PSI Power Washer



## ANTIQUES ~ COLLECTIBLES

Glass Minnow Trap • Butter Churn • Crocks • Oil Cans • Metal Tractors • Scales • Whiskey Jugs • Antique Tools • Match Box • Sat Irons • Wooden Planes • Hay Hooks • Collection of Straight Edge Knives • John Wayne Pictures • Leather Straps • Wooden Sheller • Rooster Dishes • Log Tongs • Can Hook • Boat Motor • Cross Cut Saws • Milk Crates • Buggy Seat • Crank Forge • Coleman Lantern • Army Trunk • Antique Hand Tools • Wooden Seed Bins • Wooden Tool Box • Assorted Horse Drawn Equipment • Corn Planter • Tiffany Lamps



## FARM RELATED

MF 3pt Post Hole Digger • 3pt 5' Bushhog • 3pt Ripper • Front Pallet Forks • Woods 5' Angle Blade • Homemade Drag • Tire Weights • Water Tank on Wheels • Tractor Muffler • Misc Tractor Parts • Tractor Fluids • Tractor Rims • Tractor Tires • Metal Trough • 14' Gate • Rhino Finishing Mower

## HOUSEHOLD

Hot Plate • Coffee Maker • Office Supplies • Other

## TRACTORS

Ford 3600 Tractor w/249l Rhino Joystick Loader 5 Spd w/hi lo 3800 hrs (diesel) • Farmall 460 Tricycle Front End Dual Hyd 540 PTO



**AUCTIONEER'S NOTE:** Lots of Good Quality Items. Come spend the day with us! **Thanks, Shawn**

**DRIVER'S LICENSE OR PICTURE I.D. REQUIRED • TERMS: CASH OR APPROVED CHECK**



**Chadwell**  
Auction Service, LLC  
[www.chadwellauctions.com](http://www.chadwellauctions.com)

Auctioneer:  
**SHAWN CHADWELL**  
417-830-0209  
Ringmen:  
Weston Chadwell ~ 417-349-0727

Clerk:  
**SHELLY CHADWELL**  
Cell: 417-880-8449  
Cashiers:  
Maria Chadwell • Emily Shaffer  
Cassie Collins

## PROFESSIONAL SALES MANAGEMENT

LUNCH WAGON • APPRAISAL SERVICE • RAIN OR SHINE  
All announcements made day of sale take precedence over any printed matter.  
Not responsible for lost or stolen merchandise. Not responsible for accidents.



# Wheeler Livestock Auction Special Stock Cow Sale Osceola, MO



## SAT., MAY 27, 2023 • 6:00 P.M.

### Expecting 20 Breeding Bulls - 700 Bred Cows, Pairs & Open Heifers

**Todd Griffin-**

1 Hereford Bull 4 y/o. Good bull.

**Bruce Bradley-**

2 Reg Blk SimAng Bulls, 18mos. 2 Reg Char bulls, 18mos. 1 Reg Red Ang bull, 3 y/o. 2 Reg Hereford bulls 2 ½ y/o. 1 Purebred Simmental 16mos.

**Rapp Farm-**

2 Blk SimAng Bulls 20mos, 80lbs BW, ¾ Brothers AI sired.

**Buchen Farm-**

1 Red Bal bull 4 y/o, Tender Score of 10. 1 F1 Blk Sim cow 4 y/o w/Red Bal calf 200lbs.

**Berry Lord-**

2 Red Gelb bulls w/Judd Ranch genetics, 3 & 4 y/o.

**P Bar Land & Cattle Co-**

2 SimAng bulls 20mo. 1 SimAng bull 4 y/o.

**Shelby & Colby Wood-**

23 Fancy red AngX hfrs home-raised 2 y/o 1,050lbs. Bred to Muscle Rush CE Red Ang bull to calve Aug 20th. Complete Health program, pelvic measured & gentle.

**Hoffman Farm-**

7 Fancy Blk Balancer cows 3 y/o w/7 calves sired by Lacey Red Ang. These are home-raised gentle, all Seedstock+ genetics. Bull put in May 7th.

**P Bar Land & Cattle Co-**

9 SimAng hfr 2 y/o Bred to CE SimAng bull. Show Me Select Qualified.

**Choate Farm-**

4 Blk cows 3 y/o 1,100lbs w/ 4 Blk calves 200lbs.

**Ruth Farm-**

8 Blk & BWF cows 4-6 y/o. Bred 2nd to Hawk Ang.

**2L Farms-**

12 Blk & BWF cows 5-7 y/o w/ 12 calves, 200lbs. Cows are open.

**J&D Farm-**

42 Fancy Ang cows 5 y/o 1,250lbs. Bred 2nd to Ang bull. Sold calves May 11th, 552lbs avg. Selling due to family health.ch

**Dispersal-**

60 Mix cows Blk & CharX 3-6 y/o 1,150lbs w/ 45 calves up to 300lbs. Cows bred back to Char or Ang bull. Selling due to lost lease.

**Hadlock Farm Dispersal-**

56 Fancy Blk cows 4-6 y/o 1,250lbs w/56 Blk calves 300lbs. Cows & calves all worked. 1 Blk LimFlex bull 2 y/o. Bull put in April 15th.

**Brush Creek-**

20 Red AngX cows 4-6 y/o, 1,250lbs. Bred 2nd to Char bull. 20 Blk cows 4-6 y/o 1,250lbs bred to Blk or Herf bull. 10 mix cows 4-6 y/o 1,250lbs. The above 50 cows all sold calves here last month. Good calf raisers.

**Jackson Farm-**

20 Big Fancy Blk SimAngX cows 3-5 y/o 1,300lbs. 10 Big Fancy Red SimAngX cows 3-5 y/o 1,300lbs. The above 30 cows all bred to top bulls to calves Aug 20th with Complete Health Program.

**Cliquot Farm-**

20 Fancy Blk cows 3-5 y/o, 1,250lbs w/10 calves. Rest bred 3rd to Ang bull.

**Bar W Ranch-**

43 Blk cows 4-6 y/o 1,200lbs. Bred 3rd to

good bulls. All cows worked & gentle.

**Heiserman Farm-**

15 Red & CharX cows 5-SS w/15 CharX calves, 200lbs. 3 hfrs 2 y/o w/200lbs calves. 2 hfrs 2 y/o bred 2nd.

**Len Miller-**

26 Blk cows 3 y/o w/250lb calves. 3 red cows 4 y/o w/250lb calves. 3 CharX cows 6 y/o w/250lb calves. Very nice set of young cows gentle & tagged to match.

**Reuben Graber Dispersal-**

44 Blk cows 5-SS. Bred 2nd & 3rd to Ang bulls. 11 Blk cows w/11 calves up to 450lbs. Cows bred back to Ang bull. 30 Bk Ang & CharX cows 3-7 y/o w/ 12 calves. Red bred 3rd to good bulls. All cows home-raised, gentle, w/ complete health program.

**Twin Oak-**

20 Yell CharX cows 4-6 y/o. Bred 2nd & 3rd to Char or Ang bull. 15 Yell CharX cows 5 y/o w/15 calves 200lbs. Cows are open.

**Pending Consignment-**

12 Blk cows 6-SS 1,300lbs. Bred 2nd & 3rd to Lucas bull.

**Roeder Farm-**

80 Fancy Blk SimAngX cows 4-6 y/o. Bred to Top SimAng bulls to calve Aug 20th for 60 days.

**Picture and video of consignments can be viewed on our website and on Facebook.**

## LAST SPECIAL WEAN/VAC FEEDER SALE UNTIL FALL - JUNE 8TH JUNE STOCK COW SALE - JUNE 24TH



# Wheeler Livestock Auction, Inc.

Osceola, MO 685 SE 13 Hwy., PO Box 560 BARN 417-646-8102

Byron Wheeler-417-777-0897 • Les Tennis-417-466-8786  
Red Whistance 417-276-7909 • Burleigh Wheeler-417-840-6561  
Darwin Hearting-417-296-1029 • Kevin Wade-660-492-3279  
Tim Sherrer 573-855-1951 • Lyndon Ropp 918-325-1616

**Barn Manager: Austin Shelby 417-309-1350**

**Office Manager: Sarah Wheeler, 417-399-4947**

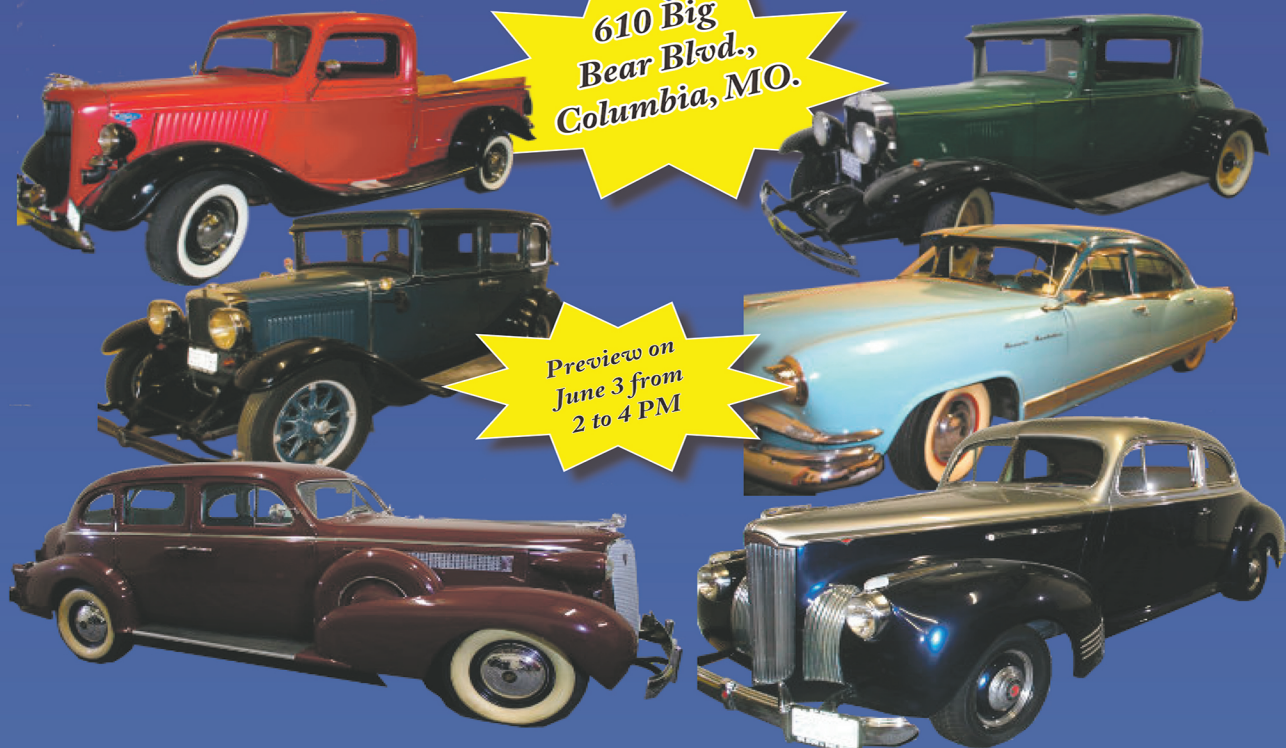
**Marketing Manager: Sue Hemenway 417-839-9316**

Bid online on CattleUSA [www.wheelerlivestock.com](http://www.wheelerlivestock.com) • Like us on Facebook-Wheeler Livestock Auction

# Central Missouri Online Classic Car Auction

Ending June 4, 2023 at 7 PM (soft close)

610 Big  
Bear Blvd.,  
Columbia, MO.



Preview on  
June 3 from  
2 to 4 PM

## CLASSIC CARS

1929 Nash Series 400 -4 dr., 3 spd. floor, flat head 6 cyl. eng., 18,475 on odometer

1930 Chevrolet Universal Series AD 2 passenger coupe, 6 cyl. Eng., 3 spd. on floor, 64,190 on odometer (not guaranteed)

1936 Ford pickup w/V-8 eng., Offenhauser heads & intake, dual carbs, 3 spd. on floor, glass pk. dual exhaust, 75,349 on odometer

1937 Cadillac Series 60 - 4 dr. w/suicide doors, V-8, 3 spd. On floor, 54,098 on odometer (not guaranteed)

1941 Packard Business Coupe 2 dr., Packard

engine, 3 spd. on tree, missing 1 hub cap, 27,155 on odometer (not guaranteed)

1952 Kaiser Manhattan w/Super Sonic 6 cyl. engine, Dual Range Hydra Matic drive, 58,766 on odometer (not guaranteed)

*Auctioneer's Note: Vehicles have been stored inside, but have not been started in the last 18 months. Odometer readings are not guaranteed! Viewing will be on June 3, from 2 to 4 PM at 610 Big Bear Blvd., Columbia, MO. Bidding at [voorheisauction.hibid.com](http://voorheisauction.hibid.com).*

**Dave and Carol Denton, sellers**

**VOORHEIS**  
**Auction & Realty, LLC**  
"Licensed Auctioneers & Real Estate Practitioners • Harrisburg, MO"



For Additional Information Contact

**Brent Voorheis** cell 573-808-3989

[brent@voorheisauction.com](mailto:brent@voorheisauction.com)

Additional information & photos at  
[www.voorheisauction.com](http://www.voorheisauction.com)



Scan for link



# GUNS, LURES, AND COLLECTABLES AUCTION

## ON-SITE ONLY!

### SUNDAY, MAY 28TH, 2023 @ 1:00PM

### 2568 WEST KEARNEY, SPRINGFIELD, MO 65803

#### INVENTORY LIST:

Stevens model 320 12 gauge 3in.	Ruger Model 10/22. Carbine 22 lr	511 22s,lr	Reloading equipment	Winston sign
Krupp Laufstahl 20 gauge double barrel	Marlin 22lr stainless Model 60sb	Remington Magnum wingmaster model 870LW 20g	Lots of chokes	Lucky strike pivoting sign
Ithaca 22 short,long	Marlin 30-30 model 336	Mossberg Plinkster Model 702 22LR	Gun cleaning kits	Camels sign
Howa model 1500 22-250	Remington 280 Model 7400	Winchester 22LR Model 74	Bushnell telescope	Marlboro sign
Remington 870 Express super mag	Companhia brasileira de cartuchos 410 Model sb	Remington 22LR Model 597	Old wood cleaning rods	Large zippo neon clock
Remington Arms 22 short,long or long rifle Model	Stevens A&T 22lr	Winchester Model 12. 16ga	Graphite compound bow	Camel neon sign
New Haven by Mossberg 410 pump 600et	Savage Mark 2 22 LR	Glenfield Mod 60 22 LR	Quiver arm gauard	Lot of arrows
Walther p22 cal 22lr	Stevens Model 62 22 LR	Springfield Savage 12ga Model 67	Bayonet	Coleman lanterns
Remington 30-06 Model 740	Winchester 22LR. Model 190	Marlin 22 war only Model 883	Bayonet	Red case Coleman lantern
Woodmaster	Winchester 12 ga Super X Model 1	Harle's Daly 12 ga Winchester Model 70. 270	Ames manufacturing	Red lens lantern
Browning Arms 308 A bolt	Glenfield Model 10 22 s,lr	Remington 870	Mass us civil war Seward CSL	Coleman US Military lanterns
Remington 30-06 WOODMASTER MODEL 742	Stevens Model 87D 22 A.Rossi S.A. .17 HMR	Remington 870 12 ga	Us military badges and honors	Coleman lantern/Pyrex
Remington 12 ga super mag model 870	Winchester Model 120 20 ga	Remington 410 Model 11-48	Timlar sward	Coleman electronic ignition
Falco 410ga 3 over and under	Stevens Model 311 20 ga double barrel	Remington 770 7MM	Horton cross bow	Coleman lantern in brown
Iver Johnson 22 s,lr	Browning 7mm mag	Rem Mag	Templar sward	Arrows
Marlin 30-30 mod 336	Mossberg 20 ga pump	Stevens 22 LR Snap shot	Pthyian sward	Wenzel Lantern
Remington 30-06 model 770	S.P.Aa. Franchi Brescia 20ga skeet	Rossi 410 2.5 in 25-06 Out action	Excalibur cross bow	Red Coleman lantern
Rossi Matched pairs 243 win, 20 ga and center	Browning bar 300 mag	Ruger Blackhawk Single action 30cal	Peter's small arm amo crate	Mr Heater
Henry 22 s,lr	Mossberg 702 plinkster 22	Beretta 22LR Model	Old bugle	Lure's
Winchester 30-30 Model 94	Marlin model 60 22	Heritage 22 mag /22 rough rider	Ammo pouches	Leinenkugel sign
ER Amantino 410 Model Uplander	Remington 12ga sportsman 48	Brevets Model D MAB	holsters	Fishing Lures
Marlin 22 s,lr model 39A	Western auto 22model 120	French Naval Ww2 7.65	Gun cleaning kit	Colt padlock with keys
Savage. Model 110 270	Utas 12 ga Hatfield	Ruger 380 w/2 clips	Bore sighting kit	Colt fire arms factory padlock with Keys
Winchester 22 s,lr. Model 61	Marlin 22 LR LIMITED EDITION MODEL 6083	Colt civil war centennial 22short	Military light	Padlock
Remington 30-06 Model 770	Mossberg 12 ga Model 88 Maveric	Parker 10 mm SS	Bayonet	Lure assortment
New England 410. Model SB1 3in full	OF Mossberg 22 LR Model 151k	Canik tp9sa 9mm	Ammo box	Jig mold Arky-M
Sears Roebuck 410 model 21	Mossberg 22LR Diamond Jubilee Model 6060	Springfield Armory XD 40	Reloader	Hooks
	Remington scoremaster model	Robinhood #1. 22long	Shooters vise	Fishing lights
		Leupold scope in box	Binoculars	Lights
		Rifle and pistol dies	Remington pinion thrower	Sling and miscellaneous
		Bushnell scope in box	Rhino compound bow	Gigs
		Scope	Deer antlers	glass minnow trap
		Bushnell scope	Hi power 12ga crate	Knife stone sharpener
			Holsters	Turkey fryer set
			Schlitz sign	outdoor cooker
			Coca Cola electric car	Fishing supplies
			Camel open sign	Tournament board
			Zippo advertising stands	Rifle bench
			Zippo display	Bumper nets
			Camel signe	Prowler trolling
			Camel neon sign	motors one new
			GPC neon sign	And More!!!
			Newport clock	



FOR MORE INFORMATION GO TO [WWW.EASTERLYAUCTIONCO.COM](http://WWW.EASTERLYAUCTIONCO.COM) OR CALL EASTERLY'S AT 417-833-9494

# EASTERLY

## AUCTION CO.

Mike Easterly Auctioneer • 417-833-9494

Not Responsible for accidents or theft. For more information call: Easterly Auction Company, Springfield, MO. Auction Terms: Visa, Mastercard, Cash, Cashier's check or checks with proper I.D. Announcements day of sale take precedence over printed material. Auction Notes: Although information is obtained from sources deemed reliable, auctioneer makes no warranty or guarantee expressed or implied. Buyers should themselves take the opportunity to make their own inspection prior to sale.

[www.EasterlyAuction.com](http://www.EasterlyAuction.com) • [auctionzip.com](http://auctionzip.com) ID#14770

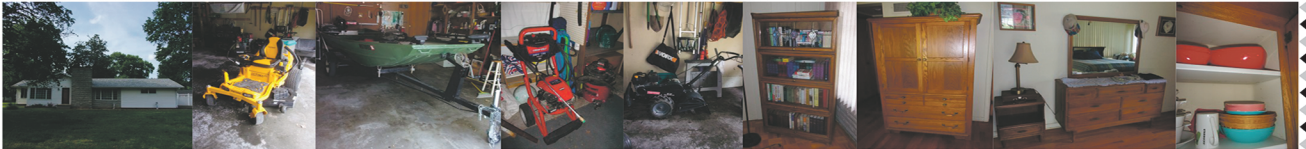


# REAL ESTATE & ESTATE AUCTION

**Sunday, May 28th, 2023 ~ 1:00 PM**

**LOCATION: 1019 East Fairview, Carthage, MO (Watch For Signs)**

## **Auction For Barbara Theil Estate**



### **Real Estate Will Sell First At 1:00 PM**

Home Consists Of 3 Bedroom, 3 Bath W/Kitchen, Dining, Living & Sun Rooms, Master Bath Has Walk In Shower & Jacuzzi Tub, Home Is Equipped W/Central Heat & Air W/Heater Being Brand New, Also Has Backup Gas Heat Fireplace. Home Has New Good Roof, Updated Windows, Lots Of Closet & Cabinet Space & Is Very Energy Efficient. Home Will Sell With Electric Flat Top Cookstove, Dishwasher & Like New Hot Water Heater. Has 2 Car Attached Garage W/ Concrete Floor & Electricity As Well As Storage Shelves & Cabinets. Home Is Setting On 2 Double Lots That Go From Fairview Street To Hawthorn Street Which Gives You Double Street Access To Property, Has Fenced Back Yard W/Privacy Fence On Front Part & Also Has Underground Pool. Also Has 2 Car Unattached Garage W/Concrete Floor & Electricity In Garage Has Storm Shelter Built Under Floor, Also Has In Garage Side Entertaining Room & Bathroom W/ Toilet & Shower. This Is A Very Outstanding Home Located Between Fairview Elementary & Middle School. To Preview Contact Bill At 417-214-0093. Terms: 10% Down Day Of Sale With Signed Contract And Balance Due In 45 Days Or When Closing Date Set By Abstract Office. Seller Has The Right To Accept Or Reject Any And All Bids.

### **Antique, Modern Furniture & Appliances**

Ant Oak Plant Stand, Ant Wood Desk, Prim Bookshelf, Oak Lawyers Bookcase W/Glass Front, Oak China Cabinet, Oak Armoire, 3 Pc Oak Bedroom Suite Inc Dresser W/Mirror, 2 Night Stands, Queen Bed, Brass Stand Up Mirror, Retro Lounge House Chair, Retro Dresser W/Mirror & 2 Nightstands, Pictures & Paintings, Wood Wind Rack, Suede Style Dual Reclining Couch, Oak Glider/Rocker W/Ottoman, Wood & Metal End Tables, Lamps, Lg Area Rugs,

Kitchen Table & Roll Around Kitchen Chairs, Sm Pantry Cabinet W/Drawer, Hide-A-Bed Couch, Exercise Bike, Gas & Electric Heaters, Rainbow & Other Sweepers, 2 TV's, Microwave, Side By Side Refrigerator W/Ice & Water In Door, Washer & Electric Dryer, 2 Refrigerators W/Freezers On Top, Other Items Not Listed

### **Antiques, Collectibles & Households**

WWII Songbook, Old Stamps, Old Postcards, Foreign Silver Coins, Old Sled, Several Brass Knick Knack Pcs, Old Bushel Basket, Old Bottles, Colored Pyrex Dishes, Cookie Jars, Corel Dishes, Old Cookbooks, Linens, Drum, Sm Electrical Appliances, Club Alum Pcs, Chiefs Items, Pots, Pans & Dishes, Christmas & Other Holiday Décor, Lots Of Sm Knick Knacks & Other Household Items, Other Items Not Listed  
Boat, Zero Turn Mower, Tiller, Portable

### **Building, Tools & Outdoor**

12x12 Portable Storage Building, 18 Ft Flat Bottom Boat W/Suzuki 4 Stroke Motor, Electric Trolling Motor, Fish Finder, 2 Bass Seats, Spare Tire & Trailer, Cub Cadet Ultima ZT1 Aero Force Deck 50" Cut Zero Turn Mower W/Kawasaki 23HP Motor, Craftsman 18" Dual Direction Rear Tine Tiller, Troy Bilt Gas Push Mower, Troy Bilt Gas Weed Eater, Troy Bilt 2200 Gas Power Washer, Husky Yard Dump Utility Cart Trailer, Gas & Electric Chainsaws, Portable Air Compressor, Work Force & Other Electric Blowers, Wheelbarrow, Alum Loading Ramps, Battery Charger, Shop Vac, Sm Electric Tools, Sm Hand Tools, Several Ladders, Vise, Long Handle Tools, Sawhorses, Shop Shelves, Like New Back Yard Gas BBQ Grill W/Side Burners, Patio & Yard Furniture, Concrete Yard Décor, Outdoor Closets, Fishing Poles, Other Items Not Listed

**Auctioneers Note:** It Is An Honor To Be Conducting This Auction For Mrs. Theil's Estate As We Are Auctioning Her Home & She Is Moving Into Assisted Living We Will Offer A Very, Very Clean & Outstanding Auction With Something For Everyone. Real Estate Is Amazing In A Prime Location With 2 Dual Lots & Swimming Pool. Mowers, Tiller, Boat, Tools & Outdoor Items Are All Like New Condition & Ready To Go. Antique, Modern Furniture, Appliances, Also Antiques, & Households Are Excellent As Well. Please Plan Now To Attend. **Sale Order: Real Estate Sells First Then Appliances, Antique & Modern Furniture Then Move Into Antiques, Collectibles & Households Followed By Boat, Mowers, Tiller, Tools & Outdoor Items. See Ya There!!!**

Terms: Cash or check with proper ID. Now accepting most major credit cards. Nothing removed until settled for. Statements made the day of sale takes precedence over printed material. Everything sold as is where is. Not responsible for accidents. Restroom available. Concessions Provided. Check our website for upcoming auctions and for additional pictures!!



## **NANCE AUCTION SERVICE**

**No Matter How BIG or small, We Do Them All!!!**



**Col. Bill Nance 417-214-0093 In God We Trust Philippians 4:13 Sean Beazley 417-247-6754**



# ESTATE AUCTION

**Saturday May 27th • 9:00 a.m.**

**LOCATION:** 1585 North Highway 63, Houston, MO 65483 (Texas County Fairgrounds) **DIRECTIONS:** Travel north on Highway 63 from Houston to the fairgrounds on right just at the north edge of town.

**Watch for Tooley Auction signs**

**Payment:** Cash, Check, Debit/Credit Card (Debit/Credit card convenience fees will apply). For photos go to: [www.auctionzip.com/Listings/3804887.html](http://www.auctionzip.com/Listings/3804887.html)

## **FOLLOWING ITEMS TO SELL AT 11 A.M.**

*2006 Ford F-350, King Ranch Edition, 4WD, Crew Cab, Automatic, Dually, 6.0 Powerstroke Diesel, 131,xxx miles; 2018 PJ bumper pull trailer w/ tailgate, 7x12, heavy built; Dixie Chopper zero turn mower, Silver Eagle 2760KW, 89 HOURS*

## **COLLECTIBLES - HOUSEHOLD**

Vintage solid wood ice box, Cold Storage Refrigerator Co. Eau Claire, Wi; lawyer bookcases, (1-5 tier, 2-4tier); USA cast iron yard bell; smaller cast iron buck deer bell; lighted Strohs beer sign; other Coors and Strohs beer collectible signs; various beer steins; 2- older cast iron stoves; ornate electric lamps; oil lamps; bucksaws and 1 and 2 man crosscuts; Pyrex bowls (1 set of pink gooseberry); vintage nesting splatter bowls; crystal candle holders; set of Currier and Ives plates and platters; antique hall chairs; parlor chairs; galvanized tubs and buckets; 2-full size cast iron bed frames with springs and mattress; various stagecoaches, wagons and horses (metal and cast); cedar and pine TV cabinet/stand; cherry TV cabinet and stand; 4 post solid wood queen bed w/box springs and mattress; older matching chest of drawers w/dresser and mirror; Maytag upright freezer (large and nice); lighted curio cabinet; cast and wooden porch bench (w/ cast angel as back piece); 5 pc. metal w/glass top dining set; Gibson apartment size chest deep freeze; Frigidaire apartment size upright freezer; glass top coffee table; various side tables and nightstands; large water dispensers and 5 gallon jugs; various kitchen ware and small appliances (microwave, toasters, roasting pans, Kitchenaid mixer, crock pots; coffee maker, blender, deep fryer, plates, saucers, cups, glasses, pots, pans, silverware, kitchen utensils, other); various bed sets, quilts and linens; denim jackets; work boots; filing cabinets; vintage metal lockers and storage cabinets; TCL flat screen TV; ONN flat screen TV; misc. glassware (some Carnival and depression); all kinds of pictures and wall décor; other

## **GUNS - AMMO - GUN CASES**

Charles Daly AK 9, 9mm pistol; Rock Island 38 special, snub nose, model 206; S&W .357 magnum; Ruger 10/22, red dot 1x30 scope; Rockledge Baikal double barrel stagecoach 12 ga.; Savage Axis 270 w/3x9 scope; Mossberg 500 20 ga.; S&W 30-06 w/3x9 scope; Stevens 320 12 ga.; JC Higgins model 66 12 ga.; G Force (Turkish made) PAX 12 ga.; Iver Johnson 44 cal. Single shot; ammo as follows-12 and 20 ga.; .410; .22; 9mm; 38 special; 30-06; 270; 40; 32; wood and glass gun cabinets (1-5 gun, 1-8 gun, 1-10 gun); 2 – large metal ammo boxes (military); several soft cases;

## **OUTDOOR - LAWN & GARDEN - MISC.**

2-wooden porch swings; Stihl chainsaw, MS170; Echo chainsaw CS-4400; Stihl FS55R weed eater; Stihl BG56L leaf blower; Stihl FE55 electric weed eater; Grasshog electric weed eater; several dog pen panels(10 ft. long x 6 ft. tall); 2-fiberglass step ladders(1-10 foot & 1-8 foot); wooden step ladders; assorted tube gates(3 ft. to 10 ft.); bench vise; bench grinders; 2-miter saws; various hand power tools(drills, skilsaw, reciprocating saw, grinder, other); 2 wheel dollies; furniture dolly; smaller air compressor; air tank; yard roller; gas & diesel cans; chains & binders; load locks (4 to 8 foot); extension cords; various hand tools (rakes, shovels, post hole diggers, mauls, axes, hoes); bolt cutters; wheel barrow; galvanized and plastic stock tanks; nuts, bolts, screws, nails; other



## **Tooley Auction Services, LLC**

**417-293-6909**

[tooleyauctions@gmail.com](mailto:tooleyauctions@gmail.com)

Follow us on Facebook - Tooley Auction Services, LLC

Travis Tooley, Auctioneer  
417-293-6909  
Bruce Scheets, Auctioneer  
417-260-2118  
Josh Wheeler, Auctioneer  
417-349-0265



**Clerks & Cashiers:**  
Shelly Cauldwell, Barb Schumacher,  
Lena Walsh, Kim Wheeler  
Ringmen: Vance Farmer,  
Terry McCallister, Justin Wheeler



Drivers license or photo ID, Cash, check and credit/debit cards (3.75% fee applies on cards).  
Announcements made on the day of the sale take precedence over any printed material.  
Not responsible for accidents, theft or lost articles.

# BUFFALO LIVESTOCK MARKET LLC



276 Hwy 32 W., Buffalo, MO

**May 20<sup>th</sup>, 2023**

**Receipts: 1391**

## REPRESENTATIVE STEERS

300-400 @ 240.00 to 260.00  
400-500 @ 230.00 to 260.00  
500-600 @ 220.00 to 252.00  
600-700 @ 215.00 to 229.50  
700-800 @ 185.00 to 196.00  
800-900 @ 165.00 to 175.00

## REPRESENTATIVE HEIFERS

300-400 @ 200.00 to 240.00  
400-500 @ 200.00 to 224.00  
500-600 @ 180.00 to 220.00  
600-700 @ 180.00 to 195.00  
700-800 @ 155.00 to 177.00  
800-900 @ 145.00 to 150.50

## FEEDER BULLS

300-400 @ 215.00 to 238.00  
400-500 @ 210.00 to 240.00  
500-600 @ 200.00 to 234.00  
600-700 @ 180.00 to 220.00  
700-800 @ 160.00 to 182.50  
800-900 @ 131.00 to 141.00

## STOCKS COWS

Bred Cows 1200.00 to 1550.00  
Cow/Calf Pairs 1275.00 to 1675.00

## SLAUGHTER BULLS

High Yield 130.00 to 146.00  
Low Yield 90.00 to 120.00

## SLAUGHTER COWS

Fleshy 95.00 to 104.00  
Med Flesh 92.00 to 1015.00  
Light Flesh 75.00 to 99.00

## QUESTIONABLE HEALTH OR CRIPPLE COWS

60 Down

Fat Fleshy Unweaned Cattle showing resistance as farmers & feeder hit the fields! Fat, fleshy, off color, Dairy X plain or poor quality will be below this market!!

NO SALE NEXT WEEK  
HAPPY MEMORIAL WEEKEND  
ENJOY YOUR FAMILY  
AND REMEMBER THOSE THAT  
GAVE IT ALL

## MON-WED MARKET REPORT

Listen to KJEL 103.7FM • Lebanon or KYOO 99FM • Bolivar

**VIEW OUR SALES AT CATTLEUSA.COM**

**CALL FOR TRUCKING OR ON-FARM VISIT**

Lyle Caselman • Owner-Manager  
417-345-7876 • mobile 417-533-2944  
Leon Caselman • Owner  
417-345-4514 • mobile • 417-588-6185

**JOHN DEERE 466 ROUND BALER:**  
Monitor, Kicker, 4x6. \$4,750. 573-765-4406. Richland.

**FORD 6610 DIESEL TRACTOR:** Cab & Air, 75HP, with Nice Quick Tach Loader. \$21,750. 573-765-4406. Richland.

**CASE IH DIESEL 385 TRACTOR:**  
Canopy, 2,000 Hours, 40 HP. \$6,950. 573-765-4406. Richland.

**JOHN DEERE 2640 DIESEL TRACTOR:**  
70 HP., with J.D. 146 Loader. \$13,300. 573-765-4406. Richland

**BESTWAY 700 GAL. PASTURE SPRAYER:** Tandem Axle. \$2,500. 573-765-4406. Richland.

**BOBCAT 753 DIESEL SKID STEER LOADER:** \$12,500. 573-765-4406. Richland.

**IHC 806 DIESEL TRACTOR:** Turbo, T.A. \$9,750. 573-765-4406. Richland.

**CASE IH MD92 DISK MOWER:** \$5,250. 573-765-4406. Richland.

**FORD 4000 DIESEL TRACTOR:** \$3,250. 573-765-4406. Richland.



**REGULAR SALE EVERY THURSDAY 11AM**

WATCH OUR WEEKLY SALE IN REAL TIME ON [DVAUCTION.COM](http://DVAUCTION.COM)

For Farm Visits, Market Updates, or Trucking  
Call **Zach Cox 417-777-1320**  
**Dan Romine 573-578-4939**

**Competitive Buyers!  
Competitive Commission!  
Competitive Market!**

Barn: 417-532-9292

**I-44 • Exit 123 "just outside of Lebanon"**  
**17505 Route 66, Phillipsburg, MO 65722**

For weekly market updates, visit us at  
[www.midmostockyards.com](http://www.midmostockyards.com)

**JOHN DEERE MX10 PULL TYPE BRUSHCUTTER:** Good. \$6,950. 573-765-4406. Richland.

**JOHN DEERE 854 SILAGE SPECIAL ROUND BALER:** Monitor, net wrap, late baler. \$15,500. 573-765-4406. Richland.

# Firearms Auction

**The Red Shed**

I-44 to exit 179 • 169 Truman St / Hwy T  
Doolittle, MO 65550

**Saturday, June 3rd, 2023 • 10 a.m.** Doors open at 8:00 a.m.  
Sale Preview - Friday, June 2nd • 6-9 p.m.

We will sell the following  
private collections of firearms  
without reserve.

## Selling Over 300 Firearms & Small Lot Of Ammo and Miscellaneous



For a complete sale  
bill and pictures  
of each gun, go to  
[auctionzip.com](http://auctionzip.com) and  
enter auctioneer  
ID #28053. Pictures  
also on [HiBid.com](http://HiBid.com)



# J & J Sales, LLC

573-341-5450  
Office

573-465-4647  
Julie Reagan

573-465-0642  
JD Roach, Auctioneer

573-762-2227  
Sale Day Number



# BYLER SUPPLY

*The Builder's Choice!*

## Get Ready for Spring!

**CALL TODAY  
FOR  
NEXT DAY  
SERVICE!**  
Call for Details



**HEAVY 29 Ga.  
METAL #1**  
Limited LIFETIME WARRANTY  
29 Ga. & 26 Ga. Painted

**CUT TO LENGTH PANELS**  
GALVALUME METAL UNPAINTED  
25 YEAR WARRANTY  
#1 Standard Panels, 29 Ga.

**\$71.61 sq.**

**Ask About Our  
Quick Service.**

**Over 20 Colors and  
Several Styles To Choose!**



**Reg. Pole Frame Buildings Are  
Heavy 29 Ga. Metal, Three 2"x6"  
T&G Splashboards, All Poles  
5"x5" Or Larger, CCA Treated,  
Fully Trimmed With One 3'x6'  
Walk-Through Door & One Large  
Sliding Door.**

**CALL US FOR CURRENT PRICING**



**BYLER BUILDING SUPPLY, LLC**



2 1/2 Miles East of Seymour On 60, 1/4 Mile North at the Peewee Crossing\Star Road Intersection

**877-556-8855 • MON.-FRI. 7:30-5 SAT. 8-12 • 417-771-3100**

**VISIT US AT WWW.BYLERSUPPLY.COM**



**Find Us On Facebook**

Coming Soon **BUY SELL TRADE LOOK** Vendors Wanted

## PRAIRIE SWAP

Friday, May 26 ♦ Saturday, May 27 ♦ Sunday, May 28 2023  
Gates open: 8 a.m. to 6p.m. (rain or shine)

½ mile west of Wheatland, MO on Highway 54

Something for everyone!

♦ Poultry ♦ Small Animals ♦ New and Used Items ♦ Antiques ♦ Tools  
♦ Handmade Treasures ♦ Seasonal Goods ♦ And much, much more!

Questions? Email: [prairieswap@gmail.com](mailto:prairieswap@gmail.com) Phone: 417-327-6623

**NEW HOLLAND 1411 DISCBINE:** With Rollers. 573-765-4406. Richland.

**RHINO 4 BASKET HYD. FOLD TEDDER:** \$4,300. 573-765-4406. Richland.

**JOHN DEERE 6400 DIESEL TRACTOR:** Cab & Air, 85H.P. \$19,500. 573-765-4406. Richland.

**LONG 2510 DIESEL 4-WHEEL DRIVE TRACTOR:** Canopy, with Loader. \$11,750. 573-765-4406. Richland.

**LELY 9FT DISK MOWER:** \$2,350. 573-765-4406. Richland.

**SLIGHTLY USED PUZZLES:** Will sell or trade. 417-818-3469. Strafford.

**LOG SIDING:** 2X8 Pine/Western Cedar [www.pineridgerustic.com](http://www.pineridgerustic.com) 573-729-7226. Salem.

**Route 66 MOTHER ROAD BOOK:** by Michael Wallis, \$12.50. 417-532-2045. Lebanon. (Leave message and phone number.)

**WEATHERED BARN WOOD SIDING:** 10" wide. 573-729-7226. [www.pineridgerustic.com](http://www.pineridgerustic.com) Salem.

**BASEMENT READY USED DOUBLE-WIDE** – 3 bdr, 2 bath, Financing Call for info 573-657-2176 [amegamobilehomes.com](http://amegamobilehomes.com)

**TINY HOMES** – Missouri Franchise 573-881-7965

### DISCOUNT NEW MOBILE HOMES

– we will beat any price on any home **GUARANTEED**, Financing, 573-499-9993 [columbiadiscounthomes.com](http://columbiadiscounthomes.com)

### BASEMENT READY TRUE MODS-

instock ready for delivery 573-657-7040 [chateauhomes.net](http://chateauhomes.net)

**2 GELBVIEH BULLS FOR SALE: 12 & 14-months-old. \$2,400 each. 417-531-1048. Morgan.**

**I BUY.....used mobile homes.** Call or text 573-338-6250 or email [GregS.CDH@outlook.com](mailto:GregS.CDH@outlook.com)

**REGISTERED HEREFORD & ANGUS BULLS:** Home raised, Some Show-Me Select Qualified. 573-701-7828. Belgrade.

**LIGHTLY EXPERIENCED GOLF BALLS:** \$3 a dozen. 417-818-3469. Strafford.

**LIONEL TRAIN SET:** Steam engine, tender, caboose and other car, track, and transformer. \$195. 573-364-7465. Rolla.

**MODEL 1911 FRAME 8-SHOT C02 PISTOL:** Like new, in box with C02 cartridges, 4 clips, pellets & all paperwork. \$95. 573-364-7465. Rolla.



Starting at \$57,500  
2022 Deere 317G \*UNUSED\*  
Cab&OROPS, Loaded! IN-STOCK



**Over 500 Attachments IN STOCK!**  
**We ship NATIONWIDE!**

**Craig Equipment**

2681 W. Pearce Blvd | Wentzville, MO 63385

**636-856-8555**

[www.CraigEquipment.com](http://www.CraigEquipment.com)

\*Availability & Price subject to change without notice



Starting at \$94,995  
2022 Deere 333G \*UNUSED\*  
LOADED! IN-STOCK



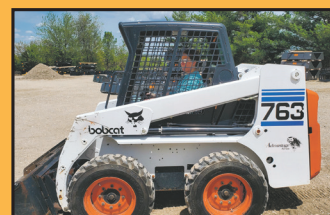
2015 Deere 319E 69hp, 1874hrs, Joystx,  
NEW Tax.....\$34,900



2021 Bobcat T870 \*HiFlow\* 540hrs, AC/  
Cab, Joystx, Warranty!.....\$84,900



2021 Bobcat T770 \*HiFlow\* 733hr AC/Cab  
Joystx \*Warranty\*.....\$69,900



2000 Bobcat 763 \*LIKE NEW\* 106 HOURS,  
Clean & NEW Tires.....\$34,900



2018 Kubota SVL75\*1 owner\* 74hp, 1768hrs,  
AC/Cab, Joystx, PwrBkt Chngr .....\$48,900



2015 Kubota SVL90 92hp, 2943hrs, AC/  
Cab, Joystx, 2sp, Pwr Bkt Chngr.....\$42,500



2010 Gehl CTL75 83hp, 1435hrs, AC/Cab,  
Joystx, 2sp.....\$42,500



2005 Gehl 6640 82hp, ONLY 710hrs,  
T-BAR controls .....\$29,900



**Buildings • Hunter's Cabins • Lawn Furniture**



**JAMCO Portable Buildings**

800-688-2064 • 307 Enterprise Dr. • Seymour, MO • [www.jamcobuilders.com](http://www.jamcobuilders.com)

**Rent To Own Plan**

**1970s KIDS METAL STOVE & FRIDGE:** Nice Lithographic paint, 18" wide x 36" high. \$75. 573-364-7465. Rolla.

**3 GENTS WITTNAUER WRIST WATCHES:** 10k gold + 23J. All \$200. 573-764-3517. Call in P.M.

**HARLEY FAT BOBS:** Custom flame paint w/ gas caps + lines. \$100. 573-764-3517. Call in P.M.

**COLT REVOLVER DEALER CATALOGS:** Circa 1950's + 1960's. All for \$100. 573-764-3517. Call in P.M.

**110 PORCELAIN POCKET WATCH DIALS:** Perfect for arts & crafts. \$100. 573-764-3517. Call in P.M.

**1890 GOLD TESTING KIT:** Glass acid beakers + antique wooden case. \$100. 573-764-3517. Call in P.M.

**SINGER SEWING MACHINE:** Pump style excellent condition. \$125. 573-346-0612 or 573-286-6585.

**1500 VINTAGE WRISTWATCH DIALS:** \$100. 573-764-3517. Call in P.M.

**HARLEY 45 SOLO:** factory rear brake drum + sprocket. \$150. 573-764-3517. Call in P.M.

**HARLEY PANHEAD DISTRIBUTOR:** original, chrome + complete. \$125. 573-764-3517. Call in P.M.

**1962 HARLEY SPORTSTER 900CC:** original distributor. \$50. 573-764-3517. Call in P.M.

**RUBBER & LEATHER BOOTS AND 5-Buckle OVER SHOES:** Men's 11, Women's 7, some insulated. \$15-\$40 obo. 636-239-2695 or 314-560-5700. Washington.

**NEW SQUARE D RAINPROOF 50AMP DISCONNECT:** \$160. 636-239-2695 or 314-560-5700. Washington.

**USED JET HOME POLLUTION CONTROL PANNEL:** Model CP700. \$65. 636-239-2695 or 314-560-5700. Washington.



**CLASSIC EDGE**  
TITANIUM HDX

26% Tax Credit on EPA certified Central Boiler Classic Edge HDX models and installation. Call today to learn more!

**Outdoor Wood Furnace CentralBoiler.com**



The Classic Edge 360, 560 and 760 HDX are U.S. EPA Certified

Yarborough Equipment Sales & Services, Inc.  
9776 E. State Hwy OO • Strafford, MO  
417-736-2303 • 1-866-286-6901 • [www.yarbeq.com](http://www.yarbeq.com)

**1 PAIR OF KEY BRAND MEN'S JEANS:** Waist 38, Length 34. \$10. 636-239-2695 or 314-560-5700. Washington.

**ANTIQUE HOG OILER:** \$35. 573-308-5884. Rolla.

**TRAILER HOUSE RIMS:** \$10 each. 573-308-5884. Rolla.

**VINTAGE WORKING 1967 ELECTRIC SINGER SEWING MACHINE:** Special zigzag model 638 in cabinet with original instruction book. \$50. 210-787-8222. Linn Creek.

**NOW BUYING STANDING RED AND WHITE OAK TIMBER:** All slash will be trimmed to lay flat or placed in tidy piles for wildlife. No scarred-up trees or ruts from heavy logging equipment. We use low impact compact track loaders to minimize disturbance in your forest. Missouri Land Service LLC. 417-991-9280.

**METAL ROOFS:** We repair leaky metal roofs with warranty. Also, flat roofs. Very affordable. Cover all of state. 573-338-1148. Jefferson City.

**NEIGHBORHOODS HOME IMPROVEMENT STORE:** 417-533-5080. Lebanon

**2004 CHEVY TRAILBLAZER:** AWD, Runs & drives good. Good tires & battery. Heat & air works. 184,000 miles. \$2,250 OBO. 573-435-6987. Leave Message.

**CUSTOM HAY HARVESTING:** or put up in shares. 4x5 Net Wrap Tight JD Bales. \*Reasonable Rates\* Reliable Service Larger Acreages Desired. Book early to beat the rush. For a Free Quote call Josh \*573-250-8715\* Green Meadows Farm: Servicing Dent, Texas, and surrounding counties.

**NEW JELD WEN 5' LEFT HAND SLIDING GLASS DOOR WITH SUNSTABLE INTERIOR BLINDS:** Clear tempered glass, Desert Sand trim/hardware. Retail \$2655 Sell \$900. 417-693-0389. Conway.

**PLAD PANTRY**

DISCOUNT & SURPLUS FOODS  
FRESH PRODUCE LLC

417-532-4700



Loaded Cheesy Potatoes.....	\$1.99 9 oz.
Mini Original Babybel Cheese.....	\$5.79 8-2.3 oz.
Extra Large White Eggs .....	\$1.49 1 dozen
Lean Ground Turkey.....	\$3.29 2.5 lbs.
Original Ritz Crackers.....	\$2.19 13.7 oz.

1571 State Hwy 64 • Tunas, MO 65764  
Hours: 8:30 a.m. to 5:30 p.m. • Closed Wed. & Sun.



**KUSTER LOGGING**

**BUYER of Standing Timber Oak and Walnut**

Dozing Now Available

**417-259-0047**

References Available



**FOR SALE:** Transmission for 56 & 06 series International tractors. \$675. 636-239-2695 or 314-560-5700. Washington.

**HEARTH CRAFT GLASS BI-FOLD FIREPLACE DOORS PURCHASED AT FORSHAW'S FIREPLACE:** Antique brass. \$160 obo. 636-239-2695 or 314-560-5700. Washington.

**120 WHITE TRACTOR:** 7317 Hours, 140 H.P. \$26,000. Excellent Condition. 636-239-4921. Washington.

**JOE THEISMANN AUTOGRAPHED CAREER STAT JERSEY:** JSA COA. Text for pictures. \$95 573-854-8132. Licking.

**STAN MUSIEL CANCELED CHECK:** full signature with authenticity \$55, txt for pictures. Mint condition. 573-854-8132

**TROLLING MOTOR:** MotorGuide 71 lb. thrust, 24-volt. Excellent condition. \$150. 210-787-8222. Linn Creek.

**2 ELECTRIC MOTORS:** Diehl 1/3 horsepower and Wagner Electric 3/4 horsepower, includes 21 pulleys various sizes and widths. \$45. 210-787-8222. Linn Creek.

**4 GOODYEAR WRANGLER TIRES:** Kevlar LT245/70R17, all terrain, \$100 for a pair. 417-417-260-0941. Raymondville.

**2007 QUALITY BUILT SINGLE HORSE TRAILER:** Good floor with mats, good tires. Nice clean trailer. \$3,500 or will consider cash offer. 417-599-8089. Willard.

**BAMBOO FLY RODS:** \$50. 417-589-8200.

**2005 RAM QUAD CAB CUMMINGS DIESEL:** Automatic transmission, 4x4, long bed, 272,000 miles. Engine and transmission have low miles. \$15,500 or consider cash offer. 417-599-8089. Willard.

**FOR SALE:** 2 Dayco motorcycle covers for Harley or other big bikes. \$50 each. 417-260-0941. Raymondville.

**GLOCK 42 380 AUTO:** Never fired. \$390 Firm. 417-260-0941. Raymondville.

**MAC'S TIEDOWN STRAPS:** Like New. \$80. 417-260-0941. Raymondville.

**Starnes Auto LLC**  
22115 Rt. 66 • Lebanon, MO 65536  
417.718.2707 Cell  
417.588.3159 Office  
www.starnesauto.com



**WE'RE HIRING**

**PAINT PREP & REBUILDERS**

Call Amanda or Alva  
for more info.

**WE DO ALIGNMENTS!**

**Larry Heisel Rentals**  
Have Rock? How about 3,500 lbs. of Hammer  
Call Larry! We Deliver!  
**573-779-1500**  
www.larryheiselequipment.com  
Rental Available in 636 or 573 area code



**2017 JEEP RENEGADE:** 57,000 miles, garage kept. 417-935-2635. Seymour.

**FISHING SEASON COMING:** Get your rod and reels. \$15 & up. 417-589-8200.

**FRESH SHEEP MILK & CHEESE:** For more info call 417-741.2186. Hartville.

**RED AND BLUE HEELER PUPPIES:** \$100. 417-322-8027.

**FOR SALE:** 10 Bred Angus Heifers, 16 Bred Angus Cows & 1 Angus Bull 2-years-old. 314-306-6345 Call or text. Drake/Owensville.

**FAINTING GOATS:** Looking for an economical way to begin raising purebred fainters? Start with 2 bucklings as pets. Offering 2 for the regular price of 1. Call/Text 573-216-7796. www.greenacresvillage.com. Lake of the Ozarks.

**GREAT PYRENEES PUPPIES:** 2 males, 2 females. UTD on shots and wormer. Ready now. \$150. 417-589-0227. Conway.

**1993 RED GMC 3/4 TON PICKUP:** 2WD, V8, 5-speed. "Mechanically Restored" including factory rebuilt engine & many new parts. Over 10k of recent reputable mechanical work done. Nicely detailed inside & out. Asking \$8,000. 573-759-7143. Vienna.

**WE BUY AND SELL**  
new and used mobile homes



**(417) 501-1061**

**CHILTON'S AUTO REPAIR**  
**MANUAL:** American & Volkswagen Cars 1969-1976. \$35. 417-260-0941. Raymondville.

**PAIR OF CAR OR PICKUP RAMPS:** 70" tall on end and 16" wide \$45. 417-260-0941. Raymondville.

**AKC WELSH CORGI PUPS: DOB 4/21/23. \$300. 417-259-9738.**

**5 BLACK STALLION WALTER FARLEY BOOKS:** Also, 5 Terhune Collie books. \$10 each. 417-260-0941. Raymondville.

**TAKING OUT GARDEN, YOU TAKE DOWN FREE FENCE, POST & GATE:** Roughly 22' 8" L x 13' 10" W. 417-260-0941. Raymondville.

**DARDEN PROFESSIONAL TIMBER HARVESTING, BUYING STANDING TIMBER:** Great prices, improve wildlife habitat and improve forest health. State Certified & Fully Insured! 573-247-4808. Salem.

**WANTED BULLHEAD CATFISH:** Live, any size, Farm Pond raised. 573-699-4805. St. James.



**'85 FORD PICKUP PARTS:** Passenger door with window glass & mirror \$30. Also, Tailgate for '85 Ford pickup \$25. 573-308-5884. Rolla.

**INTERNATIONAL PICKUP TRANSFER GEARBOX:** \$150. 573-308-5884. Rolla.

**GAITED RIDING HORSE:** Broke, 15yrs. \$1,500. 573-759-3851 8-8:30AM.



**OMAR'S DOZING**

- ⇒ Clear land
- ⇒ Clean up woods
- ⇒ Make driveways
- ⇒ Clear property lines
- ⇒ Build ponds

*Amish Owned & Operated*

**LEAVE MESSAGE: 417-741-0440**  
Hartville & Surrounding Areas

**50-60 T-POST FOR SALE:** Excellent shape. \$5/each. 573-647-3139. Bourbon.

**ANTIQUE DRESSER:** With mirror. \$200. 573-647-3139. Bourbon.

**MODEL 1911 FRAME 8-SHOT C02 PISTOL:** Like new, in box with C02 cartridges, 4 clips, pellets & all paperwork. \$95. 573-364-7465. Rolla.



**Pine Ridge Rustic**  
Log Home Building Supplies

**Services Offered!**

- Custom Log Home Products
- Pre-finishing available on interior & exterior
- Hand Hewn Sidings Offered

- Log Siding
- Beveled Siding
- Car Siding • Red Cedar
- Western Cedar • Pine • Timbers • Barnwood

**www.pineridgerustic.com**

**523 CR 2410 • Salem, MO 65560 • Ph: 573-729-7226**

**ELECTRIC DRYER:** \$125. 573-647-3139. Bourbon.

**BRAND NEW SMOKER:** \$100. 573-647-3139. Bourbon.

**WOODEN KITCHEN TABLE WITH 6 CHAIRS:** 2 are captain chairs, black, leaf, heavy duty. \$200 or open to trades. 573-647-3139. Bourbon.

**GERMAN SHEPHERD CROSS PUPPIES FOR SALE:** 10-weeks-old. \$35 OBO. 417-741-0476.

**BUYING SCRAP METAL:** All kinds, can torch heavy equipment. Call for prices. 40 years experience. 573-308-6739. Newburg.

**LARGE COCA-COLA NOVELTY SET/ GROUP:** \$50. 417-532-2344.



**CALUS LOGGING**

**20 YEARS EXPERIENCE**

**Buying Standing Timber**  
Walnut & Oak

**Joe Calus, Owner**  
417-926-4606 • MTN. GROVE

**CERTIFIED**

**IN THE BOX NEW SET OF HORSESHOES:** \$50. 417-532-6561. Phillipsburg.

**LARGE GRASS SEEDER:** On wheels, pull behind tractor. \$500. 417-532-6561. Phillipsburg.

**CASE IH MD92 DISK MOWER:** \$5,250. 573-765-4406. Richland.

**AERMOTOR FARM WINDMILL:** 30Ft. tower. \$2,000. 417-991-9036. Richland.

**185 SUZUKI FOUR-WHEELER:** Good condition, 454 miles. \$800. 417-991-9036. Richland.

**PRIDE HANDICAP SCOOTER:** \$150. 417-991-9036. Richland.

**WANTED HAY ELEVATOR:** For small squares, skeleton type. 573-378-5180. Versailles.

**COLEMAN HOT TUB/SPA:** 4-person, 120 jets, like new, complete with platform & cover, ready to set up & enjoy. \$450. 417-286-3212.

**LONG 2510 DIESEL 4-WHEEL DRIVE TRACTOR:** Canopy, with Loader. \$11,750. 573-765-4406. Richland.

**EXERCISE BIKE:** In good condition. \$65. 417-532-2344.

**MISC. MECHANICAL TOOLS:** Small set \$25. & Large set \$35. 417-532-2344.

**JOHN DEERE 920 DISCBINE:** With rollers. \$7,500. 573-765-4406. Richland.

**JOHN DEERE 466 ROUND BALER:** Monitor, Kicker, 4x6. \$4,750. 573-765-4406. Richland.

**FORD 6610 DIESEL TRACTOR:** Cab & Air, 75HP, with Nice Quick Tach Loader. \$21,750. 573-765-4406. Richland.

**CASE IH DIESEL 385 TRACTOR:** Canopy, 2,000 Hours, 40 HP. \$6,950. 573-765-4406. Richland.

**JOHN DEERE 2640 DIESEL TRACTOR:** 70 HP., with J.D. 146 Loader. \$13,300. 573-765-4406. Richland.

**BOBCAT 753 DIESEL SKID STEER LOADER:** \$12,500. 573-765-4406. Richland.

**BASEMENT READY TRUE MODS-** instock ready for delivery 573-657-7040 chateauhomes.net

**FORD 4000 DIESEL TRACTOR:** \$3,250. 573-765-4406. Richland.

**JOHN DEERE MX10 PULL TYPE BRUSHCUTTER:** Good. \$6,950. 573-765-4406. Richland.

**NEW HOLLAND 1411 DISCBINE:** With Rollers. 573-765-4406. Richland.

**RHINO 4 BASKET HYD. FOLD TEDDER:** \$4,300. 573-765-4406. Richland.

**BESTWAY 700 GAL. PASTURE SPRAYER:** Tandem Axle. \$2,500. 573-765-4406. Richland.

**ADORABLE SIAMESE KITTENS:** Litter trained. \$125. 417-205-6899.

**JOHN DEERE 854 SILAGE SPECIAL ROUND BALER:** Monitor, net wrap, late baler. \$15,500. 573-765-4406. Richland.

**JOHN DEERE 6400 DIESEL TRACTOR:** Cab & Air, 85H.P. \$19,500. 573-765-4406. Richland.

**LELY 9FT DISK MOWER:** \$2,350. 573-765-4406. Richland.

**Route 66 MOTHER ROAD BOOK:** by Michael Wallis, \$12.50. 417-532-2045. Lebanon. (Leave message and phone number.)

**WEATHERED BARN WOOD SIDING:** 10" wide. 573-729-7226. [www.pineridgerustic.com](http://www.pineridgerustic.com) Salem.

**LOG SIDING:** 2X8 Pine/Western Cedar [www.pineridgerustic.com](http://www.pineridgerustic.com) 573-729-7226. Salem.

**TINY HOMES** – Missouri Franchise 573-881-7965

**BASEMENT READY USED DOUBLE-WIDE** – 3 bdr, 2 bath, Financing Call for info 573-657-2176 [amegamobilehomes.com](http://amegamobilehomes.com)

**DISCOUNT NEW MOBILE HOMES** – we will beat any price on any home **GUARANTEED**, Financing, 573-499-9993 [columbiadiscounthomes.com](http://columbiadiscounthomes.com)

**2 GELBVIEH BULLS FOR SALE: 12 & 14-months-old. \$2,400 each. 417-531-1048. Morgan.**

**I BUY.....used mobile homes.** Call or text 573-338-6250 or email [GregS.CDH@outlook.com](mailto:GregS.CDH@outlook.com)

**IHC 806 DIESEL TRACTOR:** Turbo, T.A. \$9,750. 573-765-4406. Richland.

**REGISTERED HEREFORD & ANGUS BULLS:** Home raised, Some Show-Me Select Qualified. 573-701-7828. Belgrade.

**LIGHTLY EXPERIENCED GOLF BALLS:** \$3 a dozen. 417-818-3469. Strafford.

**SLIGHTLY USED PUZZLES:** Will sell or trade. 417-818-3469. Strafford.

**LIONEL TRAIN SET:** Steam engine, tender, caboose and other car, track, and transformer. \$195. 573-364-7465. Rolla.

**1970s KIDS METAL STOVE & FRIDGE:** Nice Lithographic paint, 18" wide x 36" high. \$75. 573-364-7465. Rolla.

**3 GENTS WITTNAUER WRIST WATCHES:** 10k gold + 23J. All \$200. 573-764-3517. Call in P.M.

**HARLEY FAT BOBS:** Custom flame paint w/ gas caps + lines. \$100. 573-764-3517. Call in P.M.

**COLT REVOLVER DEALER CATALOGS:** Circa 1950's + 1960's. All for \$100. 573-764-3517. Call in P.M.

**110 PORCELAIN POCKET WATCH DIALS:** Perfect for arts & crafts. \$100. 573-764-3517. Call in P.M.

**1890 GOLD TESTING KIT:** Glass acid beakers + antique wooden case. \$100. 573-764-3517. Call in P.M.

**1500 VINTAGE WRISTWATCH DIALS:** \$100. 573-764-3517. Call in P.M.

**HARLEY 45 SOLO:** factory rear brake drum + sprocket. \$150. 573-764-3517. Call in P.M.

**HARLEY PANHEAD DISTRIBUTOR:** original, chrome + complete. \$125. 573-764-3517. Call in P.M.

**1962 HARLEY SPORTSTER 900CC:** original distributor. \$50. 573-764-3517. Call in P.M.

# OFFICIAL TRACTOR OF TOUGH™

INTRODUCING THE ALL-NEW 5100 SERIES



## Marshfield Machinery Inc.

222 E. Madison • Marshfield, MO 65706  
417-859-2117 • [www.marshfieldmachinery.com](http://www.marshfieldmachinery.com)

\*2018 data including all Mahindra group brand sales.  
MahindraUSA.com © 2020 Mahindra USA Inc.

Mahindra  
Rise.

NEW MAHINDRA  
TRACTORS

1626 4WD & LDR 26HP	IN STOCK
2638 4WD & LDR 38HP	IN STOCK
2645 4WD & LDR 45HP	IN STOCK
4550 4WD & LDR 48 HP	IN STOCK

USED TRACTORS

MAHINDRA M85P 4WD CAB LDR	29,500
MAHINDRA 2638 38HP 4WD LDR	21,000
MAHINDRA 1635 35HP 4WD LDR	19,500
MAHINDRA 1635 35HP 4WD LDR	19,500
MF 2675 100HP CAB LDR	9,500
AGCO ALLIS 4660 52 HP	6,500
INC 574 52HPW/LDR	6,500
CUB CADET 7205 20HP 4WD	4,250
FORD 2000 31 HP	3,500
KUBOTA L175 17HPW/ MOWER	3,000
MF 135 36 HP	2,750
FORD 861 45 HP	2,500

USED ROUND  
BALERS

NH RB450 4X5 MESH	24,000
NH RB780A 5X6 MESH	7,500
HESSTON 550 4X6	2,500
HESSTON 560 5X6	2,000

USED MISC.

SITREX 8 WHEEL RAKE	1,750
LELY 8 WHEEL RAKE	1,750
INTERNATIONAL 10FT CUTTER	1,250
BH RDTH 60 FINISH MOWER	850
RHINO 5FT FINISH MOWER	850
LAND PRIDE 5FT CUTTER	500
ROLLINS 5FT BLADE	250

Marshfield  
Machinery Inc.

222 E. Madison  
Marshfield, MO 65706  
417-859-2117  
[www.marshfieldmachinery.com](http://www.marshfieldmachinery.com)



# WEEKLY TRADER MAGAZINE

## YOUR AD GOES HERE!

Add **YELLOW** Color  
For An Additional  
**\$3** Per Reader Ad

*All ads will include Phone Number (unless requested to be deleted by advertiser) and City Or Town, Phone Number with Area Code counts as one word. City or Town counts as one word.*

**RATE: 80¢ Per Word. All Classified Ads Require Payment Before Print.**

(1) 80¢	(2) \$1.60	(3) \$2.40	(4) \$3.20
(5) \$4.00	(6) \$4.80	(7) \$5.60	(8) \$6.40
(9) \$7.20	(10) \$8.00	(11) \$8.80	(12) \$9.60
(13) \$10.40	(14) \$11.20	(15) \$12.00	(16) \$12.80
(17) \$13.60	(18) \$14.40	(19) \$15.20	(20) \$16.00
(21) \$16.80	(22) \$17.60	(23) \$18.40	(24) \$19.20
(25) \$20.00	(26) \$20.80	(27) \$21.60	(28) \$22.40
(29) \$23.20	(30) \$24.00	(31) \$24.80	(32) \$25.60
(33) \$26.40	(34) \$27.20	(35) \$28.00	(36) \$28.80
(37) \$29.60	(38) \$30.40	(39) \$31.20	(40) \$32.00

**Buy 3 Weeks - Get 4th Week Free! (Must be same ad)**

## Place your Classified Ad TODAY!

**417-532-9131 • 800-665-8875**

**Fax: 417-532-8140**

**Or Mail To: P.O. Box 192 • Lebanon, MO 65536**

For your convenience we accept MasterCard, Visa, Discover or American Express



**DEADLINE FOR CLASSIFIED ADS: FRIDAY 4:00PM!**

Name \_\_\_\_\_

Address \_\_\_\_\_

City \_\_\_\_\_ Email \_\_\_\_\_

State \_\_\_\_\_ Zip Code \_\_\_\_\_ Phone \_\_\_\_\_

**Ad Total \$ \_\_\_\_\_ X # Weeks \_\_\_\_\_ = Amount Enclosed \$ \_\_\_\_\_**

## Specializing in farm and home, recreation, and commercial listings.

Whether you're buying or selling, our team can save you time, help you avoid costly mistakes, and ensure you get the best value. Call or visit us online today to start your home search, talk to an agent or request your free home value report!

**Located in Mountain Grove, Ava, Gainesville and Theodosia.**



**We are looking to expand and bring on other agents.**

# CENTURY 21<sup>®</sup>

## Hometown Properties

### MOUNTAIN GROVE

9871 E 20th St, Bldg A  
Mountain Grove, MO 65711  
417.926.1070



**20431 State Hwy 76  
Ava, MO**

Park like setting!!!!!! This is a one-of-a-kind property that has its own spring fed lake right next to the home. This property also features a large, attached shop with a lot of shop amenities. This 1900 sq foot home has beautiful custom cabinets, tiled showers, custom stair treads and much more character. The home is set off from the road so you have a lot privacy. This small lake is fully stocked with a different variety of fish. It also has two wells, two septic, and full rv hook up with pad. There is a lot of mature timber, open fields and located right off Hwy 76 outside of Ava.



**7629 T-537  
Ava, MO**

Nestled in the Ozark Mountains just 12 miles west of Ava in the Goodhope area and less than an hour from Springfield or Branson, the location is perfect. Stepping through the custom handmade front door you will find yourself standing in the open floor plan, main living area. Built in 2019, this house just feels like home! 3 bedrooms and 2.5 baths with a wide open kitchen just off of the dining and living "great room." The master bedroom, en-suite bath is generous with space. With a split floor plan there is a full bath conveniently located between the two other bedrooms.



**Rural Rt 1 Box 720-A  
Vanzant, MO**

!PRICE IMPROVEMENT! Priced \$6,750 below appraised value! Country Living at its Finest and a Nature Lover's Dream!! This home and 27 acres m/l features tall south-facing windows that provide a beautiful view and a sunny burst of warmth when the sun shines in the winter, keeping heating bills low, as well as a front deck that is perfect for sitting and enjoying your morning coffee during the warmer months. There is a cozy, efficient freestanding wood stove along with conventional HVAC to heat and cool the home.



**7300 Wade Drive  
Mountain Grove, MO**

Have you been dreaming to own property that you can hunt, fish, kayak, swim, and farm? Come take a look at this beautiful 280 acre m/l farm and enjoy some of the best amenities the Ozarks are known for! This well-kept farm is approx. half open and half timber with improved pastures and hay ground. Signs of wild-life abound and the 2022 whitetail hunting tally impressive. There are 3 ponds, several springs, and best yet, about 1/8 mile of Gasconade River frontage with your own easy access to the river.



**RUBBER & LEATHER BOOTS AND 5-Buckle OVER SHOES:** Men's 11, Women's 7, some insulated. \$15-\$40 obo. 636-239-2695 or 314-560-5700. Washington.

**NEW SQUARE D RAINPROOF 50AMP DISCONNECT:** \$160. 636-239-2695 or 314-560-5700. Washington.



**Wright Spray Foam Insulators, LLC**  
Commercial & Residential  
Call for FREE Estimates!

Ervin Gingerich 417-926-2052  
B. Eli Yoder 417-746-4932

**USED JET HOME POLLUTION CONTROL PANNEL:** Model CP700. \$65. 636-239-2695 or 314-560-5700. Washington.

**FOR SALE: Transmission for 56 & 06 series International tractors.** \$675. 636-239-2695 or 314-560-5700. Washington.

**HEARTH CRAFT GLASS BI-FOLD FIREPLACE DOORS PURCHASED AT FORSHAW'S FIREPLACE:** Antique brass. \$160 obo. 636-239-2695 or 314-560-5700. Washington.

**1 PAIR OF KEY BRAND MEN'S JEANS:** Waist 38, Length 34. \$10. 636-239-2695 or 314-560-5700. Washington.

**FOR SALE: 10 Bred Angus Heifers, 16 Bred Angus Cows & 1 Angus Bull 2-years-old.** 314-306-6345 Call or text. Drake/Owensville.



**0% for 4 Years**  
**HEATMOR**  
**Outdoor Wood Furnace**  
as low as **\$238** per month  
**HEATMOR MIDWEST**  
Licking, MO 65542 • 573-674-2962

**CUSTOM HAY HARVESTING:** or put up in shares. 4x5 Net Wrap Tight JD Bales. \*Reasonable Rates\* Reliable Service Larger Acreages Desired. Book early to beat the rush. For a Free Quote call Josh \*573-247-8715\* Green Meadows Farm: Servicing Dent, Texas, and surrounding counties.

**ANTIQUE HOG OILER:** \$35. 573-308-5884. Rolla.

**120 WHITE TRACTOR:** 7317 Hours, 140 H.P. \$26,000. Excellent Condition. 636-239-4921. Washington.

**VINTAGE WORKING 1967 ELECTRIC SINGER SEWING MACHINE:** Special zigzag model 638 in cabinet with original instruction book. \$50. 210-787-8222. Linn Creek.

**2017 JEEP RENEGADE:** 57,000 miles, garage kept. 417-935-2635. Seymour.



**OMAR'S LOGGING**  
⇒ Oak & Walnut  
⇒ Excellent Prices  
Amish Owned & Operated  
**LEAVE MESSAGE: 417-741-0440**  
Hartville & Surrounding Areas

**2 ELECTRIC MOTORS:** Diehl 1/3 horsepower and Wagner Electric 3/4 horsepower, includes 21 pulleys various sizes and widths. \$45. 210-787-8222. Linn Creek.

**NOW BUYING STANDING RED AND WHITE OAK TIMBER:** All slash will be trimmed to lay flat or placed in tidy piles for wildlife. No scarred-up trees or ruts from heavy logging equipment. We use low impact compact track loaders to minimize disturbance in your forest. Missouri Land Service LLC. 417-991-9280.



**YOUR FULL SERVICE AUTO BODY SHOP**

Call today for an appointment or estimate!

**Restorations, insurance jobs, and more!**

**DAVIDSON'S Customs**  
417-288-1589

417-288-1589 • 115 Lincoln St., Buffalo, MO • f @DavidsonCustoms

**TRAILER HOUSE RIMS:** \$10 each. 573-308-5884. Rolla.

**K.C. CHIEFS SUPERBOWL 2019 DAMIEN WILLIAMS AUTOGRAPHED JERSEY:** JSA COA. Text for pictures. \$135. 573-854-8132. Licking.

**RED AND BLUE HEELER PUPPIES:** \$100. 417-322-8027.

**GLOCK 42 380 AUTO:** Never fired. \$390 Firm. 417-260-0941. Raymondville.

**1993 RED GMC 3/4 TON PICKUP:** 2WD, V8, 5-speed. "Mechanically Restored" including factory rebuilt engine & many new parts. Over 10k of recent reputable mechanical work done. Nicely detailed inside & out. Asking \$8,000. 573-759-7143. Vienna.

**2005 RAM QUAD CAB CUMMINGS DIESEL:** Automatic transmission, 4x4, long bed, 272,000 miles. Engine and transmission have low miles. \$15,500 or consider cash offer. 417-599-8089. Willard.

**CHILTON'S AUTO REPAIR MANUAL:** American & Volkswagen Cars 1969-1976. \$35. 417-260-0941. Raymondville.



# Land

For Sale

Greene Co., Mo • 113 Acres +/-



**\$2,999,000**

Over a half mile of phenomenal accessible James River water frontage  
Two miles from East Springfield and all amenities the city offers  
Great location for building your future home with a picturesque landscape  
Close proximity to city but secluded and quiet atmosphere

- Amazing views from every inch of property
- Great fishing in the James River on property
- 6 cross-fenced pastures
- Nice 5 strand barbed wire fence
- Feeding alleyways between pastures
- Livestock barn with individual catching pens for each stall
- Large barn for equipment and livestock

- Two grain bins
- Fuel tank with pump
- 17 acres planted in alfalfa
- Multiple automatic cattle waterers and tanked pond waterer
- Pond
- Water well and electric on property
- Blacktop access



**WHITETAIL PROPERTIES REAL ESTATE**

HUNTING | RANCH | FARM | TIMBER

**Brian Utecht | 417-766-5595**

[Brian.Utecht@whitetailproperties.com](mailto:Brian.Utecht@whitetailproperties.com)

**WHITETAILPROPERTIES.COM**

Missouri's Top Land Specialist in 2014, 2015,  
2016, 2017, 2018, 2019, 2020 and 2021





# A deal designed to help you get the job done right.



MX Series

55.5-63.4 HP

Factory cab available



Kubota®

Together we do more.®

Save big on the comfort and versatility of the MX Series, part of our tractor lineup rated #1 for durability and owner experience in the U.S.\* Stop in for a demo and to claim this great offer today.

**\$0 DOWN    0% APR    UP TO 60 MONTHS**

**PLUS**

**SAVE UP TO \$800**

**VISIT US TODAY FOR THIS LIMITED-TIME OFFER**



Kubota®

## Quarles Supply

3251 S Springfield Ave  
Bolivar, MO 65613  
417-777-2391

KubotaUSA.com

\*Award based on 2021 Progressive Farmer Reader Insights Tractor Study. © Kubota Tractor Corporation, 2023. \$0 Down, 0% A.P.R. financing for up to 60 months on purchases of new Kubota MX Series equipment from participating dealers' in-stock inventory is available to qualified purchasers through Kubota Credit Corporation, U.S.A.; subject to credit approval. Example: 60 monthly payments of \$16.67 per \$1,000 financed. Customer rebates include Orange Plus Attachment Instant Rebate of \$300 with purchase of the second qualifying new implement and \$500 for the third new qualifying implement. Some exceptions apply. There is no rebate on the first implement purchased. Offers expire 06/30/23. Terms subject to change. This material is for descriptive purposes only. Kubota disclaims all representations and warranties, express or implied, or any liability from the use of this material. For complete warranty, disclaimer, safety, incentive offer and product information, consult your Dealer or KubotaUSA.com.

*Progressive*  
**FARMER**  
READER INSIGHTS