

FREE - TAKE ONE!

Vol. 30 No. 6

MAY 4, 2023

417-532-9131

WEEKLY TRADER MAGAZINE



Find us on Facebook

@myweeklytrader
AUCTIONS PG. 7



VISIT OUR NEW WEBSITE! MYWEEKLYTRADER.COM

**You pull it,
we sell it...**

CHEAP!



Lebanon, MO

22395 Rt. 66

417-588-3555

Fax 417-588-8955



U-PULL-IT

SELF-SERVICE AUTO PARTS

We also have a large inventory
of used tires and be sure to check
out our used car lot!

Mon.-Fri. 8:00am-6:00pm • Sat. 8:00am-4:30pm

WWW.SSUPULLIT.COM

Located next to S&S Recycling.



Roll-off, Trailer, and
Mobile Crushing
Services Available

For All Your Metal Recycling Needs

Lebanon, MO

22395 Rt. 66

417-588-3555

Fax 417-588-8955

Mtn. Grove, MO

8930 First Rd

417-926-3360

Fax 417-926-0180

Monday-Friday 8:00am-4:30pm (Closed 12pm-1pm Lunch)
Saturday 8:00am-Noon

email: contact@ss-recycling.com

Buyer of all types of scrap metal.

Land

For Sale

Pulaski Co., Mo • 369 Acres +/-



\$1,291,000

- ¾ mile of accessible Gasconade River frontage
- 3 sizable caves with tons of character
- Unique river island
- Miles of trails accessing every corner of the property
- Amazing build sites
- Electricity on the northern boundary
- Just over a mile of county road frontage with multiple access points



WHITETAIL PROPERTIES REAL ESTATE

HUNTING | RANCH | FARM | TIMBER

Brian Utecht | 417-766-5595

Brian.Utecht@whitetailproperties.com

WHITETAILPROPERTIES.COM

Missouri's Top Land Specialist in 2014, 2015, 2016, 2017, 2018, 2019, 2020 and 2021



HUSTLER®

For Outstanding Products & Service

AGRI-ENTERPRISES

1-1/2 Miles South Of Licking, MO On Hwy 63
 573-674-2203 • 1-800-653-7152 • www.agri-enterprises.com

AT YOUR LOCAL HUSTLER DEALER



SPRING SALES

20 EVENT 23

SAVE \$200 OR MORE

ON RAPTOR MOWERS

*Offer applies to Hustler Raptor Series Zero-turn mowers only. Valid 4/1/23 to 5/31/23, only at participating US dealers. Inventory varies by dealer; offer subject to availability at individual dealer. May not be combined with any other discount or offer and does not apply to prior purchases or purchases made before or after the promotion dates. Discount does not apply to tax, shipping and handling, or setup. If you return the merchandise, the value of this promotion is not refunded or credited to your account. No cash value, except where prohibited by law.

SMALL TOWN MAYOR OF WAYNESVILLE, MO: Political Adventures of the Ozarks by Luge Hardman, featuring small town politics and small-town life, featuring local photographers and local characters. \$9.50. 417-532-2045. Lebanon. (Leave message and phone number).

WEATHERED BARN WOOD SIDING: 10" wide. 573-729-7226. www.pineridgerustic.com Salem.

LOG SIDING: 2X8 Pine/Western Cedar www.pineridgerustic.com 573-729-7226. Salem.

BASEMENT READY USED DOUBLE-

WIDE – 3 bdr, 2 bath, Financing Call for info 573-657-2176 amegamobilehomes.com

DISCOUNT NEW MOBILE HOMES – we will beat any price on any home **GUARANTEED**, Financing, 573-499-9993 columbiadiscounthomes.com

BASEMENT READY TRUE MODS- instock ready for delivery 573-657-7040 chateauhomes.net

TINY HOMES – Missouri Franchise 573-881-7965


I BUY.....used mobile homes. Call or text 573-338-6250 or email GregS.CDH@outlook.com


REGISTERED HEREFORD & ANGUS BULLS: Home raised, Some Show-Me Select Qualified. 573-701-7828. Belgrade.

LIGHTLY EXPERIENCED GOLF BALLS: \$3 a dozen. 417-818-3469. Strafford.

SLIGHTLY USED PUZZLES: Will sell or trade. 417-818-3469. Strafford.





LIONEL TRAIN SET: Steam engine, tender, caboose and other car, track, and transformer. \$195. 573-364-7465. Rolla.





TIM'S USED CARS

(573) 341-3828 • 1334 South Bishop (Hwy. 63) • Rolla, MO
 Next to Hwy CC • www.tims-used-cars.com

 <p>2018 NISSAN FRONTIER S Ext cab, 2WD, 4 cyl auto, 125,xxx Miles Only \$14,900</p>	 <p>2018 DODGE DURANGO CITADEL AWD, V-6, loaded w/options, 123,xxx Miles Only \$28,500</p>
 <p>2015 JEEP CHEROKEE ALTITUDE FWD, power equipped, leather, 3.2 V-6, 101,xxx Miles Only \$15,500</p>	 <p>2015 CHRYSLER 200 LIMITED 4 cyl, power equipped, 138,xxx Miles Only \$8,500</p>

LARGE SELECTION OF CARS, TRUCKS, SUVs & VANS!

MODEL 1911 FRAME 8-SHOT C02 PISTOL: Like new, in box with C02 cartridges, 4 clips, pellets & all paperwork. \$95. 573-364-7465. Rolla.

1970s KIDS METAL STOVE & FRIDGE: Nice Lithographic paint, 18" wide x 36" high. \$75. 573-364-7465. Rolla.

3 GENTS WITTNAUER WRIST WATCHES: 10k gold + 23J. All \$200. 573-764-3517. Call in P.M.

HARLEY FAT BOBS: Custom flame paint w/ gas caps + lines. \$100. 573-764-3517. Call in P.M.

THE ROARING ROUBIDOUX: Book by Dan Slais, 229 pages, Waynesville/ Fort Wood, Texas County areas, many old photos. \$12.50. 417-532-2045. Lebanon. (Leave message and phone number).

COLT REVOLVER DEALER CATALOGS: Circa 1950's + 1960's. All for \$100. 573-764-3517. Call in P.M.

110 PORCELAIN POCKET WATCH DIALS: Perfect for arts & crafts. \$100. 573-764-3517. Call in PM.

1890 GOLD TESTING KIT: Glass acid beakers + antique wooden case. \$100. 573-764-3517. Call in PM.

BARNs OF MISSOURI BOOK: Storehouses of History, 168 pages, hardback, \$12.50. 417-532-2045. Lebanon. (Leave message and phone number).

1500 VINTAGE WRISTWATCH DIALS: \$100. 573-764-3517. Call in PM.

HARLEY 45 SOLO: factory rear brake drum + sprocket. \$150. 573-764-3517. Call in PM.

HARLEY PANHEAD DISTRIBUTOR: original, chrome + complete. \$125. 573-764-3517. Call in PM.

1962 HARLEY SPORTSTER 900CC: original distributor. \$50. 573-764-3517. Call in PM.

RUBBER & LEATHER BOOTS AND 5-Buckle OVER SHOES: Men's 11, Women's 7, some insulated. \$15-\$40 obo. 636-239-2695 or 314-560-5700. Washington.

FERGUSON DEALER SHOP MANUAL: Covering TE-20, TO-20 & TO-30 Model tractors. \$40. 636-239-2695 or 314-560-5700. Washington.

PAIR OF CAR OR PICKUP RAMPS: 70" tall on end and 16" wide \$45 417-260-0941

NEW SQUARE D RAINPROOF 50AMP DISCONNECT: \$160. 636-239-2695 or 314-560-5700. Washington.

USED JET HOME POLLUTION CONTROL PANNEL: Model CP700. \$65. 636-239-2695 or 314-560-5700. Washington.

FOR SALE: Transmission for 56 & 06 series International tractors. \$675. 636-239-2695 or 314-560-5700. Washington.

POOL TABLES: Installations, moves, recovers, repairs, accessories, etc. 573-646-1700.

HEARTH CRAFT GLASS BI-FOLD CHILTON'S AUTO REPAIR MANUAL: American Volkswagen 1969-1976. \$35. 417-260-0941. Raymondville.

FIREPLACE DOORS PURCHASED AT FORSHAW'S FIREPLACE: Antique brass. \$160 obo. 636-239-2695 or 314-560-5700. Washington.

THREE SHEPHERD'S HOOKS: To hang potted plants. Black wrought iron. 6ft. 7in. when in ground. One is a double & two are single hooks. \$50. 636-239-2695 or 314-560-5700. Washington.

OFFICIAL TRACTOR OF TOUGH™

INTRODUCING THE ALL-NEW 5100 SERIES



NEW MAHINDRA TRACTORS

1626 4WD & LDR 26HP	IN STOCK
2638 4WD & LDR 38HP	IN STOCK
2645 4WD & LDR 45HP	IN STOCK
4550 4WD & LDR 48 HP	IN STOCK

USED TRACTORS

MAHINDRA M85P 4WD CAB	LDR 29,500
MAHINDRA 2638 38HP 4WD	LDR 21,000
MAHINDRA 2638 38HP 4WD	LDR 20,000
MAHINDRA 1635 35HP 4WD	LDR 19,500
MF 2640 90HP CAB	17,500
MF GC1725M 24HP 4WD LDR	13,000
AC 7010 106 HP CAB	9,500
MF 2675 100HP CAB LDR	9,500
AC 175 62 HP LDR	8,500
AGCO ALLIS 4660 52 HP	6,500
MF 1085 81HP	6,500
FORD 2000 31 HP	3,500
MF 135 36 HP	2,750

USED ROUND BALERS

NH RB450 4X5 MESH	24,000
NH RB780A 5X6 MESH	7,500
HESSTON 550 4X6	2,500
HESSTON 560 5X6	2,000

USED MISC.

SITREX 8 WHEEL RAKE	1,750
LELY 8 WHEEL RAKE	1,750
INTERNATIONAL 10FT CUTTER	1,250
BH RDTH 60 FINISH MOWER	850
RHINO 5FT FINISH MOWER	850
LAND PRIDE 5FT CUTTER	500
ROLLINS 5FT BLADE	250
KING CUTTER BEDDING PLOW	200

Marshfield Machinery Inc.
 222 E. Madison • Marshfield, MO 65706
 417-859-2117 • www.marshfieldmachinery.com

*2018 data including all Mahindra group brand sales.
 MahindraUSA.com © 2020 Mahindra USA Inc.

Mahindra
Rise.

Marshfield Machinery Inc.
 222 E. Madison
 Marshfield, MO 65706
 417-859-2117
www.marshfieldmachinery.com

FIRST GEAR KILIMANJARO MOTORCYCLE COAT: XL, but runs smaller. Zip out liner, Kevlar padding on shoulders & elbows, vented, rainproof. Like new. \$95 FIRM. 417-260-0941. Raymondville.

2 GOODYEAR WRANGLER TIRES: Kevlar LT245/70R17, all terrain, \$100 for the pair. 417-417-260-0941. Raymondville.

FOR SALE: 2 Dayco motorcycle covers for Harley or other big bikes. \$50 each. 417-260-0941. Raymondville.

ANTIQUE HOG OILER: \$35. 573-308-5884. Rolla.

460 FORD ENGINE BLOCK: \$100. 573-308-5884. Rolla.

TRAILER HOUSE RIMS: \$10 each. 573-308-5884. Rolla.

POSTER BED: \$150. 417-741-1232.

ROUND TABLE: \$40. 417-741-1232.

DOXIN PUPPIES: Registered, shots & wormed. 573-247-6273. Salem.

NOW BUYING STANDING RED AND WHITE OAK TIMBER: All slash will be trimmed to lay flat or placed in tidy piles for wildlife. No scarred-up trees or ruts from heavy logging equipment. We use low impact compact track loaders to minimize disturbance in your forest. Missouri Land Service LLC. 417-991-9280.

BUYING OLD BARNs AND LUMBER: 417-298-3475 Leave Message.

FULLBLOOD YEARLING RAMS: One Dorper and two St. Croix. \$500 each. Call 417-458-1771.



Meadowview Dutch Market

Bulk & Surplus Groceries • Prices Subject to Stock on Hand

Call to Order
417-993-3017

Sale Dates May 3rd, 2023 to
May 9th, 2023 while supplies last!

DELI SPECIAL

PICKLE LOAFREG. \$5.99 LBSALE \$5.49 LB

GOUDA CHEESEREG. \$5.35 LBSALE \$4.85 LB

TRY our Fresh Homemade DELI Sandwiches: TURKEY, HAM, ROAST BEEF, ITALIAN, BLT'S, PULLED PORK AND BLT PULLED PORK (MADE YOUR WAY)! COME IN OR CALL to order! ALSO Custom Deli trays! Veggie OR FRESH Meat-N-Cheese!

Cross-Cut
Beef Shanks

\$3⁷⁵
LB.

Puffed
Granola Cereal

**BUY 1,
GET 1 FREE**

Honey
Graham Cracker

\$1⁴⁹
14.4 OZ.

Ice
Pops

\$2⁴⁹
36 CT.

Chicken
Wings

\$1⁷⁵
LB

Cheddar
Brats

\$1²⁵
LB.

MEADOWVIEW DUTCH MARKET
417-993-3017 Hours: Mon-Thurs 8-5pm
Fri 8-6pm • Sat 8-5pm
23 Miles West on Hwy 64 • Right on T Hwy
9 miles • Left on E Hwy 1 mile on Left

DUTCH COUNTRY STORE, LLC
573-378-4395
Hours: Mon-Thurs 8-5pm
Fri 8-6pm • Sat 8-5pm
5 miles East of Versailles off Hwy C on Kelsay Road

NOW ACCEPTING CREDIT, DEBIT CARDS & EBT

WE ARE CLOSED ON MAY 18TH OBSERVANCE OF ACCENSION DAY

BONE-IN RIBEYE STEAK

\$6⁴⁹
LB.

MAC'S TIEDOWN STRAPS: Like New. \$80. 417-260-0941. Raymondville.

BOX OF SILVER-PLATED SILVERWARE: at least 75 years old \$60 417-260-0941

DARDEN PROFESSIONAL TIMBER HARVESTING, BUYING STANDING TIMBER: Great prices, improve wildlife habitat and improve forest health. State Certified & Fully Insured! 573-247-4808. Salem.

FIREPIT: \$40 Firm. 573-647-3139.

25 SECLUDED ACRES: Powerlines on two sides of property. One hour from Springfield. Hunter's Paradise. Stream through property. Cash Only. \$8,000/per acre. Must take all. 00417-741-1232.

HIGHPOINT GREENHOUSE: Open for the season. Garden seeds, vegetable and flower plants, seed potatoes, onion sets and plants, herbs, etc. 417-741-2793. 9337 Warner Rd. Hartville.

METAL ROOFS: We repair leaky metal roofs with warranty. Also, flat roofs. Very affordable. Cover all of state. 573-338-1148. Jefferson City.

NEED YOUR CDL????? We furnish the truck & trailer. We teach all requirements for ELDT & skills test. We go to the state highway patrol with our truck. Requires only 2 days of in person training. Much cheaper way to get CDL. Jefferson City MO, Willow Springs MO, Strafford MO, 573-353-2853. For more info www.capitaltruckdrivinginstitute.com

WANTED NEW HOLLAND SKID STEER 865: Any Condition. Call Bob 573-697-5143.

TRUNK LID FOR 55/56 CHEVY CAR: \$50 or trade. 573-734-2822.

REAL ESTATE & PERSONAL PROPERTY

Auction

SATURDAY, JUNE 3, 2023 AT 10 AM SHARP

REAL ESTATE SELLS AT 12 NOON SHARP

Location: 2453 N Albertha Ave, Springfield, MO 65803

DIRECTIONS: FROM AVA, TAKE HWY 5 NORTH TO 60 HWY. FOLLOW 60 WEST TOWARDS SPRINGFIELD. TAKE THE EXIT ONTO 65 NORTH. CONTINUE TO I-44. TAKE THE EXIT ONTO WEST I-44 AND CONTINUE 0.6 MI TO MO-13/KANSAS EXPWY. TAKE KANSAS EXPWY SOUTH TO KEARNEY. TURN RIGHT (WEST). DRIVE 0.3 MILES, THEN TURN RIGHT ONTO N ALBERTHA AVE. DESTINATION WILL BE ON THE LEFT. WATCH FOR CHEYNEY AUCTION SIGNS!!

REAL ESTATE Lot is approx 2 ac m/l in the MC Koins Subdivision. Residence has been damaged by fire. There are 2 large outbuildings on the property. The first is approx 30' x 30' block garage, and the second is approx 30' x 50' metal shop. This is a nice location if you are looking for a larger lot in a quaint neighborhood.

PERSONAL PROPERTY 2000 Olds Intrigue, International 175 Series track loader, 1974 International Twin screw dump truck, 1978 Dune Buggy, 1957 Chevy pickup, 1978 Olds 2 door sedan, 1986 Johnson 30 hp boat motor, 1978 Lowe 16x48 flat bottom boat (no title), 1979 1 ton Ford 2wd (no title), 8N Ford tractor, Ford 3400 tractor w/ loader, Tri axle equipment trailer (no title), 16x36 Lowe flat bottom boat (no title), Electric concrete mixer, 2 bottom plow, 16' utility flatbed (no title), 3 pt auger, 7' box blade, 2 - 2 bottom 3 pt plows, Dodge 1 ton Bread truck (no title), 1985 GMC General (no title) 400 Cummins 15 spd w/ OD, 300 gal fuel tank w/ stand, 20 ton wood splitter, 200 gal metal water tank, Roto-Hoe rear tine tiller, Garden trailer, Numerous riding mowers (not running), Numerous

100 lb and 20 lb propane bottles, 5 ft brush hog, Honda 1981 XL805 dirt bike, 50 ton shop press, Step ladders and extension ladders, Antique Tonka toys, Misc lumber, Steel drum dolly, Various hand tools, 2 - floor jacks, Work Zone 2000 watt generator, Pancake air compressor, Honda 5.5 hp 3000 psi power washer, Industrial 3/4 drill press, Troybilt push mower, Predator 9000 kw generator, Metal bandsaw, Bench grinder, 2 - tablesaws, Miller 35 Mig welder, Booster battery chargers, Large variety of chains & boomers, Sand blasters, Campbell Hausfeld 80 gal air compressor, Many more items, too numerous to list.



FOR MORE PHOTOS, VISIT OUR WEBSITE CHEYNEYAUCTIONS.COM OR FIND US ON FACEBOOK!

Cheyney Auction Company, LLC

Real Estate • Livestock • Farm & Ranch • Equipment • Household • Antiques

Travis Cheyney, Auctioneer • Buddy Boyd, Ringman

417-543-8751 • cheyneyauctions.com

10% buyers premium. ANNOUNCEMENTS Made Day Of Sale By Auctioneer Take Precedence over any Printed Matter. Not Responsible For Accidents. All items sold as is, where is, with no guarantee. Terms of sale: cash, credit/debit card, or check with valid ID.



IRISH DEXTER BREEDERS ASSOCIATION IDBA



ANNOUNCES ITS FIRST ANNUAL SHOW AND SALE! May 5 & 6 2023 at the Dallas County Fairgrounds Buffalo Mo.

We are proud to make this announcement as the desire for these animals continue to grow and we strive to represent the breed to the best of our ability we would like to invite you all to come join us for a fun filled 2 days.

We will be offering a hand picked selection of what we feel are some of the breeds best for auction.

We will be offering 12 – females and 3 – males all animals will be broke to lead.

We will have a variety from show heifers and bulls to maternal genetics in cows and herd sires.

We will also have a silent auction and a few items we will live auction to help raise money for the IDBA to help promote the growth in our youth in raising Irish Dexter's. So, whether you're interested in buying, selling, showing, or just spectating please take this opportunity to help grow the youth in agriculture for our group is strongly focused on the youth. We love what we do and raising these high-quality animals. We also believe in supporting the youth for they are our future and the future of agriculture.

BRING THE FAMILY AND COME JOIN US MAY 5TH AND 6TH FOR THE OPPORTUNITY TO PURCHASE SOME OF THE BREEDS BEST GENETICS, FOR FUN, AND TOP-NOTCH FOOD!

For more info on the show and sale or becoming a member you can contact the following IDBA board members:

President – Steve Cushing 417-991-6707 Vice President – Robert Doehring 417-733-4088

Treasurer – Bo Hampton 417-288-2376 Rob Doehring 417-241-5241

Sam **CRAWFORD AUCTION SERVICE** LLC
ESTATE AUCTION

Will sell the following North of Lebanon, MO at 26740 Pelican Drive. From Jct. 5/64 North on Hwy. 5 1 mile to Hwy. YY, then East 1.3 miles to Pelican Dr. then North 1.2 miles.
 Watch for Auction Signs.

WEDNESDAY, MAY 10TH, 2023 - 10:00 AM

HOUSEHOLD - VEHICLES - TRACTORS - MACHINERY - GUNS - TOOLS - MISC.

Household

Tools & Misc.



4 Pc. Bedroom Set, Full
 2 - 3 Pc. Bedroom Sets, Full
 Dining Table & 6 Chairs
 3 Recliner/Rockers
 2 Swivel Rocker/Recliners
 2 Wing Back Livingroom Chairs
 Couch & Loveseat • Hide-A-Bed
 Flat Screen TV & Stand
 Sofa Table, Coffee Table, End Tables Other Small Tables
 • Maytag Washer & Dryer
 Singer 301A Sewing Machine & Cabinet Small Chest
 Freezer • Refrigerator
 Sears Upright Freezer • Older Chest Freezer Lamps,
 Wall Decor • Fans, Heaters
 8 Chrome Stacking Chairs
 Folding Chairs • Lawn Chairs
 Antique Vanity & Sofa Table
 Oak School Desk • Plastic Storage Shelves Lg. Metal
 Storage Cabinet
 Good Asst. Small Kitchen Appliances
 Lot Asst. Pots, Pans, Utensils
 Granite Pans • Some Cast Iron
 Set Pyrex Mixing Bowls • Lot Corningware
 Lot Misc. Glassware • Fruit Jars • Figurines Lot
 Bedding • Some Quilts • Crochet Items Set Salem
 "Maple Leaf" China
 Lot Louis L'Amour Hardback & Paperback Books
 Luggage • Other Misc.

16 Gal. Wet/Dry Shop Vac
 John Deere LX 280 Lawn Tractor, 18 HP Front
 Tine Tiller • Chipper/Shredder
 2 Push Trimmers • Push Lawn Mower Good
 Asst. Wrenches, Hammers, Power Tools •
 Handsaws • Braces & Bits • Scythe
 • Long Handle Tools
 Elect. Power Washer • Yard Cart
 Stihl 250 Chainsaw • Stihl Trimmer Push Garden Plow • Garden
 Cart Ratchet Fence Stretcher • Tub
 Nails, Bolts, Oil • Lg Chains & Booms 2 Galv. Water Cans • 2
 Wellbuckets Wooden Boxes • 3 Gal. of Buttons
 5 - 10 Gal. Milk Cans • Ladders
 2 Wood Nail Kegs • Kid's Sled
 Old Harness & Collars • Old Bicycle
 2 Red Wagons • 2 Implement Seats Set of Lockers (6) • Gas Cans
 Some Metal Ammo Boxes
 MFA 5 Gal. & 1 Gal. Can
 500 Gal. Propane Tank
 Some Steel Posts • Some Lumber
 Roll 48" Woven Wire • Some Scrap Iron Pile 50+ Sheets Used
 Metal Roofing Wood Pick-Up Stock Rack

4-5 Farm Gates • Old Squeeze Chute 7-8 Round Bales Hay, In
 Barn 4 Yrs.
 6-8 Jts. 6" Sch. 40 Plastic Pipe, Perf. Old 6 Cyl. Motor
 Old Field Tiller, 2 Row Planter, McCormick Sickle Mower, Model T
 Frame, Other Misc.

Vehicles

'05 Mercury Grand Marquis LS, 45K, Leather, Nice, Garaged; '85 Mercury Grand Marquis, 126K, Clean & Good; Garaged '94 Ford F150, V-8, Auto, 4x4, Over 100K Miles

Tractors & Machinery

John Deere 2630, Diesel, Canopy, Running By Sale Day; IH 354, Gas, Live Power, Shows 3120 Hrs., Runs Good; John Deere 260 Disc Mower, 7'; 2 - Allis Chalmers Round Balers (1 White Top); 2 - John Deere 694 Side Rakes; 3 Pt. IH 6' Brushcutter; 3 Pt. Ford 2 Bottom Plow; 3 Pt. Scoop; 3 Pt HD 6' Disk; Ford 3 Pt. 8' Field Tiller; Ford 3 Pt. 2 Bottom Disc Plow; 3 Pt. Carry-All; 2 - 3 Pt. Bale Spears; 3 Pt. 110 Gal. Sprayer w/Boom, Good 8' Chain Harrow 2 Section harrow; 3 Pt. 6' Blade; Cyclone 12V Seeder; 60's IH Pick-Up Bed Trailer; Wagon Gear; 2 Bale Rings; Neck Over Gooseneck Stock Trailer, 18' Bar Top, Sheddged; Bumper Hitch 18' Utility Trailer, Sheddged; Bumper Hitch 10' Utility Trailer, Mesh Floor & Ramp, Sheddged

Good auction with lots of interesting items. Great property in he county. Loader on site day of sale.



TERMS: Cash or good check. Nothing removed until settled for. Not responsible for accidents. Lunch available. Settlements made day of sale take precedence over printed matter. All items sell as is. No warranties given or implied.

417-998-6629
 Cross Timbers, Mo.

CrawfordAuctionService.com



Sam
 417-328-9137

Chase
 417-399-1904

Chance, CAI
 417-298-1751

Tom Poynter
 Jack Lancaster

**DARRELL & DOROTHY
 HARRILL ESTATE**

Absolute Real Estate & Estate Auction

10:00 A.M. * Saturday, May 6th, * 10:00 A.M.

See our Website For More Pictures & Info!

Location: 1317 Oak Ridge Rd. Nixa, Mo. 65714

Directions: From Nixa take hwy. 14 west 1 1/2 mi. then left on M hwy. 2 1/2 mi. then right on Smith Hill Rd. 1/2 mi to Auction
* Watch for Signs *



Real Estate

Beautiful 3200+ Sq. Ft. Brick/Vinyl Home on 4 Acres in a Country setting just outside of Nixa!

Gorgeous Home with 4-Bedrooms, 3-Bath, Large, Open Family, Living room and Kitchen, Gas Log Fireplace, Master Bedroom w/walk in closet and open Bathroom, Full Walk-Out Basement w/ 2 Bedrooms, Game Room, Wet Bar, Nice Utility Room & Lots of Storage. Beautiful! Move in Ready Home! Large Yard with Beautiful Landscaping, Mature Shade Tree's & Ornaments, Wet Weather Spring in back yard, Central Heat & Air, Private Well & Septic, 2-Car Garage, Asphalt Driveway, Nixa Schools,

Just minutes to Springfield or Nixa,
If you have been looking for a home in the Nixa area, You won't find one better than this! This Home has it all!
Absolutely Gorgeous inside and out!

Property Sells Absolute to the Highest Bidder

Terms: 10% Down, Balance due at closing 45 days or less.

Portable Building - Pickup Mowers - Tools

10ft. X 16 ft. Portable Building;
2003 Chevy 4x4 Extended Cab, LT, 5.3 V8, Auto, Leather, Bose, 1 owner 244,xxx mi;
Grasshopper 225 Zero Turn Mower, 60" 25hp. (881 hrs);
Bush Hog Zero Turn Mower, 52" 20hp.;
Lawn Boy Push Mower;
Black Max 2800 psi Gas Pressure Washer,
Mitsubishi Motor (Like New);
Husqvarna Special 50 Chainsaw;
Stihl FS40C Gas Weedeater;
Stihl Gas Leaf Blower;
Craftsman Gas Hedge Trimmer;
17 Drawer Craftsman Mechanics Toolbox;
Misc. Good Hand & Power Tools;
Misc. Ladders, Lawn & Garden Tools;
Bench Grinder;
Metal 6ft. Lawnmower Ramps;
(5) 20lb. Propane Bottles;
40,000 BTU Kerosene Reddy Space Heater;
Fish Cooker & (2) Smokers;
Misc. Concrete Lawn Decor;
Lots of Misc. Not Listed;

Antiques - Collectibles - Snooker Table - Gun Safe

A.E. Schmidt "Meteor" Snooker Table;
12 Gun RedHead Gun Safe;
(25+) Older Plymouth MI. made Daisy BB Guns including Buzz Barton, Buck Jones, mod. 40 Red Ryders, model 25's, 1894, 94, 29, 98, 80, 102-36, 107 & others;
Misc. Daisy BB Guns for Parts;
Toy Pop Guns;
Old Wood Bows;
Few Hunting Knives;
Lg. 3 Legged Cast Iron Scalding Pot;
Few Pcs. Cast Iron Cookware;
1 Gallon Crock Jug;
Old 27" Grist Mill Grinding Wheel;
"KELLEY & KERR, SPLFD, MO." Bottles;
Several Royal Doulton "Balloon Seller Man & Woman" Figurines;
Misc. Quality Figurines & Decor;
Antique Child's Saddle;
"Men From Earth" Album;
Old Charley Weaver & Troll Dolls;
Vintage Slag Glass Stand Ashtray;
Few Pcs. Black Amethyst Glass;

(2) Decorative Wood Texaco Gas Pumps;
Lots & Lots of Nice Collectibles Not Listed;
Appliances - Furniture - Household
Nice Bosch Front Load Washer & Dryer;
Whirlpool Refrigerator;
(2) Sets Nice Wood Dining Chairs;
Several Nice Wood Chairs;
4ft. Wood Depot Bench/Pew;
Lot Nice Tables, Stands & Shelves;
Upholstered Sofa (Brown);
(2) Floral Arm Chairs & Ottoman;
Lg. China Hutch & Curio Cabinet;
Kneehole Desk;
Dresser & Chest of Drawers;
Antique 2 Stack Barrister Bookcase;
Antique Oak 3 Drawer Chest;
Beautiful Howard Millar Wall Clock;
Misc. Floor & Table Lamps;
Nice Pictures, Prints, Mirrors & Wall Deco.
Lot nice Kitchen Items & Cookware;

Auctioneers Note

Lots & Lots of very Nice & Clean Collectibles, Furniture & Household Items. Lots not Listed.
For more info & 100's of pictures see
fosterauctionservice.com

Owners: Doris Arterberry & the Late Jerry Arterberry

Foster Auction & Appraisal Service

www.fosterauctionservice.com
Email: bidnowsold@aol.com



Auctioneer: Larry Foster
Galena, Mo
Phone: (417) 723-8329
Cell: (417) 839-6860

13TH ANNUAL PRAIRIE GROVE SCHOOL CONSIGNMENT AUCTION

TWO DAY AUCTION! Starting Friday, May 12, 1:00 PM | Saturday, May 13, 9:00 AM

12 Winding Creek Rd., Buffalo, MO

Come and join us! Enjoy homemade Amish Mennonite food! Breakfast, Steaks, Burgers, BBQ Chicken, Pies, Hand-quilted Quilts, Farm Equip, Lawn & Garden, Guns, Furniture, Household & More

Friday BBQ Pork Dinner starting 5PM | Saturday Breakfast 7:30 AM – 10AM | Lunch All Day

Directions From Buffalo go South on Hwy 65 to milepost marker 80, turn right on Kelly Rd, go West 2 ½ miles, turn right on Winding Creek Drive., go North ½ mile to sale site. **From Springfield** go North on Hwy 65 to milepost marker 80, turn left on Kelly Rd., go West 2 ½ miles, turn right on Winding Creek Drive., go North ½ mile to sale site.

SALE STARTS FRIDAY AT 1:00 PM WITH MISCELLANEOUS TOOLS AND SMALL ITEMS

GUNS SELL AT 6:30 PM FRIDAY: Win. 1894 94 Canadian Centennial 20" 30-30, Mfg 1967; Browning A-Bolt Medallion 25-06, 24"; Rem. Mod. 700 BDL .243 Win, NIB; Browning X-Bolt Medallion, 6.5 Creedmoor, 22+; 4+1 NIB; Ruger 10/22 Syn. Stock; Weatherby Vanguard, .270 Win. Walnut stock, Bushnell scope; Browning X-Bolt 22-250, Syn. Stock; Kimber 1911, 45 ACP; Ruger M77 Mark 11 .270 Win. Leupold Scope; Rem. Mod 700 BDL .270 Win w/Box; Rem Mod 700 BDL .243 Win; Cricket .22LR Wood Stock, SS Barrel w/Scope; Rossi .243 Win. Single Shot, Break-open; Tri-Star .410 Pump, Syn. Stock; Savage .243 Win. Came w/Scope; Berika Arms .410 Single Shot Syn. Stock; Savage .22LR Single Shot, Wood Stock, Bushnell Scope; Rem Mod 700 BDL 30-06; Rem Mod 700 BDL .17, Bighorn Engraving; Rem Mod 700 BDL.223; Rem Mod 700 BDL.222 Bighorn Engraving; Savage .17HMR Wood Stock, NIB; Henry .22 NIB; Ruger .308 Win Syn. Stock w/Scope; Savage Axis .270 Win Wood Stock w/Scope; Stoeger P300012ga. 2-3/4-3"; Came; Rem Mod 700 BDL .17; Browning .22LR Wood Stock w/Box; Weatherby 20ga. 2 G - 3" Wood Stock Youth; Henry Golden Boy .44 Mag, NIB; Savage 25-06 w/Bushnell Scope, Came; Marlin 7MM-08, Came Stock, Nikon Scope; Ruger 10-22 55 Syn. Stock. Take-down; Rem Mod 700 BDL .243 NIB; Rem Mod 700 BDL 25-06 NIB; Maverick 30-06 Syn Stock; Escort 12ga. 3"; Came; Browning A-Bolt .22 Wood Stock NIB; Henry Golden Boy .410 NIB; Win Model 94 30-30; Savage Rascal .22 Wood Stock New; Mossberg Mod 817 .17 Syn Stock w/Scope; Savage Mod 110 .300 Win Mag, Came w/Box; Savage Axis 25-06, Wood Stock w/Scope, New; ERA Brazil 20ga. Double Barrel, Wood Stock, Coach Style; Savage Foremost Mod 6870-H 12ga. Wood Stock Pump; Henry Silver Bow .22 Octagon Barrel, Happy Fathers Day Engraved, NIB; Browning 7MM Reg Mag Automatic w/Scope. Several lots of Ammo, 30-30, 17HMR, 25-06, .270 Win, .22 LR, 22-250, 6MM, .410.

QUILTS SELL AT APPROX. 1:30 PM SATURDAY: Tumbling Block, Maroon & Pink, 97x112; Boston Commons, Wine & Black, 107x110; Star Beam, Multicolor, Crib; Double Wedding Ring, Black, Gray & White, 97x110; Double Irish Chain, Blues, 99x111; Stack n Whack Fan, Blues, 100x109; Diamond Jubilee, Purple, 113x114; Heartsong, Purple, 108x116; Aurora Bargello, Red & Gray, 115x115; Compass Wave, Teal, 103x111; Eldon Quilt, Multicolor, 95x114; Chevron Log Cabin, Black & Lt. Beige, 98x108; Wilderness Cabin, Charcoal & Lt. Blue, 96x110; Stars Over Georgetown, Purple & Dk. Green, 95x103; Snake River Log Cabin, Black & Burgundy, 97x108; More Quilts expected!

HUNTING EQUIP., KNIVES, ETC. 3 - Midwest Extreme Hunting Blinds, one w/Trailer, one w/stand; Case Knives; Elk & Deer Antlers; Browning Nomad Stalker 52" Recurve Bow.

TRACTORS: '02 JD 6420, MFD, 16 Sp Power Quad, CIA, 5, 130 Hrs, 640 Loader w/Bucket & 3Pt Bale Spike; Ford 2600 Diesel, 37 HP, w/Superior HD Loader & Bucket, Joystick, Good Tires - Rear Turf Tires, Clean

FARM EQUIPMENT: JD 926 MoCo; JD 328 Square Baler; Sitrex Magnum 12 Wheel Rake; JD 858A Hay Rake; Kuhns 15 Bale Accumulator; Kuhns 15 Bale Grapple; Kuhns 15 Bale Tie Grabber; JD 400 Grain Cart; '19 JD E12, Batwing Rotary Cutter; Frontier 5' Rotary Cutter, 3pt. Like New; Bushwhacker 6' 3pt Rotary Cutter, Like New; Rhino FR1515' HD Rotary Cutter, 1000 PTO; Frontier Cone Seeder, 10 Bu, 3pt.New; Agri-Spray 55 Gal. 3pt. Sprayer, Folding 10' Boom, New; Arts-Way Hammer Mill, w/Scale, Hydraulic Feed-in for Hay, Shedded everything works; 11' 3pt Chisel; Wil-Rich 28' Field Cultivator; Sukup Grain Bin Unload Augers 6'; 1 for 18' & 1 for 24' dia; 15 Rolls Netex 4'x11,800' Net Wrap; 2 - Tiger TL500 LED Ag Lights, 7000 Lumen.

LIVESTOCK EQUIP: H MC 3-ton Galv. Creep Feeder.

VEHICLES & TRAILERS: '05 Starlite 32' GN Flatbed Trailer, Tandem Duals, Dovetail Ramps; Homemade GN Trailer 7x20 Deck, Tandem Axle, Ramps; '92 Hook 16' GN 3-Horse Slant w/Tack Room;

ATV: '19 Polaris Ranger 900 XP, Good cond.; '13 Honda Recon 4-whlr Good cond.; '03 Honda 450 Foreman 4-whlr

LAWN MOWER: 13 Hustler Super Duty Fastrack, 54"

FURNITURE & HOUSEHOLD: Trailer load of new Amish made furniture includes: 5 Pc. Rough Sawn Maple Queen Bedroom Set; 5 Pc. Sap Cherry Queen Bedroom Set; 5 Pc. Rustic Walnut w/Live Edge Tops Bedroom Set, Queen Bookcase Bed; 1 - King Bed w/Under Drawer Storage, Brown Maple; 1 - Full/Full Bunk Bed w/ Matching Chest, Red Oak; 1 - Full/Full Bunk Bed w/ Matching, Chest Rough Sawn Maple; 48X72 Double Pedestal Table w/4 Leaves, 6-Chairs, Grey Elm; 42x72 Trestle Table w/4 Leaves & 6 - Chairs, Rough Sawn Maple; 42x72 Trestle Table w/4 Leaves & 6 - Chairs, Red Oak; 2 - Sewing Cabinets w/Serger Lift; Swivel Glider Chair; Swivel Magazine End Tables; Assortment of Bookcases; Child Size Table Sets; Niangua Furniture - 6 Pc. Rough Sawn Oak - Barn Door, Queen Bedroom Set; Niangua Furniture - 4 Pc. Rough Sawn Oak Bedroom Set; 1 - Aspen Deluxe Bedroom Set; 1 - Barn Board Queen Bedroom Set; Justice Power Foundation & Queen Mattress, Adjustable Bed System, Brand New;

LAWN & GARDEN: Big Pipe Swing Set; Swing Sets; Truck Load of Shade & Flowering Trees, Evergreens, Flowering Shrubs, Rose Bushes, Perennials, Ornamental Grasses; Poly Martin Houses; Gourd Racks; Flower Hangers etc.

TOOLS: Delta Scroll Saw; Honda EU2000 Generator; HORSES & TACK: 2 - Miniature Ponies; 3 -pairs Handmade Rasp Spurs TOYS: Wooden Toys & Toy Barns; Assorted Farm Toys.

MISC: 2 - 20' x 14" Steel Culverts;

MANY MORE ITEMS NOT LISTED & MORE CONSIGNMENTS EXPECTED BY SALE DAY

TERMS: Cash or check. No items to be removed until settled for. Sellers or auction company are not responsible for accidents, errors in listing or lost items. Announcements made day of sale take precedence over any printed matter. When registering for a buyer number proper I.D. will be required. All Guarantees are between the Buyer and Seller.

All Commissions & Donations for Meals go to Prairie Grove Amish Mennonite School!

FOR MORE INFORMATION OR TO CONSIGN, CALL:

Dennis Blosser 417-326-9788 | Vernon Kropf 417-733-2600

Eldon Swartzentruber 417-327-6348 | Lyndal Hostetler 417-733-2560

ESTATE AUCTION
WALNUT GROVE, MO

AUCTION

We will sell the following Household, Collectibles, Collector Tractor's, Guns, Tools and Misc. At the Home located in Walnut Grove, Mo. At 217 West Main Street just West of the 123-V-BB Hwy. Intersection on

Sat. May. 13, 2023 at 9:00 am

WATCH FOR AUCTION COMPANY SIGNS • LUNCH SERVED

FOR MORE PICTURES GO TO: WWW.BRUCEANDLEANAUCTION.COM



TRACTORS-TRAILER

- Cub Cadet 5254 Series 5000 Diesel Tractor W/3 pt Hitch & PTO
- International 184 Tractor W/72" Belly Mower & Turf Tires
- 7-Cub Cadet & International Lawn Tractors Model's 582, 2-782, 982, 1282, 1450, 1811 (most of these run)
- IH 2 Wheel Lawn Trailer
- 450 McCormick Farmall Gas Wide Front Tractor
- 450 McCormick Farmall Diesel Wide Front Tractor
- 200 McCormick Farmall Gas Narrow Front Tractor
- 230 McCormick Farmall Gas Narrow Front Tractor
- Super M Farmall Wide Front Tractor
- Super M Farmall Tractor Narrow Front
- 2-Super H Farmall Tractors
- H Farmall Tractor
- F-20 Farmall Tractor
- Massey Harris 101 Twin Power Tractor
- 16' Gooseneck Tandem Axle Flatbed Trailer W/4' Dove Tail
- 6' Bush Hog 3pt Rear Tire Tiller
- Brinly Single Bottom Plow
- 2 Bottom Disc Plow
- 2 Bottom Plow
- 4' Pull Type Rock Rake
- 6' 3pt Blade
- Cultivator
- Misc. IHC Parts
- Misc. Front & Rear Tractor Tires

GUNS-TOYS

- Marlin Model 336cs Lever Action 30-30
- Remington Model 550-1 Semi-Automatic 22 Rifle
- Glenfield Model 25 Bolt Action 22 cal. Rifle
- Harrington Richardson 410-44 Cal. Single Shot Rifle
- Farmall 560 Metal Pedal Tractor (Eskal Tractorcycle)
- Several Metal IHC & Case Toy Tractor's and Trucks
- IHC 66 Series Tractor Collection 8 boxes
- 40 Plus Toy Tractors and Trucks Several in Boxes
- Large lot of Red Power & IHC Collector Books & Magazines
- Tractor Manuals
- Lot of Kids Toys

HOUSEHOLD-COLLECTIBLES

- Whirlpool Refrigerator
- Whirlpool Glass Top Washer (like new)
- Whirlpool Electric Dryer
- Sharp Microwave
- Sm. Magic Chef Chest Freezer
- Insignia 54" Flat Screen TV
- Vizio 31" Flat Screen TV
- 2 110v Window Air Units
- 3 Electric Lift Chairs
- Lazy Boy Recliner
- Dining Table W/6 Chairs
- 7' Glass Fronted Hutch
- Tempus Fugit Grand Father Clock
- 4' Oak Rolltop Desk
- 4pc Queen Bedroom Set
- 3pc Bedroom Set
- 3pc White Bedroom Set
- 4pc Queen Bedroom Set
- Cedar Chest
- 2pc Love Seat/Couch Set
- Coffee & End Tables
- Occasional Chairs
- Cradle Rocker W/Foot Stool
- 4' Glass Fronted Curio
- 6' Glass Fronted Cabinet
- Glass Top Wicker Table W/2 Chairs
- Bar Stools
- Rainbow Sweeper
- Cabinet Model Record Player
- Table & Floor Lamps
- Sev. Wall Hangings
- Umbrella Vase
- Ant. Drop Leaf Table Ornate
- Gate Legged Table
- Roll Around Chairs
- Bluebird 5 Gallon Stone Jar
- Quilling Frames
- Necchi Sewing Machine
- One lot of Sewing Items
- 2 Wooden File Cabinets
- Lot of Bedding & Linens
- Dishes, Pots, Pans
- Kerosene Lamps

HOUSEHOLD-COLLECTIBLES CONT.

- Fruit Jars Green, Blue, MFA
- Pressure Cooker
- Standard Oil 5 Gallon Fuel Can
- Maytag Wringer Washer
- Rock Island Plow Cast Iron Seat
- Galv. Hilland Milk Bottle Box
- Several Collectibles

TOOLS & MISC.

- Monarch 5hp 60 Gallon Upright Air Compressor 220v
- 4 Craftsman 13-9-5-3 Drawer Roll Around Tool Boxes
- Snap on Side Tool Box & 3 Drawer Tool Box
- Ametek Act. Torch Set W/Bottles & Cart
- Craftsman 180 amp older Welder
- Guardian Floor Model Drill Press
- Grinder on Stand
- Bearing Press
- Cherry Picker
- Iron Horse Air Compressor
- 30 Drawer Organizer Cabinet
- 80 Compartment Organizer Cabinet
- One Lot of Misc. Hand Tools & Wrench's
- Several Electric Hand Tools
- Delta 10" Table Saw
- Work Benches
- Porta Power
- Tire Bead Breaker
- Jack Stands
- Troy Bilt 5550 Watt Generator
- Pro Space Heater
- 10 Gal. 12 Volt Sprayer
- Troy Bilt Rear Tire Tiller
- Lawn Trailer
- 2-6' Poly Lawn/Garden Cabinets
- Lawn & Garden Tools
- Gas Pressure Washer
- One Row Garden Planter
- 38" Lawn Sweeper
- Child's Wagon
- 2 Sets of Loading Ramps
- Misc. Lawn Furniture
- 2 Wheel Walkers
- Misc. Conv. Items
- Lot of Christmas Decor
- One Lot of Misc.

OWNER: ESTATE OF "CE" CLAUDE & BARBARA VORIS

TERMS: Everything sells as is, where is. Nothing is to be removed until settled for. Payment of Cash, Check with Proper ID, or Credit Cards. Auction Company or the Owners will not be responsible for loss of items or accidents. Statements made the Day of the Auction take Precedence over Printed Matter.

SALE CONDUCTED BY **BRUCE & Le'AN AUCTION & APPRAISAL, LLC**
THE AUCTION COMPANY THAT APPRECIATES YOUR BUSINESS

For more information and pictures go to our website at www.bruceandleanauction.com

RONNIE BRUCE - Fair Play, MO
417-777-1685 or 417-654-2214
colronbruce@gmail.com

BRANDON BRUCE
Fair Play, MO

BILLY BRUCE - Stockton, MO
417-399-4800
colbbruce@gmail.com

ESTATE AUCTION

SATURDAY, MAY 6 @ 9:30 A.M.

At 4:00pm we will offer the airplanes at the Salem airport at the junction of 32 west and F hwy.
Directions: From SALEM, MO - Take 32 Hwy West approximately 3 miles to sale. Watch for signs.

GUNS • FURNITURE • EQUIPMENT • LAWN MOWERS • HOUSEHOLD

Organ - Piano & Bench - Small Bookshelf
Couch - Blue Recliner - Rugs - Pictures
Small Floral Pillar Cabinet - Lamps
Shredder - 2 Wood Gun Racks
Men's Clothing 16-16^{1/2} - Hall Trees
Small Green House
Kitchen Table & 2 Chairs
Green Wooden Chair - HD Wire Rack
China Hutch - Pots & Pans
Brown Recliner - Curio Cabinet
Floor Lamps - Hutch - Picture Frames
Arza Rug Indoor/Outdoor
50" Flat Screen TV - Floral Recliner
Bachelor Chest - Dresser - Coat Racks
Bed & Rails - 2 Night Stands
King Size Bedrm Suite 5 Piece Sleigh Bed
Feather Lite Dirt Devil
Like New BBQ Grill - Lawn Bench
Bristol Set - Coolers - Shoes Size 14
Folding Chairs - Spool Table
Bird Bath - Schwinn 470
Electric Panel New in Box

Chest Freezer - Scout Cannon Gun Safe
Christmas Items - Metal Table & Chairs
Kubota L3800 Diesel 4x4 with LA524
Front End Loader 575 Hours Nice Tractor
Weed Trimmer - Engine Jack
Lawn Mower Jack - 2 Push Mowers
JD2355 22 HP V-Twin 724cc Zero Turn
Mower
Craftsman T-1900 Riding Mower
Ford F150 XL 2011 4x4 Pickup
Very Clean Auto
10" Bench Table Saw - Tool Cart
Bench Grinder - Electric Cords
New LED Shop Lights - Radial Saw 10"
Red Hawk Remote Airplane
New Chain Saw - 6 Speed Drill Press
12" Miter Saw New - Table Saw
Pipe Wrenches - Sockets
Open End Wrenches of All Kinds
Yard & Shop Handles - Chip Board
2x4s - Welding Table - Old Fan
Old Communication Items

6" Angle Grinder - Step Ladders
Folding Ladders - Oils - Greases
Aluminum Ramps

Case of Aviation Oil
3 Large Stackable Tool Boxes Full

GUNS

Some of the guns may be given to the family before the sale. Most will be there. Lots of Ammo.

Rifles
WW2 Bayonet Gun
Beeman Power Series QB78
Palmetto PSAK-47
Rossi RS22
PW Arms (Italy M.91/TS 6.5x52mm)
Zastava Serbia N PAP M70 7.62x39

Pistols
Beretta 21 Bobcat Inox .22LR
Ruger American .45 Auto Pro Duty
Phoenix Arms HP22A
Taurus Judge .45 Colt/.410
Taurus PT111 G2 9mm
Heritage Rough Rider .22LR
Taurus G2C 9mm

Taurus 709 Slim 9mm
Ruger LCP .38 Auto
Ruger LCP Pro 9mm Luger
SCCY CPX-2 9mm
Pietro Beretta Model 81 7.65 Cal
BB Gun
Air Strike 240 BB Gun with Target

Empty Boxes
Kahr Arms CT45 45ACP
Beretta 22
North American Arms NAA-22LR

AUCTIONEER'S NOTE:
Very Clean Sale. Lots still new in box. Great Shop Items.
See you there! - Tom



ESTATE OF: VAN WINKLE

ANNOUNCEMENTS AT AUCTION TAKE PRECEDENCE OVER PRINTED MATTER

WULFF AUCTION

TERMS: CASH OR
APPROVED CHECK -
I.D. REQUIRED
NOTHING REMOVED
UNTIL SETTLED FOR

Licensed
Appraisals

2334 Highway K, Salem, MO 65560

AUCTIONEERS:

Col. Tom Wulff • John Wisdom

Cell: 573-247-3884 • Cell: 573-247-9563 • Home: 573-729-8476

Clerk: Tracy Strange

Cashier: Nancy Inman

See Wulff Auctions at www.thesalemnews.com/auctions



RAIN OR SHINE
OWNER & AUCTION
PERSONNEL NOT
RESPONSIBLE
FOR ACCIDENTS AT
SALE SITE

ESTATE AUCTION

SATURDAY, MAY 6 @ 4:00 P.M.

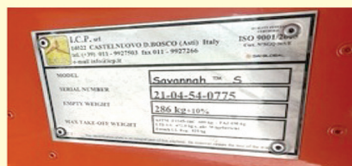
Directions: SALEM, MO - Salem Airport - Hwy. 32 West and Hwy. F Junction. Watch for signs.

PLANES

© 1946 Aeronca 7AC "Champ", 3235 TT, 725 SMOH on a Continental A&C65, McCauley prop. NO electrical system. Currently in the shop for annual inspection. Times may vary as the aircraft will be flown. Reg #N1268E S/N 7AC-4826 Approx. 800 hours.



© 2021 Savannah S Manufactured by I.C.P. 69 TTSN. Rotax 912 IS fuel injected engine. 3 blade DUC Flash prop. Annual good through May 2023. Dynon Avionics. Auto pilot. Dual brakes and joysticks. Extended range fuel tanks. Electric trim and flaps. Times may vary as the aircraft will be flown. Reg #N78VW SN: 21-04-54-0775 - Has 70 hours with many upgrades. The Savannah is being flown daily. Will be mechanically checked and will be authorized.



ESTATE OF: VAN WINKLE

ANNOUNCEMENTS AT AUCTION TAKE PRECEDENCE OVER PRINTED MATTER

WULFF AUCTION

TERMS: CASH OR APPROVED CHECK - I.D. REQUIRED NOTHING REMOVED UNTIL SETTLED FOR

Licensed Appraisals

2334 Highway K, Salem, MO 65560

AUCTIONEERS:

Col. Tom Wulff • John Wisdom

Cell: 573-247-3884 • Cell: 573-247-9563 • Home: 573-729-8476

Clerk: Tracy Strange Cashier: Nancy Inman

See Wulff Auctions at www.thesalemnewsonline.com/auctions



RAIN OR SHINE OWNER & AUCTION PERSONNEL NOT RESPONSIBLE FOR ACCIDENTS AT SALE SITE

REAL ESTATE-VEHICLES-TRAILERS-TRACTOR-TOOLS-GUNS-FURNITURE-COINS-COLLECTIBLES-MISC AUCTION**SATURDAY MAY 6, 2023 10:00AM****LOCATED: 1283 E 500th RD MORRISVILLE MO**

FROM BOLIVAR GO 3 MILE SOUTH ON HWY 13 TO HWY 13 & HWY 135th BY SUBSTATION TURN RIGHT, THEN IMMEDIATELY LEFT ON 490th GO TO 1st LEFT ONTO GRANT RD, GO 1 MILE TURN RIGHT ON 500th TO AUCTION ON RIGHT. CONCESSIONS & RESTROOMS AVAILABLE.

FOR PICTURES SEE WEBSITE OR AUCTION ZIP.COM**BANK LETTER OF CREDIT MADE PAYABLE TO MELTON AUCTION & REALTY WILL BE REQUIRED FOR PURCHASE OVER \$5000**

GUNS SELL @ 10:00 - REAL ESTATE SELL @ 11:00 - 10% DOWN DAY OF AUCTION BALANCE @ CLOSING WITHIN 45 DAYS
VEHICLES, TRAILERS, TRACTOR WILL BE SELLING @ 12:00 - WILL BE RUNNING 2 RINGS IMMEDIATELY FOLLOWING
SELECT ITEMS AVAILABLE ON MELTONAUCTIONREALTY.HIBID.COM
PREVIEW FRIDAY MAY 5, 2023 11-1 PM

REAL ESTATE

3 BEDROOM 2 BATH, DOUBLE CAR GARAGE APPROX 1621 SQ FT HOME BUILT IN 1994, NEW FRONT & BACK DECK, 80 GAL WATER HEATER, HEAT PUMP, ALL ELECTRIC, PELLET STOVE, WINDOW BLINDS, CEILING FANS, BAMBOO LIVING ROOM FLOORING, VINYL PLANK REST OF FLOORING, NEW VINYL SIDING, SOFFITS, GUTTERING. CHAIN LINK YARD FENCE, CONCRETE STORM SHELTER NEAR HOME, WELL & SEPTIC. INCLUDED WITH THIS BEAUTIFUL SETTING 20X38 SHOP BUILDING W/220 ELECTRIC, CONCRETE FLOORING, HEATED, COMMERCIAL AIR UNIT, (2) 8X9 OVERHEAD DOORS, 1 WALK THRU, 8X24 LEAN TOO BUILDING 2-40X40 W/220 ELECTRIC, CONCRETE FLOOR 6" THICK W/FIBER & REBAR, HEAT, FINISHED 10X20 OFFICE, 3 OVERHEAD DOORS 10X10, 12' SIDE WALLS, 1 WALKTHRU DOOR, 1 WINDOW, ALL LED LIGHTING, MULTIPLE 220 OUTLETS, PRIVACY FENCE SURROUNDS THE 40X40 BUILDING. ALL THIS SITTING ON APPROX 10 PARTIALLY WOODED ACRES WITH CREEK RUNNING THRU FOR THE WILD LIFE TO DRINK FROM OR JUST TO SIT AND ENJOY THE BEAUTIFUL SOUND OF THE WATER RUNNING. MANY BUSINESS OPPORTUNITIES SET TO GO WITH ALL THE ROOM YOU WILL NEED. 2022 REAL ESTATE TAXES \$783.08

CARS-TRAILERS-TRACTOR-SIDE BY SIDE-DUNEBUGGY-MOWERS-STORAGE BUILDINGS

1968 CHEVY CAMARO BUTTERNUT YELLOW 427 BIG BLOCK MOTOR, RUNS ON PUMP GAS, TH 400 TURBO TRANSMISSION, 2500 STALL CONVERTER, 9" FORD REAR END, 411 GEARS, LADDER BARS, COIL OVER SUSPENSION, MINI TUBBED—1965 FORD MUSTANG FIRE ENGINE RED 302 V8, 4 SPD ALUM RADIATOR, NEW TIRES, 4 WHEEL DISK BRAKES, NEW INTERIOR—1965 CADILLAC DEVILLE 2 DOOR CONVERTIBLE, PS, PB, PW, AIR, AUTO V8, 500 ENGINE, RED W/WHITE INTERIOR 6550 MILES—2008 CHEVY CREW CAB 4X4 LTZ RAMP TRUCK, DURAMAX DIESEL, ALLISON AUTO, LEATHER INTERIOR, HEATED SEATS, DUAL CLIMATE CONTROLS, 18" HODGES BED, ELECT WINCH, REAR AIR BAGS W/DUAL COMPRESSORS, REMOTE START, COLD A/C, 220K MILES—2021 TOYOTA CAMRY XLE HYBRID ONLY 13,000 MILES, FACTORY WARRANTY REMAINING, LEATHER INT, ADAPTIVE CRUISE CONTROL LANE DEPARTURE ASSIST, BACK UP CAMERA—2010 DODGE CARAVAN C/V CARGO VAN 3.8, V6 MOTOR 139 K MILES, REAR DIVIDER W/SHELVING DUAL SLIDING DOORS, PW, PL, REMOTE ENTRY, COLD A/C—2006 DODGE DAKOTA CREW CAB 4X4, 4.7, V8 AUTO, NEW TIRES—2000 FORD RANGER EXT CAB 4X4, V6 AUTO, PW & LOCKS, 123 K MILES—2004 MERCURY MOUNTAINEER V6 AUTO, LEATHER INT, 3RD ROW SEATING, TINTED WINDOWS, 145 K MILES—2022 GATOR MADE TRAILER 40' HD GOOSE NECK, DUAL TANDEM AXLES, 25,900 K, GVNR, 10 BUILT IN SLIDING TIE DOWNS ON EACH SIDE, BUILT IN TOOL BOX—2022 LONE STAR 36' TANDEM AXLE CAR HAULER DRIVE OVER FENDERS, 8' DOVE TAIL, 8' HEAVY DUTY ALL ALUM 10 K LB RAMPS, ALL STEEL FLOOR 12 K LB ELECT WIRELESS WINCH, 8 OVER TIRE TIE DOWNS, BUILT TO HAUL LOW RIDING CLASSIC CARS, TANDEM 7K DUAL AXLES, BUILT IN TOOL BOX DEEP CYCLE BATTERY—2019 GRAY STEALTH TITAN 24 +2' V NOSE ENCLOSED CAR HAULER, SCREW LESS EXTERIOR, EPOXY FLOOR, 48" SIDE DOOR, ALUM WHEELS, WINCH, POWER JACK—2002 HAUL MARK ELITE II RACE TRAILER GOOSE NECK 36' FULL FINISHED INTERIOR, ALL ALUM UPPER & LOWER CABINETS, ALUM WORK BENCH, DUAL FRONT & REAR HEAT/AC, CLOSET, RUBBER FLOOR, LED LIGHTS INSIDE, PIT PAL SHELVES, BRAND NEW 14 PLY TIRES, DUAL 8000 LB DUAL AXLES, GVWR 16,000 GENERATOR BOX 48" WALK IN SIDE DOOR—2015 DIAMOND C 20' DOVE TAIL CAR TRAILER, DUAL 5200 LB AXLES, 10,000 GVWR, 9K WINCH, STORAGE BOX, HD SLIDE OUT RAMPSR

TOOLS

BEND PAK 4 POST LIFT XL SERIES 12,000 LB HD12—QUALITY 2 POST LIFT 10,000 LB—SNAP ON VERUS EDGE SCANNER W/CART 19.2 SOFTWARE—SNAP ON LIMITED EDITION GM MUSCLE CAR 54" TOOL CHEST 20 DRAWER MOD KRL791APFD—FORD ROTUNDA

OWNER: ERIN BUSSARD

TRANSMISSION FLUSH MACHINE—BLUE POINT 4 DRAWER TOOL CART/CHEST—SNAP ON TJ100 TRANSMISSION JACK—20 TON SHOP PRESS—COOL SPACE FAN MOD CS6-36-1D—OXYGEN ACETYLENE TORCH—1 DRAWER RED TOOL CART—4 DRAWER TOOL CART—CAROLINA PARTS WASHER—EASTWOOD MIG 175 WELDER W/SB8 SPOOL GUN—EASTWOOD TIG 200 WELDER—MITY VAC FLUID EXTRACTION MACHINE—INTER CONT PARTS WASHER—BEL AIRE AIR COMPRESSOR 216V 60 GAL 5 HP—CLEAN BURN CB140 WASTE OIL HEATER—MOTOR TRANSMISSION SUPPORT BARS—HYD LIFT TABLE—LIFT JACK STANDS—SNAP ON CREEPER—SNAP ON ROLL AROUND STOOL—6" BENCH GRINDER - **TOO MANY TO LIST!**

GUNS

1. MASTERPIECE ARMS MOD MPA DEFENDER 9MM 30 RD MAG NEW SER# FX32752
2. S&W 9MM MOD M&P LASER SITE 7 MAGS 60 RD DRUM CUSTOM BAG
3. WALTHER MOD P22, 22 CAL STAINLESS TOP RAIL, SER# WA336487 NEW NEVER FIRED
4. REM MOD 700 THE ULTIMATE SNIPER CLASSY 7MM SHORT MAG CAL FULL BULL BARREL MUZZLE BREAK, BY POD, SIMMONS MT6.5X20X44 AOL SCOPE
5. PALMETTO AR-15 5.56 CAL SER# SCD440510 W/TACTICAL RED DOT OPTICS
6. DPMS AR-15, 223 CAL GREEN LASER NIKON 4X12 SCOPE SER#F290919
7. VENZA MOD ATD 12 GA SER# 181D02872
8. REM MOD 783, 270 CAL SER# RM42610G
9. PALMETTO AR-15 5.56 MUZZLE BREAK AFTER MARKET BUTT STOCK, AFTER MARKET GRIP, SLING HANGERS, SIMMONS 3X9 SCOPE
10. MARLIN MODEL 60, 22 LR REDHEAD FIRE RESISTANCE GUN SAFE, HOLDS 39 LONG GUNS + 8 PISTOL HOLDERS IN DOOR, 5 ZIPPERED DOOR POCKETS, 60 MIN FIRE @ 1400 DEGREES, SLIDE LOCK ADJ SHELVING 1" DIAMETER 3 WAY LOCK BOLTS, MEASURES 60" TALL X 25" DEEP X 40" WIDE, WEIGHT 700 LB—GUN CASES

FURNITURE

SAMSUNG FRENCH 4 DOOR FRIDGE W/WIFI, BLUE TOOTH, SPEAKERS, LED LIGHTING LIKE NEW—SAMSUNG FRONT LOAD WASHER/DRYER W/PEDESTALS—HISENSE 65" FLAT SCREEN TV W/STAND, 40" SMART TV, SANYO 27" TV, SAMSUNG 41" FLAT SCREEN TV—SONY SURROUND SOUND W/DVD—SONY BLUE RAY—MATCHING END TABLES—REJUVENATE BED PLATFORM & FRAME, DUAL CONTROL, FOOT & BODY MASSAGE, LED LIGHTING, NO MATTRESS—CEDAR NIGHT STANDS—DRESSER & CHEST—SIDE TABLE—HEAT /COOL FAN TOWER—(2) 2 DRAWER FILE CABINETS—SELF CLEAN WATER COOLER—QN BED FRAME

CAR PARTS - FISHING MISC-COLLECTIBLES-COINS

04-08 FORD F150 GRAY DOOR PANELS—66-67 NOVA DOORS, FRONT FENDERS, DECK LID—69-72 CHEVY PICKUP HOOD—MISC CAR PARTS—MOTORCYCLE HELMET—ROD & REELS, BASS PRO, LEWS, PINNACLE, PFLUEGER, BERKLEY, DAIWA, QUANTUM, ZEBCO, SHIMANO—1 LOT BOAT PARTS, GAUGES, TACHOMETER, LIGHTS—MERCURY EVINRUDE, YAMAHA, JOHNSON NEW PARTS NOS—BOAT PROPS—BOAT PEDESTAL—FISH FINDER—FISHING TACKLE, LINE, PLASTICS—STAN SLOANS BLACK LIGHTS—MAGNETIC TAIL LIGHT

MISC.

TIMBERLINE BIKE—NORDIC TRACK WEIGHT MACHINE—INVERSION TABLE—WEIGHT BENCH—PING PONG TABLE—EXTRA LG 42" DOG CRATE—10" DIAMETER DOG PEN—10 CHAIN LINK FENCING 12'X6' PANELS—500 GAL PROPANE TANK—ROLL FENCING—GAZEBO 10X10—10"X11" PLASTIC CULVERT—CHANDELIER LIGHTS—SEVERAL SM KITCHEN APPLIANCES—TABLE DECOR, LUGGAGE, MISC TOYS—BASS PRO DISHES, ANGEL DEC PLATES—ARTIFICIAL FLOWERS—BODY SPRAYS, SOAP—BASKET BALL GOAL

ANNOUNCEMENTS MADE ON SALE DAY WILL TAKE PRECEDENCE OVER ANY OTHER PRINTED MATERIALS. NOT RESPONSIBLE FOR ACCIDENTS OR LOSS OF ARTICLES ON OR NEAR SALE SITE.

meltonauctionrealty.com | roger@meltonauctionrealty.com

Roger Melton | Nixa, MO | 417-830-0153 or 417-725-1801

Brad Cole | Nixa, MO | 417-840-2950

Hal White | Nixa, MO | 417-343-2334

Tanner Foster | Galena, MO | 417-840-5519

**MELTON AUCTION
& REALTY CO LLC**



PUBLIC AUCTION

Saturday, May 6, 2023 • 9:00 a.m.

SHOW-ME AUCTION CENTER
17829 Shadley Brook Dr. • Versailles, MO 65084



Breakfast & Lunch
will be available.

MANY ITEMS
NOT LISTED

9:00 am RING 1 Antiques & Trains
Followed by Furniture
9:00 am RING 2 Housewares
11:00 am RING 3 Coins
9:00 am RING 4 Tools
12:30 pm Outside

ANTIQUES & COLLECTIBLES

- Milk Cans, Cream Cans
- Child's Rocker
- Victorian Small Love Seat
- 3 Wood Decorated Chairs
- Large Lot Longaberger Baskets w/Storage Cabinet
- Cistern Pump
- 3 GMC Hub Caps
- Forge - Blacksmith
- Fence Stretcher
- Several Boxes Disney Toys - McDonalds?
- Steins
- Hand Grinders
- 10-Gallon Western Crock
- Electric Ice Cream Freezer
- Coke Bottles in Wood Carriers
- Radio Flyer Wagon
- Old Toys Tonka & Buddy L
- Burlap Feed Bags
- Lot Car Magazines
- Egg Basket
- Child Sled
- Crock Water Jug - 3 Gallon w/Bail
- Brownie Hawkeye Cameras
- Avon Bottles
- Large Enterprise Coffee Grinder, Very Nice
- #10 Superior Churn 1910, Rare, Crock Style
- Conoco 5-Gallon Oil Can
- Lot Pulleys
- Lot Tools
- Hoard Oil Can, 5-Gallon
- 2.5-Gallon Oil Can
- Cast Dog
- Cast IH Sign
- Small Deere Anvil
- Remington Typewriter
- Valcum Anvil, Approx. 125-lb
- Small Buffalo Forge
- Enterprise Sausage Stuffer
- Milk Cans
- Pitcher Pumps
- 3 Big Endless Belts
- #7 McCormick Deering Mower
- 2 McCormick Deering Wheels
- 2 Rear JD Steel Wheels, Old
- Supreme Platform Scales
- 4 2-Man Saws, Buckeye
- Case International Pedal Tractor
- Ford Pedal Tractor, Rough
- Lot Toys, NIB
- Sausage Stuffer
- Weed Chopper
- 57 Belair Chevy Car Model
- Allis Chalmers Balers
- 2 '70 Plymouth Muscle Cars
- Valcan Brand Anvil Approx 150-lb
- Iron Skillet
- Mens Ice Skates
- Scythes
- Hand Corn Plater
- Hames, Grinder, Hay Ho
- 2 Metal Stars, 4", Decor
- Bull Blind
- Metal Gas Cans
- Large Cast Iron Bell w/Collar
- Electric Flashing Open Sign
- Lot Old License Plates
- Crock Bowl w/ Fruit
- Remote Control Helicopter
- Oil Finger Lamp
- Decanters
- Pewter Picture
- Set Crockery Dishes
- Crystal Stewmare
- Metal Signs
- Kar Products Inc. Display
- 2 Wee Chee Signs
- Beaded Artwork, Diamond Dots
- Large Crock #12 Water Pot w/Wooden Lid
- Bobcat Rug w/Head Mount
- Pheasant Mount
- Deer Jack-a-lope Mount
- Bull Horns
- Whip
- Deer Hoof Gun Holder
- Lodge/Wagner/Griswald Skillet
- 2 Dutch Ovens
- Granite Roaster
- Lot Western Trinkets
- Wooden Pepsi Carriers, 6-Pack
- Horse Figurines
- Covered Soup Tureen
- Large Union Pacific Spittoon
- Lot Old Lighters
- Metal Squirrel Nut Cracker
- Brass Bucket

FURNITURE

- Blue Gray Double Recliner
- 2 - Brown Recliner/Blue Recliner
- Wooden Rockers
- King Bedroom Set
- Queen Bedroom Set
- Glass Sofa Table
- 4 - Bookshelves
- Bedroom Set, Solid Wood
- Tan Glider Rocker
- 2 Mauve Wing-Back Chairs
- Wooden Desk
- Tan/Gold Love Seat w/Matching Chair
- Twin Box Spring & Mattress
- Oak Tea Cart, Nice
- Small Entertainment Center/TV Stand
- Several Oak Table & Chairs
- End Tables & Coffee Tables
- 2 Corner Trinket Shelves
- 2 Glass Showcases
- Hall Stand
- Wooden Bar Stools
- Wooden Highchair
- 5-Tier Shelf
- Small Wooden Bench
- Floor Lamps
- File Cabinets
- Card Table
- Child's Rustic Table & Chairs
- Quilting Frame
- Round Oak Breakfast Table
- 3 Wooden Stacked Drawers
- Narrow 5-Drawer Chest
- Queen Box Spring & Mattress
- Dinette Set & 4 Chairs
- Chest of Drawers

2 LARGE LIONEL TRAIN SETS

- N SCALE**
 - 8 Engines
 - 9 Cars, 9 Controllers
 - Lot of Tracks
 - Large Lot of Accessories
- LARGE SCALE TRIPLE TRACK**
 - 4 Engines
 - Dodge 1500 Electric Truck
 - 35 All Types of Cars
 - Lots & Lots of Track
 - Lot of Controllers
 - Wooden Plant Stand & Other Plant Stands
 - Electric Signals
 - Electric Lights
 - Electric Oil Derrick
 - Lot of Bridges & Tunnels
 - Lot of Rocks
- HO SCALE**
 - 11 Engines
 - 50 Cars
 - Big Lot of Tracks
 - Lots of Accessories
 - LARGE SCALE
 - Wind Up Engine
 - 3 Cars

LAWN & GARDEN

- Patio Table & Chairs
- Oval Glass-top Table & 6 Chairs
- 2 Matching Swivel Chairs
- Small Patio Heater
- 6 Metal Lawn Chairs
- 6 Green Stackable Chairs
- Metal Plant Stand & Other Plant Stands
- Assorted Lawn Chairs
- Lot Assorted Flower Pots
- 2' Concrete KC Flower Planters
- Hummingbird Feeder & Lot Nectar
- Bird Feeders
- Friskar Tree Trimmer
- Assorted Hand Tools
- Sprayers
- Bicycles
- Tricycles/Ride-on Toys
- Sears Child's Wagon
- 18-ft Wooden Martin Birdhouse
- Gas Grill
- Electric Heater
- Stainless Steel Table & Chairs
- Concrete Mushroom
- Concrete Mickey Mouse & Donald Duck
- 2 Wooden Lawn Chairs
- Pet Taxis
- 2 Metal Porch Rockers
- Sun Dance 3-Wheeled Battery-Powered Electric Scooter
- Mole Trap
- Decorative 12' Light Pole, Nice

These train sets were set up running. There are lots of accessories. If you like Trains, Don't miss this sale!

APPLIANCES

- Fridgidaire Upright Freezer
- GE 7.0 Cubic Chest Freeze
- Whirlpool Front-Load Washer & Dryer, Matching
- Fridgidaire Electric Cook Stove
- Westinghouse Refrigerator, Shop
- Antique Allis Chalmers Refrigerator, Works, RARE FIND

BUILDING MATERIALS

- Lot Vinyl Porch Posts/Rails
- 270 CCA 1.5"x1.5" Spindles
- 120 CCA 1"x4"x16" New
- 27 CCA 4"x4"x14" New
- 30 CCA 1"x6"x14" New
- 20 6"x6" Laminated Posts 14' & 34'
- 120 12" Metal, Nice, New
- 120 10" Metal, Nice, New
- 77 10" Metal #2, New
- 31 10" Metal #2, New
- 15 Short Pieces Metal, New
- Semi Load Assorted Lumber
- 4 Trusses 12' 4" O/C
- 4 Trusses 24' 4" O/C
- 29 Trusses 40' 4" O/C 4/12 Pitch
- 5 Trusses 23'9" 4" O/C
- Lot Steel Purlins
- 120 10" Metal, Nice, New
- Lot Steel

EQUINE & SPORTING GOODS

- Lariats
- Lead Ropes
- Halters/Bridle
- Bucket Assorted Tack
- Rustic Star Leather Saddle
- Saddle Pad
- Hunting Clothes
- Live Traps
- Fishing Rods
- Tackle
- Simons 10x50 Binoculars
- Fire Ring
- Hammock
- Sleeping Bags
- Water Cooler
- Fish Fryer
- John Boat w/Title
- Boat Motor - No Title

GUNS & WATCHES & KNIVES

- Mens Seiko Chronograph Watch
- 2 Waltham Mens Watches
- Timex Mens Watch, 21-Jewels
- Wittnauer Geneve Mens Watch
- Serkisof 18-Jewel USSR Pocket Watch
- SSK 375 JDF Single-Shot Pistol
- Packmeyer Grip & Forearm
- Ka-Bar US Army Knife
- 9-Pocket Knives, Case, Etc.

FARM & RANCH

- JD 455 Hydrostat Riding Mower, Diesel, Low Hours
- JD 110 Riding Mower
- Allis Chalmers 130, 23hp, 42" Cut, Nice
- 2007 JD Gator, 371 Hours, Like New
- Husqvarna 50 Rear-Tine Triller, Like New
- New Dewalt Push Mower w/Bagger
- 2 New Dewalt Weed Eaters
- Wheel Horse C81 Riding Mower, Very Nice
- Cub Cadet 100 Riding Mower
- Cub Cadet 122 Riding Mower
- Garden Cart of Mower
- 2 Wheelbarrows
- Scotts Lawn Seeder
- Craftsman Electric Snow Blower
- Evinrude Boat Motor, Old, 7.5hp
- Firestone Ship Boat Motor, Old
- Stealth Trolling Motor
- 12V Sprayer for ATV
- 14' Stock Trailer, no title
- 2 Rolls Welded Wire
- JD B Rear Wheels, Bolted on Rubber
- Tractor Alternators and Starters
- 4 Trailer Wheels & Tires, 15", 5-Hole
- 4 Chevy Wheels & Tires, 16", 6-Hole
- Lot Rims & Tires
- 15 Metal Barrels, 55-Gallon
- 14' Utility Trailer
- 5'x8' Utility Trailer
- 3 Pallets Rims & Tires

HOUSEHOLD

- Lot 55 Pots & Pans
- Cookie Jars
- Kerens Lamps
- Dehumidifier
- Cookbooks, Picture Frames
- Lot Christmas Decor & Lights
- Luggage
- Games, Puzzles
- Electric Skillet, Roasters
- Utensils, Graniteware
- 2 Vacuum Cleaners
- Kitchen Scales
- 5'x8' Utility Trailer
- Large Lot New Composition Books
- Stainless Steel Pizza Grilling Kit
- Electric Griddle, New
- Child's Walker
- Lot Small Appliances
- Lot Wall Decor
- Lot Dishes
- Winchester Clock
- Lot Pots & Pans
- Pine-Look Bathroom Set
- Canning Jars
- Wrought-Iron Light Fixture
- Bowl Set
- Pressure Cooker

COINS

- | | | | |
|---|--|--|--|
| 1. 1844 large cent | 28. 1982 Washington silver half dollar | 56. 1885-0 silver dollar, BU | 82. Card USA State Pennies |
| 2. 1845 large cent | 29. 1992 Olympic proof coin | 57. 1889-P silver dollar, choice+ | 83. 80 Wheat Pennies & 3 Indian Head Pennies |
| 3. 1848 large cent | 30. White House 200th Anniversary proof silver dollar | 58. 1890-CC silver dollar, nice+ | 84. 6 Buffalo Head Nickels & 8 Jefferson Nickels |
| 4. 1849 large cent | 31. 1992 silver dollar, Columbus proof | 59. 1891-CC silver dollar, choice | 85. 6 Mercury Dimes |
| 5. 1857 flying eagle cent | 32. 1993 Thomas Jefferson 250th anniversary | 60. 1893-CC silver dollar, nice, key | 86. 6 Washington Quarters |
| 6. 1858 flying eagle cent | 33. 1997 proof commemorative silver dollar Botanic Gardens | 61. 1897-P silver dollar | 87. 6 Walking Liberty Dollars |
| 7. 1896 Indian cent ch BU, red/brown | 34. 1994 U.S. Capital Commemorative proof silver dollar | 62. 1921-S Morgan silver dollar | 88. Liberty Seated Half Dollar |
| 8. 1903 Indian cent ch BU, red | 35. 1960 silver proof set | 63. 1935-S Peace dollar | 89. 3 Franklin Half Dollars |
| 9. 1909-S Lincoln cent, nice+ | 36. 1961 silver proof set | 64. 1893-P 5 dollar Liberty gold, ch | 90. 2 Kennedy Half Dollars |
| 10. 1909-S V.D.B. Lincoln cent, key | 37. 1963 & 1964 silver proof sets; 1965 special mint set | 65. 1897-P 10 dollar Liberty gold, ch | 91. 1922 Peace Silver Dollar |
| 11. Sheet of 20 1911-D Lincolns | 38. 1976 3-piece silver proof set | 66. Lincoln Cent Book | 92. Canadian Coins |
| 12. 1852 three cent nickel | 39. 1994 silver proof set | 67. Lincoln Memorial Cent Book | 93. Australian Coins |
| 13. 1950-D Jefferson nickel | 40. 1996 silver proof set | 68. Mercury Dime Book | 94. German Coins |
| 14. 1917-D standing Liberty quarter, type II | 41. 1968 proof set | 69. Roosevelt Dime Book | 95. Greek Coins |
| 15. 1963 series red seal two dollar bill | 42. 1976 proof set | 70. 2-State Quarter Books | 96. Switzerland Coins |
| 16. 1963 series red seal two dollar bill | 43. 1986 proof set | 71. Eisenhower 1973 Silver Dollar | 97. Norway Coins |
| 17. 1928 series \$20 gold note | 44. 1993 proof set | 72. American Eagle 2004 Silver Dollar (Dodge) | 98. Belgian, Portuguese, Italian Coins |
| 18. 1925 Stone Mountain commemorative | 45. 1987 gem proof silver eagle | 73. United States 1986 Prestige Set | 99. Japanese Paper Bills |
| 19. 1952 Washington-Carver commemorative BU | 46. 1991 gem proof silver eagle | 74. Eisenhower 1974 Silver Dollar | |
| 20. 1859-0 seated half dollar, nice | 47. 1992 gem proof silver eagle | 75. George Washington Commemorative Half Dollar, 1732-1982 | |
| 21. 1941-P Walker BU | 48. 1878-S silver dollar, BU | 76. 2 1973 Proof Sets (Silver Dollar) Eisenhower | |
| 22. 1938-D Walker, key date | 49. 1878-CC silver dollar, choice+ | 77. 1973 Proof Set Eisenhower Silver Dollar | |
| 23. 1945-P Walker, BU | 50. 1879-S silver dollar, choice+ | 78. 2 1979 Proof Susan B. Anthony Dollar Sets | |
| 24. 1937-D Walker, choice+ | 51. 1879-S silver dollar, very choice | 79. 1989 Kennedy Half Dollar Proof Set | |
| 25. Type set of five coins | 52. 1879-S silver dollar, choice+ | 80. Silver Wedding Crown, Queen Elizabeth & Prince Phillip | |
| 26. \$4.50 in 40% silver halves | 53. 1880-S silver dollar | 81. 2 1989 US Mint Sets, D & P Marks | |
| 27. Franklin Half Dollar Collection 1948-1963, complete | 54. 1881-S silver dollar | | |
| | 55. 1883-CC silver dollar | | |

VEHICLES



For more photos and information, see auctionarrows.com or auctionzip.com (ID 30027)

Show-Me Auction Center Owners:
WILMER & ANNIE HOOVER
 573-789-2215 • 573-789-0010
 Sale Day Only 573-378-4908

Auctioneers:
 Col. Doug Dieckman - 660-287-1622
 Col. Kenton Stover - 573-569-1531
 Col. Enos Girod

For Information, Call Earl Ray Zimmerman
 573-378-4335

Not responsible for accidents. TERMS: Cash or Check with Proper I.D. • All statements made date of sale take precedence over printed material. After 30 days, all items not picked up become auction property.

#1 AUCTION SOURCE IN CENTRAL MISSOURI

SERVING 34 COUNTIES!



IN PRINT & ONLINE!

TO ADVERTISE YOUR AUCTION, CALL 417-532-9131

WEEKLY TRADER MAGAZINE

100 E. Commercial, Lebanon
 www.myweeklytrader.com
 www.facebook.com/myweeklytrader



HUGE OUTSTANDING RESTAURANT EQUIPMENT LIVE AUCTION

MONDAY, MAY 8 - 10:00 AM

LOTS OF NEW, NEVER USED RESTAURANT EQUIPMENT

CONTENTS FORMERLY OF
TACO HABITAT OF BRANSON

PLUS FIVE GUYS & SUBWAY REMODELS

**104 W THIRD ST
FAIR PLAY, MO 65649**

SELLING ➔



WALKIN COOLER & FREEZER NORLAKE 6'X8' WALKIN COOLER W/FLR, SELF CONTAINED, 115 V! MATEBUILT 8'X8' WALKIN FREEZER W/FLR, 230 V, 1 PH-ICE MACHINES INCL NEW SCOTSMAN 905 LB & MANITOWOC 430 LB-SANDWICH PREP TABLES INCL NEW DELFIELD 72"! 2 NEW STOELTING FROZEN DRINK OR MARGARITA MACHINES-NEW ARCTIC AIR CHEF'S PREP TOPPING COOLER-NEW DELFIELD GLASS DOOR BACK BAR CABINET-SEVERAL NEW & USED DBL & SGL DOOR WORKTOP COOLERS & FREEZERS-2 ICE CREAM NOVELTY BOX FREEZERS-LOTS OF QUALITY SGL, DBL & TRIPLE GLASS & SOLID DOOR REACHIN COOLERS & FREEZERS-OPEN FRONT COOLER MERCHANDISER-3 REFRIGERATED CHEF BASES INCL 2 BRAND NEW! COOKSHACK SMOKER-CONVECTION OVENS-SGL DOOR PROOFER-AMERICAN RANGE COMBI RANGE W/4 BURNERS, 3' GRILL & DBL OVENS! 3 GRILLS INCL 2 THERMO CONTROLLED & 1 BRAND NEW, 4' & 5'! NEW PANINI GRILL-2 CHARBROILERS INCL 1 NEW! MAGICATER BY MAGIKITCH'N 60" EVENT GRILL, EXCELLENT-DEEP FRYERS-BROASTER 1600 ELEC BROASTER/PRESSURE FRYER-GROEN TILT SKILLET-NEW STEAMTABLE-SEAFOOD STEAMER & THAWING TABLE-CHEESE MELTER BROILER-CMA & ADS COMMERCIAL DISHWASHERS-NEW 3 COMP SINK-OTHER 3 COMP SINK-BAR SINK-HAND SINKS-SEVERAL BRAND NEW STAINLESS STEEL WORK TABLES-EQUIPMENT STANDS-ADVANCE TABCO ENCLOSED MOP SINK CABINET, NEW COST OVER \$6K-PORTABLE PASTRY RACKS-CAN RACK-LOTS OF NEW & USED WIRE & COATED SHELVING UNITS-2 RESTAURANT POS SYSTEMS INCL 1 BRAND NEW, NEVER USED TOAST POS SYSTEM-OTHER RESTAURANT EQUIPMENT & SMALLWARES TOO NUMEROUS TO LIST!

NOTE: THIS IS ONLY A SMALL & PARTIAL LISTING DUE TO ADVERTISING DEADLINES. ALL EQUIPMENT FROM TACO HABITAT IS BRAND NEW WITH MOST NEVER INSTALLED AS RESTAURANT NEVER OPENED! TOP OF THE LINE, QUALITY EQUIPMENT! EXCELLENT WALKIN COOLER, WALKIN FREEZER, REACHIN REFRIGERATION, COOKING EQUIPMENT & MORE! THIS WILL BE OUR LARGEST & BEST AUCTION OF THE YEAR SO MARK YOUR CALENDAR & MAKE PLANS TO ATTEND. THIS IS ONE YOU WON'T WANT TO MISS! VISIT OUR WEBSITE & CLICK ON THE "AUCTIONS" TAB FOR DETAILED LISTING & PHOTOS!

MARON RESTAURANT EQUIPMENT, LLC & AUCTIONS CO.

417-327-5619 • WWW.MARONRESTAURANTEQPT.COM

**YOUR RESTAURANT EQUIPMENT AND FOOD SERVICE
LIQUIDATION SPECIALISTS**

Sam **CRAWFORD AUCTION SERVICE** LLC
MACHINERY AUCTION
 Will sell the following located 5 miles North of Cross Timbers, MO on Hwy. 65. Watch for Auction Signs.

SATURDAY, MAY 6TH, 2023 - 9:30 AM

COINS - GUNS - TRACTORS - TRUCKS - TRAILERS - MACHINERY - MISC.



COINS - SELL AT 9:30

1851 Large Cent
 1852 Large Cent
 4 - 2 Cent Pcs.
 4 - Rolls Wheat Pennies
 1832-33 Bust Half Dollar
 Lot Silver Dimes, Quarters, Half Dollars
 40-50 Peace & Morgan Silver Dollars
 1878-81-82-83-90-91 CC Silver Dollars
 1895 & 1901 Five Dollar Liberty Gold
 1910-26-28 2½ Dollar Indian Gold
 1998 & 2000 Super Gem Proof Silver Eagles
 Other Silver Eagles & Bars

GUNS - SELL AT 9:30

Hawes Western 22 Pistol, 6 Shooter
 H & R Side Kick 8 Shot Pistol
 Smith & Wesson 59 9MM Semi-Auto
 Taurus (Brazil) 357 Mag Revolver
 Smith & Wesson 28 357
 H & R 922 .22
 2 - JA Industries 9mm
 Smith & Wesson 32 5 Shot
 Stoeger 20 Ga. O/U 3"
 Marlin 336 30-30
 Savage 110 DL 30/06 Left Handed
 Ruger 10/22 .22



2 - Stevens & Savage 22/410 Win 67 .22
 M-I Carbine 30 Cal.
 Remington 742 243
 Savage 22 Semi-Auto
 Remington 597 .22 LR
 SKS 7.62x39 Like New
 Mauser 8mm, All Original
 Savage 93 R17, 17HMR
 Hi Standard Model B 22 Pistol, Auto
 Smith & Wesson Mod. 16-4, 32
 HR Mag., Very Nice
 Smith & Wesson Mod. 25-2, .45
 Revolver, Very Nice
 Winchester Mod. 59 12 Ga.
 Winchester Mod. 70 300 Win.
 Mag. Scope, Leather Sling, Extra Nice
 Remington Woodmaster 742 30-06
 Remington #2
 Rolling Block 22
 Laminated Stock for Rem. 700
 Long Action
 Kimber 270 WSM w/Leupold Scope
 Rock Island Armory 1911 45 Cal.
 Win 94 32 Special
 Marlin 4445 444
 Win. Big Bore 375
 Springfield/Savage 187H 22
 American Gun Co. 12 Ga., Double Barrel
 Monte Carlo (Hungary) 16 Ga. Double Barrel
 LC Smith 12 Ga. Double Barrel



TRUCKS & TRAILERS

'09 Chevy 3/4 Silverado, Diesel, Auto, Crew Cab, 4x4, Leather, 76K, One Owner, Nice, Red
 '95 Chevrolet 1500, 4x4, Short Bed, Auto
 '99 Ford 2 Ton Single Axle 13' Steel Flatbed, GN Ball, 5.9 Cummins Diesel, 6 Spd., Good Solid Truck
 2000 Chevy 2500, Gas, 4x4, Auto, Reg. Cab
 '94 Ford Super Duty 1 Ton V8 Gas, 5 Speed, 12' Flatbed
 '78 Chevy C65 V-9, 5 & 2, 16' Bed & Hoist
 Bumper Hitch Shop Built 18'x80" Wide HD Utility Trailer, Aluminum Floor
 Gooseneck 45' Flatbed Tandem Duals

MACHINERY

Claas 3600 Disc Mower w/HD Cart, 11'2" Cut, Low Acres, Nice Cut
 NH 451 3 Pt. 9' Sickle Mower, Ex. Good
 Woods DS96 8' Pull Type Brush Cutter, Used Once, Shredded, Like New
 Land Pride 3 Pt. 5' Brush Cutter
 Bush Hog 3 Pt. 4' Brush Cutter
 Bush Hog 3 Pt. 10' Brush Cutter, Rough
 John Deere 510C Backhoe, Cab, 2 WD
 Land Pride 15' Cutter, 540PTO 12' Wheel Disk
 3 Pt. Single Gang Disk
 4 Basket Tedder • 3 Pt. Scoop
 3 Pt. Leley Disc Mower, 9'
 560 Hesston Baler



PORTABLE STORAGE BUILDING - SELLS 12 NOON

'22 16x24' Portable Building, 9' Overhead Door in End, 1 Side Door & 2 Windows, Ex. Nice

TRACTORS • SKID STEER

Case 580 Super K Backhoe
 David Brown 95 Diesel w/ Loader
 Case 1830 Skid Loader
 Mustang 930 Diesel Skid Loader

MISCELLANEOUS

3 Buckets for Mini Excavator 14", 16", 18"
 Skid SLoader Grapple Bucket
 JCT Hydraulic Drive Tiller for Skid Loader, New
 Tramco Hyd. Jack Hammer for Skid Loader
 Precision Teleclipper for Skid Loader, Swivels & Telescopes, Used Little
 Calf Creep Feeder w/Cage
 Shop Built Squeeze Chute, New
 20x30x12' Tall Hoop Buddy, New In Box
 Cub Cadet LT1042 Lawn Tractor
 Husqvarna Backpack Blower
 Bosch Electric Jack Hammer - Bits
 35 Gal. Aluminum Tank
 Lot Asst. Misc. Tools, Lawn Equipment, Misc.



TERMS: Cash or good check. Nothing removed until settled for. Not responsible for accidents. Lunch available. Statements made day of sale take precedence over printed matter. All items sell as is. No warranties given or implied.

417-998-6629
 Cross Timbers, Mo.
 CrawfordAuctionService.com

Sam 417-328-9137 Chase 417-399-1904
 Chance, CAI 417-298-1751 Tom Poynter Jack Lancaster

R&R AUCTION SERVICE

FRIDAY MAY 5TH @ 6PM

in the R&R Auction House, 1644 South Ash, Buffalo, MO

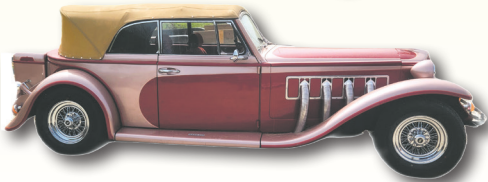


This is one of the most amazing collectible auctions EVER!

1989 Duesenberg Replica car. Clear title and in excellent condition ready for you to hit the road in or take to the next car show.

From a Red Ryder BB gun to a black powder 50 cal. You won't want to miss this auction !

Pedal cars, clocks, lamps, granite ware, blue jars, Die cast cars, 4 wheel hay wagon with John Deere running undercarriage (needs floor), Nascar, large model ship, old metal toys, wicker furniture, bear skin rug, Bobcat mount, duck mount, cream can, old wagon, tricycle, wooden cars, copper and brass pots, cement swan planters, McCoy pottery, Hydraulic hose press, tools, wooden boxes, stained glass, iron wheels, Old silverware sets, Six 2023 Silver Eagle Coins, Tin ceiling tiles, shelving, aluminum loading ramps, Old trunk, washboard, fishing lures, Very old rods and reels, bamboo poles, framed presidential dollar set, jewelry, push mower, aluminum truck tool box, extension ladder, and so much more !



SEE NEXT WEEK'S TRADER FOR A FULL LISTING OF THE DAN POGUE ESTATE AUCTION. SATURDAY MAY 13TH AT 10AM

19661 Jasper, Lebanon, MO featuring 2003 Dodge 3500 diesel truck, 2017 Rockwood Signature Ultra Lite 5th wheel, Chevy 3500 box truck, Ferguson tractor TO-3551, flatbed trailers, 4 wheeler and so much more!

Please keep watch on our website for added photos.

TERMS: 10% Buyers premium. Cash, check, or credit card with proper I.D. nothing removed until settled for A 3% fee will be added to credit card purchases. Not responsible for errors in listing. Any announcement made sale day will take precedence over any printed matter.

GENERAL AUCTIONEERS

Auction & Appraisals

For more information contact Professional Auctioneer Russ Weeks at 417-576-7357 or check out www.rrauctionservice.com

Serving this area's auction needs since 1997 with honesty and professionalism.
www.rrauctionservice.com
(417) 576-7357 or (417) 345-4140



ESTATE AUCTION

Friday, May 5th, 2023 ~ 10:00 AM

LOCATION: 23374 Norway Rd, Granby, MO; Directions: From 86 Hwy At East Newton School Go 2 Miles South To Norway Road Then East 1/4 Mile To Sale Site. GPS Will Get You There (Watch For Signs)

Auction For George & Velda Eads Estate



Antique, Primitive & Modern Furniture

Ant Oak Double Drop Leaf Table, Ant Mahogany Display Cabinet, Ant Oak Child's High Chair, Ant Oak Baby Cradle, Ant Oak Office & Sitting Chairs, Ant Oak Full Size Bed W/Headboard & Footboard, Ant Oak Dresser W/Mirror, Ant Victrola, Ant Oak End Tables, Ant Safe, Ant Treadle Sewing Machine Base, Prim Wrought Iron Bed, Prim Metal Wardrobe, Prim Medicine Cabinet, Tiger Oak Corner China Cabinet, 2 Oak China Cabinets, Oak Kitchen Table W/4 Chairs, Oak Barstools, Tiger Oak China Cabinet W/Curved Front, Like New Leather Lift Chair, Bookshelves, Loveseat, Lift Chair, Oak Chest Of Drawers, Full Size Bed, Oak Nightstand, Oak Roll Top Desk, Microwave Cart, Floor Lamps, Globes, Corner Shelves, Metal Filing Cabinet, Wicker Room Divider & Other Wicker Furniture, Handicap Walker & Handicap Lift, Canes, Metal Kids Chairs, Other Items Not Listed

Antiques, Primitives, Collectibles,

Households & Outdoor

Cast Iron Parlor Stove, Electric Fireplace W/ Oak Mantle, Cast Kettle, Cast Iron Pans & Other Cast Iron Pcs, Butter Churn, Crockery Pcs, Aladdin Lamp & Other Oil Lamps, Ant

Jars & Bottles, Carnival Glass Inc Hens On Nest, Glass Coin Banks, Charlie Weaver Bartender, Pottery Inc Hull, Frankoma & McCoy, Brass Bell & Other Brass Pcs, Ant Toys Some New In Box, Cream Can, Black Americana Pcs, Glass & Ceramic Insulators, Enamel Ware Items, Galvanized Pcs, Nail Keg, Apple Basket, Dodge Brothers Speedometers, Wagon Wheel Hubs, Steel Wheels, 2 Man Saw Blade & Other Prim Saws, Amber Glass, Milk Glass, Pyrex, Corel Dishes, Wilton Cake Pans & Other Metal Decorative Pans, Salt & Pepper Shaker Sets, Eagle Décor & Pcs, Indian Dolls, Indian Décor & Knick Knacks, Lg Lot Of Misc Knick Knacks, Pictures & Wall Décor, Musical Instruments, Jewelry & Costume Jewelry, Women's Hats, Linens, Pots, Pans & Dishes, Tupperware, Sm Kitchen Appliances, Stoplight Sign, Polaroid & Other Cameras, Coleman Camp Stove & Oven, Weather Vane, Other Items Not Listed

Railroad Items

Cast Iron Train Model, Lg Lot Of Model Train Cars, Lot Of Jim Beam Train Decanters, RxR Water Bottle Chiller, RxR Torpedo Holder (Train Alerter), Train Horns, Ant RxR Engine BBQ Grill/Smoker, Wall Décor & Pictures, Other Items Not Listed



Auctioneers Note: It Is An Honor To Be Conducting This Auction For The Eads Estate. Over 65 Years Of Collecting Antiques & Primitives Will Be Offered In 2 Auctions. There Are Some Very Unique & Hard To Find Items In This Sale. Auction Will Be Very Larger With Possibility Of Running 2 Rings So Please Plan Now To Attend. The Eads Were Very Well Known Members Of The Community & Outstanding Antique Collectors. Again This Is A Very, Very Large Auction With Hundreds & Hundreds Of Items Not Listed Unable To See Due To Being In Boxes. Watch Papers For Next Date For 1 More Auction. **Sale Order: Furniture Will Sell First Then Move Directly Into Antiques, Primitives & Collectibles. Railroad Items Will Sell Approx 1:00 PM. See Ya There!!!**

Terms: Cash or check with proper ID. Now accepting most major credit cards. Nothing removed until settled for. Statements made the day of sale takes precedence over printed material. Everything sold as is where is. Not responsible for accidents. Restroom available. Concessions Provided. Check our website for upcoming auctions and for additional pictures!!



NANCE AUCTION SERVICE

No Matter How BIG or small, We Do Them All!!!



Col. Bill Nance 417-214-0093 In God We Trust Philippians 4:13 Sean Beazley 417-247-6754

PEMBROKE WELSH CORGIS: D.O.B. 1/12/23 & 1 D.O.B. 7/20/22. U.T.D. on shots & wormer. \$300. 417-741-2949. Grovespring.

9 PAIRS OF LADY'S COTTON KNIT LONG PANTS: Size XL. \$3 each or all for \$25. 417-288-6714. Lebanon.

COWBOY CORGIS: D.O.B. 1/9/23. UTD on shots & wormer. \$50. 417-349-0831. Hartville.

NEIGHBORHOODS HOME IMPROVEMENT STORE: 417-533-5080. Lebanon

FOR SALE: Hardwood kitchen table, 6 chairs (2 are captain chairs) & leaf. Black. \$200 Firm. 573-647-3139.

CUSTOM HAY HARVESTING: or put up in shares. 4x5 Net Wrap Tight JD Bales. *Reasonable Rates* Reliable Service Larger Acreages Desired. Book early to beat the rush. For a Free Quote call Josh *573-247-8715* Green Meadows Farm: Servicing Dent, Texas, and surrounding counties.

MOTHER'S DAY SALE 10% OFF ALL WEEK: May 8-13 at Highpoint Greenhouse. Large variety of flowers to choose from. Gift certificates!! 417-741-2793. 9337 Warner Rd. Hartville.

SADDLES FOR SALE: HEREFORD 16" Bear Trap \$400 & BIG HORN 16" saddle \$125. Conway, MO 417-718-5347.

EXHAUST MANIFOLD FOR 55/56 CHEVY CAR: \$100 or trade. 573-734-2822.

BUFFALO LIVESTOCK MARKET LLC



276 Hwy 32 W. ,Buffalo, MO

April 29th, 2023
Receipts: 1304

REPRESENTATIVE STEERS

300-400 @ 238.00 to 280.00
400-500 @ 230.00 to 270.00
500-600 @ 220.00 to 260.00
600-700 @ 212.00 to 234.00
700-800 @ 190.00 to 211.00
800-900 @ 175.00 to 192.00

REPRESENTATIVE HEIFERS

300-400 @ 210.00 to 242.00
400-500 @ 205.00 to 246.00
500-600 @ 200.00 to 224.00
600-700 @ 190.00 to 205.50
700-800 @ 170.00 to 187.50
800-900 @ 120.00 to 168.00

FEEDER BULLS

300-400 @ 210.00 to 263.00
400-500 @ 200.00 to 258.00
500-600 @ 185.00 to 245.00
600-700 @ 180.00 to 196.00
700-800 @ 170.00 to 195.00
800-900 @ 140.00 to 180.00

STOCKS COWS

Bred Cows 1200.00 to 1575.00
Cow/Calf Pairs N/T

SLAUGHTER BULLS

High Yield 120.00 to 134.00
Low Yield 85.00 to 110.00

SLAUGHTER COWS

Fleshy 95.00 to 102.00
Med Flesh 90.00 to 105.00
Light Flesh 70.00 to 99.50

QUESTIONABLE HEALTH OR CRIPPLE COWS

60 Down

MON-WED MARKET REPORT

Listen to KJEL 103.7FM • Lebanon or KY00 99FM • Bolivar

VIEW OUR SALES AT CATTLEUSA.COM

CALL FOR TRUCKING OR ON-FARM VISIT

Lyle Caselman • Owner-Manager
417-345-7876 • mobile 417-533-2944
Leon Caselman • Owner
417-345-4514 • mobile • 417-588-6185

SHOW-ME-SELECT REPLACEMENT HEIFER SALE

FALL-CALVING BRED HEIFERS

FRIDAY, MAY 12, 2023 • 7:00 PM
Farmington Regional Stockyards, LLC
1600 Woodlawn Drive, Farmington, MO



CROSSBRED & PUREBRED HEIFERS AVAILABLE
Registered Angus, Crossbred Angus, & Hereford

- Mostly black and black-baldies, two red-white-face
- GUARANTEED BREED; Due to calve from late August to early November 2023
- Many AI BRED & selling with known FETAL SEX
- TIER II daughters out of high caliber AI Angus, Red Angus and Simmental bulls
- Sorted in UNIFORM LOTS by breed, color, size, calving date & some fetal sexed

CONSIGNORS:

Morgan Clark; Farmington
Flieg's Farm, Ste. Genevieve
Graham Family Farm, Farmington
Mike & Gavin Graham, Farmington
Rick Grellner, Owensville

Bill McLaren, Pacific
Schulte Brothers Farm, Meta
Greg Tharp, Naylor
Turner Farms, Belgrade
Dean & Dallas Wilson, Dittmer

FOR INFORMATION OR CATALOG CONTACT:

Kendra Graham • 573-756-4539 • grahamkk@missouri.edu
Facebook: Show Me Select Bred Heifer Sale: Farmington

Offering online bidding through:
DVAuction
Broadcasting Real-Time Auctions

2010 FORD ESCAPE: 249,000 miles on body & 160,000 on engine. Good tires, battery, heat, air & cruise. All windows & locks work. Runs & drives very good. \$5,000 OBO Cash. 573-435-6987 Leave Message. Edgar Springs.

'86 CORVETTE PROJECT CAR: Will need to be trailered. Ran good until 2 1/2-3 years ago. Chipmunks ate the wire harness. \$1,250 OBO Cash. 573-435-6987 Leave Message. Edgar Springs.

ANTIQUA DRESSER WITH MIRROR: \$200 Firm. 573-647-3139.

2 ELECTRIC MOTORS: Diehl 1/3 horsepower and Wagner Electric 3/4 horsepower, includes 21 pulleys various sizes and widths. \$45. 210-787-8222. Linn Creek.

OLD ARMY MARMITE FOOD CAN FROM WWII: \$150. 573-734-2822.

NEW JELD WEN 5' LEFT HAND SLIDING GLASS DOOR WITH SUNSTABLE INTERIOR BLINDS: Clear tempered glass, Desert Sand trim/hardware. Retail \$2655 Sell \$900. 417-693-0389. Conway.

BRAND NEW SMOKER: \$100. 573-647-3139.

FOR SALE: Washing machine. \$125. 573-647-3139.

FOR SALE: Dryer. \$125. 573-647-3139.

RED AND BLUE HEELER PUPPIES: \$100 417-322-8027

JR Kelley Liquidation Auction

Friday, May 26th @ 10:00 am
12940 Memory Lane, Neosho MO 64850

Featuring: Tractors, Farm Machinery,
Classic Trucks-'47 Intl Pickup,'51
Chevy Pickup, Shop, Tools, Lots of
extra Car & Truck parts,
Firearms & More!

Contact Southwest Auction Service for more info!
417-652-7540 or email: kathy@swaauction.com
Website: www.swaauction.com



SUPER M FARMALL: New 15 x 5 x 38s:
for \$2,500 417-349-2908

2001 F350 4X4 DUALY: Reupholstered
seats, new front tires & brand new 7.3 diesel
engine. \$24, 950. 417-254-1001. Edgar
Springs.

FOR SALE: D17 Allis Chalmers Tractor
rebuilt motor series 2. \$2,200. No Sunday
Calls. 417-733-2068. Buffalo.

ROOMATE WANTED: Hazelgreen, MO,
by the highway. 15 minutes to everywhere.
\$500/month. Utilities included. Call Kurt
at 573-528-0234.

FARM AUCTION

Due to retiring and downsizing, we will sell the following personal property, located from St. James, Missouri, take Matlock Drive and continue 1 mile to CR 2220. Follow CR 2220 1/4 mile to auction. Follow Lorts Auction Today signs on

SATURDAY, MAY 6, 2023 AT 9AM - RAIN OR SHINE

HOUSEHOLD, FURNITURE & ANTIQUES Samsung electric matching frontload washer & dryer w/pedestal KitchenAid classic (white), Sharp microwave (white), Leather recliner loveseat (dark brown) Leather recliner couch (dark brown) Visio 50 inch flatscreen TV, 3 drawer wicker stand, Plant stands Small 5 drawer cabinet, Cookbooks Stoneware (blue design), Cake plates Flat top antique trunk, Picnic baskets Maple top farmhouse table w/1 leaf & 6 chairs (cream color), Glasses (Care Bears, Walt Disney, Mickey Mouse, Smurf, Chipmunks, Coca Cola, Christmas, Donald Duck) Farmhouse style kitchen cupboard w/wire on doors **TOOLS & RELATED ITEMS** Rolling shop cart, Milkhouse heater Shop cabinets, Gas cans, 6 ft. gray metal cabinets, Small garden cart, Work light, Horse drawn hay mowing machine Coleman Ultra 2500 generator, Delta 10 inch table saw, Jack stands Skil miter box sa, Metal buckets True Temper wheelbarrow, Hammers Handyman jack, Fence stretcher Conduit benders, Assorted doors Large tap & die (in box), Reese hitch extended carrier, Hand painted signs, Crowbars Rakes, Shovels, Saw horses Cow stanchions, Single trees, Large 24 inch pipe wrenches, Bar clamps, Old barn wood, 10 ft. Davidson fiberglass ladder Wooden extension ladders Corrugated barn metal, Air tank Concrete flower bed edging, Wooden benches, Moving blankets 6 ft. shop table, Old barn lantern Plastic pickup toolbox, Coolers, 2 wheel lawn cart, 2 wheel dollies **GUNS & HUNTING & FISHING ITEMS** user-Werke A.G. Oberndorf A.N. mod#HSE, Kal. 7-65 mm (32 caliber) pistol, Ithaca mod#37 12 gauge pump Featherlight, Winchester mod#52 22 long rifle British 303 side mount scope (sporterized), Browning Citori over/under 12 gauge vented rib, walnut stock, gold trigger w/case, Springfield Savage mod#67H 12 gauge pump, Mossberg International 715T 22 w/Red Dot scope, 20 round mag British 303 original, Stevens 12 gauge pump mod#620 Forehand & Wadsworth 12 gauge (mfg. in Worcester, Mass), Thompson Center Arms 50 cal. blackpowder gun

MANY MORE ARTICLES TOO NUMEROUS TO MENTION

OWNER: BOBBY & SUE LEWIS • 15760 CR 2220, ST. JAMES, MO 65559 ; AUCTIONEER'S NOTE: Lots of nice clean items on this auction. Mark your calendar for Saturday, May 6 and come spend the day with us!

TERMS: Not responsible for accidents or losses, should they occur. • Nothing removed until paid for. • No buyers fee. Lunch Served — ALL ANNOUNCEMENTS MADE SALE DAY TAKE PRECEDENCE OVER ALL PRINTED MATERIALS —

SALE CONDUCTED BY LORTS AUCTION SERVICE ST. JAMES, MO 65559

AUCTIONEERS: Larry W. Lorts & Gary R. Lorts Licensed and Bonded • 573-263-1509 & 573-263-0243

"like" us on Facebook- Lorts Auction Service or view this auction on line at www.threeriverspublishing.com or Auctionzip.com (auctioneer ID # 42353)

LOOKING FOR A FARMHOUSE TO RENT: Must accept pets. Any location. Good rental history & guaranteed income. 573-840-6702.

2 TWIN BEDS: Stackable or separate. \$200 each. 573-647-3139.

TRACTOR & IMPLEMENTS FOR SALE: 5200 Deck Tractor, 1969 62hp \$7,000, Frontier Food Plot Master, Brand New \$3,900, 6ft Sidewinder Brush Hog \$1,250, 6ft Hiniker Heavy Duty Blade \$750. 417-718-5758 or 573- 765-5884. Richland.

MOWER: \$5,250. 573-765-4406 Richland.

120 WHITE TRACTOR: 7317 Hours, 140 H.P. \$26,000. Excellent Condition. 636-239-4921. Washington.

JOE THEISMANN AUTOGRAPHED CAREER STAT JERSEY: JSA COA. Text for pictures. \$95 573-854-8132. Licking.

MID MISSOURI STOCKYARDS

REGULAR SALE EVERY THURSDAY 11AM

SPECIAL COW SALE • MAY 6TH AT 6 PM

WATCH OUR WEEKLY SALE IN REAL TIME ON DVAUCTION.COM

For Farm Visits, Market Updates, or Trucking
Call **Zach Cox 417-777-1320**
Dan Romine 573-578-4939

**Competitive Buyers!
Competitive Commission!
Competitive Market!**

Barn: 417-532-9292

I-44 • Exit 123 "just outside of Lebanon"
17505 Route 66, Phillipsburg, MO 65722
For weekly market updates, visit us at
www.midmostockyards.com

FARM AUCTION

Due to selling our farm, we will sell the following personal property at auction located from Vienna, Missouri, take Hwy. 63 South 2 miles to Hwy. 28 West. Follow Hwy. 28 - 10 miles to Hwy. E. Follow Hwy. E 7 miles to Maries CR 512 and continue 1 mile to auction or from Dixon, Missouri, take Hwy. 28 East 8 miles to Hwy. E. Follow Hwy. E 7 miles to Maries CR 512 and continue 1 mile to auc-tion. Follow Lorts Auction Today signs on

SUNDAY, MAY 7, 2023 AT 12:30PM - RAIN OR SHINE

HOUSEHOLD, FURNITURE & ANTIQUES Old wooden bookshelf, Oak night stand, Chair side table Small coffee table, 2 antique oak rockers, Drink mixer 4 ft. flat top trunk, Small oak rocker 2 cuckoo clocks (made in Germany) Oak straight back chair, Claw foot piano stool, Pet carrier Full size brass bed/frame, 6 ft. pre-lit frosted Christmas tree Blackstone 28 inch grill on wheels Cooper wash boiler, Square oak table w/hand carving, Tall plant stand, Liquor decanters 5 ft. oak curio cabinet, 3 ft. small flat top trunk, Frigidaire chest type 4 ft. wide freezer Commercial type meat slicer (American Mach. Co.), 3 ft. round edge trunk, Lamps Kenmore apartment size refrigerator 24 quart Nesco roasters, Milk cans Chair type wooden school desk Baseboard heaters, Folding chairs 18 ft. above ground pool, 4 ft. deep w/ladders, pump & supplies, Possum rug shampooers; **FARM & LAWN EQUIPMENT** John Deere 5200 farm tractor, w/canopy, dual remote hydraulics, radio, good rubber, good condition, 3050 hours, Side by Side Club Car XRT950 w/cloth cab & dump bed, 3 pt. 6 ft. tandem disc, Club Car golf cart, 4 seater w/top, electric w/battery charger attached 2 pt. 5 ft. box blade w/rippers, 3 pt. bale spear, 3 pt. 5 ft. brush hog **TOOLS & SHOP RELATED ITEMS** 2 push lawn mowers, True Temper plastic wheelbarrow Radio Flyer cargo wagon, Utility cart on wheels, Garden supplies, 2 wheel dollies True Temper metal wheelbarrow, 5 ft. steel fence posts, 4 ft. job box on wheels, Square bales of straw, Hammers Reese hitch carrier, Gas cans Roll around tool cart, Hatchets Ryobi electric pole saw, Pipe wrenches, Bolt cutters Extension cords, C-clamps, Large crescent wrenches, Plastic tote boxes **HUNTING & FISHING ITEMS** 44 inch live well for boat, Deer feeder, Hunting blind Hunting gun targets, Assorted coolers, Stainless camping coolers Fish cooker, Meat smoker Lots of camping supplies Rods & reels, Dip nets Boat oars, Life jackets, 20 inch shop fan on stand Duck decoys, Yard games Bounty Hunter Lone Star metal detector

MANY MORE ARTICLES TOO NUMEROUS TO MENTION

OWNER: IRWIN-VILLHARD • 11492 MARIES CR 512, DIXON, MO 65459 ; AUCTIONEER'S NOTE: Lots of nice clean items on this auction. Off road parking available if dry. Come spend the afternoon with us on Sunday, May 7.

TERMS: Not responsible for accidents or losses, should they occur. • Nothing removed until paid for. • No buyers fee. Lunch Served — ALL ANNOUNCEMENTS MADE SALE DAY TAKE PRECEDENCE OVER ALL PRINTED MATERIALS —

SALE CONDUCTED BY LORTS AUCTION SERVICE ST. JAMES, MO 65559

AUCTIONEERS: Larry W. Lorts & Gary R. Lorts Licensed and Bonded • 573-263-1509 & 573-263-0243

"like" us on Facebook- Lorts Auction Service or view this auction on line at www.threeriverspublishing.com or Auctionzip.com (auctioneer ID # 42353)

K.C. CHIEFS SUPERBOWL 2019 DAMIEN WILLIAMS AUTOGRAPHED JERSEY: JSA COA. Text for pictures. \$135. 573-854-8132. Licking.

DUAL LOADER OFF D19 AC: Works fine. \$900. 417-321-1928. Osceola.

FOR SALE: Hay 4x5 bales \$55. I-Beam 4in.x6in. 20FT. 6in. long \$500 each. Used sheets tin 2FT.x14FT. \$2 a Sq. FT. Billy Cook Roping Saddle, Cowboy cut 17in. seat. Greenville, TX. \$1,500. 573-729-2874.

FISHING SEASON COMING: Get your rod and reels \$15 & up 417-589-8200

WHITE FRIGIDAIRE DISHWASHER: 1-year-old fits in 20" cabinet space. Works like new. \$250. 573-263-2682. St. James.

GENIE 5519 LIFT: Low hours on rebuilt engine. Runs good. 417-741-0175 Jacob Stoltzfoos. Hartville, MO.

KUSTER LOGGING
BUYER of Standing Timber Oak and Walnut
 Dozing Now Available
417-259-0047
 References Available



CENTRAL BOILER
CLASSIC EDGE
 TITANIUM HDX
 26% Tax Credit on EPA certified Central Boiler Classic Edge HDX models and installation. Call today to learn more!
Outdoor Wood Furnace CentralBoiler.com
 Yarbrough Equipment Sales & Services, Inc.
 9776 E. State Hwy 00 • Strafford, MO
 417-736-2303 • 1-866-286-6901 • www.yarbeq.com



OMAR'S DOZING

- ➡ Clear land
- ➡ Clean up woods
- ➡ Make driveways
- ➡ Clear property lines
- ➡ Build ponds

Amish Owned & Operated
LEAVE MESSAGE: 417-741-0440
 Hartville & Surrounding Areas

2002 HONDA VTX: 1800 CC. 1 owner. 573-330-7094. Potosi.

STAN MUSIEL CANCELED CHECK: full signature with authenticity \$55, txt for pictures. Mint condition. 573-854-8132

460 FORD MOTOR & TRANSMISSION: Out of motor home, 20,000 miles. \$500 Firm. 417-594-1656. Richland.

UNIQUE MOTHER'S DAY OR FATHER'S DAY GIFT: A pair of purebred fainting goat kids. 573-216-7796. Lake of the Ozarks.

TROLLING MOTOR: MotorGuide 71 lb. thrust, 24-volt. Excellent condition. \$150. 210-787-8222. Linn Creek.

REMINGTON MODEL 241 SPEEDMASTER SEMI-AUTO 22: Make offer. 1-573-729-3325.

MOTHER'S DAY SALE AT YODER'S GREENHOUSE: May 13th, discount on flowers. Free coffee and donuts. Also, a yard sale on same day. 6897 Highway 5. Hartville, MO.

5X8 TRAILER: With wood over mesh floor and wood sides. Drop rear gate. Kept inside. \$1095 417-844-4319. Springfield.

VINTAGE WORKING 1967 SINGER SEWING MACHINE: Special zigzag model 638 in cabinet with original instruction book. \$50. 210-787-8222. Linn Creek.

NICE COUCH: \$200. 573-647-3139.

WANTED: Motor for Equinox SUV 2011 Serial #2GNALDEC1B1280743. Pay cash. 573-636-8000. Jefferson City.

BAMBOO FLY RODS: \$50 417-589-8200

2 FEMALE TOY SCHNAUZER/POODLE MIX: 417-664-5926. Lebanon.

1 M FARMALL: With rebuilt motor for \$1,800 417-349-2908

STANDARD POODLE PUPPIES: ACA, DOB 1-31-23. Miniature Australian Shepherd Puppies: ASDR, DOB 4-1-23. FB Emerald E Kennel. Text 417-718-9868. Macks Creek.

2017 JEEP RENEGADE: 57,000 miles, garage kept. 417-935-2635. Seymour.



Wright Spray Foam Insulators, LLC
 Commercial & Residential
 Call for FREE Estimates!

Ervin Gingerich 417-926-2052
 B. Eli Yoder 417-746-4932

Find Us On Facebook

Coming Soon BUY SELL TRADE LOOK Vendors Wanted

PRAIRIE SWAP

Friday, May 26 ♦ Saturday, May 27 ♦ Sunday, May 28 2023
 Gates open: 8 a.m. to 6p.m. (rain or shine)

½ mile west of Wheatland, MO on Highway 54

- ♦ Poultry ♦ Small Animals ♦ New and Used Items ♦ Antiques ♦ Tools
- ♦ Handmade Treasures ♦ Seasonal Goods ♦ And much, much more!

Questions? Email: prairieswap@gmail.com Phone: 417-327-6623

FOR SALE: 5' King Cutter Finish Mower, 5' Howse Bushhog, Bushhog straight blade King Cutter, Carry all King Cutter Furrow Blade. 573-528-5361.

2 GELBIEH BULLS FOR SALE: 12 & 14-months-old. \$2,400 each. 417-531-1048. Morgan.

2005 RAM QUAD CAB CUMMINGS DIESEL: Automatic transmission, 4x4, long bed, 272,000 miles. Engine and transmission have low miles. \$15,500 or consider cash offer. 417-599-8089. Willard.

5X8 TRAILER: With wood over mesh floor and wood sides. Drop rear gate. Kept inside. \$1095 417-844-4319. Springfield.

1939 GRAHAM BRADLEY: Needs restored. Runs good, has side panels, narrow front end. New grill & half grill. Plus, parts tractor. \$3,500. 417-594-1656. Richland.

TWO 380/85R34 TRACTOR TIRES: \$175. 417-321-1928. Osceola.

AC 3 BOTTOM PLOW: Good. \$200. 417-321-1928. Osceola.

CASE FORKLIFT: Diesel. Will Run. \$1,000. 417-321-1928. Osceola.

JOHN DEER 920 DISCBINE: With rollers. \$7,500. 573-765-4406. Richland.

FORD 6610 DIESEL TRACTOR: Cab & Air, 75HP, with quick tach loader. \$21,750. 573-765-4406. Richland.

LAWN MOWING & YARD WORK SERVICES: 417-288-8123. Lebanon.

MASSEY FERGUSON 520 WHEELED DISK: 10FT. \$2,300. 573-765-4406. Richland.

BOBCAT 753 DIESEL SKID STEER LOADER: \$12,500. 573-765-4406. Richland.

JOHN DEERE MX10 PULL TYPE 10FT. BRUSHCUTTER: \$6,950. 573-765-4406. Richland.

RHINO 4 BASKET HYD. FOLD TEDDER: \$4,300. 573-765-4406 Richland.

SMALL TOWN MAYOR OF WAYNESVILLE, MO: Political Adventures of the Ozarks by Luge Hardman, featuring small town politics and small-town life, featuring local photographers and local characters. \$9.50. 417-532-2045. Lebanon. (Leave message and phone number).

WEATHERED BARN WOOD SIDING: 10" wide. 573-729-7226. www.pineridgerustic.com Salem.

SLIGHTLY USED PUZZLES: Will sell or trade. 417-818-3469. Strafford.

Starnes Auto LLC
 22115 Rt. 66 • Lebanon, MO 65536
 417.718.2707 Cell
 417.588.3159 Office
www.starnesauto.com



WE'RE HIRING

PAINT PREP & REBUILDERS

Call Amanda or Alva for more info.

WE DO ALIGNMENTS!

Cedar Ridge Truss LLC



ENGINEERED TRUSSES
Satisfaction is our goal

Mention this ad when calling!

417-259-9788
 Fax 417-701-0021

4952 N Hwy. E
 Hartville, MO 65667

IHC 475 HYD FOLD 18FT DISK: \$2,750. 573-765-4406 Richland.

2007 QUALITY BUILT SINGLE HORSE TRAILER: Good floor with mats, good tires. Nice clean trailer. \$3,500 or will consider cash offer. 417-599-8089. Willard.

ALLIS CHALMERS DIESEL 7G DIESEL TRACK LOADER: Good. \$13,000. 573-765-4406 Richland.

JOHN DEERE 6400 DIESEL CAB & AIR TRACTOR: 85H.P. \$19,500. 573-765-4406 Richland.

FRESH SHEEP MILK & CHEESE: For more info call 417-741.2186. Hartville.

WESTFIELD 10X61 GRAIN AUGER WITH DRAG HOPPER: \$2,850. 573-765-4406 Richland.

JOHN DEERE 2-BOTTOM 3-POINT PLOW: \$450. 573-765-4406 Richland.

MODERN 6FT 3-POINT BRUSH CUTTER: \$475. 573-765-4406 Richland.

CASE IH MD92 3-POINT DISK

TINY HOMES – Missouri Franchise 573-881-7965

LOG SIDING: 2X8 Pine/Western Cedar www.pineridgerustic.com 573-729-7226. Salem.

BASEMENT READY USED DOUBLE-WIDE – 3 bdr, 2 bath, Financing Call for info 573-657-2176 amegamobilehomes.com

DISCOUNT NEW MOBILE HOMES – we will beat any price on any home **GUARANTEED**, Financing, 573-499-9993 columbiadiscounthomes.com

BASEMENT READY TRUE MODS – instock ready for delivery 573-657-7040 chateauhomes.net

I BUY.....used mobile homes. Call or text 573-338-6250 or email GregS.CDH@outlook.com

REGISTERED HEREFORD & ANGUS BULLS: Home raised, Some Show-Me Select Qualified. 573-701-7828. Belgrade.

LIGHTLY EXPERIENCED GOLF BALLS: \$3 a dozen. 417-818-3469. Strafford.

LIONEL TRAIN SET: Steam engine, tender, caboose and other car, track, and transformer. \$195. 573-364-7465. Rolla.

MODEL 1911 FRAME 8-SHOT C02

PISTOL: Like new, in box with C02 cartridges, 4 clips, pellets & all paperwork. \$95. 573-364-7465. Rolla.

1970s KIDS METAL STOVE & FRIDGE: Nice Lithographic paint, 18" wide x 36" high. \$75. 573-364-7465. Rolla.

3 GENTS WITTNAUER WRIST WATCHES: 10k gold + 23J. All \$200. 573-764-3517. Call in P.M.

1500 VINTAGE WRISTWATCH DIALS: \$100. 573-764-3517. Call in PM.

110 PORCELAIN POCKET WATCH

DIALS: Perfect for arts & crafts. \$100. 573-764-3517. Call in PM.

1890 GOLD TESTING KIT: Glass acid beakers + antique wooden case. \$100. 573-764-3517. Call in PM.

BARN OF MISSOURI BOOK: Storehouses of History, 168 pages, hardback, \$12.50. 417-532-2045. Lebanon. (Leave message and phone number).

FOR SALE: Washing machine. \$125. 573-647-3139.

FERGUSON DEALER SHOP MANUAL:

Covering TE-20, TO-20 & TO-30 Model tractors. \$40. 636-239-2695 or 314-560-5700. Washington.

NEW SQUARE D RAINPROOF 50AMP DISCONNECT: \$160. 636-239-2695 or 314-560-5700. Washington.

USED JET HOME POLLUTION CONTROL PANNEL: Model CP700. \$65. 636-239-2695 or 314-560-5700. Washington.

ANTIQUE DRESSER WITH MIRROR: \$200 Firm. 573-647-3139.



**Over 500 Attachments IN STOCK!
We ship NATIONWIDE!**

Craig Equipment
2681 W. Pearce Blvd | Wentzville, MO 63385
636-856-8555
www.CraigEquipment.com
*Availability & Price subject to change without notice

 <p>2022 Deere 317G *UNUSED* Cab&OROPS, loaded! IN-STOCK.....starting at \$61,900</p>	 <p>2022 Deere 333G *UNUSED* LOADED!.....starting at \$99,995</p>		
 <p>2015 Deere 319E 69hp, 1874hr, Joystx, NEW Trax.....\$37,500</p>	 <p>2021 Bobcat T870 *HiFlow* 540hrs, AC/ Cab, Joystx, Warranty!.....\$89,900</p>	 <p>2021 Bobcat T770 *HiFlow* 733hr AC/Cab Joystx *Warranty.....\$74,900</p>	 <p>2000 Bobcat 763 *LIKE NEW* 106 HOURS, Clean & NEW Tires.....\$34,900</p>
 <p>2003 Bobcat MT85 25hp, 1538hrs, NEW Trax, Ride on platform\$23,900</p>	 <p>2015 Kubota SVL90 0 74hp, AC/Cab, Joystx, 2sp, Pwr Bkt Chngr.....\$45,500</p>	 <p>2010 Gehl CTL75 83hp, 1435hrs, AC/Cab, Joystx, 2sp.....\$43,500</p>	 <p>2005 Gehl 6640 82hp, ONLY 710hrs, T-BAR controls\$29,900</p>

HARLEY FAT BOBS: Custom flame paint w/ gas caps + lines. \$100. 573-764-3517. Call in P.M.

THE ROARING ROUBIDOUX: Book by Dan Slais, 229 pages, Waynesville/ Fort Wood, Texas County areas, many old photos. \$12.50. 417-532-2045. Lebanon. (Leave message and phone number).

COLT REVOLVER DEALER CATALOGS: Circa 1950's + 1960's. All for \$100. 573-764-3517. Call in P.M.

TRAILER HOUSE RIMS: \$10 each. 573-308-5884. Rolla.

HARLEY 45 SOLO: factory rear brake drum + sprocket. \$150. 573-764-3517. Call in PM.

HARLEY PANHEAD DISTRIBUTOR: original, chrome + complete. \$125. 573-764-3517. Call in PM.

1962 HARLEY SPORTSTER 900CC: original distributor. \$50. 573-764-3517. Call in PM.

RUBBER & LEATHER BOOTS AND 5-Buckle OVER SHOES: Men's 11, Women's 7, some insulated. \$15-\$40 obo. 636-239-2695 or 314-560-5700. Washington.

FOR SALE: Transmission for 56 & 06 series International tractors. \$675. 636-239-2695 or 314-560-5700. Washington.

HEARTH CRAFT GLASS BI-FOLD FIREPLACE DOORS PURCHASED AT FORSHAW'S FIREPLACE: Antique brass. \$160 obo. 636-239-2695 or 314-560-5700. Washington.

THREE SHEPHERD'S HOOKS: To hang potted plants. Black wrought iron. 6ft. 7in. when in ground. One is a double & two are single hooks. \$50. 636-239-2695 or 314-560-5700. Washington.

FIRST GEAR KILIMANJARO MOTORCYCLE COAT: XL, but runs smaller. Zip out liner, Kevlar padding on shoulders & elbows, vented, rainproof. Like new. \$95 FIRM. 417-260-0941. Raymondville.

2 GOODYEAR WRANGLER TIRES: Kevlar LT245/70R17, all terrain, \$100 for the pair. 417-417-260-0941. Raymondville.

FOR SALE: 2 Dayco motorcycle covers for Harley or other big bikes. \$50 each. 417-260-0941. Raymondville.

DARDEN PROFESSIONAL TIMBER HARVESTING, BUYING STANDING TIMBER: Great prices, improve wildlife habitat and improve forest health. State Certified & Fully Insured! 573-247-4808. Salem.

ANTIQUE HOG OILER: \$35. 573-308-5884. Rolla.

460 FORD ENGINE BLOCK: \$100. 573-308-5884. Rolla.

POSTER BED: \$150. 417-741-1232.

NEED YOUR CDL????? We furnish the truck & trailer. We teach all requirements for ELDT & skills test. We go to the state highway patrol with our truck. Requires only 2 days of in person training. Much cheaper way to get CDL. Jefferson City MO, Willow Springs MO, Strafford MO, 573-353-2853. For more info www.capitaltruckdrivinginstitute.com

POOL TABLES: Installations, moves, recovers, repairs, accessories, etc. 573-646-1700.

BAMBOO FLY RODS: \$50 417-589-8200

YOUR FULL SERVICE AUTO BODY SHOP

Call today for an appointment or estimate!

Restorations, insurance jobs, and more!

DAVIDSON'S Customs
417-288-1589

417-288-1589 • 115 Lincoln St., Buffalo, MO • [@DavidsonCustoms](https://www.facebook.com/DavidsonCustoms)

CHILTON'S AUTO REPAIR MANUAL: American Volkswagen 1969-1976. \$35. 417-260-0941. Raymondville.

MAC'S TIEDOWN STRAPS: Like New. \$80. 417-260-0941. Raymondville.

PAIR OF CAR OR PICKUP RAMPS: 70" tall on end and 16" wide \$45 417-260-0941

CALUS LOGGING

20 YEARS EXPERIENCE

Buying Standing Timber
Walnut & Oak

Joe Calus, Owner
CERTIFIED 417-926-4606 • MTN. GROVE

BOX OF SILVER-PLATED SILVERWARE: at least 75 years old \$60 417-260-0941

'86 CORVETTE PROJECT CAR: Will need to be trailered. Ran good until 2 1/2-3 years ago. Chipmunks ate the wire harness. \$1,250 OBO Cash. 573-435-6987 Leave Message. Edgar Springs.

ROUND TABLE: \$40. 417-741-1232.

25 SECLUDED ACRES: Powerlines on two sides of property. One hour from Springfield. Hunter's Paradise. Stream through property. Cash Only. \$8,000/per acre. Must take all. 00417-741-1232.

HIGHPOINT GREENHOUSE: Open for the season. Garden seeds, vegetable and flower plants, seed potatoes, onion sets and plants, herbs, etc. 417-741-2793. 9337 Warner Rd. Hartville.

NOW BUYING STANDING RED AND WHITE OAK TIMBER: All slash will be trimmed to lay flat or placed in tidy piles for wildlife. No scarred-up trees or ruts from heavy logging equipment. We use low impact compact track loaders to minimize disturbance in your forest. Missouri Land Service LLC. 417-991-9280.

BUYING OLD BARN AND LUMBER: 417-298-3475 Leave Message.

TRACTOR & IMPLEMENTS FOR SALE: 5200 Deck Tractor, 1969 62hp \$7,000, Frontier Food Plot Master, Brand New \$3,900, 6ft Sidewinder Brush Hog \$1,250, 6ft Hiniker Heavy Duty Blade \$750. 417-718-5758 or 573- 765-5884. Richland.

FULLBLOOD YEARLING RAMS: One Dorper and two St. Croix. \$500 each. Call 417-458-1771.

METAL ROOFS: We repair leaky metal roofs with warranty. Also, flat roofs. Very affordable. Cover all of state. 573-338-1148. Jefferson City.

WANTED NEW HOLLAND SKID STEER 865: Any Condition. Call Bob 573-697-5143.

PEMBROKE WELSH CORGIS: D.O.B. 1/12/23 & 1 D.O.B. 7/20/22. U.T.D. on shots & wormer. \$300. 417-741-2949. Grovespring.

9 PAIRS OF LADY'S COTTON KNIT LONG PANTS: Size XL. \$3 each or all for \$25. 417-288-6714. Lebanon.

DOXIN PUPPIES: Registered, shots & wormed. 573-247-6273. Salem.

COWBOY CORGIS: D.O.B. 1/9/23. UTD on shots & wormer. \$50. 417-349-0831. Hartville.

NEIGHBORHOODS HOME IMPROVEMENT STORE: 417-533-5080. Lebanon

2010 FORD ESCAPE: 249,000 miles on body & 160,000 on engine. Good tires, battery, heat, air & cruise. All windows & locks work. Runs & drives very good. \$5,000 OBO Cash. 573-435-6987 Leave Message. Edgar Springs.

SADDLES FOR SALE: HEREFORD 16" Bear Trap \$400 & BIG HORN 16" saddle \$125. Conway, MO 417-718-5347.

UNIQUE MOTHER'S DAY OR FATHER'S DAY GIFT: A pair of purebred fainting goat kids. 573-216-7796. Lake of the Ozarks.

TRUNK LID FOR 55/56 CHEVY CAR: \$50 or trade. 573-734-2822.

OLD ARMY MARMITE FOOD CAN FROM WWII: \$150. 573-734-2822.

NEW JELD WEN 5' LEFT HAND SLIDING GLASS DOOR WITH SUNSTABLE INTERIOR BLINDS: Clear tempered glass, Desert Sand trim/hardware. Retail \$2655 Sell \$900. 417-693-0389. Conway.

2 TWIN BEDS: Stackable or separate. \$200 each. 573-647-3139.

NICE COUCH: \$200. 573-647-3139.

ROOMMATE WANTED: Hazelgreen, MO, by the highway. 15 minutes to everywhere. \$500/month. Utilities included. Call Kurt at 573-528-0234.

120 WHITE TRACTOR: 7317 Hours, 140 H.P. \$26,000. Excellent Condition. 636-239-4921. Washington.

JOE THEISMANN AUTOGRAPHED CAREER STAT JERSEY: JSA COA. Text for pictures. \$95 573-854-8132. Licking.

MEMORIAL DAY DEADLINES

Due to the upcoming holiday, the following deadlines will be observed:

Weekly Trader ★ Thursday, June 1 Edition

Display Advertising Deadline:

Wednesday May 24 at 4pm

Classifieds Deadline:

Wednesday, May 24 at 3pm

We appreciate your business. Thank you for your continued support.



417-532-9131 • 800-665-8875
100 E. Commercial • Lebanon, MO
www.myweeklytrader.com

CUSTOM HAY HARVESTING: or put up in shares. 4x5 Net Wrap Tight JD Bales. *Reasonable Rates* Reliable Service Larger Acreages Desired. Book early to beat the rush. For a Free Quote call Josh *573-247-8715* Green Meadows Farm: Servicing Dent, Texas, and surrounding counties.

MOTHER'S DAY SALE 10% OFF ALL WEEK: May 8-13 at Highpoint Greenhouse. Large variety of flowers to choose from. Gift certificates!! 417-741-2793. 9337 Warner Rd. Hartville.

EXHAUST MANIFOLD FOR 55/56 CHEVY CAR: \$100 or trade. 573-734-2822.

FOR SALE: Hardwood kitchen table, 6 chairs (2 are captain chairs) & leaf. Black. \$200 Firm. 573-647-3139.

BRAND NEW SMOKER: \$100. 573-647-3139.

FOR SALE: Dryer. \$125. 573-647-3139.

LOOKING FOR A FARMHOUSE TO RENT: Must accept pets. Any location. Good rental history & guaranteed income. 573-840-6702.

FIREPIT: \$40 Firm. 573-647-3139.

K.C. CHIEFS SUPERBOWL 2019 DAMIEN WILLIAMS AUTOGRAPHED JERSEY: JSA COA. Text for pictures. \$135. 573-854-8132. Licking.

STAN MUSIEL CANCELED CHECK: full signature with authenticity \$55, txt for pictures. Mint condition. 573-854-8132

460 FORD MOTOR & TRANSMISSION: Out of motor home, 20,000 miles. \$500 Firm. 417-594-1656. Richland.

FORD 6610 DIESEL TRACTOR: Cab & Air, 75HP, with quick tach loader. \$21,750. 573-765-4406. Richland.

FOR SALE: 5' King Cutter Finish Mower, 5' Howse Bushhog, Bushhog straight blade King Cutter, Carry all King Cutter Furrow Blade. 573-528-5361.

2 GELBIEH BULLS FOR SALE: 12 & 14-months-old. \$2,400 each. 417-531-1048. Morgan.

TROLLING MOTOR: MotorGuide 71 lb. thrust, 24-volt. Excellent condition. \$150. 210-787-8222. Linn Creek.

MOTHER'S DAY SALE AT YODER'S GREENHOUSE: May 13th, discount on flowers. Free coffee and donuts. Also, a yard sale on same day. 6897 Highway 5. Hartville, MO.

1939 GRAHAM BRADLEY: Needs restored. Runs good, has side panels, narrow front end. New grill & half grill. Plus, parts tractor. \$3,500. 417-594-1656. Richland.

5X8 TRAILER: With wood over mesh floor and wood sides. Drop rear gate. Kept inside. \$1095 417-844-4319. Springfield.

BOBCAT 753 DIESEL SKID STEER LOADER: \$12,500. 573-765-4406. Richland.

GENIE 5519 LIFT: Low hours on rebuilt engine. Runs good. 417-741-0175 Jacob Stoltzfoos. Hartville, MO.

OMAR'S LOGGING

⇒ Oak & Walnut
⇒ Excellent Prices
Amish Owned & Operated



LEAVE MESSAGE: 417-741-0440
Hartville & Surrounding Areas

Pine Ridge Rustic
Log Home Building Supplies

Services Offered!

- Installation
- Pre-finishing available on interior & exterior
- Dealer for exterior stains



- Log Siding
- Beveled Siding
- Car Siding • Red Cedar
- Western Cedar • Pine

www.pineridgerustic.com
523 CR 2410 • Salem, MO 65560 • Ph: 573-729-7226

FOR SALE: Hay 4x5 bales \$55. I-Beam 4in.x6in. 20FT. 6in. long \$500 each. Used sheets tin 2FT.x14FT. \$2 a Sq. FT. Billy Cook Roping Saddle, Cowboy cut 17in. seat. Greenville, TX. \$1,500. 573-729-2874.

REMINGTON MODEL 241 SPEEDMASTER SEMI-AUTO 22: Make offer. 1-573-729-3325.

2001 F350 4X4 DUALLY: Reupholstered seats, new front tires & brand new 7.3 diesel engine. \$24,950. 417-254-1001. Edgar Springs.

2 ELECTRIC MOTORS: Diehl 1/3 horsepower and Wagner Electric 3/4 horsepower, includes 21 pulleys various sizes and widths. \$45. 210-787-8222. Linn Creek.

VINTAGE WORKING 1967 SINGER SEWING MACHINE: Special zigzag model 638 in cabinet with original instruction book. \$50. 210-787-8222. Linn Creek.

FOR SALE: D17 Allis Chalmers Tractor rebuilt motor series 2. \$2,200. No Sunday Calls. 417-733-2068. Buffalo.

WANTED: Motor for Equinox SUV 2011 Serial #2GNALDEC1B1280743. Pay cash. 573-636-8000. Jefferson City.

FISHING SEASON COMING: Get your rod and reels \$15 & up 417-589-8200

JOHN DEERE 6400 DIESEL CAB & AIR TRACTOR: 85H.P. \$19,500. 573-765-4406 Richland.

2017 JEEP RENEGADE: 57,000 miles, garage kept. 417-935-2635. Seymour.

PLAD PANTRY

DISCOUNT & SURPLUS FOODS FRESH PRODUCE LLC
417-532-4700



Stadium Brats.....	\$2.19	14 oz.
Pizza Seasoned Bagels.....	\$0.99	6 count
Roasted Garlic Hummus.....	\$4.99	4 lbs.
Reduced Fat Pork Sausage.....	\$1.59	12 oz.
Oats & Dark Chocolate Crunchy Granola Bars.....	\$2.99	17.88 oz.

1571 State Hwy 64 • Tunas, MO 65764
Hours: 8:30 a.m. to 5:30 p.m. • Closed Wed. & Sun.



Larry Heisel Rentals



HEISEL 573-779-1500
RENTALS SALES & SERVICE. Larry's Cell 636-432-9460

Crawler Loaders Excavators, Backhoes

Call Larry! **We Deliver!**

Rental Available in 636 or 573 Area Codes
573-779-1500

2005 RAM QUAD CAB CUMMINGS DIESEL: Automatic transmission, 4x4, long bed, 272,000 miles. Engine and transmission have low miles. \$15,500 or consider cash offer. 417-599-8089. Willard.

WE BUY AND SELL
new and used mobile homes



(417) 501-1061

RED AND BLUE HEELER PUPPIES: \$100 417-322-8027

2 FEMALE TOY SCHNAUZER/POODLE MIX: 417-664-5926. Lebanon.

2002 HONDA VTX: 1800 CC. 1 owner. 573-330-7094. Potosi.

SUPER M FARMALL: New 15 x 5 x 38s: for \$2,500 417-349-2908

1 M FARMALL: With rebuilt motor for \$1,800 417-349-2908

STANDARD POODLE PUPPIES: ACA, DOB 1-31-23. Miniature Australian Shepherd Puppies: ASDR, DOB 4-1-23. FB Emerald E Kennel. Text 417-718-9868. Macks Creek.

WHITE FRIGIDAIRE DISHWASHER: 1-year-old fits in 20" cabinet space. Works like new. \$250. 573-263-2682. St. James.

DUAL LOADER OFF D19 AC: Works fine. \$900. 417-321-1928. Osceola.

TWO 380/85R34 TRACTOR TIRES: \$175. 417-321-1928. Osceola.

AC 3 BOTTOM PLOW: Good. \$200. 417-321-1928. Osceola.

CASE FORKLIFT: Diesel. Will Run. \$1,000. 417-321-1928. Osceola.

JOHN DEER 920 DISCBINE: With rollers. \$7,500. 573-765-4406. Richland.

LAWN MOWING & YARD WORK SERVICES: 417-288-8123. Lebanon.

MASSEY FERGUSON 520 WHEELED DISK: 10FT. \$2,300. 573-765-4406. Richland.

JOHN DEERE MX10 PULL TYPE 10FT. BRUSHCUTTER: \$6,950. 573-765-4406. Richland.

RHINO 4 BASKET HYD. FOLD TEDDER: \$4,300. 573-765-4406 Richland.

IHC 475 HYD FOLD 18FT DISK: \$2,750. 573-765-4406 Richland.

2007 QUALITY BUILT SINGLE HORSE TRAILER: Good floor with mats, good tires. Nice clean trailer. \$3,500 or will consider cash offer. 417-599-8089. Willard.

ALLIS CHALMERS DIESEL 7G DIESEL TRACK LOADER: Good. \$13,000. 573-765-4406 Richland.

FRESH SHEEP MILK & CHEESE: For more info call 417-741.2186. Hartville.

WESTFIELD 10X61 GRAIN AUGER WITH DRAG HOPPER: \$2,850. 573-765-4406 Richland.

JOHN DEERE 2-BOTTOM 3-POINT PLOW: \$450. 573-765-4406 Richland.

MODERN 6FT 3-POINT BRUSH CUTTER: \$475. 573-765-4406 Richland.

CASE IH MD92 3-POINT DISK MOWER: \$5,250. 573-765-4406 Richland.

JOHN DEERE 854 ROUND BALER: Monitor, kicker, net wrap. Silage Special. Nice Late Baler. \$15,500. 573-765-4406 Richland.

NICE COUCH: \$200. 573-647-3139.

SMALL TOWN MAYOR OF WAYNESVILLE, MO: Political Adventures of the Ozarks by Luge Hardman, featuring small town politics and small-town life, featuring local photographers and local characters. \$9.50. 417-532-2045. Lebanon. (Leave message and phone number).

WEATHERED BARN WOOD SIDING: 10" wide. 573-729-7226. www.pineridgerustic.com Salem.

LOG SIDING: 2X8 Pine/Western Cedar www.pineridgerustic.com 573-729-7226.

2023

JUNKIN

for **TREASURES**

at the **Cowan Civic Center**

500 E ELm St. Lebanon MO 65536

FRIDAY 05/12/23 **&** **SATURDY** 05/13/23

10am-4pm **9am-3pm**

FREE ADMISSION

ANTIQUES-VINTAGE-BOUTIQUES-RESELL

HAND CRAFTED-FOOD TRUCKS & MORE

OVER 150 VENDORS

forkedroadevents.com



YOUR AD GOES HERE!

Add YELLOW Color For An Additional \$3 Per Reader Ad

All ads will include Phone Number (unless requested to be deleted by advertiser) and City Or Town, Phone Number with Area Code counts as one word. City or Town counts as one word.

RATE: 80¢ Per Word. All Classified Ads Require Payment Before Print.

(1) 80¢	(2) \$1.60	(3) \$2.40	(4) \$3.20
(5) \$4.00	(6) \$4.80	(7) \$5.60	(8) \$6.40
(9) \$7.20	(10) \$8.00	(11) \$8.80	(12) \$9.60
(13) \$10.40	(14) \$11.20	(15) \$12.00	(16) \$12.80
(17) \$13.60	(18) \$14.40	(19) \$15.20	(20) \$16.00
(21) \$16.80	(22) \$17.60	(23) \$18.40	(24) \$19.20
(25) \$20.00	(26) \$20.80	(27) \$21.60	(28) \$22.40
(29) \$23.20	(30) \$24.00	(31) \$24.80	(32) \$25.60
(33) \$26.40	(34) \$27.20	(35) \$28.00	(36) \$28.80
(37) \$29.60	(38) \$30.40	(39) \$31.20	(40) \$32.00

Buy 3 Weeks - Get 4th Week Free! (Must be same ad)

Place your Classified Ad TODAY!

417-532-9131 • 800-665-8875

Fax: 417-532-8140

Or Mail To: P.O. Box 192 • Lebanon, MO 65536

For your convenience we accept MasterCard, Visa, Discover or American Express



DEADLINE FOR CLASSIFIED ADS: FRIDAY 4:00PM!

Name _____

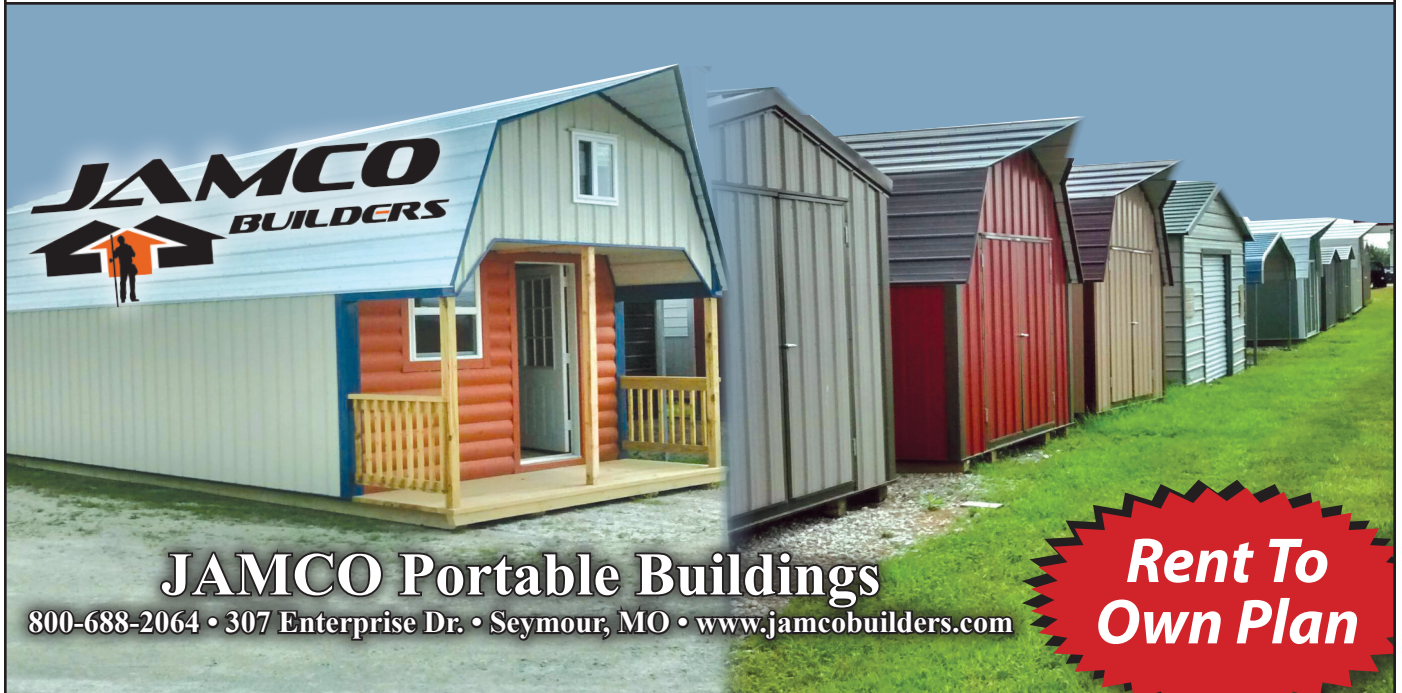
Address _____

City _____ Email _____

State _____ Zip Code _____ Phone _____

Ad Total \$ _____ X # Weeks _____ = Amount Enclosed \$ _____

Buildings • Hunter's Cabins • Lawn Furniture



JAMCO Portable Buildings
 800-688-2064 • 307 Enterprise Dr. • Seymour, MO • www.jamcobuilders.com

Rent To Own Plan

THE TIRES YOU NEED FOR ALL SEASONS

With brands like:



ATTEBERRY MFA TIRE & AUTO CENTER

333 E. BROADWAY • BOLIVAR, MO
DUANE ATTEBERRY • 417-326-6286



High horsepower.
High performance.
Low financing.



Save big on our L2501DT with Kubota loader. Part of our tractor lineup rated #1 for durability and owner experience in the U.S.* Stop in for a demo and to claim this offer today.

L2501 DT W/ KUBOTA LOADER **ONLY \$19,495**

0% APR FOR 72 MONTHS

VISIT US TODAY FOR THIS LIMITED-TIME OFFER



Quarles Supply

3251 S Springfield Ave
Bolivar, MO 65613
417-777-2391

KubotaUSA.com

0% Down, 0% A.P.R. financing for up to 72 months on purchases of select new Kubota L2501 DT equipment from participating dealers' in stock inventory is available to qualified purchasers through Kubota Credit Corporation, U.S.A.; subject to credit approval. Example: 72 monthly payments of \$13.89 per \$1,000 financed. Some exceptions apply. Terms subject to change. Offers expire 06/30/23. This material is for descriptive purposes only. Kubota disclaims all representations and warranties, express or implied, or any liability from the use of this material. For more information, see Dealer or go to KubotaUSA.com.

Progressive
FARMER
READER INSIGHTS