

FREE - TAKE ONE!

Vol. 30 No. 5

APRIL 27, 2023

417-532-9131

WEEKLY TRADER MAGAZINE



Find us on
Facebook

@myweeklytrader
AUCTIONS PG. 8

VISIT OUR NEW WEBSITE! MYWEEKLYTRADER.COM

TRUCK SEASON

GREAT DEALS ON A HUGE SELECTION OF SIERRA AND SILVERADO



WE WANT YOUR TRADE.

**ED MORSE
CHEVROLET
BUICK · GMC**

ROLLA

FORMERLY FAIRGROUNDS AUTO PLAZA

NEW NAME. SAME TEAM.

100 Fairgrounds Rd., Rolla, MO

573-364-1002

EdMorseChevroletBuickGMCRolla.com

MOWERS ON SALE NOW WHILE SUPPLIES LAST



SAVE UP TO \$1000



MODEL #5901906
REG PRICE \$7,699
SALE: \$7,199

MODEL #5902024
REG PRICE \$9,899
SALE: \$9,299

MODEL #5902034
REG PRICE \$15,999
SALE: \$14,999



MODEL #5901280
REG PRICE \$9,399
SALE: \$8,899



CALL US TODAY 417-859-4311



MT122H \$13,763



MT235E \$21,610



MT468CPS \$46,810



TYM TRACTORS

SAVE an ADDITIONAL \$1250 Off the T474, T494 and T574 GEAR Tractors in April



T254HST \$15,455



**T474g \$26,164
\$24,914**



**T574g \$30,119
\$28,869**

www.wctfarmandlawn.com



WCT Farm & Lawn
417-859-4311
SALES • SERVICE • PARTS
3299 E. EVERGREEN ROAD
STRAFFORD, MO



HUSTLER®



**AT YOUR LOCAL
HUSTLER DEALER**

*Offer applies to Hustler Raptor Series Zero-turn mowers only. Valid 4/1/23 to 4/30/23, only at participating US dealers. Inventory varies by dealer; offer subject to availability at individual dealer. May not be combined with any other discount or offer and does not apply to prior purchases or purchases made before or after the promotion dates. Discount does not apply to tax, shipping and handling, or setup. If you return the merchandise, the value of this promotion is not refunded or credited to your account. No cash value, except where prohibited by law.

For Outstanding Products & Service
AGRI-ENTERPRISES

1-1/2 Miles South Of Licking, MO On Hwy 63
573-674-2203 • 1-800-653-7152 • www.agri-enterprises.com

SPRING SALES

20 EVENT 23

SAVE \$200 OR MORE

ON RAPTOR MOWERS

SMALL TOWN MAYOR OF WAYNESVILLE, MO: Political Adventures of the Ozarks by Luge Hardman, featuring small town politics and small-town life, featuring local photographers and local characters. \$9.50. 417-532-2045. Lebanon. (Leave message and phone number).

POSTER BED: \$150. 417-741-1232.

WEATHERED BARN WOOD SIDING: 10" wide. 573-729-7226. www.pineridgerustic.com Salem.

LOG SIDING: 2X8 Pine/Western Cedar www.pineridgerustic.com 573-729-7226. Salem.

TINY HOMES – Missouri Franchise 573-881-7965

BASEMENT READY USED DOUBLE-WIDE – 3 bdr, 2 bath, Financing Call for info 573-657-2176 amegamobilehomes.com

DISCOUNT NEW MOBILE HOMES – we will beat any price on any home GUARANTEED, Financing, 573-499-9993 columbiadiscounthomes.com





BARN OF MISSOURI BOOK: Storehouses of History, 168 pages, hardback, \$12.50. 417-532-2045. Lebanon. (Leave message and phone number).

BASEMENT READY TRUE MODS- instock ready for delivery 573-657-7040 chateauhomes.net

I BUY.....used mobile homes. Call or text 573-338-6250 or email GregS.CDH@outlook.com

TIM'S USED CARS

(573) 341-3828 • 1334 South Bishop (Hwy. 63) • Rolla, MO
Next to Hwy CC • www.tims-used-cars.com

 <p>2015 CHEVY 2500 HD LT, Crew cab, short bed, 4x4, 6.0 V-8, power equipped, 156,xxx Miles Only \$24,900</p>	 <p>2016 CADILLAC ESCALADE LUXURY AWD, 6.2 V-8, loaded w/ options, 138,xxx Miles Only \$29,800</p>
 <p>2016 CHEVY 3500 HD Crew cab, long bed, 4x4, 6.6 diesel, power equipped, 115,xxx Miles Only \$35,900</p>	 <p>2013 FORD FUSION SE 4 cyl auto, power equipped, 148,xxx Miles Only \$8,500</p>

LARGE SELECTION OF CARS, TRUCKS, SUVs & VANS!

FIXED KNOT FENCE

- Deli Sandwiches
- Homemade Yogurt
- Homemade Bread
- Glass Bottle Milk
- Cheese & Spices
- Bulk Foods
- Hydraulic Hoses
- Electric Fence Supplies
- Stay-Tuff Fence
- Johnson & Ritchie Waterers
- Gates & Panels

VISIT YOUR ONE STOP SHOP
FARMERS QUIK STOP
5 mi. East of Lebanon on Hwy 32 • 417-991-1938

0% for 4 Years

HEATMOR
Outdoor Wood Furnace
 as low as **\$238** per month
HEATMOR MIDWEST
 Licking, MO 65542 • 573-674-2962

REGISTERED HEREFORD & ANGUS BULLS: Home raised. Some Show-Me Select Qualified. 573-701-7828. Belgrade.

LIGHTLY EXPERIENCED GOLF BALLS: \$3 a dozen. 417-818-3469. Strafford.

SLIGHTLY USED PUZZLES: Will sell or trade. 417-818-3469. Strafford.

1500 VINTAGE WRISTWATCH DIALS: \$100. 573-764-3517. Call in PM.

OMAR'S DOZING

- ⇒ Clear land
- ⇒ Clean up woods
- ⇒ Make driveways
- ⇒ Clear property lines
- ⇒ Build ponds

Amish Owned & Operated

LEAVE MESSAGE: 417-741-0440
 Hartville & Surrounding Areas

LIONEL TRAIN SET: Steam engine, tender, caboose and other car, track, and transformer. \$195. 573-364-7465. Rolla.

MODEL 1911 FRAME 8-SHOT C02 PISTOL: Like new, in box with C02 cartridges, 4 clips, pellets & all paperwork. \$95. 573-364-7465. Rolla.

MAC'S TIEDOWN STRAPS: Like New. \$80. 417-260-0941. Raymondville.

KUSTER LOGGING
BUYER of Standing Timber
Oak and Walnut
Dozing Now Available
417-259-0047
 References Available



1970s KIDS METAL STOVE & FRIDGE: Nice Lithographic paint, 18" wide x 36" high. \$75. 573-364-7465. Rolla.

3 GENTS WITTNAUER WRIST WATCHES: 10k gold + 23J. All \$200. 573-764-3517. Call in P.M.

110 PORCELAIN POCKET WATCH DIALS: Perfect for arts & crafts. \$100. 573-764-3517. Call in PM.

1890 GOLD TESTING KIT: Glass acid beakers + antique wooden case. \$100. 573-764-3517. Call in PM.

OFFICIAL TRACTOR OF TOUGH™

INTRODUCING THE ALL-NEW 5100 SERIES



NEW MAHINDRA TRACTORS

1626 4WD & LDR 26HP	IN STOCK
2638 4WD & LDR 38HP	IN STOCK
2645 4WD & LDR 45HP	IN STOCK
4550 4WD & LDR 48 HP	IN STOCK

USED TRACTORS

MAHINDRA M85P 4WD CAB LDR	29,500
MAHINDRA 2638 38HP 4WD LDR	21,000
MAHINDRA 2638 38HP 4WD LDR	20,000
MAHINDRA 1635 35HP 4WD LDR	19,500
MF 2640 90HP CAB	17,500
MF GC1725M 24HP 4WD LDR	13,000
AC 7010 106 HP CAB	9,500
MF 2675 100HP CAB LDR	9,500
AC 175 62 HP LDR	8,500
AGCO ALLIS 4660 52 HP	6,500
MF 1085 81HP	6,500
FORD 2000 31 HP	3,500
MF 135 36 HP	2,750

USED ROUND BALERS

NH RB450 4X5 MESH	24,000
NH RB780A 5X6 MESH	7,500
HESSTON 550 4X6	2,500
HESSTON 560 5X6	2,000

USED MISC.

SITREX 8 WHEEL RAKE	1,750
LELY 8 WHEEL RAKE	1,750
INTERNATIONAL 10FT CUTTER	1,250
BH RDTH 60 FINISH MOWER	850
RHINO 5FT FINISH MOWER	850
LAND PRIDE 5FT CUTTER	500
ROLLINS 5FT BLADE	250
KING CUTTER BEDDING PLOW	200

Marshfield Machinery Inc.
 222 E. Madison • Marshfield, MO 65706
 417-859-2117 • www.marshfieldmachinery.com

*2018 data including all Mahindra group brand sales. MahindraUSA.com © 2020 Mahindra USA Inc.

Mahindra
Rise.

Marshfield Machinery Inc.
 222 E. Madison
 Marshfield, MO 65706
 417-859-2117
www.marshfieldmachinery.com

HARLEY FAT BOBS: Custom flame paint w/ gas caps + lines. \$100. 573-764-3517. Call in P.M.

COLT REVOLVER DEALER CATALOGS: Circa 1950's + 1960's. All for \$100. 573-764-3517. Call in P.M.

HARLEY 45 SOLO: factory rear brake drum + sprocket. \$150. 573-764-3517. Call in PM.

HARLEY PANHEAD DISTRIBUTOR: original, chrome + complete. \$125. 573-764-3517. Call in PM.

1962 HARLEY SPORTSTER 900CC: original distributor. \$50. 573-764-3517. Call in PM.

1963 CHEVY SHOP MANUAL: \$20. Vintage Chevrolet 1963-1974 V8 & 6-cylinder manual \$30. Chilton's manual American Volkswagen 1969-1976. \$35. 417-260-0941. Raymondville.

HEARTH CRAFT GLASS BI-FOLD FIREPLACE DOORS PURCHASED AT FORSHAW'S FIREPLACE: Antique brass. \$160 obo. 636-239-2695 or 314-560-5700. Washington.

FERGUSON DEALER SHOP MANUAL: Covering TE-20, TO-20 & TO-30 Model tractors. \$40. 636-239-2695 or 314-560-5700. Washington.

NEW SQUARE D RAINPROOF 50AMP DISCONNECT: \$160. 636-239-2695 or 314-560-5700. Washington.

RUBBER & LEATHER BOOTS AND 5-Buckle OVER SHOES: Men's 11, Women's 7, some insulated. \$15-\$40 obo. 636-239-2695 or 314-560-5700. Washington.

ROUND TABLE: \$40. 417-741-1232.

FIRST GEAR KILIMANJARO MOTORCYCLE COAT: XL, but runs smaller. Zip out liner, Kevlar padding on shoulders & elbows, vented, rainproof. Like new. \$95 FIRM. 417-260-0941. Raymondville.

2 GOODYEAR WRANGLER TIRES: Kevlar LT245/70R17, all terrain, \$100 for the pair. 417-417-260-0941. Raymondville.

VINTAGE WORKING 1967 SINGER SEWING MACHINE: Special zigzag model 638 in cabinet with original instruction book. \$60. 210-787-8222. Linn Creek.

Starnes Auto LLC
 22115 Rt. 66 • Lebanon, MO 65536
 417.718.2707 Cell
 417.588.3159 Office
 www.starnesauto.com



WE'RE HIRING

PAINT PREP & REBUILDERS

Call Amanda or Alva for more info.

WE DO ALIGNMENTS!

Buildings • Hunter's Cabins • Lawn Furniture

JAMCO Portable Buildings
 800-688-2064 • 307 Enterprise Dr. • Seymour, MO • www.jamcobuilders.com

Rent To Own Plan

USED JET HOME POLLUTION CONTROL PANNEL: Model CP700. \$65. 636-239-2695 or 314-560-5700. Washington.

FOR SALE: Transmission for 56 & 06 series International tractors. \$675. 636-239-2695 or 314-560-5700. Washington.

460 FORD ENGINE BLOCK: \$100. 573-308-5884. Rolla.

RAINBOW VACUUM CLEANER: Excellent Condition. \$200. 417-260-0941. Raymondville.

FOR SALE: 2 Dayco motorcycle covers for Harley or other big bikes. \$50 each. 417-260-0941. Raymondville.

DARDEN PROFESSIONAL TIMBER HARVESTING, BUYING STANDING TIMBER: Great prices, improve wildlife habitat and improve forest health. State Certified & Fully Insured! 573-247-4808. Salem.

BOX OF SILVER-PLATED SILVERWARE: at least 75 years old \$60 417-260-0941

Is Your Log Home Starting To Look UGLY?

Professional Staining & Repair
 (Log Homes & Wood Siding)

Call **Pine Ridge Rustic**
 Log Home Building Supplies **573-729-7226**

www.pineridgerustic.com

THREE SHEPHERD'S HOOKS: To hang potted plants. Black wrought iron. 6ft. 7in. when in ground. One is a double & two are single hooks. \$50. 636-239-2695 or 314-560-5700. Washington.

25 SECLUDED ACRES: Powerlines on two sides of property. One hour from Springfield. Hunter's Paradise. Stream through property. Cash Only. \$8,000/per acre. Must take all. 00417-741-1232.



Wright Spray Foam Insulators, LLC
Commercial & Residential
Call for **FREE** Estimates!

Ervin Gingerich 417-926-2052
B. Eli Yoder 417-746-4932



CENTRAL BOILER **CLASSIC EDGE** TITANIUM HDX
26% Tax Credit on EPA certified Central Boiler Classic Edge HDX models and installation. Call today to learn more!

Outdoor Wood Furnace Central Boiler.com

Yarborough Equipment Sales & Services, Inc.
9776 E. State Hwy 00 • Strafford, MO
417-736-2303 • 1-866-286-6901 • www.yarbeq.com

The Classic Edge 360, 560 and 760 HDX are U.S. EPA Certified

OMAR'S LOGGING

⇒ Oak & Walnut
⇒ Excellent Prices
Amish Owned & Operated



LEAVE MESSAGE: 417-741-0440
Hartville & Surrounding Areas

ANTIQUE HOG OILER: \$35. 573-308-5884. Rolla.

TRAILER HOUSE RIMS: \$10 each. 573-308-5884. Rolla.

HIGHPOINT GREENHOUSE: Open for the season. Garden seeds, vegetable and flower plants, seed potatoes, onion sets and plants, herbs, etc. 417-741-2793. 9337 Warner Rd. Hartville.

NOW BUYING STANDING RED AND WHITE OAK TIMBER: All slash will be trimmed to lay flat or placed in tidy piles for wildlife. No scarred-up trees or ruts from heavy logging equipment. We use low impact compact track loaders to minimize disturbance in your forest. Missouri Land Service LLC. 417-991-9280.

BUYING OLD BARNs AND LUMBER: 417-298-3475 Leave Message.

NEED YOUR CDL????? We furnish the truck & trailer. We teach all requirements for ELDT & skills test. We go to the state highway patrol with our truck. Requires only 2 days of in person training. Much cheaper way to get CDL. Jefferson City MO, Willow Springs MO, Strafford MO, 573-353-2853. For more info www.capitaltruckdrivinginstitute.com

POOL TABLES: Installations, moves, recovers, repairs, accessories, etc. 573-646-1700.

FULLBLOOD YEARLING RAMS: One Dorper and two St. Croix. \$500 each. Call 417-458-1771.

METAL ROOFS: We repair leaky metal roofs with warranty. Also, flat roofs. Very affordable. Cover all of state. 573-338-1148. Jefferson City.

WANTED NEW HOLLAND SKID STEER 865: Any Condition. Call Bob 573-697-5143.

PEMBROKE WELSH CORGIS: D.O.B. 1/12/23 & 1 D.O.B. 7/20/22. U.T.D. on shots & wormer. \$300. 417-741-2949. Grovespring.

PAIR OF CAR OR PICKUP RAMPS: 70" tall on end and 16" wide \$45 417-260-0941

NEIGHBORHOODS HOME IMPROVEMENT STORE: 417-533-5080. Lebanon



Meadowview Dutch Market

Bulk & Surplus Groceries • Prices Subject to Stock on Hand

Call to Order
417-993-3017

Sale Dates April 26th, 2023 to May 2nd, 2023 while supplies last!

<p>DELI SPECIAL</p> <p>HAVARTI CHEESEREG. \$5.35 LBSALE \$4.85 LB</p> <p>CANADIAN BACONREG. \$6.49 LBSALE \$5.99 LB</p> <p>TRY our Fresh Homemade DELI Sandwiches: TURKEY, HAM, ROAST BEEF, ITALIAN, BLT'S, PULLED PORK AND BLT PULLED PORK (MADE YOUR WAY!) COME IN OR CALL to order! ALSO Custom Deli trays! Veggie OR FRESH Meat-N-Cheese!</p>			<p>SPECIAL BONUS SMOKED BACON</p> <p>\$2.49 OR \$47.99</p> <p>LB. 24 LB CASE</p>
<p><i>Applewood</i> Bacon Jerky</p> <p>\$1.99 2.5 OZ.</p> 	<p><i>Original</i> Corn Nuts</p> <p>\$1.50 18-17 OZ.</p>		<p><i>Cremeclle</i> Brie Cheese</p> <p>\$5.99 48 OZ.</p> 
<p>12" Sausage Pizza</p> <p>\$2.99</p> 	<p><i>Miracle</i> Whip</p> <p>\$1.99 30 OZ.</p> 	<p>50# Russet Potatoes</p> <p>\$17.99</p> 	

MEADOWVIEW DUTCH MARKET
417-993-3017 Hours: Mon-Thurs 8-5pm
Fri 8-6pm • Sat 8-5pm
23 Miles West on Hwy 64 • Right on T Hwy
9 miles • Left on E Hwy 1 mile on Left

NOW ACCEPTING CREDIT, DEBIT CARDS & EBT

DUTCH COUNTRY STORE, LLC
573-378-4395
Hours: Mon-Thurs 8-5pm
Fri 8-6pm • Sat 8-5pm
5 miles East of Versailles off Hwy C on Kelsay Road

WE BUY AND SELL
new and used mobile homes



(417) 501-1061

Fly Free with AFC.



AFC
ALTOSEID FLY CONTROL
PRODUCTS

KENT

Kropf Feeds

Located in the Heart of the Amish Mennonite Community!
417-345-8600
19 Prairie Lane, Buffalo

Larry Heisel Rentals

Have Rock? How about 3,500 lbs. of Hammer



Call Larry!
573-779-1500
www.larryheiselequipment.com
Rental Available in 636 or 573 area code

We Deliver!

9 PAIRS OF LADY'S COTTON KNIT LONG PANTS: Size XL. \$3 each or all for \$25. 417-288-6714. Lebanon.

DOXIN PUPPIES: Registered, shots & wormed. 573-247-6273. Salem.

COWBOY CORGIS: D.O.B. 1/9/23. UTD on shots & wormer. \$50. 417-349-0831. Hartville.

2010 FORD ESCAPE: 249,000 miles on body & 160,000 on engine. Good tires, battery, heat, air & cruise. All windows & locks work. Runs & drives very good. \$5,000 OBO Cash. 573-435-6987 Leave Message. Edgar Springs.

'86 CORVETTE PROJECT CAR: Will need to be trailered. Ran good until 2 1/2-3 years ago. Chipmunks ate the wire harness. \$1,250 OBO Cash. 573-435-6987 Leave Message. Edgar Springs.

CUSTOM HAY HARVESTING: or put up in shares. 4x5 Net Wrap Tight JD Bales. *Reasonable Rates* Reliable Service Larger Acreages Desired. Book early to beat the rush. For a Free Quote call Josh *573-247-8715* Green Meadows Farm: Servicing Dent, Texas, and surrounding counties.

FRUIT TREES FOR SALE: Apple, Peach, Pear & Plum. \$20 each. 417-664-0742. Lebanon.

SADDLES FOR SALE: BILLY COOK
16.5" Reiner \$600 **HEREFORD** 16" Bear Trap \$400 **CIRCLE Y** 16.5" Foxtrotter Saddle \$375 **BIG HORN** 16" saddle \$125. Conway, MO 417-718-5347.

MOTHER'S DAY SALE 10% OFF ALL WEEK: May 8-13 at Highpoint Greenhouse. Large variety of flowers to choose from. Gift certificates!! 417-741-2793. 9337 Warner Rd. Hartville.

EXHAUST MANIFOLD FOR 55/56 CHEVY CAR: \$100 or trade. 573-734-2822.

TRUNK LID FOR 55/56 CHEVY CAR: \$50 or trade. 573-734-2822.



Over 500 Attachments IN STOCK!
We ship **NATIONWIDE!**

Craig Equipment
2681 W. Pearce Blvd | Wentzville, MO 63385
636-856-8555
www.CraigEquipment.com
*Availability & Price subject to change without notice

 <p>2022 Deere 317G *8* available, UNUSED, Cab&OROPS.....starting at \$61,900</p>	 <p>2022 Deere 333G *HiFlow* UNUSED, LOADED!.....starting at \$99,995</p>		
 <p>Deere 312GR 51hp, LOW hours 910hr, OROPS, NEW Tires.....starting at \$26,900</p>	 <p>2015 Kubota SVL90 74hp, AC/Cab, Joystx, 2sp, PwrBktChngr.....\$45,500</p>	 <p>2010 Gehl CTL75 83hp, 1435hrs, AC/Cab, Joystx, 2sp.....\$43,500</p>	 <p>2015 Takeuchi TL10 *HiFlow* 92hp, 2050hrs, AC, PolyDr, Joystx.....\$51,500</p>
 <p>2021 Bobcat T870 *HiFlow* 540hrs, AC/Cab, Joystx, Warranty!.....\$89,900</p>	 <p>Bobcat T770 *4* available, HiFlow AC/Cab Joystx.....starting at \$55,500</p>	 <p>2006 Bobcat T300 81hp, 2992hrs, AC, Joystx, NICE Trax.....\$44,900</p>	 <p>2003 Bobcat MT50 19hp, 1268hrs, Ride on platform\$13,900</p>

Wheeler Livestock Auction Special Stock Cow Sale Osceola, MO



SAT., APR 29, 2023 • 6:00 P.M.

Expecting 75 Breeding Bulls - 1000 Bred Cows, Pairs & Open Heifers

Seedstock Plus-

8 Blk Balancer bulls 18-20mo, Homo Blk & Homo Polled.

Gary Mitchell-

2 Reg Blk Gelb bull 2-2 1/2 y/o. Best of breeding.

Carl Johnson-

6 Purebred Char bulls 18mo 1,500lbs, 70-80lbs BW, Embryo transplant. Outstanding bulls & gentle.

Bruce Bradley-

2 Char bulls 18mo. 2 SimAng bulls 18mo. 2 Red Ang 18mo. 1 Char & Red AngX. All bulls are registered w/ moderate BW, gentle & complete health program.

Peterman Farm-

1 Red Bal bull 2 y/o 1,600lbs. Good bull with a lot of growth.

A&E Nogal-

10 Red & Blk Gelb Balancer bulls 20mo. Home-raised & gentle.

Tex Nall-

3 Reg Hereford bulls 2 y/o, 2 polled & 1 horned. Home-raised.

Frank Barnitz-

2 Reg Hereford bulls, AI sired, 18mo, LBW & CE bull.

Sensenig-

31 Reg Red Gelb bull 3 y/o CE & BW-60lbs.

B&A Livestock-

70 Fancy purebred Grey Brahman hfrs 750lbs & open. These hfrs are all sisters, gentle, w/ complete health program. Ready for bull.

Ray Farms-

75 Fancy Red Ang cows 4-6 y/o 1,250lbs w/ 75 Red Ang calves 3-500lbs. Cows bred back to Red Ang bulls. 4 Red Ang bulls 3 y/o 1,600lbs. All cows & calves worked.

Darrel Watson Dispersal-

6 Blk 2 y/o hfrs w/ 6 blk calves 400lbs. Cows bred back to Hereford. 12 horned Hereford hfrs 2 y/o w/ 12 Herf calves 200lbs. Heifers are open and

of Ridder Ranch Genetics. 10 Horned Herf cows 5 y/o w/ 10 BWF calves, 450lbs. Cows bred back to Ang bull. 60 BWF cows 3-7 y/o w/ calves up to 500lbs. Cows bred back to Ang bull. This is an outstanding set of cows & calves. Selling due to health reasons.

Zimmerman Farm Dispersal-

40 Blk cows 1,300lbs 4-SS. 22 Red cows 1,300lbs 4-SS. The above 62 cows are bred to Red & Blk Judd Ranch bulls. Cows will calve Sept 15th for 60 days.

Twin Oaks-

61 Char & CharX cows 4-6 y/o, 1,300lbs w/ 40 calves up to 400lbs. Cows & calves all worked & tagged to match cows, bred back to Char or Red Gelb bull.

Gordon Farm Dispersal-

40 Blk Ang cows 3-6 y/o w/40 Blk calves weighing 350lbs. Cows bred back to Blk or Horn Herf bull. 35 Red Ang cows 4-7 y/o w/ 15 Yell calves, 350lbs. All cows bred to Char bull. Good set of cows all worked & ready to go. Sold Farm is the reason for selling.

Ray Welch Dispersal-

60 Mix cows Blk & CharX 3-6 y/o 1,150lbs w/ 45 calves up to 300lbs. Cows bred back to Char or Ang bull. Selling due to lost lease.

Mike Cooseman Dispersal of Aged Cows-

43 Blk SimAng cows 8 y/o 1,400lbs. All cows home-raised & very good calf raisers. Bred to Top bulls, retaining hfrs just selling older cows.

Roger Dreier-

9 Mix cows 3 y/o w/ 9 Blk calves, 300lbs. 7 Mix cows 6 y/o w/ 7 Blk calves 300lbs.

Leinbach Farm-

13 Red Bal cows 2-4 y/o w/ 13 calves, 200lbs. 1 Red Ang cow 3 y/o bred 3rd period. 1 reg Red Gelb bull 3y/o. 1 Blk Bal bull 2 y/o.

DeWain Witt-

20 Red & Blk Gelb cows 3-6 y/o, bred 2nd to Bal bull. 8 Gelb Balancer cows w/8 calves, 400lbs,

calves worked & cows bred back to Gelb bull. 1 hfr 2 y/o AI bred 2nd period. 4 hfrs open, 800lbs pelvic measured. 10 cows bred 3rd to Gelb bull.

Kody Norris-

40 Blk & Red cows 3-6 y/o, 1,300lbs w/ 25 calves up to 300lbs. Rest bred 2nd & 3rd to good bulls.

Dallas Self-

6 Blk hfrs 2 y/o w/ 6 calves 150lbs. Hfrs are open. Good gentle hfrs & calves.

Berning Land & Cattle-

5 Blk hfrs 1,050lbs, bred 3rd to Bal bull. 5 Red hfrs 1,050lbs, bred 3rd to Bal bull. Good hfrs home-raised & gentle.

D&M Cattle-

18 Red & Red Baldy cows 4 y/o 1,200lbs. Bred 2nd to good bulls.

Ridgeview Ranch-

3 Fancy Blk hfrs 1,100lbs, bred 3rd to Worthington Ang CE bull-CE 12. 1 Blk cow 5 y/o 1,300lbs, w/ Beefmaster calf 200lbs.

Parrott Farm-

30 Bk Ang & CharX cows 3-7 y/o w/ 12 calves. Red bred 3rd to good bulls. All cows home-raised, gentle, w/ complete health program.

Brush Creek Farm-

20 Red cows 4-6 y/o 1,250lbs. Bred 2nd & 3rd to Char bull.

Bob Cambell-

12 Blk cows 6-SS 1,300lbs. Bred 2nd & 3rd to Lucas bull.

Roeder Farm-

7 Blk & BWF cows 2-4 y/o, 1,100lbs, bred 2nd to Blk or Red Ang bull.

Doug Boswell-

4 Gelb cows 3-7 y/o, 1 Blk & 3 red. Bred to Justamere Gelb bull. Good calf raisers.

Picture and video of consignments can be viewed on our website and on Facebook.

SPECIAL WEAN/VAC FEEDER SALE MAY 4TH & 18TH MAY STOCK COW SALE-MAY 27TH



Wheeler Livestock Auction, Inc.

Osceola, MO 685 SE 13 Hwy., PO Box 560 BARN 417-646-8102

Byron Wheeler-417-777-0897 • Les Tennis-417-466-8786
Red Whistance 417-276-7909 • Burleigh Wheeler-417-840-6561
Darwin Hearting-417-296-1029 • Kevin Wade-660-492-3279
Tim Sherrer 573-855-1951 • Lyndon Ropp 918-325-1616

Barn Manager: Austin Shelby 417-309-1350

Office Manager: Sarah Wheeler, 417-399-4947

Marketing Manager: Sue Hemenway 417-839-9316

Bid online on CattleUSA www.wheelerlivestock.com • Like us on Facebook-Wheeler Livestock Auction

Sam **CRAWFORD AUCTION SERVICE** LLC
ESTATE AUCTION

Will sell the following North of Lebanon, MO at 26740 Pelican Drive. From Jct. 5/64 North on Hwy. 5 1 mile to Hwy. YY, then East 1.3 miles to Pelican Dr. then North 1.2 miles.
 Watch for Auction Signs.

WEDNESDAY, MAY 10TH, 2023 - 10:00 AM

HOUSEHOLD - VEHICLES - TRACTORS - MACHINERY - GUNS - TOOLS - MISC.

Household

Tools & Misc.



- 4 Pc. Bedroom Set, Full
- 2 - 3 Pc. Bedroom Sets, Full
- Dining Table & 6 Chairs
- 3 Recliner/Rockers
- 2 Swivel Rocker/Recliners
- 2 Wing Back Livingroom Chairs
- Couch & Loveseat • Hide-A-Bed
- Flat Screen TV & Stand
- Sofa Table, Coffee Table, End Tables Other Small Tables
- Maytag Washer & Dryer
- Singer 301A Sewing Machine & Cabinet Small Chest
- Refrigerator
- Sears Upright Freezer • Older Chest Freezer Lamps,
- Wall Decor • Fans, Heaters
- 8 Chrome Stacking Chairs
- Folding Chairs • Lawn Chairs
- Antique Vanity & Sofa Table
- Oak School Desk • Plastic Storage Shelves Lg. Metal
- Storage Cabinet
- Good Asst. Small Kitchen Appliances
- Lot Asst. Pots, Pans, Utensils
- Granite Pans • Some Cast Iron
- Set Pyrex Mixing Bowls • Lot Corningware
- Lot Misc. Glassware • Fruit Jars • Figurines Lot
- Bedding • Some Quilts • Crochet Items Set Salem
- "Maple Leaf" China
- Lot Louis L'Amour Hardback & Paperback Books
- Luggage • Other Misc.

- 16 Gal. Wet/Dry Shop Vac
- John Deere LX 280 Lawn Tractor, 18 HP Front
- Tine Tiller • Chipper/Shredder
- 2 Push Trimmers • Push Lawn Mower Good
- Asst. Wrenches, Hammers, Power Tools •
- Handsaws • Braces & Bits • Scythe
- Long Handle Tools
- Elect. Power Washer • Yard Cart
- Stihl 250 Chainsaw • Stihl Trimmer Push Garden Plow • Garden
- Cart Ratchet Fence Stretcher • Tub
- Nails, Bolts, Oil • Lg Chains & Booms 2 Galv. Water Cans • 2
- Wellbuckets Wooden Boxes • 3 Gal. of Buttons
- 5 - 10 Gal. Milk Cans • Ladders
- 2 Wood Nail Kegs • Kid's Sled
- Old Harness & Collars • Old Bicycle
- 2 Red Wagons • 2 Implement Seats Set of Lockers (6) • Gas Cans
- Some Metal Ammo Boxes
- MFA 5 Gal. & 1 Gal. Can
- 500 Gal. Propane Tank
- Some Steel Posts • Some Lumber
- Roll 48" Woven Wire • Some Scrap Iron Pile 50+ Sheets Used
- Metal Roofing Wood Pick-Up Stock Rack

- 4-5 Farm Gates • Old Squeeze Chute 7-8 Round Bales Hay, In
- Barn 4 Yrs.
- 6-8 Jts. 6" Sch. 40 Plastic Pipe, Perf. Old 6 Cyl. Motor
- Old Field Tiller, 2 Row Planter, McCormick Sickle Mower, Model T
- Frame, Other Misc.

Vehicles

'05 Mercury Grand Marquis LS, 45K, Leather, Nice, Garaged; '85 Mercury Grand Marquis, 126K, Clean & Good; Garaged '94 Ford F150, V-8, Auto, 4x4, Over 100K Miles

Tractors & Machinery

John Deere 2630, Diesel, Canopy, Running By Sale Day; IH 354, Gas, Live Power, Shows 3120 Hrs., Runs Good; John Deere 260 Disc Mower, 7'; 2 - Allis Chalmers Round Balers (1 White Top); 2 - John Deere 694 Side Rakes; 3 Pt. IH 6' Brushcutter; 3 Pt. Ford 2 Bottom Plow; 3 Pt. Scoop; 3 Pt. HD 6' Disk; Ford 3 Pt. 8' Field Tiller; Ford 3 Pt. 2 Bottom Disc Plow; 3 Pt. Carry-All; 2 - 3 Pt. Bale Spears; 3 Pt. 110 Gal. Sprayer w/Boom, Good 8' Chain Harrow 2 Section harrow; 3 Pt. 6' Blade; Cyclone 12V Seeder; 60's IH Pick-Up Bed Trailer; Wagon Gear; 2 Bale Rings; Neck Over Gooseneck Stock Trailer, 18' Bar Top, Sheddged; Bumper Hitch 18' Utility Trailer, Sheddged; Bumper Hitch 10' Utility Trailer, Mesh Floor & Ramp, Sheddged

Good auction with lots of interesting items. Great property in he county. Loader on site day of sale.

Sam
CRAWFORD LLC
Auction Service

1944 **CELEBRATING 79 YEARS** 2023
 STARTING 79 YEARS OF SALES & SERVICE

TERMS: Cash or good check. Nothing removed until settled for. Not responsible for accidents. Lunch available. Statements made day of sale take precedence over printed matter. All items sell as is. No warranties given or implied.

417-998-6629
 Cross Timbers, Mo.

CrawfordAuctionService.com



Sam
417-328-9137

Chase
417-399-1904

Chance, CAI
417-298-1751

Tom Poynter
Jack Lancaster

DARRELL & DOROTHY HARRILL ESTATE

HELLING 34TH ANNUAL SPRING FARM MACHINERY CONSIGNMENT AUCTION SUNDAY APRIL 30TH 2023 9:30 AM AUCTION HELD AT HELLING FARM 3548 HWY C LESLIE, MO 63056

LOCATION: FROM HERMANN MO TAKE HWY 100 15 MILES TO NEW HAVEN MO .THEN TURN RIGHT ON HWY C GO 8 MILES TO FARM ON LEFT HAND SIDE. FROM GERALD MO TAKE HWY C 4 MILES TO FARM ON RIGHT. FROM UNION MO TAKE HWY 50 WEST 17 MILES THEN TURN RIGHT ON HWY C GO 3 MILES TO FARM ON RIGHT HAND SIDE. THIS IS A PARIAL LISTING WATCH FOR UPDATES AND PHOTOS ON WEBSITE

TRACTORS & INDUSTRIAL EQUIPMENT

JD 555 B HIGH LIFT
8N FORD TRACTOR W/ SIDE DISTRIBUTOR
JD 60 W/3PT & POWER STEERING
TO-35 TRACTOR
JD MT TRACTOR
MF 135 TRACTOR
JD 520 TRACTOR PS. 3PT
IH 424 TRACTOR
FORD 601 TRACTOR
JD 2010 TRACTOR
MAHINDRA 454 DIESEL
NEW HOLLAND WORK MASTER 70 110 HRS W/ LOADER 4X4 TRACTOR
656 IH HYDRO TRACTOR
AC C TRACTOR
MASSEY HARRIS 44 SPECIAL
MF 65 TRACTOR
JD 4010 TRACTOR
9N FORD TRACTOR
IH CUB W/BELLY MOWER

SEVERAL MORE TRACTORS BY SALE DAY AUCTION NOTE COMPACT TRACTORS WILL SELL IN LAWN AND GARDEN

HAY EQUIPMENT

NEW IDEAL HAY RAKE
NH 256 HAY RAKE
JD 14T SQUARE BALER
FORD 7FT SICKLE MOWER 3PT
3PT BALE FORK
ROUND BALE FEEDERS
NH 258 HAY RAKE
HAY ELEVATOR
NH 469 HAYBINE 9FT
HAY FORKS

3PT BALE SPEAR
WAGON RUNNING GEAR
NH 488 HAYBINE 9FT
NH 451 SICKLE MOWER
NH 849 ROUND BALER
JD PULL TYPE RAKE

FARM EQUIPMENT

6FT BRUSH HOG 3PT
POST HOE DIGGER 3PT
7FT BLADE 3PT
BRAND NEW GRAPPLE BUCKET
SET FORD WHEEL WEIGHTS
10 FT BRUSH HOG 3PT
JD 5FT BRUSH HOG 3PT
5FT PULLTYPE DISC
5FT FINISH MOWER
JD 2 BTM PLOW 3PT
2 ROW CORN PLANTER
8FT DISC 3PT
5FT FORD DISC 3PT
2- BTM PLOW OLIVER 3PT
5FT KING KUTTER FINISH MOWER
KING KUTTER DIRT SCOOP 3PT
3PT BACKHOE ATTACHMENT
BRUSH HOG 10FT 3PT
3PT BALE CARRYALL
CARRY ALL
POST HOLE DIGGER 3PT
TRACTOR PARTS
1BTM PLOW 3PT
HEAD GATE
OLIVER WHEEL WEIGHTS
JD WHEEL WEIGHTS
SEVERAL OTHER WHEEL WEIGHTS
6FT JD BRUSH HOG 3PT
TRACTOR TIRES 13-6-38
7FT OLIVER SICKLE MOWER
JD 68 AUGER WAGON
5FT ROTARY TILLER 3PT

6FT ROTARY TILLER 3PT
5FT BOX BLADE 3PT
JD CULTIVATOR
JD HAMMER MILL
JD 1 ROW CORN PICKER
3PT DISC PLOW
3PT BALE SPEAR
2- IRON WHEEL GRAIN DRILLS
DEERBORN CULTIVATOR
2BTM FORD PLOW
HARROW SECTIONS PULL TYPE
1 BTM DISC PLOW 3PT
JD 3 BOTTOM PLOW 3PT
TRUCKS, CARS, TRAILERS CAMPERS

BRAND NEW 2003 HILLSBORO FLAT TRUCK BED
BRAND NEW 2003 BETTER BUILT 100 GALLON FUEL TANK WITH 12 VOLT PUMP
16 FT TRAILER BUMPER HITCH
73 CHEV DUMP TRUCK
2012 CHRYSLER TOWN & COUNTRY
2014 FORD FOCUS 4DR
16FT BUMPER HITCH TRAILER WITH WINCH AND LIGHTS
2009 FORD FOCUS
2009 CHRYSLER TOWN & COUNTRY
2000 DODGE PICKUP
1995 FORD RANGER P/U 4SP
18FT BUMPER HITH TRAILER NO TITLE
30FT TRAILER GOOSENECK
UD ROLL BACK 6 SPD STICK
6CLY DIESEL 19FT STEEL BED

1997 FORD 350 TRUCK
2003 DODGE P/U 4DR HEMI 4X4 5.7 1/2 TON
BOUNDER RV CAMPER
2018 COLEMAN CAMPER LIKE NEW SLEEPS 6 BUMPER HITCH
2009 DODGE P/UP 4X4 2500 167,000 MILES

LAWN AND GARDEN & ATV'S

JD GATOR 2X4
CRAFTSMAN 46' RIDDING MOWER
LAWN CART
HIT AND MISS ENGINES
GAS GOLF CART RUNS
CUB CADET ZERO TURN REAR TINE TILLER
4- JD RIDERS FOR PARTS
SKAGE ZERO TURN 56 CUT POWER WASHER
UP RIGHT AIR COMPRESSOR 6HP WORKS GOOD
BRUSH HOG 2561 ZERO TURN 60"9XX HRS
JD 345 54" POWER STEERING AND LIFT
2 PERSON PADDLE BOAT
GENERAC 6500 GENERATOR
GENERAC 20KW WHOLE HOUSE GENERATOR
KAWASAKI PRAIRIE 4 WHEELER
16FT LOWES BRASS BOAT 50 HP MERCURY W/TROLLING MTR FISH FINDER
16FT 86 LOWE JOHN BOAT
1976 JOHNSON MTR 15HP W/1976 TRAILER
76 TRAILER
SEVERAL PUSH MORES ,WEED EATERS AND CHAIN SAWS

POLARIS SIDE BY SIDE 500 SEVERAL RIDING MOWERS BY SALE DAY

1-LOT OF MISC ITEMS
SEVERAL WAGONS OF MISC ITEMS
TRACTOR TIRES
1-LOT OF USED TOOLS
1-LOT BRAND NEW ITEMS
NEW BBQ GRILLS , JACKETS TOOLS
SIDE BY SIDE ATTACHMENTS AND EX MARK CANOPY
TOPS AND DOORS FOR SIDE BY SIDES GUARDS
AND MORE AND NEW DEER STANDS
STEEL TABLES
LADDLES
AIR COMPRESSORS
STAINLESS SINK
RIDING MOWERS ,
INSULATION DUCK WORK TRAILER LOAD
LAWN CHAIRS
5FT WHHEEL HITCH
1-LOT OF STEEL PIPE
1-LOT MODEL T PARTS
1-LOT OF GUNS
GUNS WILL SELL EARLY THAT MORNING
GUNS SUPPLIES ECT
WILL HAVE SOME LEFT HANDED BOWS AND GUNS ALSO
LIKE NEW LEFT HAND RIFLES, RELOADING SUPPLIES, AND TWO,ONE RIGHT HAND AND ONE LEFT HAND WITH LIMBS FOR 45-60, MARTIN PANTHER TAKEDOWN AND RECURVE BOWS WITH ACCESSORIES



RAIN OR SHINE - LUNCH WILL BE SERVED - WE WILL BE RUNNING 3 AUCTIONEERS ALL DAY SO COME PREPARED - MANY MORE ITEMS BY SALE DAY - WATCH FOR UPDATES & PHOTOS ON WEBSITE

AUCTION NOTE: WE WILL BE RUNNING TWO OR 3 AUCTION RINGS THAT DAY SO COME EARLY!! LITTLE SOMETHING FOR EVERYONE.

THESE BILLS ARE MADE 2WKS IN ADVANCE OF AUCTION DATE& COULD HAVE DELETIONS & MANY MANY MORE ITEMS BY AUCTION TIME. TERMS CASH OR GOOD CHECK WITH PROPER IDENTIFICATION. NO OUT OF STATE CHECKS WITH OUT APPROVE BY OWNER OF AUCTION .NOTHING TO BE REMOVED UNTIL SETTLE FOR MUST HAVE PAID TICKET BEFORE LOADING ITEMS!!! NOT RESPONSIBLE FOR ACCIDENTS, OR LOSSES. ANNOUNCEMENT ON SALE DAY.

COME WHERE YOUR MONEY COUNTS!!! COME EARLY SOMETHING FOR EVERYONE.

ALL ITEMS MUST BE REMOVED IN 10 DAYS. NO HOUSEHOLD GLASS WARE OR SINKS ,TOILETS OR BATH TUBS UNLESS STAINLESS STEEL, NO JUNK TIRES. DUE TO THE COVID -19 WE WILL BE FOLLOWING THE CDC GUIDELINES AND PRACTICING SOCIAL DISTANCING . HAND SANITIZER WILL BE AVAILABLE AND ANY PPE YOU DESIRE TO WEAR IS OK. **AUCTION NOTE :** WE WILL BE GIVING OUT BUYERS BID CARDS THE WEEK OF THE AUCTION, FOR ANYONE WHO WOULD LIKE TO GET THEIR NUMBER EARLY THANK YOU

**FOR INFORMATION
CALL DEANNA HELLING 636-303-5105**

*As always we appreciate your business
Helling Farm Auction*

WEBSITE: HELLINGSFARMAUCTION.COM

EMAIL ADDRESS: HELLINGSFARMAUCTION@YAHOO.COM

ESTATE AUCTION

Friday, April 28th, 2023 ~ 10:00 AM

LOCATION: 611 South Dade 11, Golden City, MO; Directions: From Golden City Go South On 37 Hwy 6 1/2 Miles Then East On NN Hwy Approx 2 Miles Or From Lockwood On 97 Hwy Go South 6 Miles Then West 6 Miles On NN Hwy Then Turn North On South Dade 11, Approx 1 Mile To Sale Site (Watch For Signs)

Auction For Judy Robinson



Antique, Modern Furniture & Appliances

Ant Walnut China Cabinet, Ant Double Drop Leaf Table & Chairs, Gilmore Piano & Bench, Ant Oak Full Size Bed & Headboard W/Cabinets, Ant Oak Full Size Corner Post Bed, Ant Quartersaw Serpentine Front Dresser W/Wishbone Mirror, Ant Dresser W/Mirror, Ant Chest Of Drawers, Ant Oak Armoire, Ant Oak End Tables, Oak Hope Chest, Ant Kitchen Chairs, Oak Vanity Bench, Ant Prim White Wardrobe, Ant Trunks, Ant Kitchen Sinks 1 Single & 1 Double, Prim Child's Rocking Chair, Prim Child's Highchair, Prim Shelves, Prim Metal Cabinet, Prim Loveseat, Primitive Chairs & Prim Kitchen Chairs, Retro Chairs & Tables, Sm Oak Kitchen Table & Chairs, Roll Top Desk, Sitting Chairs, High Back Sitting Chair, Coffee & End Tables, Wall Mirrors, Roll Away Bed, Store Shelving, Roper Refrigerator, Electric Hot Water Heater, Whirlpool Portable Dishwasher, Washer & Electric Dryer, Refrigerator W/Ice Maker, 25 Cu Ft Chest Deep Freeze, Electric Stove, Warm Morning & Kozy World Heat Stoves, Wall Vent Less Propane Heater, Console Stereo, Other Items

Antiques, Collectibles & Households

Flying O Tricycle, Ant Corn Sheller, Cream Can, 8 Gal Ruckets Stoneware Crock, 6 Gal Pittsburg Diamond Brand Crock, Ant Jars, Daisy #40 Churn, Crock Bowls, Treadle Sewing Machine, Church Paper Towel Cloths, Plastic Christmas Nativity

Scene Figures, Several Pcs Of Pyrex & Fire King, Several Pcs Of Carnival Glass, Cookie Jars, Corning Ware, Lg Lot Of Owl Décor & Knick Knacks, Clear Glass, Cast Iron Utensil Set, Beer Sign, Lamp, Outdoor Game, Yardsticks, Oil Lamps, Prim Door, Globe, Records, Jewelry, Linens, Books, Electric Kitchen Appliances, Enamel Ware, Train Set, Pots, Pans, Tupperware, Flat Screen TV, Wall Décor & Pictures, Emdeko Sewing Machine, Grinding Stone, Cobbler Tools, Well Bucket & Other Galvanized Items, 2 Man Saw Blade, Reel Mower, Lanterns, Other Prim Tools, Other Items Not Listed

Tractor, Car, Propane Tank, Guns, Tools & Outdoor Items

Massey Harris 44 Gas Tractor, 3 Pt Garber Power Seeder, Mass Arms Co Checo Board Break Over Single Shot 12 Ga, Sears & Roebuck Model 410 Three Inch Chamber Bolt Action Single Shot Shotgun, Revelation Model 330 Three Inch Chamber 410 Shotgun, J Stevens Arms Model Crack Shot 26 Rolling Chamber 22 Rifle, Savage Arms Model 3A Bolt Action Single Shot 22 Long Rifle Or Short, Iver Johnson 38 Special Revolver, Heritage Rough Rider 22 Mag & 22 Long Rifle W/ Dual Cylinders, 2005 Dodge Neon (Doesn't Run), 1000 Gal Propane Tank W/35% Available, Metal Shop Shelves, Vise, Rubbermaid Lawn Mower Dump Trailer, Long Handle Tools, Coolers, Bounty Hunter Metal Detector, Truck Toolbox, Sm Hand Tools, Other Items Not Listed



Auctioneers Note: It Is An Honor To Be Conducting This Auction For Ms. Robinson. This Should Be A Great Auction For Everyone With Something There For All From Great Antique Furniture, Good Appliances To Excellent Antiques & Collectibles, Outstanding Lot Of Neat Metal & Wood Primitive Items, Nice Collector Massey Tractor & Good Collector & Useable Guns. Hundreds Of Other Items Not Listed Will Be Added Sale Day. Please Plan Now to Attend. **Sale Order: Furniture & Appliances Will Sell First Followed By Antiques, Collectibles, Primitives & Households. At Approx 1:00 PM Will Offer Propane Tank, Tractor, Car & Guns, Tools & Outdoor Items Will Finish Auction. See Ya There!!!**

Terms: Cash or check with proper ID. Now accepting most major credit cards. Nothing removed until settled for. Statements made the day of sale takes precedence over printed material. Everything sold as is where is. Not responsible for accidents. Restroom available. Concessions Provided. Check our website for upcoming auctions and for additional pictures!!



NANCE AUCTION SERVICE

No Matter How BIG or small, We Do Them All!!!



Col. Bill Nance 417-214-0093 In God We Trust Philippians 4:13 Sean Beazley 417-247-6754

PERSONAL PROPERTY AUCTION

ON-SITE ONLY!

SATURDAY, MAY 6TH, 2023 AT 10:00 AM

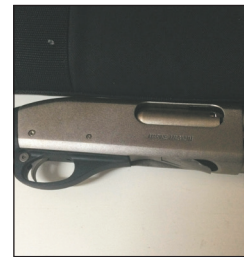
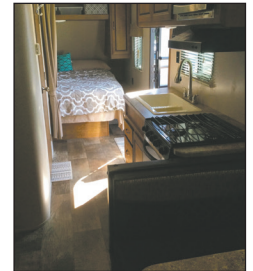
RAIN DATE SATURDAY, MAY 20TH, 2023 AT 10:00 AM
5651 S. 111TH ROAD, WILLARD, MO 65781

INVENTORY LIST:

Like new 2017 Zinger z-1 camper trailer
 2001 Chevy Duramax Diesel 3500 259,000 miles
 2006 Corvette 94,000 miles
 2000 Camaro Z28 182,000 miles
 1988 IROC Z 570hp
 Browning x-bolt 22-250
 Ruger 10-22
 TC Contender 22lr, 45 colt, 44 mag
 AK-47 Hungry
 3" Remington 870
 Magnum Marine
 Magnum
 Commando Mark III
 Interarms 30-06 Mark X
 Wagon
 Earthquake tiller
 Husqvarna mower
 Ramps
 Glass table
 True Cooler
 GE Refrigerator
 Matching recliners
 Chest freezer
 Aerie table with storage
 Sofa
 Kryptonics skateboard

3 outdoor chairs
 Boxes of DVDS
 Three concrete planters
 Concrete ornaments
 Electric master built grill
 Large collection of Salvino's Bammers beanies
 Fishing rods
 Lots of chairs
 Surf board
 Rooster stands
 Five bicycles like new
 Wooden hutch
 Lots of pictures and frames
 Marvel HeroClix
 Pioneer Sub Wolf
 Porter cable, cordless drills, and set
 125,000 BTU gas heater
 Shop vac
 Lots of cookware
 Have a gun cleaning, set and hard case
 Over 50 chandeliers
 Batman and Superman dolls
 Lots of antiques
 Ertl trucks and trailers
 Lots of place settings
 Planet of the apes

dolls
 Diecast NASCAR collection
 New bike helmets
 Home decor
 Large collection of baseball figures
 Lots of glass bowls baskets etc.
 Boxes of new earrings
 Cow skulls
 Over 200 salt and pepper shakers
 Spice girls doll collection
 Lots of hull pottery
 Elephant decor
 Hundreds of comic books
 Lots of laser disc movies
 Purses
 Lots of sports cards
 Brothers sewing machine and mending
 Camaro wheel and tire
 Box of electronics
 Lots of shelves
 Horse tack
 AND MORE!!!



FOR MORE INFORMATION GO TO WWW.EASTERLYAUCTIONCO.COM OR CALL EASTERLY'S AT 417-833-9494



Mike Easterly Auctioneer • 417-833-9494

Not Responsible for accidents or theft. For more information call: Easterly Auction Company, Springfield, MO. Auction Terms: Visa, Mastercard, Cash, Cashier's check or checks with proper I.D. Announcements day of sale take precedence over printed material. Auction Notes: Although information is obtained from sources deemed reliable, auctioneer makes no warranty or guarantee expressed or implied. Buyers should themselves take the opportunity to make their own inspection prior to sale.

www.EasterlyAuction.com • auctionzip.com ID#14770



PUBLIC AUCTION

10 a.m. Saturday, April 29th

Estate of John and Eileen Warner

Location: 14535 Hwy. AA, Bucyrus, Mo. 65444. **DIRECTIONS:** From Houston, take Highway 17 West to AA Highway. Follow AA Highway to auction. Watch for Scheets Auctions signs day of sale.

★★★ TRACTORS ★ EQUIPMENT ★ MISC ★★★

1951 John Deere A purchased from Ted Scheets • 1959 John Deere 730 Diesel w/Rollomatic and power steering, good condition • 1963 John Deere 4010 Diesel w/48 John Deere loader, bucket and spike • Case 870 Tractor w/loader, bucket and spike • Case 830 w/Westerndorf loader, bucket and spike • 488 New Holland hay bine • 488 New Holland hay bine for parts • 256 New Holland hay rake • Rossi 8-wheel hay rake • Fella 8-foot disc mower • Sitrix four-basket hay tedor • New Holland 271 square baler, always shedded • John Deere 375 round baler, purchased new, always shedded • 350 John Deere 9-foot Scycle mower • Pop Up hay loader • Pull-type John Deere three-bottom plow • 3-Point J D four-bottom plow • 8-foot offset disc • Six-foot Chisel plow • JD field cultivator • JD 12-foot wheel disc • 3-Point JD 14-foot bushhog • JD 5-foot bushhog • 3-Point seeder • 3-Point boom pole • 3-Point bale spikes • 3-Point six-foot blade • 200-Gallon Skid Mount pasture sprayer w/gas motor • Shaver Hydraulic post driver • Misc. items not listed •



★★★ BOAT ★ TRUCK ★ TRAILERS ★ GATOR ★ MISC ★★★



36-Foot Gooseneck EZ hay bale handler trailer • 20-Foot Gooseneck Co-ose stock trailer • 14-Foot Gooseneck cattle trailer • 1981 GMC Brigadaire flatbed twin screw w/300 Cummins and 10-speed transmission • 15-Foot Fiberglass bass boat w/65 HP Evinrude motor, Sunshade, Live well • Two-wheel farm trailer • John Deere 210 lawn mower • 2008 John Deere 620 I Gator, w/windshield, roof and front winch • Rear-tine Husqvarna tiller • Small lake boat, trailer and motor • DR Grass Trimmer • New kerosene heater • R & M wood furnace •



★★★ WELDERS ★ TOOLS ★ MISC ★★★

Ranger 8 Lincoln welder • Six hp 60-gallon air compressor • 20-Ton hydraulic press • Coleman 3000 Electric Watt Generator • Metal band saw • Paint shaker • NAPA top and bottom tool boxes • Bench grinder • Forney AC/DC welder • Log chains • 55-Pound anvil • Lots of mechanic tools • Bolts • Two fuel tanks on stand • Cream can •

★★★ ITEMS ADDED BY FAMILY MEMBER ★★★

478 New Holland hay bine • 268 New Holland square baler • Hayliner 8 foot • 8440 Case round baler • John Deere drill seeder • Five-bottom plow •

★★★ HOUSEHOLD ★★★

Counter-height dining table and chairs • Small-drop leaf dining table & chairs • Two small entry benches • Small butcher-block table • Two solid-wood end tables • One coffee bar • Small chest freezer • Set of Home and Garden canisters & accessories • Misc. dishes and utensils • Misc. items not listed • 220 Window air conditioner • Solid-oak queen bedroom set, headboard, dresser w/trifold mirror, armoire and chest of drawers • Solid wood roll-top desk • Two-piece entertainment center •

★★★ GUNS ★★★

20-Gauge Pointer FT 3 Shotgun, new in box • Beretta U22 Neos Auto 22 caliber • Ruger 10-22 Stainless in Modified 17 HMR • Marlin Model 336 in 30-30 caliber • JTS, 12-gauge automatic •



To see all pictures, go to www.auctionzip.com....auctioneer number 22112; or go to Facebook at Darren Scheets Auction Service.

Auctioneer's note: Don't miss this good farm auction. Thanks, Darren and Jake

TERMS OF AUCTION: Cash or check with picture ID. If not known by the auctioneer you need to bring a bank letter of credit addressed to Scheets Auctions LLC. Nothing loaded or removed until paid for. Everything sells as is, where is. Not responsible for accidents, lost or stolen items. Auction day announcements take precedence over all previous advertisements. **LUNCH ON GROUNDS.**

Darren SCHEETS AUCTIONS

(417) 457-6638 • (417) 926-8575
www.scheetsauctions.net

PUBLIC AUCTION

SATURDAY, APRIL 29TH, 10:00 A.M.

LOCATION: 1205 County Road 161, Gainesville, MO. From West Plains take Highway 160 West 36 miles to right on Highway 181, then 6.5 miles to left on Highway N; follow 3.2 miles to drive on right. (Watch for Auction Signs)

TRACTORS • DOZER • HAY EQUIPMENT

2013 John Deere 7230 w/740 classic loader, 1260 hours, pre-def, 135 HP, 4x4, cab, air/swivel seat, buddy seat, 16sp, LH reverser, good rubber; 1993 John Deere 6400, cab, heat/air, 2x4, air ride seat, 6300 hours, 85 HP; John Deere 2750 w/Koyker 310 loader, open station w/canopy, 75 HP, 3067 original hours, high/low, dual remotes, good rubber; Caterpillar D6C 10K dozer, tree pusher, hydraulic tilt, turbo, headache rack, 150 hours on motor rebuild, good tracks/undercarriage, SN-1345-8p5543; John Deere 568 MegaWide plus 5x6 round baler, net wrap, garage kept, field ready; John Deere 530 MoCo 9' mower condition w/flail choppers; Vermeer R2300 hydraulic hay rake, hydraulic fold; Kuhn GF5001 4 basket hydraulic fold hay tedder.

SKIDSTEER • TRAILERS • FARM EQUIPMENT

2005 John Deere 270 skidsteer, 2 speed, 82 HP, tire machine, 800 hours, open cab; 2004 Gooseneck brand 24'x7' gooseneck stock trailer w/4' front escape gate, 2 heavy bull cut gates, bi-fold back gates; 1995 Gooseneck brand 28' (24' w/4' dovetail) gooseneck flatbed, good floor, dual jacks, toolboxes, dual tandem 10k axles; 2020 EZ Haul inline manual side dump 36' hay trailer 14 ply tires; 16' bumper hitch flatbed trailer w/surge brakes, 18' bumper hitch flatbed trailer, 2009 Crafton 5'x8' utility trailer w/tilt bed, 6'x12' bumper hitch trailer, utility trailer w/50 gallon fuel tank mounted, 6' 3pt Pittsburg spring tooth ripper, 6' 3pt Athens disc, John Deere H1520 heavy duty 15' disc, Taylorway 9-1/2' offset disc, Ag Spray 500 gallon pull type sprayer w/cluster spray, Graham 13 shank 12' 3pt chisel plow, John Deere 1518 15' batwing bushhog, Knight big auggie 12 mixer wagon (parts), Knight little auggie mixer wagon (good), Douglas Cole Iron 10' Heavy Duty field roller w/brake, 3pt Balemaster hydraulic bale unroller, 17' Tarzan chain link drag harrow, 6' chain link drag, Bushhog 176 9' 3pt hydraulic angle blade, 10' hydraulic box blade w/tires, 3pt Oliver 5 shovel turning plow, 500 pound 3pt cone seeder, Shaver HD10 hydraulic post driver (like new), Grain-o-vator feed wagon.

CONCRETE BUNKS • PANELS • ATTACHMENTS

Approximately 105 concrete feed bunks, 65-assorted panels (10's/12's/16's), 12- 12' galvanized panels, Priefert tub sweep system, 10- PVC round bale feeders, 1-aluminum feeder, 3- 6' plastic troughs, 100 used T-posts, 3-spools of 3/4" cable, rubber mineral feeders, 1100 pound bed mounted trip feeder (cake box), W&W guillotine squeeze chute w/transport wheels & palp cage, WW palp cage, 7' John Deere bucket, 6' John Deere bucket, Balemaster double front spike, single front spike, 3pt rear forks, 2-quick attach skeleton grapple buckets, quick attach tree shear, 3pt rear bale spike w/ball, 3pt balemaster rear spike, 10' hydraulic feed auger, 2-500 gallon liquid feeders, grain auger, hay elevator, 3pt rear tractor brush guard, head chute, 500 gallon fuel tank w/stand, 600 gallon fuel tank w/stand.

GUNS • TOOLS • MISCELLANEOUS

Browning BLR 270 lever action w/3x9 redfield scope, Browning BLR 7mm-08 lever action w/scope rings, Glenfield model 60 .22 semi-auto (squirrel engraved), Winchester model 94AE 30-30 lever action, Magtech .22 bolt action rifle, NIB H&R 12 gauge 3-1/2 magnum single shot, NIB Encore inline 50 cal muzzleloader w/ Nikon scope, NIB Rossi 50 cal muzzleloader, NIB Traditions 50 cal muzzleloader, Thompson center 308 bolt action w/leopard scope, H&R 22-250 handi-rifle bull barrel w/tasco scope, Ten Point crossbow like new w/ scope, Sthil chainsaws MS441, MS460, MS481, MS261C, Spray Tech airless paint sprayer, Generac 5000 watt generator, Coleman 5000 watt generator, 2-Hereford cutting saddles, 4-wagon frames, scaffolding w/ castors and planks, corrugated barn tin, wood auction block, pallet of concrete mix, metal feed hopper, dog box, 2-wood stoves, calf pullers, deer blinds, deer stands, tripod deer feeders, Gulf Good gas pump, lawnchief mower, fiberglass canoe, 20 ton hydraulic press, AC delco engine stand, electric cement mixer, 55 gallon barrels, gas cans, buckets, cast iron tub, ATV field roller, ATV 2 wheel wagon, Milwaukee electric jackhammer, Oregon 28 ton wood splitter w/honda motor, Atv sprayers, Atv pull type seeder, roll out drawer toolbox, stack of lumber, 2-calf pullers, mineral tubs, chain link dog pen, underground conduit, camper shell, dog wire, Westinghouse welder (needs work), aluminum boat w/trailer, Singer sewing machine, drop leaf table, massage chair, misc lamps, Longaberger baskets, misc household furniture, what-nots.

Auctioneers Notes- Excellent line of John Deere tractors and equipment everything has been barn kept and field ready! Plenty of trailer parking with concessions on site all day, make plans to attend this fine farm auction! Watch our website and Facebook page for more photos.



OWNER: DAN PLEASANT

BILLY SEXTON AUCTIONEERS

683 Missouri Avenue, West Plains, MO • Office: 417-255-2744
 Billy Sexton 417-257-4595 • Ark. License # 2749 • www.sextonauctions.com
 Justin Kraft 417-274-0073 • Ark. License # 2745

See this auction at: www.ozarkhorsetrader.com • *Not Responsible For Accidents*

DIEHL LIVING ESTATE AUCTION

LIVE AUCTION



George Diehl will sell equipment and personal property at public auction on :

Saturday, April 29th 2023, Beginning at 9:00 AM

Location: 333 Fort Westside Road Bourbon Mo 65441

Directions: From Interstate 44, take Exit #218, and go West on Highway C for 3 miles, then left on Brand Road. After 1.5 miles turn left on Fort Westside to auction. Roads will be marked day of sale.

BOBCAT EQUIPMENT / UTILITY VEHICLES CLASSIC TRUCK / VINTAGE FARM (will sell after guns at Noon)



Bobcat T200 skidsteer-turbo diesel-rubber tracks-QT 80" toothed bucket, Bobcat 763 diesel skidsteer-tires-bucket, Bobcat MT55 walk behind Mini Steer, Exmark zero turn mower w/72" deck, Bobcat RTV gas utility vehicle-2-seater-4x4, Bobcat UTV 3400 EXL-4 seater-gas engine-4x4-dump bed, **TRUCK**; 1955 Chevy 3600-5 window step side-in line 6 cylinder engine-4 speed standard, **VINTAGE**; Letz grinder, large belt driven corn sheller, Simplicity farm tractor-nice, (2) Fulton garden tractors



COMMERCIAL / INDUSTRIAL SHOP MACHINES



Powermatic PM15 15" power planer, 1/2" spindle shaper-molder with Holz ET117 power feeder-trim-molding bits, Maka bench top oscillating chisel mortising machine, New Britain chain mortising machine, tenoning machine, industrial Delta sander-disc/belt, lathe on cast iron base, Delta Uni saw 10" table saw-with table extension, cast iron base table saw, scroll saw on stand, 24" belt sander, grinder on stand, Delta belt sander w/dust collection, band saw on stand, 14" Power Matic band saw on stand, grinder on stand, spindle sander, dust collection system, (2) Craftsman radial arm saw, Black & Decker radial arm saw, Walker Turner radial arm saw, Craftsman joiner, smaller bench top lathes, Rockwell Delta scroll saw, heavy duty drill presses, buffer-polisher, (3) rolling air compressors

**LUNCH WILL BE SERVED
BY BEAUFORT LIONS CLUB**

GUNS (guns will sell at 12:00 Noon)



Traditions 50 caliber muzzle loader-Mag 50, British SMLC .303 rifle, Remington 1903-A3 30-06, Ithaca 49 .22 rifle, Ruger 10/22 .22 rifle, Marlin M 60-.22 rifle, Hatfield 12S21 12 ga shotgun, Stevens M 350 12 gauge, Hatfield 12A21 12 gauge, Maverick M 88 12 ga, Winchester 12 12 ga, Jimenez J22 .22 pistol-holster, Ruger LC9 .9MM, Ruger SR9C .9MM with 2 mags, Smith & Wesson Shield .40 caliber pistol, Western antique cast iron clay bird thrower, fishing poles

ANTIQUES / HOUSEHOLD



Anvil, lot ornamental cast iron pieces, balcony brackets, iron bed frame, old cabinet hardware-pulls-knobs, industrial warehouse carts, cast iron work table legs, work shop stools, knock down wardrobe, 5-leg oak table, bent back chairs, park bench, Waterford wood stove, cast iron wood stove, fruit crates, rawhide mallet, warehouse lumber cart, old wooden boxes, brass blade fan, old tabletop fans, pedestal fan, wooden sleds, 1991 IBEW Convention poster, framed art, wooden transit stands, 17 gallon Civil Defense drinking water cans, Camel lit bar signs, cigarette signs, wooden knobs, glass insulators, old soda bottles, galvanized tall cans-tubs-buckets, dial phones, rolling step stools, plaster Egyptian style rams, portable 110 dryer

SHOP TOOLS / HARDWARE



Miter saws, wood planes-Bailey #8-block planes-molding planes-spoke planes-others, draw knives, brace-bits, wooden handle augers, pipe wrenches, hammers, chisels, drill bits, hardware store-5 level free standing nail bin-rotating bins, Craftsman tool box, bench vises, bench wood vises, bottle jacks, bar clamps, Jorgenson wood clamps, C clamps, rasps, files, saw blades, dado blades, small bench anvil, saw horses, pipe vise-hand threading machine, bench pipe vise, assorted motors, castors, hinges, joist hangers

**VIEW OUR PHOTO GALLERY ON
www.breheauction.com**

BREHE AUCTIONEERING SERVICE, LLC
 Union, MO: (636) 583-0841 Owensville, MO: (573) 437-3454
www.breheauction.com
 LICENSED AUCTIONEERS:
 Kerry Brehe 314.954.3798 Josh Brehe 314.603.3129 Nick Brehe 314.560.7737
 Harry Engelhart 636.399.3743

Announcements made day of sale supersede all printed material.
 TERMS: CASH, PERSONAL CHECKS WITH PROPER I.D., BUSINESS CHECKS WITH BANK LETTER AND NO OUT OF STATE CHECKS UNLESS APPROVED BY SELLER. Email Us At kkauction@sbcglobal.net
 Everything sells as is with no guarantees. Not responsible for accidents.

PUBLIC AUCTION

Friday, May 5, beginning at 9:30 A.M. DST

Located at the Alvin Miller farm 907 Audrain RD 124, Clark, MO 65243. Directions from Columbia Hwy 63 North to Hwy 22 turn right 2 miles to Hwy Y north on Y 3 miles to Audrain RD 124 left 1/4 mile to auction site. Watch for auction today signs.

HORSES

1-Team 2 and 3 yr old Belgium Geldings sired by King well started pulling bred 1/2 brothers home raised — 1-Team 5 & 7 yr old mares, Dolly & Molly, Dolly has colt on side both bred back

1-Team smooth mouth Belg. mares, Bell and Bess, well broke
Blonde Belg. Mare smooth mouth in foal — 3y pony gelding broke
Team and 6 yr Belg. Haflinger cross geldings broke big upstanding team Red Belg. Geld smooth mouth — Yearling Belg. qtr x stud
Yearling Belg. Stud — Older std bred mare broke — 2 yr old paint pony stud
2 coming 5 yr Belg. blonde mares broke & matching!! — 2 yr old pony mare
11 yr old Morgan mare lady broke top buggy broke
7 yr old draft gelding home raised broke to all farm machinery
Std bred mare Judy 3 yr old—2 yr Belg mare in foal stocky built
1-Team 10 yr old grey percheron geldings broke calm
1-Team 13 yr old Belg. Percheron cross geldings broke the best
1-Team coming 4 blonde Belg. Geldings well broke
1-Team 4 and 5 yr old blonde Belg. Mares 1/2 sisters broke
1-Team Belg. Red sorrel 8 and 10 yr old mare and gelding very well broke
Yearling red stud colt and 1 blonde yearling stud colt both sired by Banner Dam Tater — 1-Team 2 and 3 yr old blonde geldings well started
4 yr old blonde gelding 17.2 HH broke, gentle
8 yr old sorrel gelding 18.2 HH well broke
1-Team 1 yr old red sorrel geldings well started
1-Team mares Judy and Jane 13 and 15 yr old full sisters Jane has colt sired by Jerry, anybody can drive this team broke-broke!
1-Team 10 and 11 yr old mares Beth and Summer sire: Tater well broke team in foal — 1-Team Don and Dwayne 7/8 brothers blonde 5 yr old sire Banner Dam Tater well broke — Weanling Belg filly blonde
1-Team Bob and Bill 2 yr old blonde geldings broke Sire Banner Dam Tater Rock 6 yr old blonde stud Dam CD Rock sire Tater, well broke
1-Team 7 and 4 yr old light sorrel geldings well broke to everything
3 year old std percheron cross gelding sire Southern Weightlifter broke to buggy, traffic safe 2 hind white and star dark bay
Sally 2 yr Belg filly started—Molly 2 yr Belg filly started
Holly 2 yr Belg filly started — 3 yr Belg. qtr cross gelding broke to ride
17 yr red roan Belg. mare broke — 15 yr red roan Belg mare broke
10 yr red roan Belg mare broke — 11 yr red roan Belg mare broke
1-Team Pete and Prince 3 yr geldings blonde and sorrel broke
Mabel 12 yr sorrel Belg mare broke-broke
Buck yearling blonde Belg stud colt — Bill yearling blonde Belg stud colt
Bess yearling blonde Belg filly — Bell yearling blonde Belg filly
1-Team Mike and Ike yearling Belg geldings—17 yr haflinger gelding broke
1-Team Tony and Bonny yearling Percheron mare and gelding
Larry yearling Percheron Belg gelding blonde — 2 ponies 3 and 5 year old
Yearling Belg gelding blonde — Yearling Belg gelding blonde
1-Team Belg mares 10 and 11 yr broke not for beginners
1-Team Percheron qtr cross mares 11 and 12 yr well broke
8 yr stbd mare dark bay brood mare broke should have foal by sale date
25—1 to 4 year old Dorper sheep dispersal

FARM MACHINERY

Several new hay rack wagons — 2 row miller cultivator
IH mower 6' bar — Corn binder — 18 hole JD grain drill
IH #7 silage cutter — IH #9 silage cutter (good cond)
#9 trailer gear mower field ready w/ dolly wheel
JD big 4 mower field ready w/ dolly wheel
4-Flare side wagons — 2-New Idea hay mowers
Papec cutter — IH 2 row planter — JD 999 2 row planter
7' grain binder — New Idea manure spreader
New Idea #10A spreader (completely rebuilt)
NH 68 square baler (good) — JD 494A-4 row planter
IH 430 baler — JD disc — Tumble bug—Bale elevator
Fertilizer spreader — Kewanee 500 50' elevator
Bale mover — Harrow — Spring tooth harrow
4 row rotary hoe — 4 section harrow
2-1 horse lawn mowers (good) — Bundle carrier
2 btm tractor plow — 1 row cultivator handle guide

BUGGIES, TOOLS, AND MISC.

Single buggy — Road cart — Pioneer forecart — 11 can milk buggy
People hauler wagon —Several sets used team harness
New and used collars and pads — Used single Brahma harness
15 Hp diesel motor — Atlas floor model drill press
23 Hp predator motor — Bale feeders — Gates
Craftsman planer — S.S. milk cans — Chicken plucker
Several lawn mowers — Used tin — Steel barrels
Large lot used T posts and barbed wire — Blocks
150 gal. fuel tank — Steel wheels— Single driving harness
Harnesses—Saddles —Set haflinger harness complete w/ collars
11-4'x10' dog pens 1" galv. Pipe 2"x3" wire w/ doors and latches
Lot new rolls barbed wire — Oil vat w/ oil
New Bosch laser transit w/ case, shovels, brooms, tape measures, tri squares, air hoses, nail aprons, back pack sprayers, etc.
50+ 2x8 yellow pine—Chicago US older livestock scales
Large cardinal platform scale — Fairbanks platform scale
Durkoph Adler sewing machine — Leather skiver, riveter
Leather cutter, leather cutter—American sewing machine
The AR-DA-BE rocky's banner sire to these home raised colts goes back to AR-DA-BE King Rocky-Bogg's creek rocky -C.D's rock supreme

Free Coffee and Doughnuts till 9:30 AM

**Owners: William & Barbara Petersheim
and Alvin & Ada Miller**

What an opportunity to buy home raised draft teams and well bred colts right off the farm. Horses to sell at 12:00 sharp, followed by farm machinery. If you are looking for a good farm team, mares or a stud for your program look in her. Hope to see you at the auction!

Auctioneers
Larry Martin, Loren Martin
& Mel Yoder



*Thanks you,
Larry and the Crew*

For more auctions go to www.auctionzip.com ID # 47012

Terms: Cash or check with ID. Not responsible for accidents. Statements made day of auction take precedence over printed material

ESTATE AUCTION

SATURDAY, APRIL 29 @ 9:30 A.M.

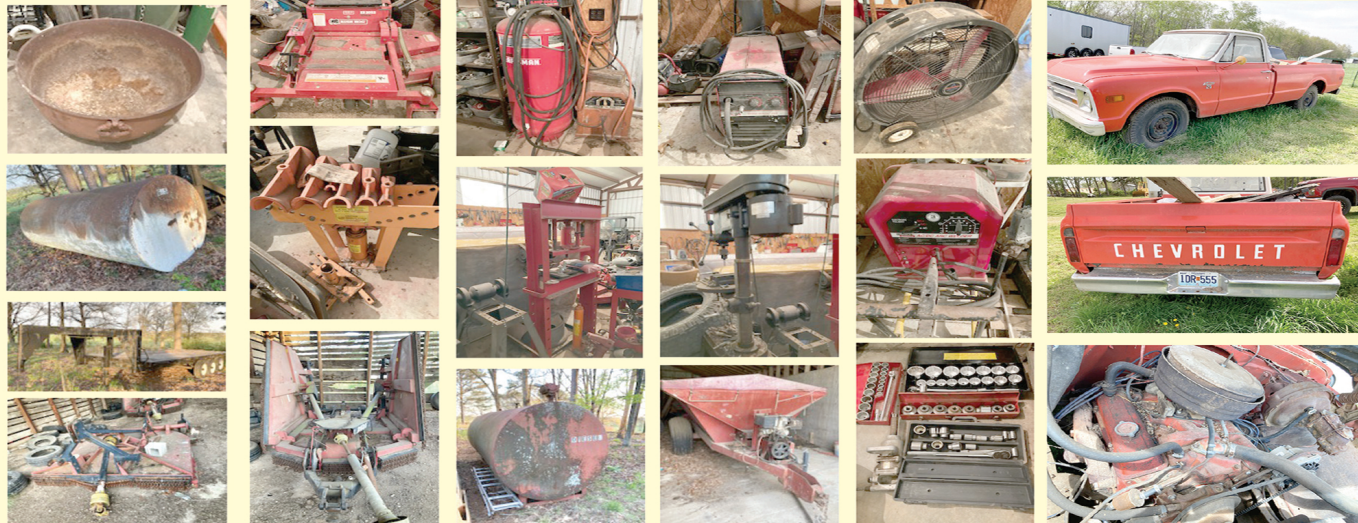
Directions: SALEM, MO - From Salem, take Hwy. 19 south 4.2 miles to Hwy. B, take Hwy. B 3.4 miles to Co. Rd. 5150, take gravel road 1 mile to sale site. Watch for signs.

FARM EQUIPMENT • TOOLS • HOUSEHOLD • AUTOS • MISC.

1968 Chevy #20 w/50,796 miles, VIN# CS2485167022 4 Sp.
 Motorized Fertilizer Cart, Single Wheel, Runs, Fair Shape
 Lincoln Welder w/Trailer, 12' Ranger 10,000 Torches, Motorized Air Compressor
 3010 New Holland Diesel, 4691 Hours, Canopy, 2-Wheel Drive w/Dual Remotes w/2426 QT Bushhog Loader
 7840 Power Star SL Ford Cab Tractor, 2WD, 2015 Hours, Good Cab, Diesel, Good Tires, Clean Tractor
 4 Creep Feeders, Need Cages - Oils/Grease
 1970 Chevrolet 2-Ton, Dump Bed - Shop Vac
 Coleman Lantern - Grease Guns - Power Washers
 Bush Hog Parts - 3 Bench Vises, Small
 Several Lots of Old Parts, International Tractor
 Sanding Tools - 7, 2.5 Gallon 30wt Motor Oil
 American Made Tap & Die Set
 Starters & Alternators for Tractors & Combines
 Small Toolboxes - Air Hose Reel - New Tool Stands
 Ready Made Hydraulic Hoses - Parts Washer
 Battery Chargers - Nuts & Bolts
 Several Fence Chargers - Old Cylinders
 Extension Cords - Brake Items - Fence Stretchers
 Hydraulic Hoses - Barrel Pump - Log Turners
 Chest of Drawers - Headboard - Creepers
 Wing Back Chairs - 2 Stackable Tool Cabinets
 Craftsman 15 Drawer Stackable Tool Cabinet
 Lot Wrenches, Sockets & Hand Tools - 4-Ways
 Shop Hammers - Chisels - Punches - Pliers - Fence Tools
 Brake Tools - Cable Stretchers
 Several Air Tools
 Impact Wrenches
 Large Set of Sockets

Open & Box Wrenches - Line Wrenches - C-clamps
 1" Air Impact - Pipe Wrenches - Bar Clamps - Buckets
 21pc. 1" Socket Set - Several Electric Grinders
 Lot of Bottle Jacks - Bumper Jacks - Cassette Players
 Bench Grinder on Stand - Small Anvil, 30#
 30-Ton Shop Press - Craftsman Tool Table on Wheels
 Bush Hog Zero-Turn Mower, 725cc Kohler ES 2052, Low Hours
 Troybilt 3000psi Pressure Washer
 12" Metal Cut-off Saw - 3000# Engine Hoist
 2-Ton Hydraulic Engine Hoist
 Master Force 24" Floor Fan on Stand
 Electric Pressure Washer - End Tables - Coffee Tables
 Owl Decoy - Deer Shoulder Mounts - Rocking Chair
 Old Sitting Chairs - Old School Desk - BBQ Grill
 Old Budweiser Picture - Wooden Boxes - Heaters
 Lincoln 225 Welder, Dial Good
 Sears 6.5hp 60 Gallon Air Compressor
 Bedside Diamond Tread Toolbox - Bed Toolbox
 Lot of 16' 1x8 Pine Boards - Var. Cut Offs & Plywood
 3, 3 1/2-Ton Floor Jacks - Log Chains
 Babbed Wire Unroller on Wheels - Chain Hoist
 Rakes - Shovels - Hunting Bow - Bolt Cutters
 Ratchet Straps - Trailer Fenders - Old Timing Lights
 1.5-Ton Chain Hoist - Gas Cans - Shelving
 Lincoln AC DC Arc Welder
 Lincoln Wire, Matic 255 Welder DC, Cart-Cyli
 7018-6011 Welding Rods - Filler Rods
 Mufflers - Skidding Tongs - Lawn Mower Parts
 Various Old Truck & Tractor Parts
 Glass Tractor Bulbs - Shop Lights

Lawn Mower Parts - 1/4hp Roll-around Shop Fan, 30"
 Front End Hay Spike for Loader - 1,000 Gal. Fuel Tank
 Large Dozer Blade - Large Scrap Pile
 Gooseneck Triple Axle Trailer
 Bush Hog 307 7' 3pt. HD
 Several Used Tires, 16" & Others
 @ 2620 20" Wing Bush Hog, Chains in Front
 Bread Racks - 300 Gallon Fuel Oil Tank
 Farmall H, New Tires, Been Restored but Has Been
 Sitting Quite a While
 1,000 Gallon Diesel Fuel Tank - Old Dresser w/Mirror
 Curio Cabinet - Old Forge - Single Trees
AUCTIONEER'S NOTE: Great shop equipment along with farming items.
See you there! - Tom



FINAL ESTATE OF: JAMES & HERBERT HOFER

ANNOUNCEMENTS AT AUCTION TAKE PRECEDENCE OVER PRINTED MATTER

WULFF AUCTION

TERMS: CASH OR APPROVED CHECK - I.D. REQUIRED
 NOTHING REMOVED UNTIL SETTLED FOR

Licensed Appraisals

2334 Highway K, Salem, MO 65560

AUCTIONEERS:

Col. Tom Wulff • John Wisdom

Cell: 573-247-3884 • Cell: 573-247-9563 • Home: 573-729-8476

Clerk: Tracy Strange Cashier: Nancy Inman

See Wulff Auctions at www.thesalemnews.com/auctions



RAIN OR SHINE OWNER & AUCTION PERSONNEL NOT RESPONSIBLE FOR ACCIDENTS AT SALE SITE



HARTVILLE LIONS CLUB

Consignment & Donation 18th Annual Auction Saturday, April 29

Auction Held At Hartville Lions Club Building
2 Miles South Of Hartville On Hwy 5

Auction will start at 9:00AM • Registration starts at 8:00AM.

VEHICLES/TRAILERS/RELATED

98 Dodge, 1 ton, diesel
2003 Dodge Ram Tailgate
Utility Service Truck Bed
2 Tires on Rims, 19.5, 16 Ply, Load Range F

FARM EQUIPMENT

Massey Ferguson 35, diesel, new engine & tires
Allis Chalmers D17, cab
Ford 9N
Ford 8N
New Idea Disc Mower
8 Wheel Hay Rake
2 Basket Hay Tedder
Cattle Squeeze Chute
3-pt Blade, 6 ft

Belly Blade, 10 ft
Fuel Tank, 300 Gal, stand
Field Sprayer, 300 gal, 3 pt, boomless, pto pump
3 pt Cultivator, 7 ft
New Plastic Septic Tank, 500 gal
Front Bale Spike
MD Cube Feeder
Grader blades

OUTSIDE/SHOP/GARDEN EQUIPMENT

Poulan Pro 48" Riding Mower
DR Trimmer/Mower, walk-behind
Generac Portable Generator

Coleman Canoe
2 Kayaks
Campbell Hausfeld Air Compressor
Craftsman Power Washer
Surveyor's transit
LED Shop Lights, 4 ft, new in box
Outdoor Handtools
Deck Rail Flower Planters
2 Portable 3-drawer Storage Bins
Chimney Cap, 13x13, new

HOUSEHOLD

Complete Bedroom Suite-Queen bed w/
headboard, footboard, rails, Dresser, Chest of
drawers, nightstand
Full-size bed, headboard & frame
Twin-size Headboard
Queen Size Quilt, Pillow Shams, Dust Ruffle
Rocking Chair, seat & back cushions
Loveseat
Microwaves
Whirlpool Washer/Dryer
Entertainment Center
Banquet-size Folding Table
Various Odds & End Tables
Kitchen Island
Small Kitchen Appliances
Kitchen Pots/Pans
Kitchen Cooking Utensils
Toaster Oven

Toaster
Bathroom Scale
Dinnerware, sterling silver, 5 place
Tupperware Containers
Decor Items
Table & Floor Lamps
House Fans-Handtools & Floor Model
Pictures-picture frames
Wicker Baskets
ADA Adjustable Shower Bench
New Sofa Pillows

COLLECTIBLES/MISC.

Reptile Habitat, supplies
Octagon Fishtank, supplies
Golf Clubs, bag
Craft Items
Stuffed Animals
Several Boxes of Stuff

OFFICE EQUIPMENT

File Cabinets
Office Desk
Office Chairs
Metal Shelving
Portable Chair & Table Storage Carts

**Many more items
by sale day**



To consign or donate items, contact: Scott 417-741-0082



Previous Auction Photos



Friday, May 12th

Sale Starts at 1:00 PM
Gun sale starting at 6:30 PM

Saturday, May 13th

Breakfast - 7:30 AM
Sale Starts at 9:00 AM

Suggested Consignments

Deadline Thursday 5/11/23

- Tractors & Farm Equipment
- Cattle Equipment
- Lawn & Garden
- ATV's
- Shop Tools
- Hand Tools
- Handmade Quilts
- New Furniture
- Antiques

NO JUNK PLEASE



Auction held on school grounds.
12 Winding Creek Dr., Buffalo, MO 65622



To consign or for more information, contact

417.327.4670 - Nathan Blosser
417.327.6240 - Nathan Kropf
417.326.9788 - Dennis Blosser
417.733.2600 - Vernon Kropf (Tractors & Machinery)
417.327.6348 - Eldon Swartzentruber (Vehicles & Guns)
417.327.7720 - Herman Hostetler (Guns)

THE SOONER CONSIGNED, THE BETTER ADVERTISED!

TRACTOR-IMPLEMENTS-PICKUP-ATV-PORTABLE BUILDING-TOOLS-FURNITURE-MISC AUCTION**SATURDAY APRIL 29, 2023 10:00AM****LOCATED: 5368 W NOKES LN, BROOKLINE MO**

FROM BATTLEFIELD MO TURN WEST ON 3RD ST BY GODFATHERS PIZZA, GO 1/2 MILE, THEN WEST ON ELM, GO 6/10 MILE THEN 3/10 MILE SOUTH ON FARM RD 115 TO AUCTION ON RIGHT.

FOR PICTURES SEE WEBSITE OR AUCTION ZIP.COM**BANK LETTER OF CREDIT MADE PAYABLE TO MELTON AUCTION & REALTY WILL BE REQUIRED FOR PURCHASE OVER \$500****THIS IS A VERY CLEAN AUCTION, YOU WON'T WANT TO MISS!!****TRACTOR-IMPLEMENTS-TRAILERS-PICKUP-ATV**

2012 KUBOTA L3200 TRACTOR, DIESEL, 4 WHEEL DRIVE, HYDRA STATIC TRANS, W/LA524 LOADER 424 HR, VERY GOOD CONDT.—LAND PRIDE 5' ROCK RAKE—LAND PRIDE RCR1260 BRUSH HOG 5'—LAND PRIDE 5' BOX BLADE—YARD ROLLER—3 PT CARRY ALL—RUBBERMAID STOCK TANK—DIESEL TANK ON STAND 1/2 FULL—16' UTILITY TRAILER, 3500 LB AXLES W/ RAMP—6'X10' CARRY ON TRAILER W/FOLD DOWN RAMP, STORAGE BOX—2001 DODGE 4X4 2500 SERIES EXTENDED CAB PICKUP, DIESEL, AUTO, PS, PW, 198,600 MILES VERY CLEAN—1999 MULE 2510 ATV 1046 HR

PORTABLE BUILDING

10'X20' PORTABLE BUILDING, PARTIALLY FINISHED INSIDE, CARPET, ELECTRIC, OVERHEAD STORAGE W/PORCH

TOOLS

(2) DELTA 10" TABLE SAW ON STANDS—DEWALT 12" COMPOUND MITER SAW ON STAND—CRAFTSMAN RADIAL ARM SAW 10" 2.75 HP ON STAND—SHOP VAC 3 HP—BLACK MAX 7000 WATT GENERATOR HONDA MOTOR—REDDY HEATER 150,000 BTU—CRAFTSMAN 5 1/2 HP 30 GAL 110 VOLT AIR COMPRESSOR—CRAFTSMAN 16 DRAWER ROLL AROUND TOOL BOX—EMGLO 1 1/2 HP DUAL TANK AIR COMPRESSOR—CRAFTSMAN 12" MITER BOX—BAKERS SCAFFOLD—(2) 20' ALUMN LADDERS—8', 6', 4' FIBERGLASS LADDERS—CAMPBELL HAUSFIELD AIR COMPRESSOR—METAL AND PLASTIC SAW HORSES—SNAP ON SCREWDRIVER SET—TORCH BURNER—SOLDERING GUN—SOCKETS, RATCHETS, EXTENSIONS, SCREWDRIVERS, ALLEN WRENCHES, WRENCHES, BRANDS SNAP ON, MAC, CRAFTSMAN, SK WAYNE—PLIERS, NEEDLE NOSE, VISE GRIPS—AIR CHISEL—3/8 AIR RATCHET, (2) 1/2 AIR RATCHET—TIMING LIGHT—DWELL METER—STANT COOLING PRESSURE TESTER—SNAP ON COMPRESSION GAUGE—BEARING PACKER—GREASE GUN—HARMONIC BALANCER/STEERING PULLER—LONG DRILL BITS—AIR HOSES—EXT CORDS—C CLAMPS—BAR CLAMPS—COME ALONGS—HAND SAWS—PIPE WRENCHES—MEASURING WHEEL—SCHUMACHER BATTERY CHARGERS, SEVERAL—STABILA 8', 6'6", 4' LEVELS—SAW BLADES—PORTER CABLE AIR BRAD NAILER—PASLODE AIR BRAD & AIR NAILER—DEWALT JIG SAW—DEWALT 7.2 VOLT SCREW DRIVER—PORTER CABLE AIR NAILER—MILWAUKEE ROTARY HAMMER—BUDDY HEATER—DREMEL MOTO TOOL—DEWALT 5" DA SANDER—PORTER CABLE PALM SANDER—SANDING DISC—PORTER CABLE LAMINATE ROUTER—CRAFTSMAN ROUTER—DEWALT 1/2" DRILL—DEWALT SCREW GUN—ROTO ZIP CUT OUT TOOL—BOSTITCH AIR NAILER—CHICAGO ELECT MULTI FUNCTION TOOL—RYOBI ROTARY TOOL—CANVAS PAINT/DROP CLOTHS—TARPS—FRAMING SQUARE—HAMMERS—PROPANE BOTTLES—MILWAUKEE 18 VOLT CORDLESS DRILL & SAW—VOLT METER—YARD SPRAYER—MR HEATER 85,000 BTU—PAINTING SUPPLIES—20 TON BOTTLE JACK—DEWALT 7 1/4" WORM DRIVE SKIL SAW—MILWAUKEE 18 VOLT CORDLESS DRILL IMPACT—CLARKE 2 WHEEL DOLLY—3 TIER ROLL AROUND CART—4 WHEEL DOLLYS—TRAILER HITCHES—BULL DOG 500 WATT HALOGEN LIGHT—POST HOLE DIGGER, LONG HANDLED TOOLS—LIMB SAW—NUTS, BOLTS, SCREWS, NAILS—DRILL BITS—HEAT GUN—6" BENCH GRINDER—DEWALT 4 1/2" VISE—CONDUIT BENDER—WHEEL BARROW—12' STEP LADDER—ALUM WALK

OWNER: VICKY SULLIVAN

BOARD—LG SHOP VAC—LOG CHAINS—CAR RAMPS—MILWAUKEE BAND SAW—CENTRAL MACHINERY 6" BELT SANDER—SKIL SAW 10" MITER BOX—PORTER CABLE 7" POLISHER—2 WHEEL DOLLY—PAINT SPRAYER—SAND BLASTER—CONCRETE TOOLS—FURNITURE CLAMPS—LADDER STABILIZER—STANLEY ROLL AROUND TOOL BOX—DRILL PRESS—SPRAYING MANTIS—PORTER CABLE DETAIL SANDER—DEWALT SAW ZALL—SHEETROCK CART—CHAIN BOOMERS—HOLE SAWS—TORQUE WRENCH—MILWAUKEE HAMMER DRILL 18 VT—T POST PULLER—POST DRIVER—CARPET TOOLS—PORTER CABLE SAW ZALL—CARPET STRETCHER—MILWAUKEE SHOP RADIO—SNAP ON BATTERY TESTER—FILES—AIR TOOL SET—HOSE REEL W/HOSE—TOOL POUCH—LED 4' SHOP LIGHTS, NEW—ROLL WIRE—PAINT GUN—FUNNELS—INSULATION—14 PC LUMBER 1X12, 10'—2"8" OUTSIDE ENTRY DOOR

MOWERS-TRIMMERS-CHAIN SAWS

SNAPPER LT12 32" CUT RIDING MOWER—MURRAY 3 1/2 HP 20" PUSH MOWER—HUSQVARNA 625E STRING TRIMMER—TORO 6.75 HP SELF PROPELLED 21" PUSH MOWER—STIHL FS80 GAS WEEDEATER—STIHL 029 CHAIN SAW—CORDLESS 24 VT CHAIN SAW—B&D 40 VT CHAIN SAW—ELECT HEDGE TRIMMER—STIHL FS90R STRAIGHT SHAFT WEED EATER—STIHL GAS BG55 BLOWER—HEDGE TRIMMER ELECT

FURNITURE-HOUSEHOLD-MISC

GE FRONT LOAD WASHER/DRYER WPEDESTALS—WHIRLPOOL ELECT RANGE—GE MICROWAVE—BUTCHER BLOCK TABLE—5 DRAWER CHEST—MATCHING BAKERS RACK & 5 PC DINETTE SET—OFFICE CHAIR—ANTQ PORCELAIN TOP CABINET—52" SONY TV—(3) 32" TV'S—(2) PATIO HEATERS—SCHOOL CHAIRS—TAILGATE TABLES—PATIO STORAGE BOX—HUMIDIFIER—DEHUMIDIFIER—FANS—SM WINDOW AIR CONDITIONER—PICNIC TABLES—LAWN CHAIRS, METAL LAWN CHAIR—TURKEY FRYER—ROLL TOP DESK—GLASS TOP TABLE—DYSON VAC—2 BAR STOOLS—PITCHER & BOWL SET—REI SCREEN HOUSE—CUSINART 12 & 14 CUP COFFEE POTS—COLEMAN CAMP STOVE—SHELVE—LIVE TRAPS—PET CRATES & TAXI—CORNHOLE GAME—COOLERS—MISC FISHING TACKLE & RODS—CLEANERS—WALKER—TREK BICYCLEDISHES—COLORED PYREX BOWLS, ANCHOR HOCKING, FRANKOMA DISHES—CROCK BOWL—SET KITCHEN CRAFT COOKWARE—SAUSAGE GRINDER—LG WOODEN BASS—DULCIMER—BELLOW—WASH BOARD—ROCKING HORSE—MISC IRON WHEELS—1 LOT DIVE EQUIP, DIVE GEAR, ALUM DIVE TANKS, DIVE LIGHT—HAND MADE QUILTS—SEVERAL CAMERAS, MOVIE PROJECTOR—COSTUME JEWELRY—DUCK DECOYS—FISHING FIGURINES—1 LOT BOOKS, FISHING, HARRY POTTER & MISC—5 GAL GLASS JAR—TELESCOPE—4 SETS NEW BI FOLD DOORS—WATER SKIS—MOTORCYCLE HELMETS—LIFE JACKETS & BOAT CUSHIONS—AMMO BOXES—TRACTOR ON MILK CAN—POTATO BIN—POPCORN POPPER—TOY CHINA TEA SET—FOOD SCALES—BASKETS—LAWN CHEMICALS, OILS, PAINT, STAIN—SM WIND MILLS, LAWN ORNAMENTS, BIRD FEEDERS—CANE, CRUTCHES—FLOWER POTS—TOMATO CAGES—CHRISTMAS DECOR—LIVE TRAPS—PET TAXIS—SEVERAL MISC BAGS

ANNOUNCEMENTS MADE ON SALE DAY WILL TAKE PRECEDENCE OVER ANY OTHER PRINTED MATERIALS. NOT RESPONSIBLE FOR ACCIDENTS OR LOSS OF ARTICLES ON OR NEAR SALE SITE.

MELTON AUCTION & REALTY CO LLC**meltonauctionrealty.com | roger@meltonauctionrealty.com**

Roger Melton | Nixa, MO | 417-830-0153 or 417-725-1801

Brad Cole | Nixa, MO | 417-840-2950

Hal White | Nixa, MO | 417-343-2334

Tanner Foster | Galena, MO | 417-840-5519

PUBLIC AUCTION

Saturday April 29th at 10:00 a.m.

13414 County Road 8110, West Plains, MO 65775

Directions From West Plains, West Hwy 160 to JJ Hwy. Left on JJ Hwy 7.6 miles to County Road 9620. Left on CR 9620 to the Y. (.4 mile) Right at the Y on County Road 8110 .4 mile to auction. Watch for Reid Auction signs

VICTROLA, FURNITURE & HOUSEHOLD

Victrola "Victor Talking Machine". Mint Condition! w/Extra Records, Fisher & Paykel Washer & Dryer, King Bed, Queen Platform Bed w/Storage Under, Queen Bed, Day Bed w/Canopy & Trundle, Antique Table w/6 Chairs (Barley Twist Legs), Breakfast Set of Table w/3 Chairs, 2 Vanities w/Stools, 2 Blanket Chests, Fainting Couch, Several Matching Night Stands, Several End Tables, Oak Dresser, Coffee Table w/Matching End Table, Glass & Metal Butterfly Sofa Table, Oak Library Table, Small Square Wood Table, Round Coffee Table, 3 Round Back Padded Arm Chairs-Flowered, Wing Back Chair, Padded Wood Rocker, Sofa Table, Pink Arm Chair, Pink Chair w/Bookcase Foot Rest, 4 White Porch Rockers, Chaise Lounge Lawn Chair, Several Area Rugs, Natural & White Coffee Table, Quilt Rack, Hall Tree/Coat Rack, White Padded Wood Porch Bench w/Storage, Wood & Plaid Rocker, Wood Desk & Chair, Magazine Table, Mini Curio Cabinet, Table Lamps & Floor Lamps, Sanyo Flatscreen TV, Small Wood Wastebasket, Oak Office Chair, Office Chair, Metal & Glass Tables, Metal Plant Stands, Wood Plant Stands, Eden Pure Heater, Electric Heaters, Lots of Beautiful Wall Art including Pictures and Wood Carvings. A Framed Berlin Wall Article w/a Piece of the Berlin Wall. Nasa Framed Prints, Wall Clocks, Metal M-Diamond Ranch Sign, Digital Picture Frame, Octagon Table, Bar Stool, Jewelry Box, Shadow Box, Three Tier Swivel Bookcases, Two Tier Swivel Bookcases, Several Small Book Cases, Hall Table, Tea Cart, File Cabinets, Paper Cutter, Office Supplies, Lots of Candles, Small Appliances, Baking Dishes, Cups, Glasses & Mugs, Knife Block w/Knives, Teapot, Corn Shaped Glass Items w/Lids, Large Platters, Cookware, Linens, Book Ends, Lots of Metal Shelving, Wire Storage Racks, Humidifier, Collections of Artifacts Collected throughout the years including Two Cannon Balls, Military Buttons from Uniforms, Skulls, Rocks, Wood Ships w/Sails, Shells, Two Morse Code Telegraph Keys, Caliper Set, Bolo Ties w/Turquoise, Books, Including Woodworking Books. Desktop Air Conditioner Fan, Wildflower Gardens, Magic Bullet, Black & Decker Dustbuster

MOWERS, TOOLS & MISC

Country Clipper Boulevard 54 Inch Cut Zero Turn Mower w/Bagger, Murray Push Mower, Echo PW-3100 Pressure Washer (like new), Central Pneumatic 21 Gallon Air Compressor, CS-501P Echo Chainsaw, GT-225 Echo Weed Eater, Bostitch Pancake Air Compressor & Hose, Hyper Tough 18-volt Cordless Drill, GE Belt Sander, Napa 10 Amp Battery Charger, 3 Step Stool, 5 Foot Fiberglass Step Ladder, 10 Foot Fiberglass Step Ladder, 16 Foot Fiberglass Extension Ladder, Dirt Devil Vacuum, Shop Tables, Wood Saw Horses, Gas Cans, 4x8 Sheet of Lattice, Rakes, Shovels, Extension cord on Roll, Water Hoses, Cleaning Supplies, Trash Cans, Misc. Nuts, Bolts & Screws, Hand Tools,

Ms. Thomas has sold her home and is relocating. Listing is subject to additions & deletions.

LIUDMYLA THOMAS, OWNER

Reid Auction Service

Randy Reid 417-257-3911 • Rex Reid 417-372-1866 Ark. Lise. #2606 • Ted Reid 417-256-6661
 Concessions available. Come early and let Barb and her crew fix your breakfast or lunch. Bathroom on site. Not responsible for Accidents, Lost, Stolen or Mislplaced items. Any announcements made day of sale supersedes any prior written or oral communications. Cash and checks accepted no Credit Cards.



VISIT WEBSITE FOR PICTURES

AUCTION

SATURDAY, APRIL 29TH - 10:00 A.M.

Location: 753 Prospect Rd., Marshfield, MO **Directions:** From Marshfield Take Hwy 38 East go approx 8 miles to JJ Hwy on left go 1 mile to Prospect Rd on right go approx 1 mile to Auction on right. **WATCH FOR CHADWELL AUCTION SIGNS.** **Payment System:** Cash • Debit Card • Credit Card (Debit / Credit Card Fee Will Apply) Checks approved if known by auction company. **VISIT: WWW.CHADWELLAUCTIONS.COM**

Dave & Diane
LEA

REAL ESTATE ~ Sells @ 12 NOON

Beautiful open 137 acre m/l working cattle farm with 3 Bedroom 2 Bath 1969 sq ft home featuring living room, kitchen, dining room, utility room & a full basement. This is a working farm that offers 2 Utility Buildings, a 1200 sq ft shop building, & 3 barns. Mostly opened land with good fences and live water. Located in a great place and turn key ready. Terms: 10% down day of Auction, Closing Costs Split, Taxes Prorated, Balance Due on Closing Date. For Viewing call Shawn 417-830-0209



TRACTORS ~ FARM EQUIPMENT

Hesston 55-56 4spd hi/lo 540 PTO Single Remote 3700 hrs w/Canopy • MF 30 Tractor 4spd (good rubber) • New Holland Side Delivery Rake • New Holland 474 7' Haybine • 7' Roller • Drag Type Harrell • Concrete Filled 8' Roller • 3pt Farm Star 250 Seeder • JD Pull Type Grain Drill • 3pt 6' King Cutter Bush Hog • New Holland 268 Square Baler • Hesston 540 String Tie Belt Baler 4x4 • 4 Wheel Flatbed Wagon • 3pt 6' Angle Blade • 3pt Bale Unroller • Ferguson 3pt 3 Bottom Plow • 213 NH Manure Spreader • 3pt Scissor Lift • 3pt 7' Spring Tooth Cultivator • Disc Pull Type JD 12' Hydraulic Lift • 6' Ford Offset Disc • McCormick Steel Wheel Mower • 6' Pull Type Disc



FARM ITEMS

Cattle Head Gate • Hay Elevator • Cow Lifts • 3pt Bale Spike • Wire Cattle Panels • 10' Cattle Panels • 8' Gate • 10' Galvanized Cattle Panels HD(20) • Poly Water tank • Feed Bunks • SS Wash Tub • Westphalia Milk Pump • Poly Feed Bunks • Woven Wire Stretchers • Misc Barbed Wire • Dehomers • Misc Electric Fence Supplies • 300 Gallon Fuel Tank & Stand • Brooks 8 Ton Feed Bin w/Auger

OUTDOOR ~ MISCELLANEOUS

Power Back 3000 Watt Generator • Assorted T Posts • Woven Wire • 18' Wooden Extension Ladder • Metal • Assorted Lumber • Long Handle Tools • Electric Fence Posts • Log Chains • Rubber Floor Mats • Wheel Barrow • Live Trap • 20' Alum Extension Ladder • Small Animal Cage • Yard Roller • Misc Horse Tack • Hand Tools • Homelite Chain Saw • GenPower Generator PTO 25 KW 60 KW Surge • Steel Traps • Haybine Section & Guards • Plastic Tarps • Hand Sprayer • Step Ladder • Fuel Cans • Old Saddle • Poulan Chainsaw Model P3816 • Craftsman 5spd 38" Cut Riding Mower • Log Chains • TroyBilt Rear Tine Garden Tiller • Boat Paddles • Heat Lamps • Fish Gigs • Wrought Iron Patio Set • Igloo Dog House • Electric Weedeater • Garden Hoses • Other

ANTIQUES ~ COLLECTIBLES

Metal Tomato Basket • Wooden Tomato Crates • Steel Wooden Cart • Chicken Crates • Wooden Storage Box • Single Tree • Hay Forks • Buzz Saw • Horse Drawn Disc • Cream Can • Push Plow • Forge • Cotton Scales • Cross Cut Saws • Wooden Buckets • Haymes • Single Tree • Nail Keg • Leg Vise • Wash Tubs • Meat Hooks • Sythe • Metal Lawn Chair • Blue Jars • Sad Iron • Whiskey Crocks • Crockets

SHOP ITEMS

Stand Light • Grease Guns • Lincoln 225 Welder • Craftsman Air Compressor • Car Ramps • Bench Grinder • Grease Guns • Tool Boxes • Other

HOUSEHOLD

End Tables • Couch & Love Seat • Rocker Recliner • Record Player & Records • Oak Rocking Chair • 18" Television • Tables • Entertainment Center • Lamps • Quilt Rack • Stand Light • Misc Dishes • Kenmore Refrigerator • Spectra Flat Top Stove • Kenmore Washer & Dryer • Sunbeam Mixer • Misc Wall Pictures & Mirrors • Computer Stand, Printer & Computer • Christmas Decor • Meat Grinder • Chest Deep Freezer • Pressure Cooker • Amana Refrigerator • Fan • Old Twin Bed • Puzzles & Books • Portable Clothes Racks • Lazy Boy Rocker Recliner • Oak Corner Hutch • Ice Cream Freezer • Tupperware • 32 Cup Coffee Pot • Other

AUCTIONEER'S NOTE: This farm will make someone a great piece of property. Lots of farm equipment and household items. Come spend the day with us. *Thanks, Shawn*

DRIVER'S LICENSE OR PICTURE I.D. REQUIRED • TERMS: CASH OR APPROVED CHECK **OR**

Chadwell
Auction Service, LLC
www.chadwellauctions.com

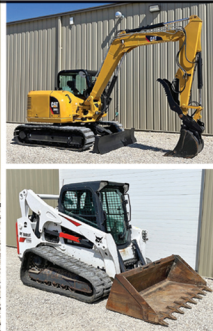
Auctioneer:
SHAWN CHADWELL
417-830-0209

Ringmen:
Weston Chadwell ~ 417-349-0727

Clerk:
SHELLY CHADWELL
Cell: 417-880-8449

Cashiers:
Maria Chadwell • Emily Shaffer
Cassie Collins

PROFESSIONAL SALES MANAGEMENT
LUNCH WAGON • APPRAISAL SERVICE • RAIN OR SHINE
All announcements made day of sale take precedence over any printed matter.
Not responsible for lost or stolen merchandise. Not responsible for accidents.



ONLINE AUCTION

BID NOW! BIDDING CLOSSES SAT, MAY 6TH



ITEM PREVIEW DAYS:
 Bidders will be able to inspect and view items
 Monday-Friday (8am-4pm) and Saturdays
 (8am-noon) while the auction is open for bidding at
 4177 HWY VV, Berger, MO 63014

920 LOTS



**All items sell
 regardless of
 price.
 All items start
 at only \$1.
 BID TODAY!**

Construction Equipment

- 2020 JD 325G skid steer loader
- 2019 Bobcat T770 skid steer loader
- 2019 Cat 314F CR excavator
- 2018 & 2019 Cat 312F GC excavators
- 2-2018 JCB JS131LC excavators
- 2018 & 2017 Cat 308E2 CR excavators
- 2015 Doosan DX85R-3 excavator
- 2012 Kobelco SK75SR-3 excavator
- 2015 Cat 420F2 loader backhoe
- JD 450-B crawler loader
- Ditch Witch 3700 trencher backhoe
- 2018 Bobcat MT85 mini skid steer loader
- JLG 3248RS & 2632ES electric man-lifts
- Reynolds 17C 17-yard pull type scraper
- Kubota B21 tractor loader backhoe
- Wacker Neuson 803 mini excavator
- 2-Bobcat 418A mini excavators
- 60+ unused skid steer attachments
- Sellick SD-80 rough terrain forklift
- JLG 400S 40' boom lift

Tractors

- Case IH CX100
- Ford 7740 w/ loader
- JD 990
- IH 706 diesel
- Ford 961 Powermaster diesel
- Ford 6610 w/ loader
- NH 1530 4x4
- JD 2640 w/ loader
- White 2-70
- JD 4200 w/ mower
- JD 730 LP
- JD 301-A
- Ford 7840 w/ loader
- JD 620
- JD 650
- AC D15 gas
- JD 2040 tractor
- IH Cub
- AC 185 diesel w/ loader
- AC D17 gas & diesel
- JD 670
- IH Cub Lo-Boy
- Ferguson 50
- Ford 1500
- Ford 860
- Case 1370 Agri-King
- JD 40
- JD 50
- Kubota B6100
- MF 65
- MF135

Farm Equipment

- Vermeer 504R Classic round baler
- JD 457 round baler
- Vermeer 504 Super 1 round baler
- JD 750 15' no-till drill
- NH 1411 10' discbine
- Unused Enorossi Batrake 81 v-hay rake
- 60- 12' corral panels w/ trailer
- Unused storage containers from 7'-40"
- Vermeer TM700 9' trailed disc mower

- Shiloh Wagon Works parade wagon
- JD 710 7' mower conditioner
- JD 920 20' grain head
- JD 7000 6-11 split row planter
- Unused Ag-Spray 200-gal. 3-pt sprayer
- Unused portable hoop buildings
- Sunflower 16' disc
- Case IH 496 25' disc
- Melroe 3430 Spra-Coupe sprayer
- Unused Bison NVHL 300XHD 10' 3-pt grader blade
- Art's Way 5165 roller mill feed mixer
- NH 256 hay rake w/ dolly wheels
- NH 328 manure spreader
- Hardi TR500G pull type sprayer
- Hesston 956 round baler
- Hesston 855 round baler
- Case IH RS551 round baler
- NH 1032 & 1010 Stackliner bale wagons
- Westfield MKX130-84 transport auger
- 40- 4x5' round bales of grass hay
- JD 7000 6-row planter
- NH 617 9' disc mower
- NH H6740 710" disc mower
- Several cattle squeeze chutes
- Brown 6.5' 3-pt tree cutter
- Antique Aeromotor windmill
- Krause 1581 15' disc
- NH3417 hay tedder
- Rhino 10' grader blade
- JD 7000 4-row planter
- Hardi 500 gallon sprayer
- Shaver 3-pt hyd post driver
- 3-JD 235 discs
- JD 14T square baler
- Frontier 5' 3-pt disc
- NI #200 manure spreader
- Several 2-row planters
- 3-pt implements of all types incl. unused 3-pt tillers
- Huge assortment of hay equipment
- Several front loaders incl. JD
- Rock pickers
- Sprayer trailers

Trucks, Cars, Motorhomes

- 2008 Ford Mustang Shelby GT500
- 2019 Winnebago Vista 29VE motorhome
- 2009 International 4300 dump truck
- 2008 Dodge Ram 2500 4x4 diesel w/ flatbed
- 2014 Jeep Grand Cherokee Overland
- 2010 Mercury Mariner AWD
- 2005 Ford F450 crew cab flatbed
- 1989 Ford F800 grain truck
- 1998 Tiffin Allegro Bus 39' motorhome
- 2007 Toyota Rav4 SUV
- 1990 GMC C6500 dump truck
- 2007 International school bus
- 2006 Dodge Ram 2500 quad cab diesel 4x4
- 1953 Chevrolet 6400 grain truck
- 2000 Chevrolet 3500 box van
- 2005 Ford F-250 4x4 pickup
- 1985 Ford F-250 4x4 pickup
- 2002 Dodge Ram 2500 quad cab diesel 4x4
- 2005 Mercury Mariner Premier

- 4x4
- 2000 Chevrolet 3500 4x4 pickup
- 2007 GMC 3500 4x4 flatbed
- 2011 Chevrolet Cruze Eco sedan
- 1995 Jeep Wrangler 4x4
- 1966 Ford 1-ton flatbed dump

Trailers

- 2020 Load Trail 34' flatbed gn
- 2022 Region Welding 20' flatbed
- 2015 Riechers 24' enclosed gn
- 2019 Doolittle 25' flatbed gn
- Doolittle 7'x18' flatbed
- Loadmaster 23' flatbed gn
- Dyna 25' flatbed equipment
- 4-semi van, 48-53'
- Trailerman 24' flatbed gn

UTVs, ATVs, Boats, Motorcycles

- 2020 Kawasaki Mule ProFXT ATV
- 2017 Polaris ACE 150 Youth ATV
- 2007 ProCRAFT Pro 165 16' fishing boat
- 2009 Harley-Davidson soft tail custom
- 2008 Harley Davidson Fat Bob
- 2005 Harley Davidson Fatboy
- 2011 John Deere Gator 825I UTV
- 2016 John Deere Gator 825I UTV
- Yamaha electric golf cart
- 2003 Honda XR 70R dirtbike
- Honda 4x4 mini-truck
- John Deere Gator 6x4 UTV
- Mon-Ark 18' alum. jon boat
- Polaris Magnum 325 4x4 ATV
- Yamaha Terraport ATV
- Honda Rancher 4x4 ATV
- John Deere AMT600 UTV
- 2011 Polaris Ranger 800EFI XP UTV
- Challenger 15' fishing boat
- Lowe 18' aluminum jon boat
- Ozark 16' fishing boat
- 2017 New Holland Rustler 850 UTV

Lawn Mowers

- Gravely 260Z zero turn
- JD 430 diesel
- Walker MTGHS zero turn
- Exmark TT20KCE walk behind
- Toro Timecutter Z5035 Zero turn
- Kubota TG1860G
- Hustler Raptor SD zero turn
- Gravely ZT 54XL zero turn
- JD D110
- Toro ZX5400 zero turn
- JD LX176
- JD Z425 zero turn
- Agco Allis 2T1644 zero turn
- JD 260
- Swisher 60" pull type finish mower
- Great Dane GDSM61 stand-up zero turn
- John Deere LT190

Shop Equipment & Miscellaneous

- Unused portable restroom shower units & portable cabin
- 10+ chainsaws
- Grimmer Schmidt 175 air compressor
- Miller Trailblazer 280 welder generator
- 25+ Unused toolbox workbenches
- Livestock equipment
- More items listed at SchneiderAuctioneers.com

SCHNEIDER
 Auctioneers LLC
 573-834-2207 • 573-291-8075
www.SchneiderAuctioneers.com

OLD ARMY MARMITE FOOD CAN FROM WWII: \$150. 573-734-2822.

NOW OPEN GREENHOUSE: Garden Seeds. Check us out before you buy. Open Monday-Saturday. 1207 Bluegrass Rd. Conway, MO.

LOOKING FOR A FARMHOUSE TO RENT: Must accept pets. Any location. Good rental history & guaranteed income. 573-840-6702.

FOR SALE: Hardwood kitchen table, 6 chairs (2 are captain chairs) & leaf. Black. \$200 Firm. 573-647-3139.

BRAND NEW SMOKER: \$100. 573-647-3139.

ANTIQUE DRESSER WITH MIRROR: \$200 Firm. 573-647-3139.

FOR SALE: Washing machine. \$125. 573-647-3139.

FOR SALE: Dryer. \$125. 573-647-3139.

NEW JELD WEN 5' LEFT HAND SLIDING GLASS DOOR WITH SUNSTABLE INTERIOR BLINDS: Clear tempered glass, Desert Sand trim/hardware. Retail \$2655 Sell \$900. 417-693-0389. Conway.

120 WHITE TRACTOR: 7317 Hours, 140 H.P. \$2,600. Excellent Condition. 636-239-4921. Washington.

Coin, Silver & Gold AUCTION

Saturday, April 29 @ 9:00 am
Lemone Building, 500 E. Hwy 00, Hallsville, MO

PREVIEW AT 8:00 AM

**18 GOLD COINS, many PCGS;
Over 100 silver dollars,
including several CCs; many
key date, type coins: 1913-
D Type I Buffalo nickels,
(2) - 1916-D Mercury dimes,
20-cent pieces, including
1876 (low mintage), key
date Walking Lib. Halves;
rare 1874-CC half, \$500 and
\$1000 bills**

NO BUYER'S PREMIUM

**Visit our listing on AuctionZip
for more pictures, an auction
catalog, and payment terms.**

AUCTIONEERS NOTE: Please join us for a live, in-person coin auction on behalf of a large local estate, started at 9 AM.

SELLERS: The late Eli and Geraldine Jeffries

LUNCH SERVED auctionzip.com # 36171
KYLE GEORGE AUCTION SERVICE
HALLSVILLE, MO

Note: Not responsible for accidents. Announcements auction day take precedence over all printed material

AUCTIONEER: Kyle George 573-696-3142

Farm Equipment & Gun Auction Friday, April 28 • 1 p.m.

LOCATION: 1585 North Hwy. 63, Houston, Mo. 65483, at the Texas County Fairgrounds. **DIRECTIONS:** Just north of Houston approximately one mile on U.S. 63. Watch for Rick Dixon Auction signs day of auction.

**• LOADERS • TRACTOR • FARM EQUIP • UTVS
• SAWMILL ITEMS • BOATS • TRAILERS •**

John Deere 655B series 2 track loader w/cab heat & air, 4k hours, w/clam shell bucket • International 510 A101 wheel loader • Mitsubishi Leeway blade crawler, 45 hp • 4430 John Deere w/720 John Deere loader, 8300 hrs, quad trans • 2018 Polaris 900 4wheel drive Ranger • 2017 Polaris 4wheel drive Ranger • 2001 UltraMarine Grizzly 600 4x4 • Honda Rancher 4wheeler • Yamaha Moto 350 4wheeler • Mac 300 day cab semi 15 speed Trumac Eaton transmission • 30 ft lowboy tandem axle trailer w/air brakes • 3 good log pole trailers w/air brakes • John Deere HX15 15 ft batwing bushhog • Bushhog 265 batwing • Land Pride 10 ft pull-type bushhog • M&W 9 ft disc mower • Vicon 9 ft disc mower • Massey Ferguson 13 ft disc mower w/caddy, like new, has cut approx 25 acres • 4 basket hay tedder • Durabilt 8 wheel hay rake • Tonitti 8 wheel hay rake • Vermeer 504 Super I round hay baler • 8 ft field roller • John Deere 350 sickle mower • New Idea 9 ft disc mower • Food Train UTV cube feeder, like new • 10 ft offset plow • 12 ft grain auger, like new • 12 ft wheel disc • 9 ft manure spreader • 2 ton 16 ft utility trailer w/boxes • Morrison power buggy with Hyundai engine • 3 pt boom sprayer • sprayer wagon w/booms • 20 ft flatbed gooseneck trailer w/5 ft dove • 8x12 utility trailer • 2 wheel car dolly • Tractor hay bale spike • Scratch Mill w/15 ft work table w/motor • Alum & steel semi truck wheels • North Star large shop size air compressor • New hydraulic hoses w/fittings • New hydraulic fittings • 3 sets pallet forks • Axles for low boy trailer • 100 gal transfer tank w/pump • 100 gal transfer tank • Lots of new semi truck parts • Lots of new trailer lights & truck tail lights • Double-rubber pontoon boat w/seats • Lots of scrap iron • High bay shop lights • Elec motors, single phase and three phase • Approx 16 ft flatbed trailer load of Craftsmen tools •

**• GUNS: RIFLES • PISTOLS • SHOTGUNS
GUNS SELL AT 5:30 PM!**

Smith & Wesson Mod 27 357 mag double action • Smith & Wesson mod 57 44 mag • Smith & Wesson mod 57 41 mag • Smith & Wesson mod 27 357 mag • Springfield mod 1911 45 auto • Ruger mod GP100 357 mag • Glock mod 19 9 mm • Stevens mod 200 223 cal bolt action rifle • H & R 243 cal single shot rifle • Stevens 12 ga shotgun • Ruger mod M77 Mark II 243 cal rifle • Remington mod 5 22 cal rifle • C.G. Bone Hill double barrel 12 ga shotgun • Mossberg Patriot 22-250 cal rifle • Springfield mod 1873 trap door 45-70 cal • Remington Woodmaster 7 mm Express auto rifle • (2) Swiss Arms air rifle • CZ mod 452-2E ZKM 22 cal • Kimber micro 9 mm auto • Kimber micro carry .380 cal auto • Ruger LCP 2 .380 cal auto • Marlin Camp rifle 45 cal • Taurus ultra-light 38 Spl • Browning a-bolt 6.5 creedmore • Remington 1100 12 ga auto shotgun • 2 barrels for Remington mod 1100 full choke and slug barrel • Marlin mod 92 lever action • Mossberg 71ST 22 cal auto • Remington 512 bolt action 22 cal Sportmaster • Remington mod 33 single shot 22 cal • Springfield mod 53 A single shot 22 cal • Rossi 22 cal pump • Anderson AR 15 • Sig Sauer P938 9 mm • Anderson AR 15 300 blackout • Taurus 357 mag pistol • Sig Sauer P290 limited 1st edition 9 mm • Ruger American 9 mm luger • Smith & Wesson M&P 40 cal • Ruger EC9S 9mm • Glock 43 9 mm American Flag Cherokee • Springfield Arms XDE9 5-3 9 mm new in box • Taurus Judge, stainless 410-45 cal • LS AR 15 556-223 • AKLYS Defense AR 15 556-223 • Mossberg 500K 12 ga pump shotgun • Remington Sportsman 58 16 ga shotgun • Remington nylon 22 LR black/stainless • Lots of scopes • Lots of misc gun items •

Auctioneer's note: Please be with us for this quality auction. **Jimmy Floyd is cutting back on his farming operation.** Equipment sells at 1 p.m. - please be on time as there will not be many small items. Guns sell at 5:30 p.m. - plenty of seating. Thanks for your attendance - Rick
For more information on this auction, contact Len or Josh at numbers below.



Rick Dixon Auction Service LLC
www.rickdixonauctions.com

Rick Dixon
417-967-6604

Len Clayton
417-464-0374

Josh Dixon
417-217-9627

TRACTOR & IMPLEMENTS FOR SALE: 5200 Deck Tractor, 1969 62hp \$7,000, Frontier Food Plot Master, Brand New \$3,900, 6ft Sidewinder Brush Hog \$1,250, 6ft Hiniker Heavy Duty Blade \$750. 417-718-5758 or 573-765-5884. Richland.

K.C. CHIEFS SUPERBOWL 2019 DAMIEN WILLIAMS AUTOGRAPHED JERSEY: JSA COA. Text for pictures. \$135. 573-854-8132. Licking.

2 GELBVIEH BULLS FOR SALE: 12 & 14-months-old. \$2,400 each. 417-531-1048. Morgan.

JOE THEISMANN AUTOGRAPHED CAREER STAT JERSEY: JSA COA. Text for pictures. \$95 573-854-8132. Licking.

STAN MUSIEL CANCELED CHECK: full signature with authenticity \$55, txt for pictures. Mint condition. 573-854-8132

BUFFALO LIVESTOCK MARKET LLC



276 Hwy 32 W., Buffalo, MO

April 22nd, 2023

Receipts: 1167

REPRESENTATIVE STEERS

300-400 @ 245.00 to 300.00
 400-500 @ 240.00 to 282.00
 500-600 @ 215.00 to 253.00
 600-700 @ 200.00 to 233.00
 700-800 @ 180.00 to 203.00
 800-900 @ 175.00 to 189.00

REPRESENTATIVE HEIFERS

300-400 @ 215.00 to 252.00
 400-500 @ 200.00 to 246.00
 500-600 @ 199.00 to 221.00
 600-700 @ 180.00 to 206.00
 700-800 @ 165.00 to 176.00
 800-900 @ 145.00 to 178.00

FEEDER BULLS

300-400 @ 225.00 to 291.00
 400-500 @ 220.00 to 265.00
 500-600 @ 199.00 to 242.00
 600-700 @ 190.00 to 219.00
 700-800 @ 170.00 to 191.00
 800-900 @ 150.00 to 157.00

STOCKS COWS

Bred Cows 1100.00 to 1600.00
 Cow/Calf Pairs 1375.00 - 1725.00

SLAUGHTER BULLS

High Yield 125.00 to 135.00
 Low Yield 80.00 to 115.00

SLAUGHTER COWS

Fleshy 90.00 to 95.00
 Med Flesh 88.00 to 104.00
 Light Flesh 72.00 to 89.00

QUESTIONABLE HEALTH OR CRIPPLE COWS

60 Down

HOL. HOLX STEERS

300-700 @ 120.00 to 135.00

Plain Quality or Off Color or Dairy X Cattle Under this Market

Sheep & Goat Sale Tues.

Special Bower Dairy Dispersal Thursday at Noon

MON-WED MARKET REPORT

Listen to KJEL 103.7FM • Lebanon or KYOO 99FM • Bolivar

VIEW OUR SALES AT CATTLEUSA.COM

CALL FOR TRUCKING OR ON-FARM VISIT

Lyle Caselman • Owner-Manager
 417-345-7876 • mobile 417-533-2944
 Leon Caselman • Owner
 417-345-4514 • mobile • 417-588-6185

Absolute Moniteau County

REAL ESTATE & PERSONAL PROPERTY AUCTION

SATURDAY, APRIL 29, 2023 AT 10 AM

Auction & Property Location:

23251 Indian Springs Road at California, Missouri 65018

Directions: From the stop light on Highway 87 and West Buchanan Street (Business Hwy. 50) in California, MO, take Hwy. 87 and Hwy. O north 4 miles, (Hwy. 87 becomes Hwy. O on the north side of California), to Hwy. D, turn right and go 5 miles to Gooseberry Hollow Road, turn left and go 1 mile to Indian Springs Road, turn tight and go 1.5 miles to the end of the road.



189.76 SURVEYED ACRES OFFERED IN ONE TRACT IN TOWNSHIP 46N, RANGE 15W, SECTIONS 16 AND 17 IN MONITEAU COUNTY, MO. IMPROVEMENTS INCLUDE A 3,000+ SQ. FT. ONE AND A HALF STORY ALONG WITH DETACHED GARAGE AND OTHER OUTBUILDINGS



Personal Property Includes:

TRACTOR & FARM EQUIPMENT, SHOP TOOLS, LIVESTOCK EQUIPMENT, LAWN & GARDEN EQUIPMENT, AUTO, PICKUP, TRAILER, ATV, MISCELLANEOUS, HOUSEHOLD FURNISHINGS, CANDLE MAKING & BEE KEEPING, BALUSTERS, JUKEBOXES, BARBER CHAIR



SELLER: THE DUGAN FAMILY

LANCE DUGAN AND BEN AND VELMA DUGAN

Wheeler AUCTIONS & REAL ESTATE

23101 HWY. 24, PARIS, MO 65275 | 469-327-5890
 WWW.WHEELERAUCTIONS.COM

Visit wheelerauctions.com for more information!

For more information call Charlie Nordwald at 636-795-4552 or visit wheelerauctions.com.

SMALL TOWN MAYOR OF WAYNESVILLE, MO: Political Adventures of the Ozarks by Luge Hardman, featuring small town politics and small-town life, featuring local photographers and local characters. \$9.50. 417-532-2045. Lebanon. (Leave message and phone number).

WEATHERED BARN WOOD SIDING: 10" wide. 573-729-7226. www.pineridgerustic.com Salem.

LOG SIDING: 2X8 Pine/Western Cedar www.pineridgerustic.com 573-729-7226. Salem.

BASEMENT READY USED DOUBLE-WIDE – 3 bdr, 2 bath, Financing Call for info 573-657-2176 amegamobilehomes.com

DISCOUNT NEW MOBILE HOMES – we will beat any price on any home **GUARANTEED**, Financing, 573-499-9993 columbiadiscounthomes.com

BARN OF MISSOURI BOOK: Storehouses of History, 168 pages, hardback, \$12.50. 417-532-2045. Lebanon. (Leave message and phone number).

BASEMENT READY TRUE MODS- instock ready for delivery 573-657-7040 chateauhomes.net

TINY HOMES – Missouri Franchise 573-881-7965

I BUY.....used mobile homes. Call or text 573-338-6250 or email GregS.CDH@outlook.com

REGISTERED HEREFORD & ANGUS BULLS: Home raised, Some Show-Me Select Qualified. 573-701-7828. Belgrade.

LIGHTLY EXPERIENCED GOLF BALLS: \$3 a dozen. 417-818-3469. Strafford.

SLIGHTLY USED PUZZLES: Will sell or trade. 417-818-3469. Strafford.

LIONEL TRAIN SET: Steam engine, tender, caboose and other car, track, and transformer. \$195. 573-364-7465. Rolla.

MODEL 1911 FRAME 8-SHOT C02 PISTOL: Like new, in box with C02 cartridges, 4 clips, pellets & all paperwork. \$95. 573-364-7465. Rolla.

1970s KIDS METAL STOVE & FRIDGE: Nice Lithographic paint, 18" wide x 36" high. \$75. 573-364-7465. Rolla.

ROUND TABLE: \$40. 417-741-1232.

FARM AUCTION

Due to downsizing and retiring, I will sell the following personal property, located from St. James, Missouri, take Hwy. 68 west 9 miles to CR 448. Follow CR 448 1 mile to auction. Follow Lorts Auction Today's signs on

SATURDAY, APR. 29, 2023 AT 9AM - RAIN OR SHINE

TOOLS & FARM RELATED ITEMS roll 1/2 inch cable - rakes - shovels workbenches - reese hitches - delta 6 1/2 ft. Tool boxes - craftsman 60 gallon upright - compressor (needs motor) tool boxes - delta miter box saw - stanley 20 ft. Aluminum extension ladder - electric fence supplies - stihl bg-66 blower - t-post driver - chain binders - hay knife - Corrugated barn tin - Steel pipe - Metal tubs - Several used T-posts - Bar clamps - Wooden boxes Plumbing supplies - 4x8 oxboard (several) - 3/4 inch PVC pipe - 2x6 lumber - DeWalt cutoff saw - Fence wire - 1x6 cedar lumber (stored inside) Aluminum tool box for full size bed Ideal 5 ft. water tank, 72 inches deep 20x8 ft. homemade gooseneck - flatbed dovetail trailer w/steel floor Hanson 100 lb. hanging scale - Hanson 25 lb. scale - 5 1/2 ft. lawn mower ramps 2 round bale feeders, 7 ft. steel - frame, stand up - Homelite generator LR2500 Gas cans - Saw horses - 3 ton floor jack - Barrel - Milk cans - Coleman Powermate 27 gallon - upright air compressor Tow chains - Fence stretcher - Nails - Nuts & bolts - Stihl chainsaw MS260 - Stihl weedeater FS130R - 1 inch & 2 inch lumber **TRACTOR & FARM MACHINERY** Mahindra 3510 tractor w/Mahindra - ML 112 loader w/quick release front spike, 4x4, 673 hours & loader bucket - Mahindra ball hitch/Reese hitch 3 pt. adapter - Mahindra 3510 tractor w/loader, 4x4, 3500 hours - 4 1/2 ft. homemade offset disc 3/4 ton pickup bed trailer - 2 section harrow - 24 ft. truck bed storage box 3 pt. bale unroller - Honda Recon ES four wheeler w/electric shift, yellow 8 ft. 3 pt. tractor blade - 30 ft. semi trailer (for storage) 3 pt. quick hitch - 16 ft. 2 ton storage bed off truck 26 ft. semi trailer w/single axle & - steel floor (for storage) Priefert headgate - 4 wheel Case wagon w/flatbed

MANY MORE ARTICLES TOO NUMEROUS TO MENTION

OWNER: DALE CAMPBELL • 14981 CR 448, ST. JAMES, MO 65559; AUCTIONEER'S NOTE: Dale is 81 years old and thought it was time to retire. This will be a small auction, with not a lot of small items (only one wagon load) so plan to be on time! Off the road parking available.

TERMS: Not responsible for accidents or losses, should they occur. • Nothing removed until paid for. • No buyers fee. Lunch served - ALL ANNOUNCEMENTS MADE SALE DAY TAKE PRECEDENCE OVER ALL PRINTED MATERIALS. Cash or check with photo I.D. No debit/credit cards

SALE CONDUCTED BY LORTS AUCTION SERVICE ST. JAMES, MO 65559

AUCTIONEERS: Larry W. Lorts & Gary R. Lorts Licensed and Bonded • 573-263-1509 & 573-263-0243

"like" us on Facebook- Lorts Auction Service or view this auction on line at www.threeriverspublishing.com or Auctionzip.com (auctioneer ID # 42353)

3 GENTS WITTNAUER WRIST WATCHES: 10k gold + 23J. All \$200. 573-764-3517. Call in P.M.

HARLEY FAT BOBS: Custom flame paint w/ gas caps + lines. \$100. 573-764-3517. Call in P.M.

POSTER BED: \$150. 417-741-1232.

DARDEN PROFESSIONAL TIMBER HARVESTING, BUYING STANDING TIMBER: Great prices, improve wildlife habitat and improve forest health. State Certified & Fully Insured! 573-247-4808. Salem.

1500 VINTAGE WRISTWATCH DIALS: \$100. 573-764-3517. Call in PM.

J. D. Gator UTV * 16ft. Flatbed Trailer * Bush Hog * Chainsaws * Wood Splitter * Tools

Estate Auction

1:00 P.M. * Sunday, April 30th. * 1:00 P.M.

Location: 1901 State Hwy. CC, Crane Mo. (Hurley Area) **Directions:** From Hurley take Hwy CC south 2 mi. To Auction.



Gator - Trailer - Farm

2006 John Deere Gator HPX 4x4 UTV; 16ft. Flatbed Utility Trailer (good floor); 5ft. 3pt. Brush Hog; John Deere 261 3pt Grooming Mower; White model 378 5 Row Cultivator; Small 2 Wheel Trailer; Heavy 5ft. Lawn Aerator; Old Hwy. Dept Road Sign Trailer; Misc. Farm Related Items;

Chainsaws - Tools

Stihl MS441 Magnum Chainsaw, 32" Bar; Stihl 090 Chainsaw, 32" Bar (used very little); Payload Truck/Trailer side Toolbox; Huge Kobalt Top Toolbox, stainless steel (light damage); Hoseomatic Hydraulic Hose Repair Kit; Manual Pipe Threader; Blackmax 5hp. 2 stage Air Compressor; Grizzly T10010ANV 10" Wet Grinder; Pacific 79cc. Gas Motor 1" Water Pump; Blackmax Portable Clamping Work Station; Portable Sawhorses; Grease Guns; Extension Cords; Craftsman 6.0 Shop Vac; 8" Ventilator Fan; Manual Tire Machine; Garden Push Plow; Weed Barrier & Lawn Netting; Lots misc. Hand Tools & Shop Related Items;

Outdoor - Military - Smokers

Misc. Rods & Reels; New 20ft. Frabill Minnow Seine; Portable Rod Travel Tubes; 12ft" Aluminum V-Bottom Boat; Heavy Blow Up Raft; Minn Kota 12v Anchor Winch (new); (2) Minn Kota 12v Trolling Motors; Trolling Motor Rigging Kit (new); Kayak Paddles; 2 Wheel Kayak Dolly; 12v. Boat Trailer Winch; Lot misc. Boating & Fishing Accessories; Big Game Deluxe Deer Feeder Kit (new); 40qt. Cabela's Polar Cap Cooler; Portable Metal Campstove Table; Ultimate Sporting Table (new); Forneot Multi-Function Vertical Smoker; Homemade Stainless Steel Smoker; Hot Pot; New BBQ Grill Covers; New Stainless Vertical Meat Tenderizer; Pop-Up Canopies; (2) Wobblight Work/Camping Lights (new); New Nylon Rope & Straps; Heavy Poly Military Shipping Crates; Vintage Tentage Tent Repair Kit; Misc. Military Tents & Poles (aluminum); Military Tent Lights; Misc. Military & Camo; (2) Military Gas Masks; More not Listed;

Antique - Misc.

(2) New Noritz Always Hot Instant Hot 162,000 BTU Water Heaters, L.P.; Vintage Craftsman Transit with (wood legs); Old School Desk; Old Galvanized Pig Feeder; Bucksaw & Crosscut Saw; Fog Machines; Large Commercial Bounce House; Bounce House style Fans; Many Items not Listed;



Estate of: Terry North

Foster Auction & Appraisal Service
www.fosterauctionservice.com
Email: bidnowsold@aol.com



Auctioneer: Larry Foster
Galena, Mo
Phone: (417) 723-8329
Cell: (417) 839-6860


ANNUAL IRISH DEXTER BREEDERS SHOW AND SALE
 Now taking applicants for the sale. Call for more info!
MAY 5 & 6, 2023
DALLAS COUNTY FAIRGROUNDS - BUFFALO, MO
 Check in starts at 5PM, Thursday May 4, 2023
 Ends at 12PM Friday May 5, 2023
 Adult show at 4PM Friday May 5, 2023
 Junior show at 9AM Saturday May 6, 2023
 Sale at 2PM Saturday May 6, 2023
 For more info and entry form: Visit our Facebook page at IRISH DEXTER BREEDERS ASSOCIATION or contact
 Steve Cushing (417) 991-6707
 Robert Doering (417) 733-4088
 Bo Hampton (417) 288-2376


MID MISSOURI STOCKYARDS
REGULAR SALE EVERY THURSDAY 11 AM
SPECIAL COW SALE • MAY 6TH AT 6 PM
 WATCH OUR WEEKLY SALE IN REAL TIME ON DVAUCTION.COM
 For Farm Visits, Market Updates, or Trucking
 Call **Zach Cox 417-777-1320**
Dan Romine 573-578-4939
Competitive Buyers!
Competitive Commission!
Competitive Market!
 Barn: 417-532-9292 
I-44 • Exit 123 "just outside of Lebanon"
17505 Route 66, Phillipsburg, MO 65722
 For weekly market updates, visit us at www.midmostockyards.com

FIRST GEAR KILIMANJARO MOTORCYCLE COAT: XL, but runs smaller. Zip out liner, Kevlar padding on shoulders & elbows, vented, rainproof. Like new. \$95 FIRM. 417-260-0941. Raymondville.

HEARTH CRAFT GLASS BI-FOLD FIREPLACE DOORS PURCHASED AT FORSHAW'S FIREPLACE: Antique brass. \$160 obo. 636-239-2695 or 314-560-5700. Washington.

110 PORCELAIN POCKET WATCH DIALS: Perfect for arts & crafts. \$100. 573-764-3517. Call in PM.

460 FORD ENGINE BLOCK: \$100. 573-308-5884. Rolla.

COLT REVOLVER DEALER CATALOGS: Circa 1950's + 1960's. All for \$100. 573-764-3517. Call in P.M.

THREE SHEPHERD'S HOOKS: To hang potted plants. Black wrought iron. 6ft. 7in. when in ground. One is a double & two are single hooks. \$50. 636-239-2695 or 314-560-5700. Washington.

Absolute Real Estate Auction
10:00 A.M. * Saturday May 6th
Location: 1317 Oak Ridge Rd., Nixa, Mo 65714


Beautiful 3200+ Sq. Ft. Brick/Vinyl Home on 4 Acres in a Country setting just outside of Nixa!
 Gorgeous Home with 4-Bedrooms, 3-Bath, Large, Open Family, Living room and Kitchen, Gas Log Fireplace, Master Bedroom w/walk in closet and open Bathroom, Full Walk-Out Basement w/ 2 Bedrooms, Game Room, Wet Bar, Nice Utility Room & Lots of Storage. Beautiful! Move in Ready Home! Large Yard with Beautiful Landscaping, Mature Shade Tree's & Ornamentals, Wet Weather Spring in back yard, Central Heat & Air, Private Well & Septic, 2-Car Garage, Asphalt Driveway, Nixa Schools, Just minutes to Springfield or Nixa,
 If you have been looking for a home in the Nixa area, You won't find one better than this! This Home has it all! Absolutely Gorgeous inside and out!
Property Sells Absolute to the Highest Bidder
Terms: 10% Down, Balance due at closing 45 days or less.

Property shown by appointment only.
 Please Contact Larry Foster at 417-839-6860 or bidnowsold@aol.com
Auctioneer: Larry Foster
Phone: (417) 723-8329
Cell: (417) 839-6860

Foster Auction & Appraisal Service
www.fosterauctionservice.com
 Email: bidnowsold@aol.com

JR Kelley Liquidation Auction
Friday, May 26th @ 10:00 am
 12940 Memory Lane, Neosho MO 64850
 Featuring: Tractors, Farm Machinery, Classic Trucks-'47 Intl Pickup; 51 Chevy Pickup, Shop, Tools, Lots of extra Car & Truck parts, Firearms & More!
 Contact Southwest Auction Service for more info!
 417-652-7540 or email: kathy@swaauction.com
 Website: www.swaauction.com

Bob Hughes
 417-652-7540
SOUTHWEST AUCTION SERVICE & MARKETING
www.swaauction.com

1890 GOLD TESTING KIT: Glass acid beakers + antique wooden case. \$100. 573-764-3517. Call in PM.

HARLEY 45 SOLO: factory rear brake drum + sprocket. \$150. 573-764-3517. Call in PM.

FOR SALE: Transmission for 56 & 06 series International tractors. \$675. 636-239-2695 or 314-560-5700. Washington.

2 GOODYEAR WRANGLER TIRES: Kevlar LT245/70R17, all terrain, \$100 for the pair. 417-417-260-0941. Raymondville.

POOL TABLES: Installations, moves, recovers, repairs, accessories, etc. 573-646-1700.

FULLBLOOD YEARLING RAMS: One Dorper and two St. Croix. \$500 each. Call 417-458-1771.

YOUR FULL SERVICE AUTO BODY SHOP

Call today for an appointment or estimate!





Restorations, insurance jobs, and more!

CUSTOM AUTO BODY **417-288-1589 • 115 Lincoln St., Buffalo, MO •** **@DavidsonCustoms**

HARLEY PANHEAD DISTRIBUTOR: original, chrome + complete. \$125. 573-764-3517. Call in PM.

1962 HARLEY SPORTSTER 900CC: original distributor. \$50. 573-764-3517. Call in PM.

RUBBER & LEATHER BOOTS AND 5-Buckle OVER SHOES: Men's 11, Women's 7, some insulated. \$15-\$40 obo. 636-239-2695 or 314-560-5700. Washington.

NEW SQUARE D RAINPROOF 50AMP DISCONNECT: \$160. 636-239-2695 or 314-560-5700. Washington.

RAINBOW VACUUM CLEANER: Excellent Condition. \$200. 417-260-0941. Raymondville.

FOR SALE: 2 Dayco motorcycle covers for Harley or other big bikes. \$50 each. 417-260-0941. Raymondville.

1963 CHEVY SHOP MANUAL: \$20. Vintage Chevrolet 1963-1974 V8 & 6-cylinder manual \$30. Chilton's manual American Volkswagen 1969-1976. \$35. 417-260-0941. Raymondville.

MAC'S TIEDOWN STRAPS: Like New. \$80. 417-260-0941. Raymondville.

NOW BUYING STANDING RED AND WHITE OAK TIMBER: All slash will be trimmed to lay flat or placed in tidy piles for wildlife. No scarred-up trees or ruts from heavy logging equipment. We use low impact compact track loaders to minimize disturbance in your forest. Missouri Land Service LLC. 417-991-9280.

BUYING OLD BARNs AND LUMBER: 417-298-3475 Leave Message.

METAL ROOFS: We repair leaky metal roofs with warranty. Also, flat roofs. Very affordable. Cover all of state. 573-338-1148. Jefferson City.

CALUS LOGGING

20
YEARS
EXPERIENCE

Buying
Standing
Timber
Walnut & Oak



CERTIFIED

Joe Calus, Owner
417-926-4606 • MTN. GROVE

FERGUSON DEALER SHOP MANUAL: Covering TE-20, TO-20 & TO-30 Model tractors. \$40. 636-239-2695 or 314-560-5700. Washington.

USED JET HOME POLLUTION CONTROL PANNEL: Model CP700. \$65. 636-239-2695 or 314-560-5700. Washington.

WE BUY White Oak Logs!

- ✓
Top prices for your logs
- ✓
Experienced log buyers
- ✓
Professional service

Chad Cook | Salem Wood Products

417.718.2950

5 miles north of Salem, MO on Hwy 19



INDEPENDENT
STAVE COMPANY

Log Procurement & Sales

www.independentstavecompany.com

WE'RE HERE FOR YOU AT OUR NEW LOCATION



Local Family Owned and Operated



CENTURY 21®
Hometown Properties

COME VISIT US!

200 Main Street, Suite D
on the Square
417.926.1070



Cedar Ridge Truss LLC

ENGINEERED TRUSSES

Satisfaction is our goal

Mention this ad when calling!

417-259-9788
Fax 417-701-0021

4952 N Hwy. E
Hartville, MO 65667

25 SECLUDED ACRES: Powerlines on two sides of property. One hour from Springfield. Hunter's Paradise. Stream through property. Cash Only. \$8,000/acre. Must take all. 00417-741-1232.

HIGHPOINT GREENHOUSE: Open for the season. Garden seeds, vegetable and flower plants, seed potatoes, onion sets and plants, herbs, etc. 417-741-2793. 9337 Warner Rd. Hartville.

ANTIQU HOG OILER: \$35. 573-308-5884. Rolla.

LOADS OF INVENTORY

Bundle & Save on
Tractor Packages



DIY DIGGER
1025R JOHN DEERE TRACTOR
+ 120R LOADER
+ 260B BACKHOE



CURB APPEAL
3025E JOHN DEERE TRACTOR
+ 300E LOADER



PREMIUM PACKAGE
DRIVE AWAY TODAY!

WEEKEND WARRIOR
3038E JOHN DEERE TRACTOR
+ 300E LOADER
+ RC2060 ROTARY CUTTER
+ 18' TRAILER

PLAD PANTRY

DISCOUNT & SURPLUS FOODS
FRESH PRODUCE^{LLC}
417-532-4700

Tater-Bites Frozen Potatoes	\$2.99 2 lbs.
Organic Half & Half	\$0.79 1 pint
Fruity Pebble Treats	\$8.49 8 - 6.2 oz.
Chocolate & Peanut Butter Ice Cream bars	\$1.49 9 oz.
Instant Mashed Potatoes	\$1.79 15.3 oz.

1571 State Hwy 64 • Tunas, MO 65764
Hours: 8:30 a.m. to 5:30 p.m. • Closed Wed. & Sun.

TRAILER HOUSE RIMS: \$10 each. 573-308-5884. Rolla.

VINTAGE WORKING 1967 SINGER SEWING MACHINE: Special zigzag model 638 in cabinet with original instruction book. \$60. 210-787-8222. Linn Creek.

NEED YOUR CDL???? We furnish the truck & trailer. We teach all requirements for ELDT & skills test. We go to the state highway patrol with our truck. Requires only 2 days of in person training. Much cheaper way to get CDL. Jefferson City MO, Willow Springs MO, Strafford MO, 573-353-2853. For more info www.capitaltruckdrivinginstitute.com

WANTED NEW HOLLAND SKID STEER 865: Any Condition. Call Bob 573-697-5143.

9 PAIRS OF LADY'S COTTON KNIT LONG PANTS: Size XL. \$3 each or all for \$25. 417-288-6714. Lebanon.



See Dealer for Details.

Heritage
TRACTOR

Scan Here
for Savings



Land

For Sale

Pulaski Co., Mo • 369 Acres +/-



\$1,291,000

- ¾ mile of accessible Gasconade River frontage
- 3 sizable caves with tons of character
- Unique river island
- Miles of trails accessing every corner of the property
- Amazing build sites
- Electricity on the northern boundary
- Just over a mile of county road frontage with multiple access points



WHITETAIL PROPERTIES REAL ESTATE

HUNTING | RANCH | FARM | TIMBER

Brian Utecht | 417-766-5595

Brian.Utecht@whitetailproperties.com

WHITETAILPROPERTIES.COM

Missouri's Top Land Specialist in 2014, 2015, 2016, 2017, 2018, 2019, 2020 and 2021

High horsepower.
High performance.
Low financing.



Save big on our L2501DT with Kubota loader. Part of our tractor lineup rated #1 for durability and owner experience in the U.S.* Stop in for a demo and to claim this offer today.

L2501 DT W/ KUBOTA LOADER **ONLY \$19,495**

0% APR FOR 72 MONTHS

VISIT US TODAY FOR THIS LIMITED-TIME OFFER



Quarles Supply

3251 S Springfield Ave
Bolivar, MO 65613
417-777-2391

KubotaUSA.com

0% Down, 0% A.P.R. financing for up to 72 months on purchases of select new Kubota L2501 DT equipment from participating dealers' in stock inventory is available to qualified purchasers through Kubota Credit Corporation, U.S.A.; subject to credit approval. Example: 72 monthly payments of \$13.89 per \$1,000 financed. Some exceptions apply. Terms subject to change. Offers expire 06/30/23. This material is for descriptive purposes only. Kubota disclaims all representations and warranties, express or implied, or any liability from the use of this material. For more information, see Dealer or go to KubotaUSA.com.

Progressive
FARMER
READER INSIGHTS