

FREE - TAKE ONE!

Vol. 30 No. 4

APRIL 20, 2023

417-532-9131

WEEKLY TRADER MAGAZINE



Find us on Facebook

@myweeklytrader AUCTIONS PG. 9

VISIT OUR NEW WEBSITE! MYWEEKLYTRADER.COM

High horsepower.
High performance.
Low financing.



 **Kubota**. Together we do more.®

Save big on our L2501DT with Kubota loader. Part of our tractor lineup rated #1 for durability and owner experience in the U.S.* Stop in for a demo and to claim this offer today.

L2501 DT W/ KUBOTA LOADER **ONLY \$19,495**

0% APR FOR 72 MONTHS

VISIT US TODAY FOR THIS LIMITED-TIME OFFER

 **Kubota**.®

Quarles Supply

3251 S Springfield Ave
Bolivar, MO 65613
417-777-2391

KubotaUSA.com

0% Down, 0% A.P.R. financing for up to 72 months on purchases of select new Kubota L2501 DT equipment from participating dealers' in stock inventory is available to qualified purchasers through Kubota Credit Corporation, U.S.A.; subject to credit approval. Example: 72 monthly payments of \$13.89 per \$1,000 financed. Some exceptions apply. Terms subject to change. Offers expire 06/30/23. This material is for descriptive purposes only. Kubota disclaims all representations and warranties, express or implied, or any liability from the use of this material. For more information, see Dealer or go to KubotaUSA.com.

Progressive
FARMER
READER INSIGHTS

Land

For Sale

Douglas Co., Mo • 204.4 Acres +/-



80 +/- acres of healthy pastureland for hay production and cattle grazing

- 124 acres of hardwoods with bluffs, creeks, and great topography for hunting
- Hardwoods consist of mature pine and oak trees
- The creek that flows through the land is beautiful with boulders and pools of water
- Two cattle working facilities convey in sale

- Nice fencing for rotational grazing
- One field is 33 continuous acres cross fenced into 20 and 13 acre pastures
- Has 6 acres of Class 1 soils for intense farming on land to the west of the house
- Automatic cattle waterers
- Incredible trails throughout the land to utilize all of the property
- Two water wells - one for house and one

- on ridge for automatic cattle waterers
- Three nice ponds
- 4-bay lean-to barn
- Old dairy cattle barn
- 2688 sq ft home built in 1987 with 4 bedrooms and 2.5 bathrooms
- Additional common area and room downstairs for home gym, play-area, or office



WHITETAIL PROPERTIES REAL ESTATE

HUNTING | RANCH | FARM | TIMBER

Brian Utecht | 417-766-5595

Brian.Utecht@whitetailproperties.com

WHITETAILPROPERTIES.COM

Missouri's Top Land Specialist in 2014, 2015, 2016, 2017, 2018, 2019, 2020 and 2021



HUSTLER®

**AT YOUR LOCAL
HUSTLER DEALER**



*Offer applies to Hustler Raptor Series Zero-turn mowers only. Valid 4/1/23 to 4/30/23, only at participating US dealers. Inventory varies by dealer offer subject to availability at individual dealer. May not be combined with any other discount or offer and does not apply to prior purchases or purchases made before or after the promotion dates. Discount does not apply to tax, shipping and handling, or setup. If you return the merchandise, the value of this promotion is not refunded or credited to your account. No cash value, except where prohibited by law.

For Outstanding Products & Service
AGRI-ENTERPRISES

1-1/2 Miles South Of Licking, MO On Hwy 63
573-674-2203 • 1-800-653-7152 • www.agri-enterprises.com

SPRING SALES

20 EVENT 23

SAVE \$200 OR MORE ON RAPTOR MOWERS

MODEL 1911 FRAME 8-SHOT C02

PISTOL: Like new, in box with C02 cartridges, 4 clips, pellets & all paperwork. \$95. 573-364-7465. Rolla.

DISCOUNT NEW MOBILE HOMES

– we will beat any price on any home **GUARANTEED.** Financing, 573-499-9993 columbiadiscounthomes.com

K.C. CHIEFS SUPERBOWL 2019 DAMIEN WILLIAMS AUTOGRAPHED JERSEY: JSA COA. Text for pictures. \$135. 417-318-8932. Houston.

RUBBER & LEATHER BOOTS AND 5-Buckle OVER SHOES: Men's 11, Women's 7, some insulated. \$15-\$40 obo. 636-239-2695 or 314-560-5700. Washington.

WEATHERED BARN WOOD SIDING: 10" wide. 573-729-7226. www.pineridgerustic.com Salem.

BASEMENT READY USED DOUBLE-WIDE – 3 bdr, 2 bath, Financing Call for info 573-657-2176 amegamobilehomes.com

BASEMENT READY TRUE MODS- instock ready for delivery 573-657-7040 chateauhomes.net

TINY HOMES – Missouri Franchise 573-881-7965

I BUY.....used mobile homes. Call or text 573-338-6250 or email GregS.CDH@outlook.com

REGISTERED HEREFORD & ANGUS BULLS: Home raised, Some Show-Me Select Qualified. 573-701-7828. Belgrade.

LIGHTLY EXPERIENCED GOLF BALLS: \$3 a dozen. 417-818-3469. Strafford.





SLIGHTLY USED PUZZLES: Will sell or trade. 417-818-3469. Strafford.

LIONEL TRAIN SET: Steam engine, tender, caboose and other car, track, and transformer. \$195. 573-364-7465. Rolla.

VOTED #1 BEST Preowned Car Dealership

TIM'S USED CARS

(573) 341-3828 • 1334 South Bishop (Hwy. 63) • Rolla, MO
Next to Hwy CC • www.tims-used-cars.com

 <p>2021 RAM 1500 CLASSIC Crew cab, 4x4, 3.6 V-6, power equipped, 52,xxx Miles Only \$32,500</p>	 <p>2015 RAM 1500 BIG HORN Crew cab, 4x4, 5.7 V-8, power equipped, 182,xxx Miles Only \$16,900</p>
 <p>2018 RAM 2500 TRADESMAN Crew cab, 4x4, 6.4 V-8, power equipped, 78,xxx Miles Only \$34,500</p>	 <p>2020 CHEVY TRAX LS FWD, power equipped, 34,xxx Miles Only \$19,500</p>

LARGE SELECTION OF CARS, TRUCKS, SUVs & VANS!

SMALL TOWN MAYOR OF WAYNESVILLE, MO: Political Adventures of the Ozarks by Luge Hardman, featuring small town politics and small-town life, featuring local photographers and local characters. \$9.50. 417-532-2045. Lebanon. (Leave message and phone number).

LOG SIDING: 2X8 Pine/Western Cedar www.pineridgerustic.com 573-729-7226. Salem.

1970s KIDS METAL STOVE & FRIDGE: Nice Lithographic paint, 18" wide x 36" high. \$75. 573-364-7465. Rolla.

3 GENTS WITTNAUER WRIST WATCHES: 10k gold + 23J. All \$200. 573-764-3517. Call in P.M.

HARLEY FAT BOBS: Custom flame paint w/ gas caps + lines. \$100. 573-764-3517. Call in P.M.

COLT REVOLVER DEALER CATALOGS: Circa 1950's + 1960's. All for \$100. 573-764-3517. Call in P.M.

110 PORCELAIN POCKET WATCH DIALS: Perfect for arts & crafts. \$100. 573-764-3517. Call in P.M.

1890 GOLD TESTING KIT: Glass acid beakers + antique wooden case. \$100. 573-764-3517. Call in P.M.

1500 VINTAGE WRISTWATCH DIALS: \$100. 573-764-3517. Call in P.M.

HARLEY 45 SOLO: factory rear brake drum + sprocket. \$150. 573-764-3517. Call in P.M.

HARLEY PANHEAD DISTRIBUTOR: original, chrome + complete. \$125. 573-764-3517. Call in P.M.

1962 HARLEY SPORTSTER 900CC: original distributor. \$50. 573-764-3517. Call in P.M.

FERGUSON DEALER SHOP MANUAL: Covering TE-20, TO-20 & TO-30 Model tractors. \$40. 636-239-2695 or 314-560-5700. Washington.

NEW SQUARE D RAINPROOF 50AMP DISCONNECT: \$160. 636-239-2695 or 314-560-5700. Washington.

USED JET HOME POLLUTION CONTROL PANNEL: Model CP700. \$65. 636-239-2695 or 314-560-5700. Washington.

460 FORD ENGINE BLOCK: \$100. 573-308-5884. Rolla.

FOR SALE: Transmission for 56 & 06 series International tractors. \$675. 636-239-2695 or 314-560-5700. Washington.

HEARTH CRAFT GLASS BI-FOLD FIREPLACE DOORS PURCHASED AT FORSHAW'S FIREPLACE: Antique brass. \$160 obo. 636-239-2695 or 314-560-5700. Washington.

THREE SHEPHERD'S HOOKS: To hang potted plants. Black wrought iron. 6ft. 7in. when in ground. One is a double & two are single hooks. \$50. 636-239-2695 or 314-560-5700. Washington.

FIRST GEAR KILIMANJARO MOTORCYCLE COAT: XL, but runs smaller. Zip out liner, Kevlar padding on shoulders & elbows, vented, rainproof. Like new. \$95 FIRM. 417-260-0941. Raymondville.

STAN MUSIEL CANCELED CHECK: Full signature with authenticity. \$55. Text for pictures. Mint condition. 417-318-8932. Houston.

2 GOODYEAR WRANGLER TIRES: Kevlar LT245/70R17, all terrain, \$100 for the pair. 417-417-260-0941. Raymondville.

OFFICIAL TRACTOR OF TOUGH™

INTRODUCING THE ALL-NEW 5100 SERIES



Marshfield Machinery Inc.
 222 E. Madison • Marshfield, MO 65706
 417-859-2117 • www.marshfieldmachinery.com

*2018 data including all Mahindra group brand sales. MahindraUSA.com © 2020 Mahindra USA Inc.

Mahindra
Rise.

NEW MAHINDRA TRACTORS

1626 4WD & LDR 26HP	IN STOCK
2638 4WD & LDR 38HP	IN STOCK
2645 4WD & LDR 45HP	IN STOCK
4550 4WD & LDR 48 HP	IN STOCK

USED TRACTORS

MAHINDRA M85P 4WD CAB	LDR 29,500
MAHINDRA 2638 38HP 4WD LDR	21,000
MAHINDRA 2638 38HP 4WD LDR	20,000
MAHINDRA 1635 35HP 4WD LDR	19,500
MF 2640 90HP CAB	17,500
MF GC1725M 24HP 4WD LDR	13,000
AC 7010 106 HP CAB	9,500
MF 2675 100HP CAB LDR	9,500
AC 175 62 HP LDR	8,500
AGCO ALLIS 4660 52 HP	6,500
MF 1085 81HP	6,500
FORD 2000 31 HP	3,500
MF 135 36 HP	2,750

USED ROUND BALERS

NH RB450 4X5 MESH	24,000
NH RB780A 5X6 MESH	7,500
HESSTON 550 4X6	2,500
HESSTON 560 5X6	2,000

USED MISC.

SITREX 8 WHEEL RAKE	1,750
LELY 8 WHEEL RAKE	1,750
INTERNATIONAL 10FT CUTTER	1,250
BH RDTH 60 FINISH MOWER	850
RHINO 5FT FINISH MOWER	850
LAND PRIDE 5FT CUTTER	500
ROLLINS 5FT BLADE	250
KING CUTTER BEDDING PLOW	200

Marshfield Machinery Inc.
 222 E. Madison
 Marshfield, MO 65706
 417-859-2117
www.marshfieldmachinery.com

0% for 4 Years

HEATHMOR
Outdoor Wood Furnace
 as low as **\$238** per month
HEATHMOR MIDWEST
 Licking, MO 65542 • 573-674-2962

CALUS LOGGING
20 YEARS EXPERIENCE
Buying Standing Timber
 Walnut & Oak
Joe Calus, Owner
417-926-4606 • MTN. GROVE

OMAR'S DOZING

- ⇒ Clear land
- ⇒ Clean up woods
- ⇒ Make driveways
- ⇒ Clear property lines
- ⇒ Build ponds

Amish Owned & Operated
LEAVE MESSAGE: 417-741-0440
 Hartville & Surrounding Areas

RAINBOW VACUUM CLEANER:
 Excellent Condition. \$200. 417-260-0941. Raymondville.

FOR SALE: 2 Dayco motorcycle covers for Harley or other big bikes. \$50 each. 417-260-0941. Raymondville.

1963 CHEVY SHOP MANUAL: \$20.
 Vintage Chevrolet 1963-1974 V8 & 6-cylinder manual \$30. Chilton's manual American Volkswagen 1969-1976. \$35. 417-260-0941. Raymondville.

JOE THEISMANN AUTOGRAPHED CAREER STAT JERSEY: JSA COA. Text for pictures. \$95 417-318-8932. Houston.

MAC'S TIEDOWN STRAPS: Like New. \$80. 417-260-0941. Raymondville.

DARDEN PROFESSIONAL TIMBER HARVESTING, BUYING STANDING TIMBER: Great prices, improve wildlife habitat and improve forest health. State Certified & Fully Insured! 573-247-4808. Salem.

ANTIQUE HOG OILER: \$35. 573-308-5884. Rolla.

TRAILER HOUSE RIMS: \$10 each. 573-308-5884. Rolla.

6FT X 10FT GRAIN BOX: On 2-Wheel Trailer. \$400 O.B.O. 573-308-5884. Rolla.

FLAT CREEK ROCK FOR LANDSCAPING: 573-308-5884. Rolla.

ROUND TABLE: \$40. 417-741-1232.

25 SECLUDED ACRES: Powerlines on two sides of property. One hour from Springfield. Hunter's Paradise. Stream through property. Cash Only. \$8,000/per acre. Must take all. 00417-741-1232.

HIGHPOINT GREENHOUSE: Open for the season. Garden seeds, vegetable and flower plants, seed potatoes, onion sets and plants, herbs, etc. 417-741-2793. 9337 Warner Rd. Hartville.

VINTAGE WORKING 1967 SINGER SEWING MACHINE: Special zigzag model 638 in cabinet with original instruction book. \$60. 210-787-8222. Linn Creek.

FRUIT TREES FOR SALE: Apple, Peach, Pear & Plum. \$20 each. 417-664-0742. Lebanon.



Call to Order 417-993-3017

Meadowview Dutch Market

Bulk & Surplus Groceries • Prices Subject to Stock on Hand

<p>DELI SPECIAL</p> <p>LEBANON BOLOGNAREG. \$6.99 LBSALE \$6.49 LB</p> <p>BACON CHEESEREG. \$5.89 LBSALE \$5.39 LB</p> <p>TRY our Fresh Homemade DELI Sandwiches: TURKEY, HAM, ROAST BEEF, ITALIAN, BLT'S, PULLED PORK AND BLT PULLED PORK (MADE YOUR WAY)! COME IN OR CALL to order! ALSO Custom Deli trays! Veggie OR FRESH Meat-N-Cheese!</p>			
<p><i>Walnut Creek</i> Butter Quarters \$3.49 16 OZ.</p> 	<p><i>Premium</i> Grilled Chicken Dog Food \$6.50 12-3.5 OZ.</p>	<p><i>Turkey and Cheddar</i> Lunchables 50¢ EA.</p>	<p><i>Sliced</i> Pepeproni \$7.99 LB.</p> 
<p><i>Cooks Bone-In</i> Butt Hams \$1.25 LB.</p> 	<p><i>Chocolate Filled</i> Croissants 5 FOR \$1.00</p> 	<p><i>Old Bay</i> Seasoning 99¢ LB.</p> 	<p>LARGE BROWN EGGS \$3.25 A DOZ.</p> 
<p>BONUS SPECIAL 80/20GROUND BEEF \$2.25 16 OZ.</p> 			

MEADOWVIEW DUTCH MARKET
 417-993-3017 Hours: Mon-Thurs 8-5pm
 Fri 8-6pm • Sat 8-5pm
 23 Miles West on Hwy 64 • Right on T Hwy
 9 miles • Left on E Hwy 1 mile on Left

NOW ACCEPTING CREDIT, DEBIT CARDS & EBT

DUTCH COUNTRY STORE, LLC
 573-378-4395
 Hours: Mon-Thurs 8-5pm
 Fri 8-6pm • Sat 8-5pm
 5 miles East of Versailles off Hwy C on Kelsay Road

1996 Cadillac Hearse: For sale or trade for truck. 573-734-2822.

POSTER BED: \$150. 417-741-1232.

NOW BUYING STANDING RED AND WHITE OAK TIMBER: All slash will be trimmed to lay flat or placed in tidy piles for wildlife. No scarred-up trees or ruts from heavy logging equipment. We use low impact compact track loaders to minimize disturbance in your forest. Missouri Land Service LLC. 417-991-9280.

BUYING OLD BARN AND LUMBER: 417-298-3475 Leave Message.

NEED YOUR CDL????? We furnish the truck & trailer. We teach all requirements for ELDT & skills test. We go to the state highway patrol with our truck. Requires only 2 days of in person training. Much cheaper way to get CDL. Jefferson City MO, Willow Springs MO, Strafford MO, 573-353-2853. For more info www.capitaltruckdrivinginstitute.com

POOL TABLES: Installations, moves, recovers, repairs, accessories, etc. 573-646-1700.

WANTED OLD MILITARY RIFLES & PISTOLS: 816-838-6254. Lee's Summit.

2 ELECTRIC MOTORS: Diehl 1/3 horsepower and Wagner Electric 3/4 horsepower, includes 21 pulleys various sizes and widths. \$75. 210-787-8222. Linn Creek.

HORSE BONDING PASTURE & RUBBER PADDED BOX STALLS: \$300 a Month. Write with number to call back at 3676 Davis Rd Mansfield, MO 65704.

FREE TO GOOD HOMES: 8-year-old Welsh Corgi Female, 3-month-old Welsh Corgi Female. Also, 3 Cowboy Corgi Males \$50 O.B.O. 417-259-9738.

FULLBLOOD YEARLING RAMS: One Dorper and two St. Croix. \$500 each. Call 417-458-1771.



CLASSIC EDGE
TITANIUM HDX
26% Tax Credit on EPA certified Central Boiler Classic Edge HDX models and installation. Call today to learn more!

Outdoor Wood Furnace
CentralBoiler.com

Yarbrough Equipment Sales & Services, Inc.
9776 E. State Hwy OO • Strafford, MO
417-736-2303 • 1-866-286-6901 • www.yarbeq.com

The Classic Edge 360, 560 and 760 HDX are U.S. EPA Certified

77 JEEP CJ5 FOR SALE: Runs good, drives good. \$7,500. 417-343-3928. Marshfield.

METAL ROOFS: We repair leaky metal roofs with warranty. Also, flat roofs. Very affordable. Cover all of state. 573-338-1148. Jefferson City.

WANTED NEW HOLLAND SKID STEER 865: Any Condition. Call Bob 573-697-5143.

2002 HONDA VTX: 1800 CC. 1 owner. 573-330-7094. Potosi.

PEMBROKE WELSH CORGIS: D.O.B. 1/12/23 & 1 D.O.B. 7/20/22. U.T.D. on shots & wormer. \$300. 417-741-2949. Grovespring.

SUPER M FARMALL: new 15 x 5 x 38s: for \$2,500 417-349-2908

1 M FARMALL: with rebuilt motor for \$1,800 417-349-2908

FREE INTERACTIVE MORGAN HORSE FUN! Selfies with Morgan horses, kids activities, videos, painting, educational, demos, & carriage rides. Laura Ingalls Wilder door prizes, history. #meetthemorgan in Facebook for more information. Held at 5555 South State Highway NN, Rogersville. April 29th, 1-4p.m.

PAIR OF CAR OR PICKUP RAMPS: 70" tall on end and 16" wide \$45 417-260-0941



Larry Heisel Rentals
LARGE or SMALL...
We Rent!
Crawler Loaders • Excavators • Backhoes
Call Larry!
573-779-1500
www.larryheiselequipment.com
Rental Available in 636 or 573 area code

BOX OF SILVER-PLATED SILVERWARE: at least 75 years old \$60 417-260-0941

FOR SALE: German Shepherd Cross puppies. Nice Markings. \$50 each. Call 417-741-0476 Leave message. Ready April 24th.

2 FEMALE TOY SCHNAUZER/POODLE MIX: 417-664-5926. Lebanon.

FAINTING GOATS: Looking for an economical way to begin raising purebred fainters? Start with 2 bucklings as pets. Offering 2 for the regular price of 1. Call/Text 573-216-7796. www.greenacresvillage.com. Lake of the Ozarks.

9 PAIRS OF LADY'S COTTON KNIT LONG PANTS: Size XL. \$3 each or all for \$25. 417-288-6714. Lebanon.

DOXIN PUPPIES: Registered, shots & wormed. 573-247-6273. Salem.

COWBOY CORGIS: D.O.B. 1/9/23. UTD on shots & wormer. \$50. 417-349-0831. Hartville.

JESSE BARNES 1991 OCTOBER RADIANCE PRINT: 16x24, print #2796/2800, framed & matted by professional. 417-830-5309. Leave message. Bruner.

TRUNK LID FOR 55/56 CHEVY CAR: \$50 or trade. 573-734-2822.

FIXED KNOT FENCE

- Deli Sandwiches
- Glass Bottle Milk
- Homemade Yogurt
- Cheese & Spices
- Homemade Bread
- Bulk Foods
- Hydraulic Hoses
- Johnson & Ritchie
- Electric Fence Supplies
- Waterers
- Stay-Tuff Fence
- Gates & Panels

VISIT YOUR ONE STOP SHOP
FARMERS QUIK STOP
5 mi. East of Lebanon on Hwy 32 • 417-991-1938

KUSTER LOGGING
BUYER of Standing Timber
Oak and Walnut
Dozing Now Available
417-259-0047
References Available




Wright Spray Foam Insulators, LLC
Commercial & Residential
Call for **FREE Estimates!**

Ervin Gingerich 417-926-2052
B. Eli Yoder 417-746-4932

2001 F350 4X4 DUALLY: Reupholstered seats, new front tires & brand new 7.3 diesel engine. \$24,950. 417-254-1001. Edgar Springs.

MOTHER'S DAY SALE 10% OFF ALL WEEK: May 8-13 at Highpoint Greenhouse. Large variety of flowers to choose from. Gift certificates!! 417-741-2793. 9337 Warner Rd. Hartville.

DISCOUNT NEW MOBILE HOMES
- we will beat any price on any home **GUARANTEED.** Financing, 573-499-9993 columbiadiscounthomes.com

2010 FORD ESCAPE: 249,000 miles on body & 160,000 on engine. Good tires, battery, heat, air & cruise. All windows & locks work. Runs & drives very good. \$5,000 OBO Cash. 573-435-6987 Leave Message. Edgar Springs.

'86 CORVETTE PROJECT CAR: Will need to be trailered. Ran good until 2 1/2-3 years ago. Chipmunks ate the wire harness. \$1,250 OBO Cash. 573-435-6987 Leave Message. Edgar Springs.

NEIGHBORHOODS HOME IMPROVEMENT STORE: 417-533-5080. Lebanon

2 MALES & 2 FEMALES GREAT PYRENEES PUPPIES: \$250 Each. 417-589-0227. Conway.

CUSTOM HAY HARVESTING: or put up in shares. 4x5 Net Wrap Tight JD Bales. *Reasonable Rates* Reliable Service Larger Acreages Desired. Book early to beat the rush. For a Free Quote call Josh *573-247-8715* Green Meadows Farm: Servicing Dent, Texas, and surrounding counties.

LAWN MOWING & YARD WORK SERVICES: 417-288-8123. Lebanon.

PAST DUE STORAGE UNITS AT WEST 64 STORAGE IN LEBANON: will sell at auction by R&R Auction Service on Saturday April 22 at 10am. This is a Cash only auction 7 days to clean out, perimeter never broken. Call professional auctioneer Russ Weeks for info 417-576-7357.

DRIVING TEAM FOR SALE: 16-year-old Bay Clydesdale Quarter Cross and 15-year-old Black Friesian Quarter Cross. Beginner team, anyone can drive. 573-269-4743.

EXHAUST MANIFOLD FOR 55/56 CHEVY CAR: \$100 or trade. 573-734-2822.

BASEMENT READY TRUE MODS- instock ready for delivery 573-657-7040 chateauhomes.net

OLD ARMY MARMITE FOOD CAN FROM WWII: \$150. 573-734-2822.

1978 GMC DUMP FLAT BED: 20Ft. Keaseer Bed, 427-5sp 2sp-Axle. 573-269-4743.

MODEL 1911 FRAME 8-SHOT C02 PISTOL: Like new, in box with C02 cartridges, 4 clips, pellets & all paperwork. \$95. 573-364-7465. Rolla.

SMALL TOWN MAYOR OF WAYNESVILLE, MO: Political Adventures of the Ozarks by Luge Hardman, featuring small town politics and small-town life, featuring local photographers and local characters. \$9.50. 417-532-2045. Lebanon. (Leave message and phone number).

WEATHERED BARN WOOD SIDING: 10" wide. 573-729-7226. www.pineridgerustic.com Salem.

LOG SIDING: 2X8 Pine/Western Cedar www.pineridgerustic.com 573-729-7226. Salem.

BASEMENT READY USED DOUBLE-WIDE - 3 bdr, 2 bath, Financing Call for info 573-657-2176 amegamobilehomes.com

TINY HOMES - Missouri Franchise 573-881-7965

I BUY.....used mobile homes. Call or text 573-338-6250 or email GregS.CDH@outlook.com

REGISTERED HEREFORD & ANGUS BULLS: Home raised, Some Show-Me Select Qualified. 573-701-7828. Belgrade.

LIGHTLY EXPERIENCED GOLF BALLS: \$3 a dozen. 417-818-3469. Stafford.

HARLEY FAT BOBS: Custom flame paint w/ gas caps + lines. \$100. 573-764-3517. Call in P.M.

Starnes Auto LLC
22115 Rt. 66 • Lebanon, MO 65536
417.718.2707 Cell
417.588.3159 Office
www.starnesauto.com

1988 CHEVY SILVERADO MAROON VIN#6537, 247,XXX MILES.....	\$2,350
2008 CHEV SILVERADO 1500 4WD BLACK VIN#4879, 217,XXX MILES.....	\$9,250
2015 BUICK VERANO WHITE, VIN#7932, 62,XXX MILES.....	\$9,850
THE VEHICLES LISTED BELOW ARE NOT AVAILABLE FOR FINANCING	
2004 FORD SPORT TRAC SILVER, VIN#0901, 277,XXX MILES.....	\$4,200
2014 KIA SEUL (GRAY, VIN#5100, 89,XXX MILES.....	\$7,500
2015 CHEVY SONIC BLACK, VIN#5613, 103,XXX MILES.....	\$6,500
2016 CHEVY TRAVERSE AWD BLACK, VIN#5787, 122,XXX MILES.....	\$13,500
2017 FORD FUSION MAROON, VIN#5911, 77,XXX MILES.....	\$10,500

SUPPORT SQUAD
#Crew'sCrew
WE DO ALIGNMENTS!

Pine Ridge Rustic
Log Home Building Supplies

Services Offered!

- Installation
- Pre-finishing available on interior & exterior
- Dealer for exterior stains

www.pineridgerustic.com

523 CR 2410 • Salem, MO 65560 • Ph: 573-729-7226

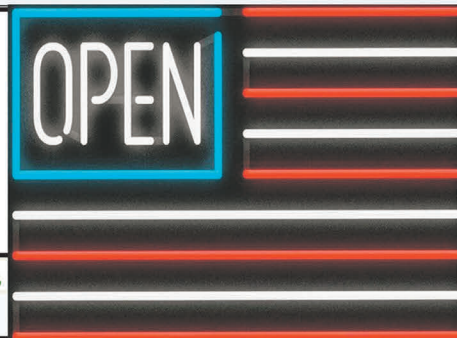


- Log Siding
- Beveled Siding
- Car Siding • Red Cedar
- Western Cedar • Pine



LUCKY DISCOUNT LUMBER
NOBODY BEATS OUR PRICES

Sale Ends April 29, 2023
 Seymour, Missouri 417-935-4201



Pole Barns & Post Framed Buildings!

23'x32'x10' \$6,888 Material Only \$9,090 Labor Included	23'x40'x10' \$7,885 Material Only \$10,600 Labor Included	30'x40'x10' \$9,595 Material Only \$13,100 Labor Included	40'x60'x12' \$16,745 Material Only \$23,985 Labor Included
---	--	--	---

Call for free quote, brochure & color chart.
 Other sizes also available.



NOBODY, BUT NOBODY BEATS OUR PRICES!!!

10 ft. Slider • Engineered Trusses 8' O.C. • 2x6 Treated Bottom Wrap • Screws • 2x10 Top Wrap • 2x4 Purlins • Full 29 Gauge Steel • Plus 3 ft. Entry Door with Lock
 OPTIONS: Sidewall Heights 10', 12', 14' & 16'. Overhead Garage Door. Skylights. Insulation. Wainscoting. Insulated Vinyl Windows. Cupolas. Labor Rates Slightly Higher over 50 Miles from Seymour. Call for YOUR FREE QUOTE TODAY!!!

PAINTED WHITE, GREEN OR TAN METAL\$97.79

10' - \$31.00 12' - \$37.20 16' - \$49.60

MIX & MATCH METAL\$59.99

8' - \$15.20 10' - \$19.00 12' - \$22.80

GALVALUME METAL\$79.99

10' - \$25.40 12' - \$30.48 16' - \$40.64

GALVANIZED CORRUGATED METAL SOLD OUT!

8' - \$9.84 10' - \$12.30 12' - \$14.75 16' - \$19.67

IN STOCK

40yr Painted Metal
\$105.59_{Sq}

KNOTTY PINE DOORS
 Starting at
\$164.99

Prices subject to change without notice
6X6 CEDAR POST LIMITED TIME \$5.87 LN FT

Car Siding!

1x6 White Pine Siding **79¢** in ft
 1x8 White Pine Siding **\$1.05** in ft

* 4 Profiles to choose from!
 Broken Bundles Add 10¢ Per Ft.

4x8 Sheeting
 Less than full units Add \$1 per sheet

3/8" Beaded Paneling \$24.99
 5/8" T111 Siding \$19.99
 Paneling **SSOLD**
 1/2" Plywood **SSOLD**
 3/4" Plywood \$29.99
 3/16 Pegboard \$12.99

**LOTS OF MATERIAL AVAILABLE
 FOR THOSE IN HOME PROJECTS!**

REAL WOOD SIDING

2x6 Log Siding **\$1.76** in ft
 1x8 Beveled Cedar from- **99¢** in ft
 T1-11 Siding from **\$19.99**

NEW PACKAGE HOMES



2x6—16" on center-Exterior Stud Walls
 Residential Roof Trusses-2' on center
 4/12 pitch with 1' over hang
 40 year Painted Metal roofing in 20 Different Colors
 Profile Ridge Vent - Ventilated Ridge Cap
 Vinyl Center Vent Soffit
 Color Matched Metal Fascia & Gable Trim
 2 - 3' 6 Panel Entry Doors
 4 - 3'x4' Vinyl Insulated Windows

Shown with Available Options
 Your Choice of either:
 Stock 5/8" T111 Siding w/1x4 Pine Window & Door Trim - or -
 7/16" OSB & House Wrap ready for other finish options

ALL FIGURED FOR SUITABLE CUSTOMER SUPPLIED SLAB OR SUB-FLOOR

Price for Basic Materials Package (No Labor at this Time)

20x24(480 sq. ft.)	20x32(640 sq. ft.)	20x40(800 sq. ft.)	28x40(1120 sq. ft.)	28x48(1344 sq. ft.)
\$9,490	\$10,839	\$12,339	\$15,129	\$18,729

DECK PACKAGES

Materials Only

8x8.....\$349.00	10x12.....\$699.00
10x10.....\$499.00	10x16.....\$899.00
12x12.....\$899.00	12x16...\$1179.00

QUAKER Now Stocking Quaker Vinyl Windows

2030 \$ 163.99	3030 \$189.99
3040 \$206.99	3052 \$225.99
3040Twin \$453.99	3052Twin \$497.99



LUCKY DISCOUNT LUMBER
 417-935-4201
 455 State Hwy C • Seymour MO 65746
 www.luckydiscountlumber.com



*Some restrictions apply see store for details. Prices subject to change without notice.

VISIT WEBSITE FOR PICTURES

ESTATE AUCTION

SATURDAY, APRIL 22ND - 10:00 A.M.

Location: 10464 Hwy AM, Mountain Grove, MO **Directions:** From Mtn Grove 4 way stop go East 2/10 mile to Wall Street on right go 3/4 mile to Clouse Street on left. Go 2.4 miles to Auction on Right. **WATCH FOR CHADWELL AUCTION SIGNS.** **Payment System:** Cash • Debit Card • Credit Card (Debit / Credit Card Fee Will Apply) Checks approved if known by auction company. **VISIT: WWW.CHADWELLAUCTIONS.COM**

Estate of David PARKER



1955 Chevrolet 2 Door Post with new Trunk Deck, Floor, & Frame with Assorted Parts

ANTIQUES ~ COLLECTIBLES

Victrola (good working condition) • Marbles • Wash Stand • Oil Lamps • Large Lot Old Records • White Pitcher • Cowbell • Milk Jars • Small Tiffany Lamp • Secretary

w/Pigeon Holes • Parlor Chair • Pitcher & Bowl • Dazy Butter Churn • Butter Churn • Pyrex Bowls • Log Tongs • Salt & Pepper Shakers • Hamilton Beach Shake Maker • Old School Bell • Radio Flyer Wagon • Wash Board • Push Plow • Cream Cans • 2 Man Crosscut Saw • Corn Sheller • Large Lot License Plates •



Wooden School Desk • Large Glass Jug • Granite Ware • Ash Trays • Bayonettes • Large Cast Iron Kettle • Assorted Glassware • USA • Coke Bottles w/City Names • Coca Cola Crate • Buggy Wheels • Water Pump • Metal International Signs • Willie Mays Baseball Card • Norse Fifty Seven Washing Machine • Crock w/Lid • Hoosier Cabinet w/Flour Bin • Hand Saws • Sythe • Other

2009 Harley Davidson Loaded with Lots of Extras



FARM EQUIPMENT

8N Ford Tractor w/Fenders & Parts • 6' 3pt 286 Brushhog • Pond Slip • Gearmove 5' 3pt Tiller • MF Model 202 Construction Tractor 3spd hi lo 540 PTO • Harrow • Other



HOUSEHOLD

Wooden Rocking Chair • Assorted Pictures • Sharp 53" Television • Assorted Linen • Pool Sticks • Oak Claw Foot Table • GE Microwave • Whirlpool Side by Side Refrigerator • Whirlpool Washer & Dryer • Stand Lamp • Assorted Kitchen Dishes • Other



CLOCKS ~ WATCHES

Brass Horse Clock • Anniversary Clock • Coin Pay Phone • Assorted Watches • Wooden Wall Phones • Verichron Wall Clock • Quartz Wall Clock • Regulator Westminster Chime Clock • Assorted Coo Coo Clocks • Mantle Clocks • Seth Thomas Hump Back Clock • Railroad Clock • Rhythm Christmas Clock • Campbell Soup Clock • Pocket Watch Parts • Pocket Watch • Other

OUTDOOR ~ MISCELLANEOUS

(2) Craftsman LT 1000 42" Lawn Mower • Wheel Barrow • Steel Posts • Car Ramps • 2 Wheel Dolly • Rubber Tire Yard Cart • Gas Jugs • Drop Hitches • Assorted Hand Tools • Pole Bar • Stihl Weedeater • Coolers • Fatsco Wood Stove • Small #16 Wood Stove • Alum Ladder • Fence Stretchers • Other

SHOP ITEMS

55# Anvil • 75# Anvil • Small Anvil • Industrial HD Bandsaw • Jet Table Saw • 10" Collins Table Saw • Jack • Makita Drill Set • Makita Drill • Drop Cords • Electrical Wire • Motor Stands • Mini Shop Vac • Makita 10" Miter Saw • Battery Charger • Sawzalls • Large Lot of Log Chains • Large Lot of Booms • 12v Battery Charger • Bolt Cutters • 1 Ton Hoist • Tool Boxes • Wood Clamps • Milwaukee Sawzall • Air Grease Gun • Air Hoses • Makita Hand Sanders • Metal Shop Bench • Other

AUCTIONEER'S NOTE: This will be a great sale with lots of variety. Come spend the day with us! **Thanks, Shawn**

DRIVER'S LICENSE OR PICTURE I.D. REQUIRED • TERMS: CASH OR APPROVED CHECK



Chadwell
Auction Service, LLC
www.chadwellauctions.com

Auctioneer:
SHAWN CHADWELL
417-830-0209
Ringmen:
Weston Chadwell ~ 417-349-0727

Clerk:
SHELLY CHADWELL
Cell: 417-880-8449
Cashiers:
Marla Chadwell • Emily Shaffer
Cassie Collins

PROFESSIONAL SALES MANAGEMENT

LUNCH WAGON • APPRAISAL SERVICE • RAIN OR SHINE
All announcements made day of sale take precedence over any printed matter. Not responsible for lost or stolen merchandise. Not responsible for accidents.

PUBLIC AUCTION

SATURDAY, APRIL 22 @ 9:00 A.M.

Directions: Salem, MO - From Salem, take 19 North to 68 Hwy., take 68 1.2 miles to 3233. Follow 3233 1/2 mile to 935 CR 3233. Watch for signs.

TOOLS - HUNTING - BOAT - HOUSEHOLD ITEMS

Green Recliner - Music Table
 Kitchen Table & 8 Rolling Chairs
 Wardrobe - Glider - Desk & Chair
 Full Size Bed - Grandfather Clock
 Table - 6 Drawer Dresser
 Old Dresser - Jelly Cabinet
 Wooden Chair Leather Bottom
 Humidor - Hall Tree
 Gun Cabinet Clock - Corner Cabinet
 Dry Sink - Couch
 Volume 1-2-3-4 Salem History
 Volume 1 & Volume 5 Ozark
 Heritage
 Upright Freezer - Metal Carts
 Folding Work Table
 2 Small Refrigerators
 2 - 3pt Cyclone Seeders
 DR Leaf Collector B+S - Plywood

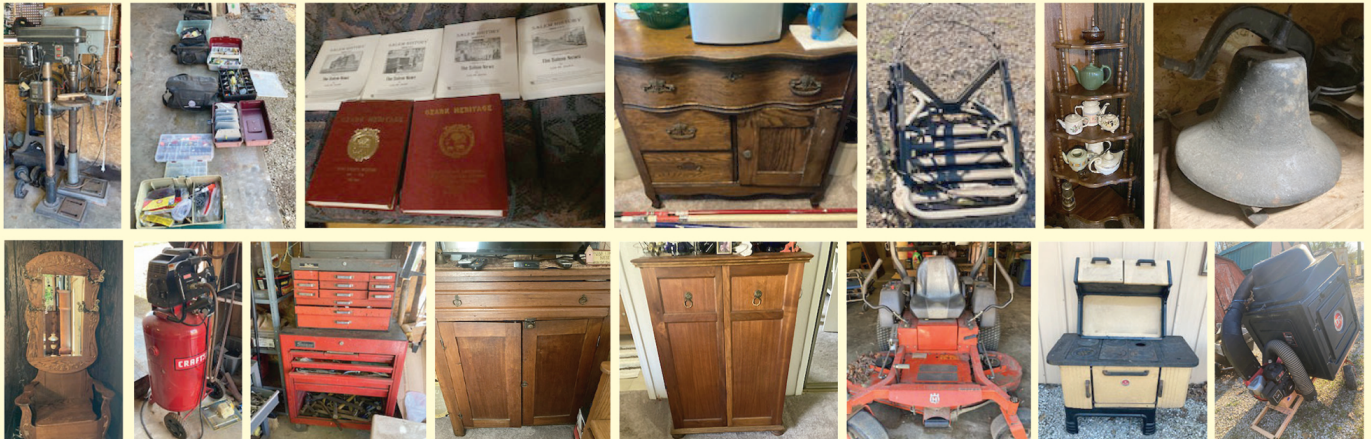
Miter Saw - Table Saw
 Coolers - Hunting Chairs
 Old Bicycles - Mr. Heater
 Hunting Blinds - Clothes
 Old Ice Cream Makers
 Old Wood Cook Stove
 Metal Yard Table
 Rudd Air Conditioner - Wood Insert
 Saw Horses - Black Smith Vise
 100 Lb Propane Cylinder
 Evinrude 25 HP Jet with Title
 2 Mercury Motors 9.9 with Titles
 ® Husqvarna
 Bumper Jack - Shovels - Rakes - Hoes
 2 Drill Presses - Pipe Wrench
 Grinder on Stand - Coleman Lamps
 Tons of Tools (Snap-On, USA,
 Craftsman)

Open and Close End Wrenches
 Screw Drivers - Pliers
 Speed Wrenches - 6250 Generac
 Craftsman Pole Saw - Drop Hitches
 Bug Zapper - Smoker - MS441
 Straight Shaft Weed Eater
 2 Foot Controls
 2 Stern Drive Trolling Motor - Edger
 Stove Pipe - Front Tine Tiller
 Tomato Stakes - Pintle Hitch
 Draw Bar - Cross Bars
 Wash Tub - Dinner Bell - Shop Lights
 Boat Seats - Scroll Saw
 Oils - Grease - Fluids - Deer Stands
 Nuts - Bolts - Nails - 35 Lb Propane
 Craftsman 33 Gallon Air
 Compressor
 Lot of Fishing Items, Poles

3 pt. 5' Aerator - Wood Sled
 3 pt. Danuser Auger
 Water Tank - 1 Front Tiller
 3 pt. 6' Cultipacker - 6' 3 pt. Blade
 Procraft Lake Boat Trailer
 24' Aluminum Extension Ladder
 Summit Viper Tree Stand

1986 18' Run-
 About Inboard
 with
 Titles. Runs
 Good, has New
 Water Pump.

See you there! - Tom



OWNER: SUE AND THE LATE CLIFFORD JADWIN

ANNOUNCEMENTS AT AUCTION TAKE PRECEDENCE OVER PRINTED MATTER

WULFF AUCTION

TERMS: CASH OR
 APPROVED CHECK -
 I.D. REQUIRED
 NOTHING REMOVED
 UNTIL SETTLED FOR

Licensed
 Appraisals

2334 Highway K, Salem, MO 65560

AUCTIONEERS:

Col. Tom Wulff • John Wisdom

Cell: 573-247-3884 • Cell: 573-247-9563 • Home: 573-729-8476

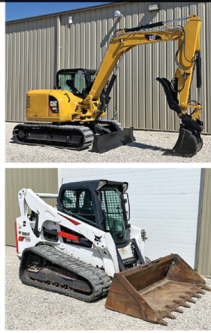
Clerk: Tracy Strange

Cashier: Nancy Inman



RAIN OR SHINE
 OWNER & AUCTION
 PERSONNEL NOT
 RESPONSIBLE
 FOR ACCIDENTS AT
 SALE SITE

See Wulff Auctions at www.thesalemnewsonline.com/auctions



Construction Equipment

2020 JD 325G skid steer loader
 2019 Bobcat T770 skid steer loader
 2019 Cat 314F CR excavator
 2018 & 2019 Cat 312F GC excavators
 2-2018 JCB JS131LC excavators
 2018 & 2017 Cat 308E2 CR excavators
 2015 Doosan DX85R-3 excavator
 2012 Kobelco SK75SR-3 excavator
 2015 Cat 420F2 loader backhoe
 JD 450-B crawler loader
 Ditch Witch 3700 trencher backhoe
 2018 Bobcat MT85 mini skid steer loader
 JLG 3248RS & 2632ES electric man-lifts
 Reynolds 17C 17-yard pull type scraper
 Kubota B21 tractor loader backhoe
 Wacker Neuson 803 mini excavator
 2-Bobcat 418A mini excavators
 60+ unused skid steer attachments
 Sellick SD-80 rough terrain forklift
 JLG 4005 40' boom lift

Tractors

Case IH CX100
 Ford 7740 w/ loader
 JD 990
 IH 706 diesel
 Ford 961 Powermaster diesel
 Ford 6610 w/ loader
 NH 1530 4x4
 JD 2640 w/ loader
 White 2-70
 JD 4200 w/ mower
 JD 730 LP
 JD 301-A
 Ford 7840 w/ loader
 JD 620
 JD 650
 AC D15 gas
 JD 2040 tractor
 IH Cub
 AC 185 diesel w/ loader
 AC D17 gas & diesel
 JD 670
 IH Cub Lo-Boy
 Ferguson 50
 Ford 1500
 Ford 860
 Case 1370 Agri-King
 JD 40
 JD 50
 Kubota B6100
 MF 65
 MF135

Farm Equipment

Vermeer 504R Classic round baler
 JD 457 round baler
 Vermeer 504 Super I round baler
 JD 750 15' no-till drill
 NH 1411 10' discbine
 Unused Enorossi Batrake 8l v-hay rake
 60- 12' corral panels w/ trailer
 Unused storage containers from 7-40
 Vermeer TM700 9' trailed disc mower

Shiloh Wagon Works parade wagon
 JD 710 7' mower conditioner
 JD 920 20' grain head
 JD 7000 6-11 split row planter
 Unused Ag-Spray 200-gal. 3-pt sprayer
 Unused portable hoop buildings
 Sunflower 16' disc
 Case IH 496 25' disc
 Melroe 3430 Spra-Coupe sprayer
 Unused Bison NVHL 300XHD 10' 3-pt grader blade
 Art's Way 5165 roller mill feed mixer
 NH 256 hay rake w/ dolly wheels
 NH 328 manure spreader
 Hardi TR500G pull type sprayer
 Hesston 956 round baler
 Hesston 855 round baler
 Case IH RS551 round baler
 NH 1032 & 1010 Stackliner bale wagons
 Westfield MKX130-84 transport auger

40- 4x5' round bales of grass hay
 JD 7000 6-row planter
 NH 617 9' disc mower
 NH H6740 710" disc mower
 Several cattle squeeze chutes
 Brown 6.5' 3-pt tree cutter
 Antique Aeromotor windmill
 Krause 1581 15' disc
 NH3417 hay tedder
 Rhino 10' grader blade
 JD 7000 4-row planter
 Hardi 500 gallon sprayer
 Shaver 3-pt hyd post driver
 3-JD 235 discs
 JD 14T square baler
 Frontier 5' 3-pt disc
 NI #200 manure spreader
 Several 2-row planters
 3-pt implements of all types incl. unused 3-pt tillers

Huge assortment of hay equipment
 Several front loaders incl. JD
 Rock pickers
 Sprayer trailers

Trucks, Cars, Motorhomes

2008 Ford Mustang Shelby GT500
 2019 Winnebago Vista 29VE motorhome
 2009 International 4300 dump truck
 2008 Dodge Ram 2500 4x4 diesel w/ flatbed
 2014 Jeep Grand Cherokee Overland
 2010 Mercury Mariner AWD
 2005 Ford F450 crew cab flatbed
 1989 Ford F800 grain truck
 1998 Tiffin Allegro Bus 39' motorhome
 2007 Toyota Rav4 SUV
 1990 GMC C6500 dump truck
 2007 International school bus
 2006 Dodge Ram 2500 quad cab diesel 4x4
 1953 Chevrolet 6400 grain truck
 2000 Chevrolet 3500 box van
 2005 Ford F-250 4x4 pickup
 1985 Ford F-250 4x4 pickup
 2002 Dodge Ram 2500 quad cab diesel 4x4
 2005 Mercury Mariner Premier

4x4
 2000 Chevrolet 3500 4x4 pickup
 2007 GMC 3500 4x4 flatbed
 2011 Chevrolet Cruze Eco sedan
 1995 Jeep Wrangler 4x4
 1966 Ford 1-ton flatbed dump

Trailers

2020 Load Trail 34' flatbed gn
 2022 Region Welding 20' flatbed
 2015 Riechers 24' enclosed gn
 2019 Doolittle 25' flatbed gn
 Doolittle 7'x18' flatbed
 Loadmaster 23' flatbed gn
 Dyna 25' flatbed equipment
 4-semi van, 48-53'
 Trailerman 24' flatbed gn

UTVs, ATVs, Boats, Motorcycles

2020 Kawasaki Mule ProFX ATV
 2017 Polaris ACE 150 Youth ATV
 2007 ProCrafi Pro 165 16' fishing boat
 2009 Harley-Davidson soft tail custom
 2008 Harley Davidson Fat Bob
 2005 Harley Davidson Fatboy
 2011 John Deere Gator 825I UTV
 2016 John Deere Gator 825I UTV
 Yamaha electric golf cart
 2003 Honda XR 70R dirtbike
 Honda 4x4 mini-truck
 John Deere Gator 6x4 UTV
 Mon-Ark 18' alum. jon boat
 Polaris Magnum 325 4x4 ATV
 Yamaha Terraport ATV
 Honda Rancher 4x4 ATV
 John Deere AMT600 UTV
 2011 Polaris Ranger 800EFI XP UTV
 Challenger 15' fishing boat
 Lowe 18' aluminum jon boat
 Ozark 16' fishing boat
 2017 New Holland Rustler 850 UTV

Lawn Mowers

Gravely 260Z zero turn
 JD 430 diesel
 Walker MTGHS zero turn
 Exmark TT20KCE walk behind
 Toro Timecutter Z5035 Zero turn
 Kubota TG1860G
 Hustler Raptor SD zero turn
 Gravely ZT 54XL zero turn
 JD D110
 Toro ZX5400 zero turn
 JD LX176
 JD Z425 zero turn
 Agco Allis 2T1644 zero turn
 JD 260
 Swisher 60" pull type finish mower
 Great Dane GDSM61 stand-up zero turn
 John Deere LT190

Shop Equipment & Miscellaneous

Unused portable restroom shower units & portable cabin
 10+ chainsaws
 Grimmer Schmidt 175 air compressor
 Miller Trailblazer 280 welder generator
 25+ Unused toolbox workbenches
 Livestock equipment
 More items listed at SchneiderAuctioneers.com

ONLINE AUCTION
 BID NOW! BIDDING CLOSSES SAT, MAY 6TH



ITEM PREVIEW DAYS:
 Bidders will be able to inspect and view items Monday-Friday (8am-4pm) and Saturdays (8am-noon) while the auction is open for bidding at 4177 HWY VV, Berger, MO 63014

920 LOTS



All items sell regardless of price.
 All items start at only \$1.
BID TODAY!



SCHNEIDER Auctioneers LLC
 573-834-2207 • 573-291-8075
www.SchneiderAuctioneers.com



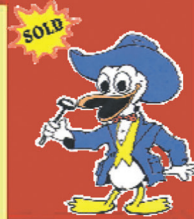
Mickey Duckett
CAL, MPPA, AARE, CES

Mickey Duckett Professional Auctioneer

P.O. Box 1575, Ozark, MO 65721

(417) 353-2768

www.mickeyduckettproauction.com



UNIQUE REAL ESTATE & PERSONAL PROPERTY AUCTION

458 Laurel Rd., Ozark, MO Bidding Ends Sat., April 28th @ 1:07

Preview: Sat., April 22nd, 10-12 Pick up Sat., April 29th, 10-12

Quaint approx. 1750 sq. ft. home in a tranquil setting, with 3bed/ 2bath, featuring newer laminate flooring in the kitchen/dining room, wood burning fireplace, 2-car attached garage, large attic storage and newer wrap-around deck, situated on approx. 5 +/- acres, with single stall barn and fenced areas for horses. **NOTE:** Sale subject to court approval. **Personal Property:** NEW 18' x 33' Oval above ground pool, 5 person jacuzzi, lots of vintage toys, mid-century furniture, lawn tractor, home decor **AND SO MUCH MORE!** Over 490+ lots to bid on. Take a look at our catalog!

Owner: Annette Diane Adams Dobbs Estate

Auctioneer Note: You have to see this unique auction. Something for everyone! Check out our Online Catalog! For auction terms, photos and register to bid, go to our website at www.mickeyduckettproauction.com



ESTATE AUCTION

Friday, April 21st, 2023 ~ 10:00 AM

LOCATION: 23374 Norway Rd, Granby, MO; Directions: From 86 Hwy At East Newton School Go 2 Miles South To Norway Road Then East 1/4 Mile To Sale Site. GPS Will Get You There (Watch For Signs)

Auction For George & Velda Eads Estate



Antique Furniture

Ant Porcelain Gas Cook Stove, Ant Walnut Chest Of Drawers, Ant Walnut Vanity, Ant Iron Sewing Table, Ant Eastlake Table, Ant Square Table, Ant Bar, Ant Quartersaw Oak Kitchen Table, Ant Oak Kitchen Chairs, Ant Child's Rocker, Ant Sewing Machines, Ant Iron Beds, Ant Trunks, Ant High Stool, Ant Wagon Wheel Chandelier Lights, Ant Kidney Table, Ant Dining Table, Several Sm Ant & Prim Tables, Ant Lamps, Ant School Desks, Retro China Cabinet, Prim Chairs, Shelves & Benches, Ant Store Bust W/Iron Stand, Several Store Display Pcs, Wicker Furniture, Other Items Not Listed

Antiques, Primitives & Collectibles

Neat Ant RxR Engine BBQ Grill/Smoker, Ant RxR Switch Light, Ant RxR Crossing Sign, Ant RxR Switch Globes, Ant Lg Gas Station Oil Can, Ant Foot Sharpening Stone Grinder, Ant School Bell, Ant Yard Swing, Ant Push Plow, Ant Pitcher Pump, Ant Hog Oiler, Ant Concrete Horse Tie, Ant Iron Wheels, Rare Ant Lg Insulators & Others, Ant Pulleys, Ant Buggy Rings, Steps & Wrenches, Ant

Hay Hooks, Ant Whiskey Barrel, Ant Metal Kerosene Heaters, Ant Ice Tongs, Ant Feed Scoops, Ant Fire Extinguishers, Ant Crocks & Crock Pcs, Very Lg Lot Of Ant Cast Iron Pcs, Ant Table Top Stove, Old Galvanized & Granite Ware Pcs, Old Nail Kegs, Old Advertising Wood Boxes & Gas Cans, Lg Lot Of Old Jars & Bottles, Old Rolling Pins, Lg Lot Of Old Salt & Pepper Shakers, Old Washboards, Old Alum Coolers, Ant Wood Bouncy Horse, Ant Horse Collars, Prim Horse Collector Items, Old Metal & Other Old Baskets, Old Metal Bird Cage, Old Saws, Lg Lot Of Prim Tools, Old Toys, Old Cartoon Glasses, Colored, Pyrex & Fire King Dishes, Very Old Pottery Inc McCoy, Frankoma, Shawnee & Others, Stained Glass Pcs, Old Steins, Black Americana Collectible Pcs, Lg Lot Of Colored Glass Inc Pink & Green Depression, Carnival, Milk Glass, Blue, Red & Others, Hundreds Of Pcs Of Old Glass Of Various Kinds, Old Bells, Vaseline Glass, Hundreds & Hundreds Of Sm Prim & Ant Pcs Not Listed



Auctioneers Note: It Is An Honor To Be Conducting This Auction For The Eads Estate. Over 65 Years Of Collecting Antiques & Primitives Will Be Offered In 3 Auctions. There Are Some Very Unique & Hard To Find Items In This Sale. Auction Will Be Very Larger With Possibility Of Running 2 Rings So Please Plan Now To Attend. The Eads Were Very Well Known Members Of The Community & Outstanding Antique Collectors. Again This Is A Very, Very Large Auction With Hundreds & Hundreds Of Items Not Listed. Watch Papers For Next Dates For 2 More Auctions. **Sale Order: Furniture Will Sell First Then Move Directly Into Antiques, Primitives & Collectibles. See Ya There!!!**

Terms: Cash or check with proper ID. Now accepting most major credit cards. Nothing removed until settled for. Statements made the day of sale takes precedence over printed material. Everything sold as is where is. Not responsible for accidents. Restroom available. Concessions Provided. Check our website for upcoming auctions and for additional pictures!!



NANCE AUCTION SERVICE

No Matter How BIG or small, We Do Them All!!!



Col. Bill Nance 417-214-0093 In God We Trust Philippians 4:13 Sean Beazley 417-247-6754



OUTSTANDING BAKERY & RESTAURANT AUCTION

MONDAY, APRIL 24 - 10:00 AM

DELICIEUX

3757 N STATE HWY H (N. GLENSTONE AVE)
 SPRINGFIELD, MO 65803

SELLING ➔



MARCHIA CTR MDL REFRIG. GLASS PASTRY OR DESSERT CASE-HAND CRAFTED ROUGH SAWN CEDAR DRY PASTRY CASE, 87"-MANITOWOC MDL QM30A UNDERCOUNTER 60 LB CUBE ICE MACHINE, EXCELLENT-VENEZIA BY CECILWARE ESPRESSO MACHINE W/STEAM & FROTHER-2 ESPRESSO/COFFEE BEAN GRINDERS-BLENDTEC 90 OZ SMOOTHIE BLENDER-2 OUTSTANDING ROUGH SAWN CEDAR LIVE EDGE SERVICE COUNTERS-SEVERAL LIVE EDGE WOOD SHELVES, CRATES & DÉCOR-FANTASTIC SELECTION LATE MODEL SINGLE AND DOUBLE GLASS DOOR REACHIN COOLERS-TRUE 27" WORKTOP COOLER-FRIGIDAIRE & KENMORE UPRIGHT DEEP FREEZERS & MAGIC CHEF CHEST FREEZER-HOBART 20 QUART DOUGH MIXER, HAWK 10 QUART & KITCHEN AID 5 QUART MIXERS, EXCELLENT-2 OLIVER MODEL 777 BREAD SLICERS-BLODGETT SS DOUBLE STACK NAT GAS CONVECTION OVENS W/VISUAL DOORS-WISCO CTR MDL ELEC CONVECTION OVEN-HATCO FLAVRSAVOR UPRIGHT FLOOR MODEL GLASS DISPLAY WARMER & HOLDING CABINET-2 HENNY PENNY HC900 SS PASS THRU HEATED HOLDING CABINETS-2 HEAVY DUTY BAKER'S TABLES, NICE-SS 3 COMP SINK-HAND SINKS-SS WORKTABLES-PASTRY RACKS-WIRE SHELVING-SQUARE POS SYSTEM-SEATING INCL DINING TABLES & CHAIRS PLUS 2 WROUGHT IRON PATIO SETS-3'X8' M/L LIGHTED EXTERIOR BUILDING SIGN, COST OVER \$3,000! INSIGNIA 50" FLAT SCREEN TV-NEON OPEN SIGN, COMMERCIAL MICROWAVES, DIGITAL SCALES & OTHER RESTAURANT, BAKERY EQUIPMENT & SMALLWARES TOO NUMEROUS TO LIST!

NOTE: OUTSTANDING, SUPER NICE & CLEAN RESTAURANT & BAKERY EQUIPMENT. VISIT OUR WEBSITE & CLICK ON THE AUCTIONS TAB FOR PHOTOS & COMPLETE LISTING. FANTASTIC LATE MODEL REFRIGERATION, ESPRESSO & BEVERAGE ITEMS, CONVECTION OVENS & DOUGH MIXERS WITH ALL HOOKED UP & WORKING! THIS IS ONE YOU WON'T WANT TO MISS. NOT A HUGE AMOUNT OF SMALLS SO BE ON TIME. ALL EQUIPMENT MUST BE REMOVED BY TUESDAY APRIL 25 AT 5 PM. MARK YOUR CALENDAR & MAKE PLANS TO ATTEND THIS EXCELLENT AUCTION!

MARON RESTAURANT EQUIPMENT, LLC & AUCTIONS CO.
 417-327-5619 • WWW.MARONRESTAURANTEQPT.COM
 YOUR RESTAURANT EQUIPMENT AND FOOD SERVICE LIQUIDATION SPECIALISTS

STONES & JEWELRY AUCTION

ONLINE ONLY!

TUESDAY, MAY 2ND, 2023 AT 6:00 PM CDT

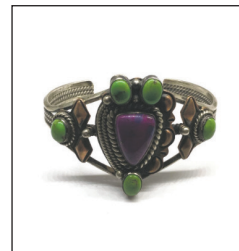
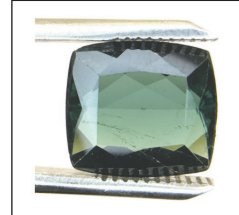
INVENTORY LIST:

Citrine 15.10 ct
 Amethyst 3.55 ct
 Blue Topaz 1.85 ct
 Sterling Silver & Copper Cuff
 Sapphire 4.10 ct
 Morganite 1.10 ct
 Pink Tourmaline .85 ct
 Lemon Quartz 4.30 ct
 Sterling Silver Pendant
 Burmese Rubys 1.10 ct
 Chrome Diopside 1.20 ct
 Emerald .90 ct
 Sterling Silver Bracelet
 Amethyst 8.85 ct
 Ruby 3.00 ct
 Opal 1.25 ct
 Sterling Silver Necklace with Pendant
 Aqua Marine 2.15 ct
 Green Tourmaline 5.20 ct
 Red Garnet .75 ct
 Sterling Silver Pendant
 Sterling Silver Ring
 Amethyst 9.25 ct
 Sterling Silver Ring
 Emeralds 1.00 ct
 Ruby 3.65 ct
 Sterling Silver Earrings
 Lemon Quartz 9.80 ct
 Sapphire 4.00 ct
 Money Clip
 Green Kunzite 7.00 ct
 Citrine 7.80 ct
 Blue Topaz 1.00 ct
 Peridot 1.60 ct
 Sterling Silver Bracelet
 Amethyst 18.70 ct
 Red Garnet 4.65 ct
 Sterling Silver Pendant

Burmese Ruby 1.25 ct
 Pink Tourmaline .75 ct
 Sapphire 5.30 ct
 Sterling Silver Ring
 Opal 1.55 ct
 Sterling Silver Cuff
 Green Tourmaline 3.35 ct
 Lemon Quartz 9.05
 Emerald 1.45 ct
 Sterling Silver Necklace
 Blue Topaz .90 ct
 Sterling Silver Earrings
 Citrine 13.15 ct
 Red Garnet 6.80 ct
 Opal 4.05 ct
 Ruby 1.25 ct
 Sterling Silver and Turquoise Necklace
 Chrome Diopside 1.45 ct
 Amethyst 1.55 ct
 Sapphire 3.25 ct
 Peridot
 Pink Tourmaline 2.40 ct
 Sterling Silver and Turquoise Earrings
 Burmese Ruby 1.10 ct
 Sterling Silver Necklace
 Amethyst 37.80 ct
 Citrine 1.90 ct
 Green Tourmaline 2.60 ct
 Sterling Silver Ring
 Opal .95 ct
 Sapphire 3.95 ct
 Red Garnet 3.70 ct
 Sterling Silver Bracelet
 Peridot 1.50 ct
 Lemon Quartz 4.75 ct
 Amethyst 1.80 ct
 Sterling Silver Pin
 Citrine 4.15 ct

Blue Topaz 1.05 ct
 Opal 1.95 ct
 Lemon Quartz 6.45 ct
 Sterling Silver Pendant
 Amethyst 3.20 ct
 Sterling Silver Earrings
 Green Tourmaline 2.55 ct
 Red Garnet 4.00 ct
 Emerald 1.80 ct
 Sterling Silver Ring
 Blue Topaz 1.00 ct
 Sterling Silver Ring
 Red Garnet 4.55 ct
 Peridot 1.45 ct
 Sterling Silver Necklace and Pendant
 Chrome Diopside 1.25
 Opal 1.30 ct
 Amethyst 9.35 ct
 Green Kunzite 5.60 ct
 Sterling Silver Earrings
 Aquamarine 1.70 ct
 Emeralds 1.20 ct
 Burmese Ruby 1.30 ct
 Green Tourmaline 16.45 ct
 Sterling Silver Bracelet
 Red Garnet 3.70 ct
 Blue Topaz 1.00
 Peridot 1.50 ct
 Amethyst 2.60 ct
 Aquamarine 1.80 ct

AND MORE!!!



FOR MORE INFORMATION GO TO WWW.EASTERLYAUCTIONCO.COM OR CALL EASTERLY'S AT 417-833-9494

E

ASTERLY

AUCTION CO.

Mike Easterly Auctioneer • 417-833-9494

Not Responsible for accidents or theft. For more information call: Easterly Auction Company, Springfield, MO. Auction Terms: Visa, Mastercard, Cash, Cashier's check or checks with proper I.D. Announcements day of sale take precedence over printed material. Auction Notes: Although information is obtained from sources deemed reliable, auctioneer makes no warranty or guarantee expressed or implied. Buyers should themselves take the opportunity to make their own inspection prior to sale.

www.EasterlyAuction.com • auctionzip.com ID#14770



REAL ESTATE-BOATS-VEHICLES-TOOLS-FURNITURE-MISC AUCTION**SATURDAY APRIL 22, 2023 10:00AM****LOCATED: 1360 W OLD BITTERSWEET, NIXA MO**

FROM NIXA @ MASSEY BLVD & MT VERNON GO WEST ON HWY 14 (MT VERNON) 1.3 MILES, TURN SOUTH ON HWY M (NICHOLAS RD) GO 7/10 MILE TURN WEST ON W OLD BITTERSWEET TO 3RD HOUSE ON LEFT.

FOR PICTURES SEE WEBSITE OR AUCTION ZIP.COM**BANK LETTER OF CREDIT REQUIRED FOR PURCHASE OVER \$5000 ADDRESSED TO MELTON AUCTION & REALTY****TO PREVIEW CALL 417-830-0153****TERMS: 10% DOWN DAY OF AUCTION, BALANCE @ CLOSING WITHIN 30 DAYS OR BEFORE
REAL ESTATE SELLS @ 11:00****REAL ESTATE**

APPROX 2068 SQ FT 3 BED, 2 BATH HOME WITH A LARGE SUN ROOM, DOUBLE CAR GARAGE BETWEEN BREEZEWAY, ADDITIONAL 2 CAR DETACHED GARAGE, SOLAR PANELS, ALL SITTING ON APPROX 3.4 ACRES CLOSE TO NIXA HIGH SCHOOL, MEDICAL FACILITIES, SHOPPING & RESTAURANTS BUT WITH THE COUNTRY ATMOSPHERE. 2022 TAXES \$1350.99

SUBURBAN-BOATS-TRAILER-GOLF CART-MOWERS

1999 CHEVY SUBURBAN 1500, 4 WHEEL DR, 5.7 ENGINE, 180,388 MILES—1998 NITRO SAVAGE 912 BASS BOAT 21' W/MERCURY 225 HP OPTIMAX PRO XS MOTOR, HUMMINGBIRD DEPTH FINDER, MINN KOTA TROLLING MOTOR W/NITRO TRAILER—1960 RICHLINE SEMI V 16' FISHING BOAT W/MERCURY 35 HP MOTOR, MOTOR GUIDE TROLLING MOTOR, W/TRAILER—1986 SUN TRACKER BASS BUGGY PONTOON W/MERCURY 40 HP 4 STROKE MOTOR, MINN KOTA TROLLING MOTOR W/TRAILER—BASS TRACKER BANTAM 8' BOAT—5'X8' TWO WHEEL TRAILER W/FOLD DOWN RAMP—EVINRUDE 7 1/2 HP, JOHNSON 6 HP, ELGIN BOAT MOTORS—HAND CONTROL TROLLING MOTORS—MOTOR GUIDE 24 VOLT TROLLING MOTOR—ASCEND FS128T KAYAK—YAMAHA GAS GOLF CART—WOODS 6' FINISH MOWER—6' BOX BLADE—SCAG TURF TIGER ZERO TURN MOWER SMT61Z, 61" CUT—4 WHEEL LAWN WAGON

TOOLS

STIHL MS250C CHAIN SAW—STIHL WEED EATER—B&D WEED EATER—PORTER CABLE GENERATOR 5250 WATT—DR STRING TRIMMER—2500 ATV WINCH—PUSH LAWN SEEDER—FIMCO SPRAYER—2 WHEEL DOLLYS—PUSH REEL MOWER—26' ALUM EXT LADDER—5' & 6' WOOD STEP LADDERS & EXT WOOD LADDER—6' FIBERGLASS LADDER—SAW HORSES—CRAFTSMAN 20 DRAWER ROLL AROUND TOOL BOX—BLACK ROLL AROUND TOOL BOX—8" DRILL PRESS—6" BENCH GRINDER—4" VICE—DEWALT SANDER—BATTERY CHARGER—CRAFTSMAN ROUTER—ROCKWELL DETAIL SANDER—1/2" AIR IMPACT—AIR DIE GRINDER—BRAD NAILER—SM AIR COMPRESSOR—2 TON FLOOR JACK—PARTS ORGANIZERS—JACK STANDS—LONG HANDLE TOOLS, SHOVELS, RAKES, HOES, CROW BARS—TORQUE WRENCH—RIGID PIPE WRENCHES—PLIERS, CHANNEL LOCKS, TIN SNIPS, SIDE CUTTERS, CRESCENT WRENCHES, SCREWDRIVERS, FILES, MEASURING TAPES, SOCKETS, RATCHETS, DRILL BITS, HAMMERS, WRENCHES, KNIVES, WOOD CHISELS, VICE GRIPS, LEVELS, SAWS—CRAFTSMAN JIG SAW—SKIL 4

1/2" GRINDER—7" POLISHER—16 GAL SHOP VAC 6 1/2 HP—MILWAUKEE 7 1/4" SKIL SAW—METABO 4 1/2" GRINDER—TOOL BOXES—COLEMAN LANTERNS—CAR RAMPS—GAS CANS—AIR HOSE REEL—TEKNETICS METAL DETECTOR—DRAFTING TOOLS—ALUM & WOODEN FOLDING ATTIC LADDERS—LP TANKS—POLE LIGHT—SCRAP--BARN TIN—MISC LUMBER-PROPANE HEATER

FURNITURE

FULL SZ ANTQ BED—ANTQ DRESSER—ANT CHAIRS—5 PC ANTQ DINETTE SET—WOODEN TABLES—COFFEE TABLES—7 PC DINETTE SET—5 PC PATIO SET—FLOOR LAMP—5 PC PATIO SET W/UMBRELLA—32", 19" & 41" TV'S—ANTQ DESK—ROLL TOP DESK—KENMORE WASHER/DRYER—WHIRLPOOL S/S FRIDGE—BUTCHER BLOCK—MICROWAVE—PLANT STAND—TV TRAYS—ENTRY TABLE—QUILT RACK—PARK BENCH—2 & 4 DRAWER FILE CABINETS—METAL & PLASTIC SHELVING—KIDS ROCKER—PORCH SWING—LG LOT WALL PICTURES—CARD TABLES & CHAIRS—COAT RACK—ELECT RECLINER—ANTQ WALL PHONES—AREA RUG—RUG DOCTOR—FAN—SOUND BAR—3 PATIO STORAGE BOXES—SHADOW BOX

COLLECTIBLES-MISC

VERY LG LOT STAR TREK, ORNAMENTS, PLATES, BOOKS, MOVIES, PUZZLES, GLASSES, GAMES, PICTURES—ANTQ BICYCLE—METAL COCA COLA COOLER—LG LOT BOY SCOUT MEMORABILIA, CAPS, BOOKS, MUGS, PATCHES, CLOTHING—RECORDS—CAST IRON SKILLETS #14, 8, KETTLE, GRIDDLE, WAGNER, GRISWOLD—APPROX 75 OIL LAMPS—KEROSENE IRON—PORCELAIN PANS & TEA POT—FIRE KING DISHES—COLORED PYREX BOWLS, ANCHOR HOCKING, FRANKOMA DISHES—CROCK BOWL—SET KITCHEN CRAFT COOKWARE—SAUSAGE GRINDER—LG WOODEN BASS—DULCIMER—BELLOW—WASH BOARD—ROCKING HORSE—MISC IRON WHEELS—1 LOT DIVE EQUIP, DIVE GEAR, ALUM DIVE TANKS, DIVE LIGHT—HAND MADE QUILTS—SEVERAL CAMERAS, MOVIE PROJECTOR—COSTUME JEWELRY—DUCK DECOYS—FISHING FIGURINES—1 LOT BOOKS, FISHING, HARRY POTTER & MISC—5 GAL GLASS JAR—TELESCOPE—4 SETS NEW BI FOLD DOORS—WATER SKIS—MOTORCYCLE HELMETS—LIFE JACKETS & BOAT CUSHIONS—AMMO BOXES—TRACTOR ON MILK CAN—POTATO BIN—POPCORN POPPER—TOY CHINA TEA SET—FOOD SCALES—BASKETS—LAWN CHEMICALS, OILS, PAINT, STAIN—SM WIND MILLS, LAWN ORNAMENTS, BIRD FEEDERS—CANE, CRUTCHES—FLOWER POTS—TOMATO CAGES—CHRISTMAS DECOR—LIVE TRAPS—PET TAXIS—SEVERAL MISC BAGS

OWNER: ESTATE OF SHARON GATES

ANNOUNCEMENTS MADE ON SALE DAY WILL TAKE PRECEDENCE OVER ANY OTHER PRINTED MATERIALS. NOT RESPONSIBLE FOR ACCIDENTS OR LOSS OF ARTICLES ON OR NEAR SALE SITE.

**MELTON AUCTION
& REALTY CO LLC**meltonauctionrealty.com | roger@meltonauctionrealty.com

Roger Melton | Nixa, MO | 417-830-0153 or 417-725-1801

Brad Cole | Nixa, MO | 417-840-2950

Hal White | Nixa, MO | 417-343-2334

Tanner Foster | Galena, MO | 417-840-5519

80+ Old Daisy BB Guns - Antique & Collectible Toys - Cowboy Toys - Brewania

Auction

10:00 AM * Saturday, April 22nd * 10:00 AM

Location: 1317 Oak Ridge Rd. Nixa, Mo.

Directions: From Nixa take hwy. 14 west 1 1/2 mi. then left on M hwy. 2 1/2 mi. then right on Smith Hill Rd. 1/2 mi to Auction.

Watch for Signs Lunch & Restrooms Available



Daisy BB Guns & Related

Daisy BB Guns mfg. in Plymouth Michigan
 Model 104 Double Barrel (1938 - 1940);
 Model 40 Military w/ Bayonet (1916 - 1918);
 Model 140 Defender (1942 only, very rare);
 (13) Model 25's from 1914 thru 1958;
 Model B 1000 shot, Nickel (1914-1918);
 Model B 500 shot, Blue (1918- 19210);
 (9) Model 40 Red Ryder's from 1938 Copper Bands thru 1952;
 Model 195 - #32 Buzz Barton Special (Paper Label 1932 - 1933);
 Model 195 - #36 Buzz Barton Special (Branded Stock 1936 - 1941);
 Model 33 #103 Super Buzz Barton Special, 1000 shot, Nickel, (1933 - 1936);
 Model 195 - #36 (1936 - 1941);
 Model 107 Buck Jones Special (1934 - 1942);
 Model 30 Single Shot (1939 - 1941);
 Model 36 #102 (Pre War);
 #2 Single Shot, Nickel (1902 - 1908);
 Model 50 Golden Eagle (1936 - 1938);
 Model 98 Eagle (1956 - 1957);
 Model 39 #108 (1939 - 1942);
 #118 "Targeteer" Target Special BB Gun, in original Box (1937 - 1942);
 (2) Model 179 Spittin Image Colt 6 Shooters;
 Model 33 #101 (Daisy for a Buck 1933- 36);
 Model 27 1000 Shot (1927 - 1932);
 Model 27 500 Shot (1927 - 1932);
 Model 110 Air Force Command, White/Blue Broken Stock (1959);
 Model 36 #106, 500 shot (Pre War);
 Model 94 Red Ryder Carbine (1956 - 1957);
 Model 177 Target Special (1958 - 1978);
 Model 155 1000 shot (1946 - 1953);
 Model 29 #11 Nickel, (1929 - 1942);
 Model 38 #100 Single Shot (1938 - 1951);
 Model 107 Trombone Action (1956 - 1964);
 Model #118 Targeteer, Nickel (1948);
 Daisy/Sears model 1894 #799, 19052, 1894 commem, Octagon Barrel, Gold (1969 - 73);
 Model 111 (1958 - 1962);
 Daisy-Heddon model 3030 Buffalo Bill Scout (1961 - 1969);
 (5) Model 1894's (1961 - 1965);
 Model 1938 Gold Rush M.I.B. (1989);
 Model 111-B American Youth M.I.B. (1998);
 Several More Daisy BB Guns not Listed;
 Daisy Targets, BB's, & Lots more Vintage Daisy BB Gun Related Items;
 Misc. Vintage Pop Guns & Cork Guns;



Antique & Collectible Toys

(2) 1920's Tri-Motor Steelcraft Buster Brown Shoes Airplanes;
 Original Tom Mix, Tony Wood Rocking Horse (very nice);
 Lots & Lots old Radio & TV Cowboy Toys, Memorabilia, & Collectibles incl. Cap Guns, Spurs, Holsters, Comic Books, & more from Buck Jones, Tom Mix, Roy Rogers, Hopalong Cassidy, Gene Autry & others;
 20's Kilgore -Page Cast Iron Fire Truck;
 Old Cast Iron & Metal Cars, Trucks;
 1940's Repeat O Plane Toy Plane Launcher;
 Cox Tri-Wing Line Control RC Airplane;
 Spec-Cast Bud & Bud Light Planes;
 Del Prado Die Cast Airplanes;
 Several Model Airplanes;
 Repro 1935 Civil Aeroplanes Tobacco Cards;
 Planes of WWII Trading Cards (framed);
 Old Charles Lindbergh Hand Fan (framed);
 Buddy L Cannon;
 Many Older Toys & Collectibles not Listed;

Lots of Ertyl Anheuser Busch Budweiser Die Cast Trucks & Pickups of all kinds;
 Jack Daniels Collectibles;
 Jack Daniels Oak Display Stand;
 Jim Beam & Hennessy Mirrors;
 Jim Beam Arrowhead Stadium Hornsby's Draft Rhino Head Display's;
 Chivas Regal & MUM Cognac Clocks;
 E&J Brandy Ducks Unlimited Mirrors;
 Beam Ford Pickup Decanter;
 Brooks Indy Car & F.O.E. Decanters;
 Kraft Food Die Cast Trucks;
 Old Kraft Wood Cheese Boxes;
 Misc. Comic Books;
 Old Standard Oil Thermometer;
 1952 Pontiac Chieftain Hood Ornament;
 1930 Missouri Licence Plate;
 Old Ball Glove & Catchers Mask;
 Ernie Banks Signed Baseball & Card;
 Vintage Snooker Scorekeeper on Wire;
 Embossed Kelly & Kerr, Springfield Mo. Bottles;
 Embossed Cranks Drug Store, Springfield, Mo. Bottles;
 Hutchinson Blob Top Florence Bottling Works Springfield, Mo. Pop Bottle;
 Lots More Nice Old Collectibles Not Listed.



Auctioneers Note

Live & Online Bidding Available
 No Buyers Premium for Onsite Bidders
 18% Buyers Premium for Online Bidders
 See our website for over 200 pictures & Lots

Foster Auction & Appraisal Service
www.fosterauctions.com
 Email: bidnowsold@aol.com



Auctioneer: Larry Foster
 Galena, Mo
 Phone: (417) 723-8329
 Cell: (417) 839-6860

PUBLIC AUCTION ARCOLA, MO

AUCTION

As we are down sizing we will sell the following Automobiles, Tractor's, Machinery, Cattle Equipment, Tools, Household and Misc.

At the Farm located 1.2 miles East of Arcola, Mo. On Y Hwy. On

Sat. April 29, 2023 at 9:00 am

WATCH FOR AUCTION COMPANY SIGNS • LUNCH SERVED

FOR MORE PICTURES GO TO: WWW.BRUCEANDLEANAUCTION.COM



AUTOMOBILES

- 1994 Dodge Dakota Ext. Cab Pickup 5.2 V-8, Automatic Transmission, PW, PL, 241,000 miles, with Camper Shell
- 1992 Fleetwood Southwind 33' Motor Home Ford Chassis, 460 V-8 Motor, Automatic (has been sitting not running)

TRAILERS-CATTLE EQUIP. CONT.

- B & W Poly Bottom Creep Feeder (like new)
- 2 Bale Rings
- Approx. 30 Steel Post
- 2 Gallagher Solar S17 Fencers
- Electric Fencing Items
- Poly Tanks



TRACTORS-MACHINERY

- Case D35 4X4 35hp Tractor W/ LX350 Front End Loader, W/ Joy Stick Control, 4 Speed-3 Speed Transmission W/ Reverser, 1538 Hours
- 1948 Ferguson T5 Tractor (not running)
- Vermeer 5410 Rebel 4X5 Round Baler one owner 2019 Bale Count, Twine Tie
- Case International 8455 Round Baler (used last year)
- H & S 8 Wheel Bi-Fold Wheel Rake
- New Holland Side Delivery Rake
- Twin Row Tedder
- New Holland 9' Hay Bind W/Rollers
- Gale 6' Model 140 3pt Disk Mower
- Case 12' Offset Disk
- King Kutter II 6' 3pt Rear Tine Tiller
- Case IH 3pt 7' Sickle Mower

TOOLS-SUV'S-MOWER

- 2005 Honda Recon 250cc Four Wheeler
- Wiese Columbia Electric Utility Yard Cart Dump Bed, W/Charger, Like New Tires
- Craftsman YT3000 Riding Mower 21hp, 42" Cut
- Troy-Bilt 5000 Watt Generator
- Troy-Bilt 1150 Seres Pony ES 16" Rear Tine Tiller
- Sears 3hp 220 Volt Air Compressor
- Craftsman 6hp 30 Gallon Air Compressor
- Cummins Drill Press
- Grizzly G0444 Table Saw
- Grizzly Oscillating Spindle Sander
- Grizzly 3/4hp Shaper
- Craftsman Scroll Saw
- Stihl KM 55R Weed Eater/Limb Saw
- 7hp Pressure Washer
- Chicago Radial Arm Saw
- Misc. Hand Power Tools
- Poulan Chain Saw
- Dead-man Stands
- 50" Lawn Sweeper
- Compost Tumbler
- Lawn Roller
- Garden Seeder
- Lawn Cart
- Misc. Hand Tools
- Several Concrete & Landscape Blocks
- Lot of Misc. Lumber
- Lot of Scrap Metal
- Scrap Lawn Mowers



HOUSEHOLD-COLLECTIBLES

- Frigidaire 23cu Chest Freezer
- Kitchen Table W/4 Chairs
- Magic Chef Mini Fridge
- Singer Sewing Machine
- Sec. Desk
- Wooden File Cabinets
- Misc. Tables
- Ruby Red Dishes
- Misc. Pots, Pans & Dishes
- Popcorn Machine on Stand
- Lot of Sewing Fabric
- Leather Jackets
- Keen Kutter Meat Grinder W/Motor
- Poly Shelving Units
- Lot of Lawn Ornaments
- Lot of Misc.

OWNER: CHRISTOPHER "SCOTT" JEFFREYS

TERMS: Everything sells as is, where is. Nothing is to be removed until settled for. Payment of Cash, Check with Proper ID, or Credit Cards. Auction Company or the Owners will not be responsible for loss of items or accidents. Statements made the Day of the Auction take Precedence over Printed Matter.

SALE CONDUCTED BY **BRUCE & Le'AN AUCTION & APPRAISAL, LLC**
THE AUCTION COMPANY THAT APPRECIATES YOUR BUSINESS

For more information and pictures go to our website at www.bruceandleanauction.com

RONNIE BRUCE - Fair Play, MO
417-777-1685 or 417-654-2214
colonbruce@gmail.com

BRANDON BRUCE
Fair Play, MO

BILLY BRUCE - Stockton, MO
417-399-4800
colbbruce@gmail.com

PUBLIC AUCTION
STOCKTON, MO

AUCTION

We will sell the following Household, Collectibles, Guns, Ammo, Fishing Equipment, Tools, UTV, Sporting Goods and Misc.
At the Zumwalt Expo Center in Stockton, Mo. On

Sunday April 30, 2023 at 9:00 am

WATCH FOR AUCTION COMPANY SIGNS • LUNCH SERVED

FOR MORE PICTURES GO TO: WWW.BRUCEANDLEANAUCTION.COM



UTV

- 2013 Polaris Model 900 Ranger Diesel Side by Side, W/Top, Windshield, Dump Bed, LED Lights
- 50cc Kids Chopper Model 65-58
- 212cc Go-Cart

MOWER-MISC. CONT.

- 5-Glass Fronted Show Cases 5'-7" Long 3' Tall
- Sharp XE-A207 Cash Register
- New House Doors & Windows

GUNS-AMMO-FISHING CONT.

- RTI-AR15 Semi-Auto 7.62 Cal. Rifle (NEW)
- RTI-AR15 Semi-Auto 410 Ga. Rifle (NEW)
- Saiga AK47 Legion Russia 7.62 X 39mm Semi-Auto Rifle Dura Camo Coated
- Thompson/Center Compass II 6.5 Creedmoor Rifle W/Scope
- Winchester 94E Lever Action 30-30 Rifle W/Scope
- Savage 110 Bolt Action 30-06 Rifle W/Scope
- Savage 10 Bolt Action 308 Cal Rifle W/Scope
- Mossberg Patriot Bolt Action 30-06 Camo Rifle W/Scope
- Fabricate Arms 1916 Mauser Bolt Action 7mm Rifle
- H & R SB2 Ultra Single Shot 223 Cal. Rifle
- Savage 24 Single Shot Over & Under 22/410
- H & R Handi-SB2 45-70 Cal. Single Shot Rifle W/Scope
- Ruger 10/22 Semi-Auto 22 Cal. Rifle (NEW)
- Remington 522 Viper Semi-Auto 22 Cal. Rifle
- Mossberg 3405A Bolt Action 22 Cal. Rifle (no clip)
- Marlin Glenfield Mod. 60 Semi-Auto 22 Cal. Rifle
- Rossi SA22LR Single Shot 22 Cal. Rifle
- SDS Imports Duo Force 12 Ga. Pump/Semi-Auto Shot Gun (NEW)
- EAA Churchill 612 Pump 12 Ga. Shot Gun (NEW)
- Panzer AR12 Semi-Auto 12 Ga. Shot Gun (NEW)
- RIA Imports TK-104 Single Shot 410 Ga. Shot Gun (NEW)
- Remington 870 Super Mag 12 Ga. Camo Pump Shot Gun
- Remington 870 Express Mag 12 Ga. Pump Shot Gun
- Spartan SPR100 Single Shot 12 Ga. Shot Gun
- Winchester 1200 Pump 12 Ga. Shot Gun
- Remington 870 Express Mag. 12 Shot Gun 18" Barrel
- Ruger Co2 Powered 177 Cal. Rifle (NEW)
- Lot of New Ammo (22 Cal 38, 44, 357, 45 Auto, 9mm, 30-30, 30-06, 270, 6.5, 7.62, 308 Misc. Shot Gun)
- New Reloading Dies 25-06, 243, 300, 380Auto
- New Reloading Supplies (Brass, Powder, Primers, Bullets)
- Lrg. Lot of New Hoisters (Different Size's)
- Sev. New Clips (AK-47, AR-15 & Others)
- New Red Dot Scopes (Crossfire, Romeo, SigSauer)
- New & Used Rifle Scopes (Leupold, Hi-Lux, Diamond Back)
- 10X42 New Binoculars
- Shooting Targets
- Hunting Vest's
- Duck Decoy's
- Mathews Compound Bow (New)
- 2 New Pearson & Browning Re-curve Bows
- 2 Hoyt Bow's
- New Frankford Arsenal Brass Tumbler & Brass Dryer
- Sev. Pocket Knives
- 2 Deer Mounts & Deer Horns
- Several Rod & Reel Combo's
- Lot of NEW Fishing Lures, Plugs, Rubber Bodies, Hooks and Lead Sinkers
- Tackle Boxes
- 11' X 7' Pop up Tent (New)
- Fish Cooker & Grills
- Life Jackets
- 2 Sets of Kids Golf Club's (NEW)
- 2 Kayaks

TOOLS

- Puma 6hp 60 Gallon 220v Air Compressor
- Husqvarna 455 Chain Saw
- DeWalt 20v Compound Miter Saw
- 2 Craftsman Tool Boxes 5 & 7 Drawer
- Parts Washer
- Central Pneumatic 50' Air Hose Reel NIB
- 10,000 lb 12v Winch
- Miller 130xp Welder
- Clarke 100e Welder
- Flux Core 80 Welder
- 2 DeWalt 20v Drills NIB
- 3 Bostitch Air Nailers (2-NIB)
- Predator 1" Water Pump (Like New)
- Craftsman Shop Vac
- Oregon Sharpener
- Delco Motor Stand
- Remington 14" Chain Saw (NIB)
- Electric Pressure Washer
- Greenworks 40 Volt 17" Cut Trimmer (NIB)
- 2 Ryobi 18 Volt Trimmers NIB
- Greenworks 110 Volt Mulcher
- Tool Boxes
- Lot of Electric Hand Tools
- Lot of Wrench's and Misc. Tools
- 220 Volt Ext. Cord
- Smitty 10,000 lb 12 Volt Winch
- 18" Wet-Dry Sharpener

HOUSEHOLD-COLLECTIBLES-COINS

- 2 Morgan Silver Dollars 1890-1891
- Early 1900's Half Dollars
- 1843 Lib. Dime
- 1854 3 Cent Pc.
- Frigidaire 220v Window Air Conditioner
- 2 Sm. Window Air Units
- Flat Screen TV's
- Stereo Systems
- Ant. Red Kitchen Table & Chairs
- 5 Kitchen Table Sets
- Bar Stools
- Lot of Sm. Kitchen App. (Several New Ones)
- 4 Dehumidifiers
- Chest Drawers
- Misc. Tables & Chairs
- Queen Bed
- Bakers Rack
- Casio Music Key Board
- Lot of Play Station Games & Systems
- Misc. Household
- Blue Metal Pepsi Cooler

GUNS-AMMO-FISHING

- Walther PPS Semi-Auto 9mm Pistol (New)
- Walther P38/P1 Semi-Auto 9mm Pistol
- Walther PK380 Semi-Auto 380 Cal. Pistol
- Smith & Wesson 9 Shield EZ 9mm Semi-Auto Pistol (New)
- EAA-Girsan 9mm Regard MC Semi-Auto Pistol
- Para-Ordinance 1911 Semi-Auto .45 Auto Pistol
- Ruger LCR 357 Mag Revolver
- Ruger SR45 Semi-Auto 45 Pistol
- Taurus PT92AF Semi-Auto 9mm Pistol
- Raven Arms MP-25 Semi-Auto 25 Cal. Pistol
- FIE Titan Semi-Auto 25 Cal. Pistol
- Ruger Mark II Target 22 Cal. Semi-Auto Pistol
- 2-Taurus PT22 Semi-Auto 22 Cal. Pistols (NEW)
- Sterling Arms 302 Semi-Auto 22 Cal. Pistol
- Standard Mfg Thunderstruck 22 Cal. Revolver
- Black Powder Vest Pocket 31 Cal. Derringer
- Palmetto State Armory AR15 Semi-Auto 223/5.56 Cal Rifle (NEW)
- Palmetto State Armory AR15 Semi-Auto 223/5.56 Cal. Rifle (NEW) W/Dual Scopes
- Palmetto State Armory AR15 .350 Legend Semi-Auto Rifle (NEW)

MOWER-MISC.

- Troy-Bilt 17hp 42" Cut Riding Mower
- Push Mowers
- Aereins Big Wheel Trimmer
- Craftsman Edger
- New Back Pack Sprayer
- 800 Watt 2hp Generator (NIB)
- Roll 3/4" Pex Pipe
- Gas Grills (one new)
- 7' Alum. Wheel Chair Ramps
- One Lot of New & Used Computer Items
- 5-4" Double Sided Peg Board Shelving Units
- Wood Shelving Units
- 2 Metal Pallet Shelving Units

AUCTIONEER'S NOTE: This is a very large offering a lot of unseen items at time of listing something for everybody. Guns & Ammo will sell at 12:30

OWNER: KEVIN SMITH

TERMS: Everything sells as is, where is. Nothing is to be removed until settled for. Payment of Cash, Check with Proper ID, or Credit Cards. Auction Company or the Owners will not be responsible for loss of items or accidents. Statements made the Day of the Auction take Precedence over Printed Matter.

SALE CONDUCTED BY **BRUCE & Le'AN AUCTION & APPRAISAL, LLC**
THE AUCTION COMPANY THAT APPRECIATES YOUR BUSINESS

For more information and pictures go to our website at www.bruceandleanauction.com

RONNIE BRUCE - Fair Play, MO
417-777-1685 or 417-654-2214
colonbruce@gmail.com

BRANDON BRUCE
Fair Play, MO

BILLY BRUCE - Stockton, MO
417-399-4800
colbbruce@gmail.com

Sam **CRAWFORD AUCTION SERVICE** LLC

Will sell the following located 2 miles West of Weaubleau, MO on Hwy. 54 to Hwy. MM, then North 2.2 miles. Watch for auction signs.

SATURDAY, APRIL 29th, 2023 - 10:00 AM

BUILDING MATERIALS - MOTORCYCLE - TRAILERS - MISC.

MOTORCYCLE - SELLING AT 12 NOON

'03 Harley Davidson 100th Anniversary XL 883 Sportster, 800cc, Low Miles, Good Shape

BUILDING MATERIAL

Metal Trusses for 32x60' Building - Other Trusses

Lg. Lot New & Used Metal Roofing, 3'-24'

Lg. Lot New Metal Trusses - 2 Roll-Up Garage Doors - Pile Metal Studs

Garage Door & Track - Sev. New & Used Windows

Lot Buckets & Bags Colored Metal Screws for Metal Roofing

Lot Staples - Lot Insulation - Small Oak & Walnut 1" Stored Inside

Lot Mahogany Cove Casing Trim - Sev. Joints 2 7/10 Used Pipe

Sev. Bundles Rough Saw Oak Lumber, Stored Outside

Set of Plywood Forms 2x8' - Lg. Roll New Galv. Cable & Other Cable

Breaker Boxes - Lots of Other Misc.

MISCELLANEOUS

Lot Misc. Hand Tools, Power Tools - Miller Bobcat Welder for Parts

Power Washer - 2 Port. Generators - Edger for Saw Mill

4 Cyl. Diesel Motor w/Clutch - Power Unit

Grizzly 20" HD Planer, Used Little - 3 Pt. PTO Cut-Off Saw

5' One Way Disk, Pull Type - JD 494 Corn Planter, Pull Type

Rolling Conveyor - Alum. Ramp for Loading Dock

20' Alum. Loading Ramps - HD Steel Work Table

Set Torch Bottles & Gauges - (3) 500 Gal. Propane Tanks

1000 Gal. Propane Tank - 200 Gal. Propane Tank

(2) 6' Sections Concrete Cattle Guard - Carousel Shelving

Elect. Fence Supplies - Used Barb Wire - 12V Seeder

Camper 5th Wheel Hitch - Asst. Tires & Wheels - Chainlink

4-5 Fish Jigs - Scrap Iron - HD Torch Cart - Gas Wall Heater

Comm. Elect. Meat Grinder - Upright Freezer - Ceramic Kiln

4-5 Washers & Dryers - Ranger - 2 Lift Beds - Lot Other Misc.

2 Compartment Pick-Up Dog Box - 2 Beauty Shop Stations

Sev. Used Motel Heaters/AC Units - 2 Sets Golf Clubs

Some Antique Furniture

'78 Chevrolet Single Axle Dump Truck, 10' Bed (Running By Sale Day)

53' Semi Van Trailer for Storage, Rear Doors Need Work

53' Semi Flatbed Trailer

26' Deck Boat, V-6, 160 Weseco Motor, Outside



Sam **CRAWFORD** LLC **Auction Service**



TERMS: Cash or good check. Nothing removed until settled for. Not responsible for accidents. Lunch available. Statements made day of sale take precedence over printed matter. All items sell as is No warranties given or implied.

417-998-6629
Cross Timbers, Mo.

CrawfordAuctionService.com



Sam
417-328-9137

Chase
417-399-1904

Chance, CAI
417-298-1751

Tom Poynter
Jack Lancaster

Justin Loehr

ESTATE AUCTION

Saturday, April 22nd, 2023 ~ 10:00 AM

LOCATION: 1506 South Vernon, El Dorado Springs, MO (Watch For Signs)

Auction For Carl & Dolores Schuchman



Furniture, Antiques, Collectibles & Households

Ant School Desk, 3 Very Nice China Display Cabinets, Wall Display Cabinet, Prim Pink End Table, Oak Kitchen Table & Chairs, 2 Dressers, 2 Coffee Tables, 2 Corner Cabinets, 2 Rocking Chairs, Old Clocks, Pantry Cabinets, Lamps, Couch W/Long Side, 2 Recliners, Plastic Shelves, Folding Tables, Nice Exercise Bike, Ant Bird Feather Painting Pictures, Rare Danbury Mint Collection Of North American Songbirds, Over 100+ Pcs Of Real & Unusual Green Vaseline Glass 100% Of Pcs Will Glow Under Purple Light (Very Rare Collection), Carnival Glass Pcs, Several Collectors Plates Inc Hummel, Noah's Ark Collection, Beanie Baby Collection, Neat Keychain Collection, Indian Décor Collection, Coca Cola Glasses Collection, Old Baseball Cards, Some Puzzles & Games, Angel Collection, Old Glassware, Lots Of Old & Ornate Knick Knack Pcs, Lg Lot Of Christmas Décor Some Old, Model Airplane Book Collection, Other Items Not Listed

Camper, Flatbed Trailer, Car, Mowers, Tools, Electrical Supplies & Outdoor Items

2015 Gulf Breeze 32 Ft Camper W/3 Slide Outs & Very, Very Clean & Excellent Condition, 2008 Hyundai Sonata 4 Door Car Has Auto Trans, 4 Cy Motor & Approx 180,000 Miles, Excellent Driving Car, 6x10 Flatbed Trailer, Ladder Truck Top Carrier For Utility Truck, Troybilt Tuffy Riding

Mower, Like New Push Mower, Gas Pressure Washer, Gas Blower, Portable Air Compressor, Oxygen & Acetylene Bottles, Alum Extension Ladder, Propane Bottle Holder, Scaffolding Unit, Stand Up Work Lights, Rigid Cutter, Plastic Pipe, Insulation Bags, Shop Metal Shelves & Cabinets, Very, Very Lg Lot Of Electric Supplies, Pole Climbers, New Rolls Of Electric Wire, Yellow Jacket Test Gauge, Plumbing Supplies, Sm Hand Tools, Sm Electric, Battery & Air Tools, Organizers, Toolboxes, Tarps, Gas Cans, Oils & Cleaners, Wheelbarrow, Pop Up Canopy, Gas BBQ Grill, BBQ Grill Kit, New Bike, Yard Ornaments, Other Items Not Listed

Gold, Silver, Collector Coins & Currency

1881-S \$20 Gold Piece, 1881 \$5 Gold Pc, Two 1/10th Oz Platinum Eagles, 20+ Morgan Dollars Inc Rare & Very Key 1888-S Uncirculated, 1879-S, 1909-O, 1890-O, 1901-O, 1896-O, 1921, 1921-S, 1921-D & Others, 25+ Peace Dollars Inc Very Key 1926-S, 1922, 1923 & Others, Lg Cents Inc Very Key 1785 Connecticut Colonial, 1803, 1812, 1818, 1838, 1839, 1840, 1845, 1846, 1847, 1859, Indian & Flying Eagle Cents Inc Key 1864-L, 1864 CN, 1864, 1859, 1860, 1863, 1865, 1866, & 1867 Indians, Also 1857, 1858 SL & 1858 LL Flying Eagles, Very Key 1886 V-Nickel, Very Key 1885 Over 1885 W/Fancy 5 Two Cent Pc, Lots Of Ike Dollars & Silver Rounds, Several Good Date Seated, Barber & Mercury Dimes, Several Good Date Seated, Standing & Washington Quarters, Several Key Date Walking Liberty & Franklin Halves, Several Good Proof Sets & Coin Sets, Currency To Inc Key 1923 \$1 Horse Blanket, \$1 & \$2 Star Notes, Silver Certificates, Other Items Not Listed



Auctioneers Note: It Is An Honor To Be Conducting This Auction For The Schuchman Family as They Have Been Very Well Known & Respected Members Of The Community For Many Years. Carl Owned & Operated Carl's Electric For Over 52 Years. This Is An Outstanding Auction With Excellent Furniture, Outstanding Vaseline Glass, Excellent Collectibles, Like New Camper, Excellent Car & Trailer & Of Course Outstanding Electrical Supplies & Tools From Carl's Business. Don't Forget Very Great Collection Of Coins & Currency As Well. Please Plan Now To Attend. **Sale Order: Furniture Sells First Followed By Antiques & Collectibles. At Approx 12:30 PM Will Offer Camper, Car, Trailer & Large Items. At Approx 1:30 PM Will Offer Coins & Currency. See Ya There!!!**

Terms: Cash or check with proper ID. Now accepting most major credit cards. Nothing removed until settled for. Statements made the day of sale takes precedence over printed material. Everything sold as is where is. Not responsible for accidents. Restroom available. Concessions Provided. Check our website for upcoming auctions and for additional pictures!!



NANCE AUCTION SERVICE

No Matter How BIG or small, We Do Them All!!!



Col. Bill Nance 417-214-0093 In God We Trust Philippians 4:13 Sean Beazley 417-247-6754

PUBLIC AUCTION

SATURDAY, APRIL 29TH, 10:00 A.M.

LOCATION: 1205 County Road 161, Gainesville, MO. From West Plains take Highway 160 West 36 miles to right on Highway 181, then 6.5 miles to left on Highway N; follow 3.2 miles to drive on right. (Watch for Auction Signs)

TRACTORS • DOZER • HAY EQUIPMENT

2013 John Deere 7230 w/740 classic loader, 1260 hours, pre-def, 135 HP, 4x4, cab, air/swivel seat, buddy seat, 16sp, LH reverser, good rubber; 1993 John Deere 6400, cab, heat/air, 2x4, air ride seat, 6300 hours, 85 HP; John Deere 2750 w/Koyker 310 loader, open station w/canopy, 75 HP, 3067 original hours, high/low, dual remotes, good rubber; Caterpillar D6C 10K dozer, tree pusher, hydraulic tilt, turbo, headache rack, 150 hours on motor rebuild, good tracks/undercarriage, SN-1345-8p5543; John Deere 568 MegaWide plus 5x6 round baler, net wrap, garage kept, field ready; John Deere 530 MoCo 9' mower condition w/flail choppers; Vermeer R2300 hydraulic hay rake, hydraulic fold; Kuhn GF5001 4 basket hydraulic fold hay tedder.

SKIDSTEER • TRAILERS • FARM EQUIPMENT

2005 John Deere 270 skidsteer, 2 speed, 82 HP, tire machine, 800 hours, open cab; 2004 Gooseneck brand 24'x7' gooseneck stock trailer w/4' front escape gate, 2 heavy bull cut gates, bi-fold back gates; 1995 Gooseneck brand 28' (24' w/4' dovetail) gooseneck flatbed, good floor, dual jacks, toolboxes, dual tandem 10k axles; 2020 EZ Haul inline manual side dump 36' hay trailer 14 ply tires; 16' bumper hitch flatbed trailer w/surge brakes, 18' bumper hitch flatbed trailer, 2009 Crafton 5'x8' utility trailer w/tilt bed, 6'x12' bumper hitch trailer, utility trailer w/50 gallon fuel tank mounted, 6' 3pt Pittsburg spring tooth ripper, 6' 3pt Athens disc, John Deere H1520 heavy duty 15' disc, Taylorway 9-1/2' offset disc, Ag Spray 500 gallon pull type sprayer w/cluster spray, Graham 13 shank 12' 3pt chisel plow, John Deere 1518 15' batwing bushhog, Knight big auggie 12 mixer wagon (parts), Knight little auggie mixer wagon (good), Douglas Cole Iron 10' Heavy Duty field roller w/brake, 3pt Balemaster hydraulic bale unroller, 17' Tarzan chain link drag harrow, 6' chain link drag, Bushhog 176 9' 3pt hydraulic angle blade, 10' hydraulic box blade w/tires, 3pt Oliver 5 shovel turning plow, 500 pound 3pt cone seeder, Shaver HD10 hydraulic post driver (like new), Grain-o-vator feed wagon.

CONCRETE BUNKS • PANELS • ATTACHMENTS

Approximately 105 concrete feed bunks, 65-assorted panels (10's/12's/16's), 12- 12' galvanized panels, Priefert tub sweep system, 10- PVC round bale feeders, 1-aluminum feeder, 3- 6' plastic troughs, 100 used T-posts, 3-spools of 3/4" cable, rubber mineral feeders, 1100 pound bed mounted trip feeder (cake box), W&W guillotine squeeze chute w/transport wheels & palp cage, WW palp cage, 7' John Deere bucket, 6' John Deere bucket, Balemaster double front spike, single front spike, 3pt rear forks, 2-quick attach skeleton grapple buckets, quick attach tree shear, 3pt rear bale spike w/ball, 3pt balemaster rear spike, 10' hydraulic feed auger, 2-500 gallon liquid feeders, grain auger, hay elevator, 3pt rear tractor brush guard, head chute, 500 gallon fuel tank w/stand, 600 gallon fuel tank w/stand.

GUNS • TOOLS • MISCELLANEOUS

Browning BLR 270 lever action w/3x9 redfield scope, Browning BLR 7mm-08 lever action w/scope rings, Glenfield model 60 .22 semi-auto (squirrel engraved), Winchester model 94AE 30-30 lever action, Magtech .22 bolt action rifle, NIB H&R 12 gauge 3-1/2 magnum single shot, NIB Encore inline 50 cal muzzleloader w/ Nikon scope, NIB Rossi 50 cal muzzleloader, NIB Traditions 50 cal muzzleloader, Thompson center 308 bolt action w/leopard scope, H&R 22-250 handi-rifle bull barrel w/tasco scope, Ten Point crossbow like new w/ scope, Sthil chainsaws MS441, MS460, MS481, MS261C, Spray Tech airless paint sprayer, Generac 5000 watt generator, Coleman 5000 watt generator, 2-Hereford cutting saddles, 4-wagon frames, scaffolding w/ castors and planks, corrugated barn tin, wood auction block, pallet of concrete mix, metal feed hopper, dog box, 2-wood stoves, calf pullers, deer blinds, deer stands, tripod deer feeders, Gulf Good gas pump, lawnchief mower, fiberglass canoe, 20 ton hydraulic press, AC delco engine stand, electric cement mixer, 55 gallon barrels, gas cans, buckets, cast iron tub, ATV field roller, ATV 2 wheel wagon, Milwaukee electric jackhammer, Oregon 28 ton wood splitter w/honda motor, Atv sprayers, Atv pull type seeder, roll out drawer toolbox, stack of lumber, 2-calf pullers, mineral tubs, chain link dog pen, underground conduit, camper shell, dog wire, Westinghouse welder (needs work), aluminum boat w/trailer, Singer sewing machine, drop leaf table, massage chair, misc lamps, Longaberger baskets, misc household furniture, what-nots.

Auctioneers Notes- Excellent line of John Deere tractors and equipment everything has been barn kept and field ready! Plenty of trailer parking with concessions on site all day, make plans to attend this fine farm auction! Watch our website and Facebook page for more photos.



OWNER: DAN PLEASANT

BILLY SEXTON AUCTIONEERS

683 Missouri Avenue, West Plains, MO • Office: 417-255-2744

Billy Sexton 417-257-4595 • Ark. License # 2749 • www.sextonauctions.com

Justin Kraft 417-274-0073 • Ark. License # 2745

See this auction at: www.ozarkhorsetrader.com • *Not Responsible For Accidents*



Saturday, April 22, 2023 • 9:00 a.m.

**LOCATION: In Licking, Mo., on Highway 32 east at old Licking Livestock Auction site.
Next to Hammond Feed & Farm Supply. Watch for signs.
To view photos, go to auctionzip.com. Auctioneer #28367**

HOUSEHOLD

Cast Iron Dutch Oven
Cast Iron Red Goose School Shoe Bank
Regulator Clock
Fenton pieces
Pfaltzgraff Dish Set
Berkshire China
Carnival Glass
Viking Vase
Depression Glass
Cake Stand
Lead Crystal Lot
2 Washboards
Norman Rockwell Mugs & Bells
Rainbow Pitcher & Glasses
Avon Fostoria George & Martha Wine Glasses
Avon Fostoria Mount Vernon Pitcher
Shirley Temple Pitcher
Nuova Capodimonte Pieces, Italy
Kerosene Lanterns
Africa Décor
Chockin Vases & Saucers, Japan
Amber Decanter & Vase
Silver Set
Fairyland Tea Set
Harmony House China
Compote Bowl Lot
Corning Ware
Glassbake Ware
Pyrex
Johann Haviland China, Germany
Rooster Churn
Bear Churn & Cookie Jar
Vision Ware
Eagle Churn
Libbey Gold & White Frosted Horse Glasses
Verco France Glass Dish Set
Pitchers

Vases
Etched Goblets
Clear Mug Lot
Kitchen Utensils
Silverware
Clear Glasses Lot
Coffee Mugs
Tupperware
Swan Soup Bowl
Terra Cotta Clay Cooker
Pots & Pans
Baking Pans
Oster Stand Mixer
XL Power Pressure Cooker
George Foreman Grill
Nuwave Infrared Oven
Hull Bean Pot
Wok
Recipe Pie Plates
Marcrest Cookie Jar & Bean Pot
Gravy Bowls
Mushroom Canister Set
Presto Canner
Bread Maker
Microwave
Punch Bowl
Nicknack Shelf
Serving Platters
Painted Wooden Churn
File Cabinet
Floor Fan
Nuwave Air Purifier
Potato/Onion Box
Suitcases
Granite Roaster
Canning Jars
Step Stool
Statues
Ceramic Shoes
Clocks
Canisters
Candle Holders
Records
Artificial Flowers
Bird Décor

Picture Lot
Wall Décor
Porcelain Dolls
Radios
Humidifier
Fleece Throws
Table Clothes
Purses
Lamp Oil
Nicknacks
Metal Balance Scale
Oriental fans
Decanters
Janome Sewing Machine
Brother 920D Serger
Fabric
DVDs
Quilting Books
Ironing Board
Crutches
Christmas Trees
Christmas Décor
Metal Reindeers

FURNITURE

2 Queen Size Bedroom Suites – really nice
Queen Bed
40 inch TV
Singer Treadle Sewing Machine
Marble & Wood End Table
Marble & Wood Wash Stand
Oak Hat Box Dresser with Mirror
Parlor Seat
End Tables
Coffee Tables
High Back Chairs
Chair & Ottoman
Dressers
Curio Cabinets
Library Table
Dining Room Table with 8 Chairs
Kitchen Table with 4 Chairs
Kimball Piano
Couch & Chair

White Dresser Set
Glider
Bakers Rack
Couch
Stool
Area Rugs Lot
Shelves
Desk with Chair
Magazine Racks
Quilt Racks
Wooden Shelves
Coat Rack
Lawn Furniture Cushions
Lamp Lot
Mirrors
Plant Stands
Planters
Turtle Planter
Frog Planter
Microwave Stand
Cabinet

VEHICLE, TOOLS & OUTDOORS

1996 Ford F-150 XLT, Very Nice
1983 Jeep Scrambler 4x4 CJ-8, 114,000 Miles
1995 F-150 Steel Wheels
1997 F-350 285/75/R16 Wheels & Tires
2018 Ford 18 inch Aluminum Wheels
DeWalt Grinder
Makita Shop Saw
Snap On Tool Box
Shop Vac
Jumper Cables
Hand Tools
Deer Antlers Lot

*Exceptionally clean, nice items!
Come spend the day with us!
Thanks, Steve & Neal*

Owner – Estate of Jo Poulson

Terms - Cash or Approved Good Check. Nothing Removed Until Settled For. Not Responsible For Accidents. Must show ID to get Buyers #. Announcements Made Day Of Sale Take Precedence Over Printed Matter.

**Buckner & Gately Auction Service
Auctioneers**

Steve Buckner 573-674-2686

Neal Gately 573-202-3132

NO RESERVE Gilbert Farm Auction

Saturday, April 29, 2023 at 9:00 AM

SALE LOCATION: 20644 Nutmeg Road, Jasper, MO. **DIRECTIONS:** From Oronogo, MO. at the 4-way stop take Hwy D north 3.3 miles to County Rd. 210 (Main Street, Purcell Mo.) turn left, go 1 mile to Nutmeg Rd. turn right, go 0.4 mile to farm on right. Or from Jct. I-49 & Hwy M (Baseline Blvd.) go west 6 miles to Hwy O, turn left go 3 miles to Nutmeg Rd. turn right go 0.6 mile to farm on left.

Watch for Auction Today signs. Concessions will be available on site.

Online bidding starts at 12:00 PM on select items @ circleeauction.com

NOTE: WE WILL BE CLOSED ON SUNDAY! Absolutely NO Sunday pickup. Pickup will be day of auction and Monday following the auction 9 AM- 4 PM.

TRACTORS & BACKHOE

2004 John Deere 6420 tractor w/ 640 self-leveling loader, 2069 actual hrs, CHA, MFWD, 16 sp. P.O. 25CV, with bucket, pallet forks and bale spike, 1 owner
John Deere 2030 tractor, 3423 hrs, OROPS, diesel
John Deere 950 tractor, 8 sp. 983 hrs, OROPS, diesel
Case 580C backhoe, 2-WD, OROPS, 16" and 24" buckets
Ferguson T0-30 tractor, does not run

FARM EQUIPMENT

2004 John Deere 467 round baler, 4604 bales, net & twine, 540 PTO, 1 owner
JD 272 3pt. finish mower
2- 2004 NH 258 rakes with dolly wheels
NH 260 rake with dolly wheel
Twin hitch for NH rake
Ag-Maxx 4-basket tedder, hyd. fold and lift
NH 451 sickle bar mower, 7 cut, 3pt.
JD 13" pull-type disk, B&W
FMC 6" pull-type cutter
Worksaver 3pt. hyd. post driver, 10"
Danuser 3pt. post hole digger, 9" & 18" augers
King Kutter 6" & 5" 3pt. rock rakes
5' 3pt. box blade,
King Kutter 3pt. 60" tiller
3pt. 8-shank chisel
3pt. 2 bottom plow
Old dump rake
WW grain grinder w/ gas motor
2 - 10' driveway drags

FARM SUPPLIES

3- Peterson frost proof cattle waterers
Several round bale feeders and mineral feeders
300 gal. fuel tank on stand
Large lot of various cattle panels
2- 4x10x1/8" steel sheets
Large lot steel pipe, 2"-8"
Saddles and large lot of tack
Electric fence chargers
T-posts, Several rolls of barbed wire
Large lot of fence clips
Electrical fencing supplies
Fencing splicing tool
RAU immobilizer for animals, model IM 2000
Electric cattle brands
Propane branding heater
Lot of livestock items
Chicken waterers, feeders, & chicken wire

TRAILERS & TRUCK

2004 Kodiak 24'-6" dovetail GN trailer, tandem 10K axles
36" GN inline bale trailer, tandem axle
6'8" x16" BH trailer, tandem axle
1949 GMC 1.5 ton flatbed, single axle, does not run, needs work

HOT ROD

1989-1932 Replica Ford T bucket w/ 350 Chevy motor, 1064 miles, runs good

BUILDING MATERIALS

15 concrete post perma columns, various sizes
Assorted cedar logs and log siding
Several pieces of metal roofing
Several sheets of insulation
Large lot of sonotubes, various sizes
Large lot of PVC fittings
Electrical tools and supplies
Misc. electrical wire

SHOP ITEMS

Electric concrete mixer on trailer
Hydro Tek HX12003E1 pressure washer/steam cleaner, diesel fired, 132 hrs. 220 volt
Craftsman 5 HP 80 gal. air compressor, 220 volt
Hitachi air compressor, gas motor
Speed Air refrigerated dryer for air compressor
2-Home Power 9000 generator, B&S 16 HP
Spectra precision laser transit
Several floor jacks
Craftsman work bench
Tool boxes
Heavy duty metal racks
Electric fans & heaters
Rechargeable work lights
6 pallets of nails
Jack stands
Ladders
Various pipe & roller stands
Several sets of scaffolding
Several Shop Vacs
Air hose reel

TOOLS

Jet 12" metal cutting band saw, 220 volt, 2 HP
Craftsman 12" wood cutting band saw
KFF floor model drill press
Pro-Tek scroll saw
Craftsman table saw
Tool Shop 9" band saw
Duracraft wood lathe, 12" swing, 37" center to center
4" belt sander
Enerpac air pipe bender, 3/4" & 2" tubing
Hand operated pipe bender
Metal shears
Cutting torch
Large lot of power hand tools, drills, sockets, wrenches
Jig saws, Sanders
A-Bec sandblaster
400 watt rechargeable power center

MISC.

Reese RV hitch
Several 100 lb. propane tanks for RV
Honda 5.5 motor
Fireplace front
Several window unit AC's
Misc. wheels and tires
Large lot of metal wheels
Several milk cans
Stoneware crocks
Dog washing station, new
Drafting tools

LAWN & GARDEN

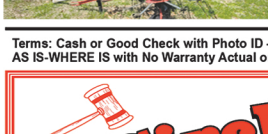
Kubota ZD331 zero turn riding lawn mower, diesel, 72" deck, 487 hrs
Burlton walk-behind golf course reel mower w/ Wisconsin Robinson motor
Snapper push mower
Worx leaf blower/vac/mulcher
Earthway garden seeder
2- yard seeders
Yard seed
2- grass catchers for Grasshopper mowers
Stihl pole saw, weed eater
Submersible water pump, 2" hose, electric motor
Sump pump
6,000' drip irrigation pipe & fittings
4-tier greenhouse
Seed starting supplies
Grow Lux lights with stands
Heat pads for seed germination
Peat moss & potting soil
Jiffy pots
Several live animal traps
Goldfish pond setup
Qt. and pint strawberry boxes
Lot of tomato cages
Large lot of garden and hand tools
Nativity scene

RESTAURANT SUPPLIES

Clark Encore walk-behind floor cleaner machine
Assorted lot of restaurant tables and chairs
Cold food serving buffet
2- Chipwich ice cream carts

HOUSEHOLD ITEMS

Jenn-Air BBQ grill
Large electric Hobart griddle
Large electric stainless-steel smoker
Rocky Mountain 4-burner propane range
Kitchen Aid dishwasher
Winger washer
Propane fish fryer
Electric grain mill
Ice cream freezers
Small ice maker
Many small kitchen appliances
Cast iron skillets
Large lot of canning jars
Dishes
Armoire
Large lot of books
Stereo and speakers
Lots of miscellaneous items too numerous to mention.



Concessions available including homemade pies and baked goods, biscuits & gravy!

Online Bidding starts at 12 PM on select items @ circleeauction.com

NOTE: WE WILL BE CLOSED ON SUNDAY! Absolutely NO Sunday pickup. Pickup will be day of auction and Monday May 1, following the auction from 9 am - 3 pm. View pictures @ circleeauction.com

Auctioneers Note: Reason for auction: After living on the farm for over 50 years the Gilberts are selling their farm and downsizing. Mr. Gilbert has had a lot of different hobbies and businesses in his lifetime and has collected a lot of unique and different items. A lot of the farm items were bought new by the Gilberts. Some items are new and have never been used. Several items have been consigned by family members. Due to the large quantity of items, we will be selling in 2 places at the same time, so bring a friend. Larger items will sell online at @12:00. Don't be late. Everything will sell unreserved to the highest bidder regardless of price! Loadout assistance will be available day of auction, so bring your trailers. Everything must be removed in 14 days.

Owners: Verle & Vickie Gilbert • Phone: 417-525-6441

Terms: Cash or Good Check with Photo ID - All Buyers Unknown to Circle E Auction MUST Furnish a Current Bank Letter of Credit if Paying by Check. Not Responsible in Case of Accident or Sickness on Premises. Everything Sells AS IS-WHERE IS with No Warranty Actual or Implied. Not Responsible for Stolen Items or Loss of Items. Nothing Removed Until Settled For. All Announcements Day of Sale Supersede Any Printed Material.

Circle E Auction LLC

Your Farm Auction Specialists!

**Auctioneer
Ervin Eicher
417-310-0812**

620-778-9966

**1551 14000 Road
Altamont, KS 67330**

**Auctioneer
Merlin Eicher
417-310-3324**



Estate Gun Auction



"Knights of Columbus"
1708 Elm Hills Blvd, Sedalia Mo. 65301

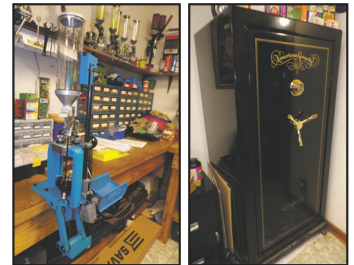
Directions: From 50 & 65 hwy intersection in Sedalia go South on 65 hwy. 2.3 Miles to Auction on Left watch & follow signs on sale day.

Due to the loss of my Husband, we will sell the following at public Auction on:

**Lyle
 Browning**

SATURDAY APRIL 29TH 2023 • 10:00AM

AMERICAN SECURITY GUN SAFE (30GUN CAP.), SAVAGE AXIS .243 WIN #N739536, THOMPSON CENTER ENCORE #S12316 (W/.223 PISTOL - .204 RUGER RIFLE - MUZZLE LOAD), SAVAGE MODEL 25 .20CAL #G998201, SAVAGE M64 .22 LR, SAVAGE AXIS .25-06 #H205090, SAVAGE AXIS 6.5 CREEDMORE #N513808, ANDERSON AM-15 #15126733, WINCHESTER MODEL 70 .223 #G2043835, LEE ENFIELD #1 .303 #CR1678, SAVAGE .22/20GA #B646923, MOSSBERG 12GA #H114249, PALMETTO PA-15 #PA025347, DPMS AR-15 .223 #DKF801325, ANDERSON AM-15 .223 1-7 TWIST #19147481, ANDERSON AM-15 .223 #15126734, CMMG MK4 .223 WYLDE #SWV08968, BEAR CREEK ARSENAL BCA-15 .300 BLACKOUT #50547, HARRINGTON & RICHARDSON MODEL 158 .410GA #2876576, RUGER MINI 14 .223 #583-39458, SAGINAW M1 CARBINE .30CAL #3488763, SMITH & WESSON M29 .44MAG #N704428, RUGER SECURITY SIX .357MAG #160-66477, SMITH & WESSON REGULATION POLICE .38 S&W (PRE-1918) #4205, SMITH & WESSON REGULATION POLICE .38 S&W (PRE-1918) #9901, WALTHER CCP 9MM #WK023059, SMITH & WESSON M&P SHIELD 9MM #HVH1844, BROWNING BUCK MARK .22LR #BRUS22999ZN515, ANDERSON AM-15 .300 BLACKOUT #1610332, BRAZILION MAUSER 7MM #B1884, LEE ENFIELD #4 MK1 .303 #193C799, CHINESE TYPE 53 7.62X54 #3323599, MARLIN M57 .22MAG #666999, MARLIN M90 20GA #G1120, ITHICA MODEL 49 .22 #490334269, REVELATION .410GA #G337059, MOSSBERG 12GA #K614337, NORINCO SKS #K8970, ARGENTINO MAUSER #M7240, SEARS M200 20GA. #107820 MAUSER .308 #3354, CARCANO #R2735, REMINGTON 03-A3 (NEVER ISSUED) #3787259, NEW ENGLAND WESTINGHOUSE CO. RUSSIAN, BERETTA 92FS 9MM W/HOLSTER #A280119Z, GLOCK 22 .40CAL #HET801, SMITH & WESSON M41 .22LR #UBB4175, **DILLON 550B** HIGH SPEED RELOADING MACHINE, 17 **DILLON** DIE ASSEMBLY PLATES SOME WITH FILL TUBES, .220 SWIFT, .223 REM, 30-06, 30 CARBINE, 25-06, 5.56, 9MM LUGER, .40 S&W, 6.5 CREEDMOOR, .243, .45 ACP, .204 RUGER, .38, .300 BLK, .44 MAG, .303, .308 WIN, .35 WHELEN, 7MM MAUSER, DIES LARGE LOT POWDER, HUGE LOT NEW & USED (SORTED) BRASS, LARGE LOT PRIMERS (LARGE & SMALL RIFLE, LARGE & SMALL PISTOL), HUGE LOT BULLETS ALL CALIBERS, 9MM, 10MM, .25CAL, .22CAL, .44, .357MAG, ETC. (TOO MANY TO LIST), LOT MANY ODD BALL & HARD TO FIND AMMO, LARGE LOT AMMO NEW & RELOADS 30-30, .223, .5.56, 9MM. .44, .45, 300 BLACKOUT, MANY MORE, **LEE** LOAD-ALL SHOTGUN PRESS, (**MEC 600JR** 12GA. RELOADING PRESS W/ COMPLETE .410 CONVERSION KIT), **LEE** BREECH LOCK CHALLENGER SINGLE STAGE PRESS, **HORNADY** MAGNUM DIGITAL VIBRATORY CASE TUMBLER, MIDWAY MODEL 1292 TUMBLER, LOT MISC. SOLVENTS & CLEANERS, LOT 30RD MAGAZINES, LOT AMMO BOXES, 3 - WIRE RACKS, **CALDWELL** AR15 MAG CHARGER, SIMMONS SPOTTING SCOPE, P3 ULTIMATE GUN VISE, **REMINGTON** CLAY PIGEONS, HARD & SOFT GUN CASES & SLEEVES, VINTAGE GUN CABINET, **SIERRA** BULLETS CALIBER DISPLAY, LOT GUN MANUALS DIGEST & BOOKS, MISC. SAFETY GEAR, LOT VINTAGE POWDER CANS, 4 - WOODEN GUN RACKS, AERO 800 VARIABLE RESISTANCE EXERCISE BIKE



MANY MORE ITEMS, TOO NUMEROUS TO MENTION

*statements made day of sale take precedence over printed material.

Auctioneer Note: Lyle was an avid gun collector for 60+ years & worked at Sierra Bullets for 25yrs this coincided well with a love for firearms & the industry. His passion is evident by the quality and condition of all items included in this sale. You don't want to miss this.

Note: firearms have been removed from family home & will be brought to "Knights of Columbus" day of sale.

Concessions provided by the Award Winning "Benton County Good Ole Gals"



JOHNSON AUCTION SERVICE

"Third Generation Family Tradition since 1942"

Russell "Rusty" Johnson (660) 221-4067 • Phillip Yoder (660) 723-3389

For Full Listing,
 Pictures
 and Details
auctionzip.com
 (ID# 20300)

PUBLIC AUCTION

SATURDAY, APRIL 22ND, 10:00 A.M.

LOCATION: 316 County Road 571, Udall, Mo. From West Plains take 160 West 16 miles to left on 101 Highway, travel 8 miles to right on O Highway, travel 6.2 miles to County Road 571 on left .3 miles to private drive on left. (Watch for Auction Signs)

TRUCKS - TRACTOR - HAY EQUIPMENT

1981 Chevy square body, 350 motor, 4 speed manual, 4" lift, new tires and wheels, 4x4 lockout hubs, reg cab, long bed; 1997 Toyota Tacoma, reg cab, 4x4, cold air, 5 speed manual, 240,000 miles; John Deere 2940 80 HP, cab, 2x4, Koyker loader; John Deere 466 round baler 4x6 net wrap or string field ready; Vermeer 6040 8' 3pt disc mower, Durabuilt 8 wheel fold up V rake.

DOZER - TRAILERS - EQUIPMENT

Caterpillar D6D dozer w/tilt blade, new tracks, power shift, rear rippers, tree pusher, SN-31X01932; 2006 Neckover 20' flatbed w/5' dovetail gooseneck flatbed dual tandem axles heavy duty, 16' bumper hitch stock trailer center cut gate w/new tires and lights, International 500 12' disc, Bushhog brand 10' 3126 bushhog, 3pt 7' Athens disc, 3pt 2 bottom plow, 3pt 200 gallon sprayer w/cluster, 2-3 pt Farmstar post hole augers, 3pt 9 tooth spring cultivator, Shaver HD8 hydraulic post driver, 4-new 12' cattle panels, Priefert head chute, Semi tag axle, misc semi wheels and tires, 100 gallon fuel tank w/12 volt pump on utility trailer, complete Detroit 53 diesel motor.

ATV - WELDER - SHOP - TOOLS

Polaris Magnum 425 4x4 four wheeler 1900 miles, Miller Big-40 gas welder w/6'x8' trailer, Victor torch set w/oxygen and acetylene bottles, Lincoln AC 225 welder, 60 gallon upright air compressor w/new motor, Husqvarna 435 chainsaw, Troybuilt leaf blower, aluminum ramps, jack stands, Briggs and Stratton 3000 psi pressure washer, Poulan pole saw, Lynxx pole saw battery powered, 3-Kippertool boxes, Powercraft bench vice, Blitzer solar fence charger, 3 ton engine hoist, 14" cutoff saw, 1" air impact, 3/4 inch socket sets, 20 ton bottle jacks, Mat drill press, Ever Start 200 amp battery charger, grease guns, log chains, hay straps, 5' Craftsman upright toolbox, transmission jack, TONS of nuts and bolt bins full, handi-man jack, air hose w/reel, ATV seeder, North Star ATV sprayer, Oregon chainsaw sharpener, metal shop table, metal shelving, Delta 10" miter saw, tire tools, Husky straight shaft weed eater, new rolls of barb wire, fencing materials, Task Force router, Dewalt/Ryobi/Craftsman power tools, car ramp, motor stand, shop completely full!

GUNS - FURNITURE - MISCELLANEOUS

Weatherby Mark V 30-06 wood stock, Remington Woodmaster model 742 30-06, Hatsan 12 gauge full choke pump shotgun, 12 gauge shells, 30-06 ammo, China cabinet, table and 6 chairs, oak glass top 3 piece living room tables, sports craft ping-pong table, Schwinn workout bike, gun case, chest of drawers, waterfall dresser, hex table, wall décor, pots, pans, dishes, lots of garden hand tools, Earthquake rear tine tiller, Craftsman 900 rear tine tiller, Coleman coolers, calf pullers, wood gun cabinet, pool supplies, book shelves, 2- antique high back saddles, antique hay rake, antique McCormick-Deering sickle mower, antique horse drawn plow, rough cut walnut lumber, double porcelain sink, vintage wood windows, extension ladder, fan, antique wine press.

AUCTIONEERS NOTE: The Wallace's are relocating and everything must sell! Nice Cat dozer, equipment barn kept, nice lifted square body chevy truck, shop is completely full of name brand tools. Too many items to mention! Make plans to attend this fine auction!



OWNERS: RANDY AND SHERRY WALLACE

BILLY SEXTON AUCTIONEERS

683 Missouri Avenue, West Plains, MO • Office: 417-255-2744
 Billy Sexton 417-257-4595 • Ark. License # 2749 • www.sextonauctions.com
 Justin Kraft 417-274-0073 • Ark. License # 2745

See this auction at: www.ozarkhorsetrader.com • *Not Responsible For Accidents*



Online Only Equipment Auction

ENDS THURSDAY, APRIL 27, 2023

Internet Bidding Starts Closing at 11am CST

SEXTONAUCTIONEERS.COM

BID NOW!

More Equipment
Online To Bid On!



1965 Chevrolet Chevelle



1972 GMC Pickup



1989 AM General Supercharged



1961 Chevrolet Apache C10



1972 Chevrolet Custom 10



2006 Ford F-250 Pickup



1935 Ford Coupe

Call us at:
314-529-0124

1935 Ford Coupe Featuring: All Steel, Chevy 350, 4 Speed Manual, Chrome Straight Axle, New Interior, Vintage Air, Bluetooth Radio.....Bid Now at SextonAuctioneers.com

HEAVY EQUIPMENT | CLASSIC CARS | SEMIS | RVS & MORE!



2004 M1078 A1 Military Truck



2020 Forrest RV camper



2008 Tahoe Q9



1993 Peterbilt 379



1996 Peterbilt 379 Tri Axle Heavy Haul



2016 Peterbilt 579



2011 Ledwell LW48 Trailer



2023 NEVILLE Drop Deck Trailer



2018 Doonan Step Deck Trailer



2012 Fontaine Drop Deck



2018 Fontaine Stepdeck Trailer



2005 Great Dane Trailer



1998 Timbco 415C



1989 Caterpillar E300 Excavator



Takeuchi TB240 Mini Excavator



2018 Bobcat T770 Skid Steer



2015 Case TR340 Skid Steer



2012 Case 590 Super N Backhoe



Samsung SL 150-2 Wheel Loader



2016 Mahindra 105S Tractor



1998 Ford LT9522 Louisville 122 Dump Truck



2013 International WorkStar 7400 Garbage Truck



2005 Sterling LT8500 Concrete Mixer Truck



2015 Can-Am Maverick



SEXTONAUCTIONEERS.COM

314-529-0124

Sales@SEXTONAUCTIONEERS.COM

Sell at your location or at our auction yard at 5182 US Hwy 63, Pomona, MO 65789

BID NOW! >>



PERSONAL PROPERTY AUCTION

ON-SITE ONLY!

SATURDAY, MAY 6TH, 2023 AT 10:00 AM

RAIN DATE SATURDAY, MAY 20TH, 2023 AT 10:00 AM

5651 S. 111TH ROAD, WILLARD, MO 65781

INVENTORY LIST:

Like new 2017
Zinger z-1 camper
trailer

2001 Chevy Duramax
Diesel 3500 259,000
miles

2006 Corvette 94,000
miles

2000 Camaro Z28
182,000 miles

1988 IROC Z 570hp
Browning x-bolt
22-250

Ruger 10-22

TC Contender 22lr, 45
colt, 44 mag

AK-47 Hungry

3" Remington 870
Magnum Marine
Magnum

Commando Mark III
Interarms 30-06
Mark X
Wagon

Earthquake tiller

Husqvarna mower

Ramps

Glass table

True Cooler

GE Refrigerator

Matching recliners

Chest freezer

Aerie table with
storage

Sofa

Kryptonics skateboard

3 outdoor chairs

Boxes of DVDS

Three concrete
planters

Concrete ornaments

Electric master built
grill

Large collection of
Salvino's Bammer's
beans

Fishing rods

Lots of chairs

Surf board

Rooster stands

Five bicycles like new

Wooden hutch

Lots of pictures and
frames

Marvel HeroClix

Pioneer Sub Wolfer

Porter cable, cordless
drills, and set

125,000 BTU gas
heater

Shop vac

Lots of cookware

Have a gun cleaning,
set and hard case

Over 50 chandeliers

Batman and
Superman dolls

Lots of antiques

Ertl trucks and trailers

Lots of place settings

Planet of the apes

dolls

Diecast NASCAR
collection

New bike helmets

Home decor

Large collection of
baseball figures

Lots of glass bowls
baskets etc.

Boxes of new earrings

Cow skulls

Over 200 salt and
pepper shakers

Spice girls doll
collection

Lots of hull pottery

Elephant decor

Hundreds of comic
books

Lots of laser disc
movies

Purses

Lots of sports cards

Brothers sewing
machine and
mending

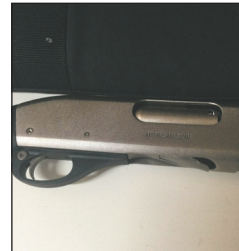
Camaro wheel and
tire

Box of electronics

Lots of shelves

Horse tack

AND MORE!!!



FOR MORE INFORMATION GO TO WWW.EASTERLYAUCTIONCO.COM OR CALL EASTERLY'S AT 417-833-9494

EASTERLY

AUCTION CO.

Mike Easterly Auctioneer • 417-833-9494

Not Responsible for accidents or theft. For more information call: Easterly Auction Company, Springfield, MO. Auction Terms: Visa, Mastercard, Cash, Cashier's check or checks with proper I.D. Announcements day of sale take precedence over printed material. Auction Notes: Although information is obtained from sources deemed reliable, auctioneer makes no warranty or guarantee expressed or implied. Buyers should themselves take the opportunity to make their own inspection prior to sale.

www.EasterlyAuction.com • auctionzip.com ID#14770



CONSIGNMENT

Auction

SATURDAY, APRIL 22, 2023 • 10 a.m.

Location: 304 Springfield Rd, Ava, MO 65608

Directions: Across the street from Town & Country Supermarket

FIREARMS * CAMPERS * TRACTORS * VEHICLES * TRAILER * FARM EQUIPMENT * LAWN & GARDEN * HOUSEHOLD

FIREARMS

Smith & Wesson M&P 40 • Thompson Center Arms 50 cal - Simmons/Blazer 3-9x40 Scope • Remington .22 Target Master model 41 • 357 Colt • Remington 270 Win - Simmons scope w/ flip up caps

CAMPERS

2004 Keystone Sprinter 32' 5th Wheel camper, SUPER CLEAN • Skamper truck bed camper

TRACTORS

John Deere 400 with front end loader • Case 1070

VEHICLES

2008 Cadillac STS • 2008 Saturn Aura • 2000 Freightliner *Century Class (N14 engine) • Cushman 3-wheel carts

TRAILERS

Gooseneck stock trailer

EQUIPMENT

John Deere 435 baler • Hay bale ring

LAWN & GARDEN

Craftsman riding lawn mower • John Deere E100 riding lawn mower • Husqvarna YTH2348 riding lawn mower • Murray push mower • Manual Reel push mower • Electric Push De-thatcher • New In Box Covered outdoor swing • Outdoor patio furniture • Misc wrought iron décor • Wrought iron garden arch • Craftsman lawn spreader • Large pet crate • BBQ grill •

Leaf blower • Baseball catching equipment w/ bag • 4'x8' dog kennel • Portable deer blind - mounted on trailer • Cub Cadet FT 24 front tine garden tiller

BUTCHER BEEF

Black Baldy calf will weigh 1000+ lbs by September. Date is scheduled for processing by Quality Meats in Seymour. Proceeds to be donated to local church fundraiser

HOUSEHOLD

Portable AC • Window AC unit (8000 btu) • Exercise bike • Elliptical • Wheelchair • Scooter • Roll top desk • Antique vanity w/ mirror • Hall tree w/ mirror • Bar height dining table w/ 6 chairs & built in leaf • Dining table w/ 4 chairs & leaf • Dining table w/ 6 chairs & leaf • CUSTOM corner lighted display cabinet • Rocker recliner • Like new Leather sofa • Matching dresser & night stand • Coffee tables • Small display cabinet • Loveseat settee • Antique drop leaf side table • Electric fireplace • Teacher Podium • Wood quilt rack • CDs, DVDs, VHS tapes • NEW Muck Boots, mens size 11 • NEW in Box Exterior wall light fixture • Bose speaker system • Stand up speakers • Large selection of Misc costume jewelry • Canning equipment/jars • Antique dish sets • Fire King dishes • Corelle dish sets • Corningware dishes • Fostoria glassware • Carnival glass • Nasco china set • Sonoma dish set • Vintage Tupperware • Nesting bowls • Decorative kitchen canister sets • Rival electric skillet NEW • Large Chefmate Rice cooker (like new!) • Vintage Anchor Hocking Serva-Snack set IN BOX • Beverage fountain • Buffet servers • Meat grinder • Misc kitchenware • Large wok set • Meat slicer • Z44 handquilting frame



LARGE VARIETY OF ITEMS TOO NUMEROUS TO MENTION!! STILL UNBOXING AS WE SPEAK!

Auctioneer's Note: More items expected! Still accepting good quality consignments up to the day of auction. Food truck will be serving all day! Come spend the day with us. Rain or shine - See ya there! **FOR MORE PHOTOS, VISIT OUR WEBSITE CHEYNEYAUCTIONS.COM OR FIND US ON FACEBOOK!**



Cheyney Auction Company, LLC

Real Estate • Livestock • Farm & Ranch • Equipment • Household • Antiques

Travis Cheyney, Auctioneer • Buddy Boyd, Ringman

417-543-8751 • cheyneyauctions.com

ANNOUNCEMENTS Made Day Of Sale By Auctioneer Take Precedence over any Printed Matter. Not Responsible For Accidents. All items sold as is, where is, with no guarantee. Terms of sale: cash, credit/debit card, or check with valid ID

21ST SEMI-ANNUAL SPRING MACHINERY AUCTION

SAT., APRIL 22, 2023 • 9:00 A.M.

**THE MOFFAT CENTER
467 CO RD 604, LINN, MO**

DIRECTIONS: FROM LINN, TAKE HWY. 50 WEST 1 ½ MI. TO CO. RD. 604, TURN LEFT & GO 1 MILE TO BUILDING ON RIGHT, OR FROM JEFFERSON CITY, TAKE HWY. 50 EAST APPROX. 18 MI. & TURN RIGHT ON CO. RD. 604.

TRACTORS

John Deere 630 WF 3PT w/ loader – not running; John Deere 630 NF 3 PT – not running; 8N Ford; Case 270; Case DX45 w/cab 4x4 & Loader; Oliver 1800 Wheatland Diesel 3pt w/loader; 641 Ford Workmaster; Ford 7700 Blue Power Special-less than 500 hours on engine, transmission & rear end rebuild, new tires; Case IH 585 diesel 2000 hours; Case DC 3 pt; Ferguson T020.

FARM EQUIPMENT & TRAILERS

Gehl-Heston 2130 hay bine 7 ft.; JD hay rake; Pickup bed trailer; JD 39 sickle mower 3 PT; JD 8 ft. blade 3 PT; 7 ft. Field cultivator 3 PT; IH Corn planter 2 row 3 PT; JD Plow 3-14 3 PT; Oliver Superior iron wheel grain drill; Kuhn rake; Ford 6 ft. 3 PT blade; 3 PT Boom pole; Bumper hitch trailer 16 ft.; JD Running Gear; NH 488 hay bine; JD Hay wagon w/ wood bed; 3 PT sprayer; JD Model H manure spreader; JD 336 square baler; 16 ft. Stock trailer; 16 ft. Cattle rack for trailer; NH 351 Grinder mixer; Versatile 8 in. Grain auger 55 ft.; Gehl silage feed wagon; Chisel plow 10 ft. 3 PT; Gravity wagon on IH running gear; NH 327 manure spreader; Gravity feed bin 6 x 16 upright; Bumper hitch trailer 16 ft. w/ 2 ft. dove; 8 ft. Turfline 3 PT blade; 3 PT scoop; 8 ft. 3 PT rock rake; 6 ft. 3 PT disk; Danuser post hole digger 3 PT; Dearborn plow 2-14 3 PT; 7 ft. Ford blade 3 PT.; Kuhn Tedder; JD 3pt. 2 Row Corn Planter; Woods 9 ft. 3pt. Brush Hog; Frontier 6ft. Brush Hog; 7ft. 3pt. Brush Hog; 6 ft. 3 pt. Field Cultivator; 16 ft. Homemade Gooseneck Trailer; Gooseneck Stock Trailer; New Holland 848 Round Hay Baler; New Holland 273 Square Hay Baler; Case manure spreader; 5 x 8 trailer.

NEW SKIDSTEER ATTACHMENTS

New Lowe Hyd auger 750 w/ 12 in skid steer quick attach; New Stout brush grapple HD72-4 close tine skid steer quick attach; New Stout brush grapple; 2 Pallet XHD84-6 skid steer quick attach; New Stout rock grapple 72-3B skid steer quick attach; 2 New Skid Steer Tree Pullers; Skid Steer Plates; 2 Skid Steer Trailer Movers; 2 Pallet Fork Extensions.

NEW BUILDING MATERIAL

Black & Charcoal tin enough for a 30 x 40 ft. Building with 10 ft. lean-to with ridge cap & sides.

VEHICLES

2009 Nissan Frontier truck 4 x 4, 4 dr V6 AC 190,000 miles; 2011 Equinox; 1969 IH dump truck single axle.

LAWN & GARDEN, POWER TOOLS & HAND TOOLS, LUMBER

JD S240 mower; JD 425 mower; Husqvarna zero turn mower; Husqvarna rear tine tiller; Push mowers; White riding mower; Artic Cat 400 w wheeler; Lots of tools & misc. not listed; Cedar lumber cut for raised garden beds.



See www.moffatauction.com for photos.

Note: This is our semi-annual machinery auction. Please join us at the auction. Rick. **Terms:** Cash or good check with proper identification. All sales are final. Everything sells as is, where is. Proper identification is necessary to obtain a buyer's number. Announcements day of sale supersede all printed material. Food on grounds.

RICHARD MOFFAT AUCTION SERVICE



573-761-4293
Jefferson City, MO

Auctioneers-
Richard Moffat & BJ Moffat
www.moffatauction.com

573-690-2823
Linn, MO

SLIGHTLY USED PUZZLES: Will sell or trade. 417-818-3469. Strafford.

RUBBER & LEATHER BOOTS AND 5-Buckle OVER SHOES: Men's 11, Women's 7, some insulated. \$15-\$40 obo. 636-239-2695 or 314-560-5700. Washington.

LIONEL TRAIN SET: Steam engine, tender, caboose and other car, track, and transformer. \$195. 573-364-7465. Rolla.

1970s KIDS METAL STOVE & FRIDGE: Nice Lithographic paint, 18" wide x 36" high. \$75. 573-364-7465. Rolla.

3 GENTS WITTNAUER WRIST WATCHES: 10k gold + 23J. All \$200. 573-764-3517. Call in P.M.

COLT REVOLVER DEALER CATALOGS: Circa 1950's + 1960's. All for \$100. 573-764-3517. Call in P.M.

110 PORCELAIN POCKET WATCH DIALS: Perfect for arts & crafts. \$100. 573-764-3517. Call in PM.

1890 GOLD TESTING KIT: Glass acid beakers + antique wooden case. \$100. 573-764-3517. Call in PM.

1500 VINTAGE WRISTWATCH DIALS: \$100. 573-764-3517. Call in PM.

HARLEY 45 SOLO: factory rear brake drum + sprocket. \$150. 573-764-3517. Call in PM.

HARLEY PANHEAD DISTRIBUTOR: original, chrome + complete. \$125. 573-764-3517. Call in PM.

1962 HARLEY SPORTSTER 900CC: original distributor. \$50. 573-764-3517. Call in PM.

FERGUSON DEALER SHOP MANUAL: Covering TE-20, TO-20 & TO-30 Model tractors. \$40. 636-239-2695 or 314-560-5700. Washington.

NEW SQUARE D RAINPROOF 50AMP DISCONNECT: \$160. 636-239-2695 or 314-560-5700. Washington.

USED JET HOME POLLUTION CONTROL PANNEL: Model CP700. \$65. 636-239-2695 or 314-560-5700. Washington.

FOR SALE: Transmission for 56 & 06 series International tractors. \$675. 636-239-2695 or 314-560-5700. Washington.

HEARTH CRAFT GLASS BI-FOLD FIREPLACE DOORS PURCHASED AT FORSHAW'S FIREPLACE: Antique brass. \$160 obo. 636-239-2695 or 314-560-5700. Washington.

THREE SHEPHERD'S HOOKS: To hang potted plants. Black wrought iron. 6ft. 7in. when in ground. One is a double & two are single hooks. \$50. 636-239-2695 or 314-560-5700. Washington.

FIRST GEAR KILIMANJARO MOTORCYCLE COAT: XL, but runs smaller. Zip out liner, Kevlar padding on shoulders & elbows, vented, rainproof. Like new. \$95 FIRM. 417-260-0941. Raymondville.

2 GOODYEAR WRANGLER TIRES: Kevlar LT245/70R17, all terrain, \$100 for the pair. 417-417-260-0941. Raymondville.

RAINBOW VACUUM CLEANER: Excellent Condition. \$200. 417-260-0941. Raymondville.

METAL ROOFS: We repair leaky metal roofs with warranty. Also, flat roofs. Very affordable. Cover all of state. 573-338-1148. Jefferson City.

COWBOY CORGIS: D.O.B. 1/9/23. UTD on shots & wormer. \$50. 417-349-0831. Hartville.

Absolute Moniteau County

REAL ESTATE & PERSONAL PROPERTY AUCTION

SATURDAY, APRIL 29, 2023 AT 10 AM

Auction & Property Location:
23251 Indian Springs Road at California, Missouri 65018

Directions: From the stop light on Highway 87 and West Buchanan Street (Business Hwy. 50) in California, MO, take Hwy. 87 and Hwy. O north 4 miles, (Hwy. 87 becomes Hwy. O on the north side of California), to Hwy. D, turn right and go 5 miles to Gooseberry Hollow Road, turn left and go 1 mile to Indian Springs Road, turn tight and go 1.5 miles to the end of the road.





189.76 SURVEYED ACRES OFFERED IN ONE TRACT IN TOWNSHIP 46N, RANGE 15W, SECTIONS 16 AND 17 IN MONITEAU COUNTY, MO. IMPROVEMENTS INCLUDE A 3,000+ SQ. FT. ONE AND A HALF STORY ALONG WITH DETACHED GARAGE AND OTHER OUTBUILDINGS






Personal Property Includes:

TRACTOR & FARM EQUIPMENT, SHOP TOOLS, LIVESTOCK EQUIPMENT, LAWN & GARDEN EQUIPMENT, AUTO, PICKUP, TRAILER, ATV, MISCELLANEOUS, HOUSEHOLD FURNISHINGS, CANDLE MAKING & BEE KEEPING, BALUSTERS, JUKEBOXES, BARBER CHAIR








SELLER: THE DUGAN FAMILY
LANCE DUGAN AND BEN AND VELMA DUGAN

Wheeler AUCTIONS & REAL ESTATE

23101 HWY. 24, PARIS, MO 65275 | 660-327-5890
WWW.WHEELERAUCTIONS.COM

Visit wheelerauctions.com for more information!

For more information call Charlie Nordwald at 636-795-4552 or visit wheelerauctions.com.

1963 CHEVY SHOP MANUAL: \$20. Vintage Chevrolet 1963-1974 V8 & 6-cylinder manual \$30. Chilton's manual American Volkswagen 1969-1976. \$35. 417-260-0941. Raymondville.

MAC'S TIEDOWN STRAPS: Like New. \$80. 417-260-0941. Raymondville.

DARDEN PROFESSIONAL TIMBER HARVESTING, BUYING STANDING TIMBER: Great prices, improve wildlife habitat and improve forest health. State Certified & Fully Insured! 573-247-4808. Salem.

ANTIQUHOG OILER: \$35. 573-308-5884. Rolla.

FOR SALE: 2 Dayco motorcycle covers for Harley or other big bikes. \$50 each. 417-260-0941. Raymondville.

460 FORD ENGINE BLOCK: \$100. 573-308-5884. Rolla.

TRAILER HOUSE RIMS: \$10 each. 573-308-5884. Rolla.

6FT X 10FT GRAIN BOX: On 2-Wheel Trailer. \$400 O.B.O. 573-308-5884. Rolla.

FLAT CREEK ROCK FOR LANDSCAPING: 573-308-5884. Rolla.

POSTER BED: \$150. 417-741-1232.

ROUND TABLE: \$40. 417-741-1232.

25 SECLUDED ACRES: Powerlines on two sides of property. One hour from Springfield. Hunter's Paradise. Stream through property. Cash Only. \$8,000/per acre. Must take all. 00417-741-1232.

HIGHPOINT GREENHOUSE: Open for the season. Garden seeds, vegetable and flower plants, seed potatoes, onion sets and plants, herbs, etc. 417-741-2793. 9337 Warner Rd. Hartville.

JOE THEISMANN AUTOGRAPHED CAREER STAT JERSEY: JSA COA. Text for pictures. \$95 417-318-8932. Houston.

K.C. CHIEFS SUPERBOWL 2019 DAMIEN WILLIAMS AUTOGRAPHED JERSEY: JSA COA. Text for pictures. \$135. 417-318-8932. Houston.

STAN MUSIEL CANCELED CHECK: Full signature with authenticity. \$55. Text for pictures. Mint condition. 417-318-8932. Houston.

WANTED OLD MILITARY RIFLES & PISTOLS: 816-838-6254. Lee's Summit.

VINTAGE WORKING 1967 SINGER SEWING MACHINE: Special zigzag model 638 in cabinet with original instruction book. \$60. 210-787-8222. Linn Creek.

WANTED NEW HOLLAND SKID STEER 865: Any Condition. Call Bob 573-697-5143.

NOW BUYING STANDING RED AND WHITE OAK TIMBER: All slash will be trimmed to lay flat or placed in tidy piles for wildlife. No scarred-up trees or ruts from heavy logging equipment. We use low impact compact track loaders to minimize disturbance in your forest. Missouri Land Service LLC. 417-991-9280.

BUYING OLD BARNS AND LUMBER: 417-298-3475 Leave Message.

NEED YOUR CDL????? We furnish the truck & trailer. We teach all requirements for ELDT & skills test. We go to the state highway patrol with our truck. Requires only 2 days of in person training. Much cheaper way to get CDL. Jefferson City MO, Willow Springs MO, Strafford MO, 573-353-2853. For more info www.capitaltruckdrivinginstitute.com

1 M FARMALL: with rebuilt motor for \$1,800 417-349-2908

POOL TABLES: Installations, moves, recovers, repairs, accessories, etc. 573-646-1700.

2 ELECTRIC MOTORS: Diehl 1/3 horsepower and Wagner Electric 3/4 horsepower, includes 21 pulleys various sizes and widths. \$75. 210-787-8222. Linn Creek.

HORSE BONDING PASTURE & RUBBER PADDED BOX STALLS: \$300 a Month. Write with number to call back at 3676 Davis Rd Mansfield, MO 65704.

FULLBLOOD YEARLING RAMS: One Dorper and two St. Croix. \$500 each. Call 417-458-1771.

77 JEEP CJ5 FOR SALE: Runs good, drives good. \$7,500. 417-343-3928. Marshfield.

2002 HONDA VTX: 1800 CC. 1 owner. 573-330-7094. Patosi.

PEMBROKE WELSH CORGIS: D.O.B. 1/12/23 & 1 D.O.B. 7/20/22. U.T.D. on shots & wormer. \$300. 417-741-2949. Grovespring.

SUPER M FARMALL: new 15 x 5 x 38s: for \$2,500 417-349-2908

RETIREMENT AUCTION

Thursday, April 27, 2023

STARTS @ 9:34 AM

Address: 9404 E. 460 Rd. • Claremore, OK 74017

Directions: On West Side of Claremore, OK @ Jct Hwy 20 & N Clubhouse Rd/Northaven Rd (Casey's Convenience Store) Take N Clubhouse Rd 3 mi. East to 460 Rd. Turn Left (W). Go 6 1/10 mi. Road Dead Ends @ Auction Location. OR In Claremore, OK at the Jct of Hwy 88 & Blue Star Drive (on the north side of Rogers State University), take Blue Star Dr., West 1 mile to Old Hwy 88/Northaven, turn right (north) go 2 miles to E 460 Rd. Turn left go 6 1/10 mile, Road Dead Ends at Auction Location. Pasture Parking Available.

PECAN EQUIPMENT & SUPPLIES, TRACTORS, TRAILERS, TRUCKS with DUMP BEDS, DOZER, SKID STEER, BOX BLADES, BRUSH HOGS, HAY HAULER, FUEL TANKS, HONDA SIDE-BY-SIDE, CATTLE CHUTE, AUGERS, PLATFORM SCALES, PANELS - GATES - FENCING, CATTLE FEEDERS, SCRAP IRON, SCAFFOLDING, YARD TOOLS, HAND TOOLS, SAWS, PALLET FORKS, WAGON WHEELS, PATIO & HOUSEHOLD FURNITURE

AUCTION STARTS @ 9:34AM ONSITE & ONLINE BIDDING ON LOTS 1-67 START @ 11:17AM



For more information and pictures
www.chuppsauction.com

OWNER: TERRY POWELL



Auctioneer's Note: Mr. Powell has owned and operated a Pecan Farm for the past 40 years. He is now retiring and selling his Farming Equipment and Supplies. Follow us on Facebook or visit our website for more info and pictures @ www.chuppsauction.com

TERMS: Cash - Pay Day of Auction - Most Credit Cards Accepted - Check with Proper ID - Concession NOT RESPONSIBLE FOR ACCIDENTS. ANY ANNOUNCEMENTS DAY OF SALE SUPERSEDES PREVIOUS ADVERTISING.

CHUPPS AUCTION & REAL ESTATE

Stan Chupp
(918) 638-1157

Dale Chupp, Realtor
Coldwell Banker Neokla Select
(918) 630-0495

Jonathan Miller
(918) 237-7582

BUFFALO LIVESTOCK MARKET LLC



276 Hwy 32 W., Buffalo, MO

April 15th, 2023

Receipts: 1310

REPRESENTATIVE STEERS

- 300-400 @ 245.00 to 287.00
- 400-500 @ 235.00 to 272.00
- 500-600 @ 220.00 to 251.00
- 600-700 @ 200.00 to 220.00
- 700-800 @ 185.00 to 209.00
- 800-900 @ 140.00 to 168.00

REPRESENTATIVE HEIFERS

- 300-400 @ 210.00 to 262.00
- 400-500 @ 200.00 to 233.00
- 500-600 @ 190.00 to 229.00
- 600-700 @ 175.00 to 199.00
- 700-800 @ 167.00 to 183.00
- 800-900 @ 140.00 to 168.00

FEEDER BULLS

- 300-400 @ 220.00 to 292.50
- 400-500 @ 220.00 to 265.00
- 500-600 @ 200.00 to 234.00
- 600-700 @ 185.00 to 210.00
- 700-800 @ 165.00 to 184.00
- 800-900 @ 140.00 to 165.00

STOCKS COWS

- Bred Cows 1175.00 to 1650.00
- Cow/Calf Pairs 1300.00 - 2200.00

SLAUGHTER BULLS

- High Yield 115.00 to 128.00
- Low Yield 80.00 to 105.00

SLAUGHTER COWS

- Fleshy 95.00 to 102.00
- Med Flesh 90.00 to 108.00
- Light Flesh 75.00 to 92.00

QUESTIONABLE HEALTH OR CRIPPLE COWS

60 Down

Plain Quality, Dairy Cross, Fleshy or Unweaned
Small Frame Cattle under this market!!!

MON-WED MARKET REPORT

Listen to KJEL 103.7FM • Lebanon or KYOO 99FM • Bolivar

VIEW OUR SALES AT CATTLEUSA.COM

CALL FOR TRUCKING OR ON-FARM VISIT

Lyle Caselman • Owner-Manager
417-345-7876 • mobile 417-533-2944
Leon Caselman • Owner
417-345-4514 • mobile • 417-588-6185

FAINTING GOATS: Looking for an economical way to begin raising purebred fainters? Start with 2 bucklings as pets. Offering 2 for the regular price of 1. Call/Text 573-216-7796. www.greenacresvillage.com. Lake of the Ozarks.

FREE INTERACTIVE MORGAN HORSE FUN! Selfies with Morgan horses, kids activities, videos, painting, educational, demos, & carriage rides. Laura Ingalls Wilder door prizes, history. #meetthemorgan in Facebook for more information. Held at 5555 South State Highway NN, Rogersville. April 29th, 1-4p.m.

PAIR OF CAR OR PICKUP RAMPS: 70" tall on end and 16" wide \$45 417-260-0941

BOX OF SILVER-PLATED SILVERWARE: at least 75 years old \$60 417-260-0941

FOR SALE: German Shepherd Cross puppies. Nice Markings. \$50 each. Call 417-741-0476 Leave message. Ready April 24th.

FREE TO GOOD HOMES: 8-year-old Welsh Corgi Female, 3-month-old Welsh Corgi Female. Also, 3 Cowboy Corgi Males \$50 O.B.O. 417-259-9738.

2 FEMALE TOY SCHNAUZER/POODLE MIX: 417-664-5926. Lebanon.

2001 F350 4X4 DUALY: Reupholstered seats, new front tires & brand new 7.3 diesel engine. \$24,950. 417-254-1001. Edgar Springs.

9 PAIRS OF LADY'S COTTON KNIT LONG PANTS: Size XL. \$3 each or all for \$25. 417-288-6714. Lebanon.

DOXIN PUPPIES: Registered, shots & wormed. 573-247-6273. Salem.

JESSE BARNES 1991 OCTOBER RADIANCE PRINT: 16x24, print #2796/2800, framed & matted by professional. 417-830-5309. Leave message. Bruner.

2010 FORD ESCAPE: 249,000 miles on body & 160,000 on engine. Good tires, battery, heat, air & cruise. All windows & locks work. Runs & drives very good. \$5,000 OBO Cash. 573-435-6987 Leave Message. Edgar Springs.

'86 CORVETTE PROJECT CAR: Will need to be trailered. Ran good until 2 1/2-3 years ago. Chipmunks ate the wire harness. \$1,250 OBO Cash. 573-435-6987 Leave Message. Edgar Springs.

Absolute Real Estate Auction

10:00 A.M. * Saturday May 6th

Location: 1317 Oak Ridge Rd., Nixa, Mo 65714



Beautiful 3200+ Sq. Ft. Brick/Vinyl Home on 4 Acres in a Country setting just outside of Nixa!

Gorgeous Home with 4-Bedrooms, 3-Bath, Large, Open Family, Living room and Kitchen, Gas Log Fireplace, Master Bedroom w/walk in closet and open Bathroom, Full Walk-Out Basement w/ 2 Bedrooms, Game Room, Wet Bar, Nice Utility Room & Lots of Storage. Beautiful! Move in Ready Home! Large Yard with Beautiful Landscaping, Mature Shade Tree's & Ornamentals, Wet Weather Spring in back yard, Central Heat & Air, Private Well & Septic, 2-Car Garage, Asphalt Driveway, Nixa Schools, Just minutes to Springfield or Nixa,

If you have been looking for a home in the Nixa area, You won't find one better than this! This Home has it all! Absolutely Gorgeous inside and out!

Property Sells Absolute to the Highest Bidder

Terms: 10% Down, Balance due at closing 45 days or less.

Property shown by appointment only.
Please Contact Larry Foster at 417-839-6860 or bidnowsold@aol.com

Auctioneer: Larry Foster
Phone: (417) 723-8329
Cell: (417) 839-6860



Foster Auction & Appraisal Service
www.fosterauctionservice.com
Email: bidnowsold@aol.com

**NEIGHBORHOODS HOME
IMPROVEMENT STORE: 417-533-5080.
Lebanon**

**2 MALES & 2 FEMALES GREAT
PYRENEES PUPPIES:** \$250 Each. 417-
589-0227. Conway.

CUSTOM HAY HARVESTING: or put
up in shares. 4x5 Net Wrap Tight JD Bales.
Reasonable Rates Reliable Service Larger
Acreages Desired. Book early to beat the
rush. For a Free Quote call Josh *573-247-
8715* Green Meadows Farm: Servicing
Dent, Texas, and surrounding counties.

**PAST DUE STORAGE UNITS AT WEST
64 STORAGE IN LEBANON:** will sell at
auction by R&R Auction Service on Saturday
April 22 at 10am. This is a Cash only auction
7 days to clean out, perimeter never broken.
Call professional auctioneer Russ Weeks for
info 417-576-7357.

**MOTHER'S DAY SALE 10% OFF ALL
WEEK:** May 8-13 at Highpoint Greenhouse.
Large variety of flowers to choose from. Gift
certificates!! 417-741-2793. 9337 Warner Rd.
Hartville.

**LAWN MOWING & YARD WORK
SERVICES: 417-288-8123. Lebanon.**

FRUIT TREES FOR SALE: Apple, Peach,
Pear & Plum. \$20 each. 417-664-0742.
Lebanon.

**DRIVING TEAM FOR SALE: 16-year-
old Bay Clydesdale Quarter Cross and
15-year-old Black Friesian Quarter Cross.
Beginner team, anyone can drive. 573-269-
4743.**

1996 Cadillac Hearse: For sale or trade for
truck. 573-734-2822.

**EXHAUST MANIFOLD FOR 55/56
CHEVY CAR:** \$100 or trade. 573-734-2822.

TRUNK LID FOR 55/56 CHEVY CAR:
\$50 or trade. 573-734-2822.

**OLD ARMY MARMITE FOOD CAN
FROM WWII:** \$150. 573-734-2822.

**1978 GMC DUMP FLAT BED: 20Ft.
Keaseer Bed, 427-5sp 2sp-Axle. 573-269-
4743.**

**WEATHERED BARN WOOD
SIDING:** 10" wide. 573-729-7226. www.pineridgerustic.com Salem.

LOG SIDING: 2X8 Pine/Western Cedar
www.pineridgerustic.com 573-729-7226.
Salem.

**BASEMENT READY USED DOUBLE-
WIDE** – 3 bdr, 2 bath, Financing Call for
info 573-657-2176 amegamobilehomes.com

DISCOUNT NEW MOBILE HOMES
– we will beat any price on any home
GUARANTEED, Financing, 573-499-9993
columbiadiscounthomes.com

BASEMENT READY TRUE MODS-
instock ready for delivery 573-657-7040
chateauhomes.net

TINY HOMES – Missouri Franchise 573-
881-7965

I BUY.....used mobile homes. Call or
text 573-338-6250 or email GregS.CDH@outlook.com

**REGISTERED HEREFORD & ANGUS
BULLS:** Home raised, Some Show-Me
Select Qualified. 573-701-7828. Belgrade.

**LIGHTLY EXPERIENCED GOLF
BALLS:** \$3 a dozen. 417-818-3469.
Strafford.

SLIGHTLY USED PUZZLES: Will sell or
trade. 417-818-3469. Strafford.

Farm Equipment & Gun Auction Friday, April 28 • 1 p.m.

LOCATION: 1585 North Hwy. 63, Houston, Mo. 65483, at the Texas
County Fairgrounds. **DIRECTIONS:** Just north of Houston approximately
one mile on U.S. 63. Watch for Rick Dixon Auction signs day of auction.

• LOADERS • TRACTOR • FARM EQUIP • UTVS • SAWMILL ITEMS • BOATS • TRAILERS •

John Deere 655B series 2 track loader w/cab heat & air, 4k hours, w/clam
shell bucket • International 510 A101 wheel loader • Mitsubishi Leeway
blade crawler, 45 hp • 4430 John Deere w/720 John Deere loader, 8300 hrs,
quad trans • 2018 Polaris 900 4wheel drive Ranger • 2017 Polaris 4wheel
drive Ranger • 2001 UltraMarine Grizzly 600 4x4 • Honda Rancher 4wheeler
• Yamaha Moto 350 4wheeler • Mac 300 day cab semi 15 speed Trumac
Eaton transmission • 30 ft lowboy tandem axle trailer w/air brakes • 3 good
log pole trailers w/air brakes • John Deere HX15 15 ft batwing bushhog •
Bushhog 265 batwing • Land Pride 10 ft full-type bushhog • M&W 9 ft disc
mower • Vicon 9 ft disc mower • Massey Ferguson 13 ft disc mower w/caddy,
like new, has cut approx 25 acres • 4 basket hay tedder • Durabilt 8 wheel
hay rake • Tonitti 8 wheel hay rake • Vermeer 504 Super I round hay baler •
8 ft field roller • John Deere 350 sickle mower • New Idea 9 ft disc mower •
Food Train UTV cube feeder, like new • 10 ft offset plow • 12 ft grain auger,
like new • 12 ft wheel disc • 9 ft manure spreader • 2 ton 16 ft utility trailer
w/boxes • Morrison power buggy with Hyundai engine • 3 pt boom sprayer •
sprayer wagon w/booms • 20 ft flatbed gooseneck trailer w/5 ft dove • 8x12
utility trailer • 2 wheel car dolly • Tractor hay bale spike • Scratch Mill w/15 ft
work table w/motor • Alum & steel semi truck wheels • North Star large shop
size air compressor • New hydraulic hoses w/fittings • New hydraulic fittings
• 3 sets pallet forks • Axles for low boy trailer • 100 gal transfer tank w/pump •
100 gal transfer tank • Lots of new semi truck parts • Lots of new trailer lights
& truck tail lights • Double-rubber pontoon boat w/seats • Lots of scrap iron
• High bay shop lights • Elec motors, single phase and three phase • Approx
16 ft flatbed trailer load of Craftsmen tools •

• GUNS: RIFLES • PISTOLS • SHOTGUNS GUNS SELL AT 5:30 PM!

Smith & Wesson Mod 27 357 mag double action • Smith & Wesson mod 57
44 mag • Smith & Wesson mod 57 41 mag • Smith & Wesson mod 27 357
mag • Springfield mod 1911 45 auto • Ruger mod GP100 357 mag • Glock
mod 19 9 mm • Stevens mod 200 223 cal bolt action rifle • H & R 243 cal
single shot rifle • Stevens 12 ga shotgun • Ruger mod M77 Mark II 243 cal
rifle • Remington mod 5 22 cal rifle • C.G.Bone Hill double barrel 12 ga shot-
gun • Mossberg Patriot 22-250 cal rifle • Springfield mod 1873 trap door 45-
70 cal • Remington Woodmaster 7 mm Express auto rifle • (2) Swiss Arms
air rifle • CZ mod 452-2E ZKM 22 cal • Kimber micro 9 mm auto • Kimber
micro carry .380 cal auto • Ruger LCP 2 .380 cal auto • Marlin Camp rifle 45
cal • Taurus ultra-light 38 Spl • Browning a-bolt 6.5 creedmore • Remington
1100 12 ga auto shotgun • 2 barrels for Remington mod 1100 full choke
and slug barrel • Marlin mod 92 lever action • Mossberg 71ST 22 cal auto •
Remington 512 bolt action 22 cal Sportmaster • Remington mod 33 single
shot 22 cal • Springfield mod 53 A single shot 22 cal • Rossi 22 cal pump •
Anderson AR 15 • Sig Sauer P938 9 mm • Anderson AR 15 300 blackout •
Taurus 357 mag pistol • Sig Sauer P290 limited 1st edition 9 mm • Ruger
American 9 mm luger • Smith & Wesson M&P 40 cal • Ruger EC9S 9mm
• Glock 43 9 mm American Flag Cherokee • Springfield Arms XDE9 5-3 9
mm new in box • Taurus Judge, stainless 410-45 cal • LS AR 15 556-223
• AKLYS Defense AR 15 556-223 • Mossberg 500K 12 ga pump shotgun •
Remington Sportsman 58 16 ga shotgun • Remington nylon 22 LR black/
stainless • Lots of scopes • Lots of misc gun items •

Auctioneer's note: Please be with us for this quality auction. **Jimmy
Floyd is cutting back on his farming operation.** Equipment sells at
1 p.m. - please be on time as there will not be many small items. Guns
sell at 5:30 p.m. - plenty of seating. Thanks for your attendance - Rick
For more information on this auction, contact Len or Josh at
numbers below.



Rick Dixon Auction Service LLC
www.rickdixonauctions.com
Rick Dixon
417-967-6604
Len Clayton
417-464-0374
Josh Dixon
417-217-9627



MID MISSOURI STOCKYARDS

REGULAR SALE EVERY THURSDAY 11AM

SPECIAL COW SALE • MAY 6TH AT 6 PM

WATCH OUR WEEKLY SALE IN REAL TIME ON DVAUCTION.COM
 For Farm Visits, Market Updates, or Trucking
 Call **Zach Cox 417-777-1320**
Dan Romine 573-578-4939

**Competitive Buyers!
 Competitive Commission!
 Competitive Market!**

Barn: 417-532-9292  [Like us on Facebook](https://www.facebook.com/midmostockyards)
I-44 • Exit 123 "just outside of Lebanon"
17505 Route 66, Phillipsburg, MO 65722
 For weekly market updates, visit us at www.midmostockyards.com



ANNUAL IRISH DEXTER BREEDERS SHOW AND SALE

Now taking applicants for the sale. Call for more info!

MAY 5 & 6, 2023

DALLAS COUNTY FAIRGROUNDS - BUFFALO, MO

****Check in starts at 5PM, Thursday May 4, 2023****
Ends at 12PM Friday May 5, 2023
****Adult show at 4PM Friday May 5, 2023****
****Junior show at 9AM Saturday May 6, 2023****
****Sale at 2PM Saturday May 6, 2023****

For more info and entry form: Visit our Facebook page at **IRISH DEXTER BREEDERS ASSOCIATION** or contact
Steve Cushing (417) 991-6707
Robert Doering (417) 733-4088
Bo Hampton (417) 288-2376

LIONEL TRAIN SET: Steam engine, tender, caboose and other car, track, and transformer. \$195. 573-364-7465. Rolla.

MODEL 1911 FRAME 8-SHOT C02 PISTOL: Like new, in box with C02 cartridges, 4 clips, pellets & all paperwork. \$95. 573-364-7465. Rolla.

1970s KIDS METAL STOVE & FRIDGE: Nice Lithographic paint, 18" wide x 36" high. \$75. 573-364-7465. Rolla.

3 GENTS WITTNAUER WRIST WATCHES: 10k gold + 23J. All \$200. 573-764-3517. Call in P.M.

HARLEY FAT BOBS: Custom flame paint w/ gas caps + lines. \$100. 573-764-3517. Call in P.M.

COLT REVOLVER DEALER CATALOGS: Circa 1950's + 1960's. All for \$100. 573-764-3517. Call in P.M.

110 PORCELAIN POCKET WATCH DIALS: Perfect for arts & crafts. \$100. 573-764-3517. Call in P.M.

1890 GOLD TESTING KIT: Glass acid beakers + antique wooden case. \$100. 573-764-3517. Call in P.M.

HARLEY 45 SOLO: factory rear brake drum + sprocket. \$150. 573-764-3517. Call in P.M.

HARLEY PANHEAD DISTRIBUTOR: original, chrome + complete. \$125. 573-764-3517. Call in P.M.

1962 HARLEY SPORTSTER 900CC: original distributor. \$50. 573-764-3517. Call in P.M.

SMALL TOWN MAYOR OF WAYNESVILLE, MO: Political Adventures of the Ozarks by Luge Hardman, featuring small town politics and small-town life, featuring local photographers and local characters. \$9.50. 417-532-2045. Lebanon. (Leave message and phone number).

1500 VINTAGE WRISTWATCH DIALS: \$100. 573-764-3517. Call in P.M.

RUBBER & LEATHER BOOTS AND 5-Buckle OVER SHOES: Men's 11, Women's 7, some insulated. \$15-\$40 obo. 636-239-2695 or 314-560-5700. Washington.

FERGUSON DEALER SHOP MANUAL: Covering TE-20, TO-20 & TO-30 Model tractors. \$40. 636-239-2695 or 314-560-5700. Washington.

NEW SQUARE D RAINPROOF 50AMP DISCONNECT: \$160. 636-239-2695 or 314-560-5700. Washington.

USED JET HOME POLLUTION CONTROL PANNEL: Model CP700. \$65. 636-239-2695 or 314-560-5700. Washington.

FOR SALE: Transmission for 56 & 06 series International tractors. \$675. 636-239-2695 or 314-560-5700. Washington.

OMAR'S LOGGING

⇒ Oak & Walnut
 ⇒ Excellent Prices
Amish Owned & Operated



LEAVE MESSAGE: 417-741-0440
 Hartville & Surrounding Areas

THE TIRES YOU NEED FOR ALL SEASONS

With brands like:



ATTEBERRY MFA TIRE & AUTO CENTER
 333 E. BROADWAY • BOLIVAR, MO
 DUANE ATTEBERRY • 417-326-6286






Previous Auction Photos

Friday, May 12th

Sale Starts at 1:00 PM
Gun sale starting at 6:30 PM

Saturday, May 13th

Breakfast - 7:30 AM
Sale Starts at 9:00 AM

Suggested Consignments

Deadline Thursday 5/11/23

- Tractors & Farm Equipment
- Cattle Equipment
- Lawn & Garden
- ATV's
- Shop Tools
- Hand Tools
- Handmade Quilts
- New Furniture
- Antiques

NO JUNK PLEASE



Auction held on school grounds.
12 Winding Creek Dr., Buffalo, MO 65622



To consign or for more information, contact

417.327.4670 - Nathan Blosser
417.327.6240 - Nathan Kropf
417.326.9788 - Dennis Blosser
417.733.2600 - Vernon Kropf (Tractors & Machinery)
417.327.6348 - Eldon Swartzentruber (Vehicles & Guns)
417.327.7720 - Herman Hostetler (Guns)


THE SOONER CONSIGNED, THE BETTER ADVERTISED!

WE BUY AND SELL
new and used mobile homes



(417) 501-1061

Cedar Ridge Truss LLC



ENGINEERED TRUSSES
Satisfaction is our goal

Mention this ad when calling!

417-259-9788
Fax 417-701-0021

4952 N Hwy. E
Hartville, MO 65667

HEARTH CRAFT GLASS BI-FOLD FIREPLACE DOORS PURCHASED AT FORSHAW'S FIREPLACE: Antique brass. \$160 obo. 636-239-2695 or 314-560-5700. Washington.

THREE SHEPHERD'S HOOKS: To hang potted plants. Black wrought iron. 6ft. 7in. when in ground. One is a double & two are single hooks. \$50. 636-239-2695 or 314-560-5700. Washington.

RAINBOW VACUUM CLEANER: Excellent Condition. \$200. 417-260-0941. Raymondville.

FIRST GEAR KILIMANJARO MOTORCYCLE COAT: XL, but runs smaller. Zip out liner, Kevlar padding on shoulders & elbows, vented, rainproof. Like new. \$95 FIRM. 417-260-0941. Raymondville.

2 GOODYEAR WRANGLER TIRES: Kevlar LT245/70R17, all terrain, \$100 for the pair. 417-417-260-0941. Raymondville.

HORSE BONDING PASTURE & RUBBER PADDED BOX STALLS: \$300 a Month. Write with number to call back at 3676 Davis Rd Mansfield, MO 65704.

FOR SALE: 2 Dayco motorcycle covers for Harley or other big bikes. \$50 each. 417-260-0941. Raymondville.

1963 CHEVY SHOP MANUAL: \$20. Vintage Chevrolet 1963-1974 V8 & 6-cylinder manual \$30. Chilton's manual American Volkswagen 1969-1976. \$35. 417-260-0941. Raymondville.

MAC'S TIEDOWN STRAPS: Like New. \$80. 417-260-0941. Raymondville.

DARDEN PROFESSIONAL TIMBER HARVESTING, BUYING STANDING TIMBER: Great prices, improve wildlife habitat and improve forest health. State Certified & Fully Insured! 573-247-4808. Salem.

ANTIQUE HOG OILER: \$35. 573-308-5884. Rolla.

460 FORD ENGINE BLOCK: \$100. 573-308-5884. Rolla.



HARTVILLE LIONS CLUB

Consignment & Donation
18th Annual Auction

Saturday, April 29th
Good Consignments Needed
Low Fee Commissions
Donations Appreciated

To consign or donate items, contact:

Dan	Lonnie	Scott
531-3329	741-2095	741-0082

Consign early by April 21st
for sale bill listing

PLAD PANTRY

DISCOUNT & SURPLUS FOODS
FRESH PRODUCE LLC
417-532-4700



Mint Chip Ice Cream Sandwiches.....	\$3.99	12 count
Applegate Charcuterie Snack Plates.....	\$2.99	12 - 2.5 oz.
Reese's Candy Assortment.....	\$7.99	28.06 oz.
Four Cheese Pizza.....	\$2.99	31.4 oz
Original Uncured Wieners.....	\$5.99	3 lbs.

1571 State Hwy 64 • Tunas, MO 65764
Hours: 8:30 a.m. to 5:30 p.m. • Closed Wed. & Sun.





YOUR AD GOES HERE!

Add YELLOW Color For An Additional \$3 Per Reader Ad

All ads will include Phone Number (unless requested to be deleted by advertiser) and City Or Town, Phone Number with Area Code counts as one word. City or Town counts as one word.

RATE: 80¢ Per Word. All Classified Ads Require Payment Before Print.

(1) 80¢	(2) \$1.60	(3) \$2.40	(4) \$3.20
(5) \$4.00	(6) \$4.80	(7) \$5.60	(8) \$6.40
(9) \$7.20	(10) \$8.00	(11) \$8.80	(12) \$9.60
(13) \$10.40	(14) \$11.20	(15) \$12.00	(16) \$12.80
(17) \$13.60	(18) \$14.40	(19) \$15.20	(20) \$16.00
(21) \$16.80	(22) \$17.60	(23) \$18.40	(24) \$19.20
(25) \$20.00	(26) \$20.80	(27) \$21.60	(28) \$22.40
(29) \$23.20	(30) \$24.00	(31) \$24.80	(32) \$25.60
(33) \$26.40	(34) \$27.20	(35) \$28.00	(36) \$28.80
(37) \$29.60	(38) \$30.40	(39) \$31.20	(40) \$32.00

Buy 3 Weeks - Get 4th Week Free! (Must be same ad)

Place your Classified Ad TODAY!

417-532-9131 • 800-665-8875

Fax: 417-532-8140

Or Mail To: P.O. Box 192 • Lebanon, MO 65536

For your convenience we accept MasterCard, Visa, Discover or American Express



DEADLINE FOR CLASSIFIED ADS: FRIDAY 4:00PM!

Name _____

Address _____

City _____ Email _____

State _____ Zip Code _____ Phone _____

Ad Total \$ _____ X # Weeks _____ = Amount Enclosed \$ _____

YOUR TRUSTED SOURCE FOR QUALITY FEED FOR ALL YOUR LIVESTOCK AND PETS



YOUR FULL SERVICE AUTO BODY SHOP

Call today for an appointment or estimate!

Restorations, insurance jobs, and more!



DAVIDSON'S *Customs*
 417-288-1589

417-288-1589 • 115 Lincoln St., Buffalo, MO • [f](#) @DavidsonCustoms



2022 Deere 317G *8* available, UNUSED, Cab&OROPS.....starting at \$61,900



Over 500 Attachments IN STOCK!
We ship NATIONWIDE!

Craig Equipment

2681 W. Pearce Blvd | Wentzville, MO 63385

636-856-8555

www.CraigEquipment.com

*Availability & Price subject to change without notice



2022 Deere 333G *HiFlow* UNUSED, Cab, LOADED!.....starting at \$104,900



Deere 312GR *2* available, LOW hours, NEW Tires.....starting at \$24,900



2015 Kubota SVL90 74hp, AC/Cab, Joystx, 2sp, PwrBktChngr.....\$46,500



2010 Gehl CTL75 83hp, 1435hrs, AC/Cab, Joystx, 2sp.....\$44,500



2015 Takeuchi TL10 *HiFlow* Kubota92hp, 2050hrs, AC/Cab, PolyDr, Joystx.....\$51,900



2021 Bobcat T870 *HiFlow* 540hrs, AC/Cab, Joystx, Warranty!.....\$91,500



Bobcat T770 *4* available, HiFlow AC/Cab Joystx.....starting at \$56,900



2004 Bobcat T190 66hp, 2568hrs, AC/Cab, PwrBktChngr.....\$34,900



2003 Bobcat MT50 19hp, 1268hrs, Ride on platform\$14,900

Buildings • Hunter's Cabins • Lawn Furniture

JAMCO BUILDERS

JAMCO Portable Buildings
800-688-2064 • 307 Enterprise Dr. • Seymour, MO • www.jamcobuilders.com

Rent To Own Plan