

FREE - TAKE ONE!

Vol. 30 No. 3

APRIL 13, 2023

417-532-9131

WEEKLY TRADER MAGAZINE



Find us on
Facebook

@myweeklytrader
AUCTIONS PG. 11

VISIT OUR NEW WEBSITE! MYWEEKLYTRADER.COM

TRUCK SEASON

GREAT DEALS ON A HUGE SELECTION OF SIERRA AND SILVERADO



WE WANT YOUR TRADE.

ED MORSE
CHEVROLET
BUICK · GMC

ROLLA

FORMERLY FAIRGROUNDS AUTO PLAZA
NEW NAME. SAME TEAM.

100 Fairgrounds Rd., Rolla, MO

573-364-1002

EdMorseChevroletBuickGMCRolla.com

High horsepower.
High performance.
Low financing.



Save big on our L2501DT with Kubota loader. Part of our tractor lineup rated #1 for durability and owner experience in the U.S.* Stop in for a demo and to claim this offer today.

L2501 DT W/ KUBOTA LOADER **ONLY \$19,495**

0% APR FOR 72 MONTHS

VISIT US TODAY FOR THIS LIMITED-TIME OFFER



Quarles Supply

3251 S Springfield Ave
Bolivar, MO 65613
417-777-2391

KubotaUSA.com

0% Down, 0% A.P.R. financing for up to 72 months on purchases of select new Kubota L2501 DT equipment from participating dealers' in stock inventory is available to qualified purchasers through Kubota Credit Corporation, U.S.A.; subject to credit approval. Example: 72 monthly payments of \$13.89 per \$1,000 financed. Some exceptions apply. Terms subject to change. Offers expire 06/30/23. This material is for descriptive purposes only. Kubota disclaims all representations and warranties, express or implied, or any liability from the use of this material. For more information, see Dealer or go to KubotaUSA.com.

Progressive
FARMER
READER INSIGHTS



RB16 SERIES

REAR BLADES
20-40 HP 60", 74", 84" Widths

- Cat. 1 hitch
- 7 Forward angles; 3 Reverse angles
- 5 Tilt positions
- 12" Offset left or right
- 14" Moldboard height
- 1/4" Moldboard thickness
- Landscape Rake adaptable

Getting Chores Done
LAND PRIDE
does that.



www.landpride.com

For Outstanding Products & Service
AGRI-ENTERPRISES
 1-1/2 Miles South Of Licking, MO On Hwy 63
 573-674-2203 • 1-800-653-7152 • www.agri-enterprises.com

SMALL TOWN MAYOR OF WAYNESVILLE, MO: Political Adventures of the Ozarks by Luge Hardman, featuring small town politics and small-town life, featuring local photographers and local characters. \$9.50. 417-532-2045. Lebanon. (Leave message and phone number).

WEATHERED BARN WOOD SIDING: 10" wide. 573-729-7226. www.pineridgerustic.com Salem.

DISCOUNT NEW MOBILE HOMES: We will beat any price on any home Guaranteed, financing, 573-499-9993. columbiadiscountnhomes.com

LOG SIDING: 2X8 Pine/Western Cedar www.pineridgerustic.com 573-729-7226. Salem.

USED DOUBLE-WIDE: 3 bdr, 2 bath. WOW! \$39,900 delivered & set, Financing. 573-657-2176. amegamobliehomes.com

MODULAR BUILDING: Save \$\$\$ with us, Financing professionals 573-657-7040 chateauhomes.net

TINY HOMES: Missouri Franchise 573-881-7965

I BUY.....used mobile homes. Call or text 573-338-6250 or email GregS.CDH@outlook.com

REGISTERED HEREFORD & ANGUS BULLS: Home raised, Some Show-Me Select Qualified. 573-701-7828. Belgrade.

LIGHTLY EXPERIENCED GOLF BALLS: \$3 a dozen. 417-818-3469. Strafford.

SLIGHTLY USED PUZZLES: Will sell or trade. 417-818-3469. Strafford.

LIONEL TRAIN SET: Steam engine, tender, caboose and other car, track, and transformer. \$195. 573-364-7465. Rolla.

VOTED #1 BEST Preowned Car Dealership

TIM'S USED CARS

(573) 341-3828 • 1334 South Bishop (Hwy. 63) • Rolla, MO
Next to Hwy CC • www.tims-used-cars.com

<p>2013 CHEVY 1500 WT 4WD, 4.8 V-8, auto, A/C, 45,xxx Miles Only \$17,900</p>	<p>2017 DODGE JOURNEY SE FWD, 4 cyl, power equipped, 3rd row seat, 83,xxx Miles Only \$11,900</p>
<p>2019 KIA SORENTO LX FWD, V-6, power equipped, 3rd row seating, 92,xxx Miles Only \$17,900</p>	<p>2010 TOYOTA CAMRY LE 4 cyl, power equipped, 140,xxx Miles Only \$8,900</p>

LARGE SELECTION OF CARS, TRUCKS, SUVs & VANS!

MODEL 1911 FRAME 8-SHOT C02 PISTOL: Like new, in box with C02 cartridges, 4 clips, pellets & all paperwork. \$95. 573-364-7465. Rolla.

1970s KIDS METAL STOVE & FRIDGE: Nice Lithographic paint, 18" wide x 36" high. \$75. 573-364-7465. Rolla.

3 GENTS WITTNAUER WRIST WATCHES: 10k gold + 23J. All \$200. 573-764-3517. Call in P.M.

HARLEY FAT BOBS: Custom flame paint w/ gas caps + lines. \$100. 573-764-3517. Call in P.M.

COLT REVOLVER DEALER CATALOGS: Circa 1950's + 1960's. All for \$100. 573-764-3517. Call in P.M.

110 PORCELAIN POCKET WATCH DIALS: Perfect for arts & crafts. \$100. 573-764-3517. Call in P.M.

1890 GOLD TESTING KIT: Glass acid beakers + antique wooden case. \$100. 573-764-3517. Call in P.M.

1500 VINTAGE WRISTWATCH DIALS: \$100. 573-764-3517. Call in P.M.

HARLEY 45 SOLO: factory rear brake drum + sprocket. \$150. 573-764-3517. Call in P.M.

HARLEY PANHEAD DISTRIBUTOR: original, chrome + complete. \$125. 573-764-3517. Call in P.M.

1962 HARLEY SPORTSTER 900CC: original distributor. \$50. 573-764-3517. Call in P.M.

RUBBER & LEATHER BOOTS AND 5-Buckle OVER SHOES: Men's 11, Women's 7, some insulated. \$15-\$40 obo. 636-239-2695 or 314-560-5700. Washington.

FERGUSON DEALER SHOP MANUAL: Covering TE-20, TO-20 & TO-30 Model tractors. \$40. 636-239-2695 or 314-560-5700. Washington.

NEW SQUARE D RAINPROOF 50AMP DISCONNECT: \$160. 636-239-2695 or 314-560-5700. Washington.

VINTAGE WORKING 1967 SINGER SEWING MACHINE: Special zigzag model 638 in cabinet with original instruction book. \$60. 210-787-8222. Linn Creek.

USED JET HOME POLLUTION CONTROL PANNEL: Model CP700. \$65. 636-239-2695 or 314-560-5700. Washington.

FOR SALE: Transmission for 56 & 06 series International tractors. \$675. 636-239-2695 or 314-560-5700. Washington.

HEARTH CRAFT GLASS BI-FOLD FIREPLACE DOORS PURCHASED AT FORSHAW'S FIREPLACE: Antique brass. \$160 obo. 636-239-2695 or 314-560-5700. Washington.

THREE SHEPHERD'S HOOKS: To hang potted plants. Black wrought iron. 6ft. 7in. when in ground. One is a double & two are single hooks. \$50. 636-239-2695 or 314-560-5700. Washington.

FIRST GEAR KILIMANJARO MOTORCYCLE COAT: XL, but runs smaller. Zip out liner, Kevlar padding on shoulders & elbows, vented, rainproof. Like new. \$95 FIRM. 417-260-0941. Raymondville.

2 GOODYEAR WRANGLER TIRES: Kevlar LT245/70R17, all terrain, \$100 for the pair. 417-417-260-0941. Raymondville.

RAINBOW VACUUM CLEANER: Excellent Condition. \$200. 417-260-0941. Raymondville.

OFFICIAL TRACTOR OF TOUGH™

INTRODUCING THE ALL-NEW 5100 SERIES



NEW MAHINDRA TRACTORS

1626 4WD & LDR 26HP	IN STOCK
2638 4WD & LDR 38HP	IN STOCK
2645 4WD & LDR 45HP	IN STOCK
4550 4WD & LDR 48 HP	IN STOCK

USED TRACTORS

MAHINDRA M85P 4WD CAB	LDR 29,500
MAHINDRA 2638 38HP 4WD	LDR 21,000
MAHINDRA 2638 38HP 4WD	LDR 20,000
MAHINDRA 1635 35HP 4WD	LDR 19,500
MF 2640 90HP CAB	17,500
MF GC1725M 24HP 4WD LDR	13,000
AC 7010 106 HP CAB	9,500
MF 2675 100HP CAB LDR	9,500
AC 175 62 HP LDR	8,500
AGCO ALLIS 4660 52 HP	6,500
MF 1085 81HP	6,500
FORD 2000 31 HP	3,500
MF 135 36 HP	2,750

USED ROUND BALERS

NH RB450 4X5 MESH	24,000
NH RB780A 5X6 MESH	7,500
HESSTON 550 4X6	2,500
HESSTON 560 5X6	2,000

USED MISC.

SITREX 8 WHEEL RAKE	1,750
LELY 8 WHEEL RAKE	1,750
INTERNATIONAL 10FT CUTTER	1,250
BH RDTH 60 FINISH MOWER	850
RHINO 5FT FINISH MOWER	850
LAND PRIDE 5FT CUTTER	500
ROLLINS 5FT BLADE	250
KING CUTTER BEDDING PLOW	200

Marshfield Machinery Inc.
 222 E. Madison • Marshfield, MO 65706
 417-859-2117 • www.marshfieldmachinery.com

*2018 data including all Mahindra group brand sales.
 MahindraUSA.com © 2020 Mahindra USA Inc.

Mahindra
Rise.

Marshfield Machinery Inc.
 222 E. Madison
 Marshfield, MO 65706
 417-859-2117
www.marshfieldmachinery.com

FOR SALE: 2 Dayco motorcycle covers for Harley or other big bikes. \$50 each. 417-260-0941. Raymondville.

1963 CHEVY SHOP MANUAL: \$20. Vintage Chevrolet 1963-1974 V8 & 6-cylinder manual \$30. Chilton's manual American Volkswagen 1969-1976. \$35. 417-260-0941. Raymondville.

MAC'S TIEDOWN STRAPS: Like New. \$80. 417-260-0941. Raymondville.

BUYING OLD BARNS AND LUMBER: 417-298-3475 Leave Message.

TRAILER HOUSE RIMS: \$10 each. 573-308-5884. Rolla.

4x5 GRASS HAY: \$60 per bale. 300 square bales at \$6 per bale. 573-308-5884. Rolla.

6FT X 10FT GRAIN BOX: On 2-Wheel Trailer. \$400 O.B.O. 573-308-5884. Rolla.

FLAT CREEK ROCK FOR LANDSCAPING: 573-308-5884. Rolla.

POSTER BED: \$150. 417-741-1232.

ROUND TABLE: \$40. 417-741-1232.

STAN MUSIEL CANCELED CHECK: Full signature with authenticity. \$55. Text for pictures. Mint condition. 417-318-8932. Houston.

MASTER SPANISH TEACHER DISPOSING LARGE AMOUNT OF FREE MATERIALS: To a public, private or co-op school interested. 660-438-4357. Warsaw.

2 ELECTRIC MOTORS: Diehl 1/3 horsepower and Wagner Electric 3/4 horsepower, includes 21 pulleys various sizes and widths. \$75. 210-787-8222. Linn Creek.



Meadowview Dutch Market

Bulk & Surplus Groceries • Prices Subject to Stock on Hand

Call to Order
417-993-3017

Sale Dates April 12th, 2023 to
April 18th, 2023 while supplies last!

DELI SPECIAL

GERMAN BOLOGNAREG. \$4.99 LBSALE \$4.49 LB

SMOKED HOT PEPPER CHEESEREG. \$6.39 LBSALE \$5.89 LB

TRY our Fresh Homemade DELI Sandwiches: TURKEY, HAM, ROAST BEEF, ITALIAN, BLT'S, PULLED PORK AND BLT PULLED PORK (MADE YOUR WAY)! COME IN OR CALL to order! ALSO Custom Deli trays! Veggie OR FRESH Meat-N-Cheese!

BONUS SPECIAL

SMITHFIELD PORK SAUSAGE

99¢ 16 OZ.



BONUS SPECIAL

Uncooked Chicken Wings

\$1.49 LB



Roasted Salted

Peanuts

\$1.99 15-2.5 OZ.



Honey Roasted

Cashews

\$2.50 18-1.5 OZ.



Shrimp

Egg Rolls

\$1.99 LB.



Sausage

Links

99¢ 9.6 OZ.



Cheez

Whiz

\$1.99 15 OZ.



Smoked

Pork Chops

\$1.49 LB.



MEADOWVIEW DUTCH MARKET
417-993-3017 Hours: Mon-Thurs 8-5pm
Fri 8-6pm • Sat 8-5pm
23 Miles West on Hwy 64 • Right on T Hwy
9 miles • Left on E Hwy 1 mile on Left

NOW ACCEPTING CREDIT, DEBIT CARDS & EBT

DUTCH COUNTRY STORE, LLC
573-378-4395
Hours: Mon-Thurs 8-5pm
Fri 8-6pm • Sat 8-5pm
5 miles East of Versailles off Hwy C on Kelsay Road

DARDEN PROFESSIONAL TIMBER HARVESTING, BUYING STANDING TIMBER: Great prices, improve wildlife habitat and improve forest health. State Certified & Fully Insured! 573-247-4808. Salem.

ANTIQUHOG OILER: \$35. 573-308-5884. Rolla.

460 FORD ENGINE BLOCK: \$100. 573-308-5884. Rolla.

JOE THEISMANN AUTOGRAPHED CAREER STAT JERSEY: JSA COA. Text for pictures. \$95 417-318-8932. Houston.

25 SECLUDED ACRES: Powerlines on two sides of property. One hour from Springfield. Hunter's Paradise. Stream through property. Cash Only. \$8,000/per acre. Must take all. 00417-741-1232.

HIGHPOINT GREENHOUSE: Open for the season. Garden seeds, vegetable and flower plants, seed potatoes, onion sets and plants, herbs, etc. 417-741-2793. 9337 Warner Rd. Hartville.

K.C. CHIEFS SUPERBOWL 2019 DAMIEN WILLIAMS AUTOGRAPHED JERSEY: JSA COA. Text for pictures. \$135. 417-318-8932. Houston.

NOW BUYING STANDING RED AND WHITE OAK TIMBER: All slash will be trimmed to lay flat or placed in tidy piles for wildlife. No scarred-up trees or ruts from heavy logging equipment. We use low impact compact track loaders to minimize disturbance in your forest. Missouri Land Service LLC. 417-991-9280.

1 M FARMALL: with rebuilt motor for \$1,800 417-349-2908

METAL ROOFS: We repair leaky metal roofs with warranty. Also, flat roofs. Very affordable. Cover all of state. 573-338-1148. Jefferson City.

BYLER SUPPLY

The Builder's Choice!

Get Ready for Spring!

CALL TODAY FOR NEXT DAY SERVICE!
Call for Details



**CUT TO LENGTH PANELS
GALVALUME METAL UNPAINTED
25 YEAR WARRANTY
#1 Standard Panels, 29 Ga.**

HEAVY 29 Ga. METAL #1
Limited LIFETIME WARRANTY
29 Ga. & 26 Ga. Painted

\$72.98 sq.

Ask About Our Quick Service.



Over 20 Colors and Several Styles To Choose!



Reg. Pole Frame Buildings Are Heavy 29 Ga. Metal, Three 2"x6" T&G Splashboards, All Poles 5"x5" Or Larger, CCA Treated, Fully Trimmed With One 3'x6' Walk-Through Door & One Large Sliding Door.

CALL US FOR CURRENT PRICING



BYLER BUILDING SUPPLY, LLC



2 1/2 Miles East of Seymour On 60, 1/4 Mile North at the Peewee Crossing \ Star Road Intersection

877-556-8855 • MON.-FRI. 7:30-5 SAT. 8-12 • 417-771-3100

VISIT US AT WWW.BYLERSUPPLY.COM

2002 HONDA VTX: 1800 CC. 1 owner. 573-330-7094. Patosi.

NEED YOUR CDL????? We furnish the truck & trailer. We teach all requirements for ELDT & skills test. We go to the state highway patrol with our truck. Requires only 2 days of in person training. Much cheaper way to get CDL. Jefferson City MO, Willow Springs MO, Strafford MO, 573-353-2853. For more info www.capitaltruckdrivinginstitute.com

WANTED OLD MILITARY RIFLES & PISTOLS: 816-838-6254. Lee's Summit.

POOL TABLES: Installations, moves, recovers, repairs, accessories, etc. 573-646-1700.

LAWN MOWING & YARD WORK SERVICES: 417-288-8123. Lebanon.

BLUE HEELER PUPPIES: Raised for 50 years, good with cattle or as pets, pups already working. \$125. 660-553-2333. Cole Camp.

2017 POLARIS RANGER XP 1000: Very good condition. \$11,000. 417-464-3895. Mt. Grove.

77 JEEP CJ5 FOR SALE: Runs good, drives good. \$7,500. 417-343-3928. Marshfield.

2 FEMALE TOY SCHNAUZER/POODLE MIX: 417-664-5926. Lebanon.

WANTED NEW HOLLAND SKID STEER 865: Any Condition. Call Bob 573-697-5143.

NOW OPEN GREENHOUSE: Garden Seeds. Check us out before you buy. Open Monday-Saturday. 1207 Bluegrass Rd. Conway, MO.

Starnes Auto LLC
22115 Rt. 66 • Lebanon, MO 65536
417.718.2707 Cell
417.588.3159 Office
www.starnesauto.com



WE'RE HIRING

PAINTERS & REBUILDERS

Call Amanda or Alva for more info.

SUPPORT SQUAD
#Crew'sCrew

WE DO ALIGNMENTS!

OMAR'S LOGGING
⇒ Oak & Walnut
⇒ Excellent Prices
Amish Owned & Operated

LEAVE MESSAGE: 417-741-0440
Hartville & Surrounding Areas

HORSE OR LIVESTOCK AUTOMATIC WATERER: \$100 cash. 417-599-8089. Willard.

PEMBROKE WELSH CORGIS: D.O.B. 1/12/23 & 1 D.O.B. 7/20/22. U.T.D. on shots & wormer. \$300. 417-741-2949. Grovespring.

HORSE BONDING PASTURE & RUBBER PADDED BOX STALLS: \$300 a Month. Write with number to call back at 3676 Davis Rd Mansfield, MO 65704.

NEIGHBORHOODS HOME IMPROVEMENT STORE: 417-533-5080. Lebanon

FULLBLOOD YEARLING RAMS: One Dorper and two St. Croix. \$500 each. Call 417-458-1771.

0% for 4 Years

HEATMOR Outdoor Wood Furnace
as low as **\$238** per month
HEATMOR MIDWEST
Licking, MO 65542 • 573-674-2962

1979 HONDA 750 ANNIVERSARY EDITION BIKES: Several to choose from. Selling off collection. Call for prices. Bikes are priced well below market value. Will NOT respond to text. 636-228-4204 or 636-359-6189.

SUPER M FARMALL: new 15 x 5 x 38s: for \$2,500 417-349-2908

FREE INTERACTIVE MORGAN HORSE FUN! Selfies with Morgan horses, kids activities, videos, painting, educational, demos, & carriage rides. Laura Ingalls Wilder door prizes, history. #meetthemorgan in Facebook for more information. Held at 5555 South State Highway NN, Rogersville

PAIR OF CAR OR PICKUP RAMPS: 70" tall on end and 16" wide \$45 417-260-0941

Is Your Log Home **UGLY?**
Starting To Look
Professional Staining & Repair
(Log Homes & Wood Siding)
Call **Pine Ridge Rustic**
Log Home Building Supplies **573-729-7226**

www.pineridgerustic.com

BOX OF SILVER-PLATED SILVERWARE: at least 75 years old \$60 417-260-0941

FOR SALE: 8950 Kubota 4X4, 96 horsepower, good rubber \$12,000 573-301-2148

FOR SALE: German Shepherd Cross puppies. Nice Markings. \$50 each. Call 417-741-0476 Leave message. Ready April 24th.

FOR SALE: Set of 18-4-30 snap on duals with Goodyear tires, a lot of tread, all hardware. \$500 Cash, Firm. 217-343-8826.

DOXIN PUPPIES: Registered, shots & wormed. 573-247-6273. Salem.

MASSEY FERGUSON 520 10FT. WHEEL DISK: \$2,300. 573-765-4406 Richland.

COWBOY CORGIS: D.O.B. 1/9/23. UTD on shots & wormer. \$50. 417-349-0831. Hartville.

460 FORD MOTOR & TRANSMISSION: Out of motor home, 20,000 miles. \$500 Firm. 417-594-1656. Richland.

CASE IH DIESEL 385 TRACTOR: Canopy, 2,000 Hours. \$6,950. 573-765-4406. Richland.

JOHN DEERE 2640 DIESEL TRACTOR: 70 H.P., with J.D. 146 Loader. \$13,300. 573-765-4406. Richland

BOBCAT 753 DIESEL SKID STEER LOADER: \$12,500. 573-765-4406. Richland.

IHC 806 DIESEL TRACTOR: Turbo, Runs Nice. \$9,750. 573-765-4406 Richland.



Over 500 Attachments IN STOCK!
We ship NATIONWIDE!

Craig Equipment
2681 W. Pearce Blvd | Wentzville, MO 63385
636-856-8555
www.CraigEquipment.com
*Availability & Price subject to change without notice

			
2022 Deere 317G *8* available, UNUSED, Cab&OROPS.....starting at \$61,900		2022 Deere 333G *HiFlow* UNUSED, Cab, LOADED!.....starting at \$104,900	
			
Deere 312GR *2* available, LOW hours, NEW Tires.....starting at \$24,900	2015 Kubota SVL90 74hp, AC/Cab, Joystx, 2sp, PwrBktChngr.....\$46,500	2010 Gehl CTL75 83hp, 1435hrs, AC/Cab, Joystx, 2sp.....\$44,500	2015 Takeuchi TL10 *HiFlow* Kubota92hp, 2050hrs, AC/Cab, PolyDr, Joystx.....\$51,900
			
2021 Bobcat T870 *HiFlow* 540hrs, AC/ Cab, Joystx, Warranty!.....\$91,500	Bobcat T770 *4* available, HiFlow AC/Cab Joystx.....starting at \$56,900	2004 Bobcat T190 66hp, 2568hrs, AC/Cab, PwrBktChngr.....\$34,900	2003 Bobcat MT50 19hp, 1268hrs, Ride on platform\$14,900

FREE TO GOOD HOMES: 8-year-old Welsh Corgi Female, 3-month-old Welsh Corgi Female. Also, 3 Cowboy Corgi Males \$50 O.B.O. 417-259-9738.

FAINING GOATS: Looking for an economical way to begin raising purebred fainters? Start with 2 bucklings as pets. Offering 2 for the regular price of 1. Call/ Text 573-216-7796. www.greenacresvillage.com. Lake of the Ozarks.

9 PAIRS OF LADY'S COTTON KNIT LONG PANTS: Size XL. \$3 each or all for \$25. 417-288-6714. Lebanon.

JESSE BARNES 1991 OCTOBER RADIANCE PRINT: 16x24, print #2796/2800, framed & matted by professional. 417-830-5309. Leave message. Bruner.

JOHN DEER 920 DISCBINE: With rollers. \$7,500. 573-765-4406. Richland.

CRAFTSMAN YTS4000: 46" cut, B&S 24hp Trade for 45-70 or \$800. 816-591-5612.

JOHN DEERE 466 ROUND BALER: Monitor, Kicker, 4x6. \$4,750. 573-765-4406. Richland.

JOHN DEERE MX10 PULL TYPE BRUSHCUTTER: Good. \$6,950. 573-765-4406. Richland.

CASE 410 DIESEL SKID STEER LOADER: Low Hrs. \$19,500. 573-765-4406. Richland.

ALLIS CHALMERS DIESEL 7G SERIES B TRACK LOADER: Nice. \$13,000. 573-765-4406 Richland.

CATAHOULA LEOPARD PUPPIES: 30-year bloodline. Leopard & Merle, some bobtails and blue-eyed \$150. 417-543-4816.

RHINO 4 BASKET HYD. FOLD TEDDER: \$4,300. 573-765-4406 Richland.

K.C. CHIEFS SUPERBOWL 2019 DAMIEN WILLIAMS AUTOGRAPHED JERSEY: JSA COA. Text for pictures. \$135. 417-318-8932. Houston.

DISCOUNT NEW MOBILE HOMES: We will beat any price on any home Guaranteed, financing, 573-499-9993. columbiadiscountnhomes.com

FLAT CREEK ROCK FOR LANDSCAPING: 573-308-5884. Rolla.

BULLS: Home raised, Some Show-Me Select Qualified. 573-701-7828. Belgrade.
LIGHTLY EXPERIENCED GOLF BALLS: \$3 a dozen. 417-818-3469. Strafford.

POSTER BED: \$150. 417-741-1232.

YOUR FULL SERVICE AUTO BODY SHOP

Call today for an appointment or estimate!

DAVIDSON'S Restorations, insurance jobs, and more!

CUSTOM AUTO BODY 417-288-1589 • 115 Lincoln St., Buffalo, MO •  @DavidsonCustoms



WESTFIELD 10X61 GRAIN AUGER WITH DRAG HOPPER: \$2,850. 573-765-4406 Richland.

IHC 475 HYD FOLD DISK: 18FT. \$2,750. 573-765-4406 Richland.

DUAL LOADER QUICK TACH WITH IH M85: \$2,400. 573-765-4406 Richland.

JOHN DEERE 6400 DIESEL CAB & AIR TRACTOR: 85H.P. \$19,500. 573-765-4406 Richland.

TINY HOMES: Missouri Franchise 573-881-7965

LOG SIDING: 2X8 Pine/Western Cedar www.pineridgerustic.com 573-729-7226. Salem.

USED DOUBLE-WIDE: 3 bdr, 2 bath. WOW! \$39,900 delivered & set, Financing. 573-657-2176. amegamobliehomes.com

MODULAR BUILDING: Save \$\$\$ with us, Financing professionals 573-657-7040 chateauhomes.net

MODEL 1911 FRAME 8-SHOT C02 PISTOL: Like new, in box with C02 cartridges, 4 clips, pellets & all paperwork. \$95. 573-364-7465. Rolla.

3 GENTS WITTNAUER WRIST WATCHES: 10k gold + 23J. All \$200. 573-764-3517. Call in P.M.

LIONEL TRAIN SET: Steam engine, tender, caboose and other car, track, and transformer. \$195. 573-364-7465. Rolla.

1970s KIDS METAL STOVE & FRIDGE: Nice Lithographic paint, 18" wide x 36" high. \$75. 573-364-7465. Rolla.

COLT REVOLVER DEALER CATALOGS: Circa 1950's + 1960's. All for \$100. 573-764-3517. Call in P.M.

Buildings • Hunter's Cabins • Lawn Furniture

JAMCO BUILDERS

JAMCO Portable Buildings

800-688-2064 • 307 Enterprise Dr. • Seymour, MO • www.jamcobuilders.com

Rent To Own Plan



CALUS LOGGING

20 YEARS EXPERIENCE

Buying Standing Timber
Walnut & Oak

Joe Calus, Owner

CERTIFIED 417-926-4606 • MTN. GROVE



WEATHERED BARN WOOD SIDING: 10" wide. 573-729-7226. www.pineridgerustic.com Salem.

1500 VINTAGE WRISTWATCH DIALS: \$100. 573-764-3517. Call in PM.

MAC'S TIEDOWN STRAPS: Like New. \$80. 417-260-0941. Raymondville.

HARLEY FAT BOBS: Custom flame paint w/ gas caps + lines. \$100. 573-764-3517. Call in P.M.

I BUY.....used mobile homes. Call or text 573-338-6250 or email GregS.CDH@outlook.com

REGISTERED HEREFORD & ANGUS

SLIGHTLY USED PUZZLES: Will sell or trade. 417-818-3469. Strafford.

ANTIQUE HOG OILER: \$35. 573-308-5884. Rolla.

110 PORCELAIN POCKET WATCH DIALS: Perfect for arts & crafts. \$100. 573-764-3517. Call in PM.

FERGUSON DEALER SHOP MANUAL: Covering TE-20, TO-20 & TO-30 Model tractors. \$40. 636-239-2695 or 314-560-5700. Washington.

VINTAGE WORKING 1967 SINGER SEWING MACHINE: Special zigzag model 638 in cabinet with original instruction book. \$60. 210-787-8222. Linn Creek.

SMALL TOWN MAYOR OF WAYNESVILLE, MO: Political Adventures of the Ozarks by Luge Hardman, featuring small town politics and small-town life, featuring local photographers and local characters. \$9.50. 417-532-2045. Lebanon. (Leave message and phone number).

NEW SQUARE D RAINPROOF 50AMP DISCONNECT: \$160. 636-239-2695 or 314-560-5700. Washington.

USED JET HOME POLLUTION CONTROL PANNEL: Model CP700. \$65. 636-239-2695 or 314-560-5700. Washington.

LAPP'S CONSTRUCTION **417-664-8913**
Free Estimates

Pole Barns • Garages • New Home Construction
Remodels • Roofing • Windows • Siding • Doors
Decks & Porches • All Types of Concrete Work

Jesse Lapp
2099 Deerwood Road
Groves Springs, MO



Fly Free with AFC.



AFC PRODUCTS
ALTOSID® FLY CONTROL



Located in the Heart of the Amish Mennonite Community!
417-345-8600
19 Prairie Lane, Buffalo

ROUND TABLE: \$40. 417-741-1232.

RUBBER & LEATHER BOOTS AND 5-Buckle OVER SHOES: Men's 11, Women's 7, some insulated. \$15-\$40 obo. 636-239-2695 or 314-560-5700. Washington.

HARLEY 45 SOLO: factory rear brake drum + sprocket. \$150. 573-764-3517. Call in PM.

1890 GOLD TESTING KIT: Glass acid beakers + antique wooden case. \$100. 573-764-3517. Call in PM.

STAN MUSIEL CANCELED CHECK: Full signature with authenticity. \$55. Text for pictures. Mint condition. 417-318-8932. Houston.

HARLEY PANHEAD DISTRIBUTOR: original, chrome + complete. \$125. 573-764-3517. Call in PM.

BLUE HEELER PUPPIES: Raised for 50 years, good with cattle or as pets, pups already working. \$125. 660-553-2333. Cole Camp.

FOR SALE: Transmission for 56 & 06 series International tractors. \$675. 636-239-2695 or 314-560-5700. Washington.

HEARTH CRAFT GLASS BI-FOLD FIREPLACE DOORS PURCHASED AT FORSHAW'S FIREPLACE: Antique brass. \$160 obo. 636-239-2695 or 314-560-5700. Washington.

HORSE BONDING PASTURE & RUBBER PADDED BOX STALLS: \$300 a Month. Write with number to call back at 3676 Davis Rd Mansfield, MO 65704.

PLAD PANTRY
DISCOUNT & SURPLUS FOODS
FRESH PRODUCE LLC
417-532-4700



Maplewood Smoked Uncured Ham.....	\$2.29 a lb.
Turkey Sausage Links.....	\$4.99 38.4 oz.
Crinkle Cut French Fries.....	\$2.99 2 lbs.
Original Bavarian Meat Snack Sticks.....	\$3.99 12 - 1oz.
Mini Peanut Granola Bars.....	\$1.49 7.5 oz.

1571 State Hwy 64 • Tunas, MO 65764
Hours: 8:30 a.m. to 5:30 p.m. • Closed Wed. & Sun.



WE BUY AND SELL
new and used mobile homes



(417) 501-1061

1962 HARLEY SPORTSTER 900CC: original distributor. \$50. 573-764-3517. Call in PM.

460 FORD ENGINE BLOCK: \$100. 573-308-5884. Rolla.

Larry Heisel Rentals



We Rent!

Call Larry!
Rental Available in 636 or 573 Area Codes
573-779-1500
www.larryheiselequipment.com

THREE SHEPHERD'S HOOKS: To hang potted plants. Black wrought iron. 6ft. 7in. when in ground. One is a double & two are single hooks. \$50. 636-239-2695 or 314-560-5700. Washington.

The following personal property of **Katherine Strassner, George Schroer and Cora (Priess) Dahl** will be offered for sale by public auction on

Saturday, April 15, 2023 • 10:00 a.m.

The auction will be held at 507 Elm St., McKittrick, MO. Directions: From Hermann, MO, take Hwy. 19 approx. 4 miles north to "McKittrick" sign. Turn east, continue on Main St. to auction site. Roads will be marked day of sale.

MOTORCYCLE & VEHICLE (will be offered at noon w/reserve): 2011 Can-Am Spyder RTSS motorcycle w/windshield, heated seats, radio, automatic transmission, 40,000+ miles, serviced 12/22, Great condition!; 2005 Ford Explorer XLT, 4 door, 125,000+ miles, 2 new tires, new brakes, new wheel bearings. **ANTIQUES/COLLECTIBLES:** "Lionberger Dairy", "F.G. Bundrick Dairy", "Chapman Dairy" Hermann, MO milk bottles; "National Candy Co., St. Louis" cardboard bucket; "Otto Eberlin" bottle opener; "Blumer Home Furnishers & Funeral Directors" match holder; "Claus Bros. Service Station" ash tray; "Johns-Manville" thermometer; "Strecker's Market" thermometer; "Robinson Gas & Electric" thermometer; "The Hermann Bank" checkbook holder; "People's Savings Bank" pocket knife; "Schaumbing's Hardware" thermometer; "A&L's MFA Service" salt & pepper; "Maytag Multi-Motor Oil" can; Watkins Products salesman carrier w/supplies; Lot of merchandise tins; 1924 Mo. Health Manual; WWII ration books; "Industrial Workers of the World" song book; Valentines; Halloween card; "Beatles Round the World" publication; 1-, 2-, 3- & 6-gal. crocks; Ornate, high-back, burl bed; Side board; Wooden rocker; Kitchen cupboard; Gentleman's dresser w/ mirror; Primitive bench; Wooden high chair; (2) piano stools; Occasional table; Alladdin lamps; (12) gallon Old Judge coffee jars; Pyrex, 3-pc. casserole set-NIB; Glass measuring cup w/embossed numbers; Milkglass S&P; Sylvester & Tweety S&P; Glass flower frog; Green depression cookie jar w/lid; Misc. green depression pieces; Pink depression pieces; Pitcher & glasses sets; Pyrex & Fire King casseroles; (2) stoneware milk pitchers; Granite pieces; Set of 4 Fire King cereal bowls; Complete set "Golden Harvest" china- NIB; Set of flatware w/bakelite (?) handles; Northwester Products, pinball, baseball game; Doll w/original dress, Aruland Marseille, Germany, 4 teeth, ca. 1920; Betty the Beautiful doll; Old doll clothes; Metal doll house; Kissing dolls-IOB; Funny Bunny fork, spoon & holder; Marbles; Toy metal, windup helicopter; "Lone Ranger & Tonto" wigwams-IOB; Kellogg PEP pins; Globe; Crazy Ikes building set; Toy "Wiz Walker" cow -IOB; Cracker Jack toys; "World of Science" chemistry lab; Erector set; 1957 Standard Station travel games; Donald Duck bank; Poll Parrot Shoe bank; Chalkware girl & pig bank; View Master w/slides; Fischer Price toys; Music top #36- NIB; "Popeye" puzzle; Paper dolls; Pencil cases; School slates; 1904-1920 Standard & Victor records; Fountain pens & ink; Dresser set; Compacts; Large lot costume jewelry; "John Alden" watch IOB; Alaron mantel clock w/key; Metal "Coke" carrier; Candle mold; National, brass washboard; Bromwell flour sifter; Cookie cutters; Cookie press-IOB; Cake decorating set-IOB; Kenmore, ceramic bottle warmer/vaporizer-IOB; Medical douche syringe; Little Tom reading glasses in case; 1936 wedding dress; Men's & ladies' hats; Vintage clothing; Ladies' hankies; Fancywork; Hand quilted quilts; Quilt tops & blocks; Sewing patterns; Button hooks; Vidal Sassoon hair dryer/styler-IOB; Remington manual typewriter; Canes; Sad irons; "Arm & Hammer" bird cards in frame; Lock & keys; Wooden boxes; Tagret cigarette roller; Ever Ready radio battery; Kodak Holiday flash camera w/bulbs; Western Super-X, .410 ammo box; Keen Kutter Shears box; Sports cards; Grind stone; Castiron kettle. **TOOLS/EQUIPMENT:** Cub Cadet C53310 chipper/shredder; Craftsman 675 push string trimmer; Southland, 17" push string trimmer; Echo string trimmer w/ leaf blower, pole saw & brush cutting blade; Ariens tiller; Speco gas post hole digger (never used); Five-speed drill press; Coleman lantern; Vise; Hand tools; Wooden step ladders; Metal buckets; "The Rival" push plow. **HOUSEHOLD/MISC.:** Aristocrat wood furnace; Hamilton Beach microwave; Hansen kitchen scale; Regal bread machine; Old Hickory, 5-pc. knife set IOB; Kitchen utensils; Crown Royal hostess set; Food dehydrator; Victorian style dresser lamp; Castiron chicken fryer & skillet; Set of WearEver cookware NIB; Cookbooks; Glass pie plates; Set of "Moss Rose" dishes; Misc. glassware; Slate pool table (some assembly required); Diningroom table; Upholstered rocker; Buffets; Dresser; Small chest-of-drawers; Caswell Runyan cedar chest; Round, pedestal table; Beds; Electric clock w/planting info; Floor lamp; Aprons; Large lot yarn; Rug thread; Material remnants, fabric & scraps; Afghans & lap robes; Dress mannequin; Large lot, unopened, Avon merchandise; Canning jars; Zinc lids; Blue granite canner; Round, #3, galvanized wash tub; Galvanized wash tub on stand; Double wash tubs on stand; Wringer washer w/ square, stainless tub; Trek mountain bike;

Other items too numerous to mention.

AUCTIONEER'S NOTE: To appreciate the merchandise listed, go to our website or Auction Zip to see the pictures. Many interesting items on this sale.

Lunch will be served by the Hermann Scouts and Hermann Girl Scouts • See pictures at www.grossauction.com or Auction Zip #22263

SALE CONDUCTED BY:



Members of
Missouri Professional
Auctioneers Association



Chas & Phyllis Gross 1863 Hwy 50 Owensville, MO 65066 573-437-3631	Jason Gross, 2839 Brinkman Rd., Owensville, MO 65066 573-437-6165
www.grossauction.com or www.auctionzip.com	

**Terms: Cash or "Approved" check. No out of state checks.
Announcements day of sale supercedes printed material.
Everything sells as is. No property to be removed until settled for.
Not responsible for accidents should any occur**

17TH ANNUAL SPRING CONSIGNMENT AUCTION

Saturday April 15, 2023 @ 10 A.M.
951 W. Rosedale Rd. Nixa, MO 65714



WE ARE CURRENTLY TAKING CONSIGNMENTS.

TRACTORS AND FARM ITEMS

2021 John Deere 5045E 4x4 w/ loader 160 hours,
2021 LS XR4140 4x4 w/ loader and backhoe
attachment 90 hours, 2 500 lb creep feeders, 6'
King Kutter straight blade, 2 portable squeeze
chutes, New Holland side delivery rake, 5' bushhog,
7' Ford sickle mower, Vermeer 8 wheel V rake, many
other items coming



TRUCKS, CARS, BOATS & TRAILERS

16' Bumper hitch stock trailer, 1978 Jeep CJ5 V-8,
16' Bass Tracker with 50hp Mercury, 16' gooseneck
flatbed



GUNS

Remington Wingmaster 870 20g, H&R model 153
20g 3", Ruger 10-22 takedown, more guns coming



SEMI TRAILER LOAD OF AUTO PARTS SUPPLY AND MISC PARTS STORE ITEMS

Still taking consignment and have several more items
on the way, keep checking back for updated listings!



WATCH AUCTIONZIP.COM (ID# 19479) FOR UP TO DATE LISTINGS

Call for more information or to consign

B & D CONSIGNMENT AUCTION • NIXA, MISSOURI

Dwight Glossip (417) 818-5488 • Brad Cole - Auctioneer (417) 840-2950

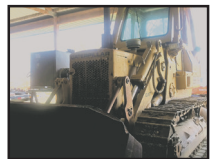
PECAN GROVE CAMPGROUND AUCTION

30249 WEST DAM ACCESS RD., WARSAW, MO

AS WE HAVE SOLD THE PECAN GROVE CAMPGROUND, WE WILL SELL THE FOLLOWING AT AUCTION LOCATED FROM THE STOPLIGHT OF HWY 7 AND COMMERCIAL STR. IN WARSAW, GO 1.8 MILE NORTH ON HWY 7 TO THE WEST DAM ACCESS ROAD, THEN 7/10TH MILE TO SALE ON

SAT. APRIL 22ND, 2023 AT 10 AM

TRAVEL TRAILER 2017 28' Layton Javelin Series 285, 2 slide-outs, 2 awnings, bunkhouse outdoor kitchen, pass thru storage, new tires, snap-on skirting, roof has been routinely coated, well-maintained, NICE!
TRACTOR Kubota HST L3800, 4 wheel drive hydro, one owner, 942 hrs, w/LA524 loader, serviced and well-maintained, great cond.
CRAWLER LOADER Caterpillar 955L, ser# 13X02383, well-maintained, recently installed new pins & track adjuster, good cond.
ANTIQUES & COLLECTIBLES Large cast iron kettle, Western #2 Crock churn, #8 Glass butter churn, Red Carnival glassware, John Wayne and Winchester metal signs and other collectibles, **Norman Rockwell** Coca Cola thermometer, Revere China Pitcher/Bowl & water pitcher, Silver Pistol Express train engine metal toy, Bridge Tool Co meat saw with John H Beck initials, Top tobacco tin, razor straps, corn knife, Coke bottle opener, **Wagner** corn pan, Wagner iron skillet, other iron pans, USA roofing hammer, Chamber pot w/lid, Sano cigar boxes, Sev. Collectible decorator plates, Collection of manger scenes, other antiques, lg lot baseball caps, Several Time Life "Old West" books
VINTAGE TRUCKS 1956 Ford F600 truck, w/scissor lift dump bed, runs ~ 1956 Ford F600 truck, w/flatbed, front light panel needs re-installed, runs
STOCK TRAILERS 1995 38' Sooner Horse trailer, fully self-contained living quarters, top hay rack, rear tack compartment, NICE! ~ 1986 28' Tandem axle gooseneck stock trailer, dry living quarters, awning, hay storage rack
GOLF CARTS EZGo electric golf cart, good cond ~ Vintage 1966 Harley Davidson golf cart, ran good prior to being stored
FLATBED TRAILERS Pro-Trak gooseneck, 20' plus 5' beaver tail w/ramps, no title ~ Homemade flatbed trailer, 6x10', new wood floor
CARPORITS & BUILDINGS 2-18x20 carports ~ 12x20 Carport ~ 12x25 Carport ~ 7 1/2 x 7 1/2 green metal sided building ~ 5x6' Red metal sided building ~ Trusses and metal roof for 30x40 motor building
BOAT 14 v-Bottom aluminum fishing boat, Evinrude 25hp motor, trailer
ANTIQUES and COLLECTIBLES Antique King Bee Air Blast parlor stove ~ Very Early GE Hotpoint electric cook stove, white enamel ~ Antique washing machine w/wringer ~ Antique Howe platform scales ~ DeLaval cream separator ~ Vintage double and single wash tubs on stands ~ Small antique desk ~ Redwing #4 crock jar, other crocks ~ Wicker loveseat, 2 chairs, and table ~ 4 metal Budweiser trays ~ Vintage Tin toys: Riverboat, 2 Locomotives, clown ~ Antique Husky road grader, single shovel plow, lister, motorized reel mower, horse drawn cultivator and double shovel plow, iron wheels, wagon running gears, other iron implements and parts ~ Several old oil cans ~ 2 Green Coke display racks ~ 3 Antique trunks ~ China tea pots
TOOLS Golf Cart lift ~ Campbell-Hausfeld air compressor ~ 4x5 1/2' shop cabinet ~ Shop counter, 8' ~ Transits, tripods ~ Boomers, come-a-longs, log chains ~ Floor jacks, Wood lathe tools, air tools, welding rod ~ Metal car ramps ~ Misc bolts, screws, small hand tools, drop cords, fuel hose and gun, etc ~ Reddy Pro-110 heater ~ Several aluminum ladders ~ Lead smelter, some lead
MOWERS Gravely XDZ 272 72" Pro-Master Commercial 0-Turn mower ~ Gravely 260 60" 0-turn mower ~ John Deere 425, 54" hydrostat, maintained and serviced at John Deere in Sedalia ~ Weedeater 22 5 hp push mower
LAWN, GARDEN, PATIO Blackstone 36" grill ~ Chapin ATV 25 gal sprayer, fold-up 10' boom ~ Agri-Fab pull type yard seeder ~ Agri-Fab 10 cu ft yard wagon ~ Earthquake 2 cycle tiller, 33 cc Viper ~ Yard Machine 5 hp leaf blower ~ Echo PB250LN leaf blower ~ Stihl FS56RC Weed trimmer ~ Stihl FS55R weed trimmer ~ Stihl limb saw ~ Electric chainsaw ~ Snowplow parts ~ Wrought iron patio table and chairs ~ Wheelbarrows ~ Several shepherds hooks ~ Lot of plastic patio chairs ~ 2-Large horse plastic yard ornaments ~ Lg Smoker on trailer
BEER NEON SIGNS & OTHER ITEMS Beam neon sign 30" ~ Bud Light neon sign, 26" ~ Michelob neon sign ~ Bud Mug lighted sign, 19" ~ Bush lighted sign, 21" ~ Michelob lighted sign, 17" ~ Budweiser chiminea
HOUSEHOLD Coffee and end tables ~ 5' Double door record cabinet ~ Oak tv console ~ GE top load washer, like new ~ GE dryer ~ GE RV size refrigerator ~ Novelty wood table w/4 chairs ~ Couch and loveseat, burgundy floral ~ Chair w/ottoman, leather ~ Pr of lamps with hand-painted shades ~ Clear pattern glass dish set, serv. For 24 ~ Lots of crock pots and other small kitchen appliances ~ 4 White enamel utility cabinets ~ Metal pantry cabinet ~ 4 Tier metal rack display ~ Wooden shelving ~ Misc small pieces of furniture ~ Several space heaters
CONSTRUCTION TOOLS AND MATERIALS Concrete forms: 10-12" metal curb forms, 11-4" metal sidewalk forms, 12-12" wooden forms ~ Approx 55 pcs 10' Aged barn wood; 5-4x6, 16-4x4 wooden posts; 12'; 7-6x6 native oak posts; 14', Telephone poles; cedar posts and boards; other misc lumber ~ Lot 5 & 8' angle iron, 5' drag iron, Lot of PVC; conduit; sewer line; gas, electric and water flex line ~ 4-Warehouse pallet racks, 10'wx8't ~ Metal Warehouse shelving, disassembled ~ Several electrical boxes, service meter, disconnect boxes ~ Electrical wire, roll of 12-2, 4-00 and other underground wire ~ 10-2 1/2" square steel tubing, 18' ~ 7-2 1/2" square tubing, up to 22' ~ Spool w/1" cable; sev. 3/4" cable with tow clamps ~ Plumbing and electrical fittings ~ Sewer snakes ~ 220 AC Unit ~ 6-2x5 RV windows ~ Toilets, floor tile, decorative stone
STORE, RESTAURANT, & OFFICE Stainless Steel cabinet Commercial fridge (no compressor) ~ Store showcase counter 2'x4' ~ Store counter, 5'Lx4'T ~ Pine cabinet base w/shelf top ~ Stock pots and cookers ~ 2 Café tables, formica ~ 4 Metal bar stools ~ Office cabinet ~ 4 drawer metal filing cabinet ~ Wooden rack for fishing rods
HORSE STALL PANELS Panels and doors for 4 horse stalls, 9x10' and 7' doors
FARM King Kutter 6' Rock rake ~ King Kutter 5' Brush cutter ~ King Kutter II 5' tiller ~ 3 pt 5' Blade ~ 3 pt Carry-all ~ 3 pt Scoop ~ Approx 150 used steel fence posts ~ Barbed wire, woven wire, hog wire ~ Small animal feeders ~ Heat lamps ~ Chicken cages ~ Rabbit hutches
AUTOMOTIVE Diamond plate tool box for full size pickup ~ 2 Truck drag up fuel tanks, 75 & 95 gal. ~ Nerf bar for 1 ton 4 door truck ~ 5th Wheel trailer hitch ~ Reese gooseneck pickup bed hitch ~ Hi/Low speed crank trailer legs ~ Many other items not mentioned.



Note: This is a large sale with a lot of nice things. Please arrive early to get your bidder number as we will start promptly at 10 am with two rings. The equipment and trailers will sell between noon and 1; the carports and buildings will sell after that. A loader will be available on site.

For pictures, check out the website www.DrenonAuction.com

TED and SHARYL BRANSON

Larry DRENON AUCTION



Larry Laramie
660-596-8515 660-221-4386
Lacey Cooper
660-723-1104 660-723-2221

Office: 660-723-6188
www.DrenonAuction.com

Terms: Cash, approved check, debit/credit card (convenience fee applied to card purchases), Nothing to be removed until settled for. Not responsible for any accidents. Statements made day of sale take precedence over printed material. Lunch served.

GUN & COIN AUCTION

SUNDAY, APRIL 16TH, 2023 • 10:30 A.M.

*** BUILDING OPENS AT 9:30 A.M. ***

**THE MOFFAT CENTER
467 CO RD 604, LINN, MO**

DIRECTIONS: FROM LINN, TAKE HWY. 50 WEST 1 ½ MI. TO CO. RD. 604, TURN LEFT & GO 1 MILE TO BUILDING ON RIGHT, OR FROM JEFFERSON CITY, TAKE HWY. 50 EAST APPROX. 18 MI. & TURN RIGHT ON CO. RD. 604.

GOLD COINS

2015 American Eagle 1/2 oz Proof Gold; 2015 First Spouse Gold Proof Jacqueline Kennedy; \$10 -.9999 Fine Gold is 15.554 grams; 2015 \$25 American Eagle 1/2 oz Gold Proof; 2016 Mercury Dime Centennial Gold coin; 2016 Quarter Standing Liberty Centennial Gold Coin; 2016 Walking Liberty 1/2 Dollar Centennial Gold Coin; 2015 American Liberty 1 oz High Relief Gold Coin; 1897 -S \$20 Gold MS63; 1998 1/4 oz Gold; 1914-D \$10 Gold.

SILVER COINS

Morgan Dollars 1882, 83, 93 C.C., 78 S, 79 S&P, 80 S&P, 81 S&P, 83 P, 84 O, 85, 86 P, 87 P, 88 O, 89 O, 90 O, 91 S, 92 S, 94 O, 95 O, 96 P, 97, 97 O&S, 98 P, 99 O, 1900 O&S, 01 O, 02 P, 03 P, 04 O, 21 PDS and others; Peace 21 P, 23 P, 25 P&S, 26 D, 27 D, 28 S, 34 D, 35 S; 2016 Mark Twain Silver Dollar; 35 + Silver Eagles – Some Graded; Proof American Eagles Graded MS70; 2016 & 2017 U.S. Mint Limited Edition Silver Proof Sets; 2012 & 2016 Silver Eagle Set 2 oz Bar 1 oz Coin; JFK Uncirc. 1/2 Dollar Collection; 2006 American Eagle; 2019 Trump American Eagle; U.S. Veterans Silver Dollar Set; Lincoln Silver Dollar; American Eagle 86 – 92; 2021 Type 1 & Type 2 American Eagle MS70; 1976, 2009, 2015 Silver Proof Set; Morgan Dollar Collection Set; 230th Marine Anniversary Silver Dollar; 2002 Military Academy Silver Proof; U.S. Veterans Silver Dollar Set; 2006 Ben Franklin Silver Proof; 50+ Walking Liberty Halves; 25+ Franklin Halves; Wedge Tail Eagle 1oz Proof; 2015 March of Dimes Special Silver Set; 46-65 Roosevelt Dime Book; Partial Lincoln Cent Book; Collectors Proof Sacagawea Dollars; 50's & 60's Washington Quarters; 1916-1945 Mercury Dimes; 1826 Half Cent; 1826 Large Cent; 1846, 64 & 65 Two Cent; 1857 Flying Eagle Cent; 1863 & 70 Three Cent; 1865 Two Cent; 1872 1/2 Dime; 1836 Capped Bust; Seated Dimes & Quarters; Several Proof & Mint Sets; Proof Commemorative Coins some Silver; \$50 Bag of Wheat Pennies

GUNS - SELL AT 10:30 A.M.

Marlin 336CS, 30-30 Win, Simmons 3-9x32 Scope; H.M. Quackenbush 22 Simmons Scope; Winchester 270, 22 S, L,LR; Remington 22 Rim Special, Pump; Ithaca Gun Co M-49, 22 S,L,LR Single Shot Lever Action; Beuket Tes Umblain; Marlin 336, 30-30 Win Lever Action; Central Arms Co 1929, 12 GA St Louis Single Shot; Daisy 880 177 pellet or BB; Ruger 10/22 Carbine 22 LR, 4x32 Tasco Scope, 10 Shot Clip; J. Stevens 32 Long Single Shot Lever Action Favorite; Marlin 80, 22 S,L,LR Bolt Action; Marlin 882 SS 22 W.M.R only Bolt Action; Remington Nylon 66, 22 LR Semi Auto; Remington Double Barrel 12 GA; Marlin 39-A 22 S.L,LR Lever Action; WestPoint 45, 22 LR only(needs repair); Remington Nylon 66, 22 LR only; Remington 597, 22 LR, Tasco 4x40 scope; Daisy Rogers 770 BB, Lever One Stroke Air Pump; Ruger M77, 30-06 Sprg, Tasco 3-9x32 Scope; Remington 7400, 270 WIN, 3-9x40 Scope; Belgium FL 8M.1 L Single Shot; Stevens Savage Arms Corp 59B, 410 Bolt Action; Remington 29, 12 GA Pump; Marlin 336-A, 32 Special Lever Action; Stevens Savage Arms Corp 512, 20 GA Over/Under Double Barrel; Remington 572, 22 S,L,LR Pump; Remington 552, 22 S.L,LR Semi Auto; C.A.I Georgia VT H91/30 1942 Russian 7.62x54R; Savage 10, 243 Win Bolt Action w/Bushnell 3x9x40 Scope; J Stevens 335, 12 GA Double Barrel; Hopkins & Allen Arms Co 12 GA Single Shot; Browning A500, 12GA; Ruger Ranch Rifle 223; Mossberg 500A, 12 GA, 28" Mod full choke; O.F. Mossberg & Sons 185K 20 GA Bolt Action; Springfield 1846 Muzzle Load; Springfield 1878 Muzzle Load; Winchester 1897 12GA Pump; Winchester 1873 38 WCF; J Stevens A&T Co, Stevens Maynard Jr, 22 LR Single Shot Lever Open; Henry Repeating Arms Co H004, 22 LR Golden Boy Lever Action Original Box; Henry Repeating Arms Co H001, 22 LR Lever Action Original Box; Ruger 5801, 223 REM Semi-Auto Original Box; Daisy 19388 BB Red Rider Carbine Lever Action Original Box; Iver Johnson Top Break Revolver; Ellipietta 44 Cal Black Powder, Italy; Taurus INT PT24/7 OSSDS 40 Cal; Ruger SR22P, 22 LR; Colt 675, 32 Auto; Ruger 22 LR Auto Pistol; U.S. Revolver Co Top Break Revolver; Smith & Wesson 586-3, 357 Mag Revolver; Smith & Wesson Top Break Revolver; Germany Texas Scout 22 LR Revolver; R Guns 1895 Russian 1936, 7.62x38R Carpentersville IL; Muzzle Load; Jukar Spain Muzzle Load, 45 CAL Black Powder; Beretta NANO 9MM

Wanda Covert & the late Burt Covert

See www.moffatauction.com for photos.

Note: This is an Outstanding Coin Collection to be sold. This is just a partial list. There are Lots of Silver and 10 pieces of Gold. Burt also collected Guns – approx. 60 to be sold. Guns can be viewed at 9:30 a.m. on the day of the sale. We will sell guns 1st then sell the coins. Watch for 2nd Covert Auction on the 29th of April of Antiques, Collectibles, Vehicles and Tools, and then the Covert Real Estate will be sold On-Line in May. Rick. **Terms:** Cash or good check with proper identification. All sales are final. Everything sells as is, where is. Proper identification is necessary to obtain a buyer's number. Announcements day of sale supersede all printed material. Food on grounds.

RICHARD MOFFAT AUCTION SERVICE



573-761-4293
Jefferson City, MO

Auctioneers-
Richard Moffat & BJ Moffat
www.moffatauction.com

573-690-2823
Linn, MO



Online Only Equipment Auction
ENDS THURSDAY, APRIL 27, 2023
Internet Bidding Starts Closing at 11am CST

SEXTONAUCTIONEERS.COM
BID NOW!
More Equipment
Online To Bid On!



Call us at:
1935 Ford Coupe 314-529-0124
1935 Ford Coupe Featuring: All Steel, Chevy 350, 4 Speed Manual, Chrome Straight Axle, New Interior, Vintage Air, Bluetooth Radio.....Bid Now at SextonAuctioneers.com



1965 Chevrolet Chevelle



1972 GMC Pickup



1989 AM General Supercharged



1961 Chevrolet Apache C10



1972 Chevrolet Custom 10



2006 Ford F-250 Pickup

HEAVY EQUIPMENT | CLASSIC CARS | SEMIS | RVS & MORE!



2004 M1078 A1 Military Truck



2020 Forrest RV camper



2008 Tahoe Q9



1993 Peterbilt 379



1996 Peterbilt 379 Tri Axle Heavy Haul



2016 Peterbilt 579



2011 Ledwell LW48 Trailer



2023 NEVILLE Drop Deck Trailer



2018 Doonan Step Deck Trailer



2012 Fontaine Drop Deck



2018 Fontaine Stepdeck Trailer



2005 Great Dane Trailer



1998 Timbco 415C



1989 Caterpillar E300 Excavator



Takeuchi TB240 Mini Excavator



2018 Bobcat T770 Skid Steer



2015 Case TR340 Skid Steer



2012 Case 590 Super N Backhoe



Samsung SL 150-2 Wheel Loader



2016 Mahindra 1055 Tractor



1998 Ford LT9522 Louisville 122 Dump Truck



2013 International WorkStar 7400 Garbage Truck



2005 Sterling LT8500 Concrete Mixer Truck



2015 Can-Am Maverick



SEXTONAUCTIONEERS.COM

314-529-0124

Sales@SEXTONAUCTIONEERS.COM

BID NOW! >>

Sell at your location or at our auction yard at 5182 US Hwy 63, Pomona, MO 65789



VISIT WEBSITE FOR PICTURES

Outstanding Antique & Collectible AUCTION

EARLY START!

SATURDAY, APRIL 15TH - 9:00 A.M.

Location: 9811 Willow Rd., Mtn. Grove, MO **Directions:** From Mtn. Grove 4 Way Stop Take North Main Street (Hwy 95) approx 4.5 miles to Willow Rd. on right go approx 1.2 miles to Auction on left. **WATCH FOR CHADWELL AUCTION SIGNS.** **Payment System:** Cash • Debit Card • Credit Card (Debit / Credit Card Fee Will Apply) Checks approved if known by auction company. **VISIT: WWW.CHADWELLAUCTIONS.COM**

Terry & Pat AMOS

200+ KNIFE COLLECTION



35+ Lynch, Quaker, Chatterbox, etc. TURKEY CALLS



LARGE LOT OF CHEESE BOXES



LARGE LOT OF ANTIQUE FISHING EQUIP, Rods, Reels, Bobbers, & Lures (including Heddon, Eagle Claw, Zebco etc.)



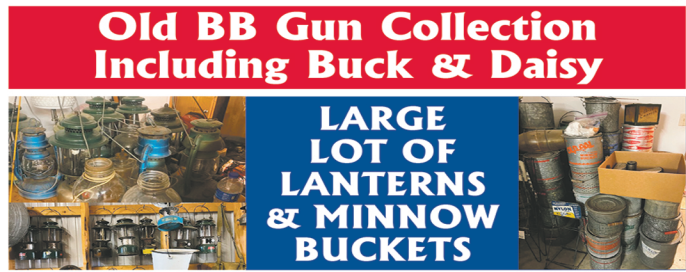
OUTDOOR ~ MISCELLANEOUS

Danuser 3pt Post Hole Auger • Danuser 3pt Post Driver • Homemade Smoker w/Trailer • Troybilt Rear Tine Tiller • 4 Wheel Metal Cart • Misc 1 1/4" Pipe • Water Tank Heaters • Electric Fence Chargers • Gas Nozzles • Cable on Spool • Electric Fencing • 3pt Twin Flow Seeder • Large Lot of Steel Traps • Misc Leather • Misc Lariats • Coleman Gas Stoves • Assorted Sisel Rope • SS Double Wash Vat • Dip Nets • Sunset 800 gallon Milk Tank • Wooden Step Ladders • 30 Gallon Metal Barrels • Large Lot of Assorted Lumber • Metal Fuel Tank w/Hand Pump • JD Tire & Wheel • Utility Ramps • 3 Burner Cooker • Fish Cooker • Fruit Jars • Tent Tarps • Deer Horns • Other



Old BB Gun Collection Including Buck & Daisy

LARGE LOT OF LANTERNS & MINNOW BUCKETS



ANTIQUES ~ COLLECTIBLES

Large Lot of Green Crocks • Green Primitive Utensils • Green Granite Ware • Kraut Cutter • Butter Molds • Butter Pats • Wooden Spoons • Sifters • Old Popcorn Popper • Spice Tins • Spice Racks • Rolling Pins • Kitchen Stool • Wooden Cabinet • Kids Wooden Ironing Board • Wash Board • Wooden Lobster Trap • Wooden Catfish Trap • Rock It Fish Scalper • Large Lot of Primitive Hand Tools • Army Storage Box • Wooden Ironing Boards • Old Drills • Milk Crates • Hames • Lanterns • Assorted Wooden Chairs • Old Tire Patcher w/Patches • Lincoln Oil Bucket • Cast Iron Shoe Anvil Repair Stand • Wooden Advertising Boxes • Wooden Chicken Crate • Oil Cans • Wooden Tool Boxes • Direct Action Cook Stove • Cast Iron Stove • Large Lot of Anvils Various Sizes (wilton, craftsman, Olympia) • Globe Milker Inc Milk Machine • Assorted Galvanized Tubs • Vintage Lawn Aerator • Cyclone Seeders • Wooden Doors, Wooden Screen Doors, Wooden Window Screens • Minnow Seine • Single Trees • Double Trees • Bushel Baskets • Metal Tins • Horse Bits • Nail Kegs • Horse Collars • Large Lot of Tackle Boxes • Ice Skates • Well Pump Lamps • Texaco & Phillips 66 Oil

Buckets • Old Stand Fan • Large Banister • Large Lot of Primitive Fish Gigs • large Lot of Push Plows • Twin Metal Bed Frame • Yale Chain Hoist • Iron Wheels • Buggy Seat Bench • Wine Press • Cream Separator • Church Pew • Whiskey Barrel • Wooden Spoke Wheel • Butcher Block • Antique Lawn Trimmer • Metal Lawn Chairs • Conlon Laundry Dry Cleaning Press • Glass Minnow Jugs • Train Whistles • Singer Tredle Machine • Misc Wooden Tool Boxes • Old Feed & Flour Sacks • Material Cutter • Primitive Childs Dress • Old Flour Sifters • Old Fire Extinguishers • Wooden Hay Fork & Rake • Various Crocks • Blue Band Crocks • Cube Steak Machine Meat Tenderizer • Meat Grinders & Shellers • Ice Tongs • Old Glass Jars • Butter Churn • Dazey Butter Churn • Cast Iron including Griswold & Wagner • Dutch Ovens • Cast Iron Waffle Makers • General Dandy Butter Churn • Galvanized Water Cans • White Mountain Ice Cream Freezers • Large Lot of Baskets • Picnic Baskets • Post Office Box • Shoe Shine Box • Quilts • Baby Dolls • Wooden High Chair • Childs Wooden Chairs • Salt & Pepper Collection • 7up & Coca Cola Crates • Coolers • Falstaff Box • Cotton Scales • Assorted Battery Chargers • Bell • Universal Vac • American Family Scales • Large Cook & Kettle Cast Iron • Old Eastwing Hammers • Sharpening Stones in Wooden Boxes • Old Fence Parmak Chargers • RR Irons • Other

LARGE LOT OF OLD AMMO (Winchester, Super X, Canuck)

SHOP ITEMS

Lincoln AC 225 Welder • Craftsman Table Saw • Kuntry Kitchen Meat Saw • Jet Dust Collector DC-650 • Skillsaw • Wizard Grinder • Craftsman 200 Watt Generator • Shelf of Castors • Craftsman Air Compressor • Grease Guns • Other

AUCTIONEER'S NOTE: Over 40 years worth accumulation. This will be a one of a kind auction. Make plans to attend, you won't want to miss it! **Thanks, Shawn**

DRIVER'S LICENSE OR PICTURE I.D. REQUIRED • TERMS: CASH OR APPROVED CHECK   **OR** 

Chadwell
Auction Service, LLC
www.chadwellauctions.com

Auctioneer: **SHAWN CHADWELL**
417-830-0209

Clerk: **SHELLY CHADWELL**
Cell: 417-880-8449

Cashiers: **Marla Chadwell • Emily Shaffer**
Cassie Collins

Ringmen: **Weston Chadwell ~ 417-349-0727**

PROFESSIONAL SALES MANAGEMENT
LUNCH WAGON • APPRAISAL SERVICE • RAIN OR SHINE

All announcements made day of sale take precedence over any printed matter. Not responsible for lost or stolen merchandise. Not responsible for accidents.

#1 AUCTION SOURCE IN CENTRAL MISSOURI

SERVING 34 COUNTIES!



IN PRINT & ONLINE!

TO ADVERTISE YOUR AUCTION, CALL 417-532-9131

WEEKLY TRADER MAGAZINE

100 E. Commercial, Lebanon
 www.myweeklytrader.com
 www.facebook.com/myweeklytrader

PUBLIC AUCTION
HUMANSVILLE, MO

AUCTION

Due to the death of the late John Tinsley we will sell the following Automobiles, Tractors, Equipment, Trailers, Tools, Collectibles, Household and Misc. at the Farm. From the junction of 13 & 123 Hwy South of Humansville, MO go South on 13 Hwy. 1/2 mile to F.R. East 350 & F.R. South 42 go South on F.R. 42, 1/2 mile to the Auction on

Sat. April 22, 2023 at 9:00 am

WATCH FOR AUCTION COMPANY SIGNS • LUNCH SERVED

FOR MORE PICTURES GO TO: WWW.BRUCEANDLEANAUCTION.COM



AUTOMOBILES - TRAILER

- 1993 Dodge Larime 3500 One Ton Dually Pickup W/Flatbed, Cummins Turbo Diesel Motor, 5 Speed Transmission, 182,647 2nd Owner Miles, PW, PL
- 2004 Buick Century 4 door Car, V-6, Automatic, (not running been sitting)
- 2007 LaCrosse CXL (wrecked not running)
- 1993 Flatbed Tandem Axle 12' X 6'6" Trailer

BUGGY-PROPANE TANK-BIN

- 4 Wheel Amish Double Seated Buggy W/Top & Storage Box Good Condition (stored inside not used very much)
- 500 Gallon Propane Tank
- Columbian Galv. Grain Bin 14' Wide X 8' Tall Sitting on Concrete Slab
- Single set of Harness W/Collar



TRACTORS & EQUIPMNET

- John Deere Cab Model 4240 Tractor, 120hp, 16 Speed Trans. 6930 Hrs. W/TA-29 Westendorf Front End Loader W/7' Bucket & Bale Forks John Deere 2640 Open Deck 75hp Tractor W/Canopy
- Vermeer 605 Series L Accu Bale Round Baler, Twine Tie
- Rhino 15' Batwing Brush Hog
- 3pt. Sickle Mower
- 25' Hyd. Self Loading Single Axle Bale Wagon
- Older Poly Tank Sprayer
- 2-3pt. Bale Spike's
- 3pt. Cone PTO Grass Seeder
- 8' Flex Harrow
- Wagon Running Gears
- 5-6 Bar 10' Cattle Panels
- Double Gated Palp Cage
- Lrg. Lot Steel Post
- Misc. Fencing Items
- Stock Tanks
- 4 Concrete Bunks
- Older 6 Bale Round Bale Bumper Trailer
- Roll 34" Woven Wire
- 2 Poly Cattle Lick Tanks
- 8pc. 2 1/4" Thick Wall 22' long Pipe
- Lot of Chain Link Fencing W/Post & Rails

TOOLS-MISC.

- Lincoln Ranger 10,000 watt Welder/Generator W/17 Hours & W/Welding Leads
- Victor Act. Torch Outfit W/Med Bottles
- Large Anvil on Stand
- Lrg. Metal Tool Box
- Roll Around Tool Cart
- Snap-on Side Box
- Several Hand Tools
- Misc. Electric & Air Hand Tools
- Tire Tools
- 4 Ton Porta Power
- 12 Volt Poly Tank Sprayers
- Belt/Disc. Sander on Stand
- Misc. Garden Tools
- Alum. Folding Ramps
- Fisher Lawn Mower Jack
- Com-a-Longs
- Lrg. House Jack
- Floor Jack
- Misc. Ladders
- Metal Storage Boxes
- 2 Alum. Saddle Fuel Tanks
- Hand Fuel Pump
- Honda Foreman Rubicon 4-Wheeler (been sitting)
- 2-Honda Big Red 3 Wheelers (been sitting)
- Copper Wire
- Lot of Scrap Metal
- Conv. Items
- Lot of Misc.



COLLECTIBLES-HOUSEHOLD

- Regal Dobro Guitar W/Case
- Pittsburg 12 Gallon Stone Jar
- Pittsburg 5 Gallon Stone Jar
- Western 5 Gallon Stone Jar
- Churn Stone Jar
- Dazy 4 qt. Butter Churn
- 2 Oak Ornate Kitchen Clocks
- Milk Cans
- Corn Planter
- 2 Wheel Feed Dolly
- Well Bucket
- Wooden Boxes
- Pedal Grinder on Stand
- Misc. Primitive's
- Misc. Household Items
- Pots, Pans & Dishes
- Men's Clothing

OWNER: MRS. JOHN "KAREN" TINSLEY

TERMS: Everything sells as is, where is. Nothing is to be removed until settled for. Payment of Cash, Check with Proper ID, or Credit Cards. Auction Company or the Owners will not be responsible for loss of items or accidents. Statements made the Day of the Auction take Precedence over Printed Matter.

SALE CONDUCTED BY **BRUCE & Le'AN AUCTION & APPRAISAL, LLC**
THE AUCTION COMPANY THAT APPRECIATES YOUR BUSINESS

For more information and pictures go to our website at www.bruceandleanauction.com

RONNIE BRUCE - Fair Play, MO
417-777-1685 or 417-654-2214
colronbruce@gmail.com

BRANDON BRUCE
Fair Play, MO

BILLY BRUCE - Stockton, MO
417-399-4800
colbbruce@gmail.com

Sam CRAWFORD AUCTION SERVICE LLC 2-DAY AUCTION

As I am selling my farm, will sell the following located 8 miles north of Lebanon, MO on Hwy. 5 to Hwy. BB, then East 1½ miles to Pelican Dr., then North 1½ miles. Watch for Auction Signs.

WED., APRIL 19TH 10 A.M. SAT., APRIL 22ND

TRACTORS - MACHINERY - RANGER - TOOLS - FARM Misc.
Tractors - Sell at 12:30



New Holland 6610 Diesel w/Koyker 210 Loader, ROPS, Dual Hyd., Shows 2093 Hrs., Shedded, 76 PTO HP



Massey Ferguson 383 Diesel, w/MF 236 Loader, ROPS, Dual Hyd., Shows 4830 Hrs., Shedded, 73 PTO HP

David Brown 990 Diesel

Ranger - Sell After Tractors

Polaris Ranger 500 4x4, 3000 Miles

Machinery



Gehl 418 8 Wheel Rake One Way 6' Pull Type Disk Case IH MD92, 3 Pt. 9' Disc Mower



John Deere 457 Big Baler, Net Wrap, 540 PTO, Shedded, Good

3 Pt. 8' Disk 3 Pt. 6' Bush Hog

Older 3 Pt. 7' Brush Cutter, Rough

3 Pt. 2 Bottom Plow 8' Road Drag

Lg. 3 Pt. Carry-All 3 Pt. Wood Splitter

3 Pt. Spike 2 Loader Bale Spikes

3 Pt. 5' Box Blade Old Steel Wheel Side Rake

Tools - Misc.



Stihl 211 Chainsaw 3 Husqvarna Chainsaws

Generac S 4001 Portable Generator

Tahoe 7000 LXR Diesel Portable Generator, New

Troy Bilt 7.75 Power Washer

2 12V Seeders Hyd. Motor Lift

Troy Bilt Horse Tiller Battery Charger

Craftsman Rear Tine Tiller 2 Floor Jacks & Hyd. Jack

Stanley 2 Tier Toolbox, Sev. Carry Around Toolboxes

Lot Asst. Wrenches, Sockets, Asst. Power Hand Tools

Craftsman Table Top Drill Press

Craftsman 10" Table Saw

7' Fiberglass Step Ladder

Bench Grinder

Long Handle Tools

Oil, Anti-Freeze, Garden Supplies

40-50 Used Steel Posts

Other Misc., Much More!

Lot Gas Cans

10-15 Rods & Reels

Wood Fireplace Type Wood Stove

Sev. Bags Wood Pellets

Cow Hip Jack

6-8 Rolls Barb Wire, New

Antiques & Collectibles

2 - 10 Gal. Milk Cans

5-6 Wood Planes

Sev. Sad Irons

2 Crosscut Saws

2 Scythes, Handsaws

Other Old Tools

Shingle Froe

Kids Red Wagon

5-6 RR Lanterns, Other Lanterns

Ice Tongs, 2 Cistern Pumps

Small Iron Bell

4-5 Tonka Trucks

Kitchen Queen Woodstove

Shoe Lasts, 3 Square Tubs

5-6 Wood Kids Chairs

2 Croquet Sets

Coca-Cola Cabinet, Reach In, Bottle

Cooler, Works

2 Lg. Peavey Speakers & Woodson

Amp

ANTIQUE DISHES - GLASSWARE - COLLECTIBLES
ANTIQUE FURNITURE - Misc.

Glassware - Dishes

Sev. Lg. Sets Blue Willow, Red Willow: Avon Cottage & Old Britian Castles, Meakin, Johnson Bros., Staffordshire

2-3 Lg. Sets Liberty Blue - Old North Church

Collection of Fenton Blue Carnival Year Plates

Sev. Sets Blue & Gold Carnival, Water Sets, Punch Bowls, Compotes, Egg Plates, Butter Dishes, Hens on Nests

2-3 Sets Cape Cod Some Ruby Red

Lot Clear Depression Lg. Collection Lg. Glass Swans

20-30 Musical Figurines Lot Figurines

Hens on Nests Pyrex Mixing Bowls

3-4 Boxes Avon Sev. Lg. Vases

Hanging Lamps Pairs Vanity Lamps

15-20 Dolls Other Toys

Nintendo Player 10 Gal. Stone Jar

Lg. Steel Cooking Pot, 10 Gal.?

Sunbeam 1 Gal. Glass Churn

Old Books Record Albums

Coffee Grinder Food Chopper

Lot Framed Pictures Dresser Sets

Old Bottles & Jars Much More!

Antique Furniture

4 Oak Beds, 7' Tall Headboards

6 Oak Dressers & Chest of Drawers Crown Organ

Camel Back & Flat Top Trunks 2 Piano Stools

Taylor Upright Piano Oak Wash Stand

2 Oak Rockers Glass Front Bookcase

Buffet 2 Church Pews

Curved Front China Cabinet

2 Pc. Parlor Set Console Stereo/Radio

Antique Furniture Is Really Nice, Piano Has Been

Kept Tuned

Houshold & Misc.

Dining Table & 6 Chairs, Dish Hutch, Coffee Table & End Tables

Asst. Kitchen Appliances, Utensils, Pots & Pans, Glassware

Howard Miller Grandfather Clock 2 Leather Couches w/End Recliners

Lg. Modern Dish Hutch Lighted Curio Cabinet

Stereo & Speakers Floor Lamps

Fans Wall Decor

Schwinn Exercise Bike Confidence Fitness Bicycle

Mesh Patio Table & Chairs Wood Glider

4-5 Birdbaths Other Lawn Ornaments

Rake Wheel Lawn Windmill, Other Misc.

Some of the nicest & most antique glassware/furniture we have ever sold. The late Mrs. Lormis collected for many years in several different states.



SAM CRAWFORD Auction Service LLC



TERMS: Cash or good check. Nothing removed until settled for. Not responsible for accidents. Lunch available. Statements made day of sale take precedence over printed matter. All items sell as is. No warranties given or implied.

417-998-6629
Cross Timbers, Mo.
CrawfordAuctionService.com

Sam 417-328-9137 Chase 417-399-1904 Chance, CAI 417-298-1751 Tom Poynter Jack Lancaster

Charles Lormis
31491 Pelican Dr. - Lebanon, MO

ESTATE AUCTION

SATURDAY, APRIL 15 @ 10:00 A.M.

Directions: ROLLA, MO - 1312 Harvey Lane. Watch for signs.

PROPERTY TO BE OFFERED • HOUSEHOLD • AUTO • MISC.

5 Pc. King-size Bedroom Suite, Very Clean - Refrigerator - GE Washer & Dryer, Clean
3 Pc. Full-size Bedroom Suite - Nice Grandfather Clock - 2017 Rav-4, Very Nice - Bedding
Comforters, Sheets & Blankets - Lamps & Other Household Items; TV, Rugs, Misc.

TO BE OFFERED: 1 Car Garage, Fenced Backyard, Very Nice Neighborhood, Clean Home.
Don't Miss This Opportunity. Sold As-Is. 10% Down Day of Sale. Non-Refundable. Call To
Make Walk-through Appointment. Rest Sold On Sunday, April 16 Sale (12860 Rolla Fairgrounds, U.S. Hwy.
63.) @ 10:00 a.m. Start. **See you there! - Tom**



ANNOUNCEMENTS AT AUCTION TAKE PRECEDENCE OVER PRINTED MATTER

WULFF AUCTION

TERMS: CASH OR APPROVED CHECK - I.D. REQUIRED
NOTHING REMOVED UNTIL SETTLED FOR

Licensed Appraisals

2334 Highway K, Salem, MO 65560

AUCTIONEERS:

Col. Tom Wulff • John Wisdom

Cell: 573-247-3884 • Cell: 573-247-9563 • Home: 573-729-8476

Clerk: Tracy Strange Cashier: Nancy Inman

See Wulff Auctions at www.thesalemnewsonline.com/auctions



RAIN OR SHINE OWNER & AUCTION PERSONNEL NOT RESPONSIBLE FOR ACCIDENTS AT SALE SITE

ESTATE AUCTION

SUNDAY, APRIL 16 @ 10:00 A.M.

Directions: ROLLA, MO - 12860 Rolla Fairgrounds, U.S. Hwy. 63. Watch for signs.

GUNS • COLLECTIBLES • KNIVES • ARROWHEADS HOUSEHOLD • MISC.

Carved Pipes - LG 65" Flat Screen TV
 Several Country CDs - Carved Wood Box
 Sony CD Player & CDs - Coffee Table
 Over 50 Collectible Powder Flasks; Metal, Leather & Bone
 Crock Pot, Brand New in Box
 Dark Brown Micro-fiber Loveseat
 Light Brown Micro-fiber Loveseat - Curio Cabinet
 End Tables - Grandfather Clock - Microwave
 Toaster - B&D Blender - Sofa Table - Shop Vac
 2 Electric Smokeless Grill & Griddle - Rocking Chair
 Several Survival Knives - Gun Valve Books
 NW TF Duck Figurine
 End of the Trail James Earle Fraser
 Large Collection of Pocket Knife Cases
 Old Rawlings Claw Catchers Mitt
 Old Bean Grinder - Telescope
 Old Boy Scout Canteen - Zippo
 Collection of Old Shells & Shotgun Shells
 Hollywood Prop Supply, Dances with Wolves Canteen
 Old Case Cleaning Rod
 Old Duck Calls, Duck Commander Faulk's
 Old Whiskey Containers - Several Fire Arm Books
 Old Tomahawks - Grand Olde Opry Advertisement
 Several Old Recurve Bows & Old Arrows
 Several Nice Pieces of Antique Furniture
 2, Push Lawn Mowers - Many Others
 Oak Bench - Wicker Chair - Ceramic Heater

Belts - Reciprocating Saw Blades - LinenS
 Motorcycle Storage Cover - Shower Chair
 Hope Chest - Wooden Boxes - Walker
 5 Pair of Cowboy Boots, Size 8.5
 Motorcycle Bag, Chaps & Boots
 Handheld Shark Vacuum - Patio Set
 Kalorik Air Fryer, New in Box
 6pc. Cookware, New in Box
 Copper Chef Air Fryer, New in Box
 Shark Vacuum Cleaner - Dehumidifier
 Large Collection of Old Reels w/Boxes; Pering, Zebco,
 Bronson, JCHiggins, Pffueger, Shakespeare
 Tuxedo Tobacco Can - Old Military Camo
 Western Bros Straight Edge
 Old Wooden Lure Collection
 Big Collection of Arrowheads
GUNS:
 Iver Johnson, Hammerless 32 - H&R 733 .22
 Stevens 35 .22 - US Revolver Top Break .38
 MAB G .22 - J-Stevens Pistol .22
 Iver Johnson Revolver .22
 Lorcin I-22 .22 - Hi Standard H-D Military .22
 Stoeger Luger .22 - Ruger Blackhawk .30 Carbine
 Colt New Frontier .22
 Smith & Wesson 629 44 Mag - Colt DA-41
 Colt Junior .25 - Colt Junior .25 - Star SA .22
 Smith & Wesson 63 .22 - Colt 1908 .380
 Magnum Research Baby Eagle Design 9mm

Ruger Single Six .22 mag - Ruger Mark II .22
 Springfield XD 40 S&W - Browning Hi-Power 9mm
 Ithaca 500 20ga - Ithaca 37 20ga
 Winchester 94 30-30
 Ruger 77R 25-06 - Smith & Wesson 1 1/2 .32
 Iver Johnson Top Break .38 S&W
 H&R Top Break .38 S&W
 French Folding Trigger Revolver 6mm
 Folding Trigger Revolver 6.5mm
 Hopkins & Allen Blue Jacket No.2 .32 RF
 Hopkins & Allen Top Break .32
 Jones Import .22 Short - Webley Style Revolver .455
 C. Sharps Pepperbox .25 - British Single Shot .321
 Smith & Wesson #2 .38 S&W
 Hopkins & Allen #4 .38 S&W
 Smith & Wesson 1 1/2 .32 S&W
 Smith & Wesson 1 1/2 .25
 Iver Johnson Break Top .32 S&W
 Hopkins & Allen Break Top .38 S&W
 English Single Shot .321 - Baby Hammerless 1918 .22
 Baby Hammerless .22 - Iver Johnson Sealed 8 .22
 Iver Johnson Top Break .32 S&W
 Small Folding Trigger .22
 Iver Johnson Knuckle Grip .32 - British Bulldog .455
 Brass Frame Revolver .38 S&W
 American Bulldog .38 S&W
 32 S&W 357 30 Special .22

See you there! - Tom



ANNOUNCEMENTS AT AUCTION TAKE PRECEDENCE OVER PRINTED MATTER

WULFF AUCTION

TERMS: CASH OR APPROVED CHECK - I.D. REQUIRED
 NOTHING REMOVED UNTIL SETTLED FOR

Licensed Appraisals

2334 Highway K, Salem, MO 65560
AUCTIONEERS:

Col. Tom Wulff • John Wisdom

Cell: 573-247-3884 • Cell: 573-247-9563 • Home: 573-729-8476

Clerk: Tracy Strange Cashier: Nancy Inman



RAIN OR SHINE OWNER & AUCTION PERSONNEL NOT RESPONSIBLE FOR ACCIDENTS AT SALE SITE

See Wulff Auctions at www.thesalemnewsonline.com/auctions

Public Auction

302 West 2nd St. Sedalia, MO 65301

Directions: From 50 & 65 hwy intersection in Sedalia go North on 65 hwy. to Main St. turn Right (East) on Main St. to to Auction on Right watch for signs on sale day.

As I have sold my building, I will sell the following at public Auction

*Chuck
Salmons*

WEDNESDAY APRIL 19TH 2023 • 10:00AM

ANTIQUES, HOUSEHOLD, & MISC.

12 PEACE DOLLARS (1922-23) **FRIGIDAIRE** CROSS TOP REFRIGERATOR, **DRIFT & BURLWOOD LOVE SEAT IMPRESSIVE (MUST SEE)**, LG WALL DESK UNIT, 2 - CHEST OF DRAWERS, FULL SIZE BED, CHEST OF DRAWERS W/MATCHING VANITY, BENT GLASS CHINA HUTCH, DINING ROOM TABLE W/6 CHAIRS & 3 LEAVES, IRON BED & FRAME, IRON & GLASS TABLE W/2 CHAIRS, DAY BED, 2 - BARN WOOD DISPLAY BOXES, ROCKING CHAIR, ANTIQUE SERPENTINE OAK CHEST OF DRAWERS, MIRRORED DRESSERS, 1920S WARDROBE, 1965-69 CHEVROLET BIG BLOCK ENGINE, LG. LOT VINTAGE ADVERTISING SIGNS (WOOD, PLASTIC & METAL), LARGE "PHILLIPS 66" STATION SIGN, LIT "TEXACO" SIGN, VINTAGE STAMPAK POSTAGE STAMP VENDING MACHINE, MISC. FLOOR & TABLE LAMPS, LOT SEDALIA COLLECTIBLES, BUD & MILLER LITE POOL TABLE LIGHTS, LG LOT VINTAGE & UNIQUE PICTURES & PRINTS, LOT BURLAP BAGS W/GRAPHICS, 1891 LAMP W/RED GLOBE, LOT OIL LAMPS, FOOT LOCKERS & TRUNKS, SNOOKER TABLE, LOT NATIVE AMERICAN ARTIFACTS, ANTIQUE FLOOR RADIO, 8X11 AREA RUG, MISC. WOOD BOXES MANY W/GRAPHICS, 2 - CHURCH PEWS, LG WOODEN DOLL HOUSE, 3 - GLASS DISPLAY COUNTERS, PUMP ORGAN, 2 - DROP LEAF TABLES, LOT MISC. OCC TABLES, STEAMER TRUNK, LG LOT ANTIQUE DOORS & WINDOWS, WOODEN SHELVING, ROW JUKE BOX, 2 - VANITIES, HEAVY WIRE PLANT STAND, RATTAN TABLE & CHAIR, CEDAR WARDROBE, 2 - MICROWAVES, ENAMEL GAS PARLOR STOVE, 70+ STACKABLE CONFERENCE CHAIRS, 2 - POLLY TABLES, PLASTIC AUCTION NUMBER BOX, HORSE COLLAR & HAMES, METAL OFFICE DESK, PR VINTAGE WATER SKIS, FIREPLACE MANTEL & SURROUND, MILK CAN, 2 - SENTRY SAFES, LOT LUMBER NEW & USED, MISC. SODA POP CRATES, LOT DEER ANTLERS, VIOLIN & CASE W/BOW, 5 - PALLET RACKS, TWO U-BOAT UTILITY CARTS, LOT "SEDALIA AUCTION" SIGNS, METAL STORAGE CABINETS, CRAFTSMAN TOP & BOTTOM ROLL AROUND TOOLBOX, 10' **WERNER** FIBERGLASS STEP LADDER, "HYPER TOUGH" TOOL CHEST, WHEELBARROW, PRESSURE WASHER, 2 - BARREL FANS (42" & 36"), 2 - TABLE SAWS, BENCH TOP BELT/DISK SANDER, POWER MITER SAW, LOT MISC. ALUMINUM WHEELS, THREE TON JACK STANDS, 6" RAPID BENCH VISE, ENGINE STAND, CHERRY PICKER, LOT MECHANICS HAND TOOLS, LOG CHAINS, LONG HANDLED TOOLS, NASCAR FIRE RESISTANT XXL RACING SUIT, MISC. EXERCISE EQUIPMENT, DOG KENNEL, 2 - BICYCLES



MANY MORE ITEMS, TOO NUMEROUS TO MENTION

*statements made day of sale take precedence over printed material.

Auctioneer Note: This is going to be a good sized sale many treasures yet to discover, You will NOT regret attending this one. Hope to see you there.

Concessions provided by the Award Winning "Benton County Good Ole Gals"



JOHNSON AUCTION SERVICE

"Third Generation Family Tradition since 1942"

Russell "Rusty" Johnson (660) 221-4067 • Phillip Yoder (660) 723-3389

For Full Listing,
Pictures
and Details
auctionzip.com
(ID# 20300)

BUFFALO LIVESTOCK MARKET LLC



276 Hwy 32 W. ,Buffalo, MO

April 8th, 2023
Receipts: 1181

REPRESENTATIVE STEERS

300-400 @ 228.00 to 275.00
 400-500 @ 218.00 to 263.00
 500-600 @ 205.00 to 247.00
 600-700 @ 195.00 to 215.00
 700-800 @ 185.00 to 200.50
 800-900 @ 165.00 to 180.00

REPRESENTATIVE HEIFERS

300-400 @ 210.00 to 242.00
 400-500 @ 200.00 to 256.00
 500-600 @ 185.00 to 214.00
 600-700 @ 175.00 to 201.00
 700-800 @ 162.00 to 174.00
 800-900 @ 140.00 to 165.00

FEEDER BULLS

300-400 @ 200.00 to 269.00
 400-500 @ 200.00 to 256.00
 500-600 @ 185.00 to 225.00
 600-700 @ 175.00 to 199.00
 700-800 @ 140.00 to 194.00
 800-900 @ 120.00 to 156.00

STOCKS COWS

Bred Cows 1250.00 to 1775.00
 Cow/Calf Pairs 1200.00 - 1900.00

SLAUGHTER BULLS

High Yield 115.00 to 128.00
 Low Yield 90.00 to 112.00

SLAUGHTER COWS

Fleshy 95.00 to 100.00
 Med Flesh 92.00 to 107.00
 Light Flesh 78.00 to 91.00

QUESTIONABLE HEALTH OR CRIPPLE COWS

60 Down

Plain Quality, Fleshy, Unweaned, Off Color or Dairy Cross Cattle will be under this market.

SPECIAL COW SALE
April 18th

MON-WED MARKET REPORT

Listen to KJEL 103.7FM • Lebanon or KYOO 99FM • Bolivar

VIEW OUR SALES AT CATTLEUSA.COM

CALL FOR TRUCKING OR ON-FARM VISIT

Lyle Caselman • Owner-Manager
 417-345-7876 • mobile 417-533-2944
 Leon Caselman • Owner
 417-345-4514 • mobile • 417-588-6185

FIRST GEAR KILIMANJARO MOTORCYCLE COAT: XL, but runs smaller. Zip out liner, Kevlar padding on shoulders & elbows, vented, rainproof. Like new. \$95 FIRM. 417-260-0941. Raymondville.

2 GOODYEAR WRANGLER TIRES: Kevlar LT245/70R17, all terrain, \$100 for the pair. 417-417-260-0941. Raymondville.

RAINBOW VACUUM CLEANER: Excellent Condition. \$200. 417-260-0941. Raymondville.

2 ELECTRIC MOTORS: Diehl 1/3 horsepower and Wagner Electric 3/4 horsepower, includes 21 pulleys various sizes and widths. \$75. 210-787-8222. Linn Creek.

1963 CHEVY SHOP MANUAL: \$20. Vintage Chevrolet 1963-1974 V8 & 6-cylinder manual \$30. Chilton's manual American Volkswagen 1969-1976. \$35. 417-260-0941. Raymondville.

DARDEN PROFESSIONAL TIMBER HARVESTING, BUYING STANDING TIMBER: Great prices, improve wildlife habitat and improve forest health. State Certified & Fully Insured! 573-247-4808. Salem.

TRAILER HOUSE RIMS: \$10 each. 573-308-5884. Rolla.

4x5 GRASS HAY: \$60 per bale. 300 square bales at \$6 per bale. 573-308-5884. Rolla.

6FT X 10FT GRAIN BOX: On 2-Wheel Trailer. \$400 O.B.O. 573-308-5884. Rolla.

25 SECLUDED ACRES: Powerlines on two sides of property. One hour from Springfield. Hunter's Paradise. Stream through property. Cash Only. \$8,000/per acre. Must take all. 00417-741-1232.

HIGHPOINT GREENHOUSE: Open for the season. Garden seeds, vegetable and flower plants, seed potatoes, onion sets and plants, herbs, etc. 417-741-2793. 9337 Warner Rd. Hartville.

JOE THEISMANN AUTOGRAPHED CAREER STAT JERSEY: JSA COA. Text for pictures. \$95 417-318-8932. Houston.

FOR SALE: German Shepherd Cross puppies. Nice Markings. \$50 each. Call 417-741-0476 Leave message. Ready April 24th.

2017 POLARIS RANGER XP 1000: Very good condition. \$11,000. 417-464-3895. Mt. Grove.

Absolute Moniteau County

REAL ESTATE & PERSONAL PROPERTY AUCTION

SATURDAY, APRIL 29, 2023 AT 10 AM

Auction & Property Location:
23251 Indian Springs Road at California, Missouri 65018

Directions: From the stop light on Highway 87 and West Buchanan Street (Business Hwy. 50) in California, MO, take Hwy. 87 and Hwy. O north 4 miles, (Hwy. 87 becomes Hwy. O on the north side of California), to Hwy. D, turn right and go 5 miles to Gooseberry Hollow Road, turn left and go 1 mile to Indian Springs Road, turn right and go 1.5 miles to the end of the road.




189.76 SURVEYED ACRES OFFERED IN ONE TRACT IN TOWNSHIP 46N, RANGE 15W, SECTIONS 16 AND 17 IN MONITEAU COUNTY, MO. IMPROVEMENTS INCLUDE A 3,000+ SQ. FT. ONE AND A HALF STORY ALONG WITH DETACHED GARAGE AND OTHER OUTBUILDINGS

PRE-AUCTION PROPERTY VIEWING

Saturday, April 15, 2023 from 2 PM to 4 PM

Personal Property Includes:
TRACTOR & FARM EQUIPMENT, SHOP TOOLS, LIVESTOCK EQUIPMENT, LAWN & GARDEN EQUIPMENT, AUTO, PICKUP, TRAILER, ATV, MISCELLANEOUS, HOUSEHOLD FURNISHINGS, CANDLE MAKING & BEE KEEPING, BALUSTERS, JUKEBOXES, BARBER CHAIR

SELLER: THE DUGAN FAMILY
LANCE DUGAN AND BEN AND VELMA DUGAN

Wheeler

AUCTIONS & REAL ESTATE

23101 HWY. 24, PARIS, MO 65275 | 660-327-5890
WWW.WHEELERAUCTIONS.COM

Visit wheelerauctions.com for more information!

For more information call Charlie Nordwald at 636-795-4552 or visit wheelerauctions.com.

MASTER SPANISH TEACHER DISPOSING LARGE AMOUNT OF FREE MATERIALS: To a public, private or co-op school interested. 660-438-4357. Warsaw.

NOW BUYING STANDING RED AND WHITE OAK TIMBER: All slash will be trimmed to lay flat or placed in tidy piles for wildlife. No scarred-up trees or ruts from heavy logging equipment. We use low impact compact track loaders to minimize disturbance in your forest. Missouri Land Service LLC. 417-991-9280.

BUYING OLD BARNs AND LUMBER: 417-298-3475 Leave Message.

LAWN MOWING & YARD WORK SERVICES: 417-288-8123. Lebanon.

NEED YOUR CDL???? We furnish the truck & trailer. We teach all requirements for ELDT & skills test. We go to the state highway patrol with our truck. Requires only 2 days of in person training. Much cheaper way to get CDL. Jefferson City MO, Willow Springs MO, Strafford MO, 573-353-2853. For more info www.capitaltruckdrivinginstitute.com

POOL TABLES: Installations, moves, recovers, repairs, accessories, etc. 573-646-1700.

HORSE OR LIVESTOCK AUTOMATIC WATERER: \$100 cash. 417-599-8089. Willard.

WANTED OLD MILITARY RIFLES & PISTOLS: 816-838-6254. Lee's Summit.

FULLBLOOD YEARLING RAMS: One Dorper and two St. Croix. \$500 each. Call 417-458-1771.

Americana Collectibles, Rare Finds, Vintage Prints- MUST SEE! Eldon, MO



Annalee Dolls
Cookie Jars
Black Americana Collectibles
Antique Furniture
Dolls
Whirlpool Cabrio Platinum Washer and Dryer
Vintage Prints
Yard Art
Longaberger Baskets
Graniteware
Quilts

Preview:
Monday, April 17th | 3:30 p.m. - 5:30 p.m.
Auction Ends:
Tuesday, April 18th | 12:30 p.m.
Pick-Up:
Wednesday, April 19th | By Apt. Only
66 Booth Road, Eldon, MO

Check it out & Bid at www.AtterberrySells.com
573-474-9295



contactus@atterberryauction.com
ATTERBERRY
— AUCTION & REALTY COMPANY —
Your Real Estate at Auction Specialists

Salem Livestock Auction
Hwy. 32 Salem, MO • 573-729-8880
Over 40 Years in the Livestock Business

Stock Cow Sale
Saturday, April 15th • 1:00pm


Early Consignments

- 35 Black Cows 4yrs-SS all with 300-400lb calves Cows will be bred back to Black Bulls
- 2 Red Angus Bulls 17 months
- 23 Red and Black Cows 3-6yrs all with 400-500lb calves Cows will be bred back to a Red Angus Bull -Fancy
- 9 Mix Cows 5yrs-SS all with 450lb calves cows will be bred back to a Black Bull
- 10 Black and Red Angus Cows 3-5yrs all with 400lbs calves cows will be bred back to a Black Bull
- 16 Black and Bwf Cows 5yrs-SS 2nd and 3rd stage bred to a Sim Angus Bull - Sell Out
- 20 Black and Red Cows 4-7yrs 15 with 200-300lb calves bal 3rd stage bred to Black Bull
- 76 Char and Black Cows 3-7yrs 10 with calves bal bred to Black or Char Bull -Sell Out
- 10 Mix Cows 2-7yrs all with 200lb calves Cows have been running back with Lucas Oil Bulls
- 8 Char 1st Calf Heifers 1st & 2nd Stage bred to Registered Red Angus Bulls -Home Raised
- 7 Char Heifers 14 months old- guaranteed open Home Raised
- 21 Mixed Cows 2-7yrs 15 with calves bal 3rd stage Cows are bred to Smith Valley Angus Bulls
- 5 Char Cows 2yrs with 400-500lb Char Calves " Purebred -Out of Registered Stock" bred back to Char Bulls

All Consignments Welcome Up Until Sale

• Feeder Calves to Sell every Monday @ 12pm
• Goat, Hog, & Sheep Sale 2nd Tuesday every month @ 6pm

Allen Thompson 417-932-4097
Renee Lauderdale 417-926-2682
Chuck Thompson 417-257-5610
Brandon Barton 417-259-1597


SALEM LIVESTOCK AUCTION
EST. 1982

Terms of Sale: Cash or Approved Check!

BUFFALO LIVESTOCK MARKET LLC



276 Hwy 32 West Buffalo, Missouri
417-345-8122

SPECIAL STOCK COW & BULL SALE
Tuesday Night, April 18th, 2023
Early Consignments

- 15 Red Angus/Red Angus Replacement Open Heifers, all Pelvic Measured, Weaned, Vacc., ready to breed.
- 35 Angus & Sim Angus X Cows, all homeraised, 4-9 yrs. old, Cows are bred to calve now then June to Heeley Cattle Angus Bulls and have had all their Spring Shots and Scourboss Vacc.
- 52 BLK, Red and Char X Cows running with Black Bulls both Spring and Fall calvers, your getting the whole pasture, 8 heads with calves already by side.
- 10 5-6 yrs. old Angus pairs, all Spring Vacc. & Wormed, real stout set of calves, months old on their side.
- 10 Red Angus/Gelv X Cows, 4-7 yrs. old, bred 2nd and 3rd stage.
- 35 Blk Cows, 4-6 yrs. old, bred in 3rd stage to Blk Bulls, nice set of Cows, gentle and easy to handle.
- 80 Blk, Bwf Cows, 4-6 yrs. old, 2nd and 3rd stage, bred to Red Angus Bulls.
- 12 Hereford Cows, 4-6 yrs. old 2nd and 3rd stage, bred to Red Angus Bulls.

Several Young Production TESTED Bulls of different breeds.

Watch our ads and pictures on Facebook.
Expecting 400+ Cows and 20-25 Bulls.

MON-WED MARKET REPORT
Listen to KJEL 103.7FM • Lebanon or KY00 99FM • Bolivar

VIEW OUR SALES AT CATTLEUSA.COM
CALL FOR TRUCKING OR ON-FARM VISIT


533-2944 | **588-6185**
Lyle Caselman | Leon Caselman

77 JEEP CJ5 FOR SALE: Runs good, drives good. \$7,500. 417-343-3928. Marshfield.

PAIR OF CAR OR PICKUP RAMPS: 70" tall on end and 16" wide \$45 417-260-0941

DUAL LOADER QUICK TACH WITH IH M85: \$2,400. 573-765-4406 Richland.

CASE IH DIESEL 385 TRACTOR: Canopy, 2,000 Hours. \$6,950. 573-765-4406. Richland.



Cedar Ridge Truss LLC
 ENGINEERED TRUSSES
Satisfaction is our goal

Mention this ad when calling!

417-259-9788
 Fax 417-701-0021

4952 N Hwy. E
 Hartville, MO 65667



MID MISSOURI STOCKYARDS

REGULAR SALE EVERY THURSDAY 11 AM

SPECIAL COW SALE • MAY 6TH AT 6 PM

WATCH OUR WEEKLY SALE IN REAL TIME ON DVAUCTION.COM

For Farm Visits, Market Updates, or Trucking
 Call **Zach Cox 417-777-1320**
Dan Romine 573-578-4939

**Competitive Buyers!
 Competitive Commission!
 Competitive Market!**

Barn: 417-532-9292 

I-44 • Exit 123 "just outside of Lebanon"
17505 Route 66, Phillipsburg, MO 65722
 For weekly market updates, visit us at www.midmostockyards.com

FOR SALE: 2 Dayco motorcycle covers for Harley or other big bikes. \$50 each. 417-260-0941. Raymondville.

METAL ROOFS: We repair leaky metal roofs with warranty. Also, flat roofs. Very affordable. Cover all of state. 573-338-1148. Jefferson City.

BOBCAT 753 DIESEL SKID STEER LOADER: \$12,500. 573-765-4406. Richland.

WANTED NEW HOLLAND SKID STEER 865: Any Condition. Call Bob 573-697-5143.

PEMBROKE WELSH CORGIS: D.O.B. 1/12/23 & 1 D.O.B. 7/20/22. U.T.D. on shots & wormer. \$300. 417-741-2949. Grovespring.

BOX OF SILVER-PLATED SILVERWARE: at least 75 years old \$60 417-260-0941



ANNUAL IRISH DEXTER BREEDERS SHOW AND SALE

Now taking applicants for the sale. Call for more info!

MAY 5 & 6, 2023
DALLAS COUNTY FAIRGROUNDS - BUFFALO, MO

****Check in starts at 5PM, Thursday May 4, 2023****
 Ends at 12PM Friday May 5, 2023
****Adult show at 4PM Friday May 5, 2023****
****Junior show at 9AM Saturday May 6, 2023****
****Sale at 2PM Saturday May 6, 2023****

For more info and entry form: Visit our Facebook page at **IRISH DEXTER BREEDERS ASSOCIATION** or contact
 Steve Cushing (417) 991-6707
 Robert Doering (417) 733-4088
 Bo Hampton (417) 288-2376


JOHN DEERE MX10 PULL TYPE BRUSHCUTTER: Good. \$6,950. 573-765-4406. Richland.

2002 HONDA VTX: 1800 CC. 1 owner. 573-330-7094. Patosi.

2 FEMALE TOY SCHNAUZER/POODLE MIX: 417-664-5926. Lebanon.

1979 HONDA 750 ANNIVERSARY EDITION BIKES: Several to choose from. Selling off collection. Call for prices. Bikes are priced well below market value. Will NOT respond to text. 636-228-4204 or 636-359-6189.

RHINO 4 BASKET HYD. FOLD TEDDER: \$4,300. 573-765-4406 Richland.



HARTVILLE LIONS CLUB
 Consignment & Donation
18th Annual Auction

Saturday, April 29th
 Good Consignments Needed
 Low Fee Commissions
 Donations Appreciated

To consign or donate items, contact:

Dan 531-3329	Lonnie 741-2095	Scott 741-0082
------------------------	---------------------------	--------------------------

Consign early by April 12th for sale bill listing

NEIGHBORHOODS HOME IMPROVEMENT STORE: 417-533-5080. Lebanon

SUPER M FARMALL: new 15 x 5 x 38s: for \$2,500 417-349-2908

1 M FARMALL: with rebuilt motor for \$1,800 417-349-2908

FOR SALE: 8950 Kubota 4X4, 96 horsepower, good rubber \$12,000 573-301-2148

FREE INTERACTIVE MORGAN HORSE FUN! Selfies with Morgan horses, kids activities, videos, painting, educational, demos, & carriage rides. Laura Ingalls Wilder door prizes, history. #meetthemorgan in Facebook for more information. Held at 5555 South State Highway NN, Rogersville

FOR SALE: Set of 18-4-30 snap on duals with Goodyear tires, a lot of tread, all hardware. \$500 Cash, Firm. 217-343-8826.

FREE TO GOOD HOMES: 8-year-old Welsh Corgi Female, 3-month-old Welsh Corgi Female. Also, 3 Cowboy Corgi Males \$50 O.B.O. 417-259-9738.

NOW OPEN GREENHOUSE: Garden Seeds. Check us out before you buy. Open Monday-Saturday. 1207 Bluegrass Rd. Conway, MO.

FAINTING GOATS: Looking for an economical way to begin raising purebred fainters? Start with 2 bucklings as pets. Offering 2 for the regular price of 1. Call/ Text 573-216-7796. www.greenacresvillage.com. Lake of the Ozarks.

CATAHOULA LEOPARD PUPPIES: 30-year bloodline. Leopard & Merle, some bobtails and blue-eyed \$150. 417-543-4816.

9 PAIRS OF LADY'S COTTON KNIT LONG PANTS: Size XL. \$3 each or all for \$25. 417-288-6714. Lebanon.

460 FORD MOTOR & TRANSMISSION: Out of motor home, 20,000 miles. \$500 Firm. 417-594-1656. Richland.

CRAFTSMAN YTS4000: 46" cut, B&S 24hp Trade for 45-70 or \$800. 816-591-5612.

460 FORD MOTOR & TRANSMISSION: Out of motor home, 20,000 miles. \$500 Firm. 417-594-1656. Richland.

COWBOY CORGIS: D.O.B. 1/9/23. UTD on shots & wormer. \$50. 417-349-0831. Hartville.

THE TIRES YOU NEED FOR ALL SEASONS

With brands like:

NEXEN TIRE **YOKOHAMA**

ATTEBERRY MFA TIRE & AUTO CENTER
 333 E. BROADWAY • BOLIVAR, MO
 DUANE ATTEBERRY • 417-326-6286

ASE

JESSE BARNES 1991 OCTOBER RADIANCE PRINT: 16x24, print #2796/2800, framed & matted by professional. 417-830-5309. Leave message. Bruner.

JOHN DEER 920 DISCBINE: With rollers. \$7,500. 573-765-4406. Richland.

JOHN DEERE 466 ROUND BALER: Monitor, Kicker, 4x6. \$4,750. 573-765-4406. Richland.

MASSEY FERGUSON 520 10FT. WHEEL DISK: \$2,300. 573-765-4406 Richland.

JOHN DEERE 2640 DIESEL TRACTOR: 70 H.P., with J.D. 146 Loader. \$13,300. 573-765-4406. Richland

ALLIS CHALMERS DIESEL 7G SERIES B TRACK LOADER: Nice. \$13,000. 573-765-4406 Richland.

IHC 806 DIESEL TRACTOR: Turbo, Runs Nice. \$9,750. 573-765-4406 Richland.

DOXIN PUPPIES: Registered, shots & wormed. 573-247-6273. Salem.

CASE 410 DIESEL SKID STEER LOADER: Low Hrs. \$19,500. 573-765-4406. Richland.

xIHC 475 HYD FOLD DISK: 18FT. \$2,750. 573-765-4406 Richland.

DUAL LOADER QUICK TACH WITH IH M85: \$2,400. 573-765-4406 Richland.

JOHN DEERE 6400 DIESEL CAB & AIR TRACTOR: 85H.P. \$19,500. 573-765-4406 Richland.

THREE SHEPHERD'S HOOKS: To hang potted plants. Black wrought iron. 6ft. 7in. when in ground. One is a double & two are single hooks. \$50. 636-239-2695 or 314-560-5700. Washington.

WE BUY White Oak Logs!

- ✓ Top prices for your logs
- ✓ Experienced log buyers
- ✓ Professional service

Chad Cook | Salem Wood Products
417.718.2950
 5 miles north of Salem, MO on Hwy 19

INDEPENDENT STAVE COMPANY
 Log Procurement & Sales

www.independentstavecompany.com



Wright Spray Foam Insulators, LLC
Commercial & Residential
Call for FREE Estimates!

Ervin Gingerich 417-926-2052
B. Eli Yoder 417-746-4932

SMALL TOWN MAYOR OF WAYNESVILLE, MO: Political Adventures of the Ozarks by Luge Hardman, featuring small town politics and small-town life, featuring local photographers and local characters. \$9.50. 417-532-2045. Lebanon. (Leave message and phone number).

WEATHERED BARN WOOD SIDING: 10" wide. 573-729-7226. www.pineridgerustic.com Salem.

LOG SIDING: 2X8 Pine/Western Cedar www.pineridgerustic.com 573-729-7226. Salem.

USED DOUBLE-WIDE: 3 bdr, 2 bath. WOW! \$39,900 delivered & set, Financing. 573-657-2176. amegamobliehomes.com

TAYLOR TRUCKS & EQUIPMENT
417-924-2026 • 2676 Hwy. 5, Mansfield, MO

★ **3 POINT TILLERS** ★
★ **INTIMIDATOR TREE PULLER** ★

TRAILER PARTS & REPAIR
DANUSER DEALER
T3 Post Driver & Other Attachments
New Mowers! Bush-Whacker, Big Bee
Storage Containers & Dry Vans - 20' - 53',
BUSH-WHACKER HD
SKIDSTEER BRUSH CUTTER

Milwaukee Cordless Tools
MD144 Bat Wing in stock!
Portable Generators, Farm Tires, New Semi Tires,
PTO's & Parts for Rotary Mowers, Farm Tractor
Implements, Plows, Used 15" Bush-Whacker Now In
Stock, Discs, and More Skidsteer Attachments: Pallet
Forks, Buckets, Grapples, Hay Spears, RR Ties

Bush-Whacker Heavy Duty Rotary Cutter



We Invite you To Come By & Look Us Over! Located 2.5 Miles North Of Mansfield, MO On Hwy 5

DISCOUNT NEW MOBILE HOMES:

We will beat any price on any home Guaranteed, financing, 573-499-9993. columbiadiscountnewhomes.com

MODULAR BUILDING: Save \$\$\$ with us, Financing professionals 573-657-7040 chateauhomes.net

TINY HOMES: Missouri Franchise 573-881-7965

I BUY..... used mobile homes. Call or text 573-338-6250 or email GregS.CDH@outlook.com

REGISTERED HEREFORD & ANGUS BULLS: Home raised, Some Show-Me Select Qualified. 573-701-7828. Belgrade.

LIGHTLY EXPERIENCED GOLF BALLS: \$3 a dozen. 417-818-3469. Strafford.

SLIGHTLY USED PUZZLES: Will sell or trade. 417-818-3469. Strafford.

LIONEL TRAIN SET: Steam engine, tender, caboose and other car, track, and transformer. \$195. 573-364-7465. Rolla.

MODEL 1911 FRAME 8-SHOT C02 PISTOL: Like new, in box with C02



CENTRAL BOILER CLASSIC EDGE
TITANIUM HDX
26% Tax Credit on EPA certified Central Boiler Classic Edge HDX models and installation. Call today to learn more!

Outdoor Wood Furnace CentralBoiler.com

Yarborough Equipment Sales & Services, Inc.
9776 E. State Hwy OO • Strafford, MO
417-736-2303 • 1-866-286-6901 • www.yarbeq.com

The Classic Edge 360, 560 and 760 HDX are U.S. EPA Certified

cartridges, 4 clips, pellets & all paperwork. \$95. 573-364-7465. Rolla.

1970s KIDS METAL STOVE & FRIDGE: Nice Lithographic paint, 18" wide x 36" high. \$75. 573-364-7465. Rolla.

3 GENTS WITTNAUER WRIST WATCHES: 10k gold + 23J. All \$200. 573-764-3517. Call in P.M.

HARLEY FAT BOBS: Custom flame paint w/ gas caps + lines. \$100. 573-764-3517. Call in P.M.

COLT REVOLVER DEALER CATALOGS: Circa 1950's + 1960's. All for \$100. 573-764-3517. Call in P.M.

OMAR'S DOZING

- ⇒ Clear land
- ⇒ Clean up woods
- ⇒ Make driveways
- ⇒ Clear property lines
- ⇒ Build ponds

Amish Owned & Operated

LEAVE MESSAGE: 417-741-0440
Hartville & Surrounding Areas

110 PORCELAIN POCKET WATCH DIALS: Perfect for arts & crafts. \$100. 573-764-3517. Call in PM.

1890 GOLD TESTING KIT: Glass acid beakers + antique wooden case. \$100. 573-764-3517. Call in PM.

1500 VINTAGE WRISTWATCH DIALS: \$100. 573-764-3517. Call in PM.

HARLEY 45 SOLO: factory rear brake drum + sprocket. \$150. 573-764-3517. Call in PM.

HARLEY PANHEAD DISTRIBUTOR: original, chrome + complete. \$125. 573-764-3517. Call in PM.

1962 HARLEY SPORTSTER 900CC:

KUSTER LOGGING

BUYER of Standing Timber
Oak and Walnut

Dozing Now Available

417-259-0047

References Available



original distributor. \$50. 573-764-3517. Call in PM.

RUBBER & LEATHER BOOTS AND 5-Buckle OVER SHOES: Men's 11, Women's 7, some insulated. \$15-\$40 obo. 636-239-2695 or 314-560-5700. Washington.

FERGUSON DEALER SHOP MANUAL: Covering TE-20, TO-20 & TO-30 Model tractors. \$40. 636-239-2695 or 314-560-5700. Washington.

NEW SQUARE D RAINPROOF 50AMP DISCONNECT: \$160. 636-239-2695 or 314-560-5700. Washington.

TRAILER HOUSE RIMS: \$10 each. 573-308-5884. Rolla.

WEEKLY TRADER MAGAZINE

YOUR AD GOES HERE!

Add YELLOW Color For An Additional \$3 Per Reader Ad

All ads will include Phone Number (unless requested to be deleted by advertiser) and City Or Town, Phone Number with Area Code counts as one word. City or Town counts as one word.

RATE: 80¢ Per Word. All Classified Ads Require Payment Before Print.

(1)	80¢	(2)	\$1.60	(3)	\$2.40	(4)	\$3.20
(5)	\$4.00	(6)	\$4.80	(7)	\$5.60	(8)	\$6.40
(9)	\$7.20	(10)	\$8.00	(11)	\$8.80	(12)	\$9.60
(13)	\$10.40	(14)	\$11.20	(15)	\$12.00	(16)	\$12.80
(17)	\$13.60	(18)	\$14.40	(19)	\$15.20	(20)	\$16.00
(21)	\$16.80	(22)	\$17.60	(23)	\$18.40	(24)	\$19.20
(25)	\$20.00	(26)	\$20.80	(27)	\$21.60	(28)	\$22.40
(29)	\$23.20	(30)	\$24.00	(31)	\$24.80	(32)	\$25.60
(33)	\$26.40	(34)	\$27.20	(35)	\$28.00	(36)	\$28.80
(37)	\$29.60	(38)	\$30.40	(39)	\$31.20	(40)	\$32.00

Buy 3 Weeks - Get 4th Week Free! (Must be same ad)

Place your Classified Ad TODAY!

417-532-9131 • 800-665-8875

Fax: 417-532-8140

Or Mail To: P.O. Box 192 • Lebanon, MO 65536

For your convenience we accept MasterCard, Visa, Discover or American Express



DEADLINE FOR CLASSIFIED ADS: FRIDAY 4:00PM!

Name _____

Address _____

City _____ Email _____

State _____ Zip Code _____ Phone _____

Ad Total \$ _____ X # Weeks _____ = Amount Enclosed \$ _____

STAN MUSIEL CANCELED CHECK:
Full signature with authenticity. \$55. Text for pictures. Mint condition. 417-318-8932. Houston.

FOR SALE: Transmission for 56 & 06 series International tractors. \$675. 636-239-2695 or 314-560-5700. Washington.

HEARTH CRAFT GLASS BI-FOLD FIREPLACE DOORS PURCHASED AT FORSHAW'S FIREPLACE: Antique brass. \$160 obo. 636-239-2695 or 314-560-5700. Washington.

FIRST GEAR KILIMANJARO MOTORCYCLE COAT: XL, but runs smaller. Zip out liner, Kevlar padding on shoulders & elbows, vented, rainproof. Like new. \$95 FIRM. 417-260-0941. Raymondville.

2 GOODYEAR WRANGLER TIRES: Kevlar LT245/70R17, all terrain, \$100 for the pair. 417-417-260-0941. Raymondville.

RAINBOW VACUUM CLEANER: Excellent Condition. \$200. 417-260-0941. Raymondville.

FOR SALE: 2 Dayco motorcycle covers for Harley or other big bikes. \$50 each. 417-260-0941. Raymondville.

1963 CHEVY SHOP MANUAL: \$20. Vintage Chevrolet 1963-1974 V8 & 6-cylinder manual \$30. Chilton's manual American Volkswagen 1969-1976. \$35. 417-260-0941. Raymondville.

MAC'S TIEDOWN STRAPS: Like New. \$80. 417-260-0941. Raymondville.

DARDEN PROFESSIONAL TIMBER HARVESTING, BUYING STANDING TIMBER: Great prices, improve wildlife habitat and improve forest health. State Certified & Fully Insured! 573-247-4808. Salem.

ANTIQUE HOG OILER: \$35. 573-308-5884. Rolla.

460 FORD ENGINE BLOCK: \$100. 573-308-5884. Rolla.

4x5 GRASS HAY: \$60 per bale. 300 square bales at \$6 per bale. 573-308-5884. Rolla.

6FT X 10FT GRAIN BOX: On 2-Wheel Trailer. \$400 O.B.O. 573-308-5884. Rolla.

FLAT CREEK ROCK FOR LANDSCAPING: 573-308-5884. Rolla.

POSTER BED: \$150. 417-741-1232.

ROUND TABLE: \$40. 417-741-1232.

25 SECLUDED ACRES: Powerlines on two sides of property. One hour from Springfield. Hunter's Paradise. Stream through property. Cash Only. \$8,000/acre. Must take all. 00417-741-1232.

HIGHPOINT GREENHOUSE: Open for the season. Garden seeds, vegetable and flower plants, seed potatoes, onion sets and plants, herbs, etc. 417-741-2793. 9337 Warner Rd. Hartville.

JOE THEISMANN AUTOGRAPHED CAREER STAT JERSEY: JSA COA. Text for pictures. \$95 417-318-8932. Houston.

K.C. CHIEFS SUPERBOWL 2019 DAMIEN WILLIAMS AUTOGRAPHED JERSEY: JSA COA. Text for pictures. \$135. 417-318-8932. Houston.

VINTAGE WORKING 1967 SINGER SEWING MACHINE: Special zigzag model 638 in cabinet with original instruction book. \$60. 210-787-8222. Linn Creek.

JOHN DEER 920 DISCBINE: With rollers. \$7,500. 573-765-4406. Richland.

LOADS OF INVENTORY

Bundle & Save on Tractor Packages

0% FOR 60 MONTHS¹



DIY SPECIAL
1023E JOHN DEERE TRACTOR

ONLY
\$185/MO¹
FOR BASE MODEL



CURB APPEAL

3025E JOHN DEERE TRACTOR
+ 300E LOADER

AS LOW AS
\$422/MO¹



PREMIUM PACKAGE
DRIVE AWAY TODAY!

WEEKEND WARRIOR

3038E JOHN DEERE TRACTOR
+ 300E LOADER
+ RC2060 ROTARY CUTTER
+ 18' TRAILER

AS LOW AS
\$606/MO¹



Heritage
TRACTOR



Scan Here
for Savings

¹Offer ends 4/30/2023. Some restrictions apply. See dealer for details.

Land

For Sale

Ozark Co., Mo • 16.51 Acres +/-



\$3,490,000

- Incredible pasture farm next to Bull Shoals Lake
- Live water to 16 pastures with 4 wells excellent rotation system
- 1200 acres of pasture land and 445 acres of mature timber
- Over three miles of road frontage
- with multiple entrances
- 5 wire fencing on perimeter and cross fenced into 16 pastures for rotational grazing
- Excellent sets of working pens and fountains for ease of settling and shipping cattle
- Good road system on entire ranch
- Nice home on property that is being rented for cash flow
- Excellent hunting and fishing on property
- 20 ponds, mature timber and beautiful trails in the woods



WHITETAIL PROPERTIES REAL ESTATE

HUNTING | RANCH | FARM | TIMBER

Brian Utecht | 417-766-5595

Brian.Utecht@whitetailproperties.com

WHITETAILPROPERTIES.COM



Missouri's Top Land Specialist in 2014, 2015, 2016, 2017, 2018, 2019, 2020 and 2021



TYM
TRACTORS

**SAVE an ADDITIONAL \$1250 Off the
T474, T574 and T494 GEAR Tractors in April**



T254HST \$15,455



T474g \$26,164



T574g \$30,119

LS TRACTOR

CALL US TODAY 417-859-4311



MT122H \$13,763



MT235E \$21,610



MT468CPS \$46,810



www.wctfarmandlawn.com



WCT Farm & Lawn
417-859-4311
SALES • SERVICE • PARTS
3299 E. EVERGREEN ROAD
STRAFFORD, MO