

FREE - TAKE ONE!

Vol. 30 No. 2

APRIL 6, 2023

417-532-9131

WEEKLY **TRADER** MAGAZINE



Find us on
Facebook

@myweeklytrader
AUCTIONS PG. 11

VISIT OUR NEW WEBSITE! MYWEEKLYTRADER.COM

**You pull it,
we sell it...**

CHEAP!



Lebanon, MO

22395 Rt. 66

417-588-3555

Fax 417-588-8955



U★PULL★IT

SELF-SERVICE AUTO PARTS

We also have a large inventory
of used tires and be sure to check
out our used car lot!

Mon.-Fri. 8:00am-6:00pm • Sat. 8:00am-4:30pm

WWW.SSUPULLIT.COM

Located next to S&S Recycling.



Roll-off, Trailer, and
Mobile Crushing
Services Available

For All Your Metal Recycling Needs

Lebanon, MO

22395 Rt. 66

417-588-3555

Fax 417-588-8955

Mtn. Grove, MO

8930 First Rd

417-926-3360

Fax 417-926-0180

Monday-Friday 8:00am-4:30pm (Closed 12pm-1pm Lunch)
Saturday 8:00am-Noon

email: contact@ss-recycling.com

Buyer of all types of scrap metal.

Land

For Sale

Camden Co., Mo • 16.51 Acres +/-



\$59,950

- Amazing panoramic views of Lake of the Ozarks
- Over a half mile of bluff shoreline overlooking the Osage River Arm
- A few nice spots to establish an area to put a small cabin, camper, or RV
- Views from the entire shoreline are massive
- On a dead-end road so minimal traffic
- Located at MM 59 on Lake of the Ozarks
- Over a half mile of blacktop road frontage
- Level areas to create an ingress/ egress
- Some nice hardwoods
- Lake of the Ozarks offers amazing fishing, boating, entertainment, and dining
- Low taxes
- Close proximity to boat ramp, bar and grill, and more at Moonies Resort



WHITETAIL PROPERTIES REAL ESTATE

HUNTING | RANCH | FARM | TIMBER

Brian Utecht | 417-766-5595

Brian.Utecht@whitetailproperties.com

WHITETAILPROPERTIES.COM



Missouri's Top Land Specialist in 2014, 2015, 2016, 2017, 2018, 2019, 2020 and 2021

TIME FOR PRECISION

Hustler's residential mowers are built stronger and perform faster, allowing you to quickly maneuver around obstacles with ease. Tackle your lawn in record time with unparalleled precision, and use the time you save to do the things you love.



For Outstanding Products & Service AGRI-ENTERPRISES

1-1/2 Miles South Of Licking, MO On Hwy 63

573-674-2203 • 1-800-653-7152 • www.agri-enterprises.com

SMALL TOWN MAYOR OF WAYNESVILLE, MO: Political Adventures of the Ozarks by Luge Hardman, featuring small town politics and small-town life, featuring local photographers and local characters. \$9.50. 417-532-2045. Lebanon. (Leave message and phone number).

WEATHERED BARN WOOD SIDING: 10" wide. 573-729-7226. www.pineridgerustic.com Salem.

DISCOUNT NEW MOBILE HOMES: We will beat any price on any home Guaranteed, financing, 573-499-9993. columbiadiscountnhomes.com

LOG SIDING: 2X8 Pine/Western Cedar www.pineridgerustic.com 573-729-7226. Salem.

USED DOUBLE-WIDE: 3 bdr, 2 bath. WOW! \$39,900 delivered & set, Financing. 573-657-2176. amegamobliehomes.com

MODULAR BUILDING: Save \$\$\$ with us, Financing professionals 573-657-7040 chateauhomes.net

TINY HOMES: Missouri Franchise 573-881-7965

I BUY.....used mobile homes. Call or text 573-338-6250 or email GregS.CDH@outlook.com

REGISTERED HEREFORD & ANGUS BULLS: Home raised, Some Show-Me Select Qualified. 573-701-7828. Belgrade.





LIGHTLY EXPERIENCED GOLF BALLS: \$3 a dozen. 417-818-3469. Strafford.

SLIGHTLY USED PUZZLES: Will sell or trade. 417-818-3469. Strafford.

LIONEL TRAIN SET: Steam engine, tender, caboose and other car, track, and transformer. \$195. 573-364-7465. Rolla.

VOTED #1 BEST Preowned Car Dealership

TIM'S USED CARS
(573) 341-3828 • 1334 South Bishop (Hwy. 63) • Rolla, MO
Next to Hwy CC • www.tims-used-cars.com

	2020 NISSAN FRONTIER S King cab, 4x4, 3.8 V-6, Power Equipped, 92,xxx Miles Only \$23,500		2016 FORD F150 XL 2WD, 3.5 V-6 auto, 55,xxx Miles Only \$19,800
	2012 FORD F250 KING RANCH Crew cab, Short Bed, 4x4, 6.7 Powerstroke, loaded w/options, 129,xxx Miles Only \$32,500		2016 CHEVY 1500 WT 2WD, 4.3 V-6 auto, 184,xxx Miles Only \$10,900

LARGE SELECTION OF CARS, TRUCKS, SUVs & VANS!

MODEL 1911 FRAME 8-SHOT C02

PISTOL: Like new, in box with C02 cartridges, 4 clips, pellets & all paperwork. \$95. 573-364-7465. Rolla.

1970s KIDS METAL STOVE & FRIDGE: Nice Lithographic paint, 18" wide x 36" high. \$75. 573-364-7465. Rolla.

3 GENTS WITTNAUER WRIST

WATCHES: 10k gold + 23J. All \$200. 573-764-3517. Call in P.M.

HARLEY FAT BOBS: Custom flame paint w/ gas caps + lines. \$100. 573-764-3517. Call in P.M.

COLT REVOLVER DEALER

CATALOGS: Circa 1950's + 1960's. All for \$100. 573-764-3517. Call in P.M.

110 PORCELAIN POCKET WATCH

DIALS: Perfect for arts & crafts. \$100. 573-764-3517. Call in P.M.

1890 GOLD TESTING KIT: Glass acid beakers + antique wooden case. \$100. 573-764-3517. Call in P.M.

1500 VINTAGE WRISTWATCH DIALS: \$100. 573-764-3517. Call in P.M.

HARLEY 45 SOLO: factory rear brake drum + sprocket. \$150. 573-764-3517. Call in P.M.

HARLEY PANHEAD DISTRIBUTOR: original, chrome + complete. \$125. 573-764-3517. Call in P.M.

1962 HARLEY SPORTSTER 900CC: original distributor. \$50. 573-764-3517. Call in P.M.

RUBBER & LEATHER BOOTS AND 5-Buckle OVER SHOES: Men's 11, Women's 7, some insulated. \$15-\$40 obo. 636-239-2695 or 314-560-5700. Washington.

FERGUSON DEALER SHOP MANUAL: Covering TE-20, TO-20 & TO-30 Model tractors. \$40. 636-239-2695 or 314-560-5700. Washington.

NEW SQUARE D RAINPROOF 50AMP DISCONNECT: \$160. 636-239-2695 or 314-560-5700. Washington.

USED JET HOME POLLUTION CONTROL PANNEL: Model CP700. \$65. 636-239-2695 or 314-560-5700. Washington.

FOR SALE: Transmission for 56 & 06 series International tractors. \$675. 636-239-2695 or 314-560-5700. Washington.

ROUND TABLE: \$40. 417-741-1232.

HEARTH CRAFT GLASS BI-FOLD FIREPLACE DOORS PURCHASED

AT FORSHAW'S FIREPLACE: Antique brass. \$160 obo. 636-239-2695 or 314-560-5700. Washington.

THREE SHEPHERD'S HOOKS: To hang potted plants. Black iron. 5 1/2-6FT. \$50. 636-239-2695 or 314-560-5700. Washington.

FOR SALE: 2 Dayco motorcycle covers for Harley or other big bikes. \$50 each. 417-260-0941. Raymondville.

POSTER BED: \$150. 417-741-1232.

FIRST GEAR KILIMANJARO MOTORCYCLE COAT: XL, but runs

smaller. Zip out liner, Kevlar padding on shoulders & elbows, vented, rainproof. Like new. \$95 FIRM. 417-260-0941. Raymondville.

2 GOODYEAR WRANGLER TIRES: Kevlar LT245/70R17, all terrain, \$100 for the pair. 417-417-260-0941. Raymondville.

RAINBOW VACUUM CLEANER: Excellent Condition. \$200. 417-260-0941. Raymondville.

OFFICIAL TRACTOR OF TOUGH™

INTRODUCING THE ALL-NEW 5100 SERIES



Marshfield Machinery Inc.
222 E. Madison • Marshfield, MO 65706
417-859-2117 • www.marshfieldmachinery.com

*2018 data including all Mahindra group brand sales. MahindraUSA.com © 2020 Mahindra USA Inc.

NEW MAHINDRA TRACTORS

1626 4WD & LDR 26HP	IN STOCK
2638 4WD & LDR 38HP	IN STOCK
2645 4WD & LDR 45HP	IN STOCK
4550 4WD & LDR 48HP	IN STOCK

USED TRACTORS

MAHINDRA M85P 4WD CAB	LDR29,500
MAHINDRA 2638 38HP 4WD LDR	21,000
MAHINDRA 2638 38HP 4WD	LDR20,000
MAHINDRA 1635 35HP 4WD LDR	19,500
MF 2640 90HP CAB	17,500
MAHINDRA 5035 49HP 4WD LDR	13,500
MF GC1725M 24HP 4WD LDR	13,000
AC 7010 106 HP CAB	9,500
MF 2675 100HP CAB LDR	9,500
AC 175 62 HP LDR	8,500
AGCO ALLIS 4660 52 HP	6,500
MF 1085 81HP	6,500
FORD 2000 31 HP	3,500
MF 135 36 HP	2,750

USED ROUND BALERS

NH RB450 4X5 MESH	24,000
NH RB780A 5X6 MESH	7,500
HESSTON 550 4X6	2,500
HESSTON 560 5X6	2,000

USED MISC.

SITREX 8 WHEEL RAKE	1,750
LELY 8 WHEEL RAKE	1,750
INTERNATIONAL 10FT CUTTER	1,250
MAHINDRA SD6 6FT CUTTER	950
BH RDTH 60 FINISH MOWER	850
RHINO 5FT FINISH MOWER	850
LAND PRIDE 5FT CUTTER	500
ROLLINS 5FT BLADE	250
KING CUTTER BEDDING PLOW	200

Marshfield Machinery Inc.
222 E. Madison
Marshfield, MO 65706
417-859-2117
www.marshfieldmachinery.com



1963 CHEVY SHOP MANUAL: \$20. Vintage Chevrolet 1963-1974 V8 & 6-cylinder manual \$30. Chilton's manual American Volkswagen 1969-1976. \$35. 417-260-0941. Raymondville.

MAC'S TIEDOWN STRAPS: Like New. \$80. 417-260-0941. Raymondville.

NOW BUYING STANDING PINE TIMBER: \$0.20 board ft. International Scale. All stumps and slash mulched; no mess left behind. We also log small acreage, mobile sawmilling available as well. 417-991-9280.

WE BUILD HOUSES, BARN & GARAGES: Free Estimates. 417-241-3280.

FLAT CREEK ROCK FOR

DARDEN PROFESSIONAL TIMBER HARVESTING, BUYING STANDING TIMBER: Great prices, improve wildlife habitat and improve forest health. State Certified & Fully Insured! 573-247-4808. Salem.

D&H OUTDOOR WOOD FURNACES: Complete heating & cooling systems. Owner Larry Harmon 573-743-6943. Cherryville.

JOE THEISMANN AUTOGRAPHED CAREER STAT JERSEY: JSA COA. Text for pictures. \$95 417-318-8932. Houston.

K.C. CHIEFS SUPERBOWL 2019 DAMIEN WILLIAMS AUTOGRAPHED JERSEY: JSA COA. Text for pictures. \$135. 417-318-8932. Houston.

LAWN MOWING & YARD WORK SERVICES: 417-288-8123. Lebanon.

FREE HOSPITAL BED: Will need to be picked up. Call for info 417-650-7400. Lebanon.



Meadowview Dutch Market

Bulk & Surplus Groceries • Prices Subject to Stock on Hand

Call to Order
417-993-3017

Sale Dates April 5th, 2023 to April 12th, 2023 while supplies last!

DELI SPECIAL

TAVERN SMOKED TURKEYREG. \$6.29 LBSALE \$5.79 LB
HOT PEPPER CHEESEREG. \$5.59 LBSALE \$5.09 LB

TRY our Fresh Homemade DELI Sandwiches: TURKEY, HAM, ROAST BEEF, ITALIAN, BLT'S, PULLED PORK AND BLT PULLED PORK (MADE YOUR WAY)! COME IN OR CALL to order! ALSO Custom Deli trays! Veggie OR FRESH Meat-N-Cheese!

<p><i>Philadelphia</i> Cream Cheese</p> <p>\$5⁹⁹ 3 LBS</p> 	<p><i>Fully Cooked</i> Breaded Chicken Patties</p> <p>\$1⁵⁰ LB</p> 	<p><i>Cheddar Cheese</i> Slices</p> <p>\$1⁹⁹ LB</p> 	<p><i>Yogurt Covered</i> Animal Crackers</p> <p>99¢ LB.</p> 
<p><i>J.D. Applewood</i> Bacon</p> <p>\$2⁹⁹ 16 OZ.</p> 	<p><i>Neopolitan</i> Ice Cream</p> <p>69¢ 56 OZ.</p> 	<p><i>Root Beer</i> Soda</p> <p>2 LITERS 75¢</p>	<p><i>Turkey</i> Chili</p> <p>89¢ LB APPROX. 5 LB</p> 

MEADOWVIEW DUTCH MARKET
417-993-3017 Hours: Mon-Thurs 8-5pm
Fri 8-6pm • Sat 8-5pm
23 Miles West on Hwy 64 • Right on T Hwy
9 miles • Left on E Hwy 1 mile on Left

DUTCH COUNTRY STORE, LLC
573-378-4395
Hours: Mon-Thurs 8-5pm
Fri 8-6pm • Sat 8-5pm
5 miles East of Versailles off Hwy C on Kelsay Road

NOW ACCEPTING CREDIT, DEBIT CARDS & EBT

CLOSED ON FRIDAY
IN OBSERVANCE OF GOOD FRIDAY
REOPEN SATURDAY

BONUS SPECIAL
SPLIT CHICKEN BREAST

99¢
LB.



ANTIQUHOG OILER: \$35. 573-308-5884. Rolla.

460 FORD ENGINE BLOCK: \$100. 573-308-5884. Rolla.

TRAILER HOUSE RIMS: \$10 each. 573-308-5884. Rolla.

4x5 GRASS HAY: \$60 per bale. 300 square bales at \$6 per bale. 573-308-5884. Rolla.

6FT X 10FT GRAIN BOX: On 2-Wheel Trailer. \$400 O.B.O. 573-308-5884. Rolla.

LANDSCAPING: 573-308-5884. Rolla.

25 SECLUDED ACRES: Powerlines on two sides of property. One hour from Springfield. Hunter's Paradise. Stream through property. Cash Only. \$8,000/acre. Must take all. 00417-741-1232.

HIGHPOINT GREENHOUSE: Open for the season. Garden seeds, vegetable and flower plants, seed potatoes, onion sets and plants, herbs, etc. 417-741-2793. 9337 Warner Rd. Hartville.

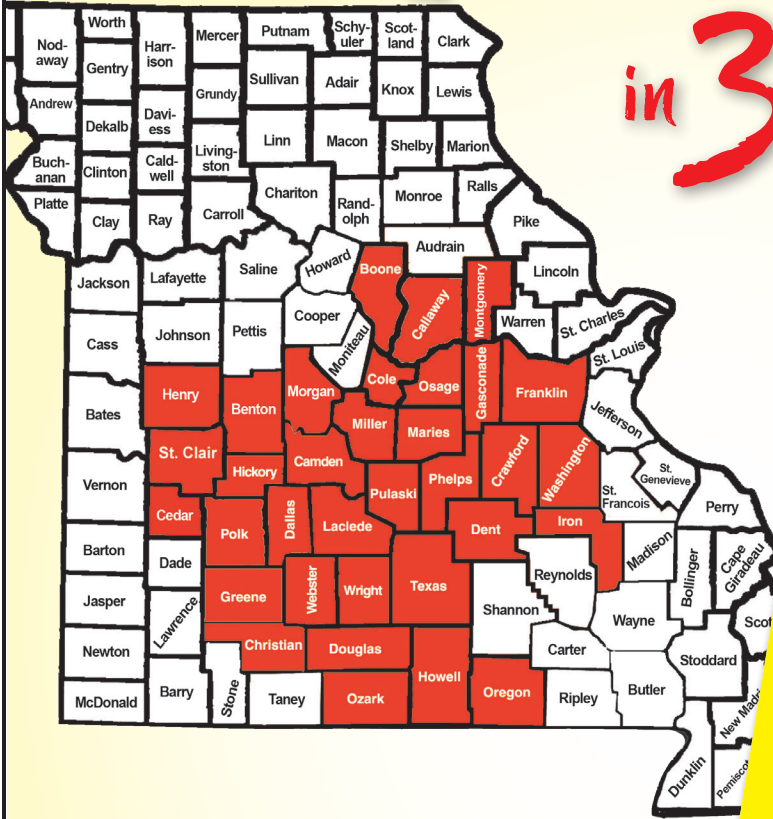
STAN MUSIEL CANCELED CHECK: Full signature with authenticity. \$55. Text for pictures. Mint condition. 417-318-8932. Houston.

VINTAGE WORKING 1967 SINGER SEWING MACHINE: Special zigzag model 638 in cabinet with original instruction book. \$60. 210-787-8222. Linn Creek.

NOW BUYING STANDING RED AND WHITE OAK TIMBER: All slash will be trimmed to lay flat or placed in tidy piles for wildlife. No scarred-up trees or ruts from heavy logging equipment. We use low impact compact track loaders to minimize disturbance in your forest. Missouri Land Service LLC. 417-991-9280.

BUYING OLD BARN AND LUMBER: 417-298-3475 Leave Message.

Serving Central Missouri in 34 counties!



- Benton
- Boone
- Callaway
- Camden
- Cedar
- Christian
- Cole
- Crawford
- Dallas
- Dent
- Douglas
- Franklin
- Gasconade
- Greene
- Henry
- Hickory
- Howell
- Iron
- Laclede
- Maries
- Miller
- Montgomery
- Oregon
- Osage
- Ozark
- Phelps
- Polk
- Pulaski
- St. Clair
- Texas
- Washington
- Webster
- Wright
- Morgan

WEEKLY TRADER MAGAZINE

417-532-9131
100 E. Commercial St.,
Lebanon, MO 65536

WWW.MYWEEKLYTRADER.COM

f @myweeklytrader

MASTER SPANISH TEACHER DISPOSING LARGE AMOUNT OF FREE MATERIALS: To a public, private or co-op school interested. 660-438-4357. Warsaw.

POOL TABLES: Installations, moves, recovers, repairs, accessories, etc. 573-646-1700.

BLUE HEELER PUPPIES: Raised for 50 years, good with cattle or as pets, pups already working. \$125. 660-553-2333. Cole Camp.

1979 HONDA 750 ANNIVERSARY EDITION BIKES: Several to choose from. Selling off collection. Call for prices. Bikes are priced well below market value. Will NOT respond to text. 636-228-4204 or 636-359-6189.

2017 POLARIS RANGER XP 1000: Very good condition. \$11,000. 417-464-3895. Mt. Grove.

HORSE OR LIVESTOCK AUTOMATIC WATERER: \$100 cash. 417-599-8089. Willard.

2 ELECTRIC MOTORS: Diehl 1/3 horsepower and Wagner Electric 3/4 horsepower, includes 21 pulleys various sizes and widths. \$75. 210-787-8222. Linn Creek.

2 FEMALE TOY SCHNAUZER/POODLE MIX: 417-664-5926. Lebanon.

HORSE BONDING PASTURE & RUBBER PADDED BOX STALLS: \$300 a Month. Write with number to call back at 3676 Davis Rd Mansfield, MO 65704.

2002 HONDA VTX: 1800 CC. 1 owner. 573-330-7094. Patosi.

Starnes Auto LLC
22115 Rt. 66 • Lebanon, MO 65536
417.718.2707 Cell
417.588.3159 Office
www.starnesauto.com



WE'RE HIRING

PAINTERS & REBUILDERS

Call Amanda or Alva for more info.

SUPPORT SQUAD
#Crew'sCrew

WE DO ALIGNMENTS!

Wright Spray Foam Insulators, LLC
Commercial & Residential
Call for FREE Estimates!

Ervin Gingerich 417-926-2052
B. Eli Yoder 417-746-4932

77 JEEP CJ5 FOR SALE: Runs good, drives good. \$7,500. 417-343-3928. Marshfield.

IT'S FAINTING GOATS SEASON! Docile, non-jumping purebreds. Which are great for small acreages & as pets. Additional info on website; www.greenacresvillage.com or text 573-216-7796. Lake of the Ozarks.

NEED YOUR CDL????? We furnish the truck & trailer. We teach all requirements for ELDT & skills test. We go to the state highway patrol with our truck. Requires only 2 days of in person training. Much cheaper way to get CDL. Jefferson City MO, Willow Springs MO, Strafford MO, 573-353-2853. For more info www.capitaltruckdrivinginstitute.com

WANTED OLD MILITARY RIFLES & PISTOLS: 816-838-6254. Lee's Summit.

OMAR'S DOZING

- ➡ Clear land
- ➡ Clean up woods
- ➡ Make driveways
- ➡ Clear property lines
- ➡ Build ponds

Amish Owned & Operated
LEAVE MESSAGE: 417-741-0440
Hartville & Surrounding Areas

FULLBLOOD YEARLING RAMS: One Dorper and two St. Croix. \$500 each. Call 417-458-1771.

1939 GRAHAM BRADLEY: Needs restored. Runs good, has side panels, narrow front end. New grill & half grill. Plus, parts tractor. \$3,500. 417-594-1656. Richland.

METAL ROOFS: We repair leaky metal roofs with warranty. Also, flat roofs. Very affordable. Cover all of state. 573-338-1148. Jefferson City.

WANTED NEW HOLLAND SKID STEER 865: Any Condition. Call Bob 573-697-5143.

JOHN DEERE 466 ROUND BALER: Monitor, Kicker, 4x6. \$4,750. 573-765-4406. Richland.

Pine Ridge Rustic
Log Home Building Supplies

Services Offered!

- Installation
- Pre-finishing available on interior & exterior
- Dealer for exterior stains

www.pineridgerustic.com

523 CR 2410 • Salem, MO 65560 • Ph: 573-729-7226

- Log Siding
- Beveled Siding
- Car Siding • Red Cedar
- Western Cedar • Pine

PEMBROKE WELSH CORGIS: D.O.B. 1/12/23 & 1 D.O.B. 7/20/22. U.T.D. on shots & wormer. \$300. 417-741-2949. Grovespring.

SUPER M FARMALL: new 15 x 5 x 38s: for \$2,500 417-349-2908

1 M FARMALL: with rebuilt motor for \$1,800 417-349-2908

FORD 6610 DIESEL TRACTOR: Cab & Air, 70 H.P. with Quick Tack Loader, Bucket & Bale Spike. \$20,750. 573-765-4406. Richland.

A. C. WD-45: Parting out W.F. PS 3-point hitch 417-967-6841

1998 CHEVY SILVERADO 2500: 4X4 manual shift, gas, black, \$5,800 OMO. Weatherby vanguard 270 walnut stock \$680 OMO. 417-327-9294 Deep Water.

JOHN DEER 920 DISCBINE: With rollers. \$7,500. 573-765-4406. Richland.

CASE IH 385 DIESEL TRACTOR: Canopy, 2,000 Hours, Good \$6,950. 573-765-4406. Richland.

IHC 806 DIESEL TRACTOR: Turbo \$9,750. 573-765-4406 Richland

JOHN DEERE MX10 PULL TYPE BRUSHCUTTER: Good. \$6,950. 573-765-4406. Richland.

SILAGE OR ROUND BALE FEEDER TRAILER: 30FT. Looks Like New \$3,500. 573-765-4406. Richland.

MODERN 3 POINT 6 FT BRUSHCUTTER: \$475 573-765-4406 Richland



Over 500 Attachments IN STOCK!
We ship NATIONWIDE!

Craig Equipment
2681 W. Pearce Blvd | Wentzville, MO 63385
636-856-8555
www.CraigEquipment.com
*Availability & Price subject to change without notice

			
2016 Bobcat MT85 24.8hp, 1538hrs, NEW TRAX.....\$24,900			2016 Toro Dingo TX1000 24.9hp, Kubota, 574hrs, Narrow Trax.....\$28,900
			
2017 Deere 312GR 51hp, 910hrs, OROPS, NEW TIRES.....\$27,500	2022 Deere 317G 65hp, 1hr, AC/Cab, Joystix, PwrBkt Chngr.....\$66,900	2022 Deere 333G *HiFlow*100hp, 1hr AC/Cab, Joystix, LOADED!.....\$104,900	2016 Kubota SVL95-2 *HiFlow*96hp, 2068hrs, AC/Cab, PolyDoor, Joystix.....\$56,900
			
2016 Bobcat T750 85hpDEF 3231hr 1 OWNER AC/Cab PwrBktChngr.....\$42,900	2008 Bobcat T250 *HiFlow*81hp, 3739hrs, AC/Cab, Joystix.....\$42,900	2009 Bobcat T190 *HiFlow*66hp, 627hrs, AC/Cab, Joystix, PwrBktChngr.....\$52,500	2012 CAT 289 *HiFlow* 3353hr AC Joystix.....\$44,900

FREE INTERACTIVE MORGAN HORSE FUN! : selfies with morgan horses, kids activities, videos, painting, educational, demos, & carriage rides. Laura Ingalls Wilder door prizes, history. #meetthemorgan in facebook for more information. Held at 5555 South State Highway NN, Rogersville

PAIR OF CAR OR PICKUP RAMPS: 70" tall on end and 16" wide \$45 417-260-0941

BOX OF SILVER-PLATED SILVERWARE: at least 75 years old \$60 417-260-0941

M.F. 10 FT WHEEL DISK: \$2,300. 573-765-4406. Richland.

NEIGHBORHOODS HOME IMPROVEMENT STORE: 417-533-5080. Lebanon

JOHN DEERE 2640 DIESEL TRACTOR: 70 H.P., with John Deer 146 Loader. \$13,300. 573-765-4406. Richland

BOBCAT 753 DIESEL SKID STEER LOADER: \$12,500. 573-765-4406. Richland.

CASE 410 DIESEL SKID STEER LOADER: Nice, \$19,500. 573-765-4406. Richland.

FOR SALE: 8950 Kubota 4X4, 96 horsepower, good rubber \$12,000 573-301-2148

CASE 580B DIESEL BACKHOE LOADER: \$9,975. 573-765-4406. Richland.

1970s KIDS METAL STOVE & FRIDGE: Nice Lithographic paint, 18" wide x 36" high. \$75. 573-364-7465. Rolla.

IHC 475 HYD FOLD DISK: 18 ft \$2,750
573-765-4406 Richland.

DISCOUNT NEW MOBILE HOMES:

We will beat any price on any home
Guaranteed, financing, 573-499-9993.
columbiadiscountshomes.com

**MODEL 1911 FRAME 8-SHOT C02
PISTOL:** Like new, in box with C02
cartridges, 4 clips, pellets & all paperwork.
\$95. 573-364-7465. Rolla.

TINY HOMES: Missouri Franchise 573-
881-7965

1890 GOLD TESTING KIT: Glass acid
beakers + antique wooden case. \$100. 573-
764-3517. Call in PM.

LIONEL TRAIN SET: Steam engine,
tender, caboose and other car, track, and
transformer. \$195. 573-364-7465. Rolla.

YOUR FULL SERVICE AUTO BODY SHOP

Call today for an appointment or estimate!

DAVIDSON'S Restorations, insurance jobs, and more!

CUSTOM AUTO BODY 417-288-1589 • 115 Lincoln St., Buffalo, MO • f @DavidsonCustoms

**SMALL TOWN MAYOR OF
WAYNESVILLE, MO:** Political
Adventures of the Ozarks by Luge
Hardman, featuring small town politics
and small-town life, featuring local
photographers and local characters. \$9.50.
417-532-2045. Lebanon. (Leave message
and phone number).

**WEATHERED BARN WOOD
SIDING:** 10" wide. 573-729-7226. www.pineridgerustic.com Salem.

LOG SIDING: 2X8 Pine/Western Cedar
www.pineridgerustic.com 573-729-7226.
Salem.

HARLEY FAT BOBS: Custom flame paint
w/ gas caps + lines. \$100. 573-764-3517. Call
in P.M.

**COLT REVOLVER DEALER
CATALOGS:** Circa 1950's + 1960's. All for
\$100. 573-764-3517. Call in P.M.

I BUYused mobile homes. Call or
text 573-338-6250 or email GregS.CDH@outlook.com

**REGISTERED HEREFORD & ANGUS
BULLS:** Home raised, Some Show-Me
Select Qualified. 573-701-7828. Belgrade.

**3 GENTS WITTNAUER WRIST
WATCHES:** 10k gold + 23J. All \$200. 573-
764-3517. Call in P.M.

1500 VINTAGE WRISTWATCH DIALS:
\$100. 573-764-3517. Call in PM.

SLIGHTLY USED PUZZLES: Will sell or
trade. 417-818-3469. Strafford.

**110 PORCELAIN POCKET WATCH
DIALS:** Perfect for arts & crafts. \$100. 573-
764-3517. Call in PM.

460 FORD ENGINE BLOCK: \$100. 573-
308-5884. Rolla.

Buildings • Hunter's Cabins • Lawn Furniture

JAMCO BUILDERS

JAMCO Portable Buildings

800-688-2064 • 307 Enterprise Dr. • Seymour, MO • www.jamcobuilders.com

Rent To Own Plan

CALUS LOGGING

20 YEARS EXPERIENCE

Buying Standing Timber
Walnut & Oak

Joe Calus, Owner

CERTIFIED 417-926-4606 • MTN. GROVE

USED DOUBLE-WIDE: 3 bdr, 2 bath.
WOW! \$39,900 delivered & set, Financing.
573-657-2176. amegamobliehomes.com

MODULAR BUILDING: Save \$\$\$ with
us, Financing professionals 573-657-7040
chateauhomes.net

POSTER BED: \$150. 417-741-1232.

FERGUSON DEALER SHOP MANUAL:
Covering TE-20, TO-20 & TO-30 Model
tractors. \$40. 636-239-2695 or 314-560-5700.
Washington.

**LIGHTLY EXPERIENCED GOLF
BALLS:** \$3 a dozen. 417-818-3469.
Strafford.

HARLEY 45 SOLO: factory rear brake
drum + sprocket. \$150. 573-764-3517. Call
in PM.

**RUBBER & LEATHER BOOTS AND 5-
Buckle OVER SHOES:** Men's 11, Women's
7, some insulated. \$15-\$40 obo. 636-239-
2695 or 314-560-5700. Washington.

VINTAGE WORKING 1967 SINGER SEWING MACHINE: Special zigzag model 638 in cabinet with original instruction book. \$60. 210-787-8222. Linn Creek.

K.C. CHIEFS SUPERBOWL 2019 DAMIEN WILLIAMS AUTOGRAPHED JERSEY: JSA COA. Text for pictures. \$135. 417-318-8932. Houston.

HEARTH CRAFT GLASS BI-FOLD FIREPLACE DOORS PURCHASED AT FORSHAW'S FIREPLACE: Antique brass. \$160 obo. 636-239-2695 or 314-560-5700. Washington.

THREE SHEPHERD'S HOOKS: To hang potted plants. Black iron. 5 1/2-6FT. \$50. 636-239-2695 or 314-560-5700. Washington.

HARLEY PANHEAD DISTRIBUTOR: original, chrome + complete. \$125. 573-764-3517. Call in PM.

FOR SALE: 2 Dayco motorcycle covers for Harley or other big bikes. \$50 each. 417-260-0941. Raymondville.

1963 CHEVY SHOP MANUAL: \$20. Vintage Chevrolet 1963-1974 V8 & 6-cylinder manual \$30. Chilton's manual American Volkswagen 1969-1976. \$35. 417-260-0941. Raymondville.

MAC'S TIEDOWN STRAPS: Like New. \$80. 417-260-0941. Raymondville.

NOW BUYING STANDING PINE TIMBER: \$0.20 board ft. International Scale. All stumps and slash mulched; no mess left behind. We also log small acreage, mobile sawmilling available as well. 417-991-9280.

ANTIQUE HOG OILER: \$35. 573-308-5884. Rolla.

4x5 GRASS HAY: \$60 per bale. 300 square bales at \$6 per bale. 573-308-5884. Rolla.

6FT X 10FT GRAIN BOX: On 2-Wheel Trailer. \$400 O.B.O. 573-308-5884. Rolla.

FREE HOSPITAL BED: Will need to be picked up. Call for info 417-650-7400. Lebanon.

2 ELECTRIC MOTORS: Diehl 1/3 horsepower and Wagner Electric 3/4 horsepower, includes 21 pulleys various sizes and widths. \$75. 210-787-8222. Linn Creek.

LAPP'S CONSTRUCTION **417-664-8913**
Free Estimates

Pole Barns • Garages • New Home Construction
Remodels • Roofing • Windows • Siding • Doors
Decks & Porches • All Types of Concrete Work

Jesse Lapp
2099 Deerwood Road
Groves Springs, MO



1962 HARLEY SPORTSTER 900CC: original distributor. \$50. 573-764-3517. Call in PM.

ROUND TABLE: \$40. 417-741-1232.

NEW SQUARE D RAINPROOF 50AMP DISCONNECT: \$160. 636-239-2695 or 314-560-5700. Washington.

FOR SALE: Transmission for 56 & 06 series International tractors. \$675. 636-239-2695 or 314-560-5700. Washington.

USED JET HOME POLLUTION CONTROL PANNEL: Model CP700. \$65. 636-239-2695 or 314-560-5700. Washington.

FIRST GEAR KILIMANJARO MOTORCYCLE COAT: XL, but runs smaller. Zip out liner, Kevlar padding on shoulders & elbows, vented, rainproof. Like new. \$95 FIRM. 417-260-0941. Raymondville.

2 GOODYEAR WRANGLER TIRES: Kevlar LT245/70R17, all terrain, \$100 for the pair. 417-417-260-0941. Raymondville.

PLAD PANTRY
DISCOUNT & SURPLUS FOODS FRESH PRODUCE LLC
417-532-4700



Seasoned Beef Taco Meat	\$8.99	5 lbs.
Uncured Beef Cocktail Franks	\$1.59	9.5 oz.
Chocolate Peanut Butter Ice Cream.....	\$3.29	1.5 qts.
Slow Cooked Uncured Ham.....	\$0.99	6 oz.
Buttermilk Pancake Mix.....	\$2.99	5 lbs.

1571 State Hwy 64 • Tunas, MO 65764
Hours: 8:30 a.m. to 5:30 p.m. • Closed Wed. & Sun.



WE BUY AND SELL
new and used mobile homes



(417) 501-1061

RAINBOW VACUUM CLEANER: Excellent Condition. \$200. 417-260-0941. Raymondville.

TRAILER HOUSE RIMS: \$10 each. 573-308-5884. Rolla.

Larry Heisel Rentals



HEISEL 573-779-1500
LARRY'S CELL 636-432-9460

Crawler Loaders Excavators, Backhoes
We Deliver!

Call Larry!
Rental Available in 636 or 573 Area Codes
573-779-1500

DARDEN PROFESSIONAL TIMBER HARVESTING, BUYING STANDING TIMBER: Great prices, improve wildlife habitat and improve forest health. State Certified & Fully Insured! 573-247-4808. Salem.

GUNS-VEHICLES-TRACTORS-EQUIPMENT-TOOLS-ANTIQUES-AUCTION

SATURDAY APRIL 8, 2023 10:00AM

LOCATED: 724 FIVE BROTHERS RD, PROTEM, MO

FROM 6 MILES NORTH OF PROTEM AT HWY 160 & 125 S. GO 2 MILES EAST ON HWY 160 TURNS INTO HWY 125 GO 6 MILES, TURN RIGHT ONTO MCBRIDE RD (ACROSS FROM POWER SUB STATION) GO 1 MILE THEN RIGHT ON FIVE BROTHERS RD, GO 1 MILE TO AUCTION

FOR PICTURES SEE WEBSITE OR AUCTION ZIP.COM

LETTER OF CREDIT MADE PAYABLE TO MELTON AUCTION & REALTY WILL BE REQUIRED FOR PURCHASE OVER \$5000

GUNS

1. REMINGTON 870 EXPRESS 12 GA SER W839982M
 2. STEVENS MOD 9478 10 GA SINGLE SHOT SER D048266
 3. LYMAN 50 CAL BLACK POWDER SER 103715
 4. REMINGTON 11-48 12 GA AUTO SER 5022321
 5. TAURUS 9MM SLIM MOD PT709 SER TCV87438 W/BOX
 6. HARDENED ARMS 223 MOD HRD-N15 SER N15L-0611 W/3X9 SPOT ON SCOPE
 7. THOMPSON CENTER RENEGADE 50 CAL SER 326999
 8. SAVAGE MOD 93R17-17HMR BOLT ACTION SER 0315923 W/3X9 REDFIELD SCOPE
 9. NEW FRONTIER ARMORY 223 MOD LW15 SER NLV83296 W/2 1/2X4 PERSUIT XL SCOPE W/ LASER GENETICS SUB ZERO ND3P RED DOT SYSTEM
 10. SHAPLEIGH KING NITRO 22 PISTOL NO SER
 11. F.LLI-PIETTA MADE IN ITALY 44 BLACK POWDER PISTOL, STAINLESS
 12. GERMAN DERRINGER CORP 22 PISTOL
 13. PHOENIX ARMS AUTO 22 MOD HP22 SER 4206885
 14. REMINGTON 870, 200TH ANNIVERSARY LIGHT CONTOUR 12 GA W/CHOKE SER NRA20160496
 15. WINCHESTER MOD 100, 308 W/SIMMONS 3X9 SCOPE SER A217490
 16. WINCHESTER MOD 70, 7 MM MAG SER G2252655
 17. REMINGTON BOLT ACTION 22 MOD 41-2 N/SER
 18. MOSSBERG BOLT ACTION 22 MOD B N/SER
 19. WINCHESTER 67A BOLT ACTION 22 N/SER
 20. STEVENS MOD 87A 22 AUTO
- MUZZLE LOADER SUPPLIES—HOLSTER—GAME CAM

VEHICLES-TRAILERS-TRACTORS-EQUIPMENT-MOWER

1973 INTERNATIONAL SCOUT II, V8 4 SPD—1972 CHEVY CUSTOM PICKUP 1/2 TON 4X4, 350 ENGINE, 4 SPD—1968 CHEVY PICKUP 2 WHEEL DRIVE, 6 CYL, 4 SPD,—1971 FORD DUMP TRUCK V8—1989 FORD L9000 SEMI TRUCK 424,715 MILES RUNS—1951 GMC 2 TON TRUCK, NO BED—1960'S MOD FORD 2 TON DUMP TRUCK, NO TITLE—GMC 2 TON TRUCK NO TITLE--(3) INTERNATIONAL SCHOOL BUS BODIES—18' MILLER TILT TOP TRAILER—24' TANDEM AXLE TRAILER NEEDS FLOOR—18' TILT TRAILER 3500 LB AXLES, PIPE RAIL--(2) 2 WHEEL PICKUP BED TRAILERS—ANTQ JOHN DEERE TRACTOR—DEUTZ D4506 DIESEL TRACTOR 45 HP RUNS—FORD 8N TRACTOR—T55 ALLIS CHALMERS DOZER—PARTS DOZER—SATOH STALLION 4 WHEEL DRIVE, LIVE PTO W/FRONT END LOADER, 5' BUCKET, RUNS 1079 HRS—BRUSH HOG 20' BAT WING—8' LITTLE RHINO ROCK RAKE—NEW HOLLAND MODEL 469 HAYBINE—8'X2' CONCRETE FIELD ROLLER—JOHN DEERE BALER MOD 14T SQUARE BALER—JOHN DEERE HAY RAKE MOD 640—JOHN DEERE HAY RAKE PARTS ONLY—NEW HOLLAND MOD 450 SICKLE MOWER—6' BOX BLADE—6' BLADE—3 PT CARRY ALL—7' SPRING CULTIVATOR—WIKOME POST HOLE DRILL W/12" & 8" AUGER—ANTQ IMPLEMENTS—KAWASAKI MULE 2500 SIDE X SIDE 463 HRS—AGCO ALLIS ZT 1644 MOWER DON'T RUN—JOHN DEERE LOADER FITS 4430 W/BRACKETS—HAY SPIKE—6' BUCKET—EAGLE 3 PT SEEDER—SINGLE TURNING PLOW—3 PT BALE SPIKE—HUSQVARNA ZERO TURN MOWER MOD MZ61, 27 HP BRIGGS & STRATTON W/VERY LOW HRS—CATTLE FEEDER—HONDA 300 FOUR WHEELER, DON'T RUN—VERY LG LOT SCRAP METAL—HAY ELEVATOR—HOG PANELS

OWNER: ESTATE OF DONNIE BRIGHTWELL

TOOLS

DR FIELD & BRUSH MOWER W/KAWASAKI MOTOR, RUNS—HUSQVARNA BATTERY 40 VT CORDLESS HEDGE TRIMMER 115HD55—STIHL 021 & 210 CHAIN SAWS—HOMELITE GAS SAW—HOMELITE ELECT WEED EATER—STIHL 024 AV CHAIN SAW W/16" BAR—ECHO CS-440 CHAIN SAW W/18" BAR—ECHO SRM-2105B WEED EATER W/COMBO POLE SAW—CENTRAL MACHINERY 12 SPD 5" DRILL PRESS—4' HI LIFT JACK—MAKITA 14" CHOP SAW—POWER CRAFT DRILL PRESS ROUTER/SHAPER—MILLER ROUGHNECK 1-E PORTABLE WELDER W/LEADS—EXCELL 2500 LB PRESSURE WASHER—COLEMAN 4000 WATT GENERATOR—MILLER DIAL ARC 250 AC/DC WELDER—RIDGID TRI STAND—SANBORN 5 HP AIR COMPRESSOR 220 VOLT—SHOP FOX BAND SAW—CRAFTSMAN 14 DRAWER TOOL CHEST—KOBALT MATERIAL ROLLER—6 HP SHOP VAC—CENTRAL HYD 2 1/4 TON FLOOR JACK—5 GAL GREASE PUMP—AIR TANK—2 1/2 TON FLOOR JACK—STEEL WELDING TABLE ON CASTORS—OXYGEN ACETYLENE TORCH SET—WORK SAVER SEEDER—CRAFTSMAN 3/8" AIR RATCHET—3/8" AIR IMPACT—SUNEX 3/8" AIR DRILL—INGERSOLL RAND DIE GRINDER—FIRE STORM DETAIL SANDER—FIRE STORM VAC—SKIL HAND SANDER—CRAFTSMAN 1 1/2 HP ROUTER—B&D 7-9" SANDER POLISHER—B&D 1/2" DRILL--(2) GALLAGHER FENCE CHARGERS—PARMAK FENCE CHARGER—DEWALT DW305 SAW ZALL—HITACHI DUAL TANK AIR COMPRESSOR—AIR TANK—TRAILER TONGUE JACK—LARIN 2 TON FOLDING ENGINE HOIST--(2) CREEPERS—POST HOLE DIGGER—CHICAGO ELECT 5" DA SANDER—SKIL 6 AMP BELT SANDER—MASTER MECHANIC 2 1/3 HP 7 1/4" SKIL SAW—HUTCHINS HUSTLER AIR FILE—BELL SAW CHAIN SAW SHARPENER—BATTERY CHARGER 25 AMP—FAST CHARGER 265 AMP BATTERY CHARGER—RIDGID PIPE WRENCHES—CHAIN BOOMERS—COLEMAN LANTERNS—HYD BOTTLE JACKS—VICES—COME ALONG—LG WRENCHES 1 1/8-2 1/2"—CARPENTERS TOOL BOX—6' WOOD STEP LADDER—LIMB SAWS—4 TON PORTA POWER—WILTON 4" VISE—BUFFALO 6" GRINDER—HAND SAWS—HAMMERS—BOLT BIN W/BOLTS—6 1/2" SKIL SAW—3/8" MAKITA DRILL—4 1/2" & 5" MAKITA GRINDER—ELECT CHAIN SAW SHARPENER—50' AIR/WATER HOSE REEL—BATTERY FLOAT CHARGERS—VISE GRIP WRENCH—PUSH SEEDER—FENCE STRETCHER—FOLDING 12' LADDER—ALUM BI FOLD ATV RAMPS—OAK LUMBER—OLD TANKS—HYD PRESS

ANTIQUES-DISHES-MISC

1 LG LOT PINK DEPRESSION, DIFFERENT PATTERNS—VIRGINIA ROSE LG LOTDISHES—GALVANIZED WATER JUG—WOODEN PEPSI & COKE CRATES—ICE TONGS—JUICER—PORCELAIN TEA POT—SEVERAL PC'S GRANITE—WASH BOARD—SCYTHE—CROSS CUT SAW—CROCK JUG—CAST IRON RIVAL WOOD STOVE—CAST SKILLETS & PANS—FLOUR SIFTER—COOKIE JAR—PERFUME BOTTLES—COLANDER—GRATERS—VICTOR SORGHUM PRESS—CHINA CABINET—COW BELL—DECORATIVE IRON—PROFESSIONAL 3 BURNER OUTDOOR COOKER—IRON WHEELS—SADDLE—TACKLE BOXES, MISC FISHING RODS—METAL TRACTOR SEATS—METAL MINNOW BUCKET—WELL BUCKETS—MOTOR OIL BUCKET—METAL LAWN CHAIR—4' FIBERGLASS TABLE—PORCH SWING—WATER SKIS

ANNOUNCEMENTS MADE ON SALE DAY WILL TAKE PRECEDENCE OVER ANY OTHER PRINTED MATERIALS. NOT RESPONSIBLE FOR ACCIDENTS OR LOSS OF ARTICLES ON OR NEAR SALE SITE.

MELTON AUCTION & REALTY CO LLC

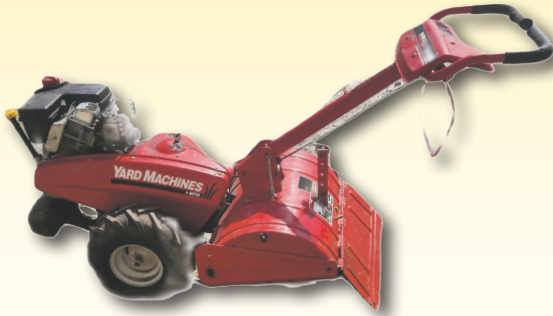


meltonauctionrealty.com | roger@meltonauctionrealty.com
 Roger Melton | Nixa, MO | 417-830-0153 or 417-725-1801
 Brad Cole | Nixa, MO | 417-840-2950
 Hal White | Nixa, MO | 417-343-2334
 Tanner Foster | Galena, MO | 417-840-5519

R&R AUCTION SERVICE

FRIDAY NIGHT, APRIL 7TH @ 6PM

at the R&R Auction House, 1644 S Ash in Buffalo, MO



This auction will feature hundreds of new old stock car and truck parts 40's, 50's, and even into 2000's including but not limited to...Lots of carburetors, Power boosters, water pumps, master cylinders, new shock absorbers, 5 gallon Champion oil, pistons, bearings, rings, flashers, push button switches, new tail lights for Ford Ranger 83-89, air filters, transmission filters, oil filters, gas line, u joints, timing gear & chain sets, new plug wires, thermostats, locking

gas caps, Guns (selling at 7pm) Savage Mark II 22 w/scope, Antique .22 single shot, H&R 280 Rocky Mountain Elk Foundation edition, H&R revolver, Foremand revolver, Hopkins & Allen 12ga, 280 ammo MTD Yard Machine rear tyne tiller, air tools, wrenches, power tools, spurs, Amana electric dryer, refrigerant reclaim unit, Robin Hood compound bow with arrows and case, 7 foot Frontier box blade, 8 foot Frontier landscape rake, 3 point post auger power head (no bit), chain saws, Large lights, lawn aerator, lots of general merchandise, books, wall decor, bicycles, box lots, Toro zero turn mower with Kawasaki FR691V 24.0 motor (very clean), and so much more!



Please keep watch on our website for added photos.

TERMS: 10% Buyers premium. Cash, check, or credit card with proper I.D. nothing removed until settled for A 3% fee will be added to credit card purchases. Not responsible for errors in listing.

GENERAL AUCTIONEERS

AUCTION

R&R

SERVICE

Auction & Appraisals

For more information contact Professional Auctioneer Russ Weeks at 417-576-7357 or check out www.rrauctionservice.com

Serving this area's auction needs since 1997 with honesty and professionalism. www.rrauctionservice.com

(417) 576-7357 or (417) 345-4140



TURNER AUCTION SERVICES SPRING CONSIGNMENT AUCTION



Saturday, April 8, 2023 • 10:00 A.M.



Valley Lions Club, Belgrade, Missouri (1 mile west of Belgrade)

Accepting consignments until Friday, April 7 at 8PM

**Tractors/Skidsteer/
Vehicles/Trailers**

Caterpillar 277C skidsteer (tracks, 2900 hours, cab, heat, air)
2008 Chevrolet 2500HD (duramax, 4 door, 4wd, B&W gooseneck ball, deleted and tuned, 2 owner, 170xxx miles)
1998 Dodge 2500 (cummins, auto, crew cab, 287xxx miles)
1952 Willys Jeep pickup
2013 John Deere Gator XUV 550 (335 hours, camo)
2015 Polaris Ranger 570 crew
2015 Polaris Ranger (diesel, new motor @ 720 hours)
2004 Kawasaki Mule
2015 Polaris 570 4 wheeler (AWD, EFI, 800 miles)
2012 Suzuki King Quad 450 4 wheeler (4x4)
Yamaha Moto 4 4 wheeler
New Holland TC29D with loader (2000 hours, hydrostatic transmission, belly mower, one owner)
John Deere 2020 with loader
John Deere 950 Diesel
Ford 3910 with loader
Ford 2000 gas
Massey Ferguson 135 gas
Massey Ferguson 50 gas
Gooseneck flatbed 20ft x 82" wide trailer
2021 Diamond C bumper pull flatbed trailer 18ft x 83" wide
Bumper Pull 3 bale self unloading bale trailer

Hay Equipment

VPMI (Vicon) 1411 round baler 5x5
Heston 540 round baler
Vermeer 8 wheel rake
John Deere 350 side delivery rake
John Deere 350A side delivery rake
New Holland 469 haybine 7ft
New Holland 451 7ft sickle mower
International 7ft sickle mower
John Deere 350 7ft sickle mower
Hydraulic Bale Unroller for truck
3pt bale spike
16ft hay wagon

Farm Equipment

15ft batwing brush hog
Howse 10ft pull type brush hog
Bush Hog 3pt ditch bank mower
Bush Hog 3pt 6ft brush hog
Bush Hog 3pt 5ft brush hog
Ford 951A 5ft 3pt brush hog
3pt 5ft brush hog
John Deere hydraulic dump wagon
New Holland manure spreader (pto)
Shaver 3pt 10" post driver
Danuser 3pt post auger with 2 bits
Long 3pt 6ft tiller
3pt 10ft harrow
560 2pt 3 section harrow
John Deere grain drill
Land Pride 3pt 5ft disc
3pt 6ft adjustable disc
Ford 3pt 3 bottom plow
Ford 3pt 2 bottom plow
3pt cultivator

Land Pride 3pt blade
3pt 6ft blade
3pt 5ft blade
Ferguson 3pt 5ft blade
3pt reversible slip scoop
3pt seeder
Ford bumpers
Massey Ferguson Pallet Forks

**Livestock Equipment/
Fence Supplies/Pipe**

Lot of NEW Heavy Duty 10ft corral panels
Lot of NEW Heavy Duty 10ft portable gates
Lot of NEW Heavy Duty 5ft portable gates
Lot of 3 1/2" pipe
Lot of 2 7/8" pipe
Lot of 1 7/8" pipe
Lot of 1.66" pipe
Grain Bin with auger
4ft feed trough
Manual head catch
Automatic head catch
Lot of Clover seed
Lot of New hook over feeders
Lot of New feed pans
Lot of New sorting sticks
Lot of T posts
Several rolls of electric high tensile wire

Lawn/Garden/Shop

Craftsman 60 gal air compressor
Gooseneck plate for truck
USA 1/2 socket set
Dewalt 18v tool set
Makita sawzall
Small vice
Fold up ATV ramps
Goplus Ratchet pipe threader kit

Shop lights
Makita angle grinder
Generator
Air Compressor
(2) 300 gallon fuel tanks
Several 5 gallon buckets of industrial electric contact cleaner
Lot of New gloves

**Estate Guns/
Sporting Goods**

Remington 870 express 12ga
Marlin mod 90 over/under 12ga
EIG-Eibar-Spain 16ga single shot
Sears & Roebuck Mod 101.100A 20ga single shot
New in Box Ruger LCPII 22 pistol SKS
Argentine Mouser 7.65
Swiss Army K31 Schmidt Rubin 7.5
Swedish M96 Carl Gusta Mouser
Lot of Ammo
Lot of knives
Aluminum Jon Boat
NEW Lot of 5'3"x 7'2" rugs
Cow Hides

PLUS LOTS MORE!!!!

COMPLETE LISTING AT WWW.AUCTIONZIP.COM AUCTIONEER ID 43766

TA TURNER AUCTION SERVICES

For more information, call Andrew Turner at 573-760-3755

Auctioneer: Col Andrew Turner

Terms & Conditions: Cash or Good Check - proper ID required -
Not Responsible for accidents or stolen articles.

All announcements made on sale day take precedence over printed material.
"No Alcohol" Lunch Provided by Vally Lions Club

BAUGH ESTATE AUCTION

LIVE AUCTION

Carolyn Baugh will sell her and the late Howard (Bud) Baugh's heavy equipment and tools at public auction on:

Saturday, April 8th, Beginning at 9:00 AM

Location: 8699 Highway 185 Leslie Mo 63056 (Spring Bluff area)

Directions: From Interstate 44, take Exit #225 and go North on Highway 185 for 8.4 miles to auction. From Highway 50 in Beaufort, take Highway 185 South 8 miles to auction. Roads will be marked day of sale.



HEAVY EQUIPMENT / SKIDSTEER (sell at 12:00 Noon)



Case Poclair 220 excavator-226 Deutz engine-6632 hours-3 yard bucket-12M hor. reach-8M depth, Yanmar VIO27 mini excavator-rubber tracks-9" bucket w/thumb-also 17" bucket- front finish blade, Case 1845C skidsteer w/homemade metal tracks-6" bucket, skidsteer 5' and 6' buckets, Vermeer M-475 140 back hoe-trencher, Yale forklift, Cat 1' and 2' excavator buckets, cable unroller



DUMP TRUCKS / TRAILERS (sell at 12:00 Noon)



GMC 5 star General truck-400 Cummins big cams-54,000 GVW-spring suspension-14' bed with air tail gate-13 speed Eaton-Fuller transmission, GMC Brigadier dump truck-Detroit engine-13 speed transmission-14' bed, **TRAILERS**; Big Tex gooseneck-dual 10,000 axles-30' with 5' beaver tail-3 drop ramps-hydraulic winch, Titan livestock gooseneck trailer-24'-tandem axle-6.5' tall, 26' gooseneck horse trailer-2 horse-tack room, gooseneck trailer-metal floor trailer-30'x8.5'-10,000 LB tandem axle, 8'x20' metal grid floor trailer-bumper hitch-double axle, single axle trailer-12'x6.5'-drop ramp, Doolittle 18' bumper hitch car hauler with tilt bed, heavy duty 8.5'x6' utility dump trailer-tandem axle-walking beam, 40' storage container, Weathergaurd sliding truck tool box, diamond plate tool box



FARM SUPPLIES / SCRAP

Used T post, electric fence post, cattle panels, roll used chain link fence, chain link panels, lots of plastic bins in frames-4'x4', lot racking, pallet rack, used tires, tractor tires, 500 GA fuel tank w/electric pump, 1000 GA propane tank, metal 25' light poles, 11'x3' plastic culvert, lots cable-braided cable, barrels, barrel pump, barrel cradle, lot treated timbers, **SCRAP**; iron tubes-channel-beams, lot used copper electrical wire, aluminum cable, (will have 30 days to remove scrap), 2-3 cords of seasoned firewood in metal racks

LUNCH WILL BE SERVED BY
BEAUFORT LIONS CLUB

VIEW OUR PHOTO GALLERY ON
www.breheauction.com

TRACTORS / PROJECT TRACTORS / FARM IMPLEMENTS



International 350 utility tractor-runs, Ferguson T020 tractor-runs, **PROJECTS**; Massey Ferguson 165 gas tractor, Massey Ferguson 50, Golden Jubilee with industrial loader, Ford 8N, 801 Ford diesel tractor, Ford 800Series bluebelly tractor, John Deere 2010 gas tractor with New Idea loader-rear weights, Allis Chalmers 180 gas tractor, **FARM IMPLEMENTS**; 3 point 4' finish mower, 3 point Ferguson 2-14 plow, 3 pt Ferguson 3-14 plow, 2-14 plow, 3-14 plow, 3 pt Massey Ferguson 2-14 plow, 3 point hvy duty 7' disc, 6' brush hog, 3 pt 5' brush hog, 3 pt bale fork, 3 pt YanmahRS1400 5' tiller, 3 pt 5' Woods brush hog, 5' brush hog, (2) Danhauser 3 pt post hole diggers, 3 pt Ford post hole digger, auger, 3 pt 6' box blade, 3 pt Massey Ferguson 6' notch blade disc, 3 pt Ford 5' brush hog, skid steer homemade pallet fork, 3 pt 7' heavy blade, 3 pt blade, (2) 2 point-3 point converters, IH 2 point 2-14 plow, IH 2 pt 7' disc, top links, draw bars, sway bars, brush guard

RV / SUV / FOUR WHEELERS / SCRAP TRUCKS



1994 Spartan Motors RV-Dutch Star-Model C8.3-diesel-250 HP-shower-kitchen-living room couches, Mercury Mountaineer 2004-AWD-V8 engine, ATVs; Honda Fourtrax 300 4 wheeler, Honda Fourtrax 250 4 wheeler, 380 three wheeler-Kohler engine, NIB 5000 LB ATV winch, ATV spreader, 12 volt sprayer, **SCRAP**; Ford F-150 XL pick up-wrecked (parts), Econoline 350 work van, 5th wheel hitch-NIB

SHOTGUN / COLLECTIBLES / SADDLES

Maverick 12 gauge pump shotgun w/pistol grip, .22 bullets, Keen Kutter hatchet/nail puller, 2 man saw, ice tongs, log tongs, iron implement wheels, Western Flyer bike, small cube safe, canoe, (2) Western saddles, leather rifle scabbard

TOOLS

Stihl TS 350 Super wrecking saw, Craftsman 8" bench top drill press, Sears bench vise, heavy duty rotating bench vise, bench grinder, Bosch commercial hammer drill, Craftsman rolling compressor-240V, air hose-reel, pneumatic tools, Emerson Electric arc welder, welding helmets, Delta grinder, metal cut off saw, router table, lot Dewalt cordless tools-hammer drill-drill-light-reciprocating saw, impact wrench, Greenlee knock out punches, 3/4" socket set, large clevis hooks, rigging straps, binders, chain hoist, chain ratchets, workmate tool benches, large wrenches, open-box end wrenches, sockets, ratchets, deep well sockets, jig saw, reciprocating saw, wood plane, circular saws, drills, drill bits, screw gun, rotozip, hammers, mallets, screwdrivers, hand saws, crescent wrenches, pipe wrenches, squares, T square, levels, paint supplies, electrical supplies, new 12-2 wire, single strand wire, conduit parts, tubing benders, electric boxes, plumbing, sand blaster, lot parts bins, large amount hardware, bolts-washers, 400 pc O ring asst., digital caliper, grease fittings, C clamps, drill press vise, scroll saw, shop lights, pole climbing spikes, bolt cutters, tool pouches, hard hats, storage cabinets, shelving, **AUTO**; Napa pneumatic deep well socket set, 4 ton hydraulic frame repair kit, 7 pc body repair kit, 4000 LB engine hoist, engine stand, hi wagon jack, car ramps, car creeper, floor jacks, jack stands, lot batteries, Schumacher rolling battery charger-starter, lot battery chargers, reflectors, spark plugs, 4 ton hydraulic frame repair kit, 7 pc body repair kit, tow balls, receiver hitches, 12 volt Golight spotlight, portable jump box, fluids, oils, Sea Foam, bead breaker, **YARD**; Stihl Farm Boss MS290, Stihl MS 170, other chain saws, Husqvarna backpack blower, Brute 2700 PSI 2.3 GPM power washer, Honda pressure washer, Honda propane generator, 110,000 BTU oil heater, 125,000 BTU Mr Heater, sledge, rakes, shovels, weed eaters, T post driver, rope, post hole digger, lot chains, propane weed burner, propane tanks 20-100 LB, yard dump trailer, appliance dolly, 7' ramp, lawn rollers, pallet jack

BREHE AUCTIONEERING SERVICE, LLC
 Union, MO: (636) 583-0841 Owensville, MO: (573) 437-3454
www.breheauction.com
 LICENSED AUCTIONEERS:
 Kerry Brehe 314.954.3798 Josh Brehe 314.603.3129 Nick Brehe 314.560.7737
 Harry Engelhart 636.399.3743

Announcements made day of sale supersede all printed material.
TERMS: CASH, PERSONAL CHECKS WITH PROPER I.D., BUSINESS CHECKS WITH BANK LETTER AND NO OUT OF STATE CHECKS UNLESS APPROVED BY SELLER. Email Us At kkauction@sbcglobal.net
Everything sells as is with no guarantees. Not responsible for accidents.

ESTATE AUCTION

Saturday, April 8th, 2023 ~ 10:00 AM

LOCATION: Sheldon Community Building, 6th & Main, Sheldon, MO (Watch For Signs)

Auction For Ron "Lefty" & Ruth Lancaster



**Rare & Outstanding 1800's & Early 1900's
Antique Furniture**

Rare 1800's 42 Inch Wide 5 Stack Lawyers Bookcase W/2 Bottom Drawers, 1800's Quarter Saw Oak 4 Stack Lawyers Bookcase W/Bottom Drawer, Very Rare Ant Oak Stack Lawyers File Cabinet, Rare 1800's Ant Hamilton Map & Blueprint Cabinet, 1800's Quarter Saw Oak Secretary W/Lead Glass & Claw Feet, 1800's Lg Wall Step Back Kitchen/Jelly Cabinet, 1800's Quarter Saw Oak China Buffet Sideboard W/Glass Top Hutch & Ornate Carvings, Very Rare Ant 1800's Belding Brothers Co. Store Spool Cabinet, 1800's Quarter Saw Oak Ant Halltree W/Lg Oval Mirror & Lg Claw Feet, 1800's Ant Oak 2 Door Hotel Wardrobe, Unusual 1800's Oak Ideal Kitchen Cabinet W/Onion & Potato Bin Also W/Lots Of Drawers, 1800's Quarter Saw Oak Chiffarobe W/6 Drawers & Lg Hat Drawer, 1800's Quarter Saw Oak Ant Serpentine Front Sideboard W/Ornate Carvings & Claw Feet, Rare Ant Quarter Saw Oak Sunbelt End Table, Early 1900's Ant Upright Oak Jelly/Pie Safe Cabinet, Ant 1800's Wood Barber Chair W/Footrest, Ant Oak Square Table W/Lg Glass Claw Feet, Ant Chip & Dale Highboy W/Break Front & Claw Feet, Ant 1800's Oak Printers Cabinet, Ant Oak Pear Mirror, 2 Ant Oak Ornate

Wash Stands, Ant Oak Child's Highchair/Rocking Chair Combo, 1800's Quarter Saw Oak Square Table W/Spindle Legs, 1800's Walnut Lawyers Drop Front Secretary W/Drawers, Ant Walnut Globe Ideal File Cabinet, Ant Walnut Hamilton Printers Cabinet, Early 1900's Walnut Halltree, Early 1900's Ant Walnut Empire 4 Drawer Dresser W/Lg Knobs, 6 Ant 1800's French Prevential Parker Chairs, Early 1900's Ant Stroll Cabinet, Ant 1800's Redwood Pantry, 1800's Rough Wood Jelly Cabinet, 1800's Ant Coffee Box, Ant Early 1900's Stagecoach Toolbox/Trunk, Prim Cherry Cabinet, Other Items Not Listed

Rare Antiques & Collectibles

2 Very Rare 1800's Santa Fe Railway RxR Signs, Ant Red Globed RxR Lanterns, Ant Lg Stand Up Store Elgin Coffee Mill Grinder, Ant Big Top Bozo Balloon/Candy Machine, Ant 5 Cent Comic Show View Machine, Ant 10 Cent Store Foot Massager, Ant Store Front Child's Riding Dolphin, Ant Advertising Clocks Inc Mobile Gas, 7-UP, & Travelers, Old Ant Toys, Lg Lot Of Ant Porcelain & Metal Signs (Some Unusual), Ant Sinclair Gas Station Attendant Stand, Old Crock Inc Redwing Jug, #2 & #3 Churns, #5 Redwing Crock & Sanitary Draining Crock, Ant Car Bulb Store Display, Lots Of Light Up Signs, Ant Tulip Bottom Butter Churn, Ant Kerosene Cans, Ant Metal Adv Tins, Ant Single Metal Locker, Old Wood Carved Howling Wolf, Lg Lot Of Blue & White Dishes, Lots Of Other Items Not Listed



Auctioneers Note: WOW!!! What An Amazing Antique Auction!!! This Is Auction #3 Of Several Of The Very Best True Antique Furniture & Small Antique Auctions We Will Conduct For This Family. The Lancaster's Have Been Antique Collectors For Over 50+ Years. There Is Absolutely No Junk Or Box Row Items In This Auction. Everything Is 100% True Blue Antiques & Many Very Hard To Find Items. This Is The Very Best Antique Auction & You Do Not Want To Miss!!! Auction Held Indoors No Matter The Weather. Please Plan Now To Attend. **Sale Order: Will Start With Very Outstanding & Rare Antique Furniture Items Then Move Directly Into Hard To Find & Unique Small Antiques & Primitives. Again No Junk True Blue Antique Auction!!! See Ya There!!!**

Terms: Cash or check with proper ID. Now accepting most major credit cards. Nothing removed until settled for. Statements made the day of sale takes precedence over printed material. Everything sold as is where is. Not responsible for accidents. Restroom available. Concessions Provided. Check our website for upcoming auctions and for additional pictures!!



NANCE AUCTION SERVICE

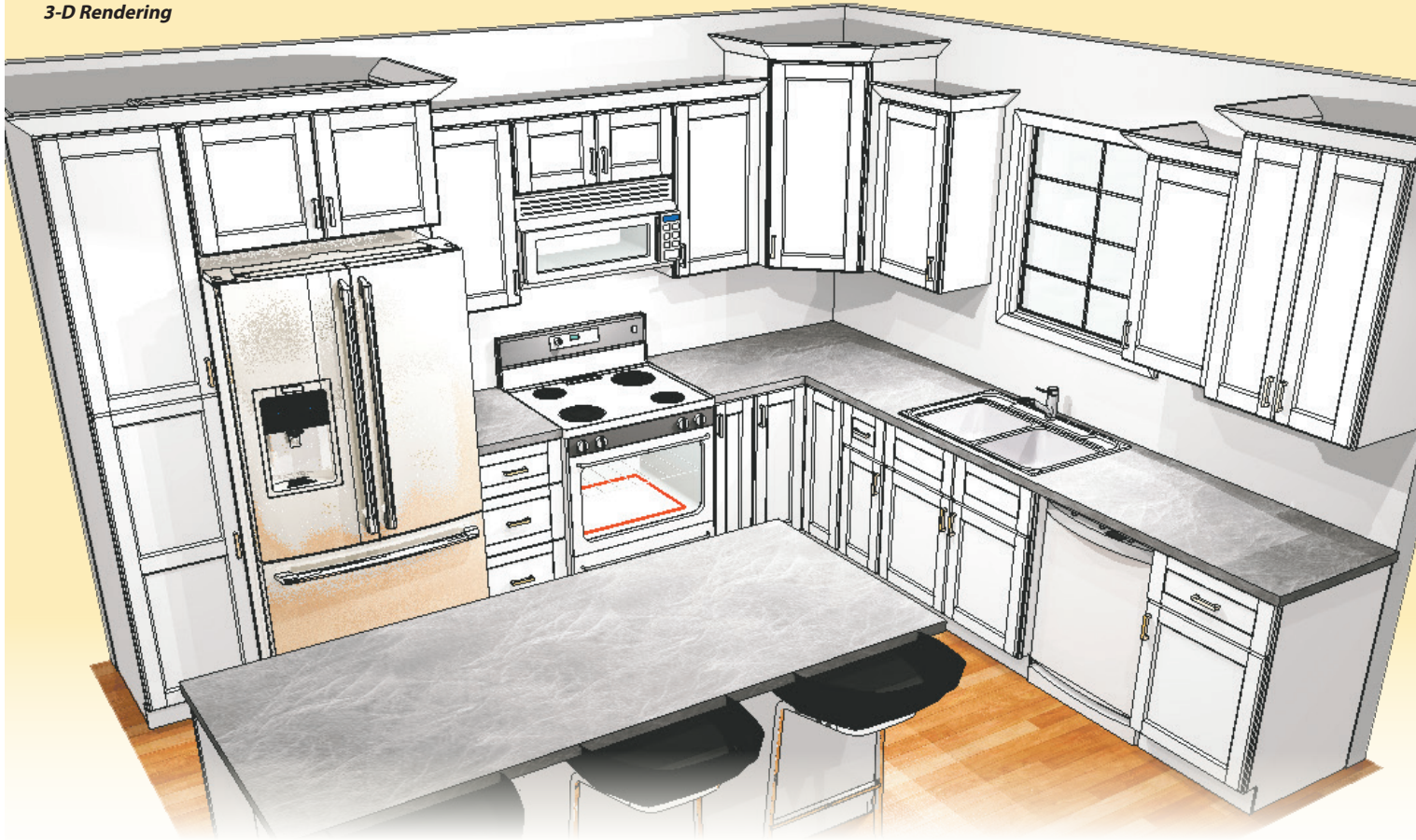
No Matter How BIG or small, We Do Them All!!!



Col. Bill Nance 417-214-0093 In God We Trust Philippians 4:13 Sean Beazley 417-247-6754

DELUXE WHITE OR GRAY SHAKER CABINETS

3-D Rendering

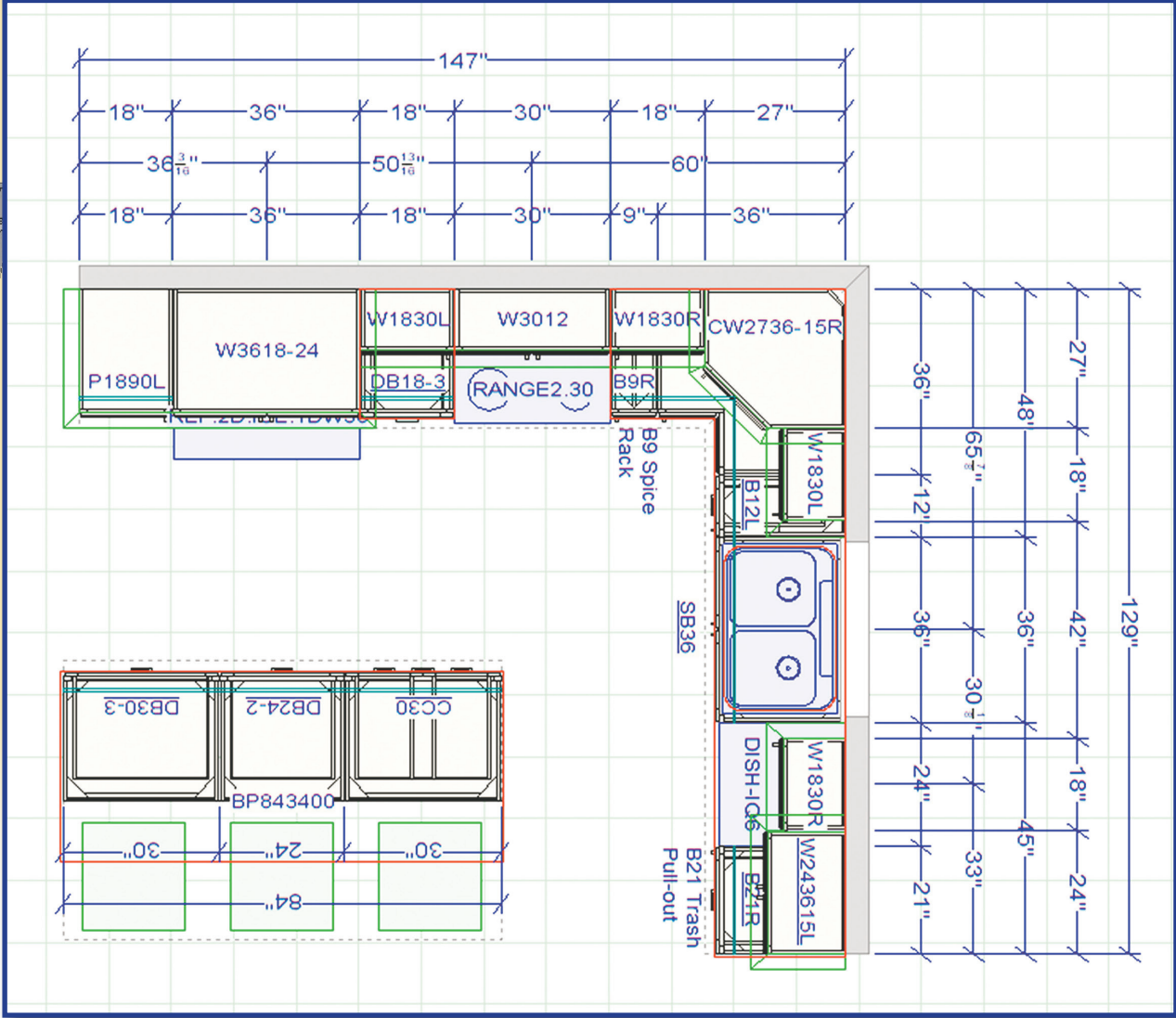


This cabinet layout, all-wood with soft close features on doors and drawers. **ONLY \$7,500**

NEIGHBORHOODS
HOME
IMPROVEMENT STORE
Where **QUALITY** doesn't cost more!

Quartz & Granite Countertops,
Luxury Vinyl Plank. Worlds
biggest selection of bathroom
cabinets & vanity tops

Let us design your next projects layout complete with 3-D renderings



NO particle board or MDF

You can add more or less pieces available in days, not weeks.

CALL OR STOP BY TODAY!

417-533-5080 • 19850 Houston Road, Lebanon

Mon.-Fri. 8am-5pm • Sat. 8am-3pm [neighborhoods-inc.com](https://www.facebook.com/neighborhoods-inc.com)



ESTATE AUCTION

SATURDAY, APRIL 15 @ 10:00 A.M.

Directions: ROLLA, MO - 1312 Harvey Lane. Watch for signs.

PROPERTY TO BE OFFERED • HOUSEHOLD • AUTO • MISC.

5 Pc. King-size Bedroom Suite, Very Clean - Refrigerator - GE Washer & Dryer, Clean 3 Pc. Full-size Bedroom Suite - Nice Grandfather Clock - 2017 Rav-4, Very Nice - Bedding Comforters, Sheets & Blankets - Lamps & Other Household Items; TV, Rugs, Misc.

TO BE OFFERED: 1 Car Garage, Fenced Backyard, Very Nice Neighborhood, Clean Home. Don't Miss This Opportunity. Sold As-Is. 10% Down Day of Sale. Non-Refundable. Call To Make Walk-through Appointment. Rest Sold On Sunday, April 16 Sale (12860 Rolla Fairgrounds, U.S. Hwy. 63.) @ 10:00 a.m. Start. **See you there! - Tom**



ANNOUNCEMENTS AT AUCTION TAKE PRECEDENCE OVER PRINTED MATTER

WULFF AUCTION

TERMS: CASH OR APPROVED CHECK - I.D. REQUIRED
NOTHING REMOVED UNTIL SETTLED FOR

Licensed Appraisals

2334 Highway K, Salem, MO 65560

AUCTIONEERS:

Col. Tom Wulff • John Wisdom

Cell: 573-247-3884 • Cell: 573-247-9563 • Home: 573-729-8476

Clerk: Tracy Strange

Cashier: Nancy Inman

See Wulff Auctions at www.thesalemnewsonline.com/auctions



RAIN OR SHINE OWNER & AUCTION PERSONNEL NOT RESPONSIBLE FOR ACCIDENTS AT SALE SITE

ESTATE AUCTION

Friday, April 7th, 2023 ~ 10:00 AM

LOCATION: 209 North Grime Street, Carl Junction, MO; GPS Will Get You There (Watch For Signs)

Auction For Janette & The Late Larry VanDeMark



Antique Furniture

Ant Oak 3 Glass Side Curio Cabinet, Ant Oak High Boy Dresser W/Hat Box, Ant Oak Edison Victrola, Ant Oak Ornate Secretary, 2 Ant Oak Treadle Sewing Machines, Ant Oak Rockers, Ant Wood Quilt Chest, Ant China Cabinet, Ant Cedar Chest Trunk, Ant Wood Baby Bed, Ant Child's Rocker, Prim Barnwood Pantry Cabinet, Some Sm Prim Furniture, Ant Lamps, Ant Metal Washing Machine, Lots Of Old & Ant Pictures, Other Items Not Listed

Antique Steam Engine, Steam Engine Collectibles, Antique Railroad Items, Antiques & Primitives

Working Ant Gardner Steam Engine, Snow Stream Pump Work Steam Engine, 5 Other Smaller Steam Engines, Several Ant Steam Engine Toys, Steam Engine Books, Several Steam Engine Parts, Several Ant Steam Whistles & Gauges, Lg Lot Of Ant RxR Lanterns, Ant RxR Jacks, Ant RxR Switch, Ant RxR Working Hose, 60+ Lb Anvil, 2 Ant Forge Tubs, Ant Forge Tools, Lg Ant Industrial Press, Ant Keystone Apple Press, Lg Ant Barn Hay Fork, 3 Ant 1 Bottom Walk Behind Plows, Ant 1 Pot JD Planter, Ant Sickle Bar Mower, Ant Plows & Cultivators, Ant Letz Grinder, Ant Implement Seats, Ant Scoop, Approx 20+ Ant Iron Wheels, Ant Push Plows & Parts, Ant Buckboard Seat, Ant Reel Mowers, Lg Lot Of Sm & Med Size Ant & Prim Tools (Some Unusual), Ant Steel Wheel Wheelbarrow, Ant 4 Way Stoplight, Ant Metal Fire Extinguishers, Several Crock & Crock Pcs Inc #3 Butter Churn, Lg Ant Grinding Stone, Ant Whiskey Barrels, Ant Metal Double Tree, Also Wood Single Trees, Very Lg Ant Copper Moonshine Still Tub, Ant Wood Adv Boxes, Over 30+ Pcs Of Waggoner & Griswold Cast Iron Inc #12, #10 & #1, Over 50+

Ant Toys Most Metal, Some Outstanding Cars & Trucks, Old Train Set, Ant Tricycle & Wagon, Pedal Car, Ant Saws, Ant Adv Gunny Sacks, Ant Adv Nail Pouches, Ant Oil Lamps, Ant Jars & Bottles, Aprox 60+ Victrola Records, Vintage Song Books & Hymnals, Civil War Books, Old Dolls, 2 Ant Store Scales, Ant Harmonica, Old Jaw Harp, Ant German Melodica, Music Tuners, Ant Violin, Ant Early 1900's German Music Box, Lg Lot Of Fostoria Dishes (Some Unusual), Lg Lot Of Green & Pink Depression Glass, Red, Blue, Amber & Other Old Glassware, Old Blown Glass, Glass Bird Collection, This Is Only A Partial Listing As There Are Approx 25 Totes Of Glassware & Sm Ant Pcs Not Gone Through, Stored & Unable To See

Excellent Woodworking Tools, Mower, Tiller, Generator, Shop Tools & Outdoor Related Items

Grizzly Mobile Joiner, Grizzly Band Saw, Craft Radial Arm Saw, Craft Drill Press On Stand, Craft Table Saw, Like New Portable Dewalt Planer, Industrial Size Drill Press, Dual Sander On Stand, 2 Grinders On Stands, Belt Sander On Stand, Dust Collector, Router W/Stand, Ryobi Scroll Saw, Chop Saws, Saw Blade Sharpener, Lg Lot Of Good Lumber, Saw Horses, Over 25+ Different Size Wood Clamps, Sm Wood Working Tools, 45" Cut Riding Mower, Troy Bilt Horse Rear Tine Tiller, Craft Front Tine Tiller, Push Mower, Welding Rods & Supplies, Miller Thunderbolt Welder, Torch Set & Bottles, 10,000 Watt Generator, Sand Blaster & Extra Tank, 8x8 Trailer Frame, Lg Roll Around Engine Hoist Frame, Heavy Press, Electric Power Washer, Chainsaw, Weed Eaters, Yard Dump Utility Cart, Wheelbarrow, Several Log Chains, Several Shop Cabinets & Shelves, Organizers, Ladders, Several Concrete Blocks, Some Tin, Deer Carry Cart, Other Items Not Listed



Auctioneers Note: It Is An Honor To Be Conducting This Auction For The VanDeMark Family. This Is A Very Outstanding Rare Antique & Very Good Woodworking & Shop Tool Auction. There Will Be Something Here For Everyone. Steam Engine Enthusiasts You Do Not Want To Miss This Auction As There Are Some Very Outstanding Parts, Gauges, Whistles & Related Items. Very Excellent Antiques & Hard Core Primitives. Great Antique Furniture & Glassware. All Tools In Excellent & Ready To Go Working Order. All Around Excellent Auction. Please Plan Now To Attend. **Sale Order: Furniture Sells First Then Antiques, Collectibles & Primitives. At Approx 1:00 PM Will Offer Steam Engine Related Items, Also Woodworking Tools & Large Items. Remainder Of Tools, Outdoor & Scrap Related Items Will Finish Auction. See Ya There!!!**

Terms: Cash or check with proper ID. Now accepting most major credit cards. Nothing removed until settled for. Statements made the day of sale takes precedence over printed material. Everything sold as is where is. Not responsible for accidents. Restroom available. Concessions Provided. Check our website for upcoming auctions and for additional pictures!!



NANCE AUCTION SERVICE

No Matter How BIG or small, We Do Them All!!!



Col. Bill Nance 417-214-0093 In God We Trust Philippians 4:13 Sean Beazley 417-247-6754

#1 AUCTION SOURCE IN CENTRAL MISSOURI

SERVING 34 COUNTIES!



IN PRINT & ONLINE!

TO ADVERTISE YOUR AUCTION, CALL 417-532-9131

WEEKLY TRADER MAGAZINE

100 E. Commercial, Lebanon
 www.myweeklytrader.com
 www.facebook.com/myweeklytrader

ESTATE AUCTION

310 E. JACKSON ST., WARSAW, MO

DUE TO THE DEATH OF MURL STULL, THE FOLLOWING WILL BE SOLD AT AUCTION LOCATED AT 310 E JACKSON ST. WARSAW, MO (FROM THE LIBRARY AT THE CORNER OF COMMERCIAL AND JACKSON, GO EAST 2 1/2 BLOCKS TO SALE) ON

SAT. APRIL 15TH, 2023 AT 10 AM

GUNS & BOW Winchester 94 22 S,L,LR, lever act. w/scope, Winchester 94 22 mag, w/ scope, Winchester 190 22 L,LR, auto, Winchester 74 22 S, auto, Winchester 1200 12 ga 3" pump, rib barrel, Winchester 1400 MKII 12 ga. 2 3/4", Winchester 1912 12 ga full choke, rib barrel, Winchester mod. 40 12 ga., full choke, Winchester Ranger 20 ga. 2 3/4", rib barrel, **JC Higgins** 583-1101 16 ga. 2 3/4" Bolt act, poly choke, **Sears** 22 S,L,LR, Winchester by Daisy mod 1029 air rifle, thumbhole stock, **Sears** 799-19051 Lever action BB gun, **Daisy** BB gun, Old box Peters 16ga ammo, other ammo ; Extra barrel for 12 ga. 2 3/4"; Whitetail Bow and arrows

TOYS: Mattel Fanner 50 toy pistol- Hubley cap gun

Note: The guns will not be on premises until morning of auction

KNIVES Winchester Limited Edition 2006 folding knife set, Knife set w/US Presidents, in case

FURNITURE Antique Hoosier kitchen cabinet w/ flour and sugar bins, bread drawer, glass spice jars, Antique chiffoffe, Antique oak buffet, Antique 41" round claw-foot dining table, Small antique pie safe, 28" w x 33" t, Antique kitchen utility table w/enamel top, Antique 4 drawer chest and matching vanity dresser, Antique flat front china cabinet, Antique washstand w/thick marble top, Antique oak desk, Antique wardrobe, Antique Seth Thomas mantle clock, Regulator 31 day clock, Antique Grunow tube cabinet radio, Large steamer trunk, Large camel back trunk, Antique iron bed, 2- Antique dressers w/mirror, Antique Victrola player, Antique firewood box, Antique curve-front china cabinet, 6' Long Store showcase counter, Old oak cabinet w/2 shelves, 2 drawers, Pie safe cabinet, Wooden trash can, handmade by Murl, Older Whirlpool upright freezer, Older Kenmore refrigerator

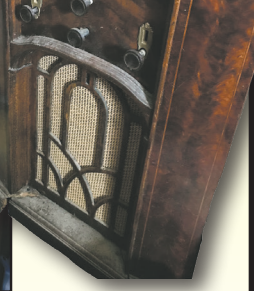
ANTIQUES & COLLECTIBLES Large cast iron kettle, Western #2 Crock chum, #8 Glass butter churn, Red Carnival glassware, John Wayne and Winchester metal signs and other collectibles, Norman Rockwell Coca Cola thermometer, Revere China Pitcher/Bowl & water pitcher, Silver Pistol Express train engine metal toy, Bridge Tool Co meat saw with John H Beck initials, Top tobacco tin, razor straps, corn knife, Coke bottle opener, Wagner corn pan, Wagner iron skillet, other iron pans, USA roofing hammer, Chamber pot w/lid, Sano cigar boxes, Sev. Collectible decorator plates, Collection of manger scenes, other antiques, lg lot baseball caps, Several Time Life "Old West" books

LAWN, GARDEN, TOOLS

John Deere LA105 mower, TroyBilt Super Bronco tiller, 6 hp B&S, TroyBilt Chipper-Shredder, Troybilt trimmer, Push garden plow, Wheel garden planter, 2- Wheel garden push cart, Garden tools, Husqvana push Mower, Yard wagon, Double wheel grinder, McGraw 8 gal air compressor, Small Craftsman air compressor, Small hand tools

MISCELLANEOUS Propane double burner cook top, Fishing rods and reels, Tackle boxes and tackle, Porch glider swing, Live animal traps, 6 qt Ice Cream freezer, small kitchen appliances

Note: Murl was well-known in the area for the paddlefish he'd catch every spring, and for the big gardens he tended every summer up until the time of his death at 100 years of age. He and his wife lived in this house many, many years; we're sure there will be a lot of surprises as we prepare for the auction!



For pictures, check out the website www.DrenonAuction.com

Children of MURL STULL

Larry DRENON AUCTION

Larry Laramie
660-596-8515 660-221-4386
Lacey Cooper
660-723-1104 660-723-2221

Office: 660-723-6188
www.DrenonAuction.com

Terms: Cash, approved check, debit/credit card (convenience fee applied to card purchases), Nothing to be removed until settled for. Not responsible for any accidents. Statements made day of sale take precedence over printed material. Lunch served.

PUBLIC AUCTION AUCTION

EVERTON, MO

As we have sold our Farm we will sell the following Tractors, Automobiles, Equipment, Trailers, Tools and Misc. At the Farm, from Everton, Mo. go North on 160 hwy. 2 miles to O hwy. Go West on O hwy. 3 miles to R.R. Dade 181 then go South to R.R. Dade 152 go West ¼ mile to the Auction or from Greenfield, Mo. Go East on 160 hwy. To O hwy. Go Southeast 5.4 miles on O hwy. Then follow Co. Road directions on

Sat. April 15, 2023 at 9:00 am

WATCH FOR AUCTION COMPANY SIGNS • LUNCH SERVED

FOR MORE PICTURES GO TO: WWW.BRUCEANDLEANAUCTION.COM



TRACTORS-EQUIPMENT

- International 884 Diesel 72 hp open deck Tractor W/Front End Loader model 2250 W/Bucket & Bale Forks, 4 Speed High/Low Trans.
- John Deere 4X4 Model 4300 Tractor 30hp W/430 JD Front End Loader
- Hesston 8035 Diesel open deck Tractor W/ L30 Front End Loader Good Rubber, needs brakes
- International 574 Diesel Tractor (not running)
- International 354 Tractor (not running)
- Allis Chalmers 6080 Cab 90hp Tractor, 4 speed high/low Transmission, (has been sitting needs clutch)
- 3pt Bale Unroller
- Fimco 50 Gallon 3pt Sprayer W/10' Booms
- Landpride FDR-2572 Finish Mower (needs bearings)
- 3pt Post Hole Digger
- 3pt Disk
- 3pt 2 Bottom Plow
- 3pt 6' Blade
- Ford 105A 3pt 5' Rear Tine Tiller
- 15' Model 2615 Bush Hog
- 3pt Box Blade
- 3pt Rock Rake
- 3pt Bale Spike

TRAILERS-CATTLE EQUIPMENT

- 16' X 6' Gooseneck Stock Trailer, W/Divide Gate, Metal Top
- 16' Tandem Axle Older Flat Bed Trailer
- 14 Concrete Feed Bunks
- Single Sided Creep Feeder
- Poly Stock Tank
- Head Gate

TRAILERS-CATTLE EQUIP. CONT.

- Misc. Gates & Cattle Panels
- Roll of Woven Wire
- Misc. Post

AUTOMOBILES

- 1996 Dodge ½ ton Pickup, V-6 Motor, Automatic Transmission (not running)
- Chevy ¾ ton Pickup W/Flatbed (not running)
- 1964 Chevy Pickup (not running for rebuild)
- 1996 Grand Cherokee Laredo (wrecked not running)
- Dutchman 25' Fifth Wheel Camper Trailer (has been sitting, needs rebuild)

TOOLS-MISC.

- Porta-Cable 6hp Air Compressor
- Rockwell 6" Planer
- Cherry Picker
- Pressure Washer
- Tool Cart
- Hand Electric Tools
- Misc. Garden & Hand Tools
- Large Welding Table
- Lot of Boxed unseen Items at Listing Time
- 20'-8" Ibeam
- Lot of Nails, Bolts & Hardware
- Lot of Misc. Lumber
- Log Chains
- Shop Vac.
- Large lot of Scrap Iron
- Med. Size Chest Freezer
- Lot of Misc. Items



OWNER: MR. & MRS. JOE FOWLER

TERMS: Everything sells as is, where is. Nothing is to be removed until settled for. Payment of Cash, Check with Proper ID, or Credit Cards. Auction Company or the Owners will not be responsible for loss of items or accidents. Statements made the Day of the Auction take Precedence over Printed Matter.

SALE CONDUCTED BY **BRUCE & Le'AN AUCTION & APPRAISAL, LLC**
 THE AUCTION COMPANY THAT APPRECIATES YOUR BUSINESS

For more information and pictures go to our website at www.bruceandleanauction.com

RONNIE BRUCE - Fair Play, MO
 417-777-1685 or 417-654-2214
 colronbruce@gmail.com

BRANDON BRUCE
 Fair Play, MO

BILLY BRUCE - Stockton, MO
 417-399-4800
 colbbruce@gmail.com

ESTATE AUCTION

SUNDAY, APRIL 16 @ 10:00 A.M.

Directions: ROLLA, MO - 12860 Rolla Fairgrounds, U.S. Hwy. 63. Watch for signs.

GUNS • COLLECTIBLES • KNIVES • ARROWHEADS HOUSEHOLD • MISC.

Carved Pipes - LG 65" Flat Screen TV
 Several Country CDs - Carved Wood Box
 Sony CD Player & CDs - Coffee Table
 Over 50 Collectible Powder Flasks; Metal, Leather & Bone
 Crock Pot, Brand New in Box
 Dark Brown Micro-fiber Loveseat
 Light Brown Micro-fiber Loveseat - Curio Cabinet
 End Tables - Grandfather Clock - Microwave
 Toaster - B&D Blender - Sofa Table - Shop Vac
 2 Electric Smokeless Grill & Griddle - Rocking Chair
 Several Survival Knives - Gun Valve Boxes
 NW TF Duck Figurine
 End of the Trail James Earle Fraser
 Large Collection of Pocket Knife Cases
 Old Rawlins Claw Catchers Mitt
 Old Bean Grinder - Telescope
 Old Boy Scout Canteen - Zippo
 Collection of Old Shells & Shotgun Shells
 Hollywood Prop Supply, Dances with Wolves Canteen
 Old Case Cleaning Rod
 Old Duck Calls, Duck Commander Faulk's
 Old Whiskey Containers - Several Fire Arm Books
 Old Tomahawks - Grand Olde Opry Advertisement
 Several Old Recurve Bows & Old Arrows
 Several Nice Pieces of Antique Furniture
 2, Push Lawn Mowers - Many Others
 Oak Bench - Wicker Chair - Ceramic Heater

Belts - Reciprocating Saw Blades - Linen5
 Motorcycle Storage Cover - Shower Chair
 Hope Chest - Wooden Boxes - Walker
 5 Pair of Cowboy Boots, Size 8.5
 Motorcycle Bag, Chaps & Boots
 Handheld Shark Vacuum - Patio Set
 Kalorik Air Fryer, New in Box
 6pc. Cookware, New in Box
 Copper Chef Air Fryer, New in Box
 Shark Vacuum Cleaner - Dehumidifier
 Large Collection of Old Reels w/Boxes; Pering, Zebco,
 Bronson, JCHiggins, Pflueger, Shakespeare
 Tuxedo Tobacco Can - Old Military Camo
 Western Bros Straight Edge
 Old Wooden Lure Collection
 Big Collection of Arrowheads
GUNS:
 Iver Johnson, Hammerless 32 - H&R 733 .22
 Stevens 35 .22 - US Revolver Top Break .38
 MAB G .22 - J-Stevens Pistol .22
 Iver Johnson Revolver .22
 Lorcin I-22 .22 - Hi Standard H-D Military .22
 Stoeger Luger .22 - Ruger Blackhawk .30 Carbine
 Colt New Frontier .22
 Smith & Wesson 629 44 Mag - Colt DA-41
 Colt Junior .25 - Colt Junior .25 - Star SA .22
 Smith & Wesson 63 .22 - Colt 1908 .380
 Magnum Research Baby Eagle Design 9mm

Ruger Single Six .22 mag - Ruger Mark II .22
 Springfield XD 40 S&W - Browning Hi-Power 9mm
 Ithaca 500 20ga - Ithaca 37 20ga
 Winchester 94 30-30
 Ruger 77R 25-06 - Smith & Wesson 1 1/2 .32
 Iver Johnson Top Break .38 S&W
 H&R Top Break .38 S&W
 French Folding Trigger Revolver 6mm
 Folding Trigger Revolver 6.5mm
 Hopkins & Allen Blue Jacket No.2 .32 RF
 Hopkins & Allen Top Break .32
 Jones Import .22 Short - Webley Style Revolver .455
 C. Sharps Pepperbox .25 - British Single Shot .321
 Smith & Wesson #2 .38 S&W
 Hopkins & Allen #4 .38 S&W
 Smith & Wesson 1 1/2 .32 S&W
 Smith & Wesson 1 1/2 .25
 Iver Johnson Break Top .32 S&W
 Hopkins & Allen Break Top .38 S&W
 English Single Shot .321 - Baby Hammerless 1918 .22
 Baby Hammerless .22 - Iver Johnson Sealed 8 .22
 Iver Johnson Top Break .32 S&W
 Small Folding Trigger .22
 Iver Johnson Knuckle Grip .32 - British Bulldog .455
 Brass Frame Revolver .38 S&W
 American Bulldog .38 S&W
 32 S&W 357 30 Special .22

See you there! - Tom



ANNOUNCEMENTS AT AUCTION TAKE PRECEDENCE OVER PRINTED MATTER

WULFF AUCTION

TERMS: CASH OR
 APPROVED CHECK -
 I.D. REQUIRED
 NOTHING REMOVED
 UNTIL SETTLED FOR

Licensed
 Appraisals

2334 Highway K, Salem, MO 65560

AUCTIONEERS:

Col. Tom Wulff • John Wisdom

Cell: 573-247-3884 • Cell: 573-247-9563 • Home: 573-729-8476

Clerk: Tracy Strange Cashier: Nancy Inman



RAIN OR SHINE
 OWNER & AUCTION
 PERSONNEL NOT
 RESPONSIBLE FOR
 ACCIDENTS AT
 SALE SITE

See Wulff Auctions at www.thesalemnews.com/auctions

CASE IH 385 DIESEL TRACTOR:
Canopy, 2,000 Hours, Good \$6,950. 573-765-4406. Richland.

M.F. 10 FT WHEEL DISK: \$2,300. 573-765-4406. Richland.

HIGHPOINT GREENHOUSE: Open for the season. Garden seeds, vegetable and flower plants, seed potatoes, onion sets and plants, herbs, etc. 417-741-2793. 9337 Warner Rd. Hartville.

JOE THEISMANN AUTOGRAPHED CAREER STAT JERSEY: JSA COA. Text for pictures. \$95 417-318-8932. Houston.

LAWN MOWING & YARD WORK SERVICES: 417-288-8123. Lebanon.

STAN MUSIEL CANCELED CHECK: Full signature with authenticity. \$55. Text for pictures. Mint condition. 417-318-8932. Houston.

D&H OUTDOOR WOOD FURNACES: Complete heating & cooling systems. Owner Larry Harmon 573-743-6943. Cherryville.

WE BUILD HOUSES, BARNs & GARAGES: Free Estimates. 417-241-3280.

NOW BUYING STANDING RED AND WHITE OAK TIMBER: All slash will be trimmed to lay flat or placed in tidy piles for wildlife. No scarred-up trees or ruts from heavy logging equipment. We use low impact compact track loaders to minimize disturbance in your forest. Missouri Land Service LLC. 417-991-9280.

BUYING OLD BARNs AND LUMBER: 417-298-3475 Leave Message.

MASTER SPANISH TEACHER DISPOSING LARGE AMOUNT OF FREE MATERIALS: To a public, private or co-op school interested. 660-438-4357. Warsaw.

POOL TABLES: Installations, moves, recovers, repairs, accessories, etc. 573-646-1700.

BLUE HEELER PUPPIES: Raised for 50 years, good with cattle or as pets, pups already working. \$125. 660-553-2333. Cole Camp.

IT'S FAINTING GOATS SEASON! Docile, non-jumping purebreds. Which are great for small acreages & as pets. Additional info on website; www.greenacresvillage.com or text 573-216-7796. Lake of the Ozarks.

FLAT CREEK ROCK FOR LANDSCAPING: 573-308-5884. Rolla.

NEED YOUR CDL????? We furnish the truck & trailer. We teach all requirements for ELDT & skills test. We go to the state highway patrol with our truck. Requires only 2 days of in person training. Much cheaper way to get CDL. Jefferson City MO, Willow Springs MO, Strafford MO, 573-353-2853. For more info www.capitaltruckdrivinginstitute.com

WANTED OLD MILITARY RIFLES & PISTOLS: 816-838-6254. Lee's Summit.

2002 HONDA VTX: 1800 CC. 1 owner. 573-330-7094. Patosi.

Cozy Country Home & Shop

On 22 +/- Acres, Just off Highway 54



2,450 +/- Sq. Ft. with Main Level Living & Loft

27' x 30' Detached Shop with Concrete Floor & Electric

Lawn Building & Carport

Great Pasture for Horses or Cattle

Easy Commute to Jefferson City or Lake of Ozarks

Open House Dates:

**Wednesday, April 5th
12 - 1:30 p.m.**

**Wednesday, April 12th
4 - 5:30 p.m.**

Online Bidding Ends:

**Wednesday, April 19th
12:30 p.m.**

**66 Booth Rd.,
Eldon, MO**

Check It Out & Bid At
www.AtterberrySells.com

573-474-9295



contactus@atterberryauktion.com

ATTERBERRY

— AUCTION & REALTY COMPANY —

Your Real Estate at Auction Specialists

2017 POLARIS RANGER XP 1000: Very good condition. \$11,000. 417-464-3895. Mt. Grove.

HORSE OR LIVESTOCK AUTOMATIC WATERER: \$100 cash. 417-599-8089. Willard.

77 JEEP CJ5 FOR SALE: Runs good, drives good. \$7,500. 417-343-3928. Marshfield.

WANTED NEW HOLLAND SKID STEER 865: Any Condition. Call Bob 573-697-5143.

Large Coin Auction

Sizable collection you won't want to miss!



300 Lots of High-Quality Coins-Diverse Mix!!

Sizable Quantity of 90% Silver Coins, Including Barber Dimes, Mercury Dimes, Walking Liberty Halves, & More

Group Of Type Coins, Including Key Dates, Some Slabbed

Slabbed Commemorative Silver Dollars
Silver Eagles, Proof And UNC

Silver Rounds, Including Lots of Foreign Silver Rounds, Many Slabbed

Limited Edition Small Gold Pieces

Slabbed Silver Kennedy Halves

Lots of Boxed Silver Coins & Sets

Coins & Chronicles Sets, Multiple Examples of Each

Preview:

Monday, April 10th | 11a.m. - 1 p.m.

Auction Ends:

Tuesday, April 11th | Starting at 12:30 p.m.

Pick-Up:

Wednesday, April 12th | By Apt. Only

Shipping Available on All Lots!

7912 I-70 Dr. SE Columbia, MO

Check it out & Bid at
www.AtterberrySells.com

573-474-9295



contactus@atterberryauktion.com

ATTERBERRY

— AUCTION & REALTY COMPANY —

Your Real Estate at Auction Specialists

BUFFALO LIVESTOCK MARKET LLC

276 Hwy 32 W., Buffalo, MO



April 1st, 2023
Receipts: 1405

REPRESENTATIVE STEERS

300-400 @ 260.00 to 280.00
400-500 @ 254.00 to 275.00
500-600 @ 218.00 to 252.00
600-700 @ 205.00 to 218.00
700-800 @ 180.00 to 195.00
800-900 @ 170.00 to 182.00

REPRESENTATIVE HEIFERS

300-400 @ 215.00 to 244.00
400-500 @ 200.00 to 226.50
500-600 @ 180.00 to 226.00
600-700 @ 170.00 to 192.50
700-800 @ 162.00 to 172.00
800-900 @ 150.00 to 162.00

FEEDER BULLS

300-400 @ 245.00 to 277.00
400-500 @ 235.00 to 253.00
500-600 @ 200.00 to 220.00
600-700 @ 185.00 to 198.00
700-800 @ 160.00 to 185.00
800-900 @ 130.00 to 160.00

STOCKS COWS

Bred Cows 1275.00 to 1700.00
Cow/Calf Pairs 1300.00 - 1875.00

SLAUGHTER BULLS

High Yield 115.00 to 135.00
Low Yield 90.00 to 114.00

SLAUGHTER COWS

Fleshy 92.00 to 100.00
Med Flesh 90.00 to 108.00
Light Flesh 82.00 to 99.00

QUESTIONABLE HEALTH OR CRIPPLE COWS

60 Down

WEANED VACC. SALE
next week April 8th
Bring PRE-VAC Friday

Some Poor Flesh Calves and Cows too thin to ride the ride under these markets as well as Fleшы or Unwean

MON-WED MARKET REPORT

Listen to KJEL 103.7FM • Lebanon or KY00 99FM • Bolivar

VIEW OUR SALES AT CATTLEUSA.COM

CALL FOR TRUCKING OR ON-FARM VISIT

Lyle Caselman • Owner-Manager
417-345-7876 • mobile 417-533-2944
Leon Caselman • Owner
417-345-4514 • mobile • 417-588-6185

2 FEMALE TOY SCHNAUZER/
POODLE MIX: 417-664-5926. Lebanon.

HORSE BONDING PASTURE &
RUBBER PADDED BOX STALLS: \$300
a Month. Write with number to call back at
3676 Davis Rd Mansfield, MO 65704.

FULLBLOOD YEARLING RAMS: One
Dorper and two St. Croix. \$500 each. Call
417-458-1771.

1939 GRAHAM BRADLEY: Needs
restored. Runs good, has side panels,
narrow front end. New grill & half grill.
Plus, parts tractor. \$3,500. 417-594-1656.
Richland.

METAL ROOFS: We repair leaky metal
roofs with warranty. Also, flat roofs. Very
affordable. Cover all of state. 573-338-1148.
Jefferson City.

1979 HONDA 750 ANNIVERSARY
EDITION BIKES: Several to choose from.
Selling off collection. Call for prices. Bikes
are priced well below market value. Will
NOT respond to text. 636-228-4204 or 636-
359-6189.

A. C. WD-45: Parting out W.F. PS 3-point
hitch 417-967-6841

PEMBROKE WELSH CORGIS: D.O.B.
1/12/23 & 1 D.O.B. 7/20/22. U.T.D. on
shots & wormer. \$300. 417-741-2949.
Grovespring.

SUPER M FARMALL: new 15 x 5 x 38s:
for \$2,500 417-349-2908

1 M FARMALL: with rebuilt motor for
\$1,800 417-349-2908

FREE INTERACTIVE MORGAN
HORSE FUN! : selfies with morgan
horses, kids activities, videos, painting,
educational, demos, & carriage rides.
Laura Ingalls Wilder door prizes, history.
#meetthemorgan in facebook for more
information. Held at 5555 South State
Highway NN, Rogersville

PAIR OF CAR OR PICKUP RAMPS: 70"
tall on end and 16" wide \$45 417-260-0941

BOX OF SILVER-PLATED
SILVERWARE: at least 75 years old \$60
417-260-0941

1998 CHEVY SILVERADO 2500: 4X4
manual shift, gas, black, \$5,800 OMO.
Weatherby vanguard 270 walnut stock
\$680 OMO. 417-327-9294 Deep Water.

Absolute Moniteau County

REAL ESTATE & PERSONAL PROPERTY AUCTION

SATURDAY, APRIL 29, 2023 AT 10 AM

Auction & Property Location:
23251 Indian Springs Road at California, Missouri 65018

Directions: From the stop light on Highway 87 and West Buchanan Street (Business Hwy. 50) in California, MO, take Hwy. 87 and Hwy. O north 4 miles, (Hwy. 87 becomes Hwy. O on the north side of California), to Hwy. D, turn right and go 5 miles to Gooseberry Hollow Road, turn left and go 1 mile to Indian Springs Road, turn tight and go 1.5 miles to the end of the road.




189.76 SURVEYED ACRES OFFERED IN ONE TRACT IN TOWNSHIP 46N, RANGE 15W, SECTIONS 16 AND 17 IN MONITEAU COUNTY, MO. IMPROVEMENTS INCLUDE A 3,000+ SQ. FT. ONE AND A HALF STORY ALONG WITH DETACHED GARAGE AND OTHER OUTBUILDINGS

PRE-AUCTION PROPERTY VIEWING

Saturday, April 15, 2023 from 2 PM to 4 PM

Personal Property Includes:
TRACTOR & FARM EQUIPMENT, SHOP TOOLS, LIVESTOCK EQUIPMENT, LAWN & GARDEN EQUIPMENT, AUTO, PICKUP, TRAILER, ATV, MISCELLANEOUS, HOUSEHOLD FURNISHINGS, CANDLE MAKING & BEE KEEPING, BALUSTERS, JUKEBOXES, BARBER CHAIR

SELLER: THE DUGAN FAMILY
LANCE DUGAN AND BEN AND VELMA DUGAN

Wheeler

AUCTIONS & REAL ESTATE

23101 HWY. 24, PARIS, MO 65275 | 660-327-5890
WWW.WHEELERAUCTIONS.COM

Visit wheelerauctions.com
for more information!

For more information call Charlie Nordwald
at 636-795-4552 or visit wheelerauctions.com.

JOHN DEER 920 DISCBINE: With rollers. \$7,500. 573-765-4406. Richland.

JOHN DEERE 466 ROUND BALER: Monitor, Kicker, 4x6. \$4,750. 573-765-4406. Richland.

FORD 6610 DIESEL TRACTOR: Cab & Air, 70 H.P. with Quick Tack Loader, Bucket & Bale Spike. \$20,750. 573-765-4406. Richland.

NEIGHBORHOODS HOME IMPROVEMENT STORE: 417-533-5080. Lebanon

IHC 475 HYD FOLD DISK: 18 ft \$2,750 573-765-4406 Richland.

JOHN DEERE MX10 PULL TYPE BRUSHCUTTER: Good. \$6,950. 573-765-4406. Richland.

25 SECLUDED ACRES: Powerlines on two sides of property. One hour from Springfield. Hunter's Paradise. Stream through property. Cash Only. \$8,000/per acre. Must take all. 00417-741-1232.

SILAGE OR ROUND BALE FEEDER TRAILER: 30FT. Looks Like New \$3,500. 573-765-4406. Richland.

DISCOUNT NEW MOBILE HOMES: We will beat any price on any home Guaranteed, financing, 573-499-9993. columbiadiscounthomes.com

MODEL 1911 FRAME 8-SHOT C02 PISTOL: Like new, in box with C02 cartridges, 4 clips, pellets & all paperwork. \$95. 573-364-7465. Rolla.

WEATHERED BARN WOOD SIDING: 10" wide. 573-729-7226. www.pineridgerustic.com Salem.

K.C. CHIEFS SUPERBOWL 2019 DAMIEN WILLIAMS AUTOGRAPHED JERSEY: JSA COA. Text for pictures. \$135. 417-318-8932. Houston.

USED DOUBLE-WIDE: 3 bdr, 2 bath. WOW! \$39,900 delivered & set, Financing. 573-657-2176. amegamobliehomes.com

*** COURT ORDERED *** LAND and FARM AUCTION

Thursday, April 13, 2023 STARTS @ 10:01 A.M.
For more information and pics: www.chuppsauction.com

22069 S. 145TH ST. EAST • WEBBERS FALLS, OK.

DIRECTIONS: Exit 287 Webbers Falls/Gore @ Jct of I-40 & Hwy 100. Take Hwy 100 S 3/10 mi to Rd E, 193rd St. S. Turn Left (E) Go 1.3 mi to S. 150th St. E. Turn Rt. Go 3 mi to E. 223rd St. S. Turn Rt. (W) Go approx. 1 mi to S. 145th St. E. Turn Rt. (N) Go 2/10 mi. First place on Left.

408 ACRES +/- SELLING in 5 PARCELS with NO RESERVE!



Tractors, Horse - Cattle and Utility Trailers, Brush Hogs, Hay Rakes & Tedder, Hay Balers, Grain Drill, Pasture Aerator, Creep Feeders, Pasture Sprayer, Hay Feeders, Overhead Feed Bin, Box Blade, Concrete Feed Troughs and Overhead Fuel Tanks

LIVE ONSITE & ONLINE BIDDING ON REAL ESTATE STARTS @ 10:01 AM FOLLOWED BY LOTS 1-48 @ 10:33 AM

ESTATE OF: NOLAN PEVEHOUSE

Auctioneer's Note: Equipment is in EXCELLENT CONDITION! DON'T BE LATE - NO SMALL STUFF in this sale! Follow us on Facebook for updates or our website for pictures at www.chuppsauction.com.

TERMS: Cash - Credit Cards - Check with Proper ID - OK Sales Tax Applies unless exemption is shown. NOT RESPONSIBLE FOR ACCIDENTS. ANY ANNOUNCEMENTS DAY OF SALE SUPERSEDES PREVIOUS ADVERTISING.

CHUPPS AUCTION & REAL ESTATE

Stan Chupp
(918) 638-1157

Dale Chupp, Realtor
Coldwell Banker Neokla Select
(918) 630-0495

Jonathan Miller
(918) 237-7582

JOHN DEERE 2640 DIESEL TRACTOR: 70 H.P., with John Deer 146 Loader. \$13,300. 573-765-4406. Richland

BOBCAT 753 DIESEL SKID STEER LOADER: \$12,500. 573-765-4406. Richland.

IHC 806 DIESEL TRACTOR: Turbo \$9,750. 573-765-4406 Richland

CASE 580B DIESEL BACKHOE LOADER: \$9,975. 573-765-4406. Richland.

MODERN 3 POINT 6 FT BRUSHCUTTER: \$475 573-765-4406 Richland

CASE 410 DIESEL SKID STEER LOADER: Nice, \$19,500. 573-765-4406. Richland.

FOR SALE: 8950 Kubota 4X4, 96 horsepower, good rubber \$12,000 573-301-2148

ROUND TABLE: \$40. 417-741-1232.



MID MISSOURI STOCKYARDS

REGULAR SALE EVERY THURSDAY 11 AM

SPECIAL COW SALE • MAY 6TH AT 6 PM

WATCH OUR WEEKLY SALE IN REAL TIME ON DVAUCTION.COM

For Farm Visits, Market Updates, or Trucking
Call Zach Cox 417-777-1320
Dan Romine 573-578-4939

Competitive Buyers!
Competitive Commission!
Competitive Market!

Barn: 417-532-9292 

1-44 • Exit 123 "just outside of Lebanon"
17505 Route 66, Phillipsburg, MO 65722

For weekly market updates, visit us at
www.midmoststockyards.com

MODULAR BUILDING: Save \$\$\$ with us, Financing professionals 573-657-7040 chateauhomes.net

LOG SIDING: 2X8 Pine/Western Cedar www.pineridgerustic.com 573-729-7226. Salem.

TINY HOMES: Missouri Franchise 573-881-7965

I BUY.....used mobile homes. Call or text 573-338-6250 or email GregS.CDH@outlook.com

REGISTERED HEREFORD & ANGUS BULLS: Home raised, Some Show-Me Select Qualified. 573-701-7828. Belgrade.

LIGHTLY EXPERIENCED GOLF BALLS: \$3 a dozen. 417-818-3469. Strafford.



YOUR AD GOES HERE!

Add YELLOW Color For An Additional \$3 Per Reader Ad

All ads will include Phone Number (unless requested to be deleted by advertiser) and City Or Town, Phone Number with Area Code counts as one word. City or Town counts as one word.

RATE: 80¢ Per Word. All Classified Ads Require Payment Before Print.

(1)	80¢	(2)	\$1.60	(3)	\$2.40	(4)	\$3.20
(5)	\$4.00	(6)	\$4.80	(7)	\$5.60	(8)	\$6.40
(9)	\$7.20	(10)	\$8.00	(11)	\$8.80	(12)	\$9.60
(13)	\$10.40	(14)	\$11.20	(15)	\$12.00	(16)	\$12.80
(17)	\$13.60	(18)	\$14.40	(19)	\$15.20	(20)	\$16.00
(21)	\$16.80	(22)	\$17.60	(23)	\$18.40	(24)	\$19.20
(25)	\$20.00	(26)	\$20.80	(27)	\$21.60	(28)	\$22.40
(29)	\$23.20	(30)	\$24.00	(31)	\$24.80	(32)	\$25.60
(33)	\$26.40	(34)	\$27.20	(35)	\$28.00	(36)	\$28.80
(37)	\$29.60	(38)	\$30.40	(39)	\$31.20	(40)	\$32.00

Buy 3 Weeks - Get 4th Week Free! (Must be same ad)

Place your Classified Ad TODAY!

417-532-9131 • 800-665-8875

Fax: 417-532-8140

Or Mail To: P.O. Box 192 • Lebanon, MO 65536

For your convenience we accept MasterCard, Visa, Discover or American Express



DEADLINE FOR CLASSIFIED ADS: FRIDAY 4:00PM!

Name _____

Address _____

City _____ Email _____

State _____ Zip Code _____ Phone _____

Ad Total \$ _____ X # Weeks _____ = Amount Enclosed \$ _____

SMALL TOWN MAYOR OF WAYNESVILLE, MO: Political Adventures of the Ozarks by Luge Hardman, featuring small town politics and small-town life, featuring local photographers and local characters. \$9.50. 417-532-2045. Lebanon. (Leave message and phone number).

HARLEY 45 SOLO: factory rear brake drum + sprocket. \$150. 573-764-3517. Call in PM.

LIONEL TRAIN SET: Steam engine, tender, caboose and other car, track, and transformer. \$195. 573-364-7465. Rolla.

1970s KIDS METAL STOVE & FRIDGE: Nice Lithographic paint, 18" wide x 36" high. \$75. 573-364-7465. Rolla.

3 GENTS WITTNAUER WRIST WATCHES: 10k gold + 23J. All \$200. 573-764-3517. Call in P.M.

HARLEY FAT BOBS: Custom flame paint w/ gas caps + lines. \$100. 573-764-3517. Call in P.M.

COLT REVOLVER DEALER CATALOGS: Circa 1950's + 1960's. All for \$100. 573-764-3517. Call in P.M.

110 PORCELAIN POCKET WATCH DIALS: Perfect for arts & crafts. \$100. 573-764-3517. Call in PM.

1890 GOLD TESTING KIT: Glass acid beakers + antique wooden case. \$100. 573-764-3517. Call in PM.

FIXED KNOT FENCE

- Deli Sandwiches
- Homemade Yogurt
- Homemade Bread
- Glass Bottle Milk
- Cheese & Spices
- Bulk Foods
- Hydraulic Hoses
- Electric Fence Supplies
- Stay-Tuff Fence
- Johnson & Ritchie Waterers
- Gates & Panels

VISIT YOUR ONE STOP SHOP FARMERS QUIK STOP
5 mi. East of Lebanon on Hwy 32 • 417-991-1938

1500 VINTAGE WRISTWATCH DIALS: \$100. 573-764-3517. Call in PM.

HARLEY PANHEAD DISTRIBUTOR: original, chrome + complete. \$125. 573-764-3517. Call in PM.

SLIGHTLY USED PUZZLES: Will sell or trade. 417-818-3469. Strafford.

USED JET HOME POLLUTION CONTROL PANNEL: Model CP700. \$65. 636-239-2695 or 314-560-5700. Washington.

FOR SALE: Transmission for 56 & 06 series International tractors. \$675. 636-239-2695 or 314-560-5700. Washington.

OMAR'S DOZING

- ⇒ Clear land
- ⇒ Clean up woods
- ⇒ Make driveways
- ⇒ Clear property lines
- ⇒ Build ponds

Amish Owned & Operated
LEAVE MESSAGE: 417-741-0440
Hartville & Surrounding Areas

HEARTH CRAFT GLASS BI-FOLD FIREPLACE DOORS PURCHASED AT FORSHAW'S FIREPLACE: Antique brass. \$160 obo. 636-239-2695 or 314-560-5700. Washington.

THREE SHEPHERD'S HOOKS: To hang potted plants. Black iron. 5 1/2-6FT. \$50. 636-239-2695 or 314-560-5700. Washington.

TAYLOR TRUCKS & EQUIPMENT
417-924-2026 • 2676 Hwy. 5, Mansfield, MO

- ★ **3 POINT TILLERS** ★
- ★ **INTIMIDATOR TREE PULLER** ★
- TRAILER PARTS & REPAIR**
- DANUSER DEALER**
- T3 Post Driver & Other Attachments
- New Mowers! Bush-Whacker, Big Bee
- Storage Containers & Dry Vans - 20' - 53'
- BUSH-WHACKER HD**
- SKIDSTEER BRUSH CUTTER**
- Milwaukee Cordless Tools**
- MD144 Bat Wing in stock!
- Portable Generators, Farm Tires, New Semi Tires, PTO's & Parts for Rotary Mowers, Farm Tractor Implements, Plows, Used 15" Bush-Whacker Now In Stock, Discs, and More Skidsteer Attachments: Pallet Forks, Buckets, Grapples, Hay Spears, RR Ties

Bush-Whacker Heavy Duty Rotary Cutter



We Invite you To Come By & Look Us Over! Located 2.5 Miles North Of Mansfield, MO On Hwy 5

CENTRAL BOILER CLASSIC EDGE
TITANIUM HDX
26% Tax Credit on EPA certified Central Boiler Classic Edge HDX models and installation. Call today to learn more!

Outdoor Wood Furnace CentralBoiler.com

Yarborough Equipment Sales & Services, Inc.
9776 E. State Hwy 00 • Strafford, MO
417-736-2303 • 1-866-286-6901 • www.yarbeq.com



The Classic Edge 360, 560 and 760 HDX are U.S. EPA Certified

1962 HARLEY SPORTSTER 900CC: original distributor. \$50. 573-764-3517. Call in PM.

RUBBER & LEATHER BOOTS AND 5-Buckle OVER SHOES: Men's 11, Women's 7, some insulated. \$15-\$40 obo. 636-239-2695 or 314-560-5700. Washington.

FERGUSON DEALER SHOP MANUAL: Covering TE-20, TO-20 & TO-30 Model tractors. \$40. 636-239-2695 or 314-560-5700. Washington.

NEW SQUARE D RAINPROOF 50AMP DISCONNECT: \$160. 636-239-2695 or 314-560-5700. Washington.

KUSTER LOGGING
BUYER of Standing Timber
Oak and Walnut
Dozing Now Available
417-259-0047
References Available



FIRST GEAR KILIMANJARO MOTORCYCLE COAT: XL, but runs smaller. Zip out liner, Kevlar padding on shoulders & elbows, vented, rainproof. Like new. \$95 FIRM. 417-260-0941. Raymondville.

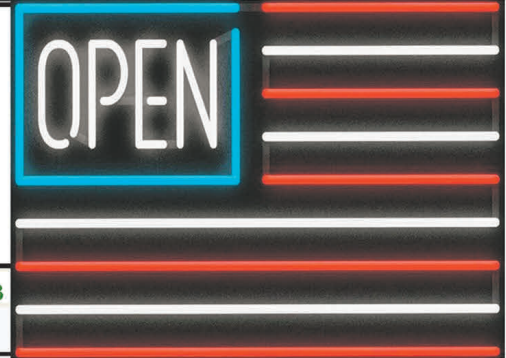
2 GOODYEAR WRANGLER TIRES: Kevlar LT245/70R17, all terrain, \$100 for the pair. 417-417-260-0941. Raymondville.

RAINBOW VACUUM CLEANER: Excellent Condition. \$200. 417-260-0941. Raymondville.

FOR SALE: 2 Dayco motorcycle covers for Harley or other big bikes. \$50 each. 417-260-0941. Raymondville.



Sale Ends April 29, 2023
 Seymour, Missouri 417-935-4201



Pole Barns & Post Framed Buildings!

23'x32'x10' \$6,888 Material Only \$9,090 Labor Included	23'x40'x10' \$7,885 Material Only \$10,600 Labor Included	30'x40'x10' \$9,595 Material Only \$13,100 Labor Included	40'x60'x12' \$16,745 Material Only \$23,985 Labor Included
--	---	---	--

Call for free quote, brochure & color chart.
 Other sizes also available.



Due to increased demand for our quality product we are currently hiring new barn construction crews. Contact Jeff

NOBODY, BUT NOBODY BEATS OUR PRICES!!!

10 ft. Slider • Engineered Trusses 8' O.C. • 2x6 Treated Bottom Wrap • Screws • 2x10 Top Wrap • 2x4 Purlins • Full 29 Gauge Steel • Plus 3 ft. Entry Door with Lock
 OPTIONS: Sidewall Heights on all Buildings 10', 12', 14' & 16'. Overhead Garage Door. Skylights. Insulation. Wainscoting. Insulated Vinyl Windows. Cupolas. Labor Rates Slightly Higher over 50 Miles from Seymour. Call for YOUR FREE QUOTE TODAY!!!!

PAINTED WHITE, GREEN OR TAN METAL\$97.79	IN STOCK
10' - \$31.00 12' - \$37.20 16' - \$49.60	
MIX & MATCH METAL\$59.99	
8' - \$15.20 10' - \$19.00 12' - \$22.80	
GALVALUME METAL\$79.99	
10' - \$25.40 12' - \$30.48 16' - \$40.64	
GALVANIZED CORRUGATED METAL SOLD OUT!	
8'-\$9.84 10'-\$12.30 12'-\$14.75 16'-\$19.67	

40yr Painted Metal
\$105.59^{Sq}

KNOTTY PINE DOORS
 Starting at
\$164.99

Prices subject to change without notice
6X6 CEDAR POST LIMITED TIME \$5.87 LN FT

Car Siding!

1x6 White Pine Siding **79¢** in ft
 1x8 White Pine Siding **\$1.05** in ft

* 4 Profiles to choose from!
 Broken Bundles Add 10¢ Per Ft.

4x8 Sheeting
 Less than full units Add \$1 per sheet

3/8" Beaded Paneling	\$24.99
5/8" T111 Siding	\$19.99
Paneling	\$SOLD
1/2" Plywood	\$SOLD
3/4" Plywood	\$29.99
3/16 Pegboard	\$12.99

**LOTS OF MATERIAL AVAILABLE
 FOR THOSE IN HOME PROJECTS!**

NEW PACKAGE HOMES



2x6—16" on center-Exterior Stud Walls
 Residential Roof Trusses-2' on center
 4/12 pitch with 1' over hang
 40 year Painted Metal roofing in 20 Different Colors
 Profile Ridge Vent - Ventilated Ridge Cap
 Vinyl Center Vent Soffit
 Color Matched Metal Fascia & Gable Trim
 2 - 3' 6 Panel Entry Doors
 4 - 3'x4' Vinyl Insulated Windows

Shown with Available Options
 Your Choice of either:
 Stock 5/8" T111 Siding w/1x4 Pine Window & Door Trim - or -
 7/16" OSB & House Wrap ready for other finish options

ALL FIGURED FOR SUITABLE CUSTOMER SUPPLIED SLAB OR SUB-FLOOR

Price for Basic Materials Package (No Labor at this Time)

20x24(480 sq. ft.)	20x32(640 sq. ft.)	20x40(800 sq. ft.)	28x40(1120 sq. ft.)	28x48(1344 sq. ft.)
\$9,490	\$10,839	\$12,339	\$15,129	\$18,729

REAL WOOD SIDING

2x6 Log Siding \$1.76 in ft
1x8 Beveled Cedar from- 99¢ in ft
T1-11 Siding from \$19.99

DECK PACKAGES

Materials Only

8x8.....\$349.00	10x12.....\$699.00
10x10.....\$499.00	10x16.....\$899.00
12x12.....\$899.00	12x16..\$1179.00

QUAKER Now Stocking Quaker Vinyl Windows

2030 \$ 163.99	3030 \$189.99
3040 \$206.99	3052 \$225.99
3040Twin \$453.99	3052Twin \$497.99

LUCKY DISCOUNT LUMBER
 417-935-4201
 455 State Hwy C • Seymour MO 65746
 www.luckydiscountlumber.com

*Some restrictions apply see store for details. Prices subject to change without notice.

Economy Buildings in Stock Now!!
Custom Built, Meeting Your Storage Needs

Come check out our double wides!! Sizes 32'x52' available

Come Visit Us Near You!
 For Display Locations in Waynesville, Sunrise Beach, & Camdenton, Call 573-346-3030

BENNETT SPRINGS BUILDING CENTER
 2519 Hwy 65 • Louisburg, MO • Buy or Rent to Own Storage Buildings • 417-532-8338

1963 CHEVY SHOP MANUAL: \$20. Vintage Chevrolet 1963-1974 V8 & 6-cylinder manual \$30. Chilton's manual American Volkswagen 1969-1976. \$35. 417-260-0941. Raymondville.

MAC'S TIEDOWN STRAPS: Like New. \$80. 417-260-0941. Raymondville.

NOW BUYING STANDING PINE TIMBER: \$0.20 board ft. International Scale. All stumps and slash mulched; no mess left behind. We also log small acreage, mobile sawmilling available as well. 417-991-9280.

ANTIQUE HOG OILER: \$35. 573-308-5884. Rolla.

460 FORD ENGINE BLOCK: \$100. 573-308-5884. Rolla.

TRAILER HOUSE RIMS: \$10 each. 573-308-5884. Rolla.

4x5 GRASS HAY: \$60 per bale. 300 square bales at \$6 per bale. 573-308-5884. Rolla.

6FT X 10FT GRAIN BOX: On 2-Wheel Trailer. \$400 O.B.O. 573-308-5884. Rolla.

POSTER BED: \$150. 417-741-1232.

FLAT CREEK ROCK FOR LANDSCAPING: 573-308-5884. Rolla.

DARDEN PROFESSIONAL TIMBER HARVESTING, BUYING STANDING TIMBER: Great prices, improve wildlife habitat and improve forest health. State Certified & Fully Insured! 573-247-4808. Salem.

25 SECLUDED ACRES: Powerlines on two sides of property. One hour from Springfield. Hunter's Paradise. Stream through property. Cash Only. \$8,000/per acre. Must take all. 00417-741-1232.

HIGHPOINT GREENHOUSE: Open for the season. Garden seeds, vegetable and flower plants, seed potatoes, onion sets and plants, herbs, etc. 417-741-2793. 9337 Warner Rd. Hartville.

JOE THEISMANN AUTOGRAPHED CAREER STAT JERSEY: JSA COA. Text for pictures. \$95 417-318-8932. Houston.

LAWN MOWING & YARD WORK SERVICES: 417-288-8123. Lebanon.

STAN MUSIEL CANCELED CHECK: Full signature with authenticity. \$55. Text for pictures. Mint condition. 417-318-8932. Houston.

YOUR TRUSTED SOURCE FOR QUALITY FEED FOR ALL YOUR LIVESTOCK AND PETS

Kropf Feeds
 "DOING BUSINESS ON OUR WORD AND A HAND SHAKE"
 Located in the Heart of the Amish Mennonite Community!
 417-345-8600 • 19 Prairie Lane, Buffalo

High horsepower.
High performance.
Low financing.



Save big on our L2501DT with Kubota loader. Part of our tractor lineup rated #1 for durability and owner experience in the U.S.* Stop in for a demo and to claim this offer today.

L2501 DT W/ KUBOTA LOADER **ONLY \$19,495**

0% APR FOR 72 MONTHS

VISIT US TODAY FOR THIS LIMITED-TIME OFFER



Quarles Supply

3251 S Springfield Ave
Bolivar, MO 65613
417-777-2391

KubotaUSA.com

0% Down, 0% A.P.R. financing for up to 72 months on purchases of select new Kubota L2501 DT equipment from participating dealers' in stock inventory is available to qualified purchasers through Kubota Credit Corporation, U.S.A.; subject to credit approval. Example: 72 monthly payments of \$13.89 per \$1,000 financed. Some exceptions apply. Terms subject to change. Offers expire 06/30/23. This material is for descriptive purposes only. Kubota disclaims all representations and warranties, express or implied, or any liability from the use of this material. For more information, see Dealer or go to KubotaUSA.com.

Progressive
FARMER
READER INSIGHTS



**IRISH DEXTER
BREEDERS ASSOCIATION
IDBA**



**Announces its first annual show and sale!
May 5 & 6 2023 at the Dallas County Fairgrounds
Buffalo Mo.**

We are proud to make this announcement as the desire for these animals continue to grow and we strive to represent the breed to the best of our ability we would like to invite you all to come join us for a fun filled 2 days.

We will be offering a hand picked selection of what we feel are some of the breeds best for auction.

We will be offering 12 – females and 3 – males all animals will be broke to lead.

We will have a variety from show heifers and bulls to maternal genetics in cows and herd sires.

We will also have a silent auction and a few items we will live auction to help raise money for the IDBA to help promote the growth in our youth in raising Irish Dexter's. So if you have little interest in raising these cattle we would like to offer the opportunity to help grow the youth in agriculture for our group is strongly focused on the youth. We love doing what we do and raising high quality animals but we also believe in supporting the youth for they are our future.

So come join us May 5th and 6th for the opportunity to purchase some of the breeds best genetics and for fun and food.

For more info on the show and sale or becoming a member you can contact the following IDBA board members:

President – Steve Cushing 417-991-6707
Treasurer – Bo Hampton 417-288-2376
Dakota Cushing 417-991-6720

Vice President – Robert Doehring 417-733-4088
Rob Doehring 417-241-5241
Butch Rankin 417-619-0801