

FREE - TAKE ONE!

Vol. 29 No. 50

MARCH 9, 2023

800-543-8271 • 800-665-8875

WEEKLY TRADER MAGAZINE



Find us on
Facebook

@myweeklytrader
AUCTIONS PG. 9

VISIT OUR NEW WEBSITE! MYWEEKLYTRADER.COM

TRUCK SEASON

GREAT DEALS ON A HUGE SELECTION OF SIERRA AND SILVERADO



WE WANT YOUR TRADE.

**ED MORSE
CHEVROLET
BUICK • GMC**

ROLLA

FORMERLY FAIRGROUNDS AUTO PLAZA

NEW NAME. SAME TEAM.

100 Fairgrounds Rd., Rolla, MO

573-364-1002

EdMorseChevroletBuickGMCRolla.com

Land

For Sale

Webster Co., Mo • 80 Acres +/-



\$499,900

- Gated entrance
- Blacktop road frontage
- Barn
- High-quality hay production pastures
- Building locations with beautiful panoramic views

- Unique topography for hunting
- Quality deer and turkey hunting
- Great clearings for secluded food plots
- Some nice timber
- Close to Marshfield MO for all needs

- 1/2 mile from Elkland, MO
- 1/2 mile from HWY 38 and easy access to I-44 and US-65
- Marshfield School District
- Boundary partially fenced
- Property will have new survey and some new fencing



WHITETAIL PROPERTIES REAL ESTATE

HUNTING | RANCH | FARM | TIMBER

Brian Utecht | 417-766-5595

Brian.Utecht@whitetailproperties.com

WHITETAILPROPERTIES.COM

Missouri's Top Land Specialist in 2014, 2015,
2016, 2017, 2018, 2019, 2020 and 2021





RB16 SERIES

REAR BLADES
20-40 HP 60", 74", 84" Widths

- Cat. 1 hitch
- 7 Forward angles; 3 Reverse angles
- 5 Tilt positions
- 12" Offset left or right
- 14" Moldboard height
- 1/4" Moldboard thickness
- Landscape Rake adaptable

Getting Chores Done
LAND PRIDE
does that.



www.landpride.com

For Outstanding Products & Service

AGRI-ENTERPRISES

1-1/2 Miles South Of Licking, MO On Hwy 63
573-674-2203 • 1-800-653-7152 • www.agri-enterprises.com

2004 GMC Envoy SLT: 2WD. \$4,900. Call 573-364-5008 or visit jimsmotorrolla.com.

WEATHERED BARN WOOD

SIDING: 10" wide. 573-729-7226. www.pineridgerustic.com Salem.

WE HAVE MOBILE HOMES:

Instock new arrivals (8) homes, need to go as soon as possible! 573-499-9993. columbiadiscountohomes.com

LOG SIDING: 2X8 Pine/Western Cedar www.pineridgerustic.com 573-729-7226. Salem.

USED MOBILE HOMES: Call David at VILLA HOMES IN ROLLA 573-578-8072. Rolla.

BUYING MOBILE HOMES: Call David at VILLA HOMES IN ROLLA 573-578-8072. Rolla.

NEW MOBILE HOME STOCK: Just received (5) new units, they gotta go! 573-657-2176. amegamobliehomes.com

USED DOUBLE-WIDE: \$34,900 WOW!!!! This won't last! 573-657-2176. amegamobliehomes.com

TRUE MODULARS: 30 to 60 day delivery available, 3 and 4 bedroom 573-657-7040 chateauhomes.net



TIM'S USED CARS

(573) 341-3828 • 1334 South Bishop (Hwy. 63) • Rolla, MO
Next to Hwy CC • www.tims-used-cars.com

	<p>2018 NISSAN PATHFINDER SV 4x4, v-6 Auto, Power Equipped, 3rd row seat, 100,xxx Miles Only \$17,900</p>		<p>2015 RAM 1500 TRADESMAN Quad Cab, 4x4, V-6 Auto, Power Equipped, 173,xxx Miles Only \$13,900</p>
	<p>2018 JEEP RENEGADE SPORT 4x4, 2.4 4 Cyl., Auto, Power Equipped, 67,xxx Miles Only \$16,900</p>		<p>2006 DODGE 2500 LARAMIE Quad Cab, 4x4, 5.7 Hemi, Power Equipped Only \$8,900</p>

LARGE SELECTION OF CARS, TRUCKS, SUVs & VANS!

CALUS LOGGING

20 YEARS EXPERIENCE

Buying Standing Timber
Walnut & Oak

Joe Calus, Owner
417-926-4606 • MTN. GROVE

CERTIFIED

TINY HOMES: We gottem 573-881-3283

2016 Forest River Pop-up Camper and Toy Hauler: \$8,800. Call 573-364-5008 or visit jimsmotorrolla.com.

I BUY.....used mobile homes. Call or text 573-338-6250 or email GregS.CDH@outlook.com

FIREARMS: Professional Repair, Restorations and Appraisals. Baron's Gunsmithing. 573-363-5801. Camdenton.

REGISTERED HEREFORD & ANGUS BULLS: Home raised, Some Show-Me Select Qualified. 573-701-7828. Belgrade.

LIGHTLY EXPERIENCED GOLF BALLS: \$3 a dozen. 417-818-3469. Strafford.

2012 Chevrolet Malibu LS: \$6,900. Call 573-364-5008 or visit jimsmotorrolla.com.

SLIGHTLY USED PUZZLES: Will sell or trade. 417-818-3469. Strafford.

NEIGHBORHOODS HOME IMPROVEMENT STORE: 417-533-5080. Lebanon.

LIONEL TRAIN SET: Steam engine, tender, caboose and other car, track, and transformer. \$195. 573-364-7465. Rolla.

MODEL 1911 FRAME 8-SHOT C02 PISTOL: Like new, in box with C02 cartridges, 4 clips, pellets & all paperwork. \$95. 573-364-7465. Rolla.

A PICTORIAL HISTORY OF WORLD WAR II: Air forces in Combat. \$10. 417-532-2045. Lebanon. (Leave message and phone number).

HEARTH CRAFT GLASS BI-FOLD FIREPLACE DOORS PURCHASED AT FORSHAW'S FIREPLACE: Antique brass. \$160 obo. 636-239-2695 or 314-560-5700. Washington.

HARLEY 45 SOLO: factory rear brake drum + sprocket. \$150. 573-764-3517. Call in PM.

110 PORCELAIN POCKET WATCH DIALS: Perfect for arts & crafts. \$100. 573-764-3517. Call in PM.

COLT REVOLVER DEALER CATALOGS: Circa 1950's + 1960's. All for \$100. 573-764-3517. Call in P.M.

OFFICIAL TRACTOR OF TOUGH™

INTRODUCING THE ALL-NEW 5100 SERIES



Marshfield Machinery Inc.

222 E. Madison • Marshfield, MO 65706

417-859-2117 • www.marshfieldmachinery.com

*2018 data including all Mahindra group brand sales.
MahindraUSA.com © 2020 Mahindra USA Inc.

Mahindra
Rise.

NEW MAHINDRA TRACTORS

1626 4WD & LDR 26HP	IN STOCK
2638 4WD & LDR 38HP	IN STOCK
2645 4WD & LDR 45HP	IN STOCK
5145 4WD & LDR 45HP	IN STOCK
4550 4WD & LDR 48 HP	IN STOCK

USED TRACTORS

MF 4610 99HP 4WD CAB LDR	48,000
MAHINDRA M85P 4WD CAB LDR	29,500
MF 4243 75HP CAB LDR	28,000
MAHINDRA 2565 65HP CAB LDR	25,000
MAHINDRA 2638 38HP 4WD LDR	21,000
MAHINDRA 1635 35HP 4WD LDR	19,500
AC 7010 106 HP CAB	9,500
AC 175 62 HP LDR	8,500
MF 1085 81HP	6,500
FORD 2000 31 HP	3,500
MF 135 36 HP	2,750

USED ROUND BALERS

NH RB450 4X5 MESH	24,000
NH RB780A 5X6 MESH	7,500
HESSTON 560 5X6	2,000

USED MISC.

SITREX 8 WHEEL RAKE	1,750
M&W 8 WHEEL RAKE	1,750
LELY 8 WHEEL RAKE	1,750
INTERNATIONAL 10FT CUTTER	1,250
BH RDTH 60 FINISH MOWER	850
RHINO 5FT FINISH MOWER	850
LAND PRIDE 5FT CUTTER	500
ROLLINS 5FT BLADE	250
KING CUTTER BEDDING PLOW	200

Marshfield Machinery Inc.

222 E. Madison
Marshfield, MO 65706
417-859-2117

www.marshfieldmachinery.com

PLAD PANTRY



DISCOUNT & SURPLUS FOODS
FRESH PRODUCE^{LLC}
417-532-4700

Shredded Colby Jack Cheese.....	\$14.99 5 lbs.
Cheeseburgers with bun and cheese.....	\$0.99 each or \$39.99 case of 48
Apple Chicken Sausages.....	\$1.979 12 oz.
Chicken Drumsticks.....	\$1.19 a lb.
Fully Cooked Bacon.....	\$2.99 2.52 oz.

1571 State Hwy 64 • Tunas, MO 65764
Hours: 8:30 a.m. to 5:30 p.m. • Closed Wed. & Sun.



1500 VINTAGE WRISTWATCH DIALS: \$100. 573-764-3517. Call in PM.

BURIED BY TABLE ROCK LAKE BOOK: About old towns, cemeteries, stores, etc. that were covered by the lake, 188 pages, \$12.00. 417-532-2045. Lebanon. (Leave message and phone number).

1970s KIDS METAL STOVE & FRIDGE: Nice Lithographic paint, 18" wide x 36" high. \$75. 573-364-7465. Rolla.

KUSTER LOGGING

BUYER of Standing Timber
Oak and Walnut

Dozing Now Available

417-259-0047

References Available



3 GENTS WITTNAUER WRIST

WATCHES: 10k gold + 23J. All \$200. 573-764-3517. Call in P.M.

ANTIQUE HOG OILER: \$35. 573-308-5884. Rolla.



CLASSIC EDGE
TITANIUM HDX

26% Tax Credit on EPA certified Central Boiler Classic Edge HDX models and installation. Call today to learn more!

Outdoor Wood Furnace CentralBoiler.com

The Classic Edge 360, 560 and 760 HDX are U.S. EPA Certified

Yarbrough Equipment Sales & Services, Inc.
9776 E. State Hwy 00 • Strafford, MO
417-736-2303 • 1-866-286-6901 • www.yarbeq.com

HARLEY PANHEAD DISTRIBUTOR:

original, chrome + complete. \$125. 573-764-3517. Call in PM.

460 FORD ENGINE BLOCK: \$100. 573-308-5884. Rolla.



Wright Spray Foam Insulators, LLC
Commercial & Residential
Call for FREE Estimates!

Ervin Gingerich
417-926-2052
B. Eli Yoder
417-746-4932

USED JET HOME POLLUTION

CONTROL PANNEL: Model CP700. \$65. 636-239-2695 or 314-560-5700. Washington.

18 4X5 2-YEAR-OLD GRASS HAY: \$45 per bale. 573-308-5884. Rolla.



FIXED KNOT FENCE

- Deli Sandwiches
- Homemade Yogurt
- Homemade Bread
- Glass Bottle Milk
- Cheese & Spices
- Bulk Foods
- Hydraulic Hoses
- Electric Fence Supplies
- Stay-Tuff Fence
- Johnson & Ritchie Waterers
- Gates & Panels

VISIT YOUR ONE STOP SHOP
FARMERS QUIK STOP
5 mi. East of Lebanon on Hwy 32 • 417-991-1938

HARLEY FAT BOBS: Custom flame paint w/ gas caps + lines. \$100. 573-764-3517. Call in P.M.

3-MOTOR MANUALS (CARS): 1935-1952 for \$20 + Postage. 1935-1949 for \$15 + Postage. 1964-1970 for \$30 + Postage. 417-260-0941. Raymondville.

RUBBER & LEATHER BOOTS AND 5-Buckle OVER SHOES: Men's 11, Women's 7, some insulated. \$15-\$40 obo. 636-239-2695 or 314-560-5700. Washington.

1962 HARLEY SPORTSTER 900CC: original distributor. \$50. 573-764-3517. Call in PM.

FERGUSON DEALER SHOP MANUAL: Covering TE-20, TO-20 & TO-30 Model tractors. \$40. 636-239-2695 or 314-560-5700. Washington.

LOADER BALE FORKS: For John Deere, fast hitch. \$200 Cash. 417-599-8089. Willard.

POSTER BED: \$150. 417-741-1232.

FOR SALE: Transmission for 06 series International tractors. \$675. 636-239-2695 or 314-560-5700. Washington.

ST. LOUIS CIVIL WAR SITES OF THE FIGHT FOR FREEDOM: By Peter Downs, 207 pages, \$7.50. 417-532-2045. Lebanon. (Leave message and phone number).

RAINBOW VACUUM CLEANER: Excellent Condition. \$200. 417-260-0941. Raymondville.

JIM'S MOTORS OF ROLLA



**2015 Ford Expedition
EL Platinum 4WD - Call For Price**



2010 Lexus SC 430 Base - \$11,900

LIST OF VEHICLES

2010 Lexus SC 430	\$11,900
2012 Chevy Malibu 4dr	\$6,900
2012 Mazda 5 Station Wagon	\$9,800
2004 GMC Envoy FWD	\$4,900
2016 Clipper POP UP	\$8,800
2014 Ram Cargo Van	\$6,900
1999 BMW K 1200 Cycle	\$5,900
2013 Ford Taurus s-roof	\$12,500
2001 Ford Dually 7.3 pu	\$16,500
2015 Expedition 8 pass	\$22,000

700 S. Bishop Ave, Ste A, Rolla, MO 65401 • 573-364-5008 • www.jimsmotorsrolla.com

1890 GOLD TESTING KIT: Glass acid beakers + antique wooden case. \$100. 573-764-3517. Call in PM.

AUSSIE/BORDER COLLIES: Born 1-9-23, UTD on shots and wormer. Born on the farm! Great prospects for stock dogs or family pets. \$100. 417-701-1372. Hartville.

NOW BUYING STANDING TIMBER IN THE LAKE OF THE OZARKS AREA: Free estimates. Littleton Storm & Timber Services. 217-836-4985.

NEW SQUARE D RAINPROOF 50AMP DISCONNECT: \$160. 636-239-2695 or 314-560-5700. Washington.

TAYLOR TRUCKS & EQUIPMENT

417-924-2026 • 2676 Hwy. 5, Mansfield, MO

NEW ROTOTILLERS

Milwaukee Cordless Tools

TRAILER PARTS & REPAIR

DANUSER DEALER

T3 Post Driver & Other Attachments
New Mowers! Bush-Whacker, Big Bee
Storage Containers & Dry Vans - 20' - 53',
BUSH-WHACKER HD
MD144 Bat Wing in stock!

★ INTIMIDATOR TREE PULLER ★

Portable Generators, Farm Tires, New Semi Tires, PTO's & Parts for Rotary Mowers, Farm Tractor Implements, Plows, Used 15" Bush-Whacker Now In Stock, Discs, and More Skidsteer Attachments: Pallet Forks, Buckets, Grapples, Hay Spears, RR Ties

Bush-Whacker
Heavy Duty Rotary Cutter



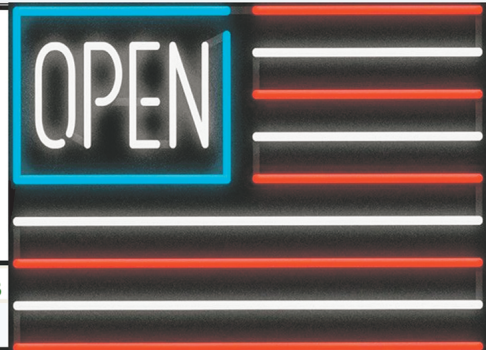
We Invite you To Come By & Look Us Over! Located 2.5 Miles North Of Mansfield, MO On Hwy 5



NOBODY BEATS OUR PRICES

Sale Ends March 31, 2023

Seymour, Missouri 417-935-4201



Pole Barns & Post Framed Buildings!

23'x32'x10' \$6,888 Material Only \$9,090 Labor Included	23'x40'x10' \$7,885 Material Only \$10,600 Labor Included	30'x40'x10' \$9,595 Material Only \$13,100 Labor Included	40'x60'x12' \$16,745 Material Only \$23,985 Labor Included
---	--	--	---

Call for free quote, brochure & color chart.
Other sizes also available.



NOBODY, BUT NOBODY BEATS OUR PRICES!!!

10 ft. Slider • Engineered Trusses 8' O.C. • 2x6 Treated Bottom Wrap • Screws • 2x10 Top Wrap • 2x4 Purlins • Full 29 Gauge Steel • Plus 3 ft. Entry Door with Lock

OPTIONS: Sidewall Heights on all Buildings 10', 12', 14' & 16'. Overhead Garage Door, Skylights, Insulation, Wainscoting, Insulated Vinyl Windows, Cupolas. Labor Rates Slightly Higher over 50 Miles from Seymour. Call for YOUR FREE QUOTE TODAY!!!!

PAINTED WHITE, GREEN OR TAN METAL	\$97.79
10' - \$31.00 12' - \$37.20 16' - \$49.60	
MIX & MATCH METAL	\$59.99
8' - \$15.20 10' - \$19.00 12' - \$22.80	
GALVALUME METAL	\$79.99
10' - \$25.40 12' - \$30.48 16' - \$40.64	
GALVANIZED CORRUGATED METAL SOLD OUT!	
8' - \$9.84 10' - \$12.30 12' - \$14.75 16' - \$19.67	

IN STOCK

40yr Painted Metal

\$97.79_{Sq}

KNOTTY PINE DOORS

Starting at

\$164.99

Prices subject to change without notice

6X6 CEDAR POST LIMITED TIME \$5.87 LN FT

Car Siding!

1x6 White Pine Siding **79¢_{ln ft}**

1x8 White Pine Siding **\$1.05_{ln ft}**

* 4 Profiles to choose from!
Broken Bundles Add 10¢ Per Ft.

4x8 Sheeting

Less than full units Add \$1 per sheet

3/8" Beaded Paneling	\$24.99
5/8" T111 Siding	\$19.99
Paneling	\$SOLD
1/2" Plywood	\$SOLD
3/4" Plywood	\$29.99
3/16 Pegboard	\$12.99

**LOTS OF MATERIAL AVAILABLE
FOR THOSE IN HOME PROJECTS!**

NEW PACKAGE HOMES



Shown with Available Options

Your Choice of either:
Stock 5/8" T111 Siding w/1x4 Pine Window & Door Trim - or -

7/16" OSB & House Wrap ready for other finish options

2x6—16" on center-Exterior Stud Walls
Residential Roof Trusses-2' on center
4/12 pitch with 1' over hang
40 year Painted Metal roofing in 20 Different Colors

Profile Ridge Vent - Ventilated Ridge Cap
Vinyl Center Vent Soffit
Color Matched Metal Fascia & Gable Trim
2 - 3' 6 Panel Entry Doors
4 - 3'x4' Vinyl Insulated Windows

**ALL FIGURED FOR SUITABLE CUSTOMER
SUPPLIED SLAB OR SUB-FLOOR**

Price for Basic Materials Package (No Labor at this Time)

20x24(480 sq. ft.)	20x32(640 sq. ft.)	20x40(800 sq. ft.)	28x40(1120 sq. ft.)	28x48(1344 sq. ft.)
\$9,490	\$10,839	\$12,339	\$15,129	\$18,729

REAL WOOD SIDING

2x6 Log Siding \$1.76 ln ft

1x8 Beveled Cedar from- 99¢ ln ft

T1-11 Siding from \$19.99

DECK PACKAGES

Materials Only

8x8.....\$349.00	10x12.....\$699.00
10x10.....\$499.00	10x16.....\$899.00
12x12.....\$899.00	12x16.....\$1179.00



Now Stocking Quaker Vinyl Windows

2030 \$163.99	3030 \$189.99
3040 \$206.99	3052 \$225.99
3040Twin \$453.99	3052Twin \$497.99



LUCKY DISCOUNT LUMBER

417-935-4201

455 State Hwy C • Seymour MO 65746

www.luckydiscountlumber.com



*Some restrictions apply see store for details. Prices subject to change without notice.

COWBOY CORGIES: Born 1-9-23, UTD on shots and wormer. Great prospects for stock dogs or family pets. \$300. 417-701-1372. Hartville.

KITCHEN TABLE & CHAIRS: Solid wood. \$70. 573-734-2822.

2 GOODYEAR WRANGLER TIRES: Kevlar LT245/70R17, all terrain, \$100 for the pair. 417-417-260-0941. Raymondville.

FOR SALE: 2 Dayco motorcycle covers for Harley or other big bikes. \$50 each. 417-260-0941. Raymondville.

STARTER & GENERATOR: For Chrysler 6-cylinder flathead engine. \$50 OBO. 573-308-5884. Rolla.

PUREBRED MOUNTAIN FEIST PUPPIES: Small dogs. 573-796-8343 or 660-415-1311. California, MO.

Fly Free with AFC.



AFC
ALTOBID® FLY CONTROL
PRODUCTS

KENT

Located in the Heart of the Amish Mennonite Community!
417-345-8600
19 Prairie Lane, Buffalo

Kropf Feeds

Larry Heisel Rentals



HEISEL 573-779-1500
Larry's Cell 636-432-9460
RENTAL SALES & SERVICE

**Crawler Loaders
Excavators, Backhoes**

We Deliver!

Call Larry!
Rental Available in 636 or 573 Area Codes
573-779-1500

**WE BUY AND SELL
new and used mobile homes**



(417) 501-1061

FIRST GEAR KILIMANJARO MOTORCYCLE COAT: XL, but runs smaller. Zip out liner, Kevlar padding on shoulders & elbows, vented, rainproof. Like new. \$95 FIRM. 417-260-0941. Raymondville.

TRAILER HOUSE RIMS: \$10 each. 573-308-5884. Rolla.

AB LOUNGE SPORT: Abdominal exercise chair. Like new. \$50. 210-787-8222. Linn Creek.

BASSET HOUND PUPPIES: Multiple colors. Might trade for whatever. 417-650-0405. Lebanon.

ROUND TABLE: \$40. 417-741-1232.

NOW BUYING STANDING PINE TIMBER: \$0.20 board ft. International Scale. All stumps and slash mulched; no mess left behind. We also log small acreage, mobile sawmilling available as well. 417-991-9280.

OFFICE DESK: 36x72. Nice, Walnut laminated. \$50. 573-259-2951. Bourbon.

WE DELIVER YOUR SUCCESS!

CALL TODAY



Conveniently located across from
Clark Tire on Highway 52
just outside Versailles

Delivery Available



Coming Soon!



Great Equipment. Great Service. Great Price.

PINEY RIVER FORD .COM 

MARCH MADNESS INTENSE

TENT SALE

Starting Friday March 17th - 25th
Vehicles under the tent have special discounts.
EVERY VEHICLE MARKED DOWN TO GO!

✓ BRONCOS ✓ ESCAPES ✓ JEEP ✓ SUPERDUTIES ✓ NISSAN ✓ GMC
 ✓ RAM ✓ DODGE ✓ KIA ✓ HYUNDAI ✓ LINCOLN ✓ TOYOTA

0% and \$1,000 rebate on select vehicles
 36 months with approved credit

Special Financing Credit Issues — Let Us Help!
 Payments starting as low as \$129 per month w.a.c.

Vehicles Starting Out at \$5,000

Up to \$100 Rebate on Select Tires

Get your hiney to the Piney. No hidden costs - no documentation fees! If we don't have it, we can find it! We buy vehicles.

1100 S. SAM HOUSTON BLVD., HOUSTON
417-967-4134

 Check us out on our Facebook page, facebook.com/pineyriverford • www.pineyriverford.com

Real Estate

40x60 3 bay metal garage w/concrete floors. Doors are 10x12 with bldg. height of 14'.

Would make a great automotive shop. Shop sits on 10 mostly wooded acres. Located on County Road 2110 (newly blacktop road) ~ 8 miles north of Rolla. Includes 2 post Eagle car lift, pneumatic compressor, and lines throughout for tools. Lots of extra storage is lofts on each end of garage. Garage is set up with bathroom and shower. Call me for more information today!

Lisa Lorts
c#573-261-1487 ofc# 636-534-8378
email:lialorts@kw.com

kw CHESTERFIELD
 KELLERWILLIAMS. REALTY

WHITE GERMAN SHEPHERD PUPPIES: Male & Female, ready February 24th. CKC Registered. Parents on site. 859-393-4760.

DARDEN PROFESSIONAL TIMBER HARVESTING, BUYING STANDING TIMBER: Great prices, improve wildlife habitat and improve forest health. State Certified & Fully Insured! 573-247-4808. Salem.

POOL TABLES: Installations, moves, recovers, repairs, accessories, etc. 573-646-1700.

ATLANTA 65,000 DTU PROPANE CIRCULATOR: \$200 Cash. 417-599-8089. Willard.

ANTIQUE 1930S DRESSER: Round mirror on back. 2 large drawers & 2 small drawers. \$200 Firm. 573-647-3139. Sullivan.

25 ACRES: Rough ground. Hunter's paradise. Stream through property, spring fed. Secluded. \$8,000 Per Acre Cash. 417-741-1232.

1 TON WRECKER: 573-734-2822.

DACHSHUNDS: Registered, shots, wormed. One long haired red & one brown and white, both males. \$500. 417-260-1917. Raymondville.



Call to Order 417-993-3017

Meadowview Dutch Market
 Bulk & Surplus Groceries • Prices Subject to Stock on Hand

DELI SPECIAL

SWEET LEBANON BOLOGNAREG. \$6.99SALE \$6.49
CAROLINA REAPER CHEESEREG. \$8.99SALE \$8.49

TRY our Fresh Homemade DELI Sandwiches: TURKEY, HAM, ROAST BEEF, ITALIAN, BLT'S, PULLED PORK AND BLT PULLED PORK (MADE YOUR WAY)! COME IN OR CALL to order! ALSO Custom Deli trays! Veggie OR FRESH Meat-N-Cheese!

Sliced American Cheese**\$10⁹⁹**5 LB. BLOCK
Mrs. Cubbison's Stuffing**2 FOR \$1⁰⁰**12 OZ.
Boneless Skinless Chicken Thighs**\$1⁷⁵**LB.
Ready to Bake Brownie Batter**50¢**LB. IN COOLER

Fully Cooked Taco Meat**\$1⁷⁹**LB.
Uncooked Sausage Links**99¢**LB.
Strawberry Jello**50¢**FOR A 4 PACK
Velveeta Cheese**\$4⁹⁹**32 OZ.

ALL CREAM CHEESE DIPS 10% OFF

BONUS SPECIAL POTATO WEDGES 65¢ LB.

MEADOWVIEW DUTCH MARKET
 417-993-3017 Hours: Mon-Thurs 8-5pm
 Fri 8-6pm • Sat 8-5pm
 23 Miles West on Hwy 64 • Right on T Hwy
 9 miles • Left on E Hwy 1 mile on Left

NOW ACCEPTING CREDIT, DEBIT CARDS & EBT

DUTCH COUNTRY STORE, LLC
 573-378-4395
 Hours: Mon-Thurs 8-5pm
 Fri 8-6pm • Sat 8-5pm
 5 miles East of Versailles off Hwy C on Kelsay Road

Consignments
Welcomed!

JR'S 6TH SEMI-ANNUAL CONSIGNMENT AUCTION

Saturday, March 18, beginning at 8:30 A.M.

Located at: 4875 Hwy BB, Hartville, MO, 65667. From Lebanon, MO take Hwy 5 South approx. 30 miles to Hwy Z, left on Z, 2 miles to Hwy E, right on E to Hwy BB, right on BB to auction on left. Watch for auction today signs.

EQUIPMENT

6T hopper wagon — Blue creep feeders (good shape)
14T JD baler — 214 JD baler w/ wire tie
Pioneer forecart w/ brakes — Rakes NH 56, 256, 258
#9 mower regular gear w/ dolly wheel 5' bar
New Idea 10A manure spreader steel wheels
2-#7 rebuilt mowers — Adams road grader
JD GD fertilizer spreader rebuilt — Forecarts
Approx. 10+ #9 and #7 fence row mowers
8 rebuilt #9 trailer gear mowers w/ dolly wheels 7' bar
New 7' farmers equip GD mower — 2, 3, 4, & 6 horse eveners & yokes
New Pequea 85 bu. 4 wheel spreader — New garden cultivators
New 3'-4'-6'-8' and 12' cultimulchers — Round bale carts
New WH 715 leaf spring plows — Tandem rake hitches
IH 25 bu manure spreader rebuilt — Hay elevators
Round bale hay feeders — IH cultivator — Corral panels & swing gates
New 3'-4'-6'-8' and 12' cultimulchers — Round bale carts
NH 456 mower w/ engine & hy 9' bar — Several horse stall founts



HORSES AND TACK

13 yr standardbred gelding family broke S&S
Yearling standardbred Morgan stud colt
Yearling Belgium blond
Registered yearling pulling bred stud
2 yr Belgium mare been hauling manure all winter
2 yr Belgium x percheron gelding green broke
4 yr Morgan x standardbred gelding our main buggy horse all winter big sharp horse check him out TSS (see picture)
15 yr Belgium gelding broke to all farm machinery good worker
Team registered yearling Belgium stud colts, well match team red sorrel
Load expected from Jr Yoder
3 yr old black standard bred gelding star and 2 whites, one month in harness good prospect
New harnesses Team & single—Lines—Ropes—Halters—Shoeing aprons—Buckets



For horse questions and consignment please contact Reuben Glick at 417-554-3201. There will be a \$50 no sale fee and \$25 coggin fee on horses



GUNS, COMPOUND BOWS & AMMO

1969 Rem 660 .308 — 1903 Win .22 WAR w/ ammo
Savage mod 12 heavy varmeter .233 — Rem 783 Syn .270
Ruger American .308 — Rem 770 Buckmaster .300 Winmag
Ruger 10/22 wood stock — Rem 522 .22lr — Mossberg 702 .22lr
Mossberg 85 20 ga — Uberti 1873 Colt Army .45LC
GSG Firefly .22lr — FMK Recon 9mm — Heritage 16" Revolver
Heritage 4.75" revolver — Diamondback DB380 — Enfield 1917 30-06
Mossberg 500C 20 ga — Citadel Katak 12 ga auto
Stevens 320 Security 12 ga pump — Iver Johnson PAS12 12 ga
Rossi Ranch rifle .233/20 ga — Rossi RB17 .17HMR
Rem. 870 express 12 ga slug w/ extra choked barrel
Marlin mod 60 22 auto w/ scope — Win mod 1200 12 ga pump
Beeman 177 cal pellet rifle — Glenfield mod 75 22 auto
Westernfield mod 550C 20 ga pump 3" VR poly choke
Win 1894 30-30 lever action — Hatfield 410 single shot
Rem mod 740 30-06 semi-auto — Win mod 190 22 auto
Rem mod 770 270 bolt auction syn. w/ scope — Ruger pellet gun
Ruger American 30-06 bolt auction syn (new) w/ vortex scope
Marlin 30AW 30-30 w/ scope (JM stamped) — Marlin 25 22 auto
Marlin 336 30-30 like new — Rem mod 10-A 12 ga pump
Win mod 120 12 ga pump — Win mod 120 12 ga pump (slug barrel)
Savage mod 487T 22 cal auto — CVA 50 cal muzzle loader
Win mod 70 ranger 7mm mag w/ Leupold vari xii 3x9x40 (nice)
Savage mod 170 30-30 pump — Ruger 10/22 22 auto lam stock
Savage 112 270 bolt stainless w/ stainless Nikon scope — 12 ga shot gun
30-06 pump action Rem mod 760 — 22 pump action Rossi
Compound bows — PSE Nova — Buckmaster Pro — BowTech Patriot
Ammo including: 25-06, 30-30, 12 ga turkey loads, 30-06, 270, 20 ga 3" #5 steel, 20 ga 7 1/2 shot, .22, 12 ga 7 1/2 shot



SHOP TOOLS & MISC. ITEMS

2-Leather sewing machines — Milk cans — Sausage stuffers
Gourd bird houses — Cattle stanchions — Push carts
65 gal butcher kettle — Copper kettle — Lots 3-4-5 tine forks
Silage forks — New aluminum shovels — Straw forks shovels
Breast drills — Yankee screwdrivers — Cattle dehorners
Meat saws — Handsaws — Bench vises — Post vises — Ice tongs
Hand crank bench grinders (sharpeners) — Fishing poles
Log tongs — Log chains — Hay trolleys — Hay grabble forks
Hay forks — Pulleys — Push cultivators — Push planters
Traps — Hog scrappers — White Mountain ice cream freezers

HOUSEHOLDS

Vegetable slicers King Cutters — Stockpots — Oil lamps — Hutch
Pressure cookers several All American — Mantel clocks — Books
Rockers — EZ freeze propane fridge — Chairs — Tables — Lifetime tables
Hickory rockers — Hickory glider — Clothes drying rack
Hand crank meat grinders — Daisy butter churns
3 Burner oil stove — Stainless steel milk buckets
US hand crank meat slicer on stand made in In.

Please contact Levi at 417-741-2070 with questions

This will be a large Auction again with 3-4 rings. Bring a friend and come enjoy the day. Jr Fabrication will have a row of new and used farm machinery that sells absolute to the highest bidder. Consignments receiving dates Sat, March 11th, Mon, March 13th thru Fri, March 17 from dawn to dusk. No consignments day of auction unless arrangements have been made except horses and guns. We welcome absent bids if you can't make it to the auction. Please call 417-741-2070 before the auction if you can't make it to the auction and want to bid on something.

Thanks

Lunch stand by Amish community benefiting Amish parochial schools. Breakfast sandwiches, BBQ chicken, Fish, Donuts, & Baked goods

For more auctions go to www.auctionzip.com ID # 47012

Auctioneers
Larry & Loren Martin



MARTIN AUCTIONS

1-660-337-6471



Auctioneers
Mel Yoder

Terms: Cash or check with ID. Not responsible for accidents. Statements made day of auction take precedence over printed material

Sam CRAWFORD AUCTION SERVICE LLC ESTATE AUCTION

Will Sell The Following Located 9 Miles West of Lebanon, MO on Hwy. I-44 to Phillipsburg Exit (Candy Factory), Then West on Hwy. A 2/10 Mile to Birch, Then West 4/10 Mile.
Watch for Auction Signs.

SATURDAY, MARCH 18TH, 2023 - 9:30 AM



CARPORT - SELLS 12:30
12x20 Carport - To Be Moved

ANTIQUES & COLLECTIBLES

Collection Trivets - Utensils
Campbell Kids Plates - Cups
2-3 Metal Match Holders
Lot Asst. Collector Plates
3-4 Coke & Pepsi Bottle Openers
Glass Egg Collection
Metal Comb Holder
Porcelain Doll Collection
(1 w/Cabinet)
Other Dolls
Cup & Saucer Collection
Large Lot Figurines
Doll, Dishes
Chicken & Animal Figurines
Lot Asst. Pocket Knives
Asst. Dishes
Sev. Oil Lamps

HOUSEHOLD - ANTIQUES - COLLECTIBLES - MISC



Cookbooks
Lg. Lot Old Hardback Books
Collector Books



2 Kerosene Lanterns
Linens, Handkerchiefs
Galloon Crock Jar
2 Gallon Crock Jar
Some Blue Fruit Jars
Sev. Sad Irons
Lot Framed Pictures
2 Countertop Showcases
Vanity Lamps - Other Lamps
2 Floor Lamps
Mini Cast Iron Cookstove & Pots
Material & Sewing Misc.
Sev. Old Suitcases
2 Striking Kitchen Clocks
(1 w/Shelf)
Wood Office Desk
Dresser
2 Wash Stands
3-4 Flat Top Trunks
2 Camel Back Trunks
Oak Curio Cabinet
2 Round Oak Tables w/Chairs
3-4 Wood Kitchen Chairs
Marble Top Lamp Table



Parlor Chair
Drop Front Secretary
Marble Top Dresser w/Tall Mirror
Lg. Sq. Oak China Cabinet
Lg. Curved Glass China Cabinet
Drop Front Secretary
2 Shoe Store Stools
2 Metal Kitchen Cabinet Bases
••Antique Furniture Is All Nice••

HOUSEHOLD

Whirlpool Refrigerator w/Bottom Freezer
Amana Electric Range
Kenmore (Med.) Chest Freezer
Chest of Drawers
Bookcase Headboard Bed
2 Recliners
Old Couch
2-3 File Cabinets
Heaters, Fans
Pots, Pans, Misc.
Other Items

••50-60 Year Collection••
••Lots to Sell••



TERMS: Cash or good check. Nothing removed until settled for. Not responsible for accidents. Lunch available. Statements made day of sale take precedence over printed matter. All items sell as is. No warranties given or implied.

417-998-6629
Cross Timbers, Mo.

CrawfordAuctionService.com



Sam
417-328-9137

Chase
417-399-1904

Chance, CAI
417-298-1751

Tom Poynter
Jack Lancaster

Estate of Dean & Norma (Clyde) Millard
12735 Birch - Phillipsburg, MO

14th Annual Spring CONSIGNMENT AUCTION

Saturday, March 18, 2023 at 9:30 A.M.

SALE LOCATION: 1551 14000 Road, Altamont, KS 67330

DIRECTIONS: 1.5 miles east of Altamont, KS or 9 miles west of Oswego, KS on Hwy. 160.

NOTE: WE ARE ALWAYS CLOSED ON SUNDAY!

TRACTORS

2013 Case 600 Quad Track, CHA, 3994 hrs. PS. 3pt. 6 SCV, auto steer, 372 globe, AFS 700 screen, 95% front tracks, rear tracks 50%

2003 JD 8420, CHA, 5168 hrs. MFWD, PS, 2 owners, 4 SCV, duals, Green Star ready

1997 JD 7810, CHA, 4473 hrs. MFWD, PS, 2 owners, 3 SCV, duals, auto steer

2010 JD 7230 Premium, CHA, 3125 hrs. MFWD, 16 spd, 3 SCV, with JD SL741 loader

2015 JD 6215R, CHA, 3312 hrs. MFWD, IVT, 4 SCV, duals, loader ready

2017 JD 6155M, CHA, 420 hrs. MFWD, 16 spd. PQ, 1 owner, 2 SCV, with JD 640R loader

2021 JD 6145M, CHA, 184 hrs. MFWD, 24 spd. PQ, 1 owner, 3 SCV, with JD 640R loader, 3rd function, warranty

2015 JD 6115M, CHA, 3108 hrs. MFWD, 24 spd. PQ, 1 owner, 3 SCV, with JD H310 loader

2018 JD 6110M, CHA, 1684 hrs. 2wd. 16 spd. PQ, 1 owner, 2 SCV, with JD 620R loader

2014 JD 5100M, CHA, 2148 hrs. MFWD, 16 spd. PQ, 2 owner, 3 SCV, with JD H310 loader

JD 4020, diesel, wide front, 3pt.

2015 Kubota M126GX, CHA, 2459 hrs. MFWD, 24 sp. 2 SCV, with Kubota LA2254 loader

2012 Kubota 9960, CHA, 4698 hrs. MFWD, 8 sp. 2 SCV, with Kubota LA1353 loader

2018 Case IH 90C, CHA, 1398 hrs. MFWD, 12 sp. 2 SCV, with CIH L630 loader

1995 Case IH 5230, CHA, 3655 hrs. 2wd. 16 sp. partial power shift, 2 SCV, nice

2009 NH TD5030, CHA, 926 hrs. MFWD, 12 spd. 2 SCV

2016 NH Boomer 47, CHA, 261 hrs. MFWD, Hydro, 1 owner, 2 SCV, with NH 260 TLA loader

2012 JD 3032E, OROPS, 625 hrs. MFWD, Hydro, 1 owner, 2 SCV, with JD 305 loader

1979 Case 995, open station, 4983 hrs. 2wd. 2 SCV

Kubota L245, OROPS, 3648 hrs. 2wd. 60" belly mower

IH Cub 154 Lo-boy with belly mower

1947 Farmall B tractor, 12 volt, NF, PTO, with free wheeling steering platform, seat & belt, completely restored, show room ready

FARM EQUIPMENT

Unverferth 3750 seed tender, gooseneck, triple axle, Honda gas motor

Convey-All BTS290 seed tender, gooseneck, tandem axle

Unverferth 1225 28' hyd. fold rolling harrow

JD 1850 36' air seeder with tow behind JD 787 cart

JD 787 air seeder cat, 130 bu. 6-run

JD 7000 6R 30" no-tilt planter, row cleaners

Case IH 4800 32' field cultivator

JD 650 hyd. fold 23' disk, 9" spacing

IA 2428X 10.5' pull-type offset disk, new

IA 2224X 9.5' pull-type disk, new

IA 1824X 7.5' 3pt disk, new

Case IH 181 16' 3pt. rotary hoe

Degelman R570P rock picker

Sukup 6 row 30" high speed 3pt. cultivator

Hiniker 5000 6 row, 30" no-tilt cultivator

JD RM 6 row 30" cultivator, 3pt. with rolling fenders

2010 Top Air TA1200 sprayer, 1200 gal. 90' booms, stainless hyd. pump, Raven 450 controller

Schaben 1000 gal. pull-type sprayer, 60' hyd. fold booms, Teejet controller

Ag Spray 500 gal. pull-type sprayer, boomless, new

Ag Spray 500 gal. pull-type sprayer, 42' booms, 36' boomless

Brillion 15' hyd. lift culti-mulcher

Danuser 3pt. post hole digger, 12" auger

IA F12 12' pull-type box blade with side tilt

IA F08 8' pull-type box blade

Frontier 5' 3pt. box blade

Set of New Holland dual hubs off NH T7 series tractor

Ag Rain 30A irrigation hose reel, 1100' hard hose, Model 100 Big Gun nozzle

Caldwell GC250 grain cat with extensions

Worksaver HPD22 3pt hyd. post driver, 10'

Pickup head fits MF 510 combine

2 - 250 gal. poly saddle tanks, fits JD 50 series

2- 73x44.00-32 combine tires, 10 hole, fits Case IH 2188 or older JD combines

2- Haukaas Sidearm markers fits JD 36'-42' air drills

HAY EQUIPMENT

2021 JD 460M round baler, net & twine, 540 PTO, 2489 bales, 1 owner, like new

2017 NH Roll-Belt 460 round baler, net, 540 PTO, 8197 bales

2015 NH Roll-Belt 460 round baler, net, 540 PTO, 7256 bales

1999 JD 566 round baler, net & twine, 540 PTO, 14,852 bales

Gehl 2880 round baler, twine, 540 PTO, 8905 bales

2009 Agco 7115 inline square baler, 540 PTO, twine tie

JD 338 square baler, twine, nice

NH 570 square baler, wire tie

IH 435 square baler, twine tie

2005 Case IH WDX1902 swather, CHA, 990 hrs. with RDX161 16' rotary disc head, steel rollers

2014 Case IH DC92 discbine, 9' 2" cut, 540 PTO, flail conditioner

NH H6830 pull-type disc mower, 10' 4" cut, new blades

Kuhn FC4000G discbine, 13' cut, 2pt. hitch, flail conditioner, cutter bar completely rebuilt

2- Kuhn GMD700GII HD 3pt disc mower, 9' 2" cut

2021 Kubota RA212CR 12-wheel hyd. fold V rake

Sitrex MX-10 high cap. 10-wheel hyd. fold V rake

2022 Rhino PT405H 17' hyd. fold 4-basket tedder, new

Sitrex RT5800H 19' hyd. fold 4-basket tedder

Hoelscher 1000 square bale accumulator

KMC 4760 caddy for 3pt. disc mower

Caddy for 3pt. disc mower, new

TRUCKS & SEMI-TRAILER

1998 GMC 7500 truck, 204K mi. day cab, Cat 3116, Allison 6 sp. man. 18' steel flatbed with hoist, single axle

2001 Sterling 9500 semi, 455K mi. day cab, Cat C10, Eaton 10 sp. like new tires

2000 Freightliner semi, day cab, Detroit 11.1L, 13 sp. tandem axle, twin screw, air ride

1981 Chevrolet C70 grain truck, 29K mi. 20' steel dump bed, tandem axle with air lift, 427 gas, 5/2 sp. Allison auto, tarp

1974 Chevrolet C60 grain truck, 43K mi. 14' dump bed with auger, V8 gas, 4/2 tranny, tarp

1981 Ford F700 grain truck, 8.2L Detroit, 5/2 sp. Knapheide 18' all steel dump bed, tarp

1999 Fleet Hawk by Raven 48' all aluminum flatbed semi-trailer, tandem spread axle, air ride

1983 Fruehauf 32 dry van trailer for storage, pintle hitch

CUTTERS

2022 Titan 3515 15' batwing cutter, 540 PTO, brand new, warranty

2014 JD MX15 15' batwing cutter, 540 PTO, 1 owner, low acres

2012 JD CX15 15' batwing hyd. fold cutter, 1000 PTO, 1 owner, extra nice

Woods 3180 15' batwing hyd. fold cutter, 1000 PTO

Bush Hog 3210 pull-type cutter, 540 PTO

Land Pride RCR2596 8' 3pt brush cutter, 540 PTO

JD MX8 8' pull-type cutter, 540 PTO

Bush Hog 3008 2pt. 8' cutter, 540 PTO, nice

Land Pride 6' 3pt. finish mower

King Kutter 6' 3pt. finish mower

Bush Hog SM60 3pt. side mower, ditch maintainer, 60", 540 PTO

JD 513 3pt. 5' cutter

UTV'S

2016 Polaris Ranger 570 UTV, 1240 hrs. 4x4, poly roof 2014 Polaris Ranger 900 XP, 2062 hrs. crew cab, 4x4, roof and windshield

2009 Polaris RZR 800 UTV, 637 hrs. 4x4, runs good



Circle E Auction LLC
Your Farm Auction Specialists!
620-778-9966

Auctioneer
Ervin Eicher
417-310-0812



1551 14000 Road
Altamont, KS 67330



Auctioneer
Merlin Eicher
417-310-3324



14th Annual Spring CONSIGNMENT AUCTION

Saturday, March 18, 2023 at 9:30 A.M.

SALE LOCATION: 1551 14000 Road, Altamont, KS 67330

DIRECTIONS: 1.5 miles east of Altamont, KS or 9 miles west of Oswego, KS on Hwy. 160.

NOTE: WE ARE ALWAYS CLOSED ON SUNDAY!

VEHICLES, TRAILERS & RV

2012 Chevy 2500 HD LT pickup, 75K mi.
4x4, short bed, auto, 6.0L gas, double cab, matched top, one owner, nice
2008 Ford F250, 217K mi. 4x4, short bed, auto, 6.8L gas, crew cab, leather, 8" lift, over size tires
2011 Dodge Ram 2500 pickup, 141K mi.
4x2, long bed, auto, 5.7L Hemi, new tires
2004 Ford F350 dually pickup, 4x4, 6.0L diesel, auto, with DewEze bale bed
1989 Ford F250 pickup, 102K mi.
4x4, 5 speed man. V8 460, like new
265X75X16 tires, steel flatbed
2016 Keystone Hideout BH camper trailer, tandem axle
2 - Hay Toter 40' gooseneck inline hay trailer, new
2018 PJ 8'x20' gooseneck hyd. dump trailer, tandem 10K axles, ramps, new 16 ply tires
2022 Big Tex 22' BH equipment trailer, tilt, tandem 7K axles
1995 Shop built 20+5 gooseneck flatbed tandem axle trailer, ramps
2006 WW 16X6 BH stock trailer, tandem axle, 2 cut gates
IA 500 fuel trailer with fuel pump, new
IA 990 fuel trailer with fuel pump, new
IA FT7014R BH hyd. dump trailer, 7'x14', ramps, tarp, new

LARGE MISC. ITEMS

2022 40' high cube metal container, 4 double doors on side & one on end
2022 8' & 9' cube metal container, 1 double door
2022 Bastone 110V portable toilet with shower
2022 Bastone 110V portable toilet with 2- stools
6 sets of Great Bear 20' Bi-Parting wrought iron gates, new
5 sets of Great Bear 14' Bi-Parting wrought iron gates, new
2 GM hoop storage shelter, 1- 30'x40'x15', 1- 20'x30'x12', new
2 GM hoop container shelter, 1- 20'x40', 1- 40'x40', new
4 - GB 1-cubic yard self-dumping hoppers
BH 5X8 trailer with air compressor, Honda gas motor
2- Boss 9' snow plows, mounts and lights
100 gallon fuel tank with 12V pump & meter
Cardinal 4'X5' platform scales, 8000#, manual
Pallet forks for Westendorf loader

**Online Bidding on
select items
@circleeaauction.com**

CONSTRUCTION EQUIPMENT

2016 Cat 308E2CR mini excavator, 1460 hrs. CHA, 2-spd. 18" steel tracks, 28" bucket
2018 Bobcat E63 mini excavator, CHA, 2-spd. 16" rubber tracks, 20" bucket
Kubota B20 tractor, loader, backhoe, MFWD, hydro, 2 backhoe buckets
2021 Kubota SVL97-2 track skid steer, 375 hrs. CHA, HF, 2-spd. PQ, camera, joysticks, warranty, nice
2017 Kubota SVL95-2 track skid steer, 1845 hrs. CHA, HF, 2-spd. PQ, joysticks
2016 Kubota SVL90-2 track skid steer, 2020 hrs. CHA, HF, 2-spd. PQ, joysticks
2015 Kubota SVL90-2 track skid steer, 2326 hrs. CHA, 2-spd. PQ, joysticks
2013 Kubota SVL90-2 track skid steer, 2212 hrs. OROPS, 2-spd. joysticks
2011 Cat 289C track skid steer, 2840 hrs. CHA, 2-spd. pre-emissions
2017 Case TR310 track skid steer, 717 hrs. CHA, 2-spd. PQ, joysticks
2007 Cat 297C track skid steer, 2600 hrs. CHA, PQ, joysticks, new tracks
2020 John Deere 324G wheel skid steer, only 27 hrs. OROPS, 2-spd. PQ, joysticks, like new
2021 Kubota SSV65 wheel skid steer, 746 hrs. OROPS, 2-spd. joysticks, warranty
2001 Bobcat 773 wheel skid steer, 6K hrs. cab & heat

SKID STEER ATTACHMENTS

2016 Cat HM415C 59" mulcher
Cat 72" brush mower
Bradco 72" brush cutter
Jenkins trencher, 48" x 6", new
Jenkins tree pullers, new
Jenkins hyd. tree shears, new
IA tree pullers, IA tree shears, new
Jenkins backhoe with 12" bucket, new
Several 5500 lb. 4' pallet forks, walk-thru, new

Several new & used buckets
Several new 2-prong bale spikes
Several new blank plates and receiver hitches
2 - GB sets of fork extensions
2 - GB heavy 78" grass fork grapple
2 - GB 6' rotary tillers
2 - GB 1000/200 trenchers
2 - GB post hole diggers with 3 bits
Steel tracks for skid steer

LIVESTOCK EQUIPMENT & ETC.

Stock Pro H2200 premium hydraulic chute, palpation cage, new
Stock Pro M1200 premium chute, palpation cage, new
Stock Pro A880 chute, auto catch head gate, new Sioux
Steel S191440LH chute, auto catch head gate, palpation cage
DH Standard Eco Plus squeeze chute, new
Several 24' HD free standing corral panels, new Several
3-ton portable feeders
16 concrete feed bunks, 6' long, round bottom
Several gates, T-posts, feed bunks, etc.

SHOP ITEMS

2 - Steelman 10' work benches
DeWalt 8" radial arm saw, Grizzly wood lathe
Parts washing tub/stand, 7 gal.
8 - Stihl straight shaft weed eaters
4 - Stihl chain saws

SMALL MISC. ITEMS

10 - 3/8"x20' G70 log chains & 5- ratchet chain binders
10 - 5/16"x20' G70 log chains & 5- ratchet chain binders
8- Ratchet straps
Several truck tires and wheels
Category I and Category II quick hitchers

FEEDING EQUIPMENT

Kuhn Knight 5143 vertical mixer, 540 PTO, RH discharge, scales, nice
Grain-A-Vator auger wagon, 540 PTO
Pro Welding 3pt. bale unrollers, handles 4' & 5' bales, new Steel flatbed with bale spikes, off 1991 Dodge 2500 pickup
Several grapples for tractor buckets

**Concessions available including
homemade pies and baked
goods, biscuits & gravy!**

Auctioneer's Note: We will have a very nice line of items to sell. Almost every item is right off the farm. Something for everyone. Most of the items will sell with No Reserve. At our last auction, we sold over 90% of items consigned. Since sale bills are printed 3 weeks in advance, we usually have a lot more items than listed. We will be selling in two rings at the same time, so bring a friend. Because we rely on the word of others, **ALL items are subject to prior sale and/or no show. If driving a distance for a single item, please call.**

NOTE: 9.25% Sales Tax will be added to all items that are not used for agriculture. All dealers must bring a copy of your resale sales tax license.

If you have items to sell, you can still consign to this auction! We are open 8:00-5:00 Monday-Friday and on Saturday by appointment only to check-in and unload your items. We are always closed on Sunday! To have your equipment available for online bidding, your equipment **MUST** be on our lot by Tuesday, March 14th @ 5:00 pm. **NO consignments taken after 5:00 pm Thursday, March 16, 2023!** For questions or to consign call Ervin at 417-310-0812 or Merlin 417-310-3324 or e-mail us at circleeaauction@gmail.com View pictures @ circleeaauction.com.

Everything must be removed in 14 days. After 14 days there will be a storage fee of \$25 per item, per day. Any items left after 30 days will be considered abandoned and will become the property of Circle E Auction.



Circle E Auction LLC
Your Farm Auction Specialists!
620-778-9966

**Auctioneer
Ervin Eicher
417-310-0812**

**1551 14000 Road
Altamont, KS 67330**

**Auctioneer
Merlin Eicher
417-310-3324**



Billy Sexton Auctions

Saturday March 11th starting at 10:00 AM

Location: 3803 Private Road 6692 West Plains, Mo. From West Plains take 160 West past Wal-Mart 8 miles to Southfork turn right on County Road 6690 1 mile to private road on left. (Watch for Auction signs).



Tractors-Trailers-Equipment

2014 TYM-T1003, 100HP, 4x4, cab, TYM-LT900 loader, 5300 hours, 1 owner; 1951 John Deere MT tricycle front end tractor runs good, 1998 Stoughton 48' dry van semi trailer, 8' by 10' bumper hitch flatbed utility trailer, County Line 30 ton hydraulic log splitter w/Kohler motor, bushhog BH26 6' 3pt bushhog, 2- John Deere grain drills, 2 bottom plow, 2- 4 wheel wagon running gear frames, 24' camper frame trailer, camper shell truck bed trailer, 2 small yard trailers, steel wheel grain wagon, 14' fiberglass V bottom boat w/trailer, quick attach pallet forks, quick attach double hay spike, Penn Creek 300 gallon produce sprayer, ATV/lawn roller, 3pt bale spike, 3-16' gates, 2-10' gates, 2-8' gates, misc panels, round bale hay ring, Tuffline 8' 3pt disc, 3pt 7' chisel plow, 3pt Lillistan 15' rolling cultivator, 8' cultipacker, 6' grain drill, 3pt cone seeder, 300 gallon fuel tank w/stand, 1000 gallon propane tank, wheels and tires.

Zero Turn-Tools-Shop

Ferris 400S 48" cut zero turn mower 94 hours commercial 25 HP Briggs motor, 2- craftsman riding lawn mowers (parts), Red Hawk 48" walk behind mower, Murray 42" cut riding mower, hydraulic pallet jack, lawn cart, DR trimmer, lawn seeder, Rigid miter saw, Coleman powermate Honda gas air compressor, Viking 12 volt jump pack, Stihl BR450 back pack leaf blower, Schumacher 300 amp battery charger, Honda GC160 water pump, Solo 451 mist sprayer, hydraulic table lift, jack stands, ext cords, air hoses, bottle jacks, propane torch, Powerhouse 9000 watt generator, Honda 2200 inverter, Central machinery 16 speed drill press, Stihl chainsaws 044/026/MS170, husky 257, Bostitch 10 gallon shop vac, Lincoln Ac225 welder, 12 ton pipe bender, grease guns, shop fans, Bostitch air bander, disc/belt sander, Echo gas powered drill, gas cans.

Contractor Supplies-Garden-Outdoor

Over 200 2x4 dimensional lumber 8' to 20' some 2x6's kept inside, several interior doors, cabinet base, vinyl windows, Kremlin 1014 paint sprayer, Spray tech air paint sprayer, back pack sprayer, hose reels w/flat hose, hardwood flooring, cedar posts, copper tubing, misc PVC, louvers, chemical injectors, greenhouse frame, underground service wire, ladders, qt strawberry boxes, roll of 110 wire, rolling paint rack, barrel dolly, mobile roof jacks, rear tine tiller, cement mixer, electric fence supplies, several T-posts, plastic mulch, 24" fan paint booth duct, Rubbermaid stock tank, bay window, toilets, coolers, 20' by 30' outdoor commercial tent, pex pipe, hydrant.

Furniture-Household-Misc

Aluminum wash tubs, cast iron skillets, several metal and plastic 55 gallon barrels, dozens of chicken feeders, office desk, nesting boxes, rabbit cages, firewood racks, alternators, several concrete blocks, LP heaters, hand tools, rolls of barb wire/woven wire, several 1-5 gallon buckets, New belt driven grain mill, 2- Sun star 14 cu. Ft. chest deep freezers, large picnic table, fish cookers, several gas and kerosine lanterns, pneumatic cow milker, grandfather clock, baby cribs, 20- wooden cages, bicycles, horse mineral/supplies, end tables, dressers, beds, New Perfection 5 burner tabletop stove, produce cart, smokers, SA sports crossbow w/arrows and scope, Lem meat grinder, Lem sausage stuffer, Fodder-Pro mini feed system, HP office jet printer/scanner, hot water pump, Kenmore gas stove.

AUCTIONEERS NOTES- The Gingerich's have sold their farm and everything goes! Clean four-wheel drive 100 HP tractor, lots of commercial gardening items, too many items to list, lots of items not listed! Check out our Website or Facebook for photos, nice clean sale!

Owners: URA AND BETTY GINGERICH

BILLY SEXTON AUCTIONEERS

683 Missouri Avenue, West Plains, MO • Office: 417-255-2744

Billy Sexton 417-257-4595 • Ark. License # 2749 • www.sextonauctions.com

Justin Kraft 417-274-0073 • Ark. License # 2745

FARM AUCTION

Saturday, March 11th, 2023 ~ 10:00 AM

LOCATION: 1000 Northwest County Road 16502, Archie, MO; **Directions:** From Archie Go South On 149 3 Miles To Exit 144 At AA Hwy, Go West On AA Hwy 1 1/2 Mile To Northwest 1501 Rd Then Northwest 2 Miles To Sale Site; GPS Will Get You There (Watch For Signs)

Auction For Ron & Debbie Mawson



Tractors, Ten Wheeler Grain Truck, Tillage Equipment, Related Items

JD 8320 Cab 4x4 Front Wheel Assist Diesel Dual Wheel Tractor, Has 1000 PTO, 4 Dual Remotes, Quick Attach & Approx 3,663 Hours Always Shredded, JD 7210 Diesel Tractor W/Canopy, 3 Dual Remotes & Approx 4298 Hours, 1990 KW Ten Wheeler W/Cat Motor Alum Shurlok Extra High Side Box W/Canopy Top, Hydraulic Dump & Approx 220,000 Miles, 9706 EHC Silage Wagon W/Topper, Big Blue Silage Wagon, JD 35 Quick Attach 2 Row Silage Cutter, Case IH 8210 Swather, JD 213 Pickup Attack Header, Friesen 110 Bulk Seed Tender (Like New), Case IH 950 Cyclo Air 30" Twelve Row Air Planter, 21 Hole JD 8250 Hydraulic Grain Drill W/Markers, Crust Buster 3400 Planter That Is 22 Hole 8" Space W/Markers, Case IH 900 Hydraulic 13 Pot Planter W/Markers, JD 8250 Van Brundt 12 Hole Drill W/Markers, IH Soybean Special Drill, Krause 24 Ft Bat Wing Hydraulic Finish Disc, 24 Ft Case IH 420 Hydraulic Bat Wind Disc, 20 Ft Kawanee 1010 Cab Controlled Hydraulic Bat Wing Disc, Case IH 1830 Vibra-Tine 12 Row 30" Row Cultivator, Krause 12 Ft Chisel Plow W/Extension, JD 2200 Hydraulic 36 Ft Accudepth Control Bat Wing Field Cultivator, 4 Gravity Wagons Inc BII 1072, BII 335A W/New Tires, & Two DMI 250, All In Excellent Shape, Gahl 1006 Gravity Bottom Trailer, Big Guy 12 Ft Water Fill Hydraulic Pasture Aerator (Used 1 Time), JD 2100 Soil Management System Conservation Tillage 5 Shank Ripper, JD 2800 Hydraulic 12 Or 18" Swath Six Bottom Plow, 1510 IH 3 Pt 4 Bottom Cut Plow, Box Ox 9 Shank Chisel Plow, Krause Hydraulic 36 Ft Harrow, 14 Ft JD 3 Pt 4 Section Rotary Hoe, Westfield MK 100-71 Portable 72 Ft 10" PTO Auger, Kawanee 500 Portable 36 Ft Elevator, Several Different Sizes & Kinds Of Tractor Weights, Universal JD Quick Attach, Lots Of Other Tillage Equipment Items

Hay Equipment & Cattle Related Equipment, 5x6 Hay & Items

Approx 125+ Net Wrapped Never Wet 5x6 Fescue Mixed Hay Bales, Approx 30+ Net Wrapped Never Wet 5x6 High Quality Clover Hay Bales, Auto Tube-Line Model TC-5500 In Line Round Bale Wrapper W/Auto Start (Like New), Case IH 8610 Bale Grinder, 9 Ft JD 285 Disc Mower Has Only Cut 35 Acres Of Clover Hay (Like New), NH 258 Ground Driven Side Delivery Rake W/Dolly Wheels, Frontier 2 Basket Tedder, NH 355 Feed Grinder Always Shredded, 4 Portable Lg Calf Creep Feeders 2 Are Apache, 2 Little Creep Calf Creep Feeders, Filson Calf Chute W/Side Clip & Tilt (Like New), Farm Hand Calf Chute W/Tilt, Potable Quick Hitch Cow/Calf Catcher W/Working Head Gate, Calf Cage Catch Unit, WW Pot Loading Chute, Wrangler 16 Ft Gooseneck Stock Trailer, 7 Heavy Duty Bale Rings, Several 16 Ft Wire Cattle Panels, Solar Fence Chargers, New Never Used Dan Huser Hydraulic 3 Pt Post Driver, Rhino 1540 Heavy Duty 10 Ft Hydraulic Blade, JD CX20 Bat Wing Bush Hog Completely Reconditioned, 3 Pt Hydraulic Heavy Duty Boom, AC Sm Round Baler, Other Items Not Listed

Ditch Witch, Antique Anvils, Tools & Shop Related Items

500 Lb Soderfors Anvil, 250 Lb Pioneer, MO Anvil, 200 Lb Carriage Anvil, 300 Lb Charles Parker W/8" Jaws, Lg Ferrier Cone Anvil, Flat Top Anvil, Anvil Shaper, Champion Hand Crank #400 Forge Blower, Will Be Other Sm Ant Related Tye Items, J20 Ditch Witch 4x4 Trencher W/Push Blade, Portable Cement Mixer, Craft Air Compressor, Craft 14 Drawer Roll Around Toolbox, Remline 23 Drawer Roll Around Toolbox, New 4" Honda GX 270 Water Pump, Craftsman 3/4" Socket Set, 1" Drive Socket Set, 3/4" Battery Impact Set, Lg Lot Of Sm Tools Inc Snap On, Mateco, S&K, Craftsman & Other Major Brands, Lg Lot Of Sm Electric & Battery Tools Most Major Brands, Barrel Dolly, Heavy Extension Ladder, Lg Lot Of New Lumber, Lots Of Other Sm Shop Related Items, Approx 4-6 Trailers Full



Auctioneers Note: It Is An Honor To be Conducting This Auction For Mr. & Mrs. Mawson. The Mawson Family Has Been Farming In This Area For Many, Many Years. As They Have Decided To Slow Down Some We Will Offer An Outstanding & Rare Opportunity For You To Purchase Excellent Well Maintained Equipment. Most Items Have Always Been Shredded Or Cleaned & Covered So You Can Buy With Confidence Of Equipment Ready To go to Work For You. This Will Be A Large Auction & Possibility Of Running 2 Rings So Please Bring A Friend & Plan To Spend The Day With Us. Please Plan Now To Attend. **Sale Order: Anvils & Antiques Will Sell First Then Move Directly Into Small Tools & Related Items. At Approx 1:00 PM Will Offer Tractors, Equipment, Cattle Related Items & Hay. Remainder Of Small Items Will Finish Auction. See Ya There!!!**

Terms: Cash or check with proper ID. Now accepting most major credit cards. Nothing removed until settled for. Statements made the day of sale takes precedence over printed material. Everything sold as is where is. Not responsible for accidents. Restroom available. Concessions Provided. Check our website for upcoming auctions and for additional pictures!!



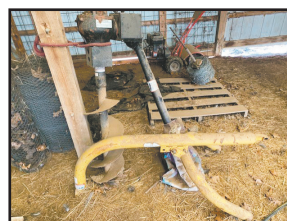
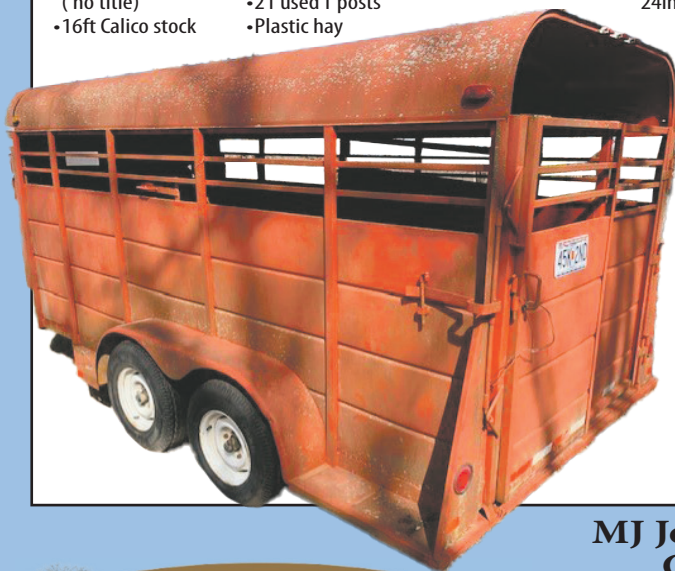
NANCE AUCTION SERVICE

No Matter How BIG or small, We Do Them All!!!

Col. Bill Nance 417-214-0093

Ken Parsons**AUCTION****March 25th at 10:30 am**
923 Pine Grove Rd Marshfield, Mo. 65706**Directions: 1 mile south of Marshfield on State Hwy A turn right on KK for 7 miles then left on Pine Grove Rd for 1 mile.**

- 1999 Massey Ferguson 422.5 with bucket / Allied 495 Loader 2WD Bale Spike/ 2 Hyd outlets 65HP
- 1988 Kubota L2850 1177hrs/ 34HP Shuttle shift 3 pt bale unroller
- Craftsman 1/ TS 3000 Riding Mower 32in.
- Flower Pots
- Metal workbench with vise
- King Kutter 6ft. Bush Hog
- Ferguson 3pt. 2 bottom plow
- Yard Cart
- 3pt. Bale carrier
- 1 section drag
- 3 pt. blade 6ft.
- 16x8 ft flatbed trailer with ramps (no title)
- 16ft Calico stock trailer with gate and rubber mats (excellent condition)
- Head Gate
- Lot of long handle tools
- Lot of electric fence supplies
- Earthway hand held seeder
- Lawn mower wheels & tires
- Craftsman Yard Cart
- Portable electric corral-Gallagher B11
- San Rafael electric solar light
- 8 plastic lawn chairs
- Hurricane Lantern
- Bait Pale
- Fimco sprayer tank
- 4 plastic tubs
- 21 used T posts
- Plastic hay feeder
- Yard swing wooden
- Post hole auger 3pt. Farm star 12in.
- Rubbermaid watering tub with flute
- Lot barbed wire 4 1/2 rolls
- 24ft extension ladder aluminum
- 3pt. Bale spike
- Storage bench
- 4 12ft livestock panels
- 2 14ft livestock panels
- 5 Livestock panels
- 2 High gates
- 1 Galvanized Gate
- Homemade Cedar Swing
- Saddle rack
- 2 20lb Propane Tank -full
- Metal sawhorses
- Jack Stands
- Husqvarna 350 chain saw & case
- 1 1/2" PVC Fittings
- 2 Ton Floor Jack
- Porter Gable Palm Sander
- 1/2 Drive Impact Wrench
- Tank Heater
- Electric Grease Gun with charger battery
- Craftsman Grinder 4 1/2 in.
- Flooring Kit
- Highlift Jack
- Router Black & Decker
- Trailing motor 6 or 12 volt
- Hand Tools
- Lot of fishinf poles & tackle
- Craftsman Tiller 24in 5HP Briggs & Stratton
- Skeet Thrower
- 7 gallons Transgard Hydro fluid
- 2 1/2 gallon Delvac 1300 super 15-40
- 2 x 25 Ratchet straps
- Wheel burrow
- Igloo Dog House
- Box Drywall screws
- Milwaukee Sawsall
- Morrone Gas Cooker with gas bottle -Full
- Worx Weed Eater & Blower
- Skill Jig saw
- Campbell Hausfeld staple gun-pneumatic
- Speedrite electric fence tester-New

**MJ Johnson - sale manager 417.838.0291****Case Auction Co. • 417.859.3204****info@caseauction.com • www.caseauction.com**
auctionzip.com

Terms: Announcements made sale day take precedence over all printed material. Neither Case Auction or property owner guarantees the absolute accuracy of supplied information.

**Real Estate & Auction Services**

Billy Sexton Auctions

Saturday March 18th starting at 10:00 AM

Location: 683 Missouri Ave West Plains, Mo. Billy Sexton Auction office across from Ozark Café.



Tractors-Hay Equipment-Trailers

John Deere 2755 open station, 2wd, w/JD 245 loader, canopy, diesel, 5500 hours, new starter and water pump; John Deere 300 2wd backhoe, w/JD 245 frond end loader, gas; Massey Ferguson 393, 2wd, diesel, cab, Allied 595 loader, 95 HP; New Holland BR7070 4x5 round baler approx. 5000 bales, string tie, new bearings 2 years ago, spare belts, monitor; 9' Vermeer disc mower w/new guards and blades; 8 wheel fold up V rake, 32' inline side dump hay trailer, 2014 16' Calico stock trailer good rubber solid floor center cut gate, 2004 Starlight 20' w/5' dovetail gooseneck flatbed double jacks w/2 7,000 pound axels, Heavy duty 16' flatbed bumper hitch trailer w/metal treadplate floor and removable metal sides.

Trucks-Equipment-Panels

1993 Chevy dually, flatbed, 2wd, 6.2L diesel, 107,000 miles, reg cab, long bed; 1981 International single axle log truck, DT466 diesel, 5 w/2, air brakes; 200 gallon 3pt sprayer, 2-pull type 300 gallon sprayers, 15' batwing bush-whacker bushhog, Bushhog brand 307 drag type 7' bushhog, 5' 3pt bushhog, MF 6' 3pt disc, international 10' disc, 3pt ripper, Honda TL-125 motorcycle runs good, 6' 3pt Brillion cultipacker, IH 2 bottom plow, John Deere 148 loader, John Deere universal pallet forks, Dewalt 15 gallon air compressor, hog creep feeder, aluminum canoe, Like new Tarter head catch, 4- plastic feed troughs, several PVC hay rings, 1 metal hay ring, calf creep feeder, approximately 100 like new corral panels, Electric club car golf cart w/fold up back seat needs batteries.

AUCTIONEERS NOTES- Mr. Colburn has sold his farm, due to poor location and parking all equipment will be brought to Billy Sexton Auction facility. Tractors and hay equipment have all been very well maintained, lots of good clean equipment and there will be some consignments from local farmers in this auction. Make plans to attend this fine auction!

Owners: COLBURN FARMS

BILLY SEXTON AUCTIONEERS

683 Missouri Avenue, West Plains, MO • Office: 417-255-2744

Billy Sexton 417-257-4595 • Ark. License # 2749 • www.sextonauctions.com

Justin Kraft 417-274-0073 • Ark. License # 2745

ESTATE AUCTION STOCKTON, MO

AUCTION

Due to the death of the late Bill Gabel we will sell the following Auto's, Boats, UTV, Guns, Fishing Equipment, Collectibles, Household and Misc. From the Stockton Square go West on Highway 32 to Highway 39. Go North a short distance to the Auction on

Sat. March 18, 2023 at 9:00 am

WATCH FOR AUCTION COMPANY SIGNS • LUNCH SERVED
FOR MORE PICTURES GO TO: WWW.BRUCEANDLEANAUCTION.COM



AUTOMOBILE'S - FORK LIFTS

- Ford F-250 Ext. Cab 4X4 Diesel 7.3 Power Stroke Super Duty Pickup 197,213 miles, Automatic Transmission, (Prior Salvage Title)
- 2003 Mercedes Benz S500 4Matic, Automatic Transmission, 230,892 miles, PW, PL
- Yale Propane Fork Lift Model GLC060TENUA083, 5800 lb. Lifting (Runs)
- Komatsu Model FG25-8 Propane Fork Lift, 5000 lb. Lifting (Does not run)

BOATS-UTV

- 1998 Outlaw Gamble 19 1/2' Fiberglass Boat W/150 hp. EFI Mercury Motor, Motor Guide Trolling Motor, Live Well and Storage
- 1982 Bass Tracker II Alum. Fishing Boat W/40 hp. Mercury Motor, Motor Guide Trolling Motor & Depth Finder
- 2017 Polaris Ranger 570 UTV 4X4, Automatic Transmission, 1207 miles, Top, Windshield, Dump Bed, Good Tires

GUNS-FISHING

- Remington Model 760 Game Master 30-06 Rifle W/3x9 Scope
- Thompson 50 Cal. Black Powder Rifle
- Ithaca Model 37 Pump 12 Ga. Shotgun
- Browning 12 Ga. Semi-Automatic Shotgun W/Poly Choke
- Winchester Model 12 Pump 12 Ga. Shotgun
- Mossburg "New Haven" 12 Ga. Pump Shotgun W/Poly Choke
- Double Barrel 12 Ga. Hammer Shotgun
- Stevens Savage 20 Ga. Single Shot Shotgun
- H & R 12 Ga. SS Shotgun
- H & R Topper 16 Ga. Model 158 SS Shotgun
- Remington Model 12-A Pump 22 cal. Rifle
- Winchester Model 190 Semi-Auto 22 cal. Rifle
- Marlin Model 81-DL Bolt Action 22 cal. Rifle

GUNS-FISHING CONT.

- Hopkins-Allen SS Lever Action 22 cal. Rifle
- New Heritage Rough Rider 6 Shot 22/22 Mag. Revolver (NIB)
- 1964 Evinrude 18 hp. Boat Motor
- 1970 Mercury 7.5 hp Boat Motor
- 2- Fiesta Kayak's
- Over 100 Fishing Rods & Reels (Zebco, Ambassador, Mitchell, Shimano, and others)
- Several Tackle Boxes
- Boat Anchors
- Fishing Lures
- Climbing Deer Stand
- Clay Pigeon Thrower
- Misc. Sporting

HOUSEHOLD-COLLECTIBLES

- 2 New Emerson & TCL 50" HDTV Flat Screen TV'S NIB
- Kenmore Washer & Dryer
- Twin size Electric Lift Bed (like new)
- Low-Back Buffet W/Mirror
- Camel & Flat Back Trunks
- Treadle Sewing Machine
- Glass Fronted Book Case
- Gallon Western Stone Jug
- School Desk
- Metal Kitchen Cabinets
- Collector's Signs & Mirrors
- Corn Shellers
- Lot of Guardian Alum. Pans & Cookware
- Lot of Cast Iron Pans & Skillets (Griswald, Wagner)
- Lot of Hand Grinders
- Cartoon Glassware
- 2 Lard Presses
- Lrg. Lot of Packed Unseen Misc. Glassware & Collectibles
- Pictures & Wall Hangings
- Conqueror Banjo in Case
- Well Pump
- 2 Brass Boat Prop's

HOUSEHOLD-COLLECTIBLES CONT.

- Lot of Ant. Primitive Tools
- Lot of Fruit Jars old & new
- Misc. Shelves
- Metal Lawn Chairs
- Lot of Books
- Baseball and Basketball Collectibles

MOWERS-TOOLS-MISC.

- Husqvarna RZ424, 54" Zero Turn Mower
- 44" Lawn Sweeper
- Powermate Walk Behind Blower 1200 CFM Air Vol.
- Southand Walk Behind Blower
- Easy Vac 6.5 hp Lawn Vac
- Lrg. Lot of Garden & Hand Tools
- 5hp Garden Tiller
- Flower Bed Tiller
- Cub Cadet Gas Trimmer
- 5 Gallon Bucket Paint Sprayer
- 6' Alum. Loading Ramps
- 2 Bikes
- 2 Bench Vise's
- 2 Bags R-11 Insulation Bats
- 18 Bags R-38 Insulation Bats
- Subaru 169cc 6.5 hp Go-Cart (not running)
- Honda 4-Wheeler 300, 5 Speed (not running)
- Lot of Misc.

AUCTIONEER'S NOTE

Mr. Gabel did not live in this area the Family has moved this Estate to this Building to hold this Auction, this is a partial listing, lot of items unseen at time of listing. Auto's, Boats and Guns selling close to noon.

OWNER: ESTATE OF BILL GABEL

TERMS: Everything sells as is, where is. Nothing is to be removed until settled for. Payment of Cash, Check with Proper ID, or Credit Cards. Auction Company or the Owners will not be responsible for loss of items or accidents. Statements made the Day of the Auction take Precedence over Printed Matter.

SALE CONDUCTED BY **BRUCE & Le'AN AUCTION & APPRAISAL, LLC**
THE AUCTION COMPANY THAT APPRECIATES YOUR BUSINESS

For more information and pictures go to our website at www.bruceandleanauction.com

RONNIE BRUCE - Fair Play, MO
417-777-1685 or 417-654-2214
colonbruce@gmail.com

BRANDON BRUCE
Fair Play, MO

BILLY BRUCE - Stockton, MO
417-399-4800
colbbruce@gmail.com

BAUGH ESTATE AUCTION

**LIVE
AUCTION**


Carolyn Baugh will sell her and the late Howard (Bud) Baugh's heavy equipment and tools at public auction on:

Saturday, April 8th, Beginning at 9:00 AM

Location: 8699 Highway 185 Leslie Mo 63056 (Spring Bluff area)

Directions: From Interstate 44, take Exit #225 and go North on Highway 185 for 8.4 miles to auction. From Highway 50 in Beaufort, take Highway 185 South 8 miles to auction. Roads will be marked day of sale.

HEAVY EQUIPMENT / SKIDSTEER (sell at 12:00 Noon)



Case Poclair 220 excavator-226 Deutz engine-6632 hours-3 yard bucket-12M hor. reach-8M depth, Yanmar VIO27 mini excavator-rubber tracks-9" bucket w/thumb-also 17" bucket- front finish blade, Case 1845C skidsteer w/homemade metal tracks-6" bucket, skidsteer 5' and 6' buckets, Vermeer M-475 140 back hoe-trencher, Yale forklift, Cat 1' and 2' excavator buckets, cable unroller



DUMP TRUCKS / TRAILERS (sell at 12:00 Noon)



GMC 5 star General truck-400 Cummins big cams-54,000 GVW-spring suspension-14' bed with air tail gate-13 speed Eaton-Fuller transmission, GMC Brigadier dump truck-Detroit engine-13 speed transmission-14' bed, **TRAILERS:** Big Tex gooseneck-dual 10,000 axles-30' with 5' beaver tail-3 drop ramps-hydraulic winch, Titan livestock gooseneck trailer-24'-tandem axle-6.5' tall, 26' gooseneck horse trailer-2 horse-tack room, gooseneck trailer-metal floor trailer-30'x8.5'-10,000 LB tandem axle, 8'x20' metal grid floor trailer-bumper hitch-double axle, single axle trailer-12'x6.5'-drop ramp, Doolittle 18' bumper hitch car hauler with tilt bed, heavy duty 8.5'x6' utility dump trailer-tandem axle-walking beam, 40' storage container, Weathergaurd sliding truck tool box, diamond plate tool box



FARM SUPPLIES / SCRAP

Used T post, electric fence post, cattle panels, roll used chain link fence, chain link panels, lots of plastic bins in frames-4'x4', lot racking, pallet rack, used tires, tractor tires, 500 GA fuel tank w/electric pump, 1000 GA propane tank, metal 25' light poles, 11'x3' plastic culvert, lots cable-braided cable, barrels, barrel pump, barrel cradle, lot treated timbers, **SCRAP:** iron tubes-channel-beams, lot used copper electrical wire, aluminum cable, (will have 30 days to remove scrap), 2-3 cords of seasoned firewood in metal racks

**LUNCH WILL BE SERVED BY
BEAUFORT LIONS CLUB**

**VIEW OUR PHOTO GALLERY ON
www.breheauction.com**



TRACTORS / PROJECT TRACTORS / FARM IMPLEMENTS



International 350 utility tractor-runs, Ferguson T020 tractor-runs, **PROJECTS:** Massey Ferguson 165 gas tractor, Massey Ferguson 50, Golden Jubilee with industrial loader, Ford 8N, 801 Ford diesel tractor, Ford 800Series bluebelly tractor, John Deere 2010 gas tractor with New Idea loader-rear weights, Allis Chalmers 180 gas tractor, **FARM IMPLEMENTS:** 3 point 4' finish mower, 3 point Ferguson 2-point 4' plow, 3-14 plow, 3 pt Massey Ferguson 2-14 plow, 3 point hvy duty 7' disc, 6' brush hog, 3 pt 5' brush hog, 3 pt bale fork, 3 pt YanmahRS1400 5' tiller, 3 pt 5' Woods brush hog, 5' brush hog, (2) Danhauser 3 pt post hole diggers, 3 pt Ford post hole digger, auger, 3 pt 6' box blade, 3 pt Massey Ferguson 6' notch blade disc, 3 pt Ford 5' brush hog, skid steer homemade pallet fork, 3 pt 7' heavy blade, 3 pt blade, (2) 2 point-3 point converters, IH 2 point 2-14 plow, IH 2 pt pallet fork, IH 2 pt 7' disc, top links, draw bars, sway bars, brush guard

RV / SUV / FOUR WHEELERS / SCRAP TRUCKS



1994 Spartan Motors RV-Dutch Star-Model C8.3-diesel-250 HP-shower-kitchen-living room couches, Mercury Mountaineer 2004-AWD-V8 engine, ATVs; Honda Fourtrax 300 4 wheeler, Honda Fourtrax 250 4 wheeler, 380 three wheeler-Kohler engine, NIB 5000 LB ATV winch, ATV spreader, 12 volt sprayer, **SCRAP:** Ford F-150 XL pickup-wrecked (parts), Econoline 350 work van, 5th wheel hitch-NIB

SHOTGUN / COLLECTIBLES / SADDLES

Maverick 12 gauge pump shotgun w/pistol grip, .22 bullets, Keen Kutter hatchet/nail puller, 2 man saw, ice tongs, log tongs, iron implement wheels, Western Flyer bike, small cube safe, canoe, (2) Western saddles, leather rifle scabbard

TOOLS

Stihl TS 350 Super wrecking saw, Craftsman 8" bench top drill press, Sears bench vise, heavy duty rotating bench vise, bench grinder, Bosch commercial hammer drill, Craftsman rolling compressor-240V, air hose-reel, pneumatic tools, Emerson Electric arc welder, welding helmets, Delta grinder, metal cut off saw, router table, lot Dewalt cordless tools-hammer drill-drill-light-reciprocating saw, impact wrench, Greenlee knock out punches, 3/4" socket set, large clevis hooks, rigging straps, binders, chain hoist, chain ratchets, workmate tool benches, large wrenches, open-box end wrenches, sockets, ratchets, deep well sockets, jig saw, reciprocating saw, wood plane, circular saws, drills, drill bits, screw gun, rotozip, hammers, mallets, screwdrivers, hand saws, crescent wrenches, pipe wrenches, squares, T square, levels, paint supplies, electrical supplies, new 12-2 wire, single strand wire, conduit parts, tubing benders, electric boxes, plumbing, sand blaster, lot parts bins, large amount hardware, bolts-washers, 400 pc O ring asst., digital caliper, grease fittings, C clamps, drill press vise, scroll saw, shop lights, pole climbing spikes, bolt cutters, tool pouches, hard hats, storage cabinets, shelving, **AUTO:** Napa pneumatic deep well socket set, 4 ton hydraulic frame repair kit, 7 pc body repair kit, 4000 LB engine hoist, engine stand, hi wagon jack, car ramps, car creeper, floor jacks, jack stands, lot batteries, Schumacher rolling battery charger-starter, lot battery chargers, reflectors, spark plugs, 4 ton hydraulic frame repair kit, 7 pc body repair kit, tow balls, receiver hitches, 12 volt Golight spotlight, portable jump box, fluids, oils, Sea Foam, bead breaker, **YARD:** Stihl Farm Boss MS290, Stihl MS 170, other chain saws, Husqvarna backpack blower, Brute 2700 PSI 2.3 GPM power washer, Honda pressure washer, Honda propane generator, 110,000 BTU oil heater, 125,000 BTU Mr Heater, sledge, rakes, shovels, weed eaters, T post driver, rope, post hole digger, lot chains, propane weed burner, propane tanks 20-100 LB, yard dump trailer, appliance dolly, 7' ramp, lawn rollers, pallet jack

BREHE AUCTIONEERING SERVICE, LLC
Union, MO: (636) 583-0841 Owensville, MO: (573) 437-3454
www.breheauction.com
LICENSED AUCTIONEERS:
Kerry Brehe 314.954.3798 Josh Brehe 314.603.3129 Nick Brehe 314.560.7737
Harry Engelhart 636.399.3743

Announcements made day of sale supersede all printed material.
TERMS: CASH, PERSONAL CHECKS WITH PROPER I.D., BUSINESS CHECKS WITH BANK LETTER AND NO OUT OF STATE CHECKS UNLESS APPROVED BY SELLER. Email Us At kkauction@sbcglobal.net
Everything sells as is with no guarantees. Not responsible for accidents.

BUILDING SUPPLY AUCTION



SATURDAY, MAY 11TH • 9:30 AM - BAXTER SPRINGS, KS

2404 Cleveland • Baxter Springs, KS • Corner of 24th & Cleveland,
3 blocks E of 69A on 24th St.

SALE HELD INSIDE REGARDLESS OF WEATHER

(SPECIAL ANNOUNCEMENT – IF FOR ANY REASON WE HAVE INCLEMENT WEATHER THAT WOULD IMPACT OUR NORMAL SATURDAY LOADOUT, FEEL FREE TO LEAVE YOUR TRAILERS AT HOME & WE WILL ARRANGE LOADOUT THE FOLLOWING WEEKEND)

♦ **ARCHITECTURAL SHINGLES** – in 3 colors ♦ **PINE** – 1x6 & 1x8 T&G Shiplap and V-Match/Bead Board

♦ **DECKING - ALASKAN CEDAR** – 5/4" radius edge, **COMPOSITE** in multiple colors ♦ **WESTER CEDAR** – 1x8 beveled lap siding ♦ **OSB SMART SIDE** – 4x8 sheets – used for board and batt or soffit ♦ **BACKER BOARD** ♦ **1 1/8" OSB** ♦ **CULTURED STONE** – nice selection of colors and styles ♦ **VINYL SIDING** – CertainTeed Brand – several colors ♦ **PINE LOG SIDING** – milled from 2x8, various lengths ♦ **JAMES HARDY SIDING** – 6 1/4" wide – A Grade – Warranty ♦ **PREFINISHED FIBER CEMENT SHAKE SIDING** ♦ **SM@RT ART SHAKES** ♦ **SM@RT SIDE SOFFIT** – 3/8"x12"x16' ♦ **ICE AND WATER SHIELD** ♦ **CLAY ROOF TILES** ♦ **HOUSE WRAP** ♦ **BARN WOOD DOOR** – real wood ♦ **INSULATION** – R13, R19, R30, R38 also 5' and 6' wide rolls of r10 – r11 insulation ♦ **HOT WATER HEATERS** – new in box – electric – 30, 50, and 80 gallon ♦ **7/16" HIGH PERFORMANCE OSB** ♦ **FAUCETS** – DELTA, MOEN, and HOME IMPRESSION brands – Vanity and Kitchen, including pulldown

kitchen faucets – NIB – large selection to choose from ♦ **APPLIANCES** – NEW – as well as Shelf Pulls and Scratch and Dent ♦ **WIRE CLOSET SHELVING** ♦ **LIGHTING** – NEW large variety of nice lighting fixtures – including some high end lighting ♦ **WINDOWS - VINYL** – New – brands including JELDOWEN, WEATHER BARR, QUAKER – new construction – vinyl insulated windows ♦ **KITCHEN CABINETS** – multiple sets of cabinets – option of stained or painted including: Farmhouse Brown, and Shaker Style in Dark Gray, Light Gray and White – all wood – prefinished cabinets. Straight and L shaped sets with some sets also including pantry – some sets also include soft close doors & dovetailed drawers ♦ **VANITIES** – nice selection of vanities including colors matching Kitchen Cabinets – variety of sizes, up to 5', some including granite tops ♦ **PORCELAIN AND CERAMIC TILE** – over 20,000 sq ft, with great selection of sizes and colors of tile to choose from including **MOSAIC** – nice selection – **TRAVERTINE** – **MARBLE** – **STONE** – including **SUBWAY TILE** ♦ **WOOD LOOK TILE** – nice selection of

styles and colors in various lengths and widths ♦ **HARDWOOD FLOORING** up to 7" wide **PREFINISHED PLANK WOOD FLOORING** in 1/2" and 9/16" thickness ♦ **SNAP AND LOCK LAMINATE** – in small lots ♦ **LVT** – great selection of glue down LVT as well as nice colors in **RIGID CORE SNAP LOCK** ♦ **TRIM – BASE – CASING – CROWN:** pre-primed – various widths and lengths; as well as **OAK** quarter round, corners, chair rail, cove, base shoe and door stop ♦ **STAIRCASE HANDRAILS** ♦ **ENTRY – PASSAGE – PRIVACY DOOR KNOBS AND LOCKS** ♦ **3CM QUARTZ** – Maple White in various sizes – countertops – island panels, with & w/o sink cutouts ♦ **GRANITE COUNTERTOPS** ♦ **KITCHEN SINKS** ♦ **FREESTANDING BATHTUBS** ♦ **CEILING FANS** – nice selection ♦ **PEDESTAL SINKS** ♦ **TOWEL BARS and RINGS, TOILET PAPER HOLDERS, ROBE HOOKS, TOOTHBRUSH HOLDERS**

COME FOR THE DAY AND SAVE LOTS
AND LOTS OF \$

MORE COMING IN DAILY - check sites often. For pictures see Mt. Vernon Auction Co on Auctionzip.com (enter auctioneer ID#29728) or Facebook • CELL 870-754-4428 • 870-754-5479 • 870-715-2326 (text only)

No Buyer's Premium

All items not picked up day of sale or during one of our posted, scheduled, and announced pick up times following the auction will be forfeited. Thank you!!

MT. VERNON AUCTION CENTER

CONTACTS - CALL OR TEXT MIKE @ 870-754-4428 • TEXT ONLY @ 870-715-5479 or 870-715-2326



All announcements made the day of auction will supersede previous advertising.

Real Estate & Estate Auction

9:00 A.M. * Saturday, March 11th, * 9:00 A.M.

Location: 23 Mulberry Dr. Galena, Mo. 65656

Directions: From Galena take Hwy. 248 west 4 1/2 mi. then left on Hwy. 173, 2 miles to Auction.
From Cape Fair take Hwy 173 north 5 miles to Auction ***Watch for Signs -- Breakfast & Lunch Available***





Home & Shops on 6.76 Acres less than 1 mile to public lake access!

1700+ sq. ft. Home on 6.76 acres, 3 Bedroom, 2 Bath, Big Living Room with Fireplace, Large Suken Den, Nice Kitchen, Utility & Mud Room, 1 Car attached Garage, Nice Deck, Beautiful big yard with mature shade trees & ornamentals. Central Air, Whole House Generator, Private Well & Septic, Galena Schools. There are also (2) 30ft. X 40ft. Metal Shop Buildings on the property. Property is only 30 minutes to Branson & 1 hour to Springfield, This property is in a beautiful location would make a great home for any country or lake loving family!

Needs some updating and a little TLC! Ready for you to fix it up the way you like it!

Property Sells Subject to Probate Court Approval - Terms: 10% Down Day of Sale, Balance Due 45 Days or Less at Closing.

Cars - Trucks - Motorcycles - Boats

2002 Dodge 3500 1 Ton 4x4 Extended Cab Pickup, Diesel, 6 Speed, runs good (only 98,xxx miles);
2008 Cadillac DTS, (motor noise);
1995 Cadillac (not running);
1990 Cadillac (not running);
2001 Pontiac Grand -Am (not Running);
1969 Triumph TR6 (not running, no title);
1972/3 Dodge Monaco (Good Demo Derby Car);
2010 Honda Goldwing Roadmaster Trike Very Nice (44,169 miles);
2010 Honda Shadow 750 (only 9869 miles);
(3) Old Honda Goldwings (For Parts);
2012 Turtle Top Motorcycle Cargo Trailer;
2004 Sundance 20ft. Pontoon Boat with 50.hp. Mercury Outboard & Trailer (Needs Work);
1970 14ft. V-Bottom Alum. Boat with 2004 9.9 hp. Mercury Motor & Trailer (boat has no title);
Motorcycle Helmets & Riding Accessories;
Motorcycle Club Vests;

Guns - Gun Safe

Centurion FAT BOY JR. 48 Gun Gun Safe;
KSI MAK-90 AK-47, 7.62x39;
Stag Arms Stag-15 AR-15 5.56;
Beretta CX\$ Storm 9mm semi-auto compact rifle;
Winchester mod. 94 30-30;
Mossberg mod. 702 Plinkster .22
Mossberg mod.152 .22;
Mossberg mod. 44US .22 (for parts);
Glenfield mod. 60 .22;
N.E.F. Pardner Pump 20ga. w/ screw in choke;
Sears 101.40B 20ga. single shot;
W.H. Davenport Acme 1896 12ga. single shot;
R.G. 14 .22 revolver;
Misc. Ammo & Accessories;
Misc. Knives & Outdoor Accessories;

Trailers - Tractors - Farm - L.P Tank

1998 AZ-TEX 20ft. Gooseneck Cargo Box Trailer;
1998 Az-TEX 16ft. X 77in. Flatbed Utility Trailer;
2011 10ft. X 5ft. Flatbed Trailer w/ Ramp Gate;
2000 8ft. X 5ft Utility Trailer (Needs Floor, No title);
1967 3 Axle Equipment Trailer (pintle hitch);
1974 Radio Tower Trailer;
Ford 600 Tractor (not running but turns over);
International B414 (parts or salvage)
Ferguson TO-35 (not running);
Ferguson TO-30 (not running, Good Tires);
Ferguson TO (parts or salvage);
Set new 3 Rib 6" x 16" Front Tractor Tires;
Farm Star 6ft. Angle Blade;
Heavy 5ft. Box Blade;
Leinbach Post Hole Digger w/ 2 Augers;
(3) 5ft. Bush Hogs;
3pt. Cherry Picker;
250 Gallon Propane Tank;

Tools - Misc.

(7) Craftsman Roll Around Mechanics Toolboxes;
Cutting Torch Set w/ Big Bottles & Gauges;
Absco 225v Arc Welder;
Ch. Elec. ARC-180 AC/DC Arc Welder;
Ch. Elec. Dual Mig 151 Mig Welder;
Ch. Elec. Hobby Arc 110 Arc Welder;
6 & 10 Ton Shop Presses;
3 Ton Floor Jack;
Air over Hydraulic Bottle Jacks;
Central Machinery Manual Tire Changer;
Cherry Picker & Engine Stand;
Central Hyd. 12 Ton Pipe Bender;
Unimat SL1000 Jewelers Lathe;
14" Makita Chop Saw;
Craftsman Drill Press & Table Saw;
Bench Grinders;
4 1/2" Metal Cutting Band Saw;
CEN-TECH Battery Charger /Booster (NEW);
Older 30 gal. Air Compressor;
5.5 & 6.5 hp. Gas Engines (NEW);
Manual Tire Changer & Bead Breaker;
36" Sheet Metal Brake;
Concrete Mixer;
Shop Tool Carts & Shelving;
Lots & Lots of Hand Tools & Shop Related Items;
1973 Chevy 350 Long Block;
Sm. Block Chevy Aluminum Intakes & 4bbl. Carbs;

Extension & Step Ladders;
12ft. X 6ft. X 6ft. Chain Link Dog Pen;
Echo PB-26SLN Backpack Blower;

Radios - Electronics - Towers

Shortwave Radio Receivers including Hallicrafters SX-71, Hallicrafters SX-62, Hammarlund HQ-180, General Radio, Gertsch, Marconi, Eico & more;
Vintage Police Radio & Microphone Equipment;
Huge assortment of Vintage Electronic Test Equipment Including Modulation Meters, Tone Generators, Microvolt Ammeters, Thermoelectric Power Meters, Communication System Analyzers, Audio Generators, R/C Testers, Sweep/Signal Generators, Condenser Checkers, Oscilloscopes, Tube Set Tester; Frequency Meters & Lots More.
1000's NOS Misc. Vacuum Tubes;
Boxes & Boxes of Electronic Parts & Manuals;
2 Way Radio Towers & Parts;
Vintage Computers;
No way to list it all;

Antique & Collectible

Antique Skyline 6051 Surveyors Transit;
Chicago #8 A Cast Iron Skillet;
W.I.R. & Co. Cast Iron Skillet;
Misc. Cast Iron Skillets & Dutch Ovens;
Wagner Magnalite #4248 Roaster w/ trivet;
Iron Implement Wheel;
Metal Blade Hunter Table Fan;
Vintage KYTV channel 3 Shirt;
(3) Union Pacific Winged Streamliner Dinner Plates;

Furniture - Household

Frigidaire Stainless & Black SxS Refrigerator (nice);
Whirlpool Washer & Dryer;
Dining Table & 6 Chairs w/ Matching Hutch;
Misc. Furniture Pcs;
Misc. Kitchen & Household Deco Items;

Auctioneers Note

Huge all day Auction so bring a friend as we will be running 2 rings most of the day,
No way to list it all,
See our website for over 800 Pictures

Estate of Carl Moore

Foster Auction & Appraisal Service

www.fosterauctionservice.com

Email: bidnowsold@aol.com



Auctioneer: Larry Foster
Galena, Mo
Phone: (417) 723-8329
Cell: (417) 839-6860



Saturday, March 11, 2023 • 10:00 a.m.

LOCATION: In Licking, Mo., on Hwy. 32 East at old Licking Livestock Auction site.

Next to Hammond Farm & Feed Supply. Watch for signs.

Go to auctionzip.com to view photos. Auctioneer #28367

HOUSEHOLD

Pyrex Casserole Dishes
Lead Crystal Glassware
Ruby Red Avon Glassware
Enamel Ware Stock Pot
Jewelry – necklaces, watches,
brooches
Cake Stand with Lid
Pillsbury Dough Boy Mugs,
Cookie Jars
Granite Roasters
Corning Ware Casserole Dishes
Glasses & Dishes
Canister Sets
Mixing Bowls
Pots & Pans
Kitchen Utensils
Punch Bowl, Vases
Amber Glassware
Candle Holders & Candles
Picture Frames
Hangers, Suitcases
Pictures, Wall Décor
Ceiling Fans
Eden Pure Heater
Crock Pots
Coffee Maker
Electric Can Opener
Microwave
Electric Skillet
VCR Player
DVD Players
Wooden Giraffe Set
Lot of Books & Cookbooks
Lot DVD's, Lot of CD's

Christmas Tree & Christmas

Décor
Throw Pillows, Linens
Towels, Wash Cloths
Afghans, Comforters
Rugs
Kids Games & Toys
Meade Microscope
Shower Curtains
Wine Racks
Shoe Rack
Kid's Electric Drum Set
Cerviano Electric Piano
Vacuums
Shower Chair, Walker, Cane
Bedside Commode

FURNITURE

Washers – Whirlpool &
Conservator
Portable Dishwasher
Crosley Dryer
GE Small Freezer
Whirlpool Gas Stove
Kitchen Table & 4 Chairs
Kitchen Table & 6 Chairs
JVC TV
Waterfall Bedroom Set
Adjustable Bed Risers
Medicine Cabinet
Hall Tree
Green Kitchen Stool/Step Stool
Exercise Machines
Lamps
Lot Plant Stands
Leather Top Desk

2 Armoires
2 Night Stands
High Back Chairs
Lift Chair
End Tables
Coffee Tables
Patio Chairs
Book Shelves
Hutch
Small Butcher Block Table
Singer Treadle Machine Table
Leather Recliner
Oak Chairs
Stainless Steel Sink
2 Drawer File Cabinet
Couch & Love Seat
Twin Bed
Full Bed
Chest & Dresser
Bar Stools
Foot Stools
Office Chair

TOOLS & OUTDOORS

2 Wooden Wagon Wheels
JD Manuals – Windrower,
Combine, Square Baler
NH Manuals – Combine, Square
Baler
GM Diesel Manuals
1978 Chev. Truck Service
Manual
Campbell Hausfeld 3.5 Air Comp
Foley Saw Grinder on Stand
Foley Saw Filer
Belsaw Sharpener

Belsaw Model 276
DeWalt Cordless Rotary Laser
Lincoln Power Lube Grease Gun
800 Watt Generator
Leaf Blower
Chainsaws
Husq. Push Mower
Metal Tool Cabinet
Metal Work Bench
Tool Cabinet
Tool Shelves
Oil Cans
Hand Saws, Planes
Wrenches, Screwdrivers
Concrete Tools
Clamps, Funnels
Nails, Screws
Nippers, Loppers
Drills, Drill Bits
Hammers, Hole Saw Kit
Punches, Files
2 Emerson Electric Fans
Electric Cords
Furniture Clamps
Saw Horses
12 gal. Shop Vacuum
Gas Jugs, Pipe Threader
Metal Tool Boxes
Ammo Cans
Red Tool Box on Wheels
Lawn Mower Tires
Slide Hammers & Attachments

**Come see us! Thanks,
Steve & Neal.**

Property of Jake Edgar - Owner

Terms-Cash or Approved Check. Not Responsible For Accidents. Nothing Removed Until Settled For.
Must show ID to get Buyers #. Announcements Made Day Of Sale Take Precedence Over Printed Matter.

Buckner & Gately Auction Service

Auctioneers

Steve Buckner 573-674-2686

Neal Gately 573-202-3132

PUBLIC AUCTION

SATURDAY, MARCH 11 @ 9:00 A.M.

Directions: SALEM, MO - 300 E. Franklin, at Coopers Auction, behind Phil-Mart. (indoor auction)

SELLING THE FOLLOWING DUE TO SALE OF HOME HOUSEHOLD ITEMS • TOOLS • MISCELLANEOUS

Craftsman Roll-Around Tool Chest
Husky Tool Chest
16' Alum. Ext. Ladder
Nice Plastic Storage Cabinets
Craftsman Wrenches - Sockets Sets
Hammers - Screwdrivers
Metric Speed Wrenches
Box-End Wrenches
Wood Chisels & Files - Air Ratchets
Flaring Tools - Torque Wrenches
Bearing Tools
Deep Well SAE & Metric Sockets
C-Clamps - Wood Clamps
Side Cutters & Shears
Nut Drivers - Shop Vacs
Pipe Wrenches - Edge Tools
Allen Wrenches & Sockets
Tape Measures - Punches & Chisels
Makita Battery Sawzall
VPX Black & Decker Sawzall
Chairs - Work Chest
Old Oak Pedestal Table & 6 Chairs
Work Desk & Swivel Chair
Nice End Tables
Loveseat w/Recliners
2 Nice Recliners - Bookshelf
Paper Shredder - 2 Ceramic Heaters
Live Pure Air Purifier - Mantel Clock
Sony 64" Flat Screen, 6 Months Old
Area Rugs - Nice TV Stand
Table Lamps - Pleather Recliner
Corner Table - Pictures & Paintings
Floor Lamps - Lawyers Cabinet
Southerland 60x80 Othermo
Balance Queen Bed
Night Stands - New Bedding
Zhejiang Bed Company 2022
Queen Bed, Very Nice
Chest of Drawers - 2 Night Stands
Sitting Chair - Vizio 40" Flat Screen
Old Cabinet - Books
Tiffany Style Table Lamps
6 Pc. Patio Set - Char-Broil Gas Grill

Spring Patio Chairs - Loungers
7.25 Troy Built Pressure Washer
Wrought Iron Bench - Flower Pots
Large Plastic Outdoor Storage Box
2 Dehumidifiers 70 & 45 Pint
Kenmore Upright Freezer, Clean
Samsung 36" Flat Screen
4-Drawer Antique Dresser
5 & 2 Gal. Crocks - Whiskey Crock
Correlle Plates - Hand Towels
CorningWare - Pasaonic Microwave
Cut Co. Knife Set - SS Mixing Bowls
Cooking Pans - Graters
Pots & Pans - Kitchen Pads
Tupperware - Gourmia Air Fryers
Ninja Mixer - Crock Vases
Keurig Coffee Maker
Haier Wine Cooler
Wooden School Chair
Handmade Cedar Cabinet
Kenmore Elite Stackable Front Load
Washer & Dryer w/Pedestals
Hoover & Kenmore Vacuums
Old Washboards
Remington Sportsman 58, 12 Ga, 2 3/4" Shotgun
Ruger Bearcat .22 LR Revolver
Rossi Revolver 32 Long, S&W
Bersa Semi-Auto .380 Pistol
Leather US Military Holster
Large Multi-Section Desk
Nice Wooden Desk
Leather Office Chair
Plumbing Hardware
Knick Knacks - 2 Chandeliers
Vanity Stool - Wooden Stools
Vases - Leather Recliner
Nice Sitting Chairs
Shadow Box Table
Neat Old Divided Cabinet
Small Church Pew
Covered Wooden Bench
Retro Office Chairs

Neat Multi-Drawer Cabinet
6 Shabby-Chic Chairs - Entry Table
Double Indoor Lounger
Storage Chest - BBQ Grill
Large Wire Decorative Birdcage
Lots of Paintings from Sybill's in St.James
Fireproof Box - Small Fireproof Safev



AUCTIONEER'S NOTE:

**Very clean auction.
Bedroom sets are new!**

See you there! - Tom!

**ANNOUNCEMENTS AT AUCTION TAKE PRECEDENCE
OVER PRINTED MATTER**

WULFF AUCTION

TERMS: CASH OR
APPROVED CHECK -
I.D. REQUIRED
NOTHING REMOVED
UNTIL SETTLED FOR

LICENSED
APPRAISALS

2334 Highway K, Salem, MO 65560
AUCTIONEERS: Col. Tom Wulff • John Wisdom
Cell: 573-247-3884 • Cell: 573-247-9563

Clerk: Tracy Strange Home: 573-729-8476 Cashier: Nancy Inman
See Wulff Auctions at www.thesalemnewsonline.com/auctions



RAIN OR SHINE
OWNER & AUCTION
PERSONNEL NOT
RESPONSIBLE FOR
ACCIDENTS AT SALE SITE

CONSIGNMENT**Auction****SATURDAY MARCH 11TH, 2023 AT 10:00 AM****Location: 304 Springfield Rd, Ava, MO 65608**

Directions: Across the street from Town & Country Supermarket

FIREARMS

Weatherby 300 Magnum
Thompson Center 50
caliber Muzzle loader
Stevens Shotgun
Sayers Shotgun
H & R Shotgun
Remington auto Shotgun
Cobra Arms 38 cal
Derringer
Taurus G3 9mm
Beretta UGB25 Xcel
ser#UG00429A

UTV

Polaris Ranger 800 High
Output

SEMI

2000 Freightliner
*Century Class

VEHICLES

2008 Cadillac STS
Skye Ryder Aerochute
*mfd by Six Chuter Inc

CAMPERS/BOATS

Rockwood Pop up Camper
Stinger boat w/ Mariner
motor

TRACTORS

Case 1070 tractor
John Deere 400 w/ Front
end Loader
Farm Equipment
John Deere 5 bottom Plow
Vermeer Disc Mower w/
caddy
Vermeer 4 basket Tedder
8 wheel Hay Rake
Aluminum Field Fertilizer
Buggy (PTO driven)
Shaver Hydraulic Post
Driver
Rock Rake
Misc implements

TRAILERS

Hay Wagon
Flatbed Gooseneck Trailer
Hay trailer

PROJECT CARS

Pontiac Catalina
Buick GS

SHOP TOOLS

Rear tine Tiller
Stihl MS 661C
Ridgid Planer
Delta Benchtop Oscillating
sander
Miller Plasma Cutter
Misc building materials-
Lumber, siding, decking

**HOUSEHOLD/
MISCELLANEOUS**

Brother Business Smart
Printer/scanner
Dining table w/ chairs
Large collection of
Carnival glass
Misc antique furniture
Cream cans

SCAN ME!

Scan with your phone's
camera to be directed
to our website for more
photos and info!

**LARGE VARIETY OF ITEMS, TOO NUMEROUS TO MENTION!!**

More items expected! Still accepting good quality consignments. Come spend the day with us.
Food truck will be serving all day! Rain or shine—See ya there!

**FOR MORE PHOTOS, VISIT OUR WEBSITE CHEYNEYAUCTIONS.COM
OR FIND US ON FACEBOOK!**

**Cheyney Auction Company, LLC**

Real Estate • Livestock • Farm & Ranch • Equipment • Household • Antiques

Travis Cheyney, Auctioneer • Buddy Boyd, Ringman**417-543-8751 • cheyneyauctions.com**

ANNOUNCEMENTS Made Day Of Sale By Auctioneer Take Precedence over any Printed Matter. Not Responsible
For Accidents. All items sold as is, where is, with no guarantee. Terms of sale: cash, credit/debit card, or check with valid ID.

POMME DE TERRE PRIVATE DOCK AND PERMIT ONLINE AUCTION GALMEY, MISSOURI



WWW.OZARKBID.COM

Located in one of the most premier areas on Pomme de Terre Lake, this 16' x 8' private dock (312) sits in Galmey Cove at the end of County Road 271. Whether you love fishing, water sports, or pleasure cruising, you won't find a better location on the north shore to own your own private dock.

- Great Fishing Location
- Located Close to Main Arm of Pomme de Terre
- Very Close to the Dam, The Harbor Restaurant, and Wheatland Beach
- Concrete Boat Ramp Launch
- Paved County Road Access
- Close to Dollar General and Gas Stations
- Surrounded by a Beautiful Neighborhood
- Right off Highway 254

Located in one of the most premier areas on Pomme de Terre Lake, this 16' x 8' private dock (312) sits in Galmey Cove at the end of County Road 271. Whether you love fishing, water sports, or pleasure cruising, you won't find a better location on the north shore to own your own private dock.

Don't miss the PERFECT opportunity to own your own dock in the PERFECT location on Pomme de Terre Lake!

ONLINE BIDDING ENDS MARCH 12TH @ 7PM



- Sam

CRAWFORD
Auction Service



VISIT OUR WEBSITE TODAY TO PLACE YOUR BID
@ WWW.OZARKBID.COM
CONTACT CHASE CRAWFORD, AUCTIONEER,
FOR MORE DETAILS @ 417-399-1904



FREE PARKING

SHOW-ME TRADE SHOW

FREE ADMISSION

Friday, March 10, 2023 - 9 am to 5 pm
Saturday, March 11, 2023 - 9 am to 3 pm

LUNCH AVAILABLE BOTH DAYS

SHOW-ME AUCTION CENTER

17829 Shadey Brook Dr. • Versailles, MO 65084

OVER 100 BOOTHS

BRINGING THE COMMUNITY TOGETHER

Come & meet your local business leaders. There will be many show specials & discounts.

- **Zimmerman Tractor**
 - **Marks Meats**
 - **A-K Small Engine**
 - **Spray Rite Foam**
 - **Steiner Fabrications LLC**
 - **Pleasant Valley Quilts & Appliances**
 - **Crown Power & Equipment**
 - **School Basics-n-More**
 - **Hibdon Gravel Inc.**
 - **Gathering Grounds Coffee**
 - **Stover Milling Co**
 - **Bramble Patch Health Food LLC**
 - **Citizens Bank of Eldon**
 - **Ramer Bros. Furniture**
 - **Oaklawn Shoppe**
 - **Triple S Seeds**
 - **Spray Foam Done Rite**
 - **Frontier Metal**
 - **Zimmerman Produce**
 - **AA Propane**
 - **B-W Graphics, Inc**
 - **Martins Supply**
 - **Hilltop Harness Shop**
 - **Mid Mo Metals**
- YOUNG OR OLD, WE HAVE SOMETHING FOR ALL.**
- **Anovité**
 - **S.Z. Mfg**
 - **Weaver Tire**
 - **Burkholder Truck**
 - **Ozark Ag Repair**
 - **Top Stitch LLC**
 - **Nutri Ag**
 - **dōTERRA**
 - **QC Supply**
 - **Skyline Electric**
 - **Excel Metal**
 - **L-N-S Feeds**
 - **Vista Life**
 - **Latham Market**
 - **B.T.C. Bank**
- **Bio-Mass Techniques**
 - **Diamond K Mfg**
 - **Dutch Country Store**
 - **Kilmer Farm Equipment**
 - **Community Point Bank**
 - **The Bank of Versailles**
 - **Martins Goods & Gifts**
 - **Creative Resources**
 - **Lauf Equipment Co Inc.**
 - **Office Business Equipment**
 - **Ralco Nutrition**
 - **Sydenstricker-Nobbe Partners**
 - **Timber Ridge Millworks**
 - **Goetze Bro Carpet & Furniture**
 - **Forklift of Central MO**
 - **The Wellness Way, Columbia**
 - **Softwave Therapy Columbia**
 - **Bio Carbon Solutions LLC**
 - **Wasson Farm & Fence**
 - **Hoover's Precast**
 - **Dieckmans Auction Service**
 - **Mid Mo Metals**
 - **21st Century Realtors**
 - **L&L Brookside Furniture**
 - **J.Z. Yardscapes**

**\$1,000.00
in Prizes!**
Register to win.

**LOTS OF GOOD FOOD!
COME AND ENJOY
THE DAY WITH US!**

For Information, Call
Wilmer Hoover • 573-789-2215
Earl Ray Zimmerman • 573-378-4335

*This is just a
partial listing.*

DIRECTIONS: From Versailles: Hwy 52 for 6 mile east of Versailles to Hwy C then left on Hwy E. Right on Shadey Brook Dr.
 From Jefferson City: Hwy C 30 miles to a right on Hwy E, then Right on Shadey Brook Dr.
 From Tipton: 15 miles south on Hwy 5 to Hwy HH. Left on HH to right on Hwy E. Left on Shadey Brook Dr.

TREE SERVICE AVAILABLE: Complete tree removal & trimming. Call for free estimate. The Tree Monkey 417-293-3417.

IT'S FAINTING GOATS SEASON!

Docile, non-jumping purebreds. Which are great for small acreages & as pets. Additional info on website; www.greenacresvillage.com or text 573-216-7796. Lake of the Ozarks.

WASHER & DRYER: \$200 Each. 573-647-3139. Sullivan.

FOR SALE: Property in Huston, MO. 1 acre +, Hwy 63, zoned commercial/residential property. House on property. Locate to a region with a rich history of manufacturing. 417-887-8221 or 417-766-3997.

HIGHPOINT GREENHOUSE: Open for the season. Garden seeds, vegetable and flower plants, seed potatoes, onion sets and plants, herbs, etc. 417-741-2793. 9337 Warner Rd. Hartville.

BRAND NEW 18-VOLT DRILL: \$100. 573-647-3139. Sullivan.

FIREPIT: \$50. 573-647-3139. Sullivan.

35 MASSEY FERGUSON TRACTOR: Field ready. \$2,400. 417-859-4676. Marshfield.

NIGERIAN GOATS: Male and Female, reasonably priced. 573-345-4710. Climax Springs.

YOUR FULL SERVICE AUTO BODY SHOP

Call today for an appointment or estimate!



Restorations, insurance jobs, and more!

417-288-1589 • 115 Lincoln St., Buffalo, MO • @DavidsonCustoms

FRESH DAIRY PRODUCTS: Whole Jersey milk. Yogurt. Butter. Tuesdays and Saturdays 8-11. 3242 Morton Road. Hartville.

WANTED: Ruger 44 Magnum Carbine. 573-298-2326. Vienna.

YEARLING IRISH DEXTER BULL: Nice looking bull. \$1,200. 417-630-2843 Text or call, leave message. Conway.

CONCRETE BIRD BATH: \$200. 573-647-3139. Sullivan.

HAY FOR SALE: brome hay big squares \$140, Round bales timothy hay \$125, Both good horse hay. 573-378-7326. Versailles.

FOUR WOODEN CHAIRS: \$25 Each. 573-647-3139. Sullivan.

BRAND NEW ORTHOPEDIC XL TWIN SIZE BED: \$200. 573-647-3139. Sullivan.

SMALL CHICKEN COOP: Nesting box 20 1/2"x 8"x 9." Run length 25"x 22"x 22." \$175. 573-647-3139. Sullivan.

CASE LOADER: Low hrs. \$22,000. 573-578-3806. Leslie.

3-PT. BLADE: 6' H.D. \$250.00. 417-589-2893 or 417-533-7126.

3-WHEEL BICYCLE WANTED: Three speeds or more. 417-414-3686.

CATAHOULA LEOPARD PUPPIES: Born January 25th. 30-year-old bloodline. Leopard males, some natural bobtails and some merle. 417-543-4816.



MID MISSOURI STOCKYARDS

REGULAR SALE EVERY THURSDAY 11AM

WATCH OUR WEEKLY SALE IN REAL TIME ON DYAUCTION.COM

For Farm Visits, Market Updates, or Trucking
Call Zach Cox 417-777-1320
Dan Romine 573-578-4939

**Competitive Buyers!
Competitive Commission!
Competitive Market!**

Barn: 417-532-9292 

I-44 • Exit 123 "just outside of Lebanon"
17505 Route 66, Phillipsburg, MO 65722

For weekly market updates, visit us at
www.midmoststockyards.com

CLINES EQUIPMENT Co., LLC

SPRING CONSIGNMENT AUCTION

20133 LAWRENCE 2220, AURORA, MO 65605

Saturday, April 1, 2023 • We are taking consignments NOW!

Located 1 mile East of Jct. 60 & Hwy. 39 on US Hwy. 60 or .9 miles West of Bus. 60 On US Hwy. 60



**LAST DAY TO TAKE
CONSIGNMENTS TO BE PLACED
ON SALE BILL WILL BE
MARCH 13TH, 2023**



**FOR MORE INFORMATION CALL
OFFICE 417-678-0049 or CELL 417-830-0912**

CLINESEQUIMENT@GMAIL.COM

Pictures and additional listings may be seen at
[HTTPS://WWW.AUCTIONZIP.COM/LISTINGS/](https://www.auctionzip.com/listings/)

**TRUCKING
AVAILABLE
IF NEEDED.**

BUFFALO LIVESTOCK MARKET LLC

276 Hwy 32 W., Buffalo, MO



March 4th, 2023
Receipts: 539

REPRESENTATIVE STEERS

300-400 @ 220.00 to 254.00
400-500 @ 210.00 to 250.00
500-600 @ 200.00 to 223.00
600-700 @ 190.00 to 202.00
700-800 @ 175.00 to 190.00
800-900 @ 160.00 to 170.00

REPRESENTATIVE HEIFERS

300-400 @ 200.00 to 232.50
400-500 @ 190.00 to 225.00
500-600 @ 180.00 to 220.00
600-700 @ 167.00 to 177.00
700-800 @ 154.00 to 165.00
800-900 @ 135.00 to 150.00

FEEDER BULLS

300-400 @ 190.00 to 235.00
400-500 @ 190.00 to 220.00
500-600 @ 185.00 to 209.00
600-700 @ 175.00 to 191.00
700-800 @ 150.00 to 153.00
800-900 @ 130.00 to 145.00

STOCKS COWS

Bred Cows 1375.00 to 1675.00
Cow/Calf Pairs 1575.00 - 2000.00

SLAUGHTER BULLS

High Yield 115.00 to 130.00
Low Yield 85.00 to 102.00

SLAUGHTER COWS

Fleshy 90.00 to 99.00
Med Flesh 92.00 to 107.00
Light Flesh 80.00 to 100.00

QUESTIONABLE HEALTH OR CRIPPLE COWS

60 Down

Plain Quality, Dairy X LHS Cattle
will be below this Market Report!!

PRE-VAC SALE next week
March 11th, 2023

MON-WED MARKET REPORT

Listen to KJEL 103.7FM • Lebanon or KYOO 99FM • Bolivar

VIEW OUR SALES AT CATTLEUSA.COM

CALL FOR TRUCKING OR ON-FARM VISIT

Lyle Caselman • Owner-Manager
417-345-7876 • mobile 417-533-2944
Leon Caselman • Owner
417-345-4514 • mobile • 417-588-6185

PEMBROKE WELSH CORGIS: D.O.B.
1/12/23, U.T.D. on shots & wormer. \$300.
417-741-2949. Grovespring.

HELP WANTED PLUMBER: Seeking a plumber with experience in residential service plumbing. Must have experience with all sorts of plumbing repairs and the ability to troubleshoot and repair plumbing problems. We are looking for someone who is outgoing, self-motivated, reliable and has quality ethics. A valid driver's license with good driving record is a must. We offer long term employment to the right candidate with paid vacation, paid holidays and health insurance. Immediate employment. Please Call 573-348-2093. Four Seasons Plumbing.



2012 Ford Connect Transit Van.
41,xxx original miles. Clean, runs great, metal grate divider. Ready to hit the road running!

\$11,500

Text 417-532-0250 • Call after 5 p.m. • 417-664-0210

FOR SALE: Small patio table, two chairs.
\$50. 417-288-6714. Lebanon.

VERNON COUNTY LAND AUCTION

T37N – R33W – SECTIONS 14, 15, 16, 21, AND 22

THURSDAY, MARCH 23, 2023 | 10 AM

AUCTION & PROPERTY LOCATION:

6619 S 463 RD, HUME, MO 64752

1 ½ MILE NORTH OF STOTESBURY, MO ON HWY V, THEN EAST ON E DODGE RD, S. 425 RD, AND S 463 RD TO THE FARMSTEAD.

**958.39 ACRES M/L
OFFERED IN 3 TRACTS**

FSA TILLABLE @ 823.51 ACRES M/L

- Tract 1: 312.57 Acres M/L - FSA Cropland @ 261.69
- Tract 2: 552.31 Acres M/L - FSA Cropland @ 484.02
- Tract 3: 93.51 Acres M/L - FSA Cropland @ 75.02



**SELLERS: WELCH FAMILY LIMITED
PARTNERSHIP FIFTEEN
LITTLE OSAGE FARMS LLC**

Wheeler 
AUCTIONS & REAL ESTATE
23101 HWY. 24, PARIS, MO 65275 | 660-327-5890
WWW.WHEELERAUCTIONS.COM

For More Info
contact:
Mike Williams
816-797-5450
wheelerauctions.com

BYLER SUPPLY

The Builder's Choice!

Get Ready for Spring!

**CALL TODAY
FOR
NEXT DAY
SERVICE!**
Call for Details



**HEAVY 29 Ga.
METAL #1**

Limited LIFETIME WARRANTY
29 Ga. & 26 Ga. Painted

**CUT TO LENGTH PANELS
GALVALUME METAL UNPAINTED
25 YEAR WARRANTY
#1 Standard Panels, 29 Ga.**

\$72.98 sq.

**Ask About Our
Quick Service.**

**Over 20 Colors and
Several Styles To Choose!**



**Reg. Pole Frame Buildings Are
Heavy 29 Ga. Metal, Three 2"x6"
T&G Splashboards, All Poles
5"x5" Or Larger, CCA Treated,
Fully Trimmed With One 3'x6'
Walk-Through Door & One Large
Sliding Door.**

CALL US FOR CURRENT PRICING



BYLER BUILDING SUPPLY, LLC



2 1/2 Miles East of Seymour On 60, 1/4 Mile North at the Peewee Crossing\Star Road Intersection

877-556-8855 • MON.-FRI. 7:30-5 SAT. 8-12 • 417-771-3100

VISIT US AT WWW.BYLERSUPPLY.COM

FOR SALE: Pressed wood 4-shelf bookcase. \$5. 417-288-6714. Lebanon.

FOR SALE JENSEN TABLE SIZE PORTABLE STEREO: 2 speakers. \$50. 417-288-6714. Lebanon.

HAFLINGER-PERCHERON CROSS COLTS: 9-months-old, weaned, Stud & Filly. Very gentle, fed daily. \$2,500 each. Info & pics. 573-712-4128. Lodi.

JOHN DEERE MX10 PULL TYPE 10FT. BRUSHCUTTER: Good. \$6,950. 573-765-4406. Richland.

IHC 1466 DIESEL TRACTOR: 145 H.P., Runs nice. \$9,750. 573-765-4406. Richland.

3 DRAFT CROSS: coming 2-year-old colts. Percheron-Quarter cross. 1 stud & 2 fillies. Call 573-712-4108 for more info. Pics. available. Lodi.

FEATHERLITE ALUMINUM CAR HAULER TRAILER: 18Ft. long, 2 5/16" ball, removeable fenders, ramps. Excellent condition. \$6,200. 573-712-4128. Lodi.

FORD 4000 DIESEL TRACTOR: W.F., P. Steering. \$3250. 573-765-4406. Richland.

CASE IH 385 DIESEL TRACTOR: 35 H.P., 2,000 Hours. \$6,950. 573-765-4406. Richland.

STARBUCKS CITYSCAPE COLLECTION MUGS: Various cities. \$10 each. 573-854-8132. Licking.

JOHN DEERE 466 ROUND BALER: Monitor, Kicker, 4x6. \$4,750. 573-765-4406. Richland.

FORD 6610 DIESEL TRACTOR: Cab & Air, with loader, bucket & bale spike. 72 H.P. Nice. \$20,750. 573-765-4406. Richland.

Starnes Auto LLC

22115 Rt. 66 • Lebanon, MO 65536
417.718.2707 Cell
417.588.3159 Office
www.starnesauto.com

2003 CHEVY SILVERADO 4WD LS

MAROON VIN#7851, 197,XXX \$5,500

2004 CHEVY SUBURBAN

GREEN VIN#1401, 198,XXX \$5,000

2010 PONTIAC G6

MAROON, VIN#7307, 151,XXX MILES \$4,500

2012 CHEVY MALIBU

WHITE, VIN#3859, 152,XXX MILES \$5,200

2012 CHEVY SILVERADO EXT CAB 4WD

WHITE, VIN#2799, 80,XXX MILES \$16,500

THE VEHICLES LISTED BELOW ARE NOT
AVAILABLE FOR FINANCING

2004 FORD SPORT TRAC

SILVER, VIN#0901, 277,XXX MILES \$4,200

2016 CHEVY TRAVERSE AWD

BLACK, VIN#5787, 122,XXX MILES..... \$13,500

2017 FORD FUSION

MAROON, VIN#5911, 77,XXX MILES \$10,500

SUPPORT SQUAD
#Crew'sCrew

WE DO ALIGNMENTS!



Pine Ridge Rustic
Log Home Building Supplies

Services Offered!

- Installation
- Pre-finishing available on interior & exterior
- Dealer for exterior stains

www.pineridgerustic.com

523 CR 2410 • Salem, MO 65560 • Ph: 573-729-7226



- Log Siding
- Beveled Siding
- Car Siding • Red Cedar
- Western Cedar • Pine

JOHN DEER 920 DISCBINE: With rollers. \$7,500. 573-765-4406. Richland.

BROWN 3-POINT TREE CUTTER: heavy duty, \$2,450. 573-765-4406. Richland.

BOBCAT 753 DIESEL SKID STEER LOADER: Shows Low Hrs. \$12,500. 573-765-4406. Richland.

BUSH HOG 2615 LEGEND 15FT HYD. FOLD BRUSHCUTTER: 540 Shaft, Big Gear Boxes. \$7,750. 573-765-4406. Richland.

Buildings • Hunter's Cabins • Lawn Furniture



JAMCO Portable Buildings

800-688-2064 • 307 Enterprise Dr. • Seymour, MO • www.jamcobuilders.com

Rent To Own Plan

FOR SALE: Brute 8ft pull type box blade w/cylinder. Used 1 time. Please call 573-263-1509 for information.

JOE THEISMANN AUTOGRAPHED CAREER STAT JERSEY: JSA COA. Text for pictures. 573-854-8132. Licking.

K.C. CHIEFS SUPERBOWL 2019 DAMIEN WILLIAMS AUTOGRAPHED JERSEY: JSA COA. Text for pictures. \$135. 573-854-8132. Licking.

NEW HOLLAND 7230 DISCBINE WITH ROLLERS: Nice. \$17,300. 573-765-4406. Richland.

JOHN DEERE 2640 DIESEL TRACTOR: 70 H.P., with J.D. 146 Loader. \$13,300. 573-765-4406. Richland.

IHC 1086 DIESEL TRACTOR: Cab & Air, 130 H.P., Triple Hyd. Shows 4900 hrs. \$15,500. 573-765-4406. Richland.

SILAGE OR ROUND BALE FEED WAGON: 30FT. Long. Nice. \$3,500. 573-765-4406. Richland.

M.F. 520 WHEELED DISK: 12FT. \$2,300. 573-765-4406. Richland.

KITCHEN TABLE & CHAIRS: Solid wood. \$70. 573-734-2822.

Specializing in farm and home, recreation, and commercial listings.

Whether you're buying or selling, our team can save you time, help you avoid costly mistakes, and ensure you get the best value. Call or visit us online today to start your home search, talk to an agent or request your free home value report!

Located in Mountain Grove, Ava, Gainesville and Theodosia.

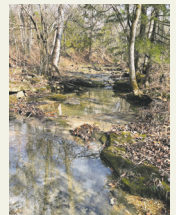
CENTURY 21[®]

Hometown Properties



MOUNTAIN GROVE

9871 E 20th St, Bldg A
Mountain Grove, MO 65711
417.926.1070



280 acres m/l with Gasconade River Frontage!! - \$1,199,950

Have you been dreaming of owning property that you can hunt, fish, kayak, swim, and farm? Come take a look at this beautiful 280 acre m/l farm and enjoy some of the best amenities the Ozarks are known for! This well-kept farm is approx. half open and half timber with improved pastures and hay ground. Signs of wild-life abound and the 2022 whitetail hunting tally is impressive. There are 3 ponds, several springs, and best yet, about 1/8 mile of Gasconade River frontage with your own easy access to the river where you can cast a line, put the kayak in, or take a dip during those summer days. Bald eagles and numerous buck rubs were sighted while viewing the property. There is a 990 sq. ft. 2 bed, 1 bath cabin with central heat & air. Cabin has an open combined kitchen, living, & dining area. Multiple outbuildings are present to accommodate both hobbies & equipment. Hay barn is 57x104. Single bay shop is fully enclosed with power & concrete. There is also a 20x40 building previously used as a calf barn, a 20x60 with power & concrete with 12x60 side shed, along with a smaller 12x10 almost finished building that could be a pool house, garden or she-shed. Not only are there corrals & alleys to help with cattle and livestock rotation, but there are also 4 hunting blinds, 3 elevated and 1 ground blind, a couple of areas perfect for food plots for those who enjoy hunting and wild-life observation. Many trail roads have been cut through the property to aid in ease of navigating equipment or ATV's. Property joins Mo Dept. of Conservation land. No matter your focus, whether recreational, hunting, or farming, this one checks all the boxes. For some the cabin will be perfect; for those who want a big home with sweeping views, there are some great building spots! Call Amanda Kelly @ 417.224.4735 to schedule your showing!

WE HAVE CARGO CONTAINERS



**20' New
\$5,000**

**CONTAINER
MAN**
1-800-922-9704



**40' New
\$7,000**

Quarles Supply

3251 S Springfield Ave
Bolivar, MO 65613
417-777-2391

NOW RENTING CONTAINERS!