

FREE - TAKE ONE!

Vol. 29 No. 49

MARCH 2, 2023

800-543-8271 • 800-665-8875

WEEKLY **TRADER** MAGAZINE



Find us on
Facebook

@myweeklytrader
AUCTIONS PG. 8

VISIT OUR NEW WEBSITE! MYWEEKLYTRADER.COM

**You pull it,
we sell it...**

CHEAP!



Lebanon, MO

22395 Rt. 66

417-588-3555

Fax 417-588-8955



U★PULL★IT

SELF-SERVICE AUTO PARTS

We also have a large inventory
of used tires and be sure to check
out our used car lot!

Mon.-Fri. 8:00am-6:00pm • Sat. 8:00am-4:30pm

WWW.SSUPULLIT.COM

Located next to S&S Recycling.



**Roll-off, Trailer, and
Mobile Crushing
Services Available**

For All Your Metal Recycling Needs

Lebanon, MO

22395 Rt. 66

417-588-3555

Fax 417-588-8955

Mtn. Grove, MO

8930 First Rd

417-926-3360

Fax 417-926-0180

Monday-Friday 8:00am-4:30pm (Closed 12pm-1pm Lunch)
Saturday 8:00am-Noon

email: contact@ss-recycling.com

Buyer of all types of scrap metal.

2022 MODELS ON SALE NOW

L7 4WD TRAIL PACKAGE - \$13,500, *Power Steering, Winch, Roof, Split Windshield, CV Guards, USB Port, Upgraded Bumper, Center Console*

*TOWING CAPACITY: 1,500 LBS, ENGINE SIZE: 694CC,
TOP SPEED: 34MPH, BED CAPACITY: 700LBS*

L5 4WD TRAIL PACKAGE - \$12,500

L5 4WD BASE WITH ROOF AND WINDSHIELD - \$11,500

*TOWING CAPACITY: 1,500 LBS, ENGINE SIZE: 479CC,
TOP SPEED: 24MPH, BED CAPACITY: 700LBS*

L4 4WD WITH FLIP DOWN SEAT, ROOF, AND WINDSHIELD - \$11,500

*TOWING CAPACITY: 1,500 LBS, ENGINE SIZE: 429CC,
TOP SPEED: 24MPH, BED CAPACITY: 600LBS*

L3'S 2WD BASE WITH ROOF AND WINDSHIELD - \$7,600

*TOWING CAPACITY: 1,100 LBS, ENGINE SIZE: 277CC,
TOP SPEED: 22MPH, BED CAPACITY: 400LBS*

Financing Available,
\$180 per month
for qualified
buyers on L3



LANDMASTER

Early Bird
SPRING
SALES EVENT
FEB.1 - APRIL 30TH!



Farm & Lawn

417-859-4311
SALES • SERVICE • PARTS
3299 E. EVERGREEN ROAD
STRAFFORD, MO



RB16 SERIES

REAR BLADES
20-40 HP 60", 74", 84" Widths

- Cat. 1 hitch
- 7 Forward angles; 3 Reverse angles
- 5 Tilt positions
- 12" Offset left or right
- 14" Moldboard height
- 1/4" Moldboard thickness
- Landscape Rake adaptable

Getting Chores Done
LAND PRIDE
does that.



www.landpride.com

For Outstanding Products & Service

AGRI-ENTERPRISES

1-1/2 Miles South Of Licking, MO On Hwy 63
573-674-2203 • 1-800-653-7152 • www.agri-enterprises.com

A PICTORIAL HISTORY OF WORLD WAR II: Air forces in Combat. \$10. 417-532-2045. Lebanon. (Leave message and phone number).

WEATHERED BARN WOOD SIDING: 10" wide. 573-729-7226. www.pineridgerustic.com Salem.


LOG SIDING: 2X8 Pine/Western Cedar www.pineridgerustic.com 573-729-7226. Salem.

WE HAVE MOBILE HOMES:

Instock new arrivals (8) homes, need to go as soon as possible! 573-499-9993. columbiadiscountshomes.com





MODEL 1911 FRAME 8-SHOT C02 PISTOL: Like new, in box with C02 cartridges, 4 clips, pellets & all paperwork. \$95. 573-364-7465. Rolla.

USED MOBILE HOMES: Call David at VILLA HOMES IN ROLLA 573-578-8072. Rolla.



TIM'S USED CARS

(573) 341-3828 • 1334 South Bishop (Hwy. 63) • Rolla, MO
Next to Hwy CC • www.tims-used-cars.com

 <p>2014 CHEVY 1500 LTZ Crew Cab, 4x4, 5.3 V-8, leather, navigation, 139,xxx Miles Only \$21,900</p>	 <p>2018 FORD F750 6.7 Powerstroke, auto, 12' dump, Power Equipped, 13,xxx Miles Only \$89,000</p>
 <p>2013 RAM 1500 EXPRESS Crew cab, 4x4, 5.7 V-8, Power Equipped, 150,xxx Miles Only \$15,500</p>	 <p>2016 JEEP WRANGLER SAHARA UNLIMITED 4x4, V-6 Auto, hard top, loaded w/options, 94,xxx Miles Only \$27,900</p>

LARGE SELECTION OF CARS, TRUCKS, SUVs & VANS!

0% for 4 Years



HEATMOR Outdoor Wood Furnace
as low as **\$238** per month

HEATMOR MIDWEST

Licking, MO 65542 • 573-674-2962

BUYING MOBILE HOMES: Call David at VILLA HOMES IN ROLLA 573-578-8072. Rolla.

ST. LOUIS CIVIL WAR SITES OF THE FIGHT FOR FREEDOM: By Peter Downs, 207 pages, \$7.50. 417-532-2045. Lebanon. (Leave message and phone number).

NEW MOBILE HOME STOCK: Just received (5) new units, they gotta go! 573-657-2176. amegamobliehomes.com

USED DOUBLE-WIDE: \$34,900 WOW!!!! This won't last! 573-657-2176. amegamobliehomes.com

BURIED BY TABLE ROCK LAKE BOOK: About old towns, cemeteries, stores, etc. that were covered by the lake, 188 pages, \$12.00. 417-532-2045. Lebanon. (Leave message and phone number).

TINY HOMES: We gottem 573-881-3283

REGISTERED HEREFORD & ANGUS BULLS: Home raised, Some Show-Me Select Qualified. 573-701-7828. Belgrade.

LIGHTLY EXPERIENCED GOLF BALLS: \$3 a dozen. 417-818-3469. Strafford.

Larry Heisel Rentals
Have Rock?
How about 3,500 lbs. of Hammer
Call Larry!
573-779-1500
www.larryheiselequipment.com
Rental Available in 636 or 573 area code



2012 Ford Connect Transit Van.

41,xxx original miles.

Clean, runs great, metal grate divider. Ready to hit the road running!

\$11,500

Text 417-532-0250

Call after 5 p.m.

417-664-0210

TRUE MODULARS: 30 to 60 day delivery available, 3 and 4 bedroom 573-657-7040 chateauhomes.net

I BUY.....used mobile homes. Call or text 573-338-6250 or email GregS.CDH@outlook.com

1890 GOLD TESTING KIT: Glass acid beakers + antique wooden case. \$100. 573-764-3517. Call in PM.

LIONEL TRAIN SET: Steam engine, tender, caboose and other car, track, and transformer. \$195. 573-364-7465. Rolla.

FIREARMS: Professional Repair, Restorations and Appraisals. Baron's Gunsmithing. 573-363-5801. Camdenton.

1970s KIDS METAL STOVE & FRIDGE: Nice Lithographic paint, 18" wide x 36" high. \$75. 573-364-7465. Rolla.

Meadowview Dutch Market

Bulk & Surplus Groceries • Prices Subject to Stock on Hand

Call to Order
417-993-3017

DELI SPECIAL

JALAPENO MUNSTER CHEESE.....REG. \$5.99SALE \$5.49

COOKED SALAMI.....REG. \$4.49SALE \$3.99

TRY our Fresh Homemade DELI Sandwiches: TURKEY, HAM, ROAST BEEF, ITALIAN, BLT'S, PULLED PORK AND BLT PULLED PORK (MADE YOUR WAY)! COME IN OR CALL to order! ALSO Custom Deli trays! Veggie OR FRESH Meat-N-Cheese!

Smoked Pork Chops
\$9.99
10 LB CASE

Bonus Special 73% Ground Beef
\$7.25
3 LB.

Smoked Sausage
99¢
LB. - APPROX. 11 LB.

3 GALLON ICE CREAM
\$21.99
ASSORTED FLAVORS

EZ Melt Monterey Jack Cheese
\$1.49
LB.

Pepperoni Cheese
\$2.49
LB.

Sesame Teriyaki Sauce
\$1.25
14 OZ.

Chicken Broth
89¢
32 OZ.

#1 APPLES
89¢
LB.
GALA, FUJI, GOLDEN DELICIOUS

MEADOWVIEW DUTCH MARKET
417-993-3017 Hours: Mon-Thurs 8-5pm
Fri 8-6pm • Sat 8-5pm
23 Miles West on Hwy 64 • Right on T Hwy
9 miles • Left on E Hwy 1 mile on Left

NOW ACCEPTING CREDIT, DEBIT CARDS & EBT

DUTCH COUNTRY STORE, LLC
573-378-4395
Hours: Mon-Thurs 8-5pm
Fri 8-6pm • Sat 8-5pm
5 miles East of Versailles off Hwy C on Kelsay Road

3 GENTS WITTNAUER WRIST

WATCHES: 10k gold + 23J. All \$200. 573-764-3517. Call in P.M.

HARLEY FAT BOBS: Custom flame paint w/ gas caps + lines. \$100. 573-764-3517. Call in P.M.

HARLEY PANHEAD DISTRIBUTOR:

original, chrome + complete. \$125. 573-764-3517. Call in PM.

1962 HARLEY SPORTSTER 900CC:

original distributor. \$50. 573-764-3517. Call in PM.

FOR SALE: Transmission for 06 series

International tractors. \$675. 636-239-2695 or 314-560-5700. Washington.

110 PORCELAIN POCKET WATCH

DIALS: Perfect for arts & crafts. \$100. 573-764-3517. Call in PM.

YOUR FULL SERVICE AUTO BODY SHOP

Call today for an appointment or estimate!



DAVIDSON'S

CUSTOM AUTO BODY

Restorations, insurance jobs, and more!



417-288-1589 • 115 Lincoln St., Buffalo, MO •  @DavidsonCustoms

COLT REVOLVER DEALER

CATALOGS: Circa 1950's + 1960's. All for \$100. 573-764-3517. Call in P.M.

SLIGHTLY USED PUZZLES: Will sell or trade. 417-818-3469. Strafford.

32' WOODEN LADDER: In excellent shape. \$200 Firm. 573-647-3139.

1500 VINTAGE WRISTWATCH DIALS: \$100. 573-764-3517. Call in PM.

RUBBER & LEATHER BOOTS AND 5-

Buckle OVER SHOES: Men's 11, Women's 7, some insulated. \$15-\$40 obo. 636-239-2695 or 314-560-5700. Washington.

STRAW FOR SALE: \$4 per bale. 21 bales to a bundle. 573-539-2060. Versailles.

FERGUSON DEALER SHOP MANUAL:

Covering TE-20, TO-20 & TO-30 Model tractors. \$40. 636-239-2695 or 314-560-5700. Washington.

HEARTH CRAFT GLASS BI-FOLD FIREPLACE DOORS PURCHASED AT

FORSHAW'S FIREPLACE: Antique brass. \$160 obo. 636-239-2695 or 314-560-5700. Washington.

FIRST GEAR KILIMANJARO

MOTORCYCLE COAT: XL, but runs smaller. Zip out liner, Kevlar padding on shoulders & elbows, vented, rainproof. Like new. \$95 FIRM. 417-260-0941. Raymondville.

Economy Buildings in Stock Now!!

Custom Built, Meeting Your Storage Needs

Come check out our double wides!! Sizes 32'x52' available

Come Visit Us Near You!

For Display Locations in Waynesville, Sunrise Beach, & Camdenton, Call 573-346-3030

BENNETT SPRINGS BUILDING CENTER

2519 Hwy 65 • Louisburg, MO • Buy or Rent to Own Storage Buildings • 417-532-8338

WE BUY AND SELL

new and used mobile homes



(417) 501-1061

ALFALFA ORCHARD GRASS: Small squares for sale. 2nd & 3rd cutting. \$10 per bale. Bundled in 21 bales per unit. 573-539-2060.

HARLEY 45 SOLO: factory rear brake drum + sprocket. \$150. 573-764-3517. Call in PM.

MEN'S LEVI'S: Size 36x36, #502. Brand new. \$25/each. 573-647-3139.

NEW SQUARE D RAINPROOF 50AMP DISCONNECT: \$160. 636-239-2695 or 314-560-5700. Washington.

USED JET HOME POLLUTION CONTROL PANNEL: Model CP700. \$65. 636-239-2695 or 314-560-5700. Washington.

KITCHEN TABLE & CHAIRS: Solid wood. \$70. 573-734-2822.

2 GOODYEAR WRANGLER TIRES: Kevlar LT245/70R17, all terrain, \$100 for the pair. 417-417-260-0941. Raymondville.

RAINBOW VACUUM CLEANER: Excellent Condition. \$200. 417-260-0941. Raymondville.

NEIGHBORHOODS HOME IMPROVEMENT STORE: 417-533-5080. Lebanon.

3-MOTOR MANUALS (CARS): 1935-1952 for \$20 + Postage. 1935-1949 for \$15 + Postage. 1964-1970 for \$30 + Postage. 417-260-0941. Raymondville.

FOR SALE: 2 Dayco motorcycle covers for Harley or other big bikes. \$50 each. 417-260-0941. Raymondville.

NOW BUYING STANDING TIMBER IN THE LAKE OF THE OZARKS AREA: Free estimates. Littleton Storm & Timber Services. 217-836-4985.

1 TON WRECKER: 573-734-2822.

BASSET HOUND PUPPIES: Multiple colors. Might trade for whatever. 417-650-0405. Lebanon.

NOW BUYING STANDING PINE TIMBER: \$0.20 board ft. International Scale. All stumps and slash mulched; no mess left behind. We also log small acreage, mobile sawmilling available as well. 417-991-9280.

DACHSHUNDS: Registered, shots, wormed. One long haired red & one brown and white, both males. \$500. 417-260-1917. Raymondville.

DARDEN PROFESSIONAL TIMBER HARVESTING, BUYING STANDING TIMBER: Great prices, improve wildlife habitat and improve forest health. State Certified & Fully Insured! 573-247-4808. Salem.

PEMBROKE WELSH CORGIES: D.O.B. 1-5-23. Up to date on shots & wormer. \$300. 417-259-9738.

COWBOY CORGIES: Born 1-9-23, UTD on shots and wormer. Great prospects for stock dogs or family pets. \$300. 417-701-1372. Hartville.

SAVE SOME GREEN

Spring Tractor Sale

**UP TO \$4,300 OFF MSRP +
ZERO \$ DOWN & 0% FOR 60 MONTHS
ON ALL JOHN DEERE COMPACT TRACTORS**

DIY DIGGER
1025R COMPACT TRACTOR
+ LOADER & BACKHOE



OZARK PACKAGE
3032E COMPACT TRACTOR
+ LOADER & ROTARY CUTTER



JOHN DEERE

Heritage
TRACTOR

Offer valid until
3/21/2023. Restrictions apply.
See dealer for details.

Scan Here
for Savings



PLAD PANTRY
DISCOUNT &
SURPLUS FOODS
FRESH PRODUCE LLC
417-532-4700

Pepperoni Pizza Lunchables	\$6.99 8 count case
73/27 Ground Beef	\$14.99 5 lbs.
Shredded Sharp Cheddar Cheese	\$1.99 8 oz.
All Natural Pork Sausage	\$5.99 3 lb.
Dark Chocolate Chip Frappe Mix	\$4.99 50 oz..

1571 State Hwy 64 • Tunas, MO 65764
Hours: 8:30 a.m. to 5:30 p.m. • Closed Wed. & Sun.



AUSSIE/BORDER COLLIES: Born 1-9-23, UTD on shots and wormer. Born on the farm! Great prospects for stock dogs or family pets. \$100. 417-701-1372. Hartville.

LAUGHING DOVES: \$8/each or \$12/pair. Some spotted. 573-368-1625. Owensville.

3 HEIFERS & 1 BULL: 11 Months Old. Negotiable. 573-436-0487. Patosi.

2nd CUTTING GRASS HAY: \$7.50/Square bale. 573-308-5884. Rolla.

ANTIQUE HOG OILER: \$35. 573-308-5884. Rolla.

STARTER & GENERATOR: For Chrysler 6-cylinder flathead engine. \$50 OBO. 573-308-5884. Rolla.

POOL TABLES: Installations, moves, recovers, repairs, accessories, etc. 573-646-1700.

AB LOUNGE SPORT: Abdominal exercise chair. Like new. \$50. 210-787-8222. Linn Creek.

FRESH DAIRY PRODUCTS: Whole Jersey milk. Yogurt. Butter. Tuesdays and Saturdays 8-11. 3242 Morton Road. Hartville.

AKC REGISTERED GREAT DANES: Vet checked, U.T.D. on shots. Call for more info. 573-870-0073. Ellington.

PUREBRED MOUNTAIN FEIST PUPPIES: Small dogs. 573-796-8343 or 660-415-1311. California, MO.

WHITE GERMAN SHEPHERD PUPPIES: Male & Female, ready February 24th. CKC Registered. Parents on site. 859-393-4760.

ATLANTA 65,000 DTU PROPANE CIRCULATOR: \$200 Cash. 417-599-8089. Willard.

LOADER BALE FORKS: For John Deere, fast hitch. \$200 Cash. 417-599-8089. Willard.

POSTER BED: \$150. 417-741-1232.

ROUND TABLE: \$40. 417-741-1232.

2004 PONTIAC GRAND AM: 4 Cyl. Auto. Runs good, everything works. \$2,500 or Best Offer. 417-683-2821. Ava.

FESCUE HAY: 5x6 large round bales, net wrapped, in barn, no weeds, never wet. \$100 per bale. Near Warsaw. 660-723-0103.

TRAILER HOUSE RIMS: \$10 each. 573-308-5884. Rolla.

BUYING PRE 1970 BEER SIGNS: FALSTAFF, GRIESEDIECK, BUDWEISER, STAG CAPITOL, ETC. 573-680-5377.



Buildings • Hunter's Cabins • Lawn Furniture

JAMCO BUILDERS

JAMCO Portable Buildings

800-688-2064 • 307 Enterprise Dr. • Seymour, MO • www.jamcobuilders.com

Rent To Own Plan



CLASSIC EDGE

TITANIUM HDX

26% Tax Credit on EPA certified Central Boiler Classic Edge HDX models and installation. Call today to learn more!

Outdoor Wood Furnace
CentralBoiler.com

Yarbrough Equipment Sales & Services, Inc.
9776 E. State Hwy OO • Strafford, MO
417-736-2303 • 1-866-286-6901 • www.yarbeq.com

The Classic Edge 360, 560 and 760 HDX are U.S. EPA Certified

25 ACRES: Rough ground. Hunter's paradise. Stream through property, spring fed. Secluded. \$8,000 Per Acre Cash. 417-741-1232.

TWIN SIZE ORTHOPEDIC: extra-long box spring, mattress & frame. Like new. 200. 573-647-3139.

FOR SALE: Patio table & two chairs. Small. \$50. See at 1722 Amy Dr. Lebanon, MO.

460 FORD ENGINE BLOCK: \$100. 573-308-5884. Rolla.

FOUR BULLS: From 400lbs. Up. \$1,200 to \$1,500. 417-778-7309. Alton.

18 4X5 2-YEAR-OLD GRASS HAY: \$45 per bale. 573-308-5884. Rolla.

OFFICE DESK: 36x72. Nice, Walnut laminated. \$50. 573-259-2951. Bourbon.

TREE SERVICE AVAILABLE: Complete tree removal & trimming. Call for free estimate. The Tree Monkey 417-293-3417.

WEATHERED BARN WOOD SIDING: 10" wide. 573-729-7226. www.pineridgerustic.com Salem.

HAY FOR SALE: brome hay big squares \$140, Round bales timothy hay \$125, Both good horse hay 573-378-7326 Versailles



WE BUY

White Oak Logs!

- ✓ Top prices for your logs
- ✓ Experienced log buyers
- ✓ Professional service

Chad Cook | Salem Wood Products
417.718.2950
5 miles north of Salem, MO on Hwy 19

INDEPENDENT STAVE COMPANY
Log Procurement & Sales

www.independentstavecompany.com



KUSTER LOGGING

BUYER of Standing Timber

Oak and Walnut

Dozing Now Available

417-259-0047

References Available

USED JET HOME POLLUTION CONTROL PANNEL: Model CP700. \$65. 636-239-2695 or 314-560-5700. Washington.

FOR SALE: Jensen Stereo, 2 speakers, table size. \$50. See at 1722 Amy Dr. Lebanon, MO.

Sam CRAWFORD AUCTION SERVICE LLC ESTATE AUCTION

Will sell the following located from Brumley, MO 3 miles West on Hwy. 42 to Bear Creek Rd., then North 2½ miles. Watch for Auction Signs.

SATURDAY, MARCH 11TH, 2023 - 9:30 AM

TRACTOR - EQUIPMENT - ATV - TOOLS - MISC.



TRACTOR - SKID STEER

Ford Jubilee, Sheddied, Looks Good
Case 410 Skid Loader, Sheddied, w/
Bucket

Skid Loader Grapple Bucket
3 Pt. Carry-All
3 Pt. Danuser Post Hole Digger
3 Pt. 6' Blade
3 Pt. Single Gang Disk
3 Pt. John Deere 2 Bottom Plow
3 Pt. 5' Brush Cutter
3 Pt. Scoop
2 Wheel Farm Trailer
Small Utility Trailer, 4x8'

TOOLS - MISC.

2 Front Tine Tillers
4 Push Mowers
2 Blowers
Weedeaters
3-4 Chainsaws (2 Stihl)
5 HP Generator
Power Washer w/Honda Motor
2 Small Generators
Central 9 HP Wood Splitter
Lawn Wagon & Cart
12V Sprayer



Table Top Drill Press
Craftsman Radial Arm Saw
Craftsman Table Saw
Vise
Craftsman 6 HP Air Compressor
Small Upright Craftsman Air Compressor
Skil Miter Saw & Table
Small Lincoln Wire Welder
12" Wood Planer
Other Power Hand Tools
Asst. air Tools
Good Asst. Wrenches, Sockets
3-4 Rolling Tool Boxes
Storage Cabinets - Shelving
Work Tables
Long Handle Tools
4-5 Alum. Extension & Step Ladders
4-5 Bicycles
Jack Stands
2 Floor Jacks
2 Pair Alum. Ramps
Air Hose, Ext. Cords
Electric Cement Mixer
Paint - Oil - Anti-Freezer
Scrap Iron
Chuckwagon 650 4x4 Side By Side,
Sheddied
Kubota RV400 4x4, Gas, Side by Side,
Sheddied - May Need Work

Older 12V V Bottom Alum. Boat
Older 16' Alum. Canoe
Fiberglass 20' Canoe & Trailer
Mercury 9.8 Outboard Motor
Gamefisher 3 HP Motor
Older Evinrude "Lightnin" Motor
Older Evinrude 40HP Motor
Rods & Reels
Assorted Camping Equipment
Some 2" Pine Lumber
Used Lumber 1" & 2", Some Plywood
Older 8x10' Storage Building
Other Small Metal Building

MISCELLANEOUS

Antique Dinner Bell
Antique Roll Top Desk
Wall Telephone
Sev. Totes Misc. Household
Chest of Drawers
Box Woodstove
Frigidaire Upright Freezer
Chest Freezer - Medium
3 Window AC
Other Items



TERMS: Cash or good check. Nothing removed until settled for. Not responsible for accidents. Lunch available. Statements made day of sale take precedence over printed matter. All items sell as is. No warranties given or implied.

417-998-6629
Cross Timbers, Mo.

CrawfordAuctionService.com

Sam
417-328-9137

Chase
417-399-1904

Chance, CAI
417-298-1751

Tom Poynter
Jack Lancaster

KEN STITES ESTATE

521 Bear Creek Rd. • Brumley, MO

ONLINE AUCTION

PULASKI COUNTY SURPLUS PROPERTY AUCTION

BIDDING OPEN NOW!

INSPECTION/PREVIEW:

Thursday, March 6th

(see website for exact times and locations)

BIDDING WILL END:

Tuesday, March 14th at 6:30PM

PICK UP TIME WILL BE:

Thursday, March 16th, 2023

Merchandise is located at the County Road & Bridge Dept Sheds and the Sheriff's Office.

WWW.WARDENAUCATION.BID

<https://www.apro.bid/affiliate/ed-warden-1990/>



TERMS
Cash, Credit,
Debit or Approved
Check

ID Required for
Bid Number



WARDEN AUCTION & MORE

(573) 336-2367 or (573) 528-0729

Ed Warden – Licensed Auctioneer/Real Estate Broker

www.wardenauction.com



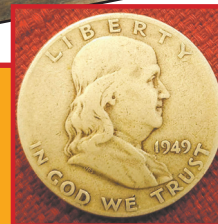
TERMS
Not Responsible
For Accidents
or Losses

Nothing Removed
Until Settled For

R&R AUCTION SERVICE

FRIDAY NIGHT MARCH 3RD @ 6PM

in the R&R Auction House, 1644 South Ash, Buffalo, MO



March is BLOWING in AMAZING AUCTION ITEMS at the R&R Auction House. We had a lot of great auctions last year but this auction is topping the list as we start the 2023 auction season. The list includes but not limited to; Vintage and antique furniture, DeWalt, Makita, Craftsman & Milwaukee tools, Delta X5 thickness sander, Bohm Stirling Technik Heissluftmaschinen type HB9 and HB27 engines, Antique books, non sweating ADLAKE RR lamp, Kawasaki side by side (300 hrs), 3pt seeder, 3pt auger, Rollins box blade, SQ184 Bush Hog 7ft rotary mower, rock rake, Leinbach Line scrape blade, flatbed bumper hitch trailer with racks, Washer and Dryer, several core bits, glass beakers and other chemistry glassware, (Aladdin mantles, wicks, chimneys and lamps) NIB TS-808 Kerosene cooker, NIB SS cook set, NIB Radiometer, Katadyn Combi water filtration system, Grundig Satellit 750 radio, Grundig field radio S450DLX, NIB anywhere fireplace, aircraft and train books, Model Railroad track and cars, Wilescop Experimentierbausatz D100E, D21 & D18 Dampfbox Steambox, Lanterns, campstove, Daniel Steiger skeletonized watch, Spyderco Police Model folding knife, Old Pepsi bottles and crates, Pink Depression and other fine glassware, lamps, 45's, architectural decor, camel back trunk, HVAC items, Hole saws, Lodge cast iron, weed eaters, old tins, lighters, Stihl chainsaw, old cane poles, lots of vintage items, collectibles and one of a kind pieces. There is much more being added daily. Check out our website for many pictures. We will see you on the 3rd!

Check out next week's trader for our
COIN & CURRENCY auction, March 10th
and **REAL ESTATE** auction, March 11th

Please keep watch on our website for added photos.

TERMS: 10% Buyers premium. Cash, check, or credit card with proper I.D. nothing removed until settled for A 3% fee will be added to credit card purchases. Not responsible for errors in listing.



For more information contact Professional Auctioneer Russ Weeks
at 417-576-7357 or check out www.rrauctionservice.com

Serving this area's auction needs since 1997
with honesty and professionalism.
www.rrauctionservice.com

(417) 576-7357 or (417) 345-4140



CAGA
CERTIFIED
APPRAISER



IRISH DEXTER BREEDERS ASSOCIATION IDBA

**Announces its first annual show and sale!
May 5 & 6 2023 at the Dallas County Fairgrounds
Buffalo Mo.**

We are proud to make this announcement as the desire for these animals continue to grow and we strive to represent the breed to the best of our ability we would like to invite you all to come join us for a fun filled 2 days.

We will be offering a hand picked selection of what we feel are some of the breeds best for auction.

We will be offering 12 – females and 3 – males all animals will be broke to lead.

We will have a variety from show heifers and bulls to maternal genetics in cows and herd sires.

We will also have a silent auction and a few items we will live auction to help raise money for the IDBA to help promote the growth in our youth in raising Irish Dexter's. So if you have little interest in raising these cattle we would like to offer the opportunity to help grow the youth in agriculture for our group is strongly focused on the youth. We love doing what we do and raising high quality animals but we also believe in supporting the youth for they are our future.

So come join us May 5th and 6th for the opportunity to purchase some of the breeds best genetics and for fun and food.

For more info on the show and sale or becoming a member you can contact the following IDBA board members:

President – Steve Cushing 417-991-6707
Treasurer – Bo Hampton 417-288-2376
Dakota Cushing 417-991-6720

Vice President – Robert Doebling 417-733-4088
Rob Doebling 417-241-5241
Butch Rankin 417-619-0801

22nd Annual FARM MACHINERY CONSIGNMENT AUCTION

SATURDAY, MARCH 11, 2023 • STARTING AT 10AM

LIVE & ONLINE BIDDING!!!

RAIN OR SHINE!

SALE LOCATION: 622 N. Perryville Blvd, Perryville, MO. From I-55 at the Perryville exit, go north on highway 51 bypass about 1 ½ miles to sale site. Or from highway 61, take highway 51 bypass south about ½ mile to sale site. Watch for sale markers!!!

AUCTIONEER'S NOTE: : Consigned items may be delivered to the auction site starting on March 4. We will accept deliveries up through Thursday, March 9. **NO CONSIGNMENTS WILL BE ACCEPTED ON FRIDAY OR SATURDAY, MARCH 10 & 11. NO TIRES & NO JUNK WILL BE ACCEPTED!**

****For online bidding you must pre-register through www.equipmentfacts.com. NOTE: Any items purchased online will be subject to a 5% Buyer's Premium. Please read all terms!!**

We will post additions/changes frequently online. Announcements made day of sale take precedence over printed material. Manche Auction Service is not responsible for any errors, omissions or no shows. The auction MAY sell in 2 rings at times if necessary.

TRACTORS – TRUCKS – TRAILERS – DOZER

JD 610SE 4x4 tractor w/ cab, has 673 JD self-leveling loader, approx. 800 hours, 2019 model, very clean
JD 2020 gas tractor w/ loader & bucket, has hi-lo transmission
165 Massey Ferguson diesel tractor w/ wide front end, hi-lo transmission
JD 790 4x4 gas tractor w/ 60" belly mower, 3 pt hitch, 540 PTO, 1,556 hours, in very good condition
2014 GMC ½ ton truck w/ 4.3L engine, w/ 4x4, 4 door, auto trans, power windows, w/ 213,741 miles
2014 Chevy Silverado ½ ton truck w/ V-8 5.3, 4x4, 4-door, air, tilt, cruise, 224,336 miles
PJ 14' gooseneck dump trailer, 2 axle, w/ like new rubber, metal sides, floors & extensions, swinging rear doors, 2013 year model
2014 Mack Pinnacle road tractor w/ sleeper, 835,xxx miles, MPS 505, 10 speed manual Eaton transmission, 3:55 rear
1980 Chevy C70 tandem grain truck w/ 18' bed, hoist & tarp, has 366 Eaton 13 speed transmission
PJ 5 ½ x 8 ½ single axle dump trailer w/ ramps & swinging doors, 2021 year model, like new
Fruehauf 1977 model enclosed van trailer, single axle, 26', set up w/ electric inside
Gooseneck 20' flatbed trailer w/ steel floor, 2-axle
2009 Dodge Ram pickup w/ 5.7 Hemi, auto trans, 4 door, 223,605 miles
Piens 1984 model enclosed van trailer, set up w/ electric inside, 28'
White 2-50 diesel tractor w/ loader & bucket, 5 speed trans w/ hi-lo
Kirks 6.5 x 12' tip top trailer w/ wooden floor, like new condition
CAT D7-F bulldozer (early 70's model) has angle blade, new batteries, about 50%

undercarriage
1982 Gleaner model F2 w/ 13' flex head & black 4-row 36" corn head, electric over hydraulic controls

LIVESTOCK, HAY & FIELD EQUIPMENT

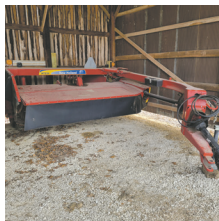
Oswalt D575 hay saw processor mixer wagon w/ 4 augers, 540 PTO, left hand chain discharge, w/ scales, in very good condition, shed kept, from retired cattle farmer
Diamond 920T vertical mixer wagon, been rebuilt w/ new liner, 2 new screws & knives; 540 PTO, w/ scales, 3 auger right side discharge, very good condition, shed kept, from retired cattle farmer
Knight Real Auggie model 3375, 540 PTO, scales, single axle, in very good condition, shed kept, retired cattle farmer
JD model 750 3.5 ton grinder mixer, w/ hyd augers, has small square bale table, 1,000 rpm PTO
Portable automatic head catch w/ transport wheels
JD model 1209 mower conditioner, 9', w/ rubber rollers, in good condition
JD 650 5-bar hay rake
Ag-Chem rogator 854 sprayer w/ 5,400 hours, 90' booms
Great Plains 1500 no till drill
JD model 7200 12-row planter w/ trash sweeps, no till, liquid fertilizer tank, vacuum planter
JD 8200 12-hole grain drill w/ small seed box attachment
JD 6000 hi-boy sprayer, 3-wheel, w/ cab & air, 60' booms, 320 gal tank
IHC model 510 double disk offset 21-hole grain drill
JD 510 5x5 twine baler w/ several new bearings
JD model 7000 6 row planter liquid fertilizer tank, no till, good paint, w/ monitor, corn & bean meters
New Idea model 364 2-axle PTO driven manure

spreader
Dual front end loader w/ tractor hardware
IHC front end loader w/ tractor hardware
Cattle head gate
NH 488 mower conditioner, 9' (also a NH 488 parts mower)
NH 974 6-row corn head (for parts)
Land Pride RSR 2510 pull-type brush hog, like new
JD 535 round baler, twine, 5x6 bale
Kilsbros model 800 grain cart w/ tarp
Allied 10-wheel V hay rake
DMI NH-3 pull-type tool bar, 11 knife, w/ no till coulters
Reminger 30' pull-type harrow
Heavy duty grapple w/ JD bucket hitches
JD bale fork
3- cattle creep feeders
3- Rubbermaid water tanks
Semi load of various size treated round posts
Some new continuous fence
1,300 gal round plastic water tank
7' pull-type box blade, like new
King Kutter 7' 3 pt blade
3 pt PTO seeder, like new
7' 3 pt spring loaded field cultivator
Ford 2-bottom plow, 3 pt
Dearborn 2-bottom plow, 3 pt
3 pt dirt scoop
ATV sprayer
1,500 gal plastic water tank
Grain-O-Vator tandem axle auger wagon w/ long load out auger
JD hay wagons & other hay wagons
RT-5800-H Sitrex 4 spinner hay tetter
Ogden 8-wheel hay rake, like new
Case IH RBX 552 round baler w/ monitor, 5x5, like new
NH H7230 disk bind, 10' 4" cut, 540 PTO
Kemco Pro 2 inline bale wrapper, like new

H&S heavy duty model 430 manure spreader, like new, 540 PTO

WINDMILL - SIDE BY SIDE - GUNS - MISC

Aeromotor windmill 4-leg, 30' tall, 6' fan, in very good condition
2020 RK750 Performance 4x4 side-by-side w/ winch & dump bed
About 300' of overhead trolley track w/ trolley
Custom fuel trailer w/ 250 gal tank & pump
Troy Bilt 33 ton wood splitter w/ 8 hp motor
2- 100 gal fuel tanks
Echo gas pole saw (like new)
Gas weed eater
North Star gas power washer
Metal chop saw
Grinder on pedestal stand
Walker motor stand
Metal shop cart on wheels
Walker motor stand
Power Plus 6500 watt gas portable generator, 11 hp (like new)
Several new skid steer attachments: grapple, brushhog, blank plates
GUNS TO SELL AT END OF AUCTION (AT APPROX 21SH)
Remington model 10 12 gauge pump
Remington model 12 22 pump
Taurus 709 9mm, new in box
Ruger LCP .380 pistol
Lefer Nitro 12 gauge double barrel shotgun
Winchester model 70, stainless steel barrel
Stevens model 22 22 caliber pump action
Ivory Johnson 22 Super Shot
H&R model 732 w/ 22 caliber S&W
Stevens model 41 pocket issue 22 pistol
Mossburg Silver Reserve double barrel 20 gauge shotgun
More guns expected by sale time



SALE CONDUCTED BY:

MANCHE AUCTION SERVICE

COL. RODNEY MANCHE (573) 547-1818 OR (573) 513-1212

SINCE 1982~ "LET OUR EXPERIENCE SELL YOUR NEXT AUCTION!"

LUNCH PROVIDED BY: 4-H
NOT RESPONSIBLE FOR ACCIDENTS
TERMS: CASH OR APPROVED CHECK

VISIT US ONLINE AT www.mancheauctionservice.com OR www.auctionzip.com (Auctioneer # 6476)

to view color photos & additional auction items.

Firearms Auction

Saturday March 4th, 2023 • 10:00 a.m.

Doors open at 8 AM on Saturday

Sale Preview - Friday, March 3rd • 6-9 p.m.

The Red Shed
I-44 to exit 179 • 169 Truman St
Doolittle, MO 65550

SELLING 300 FIREARMS

SOME OF THE HIGHLIGHTS TO INCLUDE:



A nice collection of Rocky Mountain Elk Foundation rifles,
all new in the boxes.

K98 Mauser (bringback), M1 Garand with CMP grading tag,
Remington Rand 1911 .45ACP w/CMP case & paperwork,
Husqvarna Lahti 9mm, Springfield M1A, Springfield 1898
30-40 Krag, Polish Radom 35P, Mauser P38



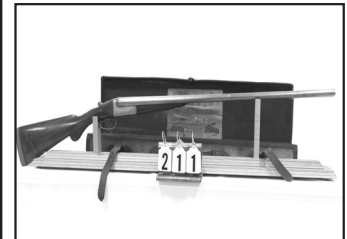
Sig P250 9mm, Mauser HSc .380, Smith & Wesson Model
39 9mm, Six very collectible High Standard pistols, Beretta
92G Brigadier Tennessee Commemorative, Smith &
Wesson 629 .44 mag, Colt King Cobra, Colt Gold Cup 1911



Collection of Remington 742 rifles like new, Ruger #1 45-
70, Winchester 70 Super Grade .458 Win, Browning Safari
.284, Browning BAR .22, Browning X-Bolt and A-Bolt



Browning A5 12 ga & 20 ga, Remington Peerless Over/
Under, Remington 870 Wingmaster, Remington 1100,
Winchester 42 .410



J & J Sales, LLC

Pictures on www.auctionzip.com (auctioneer ID #28053) • Pictures also available on Hibid.com

573-341-5450
Office

573-465-4647
Julie Reagan

573-465-0642
JD Roach, Auctioneer

573-762-2227
Sale Day Number

jjsalesllc12@gmail.com

NEW ATF RULE - For ATF Form 4473, current name & address must exactly match the photo ID such as drivers license. **MUST MATCH!!** If not, we need supplemental government issued documentation with matching current address such as vehicle registration, property taxes, county or city utility bill. Cannot be a PO Box!

Concessions by Mt. Olive Baptist Church

Terms of Sale: Sale day announcements supercede any and all printed material. Photo I.D. required for buyer's number. No buyer's premium. Payment accepted by cash, check, debit/credit card. There is a 3% convenience fee unless paid by cash or check. Nothing removed until settled for. All state and federal firearms regulations will be followed. Not responsible for loss or accidents.

POMME DE TERRE PRIVATE DOCK AND PERMIT ONLINE AUCTION GALMEY, MISSOURI



WWW.OZARKBID.COM



Located in one of the most premier areas on Pomme de Terre Lake, this 16' x 8' private dock (312) sits in Galmey Cove at the end of County Road 271. Whether you love fishing, water sports, or pleasure cruising, you won't find a better location on the north shore to own your own private dock.

- Great Fishing Location
- Located Close to Main Arm of Pomme de Terre
- Very Close to the Dam, The Harbor Restaurant, and Wheatland Beach
- Concrete Boat Ramp Launch
- Paved County Road Access
- Close to Dollar General and Gas Stations
- Surrounded by a Beautiful Neighborhood
- Right off Highway 254

Located in one of the most premier areas on Pomme de Terre Lake, this 16' x 8' private dock (312) sits in Galmey Cove at the end of County Road 271. Whether you love fishing, water sports, or pleasure cruising, you won't find a better location on the north shore to own your own private dock.

Don't miss the PERFECT opportunity to own your own dock in the PERFECT location on Pomme de Terre Lake!

ONLINE BIDDING ENDS MARCH 12TH @ 7PM



- Sam -

CRAWFORD
Auction Service



VISIT OUR WEBSITE TODAY TO PLACE YOUR BID
@ WWW.OZARKBID.COM
CONTACT CHASE CRAWFORD, AUCTIONEER,
FOR MORE DETAILS @ 417-399-1904

Sam **CRAWFORD AUCTION SERVICE LLC** **REAL ESTATE AUCTION**

Will sell the following located 14 miles South of Warsaw, MO on Hwy. 65 to Hwy. AA, then East 1½ miles. Watch for Auction Signs.

FRIDAY, MARCH 17TH, 2023 - 1 P.M.

HOUSE & 1+ ACRE • 60 ACRES +/-



Tract 1

3 Bedroom, 1 Bath Farm Home
 Full Walk-Out Basement
 w/2 Bedrooms & ½ Bath Down
 Home Was Built In The 60's
 Electric Heat
 Lg. Window AC/Heater, 1 Yr. Old
 2 Yr. Old Roof - 1 Yr. Old Well Pump & Wire
 1+ Acre - Blacktop Frontage
 Warsaw School

Good, Small Farm & Home
 with lots of possibilities.

The 2 parcels will sell separately
 and NOT combined.

For more information, contact auctioneers.
 Auction will be held at the home site.



Tract 2

60 Acres +/-

Approx. 50 Acres Open & Mostly Tillable
 Turkey Creek on East Side & Small Pond
 Perimeter Fenced
 Front on Blacktop On 2 Sides
 Farm has been cropped in recent years
 Warsaw School



Sam
417-328-9137

Chase
417-399-1904

TERMS: Cash or good check. Nothing removed until settled for. Not responsible for accidents. Lunch available. Statements made day of sale take precedence over printed matter. All items sell as is. No warranties given or implied.

417-998-6629
 Cross Timbers, Mo.

CrawfordAuctionService.com

Chance, CAI
417-298-1751

Tom Poynter
Jack Lancaster



James A. McClurg Trust

JoAnn's Printing 660-5472299

BUILDING SUPPLY AUCTION



SATURDAY, MAY 11TH • 9:30 AM - BAXTER SPRINGS, KS

2404 Cleveland • Baxter Springs, KS • Corner of 24th & Cleveland,
3 blocks E of 69A on 24th St.

SALE HELD INSIDE REGARDLESS OF WEATHER

(SPECIAL ANNOUNCEMENT – IF FOR ANY REASON WE HAVE INCLEMENT WEATHER THAT WOULD IMPACT OUR NORMAL SATURDAY LOADOUT, FEEL FREE TO LEAVE YOUR TRAILERS AT HOME & WE WILL ARRANGE LOADOUT THE FOLLOWING WEEKEND)

♦ **ARCHITECTURAL SHINGLES** – in 3 colors ♦ **PINE** – 1x6 & 1x8 T&G Shiplap and V-Match/Bead Board

♦ **DECKING - ALASKAN CEDAR** – 5/4" radius edge, **COMPOSITE** in multiple colors ♦ **WESTER CEDAR** – 1x8 beveled lap siding ♦ **OSB SMART SIDE** – 4x8 sheets – used for board and batt or soffit ♦ **BACKER BOARD** ♦ **1 1/8" OSB** ♦ **CULTURED STONE** – nice selection of colors and styles ♦ **VINYL SIDING** – CertainTeed Brand – several colors ♦ **PINE LOG SIDING** – milled from 2x8, various lengths ♦ **JAMES HARDY SIDING** – 6 1/4" wide – A Grade – Warranty ♦ **PREFINISHED FIBER CEMENT SHAKE SIDING** ♦ **SM@ART SHAKES** ♦ **SM@RT SIDE SOFFIT** – 3/8"x12"x16' ♦ **ICE AND WATER SHIELD** ♦ **CLAY ROOF TILES** ♦ **HOUSE WRAP** ♦ **BARN WOOD DOOR** – real wood ♦ **INSULATION** – R13, R19, R30, R38 also 5' and 6' wide rolls of r10 – r11 insulation ♦ **HOT WATER HEATERS** – new in box – electric – 30, 50, and 80 gallon ♦ **7/16" HIGH PERFORMANCE OSB** ♦ **FAUCETS** – DELTA, MOEN, and HOME IMPRESSION brands – Vanity and Kitchen, including pulldown

kitchen faucets – NIB – large selection to choose from ♦ **APPLIANCES** – NEW – as well as Shelf Pulls and Scratch and Dent ♦ **WIRE CLOSET SHELVING** ♦ **LIGHTING** – NEW large variety of nice lighting fixtures – including some high end lighting ♦ **WINDOWS - VINYL** – New – brands including JELDOWEN, WEATHER BARR, QUAKER – new construction – vinyl insulated windows ♦ **KITCHEN CABINETS** – multiple sets of cabinets – option of stained or painted including: Farmhouse Brown, and Shaker Style in Dark Gray, Light Gray and White – all wood – prefinished cabinets. Straight and L shaped sets with some sets also including pantry – some sets also include soft close doors & dovetailed drawers ♦ **VANITIES** – nice selection of vanities including colors matching Kitchen Cabinets – variety of sizes, up to 5', some including granite tops ♦ **PORCELAIN AND CERAMIC TILE** – over 20,000 sq ft, with great selection of sizes and colors of tile to choose from including **MOSAIC** – nice selection – **TRAVERTINE** – **MARBLE** – **STONE** – including **SUBWAY TILE** ♦ **WOOD LOOK TILE** – nice selection of

styles and colors in various lengths and widths ♦ **HARDWOOD FLOORING** up to 7" wide **PREFINISHED PLANK WOOD FLOORING** in 1/2" and 9/16" thickness ♦ **SNAP AND LOCK LAMINATE** – in small lots ♦ **LVT** – great selection of glue down LVT as well as nice colors in **RIGID CORE SNAP LOCK** ♦ **TRIM – BASE – CASING – CROWN:** pre-primed – various widths and lengths; as well as **OAK** quarter round, corners, chair rail, cove, base shoe and door stop ♦ **STAIRCASE HANDRAILS** ♦ **ENTRY – PASSAGE – PRIVACY DOOR KNOBS AND LOCKS** ♦ **3CM QUARTZ** – Maple White in various sizes – countertops – island panels, with & w/o sink cutouts ♦ **GRANITE COUNTERTOPS** ♦ **KITCHEN SINKS** ♦ **FREESTANDING BATHTUBS** ♦ **CEILING FANS** – nice selection ♦ **PEDESTAL SINKS** ♦ **TOWEL BARS and RINGS, TOILET PAPER HOLDERS, ROBE HOOKS, TOOTHBRUSH HOLDERS**

COME FOR THE DAY AND SAVE LOTS
AND LOTS OF \$

MORE COMING IN DAILY - check sites often. For pictures see Mt. Vernon Auction Co on Auctionzip.com (enter auctioneer ID#29728) or Facebook • CELL 870-754-4428 • 870-754-5479 • 870-715-2326 (text only)

No Buyer's Premium

All items not picked up day of sale or during one of our posted, scheduled, and announced pick up times following the auction will be forfeited. Thank you!!

MT. VERNON AUCTION CENTER

CONTACTS - CALL OR TEXT MIKE @ 870-754-4428 • TEXT ONLY @ 870-715-5479 or 870-715-2326



All announcements made the day of auction will supersede previous advertising.

Billy Sexton Auctions

Saturday March 11th starting at 10:00 AM

Location: 3803 Private Road 6692 West Plains, Mo. From West Plains take 160 West past Wal-Mart 8 miles to Southfork turn right on County Road 6690 1 mile to private road on left. (Watch for Auction signs).



Tractors-Trailers-Equipment

2014 TYM-T1003, 100HP, 4x4, cab, TYM-LT900 loader, 5300 hours, 1 owner; 1951 John Deere MT tricycle front end tractor runs good, 1998 Stoughton 48' dry van semi trailer, 8' by 10' bumper hitch flatbed utility trailer, County Line 30 ton hydraulic log splitter w/Kohler motor, bushhog BH26 6' 3pt bushhog, 2- John Deere grain drills, 2 bottom plow, 2- 4 wheel wagon running gear frames, 24' camper frame trailer, camper shell truck bed trailer, 2 small yard trailers, steel wheel grain wagon, 14' fiberglass V bottom boat w/trailer, quick attach pallet forks, quick attach double hay spike, Penn Creek 300 gallon produce sprayer, ATV/lawn roller, 3pt bale spike, 3-16' gates, 2-10' gates, 2-8' gates, misc panels, round bale hay ring, Tuffline 8' 3pt disc, 3pt 7' chisel plow, 3pt Lillistan 15' rolling cultivator, 8' cultipacker, 6' grain drill, 3pt cone seeder, 300 gallon fuel tank w/stand, 1000 gallon propane tank, wheels and tires.

Zero Turn-Tools-Shop

Ferris 400S 48" cut zero turn mower 94 hours commercial 25 HP Briggs motor, 2- craftsman riding lawn mowers (parts), Red Hawk 48" walk behind mower, Murray 42" cut riding mower, hydraulic pallet jack, lawn cart, DR trimmer, lawn seeder, Rigid miter saw, Coleman powermate Honda gas air compressor, Viking 12 volt jump pack, Stihl BR450 back pack leaf blower, Schumacher 300 amp battery charger, Honda GC160 water pump, Solo 451 mist sprayer, hydraulic table lift, jack stands, ext cords, air hoses, bottle jacks, propane torch, Powerhouse 9000 watt generator, Honda 2200 inverter, Central machinery 16 speed drill press, Stihl chainsaws 044/026/MS170, husky 257, Bostitch 10 gallon shop vac, Lincoln Ac225 welder, 12 ton pipe bender, grease guns, shop fans, Bostitch air bander, disc/belt sander, Echo gas powered drill, gas cans.

Contractor Supplies-Garden-Outdoor

Over 200 2x4 dimensional lumber 8' to 20' some 2x6's kept inside, several interior doors, cabinet base, vinyl windows, Kremlin 1014 paint sprayer, Spray tech air paint sprayer, back pack sprayer, hose reels w/flat hose, hardwood flooring, cedar posts, copper tubing, misc PVC, louvers, chemical injectors, greenhouse frame, underground service wire, ladders, qt strawberry boxes, roll of 110 wire, rolling paint rack, barrel dolly, mobile roof jacks, rear tine tiller, cement mixer, electric fence supplies, several T-posts, plastic mulch, 24" fan paint booth duct, Rubbermaid stock tank, bay window, toilets, coolers, 20' by 30' outdoor commercial tent, pex pipe, hydrant.

Furniture-Household-Misc

Aluminum wash tubs, cast iron skillets, several metal and plastic 55 gallon barrels, dozens of chicken feeders, office desk, nesting boxes, rabbit cages, firewood racks, alternators, several concrete blocks, LP heaters, hand tools, rolls of barb wire/woven wire, several 1-5 gallon buckets, New belt driven grain mill, 2- Sun star 14 cu. Ft. chest deep freezers, large picnic table, fish cookers, several gas and kerosine lanterns, pneumatic cow milker, grandfather clock, baby cribs, 20- wooden cages, bicycles, horse mineral/supplies, end tables, dressers, beds, New Perfection 5 burner tabletop stove, produce cart, smokers, SA sports crossbow w/arrows and scope, Lem meat grinder, Lem sausage stuffer, Fodder-Pro mini feed system, HP office jet printer/scanner, hot water pump, Kenmore gas stove.

AUCTIONEERS NOTES- The Gingerich's have sold their farm and everything goes! Clean four-wheel drive 100 HP tractor, lots of commercial gardening items, too many items to list, lots of items not listed! Check out our Website or Facebook for photos, nice clean sale!

Owners: URA AND BETTY GINGERICH

BILLY SEXTON AUCTIONEERS

683 Missouri Avenue, West Plains, MO • Office: 417-255-2744

Billy Sexton 417-257-4595 • Ark. License # 2749 • www.sextonauctions.com

Justin Kraft 417-274-0073 • Ark. License # 2745

BUFFALO LIVESTOCK MARKET LLC

276 Hwy 32 W., Buffalo, MO

February 25th, 2023

Receipts: 1097

REPRESENTATIVE STEERS

300-400 @ 220.00 to 262.50
400-500 @ 210.00 to 250.00
500-600 @ 205.00 to 235.00
600-700 @ 190.00 to 210.00
700-800 @ 175.00 to 196.00
800-900 @ 170.00 to 174.00

REPRESENTATIVE HEIFERS

300-400 @ 200.00 to 225.00
400-500 @ 185.00 to 215.00
500-600 @ 180.00 to 205.00
600-700 @ 160.00 to 175.00
700-800 @ 147.00 to 152.00
800-900 @ 135.00 to 152.00

FEEDER BULLS

300-400 @ 200.00 to 240.00
400-500 @ 200.00 to 250.00
500-600 @ 180.00 to 217.00
600-700 @ 165.00 to 190.00
700-800 @ 150.00 to 173.00
800-900 @ 130.00 to 150.00

STOCKS COWS

Bred Cows 1200.00 to 1585.00
Cow/Calf Pairs 1375.00 - 1800.00

SLAUGHTER BULLS

High Yield 110.00 to 130.00
Low Yield 90.00 to 105.00

SLAUGHTER COWS

Fleshy 95.00 to 107.00
Med Flesh 87.00 to 105.00
Light Flesh 75.00 to 88.00

QUESTIONABLE HEALTH OR CRIPPLE COWS

60 Down

Far Fleshy or Plainer Quality cattle will be under this market!

Time to cull some hay burners

MON-WED MARKET REPORT

Listen to KJEL 103.7FM • Lebanon or KYOO 99FM • Bolivar

VIEW OUR SALES AT CATTLEUSA.COM

CALL FOR TRUCKING OR ON-FARM VISIT

Lyle Caselman • Owner-Manager
417-345-7876 • mobile 417-533-2944
Leon Caselman • Owner
417-345-4514 • mobile • 417-588-6185

MID MISSOURI STOCKYARDS

REGULAR SALE EVERY
THURSDAY 11AM

SPECIAL COW SALE • MARCH 4TH AT 6 PM

WATCH OUR WEEKLY SALE IN REAL TIME ON DVAUCTION.COM

For Farm Visits, Market Updates, or Trucking

Call Zach Cox 417-777-1320

Dan Romine 573-578-4939

Competitive Buyers!
Competitive Commission!
Competitive Market!

Barn: 417-532-9292

I-44 • Exit 123 "just outside of Lebanon"

17505 Route 66, Phillipsburg, MO 65722

For weekly market updates, visit us at
www.midmostockyards.com

FOR SALE: 30" wide 4-shelf bookcase. \$5.
See at 1722 Amy Dr. Lebanon, MO.

WANTED: Ruger 44 Magnum Carbine.
573-298-2326. Vienna.

LOG SIDING: 2X8 Pine/Western Cedar
www.pineridgerustic.com 573-729-7226.
Salem.

RV FOR SALE ARCTIC FOX: 2
push outs, 35 ft. Long, Excellent
Condition. Located at Bennett Spring,
Missouri. \$6,500. 417-766-3497.

USED JET HOME POLLUTION
CONTROL PANNEL: Model CP700.
\$65. 636-239-2695 or 314-560-5700.
Washington.

CALUS LOGGING

20 YEARS EXPERIENCE

Buying Standing Timber
Walnut & Oak

Joe Calus, Owner
417-926-4606 • MTN. GROVE

CERTIFIED

FOR SALE: Property in Huston, MO.
1 acre +, Hwy 63, zoned commercial/
residential property. House on property.
Locate to a region with a rich history of
manufacturing. 417-887-8221 or 417-766-
3997.

1 TON WRECKER: 573-734-2822.

KILMER FARM EQUIPMENT CONSIGNMENT AUCTION

SATURDAY, MARCH 4 - 9:30 AM

14769 Cattle Lane, Versailles, MO 65084

Directions: At the Intersection of Hwy 5 and Hwy 52 in Versailles, go North on
Hwy 5 for 1 mile to Cattle Ln then turn Right or East and go ¾ mile to Sale Site.



TRACTORS, CONSTRUCTION EQUIPMENT, TRUCKS AND TRAILERS, GRAIN CARTS
AND WAGONS, CUTTERS, TILLAGE, COMBINE AND HEADS, FEED MIXERS, MISC.
EQUIPMENT, HAY EQUIPMENT, SILAGE EQUIPMENT

Wheeler
AUCTIONS & REAL ESTATE
23101 HWY. 24, PARIS, MO 65275 | 660-327-5890
WWW.WHEELERAUCTIONS.COM

For more info and photos:
www.wheelerauctions.com

BID LIVE Live Online Bidding Powered By: proxibid

BID NOW Online Bidding Provided By: Equipmentfacts

KILMER FARM EQUIPMENT, LLC
14270 Hwy. 52, Versailles, MO 65084
(573) 378-6615

THE TIRES YOU NEED FOR ALL SEASONS

With brands like:




NEXEN TIRE YOKOHAMA

ATTEBERRY MFA TIRE & AUTO CENTER

**333 E. BROADWAY • BOLIVAR, MO
DUANE ATTEBERRY • 417-326-6286**




FIXED KNOT FENCE

- Deli Sandwiches
- Homemade Yogurt
- Homemade Bread

- Glass Bottle Milk
- Cheese & Spices
- Bulk Foods

- Hydraulic Hoses
- Electric Fence Supplies
- Stay-Tuff Fence

- Johnson & Ritchie Waterers
- Gates & Panels




VISIT YOUR ONE STOP SHOP
FARMERS QUIK STOP
 5 mi. East of Lebanon on Hwy 32 • 417-991-1938

POSTER BED: \$150. 417-741-1232.

9-YEAR-OLD POLLED RED DEXTER COW: \$800. 2-year-old polled black dexter/angus cross heifer \$700. Both may be bred. 573-775-2564. Steelville.

FOR SALE: Patio table & two chairs. Small. \$50. See at 1722 Amy Dr. Lebanon, MO.

YEARLING IRISH DEXTER BULL: Nice looking bull. \$1,200. 417-630-2843 Text or call, leave message. Conway.

COWBOY CORGIES: Born 1-9-23, UTD on shots and wormer. Great prospects for stock dogs or family pets. \$300. 417-701-1372. Hartville.

IT'S FAINTING GOATS SEASON! Docile, non-jumping purebreds. Which are great for small acreages & as pets. Additional info on website; www.greenacresvillage.com or text 573-216-7796. Lake of the Ozarks.

ANTIQUE HOG OILER: \$35. 573-308-5884. Rolla.

WANTED: Ruger 44 Magnum Carbine. 573-298-2326. Vienna.

USED MOBILE HOMES: Call David at VILLA HOMES IN ROLLA 573-578-8072. Rolla.

A PICTORIAL HISTORY OF WORLD WAR II: Air forces in Combat. \$10. 417-532-2045. Lebanon. (Leave message and phone number).

BUYING MOBILE HOMES: Call David at VILLA HOMES IN ROLLA 573-578-8072. Rolla.

AUSSIE/BORDER COLLIES: Born 1-9-23, UTD on shots and wormer. Born on the farm! Great prospects for stock dogs or family pets. \$100. 417-701-1372. Hartville.

MODEL 1911 FRAME 8-SHOT C02 PISTOL: Like new, in box with C02 cartridges, 4 clips, pellets & all paperwork. \$95. 573-364-7465. Rolla..

PINEY RIVER FORD

.COM 

MARCH MADNESS INTENSE

TENT SALE

Starting Friday March 17th - 25th
Vehicles under the tent have special discounts.
EVERY VEHICLE MARKED DOWN TO GO!

✓ BRONCOS ✓ ESCAPES ✓ JEEP ✓ SUPERDUTIES ✓ NISSAN ✓ GMC
✓ RAM ✓ DODGE ✓ KIA ✓ HYUNDAI ✓ LINCOLN ✓ TOYOTA

0% and
\$1,000 rebate on
select vehicles

36 months with approved credit

Special Financing
Credit Issues —
Let Us Help!

Payments starting as low as \$129 per month w.a.c.

Vehicles
Starting Out
at \$5,000

Up to \$100 Rebate on Select Tires

Get your hiney to the Piney. No hidden costs - no documentation fees! If we don't have it, we can find it! We buy vehicles.

1100 S. SAM HOUSTON BLVD., HOUSTON
417-967-4134

Check us out on our Facebook page, facebook.com/pineyriverford • www.pineyriverford.com

Starnes Auto LLC

22115 Rt. 66 • Lebanon, MO 65536
417.718.2707 Cell
417.588.3159 Office
www.starnesauto.com

2003 CHEVY SILVERADO 4WD LS	
MAROON VIN#7851, 197,XXX	\$5,500
2004 CHEVY SUBURBAN	
GREEN VIN#1401, 198,XXX	\$5,000
2009 CHEVY IMPALA	
RED, VIN#2422, 73,XXX MILES	\$6,200
2010 CHEVY HHR 1LT	
RED, VIN#2841, 41,XXX MILES	\$6,200
2012 CHEVY IMPALA LTZ WHITE, VIN#7620,	
145,XXX MILES	\$5,450
2012 CHEVY SILVERADO EXT CAB 4WD	
WHITE, VIN#2799, 80,XXX MILES	\$16,500
2012 CHEVY MALIBU WHITE, VIN#3859,	
152,XXX MILES	\$5,200
2013 GMC TERRAIN SLE TAN, VIN#6546, 129,XXX	
MILES	\$7,200
2014 TOYT SCION XB	
RED, VIN#4505, 83,XXX MILES	\$9,500

THE VEHICLES LISTED BELOW ARE NOT AVAILABLE FOR FINANCING

1996 JEEP CHEROKEE	
RED, VIN#5704, 164,XXX MILES	\$2,850
2004 FORD SPORT TRAC SILVER, VIN#0901, 277,XXX	
MILES	\$4,200
2008 JEEP CHEROKEE MAROON, VIN#8638, 162,XXX	
MILES	\$4,950
2016 CHEVY TRAVERSE AWD BLACK,	
VIN#5787, 122,XXX MILES	\$13,500

SUPPORT
SQUAD

#Crew'sCrew

WE DO ALIGNMENTS!

ST. LOUIS CIVIL WAR SITES OF THE FIGHT FOR FREEDOM: By Peter Downs, 207 pages, \$7.50. 417-532-2045. Lebanon. (Leave message and phone number).

RUBBER & LEATHER BOOTS AND 5-Buckle OVER SHOES: Men's 11, Women's 7, some insulated. \$15-\$40 obo. 636-239-2695 or 314-560-5700. Washington.

NEW MOBILE HOME STOCK: Just received (5) new units, they gotta go! 573-657-2176. amegamobliehomes.com

USED DOUBLE-WIDE: \$34,900 WOW!!!! This won't last! 573-657-2176. amegamobliehomes.com

WE HAVE MOBILE HOMES:

Instock new arrivals (8) homes, need to go as soon as possible! 573-499-9993. columbiadiscounthomes.com

TRUE MODULARS: 30 to 60 day delivery available, 3 and 4 bedroom 573-657-7040 chateauhomes.net

ANTIQUE HOG OILER: \$35. 573-308-5884. Rolla.

BURIED BY TABLE ROCK LAKE BOOK: About old towns, cemeteries, stores, etc. that were covered by the lake, 188 pages, \$12.00. 417-532-2045. Lebanon. (Leave message and phone number).

TINY HOMES: We gottem 573-881-3283

I BUY.....used mobile homes. Call or text 573-338-6250 or email GregS.CDH@outlook.com

FIREARMS: Professional Repair, Restorations and Appraisals. Baron's Gunsmithing. 573-363-5801. Camdenton.

OFFICIAL TRACTOR OF TOUGH™

INTRODUCING THE ALL-NEW 5100 SERIES



Marshfield Machinery Inc.

222 E. Madison • Marshfield, MO 65706
417-859-2117 • www.marshfieldmachinery.com

*2018 data including all Mahindra group brand sales.
MahindraUSA.com © 2020 Mahindra USA Inc.



NEW MAHINDRA TRACTORS

1626 4WD & LDR 26HP	IN STOCK
2638 4WD & LDR 38HP	IN STOCK
2645 4WD & LDR 45HP	IN STOCK
5145 4WD & LDR 45HP	IN STOCK
4550 4WD & LDR 48 HP	IN STOCK

USED TRACTORS

MF 4610 99HP 4WD CAB LDR	48,000
MAHINDRA M85P 4WD CAB LDR	29,500
MF 4243 75HP CAB LDR	28,000
MAHINDRA 2565 65HP CAB LDR	25,000
JD 5055E 55HP 4WD LDR	24,000
MAHINDRA 2638 38HP 4WD LDR	21,000
MAHINDRA 1635 35HP 4WD LDR	19,500
AC 7010 106 HP CAB	9,500
AC 175 62 HP LDR	8,500
MF 1085 81HP	6,500
FORD 2000 31 HP	3,500
FORD 1210 16HP 4WD LDR	3,500
MF 135 36 HP	2,750

USED ROUND BALERS

NH RB450 4X5 MESH	24,000
NH RB780A 5X6 MESH	7,500
HESSTON 560 5X6	2,000

USED MISC.

SITREX 8 WHEEL RAKE	1,750
M&W 8 WHEEL RAKE	1,750
LELY 8 WHEEL RAKE	1,750
INTERNATIONAL 10FT CUTTER	1,250
BH RDTH 60 FINISH MOWER	850
RHINO 5FT FINISH MOWER	850
LAND PRIDE 5FT CUTTER	500
ROLLINS 5FT BLADE	250
KING CUTTER BEDDING PLOW	200

TAYLOR TRUCKS & EQUIPMENT

417-924-2026 • 2676 Hwy. 5, Mansfield, MO

NEW ROTOTILLERS

Milwaukee Cordless Tools

TRAILER PARTS & REPAIR

DANUSER DEALER

T3 Post Driver & Other Attachments

New Mowers! Bush-Whacker, Big Bee

Storage Containers & Dry Vans - 20' - 53',

BUSH-WHACKER HD

MD144 Bat Wing in stock!

★ INTIMIDATOR TREE PULLER ★

Portable Generators, Farm Tires, New Semi
Tires, PTO's & Parts for Rotary Mowers,
Farm Tractor Implements, Plows, Used 15"
Bush-Whacker Now In Stock, Discs, and More
Skidsteer Attachments: Pallet Forks, Buckets,
Grapples, Hay Spears, RR Ties

Bush-Whacker

Heavy Duty Rotary Cutter



We Invite you To Come By & Look
Us Over! Located 2.5 Miles North
Of Mansfield, MO On Hwy 5

REGISTERED HEREFORD & ANGUS BULLS: Home raised, Some Show-Me Select Qualified. 573-701-7828. Belgrade.

LIGHTLY EXPERIENCED GOLF BALLS: \$3 a dozen. 417-818-3469. Strafford.

LOG SIDING: 2X8 Pine/Western Cedar www.pineridgerustic.com 573-729-7226. Salem.

LIONEL TRAIN SET: Steam engine, tender, caboose and other car, track, and transformer. \$195. 573-364-7465. Rolla.

WEEKLY
TRADER
MAGAZINE

**YOUR AD
GOES HERE!**

**Add YELLOW Color
For An Additional
\$3 Per Reader Ad**

All ads will include Phone Number (unless requested to be deleted by advertiser) and City Or Town, Phone Number with Area Code counts as one word. City or Town counts as one word.

RATE: 80¢ Per Word. All Classified Ads Require Payment Before Print.

(1) 80¢	(2) \$1.60	(3) \$2.40	(4) \$3.20
(5) \$4.00	(6) \$4.80	(7) \$5.60	(8) \$6.40
(9) \$7.20	(10) \$8.00	(11) \$8.80	(12) \$9.60
(13) \$10.40	(14) \$11.20	(15) \$12.00	(16) \$12.80
(17) \$13.60	(18) \$14.40	(19) \$15.20	(20) \$16.00
(21) \$16.80	(22) \$17.60	(23) \$18.40	(24) \$19.20
(25) \$20.00	(26) \$20.80	(27) \$21.60	(28) \$22.40
(29) \$23.20	(30) \$24.00	(31) \$24.80	(32) \$25.60
(33) \$26.40	(34) \$27.20	(35) \$28.00	(36) \$28.80
(37) \$29.60	(38) \$30.40	(39) \$31.20	(40) \$32.00

Buy 3 Weeks - Get 4th Week Free! (Must be same ad)

Place your Classified Ad TODAY!

417-532-9131 • 800-665-8875

Fax: 417-532-8140

Or Mail To: P.O. Box 192 • Lebanon, MO 65536

For your convenience we accept MasterCard, Visa, Discover or American Express



DEADLINE FOR CLASSIFIED ADS: FRIDAY 4:00PM!

Name _____

Address _____

City _____

Email _____

State _____

Zip Code _____

Phone _____

Ad Total \$ _____

X # Weeks _____

= Amount Enclosed \$ _____

AUSSIE/BORDER COLLIES: Born 1-9-23, UTD on shots and wormer. Born on the farm! Great prospects for stock dogs or family pets. \$100. 417-701-1372. Hartville.

25 ACRES: Rough ground. Hunter's paradise. Stream through property, spring fed. Secluded. \$8,000 Per Acre Cash. 417-741-1232.

1500 VINTAGE WRISTWATCH DIALS: \$100. 573-764-3517. Call in PM.

2nd CUTTING GRASS HAY: \$7.50/Square bale. 573-308-5884. Rolla.



Wright Spray Foam Insulators, LLC
Commercial & Residential
Call for FREE Estimates!

Ervin Gingerich 417-926-2052
B. Eli Yoder 417-746-4932

Is Your Log Home **UGLY?**
Starting To Look
Professional Staining & Repair
(Log Homes & Wood Siding)

Call **Pine Ridge Rustic**
Log Home Building Supplies **573-729-7226**
www.pineridgerustic.com



1970s KIDS METAL STOVE & FRIDGE: Nice Lithographic paint, 18" wide x 36" high. \$75. 573-364-7465. Rolla.

3 GENTS WITTNAUER WRIST WATCHES: 10k gold + 23J. All \$200. 573-764-3517. Call in P.M.

HARLEY FAT BOBS: Custom flame paint w/ gas caps + lines. \$100. 573-764-3517. Call in P.M.

NOW OPEN GREENHOUSE: Garden Seeds. Check us out before you buy. Open Monday-Saturday. 1207 Bluegrass Rd. Conway, MO.

110 PORCELAIN POCKET WATCH DIALS: Perfect for arts & crafts. \$100. 573-764-3517. Call in PM.

1890 GOLD TESTING KIT: Glass acid beakers + antique wooden case. \$100. 573-764-3517. Call in PM.

ALFALFA ORCHARD GRASS: Small squares for sale. 2nd & 3rd cutting. \$10 per bale. Bundled in 21 bales per unit. 573-539-2060.

HARLEY 45 SOLO: factory rear brake drum + sprocket. \$150. 573-764-3517. Call in PM.

HARLEY PANHEAD DISTRIBUTOR: original, chrome + complete. \$125. 573-764-3517. Call in PM.

YOUR TRUSTED SOURCE FOR QUALITY FEED FOR ALL YOUR LIVESTOCK AND PETS






Kropf Feeds

"DOING BUSINESS ON OUR WORD AND A HAND SHAKE"
Located in the Heart of the Amish Mennonite Community!
617-345-8600 • 19 Prairie Lane, Buffalo

Land

For Sale

Dallas Co., Mo • 50 Acres +/-



\$200,000

- Located on a paved road with multiple access points
- Located just minutes from Bennett Springs State Park
- World-class fishing and floating on the Niangua River is just minutes away
- Easy terrain and mixed hardwoods



WHITETAIL PROPERTIES REAL ESTATE

HUNTING | RANCH | FARM | TIMBER

Brian Utecht | 417-766-5595

Brian.Utecht@whitetailproperties.com

WHITETAILPROPERTIES.COM

Missouri's Top Land Specialist in 2014, 2015,
2016, 2017, 2018, 2019, 2020 and 2021



High horsepower.
High performance.
Low financing.



Save big on our L2501DT with Kubota loader. Part of our tractor lineup rated #1 for durability and owner experience in the U.S.* Stop in for a demo and to claim this offer today.

L2501 DT W/ KUBOTA LOADER **ONLY \$19,495**

0% APR FOR 72 MONTHS

VISIT US TODAY FOR THIS LIMITED-TIME OFFER



Quarles Supply

3251 S Springfield Ave
Bolivar, MO 65613
417-777-2391

KubotaUSA.com

0% Down, 0% A.P.R. financing for up to 72 months on purchases of select new Kubota L2501 DT equipment from participating dealers' in stock inventory is available to qualified purchasers through Kubota Credit Corporation, U.S.A.; subject to credit approval. Example: 72 monthly payments of \$13.89 per \$1,000 financed. Some exceptions apply. Terms subject to change. Offers expire 06/30/23. This material is for descriptive purposes only. Kubota disclaims all representations and warranties, express or implied, or any liability from the use of this material. For more information, see Dealer or go to KubotaUSA.com.

Progressive
FARMER
READER INSIGHTS