

**FREE - TAKE ONE!**

Vol. 29 No. 36

**DECEMBER 1, 2022**

800-543-8271 • 800-665-8875

# TRADER

WEEKLY  
MAGAZINE



Find us on  
Facebook

@myweeklytrader

AUCTIONS PG. 7

**VISIT OUR NEW WEBSITE! MYWEEKLYTRADER.COM**

# LARGEST SELECTION OF NEW & PREOWNED IN YEARS!



*Backed By*  
**Morse**

**WE WANT YOUR TRADE.**

**ED MORSE**  
**CHEVROLET**  
**BUICK GMC**

ROLLA

FORMERLY FAIRGROUNDS AUTO PLAZA  
**NEW NAME. SAME TEAM.**

100 Fairgrounds Rd., Rolla, MO

**573-364-1002**

EdMorseChevroletBuickGMCRolla.com

# WE HAVE CARGO CONTAINERS



**20' New  
\$5,000**



**40' New  
\$7,000**

**Quarles Supply**

3251 S Springfield Ave  
Bolivar, MO 65613  
417-777-2391

# TIME FOR PRECISION

Hustler's residential mowers are built stronger and perform faster, allowing you to quickly maneuver around obstacles with ease. Tackle your lawn in record time with unparalleled precision, and use the time you save to do the things you love.



## For Outstanding Products & Service AGRI-ENTERPRISES

1-1/2 Miles South Of Licking, MO On Hwy 63  
573-674-2203 • 1-800-653-7152 • [www.agri-enterprises.com](http://www.agri-enterprises.com)

**HIKING THE OZARKS BOOK: A Guide to the Area's Greatest Hiking Adventures.** \$6.75. 417-532-2045. Lebanon. (Leave message and phone number).

**WEATHERED BARN WOOD SIDING:** 10" wide. 573-729-7226. [www.pineridgerustic.com](http://www.pineridgerustic.com) Salem.

**WE HAVE MOBILE HOMES:** Instock new arrivals (8) homes, need to go as soon as possible! 573-499-9993. [columbiadiscountohomes.com](http://columbiadiscountohomes.com)

**LOG SIDING:** 2X8 Pine/Western Cedar [www.pineridgerustic.com](http://www.pineridgerustic.com) 573-729-7226. Salem.





**BUYING MOBILE HOMES:** Call David at VILLA HOMES IN ROLLA 573-578-8072. Rolla.

**MODEL 1911 FRAME 8-SHT C02 PISTOL:** Like new, in box with C02 cartridges, 4 czlips, pellets & all paperwork. \$95. 573-364-7465. Rolla.

**VOTED #1 BEST Preowned Car Dealership**

### TIM'S USED CARS

(573) 341-3828 • 1334 South Bishop (Hwy. 63) • Rolla, MO  
Next to Hwy CC • [www.tims-used-cars.com](http://www.tims-used-cars.com)

	<b>2018 JEEP COMPASS LATITUDE</b> 4x4 2.4 cyl., auto, power equipped, 49,xxx Miles <b>Only \$21,900</b>		<b>2018 DODGE DURANGO CITADEL</b> AWD, V-6, loaded w/options <b>Only \$29,500</b>
	<b>2011 JEEP WRANGLER SPORT</b> Unlimited, 4x4, V-6 auto, power equipped, hard top, <b>Only \$11,500</b>		<b>2015 CHEVY CAMARO SS</b> Convertible, 6.2 V-8, loaded w/options 88,xxx Miles <b>Only \$25,800</b>

**LARGE SELECTION OF CARS, TRUCKS, SUVs & VANS!**

## OMAR'S LOGGING

- ⇒ Oak & Walnut
- ⇒ Excellent Prices

*Amish Owned & Operated*



**LEAVE MESSAGE: 417-741-0440**  
Hartville & Surrounding Areas

**308 WINCHESTER 100: \$800.** 573-247-4280. Salem.

**USED MOBILE HOMES:** Call David at VILLA HOMES IN ROLLA 573-578-8072. Rolla.

**NEW ID MANURE SPREADER: \$1,500.** 573-247-4280. Salem.

**NEW MOBILE HOME STOCK:** Just received (5) new units, they gotta go! 573-657-2176. amegamobliehomes.com

**USED DOUBLE-WIDE:** \$34,900 WOW!!!! This won't last! 573-657-2176. amegamobliehomes.com

**0% for 4 Years**  
  
**HEATMOR**  
**Outdoor Wood Furnace**  
 as low as **\$238** per month  
**HEATMOR MIDWEST**  
 Licking, MO 65542 • 573-674-2962

**TRUE MODULARS:** 30 to 60 day delivery available, 3 and 4 bedroom 573-657-7040 chateauhomes.net

**TINY HOMES:** We gottem 573-881-3283

**I BUY.....used mobile homes.** Call or text 573-338-6250 or email [GregS.CDH@outlook.com](mailto:GregS.CDH@outlook.com)

**FIREARMS:** Professional Repair, Restorations and Appraisals. Baron's Gunsmithing. 573-363-5801. Camdenton.

**REGISTERED HEREFORD & ANGUS BULLS:** Home raised, Some Show-Me Select Qualified. 573-701-7828. Belgrade.

**Larry Heisel Rentals**  
**LARGE or SMALL...**  
  
**We Rent!**  
 Crawler Loaders • Excavators • Backhoes  
 Call Larry!  
**573-779-1500**  
[www.larryheiselequipment.com](http://www.larryheiselequipment.com)  
 Rental Available in 636 or 573 area code

**POOL TABLES:** Installations, moves, recovers, repairs, accessories, etc. 573-646-1700.

**DARDEN PROFESSIONAL TIMBER HARVESTING, BUYING STANDING TIMBER:** Great prices, improve wildlife

**habitat and improve forest health. State Certified & Fully Insured! 573-247-4808. Salem.**

**LIGHTLY EXPERIENCED GOLF BALLS:** \$3 a dozen. 417-818-3469. Strafford.

**AVON**  
 make life beautiful  
  
 mcg skincare  
 AVON independent sales representative  
 417-293-1609  
 Order online at:  
[www.avon.com/repstore/mcgskincare](http://www.avon.com/repstore/mcgskincare)

**MISSOURI OZARKS BOOKS:** Ozark Baptizings, Hangings & Other Diversions \$12.50. Walkin' Preacher of the Ozarks Guy Howard, \$12.50. Missouri Caves in History & Legend \$6.50. Weird Missouri \$10. Missouri Curiosities, Roadside Oddities, \$7.50, Roadside Geology of MO. \$6.50. Fishes of Missouri \$6.50. Butterflies and Moths of MO \$7.50. Bittersweet Book \$10. 417-532-2045. Lebanon. (Leave message and phone number).

**SLIGHTLY USED PUZZLES:** Will sell or trade. 417-818-3469. Strafford.

**1500 VINTAGE WRISTWATCH DIALS:** \$100. 573-764-3517. Call in PM.

*Your Trusted Choice for Plumbing & Electrical*  
**Hickory Plumbing & Electrical**  
 Honest and Affordable Services  
 New Homes, Remodels, Repairs  
 25 Years Experience  
 Free Estimates  
 Call Shane or Dave  
 417-415-2928  


**LIONEL TRAIN SET:** Steam engine, tender, caboose and other car, track, and transformer. \$195. 573-364-7465. Rolla.

**COLT REVOLVER DEALER CATALOGS:** Circa 1950's + 1960's. All for \$100. 573-764-3517. Call in P.M.

**110 PORCELAIN POCKET WATCH DIALS:** Perfect for arts & crafts. \$100. 573-764-3517. Call in PM.

**3 GENTS WITTNAUER WRIST WATCHES:** 10k gold + 23J. All \$200. 573-764-3517. Call in P.M.

**FIXED KNOT FENCE**  

- Deli Sandwiches
- Homemade Yogurt
- Homemade Bread
- Glass Bottle Milk
- Cheese & Spices
- Bulk Foods
- Hydraulic Hoses
- Electric Fence Supplies
- Stay-Tuff Fence
- Johnson & Ritchie Waterers
- Gates & Panels

  
  
**VISIT YOUR ONE STOP SHOP**  
**FARMERS QUIK STOP**  
 5 mi. East of Lebanon on Hwy 32 • 417-991-1938

**HARLEY FAT BOBS:** Custom flame paint w/ gas caps + lines. \$100. 573-764-3517. Call in P.M.

**MADE IN TIMBER BOOK:** A settlement history of Fort Leonard Wood, Bloodland, Cookville, old towns, schools and cemeteries. \$12.50. 417-532-2045. Lebanon. (Leave message and phone number).

**1970s KIDS METAL STOVE & FRIDGE:** Nice Lithographic paint, 18" wide x 36" high. \$75. 573-364-7465. Rolla.

**1890 GOLD TESTING KIT:** Glass acid beakers + antique wooden case. \$100. 573-764-3517. Call in PM.

**WE BUY AND SELL**  
**new and used mobile homes**  
  
**(417) 501-1061**

**ANTIQUA POND SLIP:** \$50 OBO. 417-362-0073. Willow Springs.

**RUBBER & LEATHER BOOTS AND 5-Buckle OVER SHOES:** Men's 11, Women's 7, some insulated. \$15-\$40 obo. 636-239-2695 or 314-560-5700. Washington.

**5 GAL. PLASTIC BUCKETS:** with lids. \$3 each. 636-239-2695 or 314-560-5700. Washington.

**HANDICAP BENCH WALKER:** With storage. \$50. 417-532-6561. Lebanon.

**RABBITS & BUNNIES FOR SALE:** \$10 Each. 417-741-2793. Hartville.

**1962 HARLEY SPORTSTER 900CC:** original distributor. \$50. 573-764-3517. Call in PM.

**OLD CREAM CAN:** Good condition, very heavy, no rust. \$50. 417-532-6561. Lebanon.

**HARLEY PANHEAD DISTRIBUTOR:** original, chrome + complete. \$125. 573-764-3517. Call in PM.

**Bob's Powerhouse**  
**ANTIQUES**  
 REFINISHING & RESTORATION  
**GRAND OPENING**  
 December 1st, 2022  
 New Location In Phillipsburg, Mo.  
 I-44 Eastbound Exit 118  
 I-44 Westbound Exit County Rd  
**(417).669.0379**  
 SPECIALIZE IN  
 Dental & Doctor Cabinets • Country Oak • General Store Items  
 Primitives • AJ Johnson • Horner • Merklen • Ransom Randolph  
 Offer Refinishing & Restoration  
**RETAIL & WHOLESALE**  
**OVER 4,200 SQ. FT.**  
 Find Us On Google & Facebook

**Wright Spray Foam Insulators, LLC**  
 Commercial & Residential  
**Call for FREE Estimates!**

**Ervin Gingerich** 417-926-2052  
**B. Eli Yoder** 417-746-4932

**THE CIVIL WAR ILLUSTRATED HISTORY BOOK:** 425 pages, \$12.50. **MEMORIES OF AN OZARKS PIONEER & CIVIL WAR Soldier James Frances Coatney, Private Arkansas Union Calvary, Company D, \$6.50.** 417-532-2045. Lebanon. (Leave message and phone number).

**DRAPES AND CURTAIN RODS:** Off-white, various sizes, \$15 for all obo. 636-239-2695 or 314-560-5700. Washington.

**I AM LOOKING FOR LAND TO RENT TO GROW WHEAT:** I can pay a good rate per acre for land that is fairly level, decent soil and in a 30 mile radius of Marshfield. I am looking for 80-500 acres. 417-741-2288. Marshfield.

**HORTON CROSSBOW:** \$125. 573-247-4280. Salem.

**KUSTER LOGGING**  
**BUYER of Standing Timber**  
**Oak and Walnut**  
 Dozing Now Available  
**417-259-0047**  
 References Available

**1986 CORVETTE PROJECT CAR:** Needs trailer. \$1,500 OBO. 573-435-6987. Edgar Springs.

**HARLEY 45 SOLO:** factory rear brake drum + sprocket. \$150. 573-764-3517. Call in PM.

**KITCHEN FAUCET MOEN:** Single lever, sprayer, new cartridge. \$45 obo. 636-239-2695 or 314-560-5700. Washington.

**ALLIS CHALMERS WD-45 TRACTOR:** Wide front end, 7' blade, 3pt. hitch, PTO \$1,200. 210-787-8222. Linn Creek.

**2 ALLEN ANTIQUE COMPOUND BOWS:** With case. \$50 each. 573-247-4280. Salem.

**MATHEWS SOLO CAM COMPOUND BOW:** With Case. \$175. 573-247-4280. Salem.

**VINTAGE RECORDS:** In mint condition, Elvis records with no barcode, lots of records. \$20 each. 573-259-9448.

**MOTORCYCLE:** Men's & Women's boots, leather chaps & jackets. \$100. 573-259-9448.

**SHIHPOO PUPPIES:** Wormed, vaccinated, family raised. 845-702-4864. Fordland.

**BARNETT RAPTOR CROSSBOW:** \$125. 573-247-4280. Salem.

**FIREWOOD:** 1/4 of a Cord (4x8), \$70. Sullivan Missouri. 573-468-4924.

**TWO REDBONE HOUNDS:** Love Coons, with my health not able to hunt them. 573-315-7574. Ironton.

**Pine Ridge Rustic**  
Log Home Building Supplies

**Services Offered!**

- Installation
- Pre-finishing available on interior & exterior
- Dealer for exterior stains

[www.pineridgerustic.com](http://www.pineridgerustic.com)

523 CR 2410 • Salem, MO 65560 • Ph: 573-729-7226



- Log Siding
- Beveled Siding
- Car Siding • Red Cedar
- Western Cedar • Pine

**CENTRAL BOILER** **CLASSIC EDGE**  
TITANIUM HDX

26% Tax Credit on EPA certified Central Boiler Classic Edge HDX models and installation. Call today to learn more!

**Outdoor Wood Furnace CentralBoiler.com**

The Classic Edge 360, 560 and 760 HDX are U.S. EPA Certified

Yarborough Equipment Sales & Services, Inc.  
9776 E. State Hwy 00 • Strafford, MO  
417-736-2303 • 1-866-286-6901 • www.yarbeq.com



**EARN \$60,000/YEAR PART-TIME:** In the livestock or farm equipment appraisal business. Agricultural background required. Home study course available. 800-488-7570 or [www.amagappraisers.com](http://www.amagappraisers.com)

**HEARTH CRAFT GLASS BI-FOLD FIREPLACE DOORS PURCHASED AT FORSHAW'S FIREPLACE:** Antique brass. \$160 obo. 636-239-2695 or 314-560-5700. Washington.

**FORD TRACTOR 802:** Live power, 3 Point 7 Foot Blade. \$2,000. 417-543-1595. Ava.

**AIREDALE PUPPIES FOR SALE:** Good family & farm dogs. Full blooded. \$250. 573-205-3735. Sullivan.


**2 GOODYEAR WRANGLER TIRES:** Kevlar LT245/70R17, all terrain, \$100 for the pair. 417-457-1023. Raymondville.

**FIRST GEAR KILIMANJARO MOTORCYCLE COAT:** XL, but runs smaller. Zip out liner, Kevlar padding on shoulders & elbows, vented, rainproof. Like new. \$95 FIRM. 417-457-1023. Raymondville.

**ESTATE SALE:** Ladies quality real mink fur coats, suits, dresses, power wheelchairs & ADA equipment. 573-699-4351. St. James.

**DELIVERING THE BEST IN EQUINE FEED**

WE KNOW YOU PUT A LOT OF TIME AND MONEY INTO YOUR HORSES. FEED THEM ONLY THE BEST WITH OUR EXTENSIVE LINE OF EQUINE FEED.



**PURINA IMPACT** 12% PROTEIN

**CALUS LOGGING**

20 YEARS EXPERIENCE

Buying Standing Timber  
Walnut & Oak

Joe Calus, Owner  
CERTIFIED 417-926-4606 • MTN. GROVE



**NOW OFFERING WEEKLY DELIVERY TO THE MOUNTAIN GROVE AREA!**

Family owned and operated since 1950.

**Hudson Feed & Grain**  
417-532-3921  
316 W. Commercial St., Lebanon  
[www.hudsonfeedandgrain.com](http://www.hudsonfeedandgrain.com)



**POMAPOO & SHIHPOO:** UTD on vaccines & preventatives. Ready for their new homes. 417-664-1961. Lebanon.

**PUREBRED GOATS:** Males, Boers, Kikos. 660-598-4019. Appleton City.

**AKC REGISTERED AUSTRALIAN SHEPHERD PUPPIES:** Black & Red Tri Males. All vaccinations updated. Dewormed. \$500 Each. 630-687-0705. Falcon.

**FOR SALE:** 2-Nova 8 Speakers \$200. Lincoln Welder \$300. New in box Size 12 Narcona Elephant Skin Boots \$400. Massey Ferguson 135 Perkins Engine Diesel \$3,000. Propane Tanks 5-gallon, some with gas. \$6/each. 417-679-4131. Tunas.

# PUBLIC AUCTION

## Saturday, December 3 at 10:00 AM

**Location:** 332 Union Hill Road, Mammoth Spring, AR. From Mammoth travel South on 63 approx. 4 miles to left on Union Hill road 3/10 of a mile to house on left.



### Real Estate

Very well-maintained 28' x 56' Sun Belt double-wide trailer sitting on 7 acres M/L. Home features 3 bedrooms, 2 bathrooms, metal roof, newer central heat and air, several updated fixtures, large fireplace, good well, septic, covered back deck, and large front deck. Property sits just off the highway and just minutes from the Spring River, would make excellent home for any buyer from first time home buyer to investor! For inspections call Billy 417-257-4595 or Justin 417-274-0073. Terms 10% down due day of auction, balance due at closing, 50/50 closing costs, as is where is, have all finances made prior to auction day.

### Arifles - Shotguns - Pistols - Ammo

**RIFLES:** Marlin 30-30 lever action Model 30-AS, Savage Axis 243 Win w/Bushnell 3x9 scope, Savage 17 HMR bolt action model 93r17, Mossberg 30-06 w/BSA 4x16x40 scope Model 100ATR, Winchester 257 Roberts Model 70XTR bolt action Featherlight, Mossberg ATR 30-06 w/3x9x40 Leopold scope camo, Remington Model 770 30-06 synthetic stock w/scope, Savage Model 10 204 Ruger wood stock w/scope, Savage model 99 lever action 300 Savage wood stock, Remington Model 7400 270 win w/scope mounts, Mossberg 100 ATR 270 win w/tasco 3x9 scope, Savage Model 110 22-250 Rem bolt action w/Tasco 3x9 scope, Remington model 710 270 win synthetic stock, Remington model 770 300 win mag w/Tasco 2.5x10x42 scope, Savage B-mag 17 super win mag w/scope, Marlin Glenfield model 60 .22 w/scope, Marlin model 60 22 semi auto LR only gold trigger w/Bushnell scope, Marlin model 783 .22 bolt action, Marlin model 782 22 wmr w/Bushnell 3x9 scope, Marlin .22 mag model 57 lever action w/Simmons 3x9x32 scope, Marlin Glenfield model 60 22 LR only semi-auto, Marlin model 60w .22 automatic, Mossberg 22 S or LR model 142-A. **SHOTGUNS:** Double barrel 410 made in Spain, Stevens 12 gauge pump model 79 2-3/4 or 3" Remington model 1100 12 gauge 2-3/4, Pardner model SB1 12 gauge 3" mod singleshot, Mossberg model 935 12 gauge synthetic stock rib barrel 3-3-1/2", Double barrel 12 gauge, Mossberg 22" barrel 20 gauge pump 3" shell, Spartan by Remington 410 gauge single shot, pistol grip Mossberg 20 gauge pump. **PISTOLS:** Smith and Wesson 357 mag 4 inch barrel stainless steel, Lorcin model L 9mm auto, Smith and Wesson 38 special pearl grip, Titan 25 cal, H&R 22 LR ultra sportsman no 777, Llama 38 special. **BLACK POWDER:** Hunter bolt magnum 50 cal made in Spain camo synthetic stock, Frontier bear tooth magnum 50 cal made in Spain w/ Simmons scope, Kodiak magnum 50 cal camo stock w/scope. Buck Daisy BB gun, BB pistol single action. **AMMO:** 2 boxes 20 gauge, 11 boxes 16 gauge, 12 gauge slug, 2 12 gauge mags, 6 boxes 357 mag, 38 special, 11 boxes 30-06, 9 boxes 270, 2 boxes of 550 22, 5 boxes 22 mag, several boxes of 22, 5 boxes of 22-250, 2 boxes 300 win mag, 7.62, 6.5, BB's, misc loose ammo.

### Trailers - ATV - Household

16' bumper hitch flatbed trailer, 2004 blue Suzuki 650 four wheeler like new only 700 miles, 24' storage container, Pyrex glassware, pots, pans, dishes, lots of home interior home décor, bake ware, Like new Amana washer and dryer set, full size bedroom suit w/mattress and box springs, mirror dresser, side tables, end tables, matching couch and loveseat, hall tables, oak table and 6 chairs, glider rocker, Angel figurine collection,

**AUCTIONEER NOTE:** Excellent line of guns with lots of ammo, like new four-wheeler, and clean household items. Excellent piece of real estate with 7 acres close to the Spring River and very well maintained double wide. Make plans to attend this fine auction!

**Owners: THE LIVING ESTATE OF MAXCINE BALDRIDGE & THE LATE WILLARD BALDRIDGE**

## BILLY SEXTON AUCTIONEERS

683 Missouri Avenue, West Plains, MO • Office: 417-255-2744

Billy Sexton 417-257-4595 • Ark. License # 2749 • [www.sextonauctions.com](http://www.sextonauctions.com)

Justin Kraft 417-274-0073 • Ark. License # 2745

# ESTATE AUCTION

## 10 a.m. Saturday, Dec. 3<sup>rd</sup>

Estate of Lloyd Stogsdill

**Location:** 1585 N. Highway 63, Houston, Mo. 65483, at the Texas County Fairgrounds. **DIRECTIONS:** From Houston go north on Hwy. 63 one mile to sale. Watch for Scheets Auctions signs day of auction.

### ★TOOLS★LAWN & GARDEN★

Cub Cadet Lawn Tractor XT3 GS • Electric Pole Saw • Step Ladder • Lawn Trailer • Wheelbarrow • Vise • Sander • Dewalt Table Saw • Live Traps • Bench Grinder • Bosch Saws-All • Craftsman Toolbox • Wood Planes • Router and Bits • Scroll Saw • Clamps • Craftsman Wrenches • Pressure Washer • Air Compressor • Extension Ladder • Air Nailer • Dewalt Sander • Charcoal Grill • Misc. Small Tools • Misc. Items Not Listed •

### ★HOUSEHOLD★ANTIQUES★MISC

Kitchen Aid Mixer • Red Wing Pottery • Several Pieces of Cast Iron • Antique Pitter • Couch • Chair • Hutch • Dresser • Chest • Cookie Jar • Flat Screen TV • Oil Lamps • Corning Ware • Hamm's Beer Glasses • Morton Salesman Art # Prints • Wild Turkey Decanters • Tiny Anvil • Crock • Crock Jug • Hundreds of Cook Books • Misc. Items Not Listed •

### RELOADING★SHOOTING SUPPLIES★FISHING★MOUNTS

Big Horn Sheep Mount • Deer Mount • Antelope Mounts • Several Horn Mounts • Lots of Duck Decoys • Snow Shoes • Shooting Bench • Shooting Rest • Pistol Rest • Lots of Lead • Lots of Black Powder • New Brass • Lots of Bullets • Melting Pots • Bullet Molds • Lots of Reloading Dies • Lots of Ammo • Hundreds of Hunting and Reloading Books • Arrowheads • Turkey Call • Lots of Misc. Not Listed •

### ★★★GUNS★★★

S&W 1911 45 ACP • Ruger Single Six 22 LR 7 Mag Cylinder Three Screw • Ruger 22 Single Six Three Screw 22 LR & 22 Mag • Ruger 45 Colt Vaquero • S&W Model 27 357 Mag 8 3/8 Barrel • Cimarron 45 Colt • Cimarron 45 Colt • Stoeger 32-20 • Ruger Vaquero 44-40 • Colt 1991 A1 45 ACP • Kimber Desert Warrior 45 ACP • Colt Match Series 70 45 ACP • Colt Combat Target 45 ACP • Colt Gov Model Series 70 45 ACP • Thompson Ctr Encore 356 Winchester • Thompson Ctr Encore 223 Remington 4X Leupold • Marlin Ballard 22 cal. w/Long Scope • Marlin Ballard 22 cal. w/Vernier Scope • Marlin 1893 30-30 needs work • Marlin Model 1892 32 cal. • Marlin Model 92 32 cal. Weaver Scope • Remington 700 25-06 Custom Stainless Barrel • Hatfield Black Powder 32 cal. • Marlin Ballard 40-90 • Remington Rolling Block 7MM • Winchester 1885 Low Wall 22 Hornet Bausch & Lomb 6-24 Power • Clerke High Wall Copy 22-250 w/K1- Weaver Scope • Winchester Model 70 Stealth 22-250 Sitetron Scope • Remington Model 33 22 cal. Single Shot • Marlin 39A 22 3 X9 Leupold Scope • CZ 457 22 Match 4 1/2 X 14 Sitetron Scope • Iver Johnson Champion 410 ga. Shotgun • CZ 457 22 LR Burris 6 X 24 Scope • Marlin Ballard 40-65 Vernier Site • Winchester 1885 Low Wall 22 Cal. • Winchester 22 Low Wall Vortex Scope 4 x 12 • Remington Model 4 32 Rim Fire • Stevens 22 cal. Vortex Scope 4-16X • Stevens 22 cal. Long Rifle • Browning 1885 High Wall 40-65 Vermer Scope • Winchester 1885 Low Wall 22 Short • Browning High Wall 45-70 Bull Barrel Vernier Site • Winchester Cimarron High Wall 45-120 • Pedersoli Rolling Block 40-65 • Uberti 1885 High Wall 45-70 Nikon Scope 4.5 X 14 • Taylors Uberti 38-55 cal. • Marlin Ballard 38-55 High Wall • Winchester High Wall 38-55 Vernier Site • Winchester 1855 High Wall 38-55 Vernier Site • Stevens Breakover 22 cal. • Stevens Breakover may need work • Winchester 1890 22 Short • Stevens Favorite 32 cal. • Marlin Model 97 22 cal. • Stevens Crack Shot 22 • Remington Model 4 32 Rim Fire • Stevens 32 Long Rim Fire • Marlin Ballard 22 • Stevens 22 LR • Sharps Chiappa 45-70 • Remington Model 4 32 cal. • Remington 22 needs work • Stevens 22 Favorite • Stevens 22 Favorite • Stevens 22 LR Rocking Block • Remington Model 4 22 cal. • Remington Model 6 32 Rim Fire needs butt plate • Remington 32 needs work • Stevens Break Open 22 • Winchester 1885 Low Wall 25-20 Single Shot • Stevens 22 Breakover w/K4 Weaver Scope • Stevens 25-20 Rocking Block • BSA Martini 22 cal. • Winchester Low Wall 1885 • Winchester 1885 Low Wall 22 WCF • Marlin Ballard 32 Long • Remington Rolling Block 22 • Remington Rolling Block 32 Rim Fire • Rolling Block Pedersoli 30-30 • Remington Hepburn • Winchester 1885 32-30 • Savage Model 1899 22 High Power • Savage Model 99 300 Savage w/ Verneer • Savage 1899 303 Savage Lyman Site • Uberti Henry 45 Long Colt • Winchester 1885 High Wall 32-40 Unertl 12 Power Scope • Shiloh - U.S. Sharps 1874 45- 2 1/10 • Black Powder Muzzle Loader Lyman Great Plain 50 cal. • Remington Rolling Block 219 Zipper • Ruger Single Six 22 Inch Original in Box • Colt 380 MKIV Series 80 • BulArmory 9 MM 1911 Stainless • Smith & Wesson 357 Mag Model 19-4 • Sig Sauer 45 Auto 1911 • Springfield Armory 5A45 Auto Emissary • Springfield Armory 45 Auto Ronin Operator • Bergara 22 Model LR B-14 Sightron 420 X 50 Scope • Remington 700 7mm Rem Mag Custom Built by Brown Precision w/Leupold Scope • Winchester 25-20 Model 1892 • Marlin 25-20 Model 1894 • Winchester 25-35 Model 1894 • Winchester 32 Model 1892 • Marlin 32-40 Model 1893 • Boito 410 ga. Model BR-8 Double Barrel • Charles Daily 12 ga. Model 500 Double Barrel Made in Japan • Hi-Standard 22 Sentinal R101 •



To see all pictures, go to [www.auctionzip.com](http://www.auctionzip.com)...auctioneer number 22112; or go to Facebook at Darren Scheets Auction Service.

**Auctioneer's note:** Lloyd spent several years collecting these guns. Don't miss this rare opportunity to purchase these quality guns. Guns are stored off site. Large amount of reloading equipment and supplies. Thanks, Darren and Jake

**TERMS OF AUCTION:** Cash or check with picture ID. If not known by the auctioneer you need to bring a bank letter of credit addressed to Scheets Auctions LLC. Nothing loaded or removed until paid for. Everything sells as is, where is. Not responsible for accidents, lost or stolen items. Auction day announcements take precedence over all previous advertisements. **LUNCH ON GROUNDS.**

# Darren SCHEETS AUCTIONS

(417) 457-6638 • (417) 926-8575  
[www.scheetsauctions.net](http://www.scheetsauctions.net)





**VISIT WEBSITE FOR PICTURES**

# REAL ESTATE & PERSONAL PROPERTY AUCTION

## SATURDAY, DECEMBER 3<sup>rd</sup>- 10:00 A.M.

**Location:** 1212 Laurie Street, Mountain Grove, MO 65711  
**Directions:** From Mtn Grove 4 way stop: Take North Main 7/10 mile to East 13th Street on right. Go 9/10 mile on 13th Street to Auction. WATCH FOR CHADWELL AUCTION SIGNS.  
**Payment System:** Cash • Debit Card • Credit Card (Debit / Credit Card Fee Will Apply)  
 Checks approved if known by auction company. VISIT: WWW.CHADWELLAUCTIONS.COM

**JANACE MITCHELL**



**REAL ESTATE**

2 bedroom 2.5 bath brick 2184 sq. ft. home with perfect country feel. It just might be the best location in town. Hardwood floors, 2 beautiful fireplaces, vaulted ceilings, kitchen/dining combo, living room and a great room for gatherings. Property is 3.0 acres m/l with a detached garage/shop and a 792 sq. ft. storage building. Property features a fenced back yard for a few animals and boasts of a nice chicken coop, garden spot, fire pit, well and septic. Its the perfect little place to retire and still have that farm feeling. Terms: Taxes Prorated, Closing Costs Split, 10% Down Day of Auction, Balance Due at Closing! Shown by Appointment Only call Shawn 417-830-0209.

**MZ Magnum 54" Bad Boy Zero Turn Lawn Mower**



**OUTDOOR ~ MISC**

Murray 20" Push Mower • Poulan Pro Mower • Stihl Chainsaw • Stihl Weedeater • Bird Bath • Park bench • Garden Hoses • Hand Sprayer • Coolers • Fuel Cans • Wooden Step Ladders • Wheel Barrow • Trash Can • Hose Reel • Mole Traps • Lawn & Garden Tools • 215/65/R16 Tires • 225/60/18 Tires • Lawn Chairs • Log Chains • Lockers • Drain Snake • Electric Hedge Trimmer • Troybilt Leaf Blower • BBQ Grill • Fiberglass Ladders • Milk Crates • Small Animal Cage • Bird House • Chicken Feeders • Hand Tools • Expanded Metal • 4 Rick Seasoned Wood • Fence Stretchers • Poulan Electric Saw • Yard Roller • Fuel Cans • Mole Traps • Hybrid Tough Weed eater • Plastic Shelving • Patio Furniture • Wooden Bench • Christmas Decor • Hunting Clothes • Large Lot of Puzzles • Other

**8x16 Storage Building**

**SHOP ITEMS**

Receiver Hitch • 6" Bench Grinder w/Stand • 3" Vise • Oils & Solvents • Drill Bits • Power Drills • Electric Sanders • Skill Saws • Sawzall • Nuts & Bolts • Storage Cabinets • Nut & Bolt Bins • Levels • Square • Fire Extinguisher • Extension Cords • Dewalt hammer Drill • Jack Stands • Ratchet Straps • Wood Clamps • Funnels • Bottle Jack • Wooden Saw Horse • Craftsman 10" Table Saw • Welding Helmets • Air Hose • 3000# Remote Wrench • Wooden Tool Box • Grease Guns • Wooden Work Bench • US General 60 Gallon Air Compressor • 2 Wheel Dolly • 1/2 Ton HD Engine Jack Stand • Power Rack 5000 Watt Electric Generator • Dewalt Air Compressor • Gas Wall Heaters • Propane Cylinders • Sump Pump • Reddy Heater • Bolt Cutter • Tire Breaker • East Wing Hammer • NIB 5 Gallon Shop Vac • Misc Tools • Other

**GUNS ~ KNIVES (not on premises)**

Remington 597 22 Auto LR w/ Redhead 4x32 Scope • Remington 560-1 22 Auto • Thompson Center 50 cal. Black Powder • Hentge RR .22 cal Revolver Pistol w/Holster • Old Timer Knife • Winchester Knives • Other

**AUCTIONEER'S NOTE:** This is a Very Clean Auction. Merchandise is in Excellent Condition and Very Well Taken Care Of. Make Plans to Attend this Excellent Real Estate and Personal Property Auction. **Thanks, Shawn**

**DRIVER'S LICENSE OR PICTURE I.D. REQUIRED • TERMS: CASH OR APPROVED CHECK** **OR**

**Chadwell**  
 Auction Service, LLC  
[www.chadwellauctions.com](http://www.chadwellauctions.com)

**HOUSEHOLD**

Oak Table w/6 Chairs • LG Flat Screen TV • Area Rugs • Wooden Rocker • End Tables • Coffee Table • Floral Sofa • 2 Leather Recliners • Kenmore Vac • Lamps • Wall Pictures • Wall Mirrors • Figurines • Hall Tree • Entry Way Table • Wooden Shelves • Wooden Entertainment Cabinet • Assorted baskets • Samsung Front Load Washer & Dryer • Toaster Oven • Corelle Ware • Pyrex • Assorted Bakeware • Small Kitchen Appliances • Pots & Pans • Keurig • Flatware • KitchenAid Gas Stove • Whirlpool Side by Side Refrigerator • Pressure Cooker • Oak Stand Mirror • 3pc Oak bedroom Set • Assorted Linen • Wooden Shelves • Rocker Glider • 3pc Queen Bedroom Set • Wicker Chair & Table • Pleather Couch • Cloth Rocker Recliner • Oak Roll Top Desk • Wooden Desk • Office Chair • Oak Filing Cabinet • JC Penney Sewing Machine • Wooden Chairs • Wooden Benches • Oak Cabinet • Assorted Wall Decor • Infared Heaters • Maytag Refrigerator • Conservator Small Refrigerator • Other



**2018 GMC Canyon**  
 4wd Crew Cab V6 VVT  
 Direct Injection 15,800 miles  
 (1 owner)



**ANTIQUES ~ COLLECTIBLES**

Vintage Antique Double Swing • Kitchen Stool • Ladder Back Chairs • Shoe Lasts • Galvanized Wash Tubs • Lantern • Well Pulley • Meat Grinder • Oil Can • Steel Spoke Wheel • Sled • Buffalo Forge Drill Press • Granite Pitcher & Bowl • Trunk • Sat Irons • Chilton Auto Books • Lanterns • Steel Wheel Wooden Wagon • Granite Ware • Cow Bell • Fireking • Glassware • Drop Leaf Table • Dresser • 3 Metal Scale Model Cars • Other



**John Deere Gator 45hrs**

Auctioneer:  
**SHAWN CHADWELL**  
 417-830-0209

Clerk:  
**SHELLY CHADWELL**  
 Cell: 417-880-8449

Ringmen:  
 Weston Chadwell ~ 417-349-0727

Cashiers:  
 Marla Chadwell • Emily Shaffer  
 Cassie Collins

**PROFESSIONAL SALES MANAGEMENT**  
 LUNCH WAGON • APPRAISAL SERVICE • RAIN OR SHINE  
 All announcements made day of sale take precedence over any printed matter. Not responsible for lost or stolen merchandise. Not responsible for accidents.

# ESTATE AUCTION STOCKTON, MO

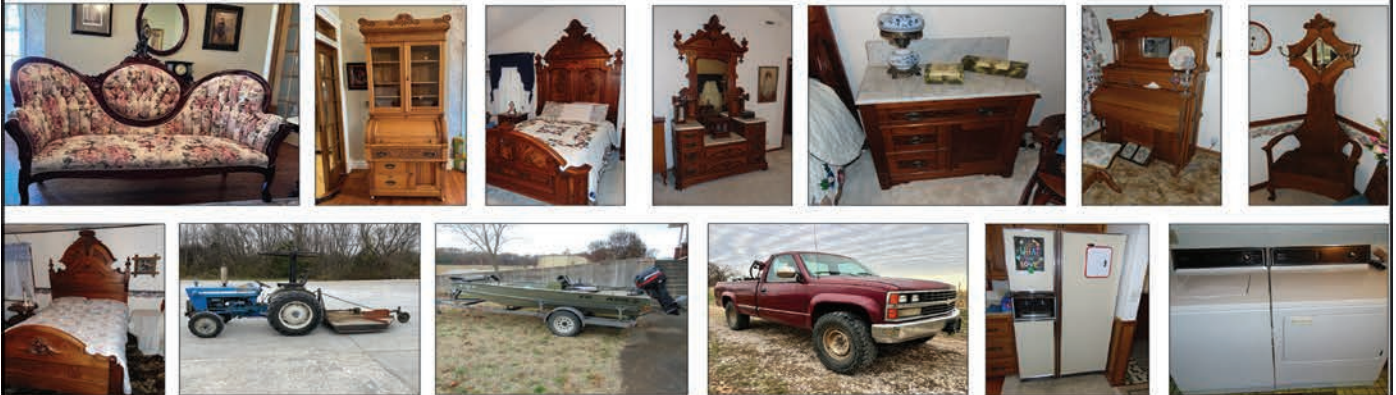
# AUCTION

Due to the death of the late Phyllis Ewing we will sell the following Household, Antiques, Collectibles, Tractor, Boat, Trailer, Pickup and Misc. At the Home located 5 miles East of Stockton, Mo. On 32 Hwy. On

## Sunday, December 4, 2022 at 12:00 Noon

WATCH FOR AUCTION COMPANY SIGNS • LUNCH SERVED

FOR MORE PICTURES GO TO: [WWW.BRUCEANDLEANAUCTION.COM](http://WWW.BRUCEANDLEANAUCTION.COM)



### ANTIQUES-COLLECTIBLES

- Walnut 9' 2" High Back Walnut Bed W/Inlays & Carving (very nice)
- Matching Walnut Marble Top Dresser
- 2 Walnut 6' & 7' High Back Beds W/Carving & Inlays
- Walnut Marble Top Dresser W/Tear Drop Pulls
- The Furniture listed above (3 Beds and Dressers) came from the Tennessee House Motel on the Square in Stockton, Mo. Years ago
- Marble Top Wash Stand
- Oak Crown Pump Organ
- Organ Stool
- Oak Hall Tree
- Oak 7' Glass Fronted Ornate Carved Desk W/Cylinder Roll
- 2-Oak Dressers
- Oak Full size Bed
- Spindle Sided Baby Cradle
- Oak Pattern Back Rocker
- 2 Camel Back Trunks
- Sewing Rocker
- Kerosene Hanging Chandelier Lamp (electrified)
- Love Seat
- Ladies Red Hat Collection
- Oct. Stand Table
- Smoke Stand
- Oak Round Coffee Table
- 2-Oak Swivel Office Chairs
- Oak Office Desk
- Kerosene Lamps
- Hand Sewn Wedding Ring Quilt
- Stone Jars
- Large Carnival Glass Bowl on Stand
- Cast Iron Boiler
- Cast Pans
- Old Camera's & Equip.
- Oneida 8 pl. Setting Plate Silverware
- Galv. Tubs
- Sm. Cast Bath Tub
- Child's Toy Metal Crane, Road Grader, Semi-Truck, Games & More
- No. 3 Dinner Bell W/Yoke

### HOUSEHOLD

- Amana Side by Side Refrigerator/Freezer
- Maytag Automatic Washer & Dryer
- GE Garage Refrigerator
- 42" Vizio Flat Screen TV
- 31" Vizio Flat Screen TV
- 50" Hisense Flat Screen TV
- Pine Roll Top Desk
- 4 Swivel Metal Padded Bar Stools
- Electric Lift Chair
- 3 Cushion Micro Fiber Recliner
- 3 Rocker Recliners
- Maple Oval Dining Table W/6 Chairs
- Kitchen Table W/4 Chairs
- King Size Book Case Bed W/Mattress
- Twin Bed
- Pine Low Back Buffet
- 4 Padded Bar Stools
- World Globe on Stand Table
- Floral Wingback Couch
- Wingback Occas. Chairs
- 2 Harp Base Marble Top Stand Tables
- Coffee & End Tables
- Handmade Oak Porch Glider
- 5' Open Cabinet
- Jewelry Armour
- Lot of Costume Jewelry
- Lot of Wall Hangings
- Lot of Linens & Towels
- Sm. Sentry key Safe
- Laptop Computer
- Table Lamps
- Bed Frames
- Lot of Pots, Pans & Dishes
- Stainless Ware
- Misc. Sm. Appliances

### BOAT-TRACTOR-TRAILER-TRUCK

- 2004 Tracker Model 16'-48" Alum. Fishing Boat W/2003 Mercury 40hp Motor, Depth Finder, Trolling Motor, and 1973 Trailer
- Ford 3000 Diesel Tractor, 48 hp, 3pt Hitch (runs good)
- 3pt. 6' Brush Hog
- 1999 Neal 22' Gooseneck Flatbed DoveTail Trailer W/ New Tires
- 1989 Chevy 2500 Farm Pickup, 4x4, 5 Speed Trans, V-8 Motor, New Front end, New Brakes & Exhaust, Truck Runs Good, Body is Rough

### MISC.

- Picnic Table
- Porch Bench
- 5' X 6' HD Metal Shelving Unit
- 3 Sm. Metal Shelves
- Wooden Porch Swing
- Sm. JD Lawn Trailer
- Step Ladders
- Lawn Chairs
- Lot of Misc.

### AUCTIONEER'S NOTE

This is a very nice offering of Unusual Antique & Collectible Furniture Items that have been well taken care of and are in very good condition.

## ESTATE OF PHYLLIS EWING

TERMS: Everything sells as is, where is. Nothing is to be removed until settled for. Payment of Cash, Check with Proper ID, or Credit Cards. Auction Company or the Owners will not be responsible for loss of items or accidents. Statements made the Day of the Auction take Precedence over Printed Matter.

SALE CONDUCTED BY **BRUCE & Le'AN AUCTION & APPRAISAL, LLC**  
THE AUCTION COMPANY THAT APPRECIATES YOUR BUSINESS

For more information and pictures go to our website at [www.bruceandleanauction.com](http://www.bruceandleanauction.com)

RONNIE BRUCE - Fair Play, MO  
417-777-1685 or 417-654-2214  
colronbruce@gmail.com

BRANDON BRUCE  
Fair Play, MO

BILLY BRUCE - Stockton, MO  
417-399-4800  
colbbruce@gmail.com

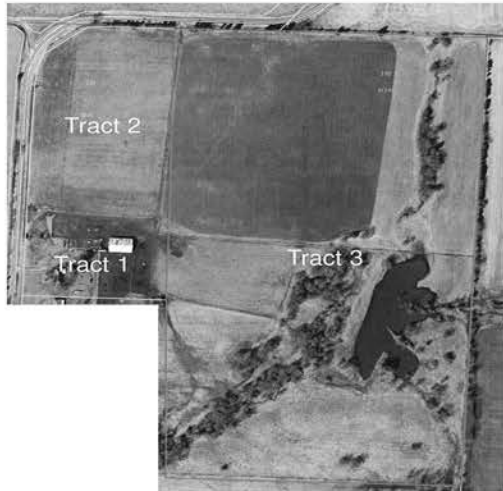
*Sam* LLC  
**CRAWFORD AUCTION SERVICE**  
**REAL ESTATE AUCTION**

As I am working out of the area. Will sell the following located from Cross Timbers, MO  
 1 mile East on Hwy. P to Hwy. VV then North 1½ miles. Watch for Auction Signs.

**SATURDAY, DECEMBER 10<sup>TH</sup>, 2022 - 12:30 AM**

*4 BEDROOM HOME - OUTBUILDINGS - 90 ACRES*

*•• SELLING IN 3 TRACTS ••*



Tract 1

3 Acres +/-  
 With 4 Bedrooms  
 3 Baths Home  
 Built in 1970  
 1700+ Sq. Ft.  
 Attached Garage  
 Basement  
 Mostly Brick Exterior  
 Electric Furnace & Outside  
 Wood/Furnace  
 Well, Lagoon  
 28x56' Shop/Storage Building  
 House Needs Some Attention  
 But Has Hots of Potential

Tract 2

17 +/- Acres  
 All Open Pasture/Tillable Cropland  
 Mostly Level - Fenced & Cross-Fenced  
 Blacktop Frontage on 2 Sides w/2 Entrances  
 Haybarn 99x46 w/Side Sheds 16x99  
 Pipe Corral & Pens - Auto Waters

Tract 3

70 Acres +/-  
 95% Open Pasture/Tillable Cropland  
 Fenced & Cross-Fenced  
 1½-2 Acre Pond  
 Blacktop Frontage w/Entrance

*Tracts 1 & 2 Will Be Offered Together and Separately*

*Farm grows a lot of grass & has been cropped in past. Lot newer fences & pipe. Great location. Lots of Potential. Skyline School. Shown by Appt. with Auctioneers. Terms: 10% of purchase price down day of sale. Balance due in 60 days or less w/possession. '22 taxes will be paid by seller. Survey cost if needed will be split 50/50. Other terms day of sale.*

*Sam*  
**CRAWFORD** LLC  
**Auction Service**



TERMS: Cash or good check. Nothing removed until settled for. Not responsible for accidents. Lunch available. Statements made day of sale take precedence over printed matter. All items sell as is. No warranties given or implied.

**417-998-6629**  
 Cross Timbers, Mo.

CrawfordAuctionService.com



Sam  
417-328-9137

Chase  
417-399-1904

Chance, CAI  
417-298-1751

Tom Poynter  
Jack Lancaster

**Matt McClurg**

# PERSONAL PROPERTY AUCTION

**Saturday December 10, 2022 10:00AM**

**Estate Of Jim & Margaret Hall**

**29400 Garrett Rd Richland, MO 65556**

**Directions: From Springfield Take I-44 East to Lebanon, Use Exit 129 And Turn Right, Then Left to Hwy 32, Remain on Hwy 32 Untill reaching State Hwy N, Follow Hwy N to Garrett Rd To Auction. Watch For Signs.**



**Motor Vehicles** 2018 Toyota Tacoma TRD 4x4 Sport V6 w/ 1564Miles \* 2009 Yamaha Star 3 Wheel Motor Cycle & Trailer  
**Farm & Machinery** CK25 Kioti Tractor 4x4 w/KL 130 Front Loader (699hrs) \* LS XU5065 Tractpr 4x4 w/ LS LL5103 Front Loader (299hrs) \* Buckets & Bale Spikes \* John Deere A3350R 4 Speed Narrow Front Tractor w/Outlets \* New Idea 6254 Round Baler w/Tucker Wheels (Low Bale Count) \* John Deere MT Narrow Front Tractor w/7' Sickle Bar Mower \* 1495 New Holland Swather \* Super A Farmall Wide Front Tractor \* 8 Wheel Hydraulic Hay Rake \* Load Trail Electric/Hydraulic Dump Trailer \* 3pt JD 6' Brushhog \* 3pt Carryall \* 3pt 8' Rock Rake \* 3pt 5' Disc \* 3pt Bushog Brand Brushhog 6' \* **Utility & Lawn** Kawasaki 4x4 Mule Pro Fxt \* Kawasaki 4x4 Diesel SxS (3498hrs) \* 14 Hp Pull Type Finish Mower \* Cub Cadet Commercial 60" Mower \* Pro Z 900 35 Hp Zero Turn Mower \* John Deere 335 Riding Mower w/Snow Blower\* 2 Yamaha Gas Powered Golf Carts \* Gas Powered ShredderWells Cargo 12' Bumper Hitch Cargo Trailer \* 3 Axle Pintle Hitch Trailer \* 16' Bumper Hitch 2 Axle Steel Floor Trailer \* 16' 2 Axle Bumper Hitch Trailer \* PLUS MORE

Auction Conducted by:

# Glenworth

Auction Service & Realty  
 Glen Yutzy, Auctioneer/Broker  
 (417) 767-4345

# PUBLIC AUCTION

**SUNDAY, Dec. 4, 2022 • 1 p.m.**

**LOCATION: 329 County Road 6620, Licking, Mo. 65542**

**DIRECTIONS:** From Licking, Mo. take Hwy. 137 south 1 mile to VV Hwy, go 6 miles to County Road 6620 to the 2nd house on the right. Watch for Rick Dixon Auction signs day of auction.

**• SUV • TRACTOR • EQUIPMENT • GUNS •**

• 2009 Nissan Rogue SL AWD - 1 owner car, leather heated seats, sun roof, good tires, ready for the road • D-17 Allis Chalmers tractor series 1, with 3 pt quick attach hitch • Rhino TW72 3 pt 6 ft bushhog • 3 bottom plow Dearborn • 3 pt disk • 3 pt blade • 3 pt jin pole • 3 black powder pistols 36 cal • Moore double-barrel muzzle load shotgun • Ruger 10/22 22 cal auto rifle • Remington auto loader 22 cal rifle, old • Springfield single shot 22 cal rifle • Armory 12 ga single shot 12 shotgun • J Stevens single shot 22 cal rifle • Old Military rifle • Thompson 30 CT bolt action, new in box •

**• LIKE NEW APPLIANCES • QUALITY FURNITURE • ANTIQUES •  
• HOUSEHOLD ITEMS • CIVIL WAR UNIFORMS & CLOTHING •  
• QUALITY TOOLS • JEWELRY ITEMS •**

• GE Profile washer & elec dryer, 6 mo old, like new • Kenmore 18.5 cu ft chest deep freezer, new • Frigidaire 21 cu ft upright deep freeze, self-defrosting • Whirlpool 2 dr refrigerator • Vizio 70" TV with TV stand • Queen-size poster bed complete, w/dresser & chest of drawers • King-size mattress & box springs, Mount Dana, like new • Howard Miller grandfather clock, nice • Couch & loveseat, brown, with recliners • Floral recliner • Oak dining table w/6 chairs & matching hutch • Mac desktop computer • 2 office chairs • Several quilts, various sizes, some hand-quilted • Wall pictures, mirrors & clocks • Elec lamps • Oak entertainment center • Kerosene lamps, Aladdin & other brands • Vizio small TV • Lots of picture frames • Metal folding cart • Oak 2-drawer chest, old • Pet Safe wireless dog boundary, complete • Small wooden cabinet • 11 Cubby holders w/baskets • Large amount of plastic bolt bins, approx 100 • Small white desk • Wicker shelf • 2 umbrella lights • Ring light • 10 gal, 8 gal, 6 gal, & smaller crocks, some Redwing & other brands • Wooden filing cabinet • Large black computer desk • HP office desktop printers • 1949-50 Ford Service manual & Ford truck operators manual • Amazon kindle • Area rugs • Office paper shredder • Outside weather station • Quilting fabrics • Portable propane heater • Elec smoker • Elec ext cords • Several Reese receiver hitches • Legal size file cabinet • Hammock swing w/cushions • 36" TV w/wall mounts • Small cabinet • DeWalt 20 vt weedeater w/charger & battery, new • Assortment of DeWalt 20 vt tools, new • Little Giant ladder • Peg board jewelry rack • Wooden book shelf • Hi Boost cell phone booster • Nikon V90 digital camera w/several lenses • DeWalt shop vac 5 gal • Craftsman pancake air compressor • Craftsman air nailers • Laser level • Bosch laser level • Schumacher 200 amp battery charger • Peg board 8' and a 4', each 3 ft long • Several lawn chairs • Shop broom • Elevated table topper • Jewelry busts • Ring trays • Mannequin • 100 lb propane tank, full • Bird bath • Porch glider • Porch chairs • Picnic table • Antique waterfall wardrobe • Assorted Victorian ball gowns • Assorted Civil War uniforms • Lots of canning jars and supplies • Pet taxi • Turkey fryer • Coolers • Card tables & chairs • Granite pans • Sound bar • Holiday decorations • Antique fold-up rocker • Turbine ventilator • Bike rack • Melmac dishes • Cane-bottom chairs • Schwinn bike trailer • Old library table • Lots of baskets • Singer sewing machine • Elec roaster • Garden tools • Garden hoses • Garden supplies • Wooden raised beds • Several farm gates • Several cattle panels • Exercise bike • Ladder that makes into scaffolding • Oil • Antifreeze • Ratchet straps • Large tow rope • Dishes, pots, pans • Elec kitchen appliances • Air tank • Camper 3 pt stand • Scotch blocks •

**Auctioneer's note:** Please make plans to be with us for this quality auction. **Note the date and time - Sunday Dec 4th at 1 p.m.** There will be 2 buildings full we haven't seen, so lots more than listed. Restroom on grounds and lunch available. Thanks, Rick **Terms:** Cash or good check. All plastic will be charged an additional 5% premium.

**Owners: Michael & Barb Roderman**

**Rick Dixon Auction Service LLC**

[www.rickdixonauctions.com](http://www.rickdixonauctions.com)

**417-967-6604**



# R&R AUCTION SERVICE

## FRIDAY NIGHT DEC 2ND @ 6PM

### in the R&R Auction House, 1644 South Ash, Buffalo, MO



Hi-Point model 09 9mm, Hi-Point model JHP 45 acp, Large iron wheel, large wooden Jones and Co. moving truck, old Penzoi sign, vintage doll bed, oil lamps, new plastic trash cans, heavy duty metal and wood shelf, tools of all kinds including, nuts, bolts, wrenches, sockets, pipe wrenches, scroll saw, circular saw, bench grinder, Delta table top belt and disc sander, one section of antique wrought iron fencing, Coke collectibles, several welcome signs, lots of old wooden crates with rope handles, milk crates, safe, ice cream freezer, coolers, trunks (2 very large), old quilts and knitting, metal ammo can, old butcher knives, 3 gal. jug vacuum with spigot, antique mixer with jadite bowls, oil lamps, granite ware, old cabinets, tupperware, pots and pans, 24' model 385-24 Davidson extension ladder, metal gas cans, lawn seeder, old canister vacuum, several totes, wreaths, pet carrier, wash board, bags of Christmas decor., metal sun wall decor., radiator heater, small Christmas trees, vintage women's bicycle, plastic patio



furniture, Crosley chest type deep freezer, Hot Point washer and dryer, old hub caps, multiple weed eaters, Stihl BG50 leaf blower, Stihl hedge trimmer, oils and other garage fluids, Murray self-propelled push mower, vintage step chair, galvanized bucket, powered hand tools, and so much more we haven't uncovered yet!!



Watch next week's Trader for special Hot Wheels auction December 9th in R&R Auction House at 6pm. Over 1000 highly collectible Hot Wheels!



Please keep watch on our website for added photos.

TERMS: 10% Buyers premium. Cash, check, or credit card with proper I.D. nothing removed until settled for A 3% fee will be added to credit card purchases. Not responsible for errors in listing.

GENERAL AUCTIONEERS

Auction & Appraisals SERVICE

For more information contact Professional Auctioneer Russ Weeks at 417-576-7357 or check out [www.rrauctionservice.com](http://www.rrauctionservice.com)

Serving this area's auction needs since 1997 with honesty and professionalism.

[www.rrauctionservice.com](http://www.rrauctionservice.com)

(417) 576-7357 or (417) 345-4140



# Personal Property Auction

**Saturday, December 10th. 10:00 am**  
**208 Drop Tine Dr. Strafford, MO. 65757**

Directions: From Strafford Exit 88 take MO-125 N for 0.3 miles to Right onto E Evergreen St. (outer rd) follow for 5.3 miles to Left onto Red Clover Rd. continue for 1.9 miles Turn Right onto Jarrett Branch Rd. to right onto Drop Tine Dr. Auction held at last home at end of drive. Look for Auction Signs!



## Tractor, Equipment Bronze Sculptures, Glass Kiln, and More!

LS XJ2025H with loader bucket  
 LS 5 ft box blade  
 2016 River Craft 12 Ft. Bumper hitch trailer  
 Bronze Bear sculpture  
 Bronze boy on wine barrel w/ grapes sculpture  
 Gravelly 60" pro turn 160 Mower 1213.4  
 Cub Cadet LTX 1046 hydrostatic Residential riding mower  
 SENTRY Xpress Music 4.0 Paragon Glass Fusing Kiln  
 2019 Solar storm 32 R 30 Amp tanning bed 1 full box of bronzing bulbs

Over 60 pieces crackle glass collection\*Fenton

### ONLINE BIDDING & LIVE AUCTION!

### FIREARMS & AMMUNITION

H&R Pardner Pump 12 GA. 2 3/4 or 3inch\*Ruger Mini 14 cal 223 with Simmons Scope\*Taurus Circuit Judge .410 and .45\*Revelation Model 120 .22 LR\*Antique .22 LR\*Savege over and under series B Winchester 30-30/ 20 GA\*Ruger GP100 357 Magnum\*IORCIN Model L25 .25 auto\*HI-Point Model c9 9 mm Ruger\*KEL-TEC .380 Auto\*STEVENS model 1915 .22 LR, 223\*Paris Archery bow with quiver and arrows\*Ammunition 410, 20ga, .32, .9mm, .45 .22 and more!

### Antiques, Collectibles, Household, Outdoor

USA Pottery\* McCoy\* Roseville dog bowls\* Hull\* Single tree\* Lawn & Garden tools, post hole diggers, shovels, rakes, rock bar, pitchfork,\*Powermate garden tiller\*Dolly cart\*Swimming pool pump & filter\* Franke kitchen sink\*Vintage highchair\*Horseshoe set\*8 ft ladder\*Extension ladder\*

Living Estate Of: Mike & Beebe Miller

Items continued: Large assortment of wagon wheels\*1983 Chevrolet collector bat and ball\*Large cauldron/kettle\*Troy Built push Lawn Mower\*Garden cart\*Aluminum ladder\*Antique trunks\*Vintage Lawn chairs\*Antique school desk\*Picture frames\*Kids chair\*Bamboo fencing\*Radio flyer toys\*Garfield figurines\*Coats\*Landscaping stones\*Hand made cedar bench\*Milk cans\*Concrete Lawn décor\*Concrete fountain\*PLOW\*Live edge cedar slabs\*Lots of lumber, post, barn 8ft. Barn tin,\*Ice cream table & chairs\*Scrap metal\*Bat houses\*Galvanized stock tanks\*Outdoor furniture\* Antique wooden chairs\*Vintage table\*20x12 deluxe screen house\*2-13x13 instant canopy\*2-9x9 canopy\* 5- Lifetime, folding tables 5ft.\*Table umbrellas\*Outdoor cushions\*Coffee pot\*8-leather padded stackable chairs\*Tarps\*Coolers\*4-Lifetime 6 ft. Collapsing picnic tables\*6x6 portable Suncast outbuilding\*Rod iron mirror\*Jack Daniels barrel planters\*Haier Mini Refrigerator\*Metal\*swinging bench\*Rod iron fence\*Dog bath tub\*Treadmill\*Powerglide exercise equipment\*Stackable metal chairs\*Exercise equipment\*AB lounge chair\*Cast iron planter\*Cast iron cannon\*Lion Picture\*2-Large mirrors\*Oak lumber slabs\*Japan Ceramic horses\*Chicken décor\*Bird bath\*Lan sprinkler\*Antique radio flyer wagon\*Bee hives, honey extractor, bee hive, gloves, smoker plus more\*8- tomato cages\*Canopy frame\*Pop up greenhouse\*Glass molds, kiln powder, glass flakes, jewelry molds,\*Old window's\*Old soda bottles\*Stain Glass\*90 & 96 Dichroic, large stain glass pieces, various sizes, colors and thickness, large assortment of lead, soldering irons, stain glass tools, lead solder, rolls of foil, Diamond router wizard grinder\*Ryobi grinder\*Water cooler\*Light table\*Oil heater\*Outdoor swing\*Electric water bowls\*Chicken feeders\*Hobart 125 mig welder\*Skill Miter saw W/stand\* 2" water pump\*Nuts, bolts, screws,\*Poulan pro pole saw\*Welding helmets\*Paint guns\*WEN drill press\*Tap and die set\*Trunk\*X box\*Microwave convection\*Breakfast nook\*Graniteware\*Cast iron\*Dutch oven\*Canning supplies\*14x10 Coleman instant cabin 10 person\*Double propane burner\*Camping supplies\*Duro star gas generator\*4 shelf Antique cabinet with beveled glass door\*Antique eyeglasses, pocket compass\*Beatles compass\*Rolling pins\*Daisy churn\*Complete set of Paragon Bone China\*Glassware\*Mounted ducks\*Cake dish\*6ft. Buffet\*American Bison skull\*Water Buffalo skull\*Fallow deer European mount\*Whitetail European mount\*African carved canoe\*African 7 head unity statue Hand carved\*Antique books\*Inversion table\*Chalk piggy bank bulldog\*Chalk bulldog\*5 seat paddle boat\*Barbed wire **PLUS MUCH MORE!**



**Stevens**  
**AUCTION SERVICE**



Announcements made day of sale takes precedence over any printed matter. All items sold as-is with no guarantee. Payment: Cash/ Check/ Credit Accepted  
 AUCTIONEER: LAREDO STEVENS

**417-459-5041**

[www.StevensAuctionService.com](http://www.StevensAuctionService.com)

GO TO THE AUCTION • GO TO THE AUCTION • GO TO THE AUCTION • GO TO THE AUCTION •

# PUBLIC AUCTION

**Saturday, December 3, 2022 STARTING AT 9:00 a.m.**

**Location:** 15150 N. Hwy 133, Dixon, MO 65560

**Directions:** From Dixon, Take C Hwy 28 to Hwy 133. Turn North on 133 and travel about one mile to the property.

**Household Items** Sofas and Love Seats, Vizio Flat Screen TV Coffee Table w/2 End Tables 2 Brown Recliners/ Rocker 2 Lighted Comer Curios Noritake China Set, Crystal & Stemware Serving table, Brass Carafe on Warming Stand, Bird Crystal, Lamps, HiSense Flat Screen TV Sanyo Flat Screen TV, TV Stand, Magnavox DVD/VHS Player Glider Rocker (Wide), Lot Vases, Figurines, Knick Knacks, Covered Wagon Light Baby/ Child Toys, Kids Picnic Table, Kids Recliner, Kids Rocker, Kids Room Rug, Baby Crib (unknown age) Chest Freezer, Solar Light Wharf Style Elk Head Mount, Blankets, Linens, Towels Kitchen, Table w/chairs Office Chair, Bakers Rack , Lrg. Lot Cookbooks Dishes, Pots, Pans, Bakeware Plastic ware McCoy Chili Bowls, GE Mini Fridge, Microwave Cart, Pyrex bowls, butter dish Keurig Pod Rack, Corning Ware, Blue Cornflower, Federal Maple Leaf Bowls Thermos, White Storage Cabinets Crock Pots ,Rotato, Some Tupperware, 18 qt. Nesco Roaster/Oven Maytag "Centennial" Washer, Whirlpool Elec. Dryer Bissel, Power Lifter, Casio Elec. Keyboard Bookshelves, Plant Stands, Dining Table w/6,1 Capt. Buffet, Step Ladder, Beverage Dispenser, Some Wexford, Mikasa "Versailles" China Snack Sets, Hand Crafted Cedar, Stool Entertainment Center, Sofa, Love Seat & Chair Wing back Chair, Comer shelf, Full size BR suit, chest, dresser, HB, FB, nightstand Computer desk, Office chair, HP Office Jet, Quilt, Kitchen Island, Sewing Machine in Cabinet Edinpure Heater, Student desk, Chest of Drawers & nightstand, Vanity w/Jewelry box Mirror Queen BR suit, HB, Nightstands, Chest, Dresser Small Chest of Drawers, Lingerie Chest, Glider Rocker, 2 7' Benches, Exercise Equipment, Beer ware, Bar, 3 stools, Hall Tree, TV Cart, Rustic Style Mirror Folding Chairs, Occasional Tables, Light Cot w/Mattress, Light Gun Cabinet, Hornak 2 Wagon Wheel Twin Beds Lot Christmas & Holiday Decor, **2004 Buick LeSabre, Antiques & Collectibles** Lg. Lot Alaskan Collectibles, Dolls, figurines, paintings, Snow shoes, Alaska Pipeline Memorial pc., Bell Collection, Angel Collection, Cross made of horseshoes Cedar Chest, Old Mantle Clocks, Wolf Pelt, Beaver Pelt, Big Horn Sheep Mount Wolverine Mount, Elvis Decanters, 8 Track "Music Machine" works, Lot 8 Track Tapes, 10+ Old Horse Collars, 2 Sets Hames, Old Milk Can, Scythe & Cradle, 2 Horse Drawn Breaking Plows, 2 School Desks w/chairs Butter Chum, **Shop & Outdoor** Deck & Patio Furniture Concrete Lawn Ornaments Horse Shoeing Stall, "Load Hog" garden wagon Magnaforce Compressor 2hp Floormate Generator Wheelbarrows, Shop Heating Stove, Army Gas Cans, Saddles, bridles, lead ropes, bits, shoes, halters and more White Riding Mower Troybilt Riding Mower Hydraulic Jack, Anvil & Tools, Weed Cutter Quantum 5hp Skaggs Furnace Co, Crocker MO, VERY large Heating Stove, Chainsaws, Bench Grinder, Elec. Fence Wire, Barbed Wire 9 some new) Sawhorses, Bins of Nuts, Bolts, etc., 7 Bundles Estate Grey Shingles, B&D Professional Cut off Saw, Lot Handle Tools, Metal Cutting Band Saw, Duracraft Drill Press, Sears 12" Floor Saw, Table Saw, Manual Tire Changer, Lg. Vise on stand, Large Lot Chains, many sizes, lengths, Toolboxes, chests, BBQ Grill, propane, Radial arm saw, Jointer, Craftsman Roller Stands, Fishing nets, poles, rods, reels, lures etc., 12' Wooden Ladder Barrels, Lot Elec. Hand Tools, String Trimmer, Stihl Pro Series FS75, Miller Industrial Arc Welder Craftsman Metal Cutting Lathe 220Volt, 220 V Compressor, Sanborn, Upright, 14" Central Machinery Bandsaw, Small Bench Vise, Mechanics Rolling Worktable, 5 pkg. Tamco Shingles Picnic Tables, Wash Tubs, Pile Barn Tin, Old Seeder , Bale Ring, 44" Pull behind Mower Cattle Panels, Garden Tillers, Used Lumber, Creeper, Fence Posts 6', Fimco Sprayer, Small Shop Vac, Pair Rubbermaid Trash Cans Yard Cart, Metal tables, Glider/Lounger

**Remington Model 700 rifle, .243 Win w/ Redfield scope Winchester Model 70 rifle, .338 Win Mag w/ Leupold scope, Black Powder cap & ball rifle, markings indicate "Made by Carl Williams, Homer, AK. Unknown caliber, Beautiful Horse Drawn Parade Wagon (rubber tires) and Decorative Harness**

**Many other items too numerous to mention**

Owner: Dorothy Withers Living Estate

**"ANNOUNCEMENTS DAY OF AUCTION TAKE PRECEDENCE OVER ANY OTHER ADVERTISING"**

3% Convenience fee added to all credit/debit card transactions

Sale Conducted By

## WARDEN AUCTION & MORE

(573) 528-0729

Ed Warden - Auctioneer/Licensed Broker

[www.wardenauction.com](http://www.wardenauction.com)



**TERMS**  
Cash, Credit, Debit  
or  
Approved Check  
  
Valid ID Required  
for Bid Number

**TERMS**  
Not Responsible For  
Accidents or Losses  
  
Nothing Removed  
Until Settled For

GO TO THE AUCTION • GO TO THE AUCTION • GO TO THE AUCTION • GO TO THE AUCTION •

GO TO THE AUCTION • GO TO THE AUCTION • GO TO THE AUCTION • GO TO THE AUCTION •

GO TO THE AUCTION • GO TO THE AUCTION • GO TO THE AUCTION • GO TO THE AUCTION •



# LARGE ESTATE AUCTION

13913 HWY 7 WARSAW, MO 65355

DUE TO THE PASSING OF MY HUSBAND, GARY, I AM CLOSING OUR BUSINESS AND WILL SELL THE FOLLOWING AT AUCTION LOCATED WEST OF WARSAW ON HWY 7 APPROX. 3 1/2 MILES FROM THE CITY LIMITS ON

## SAT. DECEMBER 10TH, AT 9 AM (NOTE TIME!!)

**TRACTOR** John Deere 3033R utility tractor w/JD H165 loader, 4wheel assist, 347 hrs, like new \* Bucket and forks to fit JD loader \* John Deere I Match quick hitch \* 8' Aluminum Adj. fork extensions  
**GOLF CART** 20' Yamaha golf cart, gas, nice **PORTABLE BUILDINGS** 18x25' Garage w/front and side walk-in doors, insulated \* 12x24' Garage w/side door \* 18x25' Super door Garage, white w/maroon trim \* 22x30' 2-bay Garage \* 9 1/2 X 20' Storage barn, double front door, windows \* 10x20' Hip roof Barn w/loft \* 24x40' 2 Bay garage \* 18x20 Building used as workshop \* Cedar-lined vintage outhouse **FLATBED TRAILERS** Kiefer Ind. 1000 Series Gooseneck Flatbed trailer, tandem duals, 20' w/ 5' Dovetail, ramps, 8' wide bed, exc. cond. \* 16' Tandem axle flatbed trailer, 6 1/2' wide **BOX TRAILER** Regulation Avenger enclosed trailer, 12 1/2' long box **CARPORTS & ACCESSORIES** 2-12x21' Carports \* 18x21' Carport, converted to workshop \* 12x20' Carport \* 5 Commercial carport dollies \* 3x3" Carbon steel tubing, Lot 2 1/4-2 1/2" steel tubing, braces, corner trim, brackets, Some sheet metal, carport parts and other accessories **BEAUTIFUL!! HANDMADE FURNITURE** Walnut table w/live edge, 3x5" \* Aspen log bed, queen size \* Cedar king bed, matching dresser, 12 drawer chest, 2 night stands \* Split door cedar chest \* Cedar dresser w/mirror \* Cedar lamp table with concealed drawer \* 2 Cedar log lamp tables \* 2-Cedar plank and log occasional tables \* Cedar desk \* Cedar filing cabinet \* Cedar entry table \* Walnut and wrought iron coffee and end tables \* Cedar, galvanized tin, and wrought iron lamp table \* Cedar tv stand \* Cedar end table w/drawer \* Pine coffee tables and end tables \* 4 & 5 Drawer cedar chests \* 2- Black stained credenzas \* Adirondack chairs and rocker \* New handmade cedar chests \* Several pieces cedar lawn furniture \* Cedar benches \* Dual fan-back glider \* Hat trees \* Cedar shoe bench \* Cedar docks \* Bench with Kansas City Chiefs logo \* Log Table and Floor lamps \* Cedar benches \* Humpback cedar chest \* 2 Cedar bar stools \* 3 Child's cedar rocking chairs \* Wooden high chair \* Wooden baby cradle \* Cedar quilt rack \* Hat trees. *This furniture is well-built; the majority is new, never used, and all is in excellent condition and ready for your home.* **SHOP EQUIPMENT & TOOLS** Porter Cable 60 gal 155 psi Air compressor \* Coleman 30 gal air compressor \* Shop Fox M1039 20" Drill press, 1 yr old \* Grizzly Industrial G0899 10" table saw, less than 1 yr old, w/rip fence \* Grizzly Industrial G0513 Band saw \* Grizzly G1021X 15" Planer, helical cutterhead \* Grizzly G0490 8" Jointer, helical cutterhead \* Grizzly G0584 Lathe \* John Deere 3500 power washer, Honda 380 \* Dewalt DW708 12" slide-arm saw \* 2- Central Machinery 6" Belt, 9" disc Sander \* Delta 10" portable compound miter saw \* HIT 6" Vise on stand \* Ridgid 52 L shop vac \* Seco Dust collection system \* Router table \* Ridgid portable belt sander \* Bostitch pneumatic brad nailer \* Chicago 12" Compound miter saw \* Autograph projector, projects image up to 10' \* Roller stand for Chop saw \* Strongway sheet rock dolly \* Cat 9 drawer tool chest \* Cat 2 door utility cabinet \* 6 Drawer tabletop tool chest \* Performax 12 drawer tool chest \* ReelWorks pneumatic hose reels \* Mr. Heater 30,000 btu propane heater \* Rockler port. Sprayer \* Hobart 210 mvp welder \* New anvil on stand \* Double wheel grinder on stand \* Masterforce 12" benchtop drill press \* Dewalt 12" chop saw \* Hitachi EC79 6 gal pancake compressor \* 2-2 Wheel dollies, 1 w/air tires \* Chicago Tabletop drill press \* 3 Makita shop radios \* Commercial Shop fan \* Max Air 24" portable shop fan \* New one-ton winch \* Milwaukee portable band saw \* Portable tool stand \* Schumacher 1000 watt battery charger \* Several hd Ratchet straps \* Stanley 6 & 7 fiberglass ladders \* Werner 20' ladder \* New Dewalt electric drill, Ridgid 18 V drill, Ridgid 18V torque wrench, Delta scroll saw, Makita circular saw, Dewalt belt sanders, 5 Tenon tapering tools, electric drills, Biscuit tools, various small hand tools \* Set of Stanley B&O end wrenches, deep well and reg. sockets, crescent wrenches, pipe wrenches, 1/2" Torque wrench, Sets of T-handle Allen wrenches, levels, squares, drill bits, Several framing and furniture clamps, diff. sizes \* Portable wood stand \* Lumber rollers **JOHN DEERE MOWERS & YARD EQUIPMENT** John Deere Z trak 7 Iron Pro 54 0-tum, like new, used one season \* John Deere 445 54" lawn tractor, rear weights, good cond \* Big 4-Wheeler Wheelbarrow \* Craftsman 4' Leaf bagger \* Honda push mower \* 3 pt Harrow \* 4' Yard roller \* Stihl MS250 chainsaw in case \* Stihl BG56C leaf blower \* Stihl F558RC weed trimmer, straight shaft \* Stihl battery weed trimmer \* Poulan Pro Limb saw \* FirmCo 30 gal pull-behind sprayer \* Pull-behind seed spreader \* Push yard seeder \* Post hole digger, driver, pitchforks, other garden tools \* Few 3 gal hand sprayers **LUMBER** Cedar logs and half-logs, aged and dried \* 5' x 10' mantle slabs, dry \* Lot Cedar slabs, dry \* Lot 5' cedar planks \* Flat, tongue and groove, & box cart lumber, kiln dried \* Live edge pieces \* Lot of walnut, white oak, and cedar not listed \* 3/4" Plywood **STORE INVENTORY, FURNITURE & DÉCOR** Antique oak buffet \* 2 American Oak 50 gal wine barrels \* Oak curio cabinet, lighted \* Glider rocker & ottoman \* 2 Swivel rockers \* Bookshelf units \* Metal shelving \* Doors made into display shelves \* Lot of sheepskin lamp shades, diff sizes \* Handmade dish cloths \* Painted novelty signs \* 3 Carved wooden baskets \* Handmade wooden dresser and jewelry boxes \* Bamboo trash can \* Sarna India brass coffee ewer \* Walnut bowl \* Anchor welcome sign \* Heart and circle shaped shadow boxes \* Browning knife \* Lot of storefront Holiday décor \* Home décor, deer pictures, etc \* Lg piece of driftwood

\* Several handmade walking sticks \* Picket fence bench \* Quilted jackets \* Truman Lake and WoodShed t-shirts \* Wooden American flags **PATIO & YARD ITEMS** Blackstone grill \* Weber propane grill \* 25' Vintage metal Windmill \* Wooden windmill yard ornament \* Water wheel fountain \* Cedar wishing well \* 2-Tripod deer feeders \* Fishing rods and reels \* 2-5' porch swings \* Large water hose reels **WOOD & FURNITURE FINISHING** 20 gal Helsing Spar satin urethane \* 10 gal Wolman deck preservative \* 14 Spray Helsing spar urethane \* 8 gal Epoxy \* 5 Sets New metal leg frames \* Large lot Mirka sandpaper, Furniture glue, Large lot foam brushes, wood screws, etc \* New Cabinet Hardware, 12" & 18" drawer slides, hinges, frame glass, etc **MISCELLANEOUS** 3' Stainless steel table \* Horizon T101 treadmill \* Air mattress \* Igloo BMX25 cooler, other coolers \* Pelouze commercial scale \* Folding tables \* Live trap

**Note: This is a large sale with something for everyone! Most everything is new or like new, and good condition. Remember the sale starts at 9 o'clock! The equipment, golf cart, and buildings will sell close to the noon hour. We will be running two rings, so bring a friend and plan to spend the day, enjoy the auction, and get in some Christmas shopping at the same time!**



For pictures, check out the website [www.DrenonAuction.com](http://www.DrenonAuction.com)  
**LINDA REISH "THE WOOD SHED"**

# Larry DRENON AUCTION



Larry Laramie  
 660-596-8515 660-221-4386  
 Lacey Cooper  
 660-723-1104 660-723-2221

Office: 660-723-6188  
[www.DrenonAuction.com](http://www.DrenonAuction.com)

**Terms:** Cash, approved check, debit/credit (convenience fee applied to card purchases). Nothing to be removed until settled for. Not responsible for accidents. Statements made day of sale take precedence over printed material. Lunch served.

*Sam*  
**CRAWFORD AUCTION SERVICE** LLC  
**MACHINERY AUCTION**

Will sell the following located 5 miles North of Cross Timbers, MO on Hwy. 65. Watch for Auction Signs.

**SATURDAY, DECEMBER 3<sup>rd</sup>, 2022 - 9:30 AM**

**COINS - GUNS - TRACTORS - TRUCKS - TRAILERS - MACHINERY - TOOLS**



**COINS & GUNS**  
**SELL AT 9:30 AM**

20 Silver Half Dollars  
 60 Silver Dollars, Other Silver Dollars  
 1883-90-91-93 CC Silver Dollars  
 1885-S Five Dollars Liberty Gold  
 1901-S Ten Dollars Liberty Gold  
 Smith & Wesson Hwy. Patrol 357  
 Stevens 320 12 Ga. Pump, NIB  
 Remington Targetmaster 22 S L LR  
 Remington Wingmaster 16 Ga. Pump  
 Savage 20 Ga. Single Shot  
 Marlin 12 Ga. Pump  
 Russian M91 7.62x54  
 Japs Military  
 3-4 B/P Rifles  
 Assorted Ammo

'09 Chevrolet 3/4 HD 4x4, Gas, Crew Cab  
 Hayline GN Bale Trailer, 37', Brakes on Both Axles, New  
 Bumper Hitch 20' HD Flatbed Trailer, New 10 Ply Tires  
 Shop Built 12' Tilt Trailer w/Commercial Power Washer  
 Keifer 16' Bumper Hitch Stock Trailer, New Floors  
 Shop Built 6x12 Bumper Hitch Single Axle Trailer  
 Shop Built Bumper Hitch 4x6 Trailer, Mesh Floor  
 Shop Built Trailer, 5x10'  
 Older Gooseneck Horse Trailer w/Front Tack/Dressing Room  
 '97 Chevrolet 3/4 4x4, Gas, Auto, Flatbed  
 '99 Chevrolet 3/4 4x4, V-8, Gas, Flatbed w/Bale Spear  
 '85 Chevrolet 1/2 Ton 2x4 Auto  
 '98 Road Boss GN 24' Flatbed w/Dovetail

Poly Bale Ring  
 2 Older WW Walk Thrus  
 Used Steel Posts  
 Shop Built Squeeze Chute - New  
 Homemade Panel Trailer - New Tires  
 Calf/Goat Creep Feeder on Wheels, 1200#, New  
 Calf Creep Feeder w/Cages, 1 Ton, New  
 5-6 Water Tanks, Galv. & Poly  
 Bale Elevator  
 Tarter Single Side Creep Feeder  
 4 - 10' Metal Feed Bunks  
 20' Steel Feed Bunk  
 2 Poly Watervane Mineral Feeders  
 Steel Back Rub - Oiler  
 Lot Electric Fence Supply  
 2-3 Rolls High Tensile Wire  
 Wire Unroller  
 Sq. Steel Hay/Grain Feeder  
 Tank Heaters  
 Cement Mixer, Other Misc.

**DOZER & TRACTORS**  
**SELL NEAR NOON**

"Cat" 951C Trackloader, Runs Good, #86J9995  
 Ford 2000 Gas (800 Style) 5 Speed, Live Power, Good Rubber  
 M.F. 135 Diesel  
 John Deere 40 N/F, 3 Pt., Shedded w/JD 3 Pt., 5' Brush Cutter  
 IH 140 w/Belly Mower & Belly Mount Blade  
 Massey Ferguson 35 Gas  
 IH 656 Gas Cab w/Loader  
 Ford 4610 Diesel w/Loader

**MACHINERY**

256 NH Rake  
 56 NH Rake w/Dolly  
 4' & 6' 3 Pt. Finish Mowers  
 Pull Type Bush Hog 4'  
 3 Pt. Bush Hog 6'  
 3 Pt. Scoop  
 3 Pt. 6' Woods Brush Cutter  
 NH 3 Pt. Bale Lift  
 3 Pt. PTO Seeder/Spreaders  
 3 Pt. 500 Gal. Sprayer  
 QT Loader Bale Spike  
 4 Wheel Wagon w/Metal Sides  
 5' Belly Mount Finish Mower  
 3 Pt. Hyd. Drive Orchard Trimmer  
 3 Pt. Sub Soiler  
 3 Pt. Carry-All

**MISCELLANOUS**

John Deere Lawn Cart  
 Cub Cadet XT2 Lawn Tractor, 22 HP  
 Cub Cadet Tiller  
 6-8 Iron Wagon Wheels  
 2 Aluminum Extension Ladders  
 2 Australian Saddles - Tack  
 Long Handle Tools  
 Deer stand  
 Walk Behind Commercial Blower  
 Pro Series Smoke Hollow Smoker  
 Hobart HD Electric Welder on Cart  
 Arco HD Electric Welder  
 3 Portable P.A.'s  
 Dump Rake  
 Riding Plow  
 Metal Pick-Up Stock Rack  
 25 Gal. Barrel Grease  
 Asst. Wrenches - Tools  
 Other Misc.

**TRUCKS & TRAILERS**

'07 Chevrolet 1500 Gas, Auto, 4x4, Flatbed w/Bale Spear, 123K, Clean & Nice  
 '06 Nissan Murano SUV, AWD, 200K  
 '12 Chevrolet 1/2 Ton Crew Cab, 5.3, Auto, 4x4  
 '07 GMC 3/4 HD Reg Cab, 6.0, Gas, 4x4, Auto w/Bramco Bale Bed & Spear, 124K, Clean  
 '12 Single Axle Cargo Trailer  
 '15 Chevrolet 1/2 Ton, 2x4, Auto

**FARM MISC.**

Wilson Portable Corral - 80 Hd.  
 10 - 24' Standing Pipe Corral Panels  
 3 - 10' Portable Panels, 1 Walk-Thru, Other Panels & Gates

**Loader on Site - Trucking Available**



**TERMS:** Cash or good check. Nothing removed until settled for. Not responsible for accidents. Lunch available. Statements made day of sale take precedence over printed matter. All items sell as is. No warranties given or implied.

**417-998-6629**  
 Cross Timbers, Mo.

CrawfordAuctionService.com



Sam  
 417-328-9137

Chase  
 417-399-1904

Chance, CAI  
 417-298-1751

Tom Poynter  
 Jack Lancaster



# ONLINE ONLY EQUIPMENT AUCTION

Internet Bidding closes at 11:00 am CST  
**THURSDAY, DECEMBER 15, 2022**

[www.SextonAuctioneers.com](http://www.SextonAuctioneers.com)  
**BID NOW!**  
*Much more equipment online!*



**1969 Chevrolet Chevelle**



2017 Peterbilt 389 Truck



2008 Peterbilt 340 Dump Truck



2005 Kenworth W900 L



2000 International 9900 (CAT 6NZ)



2015 International ProStar 122



2018 Reitnour Max Miser Flatbed Trailer



1978 Caterpillar D9H dozer



1998 Volvo L330C Wheel Loader



Caterpillar D6M Dozer



2003 Caterpillar 545 Grapple Skidder



Caterpillar TH83 Telescopic Forklift



2011 Bobcat T870



2017 John Deere 324G Skid Steer



Takeuchi TB153FR Excavator



2015 New Holland T56 140 Tractor



2005 Ford E-450 Super Duty



2011 Chevrolet Camaro SS



1988 GMC 1500 SLE



1946 Chevrolet Truck



2012 Wood Mizer WM3000 BAND MILL



2021 Polaris RZR 1000 XP



2015 Can-Am Maverick 1000



2007 Go Cart



1965 Cushman Super Silver Eagle Scooter



2019 Hyundai Reefer Trailer



2016 Nevi Semi



2016 Peterbilt 579



Storage Container



2006 genie S - 65 straight boom Man Lift



1994 Featherlite Livestock Trailer



**200+ SKID STEER ATTACHMENTS SELL TO HIGHEST BIDDER**


[www.SextonAuctioneers.com](http://www.SextonAuctioneers.com)

For any questions call our Office: 314-529-0124

Auction Contacts Tyler Sexton | Gary Sexton

5182 US Hwy. 63 • Pomona, MO • email: [Sales@SextonAuctioneers.com](mailto:Sales@SextonAuctioneers.com)

**Next Auction**  
**FEBRUARY 23**



**MID MISSOURI STOCKYARDS**


**REGULAR SALE EVERY THURSDAY 11AM**

**COW SALE • DECEMBER 3RD AT 6PM**

WATCH OUR WEEKLY SALE IN REAL TIME ON [DVAUCTION.COM](http://DVAUCTION.COM)

For Farm Visits, Market Updates, or Trucking  
Call **Zach Cox 417-777-1320**  
**Dan Romine 573-578-4939**

**Competitive Buyers!  
Competitive Commission!  
Competitive Market!**

Barn: 417-532-9292   
I-44 • Exit 123 "just outside of Lebanon"  
17505 Route 66, Phillipsburg, MO 65722  
For weekly market updates, visit us at [www.midmoststockyards.com](http://www.midmoststockyards.com)

**NOW BUYING STANDING TIMBER IN THE LAKE OF THE OZARKS AREA:**  
Free estimates. Littleton Storm & Timber Services. 217-836-4985.

**WEATHERED BARN WOOD SIDING:** 10" wide. 573-729-7226. [www.pineridgerustic.com](http://www.pineridgerustic.com) Salem.

**HONDA PIONEER 1000: 2015 Model, with cab, winch, & raise up windshield.** \$9,000. 573-247-4280. Salem.

**TINY HOMES:** We gottem 573-881-3283

**TRUE MODULARS:** 30 to 60 day delivery available, 3 and 4 bedroom 573-657-7040 [chateauhomes.net](http://chateauhomes.net)

**HIKING THE OZARKS BOOK: A Guide to the Area's Greatest Hiking Adventures.** \$6.75. 417-532-2045. Lebanon. (Leave message and phone number).

**LOG SIDING:** 2X8 Pine/Western Cedar [www.pineridgerustic.com](http://www.pineridgerustic.com) 573-729-7226. Salem.

**308 WINCHESTER 100: \$800.** 573-247-4280. Salem.

**USED MOBILE HOMES:** Call David at VILLA HOMES IN ROLLA 573-578-8072. Rolla.

**BUYING MOBILE HOMES:** Call David at VILLA HOMES IN ROLLA 573-578-8072. Rolla.

**NEW ID MANURE SPREADER: \$1,500.** 573-247-4280. Salem.

**NEW MOBILE HOME STOCK:** Just received (5) new units, they gotta go! 573-657-2176. [amegamobliehomes.com](http://amegamobliehomes.com)

**USED DOUBLE-WIDE:** \$34,900 WOW!!!! This won't last! 573-657-2176. [amegamobliehomes.com](http://amegamobliehomes.com)

**WE HAVE MOBILE HOMES:** Instock new arrivals (8) homes, need to go as soon as possible! 573-499-9993. [columbiadiscountnhomes.com](http://columbiadiscountnhomes.com)

**I BUY.....used mobile homes.** Call or text 573-338-6250 or email [GregS.CDH@outlook.com](mailto:GregS.CDH@outlook.com)

**1500 VINTAGE WRISTWATCH DIALS:** \$100. 573-764-3517. Call in PM.

**BUFFALO LIVESTOCK MARKET LLC**



**276 Hwy 32 W., Buffalo, MO  
November 26<sup>th</sup>, 2022**

Receipts: 966

**Feeder Cattle Steady.  
Cows & Bulls Steady.**

**REPRESENTATIVE STEERS**

300-400 @ 185.00 to 208.00  
400-500 @ 183.00 to 205.00  
500-600 @ 175.00 to 197.00  
600-700 @ 165.00 to 179.00  
700-800 @ 157.00 to 164.00  
800-900 @ 145.00 to 162.00

**REPRESENTATIVE HEIFERS**

300-400 @ 165.00 to 180.00  
400-500 @ 160.00 to 179.00  
500-600 @ 152.00 to 166.00  
600-700 @ 148.00 to 155.50  
700-800 @ 140.00 to 157.00  
800-900 @ 125.00 to 135.00

**FEEDER BULLS**

300-400 @ 165.00 to 191.00  
400-500 @ 160.00 to 186.00  
500-600 @ 150.00 to 165.00  
600-700 @ 145.00 to 176.00  
700-800 @ 130.00 to 148.00  
800-900 @ 115.00 to 132.00

**STOCKS COWS**

Bred Cows 800.00 to 1225.00  
Cow/Calf Pairs 875.00 to 1375.00

**SLAUGHTER BULLS**

High Yield 95.00 to 105.00  
Low Yield 70.00 to 90.00

**SLAUGHTER COWS**

Fleshy 68.00 to 80.00  
Med Flesh 67.00 to 76.00  
Thin Flesh 57.00 to 65.00  
X Thin Shelly 40.00 Down

**WEANED CATTLE TRADING STRONGER EVERY WEEK**

<b>SALE SCHEDULE:</b>	<b>NO SALES:</b>
Dec 3rd - Regular Sale	Dec 24th
Dec 10th - PRE-VAC	Dec 31st
Dec 17th - Regular Sale	<b>NEXT SAT SALE:</b>
Dec 20th - Cow & Bull Sale	Jan 7th

**MON-WED MARKET REPORT**

Listen to KJEL 103.7FM • Lebanon or KYOO 99FM • Bolivar

**VIEW OUR SALES AT [CATTLEUSA.COM](http://CATTLEUSA.COM)**

**CALL FOR TRUCKING OR ON-FARM VISIT**

**Lyle Caselman • Owner-Manager  
417-345-7876 • mobile 417-533-2944  
Leon Caselman • Owner  
417-345-4514 • mobile • 417-588-6185**

**Show-Me-Select Replacement Heifer Sale**

**Spring-Calving Bred Heifers**



**90 hd.**

**Friday, December 9, 2022 • 7:00 PM**  
**Farmington Regional Stockyards, LLC**  
1600 Woodlawn Drive, Farmington, MO

**90 Crossbred & Purebred Heifers Available**

- Black and black-baldies, two red white face
- Sorted into uniform lots and guaranteed bred
- Many AI BRED & selling with known FETAL SEX
- Some REGISTERED—Angus
- Due to calve from January to April 2022
- AI bred to INDUSTRY LEADING Angus bulls
- TIER II daughters out of high caliber AI Angus bulls

For information or catalog contact:  
Kendra Graham • 573-756-4539 • [grahamkk@missouri.edu](mailto:grahamkk@missouri.edu)  
Facebook: Show Me Select Bred Heifer Sale: Farmington

Offering online bidding through:  
**DVAuction**  
Broadcasting Real-Time Auctions

# BYLER SUPPLY

## *The Builder's Choice!*

*Thank You!*

*2022 has been a good year and we want to take the time to thank God and also you, our customers. Thank You for Your Business!*

**CALL TODAY FOR NEXT DAY SERVICE!**  
Call for Details



**CUT TO LENGTH PANELS  
GALVALUME METAL UNPAINTED  
25 YEAR WARRANTY  
#1 Standard Panels, 29 Ga.**

**HEAVY 29 Ga. METAL #1**  
Limited LIFETIME WARRANTY  
29 Ga. & 26 Ga. Painted

**\$72.98 sq.**

**Ask About Our Quick Service.**

**Over 20 Colors and Several Styles To Choose!**



**Reg. Pole Frame Buildings Are Heavy 29 Ga. Metal, Three 2"x6" T&G Splashboards, All Poles 5"x5" Or Larger, CCA Treated, Fully Trimmed With One 3'x6' Walk-Through Door & One Large Sliding Door.**

**CALL US FOR CURRENT PRICING**



**BYLER BUILDING SUPPLY, LLC**



2 1/2 Miles East of Seymour On 60, 1/4 Mile North at the Peewee Crossing/Star Road Intersection

**877-573-9314 • MON.-FRI. 7:30-5 SAT. 8-12 • 417-771-3104**

**VISIT US AT WWW.BYLERSUPPLY.COM**

**FIREARMS:** Professional Repair, Restorations and Appraisals. Baron's Gunsmithing. 573-363-5801. Camdenton.

**REGISTERED HEREFORD & ANGUS BULLS:** Home raised, Some Show-Me Select Qualified. 573-701-7828. Belgrade.

**POOL TABLES:** Installations, moves, recovers, repairs, accessories, etc. 573-646-1700.

**DARDEN PROFESSIONAL TIMBER HARVESTING, BUYING STANDING TIMBER:** Great prices, improve wildlife habitat and improve forest health. State Certified & Fully Insured! 573-247-4808. Salem.

**LIGHTLY EXPERIENCED GOLF BALLS:** \$3 a dozen. 417-818-3469. Strafford.

**SLIGHTLY USED PUZZLES:** Will sell or trade. 417-818-3469. Strafford.

**LIONEL TRAIN SET:** Steam engine, tender, caboose and other car, track, and transformer. \$195. 573-364-7465. Rolla.

**MODEL 1911 FRAME 8-SHT C02 PISTOL:** Like new, in box with C02 cartridges, 4 clips, pellets & all paperwork. \$95. 573-364-7465. Rolla.

**MADE IN TIMBER BOOK:** A settlement history of Fort Leonard Wood, Bloodland, Cookville, old towns, schools and cemeteries. \$12.50. 417-532-2045. Lebanon. (Leave message and phone number).

**1970s KIDS METAL STOVE & FRIDGE:** Nice Lithographic paint, 18" wide x 36" high. \$75. 573-364-7465. Rolla.

**3 GENTS WITTNAUER WRIST WATCHES:** 10k gold + 23J. All \$200. 573-764-3517. Call in P.M.

**HARLEY FAT BOBS:** Custom flame paint w/ gas caps + lines. \$100. 573-764-3517. Call in P.M.

**COLT REVOLVER DEALER CATALOGS:** Circa 1950's + 1960's. All for \$100. 573-764-3517. Call in P.M.

**110 PORCELAIN POCKET WATCH DIALS:** Perfect for arts & crafts. \$100. 573-764-3517. Call in P.M.

**MISSOURI OZARKS BOOKS:** Ozark Baptizings, Hangings & Other Diversions \$12.50. Walkin' Preacher of the Ozarks Guy Howard, \$12.50. Missouri Caves in History & Legend \$6.50. Weird Missouri \$10. Missouri Curiosities, Roadside

**Oddities, \$7.50, Roadside Geology of MO. \$6.50. Fishes of Missouri \$6.50. Butterflies and Moths of MO \$7.50. Bittersweet Book \$10. 417-532-2045. Lebanon. (Leave message and phone number).**

**1890 GOLD TESTING KIT:** Glass acid beakers + antique wooden case. \$100. 573-764-3517. Call in PM.

**OLD CREAM CAN:** Good condition, very heavy, no rust. \$50. 417-532-6561. Lebanon.

**FIREWOOD:** ¼ of a Cord (4x8), \$70. Sullivan Missouri. 573-468-4924.

**HANDICAP BENCH WALKER:** With storage. \$50. 417-532-6561. Lebanon.

**THE CIVIL WAR ILLUSTRATED HISTORY BOOK:** 425 pages, \$12.50. **MEMORIES OF AN OZARKS PIONEER & CIVIL WAR Soldier James Frances Coatney, Private Arkansas Union Calvary, Company D, \$6.50. 417-532-2045. Lebanon. (Leave message and phone number).**

**HARLEY 45 SOLO:** factory rear brake drum + sprocket. \$150. 573-764-3517. Call in PM.

*Now* IS THE TIME TO BUY



- 1** BIGGEST DISCOUNTS OF THE YEAR
- 2** 0% FINANCING AND \$0 DOWN
- 3** ONE FREE MAINTENANCE
- 4** FREE FLEXIBLE DELIVERY

**Our Best Wrap Pricing**  
ends December 31st

**PRE-ORDER & SAVE**



**HERITAGEGARD WINTER SERVICE SALE**

**Biggest Discounts of the Year!**



Exclusions Apply. See Dealer for Details. Offer ends 12-31-22.



**PUREBRED GOATS:** Males, Boers, Kikos. 660-598-4019. Appleton City.

**2 GOODYEAR WRANGLER TIRES:** Kevlar LT245/70R17, all terrain, \$100 for the pair. 417-457-1023. Raymondville.

**NOW BUYING STANDING TIMBER IN THE LAKE OF THE OZARKS AREA:** Free estimates. Littleton Storm & Timber Services. 217-836-4985.

**TWO REDBONE HOUNDS:** Love Coons, with my health not able to hunt them. 573-315-7574. Ironton.

each. 417-679-4131. Tunas.

**HIKING THE OZARKS BOOK: A Guide to the Area's Greatest Hiking Adventures.** \$6.75. 417-532-2045. Lebanon. (Leave message and phone number).

**WEATHERED BARN WOOD SIDING:** 10" wide. 573-729-7226. [www.pineridgerustic.com](http://www.pineridgerustic.com) Salem.

**WE HAVE MOBILE HOMES:** Instock new arrivals (8) homes, need to go as soon as possible! 573-499-9993. [columbiadiscountohomes.com](http://columbiadiscountohomes.com)

**USED MOBILE HOMES:** Call David at VILLA HOMES IN ROLLA 573-578-8072. Rolla.

**BUYING MOBILE HOMES:** Call David at VILLA HOMES IN ROLLA 573-578-8072. Rolla.

**NEW ID MANURE SPREADER: \$1,500.** 573-247-4280. Salem.

**MODEL 1911 FRAME 8-SHT C02 PISTOL:** Like new, in box with C02 cartridges, 4 clips, pellets & all paperwork. \$95. 573-364-7465. Rolla.

**YOUR TRUSTED SOURCE FOR QUALITY FEED FOR ALL YOUR LIVESTOCK AND PETS**

**Kropf Feeds**

**"DOING BUSINESS ON OUR WORD AND A HAND SHAKE"**  
 Located in the Heart of the Amish Mennonite Community!  
 417-345-8600 • 19 Prairie Lane, Buffalo

**HONDA PIONEER 1000: 2015 Model, with cab, winch, & raise up windshield.** \$9,000. 573-247-4280. Salem.

**FIRST GEAR KILIMANJARO MOTORCYCLE COAT:** XL, but runs smaller. Zip out liner, Kevlar padding on shoulders & elbows, vented, rainproof. Like new. \$95 FIRM. 417-457-1023. Raymondville.

**FOR SALE:** 2-Nova 8 Speakers \$200. Lincoln Welder \$300. New in box Size 12 Narcona Elephant Skin Boots \$400. Massey Ferguson 135 Perkins Engine Diesel \$3,000. Propane Tanks 5-gallon, some with gas. \$6/

**LOG SIDING:** 2X8 Pine/Western Cedar [www.pineridgerustic.com](http://www.pineridgerustic.com) 573-729-7226. Salem.

**MADE IN TIMBER BOOK: A settlement history of Fort Leonard Wood, Bloodland, Cookville, old towns, schools and cemeteries.** \$12.50. 417-532-2045. Lebanon. (Leave message and phone number).

**USED DOUBLE-WIDE:** \$34,900 WOW!!!! This won't last! 573-657-2176. [amegamobliehomes.com](http://amegamobliehomes.com)

**308 WINCHESTER 100: \$800.** 573-247-4280. Salem.

**NEW MOBILE HOME STOCK:** Just received (5) new units, they gotta go! 573-657-2176. [amegamobliehomes.com](http://amegamobliehomes.com)

**TRUE MODULARS:** 30 to 60 day delivery available, 3 and 4 bedroom 573-657-7040 [chateauhomes.net](http://chateauhomes.net)

**TINY HOMES:** We gottem 573-881-3283

**I BUY.....used mobile homes.** Call or text 573-338-6250 or email [GregS.CDH@outlook.com](mailto:GregS.CDH@outlook.com)

**SLIGHTLY USED PUZZLES:** Will sell or trade. 417-818-3469. Strafford.



**FIREARMS:** Professional Repair, Restorations and Appraisals. Baron's Gunsmithing. 573-363-5801. Camdenton.

**REGISTERED HEREFORD & ANGUS BULLS:** Home raised, Some Show-Me Select Qualified. 573-701-7828. Belgrade.

**POOL TABLES:** Installations, moves, recovers, repairs, accessories, etc. 573-646-1700.

**LIONEL TRAIN SET:** Steam engine, tender, caboose and other car, track, and transformer. \$195. 573-364-7465. Rolla.

**DARDEN PROFESSIONAL TIMBER HARVESTING, BUYING STANDING TIMBER:** Great prices, improve wildlife habitat and improve forest health. State Certified & Fully Insured! 573-247-4808. Salem.

**LIGHTLY EXPERIENCED GOLF BALLS:** \$3 a dozen. 417-818-3469. Stafford.

**RUBBER & LEATHER BOOTS AND 5-Buckle OVER SHOES:** Men's 11, Women's 7, some insulated. \$15-\$40 obo. 636-239-2695 or 314-560-5700. Washington.

**ESTATE SALE:** Ladies quality real mink fur coats, suits, dresses, power wheelchairs & ADA equipment. 573-699-4351. St. James.

**1970s KIDS METAL STOVE & FRIDGE:** Nice Lithographic paint, 18" wide x 36" high. \$75. 573-364-7465. Rolla.

**I AM LOOKING FOR LAND TO RENT TO GROW WHEAT:** I can pay a good rate per acre for land that is fairly level, decent soil and in a 30 mile radius of Marshfield. I am looking for 80-500 acres. 417-741-2288. Marshfield.

**Starnes Auto LLC**  
 22115 Rt. 66 • Lebanon, MO 65536  
 417.718.2707 Cell  
 417.588.3159 Office  
 www.starnesauto.com

**2004 CHEVY AVALANCHE MAROON, VIN#7743,**  
 302,XXX MILES ..... \$6,950

**2004 FORD SPORT TRAC SILVER, VIN#0901,**  
 277,XXX MILES ..... \$4,200

**2004 GMC SIERRA Z71 EXT CAB BLACK, VIN#8387,**  
 264,XXX MILES ..... \$5,750

**2006 CHEVY SILVERADO 40 4WD RED, VIN#2463,**  
 201,XXX MILES ..... \$6,200

**2007 CHEVY SILVERADO EXT CAB 4WD BLACK, VIN#0289,**  
 157,XXX MILES ..... \$10,500

**2011 BUICK REGAL CXL BLUE, VIN#5614,**  
 86,XXX MILES ..... \$8,500

**2011 CHEVY SILVERADO 40 WD WHITE, VIN#9434,**  
 239,XXX MILES ..... \$9,000

**2012 CHEVY SILVERADO EXT CAB 4WD WHITE, VIN#2799,**  
 80,XXX MILES ..... \$16,500

**2012 CHEVY EQUINOX LS FWD SILVER, VIN#0419,**  
 185,XXX MILES ..... \$5,200

**2014 CADILLAC SRX WHITE, VIN#2098,**  
 105,XXX MILES ..... \$12,800

**2014 CHEVY EQUINOX LT BLUE, VIN#1306,**  
 89,XXX MILES ..... \$10,650

**NO FINANCING**

**2018 CHEVY EQUINOX DIESEL SILVER, VIN#3801,**  
 111,XXX MILES ..... \$18,500

**WE DO ALIGNMENTS!**

**OFFICIAL TRACTOR OF TOUGH™**

**INTRODUCING THE ALL-NEW 5100 SERIES**



**Marshfield Machinery Inc.**  
 222 E. Madison • Marshfield, MO 65706  
 417-859-2117 • www.marshfieldmachinery.com

\*2018 data including all Mahindra group brand sales. MahindraUSA.com © 2020 Mahindra USA Inc.

**Mahindra Rise.**

**NEW MAHINDRA TRACTORS**

1626 4WD & LDR 26HP IN STOCK

2638 4WD & LDR 38HP IN STOCK

4540 4WD & LDR 41HP IN STOCK

4550 4WD & LDR 48 HP IN STOCK

**USED TRACTORS**

MF 4609 90 HP 4WD LDR 45,000

MAHINDRA 2638 38HP 4WD LDR 24,000

MAHINDRA 1635 35HP 4WD LDR 19,500

AC 7010 106 HP CAB 9,500

MF 135 36 HP 2,750

**USED ROUND BALERS**

MF 2946A 4X6 MESH 20,000

MF 1745 4X5 16,500

MF 1745 4X5 10,000

NH RB780A 5X6 MESH 7,500

HESSTON 560 5X6 2,000

NH 850 5X5 1,500

**USED MISC.**

TRUAX 6FT NOTIL DRILL 3PT 10,000

SITREX 8 WHEEL RAKE 1,750

M&W 8 WHEEL RAKE 1,750

LELY 8 WHEEL RAKE 1,750

**Marshfield Machinery Inc.**  
 222 E. Madison  
 Marshfield, MO 65706  
 417-859-2117  
 www.marshfieldmachinery.com



# Holiday Deadlines

## DECEMBER 29TH ISSUE:

Display Advertising Deadline: Wednesday, December 21 at Noon  
Classifieds Deadline: Wednesday, December 21 at 4PM

## JANUARY 5TH ISSUE:

Display Advertising Deadline: Wednesday, December 28 at Noon  
Classifieds Deadline: Wednesday, December 28 at 4PM

**NO EARLY DEADLINE FOR DECEMBER 22ND!**

*Merry Christmas  
& Happy New Year!*

**T** WEEKLY  
**TRADER**  
MAGAZINE

417-532-9131 • 800-665-8875 • 100 E. Commercial, Lebanon, MO

[WWW.MYWEEKLYTRADER.COM](http://WWW.MYWEEKLYTRADER.COM)

# Economy Buildings in Stock Now!!

Custom Built, Meeting Your Storage Needs

Come check out our double wides!! Sizes 32'x52' available

Come Visit Us Near You!

For Display Locations in Waynesville, Sunrise Beach, & Camdenton, Call 573-346-3030

## BENNETT SPRINGS BUILDING CENTER

2519 Hwy 65 • Louisburg, MO • Buy or Rent to Own Storage Buildings • 417-532-8338

**1500 VINTAGE WRISTWATCH DIALS:** \$100. 573-764-3517. Call in PM.

**HEARTH CRAFT GLASS BI-FOLD FIREPLACE DOORS PURCHASED AT FORSHAW'S FIREPLACE:** Antique brass. \$160 obo. 636-239-2695 or 314-560-5700. Washington.

**THE CIVIL WAR ILLUSTRATED HISTORY BOOK:** 425 pages, \$12.50. **MEMORIES OF AN OZARKS PIONEER & CIVIL WAR Soldier James Frances Coatney, Private Arkansas Union Calvary, Company D,** \$6.50. 417-532-2045. Lebanon. (Leave message and phone number).

**EARN \$60,000/YEAR PART-TIME:** In the livestock or farm equipment appraisal business. Agricultural background required. Home study course available. 800-488-7570 or www.amagappraisers.com

**HARLEY FAT BOBS:** Custom flame paint w/ gas caps + lines. \$100. 573-764-3517. Call in P.M.

**DRAPES AND CURTAIN RODS:** Off-white, various sizes, \$15 for all obo. 636-239-2695 or 314-560-5700. Washington.

**HARLEY 45 SOLO:** factory rear brake drum + sprocket. \$150. 573-764-3517. Call in PM.

**HARLEY PANHEAD DISTRIBUTOR:** original, chrome + complete. \$125. 573-764-3517. Call in PM.

**COLT REVOLVER DEALER CATALOGS:** Circa 1950's + 1960's. All for \$100. 573-764-3517. Call in P.M.

**MISSOURI OZARKS BOOKS:** Ozark Baptizings, Hangings & Other Diversions \$12.50. Walkin' Preacher of the Ozarks Guy Howard, \$12.50. Missouri Caves in History & Legend \$6.50. Weird Missouri \$10. Missouri Curiosities, Roadside Oddities, \$7.50, Roadside Geology of MO. \$6.50. Fishes of Missouri \$6.50. Butterflies and Moths of MO \$7.50. Bittersweet Book \$10. 417-532-2045. Lebanon. (Leave message and phone number).

**1890 GOLD TESTING KIT:** Glass acid beakers + antique wooden case. \$100. 573-764-3517. Call in PM.

**ANTIQUE POND SLIP:** \$50 OBO. 417-362-0073. Willow Springs.

**3 GENTS WITNAUER WRIST WATCHES:** 10k gold + 23J. All \$200. 573-764-3517. Call in P.M.

**HANDICAP BENCH WALKER:** With storage. \$50. 417-532-6561. Lebanon.



Call to Order  
417-993-3017

## Meadowview Dutch Market

Sale Dates November 30<sup>th</sup> 2022 to December 6<sup>th</sup>, 2022 while supplies last!

### DELI SPECIAL

Bulk & Surplus Groceries • Prices Subject to Stock on Hand

**SMOKED CHEDDAR CHEESE** ..... REG. \$5.99 ..... SALE \$5.49  
**LEBANON BOLOGNA** ..... REG. \$6.99 ..... SALE \$6.49

TRY our Fresh Homemade DELI Sandwiches: TURKEY, HAM, ROAST BEEF, ITALIAN, BLT'S, PULLED PORK AND BLT PULLED PORK (MADE YOUR WAY!)  
 COME IN OR CALL to order! ALSO Custom Deli trays! Veggie OR FRESH Meat-N-Cheese!



### COLBY-JACK CHEESE

\$2.25 LB.



Breaded  
**Chicken Gizzards**  
\$1.25 LB.



**Chicken Thighs**  
89¢ LB.



50 lb Russet  
**Potatoes**  
\$18.99 EA.



Shrimp  
**Egg Rolls**  
\$3.49 LB.



Boneless  
**Pork Loin**  
\$1.89 LB.



**Cheddar Wurst**  
\$1.29 LB.



**Habanero Cheddar Cheese**  
\$1.29 LB.



**Jumbo Franks**  
\$1.25 15 OZ.



MEAT & CHEESE



VEGGIES & DIP

NEED HELP WITH YOUR NEXT GATHERING? WE CAN HELP MAKE A PARTY TRAY

FRUIT & DIP

MIX IT UP

MEADOWVIEW DUTCH MARKET  
417-993-3017 Hours: Mon-Thurs 8-5pm  
Fri 8-6pm • Sat 8-5pm  
23 Miles West on Hwy 64 • Right on T Hwy  
9 miles • Left on E Hwy 1 mile on Left

NOW ACCEPTING CREDIT, DEBIT CARDS & EBT

DUTCH COUNTRY STORE, LLC  
573-378-4395  
Hours: Mon-Thurs 8-5pm  
Fri 8-6pm • Sat 8-5pm  
5 miles East of Versailles off Hwy C on Kelsay Road

# WEEKLY TRADER MAGAZINE

# YOUR AD GOES HERE!

Add **YELLOW** Color For An Additional **\$3** Per Reader Ad

All ads will include Phone Number (unless requested to be deleted by advertiser) and City Or Town, Phone Number with Area Code counts as one word. City or Town counts as one word.

**RATE: 80¢ Per Word. All Classified Ads Require Payment Before Print.**

(1) 80¢	(2) \$1.60	(3) \$2.40	(4) \$3.20
(5) \$4.00	(6) \$4.80	(7) \$5.60	(8) \$6.40
(9) \$7.20	(10) \$8.00	(11) \$8.80	(12) \$9.60
(13) \$10.40	(14) \$11.20	(15) \$12.00	(16) \$12.80
(17) \$13.60	(18) \$14.40	(19) \$15.20	(20) \$16.00
(21) \$16.80	(22) \$17.60	(23) \$18.40	(24) \$19.20
(25) \$20.00	(26) \$20.80	(27) \$21.60	(28) \$22.40
(29) \$23.20	(30) \$24.00	(31) \$24.80	(32) \$25.60
(33) \$26.40	(34) \$27.20	(35) \$28.00	(36) \$28.80
(37) \$29.60	(38) \$30.40	(39) \$31.20	(40) \$32.00

## Place your Classified Ad TODAY!

### 417-532-9131 • 800-665-8875

### Fax: 417-532-8140

### Or Mail To: P.O. Box 192 • Lebanon, MO 65536

For your convenience we accept MasterCard, Visa, Discover or American Express



**DEADLINE FOR CLASSIFIED ADS: FRIDAY 4:00PM!**

Name \_\_\_\_\_

Address \_\_\_\_\_

City \_\_\_\_\_ Email \_\_\_\_\_

State \_\_\_\_\_ Zip Code \_\_\_\_\_ Phone \_\_\_\_\_

Ad Total \$ \_\_\_\_\_ X # Weeks \_\_\_\_\_ = Amount Enclosed \$ \_\_\_\_\_

**1962 HARLEY SPORTSTER 900CC:** original distributor. \$50. 573-764-3517. Call in PM.

**1986 CORVETTE PROJECT CAR:** Needs trailer. \$1,500 OBO. 573-435-6987. Edgar Springs.

**SHIHPOO PUPPIES:** Wormed, vaccinated, family raised. 845-702-4864. Fordland.

**KITCHEN FAUCET MOEN:** Single lever, sprayer, new cartridge. \$45 obo. 636-239-2695 or 314-560-5700. Washington.

**ALLIS CHALMERS WD-45 TRACTOR:** Wide front end, 7' blade, 3pt. hitch, PTO \$1,200. 210-787-8222. Linn Creek.

**MATHEWS SOLO CAM COMPOUND BOW:** With Case. \$175. 573-247-4280. Salem.

**YOUR FULL SERVICE AUTO BODY SHOP**

**We do everything from insurance jobs to full restorations!**

**DAVIDSON'S**

*Call to schedule an appointment for estimates*

**CUSTOM AUTO BODY 417-288-1589 • 115 Lincoln St., Buffalo, MO • f @DavidsonCustoms**

**110 PORCELAIN POCKET WATCH DIALS:** Perfect for arts & crafts. \$100. 573-764-3517. Call in PM.

**AIREDALE PUPPIES FOR SALE:** Good family & farm dogs. Full blooded. \$250. 573-205-3735. Sullivan.

**FORD TRACTOR 802:** Live power, 3 Point 7 Foot Blade. \$2,000. 417-543-1595. Ava.

**5 GAL. PLASTIC BUCKETS:** with lids. \$3 each. 636-239-2695 or 314-560-5700. Washington.

**VINTAGE RECORDS:** In mint condition, Elvis records with no barcode, lots of records. \$20 each. 573-259-9448.

**2 GOODYEAR WRANGLER TIRES:** Kevlar LT245/70R17, all terrain, \$100 for the pair. 417-457-1023. Raymondville.

**END OF YEAR BLOW OUT SALE ON IN STOCK TRACTORS**

**DOWN 1.99% APR FOR UP TO 84 MONTHS W.A.C. ON ALL IN STOCK BAD BOY TRACTORS**

**BAD BOY MOWERS**

**Package Deals Available, Call for Details**

**Rebates up to \$300 per on Bad Boy Implements with tractor purchase**

**IN STOCK BLOW OUT**

**BB 2024 w/ Loader**

**IN STOCK BLOW OUT**

**BB 3026 w/ Loader**

**IN STOCK BLOW OUT**

**BB 4025 w/ Loader**

**IN STOCK BLOW OUT**

**BB 4035 w/ Loader**

**IN STOCK BLOW OUT**

**BB4035 w/ Backhoe & Loader**

**IN STOCK BLOW OUT**

**BB 4035 w/ Cab & Loader**

**Implements & Attachments in stock!**

**STAHLMAN POWERSPORTS**

1387 S. BISHOP AVE., ROLLA, MO  
800-813-6944  
[WWW.STAHLMANPOWERSPORTS.COM](http://WWW.STAHLMANPOWERSPORTS.COM)

**Take advantage of Year End Farm Depreciation**

**END OF YEAR BLOW OUT SALE ON IN STOCK TRACTORS**

**AKC REGISTERED AUSTRALIAN SHEPHERD PUPPIES:** Black & Red Tri Males. All vaccinations updated. Dewormed. \$500 Each. 630-687-0705. Falcon.

**FIRST GEAR KILIMANJARO MOTORCYCLE COAT:** XL, but runs smaller. Zip out liner, Kevlar padding on shoulders & elbows, vented, rainproof. Like new. \$95 FIRM. 417-457-1023. Raymondville.

**POMAPOO & SHIHPOO:** UTD on vaccines & preventatives. Ready for their new homes. 417-664-1961. Lebanon.

**2 ALLEN ANTIQUE COMPOUND BOWS:** With case. \$50 each. 573-247-4280. Salem.

## OMAR'S DOZING

- ⇒ Clear land
- ⇒ Clean up woods
- ⇒ Make driveways
- ⇒ Clear property lines
- ⇒ Build ponds

*Amish Owned & Operated*

**LEAVE MESSAGE: 417-741-0440**  
Hartville & Surrounding Areas

**PUREBRED GOATS:** Males, Boers, Kikos. 660-598-4019. Appleton City.

**MOTORCYCLE:** Men's & Women's boots, leather chaps & jackets. \$100. 573-259-9448.

## PLAD PANTRY

**DISCOUNT & SURPLUS FOODS FRESH PRODUCE LLC**  
**417-532-4700**

Organic Half & Half .....	<b>\$1.29</b> 1 qt.
Sea Salt Caramels .....	<b>\$0.69</b> 6 oz.
Uncooked Spicy Chicken Patties .....	<b>\$10.99</b> 6.61 lb.
Irregular Sliced Beef Pastrami.....	<b>\$2.29</b> lb.
Hickory Smoked Summer Sausage .....	<b>\$3.99</b> 1.5 lb.

1571 State Hwy 64 • Tunas, MO 65764  
Hours: 8:30 a.m. to 5:30 p.m. • Closed Wed. & Sun.

# KEEPING YOU SAFE ON THE ROAD

*with brands like:*



**NEXEN TIRE**



**YOKOHAMA**

## ATTEBERRY MFA TIRE & AUTO CENTER

**333 E. BROADWAY • BOLIVAR, MO**  
**DUANE ATTEBERRY • 417-326-6286**



**OLD CREAM CAN:** Good condition, very heavy, no rust. \$50. 417-532-6561. Lebanon.

**BARNETT RAPTOR CROSSBOW:** \$125. 573-247-4280. Salem.

## Buildings • Hunter's Cabins • Lawn Furniture



### JAMCO Portable Buildings

800-688-2064 • 307 Enterprise Dr. • Seymour, MO • [www.jamcobuilders.com](http://www.jamcobuilders.com)

**Rent To Own Plan**

**FIREWOOD:** ¼ of a Cord (4x8), \$70. Sullivan Missouri. 573-468-4924.

**NOW BUYING STANDING TIMBER IN THE LAKE OF THE OZARKS AREA:** Free estimates. Littleton Storm & Timber Services. 217-836-4985.

**HORTON CROSSBOW:** \$125. 573-247-4280. Salem.

## SHOP LOCAL FOR YOUR WINTER PANTRY STAPLES!





**Our Orchard COUNTRY STORE**  
Bulk and Natural Foods

**Canning Supplies, Deli Meat/Cheeses, Jams/Jellies, Candies/Chocolates, Fruits/Veggies**

**3294 St. Hwy. 73 • Buffalo, MO**  
**417-345-5100 • [f](https://www.facebook.com/OurOrchardCountryStore) @OurOrchardCountryStore**

# Land

For Sale

Hickory Co., Mo • 106 Acres +/-



## \$549,000

- New 1200 s/f under roof. 2000 s/f home build, 2 bed 1 bath, huge open space
- All home furnishings, deer stands, john boat and motor, Kayak and Playground set convey in sale
- Great hunting and huge views of hillsides and river bottom
- Private road
- Property is next to Mule Shoe Conservation area Conservation area for more enjoyment



### WHITETAIL PROPERTIES REAL ESTATE

HUNTING | RANCH | FARM | TIMBER

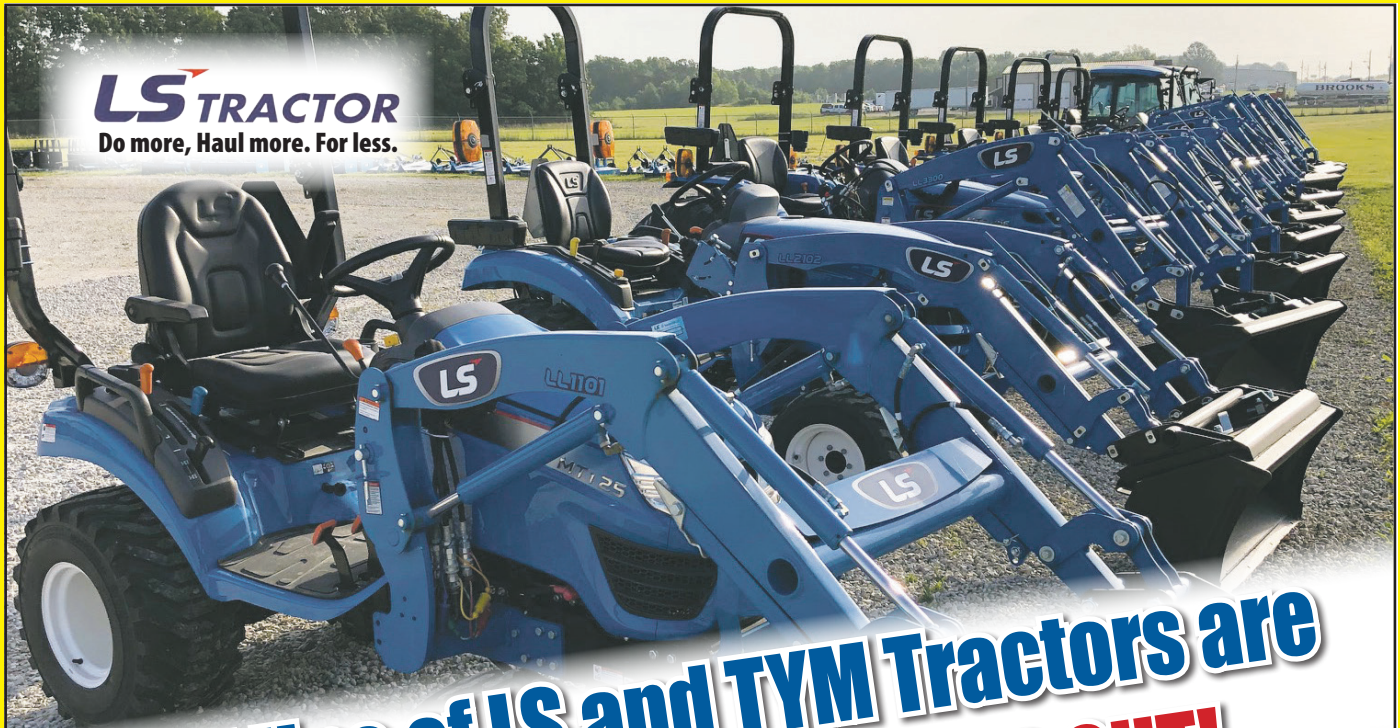
**Brian Utecht | 417-766-5595**

[Brian.Utecht@whitetailproperties.com](mailto:Brian.Utecht@whitetailproperties.com)

[WHITETAILPROPERTIES.COM](http://WHITETAILPROPERTIES.COM)

Missouri's Top Land Specialist in 2014, 2015, 2016, 2017, 2018, 2019, 2020 and 2021

**LS TRACTOR**  
 Do more. Haul more. For less.



**A full line of LS and TYM Tractors are  
 in stock now! DON'T MISS OUT!**



**WCT FARM & LAWN, NEW OWNERS, SAME GREAT STAFF!**

**WCT Farm & Lawn**

**417-859-4311**

**SALES • SERVICE • PARTS**

**3299 E. EVERGREEN ROAD**

**STRAFFORD, MO**

