

FREE - TAKE ONE!

Vol. 29 No. 31

OCTOBER 27, 2022

800-543-8271 • 800-665-8875

WEEKLY **TRADER** MAGAZINE



Find us on
Facebook

@myweeklytrader
AUCTIONS PG. 10

VISIT OUR NEW WEBSITE! MYWEEKLYTRADER.COM

**You pull it,
we sell it...**

CHEAP!



Lebanon, MO

22395 Rt. 66

417-588-3555

Fax 417-588-8955



U★PULL★IT

SELF-SERVICE AUTO PARTS

We also have a large inventory
of used tires and be sure to check
out our used car lot!

Mon.-Fri. 8:00am-6:00pm • Sat. 8:00am-4:30pm

WWW.SSUPULLIT.COM

Located next to S&S Recycling.



For All Your Metal Recycling Needs

Lebanon, MO

22395 Rt. 66

417-588-3555

Fax 417-588-8955

Mtn. Grove, MO

8930 First Rd

417-926-3360

Fax 417-926-0180

**Roll-off, Trailer, and
Mobile Crushing
Services Available**

Monday-Friday 8:00am-4:30pm (Closed 12pm-1pm Lunch)
Saturday 8:00am-Noon

email: contact@ss-recycling.com

Buyer of all types of scrap metal.

Built heavy duty, to make light work of any job.



Call today to schedule a demo on the L Series compact tractor. Part of our tractor lineup rated #1 for durability and owner experience in the U.S.*

- A range of affordable and premium models to choose from
- Performance-matched Kubota front loader
- Kubota diesel engine
- Gear or HST transmission

Together we do more.®



L2501DT PACKAGE
\$22,495

Quarles Supply

3251 S Springfield Ave
Bolivar, MO 65613
417-777-2391

KubotaUSA.com

*Award based on 2021 Progressive Farmer Reader Insights Tractor Study.

© Kubota Tractor Corporation, 2022. This material is for descriptive purposes only. Kubota disclaims all representations and warranties, express or implied, or any liability from the use of this material. For complete warranty, safety, incentive offer and product information, consult your local dealer or go to KubotaUSA.com.

Progressive
FARMER
READER INSIGHTS



DH15 SERIES

DISC HARROWS
65 HP Max: 60", 72", 90"

- Adjustable gang angles
- Notched or smooth disc blades
- Heavy-duty frame and heat-treated disc blades
- Ideal for landscapers and small acreage farmers

Getting Chores Done
LAND PRIDE
does that.



www.landpride.com

For Outstanding Products & Service
AGRI-ENTERPRISES
 1-1/2 Miles South Of Licking, MO On Hwy 63
 573-674-2203 • 1-800-653-7152 • www.agri-enterprises.com

INTERNATIONAL HARVESTER TRUCKS BOOK: The Complete History. Hardback, large book, 208 pages. \$12.50. 417-532-2045. Lebanon. (Leave message and phone number).

SLIGHTLY USED PUZZLES: Will sell or trade. 417-818-3469. Strafford.

WEATHERED BARN WOOD SIDING: 10" wide. 573-729-7226. www.pineridgerustic.com Salem.

2022 RAM PICKUP: 4x4, Full navigation, 360 camera, driver assist, crew cab, only 6,000 miles. NO SUNDAY CALLS. 417-733-2068. Buffalo.

LOG SIDING: 2X8 Pine/Western Cedar www.pineridgerustic.com 573-729-7226. Salem.

USED MOBILE HOMES: Call David at VILLA HOMES IN ROLLA 573-578-8072. Rolla.

BUYING MOBILE HOMES: Call David at VILLA HOMES IN ROLLA 573-578-8072. Rolla.


AUSTRALIAN SHEPHERD PUPPIES FOR SALE: Some natural bobtail, some not. Grey Merles & Black & White. 573-760-5157.

NEW MOBILE HOME STOCK: Just received (5) new units, they gotta go! 573-657-2176. amegamobliehomes.com


USED DOUBLE-WIDE: \$34,900 WOW!!!! This won't last! 573-657-2176. amegamobliehomes.com

WE HAVE MOBILE HOMES: Instock new arrivals (8) homes, need to go as soon as possible! 573-499-9993. columbiadiscountohomes.com

TRUE MODULARS: 30 to 60 day delivery available, 3 and 4 bedroom 573-657-7040 chateauhomes.net







VOTED #1 BEST Preowned Car Dealership



TIM'S USED CARS

(573) 341-3828 • 1334 South Bishop (Hwy. 63) • Rolla, MO
Next to Hwy CC • www.tims-used-cars.com

| | |
|---|--|
|  <p>2015 CHEVY 1500 LT Double cab, 4x4, V-6 auto, power equipped 141,xxx Miles Only \$20,900</p> |  <p>2015 FORD F250 SUPER DUTY XL Crew cab, 4x4, utility, power equipped, 6.2 V-8, 122,xxx Miles Only \$26,800</p> |
|  <p>2015 FORD F250 XL Reg cab, 4x4, 6.2 V-8, 101,xxx Miles Only \$25,900</p> |  <p>2014 DODGE DURANGO SXT AWD, power equipped, 7 passenger, 122,xxx Miles Only \$15,800</p> |

LARGE SELECTION OF CARS, TRUCKS, SUVs & VANS!

TINY HOMES: We gottem 573-881-3283

I BUY.....used mobile homes. Call or text 573-338-6250 or email GregS.CDH@outlook.com

HIKING THE OZARKS BOOK: A Guide to the Area's Greatest Hiking Adventures. \$6.75. 417-532-2045. Lebanon. (Leave message and phone number).

RUBBER & LEATHER BOOTS AND 5-Buckle OVER SHOES: Men's 11, Women's 7, some insulated. \$15-\$40 obo. 636-239-2695. Washington.

ATTENTION DOG BREEDERS, LIQUIDATING MY BUSINESS: Three portable buildings 10x20, stack cages, coated wire, water containers, water bottles & bowls, feeders, generator, power washers, snowplow, & too much more to mention. 417-429-6715. Sparta.

FIREARMS: Professional Repair, Restorations and Appraisals. Baron's Gunsmithing. 573-363-5801. Camdenton.

REGISTERED HEREFORD & ANGUS BULLS: Home raised, Some Show-Me Select Qualified. 573-701-7828. Belgrade.

CATALOGS: Circa 1950's + 1960's. All for \$100. 573-764-3517. Call in P.M.

110 PORCELAIN POCKET WATCH DIALS: Perfect for arts & crafts. \$100. 573-764-3517. Call in PM.

1890 GOLD TESTING KIT: Glass acid beakers + antique wooden case. \$100. 573-764-3517. Call in PM.

2007 INTERNATIONAL NAVISTAR BOXTRUCK: with lift gate, 8x8x16 box size, 20K miles. \$40,000 OBO excellent condition like new. 602-400-1080.

Starnes Auto LLC
 22115 Rt. 66 • Lebanon, MO 65536
 417.718.2707 Cell
 417.588.3159 Office
www.starnesauto.com

| | |
|---|----------|
| 2001 FORD RANGER SILVER, VIN#5678, 159,XXX MILES | \$3,500 |
| 2004 CHEVY AVALANCHE MAROON, VIN#7743, 302,XXX MILES | \$6,950 |
| 2005 BUICK LACROSSE GRAY, VIN#5030, 243,XXX MILES | \$1,850 |
| 2008 NISSAN ALTIMA GRAY, VIN#7638, 144,XXX MILES | \$6,450 |
| 2010 CHEVY EQUINOX FWD 2LT BROWN, VIN#1557, 116,XXX MILES | \$5,850 |
| 2011 CHEVY MALIBU BROWN, VIN#8456, 166,XXX MILES | \$4,750 |
| 2012 CADILLAC SRX AWD WHITE, VIN#0275, 156,XXX MILES | \$7,450 |
| 2013 GMC TERRAIN SLT BLUE, VIN#7194, 207,XXX MILES | \$4,250 |
| 2014 CHEVY EQUINOX LT BLUE, VIN#1306, 89,XXX MILES..... | \$10,650 |
| 2016 CHEVY EQUINOX FWD LS BLACK, VIN#7634, 130,XXX MILES | \$8,450 |
| NO FINANCING | |
| 2018 CHEVY EQUINOX DIESEL SILVER, VIN#3801, 111,XXX MILES | \$18,500 |
| 2020 CHEVY EQUINOX AWD WHITE, VIN#6046, 39,XXX MILES..... | \$21,500 |

MULTI - FAMILY YARD SALE
 November 5th Starting at 7am
 Laclede County Shrine Building
 204 N. Madison Ave Lebanon, Mo 65536
Antiques & Lots of Miscellaneous
WE DO ALIGNMENTS!

SHOP LOCAL FOR YOUR FALL PANTRY STAPLES!

Our Orchard COUNTRY STORE
 Bulk and Natural Foods

Canning Supplies, Deli Meat/Cheeses, Jams/Jellies, Candies/Chocolates, Fruits/Veggies
 3294 St. Hwy. 73 • Buffalo, MO
 417-345-5100 • [f @OurOrchardCountryStore](https://www.facebook.com/OurOrchardCountryStore)

LIGHTLY EXPERIENCED GOLF BALLS: \$3 a dozen. 417-818-3469. Strafford.

LIONEL TRAIN SET: Steam engine, tender, caboose and other car, track, and transformer. \$195. 573-364-7465. Rolla.

EARLY 1900's CAMEL BACK STEAMER TRUNK: Oak, 5 strap, solid, nice condition. \$95. 573-364-7465. Rolla.

1970s KIDS METAL STOVE & FRIDGE: Nice Lithographic paint, 18" wide x 36" high. \$75. 573-364-7465. Rolla.

3 GENTS WITTNAUER WRIST WATCHES: 10k gold + 23J. All \$200. 573-764-3517. Call in P.M.

HARLEY FAT BOBS: Custom flame paint w/ gas caps + lines. \$100. 573-764-3517. Call in P.M.

COLT REVOLVER DEALER

1500 VINTAGE WRISTWATCH DIALS: \$100. 573-764-3517. Call in PM.

HARLEY 45 SOLO: factory rear brake drum + sprocket. \$150. 573-764-3517. Call in PM.

HARLEY PANHEAD DISTRIBUTOR: original, chrome + complete. \$125. 573-764-3517. Call in PM.

1962 HARLEY SPORTSTER 900CC: original distributor. \$50. 573-764-3517. Call in PM.

MADE IN TIMBER BOOK: A settlement history of Fort Leonard Wood, Bloodland, Cookville, old towns, schools and cemeteries. \$12.50. 417-532-2045. Lebanon. (Leave message and phone number).

DRAPES AND CURTAIN RODS: Off-white, various sizes, \$15 for all obo. 636-239-2695. Washington.

THE 189 ACRE SECLUDED FARM YOU'VE BEEN WAITING FOR!

23251 INDIAN SPRINGS RD
CALIFORNIA, MO 65018

\$999,000

You'll be amazed at your surroundings as you drive the 1 ½ miles of county-maintained road to 23251 Indian Springs Rd, California, Mo 65018. Woods, crop ground, lake, deer, and turkey are just some of the features and creatures you may encounter on your personal tour of this unbelievable farm! The Moniteau Creek borders the property on two sides and a 2 ½ acre stocked farm pond, with 16 x 24 boat dock that awaits your enjoyment!

This 1 ½ story farmhouse features, 3 bedrooms, 2 baths w/over 3,000 finished sq ft. Newer Central air/heat on main level and attached spacious 2-tiered deck. The farm includes a detached 4 bay garage with an abundance of farm outbuildings, waterers, and corral, all within easy walking distance of the house.

READ ON FOR VERY EXCITING NEW INFORMATION ABOUT THIS PROPERTY!

We are happy to announce the recently surveyed acreage is 189 acres! We have just completed A SUBSTANCIAL REMODELING OF THE MAIN LEVEL!!! Main level improvements include: Master Bath-wallpaper removed (known as wpr here after), New paint on ceiling and walls, w/twin closets & towel closet painted. Master Bedroom: wpr, New paint on all walls and walk-in closet, New Carpet. Office: wpr, New Paint on Walls, New Carpet. Foyer: New Paint On Walls, Ceiling repaired & New Paint, Parquet Flooring Refinished. Kitchen: wpr, this room is paneled on lower portion (called wainscoting?), New Paint on upper walls. 2nd Bathroom: wpr, also paneled on lower portion, upper portion has New Paint.



FOR SALE BY OWNER: Parents of owner have lived on this property for 18+ years. Contact BEN DUGAN, father of the owner, for information and showings at 573-301-0085, or duganb1d@gmail.com More information available at Zillow.com.

HEARTH CRAFT GLASS BI-FOLD FIREPLACE DOORS PURCHASED AT FORSHAW'S FIREPLACE:

Antique brass. \$160 obo. 636-239-2695. Washington.

KITCHEN FAUCET MOEN: Single lever, sprayer, new cartridge. \$45 obo. 636-239-2695. Washington.

RADIATOR FOR 55 DODGE PICKUP: \$50. 573-734-2822. Bismark.

ELECTRIC WELDER: \$150 or trade. 573-734-2822. Bismark.

ALFALFA HAY FOR SALE: Big round silage bales. 417-343-4958. Seymore.

PICKUP BED TRAILER FRAME: \$185 OBO 417-668-7793 Land Line Do NOT Text. Competition.

WANTED OLD CHEVY WRECKER OR ROLLBACK: Or older car to restore. 573-734-2822. Bismark.

AUSTRALIAN SHEPHERD PUPPIES: UTD on shots, tails & dewclaws done, Tris & Merles. Trade or sell. 417-967-6493. Roby.

MILLARD'S AUTO REPAIR IS NOW OPEN IN MOUNTAIN VIEW, MO: at 413 Elm Street. We specialize in transmission repair. Our hours are Monday-Friday 7a.m. to 5p.m. Closed Saturday & Sunday. Please call 417-287-0641.

HARLEY PARTS, HELMETS, LEATHER VEST, CHAPS & COATS: Wholesale prices. Biker wear wholesale to the public 719 W. Commercial Springfield, MO.

1986 CORVETTE PROJECT CAR: Needs trailer. \$15 OBO. 573-435-6987. Edgar Springs.

END OF YEAR BLOW OUT SALE ON IN STOCK TRACTORS

0%

FOR UP TO 60mo W.A.C. OR FREE FRONT END LOADER WITH PURCHASE OF ANY IN STOCK BOBCAT TRACTOR

Package Deals Available, Call for Details

Take advantage of Year End Farm Depreciation



COMBO PACKAGE AVAILABLE

Ask about our 6yr 2000hr. Powertrain Warranty

Implements & Attachments in stock!



CT 1021 HST w/ Front Loader



CT 1025 HST w/ Front Loader



CT 2025 HST w/ FRONT LOADER



CT 2035 HST w/ FRONT LOADER



Bobcat OF ROLLA



1387 S. BISHOP AVE., ROLLA, MO
800-813-6944
WWW.STAHLMANPOWERSPORTS.COM

END OF YEAR BLOW OUT SALE ON IN STOCK TRACTORS

DARDEN PROFESSIONAL TIMBER HARVESTING, BUYING STANDING TIMBER: Great prices, improve wildlife habitat and improve forest health. State Certified & Fully Insured! 573-247-4808. Salem.

5 GAL. PLASTIC BUCKETS: with lids. \$3 each. 636-239-2695. Washington.

I AM LOOKING FOR LAND TO RENT TO GROW WHEAT: I can pay a good rate per acre for land that is fairly level, decent soil and in a 30 mile radius of Marshfield. I am looking for 80-500 acres. 417-741-2288. Marshfield.

ENGLISH SHEPHERD PUPPIES FOR SALE: Some bobtail, some not. 573-760-5157.

DEER FEEDERS: Boss Buck \$100. Redneck \$50. 618-806-8788. Lebanon.

SELLING OFF 750 HONDA COLLECTION: 10-1979 Anniversary, 5-1980-81 CB Custom Bikes. If interested call for an appointment. All very nice bikes with clean titles. These are investment bikes. **WILL NOT RESPOND TO TEXTS;** use phone or don't waste my time or yours. Andy 636-228-4204 or 636-359-6189. Marthasville.

FARMALL 560 DIESEL TURBO: Needs motor work, fast hitch, 75% rear rubber duals. \$6,500. Great Bend QT Loader to fit 560 5FT Bucket Bale Spike \$2,850. 573-765-3874 Leave Message. Richland.

CLEAN MATTRESS BOX SPRINGS: \$50. 417-370-7865. Springfield.

FREE DOCK: 1 Well 45mm, metal & tubs are ok, wood is rotted. Lake of the Ozarks. 573-505-1330.

CHRISTIAN FARMER WANTING PASTURE: To rotationally graze cattle. 417-718-5910.

DELUXE WOOD HEATER: Glass front, three speed blower, triple wall flue, high capacity. Safe, heated my mobile home. Expensive brand but asking about \$2,800, negotiable. Must see! Winter is coming, don't miss this one! 417-818-6076. Marshfield.

REGISTERED POMERANIAN PUPPIES: 1 Chocolate Male & 1 White/Chocolate Female. 1 Male Paperanian. 573-729-3851. Salem.

BEEFMASTER BULLS: 18 months old. Call for price. 417-327-2887. Halfway.

WWII FOOD MERMITE CAN: \$125. 573-734-2822. Bismark.

CURVED IRONING BOARD: 4 1/2 feet, with cover, like new. \$10. 210-787-8222. Linn Creek.

BEAGLE PUPPIES: Tri colored, two females, three males. \$50. 417-241-3206. Seymour.

2 THREE-MONTH-OLD MALE WELSH CORGI PUPPIES: 1 tri, 1 tan, with blue eye, nice markings. No papers. \$300 each. 417-259-2203. Grovespring.

THREE BASSET HOUND FEMALES: D.O.B. 2/9/22 Updated on preventatives, negative brucellosis testing on 10/17/22. 417-664-1961 TEXT ONLY.

WE HAVE MOBILE HOMES: Instock new arrivals (8) homes, need to go as soon as possible! 573-499-9993. columbiadiscountshomes.com

INTERNATIONAL HARVESTER TRUCKS BOOK: The Complete History. Hardback, large book, 208 pages. \$12.50. 417-532-2045. Lebanon. (Leave message and phone number).



Meadowview Dutch Market

Bulk & Surplus Groceries • Prices Subject to Stock on Hand

Call to Order
417-993-3017

Sale Dates October 26th 2022 to
November 1st, 2022 while supplies last!

DELI SPECIAL

CHIPOTLE CHEESE REG. \$5.85 LB. SALE \$5.35LB.

PICKLE LOAF REG. \$5.99 LB. SALE \$5.49 LB.

TRY our Fresh Homemade DELI Sandwiches: TURKEY, HAM, ROAST BEEF, ITALIAN, BLT'S, PULLED PORK AND BLT PULLED PORK (MADE YOUR WAY)! COME IN OR CALL to order! ALSO Custom Deli trays! Veggie OR FRESH Meat-N-Cheese!

| | | | |
|---|---|---|---|
| <p><i>Mozzarella</i> Cheese Sticks \$1⁹⁹ 24 OZ.</p>  | <p><i>Rice</i> Pudding 99¢ 22 OZ.</p>  | <p><i>Salami</i> Ends and pieces 99¢ LB.</p>  | <p><i>Swiss Chocolate</i> Cake Mix 79¢ 15.25 OZ.</p>  |
| <p><i>Original</i> Sausage Links 99¢ 9.6 OZ.</p>  | <p><i>Avelina</i> Rolled Oats 79¢ 14 OZ.</p>  | <p><i>Honey</i> Ham 89¢ 8 OZ.</p>  | <p style="text-align: center;">SLICED TURKEY BREAST VARIETY PACK</p>  <p style="text-align: center; font-size: 2em;">99¢ 90Z.</p> |
| | | | <p style="text-align: center;">CAMPBELL'S CREAMY TOMATO SOUP</p>  <p style="text-align: center; font-size: 2em;">69¢ 7.44OZ.</p> |

DUTCH COUNTRY STORE, LLC
573-378-4395
Hours: Mon-Thurs 8-5pm
Fri 8-6pm • Sat 8-5pm
5 miles East of Versailles off Hwy C on Kelsay Road

MEADOWVIEW DUTCH MARKET
417-993-3017 Hours: Mon-Thurs 8-5pm
Fri 8-6pm • Sat 8-5pm
23 Miles West on Hwy 64 • Right on T Hwy
9 miles • Left on E Hwy 1 mile on Left

NOW ACCEPTING CREDIT, DEBIT CARDS & EBT

FOR SALE OR TRADE: 1 Antique Warm Morning Coal Stove. Nice. \$50. 573-734-2822. Bismark.

BOB'S CONSTRUCTION IS NOW HIRING FOR JACKS OF ALL TRADES: Framing, concrete, fence building, flooring install, electric, plumbing. Full time work 40 hours plus weekly. MUST have own basic hand tools & transportation. Starting pay is \$17.00 an hour based on experience. Call 417-669-0379 for an interview.

EXHAUST MANIFOLD FOR 55-56 CHEVROLET: \$100. 573-734-2822. Bismark.

5 RED ANGUS BULLS FOR SALE: 13 months old, semen tested \$2,500. Also, 1 older red angus bull. Proven heifer bull. \$2,500. 573-539-2060. Versailles.

BOXER AKC SIRE PUPPIES: Vaccinated. 573-259-9448.

YEARLING GRASS FED STEER: No antibiotics or growth hormone. Call for details. 573-201-4435.

GREAT DANE PUPPIES: AKC. Fawn/Brindle Lions & Tigers. www.GreatDanes4U.com 417-859-0844. Marshfield.

WEATHERED BARN WOOD SIDING: 10" wide. 573-729-7226. www.pineridgerustic.com Salem.

LOG SIDING: 2X8 Pine/Western Cedar www.pineridgerustic.com 573-729-7226. Salem.

USED MOBILE HOMES: Call David at VILLA HOMES IN ROLLA 573-578-8072. Rolla.

RUBBER & LEATHER BOOTS AND 5-Buckle OVER SHOES: Men's 11, Women's 7, some insulated. \$15-\$40 obo. 636-239-2695. Washington.

32" VIZIO FLAT SCREEN COLOR TV: With remote. Like new. \$45. 210-787-8222. Linn Creek.

BUYING MOBILE HOMES: Call David at VILLA HOMES IN ROLLA 573-578-8072. Rolla.

EARLY 1900's CAMEL BACK STEAMER TRUNK: Oak, 5 strap, solid, nice condition. \$95. 573-364-7465. Rolla.

110 PORCELAIN POCKET WATCH DIALS: Perfect for arts & crafts. \$100. 573-764-3517. Call in PM.

2007 INTERNATIONAL NAVISTAR BOXTRUCK: with lift gate, 8x8x16 box size, 20K miles. \$40,000 OBO excellent condition like new. 602-400-1080.

5 GAL. PLASTIC BUCKETS: with lids. \$3 each. 636-239-2695. Washington.

2022 RAM PICKUP: 4x4, Full navigation, 360 camera, driver assist, crew cab, only 6,000 miles. NO SUNDAY CALLS. 417-733-2068. Buffalo.

NEW MOBILE HOME STOCK: Just received (5) new units, they gotta go! 573-657-2176. amegamobliehomes.com

TINY HOMES: We gottem 573-881-3283

FIREARMS: Professional Repair, Restorations and Appraisals. Baron's Gunsmithing. 573-363-5801. Camdenton.

LIONEL TRAIN SET: Steam engine, tender, caboose and other car, track, and transformer. \$195. 573-364-7465. Rolla.

SLIGHTLY USED PUZZLES: Will sell or trade. 417-818-3469. Strafford.

REGISTERED HEREFORD & ANGUS BULLS: Home raised, Some Show-Me Select Qualified. 573-701-7828. Belgrade.

1970s KIDS METAL STOVE & FRIDGE: Nice Lithographic paint, 18" wide x 36" high. \$75. 573-364-7465. Rolla.

1500 VINTAGE WRISTWATCH DIALS: \$100. 573-764-3517. Call in PM.

USED DOUBLE-WIDE: \$34,900 WOW!!!! This won't last! 573-657-2176. amegamobliehomes.com

TRUE MODULARS: 30 to 60 day delivery available, 3 and 4 bedroom 573-657-7040 chateauhomes.net

AUSTRALIAN SHEPHERD PUPPIES FOR SALE: Some natural bobtail, some not. Grey Merles & Black & White. 573-760-5157.

I BUY.....used mobile homes. Call or text 573-338-6250 or email GregS.CDH@outlook.com

I AM LOOKING FOR LAND TO RENT TO GROW WHEAT: I can pay a good rate per acre for land that is fairly level, decent soil and in a 30 mile radius of Marshfield. I am looking for 80-500 acres. 417-741-2288. Marshfield.

HEARTH CRAFT GLASS BI-FOLD FIREPLACE DOORS PURCHASED AT FORSHAW'S FIREPLACE: Antique brass. \$160 obo. 636-239-2695. Washington.

HARLEY FAT BOBS: Custom flame paint w/ gas caps + lines. \$100. 573-764-3517. Call in P.M.

HIKING THE OZARKS BOOK: A Guide to the Area's Greatest Hiking Adventures. \$6.75. 417-532-2045. Lebanon. (Leave message and phone number).

LIGHTLY EXPERIENCED GOLF BALLS: \$3 a dozen. 417-818-3469. Strafford.

HARLEY PARTS, HELMETS, LEATHER VEST, CHAPS & COATS: Wholesale prices. Biker wear wholesale to the public 719 W. Commercial Springfield, MO.

ALFALFA HAY FOR SALE: Big round silage bales. 417-343-4958. Seymore.

3 GENTS WITTNAUER WRIST WATCHES: 10k gold + 23J. All \$200. 573-764-3517. Call in P.M.

1890 GOLD TESTING KIT: Glass acid beakers + antique wooden case. \$100. 573-764-3517. Call in P.M.

HARLEY 45 SOLO: factory rear brake drum + sprocket. \$150. 573-764-3517. Call in P.M.

HARLEY PANHEAD DISTRIBUTOR: original, chrome + complete. \$125. 573-764-3517. Call in P.M.



Services Offered!

- Installation
- Pre-finishing available on interior & exterior
- Dealer for exterior stains

www.pineridgerustic.com

523 CR 2410 • Salem, MO 65560 • Ph: 573-729-7226



- Log Siding
- Beveled Siding
- Car Siding • Red Cedar
- Western Cedar • Pine

ATTENTION DOG BREEDERS, LIQUIDATING MY BUSINESS: Three portable buildings 10x20, stack cages, coated wire, water containers, water bottles & bowls, feeders, generator, power washers, snowplow, & too much more to mention. 417-429-6715. Sparta.

First general purpose Torrefied Kiln on this side of the Ozarks!!

Our Thermal Modification Kiln can produce torrefied wood at 0% moisture. This lends itself to great outdoor and water-resistant uses. Find out how torrefied wood can help your next decking, kitchen, siding or lake project!

Call 417-217-3572, visit <https://tejasbuds.com/torr>, or email levirainbowenter@ibifax.com



DARDEN PROFESSIONAL TIMBER HARVESTING, BUYING STANDING TIMBER: Great prices, improve wildlife habitat and improve forest health. State Certified & Fully Insured! 573-247-4808. Salem.

DEER FEEDERS: Boss Buck \$100. Redneck \$50. 618-806-8788. Lebanon.

BEEFMASTER BULLS: 18 months old. Call for price. 417-327-2887. Halfway.

AUSTRALIAN SHEPHERD PUPPIES: UTD on shots, tails & dewclaws done, Tris & Merles. Trade or sell. 417-967-6493. Roby.

COLT REVOLVER DEALER CATALOGS: Circa 1950's + 1960's. All for \$100. 573-764-3517. Call in P.M.

DRAPES AND CURTAIN RODS: Off-white, various sizes, \$15 for all obo. 636-239-2695. Washington.

CLEAN MATTRESS BOX SPRINGS: \$50. 417-370-7865. Springfield.

DELIVERING THE BEST
IN LIVESTOCK AND PET FEED



WE KNOW YOU PUT A LOT OF TIME AND MONEY INTO YOUR LIVESTOCK. FEED THEM ONLY THE BEST WITH OUR EXTENSIVE LINE OF EQUINE FEED AND PRODUCTS.






Family owned and operated since 1950.



Hudson Feed & Grain
417-532-3921
316 W. Commercial St., Lebanon
www.hudsonfeedandgrain.com

NOW OFFERING
WEEKLY DELIVERY
TO THE MOUNTAIN
GROVE AREA!

PLAD PANTRY

DISCOUNT & SURPLUS FOODS
FRESH PRODUCE^{LLC}

417-532-4700

| | |
|------------------------------------|--------------------------|
| Oven Ready Pumpkin Pies..... | \$1.99 34 oz. |
| Whole Milk | \$1.89 52 fl. oz. |
| Polska Keilbasa Rope Sausage | \$5.49 3 lb. |
| No Bake Cheesecake Filling..... | \$2.99 24.3 oz. |
| Key Lime Drizzled Popcorn..... | \$0.99 7.5 oz. |

1571 State Hwy 64 • Tunas, MO 65764
Hours: 8:30 a.m. to 5:30 p.m. • Closed Wed. & Sun.



MILLARD'S AUTO REPAIR IS NOW OPEN IN MOUNTAIN VIEW, MO: at 413 Elm Street. We specialize in transmission repair. Our hours are Monday-Friday 7a.m. to 5p.m. Closed Saturday & Sunday. Please call 417-287-0641.

WWW.MYWEEKLYTRADER.COM



AUCTION

Due to selling their house and moving to Florida, Dan and Ruth Weber will sell the following personal property at auction on:

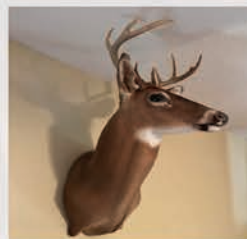
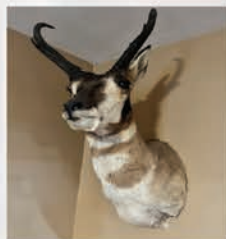
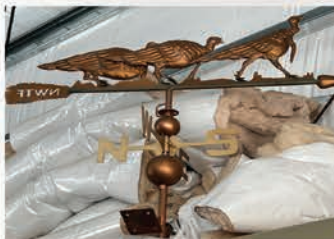
Sunday, October 30TH @ 1PM

214 West Camden Ave. • Richland, MO

Guns, Bows & Ammo: Remington mod 1100 12ga/ L703316M ~ Winchester Mod 1300 12ga/ L3255733 ~ Mossburg Mod 500 410/ U766134 ~ Savage Mod 110 270/ G731595 ~ Remington 742 Wood Master/ 7392687 ~ Ruger American 243 Win/ 690244595 ~ Savage Mod 110 7mm Rem Mag/G307101 ~ Ruger M77 Mark II 30-06/780-32730 ~ Springfield Mod 87 22 ~ Mossburg 500 20Ga/ K216828 ~ Thompson Center Encore 270Win/559911 ~ Hopkins & Allen Forehand DA 32L/9477 ~ Optima Pro 50cal Black Powder ~ Stevens Mod 87T ~ Horton HD175 Crossbow ~ Ravin R10 Crossbow ~ Martin Leopard ~ Mathews Outback ~ Mathews Creed XS ~ Large lot of Misc Ammo.

Tools & Misc: Large Lot of Reloading Supplies including Lee Turnett Press, 223, 270, 8mm & 30-06 Presses ~ 2404 Minn Kota Fortex 80lb Thrust Trolling Motor ~ 8, 9 & 12 HDS Lowrance fish finders ~ Large lot of Misc Hunting Gear including Bags & Game Cameras ~ Hitches ~ Battery Charger ~ 2) Brinks Safes ~ Campbell Hausfeld Air Compressor ~ Husqvarna 440 Chainsaw ~ Trailer Tires ~ Coolers ~ Misc Hand Tools ~ Shop Lights ~ Heavy Duty Shelves ~ Shop Vac ~ Turkey Fryer ~ Binoculars

Furniture & Misc: NWTF Weather Vane ~ NWTF Statue ~ Several Deer & Antelope Mounts ~ Antlers ~ Lg entertainment Center ~ Couch ~ Sofa Table ~ Coffee Table ~ End Tables ~ High Top Table & Chairs ~ 2) Queen Bedroom sets Including Dressers, Chests & Night stands & 1) Mattress & Box Springs ~ Quilt Chest ~ Many More Items, Too Numerous to Mention...



Auctioneer's Note: Very clean auction. Nice guns and lots of hunting items. Very nice furniture. Auction will be held inside in case of inclement weather.

Sellers Auction Service
"We Were Born Sellers"

Complete Auction Service

www.sellersauctionservice.com

Terms: Cash or Check with proper I.D. Not responsible for accidents or losses. Items will be sold As Is/Where Is with No Guarantees. Nothing to be removed until paid for. Refreshments available. Announcements made on sale day take precedence over any printed materials.



GREGG SELLERS, AUCTIONEER
573-480-4400

2-Lake View Real Estate Auction's

1st Auction * Saturday November 5th, * 12:00 P.M.

Location: 166 Crooked Tree Road, Galena, Mo 65656
Directions: From Reeds Spring east on hwy. 76, 2.5 mi. then left on Y hwy. 6.5 mi. then right on Long Bend Rd. 2.5 mi. then right on Crooked Tree Rd. to Sale.

**Note
Auction
Times!**

Nice Lake View Home!

1300+ sq. ft. Lake View Home on big lot, paved circle driveway, 3 bedroom, 2 bath, large front porch/deck, open living & dining room, kitchen, sliding glass door to screened in back porch, Bottom level has oversized garage with lots of extra storage, central heat & air, private well & septic, Reeds Spring Schools, **(No Boat dock or slip)**

This home is move in ready or decorate the way you like it. If you like being close to the lake or have been looking for a nice home near the lake then don't miss this one!

Terms: 10% Down Day of Sale, Balance Due 45 Days or Less at Closing.
Property sells with owner confirmation.

Owner: Estate of Roger O'Brian
Property shown by appointment only. Contact Larry Foster at 417-839-6860 for appointment.

2nd Auction * Saturday November 5th, * 2:00 P.M.

Location: 4428 Ance Creek Rd., Branson West, Mo. 65737
Directions: From Branson West at Jct. hwy 13 & 413 take 413 north 1 block then left on Ance Creek Rd. 4.5 mi to Sale.

Beautiful Home with distant lake view!

2700 sq ft Lake View Home on 16.8 Acres. Very cozy, secluded setting with private drive, beautiful yard with mature shade trees and ornamentals. 3 bedroom, 3 bath, open floor plan to large living, kitchen & dining room, vaulted ceilings, fireplace, sliding glass doors to deck with distant lake views, full walk-out basement w/huge game/family room, work shop, one bedroom, sauna, lots of storage, detached 2 car garage, central heat & air, central vac system, Reeds Spring School, Home is move in ready. You won't want to miss this one, especially if you like privacy, quiet settings and nature surrounding you!

Terms: 10% Down Day of Sale, Balance Due 45 Days or Less at Closing.
Property sells with probate court approval.

This property will be offered in 2 tracts & as a whole.
Tract #1 is 10.2 Acres w/Home & 2 Car Detached Garage. Tract #2 is 6.60 Acres that joins tract #1.

Owner Estate of Hanne Phipps
Property shown by appointment only. Contact Larry Foster at 417-839-6860 for appointment.

Auctioneer: Larry Foster
Phone: (417) 723-8329
Cell: (417) 839-6860



Foster Auction & Appraisal Service
www.fosterauctionservice.com
Email: bidnowsold@aol.com

REAL ESTATE-FURNITURE-TOOLS-MISC AUCTION**SATURDAY OCTOBER 29, 2022 • 10:00 AM****LOCATED: 802 PEBBLES POINT, CAPE FAIR MO****FROM WEST OF CAPE FAIR @ INTERSECTION OF HWY 76 & 173 GO WEST ON HWY 173 2 MILES, TURN LEFT ON PEBBLES POINT, GO 8/10 MILE TO AUCTION****FOR PICTURES SEE WEBSITE OR AUCTION ZIP.COM****TO PREVIEW CALL 417-830-0153 - TERMS: 10% DOWN DAY OF AUCTION, BALANCE @ CLOSING WITHIN 30 DAYS OR BEFORE REAL ESTATE SELLS @ 11:00 IF NOT SOLD BEFORE AUCTION DATE****REAL ESTATE**

APPROX 1494 BASE SQ FT, 2367 ADJ SQ FT HOME, DETACHED 3 CAR GARAGE CONCRETE FLOOR, APPROX 864 SQ FT, WITH A BEAUTIFUL PANORAMIC LAKE VIEW YEAR ROUND. THIS IS A OWNER'S DREAM TO BE ABLE TO SIT IN THE COMFORT OF YOUR HOME ON EITHER LEVEL TO ENJOY THE BEAUTY OF THE LAKE OR SIT ON THE LARGE DECK TO ENJOY THE OUTDOORS OR FIREWORKS FROM THE CAPE FAIR MARINE.

HOME FEATURES 3 BEDROOMS, 3 FULL BATH, LOTS OF STORAGE AND CLOSETS, CAR SIDING CEILING IN LIVING AREA, BUCK FIREPLACE INSERT UPSTAIRS ALSO WOOD BURNING INSERT DOWNSTAIRS. LOTS OF WINDOWS TO BE ABLE TO ENJOY THE VIEW, COOK STOVE AND DISHWASHER. REAL ESTATE 2021 TAXES \$892.66

FURNITURE

KENMORE ELITE STAINLESS FRIDGE—FRIGIDAIRE ELECTROLUX UPRIGHT FREEZER—SAMSUNG MATCHING FRONT LOAD WASHER/DRYER—WHIRLPOOL WASHER, GE DRYER—AMANA MICROWAVE—7 PC DINETTE SET, CLAW FEET—MATCHING LOVE SEAT & SOFA—POWER LIFT & MASSAGE CHAIR—VIVA POWER LIFT CHAIR, NICE—TEMPUS FUGIT GRANDFATHER CLOCK—ENTRY TABLE—DRESSER—RECLINER—2 MATCHING GREEN RECLINERS—SOFA—QN SQ IRON BED—CHEST—FULL SZ IRON BED—DRESSER W/MIRROR & CHEST—3 PC COFFEE/END TABLE SET—5 PC IRON PATIO SET—TABLE LAMPS—2 BAR STOOLS—2 FOLDING STOOLS—MAGAZINE RACK—3 TIER ROLL AROUND CART—65" SONY FLAT SCREEN TV W/STAND—MAGNAVOX VHS/DVD PLAYER—4 DRAWER FILE CABINETS—2 OFFICE CHAIRS—6' FOLDING TABLE—DYSON VAC—HOOVER POWER DASH VAC—CROSLEY RADIO/CD RECORDER—STAINLESS CART—8 FT WOOD TABLE—DIRT DEVIL VAC—SWIVEL CHAIR & OTTOMAN—EDEN PURE HEATER—HISENSE DEHUMIDIFIER—TV STAND—KEROHEAT KEROSENE HEATER—MAGNAVOX STEREO—2 BERNINA SEWING MACHINES—WHITE SERGER—WALL DECOR, WALL PICTURES—BROIL KING PROPANE GRILL—ELECT CUISINART GRILL—CONCRETE BIRD BATH, BENCH, LAWN ORNAMENTS—LAMP HOLDER SHELVES—BAKERS RACK—ALL KINDS BRASS KEROSENE LAMP BASES—TV TRAYS—QUILT RACK

TOOLS

HUSQVARNA LC221A GAS PUSH MOWER—HYPER TOUGH BATTERY CHARGER & WEED EATER—CRAFTSMAN 4 CYCLE WEED EATER 30CC—PRO SERIES LAWNMOWER LIFT—3 TON BIG RED FLOOR JACK—2 WHEEL LAWN CART—LAWN SWEEP—CRAFTSMAN 135 PSI 1 HP 3 GAL AIR

COMPRESSOR—CRAFTSMAN 16 GAL SHOP VAC—BULLET HEATER 55,000 BTU—PRO 110 READY HEATER 110,000 BTU—10 GAL SHOP VAC 2 ½ HP—WHEEL BARROW W/NEW HANDLES—MAKITA 18VT DRILL & IMPACT DRIVER, CORDLESS—2 WHEEL DOLLY—MOUSE DETAIL SANDER—CRAFTSMAN SKIL SAW—CRAFTSMAN SAW ZALL—SOCKET SET—LP TANKS—LEVELS, HAND SAWS, GREASE GUN, PRY BAR, COME ALONGS—GAS CAN—NUTS, BOLTS, ORGANIZERS—6" BENCH GRINDER—WERNER 8 FT ALUM STEP LADDER—HAND SPRAYER—4 WHEEL GORILLA CART—RYOBI CORDLESS DRILL—DEITZ LANTERN—1 LOT SCREWS—CARPENTERS WOOD HAND TOOL BOX—VACUUM TESTER—OILS & CHEMICALS—LOPING SHEARS—SNOW SHOVELS, LONG HANDLE TOOLS—1 ½ TON FLOOR JACK—LAWN SEEDER—TARPS—EXT CORDS—BOSTITCH AIR FLOOR STAPLER—COLEMAN LANTERN—2 METAL STORAGE CABINETS—JUMPER CABLES—HITCH—PIPE WRENCH, HAMMERS—OIL CAN—TOOL BOX—C CLAMPS—DRILL BITS—WRENCHES, SCREWDRIVERS, SOCKETS, VISE GRIPS, PIPE CUTTER, HOLE SAWS, SOLDERING GUN, STAPLE GUN—LAMPLIGHT LANTERN

FISHING MISC

TRACKER 12' JON BOAT—14' LOWE JON BOAT—BOAT TRAILER—FISH CLEANING TABLE—BROWNING FISH COOKER—MOTOR GUIDE TROLLING MOTOR 24 VT 55 LB THRUST—FISHING POLES—BOAT PADDLES—TACKLE BOX—FISHING LURES, PLASTIC WORKS—LEGEND XRG COMPOUND FISH BOW—REDHEAD CAMO INSULATED BOOTS—COVERALLS

HOUSEHOLD MISC

KITCHEN AID TOASTER OVEN—PYREX BOWLS, MEASURING CUPS, BAKING DISHES—POWER AIR FRYER OVEN—SM KITCHEN APPLIANCES—CORNING WARE—SILVERWARE & UTENSILS—KITCHEN SCALES—MISC GLASSES & DISHES—SKILLETS, PANS, BAKING PANS—CROCK JUG—CORELLE DISHES—COOK BOOKS—WOODEN TRASH CAN—#2 CROCK—GAMES—RECORDS—BASKETS—SEVERAL CAMERA'S, FUJI, SONY, SAMSUNG—CANNON COPY/FAX/SCAN—SAMSUNG MONITOR—1 LOT SEWING MISC—PITCHER/BOWL SET—BOX FAN—PATTON HEATER—PELONIS HEATER—AIR CHOICE HEATER—VASES—WOOD ROCKING HORSE—(2) GALVANIZE BUCKETS—PEX PIPING—HANDICAP WALKER, POTTY CHAIR—PLANK FLOORING—HELMETS—RADIO FLYER WAGON—BAG CHAIRS, HAMMOCK—PULLEY—PET TAXI—HAUSE MINI TRAINER—MARCY MAGNETIC RESISTANCE RECUMBENT BIKE—COOLERS—SADD IRON W/BURNER—PERFECTION HEATER—JIM BEAM COLLECTION EDITION—CHRISTMAS DECOR—METAL CANISTER SET—2 BIKES—PORTABLE CHARCOAL GRILL—NEW MEAT GRINDER—TOTES

OWNER: ESTATE OF LLOYD & LOIS HOLT

ANNOUNCEMENTS MADE ON SALE DAY WILL TAKE PRECEDENCE OVER ANY OTHER PRINTED MATERIALS. NOT RESPONSIBLE FOR ACCIDENTS OR LOSS OF ARTICLES ON OR NEAR SALE SITE.

MELTON AUCTION & REALTY CO LLC

meltonauctionrealty.com | roger@meltonauctionrealty.com

Roger Melton | Nixa, Mo | 417-830-0153 or 417-725-1801
Brad Cole | Nixa, Mo | 417-840-2950
Tanner Foster | Galena, Mo | 417-840-5519

6019726

REAL ESTATE & ESTATE AUCTION

SATURDAY, OCTOBER 29TH AT 10AM

Location: 486 Tower Rd. Marshfield, MO 65706

Directions: From I-44 in Marshfield, MO take exit 103 (Marshall Rd.) to roundabout and turn right on Hwy CC (Marshall Rd. North). Follow approximately 5.6 miles to Tower Rd. and turn left. Follow .4 miles to property on Right. Look for Essick Auction Signs!

Owners: Doreen Taylor and the late Rob Taylor

Real Estate: Sells at 12 PM!

To be sold in two tracts or its entirety!
Tract 1: 3.26 +/- Acres with a very nice 2,334 +/- sq. ft. 5 bed/3 bath house within a few minutes' drive to I-44 in Marshfield, MO! This 2-story home includes a huge laundry/mud room with 3 beds/2 baths on main level and 2 beds/1 bath upstairs. This home has tons of cabinet space, hardwoods & tile floors! Home has 2 car garage, well & septic. Sitting on the back deck you can enjoy large mature trees and heavily wooded land, great for wildlife & lots of privacy! Home has newer gas HVAC and water softener. Marshfield schools!
Tract 2: 3.26 +/- Acres of timber on a corner lot with road frontage on 2 sides!



Truck/Outbuilding/Tools:

- 2013 Toyota Tundra, 4 door, 5.7 L V8, 6 1/2' bed w/cover, 145,000 miles, 2WD, Power window/locks, Nice!
- 12'x20' portable building
- Craftsman YT 3000 riding mower, 353 hrs.
- Craftsman electric chainsaw
- Craftsman 12" bandsaw/sander
- Bosch jigsaw
- Williams 1/2" driver set
- Williams 3/8" driver set
- Several Snap On wrenches
- Shop Fox W1671 Mortising machine
- Little Giant ladder
- Aluminum ext. ladder
- Werner 6' fiberglass step ladder
- Misc. toolboxes
- Milwaukee hole saw kit
- Westward socket set
- Admiral compound mitre/sliding saw
- Task Force 10" bench table saw
- Shop vac
- Speedaire air compressor
- Misc. yard tools
- Misc. chisels & punches
- 10 - new 6'T posts
- Approx. 30 used 6'Tposts
- 1 roll Oklahoma brand barb wire
- 10' new gate

- 10 gal. ATV sprayer, NIB
- Wheelbarrow
- Receiver hitch cargo carrier
- Car ramps
- Scotts yard seeder
- Predator pressure washer
- Small live animal trap
- Misc. gas/diesel jugs

Firearms/Ammo:

- Mossburg mod. 800 A bolt action .308, w/ Bushnell 3x9 scope
- Ruger LCP semi auto, .380 w/Lasermx laser
- RIF Mosin Nagant 91, Russian rifle
- 1931 Russian bolt action rifle
- Antique military rifle w/bayonet
- Misc. ammo: approx. 2,000 rds. .22 LR; 38 spec.; 30-30; 243; 9mm; approx. 200 rds. 308; 200 rds. Eley Subsonic ammo
- Yamaha keyboard
- Misc. drones
- New Jersey Devils signed Hockey stick - signed by Ilya Kovalchuk
- Falcon Corto spear gun
- 3 - older knives
- Misc. camping supplies

Furniture/Household:

- Ashley dual electric reclining sofa
- Ethan Allen fabric chairs

- Electric fireplace
- Samsung wifi flatscreen TV, 3 months old
- Samsung side by side fridge
- GE washer & dryer - super capacity plus
- Large oak table w/2 leaves & 8 chairs
- Large curved desk
- OMA treadmill
- Hon metal file cabinet
- Oak bed & dresser set - new mattress never used
- Antique vanity w/mirror
- Vintage dresser w/tiger oak & jewelry drawers
- Vintage drop well dresser
- Queen adjustable poster bed & 2 end tables
- Settee chair - newly upholstered
- Book shelf
- Misc. Christmas décor
- Several pieces of misc. oak furniture
- Outdoor metal table w/umbrella & 4 chairs
- Outdoor wicker set
- Outdoor storage box
- Misc. toys
- Lots of misc. pots, pans, dishes, etc.
- Homer Laughlin China set approx. 100 years old
- Misc. glassware & décor

Too much to list!



Real Estate Terms: 10% down day of sale cash or check only, balance due on or before 45 days. Bank Letter of Credit required Day of Sale addressed to Essick Auction & Realty for October 29, 2022 only. Announcements made on sale day will take precedence over any other printed materials. Not responsible for accidents, lost or stolen articles on or near sale site. Large ticket items may be held until checks clear.



Dusty Essick - Auctioneer/Realtor
 Phone: 417.883.SOLD
www.essickauction.com
dusty@essickauctionservice.com



REAL ESTATE & PERSONAL PROPERTY AUCTION

SATURDAY, NOVEMBER 5TH AT 10AM

Location: 9882 W. Farm Rd. 4 Walnut Grove, MO 65770

Directions: From Hwy 123/S. Washington St. in Walnut Grove, MO turn east onto St. Hwy BB/E. Main St. and follow 3.1 miles to State Hwy JJ, turn left. Follow State Hwy JJ .8 miles to W. FR 4 and turn right. Follow .4 miles to auction. Look for Essick Auction Signs!

Owners: Diana & the late Rocky Stehlik

Real Estate: Sells at 12 PM!

To be sold in two tracts or its entirety!

Tract 1: 10 +/- Acres includes 2,237 +/- sq. ft. all brick one level home. Home has 4 beds/3 baths with newer roof and new gutters. Home includes Heatmor outdoor wood furnace w/propane backup and Buckstove wood fireplace insert in living area. This home sits a hill providing beautiful views and includes a nice 11'x34' covered patio area. There is lots of potential for a great hobby farm with a 30'x60'x10' steel/wood shop with 2 - 9'x7' garage doors & 2 - 11'x10' open bay doors. Property also includes 2 older barns with partial pipe working pens & alley w/ WW chute.

Tract 2: 20 +/- Acres of open pasture & timber, will be a great building site!



Boat/UTV/Tractor/Truck/Mower:

- 1987 Champion 19' bass boat w/2014 Mercury 150 - 4 stroke motor w/50 hrs., compression good on motor, Minnkota Maxim Pro 8016 trolling motor, dual console
- Polaris Ranger 500 UTV, 4x4, Pro Star, enclosed cab, w/dump bed, 386 miles, 77 hrs.
- John Deere 3010 1T diesel tractor w/Bush Hog 2846 QT joystick loader w/ quick attach bucket & forks, dual remotes, new seat, shows 1655 hrs.
- 2000 Yamaha Kodiak ultramatic 4x4 4-wheeler, needs work, has title
- '97 Dodge Ram Sport truck, 4x4, ext. cab, 343,000 miles, not running, good tires
- Scag Cheetah 61" cut velocity plus zero turn mower, Kawasaki motor, adjustable suspension, 542 hrs.

Firearms:

- S&W model 686 stainless steel .357 mag revolver, 5 3/4" barrel
- Sar 9 mm semi auto, never fired, 2 -17 rd. mags
- S&W PC M&P 9 shield EZ semi auto 9 MM 3.8" barrel, 2 mags, never fired
- Springfield Armory XDM Elite semi auto 9 MM w/Dragonfly red dot scope, 2 - 13 rd. mags, like new!
- Springfield Armory XDM Elite compact .45 ACP, semi auto, 2 - 9 rd. mags, like new!
- Springfield XDS semi auto 9 MM w/CT red dot scope, 2 - 7 rd. mags
- Springfield Hell Cat semi auto 9 MM w/5 - 11 rd. mags & range bag
- Springfield XDM Elite semi auto 10 MM, never fired, w/5 - 15 rd. mags, range bag

Tools/Household/Furniture:

- 8'x12' portable building
- Troybuilt 27-ton log splitter w/Honda motor
- Approx. 100 new 6'T posts
- Several rolls barbwire
- Troybuilt Colt FT XP tiller
- Craftsman riding mower 50" cut, not running
- 300 gal. pull behind sprayer
- 8' 3pt. angle blade
- 8'x15' steel farm wagon
- Old Chevy pickup bed trailer
- 10'x10' chainlink dog pen sides
- Chore time seed feeder
- Aluminum treadplate toolboxes
- Fimco 15 gal. ATV sprayer
- Pulsar 20" push mower
- Coleman 5,000 watt generator
- Lincoln AC-225 arc welder w/leads
- Stainless steel shop tables

- 24' aluminum ext. ladder
- 8' Werner step ladder
- 4 - 3'x7' nut/bolt bins
- Older Craftsman radial arm saw
- Victor torch set w/bottles & cart
- Collins 8" bench grinder w/light
- Craftsman 16 pc. 3/4" socket set
- Misc. cordless Dewalt & Makita tools
- Heavy duty bench vice
- Craftsman roll around tool box
- Chicago chainsaw sharpener
- Stihl BG50 leaf blower
- Stihl weed eater
- Heavy duty floor jack
- Craftsman floor creeper
- Large upright stainless-steel smoker
- Karcher 2600 psi power washer w/Honda motor
- Lots of misc. Craftsman tools
- Several misc. chains, booms, straps, etc.
- Misc. vehicle ramps
- Lots of misc. scrap metal
- Appliance dolly
- Lots of misc. yard tools & hand tools
- 6' galvanized hog alleyway
- 2-man ladder stand parts
- Hoosier cabinet w/flour bin
- Barrel belly hatch
- Roll top desk
- Couch & loveseat
- Chair & ottoman
- 2 - chairs
- Concrete bird bath
- Antique lanterns
- Old Tonka toys
- Lots of misc. small appliances, glassware, household items!

Too much to list!



Real Estate Terms: 10% down day of sale cash or check only, balance on or before 45 days. Bank Letter of Credit required Day of Sale addressed to Essick Auction & Realty for November 5, 2022 only. Announcements made on sale day will take precedence over any other printed materials. Not responsible for accidents, lost or stolen articles on or near sale site. Large ticket items may be held until checks clear. Firearms held offsite until auction day!

ESSICK
AUCTION & REALTY



Dusty Essick - Auctioneer/Realtor
Phone: 417.883.SOLD
www.essickauction.com
dusty@essickauctionservice.com



PERSONAL PROPERTY AUCTION

ON-SITE ONLY!

7402 NORTH FARM RD 197 FAIR GROVE, MO 65648

NOVEMBER 5, 2022 STARTING AT 10:00 AM

INVENTORY LIST:

2008 Kawasaki Teryx 750 4x4 Side-by-side
 Miller Bobcat 225 welder/ 10,000 watt generator
 Roadmaster bicycle
 84 inch rhino finish mower
 Still extended women saw gas powered
 Honda GC 190 power washer
 Porch hose
 Big Horn saddle
 Bridals and horse tack
 Troy Bilt tiller
 Electric sprayer
 Patton fans
 1/2 horsepower garage door opener
 20 foot stock trailer gooseneck
 Olympia vice
 Cub cadet 44 inch zero turn mower
 Cummins 6 inch bench grinder
 SK metric wrench set
 Baron toolbox rollaround ball bearing drawers
 6 hp Cummins compressor
 Multiple log chains
 Craftsman creeper
 Floor jacks
 C clamps
 Baron tool box
 Observation system
 Hand tools
 Mac ratchet wrenches
 Hand tools
 3 ton floor jack
 Sioux Air drill
 Automotive ramps and extension cords hoses
 Lake inflatables
 Mac ratchet and S&K quarter inch socket set
 Lasso fishing that ordinance oils
 Camera soldering iron
 S&K wrench set
 Weed eaters
 Matco impact 3/8 socket set
 Wheel barrel
 S&K finger ratchet set
 Outdoor gas heater like new
 Chopsaw
 17 HMR Vmax ammo

Primers and bullets
 Samsung washer
 A lot of miscellaneous ammo
 Samsung dryer with pedestals
 Several boxes of 5.56 ammo
 Queen bedroom suit
 Wilson combat 1911 45 Mag
 Colt AR mag
 Shooters Ridge shooters rest
 Holsters and gun cases
 Wall clock
 Large metal gun safe
 Antique trunk
 Gas mask
 Glass jugs
 Home gym
 Sleeping bags
 Shooting rest
 Records
 VHS tapes
 Cooking equipment
 Pocket knives and collectors knives
 Eight chairs and dining room table with leaf
 Rocking chair
 Bobsweep
 Rogers silverware set
 20 gauge ammo
 Crosman V 300 lever action BB gun pistol
 Lots of kitchen bowls plates miscellaneous
 Gun cleaning kits
 Old country style dining room table sideboard
 Frigidaire freezer
 1934 Anheuser-Busch St. Louis Missouri box NRA
 Buck 119 Knife
 Schrade folding knife
 308 ammo
 1933 Anheuser-Busch St. Louis Missouri 40 quart
 Lift chair
 Recliner
 Recliner couch
 Hutch
 Sunroom couch, loveseat and chair
 Air ratchet and drills
 Vice grips C clamps

Air hammer
 Tap and die set
 Sky mirror
 Approximately 12 x 30 carport
 Outdoor furniture
 Patio swing
 Marlin model 99 22 caliber
 Marlin model 60 stainless steel 22 long rifle
 Remington 22 long rifle load through the stock
 Stevens model 62 22 long rifle
 Glenfield model 10 ... 22 LR
 Daisy and Crossman BB guns
 Savage model 16 204 Ruger stainless
 40 Smith & Wesson ammo
 22 long rifle ammo
 Wild cat Winchester 22 long rifle ammo
 Samsung washer and dryer
 Curio cabinet and precious moments figurines
 60 inch Sony TV
 Hospital bed and large lot of quilts
 Yamaha guitar
 Frigidaire mini fridge
 Cedar chest
 Futon
 Queen bed
 Old Remington typewriter
 Railroad lamp
 Accordion
 Holland tractor pedal tractor
AND MORE!!!



FOR MORE INFORMATION GO TO WWW.EASTERLYAUCTIONCO.COM OR CALL EASTERLY'S AT 417-833-9494



Mike Easterly Auctioneer • 417-833-9494

Not Responsible for accidents or theft. For more information call: Easterly Auction Company, Springfield, MO. Auction Terms: Visa, Mastercard, Cash, Cashier's check or checks with proper I.D. Announcements day of sale take precedence over printed material. Auction Notes: Although information is obtained from sources deemed reliable, auctioneer makes no warranty or guarantee expressed or implied. Buyers should themselves take the opportunity to make their own inspection prior to sale.

www.EasterlyAuction.com • auctionzip.com ID#14770



PERSONAL PROPERTY AUCTION ONLINE ONLY!

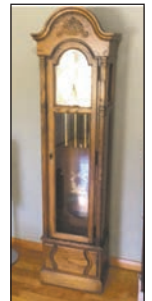
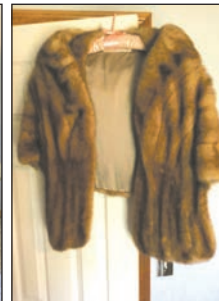
WEDNESDAY, NOVEMBER 2, 2022 STARTING AT 6:00 PM

INVENTORY LIST:

Ethan Allen Furniture
Bed, dresser, nighstands, armoire, mirror, & Dining Room Set
Cedar Chest
Small writing desk
Roll top desk
Fur shoulder wrap
Big screen TV, 52"
TV Stand, 24"x50"
Speakers, 40" tall
Grandfather Clock
Entertainment Center
Serving Dishes
Fine bone China
Glass Bowls
China Cabinet
Rogers by Oneida Tea Set
Luncheon Set from Fraureuth in Germany, 5 plates
Decorative Platters
Paintings
Coins
Silver Certificates & \$2 Bills
Art Prints, Framed
Silver Trays & Bowl
Collectible Drinking Glasses
Antique Glassware
Dalmatian Figures, variety
Stemware
Cups & Saucers
Vintage Vase
Maytag Washer & Dryer
Decorative Plates
Folding Chairs
Small Tables
Jewelry Box
52" Tall Lingerie Dresser
Misc. Cookware
Hand Stitched Quilt
School Desk

Quilt Rack
Wooden Chairs
Misc. Christmas Decor
Gift Bags
Misc. Decor Pieces
Decorative Pillows
Grill Set
Floor Lamps
Napkins & Rings
Placemats
Cooking Ware
Pasta Set
Corningware
Pyrex
Misc. Sports Memorabilia
Misc. Pampered Chef
Throw Blankets
Typewriter
Reagan/Nixon Political Buttons
Misc. Singer Sewing Machine Parts
Star Trek Card Game
Christmas Coca-Cola Chess Set
Unopened Cooks Paint Playing Card Set
Vintage Domino Set
Blue Stain Glass Lamp Shade
Crystal & Silver Coaster Ashtray Set
Waterford Christmas Ornaments
Chicago Vinyl Records, 3
Custom Made Purse
Stainless Spoons, Knives, & Forks
Indian Pottery
Garlic Roaster
Binoculars, 3 pairs
Video Camera
Verizon Tablet
Canon Camera
German Steins
Vintage Iron

Vintage Straight Razor
Oil Lamps
Brass Figures, various
Lot of sewing thread
Lot of buttons
Fiesta Ware Set
Vintage Silver Flatware
Metal Tiki Torch
Walking Sticks
Lighthouse Yard Light
Old Kerosene Stove
Windchime
Costume Jewelry
Barstools
Baskets
Misc. Tools
Umbrella Stand
Tool Rack
Wood Step Ladder
Barbecue Grills, gas and charcoal
Luggage Dolly
Walker
Gas Cans
Vintage Stretcher
Leather Electric Recliner & Loveseat
Decanters
AND MORE!!!



FOR MORE INFORMATION GO TO WWW.EASTERLYAUCTIONCO.COM OR CALL EASTERLY'S AT 417-833-9494



Mike Easterly Auctioneer • 417-833-9494

Not Responsible for accidents or theft. For more information call: Easterly Auction Company, Springfield, MO. Auction Terms: Visa, Mastercard, Cash, Cashier's check or checks with proper I.D. Announcements day of sale take precedence over printed material. Auction Notes: Although information is obtained from sources deemed reliable, auctioneer makes no warranty or guarantee expressed or implied. Buyers should themselves take the opportunity to make their own inspection prior to sale.

www.EasterlyAuction.com • auctionzip.com ID#14770



NEON SIGNS, ARCADE GAMES, & POST OFFICE MEMORABILIA

878 NE 990 RD WINDSOR, MO

AS WE ARE GOING FULL TIME RVING, WE ARE SELLING OUR COLLECTION OF BAR SIGNS, POST OFFICE MEMORABILIA, ARCADE GAMES AND OTHER COLLECTIBLES AT AUCTION LOCATED FROM CALHOUN, MO EAST 3 MILES TO 990 RD, THEN 4/10THS MILE TO SALE (IF COMING FROM THE EAST (WINDSOR), PLAN EXTRA TIME TO TAKE A DETOUR AROUND THE BRIDGE CONSTRUCTION) ON

SAT. NOV 5TH, STARTING AT 10AM!

COINS & SILVER .999 10 oz Sunshine Minting Bar * 2-.999 Silver bullets 2 oz * .999 Silver MK Barz 3 oz * .999 1 oz Let Freedom Ring Coin * 11- 2013 Standing Liberty 1 oz Silver coins * .999 1 oz Silver Eagle coin * .999 1 oz Liberty head coin * .999 1 oz Buffalo and Indian bar * Morgan Silver Dollars: 1899, 1900, 1902, 1910, 1911, 1921 * 1906 Barber Half * 1921 Liberty Half * 1913 Barber Dime * Mercury Dimes: 1934, 1940 d, 1945 s, 1940, 1944 * 9 Standing Liberty quarters * 1964 D Dime * 1943 P War Nickel * 10 Indian head pennies: 1900-1908 * 39 Liberty V nickels: 1897-1912 * 1886-1986 Centennial Copper Coin * Other coins

VINTAGE POST OFFICE 20' Post office oak front wall (from Nelson, Mo) inc: letter drop door, walk-in door, window * 6x6' Mail sorting cabinet from California, Mo * Carlisle Cast Iron letter receiving drop box * Vintage postage stamp dispenser * Vintage rural carrier and city carrier bags * Sev. Stamp art, framed

ARCADE & SLOT MACHINES Lethal Enforcers Gun Fighters arcade game * Pubtime dart arcade game * TecMo Tee'd off arcade game * Nicktoons Racing Arcade * Hoop Fever Arcade * Sammy Extreme Hunting Arcade * Mega Touch Bar video game machine * Cruisin USA arcade cabinet only * Jagermeister slot machine * Circus Days slot machine

NEON & OTHER SIGNS Budweiser on tap 3' Neon sign * Budweiser Classic Am Lager 4 1/2' Neon Sign * Bud Light Draught 3' Neon sign * Coors Light neon sign * Lighted Bar & Grill sign * Bud Light 4' Neon * Smirnoff Ice neon sign * Miller light 2' neon sign * Miller Genuine Draft lighted sign * Jack Daniels #7 Racing car hood sign * Miller lighted mirror * Kentucky Tavern 41"x29" framed mirror * Smirnoff etched glass framed mirror * Miller Lite metal sign 4x5' * Coors Light metal sign * Bud Light Lighted clock * Boulevard neon dock * Sam Adams Lighted Corridor sign * Pabst Blue Ribbon corridor sign * Keystone lighted sign * Strohs Lighted sign * Michelob 4' mirror * Miller waitress 55" tall metal sign * Coors Light 36" metal sign * Killians Irish Red metal sign * Michelob PGA metal sign * Coors Light metal sign * Budweiser select framed mirror * Coors Light logo on framed glass * Polly gas metal sign * Geo Killians Irish Red 3' sign * Foster Australian Beer 33x52" * Doc Otis logo on glass, framed * Hwy 69 road sign * Several metal diner signs * Several metal street signs * Lighted Coca Cola outside sign, 5x5' * Muffler installation sign, 8' **POOL TABLE** Regulation size pool table * Miller #2 car 4' pool table light * 3 Oak pool table chairs * Pool sticks, other pool table accessories

BAR & RESTAURANT Rowe CD jukebox * Touch Tunes Electronic jukebox * Street Stop light * 2 Train headlights * Poloran Thermaster metal cooler * Jose Cuervo shot machine * Jack Daniels barrel * Pepsi on tap barrel * 2 Metal Chief's stadium chairs * 16 Red metal restaurant chairs * Round red metal table * 9 Dark red restaurant chairs * 12 Cafeteria table, seats 16 * 4 red Button seats * Scoreboard, lighted 4x6.5' * Boulevard beer display rack * Movie Popcorn machine * Nostalgic hot dog machine * Nostalgic cotton candy machine * 7 Up Pop Machine * 1/2 gal. Budweiser amber bottles * Lot of Bar accessories * Candy machine

COLLECTIBLES 1928 Sorghum Mill from California, MO * Antique Security Mfg kerosene stove * 2-Black Americana cast iron banks * Putnam Dye Cabinet & dye packets * 2 -1983 Norman Rockwell limited edition framed 1 of 2500 * Country Ballads phonograph album * Framed and lot of loose sheet music * 2 Marx toys, Mickey and Goofy * Vintage movie camera and camera * Vintage wooden crate * Many more items not listed!

Check out pictures at www.drenonauction.com! Auctioneer's Note: This is a rare and unique collection of items that you do not find offered at auction very often! Be sure to be with us, as there are many more items not listed.



For pictures, check out the website www.DrenonAuction.com
TIM AND KELLY HORNER

Larry DRENON AUCTION

Larry Laramie
660-596-8515 660-221-4386
Lacey Cooper
660-723-1104 660-723-2221

Office: 660-723-6188
www.DrenonAuction.com

Terms: Cash, approved check, debit/credit card (convenience fee added to card purchases). Statements made day of sale take precedence over printed material. Nothing to be removed until settled for. Not responsible for accidents, should any occur. Lunch served.

Wheeler Livestock Auction, Inc. Special Stock Cow Sale Osceola, MO



SATURDAY, OCT 29, 2022 • 6:00 P.M.

Expecting 800 head of Outstanding Cow/Calf Pairs, Heifers, and Breeding Bulls

Bracher Ang Bulls-

- 6 Reg Ang bulls 20mo, weighing 1,500lbs.

Indian Creek SimAngus-

- 5 Blk SimAng bulls 16-22mo

Emerald Lane Angus-

- 3 Ang bulls 18mo. 2 Ang bulls 30mo.

Roy Freeman-

- 2 Reg Red Ang bulls, 18 mo.

John Neale Angus-

- 3 Purebred Ang bulls, 18 mo.

CJ Cattle Co-

- 2 Reg Red Gelb bulls, 18 mo. 2 Reg Red Balancer bulls, 18mo. 1 Reg Red Gelb hfr & calf. 3 Gelb hfrs, open weighing 700lbs.

Nevada FFA-

- 1 Bull ¾ Red Ang ¼ Char, Dark Yellow, 18 mo.

Brownsberger-

- 2 Reg Blk Ang bulls 30mo.

Bradley Farms-

- 2 Reg Char bulls 18mo.

Wittmeier-

- 4 Red Ang bulls 18mo.

Lysinger-

- 2 Blk Sim Ang bulls, 30mo.

Zimmerman-

- 1 Blk SimAng bull 30mo. Homozygous Blk and polled.

Peterman-

- 1 Red Ang Balancer bull, 2y/o, 1,600lbs.

Homestead Farms-

- 1 Blk Ang bull 2 y/o, Worthington Genetics.

C&B Farm-

- 14 Purebred gray Brahma hfrs, open, weighing 750lbs. JD Hudgen blood line. Gentle & good, born & raised in MO.

Jimmy Sanders-

- 40 Fancy Ang hfrs 2y/o, 1,100lbs w/30 Ang calves. Rest bred 3rd. All hfrs home raised, 100% Gardner Genetics. Fancy set of hfrs.

George Farms Dispersal of Spring Calvers-

- 25 Big Fancy Ang cows 3-5y/o, 1,400lbs. Bred to Char or Herf bull to start calving Feb 10th. 24 Ang cows 1,300lbs, 5y/o bred to Jamison Hereford, to start calving Feb 10th. The above 49 cows are good calf raisers. Sold calves here in Sept.

Tyler Smith-

- 35 Blk BrangusX cows 4-6y/o. Bred 3rd to Ang or Hereford bull or w/calf. Good cows, all shots & gentle.

Robert Hefley-

- 24 Red Ang cows 3-4y/o. Bred 3rd to good bulls. Nice cows, gentle w/complete health program.

Cliquot Farms-

- 38 Red Ang cows 3-5 y/o, 1,300lbs w/14 Red Ang calves. Rest are bred 3rd. 16 Red Ang cows 5-7y/o, 1,300lbs. Bred 3rd.

McNew Farms-

- 40 Red Ang cows 3y/o, bred to Blk Ang bulls. All cows coming for 2nd calf. All cows raised 1st calf. Calves weaned Oct 1st & cows worked Oct 1st. Cows to start calving Feb 15th.

W-G Compete Dispersal-

- 70 Char cows 4-7y/o, 1,250lbs w/30 calves weighing 300lbs. 20 Red AngX cows 4-6 y/o, 1,250lbs, bred 2nd & 3rd. The above 90 cows bred to Char or Herf bull.

Russell Johnson-

- 30 Blk cows 4-6y/o. Bred 2nd & 3rd to Blk LimFlex bull. All cows Home-raised & gentle.

John Ramer-

- 25 Blk & Red cows 4-7y/o. Bred 2nd & 3rd to Meade Ang bull.

Haden Foster-

- 44 Blk & Red AngX cows 5-SS, w/15 calves. Rest bred 2nd & 3rd to Ang bull. 2 Blk Ang bull 3y/o 1,600lbs.

Pete Schwartz-

- 50 Blk cows 3-6y/o, 1,200lbs. Bred to Bracher Ang bulls, to calve Feb 1st. Good calf raisers.

7-Meadow Farm-

- 23 Blk & BWF cows 5-7y/o, 1,250lbs. Bred to Ang bull, to calve Feb 1st. Good calf raisers, Complete Health program.

Gary Mahlock-

- 16 Blk & BWF cows 5-7y/o, 1,250lbs. Bred to Ang bull, to start calving Feb 1st. Complete Health program.

Rick Mitchell-

- 10 Red cows 5y/o, w/10 blk SimAng calves up to 400lbs. Cows bred back to Blk SimAng bull. Good gentle cows.

Wood Farms-

- 112 Beefmaster cows 5-7y/o, w/ 5 calves. Rest to calve March 1st. Bred to Beefmaster bull.

Chris Schwartz-

- 36 Corriente cows 5-7y/o w/12 Ang calves. Rest bred to Ang bulls.

Sam Berry-

- 9 Blk cows w/9 calves 5-7y/o. Cows exposed back to SimAng bull.

Recharge Ranch Belted Galloway Complete Dispersal-

- 17 cows w/11 calves, 8 are registered. 2 bulls, 1 registered.

Attn: Cattlemen some very outstanding cattle and pairs. All cattle selling due to feed and water shortage. Join us Saturday, November 5th at noon for the Seedstock Plus sale, featuring 50 Reg Red Gelbvieh & Balancer bulls, along with registered & commercial females.

NOVEMBER STOCK COW SALE • NOVEMBER 26TH

Wheeler Livestock Auction, Inc.

Osceola, MO 685 SE 13 Hwy., PO Box 560 BARN 417-646-8102

WHEELER

LIVESTOCK

AUCTION

INC.



OSCEOLA, MISSOURI

Byron Wheeler-417-777-0897 • Les Tennis-417-466-8786
Red Whistance 417-276-7909 • Burleigh Wheeler-417-840-6561
Darwin Hearting-417-296-1029 • Kevin Wade-660-492-3279
Tim Sherrer 573-855-1951

Office Manager: Sarah Wheeler, 417-399-4947

Marketing Manager: Sue Hemenway

Bid online on CattleUSA www.wheelerlivestock.com

Like us on Facebook-Wheeler Livestock Auction

BUILDING SUPPLY AUCTION



SATURDAY, OCT 29TH • 9:30 AM

Baxter Springs, KS

2404 Cleveland • Baxter Springs, KS • Corner of 24th & Cleveland, 3 blocks E of 69A on 24th St

SALE HELD INSIDE REGARDLESS OF WEATHER

DIMENSIONAL LUMBER ♦ PINE - 1x6

V-Match T&G, bead board & shiplap

♦ **DECKING - ALASKAN CEDAR** 5/4" radius edge in 8', 10', 12', 16' lengths; as well as

Composite Decking – multiple colors, new selection

♦ **WESTERN CEDAR** - 1x8 beveled lap siding

♦ **TEXTURED SIDING** – 4x8 sheets – used for board and batt or soffit

♦ **INSULATION SHEATHING WITH**

SHIPLAP EDGE – in various thicknesses & sheet sizes – foil on one side/tar paper on the other

♦ **½" PLYWOOD** – select grade

♦ **BACKER BOARD ♦ CULTURED STONE** – nice selection of colors & styles

♦ **VINYL SIDING** – CertainTeed Brand – several colors

♦ **JAMES HARDY SIDING** – 6 ¼" wide, - A Grade – Warranty

♦ **PREFINISHED FIBER CEMENT SHAKE SIDING**

♦ **SM@RT LAP SIDING** – 3/8"x8"x16' and

SM@RT SIDE SOFFIT – 3/8"x12"x16'

♦ **SMART SHAKE SIDING**

♦ **VINYL SIDING** – CertainTeed Brand - available in several colors – small lots

♦ **FIBER CEMENT SIDING**

♦ **ICE AND WATER SHIELD**

♦ **CLAY ROOF TILES**

♦ **HOUSE WRAP**

♦ **MINI SPLIT AIR**

CONDITIONERS/HEAT PUMP – 12K BTU – Indoor Units

♦ **BARN WOOD DOOR** – real wood

♦ **INSULATION** – R13, R19, R21 batts; 5' and 6' wide rolls of r10 – r11 – r-13 insulation

♦ **HOT WATER HEATERS** – new in box –

electric and limited # of gas – 30, 50 and 80 gallon

♦ **PULLDOWN KITCHEN FAUCETS**

♦ **NEW DELTA, MOEN AND HOME**

IMPRESSION FAUCETS: Vanity and Kitchen (NIB) – large selection to choose from

♦ **APPLIANCES** – NEW – as well as Shelf Pulls and Scratch and Dent

♦ **WIRE CLOSET SHELVEING**

♦ **NEW LARGE SELECTION OF**

LIGHTING: large variety of nice lighting fixtures – including some high end lighting

♦ **VINYL WINDOWS** - New – JELDWEN – new construction – vinyl insulated windows

♦ **KITCHEN CABINETS** – Multiple sets of cabinets – option of stained or painted including: Farmhouse Brown, AND Shaker Style in Dark Gray, Light Gray and White – all wood – prefinished cabinets. Straight and L shaped sets with some also including pantry. Some sets include soft close doors & dovetailed drawers.

♦ **VANITIES** - nice selection of vanities including matching vanities for Farmhouse Brown, Dark Gray, Light Gray and White Cabinets – including 5' and 6' some with granite tops

♦ **PORCELAIN AND CERAMIC TILE** – over 20,000 sq ft, with great selection of sizes and colors of tile to choose from

♦ **MOSAIC TILE** – Fantastic selection of mosaics

♦ **TRAVERTINE** – marble – tile – stone including Subway Tile

♦ **Wood Look Tile** – nice selection of styles and colors in various lengths and widths

♦ **HARDWOOD FLOORING** – Including: **PREFINISHED HARDWOOD FLOORING** – ¾"

solid prefinished hardwood flooring

♦ **6-7" WIDE PREFINISHED PLANT WOOD FLOORING** – hand scraped, wire brush ♦ **SNAP AND LOCK LAMINATE** – small lots - ~550 sq ft and less

♦ **LVT:** over 20,000 sq ft of luxury vinyl tile – wood plank – snap lock and glue down, great selection of colors

♦ **EXTERIOR DOOR UNITS**

♦ **INTERIOR DOOR UNITS AND SLABS**

♦ **TRIM – BASE – CASING – CROWN:** Pre-primed – various widths and lengths, finger joint PINE, OAK: as well as OAK quarter round, corners, chair rail, cove, base shoe and door stop

♦ **STAIRCASE HANDRAILS** – in Oak and Poplar

♦ **ENTRY – PASSAGE – PRIVACY DOOR**

KNOBS AND LOCKS

♦ **QUARTZ:** Maple White in various sizes – countertops – island panels, with and w/o sink cutouts - 3cm quartz

♦ **VANITY TOPS** available in **QUARTZ, MARBLE** and **TRAVERTINE** – includes undermount, overmount, and vessel style tops (some Glass)

♦ **GRANITE** – new selection in various colors

♦ **KITCHEN SINKS:** - SS – Composite - varying styles and colors

♦ **BATHTUBS**

♦ **CEILING FANS** - nice selection

♦ **TOILETS**

♦ **PEDESTAL SINKS**

♦ **TOWEL BARS and RINGS, TOILET PAPER HOLDERS, ROBE HOOKS, TOOTHBRUSH HOLDERS**

♦ **Scheduled to Arrive – Architectural Shingles**

• No Buyer's Premium • MORE COMING IN DAILY - check sites often

For pictures see Mt. Vernon Auction Company on Auctionzip.com (enter ID#29728 at bottom of page) or Facebook CELL 870-754-4428 • 870-715-5479 • 870-715-2326 (text only) • All items must be picked up day of sale or during one of our posted, scheduled and announced pick up times following the auction. Thank you!

COME FOR THE DAY AND SAVE LOTS AND LOTS OF \$

MT. VERNON AUCTION CENTER

CONTACTS - CALL OR TEXT MIKE @ 870-754-4428 • TEXT ONLY @ 870-715-5479 or 870-715-2326



Find us on Facebook

All announcements made the day of auction will supersede previous advertising.

R&R AUCTION SERVICE

ABSOLUTE ESTATE AUCTION SATURDAY, NOV. 5TH @ 9AM & SUNDAY, NOV 6TH @ 1PM 120 W. MAIN IN PHILLIPSBURG, MO

For a half century the name Hog Eye Antiques has stood out across the nation as a company known for outstanding quality antiques. Their auctions have enticed buyers from far and wide to attend, finding treasures to claim for the highest standard collectors. Now following the passing of founders Oren & Donna McCaslin their unbelievable estate will be sold to the highest bidder over 2 days. Saturday November 5th at 9am and Sunday November 6th at 1pm at 120 W. Main in Phillipsburg, MO.

Outdoor and garage items, many smalls, firearms (11am), jewelry, gold, and coins (noon) will sell on Saturday, Most large furniture will be selling on Sunday following the sale of Real Estate which will be promptly at 1pm. Real Estate is 1.22 Acres featuring a 5,283 sq/ft home that has enormous potential for commercial as well as residential. Up to 6 bedrooms with an amazing master suite, 2 1/2 baths, Huge kitchen and dining with double oven counter top burners, dishwasher, nice side by side refrigerator/freezer, mud room, sun room, 1 propane tank is owned and comes with property, 2 washing machines, 2 dryers, single detached garage. For property viewing ahead of auction contact Professional Auctioneer Russ Weeks 417-576-7357.



Auction inventory for the massive 2 day auction includes but is not limited to... 5 recliners, 2 upholstered rockers, 2 leather wing back office chairs, couch, 2 end tables and coffee table, glass top end tables, leaded glass oak book case, 3 big vases, tea pot, Wave Crest, RS Prussia, oil lamps, red rim glass, carnival, 2 mahogany sofa tables, pictures, oak frames, wooden stove cabinet, 5 Eden pure heaters, new gas heater, 5 radiator heaters, winged Griffin library table, slate top pool table, treadmill, PowerBoost exerciser, Stained glass lamp shades, Power chair Pronto M41, mahogany hall tree, butterfly cabinet, stair lift, marble top tables, peacock lights, peacock mirror, marble top plant stands, resin water fountains, oak file cabinet, oak sewing table 3 drawers, triple mahogany book case, walnut deer head shelf, 3 office desks, smokers wall shelf, Marlin Gold trigger 30/30, Springfield 410 model 344 series A, Glenfield 22 model 60, Crossman Quest 1000 BB/ pellet gun, Remington Browning 12 ga. model 110, Colt Defender BB/Pellet pistol, Phoenix Arms 25 suto model HP25A, Taurus PT22 auto, ammo 22, 410 and 45, hundreds of pot plates, beadwork peacock picture, oak shelf, horseshoe chair, entry mahogany mirror, tons of Christmas stuff, corner shelves, treadle sewing machine, porcelain umbrella stands, kidney shaped table, love seat, rosewood ladies chairs, hospital bed, Cherub epergne, high boy, shadow box, Washburn acoustic guitar, Charlie Ventriloquist doll, mahogany shaving stand, oak griffin head dining table, 2 marble top dog tables, oak corner china cabinet, wood painted ironing board, lots of Blue Willow, silverware, old kitchen cabinet with flour, small cookstove, Corelle, Pyrex, Goldwood, Guardian service, decor houses, granite ware, bamboo chairs and table, crocks and jugs, crock hen and nest, egg poacher, thermometer, refrigerator water in door, hot plates, dry sing, chocolate fountains, commercial metal racks, hair wreath, wall pocket, cedar chest, quilts, chenille bedspread, king bed set, 4 poster bed dresser & chest, lusters, crest, domes, full Berkley bed, dresser, vanity, chest and 2 night stands, Moses hand painted pictures, stained glass supplies, cherry tavern table, bird bath, angels, wood high chair, plateau 3 section mirror, 3 metal chairs, flower pot urns, water fountains, wall fountains, metal table and chairs, 3 tier cast iron fountain, flamingo metal planter, concrete lawn ornaments, 5 piece patio set, 2 cast iron tree benches, bird feeders, yard cart, ladder, CS310 Echo chain saw, electric chain saw, Craftsman T310 mower 54" cut, Troybilt riding mower 50" with 25" Kohler motor, hand tools, screws, bolts, nails, pliers, vise grips, screwdrivers, sockets, electric limb saw, mower lift, brass deers, 2 wheel dolly, Craftsman 22" walk behind weed trimmer, push mower, folding tables, lots of artificial flowers, new doors, tool box, Skil saw, level, Dewalt 10" miter saw, log chain, small compressor, ATV spreader, lots of jewelry including 14kt wedding set, 14kt sapphire & diamond dinner ring, 14kt ruby ring, 14kt aquamarine ring, 14kt diamond & sapphire ring, 18kt vintage diamond & sapphire dinner ring, 10kt ruby ring, 18kt vintage engagement ring, platinum vintage sapphire & diamond ring, 14kt ruby & diamond ring, 14kt amethyst



R&R AUCTION SERVICE

vintage ring, vintage dinner ring with sapphire, 22kt over sterling belt buckle, 50 pesos dated 1821-1947 37.5 gr oro pur with 14kt chain & bezel, 14kt bezel & 14kt Italy hog eye necklace, 14 kt mans gold bracelet, 14kt mans gold ring with diamond, 10kt mans gold ring with diamond, 1882 \$3 gold piece in 14kt bezel Liberty, 1877 \$3 gold piece no bezel, 1861 \$2 1/2 D with 14kt gold bezel Liberty, 1857 \$2 1/2 D Liberty gold piece no bezel, 1862 \$1 gold piece with 14 kt gold Liberty bezel, 1914 \$10 Liberty Indian head gold piece with 14kt bezel, 1881 \$5 gold piece Liberty with bezel & chain 14kt, 1904 \$20 gold piece with bezel & chain 14kt, 14kt gold necklace, 14 kt gold necklace with small jewel, gold over sterling necklace slide, 14kt gold slide bracelet with cameo & jewels, gold tennis bracelet, platinum sapphire & diamond bracelet, 14kt diamond pendant & chain, 14kt vintage diamond Hamilton watch, 1 peso 1903, 1953 Half dollar, 14kt gold chain with pendant, 14kt gold Italy sapphire & diamond necklace, 14kt Gold Italy Black Hills necklace, vintage watch slide, gold necklace with gold beads, 10kt gold necklace, ladies watch fob chain, gold necklace slide & city pendant, gold necklace with 7 gold beads, 14kt gold herringbone chain, sterling cherub brooch with sewing tools, 1986 Liberty half dollar, tie clasp cuffs, memorial pin sacred to love, 1987 Liberty dollar we the people, 1987 proof set, 1986 proof set, sterling earrings & hearts, memorial picture with gold initials, 10kt gold 20.5ct diamond & sapphire necklace, pearl necklace with pendant, costume jewelry, pair of watches, 3 Buffalo nickels, scorpion pendant, 14kt .85 diamond earring, 10kt heart diamond spinner ring, vintage cameo & ruby ring, 10kt gold 2ct ruby ring, ladies Waltham watch, vintage hat pin, vintage earrings & pendant, vintage cameo earrings, 14kt gold with sapphire ring, turquoise & silver ring, 14 kt gold ring, ladies silver plate bracelet, 14kt gold laser enamel ring, 10kt gold lapel pin, 1881 silver dollar money clip, vintage 10kt gold necklace with diamond, 14kt gold & ruby ring, 10kt gold sapphire & diamond ring, vintage lady head ring, 14kt gold ladies ring, sterling silver pendants, 14kt brooch pendant with cameo, 10kt ruby diamond tennis bracelet, gold filled bangle bracelet, Armitron & Quartz watch, vintage amethyst bracelet, gold over sterling bracelet, sterling kokopeli native ring, 3 vintage scarf clasps & hoop earrings, 14kt gold Italy bracelet, 14kt gold birthstone bracelet, 14kt gold diamond & ruby ring, 10kt gold ruby ring, 14kt gold ring, 14kt vintage necklace, Italy gold black hills necklace, 14kt gold & diamond necklace, vintage cameo necklace, vintage fob watch, vintage gold filled bracelet, vintage blue bead necklace, I love you bracelet, 1862 & 1871 \$1 gold piece set of earrings, 3 peacock necklaces, several sterling turquoise bracelets, sterling turquoise squash blossom necklace, sterling turquoise necklace, hand carved bird of paradise sterling necklace, sterling bracelet with turquoise and coral, old turquoise with silver beads, 14kt gold necklace with ball, 14kt gold chain, Italy 14kt gold & diamond necklace, 2 sets of gold jeweled earrings, ladies watch slide, tin can with old coins, 9 Kennedy half dollars, 1881 Liberty silver dollar, 1879 Liberty silver dollar, 1922 Liberty silver dollar, 1866 2 cent coin, brass jewelry box with necklace, peacock bracelet, Certina 17 jewel swiss ladies watch, and **much more to numerous to list.**



Please keep watch on our website for added photos.

TERMS: Cash, check, or credit card with proper I.D. nothing removed until settled for A 3% fee will be added to credit card purchases. Not responsible for errors in listing. Any announcement made sale day will take precedence over any printed matter.



For more information contact Professional Auctioneer Russ Weeks at 417-576-7357 or check out www.rrauctionservice.com

Serving this area's auction needs since 1997 with honesty and professionalism. www.rrauctionservice.com (417) 576-7357 or (417) 345-4140



REAL ESTATE & ESTATE AUCTION

Sunday, October 30th, 2022 ~ 1:00 PM

LOCATION: 376 Route D, Lockwood, Mo; Directions: From Lockwood Go West On 160 Hwy Approx 3 Miles To D Hwy Then North On D Hwy Approx 4 Miles To Sale Site. GPS Will Get You There (Watch For Signs)

Auction For Susie & The Late Ross Knierim



Real Estate Sells At 1:00 PM

Real Estate Consists Of 3 Bedroom Possibly 4, One Bath Home, Has Kitchen, Dining, Living, Utility & Office Rooms. Home Has Metal Roof, Energy Efficient Windows & Doors, Tile & Carpet Floors, Lots Of Cabinets & Has Had Some Remodeled Updating, Setting On Approx 5 Acres M/L, Has 1 Car Garage, Pasture Is Fenced & Cross Fenced, Has Some Timber & Lots Of Deer & Turkey. Home Is In Lockwood School District & Is Centrally Located Between Joplin & Springfield For Larger City Access. Excellent Home & Property. To Preview Contact Bill At 417-214-0093.
 Terms: 10% Down Day Of Sale With Signed Contract And Balance Due In 45 Days Or When Closing Date Set By Abstract Office. Seller Has The Right To Accept Or Reject Any And All Bids.

Furniture & Appliances, Also Household Items

Prim Cabinet, 3 Oak Shelves, Round Oak Kitchen Table, Oak Kitchen Chairs, 2 Queen Anne Leg & Wing Back Chairs, Curio Display Cabinet, Sofa & Round Tables, Old Sitting Chairs, Leather Electric Recliner, Breakfast Table & Chairs, King Size Bed, Armoire, 2 Chest Of Drawers, Sm Desk, Old School Desk, Magazine Table, Lamps, Pictures & Mirrors, Hospital Bed, Restaurant Style Stainless Shelf, Wood Burning Heat Stove W/Blower, Eden Pure Heater & Several Radiator Type Heaters, 5 A/C Units, Refrigerator, Flat Top Electric Cook Stove, Whirlpool Washer & Electric Dryer, 5 Flat Screen TV's, Art Supplies, Easels, Lots Of Knick Knacks, Galvanized Pcs,

Christmas Décor, Like New Sm Kitchen Appliances, Pots, Pans & Dishes, Several Totes & Boxes Of Household Items Not Listed

Autos, Trailer, Kayak, Mower, Tools & Outdoor

2005 F150 Extended Cab 2 Wheel Drive Truck W/V8 Motor, Auto Trans, Approx 230,000 Miles, 2005 Chevy Impala 4 Door Car W/V6 Motor, Auto Trans, Miles Unknown (Needs Work), 4x8 Flatbed Utility Trailer, Wilderness Kayak W/Extras, Rear Hitch Wheelchair Carrier, Troybilt TB2454 Hydro Riding Mower, Electric Pressure Washer, Yard Utility Cart, Bostich Air Compressor, Electric & Gas Weed Eaters Inc 1 Stihl, Stihl Chainsaw, Table Saw, Chop Saw, Scroll Saw, Sm Electric Tools, Shop Vac, Lots Of Dewalt Tools, Sm Hand Tools, Wheelbarrow, Truck Toolbox, Car Ramps, Gas Cans, Track 400 & Another Mountain Bike, Golf Clubs, Camping Supplies, Some Cut Wood, Live Plants, Outdoor Furniture, Stainless BBQ Grill, Garage Barrel Wood Heat Stove, Grow Unit, Other Items Not Listed

Storage Building, Gazebo, Portable Garage, Dog Pen, Rabbit Hutch, Chicken Coop & Farm Related Items

10x12 Portable Storage Building, Portable Iron Frame Garage, Gazebo, 4 Panel Dog Pen, Chicken Coop, Rabbit Hutch, Rabbit & Chicken Supplies, Cattle Wire Panels, Bale Ring, Stall Hay Racks, Gates, Water Tanks, Stock Tank Heaters, Horse Tack, Steel Posts, Other Items Not Listed

Auctioneers Note: It Is An Honor To Be Conducting This Auction For The Knierim Family. This Is An Outstanding Auction With Something For Everyone. If You Are Looking For A Real Estate Property In The Country But Close To Town This Is Your Opportunity. Storage Building And Gazebo Are Excellent. Kayak & Trailer Are Good As Well. Everything Is Excellent & Clean Or In Good Working Order. You Will Not Be Disappointed. Please Plan Now To Attend. **Sale Order: Real Estate Sells First Followed By Furniture, Appliances & Households Then Small Tools & Outdoor. At Approx 3:30 PM Will Offer Autos, Trailer, Kayak, Storage Building, Gazebo & Larger Items. Remainder Of Tools Will Finish Auction. See Ya There!!!**

Terms: Cash or check with proper ID. Now accepting most major credit cards. Nothing removed until settled for. Statements made the day of sale takes precedence over printed material. Everything sold as is where is. Not responsible for accidents. Restroom available. Concessions Provided. Check our website for upcoming auctions and for additional pictures!!



NANCE AUCTION SERVICE

No Matter How BIG or small, We Do Them All!
 www.nanceauctionservice.com



Col. Bill Nance 417-214-0093 In God We Trust Philippians 4:13 Sean Beazley 417-247-6754

ANTIQU & ESTATE AUCTION

Tuesday, November 1st, 2022 ~ 10:00 AM

LOCATION: 1701 West Fairview Ave, Carthage, MO; GPS Will Get You There (Watch For Signs)

Auction For Mr. & Mrs. William "Bill" J. Wilson



Antique & Ornate/Primitive Hand Made Furniture & Décor Pieces

Hand Made Ornate Pcs That Are Only One In Existence Inc Ships Wheel Ant Pc On RxR Cart, Long Gear Wheel Table, Working Roll Around Table W/Entertaining Machine, Prim Tree Trunk Board Table, Ornate Wine Cage, Ornate Hand Made Décor Mirrors, Lg Sconce Candle Holder On Wood & Other Odd Hand Made Pcs, Ant Low Boy Dresser W/Mirror, 4 Pc Ornate Living Room Suite Inc Sautee, Glider Chair & 2 Sitting Chairs, Ant Oak Library Desk W/Drawer & Sides, Ant 150 Yr Old Roll Top Desk, Ant 100 Yr Old Iron Harvest Table, Rare Ant Tilt Hand Made Desk From London England, Several Ant Ornate Lamps, Ant Lead Glass Pcs, Ant Lions Face Lamp, Ant Oak Table, Ant Dresser Mirrors, 2 Ant Iron Ice Cream Tables & Chairs, Ant Cedar Chest, 2 Ant Wood Dowel Prim Wood Shelves, 3 Ant Pictures From Hunting Trip W/President Roosevelt, Very Hard To Find Ant Art Painting Pcs From All Over, Ant Desk Lamp, Ant Deck Shuffleboard Game, Wicker Bedroom Suite, Cowhide & Zebra Rugs, Ant Furniture Parts, Round Kitchen Table & Chairs, 15 Cu Ft Chest Deep Freeze, Other Items Not Listed

Very Rare Antiques, Primitives & Oddity Items

Ant 150 Lb Anvil On Stand, Ant Anvil Hardy, Ant Cast Kettle, Lg & Sm Ant RxR Carts, Ant Cowboy Galvanized Washtub On Stand, Rare Ant Metal Steps From Carthage Lakeside, Ant Branding Irons, Ant Barn Trolley, Ant Metal Coke Cooler, Ant

Hand Grinder, Ant Spittoon, Several Old Grinding Wheels From Lg To Sm, Copper Apple Kettles & Other Old Copper Pcs, Several Unusual Cast Iron Pcs, Metal Goat Décor Pcs, Kettle Stands, Elk, Deer & Steer Horns, Hand Carved Wood Alligator, Wood Outdoor Tea Cart, 2 Elephant Table Plant Stands, 2 Ant Belgian Headstones, 4 Lg Wood Rocking Chairs, Ant Sewing Machine Base Table, Ant Bikes, Lg Ant Gas Station Oil Can, Ant Pulleys, Ant Meat Hanger, Lg Lot Of Ant Cowboy Décor, Ant Ice Tongs, Ant Iron Wheels, Ant Hand Grinding Stone, Ant England Metal Ash Pot, Ant Fireplace Sets, Ant Addem Up Dart Game, Ant Metal Tater Or Onion Bin, Ant Ornate Plant Stand, Very Lg Lot Of Unusual Hard To Find Ant, Prim & Oddity Items Not Listed

Welder, Shop Tools, Small Tools, Horse & Outdoor Décor Items

Iron Ornate Metal Bench, Several Outdoor Concrete Décor Items Inc Black Americana Horse Tie & Other Unique Items, Wood Porch Glider, Outdoor Benches, BBQ Grill, Outdoor Cooker, Lg Lot Of Pots & Planting Items, 2 Horse Hay/Bunk Feeders, 2 Water Tanks, Kalamazuo Metal Hack Saw, Lincoln AC 225 Welder, 100 Ft Of Welding Line, Radial Arm Saw, Lg Drill Press, Dremel Scroll Saw, Dewalt Grinder, Sander On Stand, Lg Shop Fan, Sm Hand Tools, Sm Electric Tools, Set Of Rollers, Metal Welding Table W/Vise, Adj Work Tables, Sm Upright Air Compressor, Air Tank, Tool Dollies, Drill Bits, Sm Tools & Shop Items, Roll Around Metal & Wood Work Tables, Pipe Rack, Long Handle Tools, Seeders, Lots Of Other Items Not Listed



Auctioneers Note: It Is An Honor To Be Conducting This Auction For The Wilsons. This Is Over 75 Plus Years Of Collecting & Accumulation. This Is One Of The Most Amazing Antique Auctions We Have Ever Had The Privilege To Conduct In 25 Years. Some Very Rare & Unique Items That I Haven't Even had The Opportunity To Sell Before. Handmade Items Are Amazing & Unique, Antique Furniture & Small Antiques Are Amazing As Well. Tools & Outdoor Items Are Good And Ready To Go. This Is An Auction You Do Not Want To Miss. Please Plan Now To Attend. **Sale Order: Furniture & Unique Items Sell First Followed By Antiques, Primitives & Oddities Then Move In To Tools & Outdoor Items. Excellent Auction. See Ya There!!!**

Terms: Cash or check with proper ID. Now accepting most major credit cards. Nothing removed until settled for. Statements made the day of sale takes precedence over printed material. Everything sold as is where is. Not responsible for accidents. Restroom available. Concessions Provided. Check our website for upcoming auctions and for additional pictures!!



NANCE AUCTION SERVICE

No Matter How BIG or small, We Do Them All!!!



Col. Bill Nance 417-214-0093 In God We Trust Philippians 4:13 Sean Beazley 417-247-6754

REAL ESTATE & ESTATE AUCTION

Saturday, October 29th, 2022 ~ 10:00 AM

LOCATION: 605 East Fields Blvd, El Dorado Springs, MO; GPS Will Get You There (Watch For Signs)

Auction For Financial Interest For Community National Bank



Real Estate Sells At 10:00 AM

Real Estate Consists Of 2 Story 3 Bedroom, 2 Bath Home With Kitchen, Dining, Living Utility & Office Rooms. Home Has Central Heat & Air With Basement. Good Oak Cabinets & 2 Car Attached Garage. Home Is Sitting On Approx 5 Acres M/L With A 100 x 80 Shop. Has Industrial Electric & Concrete Floor Also Has Spray Foam Insulation, Shop Has Been Used As A Business For Semi Trucks & Wrecker Service Trucks. Very Prime Property In El Dorado Springs Close To School & Several Other Businesses. To Preview Contact Bill At 417-214-0093. Terms: 10% Down Day Of Sale With Signed Contract And Balance Due In 45 Days Or When Closing Date Set By Abstract Office. Seller Has The Right To Accept Or Reject Any And All Bids.

Furniture, Appliances, & Household Related Items

Rare Iron & Stone Rock Tables, Lg Oak Shelf/ Entertainment System, Liquor Cabinet, Marble Top Cabinet/Counter, Oak Desk, Leather Couch, Buffet, China Cabinet, Kitchen Table & Chairs, Barstools, King Size & Queen Beds, Wood Chests, Stainless Restaurant Shelf, 2 Central Air Units, 2 Safes, File Cabinets, Dry Erase Board, Soda Venting Machine, Side By Side Refrigerator, Front Load Washer & Dryer, 2 Chest & 1 Upright Deep Freezers, Gas Cook Stove, Several Other Appliances, TV's, Blue Tooth Stereo System W/Super Boom Speakers, X-Box, New Robot Vac, Air Hockey Table, Pool Table, Computer System, Surveillance Camera System, Lots Of Office Supplies, Printer/Fax/ Copy Machine, China Set, Pots, Pans & Dishes, Lots Of Kitchen & Housewares Not Listed

Semis, Semi Trailers, Roll Back, Wrecker, & Utility Trucks, Forklift, Motorcycle, Autos, Tractor, Equipment & Related Items

1999 & 2001 Freightliner Semi Trucks Both 18 Sp & Detroit Motors, 1999 Peterbuilt 13 Sp Semi Truck W/ N14 Cummings Motor, Great Dane

& Wabush Reefer Semi Trailers, 1990 Ford F800 Diesel Boom Bucket Truck, 2 Extra Buckets For Boom Truck, 2002 IH Roll Back Diesel Tow Truck W/26 Ft Bed W/Stinger & Ramsey Winch, 2007 Ford F550 Diesel 5 Sp Tow Truck W/Stinger & Ramsey Winch, 2007 F350 Diesel Utility Bed Work Truck, 2009 Kawasaki 250 Motorcycle, 2002 Honda 4x4 Highlander SUV, Clark Propane Forklift, 13 Sp Transmission, Alum Headache Rack, Semi & Other Tires, Lots Of Semi & Truck Parts, Kubota BX235 Diesel 4x4 Tractor W/LA3401 Loader, Kubota Backhoe Attachment, 16 Ft Gooseneck Stock Trailer, 6 Ft 3 Pt Ripper Box Blade, 7 Ft Bush Hog, 5x10 Trailer, 5th Wheel Hitch, 600 Gal Diesel Fuel Tank, 250 Gal Diesel Fuel Tank On Stand, Fuel Barrel Ladder Stand, Liquid Tank Full Of New Anti Freeze, Other Items Not Listed

4 Single Wide Trailer Houses, Portable Storage Building, Propane Tank, Welders, Lg & Sm Shop Tools & Outdoor Related Items

4 Single Wide Trailer Houses, 10x12 Portable Storage Building W/ Electric & Air, 500 Gal Propane Tank, Water Cooled 3 Phase Air Compressor, Like New Lg Shop Hoist, 200+ Gal Oil Storage Bin, Miller XRW Water Cooled Welder On Cart, Arco Welder, Lg Sand Blaster, 2 Lg Generators, 2 Lg Presses, Like New Engine Hoist, 5th Wheel Gooseneck Switch, Craftsman Riding Mower, Lawn Utility Yard Dump Cart, Lg Roll Around Tool Storage Unit, Other Roll Around Toolboxes, Roll Around Storage Locker, Several Portable Air Compressors, Lg Shop Fans, Lg Lot Of Heavy Shop Shelves, Combination Work Racks, Liquid Tanks, Lg Lot Of Oil Absorbent, Parts Washers, 2 Ton Air Jack, Lg Vise, Shop Lights, Lg Floor Jacks, Lg Socket Sets, Several Heavy Duty Jack Stands, Lg Lot Of Sm Hand Tools, Lg Lot Of Electric, Air & Battery Operated Tools, Come-A-Longs, Tiller, Chipper/Shredder, Alum Ramps, Band Saw, Table Saw, Chop Saw, Scroll Saw, Grinder, Drill Press, Lots Of Lumber, Patio Gas Fire Pit, Lg Dual BBQ Grill & Smoker, Patio Furniture, Only A Partial Listing, Hundreds Of Items Not Listed, Very Lg Auction

Auctioneers Note: Due To Settling Debt For The Bank We Will Offer A Very Large & Outstanding Auction That For Sure Has Something For Everyone. Real Estate Property Is Excellent. Trucks & Equipment Have Been Used For Businesses Up Until Day Of Closing So Ready To Go To Work. Tools Are Amazing. Everything Is Ready To Go To Work & Be Used. Furniture & Households Are Excellent As Well. Possibility Of Running 2 Rings So Bring A Friend. Please Plan Now To Attend. **Sale Order: Real Estate Sells First Then Storage Building Followed By Furniture, Appliances & Households Then Smaller Tools & Outdoor. At Approx 1:00 PM Will Offer Trucks, Trailers, Tractor, Equipment & Large Items. Remainder Of Tools Will Finish Auction. See Ya There!!!**

Terms: Cash or check with proper ID. Now accepting most major credit cards. Nothing removed until settled for. Statements made the day of sale takes precedence over printed material. Everything sold as is where is. Not responsible for accidents. Restroom available. Concessions Provided. Check our website for upcoming auctions and for additional pictures!!



NANCE AUCTION SERVICE

No Matter How BIG or small, We Do Them All!
www.nanceauctionservice.com



Col. Bill Nance 417-214-0093

In God We Trust

Philippians 4:13

Sean Beazley 417-247-6754

PUBLIC AUCTION

SATURDAY, OCTOBER 29 @ 9:30 A.M.

Directions: from Salem - Highway 32 west to CR 6150 (across from Ranch Motel)
3 miles to sale site on right Watch for signs.

HOUSEHOLD - POWER TOOLS - MISC.

12x12 Canopy - Homemade Smoker
 Craftsman Riding Mower, no deck
 Cast Iron Pot - Fish Cooker - Wire Rack
 Tomato Cages - Shepherd Hooks - Gas Cans
 Lawn Chairs - Hobby Horse - Rakes - Shovels
 Wooden Ladders - Come-Along
 Section of Wrought Iron Fence
 Grease Guns - Hitch Balls - Bird Feeder
 Cream Separator - Dolly - Hose & Reel
 Bar Clamps - Hand Saws - Bench Grinder
 Bench Vise - Saber Saw - Delta Chop Saw
 Craftsman 10" Table Saw - Step Ladder
 Craftsman 12" Planer - Antique Jigsaw
 Ryobi Worm Drive Saw - Flap Sander
 Misc. Dry Lumber - Routers
 Conveyer Belting - Foot Locker - Sky Light
 Propane Heater - Axe - 2 Lift Chairs
 Recliner - Glider w/Footstool - Glider
 Couch - 2 End Tables - Cookbooks
 Wooden Shelf Unit - Small Desk
 Small Knick Knack Shelves

Matching Dresser & Chest of Drawers
 Table Lamps - Clocks - Wall Decor - Mirrors
 Hampers - Ice Cream Makers - Towels
 Storage Bins - Pots & Pans - Cups & Dishes
 2 Dish Sets - Books - Table Cloths
 Phone Table - Hair Trimmer - Tupperware
 Canning Jars - Electric Range
 Storage Cabinet - Flower Pots - Toys
 Christmas Decor - 4 Kids Tea Sets
 Magazine Rack - Lots Cassette Tapes, Religous
 Old Records - Hospital Bed
 Bed Head and Footboards
 Medical Supply Chairs - Projector & Screen
 Sony Sound System - Serger Sewing Machine
 Sewing Accessories - Porta-Crib - Bed Frames
 Bedding - What Nots - Fabric
 Folding Rocking Chair - 2 Cedar Chests - Irons
 Baby Gates - Wash Stand - Tea Cart - Baskets
 Rugs - Kirby Vac - Roaster - Stools
 Wooden Chairs - Old Metal Rocking Horse
 Typewriter - Kid's 3-Wheeler, Battery

Dehydrator - Dive Lights
 Sub Woofer - Stuffed Animals
 Sander - Cutting Boards
 Lights - Comforter - CD Shelf
 Table - 4 Chairs - Hutch
 SS Sink - Milwaukee Sawzall
 Tool Box - Maytag Dryer - Pet Carrier
 Ceiling Fan - 12x24 Wedding Tent

Many More Items Not Listed

See you there! -Tom



OWNER: MULTI-FAMILY

ANNOUNCEMENTS AT AUCTION TAKE PRECEDENCE OVER PRINTED MATTER

WULFF AUCTION

TERMS: CASH OR APPROVED CHECK - I.D. REQUIRED
NOTHING REMOVED UNTIL SETTLED FOR

Licensed Appraisals

2334 Highway K, Salem, MO 65560

AUCTIONEERS:

Col. Tom Wulff • John Wisdom

Cell: 573-247-3884 • Cell: 573-247-9563 • Home: 573-729-8476

Clerk: Tracy Strange Cashier: Nancy Inman

See Wulff Auctions at www.thesalemnewsonline.com/auctions



RAIN OR SHINE OWNER & AUCTION PERSONNEL NOT RESPONSIBLE FOR ACCIDENTS AT SALE SITE



SOUTHWEST AUCTION SERVICE
Liquidation Estate Auction!
 Office: 417-652-7540 Website: www.swaauction.com
DATE OF AUCTION: Sunday October 30th 2022
Stating Time: 10:00 AM Rain or Shine!
Location: 8244 FR 2062 Purdy MO 65734



Large Farm Equipment Sells @ Noon!

AUCTIONEER'S STATEMENT:

Guns Sell @ 1:30 Sharp!

Auction of living estate of Margie and Richard Redshaw with the passing of Richard, Margie has decided to liquidate everything. Margie and Richard have been a life long resident of Barry County. Everything in this auction is nice and very well taken care of. Margie and Richard's son, Scotty has decided to sell all of the guns and ammo. Don't miss out on this opportunity with great farm equipment, household items and guns. Thank you from the Southwest Auction Family!

DIRECTIONS TO AUCTION:

FROM WHEATON, MO: Turn right onto State Hwy 86 W/N Gilman Ave , Turn right onto State Hwy 97 N , Continue onto State Hwy B, Turn left onto State Hwy 37 N , Turn right onto FR 2062 , House on turn left.
FROM CASSVILLE, MO: Head N on State Hwy 37, Turn right onto FR 2062 House on the left.
FROM MONETT, MO: State Hwy 37 S/N Lincoln Ave, Turn left onto FR 2062
FROM NEOSHO, MO: Take State Hwy 86 E to State Hwy B in Corsicana Township, Turn right onto Hamilton St , Turn left onto State Hwy 86 E/E McKinney St , Turn right onto State Hwy 86 E , Turn left onto State Hwy 37 N , Follow FR 2062 House on the left.

Farm Equipment:

50 Round Bales, Liquid Fertilizer Tanks (2500GAL, 2000GAL, 2-1300GAL), Grain Bins, Manure Spreader, Plow, Square Bale Hay Elevator 20ft, Bale Unroller, (Like New) Trip Hopper Range Feeder Model P-836, Massey Ferguson Square Baler Model 124, New Holland 680 Manure Spreader (Good Condition), 32 ft. Spring Tooth, 516 John Deere Plow 5 Bottom, 16ft. Allis Disc, 10ft. Roller, Rock Rake (New), Model 155 Scraper Blade (Like New), Woods HBL 96-2 Scraper Blade (Like New), Allis Sycle Mower, Allis 3 Bottom Plow, David Bradley 11Ft. Hay Rake (Older), 20 Ft. Odgen 3pt. Field Drag, 20 Ft. Kewamee Field Disk Model 1020, Ral Road Iron Field Drag, 72 Allis Hookup Pulltype Combine

Trailers and Motorcycle:

*08 Yamaha Raider Custom Motorecycle (5,688 Miles) *07 Yamaha Rhino Side By Side, 1995 Trailer 18ft. Combination Stock/Flatbed

Guns:

Dan Wesson 45 Stainless Heirloom (Never Shot), CZ 45th Anniversary 9MM (New Never Shot), Colt King Cobra 357 Stainless (Never Shot), Colt Gold Cup Trophy Edition 9MM (Never Shot), Springfield Arms Ronin 9MM (Never Shot), Taurus 357 Magnum, Ruger 10MM Stainless (Never Shot), Springfield Arm XD 9MM, Old Single Shot 22, Hawes 57 Western Marshal, Remington 243 Vortex Scope (New Never Shot), *Ruger American 7MM-08 (New Never Shot), TC Compass 6.5 Creedmoor (New), Mossberg 817.17 HMR (New), Remington 870 20 Gauge (New), TC Pro Hunter 243 & 50 Cal Mussel Loader (New), Yildiz O/U 20 Gauge (Used), Stoger Condor 12 Gauge 3In. (New), 6.5 Carcano, * Sears and Roebuck 12 Gauge Automatic Shotgun Model 66, Champion 410 Shotgun, Colt Trooper, Remington 22 Model 550-1, Ruger 380LCP, Taurus Made in Brazil .44 Mag., Kimber Rapide 10MM, Mac 90 Sporter, Maddi 7.62X39 Semi Automatic, Remington Wingmaster 12 Gauge, Thompson Center Arms 22, Golden Boy Henry 22*

Ammo:

Full Box of 50 357 Magtech, 2 Boxes Remington 380, Box of 78- 380 Auto Winchester, Box of 44- 380 Auto PMC, Box of 40- 380 Auto UMC, Box of 50- 380 Auto, 3 Full boxes of 20 Hornsby 10MM, 4 Boxes of Winchester 10MM, 2- Boxes 10MM Auto Blazer, 2- Full Boxes of Hornady 243, Box 20 Federal 243, Box of Federal 308, Box of 308 Winchester, 2-Boxes of Remington 20 Gauge Shells, 4-Boxes of 22 Long Rifle 325 Federal, Box of 500 rounds 22 Long Rifle Remington, 4 -Boes of Remington 22 Long, 2 Boxes of Winchester 22 Long, Assorted 22 Lon Rifle, 2-Full Boxes of Remington 223, Box of American Eagle 223, 15-Boxes of American Eagle 5.56, Box of 32 Auto, Box of Remington 25 Auto, Box of 25 Auto UMC, Box of Winchester 30.06, Remington 270, Remington 410, Box of 410 Winchester, 22 and 22 Mag Ammo, 7 Mag, 25-06, 270, 308-338 Rem Ultra Mag, 300 Weatherly Mag, Muzzle Loader Powder Primers & Projectiles, Assorted 20 Gauge Ammo, Assorted 12 Gauge Ammo and much more.....

Other Items :

Leupold Scope Rings (New), 30-06 RCBS, 100 New Hornady 204 Brass, 6.5 Creed Brass, 1000t 223 Brass, 25-06 Brass, 6.5X52 Brass, 1000 9MM Brass, 6MM Brass, 40.40 Auto Brass, 300 Win Mag Brass, 10MM Brass, 338 Win Mag Brass, 7 Mag Brass, 41 Remingotn Mag Brass, Stripper Clips-Assorted Rifle Brass, Gun Locks, Re-loading Dies, Remington 700 Triggers, Gun Holsters, Primers Shot Shells Large Rifle and Large Pistol, Small Rifle, Mixed Pistol 44 Mag/25 Auto/243WSSM,

Household Items and Sporting Goods:

Cookware, Antique Furniture, Dishes, Cedar Log Bar Stools, Sewing Machine Base Hall Table, Split Bottom School Desk (Antique), Coke Cooler Antique (Non-Working), Air Mattresses, Propane and Charcoal Grills, 75 Gal. Curved Front Aquarium, Holiday Décor, Medical Encyclopedias, Misc. Books, Old Records 8 Track Tapes CD's, DVD's, Hats, Dog/Children Gates, Home Décor, Boxes of Truck Towing Mirrors, Canning Jars, and Misc. Household. Construction Material, Household Furniture, Computer Desks, Kitchen Table,



Terms of the Auction:

We accept Cash, Good Checks w/ proper ID & Credit Card (5% Convenience Fee) We are not responsible for accidents to man, woman, child or animal. We are not responsible for lost, stolen, or damaged articles or property! All accounts must be settled prior to removal of auction item! Statements made day of auction take precedence over all printed materials! For more pictures visit our website at www.swaauction.com



FALL MACHINERY AUCTION

SATURDAY, OCT. 29, 2022 • 9:00 A.M.

MOFFAT AUCTION CENTER • 467 CO RD 604, LINN, MO

Directions: From Linn, take Hwy. 50 west 1 ½ mi. to Co. Rd. 604, turn left & go 1 mile to building on right, or from Jefferson City, take Hwy. 50 east approx. 18 mi. & turn right on Co. Rd. 604.

TRACTORS

Oliver 1650 Gas WF; Farmall B; AC D17 WF 3 pt.; 1938 JD-AR Restored; JD 2305 w/ loader and mid mount mower; Farm Pro 2425 4WD; Ford 4000 diesel – not running; Ford 8N; Farmall H; AC – CA WF; 1950 Farmall Cub w/ sickle and blade; Kubota w/ mid mount mower, 3 pt.

COMBINE

Gleaner F2 diesel 13 ft. grain table.

EQUIPMENT

Land Pride 6 ft. brush hog 3 pt.; Rhino SBX84 box blade 3 pt. Like new; Frontier SB3107 7 ft sickle mower 3 pt. hyd. lift Like new; 3 pt. carryall; Danuser post hole digger 3 pt. 16 in. auger; 3 pt. boom; AC snap couple plow; AC 5 ft. brush hog pull type; Sidewinder 6 ft blade 3 pt.; Woods finisher mower 6 ft. 3 pt.; Belt driven hammer mill; MF 4 bottom plow 3 pt.; 7 Shank chisel plow 3 pt.; 4 Basket tedder; New Idea 362 manure spreader PTO; 3 pt. post hole digger; 30 ft. boom sprayer; 6 ft. box blade 3 pt.; Land Pride finish mower 3 pt.; NH 352 grinder mixer; 214 plow 3 pt.; 3 pt. scoop; JD field cultivator 13 ft. 3 pt.; Pequea turbo TR8 hay rake.

LAWN & GARDEN

JD S240 mower; JD 318 mower; Craftsman 20 HP mower; Toro Grand Stand mower; Tank sprayer; Cub Cadet tiller; Push mowers.

TRUCKS & TRAILERS

2004 Ford F450 3 door dully flat bed diesel w/ new tires; 1988 Dodge ¾ 4x4 gas; 8x6 trailer w/ ramp; 16 ft. bumper hitch trailer.

LIVESTOCK EQUIPMENT

3 Double Circle co-op 4 ring supplement bin; Osborne pig feeder; 10 Nursery gates – all steel; Fence posts; T posts; Gates; Feeders.

TOOLS & MISC.

Stihl 16 in. chainsaw; 2 Stihl line trimmers; Snap On 3000 recycling recovery w/ 2 jugs of R-12; Rockwell Delta Unisaw 5 HP 3 phase; Craftsman drill press; 3 Ton floor jack; Husqvarna chainsaw; RV pressure tank; 16 Ton coffin hoist; Milwaukee hammer drill; Set of aluminum jeep wheels; 4 Stacks of firewood on metal racks; ¾ Socket set; Wrenches; Hand tools; Garden tools; Construction tool box; Stacking tool boxes; Gas pressure washer; Motorcycle cable lift; Receiver hitches; Log chains; Grizzly drum sander; Craftsman table saw; 12 in. planer; Pellet grill; Chest freezer; 30 year old IH pedal tractor; Assorted Sch 40 fittings; 19 HP Briggs & Stratton motor 2 cyl, vertical shaft – good; Pipe wrenches; Plumbing supplies; Electrical supplies; Building supplies; 2 ½ HP electric motor; B&D band saw; Air compressor; 20 ft. alum ext ladder; Front mount toolbox 3 ft x 18 x 18; Homelite chainsaw; Come-a longs; Trailer jacks.

GUNS, KNIVES & HUNTING SUPPLIES

Rem 742 Woodmaster 243 Semi w/ Redfield scope; Rem 552 22 Semi w/ Bushnell scope; Rem 1100 12 ga vent w/ 3 barrels; Rem 700 ADL 270 bolt w/ scope; Rem 700 280 bolt w/ scope; Rem 700 BDL DU bolt 30-06 w/ scope; Moss Patriot 243 bolt w/ scope; Savage 223 bolt w/ scope; Rare Browning 22 short smokeless semi Belgium; Rem 541S 22 bolt; Rem 541T 22 bolt; MC 1911 9mm; Jennings 25 22; Win 190 22 auto; Win Mod 1894 30-30; 12 ga. Pump Sears Mod 200; Win Mod 1200 12 ga pump; Blackhawk 45 cal. Revolver; CZ Mod. 27 7.62 or 32 ACP semi; Marlin 39A 22 w/ scope; 45 cal. ammo; 22 ammo; 12 ga. ammo; Various other ammo; Collection of over 100 knives – Buck, Puma, Case & Others; Carson spot scope; Binoculars. NOTE: Guns will be brought to auction site morning of auction by family. Guns sell about 11:00 A.M.

See www.moffatauction.com for photos

Note: We are selling estate items for Mike Morton in this auction. Also selling tools, tractor & guns for Ronnie Sandbothe of Linn and other sellers. This will be a large auction with two auction rings most of day. Rick

Terms: Cash or good check with proper identification. Lunch on grounds. All items sell as is, where is. Not responsible for accidents. Proper ID needed to obtain bidders number.

RICHARD MOFFAT AUCTION SERVICE



573-761-4293
Jefferson City, MO

Auctioneers:
Richard Moffat & BJ Moffat
www.moffatauction.com

573-690-2823
Linn, MO

AUCTION

RAIN OR SHINE • WATCH FOR AND FOLLOW DANAHY AUCTION SIGNS

SATURDAY, OCTOBER 29th 2022 • 10:00 AM

21909 COUNTY ROAD 214, EMINENCE MO.

DIRECTIONS TO AUCTION: FROM THE INTERSECTION OF STATE HWY 60 AND STATE HWY 19 IN WINONA MO. TRAVEL NORTH ON STATE HWY 19 FOR 12 MILES TO THE INTERSECTION OF STATE HWY 106 AND STATE HWY 19 THEN RIGHT ON HWY 106 FOR 5 MILES TO STATE HWY (V) THEN LEFT FOR 1 MILE TO COUNTY ROAD 214 TURN RIGHT FOR 1 MILE TO AUCTION ON THE LEFT. WATCH FOR DANAHY AUCTION SIGNS

HOUSEHOLD • CAMPER • DOZER • PICKUP • VW TRIKE

TABLE LAMPS; END TABLES; COFFEE TABLES; TABLE AND CHAIRS; ROD AND REELS; DVD PLAYERS; BATHROOM VANITY SINK MICROWAVE; CD PLAYERS; WATER JUGS; COOLERS; VACUUM CLEANERS; DVDS; POTS AND PANS; VCR; PITCHERS; VHS TAPES; GLASSWARE; AIR FRYER; 19" FLATSCREEN TV; DEHYDRATOR; NEW SHOES; GUN RACK FOR UTV; NEW CEILING FAN MITS; PILLOWS; 4 BAR STOOLS; TABLE; 2 CHAIRS; CORNER CABINET; GAS GRILL; OLD METAL BED FRAME; FILE CABINET; TABLE SAW; 2, 100 GALLON PROPANE TANKS; BIG DOG CAGE; BIKES; METAL TABLE; WEBER GRILL; AIR COMPRESSOR; ELECTRIC HEATERS; CHOP SAWS; HOUSE SPEAKERS; BENCH GRINDERS; SMALL WOOD SPLITTER; 20 LB PROPANE TANKS; SMALL REFRIGERATOR; SKILL SAWS; OLD FANS; TOYS; LARGE BBQ GRILL; WOOD STOVE; RUBBER BOOTS; CASSETTE PLAYER; CASSETTES; WONDER WOOD; 1150 CASE DOZER 5503 HOURS WITH TILT BLADE; 2004 FORD PICKUP, 4X4 213,000 REBUILT MOTOR & TRANS, AUTOMATIC, SUPERCREW, ALL LEATHER, NEW BRAKE BOOSTER & AXLE SEALS. 2013 VOLKSWAGEN SPECIAL TRIKE; 12 FOOT BUMPER PULL CAMPER; GREAT HUNTING CABIN - WILL NOT HAVE A TITLE

OWNERS: CHARLIE AND EVA HONEYCUTT

TERMS: CASH, GOOD CHECK.

Danahy Auction Service

For All Your Auction Needs • Terry Danahy, Auctioneer

417-256-9667 • Ark. License: #2269

Not Responsible For Accidents • Everything Sold As Is

Public Auction

Sunday, October 30th at 1:00 pm

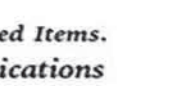
4001 State Route K, West Plains Mo

(right across from Fairview School) Watch for **Reid Auction** signs

Car, Fishing, Mowers, Tools, Antiques & Misc.

1991 Cadillac, 123,000 miles, Cold Air, Burgandy Interior, Everything works, Clean Title, Various types of Ammo, Yard Machine 3.5 hp Lawn Mower, Toro Push Mower w/Bagger, MTD Lawn Mower, Vintage Seed Planter, Mantis Tiller, Garden Hoses, Ford Lawn Cart, Metal Lawn Cart, Lawn Cart, Weed Popper, Agri-Fab Lawn Seeder, Garden Seat, Plant Stands, Sprinklers, Watering Cans, Seven Garden dust, Garden Wire, Garden Tools, Fishing Poles, Minnow Bucket, Tackle Boxes, Tackle, Some Old Wood Lures, Boat Gas Tank, Fishing Scale, Fishing Nets, Life Jackets, Fish Filet Knives, Rapala Electric Filet Knife, Boat Oars, Radio/Tackle Box, Fold Up Fishing Seat, Tackle Box w/Seat, Homemade Anchor, Rubber Boots, Big Mouth Billy Bass Wall Mount, Styrofoam Cooler, Rubbermaid Cooler on Wheels, Steel Work Bench, Craftsman Planer, Shovels, Double Bit Axe's, Metal Tool Box, 6' Wood Step Ladder, Fence Posts, Scoop Shovel, Extension Cords, Aluminum Step Ladder, Gas Cans, Aluminum Extension Ladder, Master Mechanic 10" Table Saw, Small Router Table, Selection of Oil, 10W 30 Motor Oil, Chain Saw Tools, 3' Level, New Hydraulic Jack, Shop Vac, Power Tools, Trailer Jacks, Come A Longs, 3/8 Socket Set, Fence Stretcher, Pipe Wrench, Hammers, Battery Chargers, Skil Saw, House Jacks, Mole Traps, Bow Saw, Sears Hand Miter Saw, Chain Boomers & Ratchets, Wooden Ladder, Wheel Barrows, Dremel, Black & Decker Saw, Hand Saws, Wood Planes, Hoes, Pitch Fork, Spade, Potato Fork, Small Roll of Barbed Wire, Bolt Organizer, Small Remington Hand Vac, Wheel Barrows, New Auto Vacuum, Fold Up Shovel, Vise, Grease Guns, Sockets, Roofing Nails, New Tire chains, Chains, Live Traps, 5hp Alcohol Racing Engine, Cast Iron Porch Bell, Wood & Metal Pulley, Glass Insulators, Cast Iron Kettle & Lid, Blue Jars, 2 Quart Behrens Metal Can w/Spout, Vintage Pop Bottles (Sunrise, Dr Pepper, Pepsi Cola, Coca Cola), Vintage Barn Hay Hook, Old Wood Bow Saw, Old Wooden Box, 8" Crock, 5 Gallon Phillips 66 Metal Can, Aluminum Coffee Pot & Cups, Wood Pulley, Rope & Pulley, Hanes, Milk Can w/Lid, Barn Hay Mover, 8' Rail Road Iron, Brass Spittoon, Small Cast Iron Pot, Vintage Hand Drill, Vintage Hand Sythe, 2 Man Cross cut Saw, Big Metal Funnel, Red Coleman Lantern, Old Hatchet, Old Lantern, Old Ice Tongs, Old Hay Hook, Ropes and Block & Tackle, Old Wooden Box, Aluminum Lawn Chairs, Cane Bottom Chairs, Folding Chairs, Lawn Chairs, Wood Chair, Stack of Lawn Chairs, Yard Swing, Patio Swing Bench/Chair, Padded Kitchen Chairs, Small Padded Bench, Small Wooden Table, TV Trays, Bar Stools, Roll Away Bed, End Table, Small 2 Drawer Cabinet, Wood Kitchen Cabinet, Small LP Tank, 2 Long Gun Cases, Hard Gun Case, New Golf Balls & T's, Basket Ball Hoop, Buckets of Fertilizer, Small Remington Hand Vac, Christmas Decorations, Solar Lights, Stained Glass Duck Picture, Pet Taxi, Electric Knives, Chili Pot, Western Books, Stove Top Canner, Electric Stove, 5 Qt Chicken Waterer, CB Radio, Power Corn Popper, 8 Foot Long 4 Inch Downspouts, Phillips CD Radio, Little golden Books, Squirrel Cage Fan, Fenton Glass, Bird Feeder, Rear Window Gun Rack, Wild Animal Calls, Crochet Hooks & Yarn, Large Skillet, Leather Hide, Wood Shop Stove, Padded Stadium Seats, Firewood Carrier, Handicap Commode....and more to be there day of sale.

Check AuctionZip for a more complete list and many more pictures.



Estate of Paul Wilson

Reid Auction Service

Ted Reid
417-256-6661

Rex Reid
417-372-1866
Ark. Lisc.#2606

Randy Reid
417-257-3911

Concessions and Restroom Available. Not Responsible for Accidents, Lost Stolen or Misplaced Items. Any announcements made day of sale supersede any prior oral or written communications

Cash or Check only.....NO Credit Cards

BUFFALO LIVESTOCK MARKET LLC



276 Hwy 32 W., Buffalo, MO

October 22nd, 2022

Receipts: 1112

Feeder Cattle Steady \$2 Higher.
Cows & Bulls Steady.

REPRESENTATIVE STEERS

- 300-400 @ 180.00 to 210.00
- 400-500 @ 170.00 to 197.00
- 500-600 @ 150.00 to 188.00
- 600-700 @ 150.00 to 178.00
- 700-800 @ 152.00 to 156.00
- 800-900 @ 150.00 to 160.00

REPRESENTATIVE HEIFERS

- 300-400 @ 155.00 to 192.00
- 400-500 @ 150.00 to 185.00
- 500-600 @ 145.00 to 177.00
- 600-700 @ 145.00 to 157.00
- 700-800 @ 140.00 to 158.00
- 800-900 @ 115.00 to 127.00

FEEDER BULLS

- 300-400 @ 160.00 to 190.00
- 400-500 @ 160.00 to 179.00
- 500-600 @ 145.00 to 175.00
- 600-700 @ 140.00 to 161.00
- 700-800 @ 125.00 to 140.00
- 800-900 @ 115.00 to 125.00

STOCKS COWS

Bred Cows 900.00 to 1375.00
Cow/Calf Pairs 1100.00 to 1575.00

SLAUGHTER BULLS

High Yield 95.00 to 101.00
Low Yield 78.00 to 92.00

SLAUGHTER COWS

Fleshy 65.00 to 75.00
Med Flesh 60.00 to 80.00
X Flesh 57.00 to 65.00
X Thin Shelly 57.00 Down

Plainer Quality and/or Dairy X and OFF Color Cattle \$20-\$50 under these prices.

Dry weather, short hay has brought lots and lots of Poor Light Carcass Cows to town, which have little or no value in the Food Chain, DO NOT expect big prices or be surprised if they have a no value mark.

Lots of Poor Thin Cows under \$40.

MON-WED MARKET REPORT

Listen to KJEL 103.7FM • Lebanon or KY00 99FM • Bolivar

VIEW OUR SALES AT CATTLEUSA.COM

CALL FOR TRUCKING OR ON-FARM VISIT

Lyle Caselman • Owner-Manager
417-345-7876 • mobile 417-533-2944
Leon Caselman • Owner
417-345-4514 • mobile • 417-588-6185

PICKUP BED TRAILER FRAME: \$185
OBO 417-668-7793 Land Line Do NOT
Text. Competition.

KITCHEN FAUCET MOEN: Single lever,
sprayer, new cartridge. \$45 obo. 636-239-
2695. Washington.

**ENGLISH SHEPHERD PUPPIES FOR
SALE:** Some bobtail, some not. 573-760-
5157.

FOR SALE OR TRADE: 1 Antique Warm
Morning Coal Stove. Nice. \$50. 573-734-
2822. Bismark.

WE BUY AND SELL
new and used mobile homes



(417) 501-1061

FARMALL 560 DIESEL TURBO: Needs
motor work, fast hitch, 75% rear rubber
duals. \$6,500. Great Bend QT Loader to fit
560 5FT Bucket Bale Spike \$2,850. 573-765-
3874 Leave Message. Richland.

MADE IN TIMBER BOOK: A settlement
history of Fort Leonard Wood, Bloodland,
Cookville, old towns, schools and
cemeteries. \$12.50. 417-532-2045. Lebanon.
(Leave message and phone number).

RADIATOR FOR 55 DODGE PICKUP:
\$50. 573-734-2822. Bismark.

ELECTRIC WELDER: \$150 or trade. 573-
734-2822. Bismark.

Larry Heisel Rentals



We Rent!

Call Larry!
Rental Available in 636 or 573 Area Codes
573-779-1500
www.larryheiselequipment.com

**SELLING OFF 750 HONDA
COLLECTION:** 10-1979 Anniversary,
5-1980-81 CB Custom Bikes. If interested
call for an appointment. All very nice bikes
with clean titles. These are investment
bikes. WILL NOT RESPOND TO TEXTS;
use phone or don't waste my time or yours.
Andy 636-228-4204 or 636-359-6189.
Marthasville.

1986 CORVETTE PROJECT CAR: Needs
trailer. \$15 OBO. 573-435-6987. Edgar
Springs.

FREE DOCK: 1 Well 45mm, metal & tubs
are ok, wood is rotted. Lake of the Ozarks.
573-505-1330.

30 Acres South of Centralia
SELLS TO HIGH BIDDER



- Located Just Off Rt. Z • Only 10 Miles to I-70 or Centralia • 1900+ Ft. Road Frontage
- Centralia Public Schools • Acreage Includes Barn, Pond & 1994 Dutchman Manufactured Home (manufactured home in poor condition)

10800 N. Nienaber Ln., Centralia, MO
Online Bidding Ends: Thursday, November 3 | 12:30 p.m.

Check It Out & Bid at AtterberrySells.com
Atterberry Auction & Realty Co... Your Real Estate Auction Specialists
Email: contactus@atterberryauction.com



ATTERBERRY
AUCTION & REALTY COMPANY

www.AtterberrySells.com
573-474-9295



CHRISTIAN FARMER WANTING PASTURE: To rotationally graze cattle. 417-718-5910.

CURVED IRONING BOARD: 4 1/2 feet, with cover, like new. \$10. 210-787-8222. Linn Creek.

YEARLING GRASS FED STEER: No antibiotics or growth hormone. Call for details. 573-201-4435.

BEAGLE PUPPIES: Tri colored, two females, three males. \$50. 417-241-3206. Seymour.

DELUXE WOOD HEATER: Glass front, three speed blower, triple wall flue, high capacity. Safe, heated my mobile home. Expensive brand but asking about \$2,800, negotiable. Must see! Winter is coming, don't miss this one! 417-818-6076. Marshfield.

YOUR FULL SERVICE AUTO BODY SHOP

We do everything from insurance jobs to full restorations!

DAVIDSON'S

Call to schedule an appointment for estimates

CUSTOM AUTO BODY 417-288-1589 • 115 Lincoln St., Buffalo, MO • @DavidsonCustoms

GREAT DANE PUPPIES: AKC. Fawn/Brindle Lions & Tigers. www.GreatDanes4U.com 417-859-0844. Marshfield.

EXHAUST MANIFOLD FOR 55-56 CHEVROLET: \$100. 573-734-2822. Bismark.

WWII FOOD MERMITE CAN: \$125. 573-734-2822. Bismark.

INTERNATIONAL HARVESTER TRUCKS BOOK: The Complete History. Hardback, large book, 208 pages. \$12.50. 417-532-2045. Lebanon. (Leave message and phone number).

WANTED OLD CHEVY WRECKER OR ROLLBACK: Or older car to restore. 573-734-2822. Bismark.

REGISTERED POMERANIAN PUPPIES: 1 Chocolate Male & 1 White/Chocolate Female. 1 Male Paperanian. 573-729-3851. Salem.

FIREARMS AUCTION

We will sell the following firearms at public auction located at the Montrose Community Building (Knights of Columbus Hall), 415 Missouri Ave, Montrose, MO 64770

Saturday, October 29, 2022 • 10A.M.

PISTOLS Browning 9nun Luger Single Action (Belgium Made) - S&W 29-2.44 mag SS 8" Barrel - Taurus. 44 mag Brush Nickel - S&W 27-2.357 mag SS 8" Barrel - S&W 57.41 mag SS 8" Barrel - S&W 629.44 mag Nickel 6" Barrel - Ruger New Model Blackhawk. 357 mag Blued - Ruger New Model Super Blackhawk. 44 mag SS - S&W 19-4.357 mag U.S. Custom Patrol - S&W 25-15.45 Colt Blued - Sig Sauer P938 9nun Para - Sig Sauer M191 I.45 Auto Brush Nickel - Beretta M92 9nun - S&W 10-6.38 Special CZ 75B 9nun - (2) Browning Buck Mark. 22lr S&W 500.500 mag SS 10" Barrel - Sig Sauer P320 9nun Coyote Brown 3 mags - High Standard Double Deuce .22 S&S Imports ZIGPC191 I.45 ACP - **LONGGUNS** Browning X-Bolt .243 win. (Wood) - Browning X-Bolt .243 win. Laminated w/Leupold Mounts - CZ 527 .223 Rem. Bull Barrel - Savage Tactic Mod. 10.223 Bull Barrel - Savage Mod. 11.22-250 Camo Bull Barrel w/ Bushnell Elite - Savage Mod. 110.204 Bull Barrel - Remington Mod. 742 Woodmaster 30-06 - Winchester Mod. 77.22lr - Savage Mod. 112 Series J.22-250 Bull Barrel w/Redhead Scope - Springfield Mod. 120A.22S,L,LR - Whelen Mod.35W Custom - Savage Mod.12.22-250 Bull Barrel - **AND MANY MORE!**

AUCTIONEERS NOTE: This is a great opportunity to purchase well cared for, hard to find firearms from a personal collection. Mark this date and be sure to attend. **TERMS OF SALE:** Cash or good check w/ proper ID. Nothing to be removed until settled for. Not responsible for accidents or stolen merchandise. Statements made day of sale takes precedence over printed materials. Lunch served and toilets on site.

Sale Conducted by:

WADE AUCTION SERVICE
APLINGTON CITY, MO
660-492-8278

AUCTIONEERS NOTE: ALL OUT OF STATE BUYERS ARE WELCOME BUT WILL FOLLOW FFL GUIDELINES FOR OUT OF STATE PURCHASES ON REQUIRED FIREARMS.

COL. KEVIN WADE MOBILE 660-492-3279
COL. BRYAN WADE MOBILE 660-492-3740
TYLER WADE MOBILE 660-492-7764
CLERKS: NORRIS, IRBY & WADE

TO VIEW AD ONLINE GO TO WWW.AUCTIONZIP.COM
AUCTIONEER ID: 24103

ACCREDITED BUSINESS

facebook

Allen Auction & REAL ESTATE SERVICE LLC
www.allenauction.net

Annual Thanksgiving Consignment Auction

SATURDAY NOV. 26, 2022 @ 9:00 AM

Allen Auction Sale's Lot

490 S. Hwy 47, Hawk Point, MO, 63349

Directions: Allen Auction Sale's Lot. From Hawk Point, MO, Take Hwy 47 South 2.5 miles, Auction on Left Side. Watch for Signs Day of Auction.

COMBINES & HEADS • TRACTORS • FARM EQUIPMENT • SKID LOADER EQUIPMENT • VEHICLES • CONSTRUCTION • HAY EQUIPMENT • TRAILERS & WAGONS • LIVESTOCK EQUIPMENT & SUPPLIES • RECREATION • LAWN & GARDEN • SHOP EQUIPMENT & TOOLS • MISCELLANEOUS

Special Note: We will ONLY be accepting GOOD QUALITY tractor & equipment tires! ABSOLUTELY NO VEHICLE TIRES!

Already included in the lineup of equipment is the George & Phyllis Hoelscher Retirement & Orville & Rita Thoroughman Trust.

GO TO WEBSITE FOR FULL LIST, UPDATES AND PHOTOS

Auctioneers Note: We will be running 3 auction rings. Please come prepared with extra bidders. Any questions on any of the equipment, feel free to give us a call at the office. Thanks Nick and Kyle.

ALLEN AUCTION & REAL ESTATE SERVICE LLC
(636) 338-4805 • Hawk Point, MO • www.allenauction.net

The Auctioneers:

Nick Allen: (636) 358-2900 • Kyle Allen: (636) 236-2344
Tec Parr: (636) 661-5775 • Elden Foster: (573) 239-6745
Fax: (636) 338-4823 • Email: sandy@allenauction.net

MID MISSOURI STOCKYARDS

REGULAR SALE EVERY THURSDAY 11 AM

COW SALE • NOVEMBER 5TH AT 6PM

WATCH OUR WEEKLY SALE IN REAL TIME ON DVAUCTION.COM

For Farm Visits, Market Updates, or Trucking
Call **Zach Cox 417-777-1320**
Dan Romine 573-578-4939

**Competitive Buyers!
Competitive Commission!
Competitive Market!**

Barn: 417-532-9292
I-44 • Exit 123 "just outside of Lebanon"
17505 Route 66, Phillipsburg, MO 65722
For weekly market updates, visit us at www.midmostockyards.com

LIONEL TRAIN SET: Steam engine, tender, caboose and other car, track, and transformer. \$195. 573-364-7465. Rolla.

5 RED ANGUS BULLS FOR SALE: 13 months old, semen tested \$2,500. Also, 1 older red angus bull. Proven heifer bull. \$2,500. 573-539-2060. Versailles.

THREE BASSET HOUND FEMALES:
D.O.B. 2/9/22 Updated on preventatives, negative brucellosis testing on 10/17/22. 417-664-1961 TEXT ONLY.

BOB'S CONSTRUCTION IS NOW HIRING FOR JACKS OF ALL TRADES:
Framing, concrete, fence building, flooring install, electric, plumbing. Full time work 40 hours plus weekly. MUST have own basic hand tools & transportation. Starting pay is \$17.00 an hour based on experience. Call 417-669-0379 for an interview.

32" VIZIO FLAT SCREEN COLOR TV:
With remote. Like new. \$45. 210-787-8222. Linn Creek.

2 THREE-MONTH-OLD MALE WELSH CORGI PUPPIES: 1 tri, 1 tan, with blue eye, nice markings. No papers. \$300 each. 417-259-2203. Grovespring.

WEATHERED BARN WOOD SIDING: 10" wide. 573-729-7226. www.pineridgerustic.com Salem.

DARDEN PROFESSIONAL TIMBER HARVESTING, BUYING STANDING TIMBER: Great prices, improve wildlife habitat and improve forest health. State Certified & Fully Insured! 573-247-4808. Salem.

BOXER AKC SIREDD PUPPIES:
Vaccinated. 573-259-9448.

HEARTH CRAFT GLASS BI-FOLD FIREPLACE DOORS PURCHASED AT FORSHAW'S FIREPLACE:
Antique brass. \$160 obo. 636-239-2695. Washington.

LOG SIDING: 2X8 Pine/Western Cedar www.pineridgerustic.com 573-729-7226. Salem.

USED MOBILE HOMES: Call David at VILLA HOMES IN ROLLA 573-578-8072. Rolla.

BUYING MOBILE HOMES: Call David at VILLA HOMES IN ROLLA 573-578-8072. Rolla.

2022 RAM PICKUP: 4x4, Full navigation, 360 camera, driver assist, crew cab, only 6,000 miles. NO SUNDAY CALLS. 417-733-2068. Buffalo.

NEW MOBILE HOME STOCK: Just received (5) new units, they gotta go! 573-657-2176. amegamobliehomes.com

USED DOUBLE-WIDE: \$34,900 WOW!!!! This won't last! 573-657-2176. amegamobliehomes.com

MADE IN TIMBER BOOK: A settlement history of Fort Leonard Wood, Bloodland, Cookville, old towns, schools and cemeteries. \$12.50. 417-532-2045. Lebanon. (Leave message and phone number).

WE HAVE MOBILE HOMES:
Instock new arrivals (8) homes, need to go as soon as possible! 573-499-9993. columbiadiscountshomes.com

HIKING THE OZARKS BOOK: A Guide to the Area's Greatest Hiking Adventures. \$6.75. 417-532-2045. Lebanon. (Leave message and phone number).

AUSTRALIAN SHEPHERD PUPPIES:
UTD on shots, tails & dewclaws done, Tris & Merles. Trade or sell. 417-967-6493. Roby.

TRUE MODULARS: 30 to 60 day delivery available, 3 and 4 bedroom 573-657-7040 chateauhomes.net

AUSTRALIAN SHEPHERD PUPPIES FOR SALE: Some natural bobtail, some not. Grey Merles & Black & White. 573-760-5157.

TINY HOMES: We gottem 573-881-3283

OFFICIAL TRACTOR OF TOUGH™

INTRODUCING THE ALL-NEW 5100 SERIES



NEW MAHINDRA TRACTORS

| | |
|-------------------------|----------|
| 1626 4WD & LDR 26HP | IN STOCK |
| 2638 4WD & LDR 38HP | IN STOCK |
| 4540 4WD & LDR 41HP | IN STOCK |
| 4550 4WD & LDR 48 HP | IN STOCK |
| 2670 CAB 4WD & LDR 70HP | IN STOCK |

USED TRACTORS

| | |
|----------------------------|--------|
| MAHINDRA 3550 49HP CAB LDR | 25,000 |
| MAHINDRA 2638 38HP 4WD LDR | 24,000 |
| JD 4120 43HP 4WD LDR | 21,500 |
| AC 7010 106 HP CAB | 9,500 |
| MF 135 36 HP | 2,750 |

USED ROUND BALERS

| | |
|-----------------|--------|
| MF 1745 4X5 | 10,000 |
| MF 1734 | 5,500 |
| HESSTON 560 5X6 | 2,000 |
| NH 850 5X5 | 1,500 |

USED MISC.

| | |
|--------------------------|-------|
| HAYBUSTER 107 DRILL 10FT | 9,500 |
| BUSHWACKER 8FT CUTTER | 3,000 |
| SITREX 8 WHEEL RAKE | 1,750 |
| M&W 8 WHEEL RAKE | 1,750 |
| LELY 8 WHEEL RAKE | 1,750 |
| HESSTON 3PT TEDDER 10FT | 1,750 |

Marshfield Machinery Inc.
222 E. Madison • Marshfield, MO 65706
417-859-2117 • www.marshfieldmachinery.com

*2018 data including all Mahindra group brand sales.
MahindraUSA.com © 2020 Mahindra USA Inc.

Marshfield Machinery Inc.
222 E. Madison
Marshfield, MO 65706
417-859-2117
www.marshfieldmachinery.com



Specializing in farm and home, recreation, and commercial listings.

Whether you're buying or selling, our team can save you time, help you avoid costly mistakes, and ensure you get the best value. Call or visit us online today to start your home search, talk to an agent or request your free home value report!

Located in Mountain Grove, Ava, Gainesville and Theodosia.



\$225,000

*000 Nn Highway
Theodosia, MO 65761*

Beautiful 75 acres m/l of Vacant Land Located in Theodosia, MO - Ozark County. This beautiful property has so much to offer. Great as a Hunting property (Deer & Turkey) or to Build your home and enjoy the country lifestyle. Great location since it is close to the lake area, and the best part of all, you do not have to worry about any restrictions. Call Nathaly Sherrill at 417.543.3557



\$169,900

*Tbd County Road 110 & State Hwy. U
Mansfield, MO 65704*

61 acres m/l with county road frontage & state highway frontage only 4 miles from the junction of U and A Highway located in Mansfield, Mo. Property is presently all wooded with some marketable oak timber; could be used for hunting & recreation with the perfect opportunity to blaze some SxS trails. Owner would subdivide into two 30 acre m/l from east to west. Call for more details. Owner/Agent. Call Amanda Kelly at 417.224.4735



\$170,000

*807 Elm Ave.
Ava, MO 65608*

3 bed, 2 bath home walking distance of Ava schools. Covered back porch, Privacy fence &,attached two car garage. Appliances included. CH/A with vent-free heater & attic fan. Call us today for your personal tour. Call Bill Coats at 417.543.3781 or Derek Wilkerson at 417.250.0766



\$259,900

*4902 N Hwy 95
Mountain Grove, MO 65711*

Great location for this nicely remodeled 3 bed 2 bath home just 6.5 miles north of Mtn Grove city limits. The living room is open with high ceilings, a pellet insert, and new flooring in LR & kitchen areas. The bathrooms are freshly remodeled as well. This is a really neat, move in ready place and could be just the one you've been waiting to come on the market! Call Terry Coats at 417.926.9150 or Sarah Beller at 417.349.0059

CENTURY 21[®]

Hometown Properties

MOUNTAIN GROVE
9871 E 20th St, Bldg A
Mountain Grove, MO 65711
417.926.1070

I BUY.....used mobile homes. Call or text 573-338-6250 or email GregS.CDH@outlook.com

FIREARMS: Professional Repair, Restorations and Appraisals. Baron's Gunsmithing. 573-363-5801. Camdenton.

HARLEY FAT BOBS: Custom flame paint w/ gas caps + lines. \$100. 573-764-3517. Call in P.M.

COLT REVOLVER DEALER CATALOGS: Circa 1950's + 1960's. All for \$100. 573-764-3517. Call in P.M.

2007 INTERNATIONAL NAVISTAR BOXTRUCK: with lift gate, 8x8x16 box size, 20K miles. \$40,000 OBO excellent condition like new. 602-400-1080.

1500 VINTAGE WRISTWATCH DIALS: \$100. 573-764-3517. Call in PM.

0% for 4 Years



HEATMOR
Outdoor Wood Furnace

as low as **\$238** per month

HEATMOR MIDWEST
Licking, MO 65542 • 573-674-2962

Buildings • Hunter's Cabins • Lawn Furniture



JAMCO Portable Buildings
800-688-2064 • 307 Enterprise Dr. • Seymour, MO • www.jamcobuilders.com

Rent To Own Plan

REGISTERED HEREFORD & ANGUS BULLS: Home raised, Some Show-Me Select Qualified. 573-701-7828. Belgrade.

110 PORCELAIN POCKET WATCH DIALS: Perfect for arts & crafts. \$100. 573-764-3517. Call in PM.

HARLEY 45 SOLO: factory rear brake drum + sprocket. \$150. 573-764-3517. Call in PM.

ATTENTION DOG BREEDERS, LIQUIDATING MY BUSINESS: Three portable buildings 10x20, stack cages, coated wire, water containers, water bottles & bowls, feeders, generator, power washers, snowplow, & too much more to mention. 417-429-6715. Sparta.

1890 GOLD TESTING KIT: Glass acid beakers + antique wooden case. \$100. 573-764-3517. Call in PM.

HARLEY PANHEAD DISTRIBUTOR: original, chrome + complete. \$125. 573-764-3517. Call in PM.

LIGHTLY EXPERIENCED GOLF BALLS: \$3 a dozen. 417-818-3469. Strafford.

1962 HARLEY SPORTSTER 900CC: original distributor. \$50. 573-764-3517. Call in PM.

DRAPES AND CURTAIN RODS: Off-white, various sizes, \$15 for all obo. 636-239-2695. Washington.

SLIGHTLY USED PUZZLES: Will sell or trade. 417-818-3469. Strafford.

EARLY 1900's CAMEL BACK STEAMER TRUNK: Oak, 5 strap, solid, nice condition. \$95. 573-364-7465. Rolla.

1970s KIDS METAL STOVE & FRIDGE: Nice Lithographic paint, 18" wide x 36" high. \$75. 573-364-7465. Rolla.

SELLING OFF 750 HONDA COLLECTION: 10-1979 Anniversary, 5-1980-81 CB Custom Bikes. If interested call for an appointment. All very nice bikes with clean titles. These are investment bikes. **WILL NOT RESPOND TO TEXTS;** use phone or don't waste my time or yours. Andy 636-228-4204 or 636-359-6189. Marthasville.

3 GENTS WITTNAUER WRIST WATCHES: 10k gold + 23J. All \$200. 573-764-3517. Call in P.M.

REGISTERED POMERANIAN PUPPIES: 1 Chocolate Male & 1 White/Chocolate Female. 1 Male Paperanian. 573-729-3851. Salem.

END OF YEAR BLOW OUT SALE ON ALL ZERO TURN MOWERS

MOW NOW. PAY LATER.
● MONEY DOWN ● INTEREST ● PAYMENTS

For 120 days W.A.C. on all in stock Bad Boy Mowers call for more details!



MZ Magnum
54" w/ KOHLER
WAS-~~\$5299~~
NOW-\$4460



ZT Elite
60" w/ KOHLER
WAS-~~\$7189~~
NOW-\$5999



ZT Avenger
60" w/ KAWASAKI
WAS-~~\$6649~~
NOW-\$5523



More models available!
Call for Details



Maverick
60" w/ KOHLER
WAS-~~\$8519~~
NOW-\$7223



Maverick HD
48" w/ KAWASAKI
WAS-~~\$10,079~~
NOW-\$8658

CALL FOR CASH PRICING
CALL FOR SPECIAL BONUS DETAILS
CALL FOR CURRENT SERVICE SPECIALS

STAHLMAN POWERSPORTS
1387 S. BISHOP AVE.,
ROLLA, MO
800-813-6944
WWW.STAHLMANPOWERSPORTS.COM

WEEKLY TRADER MAGAZINE

This is...

WEEKLY TRADER COUNTRY!



Place Your Ad With Us Today!

417-532-9131 CHECK US OUT ONLINE AT: myweeklytrader.com

YOUR LAND AND FARM EXPERTS!

Camden Co - 20 Acres

\$66,000



Looking for that off the grid property, you know where you can star gaze on a clear night with no city lights to dim the millions of stars overhead? Then this twenty acre mostly wooded tract fits the bill. The property has readily available electricity and a nice spot for your weekend cabin or camper for when you need to get away from the hustle and bustle of city life. Or perhaps you are looking for place to live full time and not have any visible neighbors. If you like to hunt there are plenty of Deer, turkey, and squirrels to keep the freezer full of high protein free range meat. The property has a wet weather creek, and the bottom ground has plenty of ash trees that should provide for morel mushrooms in the spring. Lots of white, red, and post oak hardwood trees as well as a good number of mature walnuts along the creek bottom. The owner has a cleared and level area just off the entrance road for a camper of cabin. Located thirteen miles north of Richland, Missouri and only twenty-two miles east of Camdenton, Missouri. You can be fishing in the Lake of the Ozarks in thirty minutes. To schedule a showing call Danny L. Miller at 573-528-1489

Maries Co - 4 Acres w/Home

\$239,000



Super nice, manufactured home on 4 acres in Maries County Missouri that will not disappoint. Meticulously maintained 4-acre parcel with a 1728 square foot Dutch built manufactured home on a permanent foundation. The three bed, two full bath home with 2"x6" walls is in excellent condition and will qualify for a VA loan. The property also provides an insulated 1600 square foot all metal detached garage and workshop with concrete floor and 500-amp electric service. An additional storage shed will provide a place to keep your livestock feed dry or store your lawn equipment. The 16' x 20' covered back deck will provide a great place to entertain and is connected to the 12' x 26' patio that partially surrounds the above ground 24' pool. The owner even has a robot that cleans the pool, nothing to do but swim and enjoy. This setup will provide hours of fun for your family. The four acres can support a cow or horse and you will have a corral with a loading and head chute that will come in handy when it's time to vaccinate or load/unload livestock. The owner is an avid outdoorsman and has a 100-yard target setup for sighting in your Deer rifle and a 30 yard target setup on the back deck for your pistol practice. This property is in the middle of an established Amish community which will provide for all your needs from garden produce to cabinetry. The Amish are the best neighbors to have and according to the seller

are always willing to help with any chore. Shown by appointment only and will require a 24-hour notice prior to showing. Be the first to view this property by calling Danny L. Miller at 573-528-1489

Crawford Co - 40 Acres

\$220,000

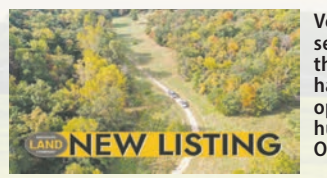


Endless outdoor recreation and or hobby farm awaits on this central Missouri property. You will have a 24' x 34' machine shed/barn/workshop for you tractor, side by side, or a place to store your hay. The building has water, electric, and a concrete floor. The land is level to gently rolling and the white oak hardwood timber has produced an enormous amount of mast this year and the Deer are getting fat on the acorns. A wet weather creek dissects the property and there is a nice little valley that would make a great lake site. The property is about half open ground that could use fertilizer and a bush hog. There are many good open areas that would make ideal food plot areas for the Deer and Turkey. A small pond provides year-round water for the wildlife or livestock. Perimeter 4 strand barb wire fencing is in good condition. The home on the property is in poor condition and is considered of no value. Steelville Missouri is seven miles east of the farm and St. James is 30 miles west of the farm. One hour and thirty

minutes from downtown St. Louis. This will make a great home of weekend retreat. For a viewing call Danny L. Miller at 573-528-1489 or email dmiller@missourilandco.com

Camden Co - 28.35 Acres

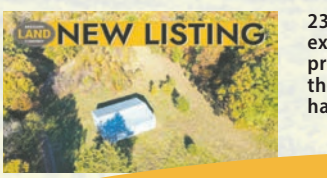
\$199,500



Very nice property in Camden County Mo off Bollinger Creek Rd. Behind a locked gate and at the end of the road seclusion. There is a cleared off building spot with electric service the owner paid 16,000 recently to get ran into the site. Beautiful hardwoods overlooking the valley below. There is an entrance to a cave on the property, and I have a video I can send the potential buyer on the cave. There is a live spring fed creek in the bottom next to the open fields. It is beautiful down by the creek. Be a great place to spend a hot afternoon with the kids. This is a great hunting tract and known for good hunting here. All surveyed and boundary fence around it. Close to Lake of the Ozarks which is right down the road. Call Mike Stoner at 573-774-9775

Morgan Co - 23.79 Acres

\$99,500



23.79 Acres in Morgan County Missouri that lays well. Property has wet weather creek, great mature timber and excellent hunting. There is a 40x50 metal building with 16 ft sidewalls, and 3 garage doors. There is a well on the property, and electric pole with a meter. This is Co-Mo electric so high-speed internet is available. The area around the building is a nice open field that looks like a park setting. This would make a perfect hunting camp or summer hang out spot when going to the lake. For more information, please call Mike Stoner at 573-774-9775

MISSOURI LAND COMPANY

Farm, Home & Hunting Properties

Rolla Office:
12647 S. Hwy 63
Rolla
573-308-4868

Cole Camp Office:
14981 Centerline Ave.,
Cole Camp
660-668-4868

www.missourilandco.com • 660-668-HUNT

Toll FREE number for both locations 844-974-1850

RUBBER & LEATHER BOOTS AND 5-Buckle OVER SHOES: Men's 11, Women's 7, some insulated. \$15-\$40 obo. 636-239-2695. Washington.

BOXER AKC SIRED PUPPIES: Vaccinated. 573-259-9448.

GREAT DANE PUPPIES: AKC. Fawn/Brindle Lions & Tigers. www.GreatDanes4U.com 417-859-0844. Marshfield.

ALFALFA HAY FOR SALE: Big round silage bales. 417-343-4958. Seymore.

DEER FEEDERS: Boss Buck \$100. Redneck \$50. 618-806-8788. Lebanon.

THREE BASSET HOUND FEMALES: D.O.B. 2/9/22 Updated on preventatives, negative brucellosis testing on 10/17/22. 417-664-1961 TEXT ONLY.



Wright Spray Foam Insulators, LLC
Commercial & Residential
Call for FREE Estimates!

Ervin Gingerich 417-926-2052
B. Eli Yoder 417-746-4932



CALUS LOGGING

20 YEARS EXPERIENCE

Buying Standing Timber
Walnut & Oak

CERTIFIED

Joe Calus, Owner
417-926-4606 • MTN. GROVE



CENTRAL BOILER CLASSIC EDGE
TITANIUM HDX

26% Tax Credit on EPA certified Central Boiler Classic Edge HDX models and installation. Call today to learn more!

Outdoor Wood Furnace
CentralBoiler.com

Yarbrough Equipment Sales & Services, Inc.
9776 E. State Hwy OO • Strafford, MO
417-736-2303 • 1-866-286-6901 • www.yarbeq.com

KITCHEN FAUCET MOEN: Single lever, sprayer, new cartridge. \$45 obo. 636-239-2695. Washington.

5 RED ANGUS BULLS FOR SALE: 13 months old, semen tested \$2,500. Also, 1 older red angus bull. Proven heifer bull. \$2,500. 573-539-2060. Versailles.

PICKUP BED TRAILER FRAME: \$185 OBO 417-668-7793 Land Line Do NOT Text. Competition.

2 THREE-MONTH-OLD MALE WELSH CORGI PUPPIES: 1 tri, 1 tan, with blue eye, nice markings. No papers. \$300 each. 417-259-2203. Grovespring.

HARLEY PARTS, HELMETS, LEATHER VEST, CHAPS & COATS: Wholesale prices. Biker wear wholesale to the public 719 W. Commercial Springfield, MO.

1986 CORVETTE PROJECT CAR: Needs trailer. \$15 OBO. 573-435-6987. Edgar Springs.



WE BUY White Oak Logs!

- ✓ Top prices for your logs
- ✓ Experienced log buyers
- ✓ Professional service

Chad Cook | Salem Wood Products
417.718.2950
5 miles north of Salem, MO on Hwy 19

INDEPENDENT STAVE COMPANY
Log Procurement & Sales

www.independentstavecompany.com



Fly Free with AFC.

AFC ALTOSID® FLY CONTROL PRODUCTS

KENT

Located in the Heart of the Amish Mennonite Community!
417-345-8600
19 Prairie Lane, Buffalo

BOB'S CONSTRUCTION IS NOW HIRING FOR JACKS OF ALL TRADES: Framing, concrete, fence building, flooring install, electric, plumbing. Full time work 40 hours plus weekly. MUST have own basic hand tools & transportation. Starting pay is \$17.00 an hour based on experience. Call 417-669-0379 for an interview.

ELECTRIC WELDER: \$150 or trade. 573-734-2822. Bismark.

FARMALL 560 DIESEL TURBO: Needs motor work, fast hitch, 75% rear rubber duals. \$6,500. Great Bend QT Loader to fit 560 5FT Bucket Bale Spike \$2,850. 573-765-3874 Leave Message. Richland.

5 GAL. PLASTIC BUCKETS: with lids. \$3 each. 636-239-2695. Washington.

I AM LOOKING FOR LAND TO RENT TO GROW WHEAT: I can pay a good rate per acre for land that is fairly level, decent soil and in a 30 mile radius of Marshfield. I am looking for 80-500 acres. 417-741-2288. Marshfield.

BEEFMASTER BULLS: 18 months old. Call for price. 417-327-2887. Halfway.

ENGLISH SHEPHERD PUPPIES FOR SALE: Some bobtail, some not. 573-760-5157.

RADIATOR FOR 55 DODGE PICKUP: \$50. 573-734-2822. Bismark.

WEEKLY TRADER MAGAZINE

YOUR AD GOES HERE!

Add **YELLOW** Color For An Additional \$3 Per Reader Ad

All ads will include Phone Number (unless requested to be deleted by advertiser) and City Or Town, Phone Number with Area Code counts as one word. City or Town counts as one word.

RATE: 80¢ Per Word. All Classified Ads Require Payment Before Print.

| | | | |
|--------------|--------------|--------------|--------------|
| (1) 80¢ | (2) \$1.60 | (3) \$2.40 | (4) \$3.20 |
| (5) \$4.00 | (6) \$4.80 | (7) \$5.60 | (8) \$6.40 |
| (9) \$7.20 | (10) \$8.00 | (11) \$8.80 | (12) \$9.60 |
| (13) \$10.40 | (14) \$11.20 | (15) \$12.00 | (16) \$12.80 |
| (17) \$13.60 | (18) \$14.40 | (19) \$15.20 | (20) \$16.00 |
| (21) \$16.80 | (22) \$17.60 | (23) \$18.40 | (24) \$19.20 |
| (25) \$20.00 | (26) \$20.80 | (27) \$21.60 | (28) \$22.40 |
| (29) \$23.20 | (30) \$24.00 | (31) \$24.80 | (32) \$25.60 |
| (33) \$26.40 | (34) \$27.20 | (35) \$28.00 | (36) \$28.80 |
| (37) \$29.60 | (38) \$30.40 | (39) \$31.20 | (40) \$32.00 |

Place your Classified Ad TODAY!

417-532-9131 • 800-665-8875

Fax: 417-532-8140

Or Mail To: P.O. Box 192 • Lebanon, MO 65536

For your convenience we accept MasterCard, Visa, Discover or American Express



DEADLINE FOR CLASSIFIED ADS: FRIDAY 4:00PM!

Name _____

Address _____

City _____ Email _____

State _____ Zip Code _____ Phone _____

Ad Total \$ _____ X # Weeks _____ = Amount Enclosed \$ _____

Land

For Sale

Webster Co., Mo • 147 Acres +/-



\$1,150,000

- Turn-key ready-to-hunt property with implemented and proven management plans
- 7 ponds on the property – one spring-fed stocked lake, 6 other ponds providing ample water
- Located in a hidden peaceful location close to shopping
- Nearly 72 acres open ground laid out to create inside corners and pockets to entice wildlife into the open
- TARGET RICH ENVIRONMENT with a healthy deer and turkey population
- 6 auto waters and frost-free water hydrants
- 2050 sq ft home and outbuildings in the Marshfield School District
- Mature timber marked for a harvest



WHITETAIL PROPERTIES REAL ESTATE

HUNTING | RANCH | FARM | TIMBER

Brian Utecht | 417-766-5595

Brian.Utecht@whitetailproperties.com

WHITETAILPROPERTIES.COM



Missouri's Top Land Specialist in 2014, 2015, 2016, 2017, 2018, 2019, 2020 and 2021

ECHO[®]
shindaiwa[®]

IT'S TIME TO
 UPGRADE YOUR
 EQUIPMENT THIS FALL



FERRIS



Simplicity

TYM
 TRACTORS



LS TRACTOR



WCT FARM & LAWN, NEW OWNERS, SAME GREAT STAFF!

WCT Farm & Lawn

417-859-4311

SALES • SERVICE • PARTS

3299 E. EVERGREEN ROAD

STRAFFORD, MO

