

FREE - TAKE ONE!

Vol. 29 No. 30

OCTOBER 20, 2022

800-543-8271 • 800-665-8875

WEEKLY **TRADER** MAGAZINE



Find us on
Facebook

@myweeklytrader
AUCTIONS PG. 9

VISIT OUR NEW WEBSITE! MYWEEKLYTRADER.COM

NEW SHIPMENTS ARRIVING DAILY.



Backed By
MORSE

ORDER YOUR NEW CHEVY, BUICK OR GMC TODAY AND GET EXACTLY WHAT YOU WANT.

WE WANT YOUR TRADE.

ED MORSE
CHEVROLET
BUICK · GMC

ROLLA

FORMERLY FAIRGROUNDS AUTO PLAZA

NEW NAME. SAME TEAM.

100 Fairgrounds Rd., Rolla, MO

573-364-1002

EdMorseChevroletBuickGMCRolla.com

Land

For Sale

Webster Co., Mo • 147 Acres +/-



\$1,150,000

- Turn-key ready-to-hunt property with implemented and proven management plans
- 7 ponds on the property – one spring-fed stocked lake, 6 other ponds providing ample water
- Located in a hidden peaceful location close to shopping
- Nearly 72 acres open ground laid out to create inside corners and pockets to entice wildlife into the open
- TARGET RICH ENVIRONMENT with a healthy deer and turkey population
- 6 auto waters and frost-free water hydrants
- 2050 sq ft home and outbuildings in the Marshfield School District
- Mature timber marked for a harvest



WHITETAIL PROPERTIES REAL ESTATE

HUNTING | RANCH | FARM | TIMBER

Brian Utecht | 417-766-5595

Brian.Utecht@whitetailproperties.com

WHITETAILPROPERTIES.COM



Missouri's Top Land Specialist in 2014, 2015, 2016, 2017, 2018, 2019, 2020 and 2021





DH15 SERIES

DISC HARROWS
65 HP Max: 60", 72", 90"

- Adjustable gang angles
- Notched or smooth disc blades
- Heavy-duty frame and heat-treated disc blades
- Ideal for landscapers and small acreage farmers

Getting Chores Done
LAND PRIDE
does that.



www.landpride.com

For Outstanding Products & Service
AGRI-ENTERPRISES
 1-1/2 Miles South Of Licking, MO On Hwy 63
 573-674-2203 • 1-800-653-7152 • www.agri-enterprises.com

INTERNATIONAL HARVESTER TRUCKS BOOK: The Complete History. Hardback, large book, 208 pages. \$12.50. 417-532-2045. Lebanon. (Leave message and phone number).

SLIGHTLY USED PUZZLES: Will sell or trade. 417-818-3469. Strafford.

WEATHERED BARN WOOD SIDING: 10" wide. 573-729-7226. www.pineridgerustic.com Salem.

2007 INTERNATIONAL NAVISTAR BOXTRUCK: with lift gate, 8x8x16 box size, 20K miles. \$40,000 OBO excellent condition like new. 602-400-1080.

LOG SIDING: 2X8 Pine/Western Cedar www.pineridgerustic.com 573-729-7226. Salem.

USED MOBILE HOMES: Call David at VILLA HOMES IN ROLLA 573-578-8072. Rolla.

BUYING MOBILE HOMES: Call David at VILLA HOMES IN ROLLA 573-578-8072. Rolla.

NEW MOBILE HOME STOCK: Just received (5) new units, they gotta go! 573-657-2176. amegamobliehomes.com


USED DOUBLE-WIDE: \$34,900 WOW!!!! This won't last! 573-657-2176. amegamobliehomes.com

WE HAVE MOBILE HOMES: Instock new arrivals (8) homes, need to go as soon as possible! 573-499-9993. columbiadiscounthomes.com


TRUE MODULARS: 30 to 60 day delivery available, 3 and 4 bedroom 573-657-7040 chateauhomes.net

TINY HOMES: We gottem 573-881-3283

ALFALFA HAY FOR SALE: Big round silage bales. 417-343-4958. Seymore.







VOTED #1 BEST Preowned Car Dealership



TIM'S USED CARS

(573) 341-3828 • 1334 South Bishop (Hwy. 63) • Rolla, MO
Next to Hwy CC • www.tims-used-cars.com

 <p>2017 CHEVY CRUZE LT 4 cyl auto, power equipped 62,xxx Miles Only \$16,900</p>	 <p>2016 FORD FIESTA S 4 cyl auto, A/C 59,xxx Miles Only \$11,800</p>
 <p>2017 DODGE GRAND CARAVAN SXT V-6, leather, power equipped, 123,xxx Miles Only \$15,800</p>	 <p>2015 FORD EXPLORER XLT 4x4, V-6, power equipped, 7 passenger, 52,xxx Miles Only \$21,900</p>

LARGE SELECTION OF CARS, TRUCKS, SUVs & VANS!

I BUY.....used mobile homes. Call or text 573-338-6250 or email GregS.CDH@outlook.com

GREAT DANE PUPPIES: AKC.
Fawn/Brindle Lions & Tigers. www.GreatDanes4U.com 417-859-0844. Marshfield.

NEW/USED PARTS: Vehicles, Semi's Machinery, "Motors/Tranny's," "Body Parts," "Warrantied/Delivery." 800-807-9612.

3 GENTS WITTNAUER WRIST WATCHES: 10k gold + 23J. All \$200. 573-764-3517. Call in P.M.

1970s KIDS METAL STOVE & FRIDGE: Nice Lithographic paint, 18" wide x 36" high. \$75. 573-364-7465. Rolla.

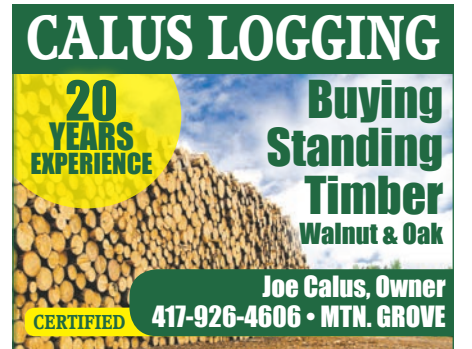
AUSTRALIAN SHEPHERD PUPPIES: UTD on shots, tails & dewclaws done, Tris & Merles. Trade or sell. 417-967-6493. Roby.



0% for 4 Years
HEATMOR
Outdoor Wood Furnace
as low as **\$238** per month
HEATMOR MIDWEST
Licking, MO 65542 • 573-674-2962



New kiln available for treating lumber. Call Sanko at 417-322-0239 to schedule
Prebuilt cedar shacks and live edge cedar sidings available.
For dimensions and pricing call Joseph at 417 589-0428
www.tejasbuds.com



CALUS LOGGING
20 YEARS EXPERIENCE
Buying Standing Timber
Walnut & Oak
Joe Calus, Owner
CERTIFIED 417-926-4606 • MTN. GROVE

FIREARMS: Professional Repair, Restorations and Appraisals. Baron's Gunsmithing. 573-363-5801. Camdenton.

AUSTRALIAN SHEPHERD PUPPIES FOR SALE: Some natural bobtail, some not. Grey Merles & Black & White. 573-760-5157.

I AM LOOKING FOR LAND TO RENT TO GROW WHEAT: I can pay a good rate per acre for land that is fairly level, decent soil and in a 30 mile radius of Marshfield. I am looking for 80-500 acres. 417-741-2288. Marshfield.

RUBBER & LEATHER BOOTS AND 5-Buckle OVER SHOES: Men's 11, Women's 7, some insulated. \$15-\$40 obo. 636-239-2695. Washington.

HIKING THE OZARKS BOOK: A Guide to the Area's Greatest Hiking Adventures. \$6.75. 417-532-2045. Lebanon. (Leave message and phone number).

MILLARD'S AUTO REPAIR IS NOW OPEN IN MOUNTAIN VIEW, MO: at 413 Elm Street. We specialize in transmission repair. Our hours are Monday-Friday 7a.m. to 5p.m. Closed Saturday & Sunday. Please call 417-287-0641.

REGISTERED HEREFORD & ANGUS BULLS: Home raised, Some Show-Me Select Qualified. 573-701-7828. Belgrade.

LIGHTLY EXPERIENCED GOLF BALLS: \$3 a dozen. 417-818-3469. Strafford.

LIONEL TRAIN SET: Steam engine, tender, caboose and other car, track, and transformer. \$195. 573-364-7465. Rolla.

MADE IN TIMBER BOOK: A settlement history of Fort Leonard Wood, Bloodland, Cookville, old towns, schools and cemeteries. \$12.50. 417-532-2045. Lebanon. (Leave message and phone number).

EARLY 1900's CAMEL BACK STEAMER TRUNK: Oak, 5 strap, solid, nice condition. \$95. 573-364-7465. Rolla.

HEARTH CRAFT GLASS BI-FOLD FIREPLACE DOORS PURCHASED AT FORSHAW'S FIREPLACE: Antique brass. \$160 obo. 636-239-2695. Washington.

1500 VINTAGE WRISTWATCH DIALS: \$100. 573-764-3517. Call in PM.

END OF YEAR BLOW OUT SALE ON ALL ZERO TURN MOWERS

MOW NOW. PAY LATER.
● MONEY DOWN ● INTEREST ● PAYMENTS

For 120 days W.A.C. on all in stock Bad Boy Mowers call for more details!

			
MZ Magnum 54" w/ KOHLER WAS- \$5299 NOW-\$4460	ZT Elite 60" w/ KOHLER WAS- \$7189 NOW-\$5999	ZT Avenger 60" w/ KAWASAKI WAS- \$6649 NOW-\$5523	

More models available! Call for Details

CALL FOR CASH PRICING
CALL FOR SPECIAL BONUS DETAILS
CALL FOR CURRENT SERVICE SPECIALS

		
Maverick 60" w/ KOHLER WAS- \$8519 NOW-\$7223	Maverick HD 48" w/ KAWASAKI WAS- \$10,079 NOW-\$8658	

1387 S. BISHOP AVE., ROLLA, MO 800-813-6944
WWW.STAHLMANPOWERSPORTS.COM

COLT REVOLVER DEALER

CATALOGS: Circa 1950's + 1960's. All for \$100. 573-764-3517. Call in P.M.

110 PORCELAIN POCKET WATCH

DIALS: Perfect for arts & crafts. \$100. 573-764-3517. Call in PM.

1890 GOLD TESTING KIT: Glass acid beakers + antique wooden case. \$100. 573-764-3517. Call in PM.

HARLEY FAT BOBS: Custom flame paint w/ gas caps + lines. \$100. 573-764-3517. Call in P.M.

SLAB WOOD: For Sale. \$10/bundle. 417-468-2255. Conway.

ATTENTION DOG BREEDERS, LIQUIDATING MY BUSINESS: Three portable buildings 10x20, stack cages, coated wire, water containers, water bottles & bowls, feeders, generator, power washers, snowplow, & too much more to mention. 417-543-4731. Sparta.

HARLEY PANHEAD DISTRIBUTOR: original, chrome + complete. \$125. 573-764-3517. Call in PM.

DARDEN PROFESSIONAL TIMBER HARVESTING, BUYING STANDING TIMBER: Great prices, improve wildlife habitat and improve forest health. State Certified & Fully Insured! 573-247-4808. Salem.

DEER RIFLES: Mauser 98 Bolt 7.62x57 8mm \$650. Mosen-Nagant M91/30 Bolt 7.62x54 \$550. 303 British Bolt 3 Box (150) Ammo \$400. Remington Mod. 81 Wood Master .30 Savage Auto Take Down \$850. Czechoslovak CZ-52 Auto Pistol 7.62x25 2 Box (100) Ammo \$500. 573-774-0665. St. Robert.

2000 FORD EXPLORER EDDIE BAUER EDITION: From California-no rust, 2 new tires, new brakes, front-end rebuilt, new power steering & new battery. \$2,700. 951-323-3500. Lebanon.

1962 HARLEY SPORTSTER 900CC: original distributor. \$50. 573-764-3517. Call in PM.



Meadowview Dutch Market

Bulk & Surplus Groceries • Prices Subject to Stock on Hand

Call to Order
417-993-3017

Sale Dates October 19th 2022 to October 25th, 2022 while supplies last!

DELI SPECIAL

CAJUN TURKEYREG. \$5.99 LB. SALE \$5.49 LB.
CHEDDAR CHEESEREG. \$5.49 LB. SALE \$4.99 LB.

TRY our Fresh Homemade DELI Sandwiches: **TURKEY, HAM, ROAST BEEF, ITALIAN, BLT'S, PULLED PORK AND BLT PULLED PORK (MADE YOUR WAY)! COME IN OR CALL to order! ALSO Custom Deli trays! Veggie OR FRESH Meat-N-Cheese!**

Boneless Skinless
Chicken Breast
\$2⁷⁹
LB.



Pepperjack
Cheese
\$2²⁵
APPROX 5 LB.



Jimmy Dean
Sausage
\$5⁹⁹
3 LB



APPLE DAYS!!

DON'T MISS IT!
Free refreshments

2 days only! Thursday, Oct 20th and Friday, Oct 21st

Apple sale Closes at 5:00pm Friday. Store open till 6:00 Friday

MIX AND MATCH 49¢ LB
JONAGOLD, HONEYCRISP, GALA, FUJI, CORTLAND, CAMEO, RED AND GOLDEN DELICIOUS, JONATHAN, AND MORE!

MEADOWVIEW DUTCH MARKET
417-993-3017 Hours: Mon-Thurs 8-5pm
Fri 8-6pm • Sat 8-5pm
23 Miles West on Hwy 64 • Right on T Hwy
9 miles • Left on E Hwy 1 mile on Left

NOW ACCEPTING CREDIT, DEBIT CARDS & EBT

DUTCH COUNTRY STORE, LLC
573-378-4395
Hours: Mon-Thurs 8-5pm
Fri 8-6pm • Sat 8-5pm
5 miles East of Versailles off Hwy C on Kelsay Road

SELLING OFF 750 HONDA COLLECTION: 10-1979 Anniversary, 5-1980-81 CB Custom Bikes. If interested call for an appointment. All very nice bikes with clean titles. These are investment bikes. WILL NOT RESPOND TO TEXTS; use phone or don't waste my time or yours. Andy 636-228-4204 or 636-359-6189. Marthasville.

HARLEY 45 SOLO: factory rear brake drum + sprocket. \$150. 573-764-3517. Call in PM.

FARMALL 560 DIESEL TURBO: Needs motor work, fast hitch, 75% rear rubber duals. \$6,500. Great Bend QT Loader to fit 560 5FT Bucket Bale Spike \$2,850. 573-765-3874 Leave Message. Richland.

CATAHOULA LEOPARD PUPS: 1 male leopard golden brindle, 1 female red merle. \$150. 417-543-4816.

PICKUP BED TRAILER FRAME: \$185 OBO 417-668-7793 Land Line Do NOT Text. Competition.

DRAPES AND CURTAIN RODS: Off-white, various sizes, \$15 for all obo. 636-239-2695. Washington.

KITCHEN FAUCET MOEN: Single lever, sprayer, new cartridge. \$45 obo. 636-239-2695. Washington.

5 GAL. PLASTIC BUCKETS: with lids. \$3 each. 636-239-2695. Washington.

RADIATOR FOR 55 DODGE PICKUP: \$50. 573-734-2822. Bismark.

FOR SALE AKC BEAGLE PUPS TRI COLOR: Lemon and whites. 573-627-2309. Sullivan

FALL FERTILIZER ORGANIC CHICKEN LITTER: Delivered Trailers. \$125/T. 800-807-9612.

TRACTOR FOR SALE: 1965 Allis Chalmers D-15 gas engine with loader, \$3,600. 314-974-6881. Middle Brook.

1986 CORVETTE PROJECT CAR: Needs trailer. \$15 OBO. 573-435-6987. Edgar Springs.

FOR SALE OR TRADE: 1 Antique Warm Morning Coal Stove. Nice. \$50. 573-734-2822. Bismark.

HARLEY PARTS, HELMETS, LEATHER VEST, CHAPS & COATS: Wholesale prices. Biker wear wholesale to the public 719 W. Commercial Springfield, MO.

DELUXE WOOD HEATER: Glass front, three speed blower, triple wall flue, high capacity. Safe, heated my mobile home. Expensive brand but asking about \$2,800, negotiable. Must see! Winter is coming, don't miss this one! 417-818-6076. Marshfield.

1949 MASSEY FERGUSON TRACTOR: Runs good, good tires. \$1,500. 1-573-315-9009. Patosi.

CLEAN MATTRESS BOX SPRINGS: \$50. 417-370-7865. Springfield.

EXHAUST MANIFOLD FOR 55-56 CHEVROLET: \$100. 573-734-2822. Bismark.

CURVED IRONING BOARD: 4 1/2 feet, with cover, like new. \$10. 210-787-8222. Linn Creek.

END OF YEAR BLOW OUT SALE ON IN STOCK TRACTORS

END OF YEAR BLOW OUT SALE ON IN STOCK TRACTORS



DOWN 1.99% APR FOR UP TO 84 MONTHS W.A.C. ON ALL IN STOCK BAD BOY TRACTORS

END OF YEAR BLOW OUT SALE ON IN STOCK TRACTORS



BB 2024 w/ Loader



BB 3026 w/ Loader



BB 4025 w/ Loader



BB 4035 w/ Loader



BB4035 w/ Backhoe & Loader



BB 4035 w/ Cab & Loader

Package Deals Available, Call for Details

Rebates up to \$300 per on Bad Boy Implements with tractor purchase

Implements & Attachments in stock!



1387 S. BISHOP AVE., ROLLA, MO
800-813-6944
WWW.STAHLMANPOWERSPORTS.COM

Take advantage of Year End Farm Depreciation

END OF YEAR BLOW OUT SALE ON IN STOCK TRACTORS

CHRISTIAN FARMER WANTING PASTURE: To rotationally graze cattle. 417-718-5910.

BEEFMASTER BULLS: 18 months old. Call for price. 417-327-2887. Halfway.

91 S10: as sits, looks rough, but runs ok. 417-370-7865. Springfield.

4X5 ROUND BALES OF MIXED GRASS HAY: \$60/bale OBO. 417-664-0419. Lebanon.

500 SMALL SQUARE BALES OF HAY: \$6.50/bale. 417-345-5634.

FEDERAL 100RD. 223 AMMO: \$55. 417-844-4319. Springfield.

WANTED OLD CHEVY WRECKER OR ROLLBACK: Or older car to restore. 573-734-2822. Bismark.

ENGLISH SHEPHERD PUPPIES FOR SALE: Some bobtail, some not. 573-760-5157.

ELECTRIC WELDER: \$150 or trade. 573-734-2822. Bismark.

FREE DOCK: 1 Well 45mm, metal & tubs are ok, wood is rotted. Lake of the Ozarks. 573-505-1330.

DEER FEEDERS: Boss Buck \$100. Redneck \$50. 618-806-8788. Lebanon.

ANGUS COW WITH BLACK HEIFER CALF WEANING AGE: Hamburger cow \$160. Calf \$750. Both \$820. Fairbanks grain platform scales from 1950s \$100. Dirty but complete. 417-264-3963. Mountain View.

WWII FOOD MERMITE CAN: \$125. 573-734-2822. Bismark.

LOG SIDING: 2X8 Pine/Western Cedar
www.pineridgerustic.com 573-729-7226.
Salem.

NEW MOBILE HOME STOCK: Just received (5) new units, they gotta go! 573-657-2176. amegamobliehomes.com

WEATHERED BARN WOOD SIDING: 10" wide. 573-729-7226. www.pineridgerustic.com Salem.

USED MOBILE HOMES: Call David at VILLA HOMES IN ROLLA 573-578-8072. Rolla.

USED DOUBLE-WIDE: \$34,900
WOW!!!! This won't last! 573-657-2176.
amegamobliehomes.com

TRUE MODULARS: 30 to 60 day delivery available, 3 and 4 bedroom 573-657-7040
chateauhomes.net

Pine Ridge Rustic
Log Home Building Supplies

Services Offered!

- Installation
- Pre-finishing available on interior & exterior
- Dealer for exterior stains

www.pineridgerustic.com

523 CR 2410 • Salem, MO 65560 • Ph: 573-729-7226



- Log Siding
- Beveled Siding
- Car Siding • Red Cedar
- Western Cedar • Pine



Wright Spray Foam Insulators, LLC
Commercial & Residential
Call for FREE Estimates!

Ervin Gingerich
417-926-2052
B. Eli Yoder
417-746-4932

INTERNATIONAL HARVESTER TRUCKS BOOK: The Complete History. Hardback, large book, 208 pages. \$12.50. 417-532-2045. Lebanon. (Leave message and phone number).

WE HAVE MOBILE HOMES:
Instock new arrivals (8) homes, need to go as soon as possible! 573-499-9993. columbiadiscountshomes.com

BUYING MOBILE HOMES: Call David at VILLA HOMES IN ROLLA 573-578-8072. Rolla.

2007 INTERNATIONAL NAVISTAR BOXTRUCK: with lift gate, 8x8x16 box size, 20K miles. \$40,000 OBO excellent condition like new. 602-400-1080.

TINY HOMES: We gottem 573-881-3283

MADE IN TIMBER BOOK: A settlement history of Fort Leonard Wood, Bloodland, Cookville, old towns, schools and cemeteries. \$12.50. 417-532-2045. Lebanon. (Leave message and phone number).

RUBBER & LEATHER BOOTS AND 5-Buckle OVER SHOES: Men's 11, Women's 7, some insulated. \$15-\$40 obo. 636-239-2695. Washington.

YOUR TRUSTED SOURCE FOR QUALITY FEED FOR ALL YOUR LIVESTOCK AND PETS



Kropf Feeds

"DOING BUSINESS ON OUR WORD AND A HAND SHAKE"
Located in the Heart of the Amish Mennonite Community!
417-345-8600 • 19 Prairie Lane, Buffalo

The Builder's Choice!

YOUR CHOICE FOR QUALITY PRODUCTS & FRIENDLY SERVICE!



**DELUXE BUILDING PACKAGES AVAILABLE
CALL TODAY TO GET YOUR QUOTE! 877-556-8855**

We offer numerous building packages for garages, decks, shops, pole barns, etc. You can choose from several different building package options, or you can customize the building the way you want it. We also offer commercial or mini storage building kits. Call for more details.

**HEAVY 29 Ga.
METAL # 1**

Limited **LIFETIME WARRANTY**

**29 Ga. & 26 Ga.
Painted**

CUT TO LENGTH PANELS

**GALVALUME METAL UNPAINTED
25 YEAR WARRANTY**

#1 Standard Panels, 29 Ga.



Ask About Our Quick Service.

Over 20 Colors and Several Styles To Choose!



CALL US FOR CURRENT PRICING

All Buildings Quoted Have #2 Lumber And #1 Galvalume Or Limited Lifetime Painted Metal

All Buildings Are Heavy 29 Ga. Metal, Three 2"x6" T&G Splashboards, All Poles 5"x5" Or Larger, CCA Treated, Fully Trimmed With One 3'x6' Walk-Through Door & One Large Sliding Door.

Plus Tax. Labor & Delivery Available On All Building Packages. Prices may vary due to local code restrictions.



BYLER BUILDING SUPPLY, LLC



2 1/2 MILES EAST OF SEYMOUR ON 60, 1/4 MILE NORTH AT AUTO SALVAGE WWW.BYLERSUPPLY.COM

877-556-8855 MON.-FRI. 7:30-5 SAT. 8-12 FAX NO. 417-935-2995 417-771-3100

VISIT US AT WWW.BYLERSUPPLY.COM

Sam **CRAWFORD AUCTION SERVICE** LLC

As I'm moving, will sell the following located from Stover, MO 11 miles South on Hwy. 135 to Ivy Bend Rd. - Then Southwest 10.6 Miles to Inidan Hills Dr.
Watch For Auction Signs

SATURDAY, OCTOBER 29TH, 2022 - 9:30 AM

REAL ESTATE - TRUCK - TRACTOR - DOZER - TOOLS - MISC.

Real Estate - Sells Near Noon



Older 2 Bedrom Mobile Home w/Addition, Gas Heat, Window AC, Open Front Machine Shed, Garage/Shop, Fenced Yard, Approx. 1½ Acre Lot, Community Water, Stover School. Serious Seller.

TRUCK

'14 GMC 2500 HD Crew Cab, Diesel, Auto 4x4, Leather, Running Boards, Grill Guard, 62K Miles, Shedded & Good

**DOZER - TRACTOR
SELL AT 12 NOON**

'75 Cat D3B Dozer, Tilt Blade, Brush Cab, Shedded, Nice Shape
Kubota B3300 SU 4x4 w/LA 504 Loader, 33 Engine HP, Canopy, 61 Hrs., Shedded, Like New
3 Pt. Land Pride 5' Brush Cutter, Shedded, Like New
3 Pt. 7' Blade
Bumper Hitch 16' Utility Trailer
Small 2 Wheel Trailer, 5x8'
EZ Go Golf Cart, Gas, Good Shape

TOOLS & MISC.

2 Metal Storage Sheds, 8x10 & 8x12, Like New
Stihl 170 & 291 Chainsaws
Green Works Cordless Chainsaw
Stihl Blower - Ryobi Blower
Southwind Gas Post Hole Digger
Cub Cadet XT2 Lawn Tractor, 22 HP Kohler
Genrac 3100 psi Power Washer
Other Power Washer
Pulsar 10K Dual Fuel Generator - New
Troy Bilt 5550 Generator
Cutting Torch - Complete
Vulcan 220 Welder, New
Wards Electric Welder
Electric Mig Welder - New
Lincoln Electric Welder
Campbell Hausfeld Air Compressor
Other Air Compressors
Central 150 psi Compressor

Chow Saw - Miter Saw - 6' Vise
Chainsaw Sharpener - Lawn Mower Jack
Handyman Jack - Hyd. Jacks
5-6 Weedeaters
Rolling Air Grease Bucket
Handheld Bandsaw, New
2 Tier Toolbox - Toolbox Base
Good Selection Sockets - Wrenches
Pipe Wrenches - Bench Grinder
Good Selection Cordless & Power Tools, Most Like New - 3/4 Socket Set
Table Top Drill Press - Air Nailers
C-Clamps - Ext. Cords - Oil, Anti-Freeze
2 - 8' Fiberglass Step Ladders
Aluminum Extension Ladder
Some Pex Pipe - Rods & Reels - Tackle
Gas BBQ - Gas Bottles - Gas Cans
Schumacher Booster/Charger
Pickup Alum. Toolbox - Scrap Iron
30+ Steel Posts, New - Much More!

COLLECTIBLES - HOUSEHOLD

Lg. Beam Decanter Collection
Thimble Collection
Cup & Saucers - Tea Sets
5-6 Train Sets - Sev. Clocks
Silver Tea Set - Mirrors - Pictures
Wall Decorations - Cookbooks
Record Albums - VCR Movies
Cranberry Glass - Other Antique Glassware
Collector Plates - Keyboard - Window AC
Singer Space Saver Sewing Machine
Fans - Heaters - Cedar Chest
Some Furniture - 2 Chest of Drawers
Kenmore Refrigerator, Black
Chest Freezer, Medium
Patio Table & Chairs - Other Misc.

Good Auction With Many Items Like New!

Sam **CRAWFORD** LLC
Auction Service



TERMS Cash or good check. Nothing removed until settled for. Not responsible for accidents. Lunch available. Statements made day of sale take precedence over printed matter. All items sell as is. No warranties given or implied.

417-998-6629
Cross Timbers, Mo.

CrawfordAuctionService.com

Sam
417-328-9137

Chase
417-399-1904

Chance, CAI
417-298-1751

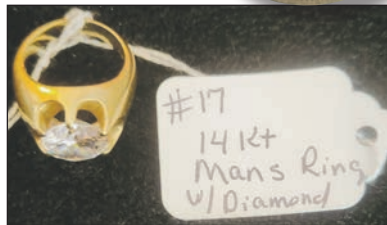
Tom Poynter
Jack Lancaster

WAYNE HOLUM

R&R AUCTION SERVICE

SATURDAY, NOV. 5TH @ 9AM & SUNDAY, NOV 6TH @ 1PM 120 W. MAIN IN PHILLIPSBURG, MO

For a half century the name Hog Eye Antiques has stood out across the nation as a company known for outstanding quality antiques. Their auctions have enticed buyers from far and wide to attend, finding treasures to claim for the highest standard collectors. Now following the passing of founders Oren & Donna McCaslin their unbelievable estate will be sold to the highest bidder over 2 days. Outdoor and garage items, many smalls, firearms (11am), jewelry, gold, and coins (noon) will sell on Saturday, Most large furniture will be selling on Sunday following the sale of Real Estate which will be promptly at 1pm. Real Estate is 1.22 Acres featuring a 5,283 sq/ft home that has enormous potential for commercial as well as residential. Up to 6 bedrooms with an amazing master suite, 2 1/2 baths, Huge kitchen and dining with double oven counter top burners, dishwasher, nice side by side refrigerator/freezer, mud room, sun room, 1 propane tank is owned and comes with property, 2 washing machines, 2 dryers, single detached garage. For property viewing ahead of auction contact Professional Auctioneer Russ Weeks 417-576-7357. **Auction inventory for the massive 2 day auction will be listed in next week's trader or view now online at www.rrauctionservice.com.**



Please keep watch on our website for added photos.

TERMS: Cash, check, or credit card with proper I.D. nothing removed until settled for A 3% fee will be added to credit card purchases. Not responsible for errors in listing. Any announcement made sale day will take precedence over any printed matter.



For more information contact Professional Auctioneer Russ Weeks at 417-576-7357 or check out www.rrauctionservice.com

Serving this area's auction needs since 1997 with honesty and professionalism.
www.rrauctionservice.com
(417) 576-7357 or (417) 345-4140



R&R AUCTION SERVICE

SATURDAY, OCTOBER 22ND @ 10AM 211 West Ruby, Conway, MO

EVERY GROWN UP LITTLE GIRL'S DREAM AUCTION

So many collectibles you won't believe your eyes. Metal decorations, lots of dolls old Precious Moments, hat rack, light on stand, teddy bears including Boyds, tins, artificial flowers, doll stroller, doll furniture, Halloween Decor, vintage Ceramic Christmas tree, baskets, Eureka vacuum, Griswold skillet #6, Corning ware, baseball cards, Stanley thermos, Hallmark ornaments, annuals, dresser, water cans, doilies, bakers rack, sofa and chair, coffee table, china cabinet, Waverly china set, entry table, kids chairs, decorative bird houses, pictures, Precious Moments figurines, dining table and chairs, yard sticks, kids sewing machine, quilts, wooden horse, Denim Days figurines, costume jewelry, Blue Willow kids tea set, crystal glasses, decorative items, Corelle, Pyrex measuring cups, mini doll cookware, Tupperware, lots of milk crates, house canisters, rolling pins, utensils, glass double boiler, drill, linens, towels, wash rags, kids Bo Peep metal ironing board, glass washboard, tin signs, purple wicker chair, styrofoam heads, Singer portable sewing machine, school desk, walker, French Provincial set including lingerie chest, makeup and bench, dresser, night stand, mirrors, wall quilt racks, leather office chair, iron doll carriage, wicker doll carriage, twin iron head board, file cabinet, afghan, door, collectible houses, adult and child white wicker furniture bed rocker hamper, doll table and 2 chairs, doll bunk bed, doll crib, vintage water bottle, Holly Hobbie, handmade baby cradle, wooden kid rocker, book shelves, porcelain doll, bamboo trike, green kids wicker sofa, vintage luggage, kid card table, rugs, old bottles, wood bar chair, glass and wood ducks, minnow bucket, tin bread box, screwdrivers, scissor, galvanized Jiffy bucket, pool cues, saw horses, work table, wooden cow decor, wood crates, books, vases, wooden snowmen/Santa, wooden bank, various tools, Shop Vac, bushel basket, new Coleman lantern large tube twin fluorescent, new greeting cards, office supplies, flour sifter, toy vise, Century 21 ceramic houses, coasters, concrete urns, rabbit, hand tools, Huffy Bicycle, Radio Flyer wagon, metal doll high chair, metal stars and sun, pink flamingos, axe, jewelry box, whirly gig, license plates, bird feeder on pole, crutches, Coke crate, purple wash tub, metal sleigh, and so much more!



Please keep watch on our website for added photos.

TERMS: Cash, check, or credit card with proper I.D. nothing removed until settled for A 3% fee will be added to credit card purchases. Not responsible for errors in listing. Any announcement made sale day will take precedence over any printed matter.



For more information contact Professional Auctioneer Russ Weeks at 417-576-7357 or check out www.rrauctionservice.com

Serving this area's auction needs since 1997 with honesty and professionalism.
www.rrauctionservice.com
(417) 576-7357 or (417) 345-4140





Saturday, October 22, 2022 • 9:00 a.m.

LOCATION: In Licking, Mo., on Highway 32 east at old Licking Livestock Auction site.

Next to Hammond Feed & Farm Supply. Watch for signs.

To view photos, go to auctionzip.com. Auctioneer #28367

Household & Furniture

Hide-a-bed Couch, Chair,
Footstool, burgundy
Hide-a-bed Couch, blue
Glider Rockers, footstool
Kitchen Table & Chairs, nice
Farm Style Kitchen Table &
Chairs
Lot of Pictures
Wall Corner Shelves
Stereo & Speakers
Metal Folding Chairs
Glass Top End Table
Bookshelves - 5
Upholstered Chairs - 4
Easels
Office Desks - 6
Office Chairs
File Cabinets -7, four drawer &
two drawer
Typewriter & Stands
Eureka The Boss Vacuum
9-foot Christmas Tree &
Decorations
Sun Heat Electric Heater
Radiator Style Heater
Microwave
Freezer
Rainbow Vacuum
Table Lamps
Rugs
Afghans
Quilts
Pillows
Material
Fruit Jars
Crock Bowls
Fire King Dishes
Carnival Vase
Canister Set, flowers
Lot of Cut & Pressed Glass
Lead Crystal Vase
8-cup Glass Measuring Bowl
Pitchers, Stemmed Glasses
Wall Décor
Set of Gibson China, white
CorningWare
Set of Stoneware Dishes
Collectible Dolls

Cups
Vases
Kitchen Utensils
Knife, cutlery set
Tupperware
Bread Maker
Naken Silverware in Chest
Blender
Coffee Maker
Red Trim Enamel Pans
Blue Granite Pot & Lid
Pots & Pans
Bake Ware
Electric Skillet
Covered Cake Stand
Glass Juicer
Stemmed Bowl
Wooden Handle Potato Masher &
Spoon
Cut Glass Creamer & Sugar
Cast Iron Cross & Skillet
Priscilla Pattern Dishes
Lot of Records, 33's
Purses
Clocks
Large Fan on Stand
Wicker Basket
Big Cat Cage, Litter Box, Small
Cage
Floor Jack
Gas Cans
4-Wheel Metal Cart
Hedge Trimmer
Shop Vac, 16-gallon
Light Bulbs
Fishing Tackle
Welding Helmets
Vaccination Supplies & Ear Tattoo
Bolts, Nuts, Fencing Clips
Lawn Metal Sprayer, 3-gallon
Floor fans, round

Tools & More

Oil Drain Catch
Anco Windshield Wiper Service
Center Bin, metal
Stepladders, 4-foot & 8-foot
Shop Brooms
Rakes, Shovels
Grease Guns

Squirt Oil Cans
Open & Box End Wrenches
Pliers, Vise Grips
Screwdrivers
Channel Locks, C-Clamps
Pipe Wrenches
Air Hose
Cutting Torch End & Hose
Hammers, Crowbars
Soldering Tools
Wooden Level
Air Buffer
Angle Grinder
Drill
Skil Saw
Curtis Bolt & Nut Caddy
Log Chain & Gate Chain
Brace & Bits
Lighted OPEN Sign
Jonsered Chainsaw 450
Poulan Chainsaw
Tool Boxes
Come Along
Galvanized Bucket
Barb Wire Stretcher
Hand Saw
Loppers
Garden Tools
Jumper Cables
Snap-On-Tool Chest
Snap-On Battery Charger
Bolt Bin

Lawn

Wheelbarrows
Stihl Gas Weedeaters - 2
Troybilt Push Mower, self-
propelled, 21 in. cut
Murray 22 in. Push Mower
John Deere E110 Riding Mower,
19 hp, hydrostat
John Deere X304, four wheel
steering, 17 hp, 42 in. cut,
hydrostat
John Deere LT 150 Riding Mower,
bad motor
John Deere Lawn Cart, all metal
GM Parts & Tools
Carburetors, 2 & 4 barrel
Floor Mats, new

Bed Mats, fit 2007-2018, 5 ½ ft,
6 ½ ft, & 8 ft
Hub Caps & Rims
Molding Trim
Console, new
Lot Windshield Wiper Blades
GM Specialty Tool Kits, approx.
40
Tail Gate Protector
Universal Adaptor
Cylinder Hone
Ball Joint Inspection Gauge
Ammco Decelerometer
Alltest Brain Master
Universal Joints
Brake Pads & Shoes
Tie Rod Tool
King Bolt Assembly
12-volt High Intensity Leak
Detection Lamp
Starters
Fender Well Panels
Motor Stabilizer
Assortment Drive Shafts
Silverado/Sierra Crew Step Bars
Bumper Deflector
Fan Shields
Mufflers, new
Tail Lights, new
Splash Guards, new
Truck Mirrors
Baby Moon Hub Caps
Aluminum Running Boards
Fender Trim
Rear Trunk Rack
Vent Visor
Deflecting Shields, assorted colors
S-10 Rear Roll Panel
GM Advertising Business Rugs
Oil and Antifreeze
Transmission Fluid
Cleaning Fluids
Leaf Spring Compressor
Exercise
Fitness Master Ski Machine
Summit ST100 Stepping Action
Ultra Max Weight Lifter
Pro-form 920 Treadmill
Stepping Trampoline

Sturgeon Chevrolet & Doris Lay - Owners

Terms - Cash or Approved Good Check. Nothing Removed Until Settled For. Not Responsible For Accidents.
Must show ID to get Buyers #. Announcements Made Day Of Sale Take Precedence Over Printed Matter.

**Buckner & Gately Auction Service
Auctioneers**

Steve Buckner 573-674-2686

Neal Gately 573-202-3132

VISIT WEBSITE FOR PICTURES

REAL ESTATE & ESTATE AUCTION

SATURDAY, OCTOBER 22ND- 10:00 A.M.

Location: 1503 Heath Ave., Ava MO **Directions:** From Ava Wal-Mart take Hwy 14, West 3/10 mile to Crain St. on left. Go approx 1/5 mile to Heath Ave. on right. **WATCH FOR CHADWELL AUCTION SIGNS.** **Payment System:** Cash • Debit Card • Credit Card (Debit / Credit Card Fee Will Apply) Checks approved if known by auction company. **VISIT:** WWW.CHADWELLAUCTIONS.COM

Estate of Joan DEDMON

REAL ESTATE

3 Bedroom 2 Bath home with kitchen, living room, laundry room, and attached 2 car garage. Very nice 12'x16' wooden deck and a chainlink back yard. Home has central heat and air. This would be a great starter home or rental sitting in a quiet neighborhood close to town. Terms: 10% down day of auction, taxes prorated, closing costs split, balance due at closing, subject to court approval. Call Shawn for showing 417-830-0209.



16'x24' STORAGE BUILDING w/ LOFT

HOUSEHOLD

Wall Decor • 52" LG Television • Lift Chair • Tupperware • Glassware • Assorted Figurines • Mixers • Choppers • Small Kitchen Appliances • Gas Fireplace • Utensils • Corelle Ware • Wii Games • (2) Rocker Recliner • Wooden End Tables • Stand Light • Corner Shelf • Large Light House Collection • Couch • 12 Drawer Metal Cabinet • Oak Table w/6 chairs • Hutch • Panasonic Microwave • Microwave Cart • Frigidaire Refrigerator • Maytag Flat Top Stove • Wooden Shelves • Full Size Bed • Horse Pictures • Maytag Dryer • Crosley Washer • Bissell Vac • Large Lot of Linen • 3pc Full Bedroom Suite • Hangers • Stereo System • Large Lot of Figurines • Home Interior • Farberware Cutlery • Steam Cleaner • Crosley Deep Freeze • Large Deep Freeze • Wrapping Paper • Large Lot of Holiday Decor • XL Cedar Hope Chest • Decanter • Roasters • Portable Bar w/Stools • Sanyo Microwave • Sewing Machines • Back Massager • Round Glass Top Table w/Wicker Chairs • Other



OUTDOOR ~ MISC

John Deere SRX75 30" Riding Mower • Yardman 42" Riding Mower • Troybilt Chipper Shredder • Craftsman Front Tine Tiller • Yard Machine 22" Cut Push Mower • FS408 Stihl Weedeater • BG50 Stihl Leaf Blower • Yard Seeder • Hand Sprayers • Fish Cooker • Coolers • B&D Hedge Trimmer • Camp Mate Propane Stove • Metal Folding Chairs • Running Boards • Pop Up Canopy • Trash Can • Glass Insulators • Weber Grill • Sportsman Smoker • Patio Furniture • Appliance Dolly • Yard Planters • Nail Keg • Kitchen Stool • Army Tank Battery Powered Riding Toy • Lawn & Garden Tools • Limb Saw • Misc Lumber • 6' Werner Step Ladder • Brinkman Charcoal Smoker • Fishing Rod • Life Jackets • Other



AUCTIONEER'S NOTE: This is a great Real Estate opportunity. Hope to see you there. *Thanks, Shawn*

DRIVER'S LICENSE OR PICTURE I.D. REQUIRED • TERMS: CASH OR APPROVED CHECK   **OR** 

Chadwell
Auction Service, LLC
www.chadwellauctions.com

Auctioneer:
SHAWN CHADWELL
417-830-0209

Clerk:
SHELLY CHADWELL
Cell: 417-880-8449

Cashiers:
Marla Chadwell • Emily Shaffer
Cassie Collins

Ringmen:
Weston Chadwell ~ 417-349-0727

PROFESSIONAL SALES MANAGEMENT
LUNCH WAGON • APPRAISAL SERVICE • RAIN OR SHINE
All announcements made day of sale take precedence over any printed matter. Not responsible for lost or stolen merchandise. Not responsible for accidents.



HUGE RESTAURANT & BAKERY LIQUIDATION AUCTION

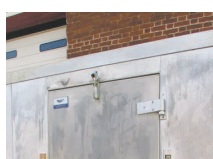
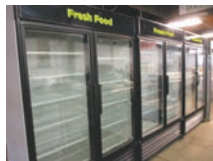
MONDAY, OCTOBER 24 - 10:00 AM

CAFÉ ITALIANO & PANETTERIA

(ALSO CONSIGNMENT FROM NEWSROOM BAR & GRILL)

104 W THIRD ST • FAIR PLAY, MO 65649

SELLING ➔



VOLLRATH 8'X6' WALKIN COOLER OR FREEZER, NEW IN 2019 TECUMSEH DUAL TEMP COMPRESSOR, 404A & SGL PHASE, NICE! SATURN UNDER BAR ICE MACHINE-LEADER LATE MODEL GLASS FRONT REFRIG DELI, PASTRY OR DESSERT DISPLAY CASE, 5', EXCELLENT-66" OPEN FRONT MERCHANDISER COOLER-2 ICE CREAM NOVELTY BOX FREEZERS-3 REFRIG SANDWICH PREP TABLES-ELMECO BY FETCO FROZEN DRINK OR MARGARITA MACHINE-OUTSTANDING, LARGE SELECTION OF TWO & THREE DOOR STAINLESS STEEL & GLASS DOOR MERCHANDISER COOLERS & FREEZERS!! WORKTOP COOLER & OTHER REFRIGERATION-2 MEAT SLICERS-2 HOBART 20 QT CTR MODEL MIXERS-2 OLIVER BREAD SLICERS, NICE-BLODGETT & GARLAND DBL STACK & SGL CONVECTION OVENS-COMBI RANGE W/4 BURNERS, 3' GRILL & DBL OVENS-3 OTHER 6 BURNER GAS RANGES-2' & 3' GAS GRILLS-CHARBROILERS-2016 MARKET FORGE 12 GALLON NATURAL GAS TILT KETTLE-ALTO SHAAM COOK & HOLD OVEN-LOTS OF GAS & PROPANE DEEP FRYERS! STEAMTABLES-HEATED HOLDING CABINETS-DINING TABLES & CHAIRS-ADS SGL PH SS COMMERCIAL CORNER DISHWASHER W/DRAIN TABLES-STAINLESS 3 COMP SINKS-4 COMP BAR SINK-SGL & HAND SINKS-SS EQUIPMENT STANDS-PORTABLE SHEET PAN/ PASTRY RACKS-WIRE SHELVING

OTHER RESTAURANT EQUIPMENT & SMALLWARES GALORE!

NOTE: HUGE AUCTION WITH NICE WALKIN COOLER OR FREEZER, EXCELLENT GLASS DOOR MERCHANDISER COOLERS & FREEZERS AS WELL AS GREAT PASTRY CASE AND SANDWICH PREP TABLES. SUPER HOBART 20 QT MIXERS & OTHER BAKERY EQUIPMENT AS WELL AS FANTASTIC COOKING ITEMS! THIS IS ONLY A SMALL & PARTIAL LISTING. BE SURE TO VISIT OUR WEBSITE & CLICK ON THE AUCTIONS TAB FOR COMPLETE LISTING AND PHOTOS! MARK YOUR CALENDAR & MAKE PLANS TO ATTEND THIS EXCEPTIONAL AUCTION!



MARON RESTAURANT EQUIPMENT, LLC & AUCTIONS CO.
 417-327-5619 • WWW.MARONRESTAURANTEQPT.COM

ESTATE AUCTION OF BRIAN & MARGARET BYERS SATURDAY • OCTOBER 22 • 2022 • 10 A.M.

1317 STAVE MILL LANE • SEYMOUR 65746
DIRECTIONS: FROM THE JUNCTION OF HWY. C & HWY. 60
IN SEYMOUR, GO NORTH APPROXIMATELY 1/8TH OF A MILE.
RIGHT ON STAVE MILL LANE TO AUCTION ON RIGHT.

— WATCH FOR CAPON AUCTION SIGNS —



GUNS & EQUIPMENT:

MARLIN STAINLESS STEEL SEMI-AUTOMATIC .22-CALIBER RIFLE WITH SCOPE • RELOADING KIT WITH SCALES, LATHE, PRIMERS, POWDER, FUNNEL, (2) PRESSES, .30-CALIBER DYES • LIKE-NEW CROSSBOW • M&M TANDEM HAY TEDDER • (2) 500-GALLON TANKS • 2005 CHEVY EQUINOX LT, 225K MILES • POLE SAW • KUKER 55-GALLON SPRAYER • (4) 100-LB. PROPANE TANKS • (4) 30-LB. PROPANE TANKS • (8) 25-LB. PROPANE TANKS • ELECTRIC INSULATOR • GALVANIZED I-BEAMS • LIFETIME TABLES • NEXGRILL CHARCOAL GRILL • 50-GALLON PROPANE TANK • PROPANE TANK TRAILER (NO TITLE) • 250-GALLON PROPANE TANK • 12X20 STORAGE BUILDING • TROY BUILT REAR-TINE TILLER • ROUGH SAWN OAK 2X6X12 • PROPANE LIGHT • SHOP CABINET • DELTA 10" RADIAL ARM SAW • COLEMAN STOVE • LANTERN • CHEVY TRUCK BED RAIL • WEED-EATERS • CAST-IRON SKILLETS • FUNNELS • MISCELLANEOUS NAILS, BOLTS, SCREWS • MEAT SAW • WOOD SAW • BIKE • BUZZ SAW BLADE, (2) POWER WASHERS • WATER HOSE • KOBALT 24V MAX NEW BLOWER • (6) TOPPER CLAMPS • (2) FLY FISHING RODS • (2) REELS, (14) FISHING RODS • NEW LED 24" LIGHT BAR • SAWZALL BLADES • CREAM CAN • GARDEN SPRAYERS • NEW 2" TRAILER HITCH • (2) ANGLE GRINDERS • 6" DEWALT HAND PLANER • SAUSAGE STUFFING MACHINE • NEW DEER STAND STEPS • ATLANTIS DROPCAM FISH FINDER • BELT SANDER • PALM SANDER • 3/8" DEWALT DRILL • CAR BUFFERS • PIPE BENDER • SHOP VAC • (2) BAND SAWS • AIR COMPRESSOR • PLEXY GLASS • SHOP SINK • (2) BAR STOOLS • SHOP LIGHT • BREAKER BOX • (2) VENTLESS HEATERS • HOMELITE CHAINSAW • (2) SHOP CABINETS • AIR HOSE • (2) LAWN CARTS • (4) ROD-IRON CHAIRS WITH TABLE • 8X12 STORAGE BUILDING • 500-GALLON PROPANE TANK • 150-GALLON PROPANE TANK • ROUGH CEDAR • LOTS OF OAK LUMBER • ANTIQUE MACHINERY SEATS • CAGES • HAND AUGER • GARDEN TOOLS • WHEELBARROW • PROPANE TANK HEATER • STIHL CHAINSAW • PELLET STOVE FOR HOUSE • MISCELLANEOUS SCRAP METAL • BATTERY CHARGER • 300-GALLON PROPANE TANK & 150-GALLON PROPANE TANK WITH STANDS • RHOBI ELECTRIC CHOP SAW • 24" WOK COOKER • (2) NEW STORAGE BUILDINGS

HOUSEHOLD ITEMS:

WHITE CABINET • WHITE COMPUTER DESK • LAMP • DAY BED • TREADMILL • COMPUTER DESK • ENTERTAINMENT CENTER • COUCH • WINGBACK CHAIR • RECLINER • COFFEE TABLE • WHIRLPOOL REFRIGERATOR • DISHWASHER • MICROWAVES • DEEP FREEZER • FILING CABINETS • CAST IRON SKILLETS • QUART FRUIT JARS



LOTS OF MISCELLANEOUS ITEMS TOO NUMEROUS TO MENTION!
WILL HOLD SALE, RAIN OR SHINE



Dusty Capon
Auctioneer
417-830-8623
 SEE MORE AT FACEBOOK
 & AUCTIONZIP.COM



TERMS & CONDITIONS: CASH OR GOOD CHECK WITH PROPER I.D. ITEMS SOLD AS IS, WHERE IS. NO ITEMS MOVED UNTIL PAID FOR. ANY QUESTIONS, CALL AUCTIONEER AT 417-830-8623. ANNOUNCEMENTS MADE DAY OF SALE TAKE PRECEDENCE OVER PRINTED MATERIAL.

ESTATE AUCTION

Monday, October 24th, 2022 ~ 1:00 PM

LOCATION: 5351 County Road 120, Carthage, MO; Directions: From Carthage Go East On Fir Road Approx 1 Mile To County Road 120 Then South To Sale Site. GPS Will Get You There (Watch For Signs)

Auction For Roy Lee McConnell Estate



Antique, Modern Furniture & Appliances

Ant Wood Gossip Bench, Ant Metal Kitchen Cabinet, Ant Desk, Ant Metal Highchair, Prim Chest Of Drawers, Prim Shelves, Oak Magazine Table, 2 Pantry Cabinets, Oak Glider Chair, Bar Stools, Lg Kitchen Island, Old & Ornate Lamps, Area Rugs, Glass Top Tables, 2 Recliners, 3 Cushion Couch, Queen Bed, Several Pictures & Mirrors, Entertainment Center, Kenmore Washer & Dryer, Whirlpool Refrigerator, Flat Top Electric Cook Stove, 15 Cu Ft Chest Deep Freeze, Microwave, TV, VHS/DVD Player, Stereo, Other Items

Antiques, Collectibles & Households

Ant Coleman Cooler, Ant Tackle Box, Old Metal Ammo Boxes, Old Oil Lamps, Old Canister Set, Pyrex Colored Bowl, Old Pottery Pcs, Old Books Inc Cookbooks, Old Linens, Kitchen Utensils & Silverware, Sm Kitchen Appliances, Pots, Pans & Dishes, Ballcap Collection, Lots Of CD & Cassette Tapes, Sm Hand Safe, Plastic Plants, Other Items

Mobile Home Trailer House, Truck, Trailer, Carport, Storage Building & Related Items

Will Sell First Single Wide Trailer House That Is 2 Bedroom, 1 Bath, Kitchen & Living Rooms, Has Built In Chest Of Drawers In Master Bedroom, Nice Curved Counter In Kitchen & Sells W/ Dishwasher, Trailer To Be Removed, 1 Car Carport, 1 Car Side Building Carport, Wood Porch Deck, 10x12 Portable Storage Building, 1995 Dodge Dakota SLT Extended Can 4x4 Truck Has V8 Motor, Auto Trans, Camper Shell, Good Tires & Approx 163,000 Original Miles, 5x10 Flatbed Trailer.

Pressure Washer, Mowers, Tools & Outdoor Related Items

Troy Bilt Gas Pressure Washer, 2 Push Mowers, Stihl Leaf Blower, Wheelbarrow, Alum Extension Ladder, & Other Ladders, Shop Vac, Air Tank, Lg Metal Toolbox, Lg Vise, Sm Hand Tools, Sm Electric & Battery Operated Tools, Battery Charger, Socket Sets, Work Mate Benches, Creeper, Long Handle Tools, Extension Cords, Organizers Full Of Items, Gas Cans, Lg Live Trap, Concrete Bird Baths, Other Items Not Listed



Auctioneers Note: It Is An Honor To Be Conducting This Auction For The McConnell Estate. There Will Most Definitely Be Something Here For Everyone. Trailer House Is Good & Livable, Truck Runs Great, Storage Building & Carports Are Excellent For Anyone. Very Clean & Workable Tools As Well As Good, Clean Furniture & Household Items. An Excellent Auction You Do Not Want To Miss. Please Plan Now To Attend. **Sale Order:** Mobile Home Trailer House Will Sell First Followed By Appliances & Furniture Then Move Into Antiques, Collectibles & Households. At Approx 3:30 PM Will Offer Truck, Trailer, Storage Building, Carports & Larger Items. Remainder Of Tools & Outdoor Will Finish Auction. See Ya There!!!

Terms: Cash or check with proper ID. Now accepting most major credit cards. Nothing removed until settled for. Statements made the day of sale takes precedence over printed material. Everything sold as is where is. Not responsible for accidents. Restroom available. Concessions Provided. Check our website for upcoming auctions and for additional pictures!!



NANCE AUCTION SERVICE

No Matter How BIG or small, We Do Them All!
www.nanceauctionservice.com



Col. Bill Nance 417-214-0093

In God We Trust

Philippians 4:13

Sean Beazley 417-247-6754



ONLINE ONLY EQUIPMENT AUCTION

Internet Bidding closes at 11:00 am CST
THURSDAY, OCTOBER 27, 2022

www.SextonAuctioneers.com
BID NOW!

Much more equipment online!



2015 Peterbilt 389



2016 Peterbilt 579



2000 Peterbilt 379



1984 Peterbilt 359 Dump Truck



1988 Peterbilt 379 Daycab



1987 Kenworth W900 Dump Truck



2000 Freightliner FLD120 Classic



2015 Freightliner Cascadia 125



2014 International Prostar



2012 Peterbilt 386



1995 Kenworth T300 Utility Truck



1998 International 4700 Flatbed



1990 International 4900 Single Axle Dump Truck



2022 Jet Detach Lowboy Trailer



2000 Landoll 930A Trailer



2014 Utility Reefer Trailer



2009 Timppe Hopper / Grain Trailer



2007 Trail King End Dump Trailer



2007 Manac Flatbed Trailer



2014 John Deere 5085E Tractor



1991 John Deere 3255 Tractor



2020 Kubota L3901 Tractor with attachments



2007 Deere 655C



2008 John Deere 410J Backhoe



2006 Genie S-65 Straight Boom Manlift



2020 Case TR340 Skid Steer



2016 Case TV380



2007 Genie S-60 Straight Boom Manlift



1998 Pitts Log Trailer and Prentice 210E Loader



2012 Can-Am Commander X



2021 BigTex Gooseneck Trailer



SEXTON AUCTIONEERS

200+ SKID STEER ATTACHMENTS SELL TO HIGHEST BIDDER

www.SextonAuctioneers.com

For any questions call our Office: 314-529-0124

Auction Contacts Tyler Sexton | Gary Sexton

5182 US Hwy. 63 • Pomona, MO • email: Sales@SextonAuctioneers.com

Next Auction

DECEMBER 15

FIFTH FIEBELMAN TRUST AUCTION

SUNDAY, OCT. 23, 2022 • 9:00 A.M.
MOFFAT AUCTION CENTER • 467 CO RD 604, LINN, MO

Directions: From Linn, take Hwy. 50 West 1.5 miles to Co. Rd. 604 & turn left on Co. Rd. 604 to Auction Center, or from Jefferson City, take Hwy. 50 east 16 miles to Co. Rd. 604 and turn right on Co. Rd. 604 to Auction Center.

****PREVIEW – SAT, OCT. 22ND FROM 12:00 P.M. NOON TO 3:00 P.M.**

ANTIQUE FURNITURE

Oak 3 door bookcase; 2 door mahogany bookcase; Walnut umbrella stand w/ marble; Walnut table desk w/ bookcase top; 2 door walnut bookcase; Walnut Victorian bed full size; Walnut Victorian marble top dresser; Walnut Knockdown wardrobe converted to curio cabinet; Oak knockdown wardrobe converted to curio cabinet; Pine 4 door blind door cupboard – pegged & grain painted; Oak S-Roll top desk; Oak double bookcase secretary; 4 Ornate oak curved glass china cabinets; Mission style oak curved glass china cabinet; Oak bookcase secretary; 6 ft pine 2 board harvest table; 2 door grain painted bookcase; 36 Drawer oak document cabinet; 10 Drawer oak document cabinet; Walnut chest; 6 Trunks; Macy 6 stack lawyers bookcase.

COUNTRY STORE

11 ft. Walnut store counter; 2 Merricks single cylinder round spool cabinets; 2 National brass cash registers; 8 ft. Oak display case; Two 4 ft. Oak display cases; 3 ft. Oak display case; Two 3 ft. Oak counter top display cases; 4 ft. Oak counter top display case; Two 6 ft. Oak display cases; 15 Drawer embroidery silk cabinet; 5 ft. Oak display case with cash drawer; Metal U.S. Post Office; 6 Drawer counter top spool cabinet; Diamond Dye cabinet; 3 ft. Oak curved glass counter top display case; 2 pc. Oak store cabinet with sliding glass top doors.

HORSE DRAWN SURREY

2 Seat horse drawn surrey.

MUSICAL INSTRUMENTS

12 Old violins – some Germany; Ukelin; Mandolin; Gibson lap steel guitar BR9; Early harp in walnut case; Early steel guitar; Guitars.

ADVERTISING SIGNS

Tin 4 ft. Drink Royal Crown Cola sign; 36 in. Coca Cola button; Pepsi menu board; Purina Health sign; Tin Coca Cola sign; 12 in. Coca Cola button; 2 Pepsi thermometers; 2 Royal Crown thermometers; Oil cans incl: Skelly,

Shell, Mobile & Texaco; Tin Purina Greens Hatchery sign; Tin Purina Chows sign; Tin Robin Hood Flower sign; Beech Nut Chewing Tobacco sign; Tin Drink Coca Cola sign; Porcelain Barber Look Good Feel Better sign; Dr. Pepper thermometer; Mail Pouch Tobacco thermometer; Porcelain John Deere door push; Sweet Cuba tobacco tin; Fram Filter clock; Phillips 66 plastic light; Keen Kutter sign; Oliver Finest In Farm Machinery Southside Sales sign, Salem, MO; Porcelain 8 ft. International Shoes sign; Numerous other Tins and signs.

ANTIQUES & COLLECTIBLES

30 Gal. Red Wing crock; 10 Gal. Red Wing crock; 3 Gal. Birch Leaf Union stoneware; Red Wing chicken feeder; Hand fans; Sterling spoons; Numerous old books; Marbles; Oil lamps; Mini lamps; Cigar boxes; Coffee jars; Stoneware pitchers; Beer steins; Photo albums; Collar box; Crock bowls; Minnow buckets; Lard tins; Egg crate; Approx. 40 hand stitched quilts – some very old; 10 Quilt tops; Quilt blocks; Fancy work; 3 Blue and White coverlets; Standard Model A table top Victrola with horn; Ansonia walnut kitchen clock; Walnut kraut kutter; Lance peanut jar; Several wood adv. Boxes; Wire baskets; Soda bottles & crates; 1904 Worlds Fair china plates & a bowl; Shapleigh paperweight; Blue & White stoneware butter crock; Old pictures, photos & frames; 6 Postcard albums w/ Christmas, Santas, Holiday & Black Americana; Trade card albums; Cigar & cigarette cards; Graniteware; Broad axe; Fireman's axe; Tobacco cutters; Coffee grinders; Brass buckets; Milk bottles; Oak wall phones; 2 Gal. Eagle Pottery crock; Cream & green wood stove w/ warming oven & water reservoir.

CAST IRON

Eight 3 legged kettles; 4 Tea kettles; Wagner waffle iron; Griswold muffin pan; Wagner skillets; Martin #8 skillet; Victor #8 skillet; Wagner chicken fryer; Wagner griddle; Excaliber St. Louis tea kettle; Boiler; Tobacco cutters; CW Ball tea kettle; #8 Griswold chicken

fryer; C/I wiener dog boot scraper; Other pcs. C/I.

CARNIVAL GLASS

Approx. 300 pcs. Carnival Glass incl: Amethyst Grape and Cable punch bowl set; Grape & Cable humidior; Amethyst Grape & Cable creamer, sugar & butter dish; Grape & Cable dresser tray, small compote, hatpin holder, 2 plates, 2 large compotes, oval fruit bowls & basket weave bowl; Amethyst Persian Medallion ruffled bowl; Ribbed tall vase; Dahlia water set; Grape & Cable water set; Holly & Berry bon bon; Grape & Cable footed bowl & vegetable bowl; Grape rose bowl; Grape water set; Blue Stag & Holly footed bowl; Blue Holly Fenton bowl; Blue Persian Medallion bowl; Blue Stork water set; Blue Imperial Singing Bird water set; Northwood Jewish Star bowl; Numerous Amethyst 3 finger bowls, vases & compotes; Green Grape & Cable basket weave plate & footed bowl; Green Grape & Cable punch bowl & berry set; Persian Medallion fluted bowl; Ragged Robin 3 finger bowl; Grape hat pin holder; Marigold Imperial Grape punch bowl & cups; Marigold windmill pitcher; Marigold butterfly & berry water set; Gothic Arches water set; Marigold lattice grape water set; Marigold Iris & Herringbone water set; Marigold hen on nest; Marigold butterfly & berry bowl; Marigold 3 fingered dragon & lotus bowl; Peach opalescent basket; Peach opalescent 3 fingered bowls; Numerous other pcs. carnival too numerous to mention.

GLASSWARE

Fenton – Cranberry opalescent vase, Coin spot pitcher; Humidors, Silver crest pcs, Pitchers, Small vases, Blue coin spot pitcher & Other pcs. Fenton; Pressed glass; Pattern glass – Pitchers, Bowls, Compotes & Butter dishes; Calendar plates; Hand painted china; Approx. 50 paperweights; Covered animals; Candy containers; Vaseline glass; Berry sets; Cruets; German canister set.

See www.moffatauction.com for photos

Note: Ken Fiebelman was an antiques collector for over 50 years, dating back to his teenage years. He was also a Missouri historian, having taught school and authored books, and was a state representative for over a decade. He operated an antique shop for years in Salem, Missouri, as well as a museum. Ken was well-known in the antique world during his life, and amassed a massive collection of antiques. We are honored to conduct the liquidation of his collection for the family. If you like fine antiques, please do not miss this auction. Rick

Terms: Cash or good check with proper identification. All sales are final. Everything sells as is, where is. Proper identification is necessary to obtain a buyer's number. Announcements day of sale supersede all printed material. Food on grounds.

RICHARD MOFFAT AUCTION SERVICE



573-761-4293
Jefferson City, MO

Auctioneers:
Richard Moffat & BJ Moffat
www.moffatauction.com

573-690-2823
Linn, MO

ESTATE AUCTION

Sunday, October 23rd, 2022 ~ 1:00 PM

LOCATION: 203 West Birch Street, Carterville, MO (Watch For Signs)

Auction For Dale & Loretta McCall



Antique, Modern Furniture & Appliances

Ant Oak Round Front Curio Cabinet, Ant Wood Child's Table & Chairs, 2 Ant Clover Leaf Tables, Ant Oriental Dresser, Ant Child's Rocker, Ant Wood Highchair, Ant Clocks, Old China Cabinet, Sm Curio Cabinet, Wood Buffet, Wood Rocker, Prim Wood Table, 4 Pc Oak Bedroom Suite Inc Queen Bed, Dresser W/Mirror, Armoire, Night Stand, Barstools, Wood Kitchen Table & Chairs, Sewing Machine In Cabinet, Trundle/Day Bed, Lg Wood Armoire, Glass Shelves, Coffee & End Tables, Lg Sectional W/Ottoman, Big Boy Leather Chair, Neat Lantern Lamps & Other Lamps, Flat Screen TV's, Upright Deep Freeze, Other Items Not Listed

Storage Building, Flatbed Trailer, Mower, Tools & Outdoor Related Items

10x12 Portable Storage Building (Like New), 5x8 Flatbed Trailer, Husqvarna Self Propelled Push Mower, Sm Hand Tools, Sm Electric Tools, Shop Vacs, Ramps, 4 Ft Shop Lights, Motorcycle Helmets & Jackets, Lots Of Other Shop Items, Dog House, Wicker Patio Furniture, Outdoor Chairs, Propane BBQ Grill, Yard Benches, Stepping Stones, Outdoor Décor, Other Items Not Listed

Antiques & Households

Old Carnival Glass, Lots Of Blue & White Dishes, Cobalt Blue Glass, Pink Depression Glass, Old Pottery, Hand Painted Dishes, Cookie Jars, Old Presidential Spoon Collection, Old Dolls, Lg Lot Of Knick Knacks Of Various Kinds, Lg Lot Of Old Glassware, Flooring, Insulation, GPS Drone, Several Totes & Boxes Stored Unable To See Have Been Told Full Of Primitive & Antique, Also Household Related Items, Listing Much Larger Than Appears

Gold, Silver & Type Collector Coins & Currency

Lots Of Silver Dollars Some Good Dates, Several Silver Eagles, Gold Coins Inc 1880-S \$5 & Others, Lots Of Old Type Coins, Seated & Bust Coins, Key Date 1908-S Indian Cent, Several Other Silver Dimes, Quarters, Halves, Also Coin Sets & Collector Tokens, Currency To Inc Silver Certificates & Others, See Website For Full Listing



Auctioneers Note: It Is An Honor To Be Conducting This Auction For The McCall Family As We All Worked Together Years Ago At O'Sullivan Industries In Lamar. This Is A Very, Very Clean & Outstanding Auction With Excellent Antique & Modern Furniture As Well As Great Antiques, Glassware & Primitive Items. Storage Building & Trailer Both Are Just Like New, Tools & Outdoor Items Are Well Kept & In Great Shape As Well. Also Excellent Gold, Silver & Collector Coins. Please Plan Now To Attend. **Sale Order: Furniture Sells First Followed By Antiques, Collectibles & Households. At Approx 3:30 PM Will Offer Storage Building, Trailer & Larger Items. At Approx 4:00 PM Will Offer Coins & Currency. See Ya There!!!**

Terms: Cash or check with proper ID. Now accepting most major credit cards. Nothing removed until settled for. Statements made the day of sale takes precedence over printed material. Everything sold as is where is. Not responsible for accidents. Restroom available. Concessions Provided. Check our website for upcoming auctions and for additional pictures!!



NANCE AUCTION SERVICE

No Matter How BIG or small, We Do Them All!
www.nanceauctionservice.com



Col. Bill Nance 417-214-0093 In God We Trust Philippians 4:13 Sean Beazley 417-247-6754

12th ANNUAL Leadmine Community Consignment AUCTION

Saturday, October 22, 2022 - Start Time 9:00 am

LOCATION: 839 Hwy T, Tunas, MO 65764 @ The Leadmine Produce Auction Facility.

DIRECTIONS: From Buffalo, MO, go North on Hwy 73, Turn Right on Hwy E (at Tunas, MO). Go 4 miles to Hwy T, Turn Right and go South 1/2 mile to Auction Site on the right.

THIS IS ONLY A PARTIAL LISTING! MORE CONSIGNMENTS WELCOME!!

Consignment unloading will be October 19, 20, 21 - 9:00am-5:00pm

For Consigning Contact Kenneth Wenger at 207 School Road in Tunas, or CALL Herman Hostetler @ 417.327.7720

Serving Breakfast and Lunch - BBQ Chicken • A Bake Sale Will Be Held On Site

FARM/MISC. EQUIPMENT

595 Allied Front End Loader
w/bucket
Pull Type Plastic Layer
Pull Type Sprayer
6' Pull Type Bush Hog
Swisher 60" Finish Mower 11hp
16' All Metal BBQ Trailer
12' Cargo Trailer
9' Trailer
Rabbit Hutches
30x96 (Zimmerman Greenhouse)
w/fans & heater,
needs disassembly south of Buffalo
Oliver Plow w/new Tongue
6' Disk

SHOP TOOLS, ETC.

12 Alu. & Fiberglass Ladders
16'-32'
Step Ladder 6'-8'
Large Lots - Long Handled Tools
Large Lots -Wrenches & Sockets
Gas Cans
Misc. Bolts
Tool Boxes

BUILDING SUPPLIES

Used Metal Roofing
120pc. 4'x8'-1" & 2" Board Insulation
Doors & Windows
Misc. Lumber
Misc. Metal Roofing
Metal Trim

LAWN AND GARDEN

Weed Eater's

Riding Lawn Mower
Push Lawn Mowers
Chain Saw
Large Swing Set
Retail Produce Carts on casters
Bicycles

OUTDOORS

14' Alu. Jon Boat
Trolling Motor
Ammo & Scopes

HOUSEHOLD

Table & Chairs
Bar Stool
Buffet & End Table
Misc. Furniture
Cast Iron Cookware
Antique Apple Peeler
Opossum Style Cabinet
Silverware & Glassware

COINS

12 - Morgan Silver Dollars
10 - Silver Peace Dollars
5 - Silver Eagles
20 - Silver Dimes

GUNS

SELLING AT 12:00 NOON
Charles Dailey 12ga
Interarms Bolt 30.06 New
Heckler&Koch Gmbh-40cal S&W
450 Bushmaster Mod Black Rain
Steven Mod 887 .22 semi-auto
Charles Dailey 12ga
Mossbergh 243cal

Winchester Mod 94 30.30
Winchester Mod 190 .22
Sears Mod 25 .22
Steven Crackshot .22
Mossbergh 500 20ga pump
Westernfield 16ga pump
Winchester 1200 12ga
Savage Mod 67C 12ga pump
Marlin 39A .22 lever action
Steven 311 16ga double barrel
HiStandard Sentinal .22rev.pistol
Duck Gun 3.5" 12ga semi-auto
German 6 shot .22 rev.
Steven single shot .22
Mossbergh 100 ATR 30.06
Thompson Center 54
Remington 742 30.06
Winchester 12ga 2.75"
Savage .17 rimfire w/scope
Mossbergh ATR Deer Thug
30.06 w/scope
T&C .45 Knight Style
Huntsman .45 Percussion
Japanese 1946 7.22?
Remington 597 NWTF .22 bolt
w/ 3x9 scope
Mossbergh 3.5" 12ga pump
Browning 81L lever action 30.06

We anticipate more guns by Sale Date.
Ask for our Gun List on day of Sale



- **Terms & Conditions:** Cash or Check w/ valid ID.
- Nothing removed until paid for.
- Not Responsible for Accidents, Lost or Stolen Items.
- No Smoking inside building.
- Announcements made Day of Sale take precedence over printed matter.

Notes: Due to large amount of consignments not listed, will be selling with several rings all day



PUBLIC AUCTION

SATURDAY, OCTOBER 22 @ 9:30 A.M.

Directions: Salem - 604 S. Park Avenue (behind Progressive Ozark Bank.) Watch for signs.

LARGE SURPLUS SALE - CONSTRUCTION ITEMS

Pallets of Metal - Screws - Hangers
 Various Bolts - 4" - 6" Metal Screws
 Several Pallets of Lighting Fixtures
 Several Lots of Metal Edging, Gutters
 Lots of Metal Roofing, Various Lengths
 Lots of Chain Link Fencing & Poles
 Pallets of Concrete Forms
 Pallets of Formed Rebar
 Tongue & Groove Pine, needs gone through
 Fiber Glass and Foam Sheets

Several Pieces of Electrical Lead-Ins
 Some Used Lumber - Cinder Blocks
 Several Lots of New Brick
 Lots of Various Windows
 Oak 30" -36" Upper & Lower Cabinets
 Wheelabrator Sand Bins
 Paint & Sand Booth, Fully Operational, Used
 to Reclaim Military Vehicles
 Small Pickup, needs work
 Water Hoses - Generators, Military

Some Used Power Tools
Many More Items Not Listed

AUCTIONEER'S NOTE: If you have a construction project large or small, this is the sale for you. Something for everyone.

See you there! -Tom



OWNER: CAHILL CONSTRUCTION

ANNOUNCEMENTS AT AUCTION TAKE PRECEDENCE OVER PRINTED MATTER

WULFF AUCTION

TERMS: CASH OR APPROVED CHECK - I.D. REQUIRED
 NOTHING REMOVED UNTIL SETTLED FOR

Licensed Appraisals

2334 Highway K, Salem, MO 65560

AUCTIONEERS:

Col. Tom Wulff • John Wisdom

Cell: 573-247-3884 • Cell: 573-247-9563 • Home: 573-729-8476

Clerk: Tracy Strange

Cashier: Nancy Inman



RAIN OR SHINE OWNER & AUCTION PERSONNEL NOT RESPONSIBLE FOR ACCIDENTS AT SALE SITE

See Wulff Auctions at www.thesalemnews.com/auctions



FALL CONSIGNMENT

The following items will be offered at public auction located at 8035 NW Hwy AA, Appleton City, MO 64724. From Appleton City go east 2 miles on 52 hwy to A, go south on A hwy 1/4 mile to AA. Then east on AA hwy to auction.

SATURDAY, OCTOBER 22, 2022 10:00 A.M.

FIREARMS & AMMO (SELL @ 10:00 AM)

Olympic Arms Mod. MFR 5.56
 Mossberg 702 Pinkster .22 cal
 H&R Pardner 1871 Pump 12ga.
 Century Arms VSKA 7.62x39
 Crossman 760 Pumpmaster Classic
 Ithaca Mod. 49 .22 cal Lever Single
 shot
 Stevens Mod. 325-B 30-30 Bolt
 Action
 H&R Pardner 20ga. Single shot
 Rock Island .45 cal
 Jimenez Arms 9mm
 SCCY CPX-2 9mm
 Cobra C8 .38 cal
 Titan FIE Corp .25 cal
 Ruger RG14 .22 cal
 Heritage Rough Rider .22 cal
 Ruger Mark IV .22lr
 Ruger LCR .38 cal
 North American Arms .22 cal
 Kahr Arms CM40 .40 cal
 Marlin Mod. 336W 30-30 (New)
 Winchester Mod. 94 30-30 w/scope
 Browning A5 20ga. (Made in
 Belgium)
 (2) Henry .22lr Lever Action (NIB)
 Stevens .410 Single Shot
 (2) Remington Mod. 870 Wingmaster
 20ga.
 Remington Mod 870 Express 12ga.
 Ruger Mod. 10/22 w/scope
 Savage Mod 93 .22WMR w/scope
 (2) Remington Mod. 552
 Speedmaster .22lr
 Rock Island 1911 45 Auto (NIB)
 H&R Mod. 922 Double Action .22lr
 Ruger .380 Auto
 Ruger Mark II Target .22lr 6 7/8" Bull
 Barrel w/Holster
 Ruger Wrangler Armor Black
 w/Holster (NIB)
 SCCY CPX-2T 9mm
 Savage Axis .270win (NIB)
 New England Arms Handi-Rifle
 SB2 .223 w/Bushnell Scope
 Remington Mod. 1100 20ga.
 Remington Mod. 1100 12ga.
 Savage Mod. 170 Series B 30-30
 S&W Mod. 1000 12ga.
 Stevens Mod. 9476 20ga.
 Winchester Mod. 90-06 Pump .22 cal
 Winchester Mod 100 Semi-Auto .308
 Berika Mod. FX3 Semi-Auto 12ga 3"
 Fed Arms FR99 Semi-Auto AR Style
 12ga 3"
 Stevens Mod. 67 Pump 20ga.
 Savage Mod. 93 17HMR Heavy barrel
 w/Scope
 Mossberg Patriot Bantam
 Youth .243win w/stock ext. &
 scope
 Winchester Mod. 94 30-30
 Berika Mod. FTS O/U 20ga.

Berika Mod. FTS O/U 12ga.
 Berika Mod. SS12 Single Barrel 12ga.
 Berika Mod. SS410 Single Barrel .410
 Remington Mod. 770 30-06 Camo
 w/scope
 Remington Mod. 742 Semi-Auto
 .280Rem w/scope
 Marlin Mod. 336 30-30 JM Barrel
 Marlin Mod. 75 Semi Auto .22lr JM
 Barrel
 Winchester Mod. 61 Pump .22 lr,1s
 (made in 1948)
 Savage Sporter Deluxe 25-20
 w/Lyman Peep & 1 Box Ammo
 Berika Lever Action 12ga
 Marlin Mod. 60 Semi-Auto .22lr
 w/squirrel stock JM Barrel
 Winchester Mod. 1890 Pump
 .22WMR
 S&W M&P 9 Shield EZ 9mm
 S&W SD40VE .40 cal w/2 mags
 Ruger Bearcat 6 shot revolver .22lr
 (made in 1970)
 S&W Mod. 10-5 6 shot revolver 4"
 barrel .38 spec.
 Taurus 6 shot revolver 4" barrel .38
 spec.
 Ruger LCP .380 American Flag
 Taurus PT740 Slim .40 S&W w/Laser
 Sight
 SCCY CPX-2 9mm (Purple)
 Heritage Rough Rider 6 shot revolver
 Burnt Bronze 16" Barrel w/Bufallo
 Nickel .22WMR cylinder
 Heritage Rough Rider 6 shot revolver
 6 1/2" Barrel .22lr w/.22WMR
 cylinder
 Thompson Center Compass 22-250
 Remington Mod. 512 Sportmaster .22
 cal
 Stevens Mod. 58D 20ga 3" Bolt
 Action
 GSG Firefly .22 Pistol (Needs Firing
 Pin)
 Hi-Point Mod. JHP .45 cal
 Bersa Thunder .380 cal
 Ruger LCR 38+P Hammerless
 Texas Radical Arms 5.56 (NIB)
 Misc. Ammo: 12 ga., 20ga., 45 auto
 .22lr, .22 shorts, 30-30win, .380
 .308, other misc. ammo

ARCHERY & SHOOTING

Phenix Hellfire 35 Compound Bow
 Bear Youth Training Compound Bow
 Other Compound Bows
 Crossbow
 Fletching Tool
 Vintage Black Eagle Arrows
 Carbon Express Arrows
 Wooden Arrows
 Arrow Blanks
 Gold Tip Arrows
 Victory Arrows
 Chrony Chronograph
 Archery Sights
 Bow Cases (Lakewood, Legend)

Spotting Scopes
 Plinking Target
 Nocks & Field Points
 Other Misc. too numerous to mention

VEHICLES & TRAILERS

2017 Dodge Ram 1500 5.7 Hemi V8, 4-
 Door, 4WD Automatic 45,000 m/l
 miles
 2002 Dodge Ram 1500 4.7 V8, Single
 Cab Long Bed 4WD, Automatic
 2004 BMW 325 XI 4-Door, Auto,
 Leather, Sunroof, 170,000 m/l miles
 1985 Ford F-250 4WD, 351W 4-Spd.,
 Flatbed w/Elec. Over Hyd. Spike
 1994 GMC Grain Truck, 366 engine, 18'
 bed, 4+2 transmission
 Polaris 90 cc Outlaw 4-Wheeler
 Polaris 400 4x4 4-Wheeler
 14' Bumper Hitch Trailer
 (2) 16' Bumper Hitch Trailer
 Coose Triple Axel Dump Trailer
 w/Omaha Standard 16" Metal Box
 Triple Axel Gooseneck Trailer 18+4
 w/dovetail
 6x12 Homemade Trailer
 Osage Aluminum Duck Boat w/8hp
 Evinrude Engine & Trailer (Blind
 Included)

TRACTORS & EQUIPMENT

Ford 7000 Diesel Cab & Heat w/Loader,
 3pt. 540 PTO 4,925 hrs m/l
 Ford 5900 Diesel w/TA26 Westendorf
 Loader, ROPS, 3pt., 540 PTO 5,610
 hrs m/l
 Ford 9N Tractor 540 PTO
 Ford 801 Powermaster w/Loader
 C Farmall NF, New Tires, Add-on 3pt.
 Fordson 2N Tractor
 Allis Chalmers 715C Backhoe w/Front
 bucket. 12" & 24" Rear buckets
 10-Wheel Hay Rake
 Walton 8-Wheel Hay Rake
 Vicon 7' 3pt Hay Mower
 Vicon CM247 8' Hay Mower
 JD 535 Baler (Twine Tie)
 New Holland 660 Autowrap Baler
 (Twine Tie)
 Bush Hog 5' 3pt Brush Hog
 Landpride 5' 3pt Brush Hog
 3pt Blade
 36" Manual Fold Pasture Harrow
 Ford Sickle Bar Mower
 Fordson 2-Bottom Plow
 3pt. Bale Unroller
 Homemade Wood Splitter
 Westfield Seed Tender Auger

TOOLS & MISC.

Motorecycle Jack
 Compound Miter Saw
 ATV Sprayers
 (2) Hydraulic Presses
 (3) Jons Red Chainsaws (2 New)
 Multiple Stihl Chainsaws

Snap-On SAE & Metric Sockets
 Snap-On Impact Sockets
 Snap-On Ratchets
 Snap-On Torque Meters
 Snap-On Wrenches
 Snap-On Timing light
 Craftsman 16-Drawer Toolbox
 Central Machine 6" Buffer
 New Sandblasting Cabinet
 Kawasaki Chop Saw
 Matco 5-Drawer Toolbox
 Hobart MVP210 Wire welder w/bottles
 (very little usage)
 Vise Grips
 Hammers
 2 Wheel Dollies
 Parts Washer
 Tabletop Drill Press
 Tabletop Table Saw
 Floor Jacks
 Jack Stands
 Multimeters
 Drill Bits
 Air Hose
 Creepers
 Campbell Hausfield Retractable Air
 Hose
 DeWalt Power tools
 Extension Cords
 Electrical Supplies
 Misc. Lumber & Building Materials
 White Flyer Targets
 Other Miscellaneous too numerous to
 mention.



TERMS OF SALE: Cash or good check w/ proper ID. Nothing to be removed until settled for. Statements made day of sale take precedence over printed materials. Lunch served and toilets on site.

COL. KEVIN WADE MOBILE 660-492-3279
 COL. BRYAN WADE MOBILE 660-492-3740
 TYLER WADE MOBILE 660-492-7764
 CLERKS: NORRIS, IRBY & WADE
 TO VIEW AD ONLINE GO TO WWW.AUCTIONZIP.COM
 AUCTIONEER ID: 24103



WADE

AUCTION SERVICE

APPLETON CITY, MO
 660-492-3279



Real Estate & Estate



Location: 1678 S. Porter, Aurora Mo. 65605
9:00 AM * Saturday, October 22nd * 9:00 AM

Call for an Appointment

Directions: From Jet. hwy. 60 & 39 take 39 (s. Elliott) 1/2 mi. then right on Prospect 2 blocks. then left on Porter to Sale.
 Watch for Signs Breakfast, Lunch & Restrooms Available



Real Estate

Beautiful all brick home in fantastic neighborhood! 2200+ sq. ft. all brick home, 3 Bedrooms, 1 1/4 Bath, spacious kitchen that is open to family room with wood burning fireplace, sliding glass doors leading out onto a nice quiet patio in the back yard, formal living room, large dining room w/built in hutch, utility room, lots of storage, new roof, 2 car garage, Central Heat & Air, Aurora Schools, This property sits in the Southern Oaks subdivision only a short distance to Hwy 60 and lots of amenities. Home is move in ready, or update to your liking. Very well kept, quality built forever home. You don't want to miss this opportunity.
Property Sells subject to Owner Confirmation, "Motivated Seller"
Terms: 10% Down Day of Sale, Balance Due 45 Days or Less at Closing.

Car

2006 Lincoln Town Car, (extra nice well kept car with only 75,xxx mi);

- Coins, Currency, Knives, Taxidermy**
 1876 Trade Dollar (very good condition);
 (75+) Morgan Silver Dollars incl. 1882-CC & graded 1901-O, some are very nice;
 (115+) Silver Peace Dollars, some very nice;
 (15) Silver Eagles;
 1892, 1893, 1918, 1920 & 1936 Commemorative Silver Half Dollars;
 (7) Seated Silver Half Dollars;
 (14) Barber Silver Half Dollars;
 (170+) Walking Liberty Silver Half Dollars;
 (150+) Frankling Silver Half Dollars;
 (110+) 1964 Kennedy Silver Half Dollars;
 (100+) 40% Silver Half Dollars;
 (3) Seated Quarters;
 (10) Barber Quarters;
 (23) Standing Liberty Quarters;
 (700+) Washington Silver Quarters;
 (6) Seated Dimes;
 (30+) Barber Dimes;
 (250+) Mercury Dimes;
 (580+) Silver Roosevelt Dimes;
 1834 Capped Bust 1/2 Dime;
 (2) Seated 1/2 Dimes;
 (5) Shield Nickels;
 (95+) V Nickels;
 (360) Buffalo Nickels;
 (260+) 40% War Nickels;
 (3) Nickel 3cent pes.;
 (4) 2 cent pes;
 (5) Large Cents;
 1858 Flying Eagle Cent;
 (280+) Indian Head Penny's;
 (2200+) Wheat Penny's;
 (7) 1oz. Silver Bars & Rounds;
 1917 \$1.00 United States Note (Large Size);
 (40+) \$1.00 & \$5.00 Silver Certificates;
 1953 \$10.00 Silver Certificate;
 Lot Misc. Other Coins, Currency & Tokens.



- (23) Case Pocket Knives (Mint in Box) incl Bulldog, Peanut, Sow Belly, Trapper etc...;
 Buck Custom by David Yellowhorse;
 (30+) Good Pocket knives by Boker, Kabar, Buck, Schrade, & others;
 (5) Very Nice Custom Made Hunting Knives Bull Elk Head & Flying Pheasant Mount; Several Nice Coleman Lanterns;
Antique - Collectible - Clocks - Art
 Griswold #8 704 Cast Iron Chrome Skillet; Wagner #1368 Cast Iron Salesman Sample; Old Mountain Mini Cast Iron Stove; Huge Brass Eagle Sculpture; 48" Bronze Spanish Conquistador Statue; Several Pewter Figurines; Few Old Marbles & Records;
 (9) Aladdin Lamps including Cranberry, Green, Amber, Pink Alacite & more; Fenton Rose Satin Poppy GWTW Lamp; Metal Lamp w/ Burmese Shade; B&H 3 Footed Oil Lamp;
 (10) Fancy Kerosene Lamps; Misc. Nice Table & Hanging Lamps; Very Nice Art Glass Vases, Baskets, Bowls, Compotes by Fenton, Chech, Bohemia, etc...; Miniature Satin Vaseline Punch Bowl Set; Lots of Nice Crystal & Cut Glass; Lots of nice Glass of all kinds; Beautiful Ridgeway Grandfather Clock; Small Grandmother Clock; Seth Thomas Figural Clock; E, Howard type #5 Banjo Clock; Fancy Large Black Forest Clock with Chime
 (2) German R A Pendulum Clocks; Miller Kitchen Clock; Seth Thomas Mantle Clock; Guild Crest Desk Clock; United 8 Day Pocket Watch Wall Clock;
 (3) Original Kickapoo Logan Oil Paintings; Paintings by Ferdinand, Barrister, Johnson; Several extra nice quality Pictures & Prints;

Estate of Jim Burbridge

- Lots & Lots of Nice Collectibles not listed;
Furniture - Appliances Household
 Beautiful Formal Dining Table & 6 Chairs with matching China Hutch;
 (3) Full/Queen Size Bedroom Suites Beds, Dressers, Chests & Nightstands; Leather Recliner;
 (2) Sofa's & misc. Occasional Chairs; Small Antique White Wood Rocker; Several Very Nice Occasional, End & Sofa Tables & Stands;
 (3) 4 Shelf Lawyer Style Bookcases; Mirror Back Curio Cabinet; Console Stereo w/ Turntable & 8 Track Player Old Wood Kitchen Cabinet (in garage);
 (2) Flat Screen TV's;
 (4) Gun Cabinets;
 Whirlpool Washer & Kenmore Dryer; Kenmore 13cu. ft. Upright Freezer; Kitchenaid Stand Mixer (Red); Misc. Small Kitchen Appliances; Fiesta Canister Set (new); Electric Ice Cream Freezer; Imperial Ware Melmac Dinnerware; Corelle Dinnerware;
 Lots & Lots of good extra clean Pots, Pans, Tupperware, & kitchen Items not listed; Good Clean Bed & Bath Linen;
 (4) Good Kirby Vacuum Cleaners; Nice Patio Set;
 Cast Iron Bench & 2 Chairs;
 Concrete Bird Baths & Large Planters;
 24ft. Fiberglass Extension Ladder; Step Ladders & Misc. Garage Related Items; Craftsman Tool Box w/ Misc. Hand Tools; Lots & Lots & Lots not Listed;
See our website for over 600 Pictures;
Auctioneers Note
Real Estate Sells 12:00 Noon.
Car & Coins sell at 12:15
Huge all day auction, we will be selling 2 rings part of the day so bring a friend



Foster Auction & Appraisal Service

www.fosterauctionservice.com
 Email: bidnowsold@aol.com



Auctioneer: Larry Foster Galena, Mo

Phone: (417) 723-8329
 Cell: (417) 839-6860



Estate of Lloyd Hendrix and living Estate of Pauline Hendrix

AUCTION

October 22, 2022 at 10:00am

411 s. Newport Ave., Conway, Mo. 65632

From Exit 113 at Conway Mo follow W Jefferson St. (HWY J) to Newport Ave. (US RT 66) turn south, Look for Price Cutter Grocery Store. Auction will be approximately 1 mile south. **SALE HELD UNDERCOVER RAIN OR SHINE!!!!**

Tractor Equipment

- Ford 601 Select speed tractor - good rubber
- 5 ft 3pt blade
- 3pt cultivator 2 shank
- 3pt 2 row cultivator
- 3pt reversible scoop
- 3pt boom pole

Household Items/Antiques/Collectibles

- 2014 Washer Maytag Centennial
- 2014 Dryer Maytag Centennial
- 2019 Whirlpool Refrigerator Montgomery Ward
- deep freeze 26 cub ft
- 5 drawer chest of drawers
- Oak table with 4 leave & 8 chairs
- Oak hutch
- Antique Table

- Mauve recliner
- various glass chickens
- Antique flat irons
- Vintage croch set
- Antique shaver knives
- Tom Mix and other color books
- MFA vintage collectables
- 2 showcase full of smaller collectibles item and toys
- 8 x 10 wall display antique kitchen utensils
- vintage mail order catalog
- Porcelain spitone
- Large lot of christmas boxes
- Antique metal gallon can
- 3 large crocks
- Antique porcelain jugs with handles
- assortment of fishing poles

- mirror/2 drawer end table/1 queen bed
- cream colored lamp
- 5 drawer chest of drawers
- ironing board- wooden
- 5 pc bedroom suit end table 2 drawer/6 drawer/drawer/8 drawer with mirror/ queen bed end table
- jewelry chest
- cirrus professional grade
- Antique murphy bed
- Antique drawer 3
- 2 drawer shelf
- white cabinet
- antique sewing machine
- antique rocking chair
- antique trunk
- vintage white lamp
- 3 dazey churns
- antique gas lantern
- old books

- Vintage table
- 2 oak stools
- Antique foot stools
- Antique chair shelves
- Vintage metal shelf w/wheels
- Magic chef oven/stove/microwave
- various plant stands
- folding wooden table
- gliders rocker-metal
- 2 tracker life jackets
- 1 Bass Pro Life Jacket
- Antique pie safe
- various antique glassware

- full set
- Ratchet wrenches
- Craftman robo grip
- Craftman adjustable wrenches
- Craftsman screwdriver
- Craftsman socket set
- Craftsman
- Reciprocating saw on frame pre-hung
- Craftsman 3/8 Drill driver
- Craftsman 1/2 in drill
- Craftsman Hammer Drill 1/2in
- Craftsman 10 drawer tool box on wheels
- Craftsman Speed Lock Drill bits
- Craftsman 33 gallon Air Compressor
- Craftsman bolt & nut remover
- Box of hammers
- Box of misc files/putty knives
- 3/8 Black & Decker drill

- new in box
- lot of steel wedges
- Cyclone broadcast seeder hand held
- pair of waders
- lot of 5 gallon buckets
- wall mount bell
- Exterior door damage on frame pre-hung
- wall mount bell
- 4 wheel hose reel
- wheel barrow
- come along
- bench vices
- echo gas blower
- hand planes and brace drill
- cyclone broadcast seeder hand held
- drill press
- oil cans and rope etc
- wood saw
- 2 s/s
- hacksaws
- misc. wrenches
- case drill bits and sockets

Tools/Equipment

- 2 ton floor jack in case
- Large lot of extension cords
- Vintage I-H Tool Box
- 20ft. Extension ladder
- 10ft fiberglass step ladder



- Recliner-Lazy boy
- Lift chair/recliner
- Recliner-Tapestry pattern
- Lazy boy Couch with recliner ends
- End tables (2 matching oak
- Hexagon shaped end table(Broyhill)
- Oak Dining table with 6 chairs
- Computer Desk
- Sears sewing machine
- Book shelf
- World books
- Samsung flat screen tv/with stand (2011)
- Handmade oak hutch
- microwave stand
- Oak roll top desk
- Glider Rocker
- 2 oak end tables
- Entertainment center
- Teal recliner(swivel)
- 2 vintage fishing poles
- bamboo fishing ploes
- tackle boxes with tackle
- camel clock
- Couch-floral pattern
- Love-seat- floral pattern
- Zenith tv
- Casiotone keyboard and bench
- Yamaha organ (model 115d)
- handmade quilt rack
- 3 p.c bedroom suit
- 6 drawer/4 drawer/ full bed
- Queen bed with headboard
- Cedar chest
- Vintage 2 shelf display case w/glass
- 4 p.c bedroom suit 5 drawer/7 drawer with
- vintage coffee table
- 3 shelf
- Philco antique radio
- 5 drawer antique chest of drawers
- 2 galvanized tubs
- 1 white mountain ice cream maker
- 1 copper boiler w/lid
- Antique table
- croquet set
- twin bed w/mattress
- Home craft fire safe
- Antique safe
- school chair
- canning jars 150+/-
- Wooden crates
- wheelchair
- walkers
- shower seat
- porty chair
- shop vac
- church pew
- antique scale
- Antique fishing poles
- Antique hand plow
- Pull behibhd broadcast seeder
- Handsaws
- Levels
- Squares
- Lot long handle tools
- Antique vise
- Box of concrete tools
- Yard cart with removable sides
- Craftmans air hose reel
- lot of antique tools and misc.
- lot of antique clothes and iron
- lot of antique toys
- Bird house on pole
- Lot of tarps
- 2 weed eaters" gas"
- Gas leaf blower
- Craftmans law cart
- Pipe wrenches
- Comination wrench
- Mastercraft jig saw
- Rapala Filet Knife (electric) NEW IN BOX
- Dremel multitool
- B&D laser level
- Grinding wheel on wood stand
- Portable air tank
- 2 ton floor jack in case
- Anvil
- Troy built rear tine Tiller
- Hand seeder with planter plates
- Lot of log chains
- Lg lot of garden hoses
- bottle jacks
- wood planes and brace drills
- 6 ft aluminim step ladder
- hand air pump
- mailbox
- 2 electric heaters (1
- oil filter wrenches
- vise grips
- Tape measures
- drill bits
- socket sets
- misc.screwdrivers and nut drivers
- cordless saw
- Weller soldering gun(new in box)
- misc.files of putty knives
- 3.6 volt screwdriver
- circular saw laser trac
- 7 1/4in
- jumper cables
- bench vise
- Box of License Plates
- Air Hoses
- Gas Cans
- Rhveter Kit
- Grease Gun with swivel

THERE WILL BE TWO SALES RINGS ALL DAY.

RING #1 - tools/tractors/and similar items. **RING #2**-Antiques,collectibles, and small personal property. Large items such as furniture, bedroom suites and etc will remain in the house. Buyer may pick up those items at a later date.

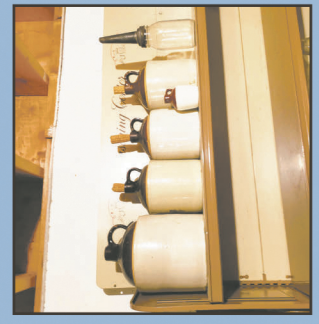
More pictures on Case Website and Auction Zip



Real Estate & Auction Services

MJ Johnson - sale manager 417.838.0291
 Case Auction Co. • 417.859.3204
 info@caseauction.com • www.caseauction.com
 auctionzip.com • ID#

Terms: Announcements made sale day take precedence over all printed material. Neither Case Auction or property owner guarantees the absolute accuracy of supplied information.



2-Lake View Real Estate Auction's

1st Auction * Saturday November 5th, * 12:00 P.M.

Location: 166 Crooked Tree Road, Galena, Mo 65656

Directions: From Reeds Spring east on hwy. 76, 2.5 mi. then left on Y hwy. 6.5 mi. then right on Long Bend Rd. 2.5 mi. then right on Crooked Tree Rd. to Sale.

**Note
Auction
Times!**

Nice Lake View Home!

1300+ sq. ft. Lake View Home on big lot, paved circle driveway, 3 bedroom, 2 bath, large front porch/deck, open living & dining room, kitchen, sliding glass door to screened in back porch, Bottom level has oversized garage with lots of extra storage, central heat & air, private well & septic, Reeds Spring Schools, (No Boat dock or slip)

This home is move in ready or decorate the way you like it. If you like being close to the lake or have been looking for a nice home near the lake then don't miss this one!

Terms: 10% Down Day of Sale, Balance Due 45 Days or Less at Closing.

Property sells with owner confirmation.

Owner: Estate of Roger O'Brian

Property shown by appointment only. Contact Larry Foster at 417-839-6860 for appointment.

2nd Auction * Saturday November 5th, * 2:00 P.M.

Location: 4428 Ance Creek Rd., Branson West, Mo. 65737

Directions: From Branson West at Jct. hwy 13 & 413 take 413 north 1 block then left on Ance Creek Rd. 4.5 mi to Sale.

Beautiful Home with distant lake view!

2700 sq ft Lake View Home on 16.8 Acres. Very cozy, secluded setting with private drive, beautiful yard with mature shade trees and ornamentals. 3 bedroom, 3 bath, open floor plan to large living, kitchen & dining room, vaulted ceilings, fireplace, sliding glass doors to deck with distant lake views, full walk-out basement w/huge game/family room, work shop, one bedroom, sauna, lots of storage, detached 2 car garage, central heat & air, central vac system, Reeds Spring School, Home is move in ready. You won't want to miss this one, especially if you like privacy, quiet settings and nature surrounding you!

Terms: 10% Down Day of Sale, Balance Due 45 Days or Less at Closing.

Property sells with probate court approval.

This property will be offered in 2 tracts & as a whole.

Tract #1 is 10.2 Acres w/Home & 2 Car Detached Garage. Tract #2 is 6.60 Acres that joins tract #1.

Owner Estate of Hanne Phipps

Property shown by appointment only. Contact Larry Foster at 417-839-6860 for appointment.

Auctioneer: Larry Foster

Phone: (417) 723-8329

Cell: (417) 839-6860



Foster Auction & Appraisal Service

www.fosterauctionservice.com

Email: bidnowsold@aol.com

PUBLIC AUCTION

Friday & Saturday, October 21 & 22 10:00 AM both days

Location: 3649 US Highway 63 Willow Springs, Mo. From West Plains travel North on Highway 63 approx. 12 miles to Traders Village Antique Mall on the left.



Real Estate

Unbelievable Commercial Building!! Two US 63 entrances, home, 5 outbuildings, and 26 acres! Property will be offered in multiple tracts. Tract 1: 7 acres M/L featuring 12,000 sq. ft. former Trader's Village building complete with spray foam insulation and 4 heat and air units (natural gas heat), two US 63 entrances, two story home, 30'x56' metal shop building on concrete floor w/2 overhead doors, 20'x50' concrete floor shop, large barn, and two storage sheds, new well when Commercial building was built, and good perimeter fencing. Tract 2: 19 acres M/L with nearly 600 feet of US 63 Highway frontage, mostly open ground, gently rolling, multiple building sites, with private road access already in place. Tract 3: Tracts 1 and 2 combined. Tracts 1 and 2 will be offered separately then combined. Highest offer will be submitted to family for acceptance or rejection. Inspections: Billy 417-257-4595 or Justin 417-274-0073. Terms: 10% down due day of sale, balance due at closing, 50/50 closing costs, have all finances made prior to auction day. Selling "as is" with no contingencies. If property is sold separately survey cost will be divided 50/50 between buyer and seller. **Real estate will sell Saturday, October 22nd at 12:00 o'clock.**

Antique Cars - Vintage Implements - Tools - Shop

Model A Ford car complete, Model A truck body (no frame), many new model A parts, automotive parts, 2-ton engine hoist, 3pt pond scoop, walk behind plows, Greyhound wagon, transmissions, used tires, 18-4x38 rear tractor tires, 1950 truck bed trailer, pipe bender, concrete tools, 5th wheel hitch, horse drawn plows, all kinds of antique horse drawn equipment, Chevy tailgate, weed eaters, ladders, commercial doors, commercial windows, 18-large double pane new triangle windows, window AC unit, booth full of primitive tools, brace and bits, Craftsman air tools, nail guns, hand saws, Radial Arm saw, bull float, sickle mower, snow blower, horse collars, Haynes, vintage wrenches, push mower, wood planes, wood vice, grinders, store scales, air compressor, large metal fan, Old Ford lawn mower, old Cub Cadet lawn mower, 3 table saws, lots of scrap iron, large amount of Walnut Lumber, Honda Gold Wing saddle bags, stack of dimensional lumber, fiberglass truck topper, square body Chevy truck long bed, stack of 4x8 treated lattice.

Antique Furniture - Collectibles

Several antique Hoosier cabinets, drop leaf table and 4 chairs, antique pie safes, lanterns, wood ladders, screen doors, wood mantle, wooden church pews, wood wagon wheels, antique wardrobes, trunks of various sizes, spindle table, rocking chairs, ice cream parlor table, several wood display shelves, office desk, school desks, wooden dolly carts, wood porch swing, oak roll top desk, porcelain cowboy statue, wood chicken crates, large antique feed box, several oak tables, antique wood porch pillars, pine cupboard, sideboards, dressers, antique oak sideboard, handmade pecan kitchen cupboard, cedar chest, antique pine dry bar, wood beds, several oak glass display cabinets, step back cabinets, vintage wood upright radio.

Vintage - Iron - Signage

Huge collection of Old Mountain Cast Iron, metal outdoor chairs, vintage well pump, pulleys, wood soda crates, metal headboard/footboard, metal wagon wheels, metal rolling racks, metal hay basket, hay tongs, hand made signs, cast iron skillet, kerosene lanterns, metal signage, John Deere collection, Coca-Cola collection, oil can collection, metal gates, brass/iron beds, Coke box, Detroit scales, complete Pony Works corn sheller, coffee grinder, vintage school lockers, vintage tins, vintage gas cans, brass lamps, lots of vintage metal signage, cast iron toys, cast iron ornaments, lots of primitive cabinets.

Decor - Graniteware - Glassware - Misc.

Several area rugs, 1803 candles and scents, depression glass, cobalt blue glass, blue willow glass, Graniteware complete sets of blue/green/light red/dark red like new, rolls of sewing fabric, costume jewelry, lamps, utensils, lanterns, bicycles, home décor, horse bits, car books, tons of picture frames, Christmas décor, collectable plates, carnival glass, wood sled, fishing poles, clocks, books, records, canister sets, burlap sacks, fishing supplies, tons of glass display cases, Singer sewing machine, Jim Beam decanters, several old trunks, figurines, what-nots, purses, golf clubs, candy machines, cream cans, galvanized wash tubs, hand tools, rakes, shovels, jacks, axes, several quilts.



AUCTIONEER NOTE: Extremely nice antique tractors all kept inside shop. All items will be clean and well kept! Lots of shop and household items not listed! Make plans to attend this fine auction!

Owners: TRADERS VILLAGE USA - ESTATE OF THE LATE LARRY & NANCY SANDS

BILLY SEXTON AUCTIONEERS

683 Missouri Avenue, West Plains, MO • Office: 417-255-2744

Billy Sexton 417-257-4595 • Ark. License # 2749 • www.sextonauctions.com

Justin Kraft 417-274-0073 • Ark. License # 2745

The following personal property of **CHARLES (CHUCK) BOND** will be offered for sale by public auction on

Saturday, Oct 22, 2022 • 10:00 a.m.

The auction will be held at 1464 Beamer Lane, Cuba, MO. From Hwy. 19 in Cuba, take Washington St. (Old Hwy. 66 also Hwy. ZZ) 4 miles west to Beamer Lane. Proceed approx. 1.5 miles to auction site. Roads will be marked the day of sale.

VEHICLES/RV: 2006 Chevy Suburban, 4x4, approx.. 199,000 mi.; Tandem axle, 14-ft. trailer w/drop ramps; Yellowstone, 20 ft. camper trailer; Three Jeep Cherokees (for parts). **CONCRETE EQUIPMENT:** Honda Stone 26" power trowel, 5.5 hp; Two, 4-ft. bull floats (new); 10-ft. bull float; Several six-foot handles for floats; Scaffolding levelers; Gates concrete forms; Curb forms-4" radius; Werner, 24-ft., aluminum pick board; 2x4x20 aluminum concrete screed; Turn buckle form braces; Rebar cutter; Rebar tops; Concrete & nail stakes; Concrete hand tools. **MACHINE/TOOLS/OUTDOOR:** Mitsubishi MT372 diesel tractor w/deck; Ditch Witch 2300, 18 hp. trencher; JD 413, 4-ft. brush hog; Rhino, 5-ft. blade, 3-pt.; Old pull-type harrow; One-gang, 6-ft, disc; Fork lift loader attachment; Electric hay elevator – 20-ft.; Homelite 3500, portable, gas generator; Coleman PowerMate generator; Lincoln AC-225-5 welder w/leads; Craftsman & Homelite leaf blowers; Stihl 028 Wood Boss chain saw; Power Stroke, gas, power washer; Dayton, 2-stage dust collector (new); Ventless propane heater; Reddy 55 heater; Craftsman 6" jointer/planer; Delta 12" planer; Delta-Milwaukee, 12" band saw; DeWalt table saw, 10"; DeWalt, 8", radial arm saw; DeWalt 12" chop saw; Rockwell 220 table saw; Pipe vise; Hand tools; Pallet racks- 8'x3'; Chain link fencing – 5" & 7"; Assorted chain link posts & top rails; Garden tiller; Yard cart; Dump yard trailer-17 cu. ft. capacity; Wheel barrels; 20-ft. square link log chain; Gate wheels; Metal pipe gates-10',12',16'; Hay ring; Orange snow fence; Metal wood rack; Misc. 10-ft. PVC pipe pieces; Misc. used tin; Smooth rod-5/8" x 2,4,6 & 8-ft.; Used T-posts, various lengths; Dog kennel; Bee hives w/racks; Bee keeping suit and equipment; Propane camp stoves. **COLLECTIBLES/HOUSEHOLD/MISC.:** Grind stone on stand; Four-foot diameter saw blade; Iron wheels; Footed castiron tub; Wooden wash tub stand; Wall telephone; Metal head board; Omaha, triple beam scale; Push reel mower; Metal, Air Force shipping container; Wooden boxes; Two 2007 Budweiser coasters w/ St. Louis Rams schedule; "L.A. Sayer" peach peeler; "Sinclair Scott" peach peeler; Keen Kutter food grinder; "Quick Edge" sharpener; Double barreled cherry pitter; "White Mountain" apple corer/parer/slicer w/ original instructions; King sized, cherry, four-poster bed w/rice carving; Wooden rocker; Mission Oak style chair; Leather, swivel-rocker; Sofa table; Round, wicker occasional table; Waltham, chiming pendulum clock w/key; Rice cooker; Pasta maker & drying rack; Juicer w/pestle; Granite canner; Pyrex bread pans; Dog figurines; Framed art; Jack-O-Lantern cutting kit; Picnic basket; Bedding and quilts; Mexican-style rugs; Pea coat w/ensignia, size 40 reg.; Assorted camo coats; 13 boxes new pint canning jars; 6 boxes new quart canning jars; Misc. canning jars; Canning supplies; Plastic barrels; Stainless sinks; Wood trim and molding; Wrought iron hand rail; Plumbing & electrical supplies; Mason jar light fixtures; CB radio; Pony saddle; Western saddles; Tack. **Many more items too numerous to mention.**

**Lunch will be served by In Joy Christian Fellowship Church
See pictures at www.grossauction.com or Auction Zip #22263**

SALE CONDUCTED BY:

GROSS

AUCTION

Members of
Missouri Professional
Auctioneers Association



Chas & Phyllis Gross
1863 Hwy 50
Owensville, MO 65066
573-437-3631

Jason Gross,
2839 Brinkman Rd.,
Owensville, MO 65066
573-437-6165

www.grossauction.com or www.auctionzip.com

**Terms: Cash or "Approved" check. No out of state checks.
Announcements day of sale supercedes printed material.
Everything sells as is. No property to be removed until settled for.
Not responsible for accidents should any occur**

130+ Guns * Ammo * Gold & Silver Coins * Currency*

See our Website For More Pictures & Info!

Gun & Coin Auction

1:00 P.M. * Sunday, October 23rd * 1:00 P.M. 2022

Location: 1030 Peaceful Dr., Galena, Mo. (Crane Area)

Directions: From Crane take D hwy. south 1/2 mi. then left on Muskydime Rd. 1/2 mi. then left on Red Hill Rd. 1/2 mi. then left on Peaceful Dr. to Sale *Watch for Signs – Lunch Available*

Rifles

Winchester mod. 1873, .32cal, 24" round bbl (1886);
 Winchester mod. 1885 High Wall .22WCF (1893);
 Winchester mod. 1886 40-82, 25" oct. Bbl. (1890);
 Winchester mod. 1894, 30WCF, 25" 1/2 octagon 1/2 round Barrel, 1/2 Magazine, Factory Deluxe Stock, Very Fancy Old Custom Engraved, (1901);
 Win. mod. 1894, .32-20, 26" round (1910);
 Winchester mod. 1894 26" octagon, .30WCF (1906);
 Winchester mod 94 .30WCF (1949);
 Winchester mod 94 30/30 (1962);
 Winchester mod. 1907 .351 win, rough (1910);
 Winchester Buffalo Bill comm. 30-30 M.I.B. (1968);
 Marlin mod. 1892, .32 cal, 101 Ranch, Ponca City OK. Medallion in Stock (1904);
 Marlin 336SC .219 Zipper;
 Marlin mod. 1893, 30-30 (1903);
 Marlin 1895CB 45-70, octagon 18" bbl, Mint in Box;
 Marlin 1894CB Cowboy Classic .357 (MIB);
 Browning BARI Safari, 7mm Magnum;
 Remington 700 Safari Classic, 375 H&H Mag. from the Custom Shop;
 Remington 700BDL, 8mm Rem. Magnum;
 Remington 700BDL, 7mm Rem Magnum;
 Remington 700 Classic, .350 Rem. Magnum (1985);
 Remington 700 Classic, 300 Weatherby Mag. (1989)
 Remington 700 Classic 7mm Weatherby Mag (1991)
 Remington mod. 81 Woodmaster .35 Rem.;
 Springfield M1 Garand (Nice Original Gun) (1943);
 Uberti 1860 Henry Rifle 44-40 (Mint in Box);
 Uberti 1873 Cattleman Carbine .45 Revolver;
 Ruger M77, .280 Rem;
 Ruger M77, 25-06 tang safety;
 Ruger M77 Mark II, .243 Stainless Barrel, Laminated;
 Glenfield 30A, 30/30, Ram Line Stock;
 Ruger No.1, 270 Weatherby Mag (nice);
 Rossi Circuit Judge 45/410 Stainless Revolver;
 Interarms Mark X 25-06;
 Stevens 1915 Favorite, .25 Savage;
 Browning A-Bolt, 300 win mag.;
 Savage 111 Long Range 338 Remington Ultra Mag. with Heavy Stainless Barrel & John Plaster Varmint Stock Tactical Scope (never fired);
 Remington mod. 7600 30-06, fancy engraved;
 Remington mod. 760 .270;
 Remington mod. 742 .308 w/ Weaver V9 Scope;
 Remington mod. Four, .270;
 Savage 110D series H, .270;
 Enfield Sporter, 30-06 with 3x9x50 Scope;
 Waffenfabrik Bern M78 Rifle .41 Swiss;
 Marlin 917V .17HMR heavy barrel;
 CVA Hunter .243 single shot w/ Simmons scope;

.22 Cal.

Winchester mod. 61 .22 (1936);
 Winchester mod. 1890 .22 Long Rifle (1927);
 Winchester mod. 1890 .22 Short (1895);
 Winchester 9422 .22 Annie Oakley (MIB 1982);
 Winchester mod. 63 .22, Lyman peep sight (1953);
 Winchester mod. 75 Target .22 (1941);
 Browning Auto .22 Belgium (Very Nice);
 Marlin mod. 39 Century .22 (1970);
 Winchester mod 04 .22
 Stevens #11 Favorite .22;

Henry H004SE Golden Boy Silver Eagle .22 (MIB);
 Henry H004 Golden Boy .22 (MIB);
 Henry H001 .22 Blue (Mint in Box);
 Henry H001TMRP .22 mag. Blue (Mint in Box);
 Remington 552 Speedmaster;
 Remington 550-1 .22;
 Remington model 12 .22 octagon barrel;
 Remington 241 Sportster .22 (drilled receiver);
 Ruger 10-22, Stainless, Tactical Stock;
 Remington Nylon 66;
 High Standard P1011 .22 Pump;
 Precision Industries, Ozark, Mo. .22 Wildcat;
 Henry U.S. Survival AR-7 .22 (new in box);
 Colt Lightning .22 Pump, needs work (1899);
 Winchester mod.190 semi-auto .22;
 Winchester mod. 290 semi-auto .22;
 Marlin mod. 15Y .22 Youth bolt action;
 Springfield mod. 83, .22
 Sears mod. 3T semi-auto .22;
 Norinco mod. JW15, .22;

Shotguns

Browning A5 Sweet Sixteen 16ga. Vent Rib (1956)
 Browning A5 Sweet Sixteen 16ga. Vent Rib with Beautiful Ornate Walnut Stock (1968);
 Winchester mod. 9410 .410 Lever Action (MIB);
 Rossi RG410SS .410 Lever Action Stainless;
 Winchester mod. 42 .410, smooth barrel (1950);
 Winchester mod. 42 .410, smooth barrel (1951);
 Winchester mod. M59 12ga;
 Winchester mod. 12, 12ga. Solid Rib, (1946);
 Rem. 870LW Mag, 20ga. Vent Rib, Chokes;
 Stoeger Uplander .410 Double Barrel Shotgun;
 Stevens mod. 520 12ga. stamped M.K.&T. R.R.;
 CZ 712 .12ga, (New in Case);
 Franchi Hunter 48, 12ga., Vent Rib;
 Benelli M2 12ga., Vent Rib & Chokes in Case;
 Wincheste 1400, 12ga. Vent Rib & Winchoke;
 Remington Sportsman 12ga. Vent Rib, mod.;
 Remington 11-48, 12ga. mod.;
 Boito O/U 12ga., Vent Rib;
 Westpoint mod. 167, .410 Pump;
 Berika SS12 12ga. single shot;
 Berika SS20 20ga. single shot;
 Berika SS410 .410 single shot;
 Hatfield SGL .410 single shot, Vent Rib;
 Chiappa 101 .410 single shot;
 New England Pardner SB1 .410 single shot;
 TriStar Raptor Tactical 12ga. (never fired);
 Mossberg A500 12ga. cut down for home defense;

Handguns

Colt SAA Frontier Scout .22, Nickel, Stag (1961);
 Colt SAA .44CF Amateur Engraving Nickel (1881);
 Colt SAA New Frontier 22/22mag. (MIB 1974);
 Colt Army Special 32-20 (1908-1927)
 Colt 1903 .32ACP, w/3 magazines (1931);
 Ruger Super Redhawk .44 mag. Stainless 7 1/2";
 Ruger Single Six .22;
 Ruger P94 .9mm semi-auto;
 Heritage Rough Rider .22/22 mag. Bird'shead, NIB;
 Merwin & Hulbert 5 Shot Pocket Model .38;
 Taurus PT111-G2, .9mm (MIB);
 Bersa mod. 383 .380 semi-auto;
 Thompson Center 45/410 Stainless (MIB);

S&W mod. 29-2 Elmer Keith Commemorative 44 Magnum, Ivory Grips, Low ser# EMK003, mint in original Walnut Display Box;
 S&W mod. 625JM .45 ACP, Stainless 4" Barrel;
 S&W mod. 13-1 .357 Blue 4" Barrel;
 S&W mod. 19-2 .357 Blue 2" Barrel;
 S&W Airweight .38spl;
 S&W mod 64-5 .38spl. Stainless 4" Barrel;
 S&W mod. 36 .38spl. Blue 2" Barrel;
 S&W Double Action .38spl.;
 Remington mod. 51 semi auto, .380;
 Dan Wesson .357 Revolver, Blue 8" Barrel;
 Navy Arms Uberti 1875 Schofield .45LC (MIB);
 Iver Johnson Top Break Revolver;

Black Powder - Misc.

(2) Marco 1847 Walker Colt .44cal Revolvers (nice);
 Pietta 1851 Navy .44 Revolver;
 Colt 1860 Army .44 Black Powder, rough (1870);

Gold & Silver Coins & Currency

1880 \$10.00 Liberty Head U.S. Gold Coin;
 1885-S \$10.00 Liberty Head U.S. Gold Coin;
 1854 \$5.00 Liberty Head U.S. Gold Coin;
 1878 \$3.00 U.S. Gold Coin (nice);
 1883 CC. GSA, NGC 64, Morgan Dollar;
 1883 CC. Morgan Dollar;
 1884 CC. Morgan Dollar;
 1890 CC. Morgan Dollar;
 1891 CC. Morgan Dollar;
 (8) Morgan Silver Dollars;
 (4) Silver Peace Dollars;
 1821 Bust Silver Half Dollar;
 1827 Bust Silver Half Dollar;
 1876 CC Seated Silver Half Dollar;
 (4) \$1.00 Silver Eagles;
 110+ Pre 1900 Indian Head Pennies;
 1899 Silver Cert. \$5.00 Indian Chief Large Note;
 1907 \$5.00 Wood Chopper Large Note;
 1899 \$1.00 Black Eagle Large Note;

Ammo - Scopes - Misc.

(1400) rounds 9mm;
 (920) rounds .223;
 (4) Boxes 6mm;
 (4) Boxes 220 Swift;
 (4) Boxes 22-250;
 (3) Boxes 222;
 (3) Boxes 257 Roberts;
 (2) Boxes 25-06;
 (900) rounds 7.62x39;
 (500) rounds 9mm Makarov;
 (750) rounds 38 special;
 (4400) rounds .22 Long Rifle;
 (500) rounds .45ACP;
 (200) rounds 30/30;
 (200) rounds 357 Magnum;
 (1) Box ea. 350 Rem Mag., 7mm & 270 Wby. Mag.;
 Misc. Other Ammo;
 Nikon ProStaff 4x12 Scope;
 Nikon 3x9 Scope;
 Redfield Golden 5 Star 4x12 Scope;

Auctioneers Note

A few more guns will be added.
 Coins Sell 1st thing at 1:00 PM so don't be late!

Foster Auction & Appraisal Service
www.fosterauctionservice.com
 Email: bidnowsold@aol.com



CAGA
CERTIFIED
APPRAISER
VESA

Auctioneer: Larry Foster
 Galena, Mo
Phone: (417) 723-8329
Cell: (417) 839-6860

Public Auction

Saturday October 22, 10:00 am

Directions; from Thayer, MO, North 63 Hwy;
from West Plains, South Hwy 63

to OO Hwy, OO Hwy to County Road 337, Right to County Road 324, Right to Auction.

Watch for **Reid Auction** signs



Guns~Ammo

Franchi Brescia 20 Gauge Shotgun, Savage Model 6B 22 Rifle, 2-UMC CHGR 22 Rifles, Bushmaster AR 15 Firearm 223 w/Case, Rugar 10/22 in Original Box, New 12 Gauge WTFW 12 Gauge in Original Box, Savage 12 Gauge Shotgun, H&R 22 Mag w/Scope, Marlin 22 Rifle, Remington 552 Speedmaster 22 Rifle, Norinco SKS Hunter Mac AK Mag 7.62x39, Norinco Mac 90 7.62x39, AK Mays, Inter Arms 22 w/Scope, Remington Target Master Model 519 22 Rifle, 2-Savage 22's w/Octagon Barrels & Clips, UMC Czech Training Rifle Bolt Action 22 Rifle Model 760, H&R Model 760 22 Rifle, Marlin 22 Model 39-D, UMC 22 Bolt Action Czech Training Rifle, Savage 22 Long Rifle w/Scope, Model 415/16, CVA 20 Gauge Shotgun, Western Field 410 Shotgun, Remington Game Master Model 141 30 Cal. w/Scope, Inter Arms 22 A.I.D., Glenfield 22 Model 60 Barrel, Kodiak Model 22 Rifle, Remington Model 24 22 Long Rifle, Husqvarna Bolt Action 22 Long Rifle, 3 Remington Target Master 510 22 Rifles, CZ 452-2E ZKM 22 Bolt Action w/Scope, Winchester 22 Mag Model 225, Remington Model 514 22 Bolt Action Rifle, Heritage Rough Rider 22 Pistol, Hi/Standard Norinico 22 Long Pistol, Norinico 9mm/Mak Pistol w/2 Barrels, Hi/Standard Norinico 22 Long Sports King Pistol, Browning Slabside 22 Long Pistol, H&R Break Over 38 Special, NEF Gardner 22 Mag Pistol USA, CZ-52 7.62x25 Pistol & Ammo, Several Gun Cases, Lots of Ammo....9MM, 223,308, 7.62x39, 243, 22, 38...Lots of Metal Ammo Boxes, 2 Sentinel Gun Safes, One Long Rifle & One Pistol

Household~Collectibles~Misc.

Blue Love Seat, Recliner, Wood Head & Foot Board, Brass Coated Head Board, Curio Cabinet, Baker's Rack, Quilt Racks, End Tables, Sofa Table, Wooden Heart Shelf w/Doors, Potato Box, Cedar Chest, Baskets, Entertainment Center, Mattress Set, Glass Top Table w/4 White & Black Chairs, Iron Bed, Ladderback Chairs w Woven Bottoms, Misc Dining Chairs, Serger Sewing Machine, Sewing Machines, Sewing Table, Area Rugs, Lamps, Office Chairs, File Cabinet, Glass & Metal TV Stand, Coca Cola Cookie Jar, Misc Cookie Jars, Glassware, Aluminum Tea Kettles, Crock, Wagner Cast Iron Skillets, Several Kerosene Lamps, Several Mini Kerosene Lamps, Metal Lawn Chairs, Kerosene Lantern, Porcelain Sink, Roadmaster Red Wagon, Carpet Cleaner, Christmas Decorations, Comforter Sets, Metal Deer Head Sign, Pressure Cooker, Canning Jars, Kitchen Step Stool.

Truck~Tools~Wood Furnace~ Propane Tank~Misc

1995 Chevrolet K2500 Extended Cab, 4 Wheel Drive, Automatic, New Battery and Like New Tires, Outside Forced Air Wood Furnace, Shaver Outside Wood Furnace, 150 Gallon Propane Tank, Trane 8100 Propane Furnace, Misc Doors, Windows, Misc Building Supplies, Used Tin, Wizard Rear Tine Tiller, Compost Tumbler, Live Trap, Loading Ramps, Stump Grinder Blade, Stihl MS 170 Chainsaw, 142 Husqvarna Chainsaw, Polan P38-16 Chainsaw, Makita Angle Grinder, Come-Alongs, Log Chains, 2 Cycle Oil, Gallons of Mobile Super Motor Oil, Maul, Assorted Tools, New Grease Gun, Tractor Draw Bar, Hydraulic Press, Small Yard Roller, Impact Wrenches, Cutting Torch, Chain Boomers, Honda 300 4WD 4 Wheeler, Feed Bunk, Gooseneck Trailer (needs work), Farm Wagon, 3 Point Cultivator, Ripper, 18x21 Unassembled Carport, Dumpster, Basketball Goal, Swing Set, Wrought Iron Railing, 8 Weaned Pure Breed Pyrenees Puppies....More added up to sale day.

Auctioneers Note; Guns will NOT be on premises till sale day.

Ophelia & the late Stephen McCullough, owner



Reid Auction Service

Ted Reid

417-256-6661

Rex Reid

417-372-1866

Randy Reid

417-257-3911

Ark. Lisc. #2606

Cash or Checks only....NO Credit Cards

Not Responsible for Accidents, Lost, Stolen or Misplaced Items

Any announcements made day of sale supersede any prior oral or written communications

Concessions & Restroom available

Follow us on Auctionzip for pictures & upcoming auctions and Reid Auction on Facebook

BUILDING SUPPLY AUCTION



SATURDAY, OCT 29TH • 9:30 AM

Baxter Springs, KS

2404 Cleveland • Baxter Springs, KS • Corner of 24th & Cleveland, 3 blocks E of 69A on 24th St

SALE HELD INSIDE REGARDLESS OF WEATHER

DIMENSIONAL LUMBER ♦ PINE - 1x6

V-Match T&G, bead board & shiplap

♦ **DECKING - ALASKAN CEDAR** 5/4" radius edge in 8', 10', 12', 16' lengths; as well as

Composite Decking - multiple colors, new selection

♦ **WESTERN CEDAR** - 1x8 beveled lap siding

♦ **TEXTURED SIDING** - 4x8 sheets - used for board and batt or soffit

♦ **INSULATION SHEATHING WITH SHIPLAP EDGE** - in various thicknesses & sheet sizes - foil on one side/tar paper on the other

♦ **½" PLYWOOD** - select grade

♦ **BACKER BOARD ♦ CULTURED STONE** - nice selection of colors & styles

♦ **VINYL SIDING** - CertainTeed Brand - several colors

♦ **JAMES HARDY SIDING** - 6 ¼" wide, - A Grade - Warranty

♦ **PREFINISHED FIBER CEMENT SHAKE SIDING**

♦ **SM@RT LAP SIDING** - 3/8"x8"x16' and

SM@RT SIDE SOFFIT - 3/8"x12"x16'

♦ **SMART SHAKE SIDING**

♦ **VINYL SIDING** - CertainTeed Brand - available in several colors - small lots

♦ **FIBER CEMENT SIDING**

♦ **ICE AND WATER SHIELD**

♦ **CLAY ROOF TILES**

♦ **HOUSE WRAP**

♦ **MINI SPLIT AIR**

CONDITIONERS/HEAT PUMP - 12K BTU - Indoor Units

♦ **BARN WOOD DOOR** - real wood

♦ **INSULATION** - R13, R19, R21 batts; 5' and 6' wide rolls of r10 - r11 - r-13 insulation

♦ **HOT WATER HEATERS** - new in box -

electric and limited # of gas - 30, 50 and 80 gallon

♦ **PULLDOWN KITCHEN FAUCETS**

♦ **NEW DELTA, MOEN AND HOME**

IMPRESSION FAUCETS: Vanity and Kitchen (NIB) - large selection to choose from

♦ **APPLIANCES** - NEW - as well as Shelf Pulls and Scratch and Dent

♦ **WIRE CLOSET SHELVEING**

♦ **NEW LARGE SELECTION OF**

LIGHTING: large variety of nice lighting fixtures - including some high end lighting

♦ **VINYL WINDOWS** - New - JELDOWEN - new construction - vinyl insulated windows

♦ **KITCHEN CABINETS** - Multiple sets of cabinets - option of stained or painted including: Farmhouse Brown, AND Shaker Style in Dark Gray, Light Gray and White - all wood - prefinished cabinets. Straight and L shaped sets with some also including pantry. Some sets include soft close doors & dovetailed drawers.

♦ **VANITIES** - nice selection of vanities including matching vanities for Farmhouse Brown, Dark Gray, Light Gray and White Cabinets - including 5' and 6' some with granite tops

♦ **PORCELAIN AND CERAMIC TILE** - over 20,000 sq ft, with great selection of sizes and colors of tile to choose from

♦ **MOSAIC TILE** - Fantastic selection of mosaics

♦ **TRAVERTINE** - marble - tile - stone including Subway Tile

♦ **Wood Look Tile** - nice selection of styles and colors in various lengths and widths

♦ **HARDWOOD FLOORING** - Including: **PREFINISHED HARDWOOD FLOORING** - ¾"

solid prefinished hardwood flooring

♦ **6-7" WIDE PREFINISHED PLANT WOOD FLOORING** - hand scraped, wire brush ♦ **SNAP AND LOCK LAMINATE** - small lots - ~550 sq ft and less

♦ **LVT:** over 20,000 sq ft of luxury vinyl tile - wood plank - snap lock and glue down, great selection of colors

♦ **EXTERIOR DOOR UNITS**

♦ **INTERIOR DOOR UNITS AND SLABS**

♦ **TRIM - BASE - CASING - CROWN:** Pre-primed - various widths and lengths, finger joint PINE, OAK: as well as OAK quarter round, corners, chair rail, cove, base shoe and door stop

♦ **STAIRCASE HANDRAILS** - in Oak and Poplar

♦ **ENTRY - PASSAGE - PRIVACY DOOR**

KNOBS AND LOCKS

♦ **QUARTZ:** Maple White in various sizes - countertops - island panels, with and w/o sink cutouts - 3cm quartz

♦ **VANITY TOPS** available in **QUARTZ, MARBLE** and **TRAVERTINE** - includes undermount, overmount, and vessel style tops (some Glass)

♦ **GRANITE** - new selection in various colors

♦ **KITCHEN SINKS:** - SS - Composite - varying styles and colors

♦ **BATHTUBS**

♦ **CEILING FANS** - nice selection

♦ **TOILETS**

♦ **PEDESTAL SINKS**

♦ **TOWEL BARS and RINGS, TOILET PAPER HOLDERS, ROBE HOOKS, TOOTHBRUSH HOLDERS**

♦ **Scheduled to Arrive - Architectural Shingles**

• No Buyer's Premium • MORE COMING IN DAILY - check sites often

For pictures see Mt. Vernon Auction Company on Auctionzip.com (enter ID#29728 at bottom of page) or Facebook CELL 870-754-4428 • 870-715-5479 • 870-715-2326 (text only) • All items must be picked up day of sale or during one of our posted, scheduled and announced pick up times following the auction. Thank you!

COME FOR THE DAY AND SAVE LOTS AND LOTS OF \$

MT. VERNON AUCTION CENTER

CONTACTS - CALL OR TEXT MIKE @ 870-754-4428 • TEXT ONLY @ 870-715-5479 or 870-715-2326



Find us on Facebook

All announcements made the day of auction will supersede previous advertising.

FIREARMS AUCTION

We will sell the following firearms at public auction located at the Montrose Community Building (Knights of Columbus Hall), 415 Missouri Ave, Montrose, MO 64770

SATURDAY, OCTOBER 29, 2022 10:00 A.M.

PISTOLS

Browning 9mm Luger Single Action (Belgium Made)
 S&W 29-2 .44 mag SS 8" Barrel
 Taurus .44 mag Brush Nickel
 S&W 27-2 .357 mag SS 8" Barrel
 S&W 57 .41 mag SS 8" Barrel
 S&W 629 .44 mag Nickel 6" Barrel
 Ruger New Model Blackhawk .357 mag Blued
 Ruger New Model Super Blackhawk .44 mag SS
 S&W 19-4 .357 mag U.S. Custom Patrol
 S&W 25-15 .45 Colt Blued
 Sig Sauer P938 9mm Para
 Sig Sauer M1911 .45 Auto Brush Nickel
 Beretta M92 9mm
 S&W 10-6 .38 Special
 CZ 75B 9mm
 (2) Browning Buck Mark .22lr
 S&W 500 .500 mag SS 10" Barrel
 Sig Sauer P320 9mm Coyote Brown 3 mags
 High Standard Double Deuce .22
 SDS Imports ZIGPC1911 .45 ACP
 S&W Performance 629-6 .44 mag Snub Brush Nickel
 Ruger SR1911 45 Auto Bruch Nickel
 Para 1911 .45 Auto
 Colt 1911A1 Compact .45 Auto
 Sig Sauer P226 9mm
 S&W 29-8 .44 mag Blued

Ruger SP101 8 shot .22lr SS 4" Barrel
 S&W 29-2 .44 mag Blued
 Colt Built w/Wilson Parts 1911 U.S. Army .45 ACP (2 mags)
 S&W 66 .357 mag SS
 S&W 63-5 8 shot .22lr SS
 Ruger New Model Super Blackhawk .44 mag SS w/Burris Scope
 Springfield Armory Saint .556 Pistol

LONGGUNS

Browning X-Bolt .243 win. (Wood)
 Browning X-Bolt .243 win. Laminated w/Leupold Mounts
 CZ 527 .223 Rem. Bull Barrel
 Savage Tactic Mod. 10 .223 Bull Barrel
 Savage Mod. 11 .22-250 Camo Bull Barrel w/ Bushnell Elite
 Savage Mod. 110 .204 Bull Barrel
 Remington Mod. 742 Woodmaster 30-06
 Winchester Mod. 77 .22lr
 Savage Mod. 112 Series J .22-250 Bull Barrel w/Redhead Scope
 Springfield Mod. 120A .22 S, L, LR
 Whelen Mod. 35W Custom
 Savage Mod. 12 .22-250 Bull Barrel
 CZ Mod. 557 .243 win. Heavy Barrel w/Bushnell Elite
 Ruger #1 35 Whelen
 Henry 45-70 Gov't
 Remington Mod. 700 .338-win mag. (Wood)
 Ruger #3 45-70 Gov't
 Remington Mod. 700 .35 Whelen (Wood)
 Axtell Mod. 1877 45-70 Gov't w/ Elevation Peep
 Savage Mod. 10 .204 Ruger Heavy Barrel w/Nikon Prostaff
 Stevens Mod. 22-410 O/U

Savage Mod. 25 .223 Rem. Heavy Barrel w/Nikon Scope
 Weatherby Vanguard .300
 Weatherby mag w/Zeiss Scope
 Savage Mod. 11 .308 w/ Bushnell Banner
 Remington Mod. 700 .300 Win mag w/ Burris Scope
 Savage Mod. 110 .22-250
 Savage Mod. 11 Hog Hunter .308
 CZ Mod. 557 .308 Synthetic
 Sako Finnbear 7mm Rem mag
 Weatherby Mark V .340 Weatherby mag. w/Zeiss Scope (4 Boxes Ammo sold Separately)
 Remington Mod. 770 7mm Rem mag w/Bushnell Scope
 Browning Safari Mark II BAR .270 Win. w/Leupold Scope (Belgium)
 Remington 700 7mm Rem mag w/Sig Whiskey Scope
 Ruger Mod. 77 Mark II .22-250 Bull Barrel w/ Nikon Prostaff 5
 CZ Mod. 527 American .22 Hornet w/ Vortex Crossfire
 CZ Mod. 527 .223 Rem. Threaded Bull Barrel
 Browning Safari Mark II BAR 30-06 Spfld.
 Ruger Mod. 77-22 .22lr w/Hawke Scope
 Browning A5 12ga 3 1/2" Vent Rib w/Screw in chokes (Japan)
 Browning Wicked Wings Maxxus 12ga. 28" Duratouch Coat
 Browning A5 Camo 12ga 3 1/2" 26" Barrel
 New England Excell 12 ga 3" Vent Rib.
 Franchi Affinity 20ga. 3" Vent Rib in Bottomland Camo
 Mossberg 835 12 ga 3 1/2" 24" Barrel Vent Rib
 Beretta A300 Outlander 12ga DU 3" 28" Barrel
 Beretta A400 Lite 20ga 3" 28" Barrel

P Beretta AL391 12ga 3" 28" Barrel Vent Rib
 Browning Maxxus 12ga 3 1/2" 26" Barrel Vent Rib
 Beretta A300 12ga 3" 28" Barrel Camo
 Franchi Affinity 3 20ga 3" 26" Barrel
 Vent Rib Shadow Grass Camo
 Benelli Nova 12ga. 3 1/2" Vent Rib
 Rock River .223Wylde Heavy SS Barrel w/2 mags
 Winchester Mod. 101 Field 12ga. 3" O/U w/chokes
 Winchester SuperX Mod 2 12ga. 3" Vent Rib
 Browning A-Bolt III Hunter 6.5 Creedmoor 22" Barrel
 Christensen Arms Mod. 14 Mesa 300 Win. mag w/ Zeiss Conquest V4 Scope (DU Rifle of Year)
 (2) Sig Sauer Mod. 400 .556 Nato 16" Tread w/BDX3 Sig Scope (NIB)
 Savage Mod. 10 .22-250 MDTLSS Heavy Barrel w/Nikon Scope (Lite Chassis)
 Marlin Mod. 70P Papoose .22 Carbine (Ducks Unlimited)
 Ruger Precision AR-10 7.62x51 Target w/Bushnell Scope
 Savage Mod. 10 .308 Heavy Barrel w/Primary Arms Scope
 Bushmaster Mod. XM15-E2S .223/556 W/Nikon P Series Scope
 Ruger Precision .22lr w/ Hawke Scope
 Aero Precision Mod. X15 223/556
 FedArms Mod. FR15 223/556 w/Sig Romeo 5 Red Dot
 American Tactical Mil Sport 223/56 w/Weaver Scope
 Del-Ton DTI-15 .556 Nato w/Vortex Strikefire Scope

AUCTIONEERS NOTE: ALL OUT OF STATE BUYERS ARE WELCOME BUT WILL FOLLOW FFL GUIDELINES FOR OUT OF STATE PURCHASES ON REQUIRED FIREARMS.




Auctioneers Note: This is a great opportunity to purchase well cared for, hard to find firearms from a personal collection. Mark this date and be sure to attend.

TERMS OF SALE: Cash or good check w/ proper ID. Nothing to be removed until settled for. Not responsible for accidents or stolen merchandise. Statements made day of sale takes precedence over printed materials. Lunch served and toilets on site.

Sale Conducted by:



COL. KEVIN WADE MOBILE 660-492-3279
 COL. BRYAN WADE MOBILE 660-492-3740
 TYLER WADE MOBILE 660-492-7764
 CLERKS: NORRIS, IRBY & WADE
 TO VIEW AD ONLINE GO TO
WWW.AUCTIONZIP.COM
 AUCTIONEER ID: 24103

WADE

AUCTION SERVICE

APPLETON CITY, MO
 660-492-3279



SOUTHWEST AUCTION SERVICE
Liquidation Estate Auction!
Office: 417-652-7540 Website: www.swaauction.com
DATE OF AUCTION: Sunday October 30th 2022
Stating Time: 10:00 AM Rain or Shine!
Location: 8244 FR 2062 Purdy MO 65734



AUCTIONEER'S STATEMENT:

DIRECTIONS TO AUCTION:

FROM WHEATON, MO: Turn right onto State Hwy 86 W/N Gilman Ave , Turn right onto State Hwy 97 N , Continue onto State Hwy B, Turn left onto State Hwy 37 N , Turn right onto FR 2062 , House on turn left.
FROM CASSVILLE, MO: Head N on State Hwy 37, Turn right onto FR 2062 House on the left.
FROM MONETT, MO: State Hwy 37 S/N Lincoln Ave, Turn left onto FR 2062
FROM NEOSHO, MO: Take State Hwy 86 E to State Hwy B in Corsicana Township, Turn right onto Hamilton St , Turn left onto State Hwy 86 E/E McKinney St , Turn right onto State Hwy 86 E , Turn left onto State Hwy 37 N , Follow FR 2062 House on the left.

Farm Equipment:

50 Round Bales, Liquid Fertilizer Tanks (2500GAL, 2000GAL, 2-1300GAL), Grain Bins, Manure Spreader, Plow, Square Bale Hay Elevator 20ft, 3pt. Blade Unroller, (Like New) Trip Hopper Range Feeder Model P-836, Massey Ferguson Square Baler Model 124, New Holland 680 Manure Spreader (Good Condition), 32 ft. Spring Tooth, 516 John Deere Plow 5 Bottom, 16ft. Allis Disc, 10ft. Roller, Rock Rake (New), Model 155 Scraper Blade (Like New), Woods HBL 96-2 Scraper Blade (Like New), Allis Sycle Mower, Allis 3 Bottom Plow, David Bradley 11Ft. Hay Rake (Older), 20 Ft. Odgen 3pt. Field Drag, 20 Ft. Kewamee Field Disk Model 1020, Ral Road Iron Field Drag, 72 Allis Hookup Pulltype Combine

Trailers and Motorcycle:

*08 Yamaha Raider Custom Motorcycle (5,688 Miles) '07 Yamaha Rhino Side By Side, 1995 Trailer 18ft. Combination Stock/Flatbed

Guns:

Dan Wesson 45 Stainless Heirloom (Never Shot), CZ 45th Anniversary 9MM (New Never Shot), Colt King Cobra 357 Stainless (Never Shot), Colt Gold Cup Trophy Edition 9MM (Never Shot), Springfield Arms Ronin 9MM (Never Shot), Taurus 357 Magnum, Ruger 10MM Stainless (Never Shot), Springfield Arm XD 9MM, Old Single Shot 22, Hawes 57 Western Marshal, Remington 243 Vortex Scope (New Never Shot), *Ruger American 7MM-08 (New Never Shot), TC Compass 6.5 Creedmoor (New), Mossberg 817.17 HMR (New), Remington 870 20 Gauge (New), TC Pro Hunter 243 & 50 Cal Mussel Loader (New), Yildiz O/U 20 Gauge (Used), Stoger Condor 12 Gauge 3In. (New), 6.5 Carcano, * Sears and Roebuck 12 Gauge Automatic Shotgun Model 66, Champion 410 Shotgun, Colt Trooper, Remington 22 Model 550-1, Ruger 380LCP, Taurus Made in Brazil .44 Mag., Kimber Rapide 10MM, Mac 90 Sporter, Maddi 7.62X39 Semi Automatic, Remington Wingmaster 12 Gauge, Thompson Center Arms 22, Golden Boy Henry 22*

Ammo:

Full Box of 50 357 Magtech, 2 Boxes Remington 380, Box of 78- 380 Auto Winchester, Box of 44- 380 Auto PMC, Box of 40- 380 Auto UMC, Box of 50- 380 Auto, 3 Full boxes of 20 Hornsby 10MM, 4 Boxes of Winchester 10MM, 2- Boxes 10MM Auto Blazer, 2- Full Boxes of Hornady 243, Box 20 Federal 243, Box of Federal 308, Box of 308 Winchester, 2-Boxes of Remington 20 Gauge Shells, 4-Boxes of 22 Long Rifle 325 Federal, Box of 500 rounds 22 Long Rifle Remington, 4 -Boes of Remington 22 Long, 2 Boxes of Winchester 22 Long, Assorted 22 Lon Rifle, 2-Full Boxes of Remington 223, Box of American Eagle 223, 15-Boxes of American Eagle 5.56, Box of 32 Auto, Box of Remington 25 Auto, Box of 25 Auto UMC, Box of Winchester 30.06, Remington 270, Remington 410, Box of 410 Winchester, 22 and 22 Mag Ammo, 7 Mag, 25-06, 270, 308-338 Rem Ultra Mag 300 Weatherly Mag, Muzzle Loader Powder Primers & Projectiles, Assorted 20 Gauge Ammo, Assorted 12 Gauge Ammo and much more.....

Other Items :

Leupold Scope Rings (New), 30-06 RCBS, 100 New Hornady 204 Brass, 6.5 Creed Brass, 1000t 223 Brass, 25-06 Brass, 6.5X52 Brass, 1000 9MM Brass, 6MM Brass, 40.40 Auto Brass, 300 Win Mag Brass, 10MM Brass, 338 Win Mag Brass, 7 Mag Brass, 41 Remingotn Mag Brass, Stripper Clips-Assorted Rifle Brass, Gun Locks, Re-loading Dies, Remington 700 Triggers, Gun Holsters, Primers Shot Shells Large Rifle and Large Pistol, Small Rifle, Mixed Pistol 44 Mag/25 Auto/243WSSM,



Terms of the Auction:


We accept Cash, Good Checks w/ proper ID & Credit Card (5% Convenience Fee) We are not responsible for accidents to man, woman, child or animal. We are not responsible for lost, stolen, or damaged articles or property! All accounts must be settled prior to removal of auction item! Statements made day of auction take precedence over all printed materials! For more pictures visit our website at www.swaauction.com

Household Items and Sporting Goods:

Cookware, Antique Furniture, Dishes, Cedar Log Bar Stools, Sewing Machine Base Hall Table, Split Bottom School Desk (Antique), Coke Cooler Antique (Non-Working), Air Mattresses, Propane and Charcoal Grills, 75 Gal. Curved Front Aquarium, Holiday Décor, Medical Encyclopedias, Misc. Books, Old Records 8 Track Tapes CD's, DVD's, Hats, Dog/Children Gates, Home Décor, Boxes of Truck Towing Mirrors, Canning Jars, and Misc. Household. Construction Material, Household Furniture, Computer Desks, Kitchen Table,

Bob Hughes
 417-652-7540

SOUTHWEST AUCTION SERVICE & MARKETING
 www.swaauction.com
 417.652.7540



BUFFALO LIVESTOCK MARKET LLC
 276 Hwy 32 W., Buffalo, MO
 October 16th, 2022
 Receipts: 1161

Feeder Cattle Steady- \$10 Down depending on WEAN & FLESH. Cows and Bulls Steady.

REPRESENTATIVE STEERS
 300-400 @ 175.00 to 199.00
 400-500 @ 170.00 to 190.00
 500-600 @ 160.00 to 181.00
 600-700 @ 152.00 to 176.50
 700-800 @ 150.00 to 154.00
 800-900 @ 142.00 to 152.00

UNWEANED/FLESHY STEERS
 400-500 @ 150.00 to 165.00
 500-600 @ 140.00 to 160.00
 600-700 @ 140.00 to 145.00

REPRESENTATIVE HEIFERS
 300-400 @ 155.00 to 178.00
 400-500 @ 150.00 to 165.00
 500-600 @ 145.00 to 178.00
 600-700 @ 138.00 to 153.00
 700-800 @ 135.00 to 142.00
 800-900 @ 130.00 to 134.00

UNWEANED/FLESHY HEIFERS
 300-400 @ 130.00 to 150.00
 400-500 @ 130.00 to 140.00
 500-600 @ 130.00 to 140.00
 600-700 @ 125.00 to 130.00

FEEDER BULLS
 300-400 @ 150.00 to 171.00
 400-500 @ 145.00 to 174.00
 500-600 @ 135.00 to 168.00
 600-700 @ 120.00 to 139.00
 700-800 @ 110.00 to 125.00
 800-900 @ 90.00 to 105.00

STOCKS COWS
 Bred Cows 850.00 to 1400.00
 Cow/Calf Pairs 1175.00 to 1435.00

SLAUGHTER BULLS
 High Yield 95.00 to 112.00
 Low Yield 75.00 to 92.00

SLAUGHTER COWS
 Fleishy 68.00 to 74.00
 Med Fleish 65.00 to 69.00
 X Fleish 55.00 to 65.00
 X Thin Shelly 50.00 Down

Plain Quality, Fleishy Unweaned, Unworked Cattle taking another large dip! November Wean Vacc will be the 19th. Moved to the 3rd week due to opening MORW. Deer Season.

Cow Sale Tuesday Night at 6:30pm!

MON-WED MARKET REPORT
 Listen to KJEL 103.7FM • Lebanon or KY00 99FM • Bolivar

VIEW OUR SALES AT CATTLEUSA.COM

CALL FOR TRUCKING OR ON-FARM VISIT
 Lyle Caselman • Owner-Manager
 417-345-7876 • mobile 417-533-2944
 Leon Caselman • Owner
 417-345-4514 • mobile • 417-588-6185



MID MISSOURI STOCKYARDS

REGULAR SALE EVERY THURSDAY 11AM

COW SALE • NOVEMBER 5TH AT 6PM

WATCH OUR WEEKLY SALE IN REAL TIME ON DVAUCTION.COM

For Farm Visits, Market Updates, or Trucking
 Call **Zach Cox 417-777-1320**
Dan Romine 573-578-4939

**Competitive Buyers!
 Competitive Commission!
 Competitive Market!**

Barn: 417-532-9292 
I-44 • Exit 123 "just outside of Lebanon"
17505 Route 66, Phillipsburg, MO 65722
 For weekly market updates, visit us at www.midmostockyards.com

I BUY.....used mobile homes. Call or text 573-338-6250 or email GregS.CDH@outlook.com

GREAT DANE PUPPIES: AKC.
 Fawn/Brindle Lions & Tigers. www.GreatDanes4U.com 417-859-0844.
 Marshfield.

FIREARMS: Professional Repair, Restorations and Appraisals. Baron's Gunsmithing. 573-363-5801. Camdenton.

AUSTRALIAN SHEPHERD PUPPIES FOR SALE: Some natural bobtail, some not. Grey Merles & Black & White. 573-760-5157.

REGISTERED HEREFORD & ANGUS BULLS: Home raised, Some Show-Me Select Qualified. 573-701-7828. Belgrade.

LIGHTLY EXPERIENCED GOLF BALLS: \$3 a dozen. 417-818-3469. Strafford.

SLIGHTLY USED PUZZLES: Will sell or trade. 417-818-3469. Strafford.

LIONEL TRAIN SET: Steam engine, tender, caboose and other car, track, and transformer. \$195. 573-364-7465. Rolla.

EARLY 1900's CAMEL BACK STEAMER TRUNK: Oak, 5 strap, solid, nice condition. \$95. 573-364-7465. Rolla.

1970s KIDS METAL STOVE & FRIDGE: Nice Lithographic paint, 18" wide x 36" high. \$75. 573-364-7465. Rolla.

1500 VINTAGE WRISTWATCH DIALS: \$100. 573-764-3517. Call in PM.

Glen Fahrni Auction Service Gun Auction

Friday Oct 21st 5:30 p.m.

65006 Morgan Road, Barnet, MO 65011

80 Very Nice and NEW Shotguns,
 Deer Rifles, Many with Scopes
 Silver Bars / 25T Wood Splitter

Full List & Pics at www.Auctionarrows.com

Or Call Glen 573-789-1447

3 GENTS WITNAUER WRIST WATCHES: 10k gold + 23J. All \$200. 573-764-3517. Call in P.M.

HARLEY FAT BOBS: Custom flame paint w/ gas caps + lines. \$100. 573-764-3517. Call in P.M.

HIKING THE OZARKS BOOK: A Guide to the Area's Greatest Hiking Adventures. \$6.75. 417-532-2045. Lebanon. (Leave message and phone number).

COLT REVOLVER DEALER CATALOGS: Circa 1950's + 1960's. All for \$100. 573-764-3517. Call in P.M.

110 PORCELAIN POCKET WATCH DIALS: Perfect for arts & crafts. \$100. 573-764-3517. Call in PM.

I AM LOOKING FOR LAND TO RENT TO GROW WHEAT: I can pay a good rate per acre for land that is fairly level, decent soil and in a 30 mile radius of Marshfield. I am looking for 80-500 acres. 417-741-2288. Marshfield.

1890 GOLD TESTING KIT: Glass acid beakers + antique wooden case. \$100. 573-764-3517. Call in PM.

HARLEY 45 SOLO: factory rear brake drum + sprocket. \$150. 573-764-3517. Call in PM.

NEW/USED PARTS: Vehicles, Semi's Machinery, "Motors/Tranny's," "Body Parts," "Warrantied/Delivery." 800-807-9612.

SLAB WOOD: For Sale. \$10/bundle. 417-468-2255. Conway.

#1 AUCTION SOURCE IN CENTRAL MISSOURI

SERVING 34 COUNTIES!



IN PRINT & ONLINE!

TO ADVERTISE YOUR AUCTION, CALL 417-532-9131

WEEKLY TRADER MAGAZINE

100 E. Commercial, Lebanon
www.myweeklytrader.com
www.facebook.com/myweeklytrader

HARLEY PANHEAD DISTRIBUTOR:
original, chrome + complete. \$125. 573-764-3517. Call in PM.

AUSTRALIAN SHEPHERD PUPPIES:
UTD on shots, tails & dewclaws done, Tris & Merles. Trade or sell. 417-967-6493. Roby.

1962 HARLEY SPORTSTER 900CC:
original distributor. \$50. 573-764-3517. Call in PM.

HARLEY PARTS, HELMETS, LEATHER VEST, CHAPS & COATS: Wholesale prices. Biker wear wholesale to the public 719 W. Commercial Springfield, MO.

ENGLISH SHEPHERD PUPPIES FOR SALE: Some bobtail, some not. 573-760-5157.

KITCHEN FAUCET MOEN: Single lever, sprayer, new cartridge. \$45 obo. 636-239-2695. Washington.

SELLING OFF 750 HONDA COLLECTION: 10-1979 Anniversary, 5-1980-81 CB Custom Bikes. If interested call for an appointment. All very nice bikes with clean titles. These are investment bikes. **WILL NOT RESPOND TO TEXTS; use phone or don't waste my time or yours.** Andy 636-228-4204 or 636-359-6189. Marthasville.

BEEFMASTER BULLS: 18 months old. Call for price. 417-327-2887. Halfway.

Buildings • Hunter's Cabins • Lawn Furniture

JAMCO BUILDERS

JAMCO Portable Buildings

800-688-2064 • 307 Enterprise Dr. • Seymour, MO • www.jamcobuilders.com

Rent To Own Plan

AVON
make life beautiful

mcg skincare
AVON independent sales representative

417-293-1609

Order online at:
www.avon.com/repstore/mcgskincare

DARDEN PROFESSIONAL TIMBER HARVESTING, BUYING STANDING TIMBER: Great prices, improve wildlife habitat and improve forest health. State Certified & Fully Insured! 573-247-4808. Salem.

DRAPES AND CURTAIN RODS: Off-white, various sizes, \$15 for all obo. 636-239-2695. Washington.

FOR SALE AKC BEAGLE PUPS TRI COLOR: Lemon and whites. 573-627-2309. Sullivan

HEARTH CRAFT GLASS BI-FOLD FIREPLACE DOORS PURCHASED AT FORSHAW'S FIREPLACE: Antique brass. \$160 obo. 636-239-2695. Washington.

5 GAL. PLASTIC BUCKETS: with lids. \$3 each. 636-239-2695. Washington.

ALFALFA HAY FOR SALE: Big round silage bales. 417-343-4958. Seymore.

500 SMALL SQUARE BALES OF HAY: \$6.50/bale. 417-345-5634.

CATAHOULA LEOPARD PUPS: 1 male leopard golden brindle, 1 female red merle. \$150. 417-543-4816.

FALL FERTILIZER ORGANIC CHICKEN LITTER: Delivered Trailers. \$125/T. 800-807-9612.

PICKUP BED TRAILER FRAME: \$185 OBO 417-668-7793 Land Line Do NOT Text. Competition.

CLEAN MATTRESS BOX SPRINGS: \$50. 417-370-7865. Springfield.

PLAD PANTRY

DISCOUNT & SURPLUS FOODS FRESH PRODUCE LLC

417-532-4700

Sweet Italian Turkey Sausages.....**\$1.79** 20 oz.
Grape or Berry Propel Water**\$6.99** 12-24 oz.
Single Serving Yogurt Pouches...**\$3.75** 8-3.5 oz.
Reduced Fat Sausage**\$1.59** 12 oz.
Extra Cheddar Cheese Curls**\$3.49** 12.5 oz.

1571 State Hwy 64 • Tunas, MO 65764
Hours: 8:30 a.m. to 5:30 p.m. • Closed Wed. & Sun.

All Wood Cabinets in Stock!
Great Selection. Affordable Prices.

Carriage House Cabinet Collection

Bring In Your Measurements For A FREE Estimate!

Granite & Quartz Countertops in stock
Prices you have to see to believe!

Luxury Vinyl Plank • And Much More!

NEIGHBORHOODS HOME IMPROVEMENT STORE
Where QUALITY doesn't cost more!

417-533-5080 • 19850 Houston Road • Lebanon
Mon.-Fri. 8am-5pm • Sat. 8am-3pm
neighborhoods-inc.com



Sale Ends October 31, 2022
 Seymour, Missouri 417-935-4201

Pole Barns & Post Framed Buildings!

23'x32'x10' \$7,630 Material Only \$9,470 Labor Included	23'x40'x10' \$8,740 Material Only \$11,040 Labor Included	30'x40'x10' \$11,595 Material Only \$13,595 Labor Included	40'x60'x12' \$18,550 Material Only \$24,910 Labor Included
---	--	---	---

Call for free quote, brochure & color chart.
 Other sizes also available.



Due to increased demand for our quality product we are currently hiring new barn construction crews. Contact Jeff

NOBODY, BUT NOBODY BEATS OUR PRICES!!!

10 ft. Slider • Engineered Trusses 8' O.C. • 2x6 Treated Bottom Wrap • Screws • 2x10 Top Wrap • 2x4 Purlins • Full 29 Gauge Steel • Plus 3 ft. Entry Door with Lock
 OPTIONS: Sidewall Heights on all Buildings 10', 12', 14' & 16'; Overhead Garage Door. Skylights. Insulation. Wainscoting. Insulated Vinyl Windows. Cupolas. Labor Rates Slightly Higher over 50 Miles from Seymour. Call for YOUR FREE QUOTE TODAY!!!

PAINTED WHITE, GREEN OR TAN METAL\$99.99	IN STOCK
10' - \$31.70 12' - \$38.04 16' - \$50.72	
MIX & MATCH METAL\$59.99	
8' - \$15.20 10' - \$19.00 12' - \$22.80	
GALVALUME METAL\$79.99	
10' - \$25.40 12' - \$30.48 16' - \$40.64	
GALVANIZED CORRUGATED METAL SOLD OUT!	
8' - \$9.84 10' - \$12.30 12' - \$14.75 16' - \$19.67	

40yr Painted Metal
\$99.99_{Sq}

KNOTTY PINE DOORS
 Starting at
\$164.99

Prices subject to change without notice
LP SMARTSIDE T-5 LAP B GRADE \$43.59_{SQ}

Car Siding!

1x6 White Pine Siding 79¢_{in ft}
1x8 White Pine Siding \$1.05_{in ft}

* 4 Profiles to choose from!
 Broken Bundles Add 10¢ Per Ft.

4x8 Sheeting
 Less than full units Add \$1 per sheet

3/8" Beaded Paneling	\$24.99
5/8" T111 Siding Paneling	\$28.99
1/2" Plywood	SSOLD
3/4" Plywood	\$49.99
3/16 Pegboard	\$12.99

LOTS OF MATERIAL AVAILABLE FOR THOSE IN HOME PROJECTS!

NEW PACKAGE HOMES



2x6—16" on center-Exterior Stud Walls
 Residential Roof Trusses-2' on center
 4/12 pitch with 1' over hang
 40 year Painted Metal roofing in 20 Different Colors
 Profile Ridge Vent - Ventilated Ridge Cap
 Vinyl Center Vent Soffit
 Color Matched Metal Fascia & Gable Trim
 2 - 3' 6 Panel Entry Doors
 4 - 3'x4' Vinyl Insulated Windows

Shown with Available Options
 Your Choice of either:
 Stock 5/8" T111 Siding w/1x4 Pine Window & Door Trim - or -
 7/16" OSB & House Wrap ready for other finish options

ALL FIGURED FOR SUITABLE CUSTOMER SUPPLIED SLAB OR SUB-FLOOR

Price for Basic Materials Package (No Labor at this Time)

20x24(480 sq. ft.)	20x32(640 sq. ft.)	20x40(800 sq. ft.)	28x40(1120 sq. ft.)	28x48(1344 sq. ft.)
\$9,490	\$10,839	\$12,339	\$15,129	\$18,729

REAL WOOD SIDING

2x6 Log Siding **\$1.96_{in ft}**
 1x8 Beveled Cedar from- **99¢_{in ft}**
 T1-11 Siding from **\$28.99**

DECK PACKAGES

Materials Only

8x8.....\$349.00	10x12.....\$699.00
10x10.....\$499.00	10x16.....\$899.00
12x12.....\$899.00	12x16..\$1179.00

QUAKER Now Stocking Quaker Vinyl Windows

2030 \$163.99	3030 \$189.99
3040 \$206.99	3052 \$225.99
3040Twin \$453.99	3052Twin \$497.99



LUCKY DISCOUNT LUMBER

417-935-4201

455 State Hwy C • Seymour MO 65746

www.luckydiscountlumber.com



*Some restrictions apply see store for details. Prices subject to change without notice.

YOUR LAND AND FARM EXPERTS!



Benton Co-30.91 Acres - \$149,500

30.91 Acres only a few minutes south of Cole Camp, Mo in Benton County. Mainly all wooded with a coupe clearing one on Henning Rd and the other one on Hink school avenue. The east one has electric and a well with buried pressure tank. So ready for a camper, or home. No restrictions on this property. Nice area and around some big farms. This area is covered up with deer, there are trails all over it and will be a great place to kill that trophy. Will have some good views across the valley in the fall once leaves are off. Lake of the Ozarks is close within 10 minutes, so a great hunting and fishing place. Property is surveyed and staked. This is in the Cole Camp school district and is a great school district. Only a little bit of gravel off Hwy B to the property.



Morgan Co-19.27 - \$199,500

Wow this property lays great and would make a perfect RV campground. Just sitting right outside Laurie Missouri city limits on Hwy 135. Great hwy frontage and already has a driveway into the property. Electric is all along the front. It has a nice big pond in the back of the property. Mainly all wooded but could easily be made to look like a park like setting. Close to Lake of the Ozarks, the new racetrack Ozarks International Speedway and The Loop a 500-acre UTV-atv riding area. This area is growing, and this would make a great area for cabins for rent for Vrbo. Call Mike Stoner for more Information 573-774-9775 Cell



Pettis Co Home - \$137,500

Want the Best of Two Worlds? This Nearly New Home, built in 2019 is Your Dream Home with Very Little Upkeep! This Home Sits on a Nice Flat Double Lot. Located Just 5 Minutes from a Grocery Store, the Train Station, Police Station, Hospital, Schools and Parks. Shopping and the Cinema is Just 10 Minutes Away! This Quaint 2 Bedrooms, 1 Bathroom Home has Beautiful Dormer Windows to Let the Natural Light Shine Through! A Lovely Kitchen with all the Necessities AND an Adorable Hideaway Table. The Laundry is in Place and is the Largest Stackable Unit that is made. The Home is Well Taken Care of with a 50 Gallon Water Tank in Place. There is a Sliding Glass Door from the Master Bedroom to the Back Patio. In the Back yard there is a Great Storage Shed to Store All Your Holiday Decorations, Lawn Mower, along with a Gardening Table to Work on. To Protect Your Car, attached to the Shed is a covered Carport. The front door also has an Arlo Door Camera-Cost \$2.99 a Month! For a Showing, Please Call Cindy Stoner, Agent-Owner at 660-281-3184

MISSOURI
LAND
COMPANY

Farm, Home & Hunting Properties

Rolla Office:
12647 S. Hwy 63
Rolla
573-308-4868

Cole Camp Office:
14981 Centerline Ave.,
Cole Camp
660-668-4868

www.missourilandco.com • 660-668-HUNT

Toll FREE number for both locations 844-974-1850

2000 FORD EXPLORER EDDIE BAUER EDITION: From California-no rust, 2 new tires, new brakes, front-end rebuilt, new power steering & new battery. \$2,700. 951-323-3500. Lebanon.

DEER FEEDERS: Boss Buck \$100. Redneck \$50. 618-806-8788. Lebanon.

MILLARD'S AUTO REPAIR IS NOW OPEN IN MOUNTAIN VIEW, MO: at 413 Elm Street. We specialize in transmission repair. Our hours are Monday-Friday 7a.m. to 5p.m. Closed Saturday & Sunday. Please call 417-287-0641.

TRACTOR FOR SALE: 1965 Allis Chalmers D-15 gas engine with loader, \$3,600. 314-974-6881. Middle Brook.

ATTENTION DOG BREEDERS, LIQUIDATING MY BUSINESS: Three portable buildings 10x20, stack cages, coated wire, water containers, water bottles & bowls, feeders, generator, power washers, snowplow, & too much more to mention. 417-543-4731. Sparta.

FREE DOCK: 1 Well 45mm, metal & tubs are ok, wood is rotted. Lake of the Ozarks. 573-505-1330.

DELUXE WOOD HEATER: Glass front, three speed blower, triple wall flue, high capacity. Safe, heated my mobile home. Expensive brand but asking about \$2,800, negotiable. Must see! Winter is coming, don't miss this one! 417-818-6076. Marshfield.

4X5 ROUND BALES OF MIXED GRASS HAY: \$60/bale OBO. 417-664-0419. Lebanon.

CHRISTIAN FARMER WANTING PASTURE: To rotationally graze cattle. 417-718-5910.

Stay Tuned

Starnes Auto Sales

MULTI - FAMILY YARD SALE

November 5th Starting at 7am

Laclede County Shrine Building
204 N. Madison Ave
Lebanon, Mo 65536

Antiques & Lots of Miscellaneous



Don't Miss It!!

OZARKS' COIN CLUB

Coin and Stamp Show Springfield, MO

October 21st & 22nd, 2022
Friday Noon-6pm & Saturday 10am-6pm

NEW LOCATION Relics Antique Mall Event Center
2015 W. Battlefield Rd – Just West of Kansas Expressway
– **BUY • SELL • TRADE** –

FREE ADMISSION

 Door Prizes Every Hour • Special Programs for Children
24 Hour Security Provided
Please visit our website: www.ozarkscoinclub.weebly.com
For more information contact Jim at 417-877-0233 

DEER RIFLES: Mauser 98 Bolt 7.62x57 8mm \$650. Mosen-Nagant M91/30 Bolt 7.62x54 \$550. 303 British Bolt 3 Box (150) Ammo \$400. Remington Mod. 81 Wood Master .30 Savage Auto Take Down \$850. Czechoslovak CZ-52 Auto Pistol 7.62x25 2 Box (100) Ammo \$500. 573-774-0665. St. Robert.

1986 CORVETTE PROJECT CAR: Needs trailer. \$15 OBO. 573-435-6987. Edgar Springs.

91 S10: as sits, looks rough, but runs ok. 417-370-7865. Springfield.

FARMALL 560 DIESEL TURBO: Needs motor work, fast hitch, 75% rear rubber duals. \$6,500. Great Bend QT Loader to fit 560 5FT Bucket Bale Spike \$2,850. 573-765-3874 Leave Message. Richland.

RADIATOR FOR 55 DODGE PICKUP: \$50. 573-734-2822. Bismark.

1949 MASSEY FERGUSON TRACTOR: Runs good, good tires. \$1,500. 1-573-315-9009. Patosi.

ELECTRIC WELDER: \$150 or trade. 573-734-2822. Bismark.

WEEKLY TRADER MAGAZINE

This is...

WEEKLY TRADER COUNTRY!



Place Your Ad With Us Today!

417-532-9131 CHECK US OUT ONLINE AT: myweeklytrader.com

FEDERAL 100RD. 223 AMMO: \$55. 417-844-4319. Springfield.

ANGUS COW WITH BLACK HEIFER CALF WEANING AGE: Hamburger cow \$160. Calf \$750. Both \$820. Fairbanks grain platform scales from 1950s \$100. Dirty but complete. 417-264-3963. Mountain View.

WWII FOOD MERMITE CAN: \$125. 573-734-2822. Bismark.

1500 VINTAGE WRISTWATCH DIALS: \$100. 573-764-3517. Call in PM.

INTERNATIONAL HARVESTER TRUCKS BOOK: The Complete History. Hardback, large book, 208 pages. \$12.50. 417-532-2045. Lebanon. (Leave message and phone number).

TINY HOMES: We gottem 573-881-3283

WEATHERED BARN WOOD SIDING: 10" wide. 573-729-7226. www.pineridgerustic.com Salem.

LOG SIDING: 2X8 Pine/Western Cedar www.pineridgerustic.com 573-729-7226. Salem.

NEW MOBILE HOME STOCK: Just received (5) new units, they gotta go! 573-657-2176. amegamobliehomes.com

USED DOUBLE-WIDE: \$34,900 WOW!!!! This won't last! 573-657-2176. amegamobliehomes.com

WE HAVE MOBILE HOMES: Instock new arrivals (8) homes, need to go as soon as possible! 573-499-9993. columbiadiscountnhomes.com

DEER FEEDERS: Boss Buck \$100. Redneck \$50. 618-806-8788. Lebanon.

KEEPING YOUR HERD IN TOP PRODUCTION

WE ARE THE TRUSTED SOURCE FOR ALL YOUR HERD'S NEEDS.



NOW OFFERING WEEKLY DELIVERY TO THE MOUNTAIN GROVE AREA!

Family owned and operated since 1950.

Hudson Feed & Grain
417-532-3921
316 W. Commercial St., Lebanon
www.hudsonfeedandgrain.com



TAYLOR TRUCKS & EQUIPMENT

417-924-2026 • 2676 Hwy. 5, Mansfield, MO

DANUSER DEALER
Intimidator Tree Puller
T3 Post Driver & Other Attachments
New Mowers! Bush-Whacker, Big Bee
Storage Containers & Dry Vans - 20' - 53'

TRAILER PARTS & REPAIR | **BUSH-WHACKER HD, SKIDSTEER BRUSH CUTTER**

Farm Tires, New Semi Tires, PTO's & Parts for Rotary Mowers, Farm Tractor Implements, Plows, Used 15" Bush-Whacker Now In Stock, Discs, and More Skidsteer Attachments: Pallet Forks, Buckets, Grapples, Hay Spears, RR Ties

Bush-Whacker Heavy Duty Rotary Cutter



We invite you To Come By & Look Us Over! Located 2.5 Miles North Of Mansfield, MO On Hwy 5

FOR SALE OR TRADE: 1 Antique Warm Morning Coal Stove. Nice. \$50. 573-734-2822. Bismark.

EXHAUST MANIFOLD FOR 55-56 CHEVROLET: \$100. 573-734-2822. Bismark.

WANTED OLD CHEVY WRECKER OR ROLLBACK: Or older car to restore. 573-734-2822. Bismark.

CURVED IRONING BOARD: 4 1/2 feet, with cover, like new. \$10. 210-787-8222. Linn Creek.

USED MOBILE HOMES: Call David at VILLA HOMES IN ROLLA 573-578-8072. Rolla.

BUYING MOBILE HOMES: Call David at VILLA HOMES IN ROLLA 573-578-8072. Rolla.

2007 INTERNATIONAL NAVISTAR BOXTRUCK: with lift gate, 8x8x16 box size, 20K miles. \$40,000 OBO excellent condition like new. 602-400-1080.

BEEFMASTER BULLS: 18 months old. Call for price. 417-327-2887. Halfway.

TRUE MODULARS: 30 to 60 day delivery available, 3 and 4 bedroom 573-657-7040 chateauhomes.net

I BUY.....used mobile homes. Call or text 573-338-6250 or email GregS.CDH@outlook.com

GREAT DANE PUPPIES: AKC. Fawn/Brindle Lions & Tigers. www.GreatDanes4U.com 417-859-0844. Marshfield.

SLAB WOOD: For Sale. \$10/bundle. 417-468-2255. Conway.

FIREARMS: Professional Repair, Restorations and Appraisals. Baron's Gunsmithing. 573-363-5801. Camdenton.

LIGHTLY EXPERIENCED GOLF BALLS: \$3 a dozen. 417-818-3469. Strafford.

AUSTRALIAN SHEPHERD PUPPIES FOR SALE: Some natural bobtail, some not. Grey Merles & Black & White. 573-760-5157.

5 GAL. PLASTIC BUCKETS: with lids. \$3 each. 636-239-2695. Washington.

MADE IN TIMBER BOOK: A settlement history of Fort Leonard Wood, Bloodland, Cookville, old towns, schools and cemeteries. \$12.50. 417-532-2045. Lebanon. (Leave message and phone number).

EARLY 1900's CAMEL BACK STEAMER TRUNK: Oak, 5 strap, solid, nice condition. \$95. 573-364-7465. Rolla.

HEARTH CRAFT GLASS BI-FOLD FIREPLACE DOORS PURCHASED AT FORSHAW'S FIREPLACE: Antique brass. \$160 obo. 636-239-2695. Washington.

HARLEY FAT BOBS: Custom flame paint w/ gas caps + lines. \$100. 573-764-3517. Call in P.M.

HIKING THE OZARKS BOOK: A Guide to the Area's Greatest Hiking Adventures. \$6.75. 417-532-2045. Lebanon. (Leave message and phone number).

COLT REVOLVER DEALER CATALOGS: Circa 1950's + 1960's. All for \$100. 573-764-3517. Call in P.M.

500 SMALL SQUARE BALES OF HAY: \$6.50/bale. 417-345-5634.

Larry Heisel Rentals
 HEISEL 573-779-1500
 Rental Sales & Service 636-432-9460
 Larry's Cell
Crawler Loaders
Excavators, Backhoes
 Call Larry!
 Rental Available in 636 or 573 Area Codes
573-779-1500
 We Deliver!

Your Trusted Choice for Plumbing & Electrical

Hickory Plumbing & Electrical

Honest and Affordable Services

New Homes, Remodels, Repairs
25 Years Experience
Free Estimates

Call Shane or Dave
417-415-2928



WE BUY AND SELL
 new and used mobile homes
(417) 501-1061

REGISTERED HEREFORD & ANGUS BULLS: Home raised, Some Show-Me Select Qualified. 573-701-7828. Belgrade.

LIONEL TRAIN SET: Steam engine, tender, caboose and other car, track, and transformer. \$195. 573-364-7465. Rolla.

1970s KIDS METAL STOVE & FRIDGE: Nice Lithographic paint, 18" wide x 36" high. \$75. 573-364-7465. Rolla.

3 GENTS WITTNAUER WRIST WATCHES: 10k gold + 23J. All \$200. 573-764-3517. Call in P.M.

RUBBER & LEATHER BOOTS AND 5-Buckle OVER SHOES: Men's 11, Women's 7, some insulated. \$15-\$40 obo. 636-239-2695. Washington.

RADIATOR FOR 55 DODGE PICKUP: \$50. 573-734-2822. Bismark.

For all things outdoors, Earth Manufacturing LLC!
 Freedom Outdoor Products
 Earth Manufacturing LLC
 Come see what makes Earth Outdoor Manufacturing and services different.
 417-926-4136 • 9871 E. 20th St., Mtn. Grove
 earthoutdoorfurnaces.com • freedomoutdoorproducts.com

KUSTER LOGGING
 BUYER of Standing Timber
 Oak and Walnut
 Dozing Now Available
417-259-0047
 References Available

FEDERAL 100RD. 223 AMMO: \$55. 417-844-4319. Springfield.

ELECTRIC WELDER: \$150 or trade. 573-734-2822. Bismark.

PICKUP BED TRAILER FRAME: \$185 OBO 417-668-7793 Land Line Do NOT Text. Competition.

WWII FOOD MERMITE CAN: \$125. 573-734-2822. Bismark.

HARLEY PARTS, HELMETS, LEATHER VEST, CHAPS & COATS: Wholesale prices. Biker wear wholesale to the public 719 W. Commercial Springfield, MO.

1962 HARLEY SPORTSTER 900CC: original distributor. \$50. 573-764-3517. Call in PM.

110 PORCELAIN POCKET WATCH DIALS: Perfect for arts & crafts. \$100. 573-764-3517. Call in PM.

1890 GOLD TESTING KIT: Glass acid beakers + antique wooden case. \$100. 573-764-3517. Call in PM.

CLEAN MATTRESS BOX SPRINGS: \$50. 417-370-7865. Springfield.

HARLEY 45 SOLO: factory rear brake drum + sprocket. \$150. 573-764-3517. Call in PM.

NEW/USED PARTS: Vehicles, Semi's Machinery, "Motors/Tranny's," "Body Parts," "Warrantied/Delivery." 800-807-9612.

HARLEY PANHEAD DISTRIBUTOR: original, chrome + complete. \$125. 573-764-3517. Call in PM.

DRAPES AND CURTAIN RODS: Off-white, various sizes, \$15 for all obo. 636-239-2695. Washington.

AUSTRALIAN SHEPHERD PUPPIES: UTD on shots, tails & dewclaws done, Tris & Merles. Trade or sell. 417-967-6493. Roby.

ALFALFA HAY FOR SALE: Big round silage bales. 417-343-4958. Seymore.

OFFICIAL TRACTOR OF TOUGH™

INTRODUCING THE ALL-NEW 5100 SERIES



Marshfield Machinery Inc.

222 E. Madison • Marshfield, MO 65706
417-859-2117 • www.marshfieldmachinery.com

*2018 data including all Mahindra group brand sales.
MahindraUSA.com © 2020 Mahindra USA Inc.



NEW MAHINDRA TRACTORS

1626 4WD & LDR 26HP	IN STOCK
2638 4WD & LDR 38HP	IN STOCK
4540 4WD & LDR 41HP	IN STOCK
4550 4WD & LDR 48 HP	IN STOCK
2670 CAB 4WD & LDR 70HP	IN STOCK

USED TRACTORS

MAHINDRA 3550 49HP CAB LDR	25,000
MAHINDRA 2638 38HP 4WD LDR	24,000
JD 4120 43HP 4WD LDR	21,500
AC 7010 106 HP CAB	9,500
MF 135 36 HP	2,750

USED ROUND BALERS

MF 1745 4X5	10,000
MF 1734	5,500
HESSTON 560 5X6	2,000
NH 850 5X5	1,500

USED MISC.

HAYBUSTER 107 DRILL 10FT	9,500
BUSHWACKER 8FT CUTTER	3,000
SITREX 8 WHEEL RAKE	1,750
M&W 8 WHEEL RAKE	1,750
LELY 8 WHEEL RAKE	1,750
HESSTON 3PT TEDDER 10FT	1,750

Marshfield Machinery Inc.
222 E. Madison
Marshfield, MO 65706
417-859-2117
www.marshfieldmachinery.com



CLASSIC EDGE
TITANIUM HDX

26% Tax Credit on EPA certified Central Boiler Classic Edge HDX models and installation. Call today to learn more!

Outdoor Wood Furnace CentralBoiler.com



The Classic Edge 360, 560 and 760 HDX are U.S. EPA Certified

Yarbrough Equipment Sales & Services, Inc.
9776 E. State Hwy 00 • Strafford, MO
417-736-2303 • 1-866-286-6901 • www.yarbeq.com

I AM LOOKING FOR LAND TO RENT TO GROW WHEAT: I can pay a good rate per acre for land that is fairly level, decent soil and in a 30 mile radius of Marshfield. I am looking for 80-500 acres. 417-741-2288. Marshfield.

CATAHOULA LEOPARD PUPS: 1 male leopard golden brindle, 1 female red merle. \$150. 417-543-4816.

FOR SALE AKC BEAGLE PUPS TRI COLOR: Lemon and whites. 573-627-2309. Sullivan

91 S10: as sits, looks rough, but runs ok. 417-370-7865. Springfield.

FALL FERTILIZER ORGANIC CHICKEN LITTER: Delivered Trailers. \$125/T. 800-807-9612.

KITCHEN FAUCET MOEN: Single lever, sprayer, new cartridge. \$45 obo. 636-239-2695. Washington.

DARDEN PROFESSIONAL TIMBER HARVESTING, BUYING STANDING TIMBER: Great prices, improve wildlife habitat and improve forest health. State Certified & Fully Insured! 573-247-4808. Salem.

ENGLISH SHEPHERD PUPPIES FOR SALE: Some bobtail, some not. 573-760-5157.

4X5 ROUND BALES OF MIXED GRASS HAY: \$60/bale OBO. 417-664-0419. Lebanon.

1949 MASSEY FERGUSON TRACTOR: Runs good, good tires. \$1,500. 1-573-315-9009. Patosi.

FOR SALE OR TRADE: 1 Antique Warm Morning Coal Stove. Nice. \$50. 573-734-2822. Bismark.

EXHAUST MANIFOLD FOR 55-56 CHEVROLET: \$100. 573-734-2822. Bismark.

2007 INTERNATIONAL NAVISTAR BOXTRUCK: with lift gate, 8x8x16 box size, 20K miles. \$40,000 OBO excellent condition like new. 602-400-1080.

WANTED OLD CHEVY WRECKER OR ROLLBACK: Or older car to restore. 573-734-2822. Bismark.

ANGUS COW WITH BLACK HEIFER CALF WEANING AGE: Hamburger cow \$160. Calf \$750. Both \$820. Fairbanks grain platform scales from 1950s \$100. Dirty but complete. 417-264-3963. Mountain View.

CURVED IRONING BOARD: 4 1/2 feet, with cover, like new. \$10. 210-787-8222. Linn Creek.

WEATHERED BARN WOOD SIDING: 10" wide. 573-729-7226. www.pineridgerustic.com Salem.

LOG SIDING: 2X8 Pine/Western Cedar www.pineridgerustic.com 573-729-7226. Salem.

USED MOBILE HOMES: Call David at VILLA HOMES IN ROLLA 573-578-8072. Rolla.

**Honda
OF THE
OZARKS**



THE ALL NEW 2023 HONDA ATV LINEUP CALL NOW TO RESERVE YOURS TODAY!

2023 RUBICON 4X4 AUTOMATIC DCT EPS DELUXE



- INDEPENDENT REAR SUSPENSION
- TRAXLOK WITH FRONT DIFFERENTIAL LOCK
- INBOARD REAR DISC BRAKE
- 1300 TOWING CAPACITY
- FRONT AND REAR CARGO RACKS
- ULTRA COMFORT SEATS



FIND OUT WHICH HONDA ATV IS PERFECT FOR YOU.



2023 FOREMAN 4X4



2023 FOREMAN 4X4



2023 RANCHER 4X4 EPS



2023 RANCHER 4X4 EPS

OUR PRICE PROMISE: If you find a better verified price in Missouri, WE WILL BEAT IT. **GUARANTEED!**

(417)862-4686
2055 E. Kerr St.

HondaOfTheOzarks.com
I-44 & GLENSTONE EXIT 80

POWERSPORTS.HONDA.COM UTILITY ATVS ARE RECOMMENDED ONLY FOR RIDERS 16 YEARS OF AGE AND OLDER. ATVS CAN BE HAZARDOUS TO OPERATE. FOR YOUR SAFETY, BE RESPONSIBLE. READ THE OWNER'S MANUAL. ALWAYS WEAR A HELMET, EYE PROTECTION AND PROTECTIVE CLOTHING. BE CAREFUL ON DIFFICULT TERRAIN. ALL ATV RIDERS SHOULD TAKE A TRAINING COURSE (FREE FOR NEW BUYERS. ASK YOUR DEALER OR CALL ASI AT 800-887-2887). NEVER RIDE AFTER CONSUMING DRUGS OR ALCOHOL, ON PAVED SURFACES, ON PUBLIC ROADS, WITH PASSENGERS, OR AT EXCESSIVE SPEEDS. NO STUNT RIDING. RESPECT THE ENVIRONMENT WHEN RIDING. FOURTRAX* AND FOREMAN* ARE REGISTERED TRADEMARKS OF HONDA MOTOR CO., LTD. ©2019 AMERICAN HONDA MOTOR CO., INC. (05/19)

FARMALL 560 DIESEL TURBO: Needs motor work, fast hitch, 75% rear rubber duals. \$6,500. Great Bend QT Loader to fit 560 5FT Bucket Bale Spike \$2,850. 573-765-3874 Leave Message. Richland.

SLIGHTLY USED PUZZLES: Will sell or trade. 417-818-3469. Strafford.

TINY HOMES: We gottem 573-881-3283

DEER RIFLES: Mauser 98 Bolt 7.62x57 8mm \$650. Mosen-Nagant M91/30 Bolt 7.62x54 \$550. 303 British Bolt 3 Box (150) Ammo \$400. Remington Mod. 81 Wood Master .30 Savage Auto Take Down \$850. Czechoslovak CZ-52 Auto Pistol 7.62x25 2 Box (100) Ammo \$500. 573-774-0665. St. Robert.

2000 FORD EXPLORER EDDIE BAUER EDITION: From California-no rust, 2 new tires, new brakes, front-end rebuilt, new power steering & new battery. \$2,700. 951-323-3500. Lebanon.

HIKING THE OZARKS BOOK: A Guide to the Area's Greatest Hiking Adventures. \$6.75. 417-532-2045. Lebanon. (Leave message and phone number).

WWW.MYWEEKLYTRADER.COM

YOUR FULL SERVICE AUTO BODY SHOP

We do everything from insurance jobs to full restorations!

DAVIDSON'S

Call to schedule an appointment for estimates

CUSTOM AUTO BODY 417-288-1589 • 115 Lincoln St., Buffalo, MO • **@DavidsonCustoms**

SELLING OFF 750 HONDA COLLECTION: 10-1979 Anniversary, 5-1980-81 CB Custom Bikes. If interested call for an appointment. All very nice bikes with clean titles. These are investment bikes. **WILL NOT RESPOND TO TEXTS;** use phone or don't waste my time or yours. Andy 636-228-4204 or 636-359-6189. Marthasville.

MILLARD'S AUTO REPAIR IS NOW OPEN IN MOUNTAIN VIEW, MO: at 413 Elm Street. We specialize in transmission repair. Our hours are Monday-Friday 7a.m. to 5p.m. Closed Saturday & Sunday. Please call 417-287-0641.

DELUXE WOOD HEATER: Glass front, three speed blower, triple wall flue, high capacity. Safe, heated my mobile home. Expensive brand but asking about \$2,800, negotiable. Must see! Winter is coming, don't miss this one! 417-818-6076. Marshfield.

1500 VINTAGE WRISTWATCH DIALS: \$100. 573-764-3517. Call in PM.

ATTENTION DOG BREEDERS, LIQUIDATING MY BUSINESS: Three portable buildings 10x20, stack cages, coated wire, water containers, water bottles & bowls, feeders, generator, power washers, snowplow, & too much more to mention. 417-543-4731. Sparta.

SLAB WOOD: For Sale. \$10/bundle. 417-468-2255. Conway.

INTERNATIONAL HARVESTER TRUCKS BOOK: The Complete History. Hardback, large book, 208 pages. \$12.50. 417-532-2045. Lebanon. (Leave message and phone number).

CHRISTIAN FARMER WANTING PASTURE: To rotationally graze cattle. 417-718-5910.

FREE DOCK: 1 Well 45mm, metal & tubs are ok, wood is rotted. Lake of the Ozarks. 573-505-1330.

TRACTOR FOR SALE: 1965 Allis Chalmers D-15 gas engine with loader, \$3,600. 314-974-6881. Middle Brook.

HEARTH CRAFT GLASS BI-FOLD FIREPLACE DOORS PURCHASED AT FORSHAW'S FIREPLACE: Antique brass. \$160 obo. 636-239-2695. Washington.

1986 CORVETTE PROJECT CAR: Needs trailer. \$15 OBO. 573-435-6987. Edgar Springs.

1st Annual
Marshfield FFA Booster Club
Truck and Tractor Pull
Non-Sanctioned Trophy Pull with Intimidator Sled
Saturday Oct. 22nd 4:00pm
Located at Marshfield Saddle Club on Commerce Rd
Tractor Classes: **Truck Classes:**

- 5500 Stock Tractor
- 6500 Open Tractor
- 8500 Stock Tractor
- 11500 Stock Tractor
- 14,000 Stock Tractor
- 14,000 & Over Stock Tractor
- 11,000 Hot Stock Tractor
- 9500 Open Tractor
- 10,500 Open Tractor
- 6200 Stock 4wd (No visible Mods)
- 6200 DOT Tire 2wd
- 6200 Altered Stock 4wd (Hot stock and Country Boy stock combo)
- Open Gas Stock (Any wheel base dually etc.)
- 6200 Open Truck 2wd or 4wd
- 6200 Pro Street
- 6200 Pro Stock 4wd
- Diesel Truck
- Small Block Super Stock 4wd
- 6200 Super Street

Classes will be added if needed.
For more information, contact:
Randall Hathcock (417) 496-5146
Matt Manary (417) 840-4996
Bring your lawn chairs!

Don't Miss This Event!

IMAGINE THE Endless Possibilities FOR YOUR LAND

- Fence Line Clearing
- Land Clearing
- Road & Trails Opened
- Wood Lot Thinning

Local family owned and operated since 2007

CALL NOW!
417-718-5508

GREAT VIEWS BRUSH CLEARING!

Ben & Jessica Joiner **www.gvbrush.com**

WEEKLY TRADER MAGAZINE

YOUR AD GOES HERE!

Add **YELLOW** Color For An Additional **\$3** Per Reader Ad

All ads will include Phone Number (unless requested to be deleted by advertiser) and City Or Town, Phone Number with Area Code counts as one word. City or Town counts as one word.

RATE: 80¢ Per Word. All Classified Ads Require Payment Before Print.

(1) 80¢	(2) \$1.60	(3) \$2.40	(4) \$3.20
(5) \$4.00	(6) \$4.80	(7) \$5.60	(8) \$6.40
(9) \$7.20	(10) \$8.00	(11) \$8.80	(12) \$9.60
(13) \$10.40	(14) \$11.20	(15) \$12.00	(16) \$12.80
(17) \$13.60	(18) \$14.40	(19) \$15.20	(20) \$16.00
(21) \$16.80	(22) \$17.60	(23) \$18.40	(24) \$19.20
(25) \$20.00	(26) \$20.80	(27) \$21.60	(28) \$22.40
(29) \$23.20	(30) \$24.00	(31) \$24.80	(32) \$25.60
(33) \$26.40	(34) \$27.20	(35) \$28.00	(36) \$28.80
(37) \$29.60	(38) \$30.40	(39) \$31.20	(40) \$32.00

Place your Classified Ad TODAY!

417-532-9131 • 800-665-8875

Fax: 417-532-8140

Or Mail To: P.O. Box 192 • Lebanon, MO 65536

For your convenience we accept MasterCard, Visa, Discover or American Express



DEADLINE FOR CLASSIFIED ADS: FRIDAY 4:00PM!

Name _____

Address _____

City _____ Email _____

State _____ Zip Code _____ Phone _____

Ad Total \$ _____ X # Weeks _____ = Amount Enclosed \$ _____

Built heavy duty, to make light work of any job.



Call today to schedule a demo on the L Series compact tractor. Part of our tractor lineup rated #1 for durability and owner experience in the U.S.*

- A range of affordable and premium models to choose from
- Performance-matched Kubota front loader
- Kubota diesel engine
- Gear or HST transmission

Together we do more.®



L2501DT PACKAGE
\$22,495

Quarles Supply

3251 S Springfield Ave
Bolivar, MO 65613
417-777-2391

KubotaUSA.com

*Award based on 2021 Progressive Farmer Reader Insights Tractor Study.

© Kubota Tractor Corporation, 2022. This material is for descriptive purposes only. Kubota disclaims all representations and warranties, express or implied, or any liability from the use of this material. For complete warranty, safety, incentive offer and product information, consult your local dealer or go to KubotaUSA.com.

Progressive
FARMER
READER INSIGHTS

ECHO[®]
shindaiwa[®]

IT'S TIME TO
 UPGRADE YOUR
 EQUIPMENT THIS FALL



FERRIS



Simplicity

TYM
 TRACTORS



LS TRACTOR



WCT FARM & LAWN, NEW OWNERS, SAME GREAT STAFF!

WCT Farm & Lawn

417-859-4311

SALES • SERVICE • PARTS

3299 E. EVERGREEN ROAD

STRAFFORD, MO

