

FREE - TAKE ONE!

WEEKLY TRADER MAGAZINE

Vol. 29 No. 26

SEPTEMBER 22, 2022

800-543-8271 • 800-665-8875



Find us on
Facebook

@myweeklytrader
AUCTIONS PG. 8

VISIT OUR NEW WEBSITE! MYWEEKLYTRADER.COM

A heavy-duty offer for a heavy-duty tractor.



L2501DT 24.8 HP Durable cast iron and steel design



Kubota

Together we do more.

Save big on our L Series tractor and handle every job with a wide range of versatile performance-matched attachments. Kubota tractors are rated #1 for durability and owner experience in the U.S.* Stop in for a demo and to claim this offer on select models today.

\$0 DOWN 0% APR UP TO 48 MONTHS

PLUS

SAVE UP TO \$1,100

VISIT US TODAY FOR THIS LIMITED-TIME OFFER



L2501DT PACKAGE

\$22,495

Quarles Supply

3251 S Springfield Ave
Bolivar, MO 65613
417-777-2391

KubotaUSA.com

*Award based on 2021 Progressive Farmer Reader Insights Tractor Study. © Kubota Tractor Corporation, 2022. \$0 Down, 0% A.P.R. financing for up to 48 months on purchases of select new Kubota L2501DT equipment at participating dealers in-stock inventory is available to qualified purchasers through Kubota Credit Corporation USA; subject to credit approval. Example: 48 monthly payments of \$20.83 per \$1,000 financed. Customer instant rebates of \$700 are available on qualifying finance or \$1,400 on cash purchases of L2501DT equipment. Additional instant rebate of \$400 is available with purchase of one new qualifying implement. Some exceptions apply. Offer expires 9/30/22. Terms subject to change. For complete warranty, disclaimer, safety and product information see dealer or KubotaUSA.com.

2KBB04032_Skt_L_L2501_F1_7-1_0628

Progressive
FARMER
READER INSIGHTS

Land

For Sale

Webster Co., Mo • 80 Acres +/-



\$550,000

- Gated entrance
- Blacktop road frontage
- Barn
- High-quality hay production pastures
- Building locations with beautiful panoramic views
- Unique topography for hunting
- Quality deer and turkey hunting
- Great clearings for secluded food plots
- Some nice timber
- Close to Marshfield MO for all needs
- 1/2 mile from Elkland, MO
- 1/2 mile from HWY 38 and easy access to I-44 and US-65
- Marshfield School District
- Boundary partially fenced
- Property will have new survey and some new fencing



WHITETAIL PROPERTIES REAL ESTATE

HUNTING | RANCH | FARM | TIMBER

Brian Utecht | 417-766-5595

Brian.Utecht@whitetailproperties.com

WHITETAILPROPERTIES.COM

Missouri's Top Land Specialist in 2014, 2015,
2016, 2017, 2018, 2019, 2020 and 2021



TIME FOR PRECISION

Hustler's residential mowers are built stronger and perform faster, allowing you to quickly maneuver around obstacles with ease. Tackle your lawn in record time with unparalleled precision, and use the time you save to do the things you love.



AGRI-ENTERPRISES

For Outstanding Products & Service

1-1/2 Miles South Of Licking, MO On Hwy 63

573-674-2203 • 1-800-653-7152 • www.agri-enterprises.com

STORY & PICTURES BOOK OF OLD LINN CREEK: Haha Tonka and Camden County, by T. Victor Jeffries, 72 pages. \$5.00 postpaid. (417)532-2045. (Leave message and phone number). Lebanon.

WANTED: Old Pinball Machines and Juke Boxes. 573-424-7200.

WEATHERED BARN WOOD SIDING: 10" wide. 573-729-7226. www.pineridgerustic.com Salem.

WE HAVE MOBILE HOMES: Instock new arrivals (8) homes, need to go as soon as possible! 573-499-9993. columbiadiscountnhomes.com

LOG SIDING: 2X8 Pine/Western Cedar www.pineridgerustic.com 573-729-7226. Salem.

USED MOBILE HOMES: Call David at VILLA HOMES IN ROLLA 573-578-8072. Rolla.

BUYING MOBILE HOMES: Call David at VILLA HOMES IN ROLLA 573-578-8072. Rolla.

WANTED TO BUY ANTIQUE CARS: Convertible, Corvettes, unrestored, motors, parts considered. 870-324-1154. Ash Flat.

NEW MOBILE HOME STOCK: Just received (5) new units, they gotta go! 573-657-2176. amegamobilehomes.com

WINCO GENERATOR: 25,000 watts, on metal 2-wheel trailer. \$2,000. Will consider offers. 417-259-1735.

TRUE MODULARS: 30 to 60 day delivery available, 3 and 4 bedroom 573-657-7040 chateauhomes.net

TINY HOMES: We gottem 573-881-3283

I BUY.....used mobile homes. Call or text 573-338-6250 or email GregS.CDH@outlook.com



TIM'S USED CARS

(573) 341-3828 • 1334 South Bishop (Hwy. 63) • Rolla, MO
Next to Hwy CC • www.tims-used-cars.com

 <p>2018 DODGE DURANGO CITADEL AWD, V-6, loaded w/options Only \$29,500</p>	 <p>2017 GMC TERRAIN SLT AWD, 4 cyl, leather 105,xxx Miles Only \$19,800</p>
 <p>2015 GMC YUKON SLE 5.3 V-8, Power Equipped, 3rd row seating, 144,xxx Miles Only \$24,900</p>	 <p>2012 KIA SORENTO LX FWD, V-6, 3rd row seating, 121,xxx Miles Only \$9,400</p>

LARGE SELECTION OF CARS, TRUCKS, SUVs & VANS!

REGISTERED HEREFORD & ANGUS BULLS: Home raised, Some Show-Me Select Qualified. 573-701-7828. Belgrade.

LIGHTLY EXPERIENCED GOLF BALLS: \$3 a dozen. 417-818-3469. Strafford.

SLIGHTLY USED PUZZLES: Will sell or trade. 417-818-3469. Strafford.

RUBBER & LEATHER BOOTS AND HIP WADERS. Men's 11, Women's 7, some insulated. \$15-\$40 obo. 636-239-2695. Washington.

LIONEL TRAIN SET: Steam engine, tender, caboose and other car, track and transformer. \$195. 573-364-7465. Rolla.

EARLY 1900's CAMEL BACK STEAMER TRUNK: Oak, 5 strap, solid, nice condition. \$95. 573-364-7465. Rolla.

1970s KIDS METAL STOVE & FRIDGE: Nice Lithographic paint, 18" wide x 36" high. \$75. 573-364-7465. Rolla.

3 GENTS WITTNAUER WRIST WATCHES: 10k gold + 23J. All \$200. 573-764-3517. Call in P.M.

COLT REVOLVER DEALER CATALOGS: Circa 1950's + 1960's. All for \$100. 573-764-3517. Call in P.M.

HARLEY 45 SOLO: factory rear brake drum + sprocket. \$150. 573-764-3517. Call in P.M.

HARLEY PANHEAD DISTRIBUTOR: original, chrome + complete. \$125. 573-764-3517. Call in P.M.

1962 HARLEY SPORTSTER 900CC: original distributor. \$50. 573-764-3517. Call in P.M.



Meadowview Dutch Market

Bulk & Surplus Groceries • Prices Subject to Stock on Hand

Call to Order
417-993-3017

Sale Dates September 21st 2022 to September 27th, 2022 while supplies last!

DELI SPECIAL

PEPPER JACK REG. \$5.65 LB. SALE \$5.15 LB.

LEBANON BOLOGNA REG. \$6.99 LB. SALE \$6.49 LB.

TRY our Fresh Homemade DELI Sandwiches: TURKEY, HAM, ROAST BEEF, ITALIAN, BLT'S, PULLED PORK AND BLT PULLED PORK (MADE YOUR WAY)! COME IN OR CALL to order! ALSO Custom Deli trays! Veggie OR FRESH Meat-N-Cheese!

<p><i>All Natural</i> 73/27</p> <p>Ground Beef</p> <p>\$7⁹⁹</p> <p>3 LBS.</p>	<p><i>Sliced Chipotle</i></p> <p>Chicken Breast</p> <p>\$1⁵⁰</p> <p>16 OZ.</p>	<p><i>Premium Smoked</i></p> <p>Rope Sausage</p> <p>\$1⁵⁰</p> <p>16 OZ.</p>	<p><i>Roasted Chicken</i></p> <p>Drum and Thighs</p> <p>\$1²⁹</p> <p>LB.</p>
<p><i>Breaded</i></p> <p>Mozzarella Stick</p> <p>\$14⁴⁹</p> <p>5 LBS.</p>	<p><i>Whole Wheat</i></p> <p>Flour</p> <p>\$1⁵⁰</p> <p>5 LB. BAG</p>	<p><i>Queso Blanco</i></p> <p>Velveeta</p> <p>\$4⁹⁹</p> <p>2 LBS.</p>	<p><i>Caribbean Jerk</i></p> <p>Taco Kit</p> <p>99¢</p> <p>11.7 OZ.</p>

WE HAVE FRESH MISSOURI APPLES!!



EASY MELT MONTEREY JACK CHEESE

\$1⁵⁹

LB.



MEADOWVIEW DUTCH MARKET
417-993-3017 Hours: Mon-Thurs 8-5pm
Fri 8-6pm • Sat 8-5pm
23 Miles West on Hwy 64 • Right on T Hwy
9 miles • Left on E Hwy 1 mile on Left

NOW ACCEPTING CREDIT, DEBIT CARDS & EBT

DUTCH COUNTRY STORE, LLC
573-378-4395
Hours: Mon-Thurs 8-5pm
Fri 8-6pm • Sat 8-5pm
5 miles East of Versailles off Hwy C on Kelsay Road

ROUTE 66 COOKBOOK: Hogs on Route 66, best food hangouts or road trips on Route 66 by Michael Wallis and Marion Clark, 195 pages, hardback, lots of color photos, \$10. 417-532-2045. Lebanon. (Leave message and phone number).

HEARTH CRAFT GLASS BI-FOLD FIREPLACE DOORS PURCHASED AT FORSHAW'S FIREPLACE: Antique brass. \$160 obo. 636-239-2695. Washington.

110 PORCELAIN POCKET WATCH DIALS: Perfect for arts & crafts. \$100. 573-764-3517. Call in P.M.

HARLEY FAT BOBS: Custom flame paint w/ gas caps + lines. \$100. 573-764-3517. Call in P.M.

CERAMIC CANISTER SET: With cutting board that fits in kitchen counter-top. Various species of ducks on surface. Set \$30 obo. 636-239-2695. Washington.

1890 GOLD TESTING KIT: Glass acid beakers + antique wooden case. \$100. 573-764-3517. Call in P.M.

1977 D6D BULLDOZER FOR SALE: Good undercarriage, good machine. \$30,000. 336-466-2391. Falcon.

LAKE OF THE OZARKS FALL SPECIAL: Lots \$4,950 - \$125 down, \$69 per month. Beautiful trees, free lake access and boat ramps, lots are a short distance from the lake, no credit checks, owner financing, immediate possession or own for investment. **Also:** acreage tracts. Missouri conservation boat ramp with covered dock and rest rooms nearby. **Prices good through October 10, 2022.** Hwy 135 between Stover and Sunrise Beach, MO. Take Lake Road 135-12 to the Ivy Bend Land Office. Closed Tuesdays and Wednesdays. Call anytime. 573-372-6493.

FOR SALE: White Dorper Ewe Lambs of various ages. 417-464-0002. Seymour.

DRAPES AND CURTAIN RODS: Off-white, various sizes, \$15 for all obo. 636-239-2695. Washington.

KITCHEN FAUCET MOEN: Single lever, sprayer, new cartridge. \$45 obo. 636-239-2695. Washington.

15 Y/O BOY LOOKING FOR EVENING JOBS: Leave a message. 724-815-5279. Hartville.

HONDA 2017-4WHL: forest green, excellent condition, drove 2 times, like new, manual shift. \$3,000 by appointment. Cell # 913-710-2554.

FIREPLACE LOG GRATE: 28" in width. \$25 obo. 636-239-2695. Washington.

MUMS: Mums at the Highpoint Greenhouse in Hartville. 9337 Warner Rd. 417-741-2198. Hartville.

SENNHEISER E835S MIC: With on/off switch and case. Never used \$65. 417-844-4319. Springfield.

IRON PIG CUSTOMS LLC: Custom fabrication metal décor, automotive arts & CNC Plasma. 417-322-5827. Stoutland.

LARGE ELIPTICAL: \$130. Also, Electric Leg Massager + more. Good condition. \$50. 573-465-0386. Rolla.



CALUS LOGGING
20 YEARS EXPERIENCE
Buying Standing Timber
Walnut & Oak
Joe Calus, Owner
417-926-4606 • MTN. GROVE
CERTIFIED



AVON
 make life beautiful
mcg skincare
 AVON independent sales representative
417-293-1609
 Order online at:
www.avon.com/repstore/mcgskincare



CLASSIC EDGE
 TITANIUM HDX
26% Tax Credit on EPA certified Central Boiler Classic Edge HDX models and installation. Call today to learn more!
Outdoor Wood Furnace CentralBoiler.com
 Yarbrough Equipment Sales & Services, Inc.
 9776 E. State Hwy 00 • Strafford, MO
417-736-2303 • 1-866-286-6901 • www.yarbeq.com

1500 VINTAGE WRISTWATCH DIALS: \$100. 573-764-3517. Call in PM.

DARDEN PROFESSIONAL TIMBER HARVESTING, BUYING STANDING TIMBER: Great prices, improve wildlife habitat and improve forest health. State Certified & Fully Insured! 573-247-4808. Salem.

WANTED YOUNG CATS: Born bobbed tailed or tailless. 573-205-9415. Leave Message Will Return Call.

5 GAL. PLASTIC BUCKETS: with lids. \$3 each. 636-239-2695. Washington.

POOL TABLES: Installations, moves, recovers, repairs, accessories, etc. 573-646-1700.

120 BRED COWS: Late 2nd & 3rd period. 3-7 years old. 1, 250lb. Trucking available. 660-619-5190.

2 ILLINOIS 1927 LICENSE PLATES: \$25 each. 573-308-5884. Rolla.

CHINA CABINET: For Sale. \$125. Small Round Table. \$40. Poster Bed. \$175. 417-741-1232.

CASE 580B DIESEL: Backhoe Loader. \$9975. 573-765-4406. Richland.

A FRAME: 11FT wide x 10FT tall \$400. 3. John Deere 2-row corn planter \$400. 6FT Brushhog \$550. 3.5" Tubular Bale Forks \$400. 16FT Double Axle Trailer \$4,500. 8FT Truck Dump Bed \$700. 816-699-6851. Creighton.



Buildings • Hunter's Cabins • Lawn Furniture
JAMCO BUILDERS
JAMCO Portable Buildings
 800-688-2064 • 307 Enterprise Dr. • Seymour, MO • www.jamcobuilders.com
Rent To Own Plan



Endless Possibilities FOR YOUR LAND GREAT VIEWS BRUSH CLEARING
 Local family owned and operated since 2007
 • Fence Line Clearing
 • Land Clearing
 • Road & Trails Opened
 • Wood Lot Thinning
 Ben & Jessica Joiner www.gvbrush.com 417-718-5508

AKC REGISTERED PEMBROKE WELSH CORGIE: D.O.B. 7/02/22, U.T.D. on shots, very colorful, great breeding stock. \$600. 417-259-9738.

84 PETERBILT 359 LONG HOOD B MODEL CAT: 15 speed transmission, good condition. Also, 2004 Wilson Cattle Pot: 53FT., triple axel. Would like to sell together. Contact Shane Leer 417-588-0602 or 417-589-2039. Contact in the evening.

CASE 1394 TRACTOR: Cab with loader, has Case 1394 Tractor operator's manual. 1,448 hours. No air-conditioning. 90% Rubber. \$15,000. Will consider offers. 417-259-1735.

SLAB WOOD: For Sale. \$10/bundle. 417-468-2255. Conway.

ROUND TABLE: With Leaf insert. \$325. 417-741-1232.

GRAVITY WAGON: 330 bushel, 20" truck tires, always shedded. Sharp. \$2,000. 573-378-5180. Versailles.

3 METAL WOOD PLANES: \$25 Each. Also, 3 Wooden Wood Clamps \$25 Each. 417-457-1023. Raymondville.

BOBCAT 753 DIESEL SKID STEER LOADER: \$11,000. 573-765-4406. Richland.

I AM LOOKING FOR LAND TO RENT TO GROW WHEAT: I can pay a good rate per acre for land that is fairly level, decent soil and in a 30 mile radius of Marshfield. I am looking for 80-500 acres. 417-741-2288. Marshfield.

FOR SALE 2002 SALEM BY FOREST RIVER: 32" bumper pull camper, very good condition, has 12.5FT pull out. 417-547-4503. Seymore.

FREE ROOM: Good food, Utilities in exchange for light caretaking. 775-997-5913. Lebanon.

0% for 4 Years

HEATMOR
Outdoor Wood Furnace
 as low as **\$238** per month
HEATMOR MIDWEST
 Licking, MO 65542 • 573-674-2962

NEW/USED PARTS: Vehicles, Semi's Machinery, "Motors/Tranny's," "Body Parts," "Warrantied/Delivery." 800-807-9612.

IHC 1086 DIESEL TRACTOR: Cab & Cold Air with Westendorf TA-28 Loader. \$22,500. 573-765-4406. Richland.

FALL FERTILIZER ORGANIC CHICKEN LITTER: Delivered Trailers. \$125/T. 800-807-9612.

06 CHEVY MALIBU: 218,000 miles, runs and drives good. \$3,500. 417-646-8807.

OAK DINING TABLE & 6 CHAIRS: Very nice. \$150. 417-733-2818. Conway.

ALFALFA HAY FOR SALE: Big round silage bales. 417-343-4958. Seymore.

WE DO TREE SERVICE: Tree removal, stump grinding, lawn clearing. Free estimates. Serving West Plains & Surrounding Areas. Call The Tree Monkey Arborists. 417-293-3417.

BOAT: 16FT Low line aluminum, 50 horsepower Evinrude engine, 3 custom seats & trailer. \$1150. 417-753-2747. Rogersville.

VERMEER TM800 PULL TYPE 10FT DISK MOWER: \$7,750. 573-765-4406. Richland.

JOHN DEERE 469 ROUND BALER: Monitor, kicker, net wrap, big tires. Nice. \$28,500. 573-765-4406. Richland.

IHC 1086 DIESEL TRACTOR: Cab & Cold Air. \$13,000. 573-765-4406. Richland.

NEW HOLLAND 258 RAKE: \$1,800. 573-765-4406. Richland.

NEW HOLLAND 7230 DISCBINE: With Roller. \$17,300. 573-765-4406. Richland.

JOHN DEERE 920 DISCBINE: With Rollers. \$7,500. 573-765-4406. Richland.


Wright Spray Foam Insulators, LLC
 Commercial & Residential
 Call for FREE Estimates!
 Ervin Gingerich 417-926-2052
 B. Eli Yoder 417-746-4932

CONSOLIDATED ELECTRIC SERVICE IS LOOKING FOR AN EXPERIENCED MECHANIC: Work will include small engine repair to heavy duty diesels and Altec equipment. Welding, and fabricating experience, Missouri inspection license, Class A CDL and owning your own tools is a plus. Must have a clean driving record and be able to work in a drug free workplace. We offer competitive wages, paid health and dental, retirement, paid vacations and holidays. If interested, please call 417-588-9562 or send resumes to jburgessces@aol.com

STUBBEN SIEGFRIED HUNTSEAT SADDLE: 15" with irons, leathers & new cover. Excellent condition. \$550. 417-622-4317. Mountain View.

JOHN DEERE 466 ROUND BALER: Monitor, Kicker 4x6. \$4750. 573-765-4406. Richland.

BRUSH HOG 2615 15FT HYD. FOLD BRUSHCUTTER: \$6,750. 573-765-4406. Richland.

IHC 8FFT WHEEL DISK: \$2,100. 573-765-4406. Richland.

JOHN DEERE 3055 DIESEL CAB & COLD AIR TRACTOR: With J.D. 148 Loader. \$21,750. 573-765-4406. Richland.

WETENDORF WL-42 LOADER: IHC Mounts. \$3,600. 573-765-4406. Richland.

STORY & PICTURES BOOK OF OLD LINN CREEK: Haha Tonka and Camden County, by T. Victor Jeffries, 72 pages. \$5.00 postpaid. (417)532-2045. (Leave message and phone number). Lebanon.

SLIGHTLY USED PUZZLES: Will sell or trade. 417-818-3469. Strafford.

ROUTE 66 COOKBOOK: Hogs on Route 66, best food hangouts or road trips on Route 66 by Michael Wallis and Marion Clark, 195 pages, hardback, lots of color photos, \$10. 417-532-2045. Lebanon. (Leave message and phone number).

Starnes Auto LLC
 22115 Rt. 66 • Lebanon, MO 65536
 417.718.2707 Cell
 417.588.3159 Office
www.starnesauto.com

1999 GEO TRACKER 5 SPEED MAROON,	
186,XXX MILES	\$4,200
2000 CHEVY S10 BLUE, VIN#0856, 131,XXX MILES	
2001 CHEVY LUMINA GREEN, VIN #6009,	
119,XXX MILES	\$1,450
2001 FORD RANGER SILVER, VIN #5678, 159,XXX MILES	
2006 PONTIAC G6 CHARCOAL, VIN #5905,	
157,XXX MILES	\$4,850
2007 BUICK LUCERNE SILVER, VIN #9079,	
144,XXX MILES	\$4,850
2007 GMC YUKON 2WD WHITE,	
300,XXX MILES	\$4,950
2011 CHEVY EQUINOX WHITE, VIN #4103,	
160,XXX MILES	\$6,650
2014 CHEVY EQUINOX BLUE, VIN #0515,	
76,XXX MILES	\$11,500
2015 CHEVY EQUINOX MAROON, VIN #3060,	
160,XXX MILES	
2015 GMC ACADIA GRAY, VIN #5582,	
106,XXX MILES	\$13,500
2016 CADILLAC SRX WHITE, VIN #7731,	
77,XXX MILES	\$16,500
2016 FORD FUSION WHITE, VIN #1010,	
89,XXX MILES	\$12,500
2018 CHEVY EQUINOX CHARCOAL, VIN #9376,	
66,XXX MILES	\$17,500
NO FINANCING	
2018 FORD F150 XLT CREW CAB BLUE,	
42,XXX MILES	\$42,500
2018 CHEVY SILVERADO 1500 CREW 4x4 Z71	
RED, 63,XXX MILES	\$39,500

WE DO ALIGNMENTS!

WEATHERED BARN WOOD

SIDING: 10" wide. 573-729-7226. www.pineridgerustic.com Salem.

LOG SIDING: 2X8 Pine/Western Cedar
www.pineridgerustic.com 573-729-7226.
Salem.

USED MOBILE HOMES: Call David at
VILLA HOMES IN ROLLA 573-578-8072.
Rolla.

BUYING MOBILE HOMES: Call David at
VILLA HOMES IN ROLLA 573-578-8072.
Rolla.

WE HAVE MOBILE HOMES:

Instock new arrivals (8) homes, need to
go as soon as possible! 573-499-9993.
columbiadiscountshomes.com

TRUE MODULARS: 30 to 60 day delivery
available, 3 and 4 bedroom 573-657-7040
chateauhomes.net

WANTED: Old Pinball Machines and Juke
Boxes. 573-424-7200.

I BUY.....used mobile homes. Call or
text 573-338-6250 or email GregS.CDH@outlook.com

1970s KIDS METAL STOVE & FRIDGE:
Nice Lithographic paint, 18" wide x 36" high.
\$75. 573-364-7465. Rolla.

**3 GENTS WITTNAUER WRIST
WATCHES:** 10k gold + 23J. All \$200. 573-
764-3517. Call in P.M.

HARLEY FAT BOBS: Custom flame paint
w/ gas caps + lines. \$100. 573-764-3517. Call
in P.M.

**COLT REVOLVER DEALER
CATALOGS:** Circa 1950's + 1960's. All for
\$100. 573-764-3517. Call in P.M.



Services Offered!

- Installation
- Pre-finishing available on interior & exterior
- Dealer for exterior stains

www.pineridgerustic.com

523 CR 2410 • Salem, MO 65560 • Ph: 573-729-7226



- Log Siding
- Beveled Siding
- Car Siding • Red Cedar
- Western Cedar • Pine

KUSTER LOGGING

**BUYER of Standing
Timber
Oak and Walnut**

Dozing Now Available

417-259-0047

References Available



WANTED TO BUY ANTIQUE CARS:
Convertible, Corvettes, unrestored, motors,
parts considered. 870-324-1154. Ash Flat.

**LIGHTLY EXPERIENCED GOLF
BALLS:** \$3 a dozen. 417-818-3469.
Strafford.

NEW MOBILE HOME STOCK: Just
received (5) new units, they gotta go! 573-
657-2176. amegamobliehomes.com

**REGISTERED HEREFORD & ANGUS
BULLS:** Home raised, Some Show-Me
Select Qualified. 573-701-7828. Belgrade.

LIONEL TRAIN SET: Steam engine,
tender, caboose and other car, track and
transformer. \$195. 573-364-7465. Rolla.

**EARLY 1900's CAMEL BACK
STEAMER TRUNK:** Oak, 5 strap, solid,
nice condition. \$95. 573-364-7465. Rolla.

**110 PORCELAIN POCKET WATCH
DIALS:** Perfect for arts & crafts. \$100. 573-
764-3517. Call in PM.

1890 GOLD TESTING KIT: Glass acid
beakers + antique wooden case. \$100. 573-
764-3517. Call in PM.

HARLEY 45 SOLO: factory rear brake
drum + sprocket. \$150. 573-764-3517. Call
in PM.

- Bathrooms
- Custom Cabinets
- Countertops
- Flooring



**Your
Home
Renovation
Specialists!**

Whatever your fall project is...

**Neighborhood's
Can Make
It Happen!**

**NEIGHBORHOODS
HOME
IMPROVEMENT STORE**

Where QUALITY doesn't cost more!

417-533-5080 • 19850 Houston Road • Lebanon
Mon.-Fri. 8am-5pm • Sat. 8am-3pm • neighborhoods-inc.com



New kiln available for treating lumber.
Call Sanko at 417-322-0239 to schedule

**Prebuilt cedar shacks and live edge
cedar sidings available.**
For dimensions and pricing call
Joseph at 417 589-0428


www.tejasbuds.com

1500 VINTAGE WRISTWATCH DIALS:
\$100. 573-764-3517. Call in PM.

FIREPLACE LOG GRATE: 28" in width.
\$25 obo. 636-239-2695. Washington.

HARLEY PANHEAD DISTRIBUTOR:
original, chrome + complete. \$125. 573-764-
3517. Call in PM.

HELLING 33RD ANNUAL FALL FARM MACHINERY CONSIGNMENT AUCTION SUNDAY SEPT 25TH 2022 9:30 AM

AUCTION HELD AT HELLING FARM 3548 HWY C LESLIE, MO 63056

LOCATION: FROM HERMANN MO TAKE HWY 100 15 MILES TO NEW HAVEN MO. THEN TURN RIGHT ON HWY C GO 8 MILES TO FARM ON LEFT HAND SIDE. FROM GERALD MO TAKE HWY C 4 MILES TO FARM ON RIGHT. FROM UNION MO TAKE HWY 50 WEST 17 MILES THEN TURN RIGHT ON HWY C GO 3 MILES TO FARM ON RIGHT HAND SIDE. THIS IS A PARTIAL LISTING WATCH FOR UPDATES AND PHOTOS

TRACTORS & INDUSTRIAL EQUIPMENT

JCB 1400B BACKHOE
8N FORD TRACTOR
5000 FORD TRACTOR 3PT LIVE POWER GAS RUNS GOOD
TO-35 TRACTOR
FARMALL M TRACTOR
FARMALL CUB W/BELLY MOWER
IH 656 UTILITY ROW CROP TRACTOR W/ HYDRO
9N FORD NOT RUNNING BUT WILL RUN
3400 FORD W/LOADER NO BUCKET BEEN SITTING IN BARN
1841 INDUSTRIAL TRACTOR W/LOADER BEEN SITTING
INDUSTRIAL MF334 W/LOADER NO BUCKET NEEDS WORK
FARMALL H W/ CULTIVATORS FRONT AND BACK BEEN SITTING
JD A TRACTOR NICE RUNS GOOD
WD 45 W/LOADER GAS
WD IRON WHEEL POWER PLANT RUNS GOOD
3000 FORD TRACTOR DIESEL
2- 8N TRACTORS NEEDS WORK
1951 FARMALL C W/BELLY MOWER
AC-D15 W/AC LOADER GAS 3PT
JD M TRACTOR NICE
LONG DIESEL TRACTOR BACK HOE
TERRAMITE TSC DIESEL
MF T30 ALL NEW TIRES
CASE 380 W/LOADER
8N FORD NEW TIRES SIDE DISTRIBUTOR
SEVERAL MORE TRACTORS BY SALE DAY AUCTION NOTE
COMPACT TRACTORS WILL SELL IN LAWN AND GARDEN
SEVERAL MORE TRACTORS BY SALE DAY AUCTION NOTE:
COMPACT TRACTORS SELL IN LAWN AND GARDEN

HAY EQUIPMENT

NEW IDEAL HAY RAKE
HAY ELEVATOR
1-LOT OF SQUARE BALES OF STRAW
1-LOT SQUARE HAY BALES
3PT BALE UNROLLER
MF 7FT SICKLE MOWER 3PT
FORD 7FT SICKLE MOWER 3PT
NH 852 ROUND BALER
HESSTON 5585 ROUND BALER
3PT BALE FORK
NH 268 SQUARE BALER
FARM EQUIPMENT
6FT BRUSH HOG 3PT

POST HOE DIGGER 3PT
8FT IH WHEEL DISC
GRAVITY WAGON
FORD DIRT SCOOP
CARRY ALL 3PT
KING KUTTER CARRY ALL 3PT
8FT BLADE 3PT
MC CURDY GRAVITY WAGON
5FT SKIDSTEER BUCKET
BOOM POLE
BRAND NEW GRAPPLE BUCKET
SET FORD WHEEL WEIGHTS
8FT BRUSH HOG 3PT
8FT HEAVY DUTY BLADE 3PT
JD 5FT BRUSH HOG 3PT
9FT IH DISC
IH 2 ROW 3PT ROTARY HOE
6FT PASTER DRAG HARROW
1&2 SECTIONS HARROW
SEVERAL BRUSH HOG
5FT PULLTYPE DISC
2 ROW CULTIVATOR 3PT
5FT FINISH MOWER
2BTM PLOW 3PT
2 ROW CORN PLANTER

1 LOT OF MISC ITEMS

STOCK TANK
8-10FT GATES
1-16 FT GATES
FEEDERS
SEVERAL WAGONS OF MISC ITEMS TOOLS
1-LOT USED LUMBER
SEVERAL EXTENSION LADDLERS
1-LOT PVC PUMING PIPE
STAINLESS STEEL DOUBLE SINK
FILING CABINETS
FARM PRIMITIVES
1-LOT USED TIN
1-LOT BINDERS, CHAINS, STRAPS, T-POST
TRACTORS TIRES
1-LOT USED TOOLS
**MANY MORE ITEMS
TOO MANY TO MENTION**

1 LOT BRAND NEW ITEMS

CRAFTSMAN TOOLS ALL KINDS, NEW
GENERATORS, SCAFFOLD, DRYWALL HOIST SAFE CONCRETE
MIXERS METAL SIGNS GAS AUGERS BLANKETS HOUSEHOLD
ITEMS YARD DECORATIONS, LOTS OF OTHER ITEMS

TRUCKS, CARS, TRAILERS CAMPERS

28 FT TERRY CAMPER W/SLIDE OUT GOOSENECK
16 FT TRAILER BUMPER HITCH
CHRYSLER MIN VAN LOW MILES RUNS GOOD
2013 18FT CLOSE END TRAILER W/FOLD DOWN RAMP FLOOR
IN GOOD SHAPE
2000 CHEV PICKUP 1/2 TON 4X4 SHORT BED
96 F350 7.3 DIESEL
1965 VW BUG RUNS
5X10 TRAILER BUMPER HITCH

LAWN AND GARDEN & ATVS

700 KAWASKI 4-WHEELER 4X4
CUB LAWN BOY W/MOWER& FRONT SNOW PLOW
JD GATOR 6X4
GRAVEY WALK BEHIND MOWER
CRAFTSMAN 46" RIDDING MOWER
CRAFTSMAN BOX BLADE
4FT BLADE 3PT
RAMPS FOR 4-WHEELERS OR LAWN MOWERS
REAR TINE TILLER
YARD ROLLER
YARD MACHINE TILLER
SPRAYER
MTD TILLER
SEVERAL RIDING MOWERS
LOG SPLITTERS
2005 KAWASAKI KIX 125
HONDA 4-WHEELERS
LAWN CARTS
HIT AND MISS ENGINES
GAS POWER WOOD SPLITTER 28TON ON TRAILER LIKE NEW
LIKE NEW DAYTON 7200 WATT GAS GENERATOR

1 LOT NEW ITEMS

1-LOT BRAND NEW TIN
1-LOT BRAND NEW 4X8 PLY BOARDS
1LOT BRAND NEW INSULATION 3'

1- LOT OF GUNS • AUCTION NOTE: GUNS WILL SELL EARLY THAT MORNING



**RAIN OR SHINE • LUNCH WILL BE SERVED • WE WILL BE RUNNING 3 AUCTIONEERS ALL DAY SO COME PREPARED • MANY MORE ITEMS
COMING YET SO CHECK WEBSITE FOR UPDATES • MANY MORE ITEMS BY SALE DAY • WATCH FOR UPDATES & PHOTOS ON WEBSITE**

AUCTION NOTE: WE WILL BE RUNNING TWO OR 3 AUCTION RINGS THAT DAY
SO COME EARLY!! LITTLE SOMETHING FOR EVERYONE.

THESE BILLS ARE MADE 2WKS IN ADVANCE OF AUCTION DATE & COULD HAVE DELETIONS & MANY
MANY MORE ITEMS BY AUCTION TIME. TERMS CASH OR GOOD CHECK WITH PROPER IDENTIFICATION.
NO OUT OF STATE CHECKS WITH OUT APPROVE BY OWNER OF AUCTION. NOTHING TO BE REMOVED
UNTIL SETTLE FOR MUST HAVE PAID TICKET BEFORE LOADING ITEMS!!! NOT RESPONSIBLE FOR
ACCIDENTS, OR LOSSES. ANNOUNCEMENT ON SALE DAY.

COME WHERE YOUR MONEY COUNTS!!! COME EARLY SOMETHING FOR EVERYONE.

WILL TAKE CONSIGNMENTS UP TO SALE DAY BUT MUST BE CHECKED IN BEFORE 8:00 CLOCK THAT
MORNING, THANK YOU. ALL ITEMS MUST BE REMOVED IN 10 DAYS. NO HOUSEHOLD GLASS WARE
OR SINKS, TOILETS OR BATH TUBS UNLESS STAINLESS STEEL, NO JUNK TIRES.

**FOR INFORMATION
CALL DEANNA HELLING 636-303-5105**

*As always we appreciate your business
Helling Farm Auction*

**WEBSITE: HELLINGSFARMAUCTION.COM
EMAIL ADDRESS: HELLINGSFARMAUCTION@YAHOO.COM**

Firearms Auction

Saturday October 1st, 2022 • 10:00 a.m.

Doors open at 8 AM on Saturday

Sale Preview - Friday, September 30th • 6-9 p.m.

The Red Shed
I-44 to exit 179 • 169 Truman St
Doolittle, MO 65550

SELLING OVER 300 FIREARMS

SOME OF THE HIGHLIGHTS TO INCLUDE:

Winchester 1892's, 1894's, 1890's, 1895,

Winchester 94/22, 9410, Model 12's

Ruger Vaquero's, Single 6, Single 7, Single 10,

Ruger #3, 77's, 10/22 in .22 Magnum

Remington 870 LW, 700 Classic .280, 1100 NWTF 28 GA,

Remington 788 in .222 Cal, 1100 LW .410

Shotguns 2-Ruger Red Labels 20 GA

4-Browning Citori Lightnings

Franchi Renaissance Elite 28 Ga

Beretta 686 Silver Pigeon .410

2-Browning X-Bolt White Gold Medallions Unfired

Remington 1903 30-06

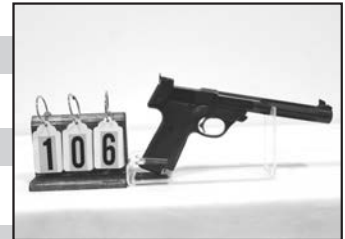
Spanish 1893 Carbine 7x57 Mauser

Polish VIS35 Radom, 9mm

Czech VZ24 8mm

Mauser C96 Broomhandle 7.63 Mauser

A small lot of ammo and misc. will sell after the guns.



J & J Sales, LLC

Pictures on www.auctionzip.com (auctioneer ID #28053) • Pictures also available on Hibid.com

573-341-5450
Office

573-465-4647
Julie Reagan

573-465-0642
JD Roach, Auctioneer

573-762-2227
Sale Day Number

jjsalesllc12@gmail.com

NEW ATF RULE - For ATF Form 4473, current name & address must exactly match the photo ID such as drivers license. **MUST MATCH!!** If not, we need supplemental government issued documentation with matching current address such as vehicle registration, property taxes, county or city utility bill. Cannot be a PO Box!

Concessions by Mt. Olive Baptist Church

Terms of Sale: Sale day announcements supercede any and all printed material. Photo I.D. required for buyer's number. No buyer's premium. Payment accepted by cash, check, debit/credit card. There is a 3% convenience fee unless paid by cash or check. Nothing removed until settled for. All state and federal firearms regulations will be followed. Not responsible for loss or accidents.



RAIN OR SHINE

ABSOLUTE FARM RETIREMENT AUCTION

SAT. OCTOBER 1, 2022

CHECK www.auctionzip.com FOR PHOTOS. AUCTIONEER ID: 33714

OWNERS: PAUL & JUDY KINNEMAN

Due to health reasons, Mr. Kinneman has sold his cattle and is retiring, selling the following personal property regardless of price.
FARMINGTON, MO

DIRECTIONS: 5551 County Line Road Farmington, MO 63640 From Farmington- Take US Hwy 67 South, turn right onto State Highway H for approx 7 miles, turn left onto County Line Road for approx 1/2 a mile, auction site on left. From Fredericktown- Take US Hwy 67 North, turn left onto State Highway H for approx . 6 1/2 miles, turn right onto County Line Road for 1/2 mile to auction site on left. **WATCH FOR AUCTION SIGNS.**



EARLY START 9:00 AM

TRACTORS & EQUIPMENT

2014 John Deere 5085M tractor
-w/ loader, cab, heat, air, FWA, 2,300 hrs
4630 John Deere tractor
- cab, heat, air, new rubber
Ford 7610 Series 2 tractor
- w/ bush hog QT2425 loader
Ford 3000
Vermeer 505M Classic baler
37' Hay liner in-line bale trailer
Elite 20+5 gooseneck flatbed trailer
New Holland 489 haybine
New Holland H7230 discbine
John Deere 8 wheel rake
Krone AM243S 7' disc mower
Gooseneck 20' stock trailer
Ford flex hitch disk
Boom pole
3 pt cultivator
2 bottom Ford plow
Large roller
3 pt blade
Pallet forks
3 bottom plow
Ford 903 post hole digger
John Deere quick attach bale spear
John Deere quick attach pallet forks
2- 3 pt bale spears
4 bottom semi mount Ford plow
3 pt auger
Fertilizer buggy
2- Case IH running gears
2- Ground driven manure spreaders
2 row John Deere planter
4 row IH planter
6 row John Deere planter
Alum. transfer tank
Fuel tank on stand
3 pt Gooseneck trailer hitch

VEHICLES

1994 Ford F700 dump truck, diesel, air brakes
2000 Grand Marquis (80k miles)

TOOLS

Magna Force 5hp air compressor
Craftsman 12" bandsaw
Craftsman 8" bench grinder
Lincoln electric welder
Milwaukee chop saw
Dewalt chop saw
Ryobi 10" planer
LARGE lot of tool chests/boxes
Chainsaw sharpener
Lot of bolt organizers
2- Bench vices
Lot of electric drills
Angle grinder
Milwaukee sawzall
Machinist box
Lot of LARGE crescent wrenches
Wood clamps
C-clamps
Lot of squares
Tin snips
Vice grips
Jack stand
Lot of pintle hitches
Lot of receiver hitches
Portable air tank
Drywall squares
Torch set
Squirrel cage fan
Lot of clevises
Chain hoist
Bar clamps
Shop vac
Cable clamps
Lot of pulleys
Lot of hole saws
Lot of chains
Lot of hand saws

Spinning bolt organizer
Lot of chain boomers
LARGE lot of hardware in bins
Scaffolding
Lot of 3/4" sockets, ratchets & extensions

ANTIQUES

2- Blacksmith anvils
Small scale
Lot misc burlap sacks (Wayne Feed)
Lot of metal Tonka toys
LARGE lot of model cars
Misc Case IH & John Deere toy tractors
Farmington FFA jacket
Wooden ladders
Tractor seat
3 prong pitch fork
Misc hay hooks
Large dinner bell
Radio flyer wagon
Sythes
Nail keg
Iron wheels

OUTDOOR & REC/FARM SUPPLIES

2- John Deere bar stools
Fish gig
Pressure washer
ATV seeder
15 gal. 2-4D
Stihl MS 250 chainsaw
Stihl FS 90 weed eater
Fence stretcher
Top links
Lot of ice chests
Large castor wheels
Lot of gas cans
T post driver
Lot of long handled tools
Misc. fencing supplies



ANNAPOLIS, MO

OUR AUCTION SERVICE DOESN'T COST, IT PAYS

PHONE 573.944.2450

COL. ELI SAMPLE * COL. ALAN RICHARDSON*
COL. CHAD NICKELSON

Ringmen: John Sample, Jake Hinkle, & Mike Sadler

Terms: Cash or Good Check * Proper I.D. Required * Lunch Available

Not Responsible for Accidents or Stolen Articles

All Announcements Made On Sale Day Take Precedence Over All Printed Materials



Saturday, September 24, 2022 • 9:00 a.m.

LOCATION: In Licking, Mo., on Highway 32 East at old Licking Livestock auction site. Next to Hammond Feed & Farm Supply. Watch for signs. To view photos, go to auctionzip.com. Auctioneer #28367

We will be running 2 rings all day. One ring will start on Fenton glassware and the other will start with tools. Come prepared to spend the day with us. This is the largest collection of Fenton we've had the privilege of selling, plus many other quality collectibles. Come take a look. Thanks. Steve & Neal

Fenton Glass, 250+ pieces, includes Baskets, Vases,; Shoes, Animal Figurines, Lamps, Bowls; - several different colors and patterns; Roseville Pottery Bowl; Fiesta Dishes - Plates, Cups, Saucers, Salt &; Pepper, Pitchers, Tea Pots, Sugar & Creamer; Cast Iron Skillets; Strawberry Tea Pot & Cups; Glass Paper Weights; Reubens Planter; Chicken & Rooster Collection; Route 66 Red Pitcher; Precious Moments Figurines; Oriental Jars; Wooden Fruit in Large Bowl; Candle Holders, unique; Red Canister & Tea Pot; Animal Figurines; Rolling Pins - wooden & glass, lots; Aunt Jemima Cast Iron Bank; Lot Stars, Bookends; Hen on Nest; Set Churchill Blue Willow Dishes; Large lot Boyd Bear Collection, Figurines & Stuffed Bears; Die Cast, 1955 Pickup, 1967 Camaro,; Krispy Creme, John Deere; Green Fruit Jars, zinc lids w/ ABC blocks & clothespins; Wooden Handle Kitchen Utensils, antique, lots; Ladies' Hats & Beaded Purses (Marchi); Dickey Bear in box; Masterpiece Porcelain Animal Figurines; Reamer in Pot; Pink Depression Dishes; Marble Type Eggs; Clear Glassware; Crock; Glass Fruit; Dresser Sets, Comb, Brush, Mirror & Trays; Candelabra; Tea Pot Collection; Old Small Oval Pictures; Bottles & Vases, unusual styles; Calf Figure; Metal Can w/lid, Vases, Decorative Blocks,; Small Hand Chest, Animal Figurines; Hat Boxes; Large Lot Pictures, Prints, Mirrors, Wall Decor; Longaberger Baskets, all sizes, 20-25+; Tin Canisters; Humpty Dumpty Garment Bag Box; Table Top Radio; Pitcher & Bowl; Tall Red Vase; Fire King Baking Pans; Corningware Baking Pans w/lids; Anchor Hocking Soup Bowls; Longaberger Bowl Set & Pie Plate & Pitcher; Amber Glasses, Disney Glasses; Town & Country Stoneware Dishes; Emmett Kelly Clown Figurines; Sheets, Blankets, Pillows, Towels, Spreads, Quilts; Child's Wooden Chair & Rocker; Wooden Churn, reproduction; Side Board, Drawers & Doors; Padded Bench & Wooden Bench; McCoy Bowls; Pitcher & 6 Cups; Wooden Cats; Rooster Planter; Salad Maker; Trade Winds Pots & Pans; Lot Small Kitchen Appliances; Texas Ware Bowls, speckled; Kitchen Utensils & Flatware; Wooden ABC Blocks; Lots Bowls & Platters; Wooden Salad Bowl; Metal Cookie Cutters; Tupperware; Metal Ice Trays & Baking Pans; Strainers; Cherry Pitter; Lead Crystal Candy Bowl; Magazine Rack; Green Melon Jar; Frog, Cat, Snail Figurines; Linden Mantle Clock; Pottery Style Vases; Glass Elephants; Unusual Baskets on Stand; Statues - Golfers & Thinker; Brass Candle Holders; Wooden Boxes; Jars of Marbles; Bo Jackson - Royals Picture; Wall Boat Decor; Canine Collection Dogs; Wooden Ducks; Michael Jordan Picture; Brass Elk, Fish; Cast Iron Car; Kerosene Lamp; Yellow Pig Bank; Big Wooden Apple; Green Jars w/lids; Tear Drop Doll; Man Bust; Decorative Suitcases; Wooden & Metal Stars; Twine Balls; Rooster Weather Vane; Seashells; Jewelry Boxes; Chamber Pot, red trim; Ingraham Wall Clock, battery; Kerosene Lantern; Kassel 31 Day Clock; Lots Flower Arrangements; Table Lamps, marble & glass; Rainbow Vacuum Cleaners; Kenmore Vacuum, canister style; Embroidery Hoops; Lots Christmas Decor; Ceramic Christmas Tree; Crochet Items; Cookbooks, hard back

books; VCR Tapes & Cassettes; Area Rugs & Throw Rugs; Dehumidifier; Coca Cola Tray; 4 pc. Bedroom Set, full; 4 pc. Bedroom Set, queen; Wooden Ironing Board; Heavy Clothes Rack; Library Table; Albums, 33s; Fireplace Set; Record Cabinet; Carved Foot Stool; Plant Pedestals; Bar Stools; Bench w/Storage; Office Chairs; Book Shelves; Cabinet Stereo, Philco; Microwave Cart; File Cabinets; Plant Stands, metal; Hanging Lights; Lighted Curio Cabinets - 4; Swivel Rockers; Wing Back Chair; Coffee & End Tables; Couch; Dry Sink w/top shelf; Metal Shelf w/glass; Wooden High Chair; Lot Canes; Cane Bottom Chair; Flat Screen TV; Wooden Rocking Horse; Chest, tall; Cabinets; Adult Walker, Bath Chair; Floor Lamps; Lamp Tables; Eden Pur Heater; Metal Wardrobe; Jewelry & Pocket Knives; Concrete Yard Ornaments; Lawn Mower Jack; Wheelbarrow; Gas Cans; 55 gallon barrel; Hand Well Pump; DeWalt Bench Grinder; Battery Charger; Drop Lights • Weights; Kerosene Cans; Tool Boxes; Sheep Shears, hand; Bostitch Nail Guns, air; Craftsman Tool Chest; Waterloo Tool Chest; Mac Tool Chest; Metal Display Shelf; Clamps • Files; Shoe Last; Air Tank; Iron Horse Compressor; Soldering Gun; Soldering Irons, old; Bosch Drill; Hand Saws, Saw Blades; Floor Jack, Boomer; Leaf Blowers • Edger; Sockets & Ratchets - Craftsman, S&K, Snap On; Open & Box End Wrenches - Craftsman, S&K, Snap On; Pliers • Crescent Wrenches • Channel Locks; Side Cutters • Bolt Cutters; Step Ladders, fiberglass & metal; Craftsman Band Saw; Mitre Saw, 2 hp Craftsman Slide Compound; Craftsman Bench Grinder; Table Saw; Sears Air Compressor; Craftsman Riding Mower; Lawn Fertilizer Spreader/Seeder, John Deere; Furniture Clamps; NAPA Chain Jack; C-Clamps • Handheld Grinders; DeWalt Drill; Router; Dremel Tool Set; Electric Box, Levels; Fire Extinguishers; Concrete Tools; Horseshoe Pitching Shoes; Jack Stand • Sump Pump; Vise • Nut & Bolt Caddys; Skil Saw • Jig Saw; Brace & Bits; Electric Cords; Railroad Iron Anvil; Oil Squirter Cans • Pipe Wrenches; Air Impact Tools; Brass Blow Torch; Pipe Cutter & Pipe Wrenches; Wooden Boxes; Golf Ball Pickup; Wooden Work Bench; Railroad Spike Hammer; Stihl Weedeater, gas; B&D Weedeater, battery; Lots Bolts, Nuts, Screws; Jumper Cables • Log Chain; B&D Drill & Sawzall; Shovels, Picks, Hoes, Tator Hand Forks, Rakes, Silage; Fork, Hand Post Hole Digger, Crosscut Saw, Wooden; Handles, Cant Hooks, Scythes-Brush Hooks; Shop Hammers • Hatchets; Shovels for Garden Cultivator; Rotozip Saw; DeWalt Electric Impact Wrench; Electric Impact Wrench; Several Fishing Plugs, some wooden; Coleman Lanterns • Coleman Camp Stove; Glass Minnow Jug, M. Swain Glass Col, Jonesboro, Ark.; Fishing Rod & Reels, Baitcaster, Garcia, Ambassador; Small Boat Paddle • Life Jacket; Minnow Buckets • Seine; Air Rifles - Winchester, lever action - (Sportsman; RST series w/scope, Beeman stock), Gamo - Daisy; BB Gun, Daisy model 96; Jimmy Houston Fish Measure; Steel Trap • Duck Decoy; Cane Pole • Bamboo Fly Rod; Metal Fisherman's Cove Sign; 2 - 14 ft. Utility Trailers; Lots more items not listed.

Johnny & Alvina Biram Estate

Terms - Cash or Approved Checks. Nothing Removed Until Settled For. Not Responsible For Accidents. Must show ID to get Buyers #. Announcements Made Day Of Sale Take Precedence Over Printed Matter.

Buckner & Gately Auction Service **Auctioneers**

Steve Buckner 573-674-2686

Neal Gately 573-202-3132

Sam CRAWFORD AUCTION SERVICE LLC ESTATE AUCTION

Will sell the following located in Urbana, MO at 312 Mill St. (South part of town).
Watch for Auction Signs.

TUESDAY, SEPTEMBER 27TH, 2022 - 9:30 AM

TRACTORS - BOAT - TOOLS - HOUSEHOLD - COLLECTIBLES - MISCELLANEOUS



TRACTORS - SELLS AT 12:30

Ford 1120 Diesel Tractor, 14 HP Engine, Shedded & Good
Farmall Cub (Yellow) w/1 Bottom Mounted Plow, Shedded
3 Pt. Land Pride 5' Finish Mower, Extra Good

BOAT - SELLS AT 12:30

Lowe 16' Aluminum Flat Bottom Boat & Trailer w/Evinrude 35
HP Motor, Shedded
Older Sea King Outboard Motor, Shedded
Homemade 2 Wheel Flatbed Trailer (Boat Trailer)

TOOLS & MISC.

Cub Cadet 1050 Lawn Tractor	Older Garden Tiller
2 Push Mowers	Older Homelite Chainsaw
Stihl Weedeater	Workmate
Long Handle Tools	Some Wrenches - Sockets
Alum. Extension Ladder	Metal Storage Cabinet
Older Carpenter Tools	Oil - Anti-Freezer
Gas Cans	Old Double Barrel Shotgun in Pieces
Wood Heating Stove	Martin House
Wood Picnic Table	4-5 Old Batteries
Lot Golf Balls	Some Used Lumber
2-3 Antique Wood Doors	4 Old Wood Porch Posts
8-10 Rods & Reels	Some Fishing Tackle
Pair Camper Jacks	Lots Misc.

HOUSEHOLD

Whirlpool Washer & Dryer	2 Twin Beds
Large Flatscreen TV	Chester Freezer - Medium
Dresser & Chest of Drawers	4 Pc. 4 Poster Bedroom Set, Queen
3 Pc. Antique Waterfall Bedroom Set	Dressing Mirror
Antique Waterfall Buffet	Antique Oak Dresser w/Wishbone Mirror
Spool Leg Lamp Table	Lg. Standing Jewelry Cabinet
Roll Top Desk	Wood Desk & Chair
Dining Table - 4 Chairs	Quilt Rack
Drop Leaf Table & 2 Chairs	Hutch
Fans	Eden Pure Heater
Coffee Table	Antique Day Bed
Other Small Tables	End Tables
3 Lazy Boy Recliners	3 Couches
3-4 Wood Kitchen Chairs	Livingroom Chairs
Pictures - Lamps	Lot Bedding
Hardback & Paperback Books	Table Clothes
Older Christmas Decorations	Wheelchair
Asst. Small Kitchen Appliances	Tupperware
Lot Asst. Pots & Pans, Utensils	Asst. Antique Glassware
Lot Corningware	Stemware
Lot Asst. Dishes, Glassware	2-3 Metal Kitchen Carts
Leaded Crystal	Other Fruit Jars
Milk Glass	Paper MFA Box
Blue Fruit Jars	Ant. Dresser Set
Mason Malted Jar	Other Misc.
Sev. Old Oil Co. Road Maps	
MO Pacific Crew Paks	

Sam CRAWFORD Auction Service LLC



TERMS: Cash or good check. Nothing removed until settled for. Not responsible for accidents. Lunch available. Statements made day of sale take precedence over printed matter. All items sell as is. No warranties given or implied.

417-998-6629
Cross Timbers, Mo.

CrawfordAuctionService.com



Sam
417-328-9137

Chase
417-399-1904

Chance, CAI
417-298-1751

Tom Poynter
Jack Lancaster

Lee M. & Opal Russell Estate

JoAnn's Printing 660.547.2299

ESTATE AUCTION

TWO-DAY SALE - SEPT. 24 & 25

Directions: From Salem take 19 north to 68, follow 68 5 miles to FF, turn onto FF for half a mile, take Co Rd 3310 to the right, follow to sale site. Property is at the end of the of the gravel road. Watch for signs.

FURNITURE - HOUSEHOLD - TOOLS - LAWN ITEMS - COLLECTIBLES - GUNS - AMMO

Property to be offered: 200 acres m/l, nice bottom fields, app, 70% open, the rest in timber, some marketable. Running water and well. 4 bedroom, 4 bath, split level home, full multi-level basement kitchen, dining/living room/washroom and mud room, 2 car attached garage, old 40x40 barn, ponds and fenced. This is a great cattle farm, bottoms are good enough for grain, always wildlife on farm. Several loads scrap vehicles, you will need a way to load them.

Property will be offered at 12:00 on Saturday. 10% down day of sale, will be held until cleared by court as stated on sale bill.

The sale of the real estate is subject to approval by the probate court of Dent County, Missouri and such approval will take a minimum of ten days following submission of the sale report to the court.

SATURDAY, SEPTEMBER 24 AT 9:30 AM

Winchester Model 370 28 Gauge Single Shot
2 Glenfield Model 60 .22 Rifles
Porch Swing - Patio Furniture - Shepards Hooks
Dollie - Rakes - Radio Flyer Wagon - Wall Decor
Hand Stitched Quilts - 51" Flatscreen TV
Eschenbach Bavaria Germany
Candles - Clear Hen on Nest - Crystal Stewware
Red Swivel Recliner - Salem, MO Coke Bottles
Keurig Coffee Maker - Bunn Coffee Pot
Pocket Watches - Costume Jewelry
State Spoon Collection - Old Teacher's Bell
Ozark Heritage Area Vol. 7
Ozark Hills Friends & Neighbors 1829-2000 Vol. 4
Ozark Heritage Vol. 3 - Old Well Pump
Hardee Outdoor Wood Furnace
Rear Tire Troybuilt Tiller - Metal Lawn Chairs
Milk Can - MFA - 48 Milk Can - Hoses & Reel
Martin Houses - Yard Wagons - Army Fuel Cans
Gas Grills - 3, 20 lb. Propane Bottles
5 Stackable Tool Boxes Full of Good Tools
Craftsman Worm Drive Skill Saw

2 Old Metal School Desks
Arctic Boy Water Cooler - Old
Old Wooden Boxes - Coolers
Book Shelves - 2 Old Wooden Rocking Chairs
Several Lots of Western VHS Tapes
Kitchen Table & 4 Wood Chairs
Floral Love Seat - White Wicker Pieces
Several Very Old Cast Iron Toys & Horse Set
Kenmore Chest Deep Freezer
Lots of Deer Horns - Shot Gun Shells
Ammo Boxes - Wood Clamps
Marlin Glenfield Model 556 12 Gauge Shot Gun
Crosman ".22" Model 120
Refrigerator - Battery Powered Weed Eater
Leaf Blower - Building Supplies
Signed David Plank & Rob Stine Paintings
2 Rocker Recliners - Old Stereo Box
Kitchen Table & 6 Chairs - Several Old Steins
Corner Shelf - TV Trays - Old Games
Kitchen Aid Mixer White - 3 Crock Pots
Electric Skillet - Set of Corning Ware

Old Oil Lamps - Metal Pitcher
Several Old Cooking Primitives
Lots of Old Wooden Boxes - Band Saw
Old Sausage Press - Plumbing Supplies
Water Pump & Fittings - Pressure Washer
Coca-Cola Crate - 2 Copper Ash Buckets
2 Old Sleds - Several Small Dressers
4 Bedroom Sets - Full to Queen - End Tables
Large Old Wardrobe - Grease - Oils
Lincoln 225-S Welder
2 More Stackable Tool Boxes
DeWALT 230 Volt 5hp 175 Gallon Upright
Like-New Compressor
30 Gallon Sprayer - Floor Jack - Bumper Jack
Set of 3/4" Sockets - Nuts - Bolts - Screws
Hitch Pins - Trailer Jacks - Lead Rods
C-Clamps - Hammers - Rakes - Shovels
Lot of Electric Cords - Air Hoses
Good Log Chains - Straps - Hooks
Grease Guns - Saddle Bags - Small Saddles
Milk Glass - .9 mm Luger Ammo - .308 Ammo

Old Singer Treddle Sewing Machine
Very Old Metal Trains - Old Jars
Kerosene Heater - Small AC Unit
Boat Paddles - Large Set of Revere Ware & Pyrex
Several Stackable Stainless Bowls
Texas Ware - Tableware - Tupperware
Deep Fryer - 10 Piece Corelle Plates
Nail Kegs - Several Lots of Carpenter Tools
Battery Powered DeWALT Skill Saw 18 Volt
Sawzall
Kenmore Washer & Dryer
Husqvarna 141 Chain Saw
Small Torch Set - DeWALT Metal Cut Off Saw
Craftsman Stackable Tool Box
Welding Rods - Limb Saw - Floor Creeper
Angle Grinder - Table Grinder - Drill Press
Pipe Wrenches - Fuel Tank Pump
Wood Step Ladder - Old Wood Planter
Key Making Machine and Keys
Several Old Primitives - Old Wood Tool Boxes
Many Items Not Listed

SUNDAY, SEPTEMBER 25 AT 11:00 AM

Steel Wheeled Mod 4-20 International
Harvester - Scrap
Massey Ferguson 150 W 235 Front End Loader -
Scrap
80's Dodge Truck - Trailer Frame
Several Late 60's Early 70's Chevy Pickups
Fuel Tank on Stand - Lots of Plywood
Doors - 3 Pt. Front End Hay Spike
Wooden Ladders - Old Metal Bed Frames
Primitives - Lot Lumber

Pair of Steel Rear Tractor Wheels - Old
Ram 1500 V8 Extra Cab 4x4
18' Stock Trailer - Ram 1500 V8 4x4
John Deere 606 3 Pt. 6' Bush hog
Old Tire Changer - 2 Front End Fork Sets
7' Blade - 16' Homemade Single Axle Trailer
M9000 Kubota Tractor LA 1251 Front Loader
12' Homemade 2 Axle Trailer
MTD 25 Ton Wood Splitter
16' Aluminum Box Bed Storage

McCormick #7 Horse Drawn Hay Mower
Old Ford Van - Old Chevy Station Wagon
60x80 Cattle Panel System - Sorting Pen and
Round Pen
Priefert Head Chute - 3 Pt. Bale Unroller
Full Roll 36" Woven Wire Red Brand
50+ Used Steel Posts - Truck Box
Truck Bed Trailer - Front End Bail Spike
Steel Wheels - Mineral Feeder
Bush Hog 2615 Brush Hog 15' Batwing

Gen Pole - 3 Pt. Post Hole Auger - Pipe Gates
Fuel Tanks - Small Finish Mower
Hog Panels - 10+ Plastic Culvert Pipe
Canoe - Several Wood Step Ladders
Scaffolding - Old 5x5 ATV
79 Ford - 300 Gallon Homemade Sprayer
Chuck Wagon 650cc V-Twin Side-by-Side
Many Items Not Listed

See you there! - Tom



ROSEMAN ESTATE

ANNOUNCEMENTS AT AUCTION TAKE PRECEDENCE OVER PRINTED MATTER

WULFF AUCTION

TERMS: CASH OR
APPROVED CHECK -
I.D. REQUIRED
NOTHING REMOVED
UNTIL SETTLED FOR

Licensed
Appraisals

2334 Highway K, Salem, MO 65560

AUCTIONEERS:

Col. Tom Wulff • John Wisdom

Cell: 573-247-3884 • Cell: 573-247-9563 • Home: 573-729-8476

Clerk: Tracy Strange

Cashier: Nancy Inman

See Wulff Auctions at www.thesalemnewsonline.com/auctions



RAIN OR SHINE
OWNER & AUCTION
PERSONNEL NOT
RESPONSIBLE
FOR ACCIDENTS AT
SALE SITE

PUBLIC AUCTION STOCKTON, MO

AUCTION

As we are selling our home we will sell the following Automobiles, Tractor, Skid Steer, Tools, Household, Collectibles and Misc.
At the Home located at 9780 South Hwy. AA Stockton, Mo. From Stockton go East on 32 hwy. To M hwy. Go Northeast 2 ¼ miles to AA hwy.

Go North on AA 2.1 miles to the Auction on

Sat. Sept. 24, 2022 at 9:00 am

WATCH FOR AUCTION COMPANY SIGNS • LUNCH SERVED

FOR MORE PICTURES GO TO: WWW.BRUCEANDLEANAUCTION.COM



AUTOMOBILES

- 2008 Ford F-350 Super Duty XLT 4X4 Four Door Ext Cab Pickup, 5.4 V-8 Motor, Automatic Transmission, PW, PL, 244,500 miles, Good Rubber, Bed Cover
- 1990 Dodge Ram Pickup V-8 Motor, 4 Speed Transmission, W/Title, has been sitting
- 1976 Ford Grand 4 door one owner Car W/Title, PW, PL, V-8, Automatic Transmission (has been sitting stored inside)
- 1996 Jeep Grand Cherokee (not running, parts only)
- 4- 1945-1955 Willy's Jeeps Partial Restore's W/Titles (stored inside)
- 3 Willy's Jeep Frames & Bodies (no titles)
- Large lot of Willy's Jeep Parts 1940's & 1950's (Grills, Radiator's, Motor Parts, Trans. Parts and More)

TRACTOR-SKID STEER

- 2019 Kubota L4701 HST 45 hp. Open Deck 4X4 Tractor, 109 One Owner Hours, Rops, Stored inside like new condition
- 1840 Case Skid Steer Uni-Loader 2670 Hrs. New Tires, 5' Bucket & Pallet Forks
- B-H Model 216 3 pt. 6' Brush Hog
- 5' & 6' Brush Hogs 3 pt.
- Rhino 6' Finish Mower 3 pt.
- Land Pride 6' 3 pt. Blade

HOUSEHOLD-COLLECTIBLES

- 2 Vizio 21" Flat Screen TV's
- Oak Dining Table W/8 Oak High Back Chairs
- 3 Pc. Waterfall Bedroom Set W/Mattress
- Queen Bed
- 2-Rocker/Recliners
- 2 Cushion Sofa
- Wooden Rocker
- Spindle Back Rocker
- Low Back Buffet
- End Tables
- 2 Bar Stools
- Magnavox Cabinet Stereo
- Vizio Sound Bar
- AM, FM, Phono, 8 Track Stereo

HOUSEHOLD-COLLECTIBLES CONT.

- OL Hauser Slate Pool Table W/Cues
- Card Table W/Chairs
- Nintendo
- Ant. Camera Equipment
- Kenmore Cabinet Sewing Machine
- Sears Portable Sewing Machine
- 8 Place Setting of Pfaltzgraff Dishes
- Table Lamps
- Electric Heaters
- Pots, Pans and Dishes
- Pressure Cooker
- Sm. Kitchen App.
- 3 Cast Iron Pans
- Child's Ant. Baby items
- 2 Ant. Wall World Maps
- 5 pc. Metal Patio Set
- 5 pc. Glass Top Patio Set
- 3 pc. Metal Patio Set

TOOLS-MISC.

- Victor Propane Torch Set W/Large Bottles & Cart
- 2 Lrg. Oxy. Bottles
- Sears 220V Welder
- Lincoln Pro 100 Wire Welder 110v
- 4' X 9' Extra Heavy Duty Rolling Welding Table
- 2' X 4' H/D Welding Table
- 24" Grizzly Metal Break
- 5hp 60 Gallon Campbell Hausfeld Air Compressor
- Air Floor Tire Machine
- Manual Tire Changer
- 2 Motor Stands
- 3 H/D 6" Vise's
- Lot of Wrench's (Craftsman, Snap-on & Others)
- Snap-on ¼" Drive Ratchet
- 3 Craftsman Tool Boxes 4 to 7 Drawers
- Floor & Bench Model Drill Press
- 10" Craftsman Table Saw
- Delta Miter Saw
- Bel-Saw older Thickness Planer
- Band Saw
- Chain Saw Sharpener
- Double Stone Grinder



TOOLS-MISC. CONT.

- Poly, Wooden & Alum. Step & Ext. Ladders
- Battery Chargers
- Ext. Cords
- Willy's Green Jeep Paint
- Craftsman Gas Blower
- Lot of Misc. Hand, Air & Electric Power Tools
- 2500 PSI Pressure Washer
- Troy-Bilt Self-Propelled Mower
- 5500 Watt Troy-Bilt 10 hp Generator
- Sm. Air Compressor
- C-Clamps
- Drill Bits
- Hyd. Jacks
- Porta-Power
- Roll Around Tables
- Lrg. Lot of Chilton Manuals
- 2 Sm. Space Heaters
- 6 Drawer Metal Organizer Cabinets
- 1 Section Roll Around Scaffolding
- Sheet Rock Lift
- 48" Round Shop Fan
- Paint Guns
- Boomers & Chains
- Ratchet Straps
- 3 ½ Gallon Roundup
- 3 Bottles of R-12 & R-22 Genetron Freon
- 25 plus Metal Road Signs
- 7 old Bikes
- Lot of Copper Wiring
- Lot of Scrap Metal
- Ford P/U Bed
- Lrg. Lot of Misc.

OWNER: FRANK & VICKY KIRKPATRICK

TERMS: Everything sells as is, where is. Nothing is to be removed until settled for. Payment of Cash, Check with Proper ID, or Credit Cards.
Auction Company or the Owners will not be responsible for loss of items or accidents. Statements made the Day of the Auction take Precedence over Printed Matter.

SALE CONDUCTED BY BRUCE & Le'AN AUCTION & APPRAISAL, LLC
THE AUCTION COMPANY THAT APPRECIATES YOUR BUSINESS

For more information and pictures go to our website at www.bruceandleanauction.com

RONNIE BRUCE - Fair Play, MO
417-777-1685 or 417-654-2214
colronbruce@gmail.com

BRANDON BRUCE
Fair Play, MO

BILLY BRUCE - Stockton, MO
417-399-4800
colbbruce@gmail.com

PUBLIC AUCTION BOLIVAR, MO

AUCTION

As we have sold our home we will sell the following Automobile, Trailer, Tools, Household, Collectibles and Misc. From the intersection of 13 & 32 Hwy at Bolivar, Mo. go West on 32 Hwy. 1 mile to E.R. S 90 go North to E.R. 438 go East to the Auction on

Sunday Sept. 25, 2022 at 12:30 pm

WATCH FOR AUCTION COMPANY SIGNS • LUNCH SERVED
FOR MORE PICTURES GO TO: WWW.BRUCEANDLEANAUCTION.COM



AUTOMOBILE-TRAILER

- 2006 Buick Lucerne CX 4 Door Car, Automatic Transmission, 3.8 L V-6 Motor, PW, PL, 114,000 miles, Good Rubber, Good Condition
- 18' X 6' 6" Tandem Axle Bumper Hitch Trailer W/Dove Tail & Ramps

WELDERS & TORCH SETS

- Victor Act. Torch set W/Bottles and Cart
- Victor Act. Torch set W/Med. Bottles
- Mig. Model B546080 Wire Feed Welder W/ Bottle
- Wards 230 amp. Welder
- Argon Gas Bottle

AIR COMPRESSOR-SHOP TOOLS-MISC.

- Campbell Hausfeld 80 Gallon 7.5 hp Upright Air Compressor
- TIP Sand Blaster
- Cherry Picker
- Makita Chop Saw
- Honda 5hp 2500 Watt Generator
- Generac 2700 psi Pressure Washer
- Stihl TS420 Concrete Saw
- Stihl BR 550 Back Pack Blower
- Stihl 017 Chain Saw
- Stihl Gas Trimmer
- Huskee 24" Snow Blower
- Craftsman 6hp Shop Vaccum
- DeWalt 18v Drill & Sawzall
- Air Conditioner Freon Gauges
- 5 Sets Jack Stands
- Ext. Cords
- Air Tank
- Gear Pullers
- 5" Vise on Stand
- Tap & Die set
- C-Clamps
- Misc. Hand Power Tools
- Sm. Double Stone Grinder

AIR COMPRESSOR-SHOP TOOLS-MISC. CONT.

- 6' Metal Work Bench
- Log Chains
- Chain Boomers
- Tap & Die Set
- Misc. Hand & Garden Tools
- 100 amp. Chrome Single Wire Chevy Alternator
- Propane Fish Cooker
- Misc. Fishing Poles
- GE Sm. Camper size Refrigerator
- Sm. Steel Post
- Home-made Steel Smoker/Grill
- 4' Car Wheel Setting Bench
- One Lot of Misc.



HOUSEHOLD & COLLECTIBLES CONT.

- 2 Glass Globe Table Lamps
- Pots, Pans & Dishes
- 4 Poly Wicker Patio Chairs

QUILTING MACHINES & QUILTS

- Nustyle Quilting Machine W/12' Work Table
- Approx. 50 Hand Made Quilts
- Extra Large Lot of Sewing Material

HOUSEHOLD & COLLECTIBLES

- 5 pc. King Size Oak Poster Bedroom Set W/ Mattress Very Nice (bed, dresser, chest, 2 night stands)
- Lrg. 5' Roll Top Desk (nice)
- Round Oak Dining Table W/6 Chairs (nice)
- 2 Oak Swivel Bar Stools
- Samsung 46" Flat Screen TV
- Western Electric Refinished Wall Telephone
- 6 Stone Jugs & Jars
- Rocker/Recliner
- Occasional Chairs
- 3 pc. Coffee & End Table Set
- 6' Glass Fronted Mirror Back Cabinet
- Foyer Table
- 4' Book Case
- Several pcs. Of Purple Carnival Glass
- 2 Free Spirit Indian Design Figurines

AUCTIONEER'S NOTE

The Alexander's have sold their home and are planning on traveling, they are not keeping very much.

This is a very nice and clean Auction of several items in like new condition.

Automobile to sell at approx. 2:00 pm

OWNERS: MICHAEL & SHARON ALEXANDER

TERMS: Everything sells as is, where is. Nothing is to be removed until settled for. Payment of Cash, Check with Proper ID, or Credit Cards. Auction Company or the Owners will not be responsible for loss of items or accidents. Statements made the Day of the Auction take Precedence over Printed Matter.

SALE CONDUCTED BY **BRUCE & Le'AN AUCTION & APPRAISAL, LLC**
THE AUCTION COMPANY THAT APPRECIATES YOUR BUSINESS

For more information and pictures go to our website at www.bruceandleanauction.com

RONNIE BRUCE - Fair Play, MO
 417-777-1685 or 417-654-2214
colronbruce@gmail.com

BRANDON BRUCE
 Fair Play, MO

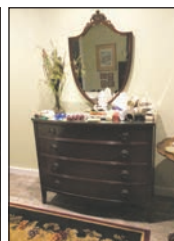
BILLY BRUCE - Stockton, MO
 417-399-4800
colbbruce@gmail.com

PERSONAL PROPERTY AUCTION

SATURDAY SEPTEMBER 24TH, 2022 @ 10:00AM
ON-SITE ONLY! 575 Lon Rd, Rogersville, Mo 65742

INVENTORY LIST:

Antique trunks great condition	Large leather sectional sofa
Antique glass	Horse heart
Gold and silver Jewelry lot	Oak table
Large lot of costume jewelry	Beautiful table and four chairs
Vintage purses	Rogers silverware set
Keen Kutter shears	Bedroom set
RS Prussia bowl	Little tea set
Flower stand	Small table and arm chair
Nice vintage kitchen wear and glasses	Wooden bench
Alaskan fox tails	Antique desk
Ostrich egg	Wood cabinet
R.R.P. CO Roseville crock bowl	Horse statue
Pfaltzgraff serving set	Kenmore washer and dryer
Equestrian art	Cowboy art
Decanters set	Drop leaf table
Curio cabinet	Bar with Coppertop
Two matching love seat	Western statues
Entryway bench	Vintage toy holster
Fenton glassware	Atomizers
Bird art	Winword Birmingham Vase
Alabaster mushrooms	Antique Bible
Leather ladies western outfit	Salt and pepper shakers
Mountain scene artwork	Old book with old photographs some Tin type
Beautiful handmade secretary	Milking bench
Four post bed	Old brass horse head cane
Decorative nightstand	Pots and pans
Small dresser	Brass horse doorstop
Oil lamp	
Glass lamp	
Outdoor furniture	
Patio furniture	
Flower pots	
Outdoor spinner	
Antique small table	
Romweiber Armoire	
Aunt Edie picture	
Equestrian lamp	



FOR MORE INFORMATION GO TO WWW.EASTERLYAUCTIONCO.COM OR CALL EASTERLY'S AT 417-833-9494

EASTERLY AUCTION CO.

Mike Easterly Auctioneer • 417-833-9494

Not Responsible for accidents or theft. For more information call: Easterly Auction Company, Springfield, MO. Auction Terms: Visa, Mastercard, Cash, Cashier's check or checks with proper I.D. Announcements day of sale take precedence over printed material. Auction Notes: Although information is obtained from sources deemed reliable, auctioneer makes no warranty or guarantee expressed or implied. Buyers should themselves take the opportunity to make their own inspection prior to sale.

www.EasterlyAuction.com • auctionzip.com ID#14770



REAL ESTATE & PERSONAL PROPERTY AUCTION

10 a.m. Saturday, Sept. 24th

Real Estate and Personal Property of Lonnie and Trish Neugebauer

Location: 5597 Hwy. Z, Houston, Mo. 65689. **DIRECTIONS:** From Houston: Take Hwy. 63 south for 7 miles to Z Hwy., go 4 1/2 miles to auction. Watch for signs day of sale.

REAL ESTATE: - To be offered if not sold before auction date....Well-kept, 2-bedroom, 2-bath earthberm on 4.28 acres, m/l, in the Houston School district. This home has plenty of trees for shade and extra privacy from the highway frontage that borders the property on two sides. This home has a bonus room that could make a 3rd bedroom, custom kitchen cabinets, large custom pantry, and a walk-out laundry room leading to the attached 2-car garage. This home is set up with a whole-home generator that automatically powers on, so you never lose power. There are 7 outbuildings on the property and a 30 x 40 shop with a concrete floor. Home is Energy Efficient with low utilities and easy maintenance.



REAL ESTATE TERMS: 10 percent down day and location of auction. Closing costs will be split between the buyer and seller. Taxes to be prorated. Sells "as is" with no contingencies.

★ HOUSEHOLD ★

• Amana washer & dryer, less than 6-months old • Two chest freezers • Dining table w/six chairs w/leaf • Three -piece full-size bedroom set, adjustable • Queen bed, adjustable • Antique buffet • Roku TV • Two cedar chests • Wardrobe • Entertainment center • Leather couch w/double recliner • End table • Electric fireplace • Roll-top desk • Quilts • Copy machine • Records • DVDs • CDs • Glassware • Pots and pans • Tea set • Wall decor • Bungalow washpan set, old • Large antique glass candy truck • Glass jar • Eagle figurines • Registered, certified Beanie Babies • Claw -foot tub • Wall propane heater • Utility cabinet • Survival food • Antique metal lawn chairs • Queen-size air mattress • Lots of misc. not listed •

★ UTV ★ TRAILER ★ ZERO-TURN MOWER ★



• 2021 Ranger XP 1000 Six Passenger, with cab, Powering steering and brakes, Heat and air, Radio, Front winch • Snow plow to fit Ranger • 14 ft.-Flatbed trailer with loading ramp, like new • Gravely ZTHD 60 Zero-Turn Mower with 81 hours • Stump grinder Teqland brand •



★ GUNS ★ TOOLS ★ MISC ★

• Two shotguns • BB gun • 410 Shotgun shells • Two Husqvarna T435 chain saws • Stihl pole saw • Stihl weed eater • Craftsman Arc welder • Acetylene torch w/bottles & cart • Hobart Mig welder • Welding sticks • Welding helmets • Shop fan • Husky air compressor 26 gallon • Air ratchet • Pal-let jack • Lawn mower/ATV jack • Electric seeder • Lawn sweeper • Berger Transit and Tripod • Schumacher battery charger • Heavy-duty extension cords • Aluminum ramps • DeWalt chop saw • Floor jack • Shop lights • Wheel barrow • Air tank • Table saw • Extension ladders and step ladders • Lawn roller • Champion power washer • Cargo carrier w/Reese hitch • Drill press • Bench grinder • ATV sprayer • Craftsman sockets • DeWalt set including reciprocating saw, grinder, drill, lights and impact • DeWalt saw • Husqvarna leaf blower • Tool sets • Bottle jacks • Husqvarna weed eater • C Clamps and wood clamps • Misc. Reese hitches • Three and a half ton floor jack • Tarps • Metal detector • Stainless milk pail • Rubber storage boxes • 40-Gallon Sunco fuel tank • Weed torch • Buddy heater • Log chains • Live trap • Three-hundred foot tape • Come-a-Longs • Load lock • Cedar lumber • Several sheets of particle board • Chicken wire • Gas jugs • Fishing poles • Misc. hand tools not listed • Small propane tanks • Dog cage •

To see all pictures, go to www.auctionzip.com....auctioneer number 22112; or go to Facebook at Darren Scheets Auction Service.

Auctioneer's note: High quality, good clean auction. Come out and see what we find. Thanks, Darren and Jake

TERMS OF AUCTION: Cash or check with picture ID. If not known by the auctioneer you need to bring a bank letter of credit addressed to Scheets Auctions LLC. Nothing loaded or removed until paid for. Everything sells as is, where is. Not responsible for accidents, lost or stolen items. Auction day announcements take precedence over all previous advertisements. **LUNCH ON GROUNDS.**

Darren SCHEETS AUCTIONS

(417) 457-6638 • (417) 926-8575
www.scheetsauctions.net



ESTATE AUCTION

Saturday, September 24th, 2022 ~ 10:00 AM

LOCATION: 23315 Marvel Road, Lebanon, MO; Directions: From Lebanon Take 64 Hwy West To KK Hwy Then Southwest On KK Approx 3 Miles To Marvel Road Then North To Sale Site. In Joel E. Baber School Area. GPS Will Get You There (Watch For Signs)

Auction For Barbara & The Late Bud Robinet



Antique, Modern Furniture & Appliances

Ant Ornate China Cabinet, Ant Dresser, Ant Clocks Inc Germany Cuckoo Clock, Ant Room Divider, Ant Sugar Bucket Table, Ant Bookcases, Ant Chest, Ant Trunk, Ant Depot Lamp, Ant Pictures, Prim Kitchen Cabinet, Old Ladder Back Chairs, Ornate 4 Pc Bedroom Suite Inc King Bed, Dresser W/Mirror, Chest Of Drawers & Nightstand, Oak Kitchen Table, Oak Kitchen Chairs, Wood Rocker, Bamboo Vanity, Several Sm Wood Tables, Ornate Cosine Style Lamps, Bakers Rack, Newer Lawyer Style Bookcase, Cherry Wood Tables, Electric Recliner, Ventless Propane Wall Heater, Side By Side Refrigerator, Upright Deep Freeze, Electric Cook Stove, Other Items Not Listed

Antiques, Collectibles & Households

RxR Caboose Lantern, Ant Cast Iron Pcs Inc #10 & Griswold, Ant Wagon Wheel Pot Rack, Ant Wash Board, #2 Crock Churn, 150 Year Old + Ornate Sm Cup & Saucer Set, Old Oil Lamps, Neat Alabaster Trojan Décor Pc, Ant Dolls, Colored Pyrex & Fire King Dishes, Fostoria Glassware, Pewter Pcs, Granite Ware Pcs, Collector Plates, Lots Of Knick Knack Items Inc Birds & Oriental, Old Cookbooks, Old Records, Old Sun Dial, Cast Iron JD Bell, Ant Push Plow, Old Jars, Glass Gazing Ball & Stand, Old Ladies Hats, 6 Good Cowboy Hats Inc Stetson, Live Plants, Lg Lot Of Wind Chimes, Sewing Material & Items, Crafting Items, Christmas Décor, Corningware, Sm Kitchen Appliances, Pots, Pans & Dishes, Other Items Not Listed

Car, Guns, Collector Knives, Guitars, & Outdoor Items

2004 Mercury Grand Marquis 4 Door Car W/V8 Motor, Auto Trans

Runs Great, Hard To Find Alvarez Professional Guitar, Mark II Beginners Guitar, New England Arms 10 GA Single Shot Shotgun, Rem Model 1100 Pump 12 Ga Shotgun, New Haven Model 28 Pump 20 Ga Shotgun, Stevens 12 Ga Single Shot Shotgun Revelation Model 107 Bolt Action W/Clip & Scope 22 Mag, JC Higgins Model 103.16 Bolt Action W/Clip 22, Stevens Model 62 Bolt Action W/Clip 22, High Point Model CF Stainless Semi Auto 380 ACP Pistol, Beeman P17 Pellet Pistol, Konus Pro Scope, Some Ammo Of Various Kinds, 2 Gun Safes Inc 1 Sentry, Old Pocket & Hunting Inc Buck, Case Old Timer & Others, Fishing Poles & Tackle, Fish Cooker, BBQ Grill, Metal Detector, Metal Yard Arbor, Patio Furniture, Lots Of Bird Feeders, Yard Bench, Concrete Yard Décor, Other Items Not Listed

Propane Tank, Tractor, Small Equipment, Welding Items, Shop Tools & Outdoor

500 Gallon Propane Tank W/30% Fuel, Yanmar YM2100 Diesel Tractor, 3 Pt 4 Ft Bush Hog, 3 Pt 5 Ft Blade, 3 Pt 6 Ft Rock Rake, 3 Pt 4 Ft Pull Behind Finish Mower, 3 Pt Scoop, 3 Pt Boom, ATB. R50 Mig 100 Welder, 225 Max Pro AC Stick Welder, Welding Supplies, 2 Portable 1 Wheel Air Compressors, Coats Tire Changer, Table Saw, Radial Arm Saw, Drill Press, Chop Saw, 3500 Gas Generator, Sm Torch Set, Electric Snow Blower, Push Mower, Craftsman Riding Mower W/O Deck, Yard Utility Dump Cart, Troy Bilt & Craftsman Front Tine Tillers, Hsqv Chainsaw, Hsqv Gas Weed Eater, Back Pack Blower, Yard Roller, Wheelbarrow, Shop Vac, Air Tank, Log Chains, Roll Of Chainlink Fence, Good Toolboxes, Name Brand Sm Wrenches & Tools, Sm Name Brand Electric & Battery Tools, Grinder, Car Ramps, Shop Shelves & Cabinets, Other Items Not Listed

Auctioneers Note: It Is An Honor To Be Conducting This Auction For The Robinet Estate As Mrs. Robinet Is Relocating We Will Offer An Outstanding Auction Of Items With Something Here For Everyone From Antique & Modern Furniture To Good Antiques & Collectibles, Excellent Guns & Knives As Well As Car, Propane Tank, Tractor, Equipment & Tools. Please Plan Now To Attend. **Sale Order:** Antique & Modern Furniture & Appliances Will Sell First Followed By Antiques, Collectibles & Households. At Approx 1:00 PM Will Offer Car, Propane Tank, Guns, Knives, Tractor & Equipment. Remainder Of Tools & Outdoor Will Finish Auction. See Ya There!!!

Terms: Cash or check with proper ID. Now accepting most major credit cards. Nothing removed until settled for. Statements made the day of sale takes precedence over printed material. Everything sold as is where is. Not responsible for accidents. Restroom available. Concessions Provided. Check our website for upcoming auctions and for additional pictures!!



NANCE AUCTION SERVICE

No Matter How BIG or small, We Do Them All!

www.nanceauctionservice.com



Col. Bill Nance 417-214-0093

In God We Trust

Philippians 4:13

Sean Beazley 417-247-6754

ESTATE AUCTION!

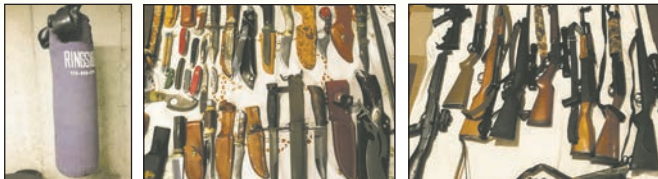
18215 ORCHARD RD WARSAW, MO

Due to the death of my husband, Tom, I will sell the following at auction located in Sterett Creek Village, north of Warsaw on Hwy 65 3 miles then west on Marina Rd, then right on Sterett Creek Village Dr for 7/10ths mile, slight right on Stirrup Rd, then right on Ancient Cedar Dr, then left on Orchard Rd to sale on

SAT. OCT. 1ST, STARTING AT 10AM!

GUNS Heritage Rough Rider 45 Long Colt revolver* Ruger P89 9mm* Hi-Point model 995 9mm* Remington 870 Wingmaster 12 ga, camo* Remington model 700 30-06 w/scope* Smith and Wesson model M&P 15-22 22LR* Heritage Rough Rider 22 mag/22 LR* Ruger American 243 WIN* SKS Chinese 762x39 w/ bayonet* Marlin model 30 AW 30/30 w/ scope* Maadi Co (Egypt) AK47 7.62x39* Crossman 2100 Classic pellet gun* Jaguar crossbow* Lots of Ammo* **KNIVES** Saber w/Scabbard, "190-6"* USM8A1 Military knife w/scabbard* Western, USA skinning knife w/bone handle* Helmut, Germany skinning knife w/ bone handle* TJ Pilling gut knife* Solenger hunting knife, bone handle* Folding knife, bone handle w/scabbard* Schrade pocketknife* Old Timer pocketknife* Mossberg gut knife* Buck bone handle knife* Camel cig. Lighter and knife* Other knives* **HUNTING & FISHING** Turkey call, handmade by Tom* Orange and camo clothes and outerwear, L & XL* Metal 8-gun cabinet* Game hangers* Bullet resistant vest* Berkley catfish rod w/Shakespeare Pro-touch reel* Shakespeare graphite bass rod w/Pro Qualifier reel* Diawa Beef Stick snagging rod* Eagle Claw Ozark Snagglers* Bass and Crappie poles, w/Zebco, Abu Garcia, Shakespeare, Johnson, other reels* Tackle and boxes* **NICE! HOUSEHOLD** Power lift recliner, brown* Lazyboy double reclining sofa, brown* Coffee table, 40" round Mahogany inlay top, and two lamp tables* Curio cabinet, curved and beveled glass* Dining table, 44x60", 18" leaf, 6 chairs* Dinette table on casters, 4 upholstered chairs on rollers Matching 3 cushion and 2 cushion sofas, beige microfiber* Queen size poster bed, dresser, nightstand* Antique rocker* Wrought iron and pine coffee table, top opens for storage* Silverware armoire, dark wood* Samsung washer and dryer* 2 4-tiered whatnot stands* Baker's rack* Queen bed, pillow top mattress* Maple dresser and nightstand* Spindle back oak rocker* Small lady's desk* Small wooden desk* Computer desk* Fern stand w/carving* Black tv console w/storage sides* Amber pitcher and glasses, Green glassware, cut and pressed glass, Sango stoneware dishes, moonstone, other dishware* Bunn coffeemaker, other small kitchen appliances* Large parrot cage on stand* Small bird cage* Lot of good hardback books* Office chair* **DÉCOR & COLLECTIBLES** Several Gallery prints, framed inc: Ted Blaylock "Rio Grande Southern", James Lee "Train 32", Native Am. Ghost Dancers, Robert Bateman "Buffalo", Carl Valente "Willow Creek Mill", M. Visser "Lords of the North", "Family Vigil", and "Westward Bound", Bev Doolittle Indian print, others* Lot of Southwest and Tribal décor, rainstick, Indian blanket, Trail of Tears Cast figurine* 80+ pc Blue Garland Bavaria china, inc: serving pieces, coffee decanter, other extras* Vintage German baby stroller* Wooden giraffe figure* Wall mirrors, lamps, décor, Latka pottery pitcher* Royal Manual typewriter in case* Some costume jewelry* **GUITARS and RELATED** Washburn W114 electric guitar* Ibanez IPF20TV acoustic guitar* Rogue acoustic guitar, blue* Washburn amp* Guitar stands, sheet music stand, Strings, self-teaching guitar books* **GAMING and ELECTRONICS** Super Nintendo controller* Nintendo Entertainment system* Nintendo zapper gun* 30 Nintendo games inc: Legend of Zelda, Mario is Missing, Ninja Gaiden, Tetris, Star Force, Dragon's Lair, Super Mario Bros/Duck Hunt, Paper Boy, Super Mario 3, others* Sony Playstation and Controllers* 14 Playstation Games inc: Rainbow 6, 007 Tomorrow never dies, Triple Play, Spec Ops, Dune 2000, Driver, Duke Nukem, Action Bass, others* GEVCR player **GYM EQUIPMENT** Punching bag and gloves* Speed punching bag* Wieder 245

Training center* Cathy Ireland Recumbent Exercycle* **TATTOO EQUIPMENT** Pelton and Crane Autoclave sterilizer* A Ott small precision pantograph* Antique tattooing tool* Tattoo books* Inks, gloves, supplies for building needles, etc* **SHOP EQUIP. & TOOLS** Mk470 Wet tile saw* Master Mech. Double wheel grinder* Delta 10" power miter saw* Craftsman 8" tabletop drill press* Craftsman 10" band saw* Craftsman 10" radial arm saw* Mini Jolly sharpener saw* Small reciprocating saw* Multi-position ladder* Werner 8' Fiberglass step ladder* 2-6' Fiberglass step ladders* 16' & 18' Aluminum Ext. ladders* 5 & 10 Gal. Shop vacs* C-clamps, small hand tools, power tools* Kerosene space heater* 3/4" drive Socket set, 7/8-2" B&D Workmate* **LAWN & GARDEN** Troy Bilt Mustang 54 0-Turn mower, used only 3 seasons, very good cond.* Weedeater push mower* Murray 21" push mower* Wheelbarrow* Poulan PL3816 chainsaw* 40" Mini greenhouse* Garden tools* **OUTDOOR LIVING** Huffy motorized bicycle* Electric smoker* King Kooker Turkey fryer* Sunbeam mini grill* Square glass top patio table, 4 metal chairs* 2 Sets of golf clubs, bags and caddy*



For pictures, check out the website www.DrenonAuction.com

JANICE THOMPSON

Larry DRENON AUCTION

Larry Laramie
660-596-8515 660-221-4386
Lacey Cooper
660-723-1104 660-723-2221

Office: 660-723-6188
www.DrenonAuction.com

Terms: Cash, approved check, debit/ credit (convenience fee applied to card purchases). Nothing to be removed until settled for. Not responsible for accidents. Statements made day of sale take precedence over printed material. Lunch served



**ONLINE
REAL ESTATE**

AUCTION

Closes on Sat., Oct. 1, 2022

15130 HWY C • LICKING, MO

REAL ESTATE: 5 Bedroom, 2 bath house on 12.7 +/- acres with 2 car detached garage. Home built in the 1960s but was near the end of a complete remodel featuring new siding, new metal roof, new windows, new sheet rock in many rooms. sitting on nearly 13 open acres producing many hay bales every year. Property is a must see. Great opportunity to own your forever home!

- Family is very motivated to sell, **NO BUYERS PREMIUM** • 10% down within 24 hours of auction closing, non-refundable funds, balance at closing • Property sells "as is where is" with no contingencies whatsoever • Taxes paid up to date • Seller guarantees good title • Closing costs split 50/50

For more information or to view property, contact auction company: 573-480-4400



VEHICLES:

2012 Corvette LT1
w/57,xxx miles

2007 Dodge Ram 4x4
w/ 229,xxx miles

87 Stratos boat
w/05 Mercury XR6 150hp motor
5x8' tilt utility trailer



BID NOW @ sellersauctionservice.hibid.com

Sellers Auction Service
"We Were Born Sellers"

Complete Auction Service

www.sellersauctionservice.com

Terms: Cash or Check with proper I.D. Not responsible for accidents or losses. Items will be sold As Is/Where Is with No Guarantees. Nothing to be removed until paid for. Refreshments available. Announcements made on sale day take precedence over any printed materials.



GREGG SELLERS, AUCTIONEER
573-480-4400

SOUTHERN MISSOURI NETWORK ASSEMBLIES OF GOD TREASURE SALE FOR MISSIONS *Auction*

SEPTEMBER 29 & SEPTEMBER 30 AT 3:00 PM

DOORS OPEN AT 1:00 PM DAILY

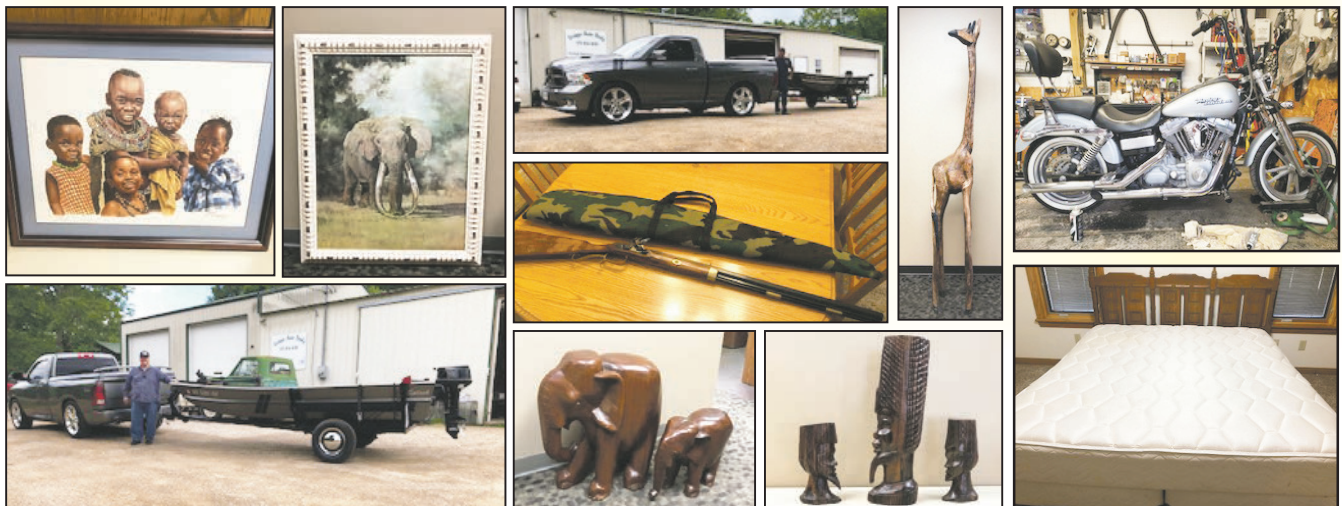
Location: Cross Pointe Camp & Retreat Center 31434 Main St, Rocky Mount, MO 65072

WE HAVE MANY ITEMS DONATED FROM THE COLLECTIONS OF MISSIONARY LEGENDS:

Victor Plymire – We have the authentic Tibetan Sword that belonged to him, and has been kept in the family for more than 100 years. This is an historic piece of mission history. • David Plymire – Possessions and collectibles that he has acquired over his entire life. Mostly items from Tibet and China. • George Flattery – Wood carvings, and collectibles from Africa. • Don Corbin – Beautiful paintings, and excellent wood carvings from Africa, including two elephants and a rhinoceros, and art by the famous South African artist, Dennis Murphy. There is also a huge painting from Kenya that is fabulous. It is the painting of a famous elephant. • John Weidman has donated many artifacts and collectibles from Africa. This includes an elephant foot, a python skin etc., along with his art from Africa. • Greg and Dana Beggs Regional Directors for Africa have donated an 8' elephant. It was carved from an acacia tree in Kenya. • A 2006 Harley Davidson Super Glide motorcycle, 1450cc fuel-injected. It has 55,000 miles, and is in excellent condition. • An aluminum boat donated by Carrol Deal. This boat is a 1976 DuraCraft 14'6" with an 8 horsepower Nissan engine. It is complete with trailer

and foot-controlled trolling motor, with a new battery. It has been freshly painted and is stunning. After painting, it has only been in the water twice. The trailer has also been painted. This boat has been in my family for more than 40 years. • Required safety equipment for boats. New, still in the package. • 2 almost new boat paddles, and an almost new 16-pound anchor. • We have several guns: At present we have two 50 caliber muzzle loaders, one of which is a flintlock. There is a Browning 270 lever-action with scope, a 1022 rifle, a 590 Mossberg pump, and two revolvers. One of them has never been fired. • A knife collection once owned by Rev. James McHaffie. • Several head of fattened cattle, to be sold by the half or by the quarter. • One hog. • 2 quality watches. • Native art from Alaska including a fossilized walrus jawbone knife, and jewelry from seal hide. • Collector cars and a curio cabinet combination. • A corner curio hutch. • More than 70 pieces of crystal. • Two beautiful antique dressers. One has a mirror. • Many beds and mattresses, various sizes including one sleep-number full-size. • And expensive putter, hardly used. • Home décor. • One small antique

table • A new queen quilt, hand-made • One hand-stitched quilt, antique • A Pioneer Woman basket filled with great items • A collection of Oswald Chambers books • Zane Grey and Louis Lamour books • One bedroom suite: a full-sized bed complete with headboard, and a matching 10-drawer dresser with mirror • Dale Earnhart Nascar soda collection • A sewing station • One left-handed tactical holster for a 9mm Beretta – new • New and used fishing poles and equipment • 1 Coleman portable cooker on wheels, new, still in the box • New camouflage fatigues • Hunting equipment • Hunting gear donated by Rev. Jack Moore • 18' Whirlpool refrigerator with icemaker, 5 years old, owned by Rev. Dean Galyen • 50" Panasonic television • 14 Branson tickets to various shows • Two one-night stays at Branson King Resort • 2 handmade quality leather purses • One gold ring with many small diamonds • One Ovation guitar 1999 model • New rotary sander • One case holding a Craftsman ½ inch 19.2-volt cordless drill-driver and a 3/8 inch, 19.2-volt right angle drill-driver both reversible, plus battery and charger • 3 new drill sets



COMPLETE FARM DISPERSAL AUCTION

Auction

SATURDAY OCTOBER 15TH AT 10:00 AM

Location: 1306 CR 955, Squires, MO 65755

Directions: From Ava, take MO-5 S 7.9 mi, Turn right onto State Hwy JJ. Continue 4.5 mi. Turn left onto Co Rd 946. Drive 1.1 mi and auction will be straight ahead. Look for Cheyney Auctions signs!

50+ head of home raised Angus cross cows, calves, and 1 herd bull!
Approx 300 4x5 round bales of hay!

TRACTORS

- John Deere 6410 cab tractor w/ 620 John Deere Front end loader

UTVS

- 2014 John Deere 625i Gator UTV

EQUIPMENT

- John Deere 457 round baler
- Frontier DM1270 disc mower
- John Deere 15 ft batwing brush hog
 - John Deere hay spear
- Rhino 12" pto post hole auger
 - 3 pt bale spike
- 3 pt pallet forks/carryall
- Viacon 8 wheel rake
- 200 gal 3 pt sprayer
- Performance Built 27 ton wood splitter
- Heavy Duty brush rake grapple bucket
 - 4 basket hay tedder

VEHICLES

- 1992 Chevrolet 1500 4x4 (New Jasper engine)

TRAILERS

- 2011 25' gooseneck flatbed, 7K axles, dovetail w/ ramps, new tires 14 ply
- 2003 WW 20' gooseneck stock trailer, steel top, new tires 14 ply, excellent floor, no rust!

BOATS

- 1989 Bayliner Fish & Ski boat



Auctioneer's Note: Mr. & Mrs. Whitaker, after 40 years, have chosen to sell the farm and relocate to be closer to family. This auction will offer a great set of home raised black angus cross cattle in running ages along with their calves and one herd bull. All cows will be aged and preg checked by vet at time of auction. Also, all equipment has been well taken care of and meticulously maintained. A small amount of misc shop and hand tools along with household items will also be sold. Don't miss one of the best farm auctions you'll see this year!

FOR MORE PHOTOS, VISIT OUR WEBSITE CHEYNEYAUCTIONS.COM OR FIND US ON FACEBOOK!



Cheyney Auction Company, LLC

Real Estate • Livestock • Farm & Ranch • Equipment • Household • Antiques

Travis Cheyney, Auctioneer • Buddy Boyd, Ringman

417-543-8751 • cheyneyauctions.com

ANNOUNCEMENTS Made Day Of Sale By Auctioneer Take Precedence over any Printed Matter. Not Responsible For Accidents. All items sold as is, where is, with no guarantee. Terms of sale: cash, credit/debit card, or check with valid ID.

LIVING ESTATE**Auction****SATURDAY OCTOBER 1, 2022 AT 10:00 AM****Location: 19574 W Hwy 76, Ava, MO 65608**

Directions: From Ava, take Hwy 76 West 2.1 miles to auction, on left. Watch for signs!

OWNERS: MARVIN & JUNE RIPPE**CLASSIC CARS/
TRACTOR**

- 1958 Chevrolet Impala, 2 door, hardtop
- 1967 Ford Mustang convertible
- McCormick Farmall tractor- tricycle front end

VEHICLES

- 2002 Mercury Mountaineer
- 2008 Nissan Sentra
- 1979 Cadillac
- Electric golf cart

BOAT

- Sun Tracker Bay Buggy Pontoon

TRAILERS

- Flatbed trailer
- Box trailer
- 5th Wheel camper Dutchman Classic

LAWN MOWERS

- Snapper model Z2002K Zero turn mower
- Dixon model ZTR 428 Zero turn mower

**ANTIQUES/
COLLECTIBLES/
PRIMITIVES**

- Newton Wagon
- Historic Missouri Pacific Railroad inspection motor car w/ transport
- Cross cut saws
- Buck saws
- Hay hooks
- Horse hames & collars
- Railroad tie tongs

TOOLS

- 2 Hp air compressor
- Delta 2200 psi power washer
- 10" table saw
- Homelite leaf blower
- Multiple battery chargers
- 16 gal Shop vac
- 2- 2 ton floor jacks
- 3 ton floor jack
- 10" compound miter saw
- 3- yard trimmers
- Sidewalk edger
- Makita 6" angle grinder
- 7 1/4" skilsaw
- Front tine garden tiller
- Craftsman tool boxes
- Various wrenches & sockets
- Handyman jack, jack stands
- Portable air tanks
- Lawn mower jack
- Extension ladders
- Step ladders
- Yard sweeper
- Numerous pump up hand sprayers
- Large assortment hand/garden tools
- Craftsman framing air nail gun

**HOUSEHOLD/
PATIO**

- BBQ grill
- Outdoor patio furniture
- Nordic Track exercise bicycle
- 2 complete bedroom sets
- Queen beds, chest of drawers, dressers, nightstands
- Small deep freeze
- Grandfather clock
- Curio cabinet
- Coffee tables
- Sofa, loveseat & 2 recliners
- Solid oak rolltop desk
- China cabinet
- Antique powder table w/ mirror
- Large assortment western decor
- Collectible bells, what-nots
- Household, kitchenware, glassware & misc too numerous to mention

**FOR MORE PHOTOS, VISIT OUR WEBSITE CHEYNEYAUCTIONS.COM OR FIND US ON FACEBOOK!****Cheyney Auction Company, LLC**

Real Estate • Livestock • Farm & Ranch • Equipment • Household • Antiques

Travis Cheyney, Auctioneer • Buddy Boyd, Ringman**417-543-8751 • cheyneyauctions.com**

ANNOUNCEMENTS Made Day Of Sale By Auctioneer Take Precedence over any Printed Matter. Not Responsible For Accidents. All items sold as is, where is, with no guarantee. Terms of sale: cash, credit/debit card, or check with valid ID.



ESTATE SLABBED & COLLECTOR COIN AUCTION

Sunday, September 25th, 2022 ~ 1:00 PM

LOCATION: Sheldon Community Building, 6th & Main, Sheldon, MO
(Watch For Signs)

Auction For Virgil Josephson Estate



Over 2000 Silver, Slabbed, Uncirculated, Proof & Collector Coins

Over 65+ Silver Dollars Some Slabbed & Uncirculated Inc 1882CC, 1878CC, 1881-O, 1883-O, 1884-O, 1889, 1900-O, 1921 Morgan & Peace, 1925, 1928-S & 1934-D, Large Lot Of Silver Eagles Inc Lots Of Slabbed & Commemoratives, Over 400+ Silver Halves Some Slabbed & Uncirculated Lots Of Key Dates Inc 1917, 1917-D Obv, 1917-S Obv, 1919, 1919-D, 1906, 1907-D, 1909-O, 1909-S, & Hundreds Of Others, Several Silver Quarters Inc 1899, 1902-O, 1911-S, 1916-D, & Others, Several Silver Dimes Inc 1907-O, 1908-S, 1912, 1914-D, Several Silver Bars & Rounds Of Various Kinds, Several Key Coins Inc 1909 VDB Penny, 1950-D Nickel, 1970-D Kennedy Half & Others, Error Coins Inc No Date Cent, 1916 Dime, 1948-D Dime, 1956 Dime, Lg Lot Of Wheat & Indian Head Cents With Key Dates, Large Lot Of

Commemorative Sets Most Silver, Lots Of Book Coin Sets Of Various Kinds, Lots Of Proof & Mint Sets Some Silver, Lots Of Other Slabbed & Graded Coins Of Various Kinds, Lots Of Currency Inc Hawaii \$1 Bill, Red Seals, Silver Certificates & Some Uncirculated Currency, This Is Only A Very Small Partial Listing, There Are Over 2000+ Coins To Sell At Auction On Sale Day. Many Key & 75% Of Coins In Auction Will Be Silver.

This Is Only A Partial Listing. See Website For Complete 124 Lot Listing. Hundreds Of Coins Not Listed

You May Be Asked To Take Picture When Checking In. There Will Be Undercover Police Officers In Attendance At this Auction. Doors Will Remained Locked Until Preview Begins At 11:30 AM.



Auctioneers Note: This Is One Of The Very Best Coin Estate Auctions We Have Had The Privilege To Conduct In Our 25 Years Of Business. Very Rare Opportunity To Purchase Slabbed & Graded Coins At One Time As Well As Key Coins & Currency. 75% Of All Coins Are Silver The Rest Are Very Key Collectible Coins. This Is An Auction You Do Not Want To Miss. Please Plan Now To Attend. **You May Be Asked To Take Picture When Checking In. There Will Be Undercover Police Officers In Attendance At This Auction. See Ya There!!!**

Terms: Cash or check with proper ID. Now accepting most major credit cards. Nothing removed until settled for. Statements made the day of sale takes precedence over printed material. Everything sold as is where is. Not responsible for accidents. Restroom available. Concessions Provided. Check our website for upcoming auctions and for additional pictures!!!



NANCE AUCTION SERVICE

No Matter How BIG or small, We Do Them All!!!



Col. Bill Nance 417-214-0093 In God We Trust Philippians 4:13 Sean Beazley 417-247-6754

Wheeler Livestock Auction, Inc.

Special Stock Cow Sale

Osceola, MO



SATURDAY, SEPT 24, 2022 • 6:00 P.M.

Expecting 800 head of Outstanding Cow/Calf Pairs and Heifers

Freeman-

- 2 Reg Red Ang bulls 2-3y/o. CE bulls with good genetics.

Reynolds Farm-

- 4 Red Gelb bulls, 16mo. Good Bulls.

Don Schapler-

- 2 Reg Beefmaster bulls, 16mo. Home-raised, selling w/papers.

Chuck Mitchem-

- 4 Blk GelbX bulls 18mo, w/ excellent Judd Ranch genetics.

Montgomery Farm-

- 47 Outstanding Ang 2y/o hfrs 1,150lbs w/47 Ang sired clvs 400lbs. Hfrs bred back to Ang bull.

B&A Livestock-

- 24 Red Ang hfrs 2y/o, 1,050lbs w/10 clvs. Rest bred 3rd to Red Ang bull. 12 Blk Ang hfrs 2y/o, 1,100lbs w/6 clvs. Rest bred 3rd to Blk Ang bull. The above 36 hfrs are gentle, calving daily

Charley Steinmark Farm-

- 16 Fancy Red Saler hfrs 2y/o, 1,150lbs. Bred 3rd to Saler bull. Hfrs will calve Oct 1st for 45 days. Charley has had Saler cattle for 40yrs. Buys the best bulls. They are fancy home-raised and gentle.

Welch Family Farms-

- 16 Fancy blk 2y/o hfrs, 1,100lbs w/16 AI sired Ang clvs, 200lbs. 10 Blk cows 3-4y/o, 1,150lbs, bred 3rd to Ang bull. 15 mix blk & red cows, 4-6y/o, w/15 clvs, 250lbs. The above cows are good gentle, all shots & tagged to match.

Agape Ranch Cowherd Dispersal-

- 36 Fancy Blk & BWF cows 3y/o, 1,100lbs w/36 Ang clvs, 400lbs. Cows bred back to Ang bulls. 14 cows 4-6 y/o, 1,250lbs, bred 3rd or w/babies. Bred Ang. The above 50 cows all born & raised on the ranch. Complete health program. All work done.

Bob Berry Dispersal-

- 40 Red AngX cows 4-6y/o, 1,200lbs, bred 2nd & 3rd to Herf or Char bull. 30 CharX cows 4-6 y/o, 1,250lbs, bred 2nd & 3rd to Herf or Char bull. 80 Blk & BWF cows 4-6y/o, 1200lbs Bred 2nd & 3rd to Ang or Herf bulls. The above 150 cows have 10 clvs now, more by sale day. Complete health program & gentle. Selling due to drought.

Wilson Farm-

- 26 Outstanding Ang Cows 5y/o, 1,300lbs w/26 BWF clvs sired by Jamison bulls. 30 Ang Cows 5y/o, 1,300lbs, bred 2nd & 3rd to Ang or Char bull. 10 mix char & red cows 5y/o, w/clvs or bred 3rd. The above 66 cows are big, gentle & good calf raisers.

Russel Johnson-

- 10 Ang cows 3y/o, 1,200lbs w/10 clvs 400lbs. 15 Blk cows 4-6y/o, 1,200lbs w/15clvs 400lbs. 15 Blk cows 7-BM, 1200lbs, w/15 clvs 400lbs. The above 40 cows are all home-raised w/outstanding clvs. Cows bred back to Blk Lim-Flex bulls. Selling due to drought.

Bram Farm Dispersal-

- 12 Blk & BWF cows 4-6y/o, 1,100lbs w/12 clvs up to 400lbs. Cows bred back to blk SimAng bull. 13 Blk & BWF cows 4-6y/o, 1,150lbs, bred 3rd to

Blk SimAng bull. 16 CharX cows 5-7y/o, 1,250lbs w/16 Ang sired clvs up to 400lbs. Cows are bred back. 14 CharX cows 5-7y/o, 1,250lbs cows bred 3rd to Blk SimAng bull.

Joe Heath-

- 7 Red Ang hfrs 2y/o, 1,000lbs. 18 Red Ang cows 6-7y/o, 1,100lbs. The above 25 cows have 12clvs, 200lbs. Rest bred 3rd to red Ang bull. Good red Ang cows selling due to health reasons.

S&P Farms-

- 40 Blk 3-5y/o, 1,200lbs, bred 2nd & 3rd. Good Cows bred to good Ang & SimAng bull.

Gary Mahlock-

- 6 Blk cows 3-6 y/o, w/ 6 clvs, 300lbs. Cows bred back to Herf. 7 CharX cows 3-6y/o, w/clvs or bred 3rd. 1 Char bull 3 y/o.

Troy Winder-

- 12 mix cows 5-7y/o, 1,050lbs, bred 2nd & 3rd. Good gentle home-raised cows. Selling due to health.

Jessie Brown-

- 3 Ang cows 4y/o, w/200lbs clvs. Cows are open.

Roger Drier-

- 13 Blk & red cows 3-7y/o, 1,200lbs w/13 clvs up to 300lbs. Selling due to drought.

Ellis Farms-

- 9 Blk & BWF cows 4-5 y/o, w/9 clvs 200lbs.

Attn: Cattlemen some very outstanding cattle and pairs. Also, our 4th annual Customer Appreciation lunch will be Thursday October, 6th starting at 10:30am. Join us and enjoy and a steak sandwich on us.

OCTOBER STOCK COW SALE • OCTOBER 29TH



Wheeler Livestock Auction, Inc.

Osceola, MO 685 SE 13 Hwy., PO Box 560 BARN 417-646-8102

Byron Wheeler-417-777-0897 • Les Tennis-417-466-8786
Red Whistance 417-276-7909 • Burleigh Wheeler-417-840-6561
Darwin Hearting-417-296-1029 • Kevin Wade-660-492-3279
Tim Sherrer 573-855-1951

Office Manager: Sarah Wheeler, 417-399-4947

Marketing Manager: Sue Hemenway

**Bid online on CattleUSA www.wheelerlivestock.com
Like us on Facebook-Wheeler Livestock Auction**

ESTATE AUCTION

Monday, September 26th, 2022 ~ 10:00 AM

**LOCATION: 402 North Walker, Webb City, MO; GPS Will Get You There
(Watch For Signs)**

Auction For Shirley Ryan Estate



Antique, Modern Furniture & Appliances

Ant Oak 3 Stack Lawyers Bookcase, Ant Mirrored Door Gentleman's Armoire, Ant Display Cabinet, Ant Gossip Bench, Ant Twin Bed, Ant Cherry Desk, Ant Mantle & Wall Clocks, Ant Chairs, Ant Wood Magazine Rack, Ant Wood Plant Stands, Ant Cedar Chest, Several Ant Tables, Ant 3 Pc Prim White Bedroom Suite Inc Full Bed, Dresser W/Mirror, Chest Of Drawers, 2 Ant Roll Around Carts, Lg Prim Wardrobe, Ant Retro Ottoman, Very Lg Lot Of Ant & New Rugs, Fireplace Heater Insert W/Mantle, Lots Of Ant Ornate Lamps, High End Seiko Working Clock, Oak Corner Curio Cabinet, Ant Pictures & Mirrors, Round Kitchen Table & Chairs, China Cabinet, Hope Chest, 4 Recliners Inc 1 Leather, Leather Couch, End Tables, TV's, Fish Aquarium W/Stand, Handicap Supplies, GE Refrigerator, Washer, 25 Cu Ft Chest Deep Freeze, Microwave, Other Items Not Listed

Antiques, Collectibles & Households

Ant Metal Dunlop Tire Metal Sign From Original Cartersville Station, Ant Glass Mailbox, Cast Iron Pcs, Crock Pcs Inc Bowls & Others, Ant Yard Gate, Ant Phones, Ant Reel

Mower W/Advertising On Handle, Ant Metal Minnow Bucket, Ant Wood Ladders, Lots Of Ant Bottles & Jars, Old Toys Of Various Kinds, Galvanized Pcs, Lg Lot Of Coke Collectibles Some Old, Old Yardsticks, Very Lg Lot Of Old & Costume Jewelry & Watches, Lg Lot Of Sewing & Quilting Supplies, Lg Lot Of Wind Chimes, Lg Lot Of Knick Knacks Inc Ducks, Pigs, Frogs, Turtles, & Others, Cookie Jars, Old Oil Lamps, Ant Glassware Of Various Kinds Inc Red, Blue, Amber & Others, Ant China Set, Old Wood Advertising Boxes, Old Dolls, Old Christmas & Other Holiday Décor, Pots, Pans & Dishes Some Old, Other Items Not Listed

Camper, Tools, Outdoor Related Items

Pickup Bed Camper For Long Bed Truck, Electric Push Lawn Mower, Wheel Barrow, Sm Hand Tools, Sm Electric Tools, Long Handle Tools, Steel Posts, Live Trap, Trampoline, Basketball Goal, Porch Glider, Good Redwood Patio Furniture, Lg Lot Of Flower Pots, Lg Lot Of Yard Décor, Lots Of Concrete Blocks, Lots Of Concrete Yard Edging & Stepping Stones, Dog House, Water Transfer Tank, Other Items Not Listed



Auctioneers Note: It Is An Honor To Be Conducting This Auction For The Ryan Estate. There Are Over 60 Years Of Collecting In This Estate. This Auction Will Have Something For Everyone From Antique & Modern Furniture To Excellent Antiques, Primitives & Households As Well As Pickup Bed Camper, Tool & Outdoor Items, Lg Lot Of Old & Costume Jewelry Also Lg Lot Of Good Small Antique & Primitive Items. Just An All Around Excellent Auction. Please Plan Now To Attend. **Sale Order: Antique, Modern Furniture & Appliances Will Sell First Followed By Antiques, Primitives & Households. Camper, Tools & Outdoor Will Finish Auction. See Ya There!!!**

Terms: Cash or check with proper ID. Now accepting most major credit cards. Nothing removed until settled for. Statements made the day of sale takes precedence over printed material. Everything sold as is where is. Not responsible for accidents. Restroom available. Concessions Provided. Check our website for upcoming auctions and for additional pictures!!



NANCE AUCTION SERVICE

No Matter How BIG or small, We Do Them All!!!



Col. Bill Nance 417-214-0093 In God We Trust Philippians 4:13 Sean Beazley 417-247-6754

MOTOR HOME-SAND RAILS-MOTORCYCLES-TRAILERS-TOOLS AUCTION**SATURDAY SEPTEMBER 24TH, 2022 • 10:00 AM****LOCATED: 266 GREEN ACRES RD, LAMPE MO**

FROM HIGHWAY 13 & HIGHWAY 86 GO WEST ON HIGHWAY 86 FOR 5.8 MILES TO NAUVOO RD, TURN RIGHT GO 2.0 MILES TO GREEN ACRES RD, TURN RIGHT GO 3/10 MILE TO AUCTION ON RIGHT. WATCH FOR SALE SIGNS, BREAKFAST & LUNCH AVAILABLE

**FOR PICTURES SEE WEBSITE OR AUCTION ZIP.COM
TO PREVIEW CALL 417-830-0153**

LETTER OF CREDIT ADDRESSED TO MELTON AUCTION & REALTY REQUIRED FOR ANY PURCHASE OVER \$5000

MOTOR HOME-MOTORCYCLES-SAND RAILS-TRAILERS

GEORGIE BOY LANDAU MOTOR HOME 32 FT, TRITON V10 GAS MOTOR, 2 SLIDE OUTS, ONAN 50 AMP 5KW GENERATOR, 2 ROOF A/C, BACK UP CAMERA, 6 GAL HOT WATER HEATER, 3 WAY FRIDGE, QN SZ BED, HYD LEVELING SYSTEM, 41,500 MILES—2007 HARLEY DAVIDSON NIGHT TRAIN MOTORCYCLE 113 CC, RACE PIPES, RHINE HART SCREAMING EAGLE AIR INTAKE, NEW TIRES, 19,000 MILES—2008 HARLEY DAVIDSON SPORTSTER 1200 HARD SADDLE BAGS, LESS THAN 900 MILES,—SINGLE SEAT SAND RAIL IRS SUSPENSION, ALUM FRONT END, RACK & PINION STEERING, 1835 CC, DELLORTO DUEL CARBS, TURNING BRAKES, PERFORMANCE CLUTCH, MOTOR BLUE PRINTED—FUGITIVE SAND RAIL 1915CC DUAL WEBER CARBS, SWING AXLE REAR END, ALUM FRONT END MOTOR BLUE PRINTED, NEW PERFORMANCE CLUTCH RACK & PINION, TURNING BRAKES—5'X6' CARRY ON TRAILER 2000 LB AXLES, NO TITLE—6'X12' UTILITY TRAILER W/RAMP—4'X8' 2 WHEEL UTILITY TRAILER, NO TITLE—1 PR SAND TIRES UNLIMITED 1300+ 5 HOLE ALUM WHEELS—1 PR ELIMINATOR EXTREME 16.50 5 HOLE ALUM WHEELS—LOTS OF MISC PARTS FOR SAND RAILS—FALCON 2 TOW BAR—REMOTE 33 GAL GAS TANK W/PUMP FOR PICKUP—2003 GMC REAR SEAT

TOOLS

TACTICALCRAFTSMAN 5 DRAWER TOOL BOX W/BASE—CRAFTSMAN 3 DRAWER W/12 DRAWER BASE TOOL CHEST—STANLEY 4 DRAWER W/2 DRAWER BASE TOOL CHEST—PLYWOOD PANEL SAW—HUSQVARNA 24D CHAINSAW—CRAFTSMAN 14" ELECT CHAINSAW—B&D 16" ELECT HEDGE TRIMMER—CRAFTSMAN 3 GAL PORTABLE AIR COMPRESSOR 1 HP—(2) CRAFTSMAN WET/DRY VAC'S 5 HP—BOSTITCH TRIM NAIL GUN—BOSTITCH LPF28WW NAIL GUN—DEWALT DRILLS—DEWALT BATTERY CHARGERS—MILWAUKEE RECIPROCATING SAW—DEWALT D25223 HAMMER DRILL—B&D ROUTER—ASSORT ELECT SKILL SAWS—(2) BATTERY CHARGERS—ASSORT ELECT HAND GRINDERS—TABLE TOP GRINDER—JIG SAWS—LOT'S TRAILER HITCHES—LUG WRENCHES—HAND SAWS—LARGE LOT TOW STRAPS—RYOBI 10" PORTABLE SAW—STANLEY TOOL TOTE W/WHEELS—HANDY MAN JACK—5 PR JACK STANDS—FLOOR JACKS—BOTTLE JACKS—TABLE TOP MASTER FORGE GRILL—KEROSENE HEATER—LARGE ASSORT SOCKETS, SCREWDRIVERS, EXTENSION CORDS, BOLT CUTTERS, CHANNEL LOCKS, PLIERS, CRIMPING TOOLS, PIPE WRENCHES, HAMMERS, SOCKET SETS, CRESCENT WRENCHES, TAPE MEASURES, SLEDGE HAMMERS, SPLITTING MAULS—TROUBLE LIGHT & STANDS—LIFTING SLINGS—GARDEN TOOLS

FURNITURE & MISC

SONY 32" & 46" TV'S—(2) LEATHER SWIVEL RECLINERS W/FOOT STOOLS—MONSTER DRINK PORTABLE FRIDGE—METAL LAWN SWING—WOODEN BIRD HOUSES—1 LOT HOUSEHOLD GOODS—STEREO, ELECTRONICS & SPEAKERS—LG LOT CHRISTMAS ITEMS—SM ASSORT NASCAR & MOTORCYCLE MINIATURES—HARLEY DAVIDSON DIE CAST MOTORCYCLES IN BOX—HARLEY DAVIDSON T SHIRTS, LEATHER JACKETS, CHAPS, GLOVES, BANDANAS, PLAYING CARDS—LIFE JACKETS—CAMO CLOTHING—MISC ROD & REELS—LURES & TACKLE BOXES

OWNER: JAY & HARLIE KOTH**"VERY LARGE AUCTION WITH EXCEPTIONAL MERCHANDISE, YOU WON'T WANT TO MISS"**

ANNOUNCEMENTS MADE ON SALE DAY WILL TAKE PRECEDENCE OVER ANY OTHER PRINTED MATERIALS. NOT RESPONSIBLE FOR ACCIDENTS OR LOSS OF ARTICLES ON OR NEAR SALE SITE.

**MELTON AUCTION
& REALTY CO LLC**



meltonauctionrealty.com | roger@meltonauctionrealty.com

Roger Melton | Nixa, Mo | 417-830-0153 or 417-725-1801

Brad Cole | Nixa, Mo | 417-840-2950

Tanner Foster | Galena, Mo | 417-840-5519

601725

THIRD FIEBELMAN TRUST AUCTION

SATURDAY, SEPTEMBER 24, 2022 • 9:00 A.M.

MOFFAT AUCTION CENTER • 467 CO RD 604, LINN, MO

Directions: From Linn, take Hwy. 50 west 1 ½ mi. to Co. Rd. 604, turn left & go 1 mile to building on right, or from Jefferson City, take Hwy. 50 east approx. 18 mi. & turn right on Co. Rd. 604.

This will be the third auction from the Ken Fiebelman Trust. The fourth Fiebelman auction will be Saturday, October 1st.

****PREVIEW FRIDAY, SEPT. 23RD 1 P.M.- 4 P.M.**

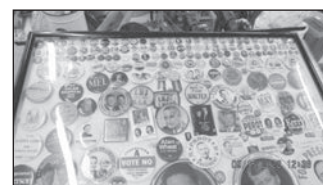
FURNITURE, ANTIQUES & COLLECTIBLES

Walnut blind door cupboard; Tall pie safe; Oak step back dish safe; 3 Oak curved glass china cabinets; 3 Dish safes; Oak bookcase; Oak slag glass 2 door bookcase; 2 Walnut marble top wash stands; Walnut marble top dresser; 3 Walnut marble top tables; Ornate walnut square lamp table; 6 Trunks; 6 Oak cane bottom press back chairs; 4 Oak T back chairs; Bingham print; Many pictures & frames; Photos; 5 Gal. crock churn; 15 Gal. crock; Waterbury shelf clock; Ansonia shelf clock; Seth Thomas OG weight clock; Several wood adv boxes; Political buttons; Wood canes; 20 Oil lamps; Mini lamps; Blue & white stoneware pitchers; Adv. tins; Coffee tins & jars; Old jars; Splint baskets; Graniteware; Photo albums; Cigar boxes; Old buttons; Adv. thermometers; Gone With The Wind lamp; Many old calendars framed; Beer steins; Roseville jardinière; Globes; Soda bottles & crates; Pitcher & bowl; Silver & silver plate; Bookends; Approx. 25 hand stitched

quilts; 10+ Old quilt tops; Quilt blocks; Large amount books; C/I 2 Wheel coffee grinder; Small display cases; Lionel train set; Jewelry; Aluminum pitcher & glasses; Brass teacher bell; Brass bucket; Nodder dolls; Adv ashtrays; Cigarette lighters; Soapstone pcs.; 1904 Worlds Fair spoons; Old keys, Pocketknives; Lots Misc.

GLASSWARE

Cranberry Jack in the Pulpit; Pattern glass water set; Covered compotes; Butter dishes; Cake stands; Cut glass bowls; Green opalescent; Blue opalescent; Fenton; HP China plates, bowls, tankard, pitchers, creamers, sugar & vases; Calendar plates; Red to clear pcs; Shaving mugs; Sets of china; Silver overlay pcs; Game plates; Paperweights; Rose bowls; Cup & saucers; Transfer ware; Flo Blue pcs.; Goofus glass; Coin spot blue opalescent vase; Lemonade set; Toothpick holders; Glass baskets; Berry sets; Beleek pcs; R.S. Germany hatpin holder; RS Prussia plates; Pink elephant powder dish.



See www.moffatauction.com for photos & complete listing

Note: Ken Fiebelman was an antiques collector for over 50 years, dating back to his teenage years. He was also a Missouri historian, having taught school and authored books, and was a state representative for over a decade. He operated an antique shop for years in Salem, Missouri, as well as a museum. Ken was well-known in the antique world during his life, and amassed a massive collection of antiques. We are honored to conduct the liquidation of his collection for the family. If you like fine antiques, please do not miss this auction. Rick

Terms: Cash or good check with proper identification. All sales are final. Everything sells as is, where is. Proper identification is necessary to obtain a buyer's number. Announcements day of sale supersede all printed material. Food on grounds.

RICHARD MOFFAT AUCTION SERVICE



573-761-4293
Jefferson City, MO

Auctioneers:
Richard Moffat & BJ Moffat
www.moffatauction.com

573-690-2823
Linn, MO

Sam CRAWFORD AUCTION SERVICE LLC

Will sell the following located at the North Edge of Pittsburg, MO (Bullseye) to Co. Rd. 296 then West 6/10 mile. Watch for auction signs.

THURSDAY, SEPTEMBER 29TH, 2022 - 9:30 AM

TRACTORS - MACHINERY - TOOLS - GUNS - MISC.



Guns - Sell 9:30

Browning 22 Auto Rifle, Japan
Marlin 12 Ga. Pump
Cross Bow, Compound Bow
Some Ammo

Tractors

Ford 8N, 2 Speed, Rough - Runs
John Deere A - Flat Spoke Rear
Wheels - Not Running
John Deere B - Not Running

Machinery

Pair Front Wheels for 8N
Shop Built Wood Splitter on Trailer
3 Pt. 6' Rock Rake
3 Pt. 6' Finish Mower
3 Pt. 5' Brush Cutter
1 Section Rotary Hoe
2 Bottom Plow on Steel
3 Dump Rakes
Massey Harris 2 Row Planter
JD Horse Drawn Cultivator
McCormick Horse Drawn Mower
Horse Drawn Walking Plow
B/H Single Axle 10' Trailer w/Full Rear
Ramp
Homemade Single Axle Trailer w/
Wood Sides
Older Boat Trailer
Piner Semi Trailer for Storage 30'
12' Aluminum V-Bottom Boat & Trailer,
Evinrude 9.9 Motor
Older Aluminum Boat & Trailer, No Title
2 Pickup Bed Trailers

Tools & Miscellaneous

3 Stihl, 2 Husqvarna, 1 John Deere
Chainsaw
Craftsman 25 HP Lawn Tractor
Power Washer - Gas
Water Transfer Pump
DR Push Trimmer
ATV Tires
Chainsaw Sharpener on Stand
John Deere Bicycle
2 Front Tine Tillers
Shop Series Table Saw
10" Cut Off Saw
Asst. Power Hand Tools
Good Asst. Wrenches, Sockets
Siren
Blacksmith Vise
Welding Rod
Sev. Crowbars
Sev. Rods & Reels
Sev. Boxes Fishing Lures, Tackle
2 Wire Fish Traps
3 Wire Minnow Traps
Minnow Seines
Case of Fence Clips
50 Used Steel Posts
4 Load Locks
Chainlink Dog Pen
Diamond Plate Pickup Tool Box
Squirrel Cage Fan
Metal Saw Horses
Older Comm. Meat Grinder
Sausage Stuffer

Shrink Wrap
Machine
Some Used
Lumber
Poly Water Tank w/Aerator
Med. Chest Freezer
Shelving
Receiver Hitch
Other Misc.

Antiques & Collectibles

10-12 Iron Wheel Wheels - Asst. Sizes
Push Garden Plows
3 - 10 Gal. Milk Cans
Platform Scale Arm
Hand Well Pump
Old Grindstone
Lg. Iron Kettle
Cast Iron Dinner Bell
4-5 Kerosene Lanterns
4-5 Oil Lamps
2 Washboards
Kraut Cutter, French Fry Cutter
Box of Butcher Knives
Meatsaws
2 Collars/Hams w/Mirror
Cast Iron Bath Tub
"Coors" Lighted Sign
Wood Cookstove - Cream
2 Treadle Sewing Machine Frames
Ice Tongs, Yard Art
2 Rattle Snake Skins on Boards
34 Collector Knives - China
Other Items

Sam CRAWFORD Auction Service LLC



TERMS: Cash or good check. Nothing removed until settled for. Not responsible for accidents. Lunch available. Statements made day of sale take precedence over printed matter. All items sell as is. No warranties given or implied.

417-998-6629
Cross Timbers, Mo.

CrawfordAuctionService.com

Sam
417-328-9137

Chase
417-399-1904

Chance, CAI
417-298-1751

Tom Poynter
Jack Lancaster

Lee Pfannenstiel

BUFFALO LIVESTOCK MARKET LLC



276 Hwy 32 W., Buffalo, MO

September 17th, 2022

Receipts: 1143 Head

Weaned Feeder Cattle Steady. Cows & Bulls
Steady. Unweaned & Plainer Feeders
\$10-\$15 Lower.

REPRESENTATIVE STEERS

300-400 @ 175.00 to 215.00
400-500 @ 170.00 to 210.00
500-600 @ 170.00 to 198.00
600-700 @ 165.00 to 182.00
700-800 @ 164.00 to 177.00
800-900 @ 154.00 to 168.00

REPRESENTATIVE HEIFERS

300-400 @ 170.00 to 204.00
400-500 @ 165.00 to 180.00
500-600 @ 160.00 to 181.00
600-700 @ 155.00 to 173.00
700-800 @ 150.00 to 161.00
800-900 @ 139.00 to 150.00

FEEDER BULLS

300-400 @ 165.00 to 201.00
400-500 @ 160.00 to 185.00
500-600 @ 155.00 to 179.00
600-700 @ 150.00 to 161.00
700-800 @ 130.00 to 140.00
800-900 @ 110.00 to 129.00

STOCKS COWS

Bred Cows 1050.00 to 1500.00
Cow/Calf Pairs N/T

SLAUGHTER BULLS

High Yield 110.00 to 117.00
Low Yield 85.00 to 104.00

SLAUGHTER COWS

Fleshy 82.00 to 86.00
Med Flesh 80.00 to 89.00
Thin Flesh 65.00 to 76.00
X Thin Shelly 60.00 Down

* Special Stock Cow & Bull Sale this
Tuesday night at 6:30pm. Watch our
Facebook for pictures of consignments! *

* Unweaned Fleshy Cattle and Plainer
Cattle showing less buyers as weather
changes effect health. *

MON-WED MARKET REPORT

Listen to KJEL 103.7FM • Lebanon or KYOO 99FM • Bolivar

VIEW OUR SALES AT CATTLEUSA.COM

CALL FOR TRUCKING OR ON-FARM VISIT

Lyle Caselman • Owner-Manager
417-345-7876 • mobile 417-533-2944
Leon Caselman • Owner
417-345-4514 • mobile • 417-588-6185

1962 HARLEY SPORTSTER 900CC:
original distributor. \$50. 573-764-3517. Call
in PM.

DRAPES AND CURTAIN RODS: Off-
white, various sizes, \$15 for all obo. 636-
239-2695. Washington.

2 ILLINOIS 1927 LICENSE PLATES: \$25
each. 573-308-5884. Rolla.

**HONDA 2017-4WHL: forest green,
excellent condition, drove 2 times, like new,
manual shift. \$3,000 by appointment. Cell
913-710-2554.**

ESTATE AUCTION

Due to the death of Walter W. Lee, I will sell the following personal property, located from Cuba, Missouri, take Hwy. PP 4 miles to Lick Creek Road. Turn
left on Lick Creek Road and continue 2 miles to auction. Follow Lorts Auction Today signs on

SATURDAY, SEPT. 24, 2022 AT 8AM

FARM MACHINERY, SHOP EQUIPMENT & RELATED ITEMS Farmall Cub tractor w/new rear tires, one bottom; plow & flail mower; 2005
20 ft. x 8 ft. closed in van trailer w/right hand; side door & fold down rear door w/inside wench; to pull in buggy w/compartments for horses; Komatsu propane
fork lift, model #FG20S; (not running); 1997 Dodge Ram 3500 dually, V10 Magnum; motor; 2 wheel drive w/fifth wheel hitch, white; (good rubber); 1994
GMC Vandura 2500 van w/Crown River; brand handicap drop down ramp, 93K miles; 1085 Massey Ferguson tractor w/cab, 3 pt. pallet; forks, dual hydraulics,
Perkins diesel; (good rubber); 16 ft. jon boat w/trailer (no title); 40 John Deere w/narrow front & front weights; (not running); 40 John Deere (parts)

HOUSEHOLD, FURNITURE & ANTIQUES Water coolers; Old bicycles; Old gas cans; Blue granite chuck wagon dishes/cook set; Oil lamp parts &
globes; Cast iron cookware; Western decor & pictures; Cast iron bean pots; 20 inch cast iron skillet; Lodge cast iron skillet set; Several wooden bowls; Maple
hutch; Louis Lamar paperback & hardback books; Bona 5 string banjo w/case; Frank McCarthy signed, dated & numbered framed; pictures; Queen handmade
quilt (hand quilted); King handmade quilt (machine quilted); Amber nursery rhyme child dish & bowl (rare)

HORSE DRAWN WAGON & RELATED EQUIPMENT Several horse drawn wagon frames to be; redone w/wooden spokes; Several buggy frames
for restoration; 10 ft. barrel type wood steamer; Lots of wagon parts & hardware, snaps & buckles; Several iron wheels; Buggy parts & pieces; 6x10 wood M
series dryer (model; MCCB050UA0A0A); Wells Fargo stage coach money box; Lot of harness equipment; Bridles; Lots of wooden wagon wheels (all sizes);
Buggy whips; Stage coach body; Leather & upholstery material; Wagon seats & springs; Horse hames; Several old wagons to be restored; (freight/John Deere);
Lots of dried 1 inch lumber; Several wagon bench seats & springs; Wooden coffin; Wood beam plow; Several wooden wagon wheels (all sizes)

HORSE DRAWN HEARSE 1880 Rock Falls 4 poster horse drawn hearse. Will accommodate up to 32 inch casket. Museum condition. Owner has right to
reject last and final bid.

MANY MORE ARTICLES TOO NUMEROUS TO MENTION

OWNERS: JOYCE LEE • 3208 LICK CREEK ROAD, LEASBURG, MO 65535; AUCTIONEER'S NOTE: Walt was a craftsman of building horse drawn
carriages, stage coaches and buggies. He also specialized in metal crafting. He built and revamped all kinds of wagons over the years. Mark your
calendar for Saturday, September 24 and make plans to attend this good auction.. Auction held rain or shine!

TERMS: Not responsible for accidents or losses, should they occur. Nothing removed until paid for. No buyers fee. Lunch Served. ALL
ANNOUNCEMENTS MADE SALE DAY TAKE PRECEDENCE OVER ALL PRINTED MATERIALS, Cash or check with photo I.D., No debit/credit cards.

SALE CONDUCTED BY LORTS AUCTION SERVICE ST. JAMES, MO 65559

AUCTIONEERS: Larry W. Lorts & Gary R. Lorts Licensed and Bonded • 573-263-1509 & 573-263-0243
"like" us on Facebook- Lorts Auction Service or view this auction on line at www.threeriverspublishing.com or Auctionzip.com (auctioneer ID # 42353)

**RUBBER & LEATHER BOOTS AND
HIP WADERS.** Men's 11, Women's 7, some
insulated. \$15-\$40 obo. 636-239-2695.
Washington.

TINY HOMES: We gottem 573-881-3283

5 GAL. PLASTIC BUCKETS: with lids. \$3
each. 636-239-2695. Washington.

**HEARTH CRAFT GLASS BI-FOLD
FIREPLACE DOORS PURCHASED
AT FORSHAW'S FIREPLACE:**
Antique brass. \$160 obo. 636-239-2695.
Washington.

KITCHEN FAUCET MOEN: Single lever,
sprayer, new cartridge. \$45 obo. 636-239-
2695. Washington.

CLINES EQUIPMENT Co., LLC FALL CONSIGNMENT AUCTION

20133 LAWRENCE 2220, AURORA, MO 65605

Saturday October 1, 2022 • We are taking consignments NOW!

Located 1 mile East of Jct. 60 & Hwy. 39 on US Hwy. 60 or .9 miles West of Bus. 60 On US Hwy. 60



**CONSIGN EARLY
FOR MAXIMUM
INTEREST IN
YOUR ITEM!**



FOR MORE INFORMATION CALL
OFFICE 417-678-0049 or CELL 417-830-0912
CLINESEQUIMENT@GMAIL.COM

Pictures and additional listings may be seen at
[HTTPS://WWW.AUCTIONZIP.COM/LISTINGS/](https://www.auctionzip.com/listings/)

**TRUCKING
AVAILABLE
IF NEEDED.**

CERAMIC CANISTER SET: With cutting board that fits in kitchen counter-top. Various species of ducks on surface. Set \$30 obo. 636-239-2695. Washington.

DARDEN PROFESSIONAL TIMBER HARVESTING, BUYING STANDING TIMBER: Great prices, improve wildlife habitat and improve forest health. State Certified & Fully Insured! 573-247-4808. Salem.

POOL TABLES: Installations, moves, recovers, repairs, accessories, etc. 573-646-1700.

1977 D6D BULLDOZER FOR SALE: Good undercarriage, good machine. \$30,000. 336-466-2391. Falcon.

OAK DINING TABLE & 6 CHAIRS: Very nice. \$150. 417-733-2818. Conway.

SENNHEISER E835S MIC: With on/off switch and case. Never used \$65. 417-844-4319. Springfield.

FOR SALE 2002 SALEM BY FOREST RIVER: 32" bumper pull camper, very good condition, has 12.5FT pull out. 417-547-4503. Seymore.

WINCO GENERATOR: 25,000 watts, on metal 2-wheel trailer. \$2,000. Will consider offers. 417-259-1735.

GRAVITY WAGON: 330 bushel, 20" truck tires, always shedded. Sharp. \$2,000. 573-378-5180. Versailles.

BOAT: 16FT Low line aluminum, 50 horsepower Evinrude engine, 3 custom seats & trailer. \$1150. 417-753-2747. Rogersville.

ALFALFA HAY FOR SALE: Big round silage bales. 417-343-4958. Seymore.

Miller County

REAL ESTATE & PERSONAL PROPERTY AUCTION

• SATURDAY, SEPT. 24, 2022 AT 10 AM •

Auction & Property Location:
233 Highway 87, Eldon, MO 65026

Directions: From the north east edge of Eldon, MO take Highway 87 north 2 miles to the Dummermuth property on the left side of the highway.

THE REAL ESTATE CONSISTS OF 205 +/- ACRES OFFERED IN 4 TRACTS RANGING FROM 4 ACRES WITH A BEAUTIFUL NEW SHOP, TWO HOMESTEADS WITH ACREAGE TO 109 ACRES OF PASTURE. THE PROPERTY IS LOCATED IN TOWNSHIP 42N, RANGE 15W, SECTION 22 OF MILLER COUNTY, MO.









PERSONAL PROPERTY INCLUDES:
 TRACTOR & FARM EQUIPMENT, PICKUP & ATV,
 LIVESTOCK EQUIPMENT, HAY BALES, FUEL TANKS & MISC.,
 PORTABLE BUILDING





Visit wheelerauctions.com for more information!

SELLERS: TRISTAN & JANA DUMMERMUTH

Wheeler AUCTIONS & REAL ESTATE

23101 HWY. 24, PARIS, MO 65275 | 660-327-5890
WWW.WHEELERAUCTIONS.COM

For more Information call
 Charlie Nordwald
 at 636-795-4552 or
 visit wheelerauctions.com.

NOW TAKING CONSIGNMENTS FOR **ANNUAL** Leadmine Community Consignment **AUCTION**

Saturday, October 22 - 9:00AM

LOCATION: 839 Hwy T. Tunas, MO 65764 @ The Leadmine Produce Auction Facility. **DIRECTIONS:** From Buffalo, MO, go North on Hwy. 73, Turn Right on Hwy. E (at Tunas, MO) Go 4 miles To Hwy. T, Turn Right and go South ½ mile to Auction Site on the right.

CONSIGNMENT UNLOADING WILL BE OCTOBER 19, 20, 21 - 9:00AM-5:00PM. FOR CONSIGNING CONTACT KENNETH WENGER AT 207 SCHOOL ROAD IN TUNAS, MO 65764 GUN CONSIGNMENTS CONTACT: STUART ZIMMERMAN AT 205 ST. RD. E, TUNAS, MO 65764 OR CALL: LARRY MARTIN @ 660-337-6471 OR HERMAN HOSTETLER @ 417-327-7720

CUT-OFF FOR YOUR CONSIGNMENT LISTING IN THE NEWSPAPER AD -OCTOBER 7, 2022

FARM MACHINERY, SUPPLIES & EQUIPMENT, HORSE DRAWN EQUIPMENT, TOOLS, TRAILERS, GUNS, HUNTING, BUILDING SUPPLIES, FURNITURE, SMALL ANIMALS (IN CAGES), LAWN & GARDEN, SUPPLIES

MINIMUM \$2 PER TICKET
 \$2.01 TO 100 = 20% • \$101 TO 1,000 = 15%
 \$1,001 TO 2,000 = 12% • GUNS 12%
 SINGLE ITEM OVER \$2,000 = 8% (\$450 CAP)

Terms & Conditions: Cash or check with valid I.D. Nothing removed until paid for. No smoking inside building. Announcements made day of sale take precedence over printed matter.


NO JUNK. NO TV'S OR RELATED ITEMS.
 WE RESERVE THE RIGHT TO REFUSE CONSIGNMENT.

HOSTETLER'S AUCTION SERVICE
 417-327-7720
 4392 HWY. FF, HALFWAY, MO • HERMAN HOSTETLER, AUCTIONEER
MARTIN AUCTIONS
 1-660-337-6471

CASE 1394 TRACTOR: Cab with loader, has Case 1394 Tractor operator's manual. 1,448 hours. No air-conditioning. 90% Rubber. \$15,000. Will consider offers. 417-259-1735.

AKC REGISTERED PEMBROKE WELSH CORGIE: D.O.B. 7/02/22, U.T.D. on shots, very colorful, great breeding stock. \$600. 417-259-9738.

NEW/USED PARTS: Vehicles, Semi's Machinery, "Motors/Tranny's," "Body Parts," "Warrantied/Delivery." 800-807-9612.



MID MISSOURI STOCKYARDS


REGULAR SALE EVERY THURSDAY 11AM

COW SALE • OCTOBER 1ST AT 6 PM

WATCH OUR WEEKLY SALE IN REAL TIME ON DVAUCTION.COM

For Farm Visits, Market Updates, or Trucking
Call **Zach Cox 417-777-1320**
Dan Romine 573-578-4939

**Competitive Buyers!
Competitive Commission!
Competitive Market!**

Barn: 417-532-9292 

I-44 • Exit 123 "just outside of Lebanon"
17505 Route 66, Phillipsburg, MO 65722

For weekly market updates, visit us at
www.midmostockyards.com

15 Y/O BOY LOOKING FOR EVENING JOBS: Leave a message. 724-815-5279. Hartville.

LAKE OF THE OZARKS FALL SPECIAL: Lots \$4,950 - \$125 down, \$69 per month. Beautiful trees, free lake access and boat ramps, lots are a short distance from the lake, no credit checks, owner financing, immediate possession or own for investment. Also: acreage tracts. Missouri conservation boat ramp with covered dock and rest rooms nearby. **Prices good through October 10, 2022.** Hwy 135 between Stover and Sunrise Beach, MO. Take Lake Road 135-12 to the Ivy Bend Land Office. Closed Tuesdays and Wednesdays. Call anytime. 573-372-6493.

CHINA CABINET: For Sale. \$125. Small Round Table. \$40. Poster Bed. \$175. 417-741-1232.

IRON PIG CUSTOMS LLC: Custom fabrication metal décor, automotive arts & CNC Plasma. 417-322-5827. Stoutland.

84 PETERBILT 359 LONG HOOD B MODEL CAT: 15 speed transmission, good condition. Also, 2004 Wilson Cattle Pot: 53FT., triple axel. Would like to sell together. Contact Shane Leer 417-588-0602 or 417-589-2039. Contact in the evening.

STUBBEN SIEGFRIED HUNTSEAT SADDLE: 15" with irons, leathers & new cover. Excellent condition. \$550. 417-622-4317. Mountain View.

WANTED YOUNG CATS: Born bobbed tailed or tailless. 573-205-9415. Leave Message Will Return Call.

LARGE ELIPTICAL: \$130. Also, Electric Leg Massager + more. Good condition. \$50. 573-465-0386. Rolla.

BOBCAT 753 DIESEL SKID STEER LOADER: \$11,000. 573-765-4406. Richland.

MUMS: Mums at the Highpoint Greenhouse in Hartville. 9337 Warner Rd. 417-741-2198. Hartville.

3 METAL WOOD PLANES: \$25 Each. Also, 3 Wooden Wood Clamps \$25 Each. 417-457-1023. Raymondville.

197 +/- Ac. Of Exceptionally Maintained Land Callaway, County

Sells to High Bidder Regardless of Price



**Offered In Two Tracts or Entirety
Perfect For Horses, Cattle & Raising A Family! Wildlife Galore!**

Tract 1: 100 +/- Acres • Endless Trails for Exploring • Pond • Deer Stands • Beautiful Building Sites

Tract 2: 97 +/- Acres • 3 or 4 Bedroom, Well Cared For Family Home with Walkout Basement • Workshop • Pond • 2 Car Detached Shop • 2 Livestock Barns

Open House Dates:
Thursday, September 15 | 4-6 p.m.
Thursday, September 22 | 4-6 p.m.

Online Bidding Ends:
September 29th at 12:30 p.m.

**2707 County Road 228
Fulton, MO (Millersburg Area)**

**Check It Out & Bid At
AtterberrySells.com**



ATTERBERRY
AUCTION & REALTY COMPANY

www.AtterberrySells.com
573-474-9295



ONE OWNER, CUSTOM BUILT BRICK HOME SELLS TO HIGH BIDDER!



Very Well Cared For Ranch Style Home With Split Bedroom Design

Perfect Home For A Family or Retiree

3,000+ Square Feet, 3 or 4 Bedrooms & 3 Full Bathrooms

Finished Walkout Basement with Plenty of Storage Space

Located in a Beautiful Neighborhood Off Country Club Drive

Also Selling Household Furniture and Accessories, Wood Working Tools, and Much More!

**304 Monterey Drive
Jefferson City, MO**

Open House Dates:
Tuesday, September 13 | 12-1 p.m.
Tuesday, September 20 | 4:30-5:30 p.m.

Online Bidding Ends:
Tuesday, September 27 | 12:30 p.m.

**Check It Out & Bid at
AtterberrySells.com**

**Atterberry Auction & Realty Co...
Your Real Estate Auction Specialists**



ATTERBERRY
AUCTION & REALTY COMPANY

www.AtterberrySells.com
573-474-9295



FOR SALE: White Dorper Ewe Lambs of various ages. 417-464-0002. Seymore.

ROUND TABLE: With Leaf insert. \$325. 417-741-1232.

120 BRED COWS: Late 2nd & 3rd period. 3-7 years old. 1, 250lb. Trucking available. 660-619-5190.

WE DO TREE SERVICE: Tree removal, stump grinding, lawn clearing. Free estimates. Serving West Plains & Surrounding Areas. Call The Tree Monkey Arborists. 417-293-3417.

A FRAME: 11FT wide x 10FT tall \$400. 3. John Deere 2-row corn planter \$400. 6FT Brushhog \$550. 3.5" Tubular Bale Forks \$400. 16FT Double Axle Trailer \$4,500. 8FT Truck Dump Bed \$700. 816-699-6851. Creighton.

06 CHEVY MALIBU: 218,000 miles, runs and drives good. \$3,500. 417-646-8807.

SLAB WOOD: For Sale. \$10/bundle. 417-468-2255. Conway.

CASE 580B DIESEL: Backhoe Loader. \$9975. 573-765-4406. Richland.

VERMEER TM800 PULL TYPE 10FT DISK MOWER: \$7,750. 573-765-4406. Richland.

I AM LOOKING FOR LAND TO RENT TO GROW WHEAT: I can pay a good rate per acre for land that is fairly level, decent soil and in a 30 mile radius of Marshfield. I am looking for 80-500 acres. 417-741-2288. Marshfield.

FREE ROOM: Good food, Utilities in exchange for light caretaking. 775-997-5913. Lebanon.

CONSOLIDATED ELECTRIC SERVICE IS LOOKING FOR AN EXPERIENCED MECHANIC: Work will include small engine repair to heavy duty diesels and Altec equipment. Welding, and fabricating experience, Missouri inspection license, Class A CDL and owning your own tools is a plus. Must have a clean driving record and be able to work in a drug free workplace. We offer competitive wages, paid health and dental, retirement, paid vacations and holidays. If interested, please call 417-588-9562 or send resumes to jburgessces@aol.com

NEW HOLLAND 7230 DISCBINE: With Roller. \$17,300. 573-765-4406. Richland.

FALL FERTILIZER ORGANIC CHICKEN LITTER: Delivered Trailers. \$125/T. 800-807-9612.

JOHN DEERE 469 ROUND BALER: Monitor, kicker, net wrap, big tires. Nice. \$28,500. 573-765-4406. Richland.

IHC 1086 DIESEL TRACTOR: Cab & Cold Air. \$13,000. 573-765-4406. Richland.

NEW HOLLAND 258 RAKE: \$1,800. 573-765-4406. Richland.

JOHN DEERE 920 DISCBINE: With Rollers. \$7,500. 573-765-4406. Richland.

IHC 1086 DIESEL TRACTOR: Cab & Cold Air with Westendorf TA-28 Loader. \$22,500. 573-765-4406. Richland.

JOHN DEERE 466 ROUND BALER: Monitor, Kicker 4x6. \$4750. 573-765-4406. Richland.

BRUSH HOG 2615 15FT HYD. FOLD BRUSHCUTTER: \$6,750. 573-765-4406. Richland.

IHC 8FFT WHEEL DISK: \$2,100. 573-765-4406. Richland.

JOHN DEERE 3055 DIESEL CAB & COLD AIR TRACTOR: With J.D. 148 Loader. \$21,750. 573-765-4406. Richland.

COINS, CURRENCY, AMMUNITION, SPORTSMAN GEAR, AND MORE



**Online Auction Ends:
Tuesday, September 27
12:30 p.m.**

**Located At:
23251 Indian Springs Road
California, MO**

**Check It Out & Bid at
AtterberrySells.com**

**Atterberry Auction & Realty Co...
Your Real Estate At Auction Specialists**



CHARMING 1900'S HOME 1/2 ACRE VACANT LOT STURGEON, MO



Sells To High Bidder Regardless of Price

1,500+ Sq. Ft., 3 Bedroom 2 Bath Home
Original Wood Trim & Hardwood
Covered Front Porch & Rear Wood Deck
Lawn Building
200' x 120' Vacant Lot - Offered Separately*

**Open House Date:
Monday, September 26 | 5 - 6 pm
Online Bidding Ends:
Thursday, October 6 | 12:30 pm**

306 E. Stone St., Sturgeon, MO

**Also Selling Personal Property Items
Including:**

Low Mileage 2016 Chevy Colorado Pickup Truck
Appliances
Riding Lawn Mowers
Household Furniture and Décor
Roseville Pottery

(Personal Property Auction Ends Tuesday,
October 18th at 12:30 p.m.)

**Check It Out & Bid at
AtterberrySells.com**



WETENDORF WL-42 LOADER: IHC Mounts. \$3,600. 573-765-4406. Richland.

WEATHERED BARN WOOD SIDING: 10" wide. 573-729-7226. www.pineridgerustic.com Salem.

Clark, 195 pages, hardback, lots of color photos, \$10. 417-532-2045. Lebanon. (Leave message and phone number).

WANTED: Old Pinball Machines and Juke Boxes. 573-424-7200.

NEW MOBILE HOME STOCK: Just received (5) new units, they gotta go! 573-657-2176. amegamobliehomes.com

5 GAL. PLASTIC BUCKETS: with lids. \$3 each. 636-239-2695. Washington.

YOUR FULL SERVICE AUTO BODY SHOP

We do everything from insurance jobs to full restorations!



DAVIDSON'S
CUSTOM AUTO BODY

Call to schedule an appointment for estimates

417-288-1589 • 115 Lincoln St., Buffalo, MO • [@DavidsonCustoms](https://www.facebook.com/DavidsonCustoms)



LOG SIDING: 2X8 Pine/Western Cedar www.pineridgerustic.com 573-729-7226. Salem.

STORY & PICTURES BOOK OF OLD LINN CREEK: Haha Tonka and Camden County, by T. Victor Jeffries, 72 pages. \$5.00 postpaid. (417)532-2045. (Leave message and phone number). Lebanon.

WANTED TO BUY ANTIQUE CARS: Convertible, Corvettes, unrestored, motors, parts considered. 870-324-1154. Ash Flat.

ROUTE 66 COOKBOOK: Hogs on Route 66, best food hangouts or road trips on Route 66 by Michael Wallis and Marion

USED MOBILE HOMES: Call David at VILLA HOMES IN ROLLA 573-578-8072. Rolla.

RUBBER & LEATHER BOOTS AND HIP WADERS. Men's 11, Women's 7, some insulated. \$15-\$40 obo. 636-239-2695. Washington.

BUYING MOBILE HOMES: Call David at VILLA HOMES IN ROLLA 573-578-8072. Rolla.

WE HAVE MOBILE HOMES: Instock new arrivals (8) homes, need to go as soon as possible! 573-499-9993. columbiadiscountmobilehomes.com

TRUE MODULARS: 30 to 60 day delivery available, 3 and 4 bedroom 573-657-7040 chateauhomes.net

TINY HOMES: We gottem 573-881-3283

I BUY.....used mobile homes. Call or text 573-338-6250 or email GregS.CDH@outlook.com

REGISTERED HEREFORD & ANGUS BULLS: Home raised, Some Show-Me Select Qualified. 573-701-7828. Belgrade.

LIGHTLY EXPERIENCED GOLF BALLS: \$3 a dozen. 417-818-3469. Strafford.

PLAD PANTRY



DISCOUNT & SURPLUS FOODS
FRESH PRODUCE LLC

417-532-4700

Original Pit Ham.....	\$1.99 a lb.
Bacon Lovers Pizza	\$3.99 15.39 oz.
Espresso Almond Fudge	
Ice Cream.....	\$16.99 3 gal.
Fun Size Crunch Candy Bars.....	\$3.19 19 oz.
Cinnamon & Brown Sugar Breakfast Biscuits	\$1.99 8 ct.

1571 State Hwy 64 • Tunas, MO 65764
Hours: 8:30 a.m. to 5:30 p.m. • Closed Wed. & Sun.

For all things outdoors, Earth Manufacturing LLC!










Come see what makes Earth Outdoor Manufacturing and services different.

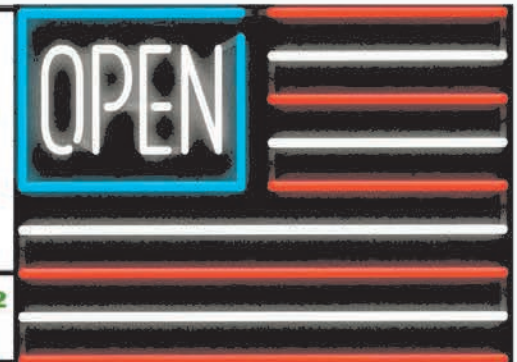
417-926-4136 • 9871 E. 20th St., Mtn. Grove
earthoutdoorfurnaces.com • freedomoutdoorproducts.com



LUCKY DISCOUNT LUMBER

NOBODY BEATS OUR PRICES

Sale Ends September 30, 2022
 Seymour, Missouri 417-935-4201



Pole Barns & Post Framed Buildings!

23'x32'x10' \$8,029 Material Only \$9,579 Labor Included	23'x40'x10' \$9,199 Material Only \$11,135 Labor Included	30'x40'x10' \$11,149 Material Only \$13,670 Labor Included	40'x60'x12' \$19,525 Material Only \$24,925 Labor Included
---	--	---	---

Call for free quote, brochure & color chart.
 Other sizes also available.



Due to increased demand for our quality product we are currently hiring new barn construction crews. Contact Jeff

NOBODY, BUT NOBODY BEATS OUR PRICES!!!

10 ft. Slider • Engineered Trusses 8' O.C. • 2x6 Treated Bottom Wrap • Screws • 2x10 Top Wrap • 2x4 Purlins • Full 29 Gauge Steel • Plus 3 ft. Entry Door with Lock
 OPTIONS: Sidewall Heights on all Buildings 10', 12', 14' & 16' Overhead Garage Door, Skylights, Insulation, Wainscoting, Insulated Vinyl Windows, Cupolas. Labor Rates Slightly Higher over 50 Miles from Seymour.
 Call for YOUR FREE QUOTE TODAY!!!!

PAINTED WHITE, GREEN OR TAN METAL\$116.20
10' - \$36.80 12' - \$44.16 16' - \$58.88
MIX & MATCH METAL\$59.99
8' - \$15.20 10' - \$19.00 12' - \$22.80
GALVALUME METAL\$99.99
10' - \$31.66 12' - \$38.00 16' - \$50.66
GALVANIZED CORRUGATED METAL SOLD OUT!
8' - \$9.84 10' - \$12.30 12' - \$14.75 16' - \$19.67

IN STOCK

40yr Painted Metal
Call

KNOTTY PINE DOORS
 Starting at
\$164.99

Prices subject to change without notice

LP SMARTSIDE T-5 LAP B GRADE \$43.59/SQ

Car Siding!

1x6 White Pine Siding	79¢ in ft
1x8 White Pine Siding	\$1.05 in ft

* 4 Profiles to choose from!
 Broken Bundles Add 10¢ Per Ft.

4x8 Sheeting

3/8" Beaded Paneling	\$24.99
7/16" T111 Siding	SSOLD
Paneling	SSOLD
1/2" Plywood	SSOLD
3/4" Plywood	\$49.99
3/16 Pegboard	\$12.99

**LOTS OF MATERIAL AVAILABLE
 FOR THOSE IN HOME PROJECTS!**

NEW PACKAGE HOMES



2x6—16" on center-Exterior Stud Walls
 Residential Roof Trusses-2' on center
 4/12 pitch with 1' over hang
 40 year Painted Metal roofing in 20 Different Colors
 Profile Ridge Vent - Ventilated Ridge Cap
 Vinyl Center Vent Soffit
 Color Matched Metal Fascia & Gable Trim
 2 - 3' 6 Panel Entry Doors
 4 - 3'x4' Vinyl Insulated Windows

Shown with Available Options
 Your Choice of either:
 Stock 3/8" T111 Siding w/1x4 Pine Window & Door Trim
 - Or -
 7/16" OSB & House Wrap ready for other finish options

ALL FIGURED FOR SUITABLE CUSTOMER SUPPLIED SLAB OR SUB-FLOOR

Price for Basic Materials Package (No Labor at this Time)

20x24(480 sq. ft.)	20x32(640 sq. ft.)	20x40(800 sq. ft.)	28x40(1120 sq. ft.)	28x48(1344 sq. ft.)
\$14,450	\$16,999	\$19,999	\$24,999	\$27,999

REAL WOOD SIDING

2x6 Log Siding	\$1.96 in ft
1x8 Beveled Cedar	from- 99¢ in ft
T1-11 Siding	from \$28.99

DECK PACKAGES

Materials Only	
8x8.....\$349.00	10x12.....\$699.00
10x10.....\$499.00	10x16.....\$899.00
12x12.....\$899.00	12x16.....\$1179.00



Now Stocking Quaker Vinyl Windows

2030 \$ 163.99	3030 \$189.99
3040 \$206.99	3052 \$225.99
3040Twin \$453.99	3052Twin \$497.99



LUCKY DISCOUNT LUMBER
 417-935-4201

455 State Hwy C • Seymour MO 65746
www.luckydiscountlumber.com



*Some restrictions apply see store for details. Prices subject to change without notice.

WEEKLY TRADER MAGAZINE

This is...

WEEKLY TRADER COUNTRY!



Place Your Ad With Us Today!

417-532-9131 CHECK US OUT ONLINE AT: myweeklytrader.com

SLIGHTLY USED PUZZLES: Will sell or trade. 417-818-3469. Strafford.

LIONEL TRAIN SET: Steam engine, tender, caboose and other car, track and transformer. \$195. 573-364-7465. Rolla.

091970s KIDS METAL STOVE & FRIDGE: Nice Lithographic paint, 18" wide x 36" high. \$75. 573-364-7465. Rolla.

1500 VINTAGE WRISTWATCH DIALS: \$100. 573-764-3517. Call in PM.

HARLEY FAT BOBS: Custom flame paint w/ gas caps + lines. \$100. 573-764-3517. Call in P.M.

ROUND TABLE: With Leaf insert. \$325. 417-741-1232.

WE BUY AND SELL
new and used mobile homes



(417) 501-1061

Larry Heisel Rentals



We Deliver!

**Crawler Loaders
Excavators, Backhoes**

Call Larry!
Rental Available in 636 or 573 Area Codes
573-779-1500

Fly Free with AFC.



Kropf Feeds

Located in the Heart of the
Amish Mennonite Community!
417-345-8600
19 Prairie Lane, Buffalo

EARLY 1900's CAMEL BACK STEAMER TRUNK: Oak, 5 strap, solid, nice condition. \$95. 573-364-7465. Rolla.

2 ILLINOIS 1927 LICENSE PLATES: \$25 each. 573-308-5884. Rolla.

CASE 1394 TRACTOR: Cab with loader, has Case 1394 Tractor operator's manual. 1,448 hours. No air-conditioning. 90% Rubber. \$15,000. Will consider offers. 417-259-1735.

DARDEN PROFESSIONAL TIMBER HARVESTING, BUYING STANDING TIMBER: Great prices, improve wildlife habitat and improve forest health. State Certified & Fully Insured! 573-247-4808. Salem.

COLT REVOLVER DEALER CATALOGS: Circa 1950's + 1960's. All for \$100. 573-764-3517. Call in P.M.

3 GENTS WITTNAUER WRIST WATCHES: 10k gold + 23J. All \$200. 573-764-3517. Call in P.M.

110 PORCELAIN POCKET WATCH DIALS: Perfect for arts & crafts. \$100. 573-764-3517. Call in PM.

KEEPING YOUR HERD IN TOP PRODUCTION

WE ARE THE TRUSTED SOURCE FOR ALL YOUR HERD'S NEEDS.



NOW OFFERING WEEKLY DELIVERY TO THE MOUNTAIN GROVE AREA!

Family owned and operated since 1950.



Hudson Feed & Grain
417-532-3921

316 W. Commercial St., Lebanon
www.hudsonfeedandgrain.com

LAKE OF THE OZARKS FALL SPECIAL: Lots \$4,950 - \$125 down, \$69 per month. Beautiful trees, free lake access and boat ramps, lots are a short distance from the lake, no credit checks, owner financing, immediate possession or own for investment. **Also:** acreage tracts. Missouri conservation boat ramp with covered dock and rest rooms nearby. **Prices good through October 10, 2022.** Hwy 135 between Stover and Sunrise Beach, MO. Take Lake Road 135-12 to the Ivy Bend Land Office. Closed Tuesdays and Wednesdays. Call anytime. 573-372-6493.

1890 GOLD TESTING KIT: Glass acid beakers + antique wooden case. \$100. 573-764-3517. Call in PM.

FOR SALE: White Dorper Ewe Lambs of various ages. 417-464-0002. Seymore.

HARLEY 45 SOLO: factory rear brake drum + sprocket. \$150. 573-764-3517. Call in PM.

A FRAME: 11FT wide x 10FT tall \$400. 3. John Deere 2-row corn planter \$400. 6FT Brushhog \$550. 3.5" Tubular Bale Forks \$400. 16FT Double Axle Trailer \$4,500. 8FT Truck Dump Bed \$700. 816-699-6851. Creighton.

HARLEY PANHEAD DISTRIBUTOR: original, chrome + complete. \$125. 573-764-3517. Call in PM.

1962 HARLEY SPORTSTER 900CC: original distributor. \$50. 573-764-3517. Call in PM.

DRAPES AND CURTAIN RODS: Off-white, various sizes, \$15 for all obo. 636-239-2695. Washington.

WINCO GENERATOR: 25,000 watts, on metal 2-wheel trailer. \$2,000. Will consider offers. 417-259-1735.

HEARTH CRAFT GLASS BI-FOLD FIREPLACE DOORS PURCHASED AT FORSHAW'S FIREPLACE: Antique brass. \$160 obo. 636-239-2695. Washington.

KITCHEN FAUCET MOEN: Single lever, sprayer, new cartridge. \$45 obo. 636-239-2695. Washington.

CERAMIC CANISTER SET: With cutting board that fits in kitchen counter-top. Various species of ducks on surface. Set \$30 obo. 636-239-2695. Washington.

FIREPLACE LOG GRATE: 28" in width. \$25 obo. 636-239-2695. Washington.

POOL TABLES: Installations, moves, recovers, repairs, accessories, etc. 573-646-1700.

120 BRED COWS: Late 2nd & 3rd period. 3-7 years old. 1, 250lb. Trucking available. 660-619-5190.

15 Y/O BOY LOOKING FOR EVENING JOBS: Leave a message. 724-815-5279. Hartville.

SENNHEISER E835S MIC: With on/off switch and case. Never used \$65. 417-844-4319. Springfield.

HONDA 2017-4WHL: forest green, excellent condition, drove 2 times, like new, manual shift. \$3,000 by appointment. Cell # 913-710-2554.

AKC REGISTERED PEMBROKE WELSH CORGIE: D.O.B. 7/02/22, U.T.D. on shots, very colorful, great breeding stock. \$600. 417-259-9738.

1977 D6D BULLDOZER FOR SALE: Good undercarriage, good machine. \$30,000. 336-466-2391. Falcon.

LARGE ELIPTICAL: \$130. Also, Electric Leg Massager + more. Good condition. \$50. 573-465-0386. Rolla.

84 PETERBILT 359 LONG HOOD B MODEL CAT: 15 speed transmission, good condition. Also, 2004 Wilson Cattle Pot: 53FT., triple axel. Would like to sell together. Contact Shane Leer 417-588-0602 or 417-589-2039. Contact in the evening.

IRON PIG CUSTOMS LLC: Custom fabrication metal décor, automotive arts & CNC Plasma. 417-322-5827. Stoutland.

CHINA CABINET: For Sale. \$125. Small Round Table. \$40. Poster Bed. \$175. 417-741-1232.

GRAVITY WAGON: 330 bushel, 20" truck tires, always shedded. Sharp. \$2,000. 573-378-5180. Versailles.

WANTED YOUNG CATS: Born bobbed tailed or tailless. 573-205-9415. Leave Message Will Return Call.

MUMS: Mums at the Highpoint Greenhouse in Hartville. 9337 Warner Rd. 417-741-2198. Hartville.

SLAB WOOD: For Sale. \$10/bundle. 417-468-2255. Conway.

OFFICIAL TRACTOR OF TOUGH™

INTRODUCING THE ALL-NEW 5100 SERIES



Marshfield Machinery Inc.

222 E. Madison • Marshfield, MO 65706
417-859-2117 • www.marshfieldmachinery.com

*2018 data including all Mahindra group brand sales.
MahindraUSA.com © 2020 Mahindra USA Inc.

NEW MAHINDRA TRACTORS

1626 4WD & LDR 26HP	IN STOCK
2638 4WD & LDR 38HP	IN STOCK
4540 4WD & LDR 41HP	IN STOCK
4550 4WD & LDR 48 HP	IN STOCK
2670 CAB 4WD & LDR 70HP	IN STOCK

USED TRACTORS

MAHINDRA 3550 49HP CAB LDR	25,000
MAHINDRA 2638 38HP 4WD LDR	24,000
JD 4120 43HP 4WD LDR	21,500
AC 7010 106 HP CAB	9,500
MF 135 36 HP	2,750

USED ROUND BALERS

MF 1745 4X5	10,000
MF 1734	5,500
HESSTON 560 5X6	2,000
NH 850 5X5	1,500

USED MISC.

HAYBUSTER 107 DRILL 10FT	9,500
BUSHWACKER 8FT CUTTER	3,000
SITREX 8 WHEEL RAKE	1,750
M&W 8 WHEEL RAKE	1,750
LELY 8 WHEEL RAKE	1,750
HESSTON 3PT TEDDER 10FT	1,750

Marshfield Machinery Inc.
222 E. Madison
Marshfield, MO 65706
417-859-2117
www.marshfieldmachinery.com





YOUR AD GOES HERE!

**Add YELLOW Color
For An Additional
\$3 Per Reader Ad**

All ads will include Phone Number (unless requested to be deleted by advertiser) and City Or Town, Phone Number with Area Code counts as one word. City or Town counts as one word.

RATE: 80¢ Per Word. All Classified Ads Require Payment Before Print.

(1) 80¢	(2) \$1.60	(3) \$2.40	(4) \$3.20
(5) \$4.00	(6) \$4.80	(7) \$5.60	(8) \$6.40
(9) \$7.20	(10) \$8.00	(11) \$8.80	(12) \$9.60
(13) \$10.40	(14) \$11.20	(15) \$12.00	(16) \$12.80
(17) \$13.60	(18) \$14.40	(19) \$15.20	(20) \$16.00
(21) \$16.80	(22) \$17.60	(23) \$18.40	(24) \$19.20
(25) \$20.00	(26) \$20.80	(27) \$21.60	(28) \$22.40
(29) \$23.20	(30) \$24.00	(31) \$24.80	(32) \$25.60
(33) \$26.40	(34) \$27.20	(35) \$28.00	(36) \$28.80
(37) \$29.60	(38) \$30.40	(39) \$31.20	(40) \$32.00

Place your Classified Ad TODAY!

417-532-9131 • 800-665-8875

Fax: 417-532-8140

Or Mail To: P.O. Box 192 • Lebanon, MO 65536

For your convenience we accept MasterCard, Visa, Discover or American Express



DEADLINE FOR CLASSIFIED ADS: FRIDAY 4:00PM!

Name _____

Address _____

City _____ Email _____

State _____ Zip Code _____ Phone _____

Ad Total \$ _____ X # Weeks _____ = Amount Enclosed \$ _____

Honda
OF THE
OZARKS



Meet The All New 2023 Pioneer 1000-6 Deluxe Crew

- **Fully Automatic DCT**
- **Best In Class Cabin Space**
- **2500 Towing Capacity**
- **No Belts to Break Or Slip**
- **Auto Leveling Rear Suspension**



Call To Reserve Yours Today!

FIND OUT WHICH HONDA SXS IS PERFECT FOR YOU.



Pioneer 500



Pioneer 520



Pioneer 700 Deluxe



Pioneer 1000-5

OUR PRICE PROMISE: If you find a better verified price in Missouri,
WE WILL BEAT IT. GUARANTEED!

(417)862-4686
2055 E. Kerr St.

HondaOfTheOzarks.com
I-44 & GLENSTONE EXIT 80

PIONEER IS ONLY FOR DRIVERS 16 YEARS AND OLDER. MULTI-PURPOSE UTILITY VEHICLES CAN BE HAZARDOUS TO OPERATE. FOR YOUR SAFETY, BE RESPONSIBLE. ALWAYS WEAR A HELMET, EYE PROTECTION AND APPROPRIATE CLOTHING. ALWAYS WEAR YOUR SEAT BELT, AND KEEP THE SIDE NETS AND DOORS CLOSED. AVOID EXCESSIVE SPEEDS AND BE CAREFUL ON DIFFICULT TERRAIN. ALL MUV DRIVERS SHOULD WATCH THE SAFETY VIDEO "MULTIPURPOSE UTILITY VEHICLES: A GUIDE TO SAFE OPERATION" AND READ THE OWNER'S MANUAL BEFORE OPERATING THE VEHICLE. NEVER DRIVE UNDER THE INFLUENCE OF DRUGS OR ALCOHOL, ON PUBLIC ROADS OR WITH MORE THAN ONE PASSENGER. DRIVER AND PASSENGER MUST BE TALL ENOUGH FOR SEAT BELT TO FIT PROPERLY AND TO BRACE THEMSELVES WITH BOTH FEET FIRMLY ON THE FLOOR. PASSENGER MUST BE ABLE TO GRASP THE HAND HOLD WITH THE SEAT BELT ON AND BOTH FEET ON THE FLOOR. RESPECT THE ENVIRONMENT WHEN DRIVING.