

FREE - TAKE ONE!

Vol. 28 No. 37

DECEMBER 9, 2021

800-543-8271 • 800-665-8875

# WEEKLY TRADER MAGAZINE



Find us on  
Facebook

@myweeklytrader  
AUCTIONS PG. 9

VISIT OUR NEW WEBSITE! MYWEEKLYTRADER.COM

## CHEVY YEAR END CLEARANCE



LARGE SELECTION OF PRE-OWNED VEHICLES AVAILABLE.

**ED MORSE**  
**CHEVROLET**  
**BUICK • GMC**

ROLLA

FORMERLY FAIRGROUNDS AUTO PLAZA

**NEW NAME. SAME TEAM.**

100 Fairgrounds Rd., Rolla, MO

**573-364-1002**

EdMorseChevroletBuickGMCRolla.com

# Land

For Sale

Dallas Co., MO • 60 +/- Acres



- Approximately 12 acres under high fence and pens
- 40 x 60 barn with dedicated AI/storage room
- Deer handling system with buck chute and individual stalls with ability to move deer directly between stalls and into the chute system
- 1200 sq ft 2/1 barndominium on second floor, washer and dryer hookups, central heat and air, open concept
- Additional individual wooden stalls across the back of the barn
- Additional covered storage attached to barn
- 8 deer pens with feeders and 6 with automatic watering system, all pens have water
- Approximately 44 adult bucks and approximately 80 adult does; approximately 50 fawns less than 12 months old – all deer convey
- Equipment that conveys: Bobcat diesel side-by-side, silver grain bin, feed buckets
- 2 acres of developed food plots
- Minutes from I-44



WHITETAIL PROPERTIES REAL ESTATE

HUNTING | RANCH | FARM | TIMBER

**Brian Utecht | 417-766-5595**

Brian.Utecht@whitetailproperties.com

WHITETAILPROPERTIES.COM

Missouri's Top Land Specialist in 2014, 2015, 2016, 2017, 2018, 2019 and 2020





**THE MOST COMPLETE  
LINE-UP IN THE INDUSTRY**

Cutting widths from 36" to 104"



*For Outstanding* Products & Service

# AGRI-ENTERPRISES

1-1/2 Miles South Of Licking, MO On Hwy 63

**573-674-2203 • 1-800-653-7152 • [www.agri-enterprises.com](http://www.agri-enterprises.com)**

**POOL TABLES:** Installations, moves, recovers, repairs, accessories, etc. 573-646-1700.


**FERTRELL ORGANIC FERTILIZER:** Free Catalog. 315-796-4370. Caulfield.

**LOG SIDING:** 2X8 Pine/Western Cedar [www.pineridgerustic.com](http://www.pineridgerustic.com) 573-729-7226. Salem.

**OZARK WHITEWATER:** A paddler's guide to the Missouri streams of Arkansas and Missouri, \$7.50. 417-532-2045. (Leave message and phone number.) Lebanon.

**BIRDS OF NORTH MISSOURI BOOK,** HB, 96 pages, \$5.00. **HOW TO KNOW BIRDS BOOK,** HB, \$5.00. 417-532-2045. (leave message and phone number). Lebanon.

**STOCK MOBILE HOMES AVAILABLE:** We gottem, single and double, 3 and 4 bedroom! Call Tuffy 573-657-2176. [amegamobilehomes.com](http://amegamobilehomes.com)





**VOTED  
#1 BEST  
Preowned Car  
Dealership**



## TIM'S USED CARS

(573) 341-3828 • 1334 South Bishop (Hwy. 63) • Rolla, MO  
Next to Hwy CC • [www.tims-used-cars.com](http://www.tims-used-cars.com)

 <p><b>2013 CHEVY SILVERADO 1500 LTZ</b> Z71, 4x4, Crew Cab, 5.3 V-8, Loaded w/ Options, 127,xxx Miles <b>Only \$24,900</b></p>	 <p><b>2014 CHEVY SILVERADO 2500 HD</b> 4x4, 6.0 V-8, A/C, 142,xxx <b>Only \$19,900</b></p>
 <p><b>2014 RAM 1500 LARAMIE</b> Crew Cab, 4x4, 5.7 Hemi, Loaded w/ Options, 134,xxx Miles <b>Only \$31,900</b></p>	 <p><b>2015 DODGE GRAND CARAVAN SE</b> V-6, Power Equipped, 64,xxx Miles <b>Only \$14,500</b></p>

LARGE SELECTION OF CARS, TRUCKS, SUVs & VANS!

**Can You  
Dig It?**

**We  
Can!**



**Specializing  
in Residential utility  
ditches for waterlines,  
electric lines,  
sewer line, etc.**

**T Campbell  
And Sons Excavating**  
**417-559-9339 • Lebanon**

**WEATHERED BARN WOOD SIDING:** 10" wide. 573-729-7226. [www.pineridgerustic.com](http://www.pineridgerustic.com) Salem.

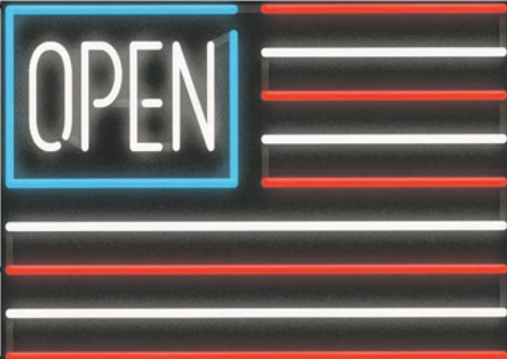
**WANTED:** Old Pinball Machines and Juke Boxes. 573-424-7200.



**NOBODY BEATS OUR PRICES**

**Sale Ends December 31, 2021**

Seymour, Missouri 417-935-4201



**Pole Barns & Post Framed Buildings!**

Call for free quote, brochure & color chart. Other sizes also available.

<b>23'x32'x10'</b> \$6,915 Material Only \$8,461 Labor Included	<b>23'x40'x10'</b> \$7,800 Material Only \$9,734 Labor Included	<b>30'x40'x10'</b> \$9,595 Material Only \$12,115 Labor Included	<b>40'x60'x12'</b> \$16,967 Material Only \$22,367 Labor Included
---	---	--	---



Due to increased demand for our quality product we are currently hiring new barn construction crews. Contact Jeff

**NOBODY, BUT NOBODY BEATS OUR PRICES!!!**

10 ft. Slider • Engineered Trusses 8' O.C. • 2x6 Treated Bottom Wrap • Screws • 2x10 Top Wrap • 2x4 Purlins • Full 29 Gauge Steel • Plus 3 ft. Entry Door with Lock  
 OPTIONS: Sidewall Heights on all Buildings 10', 12', 14' & 16', Overhead Garage Door, Skylights, Insulation, Wainscoting, Insulated Vinyl Windows, Cupolas, Labor Rates Slightly Higher over 50 Miles from Seymour. Call for YOUR FREE QUOTE TODAY!!!

<b>PAINTED WHITE, GREEN OR TAN METAL</b> .....	\$126.20
<b>10' - \$40.00</b> <b>12' - \$48.00</b> <b>16' - \$64.00</b>	
<b>MIX &amp; MATCH METAL</b> .....	\$59.99
<b>8' - \$15.20</b> <b>10' - \$19.00</b> <b>12' - \$22.80</b>	
<b>GALVALUME METAL</b> .....	\$99.99
<b>10' - \$31.66</b> <b>12' - \$38.00</b> <b>16' - \$50.66</b>	
<b>GALVANIZED CORRUGATED METAL</b> <b>SOLD OUT!</b>	
<b>8' - \$9.84</b> <b>10' - \$12.30</b> <b>12' - \$14.75</b> <b>16' - \$19.67</b>	

**IN STOCK**

40yr Painted Metal  
**Call**

**KNOTTY PINE DOORS**  
Starting at  
**\$129.99**

**LP SMARTSIDE T-5 LAP B GRADE \$43.59SQ**

**Car Siding!**  
1x6 White Pine Siding **79¢** in ft  
1x8 White Pine Siding **\$1.05** in ft  
\* 4 Profiles to choose from!  
Broken Bundles Add 10¢ Per Ft.

**4x8 Sheeting**  
Less than full units Add \$1 per sheet  
3/8" Beaded Paneling \$17.99  
7/16" T111 Siding \$23.99  
Paneling \$9.99  
1/2" Plywood \$SOLD  
3/4" Plywood \$SOLD  
3/16 Pegboard \$12.99

**LOTS OF MATERIAL AVAILABLE FOR THOSE IN HOME PROJECTS!**

**REAL WOOD SIDING**  
2x6 Log Siding - 1.59¢ in ft  
1x8 Beveled Cedar from- 79¢ in ft  
T1-11 Siding from Sold Out

**NEW PACKAGE HOMES**

2x6—16" on center-Exterior Stud Walls  
Residential Roof Trusses-2' on center  
4/12 pitch with 1' over hang  
40 year Painted Metal roofing in 20 Different Colors  
Profile Ridge Vent - Ventilated Ridge Cap  
Vinyl Center Vent Soffit  
Color Matched Metal Fascia & Gable Trim  
2 - 3' 6 Panel Entry Doors  
4 - 3'x4' Vinyl Insulated Windows  
**ALL FIGURED FOR SUITABLE CUSTOMER SUPPLIED SLAB OR SUB-FLOOR**

Shown with Available Options  
Your Choice of either:  
Stock 3/8" T111 Siding w/1x4 Pine Window & Door Trim - or -  
7/16" OSB & House Wrap ready for other finish options

**Price for Basic Materials Package (No Labor at this Time)**  
20x24(480 sq. ft.)    20x32(640 sq. ft.)    20x40(800 sq. ft.)    28x40(1120 sq. ft.)    28x48(1344 sq. ft.)  
**\$10,514    \$12,079    \$13,600    \$16,759    \$18,629**

**DECK PACKAGES**  
Materials Only  
8x8.....\$395.95    10x12.....\$684.99  
10x10.....\$569.49    10x16.... \$849.99  
12x12.....\$799.99    12x16....\$1069.99

**QUAKER** Now Stocking Quaker Vinyl Windows  
2030 \$ 135.99    3030 \$157.99  
3040 \$173.99    3052 \$189.99  
3040Twin \$379.99    3052Twin \$419.99



**LUCKY DISCOUNT LUMBER**  
417-935-4201  
455 State Hwy C • Seymour MO 65746  
www.luckydiscountlumber.com



\*Some restrictions apply see store for details. Prices subject to change without notice.

**USED MOBILE HOMES:** Call David at VILLA HOMES IN ROLLA 573-578-8072. Rolla.

**WANTED TO BUY DODGE DIESEL TRUCK:** Or Toyota Tacoma. Also, buying antique cars. 870-324-1154. Ash Flat.

**TRUE MODULARS:** 30 to 60 day delivery available, 3 and 4 bedroom 573-657-7040 chateauhomes.net

**CUSTOM SAW MILLING:** 417-533-4607. 417-664-1195. Lebanon.

**REFRIGERATOR FOR SALE:** \$300 or best offer, 417-254-1570. Seymour.

**ROSSIE 12 WHEEL HAY RAKE:** Good. \$4,000. 417-646-8807. Osceola.

**Your Friend In The Field**  
 Reliable equipment, fair prices and outstanding service you can count on season after season.

**SALES • SERVICE • REPAIR**



**STAHLMAN** POWERSPORTS  
 1387 S. BISHOP AVE., ROLLA  
 573-364-6944  
 WWW.STAHLMANPOWERSPORTS.COM

**BAD BOY**



**Wright Spray Foam Insulators, LLC**  
 Commercial & Residential  
 Call for FREE Estimates!

**Ervin Gingerich**  
 417-926-2052  
**B. Eli Yoder**  
 417-746-4932

**BUYING MOBILE HOMES:** Call David at VILLA HOMES IN ROLLA 573-578-8072. Rolla.

**RUBBER & LEATHER BOOTS AND HIP WADERS.** Men's 11, Women's 7, some insulated. \$15-\$40 obo. 636-239-2695. Washington.

**DARDEN PROFESSIONAL TIMBER HARVESTING, BUYING STANDING TIMBER:** Great prices, improve wildlife habitat and improve forest health. State Certified & Fully Insured! 573-247-4808 or 573-739-1122. Salem.

**WANTED TO BUY ANTIQUE CARS:** Convertible, Corvettes, unrestored, motors, parts considered. 870-324-1154. Ash Flat.

**OWN YOUR OWN BUSINESS:** Established Locksmith retiring after 37 years. Lockout tools, HPC Code Machine, key cutters, keys, rekeying kits, cabinets, manuals, too much to list. 2007 GMC Van optional. Call 870-421-5437 for more information.

**OUTDOOR FORCED AIR WOOD FURNACE:** Fire-proof, insulated, thermostatically controlled. Been made since 1986. Made by Harmon's Heating and Cooling. 573-743-6943.

**AVAILABLE STOCK MOBILE HOMES:** Immediately, double wide and single, 3 and 4 bedroom 573-499-9993 columbiadiscountshomes.com

**UNWRAP FUN THIS CHRISTMAS**



**SSR 70**



**SSR 189cc**

**\$50 OFF**  
 when you  
 buy 2 units

---

**\$75 OFF**  
 when you  
 buy 3 units



**FOX 70**



**200cc Jackal**



**(417) 588-3550 • LSKLebanon.com • 801 N. Jefferson Ave., Lebanon**

**HISTORIC BARNs OF MISSOURI BOOK: A Storehouse of History, HB 168 pages, great coffee table book, \$10. 417-532-2045. (Leave message and phone number). Lebanon.**

**WANTED:** Older model wrecker. 573-734-2822. Bismarck.

**REGISTERED HEREFORD & ANGUS BULLS:** Home raised, Some Show-Me Select Qualified. 573-701-7828. Belgrade.

**THE HEART OF THE SPRING BOOK. A Bennett Spring Novel by Laura L. Valenti, 161 pages. \$6.50. 417-532-2045. (Leave message and phone number). Lebanon.**

**BUTLER LOGGING:** Buying standing timber. References available. 417-630-4000. Grovespring.

**CERAMIC CANISTER SET:** With cutting board that fits in kitchen counter top. Various species of ducks. Set \$40 obo. 636-239-2695. Washington.

**YOU HAVE OPTIONS FOR HEALTHCARE!**

**WE CAN HELP YOU NAVIGATE HEALTHCARE.GOV**



**Choices In Health & Life Insurance**  
Mike Eblen, Agent  
**417-532-3360**  
238 S. Jefferson Avenue Suite A, Lebanon

**TIRES, BRAKES & MORE LLC**

- All Makes & Models
- Affordable Pricing
- Quality Products
- Outstanding Service



**Military & Senior Discounts**

Tue.-Sat. 8-5 • 1237 Rt. 66 • Lebanon • 417-532-0850

**WE STOCK FREEZE PROOF WATERERS**

- Deli Sandwiches
- Homemade Yogurt
- Homemade Bread
- Glass Bottle Milk
- Cheese & Spices
- Bulk Foods
- Hydraulic Hoses
- Electric Fence Supplies
- Stay-Tuff Fence
- Johnson & Ritchie Waterers
- Gates & Panels



**VISIT YOUR ONE STOP SHOP FARMERS QUIK STOP**  
5 mi. East of Lebanon on Hwy 32 • 417-991-1938

**TINY HOMES:** We gottem 573-881-3283

**I BUY.....used mobile homes.** Call or text 573-338-6250 or email [GregS.CH@outlook.com](mailto:GregS.CH@outlook.com)

**THE SHEPHERD OF THE HILLS:** By Harold Bell Wright, hardback, \$6.50. 417-532-2045. (Leave message and phone number). Lebanon.

**FIREARMS:** Professional Repairs and Restorations. Baron's Gunsmithing. 573-363-5801, Camdenton.

**QUALITY USED SADDLES WANTED:** Will pay cash! George's Tack, Saddles & Feed. 573-346-7866. Camdenton.

**POSTER BED:** \$175. 417-741-1232. Hartville.

**EARN \$60,000/YEAR PART-TIME:** In the livestock or farm equipment appraisal business. Agricultural background required. Home study course available. 800-488-7570 or [www.amagappraisers.com](http://www.amagappraisers.com)

**FOR RENT LAKEFRONT HOUSE:** 4 bedrooms, 3 baths, has all appliances. First and last months rent plus deposit. Phone 816-583-2421 and leave message.



**Meadowview Dutch Market**

Call to Order 417-993-3017

Sale Dates December 8<sup>th</sup>, 2021 to December 14<sup>th</sup>, 2021 while supplies last!

Discount & Surplus Groceries • Prices Subject to Stock on Hand

<b>DELI SPECIAL</b>	<b>MARBLE CHEESE</b> ..... REG. \$5.45 ..... <b>SALE \$4.95</b>	
<b>VIRGINA HAM</b> ..... REG. \$4.89 ..... <b>SALE \$4.39</b>		
<p><b>TRY our Fresh Homemade DELI Sandwiches: TURKEY, HAM, ROAST BEEF, ITALIAN, BLT'S, PULLED PORK AND BLT PULLED PORK (MAKE YOUR WAY)! COME IN OR CALL to order! ALSO Custom Deli trays! Veggie OR FRESH Meat-N-Cheese!</b></p>		
<i>Hellmann's &amp; Extra</i> <b>Creamy Mayonnaise</b> <b>SALE 99¢</b> 24 OZ.	<i>Seasoned Boneless</i> <b>Skinless Chicken Breast</b> <b>GREAT BUY! \$1.79</b> LB.	<i>Dark Semi Sweet</i> <b>Chocolate Chips</b> <b>SALE \$2.49</b> LB.
<i>Granulated</i> <b>Sugar</b> <b>\$2.99</b> 4 LB.	<i>Brown</i> <b>Sugar</b> <b>\$1.99</b> 2 LBS.	<i>Bulk</i> <b>Popcorn</b> <b>10% OFF</b> REG. PRICE!!! (Excludes 50lb. Bag)
<i>Tropicana</i> <b>Orange Juice</b> <b>SALE \$1.49</b> 59 OZ.	<i>La Colombe</i> <b>Cold Brew Coffee</b> <b>\$1.79</b> 42 OZ.	<i>80/20</i> <b>Ground Beef</b> <b>\$2.99</b> LB.
<b>MEADOWVIEW DUTCH MARKET</b> 417-993-3017 Hours: Mon-Thurs 8-5pm Fri 8-6pm • Sat 8-5pm 23 Miles West on Hwy 64 • Right on T Hwy 9 miles • Left on E Hwy 1 mile on Left		<b>ORIGINAL WHEAT THINS</b> <b>89¢ EA. 8.5 OZ.</b> Save 20% on a case of 6
<b>NOW ACCEPTING CREDIT, DEBIT CARDS &amp; EBT</b>		
<b>DUTCH COUNTRY STORE, LLC</b> 573-378-4395 Hours: Mon-Thurs 8-5pm Fri 8-6pm • Sat 8-5pm 5 miles East of Versailles off Hwy C on Kelsay Road		



**Overman Buildings Supply**  
 is **NOW** open inside the new  
**American Made** ★ **General Store**  
 in Rogersville.

*Say "Goodbye to high material/building prices!!"  
 We manufacture it all in house.*

**Metal Roofing**  
**Building In A Box**  
**-Shop Kits-**



**Portable Sheds**  
**10x12s from \$2,250**  
**12x16s from \$2,995**

**Rent To Own**  
**available**

Overmanmetal.com ★ Buildinginabox.org

40 year warranty metal **SPECIAL:**  
**\*\*Charcoal- \$2.85 per linear ft./3ft wide/29 Gauge\*\***

**Bring in a competitor's quote and if we can't beat it by 10% on the first try, we will buy you lunch at our deli inside the store!**



**1606 Chicory Rd. Rogersville MO.**



**417-753-8030**

1100 Pace Rd. Pocahontas, AR - 202 S. Prigmor Joplin, MO

**KUSTER LOGGING**  
**BUYER of Standing Timber Oak and Walnut**  
*Dozing Now Available*  
**417-259-0047**  
 References Available



**HEARTH CRAFT GLASS BI-FOLD FIRE PLACE DOORS:** Antique brass. \$200 obo. 636-239-2695. Washington.

**KITCHEN FAUCET MOEN:** Single lever, sprayer, new cartridge. \$45 obo. 636-239-2695. Washington.

**12 ROLLS OF NATURAL GRASS CLOTH WALLPAPER:** 36 sq ft per roll. \$200 for all. 636-239-2695. Washington.

**VOTED #1 BEST Preowned Car Dealership**  
**TIM'S USED CARS**  
 (573) 341-3828 • 1334 South Bishop (Hwy. 63) • Rolla, MO  
 Next to Hwy CC • www.tims-used-cars.com



**778 DEWEZE DUALY HAY BED.**  
 Electric over hydraulic  
**Only \$6,500**

**LARGE SELECTION OF CARS, TRUCKS, SUVs & VANS!**

**ELECTRIC HEATER RADIATOR STYLE:** Like new, with thermostat, hi/low settings, works excellent. \$45. 573-364-7465. Rolla.

**HELP WANTED: Experienced loggers.** Call Howard 417-733-2987. Phillipsburg.

**LIONEL TRAIN SET:** Steam engine, tender, caboose and other car, track and transformer. \$195. 573-364-7465. Rolla.

**CENTRAL BOILER CLASSIC EDGE TITANIUM HDX**  
 Eliminate high heating bills with Central Boiler's NEW, certified Classic Edge Titanium HDX OUTDOOR WOOD FURNACE. Call today!  
**Outdoor Wood Furnace CentralBoiler.com**  
 Yarbrough Equipment Sales & Services, Inc.  
 9776 E. State Hwy OO • Strafford, MO  
 417-736-2303 • 1-866-286-6901 • www.yarbeq.com



The Classic Edge 360, 560 and 760 HDX are U.S. EPA Certified

**DOG HOUSE LARGE SIZE:** 2 piece gable roof, vented, great condition. \$45. 573-364-7465. Rolla.

**HISTORY OF ST. ALBANS, MO. : H.B.** \$20. 417-532-2045. (leave message and phone number). Lebanon.

**CAR GUY ON YOUR CHRISTMAS LIST?** Let us help books, brochures, manuals, and more. Autopaper.com. 573-616-2385. 7-3:30, ship or pickup in Jefferson City.

**WHITE ELECTRIC DRYER:** \$150. 573-327-9068. Desloge.

**OFFICIAL TRACTOR OF TOUGH™**



**NEW MAHINDRA TRACTORS**  
 1626 4WD & LDR 26HP **IN STOCK**  
 2660 4WD & LDR 60HP **IN STOCK**  
 2660 CAB 4WD & LDR 60HP **IN STOCK**

**USED TRACTORS**  
 MF GC1705 4WD, LDR 23HP **10,000**  
 IHC 826 92 HP **9,000**

**USED ROUND BALERS**  
 MF 1745 4X5 **13,000**  
 HESSTON 945 4X5 **9,000**  
 JOHN DEERE 375 5X4 **3,500**  
 HESSTON 560 5X6 **2,000**  
 NH 850 5X5 **1,500**

**USED MISC.**  
 FRONTIER BALE PROCESSOR **8,500**  
 MF 8 WHEEL RAKE **3,000**  
 JD 17FT TEDDER **2,500**  
 VERMEER 8 WHEEL RAKE **1,750**

**Marshfield Machinery Inc.**  
 222 E. Madison • Marshfield, MO 65706  
 417-859-2117 • www.marshfieldmachinery.com

MahindraUSA.com © 2020 Mahindra USA Inc.

**Mahindra Rise.**  
**Marshfield Machinery Inc.**  
 222 E. Madison  
 Marshfield, MO 65706  
 417-859-2117  
 www.marshfieldmachinery.com

**HAY ROUND BALE:** 4x5 net wrap, \$45. Small square bale, \$5.50. 417-345-5634. Phillipsburg.

**ENGLISH SHEPHERD PUPPIES:** Some with natural bobtail. 1<sup>st</sup> round of shots. 573-760-5157. Centerville.

**1890'S WOODEN COFFEE BEAN MILL:** \$125. 573-764-3517. Call p.m.

**JOHN DEERE 2955 DIESEL CAB & AIR:** 85 h.p. \$19,750. 573-765-4406. Richland.



*Dealer and Farmer Machinery*  
**CONSIGNMENT AUCTION**

**FRIDAY DECEMBER 17, 2021 • 9 AM**

**AUCTION LOCATION: FORMER METHODE ELECTRONICS PROPERTY  
 111 BUCHANAN ST. CARTHAGE, IL 62321**



**SELLING LATE MODEL TRACTORS,  
 COMBINES, PLATFORMS & CORN HEADS,  
 PLANTERS AND DRILLS, TILLAGE TOOLS,  
 HAY EQUIPMENT; ROTARY CUTTERS,  
 CONSTRUCTION PIECES, GRAIN,  
 FEED AND MATERIAL HANDLING,  
 SPRAYERS AND APPLICATORS,  
 AND MUCH MORE!**

Accepting consignments daily beginning  
 Monday, November 29, 2021.

Hours will be Monday through Friday 8 AM to 5 PM.  
 & Saturday December 4 and 11 from 9 AM to 3PM.

***A loading dock is available.***



Live Online Bidding Powered By:

**proxibid**

**LIVE-ON-SITE AUCTION WITH INTERNET BIDDING THROUGH PROXIBID**

**Wheeler**   
 AUCTIONS & REAL ESTATE

To consign please call  
 Kirby Fecht | 217-248-2906  
 or Wheeler Auctions  
 660-327-5890.

23101 HWY. 24, PARIS, MO 65275 | 660-327-5890  
 WWW.WHEELERAUCTIONS.COM

Illinois Auction Firm License #444000408

# PUBLIC AUCTION

*Owner: Rockinder Farms, Cheryl & The Late Roger Kinder*

**SATURDAY, DECEMBER 18<sup>th</sup>, 10:00 A.M.**

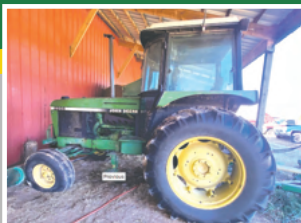
**Location: From West Plains, MO travel south on Hwy. 17 approx. 17 miles to Lanton, continue 6 miles to Moko, AR to the auction. From Salem, AR, travel north approx. 8 miles on AR-395 to Moko. Address: 289 Aspen Ln., Salem, AR.**

## OUTSTANDING FARM LIQUIDATION JOHN DEERE-TUFLINE-GOOSENECK

2955 John Deere cab tractor, 2WD, hi lo trans, 1 owner, 4230 John Deere 2WD, 3 pt. hydraulics, 7062 odometer hours, Tuflin OSH 187 10 ft. offset disk heavy duty; 936 John Deere mower conditioner, Flail 1000 PTO, barn kept; 430 John Deere round hay baler (twine) barn shedded; 1518 John Deere 15' Batwing brush cutter; 4 ton gravity flow grain cart; Big Tex Hi-tensile 28' flatbed trailer, dual tandem, dove tail, with ramps; 2004 Gooseneck Brand 24' aluminum trailer, rubber floor, divider gates, tarp, nice; 8' field roller; 2 Badger silage wagons (1-6 wheel), BN612 & BN1408, John Deere finishing disk; 660 John Deere hay rake; 300x500 gallon sprayers; Je-co cultivator; 8' blade; barbed wire trailer; 175 gal. 3 pt boom sprayer; older 4 wheeler; 1999 F350 Ford power stroke diesel pickup, farm truck, 4WD, Deweze bed; 1985 Chevy 20 Scottsdale square body 4 WD pickup, 4 speed, 350 engine, 1 owner; 2006 F250 Ford Lariat super Duty power stroke diesel pickup, 4x4 crew cab, 257,000 miles; 1977 Ram 1500 short bed, V6 Magnum, 5 speed, 1/2 ton, 196,000 miles; 2002 Toyota Camry wrecked 4 door; Craftsman riding mower; older brush hog; chisel plow; scrap pile & old farm machinery; tools; farm supplies; years of accumulation impossible to list!

## BERMUDA HAY - GUNS

180 bales barn kept Bermuda hay; 270 Ruger M77, Mark 3 scope; 280 Ruger M77, Mark 3 scope; 204 Ruger M77, Mark 3 scope; 93 Savage 17 HMR bolt action, scope; 223 Remington 700 bolt action, nylon; 444 Marlin, lever action; 243 Savage model 16, bolt action, nylon; 2 - Model 1892 Winchester 32 WCF, lever action, 1 hex barrel; 1100 Remington 12 ga. semi auto; 883 Marlin 22 WMR bolt action; 410 Stevens 59A bolt action; 916T Smith-Wesson 20 ga. pump; 2 black powder Thompson & Hawkins; 22 Magnum Winchester center pistol; Llama 32 cal. pistol; 357 Thompson Center Max with extra barrel; 9mm Glock 17 pistol; some ammo; hunting items. Auctioneer's Note: Since 1979 the Kinders have farmed in the Moko area. Due to the loss of Roger, Cheryl & boys will auction long list of good farm machinery & years of accumulation. Thanks for attending. For more photos go to: [www.garysextton.com](http://www.garysextton.com)



# Gary Sexton

Auctioneers, LLC  
Since 1978

[www.garysextton.com](http://www.garysextton.com)

417-255-7001 • [gary@garysextton.com](mailto:gary@garysextton.com)  
1028 Porter Wagoner • West Plains, MO



Todd Hornback - Oregon Co. Rep

Gene Summers - Ozark Co. Rep

Tyler G. Sexton  
SE Missouri Rep - 417-372-0124

AR Broker #PB00043890 AR License #1568



All announcements made day of the sale supersede any written material. Not responsible for lost or stolen property or accidents.

ONLINE AUCTION • ONLINE AUCTION • ONLINE AUCTION • ONLINE AUCTION • ONLINE AUCTION • ONLINE AUCTION

# ONLINE AUCTION LUTZ ESTATE AUCTION

## BIDDING OPEN NOW!

### INSPECTION/PREVIEW:

Sunday, December 12th, 2:30-5:00 PM

### LOCATION:

12644 Hwy D, Dixon, MO 65459

### AUCTION BEGINS TO CLOSE:

Thursday, December 16th at 6:00 PM

### PICK UP TIME WILL BE:

Saturday, December 18th, 9:30am-4:30pm

This online only auction features over 1,000 lots of Antiques, Primitives, Collectibles, Hundreds of Vintage Cookie Jars, Household Furniture, Kitchenware, Tools, 1949 MG Convertible, 1956 Chevrolet pickup, John Deere 60 Tractor (all 3 need restored) and much more...

**WWW.WARDENAUCATION.BID**

<https://www.apro.bid/affiliate/ed-warden-1990/>



**TERMS**  
Cash, Credit,  
Debit or Approved  
Check  
ID Required for  
Bid Number

## WARDEN AUCTION & MORE

(573) 336-2367 or (573) 528-0729



Ed Warden – Licensed Auctioneer/Real Estate Broker  
[www.wardenauction.com](http://www.wardenauction.com)



**TERMS**  
Not Responsible  
For Accidents  
or Losses  
Nothing Removed  
Until Settled For

ONLINE AUCTION • ONLINE AUCTION • ONLINE AUCTION • ONLINE AUCTION • ONLINE AUCTION • ONLINE AUCTION

ONLINE AUCTION • ONLINE AUCTION • ONLINE AUCTION • ONLINE AUCTION • ONLINE AUCTION • ONLINE AUCTION

ONLINE AUCTION • ONLINE AUCTION • ONLINE AUCTION • ONLINE AUCTION • ONLINE AUCTION • ONLINE AUCTION



# ONLINE ONLY EQUIPMENT AUCTION

Internet Bidding closes at 11:00 am CST  
**THURSDAY, DEC. 16, 2021**

[www.SextonAuctioneers.com](http://www.SextonAuctioneers.com)  
**BID NOW!**  
*Much more equipment online!*



2014 John Deere 410K



2015 Caterpillar 953D Track Loader



John Deere 544G



1990 Caterpillar 140G Motor GRADER



John Deere Skidder



John Deere 555



**1981 Peterbilt 359**



1991 Kenworth W900L



1999 Peterbilt 379



2007 Peterbilt 379



2000 Peterbilt 377



2007 Western Star Tri-axle



2014 Trail King



2021 Ford F-450



F-150 Ford platinum pickup



2005 Mustang



1967 Chevelle Malibu



24 Passenger Bus



2007 Forest River Cargo Trailer



2015 6115M John Deere



2012 John Deere 5093



John Deere 4010



Rhino 3150 Cutter



Vermeer M6030 6030 VERMEER DISC MOWER



2021 Starlite



2018 Grupo Remolques Del Norte Livestock Trailer



2002 Bison horse trailer



Ez-Haul Hay Handler G32



1999 Pettibone 6036



Hyster forklift LP



Ingersoll Rand SD116DX TF single drum vibratory roller



**CALL TYLER SEXTON TO SELL YOUR EQUIPMENT!**

[www.SextonAuctioneers.com](http://www.SextonAuctioneers.com)

For any questions call our Office: 314-529-0124

Auction Contacts Tyler Sexton | Gary Sexton

5182 US Hwy. 63 • Pomona, MO • email: [Sales@SextonAuctioneers.com](mailto:Sales@SextonAuctioneers.com)

**Next Auction**  
**FEBRUARY 24**

# ESTATE & BUSINESS AUCTION

Sunday, December 12th, 2021 ~ 1:00 PM

LOCATION: 301 East Grand, Jasper, MO (Watch For Signs)  
**Auction For Flowers Unlimited, James & Gina Hatfield, Owners**  
**Also Dick & Thelma Pope Estate**



## Antique & Primitive Furniture

Ant Buffet, Ant Table, Ant Vanity, Retro Ant Buffet, Ant Dresser, Ant Smoke Stand, Ant Metal High Chair, Ant Side Table, Ant Dresser Mirrors, Lg Prim Wood Pantry Cabinet, Prim Wood Corner Cabinet W/Glass Doors, Ant Lawyer Style Shelf, Prim Wood Chimney Cabinet, Prim Wood Tables, Prim Wood Wood Benches, Ant Porcelain Gas Cook Stove, Lots Of Prim Barnwood Furniture Inc Tables, Shelves, Benches, Cubby, Stands, Decorative Fence & Other Pcs, Wood Lattice Dividers, Prim Wood Ladder, Lots Of Pictures & Pcs W/ Different Sayings On Them, Wood Wall Hangings, Retro Bed, Retro Couch & Chairs, Wicker Shelves, Ant Lamps, Lamp Tables, Wood & Iron Plant Holders, Oak China Hutch, Oak China Cabinet, Oak Entertainment Center, Other Items Not Listed

## Antiques, Collectibles & New Items

Rare Ant Black Dot Mixing Bowl Set, Pyrex Dishes, Ant Crock Pitcher, Ant Apple Cookie Jar, Ant Glass & Pitcher Set, Retro Alum Canister Set, Old Luggage, Ant Glass Pitchers, Some Toys, New & Olds Baskets, Lg Keen

Kutter Meat Grinder, Neat Metal Décor Pcs, New Birdhouses, Jewelry, New Speckle Ware Granite Ware Pcs, Rooster Collectibles, New Candles, New Tye Beanie Babies, New Willow Tree Collectibles, Lg Lot Of New Collectible Pcs Of Various Kinds Found In Floral Shops, New Mixes For Deserts & Drinks, Some Sm Appliances & Kitchen Wares

**This Is A Great Opportunity To Purchase New Items For Your Last Minute Christmas Gifts.**

## Flower Shop Supplies, Coolers, & Necessities

2 Glass Front Coolers, Wood Store Counter, Stainless Restaurant Style Shelf, Metal Desk, Folding Work Table, Wood Store Rolling Display, Dual Candy Machine, Open Sign, Cash Register, Paper Shredder, Pedestal Sink, Lg Lot Of New Ribbon, New Balloons, Plastic Flowers, Flower Fillers, Very Lg Lot Of Different Styles Of Vases & Planters, Lots Of Planting Pots, Paints & Any Accessory Or Item Used In Floral Shop Business



**Auctioneers Note:** It Is An Honor To Be Conducting This Auction For The Hatfield & Pope Families As They Are Very Well Known & Very Well Respected Members Of The Community. This Auction Will Definitely Have Something For Everyone From Great Antique & Primitive Furniture To Excellent Small Antique, Primitive & Household Items. If You Are In The Flower Business We Will Have An Excellent Selection Of New Items For Inventory & Flower Arrangement Accessories. The Barnwood Furniture Is Very Neat & Outstanding. Please Plan Now To Attend. **Sale Order: Antique & Primitive Furniture Will Sell First Then Will Move Directly Into Antiques & Small Items. Store Related Items Will Be Sold & Mixed In With All Other Items So Don't Be Late. See Ya There!!!**

Terms: Cash or check with proper ID. Now accepting most major credit cards. Nothing removed until settled for. Statements made the day of sale takes precedence over printed material. Everything sold as is where is. Not responsible for accidents. Restroom available. Concessions Provided By Barker Concessions. Check our website for upcoming auctions and for additional pictures!!



## NANCE AUCTION SERVICE

No Matter How BIG or small, We Do Them All!!!

Col. Bill Nance 417-214-0093

In God We Trust

Philippians 4:13

# #1 AUCTION SOURCE IN CENTRAL MISSOURI

## SERVING 33 COUNTIES!



**IN PRINT & ONLINE!**

# TO ADVERTISE YOUR AUCTION, CALL 417-532-9131

# WEEKLY TRADER MAGAZINE

100 E. Commercial, Lebanon  
www.myweeklytrader.com  
www.facebook.com/myweeklytrader

# BUFFALO LIVESTOCK MARKET LLC



276 Hwy 32 West  
Buffalo, Missouri

**December 4<sup>th</sup>, 2021**

**Receipts: 1768 Head**

**Feeders \$5 to \$10 Higher;  
Cows \$3 to \$4 Higher.**

### REPRESENTATIVE STEERS

300-400 @ 162.00 to 197.50  
400-500 @ 171.00 to 201.50  
500-600 @ 162.00 to 185.00  
600-700 @ 150.00 to 166.00  
700-800 @ 137.00 to 152.75  
800-900 @ 140.00 to 152.00

### REPRESENTATIVE HEIFERS

300-400 @ 139.00 to 165.00  
400-500 @ 144.00 to 169.00  
500-600 @ 130.00 to 154.00  
600-700 @ 130.00 to 154.00  
700-800 @ 120.00 to 144.00  
800-900 @ 115.00 to 136.00

### FEEDER BULLS

400-500 @ 150.00 to 185.00  
500-600 @ 148.00 to 169.00  
600-700 @ 127.00 to 145.00  
700-800 @ 120.00 to 140.00  
800-900 @ 115.00 to 125.00

### STOCK COWS

750.00 to 1150.00

### SLAUGHTER COWS

High Dress Fleшы 60.00 to 70.00  
Med Dressing 50.00 to 60.00  
Low Dressing Thin 30.00 to 48.00

### SLAUGHTER BULLS

High Dressing 90.00 to 95.00  
Med Dressing 80.00 to 90.00  
Thin Low Dressing 73.00 to 79.00

### MON-WED MARKET REPORT

Listen to KJEL 103.7FM • Lebanon or KYOO 99FM • Bolivar

**VIEW OUR SALES AT CATTLEUSA.COM**

**CALL FOR TRUCKING OR ON-FARM VISIT**

Lyle Caselman • Owner-Manager  
417-345-7876 • mobile 417-533-2944  
Leon Caselman • Owner  
417-345-4514 • mobile • 417-588-6185

# MID MISSOURI STOCKYARDS

**REGULAR SALE EVERY THURSDAY 11AM**

WATCH OUR WEEKLY SALE IN REAL TIME ON [DVAUCTION.COM](http://DVAUCTION.COM)

For Farm Visits, Market Updates, or Trucking

Call Zach Cox 417-777-1320

Dan Romine 573-578-4939

**Competitive Buyers!  
Competitive Commission!  
Competitive Market!**

Barn: 417-532-9292

I-44 • Exit 123 "just outside of Lebanon"  
17505 Route 66, Phillipsburg, MO 65722

For weekly market updates, visit us at [www.midmostockyards.com](http://www.midmostockyards.com)

**7 MONTH OLD MALE ENGLISH SHEPHERD:** Started on cattle. 573-760-5157. Centerville.

**OVER 90 KNIVES:** Lots of pocket knives & bowie knives. \$100 for all. (All made in China). 417-948-2049. Vanzant.

**ENGLISH BULLDOG PUPPIES:** AKC registered, 4 males, home raised. Ready for Christmas. Call or text 417-712-4582. Thornfield.

**HISTORY OF UNIVERSITY OF MISSOURI-ROLLA BOOK:** Formerly Rolla School of Mines, 258 pages, HB, \$6.50. 417-532-2045. (Leave message and phone number). Lebanon.

# AUCTION HERMANN MO AUCTIONS

**Thursday, December 16, 2021  
6 P.M. • 513 Market Street  
Hermann, Mo. 65041**

Antique Furniture, Antiques,  
Used Furniture, Glassware, Tools,  
Pictures, Household and MORE!!!!!!

SEE: [www.Facebook.com/HermannMoAuctions](http://www.Facebook.com/HermannMoAuctions)  
OR AuctionZip.com

**TERMS:** cash or good check with proper ID or charge (3% fee applied for charge cards) Everything sells AS IS. ALL Sales Final

Food & Drinks Available

**CALL:** (573) 409-0019 for information or (314) 608-1468

**JERSEY CROSS HEIFER:** 6 months old, \$600. Jersey 5 cross and Jersey calves, 6 months old, weigh 380 to 400 lbs. \$1.20 lb. 573-775-2564. Steeleville.

**JERSEY MILK COW:** 7 years old, extremely gentle, good in all quarters, can hand or machine milk. Will dry up in December, bred back to calf in March. \$1,600. 573-775-2564. Steeleville.

**FOR SALE M5400 KUBOTA 4x4 TRACTOR:** With loader, \$24,000 obo. 3-point attachments available upon request. 573-280-8987. Eldon.

**2 NICE WING BACK CHAIRS:** \$150 for both. 573-327-9068. Desloge.

# 63 Marketplace

573-364-1230  
1380 S. BISHOP AVE., ROLLA • BESIDE EXIT REALTY, SAME BUILDING

- Artistically Painted Furniture
- Home Décor
- Gifts
- Myra Purses

**10% OFF ALL FURNITURE NOW \*TILL 12/31/21**

**AND SO MUCH MORE!**





**JOIN US ON FACEBOOK FOR UPCOMING CLASSES & EVENTS**

**TRUCK LOAD OF FLEA MARKET & AUCTION ITEMS:** \$200 or trade. 573-327-9068. Desloge.

**DITCHHOE METAL DETECTOR:** \$125. 573-327-9068. Desloge.

**NEW PISTOL CROSSBOW:** \$100. 573-327-9068. Desloge.

**100 VCR MOVIES:** \$2 each. 573-327-9068. Desloge.

**MARTIN 6FT. SILAGE BAGGER:** 573-539-2455.

**RAINBOW VACUMMS:** 2 with powerheads, \$75 for set. 417-532-6561. Phillipsburg.

**SWIMMING HOLES OF THE OZARKS:** A guide to 85 great places in Arkansas and Missouri. \$6.50. 417-532-2045. (Leave message and phone number). Lebanon.

**JOHN DEER BALE TRACK MONITOR:** 57 Series, just rebuilt. \$800. 417-349-1386. Hartville.

**63 SCOOPY DOO DVD'S:** \$2 each. 417-532-6561. Phillipsburg.

**1964 CANADA SILVER PROOF SET:** Celebrates 100 years of the Capitol Quebec. \$130. 573-764-3517. Call p.m.

**ANTIQUe WOODEN ROLLING PIN COLLECTION:** \$90. 573-764-3517. Call p.m.

**CHRISTMAS LIGHTS INSTALLER:** 30 plus years experience. 417-298-2668. Lebanon.

**WANTED GOOD USED PROPANE TANK:** 500 to 1000 gallons. 417-967-3084. Houston.

## H.O.B RENT-IT-CENTER TWO DAY AUCTION

**RENTAL TOOLS & EQUIPMENT,  
WEDDING RENTAL SUPPLIES, STORE  
FIXTURES & SO MUCH MORE!**



**Day 1 (Equipment, Tools, Fixtures) Bidding  
Ends Tues., Dec. 14th at 12:30 PM**  
Bobcat S130, 2003 Chevy Truck, 16' Flatbed Trailer, Vast Inventory of Large & Small Rental Equipment, Portable Smoker, Carport, Store Fixtures, Too Many Items to List

**Day 2 (Wedding/Event Supplies, Etc.) Bidding  
Ends Wed., Dec. 15th at 12:30 PM**  
Formal Dinner Dishes, Wedding Decorations, Tables/ Chairs, Tents, And The List Goes On

**5505 Business 50 West, Jefferson City, MO 65109  
Bid Online At Atterberrysells.com**

**Preview: Monday, December 13th,  
from 3:00 PM to 6:00 PM**

**Payment & Pick-Up: Thursday, December 16th  
by appointment only (approx. 10 am - 6 pm)**

After over 60 years of business, the well-established, family-owned House of Bargains will be closing. This auction has so many items to offer its impossible to list everything, please visit [atterberrysells.com](http://atterberrysells.com) to preview the vast array of items being sold.

**Seller: House of Bargains**

**Check It Out & Bid Online At  
[www.AtterberrySells.com](http://www.AtterberrySells.com)**

For complete terms, listing, catalog, pictures & bidding, visit [atterberrysells.com](http://atterberrysells.com), email [contactus@atterberryauction.com](mailto:contactus@atterberryauction.com), or call (573) 474-9295. Please contact our office if you need help with the online bidding process.

 **ATTERBERRY** AUCTION & REALTY COMPANY  
[www.AtterberrySells.com](http://www.AtterberrySells.com)  
573-474-9295  


## ESTATE AUCTION


### Saturday December 11 10:00 AM

**34 Carter Lane, Galena Mo. 65656**

**Directions:** From the Square take Maple St. 3 blocks south then right on 9th. st. to Carter Ln.

**Pickup - Tractor - Implements - Trailer** 1989 Dodge Ram 250, ¾ ton 4x4, Cummins Diesel, Auto. Trans. shows 99,xxx mi. (call for more info); Mahindra 2615 4x4 Tractor with Loader, dual remotes (only 522 hrs); Bush Hog 760H, 3pt. Backhoe Attachment; Shaver Mfg. model SC-25, 3pt. PTO Stump Grinder (Like New); 3pt. Befco T-40 42" PTO Tiller; 3pt. HawkLine Post Hole Digger (Like New); 3pt. Olathe Mfg. mod 12, Brush Chipper; 3pt. Bark Buster PTO Log Splitter; 3pt. Hydraulic Log Splitter (Homemade); 3pt. Cherry Picker; 3pt. 5ft Angle Blade; 3pt. 5ft Brush Hog; 3pt. 4ft Brush Hog; 18ft. 16'+ 2' Dovetail Flatbed Utility Trailer (Heavy Built, Needs Floor); Misc. Scrap Metal **Pickup - Tractor - Implements - Trailer** (225) Never Used 8ft. Landscape Timbers; Miller Roughneck 2E Portable Welder/Generator; 16 Spd. Benchtop Drill Press; Fuller 5" Vise Stack-On Mechanics Toolbox; Lot misc. Hand & Mechanics Tools; Lot Lawn & Garden Tools; Electric Chainsaw Sharpener (New); 15 Gallon ATV Sprayer (New); 1967 I.H. Scout Fender, Grill, Transfer Case; 12 Winch; High Wheel Push Mower; Old Craftsman Riding Mower & MTD Tiller; Lot misc. Shop & Garage Related Items; Shimano Mongoose Mountain Bike; Murray Mountain Bike; Winchester model 60 .22 single shot; Wards model 30 12ga. Pump Shotgun; Few Old Shotgun Shell Boxes; **Antique - Collectible** (Dug Up) Anasazi Indian Corrugated Bowl; (2) Pcs. Early Indian Pottery; Old Bostrum & Brady #2 Transit & Stand; Lodge 3 Notch Chicken Fryer w/ Drip Lid; Few Older Kitchen Collectibles; Oil Lamps; 1911 Winslow Az. Calendar; Few Older Books incl. 1930's Motor Show, 50's & 60's Motor Repair Manuals, Tractor Books etc... Few Comic Books; Galvanized Wash Tubs; Vogelzang Cast Iron Boxwood Stove (New); Misc. Antiques & Collectibles **Household - Misc.** Roper Washer & Dryer; Antique Curio/China Cabinet; Queen Ann Secretary Bookcase; Few Misc. Wood Furniture Pcs.; Lots not Listed

**Living Estate of Olin Lee Stauffer**

 **Larry Foster**  
Auctioneer  
Galena, Mo  
Phone: (417) 723-8329  
Cell: (417) 839-6860

[www.fosterauctionservice.com](http://www.fosterauctionservice.com)  
Email: [bidnowsold@aol.com](mailto:bidnowsold@aol.com)

# Starnes Auto LLC

**22115 Rt. 66 • Lebanon, MO 65536**

**417.718.2707 Cell  
417.588.3159 Office  
[www.starnesauto.com](http://www.starnesauto.com)**

<b>1996 GMC JIMMY</b>	
WHITE, 125,XXX MILES .....	<b>\$3,650</b>
<b>2001 CHEVY IMPALA</b>	
GRAY, 62,XXX MILES.....	<b>\$4,850</b>
<b>2006 CHEVY EQUINOX</b>	
BLACK, AWD, 186,XXX MILES..	<b>\$4,600</b>
<b>2006 TOYOTA HIGHLANDER</b>	
BLUE, 206,XXX MILES.....	<b>\$7,200</b>
<b>2007 PONT G6</b>	
SILVER, 119,XXX MILES .....	<b>\$4,200</b>
<b>2011 DODGE G. CARAVAN</b>	
SILVER, 158,XXX MILES .....	<b>\$6,500</b>
<b>2012 CHEVY MALIBU</b>	
BLUE, 81,XXX MILES.....	<b>\$6,750</b>
<b>2015 BUICK ENCORE</b>	
MAROON, 78,XXX MILES .....	<b>\$11,200</b>
<b>2015 CHEVY EQUINOX</b>	
WHITE, 61,XXX MILES .....	<b>\$13,500</b>
<b>2015 CHEVY MALIBU</b>	
SILVER, 81,XXX MILES .....	<b>\$9,250</b>
<b>2015 CHEVY MALIBU</b>	
WHITE, 127,XXX MILES .....	<b>\$8,250</b>
<b>2015 GMC TERRAIN</b>	
BLACK, 66,XXX MILES.....	<b>\$13,500</b>
<b>2016 BUICK VERANO</b>	
WHITE, 60,XXX MILES .....	<b>\$11,500</b>

**WE DO ALIGNMENTS!**




**COMINATION 3-POINT 2 BALE CARRIER:** And carry-all, \$400. 417-646-8807. Osceola.

**2003 CHRYSLER SEBRING CONVERTIBLE:** Needs motor. Sell or trade. 573-734-2822. Bismark.

**1150 CASE HI-LIFT TRACK LOADER:** 125 hp. Do your own land clearing. \$5,500. 573-247-0807. Salem.

**2 - 55 GAL. HANGING MINERAL FEEDERS:** \$15 each. 573-201-9556. Newburg.



**Where it's always a bull market!**  
**Angus - Brangus - Ultrablacks**  
 14603 HIGHWAY KK, LEBANON, MO  
 417.288.4444 • WALLSTREETCATTLE.COM



**SMALL ANIMAL SALE**  
**December 10 @ 6pm**  
 • Sheep • Goats  
 • Ducks • Chickens  
 • Ponies • Calves  
 • Rabbits  
 Accepting Stock & Misc.  
 Farm. Equipment at noon.  
**RJ's BBQ will be serving.**  
**Summersville Livestock Auction LLC**  
 245 2nd St. • Summersville, MO • 417-241-5558

**LAKE OF THE OZARKS: 2 LOT SPECIAL \$7,595, \$100 DN, \$99 PER MO. OWNER FINANCING, NO CREDIT CHECKS,** calm and peaceful water for fishing, free lake access and boat ramps. Prices good thru **December 21<sup>st</sup>.** Take Hwy 135 South out of Stover, MO to lake road 135-12, follow signs to the Ivy Bend Land Office. Open Thursday, Friday, Saturday and Monday. Call 573-372-6493. www.ivybendlandoffice.com

**AUSTRALIAN PUPPIES:** Ready December 10<sup>th</sup>. Up to date on shots, tails & dew claws are done. Out of working parents. 417-967-6493 or 417-217-4627. Roby.

**BLUE HEELER FEMALE PUPPIES:** DOB 10-1-21, ready 11-25-21. UTD shots, farm raised, working dogs, great temperament. \$250. 417-372-0478. West Plains.

**AUSTRALIAN SHEPHERD PUPPIES:** Ready 12-4-21, Red/Murals, Red/Tris, UTD shots, farmed raised, very friendly, good temperament. \$250. 417-372-0478. West Plains.

**JEAN SHEPHERD BOOK: Down Through The Years, hardback, 224 pages, \$6.50. 417-532-2045. (leave message and phone number). Lebanon.**

**STORY & PICTURES BOOK OF OLD LINN CREEK: Haha Tonka and Camden County, by T. Victor Jeffries, 72 pages. \$5.00 postpaid. (417)532-2045. (Leave message and phone number). Lebanon.**

**HYDRALIC BALE SPIKE:** For a pick-up gooseneck ball. \$1,000. Oak firewood \$140, a cord. 417-298-1918 or 417-327-6852. Louisburg.

**FOR SALE:** Full blooded male beagle, 8 months. 417-259-1815.

**BOX BLADE:** New, 5ft with rippers. \$300. 417-753-2747. Rogersville.

**PUBLIC AUCTION**  
 As we have sold our home, will sell the following 4 miles South of Wheatland, MO on Hwy. 83 to Hwy. 254, then East 2 miles - The Triangle - Then 1 Block South - Watch For Signs  
**Sat. Dec. 11, 2021 • 10am**  
**HOUSEHOLD - COLLECTIBLES - TOOLS - MISC.**  
 Log TV Stand - Log Desk - 3 Log Bed Frames - 3 Log Bed Side Tables - Log Wood Bed - Antique Dress Circa 1880 - Antique Dresser w/Mirror - Wood Desk - Tall Corner Lamp - Other Lamps - 32" Vizio TV - 50" Vizio TV - Small Decorative Folding Table - Kitchen Table w/4 Chairs - Antique Wood Chair - 2 Large Crocks - 2 Whiskey Crocks - Misc. Board Games - Bless This House Box Set - 4 Pc. House Canister Set - Fire Pit - Pig Canister - Mop Bucket - 2 Sm. Bissell Vacuums - Mickey Mouse Waffle Maker - Picnic Table - Assorted Small Kitchen Appliances - Misc. Cookbooks - Jack Lalanna Juicer - 3 Lg. White Canisters - Flat Top Griddle - 2 Duck Sculptures - Wolf Head Figurines - Misc. Decorative Plates - 2 Gal. Glass Jars - Lg. Apple Pie Container - Sectional Bookcase Set - Carnival Glass China Cabinet - Lot Nic Nacs - Vintage Boat Ads, Framed - **Elvis Presley Memorabilia** - Records - Photo Albums - Figurines - Magazines - Lamp - 5-6 Lg. Framed Paintings & Prints - Antique Cast Iron Farm Church Bell - Antique Tiffany Style Stained Glass Lamp Working - Evinrude Gas Tank Can - Lg. 2 Cycle Gas Can w/Graphics - Nike Golf Club Set - Sport King Vintage Boat Motor & Stand - Vintage Wood Boat Motor Stand - Vintage Monroe Shock Two Sided - Advertising Street Barricade - Two Ladders - Wheelbarrow - Misc. Yard Tools, Rakes, Shovels, Post Hole Digger, - Other Tools - Round & Oval Top Antique Mirror - Daisy BB & Pellet Gun w/Scope & Original Box - Vintage Table Tennis Set - Ping Pong Table - Child's Wood Rocking Chair - Uline Moving Dolly - Antique Victorian Style White Wicker Shelf - Knotty Wood Dresser - Outdoor Bench - Twin Vintage Bird Prints w/Wood Frames - Arthur Singer Magnolia Framed Print - Cargo Load Bar  
 See website for photos! [crawfordauctionservice.com](http://crawfordauctionservice.com)  
**Sam Crawford Auction Service**  
**Cross Timbers, MO • 417-998-6629**  
**TONY & REGGIE FATINO, TODD & SHARON FATINO**

**GUN AUCTION**  
**FRIDAY, DECEMBER 10TH • 6 P.M.**  
**DOORS OPEN AT 4 P.M.**  
**Location:** 1585 North Hwy. 63 of Houston, Mo. 65483 **Directions:** From Houston, Mo., take U.S. Hwy. 63 North approx. 1 mile to auction. (Auction held inside the Community Building.)  
**150 GUNS TO SELL**  
 • Hand Guns, Rifles & Shotguns. Several Collector Quality.  
 • Ammo, Holsters & Gun Cases.  
 For listing, visit our website:  
[www.rickdixonauctions.com](http://www.rickdixonauctions.com) or  
 Auctionzip (Auctioneer #1598).  
 Note: Please make plans to be with us for this outstanding gun auction. Lots of guns in storage we haven't seen and aren't on any listing.  
  
**Rick Dixon Auction Service LLC**  
[www.rickdixonauctions.com](http://www.rickdixonauctions.com)  
**Rick 417-967-6604**  
**Josh 417-217-9627**

**Larry Heisel Rentals**  
**LARGE or SMALL...**  
  
**We Rent!**  
 Crawler Loaders-Excavators-Backhoes  
*Call Larry!* *We Deliver!*  
**573-779-1500**  
[www.larryheiselequipment.com](http://www.larryheiselequipment.com)  
 Rental Available in 636 or 573 area code

**BEAUTIFUL 7 1/2 FOOT ARTIFICIAL BALSAM CHRISTMAS TREE:** Ornaments and lights included. \$100. 417-426-5266. Eldridge.

**BEST OF THE BEST FROM MISSOURI COOKBOOK:** Selected recipes from Missouri's favorite collection. \$4.50. 417-532-2045. (Leave message and phone number). Lebanon.

**ALL NATURAL BEEF ON THE HOOF:** 11 head, 1400 to 1500 lbs. No corn, soybeans or shots ever. Asking \$2,100 each. Emery Hershberger, 22654 Pinoak Rd. Summersville, 65571.

**SINGER 401A SEWING MACHINE:** In cabinet, works good. \$200. 417-718-3126 or 417-286-3850. Stoutland.

**WANTED:** 36x11.2 tractor tires to fit International C. 417-457-1015. Raymondville.

**130 ACRES, HOME, GARAGE/SHED:** 1/2 trees, 3 ponds, pasture, live creek, Dallas County. \$5,000 acre. 303-748-8215 (leave message.).

**BUCKET SPIKE:** \$275. 573-201-9556. Newburg.

**GRANDFATHER CLOCK SETH THOMAS:** Strikes on 5 pipes hanging down. \$500. 417-362-0073. Willow Springs.

**JOHNNY CALL BACK BOX:** \$200 obo. 573-201-9556. Newburg.

**0% for 4 Years**



**HEATMOR**  
Outdoor Wood  
Furnace

as low as **\$208** per month

**HEATMOR MIDWEST**  
Licking, MO 65542 • 573-674-2962

**SPECIALIZING IN HEAVY DUTY GATES**



**Cow Country Gate Sales**

Call Randy: 573-569-4754  
or Home: 573-539-2528  
Located at: Zimmerman Welding  
16889 Hwy 52, Barnett, MO

**2000 WILDERNESS GLX SERIES M-34-5L 4 SEASON EXTREME RV:** Excellent condition. \$12,250. 573-732-5588. Bourbon.

**HR MUZZLE LOADER:** 5 Cal, scope & sling, \$200. 573-201-9556. Newburg.

**FOR SALE ARABIAN GELDING:** 3 years old, other Arabian's available. 573-263-4749. Rolla.

**SOLID OAK TABLE AND 4 CHAIRS:** Excellent condition, \$650. China cabinet, \$175. Take all \$750. 417-741-1232. Hartville.

**FOR SALE: 3 acres wooded, close to the river, county road frontage, county water & phone on the property with electric close by. Excellent property for a log cabin with a bluff like view on the back side. Asking \$15,500. 573-435-0026 ask for Bob.**

**A & V UTV SEEDER:** \$75. 573-201-9556. Newburg.

**PROWLER TROLLING MOTOR:** 55lb thrust, hand operated, new leather chaps. \$170. 417-718-3126 or 417-286-3850. Stoutland.

**HYDRAULIC BALE SQUEEZE:** For silage bales. \$80. 417-753-2747. Rogersville.

## Offering the Area's LOWEST METAL PRICES!

# Pole Barn Packages

CALL TODAY FOR A FREE QUOTE!

24'x32'x10'	30'x40'x10'	40'x60'x12'	Sales Tax & Delivery not included. Labor quotes available as well.
24'x40'x10'	30'x60'x10'	<b>CALL TODAY!</b>	

Compare Before You Buy.

We Use Only The **Highest Quality** Materials!



Custom Homes • Metal Roofs

**29 Gauge**

**#1 PAINTED METAL**

- ★ Lifetime Warranty - \$99.00 Sq.
- ★ 40 Year Warranty - \$94.00 Sq.
- ★ 20 Year Warranty - \$91.00 Sq.
- ★ 25 Year Galvalume - \$76.00 Sq.

Labor prices will be higher in locations over 75 miles from Marshfield, MO



ALL MATERIAL PACKAGES INCLUDE...

- ✓ #1 Yellow Pine Lumber
- ✓ #1-40 Yr. Painted Metal w/Screws
- ✓ 1-10' Overhead Door
- ✓ 1-36" Entry Door

**Fully Insured**



**PORTABLE BUILDINGS**

Rent to Own  
No Credit Check

1049 SCHOOLVIEW DR.  
Marshfield, MO



**Marshfield BUILDINGS**  
www.marshfieldbuildings.com



417-859-7744

**AUSTRALIAN ENGLISH SHEPPERD CROSS:** Out of working parents, some natural bobtails. 573-663-7459. Centerville.

**JOHN DEERE 310C DIESEL BACKHOE LOADER:** \$11,500. 573-765-4406. Richland.

**PULL TYPE 10 FT. BAR BLADE ON WHEELS:** With cylinder. \$1,800. 573-765-4406. Richland.

**JOHN DEERE 2755 DIESEL TRACTOR 4 WHEEL DRIVE:** Cab & air with J.D. 245 loader. \$27,000. 573-765-4406. Richland.

**FORD 4610 DIESEL TRACTOR:** Canopy 52 hp. with loader. 2000 hrs. \$12,500. 573-765-4406. Richland.

**JOHN DEERE 10FT PULL TYPE BRUSH CUTTER:** \$2,950. 573-765-4406. Richland.

**MISSOURI GUN CO LLC**



Your Reloading Headquarters for Southern Missouri.

W, Th, F: 10am-6pm  
Sat: 10am-4pm  
Sun, M, T: CLOSED

**BUY. SELL. TRADE.**

516 Ozark St., Cabool, Mo. • 417-962-2666



**Cheyenne Acres**  
Horse & Tack

**BUY - SELL - TRADE**  
by Rolla, MO

Call For Directions & Availability

**Call Kip**  
**573-368-9402**



**Buying Standing Timber**  
*References Available.*

**BUTLER LOGGING**



**NIANGUA, MO**  
**417-448-9323**

**SWISHER 34 TON:** Wood splitter, with 10.5 engine. \$900. 573-765-4406. Richland.

**HISTORY OF THE SCHOOL OF THE OZARKS:** at Point Lookout. \$5.00. 417-532-2045. (leave message and phone number). Lebanon.

**BRUSHHOG 12815 15FT HYD FOLD BRUSHCUTTER:** Very nice. \$17,000. 573-765-4406. Richland.

**VICON 10 FT. DISK MOWER:** \$2,650. 573-765-4406. Richland.

**FORD 5600 DIESEL TRACTOR:** 60hp. \$7,850. 573-765-4406. Richland

**IHC 806 DIESEL TRACTOR:** With loader. \$6,800. 573-765-4406. Richland.

**IHC 1086 DIESEL TRACTOR:** Cab & air, 130 h.p. \$13,000. 573-765-4406. Richland.

**NEW HOLLAND 1411 DISCBINE WITH ROLLERS:** \$8,950. 573-765-4406. Richland.

**JOHN DEERE 467 ROUND BALER:** Monitor, new wrap. \$10,850. 573-765-4406. Richland.

**POOL TABLES:** Installations, moves, recovers, repairs, accessories, etc. 573-646-1700.



**QUALITY ISN'T OUR GOAL. IT'S OUR GUARANTEE.**

For more than 90 years, generations of producers have put their trust in Kent. And we've delivered with consistent quality, breakthrough innovations, and proven results.




**Energilass EcoTub**  
Biodegradable Container  
200lb EcoTub

**Energilass**  
250lb

**Farm Dog Feed ONLY \$18/Bag!!**  
While supplies last



**Portable Feed Bins Ready For Your Farm!**

**Stocked & Ready for all your Livestock Feed Needs!**




**"DOING BUSINESS ON OUR WORD AND A HAND SHAKE"**  
Located in the Heart of the Amish Mennonite Community!  
417-345-8600 • 19 Prairie Lane, Buffalo

**Built on Trust**  
EST. 1927

kentfeeds.com

# THANK YOU

to all of our loyal customers

*We look forward to seeing you in 2022!*

**Metal Roofs Designed To Look Great On Your Home!**



**Ask About Our Quick Service.**  
Over **20** Colors and Several Styles To Choose!



**HEAVY 29 Ga. METAL # 1**

Limited **LIFETIME WARRANTY**  
**29 Ga. & 26 Ga. Painted**

**CUT TO LENGTH PANELS**

**GALVALUME METAL UNPAINTED 25 YEAR WARRANTY**  
#1 Standard Panels, 29 Ga.

**Good Quality Quick Service**

**NEXT BUSINESS DAY SERVICE**

*Call for details.*

**DELUXE BUILDING PACKAGES AVAILABLE CALL TODAY TO GET YOUR QUOTE!**

**877-556-8855**



**24x40x10 • 24x32x10 • 30x40x10 • 30x40x12 • 40x60x12**

All Buildings Quoted Have #2 Lumber And #1 Galvalume Or Limited Lifetime Painted Metal

All Buildings Are Heavy 29 Ga. Metal, Three 2"x6" T&G Splashboards, All Poles 5"x5" Or Larger, CCA Treated, Fully Trimmed With One 3'x6' Walk-Through Door & One Large Sliding Door.

*Plus Tax. Labor & Delivery Available On All Building Packages. Prices may vary due to local code restrictions.*



**BYLER BUILDING SUPPLY, LLC**



2 1/2 MILES EAST OF SEYMOUR ON 60, 1/4 MILE NORTH AT AUTO SALVAGE [WWW.BYLERSUPPLY.COM](http://WWW.BYLERSUPPLY.COM)

**877-556-8855 MON.-FRI. 7:30-5 SAT. 8-12 FAX NO. 417-935-2995 417-771-3100**

**VISIT US AT [WWW.BYLERSUPPLY.COM](http://WWW.BYLERSUPPLY.COM)**

**STOP IN TODAY**  
**FOR ALL YOUR FALL FARMING NEEDS!**

Large selection of feeds, tools, farm equipment and more!

**STEELVILLE**  
**FEED & FARM**

573-775-2650 • 11 Cobblestone Rd., Steelville Mon-Fri 8am-5pm • Sat 8am-12pm • Sun Closed

**AKC WHITE GERMAN SHEPHERD PUPPIES**

**\$500**

**(660) 833-5692**

**WEATHERED BARN WOOD SIDING:** 10" wide. 573-729-7226. [www.pineridgerustic.com](http://www.pineridgerustic.com) Salem.

**WANTED TO BUY ANTIQUE CARS:** Convertible, Corvettes, unrestored, motors, parts considered. 870-324-1154. Ash Flat.

**BUYING MOBILE HOMES:** Call David at VILLA HOMES IN ROLLA 573-578-8072. Rolla.

**WANTED TO BUY DODGE DIESEL TRUCK:** Or Toyota Tacoma. Also, buying antique cars. 870-324-1154. Ash Flat.

**LOG SIDING:** 2X8 Pine/Western Cedar [www.pineridgerustic.com](http://www.pineridgerustic.com) 573-729-7226. Salem.

**USED MOBILE HOMES:** Call David at VILLA HOMES IN ROLLA 573-578-8072. Rolla.

**STOCK MOBILE HOMES AVAILABLE:**

We gottem, single and double, 3 and 4 bedroom! Call Tuffy 573-657-2176. [amegamobilehomes.com](http://amegamobilehomes.com)

**HISTORIC BARN OF MISSOURI BOOK:** A Storehouse of History, HB 168 pages, great coffee table book, \$10. 417-532-2045. (Leave message and phone number). Lebanon.

**Buildings • Hunter's Cabins • Lawn Furniture**

**JAMCO BUILDERS**

**JAMCO Portable Buildings**

800-688-2064 • 307 Enterprise Dr. • Seymour, MO • [www.jamcobuilders.com](http://www.jamcobuilders.com)

**Rent To Own Plan**

**Team Electrical & Plumbing**

*"The Professionals you can count on"*

Electrical • Solar Power • Plumbing • Lighting Installation

100 % Satisfaction Guaranteed	Fully Licensed & Insured	\$100 Estimates with upfront pricing
-------------------------------	--------------------------	--------------------------------------

*For the best quality of work every time...*

**Give "Team" a call today!**

417-349-6200 • [www.teamelectricalplumbing.com](http://www.teamelectricalplumbing.com)

**BIRDS OF NORTH MISSOURI BOOK,** HB, 96 pages, \$5.00. **HOW TO KNOW BIRDS BOOK,** HB, \$5.00. 417-532-2045. (leave message and phone number). Lebanon.

**OZARK WHITEWATER:** A paddler's guide to the Missouri streams of Arkansas and Missouri, \$7.50. 417-532-2045. (Leave message and phone number.) Lebanon.

**AVAILABLE STOCK MOBILE HOMES:** Immediately, double wide and single, 3 and 4 bedroom 573-499-9993 [columbiadiscountohomes.com](http://columbiadiscountohomes.com)

**WANTED:** Old Pinball Machines and Juke Boxes. 573-424-7200.

**FERTRELL ORGANIC FERTILIZER:** Free Catalog. 315-796-4370. Caulfield.

**TRUE MODULARS:** 30 to 60 day delivery available, 3 and 4 bedroom 573-657-7040 [chateauhomes.net](http://chateauhomes.net)

**TINY HOMES:** We gottem 573-881-3283

**CERAMIC CANISTER SET:** With cutting board that fits in kitchen counter top. Various species of ducks. Set \$40 obo. 636-239-2695. Washington.

Is Your Log Home **UGLY?**  
*Starting To Look*

**Professional Staining & Repair**  
 (Log Homes & Wood Siding)

**Call Pine Ridge Rustic**  
 Log Home Building Supplies

573-729-7226

[www.pineridgerustic.com](http://www.pineridgerustic.com)

**Omar's Logging**

⇒ Oak & Walnut  
 ⇒ Excellent Prices  
 Amish Owned & Operated

**LEAVE MESSAGE: 417-741-0440**  
 Hartville & Surrounding Areas

**I BUY.....**used mobile homes. Call or text 573-338-6250 or email [GregS.CH@outlook.com](mailto:GregS.CH@outlook.com)

**REGISTERED HEREFORD & ANGUS BULLS:** Home raised, Some Show-Me Select Qualified. 573-701-7828. Belgrade.

**WE BUY AND SELL**  
new and used mobile homes



**(417) 501-1061**

**FIREARMS:** Professional Repairs and Restorations. Baron's Gunsmithing. 573-363-5801, Camdenton.

**OWN YOUR OWN BUSINESS:** Established Locksmith retiring after 37 years. Lockout tools, HPC Code Machine, key cutters, keys, rekeying kits, cabinets, manuals, too much to list. 2007 GMC Van optional. Call 870-421-5437 for more information.

**CUSTOM SAW MILLING:** 417-533-4607. 417-664-1195. Lebanon.

**REFRIGERATOR FOR SALE:** \$300 or best offer, 417-254-1570. Seymour.

**CALUS LOGGING**

**20 YEARS EXPERIENCE**

**Buying Standing Timber**  
Walnut & Oak

**Joe Calus, Owner**  
417-926-4606 • MTN. GROVE

**CERTIFIED**

**ELECTRIC HEATER RADIATOR**  
**STYLE:** Like new, with thermostat, hi/low settings, works excellent. \$45. 573-364-7465. Rolla.

**JERSEY CROSS HEIFER:** 6 months old, \$600. Jersey 5 cross and Jersey calves, 6 months old, weigh 380 to 400 lbs. \$1.20 lb. 573-775-2564. Steeleville.

**BUTLER LOGGING:** Buying standing timber. References available. 417-630-4000. Grovespring.

**HEARTH CRAFT GLASS BI-FOLD FIRE PLACE DOORS:** Antique brass. \$200 obo. 636-239-2695. Washington.



For Outstanding Products & Service  
**AGRI-ENTERPRISES**

**DOG HOUSE LARGE SIZE:** 2 piece gable roof, vented, great condition. \$45. 573-364-7465. Rolla.

**LIONEL TRAIN SET:** Steam engine, tender, cabooses and other car, track and transformer. \$195. 573-364-7465. Rolla.

**Getting Chores Done**  
**LAND PRIDE**  
*does that.*

*\*See dealer for complete warranty information*

**RCR12 SERIES ROTARY CUTTERS**  
20-50 HP 48", 60", 72" Widths

- Floating 3-point allows deck to hug the terrain
- Dishpan with dual blades
- 1" Cutting capacity
- 12 Gauge deck
- Front & rear rubber guards

1-1/2 Miles South Of Licking, MO On Hwy 63  
**573-674-2203 • 1-800-653-7152**  
[www.agri-enterprises.com](http://www.agri-enterprises.com)

**JERSEY MILK COW:** 7 years old, extremely gentle, good in all quarters, can hand or machine milk. Will dry up in December, bred back to calf in March. \$1,600. 573-775-2564. Steeleville.

**EARN \$60,000/YEAR PART-TIME:** In the livestock or farm equipment appraisal business. Agricultural background required. Home study course available. 800-488-7570 or [www.amagappraisers.com](http://www.amagappraisers.com)

**OUTDOOR FORCED AIR WOOD FURNACE:** Fire-proof, insulated, thermostatically controlled. Been made since 1986. Made by Harmon's Heating and Cooling. 573-743-6943.

**DARDEN PROFESSIONAL TIMBER HARVESTING, BUYING STANDING TIMBER:** Great prices, improve wildlife habitat and improve forest health. State Certified & Fully Insured! 573-247-4808 or 573-739-1122. Salem.

**RUBBER & LEATHER BOOTS AND HIP WADERS.** Men's 11, Women's 7, some insulated. \$15-\$40 obo. 636-239-2695. Washington.

**CAR GUY ON YOUR CHRISTMAS LIST?** Let us help books, brochures, manuals, and more. [Autopaper.com](http://Autopaper.com). 573-616-2385. 7-3:30, ship or pickup in Jefferson City.

**WE BUY**  
**White Oak Logs!**

- ✓ Top prices for your logs
- ✓ Experienced log buyers
- ✓ Professional service

Chad Cook | Salem Wood Products  
**417.718.2950**  
5 miles north of Salem, MO on Hwy 19

**INDEPENDENT STAVE COMPANY**  
Log Procurement & Sales

[www.independentstavecompany.com](http://www.independentstavecompany.com)

# SAVE NOW FOR YEAR END!

## LS TRACTOR

### More Features, Standard! More Tractor for your Money!



### MT225S w/ Backhoe

25hp, Hydro, 4wd, Diesel  
Tractor w/QA Loader & Bucket  
w/Backhoe & Bucket

**ONLY  
\$22,000**

### MT225S w/ QA Loader

25hp, Hydrostatic, 4wd,  
Diesel Tractor w/QA  
Loader & Bucket

**ONLY  
\$15,600**



### MT230E w/ QA Loader

30hp, Manual Shuttle, 4wd, Diesel Tractor  
w/QA Loader & Bucket

**ONLY \$18,500**



### MT347H w/ QA Loader

47hp, Hydrostatic, 4wd, Diesel Tractor  
w/QA Loader & Bucket

**ONLY \$27,490**



### MT573CPS

73hp, Cab, Power Shuttle, 4wd, Diesel Tractor  
with QA Loader & Bucket

**ONLY \$45,800**

\* Financing available WAC. See Dealer for Details.



**WCT Farm & Lawn LLC**  
3299 E Evergreen Rd, Strafford, MO 65757  
417-859-4311 • [www.wctfarmandlawn.com](http://www.wctfarmandlawn.com)



# A heavy-duty offer for a heavy-duty tractor.

L01 Series Performance-matched attachments 24.8-47.3 HP



Save big on our L01 Series tractors. They have the versatility to handle every job and a wide range of performance-matched attachments. Kubota tractors under 100 HP are rated #1 for reliability\*. Stop in for a demo and to claim this offer on select models today.

**\$0 DOWN 0% APR UP TO 84 MONTHS**  
 PLUS  
**SAVE UP TO \$1,400**

VISIT US TODAY FOR THIS LIMITED-TIME OFFER

## Quarles Supply Company, Inc

3251 S Springfield Ave  
 Bolivar, MO 65613  
 417-777-2391

[KubotaUSA.com](http://KubotaUSA.com)

\*2020 Progressive Farmer Reader Insights Award for Fewest Reported Problems Overall in the category of Small Tractor (Under 100 Horse Power). Award based on 2020 Progressive Farmer Readers Insights Tractors Study. © Kubota Tractor Corporation, 2021. \$0 Down, 0% APR financing for up to 84 months available on purchases of new Kubota L01 series equipment from participating dealers' in-stock inventory is available to qualified purchasers through Kubota Credit Corporation, U.S.A.; subject to credit approval. Example: 84 monthly payments of \$11.90 per \$1,000 financed. Customer instant rebates of \$1000 are available on qualifying finance or \$1,500 on cash purchases of L01 series equipment. Additional instant rebate of \$400 is available with purchase of one new qualifying implement. Some exceptions apply. Offers expire 12/31/21. Terms subject to change. This material is for descriptive purposes only. Kubota disclaims all representations and warranties, express or implied, or any liability from the use of this material. For complete warranty, disclaimer, safety, incentive offer and product information, consult your Dealer or KubotaUSA.com.