

FREE - TAKE ONE!

Vol. 28 No. 28

OCTOBER 7, 2021

800-543-8271 • 800-665-8875

T WEEKLY **TRADER** MAGAZINE



Find us on Facebook

@myweeklytrader
AUCTIONS PG. 12

VISIT OUR NEW WEBSITE! MYWEEKLYTRADER.COM

**You pull it,
we sell it...
CHEAP!**



Lebanon, MO

22395 Rt. 66
417-588-3555
Fax 417-588-8955



U★PULL★IT SELF-SERVICE AUTO PARTS

We also have a large inventory of used tires and be sure to check out our used car lot!

Mon.-Fri. 8:00am-6:00pm • Sat. 8:00am-4:30pm

WWW.SSUPULLIT.COM

Located next to S&S Recycling.



For All Your Metal Recycling Needs

Lebanon, MO

22395 Rt. 66
417-588-3555
Fax 417-588-8955

Mtn. Grove, MO

8930 First Rd
417-926-3360
Fax 417-926-0180

Roll-off, Trailer, and Mobile Crushing Services Available

Monday-Friday 8:00am-4:30pm (Closed 12pm-1pm Lunch)
Saturday 8:00am-Noon

email: contact@ss-recycling.com

Buyer of all types of scrap metal.

Get a great deal on getting more done.



Cab available with select models 24.8 - 62 HP



(417) 777-2391
quarleskubota.com

Save big on our compact tractors. The versatility to handle every job and a wide range of performance-matched attachments. Kubota tractors under 100 HP are rated #1 for reliability*. Stop in for a demo today.

\$0 DOWN 0% APR UP TO 84 MONTHS

PLUS

SAVE UP TO \$1,400

VISIT US TODAY FOR THIS LIMITED-TIME OFFER

New L2501DT w/Loader Deal!

L2501DT w/loader

\$23,995 Financing Price

- NEW Kubota L2501DT
- 4wd, DIESEL, AG TIRES
- KUBOTA LOADER

- 5' ROTARY CUTTER
- 5' BOX BLADE
- NEW 18' KODIAK TRAILER W/RAMPS



KubotaUSA.com

*2020 Progressive Farmer Reader Insights Award for Fewest Reported Problems Overall in the category of Small Tractor (Under 100 Horse Power). Award based on 2020 Progressive Farmer Readers Insights Tractors Study. © Kubota Tractor Corporation, 2021. \$0 Down, 0% APR financing for up to 84 months available on purchases of new Kubota LX2610SU and all L01 series equipment from participating dealers' in-stock inventory is available to qualified purchasers through Kubota Credit Corporation, U.S.A.; subject to credit approval. Example: 84 monthly payments of \$11.90 per \$1,000 financed. Customer instant rebates of \$1,000 for L01 and \$600 for LX2610SU are available on qualifying finance or \$1,500 L01 and \$1,000 for LX2610 on cash purchases. Additional instant rebate of \$400 is available with purchase of one new qualifying implement. Some exceptions apply. Offers expire 12/31/21. Terms subject to change. This material is for descriptive purposes only. Kubota disclaims all representations and warranties, express or implied, or any liability from the use of this material. For complete warranty, disclaimer, safety, incentive offer and product information, consult your Dealer or KubotaUSA.com.



**THE MOST COMPLETE
LINE-UP IN THE INDUSTRY**

Cutting widths from 36" to 104"



For Outstanding Products & Service

AGRI-ENTERPRISES

1-1/2 Miles South Of Licking, MO On Hwy 63

573-674-2203 • 1-800-653-7152 • www.agri-enterprises.com

THE HEART OF THE SPRING BOOK. A Bennett Spring Novel by Laura L. Valenti, 161 pages. \$6.50. 417-532-2045. (Leave message and phone number). Lebanon.

ROUTE 66 DINING 7 LODGING GUIDE: 183 pages, \$5.00. 417-532-2045. (leave message) Lebanon.

POOL TABLES: Installations, moves, recovers, repairs, accessories, etc. 573-646-1700.

WEATHERED BARN WOOD SIDING: 10" wide. 573-729-7226. www.pineridgerustic.com Salem.

STOCK MOBILE HOMES AVAILABLE: We gottem, single and double, 3 and 4 bedroom! Call Tuffy 573-657-2176. amegamobilehomes.com

FERTRELL ORGANIC FERTILIZER: Free Catalog. 315-796-4370. Caulfield.

CONWAY HIGH SCHOOL BEARS 2000-2001 YEARBOOK. \$12.50. 417-532-2045. (Leave message and phone number). Lebanon.



TIM'S USED CARS

(573) 341-3828 • 1334 South Bishop (Hwy. 63) • Rolla, MO
Next to Hwy CC • www.tims-used-cars.com



2017 NISSAN SENTRA SD
4 Cyl. Auto, Sunroof, Power Equipped, 46,xxx Miles
Only \$14,900



2015 GMC TERRAIN SLT
4x4, V-6, Loaded w/ Options, 158,xxx Miles
Only \$14,900



2016 CHRYSLER 200 LIMITED
4 Cyl. Auto, Power Equipped, 94,xxx Miles
Only \$13,900



2016 GMC ACADIA SLT
AWD, V-6, Loaded w/ Options, 130,xxx Miles
Only \$18,900

LOG SIDING: 2X8 Pine/Western Cedar www.pineridgerustic.com 573-729-7226. Salem.

USED MOBILE HOMES: Call David at VILLA HOMES IN ROLLA 573-578-8072. Rolla.

BUYING MOBILE HOMES: Call David at VILLA HOMES IN ROLLA 573-578-8072. Rolla.

WANTED TO BUY ANTIQUE CARS: Convertible, Corvettes, unrestored, motors, parts considered. 870-324-1154. Ash Flat.

WANTED TO BUY DODGE DIESEL TRUCK: Or Toyota Tacoma. Also, buying antique cars. 870-324-1154. Ash Flat.

TINY HOMES: We gottem 573-881-3283

LARGE SELECTION OF CARS, TRUCKS, SUVs & VANS!

ACCEPTING NEW CLIENTS
WE CARE FOR YOUR FAMILY LIKE OUR OWN.
Reba's Family Care, LLC
 417 664-0760 • Reba Green | 573-434-3764 • David Green

AVAILABLE STOCK MOBILE HOMES: Immediately, double wide and single, 3 and 4 bedroom 573-499-9993 columbiadiscountshomes.com

TRUE MODULARS: 30 to 60 day delivery available, 3 and 4 bedroom 573-657-7040 chateauhomes.net

CUSTOM SAW MILLING: 417-533-4607, 417-664-1195. Lebanon.

Larry Heisel Rentals
LARGE or SMALL...

We Rent!
 Crawler Loaders • Excavators • Backhoes
Call Larry! *We Deliver!*
573-779-1500
 www.larryheiselequipment.com
 Rental Available in 636 or 573 area code

TREES OF MISSOURI BOOK: \$5. Missouri Wildlife & Nature Viewing Book, your guide to 101 spectacular wildlife and nature viewing area, \$5. 417-532-2045. (Leave message and phone number). Lebanon.

METAL ROOFS: We repair leaky metal roofs with warranty. Also, flat roofs, very affordable, cover all state. 573-338-1148. Jefferson City.

Team Electrical & Plumbing
"The Professionals you can count on"
 Electrical • Solar Power • Plumbing • Lighting Installation

100 % Satisfaction Guaranteed	Fully Licensed & Insured	\$100 Estimates with upfront pricing
-------------------------------	--------------------------	--------------------------------------

For the best quality of work every time...
Give "Team" a call today!
 417-349-6200 • www.teamelectricalplumbing.com

I BUY.....used mobile homes. Call or text 573-338-6250 or email GregS.CH@outlook.com

27" PHILLIPS MAGNAVOX TV: Free. 417-457-1023. Raymondville.

FIREARMS: Professional Repairs and Restorations. Baron's Gunsmithing. 573-363-5801, Camdenton.

TOTE FULL OF AUNT JAMIMA STUFF: \$200 for all. 573-327-9068. Park Hills.

OFFICIAL TRACTOR OF TOUGH™



Marshfield Machinery Inc.
 222 E. Madison • Marshfield, MO 65706
 417-859-2117 • www.marshfieldmachinery.com

MahindraUSA.com © 2020 Mahindra USA Inc.

Mahindra
Rise.

NEW MAHINDRA TRACTORS

1626 4WD & LDR 26HP IN STOCK
 1635 4WD & LDR 36HP IN STOCK

USED TRACTORS

MF 4710 4WD CAB & LDR 55,000
 IHC 826 92 HP 9,000

USED ROUND BALERS

MF 2846A 4X6	18,000
HESSTON 945 4X5	9,000
JOHN DEERE 375 5X4	3,500
HESSTON 560 5X6	2,000
NH 850 5X5	1,500

USED MISC.

HAYBUSTER 107C NOTIL DRILL	17,500
FRONTIER BALE PROCESSOR	8,500
SNAPPER ZERO TURN	2,750
BUSH HOG 2052 ZERO TURN	2,500
BUSH HOG POST HOLE DIGGER	1,200

Marshfield
Machinery Inc.

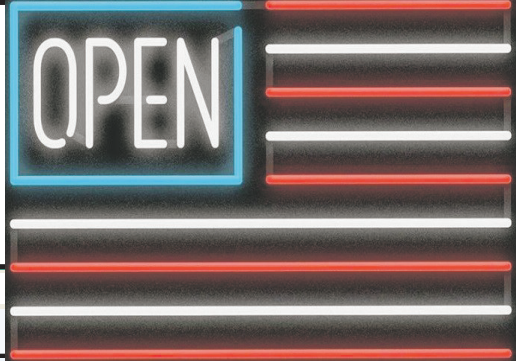
222 E. Madison
 Marshfield, MO 65706
 417-859-2117
www.marshfieldmachinery.com

REGISTERED HEREFORD & ANGUS BULLS: Home raised, Some Show-Me Select Qualified. 573-701-7828. Belgrade.

1951 FORD BRAKE DRUMS: With backing plates, exhaust manifold and cross-over plate. \$75. 417-457-1023. Raymondville.

QUALITY USED SADDLES WANTED: Will pay cash! George's Tack, Saddles & Feed. 573-346-7866. Camdenton.

RUBBER & LEATHER BOOTS AND HIP WADERS. Men's 11, Women's 7, some insulated. \$15-\$40 obo. 636-239-2695. Washington.



Sale Ends October 31, 2021
 Seymour, Missouri 417-935-4201

Pole Barns & Post Framed Buildings!

Call for free quote, brochure & color chart.
 Other sizes also available.

23'x32'x10' \$6,915 Material Only \$8,461 Labor Included	23'x40'x10' \$7,800 Material Only \$9,734 Labor Included	30'x40'x10' \$9,595 Material Only \$12,115 Labor Included	40'x60'x12' \$16,967 Material Only \$22,367 Labor Included
--	--	---	--



Due to increased demand for our quality product we are currently hiring new barn construction crews. Contact Jeff

NOBODY, BUT NOBODY BEATS OUR PRICES!!!

10 ft. Slider • Engineered Trusses 8' O.C. • 2x6 Treated Bottom Wrap • Screws • 2x10 Top Wrap • 2x4 Purlins • Full 29 Gauge Steel • Plus 3 ft. Entry Door with Lock
 OPTIONS: Sidewall Heights on all Buildings 10', 12', 14' & 16'. Overhead Garage Door. Skylights. Insulation. Wainscoting. Insulated Vinyl Windows. Cupolas. Labor Rates Slightly Higher over 50 Miles from Seymour. Call for YOUR FREE QUOTE TODAY!!!!

PAINTED WHITE, GREEN OR TAN METAL\$98.99	IN STOCK
10' - \$31.40 12' - \$37.66 16' - \$50.21	
MIX & MATCH METAL\$59.99	
8' - \$15.20 10' - \$19.00 12' - \$22.80	
GALVALUME METAL\$79.99	
10' - \$25.40 12' - \$30.43 16' - \$40.57	
GALVANIZED CORRUGATED METAL SOLD OUT!	
8' - \$9.84 10' - \$12.30 12' - \$14.75 16' - \$19.67	

40yr Painted Metal
Call

KNOTTY PINE DOORS
 Starting at
\$129.99

LP SMARTSIDE T-5 LAP B GRADE \$43.59SQ

Car Siding!
 1x6 White Pine Siding **79¢** in ft
 1x8 White Pine Siding **\$1.05** in ft
 * 4 Profiles to choose from!
 Broken Bundles Add 10¢ Per Ft.

4x8 Sheeting
 Less than full units Add \$1 per sheet
 3/8" Beaded Paneling \$17.99
 7/16" T111 Siding \$23.99
 Paneling \$9.99
 1/2" Plywood **SSOLD**
 3/4" Plywood **SSOLD**
 3/16 Pegboard \$12.99

LOTS OF MATERIAL AVAILABLE FOR THOSE IN HOME PROJECTS!

REAL WOOD SIDING
 2x6 Log Siding - 1.59¢ in ft
 1x8 Beveled Cedar from- 79¢ in ft
 T1-11 Siding from Sold Out

NEW PACKAGE HOMES



2x6—16" on center-Exterior Stud Walls
 Residential Roof Trusses-2' on center
 4/12 pitch with 1' over hang
 40 year Painted Metal roofing in 20 Different Colors
 Profile Ridge Vent - Ventilated Ridge Cap
 Vinyl Center Vent Soffit
 Color Matched Metal Fascia & Gable Trim
 2 - 3' 6 Panel Entry Doors
 4 - 3'x4' Vinyl Insulated Windows

Shown with Available Options
 Your Choice of either:
 Stock 3/8" T111 Siding w/1x4 Pine Window & Door Trim -or-
 7/16" OSB & House Wrap ready for other finish options

ALL FIGURED FOR SUITABLE CUSTOMER SUPPLIED SLAB OR SUB-FLOOR

Price for Basic Materials Package (No Labor at this Time)

20x24(480 sq. ft.)	20x32(640 sq. ft.)	20x40(800 sq. ft.)	28x40(1120 sq. ft.)	28x48(1344 sq. ft.)
\$10,514	\$12,079	\$13,600	\$16,759	\$18,629

DECK PACKAGES
Materials Only
 8x8.....\$395.95 10x12.....\$684.99
 10x10.....\$569.49 10x16..... \$849.99
 12x12.....\$799.99 12x16....\$1069.99



Now Stocking Quaker Vinyl Windows

2030 \$ 135.99	3030 \$157.99
3040 \$173.99	3052 \$189.99
3040Twin \$379.99	3052Twin \$419.99



LUCKY DISCOUNT LUMBER
 417-935-4201
 455 State Hwy C • Seymour MO 65746
 www.luckydiscountlumber.com



*Some restrictions apply see store for details. Prices subject to change without notice.

LIONEL TRAIN SET: Steam engine, tender, caboose and other car, track and transformer. \$195. 573-364-7465. Rolla

GUARDIANWARE: Turkey roaster with lid, excellent condition. \$195. 573-364-7465. Rolla.



CENTRAL BOILER
CLASSIC EDGE
TITANIUM HDX

26% Tax Credit on EPA certified Central Boiler Classic Edge HDX models and installation. Call today to learn more!

Outdoor Wood Furnace CentralBoiler.com

The Classic Edge 360, 560 and 760 HDX are U.S. EPA Certified

Yarbrough Equipment Sales & Services, Inc.
9776 E. State Hwy OO • Strafford, MO
417-736-2303 • 1-866-286-6901 • www.yarbq.com

HEAVY 6-BAR GATES: Weldable or bolt type hinges – 16’ gate \$192 available painted. Lewis Welding and Repair. 573-729-0272 – 573-729-1405. Salem.

ROUND BALE SPIKE: For front tractor bucket. \$60. 417-532-8048. Lebanon.



TIRES, BRAKES & MORE LLC

- All Makes & Models
- Affordable Pricing
- Quality Products
- Outstanding Service

Military & Senior Discounts

Tue.-Sat. 8-5
Closed Sun. & Mon.
1237 Rt. 66, Lebanon, MO
417-532-0850

BUYING PRE 1960'S BEER SIGNS: FALSTAFF, GRIESEDECK, CAPITOL, STAG, HAMMS & MORE. Soda signs too! 573-680-5377. Jefferson City.

4 FT. PRESS BRAKE: Nice, (Needs Parts) \$450. 417-322-0161. Lebanon.

KUSTER LOGGING

BUYER of Standing Timber
Oak and Walnut

Dozing Now Available

417-259-0047

References Available



ELECTRIC HEATER: Radiator style, like new, with thermostat hi/low settings, works excellent. \$45. 573-364-7465. Rolla.

OAK TABLE – FOUR CHAIRS: \$250, Pine heart day bed with mattress, good shape \$75.00. 417-543-8261. Ava.

CUTTING BOARD: Fits in your kitchen counter top, various species of ducks. \$15. 636-239-2695. Washington.

STORY & PICTURES BOOK OF OLD LINN CREEK: Haha Tonka and Camden County, by T. Victor Jeffries, 72 pages. \$5.00 postpaid. (417)532-2045. (Leave message and phone number) Lebanon.

UNITOOL PUNCHES: (to punch steel) \$25 each. 417-322-0161. Lebanon.

WILLBECK CHISEL PLOW: \$925. 417-322-0161. Lebanon.

LOOKING TO BUY TRACK FOR JOHN DEERE: 450B or 450C. 636-232-7480. DeSoto

CLIVE CUSSLER BOOKS! \$5 hardback, \$2 paperback plus shipping. For list call 417-457-1023. Raymondville.

TRUCK LOAD OF CELOTEX INSULATION: \$50 or trade. 573-734-2822. Bismark.

Pine Ridge Rustic
Log Home Building Supplies

Services Offered!

- Installation
- Pre-finishing available on interior & exterior
- Dealer for exterior stains

www.pineridgerustic.com

523 CR 2410 • Salem, MO 65560 • Ph: 573-729-7226



- Log Siding
- Beveled Siding
- Car Siding • Red Cedar
- Western Cedar • Pine

HISTORY OF UNIVERSITY OF MISSOURI-ROLLA BOOK: Formerly Rolla School of Mines, 258 pages, HB, \$6.50. 417-532-2045. (Leave message and phone number). Lebanon.

AUSTRALIAN SHEPHERDS for sale, blue merle, red and whites, out of working parents, 573-663-7459.

WELL BUILT CART: For small mig welder. New-used \$200. 573-729-0272. Salem.

WANT TO OPEN A REC CENTER?: 6 pool tables 3x7 Valley coin operated tables, chairs, Cherry Master Electronic Machine, misc. Sell all or individual. 417-531-1496. Lebanon.

MOEN KITCHEN FAUCET: Single lever, sprayer, new cartridge. \$45 obo. 636-239-2695. Washington.

1908 SEARS, ROEBUCK CATALOG REPRINT: 184 pages, \$10. 417-532-2045. (Leave message and phone number). Lebanon.

JOHN DEERE 5085E: 85 hp, 770 hours, cab, 4x4, loader, nice. 417-646-8807. Osceola.

SMALL TRAILER: To pull behind garden tractor (like new) \$95. 417-322-0161. Lebanon.

200 GALLON POLY TANK: \$190. 417-322-0161. Lebanon.

TAYLOR TRUCKS & EQUIPMENT

417-924-2026 • 2676 Hwy. 5, Mansfield, MO

FINALLY RECEIVED OUR JANUARY SHIPMENT!

DANUSER DEALER
Intimidator Tree Puller
T3 Post Driver & Other Attachments
New Mowers! Bush-Whacker, Big Bee Storage Containers & Dry Vans - 20' - 53'

Farm Tires, New Semi Tires, PTO's & Parts for Rotary Mowers, Farm Tractor Implements, Plows, Used 15" Bush-Whacker Now In Stock, Discs, and More Skidsteer Attachments: Pallet Forks, Buckets, Grapples, Hay Spears, RR Ties

Bush-Whacker Heavy Duty Rotary Cutter



TRAILER PARTS & REPAIR | **BUSH-WHACKER HD, SKIDSTEER BRUSH CUTTER**

We Invite you To Come By & Look Us Over! Located 2.5 Miles North Of Mansfield, MO On Hwy 5

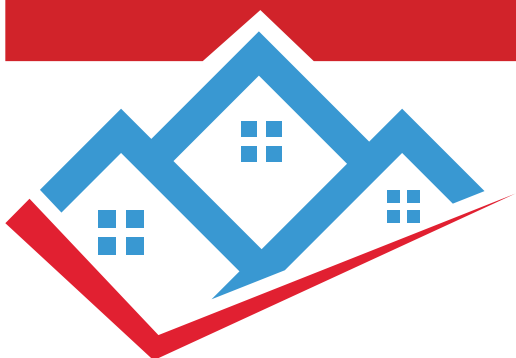
Need to sell your home?



Sell with Melton Real Estate Co.

The ONLY auction or realty company you'll ever need!

I can sell your property at auction or list it with MLS. Melton Auction & Realty Co is family owned and operated for 46 years and YOU are our priority!



We specialize in:

- Real Estate
- Farm Estate
- Furniture • Antiques
- Miscellaneous Items

MELTON AUCTION & REALTY CO LLC

www.MeltonAuction.com
Roger@MeltonAuction.com
 Roger Melton | Nixa, MO
 417-830-0153 or 417-725-1801
 Brad Cole | Nixa, MO | 417-840-2950
 Tanner Foster | Galena, MO | 417-840-5519



WARSAW, MISSOURI OZARK ECHOES 1964 YEARBOOK, \$20. 417-532-2045. (leave message and phone number). Lebanon.

HAMMERMILL 220V: (Grind Your Own Grain) \$825. 417-322-0161. Lebanon.

GRIZZLY MODEL G9744Z2 METAL-CUTTING BANDSAW: Like new (cost new 4K+) \$2,700. 417-322-0161. Lebanon.

OUTSIDE WOOD FURNACE WITH DUCT WORK: Sale or trade for truck or tractor. 573-734-2822. Bismark.

WANTED: 1965 to 1971 International Scout 800. 816-838-6254. Lee Summit.

A TRUCK LOAD OF FLEA MARKET & AUCTION ITEMS: For \$150 or trade. 573-327-9068. Desloge.

ANTIQUe BATTERY CHARGER: Full of copper. \$100 or trade. 573-734-2822. Bismark.

2006 DODGE DIESEL PICKUP: Crew cab, 4x4 heavy duty, automatic, few rust spots, mechanically sound, mileage 248,934. \$13,500. 573-789-2093. Versailles.

BIG SMOKER FOR MEAT: New \$400 - Sacrifice for \$100. 573-734-2822. Bismark.

HISTORY OF THE SCHOOL OF THE OZARKS: at Point Lookout. \$5.00. 417-532-2045. (leave message and phone number). Lebanon.

OLD ELECTRIC WELDER: Full of copper. Sacrifice \$100. 573-734-2822. Bismark.

2006 VW JETTA: Diesel, 4-door, automatic, good fuel mileage, fair condition. \$2,850. 573-789-2093. Versailles.

Buildings • Hunter's Cabins • Lawn Furniture

JAMCO BUILDERS

JAMCO Portable Buildings

800-688-2064 • 307 Enterprise Dr. • Seymour, MO • www.jamcobuilders.com

Rent To Own Plan

2-BLACK ANGUS HEIFERS: Nice, Grass fed, 100% Natural, Ready to Butcher - \$1.50/pound. 417-322-0161. Lebanon.

BARNs OF MISSOURI BOOK: A Storehouse of History, HB, 168 pages, \$12.50. 417-532-2045. (Leave message and phone number). Lebanon.

FOUR BUMPERS TO FIT OLDER MODEL CHEVELLE: \$125. 573-734-2822. Bismark.

CLARINET IN CASE: \$100 or trade. 573-327-9068. Desloge.

A FRAME TINY HOUSE/SHED: 6 ft x 8 ft, new floor, furnished. \$800. 573-759-7143. Vienna.

OLD TIME ANALYSIS MACHINE FOR CARS: \$125. 573-734-2822. Bismark.

GLASS FOR 55, 56, 57 CHEVROLET: \$150 or trade. 573-734-2822. Bismark.

Starnes Auto LLC

22115 Rt. 66 • Lebanon, MO 65536

417.718.2707 Cell
417.588.3159 Office

www.starnesauto.com

2002 GMC SIERRA
BLACK, 207,XXX MILES\$4,800

2005 CHEVY TRAILBLAZER
SILVER, 308,XXX MILES.....\$2,950

2008 MERCURY MARINER
SILVER, 139,XXX MILES.....\$5,200

2010 FORD FUSION
WHITE, 110,XXX MILES.....\$5,650

2012 CHEVY IMPALA LTZ
WHITE, 125,XXX MILES.....\$6,450

2014 CHEVY CAPTIVA
BLUE, 117,XXX MILES\$5,950

2014 BUICK ENCLAVE
BROWN, 107,XXX MILES\$12,500

2016 CHEVY EQUINOX
WHITE, 15,XXX MILES.....\$16,500

2017 BUICK ENCLAVE
BLACK, 53,XXX MILES\$19,950

WE BUY

White Oak Logs!

- ✓ Top prices for your logs
- ✓ Experienced log buyers
- ✓ Professional service

Chad Cook | Salem Wood Products
417.718.2950
5 miles north of Salem, MO on Hwy 19

INDEPENDENT STAVE COMPANY
Log Procurement & Sales

www.independentstavecompany.com

WE DO ALIGNMENTS!

ELECTRIC HOSPITAL BED: Nearly new "mattress". Didn't use. Bed has two sets sheets; rails and can be moved in three pieces. Bought at Bach Medical Supply, Springfield. Has been in clean storage. Have papers to date when bought. Want \$500. 417-588-1887. Lebanon. MO.

2014 JOHN DEERE 610M: Cab, loader, MFWA 1,280 hours, extra clean. 417-818-3495. Strafford.

2018 JOHN DEERE 630: Mo-Co, 9ft.. 3in., low hours, extra clean. 417-818-3495. Strafford.

FOR SALE: Turn table, Sounddesign, belt driven \$100 obo. 417-668-7793. No text landline.

2020 JOHN DEERE 6105E: 105 hp, MFWA, loader, cab, air seat, deluxe interior, 66 hours. 417-818-3495. Strafford.

BEAUTIFUL CATAHOULA LEOPARD PUPS: 30 year bloodline. \$150. 417-543-4816. Ava.

FREE YAHAMA ELECTRIC TONE ORGAN: With bench, great condition. 816-521-0956. Lebanon.

FOR SALE: 2011 Ford Fusion, 128,000 miles, new tires, 4-cylinder, \$5,500. 308-750-4816. Mansfield.

PUPPY FOR SALE: Anatolian/Akbash / Great Pyrenees livestock guardian, male, 14 weeks old, \$300. 909-835-2750. Lebanon.

NATURAL BOBTAIL ENGLISH SHEPARDS: Out of working parents. 573-663-7459. Centerville.

ROSSIE HIGH CAPACITY 12 WHEEL RAKE: Good paint, works good, \$4,000. 417-646-8807. Osceola.



Meadowview Dutch Market

Discount & Surplus Groceries • Prices Subject to Stock on Hand

Call to Order
417-993-3017

Sale Dates October 6th, 2021 to October 9th, 2021 while supplies last!

DELI SPECIAL

SMOKED GREEN ONION CHEESE REG. \$5.89 LB. **SALE \$5.39 LB.**

CHOPPED HAM REG. \$3.39 LB. **SALE \$2.89 LB.**

TRY our Fresh Homemade DELI Sandwiches: TURKEY, HAM, ROAST BEEF, ITALIAN, BLT'S, PULLED PORK AND BLT PULLED PORK (MADE YOUR WAY)! COME IN OR CALL to order! ALSO Custom Deli trays! Veggie OR FRESH Meat-N-Cheese!

<p><i>Fresh Apples</i></p> <p>HONEY CRISP JONAGOLD MCINTOSH GRANNY SMITH RED & YELLOW DELICIOUS</p> 	<p><i>Crinkle Cut Fries</i></p>  <p>89¢ LB. APPROX. 5 LBS</p>	<p><i>Sliced Brown Sugar Ham or Honey Ham</i></p> <p>59¢ 8 OZ. OR \$4.50 CASE OF 6</p>	<p><i>Fully Cooked Breaded Pork Patties</i></p>  <p>\$1.69 LB.</p>
<p><i>3 Gallon Ice Cream</i></p>  <p>\$10.99 EA. ASST. FLAVORS</p>	<p><i>Lice Treatment</i></p> <p>10% OFF REG. PRICE</p>	<p><i>Cooked Salami</i></p> <p>\$1.29 LB. APPROX. 8 LBS</p>	<p><i>Pepperidge Farms Herb Classic Stuffing</i></p> <p>2 FOR \$1.00 12 OZ.</p>
		<p> Clorox</p> <p>\$3.50 81 OZ.</p>	

WE WILL BE CLOSED FOR RENOVATIONS OCT. 11TH - OCT. 16TH

Reopening on Monday, Oct. 18th

APPLE DAYS OCT. 28TH - OCT. 29TH



MEADOWVIEW DUTCH MARKET
417-993-3017 Hours: Mon-Thurs 8-5pm
Fri 8-6pm • Sat 8-5pm
23 Miles West on Hwy 64 • Right on T Hwy
9 miles • Left on E Hwy 1 mile on Left

NOW ACCEPTING CREDIT, DEBIT CARDS & EBT

DUTCH COUNTRY STORE, LLC
573-378-4395
Hours: Mon-Thurs 8-5pm
Fri 8-6pm • Sat 8-5pm
5 miles East of Versailles off Hwy C on Kelsay Road

OLD DELL COMPUTER: \$75 or trade. 573-734-2822. Bismark.

PULLETS: Ready to lay, give brown eggs, \$15. Call mornings 573-759-3247. Dixon.

550 ROUND BALES – 2800 SQUARE BALES: 417-345-5634. Phillipsburg.

AKC-FC PEDIGREE TRI-COLOR BEAGLE PUPPIES: 12 weeks, male & females, \$250. 573-627-2309. Sullivan.

FOR SALE: Speed control pet nail grinder, \$20. Micro touch titanium trimmer, \$25. 12 small bags of yarn \$10 for all. Tinciy snap set kit \$20. 417-322-2960. Lebanon.

JEEP 2005 LIBERTY: \$1,800. 816-521-0956. Lebanon.

FOR SALE: 3 Slant horse trailer, A-1 shape, \$6,500. 16ft metal stock rack for trailer, \$1,000. 1964 White truck with Holmes wrecker bed, \$12,000. Body parts for 1985 F-150. 573-247-4606. Salem.

AKC STANDARD POODLE PUPPIES: \$550. 417-322-0347. Tunas.

OGDEN 8-WHEEL HAY RAKE: fully hydraulic. 417-818-3495. Strafford.

FOR SALE: Lake lots in Franklin County. Call 636-629-3701. St. Clair.

FORD 1980 REPLICI 29 MODEL-A ROADSTER WITH RUMBLE SEAT: 14,522 miles, Red with black interior. \$16,000. 417-766-1991 cell, 417-753-2747 home. Rogersville.

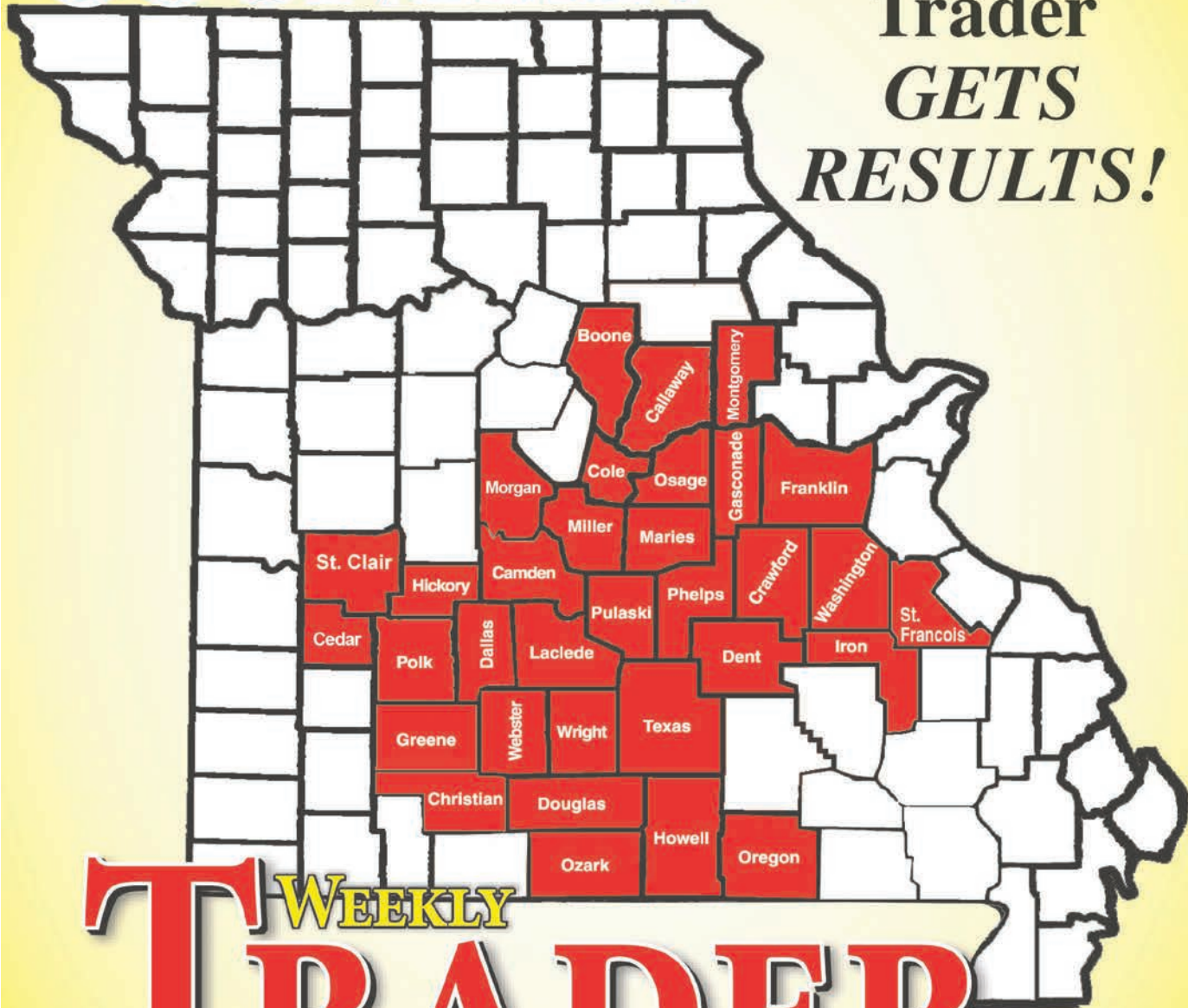
20 BLACK ANGUS HEIFERS; Nice group of purebred yearlings. Born and raised together, open, 2 rounds of shots, gentle, \$1,050 each for all, or \$1,100 each for 10 or more. 573-341-2144. Rolla.

STORY & PICTURES BOOK OF OLD LINN CREEK: Haha Tonka and Camden County, by T. Victor Jeffries, 72 pages. \$5.00 postpaid. (417)532-2045. (Leave message and phone number) Lebanon.

This is...

WEEKLY TRADER COUNTRY!

The Weekly Trader *GETS RESULTS!*



WEEKLY TRADER MAGAZINE

Place Your Ad With Us Today!

417-532-9131 CHECK US OUT ONLINE AT: myweeklytrader.com

OWN YOUR OWN BUSINESS: Established Locksmith retiring after 37 years. Lockout tools, HPC Code Machine, key cutters, keys, rekeying kits, cabinets, manuals, to much to list. 2007 GMC Van optional. Call 870-421-5437 for more information.

FIREARMS: Professional Repairs and Restorations. Baron's Gunsmithing. 573-363-5801, Camdenton.

TINY HOMES: We gottem 573-881-3283

POOL TABLES: Installations, moves, recovers, repairs, accessories, etc. 573-646-1700.

WEATHERED BARN WOOD SIDING: 10" wide. 573-729-7226. www.pineridgerustic.com Salem.

FERTRELL ORGANIC FERTILIZER: Free Catalog. 315-796-4370. Caulfield.

CUSTOM SAW MILLING: 417-533-4607, 417-664-1195. Lebanon.

BUYING MOBILE HOMES: Call David at VILLA HOMES IN ROLLA 573-578-8072. Rolla.

WANTED TO BUY ANTIQUE CARS: Convertible, Corvettes, unrestored, motors, parts considered. 870-324-1154. Ash Flat.

THE HEART OF THE SPRING BOOK. A Bennett Spring Novel by Laura L. Valenti, 161 pages. \$6.50. 417-532-2045. (Leave message and phone number). Lebanon.

Omar's Logging

⇒ Oak & Walnut
⇒ Excellent Prices
Amish Owned & Operated



LEAVE MESSAGE: 417-741-0440
Hartville & Surrounding Areas

HEALTHCARE MADE EASY

WE CAN HELP YOU NAVIGATE
HEALTHCARE.GOV

Choices In Health & Life Insurance
Mike Eblen, Agent
417-532-3360
238 S. Jefferson Avenue Suite A, Lebanon



COUPON: 10% OFF MERRILL WATER HYDRANTS

- Deli Sandwiches
- Glass Bottle Milk
- Homemade Yogurt
- Cheese & Spices
- Homemade Bread
- Bulk Foods
- Hydraulic Hoses
- Johnson & Ritchie Waterers
- Electric Fence Supplies
- Stay-Tuff Fence
- Gates & Panels

VISIT YOUR ONE STOP SHOP
FARMERS QUIK STOP
5 mi. East of Lebanon on Hwy 32 • 417-991-1938



MINI GOLDEN DOODLES: 573-453-8376. Salem.

REGISTERED HEREFORD & ANGUS BULLS: Home raised, Some Show-Me Select Qualified. 573-701-7828. Belgrade.

METAL ROOFS: We repair leaky metal roofs with warranty. Also, flat roofs, very affordable, cover all state. 573-338-1148. Jefferson City.

CONWAY HIGH SCHOOL BEARS 2000-2001 YEARBOOK. \$12.50. 417-532-2045. (Leave message and phone number.) Lebanon.

LOG SIDING: 2X8 Pine/Western Cedar www.pineridgerustic.com 573-729-7226. Salem.

WANTED: 1965 to 1971 International Scout 800. 816-838-6254. Lee Summit.

WANTED TO BUY DODGE DIESEL TRUCK: Or Toyota Tacoma. Also, buying antique cars. 870-324-1154. Ash Flat.

TRUE MODULARS: 30 to 60 day delivery available, 3 and 4 bedroom 573-657-7040 chateauhomes.net

I BUY.....used mobile homes. Call or text 573-338-6250 or email GregS.CH@outlook.com

CLASSIC AMERICAN MUSCLE



STAHLMAN POWERSPORTS

2021 BB3026HL
2021 BB4035CHIL

1387 S. BISHOP AVE., ROLLA
573-364-6944
WWW.STAHLMANPOWERSPORTS.COM

We also have Bad Boy Implements

0% for 4 Years

HEATMOR Outdoor Wood Furnace

as low as **\$168** per month

HEATMOR MIDWEST
Licking, MO 65542 • 573-674-2962



ROUTE 66 DINING 7 LODGING GUIDE: 183 pages, \$5.00. 417-532-2045. (leave message) Lebanon.

STOCK MOBILE HOMES AVAILABLE: We gottem, single and double, 3 and 4 bedroom! Call Tuffy 573-657-2176. amegamobilehomes.com

AVAILABLE STOCK MOBILE HOMES: Immediately, double wide and single, 3 and 4 bedroom 573-499-9993 columbiadiscountnhomes.com

TREES OF MISSOURI BOOK: \$5. Missouri Wildlife & Nature Viewing Book, your guide to 101 spectacular wildlife and nature viewing area, \$5. 417-532-2045. (Leave message and phone number.) Lebanon.

USED MOBILE HOMES: Call David at VILLA HOMES IN ROLLA 573-578-8072. Rolla.

BIG SMOKER FOR MEAT: New \$400 – Sacrifice for \$100. 573-734-2822. Bismark.

QUALITY USED SADDLES WANTED: Will pay cash! George's Tack, Saddles & Feed. 573-346-7866. Camdenton.

LIONEL TRAIN SET: Steam engine, tender, caboose and other car, track and transformer. \$195. 573-364-7465. Rolla

OLD TIME ANALYSIS MACHINE FOR CARS: \$125. 573-734-2822. Bismark.

GLASS FOR 55, 56, 57 CHEVROLET: \$150 or trade. 573-734-2822. Bismark.

ONLINE AUCTION

MCCRAY'S WELDING & DITCHING
GARY MCCRAY ESTATE

BIDDING ONLINE: OCT. 4TH – 13TH, 2021

PREVIEWS: OCTOBER 4TH & 11TH (1-6 P.M.)

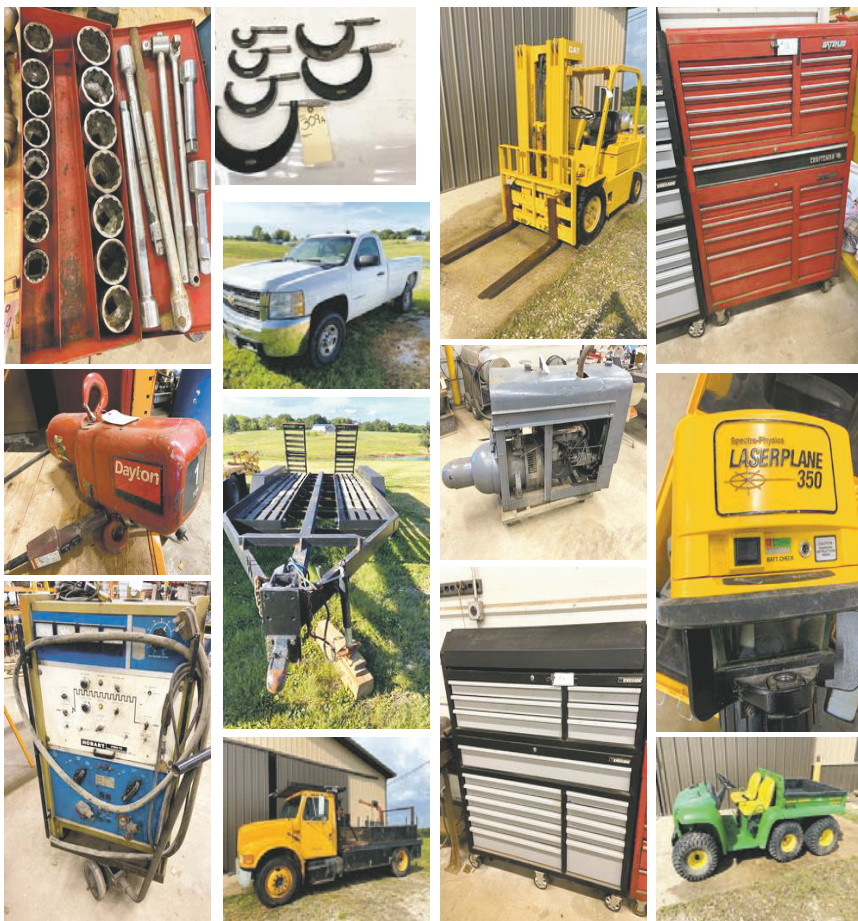
2 PICKUP DATES: OCT. 15TH (1-6 P.M.) OR OCT. 16TH (10 A.M.-3 P.M.)

(GARY'S FAMILY WILL PROVIDE ASSISTANCE IN LOADING LARGE ITEMS.)

9600 STATE ROAD C, MOKANE, MO 65059

Located 3 miles north of Highway 94 on State Road C;
or, approximately 10 miles south of Fulton on State Road C

1990 INTERNATIONAL 4900 TRUCK ; 10'X6' TRAILER ; LINCOLN SHIELD ARC WELDER ; HOBART CYBER TIG 130 WELDER ; HOBART HANDLER 135 & 120 MIG WELDERS ; WELDING SUPPLIES ; CATERPILLAR V50D FORKLIFT ; 2 SUMNER ROUST-A-BOUT LIFT JACKS ; 2 LARGE TOOL BOXES ; HOMEMADE TRIPLE AXLE 7'X17' TRAILER ; JD GATOR 6X4 ; LARGE PIPE STORAGE RACKS ; RIDGID 535 PIPE THREADING MACHINE ; MANY RIDGID TOOLS ; PNEUMATIC TOOLS ; LOT OF HAND TOOLS ; 1" & 3/4" DRIVE SOCKETS ; HYDRAULIC PORTA POWER ; MACHINIST TOOLS ; 3 PHASE ELECTRIC MOTORS ; 2 LASERPLANES ; TORCHES ; ELECTRIC HOISTS ; CHAIN HOISTS ; SAND BLASTERS ; PLUMBING FITTINGS ; TOW STRAPS, CHAINS & LOAD BINDERS ; 60 SHEETS OF MORTON USED COLORED BARN METAL 32 FT. LONG ; MORE USED BARN METAL





SMART AUCTION SERVICE, LLC

5350 State Road PP • New Bloomfield, MO 65063

John Smart

573-676-5420 (Home) • 573-864-6977 (Cell)

"Selling is our Specialty"

**SELLING 1002 LOTS +/-
OVER A 50 YEAR
ACCUMULATION !**

WWW.SMARTAUCTIONSERVICE.COM
auctionzip.com (auctioneer ID #23974)

See Website for Lots, Descriptions, Photos, Terms and Conditions.
A 10% Buyers Premium will be added to the final bid prices. All items sold "as is"

REAL ESTATE AUCTION

Saturday October 9, 2021 10:00AM

286 Acres M/L - Daves & Henson Family Trusts - 286 Acres M/L

577 Springfield Rd & Hwy 38 Buffalo, MO 65622

Directions: From Hwy 65 Take Hwy 38 East Then North On Springfield Rd To Auction. Watch For Signs.

Real Estate Selling At 10:30AM



Large Home & Barns On Up To 286 Acres M/L On Live Creek

Tract 1: Spacious 5256 M/L Sq Ft 5 Bedroom 3-1/2 Bath Brick & Stone Home Featuring Living Room w/ Vaulted Ceiling & Stone Gas Fireplace, Formal Dining w/ Hardwood Floors, Crown Molding & Tray Ceiling & A Large Kitchen w/ Corian Counters, Under Mount Sink, Tile Floors, Built In Stainless Microwave, Smooth Top Range, SxS Refrigerator, Breakfast Bar, Pantry & Dining Area. The Main Level Has 3 Bedrooms & 2-1/2 Bathrooms Including The Master Suite w/ Large Walk-In Closet & Bathroom w/ Large Vanity, Large Soaking Tub & Walk-In Shower. The Home Also Has An Attached 2 Car Garage & A Full Walkout Basement w/ An Additional Oversized Family Room, Kitchenette w/ Bar, 2 Bedrooms, Full Bathroom & Mechanical/Storage Room. This Property Also Has 2 Large Barns & Pond On Over 9 Acres M/L.



Tract 2: 24 Acres M/L Open w/ Creek Frontage.

Tract 3: 18.5 Acres M/L Open w/ Creek Frontage.

Tract 4: 16 Acres M/L Majority Open w/ Large Pond & Creek Frontage

Tract 5: 34 Acres M/L Majority Open w/ Pond, Blacktop & Creek Frontage.

(Tracts 1-5 Offered Separately & As A Whole)

Tract 6: 16 Acres M/L Majority Wooded

Tract 7: 16 Acres M/L Majority Wooded

Tract 8: 13.6 Acres M/L Majority Wooded w/ 2 Ponds

(Tracts 6-8 Offered Separately & As A Whole)

Tract 9: 7.5 Acres M/L Majority Wooded w/ Blacktop Frontage

Tract 10: 2.5 Acres M/L Partially Wooded w/ Black Top Frontage

Tract 11: 108 Acres M/L Majority Open w/ Some Woods, Creek & Black Top Frontage

(Tracts 10&11 Offered Separately & As A Whole)

Tract 12: 20.6 Acres M/L Majority Open w/ Creek Frontage.

(Tracts 10, 11 & 12 Offered Separately & As A Whole)

Terms: 10% Down At Auction With Balance Due In 60 Days Or Less At Closing.

Equipment & Farm • JD 4030 Tractor w/ Cab & Good Rubber- Overhauled • IH 4230 90hp Tractor w/ Great Bend 440Ldr, Bucket, Balespike, • Good Rubber & 3900Hrs • IH 560 6cyl Wide Front Dsl 70hp Tractor w/ Ldr • MF 124 Square Baler • 12' Hyd Finishing Disc • 3pt 5' Blade • New Idea 5409 3pt 9' Disc Mower • Amco 6' Cutting Disc • JD 3pt 4 Bottom Plow • JD 5' 3pt Bushog • 2 Section Harrow • Hay Master 4 Basket PTO Tedder • Portafeeder On Wheels • 3pt HD Rhino Post Hole Digger • 2ton Overhead Feed Bin • HD 1 Bottom Plow • Implement Trailer • NH 5 Bar Hay Rake • JD 1290 Haybine- For Parts • WW Palpation Cage • Grain Bin • Priefert Squeeze Chute • 3pt Bale Spike • Concrete Feed Bunks • 2- Metal Creep Feeders • 18' Hay Elevator • Gravity Flow Wagon • Portable Creep Feeder On Wheels • 4 Wheel Buggy- For Parts • Ground Driven Manure Spreader • 3pt Spring Tooth 7" Cultivator • 2- 300gal Fuel Tanks • 2- 8" Water Tanks • 2 Bale Rings • 4- 8' Panels • 2- 8" Panels • 16- 6" WW Type Panels • Wire Panels • 50gal 12v Sprayer • Saddles • Semen Tank • Assorted Gates • Wire Cages • 2- Show Dividers • Driving Harness • Salt Feeders • 100+ 6' Steel

Posts • Assorted Pipe Posts • Vet Supplies • Scrap Iron Rake • Alum Irrigation Pipe • 500' of 2" Pipe • Bridles • Round Bales • **Tools, Lawn & Garden** • Lincoln Ranger 10k Watt Generator Welder w/ Electric Start & 521hrs • Acetylene Torch Kit • Honda Power Washer • Chainsaw • BBQ Grill • 2- Tool Chests • Welding Table • Bench Grinder • Hand Tools • Portable Air Compressor • Alum ATV Ramps • Tires & Wheels • Quickcrete • Drill Press • Craftsman Weedeater • 1" PVC Pipe • Landscaping Rocks • 100Lb Propane Bottle • 2- Chainhoists • Wheelbarrow • Lawn Mower Parts • Shop Vice • 8- Arena Lights • Antique Patio Set • Glider Swing • Deer Stand • Fuel Containers • 5gal Buckets • **Vehicles, Trailers, Etc** • 2009 Chevy 2500 Gas 6.0 373 Auto 4x4 Crew Cab Truck • 1989 Chevy Longbed 4x4 Pickup • 1984 WW Gooseneck Trailer • 20' Double Axle Bumper Trailer • 22' Gooseneck Trailer- Needs Work • 2 Horse Trailer • Polaris Ranger 570 4x4 w/ 957 Miles • Arctic Cat Prowler 550 4x4- Needs TLC • Cadillac- For Parts • **Livestock** • 4Yr Old Registered Angus Herd Bull- Will Have Test Papers Available • 3Yr Old Registered Angus Herd Bull- Will Have Test Papers

Available • 4- Yearling Bulls w/ Papers • 2- Yearling Heifers • 2- 8Month Bull Calves • 20 Registered Angus Cows 3yrs-9yrs Old • 5- 2yr Old Heifers Exposed Aug 1 • 8 Cows w/ Calves By Side • Balanced Exposed Aug 1 • Donkey • **Furniture, Appliances & Household** • SS SxS Refrigerator • Kenmore Washer & Dryer • Large TV • Kenmore Upright Freezer • Refrigerator • Full Sofas & Loveseat • Large Upright Freezer- New • Coffee & End Tables • Recliner • Chippendale Dining Table & 6 Chairs • 2pc China Cabinet • 1920's 2 Door Armoire • Oak Dining Table & 4 Chairs • Glassware • Keller Maple China Cabinet • 3pc Oak Coffee & End Tables • 2- Oak Barstools • Tell City Dining Set • Dresser & Bed • Dishes • 3pc Oak Bedroom Suite • Nordictack Exercise Equipment • Vac • Bookcase • Kneehole Desk • Treadmill • Antique Surveyors Transit • File Cabinets • Walkers • Center Bowls • Pressure Cooker • Metal Detector • Small Kitchen Appliances • Kitchenware • Holiday Decor • Ice Cream Machine • Home Decor • Pots & Pans

Auction Conducted by:
Glenworth
 Auction Service & Realty
 Glen Yutzy, Auctioneer/Broker



Licensed in Missouri & Arkansas

Phone: (417) 767-4345 • Fax: (417) 767-4222

Not responsible for accidents. Announcements made day of sale take precedence over any printed matter. Terms: CASH or CHECK Visit our website for more information at www.glenworth.com Lunch available

PUBLIC AUCTION

Sunday October 10, 2021 9:00AM

940 S Iron Mountain Rd Fordland, MO 65652

Directions: From Springfield Take Hwy 60 East 18 Miles To Iron Mtn. Rd. Turn North Across Hwy 60 Onto Iron Mtn. Rd. To Auction. Watch For Signs.

EQUIPMENT- NOON • JD 6300 w/ H&A Cab, Front Ldr, Bucket, Spike & 4742hrs • 2014 Kubota L3800 4x4 Tractor w/ 138hrs • Cat Skidsteer • 2013 Ford F150 XLT EcoBoost Extended Cab 131k Miles • 2000 Cadillac Deville w/ Leather Interior & 79k Miles • 2000 BMW 323 4 Door Manual Gas Car w/ 140k Miles • 1992 Toyota 4cyl Auto Truck w/ 118k Miles • 2004 Dodge Ram Crew Cab Truck w/ Hemi Magnum • 1996 Chevy 2500 4x4 Single Cab Truck w/ Rebuilt Motor • 1988 5th Wheel Camper • 12' Bumper Cargo Trailer • Car Dollies • 12' Gooseneck Dump Trailer • 12' Bumper Trailer • Feed Wagons • 2011 18' Trailer w/ 2' Dovetail & Double Axles • 3pt Carryall • 2006 Rice 32' Gooseneck Trailer • Truckbed Trailer • 12v Sprayer • 2005 Doolittle Double Axle Trailer • JD Square Baler • 60" Landpride Bushog • 60" Land Pride Finish Mower • Moped • 3pt 6' Blade • Post Hole Digger • 2- 12ton Grain Bins • Canoe • Cyclone Yard Rake • 2 Bottom Steel Wheel Plow • 1970 Chevy 400 Big Block- Rebuilt • Engines & Vintage Parts • **CATTLE** • 2yr Old Black Angus Bull w/ Trig & Semen Papers • 6) 5Yr Old Black Angus Cows • 3 w/ Calves By Side Bred Back To Black Bull • **TOOLS, LAWN & GARDEN** • JD GX 345 Riding Mower • Several Upright Air Compressors • John Bean Visual Alignment System • Tune Up Tester • Generators • Power Washers • Tool Chests • Diagnostic Testers • Antifreeze/Coolant Recycler • Snap-on Battery Tester • Shop Fans • Matco Refrigerant Recovery, Recycle & Recharge Unit • Tillers • Matco Leak Tester • Snap-on Cylinder Leak Detector • Organizers • Snap-on Fuel Injector Pressure Tester • Ford V8 Cam Kit • Jacks • Tool Boxes • Lots Of Hand Tools • House Jack • Tool Carts • Portable Air Compressors • Mac Battery Charger • Shop Heaters • Snap-on Oil Pressure Gauge Test • Kobalt Toolbox • Work Tables • Matco Master Fuel Presser Test • Mac Brake Caliper Set • Saws • Matco & Snap-on Scanners w/ Programs • Diagnostic Kits • Drills • Snap-on Puller Set • Jack Stands • Oil Filter Wrenches • Squares • Fuel Injector Cleaning System • Snap-on Barstools • Drill Press • Handi-Kleen Parts Washer • Craftsman Weed Trimmer • Cherry Picker • Draw-type

Gooseneck/5th Wheel Hitch • Grinder On Stand • Hot Water Power Washer • Freon Gauges • Blackstone Flattop Grill • Chopsaws • Leaf Blowers • Oil Cans • Work Lights • Chainsaws • Hedge Trimmers • Weedeaters • Vehicle Parts • Windshield Remover Kit • Air Hoses • Ext Cords • Socket Sets • Lots Of Hand Tools • Air Tools • Craftsman Toolbox • Mac Air Drills & Angle Grinder • Air Nailers • Recyclers • Shop Vacs • Battery Chargers • Honda Mower • Ryobi Drill Press • Troybilt Tiller • Ratchet Straps • Dewalt Tools • Lots Of Power Tools • Bird Bath • Manuals • Air Nailers • Scrollsaws • Delta Bench Grinder • Lots Of Mechanics Tools • Tires & Wheels • Scaffolding • Dremel Scroll Saw • Compound Saw • Miter Saw • Air Impacts • Folding Work Table • Metal Punch • 12v Sprayer • Pipe Wrenches • Electric Fence Charger • Rotozip • Bauer Masonry Saw • Bikes • Craftsman Table Saw • Yard Tools • Truck Tool Boxes • Yeti Cooler • Jumper Cables • Stihl MS180C Chainsaw • Kobalt Masonry Saw • Craftsman Tablesaw • Fishing Poles • Hunting Gear • Yard Tools • Masterbuilt Electric Smoker • BBQ Grills • Fishing Poles • Spotting Scopes • Celestron Telescope • Tire Racks • Bowtech Heartbreaker & Assassin Bows w/ Cases • **FURNITURE & APPLIANCES** • 8- True Refrigerator Coolers • Frigidaire Deep Freeze • Cabinets • Antique Coke Vending Machine • Frigidaire Refrigerator • RV Refrigerator • Mad Money & Dynamite Kids Slot Machines • Electric Fireplace • Electric Heaters • Leather Sectional • Recliners • Antique Coke Cooler • RR Cart • Pub Table • Quilt Racks • Leather Reclining Couch, Loveseat & Recliner • Baby Bed • Lighted China Cabinets • King, Queen & Twin Beds • Chairs • Antique Ornate Carved Organ • Tables • Wingback Chairs • Trunks • Sofa, Coffee & End Tables • Childs Rocker • TV Stands • Dressers • Entertainment Centers • Oak File Cabinet • Variety Of Bar Stools • Whiteclad Lift Top Coffee Table & 2 End Tables • Roll Top Desk • Porcelain Top Kitchen Table • Drop Front Secretary Desks • Antique Oak Ice Chest • Computer Cabinets • Rustic Furniture • Kitchen Table & 6 Chairs • Dresser w/ Mirror • Computer Desks • Copper Top Round Coffee Table • Grandfather Clocks • Victorian

Floral Couch & Loveseat • Side Server • Bookshelves • Extending Pub Table w/ 6 Chairs & Side Server- NICE! • Ethan Allen Desk • Full 4 Poster Bed & Vanity • Window Bench • Slight Executive Desk • Plant Stand • Rustic Wood Cabinet • Folding Chairs • File Cabinets • Office Chairs • Wood Piston Table • Glass Top Table & 4 Chairs • Rockers • Wash Stands • Corner Cabinets • TV Stands • Stools • Ottomans • **ANTIQUES, COLLECTIBLES & HOUSEHOLD** • Texaco Gas Pump • Bear Skin Rug Complete w/ Claws • Fenton • Large Collection Of Cookie Jars • Turkey Roaster • Beanie Babies • Large Collection Of Glass Baskets • Cutglass • Stemware • Jewel Tea Autumn Leaf Bowls • Hen On Nest • Fireking Bowls • Punch Bowls & Cups • Quilt • Copper Kettle • Beaded Bustiers • Serving Trays & Platters • Green Depressionware • Scarves • Jade Glassware • Cups & Saucers • S&P Shakers • Kitchenware • 50th Anniversary China & Collectibles • Bavaria Cups & Saucers • Fenton Glassware- Vases, Baskets, Bowls, Etc • Washboards • Collection Of Glass Art • Lazarrri Glass Art • Village Collectibles • Collection Of Precious Moments Figurines, Plates, Dolls, Etc • Parini Dishes & Bakeware • Antique Westinghouse Fan • Globe • Smith-Corona Typewriter w/ Case • Antique Skate • Marbles • Figurines- Boyds Bears, Precious Moments, Raggedy Ann & Andy, Mary MooMoo, Starwars, Startrek, Marvel, Power • Rangers, Ghostbusters, Home Interior, Victorian, Etc • 8qt Cream Can • Primitives • Home Decor • Lamps • Purses • Poker Chips • Piggy Banks • Copper Chef Cooktop • Kettle • Stained Glass Light Shade • Floral Decor • Picnic Baskets • Kids Toys • Antique Thermoses • Granite Cooker • Pictures • Vacuum Cleaners- Bissel, Shark, Hoover • Hanging Pot Rack • Coca-Cola Clock • Copy/Scanner/Fax Machine • TV's • Buttons • Galv Bucket • Cream Can • Photobooth Kit • Wood Rocking Horse • French Doors • Mid Century Bronze & Slate Clock • Record Player • Carved Wood Boxes • Antique Ball Jars • Records • Magazines • Antique Sewing Machines • Sewing Materials • Antique Cameras • Barbies • Stone Cocks • Wood Crates • Rooster Collectibles • Budweiser & Dale Earnhardt Jr Signs • Cannisters • Mirrors



Auction Conducted by:
Glenworth
 Auction Service & Realty
 Glen Yutzy, Auctioneer/Broker



Licensed in Missouri & Arkansas

Phone: (417) 767-4345 • Fax: (417) 767-4222

Outstanding Real Estate Investment Portfolio

AUCTION

Friday, October 8th. * 10:00 AM

276 Fountain Lane, Kimberling City, Mo 65686



39.5 Acres, nestled in the heart of Ozark Mountain Country, near Table Rock Lake with 120 bed nursing facility and 55+ retirement village including:

8 Duplexes, 1400 sq ft, 2 bedroom 1&1/2 bath with one car garage.

4 Duplexes, 1150 sq ft, 2 bedroom 1&1/2 bath with one car garage.

6 Fourplexes, 840 sq ft, 1 bedroom 1 bath each.

41,200 +/- sq ft., 120 bed Healthcare Facility.

100% vacancy provides the opportunity to redevelop or convert into many other uses or reopen as healthcare/assisted living facility. The property offers investors the opportunity to purchase these vacant buildings at a significant discount with a huge value-add opportunity. While no longer being operated as a skilled nursing facility, Certificate of Need is still current. This offering represents a potential redevelopment opportunity conversion into other uses.

The property was formerly the Table Rock Health Care & Retirement Village, a nursing home/55+ retirement village that specialized in short-term rehabilitation, palliative and hospice care, long-term care, and respite services. Facility was closed in December of 2020 after COVID-19 rates ticked up in many of the skilled nursing facilities across the state.

Nursing home is configured with 120 beds, while the building was designed and utilized as a skilled nursing facility. The Duplexes & Fourplexes are prime for repositioning or potential redevelopment for multi-family, ideal for long/short term nightly rentals, retirement homes, etc. (Some do have limited lake views).

This facility is well positioned near a number of amenities, restaurants, banking, shopping, Branson and Beautiful Table Rock Lake. This asset allows investors to purchase a vacant building with upside opportunities. Repositioning or redevelopment of the asset will allow the new owner to enjoy significant capital appreciation upon future disposition.

Property tour are available by appointment only. Please Contact Larry Foster at 417-839-6860 or bidnowsold@aol.com to schedule a site tour.



Property has it's own Missouri State DNR licensed water supply & sewer systems.

Drinking water facilities are under the system name: Table Rock Retirement Village (MO-5069084); One well, drilled in 1981, 1,390 feet deep, 402 feet of 10-inch steel casing, approximately 300 gallons per minute pump; One elevated storage tank, 100,000 gallons total volume; Waterline distribution; Wastewater treatment plant under the system name: Table Rock Healthcare (MO-0100161); Extended aeration treatment plant with design flow capacity of 28,000 gallons per day; Design population equivalent of 244

Shown by Appointment Only.

Term & Conditions: 1. Foster Auction Service is Agent for Seller Only. 2. Taxes & Utilities will be Pro-rated at closing based on 2020 Taxes. 3. Seller is to pay normal Seller Closing Costs, Buyer is to pay normal Buyer Closing Costs. 4. Closing will be on a date not more than 30 days from date of sale. 5. Bidding is open to any Qualified Bidder under terms & conditions offered. 6. Possession is to be at Closing. 7. Winning Bidder will sign a Real Estate Contract upon completion if bidding today, which will be a no Contingency Contract. 8. Bidders are Urged to Examine the Property prior to Bidding to Determine and satisfy themselves as to Boundaries and Condition of same, Seller or Agent makes no Statements or Warranties either Expressed or Implied as to Condition. All information is from sources Deemed Reliable but not Guaranteed, Property sells "AS-IS" "WHERE IS". 9. Announcements made at time of Auction will take precedence over any and all Printed Matter or Prior Statements made by Agents or Seller, Conduct of the Auction and Increments of Bidding are at the discretion of the auctioneer. 10. Property sells "as is" "where is" with no contingencies. 11. Property sells subject to Probate Court Approval. 12. Minimum Bid 1.8 million dollars. 13. NO BUYERS PREMIUM 14. Non Refundable 10% Down Day of Sale, Balance Due 30 Days or Less at Closing. 15. All Registered Bidders must have Bank letter of Credit or Proof of Funds to Bid at Auction.

FORMERLY "TABLE ROCK HEALTHCARE & RETIREMENT VILLAGE"

See our website for pictures and more info!



Auctioneer: Larry Foster | Galena, Mo

Phone: (417) 723-8329 Cell: (417) 839-6860

www.fosterauctionservice.com Email: bidnowsold@aol.com



HUGE BUILDING MATERIAL AUCTION



THIS IS NOT A CONSIGNMENT AUCTION! ALL ITEMS FOR SALE BELONG TO INTEGRITY OUTLET!

SATURDAY, OCTOBER 9TH • 10:00 AM

**3006 Hwy 62, Green Forest, AR 72638 • 3 miles west of Green Forest
Auction Inside - will be held regardless of weather**

- ◇ **DIMENSIONAL LUMBER** – 2x4x8's
- ◇ **LVL'S**
- ◇ **SOLAR PANELS**
- ◇ **WESTERN CEDAR** 5/4" decking 1x8" beveled and
- ◇ **ALASKAN CEDAR** - 5/4 decking ◇ Pine 1x6 T&G
- ◇ **DECKING** – Duralife Composite Decking – Golden Teak, Garapa Gray, and Coastal Gray
- ◇ **COMPOSITE DECKING TILES** – Interlocking 12x12 tiles – Redwood color – great for patio's, veranda's, and virtually any level concrete or gravel surface
- ◇ **CULTURED STONE**
- ◇ **MINI SPLIT AIR CONDITIONERS/ HEAT PUMPS** – 12,000 BTU – indoor units
- ◇ **OSB** – 3/4" T&G
- ◇ **PINE 1x4x12's and 1x8x14's**
- ◇ **PREFINISHED FIBER CEMENT SHAKE SIDING**
- ◇ **HOUSE WRAP**
- ◇ **ICE AND WATER SHIELD**
- ◇ **BATHTUBS** – INCLUDING FREE STANDING, SOAKER AND WHIRLPOOL
- ◇ **BARN WOOD DOORS** – real wood doors
- ◇ **INSULATION SHEATHING with Shiplap Edge** – 1/2", 3/4", & 1" thickness in 4x8, 4x9 and 4x10 sheets
- ◇ **INSULATION** – R13 & R19 bats and 5'&6' wide rolls of R10-R11-R13
- ◇ **PEX TUBING** – red and blue – 500 ft rolls
- ◇ **PULL DOWN KITCHEN FAUCETS**
- ◇ **NEW DELTA, MOEN, AND HOME IMPRESSIONS FAUCETS** – vanity and kitchen
- ◇ **Appliances** – New – Gas Dryer
- ◇ **FANCY CHANDELIERS AND WALL SCNCES**
- ◇ **CEILING FANS**
- ◇ **VINYL WINDOWS**
- ◇ **KITCHEN CABINETS** – multiple sets of cabinets, some straight, some L – all wood – prefinished – in various colors including stained and painted including Dark Gray, Light Gray, White, Farmhouse Brown (stained) – some sets include soft close doors and dovetailed drawers
- ◇ **VANITIES** – including vanity colors matching kitchen cabinets
- ◇ **7" WIDE PLANK WHITE OAK UNFINISHED FLOORING:** dual faced engineered back flooring – T&G, beveled edge
- ◇ **PORCELAIN TILE:** 1000's of sq ft in a variety of sizes and colors including **WOOD LOOK TILE**
- ◇ **MOSAIC TILE**
- ◇ **PREFINISHED HARDWOOD FLOORING;** 3/4" solid prefinished hardwood floor
- ◇ **7" Wide 1/2" Thick PREFINISHED PLANK WOOD FLOORING**
- ◇ **LVT** - luxury vinyl tile – wood plank – snap lock and glue down – several 1,000 sq ft
- ◇ **EXTERIOR DOOR UNITS including some STORM DOORS**
- ◇ **TRIM** – PREPRIMED and OAK –
- ◇ **KITCHEN SINKS** – SS – Composite – varying styles and colors
- ◇ **VANITY TOPS available in QUARTZ – MAPLE WHITE** in various sizes – countertops – with and w/o sink cutouts; **3CM quartz** vanity tops
- ◇ **TOILETS**
- ◇ **PEDESTAL SINKS, TOWEL BARS AND RINGS, TOILET PAPER HOLDERS, ROBE HOOKS, TOOTHBRUSH HOLDERS**
- ◇ **VARIOUS OTHER ITEMS**

Scheduled to arrive - T1-11 PLYWOOD SIDING PANELS – don't miss this 4x8 siding opportunity

MORE COMING IN DAILY - check sites often. For pictures see Integrity Outlet on Auctionzip.com (enter ID#42073 at bottom of page) or Facebook CELL 870-754-4428 • 870-715-5479 • 870-715-2326 (text only)

**Loadout – Sale Day – until dark; Sunday – 1:00 – 5:00; Monday – 9:00 – 4:00 * No Buyers Premium
Loadout Assistance Available – Including Forklift After Auction Ends * All items left over 30 days will be forfeited!!!**

INTEGRITY OUTLET

CONTACTS - CALL OR TEXT MIKE @ 870-754-4428 • TEXT ONLY @ 870-715-5479 or 870-715-2326



All announcements made the day of auction will supersede previous advertising.

MONTHLY CONSIGNMENT

Auction

SATURDAY, OCTOBER 9 AT 10AM

304 SPRINGFIELD RD, AVA MO 65608

Located across from Town and Country Supermarket in Ava, MO

SCAN ME!



Scan with your phone's camera to be directed to our website for more photos and info!

TRACTORS

- 2012 Mahindra MForce, 100 hp, ML 500 Loader, 4x4, 1700 hrs
- Deutz D 8006 Tractor
- 2017 Mahindra 5570 Shuttle shift, 4x4, w/ 5564L Loader, 4x4 only
- Deutz D 100-06 700 hrs
- John Deere 4010, 88 Horse
- Deutz 6725, 4x4 w/ loader
- B414 International

EQUIPMENT

- 2018 Vermeer 504R Signature Baler- Camless Wide Pickup
- New Holland Procart 1022 Hay Rake
- 2017 Rhino VR10 Hay Rake
- 2017 Kuhn GMD 3150 TL Pull-Type Disc Mower
- New Holland Discbine 408 Pull-Type Mower
- 2007 Bobcat Skidsteer S205 Turbo
- 2007 Bobcat 709 Backhoe Attachment
- 1995 Freightliner single axel day cab, cummins engine, Eton 10 speed and air brakes
- Gooseneck 24x6 Stock Trailer
- Gooseneck 32x6 Stock Trailer Tri Axels
- Neckover Gooseneck 14ft Stock Trailer
- B414 International Tractor
- In line 6 bale dump hay trailer
- New Holland BR 7070 Baler
- 1981 Chevrolet Corvette, T-tops, low miles
- 7ft PTO Cultivator

- New Holland H 6750 3 pc disc mower
- D6 Cat Bulldozer
- Fuel tank w/ stand 300 gal
- 2005 GMC 3500 series dually. Duramax diesel, Deweeze bed, extended cab, good tires
- C65 Chevy 2 ton with grain bed
- 1970 Chevy dumptruck
- 99 Nissan Frontier ext cab 2wd pickup
- 15' Sidewinder bush hog
- Deutz 6275 tractor 4x4 w/ westendorf front end loader
- International Harvester Grinder-Mixer
- AgCo 3710SX Tedder
- WW 16 ft Stock Trailer
- 3 Point Cultivator
- Woods 6' Angle Blade
- Woods 5' Cultivator
- 7' Angle Blade
- Frontier GM2060 Finish Mower

FIREARMS

- CVA Optima Pro Rifle Black Powder .45 cal
- Weatherby Vanguard .270
- Ruger American cal .300 Blackout
- F&N PS90
- Springfield 1896 Drop block 45-70 BP

- Stevens 12 ga
- Misc pistol holsters
- Black Powder Misc Ammo
- More firearms and ammo expected!

TOOLS

- Alpha Pro Tile Saw
- Campbell Hausfeld Flux Core 80 wire welder
- Craftsman 10 drawer tool box
- Dewalt Framing Nailer

HOUSEHOLD

- Fold up tree stand
- Interior Doors
- Antique fireplace bench
- Pair of French Regence caned back chairs
- Vintage stereo/record cabinet
- Antique 1900s Singer Treadle 7 drawer sewing machine
- Antique Furniture
- Antique Hurricane Lamps
- Breyer and Stone collectible Horses
- Booth Display Shelves
- Baby Gates
- Wall Oven
- Various Cast iron
- Upright deep freeze
- Many more tools & household items too numerous to mention



FOR MORE PHOTOS, VISIT OUR WEBSITE CHEYNEAUCTIONS.COM OR FIND US ON FACEBOOK!

Auctioneer's Note: Weyrauch Brothers land & cattle equipment dispersal, Sam Shipps Estate have both consigned their farm equipment as well as many others! This will be an excellent auction with lots of quality farm related items. More items will be added up until auction day. Watch our website for updated list and photos. Come spend the day with us! Thanks, Travis.



Cheyney Auction Company, LLC
 Real Estate • Livestock • Farm & Ranch • Equipment • Household • Antiques
Travis Cheyney, Auctioneer
417-543-8751 • cheyneyauctions.com

ANNOUNCEMENTS Made Day Of Sale By Auctioneer Take Precedence over any Printed Matter. Not Responsible For Accidents. All items sold as is, where is, with no guarantee. Terms of sale: cash, credit/debit card, or check with valid ID

PUBLIC AUCTION - LIVE & ONLINE BIDDING

SATURDAY, OCTOBER 16, 2021 • STARTING AT 10 A.M.

SALE LOCATION: RR 2 Box 2636, Sedgewickville, MO. From highway 72 between Millersville & Patton take highway K north about 2 miles to highway EE in Sedgewickville, take highway EE 1.3 miles to sale site. OR from Perryville, take highway 51 south 10 miles to highway KK, take highway KK about 5 miles to highway K, turn right & take highway K south 4.5 miles to highway EE, take EE 1.3 miles to sale site. Watch for sale markers!!!

AUCTIONEER'S NOTE: : There will be live & online bidding available through www.equipmentfacts.com (Buyer's Premium applies only to items purchased online). The sale will start at 10 A.M. promptly!! We will begin with our online/live bidding items & follow up with miscellaneous items. More details for auction items can be found online at: www.mancheauctionservice.com OR www.auctionzip.com/auctioneer/6476/

OWNER: KEN SMITH



EQUIPMENT

LOT #721 Case IH 125 Maxxum tractor w/ L755 loader, w/ pallet forks, bale spear & bucket, front wheel assist, comes w/ a set of Snap On duals, 1,178 hours, 3 hyd outlets, 540 & 1,000 rpm PTO, cold air, DEF, ***VERY NICE LIKE NEW CONDITION!!!!; ZDEBE04216; LOT#723 Gehl CTL60 rubber track skid steer w/ 2 speed transmission, 66 hp, comes w/ smooth bucket, w/ new traction sprockets, 2,814 hours; S/N: 21302419

LOT #737 Rogers detach low boy trailer, triple axle, 10' wide, 50 ton capacity

LOT #665 Dresser TD 20-B with tilt blade, U/C about 50%, hours unknown

LOT #666 John Deere 555G hi-lift with 4-in-1 bucket, w/ rear ripper, U/C about 85%, with 6,087 hours; S/N: T0555GA744643

LOT #667 Allis Chalmers 840 Series B wheel loader w/ bucket & log forks, tires 50%, with 6,550 hours; S/N: 840B-3542

LOT #668 Link Belt 3400 Quantum excavator with 4' bucket, 32" wide tracks, with 9,608 hours, U/C 75%; S/N: L7J0-3873

LOT #669 Case International 1660 Axial-Flow rotary combine, 4-wheel drive, rice & cane front tires, engine hours 3,620, S/N: JJC0102795

LOT #670 TO SELL WITH #669: Case 1020 grain platform w/ implement trailer, S/N: XUUC0085493X

LOT #671 Kuhn FC 313 TG flail disk mower conditioner with 540 PTO, 11' cut, S/N:1072930 C0221

LOT #680 12' Hay King pasture renovator

LOT #681 38' gooseneck homemade side dump bale trailer w/ battery operated dump

LOT #683 Great Plains Solid Stand 10 15-hole grain drill has small seed box & covering harrow; S/N: GP-2590U

LOT #686 New Holland 650 auto-wrap baler, 4x5 bale; S/N: 873140

LOT #685 Vermeer 605 Super J baler, 5x6 bale; S/N: 1VRA121R3L1004326

LOT #687 Hesston PB20 bale processor w/ new knife hammers; S/N:BP20 00526

LOT #693 Midland model MPS12 dirt pan; S/N: 28952

LOT #694 White Field Boss articulating 4-wheel drive tractor w/ V-8 diesel motor, cab, duals, has 2 hyd outlets, 1,000 rpm PTO; MODEL #126-82084; S/N: 256-436-403

LOT #709 1985 Mack model RD685S dump truck tandem twin screw with 15' bed; VIN: 1M2C132C1FA010829

LOT #710 1984 Ford series 750 dump truck with 3208 CAT engine w/ automatic transmission, single axle, 13' bed; VIN: 1FDPK87U1EVA43557

LOT #711 Atlas Copco SBU 220 hydraulic hammer for skid steer

LOT #712 1990 Holden 18' pindle hitch flatbed trailer w/ 5' dovetail & fold down ramps, 2- 9,000# tandem axle, 25,200# rating; VIN: 12HTD2826LS093386

LOT #715 1992 International model 8300 6x4 road tractor twin screw with Cummins diesel engine; VIN: 1HSHKA4R2PH449193

LOT #718 Ford 6710 diesel tractor w/ cab; 18.4 38" rear rubber (brand new), 2- rear hyd, w/ dual power, 6,137 hours

LOT #719 180 Massey Ferguson tractor 4 cyl diesel motor, 3 pt hitch, 540 PTO

LOT #720 1928 McCormick Deering 1020 tractor, w/ pallet of parts

LOT #724 John Deere MT tractor w/ tricycle front w/ PTO, w/ 32" tiller

LOT #728 1980 Ford 9000 series tandem twin screw diesel road tractor, VIN: U90JVHG6888

LOT #730 Case model MDX91 disk mower w/ 9' cut, 540 PTO; S/N: HCA0034145

LOT #738 Schaffer hydraulic post driver mounted on skid steer attachment plate

MANY OTHER ITEMS TOO NUMEROUS TO MENTION. FOR COMPLETE LISTING & TO VIEW PICTURES VISIT
www.mancheauctionservice.com OR
www.auctionzip.com/auctioneer/6476/
 Larger items will be sold first in live/online format followed by smaller items.



SALE CONDUCTED BY:

MANCHE AUCTION SERVICE

COL. RODNEY MANCHE (573) 547-1818 OR (573) 513-1212

SINCE 1982~ "LET OUR EXPERIENCE SELL YOUR NEXT AUCTION!"

LUNCH ON THE GROUNDS.

NOT RESPONSIBLE FOR ACCIDENTS
 TERMS: CASH OR APPROVED CHECK FOR
 ITEMS BOUGHT ONSITE & WIRE TRANSFER
 ONLY FOR ITEMS BOUGHT ONLINE.

VISIT US ONLINE AT www.mancheauctionservice.com OR www.auctionzip.com (Auctioneer # 6476)

to view color photos & additional auction items.

Sam
CRAWFORD AUCTION SERVICE
ESTATE AUCTION

Will sell the following located at 520 Echo Drive in Richland, MO - Hwy. 7- Chalfont St. then North 2 Blocks
 Watch for auction signs.

WEDNESDAY, OCTOBER 13TH, 2021 - 10 AM

REAL ESTATE - HOUSEHOLD - TOOLS - MISCELLANEOUS

REAL ESTATE - SELLS AT 12 NOON

Older 2 bedroom, 1 bath home, gas heat, 3-4 small storage sheds, city water, corner lot. 9/10 of an acre. Gas range, refrigerator, dishwasher stay. 500 Gallon propane tank stays with property. Good rental or investment

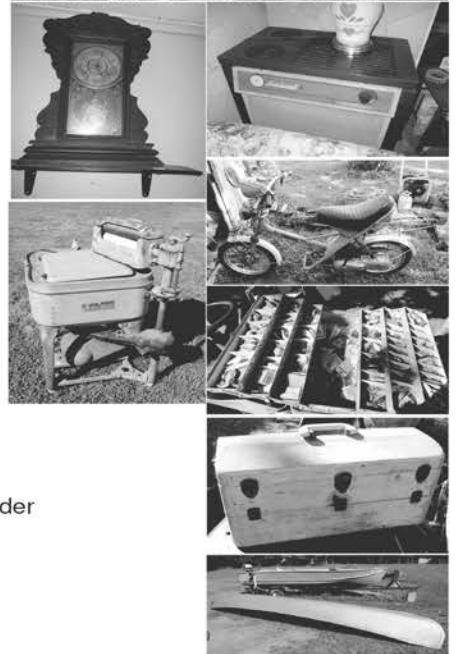


HOUSEHOLD

- Flatscreen TV
- 2 Bedroom Sets, Full
- Chest of Drawers
- Recliner
- Glider Rocker
- Dresser
- Queen Hide A Bed
- Loveseat Couch
- Sewing Machine
- Heartwood Heating Stove
- Electric Dryer
- Corner Cabinet
- Round Breakfast Table & 4 Chairs
- Antique Kitchen Hutch
- Antique Maytag Wringer Washer - Square Tub
- Rinse Tub w/Stand
- Treadle Sewing Machine Frame
- Asst. Small Kitchen Appliances
- Lot Asst. Pots, Pans, Utensils
- Lot Asst. Glass Bowls - Glassware
- Corningware, Pyrex
- Some Jewel Tea
- Lot Figurines
- Set Fire King Gold Luster Dishes
- Gold Iris Vase - Pitcher
- Antique Kitchen Clock
- Other Clocks
- Lot Wrist Watches & Parts
- Antique Aladdin Electric Lamp
- Other Lamps
- Game Board
- Pictures, Mirrors, Wall Decor
- Oil Lamps
- Fruit Jars
- Lot Other Misc.

TOOLS

- Power Washer 6.5 HP
- 3 Portable Generators
- 5 HP Front Tiller
- Murray Lawn Tractor
- Homemade Wood Splitter 8 HP
- Several Pipe Wrenches
- Good Asst. Wrenches & Sockets
- Good Asst. Power Hand Tools
- 4 Chainsaws (1 - Stihl MS250)
- Stihl Trimmer
- Lawn Cart
- Long Handle Tools
- Lot Bolts & Nails
- 4" Belt Sander
- 12-15 Rods & Reels
- Fishing Misc.
- Lg. Aluminum Tackle Box (Bought New in 1953)
- Lot Old Lures
- Metal Storage Cabinet
- Shop Vac
- Pro Tech Scroll Saw
- Pair Metal Saw Horses
- Pair Car Ramps
- Aluminum Extension Ladder & Step Ladder
- 15-20 Steel Posts
- 5-6 BB Guns
- 4-5 Coleman Lanterns
- Honda Express II Mo Ped, Runs
- Vispa Mo Ped - Frame
- Taema Motor Bike - Not Running
- 17' Aluminum Canoe
- Trolling Motor
- 14' Aluminum V Bottom Boat & Trailer, 7.5 HP Evinrude Motor, Titles
- '53 Lonsair Outboard Motor
- Some Scrap
- Other Misc.



Sam
CRAWFORD
Auction Service
 LLC



TERMS: Cash or good check. Nothing removed until settled for. Not responsible for accidents. Lunch available. Statements made day of sale take precedence over printed matter. All items sell as is. No warranties given or implied.

417-998-6629
 Cross Timbers, Mo.

CrawfordAuctionService.com



Sam
 417-328-9137

Chase
 417-399-1904

Chance, CAI
 417-298-1781

Tom Poynter
 Jack Lancaster

Owen C. Sheeley Estate

#1 AUCTION SOURCE IN CENTRAL MISSOURI

SERVING 33 COUNTIES!



IN PRINT & ONLINE!

TO ADVERTISE YOUR AUCTION, CALL 417-532-9131

WEEKLY TRADER MAGAZINE

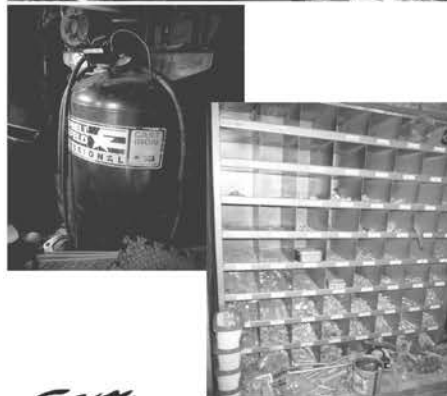
100 E. Commercial, Lebanon
www.myweeklytrader.com
www.facebook.com/myweeklytrader

Sam
CRAWFORD AUCTION SERVICE LLC

Will sell the following located from Wheatland, MO 4 miles South on Hwy. 83 to Hwy. 254, Then East 3 miles to Galway Co. Rd. 271A then South, watch for signs.

FRIDAY, OCTOBER 15TH, 2021 - 10 A.M.

PONTOON - TRAILERS - CAR - TOOLS - MISCELLANEOUS



TOOLS & MISC.

- Lawn Mower Jack - Floor Jack - 2 Pair Car Ramps
- Snap-On Professional Toolbox w/Side Box
- Smaller Toolboxes - Some Snap-On Wrenches
- Lot Assorted Wrenches & Sockets
- Assorted Power & Air Tools - 2 Mitre Saws
- Campbell Hausfeld 60 Gal. 5 HP Upright Air Compressor
- Central 110 Welder - 2 Battery Chargers
- Table Top Drill Press - 6" Bench Vise - Grinder Stand
- 7' Metal Storage Locker - 3x4' Bolt Bin
- Sev. Plastic Assorted Cabinets - Bolts, Screws, Nails
- Long Handle Tools - Poulan Chainsaw
- 2 Stihl Weeders - Stihl Blower
- 4-5 Log Chains - Boomer - Come-Alongs
- 2 Push Mowers - C-Clamps - Creeper - 2 Lawn Carts
- Hydraulic Cherry Picker - Boat Trailer, Single Axle
- Several Lawn Mower Tires & Wheels
- 2 Mobile Home Steps - 6 Flu Tile - Gas Cans
- 6' Aluminum Step Ladder - Oklahoma Joe Smoker
- 40-50 Rods & Reels - Lot Reels - 12-15 Tackle Boxes
- Other Fishing Miscellaneous

HOUSEHOLD

- Formica Top Table & 2 Chairs - Invacare Wheelchair
- Rival Roaster, Other Appliances - Some Antique Dishes
- Other Dishes - Kenmore Washer & Dryer

CAR

2006 Toyota Scion 2 Door Car

BOAT

1994 Lowe 23' Pontoon Boat & Trailer, 70 HP Johnson, Runs?

TRAILERS

Single Axle Lawn Mower Trailer, 6½x8' w/Gorilla Lift
 16' Utility Trailer 6½' Wide

Sam
CRAWFORD LLC
Auction Service



TERMS: Cash or good check. Nothing removed until settled for. Not responsible for accidents. Lunch available. Statements made day of sale take precedence over printed matter. All items sell as is. No warranties given or implied.

417-998-6629
 Cross Timbers, Mo.

CrawfordAuctionService.com



Sam
 417-328-9137

Chase
 417-399-1904

Chance, CAI
 417-298-1781

Tom Poynter
 Jack Lancaster

Marilyn Norris

Sam CRAWFORD AUCTION SERVICE LLC

Will sell the following located from Wheatland, MO 4 miles South on Hwy. 83 to Hwy. 254, then East 4.5 miles (1/2 mile east of Galmeys). Watch for auction signs.

SATURDAY, OCTOBER 16TH, 2021 - 9:30 AM

METAL ROOFING - STORAGE TRAILERS - TOOLS - ANTIQUES - MISCELLANEOUS



Metal Roofing
Sells at 12 Noon

20+ Bundles Metal Roofing, Assorted Lengths 8' & 16', Assorted Colors, Mostly New

Storage Trailers, Boat
Tools & Misc.
Sells at 12 Noon

2 Semi Storage Trailers, 45' & 48', Good Tires, Titles
Playcraft Pontoon Boat & Trailer, 25', 85 HP Mercury Motor
2 Front Tine Tillers
Push Mower
4-5 Weedeaters
Pole Saw
Poulan & Echo Chainsaws
Agri Fab Lawn Vac/Trailer, 10 HP
Yard Cart
2 Lawn Spreaders
Long Handle Tools
Some Power Tools
Several Gas Cans
Pickup Mount Hyd. Snow Plow
Sickle Mower for Farmall Cub
Garden Hose
Extension Cord
Other Items

Antiques & Collectibles

2 Rinse Tubs w/Stands
Kerosene Cookstove
7 Treadle Sewing Machine Cabinets (2 With Machines)
3/4 Bed
Several Wood Kitchen Cabinet Bases & Tops
Mirrors
Approx. 25 Wood Kitchen Chairs
2 Ice Cream Chairs
Parlor Chairs
2 Screen Doors
Porch Swing
Porch Bench
12-15 Wrought Iron Lawn Chairs - Benches - Tables
Other Lawn Chairs
Some Wicker
Brass Fire Extinguisher
Brass Gas Nozzle
Miller High Life Sign
Hand Well Pump
Washboard
Pedal Car, Tonka Trucks
Oak Mirror
Silverware
Cast Iron Dutch Iron - Sq. Skillet
Graniteware
Several Nice Pictures & Frames
Plant Stands
3-4 Kerosene Lamps

Kids Sled
Reel Mower
Baskets
Bird Baths
Punch Bowl & Cups
Sev. Boxes Packed, Unable to List
10-12 Pink Flamingos - NIB
Lawn Ornaments
Planters

Miscellaneous

Fifth Wheel Camper Hitch
2 Wheelchairs
2-3 Wire Dog Carriers
Fans & Heaters
4 Store Display Cabinets (1 Lighted)
Estate Dryer
Silent Flame Free Standing Wood Heating Stove, Nice
Older Wood Heating Stove
Metal Yard Swing
Bed Frame
25 Steel Post
Other Miscellaneous

Loader on Site to Load Roofing & Other Items



TERMS: Cash or good check. Nothing removed until settled for. Not responsible for accidents. Lunch available. Statements made day of sale take precedence over printed matter. All items sell as is. No warranties given or implied.

417-998-6629
Cross Timbers, Mo.

CrawfordAuctionService.com



Sam
417-328-9137

Chase
417-399-1904

Chance, CAI
417-298-1751

Tom Poynter
Jack Lancaster

Fred Wood

PUBLIC

Owner: Karen Jose
1233 Crossroads Church Road, Bland Missouri

I, Karen Jose will sell at Public Auction to the highest bidder machine shop equipment that my late husband, Jerry Jose, used to run his business along with many items I no longer have a need for.

AUCTION
9:00AM SHARP!

SATURDAY, OCT. 16, 2021

DIRECTIONS: From Hwy. 28 in Bland Mo. Take Hwy B South 4-1/2 miles to Crossroads Church Road on the Left, then 1 mile to auction site on the left. Bring your trailers plenty of parking. Signs will be posted day of auction.

JOSE MACHINE & TOOL

1980's 2 h.p. Alliant variable speed vertical mill with D.R.O. (bought new); 1981 12x36 TWS BL 1237S variable speed metal lathe with tooling; 1942 Monarch 18.5" swing 54" between center engine lathe with all the tooling; Harding Dovetail Bed chucker lathe with tooling; Roto-Phase 3 phase converter (still wired up and in use until after the equipment sells); Gould & Ererhardt Tool Room Universal shaper; No.2 Cincinnati cutter grinder w/ attachments; 8x24; Covell No. 35 surface grinder w/ 8"x24" magnetic chuck; Elox HRP 63 EDM; Doall vertical metal band saw w/ blade welder; Doall blade cabinet; Richards multiform saw; Temco Model CP-410T small heat treat furnace; Multi form bender; No. 3 1/2 Greenard arbor press; Bench type No. 3 Greenard arbor press; older heavy duty floor model drill press; large lot of taper shank drill bits for drill press; Hobart Handler



120 wire feed welder; Craftsman commercial horizontal metal band saw; Delta Wood cutting band saw; (2) Die platform lift carts; Yuasa Rotary table for mill; 6" Ang-Lock precision mill vise; 27 ton and (2) 15 ton punch presses (to be sold as is scrap, due to safety concerns lack of guards etc.); 15 Ton cherry picker; homemade A frame; large commercial air compressor (needs repair); large cabinet full of hardened bolts and nuts coarse to fine threads; Airco Torch set; lots of c-clamps and machinist clamps; 4 Kennedy machinist chest; Gerstner wood machinist chest; precision angle blocks; lot of large parallels and standard sizes; pedestal grinder; several small punch presses; (2) Rapid Air punch press material feeders; Indexing heads; lot strap clamps; Lot of quality precision measuring tools Micrometers, calipers, depth mics, height gage, machine level, etc. most of the tools are Starrett, Brown & Sharpe brands; Interapid vertical dial test indicator; travel indicators etc.; 10" Sine bar; mill type bore indicator; precision squares; lot of quality drill bit sets; lot of H.S.S steel expendable tooling, end mills etc.; machine jack screws; lot of misc. die sets; some misc. tool steel rounds and flat stock material; Heavy duty press stands; work benches; cabinets;



GUNS & AMMO (will sell around 2:00PM)

Ruger 10-22 I.r. carbine w/ 3x9 Tasco scope; Remington 870 Express magnum 12 ga.; Remington Model 11 16 ga. 2 3/4 mod. w/ extra barrels; Remington Model 11-48 2 3/4 mod. 20 ga.; Remington Model 11-48 12 ga.; Remington Model 11 20 ga.; Remington Model 700 6mm rem bolt w/ 3x9 Bushnell scope; Ruger Carbine 44 mag. w/ 3x9 scope; Remington Model 700 .270 Win Bolt action with Leupold scope; H&R single shot 12 ga.; Colt Python .357 mag. 8" barrel; Smith & Wesson .357 Highway Patrolman Model 28; Smith & Wesson .22 I.r. revolver 8" barrel; Walther 380 Auto Smith & Wesson stainless w/2 clips; Ruger Mark I .22 cal. Auto w/2 clips; Smith & Wesson DA 45 cal. Revolver; Sturm Ruger Security Six .357 mag revolver stainless 6" barrel; Traditions 1851 Colt Navy .44 cal. Percussion; Smith & Wesson 9mm Parabellum Model 5906 stainless; Antique firearm Moore Pat Firearms Co. Front loading revolver .32 cal. bore Teat- Fire Pat. 1864 Silver finish engraving; lot other older shotguns and wall hangers; lot of Ammo .270, .44, 6mm, bricks of .22, shotgun ammo, etc.; some starter pistols; Big game tripod shooting bench; Lot of X-large Carhart and Key hunting clothes; Ashby turkey callers and other hunting items; gun cases.



DIESEL PICKUP; FARMALL CUB FARM RELATED ITEMS ~ TRAILER ~ LUMBER ~ TOOLS ~ MISC.



1997 Dodge 2500 4 w.d. pickup with 12 valve Cummins Diesel 5 speed manual transmission Laramie SLT package approx. 237k miles at time of listing runs and drives great!!; 1951 Farmall Cub tractor Serial #131565; Like new 12 ft. Road Runner brand trailer w/ drop gate; Lot of butchering items to include

a large older heavy duty table top grinder, stuffers, good butchering knives etc.; Lot of kiln dried lumber some walnut some Cherry Oak and Cedar; lot pine lumber of various lengths and sizes; 225 Lincoln Arc Welder; lot of chains and binders; lot of heavy duty floor jacks; lot of heavy duty screw jacks; large lot of corded tools of all kinds; Cambell-Hausfeld 20 gal. air compressor; (2) Wisconsin gas motors; lot of ratchet straps; Craftsman Mechanics top box; bar clamps; c-clamps; Stihl HT-100 pole saw; Stihl 029 chain saw; Stihl HS45 edger; Stihl F551AV weed eater; Stihl BG 85 leaf blower; Stihl mantis type tiller; Wheel Horse mower w/ deck; metal tree stand; Home-made log splitter; Home-made 8 ft. farm trailer; Reese 5th wheel hitch 14k Classic; saddle stand; some fishing poles and tackle; Heavy duty trailer ramps; Ferguson 3 pt. 6" blade; Ford cycle mower; Home-made 3 pt. bale spike; 6ft. drag disc; home-made 3 pt. boom; carry-all; (6) 10 ft. sections of I-beam; 6" x15 ft. heavy wall steel pipe; lot other misc. steel pipe etc.; like new Dewalt 12" Double Bevel Compound miter saw; Bostich pneumatic stapler; Bostich pneumatic 2 oil free nailer; work stands; some wood working equipment such as a wood planer, jointer, Radial arm saw; Power washer; Cutting torches;

AUCTIONEERS NOTE: The machine shop equipment is in working condition and will be under power the day of sale. The buyers will have to make arrangements to have equipment moved and will be given 30 days to do so. Lots of unlisted items possibility of running 2 rings at times.

ANTIQUES; COLLECTIBLES; MISC.

1800's German Toy Elephant moving nodder w/ wooden wheels; Old Soda fountain 5 cent Buckeye Root Beer syrup dispenser base no top; Falstaff License holder display; Jos. Bayer jar; 6 gal. Red Wing Crock; Cast iron door stops; 1912 National Candy Store cash register; Large roll top desk mfg. by American Desk and Seating Co. came out of Old Bay Mo. post office; 27" wide by 14 ft. long Walnut old store counter top; Large safe came out of Rosebud Mo. bank; 2 gal. White Hall jug; S.D. Mills 8 gal. Crock Chester L.L.; (2) copper apple butter kettles small and large; cast iron butchering kettle; other stoneware jugs and crocks some salt glazed; Remington Arms box with shipping mark Theo Langenberg Hope Mo.; 2 blasting caps wood boxes; 1965 Wisconsin distributor catalog and other Wisconsin manuals etc.; lot of skeleton keys some Keen Kutter; lot of vintage costume jewelry; 4 Roses clock marked property of Franfort Distilleries; Budweiser King of Beers sign; Lighted Miller High Life clock/sign; Griesedieck Distilling Pheasant plate; Orange Crush clock; advertising bottle cap opener; Top metal cigarette case; Detex Watchman's clock no. 214248; Deep cast iron skillet and other cast iron; repro cast wood cook stove; Some Shapleigh Hdw. Collectibles to include a 1843 hammer forged butcher knife; old Ford wrenches; Coors mortar and pestle; lot of old lace, crochet and embroidery work; weaving lot; Braider block with shuttle and bobbin; collectible post cards; W.S. George pitcher and bowl; Enterprise coffee grinder; Alfred Meakin ironstone pitcher and bowl; Ruby Red glass; flow pattern; Bavaria German plates; Carnival glass; Depression glass; Mary Gregory vase; 1964 New York World's Fair dish; Mr. Peanut bowls; Budweiser glasses; Hyde Park glasses; ironstone bowls; very old spinning wheel; Fern stand; old sewing notions; Harley Davidson cigarette lighter case; some old quilts; feather pillows; wash boards; Cl pots; Murphy bed; Walnut corner shelf; Victor 1885 sofa; toy cap guns; Ocarina made in Austria wind instrument; Home-made guitar; Violin body only; Hohner Big River harp; child's chairs; cloth baby doll bisque head; (2) model A rims; Wine making bottles and some equipment; Kirby vacuum cleaner; large pots; gal. Jars; old flatware; blue jars; some old pictures; lot modern fruit jars; flower pots; flower arrangements; large lot of show case small collectible items!!



Terms: Cash, (Credit & Debit cards will be charged a 3% convenience fee.) Check w/ proper ID, all checks over \$2,000 must be accompanied by an original irrevocable bank letter of guarantee (no copies), unless pre-approved by auction company.

Find this auction on Facebook at: **Arnold's Auction Service**

For more pictures go to **AuctionZip.com** and enter Auctioneers ID# 19088

- Total Sale Management
 - Construction - Farm Equipment
 - Shop Equipment
 - Real Estate ; Household
 - Liquidations ; Antiques
- Auctioneers:
 Eddie Arnold & Joe Sherman
 Ringmen: Larry Arnold
 & Terry Crider



• Not Responsible for Accidents or Theft
 • Terms: Cash or Check (ID required)
 • Nothing to be Removed Until Settled for
 • Everything Sells As Is
 • No Sale too Large or too Small
 • All Announcements Day of Sale Supersedes Printed Matter
 573-437-2433 ; 573-205-0209 Cell
 1761 E. Forest Lane - Owensville, Mo

R&R AUCTION SERVICE

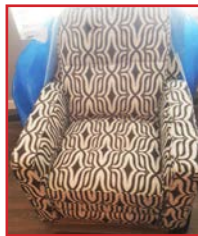
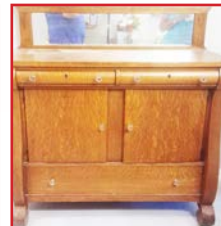
SATURDAY NIGHT SPECIAL

SATURDAY, OCTOBER 9TH AT 6PM

R&R Auction House • 1644 South Ash in Buffalo, MO

After receiving a small estate from Willard that is completely loaded down with NEW furniture and appliances we have put together our Saturday night special auction.

Remember lots of items are brand new, others are collectible and everything is nice including but not limited to...sewing base table, decorative ladders, shelving, table saw, table top band saw, hand tools, hub caps, Coleman catalytic heater, wooden whiskey box, scroll saw, glass shelf, holiday merry go round, antique large 6 dozen typeset tray, old milk bottles, old jars, antique school desks, bakers, rack, wooden shadow box NIB, Old J.C. Penney record player with cassette and 8 track, mini radio flyer wagon, oak antique high boy chest, old Robbins and Myers metal fan, shop vac, glass block, mini stove, left hand Fender stratocaster in Peavey hard shell case, left hand FG720FL Yamaha with gig bag, sleigh bag, animal cages, 5 gallon glass water bottle, 2 chest of drawers, coffee and end tables, Christmas decor, computer desk, table lamps, dehydrator, lots of misc, cat tree, solid wood cabinet, Frigidaire refrigerator, Dyna-glo bbq grill, Magic Chef chest deepfreeze, cane bottom chair, porch swing, extension ladder, step ladder, Masterbuilt smoker, pet carriers small secretary brand new reclining loveseat, sofa, chair, dishes, pots and pans, microwave, Oster toaster ovens, motion detected trash can, stainless Hisense refrigerator, set of ceramic knives, crockpot, blender, slo cooker, food processor, Samsung washer and dryer, bookshelf, buffet, king size mattress, antique table, fan on stand, floor lamp, distressed finished table and 4 chairs, afghans, bird bath, concrete planters, new flattop electric range, new dishwasher, automatic venetian blinds and so much more.



View this auction and more at www.rrauctionservice.com

TERMS: 10% buyers premium. Cash, check, or credit card with proper I.D. nothing removed until settled for A 3% fee will be added to credit card purchases. Not responsible for errors in listing. Any announcement made sale day will take precedence over any printed matter. **Note:** Service will take every precaution to prevent accidents, but will not be responsible should any occur.



For more information contact Professional Auctioneer Russ Weeks at 417-576-7357 or check out www.rrauctionservice.com

Serving this area's auction needs since 1997 with honesty and professionalism.
www.rrauctionservice.com
(417) 576-7357 or (417) 345-4140



Heart of the Ozarks Angus Association



115TH EDITION CONSIGNMENT SALE

Saturday - 12:30 pm (CT)
OCTOBER 16, 2021
Ozark Regional Stockyards - West Plains, MO

A SELECTION OF OUR OFFERING

Kelley Blackcap 12H LOT 67



CED +11
BW +6
WW +90
YW +156
MARB +45
RE +60
\$M +98
\$B +167
\$C +315

19906785 - 8/28/20

V A R Signal 7244 x Kelley Blackcap 18F
Consignor: Kelley Cattle, West Plains, MO.
Open heifer ranks in the top 1% for WW,
\$M & \$W and top 2% for YW, CW, \$F & \$C.

OVER 200 REGISTERED ANGUS CATTLE SELL!

43 Registered Angus Bulls,
37 Fall Pairs, 4 Spring Pairs,
31 Bred Cows, 9 Bred Heifers,
and 33 Open Heifers.

MM Benmidful Maid 26972 LOT 137



CED +8
BW +9
WW +54
YW +95
MARB +33
RE +63
\$M +64
\$B +116
\$C +214

18797576 - 12/15/16

Sitz Upward 307R x M M Benmidful Maid 8775
Consignor Wood River Cattle Co., Houston, MO.

An attractive daughter of the popular AI sire,
she sells with her 5/23/21 bull calf at
side by MM Medicine Bow.

CCC 777 Exclusive 2005 LOT 15



CED +10
BW +8
WW +69
YW +118
MARB +59
RE +68
\$M +84
\$B +150
\$C +279

20038233 - 2/27/2020

Musgrave 316 Exclusive x CCC Miss Classy Lady C701
Consignor Cox Cattle Co., Alton, MO.

This is an attractive, stout made, slick harried,
Show-Me Select Qualified bull.

Check out <http://heartoftheozarksangus.com/>
For additional information or to request a sale book, contact sale manager:

Missouri Angus Association

Julie Conover, Executive Director • 734-260-8635 • julie@missouriangus.org

Auctioneer: Al Conover 515-491-8078



LANDWEHR FARM AUCTION

SATURDAY, OCTOBER 9, 2021~10:00 A.M.

Owners: Jerry & Shirley Landwehr

Due to retiring from woodworking and farming, we, Jerry & Shirley Landwehr, will sell the following list of personal property to the highest bidder at auction located at 58 Pine Valley in Sullivan, MO. From Sullivan take Hwy. 185 North to Hwy. H. Go straight onto Hwy. H for approximately 7.4 miles and make a left onto Pine Valley. Go 1/4 mile to residence located on the left. Follow BERTI AUCTION signs day of auction.

FARM EQUIPMENT

3 Pt. Disc, 3 Pt. Two Bottom Plow; 3 Pt. Post Hole Digger; 3 Pt. Ag Max Sickle Mower; Chicken House; 3 Pt. Blade; 3 Pt. Bush Hog; Stock Tanks



TRACTOR

New Holland TN75S with 33LA Loader Bucket, Bale Spike, and Cab, 4x4, 3315 Hours



TOOLS & MISC.

Husqvarna DRT900H Rear Tine Tiller; Wheelbarrow; Saw Horses; Space Heater; Boat Paddles; Fire Extinguisher; Hand Saws; Stihl FS70RC; Caulk Guns; 6" Porta Cable Bench Grinder; Bolt Cutters; 1 Lot Nails & Bolts; Dremel Tool; Hitachi Miter Saw with Stand; 32 Ft. Aluminum Extension Ladder; 1 Lot Cedar Lumber-2" Thick; 5 Gal. Shop Vac; Pad Sander; Excalibur Scroll Saw; 1 Lot Bar Clamps; Pro Stand Tool Chest; Drill Bits; Framing Square; Scoop Shovel; Seyco Scroll Saw; Rikon 14" Floor Band Saw; Woodraver Oscillating Sander; Porter Cable Table Saw; Skill Router; Hitachi Brad Nailer; Hitachi Air Stapler; Montezuma 5 Drawer Tool Box; Skill Palm Sander; Clarke 1/2" Impact; Bosch Jig Saw; DeWalt Planer with Stand; DeWalt 200 Cordless Drill; Hitachi Circular Saw; Troy Bilt 8.75 Power Sprayer; BB Guns; 3 Boat Seats; Walnut Lumber; Heat Lamps; 2 Solar Fence Chargers; 2 Electric Fence Chargers; Chicken Feeders; Gas Cans; Electric Fence Posts; Yard Cart; Roll of Electric Wire; Pitch Fork; Ax; Pick; Post Hole Driver; Dip Net; Extension Cords; Log Chain; Chain Boom; Portable Air Compressor; Stihl BG86C; 1 Lot Fishing Poles; Aluminum Trailer Ramps; Fishing Tackle; In Line Fence Stretchers; Stihl MS250C Chain Saw; Poulan Chain Saw; Roll of Gaucho Barb Wire; Open End Wrenches; 1 Roll Net Wrap; Ratchet Straps; 1 Lot Oils, Grease, etc.; Grease Gun; 20 lb. Propane Tank; Uniflame Barbecue Pit; 2 Metal Patio Sets; 2 New Life Jackets; Water Skis; Taxidermy Items-6 Ft. Blue Marlin, Owl, Raccoon, Bobcat, Turkey, Duck, Pheasant, Hornets Nest; Cordless Power Washer; Farm Jack; Kerosene Heater

GUNS

Revolution Model 120 Auto 22 Marlin 22 Remington Bolt Action 22 12 Gauge Single Shot 30-30 Marlin Lever Action



HOUSEHOLD

Black Frigidaire Refrigerator; Black Sharp Carousel Microwave; Leather Rocker/Recliner; 2 Brown Matching Recliners; Floral Love Seat; Floral Couch; Sectional with Recliners & Hide-A-Bed; Kitchen Table; Desk; Sewing Machine; Dehumidifier; Treadmill; Total Gym; Canister Set; Old Casserole Dishes-Some Pottery; 3 Steins; 1 Lot Cookbooks; Crock Pot; Deviled Egg Dish; Rotisserie Oven; Canner; Corel Dishware; Salad Bowl Set; Mixing Bowls; 1 Lot Pots, Pans, Skillets; Serving Trays; Stoneware Baking Slab; 1 Lot Silverware, Knives, Serving Utensils, etc.; 1 Lot Glasses; Tea Pots; Vases; Candy Dishes; 1 Lot Coffee Cups; Lazy Susan Dip Set; Clear Glass Pumpkin Cookie Jar; DVD/VCR Player; 1 Lot Sheets, Blankets, Quilts; Wreaths; Lamps; Mirrors; End Table; RCA Console TV; 1 Lot Cameras; Camcorder; Tall Cabinet with Shelves & Doors; Desk with Bookcase; 8 Glassess with Gold Rims; Cabinet with Bookshelves; 1 Lot Books; Bissel Vacuum; Porcelain Dolls; 1 Lot Figurines; 1 Lot Toys; 1 Lot Wall Hangings; Handmade Baby Cradle



POLARIS

4X4 Polaris Ranger, 500 EFI, 811 Miles



AUCTIONEER'S NOTE: This is a lifetime collection of woodworking tools, farm machinery, and guns. Come spend the day with us!

See Ya There!! Robby



Berti Auction Service, LLC and Appraisals

Col. Robby Berti, Licensed Auctioneer-Col. Meghan Berti, Licensed Auctioneer

7786 Seminary Rd., Sullivan, MO 63080

Your trusted name in auctioneering since 1940



www.bertiauction.com

APPROVED CHECK OR CASH-ANNOUNCEMENTS MADE DAY OF AUCTION TAKE PRECEDENCE OVER ALL PRINTED MATTER- LUNCH SERVED-NOTHING REMOVED UNTIL PAID FOR-EVERYTHING SOLD "AS IS, WHERE IS"-NOT RESPONSIBLE FOR ACCIDENTS

REAL ESTATE sells ABSOLUTE!!!

106 S. HICKORY • COLE CAMP, MO

As I have moved to a nursing facility, I will sell the following at auction located south of the Post Office in Cole Camp, Mo on:

SATURDAY, OCTOBER 16TH AT 10 AM



REAL ESTATE

Sells ABSOLUTE to highest bidder at 11 am!

Built in the 1940's, this home still has its original charm, yet has been updated and very well maintained. County records show there is over 1200 sq ft on the main level, with 2 bedrooms and 1 bath. The clean, dry basement has a second kitchen area, cabinet storage, a shower, and a painted-on-the-floor shuffleboard game complete with homemade sticks! Home sets on spacious 15,000 sq. ft. lot, just a short convenient walk to post office and other services. This neat, clean, and ready to move into home sells ABSOLUTE to the highest bidder with no reserve!

Terms: Day of sale, buyer will pay 20% of purchase price to be placed in escrow at Title Co. At closing, in approx. 30 days, the balance plus applicable closing costs will be due. Seller will furnish a policy of title insurance and taxes will be prorated. Contact Auction Company to see this great town home!



ANTIQUES, HOUSEHOLD, & COLLECTIBLES Antique Eastlake dresser with hankie drawers * 1950's 4' Red Formica and chrome dining table with 2-12" Leaves and 8 red and chrome chairs, exc condition * 1950's Red and Chrome step stool chair * Fold-up red and chrome utility shelf * Red metal utility cart * Antique oak chest of drawers * Antique pencil iron bed * Antique buffet * Antique 36" dining table and 4 chairs * Double curved glass curio cabinet * Airline cabinet style tube radio * LazyBoy rocker-recliner, beige * Standard size bed with bookcase headboard * Writing desk * 2-Cane bottom rockers * Old Christmas ornaments * Maytag wringer washer, good cond * Universal Cambridge pitcher "Calico Fruit" with lid * 50's Ceramic duck light * Hull pottery, blue crock bowl, brass items * Bookcase headboard standard bed and matching dresser * Blue quart canning jars, old pop bottles, green glassware, depression era dishes, candlewick * Several pieces of Mikasa glassware * Heavy wood rocker * Old Eclipse meat grinder * 5 Gal Stainless steel milk can * MW tabletop cream separator Small kitchen appliances * Frigidaire refrigerator, Coppertone * Porch swing * Patio rocker * Concrete wishing well and other concrete lawn ornaments * Double wash tub on stand * Garden tools * Stack On tool cabinet * Other items too numerous to mention!



IZOLA SCHNAKENBERG

Larry DRENON AUCTION

Larry 660-596-8515 Laramie 660-221-4386
Lacey 660-723-1104 Cooper 660-723-2221

Office: 660-723-6188
www.DrenonAuction.com

Terms: Cash, approved check, debit/ credit card (convenience fee applied). Nothing to be removed until settled for. Not responsible for accidents. Statements made day of sale take precedence over printed material.

GUARDIANWARE: Turkey roaster with lid, excellent condition. \$195. 573-364-7465. Rolla.

200 GALLON POLY TANK: \$190. 417-322-0161. Lebanon.

AG & CONSTRUCTION REPAIRS & REBUILDS

20+ Years Experience
Cast Iron & Steel Welding
Engines • Transmissions
Electrical • Hydraulics
PTO & Drivelines
Tractors & Skidloaders etc.

VALLEY SHOP • 660-458-6747
38745 Molasses Mill Rd, Latham

ELECTRIC HEATER: Radiator style, like new, with thermostat hi/low settings, works excellent. \$45. 573-364-7465. Rolla.

HISTORY OF UNIVERSITY OF MISSOURI-ROLLA BOOK: Formerly Rolla School of Mines, 258 pages, HB, \$6.50. 417-532-2045. (Leave message and phone number). Lebanon.

Salem Livestock Auction
Hwy. 32 Salem, MO • 573-729-8880
Over 40 Years in the Livestock Business

Stock Cow Sale
Saturday, Oct. 16th • 1pm

Goat, Hog & Sheep Sale
Tuesday, Oct. 12th @ 6pm

Luke Peterson • 417-259-0036
Bryce Lauderdale • 417-255-5124

Field Representatives
Wright & Surrounding Counties
We Appreciate Your Business!

Cattle Sale Every Monday at 12
Feeder calves to sell at 12, butcher cows & stock cows following

All Consignments Welcome Up Until Sale

Allen Thompson 417-932-4097	Renee Lauderdale 417-926-2682
Chuck Thompson 417-257-5610	Brandon Barton 417-259-1597

SALEM LIVESTOCK AUCTION
Salem, MO

Terms of Sale: Cash or Approved Check!

AUCTION HERMANN MO AUCTIONS

Thursday, October 14, 2021
6 P.M. • 513 Market Street
Hermann, Mo. 65041

Antique Furniture, Antiques,
Used Furniture, Glassware, Tools,
Pictures, Household and MORE!!!!!!

SEE: www.Facebook.com/HermannMoAuctions
OR AuctionZip.com

TERMS: cash or good check with proper ID or charge (3% fee applied for charge cards) Everything sells AS IS. ALL Sales Final

Refreshments Available

CALL: (573) 409-0019 for information or (314) 608-1468

AUSTRALIAN SHEPHERDS for sale, blue merle, red and whites, out of working parents, 573-663-7459.

UNITOOL PUNCHES: (to punch steel) \$25 each. 417-322-0161. Lebanon.

WILLBECK CHISEL PLOW: \$925. 417-322-0161. Lebanon.

NOW TAKING CONSIGNMENTS FOR ANNUAL Leadmine Community Consignment AUCTION
Saturday, October 30 - 9:00AM

LOCATION: 839 Hwy T, Tunas, MO 65764 @ The Leadmine Produce Auction Facility. **DIRECTIONS:** From Buffalo, MO, go North on Hwy. 73, Turn Right on Hwy. E (at Tunas, MO) Go 4 miles to Hwy. T, Turn Right and go South ½ mile to Auction Site on the right.

CONSIGNMENT UNLOADING WILL BE OCTOBER 27, 28, 29 - 9:00AM-5:00PM. FOR CONSIGNING CONTACT KENNETH WENGER AT 207 SCHOOL ROAD IN TUNAS, MO 65764 GUN CONSIGNMENTS CONTACT: STUART ZIMMERMAN AT 205 ST. RD. E, TUNAS, MO 65764 OR CALL: LARRY MARTIN @660-337-6471 OR HERMAN HOSTETLER@417-327-7720

CUT-OFF FOR YOUR CONSIGNMENT LISTING IN THE NEWSPAPER AD - OCTOBER 16, 2021

FARM MACHINERY, SUPPLIES & EQUIPMENT HORSE DRAWN EQUIPMENT, TOOLS, TRAILERS GUNS, HUNTING, BUILDING SUPPLIES FURNITURE, SMALL ANIMALS (IN CAGES) LAWN & GARDEN, SUPPLIES

MINIMUM \$2 PER TICKET
\$2.01 to 100 = 20% • \$101 to 1,000 = 15%
\$1,001 to 2,000 = 12% • GUNS 12%
SINGLE ITEM OVER \$2,000 = 8% (\$450 CAP)

Terms & Conditions: Cash or check with valid I.D. Nothing removed until paid for. No smoking inside building. Announcements made day of sale take precedence over printed matter.

NO JUNK. NO TV'S OR RELATED ITEMS. WE RESERVE THE RIGHT TO REFUSE CONSIGNMENT.

HOSTETLER'S AUCTION SERVICE 417-327-7720
4392 HWY. FF, HALFWAY, MO • HERMAN HOSTETLER, AUCTIONEER
MARTIN AUCTIONS 1-660-337-6471

Callaway Livestock Center, Inc.
Kingdom City, MO

Watch live or bid online thru
D.V. Auctions
www.CallawayLivestock.com

SPECIAL COW SALE THURSDAY NIGHT

OCTOBER 7th, 2021 AT 6:00PM

Estimating 400 to 500 hd of Bred Cows,
Cow/Calf Pairs & Breeding Bulls.

EARLY CONSIGNMENTS

- 25 Outstanding fancy 3 yrs. old Blk Cows with fancy Blk Calves by side, outstanding milkers, very gentle, all slots ready to go.
- 42 Fancy Blk, 5 Hereford Cows, Cows 3 to 5 yrs. old, 20 will have Calves by side, rest will be heavy 3rd, bred Connealy bulls.
- 20 Fancy Blk or Blwf Cows, Cows will be 3 to 5 yrs. old, Calf Oct. 15 - Nov. 28, bred to Connealy or 44 farms Angus Bulls, all vaccinations.
- 10 Fancy Blk or Blwf Cows, Cows will be 3 to 6 yrs. old with fancy Blk Calves by side.
- 12 Fancy Blk or Blwf Cows, Cows will be 4 to 7 yrs. old with fancy Blk Calves by side.
- 15 Fancy Red Angus Cows, Cows will be 6 to 10 yrs. old with Red Angus Calves by side.
- 30 Fancy Blk or Blwf Cows, 3 to 6 yrs. old, all slots, 3rd period.
- 25 Fancy Blk or Blwf Cows, 3 to 5 yrs. old, 3rd period.
- 25 Fancy Blk or Blwf Cows, 3 to 5 yrs. old, 2nd period.
- 1 Outstanding Reg. 15 month Purebred BK Simmental Bull.
- 1 Outstanding 18 month Sim Angus Bull.

Several other cows expected by sale night.
Don't miss this sale. Many more expected by sale day. All bulls sell at the start of the sale at 6:00pm.

For more information contact:

- | | |
|---|---|
| Jack Harrison
573-999-7197 | Justin Oberling
217-440-7724 |
| John P. Harrison
573-220-1482 | Wayne McCluggage
573-473-6314 |
| Roger Temmen
573-680-4538 | Chad Nickelson
573-631-1627 |
| Glenn Stagman
573-619-8495 | Glen Stegman
573-619-8945 |
| Claude Niemeyer
573-470-1017 | Lynn Crouch
417-399-4148 |

573-642-7486

BUFFALO LIVESTOCK MARKET LLC



276 Hwy 32 West
Buffalo, Missouri

October 2nd, 2021 Farmfest Weekend Receipts: 694 Head

Market Steady. Cows Higher.

REPRESENTATIVE STEERS

300-400 @ 160.00 to 183.00
400-500 @ 145.00 to 162.00
500-600 @ 144.00 to 160.00
600-700 @ 140.00 to 159.00
700-800 @ 135.00 to 144.00

REPRESENTATIVE HEIFERS

300-400 @ 137.00 to 157.00
400-500 @ 130.00 to 148.00
500-600 @ 130.00 to 148.00
600-700 @ 124.00 to 136.00
700-800 @ 120.00 to 132.00

FEEDER BULLS

400-500 @ 142.00 to 155.00
500-600 @ 140.00 to 150.00
600-700 @ 117.00 to 144.00
700-800 @ 113.00 to 120.00
800-900 @ 90.00 to 115.00

BRED COWS

\$750.00 to \$1,175.00

SLAUGHTER COWS

Big Fleшы Cows 72.00 to 76.50
Med Fleшы Ave Dressing 52.00 to 68.00
Low Dressing Thin 40.00 to 50.00

SLAUGHTER BULLS

High Dressing 90.00 to 94.00
Med Dressing 79.00 to 90.00
Low Dressing 70.00 to 78.00

MON-WED MARKET REPORT

Listen to KJEL 103.7FM • Lebanon or KY00 99FM • Bolivar

VIEW OUR SALES AT CATTLEUSA.COM

CALL FOR TRUCKING OR ON-FARM VISIT

Lyle Caselman • Owner-Manager
417-345-7876 • mobile 417-533-2944
Leon Caselman • Owner
417-345-4514 • mobile • 417-588-6185

WELL BUILT CART: For small mig welder. New-used \$200. 573-729-0272. Salem.

HEAVY 6-BAR GATES: Weldable or bolt type hinges – 16' gate \$192 available painted. Lewis Welding and Repair. 573-729-0272 – 573-729-1405. Salem.

TOTE FULL OF AUNT JAMIMA STUFF: \$200 for all. 573-327-9068. Park Hills.

OAK TABLE – FOUR CHAIRS: \$250, Pine heart day bed with mattress, good shape \$75.00. 417-543-8261. Ava.

RUBBER & LEATHER BOOTS AND HIP WADERS. Men's 11, Women's 7, some insulated. \$15-\$40 obo. 636-239-2695. Washington.

MOEN KITCHEN FAUCET: Single lever, sprayer, new cartridge. \$45 obo. 636-239-2695. Washington.

27" PHILLIPS MAGNAVOX TV: Free. 417-457-1023. Raymondville.

TRUCK LOAD OF CELOTEX INSULATION: \$50 or trade. 573-734-2822. Bismark.

MULTI ESTATE AUCTION

FRIDAY, OCT. 8, 2021
5:00 P.M.

MOFFAT AUCTION CENTER
467 CO RD 604, LINN, MO

DIRECTIONS: From Linn, take Hwy. 50 west 1 1/2 mi. to Co. Rd. 604, turn left & go 1 mile to building on right, or from Jefferson City, take Hwy. 50 east approx. 18 mi. & turn right on Co. Rd. 604.

GUNS

6.5 Creedmoor Bolt; Pump 12 ga.; Pump 410; AR 12 ga.; Henry Golden Boy Lever 22; 30.30 Lever; 17 HMR Bolt; Ruger 9mm Pistol; XD 9mm Pistol; Ammo for Guns.

SPORTS COLLECTIBLES

Framed & Signed Jerseys: Yadier Molina, Alex Smith, Kobe Bryant, Michael Jordan & O.J. Simpson; Ball Cards (Year Sets); Other Sports Collectibles.

FABRIC

MUST SEE IF YOU'RE A QUILTER OR LOVE TO SEW - Approx. 5,000 to 7,000 Yards of Fabric; Some Bolts; Rolls; Some Bolts are New.

ALSO SELLING

ANTIQUES, COLLECTIBLES, HOUSEHOLD; TOOLS, APPLIANCES AND MISC.

SEE www.moffatauction.com for Photos

Note: This is another large auction with two rings most of the evening. Please come out and see us. Rick
Terms: Cash or good check with proper identification. All sales are final. Everything sells as is, where is. Proper identification is necessary to obtain a buyer's number. Announcements day of sale supersede all printed material. Food on grounds.

GASCONADE COUNTY LAND AUCTION

SATURDAY, OCT. 30, 2021
10:30 A.M.

KOTTWITZ FAMILY TRUST
1279 BOCK ROAD, BLAND, MO

Home w/ Outbuildings & Approx. 177.57 Acres

Selling in 5 Tracts:

From 16+/- Acre to 48+/- Acre Tracts

Property Borders Canaan Conservation Area

Open Houses & Viewing:

Saturday, Oct. 16, 2021
from 11:00 a.m. to 12:30 p.m.

Saturday, Oct. 23, 2021
from 11:00 a.m. to 12:30 p.m.

LIVE AUCTION WITH ONLINE BIDDING AVAILABLE

PROPERTY TO BE SOLD AT:

Moffat Auction Center
467 Co. Rd. 604, Linn, MO

See www.moffatauction.com For Terms

RICHARD MOFFAT AUCTION SERVICE

Auctioneer: Richard Moffat & BJ Moffat

573-761-4293 • 573-690-2823

www.moffatauction.com

RICHARD MOFFAT AUCTION SERVICE

Auctioneer: Richard Moffat & BJ Moffat

573-761-4293 • 573-690-2823

www.moffatauction.com

1908 SEARS, ROEBUCK CATALOG REPRINT: 184 pages, \$10. 417-532-2045. (Leave message and phone number). Lebanon.

CUTTING BOARD: Fits in your kitchen counter top, various species of ducks. \$15. 636-239-2695. Washington.

JOHN DEERE 5085E: 85 hp, 770 hours, cab, 4x4, loader, nice. 417-646-8807. Osceola.

CLARINET IN CASE: \$100 or trade. 573-327-9068. Desloge.

ROUND BALE SPIKE: For front tractor bucket. \$60. 417-532-8048. Lebanon.

WANT TO OPEN A REC CENTER?: 6 pool tables 3x7 Valley coin operated tables, chairs, Cherry Master Electronic Machine, misc. Sell all or individual. 417-531-1496. Lebanon.

2-BLACK ANGUS HEIFERS: Nice, Grass fed, 100% Natural, Ready to Butcher - \$1.50/pound. 417-322-0161. Lebanon.

PULLETS: Ready to lay, give brown eggs, \$15. Call mornings 573-759-3247. Dixon.

WARSAW, MISSOURI OZARK ECHOES 1964 YEARBOOK, \$20. 417-532-2045. (leave message and phone number). Lebanon.

HAMMERMILL 220V: (Grind Your Own Grain) \$825. 417-322-0161. Lebanon.

4 FT. PRESS BRAKE: Nice, (Needs Parts) \$450. 417-322-0161. Lebanon.

BARN OF MISSOURI BOOK: A Storehouse of History, HB, 168 pages, \$12.50. 417-532-2045. (Leave message and phone number). Lebanon.



Cheyenne Acres
Horse & Tack
BUY - SELL - TRADE
by Rolla, MO
Call For Directions & Availability
Call Kip
573-368-9402

SPECIALIZING IN HEAVY DUTY GATES



Cow Country Gate Sales

Call Randy: 573-569-4754
or Home: 573-539-2528
Located at: Zimmerman Welding
16889 Hwy 52, Barnett, MO

BUYING PRE 1960'S BEER SIGNS: FALSTAFF, GRIESEDIECK, CAPITOL, STAG, HAMMS & MORE. Soda signs too! 573-680-5377. Jefferson City.

LOOKING TO BUY TRACK FOR JOHN DEERE: 450B or 450C. 636-232-7480. DeSoto

SMALL TRAILER: To pull behind garden tractor (like new) \$95. 417-322-0161. Lebanon.

1951 FORD BRAKE DRUMS: With backing plates, exhaust manifold and cross-over plate. \$75. 417-457-1023. Raymondville.

CLIVE CUSSLER BOOKS! \$5 hardback, \$2 paperback plus shipping. For list call 417-457-1023. Raymondville.

GRIZZLY MODEL G9744Z2 METAL-CUTTING BANDSAW: Like new (cost new 4K+) \$2,700. 417-322-0161. Lebanon.

A TRUCK LOAD OF FLEA MARKET & AUCTION ITEMS: For \$150 or trade. 573-327-9068. Desloge.

A FRAME TINY HOUSE/SHED: 6 ft x 8 ft, new floor, furnished. \$800. 573-759-7143. Vienna.

2006 DODGE DIESEL PICKUP: Crew cab, 4x4 heavy duty, automatic, few rust spots, mechanically sound, mileage 248,934. \$13,500. 573-789-2093. Versailles.



MID MISSOURI STOCKYARDS
REGULAR SALE EVERY THURSDAY 11AM
WATCH OUR WEEKLY SALE IN REAL TIME ON DVAUCTION.COM
For Farm Visits, Market Updates, or Trucking
Call Zach Cox 417-777-1320
Dan Romine 573-578-4939
**Competitive Buyers!
Competitive Commission!
Competitive Market!**
Barn: 417-532-9292 
I-44 • Exit 123 "just outside of Lebanon"
17505 Route 66, Phillipsburg, MO 65722
For weekly market updates, visit us at www.midmoststockyards.com

SATURDAY, OCTOBER 16, 2021
SALE STARTS 1:00PM
Come By and View Cattle Before Sale

Sales Books Available on Request

Sight Unseen Satisfaction Guarantee

Angus & Sim-Angus
OUR FOCUS

14TH ANNUAL BULL FEST
COMMERCIAL CATTLEMAN

Selling: Approx. 80+ Bulls & 120+ Females
Fall & Spring Calving Cows Bred & Open Heifers

GERLOFF FARMS Bland, Mo.

View Bulls 2 Weeks Prior to Sale by video at: www.GerloffCattle.com

LANCE 573-259-9331 SCOTT 573-291-1333 CHARLIE 573-437-3751
DAKOTA 573-823-7477 KIM 573-291-1091 OR 573-680-9117

OUTSIDE WOOD FURNACE WITH DUCT WORK: Sale or trade for truck or tractor. 573-734-2822. Bismark.

FOUR BUMPERS TO FIT OLDER MODEL CHEVELLE: \$125. 573-734-2822. Bismark.

HISTORY OF THE SCHOOL OF THE OZARKS: at Point Lookout. \$5.00. 417-532-2045. (leave message and phone number). Lebanon.

OLD DELL COMPUTER: \$75 or trade. 573-734-2822. Bismark.

OLD ELECTRIC WELDER: Full of copper. Sacrifice \$100. 573-734-2822. Bismark.

ANTIQUE BATTERY CHARGER: Full of copper. \$100 or trade. 573-734-2822. Bismark.

2006 VW JETTA: Diesel, 4-door, automatic, good fuel mileage, fair condition. \$2,850. 573-789-2093. Versailles.

2018 JOHN DEERE 630: Mo-Co, 9ft. 3in., low hours, extra clean. 417-818-3495. Strafford.

FOR SALE: Turn table, Sounddesign, belt driven \$100 obo. 417-668-7793. No text landline.

ELECTRIC HOSPITAL BED: Nearly new "mattress". Didn't use. Bed has two sets sheets; rails and can be moved in three pieces. Bought at Bach Medical Supply, Springfield. Has been in clean storage. Have papers to date when bought. Want \$500. 417-588-1887. Lebanon, MO.

2020 JOHN DEERE 6105E: 105 hp, MFWA, loader, cab, air seat, deluxe interior, 66 hours. 417-818-3495. Strafford.

PUBLIC AUCTION
 Will sell the following located 3 miles North of Bolivar, MO on Hwy. 83 to Co. Rd. E 410 then East 3/10 mile to Cherry Blossom Hills, then South to 1188 E 412 Rd. Watch for auction sigs.
Mon. Oct. 11, 2021 • 10am
WOODWORKING TOOLS - TRAILER - HOUSEHOLD - KAYAKS
TOOLS: Kreg Router Table w/¾ HP Porter • Cable Router • Powermatic Spindle Sander on Stand • DeWalt 13" Planer on Stand • Shop Smith 12" Disc Sander on Stand • Powermatic 66 Cabinet Table Saw w/ • Accessories • Grizzly G0490 8" Jointer • Grizzly G05 13x2 17" Bandsaw • Grizzly G0703 1½ HP Dust Collector • 2 Porter Cable 690 Routers (1 Plunge) • Blue Point Double Wheel Grinder on • Stand • Rigid 12" Miter Saw w/Porta A Mate • Table • Keller & Woodcutter Dove Tail Jigs • Gauges & Calibration Instruments for • Power Tools • Woodworker Work Bench • Lots Whiteside Router Bits • 15-20 Assorted Bar Clamps • Makita Belt Sander • Porter Cable Disc Sander • Black & Decker ½" Drill • Tools Are All Really Nice • Well Cared For • Stihl MS180 Chainsaw • Stihl Blower • Long Handle Tools • 8-10 Joints Plastic Conduit • Ash Vacuum • Mantis Tiller • Other Miscellaneous • **WOOD:** 60 Board Feet 5/4 Walnut Planed • 30 Board Feet 8/4 Walnut Planed • 60 Board Feet 3/4 Walnut Rough Cut • 28 Board Feet 3/4 Red Oak Planed • Most Lumber 7' • Other Pieces Misc. Lumber • **KAYAKS - SELLS 12 NOON:** 2 Perception Kayaks 10' & 10' 6" - • Stored Inside • **TRAILER - SELLS 12 NOON:** Side Axle Bumper Hitch Utility Trailer, • Mesh Tailgate, 10'x6'4" Wide • **HOUSEHOLD & MISCELLANEOUS:** Sole 63 Electric Treadmill - Nice • "The Farm" Aero Garden • Loveseat • Chaise Lounge • Leather Office Chair • Poker/Game Table w/4 Leather Chairs • on Rollers - Extra Nice • Assorted Small Kitchen Appliances • Assorted Pots, Pans & Dishes • Assorted Christmas Decorations • 2 Wood Porch Benches • Tri-Pod for Outdoor Cooking • Weber Smoker • Round Metal Patio Table & 4 Chairs • w/Cushions • Lg. Retractable Patio Umbrella • • Stand • Other Miscellaneous
 See website for photos! crawfordauctionservice.com
Sam Crawford Auction Service
Cross Timbers, MO • 417-998-6629
Eric Canfield

Where it's always a bull market!
WALL\$TREET CATTLE CO. Angus - Brangus - Ultrablacks
 14603 HIGHWAY KK, LEBANON, MO
 417.288.4444 • WALLSTREETCATTLE.COM

550 ROUND BALES – 2800 SQUARE BALES: 417-345-5634. Phillipsburg.

AKC-FC PEDIGREE TRI-COLOR BEAGLE PUPPIES: 12 weeks, male & females, \$250. 573-627-2309. Sullivan.

FOR SALE: 3 Slant horse trailer, A-1 shape, \$6,500. 16ft metal stock rack for trailer, \$1,000. 1964 White truck with Holmes wrecker bed, \$12,000. Body parts for 1985 F-150. 573-247-4606. Salem.

FOR SALE: Speed control pet nail grinder, \$20. Micro touch titanium trimmer, \$25. 12 small bags of yarn \$10 for all. Tinciny snap set kit \$20. 417-322-2960. Lebanon.

2014 JOHN DEERE 610M: Cab, loader, MFWA 1,280 hours, extra clean. 417-818-3495. Strafford.

OGDEN 8-WHEEL HAY RAKE: fully hydraulic. 417-818-3495. Strafford.

FREE YAHAMA ELECTRIC TONE ORGAN: With bench, great condition. 816-521-0956. Lebanon.

JEEP 2005 LIBERTY: \$1,800. 816-521-0956. Lebanon.

PUPPY FOR SALE: Anatolian/Akbash / Great Pyrenees livestock guardian, male, 14 weeks old, \$300. 909-835-2750. Lebanon.

CLINES EQUIPMENT Co., LLC
FALL CONSIGNMENT AUCTION
 20133 LAWRENCE 2220 AURORA, MO 65605
Saturday October 9, 2021 • Starting at 9:00 AM - RAIN OR SHINE
 Direction: 1 mile East of Jct. 60 & Hwy. 39 on US Hwy. 60 or .9 miles West of Bus. 60 On US Hwy. 60

We will take Consignments NOW!

LOCAL HEALTH DEPT ADVISES SOCIAL DISTANCING.
 HAND SANITIZER & ANTIBACTERIAL SOAPS WILL BE AVAILABLE

FOR MORE INFORMATION CALL
 OFFICE 417-678-0049 or CELL 417-830-0912
[HTTPS://WWW.AUCTIONZIP.COM](https://www.auctionzip.com)

TRUCKING IS AVAILABLE

WE'RE NOT JUST IN PRINT

Visit the newly re-designed

WWW.MYWEEKLYTRADER.COM

CHEVY CERTIFIED SERVICE
SPRING TIRE EVENT

\$200 MAIL-IN REBATE!
ON A SET OF FOUR TIRES FROM BRIDGESTONE, CONTINENTAL, SCOTTY'S, HAAS, AND PHRELLY WHEN PURCHASED WITH A GM OR BUYPower CARD

LOWE CHEVROLET
"We're Easy to Deal With"
View our Inventory



WEEKLY TRADER MAGAZINE

Serving Central Missouri
in 33 counties!

417-532-9131
100 Commercial Street
Lebanon, MO 65536
myweeklytrader

- Auctions
- Auto
- Tractors
- Real Estate
- ATV's / Motorcycles
- Building Supplies
- Miscellaneous
- E-Editions

This week's ads

THIS WEEK'S CLASSIFIEDS

TOOL TABLES:
Installations, moves, covers, repairs, accessories, etc. 573-646-1700.

weathered BARN WOOD SIDING: 8' & 10' wide. 573-729-7226. www.pineridgegerustic.com

VEHICLES: 1927-1991 www.goheartland.com 417-545-6354.

HULTE SX 318: 18 ft slash cutter, bought new 19, still under warranty, 17,730/obo. Norwood 417-349-0084.

WANTED STANDING TIMBER: Butler Logging, 417-448-9323.

ROD AND REELS: fishing season is coming, \$5 and up. Conway, 417-589-8200.

1989 NISSAN TRUCK: Runs but needs clutch and body work. \$675. Lebanon, 573-453-4100.

SAVAGE MODEL NO. 270WN: with Leupold scope, \$375. Remington Model 770 with scope, \$300, obo. 417-679-4355.

STOCK TRAILER: 1983 Goose, goose-neck; 24' new floor. Four new 10 y truck tires. \$2450. Lebanon (417)664-2198.

QUALITY REPLACEMENT COWS: COW/CALF PAIRS, BREED HEIFERS AND BREEDING BULLS. 701-222-2222

BITTERSWEET COUNTRY

FEATURED ADVERTISER

Sakelaris Ford Lincoln, Where the Customer is Always #1!
Come See Us at Our NEW LOCATION!

ALL NEW Super Clean, Safe Facility at 1621 Martin Springs Drive in Rolla, MO

Get COVID-19 Relief On A New Ford Vehicle!

BUILT TO LEND A HAND *Ford*

NEW VEHICLE PURCHASES
3 MONTHS' DEFERRED 3 MONTHS PAID* 6 MONTHS RELIEF FOR PEACE OF MIND (Qualified Buyers Financed with Ford Credit)

ON SELECT NEW 2019, 2020 & 2021 FORD VEHICLES.

0% APR for 72 mos.* Ford Credit Financing for Qualified Buyers PLUS: Defer Three Payments* on Select New 2020 Ford Vehicles

ALSO Available on Select New Ford Vehicles: \$500 Bonus Cash of MSRP*

0% APR for 84 mos.* Ford Credit Financing for Qualified Buyers PLUS: Defer Three Payments* on Select New 2019 Ford Vehicles

MORE PRINT ADS

MAKING FRIENDS AGAINST CANCER

Starnes Auto LLC
22115 Rt. 66 Lebanon, MO 65536
417-718-2207 417-383-3159 www.starnesauto.com

2000 FORD RANGER \$4,800
2003 GMC ENVY SUT \$4,350
2008 CHEVY MALIBU \$2,500

THE ULTIMATE WOOD HEAT

PALE BEER PACKAGES

Wright's Spray Foam
Brentwood, TN 417-206-2052 8 Tractor 417-346-2611

1 WE ARE KW
KELLERWILLIAMS.

We are the NUMBER ONE real estate company in the United States!

AMANDA HOUGH
C:417-664-1113
O:417-883-4900
609 W. Elm - Suite B Lebanon, MO

Each office is independently owned & operated.

✓ Diagnostic
✓ Auto Body & Paint Repair
✓ Glass Repair
✓ Used Car Sales & More

GET STARTED

Starnes
Auto Body 417-588-3159

October 22, 2020

View this issue
Browse other issues

Classifieds at your fingertips

View ads from local businesses

Every display ad is available online

View the entire magazine online

WEEKLY TRADER MAGAZINE

417-532-9131
www.myweeklytrader.com

AKC STANDARD POODLE PUPPIES: \$550. 417-322-0347. Tunas.

FOR SALE: 2011 Ford Fusion, 128,000 miles, new tires, 4-cylinder, \$5,500. 308-750-4816. Mansfield.

FOR SALE: Lake lots in Franklin County. Call 636-629-3701. St. Clair.

MINI GOLDEN DOODLES: 573-453-8376. Salem.

BEAUTIFUL CATAHOULA LEOPARD PUPS: 30 year bloodline. \$150. 417-543-4816. Ava.

cutters, keys, rekeying kits, cabinets, manuals, to much to list. 2007 GMC Van optional. Call 870-421-5437 for more information.

NATURAL BOBTAIL ENGLISH SHEPARDS: Out of working parents. 573-663-7459. Centerville.

ROSSIE HIGH CAPACITY 12 WHEEL RAKE: Good paint, works good, \$4,000. 417-646-8807. Osceola.

ROUTE 66 DINING 7 LODGING GUIDE: 183 pages, \$5.00. 417-532-2045. (leave message) Lebanon.

LOG SIDING: 2X8 Pine/Western Cedar www.pineridgerustic.com 573-729-7226. Salem.

USED MOBILE HOMES: Call David at VILLA HOMES IN ROLLA 573-578-8072. Rolla.

BUYING MOBILE HOMES: Call David at VILLA HOMES IN ROLLA 573-578-8072. Rolla.

HISTORY OF THE SCHOOL OF THE OZARKS: at Point Lookout. \$5.00. 417-532-2045. (leave message and phone number). Lebanon.

Visit us at www.washingtonbullion.com

BUYING SILVER & GOLD COINS

• SILVER DOLLARS • SILVER EAGLES • GOLD COINS

PAYING FOR PRE 1964

DIMES.....	\$1.60
QUARTERS.....	\$4.00
HALVES.....	\$8.50
HALVES (1965-1970).....	\$3.00
SILVER DOLLARS	\$24.00
GOLD (1 OUNCE)	\$1,775.00

WASHINGTON BULLION
636-744-8181

311 East Main St., Union MO 63084

FORD 1980 REPLICI 29 MODEL-A ROADSTER WITH RUMBLE SEAT: 14,522 miles, Red with black interior. \$16,000. 417-766-1991 cell, 417-753-2747 home. Rogersville.

20 BLACK ANGUS HEIFERS; Nice group of purebred yearlings. Born and raised together, open, 2 rounds of shots, gentle, \$1,050 each for all, or \$1,100 each for 10 or more. 573-341-2144. Rolla.

OWN YOUR OWN BUSINESS: Established Locksmith retiring after 37 years. Lockout tools, HPC Code Machine, key

POOL TABLES: Installations, moves, recovers, repairs, accessories, etc. 573-646-1700.

WEATHERED BARN WOOD SIDING: 10" wide. 573-729-7226. www.pineridgerustic.com Salem.

FERTRELL ORGANIC FERTILIZER: Free Catalog. 315-796-4370. Caulfield.

CONWAY HIGH SCHOOL BEARS 2000-2001 YEARBOOK. \$12.50. 417-532-2045. (Leave message and phone number.) Lebanon.

WANTED TO BUY ANTIQUE CARS: Convertible, Corvettes, unrestored, motors, parts considered. 870-324-1154. Ash Flat.

THE HEART OF THE SPRING BOOK. A Bennett Spring Novel by Laura L. Valenti, 161 pages. \$6.50. 417-532-2045. (Leave message and phone number). Lebanon.

WANTED TO BUY DODGE DIESEL TRUCK: Or Toyota Tacoma. Also, buying antique cars. 870-324-1154. Ash Flat.

TOTE FULL OF AUNT JAMIMA STUFF: \$200 for all. 573-327-9068. Park Hills.

YOUR LAND AND FARM EXPERTS!

Morgan Co-76 Acres

\$180,000



Just in time to buy before rifle season! This is an excellent 76+/- acre hunting/recreational tract in Morgan County. This property is full of wildlife, deer, and turkey sign. You'll love hiking out into the timber and just listening to the sounds of nature around you. It's a wonderful location to just get away for weekend camping trips or hunting, but it's still easy to access and close to town for any necessities you could want. With its many elevation changes and ridge tops, this land is versatile enough to build your gorgeous, hilltop home with amazing views and still not bother the wildlife in areas where you can set up stands and blinds strategically for hunting the draws. On top of that, you'll find huge timber on this property that is sure to provide ample food sources for the many wildlife species that call this place home. This is one you definitely need to come see to appreciate, **so call Pamela today at 660-553-8677 to set up a showing and bring your hiking boots!**

Camden Co. 63 Acres

\$179,000



Spectacular 63+/- acre recreational tract near Lake of the Ozarks! Great highway frontage makes the property effortless to access. With thick timber and steep hills, this piece offers amazing hunting grounds. Deer and turkey sign are scattered throughout the property that show how untamed the land is. There are two wet weather creeks that run along the valleys between the beautiful hills. A powerline easement goes through the property that sports amazing views from the hilltop. This piece has huge potential for recreation and hunting purposes. **Call today to schedule your showing! Call Tristan Dempsey today at 660-553-7043 for your showing!**

Pettis Co-16 Acres

\$2,400,000



Cooley Farm North is a Premier Agricultural Business Opportunity in Missouri. Cooley Farm North is a 6 House Broiler Breeder Farm Operation Located in Southern Pettis County Missouri on 16+/- Acres, That Consistently Has a Gross Annual Income of \$545,000!! This Farm is Set up With Six 42x400 Breeder Houses Built in 1998 That are Currently Under Contract With Tyson Foods Inc. Cooley Farm North Has Been Recognized as One of Tysons Top Breeder Farms and Has Received The Golden Feather Award! Breeder Houses are Fully Automated with Computerized Feeding and Ventilation Systems. Each Breeder House is Equipped

with Dual Egg Nests, Egg Belts and Gathering Table. Breeder Houses Have Been Updated With New Side Curtains, Tunnel Ventilation System, LED Lighting and Each Egg Room is Equipped With an Efficient Mini Split Heating and Cooling System. Each Breeder House Has a Stocking Rate of 8,400 Hens and 780 Roosters. These Breeder Houses are Designed to be Very Efficient With Having the Egg Rooms in The Middle Between Two Barns. Also Attached is a 50x150 Open End Machine Shed, Modular Home with 3 Bedrooms and 2 Bathrooms, Double Wide Trailer Home with 3 Bedrooms and 2 Bathrooms. Next to the Homes is a 40x60 Outbuilding That Has a Section Converted Into a 1 Bedroom and 1 Bathroom Apartment. Cooley Farm North is One of the Most Pristine Broiler Breeder Farm Operations in West-Central Missouri. If You are Looking for an Amazing Opportunity to Run a Very Established Lucrative Agricultural Business, Wait no Longer. We Ask that Qualified Buyers will Provide a Pre Approval Before Scheduling a Showing. **If you interested and would like to schedule a private showing please contact Trenton Scott with Missouri Land Company at (660)-351-3201. Thank you!**

**MISSOURI
LAND
COMPANY**

Farm, Home & Hunting Properties

**Rolla Office:
12647 S. Hwy 63, Rolla
573-308-4868**

www.missourilandco.com • 660-668-HUNT

**Cole Camp Office:
14981 Centerline Ave.,
Cole Camp
660-668-4868**

Toll FREE number for both locations 844-974-1850

STOCK MOBILE HOMES AVAILABLE:

We gottem, single and double, 3 and 4 bedroom! Call Tuffy 573-657-2176. amegamobilehomes.com

AVAILABLE STOCK MOBILE

HOMES: Immediately, double wide and single, 3 and 4 bedroom 573-499-9993 columbiadiscountnhomes.com

TRUE MODULARS: 30 to 60 day delivery available, 3 and 4 bedroom 573-657-7040 chateauhomes.net

TINY HOMES: We gottem 573-881-3283

REGISTERED HEREFORD & ANGUS

BULLS: Home raised, Some Show-Me Select Qualified. 573-701-7828. Belgrade.

CUSTOM SAW MILLING: 417-533-4607, 417-664-1195. Lebanon.

FIREARMS: Professional Repairs and Restorations. Baron's Gunsmithing. 573-363-5801, Camdenton.

METAL ROOFS: We repair leaky metal roofs with warranty. Also, flat roofs, very affordable, cover all state. 573-338-1148. Jefferson City.

ELECTRIC HEATER: Radiator style, like new, with thermostat hi/low settings, works excellent. \$45. 573-364-7465. Rolla.

4 FT. PRESS BRAKE: Nice, (Needs Parts) \$450. 417-322-0161. Lebanon.

OAK TABLE – FOUR CHAIRS: \$250, Pine heart day bed with mattress, good shape \$75.00. 417-543-8261. Ava.

2006 DODGE DIESEL PICKUP: Crew cab, 4x4 heavy duty, automatic, few rust spots, mechanically sound, mileage 248,934. \$13,500. 573-789-2093. Versailles.

TIRED OF WAITING?

Get top quality
IN DAYS,
not months!

Bring In Your
Measurements For
A FREE ESTIMATE!



Luxury Vinyl Planks • Tile • Cabinets • Granite Countertops

417-533-5080

4 MILES N. OF LEBANON ON HWY 5
Mon.-Fri. 8am-5pm • Sat. 8am-3pm

neighborhoods-inc.com





Where QUALITY doesn't cost more!

TREES OF MISSOURI BOOK: \$5. Missouri Wildlife & Nature Viewing Book, your guide to 101 spectacular wildlife and nature viewing area, \$5. 417-532-2045. (Leave message and phone number). Lebanon.

HEAVY 6-BAR GATES: Weldable or bolt type hinges – 16' gate \$192 available painted. Lewis Welding and Repair. 573-729-0272 – 573-729-1405. Salem.

RUBBER & LEATHER BOOTS AND HIP WADERS. Men's 11, Women's 7, some insulated. \$15-\$40 obo. 636-239-2695. Washington.

QUALITY USED SADDLES WANTED: Will pay cash! George's Tack, Saddles & Feed. 573-346-7866. Camdenton.

LIONEL TRAIN SET: Steam engine, tender, caboose and other car, track and transformer. \$195. 573-364-7465. Rolla

GUARDIANWARE: Turkey roaster with lid, excellent condition. \$195. 573-364-7465. Rolla.

1951 FORD BRAKE DRUMS: With backing plates, exhaust manifold and cross-over plate. \$75. 417-457-1023. Raymondville.

HAMMERMILL 220V: (Grind Your Own Grain) \$825. 417-322-0161. Lebanon.

HISTORY OF UNIVERSITY OF MISSOURI-ROLLA BOOK: Formerly Rolla School of Mines, 258 pages, HB, \$6.50. 417-532-2045. (Leave message and phone number). Lebanon.

AUSTRALIAN SHEPHERDS for sale, blue merle, red and whites, out of working parents, 573-663-7459.

WELL BUILT CART: For small mig welder. New-used \$200. 573-729-0272. Salem.

2-BLACK ANGUS HEIFERS: Nice, Grass fed, 100% Natural, Ready to Butcher - \$1.50/pound. 417-322-0161. Lebanon.

I BUY.....used mobile homes. Call or text 573-338-6250 or email GregS.CH@outlook.com

MOEN KITCHEN FAUCET: Single lever, sprayer, new cartridge. \$45 obo. 636-239-2695. Washington.

A TRUCK LOAD OF FLEA MARKET & AUCTION ITEMS: For \$150 or trade. 573-327-9068. Desloge.

BUYING PRE 1960'S BEER SIGNS: FALSTAFF, GRIESEDECK, CAPITOL, STAG, HAMMS & MORE. Soda signs too! 573-680-5377. Jefferson City.

LOOKING TO BUY TRACK FOR JOHN DEERE: 450B or 450C. 636-232-7480. DeSoto

ROUND BALE SPIKE: For front tractor bucket. \$60. 417-532-8048. Lebanon.

GRIZZLY MODEL G9744Z2 METAL-CUTTING BANDSAW: Like new (cost new 4K+) \$2,700. 417-322-0161. Lebanon.

200 GALLON POLY TANK: \$190. 417-322-0161. Lebanon.

WARSAW, MISSOURI OZARK ECHOES 1964 YEARBOOK, \$20. 417-532-2045. (leave message and phone number). Lebanon.

FOR SALE: Speed control pet nail grinder, \$20. Micro touch titanium trimmer, \$25. 12 small bags of yarn \$10 for all. Tinciy snap set kit \$20. 417-322-2960. Lebanon.

UNITOOL PUNCHES: (to punch steel) \$25 each. 417-322-0161. Lebanon.

STOP IN TODAY

FOR ALL YOUR FALL FARMING NEEDS!

The advertisement features a large image of a black and white cow with a yellow tag numbered '425' looking into a red Purina bucket. To the right, there are three bags of Purina feed: ACCURATION, StressCare, and PRECO. Below the bags is a red chainsaw with 'FARM TOUGH' written on it. The Purina logo is visible in the top right corner of the ad area.

Large selection of feeds, tools, farm equipment and more!

STEELVILLE FEED & FARM

573-775-2650 • 11 Cobblestone Rd., Steelville Mon-Fri 8am-5pm • Sat 8am-12pm • Sun Closed

1908 SEARS, ROEBUCK CATALOG REPRINT: 184 pages, \$10. 417-532-2045. (Leave message and phone number). Lebanon.

CUTTING BOARD: Fits in your kitchen counter top, various species of ducks. \$15. 636-239-2695. Washington.

JOHN DEERE 5085E: 85 hp, 770 hours, cab, 4x4, loader, nice. 417-646-8807. Osceola.

SMALL TRAILER: To pull behind garden tractor (like new) \$95. 417-322-0161. Lebanon.

WANT TO OPEN A REC CENTER?: 6 pool tables 3x7 Valley coin operated tables, chairs, Cherry Master Electronic Machine, misc. Sell all or individual. 417-531-1496. Lebanon.

27" PHILLIPS MAGNAVOX TV: Free. 417-457-1023. Raymondville.

CLIVE CUSSLER BOOKS! \$5 hardback, \$2 paperback plus shipping. For list call 417-457-1023. Raymondville.

A FRAME TINY HOUSE/SHED: 6 ft x 8 ft, new floor, furnished. \$800. 573-759-7143. Vienna.

WILLBECK CHISEL PLOW: \$925. 417-322-0161. Lebanon.

BARN OF MISSOURI BOOK: A Storehouse of History, HB, 168 pages, \$12.50. 417-532-2045. (Leave message and phone number). Lebanon.

WANTED: 1965 to 1971 International Scout 800. 816-838-6254. Lee Summit.

CLARINET IN CASE: \$100 or trade. 573-327-9068. Desloge.

GLASS FOR 55, 56, 57 CHEVROLET: \$150 or trade. 573-734-2822. Bismark.



YOUR AD GOES HERE!

Add YELLOW Color For An Additional \$3 Per Reader Ad

All ads will include Phone Number (unless requested to be deleted by advertiser) and City Or Town, Phone Number with Area Code counts as one word. City or Town counts as one word.

RATE: 80¢ Per Word. All Classified Ads Require Payment Before Print.

(1) 80¢	(2) \$1.60	(3) \$2.40	(4) \$3.20
(5) \$4.00	(6) \$4.80	(7) \$5.60	(8) \$6.40
(9) \$7.20	(10) \$8.00	(11) \$8.80	(12) \$9.60
(13) \$10.40	(14) \$11.20	(15) \$12.00	(16) \$12.80
(17) \$13.60	(18) \$14.40	(19) \$15.20	(20) \$16.00
(21) \$16.80	(22) \$17.60	(23) \$18.40	(24) \$19.20
(25) \$20.00	(26) \$20.80	(27) \$21.60	(28) \$22.40
(29) \$23.20	(30) \$24.00	(31) \$24.80	(32) \$25.60
(33) \$26.40	(34) \$27.20	(35) \$28.00	(36) \$28.80
(37) \$29.60	(38) \$30.40	(39) \$31.20	(40) \$32.00

Place your Classified Ad TODAY!

417-532-2800 • 800-665-8875

Fax: 417-532-8140

Or Mail To: P.O. Box 192 • Lebanon, MO 65536

For your convenience we accept MasterCard, Visa, Discover or American Express



DEADLINE FOR CLASSIFIED ADS: FRIDAY 4:00PM!

Name _____

Address _____

City _____ Email _____

State _____ Zip Code _____ Phone _____

Ad Total \$ _____ X # Weeks _____ = Amount Enclosed \$ _____

OUTSIDE WOOD FURNACE WITH DUCT WORK: Sale or trade for truck or tractor. 573-734-2822. Bismark.

ANTIQUA BATTERY CHARGER: Full of copper. \$100 or trade. 573-734-2822. Bismark.

OLD ELECTRIC WELDER: Full of copper. Sacrifice \$100. 573-734-2822. Bismark.

TRUCK LOAD OF CELOTEX INSULATION: \$50 or trade. 573-734-2822. Bismark.

OWN YOUR OWN BUSINESS: Established Locksmith retiring after 37 years. Lockout tools, HPC Code Machine, key cutters, keys, rekeying kits, cabinets, manuals, to much to list. 2007 GMC Van optional. Call 870-421-5437 for more information.

Fly Free with AFC.

Located in the Heart of the Amish Mennonite Community!
417-345-8600
 19 Prairie Lane, Buffalo

3 YEAR Warranty

www.landpride.com

Land Pride

For Outstanding Products & Service

AGRI-ENTERPRISES

Getting Chores Done

LAND PRIDE
does that.

**See dealer for complete warranty information*

RCR12 SERIES ROTARY CUTTERS
 20-50 HP 48", 60", 72" Widths

- Floating 3-point allows deck to hug the terrain
- Dishpan with dual blades
- 1" Cutting capacity
- 12 Gauge deck
- Front & rear rubber guards

1-1/2 Miles South Of Licking, MO On Hwy 63
573-674-2203 • 1-800-653-7152
www.agri-enterprises.com

OGDEN 8-WHEEL HAY RAKE: fully hydraulic. 417-818-3495. Strafford.

STORY & PICTURES BOOK OF OLD LINN CREEK: Haha Tonka and Camden County, by T. Victor Jeffries, 72 pages. \$5.00 postpaid. (417)532-2045. (Leave message and phone number) Lebanon.

FOUR BUMPERS TO FIT OLDER MODEL CHEVELLE: \$125. 573-734-2822. Bismark.

OLD TIME ANALYSIS MACHINE FOR CARS: \$125. 573-734-2822. Bismark.

FOR SALE: 3 Slant horse trailer, A-1 shape, \$6,500. 16ft metal stock rack for trailer, \$1,000. 1964 White truck with Holmes wrecker bed, \$12,000. Body parts for 1985 F-150. 573-247-4606. Salem.

FOR SALE: Lake lots in Franklin County. Call 636-629-3701. St. Clair.

MINI GOLDEN DOODLES: 573-453-8376. Salem.

FREE YAHAMA ELECTRIC TONE ORGAN: With bench, great condition. 816-521-0956. Lebanon.

2006 VW JETTA: Diesel, 4-door, automatic, good fuel mileage, fair condition. \$2,850. 573-789-2093. Versailles.

2014 JOHN DEERE 610M: Cab, loader, MFWA 1,280 hours, extra clean. 417-818-3495. Strafford.

FOR SALE: 2011 Ford Fusion, 128,000 miles, new tires, 4-cylinder, \$5,500. 308-750-4816. Mansfield.

PUPPY FOR SALE: Anatolian/Akbash / Great Pyrenees livestock guardian, male, 14 weeks old, \$300. 909-835-2750. Lebanon.

CALUS LOGGING

20 YEARS EXPERIENCE

Buying Standing Timber
 Walnut & Oak

Joe Calus, Owner
417-926-4606 • MTN. GROVE

CERTIFIED

Wright Spray Foam Insulators, LLC
 Commercial & Residential
Call for FREE Estimates!

Ervin Gingerich 417-926-2052
B. Eli Yoder 417-746-4932

MISSOURI GUN CO LLC

Your Reloading Headquarters for Southern Missouri.

W, Th, F: 10am-6pm
 Sat: 10am-4pm
 Sun, M, T: CLOSED

BUY. SELL. TRADE.

516 Ozark St., Cabool, Mo. • 417-962-2666

FOR SALE: Turn table, Sounddesign, belt driven \$100 obo. 417-668-7793. No text landline.

20 BLACK ANGUS HEIFERS; Nice group of purebred yearlings. Born and raised together, open, 2 rounds of shots, gentle, \$1,050 each for all, or \$1,100 each for 10 or more. 573-341-2144. Rolla.

OLD DELL COMPUTER: \$75 or trade. 573-734-2822. Bismark.

BIG SMOKER FOR MEAT: New \$400 – Sacrifice for \$100. 573-734-2822. Bismark.

FORD 1980 REPLICI 29 MODEL-A ROADSTER WITH RUMBLE SEAT: 14,522 miles, Red with black interior. \$16,000. 417-766-1991 cell, 417-753-2747 home. Rogersville.

2020 JOHN DEERE 6105E: 105 hp, MFWA, loader, cab, air seat, deluxe interior, 66 hours. 417-818-3495. Strafford.

JEEP 2005 LIBERTY: \$1,800. 816-521-0956. Lebanon.

PULLETS: Ready to lay, give brown eggs, \$15. Call mornings 573-759-3247. Dixon.

BEAUTIFUL CATAHOULA LEOPARD PUPS: 30 year bloodline. \$150. 417-543-4816. Ava.

FERTRELL ORGANIC FERTILIZER: Free Catalog. 315-796-4370. Caulfield.

Land

For Sale

Dallas Co., MO • 340 +/- Acres



\$945,000

- 5 ponds – 3 ponds are stocked. One pond has a 12' deep dock built out into the pond
- Two live creeks on the front and back of property – year round water
- Barn that was converted into a Cabin with a loft and deck that overlooks the main ridge
- Electric and water well
- 5 beds in the cabin
- Fireplace
- 100-yard shooting range
- Refrigerator, oven, microwave, sink, hot water heater
- Two RV's on each side of the cabin stay (both under a barn/covering). One RV is a 2018 or 2019 Sundance – loaded - \$35,000
- 8 elevated, enclosed box blinds will stay (two box blinds will hold 2-3 people)
- 3 additional elevated stands in key locations in the hardwoods
- 6 food plots with perennial imperial whitetail clover planted in the spring of 2020; will last 5 years
- Other annual food plots are in place for fall of 2021 hunting season
- Phenomenal deer and turkey hunting; WORLD-CLASS turkey hunting
- Two bucks over 155" have been taken in the past 3 years
- Multiple gobblers with 10+ inch beards have been harvested since 2014
- There is a cave on the property that is about 50 yards deep and 75 yards wide and is full of stalactites and stalagmites
- Extensive trail camera pictures of deer and turkeys from 2014-2020
- Cabin is 1 mile from the main gates – total seclusion and privacy
- Large land owners surround the property – 1,000+ acres and 600+ acres that practice QDMA
- Property is 15 minutes to Lebanon, 45 minutes to Springfield, and 2 hours to St. Louis, located on excellent roads
- Property is completely fenced



WHITETAIL PROPERTIES REAL ESTATE

HUNTING | RANCH | FARM | TIMBER

Brian Utecht | 417-766-5595

Brian.Utecht@whitetailproperties.com

WHITETAILPROPERTIES.COM

Missouri's Top Land Specialist in 2014, 2015, 2016, 2017, 2018, 2019 and 2020

LS TRACTOR

SUNRISE TO SUNSET DISCOVER THE LS DIFFERENCE!

More Features, Standard
More Tractor for
your Money!



*Financing available. See dealer for details.



WCT Farm & Lawn LLC

3299 E Evergreen Rd, Strafford, MO 65757

417-859-4311 • www.wctfarmandlawn.com