

FREE - TAKE ONE!

WEEKLY TRADER MAGAZINE

Vol. 28 No. 26

SEPTEMBER 23, 2021

800-543-8271 • 800-665-8875



Find us on Facebook

@myweeklytrader AUCTIONS PG. 9

VISIT OUR NEW WEBSITE! MYWEEKLYTRADER.COM



Get a great deal on getting more done.

Cab available with select models 24.8 - 62 HP



Kubota Together we do more.®



(417) 777-2391
quarleskubota.com

Save big on our compact tractors. The versatility to handle every job and a wide range of performance-matched attachments. Kubota tractors under 100 HP are rated #1 for reliability*. Stop in for a demo today.

\$0 DOWN 0% APR UP TO 84 MONTHS
PLUS
SAVE UP TO \$1,400

New L2501DT w/Loader Deal!

VISIT US TODAY FOR THIS LIMITED-TIME OFFER

L2501DT w/loader **\$23,995**
Financing Price

- NEW Kubota L2501DT
- 4wd, DIESEL, AG TIRES
- KUBOTA LOADER

- 5' ROTARY CUTTER
- 5' BOX BLADE
- NEW 18' KODIAK TRAILER W/RAMPS



KubotaUSA.com

*2020 Progressive Farmer Reader Insights Award for Fewest Reported Problems Overall in the category of Small Tractor (Under 100 Horse Power). Award based on 2020 Progressive Farmer Readers Insights Tractors Study. © Kubota Tractor Corporation, 2021. \$0 Down, 0% APR financing for up to 84 months available on purchases of new Kubota LX2610SU and all L01 series equipment from participating dealers' in-stock inventory is available to qualified purchasers through Kubota Credit Corporation, U.S.A.; subject to credit approval. Example: 84 monthly payments of \$1,190 per \$1,000 financed. Customer instant rebates of \$1,000 for L01 and \$600 for LX2610SU are available on qualifying finance or \$1,500 L01 and \$1,000 for LX2610 on cash purchases. Additional instant rebate of \$400 is available with purchase of one new qualifying implement. Some exceptions apply. Offers expire 12/31/21. Terms subject to change. This material is for descriptive purposes only. Kubota disclaims all representations and warranties, express or implied, or any liability from the use of this material. For complete warranty, disclaimer, safety, incentive offer and product information, consult your Dealer or KubotaUSA.com.

Land

For Sale

Dallas Co., MO • 340 +/- Acres



\$945,000

- 5 ponds – 3 ponds are stocked. One pond has a 12' deep dock built out into the pond
- Two live creeks on the front and back of property – year round water
- Barn that was converted into a Cabin with a loft and deck that overlooks the main ridge
- Electric and water well
- 5 beds in the cabin
- Fireplace
- 100-yard shooting range
- Refrigerator, oven, microwave, sink, hot water heater
- Two RV's on each side of the cabin stay (both under a barn/covering). One RV is a 2018 or 2019 Sundance – loaded - \$35,000
- 8 elevated, enclosed box blinds will stay (two box blinds will hold 2-3 people)
- 3 additional elevated stands in key locations in the hardwoods
- 6 food plots with perennial imperial whitetail clover planted in the spring of 2020; will last 5 years
- Other annual food plots are in place for fall of 2021 hunting season
- Phenomenal deer and turkey hunting; WORLD-CLASS turkey hunting
- Two bucks over 155" have been taken in the past 3 years
- Multiple gobblers with 10+ inch beards have been harvested since 2014
- There is a cave on the property that is about 50 yards deep and 75 yards wide and is full of stalactites and stalagmites
- Extensive trail camera pictures of deer and turkeys from 2014-2020
- Cabin is 1 mile from the main gates – total seclusion and privacy
- Large land owners surround the property – 1,000+ acres and 600+ acres that practice QDMA
- Property is 15 minutes to Lebanon, 45 minutes to Springfield, and 2 hours to St. Louis, located on excellent roads
- Property is completely fenced



WHITETAIL PROPERTIES REAL ESTATE

HUNTING | RANCH | FARM | TIMBER

Brian Utecht | 417-766-5595

Brian.Utecht@whitetailproperties.com

WHITETAILPROPERTIES.COM

Missouri's Top Land Specialist in 2014, 2015, 2016, 2017, 2018, 2019 and 2020





**THE MOST COMPLETE
LINE-UP IN THE INDUSTRY**

Cutting widths from 36" to 104"



For Outstanding Products & Service

AGRI-ENTERPRISES

1-1/2 Miles South Of Licking, MO On Hwy 63

573-674-2203 • 1-800-653-7152 • www.agri-enterprises.com

ROUTE 66 DINING & LODGING GUIDE: 183 pages, \$5.00. 417-532-2045. (leave message) Lebanon.

POOL TABLES: Installations, moves, recovers, repairs, accessories, etc. 573-646-1700.

WEATHERED BARN WOOD SIDING: 10" wide. 573-729-7226. www.pineridgerustic.com Salem.

METAL ROOFS: We repair leaky metal roofs with warranty. Also, flat roofs, very affordable, cover all state. 573-338-1148. Jefferson City.

BARN OF MISSOURI BOOK: A Storehouse of History, HB, 168 pages, \$12.50. 417-532-2045. (Leave message and phone number). Lebanon.





FERTRELL ORGANIC FERTILIZER: Free Catalog. 315-796-4370. Caulfield.

TINY HOMES: We gottem 573-881-3283

**VOTED
#1 BEST
Preowned Car
Dealership**

TIM'S USED CARS

(573) 341-3828 • 1334 South Bishop (Hwy. 63) • Rolla, MO
Next to Hwy CC • www.tims-used-cars.com

 <p>2013 RAM 1500 EXPRESS Crew Cab, 4x4, 5.7 Hemi, Power Equipped, 107,xxx Miles Only \$21,900</p>	 <p>2008 VOLKSWAGON BEETLE 4cyl., 5 Spd., Leather, Power Equipped, 123,xxx Miles Only \$4,900</p>
 <p>2010 DODGE RAM 1500 Quad Cab, 2WD, Big Horn, 5.7 V8, 142,xxx Miles, Power Equipped Only \$12,800</p>	 <p>1999 CHEVY CORVETTE 5.7 V8, 6 Spd., Convertible, 61,xxx Miles Priced To Sell!</p>

LARGE SELECTION OF CARS, TRUCKS, SUVs & VANS!

KUSTER LOGGING

**BUYER of Standing Timber
Oak and Walnut**

Dozing Now Available

417-259-0047

References Available



BUYING STANDING CEDAR: Minimum 6-in diameter. 417-531-0403.

LOG SIDING: 2X8 Pine/Western Cedar www.pineridgerustic.com 573-729-7226. Salem.

CUSTOM SAW MILLING: 417-533-4607, 417-664-1195. Lebanon.

AG & CONSTRUCTION REPAIRS & REBUILDS

20+ Years Experience
 Cast Iron & Steel Welding
 Engines • Transmissions
 Electrical • Hydraulics
 PTO & Drivelines
 Tractors & Skidloaders etc.

VALLEY SHOP • 660-458-6747
 38745 Molasses Mill Rd, Latham

USED MOBILE HOMES: Call David at VILLA HOMES IN ROLLA 573-578-8072. Rolla.

BUYING MOBILE HOMES: Call David at VILLA HOMES IN ROLLA 573-578-8072. Rolla.

BLACK ANGUS BULLS: from 12 to 18 months. 417-932-4026. Summersville.



Wright Spray Foam Insulators, LLC
 Commercial & Residential
 Call for FREE Estimates!

Ervin Gingerich 417-926-2052
 B. Eli Yoder 417-746-4932

WANTED TO BUY ANTIQUE CARS: Convertible, Corvettes, unrestored, motors, parts considered. 870-324-1154. Ash Flat.

WANTED TO BUY DODGE DIESEL TRUCK: Or Toyota Tacoma. Also, buying antique cars. 870-324-1154. Ash Flat.

STOCK MOBILE HOMES AVAILABLE: We gottem, single and double, 3 and 4 bedroom! Call Tuffy 573-657-2176. amegamobilehomes.com

YOU HAVE OPTIONS FOR HEALTHCARE!

WE CAN HELP YOU NAVIGATE HEALTHCARE.GOV



Choices In Health & Life Insurance

Mike Eblen, Agent

417-532-3360

238 S. Jefferson Avenue Suite A, Lebanon

TRUE MODULARS: 30 to 60 day delivery available, 3 and 4 bedroom 573-657-7040 chateauhomes.net

I BUY.....used mobile homes. Call or text 573-338-6250 or email GregS.CH@outlook.com

SENIOR CITIZENS WALKER: Bedside potty, potty seat with arms for commode. 8am-8pm. 417-664-4278. Lebanon.

FIREARMS: Professional Repairs and Restorations. Baron's Gunsmithing. 573-363-5801, Camdenton.

OFFICIAL TRACTOR OF TOUGH™

NEW MAHINDRA TRACTORS

1626 4WD & LDR 26HP IN STOCK
 1635 4WD & LDR 36HP IN STOCK

USED TRACTORS

MF 4710 4WD CAB & LDR 55,000
 IHC 826 92 HP 9,000

USED ROUND BALERS

MF 2846A 4X6 18,000
 HESSTON 945 4X5 9,000
 JOHN DEERE 375 5X4 3,500
 HESSTON 560 5X6 2,000
 NH 850 5X5 1,500

USED MISC.

HAYBUSTER 107C NOTIL DRILL 17,500
 FRONTIER BALE PROCESSOR 8,500
 SNAPPER ZERO TURN 2,750
 BUSH HOG 2052 ZERO TURN 2,500
 BUSH HOG POST HOLE DIGGER 1,200

Marshfield Machinery Inc.
 222 E. Madison • Marshfield, MO 65706
 417-859-2117 • www.marshfieldmachinery.com

Marshfield Machinery Inc.
 222 E. Madison
 Marshfield, MO 65706
 417-859-2117
www.marshfieldmachinery.com

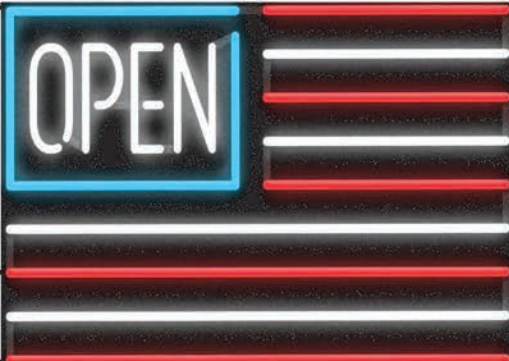
Mahindra Rise.

WANTED, TIMBER TO LOG ON SHARES: Honest, reliable, references. 417-533-4607, 417-664-1195.

2 ANTIQUE CURIO CABINETS: \$100 each. Call between 8am-8pm. 417-664-4278. Lebanon.

6 BRAND NEW AREA RUGS: White with gray squares, fluffy. Price reduced \$150. 8am-8pm. 417-664-4278. Lebanon.

1950'S COLT REVOLVER DEALERS MEMORBILIA.: All for \$100. Call pm. 573-764-3517.



Sale Ends September 30, 2021
 Seymour, Missouri 417-935-4201

Pole Barns & Post Framed Buildings!

Call for free quote, brochure & color chart.
 Other sizes also available.

23'x32'x10' \$7,279 Material Only \$8,825 Labor Included	23'x40'x10' \$8,215 Material Only \$10,149 Labor Included	30'x40'x10' \$10,100 Material Only \$12,620 Labor Included	40'x60'x12' \$17,860 Material Only \$23,260 Labor Included
---	--	---	---



NOBODY, BUT NOBODY BEATS OUR PRICES!!!

10 ft. Slider • Engineered Trusses 8' O.C. • 2x6 Treated Bottom Wrap • Screws • 2x10 Top Wrap • 2x4 Purlins • Full 29 Gauge Steel • Plus 3 ft. Entry Door with Lock
 OPTIONS: Sidewall Heights on all Buildings 10', 12', 14' & 16'. Overhead Garage Door, Skylights, Insulation, Wainscoting, Insulated Vinyl Windows, Cupolas, Labor Rates Slightly Higher over 50 Miles from Seymour.
 Call for YOUR FREE QUOTE TODAY!!!

PAINTED WHITE, GREEN OR TAN METAL\$98.99	IN STOCK
10' - \$31.40 12' - \$37.66 16' - \$50.21	
MIX & MATCH METAL\$59.99	
8' - \$15.20 10' - \$19.00 12' - \$22.80	
GALVALUME METAL\$79.99	
10' - \$25.40 12' - \$30.43 16' - \$40.57	
GALVANIZED CORRUGATED METAL SOLD OUT!	
8' - \$9.84 10' - \$12.30 12' - \$14.75 16' - \$19.67	

40yr Painted Metal
Call

KNOTTY PINE DOORS
 Starting at
\$129.99

LP SMARTSIDE T-5 LAP B GRADE \$43.59/SQ

Car Siding!
 1x6 White Pine Siding **79¢** in ft.
 1x8 White Pine Siding **\$1.05** in ft.
 * 4 Profiles to choose from!
 Broken Bundles Add 10¢ Per Ft.

4x8 Sheeting
 Less than full units Add \$1 per sheet

3/8" Beaded Paneling	\$17.99
7/16" T111 Siding	\$23.99
Paneling	\$9.99
1/2" Plywood	SSOLD
3/4" Plywood	SSOLD
3/16 Pegboard	\$12.99

**LOTS OF MATERIAL AVAILABLE
 FOR THOSE IN HOME PROJECTS!**

REAL WOOD SIDING
 2x6 Log Siding - 1.59¢ in ft
 1x8 Beveled Cedar from- 79¢ in ft
T1-11 Siding from Sold Out

NEW PACKAGE HOMES

2x6—16" on center-Exterior Stud Walls
 Residential Roof Trusses-2' on center
 4/12 pitch with 1' over hang
 40 year Painted Metal roofing in 20 Different Colors
 Profile Ridge Vent - Ventilated Ridge Cap
 Vinyl Center Vent Soffit
 Color Matched Metal Fascia & Gable Trim
 2 - 3' 6 Panel Entry Doors
 4 - 3'x4' Vinyl Insulated Windows
ALL FIGURED FOR SUITABLE CUSTOMER SUPPLIED SLAB OR SUB-FLOOR

Shown with Available Options
 Your Choice of either:
 Stock 3/8" T111 Siding w/1x4 Pine Window & Door Trim - Or -
 7/16" OSB & House Wrap ready for other finish options

Price for Basic Materials Package (No Labor at this Time)

20x24(480 sq. ft.)	20x32(640 sq. ft.)	20x40(800 sq. ft.)	28x40(1120 sq. ft.)	28x48(1344 sq. ft.)
\$10,514	\$12,079	\$13,600	\$16,759	\$18,629

DECK PACKAGES
Materials Only

8x8.....\$395.95	10x12.....\$684.99
10x10.....\$569.49	10x16.... \$849.99
12x12....\$799.99	12x16....\$1069.99

QUAKER Now Stocking Quaker Vinyl Windows

2030 \$ 135.99	3030 \$157.99
3040 \$173.99	3052 \$189.99
3040Twin \$379.99	3052Twin \$419.99



LUCKY DISCOUNT LUMBER
 417-935-4201
 455 State Hwy C • Seymour MO 65746
 www.luckydiscountlumber.com



*Some restrictions apply see store for details. Prices subject to change without notice.

42nd
ANNUAL



FRIDAY • SATURDAY • SUNDAY

OCTOBER 1, 2, 3 2021

FRIDAY & SATURDAY 9AM-5PM - SUNDAY 9AM-4PM

OZARK EMPIRE FAIRGROUNDS • 1-44 & HWY 13 • SPRINGFIELD MO

FREE ADMISSION! FREE PARKING!

**OVER 1000 AGRICULTURAL
& RURAL LIVING EXHIBITS**

**OVER 500 HEAD OF
REGISTERED LIVESTOCK!**



**HELD RAIN
OR SHINE!**



FOR INFORMATION:
3001 N. Grant
Springfield, MO 65803
620-423-2355 • 417-833-2660
www.OzarkFallFarmFest.com

STORY & PICTURES BOOK OF OLD LINN CREEK: Haha Tonka and Camden County, by T. Victor Jeffries, 72 pages. \$5.00 postpaid. (417)532-2045. (Leave message and phone number) Lebanon.

SMALL SQUARE BALES OF STRAW: 417-932-4026. Summersville.

85 DODGE SHORT BED 360 4x4 \$1,200 417-532-5670.

ANDERSON WINDOW: \$12. Call between 8am-8pm. 417-664-4278. Lebanon.

ROUND & SQUARE BALES OF HAY: 417-345-5634. Phillipsburg.

Omar's Logging

⇒ Oak & Walnut
⇒ Excellent Prices
Amish Owned & Operated



LEAVE MESSAGE: 417-741-0440
Hartville & Surrounding Areas

0% for 4 Years

HEATMOR
Outdoor Wood Furnace

as low as **\$168** per month

HEATMOR MIDWEST
Licking, MO 65542 • 573-674-2962



COUPON: 10% OFF MERRILL WATER HYDRANTS

- Deli Sandwiches
- Homemade Yogurt
- Homemade Bread
- Glass Bottle Milk
- Cheese & Spices
- Bulk Foods
- Hydraulic Hoses
- Electric Fence Supplies
- Stay-Tuff Fence
- Johnson & Ritchie Waterers
- Gates & Panels

VISIT YOUR ONE STOP SHOP
FARMERS QUIK STOP
5 mi. East of Lebanon on Hwy 32 • 417-991-1938



AVAILABLE STOCK MOBILE HOMES: Immediately, double wide and single, 3 and 4 bedroom 573-499-9993 columbiadiscounthomes.com

REGISTERED HEREFORD & ANGUS BULLS: Home raised, Some Show-Me Select Qualified. 573-701-7828. Belgrade.

TREES OF MISSOURI BOOK: \$5. Missouri Wildlife & Nature Viewing Book, your guide to 101 spectacular wildlife and nature viewing area, \$5. 417-532-2045. (Leave message and phone number). Lebanon.

OLD WORLD BOOK ENCYCLOPEDIAS: Full set. \$40. Kenmore sewing machine \$30. 8am-8pm. 417-664-4278. Lebanon.

HISTORY OF UNIVERSITY OF MISSOURI-ROLLA BOOK: Formerly Rolla School of Mines, 258 pages, HB, \$6.50. 417-532-2045. (Leave message and phone number). Lebanon.

WELL BUILT CART: For small mig welder. New-used \$200. 573-729-0272. Salem.

2 MALE BORDER DOODLES: 1 black & white, 1 blue merle, 5 months old. 573-739-9431.

100 VINYL RECORD ALBUMS: Mostly county some gospel. Take al \$2.00 each. 573-689-2490. Bunker.

OLD READERS DIGEST: \$1 each. 8am-8pm. 417-664-4278. Lebanon.



Meadowview Dutch Market

Discount & Surplus Groceries • Prices Subject to Stock on Hand

Call to Order
417-993-3017

DELI SPECIAL

PICKLE LOAF REG. \$5.99 **SALE \$5.49**

MILD CHEDDAR REG. \$6.35 **SALE \$5.85**

TRY our Fresh Homemade DELI Sandwiches: TURKEY, HAM, ROAST BEEF, ITALIAN, BLT'S, PULLED PORK AND BLT PULLED PORK (MADE YOUR WAY)!
COME IN OR CALL to order! ALSO Custom Deli trays! Veggie OR FRESH Meat-N-Cheese!

Sale Dates September 22nd, 2021 to September 28th, 2021 while supplies last!

CEREAL SALE!

Honey Bunches of Oats Granola **\$1.39** 11 OZ.

BUY 1 GET 1 FREE

Honey Bunches of Oats..... \$5.99 96 - 1 OZ. PK Case

Rice Krispies.....\$2.99 2 LB. Bag

Toasted O's......89¢ 10 OZ.

Honey Nut Scooters \$1.20 12 OZ. EA.

Cocoa Dyno-Bites \$3.79 42 OZ. EA.

Missouri Apples **\$8.99** 1/2 BU.

Balance Breaks **99¢** EA. 4-5 OZ.

Pillsbury Grands Biscuits **\$1.25** EA. 10.2 OZ.

Mrs. Field's Cookie Dough **\$1.49** EA. 16 OZ.

ASSORTED FLAVORS GREAT SELECTION

Uncooked Chicken **8pc.** **69¢** LB.

Fully Cooked Breaded Chicken Patties **\$1.69** LB.

Farmland Sausage **\$1.99** EA. 2 LB.

MEADOWVIEW DUTCH MARKET
417-993-3017 Hours: Mon-Thurs 8-5pm
Fri 8-6pm • Sat 8-5pm
23 Miles West on Hwy 64 • Right on T Hwy
9 miles • Left on E Hwy 1 mile on Left

NOW ACCEPTING CREDIT, DEBIT CARDS & EBT

DUTCH COUNTRY STORE, LLC
573-378-4395
Hours: Mon-Thurs 8-5pm
Fri 8-6pm • Sat 8-5pm
5 miles East of Versailles off Hwy C on Kelsay Road

QUALITY USED SADDLES WANTED:
Will pay cash! George's Tack, Saddles & Feed. 573-346-7866. Camdenton.

ROLL 1958 B.U. LINCOLN WHEAT PENNY'S.: Last year for these. \$60. Call pm. 573-764-3517.

ROLL 1959 B.U. MONTICELLO PENNY'S.: First year for these. \$40. Call pm. 573-764-3517.

LIONEL TRAIN SET: Steam engine, tender, caboose and other car, track and transformer. \$195. 573-364-7465. Rolla



CENTRAL BOILER
CLASSIC EDGE
TITANIUM HDX
26% Tax Credit on EPA certified Central Boiler Classic Edge HDX models and installation. Call today to learn more!
Outdoor Wood Furnace CentralBoiler.com
The Classic Edge 360, 560 and 760 HDX are U.S. EPA Certified
Yarbrough Equipment Sales & Services, Inc.
9776 E. State Hwy OO • Strafford, MO
417-736-2303 • 1-866-286-6901 • www.yarbreq.com

POWER WASHING, CALL JET STREAM POWER WASHING FOR ALL OF YOUR GRIM TO SHINE NEEDS:
We wash it all, semis, stock trailers, campers, equipment, houses, buildings and driveways. If it has grime, call today to make it shine in no time! 417-270-1075. Potosi.

THE HEART OF THE SPRING BOOK. A Bennett Spring Novel by Laura L. Valenti, 161 pages. \$6.50. 417-532-2045. (Leave message and phone number). Lebanon.

GUARDIANWARE: Turkey roaster with lid, excellent condition. \$195. 573-364-7465. Rolla.

ELECTRIC HEATER: Radiator style, like new, with thermostat hi/low settings, works excellent. \$45. 573-364-7465. Rolla.

TOTE FULL OF AUNT JAMIMA STUFF: \$200 for all. 573-327-9068. Park Hills.



WELCOME TO BAD BOY COUNTRY!
STAHLMAN POWERSPORTS
1387 S. BISHOP AVE., ROLLA
573-364-6944
WWW.STAHLMANPOWERSPORTS.COM

HEAVY 6-BAR GATES: Weldable or bolt type hinges – 16' gate \$192 available painted. Lewis Welding and Repair. 573-729-0272 – 573-729-1405. Salem.

1949 STUDABAKER 1½ TON TRUCK: One family owner, all original, no rust, garage kept, flat head 6-cylinder, 4 speed. 573-880-9178 or 573-880-9456. St. Genevieve.

KENMORE 30" ELECTRIC DROP IN RANGE: Self-cleaning, Kenmore dishwasher, microwave, new Instapot \$150. 573-699-4351. St. James.



Cheyenne Acres
Horse & Tack
BUY - SELL - TRADE
by Rolla, MO
Call For Directions & Availability
Call Kip
573-368-9402

AUSTRALIAN SHEPHERDS for sale, blue merle, red and whites, out of working parents, 573-663-7459.

ENGLISH SHEPHERD puppies, bob tails, some not, out of working parents, 573-760-5157.

HISTORY OF THE SCHOOL OF THE OZARKS: at Point Lookout. \$5.00. 417-532-2045. (leave message and phone number). Lebanon.

OAK TABLE – FOUR CHAIRS: \$250, Pine heart day bed with mattress, good shape \$75.00. 417-543-8261. Ava.

INTERNATIONAL TWO ROW CORN PICKER: Pull type. 573-674-3601. Licking.

ROD & REELS: Ultra light to snagging rods. \$5 and up. 417-589-8200. Conway.



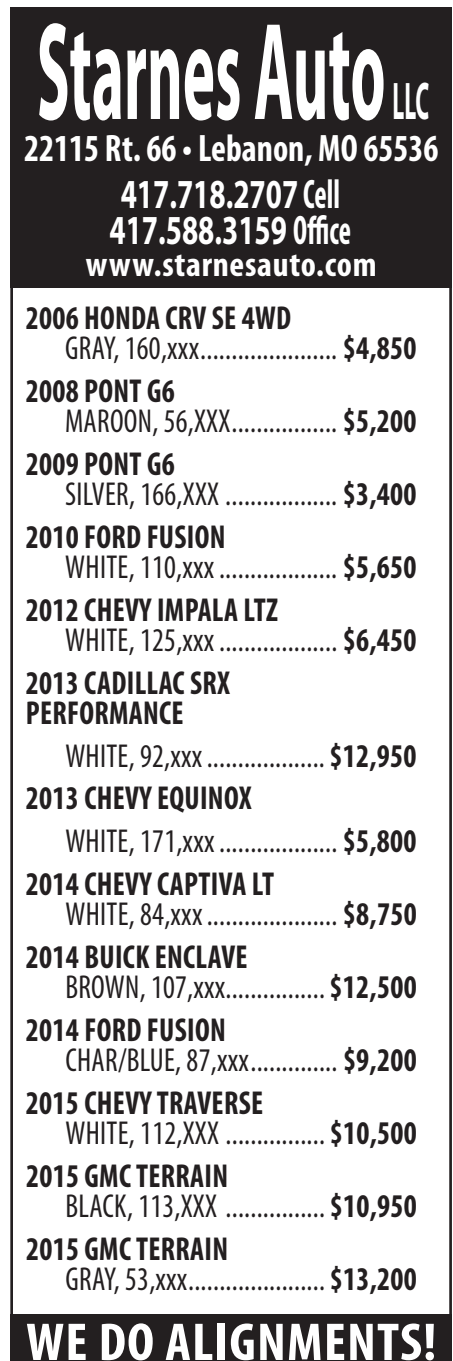
HIRING CAREGIVERS!
- Competitive Wages
- Full or Part Time
Call Now!
Reba's Family Care, LLC
417 664-0760 • Reba Green | 573-434-3764 • David Green

SELLING OUT OF THE HORSE BUSINESS: 15-20 Quarter horse bred, some registered, from weanlings to broke horses. 2 old gentle mules. 417-531-5707. Lebanon.

FULL BLOODED BLUE HEELER PUPS: UTD shots/worming. \$150. 417-650-0995. Lebanon.

INTERNATIONAL SQUARE HAY BALER: Field ready. 573-674-3601. Licking.

27" PHILLIPS MAGNAVOX TV: Free. 417-457-1023. Raymondville.



Starnes Auto LLC
22115 Rt. 66 • Lebanon, MO 65536
417.718.2707 Cell
417.588.3159 Office
www.starnesauto.com

2006 HONDA CRV SE 4WD GRAY, 160,xxx.....	\$4,850
2008 PONT G6 MAROON, 56,XXX.....	\$5,200
2009 PONT G6 SILVER, 166,XXX	\$3,400
2010 FORD FUSION WHITE, 110,xxx	\$5,650
2012 CHEVY IMPALA LTZ WHITE, 125,xxx	\$6,450
2013 CADILLAC SRX PERFORMANCE WHITE, 92,xxx	\$12,950
2013 CHEVY EQUINOX WHITE, 171,xxx	\$5,800
2014 CHEVY CAPTIVA LT WHITE, 84,xxx	\$8,750
2014 BUICK ENCLAVE BROWN, 107,xxx.....	\$12,500
2014 FORD FUSION CHAR/BLUE, 87,xxx.....	\$9,200
2015 CHEVY TRAVERSE WHITE, 112,XXX	\$10,500
2015 GMC TERRAIN BLACK, 113,XXX	\$10,950
2015 GMC TERRAIN GRAY, 53,xxx.....	\$13,200

WE DO ALIGNMENTS!



ESTATE AUCTION

Due to the death of Doug Hutson we will sell the following at auction on:

Sat. October 2, 2021 @ 10AM

DIRECTIONS: (105 Midland, Cuba, Mo) From I 44 exit 208, travel Hwy 19 South 1.3 miles to Progress Parkway on left, 0.3 miles to Midland, then 0.1 mile to auction site. Look for Sellers Auction signs sale day.

Machinery, Equipment, Trailers & Vehicles:

Case Skid Steer w/ Bucket 1963Hrs. ~ Skid Steer Forks ~ Allis Chalmers AC 7060 Tractor 8261Hrs. (Hi/Low Linkage Problem) ~ New Holland LB75 Backhoe w/ 18 & 24" Buckets, Quick Connect, Back is Plumbed for Hydraulics 4124Hrs. ~ 1955) Chevy V8 4Speed Truck ~ 2013) 4x4 Silverado Duramax 6.6HD 3500 210xxx miles /Salvage Title (very nice truck) 2008) F350 6.4L 4x4 (Bad Motor) 185xxxmi. ~ 2002) Gooseneck 20ft equipment Trailer ~ 2019) 24' + V Nose by 8 1/2' Wide Cargo Sport Trailer 5000lb Axels ~ 2002) 28' Haulmark Elite II Race Trailer ~ 12' Backhoe Snow Box ~ 2600 psi Backhoe Mount Breaker ~ 10' Snow Plow ~ 6' Sweepster w/Steel Brushes Skid Steer Attachment

Tools & Misc:

Bosch 5312 Duel Bevel Slide Miter Saw ~ Magnum Pro LTS 19 Paint Sprayer (Used Once) ~ Ingersoll Rand 120gal, 10hp Air Compressor (Needs New Pop Off Valve) ~ Grizzly G0427 Sand Blaster ~ Grizzly G1066 Drum Sander ~ Grizzly G1037Z 13" Planer/Molder ~ Grizzly G1035 Shaper ~ Grizzly G1071 Oscillating Spindle Sander ~ Grizzly G0513 17" Bandsaw ~ Grizzly G7945 Radial Drill Press ~ Lincoln AC 225 Arc Welder ~ Titan Powerliner 550 ~ Bosch Hammer GSH 16 ~ DeWalt DW 703 Saw ~ DeWalt DW 870 Chop Saw ~ Kobalt Tool Box ~ Large Lot of Misc Shop Tools & Construction Items ~ Many More Items too Numerous to Mention...



Start Bidding Now Online at

www.sellersauctionservice.hibid.com

Everything sells to the highest bidder!



Auctioneer's Note: Doug was a well known contractor and entrepreneur in the Cuba Missouri and surrounding areas. This will be a good auction of quality items. Plan to attend, if not bid online www.sellersauctionservice.hibid.com

Sellers Auction Service
"We Were Born Sellers"

Complete Auction Service

www.sellersauctionservice.com

Terms: Cash or Check with proper I.D. Not responsible for accidents or losses. Items will be sold As Is/Where Is with No Guarantees. Nothing to be removed until paid for. Refreshments available. Announcements made on sale day take precedence over any printed materials.



GREGG SELLERS, AUCTIONEER
573-480-4400

R&R AUCTION SERVICE

BILL BROBISKY ESTATE

SATURDAY SEPT. 25TH AT 9AM

2298 East 515th Road • Halfway, MO From Pleasant Hope travel H hwy toward Halfway 2miles to Z hwy and follow the R&R Auction Signs

**A magnitude of merchandise, a plethora of prizes, an amazing amount of stuff...
However you say it there is a butt load here!**

Gold Waltham pocket watch from 1900, metal trellis, wrought iron folding chairs, plastic table, two trunk tool boxes, tractor and chicken weather vanes, two wheel hand trucks, two carry alls, propane bottles, concrete lawn ornaments, gas jugs, pellet smoker, swing, Old GE refrigerator, Perfect flame BBQ grill, Weed eater, 4.75 22" push mower, stainless steel rolling cart, LED icicle lights, wet dry vacuum, wooden and metal gliders, Poulan Pro 42cc 18" PPB4218 chainsaw, Poulan Pro PP4218AVX 42cc chainsaw, wooden round table, Black and Decker 16" hedge trimmer, lawn furniture, tiki torches, wooden benches, stuffed animals, lots of Christmas decor, picnic table, toddler car bed, totes and boxes of misc., Bosch B2300 battery drill, Makita drill, Charmglow BBQ grill, fish cooker, lawn roller, aquarium, t posts, vinyl fencing, two diamond plate tailgate covers, deck blocks, lattices, saw horses, coolers, two lawn mower trailers, square wash tubs, Husqvarna walk behind trimmer, metal plant stands, Homelite chainsaw textron, clippers, lots of bag chairs, trunk, pet carrier, workmate rolling table, large pots, old bottles stadium seats, step ladder, paint sprayer, electric 2 burner portable stove, canopy, live trap, portable air tanks, camping cot, fry daddy, cookie jar, chains, 1985 Winnebago Chieftan, Pro source 10 gal. air compressor, Buffalo bench grinder, Sears air compressor, Lincoln 225 welder, Poulan PL25 weed eater, air wrenches, acetylene torches, old silverware, clamps, Craftsman roll around toolbox, new trailer light set, welding hood, sockets, wrenches, Yorktown tool cabinet, saws, nails, nuts, screws, several pipe wrenches, fishing items, horse shoes, boom, Bostitch 4 gallon air compressor, large Craftsman tool cabinet, 6" bench grinder, table top drill press, vibrating sander, crow bars, Speedy Sprayer air compressor, Craftsman miter box saw, large industrial scroll saw, bolt bins, wooden patterns, Coleman lantern in case, old kerosene stove light, lots of tool boxes, floor jack, Stanley mobile work center, joiner planer, grease guns, 4 way, drills, buffer filter wrenches, brace and bits, plastic chairs, old pedal car, sled, ATV sprayer, post hole diggers, rakes, shovels, stock tank heater, garden hose, shelving seeder, reel type lawn mower, old bar stool from drug store, glass gallon jug, several 2 x 8 plywood with vinyl covering, they are the floor boards of Pleasant Hope Middle school bleachers, dog eared fencing, 16ft tandem box trailer, 500 gallon propane tank 30%, fountain, bird bath, pulley, John Deere cast iron sign, Coke swing, wood rockers, cast iron skillet including USA Sk8, frog door knocker, lots of John Deere collectibles, showcase cabinet, wind chimes, binoculars, mini oil lamps, figurines, Frigidaire refrigerator, cabinet, Kenmore gas range, chicken decor, china cabinets, night stand, dresser, Sentry SO100 safe, cedar wardrobe, 1960's bedroom set, gun cabinet, bison picture, Vintage medical metal cabinet with glass top and matching side cabinet, frogs on bench, china hutch, Union Pacific brass spittoon, Mary Moo, pocket knives, painted saw, sewing box, love seat, couch and chair, glass top coffee and end tables, curio cabinets, slot machine, McCoy planter, two Window AC units 110, dolls and doll high chair, butter churn, heaters, buffet, stereo, hope chest, 4 ventless propane heaters, salt and pepper shakers, cream and sugar sets, treadmill, chest deep freeze non working, firepit, park bench, hens and chicks planter, mini cast iron bells, old cabinet stereo, Bentley battery grandmothers clock, Old Regulator clock, old chandeliers, Frigidaire chest type deep freezer, lantern, 5 kerosene heaters, Martin House, and much much more!



TERMS: Cash, check, or credit card with proper I.D. nothing removed until settled for A 3% fee will be added to credit card purchases. Not responsible for errors in listing. Any announcement made sale day will take precedence over any printed matter. **Note:** Service will take every precaution to prevent accidents, but will not be responsible should any occur.

GENERAL AUCTIONEERS

Auction & Appraisals

RA R SERVICE

For more information contact Professional Auctioneer Russ Weeks at 417-576-7357 or check out www.rrauctionservice.com

Serving this area's auction needs since 1997 with honesty and professionalism.
www.rrauctionservice.com
(417) 576-7357 or (417) 345-4140



NOLTKAMPER FARM AUCTION



Margaret Noltkamper will sell her and the late Charles A. Noltkamper's personal property and farm equipment at public auction on:

Saturday, September 25th 2021, Beginning at 9:00 AM

Location: 156 Highway KK Cuba Mo 65453

Directions: From Interstate 44, take Exit #208 and go South on Highway 19. Go ¼ miles and go right on Highway ZZ and then after 3 miles go left on Highway KK, across tracks to auction. Roads will be marked day of sale.

TRACTORS / VEHICLES / TRAILERS / BOATS

(will sell at 12 Noon)



Ford 7710 diesel tractor-front wheel assist-dual outlets comes with Koyker loader-7' bucket and bale spear, Ford 6610 diesel tractor-2 wheel with Allied loader-6' bucket-bale spear-sells as unit, Case 1030 diesel tractor with loader, **VEHICLES;** Ford F-800 single axle dually-Cat 3208 diesel engine-5 speed-2 axle-94,000 miles, 2014 Ford F-250 Super Duty XLT-Power Stroke 6.7 diesel-extended cab-8' bed-fully loaded-115,000 miles-used engine just installed at 111,000 miles, 2007 Chevy Malibu LT sedan-140,000 miles, **TRAILERS;** 24' flatbed gooseneck trailer-triple axle-5' beavertail with ramps, Travalong 20' gooseneck livestock trailer, 22' gooseneck horse trailer, 16'x6.5' bumper hitch tandem axle trailer, heavy duty flatbed trailer frame, **BOATS;** Weeres 24' Sportsman pontoon boat, King Fisher boat with 40 HP Johnson motor, Hustler boat with Evinrude 85 motor, Jon boat, boat and trailer



FARM SUPPLIES / SADDLES / TACK HORSE DRAWN GEAR

Plastic stock tanks, Rubbermaid 5' rd tank, 8' round galvanized tanks, rolls cable, used T posts, rolls used 7' chain link fence, round wooden fence posts, fence stretchers, homemade feed trough, cages, dog house, walk through gates, lot farm gates, corral panels, fuel tanks, fuel tank on stand, camper shell, manure spreader-yard art, cattle supplies, **HORSE;** lot Western saddles, lots of tack-all types, lots of horse drawn tack-all types, horse collars, whips, brass knob Haynes, horse drawn potato plow, horse drawn cultivator, horse drawn truck, horse drawn wagon-rubber wheels, implement seats, leather working machines, Singer hvy duty sewing machine, American leather punch machine, Landis tool

HOUSEHOLD / COLLECTIBLES / OUTDOOR

Drinking glasses, mugs, steins, cartoon glasses, cookie jars, bud vases, floral, knick knacks, candle holders, old vacuum folding chairs, dining chairs, baskets, enamel pans, food choppers, tins, vacuum, canning jars, pressure cookers, blue jars, floor scale, lot old cameras, curio shelves, dishes, ga bleach jar, lot Christmas, lot fabric, Hull pitcher, chicken tea pots, cream-sugar set, tobacco tins, milk glass, lot all sizes iron skillets-square skillet, cast iron dutch oven, Military bags, blankets, file cabinet, blueprint cabinet, brass torch, ammo box, old wooden boxes, **OUTDOOR;** plant holders, bird feeders, portable propane camp stove, wooden cabinet camping mess, lot Redwing boots 7-8, **FISHING;** large lot fishing rods-reels-fly rods, tackle boxes, tackle, trot line-weights, wooden fishing lures, turkey frying kit, lot fish gig heads, life vests

FARM EQUIPMENT / NEW STOCK OILS-TIRES



Ditch Witch 3500 6' trencher-diesel-backhoe-4x4-3 way blade, Case IH 8309 9' discbine, New Holland 320 square baler, New Holland 650 Fast-net round baler-net wrap, H&S 9 wheel hydraulic hay rake, New Holland 4 basket tedder, Durbuilt 8 wheel hydraulic hay rake, Bush Hog 3126 10' pull type brush hog, IH 470 18' fold up disc, New Holland 415 9'm discbine, New Ideal side delivery rake, 3 point hvy duty hydraulic blade, 2 bottom drag plow, New Holland 495 hay bine, 3 pt double spear bale carrier, 3 pt Case 4' rear tine tiller, 3 pt 5' brush hog, pull type chisel plow, 12;

3 pt field cultivator, 4-16" semi-mounted plow, 20' hay elevator, 3 pt Bushhog post hole digger, 3 pt FS 8' rock rake, 3 pt hvy duty 6 shank pasture renovator w/round disc, JD Van Brunt grain drill, 3 pt 3-14' Case plow, 7' drag disc, 2 bottom disc plow, 3 pt 5' brush hog, 3 pt bale forks, 3 pt carryall, flail wagon, gravity flow box, 2 square bale elevators, lot 20,000 poly baler twine, lot other baling twine, bale netting, lot scrap iron, **LUBRICANTS;** lot new stock cases of oil including Delo 400 SAE30-15/40 oil, Motor Craft transmission fluid, RTO 32 hydraulic fluid, Valvoline 15/40, 0/20, 85/140, 5/30, Kendal 5/30, 10/30, 5/20, Alemite oil transfer tank, **TIRES;** up to 20 new truck-auto-trailer tires



TOOLS / SHOP TOOLS



Smithy metal mill-lathe benchtop, Craftsman bench top drill press w/vice, drill press on stand, 20 ton- 4 ton hydraulic presses, 12 ton press-new, 12 volt 15 GPM transfer pump, table saw, Dewalt cut off saw, Chicago Electric 14" cut off saw, Craftsman miter saw, Ryobi 6.5" jointer-planer, rolling tool chest with top chest, bench top grinders, lg to 2 1/8" socket set, Wilton bench vice, wood planes, work bench on castors w/drawers, 3/4" socket set, lot sockets-ratchets, box-open end wrenches, large wrenches, Craftsman wrenches, torque wrench, lot pneumatic tools-ratchets-buffer-sander-grinder, circular saws, worm drive saw, jig saw, sanders, drills, routers, angle grinders, lot grinding wheels, bench vises, reciprocating saw, Craftsman socket set, squares, hand drill, levels, tool carriers, lot C clamps, welding clamps, welding vises, hammers, mallets, ring pliers, threaders, tap-die sets, lot drill bits, pliers, channel locks, paint sprayer, punches, whetstones, staplers, lot electrical, lot hardware, nails, screws, pipe wrenches, Buffalo forge, extension cords, electric wire, work lights, saw horses, measuring tapes, gauges, tin snips, corner clamp scroll saw, bench grinders, work mates, pullers, parts bin, impact wrench, tool bucket, cotter pins, Craftsman Brad nailer, Bosch hammer drill, step ladder, lot sledge hammers, hand sledges, spray lubricant, bottle jack, wooden 6' clamp, joist hangers, **YARD;** John Deere 332 42" cut riding mower-power steering, log splitter, dbl axes, hatchets, 2 wheel dolly, portable air tank, gas cans

LUNCH WILL BE SERVED BY MINDY'S MUNCHIES

VIEW OUR PHOTO GALLERY ON www.breheauction.com

BREHE AUCTIONEERING SERVICE, LLC
 Union, MO: (636) 583-0841 Owensville, MO: (573) 437-3454
www.breheauction.com
 LICENSED AUCTIONEERS:
 Kerry Brehe 314.954.3798 Josh Brehe 314.603.3129 Nick Brehe 314.560.7737
 Announcements made day of sale supersede all printed material.
 TERMS: CASH, PERSONAL CHECKS WITH PROPER I.D., BUSINESS CHECKS WITH BANK LETTER AND NO OUT OF STATE CHECKS UNLESS APPROVED BY SELLER. Email Us At kkauction@sbcglobal.net
 Everything sells as is with no guarantees.
 Not responsible for accidents.

PUBLIC AUCTION

Wednesday, Sept 29, beginning at 9:30 A.M. DST

Located at 2420 Hwy Y, Clark, MO 65243. Directions: From Columbia take 63 N to Hwy 22 east 2 miles to Hwy Y left on 5 miles go 1 mile past Co. Rd. 132 to farm on right. From Moberly take 63 S to Hwy NN left on NN to Hwy Y right 4 miles 1/4 mile past Co. Rd. 140 to farm on left. Watch for auction today signs.

HORSES & LIVESTOCK

- #1 and #2 Team of red sorrel mares 17 and 18 years old
- #3 and #4 Team of Bel. Geldings 8 and 14 years old
- #5 and #6 Team of blonde Bel. Mares 5 and 10 years old
- #7 and #8 Team of blonde Bel. Geldings 4 and 6 years old
- #9 Red sorrel Bel. Mare 5 yr
- #10 and #11 Team of red sorrel Belgium mares both 2 years old, one has colt on side 6-21-21
- #12 Blonde Bel. Mare 2 yr
- #13 Roan stud 3 yr
- #14 Yearling filly Bel. Red sorrel
- #15 Weanling filly red sorrel Bel.
- #16 Weanling filly red sorrel Bel.
- #17 Blonde stud colt Bel. weanling
- #18 blonde stud colt Bel. Weanling
- #19 Red sorrel Bel. filly weanling
- #20 5 yr stdb. Mare black
- #21 3 yr stdb black mare Sire Admiral
- #22 2 yr black stdb Morgan cross gelding broke
- #23 2 yr bay stdb gelding started Sire Earl Prince
- #24 Yearling filly Bay stdb Sire Earl Prince
- #25 Yearling stud black Morgan cross stdb
- #26 Weanling bay filly Sire Winkys Pine son
- #27 Buckskin pony broke to ride
- 6-Holstein cows in production—3 crossbred calves 400-500#

FARM MISC. & WOODWORKING EQUIP.

- 2-3-4 Horse eveners—Neck yokes—Several sets draft harnesses
- Horse collars—Com-a-longs—Log chains—Boomers
- Crosscut saw—Saw blades—Forks—Shovels—Post hole diggers
- Fence stretchers—Grapple forks—Endless belt—Jacks
- 30 ton jack—Post vice—Speed jack—Clippet fanning mill
- Ton chain hoist—Small cement mixer—Hay track and carriers
- New set canvess for—7 ft grain binder—28 ft extension ladder
- 2-Bale rings—Backpack sprayer—Sawdust blower
- Shop dust collector w/ extra ductwork—Heavy duty shaper
- Powermatic 20" straight knife planer—Edge sander
- Double drum 36" wide bench wood sander
- 6" Central machinery jointer—12'-7/16" flex shaft
- 4045 JD diesel on gear—MM 403 on gear—Small engines
- Predator 2" water pump—Single top buggy—Road cart
- Horse homemade sled—Hack buggy

Owners: Ora and Dena Yoder

For more auctions go to www.auctionzip.com ID # 47012

Auctioneers

Larry Martin & Loren Martin



MARTIN AUCTIONS

1-660-337-6471



Auctioneers

Mel Yoder

Terms: Cash or check with ID. Not responsible for accidents. Statements made day of auction take precedence over printed material

FARM MACHINERY

- 28' McCormick thrashing machine—No. 7 IH silage cutter
- Papec L silage cutter—Rosenthal corn shredder
- 3-IH corn binder w/ bundle carriers—McCormick 8 ft grain binder
- McCormick 7 ft grain binder—JD 14 hole double disc grain drill
- Oliver grain drill—End gate seeder
- 3 trailer gear Mc No. 9 6' mowers—2 reg gear Mc No. 9 6' mower
- JD No. 4 6 ft mower—JD No. 4 5 ft mower
- 3-Side delivery hay rakes—32' Kelly Ryan elevator
- JD 999 corn planter—Peachy 8 ft cultmulcher
- JD 11' tractor disc—JD 10' horse drawn disc
- 8' spring harrow—3 section spike harrow
- 8' single roll cultipacker—Rotary hoe
- 8' field cultivator—JD 2 row cultivator
- 1 row Mc cultivator—JD handle guide cultivator
- Miller 2 row cultivator—Several old plows
- Pioneer gang plow 14" w/ KV bottoms
- Pequea manure spreader—Master equipment manure spreader
- 3-Hay racks on Hostetler gear—Grain box on JD gear
- Flare box on JD gear—Miller forecart
- Older forecart—Mc hay loader
- Mc 100 manure spreader—JD 2 wheel manure spreader
- Disc cultivator—BC-30 Junior cereal thrasher

HOUSEHOLDS & ANTIQUES

- 9' Worktable old—Qualifield cook stove—4 Burner oil stove
- 2-3 Burner oil stoves—(New) Even heat gas butane irons
- Pressure cookers—Gas lanterns—Knee hole desk
- 2-Dressers—Metal cabinet—Buffet—Single bed—2-Metal beds
- 6 year crib—Wooden round table—Crocks—Metal wardrobe
- Pop glass bottles—Sleds—2-Cast iron lard kettles
- Sausage stuffers—Several old school desks
- Wooden swivel chair—Old wooden rocker—Lots of old books
- Kylo can cooler—Stainless steel milk cans
- Buckets—Strainers—Several old well pumps
- Galvanized tubs—Ice tongs

GUNS

- Win. Pump 12 ga. 3" extra chokes—Moss 500 3" 12 ga select choke
- Stevens 200 30-06 Bushnell scope syn
- Stevens 110-243 wood like new—Stevens 30-30 bolt w/ mag
- British 303 deer rifle—Semi auto 22 rifle—Bolt action rifle 22
- 2-Single shot 12 ga. Shot guns—Air rifle

The above items of good quality will be available for your consideration with many more small items to numerous to be listed. Guns will sell at 12:30 and then followed by horses and livestock. Great opportunity to buy home raised horses right off the farm. Hope to see you at the auction.

Thanks, Larry

Miller & Moniteau County REAL ESTATE & PERSONAL PROPERTY AUCTION

• SATURDAY, OCTOBER 2, 2021 AT 10 AM •

**AUCTION LOCATION: Eldon Community Center
309 East 2nd Street, Eldon, MO 65026**

3 FARMS IN 14 TRACTS IN TWO COUNTIES

TOTALING 837 +/- ACRES

TRACTS RANGE IN SIZE FROM 6 ACRES TO 140 ACRES

MILLER COUNTY FARMS

Howser Farm

TRACT 1: 121 +/- Acres located 6 miles north of Eldon at the junction of Hwy. 54 & Opie Road.

TRACT 2: 112 +/- Acres located 6 miles north of Eldon at the junction of Hwy. 54 & Opie Road.

Curtiss Farm

TRACT 3: 47 +/- Acres located 4 1/4 miles north of Eldon on Highway 87.

TRACT 4: 47 +/- Acres located on the west side of Tract 3 and is accessed and has frontage on Abbott Road.

TRACT 5: 75 +/- Acres located west of Tract 4 and accessed off Abbott Road along a 50-foot easement on the west side of the tract.

TRACT 6: 53 +/- Acres located west of Tract 5 and accessed off Abbott Road.

TRACT 7: 21 +/- Acres accessed and with frontage on Abbott Road.

TRACT 8: 11 +/- Acres accessed and with frontage on Abbott Road.

TRACT 9: 6 +/- Acres with access and frontage on Abbott Road.

MONITEAU COUNTY FARM

Voegeli Farm

The Voegeli Farm is located 9 miles north of Eldon on Highway 87 or 3/4 mile south of the Junction of Highway C and Highway 87 at (High Point MO) .

TRACT 10: 19.5 +/- Acres located on Highway 87 with access and frontage.

TRACT 11: 19.5 Acres located on Highway 87 at the junction of McCarty Road.

TRACT 12: 140 +/- Acres accessed and with frontage on McCarthy Road along the north side of the tract.

TRACT 13: 89 +/- Acres accessed and with frontage off McCarthy Road on the north side of the tract.

TRACT 14: 76 +/- Acres accessed and with frontage off McCarthy Road along the north side of the tract.

PERSONAL PROPERTY

Selling at 1 PM at the Voegeli Farm

**TRACTORS – SKID STEER, VEHICLES & TRAILERS,
FARM MACHINERY, LIVESTOCK EQUIPMENT, HAY,
SIDE BY SIDE - ATV, MISC.**

For full listing and photos visit wheelerauctions.com!

SELLERS: HIGH POINT RANCH

Wheeler 
AUCTIONS & REAL ESTATE

23101 HWY. 24, PARIS, MO 65275 | 660-327-5890
WWW.WHEELERAUCTIONS.COM

**For more information call
Charlie Nordwald
at 636-795-4552, or
visit wheelerauctions.com.**

AUCTION

Saturday Sept. 25, 2021 @ 10am

Location: At the corner of county roads 1030 & 3780 **Directions:** From Willow Springs business route turn on 10th street across from the city buildings then immediate left on Old Springfield Road (turns into county road 1030) follow to auction at the intersection of county roads 1030 & 3780. Watch for Tooley Auction signs



TRACTORS AND IMPLEMENTS

John Deere 5065E, w/553 loader, 2wd, 555 hours, like new, lightly used; John Deere 420W, restored; John Deere M, restored; Ford 600; Ford 9N; John Deere 430-T; John Deere loader, model 35, series 1; 2 sickle mowers for Farmall Cub tractors; 5' brush hog, Bush Hog; 6' Farmstar brush hog; 2 older 5' brush hogs; 3 pt. auger with 9" & 12" augers; 3pt. 6' blade; 3 pt. round bale carrier; 3pt. 1 bottom plow; 3pt. 4' cultivator; 3pt. 5' disc; front John Deere bale spikes, used just a few times, fits 553 loader; Farmall Cub belly mower; 12' harrow; tractor wheel & front weights; more

ANTIQUE 4 WHEEL WAGON, SPRINGFIELD

TOOLS, LAWN & GARDEN, MISC.

Craftsman LT2000 42" riding mower; Craftsman 42" riding mower; Craftsman stand up air compressor; Lincoln AC/DC stick welder, nice; Campbell Hausfeld flux core 80 wire welder, nice; 2-Stihl 170 chainsaws; Stihl 028 super chainsaw; Stihl 120C E-Z pull chainsaw; Stihl weedeater; mid size torch set w/ bottles, cart, hoses & torch; 25' torch hoses, new; 10" contractor table saw, like new; All Power 3500 watt generator, new in box; sandblaster; 20' aluminum extension ladder; 28' fiberglass extension ladder; 15 gallon sprayer, like new; back pack sprayer, like new; hand sprayers; new treated corner post; new & used T-post; fence stretchers; fence splices & tool; barbed wire; T-post puller; 3-4' gates; 2-10' gates; 12' gate; 16' foot gate; 2 galvanized gates, 1-12', 1-20'; 5' framed walkthrough gate; 16' wire cattle panels; pull behind seeder, nice; handy-man jack; jacks & jack stands; air compressor; air hose; extension cords; come-alongs; all kinds of chain & ratchet binders; top links; draw bars; stabilizer bars; gas cans; hand seeder; lawn wagons; lawn sweeper; lawn aerator; lawn baggers; saw horses; wheel barrow; all kinds of galvanized tin; some barn lumber; table saw; jig saws; sanders; bench grinder; hand tools, screwdrivers, pliers, sockets, wrenches, hammers, pry bars; shovels; rakes; pitchforks; post mauls; splitting mauls; spud bars; several Chevrolet rally wheels; Maxxis M3 tires, 225/60R16, almost new; fish cooker; all kinds of nuts, bolts, screws; more

Auctioneers Note: Good clean auction. Plenty of parking. See you on the 25th, Travis. **Owner: Jack Cauldwell**



Travis Tooley, Auctioneer
Bruce Scheets, Auctioneer

Tooley Auction Services, LLC

417-293-6909 • Willow Springs, MO • tooleyauctions@gmail.com

Clerks & Cashiers: Penny Tooley, Shelly Cauldwell & Barb Schumacher

Ringmen: Vance Farmer, Terry McCallister & Josh Wheeler



Drivers license or photo ID. Cash or check.
Announcements made on the day of the sale take precedence over any printed material. Not responsible for accidents, theft or lost articles.



Firearms Auction

Saturday, October 2nd, 2021 • 10:00 a.m.

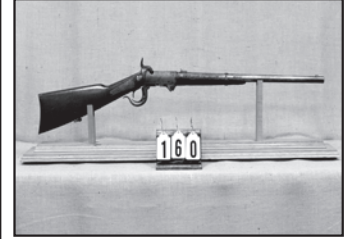
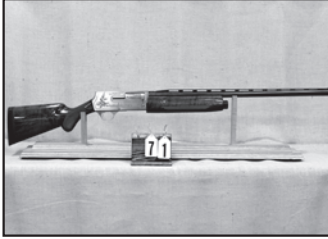
Sale Preview - Friday, October 1st • 6-9 p.m.

The Red Shed
I-44 to exit 179 • 169 Truman St
Doolittle, MO 65550

SELLING 325 FIREARMS

SOME OF THE HIGHLIGHTS TO INCLUDE:

A collection of 23 Ruger 77 Mark II Rifles, some in rare calibers



Lot 18 High Standard H-D Military .22

Lot 22 Bushmaster A3 Telef M4 5.56

Lot 34 Remington 541-T .22

Lot 37 Cimarron Wyatt Earp Peacemaker .45 Colt

Lot 49 Magnum Research Desert Eagle .357 (Israel)

Lot 75 Colt New Frontier 7 1/2" .357 Mag. 1 of 500

Lot 87 Ruger #3 .223

Lot 100 German G43 8mm (1944) w/original German instructions

Lot 112 Marlin 1894CL .218 Bee NRA Rifle, 1/2 Magazine

Lot 133 Browning Model 53 32-20

Lot 160 Burnside Model of 1864 .54 caliber Saddle Ring Carbine (original)

Lot 212 Winchester Model 70 .243 (1964)

Lot 221 Remington 1100 Trap 12 ga

Lot 236 Martini Henry 1879 Mark II .577-450

Lot 249 Ruger Single Six .22/.22 Mag "50th Anniversary"

Lot 257 Pioneer (Polish) PPS43 7.62x25 Tokarev

J & J Sales, LLC

Pictures on www.auctionzip.com (auctioneer ID #28053) • Pictures also available on Hibid.com

573-341-5450
Office

573-465-4647
Julie Reagan

573-465-0642
JD Roach, Auctioneer

573-762-2227
Sale Day Number

jjsalesllc12@gmail.com

NEW ATF RULE - For ATF Form 4473, current name & address must exactly match the photo ID such as drivers license. **MUST MATCH!!** If not, we need supplemental government issued documentation with matching current address such as vehicle registration, property taxes, county or city utility bill. Cannot be a PO Box!
Concessions by Mt. Olive Baptist Church

Terms of Sale: Sale day announcements supercede any and all printed material. Photo I.D. required for buyer's number. No buyer's premium. Payment accepted by cash, check, debit/credit card. There is a 3% convenience fee unless paid by cash or check. Nothing removed until settled for. All state and federal firearms regulations will be followed. Not responsible for loss or accidents.

Consignments
Welcomed!

JR'S 3RD ANNUAL CONSIGNMENT AUCTION

Friday, September 24, beginning at 8:30 A.M.

Located at: 4875 Hwy BB, Hartville, MO, 65667. From Lebanon, MO take Hwy 5 South approx. 30 miles to Hwy Z, left on Z, 2 miles to Hwy E, right on E to Hwy BB, right on BB to auction on left. Watch for auction today signs.

FARM EQUIPMENT

NH 69 hay baler —ME-MO RP 1211 4x5 round baler—10' NI lime drill
Wagon gears— 22' Flat hay wagon w/ steel bed
25 bu manure spreader — Feed bin
DH 85 bu manure spreader, like new
JD 2 wheel manure spreader—10' Gandy lime drill
Case 2 wheel manure spreader, very good
4 wheel McCormick #200 manure spreader, rebuilt
NI #10 manure spreader rebuilt w/ poly sides, fiberglass bottom
NH 450 3pt mower — JD 3pt mower —Hay wagon
NH 456 trailer w/ 7' bar— NI hay rake—Round bale cart
NH 456 mower rebuilt w/ engine and hy
2 Trailer gear IH #9 mower 7' bar rebuilt new wheels
#9 IH 6' bar rebuilt — Several #9 mowers rebuilders
2 JD hay rakes, one w/ dolly—56 NH rake
56 B NH rake—256 NH rake — 258 NH rake
7' Woods Cadet brush hog—2 IH grain binders
6' Woods Cadet brush hog— Oliver 1 bottom sulky plow
IH 2 way sulky plow — WH 1 bottom 715 sulky plow
4x8 Trailer—NI hay loader rebuilt—8' double disc
JD 6' double disc—Adams leaning road grader
Several potato plows—JD 5' drill double disc
6' 3pt scraper blade—7' 3pt scraper blade
JD 2 row corn planter—3pt 200 gal sprayer
110 gal ground drive sprayer—941 B Cat track loader
150 cattle corral panels—3', 4', 6', & 8' cultimulchers
New & used steel wheels—2-JD corn shellers—Forecarts
Clover leaf hay trolley w/ 50' track and hangers
Myers hay trolley w/ 40' track and hangers



There will be a row of new and used farm machinery that will sell **Absolute**.

GUNS

Mossburg 800 ASM 305 Win bolt action w/ Red field scope
Rem. 700 7mm w/ Nikon scope, like new—
Rossi single shot 243 w/ .22-n— 20 ga barrels
Marlin 336CS 3030 lever action—50 cal black powder rifle
Wards western field No 48 .22 bolt action
OP Mossburg 151 M-B .22 auto—Topper model 48 lb ga shot gun
Marlin revelation mod. 120 .22 auto w/ Simmons scope
Rem speed master mod. 552 .22 auto—Win 12 ga pump
Rem 870 rifle & barrel (slug) w/ scope, like new
Savage Steven 67E 12 ga 3" pump—New England 12 ga barrel
Mossburg 600AT 12 ga 3" pump (choked, ported)
Revelation mod 325A 20 ga bolt action
Wards Hercules mod 11 410 ga single shot
Steven mod 940E 20 ga single shot—JC Higgins mod 101-1 12 ga single shot
Ruger wrangler .22 double action revolver (NIB)
H-N-R mod 922 .22 revolver (dbl action)
H-N-R mod 623 .22 revolver (dbl action)— Bear charge compound bow
Lot of .22 ammo, 12 ga shells, 20 ga shells, 410 ga shells



Lunch stand by Amish community benefiting Amish parochial schools. Breakfast sandwiches, Fish, BBQ chicken, donuts, & baked goods

For more auctions go to www.auctionzip.com ID # 47012

HOUSEHOLDS & ANTIQUES

Hand crank ice cream freezers — Hand crank meat slicers—Irons
Pressure cookers—45 gal cast iron butcher kettle—Ice tongs
Enterprise sausage stuffers—Oil lamps—Adult & child rocking chairs
Several twin size beds, w/ mattress, good condition—Books
Butter churns—Several pitcher pumps—2-wooden school desk
Singer sewing machine w/ cabinet — Lots of sewing machines
Hand quilted quilts —Qt size Ziploc bags—Antique child rocker
Metal folding tables—Clock w/ shelf—Hilliards True Value reel mower
Reel mower—Coleman mod. 4A gas iron—Apple peeler WHHE Mountain
Cherry stoner—Enterprise cherry pitter—9-old jar wrench—Large SS sifter
Alum. Tea kettle—Alum. cooking pots—5 gal glass jar—3 prong forks
Galv. Funnel—Cast iron seat—Cow bell—Insulated water tub—Sythe
Sad irons—2-Corn shellers, 1 Black Hawk—Metal 2 horse evener—6-Hand drills
Platform scale—3-Brass torches—3-galv. Sq tubs—Single row 1 horse potato ridger
2-Sets galv. Twin tubs on stands—Galv coal bucket—Corona corn mill
2-Horse-N-buggy weather vanes—Faribank-Morse platform scale—Large hardy
Ariens WP 200 water pump gas—Red Chief mill w/ endless belt—2-Hog splitter
Wilson Bros. mill hand crank on stand—1/2 gal Huffman oil can—SS milk bucket
Anchor wash wringer—3-handwashers, 1 all wood—Universal #1 hand crank
2-Montgomery Ward cream separator, table top model—Daisey butter churn
2-Milk strainers—Milk can butter churn, usual—#2 Hawthorne wooden butter
churn—Wood butter mold—24"-34" cast iron butcher kettles—2-meat cleavers
26" cast iron butcher kettle w/ stand—18" & 21" cast iron butcher kettle
Enterprise lard press complete—3-Hand meat saws—600 lb anvil Mutz, nice
3-Propane fish fryer w/ propane bottles—Large cast iron fire pit—Well bucket
Cast iron garden mark table top grill—Hillsboro #3 and #2 bells w/ yoke—#2 bell
Large bell w/yoke—Large iron welcome flower pot—Deming hand pump
Red jacket hand pump w/ conductor cup—Various pumps & parts—5 wheel pullers
Coleman gas lantern—Love Mfg 33B wheel—Willie Russel No 1 1/2
Lighting stove pipe machine—Van Buren and Star 5 hole walk behind drills
Emporia machine, boy dixie sm walking plow—Jfleury old sod plow—Stanley chisels
Excell pressure washer 11 Hp Honda 2800 psi—Wooden pony & cart pedal toy



SHOP/HAND TOOLS, LAWN & GARDEN

Juki commercial sewing machine on stand Model DU 1181 N—175 lb anvil
Battery charger w/ engine—Air compressor w/ engine—Cattle dehorn—Sleds
Lots of hay forks, silage forks, straw forks, shovels, axes, hands saws—Log chains
25+ 3,4, 5 tine forks—2-5" post vice—Several bench vice—55 milk can w/ spigot
Live traps—JD G x 85 riding lawn mower—Breast and brace drills—55 gal barrels
Garden cultivators—Hand crank bench grinders—New handyman jacks

HORSES

Yearling filly saddle bred Morgan—3 yr old Dutch x saddle bred geld. Green broke
4 yr old mare standard bred saddle bred Dutch cross, broke, sound, watches big
trucks w/ weanling stud colt 3/4 standard bred saddle Dutch
2 yr old standard bred gelding, started
Harnesses, saddles, halters, team lines
Load from Jr Yoder, several more expected by sale



We have lots of good quality items already consigned and more expected at sale time.
Expect 2 or 3 auction rings all day. All items left 20 days after sale will become property
of JR's Auction unless approved by owner. Consignment receiving will be taken week of
auction Sept. 20th—23rd from dawn to dusk. No consignments morning of sale unless
arrangements have been made. Will not be accepting appliances or wooden windows.
To consign call Jr's auction at 417-741-2070 or 417-741-2312. For horses call Rueben
Glick at 417-554-3201. Hope to see you there.

Thanks, Larry

Auctioneers
Larry & Loren Martin
Dan Hertzler & Andy Borntreger



MARTIN AUCTIONS

1-660-337-6471



Auctioneers
Mel Yoder
Jonathon Hoover

Terms: Cash or check with ID. Not responsible for accidents. Statements made day of auction take precedence over printed material

CATTLE-TRACTORS-DOZER-BACK HOE-TRAILERS-FARM MACHINERY-TOOLS-GUNS-MISC AUCTION

SATURDAY SEPTEMBER 25, 2021 9:00 AM

LOCATED: 1441 GREENWAY DR, GALENA, MO FROM HWY 160 & HWY V GO 2.7 MILES, TURN RIGHT ON PLEASANT VIEW RD GO 4/10 MILE TURN LEFT ON ROCK HOUSE RD, GO 1 MILE WEST THEN NORTH ON SHOP HOLLOW RD 1/2 MILE, TO AUCTION ON RIGHT. FOLLOW SALE SIGNS. BREAKFAST & LUNCH AVAILABLE

FOR PICTURES SEE WEBSITE OR AUCTION ZIP.COM. NO GUN'S ON PREMISES UNTIL SALE DATE. BANK LETTER OF CREDIT ADDRESSED TO MELTON AUCTION & REALTY CO FOR PURCHASE OF CATTLE OR LARGE EQUIPMENT REQUIRED! GUNS WILL SELL @ 10:45 LIVESTOCK WILL SELL @ 12:00 FOLLOWED BY EQUIPMENT

CATTLE

7-BLACK & RED WHITE FACE COW/CALF PAIRS AGE 2-SS-COWS OPEN
 4-BLACK COW/CALF PAIRS AGE 4-SS COWS BRED 1st & 2nd
 6-MIX COWS AGE 2-SS BRED 1st STAGE
 10-BLACK COWS AGE 3-SS BRED 2nd STAGE
 3-BLACK COWS AGE SS BRED 3rd STAGE
 2-MIX 3 YR OLD 1st CALF HEIFERS BRED 2nd STAGE
 2-BLACK/RED 3 YR OLD 1st CALF HEIFERS BRED 3rd STAGE
 1-5 YR OLD HEREFORD BULL
 1-2 YR OLD CHAROLAIS BULL
 1-5 YR OLD BRANGUS BULL
 10-MIX YEARLING OPEN HEIFERS APPROX 600-700 LBS
 7-MIX YEARLING STEERS APPROX 600-750 LBS
 ALL CATTLE & BULLS HAVE BEEN VET CHECKED ON THE FARM

STORAGE BUILDING

12'X20' STORAGE BUILDING, WIRED, FINISHED ON INSIDE W/LAMINATE FLOORING, FRONT PORCH**

TRACTORS-DOZER-BACK HOE-TRAILERS-FARM EQUIPMENT-SUPPLIES

JOHN DEERE 5520 CAB TRACTOR, SYNC SHUTTLE, 4 WHEEL DRIVE W/541 LOADER, 2 SET'S HYD REMOTES, 7458 HRS, READY FOR FIELD**JOHN DEERE 990 TRACTOR, 4 WHEEL DRIVE, REAR DUAL HYD'S, FRONT WHEEL WEIGHTS, 3 RANGE, 4 SPD, 1017 HRS**JOHN DEERE 650 G DOZER ENCLOSED CAB, HEAT, RIPPERS, 6413 HRS**KOMATSU WB146 BACKHOE LOADER, CUMMINS ENGINE, TIRES LESS THAN 1 YR OLD 95% TREAD, PILOT CONTROLS OPEN CAB W/WINDSHIELD, BATTERY LESS THAN 1 YR OLD, BOOM EXTENDER INOP LOTS OF NEW HOSES & NEW FRONT BUCKET CUTTING EDGE**DOO LITTLE SS-7712 TRAILER, 6 1/2X12', FOLD DOWN RAMP LIKE NEW**1989 BLAIR 20'X6'8" GOOSE NECK STOCK TRAILER**VERMEER 504M CLASSIC BALER NET/TWINE WRAP**SOVEMA 8 WHEEL HIGH CAPACITY RAKE**RHINO MODEL PT405H 4 BASKET HYD FOLD TEDDER**3 PT 6' DISC**LANDPRIDE, 8' ROCK RAKE**BIG GUY 8' FIELD ROLLER**3 PT LANDOLL 6' DIGGERS**JD 1 BOTTOM PLOW**JD 5' CULTIVATOR**HYD BALE MOVER**3 PT 6' BLADE**2) 3 TON PORTABLE CREEP FEEDERS**7' 3 PT BRUSH HOG**JD 500 SERIES BALE SPIKE**3 PT WIRE ROLLER**SCHABEN 300 GAL SPRAYER W/PUMP, PULL TYPE**FEED TROUGHS**ALLEY TUB**MTD 22 TON VERTICAL LOG SPLITTER W/5 HP BRIGGS & STRATTON ENGINE**

BOAT-JOHN DEERE GATORS

1988 VENTURE BASS BOAT W/150 HP MARINER, TROLLING MOTOR, VERY CLEAN & NICE UPHOLSTERY, W/LIFE TIME SINGLE AXLE TRAILER**JOHN DEERE TS GATOR 4x2, ELECT LIFT BED, LOCKING DIFFERENTIAL, GREAT CONDT 649 HRS**JOHN DEERE GATOR 4x2, 2634 HRS

TOOLS-TIRES-MISC

HY-FLO MODEL 518X4XCOMMERCIAL HEATED PRESSURE WASHER ON WHEELS LIKE NEW**25 TON SHOP PRESS**MILLER BOBCAT 225 WELDER/GENERATOR 248 HRS**ACETYLENE TORCH SET**HANDY MAN JACK**CONTINENTAL 2 TON ENGINE HOIST**3 TON FLOOR JACK**2 WHEEL DOLLY**MARQUETT 295 AC

WELDER**PARTS WASHER**MILLER MATIC 250X WIRE FEED WELDER**HYD POST DRIVER**POST PULLER**HONDA G150 AIR COMPRESSOR**100 LB PROPANE TANK**POST DRIVERS**SNAP ON 16 DRAWER TOOL BOX**55 GAL BARREL W/PUMP**DX 5 GAL GREASE BUCKET W/PUMP**(2) MILWAUKEE CHOP SAWS**FENCE STRETCHER**MAKITA 4" ANGLE GRINDER**DEWALT 7" GRINDER**MILWAUKEE 7" GRINDER**MILWAUKEE 1/2" DRILL**PROPANE TANKS**BARREL PUMP**JACK STANDS**SCHUMACHER 200 AMP BATTERY CHARGER**CHAIN BINDERS**SEVERAL LOG CHAINS, 2" STRAPS, BINDERS**GAS CANS**SCREWDRIVERS, CRAFTSMAN WRENCHES, SOCKETS, RATCHETS, PLIERS, SK TOOLS**CRAFTSMAN 4 CYCLE TILLER**STIHL FS85 GAS WEED EATER**STIHL HT101 POLE SAW**HUSQVARNA 326LS GAS WEED EATER**HUSQVARNA 125B BLOWER**LT265-70R17 TIRES & WHEELS 3/4 TON**1 SET 1 TON DUALY WHEELS**1 LOT USED TRACTOR TIRES**ATV RAMPS**1 LOT MISC LUMBER**BALER BELTS FOR ROUND BALER**1 LOT SCRAP IRON, SCAFFOLDING**(2) REESE 20K FIFTH WHEEL HITCH, 1 WITH RAILS**

GUNS-GUN SAFE

BROWNING 28 GUN SAFE
 1. HAWKINS 54 CAL MODEL 4362
 2. REMINGTON 22 CAL NYLON 66, STAINLESS STEEL BARREL MODEL 2118081
 3. REMINGTON 22 AUTO SPLIT STOCK
 4. STEVENS SINGLE SHOT MODEL 15-B
 5. WINCHESTER 20 GA OVER/UNDER
 6. REMINGTON 30 CAL AUTO MODEL 8 66602, HAS BUCK HORN SITES
 7. REMINGTON 30-6 AUTO WOODS MASTER MODEL 742 SER B7319919 RECEIVER NON FUNCTIONAL
 8. 22-250 BOLT ACTION MODEL 98 SER 11614 W/WEAVER V 12-B SCOPE
 9. MARLIN 44 CAL MODEL 1894 S W/WALNUT STOCK
 10. REMINGTON MODEL 700 7MM MAG SER 6774252 W/4X12 RED FIELD SCOPE
 11. RUGER M-77 243 CAL SER 442-18-778 W/BUSHNELL SCOPE
 12. SMITH & WESSON 44 MAG, STAINLESS BARREL W/WALNUT GRIPS SER 12-344
 13. SECRET SERVICE SPECIAL SMITH & WESSON 38 SER 323649
 14. 25 AUTO MODEL MP-25 SER 920923 MADE BY RAVEN ARMS USA
 15. 45 CAL BLACK POWDER PISTOL SER E55840 WALNUT HANDLES
 16. RUGER AUTO PISTOL SER 16-85 227
 17. 22 PISTOL MODEL 92 SER BO-23 688
 18. RAVEN ARMS 25 AUTO, SER 920923
 19. 45 CAL BLACK POWDER PISTOL SER E-55840 WALNUT HANDLES
 20. 22 PISTOL MODEL R92 SER 23688
 21. CARL WALTHER WAFFEN FABRIK U/M/DO MODEL PPK 9MM CAL KURZ/380 ACP BLACK HANDLE W/CLIP
 22. RG IND MIAMI FLA FF311167-MADE IN GERMANY MOD 38-5 CAL 38 SPECIAL
 23. DOUBLE VINE CONVERTIBLE HIGH STANDARD MFG HAMDEN CONN USA 22 CAL SER 24993
 24. H&R MODEL 622 22 CAL
 25. MOSSBERG 20 GA SHOT GUN 500C

OWNER: ESTATE OF ROY GREENWAY

MELTON AUCTION & REALTY CO LLC



www.MeltonAuction.com | Roger@MeltonAuction.com
 Roger Melton | Nixa, Mo | 417-830-0153 or 417-725-1801
 Brad Cole | Nixa, Mo | 417-840-2950
 Tanner Foster | Galena, Mo | 417-840-5519

HELLING 32ND ANNUAL FALL FARM MACHINERY CONSIGNMENT AUCTION

SUNDAY SEPT 26TH 2021 9:30 AM

AUCTION HELD AT HELLING FARM 3548 HWY C LESLIE, MO 63056

LOCATION: FROM HERMANN MO TAKE HWY 100 15 MILES TO NEW HAVEN MO. THEN TURN RIGHT ON HWY C GO 8 MILES TO FARM ON LEFT HAND SIDE. FROM GERALD MO TAKE HWY C 4 MILES TO FARM ON RIGHT. FROM UNION MO TAKE HWY 50 WEST 17 MILES THEN TURN RIGHT ON HWY C GO 3 MILES TO FARM ON RIGHT HAND SIDE. THIS IS A PARTIAL LISTING WATCH FOR UPDATES AND PHOTOS



TRACTORS

JD 1010 TRACTOR GAS
JD A TRACTOR
ALLIS CHALMERS WD TRACTOR RUNS GOOD
JD B TRACTOR WITH FRONT MOUNT CULTIVATOR
AND REAR
FORD 3000 W/LOADER DIESEL 3PT
JD 1020 W/LOADER 3PT GAS
44/6 MASSEY HARRIS 6CLY TRACTOR
1935 JD A W/ROUND SPOKE WHEELS ON FRONT
AND FLAT SPOKES ON BACK
1952 8N FORD TRACTOR W/SIDE DISTRIBUTOR
AND HI-LOW, RUNS GOOD
JD 950 W/LOADER
KUBOTA BX2200
1953 GOLDEN FORD JUBILEE
8N FORD
55 MASSEY HARRIS DIESEL TRACTOR
510 LONG TRACTOR DIESEL
BARN FOUND FORD JUBILEE
MF 235 TRACTOR 3PT DIESEL W/LOADER
2017 4550 4X4 W/LOADER MAHINDRA COMES
WITH 6FT 3PT BLADE, BOX BLADE, BUCKET
SMOOTH, FRONT TEETH. FRONT FORKS, 6FT
BRUSH HOG 395 HOURS

TRUCKS, CARS AND TRAILERS

2001 DODGE 1 TON DUALLY EXT CAB 5SP DIESEL
24 VAL 350,000 MILES 4X4
16 FT BUMPER HITCH TRAILER
18FT ENCLOSE BOX TRAILER
5X8 BUMPER HITCH TRAILER N/T
1990 JD TYPE A RV 28FT
2003 COACHMAN 246 RIS 32 FT 5TH WHEEL
16 FT BUMPER HITCH TRAILER
18FT ENCLOSE BOX
18FT GRAIN DUMP TRAILER W/TITLE
1979 CHEV GRAIN TRUCK

5X11 TRAILER BUMPER HITCH
1968 JEEP
2000 CHEV 3500 GAS 5 SPEED 16FT DUMP BED
2000 CHEV STEP SIDE 4X4 5.3 1/2 TON SINGLE
CAB
2007 CHEV HHR VERY NICE 4DR AUTO, AC
EVERYTHINGS WORKS

HAY EQUIPMENT

NEW IDEAL HAY RAKE
BALE FORK 3PT
IH HAY RAKE
7FT A/C SICKLE MOWER
7FT FEGUSON SICKLE MOWER

ANTIQUE ITEMS

STATIONARY SQUARE HAY BALER WAS MADE IN
MOBERLY MO

IH L&A HIT AND MISS ENG 1 1/2 HP
OLIVER HORSE DRAWN SICKLE MOWER
WOODEN WAGON WHEELS
IRON WHEELS
WISKEY BARRELS
FAIRBURY WINDMILL
2 CYD UP RIGHT MONITOR GAS ENG
MAGTAG KICK START ENG

FARM EQUIPMENT

5FT FINISH MOWER 3PT NICE WORKS GOOD
6FT BUSH HOG BRAND 3PT
5FT BRUSH HOG 3PT
FORD 5FT BRUSH HOG 3PT
7FT JD BRUSH HOG 3PT HEAVY DUTY
8FT JD BLADE 3PT
BRAND NEW 5FT ROTARY TILLER 3PT
5FT BOX BLADE 3PT
6FT BOX BLADE 3PT
OLIVER HORSE DRAWN SICKLE MOWER
OLIVER SUPERIOR MANURE SPREADER NICE
13FT OLIVER DISC PULL TYPE

6FT BLADE 3PT
7FT BLADE 3PT
2 BTM PLOW 3PT
4 BTM PLOW
SPRAYER
AC 8FT WHEEL DISC
JD 4 SECTION ROTARY HOG
7FT ROCK RAKE
4FT BRUSH HOG
7FT BOX BLADE 3PT
GRAIN WAGON ON RUNNING GEAR W/HOIST
2- JD 70-70-20 COMBINE RIMS
BRAND NEW 4FT BOX BLADE 3PT
7FT NH SICKLE MOWER 501 3PT
BOOM POLE
POST HOLE DIGGER 3PT
DIRT SCOOP
BOBCAT POST HOLE DRILL
CARRYALL
6FT KING CUTTER BRUSH HOG 3PT
5FT DISC 3PT
8FT LANDPRIDE BLADE1

SHOP SELL OUT

OIL TANKS
TIRE BALANCER
WHEEL BALANCER
FRONT END ALIGNMENT
AND MUCH MORE

1-LOT OF BRAND NEW ITEMS AND

CRAFTSMAN TOOLS

LAWN & GARDEN & ATVS

EZ GO GOLF CART ELECTRIC RUNS GOOD
TORO RIDING MOWER
JD ZERO TURN MOWER 60"
12FT JON BOAT W/TRAILER AND TROLLING
MOTOR
5X8 TRAILER BUMPER HITCH

PUSH MOWERS, WEED EATERS
HOMELITE GENERATOR
IH CUB CADET 382 RIDING MOWER NO DECK
DUNE BUGGY FRAME
CRAFTSMAN RIDING MOWER 42' HYDRO
LAWN CART
COMMERCIAL 32 RED HAWK WALK BEHIND
MOWER
CUB CADET ZERO TURN MOWER
250 KAWASAKI BAYOU 4-WHEELER
SEVERAL MORE RIDING MOWERS COMING

MISC ITEMS

USED TIN
TRACTOR TIRES
TRACTOR RIMS
CHAIN SAWS
T-POST
ELCTRIC GRASS SEEDER
LOG SLIPPERS
ROUND STOCK TANK 8FT
POLY FEED TROUGHS
ROUND BALE FEEDERS
SEVERAL TRAILERS OF MISC ITEMS
BRAND NEW T-POST 7FT
BRAND NEW ROLLS OF FENCE WIRE
2- GAS CONCRETE BUGGIES
DOG PEN 10X16
DOG PEN 12X12 HEAVY DUTY
DOG HOUSE
JD B WHEELS
BUCK SAW
TRACTOR PARTS
1550 CUB CADET RIDING MOWER

1-LOT OF BRAND NEW TIN

1-LOT OF BRAND NEW TRUSSES



1- LOT OF GUNS • AUCTION NOTE: GUNS WILL SELL EARLY THAT MORNING

DUE TO THE COVID -19 WE WILL BE FOLLOWING THE CDC GUIDELINES AND PRACTICING SOCIAL DISTANCING .

HAND SANITIZER WILL BE AVAILABLE AND ANY PPE YOU DESIRE TO WEAR IS OK.

WE WILL BE GIVING OUT BUYERS BID CARDS THE WEEK OF THE AUCTION , FOR ANYONE WHO WOULD LIKE TO GET THEIR NUMBER EARLY THANK YOU

**RAIN OR SHINE • LUNCH WILL BE SERVED • WE WILL BE RUNNING 3 AUCTIONEERS ALL DAY SO COME PREPARED • MANY MORE ITEMS
COMING YET SO CHECK WEBSITE FOR UPDATES • MANY MORE ITEMS BY SALE DAY • WATCH FOR UPDATES & PHOTOS ON WEBSITE**

AUCTION NOTE: WE WILL BE RUNNING TWO OR 3 AUCTION RINGS THAT DAY
SO COME EARLY!! LITTLE SOMETHING FOR EVERYONE.

THESE BILLS ARE MADE 2WKS IN ADVANCE OF AUCTION DATE & COULD HAVE DELETIONS & MANY
MANY MORE ITEMS BY AUCTION TIME. TERMS CASH OR GOOD CHECK WITH PROPER IDENTIFICATION.
NO OUT OF STATE CHECKS WITH OUT APPROVE BY OWNER OF AUCTION. NOTHING TO BE REMOVED
UNTIL SETTLE FOR MUST HAVE PAID TICKET BEFORE LOADING ITEMS!!! NOT RESPONSIBLE FOR
ACCIDENTS, OR LOSSES. ANNOUNCEMENT ON SALE DAY.

COME WHERE YOUR MONEY COUNTS!!! COME EARLY SOMETHING FOR EVERYONE.

WE WILL TAKE CONSIGNMENTS UP TO SALE DAY BUT MUST BE CHECKED IN BEFORE 8:00 CLOCK THAT
MORNING, THANK YOU. ALL ITEMS MUST BE REMOVED IN 10 DAYS . NO HOUSEHOLD GLASS WARE
OR SINKS ,TOILETS OR BATH TUBS UNLESS STAINLESS STEEL , NO JUNK TIRES.

**FOR INFORMATION
CALL DEANNA HELLING 636-303-5105**

*As always we appreciate your business
Helling Farm Auction*

WEBSITE: HELLINGSFARMAUCTION.COM

EMAIL ADDRESS: HELLINGSFARMAUCTION@YAHOO.COM

Wheeler Livestock Auction, Inc.

Special Stock Cow Sale

Osceola, MO



SAT., SEPT. 25, 2021 • 6:00 P.M.

Expecting 900 head of Bred Cows & Cow/Calf Pairs

Clemons Cattle Co.-

- 4 Blk Sim-Ang bulls, 15 mos. 1,300 lbs., 75-85 lb. bw. 1 Red Sim-Ang X bull, 15 mos. 1,300 lbs., 78 lb. bw. All home raised, gentle & best of genetics.

Mark Wilson-

- 1 Reg Blk Ang bull, 5 yrs., 1,600 lbs. THM Cattle genetics, CED +5. 1 Blk Ang bull, 21 mos. son of above bull. 1,250 lbs., gentle & easy handling bulls.

Jimmy Sanders-

- 90 Ang hfrs., 2 yrs., 1,100 lbs., bred 3rd. 20 Ang cows, 3 yrs., 1,150 lbs., bred 3rd. These are all home raised will be 75% or more Gardiner Genetics & bred to CE Gardiner Ang bull. Steer mates were fed & graded 99% choice, 95% CAB or better, 47% prime. This is a fancy set of hfrs w/ years of breeding & the best genetics you can buy.

McMillan Farm-

- 20 PB Char cows, 4-6 yrs., 1,300 lbs., w/ char clvs. 200 lbs. Good gentle calf raising cows.

Kaegyn Farms-

- 35 Brhm X cows, 3-5 yrs., 1,300 lbs., bred 3rd to Char bulls. 30 Yllw cows, 4-6 yrs., 1,200 lbs., bred 3rd to Char bulls. 30 Blk & Bwf cows, 5-SS, 1,300 lbs., bred 2nd & 3rd to Char bulls. Cows all current on vac program, complete herd dispersal.

Peterman Farms-

- 15 Red cows, 5-7 yrs., 1,300 lbs., w/ 200 lb. clvs.

Bram Billingsley Complete Dispersal-

- 34 Blk & BWF hfrs., 1,000 lbs., bred 2nd to CE Ang bulls. Calve Feb. 15th for 75 days. 32 Red Ang cows, 4-6 yrs., 1,150 lbs., w/ 400 lb. Char X clvs., cows bred back to Blk Sim bull. 35 Blk & BWF cows, 4-6 yrs., 1,250 lbs., w/ 400 lb. Blk clvs., cows bred back to Blk Sim bull. All cows & calves will sell as pairs.

Mitch Grace-

- 24 Fancy Blk cows, 3-5 yrs., 1,350 lbs., bred 3rd to Blk Ang bulls. 5 Ang cows, 4 yrs., w/ 200 lb. Ang. clvs. All cows home raised, complete health program & the best of genetics.

Dennis Woody Complete Dispersal-

- 15 Ang cows, 5-7 yrs., 1,300 lbs. w/ Ang clvs. up to 300 lbs. bred back to Sim Ang bulls. 30 Ang cows, 5-BM, 1,300 lbs., bred 2nd & 3rd to Sim Ang bulls. 2 Blk Sim Ang bulls, 3 & 5 yrs., 1,800 lbs.,

Durant Farms Dispersal-

- 20 Fancy Ang cows, 4-6 yrs., 1,300 lbs., bred to Ang bull. All cows home raised, gentle & complete health program. Owner retiring at 90 years old.

Keel Farms-

- 22 Home raised Ang & Char X cows, 6-7 yrs., 1,300 lbs., w/ 11 Sim X clvs. 300 lbs., rest cows bred 2nd & 3rd to Blk Sim bull. 1 Blk Blaze face Sim bull, 4 yrs., 1,800 lbs.,

Powell Farms-

- 15 Fancy Blk Brng X cows, 4-6 yrs., 1,350 lbs., bred 3rd to good Char bull to start Oct 1st. 24 Tigerstripe Brah X cows, 5-7 yrs., 1,300 lbs., w/ 400 lb. clvs., cows bred back to Char bulls. 10 Santa Gertrudis hfrs., 2 yrs., 1,000 lbs., w/ 400 lb. clvs. bred back to Char bulls. 10 Char X hfrs., 1,000 lbs. w/ 400 lb. clvs. bred back to Char bulls.

Hefley Farms-

- 22 Fancy & Gentle ½ Santa Gertrudis ½ Hereford cows, 4-6 yrs., 1,300 lbs., bred to Lucas Blk Sim Ang bull to start Feb. 1st. These cows are big & gentle. 8 Red Ang cows, 3 yrs., w/ 200 lb. clvs. 4 Ang cows, 4-6 yrs., w/ 200 lb. clvs. 1 Blk Sim Ang bull. 3 yrs., 1,700 lbs.

Pearson Farm-

- 15 Red & Blk hfrs., 2 yrs., 1,000 lbs., bred 3rd to CE Red Ang bull.

Williams Farm-

- 30 Ang & Ang X cows, 4-6 yrs., 1,250 lbs., w/ clvs. up to 500 lbs. Cows bred back to McGutty Herf bulls. 35 Ang & Char X cows, 4-6 yrs., 1,250 lbs., bred 3rd to McGutty Herf bulls. Cows are gentle & complete health program.

3rd Anniversary Customer Appreciation Lunch - October 7th
Special Feeder Calf Sales - October 7th & 21st; October Cow Sale - October 30th

Wheeler Livestock Auction, Inc.

Osceola, MO • 685 SE 13 Hwy., PO Box 560 • BARN 417-646-8102

Byron Wheeler-417-777-0897 • Skyler Fisher-417-298-9051 • Les Tennis-417-466-8786

Red Whistance 417-276-7909 • Zach Lightfoot 417-399-5053

Burleigh Wheeler-417-840-6561 • Darwin Hearting-417-296-1029

Kevin Wade-660-492-3279 • Tim Sherrer 573-855-1951

Office Manager: Weston Shelby, 417-298-1316

Bid online on CattleUSA • www.wheelerlivestock.com

Like us on Facebook-Wheeler Livestock Auction

WHEELER

LIVESTOCK

AUCTION INC.



OSCEOLA, MISSOURI

LARRY DRENON AUCTION

TRUMAN LAKE HOME!

16429 TRAIL RD • WARSAW, MO

Due to the deaths of Michael Canfield and Billie Jean Wilson, the following will sell at auction located from Warsaw city limits, north on Hwy 7 approx. 1 mile to Cold Springs Rd, left on Cold Springs Rd 2.7 miles to 83 Hwy, then right on 83 3.5 miles to Pommosa Dr., Right on Pommosa 1.9 miles to Reservoir Rd, right on Reservoir 1/10 mile to Trail. Left on Trail Rd to sale on:

SATURDAY, OCTOBER 2ND AT 10 AM



TRUMAN LAKEVIEW HOME sells at 11 am

What a fantastic view of Truman Lake! The open concept of this house allows you to enjoy nature's beauty from the kitchen, dining area, living room, and of course the sunroom with its many windows stretching from the cathedral ceiling down to the floor. The living room sports a cozy natural stone fireplace. The kitchen has a space-saving pantry with pull-out shelves for canned goods, and divided shelves for bakeware. On the lake side of the house, there is a large deck that can be accessed from the sunroom or a bedroom. The main level also has two bedrooms, a bathroom, and super-one car garage. In the walk-out basement, the family room has aromatic cedar wood on the stairwell and the bar. From the family room, you can step out to a screened-in patio for enjoying evening breezes from the lake. The second bathroom is located just off the family room. This walk-out basement also has a one-car garage for the lawn tools. For climate control, there is a heat pump for heat/cooling and has an electric furnace back-up. Auxiliary heat includes a fireplace in the living room and wood stove in the family room.

The home sits on two lots that offer room to put another building if you desire. This lake community offers blacktop roads and a super-nice boat ramp with a truck and trailer parking area.

Terms of Real Estate: The starting bid on this great lake home is only \$225,000 and will sell subject to owner's confirmation. Buyer will pay 20% down on sale day, to be placed in escrow until closing, when the balance plus applicable closing costs will be due. Seller to furnish title insurance, taxes will be prorated. For information, or to view this property, contact the auction company.



ANTIQUE & MODERN FURNITURE Antique oak file card cabinet * Antique rotating nut and bolt cabinet from a Hardware Store * Large brass bed headboard and footboard * Pencil iron bed * 2-Antique sewing rockers * Oak washstand * Antique oak dresser * Antique 5 drawer chest * Antique library table * Antique oak rocker * Wicker desk and chair * Wicker tete a tete courting bench * Antique organ stool * Antique white drop leaf kitchen table, 2 chairs * Wicker rockers * Wicker sofa * Wicker bonnet table and two chairs * Antique dining table, 5 chairs * Antique buffet * Antique china cabinet * Copper coat rack * Antique floor lamps * Tea Cart * Nice sofa, muted brown/burgundy floral **SILVER & JEWELRY** 1924 Kirk Steiff Repousse Sterling Silver, 12 pl setting and other pieces (78 pc total) * Other odd pieces of sterling silver * Lg set Community Silver plate in wooden case * Sterling, gold, pearl, precious stone and antique rings, brooches, and necklaces * Watches inc: Mickey Mouse, lady's pocket watch, Mr. Peanut, Bud Man, many more. **SIGNED BASEBALLS & MEMORABILIA** Several autographed baseballs: Gaylord Perry, Pete Lacombe, Jon Warden, Jody Davis, Fergie Jenkins, many others * Pictures, newspaper articles, Framed prints, bats, old ball glove, and books all about baseball **PINBALL MACHINE** Vintage Pachinko pinball machine **ANTIQUES & COLLECTIBLES** Antique medicine cabinet * Old scrap books * Vintage c1800's doll buggy * Wicker doll cradle * Stereoscope and several slides * Warsaw Commemorative Crock jar and other crocks * Star 5 Star Brown Shoe St. Louis Mo wooden

box * Seth Thomas mantle clock * Perfection oil heater * Several totes full of Hallmark ornaments * Collection of galvanized items: Wash tubs, sprayers, ice cooler, wash vat, oil cans, sprinklers, milk buckets, etc * Handmade quilts * Chenille bedspreads * Matchbox cars in original box * Old Raggedy Ann doll * China doll * Large button collection * Radio Flyer wagon * Malmaison Bavaria tea set * Nodding birds salt pepper and sugar set * Green depression sugar jars, vases, other depressionware * Tin collection * Lg enamel roaster and other enamel * Old books * Vintage period clothing * Lot LuRay pastel dishware * Many other antiques and collectibles not listed **HOUSEHOLD** Whirlpool French door refrigerator * Whirlpool washer and dryer * Cedar chest * Lazyboy rocker-recliner * Small kitchen appliances * Corelle * Pots, pans, bakeware * Reed and Barton Roseland stainless flatware, 12 pc place setting * Metal patio table and chairs * Other household not listed **GUN, TOOLS & MISC** Iver Johnson Excel .410 shotgun * Crossman pellet pistol * Craftsman 14 Drawer tool chest * Hand tools * Shop vac * Master Built Veranda grill * Char Broil grill * Many more items yet to be unpacked!

Note: If you have been looking for a lake area home with a fantastic view, and an easy walk to the water, better look at this! The home sells at 11, after that we will sell the appliances. The silver will sell approx. 11:30

CHILDREN OF MICHAEL CANFIELD AND BILLIE JEAN WILSON

Larry DRENON AUCTION



Larry Laramie
660-596-8515 660-221-4386
Lacey Cooper
660-723-1104 660-723-2221

Office: 660-723-6188
www.DrenonAuction.com

Terms: Cash, approved check, or credit/debit card (convenience fee applied). Nothing to be removed until settled for. Not responsible for accidents. Statements made day of sale take precedence over printed material. Lunch served. Check out the website for pictures!



Mickey Duckett
CAL MPPA, AARE, CES

Mickey Duckett Professional Auctioneer

P.O. Box 1575, Ozark, MO 65721

(417) 353-2768

www.mickeyduckettproauction.com



RESELLERS DREAM AUCTION-PART I & OTHER UNIQUE ITEMS!

1321 St. Hwy 96, Sarcoxie, MO Bidding Ends Fri., Oct. 1st @ 1:07

Preview: Sat., Sept. 25th, 9-12 Pick up Sat., Oct. 2nd, 9-1

Whether you resell items on the internet or a vendor with a booth, or just like to decorate, this auction is for you!! This Part 1 of a 2 Part Auction features NEW OLD STOCK Hallmark, Jim Shore, Lenox, Cherished Teddies, Boyd's Bears, Fitz & Floyd, David Frykman and others. Almost everything is **NEW IN THE BOX** and over 300 lots are already packed into totes ready to move!! **PLUS** there's lots of unique antiques/collectibles like tools, farm implements, glassware, furniture, kitchen items, lamps, etc. **Over 1,000+ items to bid on!** Take A Look!

Owner: Sharon A. Ellexson Estate

Auctioneer Note: This is the first part of a two part auction with over 1,000 lots to bid on! Check out our Online Catalog!! For more auction terms, photos and register to bid, go to our website at www.mickeyduckettproauction.com.



REAL ESTATE & ESTATE AUCTION

Saturday, September 25th, 2021 ~ 10:00 AM

LOCATION: 310 East 9th Street, Lockwood, MO (Watch For Signs)

Auction For Nelda & The Late Paul Eagles



Real Estate Sells First At 10:00 AM

3 Bedroom, 1 Bath, Has Kitchen, Dining, Living & Utility Rooms, Has Central Heat & Air, Metal Roof & Full Length Side Front Porch. House Does Need Some Work On Floors But Structure Wise Seems To Be Solid. Setting On 2 Corner Large Lots That Has 2 Outbuildings Right Across The Street From The Park In A Good Neighborhood. This Home Would Make A Great First Time Buyer Fixer Upper Or A Good Rental Property. To Preview Contact Bill At 417-214-0093.

Terms: 10% Down Day Of Sale With Signed Contract And Balance Due In 45 Days Or When Closing Date Set By Abstract Office. Seller Has The Right To Accept Or Reject Any And All Bids.

Antique, Modern Furniture & Appliances

Ant Dresser W/Mirror, Ant Chest Of Drawers, Ant Vanity, Ant Record Cabinet, Drop Leaf Breakfast Table, Display Glass Table, 2 Chest Of Drawers, Queen Bed, Corner Cabinets, Neat End Table Cabinet, 2 Glider/Rockers, Sm Wood Tables, Lots Of Old Ant Pictures & Paintings, Wood Magazine Rack, Kitchen Chairs, Microwave Cart, Corner Shelf, Sitting Chair, Loveseat, Computer Desk, Locker Set, Will Be Some Small Wood & Metal Furniture Unburied From Back Of Storage Shed. 2 Organs, Stereo, Gas Cook Stove, Washer & Gas Dryer, Side By Side Refrigerator, Microwave, Wheelchairs & Handicap Supplies, Other Items Not Listed

Antiques, Collectibles, & Households

Cast Kettle (Has Crack), Old Iron Wheels, Old Oil Lamps, Ant Horse Bits, Cane Collection, Ant Ice Tongs, Very Outstanding Glass Vase Collection Of Various Kinds, Vaseline Glass, Hobnail Glass, Fenton Glass, Ant Pitcher & Bowl Set, Old Chamber Pot, Chalk Pcs, Old Cookie Jars, Teapot Collection, Old Collectors Plates, Glass Paper Weight Collection, Retro Ceramic Christmas Tree, Old Pottery Of Various Kinds, Ant Silverware, Lots Of Jewelry, Salt & Pepper Shaker Collection, Sm Globe, Lg Lot Of Old Unique Knick Knacks, Old Cookbooks, Mickey Mouse Collection, Sewing Supplies & Material, Lg Lot Of Neat Weable Wobble Collection, Sm Kitchen Appliances, Tupperware, Pots, Pans & Dishes Some Old, Some New, Other Items Not Listed

Mower, Pressure Washer, Storage Building, Tools & Outdoor

JD LT150 Hydro Riding Mower, Leaf Blower, Weed Eater, Gas Pressure Washer, Aluminum Ladders, Sm Hand Tools, Sm Electrical Tools, Long Handle Tools, Patio Storage Box, Lots Of Yard Décor, Sm Metal Storage Building, Other Items Not Listed **There Is A Storage Building Completely Full From Floor To Ceiling With Boxes & Totes. Unable To See Items Inside, Also Furniture Buried Behind Boxes In Back Of Shed Not Listed. Several Surprises Sale Day.**



Auctioneers Note: It Is An Honor To Again Be Conducting An Outstanding Collectors Auction For Nelda & Her Family. This Auction Will Have Hundreds Of Small Antique Collector Pieces & Glassware. Nelda Has Been Collecting For Over 50 Years. She Is Also Offering Her Real Estate Property As She Will Be Moving. John Deere Mower Is Very Nice And Very Clean. This Is An Auction that You Do Not Want To Miss. Please Plan Now To Attend. **Sale Order: Real Estate Sells First Then Move Directly Into Furniture & Appliances Then Antiques, Collectibles & Households. At Approx 1:00 PM Will Offer Mower, Storage Building & Larger Items. Remainder Of Tools & Outdoor Will Finish Auction. See Ya There!!!**

Terms: Cash or check with proper ID. Now accepting most major credit cards. Nothing removed until settled for. Statements made the day of sale takes precedence over printed material. Everything sold as is where is. Not responsible for accidents. Restroom available. Concessions Provided By Barker Concessions. Check our website for upcoming auctions and for additional pictures!!



NANCE AUCTION SERVICE

No Matter How BIG or small, We Do Them All!

www.nanceauctionservice.com

Col. Bill Nance 417-214-0093

In God We Trust

Philippians 4:13

EUGENE NARUP ESTATE AUCTION - LIVE

Saturday, September 25th, 9 AM

5018 Highway V, Villa Ridge, MO 63089

From the intersection of Hwy 100 and Hwy V, drive Hwy V 3.1 miles approximately to a left turn on gravel road which takes you to the farm. Field parking



7610 Ford tractor with spin out hubs-18.4-34 rear tires - 1 tire new-1 tire 100%-rear hydraulics front tires 100%-canopy-3402 Hours shown on meter, • Ford 5030 w/Westendorf loader FWA, shuttle shift, canopy, rear tires 47%, front tires 22%, 977 hours shown • Oliver 550 gas tractor w/loader, trip bucket, 4557 hours • IMT 539 diesel tractor, 39hp-2000 RPM, 3cyl. • New Holland 513 PTO driven manure spreader w/ chicken manure attachment, always kept in barn, great deck • New Holland 411-disc bine • New Holland 848 baler • Woods BW 180 15ft batwing mower 540RPM with aircraft tires • Hog wagon with hydraulic automatic walk on • New Holland 258 rubber tined dolly wheel rake • Kewanee pull 12ft disk w/ harrow teeth and hydraulic lift • JD 45 gas engine combine w/corn and bean heads-needs work to get started-last used year 2000, • Woods 10 ft twin cadet rotary mower • Kewanee conveyer • Kubota G5200 diesel riding mower, shows 1208 hours • Two sections of drag harrow • 3pt bale mover 80, pull type of rotary hoe • 3 bottom plow 3 pt with 16's • Oliver 3pt three bottom plow with 12's • 3 pt Pittsburgh field cultivator • 3 pt drag scoop, • 5 ft manure bucket, • 3pt-7ft blade • 8ft gang disk pull type • Rotary hoe-3 pt-7ft • JD Van Brunt wheel disc • JD corn planter pull type • Metal side grain wagon • Rubber tire wagon • Farnam field renovator, • Self unloading grain-o-vator, • 3 pt Midco sprayer w/boom • Swisher 10.5hp 28T log splitter • 9 Ford tractor weights • 3 pt post hole auger • 54" Ferguson roto tiller • Rear mount scoop • 2 rear mount blades • 5ft brush hog • 16" Single plow • **Gold Coin and other Silver Coins:** 1900 Five Dollar Liberty gold coin, old silver coins, foreign coins, foreign currency, 2-1922 Peace dollars, 1908 Morgan dollar, 1892 Columbian, 1943 walking Liberty half dollar, 1849 large cent with hole, mussel pearls, gold filled bracelet, Elgin pocket watch w/spade hour hand, • **Plat Books, Ledgers, Other Antique Books and Paper goods:** including German written equestrian research and care book, centennial biographical director of Franklin Co., MO, Grand New Census and Worlds Fair copywrite 1893 Geo. Cram, 1878 and 1898 Franklin County, MO atlas, Cole County IL stock ledger-very early possible late, farm account books, old manuals, DeLeval #12 cream separator instruction manual with original sleeve envelope, • **Farm Items, Tools:** 300 gal

fuel tank-no stand, SMV signs, cast iron kettle stand only or stove base, Good Year 18.4-34 6 ply tractor tire, 28" buck saw blade, augers, gear oil pump, draw bar, buck saw, chicken waterers, air compressor, horse drawn cultivators and potato plow, Hames, double and single trees, wagon tongues, surrey tongue, old wooden ladders, wheat cradle, galvanized mail boxes, seeder, scythe, battery powered string trimmer, push cultivator, assorted lumber and tin and MORE items too numerous to mention • **Guns:** Old Red Ryder BB gun, 1890 slid action Marlin pat 1890, Remington model 121-22LR, Winchester model 12-12 ga w/poly choke, Savage model 220 single shot 20 ga, Sporterized British Enfield 303, Marlin model 49 slide action shotgun 12 ga, • **Arrowheads-ALL FARM FINDS-** 2 nice hematite axes, other farm find broken axes, beautiful assorted points including st Charles, Etle, Adena, Hardin and assorted bird points, see pictures • **Crocks, Antiques, Primitives, Glassware, Turn of the Century Items:** Fantastic group of old farm crocks including unmarked Bayer, Whitehall, Macomb, Monmouth, Western, salt glaze, Ruckles and crock bread bowl, green stoneware bowl, blue band crock mug, vintage oil cans including Huberd shoe oil, IH cream separator oil, sad irons, cobblers last and shoe repair items, tin ricer and enamel ware pans, coffee pot, cast iron pig bank, Lions head mantle clock, meat saws, various antique kitchen items, Walter A Wood implement seat, Stuart ball bearing sheep machine, insulators, traps, wooden boxes, several boxes of canning jars including blue jars of various sizes, wire egg baskets, home made boot puller, vintage kids ball glove, small bai handle keg, few old pocket knives, Dekalb tape measure, lattice top cake stand, advertising yard sticks including Riechers Service Station and Hausgas, Straatmann Feed Store and Wehmuelers Hardware, couple old walking canes, Pig sheriff cookie jar, red handle utensils, enamel roasters, vintage juice glasses, tin flour bin, porcelain barn light fixture, copper wash boilers, lot of Deb Shoe advertising posters, rare Martin oil 2 gallon oil can, hog scrapers, Griswold #13 cast iron lid, Pepsi thermometer, Vitts reel mower, various oil lamps and lanterns, horn seeder, egg baskets, smoke house sausage rack, 1904 Worlds fair items, small German dresser clock under dome, various old cigar

boxes, sea shells, telephone candy container, early milk glass dresser dishes, fancy goods, few old hand made quilts, some with feed sack fabric, St John's arm band, military items, buttons, sewing box, Manning bowman oscillating fan, other window and hassock fans, Jupiter telescope, telegraph, Super 8 projector, assorted antique, Victorian and other Christmas including Shinye Brite ornaments, 6ft aluminum Christmas tree, bow ties, Argos Mode SCB-12D speakers IOB, drafting tool items, picture frames, old luggage, cream separator, grinder with a motor, and one without a motor, vintage school lunch boxes, 48 star flags, Simmons Hardware sausage stuffer, hornets nests, lye soap, old wooden step ladder, • **Furniture:** Nice knock down wardrobes, Knock down wardrobe with original mirror, massive knock down wardrobe (was told was purchased from the John B. Busch family in Washington, Mo in early 1900's-no provenance paperwork-must see this fabulous piece), nice old grey painted wood box/ flour/grain box marked Gildehaus, MO, star pattern tin punch pie safe for repair, green painted home made bench, green painted curved leg bench with chippy paint, 1930's sideboard, green painted walnut farm cupboard w/tin punch sides, Screen front and sides kitchen farm/drying or preserve cupboard with green paint, old gate leg table with leaves, Quick Comfort oak ice box with grey paint, homemade small double door cupboard bottom, old enamel top step back kitchen cupboard with bread box, 1950's red formica/grey table with chairs Queen Anne style half table, antique wooden ice box for repair, jelly cupboard, large wooden antique ice box, benches, half-moon receiving table/parlor table, Davis S M Co. Pat date 1885 treadle sewing machine cabinet w/machine, New Home treadle sewing machine, smoking stand, rocking chairs, pump organ frame-no guts, organ stool, serpentine front dresser with wishbone mirror, cane seat sewing rocker, parlor table, assorted turned leg tables and plant stands, iron beds, blanket boxes, domed and flat trunks, 1942 and 1943 US foot lockers, medicine cabinet, chifforobe, jelly cabinet, victrola, mid-century smoking stand, old hand made baby cradle, blue metal porch chair, and porch bench, newer Kenmore upright fridge/freezer-1yr old

SO MANY MORE ITEMS TOO NUMEROUS TO MENTION AT THE TIME OF THIS LISTING. 2 RING AUCTION ALL DAY-PLAN TO SPEND THE DAY WITH US. PLEASE CALL ME WITH ANY QUESTIONS 314.650.7317

Payment Terms: CASH, CHECKS WITH PROPER ID UP TO \$2,000.00. NO OUT OF STATE CHECKS, NO CREDIT CARD CHECKS, NO MONEY ORDERS AND NO TRAVELERS CHECKS. WE ALSO ACCEPT MASTER CARD, VISA, DISCOVER CARD, AMERICAN EXPRESS AND DEBIT CARDS ACCEPTED. ALL CARD PAYMENTS WILL REQUIRE A 4% PROCESSING FEE. NOTE: M R CLARK AUCTION AND STAFF, WILL NOT BE HELD LIABLE IF THE ELECTRONIC CARD READING SYSTEM IS UNABLE TO READ OR PROCESS YOUR CARD FOR ANY REASON. YOU WILL NEED TO PRESENT CASH.

BANK LETTER OF CREDIT REQUIRED FOR ALL CHECKS OVER \$2,000.00. **ON ORIGINAL BANK LETTERHEAD-NO COPIES.**

TERMS: Photo registration. Nothing to be removed until settled for. Everything sells "As Is, Where Is, Without Warranty." Not responsible for accidents. Announcements made day of auction supersede printed material. Lunch will be available.

See this auction listing on our website: www.mrclarkauktion.com See many photos of what we are selling on Auctionzip.com Our auctionzip ID# 3218

Auctioneer's note: As always, we appreciate your attendance! Mike, Julie and the Whole Auction Team.

M.R. CLARK AUCTION & APPRAISAL LTD

Lunch will be available.

CAGA
Certified
Appraiser

Lunch will be available.
See this auction listing on our website:
www.mrclarkauktion.com

WASHINGTON, MO 63090
636-390-2220 • 314-650-7317

E MAIL: headsuggolf1@gmail.com • www.mrclarkauktion.com



BRING TRUCKS & TRAILERS TO SAVE LOTS OF DOLLARS • BRING TRUCKS & TRAILERS TO SAVE LOTS OF DOLLARS

BRING TRUCKS & TRAILERS TO SAVE LOTS OF DOLLARS • BRING TRUCKS & TRAILERS TO SAVE LOTS OF DOLLARS

BRING TRUCKS & TRAILERS TO SAVE LOTS OF DOLLARS

HUGE BUILDING SUPPLY AUCTION

Saturday, September 25 • 10 AM

We will sell the following building supplies at public auction. Directions: 5 mi. west of Fair Play, MO on Hwy. 32, or from the intersection of 13 & 32 Hwys., from Bolivar, MO, go west 11.7 mi. on Hwy. 32 to FR 1750, then west ¼ mi. to the sale (Bear Creek area). Watch for auction signs.

DIMENSIONAL LUMBER- Three semi loads of #2 dimensional lumber including 621-2x4x12; 477-2x6x12; 700-2x4x104"; 578-2x12x16; 889-2x4x16; 400-2x6x104; 180-2x6x16 sold in consumer size bundles

PINE CAR SIDING AND NICKEL GAP- Semi load of 6" knotty pine siding-some can be reversed and used as flooring

CEDAR 5/4x6' DECKING - Semi load of rounded edge 5/4"x6" western red cedar decking 8'x16'

WOOD LOOK TILE - Great selection of 8" wide x 48" wood look porcelain tile. Great colors and in good quantities

LVT GLUE DOWN VINYL TILES - Large quantity of thick glue down vinyl tile

LVT WOOD PLANK SNAP AND LOCK - Good selection of plank snap and lock-heavy in grays

DESIGNER VANITIES - James Martin designer vanities (Single & Double) retailing \$2680-\$3450-16 to choose from - 24", 36", 48", 61", 72". Best selection of high end vanities ever

ONE PIECE COMMODES - Several high end comfort height commodes - Toto, Duravit, Kohler, Stack-retailing \$543-\$1050. Super nice all in white

TWO PIECE COMMODES - Kohler, American Standard, Duravit, Toto. Comfort height in white

URINALS - Kohler & Toto urinals

WALL HUNG COMMODES AND MOUNTING SYSTEM - Kohler and Toto wall hung adjustable height commodes with built in wall hanging system

FREE STANDING TUB - Beautiful Belshire free standing tub MDL D12040004, 415 absolutely beautiful tub

WHIRLPOOL TUBS - Proflow whirlpool tubs with skirts - Ariel fancy corner whirlpool, retails \$2400

WALK IN TUBS - Avano, Au2952Rws, soak in tub, retails \$3245.

SOAKING TUBS - Great selection of right and left drain soaking tubs. 15 to choose from

KITCHEN FAUCETS - Large number and selection of pull down kitchen faucets: Kohler, Brizo, Miseno, Delta, Moen, American Standard. High end faucets, brushed nickel, chrome, oil rub bronze, brushed gold.

KITCHEN FARM HOUSE SINKS - Kohler cast

iron, Franke fireclay, Brizo stonecore

KITCHEN SINGLE AND DOUBLE SINKS - 20 to choose from - Kohler, Signarture Hardware, retailing \$700-\$1200. Here is a chance to buy designer sinks at auction prices.

VANITY FAUCETS - Good quantity of all brands of faucets. Brushed gold among other finishes. Lots of Kohler.

VANITY SURFACE MOUNT AND UNDERMOUNT SINKS - Mostly Kohler single sinks, wide variety of sizes and styles

TOOLS-TOOLS-TOOLS - Shop vacs, air compressors, double stack Husky tool cabinets, Milwaukee rotary hammer drill, 6500 watt Ryobi easy start generator, Husky hand tool sets, Ryobi cordless chainsaw, auger, drills and more RIGID 12" SLIDING MITER BOX - Rigid tile saws, manual tile breaker, Rigid shop vac blower combos

SHOWER DOORS - Huge selection of frameless shower doors - Kohler, Ashton, American Standard

DURAVIT WASHLET COMMUNE BIDET SYSTEM - Commode bidet system in white

APPLIANCES - SS double door refrigerator, washing machine/dryer combo, 36" Jenn Air ss and black gas downdraft cooktop, Double door Jenn Air wall over, Summit SS dishwasher, 18" wide dish washer

LAUNDRY WAS TUBS - 24" wide free standing tub/faucet combo laundry sinks

BAR STOOLS - Good selection of pairs of bar stools and director folding chairs

MEDICINE CABINETS - Wood and mirror medicine cabinets, good colors and sizes to choose from

AUCTIONEERS NOTE: An outstanding line-up of great quality building supplies at auction prices. If you are building or remodeling, you don't want to miss this auction. Lunch will be served. Forklift loading will be provided. Terms: Cash, check or credit card with I.D. Nothing removed until settled for. Not responsible for accidents. Statements made sale day take precedence over printed matter. Preview will be on Friday, September 24th from 3:00pm to 6:00pm. For more information and pictures to Auctionzip.com and search Auctioneer ID #43971. Like us on Facebook

624060s



COL. JAMES MAYFIELD
(417) 298-8888



BRING TRUCKS & TRAILERS TO SAVE LOTS OF DOLLARS

Sam CRAWFORD AUCTION SERVICE LLC ESTATE AUCTION

Will sell the following located 4 miles south of Wheatland, MO on Hwy. 83 to Hwy. 254, then East 2 miles.
Across from "The Triangle". Watch for auction signs.

SATURDAY, OCTOBER 2ND, 2021 - 10 AM

HOUSEHOLD - TOOLS - MISCELLANEOUS



HOUSEHOLD

Round Oak Dining Table & 4 Chairs
Oval Dining Table & 6 Chairs, 2 Leaves
Small Dish Hutch
Hall Tree w/Mirror
2 Flatscreen TVs
Sofa Table
4-5 Smaller Tables
Drop Front Secretary/Chest
Wood Rocker
Oak Chest of Drawers - Dresser - 2 Nightstands
Ventura Accoustic Guitar
Chest of Drawers
Electric Fireplace Heater
6-8 Totes of Pots, Pans & Dishes
Set Cuisinart Pots & Pans
4-5 Food Choppers
Rinse Tub on Stand
Older Refrigerator - For Shop

TOOLS

Porter Cable Upright Air Compressor
Bostitch Pancake Air Compressor, 2 HP
Tennsmith 5' Metal Brake
2 Central 4' Metal Brakes
Grizzly 8" Shear
2 Grizzly Power Metal Band Saws
2 Grizzly Slip Rollers 12" & 2'
Central 16 Speed Floor Drill Press
2 Hand Held Band Saws
2 Hobart 140 & 187 Wire Welders Carts & Bottles
Cutting Torch - Complete
2 HD Bench Grinders
Porta Power
2 2.5 Ton Floor Jacks

6 Jack Stands
Craftsman 2 Tier Toolbox
2 Table Top Toolboxes
Parts Washer
Chainsaw Sharpener
Belt Disc Sander
Ironston Miter Saw
Good Selection Power Hand Tools - Air Tools
Lots Wrenches - Sockets
Lot Vise Grips - C Clamps
Pipe Vise
Lot Hammers, Screwdrivers, Pliers, Lot Drill Bits
2-3 Shop Stools
Gas Cans
Asstorted Anti-Freeze, Oil, Etc.
2-3 Step Ladders, 8' Fiberglass Step Ladder
Handyman Jack
Yard Wagon, Long Handle Tools
3-4 Rolling Work Tables
Motor Stand
Some Assorted Metal
Extension Cords
Stihl Blower
Stihl FS 55R Trimmer
Stihl MS270 Chainsaw
2 Stihl Chansaws, Smaller
Hustler Zero Turn Mower, 54", Kawasaki FR691V Motor,
Shedded, Good
Other Miscellaneous

SAM
CRAWFORD
Auction Service LLC



TERMS: Cash or good check. Nothing removed until settled for. Not responsible for accidents. Lunch available. Statements made day of sale take precedence over printed matter. All items sell as is. No warranties given or implied.

417-998-6629
Cross Timbers, Mo.

CrawfordAuctionService.com



Sam
417-328-9137

Chase
417-399-1904

Chance, CAI
417-298-1781

Tom Poynter
Jack Lancaster

Lacy & Jo DeMier Estate

**ESTATE
AUCTION
BOLIVAR, MO**

AUCTION

We will sell the following Household, Automobile, Motorcycles, Trailers, Tractor, Tack, Tools, Guns and Misc. At the Home located ¼ mile North of Bolivar, Mo. on 83 hwy. on

Sat. Oct. 2, 2021 at 9:00 am

WATCH FOR AUCTION COMPANY SIGNS • LUNCH SERVED

FOR MORE PICTURES GO TO: WWW.BRUCEANDLEANAUCTION.COM



AUTO-MOTORCYCLES-UTV

- 2021 Kawasaki Pro FXR 4X4 Mule W/105 miles, Vented Windshield, Top, Winch, Gun Racks (like new)
- 1998 Ford Explorer Sport 4X4 SUV, 2 Door, 4.0 Motor, Automatic Trans. PW, PL, 81,000 Miles
- 2000 Harley Davidson Milwaukee Ultra Classic Motorcycle W/20,195 Miles, Windshield, Helmet Box, Side Boxes
- 2003 Harley Davidson 1550cc Screaming Eagle Motorcycle W/5872 Miles
- 2003 Harley Davidson 1550cc Screaming Eagle Motorcycle W/9588 Miles
- Yamaha 360cc Motorcycle W/6750 Miles
- Yamaha 360cc Motorcycle W/7308 Miles
- Yamaha 250cc Motorcycle W/5204 Miles
- Yamaha 175cc Motorcycle W/6635 Miles

HORSE TRAILER-SADDLES-TACK

- 2006 Kiefer Built Eagle XLA Gooseneck 3 Horse Slant Alum. Trailer W/Living Quarters, Tack Compartment in Rear, Rollout Side Awning (good condition)
- Kodiak 7' X 20' Tandem Axle Bumper Flat Bed Trailer
- Billy Cook Custom Saddle
- 2 Circle Y 16" & 17" Cutting & Reigning Saddles
- Silver Royal 16" Saddle
- Saddle Racks
- Lrg. Lot of Misc. Tack (Bridles, Halters, Blankets, Pads & More)
- Spurs
- Round Pen 15-10' 6 Bar Cattle Panels W/Walk Through Gate
- 8-10' 6 Bar Cattle Panels
- Misc. Gates
- 16' Welded Wire Panels
- 5 Poly Oblong stock Tanks
- Lot of Feed Tubs & Buckets
- Several Horse Mounting Step Stands

GUNS-SPORTING

- H & R Model 922 9 Shot 22 Cal. Revolver Pistol
- Ruger Mark II Target Semi-Auto 22 Cal. Pistol
- Taurus 38 Special 6 Shot Revolver Pistol
- Glock 9X19 Semi-Automatic Pistol
- Hi-Point Firearms Model JHP 45 acp Semi-Automatic Pistol
- Smith & Wesson Model 39-2 Semi-Automatic 9mm Pistol
- Ruger Black Hawk 357 Revolver Pistol
- Ruger New Model Super Black Hawk 6 Shot 44 mag Revolver Pistol
- Henry Lever Action 22 Cal Rifle
- Remington 22 Cal. Semi-Automatic Rifle
- Remington 22 Cal. Bolt Action Model 33 Rifle
- Winchester Model 1890 Oct. Barrel Pump 22 Cal. Rifle
- Marlin Model 882 Stainless Bolt Action 22 Mag. Rifle W/Scope
- Marlin Model 917v Bolt Action 17 Cal. Rifle W/Bull Barrel & Scope
- Savage Model B-17 Bolt Action 17 Cal. Rifle W/Scope, Poly Stock

GUNS-SPORTING CONT.

- Browning Medalion Bolt Action 300 mag Banquet Model 1 of 425
- Browning Stainless Bolt Action 7mm Mag, Rifle W/Poly Stock
- Browning Pump 270 Cal. Rifle W/Scope
- Remington Pump 270 Cal. Model 760 Game Master Rifle
- Remington Pump 300 Savage Model 760 Game Master Rifle
- Remington Model 700 Bolt Action 30-06 Rifle W/Leupold Scope
- Marlin Model 336-A-30 Lever Action 30-30 Rifle
- Savage Model 99-F Lever Action 300 Rifle W/3X12 Scope
- Savage Model 99 Lever Action 300 Rifle
- Savage Model 99 Lever Action 303 Rifle
- Savage Model 340-D Bolt Action 222 Rifle W/Scope
- New England S.S 223 Cal. Rifle W/Scope & Bull Barrel
- Winchester Model 94 Lever Action 30-30 Rifle
- Winchester Model 70 Bolt Action 7mm Rifle
- Stevens Model 39A Bolt Action 410 Shotgun 3" Tube Fed
- Savage Model 219 S.S. 410 Shotgun
- Mossberg 3" Pump 410 Shotgun Full Choke W/Rib
- Winchester Model 12 Pump 20 Ga. Shotgun W/Skeet Barrel
- Winchester Model 12 Pump 16 Ga. Shotgun W/Rib
- Winchester Model 37 S.S. 16 Ga. Shotgun
- Winchester Ranger Model 120 Pump 3" 12 Ga. Shotgun
- Winchester Model 25 Pump 12 Ga. Shotgun Full Choke
- Winchester Model 1300 NWTF 12 Ga. 3" Shotgun W/Rib
- Remington Model 10 Pump 12 Ga. Shotgun
- Remington Model 870 Wingmaster Pump 16 Ga. Shotgun
- Dickinson Model XX3B-2 Pump 12 Ga. 3" Shotgun, Poly Stock
- Win Blk. Powder 50 Cal. Rifle W/Scope, Poly Stock
- Hawken 50 Cal. Blk. Powder Rifle
- Guns will not be Onsite Until Sale Day
- 177 Cal. Pellet Rifle
- Large Cannon Combination Gun Safe
- Lrg. Lot of Misc. Ammo
- 5 X 5 Elk Mount
- Deer, Turkey & Duck Decoys
- Sev. Gun Cases
- Gun Cabinets
- Hoyt Striker II Compound Bow
- Tasco Spotting Scope
- Lot of Hunting Clothes
- Fish Cookers

TRACTOR-TOOLS-MISC.

- LS Model XR4155 Cab 50 hp 4X4 Tractor, 3 Speed Hydro. Drive, 149 Hours, with a LL 4106 Frontend Loader W/6' Bucket (like new condition)
- 3 pt 6' Showse Brush Hog
- 3 pt Post Hole Digger
- 2-3 pt Bale Spikes
- 3 pt 7' Blade
- 4' and 10' Flex Harrow
- Square Hay Bale Elevator
- Dewalt 10" Miter Saw
- Stihl MS 170 Chain Saw
- Stihl 029 Chain Saw

TRACTOR-TOOLS-MISC. CONT.

- 6" Bench Grinder
- Milwaukee Power Tools
- Craftsman Tool Box
- Hand Power Tools
- Alum. Folding Ladder
- Poly Ladders
- Alum Ext. Ladders
- 36" Round Shop Fan
- 25 Gallon Fimco Sprayer
- Generac 4000 Watt Generator
- Powermate Pressure Washer
- Jack Stands
- Motorcycle Jack
- 4 Wheeler Ramps
- 80,000 BTU Space Heater
- Electric Fencing
- Solar Fencers
- Misc. Hand & Garden Tools
- Coleman Air Compressor
- Fuel Cans
- 9' X 9' Metal Dog Pen 6' Tall
- Dog Houses
- Misc. Lumber
- App. Dolly
- Lot of Misc. Items

HOUSEHOLD

- Samsung Automatic Washer
- Whirlpool Electric Dryer
- G E Double Door Refrigerator
- 48" Vizio Flat Screen TV
- 31" Phillips Flat Screen TV
- Sony Sound System
- 2 Micro Fiber Power Recliners
- Dual Brown Leather Power Recliner
- 3 pc. Set Divan, Chair & Ottoman
- 3 Cushion Divan
- 3 pc. Entertainment Center, Book Shelf, Curio Cabinet
- Corner Book Shelf
- Corner Cabinet
- Grandfather Clock
- Oval Dining Table W/6 Chairs & Matching Hutch
- Coffee & End Table Sets
- 5pc Pine King Size Bedroom Set no Mattress
- 4pc King Size Bedroom Set W/Mattress
- Iron Metal Bed
- Quilt Box
- Open Front Hutch
- Several Western & Wildlife Pictures
- 2 Cedar Wardrobes
- Sm. Drop Front Desk
- Phone Systems
- Ex. Equipment
- Lot of Pots, Pans & Dishes

OWNER: ESTATE BRADLEY TOMLINSON

TERMS: Everything sells as is, where is. Nothing is to be removed until settled for. Payment of Cash, Check with Proper ID, or Credit Cards. Auction Company or the Owners will not be responsible for loss of items or accidents. Statements made the Day of the Auction take Precedence over Printed Matter.

SALE CONDUCTED BY **BRUCE & Le'AN AUCTION & APPRAISAL, LLC**
THE AUCTION COMPANY THAT APPRECIATES YOUR BUSINESS

For more information and pictures go to our website at www.bruceandleanauction.com

RONNIE BRUCE - Fair Play, MO
417-777-1685 or 417-654-2214
colronbruce@gmail.com

BRANDON BRUCE
Fair Play, MO

BILLY BRUCE - Stockton, MO
417-399-4800
colbbruce@gmail.com

ESTATE AUCTION

SATURDAY, SEPT. 25 @ 9:00 A.M.

Directions: OLD SEARS BUILDING IN SALEM, MO

Located between Parts Tek and Town & Country Bank on Scenic Rivers Blvd. Watch for signs.

HOUSEHOLD • COLLECTIBLES • LAWN ITEMS • MISC. ITEMS

Glass Front China Cabinet - Tea Sets
 Folding Table - Tea Cart - Room Divider
 Area Rug - Glassware - China
 Sofa - Side Table - Towels - Phone Table
 Antique Full-size Bed - Trunk - Box Fan
 Quilt Rack - Wooden Chairs - Oil Lamps
 Wicker Shelf - Upholstery - Corner Shelf
 Space Heater - Old Table Lamps
 Wall Hangings - Odds & Ends Ammo
 Rainbow Vacuum - Baby Bed - Hall Table
 Chandelier - Stainless Mixing Bowls
 Old Jars - Lots of Golf Clubs, Left & Right Hand
 Metal Crate - Ceramics
 Christmas Decor
 Old Quilts - Homemade Ceramics
 Sewing Boxes - Hobnail Glass
 New Microwave
 Lots Model Cars & Trucks
 Tomato Cages - Wooden Cabinet
 2 Yard Carts - Brass Bed Frame
 Rear Tine Tiller - Granite Top Table

Tator Box - Canning Accessories
 Gibson Upright Freezer
 Metal Patio Table - Gun Cabinet
 Chest Freezer - Roll-top Desk
 Amish-made Table & 4 Chairs - Hose Reel
 Metal Shelf - Old Windows
 Cub Cadet LTX1050 KW 50" Kawasaki 23hp
 Wash Tub on Stand - Electric Trimmers
 Whirlpool Dishwasher - Sitting Chairs
 Several Canning Jars - Antique Table Fan
 Apple Baskets - Ornate Pic Frames
 Graniteware - Old Sifter - Churchill Dishes

Wicker Chairs - Old Desk
 Cast Iron Chicken Fryer - Old Pop Bottles
 Cast Iron Skillets - #2 Crock
 Hotdog Warmer - #3 Crock
 Western Ammo Box - Mens Boots
 Mens Jackets - 3, #1 Crocks
 2, Half Gallon Crocks - #2 Crock
 Car Ramps - Maytag Washer & Dryer
 Kenmore Gas Stove
AUCTIONEER'S NOTE: Lots Of Boxed
 Items Not Listed.

See you there! - Tom!



ANNOUNCEMENTS AT AUCTION TAKE PRECEDENCE OVER PRINTED MATTER

WULFF AUCTION

Auctioneers:

Col. Tom Wulff - Col. David Wulff
498 Hwy. B, Salem, MO 65560
573-729-8476



RAIN OR SHINE
OWNER & AUCTION
PERSONNEL NOT
RESPONSIBLE FOR
ACCIDENTS AT
SALE SITE

TERMS: CASH OR
APPROVED CHECK -
I.D. REQUIRED
NOTHING REMOVED
UNTIL SETTLED FOR

Licensed
Appraisals

Clerk: Tracy Strange Cashier: Nancy Inman

See Wulff Auctions at www.thesalemnewsonline.com/auctions

Outstanding Real Estate Investment Portfolio AUCTION

Friday, October 8th. * 10:00 AM

276 Fountain Lane, Kimberling City, Mo 65686



39.5 Acres, nestled in the heart of Ozark Mountain Country, near Table Rock Lake with 120 bed nursing facility and 55+ retirement village including:

8 Duplexes, 1400 sq ft, 2 bedroom 1&1/2 bath with one car garage.

4 Duplexes, 1150 sq ft, 2 bedroom 1&1/2 bath with one car garage.

6 Fourplexes, 840 sq ft, 1 bedroom 1 bath each.

41,200 +/- sq ft., 120 bed Healthcare Facility.

100% vacancy provides the opportunity to redevelop or convert into many other uses or reopen as healthcare/assisted living facility. The property offers investors the opportunity to purchase these vacant buildings at a significant discount with a huge value-add opportunity. While no longer being operated as a skilled nursing facility, Certificate of Need is still current. This offering represents a potential redevelopment opportunity conversion into other uses.

The property was formerly the Table Rock Health Care & Retirement Village, a nursing home/55+ retirement village that specialized in short-term rehabilitation, palliative and hospice care, long-term care, and respite services. Facility was closed in December of 2020 after COVID-19 rates ticked up in many of the skilled nursing facilities across the state.

Nursing home is configured with 120 beds, while the building was designed and utilized as a skilled nursing facility. The Duplexes & Fourplexes are prime for repositioning or potential redevelopment for multi-family, ideal for long/short term nightly rentals, retirement homes, etc. (Some do have limited lake views).

This facility is well positioned near a number of amenities, restaurants, banking, shopping, Branson and Beautiful Table Rock Lake. This asset allows investors to purchase a vacant building with upside opportunities. Repositioning or redevelopment of the asset will allow the new owner to enjoy significant capital appreciation upon future disposition.

Property tour are available by appointment only. Please Contact Larry Foster at 417-839-6860 or bidnewsold@aol.com to schedule a site tour.



Property has it's own Missouri State DNR licensed water supply & sewer systems.

Drinking water facilities are under the system name: Table Rock Retirement Village (MO-5069084); One well, drilled in 1981, 1,390 feet deep, 402 feet of 10-inch steel casing, approximately 300 gallons per minute pump; One elevated storage tank, 100,000 gallons total volume; Waterline distribution; Wastewater treatment plant under the system name: Table Rock Healthcare (MO-0100161); Extended aeration treatment plant with design flow capacity of 28,000 gallons per day; Design population equivalent of 244

Shown by Appointment Only.

Term & Conditions: 1. Foster Auction Service is Agent for Seller Only. 2. Taxes & Utilities will be Pro-rated at closing based on 2020 Taxes. 3. Seller is to pay normal Seller Closing Costs, Buyer is to pay normal Buyer Closing Costs. 4. Closing will be on a date not more than 30 days from date of sale. 5. Bidding is open to any Qualified Bidder under terms & conditions offered. 6. Possession is to be at Closing. 7. Winning Bidder will sign a Real Estate Contract upon completion of bidding today, which will be a no Contingency Contract. 8. Bidders are Urged to Examine the Property prior to Bidding to Determine and satisfy themselves as to Boundaries and Condition of same, Seller or Agent makes no Statements or Warranties either Expressed or Implied as to Condition. All information is from sources Deemed Reliable but not Guaranteed, Property sells "AS-IS"/"WHERE IS". 9. Announcements made at time of Auction will take precedence over any and all Printed Matter or Prior Statements made by Agents or Seller, Conduct of the Auction and Increments of Bidding are at the discretion of the auctioneer. 10. Property sells "as is"/"where is" with no contingencies. 11. Property sells subject to Probate Court Approval. 12. Minimum Bid 1.8 million dollars. 13. NO BUYERS PREMIUM 14. Non Refundable 10% Down Day of Sale, Balance Due 30 Days or Less at Closing. 15. All Registered Bidders must have Bank letter of Credit or Proof of Funds to Bid at Auction.

FORMERLY "TABLE ROCK HEALTHCARE & RETIREMENT VILLAGE"

See our website for pictures and more info!



Auctioneer: Larry Foster | Galena, Mo

Phone: (417) 723-8329 Cell: (417) 839-6860

www.fosterauctionservice.com Email: bidnewsold@aol.com



FARM EQUIPMENT DISPERSAL

IT ALL SELLS - OWNER SELLING FARM

TRAVIS AND SALLY ROST

AUCTION

Saturday, September 25, 2021 @ 10:30AM
95 ROCKY HOLLOW DR. • MARSHFIELD, MO 65706

Directions: From Marshfield follow Hwy 38 East 2 miles to Farmland Rd South 1 mile, go East on Old Seymour Rd. 3 miles to sale site on 95 Rocky Hollow Dr.

TRACTORS AND EQUIPMENT - ATV

- Massey Ferguson 4233 4x4 35% tires with Buhler Loader 595 quick thatch bucket & bale fork
- 20' + 5' Dovetail Gooseneck trailer
- 1 bumper pull 16ft tandem axle
- Buhler pull stock trailer rawhide 16ft
- 3pt bale fork
- 3pt scoop
- Ferguson 40 3pt Tractor (NOT RUNNING)
- 5ft Bushhog
- 6ft Bush hog
- 3pt bale spike – trailer mover
- 6ft 3pt blade
- 15ft Rhino bushhog
- Box blade 7ft
- 15 gallon spot sprayer
- Polaris Ranger 4x4 1146 hrs 500 EFI
- Welding trailer torch and generator + welder

- Bad Boy zero Turn 60 in deck 747 CC Kohler (NOT RUNNING)

- Gas operated post driver Skidril
- Pressure washer 2800 PSI
- 25 gal spot sprayer

HAND TOOLS – SOCKETS-WRENCHES

- Homemade yard trailer
- Shopsmith (Complete)
- Box router bits 24bits
- 2 fence stretchers
- Chicago 4 1/2" grinder
- Router
- Craftsman skill saw
- Craftsman sawsall
- Milwaukee sawsall
- Belt sander Skill
- 25 piece router bits
- Chicago 10" miter saw
- Schumaker Battery charger
- 24D weed killer

- Noromectin Ivermectin
- Miracle fount water fountain
- Ford portable air compressor
- Live trap
- Lot extension cords
- Drill bits
- Lot steel fence posts
- lot electric fence posts
- 1 Comealong
- Ryobi 4 1/2 in grinder
- Makita Chop Saw
- Poulan chain saw
- Poulan chain saw
- Homelite chain saw
- 3/4 in socket set
- Rol Red brand Barbed wire
- Stihl Weed eater FF 90R
- Stihl MS 290 chain saw with case
- Homelite chain saw with case
- Electric fence

- Drill press Guardian power
- Assorted sockets and wrenches
- Hobart welder 140 wire feed
- 2 ton jack stands
- 1 1/2 ton floor jack
- Parts bin 72 bins
- Hyd valves
- 1 central tool caliper vintage
- Small saddle
- Paslode air stapler
- Porter Cable air stapler

EXERCISE EQUIPMENT - HOUSEHOLD

- Windmill yard art
- Weider 3950 workout gym
- Image elliptical 825
- Pro form treadmill
- Lot misc. household
- Jacobs Antique Scales



Hoover Case - Auctioneer • MJ Johnson - sale manager: 417.838.0291
Have questions, Let us know • 417.859.3204 or 417.844.6020
info@caseauction.com • auctionzip.com ID#24071 • www.caseauction.com

Terms: Announcements made sale day take precedence over all printed material. Neither Case Auction or property owner guarantees the absolute accuracy of supplied information.

RUBBER & LEATHER BOOTS AND HIP WADERS. Men's 11, Women's 7, some insulated. \$15-\$40 obo. 636-239-2695. Washington.

MOEN KITCHEN FAUCET: Single lever, sprayer, new cartridge. \$45 obo. 636-239-2695. Washington.

CUTTING BOARD: Fits in your kitchen counter top, various species of ducks. \$15. 636-239-2695. Washington.

ROUND BALE SPIKE: For front tractor bucket. \$60. 417-532-8048. Lebanon.

1951 FORD BRAKE DRUMS: With backing plates, exhaust manifold and cross-over plate. \$75. 417-457-1023. Raymondville.

WANT TO OPEN A REC CENTER?: 6 pool tables 3x7 Valley coin operated tables, chairs, Cherry Master Electronic Machine, misc. Sell all or individual. 417-531-1496. Lebanon.


BUYING PRE 1960'S BEER SIGNS: FALSTAFF, GRIESE DIECK, CAPITOL, STAG, HAMMS & MORE. Soda signs too! 573-680-5377. Jefferson City.

ENGLISH SHEPHERD puppies, bob tails, some not, out of working parents, 573-760-5157. Centerville.

ELECTRIC STOVE: Like new, 20 inches wide, apartment size, 4 burners, white, \$400. 417-239-5935. Lebanon.

FOR SALE: Lady's jeans, denim colored, elastic waist, size 18. \$10 each. 417-322-2960. Lebanon.


LOOKING TO BUY TRACK FOR JOHN DEERE: 450B or 450C. 636-232-7480. DeSoto




HR Ruby 8604
CED 8 BW 2.6 YW 143 MB 1.05
RE 1.22 SB 192 SC 310

SVA Hennrietta Pride 6281
CED 8 BW 2.0 YW 141 MB .73
RE .91 SB 170 SC 282

Genetics selling by: Deadwood, Regiment, Set Apart, Salvation, Hometown, Strength, Clarity, Eastwood, Fireball, Ultra, Iconic, Growth Fund, Iron Horse





Home of SVA Gratitude



ANNUAL PRODUCTION SALE
OCTOBER 8, 2021

SELLING 30 ANGUS BULLS
Large offering of Angus Females

BRIAN & KIM SMITH
Kim 573-729-2910 • Brian 573-247-7165
7806 Hwy. K • Salem, MO 65560
smithvalleyangus.com

WES TIEMANN

500 ROUND BALES: \$45/bale. 3,000 square bales, \$5.50/bale. 417-345-5634. Phillipsburg.

WARSAW, MISSOURI OZARK ECHOES 1964 YEARBOOK, \$20. 417-532-2045. (leave message and phone number). Lebanon.

THOMAS KINKADE DIFFERENT SERIES: Hardback, excellent condition, \$2 each. Happy Hollister books, \$2 each. 417-532-6561. Phillipsburg.

JOHN DEERE 5085E: 85 hp, 770 hours, cab, 4x4, loader, nice. 417-646-8807. Osceola.

MINN KOTA TROLLING MOTOR: 50lb thrust, \$75. Digital treadmill, \$200. 573-759-7268. Dixon.

5+ ACRES WITH CABIN: Outbuildings, well, electric. Borders forestry, hunting deer, turkey... Call to see \$40,000. 573-368-1625. Newburg.

AUSTRALIAN SHEPHERDS for sale, blue merle, red and whites, out of working parents, 573-663-7459. Centerville.

RICE 14,000# MAGNUM EQUIPMENT TRAILER: With dovetail and ramps, 2017, used very little, always covered. \$3,995. 573-786-2220. Steelville.

KUBOTA 54HP: 4x4 hydrostatic, 103 hrs, \$27,700. 8x20 shipping container, \$800. 573-257-7985. Jefferson City.

GAS ENGINE POWERED WOOD SPLITTER: Good condition. \$300. 417-532-8048. Lebanon.

CLARINET IN CASE: \$100 or trade. 573-327-9068. Desloge.

ELECTRIC ORGAN YAMAHA ELECTONE: Good condition. \$300 obo. 816-521-0956. Lebanon.

STOVE FREE STANDING: Open hearth. \$100. 314-972-2903. Potosi.



MID MISSOURI STOCKYARDS

REGULAR SALE EVERY THURSDAY 11AM

WATCH OUR WEEKLY SALE IN REAL TIME ON DVAUCTION.COM

For Farm Visits, Market Updates, or Trucking
Call **Zach Cox 417-777-1320**
Dan Romine 573-578-4939

**Competitive Buyers!
Competitive Commission!
Competitive Market!**

Barn: 417-532-9292 
I-44 • Exit 123 "just outside of Lebanon"
17505 Route 66, Phillipsburg, MO 65722
For weekly market updates, visit us at www.midmostockyards.com

AUCTION

Sat. October 2, 2021 10:00AM
Donald & Betty Coffman Trust
16553 State Hwy 5 Lebanon, MO 65536

Equipment, Tools, Lawn & Garden* 8N Ford Tractor* H Draw Plow* Snapper Generator* Shop Vice* Johnson Outboard* Bench Grinder* Trolling Motor* Air Tank* Crosscut Saws* Fishing Poles* Hand & Garden Tools* Alum Ext Ladder* Wrought Iron Patio Furniture Guns* Rem Model 34 22 Auto* Win Model 67 22* 1890 Win 22 WRF w/ Octagon Barrel & Crescent Buttplate* Nylon 66* Winchester 1894 32-40* Rem Model 25 32-20* Win Model 37A 20ga* Stevens 12ga Single Shot* Browning Belgium 12ga Auto* Win Model 94 22* Rem Model 7 243 Bolt Action w/ Tasco Scope* Rem 700 243 w/ Tasco Scope* Marlin 30-30* Win Model 61* Franchi 12ga SxS* Stevens Favorite 22* Win Model 90 22 **Furniture & Household*** Antique Pie Safe* Gun Cabinet* Hand Crank Victrola* Rocker* 3pc Maple Bedroom Suite- Bed, Dresser & Chest Of Drawers* Hide-a-bed Sofa* Cast Iron Dinner Bell* Fruit Jars* Kitchenware* Guitar* Violins* Instruments* Chest **Plus More!** www.glenworth.com

Auction Conducted by:
Glenworth
Auction Service & Realty (417) 767-4345
Glen Yutzey, Auctioneer/Broker

REAL ESTATE & PERSONAL PROPERTY
of Harold and Sharon Kay Sullins

ESTATE AUCTION
10 a.m. Saturday, Oct. 2, 2021

Location: 17123 Boone Creek Rd., Licking, Mo. 65542. Directions: From Licking, take Hwy. 32 west approximately 3 miles to Deason Drive, then Boone Creek Road and follow auction signs the day of sale.

Open House/Land Viewing
2 - 4 p.m. Sunday, Sept. 26

REAL ESTATE

Tract 1: 2002 Mobile home on four acres - on rural water with large shop building and garage at auction address.
Tract 2: Older mobile home on four acres located at the corner of Deason Drive and Boone Creek Road.
Tract 3: Additional 225 acres wooded land w/spring & rustic cabin.

REAL ESTATE TERMS: Real Estate sells as is with no contingencies, with owner confirmation, closing costs split between the buyer and seller, taxes prorated, 10% down day of auction and to close within 30 days. For more information you may call, 417-926-8575.

Note: A complete auction listing will be in next week's Messenger.

Darren SCHEETS AUCTIONS
www.scheetsauctions.net
417-457-6638 • 417-926-8575

CLIVE CUSSLER BOOKS! \$5 hardback, \$2 paperback plus shipping. For list call 417-457-1023. Raymondville.

200 GALLON POLY TANK: \$190. 417-322-0161. Lebanon.

4 FT. PRESS BRAKE: Nice, (Needs Parts) \$450. 417-322-0161. Lebanon.

WILLBECK CHISEL PLOW: \$925. 417-322-0161. Lebanon.

2-BLACK ANGUS HEIFERS: Nice, Grass fed, 100% Natural, Ready to Butcher - \$150/pound. 417-322-0161. Lebanon.

HAMMERMILL 220V: (Grind Your Own Grain) \$825. 417-322-0161. Lebanon.

UNITOOL PUNCHES: (to punch steel) \$25 each. 417-322-0161. Lebanon.

GRIZZLY MODEL G9744Z2 METAL-CUTTING BANDSAW: Like new (cost new 4K+) \$2,700. 417-322-0161. Lebanon.

WANTED: 1965 to 1971 International Scout 800. 816-838-6254. Lee Summit.

Salem Livestock Auction
Hwy. 32 Salem, MO • 573-729-8880
Over 40 Years in the Livestock Business


Pre VAC Sale
Monday Oct. 4th • 12 pm

Along with our regular Feeder Sale we will sell weaned cattle at approximately 2pm cattle must be at least 45 days weaned and at least one round of shots

Luke Peterson • 417-259-0036
Shawn Chadwell • 417-830-0209
Bryce Lauderdale • 417-255-5124
Field Representatives
Wright & Surrounding Counties
We Appreciate Your Business!

Cattle Sale Every Monday at 12
Feeder calves to sell at 12, butcher cows & stock cows following

All Consignments Welcome Up Until Sale
Allen Thompson Renee Lauderdale
417-932-4097 417-926-2682
Chuck Thompson Brandon Barton
417-257-5610 417-259-1597
Terms of Sale: Cash or Approved Check!



ESTATE AUCTION SAT., SEPT. 25TH, 2021; MORNING SALE - 9:00AM

Due to the death of my husband, Jerry Karr, I will sell the following personal property at auction, located from Rolla, Missouri, take Hwy. 63 South past United Rentals to Hartville Road (CR 7130). Continue on Hartville Road 2 miles to auction. Follow Lorts Auction Today signs

HOUSEHOLD • ANTIQUES • TRUCK • TOOLS

FARM EQUIPMENT, SHOP TOOLS & RELATED ITEMS Ratchet straps; Ropes; 6 gallon propane bottle; 3 ft. Sears floor jack; Electric drills; Metal shelving; Reese hitches; Craftsman 3 drawer toolbox; Gas cans; Garden hoses; Garden sprayer; Wooden boxes; 3 gallon propane tanks; Shovels; Werner 7 ft. step ladder; Rakes; Hang Up Pro shop vac; Barrels; Magic Chef apt. size shop refrigerator; Schumacher battery charger; Chain come-a-long; Yard aerator; Fiberglass 12 ft. extension ladder; Steel shop bench; Craftsman 8 inch 1/3 hp. drill press; Milwaukee cordless drill; Cordless work light; Push plow; Craftsman 6 inch bench grinder; Speedway 14 inch metal cutoff saw; 3 ton jack stands; Pipe wrenches; Coleman Powermate 4 hp. 11 gallon air compressor; 2 air tanks; Propane bottles; MaxxAir shop fan; Car parts; Axes; Splitting mauls; 6 inch shop vice; Extension cords; Mr. Heater gas heaters; Lot of lumber (2x4, 2x6 & walnut); Craftsman 5.0 hp. 12 gallon vac; Lots of firewood; Push lawnmower; Craftsman 46 inch cut riding mower (model T1600); 2 wheel pull behind lawn mower trailer; Live animal traps; 2 wheel dolly **FORD TRUCK** 2001 Ford Ranger XLT 2 wd, extended cab, 4.0 motor, white w/gray cloth interior, one owner, 158,000 miles (very nice) **REAL ESTATE** 1993 Belmont 3 bedroom, 2 bath Manufactured Home, 44x28, newer central air & heat in 2018, front & back deck, handicap accessible, 2 acres +/- on shaded lot w/blacktop road frontage. Well & lagoon, 28x28 insulated shop w/concrete floor w/garage door opener. Older barn converted into shop & storage, 8x12 storage shed. Nice clean home & property. Non-refundable 10% down day of sale. Closing within 30 days. Cash or conventional loan. Owner has right to reject last & final bid. (as is, where is) **HOUSEHOLD, FURNITURE & ANTIQUE** Oil lamps; Marbles; Wounded Warrior figurine; Dirt Devil 12 amp vacuum; Sony Stereo; Animal carrier; Coca Cola collectibles; Children's books; Bookshelves; GE microwave; Eagle collection; 4 drawer file cabinet; Water cooler; Lots of Carhartt clothing (like new); Model ship; Collection of caps; Christmas decoration; Camp chairs; Coleman camp lanterns; Coolers; Granite stock pot; Granite roaster; Lot camping supplies; Camping tent; Blankets; 11x18 dining canopy; Bicycles; Frigidaire upright freezer; uncast patio cabinets; Fishing rod & reels; GE refrigerator; Christmas village; Canning jars; 3 ft. folding table; Wash tubs; Metal frame park bench; Old child's sled (metal & wood); Railroad lanterns; Baskets; Jim Bean decanter; Air mattress; Beer stein collection; Glass beer mug collection; NASCAR collection; Browning Medallion 14 gun gun safe; 3 deer mounts; Ammunition

Many more articles too numerous to mention

AUCTIONEER'S NOTE: This is a good auction with lots of good clean items. Off the road parking available. Come spend the day with us on Saturday, September 25. Lorts Auction Service.

Owner: Beth Karr
12827 CR 7130, Rolla, MO 65401

SALE CONDUCTED BY LORTS AUCTION SERVICE ST. JAMES, MO 65559;
573-699-4308 • 573-263-0243 • **AUCTIONEERS:** Larry W. Lorts & Gary R. Lorts Licensed and Bonded
"like" us on Facebook- Lorts Auction Service or view this auction on line at www.threeriverspublishing.com or Auctionzip.com (auctioneer ID # 42353)

2003 FORD RANGER PICKUP: Custom paint, very good condition. 135,xxx miles, bedliner, cover, super cab. 417-527-8693. Lebanon.

SMALL TRAILER: To pull behind garden tractor (like new) \$95. 417-322-0161. Lebanon.

CONWAY HIGH SCHOOL BEARS 2000-2001 YEARBOOK. \$12.50. 417-532-2045. (Leave message and phone number.) Lebanon.

UTILITY TRAILER: 20 foot, 2 foot dove tail, nice, heavy duty trailer, \$1,850. 573-468-7689. Sullivan.

BUFFALO LIVESTOCK MARKET LLC



276 Hwy 32 West
Buffalo, Missouri

September 18th, 2021
Receipts: 1323 Head

Feeders All Weights Weaned Steady \$3
Lower. Unweaned Fleshy Calves \$3-\$10
Lower. Cows & Bulls Steady.

REPRESENTATIVE STEERS

300-400 @ 150.00 to 217.00
400-500 @ 145.00 to 174.00
500-600 @ 140.00 to 164.00
600-700 @ 130.00 to 156.50
700-800 @ 138.00 to 153.00
800-900 @ 120.00 to 138.00

REPRESENTATIVE HEIFERS

300-400 @ 130.00 to 160.00
400-500 @ 126.00 to 154.00
500-600 @ 127.00 to 142.00
600-700 @ 125.00 to 146.00
700-800 @ 130.00 to 145.00

FEEDER BULLS

400-500 @ 130.00 to 156.00
500-600 @ 128.00 to 143.00
600-700 @ 120.00 to 148.00
700-800 @ 105.00 to 130.00
800-900 @ 92.00 to 122.00

BRED COWS YOUNG

\$850.00 to \$1,225.00

COW CALVE PAIRS

\$830.00 to \$1,330.00

SLAUGHTER COWS

High Dress Fleshy 70.00 to 77.50
Med Flesh 60.00 to 70.00
Low Dress Thin 50.00 to 58.00

SLAUGHTER BULLS

High Dressing 97.00 to 103.00
Med Dressing 80.00 to 96.00
Low Dressing Thin or Full
74.00 to 80.00

Special Cow Sale Tuesday, September 21st
at 6:00PM • 500+ Cows & Bulls

MON-WED MARKET REPORT

Listen to KJEL 103.7FM • Lebanon or KY00 99FM • Bolivar

VIEW OUR SALES AT CATTLEUSA.COM

CALL FOR TRUCKING OR ON-FARM VISIT

Lyle Caselman • Owner-Manager
417-345-7876 • mobile 417-533-2944
Leon Caselman • Owner
417-345-4514 • mobile • 417-588-6185

FOR SALE AKC SHIBA INU'S: 1 male,
2 females, \$300 for all. 573-743-6616.
Cherryville.

A TRUCK LOAD OF FLEA MARKET
& AUCTION ITEMS: For \$150 or trade.
573-327-9068. Desloge.

HOSPITAL BED: With rails, all electric,
thick bed pad. \$600. 417-532-9350.
Lebanon.

A FRAME TINY HOUSE/SHED: 6 ft x
8 ft, new floor, furnished. \$800. 573-759-
7143. Vienna.

OUTSIDE WOOD FURNACE WITH
DUCT WORK: Sale or trade for truck or
tractor. 573-734-2822. Bismark.

FOUR BUMPERS TO FIT OLDER
MODEL CHEVELLE: \$125. 573-734-
2822. Bismark.

OLD ELECTRIC WELDER: Full of
copper. Sacrifice \$100. 573-734-2822.
Bismark.

TRUCK LOAD OF CELOTEX
INSULATION: \$50 or trade. 573-734-
2822. Bismark.

RESIDENTIAL DEVELOPMENT LOTS

5 VACANT LOTS,
FOREST RIDGE PLAT 2
29 LOTS FOREST RIDGE PLAT 4



**Sells To The High Bidder
Regardless of Price**

Lots 18, 20, 21, 70 & 94,
Forest Ridge Plat 2

Permit Ready – All Utilities to Site
Offered Individually or Entirety

Forest Ridge Plat 4
Containing 9.35 Ac.

29 Platted Lots, No Infrastructure in
Place. Final Plat Recorded in Book 40,
Page 47, Boone Co. Records
Offered In Entirety

**Online Bidding Ends: Tuesday,
September 28th at 12:30 p.m.**

**Check It Out & Bid At
www.AtterberrySells.com**

For Additional Information Or Terms, Call Your
Real Estate At Auction Specialists: Atterberry
Real Estate Auctioneers 573-474-9295



AUCTION HERMANN MO AUCTIONS

Thursday, September 30, 2021
5:30 P.M.

513 Market Street
Hermann, Mo. 65041

Boxed lots starting at 5:30 then selling
Antique Furniture, Antiques, Used Furniture,
Glassware, Tools, Pictures, Household and
MORE!!!!!!

SEE: www.Facebook.com/HermannMoAuctions
OR AuctionZip.com

TERMS: Cash or good check with proper ID or
charge (3% fee applied for charge cards)
Everything sells AS IS. ALL Sales final.
Refreshments Available

CALL: (573)409-0019 for information
or (314)608-1468

**1908 SEARS, ROEBUCK CATALOG
REPRINT: 184 pages, \$10. 417-532-2045.
(Leave message and phone number).
Lebanon.**

**OLD TIME ANALYSIS MACHINE FOR
CARS: \$125. 573-734-2822. Bismark.**

**GLASS FOR 55, 56, 57 CHEVROLET:
\$150 or trade. 573-734-2822. Bismark.**

**BIG SMOKER FOR MEAT: New \$400 –
Sacrifice for \$100. 573-734-2822. Bismark.**

**ANTIQUe BATTERY CHARGER: Full
of copper. \$100 or trade. 573-734-2822.
Bismark.**

**OLD DELL COMPUTER: \$75 or trade.
573-734-2822. Bismark.**

**COMPLETE PARTS DEPARTMENT:
From Pontiac, Buick, and GMC dealer. New
end boxes, special shop tools, parts books,
250 service manuals, 60's-90's. Make offer.
573-438-2672. Potosi.**

ANTIQUA BLACKSMITH FORGE VICE, ANVIL AND TONGS: \$1,000. 573-438-2672. Potosi.

NICE 250 BUSHEL GRAVITY WAGON: On J.D. running gears. \$1,600. 417-646-8807. Osceola.

Where it's always a bull market!
Angus - Brangus - Ultrablacks
WALL STREET CATTLE CO.
 14603 HIGHWAY KK, LEBANON, MO
 417-288-4444 • WALLSTREETCATTLE.COM

JOHN DEERE 693 CORNHEAD: Shedded, good condition. 417-646-8807. Osceola.

FORD 4610 DIESEL TRACTOR, CANOPY, WITH BRUSHHOG LOADER: 52 hp. 2000 hours. \$12,500. 573-765-4406. Richland

Buildings • Hunter's Cabins • Lawn Furniture
JAMCO BUILDERS
JAMCO Portable Buildings
 800-688-2064 • 307 Enterprise Dr. • Seymour, MO • www.jamcobuilders.com
Rent To Own Plan

JOHN DEERE 566 ROUND BALER: Monitor, kicker. \$5,200. 573-765-4406. Richland.

IHC 1086 DIESEL TRACTOR: Cab and air, 130 hp. \$13,000. 573-765-4406. Richland

JOHN DEERE 4230 DIESEL TRACTOR: Cab & air, 100 h.p. \$13,500. 573-765-4406. Richland.

KEAN CUTTER 3-POINT 7FT FINISH MOWER: \$1,500. 573-765-4406. Richland.

JOHN DEERE 310C DIESEL BACKHOE LOADER: \$11,500. 573-765-4406. Richland.

JOHN DEERE 2955 DIESEL TRACTOR CAB & AIR: 85 hp. \$19,750. 573-765-4406. Richland.

NEW HOLLAND 1411 DISKBINE WITH ROLLERS: \$8,950. 573-765-4406. Richland.



You're Invited!

CUSTOMER APPRECIATION DAY!
SEPTEMBER 25 - FOOD & GIVEAWAYS!

STEELVILLE FEED & FARM

573-775-2650 • 11 Cobblestone Rd., Steelville, MO
 Mon-Fri 8am-5pm • Sat 8am-12pm • Sun Closed

SIDE WINDER 7FT. TIRE DRIVE PULL TYPE BRUSH CUTTER: \$1,600. 573-765-4406. Richland.

STOCK MOBILE HOMES AVAILABLE: We gottem, single and double, 3 and 4 bedroom! Call Tuffy 573-657-2176. amegamobilehomes.com

IHC 766 DIESEL TRACTOR: 80 hp, NEW engine overhaul. \$8,500. 573-765-4406. Richland.

ROUTE 66 DINING 7 LODGING GUIDE: 183 pages, \$5.00. 417-532-2045. (leave message) Lebanon.

POOL TABLES: Installations, moves, recoveries, repairs, accessories, etc. 573-646-1700.

BARN OF MISSOURI BOOK: A Storehouse of History, HB, 168 pages, \$12.50. 417-532-2045. (Leave message and phone number). Lebanon.

TAYLOR TRUCKS & EQUIPMENT
417-924-2026 • 2676 Hwy. 5 Mansfield, MO
DANUSER DEALER
Intimidator Tree Puller
T3 Post Driver & Other Attachments
New Mowers! Bush-Whacker, Big Bee Storage Containers & Dry Vans - 20' - 53'
 Farm Tires, New Semi Tires, PTO's & Parts for Rotary Mowers, Farm Tractor Implements, Plows, Used 15" Bush-Whacker Now In Stock, Discs, and More Skidsteer Attachments: Pallet Forks, Buckets, Grapples, Hay Spears, RR Ties
Bush-Whacker Heavy Duty Rotary Cutter
TRAILER PARTS & REPAIR | BUSH-WHACKER HD, SKIDSTEER BRUSH CUTTER
We Invite you To Come By & Look Us Over!
Located 2.5 Miles North Of Mansfield, MO On Hwy 5

YOUR LAND AND FARM EXPERTS!

Benton Co-64 Acres

\$425,000



This is the place you have been waiting for! 64 acres that have plenty of open ground for livestock. One nice big pond right behind the house and a creek running down into the pond for water year around. Property has a good barn for storage of your equipment or livestock. Plenty of deer hunting here, lots of good wooded areas and just across the Hwy is Forbes a non-hunting 13,000 sanctuary that has lots of good trophy bucks that will for sure come onto this property. Owner has seen a 150 class deer this past week in the yard. Turkeys are common here as well. Highway frontage but private driveway turns and leads down into this private setting. The home is a 3 bedroom 2 bath with a nice open feel. This home is new and maintenance free. Granite counter tops and nice custom cabinets make up this nice bright kitchen, the high end appliances set this place off as well. Custom marble tops and cabinets in the bathroom as well. Owner built a huge

storm shelter/ gun room with a safe door in the home. Not something you see very often. Also has a gas stove and tankless water heater supplied by a 500 gallon propane tank. Seller is in the process of finishing a few odds and ends, but is 90% done and a few things like outside decks will be have to be done by the buyer. There is a new John Deere zero turn mower and John Deere Tractor owner just bought that with a little more money he would make a deal on them. **Call Mike Stoner at 573-774-9775 Cell for more information.**

Hickory Co-157 Acres

\$628,000



You will have to look far and wide to find a farm that has this kind of features! This 157 acres by Flemington, Mo has county road frontage and power is at the front of the property. Lots of open ground for livestock and one could easily make more. Weaubleau creek is a beautiful live creek that runs through the middle of the farm. You can swim or fish in this creek. It has a gravel bottom not a mud bottom like a lot of creeks. There is also a spring branch that runs through the middle of the property that feeds into the main creek, it has a natural waterfall that is picture perfect. 2 ponds are also on the land for livestock needs. You want a hunting farm then you better look here, we jumped two nice bucks and one was pushing a 150 class type of a buck the other 140ish. Deer are all over it along with turkey. You would be hard pressed to view this property and not see wildlife. There is a 30+ acre bottom field that is

used for hay production, but you could easily grow crops here with the dirt in this bottom field. Big mature timber that has not been cut in a lot of years. One of the nicest farms i have seen in awhile. **For more information contact Mike Stoner at 573-774-9775 Cell.**

Pettis Co-16 Acres

\$2,400,000



Cooley Farm North is a Premier Agricultural Business Opportunity in Missouri. Cooley Farm North is a 6 House Broiler Breeder Farm Operation Located in Southern Pettis County Missouri on 16+/- Acres, That Consistently Has a Gross Annual Income of \$545,000!! This Farm is Set up With Six 42x400 Breeder Houses Built in 1998 That are Currently Under Contract With Tyson Foods Inc. Cooley Farm North Has Been Recognized as One of Tysons Top Breeder Farms and Has Received The Golden Feather Award! Breeder Houses are Fully Automated with Computerized Feeding and Ventilation Systems. Each Breeder House is Equipped with Dual Egg Nests, Egg

Belts and Gathering Table. Breeder Houses Have Been Updated With New Side Curtains, Tunnel Ventilation System, LED Lighting and Each Egg Room is Equipped With an Efficient Mini Split Heating and Cooling System. Each Breeder House Has a Stocking Rate of 8,400 Hens and 780 Roosters. These Breeder Houses are Designed to be Very Efficient With Having the Egg Rooms in The Middle Between Two Barns. Also Attached is a 50x150 Open End Machine Shed, Modular Home with 3 Bedrooms and 2 Bathrooms, Double Wide Trailer Home with 3 Bedrooms and 2 Bathrooms. Next to the Homes is a 40x60 Outbuilding That Has a Section Converted Into a 1 Bedroom and 1 Bathroom Apartment. Cooley Farm North is One of the Most Pristine Broiler Breeder Farm Operations in West-Central Missouri. If You are Looking for an Amazing Opportunity to Run a Very Established Lucrative Agricultural Business, Wait no Longer. We Ask that Qualified Buyers will Provide a Pre Approval Before Scheduling a Showing. **If Your Interested and Would Like to Schedule a Private Showing Please Contact Trenton Scott 660-351-3201.**

**MISSOURI
LAND
COMPANY**

Farm, Home & Hunting Properties

**Rolla Office:
12647 S. Hwy 63, Rolla
573-308-4868**

**Cole Camp Office:
14981 Centerline Ave.,
Cole Camp
660-668-4868**

www.missourilandco.com • 660-668-HUNT

Toll FREE number for both locations 844-974-1850

WEATHERED BARN WOOD SIDING: 10" wide. 573-729-7226. www.pineridgerustic.com Salem.

FIREARMS: Professional Repairs and Restorations. Baron's Gunsmithing. 573-363-5801, Camdenton.

CALUS LOGGING

20 YEARS EXPERIENCE

Buying Standing Timber
Walnut & Oak

Joe Calus, Owner
417-926-4606 • MTN. GROVE

CERTIFIED



USED MOBILE HOMES: Call David at VILLA HOMES IN ROLLA 573-578-8072. Rolla.

BUYING MOBILE HOMES: Call David at VILLA HOMES IN ROLLA 573-578-8072. Rolla.

QUALITY USED SADDLES WANTED: Will pay cash! George's Tack, Saddles & Feed. 573-346-7866. Camdenton.

REGISTERED HEREFORD & ANGUS BULLS: Home raised, Some Show-Me Select Qualified. 573-701-7828. Belgrade.

Pine Ridge Rustic
Log Home Building Supplies

Services Offered!

- Installation
- Pre-finishing available on interior & exterior
- Dealer for exterior stains

www.pineridgerustic.com

523 CR 2410 • Salem, MO 65560 • Ph: 573-729-7226




- Log Siding
- Beveled Siding
- Car Siding • Red Cedar
- Western Cedar • Pine

FERTRELL ORGANIC FERTILIZER: Free Catalog. 315-796-4370. Caulfield.

BUYING STANDING CEDAR: Minimum 6-in diameter. 417-531-0403.

LOG SIDING: 2X8 Pine/Western Cedar www.pineridgerustic.com 573-729-7226. Salem.

TINY HOMES: We gottem 573-881-3283

WANTED TO BUY ANTIQUE CARS: Convertible, Corvettes, unrestored, motors, parts considered. 870-324-1154. Ash Flat.

WANTED TO BUY DODGE DIESEL TRUCK: Or Toyota Tacoma. Also, buying antique cars. 870-324-1154. Ash Flat.

TRUE MODULARS: 30 to 60 day delivery available, 3 and 4 bedroom 573-657-7040 chateauhomes.net

STORY & PICTURES BOOK OF OLD LINN CREEK: Haha Tonka and Camden County, by T. Victor Jeffries, 72 pages. \$5.00 postpaid. (417)532-2045. (Leave message and phone number) Lebanon.

CUSTOM SAW MILLING: 417-533-4607, 417-664-1195. Lebanon.

OLD READERS DIGEST: \$1 each. 8am-8pm. 417-664-4278. Lebanon.

AM & Outdoor Sales



Premier Brush Cutter

- 72" Cutting Width
- High Flow or Standard Flow
- Carbide Mulching Teeth

CL Fabrication Tree & Post Puller – Dominator

- 1" thick AR400 steel jaws.
- 2" diameter, CF 1045 main pivot pins.
- Heaviest Built on the Market



WE ARE ONE OF THE NATION'S LARGEST JENKINS IRON & STEEL DEALERS!

Come see us today! Financing options available.

Eldon, MO • 31 Porter Rd • 573-434-9225
www.amoutdoorsales.com

AVAILABLE STOCK MOBILE

HOMES: Immediately, double wide and single, 3 and 4 bedroom 573-499-9993 columbiadiscounthomes.com

BLACK ANGUS BULLS: from 12 to 18 months. 417-932-4026. Summersville.

WANTED, TIMBER TO LOG ON

SHARES: Honest, reliable, references. 417-533-4607, 417-664-1195.

I BUY.....used mobile homes. Call or text 573-338-6250 or email GregS.CH@outlook.com

6 BRAND NEW AREA RUGS: White with gray squares, fluffy. Price reduced \$150. 8am-8pm. 417-664-4278. Lebanon.

SENIOR CITIZENS WALKER: Bedside potty, potty seat with arms for commode. 8am-8pm. 417-664-4278. Lebanon.

SPECIALIZING IN HEAVY DUTY GATES



Cow Country Gate Sales

Call Randy: 573-569-4754
or Home: 573-539-2528
Located at: Zimmerman Welding
16889 Hwy 52, Barnett, MO

Team Electrical & Plumbing

"The Professionals you can count on"

Electrical • Solar Power • Plumbing • Lighting Installation

100 % Satisfaction Guaranteed	Fully Licensed & Insured	\$100 Estimates with upfront pricing
-------------------------------------	--------------------------------	--

For the best quality of work every time...

Give "Team" a call today!

417-349-6200 • www.teamelectricalplumbing.com

METAL ROOFS: We repair leaky metal roofs with warranty. Also, flat roofs, very affordable, cover all state. 573-338-1148. Jefferson City.

SMALL SQUARE BALES OF STRAW: 417-932-4026. Summersville.

2 ANTIQUE CURIO CABINETS: \$100 each. Call between 8am-8pm. 417-664-4278. Lebanon.

OLD WORLD BOOK ENCYCLOPEDIAS: Full set. \$40. Kenmore sewing machine \$30. 8am-8pm. 417-664-4278. Lebanon.

HISTORY OF THE SCHOOL OF THE OZARKS: at Point Lookout. \$5.00. 417-532-2045. (leave message and phone number). Lebanon.

ANDERSON WINDOW: \$12. Call between 8am-8pm. 417-664-4278. Lebanon.

2 MALE BORDER DOODLES: 1 black & white, 1 blue merle, 5 months old. 573-739-9431.

TREES OF MISSOURI BOOK: \$5. Missouri Wildlife & Nature Viewing Book, your guide to 101 spectacular wildlife and nature viewing area, \$5. 417-532-2045. (Leave message and phone number). Lebanon.

Visit us at www.washingtonbullion.com

BUYING SILVER & GOLD COINS

• SILVER DOLLARS • SILVER EAGLES • GOLD COINS

PAYING FOR PRE 1964

- DIMES..... \$1.60
- QUARTERS..... \$4.00
- HALVES..... \$8.50
- HALVES (1965-1970)..... \$3.00
- SILVER DOLLARS..... \$24.00
- GOLD (1 OUNCE)..... \$1,775.00

WASHINGTON BULLION
636-744-8181

311 East Main St., Union MO 63084



1950'S COLT REVOLVER DEALERS MEMORABILIA: All for \$100. Call pm. 573-764-3517.

HISTORY OF UNIVERSITY OF MISSOURI-ROLLA BOOK: Formerly Rolla School of Mines, 258 pages, HB, \$6.50. 417-532-2045. (Leave message and phone number). Lebanon.

Larry Heisel Rentals
Have Rock? How about 3,500 lbs. of Hammer
Call Larry! 573-779-1500
www.larryheiselequipment.com
Rental Available in 636 or 573 area code

ROLL 1958 B.U. LINCOLN WHEAT PENNY'S.: Last year for these. \$60. Call pm. 573-764-3517.

ROLL 1959 B.U. MONTICELLO PENNY'S.: First year for these. \$40. Call pm. 573-764-3517.

POWER WASHING, CALL JET STREAM POWER WASHING FOR ALL OF YOUR GRIM TO SHINE NEEDS: We wash it all, semis, stock trailers, campers, equipment, houses, buildings and driveways. If it has grime, call today to make it shine in no time! 417-270-1075. Potosi.

TIRES, BRAKES & MORE LLC
• All Makes & Models
• Affordable Pricing
• Quality Products
• Outstanding Service
Military & Senior Discounts
Tue.-Sat. 8-5
Closed Sun. & Mon.
1237 Rt. 66, Lebanon, MO
417-532-0850

ROUND & SQUARE BALES OF HAY: 417-345-5634. Phillipsburg.

LIONEL TRAIN SET: Steam engine, tender, caboose and other car, track and transformer. \$195. 573-364-7465. Rolla

85 DODGE SHORT BED 360 4x4 \$1,200 417-532-5670.

THE HEART OF THE SPRING BOOK. A Bennett Spring Novel by Laura L. Valenti, 161 pages. \$6.50. 417-532-2045. (Leave message and phone number). Lebanon.

HEAVY 6-BAR GATES: Weldable or bolt type hinges – 16' gate \$192 available painted. Lewis Welding and Repair. 573-729-0272 – 573-729-1405. Salem.

3 YEAR WARRANTY
www.landpride.com
Land Pride
For Outstanding Products & Service
AGRI-ENTERPRISES

1949 STUDABAKER 1½ TON TRUCK: One family owner, all original, no rust, garage kept, flat head 6-cylinder, 4 speed. 573-880-9178 or 573-880-9456. St. Genevieve.

100 VINYL RECORD ALBUMS: Mostly county some gospel. Take al \$2.00 each. 573-689-2490. Bunker.

Getting Chores Done LAND PRIDE does that.
*See dealer for complete warranty information
RCR12 SERIES ROTARY CUTTERS
20-50 HP 48", 60", 72" Widths

- Floating 3-point allows deck to hug the terrain
- Dishpan with dual blades
- 1" Cutting capacity
- 12 Gauge deck
- Front & rear rubber guards

1-1/2 Miles South Of Licking, MO On Hwy 63
573-674-2203 • 1-800-653-7152
www.agri-enterprises.com

GUARDIANWARE: Turkey roaster with lid, excellent condition. \$195. 573-364-7465. Rolla.

ELECTRIC HEATER: Radiator style, like new, with thermostat hi/low settings, works excellent. \$45. 573-364-7465. Rolla.

OAK TABLE – FOUR CHAIRS: \$250, Pine heart day bed with mattress, good shape \$75.00. 417-543-8261. Ava.

ENGLISH SHEPHERD puppies, bob tails, some not, out of working parents, 573-760-5157.

AUSTRALIAN SHEPHERDS for sale, blue merle, red and whites, out of working parents, 573-663-7459.

KENMORE 30" ELECTRIC DROP IN RANGE: Self-cleaning, Kenmore dishwasher, microwave, new Instapot \$150. 573-699-4351. St. James.

WELL BUILT CART: For small mig welder. New-used \$200. 573-729-0272. Salem.

SELLING OUT OF THE HORSE BUSINESS: 15-20 Quarter horse bred, some

WE BUY White Oak Logs!

- ✓ Top prices for your logs
- ✓ Experienced log buyers
- ✓ Professional service

Chad Cook | Salem Wood Products
417.718.2950
5 miles north of Salem, MO on Hwy 19

INDEPENDENT STAVE COMPANY
Log Procurement & Sales
www.independentstavecompany.com



YOUR AD GOES HERE!

Add YELLOW Color For An Additional \$3 Per Reader Ad

All ads will include Phone Number (unless requested to be deleted by advertiser) and City Or Town, Phone Number with Area Code counts as one word. City or Town counts as one word.

RATE: 80¢ Per Word. All Classified Ads Require Payment Before Print.

(1) 80¢	(2) \$1.60	(3) \$2.40	(4) \$3.20
(5) \$4.00	(6) \$4.80	(7) \$5.60	(8) \$6.40
(9) \$7.20	(10) \$8.00	(11) \$8.80	(12) \$9.60
(13) \$10.40	(14) \$11.20	(15) \$12.00	(16) \$12.80
(17) \$13.60	(18) \$14.40	(19) \$15.20	(20) \$16.00
(21) \$16.80	(22) \$17.60	(23) \$18.40	(24) \$19.20
(25) \$20.00	(26) \$20.80	(27) \$21.60	(28) \$22.40
(29) \$23.20	(30) \$24.00	(31) \$24.80	(32) \$25.60
(33) \$26.40	(34) \$27.20	(35) \$28.00	(36) \$28.80
(37) \$29.60	(38) \$30.40	(39) \$31.20	(40) \$32.00

Place your Classified Ad TODAY!

417-532-2800 • 800-665-8875

Fax: 417-532-8140

Or Mail To: P.O. Box 192 • Lebanon, MO 65536

For your convenience we accept MasterCard, Visa, Discover or American Express



DEADLINE FOR CLASSIFIED ADS: FRIDAY 4:00PM!

Name _____

Address _____

City _____ Email _____

State _____ Zip Code _____ Phone _____

Ad Total \$ _____ X # Weeks _____ = Amount Enclosed \$ _____

Honda
OF THE
OZARKS



COMING SOON!
2022 LINEUP
OF RANCHERS & FOREMANS!
VERY LIMITED SUPPLY!

ALL NEW 2022 Honda RANCHERS

FourTrax Rancher FourTrax Rancher ES FourTrax Rancher 4x4 Automatic DCT EPS FourTrax Rancher 4x4 Automatic DCT IRS EPS

2022 FOREMAN & FOREMAN RUBICON MODELS

Foreman 4x4 Foreman 4x4 ES EPS Foreman 4x4 EPS Foreman Rubicon DCT EPS

RESERVE YOURS TODAY!

OUR PRICE PROMISE: *If you find a better verified price in Missouri, WE WILL BEAT IT. GUARANTEED!*

(417)862-4686
2055 E. Kerr St.

HondaOfTheOzarks.com
I-44 & GLENSTONE EXIT 80

MSRP excludes destination charge. Visit Powersports.honda.com to view applicable destination charge amount. UTILITY ATVs ARE RECOMMENDED FOR RIDERS 16 YEARS OF AGE AND OLDER. ALL ATV RIDERS SHOULD TAKE A TRAINING COURSE AND READ THEIR OWNER'S MANUAL THOROUGHLY. MULTI-PURPOSE UTILITY VEHICLES CAN BE HAZARDOUS TO OPERATE. PIONEER IS ONLY FOR DRIVERS 16 YEARS AND OLDER. DRIVER AND PASSENGER MUST BE TALL ENOUGH FOR SEAT BELT TO FIT PROPERLY AND TO BRACE THEMSELVES WITH BOTH FEET FIRMLY ON THE FLOOR. PASSENGER MUST BE ABLE TO GRASP THE HANDHOLD. NEVER DRIVE WITH MORE THAN ONE PASSENGER. ALWAYS WEAR YOUR SEAT BELT, AND KEEP THE SIDE NETS AND DOORS CLOSED. ALL MUV USERS SHOULD WATCH THE SAFETY VIDEO "MULTIPURPOSE UTILITY VEHICLES: A GUIDE TO SAFE OPERATION" AND READ THE OWNER'S MANUAL BEFORE OPERATING THE VEHICLE. FOR BOTH TYPES OF VEHICLES, ALWAYS WEAR A HELMET, EYE PROTECTION AND APPROPRIATE CLOTHING. AVOID EXCESSIVE SPEEDS, AND BE CAREFUL ON DIFFICULT TERRAIN. FOR YOUR SAFETY BE RESPONSIBLE. NEVER DRIVE UNDER THE INFLUENCE OF DRUGS OR ALCOHOL, OR ON PUBLIC ROADS. RESPECT THE ENVIRONMENT WHEN DRIVING. See dealer for details.