

**FREE - TAKE ONE!**

Vol. 28 No. 25

**SEPTEMBER 16, 2021**

800-543-8271 • 800-665-8875

# WEEKLY **TRADER** MAGAZINE



Find us on  
**Facebook**

@myweeklytrader  
**AUCTIONS PG. 9**

**VISIT OUR NEW WEBSITE! MYWEEKLYTRADER.COM**

**You pull it,  
we sell it...**

**CHEAP!**



**Lebanon, MO**

22395 Rt. 66

**417-588-3555**

Fax 417-588-8955



## **U★PULL★IT**

**SELF-SERVICE AUTO PARTS**

**We also have a large inventory  
of used tires and be sure to check  
out our used car lot!**

Mon.-Fri. 8:00am-5:00pm • Sat. 8:00am-4:30pm

**WWW.SSUPULLIT.COM**

**Located next to S&S Recycling.**



**S&S RECYCLING**

**LEBANON - MTN. GROVE**

**417-588-3555 417-926-3360**

**For All Your Metal Recycling Needs**

**Lebanon, MO**

22395 Rt. 66

**417-588-3555**

Fax 417-588-8955

**Mtn. Grove, MO**

8930 First Rd

**417-926-3360**

Fax 417-926-0180

**Roll-off, Trailer, and  
Mobile Crushing  
Services Available**

Monday-Friday 8:00am-4:30pm (Closed 12pm-1pm Lunch)  
Saturday 8:00am-Noon

email: [contact@ss-recycling.com](mailto:contact@ss-recycling.com)

**Buyer of all types of scrap metal.**



Get a great deal on getting more done.

Cab available with select models 24.8 - 62 HP



(417) 777-2391  
quarleskubota.com

Save big on our compact tractors. The versatility to handle every job and a wide range of performance-matched attachments. Kubota tractors under 100 HP are rated #1 for reliability\*. Stop in for a demo today.

**\$0** DOWN **0%** APR UP TO **84** MONTHS

PLUS

SAVE UP TO **\$1,400**

VISIT US TODAY FOR THIS LIMITED-TIME OFFER

**New L2501DT w/Loader Deal!**

**L2501DT  
w/loader**

**\$23,995  
Financing Price**

- NEW Kubota L2501DT
- 4wd, DIESEL, AG TIRES
- KUBOTA LOADER

- 5' ROTARY CUTTER
- 5' BOX BLADE
- NEW 18' KODIAK TRAILER W/RAMPS



KubotaUSA.com

\*2020 Progressive Farmer Reader Insights Award for Fewest Reported Problems Overall in the category of Small Tractor (Under 100 Horse Power). Award based on 2020 Progressive Farmer Readers Insights Tractors Study. © Kubota Tractor Corporation, 2021. \$0 Down, 0% APR financing for up to 84 months available on purchases of new Kubota LX2610SU and all L01 series equipment from participating dealers' in-stock inventory is available to qualified purchasers through Kubota Credit Corporation, U.S.A.; subject to credit approval. Example: 84 monthly payments of \$11.90 per \$1,000 financed. Customer instant rebates of \$1,000 for L01 and \$600 for LX2610SU are available on qualifying finance or \$1,500 L01 and \$1,000 for LX2610 on cash purchases. Additional instant rebate of \$400 is available with purchase of one new qualifying implement. Some exceptions apply. Offers expire 12/31/21. Terms subject to change. This material is for descriptive purposes only. Kubota disclaims all representations and warranties, express or implied, or any liability from the use of this material. For complete warranty, disclaimer, safety, incentive offer and product information, consult your Dealer or KubotaUSA.com.



**RCR12 SERIES**  
**ROTARY CUTTERS**  
 20-50 HP 48", 60", 72" Widths



[www.landpride.com](http://www.landpride.com)

- Floating 3-point allows deck to hug the terrain
- Dishpan with dual blades
- 1" Cutting capacity
- 12 Gauge deck
- Front & rear rubber guards

Getting Chores Done  
**LAND PRIDE**  
*does that*

\*See dealer for complete warranty information

For Outstanding Products & Service

**AGRI-ENTERPRISES**

1-1/2 Miles South Of Licking, MO On Hwy 63

573-674-2203 • 1-800-653-7152 • [www.agri-enterprises.com](http://www.agri-enterprises.com)

**ROUTE 66 DINING 7 LODGING GUIDE:**  
 183 pages, \$5.00. 417-532-2045. (leave message) Lebanon.

**STAY-TUFF FENCE,** Johnson concrete waters, waterlines, hydrants, posts, panels, hydraulic hoses, & **GOOD FOOD.** Farmers Quik Stop. 417-991-1938. Lebanon.

**STOCK MOBILE HOMES AVAILABLE:**  
 We gottem, single and double, 3 and 4 bedroom! Call Tuffy 573-657-2176. [amagamobilehomes.com](http://amagamobilehomes.com)

**POOL TABLES:** Installations, moves, recovers, repairs, accessories, etc. 573-646-1700.

**CUSTOM SAW MILLING:** 417-533-4607, 417-664-1195. Lebanon.

**WEATHERED BARN WOOD SIDING:** 10" wide. 573-729-7226. [www.pineridgerustic.com](http://www.pineridgerustic.com) Salem.

**TINY HOMES:** We gottem 573-881-3283

**VOTED #1 BEST Preowned Car Dealership**

**TIM'S USED CARS**  
 (573) 341-3828 • 1334 South Bishop (Hwy. 63) • Rolla, MO  
 Next to Hwy CC • [www.tims-used-cars.com](http://www.tims-used-cars.com)

<p><b>2005 DODGE 1500 ST</b>                  2WD, V-6, 5-Speed, A/C,  <b>Only \$4,400</b></p>	<p><b>2017 NISSAN SENTRA SV</b>                  4 Cyl. Auto, Loaded w/                  Options, 46,xxx Miles  <b>Only \$14,900</b></p>
<p><b>2014 RAM TRADESMAN 1500 QUAD CAB</b>                  2WD, V-6, Auto, Power Equipped, 71,xxx Miles  <b>Only \$19,800</b></p>	<p><b>2017 FORD EXPLORER XLT</b>                  FWD, Power Equipped,                  7 Passenger, 45,xxx Miles  <b>Only \$28,500</b></p>

**LARGE SELECTION OF CARS, TRUCKS, SUVs & VANS!**

**AG & CONSTRUCTION REPAIRS & REBUILDS**

20+ Years Experience  
 Cast Iron & Steel Welding  
 Engines • Transmissions  
 Electrical • Hydraulics  
 PTO & Drivelines  
 Tractors & Skidloaders etc.

**VALLEY SHOP • 660-458-6747**  
 38745 Molasses Mill Rd, Latham

**FERTRELL ORGANIC FERTILIZER:**  
 Free Catalog. 315-796-4370. Caulfield.

**WANTED, TIMBER TO LOG ON SHARES:** Honest, reliable, references. 417-533-4607, 417-664-1195.

**BUYING STANDING CEDAR: Minimum 6-in diameter. 417-531-0403.**

**LOG SIDING:** 2X8 Pine/Western Cedar  
www.pineridgerustic.com 573-729-7226.  
Salem.

**WANTED TO BUY ANTIQUE CARS:**  
Convertible, Corvettes, unrestored, motors,  
parts considered. 870-324-1154. Ash Flat.

**OLD READERS DIGEST:** \$1 each. 8am-8pm. 417-664-4278. Lebanon.

**2 ANTIQUE CURIO CABINETS:** \$100 each. Call between 8am-8pm. 417-664-4278. Lebanon.

**ANDERSON WINDOW:** \$12. Call between 8am-8pm. 417-664-4278. Lebanon.



**CENTRAL BOILER**  
**CLASSIC EDGE**  
TITANIUM HDX

Eliminate high heating bills with Central Boiler's NEW, certified Classic Edge Titanium HDX OUTDOOR WOOD FURNACE. Call today!

**Outdoor Wood Furnace**  
**CentralBoiler.com**

The Classic Edge 360, 560 and 760 HDX are U.S. EPA Certified

Yarbrough Equipment Sales & Services, Inc.  
9776 E. State Hwy OO • Strafford, MO  
417-736-2303 • 1-866-286-6901 • www.yarbeq.com

**SPECIALIZING IN HEAVY DUTY GATES**



**Cow Country Gate Sales**

Call Randy: 573-569-4754  
or Home: 573-539-2528  
Located at: Zimmerman Welding  
16889 Hwy 52, Barnett, MO

**USED MOBILE HOMES:** Call David at VILLA HOMES IN ROLLA 573-578-8072. Rolla.

**CONWAY HIGH SCHOOL BEARS 2000-2001 YEARBOOK. \$12.50. 417-532-2045. (Leave message and phone number.) Lebanon.**

**BUYING MOBILE HOMES:** Call David at VILLA HOMES IN ROLLA 573-578-8072. Rolla.

**BLACK ANGUS BULLS:** from 12 to 18 months. 417-932-4026. Summersville.

**WANTED TO BUY DODGE DIESEL TRUCK:** Or Toyota Tacoma. Also, buying antique cars. 870-324-1154. Ash Flat.

**HISTORY OF UNIVERSITY OF MISSOURI-ROLLA BOOK: Formerly Rolla School of Mines, 258 pages, HB, \$6.50. 417-532-2045. (Leave message and phone number.) Lebanon.**

**AVAILABLE STOCK MOBILE HOMES:** Immediately, double wide and single, 3 and 4 bedroom 573-499-9993 columbiadiscounthomes.com

**TRUE MODULARS:** 30 to 60 day delivery available, 3 and 4 bedroom 573-657-7040 chateauhomes.net

**I BUY.....used mobile homes.** Call or text 573-338-6250 or email [GregS.CH@outlook.com](mailto:GregS.CH@outlook.com)



**Meadowview Dutch Market**

Discount & Surplus Groceries • Prices Subject to Stock on Hand

**Call to Order**  
417-993-3017

Sale Dates September 15<sup>th</sup>, 2021 to September 21<sup>st</sup>, 2021 while supplies last!

<b>DELI SPECIAL</b>		<b>FALL SPECIALS</b>	
<b>ASSORTED MUMS</b>		<b>Fresh Apples \$8.99</b> 1/2 BU.	
<b>COOKED SALAMI</b> ..... REG. \$4.49 ..... <b>SALE \$3.99</b>		<b>PUMPKINS • GOURDS • SQUASH</b> <b>GREAT SELECTION!</b>	
<b>HOT PEPPER CHEESE</b> ..... REG. \$5.59 ..... <b>SALE \$5.09</b>		<b>LAST CHANCE TO ORDER</b> <b>NEW YORK CONCORD GRAPES</b> <b>\$14.99</b> 1/2 BU. <b>CALL TO ORDER</b> 417-993-3017	
<b>TRY our Fresh Homemade DELI Sandwiches: TURKEY, HAM, ROAST BEEF, ITALIAN, BLT'S, PULLED PORK AND BLT PULLED PORK (MADE YOUR WAY)! COME IN OR CALL to order! ALSO Custom Deli trays! Veggie OR FRESH Meat-N-Cheese!</b>			
<b>Russet Potatoes</b> 50 LB. <b>\$15.99</b>	<b>Organic Butter Qtrs.</b> 16 OZ. <b>\$1.99</b>	<b>Yellow American Cheese</b> 5 LB. BLOCK EA. <b>\$6.75</b>	<b>Seasoned Roast Beef</b> LB. - APPROX. 6-7 LB. <b>\$2.99</b>
<b>Cheeseburgers</b> EA. <b>99¢</b>	<b>Fresh Mozzarella</b> 16 OZ. <b>\$1.49</b>	<b>Miracle Whip</b> GAL. <b>\$4.99</b>	<b>Breaded Fish</b> LB. <b>99¢</b>

**MEADOWVIEW DUTCH MARKET**  
417-993-3017 Hours: Mon-Thurs 8-5pm  
Fri 8-6pm • Sat 8-5pm  
23 Miles West on Hwy 64 • Right on T Hwy  
9 miles • Left on E Hwy 1 mile on Left

**NOW ACCEPTING CREDIT, DEBIT CARDS & EBT**

**DUTCH COUNTRY STORE, LLC**  
573-378-4395  
Hours: Mon-Thurs 8-5pm  
Fri 8-6pm • Sat 8-5pm  
5 miles East of Versailles off Hwy C on Kelsay Road

**TREES OF MISSOURI BOOK: \$5.**  
 Missouri Wildlife & Nature Viewing Book, your guide to 101 spectacular wildlife and nature viewing area, \$5. 417-532-2045. (Leave message and phone number). Lebanon.

**REGISTERED HEREFORD & ANGUS BULLS:** Home raised, Some Show-Me Select Qualified. 573-701-7828. Belgrade.

**SENIOR CITIZENS WALKER:** Bedside potty, potty seat with arms for commode. 8am-8pm. 417-664-4278. Lebanon.

**ROUND & SQUARE BALES OF HAY:** 417-345-5634. Phillipsburg.

**TOTE FULL OF AUNT JAMIMA STUFF:** \$200 for all. 573-327-9068. Park Hills.

**Buildings • Hunter's Cabins • Lawn Furniture**



**JAMCO Portable Buildings**  
 800-688-2064 • 307 Enterprise Dr. • Seymour, MO • www.jamcobuilders.com

**Rent To Own Plan**

**KUSTER LOGGING**

**BUYER of Standing Timber**  
**Oak and Walnut**

**Dozing Now Available**

**417-259-0047**

**References Available**



**METAL ROOFS:** We repair leaky metal roofs with warranty. Also, flat roofs, very affordable, cover all state. 573-338-1148. Jefferson City.

**HISTORY OF THE SCHOOL OF THE OZARKS:** at Point Lookout. \$5.00. 417-532-2045. (leave message and phone number). Lebanon.

**OLD WORLD BOOK ENCYCLOPEDIAS:** Full set. \$40. Kenmore sewing machine \$30. 8am-8pm. 417-664-4278. Lebanon.

**BARN OF MISSOURI BOOK: A Storehouse of History, HB, 168 pages, \$12.50.** 417-532-2045. (Leave message and phone number). Lebanon.

**FIREARMS:** Professional Repairs and Restorations. Baron's Gunsmithing. 573-363-5801, Camdenton.

**1908 SEARS, ROEBUCK CATALOG REPRINT:** 184 pages, \$10. 417-532-2045. (Leave message and phone number). Lebanon.

**SMALL SQUARE BALES OF STRAW:** 417-932-4026. Summersville.

**6 BRAND NEW AREA RUGS:** White with gray squares, fluffy. Price reduced \$150. 8am-8pm. 417-664-4278. Lebanon.

**27" PHILLIPS MAGNAVOX TV:** Free. 417-457-1023. Raymondville.



**KENT**

**YOUR TRUSTED SOURCE FOR QUALITY FEED & FARM-LIFE ESSENTIALS**

**AFC™ stands for Altosid® Fly Control.**

Altosid is the most effective insect growth regulator for the control of horn flies for cattle on pasture.

- .4% AFC™
- MG Aureo/AFC™
- Pasture Aureo/AFC™
- Pasture Breeder Aide® Aureo/AFC™

**365 Mineral Buy 10 Get 1 FREE**  
 While Supplies Last

**Built on Trust**  
 EST. 1927

**Kropf Feeds**

**“DOING BUSINESS ON OUR WORD AND A HAND SHAKE”**  
 Located in the Heart of the Amish Mennonite Community!  
 417-345-8600 • 19 Prairie Lane, Buffalo

**Portable Feed Bins Ready For Your Farm!**

**2 MALE BORDER DOODLES:** 1 black & white, 1 blue merle, 5 months old. 573-739-9431.

**1950'S COLT REVOLVER DEALERS MEMORABILIA.:** All for \$100. Call pm. 573-764-3517.

**ROLL 1958 B.U. LINCOLN WHEAT PENNY'S.:** Last year for these. \$60. Call pm. 573-764-3517.

**ROLL 1959 B.U. MONTICELLO PENNY'S.:** First year for these. \$40. Call pm. 573-764-3517.

**WARSAW, MISSOURI OZARK ECHOES 1964 YEARBOOK, \$20.** 417-532-2045. (leave message and phone number). Lebanon.

**POWER WASHING, CALL JET STREAM POWER WASHING FOR ALL OF YOUR GRIM TO SHINE NEEDS:** We wash it all, semis, stock trailers, campers, equipment, houses, buildings and driveways. If it has grime, call today to make it shine in no time! 417-270-1075. Potosi.

**3 BASEBALL MITTS FROM THE 1950'S:** \$60. 417-457-1023. Raymondville.

**THE HEART OF THE SPRING BOOK. A Bennett Spring Novel by Laura L. Valenti, 161 pages. \$6.50.** 417-532-2045. (Leave message and phone number). Lebanon.

**LIONEL TRAIN SET:** Steam engine, tender, caboose and other car, track and transformer. \$195. 573-364-7465. Rolla

**GUARDIANWARE:** Turkey roaster with lid, excellent condition. \$195. 573-364-7465. Rolla.

**METAL DETECTOR:** \$125. 573-327-9068. Park Hills.

**Starnes Auto LLC**  
 22115 Rt. 66 • Lebanon, MO 65536  
 417.718.2707 Cell  
 417.588.3159 Office  
 www.starnesauto.com

**2006 HONDA CRV SE 4WD**  
 GRAY, 160,xxx.....\$4,850

**2007 SATURN AURA XE**  
 TAN, 83,XXX.....\$4,950

**2010 FORD FUSION**  
 WHITE, 110,xxx .....\$5,650

**2011 FORD ESCAPE XLT**  
 GRAY, 73,xxx.....\$6,200

**2012 CHEVY IMPALA LTZ**  
 WHITE, 125,xxx .....\$6,450

**2013 CADILLAC SRX PERFORMANCE**  
 WHITE, 92,xxx .....\$12,950

**2013 GMC TERRAIN AWD**  
 BLACK, 73,xxx.....\$11,700

**2014 CHEVY CAPTIVA LT**  
 WHITE, 84,xxx .....\$8,750

**2014 FORD FUSION**  
 CHAR/BLUE, 87,xxx.....\$9,200

**2015 GMC TERRAIN**  
 BLACK, 113,XXX .....\$10,950

**2015 GMC TERRAIN SLT**  
 BLACK, 103,xxx..... CALL

**WE DO ALIGNMENTS!**

**OFFICIAL TRACTOR OF TOUGH™**



**NEW MAHINDRA TRACTORS**

1626 4WD & LDR 26HP IN STOCK  
 1635 4WD & LDR 36HP IN STOCK

**USED TRACTORS**

MF 4710 4WD CAB & LDR 55,000  
 IHC 826 92 HP 9,000

**USED ROUND BALERS**

MF 2846A 4X6 18,000  
 HESSTON 945 4X5 9,000  
 JOHN DEERE 375 5X4 3,500  
 HESSTON 560 5X6 2,000  
 NH 850 5X5 1,500

**USED MISC.**

HAYBUSTER 107C NOTIL DRILL 17,500  
 FRONTIER BALE PROCESSOR 8,500  
 SNAPPER ZERO TURN 2,750  
 BUSH HOG 2052 ZERO TURN 2,500  
 BUSH HOG POST HOLE DIGGER 1,200

**Marshfield Machinery Inc.**  
 222 E. Madison • Marshfield, MO 65706  
 417-859-2117 • www.marshfieldmachinery.com

MahindraUSA.com © 2020 Mahindra USA Inc.

**Mahindra**  
 Rise.

**Marshfield Machinery Inc.**  
 222 E. Madison  
 Marshfield, MO 65706  
 417-859-2117  
 www.marshfieldmachinery.com

**ELECTRIC HEATER:** Radiator style, like new, with thermostat hi/low settings, works excellent. \$45. 573-364-7465. Rolla.

**HEAVY 6-BAR GATES:** Weldable or bolt type hinges – 16' gate \$192 available painted. Lewis Welding and Repair. 573-729-0272 – 573-729-1405. Salem.

**OAK TABLE – FOUR CHAIRS:** \$250, Pine heart day bed with mattress, good shape \$75.00. 417-543-8261. Ava.

**85 DODGE SHORT BED 360 4x4** \$1,200 417-532-5670.

**ENGLISH SHEPHERD** puppies, bob tails, some not, out of working parents, 573-760-5157.

**KENMORE 30" ELECTRIC DROP IN RANGE:** Self-cleaning, Kenmore dishwasher, microwave, new Instapot \$150. 573-699-4351. St. James.

**WELL BUILT CART:** For small mig welder. New-used \$200. 573-729-0272. Salem.

**LOTS OF DVD MOVIES:** \$2 each. 573-327-9068. Park Hills.

**RUBBER & LEATHER BOOTS AND HIP WADERS.** Men's 11, Women's 7, some insulated. \$15-\$40 obo. 636-239-2695. Washington.

**MOEN KITCHEN FAUCET:** Single lever, sprayer, new cartridge. \$45 obo. 636-239-2695. Washington.

**CUTTING BOARD:** Fits in your kitchen counter top, various species of ducks. \$15. 636-239-2695. Washington.

**ROD & REELS:** Ultra light to snagging rods. \$5 and up. 417-589-8200. Conway.

# FILL YOUR POND WITH memories!

**CALL 573-775-2650 FOR MORE  
DETAILS ABOUT FISH DAY**

Order by - September 25th  
Pick up - October 2nd

## STEELVILLE FEED & FARM

11 Cobblestone Rd., Steelville  
Mon-Fri 8am-5pm • Sat 8am-12pm • Sun Closed

**1949 STUDBAKER 1½ TON TRUCK:** One family owner, all original, no rust, garage kept, flat head 6-cylinder, 4 speed. 573-880-9178 or 573-880-9456. St. Genevieve.

**100 VINYL RECORD ALBUMS:** Mostly county some gospel. Take all \$2.00 each. 573-689-2490. Bunker.

**AUSTRALIAN SHEPHERDS** for sale, blue merle, red and whites, out of working parents, 573-663-7459.

**ROUND BALE SPIKE:** For front tractor bucket. \$60. 417-532-8048. Lebanon.

**SELLING OUT OF THE HORSE BUSINESS:** 15-20 Quarter horse bred, some registered, from weanlings to broke horses. 2 old gentle mules. 417-531-5707. Lebanon.

**FULL BLOODED BLUE HEELER PUPS:** UTD shots/worming. \$150. 417-650-0995. Lebanon.

**INTERNATIONAL TWO ROW CORN PICKER:** Pull type. 573-674-3601. Licking.

**INTERNATIONAL SQUARE HAY BALER:** Field ready. 573-674-3601. Licking.

**500 ROUND BALES:** \$45/bale. 3,000 square bales, \$5.50/bale. 417-345-5634. Phillipsburg.

**2019 DOOLITTLE 5FT.X8FT. ENCLOSED TRAILER:** Used once, like new. 573-745-0518. Sunrise Beach.

**THOMAS KINKADE DIFFERENT SERIES:** Hardback, excellent condition, \$2 each. Happy Hollister books, \$2 each. 417-532-6561. Phillipsburg.

**JOHN DEERE 5085E:** 85 hp, 770 hours, cab, 4x4, loader, nice. 417-646-8807. Osceola.

**MINN KOTA TROLLING MOTOR:** 50lb thrust, \$75. Digital treadmill, \$200. 573-759-7268. Dixon.

**CLIVE CUSSLER BOOKS!** \$5 hardback, \$2 paperback plus shipping. For list call 417-457-1023. Raymondville.

**ENGLISH SHEPHERD** puppies, bob tails, some not, out of working parents, 573-760-5157. Centerville.

**AUSTRALIAN SHEPHERDS** for sale, blue merle, red and whites, out of working parents, 573-663-7459. Centerville.

**ELECTRIC ORGAN YAMAHA ELECTONE:** Good condition. \$300 obo. 816-521-0956. Lebanon.

**JOHN DEERE 566 ROUND BALER:** Monitor, kicker. \$5,200. 573-765-4406. Richland.

**GRIZZLY MODEL G9744Z2 METAL-CUTTING BANDSAW:** Like new (cost new 4K+) \$2,700. 417-322-0161. Lebanon.

**IHC 1086 DIESEL TRACTOR:** Cab and air, T.A. 130 hp. \$13,000. 573-765-4406. Richland

**BUYING PRE 1960'S BEER SIGNS:** FALSTAFF, GRIESEDECK, CAPITOL, STAG, HAMMS & MORE. Soda signs too! 573-680-5377. Jefferson City.

**STORY & PICTURES BOOK OF OLD LINN CREEK:** Haha Tonka and Camden County, by T. Victor Jeffries, 72 pages. \$5.00 postpaid. (417)532-2045. (Leave message and phone number) Lebanon.

**RICE 14,000# MAGNUM EQUIPMENT TRAILER:** With dovetail and ramps, 2017, used very little, always covered. \$3,995. 573-786-2220. Steelville.

**Team Electrical & Plumbing**  
*"The Professionals you can count on"*  
 Electrical • Solar Power • Plumbing • Lighting Installation

100 % Satisfaction Guaranteed	Fully Licensed & Insured	\$100 Estimates with upfront pricing
-------------------------------------	--------------------------------	--

*For the best quality of work every time...*  
**Give "Team" a call today!**  
 417-349-6200 • www.teamelectricalplumbing.com

**5+ ACRES WITH CABIN:** Outbuildings, well, electric. Borders forestry, hunting deer, turkey... Call to see \$40,000. 573-368-1625. Newburg.

**NEW FIREARMS:** [rollingmead.com](http://rollingmead.com), Mossberg 22LR, AR Style \$329.95, Heritage 22LR Flag Grips \$139.98. Ruger and SCCY 9mm Semi-Auto in Stock from \$244.96. 417-241-1523. Marshfield.

**ELECTRIC STOVE:** Like new, 20 inches wide, apartment size, 4 burners, white, \$400. 417-239-5935. Lebanon.

**FOR SALE:** Lady's jeans, denim colored, elastic waist, size 18. \$10 each. 417-322-2960. Lebanon.

**WANT TO OPEN A REC CENTER?:** 6 pool tables 3x7 Valley coin operated tables, chairs, Cherry Master Electronic Machine, misc. Sell all or individual. 417-531-1496. Lebanon.

**LOOKING TO BUY TRACK FOR JOHN DEERE:** 450B or 450C. 636-232-7480. DeSoto

**KUBOTA 54HP:** 4x4 hydrostatic, 103 hrs, \$27,700. 8x20 shipping container, \$800. 573-257-7985. Jefferson City.

**GAS ENGINE POWERED WOOD SPLITTER:** Good condition. \$300. 417-532-8048. Lebanon.



JOHN DEERE



# PRE-ORDER SALE

## \$500 OFF

### COMPACT TRACK LOADERS & SKID STEERS



317G



318G

Some restrictions apply. See dealer for details. Offer ends 10/30/2021.





# POINTER TRUST AUCTION



The Trustees of the Harry A. and Sandra F. Pointer Trust will sell personal property of the Trust at public auction on :

**Saturday, September 18th 2021, Beginning at 9:00 AM**

Location: 3887 Highway 19 South, Owensville Mo 65066

**Directions:** From Owensville, take Highway 19 South 5 miles to auction. From Interstate 44, take Exit #208 in Cuba and go North on Highway 19 16 miles to auction. Roads will be marked day of sale.

## TRACTOR / ATV / VEHICLES (will sell at 12:00 Noon)



Allis Chalmers AC 5040 diesel tractor-1655 hours-power steering-good rubber with AC loader and bucket, **ATV**-Cub Cadet 6x4 utility vehicle-new tires-dump bed-gun rack, **VEHICLES**; 2019 Kia Sorento Sport LX SUV-4 cylinder-2.4 liter engine -8 speed automatic-35,500 miles-one owner-5 year 60,000 mile warranty extended to buyer, 2003 GMC Sierra 1500 pickup-2 wheel drive-4.3 V-6 engine-103,000 miles-one owner



## SHOP TOOLS / YARD TOOLS



Delta 12" planer on stand, scroll saw, Craftsman radial arm saw, rolling compressor, Delta miter saw on stand, (2) metal cut off miter saws, Task Force table saw-portable stand, Mig 100- welder, welding helmet, 6" bench grinder, Hitachi cordless drill, angle grinder, circular saw, jig saws, palm sander, Skil jig saw, Craftsman roto-cutter, cordless drills, pneumatic chisel hammer-ratchet, Dremel tool, 2" brad nailer, 20 volt reciprocating saw, pipe wrenches, C clamps, tin snips, drills, 1/2" drill, drill bit-driver set, levels, squares, laser level, lot hardware-screws-nails, parts bins, extension cords, sockets, wrench set, auto-hammer, hack saws, miter box, hand saws, saw horses, 2 rolling tool cabinets, bench vise, extension cords, 220 ext cord, castors, paint supplies, tool boxes, knife sharpener, **YARD**; Stihl extendable pole saw, Stihl chain saw, Husqvarna blower, 2 cycle cultivator, lawn roller, aerator, Generac 2800 PSI-2.5 GPM power washer, Craftsman 9.5 HP electric start snow blower, 3500W 6.5 HP generator, 8000W 13 HP generator, concrete mixer, 12 volt seeder, wheel barrow, car creeper, pump sprayer, floor jack, battery jump box, Yale 2 ton chain hoist, shovels, pitch fork, sledge hammer, grain shovel, rakes, splitting maul, step ladders, extension ladder, gas cans, **FARM**; 24 T posts, barbed wire, log chain, 50 gallon tubs, tow straps, lumber, tin, (3) 14' gates, cattle panels, oak doors, wooden windows, metal shelving

## GLASSWARE / KITCHEN / APPLIANCES

Fire King dish set, Fire King baking dishes, Pyrex bowls, Pyrex baking dishes, Corning ware dishes, egg plates, covered casseroles, candy dishes, water glasses, stemware, mugs, Corolle dishes, painted bowls, bread pans, cake pans, cake plates, lot clear glass dishes, painted plates, art glass bowl, condiment plate, Harker pottery dish set, punch bowl, snack plates, ruby red dishes, green dishes, granite dish set, granite roaster, SS pans, flatware, utensils, serving plates, platters, plastic containers-Tupperware, ice buckets, candle holders, pots, bean pots, thermos, DVD VHS tapes and players, flatscreen Roku TV, **APPLIANCES**; LG SS refrigerator-LED lights, washer-dryer, chest freezer, microwave, crock pots, slow cookers, 3 pot serving warmer, roaster oven George Foreman grills, fryer kit, GE cook touch fryer, blenders, food chopper, 60 cup coffee urn, coffee pots, wok, humidifier, hand mixer, small bar fridge, electric griddle, **COOLER**; General 3 door glass front commercial cooler-sliding glass doors, chest freezer

LUNCH WILL BE SERVED BY OLD DUTCH MILL

## MOWERS / FARM EQUIPMENT

(will sell after tractor at NOON auction)



Toro Timecutter MX 5000 zero turn mower-24.5 HP-50" deck, Cub Cadet XT LT 42" riding mower-42" deck-Kohler 18 HP engine, Cub Cadet lawn sweeper, fertilizer spreaders, Yard Machine MTD 5 HP tiller, 2-wheel lawn trailer, **FARM**; Land Pride 3 point 5' brush hog, Ferguson 3 pt 2-12" plow, 3 pt 5' disc, King Cutter 3 pt blade, 1 section drag harrow, 2 wheel wood trailer, buck saw for tractor

## COLLECTIBLES / FISHING / OUTDOORS / BOAT



Stag beer glasses, Coke trays, cookie jar, Longaberger metal plate, hen on nest, milk glass, vintage Hawkeye Basketette, **CARNIVAL GLASS**; plate, footed fruit bowls, candy dish, Watt crock bowl, crock bowls, painted butter dish, glass baskets, apple peeler, cherry pitter, pitcher-bowl set, straight razors-shaving brushes, Avon, **QUILTS**; handmade quilts-some from Kottwitz estate-Flower Garden-feed sack, embroidered, old 8 ga Buckeye crock-crack, smaller crocks, shadow box, 2' saw blade, oil lamp-lanterns, clarinet, 1973 El Camino car hood, **OUTDOORS**; **BOAT**; Lowe 18'x5' jon boat with trailer-Suzuki 35 HP jet system-oil injection-live well-canopy, trolling motors, Eagle Supra fish finder, paddle boat, lot fishing rods-reels, rod holders, tackleboxes, life vests-belts, minnow buckets, nets, propane fryers-turkey fryer pots, hunting an pocket knives, fillet knives, washer game, lot outdoor chairs, high top patio table-chairs, camping stove, small propane tanks, citronella, badminton, Little Tykes toys-playground set-slide, porch benches, chiminea, porch swings, pneumatic tires wagon, bird bath, bird feeders, shepherd hooks, propane tank heaters, gun rack, gun cabinet, BBQ grills, water hose-reels

## FURNITURE / HOUSEHOLD



Pine dining table-chairs-benches, oversize recliner, recliner-sectional sofa set, end tables, single bed, small vanity w/bench, twin bed, Lane cedar chest, oak cabinet-top display, corner curio cabinet, ornate art deco china cabinet, bakers shelves, oak bedroom set-king size=dresser folding mirrors-gentleman's chest, First Alert fire safe, jewelry armoire, costume jewelry, vanity, pair white wicker chairs, Roland EP85 digital piano, Mason & Mason piano, drop side dining table-chairs, steel-formica dining table, lot children's tables-chairs, card tables, folding chairs, TV trays, high chair, booster seat, iron board-iron, rolling serving cart, lot table lamps, lamp tables, plant stands, **SEWING**; Brother LS 2125i sewing machine, lot sewing supplies, fabric, batting, lot bedding, table linens, artificial floral, picture frames, baskets, towels, afghans, blankets, books, cook books, vacuum, book shelf, lot decorative wall hangings, artwork, senior items, 2 door file cabinet, computer desk, exercise bike, seasonal decorations, lot Christmas-small porcelain trees-lighted yard decorations-2' nativity scene-table linens, luggage, cot bed, movie screen, vases, paper shredder, **POOL TABLE**; Superior pool table, pool cues

**AUCTIONEERS NOTE:** sale will begin at 9:00 AM selling tools, second ring will start at 10:00 AM selling household.

**BREHE AUCTIONEERING SERVICE LLC**  
 Union, MO: (636) 583-0841 Owensville, MO: (673) 437-3454  
[www.breheauction.com](http://www.breheauction.com)  
 LICENSED AUCTIONEERS:  
 Kerry Brohe 314.954.3798 Josh Brohe 314.603.3129 Nick Brohe 314.560.7737  
 Announcements made day of sale supersede all printed material.  
 TERMS: CASH, PERSONAL CHECKS WITH PROPER I.D., BUSINESS CHECKS WITH BANK LETTER AND NOT OUT OF STATE CHECKS UNLESS APPROVED BY SELLER. Email Us At [kkauction@sbcbglobal.net](mailto:kkauction@sbcbglobal.net)  
 Every thing sells as is with no guarantees.  
 Not responsible for accidents.

VIEW OUR PHOTO GALLERY ON [www.breheauction.com](http://www.breheauction.com)

# FARM EQUIPMENT DISPERSAL IT ALL SELLS - OWNER SELLING FARM TRAVIS AND SALLY ROST

# AUCTION

**Saturday, September 25, 2021 @ 10:30AM**  
**95 ROCKY HOLLOW DR. • MARSHFIELD, MO 65706**

**Directions: From Marshfield follow Hwy 38 East 2 miles to Farmland Rd South 1 mile, go East on Old Seymour Rd. 3 miles to sale site on 95 Rocky Hollow Dr.**

**TRACTORS AND EQUIPMENT - ATV**

- Massey Ferguson 4233 4x4 35% tires with Buhler Loader 595 quick thatch bucket & bale fork
- 20' + 5' Dovetail Gooseneck trailer
- 1 bumper pull 16ft tandem axle
- Buhler pull stock trailer rawhide 16ft
- 3pt bale fork
- 3pt scoop
- Ferguson 40 3pt Tractor (NOT RUNNING)
- 5ft Bushhog
- 6ft Bush hog
- 3pt bale spike – trailer mover
- 6ft 3pt blade
- 15ft Rhino bushhog
- Box blade 7ft
- 15 gallon spot sprayer
- Polaris Ranger 4x4 1146 hrs 500 EFI
- Welding trailer torch and generator + welder

- Bad Boy zero Turn 60 in deck 747 CC Kohler (NOT RUNNING)

- Gas operated post driver Skidril
- Pressure washer 2800 PSI
- 25 gal spot sprayer

**HAND TOOLS – SOCKETS-WRENCHES**

- Homemade yard trailer
- Shopsmith (Complete)
- Box router bits 24bits
- 2 fence stretchers
- Chicago 4 1/2" grinder
- Router
- Craftsman skill saw
- Craftsman sawsall
- Milwaukee sawsall
- Belt sander Skill
- 25 piece router bits
- Chicago 10" miter saw
- Schumaker Battery charger
- 24D weed killer

- Noromectin Ivermectin
- Miracle fount water fountain
- Ford portable air compressor
- Live trap
- Lot extension cords
- Drill bits
- Lot steel fence posts
- lot electric fence posts
- 1 Comealong
- Ryobi 4 1/2 in grinder
- Makita Chop Saw
- Poulan chain saw
- Poulan chain saw
- Homelite chain saw
- 3/4 in socket set
- Rol Red brand Barbed wire
- Stihl Weed eater FF 90R
- Stihl MS 290 chain saw with case
- Homelite chain saw with case
- Electric fence

- Drill press Guardian power
- Assorted sockets and wrenches
- Hobart welder 140 wire feed
- 2 ton jack stands
- 1 1/2 ton floor jack
- Parts bin 72 bins
- Hyd valves
- 1 central tool caliper vintage
- Small saddle
- Paslode air stapler
- Porter Cable air stapler

**EXERCISE EQUIPMENT - HOUSEHOLD**

- Windmill yard art
- Weider 3950 workout gym
- Image elliptical 825
- Pro form treadmill
- Lot misc. household
- Jacobs Antique Scales



**Hoover Case - Auctioneer • MJ Johnson - sale manager: 417.838.0291**  
**Have questions, Let us know • 417.859.3204 or 417.844.6020**  
**info@caseauction.com • auctionzip.com ID#24071 • wwwcaseauction.com**

Terms: Announcements made sale day take precedence over all printed material.  
Neither Case Auction or property owner guarantees the absolute accuracy of supplied information.

# Sam CRAWFORD AUCTION SERVICE LLC

As we have sold the farm and moving, will sell the following located 1 mile East of Weaubleau, MO on Hwy. 54 to Hwy. H, then South 1½ miles to Co. Road 266 then West 3/10 mile. Watch for auction signs.

## WEDNESDAY, SEPTEMBER 22nd, 2021 - 10 AM

### TRACTOR - MACHINERY - CAR - TOOLS - HOUSEHOLD - COLLECTIBLES - MISC.



#### Tractor - Machinery Trailer

06 FarmTrac 535 Diesel, ROPS, 330 Hr., 35 HP, Shedded, Runs Good  
 3 pt. 8' Blade  
 3 pt. 6' Brushcutter  
 3 pt. 6' Finish Mwoer  
 3 pt. Bale Spike  
 3 pt. 7' Boom  
 3 pt. Tandem Disk  
 Bumper Hitch 16' Flatbed Trailer

#### Car

'04 Lincoln Town Car, 165K, Loaded, Clean & Nice

#### Tools & Misc.

Dirty Hand 27 Ton Woodsplitter 6.5 HP  
 DR Push Trimmer 6.5  
 DR Mower  
 Leaf Blower  
 Tiller  
 Coleman 5000W Portable Generator, New in Box  
 Sears Lawn Tractor, 26 HP, 54"  
 (5) Chainsaws  
 (2) Air Compressors  
 (4) Kayaks

Aluminum Canoe  
 Wall Mount Ventless Gas Heater, New in Box  
 Chopsaw  
 Other Power Tools  
 Shop Vacs  
 Assorted Wrenches & Sockets  
 Ladders  
 Chain Link Panels  
 Nuts, Bolts, Screws  
 Camping Gear  
 Rods & Reels  
 Knives  
 Sleeping Bags  
 Lawn Chairs  
 Picnic Table  
 Other Miscellaneous

#### Household

China Cabinet  
 Rocker  
 (3) Chest of Drawers  
 Bookcases  
 Shelves  
 TV  
 Movies  
 Serger Sewing Machine  
 File Cabinet  
 Plant Stand  
 Record Player  
 Records

Bedding  
 Set of China  
 Cast Iron Pans  
 Meat Sheer  
 Holiday Decor  
 Home Decor  
 Wicker Outdoor Furniture  
 Yard Water Fountain  
 Civil Engineer & Soil Books  
 Religious Books  
 Canning Jars & Supplies  
 30+ Pair Mens Western Boots Size 8-9½  
 Mens Work Coats Size M & L  
 Other Miscellaneous

#### Antiques & Collectibles

Dining Table  
 (2) Dressers  
 Chairs  
 Barrister Bookcase  
 Cedar Chest  
 Hand Water Pump  
 Butter Churn  
 Die Cast Cars  
 Baseball Collection



**TERMS:** Cash or good check. Nothing removed until settled for. Not responsible for accidents. Lunch available. Statements made day of sale take precedence over printed matter. All items sell as is. No warranties given or implied.

**417-998-6629**  
 Cross Timbers, Mo.

[CrawfordAuctionService.com](http://CrawfordAuctionService.com)

Sam  
 417-328-9137

Chase  
 417-399-1904

Chance, CAI  
 417-298-1751

Tom Poynter  
 Jack Lancaster

## Brad & Jan Bonnivier

# PUBLIC AUCTION

## Friday, September 17, beginning at 9:30 A.M.

Levi Miller Jr's Farm: 1797 CO. Road 2778, Clark, MO 65243. From Moberly: South on 63 to Hwy NN, left on NN 3 miles to Hwy P, right first county road to the left, Rd 2778 to second farm on the left. Watch for auction today signs.

### HORSES & LIVESTOCK

Team 3/4 perch 1/4 std. br. geldings 2 yr old and 1 yr old full brothers  
 Team 3/4 perch 1/4 std. br. 2 yr old mare 1 yr old geld full bro & sister  
 Team haflinger 2 yr and 4 yr old geldings full brothers  
 2 yr old Belg. Gelding Tater sire—Perch Std. br. Mare 15 yr old w/ colt  
 Weanling stud colt Tater dam.—CD Rock sire  
 2 yr old Std br. Gelding sire King Conch—South Wind Luster dam  
 2 yr old Std. br. Gelding Thrill mare—Sire Southern weight lifter  
 2 yr old std. br. gelding Conmywayin mare—Southern weight lifter sire  
 3 yr old std. br. X A.S.B Admiral—4 yr old family driver, buggy broke  
 4 yr old std. br. Gelding Angus Hall—Joe Boy  
 4 yr old std. br. X Dutch Joe Boy mare Family driver TSS  
 2 yr old std. br. Mare Polar Winner—Southern weight lifter  
 3-Weanling filly's Conmywayin—Wind Song  
 2-Weanling stud colts Sierra Bandit—Admiral  
 2 yr old mare, broke (Forevermore Bachelor)  
 2 yr old perch. Std. br. X Gelding—11 yr old Hackney pony —Mini pony  
 2 yr old Hackney std. br. X —Arabian 4 yr old broke rides good  
 12-Katadin X Dorper hair ewes, should lamb by auction date

### MACHINERY, TOOLS & MISC.

McD. 22" Thrash machine w/ straw cutter—3-Water pumps (new)  
 MC regular gear #9 mower 6' bar w/ dolly—3 ton floor jack  
 4-JD Big 4 mowers w/ 6' bar & dolly—JD Big 4 mower w/ 7' bar & dolly  
 Mc regular gear #9 mower 5' bar, long tongue—2-MC corn binders  
 JD #3 mower 5' bar with truck—3-#7 MC silage cutters—Hand tools (new)  
 2-#9 MC silage cutters—MC 8' grain binder with truck—20 lawn mowers  
 MC 7' grain binder with truck—Wetmore 8' cultimulcher—Cross cut saw  
 N #100 IH manure spreader with 2 wheels (steel)—Garden cultivators  
 N #200 IH manure spreader with 2 wheels (steel)—Chain hoists (new)  
 ONC. Green crop hay loader—14" Montgomery Wards hammer mill  
 JD mod. E manure spreader rebuilt & painted—Open buggy w/ torsion axle  
 #56 New Holland hay rake (5 bars)—Papec model L cutter—Hay pulleys  
 256 New Holland hay rake (5 bars)—International 4 bar hay rake  
 3.9 Cummins engine 102 HP—Hay carriage & forks Ney #15  
 Horse blankets & tie ropes (new)—6-Wheelbarrows lawn & garden (new)  
 Water jugs & coolers—Lots of forks and shovels—4-Sleds (good cond)  
 Lot used metal enough for 30'x36' building 12' walls 4-12 pitch

### HOUSEHOLDS & GLASSWARE

Hitzer stove (sm)—Cunningham stove (used very little)—Canning jars  
 Shenadoah stove—4-5 burner oil stoves—3 burner oil stove  
 4-Sewing machines cabinets, 1 with no treadle—Gas lanterns  
 Table and 6 chairs—Table and 4 chairs (maple)—Filing cabinets  
 Gun cabinet (holds 10)—Stainless steel pans—S.S. steamer pans  
 3-Fiberglass bath tubs (slightly damaged)—Stackable chairs  
 31 day clocks—3-Interior doors (new)—Pressure cookers  
 Punch bowl sets (carnival green, blue and amber)—Berry sets  
 Canister sets (green, amber, teal)—Water sets—Cake stands  
 6-Maytag wringer washers (good cond)

**Owners: Ura D. & Lizzie Gingerich  
 and Levi & Sarah Miller**

For more auctions go to [www.auctionzip.com](http://www.auctionzip.com) ID # 47012

### GUNS

**Guns are wood stock unless otherwise stated in listing**

#1-Mossburg mod. 395 KD 12 ga O-LECT-choke bolt action chambered 2 3/4 & 3" shells—#2-Mossburg mod. 500A pump 12 ga chambered 2 3/4 & 3" shells 28" barrel ACCU-choke—#3-Winchester Super X pump 12 ga chambered 2 3/4 & 3" shells Invector Plus 24" barrel synthetic stock—#4-Mossburg mod. 500A pump 12 ga chambered 2 3/4 & 3" shells 28" barrel ACCU-choke—#5-Mossburg mod. 500A pump 12 ga chambered 2 3/4 & 3" shells 28" barrel ACCU-choke—#6-Mossburg mod. 835 pump 12 ga chambered 2 3/4 & 3" shells 28" barrel ACCU-Mag choke (Not for use with slugs)—#7-Westpoint mod. 948E 20 ga single shot chambered 2 3/4 & 3" shells—#8-Stevens mod. 940 410 ga single shot chambered 2 3/4 & 3" shells—#9-Stevens mod. 9478 410ga single shot chambered 2 3/4 & 3" shells—#10-Marlin stainless mod. I-60 Micro-groove barrel cal 22 L.R. only auto—#11 and #12 Glenfield mod. 60 auto cal 22 L.R. only—#13 Marlin mod. 6087 22 cal L.R. only—#14-Winchester mod. 1300 pump 20 ga chambered 2 3/4 & 3" shells—#15-Mossburg mod. 500A pump 12 ga chambered 2 3/4 & 3" shells w/ Weaver scope—#16-Pardner mod. SBI 20 ga single shot—#17-Ruger mod. 10-22 carbine 22 L.R. auto w/ Tasco scope—#18-Mossburg mod. 835 UIT-Mag 12 ga pump chambered 2 3/4, 3, & 3 1/2" shells camo synthetic stock—#1-Savage mod. 110E cal 30-06 Sprg bolt action w/ 6-18-50 Bushnell scope, not mounted—#2-Mossburg ATR cal 30-06 SPRG bolt action w/ 3-9x40 Tasco scope camo synthetic stock—#3-Ruger mod. 77 bolt action cal 220 Swift-Bull barrel w/ 3-9x40 Bushnell scope—#4-Mauser mod. O-ARGntino 1891 bolt action cal 7 65x53 Argentine w/ Simmons scope box w/ ammo sells with it—#5 Remington mod. 788 bolt action cal 308 w/ 3-9x32 Simmons scope—#6 Vanguard by Weatherby bolt action cal 243 w/ Bushnell 3-9x40 scope—#7-Vanguard by Weatherby bolt action cal 22-250 w/ 3-9-40 Bushnell scope—#8-Remington mod. 700 bolt action cal 30-06 w/ 3-9-40 Simmons scope—#9-Savage mod. 110 SPRG bolt action cal 30-06 w/ Simmons Mag 3-9x44 scope—#10-Sportsman 74 auto cal 30-06 auto w/ 3-9x40 scope—#11 Marline mod. 30 AW cal 30-30 lever action w/ 1.5-4.5x21 Bushnell sportview scope—#12 Remington mod. 700 bolt action cal 270 w/ 3-9x40 scope camo synthetic stock—#13 Remington mod. 700 bolt action cal 270 New in box sells w/ 6x-18x50 Bushnell scope, not mounted—#14-Remington mod. 700 bolt action cal 7MM mag w. 2-9x40 Buckhorn scope—#15 Remington mod. 700 bolt action cal 270 w/ Simmons scope, not mounted—#16-Optima black powder only .50 cal w/ scope mounts, new in box, camo synthetic stock—#17-7x57 Mauser HPJ bolt action cal 7x57 w/ Simmons scope, sells w/ full box of ammo—#18-Marlin mod. 336-W cal 30-30 lever action w/ 3-9x40 scope, new in box—#19-Remington mod. 788 bolt action cal 6MM w/ 3-9x40 Simmons scope—#20-Mossburg bolt action cal 308 w/ scope—#21-Ruger mod. 77 bolt action cal 220 Swift-Bull-Barrell w/ 3-9-40 Bushnell scope—#22-Stevens mod. 200 bolt action cal 270 w/ 3-9x40 Nikon Prostaff scope synthetic stock

The above items of good quality will be available for your consideration with many more small items to numerous to mention. Guns will be on site auction day. Lunch will be available by Amish from Clark community. Hope to see you at the auction.

*Thanks, Larry*

Auctioneers

Larry Martin & Loren Martin



**MARTIN AUCTIONS**

1-660-337-6471



Auctioneers

Mel Yoder



# RESTAURANT EQUIPMENT & ECLECTIC DÉCOR AUCTION

## MONDAY, SEPT. 20 - 10:00AM

H & L STORAGE & MORE LLC

1309 HIGHWAY 42 • IBERIA, MO 65486

### SELLING →

HUGE AMOUNT OF RESTAURANT EQUIPMENT WITH MANY NEW ITEMS! SELLING: NORLAKE 6'X3 1/2' M/L WALKIN FREEZER, SGL PHASE, SELF CONTAINED! TRUE DBL GLASS DOOR REACHIN COOLER AND FREEZER MERCHANDISERS, LIKE NEW! OTHER REFRIGERATION-2 STAINLESS WORKTOP COOLERS-3 DUKE SANDWICH PREP TABLES, 60"-FEDERAL OPEN FRONT MERCHANDISING COOLER-VULCAN 6 BURNER PROPANE RANGE W/OVEN-RANKIN DELUX 32" PROPANE CHARBROILER-BRAND NEW DOYON HALF SIZE ELECTRIC CONVECTION OVEN, SGL PHASE! HOBART 20 QUART COUNTER MODEL MIXER W/STAINLESS BOWL, HOOK, WHIP & PADDLE, NICE-3 NUVU CONVECTION OVEN PROOFER COMBINATIONS, ALL SINGLE PHASE! SEVERAL ALU DOUGH RETARDERS AND 12+ ROLLAROUND SHEET PAN PASTRY RACKS-ALTO SHAAM COOK & HOLD OVEN-STEAMTABLES-ALTO SHAAM SLANT GLASS FRONT HOT FOOD MERCHANDISER DISPLAY-STAINLESS STEEL "L" SHAPED PORTABLE INDOOR OR OUTDOOR BAR & SERVICE KIOSK W/UNDERSTORAGE, TREADPLATE INTERIOR, ICE BIN & TOP MARQUEE SIGN, EXCELLENT! OPEN TOP SALAD BAR, SELF CONT. OR WOULD MAKE A FANTASTIC BOTTLE BEER TROUGH, 86"-SS 3 COMP SINK-MANY SS WORKTABLES, COUNTERS & CABINETS-APPROX 40+ WIRE & CHROME SHELVING UNITS FOR FOOD SERVICE & MORE, MOST NEW IN THE BOX! LG SELECTION SEATING INCL DINING TABLES, CHAIRS & BOOTHS-OFFICE & SHOP ITEMS INCL NEW LOCKER SETS, FILING CABINETS, COMBINATION DROP SAFES & MORE! SUPER NEAT, UNIQUE DÉCOR ITEMS INCL 2 MOOSE & 1 BUFFALO FAUX FUR SHOULDER MOUNTS, PRONGHORN SHEET MOUNT, 4 LONGHORN REPLICA HORN MOUNTS, METAL ART SCULPTURE & LAWN DÉCOR AND ANTIQUE PORCELAIN COOKSTOVE-OTHER RESTAURANT EQUIPMENT & SMALLWARES!

**NOTE: BE ON TIME AS NOT A HUGE AMOUNT OF SMALL ITEMS AND LARGE EQUIPMENT WILL BEGIN SELLING SOON AFTER BEGINNING OF AUCTION! ALL SELLS ABSOLUTE, WITHOUT RESERVE TO THE HIGHEST BIDDER! SUPER NICE WALKIN, REACHINS, CONVECTION OVENS, MIXER & MORE! LOTS OF WIRE SHELVING WITH MOST BEING BRAND NEW AND SEVERAL STAINLESS CABINETS & COUNTERS. VISIT OUR WEBSITE & CLICK ON THE "AUCTIONS" TAB TO VIEW COMPLETE LISTING AND PHOTOS. MARK YOUR CALENDAR & MAKE PLANS TO ATTEND THIS EXCELLENT AUCTION!**

**MARON RESTAURANT EQUIPMENT, LLC & AUCTIONS CO.**  
417-327-5619 • WWW.MARONRESTAURANTEQPT.COM

# LARRY DRENON AUCTION

## ESTATE AUCTION

21229 DWYER RD. • WARSAW, MO

Due to the death of Thomas and Dodi Gillman, the following will sell at auction located from Warsaw, Mo north on Hwy 65 approx. 5 miles (or 5 miles south of Lincoln on Hwy 65) to BB Blacktop, then 1.4 mile on BB to OO, then 1.6 mile on OO to Dwyer, then 2/10th mile on Dwyer to sale on:

**SATURDAY, SEPTEMBER 25TH AT 10 AM**



**REAL ESTATE 22+ Acres, 3 Bed 4 Ba Home w/ Walk-out Basement.** Located within minutes of Truman Lake, Lake of Ozarks and the north business district of Warsaw, MO, yet in the country with abundant wildlife! On the main level of this home we find a spacious kitchen with a Jenn Air cooktop in the island and GE convection oven built in to the wall. The custom-built oak cabinets have a pantry with roll-out doors, a built-in desk, and a corner Lazy Susan. Adjacent to the kitchen is the dining room with large Pella windows overlooking the acreage. Next to the dining area is the living room with brick fireplace that has a Country Flame insert. From the living room, you can walk out the Pella sliding glass door to the deck that spans the house from the living room to dining room. The master bath has a garden spa tub, Jack and Jill sinks, and a large easy-step shower. The utility room/bathroom is conveniently located by the attached two-car garage and across the hall from the kitchen; it has space-saving pocket doors for privacy. The main level of almost 1900 sq ft. has three bedrooms and 3 baths. Throughout the home you will find solid wood 6-panel doors and energy-efficient Pella windows. The mostly unfinished lower level has one bathroom, Pella windows and a door that walks out to a patio. Home is heated and cooled with an energy-saving Hydrotemp Earth Coupled Heat Pump, with electric back-up. A new architectural shingle roof was installed just a year ago. The wooded acreage is ideal if you like to hunt or just enjoy watching the wildlife. The stocked pond has a dock for the fisherman or just to sit and relax awhile. For the toys and tools, there is a 30x40 2 Bay garage/shop with concrete floor and electricity. All of this on a 22+ wooded acreage, just minutes from town. Terms of Real Estate: **The starting bid on this fantastic property will be only \$225,000, and it will sell ABSOLUTE to the highest bidder with NO further reserve!** The successful buyer will pay 20% down day of sale, to be placed in escrow with the Title Co until day of closing (approx. 30 days). At closing, buyer will pay the balance plus applicable closing costs. Seller will furnish title insurance, and taxes will be prorated. Contact auctioneer for information or to view this nice property. **MOTORHOME** 2004 Holiday Rambler 42' Vacationer, only 26k miles, 2 Slide-outs **VEHICLES** 1998 Jeep Cherokee 4x4, white, 2003 Ford Explorer, 221k miles, auto, needs motor work, less than 200 miles on new tires **FIREARMS** Remington 1100 120 ga, 30" vent, full choke, camouflaged \* British Enfield MarkIV 303 Bolt action w/Fajen stock, Weaver scope, Williams mounts \* Ruger Super Blackhawk 44 mag \* Champion 410 SS \* Mossberg 500CT 20 ga pump, 28" barrel, mod choke \* Savage 245E 22cal/20ga O/U \* Marlin Glenfield mod 75 22lr semi-auto carbine, Scope w/ Ted Williams model, Weaver mounts **ATV and GOLF CART** Polaris 350 liquid cool 2x4 4-wheeler, needs work \* Gas powered golf

cart, needs work **SCOOTER** Titan handicap scooter **COLLECTIBLES** Space Shuttle Columbia brass spittoon \* 7-Bradford Exchange Firefighter figurines w/certificates \* Bradford Exchange Firefighter commemorative tiles \* Fireman weathervane \* Sloan oil painting, turkey/wildlife \* Old metal utility cabinets \* Ant. Composite doll, other old toys and toy chest \* Classic rock 8 tracks \* Budweiser thermometer \* Lg collection Playboy magazines from 1965 \* Precious Moments figurines **HOUSEHOLD** Queen size Pineapple 4-post bed, chest, 2 night stands, dresser \* Queen size 4 post bed, Armoire, lg. dresser \* Lg black leather lift chair \* Round oak dining table, 2-24" leaves, 6 chairs \* Wooden portable wardrobe \* Whirlpool high efficiency washer and dryer \* Kenmore chest type freezer \* Kenmore refrigerator \* Whirlpool 20 cu ft upright freezer \* Older GE refrigerator \* Oak coffee table and 2 lamp tables \* Dk blue 3 cushion sofa \* Older roll top desk \* Small kitchen appliances \* Bookcases \* 3-2 drawer metal filing cabinets \* Small Sentry combo safe \* Yard nativity set, wisemen, camel, shepherd, etc \* Coleman metal cooler, others \* Lot of Tupperware \* Stoneware dishes- Lighthouse **JEWELRY** Ivory cameo necklaces \* Montana Silver jewelry \* Misc gold, sterling, other jewelry \* Nice oak jewelry armoire **SHOP EQUIPMENT and TOOLS** Campbell Hausfeld 20 gal 3.5 hp air compressor \* Popular Mechanics tool chest on wheels \* Troy Bilt Pressure washer \* Electric chainsaw sharpener \* Delta compound miter saw \* Craftsman 8 gal wet/dry vac \* 4"Belt/6" disk sander \* Chicago miter saw \* Shop Force 16 spd floor model drill press \* Port. Schumacher 105 Turbo welder \* Bolt and nut cabinets \* Stanley 6 1/2 fiberglass ladder \* Werner 8' Aluminum step ladder \* 5' Aluminum, 7' Wooden step ladders \* A;uminum ext. ladder \* New 15' ratchet tie downs \* Craftsman 3 hp 10" table saw \* Lifetime 24pc Carbide router bit set \* BE&OE wrenches \* Hatchets, hammers, air tools, hand tools \* 2 Wheel dolly \* Small shop vac \* Homemade barrel stove \* Lg wood shop heating stove \* Squirrel cage fan **LAWN, GARDEN, PATIO** Nice patio chaise, 4 chairs, table, 2 rockers \* Husqvarna YTH 24" Intek V-twin riding mower \* Commercial Cyclone Rake 6 hp Tecumseh engine \* Craftsman 8 hp chipper-shredder \* 4x8 Utility trailer w/ramp \* Mastercraft 10 yard trailer \* Fimco 14 gal sprayer, new in box \* Yard Machine push mower \* High wheel push mower \* Murray 40" riding mower \* Craftsman 6.75 Push trimmer \* Poulan Pro leaf blower \* Stihl Farm Boss 038ABS chainsaw \* Remington electric limb saw **BOAT AND FISHING** 15' Aluminum V-bottom boat w/trailer \* Johnson 10 hp Sea Horse outboard motor \* Evinrude 18 hp outboard motor \* Old Wooden plugs \* Fishing tackle and tackle boxes **MISCELLANEOUS** Lg dog crate \* New aluminum 500lb cargo carrier \* Lot items not listed; more in storage to be brought put sale day

**CHILDREN OF THOMAS & DODI GILLMAN**



# Larry DRENON AUCTION

Larry Laramie  
660-596-8515 660-221-4386  
Lacey Cooper  
660-723-1104 660-723-2221

Office: 660-723-6188  
www.DrenonAuction.com

**Terms:** Cash, approved check, or credit/debit card (convenience fee applied). Nothing to be removed until settled for. Not responsible for accidents. Statements made day of sale take precedence over printed material. Lunch served. Check out the website for pictures!

# AUCTION

**Saturday Sept. 25, 2021 @ 10am**

**Location:** At the corner of county roads 1030 & 3780 **Directions:** From Willow Springs business route turn on 10th street across from the city buildings then immediate left on Old Springfield Road (turns into county road 1030) follow to auction at the intersection of county roads 1030 & 3780. Watch for Tooley Auction signs

## TRACTORS AND IMPLEMENTS

John Deere 5065E, w/553 loader, 2wd, 555 hours, like new, lightly used; John Deere 420W, restored; John Deere M, restored; Ford 600; Ford 9N; John Deere 430-T; John Deere loader, model 35, series 1; 2 sickle mowers for Farmall Cub tractors; 5' brush hog, Bush Hog; 6' Farmstar brush hog; 2 older 5' brush hogs; 3 pt. auger with 9" & 12" augers; 3pt. 6' blade; 3 pt. round bale carrier; 3pt. 1 bottom plow; 3pt. 4' cultivator; 3pt. 5' disc; front John Deere bale spikes, used just a few times, fits 553 loader; Farmall Cub belly mower; 12' harrow; tractor wheel & front weights; more

## ANTIQUE 4 WHEEL WAGON, SPRINGFIELD

## TOOLS, LAWN & GARDEN, MISC.

Craftsman LT2000 42" riding mower; Craftsman 42" riding mower; Craftsman stand up air compressor; Lincoln AC/DC stick welder, nice; Campbell Hausfeld flux core 80 wire welder, nice; 2-Stihl 170 chainsaws; Stihl 028 super chainsaw; Stihl 120C E-Z pull chainsaw; Stihl weedeater; mid size torch set w/ bottles, cart, hoses & torch; 25' torch hoses, new; 10" contractor table saw, like new; All Power 3500 watt generator, new in box; sandblaster; 20' aluminum extension ladder; 28' fiberglass extension ladder; 15 gallon sprayer, like new; back pack sprayer, like new; hand sprayers; new treated corner post; new & used T-post; fence stretchers; fence splices & tool; barbed wire; T-post puller; 3-4' gates; 2-10' gates; 12' gate; 16' foot gate; 2 galvanized gates, 1-12', 1-20'; 5' framed walkthrough gate; 16' wire cattle panels; pull behind seeder, nice; handy-man jack; jacks & jack stands; air compressor; air hose; extension cords; come-alongs; all kinds of chain & ratchet binders; top links; draw bars; stabilizer bars; gas cans; hand seeder; lawn wagons; lawn sweeper; lawn aerator; lawn baggers; saw horses; wheel barrow; all kinds of galvanized tin; some barn lumber; table saw; jig saws; sanders; bench grinder; hand tools, screwdrivers, pliers, sockets, wrenches, hammers, pry bars; shovels; rakes; pitchforks; post mauls; splitting mauls; spud bars; several Chevrolet rally wheels; Maxxis M3 tires, 225/60R16, almost new; fish cooker; all kinds of nuts, bolts, screws; more



**Auctioneers Note:** Good clean auction. Plenty of parking. See you on the 25th, Travis. **Owner: Jack Cauldwell**

## Tooley Auction Services, LLC

417-293-6909 • Willow Springs, MO • tooleyauctions@gmail.com



**Travis Tooley, Auctioneer**  
**Bruce Scheets, Auctioneer**

**Clerks & Cashiers:** Penny Tooley, Shelly Cauldwell & Barb Schumacher

**Ringmen:** Vance Farmer, Terry McCallister & Josh Wheeler



Drivers license or photo ID. Cash or check.  
Announcements made on the day of the sale take precedence over any printed material. Not responsible for accidents, theft or lost articles.



# PUBLIC AUCTION

Sunday Sept. 19th • 1:00pm

13414 County Road 8110 • West Plains MO

**Directions:** From West Plains; West Hwy 160 to JJ Hwy, 7.6 miles to County Road 9620. Left on CR 9620 to the Y, (.4 miles), right at the Y on County Road 8110. .4 Miles to Auction on right. Watch for Reid Auction Signs

## WOODWORKING TOOLS

Sawstop 10 Inch Industrial Cabinet Table Saw, Grizzly Industrial Dust Catcher, Grizzly 6 Inch Joiner, Grizzly 16 Inch Drum Sander, Delta Shop Master Band Saw, Porter Cable Plate Joiner, DeWalt 12 Inch Compound Miter Saw on Stand, Milwaukee Palm Sander, Black & Decker 1/3 Sheet Finish Sander, Milwaukee ¼ Sheet Sander, Bosh Palm Sander, DeWalt DW317 Jig Saw, Central Machinery 8 Inch Bench Grinder/Buffer, Shop Master Band Saw, Moto-Shop Scroll Saw, Woodstock W1049 Dust Separator, American Tool Exchange 16 Speed Floor Drill Press, Hoover 4 Inch Belt Sander, Rockler Expandable Straightedge, Craftsman 4 in 1 Level with Laser Trac, Rotorazer Saw, Craftsman Router & Table, Skil Jig Saw, Skil Bench Grinder on Stand, Craftsman Push Mower, Central Machinery 4 Inch Belt & 6 Inch Disc Sander, Buffalo Metal Cutting Band Saw Model HVMB5-4.5,

## WOOD SPLITTER~TOOLS AND SHOP SUPPLIES

Brave Industries 24 Ton Wood Splitter, 2 Park Zone Alarm, 8 Foot Fiberglass Step Ladder, Hydraulic Pallet Jack, Rolling Tool Cart, Wooden Work Bench w/2 Wood Vices, Small Work Bench, EBCO Bench Leg Kit, Scrapers, Miter Box w/Saw, Dovetail Saw, Dovetail Guides, Scraper Holder, Honing Guide, Wood Clamps of all Sizes, 4 Way Pressure Clamp System, Drill Bit Sets, 36 Piece Router Bit Set, Paint Supplies, Work Light on Stand, 2 Wheel Wheelbarrow, Draw Knife, Brace & Bit, Wood Rasp, Wood Lathe, Hand Saw, 3 Utility Rollers, Piano Dollies, Cordless Drills, Hole Saw Set, RoBo Laser Level, Hammers, Center Point Chisels, Digital Calipers, Pruning Shears, Garrett Super Scanner, 4 in 1 Work Light, Drafting Table, Wood Table & Cabinet, Misc Nails and Screws, and lots of misc boxes of supplies to go with the woodworking tools.

## MISC

Western Cedar Ship Lap Lumber, Stack of Rough-Cut Walnut & Black Cherry Lumber, Several Sheets of ¼ Foil Back Solar Board, 2 Rolls of Bubble Insulation, 2 Two Wheel Carts, Garden Hoses, Aluminum Walk Boards, Metal Scaffolding, Tubes of Caulk, Wood Glue, Blackstone #1517 Gas Grill, Charbroil 9000 Gas Grill, Pro Form J4 Performance Treadmill (Spacesaver), Advertising and Campaign Buttons, Decorative Mirrors, McCoy Flower Pot, 1950's Cocktail Shaker, Uranium Glass Vase, Decorative Platter, Chocolate Fondue Fountain, Teapots, Cut Glass, Bird Figurines, Decorative Plates and several more boxes of glassware and misc boxes to be opened before auction.

**Liudmyla Thomas and the Late Dr. Thomas N Thomas**



# Reid Auction Service

Randy Reid 417-257-3911 • Rex Reid 417-372-1866 Ark. Lise. #2606 • Ted Reid 417-256-6661  
 Concessions & Restroom available. Not responsible for Accidents, Lost, Stolen or Mislplaced items. Any announcements made day of sale supersedes any prior written or oral communications. Cash and checks accepted .... no Credit Cards



# PUBLIC AUCTION

STOCKTON, MO

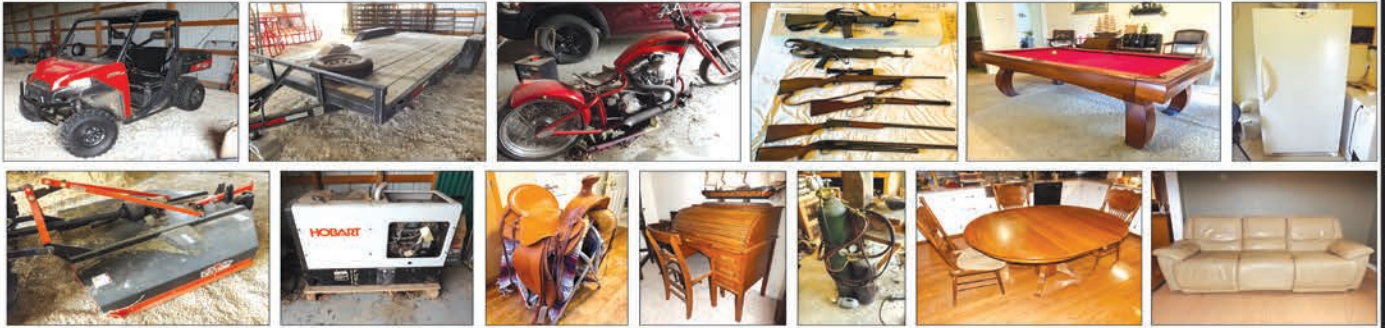
# AUCTION

As we are moving we will sell the following Household, Collectibles, Antiques, Guns, UTV, Motor Cycle, Tools and Misc. At the Home located 6 miles South of Stockton, Mo. On 39 Hwy. To B Hwy. Go West on B Hwy. 2 miles to F.R. 1025 go South to the Auction on

## Sat. Sept. 18, 2021 at 9:00 am

WATCH FOR AUCTION COMPANY SIGNS • LUNCH SERVED

FOR MORE PICTURES GO TO: [WWW.BRUCEANDLEANAUCTION.COM](http://WWW.BRUCEANDLEANAUCTION.COM)



### UTV-MOTOR CYCLE-TRAILER

- 2015 Polaris Ranger 570 EFI 4X4, W/Top, Windshield, One Owner, 311 Miles, Dump Bed, Farm Used
- Ultima 113cc Performance Custom Built Motor Cycle Built by Thompson Choppers, 6 Speed Trans, (all paper work in order for title)
- 2011 Kodiak 7' X 16' Tandem Axle Bumper Trailer W/ Short Dove Tail & Ramps
- Motor Cycle Jack
- Motor Cycle Working Stand
- Misc. Motor Cycle Parts
- Harley Davidson Leather Coats (men's & ladies) & Helmets

### HOUSEHOLD-ANTIQUES-COLLECTIBLES

- Frigidaire Lrg. Upright Deep Freezer
- Kenmore Sm. Chest Deep Freezer
- 2 Sony & RCA 31" Flat Screen TV's
- Vintalite Limited Regulation Slate Pool Table W/Cue's
- 3 Highboy Chairs
- King Temper Pedic Mattress
- Queen Hollywood Mattress & Springs
- Glass Top TV Stand
- Dual Tan Leather Couch/Recliner
- Round Oak Kitchen Table
- 6 Oak Pattern Back Chairs
- 110v Window Air Conditioner
- Cabinet Sewing Machine
- Ant. 6' Glass Fronted Pie Safe
- S Roll 44" Roll Top Desk
- Wash Stand (no towel bar)
- Sm. Oak Cabinet
- Glass Fronted 40" Lawyer Book Case Top
- Humidor Smokers Cabinet
- Sq. Dining Table W/Buffer
- Child's Roll Top Desk
- 5 Drawer Oak Desk
- Post Office Mail Rack
- Lrg. Oriental Jewelry Box W/Inlays
- Lrg. Mosaic Oriental Inlay Picture
- Music Box Collection
- Lrg Cast Piggy Bank
- Bachmann N Scale Toy Train
- Lionel Train Set
- Approx. 200 Hot Wheels Cars
- Barbie Doll Collection
- Spoon Collection
- Misc. Silver Plated Items
- Ant. Metal Porch Glider W/Ash Trays
- Lrg. Bird Cage

### HOUSEHOLD-ANTIQUES-COLLECTIBLES CONT.

- Mandola Instrument
- Bontempi Electric Keyboard
- Fender Guitar Amp.
- Alto Saxophone
- Saxophone's (3 to be rebuilt)
- Instrument Stands
- 9-32" Oriental Swords
- Sev. Other Spears & Swords (some Pal Chen)
- Lrg. Upright Stainless Electric Cooker
- Several Hand Grinders & Meat Suffer
- Misc. Cast Skillets
- Lot of Pots, Pans & Dishes
- Sets of China
- Double Wash Tub on Stand
- Lot of Household Misc.
- Repo. Gum Ball Machine on Stand

### GUNS-SADDLE-LEATHER TOOLS

- AK-47 DC-Industries 7.62 X 39 Semi-Automatic Rifle
- Armalite M15A2 Carbine Semi-Automatic 223 Cal Rifle W/Extra Clips
- Savage Model 10 Bolt Action 223 Rifle W/Scope
- Winchester Model 94AE Lever Action 44 Mag. Rifle
- HR Topper 12 Ga. 3" S.S. Shot Gun
- Westernfield 12 Ga. Pump Shotgun W/Rib
- New Handmade Slick Fork Quarter Horse Saddle W/¾ Rigging, Carving, Nice
- Approx. 225 plus Leather Carving Tools
- Crockett Spurs
- Misc. Tack
- Ant. Horse Shoeing Box
- Lot Misc. Leather Working Tools
- Saddle Stitching Stand W/2 Vise's
- Western Books & Cowboy Collectibles

### CATTLE-EQUIPMENT-MACHINERY

- 3 Pt. Bad Boy 6' Brush Hog
- Shaver 3pt Hyd. Post Driver
- 3pt King Kutter II 6' Rear Tine Tiller
- 3pt Post Hole Digger W/2 Augers
- 3pt 6' Rock Rake
- 3pt. Bale Forks
- Polaris 5' Blade
- 3 Metal Bale Rings (like new)
- 3 Poly Stock Tanks
- 10-6 Bar 10' Corral Panels
- 40 Plus 6 Bar (1" Sq. Tubing) Corral Panels & Gates 16' to 20' Long
- Misc. Pipe Gates

### CATTLE-EQUIPMENT-MACHINERY CONT.

- Approx. 10 new 16' Welded Wire Cattle Panels
- Approx. 50 used 16' Welded Wire Cattle Panels
- 3 Poly Portable Waters
- Approx. 50 new Steel Post
- Approx. 75 used Steel Post
- Misc. Electric Fencing
- Sev. Poly Tubes

### TOOLS & MISC.

- Hobart 230 Volt Welder/Generator 10,000 watt WWelder Leads, 21 hrs.
- Miller Matic 140 Wire Welder W/Bottle 110v
- Randor Act. Torch Outfit W/Sm. Bottles
- DeWalt Radial Arm Saw
- Grizzly 13" Thickness Planer
- Craftsman 12" Scroll Band Saw
- Grizzly Bench Drill Press
- English Wheel Kit W/Stand for Body Work
- 9 Drawer Craftsman Tool Box Bottom
- 6" Vise on Stand
- Sand Blaster Pot
- Alum. Ext. Ladder
- Honda 3200 psi Pressure Washer
- Big Wheel Push Mower
- Stihl 55c Sm. Garden Tiller
- Sears 50 amp Battery Charger
- Ratchet Tie Down Straps
- Delta Pickup Tool Box
- Lot of Misc. Hand Tools
- Metal 5 pc. Patio Set
- Concrete Lawn Ornaments
- Clay Pigeon Thrower & Rock
- 2 Igloo Dog House's
- 3 Paint Ball Guns
- Sm. Combination Safe
- Child's Sled
- Lot of Exercise Equipment (Weight Lifting Equip. Punching Bags, NordicTrack Tread Mill, Workout Items)
- Lot of Christmas Decor
- Lot of Misc.

## OWNERS: TYKE & TAMMY ANTONOPOULOS

TERMS: Everything sells as is, where is. Nothing is to be removed until settled for. Payment of Cash, Check with Proper ID, or Credit Cards. Auction Company or the Owners will not be responsible for loss of items or accidents. Statements made the Day of the Auction take Precedence over Printed Matter.

SALE CONDUCTED BY **BRUCE & Le'AN AUCTION & APPRAISAL, LLC**  
THE AUCTION COMPANY THAT APPRECIATES YOUR BUSINESS

For more information and pictures go to our website at [www.bruceandleanauction.com](http://www.bruceandleanauction.com)

RONNIE BRUCE - Fair Play, MO  
417-777-1685 or 417-654-2214  
colronbruce@gmail.com

BRANDON BRUCE  
Fair Play, MO

BILLY BRUCE - Stockton, MO  
417-399-4800  
colbbruce@gmail.com

**VISIT WEBSITE FOR PICTURES**

# ESTATE AUCTION

Vehicles ~ Lawn Tractor ~ Household ~ Exercise Equipment ~ Outdoor ~ Lawn & Garden ~ Log Splitter ~ Wood Chipper ~ Shop Items

**SATURDAY, SEPT. 18<sup>TH</sup> - 10:00 A.M.**

**Location:** 71 Glendale Drive, Rogersville, MO **Directions:** From Rogersville McDonald's take Hwy 60 East approx. 2 miles to Glendale Drive on right. Auction held at first house on left. **WATCH FOR CHADWELL AUCTION SIGNS.** **Payment System:** Cash • Debit Card • Credit Card (Debit / Credit Card Fee Will Apply) Checks approved if known by auction company. **VISIT: WWW.CHADWELLAUCTIONS.COM**

**Estate of Judith and the late Ron SONGER**



**2017 Lexus ES ~ 21,000 Miles (Loaded)**

**Satoh Beaver Lawn Tractor w/ Mowing Deck & Turf Tires, 3 spd Trans, PTO, Diesel**

**VEHICLE ~ TRAILERS**

2009 Suburban LTX 1500 w/Entertainment Package 220K miles • 5x10 Tilt Trailer • 4x6.5 Tilt Trailer w/Wench

**HOUSEHOLD**

Leather Sectional • 4pc King Cherry Bedroom Suite • Assorted Lamps • Shark Vacuum • Area Rugs • Sleeper Sofa Couch • Throw Pillows • Cherry Desk • Metal Chairs • End Tables • Dresser • Assorted Linens • Secretary • Couch • Occasional Chairs • Microfiber Chaise • Reclining Floral Occasional Chairs • Liquor Cabinet • Leather Round Coffee Table • Wall Decor • Pots & Pans • Utensils • Small Appliances • Mixing Bowls • Cutlery • Bar Stools • Wooden Table w/4Chairs • Small Couch • Whirlpool Front Load Washer & Dryer • Kenmore Vacuum • Nortaki Contemporary China Set • Flatware • Cookbooks • Small Table w/4 Chairs • Sewing Machine • Sewing Notions • Sofa Table • Christmas Decor • Large 10' Christmas Tree (New) • Other



**EXERCISE EQUIPMENT**

Total Gym 2500 • Weights • Horizon T203 Treadmill • Aloha Breeze Fan • Other

**OUTDOOR ~ LAWN & GARDEN**

2016 Bad Boy Zero Turn 48" Lawn Mower • JD X304 Riding Lawn Mower • Yardman Lawn Mower 46" cut • Lawn Cart • 6pc Patio Furniture w/covers (couch, chairs, table, etc) • Electric Leaf Blower • Electric Weed Eater • Folding Dog Crates • Wicker Patio Chairs • BBQ Grill • Lawn & Garden Tools • Hand Sprayer • Ash Vac • Assorted Coolers • Solar Lights • Outdoor Rugs • Flower Pots • Heat Lamps • Dog Grooming Table • Bag Chairs • Minnow Bucket • Fire Pit • Wooden Folding Chairs • Hose Reel on Wheels • JD Yard Sweeper • Assorted Lumber • Large Lot of Firewood • Rock Pavers for Patio (large lot) • Wooden Sled • Fuel Cans • Echo Backpack Leaf Blower • Stanley Backpack Sprayer • Stihl Weedeater • 3pt 4' Blade • Stihl Mantis • 4' 3pt Finishing Mower • 5th Wheel Draw Tite 15,000 pro series • 2 Wheel Yard Seeder • 24' Alum Ladder • Log Chains • Wooden Bench • Other



**TROY-BILT Chipper/Shredder w/ Briggs & Stratton Gas Motor**

**SHOP ITEMS**

Campbell Hausfeld 60 gallon Air Compressor 6hp • Lincoln AC 225-s Welder • 6' Fiberglass Ladder • Large Lot of Tools • Levels • Hand Saws • Roller Stands • Hitachi 18v Drill • Hammers • Nuts & Bolts • Porta Cable Router • Porta Cable Nail Gun • Dewalt Jig Saw • Drill Doctor Bit Sharpener • Campbell Hausfeld Air Gun • Pipe Threader • Air Hoses • Oils & Solvents • Metal Work Bench on Castors • Reese Hitch • Creeper • Coleman Lantern • Metal Shelving • 20' Alum Ladder • Lockers • Other



**MTD 20 Ton Log Splitter**

**AUCTIONEER'S NOTE:** This is some of the cleanest merchandise you will ever find at an Auction. Make plans to Attend! *Thanks, Shawn*

**DRIVER'S LICENSE OR PICTURE I.D. REQUIRED • TERMS: CASH OR APPROVED CHECK** **OR**

**Chadwell**  
Auction Service, LLC  
[www.chadwellauctions.com](http://www.chadwellauctions.com)

**Auctioneer:**  
SHAWN CHADWELL  
417-830-0209

**Clerk:**  
SHELLY CHADWELL  
Cell: 417-880-8449

**Ringmen:**  
Weston Chadwell ~ 417-349-0727

**Cashiers:**  
Shawn Irby • Marla Chadwell  
Kati Roberts • Emily Chadwell

**PROFESSIONAL SALES MANAGEMENT**

LUNCH WAGON • APPRAISAL SERVICE • RAIN OR SHINE  
All announcements made day of sale take precedence over any printed matter. Not responsible for lost or stolen merchandise. Not responsible for accidents.

# FARM & ESTATE AUCTION

**Saturday, September 18th, 2021 ~ 10:00 AM**

LOCATION: 777 Northeast 100th Lane, Lamar, MO (Milford Area); Directions: From Lamar Go North On I49/71 Hwy To C Hwy Then East On C Hwy Approx 17 Miles To 100th Lane Then North To Sale Site (Watch For Signs)

**Auction For Sterling & The Micki Martin**



## Antique & Modern Furniture

2 Ant Sellers Kitchen Cabinets 1 W/Glass Doors The Other W/Granite Top (Very Nice), Ant Hoosier Kitchen Table & Chairs, Ant Chest Of Drawers, Ant Waterfall Vanity Dresser W/Mirror & Chest Of Drawers, Ant Iron Bed, Some Sm Ant Kitchen Tables, Ant Buffet, Ant & Prim Cabinets & Pantries, Ant Cedar Chest, Ant Treadle Sewing Machine, Round Kitchen Table & Chairs, New Leather Sofa, New Rustic Wood Coffee & End Tables, Blue Rocker, Twin Size Beds, Approx 5 Dressers W/Mirrors & Chest Of Drawers, Love Seat & Matching Chair, Wine Cabinet, Ant 8 Ft Store Counter, Lg Wood Display Cabinet, King Size Sleigh Bed, Several Bookshelves, Prim Wood Bench, Maple Coffee & End Tables, Ant Child's Piano, Green Kitchen Table & 4 Chairs, White Wooden Cabinet, Lg 4 Drawer Desk, Lg Chair & Ottoman, Sm Rolltop Desk, Ant Wood & Gas Cook Stove, 5 Cu Ft Chest Deep Freeze, TV's, TV Stand, Lots Of Other Items Not Listed

## Antiques, Collectibles & Households

Ant Washboards, Ant Electric Butter Churn, Old Iron Wheels, Galvanized Pcs, Old Oil Lamps, Cast Iron Skillets & Other Cast Pcs, Lots Of Different Style Granite Ware Pcs, Old Crocks, Old Dolls, Ant Aluminum Kitchen Ware & Other Pcs, Old Jars & Bottles, Brass Pcs, Old Linens, Clown Collection, Ant Wire Egg Basket, Old Cookie Jars Inc McCoy, Old Toys, Aunt Jemima Pcs Inc Salt & Pepper Shaker & Syrup Dispenser, Old Salt & Pepper Collection, Ant Cow Creamer, Lots Of Ant Vases, Old Pottery, Very Lg Lot Of Elephant Collection Of Various Kinds Of Pcs, Ant Green Ice Bucket W/ Lid, Lots Of Wexford Dishes, Lots Of Pyrex & Fire

King Dishes Some Very Old & Some New Modern, Ant Kitchen Utensils, Wood Kitchen Ware Pcs, Ant Shaving Cups & Brushes, Ant Match Holder, Shawnee Piggly Wiggly Lg Pitcher & Salt & Pepper Shaker Set, Tea Pot Collection Some From England, Princess House Glassware, Glass Basket, Old Linen Of Various Kinds, Bell Collection, Ant Pitcher & Bowl Set, Unusual Set Of Enamel Cast Iron Maple Leaf Design Pans, Old Cookbooks, 2 Enamel Roasters, Ant Crock Bowl, Old Meat Grinder, Fish Pitcher W/6 Glasses, 1917 Ceramic Oval Dish, Punch Bowl W/Glasses, Turkey Drink Crock W/Spigot, Sm Kitchen Appliances, Lots Of Pots, Pans & Dishes Some Old, Some New, Other Items Not Listed

## Car, Tractors, Equipment, Cattle Items,

### Tools & Outdoor

2002 Buick LeSabre 4 Door Car, JD 2510 Gas Tractor W/Wide Front End, Dual Hydraulics, 2 Allis 7000 Diesel Tractors Both Cab, Wide Front End, Dual Hydraulics 1 Runs, 1 For Parts, JD 609 Brush Hog, 3 Pt Speed Mover, Rhino Post Hole Digger, Carry All Bale Mover, 3 Pt Field Sprayer, 6 Ft Pull Type Bush Hog, Portable 26 Ton Hydraulic Wood Splitter W/Motor, Bush Hog Brand Finish Mower, 3 Pt Hydraulic Bale Unroller, 5 Ton Grain Bin, 6 Concrete Feed Bunks, 4 Bale Rings, Squeeze Chute, Head Gate, Some Corral Piping, Portable Cattle Panels, Lick Tanks, Feed Stanchion Panels, Delaval Milk Stanchion, 10x12 Metal Storage Shed W/Doors On Each End, Truck Fuel Tank, Fuel Ladder, Alum Flat Bottom Boat, 4x8 Utility Trailer, Murray Push Mower, Tiller, Air Compressor, Chop Saw, Lincoln AC 225 Welder, Sm Hand Tools, Sm Electrical Tools, Dog Pen Panels, Outdoor Furniture & Décor, Other Items Not Listed

**Auctioneers Note:** It Is An Honor To Be Conducting This Auction For The Martin Family As Mr. Martin Has Been A Family Friend & Brother Mason For Many Years. This Auction Will Be Loaded With Something For Everyone From Farm, Cattle, Tools & Outdoor Items To Excellent Antique Furniture, Antiques, Primitives, Collectibles & Every Day Good Household Items. This Is A True Farm & Antique Estate Auction. Please Plan Now To Attend. **Sale Order: Furniture Will Sell First Followed By Antiques, Collectibles & Households. At Approx 1:00 PM Will Offer Car, Tractors, Equipment Cattle Related & Large Items. Remainder Of Tools & Outdoor Will Finish Auction. See Ya There!!!**

Terms: Cash or check with proper ID. Now accepting most major credit cards. Nothing removed until settled for. Statements made the day of sale takes precedence over printed material. Everything sold as is where is. Not responsible for accidents. Restroom available. Concessions Provided By Barker Concessions. Check our website for upcoming auctions and for additional pictures!!



## NANCE AUCTION SERVICE

No Matter How BIG or small, We Do Them All!!!

Col. Bill Nance 417-214-0093

In God We Trust

Philippians 4:13

# R&R AUCTION SERVICE

## GARY GENETTI ESTATE

### SATURDAY, SEPT. 18TH • 9AM



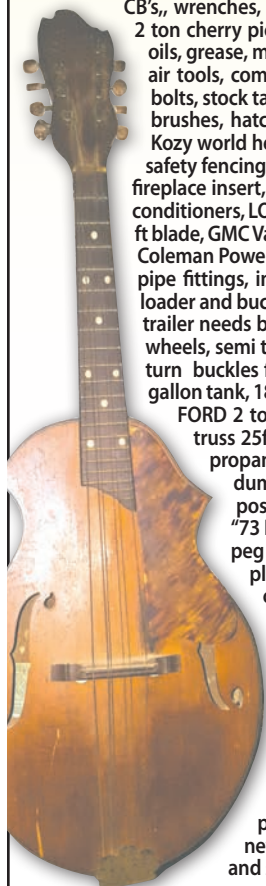
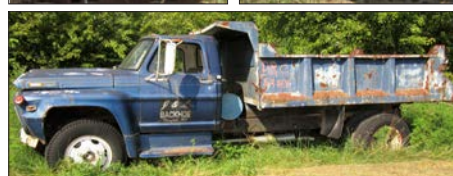
362 Genetti Lane, Marshfield, MO

This auction covers 5 acres of ground so be prepared for a long day with lots of walking. There is lots of scrap, projects, and parts. The magnitude is not able to be described without seeing in person. We will start with firearm sales at 9am sharp all other merchandise will follow as we get to it. Keep in mind there will only be 1 ring so plan on a full day.

2008 Volvo XC90 all wheel drive 173,551 miles, Honda HS 55 snowblower, 1998 Lincoln Navigator 132,768 miles, 1986 Ford F350 parts truck, big bird cages, igloo dog house, dog cages, old windows, flower pots, unicycle, water coolers, 2 air mattresses, sleeping bags, wash tubs, large cart on wheels, pull behind lawn seeder, Craftsman Professional air compressor, 110, needs repair, Harbor Freight 220 air compressor works great, lots of tools, Central Machinery 20 ton press, Craftsman shop toolboxes, Lincoln Welder, lots of shovels, weed hooks, post diggers, pitch fork, 1" drive sockets, router and table, belt sanders, drill press, spot sprayer, Craftsman Radial arm saw, Craftsman chain saw, bubble balancer, Mr. Heater, trailer air hoses, truck lights, jigsaw, drills, angle grinders, buffer, Craftsman toolbox, numerous

CB's, wrenches, vise grips, pliers, screwdrivers, semi transmission jack, 12 ton jack stands, 2 ton cherry picker, parts washer, creeper, hand saws, metal cut off saw, lantern, wedges, oils, grease, misc. garage stuff, 2 wheel hand truck, old sled, clevis pins, fire extinguishers, air tools, compression sleeves, come along, pipe wrenches, pry bars, old truck parts, u bolts, stock tank heater, wire old radios, Craftsman edger/leaf mulcher, grease guns, wire brushes, hatchets, axes, nail pullers, pipe benders, several power inverters, mud flaps, Kozy world heater, lots of hoses, old reclaimed construction materials, lard press, orange safety fencing, landscape timbers, 2 wheel barrows, chains, boomers, rolls of barbed wire, fireplace insert, sewing machine frame, Generac generator (propane), two 220 window air conditioners, LOTS of concrete blocks, truck tarps, Craftsman walk behind weed eater, Ford 8 ft blade, GMC Vandura ambulance, 400 Chevy engine, needs piston and heads, sand blaster, Coleman Powermate 5000 generator, 10" compound miter saw, cables, cases of marine oil, pipe fittings, insulators, pulleys, 1988, MACK econoline, Belarus 4wd Tractor with ML750 loader and bucket, under 1600 hours, 20,000lb roller, wheels, auger bits, 28ft 3 axle flatbed trailer needs boards, with ramps, Superb 5 fifth wheel hitch, horse trailer, truck tires and wheels, semi truck and wheels aluminum and steel, exhaust stacks, aluminum toolboxes, turn buckles flat bed semi, 1693 CAT motor, dozer parts, antique farm implements, 150 gallon tank, 18ft flatbed bumper hitch trailer, hay dump rake, Webster Electric trailer, 1955

FORD 2 ton, half pipe, barrel dolly, pipe, huge scrap pile, approximately 35, 1ft bar truss 25ft long, truck tool boxes, 3 ft whistle 12ft long, "55 FORD frame, 250 gallon propane tank, Mazda truck, oil tank, old 3 pt disc, I beam 12 X 6, 25-30 ft long, dump truck, farm fuel tank and stand, 10 ft bush hog, pull type, dozer blade, 3 pt post hole auger, chain link fence, bulk liner feed hauler bed, T posts, "40 FORD, "73 Freightliner 4 1/4 CAT 1693 15 speed, 1979 trailer, street lights, old cabinets, peg board, bags of insulation, doors, buckets of nails and screws, 2 x 4's, barrels plastic and steel, DR mower that pulls behind an ATV, lawn sweeper, electric chainsaw sharpener, 110 AC, book shelves, 5000lb ATV wench, NEW 100 lb capacity welding cart, saddle and tack, Doughboy set including cookie jar, salt and pepper, glassware, household merchandise, Blue carnival pitcher and glass set, knives, Kay mandolin, Supro lap steel in case, Zippo lighters, cigar boxes, Emerson flat screen, kitchen clock, 29 Winchester 22, 22 model 87A Stevens, Marlin 22 model 75, Ruger 10-22, model 1885 single shot 12, WH Davenport Norwich CT, 20 ga, model 94 Stevens, RG 63, German Rohm gmba southeim brezn, gun cases, scopes, cleaning kits, ammo, Peters, 22, 250, 17 HMR, 22 long rifle, 9 mm, 12 ga, 38 special, gun locks, holsters, New Pittsburg torque wrench 3/4 and 3/8" drive, air tools, palm sanders, 1/4" air hydraulic riveter, electric fireplace, lots of Christmas, new concrete mixer, approximately 150 45rpm records, several 33 albums, and so much more you won't believe your eyes!



**TERMS:** Cash, check, or credit card with proper I.D. nothing removed until settled for a 3% fee will be added to credit card purchases. Not responsible for errors in listing. Any announcement made sale day will take precedence over any printed matter. **Note:** Service will take every precaution to prevent accidents, but will not be responsible should any occur.

**AUCTION**  
  
**GENERAL AUCTIONEERS**  
**Auction & Appraisals**  
**SERVICE**

For more information contact Professional Auctioneer Russ Weeks at 417-576-7357 or check out [www.rrauctionservice.com](http://www.rrauctionservice.com)

Serving this area's auction needs since 1997 with honesty and professionalism.  
[www.rrauctionservice.com](http://www.rrauctionservice.com)  
(417) 576-7357 or (417) 345-4140



# Firearms Auction

Saturday, October 2nd, 2021 • 10:00 a.m.

Sale Preview - Friday, October 1st • 6-9 p.m.

The Red Shed  
I-44 to exit 179 • 169 Truman St  
Doolittle, MO 65550

## SELLING 325 FIREARMS

### SOME OF THE HIGHLIGHTS TO INCLUDE:

A collection of 23 Ruger 77 Mark II Rifles, some in rare calibers

Lot 18 High Standard H-D Military .22

Lot 22 Bushmaster A3 Telef M4 5.56

Lot 34 Remington 541-T .22

Lot 37 Cimarron Wyatt Earp Peacemaker .45 Colt

Lot 49 Magnum Research Desert Eagle .357 (Israel)

Lot 75 Colt New Frontier 7 1/2" .357 Mag. 1 of 500

Lot 87 Ruger #3 .223

Lot 100 German G43 8mm (1944) w/original German instructions

Lot 112 Marlin 1894CL .218 Bee NRA Rifle, 1/2 Magazine

Lot 133 Browning Model 53 32-20

Lot 160 Burnside Model of 1864 .54 caliber Saddle Ring Carbine (original)

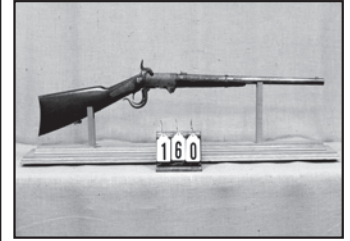
Lot 212 Winchester Model 70 .243 (1964)

Lot 221 Remington 1100 Trap 12 ga

Lot 236 Martini Henry 1879 Mark II .577-450

Lot 249 Ruger Single Six .22/.22 Mag "50th Anniversary"

Lot 257 Pioneer (Polish) PPS43 7.62x25 Tokarev



# J & J Sales, LLC

Pictures on [www.auctionzip.com](http://www.auctionzip.com) (auctioneer ID #28053) • Pictures also available on [Hibid.com](http://Hibid.com)

573-341-5450  
Office

573-465-4647  
Julie Reagan

573-465-0642  
JD Roach, Auctioneer

573-762-2227  
Sale Day Number

[jjsalesllc12@gmail.com](mailto:jjsalesllc12@gmail.com)

**NEW ATF RULE** - For ATF Form 4473, current name & address must exactly match the photo ID such as drivers license. **MUST MATCH!!** If not, we need supplemental government issued documentation with matching current address such as vehicle registration, property taxes, county or city utility bill. Cannot be a PO Box!  
Concessions by Mt. Olive Baptist Church

Terms of Sale: Sale day announcements supercede any and all printed material. Photo I.D. required for buyer's number. No buyer's premium. Payment accepted by cash, check, debit/credit card. There is a 3% convenience fee unless paid by cash or check. Nothing removed until settled for. All state and federal firearms regulations will be followed. Not responsible for loss or accidents.

Consignments  
Welcomed!

# JR'S 3RD ANNUAL CONSIGNMENT AUCTION

## Friday, September 24, beginning at 8:30 A.M.

Located at: 4875 Hwy BB, Hartville, MO, 65667. From Lebanon, MO take Hwy 5 South approx. 30 miles to Hwy Z, left on Z, 2 miles to Hwy E, right on E to Hwy BB, right on BB to auction on left. Watch for auction today signs.

### FARM EQUIPMENT

NH 69 hay baler —ME-MO RP 1211 4x5 round baler—10' NI lime drill  
Wagon gears— 22' Flat hay wagon w/ steel bed  
25 bu manure spreader — Feed bin  
DH 85 bu manure spreader, like new  
JD 2 wheel manure spreader—10' Gandy lime drill  
Case 2 wheel manure spreader, very good  
4 wheel McCormick #200 manure spreader, rebuilt  
NI #10 manure spreader rebuilt w/ poly sides, fiberglass bottom  
NH 450 3pt mower — JD 3pt mower —Hay wagon  
NH 456 trailer w/ 7' bar— NI hay rake—Round bale cart  
NH 456 mower rebuilt w/ engine and hy  
2 Trailer gear IH #9 mower 7' bar rebuilt new wheels  
#9 IH 6' bar rebuilt — Several #9 mowers rebuilders  
2 JD hay rakes, one w/ dolly—56 NH rake  
56 B NH rake—256 NH rake — 258 NH rake  
7' Woods Cadet brush hog—2 IH grain binders  
6' Woods Cadet brush hog— Oliver 1 bottom sulky plow  
IH 2 way sulky plow — WH 1 bottom 715 sulky plow  
4x8 Trailer—NI hay loader rebuilt—8' double disc  
JD 6' double disc—Adams leaning road grader  
Several potato plows—JD 5' drill double disc  
6' 3pt scraper blade—7' 3pt scraper blade  
JD 2 row corn planter—3pt 200 gal sprayer  
110 gal ground drive sprayer—941 B Cat track loader  
150 cattle corral panels—3', 4', 6', & 8' cultimulchers  
New & used steel wheels—2-JD corn shellers—Forecarts  
Clover leaf hay trolley w/ 50' track and hangers  
Myers hay trolley w/ 40' track and hangers



There will be a row of new and used farm machinery that will sell **Absolute**.

### GUNS

Mossburg 800 ASM 305 Win bolt action w/ Red field scope  
Rem. 700 7mm w/ Nikon scope, like new—  
Rossi single shot 243 w/ .22-n— 20 ga barrels  
Marlin 336CS 3030 lever action—50 cal black powder rifle  
Wards western field No 48 .22 bolt action  
OP Mossburg 151 M-B .22 auto—Topper model 48 lb ga shot gun  
Marlin revelation mod. 120 .22 auto w/ Simmons scope  
Rem speed master mod. 552 .22 auto—Win 12 ga pump  
Rem 870 rifle & barrel (slug) w/ scope, like new  
Savage Steven 67E 12 ga 3" pump—New England 12 ga barrel  
Mossburg 600AT 12 ga 3" pump (choked, ported)  
Revelation mod 325A 20 ga bolt action  
Wards Hercules mod 11 410 ga single shot  
Steven mod 940E 20 ga single shot—JC Higgins mod 101-1 12 ga single shot  
Ruger wrangler .22 double action revolver (NIB)  
H-N-R mod 922 .22 revolver (dbl action)  
H-N-R mod 623 .22 revolver (dbl action)— Bear charge compound bow  
Lot of .22 ammo, 12 ga shells, 20 ga shells, 410 ga shells



Lunch stand by Amish community benefiting Amish parochial schools. Breakfast sandwiches, Fish, BBQ chicken, donuts, & baked goods

For more auctions go to [www.auctionzip.com](http://www.auctionzip.com) ID # 47012

### HOUSEHOLDS & ANTIQUES

Hand crank ice cream freezers — Hand crank meat slicers—Irons  
Pressure cookers—45 gal cast iron butcher kettle—Ice tongs  
Enterprise sausage stuffers—Oil lamps—Adult & child rocking chairs  
Several twin size beds, w/ mattress, good condition—Books  
Butter churns—Several pitcher pumps—2-wooden school desk  
Singer sewing machine w/ cabinet — Lots of sewing machines  
Hand quilted quilts —Qt size Ziploc bags—Antique child rocker  
Metal folding tables—Clock w/ shelf—Hilliards True Value reel mower  
Reel mower—Coleman mod. 4A gas iron—Apple peeler WHHE Mountain  
Cherry stoner—Enterprise cherry pitter—9-old jar wrench—Large SS sifter  
Alum. Tea kettle—Alum. cooking pots—5 gal glass jar—3 prong forks  
Galv. Funnel—Cast iron seat—Cow bell—Insulated water tub—Sythe  
Sad irons—2-Corn shellers, 1 Black Hawk—Metal 2 horse evener—6-Hand drills  
Platform scale—3-Brass torches—3-galv. Sq tubs—Single row 1 horse potato ridger  
2-Sets galv. Twin tubs on stands—Galv coal bucket—Corona corn mill  
2-Horse-N-buggy weather vanes—Faribank-Morse platform scale—Large hardy  
Ariens WP 200 water pump gas—Red Chief mill w/ endless belt—2-Hog splitter  
Wilson Bros. mill hand crank on stand—1/2 gal Huffman oil can—SS milk bucket  
Anchor wash wringer—3-handwashers, 1 all wood—Universal #1 hand crank  
2-Montgomery Ward cream separator, table top model—Daisey butter churn  
2-Milk strainers—Milk can butter churn, usual—#2 Hawthorne wooden butter  
churn—Wood butter mold—24"-34" cast iron butcher kettles—2-meat cleavers  
26" cast iron butcher kettle w/ stand—18" & 21" cast iron butcher kettle  
Enterprise lard press complete—3-Hand meat saws—600 lb anvil Mutz, nice  
3-Propane fish fryer w/ propane bottles—Large cast iron fire pit—Well bucket  
Cast iron garden mark table top grill—Hillsboro #3 and #2 bells w/ yoke—#2 bell  
Large bell w/yoke—Large iron welcome flower pot—Deming hand pump  
Red jacket hand pump w/ conductor cup—Various pumps & parts—5 wheel pullers  
Coleman gas lantern—Love Mfg 33B wheel—Willie Russel No 1 1/2  
Lighting stove pipe machine—Van Buren and Star 5 hole walk behind drills  
Emporia machine, boy dixie sm walking plow—Jfleury old sod plow—Stanley chisels  
Excell pressure washer 11 Hp Honda 2800 psi—Wooden pony & cart pedal toy



### SHOP/HAND TOOLS, LAWN & GARDEN

Juki commercial sewing machine on stand Model DU 1181 N—175 lb anvil  
Battery charger w/ engine—Air compressor w/ engine—Cattle dehorn—Sleds  
Lots of hay forks, silage forks, straw forks, shovels, axes, hands saws—Log chains  
25+ 3,4, 5 tine forks—2-5" post vice—Several bench vice—55 milk can w/ spigot  
Live traps—JD G x 85 riding lawn mower—Breast and brace drills—55 gal barrels  
Garden cultivators—Hand crank bench grinders—New handyman jacks

### HORSES

Yearling filly saddle bred Morgan—3 yr old Dutch x saddle bred geld. Green broke  
4 yr old mare standard bred saddle bred Dutch cross, broke, sound, watches big  
trucks w/ weanling stud colt 3/4 standard bred saddle Dutch  
2 yr old standard bred gelding, started  
Harnesses, saddles, halters, team lines  
Load from Jr Yoder, several more expected by sale



We have lots of good quality items already consigned and more expected at sale time.  
Expect 2 or 3 auction rings all day. All items left 20 days after sale will become property  
of JR's Auction unless approved by owner. Consignment receiving will be taken week of  
auction Sept. 20th—23rd from dawn to dusk. No consignments morning of sale unless  
arrangements have been made. Will not be accepting appliances or wooden windows.  
To consign call Jr's auction at 417-741-2070 or 417-741-2312. For horses call Rueben  
Glick at 417-554-3201. Hope to see you there.

*Thanks, Larry*

Auctioneers  
Larry & Loren Martin  
Dan Hertzler & Andy Borntreger



MARTIN AUCTIONS

1-660-337-6471



Auctioneers  
Mel Yoder  
Jonathon Hoover

Terms: Cash or check with ID. Not responsible for accidents. Statements made day of auction take precedence over printed material

# FARM CONSIGNMENT AUCTION

## SATURDAY September 18th, 2021 @ 10am

**Location:** Alton, MO - Take Hwy 160E about 2 miles toward Doniphan on the right. Watch for Hornback Auction Signs.

**“SALES AT 10AM” Farm Machinery consigned from Alton Bank SOLD ABSOLUTE**

1999 International 9400 Bucket Truck w/ DT466E; Long 2051 Tractor; John Deere 920 Moco Hay Mower; Vermeer R-23 Hydraulic Hay Rake; John Deere 702 8 wheel Rake; Vermeer TD 200 4 Basket Hay Tedder; New Holland BR 7060 Round Baler; 278 New Holland Square Baler; 273 New Holland Square Baler; 1090 Ford Fold Out Disc; Massey Ferguson 860 Combine w/ 922 Grain Header & 1859 -24031 Grain Header; Bestco 3pt Stump Grinder; Woods BW180 Batwing Bushhog; John Deere 1209 Sickle Mower Haybind; King Cutter Rotary Tiller; Grain-A-Vater Self Unloading Wagon; 400 Archway Grinder Mixer; 14T John Deere Square Baler; Shaver Post Driver; 3pt Post Auger; 3pt 200gal Sprayer; 3pt Salvage Sprayer; 3pt Supier Prod-ucts Hay Roller; Diamond Plate Portable Scale



### TRACTORS, TRAILERS & FARM EQUIPMENT

4066R John Deere w/ 27.7 Hrs Cab A/C 440R Loader 4wd Like Brand New; 2355 John Deere Tractor w/ Canopy (Sharp); 4430 John Deere Tractor w/ Canopy; 5065 E John Deere Tractor w/ Canopy 2wd; 460 International Gas Tractor; 641 Ford Work master Diesel Tractor; VAC Case Tractor; 2010 John Deere Diesel Tractor w/ Canopy; 1010 John Deere Tractor w/ Gas, Wide Front 3pt; Kubota L2000 Diesel Tractor; 1715 New Holland 4wd Diesel Tractor; Allis Chamber 85hp Tractor w/ Loader & Canopy; 560 Farmall Wide Frontend Gas Tractor; 2 M Farmall; 3000 Ford Diesel w/ Loader; 35 Ferguson Tractor; 135 Massey Ferguson (Salvage); 9N Ford; 50 Massey Ferguson; 440 International w/ Loader; Zen-Noh YM 2000 (Salvage); 3000 Ford diesel Tractor w/ Loader; 150 Massey Ferguson gas w/ Power steering; Cub Farmall w/ Belly mower; Circle M Hay Hauler Gooseneck Trailer Brand New; 1994 53' Ravens Speed Axle Aluminum Flatbed Trailer; 36' Gooseneck Stock Trailer; 16ft Flatbed Trailer; 1989 Equip Trailer w/ Tandem Axle; Lots of Trailers (stock, Utility, Gooseneck, Bumper Pulls); New Holland 460 Roll Belt Round Baler; Vermeer XL 604 Accu-Bale Plus Round Baler; Vermeer 504N Net Wrap Round Baler; 64 John Deere Side Drilling Hay Rake; 256 New Holland Side Drilling Hay Rake; Lely Rake Caddy 10wheel Rake; Sitrex 10 wheel Fold Out Rake; John Deere 2422 Offset Hydraulic Disc; CM247 3pt Disc Mower; New Holland 451 Sickle Mower; Takeuchi TL26 Skedsteer on rubber tracks; 6034 Skytrak (runs good, trans leaks); F258 Farmhand Loader w/ Grapple Bucket; Badland ZXR 5000 Wrench Brand New on Receiver Hitch; 15ft Batwing Bushhog; 12ft Drag Type Bushhog; Husqvarna LtH18542 Riding Mower 42" Cut; John Deere Lt160 Auto 16Hp Low Hrs Riding Mower; Lots of 3pt Elements; Lots more to be consigned daily



### GUNS—VEHICLES—ATV

**Gun Collection from one seller:** Smith & Wesson 44 Magnum Pistol w/ Simmons 1x20 scope; Kel-tec PF-9 cal. 9mm Legur Pistol; Colt DA45 US Army Model 1809 No 49 121; Heritage Rough Rider 22 cal Pistol; Highpoint Model CF380 Pistol; Remington model 597 22 mag; Remington model 522 Viper 22LR; Ruger model 10/22 22LR; Savage model 110 cal 300 Win Mag w/ Firefield 10-40x50 aoe; 410 gauge Single Shot Shotgun; Mossberg 22 LR; 20 Gauge Shingle Shot Shotgun; Handi Rifle Cal 204 Ruger w/ Redhead Pursuit Target 40-16x40ao; 1995 Plymouth Handy Cap Van 87,955 miles; 2011 Dodge Nitro Heat 4wd, Daily Driver; 2007 GMC 4dr 2wd Pickup; 1999 Chevy Suburban; 2002 GMC Yukon; 1989 Red Jeep w/ Hard & Soft Top and Winch, Clean; 1984 Jeep Station Wagon (parts); 1988 Lincoln Car 40,000 miles m/l (Parts); 1987 Ford 1 ton Propane Truck 42,000 miles; 1977 Ford 1ton Dump Truck; 1984 Ford Single Axle Semi Truck w/ 3208 Cat (Parts); Burnt 1995 Chevrolet Diesel 1 ton with Good Service Body (Parts); 2006 GMC 2 ton Truck Propane; 1985 Ranger Bass Boat; Yamaha 4wheeler; Kawasaki Bayou 220 4 wheeler (parts); 3 Dodge Nitro 20" Rims; Shop Tools and Misc; Lots more to come.....

**Auctioneers Notes:** Watch on Facebook for updated list and pictures. Items will be added to the list and arriving onsite daily! Con-signors and Buyers from all over. Concessions and Restrooms will be available! **Buyer Terms:** All items are sold "as is" and no refunds! Cash, Good Checks and Credit Cards (5% fee). Drivers License is required to Bid. If you are planning to buy large items please have a letter of credit from the bank.

# HORNBACK AUCTION CO



*Family Owned and Operated" – "Working hard to protect your hard work!!"*

**Todd & Bill Hornback 417-270-0681 (cell) 417-778-7739 (home)**

**MO# 2009-3 & AR# 2274 Gene Summers (Auctioneer)**



All announcements the day of the sale take precedence over all printed material. We are not responsible for any lost or stolen property or accidents of any kind!!

# REAL ESTATE & PERSONAL PROPERTY AUCTION

## SATURDAY, SEPTEMBER 25, 2021 - 10:00 AM

1451 E Dunkirk Street • Springfield, MO 65804



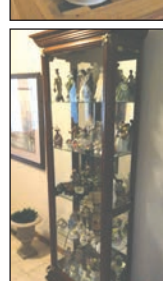
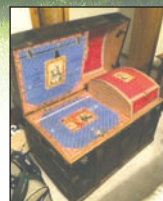
### REAL ESTATE:

**This home has approx 1980 sq ft. of living space with 3 bedrooms, 2 baths, eat in kitchen, 2 car garage, fenced in backyard with a patio and deck in a great location.**

**Open viewing September 19, 2021 from 2-4**

**Legal: Southvale Terr 14th Add lot 2 • Taxes:\$1880.60**

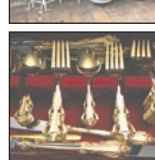
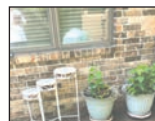
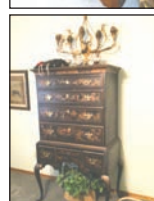
**Terms: 10% Down day of auction with balance due at closing. Possession at closing with closing in 45 days or less from auction date**



### INVENTORY LIST:

Glass top dinner table eight chairs  
Two matching Crios  
Crystal and glassware  
Tea pots jade figurine  
Heirloom sterling  
Fine art  
Sofa table  
Sectional sofa and tables coffee table to armchairs  
Entertainment cabinet  
Card table with wicker chairs  
Collectible figurines  
Books  
Bed in tables lamps ornate dressers  
Fireplace set

Whirlpool washer and dryer  
Desk with wicker chair  
Bed dresser and tables lamps trunk  
General electric refrigerator freezer  
Outdoor outdoor  
49 collector plates  
Lots of pots pans kitchen ware  
Whirlpool refrigerator freezer  
Cabinets  
Lawn and garden supplies  
Lots of holiday ornaments  
Antique dishes  
depression glass



FOR MORE INFORMATION GO TO [WWW.EASTERLYAUCTIONCO.COM](http://WWW.EASTERLYAUCTIONCO.COM) OR CALL EASTERLY'S AT 417-833-9494

# EASTERLY AUCTION CO.

Mike Easterly Auctioneer • 417-833-9494

Not Responsible for accidents or theft. For more information call: Easterly Auction Company, Springfield, MO. Auction Terms: Bank Letter Of Credit Required. Visa, Mastercard, Cash, Cashier's check or checks with proper I.D. Announcements day of sale take precedence over printed material. Auction Notes: Although information is obtained from sources deemed reliable, auctioneer makes no warranty or guarantee expressed or implied. Buyers should themselves take the opportunity to make their own inspection prior to sale.

[www.EasterlyAuction.com](http://www.EasterlyAuction.com) • [auctionzip.com](http://auctionzip.com) ID#14770





**1951 FORD BRAKE DRUMS:** With backing plates, exhaust manifold and cross-over plate. \$75. 417-457-1023. Raymondville.

**JOHN DEERE 2955 DIESEL TRACTOR:** Cab & air with J.D. 728 Loader. \$27,000. 573-765-4406. Richland.

**WILLBECK CHISEL PLOW:** \$925. 417-322-0161. Lebanon.

**HAMMERMILL 220V:** (Grind Your Own Grain) \$825. 417-322-0161. Lebanon.

**4 FT. PRESS BRAKE:** Nice, (Needs Parts) \$450. 417-322-0161. Lebanon.

**WARSAW, MISSOURI OZARK ECHOES 1964 YEARBOOK, \$20.** 417-532-2045. (leave message and phone number). Lebanon.

**FORD 4610 DIESEL TRACTOR CANOPY LOADER:** 2000 hours. \$12,500. 573-765-4406. Richland

**CALUS LOGGING**  
 20 YEARS EXPERIENCE  
 Buying Standing Timber  
 Walnut & Oak  
 Joe Calus, Owner  
 417-926-4606 - MTN. GROVE  
 CERTIFIED

**CLASSIC AMERICAN MUSCLE**  
 2021 BB3026HL  
 2021 BB4035CHIL  
 We also have Bad Boy Implements  
**STAHLMAN** POWER SPORTS  
 1387 S. BISHOP AVE., ROLLA  
 573-364-6944  
 WWW.STAHLMANPOWERSPORTS.

**COUPON: 10% OFF MERRILL WATER HYDRANTS**  
 • Deli Sandwiches • Glass Bottle Milk  
 • Homemade Yogurt • Cheese & Spices  
 • Homemade Bread • Bulk Foods  
 • Hydraulic Hoses • Johnson & Ritchie Waterers  
 • Electric Fence Supplies • Gates & Panels  
 • Stay-Tuff Fence  
**VISIT YOUR ONE STOP SHOP**  
**FARMERS QUIK STOP**  
 5 mi. East of Lebanon on Hwy 32 • 417-991-1938

**2003 FORD RANGER PICKUP:** Custom paint, very good condition. 135,xxx miles, bedliner, cover, super cab. 417-527-8693. Lebanon.

**200 GALLON POLY TANK:** \$190. 417-322-0161. Lebanon.

**UNITOOL PUNCHES:** (to punch steel) \$25 each. 417-322-0161. Lebanon.

**SMALL TRAILER:** To pull behind garden tractor (like new) \$95. 417-322-0161. Lebanon.

**KEAN CUTTER 7FT FINISH MOWER:** \$1,500. 573-765-4406. Richland.

**JOHN DEERE 310C DIESEL BACKHOE LOADER:** \$11,500. 573-765-4406. Richland.

**2-BLACK ANGUS HEIFERS:** Nice, Grass fed, 100% Natural, Ready to Butcher - \$1.50/pound. 417-322-0161. Lebanon.

**JOHN DEERE 4230 DIESEL TRACTOR:** Cab & air, \$13,500. 573-765-4406. Richland.

**ANDERSON WINDOW:** \$12. Call between 8am-8pm. 417-664-4278. Lebanon.

**ONLINE AUCTION**  
**County Road 455 & Collier in Mokane, MO 65059**  
**Directions:** From Sate Road C in Mokane take Collier to property on Left (where house is located down a long driveway) and then there is frontage on County Road 455 as well. Watch for Signs!  
**Preview Dates:** Tuesday September 14, 2021 4:00pm-6:00pm & Thursday September 16, 2021 4:00pm-6:00pm  
**Bidding Closes:** Monday, September 20, 2021 - Starts Closing @ 6:00pm  
**County Road 455 & Collier - Home & 33 Acres:** This 33 acre property has approx. 900 foot of frontage on County Road 455 and an access off of Collier Street in Mokane as well with access to Mokane water and has income producing potential as well as amazing views in the river bottom, the property features mature timber and an older 3 bedroom farmhouse that is non habitable. \*\*Max bids are private & bidders can place max bid amounts instead of only bidding the current sales price. This property is being offered as an absolute auction to the highest and best bidder!  
**Real Estate Purchase Terms:** Buyer pays \$5,000.00 non-refundable down payment the day of auction (scaled for lots), balance due at closing within 30 days. Real Estate sells "As Is, Where Is". Taxes will be prorated. Buyers must have financing pre-approved in order to bid on the real estate or be a cash buyer. If you have any questions about your financing please contact Suzanna at 573-592-1939. All announcements the day of auction supersede printed/MLS/advertised material. 3% Buyers Premium applies to final purchase price. Standard Disclaimer: The property is also listed on multiple MLS systems with Suzanna Wolfe, REALTOR and may be sold prior to auction.  
 Jeannette M. Alsup — Seller  
**For Complete Terms, Listing, Catalog, & Bidding Visit [www.WolfeAuctionRealty.com](http://www.WolfeAuctionRealty.com)**  
**WOLFE Auction Service**  
 573-592-1939 • Serving Central MO Since 1999  
 Need Help Bidding? Contact the Auction Team at 573-592-1939  
 No Computer? No Problem! Come to one of our preview days and we can help you bid!  
**Auctioneers Note:** 3% Buyers Premium applies to all Online Real Estate sales. We look forward to seeing you on **Tuesday September 14, 2021 4:00pm-6:00pm & Thursday September 16, 2021 4:00pm-6:00pm** for preview! ....The Auction Team

**Salem Livestock Auction**  
 Hwy. 32 Salem, MO • 573-729-8880  
 Over 40 Years in the Livestock Business  
**Cow Sale Sat. Sept. 18th @ 1pm**  
 47 Mixed Cows 4-6 yrs 20 with calves bal bred to Black Bull - Sell Out  
 14 Black & Bwf Cows 5yrs-SS 7 with calves bal bred to Hereford Bulls - Sell Out  
 90 Black & Char Cows 4-6yrs 40 with calves bal bred to Black Angus Bulls Home Raised-Gentle  
 33 Black Cows running ages all with calves bred to Black Bull  
 2 Black Bulls  
 61 Black Cows 4yrs -SS 2nd & 3rd stage bred to Black or Red Angus Bulls -FANCY- complete health program  
 80 Mixed Cows 3-5yrs half with calves bal 2nd & 3rd stage bred to Reg Angus Bulls - Sell Out  
 2 Reg Angus Bulls young  
 15 Mixed Cows, running ages, 2nd & 3rd stage, bred to Black or Charolais Bull  
 27 Black & Charolais Cows, 4-7yrs, few with calves bal, 2nd & 3rd stage  
 7 Charolais Cows, 4-6yrs, all with calves by side  
**Cattle Sale Every Monday at 12**  
**All Consignments Welcome Up Until Sale**  
 Allen Thompson Renee Lauderdale  
 417-932-4097 417-926-2682  
 Chuck Thompson Brandon Barton  
 417-257-5610 417-259-1597  
 Terms of Sale: Cash or Approved Check!  
**SALEM LIVESTOCK AUCTION**  
 SALEM, MO

# PUBLIC AUCTION SAT., SEPT. 18TH, 2021; MORNING SALE - 9:00AM

Due to the selling my place and moving, I will sell the following personal property, located from Steelville, Missouri, take Hwy. 8 West 3 miles to Hwy. M. Follow Hwy. M 3 miles to auction. Follow Lorts Auction Today signs

## HOUSEHOLD • ANTIQUES • GUNS • TRACTOR

**HOUSEHOLD, ANTIQUES & FURNITURE** 12 inch brass bladed Emerson fans; Cast iron floor lamps; Oak chifferobe; Oak washstand; Oak secretary w/carving; Full size metal frame bed; Lamp tables; Oak bevelled mirror; Brass wash boiler; Oak table w/2 leaves; Wall shelf; Alaska oak ice box; Jars of buttons; Brass fire extinguisher; Oak wooden boxes; Wooden ladder; Cloth feed sacks; Cooking utensils; Brown stone bowls; Cast iron skillet; Cookware; Chicken coop bookcase; Pitcher & bowl; Charbroil BBQ gas grill; Metal patio set w/4 chairs; Wicker patio furniture; Tool boxes; Outpost GT 15 speed mountain bike; Wooden school desk; Horseshoes; Metal buckets  
**FARM MACHINERY, TOOLS & FARM RELATED ITEMS** John Deere 790 tractor w/70 loader, 4x4, 620 hours; King Cutter 5 pt. brush hog; 6 ft. 3 pt. box blade w/rippers Houwe 6 ft. finish mower; 3 pt. 5 ft. reversible tractor blade; 3 pt. potato plow; 6 ft. 3 pt. disc 3 pt. grass seeder; Stillwater dump trailer w/5x9 bed; 2 wheel dump trailer w/5x6 wire bottom bed; 1927 International #9 horse drawn mower; Horse drawn dump rake; Toro wheelhorse 314 hydro riding mower; MDT Pro push mower w/6.5 hp. Honda engine; Haier

shop refrigerator; Craftsman miter saw; Lots of hand tools; Garden hoses; Tow chains; Racket binders; Carpenter tool box; Rigid shop vac; Battery chargers; Kobalt 8 gallon air compressor; Air hose reel; Grease guns; Craftsman air impact; Gas cans; Porta-Cable cordless drill; Morgan shop vice; Ace 6 inch grinder; DeWalt bit sets; Electric skill saw; Black & Decker 4 inch grinder; RedMax gas powered blower; Toro wheelhorse 312 8 speed riding mower; Riding lawn mower lift; Pull type garden seeder; 4 wheel gorilla cart; Garden cart; Cordless power tools w/bag; Craftsman creeper; Floor jacks; Aluminum folding paint bench; MS192TC Stihl chainsaw; 6 ton jack stands; Reese hitch 2 sit on top 8 ft. kayaks (rated up to 250 lbs.); 17 ft. Royalex canoe; Boat oars; Car creepers; Fishing rods & reels; Evinrude Lightwin boat motor; 7 ft. aluminum lawn mower ramps Hammers; Saws; Extension cords; Metal shelving; Minn Kota 12v trolling motor; Louisville step ladder  
**GUNS** Harrington & Richardson 20 gauge shotgun; JC Higgins 12 gauge md 58317A.

Many more articles too numerous to mention

**AUCTIONEER'S NOTE:** Lots of nice clean items on this auction. Mark your calendar and come spend the day with us in the country! Off road parking available.

**Owner: Tim Monson**  
336 Hwy. M, Steelville, MO 65565

**SALE CONDUCTED BY LORTS AUCTION SERVICE ST. JAMES, MO 65559;**

573-699-4308 • 573-263-0243 • AUCTIONEERS: Larry W. Lorts & Gary R. Lorts Licensed and Bonded

"like" us on Facebook- Lorts Auction Service or view this auction on line at [www.threeriverspublishing.com](http://www.threeriverspublishing.com) or [Auctionzip.com](http://Auctionzip.com) (auctioneer ID # 42353)

**BRUSH HOG 12715 HEAVY DUTY 15 FT. HYD. FOLD BRUSHCUTTER:** Chains, solid tires. \$9,850. 573-765-4406. Richland.

**JOHN DEERE 467 ROUND BALER:** Monitor, kicker, net wrapped 4x6. \$10,850. 573-765-4406. Richland.

**TINY HOMES:** We gottem 573-881-3283

**HISTORY OF UNIVERSITY OF MISSOURI-ROLLA BOOK: Formerly Rolla School of Mines, 258 pages, HB, \$6.50. 417-532-2045. (Leave message and phone number). Lebanon.**

**WANTED TO BUY DODGE DIESEL TRUCK:** Or Toyota Tacoma. Also, buying antique cars. 870-324-1154. Ash Flat.

# BUFFALO LIVESTOCK MARKET LLC



276 Hwy 32 West  
Buffalo, Missouri

September 11<sup>th</sup>, 2021  
Receipts: 1563 Head

Wean Vac. Cattle Special & Wean Cattle Sold Steady to Higher. Unwean Fleshy Calves Dollars Lower.

## REPRESENTATIVE STEERS

300-400 @ 180.00 to 199.00  
400-500 @ 160.00 to 185.00  
500-600 @ 157.00 to 173.00  
600-700 @ 149.00 to 165.50  
700-800 @ 144.00 to 154.00  
800-900 @ 139.00 to 146.00

## REPRESENTATIVE HEIFERS

300-400 @ 149.00 to 167.00  
400-500 @ 142.00 to 160.00  
500-600 @ 140.00 to 155.00  
600-700 @ 140.00 to 155.50  
700-800 @ 120.00 to 144.75  
800-900 @ 118.00 to 125.00

## FEEDER BULLS

400-500 @ 140.00 to 172.00  
500-600 @ 135.00 to 154.00  
600-700 @ 130.00 to 150.00  
700-800 @ 133.00 to 143.00  
800-900 @ 100.00 to 115.50

## BRED COWS

\$800.00 to \$1,200.00

## COW CALVE PAIRS

\$900.00 to \$1,300.00

## SLAUGHTER COWS

High Dress Fleshy Cows  
75.00 to 77.50

Med Dress 60.00 to 74.00

Thin Cows 48.00 to 59.00

## SLAUGHTER BULLS

High Dressing 103.00 to 107.50

Med Dressing 90.00 to 101.00

Low Dress Thin or Full 80.00 to 88.00

Special Cow Sale Tuesday, September 21st at 6:00PM • 500+ Cows & Bulls

## MON-WED MARKET REPORT

Listen to KJEL 103.7FM • Lebanon or KYOO 99FM • Bolivar

VIEW OUR SALES AT [CATTLEUSA.COM](http://CATTLEUSA.COM)

CALL FOR TRUCKING OR ON-FARM VISIT

Lyle Caselman • Owner-Manager  
417-345-7876 • mobile 417-533-2944  
Leon Caselman • Owner  
417-345-4514 • mobile • 417-588-6185

# Miller & Montean County REAL ESTATE & PERSONAL PROPERTY AUCTION

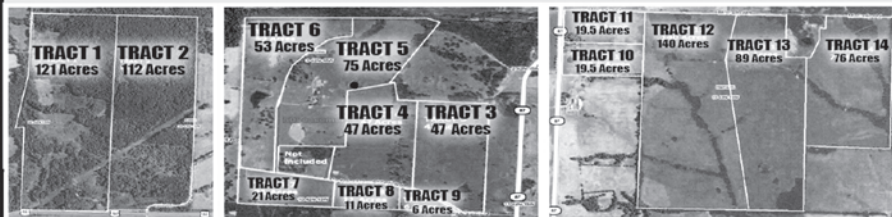
• SATURDAY, OCTOBER 2, 2021 AT 10 AM •

**AUCTION LOCATION:** Eldon Community Center  
309 East 2nd Street, Eldon, MO 65026

**3 FARMS IN 14 TRACTS IN TWO COUNTIES**

**TOTALING 837 +/- ACRES**

**TRACTS RANGE IN SIZE FROM 6 ACRES TO 140 ACRES**



**PRE-AUCTION PROPERTY VIEWING**  
Saturday, September 18 from Noon to 2 PM

## PERSONAL PROPERTY

Selling at 1 PM at the Voegell Farm  
TRACTORS - SKID STEER, VEHICLES & TRAILERS,  
FARM MACHINERY, LIVESTOCK EQUIPMENT, HAY,  
SIDE BY SIDE - ATV, MISC.

For full listing and photos visit [wheelerauctions.com](http://wheelerauctions.com)!

**SELLERS: HIGH POINT RANCH**

**Wheeler AUCTIONS & REAL ESTATE**

23101 HWY. 24, PARIS, MO 65275 | 640-327-5890  
[WWW.WHEELERAUCTIONS.COM](http://WWW.WHEELERAUCTIONS.COM)

For more information call  
Charlie Nordwald  
at 636-795-4552, or  
visit [wheelerauctions.com](http://wheelerauctions.com).

**NEW HOLLAND 1411 DISKBINE WITH ROLLERS:** \$8,950. 573-765-4406. Richland.

**PAIR OF TITAM 16.9X24 INDUSTRIAL 12 PLY NEW TIRES:** \$500 each. 573-765-4406. Richland.

**SIDE WINDER 7FT. TIRE DRIVE PULL TYPE BRUSH CUTTER:** \$1,600. 573-765-4406. Richland.

**RHINO PLAINSMAN 15FT. HYD FOLD BRUSH CUTTER:** \$6,800. 573-765-4406. Richland.

**ROUTE 66 DINING 7 LODGING GUIDE:** 183 pages, \$5.00. 417-532-2045. (leave message) Lebanon.

**POOL TABLES:** Installations, moves, recovers, repairs, accessories, etc. 573-646-1700.

**WEATHERED BARN WOOD SIDING:** 10" wide. 573-729-7226. [www.pineridgerustic.com](http://www.pineridgerustic.com) Salem.


**BUYING MOBILE HOMES:** Call David at VILLA HOMES IN ROLLA 573-578-8072. Rolla.

**FERTRELL ORGANIC FERTILIZER:** Free Catalog. 315-796-4370. Caulfield.

**BUYING STANDING CEDAR:** Minimum 6-in diameter. 417-531-0403.

**STOCK MOBILE HOMES AVAILABLE:** We gottem, single and double, 3 and 4 bedroom! Call Tuffy 573-657-2176. [amegamobilehomes.com](http://amegamobilehomes.com)

**AVAILABLE STOCK MOBILE HOMES:** Immediately, double wide and single, 3 and 4 bedroom 573-499-9993 [columbiadiscountshomes.com](http://columbiadiscountshomes.com)

**BUFFALO LIVESTOCK MARKET LLC** 

276 Hwy 32 West Buffalo, Missouri  
417-345-8122

**SPECIAL STOCK COW & BULL SALE**

**Tuesday, September 21 @ 6:30pm**  
Expecting 500 Cows & Bulls

**Early Consignments**

**E&C Farms - Total Dispersal**  
140 Blk Char Crossbred Cows, 4-7 yr. 35-40 calvers, balance fall calvers

**Jones Farms Dispersal**  
62 Blk & BWF Cows, all home raised. 3-6 yrs. Cows all up to date on vaccines 2x year. This has been a closed herd and never left the farm. Calving Sept. 20 on for 90 days to Watson Hereford Bulls.

**JBM Farms Dispersal**  
34 Angus Cows. 2-5 yrs. old. Cows all I-Iron. Bred to Angus Bulls, late fall or early spring calvers.

**Rich Farm Dispersal**  
25 Blk home raised cows w/ small calves.

**Hargis Consolidated**  
14 Corriente Cows, bred Corriente Bulls. 5 Corriente pairs, cows 1st calf up.

**Dezurika Dispersal**  
40 Blk Cows, running ages.

**Cedarspring Beefmaster**  
1 18mo. purebred Beefmaster Bull. 1 15mo. purebred Blk Beefmaster Bull.

**Bradley Farms**  
2 18mo. Fancy Angus Bulls

Watch our ads on Facebook for pictures.  
All bulls must be at market by noon Monday.  
All Cow-Calvers must be at market by noon Monday.

**MON-WED MARKET REPORT**  
Listen to KJEL 103.7FM • Lebanon or KY00 99FM • Bolivar

**VIEW OUR SALES AT CATTLEUSA.COM**

**CALL FOR TRUCKING OR ON-FARM VISIT**

**533-2944**      **588-6185**  
Lyle Caselman      Leon Caselman

**HOBBY FARM EQUIPMENT, WOODWORKING TOOLS & COLLECTOR CARS - ONLINE AUCTION**

**Barn Finds**

- 1960 Convertible Ford Thunderbird
- 1962 Convertible Ford Galaxie Sunliner

**Hobby Farm Items**

- John Deere 1010 Special Powered Gas Tractor
- Two Stall Horse Trailer
- Quality Saddles & Bridles
- Swisher Log Splitter
- Woodturning Tools
- Various Tools & Yard Equipment
- Craftsman 6 – Drawer Toolbox
- Gibson Heavy Duty Commercial Freezer
- Pool Table, Miscellaneous Household Items & Much More!

**8681 South Kari Lane**  
**Columbia, MO 65201**

**Bidding Ends**  
**Wednesday, September 22nd**  
**starting at 12:30 PM**

**Bid Online At [Atterberrysells.com](http://Atterberrysells.com)**

**Preview:** Tuesday, September 21st, from 4:00 PM to 6:00 PM

**Payment & Pick-Up:** Thursday, September 23rd by appointment only.







**Check It Out & Bid At**  
**[www.AtterberrySells.com](http://www.AtterberrySells.com)**

For Additional Information Or Terms, Call Your Real Estate At Auction Specialists: Atterberry Real Estate Auctioneers 573-474-9295



**ATTERBERRY**  
AUCTION & REALTY COMPANY

[www.AtterberrySells.com](http://www.AtterberrySells.com)  
573-474-9295



**MID MISSOURI STOCKYARDS** 

**REGULAR SALE EVERY THURSDAY 11AM**

WATCH OUR WEEKLY SALE IN REAL TIME ON [DVAUCTION.COM](http://DVAUCTION.COM)

For Farm Visits, Market Updates, or Trucking  
Call **Zach Cox 417-777-1320**  
**Dan Romine 573-578-4939**

**Competitive Buyers!**  
**Competitive Commission!**  
**Competitive Market!**

Barn: 417-532-9292 

**I-44 • Exit 123 "just outside of Lebanon"**  
**17505 Route 66, Phillipsburg, MO 65722**

For weekly market updates, visit us at [www.midmostockyards.com](http://www.midmostockyards.com)

**LOG SIDING:** 2X8 Pine/Western Cedar [www.pineridgerustic.com](http://www.pineridgerustic.com) 573-729-7226. Salem.

**USED MOBILE HOMES:** Call David at VILLA HOMES IN ROLLA 573-578-8072. Rolla.

**WANTED TO BUY ANTIQUE CARS:** Convertible, Corvettes, unrestored, motors, parts considered. 870-324-1154. Ash Flat.

**TRUE MODULARS:** 30 to 60 day delivery available, 3 and 4 bedroom 573-657-7040 [chateauhomes.net](http://chateauhomes.net)

**I BUY.....used mobile homes.** Call or text 573-338-6250 or email [GregS.CH@outlook.com](mailto:GregS.CH@outlook.com)

**2 ANTIQUE CURIO CABINETS:** \$100 each. Call between 8am-8pm. 417-664-4278. Lebanon.

**BLACK ANGUS BULLS:** from 12 to 18 months. 417-932-4026. Summersville.

**BARNES OF MISSOURI BOOK: A Storehouse of History, HB, 168 pages, \$12.50. 417-532-2045. (Leave message and phone number). Lebanon.**

**ROUND & SQUARE BALES OF HAY:** 417-345-5634. Phillipsburg.

**0% for 4 Years**



**HEATMOR**  
Outdoor Wood  
Furnace

as low as **\$168** per month

**HEATMOR MIDWEST**  
Licking, MO 65542 • 573-674-2962

**WANTED, TIMBER TO LOG ON SHARES:** Honest, reliable, references. 417-533-4607, 417-664-1195.

**FIREARMS:** Professional Repairs and Restorations. Baron's Gunsmithing. 573-363-5801, Camdenton.

**SELLING OUT OF THE HORSE BUSINESS:** 15-20 Quarter horse bred, some registered, from weanlings to broke horses. 2 old gentle mules. 417-531-5707. Lebanon.

**CONWAY HIGH SCHOOL BEARS 2000-2001 YEARBOOK. \$12.50. 417-532-2045. (Leave message and phone number). Lebanon.**

**METAL ROOFS:** We repair leaky metal roofs with warranty. Also, flat roofs, very affordable, cover all state. 573-338-1148. Jefferson City.

**OLD READERS DIGEST:** \$1 each. 8am-8pm. 417-664-4278. Lebanon.



**Where it's always a bull market!**

**Angus - Brangus - Ultrablacks**

14603 HIGHWAY KK, LEBANON, MO  
417.288.4444 + WALLSTREETCATTLE.COM

**REGISTERED HEREFORD & ANGUS BULLS:** Home raised, Some Show-Me Select Qualified. 573-701-7828. Belgrade.

**CUSTOM SAW MILLING:** 417-533-4607, 417-664-1195. Lebanon.

**HISTORY OF THE SCHOOL OF THE OZARKS:** at Point Lookout. \$5.00. 417-532-2045. (leave message and phone number). Lebanon.

**SMALL SQUARE BALES OF STRAW:** 417-932-4026. Summersville.

**STAY-TUFF FENCE,** Johnson concrete waterers, waterlines, hydrants, posts, panels, hydraulic hoses, & GOOD FOOD. Farmers Quik Stop. 417-991-1938. Lebanon.

**6 BRAND NEW AREA RUGS:** White with gray squares, fluffy. Price reduced \$150. 8am-8pm. 417-664-4278. Lebanon.

**TREES OF MISSOURI BOOK: \$5. Missouri Wildlife & Nature Viewing Book, your guide to 101 spectacular wildlife and nature viewing area, \$5. 417-532-2045. (Leave message and phone number). Lebanon.**

**RUBBER & LEATHER BOOTS AND HIP WADERS.** Men's 11, Women's 7, some insulated. \$15-\$40 obo. 636-239-2695. Washington.

## Offering the Area's LOWEST METAL PRICES!



## Pole Barn Packages

CALL TODAY FOR A FREE QUOTE!

24'x32'x10'	30'x40'x10'	40'x60'x12'	Sales Tax & Delivery not included. Labor quotes available as well.
24'x40'x10'	30'x60'x10'	<b>CALL TODAY!</b>	

Compare Before You Buy.

We Use Only The **Highest Quality** Materials!

Custom Homes • Metal Roofs

**29 Gauge**

**#1 PAINTED METAL**

- ★ Lifetime Warranty - \$99.00 Sq.
- ★ 40 Year Warranty - \$94.00 Sq.
- ★ 20 Year Warranty - \$91.00 Sq.
- ★ 25 Year Galvalume - \$76.00 Sq.



ALL MATERIAL PACKAGES INCLUDE...

- ✓ #1 Yellow Pine Lumber
- ✓ #1-40 Yr. Painted Metal w/Screws
- ✓ 1-10' Overhead Door
- ✓ 1-36" Entry Door

**Fully Insured**



**PORTABLE BUILDINGS**  
Rent to Own  
No Credit Check

Labor prices will be higher in locations over 75 miles from Marshfield, MO

1049 SCHOOLVIEW DR.  
Marshfield, MO



**Marshfield BUILDINGS**  
www.marshfieldbuildings.com



417-859-7744

**SENIOR CITIZENS WALKER:** Bedside potty, potty seat with arms for commode. 8am-8pm. 417-664-4278. Lebanon.

**1908 SEARS, ROEBUCK CATALOG REPRINT:** 184 pages, \$10. 417-532-2045. (Leave message and phone number). Lebanon.

**2 MALE BORDER DOODLES:** 1 black & white, 1 blue merle, 5 months old. 573-739-9431.

**POWER WASHING, CALL JET STREAM POWER WASHING FOR ALL OF YOUR GRIM TO SHINE NEEDS:** We wash it all, semis, stock trailers, campers, equipment, houses, buildings and driveways. If it has grime, call today to make it shine in no time! 417-270-1075. Potosi.

**THE HEART OF THE SPRING BOOK. A Bennett Spring Novel by Laura L. Valenti, 161 pages. \$6.50. 417-532-2045. (Leave message and phone number). Lebanon.**

**OAK TABLE – FOUR CHAIRS:** \$250, Pine heart day bed with mattress, good shape \$75.00. 417-543-8261. Ava.

**100 VINYL RECORD ALBUMS:** Mostly county some gospel. Take al \$2.00 each. 573-689-2490. Bunker.



**Come see us for All your Skid Steer Attachments**

WE HAVE EVERYTHING FROM PALLET FORKS TO FORESTRY MULCHERS!

31 Porter Rd • Eldon, MO • 573-434-9225 • www.amoutdoorsales.com



**Wright Spray Foam Insulators, LLC**  
Commercial & Residential  
Call for FREE Estimates!

Ervin Gingerich 417-926-2052  
B. Eli Yoder 417-746-4932

**1950'S COLT REVOLVER DEALERS MEMORABILIA.:** All for \$100. Call pm. 573-764-3517.

**ROLL 1958 B.U. LINCOLN WHEAT PENNY'S.:** Last year for these. \$60. Call pm. 573-764-3517.

**ROLL 1959 B.U. MONTICELLO PENNY'S.:** First year for these. \$40. Call pm. 573-764-3517.

**LIONEL TRAIN SET:** Steam engine, tender, caboose and other car, track and transformer. \$195. 573-364-7465. Rolla

**GUARDIANWARE:** Turkey roaster with lid, excellent condition. \$195. 573-364-7465. Rolla.

**ELECTRIC HEATER:** Radiator style, like new, with thermostat hi/low settings, works excellent. \$45. 573-364-7465. Rolla.

**1949 STUDABAKER 1½ TON TRUCK:** One family owner, all original, no rust, garage kept, flat head 6-cylinder, 4 speed. 573-880-9178 or 573-880-9456. St. Genevieve.

**85 DODGE SHORT BED 360 4x4 \$1,200** 417-532-5670.

**METAL DETECTOR:** \$125. 573-327-9068. Park Hills.



**Visit us at [www.washingtonbullion.com](http://www.washingtonbullion.com)**

# BUYING SILVER & GOLD COINS

• SILVER DOLLARS • SILVER EAGLES • GOLD COINS

**PAYING FOR PRE 1964**

DIMES.....	\$1.60
QUARTERS.....	\$4.00
HALVES.....	\$8.50
HALVES (1965-1970).....	\$3.00
SILVER DOLLARS.....	\$24.00
GOLD (1 OUNCE).....	\$1,775.00

**WASHINGTON BULLION**  
636-744-8181  
311 East Main St., Union MO 63084

**Larry Heisel Rentals**  
**LARGE or SMALL...**  
**We Rent!**  
 Crawler Loaders • Excavators • Backhoes  
*Call Larry!* *We Deliver!*  
**573-779-1500**  
 www.larryheiselequipment.com  
 Rental Available in 636 or 573 area code

**THE MOST COMPLETE LINE-UP IN THE INDUSTRY**  
 Cutting widths from 36" to 104"  
  
**AGRI-ENTERPRISES** *For Outstanding Products & Service*  
 1-1/2 Miles South Of Licking, MO On Hwy 63  
**573-674-2203 • 1-800-653-7152**  
 www.agri-enterprises.com

**AUSTRALIAN SHEPHERDS** for sale, blue merle, red and whites, out of working parents, 573-663-7459.

**ENGLISH SHEPHERD** puppies, bob tails, some not, out of working parents, 573-760-5157.

**CUTTING BOARD:** Fits in your kitchen counter top, various species of ducks. \$15. 636-239-2695. Washington.

**HEAVY 6-BAR GATES:** Weldable or bolt type hinges – 16' gate \$192 available painted. Lewis Welding and Repair. 573-729-0272 – 573-729-1405. Salem.

**FULL BLOODED BLUE HEELER PUPS:** UTD shots/worming. \$150. 417-650-0995. Lebanon.

**TOTE FULL OF AUNT JAMIMA STUFF:** \$200 for all. 573-327-9068. Park Hills.

**JOHN DEERE 5085E:** 85 hp, 770 hours, cab, 4x4, loader, nice. 417-646-8807. Osceola.

**MOEN KITCHEN FAUCET:** Single lever, sprayer, new cartridge. \$45 obo. 636-239-2695. Washington.

**2019 DOOLITTLE 5FT.X8FT. ENCLOSED TRAILER:** Used once, like new. 573-745-0518. Sunrise Beach.

**TIRES, BRAKES & MORE LLC**  
 • All Makes & Models • Quality Products  
 • Affordable Pricing • Outstanding Service  
  
**Military & Senior Discounts**  
 Tue.-Sat. 8-5 • 1237 Rt. 66 • Lebanon • 417-532-0850

**ACCEPTING NEW CLIENTS**  
 WE CARE FOR YOUR FAMILY LIKE OUR OWN.  
*Reba's Family Care, LLC*  
 417 664-0760 • Reba Green | 573-434-3764 • David Green

**HEALTHCARE MADE EASY**  
 WE CAN HELP YOU NAVIGATE HEALTHCARE.GOV  
  
**Choices In Health & Life Insurance**  
 Mike Eblen, Agent  
**417-532-3360**  
 238 S. Jefferson Avenue Suite A, Lebanon

**KENMORE 30" ELECTRIC DROP IN RANGE:** Self-cleaning, Kenmore dishwasher, microwave, new Instapot \$150. 573-699-4351. St. James.

**WELL BUILT CART:** For small mig welder. New-used \$200. 573-729-0272. Salem.

**LOTS OF DVD MOVIES:** \$2 each. 573-327-9068. Park Hills.

**INTERNATIONAL TWO ROW CORN PICKER:** Pull type. 573-674-3601. Licking.

**INTERNATIONAL SQUARE HAY BALER:** Field ready. 573-674-3601. Licking.

**500 ROUND BALES:** \$45/bale. 3,000 square bales, \$5.50/bale. 417-345-5634. Phillipsburg.

**THOMAS KINKADE DIFFERENT SERIES:** Hardback, excellent condition, \$2 each. Happy Hollister books, \$2 each. 417-532-6561. Phillipsburg.

**MINN KOTA TROLLING MOTOR:** 50lb thrust, \$75. Digital treadmill, \$200. 573-759-7268. Dixon.

**3 BASEBALL MITTS FROM THE 1950'S:** \$60. 417-457-1023. Raymondville.

**Cheyenne Acres**  
 Horse & Tack  
**BUY - SELL - TRADE**  
 by Rolla, MO  
 Call For Directions & Availability  
**Call Kip**  
**573-368-9402**  


Is Your Log Home **UGLY?**  
 Starting To Look  
**Professional Staining & Repair**  
 (Log Homes & Wood Siding)  
*Call*  
**Pine Ridge Rustic**  
 Log Home Building Supplies **573-729-7226**  
 www.pineridgerustic.com  


# Land

For Sale

Dallas Co., MO • 340 +/- Acres



\$945,000

- 5 ponds – 3 ponds are stocked. One pond has a 12' deep dock built out into the pond
- Two live creeks on the front and back of property – year round water
- Barn that was converted into a Cabin with a loft and deck that overlooks the main ridge
- Electric and water well
- 5 beds in the cabin
- Fireplace
- 100-yard shooting range
- Refrigerator, oven, microwave, sink, hot water heater
- Two RV's on each side of the cabin stay (both under a barn/covering). One RV is a 2018 or 2019 Sundance – loaded - \$35,000
- 8 elevated, enclosed box blinds will stay (two box blinds will hold 2-3 people)
- 3 additional elevated stands in key locations in the hardwoods
- 6 food plots with perennial imperial whitetail clover planted in the spring of 2020; will last 5 years
- Other annual food plots are in place for fall of 2021 hunting season
- Phenomenal deer and turkey hunting; WORLD-CLASS turkey hunting
- Two bucks over 155" have been taken in the past 3 years
- Multiple gobblers with 10+ inch beards have been harvested since 2014
- There is a cave on the property that is about 50 yards deep and 75 yards wide and is full of stalactites and stalagmites
- Extensive trail camera pictures of deer and turkeys from 2014-2020
- Cabin is 1 mile from the main gates – total seclusion and privacy
- Large land owners surround the property – 1,000+ acres and 600+ acres that practice QDMA
- Property is 15 minutes to Lebanon, 45 minutes to Springfield, and 2 hours to St. Louis, located on excellent roads
- Property is completely fenced



WHITETAIL PROPERTIES REAL ESTATE

HUNTING | RANCH | FARM | TIMBER

**Brian Utecht | 417-766-5595**

[Brian.Utecht@whitetailproperties.com](mailto:Brian.Utecht@whitetailproperties.com)

[WHITETAILPROPERTIES.COM](http://WHITETAILPROPERTIES.COM)

Missouri's Top Land Specialist in 2014, 2015, 2016, 2017, 2018, 2019 and 2020



# WE WANT YOUR VEHICLE



**LARGE SELECTION OF PRE-OWNED VEHICLES AVAILABLE.**

**ED MORSE**  
**CHEVROLET**  
**BUICK · GMC**

ROLLA

FORMERLY FAIRGROUNDS AUTO PLAZA

**NEW NAME. SAME TEAM.**

100 Fairgrounds Rd., Rolla, MO

**573-364-1002**

[EdMorseChevroletBuickGMCRolla.com](http://EdMorseChevroletBuickGMCRolla.com)