

**FREE - TAKE ONE!**

Vol. 28 No. 22

**AUGUST 26, 2021**

800-543-8271 • 800-665-8875

# WEEKLY TRADER MAGAZINE



Find us on Facebook

@myweeklytrader  
AUCTIONS PG. 9

**VISIT OUR NEW WEBSITE! MYWEEKLYTRADER.COM**

**You pull it,  
we sell it...  
CHEAP!**



**Lebanon, MO**

22395 Rt. 66

**417-588-3555**

Fax 417-588-8955



## U★PULL★IT

SELF-SERVICE AUTO PARTS

We also have a large inventory of used tires and be sure to check out our used car lot!

Mon.-Fri. 8:00am-5:00pm • Sat. 8:00am-4:30pm

**WWW.SSUPULLIT.COM**

Located next to S&S Recycling.



**For All Your Metal Recycling Needs**

**Lebanon, MO**

22395 Rt. 66

**417-588-3555**

Fax 417-588-8955

**Mtn. Grove, MO**

8930 First Rd

**417-926-3360**

Fax 417-926-0180

Roll-off, Trailer, and Mobile Crushing Services Available

Monday-Friday 8:00am-4:30pm (Closed 12pm-1pm Lunch)  
Saturday 8:00am-Noon

email: [contact@ss-recycling.com](mailto:contact@ss-recycling.com)

**Buyer of all types of scrap metal.**



**You own the land.  
Make it yours.**

**Compact Tractors   Performance-matched attachments   20.9-62 HP**



**(417) 777-2391**  
quarleskubota.com

Save big on our #1 selling\* sub-compact and compact tractors, featuring the versatility to handle every job and a wide range of performance-matched attachments. Stop in for a demo and to claim this offer on select models today.

**\$0 DOWN   0% APR   UP TO 60 MONTHS**  
**PLUS**  
**SAVE UP TO \$1,000**

**VISIT US TODAY FOR THIS LIMITED-TIME OFFER**

**L2501DT  
w/loader**

- NEW Kubota L2501DT
- 4wd, DIESEL, AG TIRES
- KUBOTA LOADER

**New L2501DT w/Loader Deal!**

**\$23,995  
Financing Price**

- 5' ROTARY CUTTER
- 5' BOX BLADE
- NEW 18' KODIAK TRAILER W/RAMPS



KubotaUSA.com

\*Based on EDA tractor sales data of under 20 horsepower models from 2009 to 2019. © Kubota Tractor Corporation, 2021. \$0 Down, 0% A.P.R. financing for up to 60 months on purchases of new Kubota BX, B, LX and L series equipment from participating dealers' in-stock inventory is available to qualified purchasers through Kubota Credit Corporation, U.S.A.; subject to credit approval. Example: 60 monthly payments of \$16.67 per \$1,000 financed. Customer instant rebates of \$500 are available on qualifying finance or \$800 on cash purchases of BX2680 equipment. Additional instant rebate of \$500 is available with purchase of one new qualifying implement. Some exceptions apply. Offers expire 6/30/21. Terms subject to change. This material is for descriptive purposes only. Kubota disclaims all representations and warranties, express or implied, or any liability from the use of this material. For complete warranty, disclaimer, safety, incentive offer and product information, consult your Dealer or KubotaUSA.com.



Getting Chores Done  
**LAND PRIDE**  
*does that*

## DH25 SERIES

DISC HARROWS  
40-100 HP 72", 96" Widths



[www.landpride.com](http://www.landpride.com)

- Cat. 1 & 2 Hitch
- 20" or 22" Notched blades
- 3" Square frame
- 7-1/2" Blade spacing
- Angle front & rear gangs up to 21 degrees
- Adjustment handle to aid in angling
- 1/2" Thick bearing hangers

For Outstanding Products & Service

# AGRI-ENTERPRISES

1-1/2 Miles South Of Licking, MO On Hwy 63  
573-674-2203 • 1-800-653-7152 • [www.agri-enterprises.com](http://www.agri-enterprises.com)

**HISTORY OF THE SCHOOL OF THE OZARKS:** at Point Lookout. \$5.00. 417-532-2045. (leave message and phone number). Lebanon.

**LOG SIDING:** 2X8 Pine/Western Cedar [www.pineridgerustic.com](http://www.pineridgerustic.com) 573-729-7226. Salem.

**USED MOBILE HOMES:** Call David at VILLA HOMES IN ROLLA 573-578-8072. Rolla.

**SELLING OUT OF THE HORSE BUSINESS:** 15-20 Quarter horse bred, some registered, from weanlings to broke horses. 2 old gentle mules. 417-531-5707. Lebanon.

**BUYING MOBILE HOMES:** Call David at VILLA HOMES IN ROLLA 573-578-8072. Rolla.

**STOCK MOBILE HOMES AVAILABLE:** We gottem, single and double, 3 and 4 bedroom! Call Tuffy 573-657-2176. [amegamobilehomes.com](http://amegamobilehomes.com)

## TIM'S USED CARS

(573) 341-3828 • 1334 South Bishop (Hwy. 63) • Rolla, MO  
Next to Hwy CC • [www.tims-used-cars.com](http://www.tims-used-cars.com)

<p><b>2005 DODGE 2500 HD LARAMIE</b> Quad Cab, 4x4, 5.9 Diesel, Auto, Loaded w/ Options <b>Only \$14,500</b></p>	<p><b>2008 DODGE GRAND CARAVAN SXT</b> 3.8 V-6, Power Equipped, 137,xxx Miles <b>Only \$5,900</b></p>
<p><b>2012 RAM 1500 BIG HORN SLT</b> Crew Cab, 4x4, 5.7 Hemi, Power Equipped, 137,xxx Miles <b>Only \$19,900</b></p>	<p><b>2012 FORD F150 XLT</b> Crew Cab, 4x4, 3.5 EcoBoost, Power Equipped, 112,xxx Miles <b>Only \$19,900</b></p>

LARGE SELECTION OF CARS, TRUCKS, SUVs & VANS!

**CLASSIC EDGE**  
TITANIUM HDX

26% Tax Credit on EPA certified Central Boiler Classic Edge HDX models and installation. Call today to learn more!

Outdoor Wood Furnace CentralBoiler.com

Yarbrough Equipment Sales & Services, Inc.  
9776 E. State Hwy OO • Strafford, MO  
417-736-2303 • 1-866-286-6901 • [www.yarbq.com](http://www.yarbq.com)

The Classic Edge 360, 560 and 760 HDX are U.S. EPA Certified

**NEW 2021 CALICO 14' BP STOCK TRAILER:** Red, escape door, interior plywood lined/sealed, rubber floor/nose mats, spare tire, brakes, 7000# GVWR. \$7,000. 417-718-5347. Conway.

**WANTED, TIMBER TO LOG ON SHARES:** Honest, reliable, references. 417-533-4607, 417-664-1195.

# YOUR LAND AND FARM EXPERTS!

## WE ARE HAVING ANOTHER RECORD BREAKING YEAR FOR US!

### LAST YEAR \$35+ MILLION, AND PROJECTING \$50 MILLION THIS YEAR!

Through Our Nationwide Advertising - We Get Your Property Out On All Major Land Websites!  
If You Are Considering Selling, Please Give Us A Call Today And Have One Of Our Land Agents Come Out And Meet You And See Your Property!

### Morgan Co-125.8 Acres

**\$283,050**



put in a couple wildlife ponds. Not far from plenty of bigger box stores is 40 minutes away.

Everyone is looking for that secluded in the country tract right now! Well look no further, this 125.8 acres is behind a locked gate and is at the end of the road seclusion. Has some amazing open fields for running livestock or perfect areas for some food plots. Has some great deer & turkey hunting, and with some food plots you will have more deer than you would imagine. The seller has ran power & high speed internet from Co- Mo connect to the property. Yes that's right, live out in the country & have the best high speed internet around. It is a shared road but only the other land owners will have access. Plenty of hardwood timber, some really mature timber & some thick areas for deer bedding. Also has some trails in the woods to get around on. Property has light restrictions as well, just to protect the area from unwanted issues. Property has a wet weather creek & one could easily Lake of the Ozarks or you could easily spend the day on Truman Lake. Sedalia a bigger town with plenty of bigger box stores is 40 minutes away. More tracts and land is available if you want more than acreage. Mike Stoner at 573-774-9775

### Morgan Co-32 Acres

**\$120,000**

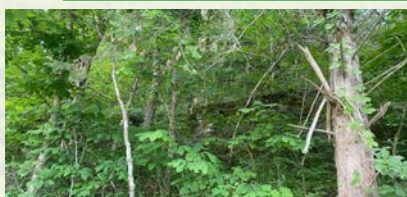


excellent investment property to develop or a gorgeous, serene place to build a home, this property has all the right stuff going for it! Seth Holt at 816-447-4660 for more info or to schedule a showing today!

Opportunities like this property do not come up for sale very often! It is roughly 32+/- acres of wooded ground very close to the Lake of the Ozarks with no restrictions, just a yearly road maintenance fee for the private road that runs through the property. This property has excellent access off of a well maintained gravel road, with a private road running through the middle and another older gated access road that cuts from the private road to the gravel road through another section of the property. The property boasts an abundance of hilltop build sites with gorgeous views through the timber. The timber is mature with tons of big trees throughout the entire property. There is also loads of wildlife to be seen all over the property, I personally spooked up two deer and three turkeys while taking pictures of the property. Whether you are looking for an

### Phelps Co-18.08 Acres

**\$63,280**



Located less than 10 minutes from Rolla is this vacant wooded parcel with some great views of a lake across the road. This land has county road frontage with a steep rock ledge. Very quiet area less than a mile to Mark Twain National Forest and Little Piney Creek for kayaking and swimming. There are no restrictions and more acreage is available. Call Jason at 270-350-6434 today.

# MISSOURI LAND COMPANY

Farm, Home & Hunting Properties

**Rolla Office:**  
12647 S. Hwy 63, Rolla  
573-308-4868

**Cole Camp Office:**  
14981 Centerline Ave.,  
Cole Camp  
660-668-4868

**www.missourilandco.com • 660-668-HUNT**

**Toll FREE number for both locations 844-974-1850**

**WANTED TO BUY ANTIQUE CARS:** Convertible, Corvettes, unrestored, motors, parts considered. 870-324-1154. Ash Flat.

**CUSTOM SAW MILLING:** 417-533-4607, 417-664-1195. Lebanon.

**THE HEART OF THE SPRING BOOK. A Bennett Spring Novel by Laura L. Valenti, 161 pages. \$6.50. 417-532-2045. (Leave message and phone number). Lebanon.**

**TINY HOMES:** We gottem 573-881-3283

**TRUE MODULARS:** 30 to 60 day delivery available, 3 and 4 bedroom 573-657-7040 chateauhomes.net

**BLACK ANGUS BULLS:** from 12 to 18 months. 417-932-4026. Summersville.

**Buildings • Hunter's Cabins • Lawn Furniture**

**JAMCO BUILDERS**

**JAMCO Portable Buildings**

800-688-2064 • 307 Enterprise Dr. • Seymour, MO • www.jamcobuilders.com

**Rent To Own Plan**

**Wright Spray Foam Insulators, LLC**  
Commercial & Residential  
Call for FREE Estimates!

Ervin Gingerich  
417-926-2052  
B. Eli Yoder  
417-746-4932

**WANTED TO BUY DODGE DIESEL TRUCK:** Or Toyota Tacoma. Also, buying antique cars. 870-324-1154. Ash Flat.

**COOKBOOK COLLECTION: \$1.00 each. Many varieties. 417-532-2045. (Leave message and phone number). Lebanon.**

**OLD READERS DIGEST:** \$1 each. 8am-8pm. 417-991-8190. Lebanon.

**AVAILABLE STOCK MOBILE HOMES:** Immediately, double wide and single, 3 and 4 bedroom 573-499-9993 columbiadiscounthomes.com

**REGISTERED HEREFORD & ANGUS BULLS:** Home raised, Some Show-Me Select Qualified. 573-701-7828. Belgrade.

**SMALL SQUARE BALES OF STRAW:** 417-932-4026. Summersville.

**STORY & PICTURES BOOK OF OLD LINN CREEK: Haha Tonka and Camden County, by T. Victor Jeffries, 72 pages. \$5.00 postpaid. (417)532-2045. (Leave message and phone number) Lebanon.**

**FREE TO A GOOD HOME:** Give away 78 rpm records 1930's - 1950's. Complete list provided - call 573-546-6681. Leave message. Most are clean & fair condition - they are originals.

**Call to Order 417-993-3017**

**Meadowview Dutch Market**

Discount & Surplus Groceries • Prices Subject to Stock on Hand

<p><b>DELI SPECIAL</b></p> <p><b>BROWN SUGAR HAM</b>..... REG. \$5.95 ..... <b>SALE \$5.45</b></p> <p><b>MARBLE CHEESE</b>..... REG. \$5.45 ..... <b>SALE \$4.95</b></p> <p>TRY our Fresh Homemade DELI Sandwiches: TURKEY, HAM, ROAST BEEF, ITALIAN, BLT'S, PULLED PORK AND BLT PULLED PORK (MADE YOUR WAY!) COME IN OR CALL to order! ALSO Custom Deli trays! Veggie OR FRESH Meat-N-Cheese!</p>		<p><b>TAKING ORDERS FOR CONCORD GRAPES</b></p> <p><b>\$14.99</b> 1/2 BU.</p> <p>Call to Order: 417-993-3017</p>
<p><b>Fresh Freestone Peaches</b> \$9.99 1/2 BU.</p>	<p><b>Big Daddy Cheese Pizza</b> \$6.99 3 PACK</p>	
<p><b>Taormina Spaghetti</b> 95¢ EA. 14 OZ.</p>	<p><b>Switch Sparkling Fruit Punch &amp; Orange Tangerine</b> 49¢ 8 OZ. \$10.79 24 CT. CASE</p>	<p><b>FRESH LOCAL PRODUCE</b> Great Prices!!! &amp; Great Variety!!!</p>
<p><b>Gatorade Mix</b> \$5.99 76 OZ.</p>	<p><b>Original Boneless Pork Tenderloin</b> \$1.99 LB. \$2.49 LB. REGULAR</p>	
<p><b>TROYER CHEESE SALE</b> HOT PEPPER CHEESE, COLBY CHEESE, MUESTER CHEESE &amp; MARBLE CHEESE \$2.99 FOR 5-6 LB. LB. BLOCK</p>	<p><b>Sargento Balanced Breaks</b> \$1.25 4.5 OZ. WHITE CHEDDAR, ROASTED ALMONDS &amp; DRIED CRANBERRIES</p>	<p><b>Cornish Hens</b> \$1.69 16 OZ.</p>
<p><b>MEADOWVIEW DUTCH MARKET</b> 417-993-3017 Hours: Mon-Thurs 8-5pm Fri 8-6pm • Sat 8-5pm 23 Miles West on Hwy 64 • Right on T Hwy 9 miles • Left on E Hwy 1 mile on Left</p>	<p><b>NOW ACCEPTING CREDIT, DEBIT CARDS &amp; EBT</b></p>	
<p><b>DUTCH COUNTRY STORE, LLC</b> 573-378-4395 Hours: Mon-Thurs 8-5pm Fri 8-6pm • Sat 8-5pm 5 miles East of Versailles off Hwy C on Kelsay Road</p>		

**POOL TABLES:** Installations, moves, recovers, repairs, accessories, etc. 573-646-1700.

**2007 ADIRONDACK RV:** 27 foot, 1-slide out. \$11,000. 417-887-8221. Springfield.

**I BUY.....**used mobile homes. Call or text 573-338-6250 or email [GregS.CH@outlook.com](mailto:GregS.CH@outlook.com)

**ROUND & SQUARE BALES OF HAY:** 417-345-5634. Phillipsburg.

**FERTRELL ORGANIC FERTILIZER:** Free Catalog. 315-796-4370. Caulfield.

**2 ANTIQUE CURIO CABINETS:** \$100 each. Call between 8am-8pm. 417-991-8190. Lebanon.

**KUSTER LOGGING**  
**BUYER of Standing Timber Oak and Walnut**  
*Dozing Now Available*  
**417-259-0047**  
 References Available



**75% OFF**  
 • All Giftware, Pictures, Lamps, Housewares, Party Supplies and School & Office Supplies

**50% OFF**  
 • All Hardware & Automotive Supplies

**25% OFF**  
 • All Office and Consignment Furniture

**h.o.b. house of bargains**  
 5505 Bus. 50 W., J.C., MO (573) 893-2015  
[houseofbargains.com](http://houseofbargains.com)

**Best Antiques & Collectibles Under the Moon!**

**Hootie Hoot Hollow Antique/Resale**  
 314-346-7098 • 314-610-0204 • 11520 Hwy. 64 • Lebanon  
 1/2 mi. from Bennett Spring State Park



**DARDEN PROFESSIONAL TIMBER HARVESTING, BUYING STANDING TIMER:** Great prices, improve wildlife habitat and improve forest health. State Certified & Fully Insured! 573-247-4808 or 573-739-1122. Salem.

**STAY-TUFF FENCE,** Johnson concrete waterers, waterlines, hydrants, posts, panels, hydraulic hoses, & GOOD FOOD. Farmers Quik Stop. 417-991-1938. Lebanon.

**FIREARMS:** Professional Repairs and Restorations. Baron's Gunsmithing. 573-363-5801, Camdenton.

**6 BRAND NEW AREA RUGS:** White with gray squares, fluffy. \$160. 8am-8pm. 417-991-8190. Lebanon.

**SNAPPER RIDING MOWER:** Needs a tune-up & tire tubes. Only \$95. 573-364-7465. Rolla.

**METAL ROOFS:** We repair leaky metal roofs with warranty. Also, flat roofs, very affordable, cover all state. 573-338-1148. Jefferson City.

**TREES OF MISSOURI BOOK: \$5.** Missouri Wildlife & Nature Viewing Book, your guide to 101 spectacular wildlife and nature viewing area, \$5. 417-532-2045. (Leave message and phone number). Lebanon.

**KENT**

**AFC™ stands for Altosid® Fly Control.**  
 Altosid is the most effective insect growth regulator for the control of horn flies for cattle on pasture.

- .4% AFC™
- MG Aureo/AFC™
- Pasture Aureo/AFC™
- Pasture Breeder Aide® Aureo/AFC™

**365 Mineral Buy 10 Get 1 FREE**  
 While Supplies Last

**Built on Trust**  
 EST. 1927

**Kropf Feeds**

**YOUR TRUSTED SOURCE FOR QUALITY FEED & FARM-LIFE ESSENTIALS**

**Portable Feed Bins Ready For Your Farm!**

**"DOING BUSINESS ON OUR WORD AND A HAND SHAKE"**  
 Located in the Heart of the Amish Mennonite Community!  
 417-345-8600 • 19 Prairie Lane, Buffalo



**Where it's always  
a bull market!**

**Angus - Brangus - Ultrablacks**

**WALL\$TREET**  
CATTLE CO.

14603 HIGHWAY KK, LEBANON, MO  
417-288-4444 • WALLSTREETCATTLE.COM

**SENIOR CITIZENS WALKER:** Bedside potty, potty seat with arms for commode. 8am-8pm. 417-991-8190. Lebanon.

**WEATHERED BARN WOOD SIDING:** 10" wide. 573-729-7226. [www.pineridgerustic.com](http://www.pineridgerustic.com) Salem.

**BOOTS:** Rubber and leather boots and hip waders. Men's 11, Women's 7, some insulated, \$15-\$40 obo. 636-239-2695. Washington.

**85 DODGE SHORT BED 360 4x4 \$1,200**  
417-532-5670.

**AG & CONSTRUCTION  
REPAIRS & REBUILDS**

20+ Years Experience  
Cast Iron & Steel Welding  
Engines • Transmissions  
Electrical • Hydraulics  
PTO & Drivelines  
Tractors & Skidloaders etc.

**VALLEY SHOP • 660-458-6747**  
38745 Molasses Mill Rd, Latham

**MARGARITAVILLE**  
*Lake Resort*  
LAKE OF THE OZARKS

*Join Our  
Housekeeping Team!*

- \$750 SIGN-ON BONUS
- POTENTIAL OF \$400+ MONTHLY BONUS
- MEDICAL, DENTAL & VISION INSURANCE
- PAID TIME OFF AFTER 6 MONTHS OF EMPLOYMENT
- ASSOCIATE CAFETERIA
- AND MUCH MORE!

APPLY AT  
[MARGARITAVILLERESORTLAKEOFTHEOZARKS.COM/EMPLOYMENT](http://MARGARITAVILLERESORTLAKEOFTHEOZARKS.COM/EMPLOYMENT)



**HEAVY 6-BAR GATES:** Weldable or bolt type hinges – 16' gate \$192 available painted. Lewis Welding and Repair. 573-729-0272 – 573-729-1405. Salem.

**HEALTHCARE  
MADE EASY**

**WE CAN HELP YOU NAVIGATE**  
HEALTHCARE.GOV

**Choices In Health  
& Life Insurance**  
Mike Eblen, Agent  
**417-532-3360**  
238 S. Jefferson Avenue Suite A, Lebanon

**METAL DETECTOR:** \$125. 573-327-9068. Park Hills.

**1950'S COLT REVOLVER DEALERS  
MEMORABILIA.:** All for \$100. Call pm. 573-764-3517.

**LABOR DAY  
DEADLINES**

*Due to the upcoming holiday,  
the following deadlines will be observed:*

★★★★ Weekly Trader ★★★★★  
Thursday, September 9 Edition

**Display Advertising Deadline:**  
Thursday, Sept. 2 at Noon

**Classifieds Deadline:** Thursday, Sept. 2 at 4pm

Our office will be closed  
Mon., Sept. 6

*We appreciate your business. Thank you for your continued support.*

**WEEKLY TRADER**  
417-532-9131 • 800-665-8875  
100 E. Commercial • Lebanon, MO  
[www.myweeklytrader.com](http://www.myweeklytrader.com)

**CALUS LOGGING**

**20 YEARS EXPERIENCE**

**Buying Standing Timber**  
Walnut & Oak

**Joe Calus, Owner**  
417-926-4606 • MTN. GROVE

CERTIFIED

**WELCOME TO BAD BOY COUNTRY!**

**STAHLMAN POWERSPORTS**

1387 S. BISHOP AVE., ROLLA  
573-364-6944  
WWW.STAHLMANPOWERSPORTS.COM

**Cheyenne Acres**  
Horse & Tack

**BUY - SELL - TRADE**  
by Rolla, MO  
Call For Directions & Availability

**Call Kip**  
573-368-9402

**LAB MIX PUPPIES:** \$150. 417-664-0742. Lebanon.

**OLD WORLD BOOK ENCYCLOPEDIAS:** Full set. \$40. Typewriter, \$30. Kenmore sewing machine \$30, VCR & movies \$45. 8am-8pm. 417-991-8190. Lebanon.

**MOEN KITCHEN FAUCET:** Single lever, sprayer, new cartridge. \$45 obo. 636-239-2695. Washington.

**CUTTING BOARD:** Fits in kitchen counter top, various species of ducks. \$15.00. 636-239-2695. Washington.

**2 MALE BORDER DOODLES:** 1 black & white, 1 blue merle, 5 months old. 573-739-9431.

**ROLL 1958 B.U. LINCOLN WHEAT PENNY'S.:** Last year for these. \$60. Call pm. 573-764-3517.

**ROLL 1959 B.U. MONTICELLO PENNY'S.:** First year for these. \$40. Call pm. 573-764-3517.

**RARE CAR, 53 INDY PACE CAR CONVERTIBLE:** Excellent condition, to many new parts to list. \$20,000. 636-583-4338. Union.

**POWER WASHING, CALL JET STREAM POWER WASHING FOR ALL OF YOUR GRIM TO SHINE NEEDS:** We wash it all, semis, stock trailers, campers, equipment, houses, buildings and driveways. If it has grime, call today to make it shine in no time! 417-270-1075. Potosi.

**BUSY CAMPGROUND IN THE OZARKS:** Looking for a hard working couple to assist, host and general maintenance. Salary & housing included. Must be self-motivated with a good attitude. 417-588-1631. Lebanon.

**CONWAY HIGH SCHOOL BEARS 2000-2001 YEARBOOK.** \$12.50. 417-532-2045. (Leave message and phone number.) Lebanon.

**LIONEL TRAIN SET:** Steam engine, tender, caboose and other car, track and transformer. \$195. 573-364-7465. Rolla

**NEED TO FIND LAMANCHAS:** Contact Yvonne at [lindenhallh@gmail.com](mailto:lindenhallh@gmail.com) or Yvonne, 890 SW 301 Rd. Chilhowee, MO. 64733.

# AM & Outdoor Sales



### Premier Brush Cutter

- 72" Cutting Width
- High Flow or Standard Flow
- Carbide Mulching Teeth

### CL Fabrication Tree & Post Puller - Dominator

- 1" thick AR400 steel jaws.
- 2" diameter, CF 1045 main pivot pins.
- Heaviest Built on the Market



**WE ARE ONE OF THE NATION'S LARGEST JENKINS IRON & STEEL DEALERS!**

*Come see us today! Financing options available.*

Eldon, MO - 31 Porter Rd - 573-434-9225  
**www.amoutdoorsales.com**



*Sam* **CRAWFORD AUCTION SERVICE** LLC  
**ESTATE AUCTION**

Due to the passing of Bill Hammill will sell the following located from Stockton, MO Square 4-Way Stop Jct. of Hwys. 32 & 39, then 2 miles north on North St. - Watch for Auction Signs at 11395 South 1501 Rd.

**FRIDAY, SEPTEMBER 3RD, 2021 - 1 PM**

**180 ACRE FARM - HOME - BARN**



**FARM**

**180 Acre Stock Farm - Approx. 80% Open Pasture or Hayland - Perimeter Fenced & Cross-Fenced - 5 Ponds & Stockton Branch Co. Rd. South 1501 Splits Farm & Co. Rd. 1120 Is The North Perimeter**

**HOME**

**3 Bedroom - 3 Bath - 4000+ Sq. Ft. Native Stone Home - Built in 1981 Full Walkout Basement With Kitchen & Bath Partly Finished - Lots of Storage - Newer Central Air & Dual Fuel Central Furnace - Large Stone Fireplace - Lots of Cabinets - Built in Bookshelves - Well & Septic Stockton Schools**



**BARN**

**Hay Barn/Machine Shed 45'x75' w/15'x75' Sideshed Garage/Shop 24'x27' Garage 30'x32' Machine Shed/Open Front 30'x60' (Built in 2011)**



*Terms: Auction will be held on site at the home. 10% down day of purchase price day of auction. Balance due in 45 days or less. Full possession at closing date. Not subject to buyer obtaining financing.*

*Heirs are serious sellers so make plans to be a buyer. A good farm & improvements - great location and lots of potential. Good hunting & Stockton Lake close by. Shown by appointment with aucitoneers.*



*Sam* **CRAWFORD** LLC  
**Auction Service**



**TERMS:** Cash or good check. Nothing removed until settled for. Not responsible for accidents. Lunch available. Statements made day of sale take precedence over printed matter. All items sell as is. No warranties given or implied.

**417-998-6629**  
**Cross Timbers, Mo.**

[CrawfordAuctionService.com](http://CrawfordAuctionService.com)



Sam  
417-328-9137

Chase  
417-399-1904

Chance, CAI  
417-298-1781

Tom Poynter  
Jack Lancaster

**Bill Hammill Estate**

# Wheeler Livestock Auction, Inc.

## Special Stock Cow Sale

### Osceola, MO



## SAT., AUG 28, 2021 • 6:00 P.M.

**Expecting 800 Head of Bred Heifers, Bred cows, & Cow/Calf pairs.**

#### Lost Creek Farm-

- 2 Braunveih Ang X cows, 3 yrs., 1,200 lbs., 2 Braunveih Char X cows, 3 yrs., 1,200 lbs., w/ 2 Ang sired calves 250 lbs. Rest bred 2nd & 3rd.

#### K & K Farm-

- 10 PB Ang hfrs., 1,100 lbs., bred 3rd to CE Ang bull. Hfrs home raised, gentle, start Sept 1st.

#### M & C Cattle Co-

- 9 Red Bal hfrs., 11 Blk Bal hfrs., 1,100 lbs., 2 yrs., bred 3rd to proven CE Seedstock Plus Bulls. Start Sept. 15th for 60 days, complete health & vac program.

#### Tony Cushman Dispersal-

- 40 Ang cows, 3-6 yrs., 1,200 lbs., w/ 40 Ang clvs. up to 400 lbs. All clvs sired by Hawk Ang bulls. Cows bred back to Hawk Ang bulls. 30 Ang cows, 3-6 yrs., 1,250 lbs., bred 3rd to Hawk Ang bulls. The above 70 cows are all home raised, gentle, complete Vac & Mineral program.

#### Johnny White Dispersal-

- Sold Farm-120 Ang cows, 3-6 yrs., 1,200 lbs., 40 Red cows, 3-6 yrs., 1,200 lbs., 20 Char X cows, 3-6 yrs., 1,200 lbs., The above 180 cows have 100 calves from babies to 200 lbs. The remainder of cows bred 3rd. All calves sired by top Sim Ang bulls & cows bred to Sim Ang bulls. 3 Blk Sim Ang bulls, 3 yrs., 1,500 lbs., All cows worked June 1st, complete health program.

#### Strickland Cattle Dispersal-

- 70 Fancy Ang cows, 3-6 yrs., 1,250 lbs., 20 Char & Red X cows, 3-6 yrs., 1,250 lbs., 20 Brng X cows, 3-6 yrs., 1,250 lbs., The above 110 cows all bred 3rd to Ang bulls, all cows gentle & good calf raisers.

#### Peterson Farms-

- 15 Blk Ang hfrs., 2 yrs., 1,000 lbs., w/ 250 lb. clvs. 10 Red Ang hfrs., 2 yrs., 1,000 lbs., w/ 250 lb. clvs. 56 Blk Ang cows, 3-5 yrs., 1,200 lbs., bred Ang or Herf to start Sept 1st.

#### Hefley Farms-

- 30 Fancy Ang cows, 3-4 yrs., 1,200 lbs., bred 3rd to Lucas Ranch Blk Sim bulls, start Sept 1st.

#### Art Endsley-

- 30 Blk Ang cows, 5-7 yrs., 1,300 lbs. bred 3rd to Ang bulls or w/ babies. Cows calving daily.

#### Coon Creek Farm-

- 10 Ang hfrs., 2 yrs., 1,100 lbs., w/ clvs. up to 450 lbs. 20 Blk cows, 4-6 yrs., w/ clvs. up to 450 lbs., Cows bred back to Blk Gelv. bulls.

#### Gore Farm-

- 30 Blk cows, 4-6 yrs., 1,250 lbs., bred 3rd. 20 Blk & BWF cows, 4-6 yrs., 1,200 lbs., bred 3rd. All cows bred to good bulls, 10 calves now calving daily.

#### Kelly Farm-

- 5 Blk horn cows, 4-6 yrs., 1,000 lbs., bred 3rd to Blk
- Bal bulls.

**Special Feeder Calf Sales - September 9th & 30th**  
**September Cow Sale - September 25th, 2021**

## Wheeler Livestock Auction, Inc.

Osceola, MO • 685 SE 13 Hwy., PO Box 560 • BARN 417-646-8102

Byron Wheeler-417-777-0897 • Skyler Fisher-417-298-9051 • Les Tennis-417-466-8786  
 Red Whistance 417-276-7909 • Zach Lightfoot 417-399-5053  
 Burleigh Wheeler-417-840-6561 • Darwin Hearting-417-296-1029  
 Kevin Wade-660-492-3279 • Tim Sherrer 573-855-1951

**Office Manager: Weston Shelby, 417-298-1316**

**Bid online on CattleUSA • www.wheelerlivestock.com**

**Like us on Facebook-Wheeler Livestock Auction**



# AUCTION

**SATURDAY, AUGUST 28<sup>th</sup> - 9:00 A.M.**

**Location:** 2019 South Hwy 95, Mtn. Grove, MO **Directions:** From Mtn. Grove Square Take Hwy 95 South 1.3 miles to Auction on Right. **WATCH FOR CHADWELL AUCTION SIGNS.** **Payment System:** Cash • Debit Card • Credit Card (Debit / Credit Card Fee Will Apply) Checks approved if known by auction company.  
**VISIT: WWW.CHADWELLAUCTIONS.COM**

**Nancy & The Late Everett  
MITCHELL**



**Eig-Eibar Spain cal. 9mm/4 #53171  
Black Powder Rifle**

**HOUSEHOLD**

Assorted Linen • Couch • Office Chairs • Magazine Rack • Wall Decor • Wooden End Tables • Quilting Material • Costume Jewelry • Assorted Lamps • Glassware • Assorted Dishes • Anniversary Clock • Chest of Drawers • Kitchen Table w/6 Chairs • 8 Day Mantle Clock • Wooden Rocking Chairs • Console Stereo • Occasional Chair • Regulator Wall Clock • Full Size Oak Bed • Singer Sewing Machine w/Cabinet • Desk • Rainbow Vac • Whirlpool Refrigerator w/Ice • Kenmore Front Load Washer & Dryer w/Stand • Mixing Bowls • Small Appliances • Kenmore Freezer • Kenmore Refrigerator • Roaster • Dirt Devil Vac • Pressure Cooker • Other



**1967 Volkswagon 4spd 81,xxx miles  
(good condition)**

**OUTDOOR ~ MISCELLANEOUS**

JD Yard Cart • Yard Seeder • Craftsman Lawn Sweeper • Craftsman 22" Push Mower • Weedeater Featherlite (new) • Assorted Hand Tools • Hip Waders (size 10) • Camo Coats • Hunting Vests • Stuffed Turkey • Projector & Screen • Sony Speaker Set • Sewing & Quilting Books • Games • Drafting Table w/Metal Chair • Lawn Chairs • Mailbox • Coolers • Christmas Decor • (2) Cots • Childs Toy Animal Barn • Coleman Camp Stove • Coleman Tent Heater • Bike Rack • 24' Alum Extension Ladder • Fuel Cans • Large Lot of Tackle • Minnow Traps • Walnut Picker • Weber Grill • 10' Collapsible Ladder • Bird Live Trap • Hand Sprayer • Meat Grinders • Reese Hitch for Fifth Wheel Camper • Walnut Cracker • Wood Craft Molds & Patterns • Other

**John Deere X300 Riding Lawn Mower  
48" Cut Hydrostat 236hrs (like new)**



**ANTIQUES ~ COLLECTIBLES**

Quick Aid Fire Extinguisher • Black Hawk Corn Sheller • Dazey Butter Churn • Butter Churn Crock • Pitcher & Bowl • Vintage Folding Rocking Chairs w/ Tapestry • Old Records • Advertising Boxes • Ladder Back Chair • Wooden Wall Table • Folding Sewing Machine • (2) Wash Stands • New Home Tredle Sewing Machine • Oil Lamps • Dr Pepper Crate • Oil Lamps • Old Kitchen Scales • Victrola w/Records (excellent condition) • Wooden Chair w/Wicker Bottom • Wooden Rocker w/Cane • Hurricane Lamp • Dresser w/Swing Back Mirror & Wooden Casters • Milk Glass • Blue Mason Jars • Antique Adding Machine • Crock • Forging Tools • Old Tools • Cast Iron • Western Clipper Sled • Wash Board • Hay Knife • Broad Axe • Shoulder Drills • Trunk • Kitchen Stool • Bushell Baskets • Lanterns • Planes • Vintage Fishing Lures • Vintage Fly Rods & Fishing Reels • Push Plug • Record Player • Wooden Tool Box • Large Lot of Wooden Chairs • Drill Press • Wash Tubs • Wood Clamps • Old Bottle Jack • Lanterns • Bee Smoker • Other



**BOATS ~ MOTOR ~ TRAILER**

5'X10' Bumper Tilt Utility Trailer • Johnson 9.5 Boat Motor • Johnson 3hp Boat Motor • Wizard 2spd Trolling Motor • 12' Flat Bottom Boat • 14' Alum Canoe • 16' V Bottom Boat w/ Trailer • Boat Stands

**SHOP ITEMS**

Delta 8" Drill Press • Delta 10" Bench Saw • Campbell Hausfeld 13 gall 100PSI Air Compressor on Wheels • Saw Horses • Extension Cords • Bench Grinder • Oils & Solvents • Creeper • Hand Saws • Metal Cart • Bottle Jack • 20# Propane Cylinder • Assorted Tools • 100" Propane Cylinder • 2" Vise

**AUCTIONEER'S NOTE:** This will be a very good clean auction. There are several boxes already packed so lots of surprise items. Please make plans to spend the day with us. We look forward to seeing you! **Thanks, Shawn**  
**DRIVER'S LICENSE OR PICTURE I.D. REQUIRED • TERMS: CASH OR APPROVED CHECK** **OR DISCOVER**

**Auction Service, LLC**  
[www.chadwellauctions.com](http://www.chadwellauctions.com)

**Auctioneer:**  
**SHAWN CHADWELL**  
417-830-0209

**Ringmen:**  
Weston Chadwell ~ 417-349-0727

**Clerk:**  
**SHELLY CHADWELL**  
Cell: 417-880-8449

**Cashiers:**  
Shawn Irby • Marla Chadwell  
Kati Roberts • Emily Chadwell

**PROFESSIONAL SALES MANAGEMENT**  
LUNCH WAGON • APPRAISAL SERVICE • RAIN OR SHINE  
All announcements made day of sale take precedence over any printed matter.  
Not responsible for lost or stolen merchandise. Not responsible for accidents.

**VISIT WEBSITE FOR PICTURES**

# AUCTION

Farm Items~Shop Items~Outdoor & Misc~Coins~Silver~Guns~Gun Safe~Ammo~Household~Survival Food & Supplies

**SUNDAY, AUG. 29<sup>TH</sup> - 1:00 P.M.**

**Location:** 3972 Clay Bank Rd., Mansfield, MO **Directions:** Exit HWY 5 North to London Road. Go about 5 miles on London, left on Red Oak, Left on Clay Bank. First house on right. **From Hartville,** 5 South to V, right to London, left on London, right on Red Oak, Left on Clay Bank. **WATCH FOR CHADWELL AUCTION SIGNS.** **Payment System:** Cash • Debit Card • Credit Card (Debit / Credit Card Fee Will Apply) Checks approved if known by auction company. **VISIT: [WWW.CHADWELLAUCTIONS.COM](http://WWW.CHADWELLAUCTIONS.COM)**

**TOM & JUDY STAPLETON**



**Onan Homelite Power 6500 watt Generator (New)**

**FARM ITEMS**

4' X 8' Portable Livestock Shelter • (5) 16' Cattle Panels • 8' Gate • 4' Gate • Suncast Tumbler Composter • Other



**SHOP ITEMS**

2 Wheel Dolly • Shop vac • Schumacher 12volt Battery Charger • Extension Cords • Central Pneumatic Pancake Compressor • Bolt Cutters • Saw Horses • 6" Vise • Receiver Hitches • Power Tools • 4' Level • Fire Extinguishers • Large Magnet Stick • Log Chains • Oils & Solvents • Other

**OUTDOOR ~ MISCELLANEOUS**

ATV Sprayer 15 Gallon (NIB) • John Deere X304 Riding Mower 42" 175hrs • Independence 1776 Bell • Planters • B&D Vac & Mulch • Water Hoses • Fuel Cans • DR Weed Trimmer • Rabbit Wire • Hand Sprayer • Hand Tools • Fence Stretchers • Wheelbarrow • Lawn Chairs • Poulan Pro 52" 6spd Mower (needs work) • Misc Lumber • Inversion Table • Pacific Trailblazer 10spd Bicycle • Metal Flag Pole & Flag • Electric Heaters • Portable Mr Buddy Heater (NIB) • Werner 6' Step Ladder • 20' Aluminum Extension Ladder • Small Animal Live Traps • 9' X 12' Screen House • Master Massage Table • Hummingbird Feeders • Adventurer Aussie Propane Grill • Cast Iron Wood Stove • Coleman Lanterns • Wooden Step Ladder • Trash Cans • 19 X 29 HD Tarp (NIB) • Pet Taxis • Brute Trash Cans • SS Buckets • Wagon Wheels • Craftsman 2 wheel Yard Cart • Walnut Picker • Apple Picker • Other

**AUCTIONEER'S NOTE:** All items have been well taken care of! There will be something at this Auction for everyone. Please make plans to spend an afternoon with us! **Thanks, Shawn**

**DRIVER'S LICENSE OR PICTURE I.D. REQUIRED • TERMS: CASH OR APPROVED CHECK** **OR**

**Chadwell**  
Auction Service, LLC  
[www.chadwellauctions.com](http://www.chadwellauctions.com)

**COINS ~ SILVER**

.999 Fine Silver One Troy Ounce Prospector Bullion (large lot) • Liberty 1976 Half Dollars • 1930-1960 90% Silver Quarters • 200+ Silver Half Dollars (assorted) • 400+ 1942-1970 Liberty Silver Half Dollars • Other



**GUNS**

Mossberg .410 Pistol Grip Shotgun • (2) 12 gauge shotguns • .308 Hunting Rifle • Kimber Ultra Carry 1911 45 cal. • Kimber 380 ACP Micro Carry • Ruger LCP Compact Pistol 380 Auto • SigSauer P938 w/ 5 clips • Walther PPS 9mm • Glock G22 Model .40 cal • Springfield XD 40 • Ruger Mini 14 .223 Auto w/nc star 6x42 • Taurus PT-740 .40 caliber • Glock 19 .9mm • Remington Wingmaster Model 870 12 gauge Pump • SKS 7.62 x 39 w/Bayonette • Marlin 22 Auto Tube Fed w/SS Barrel



**AMMO**

Winchester 9mm • Ruger 9mm .115 grain • 40 S&W 165 grain Blazer Brass (large lot) • 12 gauge 2 3/4 (large quantity) • 45 Auto .230 grain • 1000 rounds of 223 Remington • 500 rounds of Win 12 gauge 2 3/4 • .45 9mm Shells • Winchester 12 gauge 2 3/4 shells (200 rounds) • Winchester 380 .95 grain Full Metal Jacket • Rem, Launan, & misc 40 .180 grain (over 1000 rounds) • Large Lot of 223 shells • 500 rounds of 22 LR Remington • 410 Shells • 12 Gauge Shells • Other

**HOUSEHOLD**

Large Wooden Storage Cabinet • Dyson Vacuum Hoover Rug Shampooer • Sewing Machines • Cherry Office Desk • Cherry Book Case • Office Chairs • Electric Lift Chair • Brookstone Massage Chair • Bar Stools • Assorted Home Decor • Suede Dual Reclining Sofa • Wooden Coffee Table • LazBoy Recliner • Glider Rocker • 40" Samsung Flat Screen TV • Oak Entertainment Center • Small Storage Cabinet • Denon Stereo Surround System • Drop Leaf Table w/4 Chairs • Pots & Pans • Small Kitchen Appliances • Flatware • Dishes • Cutlery • Whirlpool Dryer • GE Front Load Washer • Step Stool • Queen Size Bed • Wooden Dresser • Area Rugs • Wooden Night Stand • Wooden Rocking Chair • Assorted Linen • White Clad Replica Wooden Cabinet • Maytag Refrigerator • Other

**SURVIVAL FOOD & SUPPLIES**

Fire Starters • Pressure Cookers • Stock Pots • Large Lot of Toilet Paper • Large Lot of Ziploc Bags • Large Lot of Paper Towels • Large Lot of Kleenex • Large Lot of Survival Food including Beans, Rice, Freeze Dried, Emergency Essentials, Cheese, Vegetables, Tomatos, Salt, Whole Red Wheat • Large Lot of Lamp Oil • Large Lot of Lye • Propane Fuel • Large Lot of Canning Jars

Auctioneer: **SHAWN CHADWELL**  
417-830-0209  
Ringmen: **Weston Chadwell ~ 417-349-0727**

Clerk: **SHELLY CHADWELL**  
Cell: 417-880-8449  
Cashiers: **Shawn Irby • Marla Chadwell**  
**Kati Roberts • Emily Chadwell**

**PROFESSIONAL SALES MANAGEMENT**  
LUNCH WAGON • APPRAISAL SERVICE • RAIN OR SHINE  
All announcements made day of sale take precedence over any printed matter. Not responsible for lost or stolen merchandise. Not responsible for accidents.

# ESTATE AUCTION

## SATURDAY, AUGUST 28 @ 9:00 A.M.

**Directions:** SALEM - From Salem, take Hwy. 32/72 east 4.0 miles to sale on left. Watch for signs.

### HOUSEHOLD - TOOLS - FISHING ITEMS - GUNS - FARM - LAWN - MISC. ITEMS

Several Fishing Rods & Reels - Small Chest Freezer  
 Several Lots of Hand Tools - Fish Finders  
 Skeet - Luggage - Lots of Fishing Lures  
 Nice Old Coleman Heater - Lanterns  
 GE Side-by-Side Refrigerator  
 4' Step Ladder - Trash Cans - 2-Wheeler  
 Treadmill - Lawn Chairs - 5 Pc. Camping Table & Chairs  
 Electric Cords - Buckets - Stihl P540C  
 Stihl B686 Gas Blower - Nuts & Bolts  
 Craftsman Battery Powered Trimmer  
 2 Radiator Heaters - 6.5 Craftsman Wet/Dry Shop Vac  
 Roaster - Folding Doors - Carpet  
 Matching Set Speed Queen Washer/Dryer  
 Pots - Pans - Cookers - Lots of Corningware  
 Crown Victoria Churn - Longaberger Baskets  
 Cookbooks - Cleaning Supplies - Carnival Glass  
 Coke Glasses, Pots, Pans, Tableware  
 Cherry Table w/2 Leaves, 6 Chairs, Amish Made  
 Leather Couch & Recliner, Very Nice - End Tables  
 Fenton Glass - Mantel Clock w/Wrench & Key  
 Glider - Oak Pedestal Kitchen Table w/6 Chairs  
 2 Curio Cabinets, Round & Square  
 Kimball Piano, Artist Console - Note Table  
 2 Highback Chairs - Sheets - Nice Floor Rug  
 Nice Couch - Large Oak Desk - Trendle Bed  
 Full-Size Bedroom Set w/5-Drawer Dresser, 2 Night  
 Stands, Very Nice

Small 22" TV - Buddy Heater  
 Grizzly 60555P 14" Band Saw - Drill Bits  
 Metal Pieces - Bolt Bins - Several Old Fish Lures  
 Mechanic Tools - 2 Rotozip - DeWalt Sander  
 Power Drill Bits - DeWalt Foaming Gun  
 DeWalt 18V Jig Saw - Bench Grinder  
 Makita Power Drill - Wood Clamps - Work Stools  
 Work Mate 550 - Copper - Rockwell Drill Press  
 16ga. Double Barrel Savage Model B  
 Auto 22 - Winchester Model 94 30-30  
 Sears Sander - Box of Belt Buckles  
 Case XX, Barlow & NAPA Knives  
 Porter Cable Forstner Bits - Wood Clamps  
 18V Kobalt Power Cordless Impact  
 Folding Reclining Lawn Chairs - 2 BB Guns  
 Remington Model 550  
 Blue Streak 5MM Pellet Gun  
 Benjamin Franklin 22 Cal. Pump Pellet  
 Benjamin Franklin Model 342 22  
 Model FR 35 Gun Cabinet 8 M 10  
 C-Clamp, Various Sizes - Router & Table  
 Outdoor Patio Set - Table w/4 Chairs, Glider & Rocker  
 14' Wooden Ladder - Small Windmill  
 New NAPA Air Tank - Yard Wagon  
 2, 3-Ton Chain Hoist - Old Feed Scale  
 Post Hole Cleanouts - Rakes - Shovels - Chains  
 Old Minnow Buckets - ANCO Wiper Station

Cutting Torches - Upright Air Compressor  
 Air Hose Reel - Impact Air Tools, Several  
 Hitachi Metal Cut-Off Saw - Rockwell Jawhorse  
 John Deere X485 54" Mower - Push Mower  
 Self-Propelled Weed Trimmer - Squirrel Cage Fans  
 Hay Syth - Electric Motors - Large Open-End Wrench  
 Craftsman Tool Boxes, Full - 30 Amp Battery Charger  
 Battery Load Tester - Old Wood Phone  
 Solar Battery Charger - Plane Jointer Skihl  
 Fencing Items - Wire For Small Animals  
 Lund 1600 Pro Angler DLA 1996  
 60hp Mercury 1996 & Trailer for Fishing  
 15+ T-Posts - Yard Roller & Scaffolding  
 10' Aluminum Body - Cyclone Rake Classic  
 Lil' Giant Ladder - Fish Cooker - Aluminum Ramps  
 6' Fiberglass  
 16' Bumper Hitch Trailer 6VW 7000 w/Ramps  
 10' Bumper Hitch Trailer  
 Lowline 16' 48 w/Trailer & 30 Mariner  
 3pt 5' Box Blade - 3pt 6' John Deere MX6  
 John Deere 1250 Tractor, 4x4 Like New Tires, 4059 Hrs.  
 w/100 Load

**PROPERTY TO BE OFFERED:** 3 BR, 2 BA, Brick Ranch Style Home, Living Room, Dining Room & Kitchen. 2-Car Attached Garage, Half Basement, 30.7 Mostly Open Hay & Pasture, 2 Ponds, Lagoon, Drilled Well, 18x24 Open Shed, 30x21 w/16' Side Shed.

**AUCTIONEER'S NOTE:** This auction has so many new and great tools. All day sale. Neat items. **See you there! - Tom!**



### LIVING ESTATE OF: GARY & HELEN HANNING

ANNOUNCEMENTS AT AUCTION TAKE PRECEDENCE OVER PRINTED MATTER

# WULFF AUCTION

TERMS: CASH OR APPROVED CHECK - I.D. REQUIRED  
 NOTHING REMOVED UNTIL SETTLED FOR

Licensed Appraisals

**Auctioneers:**  
 Col. Tom Wulff - Col. David Wulff  
 498 Hwy. B, Salem, MO 65560  
 573-729-8476

Clerk: Tracy Strange Cashier: Nancy Inman



RAIN OR SHINE OWNER & AUCTION PERSONNEL NOT RESPONSIBLE FOR ACCIDENTS AT SALE SITE

See Wulff Auctions at [www.thesalemnewsonline.com/auctions](http://www.thesalemnewsonline.com/auctions)

# Land Auction

## 87<sup>+/-</sup> Acres

ONLINE BIDDING ONLY

**1911 & 2103 SHARP RD.  
MONTREAL, MO.  
(HEART OF THE OZARKS)**

**BIDDING ENDS:** (SOFT CLOSE)  
**THURS. SEPT. 16 @ 7:00 P.M.**

**OPEN HOUSE: SUN. SEPT.  
5 & 12 1:00-3:00 P.M.**

### OFFERED IN (3) TRACTS

Sect. 02 Twp. 37N Range 15W  
Camden County, Mo.

**TAXES: \$2,843.41**

PIN:20-1.0-02.0-000.0-000-001.000

\*Camdenton R-3 School District

**\*Co-Broker participation welcome,  
please contact Cory**



**TRACT 1: 40 +/- ACRES** (west part of farm) •Pasture  
•Timber •Home, built in 1940, 3BR, 2 bath, 1 story, 1,652  
sq ft •Pole Barn, 30'x60' \*Sharp Rd. comes through  
southwest corner of this tract

**TRACT 2: 22 +/- ACRES** (northeast part of farm)  
•Pasture •Timber •Home, 1996 manufactured home, 3BR,  
2 bath, 1,568 sq ft •Shed, 18'x18'

**TRACT 3: 25 +/- ACRES** (southeast part of farm)  
•Pasture •Timber •Pond \*This tract consists of 1,000 head  
sow operation \*(4) Hog Barns\* •(2) Farrowing Buildings,  
each are 42'x152' w/ farrowing crates, stainless feeders,  
water, auto curtains, LB White hanging heaters, multi  
stage ventilation control •(2) Gestation Buildings, each are  
33'x266' w/ pens, feed hoppers, water, fans, auto curtains  
•(6) AP Bulk Feed Tanks, 10 Ton •Compost Shed, 20'x40'  
w/ (3) concrete bays

**ALSO SELLING** Massey Ferguson 2660 MFWD Tractor,  
Howse Chopper Mower, Irrigation Pipe, Hose Reel, Screen  
Printing Equipment

*Cory Craig*

**AUCTIONEER  
217/971-4440**

**www.corycraig.com** Register to bid, view catalogue & terms @ [corycraig.hibid.com](http://corycraig.hibid.com)

# ESTATE AUCTION

**Sunday, August 29th, 2021 ~ 1:00 PM**

LOCATION: 1805 S. Main St, Lockwood, MO (Watch For Signs)

**Auction For Darlene & The Late Dennis (Denny) Forst**



**Antique, Modern Furniture & Appliances**

Hawaiian Made Kitchen Table & Buffett Made From True Hawaiian Wood In Hawaii (Neat), 2 Ant Wood Chairs, Ant Wood School Desk, Ant Trunk, Wicker Furniture, Prim Chest Of Drawers, Sm Ant & Modern Wood Tables, 4 Pc Wood Bedroom Suite Inc Queen Bed, Chest Of Drawers, Dresser W/Mirror & Nightstand, Wood Kitchen China Hutch, Several Wood Bookshelves (Some New, Some Old), Cedar Chest, Wood Glider/Rocker, 2 Leather Style Glider/Rockers W/Ottomans, 2 Recliners, Magazine Rack, 2 Lg Oak Barstools, Roll Around Cart, Glass Top Shelves, Desk, 3 Short Barstools, Office Chair, File Cabinet, Card Table & Chairs, Misc Plant Stands, Several Pictures & Décor Pcs, Electric Fireplace Heater, Like New Washer & Electric Dryer, Upright Chest Deep Freeze, Refrigerator, Electric Organ, Exercise Bike, Hoover Steam Carpet Cleaner, Dirt Devil Vacuum, Other Items Not Listed

**Antiques, Collectibles & Households**

Crocks, Galvanized Wash Tub, Ant Tea Set, Ant Glassware Of Various Kinds, Ant Pottery, Neat Horn Handle Carving Set, Set Of 6 Wm A. Rogers Oneida Silverware In Box, 8 Pc Stainless Steel Silverware, Silver Trays, Sm Prim Ant Pcs Of Various Kinds, Set Of 12 Noritake China Set,

Of 12 Yorktown Pfaltzgraff Dishes Plus Other Added Pcs, Set Of 12 Christmas Pfaltzgraff Snow Village Dishes Plus Other Added Pcs, Set Of 8 Brown Stoneware, Lots Of Other Sm Households & Kitchen Wares Added Sale Day

**Mower, Tillers, Woodworking Tools, Small Tools & Outdoor Related Items**

Like New Cub Cadet Riding Mower, Front Tine Tiller, Mantis Type Tiller, Push Mower, Pull Behind Seeder & Push Seeder, 2 Edgers, Leaf Blower, Wheelbarrow, Long Handle Tools, 16" Scroll Saw, 4 Speed 45" Wood Lathe On Stand, Drill Press W/Stand, Circular Saw, Belt Sander, Router, Rotary Power Tools, Sm Torch Kit, Bench Grinder, Table Saw Table, Router Table, Workmate Table, Sm Electrical Tools, Air Brush Kit, Space Heater, Sm Hand Tools, Fiberglass Ladder, Fan On Stand, Wood & C Clamps, Lots Of Hardware & Wood Fasteners, Hand Saws, Outdoor Furniture, 2 Outdoor Benches & Tables, Concrete Yard Décor Inc Park Bench & Birdbath, Lots Of Potting & Gardening Supplies, Wind Chimes, Bird Houses, Fishing Poles, Other Items Not Listed

**This Auction Will Be Larger Than Sale Bill Appears. There Will Be Several Surprises Sale Day. Very Clean Auction. No Junk Here!!!**



**Auctioneers Note:** It Is An Honor To Be Conducting This Auction For The Forst Family. This Is A Very, Very Clean Auction. There Will Be Something Here For Everyone From Excellent Antique, Modern Furniture & Appliances To Really Good Antiques, Primitives, Collectibles & Households As Well As Like New Mower & Very Well Maintained Woodworking & Other Excellent Tools. Very Good Outdoor Related Items As Well. This Is A Very Well Rounded & Extremely Clean Auction. Please Plan Now To Attend. **Sale Order: Furniture & Appliances Will Sell First Then Move Directly Into Antiques, Collectibles & Households. At Approx 3:00 PM Will Offer Lawn Mowers, Tillers, Large Tools & Outdoor Items. Remainder Of Tools & Outdoor Will Finish Auction. See Ya There!!!**

Terms: Cash or check with proper ID. Now accepting most major credit cards. Nothing removed until settled for. Statements made the day of sale takes precedence over printed material. Everything sold as is where is. Not responsible for accidents. Restroom available. Concessions Provided By Barker Concessions. Check our website for upcoming auctions and for additional pictures!!



## NANCE AUCTION SERVICE

No Matter How BIG or small, We Do Them All!!!

Col. Bill Nance 417-214-0093

In God We Trust

Philippians 4:13

# R&R AUCTION SERVICE

## THE ESTATE OF PAULINE OSBORNE WILL BE SOLD ON ABSOLUTE AUCTION OVER 2 DAYS AUGUST 27<sup>TH</sup> & 28<sup>TH</sup>, STARTING AT 9AM EACH DAY.

Located in Thomasville (4 miles North of Buffalo) on US 65 at the corner of Shorty Road. 2051 US Highway 65, Buffalo, MO



*This is a massive estate full of amazing antique and collectible merchandise that cannot be given justice without seeing in person.*

**Friday August 27th** we will be selling clocks and collectibles. Items will include but not be limited to... Old tricycles, kitchen clocks, mantel clocks, quartz clock, cuckoo clock, anniversary clocks, grandfather clock, old alarm clocks, rug beaters, large antique GE cabinet radio, oil lamps, Pez dispensers, old view master, Beanie babies, Barbies, glassware, figurines, glass paperweights, cup and saucers, painted saws, #3 crock jug, canes, metal truck, horse tricycle, massive collection of Holly Hobbie collector plates, sad irons with wooden handle, shoe lasts, lots of old cast iron items including (mini stove, horse doorknob, frog bank and horse and cart), small Radio Flyer wagon, ceramic ducks and chickens, carnival glass, amber and pink depression, milk glass, lots of handmade dolls, bears, snowmen, old school desk, hen on nests, M & M dispensers, mini oil lamps, old marbles, dice, glass rolling pin, antique toy iron, old picture, blue jars, old tins, jars of buttons, Smurf, Flintstones, A & W, Skelly and Snoopy glasses, swag light, large jars of thread, old Avon bottles, old floor lamp, reverse painting, Barbie doll planter heads, antique metal toy swan, granite ware, wall pockets, coffee grinder, metal matchbook holder, butter mold, typeset trays, cheese jar, lamp holders, old phone with no ear piece, kraut cutter, small lantern, several crocks, milk bottles, cheese box, measuring cups glass and aluminum, tons of wooden rolling pins, old percolators, old multicolored refrigerator dishes, silverware, utensils, aluminum tea balls and funnel, paper cutter, tater bin, old metal dust pan, cookie cutters, antlers, tapestry, old cameras, pitcher and bowl, jewelry boxes, costume jewelry, brass deer, ceramic shoes, Goofus glass, snow globes, Gone with the wind style lamp, Amati copy fiddle, mini perfume bottles, manual typewriter, old games, Tinkertoys, step chair, cast iron bed frame porch bench, small cast iron bell, cast iron wheel ring, old Tonka toys, hand water pump, old windows, old wooden beer box, cider press, old bottles, milk cans, large steel spoked wheel, several wash tubs, crosscut saw, cast iron kettle, wooden wheel well pulley.







**Saturday August 28th** we will sell general household, antiques and other furniture, as well as the real estate, appliances, carport, storage building and propane tank. Real estate includes 3 bed, 2 bath house with living room, parlor with 2 sided fireplace, utility area, kitchen, dining, enclosed back porch, deck, 3 acres, large stocked pond, beautiful lawn, detached single car garage, out building and circle drive. Sold absolute at 12noon to the highest bidder. Appliances, propane tank, carport, and portable building will be sold after real estate. For in person viewing of the home ahead of time please contact professional auctioneer Russ Weeks at (417) 576-7357 or Dallas County Real Estate Broker Skylia Weeks at (417)733-2552. Picnic table frame, lots of lawn décor, wall hangings, spinning wheel, quilt frame, vases, swivel rocker recliners, couch, knick knacks, tuck and roll back chair, old dresser, wall shelves, wood and cushion rocker, ottoman, curio cabinets, barrister cabinet, magnifying lamp, sewing machines, wooden dropleaf tea cart, large glass curio, 3 light pole lamp, wooden child's rocker, Panasonic pop up TV, sewing notions, antique cylinder desk, small bookshelves, lots of material, round oak table with 6 chairs, antique china hutch, Kenmore electric stove, Corning ware, pots and pans, Kitchen aid mixer, Tupperware, Kenmore refrigerator, Kenmore washer, Kenmore dryer, chest of drawers, 1951 Lane cedar chest, 50's dresser, antique dresser, photo cupboard, iron bed, hall tree, Disney VHS, daybed, file cabinet, records, safe, shepherds hook, wire plant stand, glass hummingbird feeder, concrete lawn ornaments, double car carport, Campbell Hausfeld air compressor, old metal cabinet, dolly, wheel barrows, metal bakers rack, large antique school desk, wood step ladder, old Kenmore refrigerator, plant stands, ice cream chairs, ladders, wreaths, 2 tier stainless steel table, jumping horse, limb saw, vise, antique chest of drawers rounded top, antique dining table, hand saws, bird cage, garden cart, shop vac, hand tools, lawn and garden tools, post hole diggers, fans, heaters, big dip net, chains, wooden baseball bat, metal folding chairs, all kinds of shelving, coolers, totes, crafts, luggage, chain link yard gate, wire, 8 x 16 portable building, galvanized fence gate, land scaping timbers, scrap, wire, swing frame, metal lawn chair, garden hose, BBQ grill, silage fork, 500 gallon propane tank 50% full.



**This is a massive estate full of amazing antique and collectible merchandise that cannot be given justice without seeing in person.**

**TERMS:** Cash, check, or credit card with proper I.D. nothing removed until settled for A 3% fee will be added to credit card purchases. Not responsible for errors in listing. Any announcement made sale night will take precedence over any printed matter. **Note:** Service will take every precaution to prevent accidents, but will not be responsible should any occur.

**GENERAL AUCTIONEERS**  
**Auction & Appraisals**  
**RR**  
**SERVICE**

**AUCTION For more information contact Professional Auctioneer Russ Weeks at 417-576-7357 or check out [www.rrauctionservice.com](http://www.rrauctionservice.com)**

Serving this area's auction needs since 1997 with honesty and professionalism.  
[www.rrauctionservice.com](http://www.rrauctionservice.com)  
**(417) 576-7357 or (417) 345-4140**



# TURN KEY WORKING CATTLE FARM!

# Auction

**SEPTEMBER 11, 2021 AT 10:00 AM**

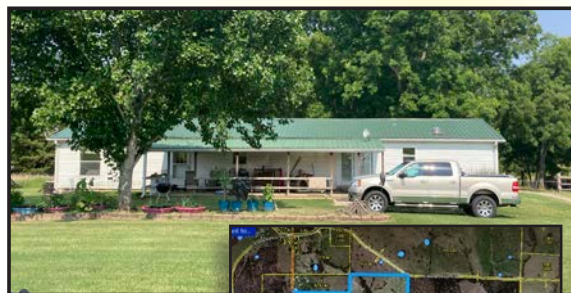
**RT 3 BOX 217A, AVA, MO 65608 REAL ESTATE SELLS AT 12 SHARP**

Directions: From Ava, take West 76 for approximately 13 miles, then turn right onto DD, drive 3 miles then turn left on to county road 434, in about 0.4 miles turn right and then drive 0.3 miles

We will be taking bids on this 225 acre m/l farm. There is a newly renovated modular home, shop, tractors, equipment, trailers, cattle, and more as a turn key working farm! Bids will be taken and considered up until September 11, 2021 at auction time. Property will be auctioned again at 12 NOON sharp. **Live auction will begin at 10:00 AM**

The property is just off the highway approximately 1/4 mile, there is county road access on multiple sides. The home, shop, and working facilities lie in the middle of the property for added privacy. This property is fenced and cross fences with auto waterers in most pastures. There are many year round springs and spring fed ponds. Approximately 70% open pasture and 30% wooded. There is some very mature timber as well! Abundant wildlife with deer, turkey, quail, and more! There are approximately 45 head of cattle on the property now that would go with it if sold as turn key operation.

Real Estate terms: 10% down due day of auction w/ bank approval letter.



## EQUIPMENT & HOUSEHOLD

- |   |   |   |   |
|---|---|---|---|
| 2018 New Holland T4<br>110 4x4 cab (under 1000 hrs) & 655 TL loader | hog<br>Homemade trailer<br>1994 WW Stock trailer<br>HMO utility trailer<br>AG Pro 60 gal Slide in sprayer   | Calf pullers<br>Approx 200 NEW t-posts<br>3 pt hay spike<br>2- 2 ton bulk feeders<br>600 lb creep feeder<br>6' rock rake<br>250 gal boom sprayer<br>Danuser 3 pt auger<br>New Holland 256 hay rake<br>GEHL manure spreader<br>3 pt carryall<br>3 pt bale unroller<br>4- mineral feeders<br>3- multi hay manglers<br>2- covered mineral feeders<br>10' field roller<br>Large field roller<br>Box blade<br>Chute -working pen<br>10- Poly hay rings | 6' feed tank<br>Field drags<br>Stock tanks<br>Mare breeding chute<br>Round bale feeders<br>Large metal hay feeders<br>22 ft long<br>Round pen panels<br>Salt block holders<br>200+ square bales alfalfa<br>30-50 round bales alfalfa mix<br>Carpentry tools<br>Body shop tools<br>Cyclone leaf collector<br>Rolls barb wire<br>Small freezer<br>Furniture<br>Washer/dryer<br>Refrigerator |
| 2019 New Holland<br>Workmaster tractor<br>60 hp (only 200 hrs)      | 250 lb 3 pt seeder<br>Table saw<br>Danuser T3 t-post driver (2020)<br>60 gal fuel tank<br>Stihl HT 132 pole saw<br>Stihl HT 130 pole saw<br>28' & 20' fiberglass extension ladders<br>DR trimmer<br>Honda push mower<br>Husqvarna 455 Rancher chainsaw<br>4500 kw generator (WEN) |   |   |
| 2016 Polaris four wheeler   |   |   |   |
| 2018 Kawasaki Mule ProFx Cold Weather pkg                           |   |   |   |
| 2010 Harley Davidson<br>Electra glide SS                            |   |   |   |
| 2016 CanAm Spider   |   |   |   |
| 2012 Kaufmann 34' tandem axle flatbed                               |   |   |   |
| 2007 Loadmax 25' flatbed trailer                                    |   |   |   |
| 20' tri axle gooseneck flatbed                                      |   |   |   |
| Woods 15' batwing bush  | 6 ton & 2 ton feed bins   |   |   |

## HORSES

7 registered cow horses, 1 unregistered mare, 2 registered studs. All mares have been exposed.

All livestock and tractors sell immediately following the real estate at 12:00



**FOR MORE PHOTOS, VISIT OUR WEBSITE CHEYNEYAUCTIONS.COM OR FIND US ON FACEBOOK!**

**Auctioneer's Note:** If the real estate does NOT sell, NO HOUSEHOLD items will be auctioned. All items in this auction are immaculate, one of the cleanest farm auctions you'll ever see!



**Cheyney Auction Company, LLC**  
Real Estate • Livestock • Farm & Ranch • Equipment • Household • Antiques  
**Travis Cheyney, Auctioneer**  
**417-543-8751 • cheyneyauctions.com**

ANNOUNCEMENTS Made Day Of Sale By Auctioneer Take Precedence over any Printed Matter. Not Responsible For Accidents. All items sold as is, where is, with no guarantee. Terms of sale: cash, credit/debit card, or check with valid ID



# ANNUAL FALL CONSIGNMENT AUCTION

## SATURDAY AUGUST 28, 2021 @ 9:00 AM

### Allen Auction Sale's Lot • 490 S. Hwy 47 • Hawk Point, MO, 63349

Directions: Allen Auction Sale's Lot. From Hawk Point, MO, Take Hwy 47 South 2.5 miles, Auction on Left Side. Watch for Signs Day of Auction.

**COMBINES**

JD 635 Grain Table, Hydra Flex, good shape  
JD 444 4 Row Corn Head

**TRACTORS**

John Deere 4020, 1971, Ser.# 4040RA261843R, 2WD, Duals, Front Weights, Diesel, 4300 hrs., always shedded, good condition  
Ford 6600 Tractor, approx. 1978 Model, runs good, baled w/it this year  
Farmall C Tractor • JD 850 Tractor  
Massey Ferguson T020 Tractor  
John Deere Z255 Lawn Tractor  
9N Ford Tractor

**FARM EQUIPMENT**

JD 7000 4 Row planter  
Case IH 3900 Disk, 25"  
JD 8300 Drill, 23 hole  
JD Cultivator w/ Harrow  
A&L 450 Bushel Grain Cart w/ Tarp  
King Cutter Brush Hog, 3 pt.  
Wagon Running Gear  
Great Plains 15' NO-Till Drill  
Pull Behind Log Splitter  
Fimco ATV Sprayer  
North Star Pull Behind Sprayer  
Kewanee Pull Type Chisel Plow, 11 Shanks  
Farmall Bucket • IH 856 Front Axle  
IH Front Loader off '41  
HD Bush Hog, 5', 3pt.  
HD Bush Hog, Model 305, 5', 3pt.  
Tractor weights for front of John Deere 5' Box Blade  
New Bush Hog model 2401 Post Hole Digger w/ 9" auger w/ stand in box  
Pallet Extensions & Stabilizer for tractor loader bucket  
EZ Flow Gravity Flow Wagon w/ hyd. auger & tarp  
7' 7 Shank Chisel Plow  
15' Spring Harrow  
3 Pt. Kin Kutter Rock Rake, 6'  
6' Blade, 3 Pt. • 2 Row Planter, 3 pt.  
18' 490 Disk • 3 Pt. Seeder  
3 Pt. King Kutter Carry All  
3 Pt. Vicon Greenland Seeder  
3 Pt. 6' Farm Star Blade  
2 Pt. Farmall Cultivator  
Bush Hog 9' Blade w/ angle cylinders  
Ford 8' Blade  
Danuser Post Hole Digger w/ 9', 12', 18', & 2' attachments  
Upright 8" Grain Bin Auger  
Bush Hog • 2 - Gravity Flow Wagons  
JD 8300 Drill • Killbros 590 Auger Cart  
10x61 Westfield Auger w/ swing out hopper  
Tag Along Bush Hog, Bat Wing Cultivator, hyd. bi-fold  
Westfield MK 100-61' Swing out Auger  
JD 8300 Drill  
Huskee Gravity Flow Wagon  
Gravity Flow Wagon  
Heider Auger Wagon, 200bu., Kewanee Running Gear, auger & tarp (2yrs. old)  
Big John Saddle Tank for Liquid Fertilizer

3 Pt. 5' Brush Hog  
3 Pt. Land Pride 6' Finish Mower  
3 Pt. Dirt Scoop • 3 Pt. 6' Brush Hog  
3 pt. 5' Howse Brush Hog  
Pull Behind 2 Row Planter  
3 Pt. Blue River Seeder/Spread  
3 Pt. Pulverizer • Parker 450 Grain Cart

**CONSTRUCTION**

Bobcat 331 E Track Hoe w/ extra bucket  
Snorkel 42' Motorized Bucket Lift  
Bobcat Hydraulic Tamper  
Ditch Witch Skidsteer Back Hoe attachment

New Holland C227 Skid Loader, tracks  
2 - Cat side panels  
Stack of Concrete Forms  
Backhoe Attachment For Skid Loader

**NEW SKID LOADER EQUIPMENT**

Stout Brush Grapple 66-9 w/ skid steer quick attach  
Stout Brush Grapple XHD 84-6 w/ skid steer quick attach  
84" Skid Steer Rock & Brush Grapple  
80" Skid Steer Rock & Brush Grapple  
75" Skid Steer Rock & Brush Grapple  
66" Skid Steer Rock & Brush Grapple  
80" Skid Steer Rock Bucket  
80" Skid Steer Rock Bucket  
75" Skid Steer Rock Bucket  
66" Skid Steer Rock Bucket  
72" Skid Steer Brush Mower  
72" Skid Steer Brush Mower  
2 Sets of Pallet Fork Extensions  
2 Receiver Hitch Skid Steer Trailer Movers  
4 weldable Quick Attach Plates

**HEAVY DUTY VEHICLES & VEHICLES**

2015 T370 Kenworth Single Axle Truck, Flat Bed w/ Revolution 84 RM Crane, 4992 Miles, 452.3 hrs., Packard PX9 Allison Transmission, Matt Hargrave Signature  
2005 Int'l. Bucket Truck, 466, 4.6 L, auto, 57' Aerial Lift, 89,855 miles  
1986 IHC 16' bed & hoist, Diesel motor newer engine, new batteries, good truck

**HAY EQUIPMENT**

JD 5 Bar Hay Rake • PeQuea 710 Rake  
New Holland 648 Baler  
Hew Holland 654 Round Baler  
John Deere 430 Round Baler  
New Holland 850 Round Baler  
3Pt. Bale Unroller • Hay Trailer, N/T  
MF 925 Mower/Conditioner  
3 Pt. 5 Wheel Rossi Rake

**TRAILERS & WAGONS**

Stillwater 5 x 8 Single Axle Trailer, title Car Dolly  
Johnny Trailer w/ 2 pull out ramps, Title  
18' Tag Along Enclosed Trailer, Cargo Master by Doolittle, drop down end gate  
18' Tag Along Enclosed Trailer, Bullet by Doolittle, drop down gate  
24' Tag Along Trailerman Tilt Bed Trailer, 2' dove tail  
David Bradley wagon w/ sides  
Wagon w/ wood floor & wood sides

**LIVESTOCK EQUIPMENT & SUPPLIES**

Apache Hay Feeder • Poly Feed Bunk  
Filson Catt Squeeze Chute  
Creep Feeders • Squeeze Chute  
2 - Alley Ways • Pipe Gates

**WINDMILL**

Aermotor Windmill 8' dia. Fan, 30" tall  
Windmill Well Pump

**ANTIQU FARM EQUIPMENT**

Horse Drawn Disc  
Old Pull Behind Cultivator, horse drawn  
IH Horse Drawn Sickle

**LAWN & GARDEN**

Kubota ZD28 72" Deck, diesel  
Kubota ZD21 60" deck, diesel  
John Deere 661R Ride Behind Mower  
JD Z255 ZT Mower  
ExMark HD 52" ZT Mower  
Craftsman Gas Powered Edger/Trimmer  
Craftsman gas Weed eater  
Hose Reel-Lawn Mower Jack  
Pull behind lawn cart  
Roto Hoe Rear Time Tiller  
Swisher Ranch King 44" Pull Behind Finish Mower  
Woods Finish Mower, belly mower form AC CA w/ mounting bracket  
Mantis Mini Tiller • 3 - Wheelbarrows  
ExMark Metro 26" self propelled mower  
Troy Bilt 22" self propelled mower  
JD TRS 21 Snow Blower  
Atlas Snow Blower  
2 - Stihl Trimmers, gas  
Homelite Trimmer, gas

**RECREATION**

Minn Kota Bow Mount Trolling Motor, 40 lb. thrust, foot control  
Hoppes Clay Bird Trap  
Viper 70 4-Wheeler  
10' Pelican Boat w/ 2 seats, Title  
Tracker Topper 14' Jon Boat, cameo  
Mariner Outboard, N/T  
Boat Trailer, N/T

**GUNS, AMMO, SUPPLIES & FISHING EQUIPMENT**

Red Head by Browning Gun Safe, 14 gun, Nice  
Black Beauty Fly Spinning Rod  
Bauer Cordless Recip. Saw, Drills, Circu-  
RCBS Reloading Press  
Tipton Bench Rest  
Primos Group Therapy Gun Rest  
20 - 60x60 Spotting Scope w/ Tripod  
4 - Hard Pistol Cases - Assorted Knives  
Hard Sided Gun Case  
Soft Sided Gun Cases  
Waders • Hunting Vests  
Ammo - 270 Weatherby Magnum, 25 cal. Auto, 38 Special, Winchester Dry  
lock 12 ga. #1 Steel shot  
Crosman 400 Pellet Gun  
Pellet Gun • Red Dot Scope  
Cabela's Bore Sight Kit  
Firefield 10-40 x 50 Rifle Scope  
Nikon 3-9 x50 Rifle Scope  
Muller 8.5 - 25x50 Rifle Scope  
Ammo - Winchester Universal 12 ga. 7 1/2 shot  
Remington Sportsman 12 ga. 3 1/2 BB  
Steel shot  
Camping Supplies - Camera in bag

Sleeping Bags • 2 Gun Racks  
2 - 40 Channel Hand Held CB Radios  
Radio Shack programable Scanner  
Camera in Case • Everlast Punching Bag  
Propane Turkey Fryer  
2 pairs of Allen Ear Muffs  
9 mm ammo • 380 ammo  
22 LR ammo • 2 - pair shooting glasses

**SHOP EQUIPMENT & TOOLS**

Electric Hoist • JET Saw  
Apache Diesel 8500 w Generator  
20 Ton Air Jack  
Craftsman Electric Drill & Saw in case  
Dixie 60 gal. Air compressor, 2 stage  
Schumacher Battery Charger  
DeWalt Chop Saw  
Husqvarna Chain Saw  
Fiberglass Ext. Ladders  
Alum. Ext. Ladders • Scaffolding  
3 - Osha Approved 2x10x16 Pick Boards, wood  
2 - Osha Approved 2x10x8 Pick Boards, wood  
10' Alum. Pick Board  
8' Alum. Pick Board  
Chain Hoist • Drill Doctor  
Propane Heaters • Saw Cat Circular Saw  
Craftsman Buffer/Polisher  
Craftsman compound Mitre Saw  
Tire Changer • Car Ramps  
Napa Floor Jack • Small Vise  
Accu Turn 1450 Tire Balancer  
Large Metal Cabinet w/ 142 Small Drawers  
Metal Cabinet • Lot Nails & Screws  
Predator 212 cc Gas Engine horizontal Shaft, new  
2 Bit Grinder • Electricity Tools  
Post Driver • 2 Car Ramps  
Milwaukee Chop Saw  
Portable Tool Box on rollers  
Senco Pneumatic Frame Nailer  
Stanley Bostich Flooring Nailer  
1 1/2 Ton Chain Hoist  
Roof Jacks • 3 - Electric Pumps  
3 Metal Shelf Units • 100' soft tape  
Misc. & Filters • Craftsman Transit  
Grease Joint Rejuvenator  
Assorted Drill Bits • Drill Bit Sharpener  
Bauer Cordless Recip. Saw, Drills, Circu-  
lar Saw, Chargers, Light, Grinder  
Craftsman 1/2" Drive Air Impact  
Air Ratchet 3/8" Drive • Air Drill  
2 Chicago Electric Grinders  
Chicago Electric Drill  
Black & Decker Drill  
Circular Saw • Cummins Solder Gun  
Ryobi Corner Sander  
Bosch Digital Level  
Lot wrenches, screwdrivers, sockets, ratchets  
Tool Box • Electrical Supplies  
Extension Cord & Reel • Jumper Cables  
Craftsman Chain Saw  
Grease & Caulk Guns  
Hitches • Stabilizer Hitch  
Bench Grinder • Task Force 9" Band Saw  
Cummins Bench Top Drill Press  
Small Vises • Craftsman Work Bench  
Campbell Hausfeld Horizontal Air Compressor

2 Shelf Roll Around Cart  
Craftsman 8 Drawer Tool Box, Roll Around  
Werner Ladder • Ambico Tri Pod  
Simpson 3000 PSI Pressure Washer, Honda Engine  
2 Collapsible Saw horses  
Werner Equalizer Extension Ladder  
Craftsman Reciprocating Saw  
Warrior Heat Gun • Equus Timing Light  
Sun pro Advance Timing Analyzer  
Actron Battery Tester  
Chicago Electric Cordless Tool Set  
Campbell Hausfeld Air Cut Off Tool  
Cummins Air Grinder  
Mario Air Tool • Sanborn Air Ratchet  
Creepers • Roll Around Shop Stool  
Central Pneumatic Brad Nailer  
Craftsman Air Drill  
Mario Sand Blaster Gun ONLY  
Campbell Hausfeld Air Chisel  
Air Paint Gun • Air Brush Kit  
Crew Line 1/2 Ton Floor Jack  
Roll Around Shop Stool  
50' Cord Reel • Crate Air Hoses  
Pneumatic Grease Tub & Hose  
Central Machinery coping saw  
Chains & binders • Straps  
Lincoln AC225C Arc Welder  
Double Bit Grinder on stand  
Master 110,000 BTU Diesel  
Galvanized Wash Basin  
2 Wheel dolly • Receiver Hitch Carry All  
Antique Wood Plane  
DeWalt Chop Saw  
Napa Model 85-1010 Battery Charger  
Squirrel Cage Fan • 3 - Bottles Jacks  
2 - PU Tool Boxes • Skilsaw Circular Saw  
3/4" Drive Sockets • Electric Grinders  
1/2" Drive Torque Wrench • Snips  
Tap & Die Sets • Hatchets  
Pipe Wrenches • Warning Triangles  
Superwinch 12 Volt  
Craftsman Rotary Tool  
Carolina 30 Ton Hydraulic Press  
Jack Stands • Roll Around Tool Boxes  
10' Aluminum Step Ladder  
6' Wooden Step Ladder  
Aluminum Ext. Ladder  
5' Fiberglass Step Ladder  
Alum. Ramps • Shop Light  
Assorted Welding Rods  
Wisdom 2 1/2 Ton Floor Jack  
Oil Drum w/ Hand Pump  
Horizontal Air Compressor  
Misc. Hand Tools • Small Gas Forge

**MISCELLANEOUS**

Climbing Harness & Tool Pouch  
Ford Wheels W 285/50R20 Nitto tires  
Warehouse Racks  
24.5 x 32 Combine Tires on JD Rims  
Hand Crank Metal Grinder  
Wagon Wheels • Antique Horn Puller  
Garden Tools • Milk Can • Turkey Fryer  
Exhaust Fan • Screw in Ground Anchors  
8' angle iron • Lot of woven wire  
Galvanized Barn Metal • Used barb wire  
5 - Metal Milk Crates  
Patio Table & Chairs  
Plastic Play House (Castle)  
Treadmills

**PARTIAL LIST - GO TO WEBSITE FOR FULL LIST, UPDATES AND PHOTOS**

**Auctioneers Note:** This is a partial list. We will be running 2 auction rings. Please come prepared with extra bidders. Any questions on any of the equipment, feel free to give us a call at the office. Thanks Nick and Kyle.

**ALLEN AUCTION & REAL ESTATE SERVICE LLC**  
**(636) 338-4805 • Hawk Point, Mo • www.allenauction.net**

The Auctioneers, Nick Allen (636) 358-2900 • Kyle Allen (636) 236-2344 • Tec Parr (573) 239-6745 • Elden Foster (636) 661-5775

# PUBLIC AUCTION

SPRINGFIELD, MO

# AUCTION

As I will be moving we will sell the following Automobiles, Tractor, Equipment, 4-Wheeler, Tools, Household, Collectibles and Misc.  
At the Home located 7 1/2 miles North of Springfield, Mo. On 13 hwy. To F.R 44 (just south of the Landfill Road)  
go West 3/4 mile to F.R. 127 go North 1/2 mile to F.R. 38 go West on 38 to the Auction on

## Sat. Sept. 4, 2021 at 9:00 a.m

WATCH FOR AUCTION COMPANY SIGNS • LUNCH SERVED

FOR MORE PICTURES GO TO: [WWW.BRUCEANDLEANAUCTION.COM](http://WWW.BRUCEANDLEANAUCTION.COM)



### TRACTOR & EQUIPMENT

- Allis Chalmers model 6080 Diesel 85 HP Tractor W/ Westendorf Model TA-26 Front End Loader W/ Bucket & Bale Forks
- New Holland 479 Haybind
- N.H. 847 Chain Round Baler (shedded)
- N.H. 273 Sq. Baler (shedded)
- N.H. Model 256 Hay Rake
- N.H. Older 5 Bar Dolly Wheel Rake
- Sq. Bale Hay Elevator • Sq. Bale Loader
- 3 Pt. Bale Forks • Sulkey Rake
- 10' & 20' Plus Tandem Disks
- Spring Toothed Harrow
- 3 Pt. Cultivator • 2-4 Wheel Wagons
- Set of Pallet Forks
- N.H. 3 Pt. Sickle Mower
- Single Sided Poly Creep Feeder
- 2 Older Concrete Feed Bunks
- Poly Bottom Trough • Poly Bale Ring
- Roll of 4 Pt. Barb Wire
- Several Used Steel Post
- Electric Fencing

### AUTOMOBILES-ATV-BOAT

- 2002 Buick Century Custom 3100 SFI 4 Door One Owner Car, 3.1 V-6 Motor, Automatic Trans, PW, PL, Good Rubber (air does not work)
- 1986 Chevy Scottsdale Pickup (not running has been sitting in shed)
- 2017 Honda 250cc Model TRX 250tm One Owner Four-Wheeler (Good Condition)
- 1973 Richline 16' Alum V-Bottom Boat & Trailer W/1982 Johnson 25 HP Motor
- 1979 20' Gooseneck Brand Tandem Axle Flatbed Gooseneck Trailer
- 10' Alum. Flat Bottom Boat (no title)

### TOOLS-MOWER-LUMBER-MISC.

- Very Lrg. Lots of Rough Sawed Lumber (Oak, Cedar, Pine & Walnut) Hundreds & Hundreds of Board Feet (1" - 2" and Larger Thickness)
- John Deere Model D110 Riding Mower 16 HP.
- Lincoln Wire Welder 110 Weld-Pak 100
- ACS 225 amp AC Arc Welder (Chemetron)
- OX Weld Act. Torch Set W/Med size Bottles
- Makita Chop Saw
- J.H. Williams 3/4" Drive Socket Set
- Air Floor Model Tire Changer (Coats ?)
- Craftsman 10" Radial Arm Saw 2.5 hp
- " 12" Band Saw
- 2 " Belt/Disc. Sanders
- " 12" x 36" Wood Lathe
- " 10" Table Saw
- L.M. Rumsey 48" older Large Drill Press (mfg co. St Louis)
- USA Very Large older 48" Large Metal Lathe
- Floor Model Drill Press 12 Speed
- Milwaukee Sawzall
- Misc. Hand Power Tools
- 5" Bench Vise
- Air Tools
- Double Stone Bench Grinder
- 110 V Air Compressor
- Lot of Bar & C Clamps
- Lathe Knives
- 3' X 8' Wooden Work Table
- Lot of Misc. Hand Tools
- T Post Puller
- Lawn Mower Jack
- Log Chains
- Poulan Pro Gas Trimmer
- 3-Older Stihl Chain Saws
- 5hp Powermate Wheel Trimmer

- One Row Garden Planter
- 2 Front Tine Tillers
- 16' Alum Ext Ladder
- Radartron Remote Dog Training Collar
- Blocks & Pulley's
- Bolt Bins
- Lot of Pipe & Angle Iron
- Lot of Scrap Iron & Copper
- Cord of Seasoned Firewood
- Approx. 25 Bags of Hardwood Pellets
- Wire Fish Trap
- One Lot of Misc.

### HOUSEHOLD & COLLECTIBLES

- Whirlpool Refrigerator (like new)
- Whirlpool Upright Freezer
- Whirlpool Med. Chest Freezer
- Amana Automatic Washer & Electric Dryer
- Emerson 18" TV
- Brown (microfiber) Lift Chair (like new)
- Kitchen Table W/4 Rollaround Chairs
- Lane Padded Top Cedar Chest
- Pine Sitting Bench
- 2 Sm. Desks
- Armour
- Misc. Pots, Pans and Dishes
- Lincoln Drape Cream Colored Aladin Lamp
- Misc. Dishes
- 2 Galv. Tubs
- Lrg Wooden Floor Model Corn Sheller
- Flour Mill • Stielyards
- Lot of Lic. Plates
- Nail Kegs
- Lot of Misc. Primitives

**OWNER: MRS. JACKIE FARRELL**

TERMS: Everything sells as is, where is. Nothing is to be removed until settled for. Payment of Cash, Check with Proper ID, or Credit Cards.  
Auction Company or the Owners will not be responsible for loss of items or accidents. Statements made the Day of the Auction take Precedence over Printed Matter.

SALE CONDUCTED BY **BRUCE & Le'AN AUCTION & APPRAISAL, LLC**  
THE AUCTION COMPANY THAT APPRECIATES YOUR BUSINESS

For more information and pictures go to our website at [www.bruceandleanauction.com](http://www.bruceandleanauction.com)

RONNIE BRUCE - Fair Play, MO  
417-777-1685 or 417-654-2214  
colronbruce@gmail.com

BRANDON BRUCE  
Fair Play, MO

BILLY BRUCE - Stockton, MO  
417-399-4800  
colbbruce@gmail.com

# ABSOLUTE COMMERCIAL REAL ESTATE AUCTION

## FRIDAY, AUGUST 27, 2021 - 10:00 AM

1461 East Seminole • Springfield, Mo 65804



### REAL ESTATE:

**This property has a building that is approx 3959 sq ft +/-, that was previously a daycare, Paved and gravel parking lot, and has another building with 650 sq ft +/- that needs repair.**

Legal: Melrose place lots 186 & 187 & 188  
 Terms: 10% Down day of auction with balance due at closing. Possession at closing with closing in 45 days or less from auction date. Buyers Premium 10%

### INVENTORY LIST:

The outside of the truck measures 24 feet in length and is 10 feet in height.  
 The inside of the truck measures 7 feet 8 inches in width and the length is 16 feet and 6 feet in height.  
 Tires are approximately 3 years old with much good tread left.  
 Medical cart  
 Laundry shelving unit  
 Piano  
 Piano bench  
 Heart shelf  
 Corner shelf  
 Computer wall desk  
 5 foot wide table  
 5 foot white plastic table  
 Window with screen  
 Wall divider  
 4 drawer wood dresser  
 Hutch  
 Blue bean bag  
 Framed picture of a barn  
 Framed picture of Monet  
 Projector screen  
 Two metal tables with wood top

Gray filing cabinet  
 Three window screens  
 Metal desk with five shelves  
 Dvd player  
 Small table  
 Reliabilt 37 5/8 width by 69 inch height double pane window with screen  
 Pallet of miscellaneous restaurant paper products, mostly plates  
 Pallet of disposable cups  
 Pallet of insulated cups  
 4 plastic wagon wheels  
 Display cardboard cow  
 Green Bar typewriter  
 Box of misc. office supplies  
 Lettuce chiller  
 Hat box  
 Wooden tv tray  
 Case pf pump delivery set  
 LG television- estimated 35 inch  
 Bag of costumes  
 Contractor pack  
 Stack of Halloween stickers  
 Feeding pump (medical)  
 File holder for wall

Upright walker therapy  
 Reading magnifier  
 Box of computer accessories  
 Walker  
 Two printer/copiers  
 EMT bag  
 Microwave  
 Christmas décor  
 Meat slicer  
 Misc. home improvement items  
 Older computer towers  
 Walker  
 Floor finish  
 Oxygen bleach powder  
 Metal folding chair  
 Maroon padded chairs with arms (2)  
 Gray padded chairs (2)  
 Two white shutters  
 Wooden bookcase with two shelves  
 Glass candle holders (30)  
 Six pack apple cider scented votive candles (3)  
 Two brown circular tables with foldable legs  
 Brown circular table  
 Small gray table  
 L shaped brown desk with seven drawers

Rectangle metal desk with wooden top, four drawers  
 Brown wooden hutch/office storage  
 Peg board  
 Metal desk with no shelves, keyboard pullout  
 Two large cabinets  
 Walker  
 Lockers  
 Utility sink  
 Large cabinet  
 Small cabinet  
 Two boxes of moving straps  
 Two refrigerators  
 Large cabinet  
 Wooden shelves  
 Steam mop  
 Box of laminate flooring  
 American flag  
 Three desks of varying sizes  
 Box of old paint  
 Yard tools  
 Paint brushes  
 Mops  
 Weed or insect sprayer  
 Light bulbs  
 Refrigerated display case  
 Three clipboards



FOR MORE INFORMATION GO TO [WWW.EASTERLYAUCTIONCO.COM](http://WWW.EASTERLYAUCTIONCO.COM) OR CALL EASTERLY'S AT 417-833-9494



Mike Easterly Auctioneer • 417-833-9494

Not Responsible for accidents or theft. For more information call: Easterly Auction Company, Springfield, MO. Auction Terms: Bank Letter Of Credit Required. Visa, Mastercard, Cash, Cashier's check or checks with proper I.D. Announcements day of sale take precedence over printed material. Auction Notes: Although information is obtained from sources deemed reliable, auctioneer makes no warranty or guarantee expressed or implied. Buyers should themselves take the opportunity to make their own inspection prior to sale.

[www.EasterlyAuction.com](http://www.EasterlyAuction.com) • [auctionzip.com](http://auctionzip.com) ID#14770



# PUBLIC AUCTION

## Sunday August 29, 2021 9:00AM

### 940 S. Iron Mountain Rd Fordland, MO 65652

**Directions:** From Springfield Take Hwy 60 East 18 Miles To Iron Mtn. Rd. Turn North Across Hwy 60 Onto Iron Mnt. Rd. To Auction Watch For Signs.



**Equipment- Noon** \* Cat 299D Track Skidsteer w/ H&A Cab, Bucket, 2 Spd & 3397hrs \* 1973 Cat 955L Crawler Loader w/ Bucket & Powershift- \* Overhauled \* 1960's D6 Cat Dozer w/ Electric Start & 10' Hyd Tilt Blade \* International 1086 H&A Cab Tractor w/ 5000hrs \* AC 190XT Cab Tractor w/ Loader & Bucket \* QA Bushog \* JCT 72' Skidsteer Brushcutter \* Tiger Power PTO15 Generator \* \* 10' Bushog Brand w/ Triple Gear Box & Chains \* Sicklebar Mower \* Mansaver 99EX Pneumatic Post Drive w/ T-Post Adapter- New \* 2- 15ton Grain Bins- New \* Bale Feeders \* Livestock \* 6- Red Baldy Pairs (3Yrs Old) \* 5- Angus Cross Cow Calf Pairs (4-5Yrs Old) \* 10- Angus Cross Breed Cows (5-6Yrs Old) \* 16 Month Old Black Angus Bull (Virgin) \* **Vehides, Trailers, ATV's, Etc- Noon** \* 2017 Ford Explorer w/ 3rd Row & 45K Miles \* 1986 Freightier Dump Truck w/ 13spd Eaton, 350 Big Cam \* Cummins, Bed Hoist & 336k Miles \* 1990 3/4Ton Dodge Dsl Service Truck 12valve w/ 196k Miles \* 1973 International Gas Semi w/ V8 & 107k Miles \* 2003 Exiss Gooseneck 4 Horse Slant Trailer w/ Living Quarters \* 1929/1980 Ford Model T Kit Car w/ Rumble Seat \* 2014 Buick Encore w/ Leather/Cloth Seats, Backup Camera, \* New Tires & 158k Miles \* 2012 Nissan Sentra SL w/ Leather, Sunroof, Backup Camera, \* Navigation & 88k Miles \* 2015 Ford F350 XL Super Duty Dsl 6spd Flatbed w/ Extras \* 2012 Oreion Reeper 825cc 5 Spd w/ Winch, Soft Enclosure, \* Extra Wheels & Tires \* Ford F350 King Ranch Dsl Dually Crew Cab Truck \* 1983 4x4 1/2ton Chevy w/ Rebuilt Motor & 96k Miles \* 1996 Ford F250 4x4 5 Spd w/ 351 Motor & 145200Miles \* 2003 Ford Explorer Sport Trac 4x4 Crew Cab \* 1996 Ford F150 4x4 5 Speed Gas w/ 214k Miles \* 2002 Toyota Camry \* 1995 Chevy Short Bus \* 2- 4Wheeler \* \* 1997 Yamaha Tour Deluxe 1300 Series Motorcycle w/ 29k Miles \* 2007 Belshe Pintle Hitch Trailer w/ HD 17.5" Tires \* 2007 28' Wells Cargo Trailer \* K5 Blazer \* 1990's Chevy Blazer \* Kubota RTV1140 Crew Cab w/ 1077hrs \* 14' Steel Frame Plywood Box Trailer \* Cub Cadet Side By Side \* \* **Guns, Coins, Jewelry Misc-2:00PM** \* Glock 22 40S&W \* Ruger Wrangler 22LR \* Hi Point 380 Auto \* Taurus PT111 G2 9mm \* Jimenez JA25 25 Auto \* 1917 Eddystone 30-06 \* Remington 03A3 30-06 \* Springfield 1903 30-06 \* Remington P14 30-06 \* Ruger 22lr mags \* Russian M1938 7.62x54R \* Fox Model B 12ga Sx5 \* FIE 410 \* Mossberg Model 88 12ga \* Stevens 320 20ga \* Marlin 336 30-30 \* H&R Model 58 12ga \* Winchester 370 28ga \* Marlin 3079 30-30 \* DPMS AR-15 5.56 \* Stevens 67 12ga \* Winchester 37A 410 \* Savage Axis 270 \* Smith & Wesson SD40VE 40 S&W \* Cobra CA-32 32 Auto \* Desert Eagle

Snakeskin 44 Mag \* Ammo- 25ACP, 32 Auto, 7.62x39, 30-06, 45, 20ga, 12ga, 22LR, \* 22Mag \* Ladies 14k & 10k Gold & Pearl Necklace w/ Pendant & Matching \* Earrings & Ring \* Morgan & Peace Silver Dollars-1880, 1882, 1883, 1884, 1888, \* 1889, 1890, 1900, 1921, 1922, 1923 \* 1986 Liberty Silver Dollar Set \* Several Silver US Proof Sets \* Several Mint & Proof Sets \* Lincoln Wheat Cents \* 3 Cent Piece \* \* Indian Head Cents \* Several Roosevelt & Mercury Silver Dimes \* Franklin & Kennedy Silver 1/2 Dollars \* 1914 Large \$5 \* 1923 Large \$1 Silver Certificate \* 1917 Red Seal \$1 \* 2-1853 Seated Dimes \* Sterling Silver Candle Holders \* \* 2-Large Thomas Kinkade Pictures \* Costume Jewelry \* **Tools, Lawn & Garden** \* JD 757 Zereturn w/ 396hrs \* Scag Turf Tiger Zereturn \* Ferris Procut2 Zereturn 444hrs \* Cub Cadet LT1045 Mower \* Toro Groundsmaster 3000 4x4 Mower \* Several Lawnmowers \* Miller Trailblazer 301G Portable 10,000w Welder w/ Long Arc \* Leads, 853hrs & 70 Series Wire Feeder \* Miller 300amp Shop Welder w/ Wire Feeder On Cart & Bottles \* Briggs & Stratton 5500w Gas Generator- Like New \* Tool Carts \* Cobra GX380 Power Washer- New \* 3ton Chainhoist \* Cobra WDP30 Industrial Trash Pump- New \* 20gal Lift Drain \* \* Cobra 10000w Generator- New \* Cobra 9500Generator- New \* 8gal HD Commercial Industrial Air Compressor \* Tool Chests \* Genie Easy Lift \* Linelazer IV 3900 \* Ryobi Bandsaw \* Bikes \* Grizzly Dust Collector \* Poulan Wild Thing Chainsaw \* Wagon \* Generator \* Sand Blaster \* Lincoln Welder \* Boat Motors \* \* Portable Air Tanks \* Power Tools \* Pneumatic Tools \* Sanders \* 200' Of 4 & 6" Steel Concrete Forms \* Concrete Tools \* Pipe \* Alum Handle Float, Broom, Fresno's \* Alum Truck Toolboxes \* 15- 8' Shop Lights- NIB \* 2- 350 Chevy Head Sets (1 Rebuilt) \* Wicker Sofa & Chairs \* Shop Vac \* Wicker Rockers \* Window \* Concrete Frog Planter \* Ford 1ton Super Duty Tire & Wheel \* \* Yard Swing \* Bench \* Metal Archways \* Misc Electrical & Plumbing \* Bench Grinder On Stand \* Mustang 5 Lug Rims & Tires \* Grill \* ATV Tires \* 13- Mesh Jeep (07-17) Eyebrows- NIB \* Chargers \* Key Machine & Keys \* Rocker Panels \* Floor Adhesive Spray \* Misc Vehicle Handles, Tail Light Covers & Parts \* Shelves \* Subfloor/Construction Adhesive \* Chopsaws \* Ext Cords \* Dollys \* Nuts, Bolts, Screws, Nails, Etc \* Organizers \* Worklights \* Saws \* Clamps \* Dewart Chopsaw \* Electric Boxes \* Eagle Statues \* 2300PSI Power Washer \* Tires & Wheels \* Electric Blower \* Lawn Chairs \* Hammock \* Tackle Boxes \* Wrenches \* Dog Kennels \* Steel Posts \* Chainsaws \* Weedeaters \* \* **Antiques, Collectibles & Household** \* Native American Artwork- Pottery,

Pictures, Lamps, Vases, \* Statue, Etc \* Gumball Machine \* Stuffed Animal Bear Home Decor \* Hats \* Floor Lamps \* Bronze Dolphin Statue \* Stone Cocks \* Guitar \* Tiffany Glass Lamp \* Kitchenware \* Primitives \* Stoneware \* Glassware- Fenton, Depressionware, Pink, Cobalt Blue, Ruby, \* Red, Carnival Glass, Brides Baskets, Cut Glass, Cake \* Stands, Jewel Tea Autumn Leaf, China Sets, Christmas \* China, Etc \* JFK Magazines \* Elvis Books \* Antique Traps \* Corningware \* \* Hoover Steam Vac \* Dolls \* Lamps \* Pictures \* Figurines \* Purses \* Precious Moments \* Records \* Record Player \* Buttermolds \* Legos \* Dietz Lanterns \* Marble Scale \* Christmas Villages \* Crockpot \* Delta Electric Co Lamp \* Mantle Clocks \* Christmas Decor \* Large Collection Of Cast Iron- House Numbers, Handles, Home \* Decor, Hardware, Brackets, Hooks, Figurines, Etc \* Kerosene Lamps \* Purses \* Antlers \* Muck Boots \* Glassware \* Small Kitchen Appliances \* Cookware \* Wheelchair \* Mirrors \* Commercial Sink \* Oneida Restaurant Dishes \* Pitcher & Bowl \* \* Water Filters \* Fryer \* Digital Video Recorder \* Kids Toys \* Stereo \* \* Nacho Cheese Machine \* Baskets \* Knickknack Shelves \* Clocks \* Bean Shopping Cart w/ Kids Car \* Speakers \* Shoe Rack \* \* Cast Iron Banks \* Beer Signs & Advertisement \* Neon Signs \* Hummels \* Hallmark Ornaments \* Precious Moments \* Luggage \* Nativity Sets \* Beanie Babies \* Quilts \* Sewing Box \* Dress Form \* Chandelier, Light Fixtures & Fans \* Cookie Jars \* Fog Machine \* Ship Decor \* Amps \* Exercise Equipment \* Saddles \* \* Antique Cameras \* **Furniture & Appliances- 10:30AM** \* Antique Oak Wood Table w/ 2 Leaves & 6 Chairs \* Bookcases \* Antique Round Table w/ 4 Leather Bottom Chairs \* End Tables \* Oak Table w/ Leaf & 6 Chairs \* Primitive Sofa Table \* Cradle \* Ornate Curved Glass Credenza \* Dresser w/ Mirror \* Chairs \* Ornate Curved Glass Corner Cabinet w/ Beveled Mirror \* Sofas \* Lighted Curio Cabinets \* 5 Drawer Dresser \* Secretary w/ Mirror \* Leaded Glass Bookcase \* Leather Sofa w/ Incliners \* Shelves \* Ornate Carved Vanity w/ Mirror \* Glider Rockers \* Roll Top Desk \* Chair w/ Ottoman \* Native American Statue In Showcase \* Beds- Twin, Full, Queen, King \* Antique School Desk \* Bench \* Magazine Table \* 2pc China Cabinet w/ Leaded Glass \* Stool \* Wood Tables \* Coffee & End Tables \* TV Stand \* Dressers \* Chests Of Drawers \* Sofas \* Coffee Tables \* End Tables \* \* Game Table \* Mini Fridge \* Washer & Dryer \* Flat Top Stove \* Folding & Stacking Chairs \* Gun Cabinet \* Primitive Tables \* Several Sets Of Nice Barstools \* Nightstands \* Water Heaters \* Electric Fireplace \* Railroad Carts



Auction Conducted by:

# Glenworth

Auction Service & Realty  
Glen Yutzy, Auctioneer/Broker



Licensed in Missouri & Arkansas

Phone: (417) 767-4345 • Fax: (417) 767-4222

# BUFFALO LIVESTOCK MARKET LLC



276 Hwy 32 West  
Buffalo, Missouri  
**August 21<sup>st</sup>, 2021**  
Receipts: 842 Head  
Feeders Steady. Cows \$2 Lower.

**REPRESENTATIVE STEERS**

300-400 @ 190.00 to 214.00  
400-500 @ 163.00 to 176.00  
500-600 @ 158.00 to 178.00  
600-700 @ 157.00 to 165.00  
700-800 @ 155.00 to 162.50  
800-900 @ 140.00 to 151.00

**REPRESENTATIVE HEIFERS**

300-400 @ 153.00 to 175.00  
400-500 @ 148.00 to 157.00  
500-600 @ 146.00 to 160.00  
600-700 @ 145.00 to 156.00  
700-800 @ 130.00 to 141.00

**FEEDER BULLS**

300-400 @ 155.00 to 175.00  
400-500 @ 148.00 to 160.00  
500-600 @ 137.00 to 153.00  
600-700 @ 133.00 to 146.50  
700-800 @ 108.00 to 127.00  
800-900 @ 95.00 to 110.00

**STOCK COWS**

Bred Few \$850.00 to \$1,250.00

**COW CALVES**

Older Prs. \$950.00 to \$1,125.00

**SLAUGHTER COWS**

High Dressing Fleishy Cows  
72.00 to 77.00

Med Dressing Cows 60.00 to 71.00

Thin Fleish Cows  
57.00 to 60.00

**SLAUGHTER BULLS**

High Dressing 100.00 to 110.00  
Med Dressing 97.00 to 99.50  
Lower Dressing 80.00 to 90.00

**Cow Sale Tuesday, August 17th at 6:30PM**  
400 Cows & Bulls

**MON-WED MARKET REPORT**

Listen to KJEL 103.7FM • Lebanon or KYOO 99FM • Bolivar

**VIEW OUR SALES AT CATTLEUSA.COM**

**CALL FOR TRUCKING OR ON-FARM VISIT**

Lyle Caselman • Owner-Manager  
417-345-7876 • mobile 417-533-2944  
Leon Caselman • Owner  
417-345-4514 • mobile • 417-588-6185

## JR'S 3rd Annual CONSIGNMENT AUCTION

**Friday, September 24, 2021**  
Levi Zook, 4875 Hwy BB Hartville, MO 65667  
417-741-2070 • 417-741-2312

Directions: From Lebanon, MO take Hwy 5 South approx. 30 miles to Hwy Z, left on Z, 2 miles to Hwy E, right on E to Hwy BB, right on BB to auction on left.

**Now taking consignments for farm machinery, horses, antiques, guns, households, and tools. Large selection of farm machinery, antiques, and hand tools already consigned. Loads coming from Wisconsin, Kansas, Iowa, Kentucky, and the surrounding areas.**

*Now Taking Consignments!*  
**Advertising deadline August 20th**  
**Auctioneer: Martins Auctions**  
Commission Rates: 15% - up to \$100; 10% - up to \$500; 7% - %500 & up • \$300 cap

To consign horses call Reuben Glick 417-554-3201

**MURRY RIDING MOWER:** Good tires, deck, blades, 5-speed, needs motor. \$150-gun trade. 573-364-7465. Rolla.

One family owner, all original, no rust, garage kept, flat head 6-cylinder, 4 speed. 573-880-9178 or 573-880-9456. St. Genevieve.

**OAK TABLE – FOUR CHAIRS:** \$250, Pine heart day bed with mattress, good shape \$75.00. 417-543-8261. Ava.

**100 VINYL RECORD ALBUMS:** Mostly county some gospel. Take al \$2.00 each. 573-689-2490. Bunker.

**1949 STUDABAKER 1½ TON TRUCK:**

## Gasconade County REAL ESTATE AUCTION

**• WEDNESDAY – SEPTEMBER 15, 2021 AT 10:00 AM •**

**AUCTION LOCATION: American Legion Hall At 207 Park Street S In Rosebud, Mo 63091**

**PROPERTY LOCATION:** Directions to Tract One from Rosebud, MO take Rosebud Road (2nd Street) County Road # 332 north 3 1/2 miles to Pfeiffer Road (County Road #334), take to Pleasant Hill School Road (County Road #336), turn right and go north 1 mile to Tract One on the left. Directions to Tracts Two and Three from Rosebud, MO take Rosebud Road (2nd Street) County Road # 332 north 3 1/2 miles to Pfeiffer Road (County Road #334), turn right and go 1 1/2 miles to the property on the right.

**142 +/- ACRES IN THREE TRACTS IN TOWNSHIP 43N, RANGE 4W, SECTIONS 29 & 30 IN GASCONADE COUNTY, MO**

**PRE-AUCTION PROPERTY VIEWING WEDNESDAY – SEPTEMBER 1 FROM 2 PM TO 4 PM**

**TRACT 1:** Consists of approximately 50+/- Acres total with 44.20 acres tillable. **TRACT 2:** Consists of 51+/- Acres and lies in the center of the farm. This tract has creek frontage along the southeast side, it is basically wooded with some open creek bottom that is currently in soybeans. **TRACT 3:** Consists of 41+/- acres, it has approximately 11 acres this is open and is currently in permanent pasture. The balance is in timber.

**Wheeler AUCTIONS & REAL ESTATE**  
23101 HWY. 24, PARIS, MO 65275 | 660-327-5890  
WWW.WHEELERAUCTIONS.COM

**SELLERS: MAHACEK FAMILY TRUST**  
For more information call Charlie Nordwald at 636-795-4552, or visit wheelerauctions.com.

**SONY SOUNDBAR AND SUBWOOFER:** With remote. \$100 OBO. 417-668-7793 landline. No text. Falcon.

**BUYING STANDING CEDAR: Minimum 6-in diameter. 417-531-0403.**

**AUSTRALIAN SHEPHERDS** for sale, blue merle, red and whites, out of working parents, 573-663-7459.

**KENMORE 30" ELECTRIC DROP IN RANGE:** Self-cleaning, Kenmore dishwasher, microwave, new Instapot \$150. 573-699-4351. St. James.

**NEW HOLLAND 315 SQUARE BALER:** \$2,500. 573-765-4406. Richland.

**ROUTE 66 DINING 7 LODGING GUIDE:** 183 pages, \$5.00. 417-532-2045. (leave message) Lebanon.

**L3200 KUBOTA 4WD TRACTOR:** 31 hp, with loader, hydrostat transmission. Low hours. \$18,900.00. 417-270-1505.

**NEW PISTOLS:** Heritage 22LR \$129.81, Ruger EC9s 9mm \$279.37, Ruger LCPII .380 \$369.98. See all selection at [rollingmead.com](http://rollingmead.com) 417-241-1523. Marshfield.



**From yard to field,  
from cat to cattle...**

**WE'VE GOT YOU COVERED!**

**STEELVILLE  
FEED & FARM**

573-775-2650 • 11 Cobblestone Rd., Steelville, MO  
Mon-Fri 8am-5pm • Sat 8am-12pm • Sun Closed

**2017 MODEL FOREST RIVER 5<sup>TH</sup> WHEEL:** 2 slide-outs, outdoor kitchen, bunkbeds in back, sleeps 9. Excellent condition. 417-733-2602. Miller.

**ENGLISH SHEPHERD** puppies, bob tails, some not, out of working parents, 573-760-5157.

**PICKUP TRUCK BEDLINER:** Standard size, Ford F-150 to F350. \$40. 314-303-7857. Cedar Hill.

**GREAT PYRENEESE PUPPIES: \$100.** Mixed puppies, Blue Heeler and Eskimo cross. \$25 Bi-color. UTD on shots & worming. Sweet Corn. 417-589-0227. Conway.

**Salem Livestock Auction**  
Hwy. 32 Salem, MO • 573-729-8880  
Over 40 Years in the Livestock Business

**Goat Sale**  
Tuesday, Sept 14th • 6 pm

**Cow Sale**  
Saturday, Sept 18th • 1 pm

**CATTLE SALE EVERY MONDAY AT 12**  
Feeder calves to sell at 12, butcher cows & stock cows following

All Consignments Welcome Up Until Sale

Allen Thompson 417-932-4097	Renee Lauderdale 417-926-2682	
Chuck Thompson 417-257-5610	Brandon Barton 417-259-1597	

Terms of Sale: Cash or Approved Check!

**LOTS OF DVD MOVIES:** \$2 each. 573-327-9068. Park Hills.

**L4600 KUBOTA 4WD TRACTOR:** 45 hp, with loader. \$23,500.00. 417-270-1505.

**WANTED:** 1966 to 1971 Jeepster Commando. 816-838-6254. Lees Summit.

**FARM AUCTION**

Monday September 6, 2021 10:00AM  
Bob & Patty Carpenter  
2381 N Farm Road 227 Strafford, MO 65757  
Directions: From Strafford Take Hwy 125 South, Then East On Division/ Hwy YY & North On Farm Rd 227 To Auction. Watch For Signs.



Tractors, Farm Machinery, Vehicles & Trailers\*  
100 Bales Net Wrapped Hay\* Tools, Lawn & Garden\* Guns, Collectibles, Household\* 300+ Decanters\* Plus More  
[www.glenworth.com](http://www.glenworth.com)

Auction Conducted by:  
**Glenworth**  
Auction Service & Realty  
Glen Yutzky, Auctioneer/Broker  
(417) 767-4345

**URBANA STOCKYARDS  
SMALL ANIMAL  
AUCTION**

**THURSDAY, AUG 26 @ 5:00PM**  
122 S. COLLEGE STREET • URBANA, MO • 417-993-5989

- Urbana Stockyards Monthly Small Animal/Miscellaneous Sale will be Thursday August 26 at 5:00PM and move inside to all cage animals and hoof stock. If we don't have any outside items, we will start on cage animals at 5:30PM. Cash and check only please. Not equipped for cards.
- For Pictures Check Out Urbana Stockyards Facebook Page For Any Updates!

For more information or consignments contact:  
Joe Webster: 573-280-9586 • Amy Knight: 417-594-1061  
Matt Whitney: 417-588-0594 • Brayden Whitney: 573-317-6340

**MID MISSOURI STOCKYARDS**

**REGULAR SALE EVERY THURSDAY 11AM**

WATCH OUR WEEKLY SALE IN REAL TIME ON [DVAUCTION.COM](http://DVAUCTION.COM)

For Farm Visits, Market Updates, or Trucking  
Call Zach Cox 417-777-1320  
Dan Romine 573-578-4939

Competitive Buyers!  
Competitive Commission!  
Competitive Market!

Barn: 417-532-9292   
I-44 • Exit 123 "just outside of Lebanon"  
17505 Route 66, Phillipsburg, MO 65722  
For weekly market updates, visit us at [www.midmostockyards.com](http://www.midmostockyards.com)



**CABLE PULLING JAW GRIP:** Klein 1684-5, excellent condition. \$150. 314-303-7857. Cedar Hill.

**WELL BUILT CART:** For small mig welder. New-used \$200. 573-729-0272. Salem.

**GM 1/2 TON 4-WHEEL DRIVE FRONT AXEL HOUSING:** With 3.07 gears. Fits a 77 to 87. \$80. 314-303-7857. Cedar Hill.

**A FRAME TINY HOUSE/SHED:** 6 ft x 8 ft, New floor, furnished, \$800. 573-759-7143. Vienna.

**TOTE FULL OF AUNT JAMIMA STUFF:** \$200 for all. 573-327-9068. Park Hills.

**WARSAW, MISSOURI OZARK ECHOES 1964 YEARBOOK, \$20. 417-532-2045. (leave message and phone number). Lebanon.**

**FULL BLOODED BLUE HEELER PUPS:** UTD shots/worming. \$150. 471-650-0995. Lebanon.

**INTERNATIONAL TWO ROW CORN PICKER:** Pull type. 573-674-3601. Licking.

**INTERNATIONAL SQUARE HAY BALER:** Field ready. 573-674-3601. Licking.

**JOHN DEERE 566 ROUND BALER:** Monitor, kicker. \$5,200. 573-765-4406. Richland.

**IHC 1086 DIESEL TRACTOR:** Cab, cold air, 130 hp. \$13,000. 573-765-4406. Richland

**JOHN DEERE 4230 DIESEL TRACTOR:** Cab & air, 100 hp. \$13,500. 573-765-4406. Richland.

# KILMER FARM EQUIPMENT CONSIGNMENT AUCTION

## SATURDAY, AUGUST 28 • 10 AM

**14769 Cattle Lane, Versailles, MO 65084**

*Directions: At the Intersection of Hwy 5 and Hwy 52 in Versailles, go North on Hwy 5 for 1 mile to Cattle Ln then turn Right or East and go 3/4 mile to Sale Site.*



**TRACTORS, PLANTERS AND SPRAYERS,  
CONSTRUCTION EQUIPMENT, TRUCKS AND TRAILERS,  
GRAIN CARTS AND WAGONS, MANURE SPREADERS,  
CUTTERS, TILLAGE, COMBINE AND HEADS,  
FEED MIXERS, MISC. EQUIPMENT, HAY EQUIPMENT,  
SILAGE EQUIPMENT**

**Wheeler**  
AUCTIONS & REAL ESTATE  
23101 HWY. 24, PARIS, MO 65275 | 660-327-5890  
WWW.WHEELERAUCTIONS.COM

**BID LIVE** Live Online Bidding Powered By **proxibid**  
**KILMER FARM EQUIPMENT, LLC**  
14270 Hwy. 52, Versailles, MO 65084  
**(573) 378-6615**

For more info and photos:  
[www.wheelerauctions.com](http://www.wheelerauctions.com)

## HOME & ACREAGE HOLTS SUMMIT, MO



**\*\*7.76 WOODED ACRES FOR YOU TO ROAM\*\***

**Open House:**  
Thursday, August 19th | 5:00 – 6:00 pm  
Thursday, August 26th | 4:00 – 5:30 pm

### SELLS TO HIGH BIDDER

- 1,250 +/- Sq. Ft., 3 Bedroom, 2 Bath Ranch Style Home
  - Living Room with Wood Burning Fireplace
  - Unfinished Walkout Basement
  - Approx. 600 +/- Ft. Chip & Seal Road Frontage
  - Just North of Hwy. 94
- Note: This home could use some foundation repairs and interior updates.

**12782 CR 4021, Holts Summit,  
Callaway Co., MO**  
**Online Bidding Ends: Thursday,  
Sept. 2nd | 12:30 pm**

**Check It Out & Bid At  
[www.AtterberrySells.com](http://www.AtterberrySells.com)**

For Additional Information Or Terms, Call Your Real Estate At Auction Specialists: Atterberry Real Estate Auctioneers 573-474-9295



IHC 10 FT. WHEEL DISK: \$1,800. 573-765-4406. Richland.

IHC 986 DIESEL TRACTOR: Canopy, 105 HP with Westendorf TA28 loader. \$13,000. 573-765-4406. Richland.

**HISTORY OF THE SCHOOL OF THE OZARKS: at Point Lookout. \$5.00. 417-532-2045. (leave message and phone number). Lebanon.**

BRUSHHOG 3-POINT 6FT  
BRUSHCUTTER: \$1,350. 573-765-4406. Richland.

## URBANA STOCKYARDS SPECIAL STOCK DISPERSAL

**Monday,  
August 30 @ 6pm**  
122 S. COLLEGE STREET • URBANA, MO  
**417-993-5989**  
Selling entire herd of  
Dennis Hall - Lebanon MO.

**Selling: 300 Fancy Home raised cows that will average weighing 1200 lbs.**

- \* 250 cows are black and black baldie
- \* 50 cows are Charolais
- \* 30 babies will sell by side and 150 big calves will be split off and sold during the regular Monday feeder sale which starts at 11:30am
- \* 150 cows will be 2 to 4 years old
- \* 150 cows will be 5 years and up
- \* All cows are bred to black and black baldie bulls
- \* AGAIN this is an entire home raised herd dispersal. You won't want to miss this sale!

**Cows and calves will be hauled prior to sale day. Feel free to come by sale barn and take a look.**

For more information or consignments contact:  
**Amy Knight: 417-594-1061**  
**Matt Whitney: 417-588-0594**  
**Gregg Cox: (417)536-3765**

## Callaway Livestock Center, Inc.

Kingdom City, MO  
Watch live or bid online thru D.V. Auctions  
[www.CallawayLivestock.com](http://www.CallawayLivestock.com)

### SPECIAL COW SALE THURSDAY NIGHT SEPTEMBER 2<sup>nd</sup>, 2021 AT 6:00PM

Estimating 600 to 700 hd of Bred Cows,  
Cow/Calf Pairs & Breeding Bulls.

#### EARLY CONSIGNMENTS

##### Lard S.

- 15 Outstanding 1,100 lbs. Blk 1st Calf Hfrs, Hfrs calf Sept. 15th for 45 days, bred to Circle A Bull, all vaccinations complete.
- 45 fancy Blk Cows, Cows will be 3-5 yrs. old, every vaccine possible, start calving Oct. 15th for 60 days, bred to Connealy or 44 farms Registered Angus Bulls.
- 60 fancy Blk or Blwf Cows, Cows will be 5 to 5S, start Sept. 1st calving, bred to Blk Balancer Bulls.
- 40 fancy Blk or Blwf Cows, Cows will be 5-8 yrs. old, weigh 1,300-1,400 lbs, start calving Sept. 1st, bred to Mead Hereford Bulls.
- 50 fancy Blk or Blwf Cows, Cows will be 3-5 yrs. old, start calving Sept 1st, bred to fancy Angus Bulls, all shots current.
- 25 fancy Blk or Red Angus Cows, Cows will be 3-5 yrs. old, 8 with Calves by side, rest will be in 3rd period.
- 10 Red Angus Cows, 3-5 yrs. old, Cows will be in 3rd period.
- 20 Blk Cows, Cows will be 3-5 yrs. old, bred Angus Bulls, Cows in 2nd period.
- 15 fancy Blk or Blwf Cows, Cows will be 3-5 yrs. old, bred to Registered Angus Bulls, Cows will have Calves by side, rest will be heavy 3rd period, all vaccinations current.
- 75 Blk or Char Cross Cows, Cows will be 6-BM, about 20 will have Blk Calves by side, rest be 3rd period.
- 4 Red Cows, 6-7 yrs. old with March calves by side.
- 2 3 yrs. old Blk Cows, bred 2nd.
- 1 17 month old, Solid Blk Sim Angus Bull.
- 1 17 month old Blwf Sim Angus Bull.
- 4 15 month old fancy Blk Balancer Bulls.
- 1 3 yrs. Registered Angus Bull.
- 1 5 yrs. Registered Angus Bull.

Several other cows expected by sale night.

This ad was made 2 weeks in advance Don't miss this sale. Many more expected by sale day. All bulls sell at the start of the sale at 6:00pm.

For more information contact:  
Jack Harrison 573-999-7197 - John P. Harrison 573-220-1482  
Roger Temmen 573-680-4538 - Glenn Stagman 573-619-8495  
Claude Niemeyer 573-470-1017 - Justin Oberling 217-440-7724  
Wayne McCluggage 573-473-6314 - Chad Nickelson 573-631-1627  
Glen Stegman 573-619-8945 - Lynn Crouch 417-399-4148

**CALLAWAY LIVESTOCK CENTER INC.**  
573-642-7486

# LOCKED & LOADED

*Ready for you!*

- Hi-point pistols.....starting at \$165<sup>00</sup>
- Heritage Rough Rider combo's .....starting at \$189<sup>00</sup>
- Ruger Security 9's..... \$349<sup>00</sup>
- Ruger SP101 357 magnum ..... \$729<sup>00</sup>
- Ruger 10/22 carbines..... starting at \$305<sup>00</sup>
- Ruger Mini-14's..... starting at \$1,189<sup>00</sup>
- Springfield Armory Hellcats .....starting at \$559<sup>00</sup>
- Springfield Armory XDME pistols .starting at \$549<sup>00</sup>
- Taurus G3C pistols .....starting at \$300<sup>00</sup>
- Smith & Wesson Governors ..... \$819<sup>00</sup>
- Smith & Wesson shield pistols .....starting at \$459<sup>00</sup>
- Smith & Wesson 637 38 SPL ..... \$489<sup>00</sup>
- Smith & Wesson SD9's and SD40's..... \$379<sup>00</sup>
- AR-15 rifles Bushmaster, Del-ton, Ruger, Smith & Wesson .....starting at \$625<sup>00</sup>
- AK-47 Rifles..... starting at \$725<sup>00</sup>
- M240-SLR 7.62X51 20 inch Barrel with 2,500 M-13 links, cleaning kit and custom fitted Rifle Case ..... starting at \$13,675<sup>00</sup>
- Barrett 82A1 50 BMG with 3-10 round mags and 100 rounds of 50 BMG ammo .....starting at \$8,900<sup>00</sup>
- Barrett 99 50 BMG with 100 rounds of 50 BMG ammo .....starting at \$4,525<sup>00</sup>
- EAA Girsan 12 gauge camo with 3-1/2 chamber .....starting at \$449<sup>00</sup>
- Mossberg Maverick 88 12 gauge .... starting at \$275<sup>00</sup>
- Mossberg 590 shockwave 12 gauge ..... \$449<sup>00</sup>
- 9MM ammo..... starting at \$375<sup>00</sup> per Case
- 40 S&W ammo..... starting at \$300<sup>00</sup> Per Case
- 5.56X45 green tip ammo SS109 ..... \$675<sup>00</sup> per 1000 round case

**Please call ahead to check on ammo and reloading supplies as inventories change daily. All firearms are factory new & prices do not include sales tax.**

**JERRY'S  
Guns & Ammo**  
1691 Blackoak Rd, Richland  
**573-765-3388**  
jerrysguns@hughes.net

**KEAN CUTTER 7FT FINISH MOWER:**  
3-point. \$1,500. 573-765-4406. Richland.

**LANDPRIDE PLAINSMAN 15FT  
HYDRAULIC FOLD BRUSHCUTTER:**  
\$6,800. 573-765-4406. Richland.

**BLACK ANGUS BULLS:** from 12 to 18  
months. 417-932-4026. Summersville.

**ATHEN HEAVY 8FT OFFSET DISK:**  
\$3,500. 573-765-4406. Richland.

**3 BASEBALL MITTS FROM THE  
1950'S:** \$60. 417-457-1023. Raymondville.

**JOHN DEERE 467 ROUND BALER:**  
Monitor, kicker, net wrap. \$12,500. 573-765-  
4406. Richland.

**FORD 4610 DIESEL TRACTOR:** Canopy,  
2000 hours 52HP with Brushhog loader .  
\$12,500. 573-765-4406. Richland

**JOHN DEERE 2955 DIESEL TRACTOR:**  
Cab & cold air, 85 HP, \$19,750. 573-765-  
4406. Richland.

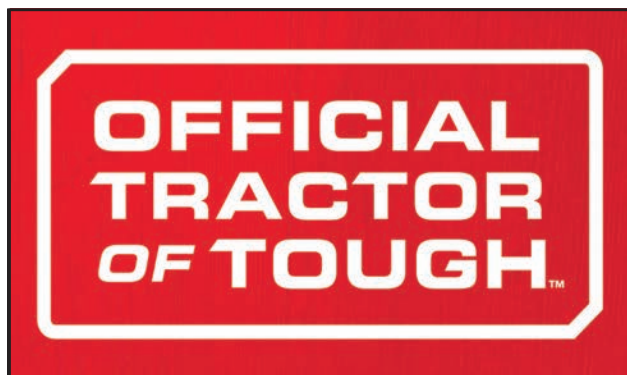
**JOHN DEERE 1008:** 10 ft. pull type  
brushcutter. \$2,950. 573-765-4406.  
Richland.

**ROUTE 66 DINING 7 LODGING GUIDE:**  
**183 pages, \$5.00. 417-532-2045. (leave  
message) Lebanon.**

**LOG SIDING:** 2X8 Pine/Western Cedar  
www.pineridgerustic.com 573-729-7226.  
Salem.

**USED MOBILE HOMES:** Call David at  
VILLA HOMES IN ROLLA 573-578-8072.  
Rolla.

**WANTED TO BUY DODGE DIESEL  
TRUCK:** Or Toyota Tacoma. Also, buying  
antique cars. 870-324-1154. Ash Flat.



**Marshfield Machinery Inc.**  
222 E. Madison • Marshfield, MO 65706  
417-859-2117 • www.marshfieldmachinery.com

MahindraUSA.com © 2020 Mahindra USA Inc.

**Mahindra**  
Rise.

**NEW MAHINDRA  
TRACTORS**

1626 4WD & LDR 26HP  
IN STOCK

1635 4WD & LDR 36HP  
IN STOCK

2638 4WD & LDR 37HP  
IN STOCK

**USED TRACTORS**

IHC 826 92 HP 9,000

**USED ROUND  
BALERS**

HESSTON 945 4X5 9,000

JOHN DEERE 375 5X4 3,500

HESSTON 560 5X6 2,000

NH 850 5X5 1,500

**USED MISC.**

HAYBUSTER 107C NOTIL  
DRILL 17,500

FRONTIER BALE PROCESSOR  
8,500

BUSH HOG 3510 10FT 8,000

SNAPPER ZERO TURN 2,750

BUSH HOG 2052 ZERO TURN  
2,500

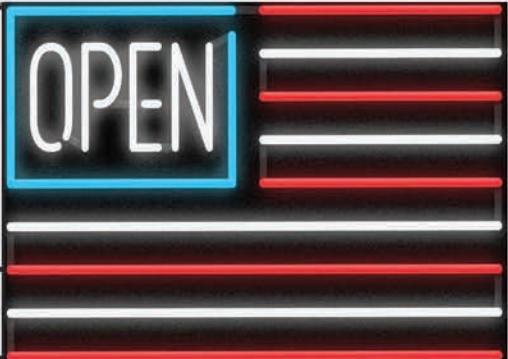
BUSH HOG POST HOLE  
DIGGER 1,200

**Marshfield  
Machinery Inc.**  
222 E. Madison  
Marshfield, MO 65706  
417-859-2117  
www.marshfieldmachinery.com

**Starnes Auto LLC**  
22115 Rt. 66 • Lebanon, MO 65536  
417.718.2707 Cell  
417.588.3159 Office  
www.starnesauto.com

<b>2002 CADILLAC DEVILLE</b> BLACK, 51,XXX MILES .....	\$5,500
<b>2005 FORD F150 XLT 4WD EXT CAB</b> GRAY, 192,XXX MILES .....	\$5,200
<b>2005 CHEVY COBALT</b> SILVER, 106,XXX MILES .....	\$4,200
<b>2006 HONDA CRV SE 4WD</b> GRAY, 160,XXX MILES .....	\$4,850
<b>2008 CHEVY COBALT</b> BLUE, 225,XXX MILES .....	\$2,500
<b>2009 PONT VIBE</b> BLUE, 61,XXX MILES .....	\$4,850
<b>2010 CHEVY TAHOE</b> WHITE, 152,XXX MILES .....	\$11,500
<b>2011 FORD ESCAPT XLT</b> GRAY, 73,XXX MILES .....	\$6,200
<b>2011 NISSAN SENTRA</b> GRAY, 104,XXX MILES .....	\$4,950
<b>2013 CADILLAC SRX PERFORMANCE</b> WHITE, 92,XXX MILES .....	\$12,950
<b>2013 GMC TERRAIN AWD</b> BLACK, 73,XXX MILES .....	\$11,700
<b>2014 CHEVY CAPTIVA LT</b> WHITE, 84,XXX MILES .....	\$8,750
<b>2014 CHEVY CAPTIVA</b> SILVER, 105,XXX MILES .....	\$8,250
<b>2014 CHEVY IMPALA LIMITED</b> GRAY, 113,XXX MILES .....	\$6,200
<b>2015 GMC TERRAIN</b> BLACK, 113,XXX MILES .....	\$10,950
<b>2019 KIA SOUL MANUAL 5 SPEED</b> GREEN, 17,XXX MILES .....	\$10,500

**WE DO ALIGNMENTS!**



**Sale Ends August 31, 2021**  
 Seymour, Missouri 417-935-4201

**Pole Barns & Post Framed Buildings!**

Call for free quote, brochure & color chart.  
 Other sizes also available.

<b>23'x32'x10'</b> <b>\$7,279</b> Material Only <b>\$8,609</b> Labor Included	<b>23'x40'x10'</b> <b>\$8,215</b> Material Only <b>\$9,885</b> Labor Included	<b>30'x40'x10'</b> <b>\$10,100</b> Material Only <b>\$12,300</b> Labor Included	<b>40'x60'x12'</b> <b>\$17,860</b> Material Only <b>\$22,480</b> Labor Included
---	---	---	---



Due to increased demand for our quality product we are currently hiring new barn construction crews. Contact Jeff

**NOBODY, BUT NOBODY BEATS OUR PRICES!!!**

10 ft. Slider • Engineered Trusses 8' O.C. • 2x6 Treated Bottom Wrap • Screws • 2x10 Top Wrap • 2x4 Purlins • Full 29 Gauge Steel • Plus 3 ft. Entry Door with Lock  
 OPTIONS: Sidewall Heights on all Buildings 10', 12', 14' & 16'. Overhead Garage Door. Skylights. Insulation. Wainscoting. Insulated Vinyl Windows. Cupolas. Labor Rates Slightly Higher over 50 Miles from Seymour. Call for YOUR FREE QUOTE TODAY!!!

<b>PAINTED WHITE, GREEN OR TAN METAL</b> .....\$98.99	<b>IN STOCK</b>
<b>10' - \$31.40 12' - \$37.66 16' - \$50.21</b>	
<b>MIX &amp; MATCH METAL</b> .....\$59.99	
<b>8' - \$15.20 10' - \$19.00 12' - \$22.80</b>	
<b>GALVALUME METAL</b> .....\$79.99	
<b>10' - \$25.40 12' - \$30.43 16' - \$40.57</b>	
<b>GALVANIZED CORRUGATED METAL SOLD OUT!</b>	
<b>8' - \$9.84 10' - \$12.30 12' - \$14.75 16' - \$19.67</b>	

**40yr Painted Metal**  
**Call**

**KNOTTY PINE DOORS**  
 Starting at  
**\$109.99**

**LP SMARTSIDE T-5 LAP B GRADE \$43.59SQ**

**Car Siding!**

1x6 White Pine Siding <b>79¢</b> in ft
1x8 White Pine Siding <b>\$1.05</b> in ft

\* 4 Profiles to choose from!  
 Broken Bundles Add 10¢ Per Ft.

**4x8 Sheeting**  
 Less than full units Add \$1 per sheet

3/8" Beaded Paneling	\$17.99
7/16" T111 Siding	\$23.99
Paneling	\$9.99
1/2" Plywood	\$\$\$OLD
3/4" Plywood	\$\$\$OLD
3/16 Pegboard	\$12.99

**LOTS OF MATERIAL AVAILABLE FOR THOSE IN HOME PROJECTS!**

**REAL WOOD SIDING**

**2x6 Log Siding - 1.59¢ In ft**  
**1x8 Beveled Cedar from- 79¢ In ft**  
**T1-11 Siding from \$23.99**

**DECK PACKAGES**

**Materials Only**

8x8.....\$534.95	10x12.....\$909.49
10x10.....\$754.49	10x16.....\$1129.99
12x12.....\$1083.49	12x16.....\$1425.29

**QUAKER** Now Stocking Quaker Vinyl Windows

2030 \$117.99	3030 \$137.99
3040 \$152.99	3052 \$169.99
3040Twin \$334.99	3052Twin \$369.99

**NEW PACKAGE HOMES**

2x6—16" on center-Exterior Stud Walls  
 Residential Roof Trusses-2' on center  
 4/12 pitch with 1' over hang  
 40 year Painted Metal roofing in 20 Different Colors  
 Profile Ridge Vent - Ventilated Ridge Cap  
 Vinyl Center Vent Soffit  
 Color Matched Metal Fascia & Gable Trim  
 2 - 3' 6 Panel Entry Doors  
 4 - 3'x4' Vinyl Insulated Windows

**ALL FIGURED FOR SUITABLE CUSTOMER SUPPLIED SLAB OR SUB-FLOOR**

Shown with Available Options  
 Your Choice of either:  
 Stock 5/8" T111 Wood Siding w/1x4 Pine Window & Door Trim - or -  
 7/16" OSB & House Wrap ready for other finish options

**Price for Basic Materials Package & Labor**  
 20x24(480 sq. ft.) 20x32(640 sq. ft.) 20x40(800 sq. ft.) 28x40(1120 sq. ft.) 28x48(1344 sq. ft.)  
**SOLD OUT!!!**



**LUCKY DISCOUNT LUMBER**  
 417-935-4201  
 455 State Hwy C • Seymour MO 65746  
 www.luckydiscountlumber.com



\*Some restrictions apply see store for details. Prices subject to change without notice.

**SPECIALIZING IN HEAVY DUTY GATES**



**Cow Country Gate Sales**

Call Randy: 573-569-4754  
or Home: 573-539-2528  
Located at: Zimmerman Welding  
16889 Hwy 52, Barnett, MO

**TRUE MODULARS:** 30 to 60 day delivery available, 3 and 4 bedroom 573-657-7040 chateauhomes.net

**BUYING MOBILE HOMES:** Call David at VILLA HOMES IN ROLLA 573-578-8072. Rolla.

**CUSTOM SAW MILLING:** 417-533-4607, 417-664-1195. Lebanon.

**STOCK MOBILE HOMES AVAILABLE:** We gottem, single and double, 3 and 4 bedroom! Call Tuffy 573-657-2176. amegamobilehomes.com

**Team Electrical & Plumbing**  
"The Professionals you can count on"  
Electrical • Solar Power • Plumbing • Lighting Installation

100% Satisfaction Guaranteed	Fully Licensed & Insured	\$100 Estimates with upfront pricing
------------------------------	--------------------------	--------------------------------------

For the best quality of work every time...  
**Give "Team" a call today!**  
417-349-6200 • www.teamelectricalplumbing.com

**OLD READERS DIGEST:** \$1 each. 8am-8pm. 417-991-8190. Lebanon.

**2017 MODEL FOREST RIVER 5<sup>TH</sup> WHEEL:** 2 slide-outs, outdoor kitchen, bunkbeds in back, sleeps 9. Excellent condition. 417-733-2602. Miller.

**Pine Ridge Rustic**  
Log Home Building Supplies



**Services Offered!**

- Installation
- Pre-finishing available on interior & exterior
- Dealer for exterior stains

[www.pineridgerustic.com](http://www.pineridgerustic.com)  
523 CR 2410 • Salem, MO 65560 • Ph: 573-729-7226

- Log Siding
- Beveled Siding
- Car Siding • Red Cedar
- Western Cedar • Pine

**HIRING CAREGIVERS!**

- Competitive Wages
- Full or Part Time

**Call Now!**

*Reba's Family Care, LLC*  
417 664-0760 • Reba Green | 573-434-3764 • David Green

**FERTRELL ORGANIC FERTILIZER:** Free Catalog. 315-796-4370. Caulfield.

**I BUY.....used mobile homes.** Call or text 573-338-6250 or email [GregS.CH@outlook.com](mailto:GregS.CH@outlook.com)

**3 BASEBALL MITTS FROM THE 1950'S:** \$60. 417-457-1023. Raymondville.

**WANTED TO BUY ANTIQUE CARS:** Convertible, Corvettes, unrestored, motors, parts considered. 870-324-1154. Ash Flat.

**KEAN CUTTER 7FT FINISH MOWER:** 3-point. \$1,500. 573-765-4406. Richland.

**WANTED, TIMBER TO LOG ON SHARES:** Honest, reliable, references. 417-533-4607, 417-664-1195.

**WE BUY White Oak Logs!**

- ✓ Top prices for your logs
- ✓ Experienced log buyers
- ✓ Professional service

Chad Cook | Salem Wood Products  
**417.718.2950**  
5 miles north of Salem, MO on Hwy 19



**INDEPENDENT STAVE COMPANY**  
Log Procurement & Sales

[www.independentstavecompany.com](http://www.independentstavecompany.com)

**TIRES, BRAKES & MORE LLC**

- All Makes & Models
- Affordable Pricing
- Quality Products
- Outstanding Service



**Military & Senior Discounts**  
Tue.-Sat. 8-5 • 1237 Rt. 66 • Lebanon • 417-532-0850

**REGISTERED HEREFORD & ANGUS BULLS:** Home raised, Some Show-Me Select Qualified. 573-701-7828. Belgrade.

**NEW 2021 CALICO 14' BP STOCK TRAILER:** Red, escape door, interior plywood lined/sealed, rubber floor/nose mats, spare tire, brakes, 7000# GVWR. \$7,000. 417-718-5347. Conway.

**Larry Heisel Rentals**  
**Have Rock?**  
 How about 3,500 lbs. of Hammer  
 Call Larry!  
**573-779-1500**  
 www.larryheiselequipment.com  
 Rental Available in 636 or 573 area code



**THE MOST COMPLETE LINE-UP IN THE INDUSTRY**  
 Cutting widths from 36" to 104"



**HUSTLER**

**AGRI-ENTERPRISES**  
 For Outstanding Products & Service  
 1-1/2 Miles South Of Licking, MO On Hwy 63  
**573-674-2203 • 1-800-653-7152**  
 www.agri-enterprises.com

**POWER WASHING, CALL JET STREAM POWER WASHING FOR ALL OF YOUR GRIM TO SHINE NEEDS:**

We wash it all, semis, stock trailers, campers, equipment, houses, buildings and driveways. If it has grime, call today to make it shine in no time! 417-270-1075. Potosi.

**JOHN DEERE 566 ROUND BALER:** Monitor, kicker. \$5,200. 573-765-4406. Richland.

**OLD WORLD BOOK ENCYCLOPEDIAS:** Full set. \$40. Typewriter, \$30. Kenmore sewing machine \$30, VCR & movies \$45. 8am-8pm. 417-991-8190. Lebanon.

**THE HEART OF THE SPRING BOOK. A Bennett Spring Novel by Laura L. Valenti, 161 pages. \$6.50. 417-532-2045. (Leave message and phone number). Lebanon.**

**AVAILABLE STOCK MOBILE HOMES:** Immediately, double wide and single, 3 and 4 bedroom 573-499-9993 columbiadiscounthomes.com

**COOKBOOK COLLECTION: \$1.00 each. Many varieties. 417-532-2045. (Leave message and phone number). Lebanon.**

**85 DODGE SHORT BED 360 4x4 \$1,200 417-532-5670.**

**LAB MIX PUPPIES: \$150. 417-664-0742. Lebanon.**

**STORY & PICTURES BOOK OF OLD LINN CREEK: Haha Tonka and Camden County, by T. Victor Jeffries, 72 pages. \$5.00 postpaid. (417)532-2045. (Leave message and phone number) Lebanon.**

**1949 STUDABAKER 1 1/2 TON TRUCK:** One family owner, all original, no rust, garage kept, flat head 6-cylinder, 4 speed. 573-880-9178 or 573-880-9456. St. Genevieve.

**LOTS OF DVD MOVIES: \$2 each. 573-327-9068. Park Hills.**



# FERTILIZE NOW FOR FALL!



**PENNINGTON**  
 Cold weather is around the corner, start stocking up on your wood pellets now!



**GrazonNext<sup>®</sup> HL**  
**HERBICIDE**  
 A simple, lasting solution making pasture improvement easy.

**Laclede County Seed & Fertilizer**  
 20756 State Hwy W (W. City Route 66) • Lebanon, MO  
 (417)532-7898 www.lacledecountyseed.com

# Land

For Sale

Barry Co., MO • 187 +/- Acres



- Rotational grazing farm with fresh water in every pasture
- 5 access points from the county road
- Enjoyable property with multiple long-range views
- 9 miles to Purdy
- 10 miles to Cassville
- Less than 1 hour to Springfield



WHITETAIL PROPERTIES REAL ESTATE

HUNTING | RANCH | FARM | TIMBER

**Brian Utecht | 417-766-5595**

Brian.Utecht@whitetailproperties.com

WHITETAILPROPERTIES.COM

Missouri's Top Land Specialist in 2014,  
2015, 2016, 2017, 2018 and 2019



# Don't wait until end of the year.

Secure your Section 179 tax deduction savings now!

Farmers, business owners, self employed operators,  
start shopping for your new truck or SUV now.



Shop Online or stop in at Ed Morse Chevrolet Buick GMC  
in Rolla and place your order today!

---

100 Fairgrounds Road • Rolla, Missouri  
573-364-1002 • [EdMorseChevroletBuickGMCRolla.com](http://EdMorseChevroletBuickGMCRolla.com)