

FREE - TAKE ONE!

Vol. 28 No. 21

AUGUST 19, 2021

800-543-8271 • 800-665-8875

WEEKLY TRADER MAGAZINE



Find us on Facebook

@myweeklytrader
AUCTIONS PG. 9

VISIT OUR NEW WEBSITE! MYWEEKLYTRADER.COM

Honda
OF THE
OZARKS



COMING SOON!

2022 LINEUP OF RANCHERS & FOREMANS!

ALL NEW 2022 Honda RANCHERS



2022 FOREMAN & FOREMAN RUBICON MODELS



2022 FOREMAN

2022 FOREMAN

2022 FOREMAN RUBICON

Reserve Yours NOW In Time For Fall!

OUR PRICE PROMISE: If you find a better verified price in Missouri, WE WILL BEAT IT. **GUARANTEED!**

(417)862-4686

HondaOfTheOzarks.com

2055 E. Kerr Street

I-44 & GLENSTONE EXIT 80

Visit Powersports.honda.com to view applicable destination charge amount. TRX models MSRP does not include \$420 in destination charges and \$189 Set-up/PDI charge. See dealer for details. UTILITY ATVs ARE RECOMMENDED FOR RIDERS 16 YEARS OF AGE AND OLDER. ALL ATV RIDERS SHOULD TAKE A TRAINING COURSE AND READ THEIR OWNER'S MANUAL THOROUGHLY. MULTI-PURPOSE UTILITY VEHICLES CAN BE HAZARDOUS TO OPERATE. PIONEER IS ONLY FOR DRIVERS 16 YEARS AND OLDER. DRIVER AND PASSENGER MUST BE TALL ENOUGH FOR SEAT BELT TO FIT PROPERLY AND TO BRACE THEMSELVES WITH BOTH FEET FIRMLY ON THE FLOOR. PASSENGER MUST BE ABLE TO GRASP THE HANDHOLD. NEVER DRIVE WITH MORE THAN ONE PASSENGER. ALWAYS WEAR YOUR SEAT BELT, AND KEEP THE SIDE NETS AND DOORS CLOSED. ALL MUV USERS SHOULD WATCH THE SAFETY VIDEO "MULTIPURPOSE UTILITY VEHICLES: A GUIDE TO SAFE OPERATION" AND READ THE OWNER'S MANUAL BEFORE OPERATING THE VEHICLE. FOR BOTH TYPES OF VEHICLES, ALWAYS WEAR A HELMET, EYE PROTECTION AND APPROPRIATE CLOTHING. AVOID EXCESSIVE SPEEDS, AND BE CAREFUL ON DIFFICULT TERRAIN. FOR YOUR SAFETY BE RESPONSIBLE. NEVER DRIVE UNDER THE INFLUENCE OF DRUGS OR ALCOHOL, OR ON PUBLIC ROADS. RESPECT THE ENVIRONMENT WHEN DRIVING.

Land

For Sale

Barry Co., MO • 187 +/- Acres



- Rotational grazing farm with fresh water in every pasture
- 5 access points from the county road
- Enjoyable property with multiple long-range views
- 9 miles to Purdy
- 10 miles to Cassville
- Less than 1 hour to Springfield



WHITETAIL PROPERTIES REAL ESTATE

HUNTING | RANCH | FARM | TIMBER

Brian Utecht | 417-766-5595

Brian.Utecht@whitetailproperties.com

WHITETAILPROPERTIES.COM

Missouri's Top Land Specialist in 2014,
2015, 2016, 2017, 2018 and 2019





**THE MOST COMPLETE
LINE-UP IN THE INDUSTRY**

Cutting widths from 36" to 104"



For Outstanding **Products & Service**
AGRI-ENTERPRISES

1-1/2 Miles South Of Licking, MO On Hwy 63

573-674-2203 • 1-800-653-7152 • www.agri-enterprises.com

ROUTE 66 DINING & LODGING GUIDE:
183 pages, \$5.00. 417-532-2045. (leave message) Lebanon.

**CONWAY HIGH SCHOOL BEARS
2000-2001 YEARBOOK.** \$12.50. 417-532-2045. (Leave message and phone number.) Lebanon.

STOCK MOBILE HOMES AVAILABLE:
We gottem, single and double, 3 and 4 bedroom! Call Tuffy 573-657-2176. amegamobilehomes.com

AVAILABLE STOCK MOBILE HOMES: Immediately, double wide and single, 3 and 4 bedroom 573-499-9993 columbiadiscounthomes.com

POOL TABLES: Installations, moves, recovers, repairs, accessories, etc. 573-646-1700.

WEATHERED BARN WOOD SIDING: 10" wide. 573-729-7226. www.pineridgerustic.com Salem.

**VOTED
#1 BEST
Preowned Car
Dealership**

TIM'S USED CARS
(573) 341-3828 • 1334 South Bishop (Hwy. 63) • Rolla, MO
Next to Hwy CC • www.tims-used-cars.com

<p>2014 RAM 1500 TRADESMAN Quad Cab, 2WD, 3.6 V-6, Auto, Power Equipped, 71,xxx Miles Only \$19,800</p>	<p>2007 FORD CONVERSION VAN Wheel Chair lift, 4.6 V-8, Power Equipped, 122,xxx Miles Only \$6,900</p>
<p>2010 CHRYSLER TOWN & COUNTRY TOURING 3.8 V-6, Power Equipped, 137,xxx Miles Only \$6,900</p>	<p>2008 FORD EDGE LIMITED AWD, V-6, Loaded w/ Options, 129,xxx Miles Only \$8,200</p>

LARGE SELECTION OF CARS, TRUCKS, SUVs & VANS!

**CLASSIC
EDGE**
TITANIUM HDX

Eliminate high heating bills with Central Boiler's NEW, certified Classic Edge Titanium HDX OUTDOOR WOOD FURNACE. Call today!

Outdoor Wood Furnace
CentralBoiler.com

The Classic Edge 360, 560 and 760 HDX are U.S. EPA Certified

Yarbrough Equipment Sales & Services, Inc.
9776 E. State Hwy OO • Strafford, MO
417-736-2303 • 1-866-286-6901 • www.yarbeq.com

FERTRELL ORGANIC FERTILIZER:
Free Catalog. 315-796-4370. Caulfield.

BUYING STANDING CEDAR: Minimum 6-in diameter. 417-531-0403.

LOG SIDING: 2X8 Pine/Western Cedar
www.pineridgerustic.com 573-729-7226. Salem.

AG & CONSTRUCTION REPAIRS & REBUILDS

20+ Years Experience
Cast Iron & Steel Welding
Engines • Transmissions
Electrical • Hydraulics
PTO & Drivelines
Tractors & Skidloaders etc.

VALLEY SHOP • 660-458-6747
38745 Molasses Mill Rd, Latham



Gun Show
Sat. August 21st • 9am - 5pm
Sun. August 22nd • 9am-3pm
 The Red Shed Event Center
 Exit 179 Doolittle, MO

Come to the Gun Show!
Buy • Sell • Trade

Admission \$5.00 Cash or Check (10 and under free).
For More information call 573-341-5450 or 573-465-0642

DARDEN PROFESSIONAL TIMBER HARVESTING, BUYING STANDING TIMBER: Great prices, improve wildlife habitat and improve forest health. State Certified & Fully Insured! 573-247-4808 or 573-739-1122. Salem.

USED MOBILE HOMES: Call David at VILLA HOMES IN ROLLA 573-578-8072. Rolla.

BUYING MOBILE HOMES: Call David at VILLA HOMES IN ROLLA 573-578-8072. Rolla.

OLD READERS DIGEST: \$1 each. 8am-8pm. 417-991-8190. Lebanon.

WANTED TO BUY ANTIQUE CARS: Convertible, Corvettes, unrestored, motors, parts considered. 870-324-1154. Ash Flat.

WANTED TO BUY DODGE DIESEL TRUCK: Or Toyota Tacoma. Also, buying antique cars. 870-324-1154. Ash Flat.

OLD WORLD BOOK ENCYCLOPEDIAS: Full set. \$40. Typewriter, \$30. Kenmore sewing machine \$30, VCR & movies \$45. 8am-8pm. 417-991-8190. Lebanon.

TRUE MODULARS: 30 to 60 day delivery available, 3 and 4 bedroom 573-657-7040 chateauhomes.net

HISTORY OF THE SCHOOL OF THE OZARKS: at Point Lookout. \$5.00. 417-532-2045. (leave message and phone number). Lebanon.

TINY HOMES: We gottem 573-881-3283

I BUY.....used mobile homes. Call or text 573-338-6250 or email GregS.CH@outlook.com

REGISTERED HEREFORD & ANGUS BULLS: Home raised, Some Show-Me Select Qualified. 573-701-7828. Belgrade.

CUSTOM SAW MILLING: 417-533-4607, 417-664-1195. Lebanon.



BACK TO SCHOOL BEACH BASH!

SATURDAY, AUGUST 21 • EVENT STARTS AT 3 PM

Day Traders Grill at the beach.

Bring your own beach chair.

Open to the public for swimming and beach games.

\$10 pulled pork sandwich, chips and soda.



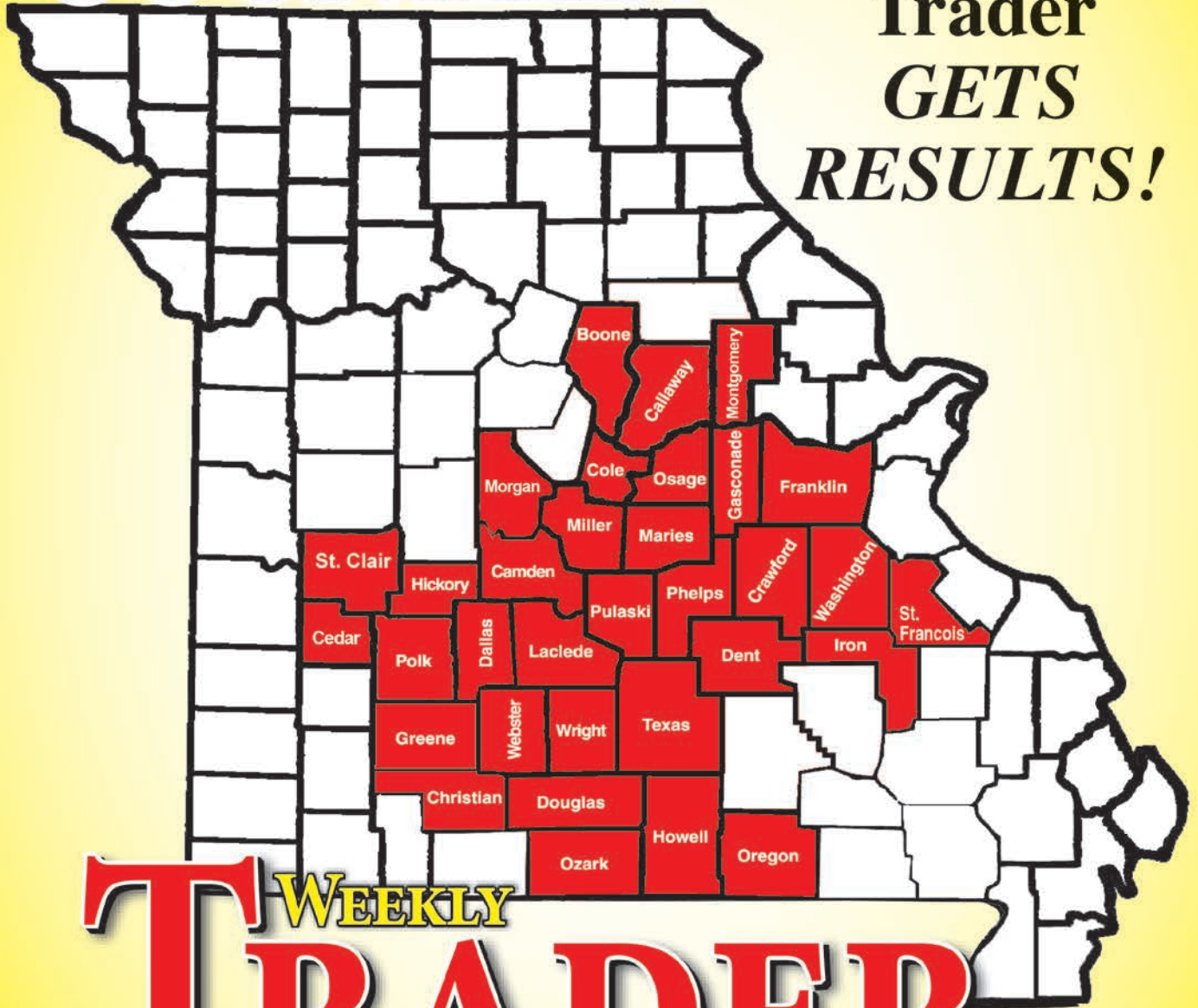
THE EXCHANGE
AT WALL STREET

417-344-1234 • Lebanon
14900 Highway KK

This is...

WEEKLY TRADER COUNTRY!

The Weekly
Trader
GETS
RESULTS!



WEEKLY TRADER MAGAZINE

Place Your Ad With Us Today!

417-532-9131 CHECK US OUT ONLINE AT: myweeklytrader.com

WANTED, TIMBER TO LOG ON SHARES: Honest, reliable, references. 417-533-4607, 417-664-1195. Lebanon.

WARSAW, MISSOURI OZARK ECHOES 1964 YEARBOOK, \$20. 417-532-2045. (leave message and phone number). Lebanon.

WANTED, TIMBER TO LOG ON SHARES: Honest, reliable, references. 417-533-4607, 417-664-1195.

GE 5,050 BTU: 100 amp, air conditioner. \$50. 573-576-7130. Park Hills.

BITTERSWEET EARTH BOOK: Edited by Ellen Gray Massey of Lebanon, 405 pages, \$9.50. 417-532-2045. (Leave message and phone number.) Lebanon.

BUSY CAMPGROUND IN THE OZARKS: Looking for a hard working couple to assist, host and general maintenance. Salary & housing included. Must be self-motivated with a good attitude. 417-588-1631. Lebanon.

2 MALE BORDER DOODLES: 1 black & white, 1 blue merle, 5 months old. 573-739-9431.

SENIOR CITIZENS WALKER: Bedside potty, potty seat with arms for commode. 8am-8pm. 417-991-8190. Lebanon.

METAL ROOFS: We repair leaky metal roofs with warranty. Also, flat roofs, very affordable, cover all state. 573-338-1148. Jefferson City.

2 ANTIQUE CURIO CABINETS: \$100 each. Call between 8am-8pm. 417-991-8190. Lebanon.

85 DODGE SHORT BED 360 4x4 \$1,200 417-532-5670.

TAYLOR TRUCKS & EQUIPMENT
417-924-2026 • 2676 Hwy. 5 Mansfield, MO
DANUSER DEALER
Intimidator Tree Puller
T3 Post Driver & Other Attachments
New Mowers! Bush-Whacker, Big Bee
Storage Containers & Dry Vans - 20' - 53'
 Farm Tires, New Semi Tires, PTO's & Parts for Rotary Mowers, Farm Tractor Implements, Plows, Used 15" Bush-Whacker Now In Stock, Discs, and More Skidsteer Attachments: Pallet Forks, Buckets, Grapples, Hay Spears, RR Ties

Bush-Whacker Heavy Duty Rotary Cutter



TRAILER PARTS & REPAIR | **BUSH-WHACKER HD, SKIDSTEER BRUSH CUTTER**

We Invite you To Come By & Look Us Over!
 Located 2.5 Miles North Of Mansfield, MO On Hwy 5

FIREARMS: Professional Repairs and Restorations. Baron's Gunsmithing. 573-363-5801, Camdenton.

DARDEN PROFESSIONAL TIMBER HARVESTING, BUYING STANDING TIMER: Great prices, improve wildlife habitat and improve forest health. State Certified & Fully Insured! 573-247-4808 or 573-739-1122. Salem.

BLACK ANGUS BULLS: from 12 to 18 months. 417-932-4026. Summersville.

SMALL SQUARE BALES OF STRAW: 417-932-4026. Summersville.



JOHN DEERE



0% FINANCING

ON ALL COMPACT TRACK LOADERS AND SKID STEERS



Some restrictions apply, see dealer for details. Offer valid through 8/31/21.



STAY-TUFF FENCE, Johnson concrete waterers, waterlines, hydrants, posts, panels, hydraulic hoses, & **GOOD FOOD**. Farmers Quik Stop. 417-991-1938. Lebanon.

MOEN KITCHEN FAUCET: Single lever, sprayer, new cartridge. \$45 obo. 636-239-2695. Washington.

6 BRAND NEW AREA RUGS: White with gray squares, fluffy. \$160. 8am-8pm. 417-991-8190. Lebanon.

WANTED: 1966 to 1971 Jeepster Commando. 816-838-6254. Lees Summit.

COOKBOOK COLLECTION: \$1.00 each. Many varieties. 417-532-2045. (Leave message and phone number). Lebanon.

CUTTING BOARD: Fits in kitchen counter top, various species of ducks. \$15.00. 636-239-2695. Washington.

TREES OF MISSOURI BOOK: \$5. **Missouri Wildlife & Nature Viewing Book**, your guide to 101 spectacular wildlife and nature viewing area, \$5. 417-532-2045. (Leave message and phone number). Lebanon.

SPECIALIST FROM "HARDSCRABBLE" BOOK: by Elbert Crittenden Traw, DDS. Life in Stoutland/Richland/Camden County area. Hardback, \$5.00. 417-532-2045. (Leave message and phone number). Lebanon.

BOOTS: Rubber and leather boots and hip waders. Men's 11, Women's 7, some insulated, \$15-\$40 obo. 636-239-2695. Washington.

18,400 BTU WHIRLPOOL AIR CONDITIONER: \$200. 573-576-7130. Park Hills.



MARGARITAVILLE
Lake Resort
LAKE OF THE OZARKS
OSAGE BEACH, MISSOURI

Join Our Team!

- \$750 SIGN-ON BONUS
- POTENTIAL OF \$400+ MONTHLY BONUS
- MEDICAL, DENTAL & VISION INSURANCE
- PAID TIME OFF AFTER 6 MONTHS OF EMPLOYMENT
- ASSOCIATE CAFETERIA
- AND MUCH MORE!

APPLY AT
MARGARITAVILLERESORTLAKEOFTHEOZARKS.COM/EMPLOYMENT




CALL DUCKS & BIRMINGHAM ROLLERS: Call color, gray, pastel, blue fawn, blacks & blue bibs. 573-702-4022. Bismark.

THE HEART OF THE SPRING BOOK. A Bennett Spring Novel by Laura L. Valenti, 161 pages. \$6.50. 417-532-2045. (Leave message and phone number). Lebanon.

POWER WASHING, CALL JET STREAM POWER WASHING FOR ALL OF YOUR GRIM TO SHINE NEEDS: We wash it all, semis, stock trailers, campers, equipment, houses, buildings and driveways. If it has grime, call today to make it shine in no time! 417-270-1075. Potosi.

PUPPIES ¾ MOUNTAIN SIEST ¼ RAT TERRIER: \$200 each 573-263-4749.



PARTS 4400 COMBINE MOTOR: Straw Walkers Raidator, 4420 Combine good machine, will part out. 636-384-6114. Wright City.

RARE CAR, 53 INDY PACE CAR CONVERTIBLE: Excellent condition, to many new parts to list. \$20,000. 636-583-4338. Union.

WELCOME TO BAD BOY COUNTRY!

STALHMAN POWERSPORTS

1387 S. BISHOP AVE., ROLLA
573-364-6944
 www.stahlmanpowersports.com



Now Hiring

Entry Level Production Technicians
 Fulton, MD & Vandalia, MD
 On The Job Training Provided
 • Excellent Wages • Full Benefits

Skilled Positions
 Mexico, MD
 • CNC Machinist • Die Designer

www.thinkhwi.com/careers



HWI

HarbisonWalker International

1950'S COLT REVOLVER DEALERS MEMORABILIA: All for \$100. Call pm. 573-764-3517.

ROLL 1958 B.U. LINCOLN WHEAT PENNY'S.: Last year for these. \$60. Call pm. 573-764-3517.

WANTED TO BUY: John Deer diesel tractor in need of repair. Call 573-768-0068.

ROUND & SQUARE BALES OF HAY: 417-345-5634. Phillipsburg.

THE AMERICAN HERITAGE PICTURE HISTORY OF THE CIVIL WAR: By Bruce Carlton, 628 pages, hardback, \$12.50. 417-532-2045. (Leave message and phone number). Lebanon.

ROLL 1959 B.U. MONTICELLO PENNY'S.: First year for these. \$40. Call pm. 573-764-3517.

L4600 KUBOTA 4WD TRACTOR: 45 hp, with loader. \$23,500.00. 417-270-1505.

CHROME WHEELS(4): 6" 6 lug, \$25 ea. Photos available. 518-275-9176. Lebanon.



Call to Order
 417-993-3017

Meadowview Dutch Market

Sale Dates August 18th, 2021 to August 24th, 2021 while supplies last!

DELI SPECIAL

Discount & Surplus Groceries • Prices Subject to Stock on Hand

LEBANON BOLOGNA REG. \$6.99 **SALE \$6.49**
COLBY CHEESE REG. \$5.45 **SALE \$4.95**

TRY our Fresh Homemade DELI Sandwiches: TURKEY, HAM, ROAST BEEF, ITALIAN, BLT'S, PULLED PORK AND BLT PULLED PORK (MADE YOUR WAY)! COME IN OR CALL to order! ALSO Custom Deli trays! Veggie OR FRESH Meat-N-Cheese!



LAST CHANCE TO ORDER!

BABY GOLD PEACHES \$29.50 BU.

BARTLETT PEARS \$27.50 BU.

All Coffee

10% OFF REG. PRICE
 (EXCLUDE FARO)



<i>Back to School LUNCH SALE!</i>	<i>Hillshire Farms</i> Brown Sugar Ham 59¢ SLICED 8OZ.	<i>Go Veggie Lactose Free</i> Monterey Jack & Cheddar 2 FOR \$1.00 7OZ.	<i>Clorox</i> Bleach \$3.50 81 OZ.	<i>Almond</i> Milk \$1.25 64 OZ.	<i>Burger's</i> Beef Sticks \$4.89 16 OZ.
-----------------------------------	---	--	---	---	--

<i>Fresh</i> Mozzarella \$1.99 16 OZ.	<i>Oscar Mayer</i> Turkey Breast \$1.49 9 OZ. Oven Roasted	<i>Gala and Fuji</i> Apples 99¢ LB. OR \$25.99 BU.	<i>Local Homegrown</i> Watermelon \$3.99	<i>Large Brown</i> Eggs \$1.49 DOZEN
--	---	---	---	---

MEADOWVIEW DUTCH MARKET
 417-993-3017 Hours: Mon-Thurs 8-5pm
 Fri 8-6pm • Sat 8-5pm
 23 Miles West on Hwy 64 • Right on T Hwy
 9 miles • Left on E Hwy 1 mile on Left

NOW ACCEPTING CREDIT, DEBIT CARDS & EBT

DUTCH COUNTRY STORE, LLC
 573-378-4395
 Hours: Mon-Thurs 8-5pm
 Fri 8-6pm • Sat 8-5pm
 5 miles East of Versailles off Hwy C on Kelsay Road

REAL ESTATE - PERSONAL PROPERTY AUCTION



Saturday @ 10:30AM
August 21, 2021
1840 State Hwy W
Marshfield, MO

Ronald and Martha Andrews, Sellers; Public Administrator Danielle Boggs as conservator

Directions: From Exit 100 in Marshfield, follow Hwy W 2 miles to sale site.



REAL ESTATE SELLS AT 10:30 AM

2000+/- sqft all brick home on 7+/- Acres • 1250+/-sqft on main level w/full basement • 2 car attached garage plus two car carport • Home is 3BD w/ 2 1/2BA • Central Heat and Air • Refrigerator, Stove, and dishwasher all sell with the home • Septic tank • Private well • Propane tank sells separately • Small shop 10x20 with concrete floor • Small storage bldg

VEHICLES (Sells after Real Estate)

2003 GMC Sonoma SLS Pickup – 4wd – 4.3 ltr – 80% Rubber • 2012 Ford Focus – 4 Cyl. 90% rubber – 55,xxx miles.

GUNS SELL AT 10:45 AM (Guns are off Site prior to Auction)

Smith & Wesson 38 B&W Special • Ruger 22 Caliber long rifle with aimpoint electronic scope • High Point JCP 40 S&W + Holster • Ruger LCP 380 auto + holster • Smith & Wesson 357 magnum • Stevens 12 gauge 3 inch • Assortment of Ammo including .38, 380, 40, 22, 357 and 12 gauge.

SADDLES

Circle Y 1 1/2 inch roping saddle • 13 inch Barrel Saddle • 14 inch saddle

EQUIPMENT, TOOLS & TRACTOR

WD 45 AC Tractor with front end loader • 6ft blade-3pt • Howse 5ft Bushhog • Craftsman Mower 2TS 7500 20HP 44"cut O-Turn • Yard Machine 5 HP weed eater on wheels • Portable Air Compressor • Stihl HS 45 Chainsaw • Poulan P3314 chainsaw • Poulan 1800 chainsaw • Husqvarna leaf blower • Troy Bilt weed eater • Husqvarna 122 C weed eater • 2 power washers • Torch kit w/tanks • 5000 Watt generator • Lincoln 225 stick welder • Wagner 770 Airless paint sprayer • 4 ft Roller • Round bale Horse Hay ring • Mower jack • Aerator/seeder combo • Die hard Battery charger • 2 portable air tanks • Fence stretchers • Large 4 wheel yard cart • Small 4 wheel yard cart • Folding extension ladder • Hi Lift Jack • Electric Pole Saw • Lot long handle tools • Grease guns • Power tools • Hand tools • Ext cords

PERSONAL PROPERTY - HOUSEHOLD

Liberty Gun Safe • Sears Chest Freezer • Dining Table & 6 Chairs • Rainbow Vacuum System • Maytag Neptune front load washer • Samsung front load dryer • Panasonic microwave • China hutch • Drop leaf table • Corner ent. Center • End tables • Glider • Wood storage cabinet • Lamps • Dressers – chest of drawers • Antique desk • 3 door cabinet • Dishes • Pots & pans • Antique dishes • Pro Form Treadmill • Nordic Track • Large office desk • Bookshelves

Real Estate Terms: Sale of real estate is contingent on approval of report of sale by the probate Division of the Webster County Circuit Court 5% of Purchase price paid down on sale day. Balance of purchase due and payable in 30 days.



Hoover Case - Auctioneer • MJ Johnson - sale manager
Have questions, Let us know • 417.859.3204 or 417.844.6020
info@caseauction.com • auctionzip.com ID#24071 • www.caseauction.com

Terms: Announcements made sale day take precedence over all printed material. Neither Case Auction or property owner guarantees the absolute accuracy of supplied information.

Estate of Edward Anthony "Buddy" Tower

Guns - Ammunition - Gun Building Equipment - Bullet Molds - Parts and more

AUCTION

Saturday, September 4, 2021 @ 10:30AM
Located at Webster County Fairgrounds • Marshfield, MO

Directions: Exit 100 from I-44 in Marshfield to first stop light (Banning Street). Turn North on Banning to Round-a-bout at Hwy CC (Hubble Drive). Follow Hubble Drive to Marshall Street. Turn South to Webster County Fairgrounds.

GUN LIST

- 12 gauge Mossberg Model 500 AG
- J Stevens 12 gauge
- Ruger 96 22 Win Mag w/ Scope
- Winchester Model 67A 22
- Revelation Western Auto 22 Model 100
- Marlin 25 mm 22
- Stevens 75 22
- Stevens 22 Model 1915
- Marlin Model 782 22 Mag
- SN ROMARM SAR-1 Model (AK)
- CN ROMARM WASR 10
- Model 514 22 Remington
- Winchester Model 70 270 Winchester w/ Scope & Case
- New England Partner Model SBI 12 gauge
- Patten Western Field Model 59 22
- SKS CGA 7.62x39 W/ Bayonet
- CS ZAVODI NA
- Marlin Model 336 30-30
- 44 Mag Model 1894
- Marlin Model 336 30-30
- 45-70 Marlin
- OPMS AR Model LR-308
- Marlin 1894 Model 44 Mag
- Marlin 1894 Model 357 Magnum
- Bush Master Model XM15-E25
- Marlin 1895 SS Model 45-70
- Marlin 1894 C5 Model 357 Mag
- Remington 721 Model 300 HMH Mag
- Marlin 1894 44 Mag
- Marlin 336CS Model 35 Remington
- Moss Berg 590 Model 12 gauge 20"
- CN ROMARM SAR-1 (AK) 762-39
- Marlin 336CS 30-30
- Marlin 336 Model 30-30
- Lakefield 6413 22
- Stevens 62 Model 22 > One Case
- Moss Berg 835 12 gauge Camo
- Ruger 10-22 Carbine
- Marlin Original Golden 39A 22
- Star Model RB 30-30
- Moss Berg Model 151K 22
- Ruger 10-22 Carbine 22
- Henry 22 Lever Action
- Remington 721 270 Winchester
- Savage 110 Model 22 2250
- Browning 30-06 Belgum Semi Auto
- High Standard The Plinker 22 M101 Model
- Ruger MK3 22 Caliber IN BOX
- Black Powder Fil.i Pietta Italy 44 cal.
- HelweIn 9mm w/ Holster
- Colt MK 3 Trooper 357 Mag
- Norinco 1911 A1
- Auto Ordinance 1911 A1 US ARMY 45
- Auto Ordinance 1911 45
- Smith/Wesson Highway Patrolman 357 CTG Model 28
- Browning Buckmark 22 IN BOX
- Ruger New Model Single 6 22 IN BOX

- AR15 UNMARKED 5.56 Black "Hand Made"
- AR10 .308 Win Homemade Flat Top w/ Short Stock and Silver Receiver
- AR10 Knurl Flat Top .308?
- AR10 .308 Flat Top w/ Scope
- AR10 .308 Flat Top w/ Halo Graphic Sight
- AR15 5.56 Flat Top w/ Flip Up Sight & Handle
- AR15 Stainless Barrel Flip Up Sight - Alum Receiver
- AR15 Alum Receiver Holo Sight
- 5.56 AR15 Stainless Fluted Barrel Alum Receiver w/ Holo Blood Sight
- AR15 223 WYLDE FU Sights
- AR15 5.56 Scope

AR 15 and AR 10 will be offered subject to final approval of authorization to auction on or before auction day by proper government authority.

Reloading Scales - Brass-Bullets Ammunition - Powder - Bullet Molds Dies - Manuals - Primers - Scopes - Gun Case - Slings - Holsters - Lead Melting Pot - Brass Tumbler - 80% AR Lowers - Reloading Presses - Magazines - AR Parts 10+15 - Old Military Items - Hunting Blind - Black Powder Supplies - Gun Parts - Gun Cleaning Supplies - Hunting Gear - Books



Real Estate & Auction Services

Hoover Case - Auctioneer • MJ Johnson - sale manager
 Have questions, Let us know • 417.859.3204 or 417.844.6020
 info@caseauction.com • auctionzip.com ID#24071 • www.caseauction.com

Terms: Announcements made sale day take precedence over all printed material.
 Neither Case Auction or property owner guarantees the absolute accuracy of supplied information.



ONLINE ONLY EQUIPMENT AUCTION

Internet Bidding closes at 11:00 am CST
THURSDAY, AUG. 26 2021

www.SextonAuctioneers.com

BID NOW!

Much more equipment online!

Over 150+
 Skid Steer
 Attachments!



2017 Case TR340
 Skid steer

2014 John
 Deere 333E



2017 Peterbilt 579



2015 Peterbilt 579



2013 Western Star 4700 SF



2007 Peterbilt 379



1994 Peterbilt 379



2000 Peterbilt 379



1993 Peterbilt 379



2003 Western Star 4900 Daycab



1992 Peterbilt 375 log loader



2000 Sterling L8500
 Dump Truck



2001 International 4900
 Plow Truck



2015 Wilson Livestock Trailer



2010 Case 450 Series 3
 Skid Steer



2009 Case 450 Series 3
 Skid Steer



2010 Case 450 Series 3
 Skid Steer



1990 John Deere 643D feller
 buncher



1996 John Deere 548G Skidder
 (x2)



1994 John Deere 548E



Timberjack 240D



1998 Case 580 Super L



1998 John Deere 410E Backhoe



John Deere 555G Crawler
 Loader



International 1086 tractor



Kubota L2500 tractor and
 bushhog



2005 Workhorse Intruder M
 391 Class A RV



2016 Ford F150 King Ranch



2012 Chevrolet 2500



2011 Ford F-550



1968 Chevelle



2019 PJ gooseneck trailer



CALL TYLER SEXTON TO SELL YOUR EQUIPMENT!

www.SextonAuctioneers.com

For any questions call our Office: 314-529-0124

Auction Contacts Tyler Sexton | Gary Sexton

5182 US Hwy. 63 • Pomona, MO • email: Sales@SextonAuctioneers.com

**Next
 Auction**

OCTOBER 28

Sam
CRAWFORD AUCTION SERVICE LLC

As I have moved to assisted living, will sell the following in Bolivar, MO at 611 N. Claud St.
 Watch For Auction Signs

WEDNESDAY, AUGUST 25TH, 2021 - 10 AM

REAL ESTATE - HOUSEHOLD - ANTIQUES - MISC.



Real Estate Sells First @ 10 am

3 Bedroom, 2 bath, brick 2400+ sq. ft. home. Double car attached garage, all electric, 2 yr. old heat pump, fireplace. Built in 1974. Clean, well kept. Built-in oven, counter top range, dishwasher stay. 100x131' lot, '20 taxes were \$872.30. A good home in a good location. Serious seller, make plans to be a buyer. Shown by appointment with auctioneer.



Household

- Couch & Chair
- Couch & Loveseat
- 3 Glider Rockers
- 4 Pc. 4 Post Bedroom Set, Queen
- 4 Pc. Antique Bedrom Set, Full
- Daybed
- Wood Dining Table, 6 Chairs
- Dish Hutch
- Breakfast Table & 4 Chairs
- Barrister Bookcase - Reprod.
- Wood Rocker
- Whirlpool Double Door Refrigerator, Stanless, Less Than 1 Yr. Old

- Amana Dryer, Newer
- Hotpoint Washer
- Sanyo Color TV
- Entertainment Cabinet
- End Tables
- Lamps
- Microwave, Roaster, Toaster
- Oven, Other Small Appliances
- Assorted Pots & Pans
- Utensils
- Lot Coffee Cups
- Large Set Correlle
- Other Dishes
- Topaz Vision Machine
- Decorator Plates
- Pictures & Wall Decor
- Fans, Heaters

- Card Table & 4 Chairs
- Small Bookcase
- Curved Metal Plant Stand
- Wicker Desk
- Antique Flat Top Trunk
- Handmade Storage Trunk
- Handicap Items
- Patio Table & 4 Chairs
- 2 Platform Porch Swings
- Christmas Decorations
- Other Miscellaneous

Tools & Misc.

- 6' Aluminum Step Ladder
- Aluminum Extension Ladder
- Small 2 Tier Toolbox
- Some Wrenches, Tools



Marian Rice

Sam
CRAWFORD LLC
Auction Service



TERMS: Cash or good check. Nothing removed until settled for. Not responsible for accidents. Lunch available. Statements made day of sale take precedence over printed matter. All items sell as is. No warranties given or implied.

417-998-6629
 Cross Timbers, Mo.

CrawfordAuctionService.com



Sam
 417-328-9137

Chase
 417-399-1904

Chance, CAI
 417-298-1751

Tom Poynter
 Jack Lancaster

ABSOLUTE COMMERCIAL REAL ESTATE AUCTION

FRIDAY, AUGUST 27, 2021 - 10:00 AM

1461 East Seminole • Springfield, Mo 65804



REAL ESTATE:

This property has a building that is approx 3959 sq ft +/-, that was previously a daycare, Paved and gravel parking lot, and has another building with 650 sq ft +/- that needs repair.

OPEN VIEWING

August 22, 2021 from 2:00-4:00 PM

Legal: Melrose place lots 186 & 187 & 188

Terms: 10% Down day of auction with balance due at closing. Possession at closing with closing in 45 days or less from auction date. Buyers Premium 10%

INVENTORY LIST:

The outside of the truck measures 24 feet in length and is 10 feet in height.
The inside of the truck measures 7 feet 8 inches in width and the length is 16 feet and 6 feet in height.
Tires are approximately 3 years old with much good tread left.
Medical cart
Laundry shelving unit
Piano
Piano bench
Heart shelf
Corner shelf
Computer wall desk
5 foot wide table
5 foot white plastic table
Window with screen
Wall divider
4 drawer wood dresser
Hutch
Blue bean bag
Framed picture of a barn
Framed picture of Monet
Projector screen
Two metal tables with wood top

Gray filing cabinet
Three window screens
Metal desk with five shelves
Dvd player
Small table
Reliablit 37 5/8 width by 69 inch height double pane window with screen
Pallet of miscellaneous restaurant paper products, mostly plates
Pallet of disposable cups
Pallet of insulated cups
4 plastic wagon wheels
Display cardboard cow
Green Bar typewriter
Box of misc. office supplies
Lettuce chiller
Hat box
Wooden tv tray
Case pf pump delivery set
LG television- estimated 35 inch
Bag of costumes
Contractor pack
Stack of Halloween stickers
Feeding pump (medical)
File holder for wall

Upright walker therapy
Reading magnifier
Box of computer accessories
Walker
Two printer/copiers
EMT bag
Microwave
Christmas décor
Meat slicer
Misc. home improvement items
Older computer towers
Walker
Floor finish
Oxygen bleach powder
Metal folding chair
Maroon padded chairs with arms (2)
Gray padded chairs (2)
Two white shutters
Wooden bookcase with two shelves
Glass candle holders (30)
Six pack apple cider scented votive candles (3)
Two brown circular tables with foldable legs
Brown circular table
Small gray table
L shaped brown desk with seven drawers

Rectangle metal desk with wooden top, four drawers
Brown wooden hutch/office storage
Peg board
Metal desk with no shelves, keyboard pullout
Two large cabinets
Walker
Lockers
Utility sink
Large cabinet
Small cabinet
Two boxes of moving straps
Two refrigerators
Large cabinet
Wooden shelves
Steam mop
Box of laminate flooring
American flag
Three desks of varying sizes
Box of old paint
Yard tools
Paint brushes
Mops
Weed or insect sprayer
Light bulbs
Refrigerated display case
Three clipboards



FOR MORE INFORMATION GO TO WWW.EASTERLYAUCTIONCO.COM OR CALL EASTERLY'S AT 417-833-9494



Mike Easterly Auctioneer • 417-833-9494

Not Responsible for accidents or theft. For more information call: Easterly Auction Company, Springfield, MO. Auction Terms: Bank Letter Of Credit Required. Visa, Mastercard, Cash, Cashier's check or checks with proper I.D. Announcements day of sale take precedence over printed material. Auction Notes: Although information is obtained from sources deemed reliable, auctioneer makes no warranty or guarantee expressed or implied. Buyers should themselves take the opportunity to make their own inspection prior to sale.

www.EasterlyAuction.com • auctionzip.com ID#14770

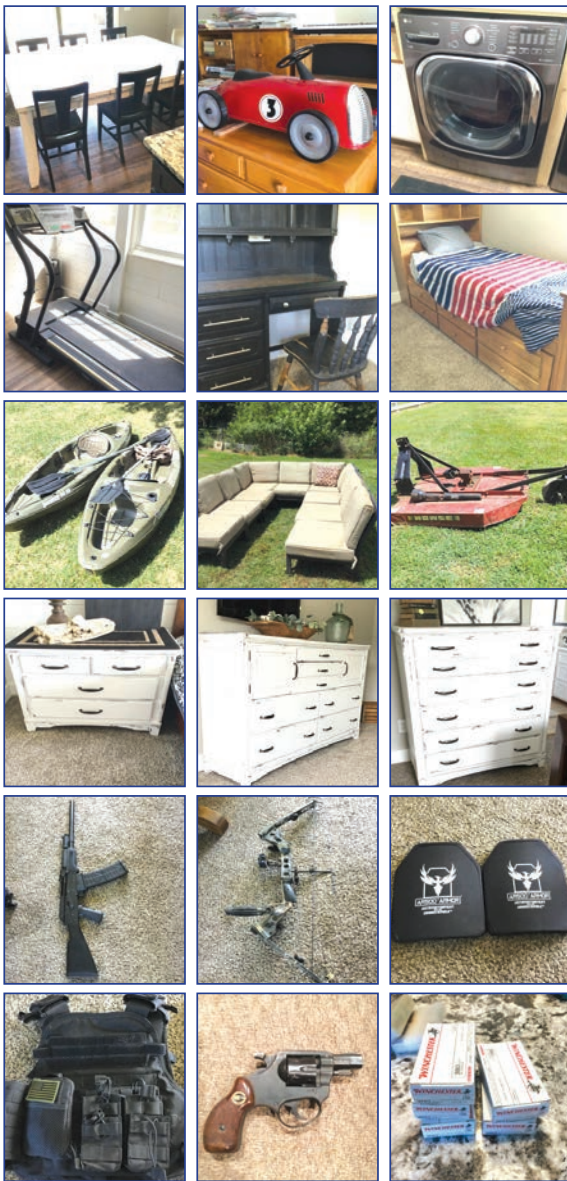


PERSONAL PROPERTY AUCTION

SATURDAY, AUGUST 28 - 10:00AM

211 Murray Street • Pleasant Hope, MO

INVENTORY LIST



- | | | |
|--|------------------------------------|--|
| Kitchen table & 8 chairs | Desk & chair | Volleyball net |
| Horse picture | Granite top table | Tree stand |
| Kitchen shelves- glass canisters, dishes | Cow head | Barbed wire |
| Kolpin ATV toolbox | Book shelf | Metal shelves & contents |
| Misc pans | Step ladders | GMC saw |
| Old school desk | Twin bed | Chicago drill |
| Flatware | Night stand | Skilsaw saw |
| Nice metal toy car | Shelving unit with baskets | bottles and tags and accessory |
| Nice dresser | Frigidaire upright freezer | Crossing sign |
| Bubblegum machine | Cow picture | Live trap |
| Kitchen utensils | Nice metal Airplane Sign | Howse 5ft Brush hog |
| Pots & pans | Trundle twin bed | JTS AK shotgun 12 gauge |
| Kitchen | Metal airplane | Rem 700 270win |
| Alexis Keyboard | Black desk & chair | Jimenez arms 380 |
| Kitchen small appliances | Lots of shelving | Centerpoint 4-14 40 scope |
| Miscellaneous toys | Sofa table | Parker Phoenix 32 bow |
| LG washer & dryer | 2 white bedside tables | AR500 armor level 4 protection |
| Laundry decor | Bedside decor | Plate carriers |
| Extension cords | Hanson hanging scale | Single point Slag |
| Laundry supplies | King bed with head & foot controls | AR mags |
| Craft supplies | Picture frames | Pistol holster |
| 7 foot Louisville latter | Large white chest of drawers | Tactical helmet |
| Puzzles | White chest of drawers | Ammo cans full of 22 shells |
| Serving items & sewing machine | Bedside decor | Ammo can full 5.56 |
| Digital scales | Pot with wheat | 50 round AR drum mag |
| Stools | Master bath decor | 5 boxes of green tip 5.56 |
| Black bench | High table & 4 chairs | Winchester 22 |
| DeWalt reciprocating saw | Windmill hanging | LED headlight |
| Games | Aluminum ladder | Round coffee table |
| Bostitch Brad nailer | Husqvarna tiller | Winchester 22 Long rifle |
| Chest of drawers | Linens | Winchester 380 ammo |
| Sofa & 2 chairs | Gas fire pit | 270 ammo |
| Irwin Quick grips | storage shelves | 223 hornady spearpoint |
| Treadmill | Firewood rack | 3" 20 gauge turkey loads |
| Black mirror | Schwinn bike | 20 gauge shotgun shells |
| Desk | Parker plastic storage box | 22 shotshells |
| Bostitch Air compressor | 2 Folding chairs | Robin Hood no 1 22 short |
| Desk chair | Lodge skillet | Phoenix arms 25 caliber pistol |
| Troy Bilt power washer | Horseshoes game | RG 22 Long rifle pistol |
| Metal shelves | Schwann bike | Cap and ball single shot pistol |
| DeWalt power inverter | Camping stove and supplies | Atlas 6.35mm pistol |
| Dehumidifier | Metal table | KelTec 380 pistol |
| Cobalt tablesaw | Coleman Lanturn | Smith and Wesson 38 Special |
| Misc household | Metal shelving & potting supplies | Bodyguard |
| Sundolphin Kayaks | Wheelbarrow | Remington 12 gauge 3 inch model 870 |
| Dream catcher | Miscellaneous wire and extension | Charles Daly 3 inch Semi automatic 12 gauge |
| Headers | Bike helmets | Remington model 597 22 LR national wild Turkey |
| Two wheel dolly | Post driver | Mossberg model 715T 22 Long rifle |
| Chest of drawers | Life jackets | Henry repeating arms lever action 22 Long , Long |
| Delete | 3/4 inch drive socket set | Knives |
| Bosch saw | Stijl br200 leaf clover | Vintage US Air Force Hoster costume jewelry and more |
| Twin bed | Critter cage | |
| Battery charger | Magnum project painter | |
| Delete | Outdoor seating set | |
| Bed side table & misc | Craftsman bench grinder | |
| Several seashells | Fishing poles | |
| Delete | | |

FOR MORE INFORMATION GO TO WWW.EASTERLYAUCTIONCO.COM OR CALL EASTERLY'S AT 417-833-9494

EASTERLY

AUCTION CO.

Mike Easterly Auctioneer • 417-833-9494

Not Responsible for accidents or theft. For more information call: Easterly Auction Company, Springfield, MO. Auction Terms: Bank Letter Of Credit Required. Visa, Mastercard, Cash, Cashier's check or checks with proper I.D. Announcements day of sale take precedence over printed material. Auction Notes: Although information is obtained from sources deemed reliable, auctioneer makes no warranty or guarantee expressed or implied. Buyers should themselves take the opportunity to make their own inspection prior to sale.

www.EasterlyAuction.com • auctionzip.com ID#14770



VISIT WEBSITE FOR PICTURES **EARLY START**

AUCTION

Vehicle ~ Camper ~ Household ~ Outdoor & Misc. ~ Shop Items ~ Farm Equipment

SATURDAY, AUGUST 21ST- 9:00 A.M.

Location: 1944 Clouse Road, Macomb, MO **Directions:** From Hwy 60 Macomb Exit go 2.5 miles West on Hwy 60. Turn right on Cravens Rd. go 3/10 mile to Clouse Red. go 8/10 mile to Auction on Right.
WATCH FOR CHADWELL AUCTION SIGNS. **Payment System:** Cash • Debit Card • Credit Card (Debit / Credit Card Fee Will Apply) Checks approved if known by auction company. **VISIT: WWW.CHADWELLAUCTIONS.COM**

Bob DAVIS



1941 4 door PLYMOUTH SEDAN w/ 350 Chevy Motor & Turbo



2004 26' DUTCHMAN CLASSIC CAMPER (needs some work)

OUTDOOR ~ MISCELLANEOUS

Murray 22" Mower • Craftsman 2000 PSI Power Washer • Stihl 024 Wood Boss Chainsaw • Husqvarna 136 Chainsaw • Husqvarna 141 Chainsaw • Poulan Wildcat Chainsaw • Approx 45 Metal Folding Chairs • (4) 6' Folding Tables • Plastic Storage Shelves • Large Metal Cabinet • Linn 6 Sound System w/Amp & Foot Control • Peavey Back Stage Amp • GE Family Size Grill (NIB) • Cedar Lumber • Hand Sprayer • Wooden Step Ladder • Long Handle Tools • 2 Boxes of Air Framing Nails • Plywood Clips • Galvanized Plumbing • Raised Metal barn Tin (new) • 2x8, 2x6, 12ft CCA Lumber • Fishing Poles • Wash Tub • 16' Covemate Boat Cover (NIB) • Wheel Barrow • Other

FARM EQUIPMENT

6' 3pt Agri Cutter Brushhog • 3pt Boom • 3pt 6' HD Bushhog Angle Blade • 6' Pull Type Keen-Cutter Bushhog • Other



SHOP ITEMS

Lincoln 225 Welder • Peg Board • Vermont American Rota Table • 2 Wheel Dolly • Power Washer • Wood Working Vise • Grease Guns • Cut Off Saw • 60pc Drill Bit Set • Shop Vac • Swing Back Boat Trailer Jack • Bosch Nail Guns • Partial Rows of Electrical Wire • Porta Cable Drill • Commercial Mop Bucket • Rail Road Push Cart • Wrenches • Sockets • Screwdrivers • Wood Clamps • Levels • HD Drop Cords • Toe Hitches • 3 Tier Cart w/Vise & Castors • Torpedo Heaters • Porta Cable Door Plane • Sheet Metal Hoist • ACS 225 Arc Welder • 2.5 Ton Floor Jack • Acetylene Torch Set w/Car • Drill Press • HI Lift Jack • Battery Charger • Air Compressors • Porta Cable Router • Porta Cable Routers • Craftsman 5hp Air Compressor • Carpenter Work Bench • Hypertherm Plasma Cutter • Oxygen Bottles • Large Lot of Tool Boxes • 10" Table Skil Saw • Belt Sander • Receiver Hitch • Dovetail Jig • Drill Bits • Miter Saws • Large Lot of hand Saws • Other

HOUSEHOLD

Couch • Love Seat • Wall Mirror • Foyer Table • Upright Maytag Freezer (like new) • Hamilton Beach Blender • Floor Fan • Other



AUCTIONEER'S NOTE: Something for everyone at this auction! Good quality merchadise with a large variety. **Thanks, Shawn**
DRIVER'S LICENSE OR PICTURE I.D. REQUIRED • TERMS: CASH OR APPROVED CHECK **OR**

Chadwell
 Auction Service, LLC
 www.chadwellauctions.com

Auctioneer: **SHAWN CHADWELL**
 417-830-0209
 Ringmen: **Weston Chadwell ~ 417-349-0727**

Clerk: **SHELLY CHADWELL**
 Cell: 417-880-8449
 Cashiers: **Shawn Irby • Marla Chadwell**
Kati Roberts • Emily Chadwell

PROFESSIONAL SALES MANAGEMENT
 LUNCH WAGON • APPRAISAL SERVICE • RAIN OR SHINE
 All announcements made day of sale take precedence over any printed matter. Not responsible for lost or stolen merchandise. Not responsible for accidents.



BID NOW!

ONLINE AUCTION

BID NOW! BIDDING CLOSES AUGUST 24



Item Preview Dates:

Saturdays, August 7 & 14 (8AM-Noon), Monday, August 23 (8AM-5PM)
 Tuesday, August 24 (8AM-until the auction closes)
 Other times available by appointment

Item Preview Location:

4177 HWY VV, Berger, MO 63014

420+ LOTS



All items sell regardless of price. All items start at only \$1.



Tractors & Construction Equipment

- 2019 Bobcat TL360.60 Ag telehandler
- 2013 Cat TH407C AG telehandler
- 2018 Kubota M6S-111 tractor
- 2013 Bobcat E42 excavator
- John Deere 450-B crawler loader
- 2004 Ditch Witch 3610 trencher backhoe
- 2005 Thwaites 6-ton site dumper
- 2002 Thwaites 4-ton site dumper
- 1998 Genie Z45/22 knuckle boom man lift
- 2004 Takeuchi TL130 skid steer loader
- 2016 John Deere 4044R tractor w/ loader
- Mitsubishi MT4501 tractor w/ loader
- International 444 gas tractor
- John Deere 3020 gas tractor
- Massey Ferguson 245 diesel tractor
- Farmall Model A tractor
- Massey Harris 44 tractor
- Ford 8N tractor w/ sickle mower

Trucks, Vehicles, and Trailers

- International 1420 combine w/ 13' grain head
- 2013 Dodge Ram 2500 4x4 diesel
- 1978 GMC 6500 grain truck
- 1978 International 1750 grain truck
- 1981 Chevrolet C60 dump truck
- 1986 Ford F-250 4x4 XLT
- 2006 Ford F-250 service truck
- 1994 Chevrolet Caprice Classic
- 1987 Ford F-150 4x4 XLT
- 1999 Ford F-150 4x4 extended cab
- 2009 Hyundai Tucson
- 2001 Dodge Ram 2500 4x4 Diesel
- 2000 13' pup dump trailer
- 1990 8'x24' GN flatbed trailer
- 1991 Travelong 26' stock trailer
- 1997 17' flatbed trailer
- 2002 Forest River T22 camper
- 20' GN encl. cargo trailer
- 1986 6.5'x16' GN utility trailer
- 2008 16' flatbed utility trailer
- 1985 8'x20' flatbed trailer
- 1981 16' dump trailer
- 2001 GMC Sonoma SLS 4x4
- 2003 Chevrolet 1500 4x4
- 1991 Dodge Stealth RT
- 1951 Dodge 1/2 ton pickup
- 1964 Ford 3/4 ton pickup

UTVs, ATVs, Boats, and Motorcycles

- 1997 Chrysler Town & Country
- 2001 Ford F-150 crew cab 4x2
- 1998 Chevrolet S10
- 1981 Ford F-350 w/ stake bed
- 2020 Can-Am 1000R Commander XT UTV
- 1977 Ozark Sport 16' ski boat
- 1990 Bass Tracker 16' bass boat
- 1993 Polaris 250 4x4 atv
- 2002 Honda Rebel motorcycle
- 1980 Suzuki GS750 motorcycle
- 1975 Kawasaki 100 motorcycle
- 1972 Honda 100 motorcycle
- 1971 Yamaha 90 motorcycle
- 1968 Honda 350 motorcycle
- 1994 Polaris 300 4x4 ATV
- Yamaha Kodiak 450 ATV
- 1996 Polaris 500 4x4 ATV
- Honda Rancher ES ATV
- 1984 Yamaha 225DX three wheeler

Farm Equipment

- John Deere 915 V ripper
- John Deere 457 round baler
- John Deere 980 27.5' field cultivator
- 2016 Travis HSC2000 seed tender cart
- John Deere 1518 15' brush hog
- John Deere 1018 10' brush hog
- John Deere 1008 10' brush hog
- Howse 10' pull type brush hog
- Mayrath 10'x71' grain auger
- Westfield 10'x71' grain auger
- 40' shipping container w/ side doors
- 12' storage container
- Unused portable restroom/shower unit
- Unused skid steer attachments
- Unused portable hoop shelters up to 40'x80'
- B & B SK2005R 200 gallon sprayer
- Ritchie Bestway 750 gallon sprayer
- David Bradley 75 manure spreader
- NH 853 Fastnet round baler
- New Idea 212 manure spreader
- Gehl silage wagon
- Vermeer 605B round baler
- John Deere 910 grain cart
- John Deere 400 grinder mixer
- Kewanee 1010 18' wing disc
- Cimarron 10-wheel v-rake
- AC 20' wing disc
- 20' OMI pasture harrow
- Vermeer 8 wheel v-hay rake
- Kuhn Knight 8124 manure spreader
- Killbros 350 gravity wagon
- John Deere 8-wheel V-hay rake
- IH horse drawn manure spreader

NH Super 717 silage chopper

- NH 1002 Stackliner bale wagon
- NH 472 & 478 7' haybines
- New Idea 14A manure spreader
- New Idea 323 1-row corn picker
- JD 756 4-basket hay tedder
- JD 38 silage chopper w/ 2-row head
- Unverferth 26' harrow
- NH 327S manure spreader
- Unused 20' decorative gates
- Edge WX430 skid steer log splitter
- Cimarron 200 gallon 3-pt sprayer
- 3-pt grader blades
- 3-pt brush hogs
- 3-pt finish mowers
- 2-row corn planters
- Hesston 3-pt 4-basket tedder
- 3-pt sickle mowers
- Danuser 3-pt post hole diggers
- 2-4 bottom plows
- 6'-15' rotary hoes
- 2, 4 & 6 row cultivators
- 3-pt discs
- 6' grain drills
- John Deere 7' wheel disc
- AC 6' pull type brush hog
- Calhoun Silage wagon
- Ford 19-209 one arm loader
- JD 45W front loader
- 2 squeeze chutes w/ headgate
- Tracks for Gehl skid steer
- Cat. 2 quick hitches

Lawn & Garden

- John Deere Z465 zero turn mower
- Land Pride Razor ZR52 zero turn mower
- John Deere 330 & 318 riding mowers
- Husqvarna YTH150 riding mower
- Toro LX425 riding mower
- Troy-Bilt sickle mower

Shop Equipment & Miscellaneous

- Antique Aeromotor windmill
- Unused workbench tool boxes
- Husqvarna, Stihl & Echo chainsaws
- Miller AEAD-200 LE welder/generator
- Miller Tig-Rig 56 rig welder
- Unused Caddy Annexe wood furnace
- Best CF464 concrete power trowel
- Unused 10' drive over cattle guards
- HD oxy/acetylene torch cart w/torch
- Porta-Cool 2000 evaporative cooler fans
- 8'x9'6" steel service body
- JD 359 6-cylinder diesel engine

More items listed at SchneiderAuctioneers.com

SCHNEIDER Auctioneers LLC
 573-834-2207 • 573-291-8075
www.SchneiderAuctioneers.com

STORAGE BUILDING - MOWER - TOOLS FURNITURE - COLLECTIBLES - MISC AUCTION

SATURDAY AUGUST 21, 2021 • 10:00 AM

510 MCNATT AVE AURORA, MO FROM HWY 60 & HWY 39 (N. ELLIOTT) GO NORTH 2 MILES ON N ELLIOTT,
TURN LEFT ON E TYNDALL ST, GO 1/10 MILE TURN RIGHT ON MCNATT AVE TO AUCTION ON RIGHT. FOLLOW SALE SIGNS. BREAKFAST & LUNCH AVAILABLE

**FOR PICTURES SEE WEBSITE OR AUCTION ZIP.COM TO PREVIEW CALL 417-830-0153
REAL ESTATE HAS BEEN SOLD BY MELTON AUCTION & REALTY**

STORAGE BUILDING

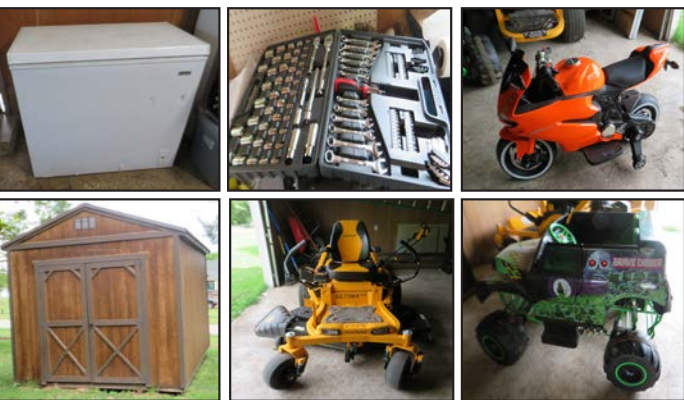
10' X 12' STORAGE BUILDING LESS THAN 3 YR OLD

MOWER-TOOLS

CUB CADET ULTIMA ZT3, 60" CUT, 24 HP KAWASAKI 40 HRS—CUB CADET SC300E, 159 CC, ELECT START PUSH MOWER—STIHL FS 90R WEED EATER—HUSQVARNA 125B GAS BLOWER—HOMELITE HEDGERS—STIHL MS 391 CHAIN SAW LIKE NEW—WHEEL BARROW—6' ALUM STEP LADDER—18' EXT LADDER—CHARGE IT 12 V BATTERY CHARGER ON WHEELS—HYPER TOUGH 137 PC MECHANIC TOOL SET—STANLEY TOOL BOX—WERNER BENCH—DEWALT GRINDER & DRILL—TORELLI 45 PC STUBBY SET—SEMI TRUCK TRAILER TARPS—BOSCH ROUTER RA1171—CAMPBELL HAUSFELD 3 GAL 110 MAX PSI AIR COMPRESSOR—STANLEY SAW HORSES—CRAFTSMAN ROUTER—BOSCH ROUTER—PORTER CABLE SKIL SAW—PORTER CABLE 10" COMPOUND MITER SAW—RYOBI 1 1/4" SHEET SANDER—PORTER CABLE ORBITAL JIG SAW—MILWAUKEE SAWZALL—BOSTICH 1/2" HAMMER DRILL, LIKE NEW—B&D 3" X 21" BELT SANDER—SUNER MECHANIC STOOL—KREG JIG K4—METAL 5' SHOP RACK—DYNA GLO 80,000 BTU KEROSENE BLOWER—2 1/2 TON FLOOR JACK—RIDGID SHOP VAC—EXT CORDS—GAS CANS—SEVERAL BOOMS—LONG HANDLE TOOLS—WOOD PLANE—LEVEL—RYOBI BITS—YUTRAX LAWN MOWER RAMPS--(2) COMMERCIAL FANS

FURNITURE

SAMSUNG FRONT LOAD WASHER/DRYER 4 MO OLD—GE REFRIGERATOR—IDYLIS CHEST FREEZER—BOMBAY MARBLE TOP CHEST—ITALIAN LEATHER SECTIONAL W/ELECTRIC RECLINERS--(2) LIGHTED CORNER CURIO CABINET—COFFEE TABLE—MEXICAN HACIENDA STORAGE TV CABINET & TABLE—ANTQ NORTH WIND BENCH--(2) COWHIDE STOOLS & BENCHES—LG DESK—JEWELRY CABINET—TABLE LAMPS--MONET WALL PICTURES—CANVAS OIL PAINTINGS—SEVERAL PICTURES & PAINTINGS—SELLING OF THE WHITE STALLION PRINT—LG CHEST—AREA RUG—CALF SKIN RUG—WALL ANGEL—RUGS--5 PC CARD TABLE SET



COLLECTIBLES-DOLLS

NAO LLADRO SEVERAL PC'S—CAPODEMONTE--ORIENTAL CHESS IVORY PC'S—ORIENTAL HORSE—TERRACOTTA SERPENT/DAGON—MUSICAL CAROUSEL—BRASS FOO DOGS—INCENSE BURNERS—PORCELAIN FIGURINES—INDIAN ARTIFACTS—TEA SET—REMINGTON BRONZE—COLLECTION OF ANGELS, BRADFORD EXCHANGE, CRYSTAL, IRISH, INDIAN—GARGOYLES--CLOISSONNE VASES—ORIENTAL PC'S—BOW & ARROW FOX SKIN—HAT BOX—TEA SET—WEDGE WOOD DISHES—35-50 DOLLS INCLUDING BETTY JEAN CARTER, AMERICAN, WOODEN, BUILD A BEARS BATTERY POWERED KID'S CARS-REMOTE CONTROL PLANES BATTERY 1628 PERFECT MOTORCYCLE—BATTERY GRAVE DIGGER—FLIGHT SIMULATOR RF 7.5—RC CONTROL, HELICOPTER, JET, FLY BAR LESS GPRO SYSTEM, TREX 550L DOMINATOR

MISC

BLACK POWDER PISTOL-- PRO FORM TREADMILL 305CST—HELMETS--TREE STAND—CHRISTMAS TREES—DOG CRATES—IGLOO COOLERS, LIFETIME COOLER—SURGE BOYS BIKE—GALVANIZED TUB—CANISTERS--1 LOT SM KITCHEN APPLIANCES



MELTON AUCTION & REALTY CO LLC



www.MeltonAuction.com | Roger@MeltonAuction.com
 Roger Melton | Nixa, Mo | 417-830-0153 or 417-725-1801
 Brad Cole | Nixa, Mo | 417-840-2950
 Tanner Foster | Galena, Mo | 417-840-5519

R&R AUCTION SERVICE

ABSOLUTE AUCTION SATURDAY AUGUST 21 • 9AM

28 Mustang Drive, Buffalo, MO

REAL ESTATE

1600 square feet 2 bedroom 1 bath house on 5 fenced acres with pond. 2 living rooms, large laundry/pantry, large enclosed porch, large well house, garage with back storage and lean to. Large producing pecan trees in yard. This fixer upper has a lot of potential in a prime spot near Buffalo, MO

It will be sold Absolute to the highest bidder at noon. Household appliances, Hot tub, Propane tank will sell following.



After 40 years in this same location Ron & Wilma Place have decided to become full time RV residents and must sell everything.

This merchandise includes but is surely not limited to the following...

250 gallon propane tank, oil lamp, lead crystal, Emerson home stereo, Emerson DVD player, DVDs, Native American and Western decor and figurines, entertainment center, crock butter churn, painted saw, Village pottery cream and sugar, shelving, swag lamp, coffee table, step stool, chair, sofa, wicker planter, runners, throw rugs, fans, heater, bubble gum machine, floor lamp, Keurig, fireplace set, mirrors, pictures, wall hangings, CA king bed, chest of drawers, dresser, night stand, file cabinet, gun rack, quilt rack with shelf, sewing machine, queen size bed, cedar chest, 4 flat screen tv's, cabinet, GE microwave, Rogers silverware set, Mason jars salt and pepper set, several salt and pepper shakers, Rooster egg plate, multi kitchen paper rack, dining table and 4 chairs, Frigidaire stainless steel side by side, GE gas range, Whirlpool Duet front load washer and dryer, cast iron including Wagner, wash board, House cookie jar, tater bin, small kitchen appliances, roll top desk, leather rocker recliners, reproduction desk, clocks, Breckwell pellet stove, pitcher and bowl set, cookbooks, child's, wood bench, child's wood rocker, Rainbow vacuum used 2 times, metal bakers rack, coat racks, Range Master Smoker, Commercial series Charbroil grill, charcoal grill, Sportsman 10" meat saw/grinder combo, rocking horse, hall tree, granite cold pack canner, lawn chairs, wind chimes, planters and lawn decor, bird baths, fire pit, Kenmore upright freezer, cash register, scroll saw, china, clown costumes, old lunch box, 8 x 10 camping tents, two iron wheels, wood, old lantern, garden tools, pipe wrenches, hammers, pliers, crow bars, hay hooks, gas cans, Poulan chain saw PL3314, Murray M2510 weed eater, Yukon roll around toolbox, oil can, Troy Bilt pressure washer 2600psi with Honda motor, Homelite weed eater, Chicago 2 1/2hp electric chipper/shredder, levels, vise, tool belts, two wheel hand truck, axes, picks, miter saw, 10" bench saw, router and table, 2hp air compressor, tree stand, Forrest King 22 ton wood splitter, limb saw, Test Rite tool cabinet, Keller folding ladder, tackle boxes, John Deere D100 mower, single tree, turkey blind and decoy, carry all for Reese hitch, crates, two old step chairs, lots of canning jars, bird cage one large, jack powered wood splitter, zero gravity chairs, paper barrels, ceiling fan, hand crank meat slicer, rods and reels, kerosene heater, post driver, steel traps, antique dresser with mirror, saw horses, come along, ladder stretcher, kids bike with training wheels, two old bikes, walk behind trimmer, push mower, two wheel barrows, pallets, Troy Bilt tiller, wash tub, lawn and garden cart, 6' aluminum step ladder, and so much more we can't list it all.



WATCH NEXT WEEK FOR A 2 DAY MEGA AUCTION FRIDAY AUGUST 27TH AND SATURDAY AUGUST 28TH

Thomasville area 4 miles North of Buffalo

ABSOLUTE REAL ESTATE AND A PLETHORA OF COLLECTIBLES.



WATCH NEXT WEEK'S TRADER FOR FULL LISTING!

TERMS: Cash, check, or credit card with proper I.D. nothing removed until settled for a 3% fee will be added to credit card purchases. Not responsible for errors in listing. Any announcement made sale day will take precedence over any printed matter. Note: Service will take every precaution to prevent accidents, but will not be responsible should any occur.

AUCTION

GENERAL AUCTIONEERS
Auction & Appraisals
SERVICE

For more information contact Professional Auctioneer Russ Weeks at 417-576-7357 or check out www.rrauctionservice.com

Serving this area's auction needs since 1997 with honesty and professionalism.
www.rrauctionservice.com
(417) 576-7357 or (417) 345-4140



GO TO THE AUCTION • GO TO THE AUCTION • GO TO THE AUCTION • GO TO THE AUCTION • GO TO THE AUCTION •

PUBLIC AUCTION

Morning Sale

Saturday, August 21, 2021 • Starting at: 9:00 a.m.

Location: 22180 Harlan Lane, St Robert, MO 65584

Directions: Between Exits 163 & 161 Take the North Outer Road and follow to Harlan Lane. Turn north on Harlan Lane and follow to the sale site.

Household & Collectibles

Small desk w/ hutch
 Dresser w/ mirror
 Full bed w/ bookcase headboard
 Microwave ovens & Cart
 Entertainment armoires
 Several lamps
 Small vintage kitchen cupboard
 Tall wooden cabinets
 Singer sewing machine in cabinet
 Coffee & end tables
 Bookcases
 Coolers
 GuardianWare aluminum cookware
 CB radio
 Wingback chairs
 Old Globe
 Small Kitchen Appliances
 Panasonic Flat Panel TV
 2 Sofas & 2 Love Seat/ Hide-a-beds
 Bakeware
 Full Bed Metal Frame
 Kitchen Chairs & Tables
 Mirrors, Framed Prints and Wall Art
 Electric Treadmill

Glass Washboard
 Elec. Turkey Fryer NIB
 Ronco Rotisserie/Cooker
 48 Spool Thread Organizer
 What Not Shelves
 Wrought Iron & Glass Cafe Set w/2 chairs
 Metal Clothing Racks
 Glider Rocker
 Night Stands
 Asian Low Table w/Peacocks and Turtles
 Clear Glassware, Some crystal
 2 2 Drawer File Cabinets
 LG Flat Panel TV
 8 Ladies Shirt Mannequins
 Baskets
 Rolling Ottoman
 Dresser w/Mirror
 Clothes/ Laundry Hampers
 Home Medical Supplies
 Oilfilled electric heater
 All Seasons Decor Items
 Parrot Cage

Shop and Outdoor

Werner 16ft & 20 ft Extension Ladders
 Wooden & aluminum stepladders

Hornets nest
 Shotgun shells (reloads)
 Large box fan
 Wizard Garden Tiller
 Handle Tools
 Gardening Supplies
 Small Pet Carrier
 Bench Grinder
 Tap & Die Set
 Stanley Bedrock #604 Plane
 Stanley Bailey #5 Plane
 Craftsman Wheel Weights
 Remington Elec. Chainsaw w/ Ext. Pole
 Window Weights
 Creeper
 36" Metal Lawn Roller
 Lawn Mower Jack
 Table top Drill Press
 Elec. Circular Saws
 Craftsman Compound Mitre Saw
 Rockwell Table Saw
 Small Air Compressor
 Charcoal Grill
 Tripod Camp Grill
 Fuller 18" Pipe Wrench
Other items too numerous to mention

GO TO THE AUCTION • GO TO THE AUCTION • GO TO THE AUCTION • GO TO THE AUCTION • GO TO THE AUCTION •

GO TO THE AUCTION • GO TO THE AUCTION • GO TO THE AUCTION • GO TO THE AUCTION • GO TO THE AUCTION •

TERMS
 Cash, Credit,
 Debit or Approved
 Check
 ID Required for
 Bid Number



WARDEN AUCTION & MORE

(573) 336-2367 or (573) 528-0729

Ed Warden – Licensed Auctioneer/
 Real Estate Broker

www.wardenauction.com



TERMS
 Not Responsible
 For Accidents
 or Losses
 Nothing Removed
 Until Settled For

GO TO THE AUCTION • GO TO THE AUCTION • GO TO THE AUCTION • GO TO THE AUCTION • GO TO THE AUCTION •



Missouri State Fair Grounds, Sedalia, Missouri
Fall Sale • September 8, 9, 10, 11, 2021

SALE SCHEDULE

Monday, September 6 - Check in 12:00 to 6:30, Check in for Tack and Carriage

Tuesday, September 7 - Check in 8:00 to 6:30, Check in for Tack and Carriage

Wednesday, September 8

8:00 Tack; **9:00** Field Sale, Outside Farm Machinery, Large Antiques, etc.;

10:00 Inside antiques, Carriages; **2:30** Harness, Collars, Saddles

Thursday, September 9

8:00 Tack (1 hour in horse ring); **9:00** Cataloged Drafts, Draft Crosses, and Halflingers

Friday, September 10

8:00 Tack (1 hour in horse ring); **9:00** Cataloged Standardbreds, Quarters, Gaited Horses, Light Teams and Ponies

Saturday, September 11

8:00 Tack (1 hour in mule ring); **9:00** Cataloged Mules, Donkeys and Mares in Foal to a Jacks, followed by Uncataloged



Reg. Belgian Mares



Percheron Mares



Friesian Cross Gelding



Reg. Quarter Gelding.



John Mule



Show Cart



Reg Quarter Gelding



Reg. Quarter Gelding



Molly & John Mules



Wagonette

If your shopping horses be sure to not miss our Fall sale. There are 831 head of horses and mules in the Catalog. Therefore we are not taking any uncataloged horses for Thurs. & Fri. but will take uncataloged mules until sale time. Thanks to all the local Missouri Horse and Mule folks for your continuing support. Be sure to mark your week off.

We look forward seeing you all in a few weeks. God Bless, Joe and Lonnie

For more information, call Joe Raber: 719-431-3137 or Lonnie Miller: 260-350-4637

Email: boonecountyhorseauction@safecomm.com | Website: BooneCountyDraftHorseandMules.com

PUBLIC AUCTION

SATURDAY, AUGUST 21 @ 8:00 A.M.

Directions: JADWIN, MO

From Salem, take Hwy. 19 south 4 miles to Hwy. K, follow K Hwy. to Hwy. ZZ at Jadwin. Follow ZZ Hwy. 1 mile to sale on right. Watch for signs.

AUTOMOTIVE • HOUSEHOLD • TOOLS • COLLECTIBLES • GUNS • COINS • MISC. ITEMS

° 2012 Buick Lacrosse AWD, Leather, 127,271 Miles, 3.6L, Sipi VC, 6-Speed Auto, 90% Tires, Light Cash-mere, Remote Start Steven's 22 Model 87A Semi-Automatic Crickett 22 Cal. Lons Rifle, Single Shot Marlin 30-30 Model 336A
 ° Pardener 410 Single Barrel, 3" Full Choke Pistol 22 Cal. R-92 Ultra 6" BBL
 Lots of Ammo, 22 Shells, Shotgun Shells, Etc.
 New DeWalt Tools
 1996 Acura, 4-Door, 252,XXX, Ride & Drive
 2001 Cadillac, 140,XXX, Ride & Drive
 4 Curio Cabinets - Ashley Lift-Top Coffee Table Electric Fireplace & Stand California King Bedroom Set
 3pc. Entertainment Center
 Queen Size Headboard & Footboard w/ Mattress & Spring, Like New
 Oak Kitchen Chair w/6 Chairs
 2, S/S Shelves, Work Shelves - Aluminum Ladder, New Lot of New Christmas Items Busch Stadium Franklin Mint Lt. Up Big Hot Wheel Collection w/Batman & Robin Cars Big Collection St. Louis Bobble Heads & Cardinal Collection
 Lot of Fenton Glassware - Old Glass Banks Pepsi Cartoon Collection Glasses - Wheat Pennies Lot of Paper Weights - Nice Mirrors David Plank Painting
 Nice Collection of 44 Country Records; Conway, Elvis, Dolly, Loretta, George Jones, Etc.
 Lot of 33 Records - Cast Iron Skillets Stamp On Up Set, Several Pieces
 Loretta Lynn Signature Guitar
 Springfield Cardinals Autographed Bats in Case Outside Planter Stands
 The Wizard of Oz Porcelain Dolls; Dorothy, Scare Crow 2-Glass Shelf TV Stand
COINS:

2013 S. Proof Basin Quarter
 2011 S. Proof Gettysburg Quarter
 2011 S. Proof Glacier Quarter
 2011 S. Proof Vicksburg Quarter
 2011 S. Proof Olympics Quarter
 2011 S. Proof Chickasaw Quarter
 2007 S. Proof Utah Quarter
 2006 S. Proof North Dakota Quarter
 2005 S. Proof West Virginia Quarter
 2005 S. Proof California Quarter
 2003 S. Proof Alabama Quarter
 2003 S. Proof Missouri Quarter
 2003 S. Proof Maine Quarter
 1999 S. Proof Georgia Quarter
 1999 S. Proof Connecticut Quarter
 1999 S. Proof Delaware Quarter
 (2) 1982 S. Proof Quarters
 1976 S. Bicentennial Proof Quarter
 2018 D Quarter - 1999 S. Proof Dime
 1979 S. Proof Dime
 S. Proof Nickels: 1978, 2006, (2) 2004, 1979, 1976 2003 \$10 Liberty Silver Dollar
 Morgan Silver Dollars; 1884, 1889, 1902, 1921 3, 1922 Peace Dollars
 Franklin Silver Half Dollars; 1951, (2) 1963, 1962,
 1955, 1951, 1948, 1936, 1937
 1841 2.5 Gold Coin Liberty Head, Rare Civil War Sesquicentennials 2014-1015 Proof 1861 Medal South
 1973 S. Proof Dollar - 1974 S. Proof Dollar
 1941 Silver Quarter - 1964 Silver Quarter 6, 1969 Kennedy Half Dollars
 1967 & 1968 Kennedy Half Dollars
 9, 1967 Silver Half Dollars S.
 Proof Half Dollars; 2011, 1987, 1982, 1985, 1981, 1996
 1978 S. Proof Nickel - 1971 S. Proof Dime
 Eisenhower Dollars; (4) 1971, (3) 1972, 1974, (2) 1976, 1977
 1979 Susan B. Anthony Dollar
 Roll Kennedy Half Dollars
 Gold President Dollars (Gold Plated); Ulysses S. Grant, Zachary Taylor, John F. Kennedy, Dwight D. Eisen-hower, John Adams, Richard M. Nixon, Henry Harri-son, John Adams 2007 Uncirculated D, John Adams 2007 D
 50 State Quarters P&D Uncirculated D Indian Head Pennies; 1882, 1884, 1889, (5) 1990, 1901, (2) 1904, 1906, (3) 1907
 Silver Dimes; 1950, 1951, (3) 1952, 1954, (6) 1956, 1957, (2) 1958, (5) 1959, (2)

1960, (7) 1961, (2) 1962, (7) 1963, (18) 1964, (7) 1946, (2) 1947, (8) 1948, 1949
 1976 D Half Dollar Gold Plated
 1996 W Gold Plated Dime
 1999 P Delaware Gold Plated Quarter
 2000 P Maryland Gold Plated Quarter
 2002 D Massachusetts Gold Plated Quarter
 2004 D Texas Gold Plated Quarter
 2004 D Iowa Gold Plated Quarter
 2004 D Michigan Gold Plated Quarter
 2005 D California Gold Plated Quarter
 2007 D Wyoming Gold Plated Quarter
 2007 P Washington Gold Plated Quarter
 5, 10pc. Coin LHC Set Uncirculated Pennies
 2002 50-State Quarter Proof Set
 15 Rolls Wheat Pennies
 Roll 2004 Peace Metal Jefferson Nickle (Rare?)
 2-Roll 2005 Buffalo Nickel (Rare?)
 3-Rolls 2005 Buffalo Bills (World Reserve, Monetary Exchange)
 3-Rolls 2006 D (World Reserve Monetary Exchange) 4-Rolls 1940s Nickels - Roll 1950s Nickels
 4-Rolls 1960s Nickels
 Roll 1930s, 1950s, 1960s Mixed
 Abraham Lincoln Uncirculated President Gold Dollar Collective Grade Certificate Commemorative Gallery 1
 P & D Mint, 2010
 2007 Set P&D George Washington Gold Plated
 Set 2000 P&D South Carolina Quarter
 Set 2001 P&D New York Quarter
 Set 1999 P&D New Jersey Quarter
 Set 2001 P&D North Carolina Quarter
 Set 1999 P&D Delaware Quarter
 Set 1999 P&D Georgia Quarter
 Set 2000 P&D New Hampshire Quarter
 Set 2000 P&D Maryland Quarter
 Set 2000 P&D Massachusetts Quarter
 Set 2000 P&D Virginia Quarter
 Set 2009 Proof Penny Set - 2, 1936 Buffalo Nickel 1937 Buffalo Nickel - 2010 Half Dollar Elvis Painted 2001 Painted NY State Quarter
 1997 Painted Connecticut Quarter
 3, Snoopy Banks full of Wheat Pennies
 Indian Head Glass Bank full of New 2009 Pennies Series of 1934 \$100 Bill - Series of 1928 \$50 Bill Series of 1963A \$20 Bill - Series of 1950A \$20 Bill Series of 1950A \$20 Bill - Series of 1934A \$20 Bill Series of

1963A \$10 Bill - Series of 1950 \$10 Bill
 (2) Series of 1950A \$10 Bill - Series of 1934C \$10 Bill Series of 1934D Silver Certificate Blue \$5
 Series of 1950 Federal Reserve Note \$5
 Series of 1950B Federal Reserve Note \$5
 Series of 1950E Federal Reserve Note \$5
 (2) Series of 1953B Red United States Note \$5
 (3) Series 1963 Red United States Note \$5
 (2) Series 1935D Blue Silver Certificate \$1
 Series 1935D Blue Silver Certificate \$1
 (3) Series 1935E Blue Silver Certificate \$1
 Series 1935E Blue Silver Certificate \$1
 (3) Series 1935F Blue Silver Certificate \$1
 Series 1935F Blue Silver Certificate \$1
 (2) Series 1935G Blue Silver Certificate \$1
 Series 1935H Blue Silver Certificate \$1
 (11) Series 1957 Blue Silver Certificate \$1
 (9) Series 1957A Blue Silver Certificate \$1
 (9) Series 1957B Blue Silver Certificate \$1
 (3) Series 2013 Numbered Consecutive \$2 Bill Series 2009 \$2 Bill - (6) Series 2003A \$2 Bills (3) Series 2003 \$2 Bill - (2) Series 1995 \$2 Bill (19) Series 1976 \$2 Bill
 Series 1963 Red United States Note \$2 Bill
 (3) Series 1953 Red United States Note \$2 Bill
 Series 1953A Red United States Note \$2 Bill Series 1053B Red United States Note \$2 Bill Series 1928G Red United States Note \$2 Bill
 (2) Series 2013 Year of the Dog \$2 Bill w/ Certificate of Authenticity
 (2) Rolls Uncirculated Danbury Mint Presidential Dollars, 12 Each Roll
 1945 Silver Quarter - 1946 Silver Dime
 1964 Silver Dime - (6) \$1 Bill Uncirculated Numbered (3) \$1 Bill Uncirculated Numbered
 (10) 1978 Eisenhower Silver Dollar
 (9) 1978 Eisenhower Silver Dollar
 (10) 1977 Eisenhower Silver Dollar 5, (10) 1976 Eisenhower Silver Dollar
 (11) 1976 Eisenhower Silver Dollar
 (9) 1974 Eisenhower Silver Dollar (11) 1972 Eisenhower Silver Dollar 2, (10) 1972 Eisenhower Silver Dollar 2,

(10) 1971 Eisenhower Silver Dollar (9) 1971 Eisenhower Silver Dollar
 (8) 1969 Kennedy Half Dollars
 (9) 1968 Kennedy Half Dollars
 (8) 1967 Kennedy Half Dollars
 (2) 1966 Kennedy Half Dollars
 (2) 1965 Kennedy Half Dollars
 (4) 1964 Silver Kennedy Half Dollars Silver Quarters; 1941, (3) 1942, 1943, (3) 1944, 1946,
 1947, 1948, 1950, 1952, (2) 1954, (3) 1960, (2) 1961, (2) 1962, (2) 1963, (15) 1964
 Mercury Dimes; 1917, 1919, 1924, (2) 1937, 1940, (2) 1941, 1942, (2) 1943, 1944, 1945
 Buffalo Nickels; (2) 1920, 1924, 1925, 1927, 1935, (9) 1936, (3) 1937

AUCTIONEER'S NOTE:
 Very clean furniture. You don't want to miss this sale!

See you there! - Tom!



NOTE: Coins will start selling at 8:00 a.m. until 10:00 a.m. At 10:00 a.m. will sell other auction items until finished, then back to remaining coins.

1900 & 1912 V Nickel - 2, 1905 V Nickels
 20 Buffalo Nickels, No Dates
 1981 S. Proof Susan B. Anthony Dollar
 1976 S. Proof Bicentennial Dollar
 S. Proof Half Dollars; 2004, 1981, 1980, 1979, (2) 1976 2001D Half Dollar - 1972D Half Dollar



OWNER: WAYNE PATTERSON

ANNOUNCEMENTS AT AUCTION TAKE PRECEDENCE OVER PRINTED MATTER

WULFF AUCTION

Auctioneers:
Col. Tom Wulff - Col. David Wulff
 498 Hwy. B, Salem, MO 65560
 573-729-8476

Clerk: Tracy Strange Cashier: Nancy Inman

See Wulff Auctions at www.thesalemnewsonline.com/auctions

TERMS: CASH OR APPROVED CHECK - I.D. REQUIRED
 NOTHING REMOVED UNTIL SETTLED FOR

Licensed Appraisals



RAIN OR SHINE
 OWNER & AUCTION PERSONNEL NOT RESPONSIBLE FOR ACCIDENTS AT SALE SITE

Absolute Real Estate & Estate AUCTION

Saturday, August 21st. * 9:00 AM

504 S. Coleman Rd Marionville, Mo. 65705 Directions: 1 block East of Jct. Hwy 60 & 265 *Watch for Signs -- Breakfast & Lunch Available*



REAL ESTATE

Charming American Four Square with Classic Rock Face Block Exterior, 2300 sq. Ft. Historic Home on 8.5 Acres with nice Barn & Outbuildings, Home has 10ft. Ceilings, 8ft. Double Doors between L.R. & Parlor with all original Woodwork, 3 Bedrooms, 1 Bath, Living Room w/ Fireplace, Parlor, Formal Dining Room, Kitchen/Dining Room, partial unfinished Basement, huge Covered front Porch, Large Concrete Patio. All Asphalt Driveway & Parking, Large Yard with Beautiful Mature Shade Tree's, Central Heat, Window Air, City Water, Sewer & Gas, 30'x40' Barn/Shop, 18'x20' 1 Car Garage, older 20'x24' Barn with Lean-to, and older 20'x30' Machine Shed. Acreage is all Grass and being used for Hay. The Home and all outbuildings are very well maintained, home is on Coleman Rd., property also has Hwy. 265 Frontage. City Only 30 minutes to Springfield, Marionville Schools.

Property Sells Absolute to the Highest Bidder. Terms: 10% Down, Balance due at closing 30 days or less.

ANTIQUE & COLLECTIBLE

Vintage Chrome Drop Leaf Dining Table & Chairs;
Enamel Dry Sink/Wash Stand;
Antique Enamel Hospital Side Table;
Kitchen Cabinet with Red & White Enamel Top;
Early Wood Dry Sink;
Oak Wash Stand;
Old Wood Ice Box (White Clad Style);
Antique Round Dining Table & Chairs;
Old Wood Rockers;
Wood Stand with Enamel Top;
Vintage Pink Metal Bathroom Cabinet & Decor;
Old Tall Kitchen China Cabinet;
Sideboard Buffet;
Very Nice Grandfather Clock;
Gorgeous Ornate Antique Pump Organ (Works);
Small Library Table;
Wood Humidor Stand;

Old Wood Checkerboard Stool;
Older Square Wood Curio Cabinet;
Waterfall Vanity Dresser & Chest;
Several Nice Antique Dressers & Chests;
Antique Iron Bed;
Old Trunk
Cast Iron Shoe Shine Stand;
Vintage Black Panther TV Lamp;
(25+) Antique Oil Lamps;
4 Gallon Crock Jar;
Fire King Green Jadeite Nesting Bowls;
(60+) Pcs. Fire King Green Jadeite Dinnerware;
F.K. Green w/ White Polka Dot Pitcher & Tumblers;
Dazey 330B 1 Gallon Metal Butter Churn;
Few Pcs. Cast Iron incl. Wagner;
Several Pcs. Original Green Metal Kitchen Items incl.
Cake Carriers, Cookie & Bread Box, Flour Tin, etc..
(50+) Pcs White Enamel Kitchen Ware;

(50+) Pcs. Old Red & Green Handle Utensils;
Glass Coffee & Tea Canisters;
Several Pcs. Very Nice Green Depression Glass;
Old Cast Iron Well Pump;
Bucksaw & Hog Scrapers;
Old Jacket with Harley Davidson Patches;
Few Vintage Ladies Garments;
Lots of Boxes we couldn't see so expect surprises;
APPLIANCES - FURNITURE
Kenmore side x side Refrigerator;
Kenmore Cookstove (Natural Gas);
Kenmore Washer & Dryer;
(2) Sun Twin Electric Heaters
Misc. Window Air Conditioners;
Sanyo 55" Flatscreen TV;
Leather Double Reclining Sofa;
Lazy Boy Recliner;
Sideboard Buffet;
Nice Dresser & Chest;

Misc. Tables & Stands;
48" Stainless Steel Table on Rollers;
TOOLS - MISC.
Craftsman 10" Table Saw;
Babco 150 Bench Vise;
Bench Grinder on Stand;
2 Wheel Lawn Cart;
2 Wheel Dump Garden Cart;
Heavy Fluid Fill Lawn Roller;
Lot Good Lawn & Garden Tools;
Extension & Step Ladders;
Schumacher Battery Charger;
Misc. Garage related Items;
Sm. Lot Fishing Tackle;
Lots & Lots not Listed

Auctioneers Note: Mr. & Mrs. Vanderhoof lived in this home for over 50 years & always took pride in how the home & property looked & was cared for. Lots & Lots of very nice Antiques not Listed.

ESTATE OF DEWEY (SONNY) & OVELLA VANDERHOOF

See our website for pictures and more info!



Auctioneer: Larry Foster | Galena, Mo

Phone: (417) 723-8329 Cell: (417) 839-6860

www.fosterauctionservice.com Email: bidnowsold@aol.com



BUFFALO LIVESTOCK MARKET LLC



276 Hwy 32 West
Buffalo, Missouri
August 14th, 2021
Receipts: 1307 Head

Feeders weaned \$8 to \$15 Higher.
Unweaned Steady. Cows and Bulls Steady

REPRESENTATIVE STEERS

300-400 @ 170.00 to 202.00
400-500 @ 163.00 to 194.00
500-600 @ 160.00 to 195.50
600-700 @ 156.00 to 169.50
700-800 @ 153.00 to 163.75
800-900 @ 135.00 to 153.00

REPRESENTATIVE HEIFERS

300-400 @ 145.00 to 159.00
400-500 @ 149.00 to 170.00
500-600 @ 146.00 to 163.00
600-700 @ 138.00 to 158.00
700-800 @ 133.00 to 151.00
800-900 @ 120.00 to 131.00

FEEDER BULLS

300-400 @ 157.00 to 198.00
400-500 @ 148.00 to 179.00
500-600 @ 148.00 to 161.00
600-700 @ 137.00 to 148.00
700-800 @ 140.00 to 145.00
800-900 @ 86.00 to 96.00

BRED COWS

\$850.00 to \$1,200.00

COW CALVE FEW

\$1,075.00 to \$1,375.00

SLAUGHTER COWS

High Dressing Fleшы Cows
70.00 to 82.00 Top
Med Dress 65.00 to 70.00
Low Dressing Thin Cows
50.00 to 64.00

SLAUGHTER BULLS

High Dressing Bulls
106.00 to 109.00 Top
Med Dressing 95.00 to 105.00
Low Dressing 92.00 to 95.00

Cow Sale Tuesday, August 17th at 6:30PM
400 Cows & Bulls

MON-WED MARKET REPORT

Listen to KJEL 103.7FM • Lebanon or KY00 99FM • Bolivar

VIEW OUR SALES AT CATTLEUSA.COM

CALL FOR TRUCKING OR ON-FARM VISIT

Lyle Caselman • Owner-Manager
417-345-7876 • mobile 417-533-2944
Leon Caselman • Owner
417-345-4514 • mobile • 417-588-6185

FREE TO GOOD HOME: Mixed breed puppies, mother English Shepherd. 417-288-1009. St. Roberts.

FREE TO A GOOD HOME: Give away 78 rpm records 1930's - 1950's. Complete list provided - call 573-546-6681. Leave message. Most are clean & fair condition - they are originals.

65 MASSEY FERGUSON TRACTOR: propane, with an older brush hog \$3,500 417-840-7936

MURRY RIDING MOWER: Good tires, deck, blades, 5-speed, needs motor. \$150-gun trade. 573-364-7465. Rolla.

OAK TABLE - FOUR CHAIRS: \$250, Pine heart day bed with mattress, good shape \$75.00. 417-543-8261. Ava.

1949 STUDBAKER 1½ TON TRUCK: One family owner, all original, no rust, garage kept, flat head 6-cylinder, 4 speed. 573-880-9178 or 573-880-9456. St. Genevieve.

Where it's always a bull market!
Angus - Brangus - Ultrablacks
14603 HIGHWAY KK, LEBANON, MO
417.288.4444 • WALLSTREETCATTLE.COM

LEATHER WORKING EQUIPMENT: 30" Consev flat bed, 2 Union lock stitch machines, 1 Ideal clicker, 1 Randle strape cutter. \$3,000 for all. 636-583-4338. Union.

2007 ADIRONDACK RV: 27 foot, 1-slide out. \$11,000. 417-887-8221. Springfield.

SNAPPER RIDING MOWER: Needs a tune-up & tire tubes. Only \$95. 573-364-7465. Rolla.

LIONEL TRAIN SET: Steam engine, tender, caboose and other car, track and transformer. \$195. 573-364-7465. Rolla

FOR SALE 3 year old Arabian colt, straight Egyptian, \$1,500 573-263-4749.

2006 LINCOLN TOWN CAR SIGNATURE SERIES: \$4,300. 573-689-2490. Bunker.

100 VINYL RECORD ALBUMS: Mostly county some gospel. Take al \$2.00 each. 573-689-2490. Bunker.

SONY SOUNDBAR AND SUBWOOFER: With remote. \$100 OBO. 417-668-7793 landline. No text. Falcon.

AUSTRALIAN SHEPHERDS for sale, blue merle, red and whites, out of working parents, 573-663-7459.

ENGLISH SHEPHERD puppies, bob tails, some not, out of working parents, 573-760-5157.

MID MISSOURI STOCKYARDS
REGULAR SALE EVERY THURSDAY 11AM
WATCH OUR WEEKLY SALE IN REAL TIME ON DVAUCTION.COM
For Farm Visits, Market Updates, or Trucking
Call Zach Cox 417-777-1320
Dan Romine 573-578-4939
**Competitive Buyers!
Competitive Commission!
Competitive Market!**
Barn: 417-532-9292
I-44 • Exit 123 "just outside of Lebanon"
17505 Route 66, Phillipsburg, MO 65722
For weekly market updates, visit us at www.midmostockyards.com

AUCTION
Sunday August 29, 2021 9:00AM
940 S Iron Mountain Rd Fordland, MO 65652
Directions: From Springfield Take Hwy 60 East 18 Miles To Iron Mtn. Rd. Turn North Across Hwy 60 Onto Iron Mtn. Rd. To Auction. Watch For Auction Signs.

Vehicles, Equipment & Misc* Tools, Lawn & Garden* Furniture & Appliances* Guns, Coins & Jewelry* Antiques, Collectibles, Glassware & Household* Plus More! www.glenworth.com

Auction Conducted by:
Glenworth
Auction Service & Realty
Glen Yutzy, Auctioneer/Broker
(417) 767-4345

L3200 KUBOTA 4WD TRACTOR: 31 hp, with loader, hydrostat transmission. Low hours. \$18,900.00. 417-270-1505.

KENMORE 30" ELECTRIC DROP IN RANGE: Self-cleaning, Kenmore dishwasher, microwave, new Instapot \$150. 573-699-4351. St. James.

1996 TOYOTA TACOMA: Extended cab, 4x4, auto, V6, prior salvage, runs good. \$2,750. 417-962-0710. Cabool.

8FT 3 POINT DISK: \$550. 573-765-4406. Richland

BORDER COLLIE PUPS: Farm raised, working parents, born 6-11-21. 2 males and 1 female. \$200 each. 417-830-8374. Mansfield.

2017 MODEL FOREST RIVER 5TH WHEEL: 2 slide-outs, outdoor kitchen, bunkbeds in back, sleeps 9. Excellent condition. 417-733-2602. Miller.

1955 ALLIS CHALMERS CA: New front tires and wheels, 80% rear tires, recent overhauled engine, new paint, 2 bottom plows and sickle mower. \$2,800. 573-689-2490. Bunker.

GREAT PYRENEESE PUPPIES: \$100. Mixed puppies, Blue Heeler and Eskimo cross. \$25 Bi-color. UTD on shots & worming. Sweet Corn. 417-589-0227. Conway.

PICKUP TRUCK BEDLINER: Standard size, Ford F-150 to F350. \$40. 314-303-7857. Cedar Hill.

CABLE PULLING JAW GRIP: Klein 1684-5, excellent condition. \$150. 314-303-7857. Cedar Hill.

NEW HOLLAND 1411 DISKBINE: With roller. \$8,950. 573-765-4406. Richland.


Annual Fall Consignment Auction
SATURDAY AUGUST 28, 2021
@ 9:00 AM
Allen Auction Sale's Lot
490 S. Hwy 47, Hawk Point, MO, 63349

Directions: Allen Auction Sale's Lot. From Hawk Point, MO, Take Hwy 47 South 2.5 miles, Auction on Left Side. Watch for Signs Day of Auction.

Please Note: We will be checking in machinery **Saturday 8/21** from 8-4 & **Sunday 8/22** from 9-4. We will also be unloading & checking in machinery all week. Look forward to seeing you!

COMBINES & HEADS • TRACTORS • FARM EQUIPMENT VEHICLES • CONSTRUCTION • NEW SKID LOADER • EQUIPMENT • HAY EQUIPMENT • TRAILERS & WAGONS • LIVESTOCK EQUIPMENT & SUPPLIES • RECREATION • LAWN & GARDEN • SHOP EQUIPMENT & TOOLS • MISCELLANEOUS

GO TO WEBSITE FOR FULL LIST, UPDATES AND PHOTOS

Auctioneers Note: We will be running 2 auction rings. Please come prepared with extra bidders. Any questions on any of the equipment, feel free to give us a call at the office.
Thanks Nick and Kyle.

ALLEN AUCTION & REAL ESTATE SERVICE LLC
(636) 338-4805 • Hawk Point, MO
www.allenauction.net
The Auctioneers:
Nick's Allen: (636) 358-2900 • Kyle's Allen: (636) 236-2344
Tec Parr: (636) 661-5775 • Elden Foster: (573) 239-6745
Fax: (636) 338-4823 • Email: sandy@allenauction.net

HOME & ACREAGE HOLTS SUMMIT, MO



****7.76 WOODED ACRES FOR YOU TO ROAM****

Open House:
Thursday, August 19th | 5:00 – 6:00 pm
Thursday, August 26th | 4:00 – 5:30 pm

SELLS TO HIGH BIDDER

- 1,250 +/- Sq. Ft., 3 Bedroom, 2 Bath Ranch Style Home
- Living Room with Wood Burning Fireplace
- Unfinished Walkout Basement
- Approx. 600 +/- Ft. Chip & Seal Road Frontage
- Just North of Hwy. 94

Note: This home could use some foundation repairs and interior updates.

12782 CR 4021, Holts Summit, Callaway Co., MO
Online Bidding Ends: Thursday, Sept. 2nd | 12:30 pm

Check It Out & Bid At
www.AtterberrySells.com

For Additional Information Or Terms, Call Your Real Estate At Auction Specialists: Atterberry Real Estate Auctioneers 573-474-9295

 **ATTERBERRY** AUCTION & REALTY COMPANY
www.AtterberrySells.com
573-474-9295
MarkNet ALLIANCE

ONLINE AUCTION JD TRACTOR, IMPLEMENTS, TRAILERS & COLLECTIBLES

- John Deere 2840 Tractor with Loader, Brush Hog, Bale Spikes
- 2003 Roadmaster Enclosed Predator Trailer
- Album Collection: Elvis, Prince, Hank Sr. & More
- Texaco Vargas Girl Ashtrays, Petty Girl Matchbook & Pinup Girl Glasses
- Glass & Collectibles

7912 I-70 Dr. SE, Columbia, MO
Bidding Ends Tuesday, August 24th at 12:30PM
Bid Online At Atterberrysells.com

Preview: Monday, August 23rd
11:00 AM to 1:00 PM

Payment & Pick-Up: Wednesday, August 25th | By Appointment Only



Check It Out & Bid At
www.AtterberrySells.com

For Additional Information Or Terms, Call Your Real Estate At Auction Specialists: Atterberry Real Estate Auctioneers 573-474-9295

 **ATTERBERRY** AUCTION & REALTY COMPANY
www.AtterberrySells.com
573-474-9295
MarkNet ALLIANCE

AMISH COUNTRY COOKBOOK:
Volume 1, easy to make delicious meals from scratch, 301 pages, \$5.00. 417-532-2045. (Leave message and phone number). Lebanon.

SELLING OUT OF THE HORSE BUSINESS: 15-20 Quarter horse bred, some registered, from weanlings to broke horses. 2 old gentle mules. 417-531-5707. Lebanon.

HEAVY 6-BAR GATES: Weldable or bolt type hinges – 16' gate \$192 available painted. Lewis Welding and Repair. 573-729-0272 – 573-729-1405. Salem.

GM ½ TON 4-WHEEL DRIVE FRONT AXEL HOUSING: With 3.07 gears. Fits a 77 to 87. \$80. 314-303-7857. Cedar Hill.

WELL BUILT CART: For small mig welder. New-used \$200. 573-729-0272. Salem.

NEW PISTOLS: Heritage 22LR \$129.81, Ruger EC9s 9mm \$279.37, Ruger LCPII .380 \$369.98. See all selection at rolling-mead.com 417-241-1523. Marshfield.

IHC 10 FT. WHEEL DISK: \$1,800. 573-765-4406. Richland.

A FRAME TINY HOUSE/SHED: 6 ft x 8 ft, New floor, furnished, \$800. 573-759-7143. Vienna.

JOHN DEERE 6430: 4-wheel drive with loader, 4,800 hours. \$61,000. 573-433-0131. Richland.

IHC 986 DIESEL TRACTOR: Canopy, TA 105 HP with Westendorf TA28 loader. \$13,000. 573-765-4406. Richland.

LANDPRIDE PLAINSMAN 15FT HYDRAULIC FOLD BRUSHCUTTER: \$6,800. 573-765-4406. Richland.

KILMER FARM EQUIPMENT CONSIGNMENT AUCTION

SATURDAY, AUGUST 28 • 10 AM

14769 Cattle Lane, Versailles, MO 65084

Directions: At the Intersection of Hwy 5 and Hwy 52 in Versailles, go North on Hwy 5 for 1 mile to Cattle Ln then turn Right or East and go ¾ mile to Sale Site.



**TRACTORS, PLANTERS AND SPRAYERS,
 CONSTRUCTION EQUIPMENT, TRUCKS AND TRAILERS,
 GRAIN CARTS AND WAGONS, MANURE SPREADERS,
 CUTTERS, TILLAGE, COMBINE AND HEADS,
 FEED MIXERS, MISC. EQUIPMENT, HAY EQUIPMENT,
 SILAGE EQUIPMENT**

Wheeler AUCTIONS & REAL ESTATE
 23101 HWY. 24, PARIS, MO 65275 | 660-327-5890
WWW.WHEELERAUCTIONS.COM

BID LIVE Live Online Bidding Powered By **proxibid**

KILMER FARM EQUIPMENT, LLC
 14270 Hwy. 52, Versailles, MO 65084
(573) 378-6615

For more info and photos:
www.wheelerauctions.com

Starnes Auto LLC
 22115 Rt. 66 • Lebanon, MO 65536
 417.718.2707 Cell
 417.588.3159 Office
www.starnesauto.com

- 2002 CADILLAC DEVILLE**
 BLACK, 51,XXX MILES **\$5,500**
- 2004 DODGE DAKOTA 4DR 2WD**
 RED, 240,XXX MILES **\$3,200**
- 2004 GMC SONOMA 4DR 4WD**
 PEWTER, 154,XXX MILES **\$6,500**
- 2006 CHEVY COBALT**
 BLUE, 225,XXX MILES **\$2,500**
- 2008 CHEVY SILVERADO 2500 2WD**
 WHITE, 85,XXX MILES **\$9,250**
- 2009 CHEVY IMPALA LT**
 MAROON, 121,XXX MILES **\$4,450**
- 2010 CHEVY TAHOE**
 WHITE, 152,XXX MILES **\$11,500**
- 2011 NISSAN SENTRA**
 GRAY, 104,XXX MILES **\$4,950**
- 2012 CADILLAC SRX**
 MAROON, 118,XXX MILES **\$10,000**
- 2012 CHEVY IMPALA LT**
 GOLD, 102,XXX MILES **\$6,250**
- 2013 CHEVY EQUINOX LT**
 BLACK, 168,XXX MILES **\$7,000**

WE DO ALIGNMENTS!



Wright Spray Foam Insulators, LLC
Commercial & Residential
Call for FREE Estimates!

Ervin Gingerich 417-926-2052
B. Eli Yoder 417-746-4932

Is Your Log Home **UGLY?**
Starting To Look

Professional Staining & Repair
(Log Homes & Wood Siding)

Call **Pine Ridge Rustic**
Log Home Building Supplies



573-729-7226
www.pineridgerustic.com

ROUTE 66 – THE MOTHER ROAD BOOK: by Michael Wallis. Hardback, 243 pages, \$12.50. 417-532-2045. (leave message). Lebanon.

BRUSHHOG 3210: 10ft heavy duty pull type brushcutter. \$6,500. 573-765-4406. Richland.

HEAVY HOMEMADE BALE UNROLLER: \$400. 573-765-4406. Richland

FORD 4610 DIESEL TRACTOR: Canopy, 2000 hours 52HP with Brushhog loader 573-765-4406. Richland

IHC 1086 DIESEL TRACTOR: Cab, all new ac, 130 hp. \$13,000. 573-765-4406. Richland

JOHN DEERE 4230 DIESEL TRACTOR: Cab & cold air, 100 hp. \$13,500. 573-765-4406. Richland.

JOHN DEERE 6 FT. 3-POINT FINISH MOWER: \$1,600. 573-765-4406. Richland.

JOHN DEERE 4020 DIESEL TRACTOR: Power shift, turbo. \$9,500. 573-765-4406. Richland.

JOHN DEERE 467 ROUND BALER: Monitor, kicker, net wrap. \$10,850. 573-765-4406. Richland.

JOHN DEERE 2755: Diesel tractor, cab & cold air, 75hp, with JD620 loader. \$19,950. 573-765-4406. Richland.

ROUTE 66 DINING 7 LODGING GUIDE: 183 pages, \$5.00. 417-532-2045. (leave message) Lebanon.

POOL TABLES: Installations, moves, recovers, repairs, accessories, etc. 573-646-1700.

WEATHERED BARN WOOD SIDING: 10" wide. 573-729-7226. www.pineridgerustic.com Salem.

FERTRELL ORGANIC FERTILIZER: Free Catalog. 315-796-4370. Caulfield.

BUYING STANDING CEDAR: Minimum 6-in diameter. 417-531-0403.

OLD READERS DIGEST: \$1 each. 8am-8pm. 417-991-8190. Lebanon.



Premier Brush Cutter

- 72" Cutting Width
- High Flow or Standard Flow
- Carbide Mulching Teeth

CL Fabrication Tree & Post Puller – Dominator

- 1" thick AR400 steel jaws.
- 2" diameter, CF 1045 main pivot pins.
- Heaviest Built on the Market



WE ARE ONE OF THE NATION'S LARGEST JENKINS IRON & STEEL DEALERS!

Come see us today! Financing options available.

Eldon, MO • 31 Porter Rd • 573-434-9225
www.amoutdoorsales.com

SPECIALIZING IN HEAVY DUTY GATES



Cow Country Gate Sales

Call Randy: 573-569-4754
or Home: 573-539-2528
Located at: Zimmerman Welding
16889 Hwy 52, Barnett, MO

HIRING CAREGIVERS!

- Competitive Wages
- Full or Part Time

Call Now!

Reba's Family Care, LLC

417 664-0760 • Reba Green | 573-434-3764 • David Green

LOG SIDING: 2X8 Pine/Western Cedar
www.pineridgerustic.com 573-729-7226.
Salem.

BUYING MOBILE HOMES: Call David at
VILLA HOMES IN ROLLA 573-578-8072.
Rolla.

TRUE MODULARS: 30 to 60 day delivery
available, 3 and 4 bedroom 573-657-7040
chateauhomes.net

**DARDEN PROFESSIONAL TIMBER
HARVESTING, BUYING STANDING
TIMBER:** Great prices, improve wildlife
habitat and improve forest health. State
Certified & Fully Insured! 573-247-4808
or 573-739-1122. Salem.

WANTED TO BUY ANTIQUE CARS:
Convertible, Corvettes, unrestored, motors,
parts considered. 870-324-1154. Ash Flat.

TREES OF MISSOURI BOOK: \$5.
Missouri Wildlife & Nature Viewing Book,
your guide to 101 spectacular wildlife and
nature viewing area, \$5. 417-532-2045.
(Leave message and phone number).
Lebanon.

**AVAILABLE STOCK MOBILE
HOMES:** Immediately, double wide and
single, 3 and 4 bedroom 573-499-9993
columbiadiscountshomes.com

**WANTED TO BUY DODGE DIESEL
TRUCK:** Or Toyota Tacoma. Also, buying
antique cars. 870-324-1154. Ash Flat.

TINY HOMES: We gottem 573-881-3283

STOCK MOBILE HOMES AVAILABLE:
We gottem, single and double, 3 and 4
bedroom! Call Tuffy 573-657-2176.
amegamobilehomes.com

**HISTORY OF THE SCHOOL OF THE
OZARKS:** at Point Lookout. \$5.00.
417-532-2045. (leave message and phone
number). Lebanon.

I BUY.....used mobile homes. Call or text
573-338-6250 or email GregS.CH@outlook.com

USED MOBILE HOMES: Call David at
VILLA HOMES IN ROLLA 573-578-8072.
Rolla.

**REGISTERED HEREFORD & ANGUS
BULLS:** Home raised, Some Show-Me
Select Qualified. 573-701-7828. Belgrade.

Offering the Area's LOWEST METAL PRICES!

Pole Barn Packages

CALL TODAY FOR A FREE QUOTE!

24'x32'x10'	30'x40'x10'	40'x60'x12'	Sales Tax & Delivery not included. Labor quotes available as well.
24'x40'x10'	30'x60'x10'	CALL TODAY!	

Compare Before You Buy.

We Use Only The **Highest Quality** Materials!



Custom Homes • Metal Roofs

29 Gauge

#1 PAINTED METAL

- ★ Lifetime Warranty - \$99.00 Sq.
- ★ 40 Year Warranty - \$94.00 Sq.
- ★ 20 Year Warranty - \$91.00 Sq.
- ★ 25 Year Galvalume - \$76.00 Sq.

Labor prices will be higher in locations over 75 miles from Marshfield, MO



- ALL MATERIAL PACKAGES INCLUDE...
- ✓ #1 Yellow Pine Lumber
 - ✓ #1-40 Yr. Painted Metal w/Screws
 - ✓ 1-10' Overhead Door
 - ✓ 1-36" Entry Door

Fully Insured



PORTABLE BUILDINGS
Rent to Own
No Credit Check

1049 SCHOOLVIEW DR.
Marshfield, MO



Marshfield
BUILDINGS
www.marshfieldbuildings.com



417-859-7744

CONWAY HIGH SCHOOL BEARS 2000-2001 YEARBOOK. \$12.50. 417-532-2045. (Leave message and phone number.) Lebanon.

WANTED, TIMBER TO LOG ON SHARES: Honest, reliable, references. 417-533-4607, 417-664-1195. Lebanon.

WARSAW, MISSOURI OZARK ECHOES 1964 YEARBOOK, \$20. 417-532-2045. (leave message and phone number). Lebanon.

KUSTER LOGGING
BUYER of Standing Timber Oak and Walnut
Dozing Now Available
417-259-0047
 References Available



OLD WORLD BOOK ENCYCLOPEDIAS: Full set. \$40. Typewriter, \$30. Kenmore sewing machine \$30, VCR & movies \$45. 8am-8pm. 417-991-8190. Lebanon.

CUSTOM SAW MILLING: 417-533-4607, 417-664-1195. Lebanon.

FIREARMS: Professional Repairs and Restorations. Baron's Gunsmithing. 573-363-5801, Camdenton.

DARDEN PROFESSIONAL TIMBER HARVESTING, BUYING STANDING TIMER: Great prices, improve wildlife habitat and improve forest health. State Certified & Fully Insured! 573-247-4808 or 573-739-1122. Salem.

85 DODGE SHORT BED 360 4x4 \$1,200 417-532-5670.

BLACK ANGUS BULLS: from 12 to 18 months. 417-932-4026. Summersville.

SMALL SQUARE BALES OF STRAW: 417-932-4026. Summersville.

WANTED, TIMBER TO LOG ON SHARES: Honest, reliable, references. 417-533-4607, 417-664-1195.

2 ANTIQUE CURIO CABINETS: \$100 each. Call between 8am-8pm. 417-991-8190. Lebanon.

Team Electrical & Plumbing
"The Professionals you can count on"
 Electrical • Solar Power • Plumbing • Lighting Installation

100% Satisfaction Guaranteed	Fully Licensed & Insured	\$100 Estimates with upfront pricing
------------------------------	--------------------------	--------------------------------------

For the best quality of work every time...
Give "Team" a call today!
 417-349-6200 • www.teamelectricalplumbing.com

BITTERSWEET EARTH BOOK: Edited by Ellen Gray Massey of Lebanon, 405 pages, \$9.50. 417-532-2045. (Leave message and phone number.) Lebanon.

6 BRAND NEW AREA RUGS: White with gray squares, fluffy. \$160. 8am-8pm. 417-991-8190. Lebanon.

METAL ROOFS: We repair leaky metal roofs with warranty. Also, flat roofs, very affordable, cover all state. 573-338-1148. Jefferson City.

SENIOR CITIZENS WALKER: Bedside potty, potty seat with arms for commode. 8am-8pm. 417-991-8190. Lebanon.

COOKBOOK COLLECTION: \$1.00 each. Many varieties. 417-532-2045. (Leave message and phone number.) Lebanon.

LOCKED & LOADED

Ready for you!

- Hi-point pistols.....starting at \$165⁰⁰
- Heritage Rough Rider combo'sstarting at \$189⁰⁰
- Ruger Security 9's..... \$349⁰⁰
- Ruger SP101 357 magnum \$729⁰⁰
- Ruger 10/22 carbines..... starting at \$305⁰⁰
- Ruger Mini-14's..... starting at \$1,189⁰⁰
- Springfield Armory Hellcatsstarting at \$559⁰⁰
- Springfield Armory XDME pistols ..starting at \$549⁰⁰
- Taurus G3C pistolsstarting at \$300⁰⁰
- Smith & Wesson Governors \$819⁰⁰
- Smith & Wesson shield pistolsstarting at \$459⁰⁰
- Smith & Wesson 637 38 SPL \$489⁰⁰
- Smith & Wesson SD9's and SD40's..... \$379⁰⁰
- AR-15 rifles Bushmaster, Del-ton, Ruger, Smith & Wessonstarting at \$625⁰⁰
- AK-47 Rifles..... starting at \$725⁰⁰
- M240-SLR 7.62X51 20 inch Barrel with 2,500 M-13 links, cleaning kit and custom fitted Rifle Case starting at \$13,675⁰⁰
- Barrett 82A1 50 BMG with 3-10 round mags and 100 rounds of 50 BMG ammostarting at \$8,900⁰⁰
- Barrett 99 50 BMG with 100 rounds of 50 BMG ammostarting at \$4,525⁰⁰
- EAA Girsan 12 gauge camo with 3-1/2 chamberstarting at \$449⁰⁰
- Mossberg Maverick 88 12 gaugestarting at \$275⁰⁰
- Mossberg 590 shockwave 12 gauge \$449⁰⁰
- 9MM ammo..... starting at \$375⁰⁰ per Case
- 40 S&W ammo.....starting at \$300⁰⁰ Per Case
- 5.56X45 green tip ammo SS109 \$675⁰⁰ per 1000 round case

Please call ahead to check on ammo and reloading supplies as inventories change daily. All firearms are factory new & prices do not include sales tax.

County Clipper Mowers

COME BY FOR YOUR TEST DRIVE!



KAWASAKI & KOHLER ENGINES
DECKS RANGE FROM 42" TO 72"
STEELVILLE
FEED & FARM
 573-775-2650 • 11 Cobblestone Rd., Steelville, MO
 Mon-Fri 8am-5pm • Sat 8am-12pm • Sun Closed

JERRY'S
Guns & Ammo
 1691 Blackoak Rd, Richland
573-765-3388
 jerrysguns@hughes.net

BOOTS: Rubber and leather boots and hip waders. Men's 11, Women's 7, some insulated, \$15-\$40 obo. 636-239-2695. Washington.

2007 ADIRONDACK RV: 27 foot, 1-slide out. \$11,000. 417-887-8221. Springfield.

PARTS 4400 COMBINE MOTOR: Straw Walkers Raidator, 4420 Combine good machine, will part out. 636-384-6114. Wright City.

GE 5,050 BTU: 100 amp, air conditioner. \$50. 573-576-7130. Park Hills.



Cheyenne Acres
Horse & Tack
BUY - SELL - TRADE
by Rolla, MO
Call For Directions & Availability
Call Kip
573-368-9402



BUSY CAMPGROUND IN THE OZARKS: Looking for a hard working couple to assist, host and general maintenance. Salary & housing included. Must be self-motivated with a good attitude. 417-588-1631. Lebanon.

MOEN KITCHEN FAUCET: Single lever, sprayer, new cartridge. \$45 obo. 636-239-2695. Washington.

FOR SALE 3 year old Arabian colt, straight Egyptian, \$1,500 573-263-4749.

0% for 4 Years
HEATMOR
Outdoor Wood Furnace
as low as **\$168** per month
HEATMOR MIDWEST
Licking, MO 65542 • 573-674-2962



SPECIALIST FROM "HARDSCRABBLE" BOOK: by Elbert Crittenden Traw, DDS. Life in Stoutland/Richland/Camden County area. Hardback, \$5.00. 417-532-2045. (Leave message and phone number.) Lebanon.

STAY-TUFF FENCE, Johnson concrete waterers, waterlines, hydrants, posts, panels, hydraulic hoses, & **GOOD FOOD.** Farmers Quik Stop. 417-991-1938. Lebanon.

OFFICIAL TRACTOR OF TOUGH™



Marshfield Machinery Inc.
222 E. Madison • Marshfield, MO 65706
417-859-2117 • www.marshfieldmachinery.com

MahindraUSA.com © 2020 Mahindra USA Inc.

Mahindra
Rise.

NEW MAHINDRA TRACTORS

- 1626 4WD & LDR 26HP IN STOCK
- 1635 4WD & LDR 36HP IN STOCK
- 2638 4WD & LDR 37HP IN STOCK

USED TRACTORS

IHC 826 92 HP 9,000

USED ROUND BALERS

- HESSTON 945 4X5 9,000
- JOHN DEERE 375 5X4 3,500
- HESSTON 560 5X6 2,000
- NH 850 5X5 1,500

USED MISC.

- HAYBUSTER 107C NOTIL DRILL 17,500
- FRONTIER BALE PROCESSOR 8,500
- BUSH HOG 3510 10FT 8,000
- SNAPPER ZERO TURN 2,750
- BUSH HOG 2052 ZERO TURN 2,500
- BUSH HOG POST HOLE DIGGER 1,200

Marshfield Machinery Inc.
222 E. Madison
Marshfield, MO 65706
417-859-2117
www.marshfieldmachinery.com

OAK TABLE – FOUR CHAIRS: \$250, Pine heart day bed with mattress, good shape \$75.00. 417-543-8261. Ava.

65 MASSEY FERGUSON TRACTOR: propane, with an older brush hog \$3,500 417-840-7936

18,400 BTU WHIRLPOOL AIR CONDITIONER: \$200. 573-576-7130. Park Hills.

CUTTING BOARD: Fits in kitchen counter top, various species of ducks. \$15.00. 636-239-2695. Washington.

YOU HAVE OPTIONS FOR HEALTHCARE!

WE CAN HELP YOU NAVIGATE HEALTHCARE.GOV

Choices In Health & Life Insurance
Mike Eblen, Agent
417-532-3360
238 S. Jefferson Avenue Suite A, Lebanon



BORDER COLLIE PUPS: Farm raised, working parents, born 6-11-21. 2 males and 1 female. \$200 each. 417-830-8374. Mansfield.

CALL DUCKS & BIRMINGHAM ROLLERS: Call color, gray, pastel, blue fawn, blacks & blue bibs. 573-702-4022. Bismark.

Larry Heisel Rentals
LARGE or SMALL...
We Rent!
 Crawler Loaders • Excavators • Backhoes
 Call Larry! We Deliver!
573-779-1500
 www.larryheiselequipment.com
 Rental Available in 636 or 573 area code

1950'S COLT REVOLVER DEALERS MEMORABILIA.: All for \$100. Call pm. 573-764-3517.

ROLL 1958 B.U. LINCOLN WHEAT PENNY'S.: Last year for these. \$60. Call pm. 573-764-3517.

ROLL 1959 B.U. MONTICELLO PENNY'S.: First year for these. \$40. Call pm. 573-764-3517.

JOHN DEERE 2755: Diesel tractor, cab & cold air, 75hp, with JD620 loader. \$19,950. 573-765-4406. Richland.

Best Antiques & Collectibles Under the Moon!
 Hootie Hoot Hollow
 Antique/Resale
 314-346-7098 • 314-610-0204 • 11520 Hwy. 64 • Lebanon
 1/2 mi. from Bennett Spring State Park

THE AMERICAN HERITAGE PICTURE HISTORY OF THE CIVIL WAR: By Bruce Carlton. 628 pages, hardback, \$12.50. 417-532-2045. (Leave message and phone number). Lebanon.

2017 MODEL FOREST RIVER 5TH WHEEL: 2 slide-outs, outdoor kitchen, bunkbeds in back, sleeps 9. Excellent condition. 417-733-2602. Miller.

AMISH COUNTRY COOKBOOK: **Volume 1, easy to make delicious meals from scratch, 301 pages, \$5.00.** 417-532-2045. (Leave message and phone number). Lebanon.

FREE TO GOOD HOME: Mixed breed puppies, mother English Shepherd. 417-288-1009. St. Roberts.

Land Pride www.landpride.com
 For Outstanding Products & Service
AGRI-ENTERPRISES
 1-1/2 Miles South of Licking, MO On Hwy 63
573-674-2203 • 1-800-653-7152
 www.agri-enterprises.com

2006 LINCOLN TOWN CAR SIGNATURE SERIES: \$4,300. 573-689-2490. Bunker.

2 MALE BORDER DOODLES: 1 black & white, 1 blue merle, 5 months old. 573-739-9431.

POWER WASHING, CALL JET STREAM POWER WASHING FOR ALL OF YOUR GRIM TO SHINE NEEDS: We wash it all, semis, stock trailers, campers, equipment, houses, buildings and driveways. If it has grime, call today to make it shine in no time! 417-270-1075. Potosi.

Buildings • Hunter's Cabins • Lawn Furniture
JAMCO BUILDERS
JAMCO Portable Buildings
 800-688-2064 • 307 Enterprise Dr. • Seymour, MO • www.jamcobuilders.com
Rent To Own Plan

IHC 10 FT. WHEEL DISK: \$1,800. 573-765-4406. Richland.

ROUND & SQUARE BALES OF HAY: 417-345-5634. Phillipsburg.

RARE CAR, 53 INDY PACE CAR CONVERTIBLE: Excellent condition, to many new parts to list. \$20,000. 636-583-4338. Union.

FREE TO A GOOD HOME: Give away 78 rpm records 1930's – 1950's. Complete list provided – call 573-546-6681. Leave message. Most are clean & fair condition – they are originals.

SNAPPER RIDING MOWER: Needs a tune-up & tire tubes. Only \$95. 573-364-7465. Rolla.

Getting Chores Done LAND PRIDE does that
DH25 SERIES DISC HARROWS
 40-100 HP 72", 96" Widths

- Cat. 1 & 2 Hitch
- 20" or 22" Notched blades
- 3" Square frame
- 7-1/2" Blade spacing
- Angle front & rear gangs up to 21 degrees
- Adjustment handle to aid in angling
- 1/2" Thick bearing hangers

1-1/2 Miles South of Licking, MO On Hwy 63
573-674-2203 • 1-800-653-7152
 www.agri-enterprises.com

LEATHER WORKING EQUIPMENT: 30" Consew flat bed, 2 Union lock stitch machines, 1 Ideal clicker, 1 Randle strape cutter. \$3,000 for all. 636-583-4338. Union.

MURRY RIDING MOWER: Good tires, deck, blades, 5-speed, needs motor. \$150-gun trade. 573-364-7465. Rolla.

1949 STUDBAKER 1 1/2 TON TRUCK: One family owner, all original, no rust, garage kept, flat head 6-cylinder, 4 speed. 573-880-9178 or 573-880-9456. St. Genevieve.

100 VINYL RECORD ALBUMS: Mostly county some gospel. Take al \$2.00 each. 573-689-2490. Bunker.

SONY SOUNDBAR AND SUBWOOFER: With remote. \$100 OBO. 417-668-7793 landline. No text. Falcon.

PUPPIES 3/4 MOUNTAIN SIEST 1/4 RAT TERRIER: \$200 each 573-263-4749.



YOUR AD GOES HERE!

Add YELLOW Color For An Additional \$3 Per Reader Ad

All ads will include Phone Number (unless requested to be deleted by advertiser) and City Or Town, Phone Number with Area Code counts as one word. City or Town counts as one word.

RATE: 80¢ Per Word. All Classified Ads Require Payment Before Print.

(1) 80¢	(2) \$1.60	(3) \$2.40	(4) \$3.20
(5) \$4.00	(6) \$4.80	(7) \$5.60	(8) \$6.40
(9) \$7.20	(10) \$8.00	(11) \$8.80	(12) \$9.60
(13) \$10.40	(14) \$11.20	(15) \$12.00	(16) \$12.80
(17) \$13.60	(18) \$14.40	(19) \$15.20	(20) \$16.00
(21) \$16.80	(22) \$17.60	(23) \$18.40	(24) \$19.20
(25) \$20.00	(26) \$20.80	(27) \$21.60	(28) \$22.40
(29) \$23.20	(30) \$24.00	(31) \$24.80	(32) \$25.60
(33) \$26.40	(34) \$27.20	(35) \$28.00	(36) \$28.80
(37) \$29.60	(38) \$30.40	(39) \$31.20	(40) \$32.00

Place your Classified Ad TODAY!

417-532-2800 • 800-665-8875

Fax: 417-532-8140

Or Mail To: P.O. Box 192 • Lebanon, MO 65536

For your convenience we accept MasterCard, Visa, Discover or American Express



DEADLINE FOR CLASSIFIED ADS: FRIDAY 4:00PM!

Name _____

Address _____

City _____ Email _____

State _____ Zip Code _____ Phone _____

Ad Total \$ _____ X # Weeks _____ = Amount Enclosed \$ _____



**You own the land.
Make it yours.**

Compact Tractors Performance-matched attachments 20.9-62 HP



(417) 777-2391
quarleskubota.com

Save big on our #1 selling* sub-compact and compact tractors, featuring the versatility to handle every job and a wide range of performance-matched attachments. Stop in for a demo and to claim this offer on select models today.

\$0 DOWN 0% APR UP TO 60 MONTHS
PLUS
SAVE UP TO \$1,000

VISIT US TODAY FOR THIS LIMITED-TIME OFFER

L2501DT w/loader
New L2501DT w/Loader Deal!
\$23,995
Financing Price

- NEW Kubota L2501DT
- 4wd, DIESEL, AG TIRES
- KUBOTA LOADER
- 5' ROTARY CUTTER
- 5' BOX BLADE
- NEW 18' KODIAK TRAILER W/RAMPS



KubotaUSA.com

*Based on EDA tractor sales data of under 20 horsepower models from 2009 to 2019. © Kubota Tractor Corporation, 2021. \$0 Down, 0% A.P.R. financing for up to 60 months on purchases of new Kubota BX, B, LX and L series equipment from participating dealers' in-stock inventory is available to qualified purchasers through Kubota Credit Corporation, U.S.A.; subject to credit approval. Example: 60 monthly payments of \$16.67 per \$1,000 financed. Customer instant rebates of \$500 are available on qualifying finance or \$800 on cash purchases of BX2680 equipment. Additional instant rebate of \$500 is available with purchase of one new qualifying implement. Some exceptions apply. Offers expire 6/30/21. Terms subject to change. This material is for descriptive purposes only. Kubota disclaims all representations and warranties, express or implied, or any liability from the use of this material. For complete warranty, disclaimer, safety, incentive offer and product information, consult your Dealer or KubotaUSA.com.