

FREE - TAKE ONE!

Vol. 28 No. 6

MAY 6, 2021

800-543-8271 • 800-665-8875

WEEKLY TRADER MAGAZINE



Find us on Facebook

@myweeklytrader
AUCTIONS PG. 11

VISIT OUR NEW WEBSITE! MYWEEKLYTRADER.COM

Turn every job into a job well done.



The New MX Series 55.5-63.4 HP Factory cab available



QUARLES
SUPPLY COMPANY INC.

(417) 777-2391
quarleskubota.com

Come see the versatile, affordable new MX Series today.

- Spacious operator platform
- Comfortable climate-controlled cab with heat and air for year-round comfort
- Hydrostatic or gear transmission options
- Excellent loader lift capacity (2,275 lb.)

Together we do more.

New MX5400HST w/Loader Deal!

**MX5400HST
W/ Loader**

- NEW Kubota MX5400HST
- 4wd, DIESEL, AG TIRES
 - KUBOTA LOADER

**\$41,940
Financing Price**

- 6' ROTARY CUTTER
- 6' BOX BLADE
- NEW 20' KODIAK TRAILER W/ RAMPS



KubotaUSA.com

© Kubota Tractor Corporation, 2020. This material is for descriptive purposes only. Kubota disclaims all representations and warranties, express or implied, or any liability from the use of this material. For complete warranty, safety, incentive offer and product information, consult your local dealer or go to KubotaUSA.com.

Land

For Sale

Douglas, MO • 110 +/- acres



\$425,000

- Mountain Springs Farm is located on blacktop road and gravel
- Large shops could be used as a shop/home
- Farm house is 3 bedrooms and 1 bath
- Very fertile farm with good fence and water
- Mansfield School District
- Very detailed property list with all of the features available from listing agent
- Property is 7 miles to Mansfield, 120 miles to St. Louis, 20 miles from Mt. Grove, 55 miles to Springfield



WHITETAIL PROPERTIES REAL ESTATE

HUNTING | RANCH | FARM | TIMBER

Brian Utecht | 417-766-5595

Brian.Utecht@whitetailproperties.com

WHITETAILPROPERTIES.COM

Missouri's Top Land Specialist in 2014, 2015, 2016, 2017, 2018 and 2019





**THE MOST COMPLETE
LINE-UP IN THE INDUSTRY**

Cutting widths from 36" to 104"



For Outstanding Products & Service

AGRI-ENTERPRISES

1-1/2 Miles South Of Licking, MO On Hwy 63

573-674-2203 • 1-800-653-7152 • www.agri-enterprises.com

COOKBOOK COLLECTION: 26 cookbooks, hardback and softback. All good shape. \$1.00 each or all \$20. 417-532-2045, leave message. Lebanon.

DOGS & DUCKS & HAT-RACK BUCKS BOOK: by Larry Dablemont. Short terms for the outdoorsman, \$6.50. 417-532-2045. Please leave message. Lebanon.

USED MOBILE HOMES: Call David at VILLA HOMES IN ROLLA 573-578-8072. Rolla.

WEATHERED BARN WOOD SIDING: 10" wide. 573-729-7226. www.pineridgerustic.com





2002 S10 PICKUP: Maroon, good tires, good shape, runs good! \$3,500. 417-533-9484. Grovespring.

CAMPER WINDOWS: 29 3/4 X 21 3/4, 23 3/4 X 21 3/4, 34 X 3/4, 47 3/4 X 21 3/4. \$200 for all or \$50 each. 417-664-8823. Conway

VOTED #1 BEST Preowned Car Dealership

TIM'S USED CARS

(573) 341-3828 • 1334 South Bishop (Hwy. 63) • Rolla, MO
Next to Hwy CC • www.tims-used-cars.com

	2003 DODGE 1500 ST 2WD, 4.7 V-8, Auto, A/C Only \$3,900		2013 RAM 1500 OUTDOORSMAN Crew Cab, 4x4, 5.7 V-8, Power Equipped, Leather, 150,xxx Miles Only \$19,900
	2013 FORD F150 XLT Crew Cab, 2WD, 5.0 V-8, Power Equipped, 141,xxx Miles Only \$17,500		2016 RAM 2500 TRADESMAN Crew Cab, Short Bed, 4x4, 6.4 Hemi, Auto, Power Equipped, 128,xxx Miles Only \$27,900

LARGE SELECTION OF CARS, TRUCKS, SUVs & VANS!



Wright Spray Foam Insulators, LLC
Commercial & Residential
Call for FREE Estimates!

Ervin Gingerich 417-926-2052
B. Eli Yoder 417-746-4932

POOL TABLES: Installations, moves, recovers, repairs, accessories, etc. 573-646-1700.

FERTRELL ORGANIC FERTILIZER: Free Catalog. 315-796-4370.

450 CASE: New motor, new under carriage, \$7,000. 417-532-5670.

BUYING STANDING CEDAR: Minimum 6-in diameter. 417-531-0403.

LOG SIDING: 2X8 Pine/Western Cedar
www.pineridgerustic.com 573-729-7226.



CENTRAL BOILER
CLASSIC EDGE
TITANIUM HDX

26% Tax Credit on EPA certified Central Boiler Classic Edge HDX models and installation. Call today to learn more!

Outdoor Wood Furnace CentralBoiler.com

The Classic Edge 360, 560 and 760 HDX are U.S. EPA Certified

Yarbrough Equipment Sales & Services, Inc.
9776 E. State Hwy OO • Strafford, MO
417-736-2303 • 1-866-286-6901 • www.yarbeq.com

I BUY.....used mobile homes.: Call or text 573-338-6250 or email GregS.CDH@outlook.com

3 POINT 10" POST AUGER: \$175. 417-733-7495. Buffalo

WANTED, TIMBER TO LOG ON SHARES: Honest, reliable, references. 417-533-4607, 417-664-1195.

FIREARMS: Professional Repairs and Restorations. Baron's Gunsmithing. 573-363-



Pine Ridge Rustic
Log Home Building Supplies

Services Offered!

- Installation
- Pre-finishing available on interior & exterior
- Dealer for exterior stains

www.pineridgerustic.com

523 CR 2410 • Salem, MO 65560 • Ph: 573-729-7226



- Log Siding
- Beveled Siding
- Car Siding • Red Cedar
- Western Cedar • Pine

BUYING MOBILE HOMES: Call David at VILLA HOMES IN ROLLA 573-578-8072. Rolla.

WANTED TO BUY ANTIQUE CARS: Convertible, Corvettes, unrestored, motors, parts considered. 870-324-1154.

TUFFY SPECIAL: Volume Prices 573-657-2176 amegamobilehomes.com

MINI FAINTING GOATS: become addicted like me, 100% purebred, perfect for breeders or pets, a great variety of bloodlines, colors and patterns, check website www.greenacresvillage.com or call/text 573-216-7796. Lake of the Ozarks.

CUSTOM SAW MILLING: Lebanon. 417-533-4607, 417-664-1195.

REGISTERED HEREFORD & ANGUS BULLS: Home raised, Some Show-Me Select Qualified. 573-701-7828. Belgrade.

HAY, SADDLES, BOOTS, SUNFLOWER SEEDS, HATS, STRAW: Black Gold, Diamond dog foods, clip ad, save \$2 on Diamond Taste of the Wild. George's, Tack, Saddle, & Feed. 573-346-7866. Camdenton.

WANTED, TIMBER TO LOG ON SHARES: Honest, reliable, references. 417-533-4607, 417-664-1195.

REGISTERED HEREFORD & ANGUS BULLS: Home raised, Some Show-Me Select Qualified. 573-701-7828. Belgrade.

FOR SALE: 256 New Holland, side delivery rake, 417-967-4527. Houston.

5801, Camdenton.

INTERNATIONAL FARM-ALL CUB: New rear tires, new battery, runs fine. \$1,600. 417-543-3180. Wasola.

BALDOR-RELIANCE: 1 hp, 250-volt, electric motor. New, sacrifice, \$50. 417-345-4562 or 417-599-9157. Buffalo.

BETTY CROCKER BAKING FOR TODAY COOKBOOK: Hardback. \$6.50. 417-532-2045. Leave message. Lebanon.

ALLIS-CHALMERS: 5040 diesel with loader, good tractor. \$6,500. 573-864-2611. Ashland.

FAINTING GOAT BUCKLINGS: Pure bred, package deal. 573-216-7796. Roach.



Fab Wor LLC

In addition to doing custom welding and fabrication, we offer...

Crownline Flat Beds — sales and installation
Move Bumpers — assembly and installation
Custom Mini Trailers • Corral Panels

Call us if you have a special project
417-730-9357 • Hwy. 60, Seymour, MO.

NO \$\$\$ DOWN MOBILE HOMES:-
Call for details 573-499-9993
columbiadiscountnhomes.com

DREAM HOUSE: -Online, chateauhomes.net Call Marla 573-657-7040



WE BUY
White Oak Logs!

- ✓ Top prices for your logs
- ✓ Experienced log buyers
- ✓ Professional service

Chad Cook | Salem Wood Products
417.718.2950
5 miles north of Salem, MO on Hwy 19

INDEPENDENT STAVE COMPANY
Log Procurement & Sales

www.independentstavecompany.com

2003 MERCURY MARQUIS: All original, 1-owner, like new condition, kept inside, 124,000. \$4,900. 417-844-4019. Springfield.

1908 ALCOHOL BURNER: \$100 each. 636-234-1888. Gerald.

RADIATOR/FAN SCHROUD: Fits international model tractors models 200, 230, 240. \$125. 636-239-2695. Washington.

SIMPLICITY GARDEN TILLER: Rear tine, \$475. Lebanon.

LIONEL TRAIN SET: Steam engine, tender, caboose and other car, track and transformer. \$195. 573-364-7465. Rolla.

BITTERSWEET MAGAZINES: \$1 each. 417-532-6561. Phillipsburg.

OFFICIAL
TRACTOR
OF TOUGH™



Marshfield Machinery Inc.

222 E. Madison • Marshfield, MO 65706
417-859-2117 • www.marshfieldmachinery.com

MahindraUSA.com © 2020 Mahindra USA Inc.

Mahindra
Rise.

NEW MAHINDRA TRACTORS

4540 2WD & LDR 41HP	IN STOCK
1640 4WD & LDR 38HP	IN STOCK
2638 4WD & LDR 38HP	IN STOCK
1626 4WD & LDR 26HP	IN STOCK

USED TRACTORS

ZETOR 6320 W/LDR 66HP	8,500
-----------------------	-------

USED ROUND BALERS

MF 2946A 4X6 MESH	27,500
MF 1745 4X5	8,500
VERMEER 505SI MESH	7,500
GEHL 2480 4X5	6,500
JD 435 4X6 MESH	6,500
HESSTON 560 5X6	3,000
NH 850 5X5	1,500
VERMEER 605D 5X6	750

USED MOWER/CONDITIONERS

HESSTON 1345 12FT	9,500
-------------------	-------

USED CUTTERS

LANDPRIDE 15FT	5,500
----------------	-------

USED MISC.

HAYBUSTER 107 DRILL	12,500
FRONTIER BALE PROCESSOR	8,500
GEHL 418 8WHL RAKE	1,750
VERMEER 8WHL RAKE	1,750
M&W 10WHL RAKE	1,750
BUSH HOG POST HOLE DIGGER	1,200

Marshfield Machinery Inc.
 222 E. Madison • Marshfield, MO 65706
 417-859-2117
www.marshfieldmachinery.com

House Hunting?

Call Vanessa Today!

Why Choose Me?

- Proven Marketing Strategies
- Competitive Commission Rates
- User-friendly online features for your convenience



Vanessa Ruble

MURRAY RIDING MOWER: Good tires, deck, blades, 5-speed, needs motor. \$150 or gun trade. 573-364-7465. Rolla.

TWO GLASS INSULATORS: Identification book guides, \$6.50. 417-532-2045, leave message. Lebanon.

LIMOUSIN AND RED ANGUS SALE: Friday, May 7 at 6 pm at Sand Spring Resort, 13 miles west of Lebanon on Highway 64. Selling bulls, open heifers bred fall heifers, spring pairs and genetic packages. To view the offering, visit www.jbarjlimousin.com or text Jack Glendenning. 417-588-6121.

FOR SALE: Church pews, color honey oak, good condition, 10 1/2 feet long. If interested call Lee, 314-240-3096. Licking.

HEALTHY KIKO YEARLING BILLY: \$300. 573-858-3238. Salem.

Omar's Logging

⇒ Oak & Walnut

⇒ Excellent Prices

Amish Owned & Operated



LEAVE MESSAGE: 417-741-0440

A CENTURY OF MISSOURI TIGERS BASKETBALL BOOK: by Michael Atchison, 258 pages, hardback. \$20. 417-532-2045 leave message. Lebanon.

MAC'S TIE DOWN STRAPS: Like new. \$95 FIRM. 417-457-1022. Raymondville.

KITCHEN FAUCET MOEN: Single lever, sprayer, new cartridge. \$45 obo. 636-239-2695. Washington.

BOOTS: Hip waders, rubber and leather boots. Men's 11, Women's 7, some insulated, \$15-\$45 obo. 636-239-2695. Washington.

FOR SALE: Chicks hatching, eggs, Chickens, Ducks, Geese. Call Lee. 314-240-3096. Licking.

1993 FORD F-150: 6-cylinder, 296 engine, 5-speed, good tires, camper shell. \$1,800. 417-322-4538. Lebanon.

JOHN DEERE STX46 RIDING MOWER: 46" cut, triple blade, Kohler motor, needs PTO wire and belts. \$195. 573-364-7465. Rolla.

BELLY MOWER: 5ft. off C or B Allis Chalmers, complete, good condition. \$200. 417-766-1991. Rogersville.

QUALITY USED SADDLES WANTED: Will pay cash! George's Tack, Saddle & Feed. 573-346-7866. Camdenton.

MILK GLASS JUGS: Variety of sizes from OCS. 636-234-1888. Gerald.

SEEKING PLUMBER: with experience in New Construction & Residential service plumbing. Must have experience with all types of plumbing repairs and the ability to trouble-shoot and repair many different plumbing problems. We are looking for someone that is outgoing, self-motivated, reliable and has quality ethics. Valid driver license with good driving record required. We offer excellent pay and long-term employment to the right candidate. Paid vacation, paid holidays and health insurance. Immediate employment available. Salary is based on experience. Please call. 573-348-2093.

BLUE/RED HEELER PUPS: Raised for 40 years. Good livestock dogs or pets. \$100 each. 660-553-2333. Cole Camp.

LA AND SC CASE PARTS: Case 960 Combine for Parts. 573-308-5884. Roach.

257 WEATHERBY MAG AMMO: \$75 per box. 573-860-3592. Sullivan.

OZARK EMPIRE FAIR-SPRINGFIELD 60TH ANNIVERSARY COOK BOOK: 1937-1996, 144 pages. Prize winning recipes from the fair. \$9.50. 417-532-2045, (leave message) Lebanon.

NATIVE
Premium Nutrition for Canine Athletes

- NutriVantage® Nutrition Optimizer®
- Concentrated energy
- Quality protein & fat sources
- Wholesome grains
- Antioxidant-rich nutrients
- EnergyFIT™ Technology

Built on Trust
natedogfood.com

YOUR TRUSTED SOURCE FOR QUALITY FEED & FARM-LIFE ESSENTIALS

Portable Feed Bins Ready For Your Farm!

KENT
365 Mineral Buy 10 Get 1 FREE While Supplies Last

“DOING BUSINESS ON OUR WORD AND A HAND SHAKE”
Located in the Heart of the Amish Mennonite Community!
417-345-8600 • 19 Prairie Lane, Buffalo

ENGLISH BULLDOG PUPPIES: 5 males, lilac color, home raised, UTD shots, 417-989-9894. Thornfield.

KENMORE RANGE/DISHWASHER: Also, microwave, new deluxe Instapot & cookbook, removed from disabled lady's home during remodel for access. Private owner, all for \$250. Will not separate. 573-699-4351. St. James.

WANTED TTO BUY: Old John Deere unstyle G Tractor in your shed that doesn't run, on steel or spoke wheel. Call 573-768-0068 or write me at Jim Schlimme, HC 62 Box 62, Sedgewickville, MO. 63781.

MISSOURI HISTORICAL BOOK: published by State Historical Society of Missouri. \$6.50. 417-532-2045 leave message. Lebanon.

TRUNK CHEST: From WWII, Drawer inside, excellent shape, from single corps. \$400 obo. 636-234-1888. Gerald.

STAY-TUFF FENCE, Johnson concrete waterers, waterlines, hydrants, posts, panels, hydraulic hoses, & GOOD FOOD. Farmers Quik Stop. 417-991-1938. Lebanon.

HAPPY HOLLISTER BOOKS: \$2 each. 417-532-6561. Phillipsburg.

FORD 8N TRACTOR: Good condition, Sherman transmission with 6 ft. 3-point finish mower. \$2,200. 417-766-1991. Rogersville.

MISSOURI OZARKS BOOKS: Scenic Driving the Ozarks, 317 pages, \$7.50. Missouri Wild Mushrooms, 186 pages, \$5.00. Missouri Orchids, \$3.75. Weird Missouri Book, a travel guide to Missouri's Local Legends and best kept secrets, 253 pages, HB, \$12.50. Life Along An Ozark River (Current River), 252 pages, HB, \$6.50. 417-532-2045. (leave message) Lebanon.

460 FORD ENGINE: Needs overhaul. \$100. 573-308-5884. Roach.

MAKING THE IMPOSSIBLE

Possible

For a fast and easy way to find out if we have coverage in your area, check out our website at splashin.net

NOW SERVING ST. ROBERT!

Honoring our military with no long term commitment!

No Surprises • Flat Rates

Serving the Tri-County Area.

Veteran & Locally Owned

splashin.net

Splash Wireless Internet LLC

573-460-2720 • 219 S. Walnut St. • Richland



YOUR LAND AND FARM EXPERTS!

**Morgan Co-
4.56 Acres**

\$17,500



Wooded ground just minutes from the Lake of the Ozarks. This land is ready to be turned into the perfect weekend getaway or home, and being located less than ten minutes from the nearest boat ramp, it also boasts easy access to one of Missouri's greatest lakes. It has not been logged and features some excellent mature timber. The property also has two wet weather creeks adding to the unique beauty of the place. There is electric available on its gravel road frontage. Don't miss out on your opportunity to own some beautiful land right by the lake. **Call or email Seth Holt at (816)-447-4660 or sholt@missourilandco.com with any questions or to schedule a showing.**

**Benton Co-
10 Acres**

\$125,000



TO NO FAULT OF THE SELLER-NOW BACK ON THE MARKET! Another Benton county hobby farm sitting on 10 acres. Property has some pasture & good timber for hunting. Tons of deer in this area. House is a 3 Bed- 2 BA. Sitting over a partial finished basement, with a little work downstairs and upstairs, this will make a good place for your next house. Nice huge back deck overlooking a open area that deer are sure to visit in the evenings. Nice enclosed front porch as well. Two car garage just off the house. Circle driveway is easy to get in and out. Highway frontage but house sits back far enough for privacy. It wont last long at this price. **Call Mike Stoner at 573-774-9775**

Hickory Co-6.25 Acres

\$275,000

The epitome of peace and quiet is waiting for you at the end of Noble Lane in Preston, Missouri! This property offers it all from an updated 4 bedroom 3 bathroom home, a shop, garden and chicken space, almost 7 wooded acres, a spring/creek, and loads of wildlife all at the end of a private road where privacy and seclusion will await you at the end of a long, stressful day. As if all of that isn't already perfect enough, Little Niangua flows through the adjacent property and Mule Shoe Conservation Area is just 12 miles away. There, you will find over 2,700 acres to explore, camp, fish, and hunt on!! The home is located in a historic area that was once know as Almon and was complete with wagon trails, an old post office, a cemetery, a schoolhouse, and a few stores. Much of the history can still be seen in the homes that remain in the area. Let's dive into the details found on this unique piece of property: 4 bedroom 3 bath home. You'll love the ample outdoor space available on the front and back decks of the home complete with a ramp making access to the front door a breeze. Upon entering the living area you'll be immediately drawn to the cozy comfort of the seating area around a wood-burning fireplace. This seamlessly flows to the open, airy kitchen complete with vaulted ceilings and a skylight. All the natural light streaming in makes this kitchen a bright, happy place to make memories of family dinners. You'll appreciate the beauty of the new granite countertops and drop-in sink with faucet options for filtered or straight well water! Off one end of the kitchen, you will find the main bathroom with a beautiful custom tile shower and unique antique medicine cabinet and towel racks. This end of the home also provides two nicely sized bedrooms each with stunning views of the woods outside. Off the other side of the kitchen, you'll fall in love with the master suite. The room is spacious with beautiful views of the flower beds outside and leads into a master bath that looks like it could be straight out of a magazine. The custom-tiled, walk-in shower will invite you in to enjoy both a standing or sitting shower head. There's also a double vanity and a beautiful, open tub for soaking in. As you make your way to the basement, you'll be delighted to find an open space ready for you to complete to your satisfaction. The whole house water filter, water heater, water softener, and furnace complete with humidifier are all conveniently located here for easy access. There is also a fourth non-conforming bedroom with its own bath which also boasts gorgeous, custom tile work. Outside, a detached shop with lean-to will provide a wonderful space for you to park your equipment and house your tools. There is electricity in the shop, so you'll be free to work well into the dark where you can be inside and out of the elements. Just beyond the shop, you'll find some garden beds that have produced well for the owners for several years, as well as a chicken coop with outside nesting box access. For small animals, there's already a fenced enclosure and pig hut in place! Beyond all of this, you'll find yourself on a nicely trimmed walking or 4-wheeler path that meanders through the beautiful woods and leads down to a spring and creek. When the water is running, it makes the perfect location to spend an afternoon picnicking and listening to the soothing sounds of the babbling water. This is a very special place, so don't miss out on your chance to snatch it off the market. Your forever is awaiting you! **Call Pamela Dempsey today at 660-553-8677 to schedule a private showing.**



**MISSOURI
LAND
COMPANY**

Farm, Home & Hunting Properties

**Rolla Office:
12647 S. Hwy 63, Rolla
573-308-4868**

**Cole Camp Office:
14981 Centerline Ave.,
Cole Camp
660-668-4868**

www.missourilandco.com • 660-668-HUNT

Toll FREE number for both locations 844-974-1850

WANTED CRAFTSMAN TABLE SAW: 12" direct drive, #11329970. 417-260-9904. Bucyrus.

WASHBURN ELECTRIC GUITAR: With case and Crate amp. \$200 obo. 417-532-6561. Phillipsburg.

69 DART RACE CAR: Less engine, full tube chassis, all fiberglass except body, for sale or trade. 573-536-8913. Jefferson City.

2016 Dodge 3500 Mega Cab 4x4
Excellent condition. New Michelin Tires. Always dealer serviced. 43,000 miles.



ASKING \$56,000 OBO
Call for further details
573-201-3411

CALUS LOGGING

20 YEARS EXPERIENCE

Buying Standing Timber
Walnut & Oak

Joe Calus, Owner
417-926-4606 • MTN. GROVE

CERTIFIED

Cheyenne Acres
Horse & Tack

BUY - SELL - TRADE
by Rolla, MO

Call For Directions & Availability

Call Kip
573-368-9402




720 JOHN DEERE TRACTOR: Complete overhaul, new bear rims, new tubes, good 18-4-34 rears, new fronts, 3 pt cylinder outlets, Make Offer. 660-826-5273. Sedalia.

NEW HOLLAND H4230 DISKBINE: With rollers. \$10,000. 573-765-4406. Richland.

BLACK 2007 SILVERADO EXTENDED CAB: 4x4, 1500, 163,000 miles. \$11,000. 417-531-3376. Grovespring.

FEMALE ENGLISH CREAM GOLDEN RETRIEVER: 2 years old, spayed, AKC, very friendly, calm. \$700 adoption fee. 630-687-0705. Falcon.

WANTED: 10 cords of wood. 314-497-1898. Leasburg.

2001 CHEVY 4-WHEEL DRIVE: ¾ ton, extended cab truck, 193,000 miles, very good condition, runs great. 417-531-2386. Richland.

PEDDLE TRACTORS FOR SALE: All brands. 573-859-6574 or 573-205-3328. Belle.

2005 HONDA FOREMAN 4-WHEELER: 2wd, in very good shape, runs good, asking \$2,800. 573-237-2690. New Haven.

5.3 ACRES: South of Newburg, house, sheds, borders forestry, great hunting, more information call to make appointment to see. \$40,000. 573-368-1625. Owensville.

WANTED: 1000 gallon propane tank. 573-378-6337. Versailles.

All Wood Cabinets in Stock!
Great Selection. Affordable Prices.

Carriage House Cabinet Collection



Bring In Your Measurements For A FREE Estimate!

Granite Countertops as low as \$10 sq. ft.

Wood Plank Vinyl • Tile • And Much More!

NEIGHBORHOOD'S HOME IMPROVEMENT STORE
Where QUALITY doesn't cost more!

417-533-5080
4 MILES N. OF LEBANON ON HWY 5
Mon.-Fri. 8am-5pm • Sat. 8am-3pm
neighborhoods-inc.com

Like us on Facebook

Team Electrical & Plumbing
"The Professionals you can count on"
Electrical • Solar Power • Plumbing • Lighting Installation

100% Satisfaction Guaranteed | **Fully Licensed & Insured** | **\$100 Estimates with upfront pricing**

For the best quality of work every time...
Give "Team" a call today!
417-349-6200 • www.teamelectricalplumbing.com

CAR DOLLY: Heavy duty, adjustable width ramps, good condition. \$900. 417-753-2747. Rogersville.

VINTAGE POCKET KNIFE COLLECTION: 1950's + 60's, 26 models. \$150. 573-764-3517. Call in pm. Gerald.

JOHN DEERE 566 ROUND BALER: Monitor, kicker. \$5,200. 573-765-4406. Richland.

ROUTE 66 DINING 7 LODGING GUIDE: 183 pages, \$5.00. 417-532-2045. (leave message) Lebanon.

JOHN DEERE 2955 DIESEL TRACTOR: Cab & cold air. 85hp, 1,700 hrs, with new loader. \$29,000. 573-765-4406. Richland.

CASE 580C DIESEL BACKHOE LOADER: \$9,200. 573-765-4406. Richland.

VERMEER 4 BASKET HYD FOLD TEDDER: \$4,700. 573-765-4406. Richland.

JOHN DEERE 4030 DIESEL TRACTOR: Cab & cold air, with JD loader. \$19,750. 573-765-4406. Richland.

WEATHERED BARN WOOD SIDING: 10" wide. 573-729-7226. www.pineridgerustic.com

QUALITY USED SADDLES WANTED: Will pay cash! George's Tack, Saddle & Feed. 573-346-7866. Camdenton.

WANTED TO BUY ANTIQUE CARS: Convertible, Corvettes, unrestored, motors, parts considered. 870-324-1154.

KUSTER LOGGING
BUYER of Standing Timber Oak and Walnut
Dozing Now Available
417-259-0047
 References Available



Buildings • Hunter's Cabins • Lawn Furniture



JAMCO Portable Buildings
 800-688-2064 • 307 Enterprise Dr. • Seymour, MO • www.jamcobuilders.com

Rent To Own Plan

JOHN DEERE SMALL GROUND DRIVEN MANURE SPREADER: \$1,500. 573-765-4406. Richland.

NEW HOLLAND 1411 DISKBINE: with roller. \$8,950. 573-765-4406. Richland.

CAMPER WINDOWS: 29 3/4 X 21 3/4, 23 3/4 X 21 3/4, 34 X 3/4, 47 3/4 X 21 3/4. \$200 for all or \$50 each. 417-664-8823. Conway

JOHN DEERE 2755 DIESEL TRACTOR: Cab & cold air, 75hp with John Deere 620 loader. \$19,950. 573-765-4406.

2002 S10 PICKUP: Maroon, good tires, good shape, runs good! \$3,500. 417-533-9484. Grovespring.

MINI FAINTING GOATS: become addicted like me, 100% purebred, perfect for breeders or pets, a great variety of bloodlines, colors and patterns, check website www.greenacresvillage.com or call/text 573-216-7796. Lake of the Ozarks.

JOHN DEERE 467 ROUND BALER: Monitor, kicker, net wrap. \$10,850. 573-765-4406. Richland

DOGS & DUCKS & HAT-RACK BUCKS BOOK: by Larry Dablemont. Short terms for the outdoorsman, \$6.50. 417-532-2045. Please leave message. Lebanon.

Larry Heisel Rentals
 Have Rock?
 How about 3,500 lbs. of Hammer
 Call Larry!
573-779-1500
www.larryheiselequipment.com
 Rental Available in 636 or 573 area code




SELL IT HERE!



WEEKLY TRADER MAGAZINE

417-532-2800 • www.myweeklytrader.com

FORD 6600 DIESEL TRACTOR: Cab, low hours. \$9,250. 573-765-4406. Richland.

IHC HOUGH 65 DIESEL ARTICULATING LOADER: \$9,750. 573-765-4406. Richland.

IHC 766 DIESEL TRACTOR: 80 hp with Koyker KS loader & bale spike. \$7,750. 573-765-4406. Richland.

COOKBOOK COLLECTION: 26 cookbooks, hardback and softback. All good shape. \$1.00 each or all \$20. 417-532-2045. leave message. Lebanon.



Sam CRAWFORD AUCTION SERVICE LLC

As we have leased our farm, will sell the following located 1 mile South of Urbana, Mo. on Hwy. 65 to Hwy. HH, then West 1.2 miles to Co. Rd. 415, then North 7/10. Watch for Crawford Auction Service signs.

Wednesday, May 12, 2021 – 9:30 a.m.

TRACTORS – MACHINERY – TRUCKS – BOAT – TRAILER – FARM MISC.



Boats (Sell near Noon)

'09 Triton 20' Alum boat & '08 trailer,
90HP Mercury mtr, center console,
fully loaded, wide body, shedded,
good
Lowe "Lake" 14' flat bottom boat

Tractors (Sell near Noon)

'04 John Deere 7420 cab, 4x4, w/
JD 741 loader, 4427 hrs., 125 HP
engine, power quad trans., left hand
reverser, cast rear wheel, 38" rear,
26" front, shedded, one owner, ex.
good, #R021151
Ford 4610 dsl., 1501 hrs., canopy, 52
PTO HP, dual hyd. ex. good
Ford 4000 dsl, 8 spd dsl w/bush hog,
2400 loader, 46 PTO HP, 4300 hrs.,
runs good

Trucks/ Trailers

'02 Chev. 1500 Z71, 4x4, Ext. cab, V8,
leather, leaded, 104K, one owner
'79 Chev. C-70 single axle, V8, gas,
10' bed single axle, farm use
Blue Diamond 24' GN flatbed dove tail,
tandem singles
2 B/H single axle bale trailers
80's Gooseneck 20' stock trailer, solid
top
Older P/U bed trailer
Dodge 1 ton dually bed
2 Wheel trailer w/metal stock rack, 5x8
Metal truck, grain bed, 13', shedded

Farm/Misc

2 Honda Foreman ES 4x4 4-wheelers
(1 not running)
Full type calf cage, for ATV
20' Chain harrow
5-6 Older wood mineral feeders
4-5 Poly calf huts
2 Metal bale rings, new
10-12 Older bale rings
12-15 Poly bottom feed bunks
2 Older single axle creep feeders
15-20 Asst. port. panels
2 Metal stanchions
12 Surge Omni take off milkers
Compressor for milk barn
4' Shop fan; (4) 16" tires
2 Ford tractor bumpers
'92 Chev. grill guard
Ashely wood heater
Pipe bender; Metal calf buckets
4-5 Used windows

Machinery (Sells after Tractors)

'05 John Deere 567 baler, mega wide,
silage, cover edge, net wrap
11,026 Bales, shedded, never wet
'13 John Deere 630 MoCo, 9', nice
John Deere 926 MoCo, 9', nice
Sitrex 12 wheel hyd. V rake
Kuhn 4 basket tedder, 2 years old, nice
New Holland 259 & 260 rakes w/dolly's,
NH twin rake hitch
NH 3pt 7' sickle mower
John Deere 450 grain drill w/grass seed
box, 17 hole, nice
Great Plains 1006NT, no till drill, 607
acres, nice
'14 Bush Hog, BH17 3pt 7' cutter, nice
Bush Hog 7' pull type cutter
Case F-21 folding wheel disk, 21'
3pt Bush Hog chisel, 10'
3pt 7' rock rake; JD 3pt HD blade, 10'
Field roller, 12'; 3pt Bale unroller
'06 Wylie PTO pull sprayer, 500 gal.,
nice
Older 3pt PTO concrete mixer
Cut off saw
Bush Hog 12' wheel disk, parts

Great farm auction! Don't miss this one if you need good field ready equipment. Sidney & Opal bought most everything new and have always taken the best care of their equipment and their farm. Loader on site sale day, trucks available.

See website for more pictures!

CRAWFORD Auction Service LLC



TERMS: Cash or good check. Nothing removed until settled for. Not responsible for accidents. Lunch available. Statements made day of sale take precedence over printed matter. All items sell as is. No warranties given or implied.

417-998-6629
Cross Timbers, Mo.

CrawfordAuctionService.com

Sam
417-328-9137

Chase
417-399-1904

Chance, CAI
417-298-1781

Tom Poynter
Jack Lancaster

Sidney & Opal Swanigan

VISIT WEBSITE FOR PICTURES

ESTATE AUCTION

VEHICLES ~ HOUSEHOLD ~ ANTIQUES & COLLECTIBLES ~ SHOP ITEMS ~ OUTDOOR / MISCELLANEOUS ~ FARM ITEMS

SATURDAY, MAY 8TH - 10:00 A.M.

Location: 1470 Kaylor Road, Mtn Grove, MO **Directions:** From 4-Way Stop go South on Hwy 95 3.5 miles to ZZ Hwy on Right. Take ZZ 1.2 miles to Kaylor Road. Take Kaylor Road .8 mile to Auction on Right. **WATCH FOR CHADWELL AUCTION SIGNS.** **Payment System:** Cash • Debit Card • Credit Card (Debit / Credit Card Fee Will Apply) Checks approved if known by auction company. **VISIT: WWW.CHADWELLAUCTIONS.COM**

Estate of Curtis & Fern CAMPBELL

VEHICLES

2005 Chrysler Town & Country Mini Van, 130,000 miles



HOUSEHOLD

2 EZ Lift Recliners • 4pc Oak Bedroom Suite • Book Shelf w/Glass Door • Day Bed w/Dresser • Kerosene Wall Hangers • Assorted End Tables • Gun Cabinets • Washer & Dryer • Oak Shelves • Computer Desk • Computers • Curio Cabinet • Pendelon Upright Clock • Maple Desk • Dining Table • Dining Hutch • Sleeper Sofa • Upright Freezer • Refrigerator • Televisions • Small Oak Table w/4Chairs • Recliner • Table Lamps • Maple Table • Electric Fireplace • Wing Back Chairs • Rocking Chair • (2) Wooden Rocking Chairs • Kitchen Utensils • Assorted Dishes • Kitchen Appliances • Pictures • World Globe • Deer Head & Deer Horn Mounts



FARM ITEMS

1-1/5 Ton Wooden Cattle Feeder • Drag Type Harrow • 3pt Bale Carrier • Priefert Portable Squeeze Chute • (24) Super Duty 12' Cattle Panels • Case 3 Bottom Plow • Alley Bows w/ Gates • Misc Cattle Panels • Bale Ring Feeder • Feed Tubs • 25 Gallon Cattle Sprayer



2007 Suzuki 4 Wheeler



GUNS

Savage 22 Rifle • Western Auto Revelation Model 100A 22 Rifle • Single Shot 22 Rifle

ANTIQUES ~ COLLECTIBLES

Kerosene Lamps • Oliver Horse Drawn Mower • 236 JD 2 Row Corn Planter • Milk Cans • Drop Leaf Chrome Table • 1940's Wardrobe • Recliner • Set of Coffee Grinder Lamps • Side Hutch • Vintage Nut & Bolt Bins • Metal Lawn Chairs • Metal Patio Rocking Chair • Tea Pot Collection • Candy Dish Collection • Canvas Paintings • Assorted Dishes • Cast Iron Pot • Daisy Butter Churn

OUTDOOR ~ MISCELLANEOUS

Stihl 043 Chain Saw • Hand Tools • 2 Wheel Yard Cart • Used Lumber • Telephone Poles • Rubber Maid Pickup Tool Box • Troybilt RotoTiller • Craftsman Garden Tiller • DR Push Trimmer • Stihl Weedeater • Push Mowers • Mantis Garden Tiller • Cutting Horse Saddle • Lawn Seeder • Deer Stand • Handicap Items • Fishing Equipment • Outdoor Swing

SHOP ITEMS

Hand Tools • Extension Ladders • Folding Ladder • Socket Sets • Impact Socket Set • Chains • House Jacks • Air Compressor • Battery Chargers • Power Washer • Tools • Skil Saws • Drills • Ford & Chevy Receiver Hitches • Portable Generator

AUCTIONEER'S NOTE: There are many unopened boxes and several items in storage so this is just a partial listing! There will be something for everyone at this Auction. Make plans to Attend. **Thanks, Shawn**

DRIVER'S LICENSE OR PICTURE I.D. REQUIRED • TERMS: CASH OR APPROVED CHECK   **OR** 

Chadwell
Auction Service, LLC
www.chadwellauctions.com

Auctioneer:
SHAWN CHADWELL
417-830-0209
Ringmen:
Weston Chadwell ~ 417-349-0727

Clerk:
SHELLY CHADWELL
Cell: 417-880-8449
Cashiers:
Shawn Irby • Maria Chadwell
Kati Roberts • Emily Chadwell

PROFESSIONAL SALES MANAGEMENT

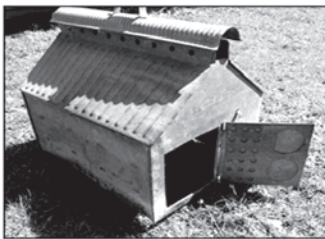
LUNCH WAGON • APPRAISAL SERVICE • RAIN OR SHINE
All announcements made day of sale take precedence over any printed matter.
Not responsible for lost or stolen merchandise. Not responsible for accidents.

Sam CRAWFORD AUCTION SERVICE LLC

As we are selling the farm and have moved, will sell the following located from Wheatland, Mo., 2 miles South on Hwy. 83 to Hwy. AA, then West 2-1/2 miles. Watch for Crawford Auction Service signs.

Saturday, May 15, 2021 – 9:30 a.m.

ANTIQUES – COLLECTIBLES – TRACTOR – TOOLS – Misc.



Lots & lots of good antique items in this good auction. Kent and his late wife Shirley collected in several states for over 50 years.

Antiques/Collectibles

Tractors (Sells @ 1 p.m.)

- Case Vac W/F
- Ford 8N
- 3Pt blade
- 3Pt brush cutter
- 3Pt 2 bottom plow



Tool/Misc

- Craftsman 10" band saw, 12" bandsaw, 16" scrollsaw, 4" combination sander
- Older Craftsman table saw
- Delta 6" jointer
- DR Chipper/shredder
- Ariens rear tine tiller
- Long handle tools; Fish gig
- 3 Alum ext. ladder
- Cement mixer, elec.
- House jack; Some lumber
- Roll black plastic pipe
- Poly water tank
- Commercial point sprayer
- Gas cans

Household/ Misc.

- Frigidaire upright freezer
- Older refrigerator
- Maytag floor model A/C
- 2 Metal file cabinets
- 20 Folding metal chairs
- 3-4 Pipe clothes racks
- 10-15 Rods & reels
- Other items

- Jenny Lind 1/2 bed
- Wood 1/2 bed
- Iron 1/2 bed w/brass knobs
- 10-12 Small tables
- 6' Table; Coffee table
- Plant stand
- 2 Small wood cabinets w/drawers
- 2 Cedar chests; Cot
- Rd oak table; Loveseat
- Player Piano; 40-50 Piano rolls
- 2 Room dividers; 2 Child's oak chairs
- Doll bed; 2 Small pews
- Stove wood box
- Sev cane bottom chairs
- 4-5 Metal lawn chairs
- 8-10 Ice cream chairs & stools
- Music stand; Flag stands
- 3-4 Bird cages; Wire rat trap
- 2 Small flat top trunks
- Primitive table; 3-4 Dress forms
- F/P screen; Doors & windows
- Conoco metal signs
- Conoco gas pump top covers, Ethyl
- Galv. tubs & buckets; 2 Yard gates

- Some wood picket yard fence
- 2 Red wagons; Lot 78 records
- Folding clothes hamper
- 2 Kerosene lanterns
- Feed cart; Old freight car
- Howe platform feed scales
- Sev wooden boxes
- Salesman Sample wood cook stove, pat. 1881
- Wood doors & windows
- Lot luggage
- Lot Christmas decorations
- Small safe; Store counter
- Iron boiler; Tiffin corn sheller
- Sev pieces of tin ceiling panels
- Stewart potato chip bucket
- Sev rag rugs
- Doilies, table cloths, other hand work
- Wire baskets
- 2 Metal bird/chicken houses
- (2) 10 gal. shortening barrels
- Lot totes in storage
- Much more

Sam CRAWFORD Auction Service LLC



TERMS: Cash or good check. Nothing removed until settled for. Not responsible for accidents. Lunch available. State-ments made day of sale take precedence over printed matter. All items sell as is. No warranties given or implied.

417-998-6629
Cross Timbers, Mo.

CrawfordAuctionService.com



Sam
417-328-9137

Chase
417-399-1904

Chance, CAI
417-298-1751

Tom Poynter
Jack Lancaster

Kent & Traci Parson

Sam
CRAWFORD AUCTION SERVICE LLC

As I have rented my farm, will sell the following located from Urbana, Mo., 7 mile East on Hwy. D to Orchard Rd., then South 6/10 mile. Watch for Crawford Auction Service signs.

Monday, May 17, 2021 – 10 a.m.

JOHN DEERE TRACTORS & EQUIPMENT – TRAILERS – MISC.



Tractors

- '12 John Deere 6330 4x4, cab, reverser, power Qd., joy stick w/ John Deere 563 loader & bucket, buddy seat, shows 10 hrs., 85 PTO HP, one owner, #697105
- '12 John Deere 5083E Limited 4x4, cab, reverser, joy stick w/ John Deere 553 loader & bucket, one owner, low hrs., 83 engine HP, #440177
- '07 John Deere 5525 2-wheel, cab w/John Deere 522 loader & bucket, joy stick, 911 hrs., #352270, 2nd owner, 91 engine HP

Equipment

- John Deere 567 big baler, mega wide, twine, shedded, low bales
- Frontier DM5070 9' disc mower w/ Vassar cart, less than 100 acres
- John Deere 8 wheel V rake, pull type
- Rhino TW120 10' brush cutter, HD
- 3pt Land Pride 8' blade
- 3pt Danuser post hole digger
- Ford 3pt 2 bottom disc plow
- Ford 3pt 2 bottom plow
- 3pt 2 row cultivator
- 10' Homemade roller
- 3 Bale forks for loaders

See website for more pictures!!

Trailers & Misc.

- 80's G.N. 20' stock trailer
- Titan 14' bumper hitch stock trailer
- 16' B/H utility trailer
- Bush hog 4 bale trailer, dumps
- Older p/u trailer
- Dump rake
- My D Han D truck mt. feed box, ex. good
- John Deere RX75 lawn mower
- Wards elec welder



Bertram is 91 years young and has rented his farm out and no longer needs this equipment. All bought new exempt for the 5525 tractor. Tractors & baler have all been shedded. Short auction - Tractors sell first. Loader on site day of sale. Trucking available.

Sam
CRAWFORD LLC
Auction Service



TERMS: Cash or good check. Nothing removed until settled for. Not responsible for accidents. Lunch available. Statements made day of sale take precedence over printed matter. All items sell as is. No warranties given or implied.

417-998-6629
Cross Timbers, Mo.

CrawfordAuctionService.com



Sam
417-328-9137

Chase
417-399-1904

Chance, CAI
417-298-1751

Tom Poynter
Jack Lancaster

Bertram True

HARGUS FARMS Farm-Shop Equipment Dispersal **AUCTION**

Saturday, May-22 - 10:00AM
1800 Whitetail Road • Elkland, MO

Directions: From Exit 100 I-44 in Marshfield, follow Hwy 38 west 13 miles to Elkland, MO. From Elkland proceed West on Hwy 38 ½ mile to Hwy AA. Follow Hwy AA 1 mile to Whitetail Rd. Follow Whitetail road South 1 mile to sale site.

						
		<p>1650 Oliver gas Tractor 1955 Oliver diesel Tractor Massey 175 Tractor w/ Loader - bale spike - bucket Vermeer Round baler 554 Kicker wheels - XL series Vermeer WR20 8 wheel rake 9ft Disc Mower</p>		<p>3pt 2 bottom plow Slide in livestock bed 7mm 30mm combo wrenchs - Craftsman 1 1/8 - 1 1/2 combo wrenchs - Craftsman 7mm - 30mm assorted combo wrenchs Craftsman multifit wrenchs DeWalt cut off saw 5000 lb Electric winch Tap & Die set DeWalt 4 1/2" grinder Hitaci cordless drill charger & Battery Large wrenches Snapper riding mower Plus Craftsman and other name brand wrenches and sockets • Power hand tools in excellent condition 2 Large Buildings full of Top quality tools</p>		
		<p>Massey Ferguson 110 manure spreader Landpride 10ft Bush hog Squeeze chute on wheels Hay rake Massey Harris SD 3 pt 4 wheel hay wagon steel bed 1979 16ft Gooseneck brand livestock trailer 1982 20ft gooseneck flatbed trailer 2007 16ft Flat bed bumper trailer w/winch 2005 Cub Cadet 4x2 utility vehicle (less than 5hrs on engine)</p>		<p>Miller Bobcat Welder/generator Model 225 Craftsman 20511 Mig Welder Honda Rancher ES 4 wheeler 4x4 Lincoln 225 Amp welder Industrial Air compressor 60gal Pressure washer - Honda Oliver 324 garden pulling tractor Kohler 301A engine-new tires Floor drill press • Bench drill press Hammer drill with bits Stihl Chain Saws • Pipe threader Black & Decker 3/8" impact wrench Electric fuel pump 12 ton press • 2 ½ ton floor jack Bulk feed bin • 2 basket tedder Grain drill Massey Ferguson 13 hole 3pt bale forks Landpride 6ft finish mower</p>		
		<p>Honda Rancher ES 4 wheeler 4x4 Lincoln 225 Amp welder Industrial Air compressor 60gal Pressure washer - Honda Oliver 324 garden pulling tractor Kohler 301A engine-new tires</p>				
		<p>Floor drill press • Bench drill press Hammer drill with bits Stihl Chain Saws • Pipe threader Black & Decker 3/8" impact wrench Electric fuel pump 12 ton press • 2 ½ ton floor jack Bulk feed bin • 2 basket tedder Grain drill Massey Ferguson 13 hole 3pt bale forks Landpride 6ft finish mower</p>				



Hoover Case - Auctioneer • 417-859-3204 or 417-844-6020
MJ Johnson - Sale Manager • 417-838-0291
Go to www.caseauction.com for complete listing • auctionzip.com ID#24071

Terms: Announcements made sale day take precedence over all printed material. Neither Case Auction or Property owner guarantees the absolute accuracy of supplied information. Payment: Cash or Check with ID accepted.

ESTATE AUCTION BONA, MO

AUCTION

Due to the Death of the late Anita Bridges we will sell the following Automobile, Mowers, Household, Collectibles, Tools and Misc. At the Home from Bona, Mo. At the intersection of 215 & 245 Highways Go north 1 mile to RA hwy. Go north ¼ mile to East Dade F.R. 4 go West & North & West 2 Miles to the Auction on

Sat. May 15, 2021 at 9:00 am

WATCH FOR AUCTION COMPANY SIGNS • LUNCH SERVED

FOR MORE PICTURES GO TO: WWW.BRUCEANDLEANAUCTION.COM



AUTOMOBILE

- 2009 Lincoln MKX 4 Door SUV 3.5L Motor, Auto Trans, Full Power

HOUSEHOLD

- Kitchen Aid Side by Side Refrig./Freezer Ice & Water in the Door
- Frigidaire Upright Freezer
- White Westinghouse Upright Freezer
- Kenmore 100 Series Automatic Washer & Dryer
- 39" Samsung Flat Screen TV
- 30" Vizio Flat Screen TV
- Oak Kitchen Table W/Chairs
- 2 Wooden Bar Stools
- 3 Cushion Divan
- Wing Back Ocean. Chairs
- 3 Cushion Vinyl Divan
- 5' Glass Fronted Curio Cabinet
- 3 Pc. Queen Bedroom Set W/Mattress
- 2 Queen Beds W/Mattress
- 6 Drawer Dresser
- Lot of Pictures & Wall Hangings
- Brother Lock929D Surger
- White ETS Quilters Star Sewing Machine
- Singer Sewing Machine
- JUKI Upholstery Sewing Machine
- Lot of Sewing Items
- Lot of Material
- Oak High Chair
- 2 Rope Legged Glass Top Tables
- Coffee & End Tables
- Dressing Mirror
- Sony Stack Stereo
- Ent. Centers
- Lot of Cook Books
- Towels, Bedding & Linens
- Wall Clock
- Lrg. Lot of Pots, Pans & Dishes

ANTIQUES - COLLECTIBLES

- Oak Curved Glass China Cabinet
- Child's Roll Top Desk W/Chair
- Oak Rocker
- Dresser Bottoms
- Highboy 5 Drawer Chest
- 2-3 Drawer Dressers
- Oak Stand Table
- Car Siding Cabinet
- Over 75 pcs. Of Wattware & Ovenware Pottery (Stack Bowl Sets, Pitchers, Bowls)
- Ant. Hafner 4 pc. Overland Flyer Keywind Stream Line Train (M-1000 Union Pacific)
- Collector Dolls W/Boxes
- Sm. Purse Collection
- Collection of Wall Vase's
- Lots of Costume Jewelry
- Quilts (Hand & Machine Sewn)
- Lot of Glassware
- Conn Trombone
- Buescher Saxophone
- 4 Child's Sleds
- Church Pew

MOWERS-TOOLS-MISC.

- Gravely ZTX 52" Zero Turn 25hp Mower
- Stihl MS290 Chain Saw
- Husqvarna 125B Gas Blower
- Stihl Gas Trimmer
- Campbell Hausfeld 5 hp Air Compressor
- 6 ½ hp. Swisher Wheel Trimmer
- Wards 3000 Watt Generator
- Troy Bilt Electric Flower Bed Tiller
- Misc. Hand Tools
- Log Chains
- Air Tank
- Bar Clamps
- Misc. Hand Tools



MOWERS-TOOLS-MISC. CONT.

- Metal Shelves
- 2 Metal Patio Sets
- Alum. Ladder
- Shop Vacc
- Metal Shelves
- Garden Tools
- Ceiling Fan (NIB)
- Pro-Form Treadmill
- Schwinn Ex. Bike
- Fish Cooker
- Clay Pigeon Thrower
- 2 Poly Dog Houses
- Live Trap
- Fruit Jars
- Tasco Telescope
- Large lot of Flower Pots & Planters (all sizes)
- Large lot of Christmas & Holiday Decorations
- Ladies Purse's & Shoes
- Older Gravely Zero Turn Mower (not running)
- 3 Poly Bottom Feed Bunks
- 3 Concrete Cattle Feed Bunks
- Approx. 15 Cattle Panels & Gates
- Lots of Misc. Items

ESTATE OF ANITA BRIDGES

TERMS: Everything sells as is, where is. Nothing is to be removed until settled for. Payment of Cash, Check with Proper ID, or Credit Cards. Auction Company or the Owners will not be responsible for loss of items or accidents. Statements made the Day of the Auction take Precedence over Printed Matter.

SALE CONDUCTED BY **BRUCE & Le'AN AUCTION & APPRAISAL, LLC**
THE AUCTION COMPANY THAT APPRECIATES YOUR BUSINESS

For more information and pictures go to our website at www.bruceandleanauction.com

RONNIE BRUCE - Fair Play, MO
417-777-1685 or 417-654-2214
colronbruce@gmail.com

BRANDON BRUCE
Fair Play, MO

BILLY BRUCE - Stockton, MO
417-399-4800
colbbruce@gmail.com

**2 DAY
EVENT!!**

11TH ANNUAL SPRING Prairie Grove Amish Mennonite School CONSIGNMENT AUCTION



FRIDAY, SATURDAY, MAY 7TH & 8TH

STARTING AT 3PM FRIDAY, 9AM SATURDAY

12 WINDING CREEK DR. | BUFFALO, MO | 65622

Hand-quilted Quilts, Farm Equipment, Lawn & Garden, Guns, Furniture, Household & More!

**OVER 40
QUILTS!**

FRIDAY STARTING AT 7PM

Guns:

- Rem. Mod. 700 BDL .270
- Henry .22 LR, Cowboy Loop, New
- Hatfield 20 Ga. Rib Barrel Single shot
- Rem. Mod. 700 .270 W/Scope Syn Stock
- Savage Mod. 14 7MM-08 Rem Wood stock
- Rem. Mod. 700 BDL Classic .243 W/Vortex Diamondback 3 – 12X42 Scope
- Thompson .50 Cal. Hawken Muzzle Loader
- S&W Mod. 1100 12 Ga.
- Rem. Mod. 514 .22LR; Rem. Sportsman 12 Ga
- Daisy 880 BB-Gun; Ruger Mod. 10/22 Carbine
- Stoeger Coach .410 Side by Side
- SHT LE-3 Rifle England 1916
- Win. 30-30 Centennial 66
- Russian M44 1948 W/Bayonet
- Remington 870 20 Ga. Wingmaster
- Winchester Mod 190 .22 L/S
- Alexandria Mark X .375 Mag
- Luigi Franchi 12 Ga.
- Win. Mod 70 .458 Mag.
- Savage Mod. 720 Semi-Auto 12 Ga.
- Champion 16 Ga. #TTVT (Rare)
- Rem. Mod. 1100 12 Ga.
- Mossberg Mod. 146B 22 L/S
- Win Mod. 1200 12 Ga.

Tools:

- Trailer Load of Misc Tools Etc.
- 2 Table Saws, One Craftsman
- Shopsmith Dust Collector
- 40' Wood Extension Ladder
- Dewalt 15 Ga. Air Compressor
- 2 – 220V Heaters

SATURDAY STARTING AT 9AM

Cattle Equipment:

- Formost Squeeze Chute
- Priefert Calf / Sheep Tilt Squeeze Chute
- Elk River Squeeze Chute, Tub and Alley
- Misc. WW Corral Panels & Gates
- HMC 3 Ton Creep Feeder
- GWS Creep Feeder
- Lil Creeper Double Sided Creep Feeder
- HMC 460Lb UTV Cube Feeder
- Sheep Hay Feeder
- 2 – Calf-Tel Calf Hutches W/Pens.

Tractors:

- JJD 2030, Diesel, Open Station
- More consignments expected at sale day

Farm Equipment:

- JD 750 No-Till Drill
- JD 336 Square Baler, Twine Tie, Good Cond. Shredded
- New Esch 2018 4-Basket Tedder 18'
- Sitrex 8-Wheel Rake
- Kodiak Rotary Rotary Cutter, 10', Pull Type; 7' Rotary Cutter, Pull Type
- Krause 4600 6-Row Cultivator
- Krause 4700 6 – Row Cultivator, Single Sweep
- Old Disc - 6' 3-Point Disc
- 2-Bottom Plow
- Killbros Gravity Wagon W/Auger
- Red Gravity Wagon
- 2012 Westfield 10 – 61 Auger
- 3 Point Bale Fork
- Bush Hog 3 Point 72" Rear Discharge Finish Mower
- 3 Point Mist Blower
- 500 Gal. Fuel Tank on Stand.

Join Us for Homemade Amish Mennonite Food!

Breakfast • Steaks • Burgers • BBQ Chicken • Pies & More!

Vehicles:

- 95 Dodge Ram, V10 Gas, 4x4, with Bale Spike, 127,875 Miles

Tack:

- Big Horn Saddle 16"
- 2 – Pairs New Stirrups

ATVs:

- '21 Honda Rancher 420 4-Wheeler, Green, "Brand New"
- Tiking Dune Buggy

Lawn Mowers:

- 2014 Hustler Super Z Hyper Drive 60"
- '11 Hustler Fastrack 60" 26HP
- '07 Scag 52" 27HP

Lawn and Garden:

- 2 – Play Sets
- Poly Martin Houses
- Gourd Racks
- Flower Hangers

Misc:

- New Lincoln Outfitters, Meat Saw & Grinder Combo
- Ozark Biomass Outdoor Wood Furnace
- Indoor LP Gas Heater
- 10 Hole Rabbit Cage
- 2 – Rolls Drainage Tile
- Mobile Home Step
- New 10'x12' Arrow Metal Storage Building, Unassembled

Furniture & Household:

Trailer load of new Amish made furniture includes:

- 5 Pc. Rough Sawn Maple Bedroom Set, Queen Bookcase Bed
- 5 Pc. Red Oak Bedroom Set, Queen Bookcase Bed
- 5 Pc. Rustic Aspen Bedroom Set
- Rough Sawn Maple 48x72 Dining Table W/4 Leaves & 6 Chairs
- Grey Elm Double Pedestal Dining Table, W/4 Leaves & 6 Chairs
- Rough Sawn Maple Full/Twin Bunk Bed, 4 – Drawer Matching Chest
- Sewing Machine Cabinets W/Serger Lifts, Oak & Rustic Hickory
- Bookcases, Oak, Maple, Rustic Aspen
- Lazy Susan Magazine Stands
- Selection of Children's Tables, Chairs, Rockers and Hutches
- Hickory Rockers
- Drying Racks
- Reclaimed Barnwood End Tables

Misc. Furniture:

- Rustic Oak Bedroom Set
- Rustic Hickory Bedroom Set
- 2 – Book Shelves
- Magazine racks
- Home Made Crafts, Blankets, Doilies, Pillows etc.
- Princess House Glassware
- Homemade Peanut, Cashew and Pecan Brittle
- Lighted Canvas Mottos.

Quilts - Starting Approx. 1:30PM

- Star & Bars, Multi, 96x104

- Center Diamond, Cream/Tan, 106x106
- Cathedral Windows, Multi Floral, 107x117
- Bargello Shadow, Navy/Burgundy, 107x120
- Broken Compass, Navy/Brown, 101x111
- Broken Twinkling Star, Yellow/Tan, 105x117
- I Am The Rose of Sharon, Applique, 93x111
- Bargello Argyle, Blues/Black, 113x116
- Many Extended Trips Around The World, Tan/Purple, 108x118
- Bargello Aurora, Wine/Gray/Black, 108x119
- Fire in the Mountain, Blues, 107x113
- Basket Weave, Teal/Blue/Black, 92x105
- Fan Stack-n-Whack, Blue/Black, 100x111
- Double Irish Chain, Teal, 99x109
- Bargello Turquoise Sea, Turquoise, 110x118
- Bargello Aurora Borealis, Turquoise, 45x68
- Bargello Violet Valleys, Purple/Lavender, 41x60
- Starburst, Navy/Tan, 108x118
- Broken Star, Navy/Burgundy, 107x116
- Star with Stars Around, Country Blue, 105x114
- Log Cabin in the Pines, Greens/Brown, 112x112
- Lake Shore Hosta, Black/Maroon/Pink, 93x114
- Bargello Aurora, Red/Brown, 120x120
- Bargello Aurora, Purple/Gray/Black, 112x114



Directions: From Buffalo go South on Hwy 65 to milepost marker 80, turn right on Kelly Rd., go West 2 ½ miles, turn right on Winding Creek Drive., go North ½ mile to sale site. From Springfield go North on Hwy 65 to milepost marker 80, turn left on Kelly Rd., go West 2 ½ miles, turn right on Winding Creek Drive., go North ½ mile to sale site.

NOTICE! POLICY CHANGE. ALL ITEMS SELL WITHOUT RESERVE. COMMISSION CHARGED ON ALL ITEMS!!

MORE CONSIGNMENTS EXPECTED BY SALE DAY

TERMS: Cash or check. No items will be removed until settled for. Sellers or auction company are not responsible for accidents, errors in listing or lost items. Announcements made day of sale take precedence over any printed matter. When registering for a buyer number proper I.D. will be required. All Guarantees are between the Buyer and Seller.

For more information or to consign, call:

- Dennis Blosser 417-326-9788
- Vernon Kropf 417-733-2600
- Eldon Swartzentruber 417-327-6348
- Lyndal Hostetler 417-733-2560

All Commissions & Donations for Meals go to Prairie Grove Amish Mennonite School

AT THE RANCH

**800 HEAD
SELL!**

Saturday - May 8th - 12 noon cst
A Bar Ranch - Claremore, Oklahoma

www.armitagelivestock.com

Pairs

- 35 - Angus pairs 3 to 5 years with Angus sired calves at side.
- 30 - Red Angus pairs 3 to 5 years with Red and Black Angus calves at side.
- 15 - Brangus pairs 3 to 5 years with Angus sired calves at side.

Bred Heifers

- 160 - A Bar Ranch Angus fall calving heifers safe to Express Ranch 4-star calving ease bulls. 30-day calving periods starting 9-1-21. Sorted into uniform groups.

Bred Cows

- 90 - Northern Angus spring calving cows 3 to 5 years safe to Angus bulls.
- 85 - Angus spring calving cows 3 to 5 years safe to Angus bulls. Several calves by sale date.
- 40 - Red Angus spring bred cows 3 to 5 years safe to Angus bulls.
- 60 - Brangus spring bred cows 3 to 5 years. Several pairs by sale day.
- 80 - Red Angus fall calving cows 3 & 4 years. Safe to Hinkson and Schilling Ranch Angus bulls.
- 140 - Angus fall calving cows 3 & 4 years. Safe to Hinkson and Schilling Ranch Angus bulls.
- 90 - Brangus fall calving cows 3 to 5 years safe to Angus and Charolais bulls



"Home raised A Bar Ranch heifers are a product of 30 years of ranching. Selected for efficiency in multiple fields of performance and highlighted in traits to boost fertility and longevity. This year's class of A Bar heifers were all bred to Express Sons of: Exar Monument, HA Cowboy Up, Exar Gold Rush, Exar Stud, Exar Expo"

For Cattle Information

Armitage Livestock

P.O. Box 1396 Claremore, OK 74018

Email: martha@abarranch.com

view online at: www.liveauctions.tv



Office .918/342-2225

Merrit 918/607-6808

Turner 918/697-6717



HUGE PUBLIC AUCTION

Saturday, May 15, 2021 • 9:00 a.m.

This is a partial listing!



SHOW-ME AUCTION CENTER

17829 Shadey Brook Dr. • Versailles, MO 65084

Come Enjoy The Day With Us! Good Food, Indoors with Lots of Seating



RING 1
9 am Antiques
12 noon Furniture

RING 2
9 am Tools
11:45 am Guns & Boats
12:00 noon Outside

RING 3
9 am House Wares

TOOLS & SHOP, ETC.

- 2 - Step Ladders
- 2 - 20-Ton Jacks
- Lots Nuts & Bolts
- Lot Nails & Screws
- Lot Hammers
- Levels
- Cords
- Concrete
- Chains
- Lot Pick & Axes
- Lot Rakes & Shovels
- Wrenches
- Screwdrivers
- Clamps
- Ball Hitches
- AirTools
- 2 - Basement Floor Jacks
- Skil Saws
- Weed Burner
- Coil Roofing Nail
- Electric Chain Saw Sharpener
- Electric Drill
- Lot Coolers
- Impact Sockets
- 4 - Adjustable Steel Posts
- Lot Gas Cans
- Coleman Lanterns
- 40-Gallon Fuel w/Hose & Nozzle
- Craftsman Torch w/Cart & Tank
- Wood Splitter (Needs Work)
- 1 0" Delta Table Saw (Older)
- Squirrel Cage Fan
- 1 0' Fiberglass Step Ladder
- Lot Electric Wire

BOAT & TRAILER

- 14' Landau Boat, Evinrude 9 Motor with Trailer & Trolling Motor

LAWN & GARDEN

- Wheelbarrows
- Concrete Lawn Decor - 2 Swans, 2 Lions, Duck w/3 Babies, 2 Flower Planters
- 2 - Metal Porch Gliders, Older, Nice
- Metal Lawn Chairs
- Gilson Riding Mower
- Small Troybilt Tiller
- Craftsman 5Hp Chipper Shredder
- Disk & PLOW for Riding Lawn Mower
- Garden Trailer
- Lawn Mower Lift
- Tractor Draw Bar

HOUSEWARES & FURNITURE

- Pressure Canner
- 30-Cup Coffee Percolator
- Step Stool
- 18-Qt Electric Roaster
- Gas Fish Fryer
- Hobart Electric Meat Slicer, Very Nice
- Singer Sewing Machine, Like New
- Cricut Card Maker w/ Accessories
- White Wash Stand & Corner Cabinet
- 2 - Door Metal Cabinet
- Tan & Beige Couch & Love Seat
- Whirlpool Washer
- Whirlpool Dryer
- 5-Cu Ft Deep Freezer, Like New
- Whirlpool 1 5-Cu Ft Deep Freezer
- Amish-built Table w/6 Chairs
- Oak Dining Room Table w/6 Chairs
- Walnut Rocker
- Oak Glider Rocker,
- Burgundy, Like New
- Nice Floral Couch & Love Seat
- Chocolate Brown Double Recliner Love Seat
- 2 - Brown Recliners
- Tan Recliner
- Oak Hutch
- Curio Cabinet
- Blue Swivel Chair
- Bedroom Set
- Small Oak Desk
- Large Lot Household Furniture, Excellent

FARM & RANCH

- 2 - Hole Freedom Front Waterer (Energy Free)
- 4 - Cattle Panels
- Lot T-Posts
- 5x8 Trailer Utility w/Title
- Electric Concrete Mixer
- Older 500-Gallon Sprayer; 40' Booms, No Pump
- Western Saddle, Good, Used
- 100 Small Square Bales Hay, Orchard Grass/Stubble
- 1 Large Grain Bins on Legs

BUILDING MATERIALS

- Approx. 100 Sq. Several Bundles Painted Metal - New
- 128-Pcs Treated 2"x6"x13' 9", New
- 384-Pcs Treated 2"x6"x11' 9", New
- 256-Pcs Treated 2"x6"x9' 9", New
- 9", New
- Lot Misc. Lumber
- 2 - Skids Used Hardwood Flooring
- 96-Pcs 2'x8' Chip Board, New
- Lot Vinyl Baseboard, New in Box
- Large Lot Used Galvanized Barn Metal
- 20 - 8Ft Fluorescent Lights, Used
- 10 - Mixed Bundles New Lumber, 2x4, 2x8, Various Lengths

ANTIQUES & COLLECTIBLES

- Oil Lamp
- Granite Pot w/Wire Handle
- Tonka Truck/John Deere Combines
- Large Iron Kettle w/Stand
- Keen Kutter Lock
- Keen Kutter Grinder
- Brass Torch
- Bull Head Boot Jack
- Almond Wood Heat Kitchen Range
- w/Warming Oven, Very Nice
- Snap-On Clocks
- Coffee Grinder
- Brass Horse Bank
- Several Crocks
- Brass Candle Holders
- Kitchen Scales
- Winchester Gun Rack
- Metal 2-Gallon Coleman Cooler
- Hame Mirrors
- Retro Formica Dinette Set
- Large Granite Water Pitcher
- Well Bucket
- Cream Can
- Camel Back Trunk
- D.F. 1 0x80 CXN German Spy Binoculars -RARE, Brought back from WWII, w/Tripod & Case
- 5-Lb Anvil, Old
- Black Hawk Corn Sheller
- Powder Horn
- Chicken Waterer
- Old Mantel Clocks
- Turquoise
- Jewelry, Silver & Turquoise
- Iron Skillets
- Lot Old Quilts
- Nice, Hand Crocheted Table Toppers & Bed Spread
- 5-Drawer Chest w/Hat Compartment & Mirror
- Fairbanks Platform Scales
- Old Jelly Cabinet, Tall
- Old Hand Pump
- Walking Table
- Walnut Table
- Old Chest
- Small Table
- Birdhouses
- Metal Chickens
- Plant Stands
- Metal Signs
- 6 - Oil Bottles & Rack
- IH Oil Pouring Can
- IH Gallon Oil Can
- John Deere Gallon Oil Can
- Tin Signs
- Cast Iron Signs
- Cigar Mold
- Maple Syrup Buckets
- Angels
- Mixed Glassware
- License Plates
- Red Chicken Shelf
- Large Lot Wall Plaques, Verses, Pictures, Etc.
- Keen Kutter Knives
- Old Timer Pocket Knives



For more photos and information, see auctionarrows.com or auctionzip.com (ID 30027)

Show-Me Auction Center Owners:

WILMER & ANNIE HOOVER
573-789-2215 • 573-378-4908

Auctioneers:

Col. Doug Dieckman - 660-287-1962
Col. Tony Stephens - 573-378-8803

For Information, Call

Earl Ray Zimmerman
573-378-4335

Not responsible for accidents. TERMS: Cash or Check with Proper I.D. • All statements made date of sale take precedence over printed material. After 30 days, all items not picked up become auction property.

The Pomme de Terre SPRINGFLING 666 FESTIVAL

Beers, Bikes, and Food Truck Extravaganza



05.15.21

STARTING AT 11:00AM POMME DE TERRE DAM OUTLET PARK, HERMITAGE, MISSOURI

**DON'T MISS THE FUN OF THE FIRST ANNUAL
SPRING FLING FOOD TRUCK FESTIVAL AT
BEAUTIFUL POMME DE TERRE LAKE!**

**KICK OFF SUMMER 2021 THE RIGHT WAY BY
ENJOYING FOOD FROM SOME OF THE BEST FOOD
TRUCKS IN SW MISSOURI AS WELL AS SOME OF
THE BEST CRAFT BREWERS.
FOOD TRUCK VENDOR SPOTS ARE LIMITED, SO CALL
TODAY TO RESERVE YOUR SPOT AT 417-399-1904
OR CHASE.A.CRAWFORD@GMAIL.COM**



Sponsored by Crawford Auction Service and Truman Lake Adventure Club

Real Estate & Personal Property Auction

Charlene Case and the late Arlis Case & Harley Lawson

Saturday May 15, 2021 @ 10am

Location: 929 Country Club Drive West Plains, MO **Directions:** From Highway 63 go West on CC highway to a left on Country Club Drive follow to property on right-watch for Tooley Auction signs.

REAL ESTATE

Very well kept 2 story home sitting over a full finished walkout basement. Brick, rock & vinyl siding. 4 bedrooms, 3 and a half baths, formal dining room, 3 fireplaces, 3 living areas, 2 laundry/utility areas, additional kitchen in basement, covered concrete front porch, rear partially covered deck, 2 car attached garage, stair lift. Windows, roof, vinyl siding, soffit & fascia have been updated recently. This property features beautiful landscaping and a beautiful hill top view of the country club in a prestigious neighborhood. **NOTE:** Buyer must have all financial arrangements made prior to auction. No contingencies shall be allowed. Buyer to do due diligence. Buyer must provide 10% earnest money day of auction with balance due at closing in approximately 30 to 45 days. Real Property is currently listed in real estate and will be offered at auction should it still be available. Real property to sell with owners consent. For more information on real property contact Bonnie Setliff @ 417-224-6269 or Travis @ 417-293-6909

FURNITURE & HOUSEHOLD

Amyx oak claw foot table w/chairs; Duncan Phyfe side tables; multiple solid oak curio cabinets, lighted; oak electric fireplace; cherry vanity bench; cherry side tables; Bi-centennial solid wood dresser w/mirror; Lane cedar chest; queen bed w/2 nightstands, mirrored dresser; Athens cherry mirrored dresser, chest of drawers & 2 nightstands; couches, 1 w/recliners; coffee & end tables; 5 pc. dining table and chairs; ornate wood book shelf; GE dishwasher, white & works good; Jazzy electric wheel chair; asst. of quilts, some hand stitched; radiator heater; various wall pictures & décor; entertainment center; floor & table lamps; cookbooks, Gooseberry, Taste of Home, Southern Living; asst. linens; Christmas décor; all kinds of kitchen ware, pots, pans, silver ware, coffee pots, keurig, various small appliances; VHS tapes; 7x50 binoculars w/case

ANTIQUES & COLLECTIBLES

Wagner aluminum steak platter; Griswold cast corn bread pans; Griswold skillet ash trays; Wagner skillet ash trays; Bob Butler's (motels, stoves & furniture inc. West Plains, MO) mini cast skillet; German wooden liquor barrel, 128 liter; large cast kettle w/wagon rim hanger; iron implement wheels; #8 crock; old well bucket; vintage doll collection, new in box; Vaseline oil lamp; Hull pottery; Fenton glass; depression glass; milk glass; American Beatui lamp w/22 kt. Gold trim; Pyrex, various patterns (friendship, wheat, pink gooseberry, olive, chip & dip set); large collection of Emmett Kelly figures, new in box & hand signed by Emmett; NSMCO cast sewing machine w/table, model RBR; smaller oak & glass wall displays; several Precious Moments figures, new in box; Norman Rockwell figures w/boxes; Regulator hanging clock; Norman Rockwell & March of Dimes collectors plates w/boxes; Hummel figures & plates; older solid wood rocker, heavy; wide collection of KISS, Elvis Presley, Harley Davidson & Marilyn Monroe (framed pictures, plates, books, clocks, lava lamps, metal signs, various other collectibles new in box); Coke collectibles; crystal & lead crystal; Japanese dishes; Strawberry dishes; 4 pc. setting Poppycock dishes; Dallas Cowboys & Harley Davidson leather coats; M&M collectibles, new in box; pocket watches; old powder horn; vintage paper weights; older postcards; antique & glass reference books

GUNS, KNIVES & COINS

GUNS: Weatherby Mark V 300 magnum bolt action Bi-centennial, #15 of 1000 made, w/hard case, mint; Weatherby 1976 Mark V Crown Custom bolt action w/scope, only 1000 made, w/hard case, mint; Winchester 30/30 lever action, Model 94AE, NRA Edition, 84 of 300 made, w/case, mint; Marlin 30/30 lever action w/scope Model 3030, Diamond Jubilee Commemorative, w/case, mint; **Knives:** Case 1996 stag, Case 1989 curly maple; Case 1982 Sho Me trapper, 150 made; Case 1994 mini trapper, Country Days, 25 made; Case 1984 Congress bone, Collectors Club; Case 1986 5th anniversary Collectors Club; Case 2004 chestnut; Case 2006 trapper, ultra violet; Case Orange County Choppers Collector; Case 1992 Commemorative Election Set; Case USA Edition Set; Case Coke Set; Harley Davidson Collector, made in USA; **COINS:** 62 Eisenhower Silver Dollars, 1971, 1972, 1974, 1978 & Bi-centennial; Eisenhower bi-centennial silver dollar 24 karat gold plate; 3 pc. Bi-centennial set, \$1, 50 cent & quarter; 40 Kennedy Liberty Bi-Centennial halves; full state quarter collection set with map & certificate of authenticity

OUTDOOR, LAWN & GARDEN, MISC.

5 pc. patio set; outdoor glider; concrete bird bath; MAXXIS M3 225/60/R16 tires, only a few miles on them; electric weed eaters, hedge trimmers, leaf blower; Craftsman 2500 PSI pressure washer, near new; BBQ grills; wrought iron shelves; garden hand tools; ladders; wheelbarrow; some lumber

Auctioneer Note: Very well kept home across from the country club with a beautiful view. Super clean personal property with mint collectors guns, knives and coins. Must see guns and knives to appreciate. Guns and knives will not be available until auction day. To view real estate before auction day call Travis @ 417-293-6909 or Bonnie Setliff @ 417-224-6269. Real Estate to sell at noon and guns to follow. Add to cash or check at the bottom *credit/debit cards(3% fee applies to card use)



Travis Tooley, Auctioneer
Bruce Scheets, Auctioneer



Tooley Auction Services, LLC

417-293-6909 • Willow Springs, MO • tooleyauctions@gmail.com

Clerks & Cashiers: Penny Tooley, Shelly Cauldwell & Barb Schumacher

Ringmen: Vance Farmer, Terry McCallister & Josh Wheeler

Drivers license or photo ID. Cash or check.
Announcements made on the day of the sale take precedence over any printed material. Not responsible for accidents, theft or lost articles.



4 WHEELER - ZTR MOWER - TOOLS - FURNITURE - MISC AUCTION

SATURDAY MAY 8, 2021 • 10:00 AM

731 WOODWIND DR, NIXA MO

FROM SOUTH OF NIXA MO ON HWY 160 GO 2 MILES SOUTH TO ROSEDALE RD, GO EAST ON ROSEDALE RD ½ MILE, TURN RIGHT ON MINNEHAHA, GO ½ MILE, CONTINUE STRAIGHT ONTO OZARK RD ¾ MILE, TURN RIGHT ON MUSKEGO RD, GO ½ MILE TURN LEFT ON WOODWIND DR, GO 800 FT TO AUCTION ON LEFT. FOLLOW SALE SIGNS. BREAKFAST & LUNCH AVAILABLE

FOR PICTURES SEE WEBSITE OR AUCTION ZIP.COM

4 WHEELER-ZTR MOWER

2004 YAMAHA GRIZZLY 660 4 WHEELER, 4 WHEEL DRIVE, NEW TIRES, 2500 LB WINCH, HITCH, HUNTING BAGS, 416.3 HRS—KUBOTA Z725 25 HP KOHLER COMMAND PRO ENGINE, 60" DECK, 220 HRS—4 WHEELER ALUM RAMP

TOOLS

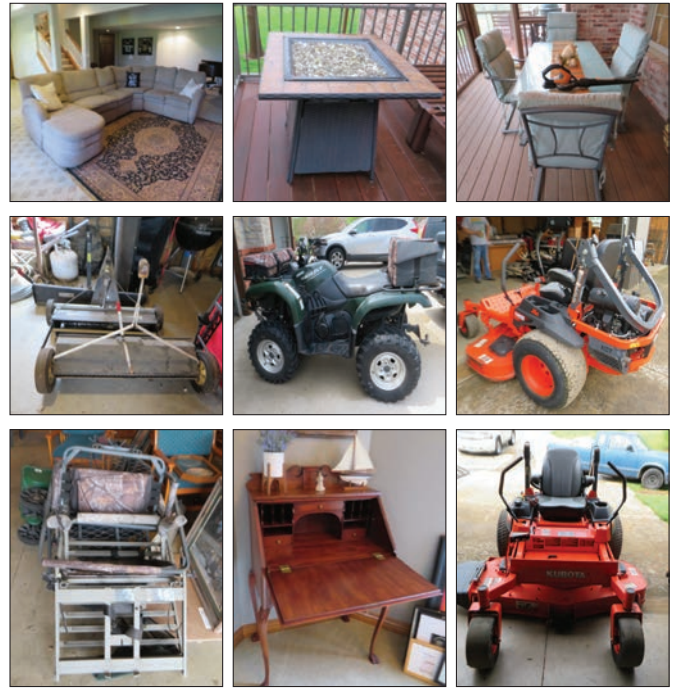
WHEEL HOUSE GENERAC GENERATOR ON WHEELS 5500 RATED WATTS, 8500 SURGE WATTS—CENTRAL HYDRAULICS 8 TON CHERRY PICKER—KOBALT WHOP/TOOL WORK TABLE/CHEST—KOBALT 3 GAL 150 MAX PSI AIR COMPRESSOR—ROYBI ELECT BLOWER—POULAN PRO GAS BLOWER—STIHL F546C GAS WEED EATER — POULAN PRO 295 22" BAR CHAIN SAW—HUSQVARNA GAS WEED EATER —CRAFTSMAN 6.25 HP SHOP VAC—2 WHEEL TRAILER DOLLY—DEWALT 9.6 RECHARGEABLE DRILL—LONG HANDLE YARD TOOLS—TROY BILT 4.5 HP 2200 PSI POWER WASHER—LAWN SEEDERS—2 WHEEL LAWN CART—HOSE REEL W/HOSE—GREASE GUNS—DRILLS —HAND YARD SPRAYER—BALDOR 11.5 KNIFE SHARPENER—24' EXT LADDER—CRAFTSMAN LAWN SWEEP, AERATOR, SEEDER — T POST-GAS CANS—HATCHETS, HAMMERS—GARAGE JACK—JACK STANDS—NAILS, SCREWS, BOLTS—HITCH'S W/BALLS—CASTERS —17 GAUGE WIRE—ELECTRICAL MISC—METAL SHELVING-MISC TOOLS

FURNITURE

SECRETARY—INSIGNIA 32" FLAT SCREEN TV—VISIO 40" FLAT SCREEN TV—3 LEG ENTRY TABLE—4 CANE BOTTOM CHAIRS—LG SECTIONAL W/ CHAISE, W/2 RECLINERS—SAMSUNG 50" TV—SONY DUAL CASSETTE, RECEIVER, DVD, VHS—2 PADDED BAR STOOLS—3 SWIVEL BAR STOOLS—2 SWIVEL BAR STOOLS—SANYO 26" FLAT SCREEN TV—WOODEN ROCKER—LEATHER LOVE SEAT—QN SLEIGH BED, 5 DRAWER CHEST, COMPUTER DESK W/PULL OUT KEYBOARD—OFFICE CHAIR—FLOOR & TABLE LAMPS—TWIN BED SET—TRIPLE DRESSER—NIGHT STAND—ANTQ FULL SZ MAPLE BED, BEAUTY REST PILLOW TOP MATTRESS, VERY NICE—2 NIGHT STANDS—WALL MIRROR—KELLER ARMOIRE —(2) 2 DRAWER LATERAL FILE CABINETS—HOTPOINT REFRIGERATOR—SHARP MICROWAVE—3 WICKER PLANTERS & 4 MATCHING PATIO CHAIRS—4' CEDAR TABLE—5 PC PATIO SET—PHONE TABLE—KENMORE WASHER, WHIRLPOOL DRYER—MATCHING SOFA & OVERSIZE CHAIR & OTTOMAN—UPHOLSTERED CHAIR—5 DRAWER CHEST—ANTQ WOODEN TRUNK—PARK BENCH—NICE LG OFFICE DESK—WOODEN CABINET—TRUNK —IRON BED—ANTQ SCHOOL DESK—WALNUT & OAK POKER TABLE W/6 CHAIRS—WOODEN ROCKING BABY CRADLE—CARD TABLE W/CHAIRS—1 LOT WALL PICTURES, WALL ART—2 CHASE LOUNGERS—4 STACKING LAWN CHAIRS—WALTHAM PENDULUM CLOCK W/KEY—FIREPLACE TOOLS—TV TRAYS—WOOD STORAGE BOX—SM ROUND TABLE—CHURCH WINDOW DECOR—PATIO GLIDER—LOVE SEAT —(2) FLORAL PLANTERS—FLOOR & TABLE LAMPS—SEVERAL 5X7 AREA RUGS—SERVING CART—FRANK ZOMBO & CLAY MATTHEWS, GREEN BAY PACKERS PICTURES—1 LOT WILD LIFE PICTURES—PROPANE FIRE PIT—AT MASTER PORTABLE MASSAGE TABLE

EXERCISE EQUIP-BIKES-MISC

TRIMLINE COMPUTERIZED TREADMILL—STAMINA ROWING MACHINE—XTERRA SB 2.5 EXERCISE BIKE—2 GRANT BRAND BIKES—SCHWINN BIKE—HUFFY BIKE—DEER STAND—BOW STAND—3 ROOM TENT, DOME TENT —LUGGAGE RACKS—GOLF CLUBS, BAGS, CART, CALLAWAY WOMENS CLUBS—ANTLERS—FISHING RODS, OPEN FACE REELS—BLOCK & TACKLE—ANTQ SLED—FIBERGLASS LG SIGN—BRICKS —MISC LUMBER—WOODEN FLOWER BOXES—ANTQ HEAVY DUTY ICE TONGS—RV & CAMPING EQUIPMENT NEVER USED—BEAN BAG TOSS—WINE OPENER — STROLLER & SEAT—CANNING JARS—RADIO FLYER ROCKING HORSE—MORRELL TARGETS—DEER FEEDER—1 LOT RECORDS—CUTTY SHARK 1869 SHIP—PIXMA CANNON PICTURE SCANNER—JVC VIDEO CAMERA W/TRIPOD—MILK GLASS PUNCH BOWL SET W/24 CUPS—WINE GLASSES, CARNIVAL SET DISHES W/MUGS—MIXER ON STAND—SM KITCHEN APPLIANCES—SILVERWARE, UTENSILS—POTS/PANS, SKILLETS—ICE BUCKETS, BAR SET—CHEESE SERVING TRAY—SILVER TEA SET—LANTERN CANDLE—SERVING PLATES, CAKE PLATE, COOKIE JARS, MISC GLASSES, PLASTIC WARE—STEMWARE —KNIFE BLOCK, KNIVES—CHEF W/CHALK BOARD—MIXING BOWLS—LINEN, BEDDING—1 LOT SPORTS EQUIP—1 LOT DVD'S—FLORAL ARRANGEMENTS—SANTA, LG CHRISTMAS TREES—CLAY POT—STATUE —LAWN CHEMICALS—PET CRATES



OWNER: TOM & JULIE MULLEN

AUCTIONEER NOTES: ANNOUNCEMENTS MADE ON SALE DAY WILL TAKE PRECEDENCE OVER ANY OTHER PRINTED MATERIALS. NOT RESPONSIBLE FOR ACCIDENTS OR LOSS OF ARTICLES ON OR NEAR SALE SITE.

MELTON AUCTION & REALTY CO LLC



www.MeltonAuction.com | Roger@MeltonAuction.com
 Roger Melton | Nixa, Mo | 417-830-0153 or 417-725-1801
 Brad Cole | Nixa, Mo | 417-840-2950
 Tanner Foster | Galena, Mo | 417-840-5519

Hickory County's
BEST KEPT SECRET!

While the other stores are out of stock,
WE'VE GOT WHAT YOU'RE LOOKING FOR!
 Hickory County's best kept secret, and the Ozark's
BEST PLACE TO SHOP.



WWW.OZARKBID.COM



ONLINE AUCTION ENDING EVERY SUNDAY NIGHT @7PM

Online
CRAWFORD
 Auction Service ^{LLC}

Register and bid online 
 @ www.OzarkBid.com **Ozarkbid**

Contact Chase Crawford, Crawford Auction Service for more info @ 417-399-1904



10x12 All Steel Frame, Insulated & Wired Portable Building
6x8 All Metal Portable Building

HIATT AUCTION SERVICE

FARM, HOUSEHOLD, REAL ESTATE, ANTIQUES, MACHINERY, ESTATE SALES

For more info visit
www.auctionzip.com/
AuctioneerID#4898

2356 North Bend Loop ■ Union, MO 63084 ■ 573-368-7516

HIATT AUCTION

Saturday, May 15, 2021 - 9:00 am • 2401 Lone Grove School Rd • Owensville, MO 65066

Directions From Gerald: Take HWY Y 3.7 miles to HWY ZZ. Make a Left on ZZ, Go West On ZZ 6.2 miles to Lone Grove School Rd. Make a Right on Lone Grove School Rd and go 2.3 miles to auction site. From Drake: Take HWY ZZ East 4.2 Miles to Lone Grove School Rd. Make a Left on Lone Grove School Rd and go 2.3 miles to auction site. Watch for signs day of the Auction.

Looking to relocate Kevin & Gena Hiatt are offering their home and belongings up for auction



Real Estate: AUCTION AT NOON. Quiet Country setting that includes 1200 Sq ft, 2 Bedroom 1 Bath Home Built in 2008 Located on 40 Acres. Has a Combination of Open Fields and Woods. Home Consists Of An Open Living Room Kitchen Space With Large Walk In Closet/Storage Room, Walk In Mud Room/Laundry Off the Parking Area. The Front Covered Porch Looks Out Over the Main Field. The Property also has 60x64 Pole barn, and Has a perimeter Fence, that is mostly 6ft with 6 strands of barb wire.

\$10,000 non-refundable deposit required day of Auction.

Closing to happen within 45 days.

TO VIEW PROPERTY CALL 573-694-1620

HOUSEHOLD & ANTIQUES
Several Hand Corn Shellers
4 Wheel Goat Wagon
Cedar bench
Spinning wheel
Antique butcher block table

Christmas Decorations
Milk Glass
Pitcher and Glass set
Horse Glass Set
Wash Pitcher and Stand
Green Glass Ware Record

Player and Records
Maple Leaf Dish Set
Corning Ware
Cranberry Flashed Glassware
Alum Pitcher and Tumblers
Misc House Wares

GUNS (After Real Estate)
Remington Stainless Steel
7 MAG
Savage 22-250
High Point 9MM Rifle

Sears 410 Single Shot
Hornet 22
HMR 17 with Bull Barrel
32 Caliber Pistol
Military Rifle

12 GA Pump Shot Gun
Crossman BB Gun
Daisy BB Gun
Phantom Air Rifle
Blow Dart Gun

LIVESTOCK EQUIPMENT
Wire Corn Crib w/ Metal Roof
(Already Disassembled)
7-Heavy Steel Feed Bunks
40- Sheep and Goat Panels
Pull Type Cattle Squeeze
Chute
1 Lot Stainless Steel Stall
Feeders 60- Like New Hog
Panels
24x20 Smidley Farrowing
House (Pulls in 2 for
Transport)
10 Hole Nest Box
6 Hole Nest Box
Metal Brooder
Portable Small Animal Sq
Bale Feeder
15- 4x6 Chain Link Panels
w/ Gate
3- Metal Hog Huts

5x8 Portable Chicken House
Round Bale Feeders
Metal Portable Sq Bale
Feeder
2 Hole Alum Dog Box w/ Top
Storage
Plastic Barrel Dog Houses
2-Fiberglass Portable
Farrowing Huts
4'x6' Livestock Cage for
Pickup
Sheep & Goat Creep Feeder
Metal Sheep & Goat Feeder
Assortment of Chain Link
Kennel Panels
Pax 2 Ton Hog Feeder Rabbit
cages
Sheep and goat shearing
stand
Mobile small animal corral
panels

Steel top hay wagon
8x10 dog kennel
8x10 off ground animal
hutch 4 hole
8x8 off ground animal hutch
3 hole
15 hole nest box
8 hole nest box
6 hole nest box
10 hole nest box
Sportsman egg hatcher
Metal horse hay feeder
Portable loading chute
Sheep, goat and hog chute
Portable milking machine
1 cabinet incubator with
turners
Kerosene incubator
New nylon webbing
Chicken supplies: feeders,
waters, cages

VEHICLES & TRAILERS
'84 Dodge 3500 4x4 w/
Dump Bed (needs work)
'07 Pace Setter Gooseneck
3 Horse Slant with Tack
Room

Gas Powered Mini Bike
16' Bumper Pull Livestock
Trailer (needs work)
'07 Jeep Liberty Parts Vehicle
16' Bumper Pull Flat Bed
Trailer

14' utility trailer with metal
floor
2' Hillsboro GN Flatbed, triple
axle with ramps
Ford Taurus (needs work)

HORSE DRAWN EQUIPMENT
Sorghum Press CS Bell #2
Paragon #1 Sorghum press
IH Manure Spreader on Steel
Wheels
IH Manure Spreader on
Rubber Wheels
2- IH #9 High Gear Sickle
Mower
IH #9 Regular Gear Sickle
Mower
2-Pioneer Fore Carts
2-IH Corn Binders
Pony Cart

Pony or Single Horse Manure
Spreader w/ Poly Box
IH Cultivator
Mini Pioneer Fore Cart
4 Wheel Alum Pony Wagon
JD Manure Spreader
Star #1 Corn Grinder
Star #2 Corn Grinder
2-Corn Grinders
Vulcan Plow Co. Reversible
Walking Plow
Disc w/ Trucks
6ft horse drawn disc
Pony wagon

Steel wheel horse drawn
fertilizer cart
4 wheel wagon with brakes
Pioneer fore cart w/ team
tongue and brakes
Snow runners for pioneer
fore cart
Running gear
Steel frame 2 seater wagon
4 wheel cob size wagon w/ all
cedar bed wagon
Metal and wooden wagon
tongues, eveners, shafts
5ft disc w/ trucks - new

blades
Single bottom plow field
ready
Several sets of harness from
mini to draft size
4 wheel wagon
4ft disc restored with trucks
Single horse drawn drill
JD Cultivator
10ft Disc w/trucks
2 row planter
Horse tack and supplies
Antique saddle made in San
Paulo Brazil excellent shape

FARM EQUIPMENT
Bobcat 763 Diesel Skid Steer
JD 12" Single Bottom Pull Type,
Steel Wheels w/ Clutch Lift
Oliver OC3 Mini High Lift
Engine with less than 10hrs
Oliver OC3 Mini High Lift with
New Under Carriage
Ford 3400 Industrial Tractor
Wide Track Frame and Under
Carriage for OC3
New Idea 1 Row Corner Picker
Field Ready
5ft Pull Type Brush Hog

Single Axle Farm Trailer
2-McCormick 6ft Drills
2-3pt Bale Spear
3pt Trailer Mover
Landpride Zero Turn Mower
Needs Work
Pull Behind Round Bale
Mover/Unroller
Metal Barrels
Gas Powered Sandblaster w/
Honda Engine
4' Pull Type Disc
Pull Type Spear Round Bale
Mover

Craftsman Riding Mower
Lawn Mower - Garden Plow,
Push Blade, Cultivator, Disc,
Box Blade, Harrow
2 Bottom Plow
3 PT Disc
2- Lawn Mower Fertilizer
spreaders
Homemade Gas power log
splitter
Single axel grain wagon
6ft pioneer blade for fore cart
Assortment of T-posts
Barb wire

Approximately 30 aluminum
planking 9'x8ft
8' Heavy lawn wagon with
dump
6ft 3 point lawn aerator
JD Gravity Wagon
Hay wagon w/ wooden bed
6 ft IH grain drill
IH 1150 Grinder mixer
JD Corn sheller
Metal banding set on cart
Telephone poles
Quicke 310 loader

BUTCHER EQUIPMENT
Hobart Meat Grinder
Snow Cone Ice Shaver
Sausage Grinder on Bench
Biro model 22 meat saw
Biro commercial 110
meat saw
Commercial meat slicer
Wood Fire Chicken Scaldler
2 motorized chicken
pluckers
8x12 walkin cooler/freezer

BEE EQUIPMENT
Approx 25 Hives
Frames

SS Honey bottling pot
SS extractor with
bottling

Electric decapping knife
Large lot of
unassembled bee



MANY OTHER ITEMS TOO NUMEROUS TO MENTION

AUCTIONEER'S NOTE: We look forward to seeing you at the auction.
There will be a loader tractor there day of auction.

TERMS: CASH, OR CHECKS WITH PROPER IDENTIFICATION. NOTHING TO BE REMOVED UNTIL SETTLED FOR. ANNOUNCEMENTS DAY OF SALE SUPERCEDES ALL PRINTED MATERIAL. NOT RESPONSIBLE FOR ACCIDENTS. WE ACT AS AGENTS ONLY. ALL ITEMS SOLD AS IS, WHERE IS.

ESTATE

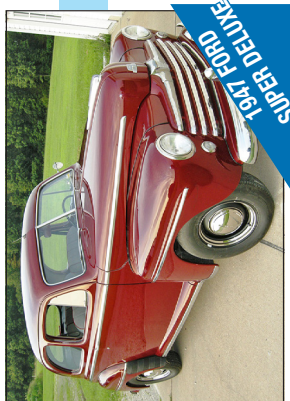
Wendell Shockley & Family Estate Auction
~ Antiques ~ Household ~
Vintage Cars ~ Car Parts

AUCTION

SATURDAY, MAY 15, 2021

**2 RINGS
All Day!**

1136 Hwy. 28 West • Bland, MO 65014
9:00AM SHARP!
2:30PM SHARP!
DIRECTIONS: From Bland Mo. Take Hwy 28 west approx. 2 miles to the farm on the left. From Belle Mo. take Hwy 28 East approx. 2 miles to the farm on the right. (Located approx. half way between Bland and Belle along Hwy. 28).



1947 FORD SUPER DELUXE



1948 PONTIAC STREAMLINER



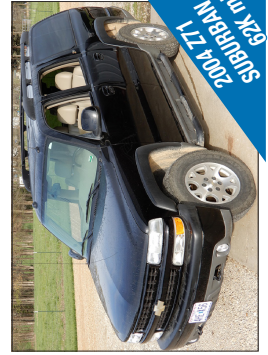
1952 FORD CUSTOMLINE



1975 PONTIAC GRANDVILLE



1941 FORD SEDAN SUPER DELUXE



2004 Z71 SUBURBAN

~ **VINTAGE CARS (will sell around 2:30pm) ~**
Preview of CARS ONLY on Thursday May 6th 3:00pm – 7:00pm
1938 Buick Century Street Rod ~ 1941 Ford 2 Door Sedan Super Deluxe ~ 1947 Ford 2-Door Sedan Super Deluxe ~ 1948 Pontiac Streamliner Street Rod project ~ 1952 Ford Custom Line 4-Door Street Rod project ~ 1957 Ford Fairlane 500 convertible project car ~ 1975 Pontiac Grandville Convertible original owner 23k miles ~ 1948 Ford 2 door sedan coupe street rod ~ 2004 Z71 Suburban 62K miles One Owner! ~ 2004 Ford F150 5.4 L engine/transmission assembly, along with misc. parts, from a show car build truck. Only 6 miles (SIX MILES!)
VINTAGE CAR PARTS/ETC.

(We will start the car parts auction ring around 11:00am)

1955 Mercury Station Wagon Tail Lights ~ Lot of 1941 Chevrolet car parts to include grill, hubcaps, gages, trim and misc. ~ Lot of 1941 thru 1948 Ford car parts to include hubcaps, gages, trim and misc. ~ 1954 Pontiac Grill Bars ~ 1940 Ford Instrument clusters ~ Set of 1951 Mercury original factory metal fender skirts ~ Set of 1951 Mercury Foxcraft cut down metal fender skirts ~ 1949 and 1950 Chevy factory metal fender skirts ~ Full set of 1941 Ford sedan new old stock Fenders, 2pc. Fenders ~ 1949 Ford 2 door sedan Left quarter panel (new old stock) ~ 1965 Impala 327 4 barrel engine assembly with later Holly carb. ~ Ford 1947/48 Sedan Right front fender ~ 1948 Ford car flathead 6 cyl. Engine ~ Late 60's Chevy 6 cyl. Truck motor ~ Lot of 1990 Mercury Grand Marquis trim items ~ 1949 thru 1951 Ford Trim parts ~ 1957 Ford 300 rear bumper ~ 1956 Mercury assorted trim parts ~ Set of 1941 Chevy bumper guards re-chromed ~ Various hood ornaments ~ Chevy 1953 to 1955 radio delete plates ~ 1959 Buick Wheel covers ~ 1955 Olds Fiesta wheel covers ~ 1961 and 1962 Impala SS wheel covers ~ 1941 thru 1948 Ford hubcaps ~ Early 60's 348 Tri-power ~ Assorted vintage bumper jacks and screw jacks ~ New old stock 1966 Corvette front license plate bracket ~ 1965 to 1970 Ford Master parts catalog ~ 1961 Delo Remy service manual ~ Assortment of engine fans various years ~ Assortment of window regulators various makes and models ~ 1946-1948 Ford front floor pan cover ~ Assorted flat head Ford clutch and ignition parts ~ (5) new old stock flat head Ford cylinder sleeves ~ vintage KD mfg. flat head Ford spring compressor tool ~ Flathead and Y block air cleaners ~ mid 60's GM shifter ~ Assorted 50's and 60's steering and suspension components ~ 1946 to 1948 Ford brake components ~ New aftermarket 1928 to 1948 Ford Super-Bell spindles and steering arms ~ 1941 Chevy shock absorbers ~ flathead Ford radiators ~ Pair of 1946 Ford business coupe or sedan doors (rust free) ~ Large lot of auto enthusiast ligature and vintage Hot Rod, Motor Trend etc. magazines ~ 1970's cb radios ~ Large assortment of automotive radios 1940's thru the 70's ~ assortment of 6v and 12v horns ~ lot of 4 way lug wrenches and bars ~ 1940's and 50's under dash heater boxes ~ under seat heater (47 or 48 Pontiac?) ~ 40's and 50's window garnish moldings ~ pair of Magni-Flo aftermarket mufflers 2 1/2" exhaust ~ assorted door and window handles ~ 1948 Ford tube shock conversion ~ various exterior and interior mirrors ~ Flat head Ford carburetors and fuel pumps ~ assorted factory and after market gages ~ 1948 Ford cross member ~ lot new 1941 rubber gaskets ~ lot new in box replacement parts such as oil filters, distributor caps, air filters, etc. ~ various vintage lighting accessories ~ 1941 Chevy factory fog lamp assembly ~ pair of vintage aftermarket fog lights ~ 1940 accessories GM spotlight ~ **Much, Much More!**

type swivel rocker/recliner ~ Zenith 23" flat screen TV ~ 2011 Toshiba 46" flat screen TV and stand cabinet ~ Kimball Swinger Deluxe "The Entertainer" organ ~ Schwinn Air Dyne Exercise bike ~ White Wicker tea cart ~ White wicker rocking chair and arm chair ~ 1980's Barbie Dolls all in orig. Boxes ~ Veneered 2 pc. Lighted china cabinet measures 4'6" x 16" x 80" tall; Remington

ANTIQUES ~ SILVER ~ GUN COLLECTIBLES ~ JEWELRY

Speed Master Mod. 552 .22 rifle S#1693544 (very good condition) ~ Dakusel Tel. and Elec. Mfg. St. Louis Mo. Oak double box telephone with ringer box, was in the Strain Store Summerfield Mo. ~ Type Setter printers tray and printer blocks from the Tri-County newspapers of bygone days ~ oak glass front book case ~ oak ice box ~ Player Piano in working order mfg. by The Cable Company Chicago IL. ~ Lot of vintage jewelry and watches to include a Bovet 14 k gold and diamond 17 jewel ladies watch ~ The Sturdy bracelet pat. 1905 in orig. box gold filled ~ (5) 1921 Morgan dollars ~ (4) Peace dollars ~ approx. 75 Kennedy 1/2 dollar clads ~ some silver dimes and quarters ~ (48) one dollar silver certificates ~ (2) 1964 silver proof sets ~ lot other misc. coins and paper money ~ UNC. Walking liberty half made into jewelry pc. ~ 1882 Morgan dollar used in a 24k gold plated paper weight ~ Rogers Sterling Silver "Sculptured Beauty" 48 pc. Flatware set in case ~ Sterling Silver brush set ~ large lot of Jadeite Fire King glassware of all kinds ~ lot of Blue Fire King ~ lot of Miss America clear depression glass ~ AAA Auto Club Missouri License Plate Topper ~ UNC. Walking liberty half made into jewelry pc. ~ 1882 Morgan dollar used in a 24k gold plated paper weight ~ Rogers Sterling Silver "Sculptured Beauty" 48 pc. Flatware set in case ~ Sterling Silver brush set ~ large lot of Jadeite Fire King glassware of all kinds ~ lot of Blue Fire King ~ lot of Miss America clear depression glass ~ lot of Blue moon and stars glassware ~ Lot of depression glass various colors and patterns ~ Lot china ~ some leaded glass pieces ~ lot of vintage green and cream porcelain ~ lot green handled kitchen tools ~ Oklahoma frosted pitcher and tumblers of famous Indians promotional item from Knox oil co. (2) Fire King strawberry nesting bowls ~ QUILTS: Double wedding ring, Log cabin ~ sun bonnet ~ fan wheel ~ star quilt and others ~ 1 qt. oil jar ~ some vintage cookie cutters ~ 6 gal. Western crock ~ 2 gal. Western Jug ~ vintage cracker jar ~ flat top trunks ~ Serpentine front tall dresser ~ Walnut head board and frame and other older beds and dressers ~ Secretary cabinet ~ oak mission style rocker and other rockers ~ Edison mod. R200 Phonograph and lot phonograph records ~ lot plated vintage silver service ~ sewing box and notions ~ Zenith Tone Register radio and record player mod. 6R880A ~ picnic baskets ~ oak fern stand ~ glass insulators ~ Vidrid Products green depression glass 2 qt. electric mixer/beater ~ Tonka pressed metal toys ~ metal doll house and furniture and other vintage doll houses ~ 2 galvanized wash tubs ~ REM originals 1972 hand painted porcelain liquor decanter Spirit of St. and the Winnie Mae planes ~ small lot of local find arrowheads ~ Lionel #27 train engine ~ 1970's child's items ~ 1970's Coca-Cola trays ~ lighted Strohs beer sign ~ dress patterns ~ cream can ~ vintage bar stools ~ mid-century drop leaf table and other mid-century items ~ Texaco Fire King porcelain sign ~ 1930's A.C. Gilbert lead toy Kaster kit w/ toy molds ~ iron wheel horse cart ~ Vintage Barbie case & clothes;

ALL TYPES OF GOOD CLEAN HOUSEHOLD AND EVERYDAY USE ITEMS!

Visit AuctionZip.com and enter auctioneers Id# 19088 for complete auto parts listing and pictures.



Find this auction on Facebook at: **Arnold's Auction Service**

AUCTIONEERS NOTE: This is a VERY LARGE VOLUME AUCTION! We'll be running 2 rings most of the day! Plenty of room for parking so bring your trailers!

Terms: Cash, (Credit & Debit cards will be charged a 3% convenience fee.) Check w/ proper ID, all checks over \$2,000 must be accompanied by an original irrevocable bank letter of guarantee (no copies), unless pre-approved by auction company.

Total Sale Management
 Construction - Farm Equipment
 Shop Equipment
 Real Estate : Household
 Liquidations : Antiques
Auctioneers:
 Eddie Arnold & Joe Sherman
 Ringmen: Larry Arnold
 & Terry Cridder



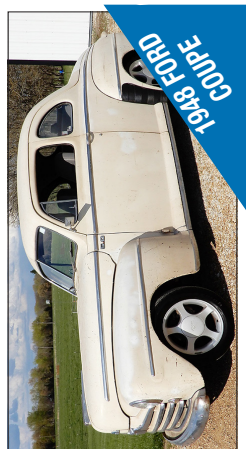
Not Responsible for Accidents or Theft
 Terms: Cash or Check (ID required)
 Nothing to be Removed Until Settled for Everything Sells As Is
 No Sale too Large or too Small
 All Announcements Day of Sale Supersede Printed Matter
573-437-2433 ; 573-205-0209 Cell
 1761 E. Forest Lane - Owensville, Mo



1957 FORD FAIRLANE 500



1938 BUICK CENTURY



1948 FORD COUPE



TOOLS ~ CAR TRAILER ~ MISC.

Homemade tilt deck drive on 15' x70" car trailer ~ Insulated well house built by Hilkemeyer's Freeburg Mo. ~ (6) 4'x8' sheets of 1/4" steel tread plate ~ Like New DR Roto Hog Power tiller 36" with Briggs motor ~ John Deere 10 utility garden dump trailer ~ Old heavy duty Superior drill press with 1 h.p. dual voltage motor was converted from a shaft belt drive commercial type ~ 2 cherry pickers ~ lot of open and box end wrenches various sizes from small to 2" ~ Cyclone leaf bagger vacuum and trailer ~ Scat sand blasting cabinet ~ 1 ton Coffin trolley elec. Hoist w/ trolleys ~ Delta 12" Miter saw ~ TEO 2 1/4 ton floor jack ~ grease barrel pumps ~ 8 ft. work bench ~ 6 ft. work bench w/ Cleveland vise and good older Craftsman bench grinder ~ King Rex mod. 165P 1 h.p. power hack saw ~ Stihl Fs-55 weed eater ~ partial spools of 1/2 and 5/8" steel cable ~ grinding wheels ~ pvc pipe fittings ~ galvanized funnel w/screen ~ lot corded tools ~ car ramps ~ galvanized pet feeder ~ hammers, pry bars, etc. ~ (5) rolls of 3' x100' silt fence ~ small lot of orange snow fence ~ LOT OF MISC SHOP ITEMS; "Jazzy" Pride mobility products mobility chair in

HOUSEHOLD ~ MOBILITY CHAIR

perfect working condition has new batteries ~ Thomasville double column Dining room table with China cabinet, buffet and matching end tables ~ 1970's King size bedroom set ~ Full size bed frame and mattress ~ twin beds ~ leaded glass lamps ~ dressers ~ quilt racks ~ lot of misc. pots and pans etc. ~ new pressure canner and jars ~ wall pictures and decorations ~ Leather

**PUBLIC
AUCTION
STOCKTON, MO**

AUCTION

As I have sold my Farm we will sell the following Automobile's, Tractor's, Machinery, Tool and Misc. At the farm located 5 ¼ miles West of Stockton, Mo. On 32 Hwy to E.R 1025 go North ¼ miles to E.R. 1070 go West to the Auction on

Sunday, May 16, 2021 at 12:30 pm

WATCH FOR AUCTION COMPANY SIGNS • LUNCH SERVED

FOR MORE PICTURES GO TO: WWW.BRUCEANDLEANAUCTION.COM



AUTOMOBILE

- 2000 GMC Sierra SL 3500 Pickup, 64,600 One Owner Miles, 5.7 V-8 Motor, Automatic Transmission, New Rubber, Grill Guard, Bed Liner (garaged good truck)
- 2011 Cadillac DTS 4 Door Second Owner Car, Fully Loaded, North Star V-8, Sun Roof, Good Rubber
- 36' EZ Haul Gooseneck Big Bale Wagon
- 1971 Jayco 13' Bumper Camper

TRACTORS-MACHINERY

- John Deere 6400 Cab 4X4 85 hp Tractor W/Allied 695 Frontend Loader (Bucket & Bale Spike) 8500 Hours, Good Rubber, Like New Air Ride Seat, 4 Speed, 4 Range Transmission, (complete rebuild on frontend last year)
- John Deere 5303 Open Deck W/ROPS 60 hp One Owner Tractor, 3 Speed, 3 Range Transmission, 3 pt.
- John Deere Model 620 Gas 50 hp. Tractor W/Wide Frontend (also has org. narrow frontend)
- John Deere Model 567 Mega Wide Cover Edge Round Baler, One Owner, Automatic Chain Oiler, ??? Bale Count (dealer maintained each year)
- 2020 John Deere MoCo Model 630 Disc. Bind 9' 9" cut, W/Rollers
- Sitrex Magnum 12 Wheel Rake
- Rhino Model PT 419H Twin Row Tedder
- 10' Hyd. Box Blade on Rubber
- 6' 3pt. Box Blade W/Ripper Teeth
- 6' Bush Hog Disc. Plow
- 3pt. Ford 2 Bottom Plow
- 3pt. Bale Unroller
- 36' PTO Grain Auger on Rubber
- W-W 12' Portable Loading Chute (on rubber stored inside)
- 2 Ton Creep Feeder on Rubber W/Rebuilt creep gates and like new floor)
- One Sided Poly Bottom Creep Feeder
- North American Auger Wagon
- 12' Flex Harrow
- 3pt. Carryall

TRACTORS-MACHINERY CONT.

- 3 Bottom Disc. Plow
- 4 Bottom Plow
- John Deere Older 13 Hole Drill
- 11' Older Tandem Disk (blades fair)
- Older Cultipacker
- Henry Sq. Hay Bale Loader
- Harrow
- 17' X 4' Pipe Hay Feeder
- Sulkey Rake
- 4 Wheel Sm. Steel Wheel Wagon
- Poly Porta Pot on Small Trailer

TOOLS & MISC.

- Lincoln 20 volt Grease Gun (like new)
- Craftsman 2400 psi 6 ½ hp Pressure Washer
- Stihl 550 Gas Weed Eater
- 2-Stihl Chain Saws
- Stihl Pole Saw
- Husqvarna Chainsaw
- 225amp Lincoln Welder
- Troybilt Pony 6 ½ hp 17" Reartine Tiller
- H/D 50' Ext. Cord
- Shop Work Bench
- Alum & Poly Ladders
- Folding Alum. 4-Wheeler Ramps
- J.D. Push Mower
- Misc. Hand Tools
- Log Chains
- 2 Rolls 67" 9000' John Deere Net Wrap
- Garden Planter
- Garden Plow
- 2-300 Gallon Fuel Tanks on Stands
- 4 JD Planter Boxes
- Coolers
- Charcoal Smoker
- Lawn Roller
- Gallagher M-800 110v Fencer
- 60 Pig Tail Electric Fence Post
- One Lot of Misc.



OWNER: TODD CLAYTON

TERMS: Everything sells as is, where is. Nothing is to be removed until settled for. Payment of Cash, Check with Proper ID, or Credit Cards. Auction Company or the Owners will not be responsible for loss of items or accidents. Statements made the Day of the Auction take Precedence over Printed Matter.

SALE CONDUCTED BY **BRUCE & Le'AN AUCTION & APPRAISAL, LLC**
THE AUCTION COMPANY THAT APPRECIATES YOUR BUSINESS

For more information and pictures go to our website at www.bruceandleanauction.com

RONNIE BRUCE - Fair Play, MO
417-777-1685 or 417-654-2214
colonbruce@gmail.com

BRANDON BRUCE
Fair Play, MO

BILLY BRUCE - Stockton, MO
417-399-4800
colbbruce@gmail.com

R&R AUCTION SERVICE

HERE IS JUST A SMALL SAMPLE OF THE TREASURES TO BE FOUND AT OUR MAGNANIMOUS MIND BLOWING MAY AUCTION

FRIDAY NIGHT MAY 7TH AT 6PM

1644 South Ash in Buffalo, MO in the R&R Auction House

We have more collectibles than ever before! From Ashton Drake dolls to Old toy trucks we have so many collectibles you won't believe your eyes. Lots and Lots of collector/Character dolls & over 150 dolls total, collectible figurines, Chisel plow, post hole auger, bale unroller, Riding mower, Ithaca .22 single shot rifle, .22, .25 auto, & 9mm ammo, gun cleaning kit, old bb guns, toy guns, Goofus glass, John Deere collectible, Antique weaving boat shuttles, Old tobacco tins, cast iron pieces, Chevrolet garage sign, other old signs, old paper products, old 1 gallon crock jug, mantle clock, New Vitamix, Keurig, Old school desk chairs, Schwinn bicycles, furniture, old tins, sled, tractor seat, tools, Historic Dallas County items, showcase items, and so much more that we haven't set out yet.



TERMS: 10% buyers premium. Cash, check, or credit card with proper I.D. nothing removed until settled for A 3% fee will be added to credit card purchases. Not responsible for errors in listing. Any announcement made sale night will take precedence over any printed matter. **Note:** Service will take every precaution to prevent accidents, but will not be responsible should any occur.

PLEASE CHECK OUT WWW.RRAUCTIONSERVICE.COM FOR PICS OF THIS SPECTACULAR EVENT

ESTATE AUCTION OF PHIL LEGAN

SATURDAY MAY 15TH • 9AM

303 North Hickory in Buffalo, MO

This estate is loaded with vintage merchandise, antique furniture, old collectibles, tools, lumber, and so much more. Also included is a 1991 Winnebago only 36,000 miles.



See next week's trader for complete listing or view online now at rrauctionservice.com

TERMS: Cash, check, or credit card with proper I.D. nothing removed until settled for A 3% fee will be added to credit card purchases. Not responsible for errors in listing. Any announcement made sale day will take precedence over any printed matter. **Note:** Service will take every precaution to prevent accidents, but will not be responsible should any occur.



For more information contact Professional Auctioneer Russ Weeks at 417-576-7357 or check out www.rrauctionservice.com

Serving this area's auction needs since 1997 with honesty and professionalism.
www.rrauctionservice.com
 (417) 576-7357 or (417) 345-4140



GUN AUCTION

SATURDAY, May 8, 2021 • 10 a.m.

LOCATION: 1585 N. Hwy. 63 of Houston, Mo. 65483, at the Texas County Fairgrounds on U.S. 63.
DIRECTIONS: From Houston, Mo. 65483, go north on U.S. 63 one mile to auction site. Watch for Rick Dixon auction signs day of auction. Visit us on the web at www.rickdixonauctions.com.

• AMMO •

CASES: 5 mm • 9 mm • 45 acp • 40 S & W • 30 carbine • 223 - 5.56 • 308 Win • 30-06 • 8 mm • 7.62 x 54R • 410 shotgun • 8 x 56 Steyr • 28 ga shotgun • 50 BMG

BOXES: 12 ga • 20 ga • 16 ga • 28 ga • 223 WSM • 260 Rem • 30-06 • 22-250 • 17 Rem • 25-20 • 5.45 x 39 • 8 mm Mauser • 7 mm Weatherby • 7.62 x 25 • 35 Whelen • 30-30 Accelerator (rare) • 9 mm Makarov • 303 British • 9 mm Luger • 30-40 Krag • 284 Win • 7.62 x 54 R • 6.5 x 55 • 32 auto • 9 mm Largo • 375 H&H • 7.5 French • 280 Rem • 7.62 Nag • 7 mm SA Ultramag • 6.5 Carcano • 38 S & W • 357 Sig • 357 Rem mag • 45-70 • 356 Win • 38 Special • 300 Win mag • 380 auto • 7 mm mag • Other cal. possible!

• RIFLES • PISTOLS • • SHOTGUNS •

• 50 BMG custom match rifle w/barrel bolt ss • Marlin mod 60 22 rifle • S & W mod 100N 12 ga 3" auto • Davis mod P-380 380 pistol • Diamond Back DB 380 auto pistol • Win 69A bolt • Mossberg 9200 auto 12 ga 3" accuchoke • Star model super 9 mm Largo auto pistol • Jenning Bryco 38 380 auto pistol (new in box) • Win mod 74 auto stock feed 22 LR • Revelation R310ABR 12 ga 3" pump • Taurus PT 709 9mm auto pistol (new in box) • Colt 1910 25 ACP auto pistol • Springfield mod 120A 22 S-L-LR bolt single shot • JC Higgins 16 ga bolt • High Standard M101 22 LR auto pistol • Lorcin L380 380 auto pistol • EIG 22 bolt single shot • Mossberg 500C 20 ga 3" • Taurus PT99 9 mm auto pistol • H&A safety police breakover revolver • Revelation bolt single shot 22 • New Haven mod 600CT 20 ga 3" pump • Ruger P95 9 mm auto pistol • Jennings Bryco 38 380 auto pistol • Daisy mod 2202 • Mossberg 500 Ag 12 ga 3" • 7.62 Nagant 1943 Russian as new with extra 32 cylinder revolver • Hungarian police 9 mm Makarov • Stevens mod 15 22 bolt • New England Tracker 12 ga 3" rifled & scoped • Mossberg mod 5500 auto 12 ga 3" • Jenning Nine 9 mm pistol (new in box) • (2) Win model 190 22 auto rifle • Coast to Coast mod 367H 12 ga 3" pump • Stevens mod 77B pump 12 ga • Davis mod P380 380 auto pistol (new in box) • Win 69A bolt S-L-LR • New England Pardner SB2 10 ga 3.5" • Stevens SB 12 ga • Bryco 38 380 auto pistol (new in box) • H&R mod 121 20 ga bolt • Stevens pump 12 ga • Lorcin mod L380 380 auto pistol • Westpoint scoped 22 auto • New Haven mod 600CT 20 ga 3" pump • Old 1902 SB 12 ga • Colt 38 Detective revolver • Rem 550-1 22 auto S-L-LR • H&R Topper mod 148 20 ga full • New England 32 ga Special rifled w/dart acc • Bryco mod 58 380 auto pistol (new in box) • Rem 341 bolt action 22 cal S-L-LR • Marlin Goose gun 12 ga 3" bolt • Smith & Wesson break-over hammerless revolver • (2) Raven 25 auto pistol (new in

box) • Rem mod 550-1 22 auto • CBC SB 12 ga modified 3" • Marlin 30AW lever 30-30 • Whitney-Lanley mod 1 rolling block • Browning ATD 22 auto • JC Higgins mod 583-1101 12 ga • Win 94 30 WCF lever • Rem 591 auto 5 mm • Rem Fieldmaster 572 22 pump 22 S-L-LR • Western Field SB 100A 16 ga full • Marlin 1894 GL Lever 32-20 scoped • Mauser custom SS 22-250 scoped bench rest • Win mod 67 22 short bolt • MagTech mod 586 12 ga 3" pump • Ted Williams 100 mod 30-30 lever • Remington rolling block HD-70 sharps • Revelation 22 auto • New England Pardner SB1 12 ga 3" • Marlin 36G lever scoped 30-30 • Custom Mauser - Red Field scope 22 swift cal • Rem 550-1 auto 22 S-L-LR • Revelation R310ABR pump 12 ga 3" modified • New England SB1 3.5" mag • Win 1884 lever 32 WCF • (2) Stevens mod 62 22 LR • New England Tracker SB1 12 ga 3" • Rem 870 • Rem mod 591M nice 5 mm • Ranger 22 S-L-LR pump • Revelation R310AB 12 ga 3" pump • British 303 • Win mod 94 30-30 scoped • Win mod 61 22 win mag pump • Win mod 120 20 ga 3" ranger pump • Torre Annunziata 6.5 carcano • Ruger police carbine 9 mm auto (new in box) • Rem mod 572 Fieldmaster pump 22 S-L-LR • Springfield mod 951 3" 410 bolt • 8 mm Mauser • (2) Win 94 lever 30-30 • Interarms 22 ATD • H&R mod 088 SB 12 ga 3" full choke tube • Marlin 22 MG 22 mag bolt (new in box) • Iver Johnson M1 carbine 50 Anniversary 30 carbine • Win mod 275 pump 22 mag scoped • Revelation mod R310AB 12 ga 3" pump • Marlin 922m 22 mag auto (new in box) • Marlin Glenfield 30A scoped 30-30 • Rem Speedmaster 552 22 S-L-LR • Chines SB 12 ga full • New England Handi rifle SB2 scoped 223 rem • Ruger carbine auto 40 S&W • Sovereign mod SM64 22 LR auto • Revelation mod 300 20 ga 3" • Stevens 325A bolt 30-30 • Marlin 1893 32-20 lever mod 94 • Win mod 61 22 cal S-L-LR pump • Mossberg 12 ga 3.5" ultimag 835 pump • British 303 rare 308 • Marlin 25MN 22 mag, new • Win 1903 22 pump S-L-LR • Stevens mod 62 12 ga 3" pump • German 98 action 8 mm Mauser • (2) Marlin 22MG 22 mag, new in box • Win mod 61 w/scope S-L-LR pump • H&R Pardner 410 SB • British 303 scoped • Win Ranger 30-30 scoped lever • Win mod 1890 22 short pump • Stevens mod 325-A bolt action 30-30 clip • (2) Win mod 12 16 ga pump • Fed Ordnance M14 308 auto • Win mod 61 22 S-L-LR pump • Win mod 1400 MK11 16 ga auto • British 303 • Marlin 30AS 30-30 scoped lever • Win mod 1890 22 long pump • Revelation R310G 20 ga pump • Eddy Stone • Fox carbine 45 ACP/9mm auto • Rem mod 12 22 S-L-LR pump • Mossberg 500A 12 ga 3" pump • Mauser 7 mm • Win 94AE 30-30 lever •

• OTHER ITEMS •

• Primers Rem- Win- CC1 • Reloading dies • Brass • Scopes • Rings- Bases • Holsters • Assorted magazines • Assorted shotgun barrels • Truck bed tool box •

AUCTIONEERS NOTE: No preview until 8 a.m. day of auction. This may be one of the best gun auctions you will find! All items are from one owner. Due to safety concerns, owner will be revealed day of auction. Thanks for your attendance, *Rick*.

TERMS: Cash or good check. Major credit cards accepted with 5% convenience fee. Driver's license or picture identification required to obtain bid number, which must match check. Nothing loaded or removed until paid for, and everything sells where is, as is. Not responsible for accidents, lost, stolen or broken items. List subject to additions or deletions. Nothing sold before auction; please do not ask. Auction day announcements take precedence over all previous advertisements. **Social distancing recommended.**



Rick Dixon Auction Service LLC

www.rickdixonauctions.com

Rick 417-967-6604 • Josh 417-217-9627

Mike & Aleshia Elwood

AUCTION

May 8, 2021

Salem, MO - HWY 32-72 East 5 miles to W Hwy 3 miles - 9:30 AM

HOUSEHOLD– Old trunk, mirrored coat rack, mirror, old wardrobe, 8 ft wooden shelf, hotel laundry basket, curio cabinet, miscellaneous Christmas, dishes, kitchenware, Home Interior pictures, pressure cookers, electric smoker, wooden ammo boxes, Bowflex, multisport gym, stair stepper, refrigerator, dishwasher, fan

EQUIPMENT – 20 ft pintle hitch trailer with a 5 ft dove tail (needs work), grain buggy auger, grain buggy floweez, horse trailer, 3 point seeder, aerator, 3 point carry all, 2019 Halverson HWP-140 Skidsteer wood processor @, 2019 turbo saw @, GMC Dump truck (been sitting), rock rake, 1999 20' Bales flatbed gooseneck trailer with dove tail

FARM – Hay ring, plastic tubs, T-posts, galvanized water tank, Priefert headgate, electric fencing, chicken waterers, chicken feeders, fence chargers, feed storage containers with lids, cattle panels, several saddles and tack

BUILDING SUPPLIES – scaffolding and decking, polymer pipes, black matting, metal pipe, roofing toe boards, miscellaneous building supplies, air compressor (needs regulator), paint mixer

MISCELLANEOUS – Smoker on trailer, 2009 Toyota Camry Hybrid (doesn't run), log racks for flatbed trailer, lot of tires, metal skidsteer boxes for half, third and full cord wood, railroad ties, Pearl drum set, Ibanez electric guitar with amp, Pelican Bass Boat 2-man with seats, paddles, trolling motor, battery and fish finder, 2003 Pontiac Grand Am, bikes, lot of items needing small repairs (Stihl chainsaw, generator, power washer, weed eaters, chop saw, push mowers, air compressor)



Sellers have sold their farm and are moving to town. Many items are still being added. - See you there - Raymond

Follow us on Facebook: Quick Auction Service LLC

QUICK Auction Service

Col. Raymond Quick (573) 247-3834 ray_quick1964@yahoo.com – Col. Brady Hagler

TERMS: Cash or Approved check . Nothing removed until settled for. Not Responsible for accidents. Refreshments available

ANNOUNCEMENTS AT AUCTION TAKE PRECEDENCE OVER PRINTED MATTER



BID NOW!

ONLINE AUCTION

BID NOW! BIDDING CLOSES MAY 11

Farm & Construction Equipment



- '18 Bobcat E85 excavator
- '13 SkyTrak 8042 telehandler
- '16 Kubota M6s-111 tractor
- '08 Genie Z45/25 knuckle boom lift
- Terex TA6 6 ton site dumper
- Thwaites 6 ton swivel site dumper
- John Deere 4430 tractor
- New Holland 8N Boomer tractor
- John Deere 444C wheel loader
- Willmar 745 self propelled sprayer
- New Holland Workmaster 60 tractor
- Dig-It 198T backhoe
- JD 3020 diesel tractor
- AC model C tractor
- JD 400 industrial tractor
- Case VAC tractor
- Gleaner C combine w/heads
- Unusd Mower King 1.2 ton excavator
- Farmall C tractor w/ Woods mower
- Belarus 525M tractor w/ loader
- Kubota B7100 HST tractor
- IH Dresser 412 scraper
- SkyJack SJ3226 electric man lift
- Case TF300 tracked trencher
- 30+ new & used skid steer attachments
- 7 unused hoop shelters
- 40' container w/ 4 doors
- Antique Aermotor windmill
- JD 630 MoCo discbine
- NH H7220 discbine
- Friesen 240 seed tender trailer
- JD 558 round baler
- NH BR740A round baler
- 2-JD 535 round baler
- JD 535 round baler
- Frontier WR6008 V-hay rake
- Frontier TD1316 4-basket hay tedder
- JD 7000 & 7200 4, 8 & 12-row planters
- IH wagon gear w/Riechers bed
- Kewanee 1175 22' disc
- NH 320 square hay baler
- IH 496 22' disc
- Hesston 565A round baler
- 2-Durabilt 8-wheel v-rake
- 4-JD 24t & 14t square balers
- 3-NH chain round balers
- Oliver 520 square hay baler
- Ritchie Bestway 750 gal. sprayer
- 3-NH side delivery rakes
- 2-NH 163 hay tedders
- Rome 7' offset disc
- Krause 15' disc
- 4-2 basket hay tedders
- Westfield 9"x61" transport auger
- JD 7.5' & 9' grain drills
- NH 7' & 9' haybines
- John Deere 702 11-wheel v-rake
- Paul portable livestock scale
- Gehl 95 grinder mixed
- NH 630 & 658 round balers
- Hesston 12-wheel v-hay rake
- Gleaner 6-row 30" corn head
- Gleaner 20' grain head
- JD 213 13' grain head
- Finish mowers
- Brush hogs
- Grader & box blades
- 3-pt sprayers
- 1-5 bottom plows
- Danuser post hole diggers
- Shaver HD10 post driver
- Bush Hog & Koyker loaders
- mower
- Homemade dune buggy
- Kubota T1600 diesel garden tractor
- Swisher ZT2450A zero turn mower
- Toro Timecutter MX5025 zero turn mower
- Kubota G1900 lawn tractor
- John Deere L130 lawn tractor
- Husqvarna 2754GLS riding mower
- Bolens LT8E riding mower
- John Deere 330 diesel riding mower
- White LT1300 riding mower
- Lawn Boy Z340 HLX zero turn mower
- Bush Hog ES2052 zero turn mower
- Cub Cadet H1952 walk behind mower
- 2-Ferris DDSKAV23 walk behind mower
- Gravely PB36 walk behind sweeper
- Gravely walk behind vacuum
- Gravely 12 walk behind tractor
- Tillers
- Chainsaws

Vehicles

- '13 Volvo VNL730 road tractor
- '07 Toyota RAV4
- '04 Dodge Dakota quad cab 4x4
- '99 Dodge Ram 3500 4x4
- '29 Ford kit car
- '86 Chevrolet C30 dump truck
- '06 Ford F-250 4x4 XL
- '98 Chevrolet Blazer 4x4 w/ snowplow
- '01 Ford F-350 dump truck
- 2-'93 Chevrolet 1500 4x4s
- '07 Ford Fusion SEL sedan
- '73 Dodge 3/4 ton pickup

UTVs, ATVs, and Lawn & Garden

- Suzuki King Quad 700 ATV
- Polaris Ranger 6x6 UTV
- Arctic Cat Prowler 700 HDX UTV
- Bush Hog TH4400 4x4 UTV
- Kawasaki Mule 2510 4x4 UTV
- Polaris Ranger 4x4 UTV
- John Deere 7H19 walk behind
- Tractor weights
- Feeders
- Gates
- Seed cleaners
- Woodmaster W-725 planer
- 2-Delta 43-445 HD shaper
- Powermatic 26 shaper
- Whirlwind 219 cut off saw
- Fuel tanks
- Unused cattle guards

**Much More!
600+ Items**

More items listed at SchneiderAuctioneers.com

600+ LOTS

Item Preview Dates:
Saturdays: April 24th, May 1st, and May 8th from 8AM until Noon
Tuesday, May 11th from 8AM until close of auction.
Other times available by appointment

Item Preview Location:
4155 HWY V V, Berger, MO 63014



All items sell regardless of price.
All items start at only \$1.



SCHNEIDER Auctioneers LLC

573-834-2207 • 573-291-8075
www.SchneiderAuctioneers.com

BUFFALO LIVESTOCK MARKET LLC



276 Hwy 32 West
Buffalo, Missouri

May 1st, 2021
Receipts: 1177 Head

Feeders \$2 - \$6 Lower. Cows & Bulls Steady.

REPRESENTATIVE STEERS

300-400 @ 161.00 to 193.00
400-500 @ 150.00 to 167.00
500-600 @ 140.00 to 163.00
600-700 @ 132.00 to 138.00
700-800 @ 123.00 to 135.00
800-900 @ 113.00 to 127.00

REPRESENTATIVE HEIFERS

300-400 @ 128.00 to 153.00
400-500 @ 135.00 to 147.00
500-600 @ 127.00 to 138.00
600-700 @ 118.00 to 130.00
700-800 @ 112.00 to 122.00
800-900 @ 105.00 to 112.00

FEEDER BULLS

400-500 @ 140.00 to 160.00
500-600 @ 129.00 to 150.00
600-700 @ 120.00 to 136.00
700-800 @ 111.00 to 122.00
800-900 @ 98.00 to 99.50

BRED COWS

775.00 to 1080.00

COWS CALF PAIRS

985.00 to 1285.00

SLAUGHTER COWS

Big Fleishy 1400# & up
65.00 to 72.50

Med Fleish 1000 - 1300#
55.00 to 65.00

Thin Fleish 50.00 to 60.00
X Thin 50.00 Down

SLAUGHTER BULLS

High Dressing 100.00 to 107.00
Med Dressing 93.00 to 99.00
Low Dressing Thin or Crisp
70.00 to 84.00

MON-WED MARKET REPORT

Listen to KJEL 103.7FM • Lebanon or KY00 99FM • Bolivar

VIEW OUR SALES AT CATTLEUSA.COM

CALL FOR TRUCKING OR ON-FARM VISIT

Lyle Caselman • Owner-Manager
417-345-7876 • mobile 417-533-2944
Leon Caselman • Owner
417-345-4514 • mobile • 417-588-6185
Howard Miller • Owner 417-345-8122

SITREX 12 WHEEL: Bi-Fold Rake.
\$5,250. 573-765-4406. Richland.

NEW IDEA: 5410 Disk mower, 10ft.
\$4,450. 573-765-4406. Richland.

POOL TABLES: Installations, moves,
recovers, repairs, accessories, etc. 573-646-
1700.

FERTRELL ORGANIC FERTILIZER:
Free Catalog. 315-796-4370.

**BUYING STANDING CEDAR: Minimum
6-in diameter. 417-531-0403.**

LOG SIDING: 2X8 Pine/Western Cedar
www.pineridgerustic.com 573-729-7226.

BUYING MOBILE HOMES: Call David at
VILLA HOMES IN ROLLA 573-578-8072.
Rolla.

**HAY, SADDLES, BOOTS, SUNFLOWER
SEEDS, HATS, STRAW: Black Gold, Di-
amond dog foods, clip ad, save \$2 on Di-
amond Taste of the Wild. George's, Tack,
Saddle, & Feed. 573-346-7866. Camdenton.**

TUFFY SPECIAL: Volume Prices 573-657-
2176 amegamobilehomes.com

LAND AUCTION CALLAWAY COUNTY, MO



- 93 +/- Acres Just North of Hwy 94
- Road Frontage On CR 485 & 486
- Only 15 Miles to Jefferson City

Land Preview:

Sat., May 1st | 10:00 a.m. - 12:00 p.m.

**Note: This property has numerous
beautiful home building sites and lots
of timber for wildlife enthusiast. Also,
a nice grass farm for livestock. Your
opportunity to own land is now!!**

11849 County Road 485,
Tebbetts, MO

Online Bidding Ends:
Tues., May 18th at 12:30 p.m.

Seller: Estate of Fern B. Perrey Trust

BID ONLINE AT Atterberrysells.com

Atterberry Auction & Realty Company
Your Real Estate At Auction Specialists
Email: contactus@atterberryauction.com



ATTERBERRY
AUCTION & REALTY COMPANY
We make buying and selling at auction easy!

www.atterberryauction.com
573-474-9295

Salem Livestock Auction

Hwy. 32 Salem, MO • 573-729-8880

Over 40 Years in the Livestock Business

Stock Sale

Saturday May 15th • 1pm

Pre VAC Sale

Friday June 4th • 12 pm

Luke Peterson • 417-259-0036

Shawn Chadwell • 417-830-0209

Bryce Lauderdale • 417-255-5124

Field Representatives

Wright & Surrounding Counties
We Appreciate Your Business!

Cattle Sale Every Monday at 12

Feeder calves to sell at 12, butcher cows
& stock cows following

All Consignments Welcome Up Until Sale

Allen Thompson Renee Lauderdale
417-932-4097 417-926-2682

Chuck Thompson Brandon Barton
417-257-5610 417-259-1597

Terms of Sale: Cash or Approved Check!



NO \$\$\$ DOWN MOBILE HOMES--:

Call for details 573-499-9993
columbiadiscounthomes.com

**A CENTURY OF MISSOURI TIGERS
BASKETBALL BOOK:** by Michael Atchi-
son, 258 pages, hardback. \$20. 417-532-
2045 leave message. Lebanon.

I BUY.....used mobile homes.: Call or
text 573-338-6250 or email GregS.CDH@outlook.com

USED MOBILE HOMES: Call David at
VILLA HOMES IN ROLLA 573-578-8072.
Rolla.

SPECIALIZING IN HEAVY DUTY GATES



Cow Country Gate Sales

Call Randy: 573-569-4754
or Home: 573-539-2528
Located at: Zimmerman Welding
16889 Hwy 52, Barnett, MO

REGISTERED HEREFORD & ANGUS BULLS: Home raised, Some Show-Me Select Qualified. 573-701-7828. Belgrade.

WANTED, TIMBER TO LOG ON SHARES: Honest, reliable, references. 417-533-4607, 417-664-1195.

REGISTERED HEREFORD & ANGUS BULLS: Home raised, Some Show-Me Select Qualified. 573-701-7828. Belgrade.

TWO GLASS INSULATORS: Identification book guides, \$6.50. 417-532-2045, leave message. Lebanon.

DREAM HOUSE: -Online, chateauhomes.net Call Marla 573-657-7040

CUSTOM SAW MILLING: Lebanon. 417-533-4607, 417-664-1195.

WANTED, TIMBER TO LOG ON SHARES: Honest, reliable, references. 417-533-4607, 417-664-1195.

450 CASE: New motor, new under carriage, \$7,000. 417-532-5670.

FIREARMS: Professional Repairs and Restorations. Baron's Gunsmithing. 573-363-5801, Camdenton.

INTERNATIONAL FARM-ALL CUB: New rear tires, new battery, runs fine. \$1,600. 417-543-3180. Wasola.

BALDOR-RELIANCE: 1 hp, 250-volt, electric motor. New, sacrifice, \$50. 417-345-4562 or 417-599-9157. Buffalo.

LIMOUSIN AND RED ANGUS SALE: Friday, May 7 at 6 pm at Sand Spring Resort, 13 miles west of Lebanon on Highway 64. Selling bulls, open heifers bred fall heifers, spring pairs and genetic packages. To view the offering, visit www.jbarjlimousin.com or text Jack Glendenning. 417-588-6121.

2003 MERCURY MARQUIS: All original, 1-owner, like new condition, kept inside, 124,000. \$4,900. 417-844-4019. Springfield.

STAY-TUFF FENCE, Johnson concrete waterers, waterlines, hydrants, posts, panels, hydraulic hoses, & GOOD FOOD. Farmers Quik Stop. 417-991-1938. Lebanon.

SHOW-ME-SELECT REPLACEMENT HEIFER SALE FALL-CALVING BRED HEIFERS

FRIDAY, MAY 14, 2021 • 7:00 PM
Farmington Regional Stockyards, LLC
1600 Woodlawn Drive, Farmington, MO



130 CROSSBRED & PUREBRED HEIFERS AVAILABLE
Registered Angus and Angus Cross, SimAngus & Angus/Hereford

- Black and black-baldies
- Sorted into uniform lots and guaranteed bred
- Many AI BRED & selling with known FETAL SEX
- Some REGISTERED—Angus
- Due to calve from late August to early November 2021
- AI bred to INDUSTRY LEADING Angus bulls
- TIER II daughters out of Angus: Mill Bar Hickok, SydGen Black Pearl, SydGen Enhance, BUBS Southern Charm, Jindra Acclaim, KFC Bennett Southside and SimAngus: TSN Protégé

CONSIGNORS:

- | | | |
|--------------------------------|--------------------------------|-------------------------------|
| Ben & Julie Davis, Farmington | Jarrold Grayson, Edgar Springs | Mike Steinman, Argyle |
| Fallert Farms, Ste. Genevieve | Rick Grellner, Owensville | Greg Tharp, Naylor |
| Flieg's Farm, Ste. Genevieve | Henson Farms, Piedmont | Triple V Farms, Perryville |
| The Little g Farm, Steelville | Schulte Brothers Farm, Meta | Turner Farms, Belgrade |
| Graham Family Farm, Farmington | Shadow Lane Farms, Mill Spring | Dean & Dallas Wilson, Dittmer |

FOR INFORMATION OR CATALOG CONTACT:
Kendra Graham • 573-756-4539 • grahamkk@missouri.edu
Facebook: Show Me Select Bred Heifer Sale: Farmington

Offering online bidding through:
DVAuction
Broadcasting Real-Time Auctions



SAT., MAY 8 • 10AM

Directions: From Hartville, Mo go approx 5 miles north on 5 to Dickenson Road, turn right, go approx 1 mile to Logan Road. Auction is on the corner of Logan & Dickenson in the field. All out side. Bring your chain saw, tick spray and a way to load your items!!

AUCTION ITEMS INCLUDE:

ALLIS B TRACTOR on STEEL RIMS
* OLD FARMALL CUB PARTS *
INTERNATIONAL WELL DIGGING TRUCK (PICTURED) * OLD BED LINERS * SUCKER ROD * OLD WAGON FRAME * FUEL TANKS * OLD SCHOOL BUSES * OLD CORBITT TRUCK * OLD WRINGER WASHER * CREAM CANS * OLD FARM ALL F12 PARTS * 1946 CHEVY FIXER UPPER PICKUP * 2-1942 DODGE COMPLETE FIXER UPPER * 1959 CAB OVER WILLYS 4X4 * 16' DUMP BED * OLD FARMALL F12 PARTS * DRAG TYPE 2 BOTTOM PLOW * ANTIQUE THRESHING MACHINE * INTERNATIONAL 260 BACKHOE PARTS* 300 GALLON TANK * GMC 2 TON BOX TRUCK * OLD F12 TRACTOR ON STEEL WHEELS CONVERTED TO V8 * OLD BUSHOG * REFRIGERATOR * 3 STOVES * OLD DREDGE * CHEVY BOX TRUCK

LOTS & LOTS OF MISCELLANEOUS CAR & TRUCK PARTS, SCRAP, BODIES, AND MORE.

EVERYTHING SELLS AS IS WHERE IS!!! CASH OR CARDS (W/3% FEE) ACCEPTED. MUST HAVE A VALID DRIVERS LICENSE OR ID TO REGISTER FOR AUCTION. ALL ITEMS MUST BE REMOVED WITHIN 10 DAYS. NO LOADING ASSISTANCE AVAILABLE!! SOME ITEMS MAY HAVE TITLES.

VICKI & BRUCE CODAY



AUCTIONS BY MIKE SHERMAN AUCTION SERVICE

WWW.AUCTIONSBYMIKE.NET
417-872-6405



**Get
Planting
This
Mother's
Day**

**STEELVILLE
FEED & FARM**

573-775-2650 • 11 Cobblestone Rd., Steelville, MO
Mon-Fri 8am-5pm • Sat 8am-12pm • Sun Closed
www.steelvillefeed.com

RADIATOR/FAN SCHROUD: Fits international model tractors models 200, 230, 240. \$125. 636-239-2695. Washington.

KITCHEN FAUCET MOEN: Single lever, sprayer, new cartridge. \$45 obo. 636-239-2695. Washington.

ALLIS-CHALMERS: 5040 diesel with loader, good tractor. \$6,500. 573-864-2611. Ashland.

3 POINT 10" POST AUGER: \$175. 417-733-7495. Buffalo

BOOTS: Hip waders, rubber and leather boots. Men's 11, Women's 7, some insulated, \$15-\$45 obo. 636-239-2695. Washington.

LIONEL TRAIN SET: Steam engine, tender, caboose and other car, track and transformer. \$195. 573-364-7465. Rolla.

FAINTING GOAT BUCKLINGS: Pure bred, package deal. 573-216-7796. Roach.

MURRAY RIDING MOWER: Good tires, deck, blades, 5-speed, needs motor. \$150 or gun trade. 573-364-7465. Rolla.

MISSOURI HISTORICAL BOOK: published by State Historical Society of Missouri. \$6.50. 417-532-2045 leave message. Lebanon.

JOHN DEERE STX46 RIDING MOWER: 46" cut, triple blade, Kohler motor, needs PTO wire and belts. \$195. 573-364-7465. Rolla.

FOR SALE: Church pews, color honey oak, good condition, 10 1/2 feet long. If interested call Lee, 314-240-3096. Licking.

FOR SALE: Chicks hatching, eggs, Chickens, Ducks, Geese. Call Lee. 314-240-3096. Licking.

BETTY CROCKER BAKING FOR TODAY COOKBOOK: Hardback. \$6.50. 417-532-2045. Leave message. Lebanon.

NOW HIRING

PARTS COUNTER

Full Time, Vacation, Benefits,
Office Environment

\$10 - 16 Hr.
Depending on experience.

Email resume to
freeburg@diamondrequipment.com

DIAMOND EQUIPMENT

FOR SALE: 256 New Holland, side delivery rake, 417-967-4527. Houston.

ENGLISH BULLDOG PUPPIES: 5 males, lilac color, home raised, UTD shots, 417-989-9894. Thornfield.

SEEKING PLUMBER: with experience in New Construction & Residential service plumbing. Must have experience with all types of plumbing repairs and the ability to trouble-shoot and repair many different plumbing problems. We are looking for someone that is outgoing, self-motivated, reliable and has quality ethics. Valid driver license with good driving record required. We offer excellent pay and long-term employment to the right candidate. Paid vacation, paid holidays and health insurance. Immediate employment available. Salary is based on experience. Please call. 573-348-2093.

1908 ALCOHOL BURNER: \$100 each. 636-234-1888. Gerald.

**ESTATE FARM AUCTION SAT., MAY 8TH, 2021;
MORNING SALE - 9:00AM**

Due to the death of Father Charles Pardee, we will sell the following personal property, located from St. James, Missouri take Hwy. KK (Old Route 66) 4 miles east to Hwy. U. Turn left and continue 1/4 mile to auction. Follow Lorts Auction Today signs on

FARM EQUIPMENT, SHOP TOOLS & RELATED ITEMS: Kubota L2900 tractor, diesel, 4x4 w/loader, 1250 hours; Foton 704 open cab tractor, 70 horse, 4x4, Perkins diesel; Vermeer 5400 Rebel round baler w/kicker wheel, 4x5; 315 New Holland square baler; Enorossi 8 wheel hi capacity hay rake; 5 ft. 3 pt. Agric tiller (like new); New Holland 492.9 ft. haybine; Dearborn 3 pt. 2 bottom plow; John Deere 5 ft. 3 pt. disc; Oliver manure spreader; Ford 3 pt. post hole digger; Woods 6 ft. blade; Howse 5 ft. bush hog; Shaver post driver; Universal 3 pt. bale spike or loader; 2 wheel trailer; Ford 3 pt. bush hog; 2 section harrow; 32 ft. x 7 ft. trailer w/steel floor; 6 ft. x 12 ft. portable chicken house; 2 large rolls chicken wire; Fuel cans; Tool boxes; Bike racks; 6 inch grinder bench; 4 inch shop vise; Brace & bit set in box; Wooden ladder; 300 gallon farm tank & stand; 3 western saddles; Lot of horse tack; Truck bed topper for full size bed (from 2011 Ford); **HOUSEHOLD, ANTIQUES & FURNITURE:** Rosati wine bottle; Lanterns; 1 gallon Dasey churn; Marbles; Tea kettle; Oil lamps; Sewing machine stand; Oak rocking chair; Bar stools; Floor lamps; Rosati history pictures; Couch & chair; Dishware; Aluminum pitcher & glasses; Metal

lunch box; Pots & pans; Hanging lamps; Light colored table w/6 chairs & leaves w/buffet & mirror; Oak China cabinet; Fold out school desk; Long stem glasses; Lamp table; Stoneware dishes; Flat top trunk; Console type stereo; Lot of 33 & 45 records; Grand Haven couch & love seat (tan); **TRUCK & VAN:** 2002 F350 Ford truck, 4 door, 2 seater, single wheel, 4x4, 7.3 diesel, automatic, maroon exterior; 2005 Dodge Grand Caravan, 7 seater, V6, maroon exterior; **GUNS, HUNTING & FISHING ITEMS:** Small propane camp grill; Fishing tackle boxes (some old); Minnow seine; Lot gigging lights; Aluminum dog box for truck; Lot ammo boxes; Lot ammo; Deer feeder; Winchester 22 auto w/scope; Winchester 270 bolt action w/scope & wood stock; Remington Arms 32 hex barrel single shot (late 1800s); Jaguar crossbow (NIB); High Country compound bow; **GRAPE & WINE EQUIPMENT:** Pak-Blast 3 pt. grape sprayer; Antique crusher on wooden barrel; Grape crusher & press; Bushel & 1/2 bushel baskets; Glass carboys; Cases of wine bottles; Gallon & 1/2 gallon tippin' jars; #18 crock; Standing corker; Bottle capper; Bottle drying tree; **MANY MORE ARTICLES TOO NUMEROUS TO MENTION**

SALE CONDUCTED BY LORTS AUCTION SERVICE
ST. JAMES, MO 65559 • 573-699-4308 • 573-263-0243
AUCTIONEERS: Larry W. Lorts & Gary R. Lorts Licensed and Bonded

"like" us on Facebook- Lorts Auction Service or view this auction on line at www.threeriverspublishing.com or Auctionzip.com (auctioneer ID # 42353)

Mike Ripplemeyer, P.R. • 573-263-3340
15544 State Route U, St. James, MO 65559
AUCTIONEER'S NOTE: Lots of nice items on this auction. Nice antiques with several local Rosati items. Mark your calendars and come spend the day with us on Saturday, May 8! Lorts Auction Service



**MID
MISSOURI
STOCKYARDS**

**REGULAR SALE EVERY
THURSDAY 11AM**

WATCH OUR WEEKLY SALE IN REAL
TIME ON DVAUCTION.COM

For Farm Visits, Market Updates, or Trucking
Call **Zach Cox 417-777-1320**
Dan Romine 573-578-4939

**Competitive Buyers!
Competitive Commission!
Competitive Market!**

Barn: 417-532-9292 
I-44 • Exit 123 "just outside of Lebanon"
17505 Route 66, Phillipsburg, MO 65722
For weekly market updates, visit us at
www.midmostockyards.com

HEALTHY KIKO YEARLING BILLY: \$300. 573-858-3238. Salem.

SIMPLICITY GARDEN TILLER: Rear tine, \$475. Lebanon.

KENMORE RANGE/DISHWASHER: Also, microwave, new deluxe Instapot & cookbook, removed from disabled lady's home during remodel for access. Private owner, all for \$250. Will not separate. 573-699-4351. St. James.

MILK GLASS JUGS: Variety of sizes from OCS. 636-234-1888. Gerald.

1993 FORD F-150: 6-cylinder, 296 engine, 5-speed, good tires, camper shell. \$1,800. 417-322-4538. Lebanon.

TRUNK CHEST: From WWII, Drawer inside, excellent shape, from single corps. \$400 obo. 636-234-1888. Gerald.

BLUE/RED HEELER PUPS: Raised for 40 years. Good livestock dogs or pets. \$100 each. 660-553-2333. Cole Camp.

FORD 8N TRACTOR: Good condition, Sherman transmission with 6 ft. 3-point finish mower. \$2,200. 417-766-1991. Rogersville.

HAPPY HOLLISTER BOOKS: \$2 each. 417-532-6561. Phillipsburg.

69 DART RACE CAR: Less engine, full tube chassis, all fiberglass except body, for sale or trade. 573-536-8913. Jefferson City.

BITTERSWEET MAGAZINES: \$1 each. 417-532-6561. Phillipsburg.

OZARK EMPIRE FAIR-SPRINGFIELD 60TH ANNIVERSARY COOK BOOK: 1937-1996, 144 pages. Prize winning recipes from the fair. \$9.50. 417-532-2045, (leave message) Lebanon.

STARNES IS NOW HIRING!



Starnes Auto Body



588-7939 • 588-3159
22115 RT. 66 • LEBANON, MO

W\$C *Wall Street Cattle Co.* **Where it's always a bull market!**
Angus - Brangus - Ultrablacks
14603 HIGHWAY KK, LEBANON, MO
417.288.4444 + WALLSTREETCATTLE.COM

BELLY MOWER: 5ft. off C or B Allis Chalmers, complete, good condition. \$200. 417-766-1991. Rogersville.

MAC'S TIE DOWN STRAPS: Like new. \$95 FIRM. 417-457-1022. Raymondville.

257 WEATHERBY MAG AMMO: \$75 per box. 573-860-3592. Sullivan.

WASHBURN ELECTRIC GUITAR: With case and Crate amp. \$200 obo. 417-532-6561. Phillipsburg.

2005 HONDA FOREMAN 4-WHEELER: 2wd, in very good shape, runs good, asking \$2,800. 573-237-2690. New Haven.

460 FORD ENGINE: Needs overhaul. \$100. 573-308-5884. Roach.

MISSOURI OZARKS BOOKS: Scenic Driving the Ozarks, 317 pages, \$7.50. Missouri Wild Mushrooms, 186 pages, \$5.00. Missouri Orchids, \$3.75. Weird Missouri Book, a travel guide to Missouri's Local Legends and best kept secrets, 253 pages, HB, \$12.50. Life Along An Ozark River (Current River), 252 pages, HB, \$6.50. 417-532-2045. (leave message) Lebanon.

720 JOHN DEERE TRACTOR: Complete overhaul, new bear rims, new tubes, good 18-4-34 rears, new fronts, 3 pt cylinder outlets, Make Offer. 660-826-5273. Sedalia.

Flower her with love this Mother's Day

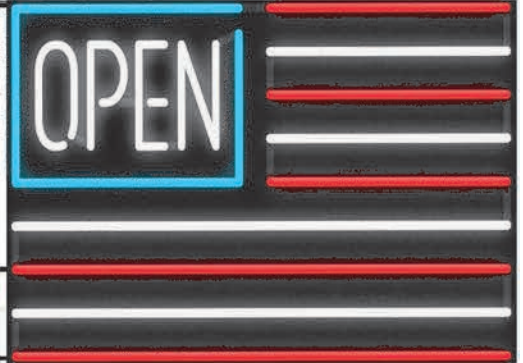
Beautiful arrangements created with Mom in mind!



JOEL RABER
573-259-1145
countryside2018@hotmail.com
Countryside Farm + Market
www.countrysidefarmandmarket.com

LOCATIONS
201 N. Franklin, Cuba MO 65453
590 Shoemaker Rd., Owensville MO 65066

Annuals, Perennials, Mums Seasonal Produce, Quality Lawn Furniture and More



Sale Ends May 31, 2021
 Seymour, Missouri 417-935-4201

Pole Barns & Post Framed Buildings!

Call for free quote, brochure & color chart.
 Other sizes also available.

23'x32'x10' \$7190 Material Only \$8520 Labor Included	23'x40'x10' \$8000 Material Only \$9670 Labor Included	30'x40'x10' \$9700 Material Only \$11900 Labor Included	40'x60'x12' \$16,950 Material Only \$21,570 Labor Included
---	---	--	---



NOBODY, BUT NOBODY BEATS OUR PRICES!!!

10 ft. Slider • Engineered Trusses 8' O.C. • 2x6 Treated Bottom Wrap • Screws • 2x10 Top Wrap • 2x4 Purlins • Full 29 Gauge Steel • Plus 3 ft. Entry Door with Lock
 OPTIONS: Sidewall Heights on all Buildings 10', 12', 14' & 16'. Overhead Garage Door. Skylights, Insulation, Wainscoting, Insulated Vinyl Windows, Cupolas, Labor Rates Slightly Higher over 50 Miles from Seymour.
 Call for YOUR FREE QUOTE TODAY!!!

PAINTED WHITE, GREEN OR TAN METAL\$89.99	IN STOCK
10' - \$28.50 12' - \$34.20 16' - \$45.60	
MIX & MATCH METAL\$59.99	
8' - \$15.20 10' - \$19.00 12' - \$22.80	
GALVALUME METAL\$74.50	
10' - \$23.60 12' - \$28.32 16' - \$37.76	
GALVANIZED CORRUGATED METAL SOLD OUT!	
8' - \$9.84 10' - \$12.30 12' - \$14.75 16' - \$19.67	

40yr Painted Metal
Call

KNOTTY PINE DOORS
 Starting at
\$109.99

LP SMARTSIDE T-5 LAP B GRADE \$43.59/SQ

Car Siding!
 1x6 White Pine Siding **65¢** in ft.
 1x8 White Pine Siding **85¢** in ft.
 * 4 Profiles to choose from!
 Broken Bundles Add 10¢ Per Ft.

4x8 Sheeting
 Less than full units Add \$1 per sheet

3/8" Beaded Paneling	\$17.99
7/16" T111 Siding	\$23.99
Paneling	\$9.99
1/2" Plywood	\$\$\$OLD
3/4" Plywood	\$\$\$OLD
3/16 Pegboard	\$12.99

**LOTS OF MATERIAL AVAILABLE
 FOR THOSE IN HOME PROJECTS!**

REAL WOOD SIDING
 2x6 Log Siding - 1.59¢ In ft
 1x8 Beveled Cedar from- 79¢ In ft
 5/8 T1-11 Siding from \$23.99

NEW PACKAGE HOMES

2x6—16" on center-Exterior Stud Walls
 Residential Roof Trusses-2' on center
 4/12 pitch with 1' over hang
 40 year Painted Metal roofing in 20 Different Colors
 Profile Ridge Vent - Ventilated Ridge Cap
 Vinyl Center Vent Soffit
 Color Matched Metal Fascia & Gable Trim
 2 - 3' 6 Panel Entry Doors
 4 - 3'x4' Vinyl Insulated Windows
ALL FIGURED FOR SUITABLE CUSTOMER SUPPLIED SLAB OR SUB-FLOOR

Shown with Available Options
 Your Choice of either:
 Stock 5/8" T111 Wood Siding w/1x4 Pine Window & Door Trim - or -
 7/16" OSB & House Wrap ready for other finish options

Price for Basic Materials Package & Labor
 20x24(490 sq. ft.) 20x32(640 sq. ft.) 20x40(800 sq. ft.) 28x40(1120 sq. ft.) 28x48(1344 sq. ft.)
SOLD OUT!!!

DECK PACKAGES
Materials Only

8x8.....\$464.95	10x12.....\$790.49
10x10.....\$654.49	10x16..... \$1029.49
12x12.....\$939.49	12x16.....\$1239.39

QUAKER Now Stocking Quaker Vinyl Windows

2030 \$ 117.99	3030 \$137.99
3040 \$152.99	3052 \$169.99
3040Twin \$334.99	3052Twin \$369.99



LUCKY DISCOUNT LUMBER
 417-935-4201
 455 State Hwy C • Seymour MO 65746
 www.luckydiscountlumber.com



*Some restrictions apply see store for details. Prices subject to change without notice.

WANTED CRAFTSMAN TABLE SAW: 12" direct drive, #11329970. 417-260-9904. Bucyrus.

PEDDLE TRACTORS FOR SALE: All brands. 573-859-6574 or 573-205-3328. Belle.

CAR DOLLY: Heavy duty, adjustable width ramps, good condition. \$900. 417-753-2747. Rogersville.

TRUSTED & THOROUGH SERVICE

Repairs • Rebuilds
Cast Iron & Steel Welding
Engines • Transmissions
Electrical • Hydraulics
PTO & Drivelines

VALLEY SHOP • 660-458-6747
38745 Molasses Mill Rd, Latham



Land Pride www.landpride.com

For Outstanding Products & Service
AGRI-ENTERPRISES

Getting Chores Done
LAND PRIDE
does that

DH25 SERIES DISC HARROWS 40-100 HP 72", 96" Widths

- Cat. 1 & 2 Hitch
- 20" or 22" Notched blades
- 3" Square frame
- 7-1/2" Blade spacing
- Angle front & rear gangs up to 21 degrees
- Adjustment handle to aid in angling
- 1/2" Thick bearing hangers

1-1/2 Miles South Of Licking, MO On Hwy 63
573-674-2203 • 1-800-653-7152
www.agri-enterprises.com

LA AND SC CASE PARTS: Case 960 Combine for Parts. 573-308-5884. Roach.

WANTED TTO BUY: Old John Deere unstyle G Tractor in your shed that doesn't run, on steel or spoke wheel. Call 573-768-0068 or write me at Jim Schlimme, HC 62 Box 62, Sedgewickville, MO. 63781.

WANTED: 10 cords of wood. 314-497-1898. Leasburg.

FEMALE ENGLISH CREAM GOLDEN RETRIEVER: 2 years old, spayed, AKC, very friendly, calm. \$700 adoption fee. 630-687-0705. Falcon.

BLACK 2007 SILVERADO EXTENDED CAB: 4x4, 1500, 163,000 miles. \$11,000. 417-531-3376. Grovespring.

WANTED: 1000 gallon propane tank. 573-378-6337. Versailles.

2001 CHEVY 4-WHEEL DRIVE: 3/4 ton, extended cab truck, 193,000 miles, very good condition, runs great. 417-531-2386. Richland.

VINTAGE POCKET KNIFE COLLECTION: 1950's + 60's, 26 models. \$150. 573-764-3517. Call in pm. Gerald.

NEW HOLLAND 1411 DISKBINE: with roller. \$8,950. 573-765-4406. Richland.



Meadowview Dutch Market

Call to Order 417-993-3017

Discount & Surplus Groceries • Prices Subject to Stock on Hand

DELI SPECIAL

ROAST BEEF REG. \$5.99 **SALE \$5.49**

AMERICAN HORSERADISH CHEESE REG. \$5.69 **SALE \$5.19**

TRY our Fresh Homemade DELI Sandwiches: TURKEY, HAM, ROAST BEEF, ITALIAN, BLT'S, PULLED PORK AND BLT PULLED PORK (MADE YOUR WAY)!
COME IN OR CALL to order! ALSO Custom Deli trays! Veggie OR FRESH Meat-N-Cheese!

EVERYTHING YOU NEED FOR Strawberry Pie	10Z Strawberries \$1.49 LB.	Reddi Whip 99¢ 6.5 OZ.	Strawberry Jello 79¢ 4 PK.	Pie Crust \$1.99 9" 2 CT.
---	-----------------------------	------------------------	----------------------------	---------------------------

Land-O-Lakes American Cheese \$7.50 5 LB. BLOCK	Seasoned Pork Chops 99¢ LB. 10 LB. CASE	Peppermint Cheesecake \$2.99	Strawberry Cheesecake \$2.99	Fresh Homegrown Tomatoes
---	---	------------------------------	------------------------------	--------------------------

Sale Dates May 5th, 2021 to May 11th, 2021 while supplies last!

CLOSED ON MAY 13TH
for Ascension Day

Shredded Mozzarella Cheese (SARGENTO BRAND)
2 LB. \$4.99 BAG

MEADOWVIEW DUTCH MARKET
417-993-3017 Hours: Mon-Thurs 8-5pm
Fri 8-6pm • Sat 8-5pm
23 Miles West on Hwy 64 • Right on T Hwy
9 miles • Left on E Hwy 1 mile on Left

Versailles Dutch Country Store has Flowers!

NOW ACCEPTING CREDIT, DEBIT CARDS & EBT

DUTCH COUNTRY STORE, LLC
573-378-4395
Hours: Mon-Thurs 8-5pm
Fri 8-6pm • Sat 8-5pm
5 miles East of Versailles off Hwy C on Kelsay Road



YOUR AD GOES HERE!

Add YELLOW Color For An Additional \$3 Per Reader Ad

All ads will include Phone Number (unless requested to be deleted by advertiser) and City Or Town, Phone Number with Area Code counts as one word. City or Town counts as one word.

RATE: 80¢ Per Word. All Classified Ads Require Payment Before Print.

(1) 80¢	(2) \$1.60	(3) \$2.40	(4) \$3.20
(5) \$4.00	(6) \$4.80	(7) \$5.60	(8) \$6.40
(9) \$7.20	(10) \$8.00	(11) \$8.80	(12) \$9.60
(13) \$10.40	(14) \$11.20	(15) \$12.00	(16) \$12.80
(17) \$13.60	(18) \$14.40	(19) \$15.20	(20) \$16.00
(21) \$16.80	(22) \$17.60	(23) \$18.40	(24) \$19.20
(25) \$20.00	(26) \$20.80	(27) \$21.60	(28) \$22.40
(29) \$23.20	(30) \$24.00	(31) \$24.80	(32) \$25.60
(33) \$26.40	(34) \$27.20	(35) \$28.00	(36) \$28.80
(37) \$29.60	(38) \$30.40	(39) \$31.20	(40) \$32.00

Place your Classified Ad TODAY!

417-532-2800 • 800-665-8875

Fax: 417-532-8140

Or Mail To: P.O. Box 192 • Lebanon, MO 65536

For your convenience we accept MasterCard, Visa, Discover or American Express



DEADLINE FOR CLASSIFIED ADS: FRIDAY 4:00PM!

Name _____

Address _____

City _____ Email _____

State _____ Zip Code _____ Phone _____

Ad Total \$ _____ X # Weeks _____ = Amount Enclosed \$ _____



KYMCO

NOW at WCT!



Like 150i Classic
Noodoe w/
Smart Features
\$3,075



Spade 150i LE
\$3,250



K-Pipe 125 LE
\$2,449



MXU 270
\$3,899



UXV 450i EFI
\$7,999
INCLUDES ROOF



Super 850x
\$1,999



MXU 450i
\$4,999



UXV 700i EFI
\$8,999
INCLUDES ROOF

Mongoose 70S
\$2,299



Mongoose 90S
\$2,599



WCT Farm & Lawn LLC

"Big enough to get what you need, small enough to know your name"
417-859-4311 • www.wctfarmandlawn.com
3299 E Evergreen Rd, Strafford, MO 65757