

FREE - TAKE ONE!

Vol. 27 No. 44

JANUARY 28, 2021

800-543-8271 • 800-665-8875

WEEKLY TRADER MAGAZINE



Find us on Facebook

@myweeklytrader AUCTIONS PG. 10

VISIT OUR NEW WEBSITE! MYWEEKLYTRADER.COM

Serving Central Missouri! in 32 counties!



- Boone
- Callaway
- Camden
- Cedar
- Christian
- Cole
- Crawford
- Dallas
- Dent
- Douglas
- Franklin
- Gasconade
- Greene
- Hickory
- Howell
- Iron
- Laclede
- Maries
- Miller
- Montgomery
- Oregon
- Osage
- Ozark
- Phelps
- Polk
- Pulaski
- St. Clair
- St. Francois
- Texas
- Washington
- Webster
- Wright

WEEKLY TRADER MAGAZINE

417-532-2800
100 E. Commercial St.,
Lebanon, MO 65536

WWW.MYWEEKLYTRADER.COM

f @myweeklytrader

Land

For Sale

Ava, MO • 40 +/- acres



\$74,000

- Secluded tract with easy access via well maintained county road
- Enjoyable terrain offering true escape from the hectic life you lead; great place to get away
- Several large pines enhance the landscape with color year-round
- Whitetails, turkeys, squirrel, and a growing black bear population
- 6/10 acre lays directly across the road offering a non-invasive camp site
- Minutes away from Rockbridge Trout Park, 26 miles to Ava, 21 miles to Gainesville, 40 miles to Hwy 60



WHITETAIL PROPERTIES REAL ESTATE

HUNTING | RANCH | FARM | TIMBER

Brian Utecht | 417-766-5595

Brian.Utecht@whitetailproperties.com

WHITETAILPROPERTIES.COM

Missouri's Top Land Specialist in 2014,
2015, 2016, 2017, 2018 and 2019



BITTERSWEET COUNTRY BOOK: edited by Ellen Gray Massey, \$6.50. 417-532-2045, Lebanon. Leave phone number.

ANTIQUA TRACTOR: 1937 Farmall F-12, rebuilt with many new and rebuilt parts, my age will not permit me to work on it any longer, will consider any reasonable offer. 417-256-1443

LOOKING FOR A 14FT BOAT TRAILER: 417-932-5716.

CDL IN ONE DAY!!: Family owned and operated, Insured, Over 10 years of experience, Training available for all states, Short wait time for appointments, Contact us today to schedule your appointment!! **CREDIT CARDS EXCEPTED.** (573-353-2853).

4X6 ROUND BALES FOR SALE: Orchard grass/timothy mix, call 417-260-1935.

ANTIQUA TRUNK TO FIT CARS 1920-1935: \$100. 573-734-2822.

HAY FOR SALE: Alfalfa square bales \$6, also round bale grass hay \$45, all in barn. 573-247-4280.

Is Your Log Home **UGLY?**
Starting To Look
Professional Staining & Repair
(Log Homes & Wood Siding)
Call
Pine Ridge Rustic
Log Home Building Supplies **573-729-7226**
www.pineridgerustic.com



0% for 4 Years
HEATMOR
Outdoor Wood Furnace
as low as **\$168** per month
HEATMOR MIDWEST
Licking, MO 65542 • 573-674-2962



IHC 986 DIESEL TRACTOR: cab & cold air, IHC 2350 loader, good. \$13,750. 573-765-4406.

TARTER GOAT PANELS: 20-8' panels, 6-4ft gates, like new. \$1,000all. 573-714-2012.

DOGS & DUCKS & HAT-RACK BUCKS BOOK: by Larry Dablemont. Short terms for the outdoorsman, \$6.50. 417-532-2045. Lebanon. Please leave message.

IT'S A GAS SWAP MEET: Gas & Oil Collectibles, Advertising, Coin-Op - No Auto Parts. Saturday, February 13th, 8am to Noon. Cowan Civic Center, Lebanon, MO. \$5 Admission. For more information, call Nancy (573) 864-1336. Website: www.itsagasswap-meet.com

THE FIRST 100 YEARS OF SOUTH-WEST MISSOURI STATE UNIVERSITY: in Springfield. Hardback, \$12.50. 417-532-2045, Lebanon. leave phone number.

ADAPTER AND TURBO TRANSMISSION: Adapter plate to fit Chevy convertor and flywheel. \$100. 573-734-2822.

QUALITY REPLACEMENT COWS: COW/CALF PAIRS, BRED HEIFERS AND BREEDING BULLS AND BUTCHER CALVES, TRUCKING AVAILABLE. Otterville, 660-619-5190 or 573-230-7700.





JOHN DEERE 1008: pull type, brushcutter. \$2,950. 573-765-4406.

MYSTERIES OF THE OZARKS VOLUME III: A collection of stories compiled by Ellen Gray Massey, \$6.50. 417-532-2045, Lebanon. leave phone number.

GREAT PYRENEES PUPPIES: Born 12-13-2020, Parents are working guard dogs with sheep, \$200 each! Zimmerman's Farm, 205 State Road E, Tunas, MO 65764.

VOTED #1 BEST Preowned Car Dealership

TIM'S USED CARS
(573) 341-3828 • 1334 South Bishop (Hwy. 63) • Rolla, MO
Next to Hwy CC • www.tims-used-cars.com

	2003 TOYOTA CAMRY XLE 4 Cyl, Power Equipped, Sunroof Only \$4,400		2008 DODGE GRAND CARAVAN SE 3.3 V-6, Power Equipped, 160,xxx Miles Only \$4,500
	2012 FORD FUSION SE 4 Cyl, Auto, Sunroof, 170,xxx Miles Only \$4,900		2013 FORD FIESTA SE Auto, Power Equipped, 92,000 Miles Only \$6,500

LARGE SELECTION OF CARS, TRUCKS, SUVs & VANS!

NEW BIG TEX 22GN FLATBED TRAILER

JIM'S Motors
TRAILERS
facebook

I-44 at Exit 208 • Cuba, MO
www.jimsmotors.com
(573)885-2595
(800)897-9840

GREAT SERVICE!
1957-2018 GREAT PRICES!



BETTY CROCKER BAKING FOR TODAY COOKBOOK: Hardback. \$6.50. 417-532-2045. Lebanon. Leave message.

KIDS LITTLE TYKES RED CAR BED: w/ mattress. \$150. Desloge, 573-327-9068.



Gun Show
 Sat. February 6th • 9am - 5pm
 Sun. February 7th • 9am - 3pm
 The Red Shed Event Center
 Exit 179 Doolittle, MO

Come to the Gun Show!
 Buy • Sell • Trade

Admission \$5.00 Cash or Check (10 and under free).
 For More information call 573-341-5450 or 573-465-0642

TRUSTED & THOROUGH SERVICE

Repairs • Rebuilds
 Cast Iron & Steel Welding
 Engines • Transmissions
 Electrical • Hydraulics
 PTO & Drivelines

VALLEY SHOP • 660-458-6747
 38745 Molasses Mill Rd, Latham

MISSOURI HISTORICAL BOOK: published by State Historical Society of Missouri. \$6.50. 417-532-2045.

1989 JEEP LAREDO: needs work 69,000 miles. \$1000 obo. 417-869-5560.

SEARS CATALOGUE 1902 REPRINT. \$8.50. 417-532-2045. Leave message.

6 RED ANGUS HEIFERS: Due February, 21 RED ANGUS HEIFERS: Due in March, \$1,750. Bred to Registered Red Angus Calving ease bulls from the PIPER Ranch in Nebraska. Versailles. 573-378-6667.

2 600-65-R28 GOODYEAR 75%: \$750, 2 16.9R28 20% GOODYEAR \$200, 2 20.8X38 BIAS GENERAL 20% \$200, 636-597-3707.

THE MAIN STREET OF AMERICA COOKBOOK: A Culinary Journey Down Route 66, 328 pages, \$8.50. 417-532-2045 (leave message).

WEATHERED BARN WOOD SIDING: 10" wide. 573-729-7226. www.pineridgerustic.com

M&W 15 HYD. FOLD BRUSH CUTTER: 540 shaft, \$3750, 573-765-4006

DARDEN PROFESSIONAL TIMBER HARVESTING, BUYING STANDING TIMBER: Great prices, improve wildlife habitat and improve forest health. State Certified & Fully Insured! 573-247-4808 or 573-739-1122. Salem

T'S COW CATCH FENCE LINE FEEDER: with 5 stanchions \$200. Hermann 636-932-4429.

ACA REGISTERED AUSTRALIAN SHEPHERD: Female, 3yrs old, great temperament, had obedience training. \$300. 630-687-0705.



SELL IT HERE!



WEEKLY TRADER MAGAZINE

417-532-2800 • www.myweeklytrader.com

TAYLOR TRUCKS & EQUIPMENT
 417-924-2026 • 2676 Hwy. 5
 Mansfield, MO
 DANUSER DEALER
 Intimidator Tree Puller
 T3 Post Driver & Other Attachments
 New Mowers! Bush-Whacker, Big Bee
 Storage Containers & Dry Vans - 20' - 53'
 Farm Tires, New Semi Tires, PTO's & Parts
 for Rotary Mowers, Farm Tractor Implements,
 Plows, Used 15" Bush-Whacker Now In Stock,
 Discs, and More Skidsteer Attachments: Pallet
 Forks, Buckets, Grapples, Hay Spears, RR Ties

Bush-Whacker Heavy Duty Rotary Cutter



TRAILER PARTS & REPAIR | BUSH-WHACKER HD, SKIDSTEER BRUSH CUTTER

We Invite you To Come By & Look Us Over!
 Located 2.5 Miles North Of
 Mansfield, MO On Hwy 5



LIVE

WORK

PLAY

We're

HIRING!

JOBS



are available in Lebanon!

If you need a job, Lebanon, Mo. has one that's just right for you.

Find the perfect job!

Laclede County employers are going above and beyond to detect and protect employees from the Covid-19 virus including distancing, face shields and temperature checks.

Many of the jobs have training programs available through Ozarks Technical College and other workforce development sources.

So, go to the website and check out all the opportunities Laclede County has for you.

Visit us online at
lacledecountymohasjobs.com
to see job openings and how you can apply!

With over 1,000 jobs available, you will find employers ready to offer:

- **Good Starting Pay Rates**
- **Safe Work Environment**
- **Good Benefits**
- **Great Training**



\$2,500 - \$11,000 LOT

Lindsay Chevrolet & Lindsay Ford

417-588-7995

Mon.-Fri. 8 am - 7 pm
Sat. 8 am - 5 pm
Not responsible for typos.
* with approved credit

Bryan Sien, Manager • Aaron Wehner, Finance • Larry Davis, Ed Compton & James Skidmore, Sales

West City Route 66
& South Monroe
Lebanon, MO

CARS

QC76031A	2008 ACURA TL WHITE, 3.2L, V6, AUTO, FWD, TAN LEATHER, DUAL P/W, H/SEATS, SUNROOF, PREMIUM STEREO, 110,000 MILES.....	\$8,900
QC76047	2013 BUICK REGAL 4D BLACK, 2.0L, 4CYL, T/C, ALLOY WHEELS, H/LEATHER, R/START, SUNROOF, 114,000 MILES.....	\$9,900
LC29012	2019 CHEVROLET SPARK LS HATCHBACK WHITE, 1.4L, 4CYL, AUTO, FWD, 26,000 MILES.....	\$9,800
LC29374	2014 CHEVROLET CRUZE LS GOLD, 1.8L, AUTO, FWD, BLACK CLOTH, 66,000 MILES.....	\$8,800
LC29375	2013 CHEVROLET MALIBU LTZ 4D PEARL WHITE, 2.5L, 4CYL, AUTO, 86,000 MILES.....	\$9,800
QC75986	2016 CHEVROLET CRUZE LS BLUE, 1.4L, T/C, AUTO, FWD, 113,000 MILES.....	\$8,500
LC29463	2010 CHEVROLET CAMARO LT COUPE SILVER, 3.6L, V6, AUTO, RWD, BLACK LEATHER SEATS, ALLOY WHEELS, STRIPE KIT, 97,000 MILES.....	\$8,500
LC7931B	2014 CHEVROLET IMPALA LT SEDAN SILVER, 3.6L, V6, AUTO, FWD, BLACK CLOTH INTERIOR, ALLOY WHEELS AM/FM/CD, REMOTE START, TOW, LOCAL TRADE, 130,000 MILES.....	\$10,900
LC29328A	2014 CHRYSLER 200 LX MAROON, 2.4L, 4CYL, AUTO, FWD, 125,000 MILES.....	\$5,900
QC76074	2014 DODGE AVENGER SXT BLACK, CLOTH, ALLOY WHEELS, P/W DRIVER SEAT, 102,000 MILES.....	\$8,900
QC76098	2010 DODGE CALIBER MAINSTREET HATCHBACK RED, 2.0L, AUTO, FWD, 81,000 MILES.....	\$7,900
LC29269A	2013 DODGE AVENGER SE 4D SEDAN CHARCOAL GREY W/BLACK STRIPE KIT, 2.4L, FWD, BLACK CLOTH, ALLOY WHEELS, AM/FM/CD, P/WP/L.....	\$3,500
LC29285A	2011 FORD TAURUS SEL BLACK, 3.5L, V6, FWD, ALLOY WHEELS, LEATHER, 137,000 MILES.....	\$5,900
QC57960D	2014 FORD TAURUS SEL WHITE, 3.5L, V6, FWD, H/LEATHER, NAVIGATION, R/START, R/CAMERA, 93,000 MILES.....	\$11,900
QC58046A	2016 FORD C-MAX HYBRID SEL HATCHBACK SILVER, 2.0L, AUTO, FWD, BLACK LEATHER, HEATED SEATS, PREMIUM HD SONY SOUND SYSTEM, NAV, R/CAM P/GATE, 56,000 MILES.....	\$12,700
QC57854A	2016 FORD FUSION SE SEDAN INGOT SILVER, 2.5L, AUTO, FWD, CHARCOAL CLOTH, P/W DRIVER, PERIMETER APPROACH LIGHTS, REAR CAMERA, 58,000 MILES.....	\$12,700

QC76110	2014 FORD FUSION SE SEDAN BLUE, 2.5L, FWD, BLACK CLOTH, P/W DRIVER, SUNROOF, REAR CAMERA, 89,000 MILES.....	\$10,500
QC75927B	2013 FORD TAURUS SEL 4D SEDAN RED, 3.5L, V6, FWD, TAN HEATED LEATHER, NAV, PREMIUM SOUND, REMOTE START, 126,000 MILES.....	\$9,500
QC76032B	2014 FORD FUSION SE SEDAN CHARCOAL GREY, 2.5L, FWD, BLACK CLOTH, POWER DRIVER, 123,000 MILES.....	\$8,500
QC76116	2007 HONDA ACCORD LX 4D SEDAN DESERT MIST METALLIC, 3.0L, V6, AUTO, FWD, IVORY CLOTH INTERIOR, PW DRIVER, REMOTE ENTRY, SUNROOF, ALLOY WHEELS, AM/FM/CD, P/WP/L, 152,000 MILES.....	\$6,900
QC76012	2014 HYUNDAI SONATA SE 4D SEDAN BURGANDY, 2.4L, 4CYL, AUTO, 133,000 MILES.....	\$7,500
QC76025	2011 MAZDA 3 S SPORT H/B RED, 2.5L, AUTO, FWD, ALLOY WHEELS, SUNROOF, 80,000 MILES.....	\$7,500
QC76094	2009 MERCURY MILAN PREMIER 4D SEDAN WHITE, 2.3L, AUTO, FWD, HEATED LEATHER SEATS, AM/FM/CD, ALLOY WHEELS, 96,000 MILES.....	\$7,500
QC76053	2014 MITSUBISHI ES H/B SILVER, 1.2L, AUTO, FWD, CLOTH, ALLOY WHEELS, 116,000 MILES.....	\$6,900
QC76114	2013 NISSAN ALTIMA S SEDAN WHITE, 2.5L, AUTO, FWD, BLACK LEATHER SEATS, P/W DRIVER, AM/FM/CD, P/W, P/L, 123,000 MILES.....	\$8,500

TRUCKS

LT7847A	2006 CHEVROLET KODIAK CHASSIS CAB CLASS 6 5500 MED DUTY RED, 8.1L, V8 GAS, ALLISON AUTO TRANSMISSION, 4WD, G80-LOCKING DIFFERENTIAL, REG CAB, 12' FRAME BEHIND CAB, 247,000 MILES.....	\$11,900
LT7823A	2006 CHEVROLET KODIAK CHASSIS CAB CLASS 6 5500 MED DUTY RED, 8.1L, V8 GAS, ALLISON AUTO TRANSMISSION, 2WD, G80-LOCKING DIFFERENTIAL, REG CAB, 12' FRAME BEHIND CAB, 234,000 MILES.....	\$10,900
QT76106	2009 DODGE RAM 1500 SLT QUAD CAB SILVER, 5.7L, HEMI, AUTO, 2WD, GREY CLOTH, AM/FM/CD, ALLOY WHEELS, 177,000 MILES.....	\$10,900
QT76115	2003 FORD RANGER XLT EXT CAB BLACK, 4.0L, V6, AUTO, 2WD, CLOTH INTERIOR, P/W, P/L, A/C, TOW, FIBERGLASS CAMPER SHELL, 175,000 MILES.....	CALL

VANS

QT75993	2014 CHRYSLER TOWN & COUNTRY TOURING LWB GOLD MIST METALLIC, 3.6L, LEATHER, DVD, LOADED, 110,000 MILES.....	\$10,500
---------	---	----------

GUARDIANWARE: 1930-1950's, Turkey roaster with lid. \$195. 573-364-7465.

5X5 1/2 GRASS HAY: Baled w/John Deere, never wet, will load. \$40. 573-765-3081.

D&H OUTDOOR WOOD FURNACES SINCE 1986: Forced air, 90% efficient, fire proof insulated, thermostat control. Complete Heating and Cooling Systems. 573-743-6943 or 573-247-5585, Salem.

DR FRANKS CALF PULLER: \$100. HERMANN 636-932-4429.

TAKEUH DIESEL EXCAVATOR: \$15,000. 573-765-4406.

ALL OF OUR FOREST RIVER VIKINGS ARE PRICED AT WHOLESALE!

- 764V **2020 Viking 17SFQ**
MSRP-\$19,510..... **\$14,911**
- 763V **2020 Viking 175BH**
MSRP-\$20,090..... **\$15,811**
- 761V **2020 Viking 18RBSS**
MSRP-\$23,811..... **\$18,963**
- 766V **2020 Viking 21FQ**
MSRP-\$24,256..... **\$19,860**
- 768V **2020 Viking 21BHS**
MSRP-\$25,742..... **\$19,975**
- 767V **2020 Viking 24RBS**
MSRP-\$29,466..... **\$21,880**



WehrRVs
11311 Bus. 60,
Mtn. Grove, MO
1-800-288-6827
www.wehrfordofmountaingrove.com

WEEKLY TRADER MAGAZINE

Let us help you grow your business!
For your advertising needs
Call Debbie Calvin • 573.465.3753
weeklytrader@gmail.com

HARLEY-DAVIDSON LEATHER JACKET: American flag on back with chaps. Size Large \$100. 417-532-6561.

YARD SALE: running 1/25 until 2/5, 39475 Hwy 32 Lynchburg, 417-217-8504.

SMALL SQUARE WHEAT STRAW: Clean. \$4/bale. Brome Hay Horse Quality \$6/bale. Alfalfa Hay \$8/bale. Versailles, 573-378-7326.

Wright Spray Foam Insulators, LLC
Commercial & Residential
Call for **FREE** Estimates!

Ervin Gingerich 417-926-2052
B. Eli Yoder 417-746-4932

BUYING OLD BARNs AND LUMBER: 417-406-0867. Leave Message.

KRONE 4 BASKET HEAVY DUTY FOLD UP TEDDER: \$4,950. 573-765-4406.

OLD CROSSMAN BB RIFLE: \$100. 573-327-9068.

FORD 3000 DIESEL TRACTOR: \$4,850. 573-765-4406.

CALUS LOGGING

20 YEARS EXPERIENCE

Buying Standing Timber
Walnut & Oak

Joe Calus, Owner
417-926-4606 • MTN. GROVE

CERTIFIED

AMMUNITION: .223, 9mm, .45cal, 30-30, 300 blackouts, and more visit our online store. www.cherokeeammunitions.com and on Facebook

JOHN DEERE 2755: Diesel, Cab & Air, 75 HP. \$13,750. 573-765-4406.

CATAHOULA LEOPARD PUPS: red, blue, gray leopards, 30yr bloodline, 6wks. \$150. 417-543-4816.

NEW/USED PARTS: Motors/Tranny's All Vehicles/Farm/Construction Equipment "Body Parts" warranted. 800-807-9612.

OLD JOHN DEERE UMBRELLA BRACKET: and pole \$40 obo. Hermann 636-932-4429.

IHC 1486 DIESEL TRACTOR: Cab & Air, 20.8x38 Duals, 145 hp \$12,500. 573-765-4406.

WE'RE NOT JUST IN PRINT

Visit the newly re-designed

WWW.MYWEEKLYTRADER.COM

CHEVY CERTIFIED SERVICE
SPRING TIRE EVENT

\$200 MAIL-IN REBATE!
ON A SET OF FOUR TIRES FROM BRIDGESTONE, CONTINENTAL, GOODYEAR, HAWKINS, AND PIRELLI WHEN PURCHASED WITH A GM DRIFT/POWER CARD

LOWE CHEVROLET
"We're Easy to Deal With!"
View our Inventory



WEEKLY TRADER MAGAZINE

Serving Central Missouri in 32 counties!

417-532-9131
100 Commercial Street
Lebanon, MO 65536
myweeklytrader

- Auctions
- Auto
- Tractors
- Real Estate
- ATV's / Motorcycles
- Building Supplies
- Miscellaneous
- E-Editions

This week's ads

THIS WEEK'S CLASSIFIEDS

TOOL TABLES:
Installations, moves, recoveries, repairs, accessories, etc. 573-646-1700.

weathered BARN WOOD SIDING: 8' & 10' wide. 573-729-7226.

www.pineridgegeriatric.com

VEHICLES: 1927-1991
www.gobheartland.com
417-545-6354.

TRAILER: HULTE SX 318: 18 ft slash cutter, bought new 2019, still under warranty, \$17,750/obo. Norwood 417-349-0084.

WANTED STANDING TIMBER: Butler Logging, 417-448-9323.

ROD AND REELS: fishing season is coming, \$5 and up. Conway, 417-589-8200.

1989 NISSAN TRUCK: Runs but needs clutch and body work. \$675. Lebanon, 573-453-4100.

SAVAGE MODEL NO. 270WN: with Leupold scope, \$375. Remington 5300, obo. 417-679-4355.

STOCK TRAILER: 1983 Goose, goose-neck; 24' new floor. Four new 10 ply truck tires. \$2450. Lebanon (417)664-2198.

QUALITY REPLACEMENT COWS: COW/CALF PAIRS, BREED HEIFERS AND BREEDING BULLS, 781-222-2222

BITTERSWEET COUNTRY

FEATURED ADVERTISER

Sakelaris Ford Lincoln, Where the Customer is Always #1!
Come See Us at Our NEW LOCATION!

ALL-NEW Super Clean, Safe Facility at 1621 Martin Springs Drive in Rolla, MO

Get COVID-19 Relief On A New Ford Vehicle!

BUILT TO LEND A HAND

NEW VEHICLE PURCHASES
3 MONTHS' DEFERRED | 3 MONTHS PAID* | 6 MONTHS RELIEF FOR PEACE OF MIND
(Qualified Buyers Financed with Ford Credit)

ON SELECT NEW 2019, 2020 & 2021 FORD VEHICLES.

Limited Supply... Limited Time... Don't Miss Out On This Opportunity!

0% APR for 72 mos.*
Ford Credit Financing for Qualified Buyers PLUS: Defer Three Payments* on Select New 2020 Ford Vehicles

ALSO Available on Select New Ford Vehicles: \$500 Bonus Cash of MSRP*

0% APR for 84 mos.*
Ford Credit Financing for Qualified Buyers PLUS: Defer Three Payments* on Select New 2019 Ford Vehicles

MORE PRINT ADS

MAKING FRIENDS AGAINST CANCER

Starnes Auto LLC
23115 Rt. 66
Lebanon, MO 65536
417-718-2700
417-388-3199

2000 FORD RANGER \$4,800
2003 GMC ENVOY SUT \$4,350
2008 CHEVY MALIBU \$2,500

THE ULTIMATE WOOD HEAT

ALL OF OUR FOREST RIVER VIKINGS

2020 Viking 1750Q \$19,910
2020 Viking 1758M \$14,911

MAKING FRIENDS AGAINST CANCER

Ernie Gilchrist
417-636-2632
8 Tractor
417-346-2617

1 WE ARE KW
KELLERWILLIAMS.

We are the NUMBER ONE real estate company in the United States!

AMANDA HOUGH
C:417-664-1113
O:417-883-4900
609 W. Elm • Suite B
Lebanon, MO

Each office is independently owned & operated.

✓ Diagnostic
✓ Auto Body & Paint Repair
✓ Glass Repair
✓ Used Car Sales & More

GET STARTED

Starnes
Auto Body 417-588-3159

October 22, 2020

View this issue
Browse other issues

Classifieds at your fingertips

Every display ad is available online

View ads from local businesses

View the entire magazine online

WEEKLY TRADER MAGAZINE

417-532-9131
www.myweeklytrader.com

8FT. BRUSH HOG: Offset disk, \$2,500. 573-765-4406.

CUSTOM SAW MILLING: Lebanon. 417-532-4607, 417-664-1195.


ANTIQUE GRINDING STONE: \$40 EACH. 417-349-0098

I BUY.....used mobile homes. Call or text 573-338-6250 or email GregS.CDH@outlook.com

WANTED: Basset hounds, any age, Lebanon. 417-650-0402

GOOSEBERRY PATCH COOKBOOKS: Hardback, \$5 a piece. 417-532-6561. Lebanon

OFFICIAL TRACTOR OF TOUGH™



Marshfield Machinery Inc.

222 E. Madison • Marshfield, MO 65706
417-859-2117 • www.marshfieldmachinery.com

MahindraUSA.com © 2020 Mahindra USA Inc.

Mahindra
Rise.

NEW MAHINDRA TRACTORS

7085 4WD & LDR 85HP	IN STOCK
6065 4WD & LDR 62HP	IN STOCK
4540 2WD & LDR 41HP	IN STOCK
1635 4WD & LDR 36HP	IN STOCK
1626 4WD & LDR 26HP	IN STOCK

USED TRACTORS

AGCO LT75A CAB LDR 100HP	27,500
MF 6170 W/ LDR 97HP	17,500
MF GC1710 BACKHOE 23HP	15,000
MF 175 63HP	6,000
IHC 464 W/ LDR 45HP	5,500
CASE IH 235 W/ MOWER 18HP	3,500
MF 135 35HP	2,750

USED ROUND BALERS

MF 1745 4X5	8,500
VERMEER 505SI MESH	7,500
GEHL 2480 4X5	6,500
JD 435 4X6 MESH	6,500
VERMEER 554XL 4X5	5,500
HESSTON 560 5X6	3,000
HESSTON 550 4X6	3,500
HESSTON 530	3,500
NH 850 5X5	1,500
VERMEER 605D 5X6	750

USED MOWER/CONDITIONERS

MF 1383 13FT	19,500
--------------	--------

USED CUTTERS

RHINO SE15-4 15FT	6,500
LANDPRIDE 15FT	5,500
BRUSHWACKER 15FT	5,500
BUSH HOG SQ84T 7FT	1,200

USED MISC.

HAYBUSTER 107C DRILL	17,500
HAYBUSTER 107 DRILL	12,500
HAYBUSTER 107C DRILL	10,500
FRONTIER BALE PROCESSOR	8,500
VERMEER 8WHL RAKE	1,750

Marshfield Machinery Inc.
222 E. Madison • Marshfield, MO 65706
417-859-2117
www.marshfieldmachinery.com

BIRDS OF MISSOURI FIELD GUIDE, \$4.00. IDENTIFICATION BIRDS OF NORTH AMERICA BOOK, \$4.00. 417-532-2045, Lebanon. Leave message.

1991 HONDA ACCORD: automatic, engine, tires strong. \$990. Lebanon, 775-997-5913.

A CENTURY OF MISSOURI TIGERS BASKETBALL BOOK: by Michael Atchison, 258 pages, hardback. \$20. 417-532-2045. Lebanon. Leave message.

BEST OF THE BEST FROM MISSOURI COOKBOOK: \$6.50. 417-532-2045, Lebanon. leave phone number.

PYRENEES MALE PUPPY: 9 months, neutered, pet only. \$250 417-458-1771.

WANTED, TIMBER TO LOG ON SHARES: Honest, reliable, references. 417-533-4607, 417-664-1195.

LOG SIDING: 2X8 Pine/Western Cedar www.pineridgerustic.com 573-729-7226.

TUFFY SPECIAL -Volume Prices 573-657-2176 amegamobilehomes.com

LOG SIDING: 2X8 Pine/Western Cedar www.pineridgerustic.com 573-729-7226.

AUSTRALIAN SHEPHERD PUPPIES: For sale or will swap for farm animals. UTD on shots, Born 11-21-20. 417-967-6493, Roby.

ELECTRIC WHEELCHAIR: InvaCare Pronto M-91, Safestep, used, good condition, new batteries. \$1,200obo. 417-588-9962

CASE 1840 DIESEL SKID STEER LOADER: good. \$8,950. 573-765-4406.

DREAM HOUSE -Online, chateauhomes.net Call Marla 573-657-7040

POOL TABLES: Installations, moves, recovers, repairs, accessories, etc. 573-646-1700.

LARGE WIZARD ELECTRIC RADIANT HEATER: thermostat, high/low settings, 19x15x7. Easy carry handle \$35. 573-364-7465

PINNACLE RANCH: Red Angus and Red Balancer Heifers for sale. 417-679-4269.

REGISTERED HEREFORD & ANGUS BULLS: Home raised, Some Show-Me Select Qualified. 573-701-7828. Belgrade

RADIATOR/FAN SCHROUD: fits international model tractors models 200, 230, 240. \$125. 636-239-2695.

ANTIQUE BRASS KITCHEN CABINET HARDWARE: 1 set of 54. \$30 obo 636-239-2695

KITCHEN FAUCET MOEN: single lever, sprayer, new cartridge. \$45obo. 636-239-2695.



ONLINE AUCTION

BID NOW! BIDDING CLOSES FEBRUARY 2



300+ LOTS

Item Preview Dates:

All Saturdays (8AM-noon) while the auction is open for bidding
 Tuesday, February 2nd from 8AM until after the auction closes
 Other times available by appointment

Item Preview Location:

4155 HWY V V, Berger, MO 63014



All items sell regardless of price.
 All items start at only \$1.

Farm & Construction Equipment

- '13 Bobcat E80 Excavator
- '15 JCB 535-125 telehandler
- 2-'13 SkyTrak 8042 telehandlers
- 2-'13 SkyTrak 6042 telehandlers
- '06 Genie S-60 boom lift
- 3-Genie S-40 boom lifts
- 2-SkyJack SJIII 3219 scissor lifts
- Unused storage containers 7'-40'
- '05 Kawasaki Mule 3010 UTV
- Land Pride 12' RC2512 brush hog
- Unused 40'x80'x20' hoop building
- Unused 20'x30'x12' hoop buildings
- Unused portable restrooms/showers
- Case-IH 8610 bale processor
- EZ-Trail 230 gravity box w/ gear
- Westendorf Landscaper 10' box blade
- New Direction 1652 bale processor
- Bobcat 763C skid steer loader
- AC D17 Series 4 tractor
- AC 160 diesel tractor
- 100 bales of 2020 4'x6' grass hay
- Unused skid steer attachments: grass mowers, grapples, hammers, trenchers, gravel screener, snow plow, augers, rollers, sweepers, cement mixers & tillers
- JD 34 manure spreader
- Several grain carts & auger wagons
- Case-IH 8309 discbine
- AC 302 square baler

- Fimco small manure spreader
- 2-flatbed wagons
- Myrath 7"x59' transport auger
- JD 1025 silage wagon
- Bush Hog SQ84T 7' Brush hog
- Westendorf bale squeeze-unroller
- 3-pt. double bale spear
- Heavy duty 9' grader blade
- Danuser 3-pt post hole digger
- McLaren steel tracks for Bobcat 763
- Case 6' grain drill
- Bush Hog 286 6' brush hog
- Bale spear for JD 400 or 500 loader
- Wheel discs 8'-10'
- OMI 8-wheel v-hay rake
- General 550 Dig-R-Mobile
- AC 4-16" 3-pt plow
- Spreaders

Trucks & Cars

- '18 Ram 2500 crew cab diesel 4x4
- '17 Hyundai Tucson Sport
- '04 Freightliner FL70 box truck
- '03 Freightliner FLD120 road tractor
- '89 Chevrolet C70 dump truck
- '63 Ford F600 grain truck
- '07 Ford F-250 4x4
- '94 Harley-Davidson motorcycle
- '96 Ford F150 4x4
- '96 GMC 1500 4x4
- '96 Chevrolet 2500 2-wheel drive
- '00 Ford Ranger
- '10 Chrysler Town & Country Touring
- '06 Jeep Liberty Limited
- '04 Dodge Neon SRT-4
- '75 Chevrolet C65 cab & chassis
- '02 Pontiac Grand Prix SE
- '60 GMC 1/2 pickup

Trailers

- '17 Texas Pride 8'x20' dump trailer
- '20 BigTex 14ET 20' equipment trailer
- '06 Doolittle 8212-HD dump trailer
- '01 53' semi van trailer
- '95 20' gooseneck flatbed trailer
- '18 Stahl car tow dolly
- '08 American Signal sign trailer
- '07 12' utility trailer

Shop Equipment & Miscellaneous

- Grand Rapids #20 surface grinder
- 2-Unused Uppro hot water power washers
- 10-Unused workbench/tool boxes
- Unused warehouse shelving
- 250 unused traffic cones
- '07 John Deere Z757 zero turn mower
- John Deere F725 mower
- Titan air compressor
- Sport go-kart
- DR & Husqvarna walk behind trimmer
- Toro snow blower
- Ex-Cell portable generator
- Homelite generator
- Stihl MS290 chainsaw
- Poulan Pro 220 chainsaw
- Unused decorative 20' gates
- Kobalt 80 gallon air compressor
- 2-ton engine hoist
- 1,000 lb. engine stand
- Heavy duty gantry crane
- 32- 12' long corral panels
- Fill-Rite fuel pump and reel
- JD starter & slab weights
- Unused log chains & ratchet binders
- Unused 20,000 lb. electric winches
- Unused 200 lb. cast iron anvils
- Unused double leg lifting chains
- Antique Clipper seed cleaner

More items listed at SchneiderAuctioneers.com

SCHNEIDER Auctioneers LLC
 573-834-2207 • 573-291-8075
www.SchneiderAuctioneers.com

ONLINE AUCTION • ONLINE AUCTION • ONLINE AUCTION • ONLINE AUCTION • ONLINE AUCTION • ONLINE AUCTION •

ONLINE AUCTION • ONLINE AUCTION • ONLINE AUCTION • ONLINE AUCTION • ONLINE AUCTION • ONLINE AUCTION •

ONLINE AUCTION • ONLINE AUCTION • ONLINE AUCTION • ONLINE AUCTION • ONLINE AUCTION • ONLINE AUCTION •

YORK WELDING & MANUFACTURING LIQUIDATION ONLINE ONLY AUCTION BIDDING OPEN NOW.

INSPECTION/PREVIEW: Saturday, January 30th from 9:30am to 4:00pm and Saturday, February 6th 2021 from 10am to 2pm at 316 Old Rt. 66 St. Robert, Mo.

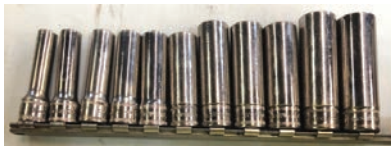
AUCTION CLOSSES: Thursday, February 11th, 2021 beginning at 6:15PM.

PICK UP TIME WILL BE: 9am-4pm, Saturday, February 13th at 316 Old Rt 66, St Robert, MO.

Selling: 2000 CAT 236 Skid Steer (new tires, includes bucket, pallet forks, boom lift) Only 1260 hours! Great Condition! Lots of Snap On, MAC, Blue Point tools; Shop equipment including MIG & TIG, stick welders; Oxy/Acetylene torches, gauges & hoses; 1989 Dodge Ram 3500 service truck, Hobart welder, vice, tool box & oxy/acetylene hoses, gauges, torches (tanks not included). Truck parts, Lots of new brake shoes for big trucks. Presses, reamers, pry bars, chains. Old John Deere tractor. Lots of steel stock, square tube, I-beams, U-channel, 20 ft pieces of solid steel rod. Much, much more.

WWW.WARDENAUCATION.BID

<https://www.apro.bid/affiliate/ed-warden-1990/>



WARDEN AUCTION & MORE

(573) 336-2367 or (573) 528-0729

Ed Warden – Auctioneer/Broker

Adam Wright - Associate

www.wardenauction.com

TERMS

Cash, Credit,
Debit or Approved
Check

ID Required for
Bid Number



TERMS

Not Responsible
For Accidents
or Losses

Nothing Removed
Until Settled For



ONLINE AUCTION • ONLINE AUCTION • ONLINE AUCTION • ONLINE AUCTION • ONLINE AUCTION • ONLINE AUCTION •

COMPLETE DISPERSAL WAREHOUSE FLORAL BUSINESS AUCTION

SATURDAY FEBRUARY 6, 2021 • 10:00 AM

2420 E BLAINE ST, SPRINGFIELD, MO

From E Division & N Packer Rd, Springfield Go North On Packer Then Left On E Blaine St, Go 3/4 Mile To Auction On Left Or From The 1700 Block Of N Glenstone & 1800 Block Of E Blaine Go East 7/10 Mile To Auction. Follow Sale Signs. Breakfast & Lunch Available. For Pictures See Website Or Auction Zip.com Auction Held Inside.



TRUCKS

2009 Isuzu NPR Diesel 2 Ton, 18' Box, Auto, Air, PW, PL, 305,000 Miles* 2015 Isuzu NPR HD Gas 2 Ton, 18' Box, Auto, Air, PW, PL, 182,000 Miles* 2016 Isuzu NPR Hd 2 Ton Gas, 18' Box, Auto, Air, PW, PL, 130,000 Miles*

FLORAL

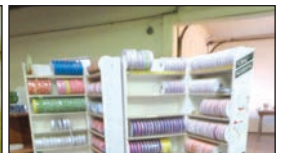
Leather Fern* Ficus Branches* 9'X14' Pine Garland* Selection Berries* Ivy Garland* Cotton Picks* Ivy Bushes & Garland* Wild Flowers, Bells Of Ireland* Zinnias* Grapes* Garland* Glitter Grass* Maple Garland* Grass* Succulents* Anthurium Bush* Gyp* Pansy's* Tulips* Filler Flowers* Stephanotis* Amaranthus* Hydrangea* Mixed Bush* Larkspur* Gerbera Daisies* Carnations* Forsythia* Orchids* Calla Lily* Gladiolus Bushes* Roses, Stem, Bushes, Open & Buds* Mini Roses* Dried Flowers*

FLORAL ARRANGEMENT SUPPLIES

Birds* Butterflies* Angels* Cherubs* Corsage Ribbon* Sheer Ribbon* Satin Ribbon, Double Face Satin Ribbon* Deco Mesh* Enclosure Cards* Carnation Picks* Flower Care Tags* Corsage Pins, Leaves, Bags* Wristlet* Rhinestones* Decor Wire* Floral Tape* Fresh Boquet Holders* Plant Stakes* Containers* Water Picks* Assorted Picks* Saucers, All Sizes* Easels* Glue Gun* Foil* Stem Cutters* Glue Pans* Pick Machine* Design Master Paint* Card Racks* Bamboo* Dcd Disinfectant* Christmas Ornaments, Assorted* Candle Holders*

SHELVING-SHOPPING CARTS-LUMBER-MISC

(31) 12'X6'X2' Wood Shelving* 1 Lot Shopping Carts* 1 Lot Lumber-1X12x6 Rough Cedar, Pine* (4) 2X12/12 Pine* Approx 25 Pc 1X12x12 Pine & Cedar* Approx (800-850 Pc) 2X4x2 Pine* 1 Lot 2X4x6 Pine* 1 Lot 2X4x12 Pine* Teakwood Bench, Nice* Glass Top Tables* Display* Wooden Shutters* Work Benches* Assorted Plant Stands* Ext Cords* Fire Extinguishers* Porch Glider* Office Supplies, Desk, Office Chairs, File Cabinets* Whirlpool Refrigerator* Microwave, Coffee Pots, Toaster Oven, Assorted Dishes & Serving Trays* (3) 8' Folding Tables*



**OWNER: BUFFALO
IMPORT CO-BILL LACKEYS**

This Has Been A Family Owned Business For Over 50+ Years. It Has Not Been A Easy Decision But They Have Decided It Is Time To Relax And Enjoy Life A Little Bit

ANNOUNCEMENTS MADE ON SALE DAY WILL TAKE PRECEDENCE OVER ANY OTHER PRINTED MATERIALS. NOT RESPONSIBLE FOR ACCIDENTS OR LOSS OF ARTICLES ON OR NEAR SALE SITE.

**MELTON AUCTION
& REALTY CO LLC**



www.MeltonAuction.com | Roger@MeltonAuction.com
 Roger Melton | Nixa, Mo | 417-830-0153 or 417-725-1801
 Brad Cole | Nixa, Mo | 417-840-2950
 Tanner Foster | Galena, Mo | 417-840-5519



Wheeler Livestock Auction, Inc.

Special Stock Cow Sale • Osceola, MO



SAT., JAN. 30, 2021 • 6:00 P.M.

Expecting 1,000 head of Bred Heifers, Bred Cows & Cow/Calf Pairs

Kline Ranch-

- 63 Fancy Ang Hfrs., 1,125 lbs., bred to CE Ang bull start Feb. 15th for 60 days. Gentle Hfrs., complete vac program, scourguard.

Keaton Farm-

- 70 Ang hfr., 1,050 lbs., Bred 3rd to CE Red Sim Ang New Day Genetics bulls. All hfrs. home raised, gentle, complete vac, scourguard.

Jump Farm-

- 12 PB Char hfr., 1,100 lbs., 10 Yell/Char hfrs., 1,000 lbs., bred 3rd to CE Red Ang bull to start Mar. 1st.

End of the Road Red Angus-

- Dispersal of Spring Calvers- 8 Red hfrs., 2-3 yrs., 1,200 lbs., 2 Red cows, 4 yrs., 1,300 lbs., All cows 1A Reg. Red Angus, bred 3rd to excellent Red Ang bulls start Feb. 15th.

B & M Farm-

- 17 Red Ang hfrs., 1,050 lbs., bred to Mushrush Red Ang bull start Feb. 10th. Gentle & complete vac program.

Mitch Grace-

- 36 Blk hfrs., 1,150 lbs., Fancy home raised gentle hfrs., Bred to CE Ang Bull, start Feb. 5th for 60 days. Complete Vac program.

Montgomery Farms-

- 14 Blk hfrs., 2 yrs., 1,050 lbs. w/ 250 lb. clvs. 4 Blk cows, 3 yrs., 1,100 lbs. w/ 250 lb. clvs. Cows all Gardiner breeding, outstanding set of young pairs.

Bobby Simpson-

- 5 Red Gelv. & Bal. cows. 3-4 yrs., 1,300 lbs., bred 3rd to Red bulls.

Wampler Farm-

- 11 Blk hfrs., 1,100 lbs., bred 3rd to CE Gardiner Blk Ang bull start Mar. 1st. 1 Blk Ang bull, 2 yrs., 1,500 lbs. CE Gardiner bull. Complete vac program.

Beavers Farm-

- 25 Blk hfrs., 7 Mix hfrs., 1,050 lbs., Bred to CE Blk Ang bulls start Feb 1st for 60 days. Home raised, complete vac program, scourguard.

Massey Land & Cattle-

- 43 Fancy Red Ang cows, 3-6 yrs., 1,300 lbs., Bred 3rd to Red Ang bull start Mar. 1st. Outstanding set of cows bred to good bulls, will have a set of calves to keep hfrs. out of.

Loyd Stockton-

- 15 mix cows, 3-6 yrs., 1,250 lbs., w/ 4 clvs up to 300 lbs. rest bred 3rd to Blk Gelv or Red Ang Judd Ranch bulls. 1 Blk Gelv bull, 3 yrs., 1,600 lbs., 1 Red Ang bull, 4 yrs., 1,700 lbs. Judd Ranch bulls.

Reynolds Farm-

- 20 Char X cows, 2-3 yrs., 1,150 lbs., bred to Ang bull. 20 Char cows, 4-6 yrs., 1,250 lbs., bred Char or Herf. w/6 clvs. on ground rest bred 3rd.

Gordon Farms-

- 30 Blk cows, 3-5 yrs., 1,100 lbs., bred 2nd & 3rd. 30 Red Ang X cows, 3-5 yrs., 1,100 lbs., bred 2nd & 3rd. 30 Char & Char X cows, 3-5 yrs., 1,100 lbs., bred 2nd & 3rd. The above 90 cows will be bred to Char or Ang bulls.

Cron Brothers Farm-

- 12 Blk cows, 4-5 yrs., 1,200 lbs. w/ 250 lb. clvs. 12 Blk cows, 4-5 yrs., 1,200 lbs. bred 3rd to Blk Ang or Red Gelv bulls.

Minxs Farm-

- 50 Blk cows, 4-6 yrs., 1,150 lbs., w/ 10 Blk clvs. Rest bred 3rd to Good bulls.

Don Berry Dispersal-

- 50 Mix cows, 4-SS. All cows home raised & gentle. Cows bred to good Gelv. bulls. Cows are gentle & good calf raisers, selling due to health reasons.

Sanders Farm-

- 36 Blk cows, 4-7 yrs., 1,100 lbs. w/ 36 Blk Sim Ang clvs up to 300 lbs. Cows bred back to same bulls.

Hamon Farms-

- 30 Blk cows, 4-7 yrs., 1,350 lbs., bred 2nd to Blk bulls.

Paul Wallen Dispersal-

- 10 Blk Gelv X cows, 3 yrs., 1,000 lbs. 20 Blk & Red Gelv X cows, 4-6 yrs., 1,100 lbs., 20 mix cows, 7-BM. The above 50 cows have 18 calves, rest bred 2nd & 3rd to Blk Gelv bulls. Every cow home raised.

Lyle East-

- 40 Blk cows, 5-SS, 1,200 lbs., bred 3rd to Blk bulls. Well cared for herd of home raised gentle calf raising cows.

Craig Farm-

- 8 Blk cows, 5-SS., 1,200 lbs., w/ 7 clvs up to 300 lbs., 1 CE Blk Ang bull, 3 yrs., 1,500 lbs., well cared for cows w/ complete vac program.

Special Feeder Calf Sales - February 4th & 18th
February Cow Sale - February 27th, 2021

Wheeler Livestock Auction, Inc.

Osceola, MO • 685 SE 13 Hwy., PO Box 560 • BARN 417-646-8102

Byron Wheeler-417-777-0897 • Austin Shelby-417-309-1350 • Darwin
 Hearting-417-296-1029

Kevin Wade-660-492-3279 • Tim Sherrer 573-855-1951 • Burleigh Wheeler-417-840-6561
 Skyler Fisher-417-298-9051 • Les Tennis-417-466-8786 • Red Whistance 417-276-7909

Office Manager: Weston Shelby, 417-298-1316

Bid online on CattleUSA • www.wheelerlivestock.com

Like us on Facebook-Wheeler Livestock Auction



Estate Auction



Lots of great items up for auction, join us to see for yourself!

206 North West 8th St., Concordia, Mo. 64020

Directions: Directions: From I-70 take exit 58, go North on RT-23 (Main St.) one half mile to NW 8th St. Turn Left (West) on NW 8th St. to Auction on Right watch & follow signs on sale day. Due to the loss of our Father, we will sell the following at public Auction on:

Saturday, February 6, 2021–10:00 a.m.



Victorian settee
2-Victorian parlor chairs
Tiger oak hall tree w/beveled glass mirror
Ornate Dresden coffee & end tables
Sofa table; Liar base tilt top table
Renaissance style library table w/ winged Griffin
Spool legged table w/ball & claw feet
Walnut library table; Parlor mirror
Small marble top table
Five tier wood corner shelf
Three-legged round marble top table
Oak office desk; Old school desk
Old wood dresser; Vanity
Large vintage Butcher block table (3'x3' 13" thick 31" tall)
(Herrick refrigerator) oak ice box
Ornate walnut hutch
Upholstered sofa w/2 matching wing backed chairs
Antique mirrored chest of drawers
Wash stand; Oak side table
Needle point foot stool
Marble top table w/matching mirror
Steamer trunk; Oak wall phone
Copper apple butter kettle
2-bent glass china hutches
Marble top table; Roll top desk
Lot misc. occ tables; Coffee & end tables
Wooden dry sink; Wood stool
Wooden child's rocker
Old upholstered chairs w/wood accents
Lot misc. wooden chairs
Drop leaf gate leg table
Aladdin kerosene hurricane lamp
2 ele. hurricane lamps
2 – marble pedestals

2 – brass lamps (black shades)
Slag glass lamp
Pr marble top night stands
Lot antique mantle & wall clocks (10 plus) Grandfather clock, 3– Cuckoo clocks, Sessions Regulator, 2-D&A curio wall clocks, Simplex time recorder clock, Cast iron dog clock
2 – cast iron elephant banks
Lot misc. crocks & stoneware (12 gal. Western crock, 6 gal. Fort Dodge, Ruckles, USA, White Hall, Illinois, & many more unmarked)
5 gal bee sting churn
Lot misc. crock pitchers some USA
Lot crock bowls & jugs
“New Style White Cedar” – cylinder churn
Waterfall cedar chest
Lot misc. china, pottery & glass (Roseville, McCoy, Fire King, Pyrex, Fenton, Hull, Limoges, Weller, occupied Japan, carnival glass, Czechoslovakian, lot Victorian blue delft porcelain figurines
Pr Royal Dux Bohemia vases
Signed Fenton vase
Lot perfume bottles
Royal Dux Bohemia platter
Brentleigh ware vase
Lot brass figurines
Lot copper pitchers & tea pots
2–Barbicide disinfectant jars
Sewing chest; RR lantern
Misc. pocket knives & watches
1905 – 13 ag year books
Misc. kerosene lamps & lanterns
Lot misc. ele. table & swag lamps

Lot vintage ladies' hats
Mink stole; Brass telescope
Bicycle wine rack; Wooden bread pan
Lot wood rolling pins; Lot granite ware
Misc. cast iron miniatures
Metal signs; Misc. beer mirrors
Vintage Schlitz beer wall clock
2 – Budweiser price signs
Budweiser pheasant light
Budweiser steins; Misc. decanters
Lot misc. ele table lamps; 2-chimneas
Leather 1930s “Hutch H-03” football helmet
Lot pictures; Mirrors & wall decor
Kerosene heater; Cast iron patio set
Old sled; Brass spittoon
Kenmore cross top refrigerator
Samsung glass top oven range
Frigidaire cross top refrigerator
Microwave; Dorm fridge in cabinet
Full size bed; 32" Sony TV
Full sized Jenny Lind style bed
Wood kitchen table
Lot misc. pots pans/kitchen ware
Lot misc. linen; Small Sentry safe
Small roll around tool box
Lot misc. hand tools & hardware
Lot misc. Christmas
Schumacher roll around battery charger
Elec hand tools; Table saw
adial arm saw; Scroll saw
20 gal portable air compressor
Assorted ladders wood & alum.
Paint sprayer; Weedeater tiller
Push lawn mower; BBQ grill
Gas string trimmer; Sandblaster
Murray riding lawn mower

Many More Items Too Numerous to Mention



Auctioneer Note: This is a LARGE and extremely nice auction with many unique and quality items. There is much more yet to be unpacked and discovered. Please bring a friend and come prepared as we may run two rings. Concessions provided by the Benton County Good Ole Gals.

TERRY HANESWORTH

JOHNSON AUCTION SERVICE

“Third Generation Family Tradition since 1942”

Russell “Rusty” Johnson (660) 221-4067 • Phillip Yoder (660) 723-3389



For Full Listing, Pictures and Details auctionzip.com (ID# 20300)

BROME HAY FOR SALE: small squares. \$5/each . Versailles, 573-539-2060.

CEDAR LINED CEDAR CHEST: \$100. 573-327-9068

MILITARY WAGON: 7FTX14FT, on 900-20 Truck tires. \$400obo. 573-308-5884.

MUSTANG 2040 DIESEL SKID STEER LOADER: \$8,500. 573-765-4406.

WANTED TO BUY: Winchester Commemorative Rifles. 573-690-1761.

USED MOBILE HOMES: Call David at VILLA HOMES IN ROLLA 573-578-8072



ANNUAL JANUARY
Consignment Auction
SATURDAY, JANUARY 30 AT 9 AM
WHEELER AUCTIONS LOT,
23101 HWY. 24, PARIS, MO

2000+ PIECES OF MACHINERY

Wheeler 
AUCTIONS & REAL ESTATE

23101 HWY. 24, PARIS, MO 65275 | 660-327-5890
WWW.WHEELERAUCTIONS.COM

Watch for full listing and photos at wheelerauctions.com!

BID LIVE Live Online Bidding Powered By **proxibid**

FOR SALE: 1991 Dodge D-350 twelve foot bed with hoist. \$3500. 1986 Dodge half ton pickup \$2,500. 573-578-4265.

4 WHEEL REAR END/FRONT END: transmission and pedals to fit 1925-27 Chevrolet: \$200. 573-734-2822.

NO \$\$\$ DOWN MOBILE HOMES- Call for details 573-499-9993 columbiadis-counthomes.com

LIONEL TRAIN SET: Steam engine, tender, caboose and other car, track and transformer. \$195. 573-364-7465, Rolla.

KILMER FARM EQUIPMENT CONSIGNMENT AUCTION

SATURDAY, MARCH 6 • 10 AM
14769 Cattle Lane, Versailles, MO 65084

Directions: At the Intersection of Hwy 5 and Hwy 52 in Versailles, go North on Hwy 5 for 1 mile to Cattle Ln then turn Right or East and go ¼ mile to Sale Site.

AD DEADLINE: TUESDAY, FEB. 9, 2021
ACCEPTING CONSIGNMENTS ON LOT
Friday, February 19 - Wednesday, March 3

CONTACT DANIEL OR MARK KILMER TO CONSIGN OR FOR MORE INFORMATION (573) 378-6615

TRACTORS, PLANTERS AND SPRAYERS, CONSTRUCTION EQUIPMENT, TRUCKS AND TRAILERS, GRAIN CARTS AND WAGONS, MANURE SPREADERS, CUTTERS, TILLAGE, COMBINE AND HEADS, FEED MIXERS, MISC. EQUIPMENT, HAY EQUIPMENT, SILAGE EQUIPMENT

2 RINGS MAY RUN DAY OF SALE

Wheeler 
AUCTIONS & REAL ESTATE

23101 HWY. 24, PARIS, MO 65275 | 660-327-5890
WWW.WHEELERAUCTIONS.COM

KILMER FARM EQUIPMENT, LLC
14270 Hwy. 52, Versailles, MO 65084
(573) 378-6615

For more info and photos:
www.wheelerauctions.com

BID LIVE Live Online Bidding Powered By **proxibid**

NEW HOLLAND TN65 DIESEL TRACTOR: 55HP with loader. \$10,500. 573-765-4406.

JOHN DEERE 467 ROUND BALER: monitor, kicker, net wrap, \$8,750. 573-765-4406.

WANTED TO BUY ANTIQUE CARS: Convertible, Corvettes, unrestored, motors, parts considered. 870-324-1154.

STRAW ROUND BALES: 4X5, net wrap. \$25. Can Deliver, 573-694-8872.

BITTERSWEET COUNTRY BOOK: edited by Ellen Gray Massey, \$6.50. 417-532-2045, Lebanon. Leave phone number.

ANTIQUA TRACTOR: 1937 Farmall F-12, rebuilt with many new and rebuilt parts, my age will not permit me to work on it any longer, will consider any reasonable offer. 417-256-1443



MID MISSOURI STOCKYARDS

REGULAR SALE EVERY THURSDAY 11AM

SPECIAL COW SALE • FEB. 6TH • 6 P.M.

For Farm Visits, Market Updates, or Trucking
 Call **Zach Cox 417-777-1320**
Dan Romine 573-578-4939

**Competitive Buyers!
 Competitive Commission!
 Competitive Market!**

Barn: 417-532-9292 
I-44 • Exit 123 "just outside of Lebanon"
17505 Route 66, Phillipsburg, MO 65722
 For weekly market updates, visit us at
www.midmostockyards.com

IHC 986 DIESEL TRACTOR: cab & cold air, IHC 2350 loader, good. \$13,750. 573-765-4406.

DOGS & DUCKS & HAT-RACK BUCKS BOOK: by Larry Dablemont. Short terms for the outdoorsman, \$6.50. 417-532-2045. Lebanon. Please leave message.

MISSOURI HISTORICAL BOOK: published by State Historical Society of Missouri. \$6.50. 417-532-2045.

ADAPTER AND TURBO TRANSMISSION: Adapter plate to fit Chevy convertor and flywheel. \$100. 573-734-2822.


JOHN DEERE 1008: pull type, brushcutter. \$2,950. 573-765-4406.

LOOKING FOR A 14FT BOAT TRAILER: 417-932-5716.

CDL IN ONE DAY!!: Family owned and operated, Insured, Over 10 years of experience, Training available for all states, Short wait time for appointments, Contact us today to schedule your appointment!! **CREDIT CARDS EXCEPTED.** (573-353-2853).

TARTER GOAT PANELS: 20-8' panels, 6-4ft gates, like new. \$1,000all. 573-714-2012.

IT'S A GAS SWAP MEET: Gas & Oil Collectibles, Advertising, Coin-Op - No Auto Parts. Saturday, February 13th, 8am to Noon. Cowan Civic Center, Lebanon, MO. \$5 Admission. For more information, call Nancy (573) 864-1336. Website: www.itsagaswapmeet.com



BUFFALO LIVESTOCK MARKET LLC

276 Hwy 32 West
 Buffalo, Missouri

Jan. 23rd, 2021
Receipts: 2021 Head

**Feeders \$5 to \$10 Higher.
 Cows Steady to \$2 Higher.**

Representative Steers

300-400 @ 160.00 to 200.00
 400-500 @ 160.00 to 185.00
 500-600 @ 145.00 to 168.00
 600-700 @ 141.00 to 152.00
 700-800 @ 134.00 to 141.10
 800-900 @ 124.00 to 130.00

Representative Heifers

300-400 @ 130.00 to 157.00
 400-500 @ 130.00 to 166.00
 500-600 @ 130.00 to 147.00
 600-700 @ 123.00 to 138.50
 700-800 @ 121.00 to 138.50

Feeder Bulls

400-500 @ 140.00 to 169.00
 500-600 @ 130.00 to 162.00
 600-700 @ 118.00 to 136.00
 700-800 @ 105.00 to 120.00

Bred Cows
 \$750 to \$1200

Slaughter Cows

Big Fleшы 55.00 to 61.00
 Med Flesh 50.00 to 55.00
 Thin Cows 40.00 to 50.00
 X Thin 40 Down

Slaughter Bulls

High Dressing 91.00 to 94.00
 Med Dressing 80.00 to 91.00
 Low Dressing 70.00 to 80.00

MON-WED MARKET REPORT
 Listen to KJEL 103.7FM • Lebanon or KYOO 99FM • Bolivar

VIEW OUR SALES AT CATTLEUSA.COM

CALL FOR TRUCKING OR ON-FARM VISIT

Lyle Caselman • Owner-Manager
 417-345-7876 • mobile 417-533-2944
Leon Caselman • Owner
 417-345-4514 • mobile • 417-588-6185
Howard Miller • Owner 417-345-8122

Callaway Livestock Center, Inc.
 Kingdom City, MO
 Watch live or bid online thru D.V. Auctions
www.CallawayLivestock.com

SPECIAL COW SALE THURSDAY NIGHT FEB. 4th, 2021 AT 6:00PM

Estimating 600 to 700 hd of Bred Cows, Cow/Calf Pairs & Breeding Bulls.

EARLY CONSIGNMENTS

Bred Heifers

Bodges

20 Fancy Blk or Blwf 1st calf Heifers. These hfrs very gentle, pelvic measured. Hfrs weigh 1100 lbs., bred to Nichols Angus Bulls, start calving March 1st 30 days Be the kind.

L-S

20 Fancy Blk Circle A Bred 1st calf Heifers. Bred to SAV Platinum. Have had Stay Bred - oral wormer, poured scour implant VLS Long Ranger wormer. 1/2 of these Hfrs calf 3-16 the other half will calf 4-16.

Swenke

4 Blk Sim Angus Hfrs. Sired by Stetson, bred to LBW Polled Hereford Bull. Complete vaccination program. Due Feb. 28th 30 days.

45 Fancy Blk or Blwf Cows. 3 to 5 yrs. old. Bred to Lucas Sim Angus Bulls, start March 1st for 60 days. Complete Vac Program.

60 Fancy Blk or Blwf Cows. 3 to 5. Bred to Angus Bulls, complete Vac Program. Start calving Feb. 20th for 75 days.

50 Big Fancy Blk or Blwf Cows. These cows coming off the Alpers Farm. Cows will be 8-SS. Bred to outstanding Sim Angus Bulls. Due March 1st. Complete Vac Program. These cows are calf raisers or Nathan wouldn't have kept them. Replaced them with Heifers.

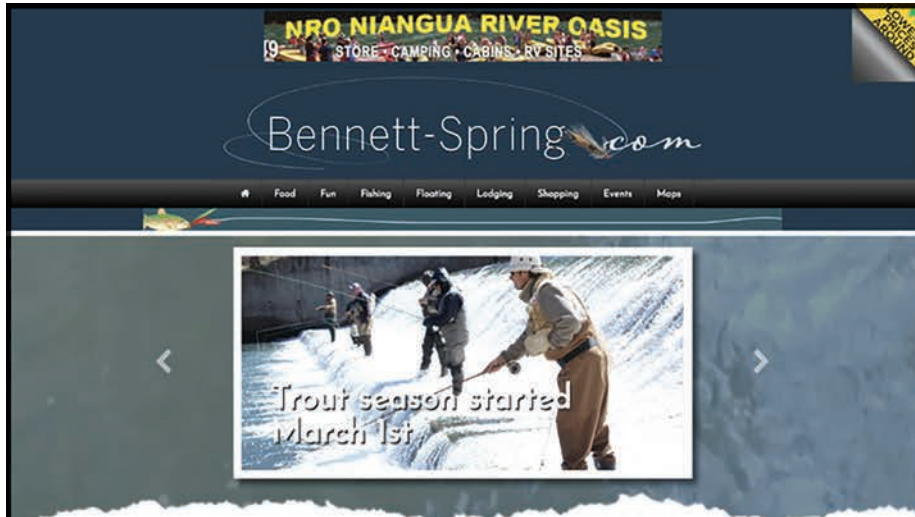
10 Big Fancy Blk Cows. 4-7 yrs. old. Circle A. Bred to Circle A Bull, due Feb. 20th.

Several other cows expected by sale night.

This ad was made 2 weeks in advance Don't miss this sale. Many more expected by sale day. All bulls sell at the start of the sale at 6:00pm.

For more information contact:
 Jack Harrison 573-999-7197 • John P. Harrison 573-220-1482
 Roger Temmen 573-680-4538 • Glenn Stagman 573-619-8495
 Claude Niemeyer 573-470-1017 • Justin Oberling 217-440-7724
 Wayne McCluggage 573-473-6314 • Chad Nickelson 573-631-1627

CALLAWAY LIVESTOCK CENTER INC.
573-642-7486



PETE'S PLACE
The Place for Primitive Camping
Reserve your spot today



FISHING

Catch a lunker trout at Bennett Spring State Park or learn the art of fly tying.



FLOATING

Take a relaxing trip down the Nangua River.



FOOD

There are plenty of great places to grab a bite to eat in the Bennett Spring area.



FUN

Fishing isn't the only thing to do at Bennett Spring. Everything from zip lines to hiking trails are available.



LODGING

Camp out in style or get a room at the many hotels in the area.



SHOPPING

Take a break from hanging out at the spring banks and head to one of the unique retailers in both Bennett Spring and the surrounding communities.

Bennett Spring "Country's" ONLY website featuring the area's best fishing, floating, food, insightful articles, and Trout Talk!

Plan your next outing at

www.bennett-spring.com

brought to you by:



417-532-9131 • 100 E. Commercial
www.laclederecord.com



MITCH ANTHONY
AGENT
417.532.3832

679 W. El, St. | Ste.4
Lebanon, MO 65536

Products and services may not be available in all states. Terms, conditions and eligibility requirements will apply. Property and casualty products and services may be underwritten by American National Property And Casualty Company or American National General Insurance Company, both of Springfield, Missouri.

AGRIBUSINESS

4X6 ROUND BALES FOR SALE: Orchard grass/timothy mix, call 417-260-1935.

ANTIQUE TRUNK TO FIT CARS 1920-1935: \$100. 573-734-2822.

THE FIRST 100 YEARS OF SOUTHWEST MISSOURI STATE UNIVERSITY: in Springfield. Hardback, \$12.50. 417-532-2045, Lebanon. leave phone number.

HAY FOR SALE: Alfalfa square bales \$6, also round bale grass hay \$45, all in barn. 573-247-4280.

QUALITY REPLACEMENT COWS: COW/CALF PAIRS, BRED HEIFERS AND BREEDING BULLS AND BUTCHER CALVES, TRUCKING AVAILABLE . Otterville, 660-619-5190 or 573-230-7700.

BETTY CROCKER BAKING FOR TODAY COOKBOOK: Hardback. \$6.50. 417-532-2045. Lebanon. Leave message.

1989 JEEP LAREDO: needs work 69,000 miles. \$1000 obo. 417-869-5560.

SEARS CATALOGUE 1902 REPRINT. \$8.50. 417-532-2045. Leave message.

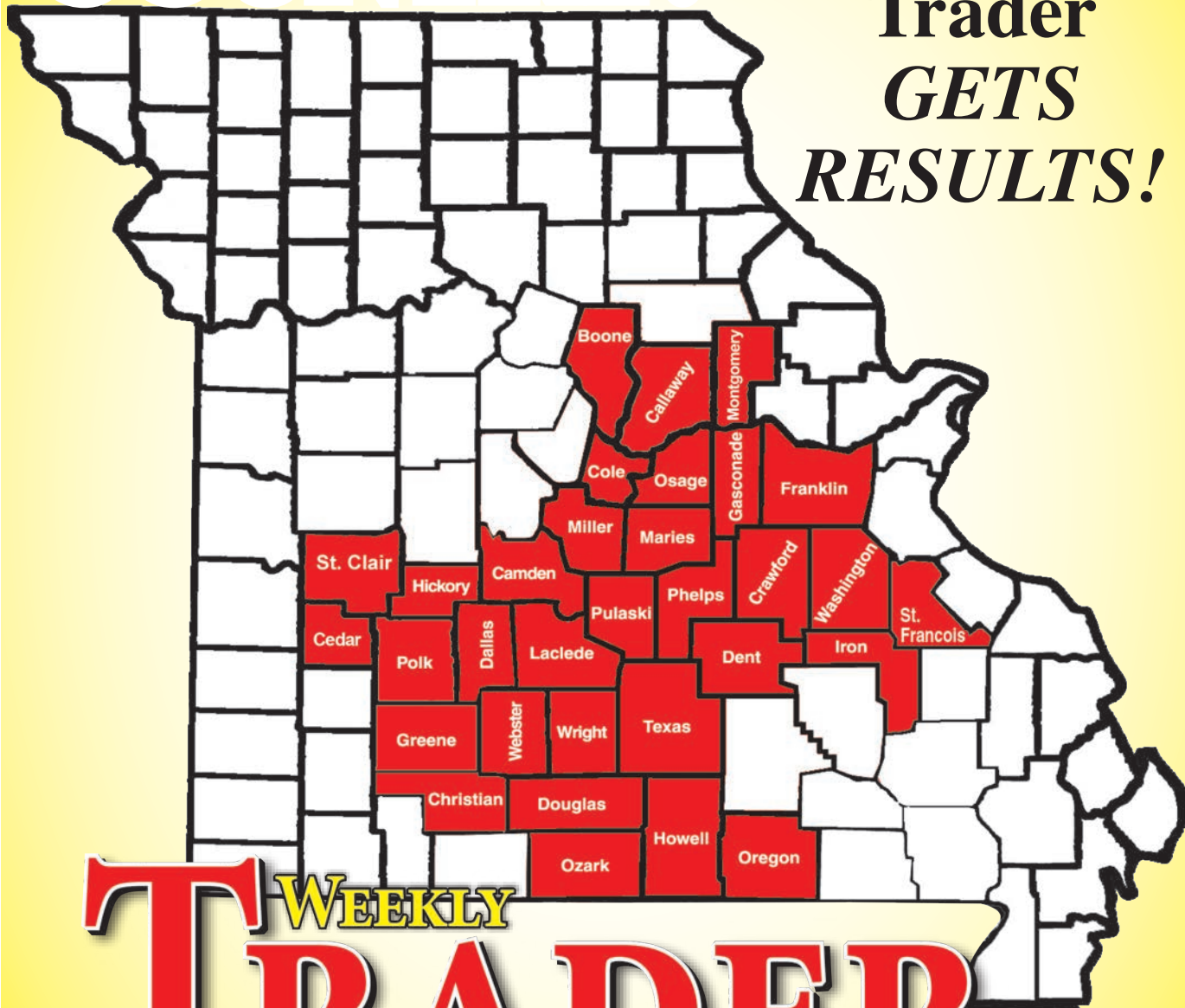
2 600-65-R28 GOODYEAR 75%: \$750, 2 16.9R28 20% GOODYEAR \$200, 2 20.8X38 BIAS GENERAL 20% \$200, 636-597-3707.

D&H OUTDOOR WOOD FURNACES SINCE 1986: Forced air, 90% efficient, fire proof insulated, thermostat control. Complete Heating and Cooling Systems. 573-743-6943 or 573-247-5585, Salem.

This is...

WEEKLY TRADER COUNTRY!

The Weekly
Trader
GETS
RESULTS!



WEEKLY TRADER MAGAZINE

Place Your Ad With Us Today!

417-532-9131 CHECK US OUT ONLINE AT: myweeklytrader.com

DR FRANKS CALF PULLER: \$100. HERMANN 636-932-4429.

TAKEUH DIESEL EXCAVATOR: \$15,000. 573-765-4406.

6 RED ANGUS HEIFERS: Due February, 21 RED ANGUS HEIFERS: Due in March, \$1,750. Bred to Registered Red Angus Calving ease bulls from the PIPER Ranch in Nebraska. Versailles. 573-378-6667.

LOG SIDING: 2X8 Pine/Western Cedar www.pineridgerustic.com 573-729-7226.

TUFFY SPECIAL -Volume Prices 573-657-2176 amegamobilehomes.com

Starnes Auto LLC
 22115 Rt. 66 • Lebanon, MO 65536
 417.718.2707 Cell • 417.588.3159 Office
 www.starnesauto.com

1993 OLD CUTLASS
 CREAM **\$1,250**

1998 NISSAN ALTIMA
 BLUE/GREEN, 85,XXX MI **\$3,500**

2002 KIA SPECTRA
 BLUE **CALL**

2006 CHEVY EQUINOX
 BLACK, 143,XXX MI **\$2,850**

2006 CHEVY AVEO
 ORANGE, 127,XXX MI **CALL**

2006 CHRYSLER TOWN & COUNTRY
 BLUE, 185,XXX MI. **\$2,850**

2007 BUICK LACROSSE
 GRAY, 134,XXX MI **CALL**

2008 SATURN AURA XE
 SILVER, 101,XXX MI. **\$3,850**

2009 CHEVY IMPALA
 GRAY **\$3,800**

2012 FORD FIESTA
 WHITE, 148,XXX MI. **CALL**

2012 CHEVY EQUINOX
 BROWN/TAN, 75,XXX MI.... **\$8,950**

2012 CHEVY EQUINOX
 GRAY, 89,XXX MI **CALL**

2013 CHEVY EQUINOX LT
 80,XXX MI. **\$9,250**

KUSTER LOGGING
BUYER of Standing Timber
Oak and Walnut
Dozing Now Available
417-259-0047
 References Available



DARDEN PROFESSIONAL TIMBER HARVESTING, BUYING STANDING TIMBER: Great prices, improve wildlife habitat and improve forest health. State Certified & Fully Insured! 573-247-4808 or 573-739-1122. Salem

WEATHERED BARN WOOD SIDING: 10" wide. 573-729-7226. www.pineridgerustic.com

Team Electrical & Plumbing
"The Professionals you can count on"
 Electrical • Solar Power • Plumbing • Lighting Installation

100% Satisfaction Guaranteed | Fully Licensed & Insured | \$100 Estimates with upfront pricing

For the best quality of work every time...
Give "Team" a call today!
 417-349-6200 • www.teamelectricalplumbing.com

THE MAIN STREET OF AMERICA COOKBOOK: A Culinary Journey Down Route 66, 328 pages, \$8.50. 417-532-2045 (leave message).

KIDS LITTLE TYKES RED CAR BED: w/ mattress. \$150. Desloge, 573-327-9068.

I BUY....used mobile homes. Call or text 573-338-6250 or email GregS.CDH@outlook.com

WE BUY
White Oak Logs!

- ✓ Top prices for your logs
- ✓ Experienced log buyers
- ✓ Professional service

Chad Cook | Salem Wood Products
417.718.2950
 5 miles north of Salem, MO on Hwy 19



INDEPENDENT STAVE COMPANY
 Log Procurement & Sales

www.independentstavecompany.com

AMMUNITION: .223, 9mm, .45cal, 30-30, 300 blackouts, and more visit our online store. www.chokeeammunitions.com and on Facebook

M&W 15 HYD. FOLD BRUSH CUTTER: 540 shaft, \$3750, 573-765-4006

MYSTERIES OF THE OZARKS VOLUME III: A collection of stories compiled by Ellen Gray Massey, \$6.50. 417-532-2045, Lebanon. leave phone number.

JOHN DEERE 2755: Diesel, Cab & Air, 75 HP. \$13,750. 573-765-4406.

HARLEY-DAVIDSON LEATHER JACKET: American flag on back with chaps. Size Large \$100. 417-532-6561.

T'S COW CATCH FENCE LINE FEEDER: with 5 stanchions \$200. Hermann 636-932-4429.

YARD SALE: running 1/25 until 2/5, 39475 Hwy 32 Lynchburg, 417-217-8504.

GREAT PYRENEES PUPPIES: Born 12-13-2020, Parents are working guard dogs with sheep, \$200 each! Zimmerman's Farm, 205 State Road E, Tunas, MO 65764.

FORD 3000 DIESEL TRACTOR: \$4,850. 573-765-4406.

LARGE WIZARD ELECTRIC RADIANT HEATER: thermostat, high/low settings, 19x15x7. Easy carry handle \$35. 573-364-7465

A CENTURY OF MISSOURI TIGERS BASKETBALL BOOK: by Michael Atchison, 258 pages, hardback. \$20. 417-532-2045. Lebanon. Leave message.

OLD CROSSMAN BB RIFLE: \$100. 573-327-9068.

Truck Driving positions available NOW in Mtn.Grove and Cabool!

Looking for a new career or part-time work? CHC has several openings right here, right now!

We have full time and part time positions available to drive trucks, provide repair and maintaince to small engine equipment, production of doors and trusses, and clerical positions. We offer flexible schedules to accommodate college students.

Join our team!

Apply in store at Cabool, Houston, or Mountain Grove | Or online at chhomecenter.com



Larry Heisel Rentals
LARGE or SMALL...

We Rent!

Crawler Loaders•Excavators•Backhoes

Call Larry! **573-779-1500**
www.larryheiselequipment.com

We Deliver!

Rental Available in 636 or 573 area code



CATAHOULA LEOPARD PUPS: red, blue, gray leopards, 30yr bloodline, 6wks. \$150. 417-543-4816.

BUYING OLD BARNs AND LUMBER: 417-406-0867. Leave Message.

NEW/USED PARTS: Motors/Tranny's All Vehicles/Farm/Construction Equipment "Body Parts" warranted. 800-807-9612.

8FT. BRUSH HOG: Offset disk, \$2,500. 573-765-4406.

IHC 1486 DIESEL TRACTOR: Cab & Air, 20.8x38 Duals, 145 hp \$12,500. 573-765-4406.

ANTIQUE BRASS KITCHEN CABINET HARDWARE: 1 set of 54. \$30 obo 636-239-2695

WANTED: Basset hounds, any age, Lebanon. 417-650-0402

GOOSEBERRY PATCH COOKBOOKS: Hardback, \$5 a piece. 417-532-6561. Lebanon

PYRENEES MALE PUPPY: 9 months, neutered, pet only. \$250 417-458-1771.

WANTED, TIMBER TO LOG ON SHARES: Honest, reliable, references. 417-533-4607, 417-664-1195.

REGISTERED HEREFORD & ANGUS BULLS: Home raised, Some Show-Me Select Qualified. 573-701-7828. Belgrade

CUSTOM SAW MILLING: Lebanon. 417-533-4607, 417-664-1195.

SPECIALIZING IN HEAVY DUTY GATES

Cow Country Gate Sales

Call Randy: 573-569-4754 or Home: 573-539-2528
Located at: Zimmerman Welding 16889 Hwy 52, Barnett, MO



LIVE WORK PLAY

We're HIRING!

JOBS
are available in Lebanon!

lacledecountrymohasjobs.com

KRONE 4 BASKET HEAVY DUTY FOLD UP TEDDER: \$4,950. 573-765-4406.

AUSTRALIAN SHEPHERD PUPPIES: For sale or will swap for farm animals. UTD on shots, Born 11-21-20. 417-967-6493, Roby.

OLD JOHN DEERE UMBRELLA BRACKET: and pole \$40 obo. Hermann 636-932-4429.

BIRDS OF MISSOURI FIELD GUIDE, \$4.00. IDENTIFICATION BIRDS OF NORTH AMERICA BOOK, \$4.00. 417-532-2045, Lebanon. Leave message.

1991 HONDA ACCORD: automatic, engine, tires strong. \$990. Lebanon, 775-997-5913.

BEST OF THE BEST FROM MISSOURI COOKBOOK: \$6.50. 417-532-2045, Lebanon. leave phone number.

RADIATOR/FAN SCHROUD: fits international model tractors models 200, 230, 240. \$125. 636-239-2695.

SMALL SQUARE WHEAT STRAW: Clean. \$4/bale. Brome Hay Horse Quality \$6/bale. Alfalfa Hay \$8/bale. Versailles, 573-378-7326.

ANTIQUE GRINDING STONE: \$40 EACH. 417-349-0098



YOUR AD GOES HERE!

Add **YELLOW** Color For An Additional **\$3** Per Reader Ad

All ads will include Phone Number (unless requested to be deleted by advertiser) and City Or Town, Phone Number with Area Code counts as one word. City or Town counts as one word.

RATE: 80¢ Per Word. All Classified Ads Require Payment Before Print.

(1) 80¢	(2) \$1.60	(3) \$2.40	(4) \$3.20
(5) \$4.00	(6) \$4.80	(7) \$5.60	(8) \$6.40
(9) \$7.20	(10) \$8.00	(11) \$8.80	(12) \$9.60
(13) \$10.40	(14) \$11.20	(15) \$12.00	(16) \$12.80
(17) \$13.60	(18) \$14.40	(19) \$15.20	(20) \$16.00
(21) \$16.80	(22) \$17.60	(23) \$18.40	(24) \$19.20
(25) \$20.00	(26) \$20.80	(27) \$21.60	(28) \$22.40
(29) \$23.20	(30) \$24.00	(31) \$24.80	(32) \$25.60
(33) \$26.40	(34) \$27.20	(35) \$28.00	(36) \$28.80
(37) \$29.60	(38) \$30.40	(39) \$31.20	(40) \$32.00

Place your Classified Ad TODAY!

417-532-2800 • 800-665-8875

Fax: 417-532-8140

Or Mail To: P.O. Box 192 • Lebanon, MO 65536

For your convenience we accept MasterCard, Visa, Discover or American Express



DEADLINE FOR CLASSIFIED ADS: FRIDAY 4:00PM!

Name _____

Address _____

City _____ Email _____

State _____ Zip Code _____ Phone _____

Ad Total \$ _____ X # Weeks _____ = Amount Enclosed \$ _____

LOG SIDING: 2X8 Pine/Western Cedar
www.pineridgerustic.com 573-729-7226.

ELECTRIC WHEELCHAIR: InvaCare Pronto M-91, Safestep, used, good condition, new batteries. \$1,200obo. 417-588-9962

CASE 1840 DIESEL SKID STEER LOADER: good. \$8,950. 573-765-4406.

BROME HAY FOR SALE: small squares. \$5/each . Versailles, 573-539-2060.

FOR SALE: 1991 Dodge D-350 twelve foot bed with hoist. \$3500. 1986 Dodge half ton pickup \$2,500. 573-578-4265.

CEDAR LINED CEDAR CHEST: \$100. 573-327-9068

LIONEL TRAIN SET: Steam engine, tender, caboose and other car, track and transformer. \$195. 573-364-7465, Rolla.

ANTIQUE TRACTOR: 1937 Farmall F-12, rebuilt with many new and rebuilt parts, my age will not permit me to work on it any longer, will consider any reasonable offer. 417-256-1443



TASK. TASK. DONE.

RB16 SERIES

REAR BLADES
20-40 HP 60", 74", 84" Widths

- Cat. 1 hitch
- 7 Forward angles; 3 Reverse angles
- 5 Tilt positions
- 12" Offset left or right
- 14" Moldboard height
- 1/4" Moldboard thickness
- Landscape Rake adaptable

For Outstanding Products & Service

AGRI-ENTERPRISES

1-1/2 Miles South Of Licking, MO On Hwy 63
573-674-2203
1-800-653-7152

www.landpride.com www.agri-enterprises.com

SPECIALIZING IN STUD FRAME & POLE BARN BUILDINGS



30+ Years Experience

Broeckelman Metal Buildings

Allen Broeckelman • Lebanon, MO
417-650-5600

DREAM HOUSE -Online. chateauhomes.net
Call Marla 573-657-7040

POOL TABLES: Installations, moves, recoveries, repairs, accessories, etc. 573-646-1700.

ACA REGISTERED AUSTRALIAN SHEPHERD: Female, 3yrs old, great temperament, had obedience training. \$300. 630-687-0705.

4 WHEEL REAR END/FRONT END: transmission and pedals to fit 1925-27 Chevrolet: \$200. 573-734-2822.

NO \$\$\$ DOWN MOBILE HOMES- Call for details 573-499-9993 columbiadiscountshomes.com

WANTED TO BUY: Winchester Commemorative Rifles. 573-690-1761.

WANTED TO BUY ANTIQUE CARS: Convertible, Corvettes, unrestored, motors, parts considered. 870-324-1154.

MILITARY WAGON: 7FTX14FT, on 900-20 Truck tires. \$400obo. 573-308-5884.

BITTERSWEET COUNTRY BOOK: edited by Ellen Gray Massey, \$6.50. 417-532-2045, Lebanon. Leave phone number.

Buildings • Hunter's Cabins • Lawn Furniture



JAMCO BUILDERS

JAMCO Portable Buildings

800-688-2064 • 307 Enterprise Dr. • Seymour, MO • www.jamcobuilders.com

Rent To Own Plan



Cheyenne Acres
Horse & Tack

BUY - SELL - TRADE

by Rolla, MO
Call For Directions & Availability

Call Kip
573-368-9402

KITCHEN FAUCET MOEN: single lever, sprayer, new cartridge. \$45obo. 636-239-2695.

GUARDIANWARE: 1930-1950's, Turkey roaster with lid. \$195. 573-364-7465.

5X5 1/2 GRASS HAY: Baled w/John Deere, never wet, will load. \$40. 573-765-3081.

PINNACLE RANCH: Red Angus and Red Balancer Heifers for sale. 417-679-4269.

NEW HOLLAND TN65 DIESEL TRACTOR: 55HP with loader. \$10,500. 573-765-4406.

JOHN DEERE 467 ROUND BALER: monitor, kicker, net wrap, \$8,750. 573-765-4406.

DOGS & DUCKS & HAT-RACK BUCKS BOOK: by Larry Dablemont. Short terms for the outdoorsman, \$6.50. 417-532-2045. Lebanon. Please leave message.

MUSTANG 2040 DIESEL SKID STEER LOADER: \$8,500. 573-765-4406.

USED MOBILE HOMES: Call David at VILLA HOMES IN ROLLA 573-578-8072

STRAW ROUND BALES: 4X5, net wrap. \$25. Can Deliver, 573-694-8872.

IHC 986 DIESEL TRACTOR: cab & cold air, IHC 2350 loader, good. \$13,750. 573-765-4406.

Built heavy duty, to make light work of any job.



L Series 24.1-47.3 HP Durable cast iron and steel design



QUARLES
SUPPLY COMPANY INC.

(417) 777-2391
quarleskubota.com

Call today to schedule a demo on the #1 selling compact tractor in the U.S. for over 10 years.*

- Four affordable models to choose from
- Performance-matched Kubota front loader
- Kubota diesel engine and gear or HST transmission
- Easy-to-use controls

Together we do more.

New L2501DT w/Loader Deal!

**L2501DT
w/loader**

**\$19,995
Financing Price**

- NEW Kubota L2501DT
- 4wd, DIESEL, AG TIRES
- KUBOTA LOADER

- 5' ROTARY CUTTER
- 5' BOX BLADE
- NEW 18' KODIAK TRAILER W/RAMPS



KubotaUSA.com

*Based on EDA tractor sales data of under 40 horsepower models from 2009 to 2019.

© Kubota Tractor Corporation, 2020. This material is for descriptive purposes only. Kubota disclaims all representations and warranties, express or implied, or any liability from the use of this material. For complete warranty, disclaimer, safety, incentive offer and product information, consult your local Dealer or go to KubotaUSA.com.

BIG SAVINGS SALE

PASSING THE SAVINGS ON TO YOU!
HURRY IN - DON'T MISS THIS OPPORTUNITY!

SAVE THOUSANDS ON OUR OVER AGED INVENTORY!



FAIRGROUND
Auto Plaza
DRIVEN TO SERVE YOU BEST...

100 Fairgrounds Road
Rolla, Missouri
(573) 364-1002
www.FairgroundGM.com