

FREE - TAKE ONE!

Vol. 27 No. 34

NOVEMBER 19, 2020

800-543-8271 • 800-665-8875

WEEKLY TRADER MAGAZINE

Find us on Facebook

@myweeklytrader AUCTIONS PG. 10

VISIT OUR NEW WEBSITE! MYWEEKLYTRADER.COM

Honda OF THE OZARKS



\$0 DOWN

PAYMENTS AS LOW AS \$79.00/month*

Available on select models

2020 CRF50FL
MSRP \$1,549
SAVE \$150

SALE
\$1,399



2020 TRX90XL
MSRP \$3,099
SAVE \$300

SALE
\$2,799



GIFTS THAT GO

2020 RECON
TRX250TML

MSRP \$4,299
SAVE \$600

SALE
\$3,699



2020 Pioneer 1000-5 Deluxe
SXS10M5DL

MSRP \$18,199
SAVE \$2,200

SALE
\$15,999



OUR PRICE PROMISE: If you find a better verified price in Missouri, WE WILL BEAT IT. GUARANTEED!

(417)862-4686
2055 E. Kerr St.

HondaOfTheOzarks.com
I-44 & GLENSTONE EXIT 80

MSRP excludes destination charge. Visit Powersports.honda.com to view applicable destination charge amount. CRF50F MSRP does not include \$190 in destination charges and \$139 Set-up/PDI charge. TRX90X MSRP does not include \$250 in destination charges and \$189 Set-up/PDI charge. TRX250TM MSRP does not include \$400 in destination charges and \$189 Set-up/PDI charge. Pioneer 1000-5 MSRP does not include \$870 in destination charges and \$229 Set-up/PDI charge.
*For well-qualified customers with approved credit. CRF50F payment based on MSRP \$1,549.00 and freight charge of \$190 for total amount of \$1,739.00 on a 24-month loan at 4.99% APR and payments of \$77.00 per month. TRX90X payment based on MSRP \$3,099.00 and freight charge of \$250 for total amount of \$3,349.00 on a 49-month loan at 4.99% APR and payments of \$76.00 per month. See dealer for details.
CRF/Fs ARE INTENDED FOR OFF-ROAD OPERATION ONLY. PARENTS NEED TO CONSIDER A RIDER'S AGE, SIZE, ABILITY AND MATURITY BEFORE ALLOWING THEM TO RIDE. ALWAYS WEAR A HELMET, EYE PROTECTION AND PROTECTIVE CLOTHING, AND PLEASE RESPECT THE ENVIRONMENT. OBEY THE LAW AND READ THE OWNER'S MANUAL THOROUGHLY. Always stay on established trails in approved riding areas. TRX90X IS RECOMMENDED ONLY FOR RIDERS 12 YEARS OF AGE AND OLDER. RIDERS UNDER 16 YEARS OF AGE MUST BE SUPERVISED BY AN ADULT. ATVs CAN BE HAZARDOUS TO OPERATE. FOR YOUR SAFETY, BE RESPONSIBLE. READ THE OWNER'S MANUAL. ALWAYS WEAR A HELMET, EYE PROTECTION AND PROTECTIVE CLOTHING. BE CAREFUL ON DIFFICULT TERRAIN. ALL ATV RIDERS SHOULD TAKE A TRAINING COURSE (FREE FOR NEW BUYERS. ASK YOUR DEALER OR CALL ASI AT 800-887-2887). NEVER RIDE AFTER CONSUMING DRUGS OR ALCOHOL, ON PAVED SURFACES, ON PUBLIC ROADS, WITH PASSENGERS, OR AT EXCESSIVE SPEEDS. NO STUNT RIDING. RESPECT THE ENVIRONMENT WHEN RIDING. UTILITY ATVs ARE RECOMMENDED FOR RIDERS 16 YEARS OF AGE AND OLDER. ALL ATV RIDERS SHOULD TAKE A TRAINING COURSE AND READ THEIR OWNER'S MANUAL THOROUGHLY. MULTI-PURPOSE UTILITY VEHICLES CAN BE HAZARDOUS TO OPERATE. PIONEER IS ONLY FOR DRIVERS 16 YEARS AND OLDER. DRIVER AND PASSENGER MUST BE TALL ENOUGH FOR SEAT BELT TO FIT PROPERLY AND TO BRACE THEMSELVES WITH BOTH FEET FIRMLY ON THE FLOOR. PASSENGER MUST BE ABLE TO GRASP THE HANDHOLD. NEVER DRIVE WITH MORE THAN ONE PASSENGER. ALWAYS WEAR YOUR SEAT BELT, AND KEEP THE SIDE NETS AND DOORS CLOSED. ALL MUV USERS SHOULD WATCH THE SAFETY VIDEO "MULTI-PURPOSE UTILITY VEHICLES: A GUIDE TO SAFE OPERATION" AND READ THE OWNER'S MANUAL BEFORE OPERATING THE VEHICLE. FOR BOTH TYPES OF VEHICLES, ALWAYS WEAR A HELMET, EYE PROTECTION AND APPROPRIATE CLOTHING. AVOID EXCESSIVE SPEEDS, AND BE CAREFUL ON DIFFICULT TERRAIN. FOR YOUR SAFETY BE RESPONSIBLE. NEVER DRIVE UNDER THE INFLUENCE OF DRUGS OR ALCOHOL, OR ON PUBLIC ROADS. RESPECT THE ENVIRONMENT WHEN DRIVING. TRX® is a registered trademark of Honda Motor Co., Ltd. ©2019 American Honda Motor Co., Inc. (05/19) CRF® is a registered trademark of Honda Motor Co., Ltd. ©2019 American Honda Motor Co., Inc. (05/19)

Land

For Sale

Webster Co, MO • 55 +/- acres



- Located in Marshfield School District
- Large shop with concrete floor
- Electric and septic in place
- Nice food plots and stand locations
- Excellent building sites
- Seller is a licensed real estate agent



WHITETAIL PROPERTIES REAL ESTATE

HUNTING | RANCH | FARM | TIMBER

Brian Utecht | 417-766-5595

Brian.Utecht@whitetailproperties.com

WHITETAILPROPERTIES.COM

Missouri's Top Land Specialist in 2014, 2015, 2016, 2017, 2018 and 2019



TIME FOR PRECISION

Hustler's residential mowers are built stronger and perform faster, allowing you to quickly maneuver around obstacles with ease. Tackle your lawn in record time with unparalleled precision, and use the time you save to do the things you love.



For Outstanding Products & Service
AGRI-ENTERPRISES

1-1/2 Miles South Of Licking, MO On Hwy 63
573-674-2203 • 1-800-653-7152 • www.agri-enterprises.com

SACAGAWEA GOLDEN DOLLARS: Face value \$1. Original issue 2000, uncirculated. In rolls of 5. \$30. 417-686-0032, Ava.

STOCK TRAILER: 1983 Coose, goose-neck: 24', new floor. Four new 10 ply truck tires. \$2450. Lebanon (417)664-2198.

HIGH FLOW STANDARD TOILET: new-in-box; 1.6 gpf; white, round bowl. \$200. Lebanon (417)664-2198.

FRUEHAUF 71 MODEL CATTLE TRAILER: 45ft, aluminum, straight-deck, 90%tires. \$5,000. 417-543-5674.





NO \$\$\$ DOWN MOBILE HOMES- Call for details 573-499-9993 columbiadiscountshomes.com

LIONEL TRAIN SET: Steam engine, tender, caboose and other car, track and transformer. \$195. 573-364-7465, Rolla.

VOTED #1 BEST Preowned Car Dealership

TIM'S USED CARS

(573) 341-3828 • 1334 South Bishop (Hwy. 63) • Rolla, MO
Next to Hwy CC • www.tims-used-cars.com

 <p>2004 CHEVY 1500 LS Crew Cab, 4x4, 5.3, V-8, Power Equipped, 148,xxx Miles Only \$8,400</p>	 <p>2013 DODGE DURANGO Crew, 4x4, V-6, Leather, Power Equipped, Only \$12,900</p>
 <p>2011 DODGE DAKOTA BIG HORN Crew Cab, 4x4, 3.7, V-6, Power Equipped, 131,xxx Miles Only \$12,500</p>	 <p>2018 FORD EDGE SE AWD, 2.0 Turbo, Power Equipped, 34,xxx Miles Only \$20,800</p>

LARGE SELECTION OF CARS, TRUCKS, SUVs & VANS!

#1 Selling FARM TRACTOR IN THE WORLD



Mahindra

Come See Us For Your Mahindra
Financing available for those who qualify
www.agri-enterprises.com

AGRI-ENTERPRISES
1-1/2 Miles South Of Licking, MO On Hwy 63
573-674-2203 • 1-800-653-7152



PINNACLE RANCH: Red Angus and Red Balancer Heifers for sale. 417-679-4269.

WINCHESTER 150: round, steel, shellcase, 9mm, ammo \$50 per box. 417-844-4319.



MITCH ANTHONY
AGENT
417.532.3832

679 W. El, St. | Ste.4
Lebanon, MO 65536

Products and services may not be available in all states. Terms, conditions and eligibility requirements will apply. Property and casualty products and services may be underwritten by American National Property And Casualty Company or American National General Insurance Company, both of Springfield, Missouri.

AGRIBUSINESS

DARDEN PROFESSIONAL TIMBER HARVESTING, BUYING STANDING TIMBER: Great prices, improve wildlife habitat and improve forest health. State Certified & Fully Insured! 573-247-4808 or 573-739-1122. Salem

AB ROLLER-SLIDER: Deluxe, stomach exercise machine, heavy duty, real 6 pack builder, detachable handles, for easy storage. \$60. Ava. 417-686-0032.

2012 FORD FOCUS: SEL, 142k, leather, bluetooth, good condition. \$5,200. Call 417-531-0545. Lebanon.

WANTED TO BUY ANTIQUE CARS: Convertible, Corvettes, unrestored, motors, parts considered. 870-324-1154.

RHINELAND, MO. PICTORIAL HISTORY: "Winter in a Missouri River town," 190 pages, \$15.00. 417-532-2045. Lebanon. Leave phone number.

SPECIALIZING IN STUD FRAME & POLE BARN BUILDINGS



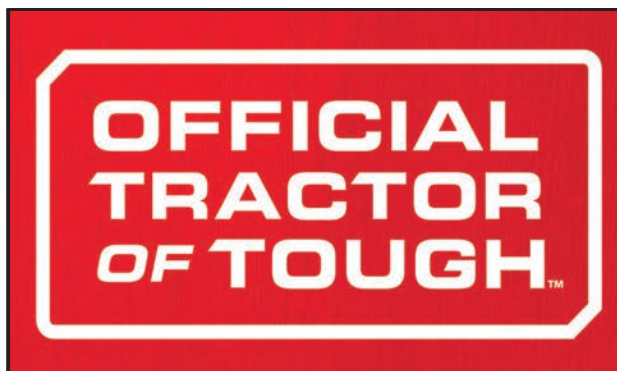
30+ Years Experience

Broeckelman Metal Buildings

Allen Broeckelman • Lebanon, MO
417-650-5600

EARNIE DEANE OZARKS COUNTRY BOOK: A collection of articles about folklore, places, people, customs, history. \$7.50. Lebanon. 417-532-2045, Lebanon. leave phone number.

QUALITY, FULL FACE PLASTIC SHIELDS: protective masks, reusable, brand new, direct splash protection, transparent, comfortable, 5 masks, \$20. Ava. 417-686-0032.



Marshfield Machinery Inc.

222 E. Madison • Marshfield, MO 65706
417-859-2117 • www.marshfieldmachinery.com

MahindraUSA.com © 2020 Mahindra USA Inc.



NEW MAHINDRA TRACTORS

7085 4WD & LDR 85HP	IN STOCK
6065 4WD & LDR 62HP	IN STOCK
4540 2WD & LDR 41HP	IN STOCK
2638 4WD & LDR 38HP	IN STOCK
1635 4WD & LDR 36HP	IN STOCK
1626 4WD & LDR 26HP	IN STOCK

USED TRACTORS

MF 4710 4WD LDR 100HP	49,500
MF 2705E 4WD BACKHOE 48HP	27,500
AGCO LT75A CAB LDR 100HP	27,500
MF 6170 W/ LDR 97HP	17,500
MF GC1723 BACKHOE 23HP	15,000
CASE 1490 83 HP	7,500
MF 175 63HP	6,000
IHC 464 W/ LDR 45HP	5,500
CASE IH 235 W/ MOWER 18HP	3,500
FORD 2000 31HP	3,500
MF 65 48HP	3,000

USED ROUND BALERS

MF 1745 4X5	8,500
NI 6254 4X5	7,500
VERMEER 505SI MESH	7,500
GEHL 2480 4X5	6,500
JD 435 4X6 MESH	6,500
VERMEER 554XL 4X5	5,500
HESSTON 560 5X6	3,000
HESSTON 550 4X6	3,500
HESSTON 530	3,500
NH 850 5X5	1,500
VERMEER 605D 5X6	750

USED MOWER/CONDITIONERS

MF 1383 13FT	19,500
CASE IH 3309 9FT	4,500

USED CUTTERS

RHINO SE15-4 15FT	6,500
LANDPRIDE 15FT	5,500
BRUSHWACKER 15FT	5,500
BUSH HOG S084T 7FT	1,200
BUSH HOG 1099FT 3PT	1,000

USED MISC.

HAYBUSTER 107C DRILL	17,500
HAYBUSTER 107 DRILL	12,500
HAYBUSTER 107C DRILL	11,500
HAYBUSTER 107C DRILL	10,500
FRONTIER BALE PROCESSOR	8,500
BUSH HOG 417 TEDDER	3,500
VERMEER 8WHL RAKE	1,750

Marshfield Machinery Inc.
222 E. Madison • Marshfield, MO 65706
417-859-2117
www.marshfieldmachinery.com

1994 CUTLESS CIERA: auto, air, 4-door, 174,xxx miles, runs great. \$800. 636-584-9476

ELECTRIC WINCH: 1200 lb, 12VDC, new-in-box. Everything included. \$200. Lebanon (417)664-2198.

2 BIG CHRISTMAS WREATHS: 3ft in diameter. \$30 each obo 636-239-2695.

2020 KC CHIEFS McDONALDS RED FRIDAY SUPERBOWL CHAMPS FLAGS: unopened, NIP \$15/each. Salem, 573-854-8132.

SPECIALIZING IN HEAVY DUTY GATES



Cow Country Gate Sales

Call Randy: 573-569-4754
or Home: 573-539-2528
Located at: Zimmerman Welding
16889 Hwy 52, Barnett, MO

BE READY for DEER SEASON



Craig's **OUTDOOR Sports** (417) 926-0255
craigsootdoorsports.com

Mon-Fri 9am-5pm • Sat 9am-Noon
9435 HWY. N Ste. A, Mtn. Grove

MILLER-MATIC 210: 220V, Mig welder, excellent condition. \$1,500obo. Preston. 563-529-0612.

2020 KC CHIEFS SUPERBOWL COCA COLA CANS: unopened, mint condition. \$15/6pack. Salem, 573-854-8132.

WANTED STANDING TIMBER: Butler Logging, 417-448-9323.

SEARS CATALOGUE 1902 REPRINT. \$8.50. 417-532-2045. Leave message.

2004 VW BEETLE DIESEL: 164,000miles. \$6,500. 417-256-2561.

INGERSOLL RAND PORTABLE AIR COMPRESSOR: 85cfm, gas motor, on-trailer, works good. \$2,500. 417-543-5674.

2020 KC CHIEFS SUPERBOWL COCA COLA CANS: unopened, mint condition. \$15/6pack. Salem, 573-854-8132.

DREAM HOUSE -Online. chateauhomes.net
Call Marla 573-657-7040



Wright Spray Foam Insulators, LLC
Commercial & Residential
Call for FREE Estimates!

Ervin Gingerich 417-926-2052
B. Eli Yoder 417-746-4932

WINDHAM SRC308 AR10: with vortex scope, accessories, ammo, bought new, like new, \$1,595.00 417-844-4319.

MYSTERIES OF THE OZARKS VOLUME III: A collection of stories compiled by Ellen Gray Massey, \$6.50. 417-532-2045, Lebanon. leave phone number.

WANTED 16.9X34 REAR TRACTOR TIRE: good condition, 75%+ tread. Union, 636-234-5269.

BAKER A RESAW: with return and turn around. \$7,500/obo. 417-327-6240.

DR ALL TERRAIN MOWER: 25 inch cut, Kawasaki 15.0 engine, 18 years old. \$1000. Lebanon (417)664-2198.

WANTED, TIMBER TO LOG ON SHARES: Honest, reliable, references. 417-533-4607, 417-664-1195.

BETTY CROCKER BAKING FOR TODAY COOKBOOK: Hardback. \$6.50. 417-532-2045. Lebanon. Leave message.

WEATHERED BARN WOOD SIDING: 8" & 10" wide. 573-729-7226. www.pineridgerustic.com

OZARKS COUNTRY PREACHER, THE LIFE OF PAUL WESLEY BUCHANON BOOK. Life, fun and religion in the Ozarks, \$5.00. 417-532-2045. Leave message.

BITTERSWEET COUNTRY BOOK: edited by Ellen Gray Massey, \$6.50. 417-532-2045, Lebanon. Leave phone number.

DOYLE STAINLESS STEEL FERTILIZER BED: 15ft, Stainless catwalks, radar, one-owner, works good. \$6,500. 417-543-5674.

FIREARMS: Professional Repairs and Restorations. Baron's Gunsmithing. 573-363-5801, Camdenton.

POOL TABLES: Installations, moves, recover, repairs, accessories, etc. 573-646-1700.

D&H OUTDOOR WOOD FURNACES SINCE 1986: Forced air, 90% efficient, fire proof insulated, thermostat control. Complete Heating and Cooling Systems. 573-743-6943 or 573-247-5585, Salem.

KIDS LITTLE TYKES RED CAR BED: w/ mattress. \$150. Desloge, 573-327-9068.

GUARDIANWARE: 1930-1950's, Turkey roaster with lid. \$195. 573-364-7465.

WE BUY White Oak Logs!

- ✓ Top prices for your logs
- ✓ Experienced log buyers
- ✓ Professional service

Chad Cook | Salem Wood Products
417.718.2950
5 miles north of Salem, MO on Hwy 19



INDEPENDENT STAVE COMPANY
Log Procurement & Sales

www.independentstavecompany.com

BIRDS OF MISSOURI FIELD GUIDE, \$4.00. IDENTIFICATION BIRDS OF NORTH AMERICA BOOK, \$4.00. 417-532-2045, Lebanon. Leave message.

CHRISTMAS PUPPIES BLUE & RED HEELER PUPPIES: Good working stock, UTD. 417-664-5926.



MIDWEST CONSTRUCTION
Free Estimates!

- Pole Barn • Garages • Framing
- Remodels • Roofing • Concrete
- Decks & Porches

Contact Abner Glick
417-664-1794

HEAVY TRACTOR TIRE CHAINS: Good in mud and snow, fit 18.4"x30" tires. \$200. Hermann. 636-932-4429.

HONEYWELL SPACE HEATER: digital readout, thermostat controlled, adjustable heat levels, high/low fan, ceramic tube. \$35. 573-364-7465.

AMMUNITION: .223, 9mm, .45cal, bulk or box. 417-257-8385, pick-up or shipping available. www.chokeeamunitions.com and on Facebook.

WANTED TO BUY: John Deere diesel tractor in need of repair. 20-30-40 series. Call 573-768-0068.



Pine Ridge Rustic
Log Home Building Supplies

Services Offered!

- Installation
- Pre-finishing available on interior & exterior
- Dealer for exterior stains

www.pineridgerustic.com

523 CR 2410 • Salem, MO 65560 • Ph: 573-729-7226



- Log Siding
- Beveled Siding
- Car Siding • Red Cedar
- Western Cedar • Pine

175 ORIGINAL VCR MOVIES: \$1/piece. 573-327-9068.

1999 MERCURY GRAND MARQUIS: 88,000 miles, 1-owner, leather seats, excellent condition. \$4,500. 636-734-2693.

THE AMISH COOKBOOK: Recollections and recipes from an Old World Order, hardback, \$8.50. 417-532-2045. Lebanon, leave phone number.

STORAGE UNIT AUCTION: Saturday November 28th @ 11am, 14549 Hwy 60 Cabool, contents of 4 units will be sold separately to the highest CASH BIDDER, winning bidders must present Government Issued picture Id, and must remove ALL contents day of sale, additional consignments will be offered following unit sale

ANTIQUK KEROSENE STOVE: 4 Burner w/oven. \$175. 573-438-2672.

AMERICAN MADE 9MM: Brass, ammo, not reloads, \$.40 per round. 417-844-4319.

I BUY.....used mobile homes. Call or text 573-338-6250 or email GregS.CDH@outlook.com

PT CRUISER: Good condition, \$2,500. Marshfield, 417-859-4401.

OZZIE SMITH: Hall of Fame induction, Hartland figurine, new in box, \$14.00 573-854-8132.

BUYING PRE 1960 BEER SIGNS: FALSTAFF, LEMP, BUDWEISER, CAPITOL, HAMMS, STAG, ANYTHING. 573-680-5377.

NORDIC CROWN II HOT TUB: W/steps. \$2,250 obo, Washington. 636-239-2695.

FOR SALE OLD BARN: Bonne Terre, 573-358-2528

THE FIRST 100 YEARS OF SOUTHWEST MISSOURI STATE UNIVERSITY: in Springfield. Hardbook, \$12.50. 417-532-2045, Lebanon. leave phone number.

160 ACRES: For sale, 3 6x6 deer stands, lakes, CRP pays \$11,320 yearly, Sullivan County, Mo, 314-471-4069.

LOG SPLITTER: 35 Ton, Tecumseh 10HP engine. 20 years old. \$1200. Lebanon (417)664-2198.

BEST OF THE BEST FROM MISSOURI COOKBOOK: \$6.50. 417-532-2045, Lebanon. leave phone number.

TUFFY SPECIAL -Volume Prices 573-657-2176 amegamobilehomes.com

NATURAL BOB-TAILED ENGLISH SHEPHERD PUPPIES: 573-663-7459, 573-760-5157.

TRUSTED & THOROUGH SERVICE

Repairs • Rebuilds
Cast Iron & Steel Welding
Engines • Transmissions
Electrical • Hydraulics
PTO & Drivelines

VALLEY SHOP • 660-458-6747
38745 Molasses Mill Rd, Latham

NEW BIG TEX 22GN FLATBED TRAILER



JIM'S Motors
TRAILERS

I-44 at Exit 208 • Cuba, MO
www.jimsmotors.com
(573)885-2595
(800)897-9840

GREAT SERVICE!
1957-2018 GREAT PRICES!

facebook

Larry Heisel Rentals



We Rent!

Call Larry!
Rental Available in 636 or 573 Area Codes
573-779-1500
www.larryheiselequipment.com

MISSOURI
LAND
COMPANY
Farm, Home & Hunting Properties

Your Land & Farm Experts!

14981 Centerline Ave. • Cole Camp, MO 65325
660-668-4868 • 844-974-1850

12647 S. Hwy 63 • Rolla, MO 65401
573-308-4868 • 844-974-1850

www.MissouriLandCompany.com

Benton Co-12 Acres \$329,999



12 +/- Timbered Acres on AB Highway South of Cole Camp with an Unbelievable, Spacious, Open Floor Plan 5000 Square Foot Home! . This home consists of 2 Living Rooms, 2 Kitchens, 2 Large Bedrooms, 2 Car Garage, 2 Full Size Bathrooms with 2 Walk in Shower. Stunning New Wood Grain Tile Floors have been Installed throughout over Half of the Home. Large Entry Vestibule is lined with Windows for Plants and Reading Area. Private Room for Guests and Family. Open Area Living with Master Chef's Kitchen with Custom Cabinets, Double Ovens, 8ft Island, Granite Counter Tops, and a Large Walk in Pantry. Great Room with Panoramic View of Wooded Acres and Stream. French Doors to the Master Bedroom Suite with Full Bath, Tiled and Walk in Shower and Separate Walk in Closet. Second Bedroom Suite has a Full Bathroom on Same Level as Master Suite. Second Kitchen In The Game Room with Same Level Laundry. Both Bedrooms have Access to Enclosed Side Porch. Large Storage Room and Hot Tub Room for Freezers, also Great for Pets. Home Provides both Wood Burning and Gas Propane Stoves. GENERAC Generator to Ensure Electricity during Power Outages. Fenced in Back Yard for Children and Pets. Large 2 Car Garage Attached to Home. This Property is a MUST SEE to Appreciate! Home

was Added onto in 2018. Also, comes with a 24x32 Outbuilding Shop or Garage Spaces with a Concrete Floor to hold all your Outdoor Accessories. Have yourself a Beautiful View off your Newly Built Screened in Back Porch that Overlooks the Mature Timber Hillside and Deer and Turkey! Property is Constructed with a Long Private Concrete Driveway off of AB Highway. As you enter the Driveway it has a Remarkable View of the Lake of the Ozarks! This is an Unbelievable Place to Call Home or an Amazing Weekend Home for the Entire Family and Friends. **If You Would Like to Request a Showing Please Contact Trenton Scott with Missouri Land Company in Cole Camp Missouri @ (660)-351-3201 or (844)-974-1850.**

Benton Co-3.6 Acres \$39,900



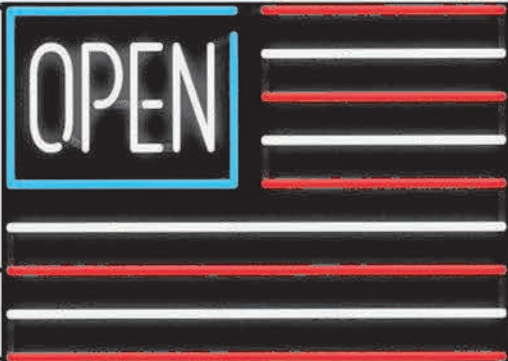
This property was previously used as a country store, with ample parking, 2 gas pumps and plenty of coolers inside, as well as a kitchen for cooking. up lunch for the customers. It has a metal canopy outside , one could use along with maybe some RV hookups. This would bring in some income and plenty of room for 5-6 campers. If someone wanted to remodel and make it a full time house, it would be pretty easy to do. Just sell the coolers, frame some walls and you would easily have a 3 bedroom house. Approximately 2300 sq feet . Close to the Lake of the Ozarks, Charlies Buffett is just down the street. Only 12 miles south of Cole Camp, Mo and 15 to Lincoln. This property is priced right! **Call Mike Stoner at 573-774-9775 Cell**

Camden Co-157 Acres \$249,500



Located just south of Climax Springs Mo in Camden county lies this 157.5 acres. Behind a locked gate for privacy and seclusion. There is a nice hunting cabin with electricity, sewer and a well. The cabin is a one bedroom with a half bath, there is also a full bathroom. The living room is pretty big and plenty of room for a buddy to sleep on the couch. There is a cook shack beside the cabin, for refrigerator, stove and cooking area. There is a lot of value here in these two buildings and utilities. The land is rolling ozark hills, with good timber, trails and a creek in the bottom of the holler. There are some good deer and turkey hunting here in this area, and this tract won't disappoint! The Niangua river is just down the road for water fun or Lake of the Ozarks is just a short drive. **For more information on this tract call Mike Stoner at 573-774-9775 Cell**

Toll FREE number for both locations 844-974-1850



Sale Ends November 30, 2020
 Seymour, Missouri 417-935-4201

Pole Barns & Post Framed Buildings!

Call for free quote, brochure & color chart.
 Other sizes also available.

23'x32'x10' \$4849 Material Only \$6179 Labor Included	23'x40'x10' \$5669 Material Only \$7339 Labor Included	30'x40'x10' \$6769 Material Only \$8969 Labor Included	40'x60'x12' \$11879 Material Only \$16499 Labor Included
---	---	---	---



NOBODY, BUT NOBODY BEATS OUR PRICES!!!

10 ft. Slider • Engineered Trusses 8' O.C. • 2x6 Treated Bottom Wrap • Screws • 2x10 Top Wrap • 2x4 Purlins • Full 29 Gauge Steel • Plus 3 ft. Entry Door with Lock

OPTIONS: Sidewall Heights on all Buildings 10', 12', 14' & 16'. Overhead Garage Door. Skylights. Insulation. Wainscoting. Insulated Vinyl Windows. Cupolas. Labor Rates Slightly Higher over 50 Miles from Seymour. Call for YOUR FREE QUOTE TODAY!!!

PAINTED WHITE, GREEN OR TAN METAL	\$69.99
10' - \$22.10 12' - \$26.52 16' - \$35.36	
MIX & MATCH METAL	\$39.99
8' - \$10.13 10' - \$12.67 12' - \$15.21	
GALVALUME METAL	\$55.50
10' - \$17.60 12' - \$21.12 16' - \$28.16	
GALVANIZED CORRUGATED METAL	\$56.75
8' - \$9.84 10' - \$12.30 12' - \$14.75 16' - \$19.67	

IN STOCK

40yr Painted Metal
\$72.25

KNOTTY PINE DOORS
 Starting at
\$109.99

LP SMARTSIDE T-5 LAP B GRADE \$43.59/SQ

Car Siding!

1x6 White Pine Siding	49¢ in ft
1x8 White Pine Siding	59¢ in ft

* 4 Profiles to choose from!
 Broken Bundles Add 10¢ Per Ft.

4x8 Sheeting
 Less than full units Add \$1 per sheet

3/8" Beaded Paneling	\$15.99
7/16" T111 Siding	\$23.99
Paneling	\$9.99
1/2" Plywood	\$19.99
3/4" Plywood	\$23.99
3/16 Pegboard	\$12.99

**LOTS OF MATERIAL AVAILABLE
 FOR THOSE IN HOME PROJECTS!**

NEW PACKAGE HOMES



2x6—16" on center-Exterior Stud Walls
 Residential Roof Trusses-2' on center
 4/12 pitch with 1' over hang
 40 year Painted Metal roofing in 20 Different Colors
 Profile Ridge Vent - Ventilated Ridge Cap
 Vinyl Center Vent Soffit
 Color Matched Metal Fascia & Gable Trim
 2 - 3' 6 Panel Entry Doors
 4 - 3'x4' Vinyl Insulated Windows

Shown with Available Options
 Your Choice of either:
 Stock 5/8" T111 Wood Siding w/1x4 Pine Window & Door Trim - or -
 7/16" OSB & House Wrap ready for other finish options

**ALL FIGURED FOR SUITABLE CUSTOMER
 SUPPLIED SLAB OR SUB-FLOOR**

Price for Basic Materials Package & Labor

20x24(480 sq. ft.)	20x32(640 sq. ft.)	20x40(800 sq. ft.)	28x40(1120 sq. ft.)	28x48(1344 sq. ft.)
\$11425	\$13349	\$15199	\$19049	\$21300

REAL WOOD SIDING

2x6 Log Siding - 1.09¢ In ft
1x8 Beveled Cedar from- 64¢ In ft
7/16 T1-11 Siding from \$23.99

DECK PACKAGES
 Materials Only
SOLD OUT!

QUAKER Now Stocking Quaker Vinyl Windows

2030 \$ 110.99	3030 \$125.99
3040 \$135.99	3052 \$155.99
3040Twin \$299.99	3052Twin \$349.99



LUCKY DISCOUNT LUMBER
417-935-4201
455 State Hwy C • Seymour MO 65746
www.luckydiscountlumber.com



*Some restrictions apply see store for details. Prices subject to change without notice.

2019/2020 4x5 ROUND BALES: plastic twine, always shedded, pay for now and will store until April. Delivery or pickup. St James, MO. 573-467-5043 or 573-699-4577.

PRIZE COUNTRY QUILTS BOOK: hard-back, 230 pages, \$5.00. 417-532-2045. Lebanon. Leave phone number

12 FT. CARGO TRAILER: 12ft. utility flat-bed trailer, 573-999-7136. Camdenton.

LIVE WORK PLAY

We're **HIRING!**

JOB

are available in Lebanon!

lacledecountymohasjobs.com

NEW HOLLAND TRACTOR: TS100, 1998, 100 HP, cab w/air/heat/radio; 2017 Westendorf Max420 front loader (inside disconnect/connect) /7' bucket/bale spikes, new rubber; all: \$24,900, or separate: tractor: \$19,900; loader and implements: \$6900. Lebanon (417)664-2198.

CUSTOM SAW MILLING: Lebanon. 417-533-4607, 417-664-1195.

LOG SIDING SALE: 2X8 Western Cedar .99 ft/ Pine \$1.30 ft while supplies last. www.pineridgerustic.com 573-729-7226.

0% for 4 Years

HEATMOR
Outdoor Wood Furnace

as low as **\$168** per month

HEATMOR MIDWEST
Licking, MO 65542 • 573-674-2962

TRUCK LOAD OF FLEA MARKET & AUCTION ITEMS: \$200 or trade. 573-327-9068

METAL DETECTOR: MineLab, new-in-box, Equinox 800 series, \$700. Lebanon (417)664-2198.

REGISTERED HEREFORD & ANGUS BULLS: Home raised, Some Show-Me Select Qualified. 573-701-7828. Belgrade

KUSTER LOGGING

BUYER of Standing Timber Oak and Walnut

Dozing Now Available

417-259-0047

References Available



2017 JAYCO FLIGHT: 19.5ft pull-behind camper, excellent condition, queen bed, table converts to bunk, tub/shower, added-TV, stabilizer/hitch bars, Price reduced. \$10,900. 417-293-3574, after 5pm or leave message.

16FT FLATBED TRAILER: King Wood Stove. 417-256-1627.

NEW MERCHANDISE & TOOL SALE: Saturday November 21st, 2020 6:00PM. Two miles North of St James on Hwy 68N @ Rolla Horse Auction. FOR INFO: 573-263-4232

Buildings • Hunter's Cabins • Lawn Furniture

JAMCO BUILDERS

JAMCO Portable Buildings

800-688-2064 • 307 Enterprise Dr. • Seymour, MO • www.jamcobuilders.com

Rent To Own Plan



SACAGAWEA GOLDEN DOLLARS: Face value \$1. Original issue 2000, uncirculated. In rolls of 5. \$30. 417-686-0032, Ava.

FRUEHAUF 71 MODEL CATTLE TRAILER: 45ft, aluminum, straight-deck, 90%tires. \$5,000. 417-543-5674.

STOCK TRAILER: 1983 Coose, goose-neck; 24', new floor. Four new 10 ply truck tires. \$2450. Lebanon (417)664-2198.

Cheyenne Acres
Horse & Tack

BUY - SELL - TRADE

by Rolla, MO

Call For Directions & Availability

Call Kip
573-368-9402



NO \$\$\$ DOWN MOBILE HOMES- Call for details 573-499-9993 columbiadis-counthomes.com

HIGH FLOW STANDARD TOILET: new-in-box; 1.6 gpf; white, round bowl. \$200. Lebanon (417)664-2198.

LIONEL TRAIN SET: Steam engine, tender, caboose and other car, track and transformer. \$195. 573-364-7465, Rolla.

PINNACLE RANCH: Red Angus and Red Balancer Heifers for sale. 417-679-4269.

2020 KC CHIEFS MCDONALDS RED FRIDAY SUPERBOWL CHAMPS FLAGS: unopened, NIP \$15/each. Salem, 573-854-8132.

VILLA HOMES IN ROLLA: Has NEW and USED Mobile Homes. Call David for info: 573-578-8072.

CAMPER WINDOWS: (2) 29 3/4 X 21 3/4, (1) 23 3/4 X 21 3/4, (1) 34 X 3/4, (1) 47 3/4 X 21 3/4. \$200 FOR ALL. 417-664-8823.

FIRESTONE MINI SPARE TIRE: Brand new, never used, 23" diameter, 5 hole, T125-70-R16, tubeless radial. \$85 firm. 417-686-0032. Ava

WINCHESTER 150: round, steel, shellcase, 9mm, ammo \$50 per box. 417-844-4319.

EARNIE DEANE OZARKS COUNTRY BOOK: A collection of articles about folklore, places, people, customs, history. \$7.50. Lebanon. 417-532-2045, Lebanon. leave phone number.

CRAWFORD *Online* AUCTION

NEIGHBORS LANDING BAR AND GRILL

**Online bidding begins to close
Sunday, November 29th at 7:00 PM
2935 State Rd. TT, Sunrise Beach, MO 65079**



Owners have decided to retire from business and pursue other interests. They have decided to sell the entire property "Neighbors Landing" at online auction as a turn key business.

■ TURN KEY BUSINESS/REAL ESTATE AUCTION ■



AUCTIONS ENDING EACH SUNDAY! BID ONLINE AT:

WWW.OZARKBID.COM

- Online
CRAWFORD LLC
Auction Service

Register and bid online
@ www.OzarkBid.com *Ozarkbid*



Contact Chase Crawford, Crawford Auction Service for more info @ 417-399-1904



YOUR Real Estate Auction Specialist

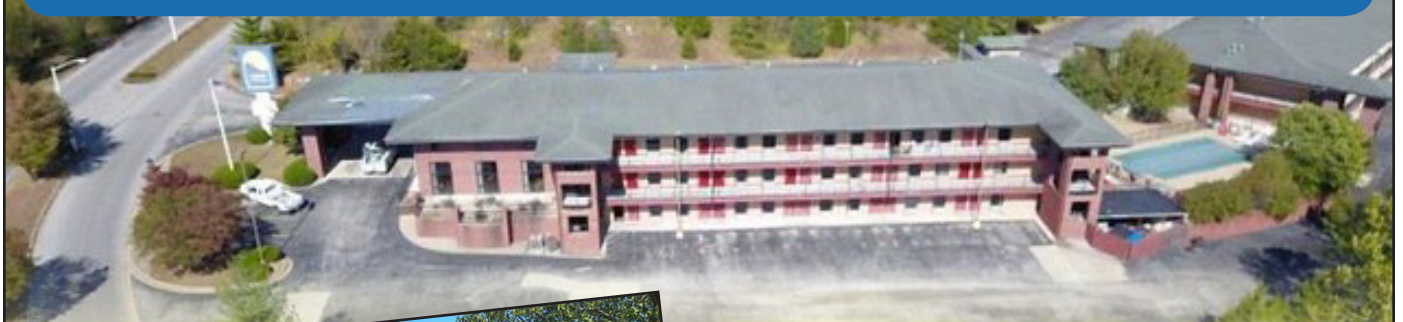


Bob Kollmeier CAI, CAGA
Auctions/Appraisals/
Real Estate • 417-882-5664



FORECLOSED PROPERTY
LODGE AT THE FALLS 120 ROOM HOTEL IN BRANSON, MO
▶▶▶ REAL ESTATE AUCTION
SATURDAY, NOVEMBER 21, 12:00 NOON
3245 FALLS PARKWAY, BRANSON, MO

DIRECTIONS: FROM W. 76 COUNTRY BLVD. & GRETN RD. (HWY S. 165 IN BRANSON, MO), GO SOUTH ON GRETN RD. 8/10MI. TO FALLS PARKWAY THEN LEFT ON FALLS PARKWAY 1 BLOCK. WATCH FOR SIGNS!



SELLS AT 12NOON! Don't miss this opportunity to buy at auction, this multi-level hotel in one of Missouri's largest tourist destinations on 3.83 acres! Hotel features include approximately 120 queen, king and suite hotel rooms. Front lobby entrance area with 1 bedroom living quarters, breakfast dining area with prep room, 2 offices, conference rooms, in ground pool, laundry facilities, elevator and storage and maintenance rooms!

YR BUILT: 1993 LOT SIZE: 3.83 ACRES. 2019 TAXES: \$32,137.51.



For viewing call office 417-882-5664. Co Brokerage fee 3%. Realtors must register buyers 48 hours prior to auction day.

FOR MORE INFO VISIT BOBKAUCTIONS.COM OR AUCTIONZIP.COM
FOR ONLINE BIDDING WALKERAUCTIONS.COM

AUCTIONEER'S NOTE: Real estate sell first at 12 noon sharp! Due to legal reasons, furniture, fixtures & equipment will sell in bulk (in entirety) immediately following real estate. Property sells subject to bank approval. This property will be sold on-site auction day by Bob Kollmeier Auctions and will also be offered online with simulcast bidding day of auction by Walker Auctions LLC, Memphis, TN.

TERMS: 10% down auction day, balance due on or before December 28, 2020. REAL ESTATE SELLS "as is, where is".



SL-0000426478

Bob Kollmeier
AUCTIONS
APPRAISALS & REAL ESTATE
417.882.5664



RICHARD JEAN
AUCTIONEER
417.299.8401



RUSS SMITH
AUCTIONEER/SET UP MANAGER
417.844.0205

PUBLIC AUCTION

Saturday, November 21st, beginning at 9:30 A.M. DST

Located at 8600 Bellair Rd, Pilot Grove, MO 65276. From Pilot Grove: Take Harris Street by Casey's, go East to Bellair Rd, left 1 mile to farm drive. Watch for auction today signs.

TRACTORS & EQUIPMENT

Ford 5000 tractor diesel dual outlets, rebuilt injection pump, new battery, good straight tractor

Ford 961 tractor 1958 model

JD model 960 20' field cultivator with harrow

IH 496 disc —Case 11' disc

IH 5 bottom semi-mount plow

Oliver 5 bottom semi-mount plow

IH 55 12" chisel plow

10' IH disc with harrow

JD 12' cultimulcher

Ford 3 bottom 3 pt plow

2-pasture drags

JD 14 hole grain drill with grass seeder

Ford 515 sickle mower

11' box scraper pull type

6' Brush hog —Tufline 3 pt 6' blade

3 pt log splitter —Wick wiper

Danuser post hole digger 6-11" and 19" augers

3 pt bale

spike—3 pt carry all

Heavy duty 10' trailer

Small wooden 2 wheel trailer

Wagon with grain sides

Wagon with grain sides and hoist

Chevrolet pickup trailer

PTO grass seeder

Fuel tank with electric pump, tank heater

3 pt sprayer —Cyclone 12 volt seeder

300 gal water tank (clean)

2-rectangular hay feeders (small square bales)

3 pt jitter bug, hydraulic grain auger

Lot fence supplies T posts, barbed wire, woven wire

Electric fence posts, Insulators, No. 9 wire

Railroad iron, corrugated metal (galv)

8-12' panels 1 with 4' walk thru

5-10' gates, 2-12' gates, 3-14' gates, 8' gate

Lot combination panels, woven wire stretchers

14" Implement rims, 16" tires

Hog squeeze chute



TOOLS AND MISC.

Log chain—Bench vise—Draw bar

Top link—Iron wheels—Old pulleys

Trailer jack—Hydraulic jack—Fence charger

Shovels—Grease gun—Pick—Bar

Live traps—Forks—Sledge hammer

Hydraulic cylinder—Cant hook

CONSIGNMENTS

Owner: Kenneth Mize

JD 920 MO-CO disc mower w/ flails 1000 RPM shaft

Landoll soil master 9 shank disc chisel

Krause 18' disc —JD 7000 planter 6 row

IH 5100 soybean special drill

2-Kilbros gravity wagons center dump heavy duty gears

15' cultipacker

16' flat bed trailer steel deck (no title)

Clark crop sprayer 40' booms hydraulic lift

3 pt boom with extension

Kewanee 6 row cultivator

Danuser post hole digger 12" auger

Craftsman 5600 watt generator

Fuel tank manual pump

3 pt forks, bale spear, 3 pt A frame

Bale mover for flatbed truck

14' and 16' gate, T posts, stock tank

Owner: Steve Day

Ford 3000 gas tractor good tires (nice)

IH feed grinder mixer w/ drag

Lincoln pipe liner welder on trailer

Owner: Roger Green

14 sets scaffolding, adjustable legs, casters

Aluminum 16'24" walk board

Aluminum 24'24" walk board

40' Aluminum Extension ladder

Ladder jacks—Chain binder

32' Aluminum Extension ladder

Implement tires

As the Harveys no longer have a need for the above tractors, machinery, and misc farm items of good quality, they will offer them at auction for your consideration. Also many good items consigned by friends and neighbors. Hope to see you at the auction.

Thanks, Larry

Owners: Jim and Betty Harvey

For more auctions go to www.auctionzip.com ID # 47012

Auctioneers
Larry Martin & Loren Martin



MARTIN AUCTIONS

1-660-337-6471



Auctioneers
Mel Yoder

Terms: Cash or check with ID. Not responsible for accidents. Statements made day of auction take precedence over printed material

PUBLIC AUCTION

Saturday, November 28th, beginning at 9:00 A.M.

Located at: 33213 Lime Quarry Rd, California, MO 65018. From California take Hwy 87 South 3 miles to Hwy F. Turn right on Hwy F. Go approximately 2 miles to driveway on right. Watch for auction today signs.

FARM MACHINERY

Ford 7700 tractor 4 wheel drive, cab with loader
 JD 3020 diesel tractor 2499 hours on overhaul
 Allis Chalmers D19 diesel tractor recent overhaul
 Allis Chalmers D17 tractor (gas)
 1994 1 ton pickup truck 5 speed manual 350 engine with Deweze hay bed
 1985 3/4 ton pickup 4 speed, 350 engine (low miles)
 Case IH 8330 haybine, stub guards (nice)
 MF diesel backhoe
 Diamond K 8' box blade
 2-5800 Hesston big round hay balers
 Bush hog post hole digger, 12" auger
 2-Gravity flow wagons
 5' brush cutter, 3 pt
 Pick up trailer
 Bulk feed bin
 1840 Case skid loader 4359 hrs foam filled tires w/ grapple bucket
 Burabuilt pasture punch
 12' pasture drag
 Anderson rock picker
 Krone 4 basket hay tedder
 OMI 10 wheel hay rake
 NH 56 side delivery hay rake
 Grain auger
 Older Ford industrial loader
 W.W. stock trailer (homemade title)
 8" Grain auger
 18' homemade flat bed trailer
 Steel tracks to fit case skid loader
 Rissler creep feeder
 Squeeze chute
 3 pt bale carrier, bale forks for loader
 120 gal fuel tank with manual pump
 2-Engine stands, older parts washer
 Engine hoist, baler kicker wheels
 Rubber maid stock tanks, implement rims, tires
 D17 Allis rear end, rims, tires
 D17 Allis lift arms, 18.4-26 rims and tires
 Metal calf shelters, 10' roll back poly



Snapper tiller, Troy built tiller
 Lot-Allis tractor parts, hyd cyl, hyd valves, 350
 Engine block, Scrap iron
 Gehl grinder, Auger wagon
 Several trucks for parts or scrap
 Gleaner K combine engine
 Metal roofing, many small and misc items

REAL ESTATE

Scenic 172 acre cattle farm with Hwy F frontage on South side. Bordering the North Moreau on the North side. Property has older house with outdoor wood furnace. Shop garage combination heated by wood furnace, approx. 30'x 60'. Hay barn equipment storage 50'x 80'. 3 freeze proof waterers located on property. Good well. **Real estate will sell at Noon.**

Terms: 10% of purchase price down on auction day. Balance due in 30 days, on closing date. Closing cost to be split 50/50 between buyer and seller.



As Mr. Bolinger decided to retire from farming he will offer the above listed real estate, farm machinery, and misc. items for your consideration at public auction. A rare opportunity to buy a very scenic rolling cattle farm in one unit. Property is mostly open with good grass and a very pretty view North toward California. The old lime quarry is located on Northeast corner of property. Must see to appreciate. For more information or to view call Larry at 660-337-6471. Hope to see you at the auction.

Thanks, Larry

Owner: Bill Bolinger

For more auctions go to www.auctionzip.com ID # 47012

Auctioneers
 Larry Martin & Loren Martin



MARTIN AUCTIONS

1-660-337-6471



Auctioneers
 Mel Yoder

Terms: Cash or check with ID. Not responsible for accidents. Statements made day of auction take precedence over printed material

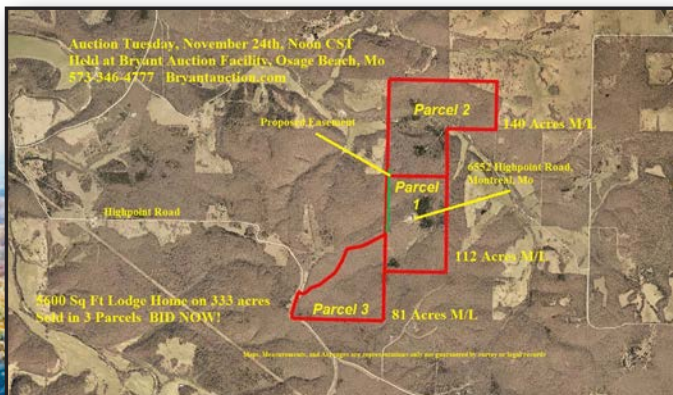


— Bankruptcy Court Order —

RANCH AND LAND AUCTION

Tuesday, November 24th, 2020 Noon CST

Auction Held at Bryant Auction Facility, 335 North Frontage Road, Osage Beach, Mo 65065



**BEAUTIFUL 7 BEDROOM
3 1/2 BATH RANCH
ON 333 ACRES M/L**
6552 HIGH POINT ROAD, MONTREAL, MO 65591

**SOLD IN 3 PARCELS: PARCEL 1- 112 ACRES,
PARCEL 2- 140 ACRES, PARCEL 3- 81 ACRES M/L**
**VIEWING AND INSPECTIONS: WEDNESDAY, NOV 4TH, 4-6 PM
SATURDAY, NOV 14TH, 10 AM-12 PM OR BY APPOINTMENT ONLY**
**ONCE IN A LIFETIME OPPORTUNITY TO BUY AN ESTATE! BEAUTIFUL
LODGE STYLE 5 BEDROOM 2.5 BATHS AND LOWER LEVEL
APARTMENT. WANT SOCIAL DISTANCE?**

**PARCEL 1 HAS LODGE AND APPROXIMATELY 112 ACRES,
PARCEL 2 HAS 140 ACRES, PARCEL 3 HAS 81 ACRE
AND HIGHPOINT ROAD FRONTAGE**

**THIS HIDDEN GEM IS NESTLED IN 333 WOODED ACRES! THE SERENE
DRIVE IN IS UNDER A CANOPY OF OAK AND WALNUT TREES.
THE STUNNING MAIN FLOOR INCLUDES MANY CUSTOM DETAILS
INCLUDING A DREAM KITCHEN WITH GRANITE COUNTERTOPS,
ALDER-WOOD CABINERY, WITH PULLOUTS AND CUBBIES.
STUNNING CHERRY WOOD FLOORING RUNS THROUGH THE OPEN
KITCHEN, DINING, AND LIVING ROOMS WHICH ARE COMPLEMENTED
BY LARGE WINDOWS OFFERING A GREAT VIEW OF THE WOODS
AND NATURAL LIGHT. AN ELEGANT CEILING AND WALLS ARE DONE
IN WOOD MILLED AND SHIPPED FROM NEW YORK. A THREE-CAR
GARAGE ALLOWS PLENTY OF ROOM AND STORAGE. THE BASEMENT
OFFERS ANOTHER APPROX. 2800 SQUARE FEET OF POSSIBILITIES.
IT IS MOSTLY FINISHED AND OFFERS AN APARTMENT AND EXTRA
ROOMS. THIS PROPERTY IS KNOWN FOR TROPHY HUNTING! EASY
TO DISCONNECT FROM HUSTLE AND BUSTLE, YET CLOSE TO LAKE OF
THE OZARKS, SHOOTING RANGES, SHOPPING, AND DINING.**

FULL TERMS ON BRYANTAUCION.COM

Auctioneer makes no representations or warranties of any kind or character whatsoever, whether express or implied, with respect to any property. Each bidder hereby releases Auctioneer and its employees, officers, directors, representatives, attorneys, brokers and agents ("representatives") from any and all claims that any such bidder may now have or hereafter acquire against auctioneer or any of its representatives for any damage or injury resulting from or relating to any errors, omissions or other conditions affecting any property. This release includes claims of which Bidder is presently unaware or does not presently suspect to exist in Bidder's favor which, if known by Bidder, would materially affect Bidder's release of Auctioneer. All information was gathered from sources deemed to be reliable and believed to be correct, however, this information is not guaranteed by the Seller, Auctioneer or their agents. All bidders are urged to do their own due diligence and verify all information including improvements, sizes, condition, and contaminants, including but not limited to, sewer system, water/well, lead, asbestos, mold, or other environmental issues. Surveys, existing easements, encroachments, inspections, appraisals, planning and zoning compliance, permits, association compliance, dockage, ingress, egress, and regress, incomes, revenue, and leases are the responsibility of the Buyer to satisfy and or remedy. Camden County, MO Recorder of Deeds and Camden County, Mo GIS, will be the reference used to convey parcel size and location. Verification of maps shown sale day is the responsibility of the Buyer. Not guaranteed by Survey or legal record. If parcels 1, 2, and 3 sell to different buyers, buyers agree to survey and record an easement that satisfies buyers to allow ingress, egress, and regress to buyers adjoining parcels. The easement should be surveyed and recorded within 30 days of this auction date. This process is the full responsibility of the buyers in this auction. Financing should be arranged prior to the auction. This property not sold contingent on financing. Auctioneer is an agent for the Seller in this transaction. All announcements day of sale take precedence over all previous printed material. Auctioneer reserves the right to reject any and all bids and will decide increments of bidding. Starting bid may not be the reserve bid required by the Seller. This auction will be live onsite and online. Seller has 48 hours to approve or reject any or all bids. Maps are for reference only, and are not guaranteed by survey or legal record. Bids are a legal commitment to purchase property.

AUCTIONS EVERY THURSDAY AND OPEN ALL WEEK!

BRYANTAUCION.COM

SOLD!



573 346-4777
sold@BryantAuction.com

ANGELA SCHEJBAL | OFFICE MANAGER sold@bryantauction.com
 RICK BRYANT | PRESIDENT/AUCTIONEER rick@bryantauction.com
 573-346-4777 Office • 573-346-4068 Fax
 Facebook Bryant Auction
 Mail to: 335 North Frontage Rd., Osage Beach, MO 65065



EXCELLENT RESTAURANT EQUIPMENT & BUILDING MATERIALS LIVE AUCTION

MON, NOVEMBER 23 - 10:00 AM

CONTENTS FORMERLY OF MOE'S SOUTHWEST GRILL

503 E NIFONG, SUITE E • COLUMBIA, MO 65201

LOCATION: IN THE ROCK BRIDGE SHOPPING CENTER (NEXT DOOR TO SUBWAY)

SELLING →

NEW STONE VENEER & SHEET ROCK: 4 BRAND NEW PALLETIZED CRATES VERSETTA STONE PANELIZED STONE VENEER "PLUM CREEK", EXC-APPROX 20 4'X8' SHEETS 5/8" CONTRACTORS GRADE SHEET ROCK/DRY WALL

RESTAURANT EQUIPMENT: KOLPAK 13'X9' LATE MODEL WALKIN COOLER W/CONDENSOR & COMPRESSOR, NICE-2 HOSHIZAKI 650 LB CUBE ICE MACHINES, LATE MODEL, LIKE NEW-2 SINGLE GLASS DOOR REACHIN MERCHANDISER COOLERS-2 RANDELL REFRIGERATED SANDWICH PREP TABLES-BEV AIR 72" REFRIG FOUR DRAWER CHEF'S BASE-ROBOT COUPE CL50 COMMCL FOOD PROCESSOR-3 TURBO CHEF RAPID COOK HI SPEED COUNTERTOP OVENS-CLAMSHELL NAT GAS GRILL, ELEC THERMO CONTROLLED, 24"-STAR ULTRA MAX 36" NAT GAS CTR MDL GRILL-4 STAR PRO MAX TWO SIDED SANDWICH GRILLS-STAR 2 BURNER GAS RANGE-PITCO FLR MDL LG CAPACITY GAS DEEP FRYER-2 ALTO SHAAM STAINLESS STEEL HEATED HOLDING CABINETS-DUKE HOLDING CABINET-2 TEXICAN CHIP MASTER TORTILLA CHIP WARMERS-3 & 4 COMPARTMENT STEAMTABLES-DROPIN HOT & COLD UNITS-2 SS SGL COMP FREESTANDING SINKS-SEV HAND SINKS-SS WORKTABLES-COATED WIRE SHELVING-EXCELLENT ALL MATCHING SEATING INCL TABLES, CHAIRS & BOOTHS, LIKE NEW! OTHER RESTAURANT EQUIPMENT & SMALLWARES TOO NUMEROUS TO LIST!

NOTE: VISIT OUR WEBSITE & CLICK ON THE "AUCTIONS" TAB TO VIEW THE COMPLETE LISTING AND PHOTO GALLERY. EXCELLENT, LATE MODEL EQUIPMENT WITH MOST BEING 6 YEARS OLD OR NEWER! ALL WAS HOOKED UP & WORKING AT TIME OF REMOVAL FROM RESTAURANT AND OWNER'S MANUALS ON ALMOST ALL ITEMS! SUPER WALKIN COOLER, ICE MACHINES, REFRIGERATION AND COOKING ITEMS AS WELL AS ATTRACTIVE, ALL MATCHING DINING ROOM SEATING IN FANTASTIC CONDITION! DON'T MISS THIS OPPORTUNITY SO MARK YOUR CALENDAR & MAKE PLANS TO ATTEND THIS OUTSTANDING RESTAURANT AUCTION. COME PREPARED TO REMOVE & LOAD ON AUCTION DAY IF POSSIBLE!

MARON RESTAURANT EQUIPMENT, LLC & AUCTIONS CO.

RONA DOWNS & RICK NEWMAN, AUCTIONEERS

P O BOX 110, COLLINS, MO • 417-327-5619

www.maronrestauranteqpt.com

FARM AUCTION

22726 Sieving Rd • Cole Camp, Mo

Due to health reasons, I have sold my place and will sell the following at auction located from Sedalia, south on 65 Hwy 15 miles to Sieving Rd, then west ¼ mile to sale on:

SAT. NOV. 28TH, 2020 STARTING AT 9 AM NOTE TIME!



TRACTORS John Deere 2510 gas tractor, w/JD 47 manual bucket loader * John Deere 1010 RS, 4 cyl, gas tractor * John Deere 420T tractor wide front, older restoration * John Deere 4020 diesel tractor, dual hydraulics, w/46A hyd bucket loader * IH 606 gas tractor, wide front, needs repair * 1936 John Deere B tractor, unstyled, does not run * John Deere 4010 diesel tractor, dual hydraulics, as-is * C Allis Chalmers tractor w/side mower, damaged, does not run * 1939 H International Farmall H tractor, does not run * 1939 H Farmall tractor, rear steel, does not run * 1939 John Deere B tractor, does not run * 88 Oliver Standard tractor, wide front, does not run * 77 Oliver tractor, good tires, does not run * Oliver 70 Hart-Parr tractor, rear steel, does not run * Int Farmall 12 tractor, round spoke rears, Heizer gear box, does not run * Int. Cub tractor, body damage * IH 140 tractor w/side mount mower, for parts **SHOP TOOLS** Ingersoll Rand 80 gal 7 1/2 hp air compressor, like new * Craftsman 1/4 hp 3 gal air compressor, new in box * Miller Diversion 165 Tig welder, new in box * Miller Thunderbolt XL stick welder, 225 ac * Miller mig welder * Hobart Beta-mig 200 * ESAB plasma cutter * Clarke 10 gal Abrasive blaster * Mack surface blaster kit * Skat Blast dry blast cabinet, 4" * Campbell Hausfeld 5" high speed sander * Mack 22 ton Air Power hydraulic jack on wheels * Milwaukee 7" angle grinder * Craftsman reciprocating saw, new in box * Craftsman 4" belt 6" disk sander, New in box * Ingersoll Rand 3/4" air impact, new in box * T&P airless Paint sprayer unit, new * Jet Band saw, on wheels * Milwaukee cut off saw * Ryobi cut-off machine, 12" * Dewalt 18 volt grinder, 4 1/2" 3 phase double wheel grinder * Double wheel grinder on stand * Clarke 1" drive socket set, new * Ryobi 1/2" Lg set Blue Point, S&K, and Mack box and open-end wrenches * 4, 6, 12 pt swivel impact sockets * Set BE & OE wrenches, up to 2" * Ryobi 1/2" hammer drill * SAE 9/16-1" Mack tap and die set * Mack metric tap and die set * Set of open end angle wrenches * Matco Air chisel, new Mack air drill, Mack air grinder, other air tools * Ram 9 pc 101b Slide hammer puller set * Diamond 24" crescent, several other 16 & 18" crescent wrenches * 8 Impact adapters, diff sizes * Windpower PTO high pressure washer * Craftsman 16 gal wet/dry vac * Air torch * Several portable air tanks * Maxx Air 43" shop fan * Parts washer * Amoco Tire machine, 3 phase w/phase converter * Pin hammer, tire hammer, punches, chisels, Chain hoist, Hydraulic jacks, Screwdrivers, Hole saw bits, Brake tools, 6" dial calipers, Snatch block, Set of Mack gear pullers, etc * Craftsman hydraulic seat, new in box **TOOL CABINETS AND STORAGE** 2- Blue Point 2 drawer tool carts w/ bottom tray, on wheels * Kobalt 10 drawer shop cabinet * Waterloo 28 drawer tool cabinet * Clarke HD plus 16 drawer tool cabinet * 2- Craftsman 10 drawer work benches * Matco 19 drawer tool cabinet * 48 bin parts cabinet * 96 bin parts cabinet * 60 drawer metal parts cabinet * 4 drawer tool box w/lid * 2- 15 locker cabinets * 2- 2 drawer tool carts w/trays * Several metal tool boxes * 2 Metal work benches * Craftsman 2 tray Service cart, new in box * Several sets of metal shelving * Several parts storage cabinets

FARM EQUIPMENT John Deere 7000 4 row Planter * John Deere #210 12' disk * 150 bu Gravity Flo wagon, mounted on 963, w/spring bolster running gear * New Holland 850 baler, elect tie, one owner * 430 OMC grinder-mixer, 80 bu, always under shed * John Deere 3300 Combine, rotary screen, been kept under shed * John Deere 306 6' brush cutter * New Holland 258 Rolabar dolly wheel rake * New Holland 260 Rolabar dolly wheel rake, rubber teeth * New Holland 1033 Stackliner * John Deere 1100 3 pt 11 1/2' field cultivator * John Deere 13 hole drill w/grass seed attachment * Noble Stine 4 row Cultivator * Landoll 11' chisel plow * John Deere 6600 diesel combine, RWA, for parts * 2- John Deere 55 Combines, self-propelled, 1 has 303 engine, for parts * JD 454 row crop head * John Deere 237 corn picker, for parts * 5' Brush hog for parts * John Deere 800 swather, self-propelled w/trailer * John Deere drill for parts * Allis Chalmers baler for parts * New Holland tedder, needs work * John Deere 43 corn sheller * Old Montgomery Ward Corn sheller * Hammermill for Cub Farmall * Front blade for Cub Farmall * 1200 AC field Cultivator, pull type * 3 pt 6' Blade * 50 gal Sprayer * Bale tumble bug * Pick up attachment, scrap * 2- 3 pt 150 Gal sprayer, for parts * Other misc equipment for scrap **CHIPPER** Vermeer 606 brush Chipper, 3 pt PTO driven, hyd. driven feed roll, like new **FARM** Gibson oat crusher, Ohio pat 1908 * Pr of John Deere wrap-around weights * John Deere slab weight * 12 gal sprayer for ATV * Belt pully for Ford tractor, Various tractor parts * Metal feed troughs * Wagon running gears * 450 gal Water tank **VEHICLES** 1993 Chevy 3/4 ton truck w/flatbed, 44, manual shift, does not run * 1982 Chevy 5-10, 4 spd, w/ camper top, for salvage * Chevy 60 Lime truck, for salvage **MISC** Cub cadet RT35 rear tine tiller * Delta Trukbox tool box for full size pickup * David Bradley garden tractor w/cycle mower * Older Chain digger * Barrell dolly * Int. Cadet 268 Snow blower * Lawnmower lift C 2-11.24 Firestone tires, 60% * Sausage stuffer, cream cans, other misc antique items * Metal yard wagon * Old IH and 2 Cub Cadet lawn tractors * Used steel posts, scrap metal

WAYNE SCHUMACHER 660-668-3240

LARRY
DRENON AUCTION

www.drenonauction.com

Since 1969

Larry 660-596-8515 Lacey 660-723-1104 Laramie 660-221-4386

660-547-3557

Note: Loaders will be available on site.

Terms: Cash, approved check, credit/debit card (convenience fee applied). Nothing to be removed until settled for. Not responsible for accidents. Statements made day of sale take precedence over printed material. Lunch Served

PUBLIC AUCTION

Friday November 27, 2020 9:00AM
940 S. Iron Mountain Rd Fordland, MO 65652

Directions: From Springfield Take Hwy 60 East 18 Miles To Iron Mtn. Rd. Turn North Across Hwy 60 Onto Iron Mnt. Rd. To Auction Watch For Signs.
-EQUIPMENT SELLS AROUND NOON-



Vehicles, Equipment & Misc

2011 25' Coleman Gooseneck Camper w/ Slide Out & 16' Awning* JD Gator 825i S4 XUV Crew Cab SxS* 2008 Ford F250 V8 w/ Utility Bed, Compressor & 135k Miles* 2006 International 16' Double Framed Dump Truck 10Spd, Cummins w/ Tarp & 228k Miles* Freightliner 15' Bed Double Framed Dump Truck 10spd, C7 Cat, 169k Miles* 2004 GMC C5000 Box Truck w/ Tommy Lift & 216k Miles* 2003 F350 XLT V10 w/ 205k Miles* 2000 Kiefer Weekender 3 Horse Trailer w/ Rear Tack* 2019 Tiger Gooseneck 27' Trailer w/ Ramps* 2016 Dual Tandem 10k lb Axle 34' Gooseneck Trailer* 1999 WW 24' Stock Trailer w/ Title* Yard Trailer* Starlite 24' Flatbed Trailer w/ 4'6" Dovetail Gooseneck* 2014 8'6"x20" Sharp Enclosed Double Axle Cargo Trailer* 1997 Talbert 45' Trailer* New Holland TC35D 4x4 Tractor w/ Hyd, QA Front End Ldr, Hydrostatic & 1613hrs* 1952 Farnall Super C Tractor* 2pt Sickle Bar Mower* 1954 Farnall Super C Tractor w/ 2pt* Hay Ring* Hay Bales * Oliver 60 Tractor* International 574 Tractor- Needs Work* Bushog Blades* Large Wood Wagon* 3pt Post Hole Auger* Deweeze 3pt Bale Unroller* 500gal Propane Tank* My-D Han-D Cake Feeder* Superior Bale Spike* Aggieville Livestock Scales* Square Bale Loader

Furniture & Appliances

1963 Wurlitzer Jukebox* Slot Machines* Butcher Block Island* Rustic Pine Desk, Chair, Book Shelf & File Cabinet* Washers* Brass Hall Tree* Kneehole Desk* Upholstered Chair & Ottoman* Schwinn Biofit Exerciser* School Desk* Bookcase* Chest Of Drawers* Antique Bedroom Set* Dressers* Sectional* Baby Beds* Chest Of Drawers* Antique Wash Stands* Butcher Block Island* Antique Marble Top Dresser w/ Mirror* Marble Top End Table* Treadmill* End Tables* Shelves* Cabinets* Desk* Couch* Double Drop Leaf Table* Queen Bed* Twin Bed* Office Chairs* Cabinets* Bowflex Exercise Equipment* Handicap Equipment

Tools, Lawn & Garden

Landscaping Rocks* Big Green Egg w/ Cover* Lawn Mower* Teakwood Patio Table w/ Umbrella & Chairs* Chainsaws* Bits* Sheet Metal Roller* Delta Power Tools* Power Washer* Tiller* ATV Fertilizer Spreader* Blacksmith Grinder* Push Spreader* Pedestal Grinder* Power Hacksaw* Dolly* Brakepress* Shelves* Snap On Hyd Jack* Snap On Cherry Picker* Weed Sprayer* Double Swing* Sand Blast Cabinet* Patio Table & Chairs* Bikes* Tire Chains* Lots Of Tires* Tarps* Yard Tools* Truck Tool Boxes* Compound Miter Saw* Weedeater* Electric Wire* Ext Cords* Chains* Air Compressor* Wrenches* Vice* Battery Chargers* Polesaw* Makita Grinder* Buckets* Ladders* Ramps* Hoses* Spraygun* Wind* Jack* Snapon Timing Light* Tool Box* Lots Of Misc Car Parts* Craftsman Table Saw* Sander* Central Machinery Drill Press* Craftsman AC/DC Welder

Cattle

2- Charolais Springer Heifers

Antiques, Collectibles & Household

Edge Power Wheel Chair* Antique Rulers* Kitchenaid Mixer* Saddles* Dehumidifier* Kerosene Lamps* Primitives* Breadbox* Candles* Lamps* Trumpet* Stereo & Speakers* Sad Irons* Bissel Carpet Cleaner* Small Kitchen Appliances* Lots Of Christmas Decor- Table Cloths, Placemats, Candles, Angels, Decor, Baskets, Figurines, Boxes, Ornaments, Glasses, Trees, Candle Holders, Floral Arrangements, Lights Wreaths & More* Collection Of Animal Decor* Pots & Pans* Glassware* Frames* Pictures* Antique Padlocks* Yamaha Acoustic Guitar* Vases* Canisters* Electric Heaters* Picnic Basket* Crock* Graniteware* Autumn Leaf Jewel Tea Dishes* Cast Iron Skillet w/ Lid* Lamps* Soda Bottles* Paper Goods* Antique Fan* Golf Decor* Linens* Ampico Piano Rolls* Large Doll House* Brother Sewing Machine* Mini Refrigerators* Highchairs* Trunks* CB Radios* Assorted Costume Jewelry* Aladdin Lamps & Parts* Jackets* Kitchenware* Dolls* Toys* Legos* Keyboard* Betty Page Pinup

PLUS MORE ARRIVING DAILY! WWW.GLENWORTH.COM

Auction Conducted by:

Glenworth

Auction Service & Realty
Glen Yutzy, Auctioneer/Broker

Member of:



Phone: (417) 767-4345

Fax: (417) 767-4222

Not responsible for accidents. Announcements made day of sale take precedence over any printed matter.
 Terms: CASH or CHECK Visit our website for more information at www.glenworth.com Lunch available

REAL ESTATE & ESTATE AUCTION

Saturday, November 21st, 2020 ~ 9:00 AM & 10:00 AM

LOCATION: 9:00 AM Location 315 North 4th Street, Jasper, MO

10:00 AM Location 303 North 2nd, Jasper, MO (Watch For Signs)

Auction For Marianna & The Late Norman Chambers



9:00 AM Real Estate Location:

315 North 4th Street

Real Estate Selling For Clifford Fitzpatrick Nice 5 Room Building That Could Be Used For A Business Or An Apartment Home Setting On 3 Lots. Property Has Been Zoned To Be Commercial Property, Has New Ceiling, New Plumbing & Wiring, New Flooring, New Roof, New Central Heat & Air System. Building Has Been Treated For Termite Protection & Will Sell With New Appliances, Also Has Storage Building On Property. Very Nice Building Across From Judy's Truck Stop & Sharon's Restaurant. If Real Estate Sells We Will Sell Some Small Items Out Of Building.

10:00 AM Real Estate Location:

303 N 2nd Street

Real Estate Selling For Chambers Estate Hand Built 2 Bedroom, 1 1/2 Bath Home W/Kitchen, Living & Utility Rooms, Has Full Basement W/Living Area & Storm Shelter, Home Has Central Heat & Air W/Attic Fan, Newer Roof, Energy Efficient Windows, Cedar Lined Closets & Marble Base Window Seals. It Is A Stone Sided Home W/ All Hardwood Floors Under Carpet & Linoleum, New Heavy Wire, New Sewer & Plumbing, Lots Of Closet Space, Fireplace In Basement, Perimeter Drain & Sump Pump In Basement. Has 1 Car Attached Garage As Well As 1 Car Unattached Garage & Shop Area, Covered Porches On Front & Back. Terms: 10% Down Day Of Sale With Signed Contract And Balance Due In 45 Days Or When Closing Date Set By Abstract Office. Seller Has The Right To Accept Or Reject Any And All Bids.

Scooter, Antique, Modern Furniture,

Also Antiques, Collectibles & Households

Shop Rider 4 Wheel Handicap Scooter (Works), 56" Flat Screen TV & Other Flat Screen TV's, Surround Sound Systems, Stereo Systems, Several VHS & DVD Players, Lg Lot Of Electronics Of Various

Kinds, Maytag Washer & Electric Dryer (Like New), Whirlpool Side By Side Refrigerator W/Ice & Water In Door, Stainless & Other Microwaves, Gas Heaters, Ant Trunk, Prim Metal Cabinets, Like New King Size Bed, 3 Pc Sectional, Dual Reclining Couch, Recliners, Table & Chairs, Glass Top Tables, Bookshelves, Computer Desks, Lamps, Paintings & Pictures, Vacuum Sweepers, Old Triple Beam Scale, Ant Post Cards, Old Jugs, Old Records & Cassettes, Crock Bowl, Old Oil Lamps, Russian & British Flags, Sm Ant & Prim Pes, Ant Tools, Old Linens, Hundreds Of Books, Lots Of Old Knick Knacks, Sm Electrical Appliances, Kitchen Utensils, Tupperware, Pots, Pans & Dishes, Very Lg Lot Of Water, Food & Dry Goods, Also Lg Lot Of Surplus Living Stored Items, Other Items Not Listed

Travel Trailer, Gas Golf Cart, 4 Wheeler, Generators, Guns, Tools & Outdoor Items

1997 30 Ft Seahawk 5th Wheel Travel Trailer, 5th Wheel Hitch, 5th Wheel Truck Tailgate, Polaris 330 Magnum 4x4 Four Wheeler, Easy Go 44 Gas Golf Cart W/Zip Up Canopy, Alum Car Luggage Or Deer Carrier, BCS Rear Tine Tiller, Chicago Electric Start Diesel 5000 Plus Generator, Coleman 5000 Watt Gas Generator, Air Compressor, Shop Vac, Leaf Blower, Chainsaw, Sm Electrical Tools, Sm Hand Tools, Organizers, Flat Dolly, Alum Ladders, Long Handle Tools, Gas Cans, Extension Cords, New Gloves, Painter Tarps, Craftsman Tool Box, Vise, Lg Lot Of New Shop Items Inc Nuts, Bolts, Screws, Nails & Hardware, Plumbing & Electrical Supplies, Trash Cans, Patio Storage Cabinets, Trucking Supplies Inc Straps, Load Locks, Chains & Other Pes, Huffy Mountain Bike, Camping Supplies, Coolers, BB Guns, Gun Parts, Scopes, Hard Gun Case, Hunting Knives, Win Model 120 Ranger Pump 12 Ga Shotgun, Rem Model 870 Wing Master 12 Ga Shotgun W/Rifle Sites, Ant Parker Double Barrel, Double Trigger Side By Side 12 Ga Shotgun, Springfield Model M1 30 Grand 30-06 Military Rifle, Italian Military Stainless Rifle Cal Unknown, Rem Model 700 ML 45 Cal Black Powder Rifle W/Scope, Other Items Not Listed

Auctioneers Note: It Is An Honor To Be Conducting This Auction For The Chambers Family As Norm Was An Outstanding Customer To Our Auctions For Many Years & Became A Good Friend. Norm Was Always Prepared For World Destruction So There Are Thousands Of Surplus Stored & Food Items. This Is An Excellent Real Estate Opportunity As Well As Excellent Opportunity To Purchase New & Antique Items. Golf Cart, 4-Wheeler, Trailer & Generators Are Excellent As Well. Please Plan Now To Attend. **Sale Order: Real Estate Will Sell First Then Appliances, Furniture, Antiques, & Households Then Move Into Tools & Outdoor. At Approx 1:00 PM Will Offer Golf Cart, Trailer, 4-Wheeler, Generator & Large Items Then Guns & Related Hunting Items. Remainder Of Small Tools Will Finish Auction. See Ya There!!!** Terms: Cash or check with proper ID. Now accepting most major credit cards. Nothing removed until settled for. Statements made the day of sale takes precedence over printed material. Everything sold as is where is. Not responsible for accidents. Restroom available. Concessions Provided. Check our website for upcoming auctions and for additional pictures!!



NANCE AUCTION SERVICE

No Matter How BIG or small, We Do Them All!

www.nanceauctionservice.com

Col. Bill Nance 417-214-0093

In God We Trust

Philippians 4:13

ESTATE AUCTION

Sunday, November 22nd, 2020 ~ 1:00 PM

LOCATION: Moore Pavilion, 10th & Poplar, Lamar, MO (Watch For Signs)

Auction For Gerald Logan Smith Estate



Furniture, Appliances, Antiques, Collectibles, Households

Refrigerator, Washer & Dryer, Flat Top Electric Cook Stove, King Size & Full Size Beds, Kitchen Table & Chairs, Smart Type Refrigerator, 3 Section Couch W/Hide A Bed, 2 Safes, Prim Gossip Bench, Chest Of Drawers, Nightstand, Computer Desk, Chandeliers, Old Stamps, Ant Dishes, Ant Cameras, Ant Pictures, KC Chiefs Glasses, Pots, Pans & Dishes (Some Old & Some New), New Chicken Run Collector Toys, New McDonalds Toys & Beanie Babies, Christmas Décor, A/C Unit, Kerosene Heater, Patio Furniture, This Is Only A Partial Listing As There Are 3 Storage Buildings Full Unable To List Of See Items. Hundreds Of Surprises Sale Day.

Motorcycles, Boat, Trailers, Welders, Guns, Tools & Outdoor Items

1996 Port Arrowhead Maxum Boat W/Inboard Motor & Trailer, 80's Suzuki Temper 550 Motorcycle, 80's Honda CMT 400 Motorcycle, 16 Ft Flatbed Trailer, 8 Ft Trailer, Murray Riding Lawn Mower, Lg Lincoln Welder, Flux Wire Welder, Torch Bottles, Craftsman Gas Pressure

Washer, 4000 Watt Generator, Large Upright Air Compressor, Chainsaws, Trash Hog, Drill Press, Grinder, Chop Saw, Shop Vac, Stihl Weed Eaters, Electric Winches, Dewalt Tools, Name Brand Small Hand Tools (Some New), Name Brand Small Electric Tools (Some New), Air Tools, Cherry Picker, Snap On Toolbox, General & Craftsman Roll Around Toolboxes (General Like New), Log Chain, Stainless BBQ Grill, Small Propane Bottles, Pet Cage, Marlin Model 30A Lever Action 30/30 Rifle, Marlin Model 336CS Lever Action 35 Cal Rifle, Amadio Rossi Stainless Pump 22 Rifle, Montgomery Ward Model M550ED Pump 410 Shotgun, Revelation Model R310CR 20 Ga Pump Shotgun, DPMS Panther SR Semi Auto BB Gun, 22 Revolver, 32 ? Parts Revolver, Other Items Not Listed

This Is Only A Partial Listing. Auction Will Be Very Large As There Are 3 Storage Units & 3 Trailers Completely Full From Floor To Top Unable To See Items Or Even Make Listing. Please Plan For Several Surprises. Lots Of New Tool Items Will Be In Auction.



Auctioneers Note: It Is An Honor To Be Conducting The Auction For The Smith Family. This Will Be An Outstanding Auction That Will Have Something For Everyone From Furniture, Appliances, Antiques, Collectibles, Households To Good Tools To Good Tools, Motorcycles, Trailers, Welders & Guns. This Is An All Around Excellent Auction. Please Plan Now To Attend. **Sale Order: Furniture, Appliances, Antiques & Households Will Sell First Then Move To Small Tools & Outdoor Items. At Approx 3:30 PM Will Offer Boat, Motorcycles, Trailers, Welders, Air Compressor & Large Items Then Move Directly Into Guns & Related Items. Remainder Of Small Tools Will Finish Auction. See Ya There!!!**

Terms: Cash or check with proper ID. Now accepting most major credit cards. Nothing removed until settled for. Statements made the day of sale takes precedence over printed material. Everything sold as is where is. Not responsible for accidents. Restroom available. Concessions Provided. Check our website for upcoming auctions and for additional pictures!!



NANCE AUCTION SERVICE

No Matter How BIG or small, We Do Them All!

www.nanceauctionservice.com

Col. Bill Nance 417-214-0093

In God We Trust

Philippians 4:13

Multi-Estate Auction

Friday, November 20 - 6:00PM

1071 State Highway A • Marshfield, MO

Directions: From I-44 and Spur Drive in Marshfield, travel south on Spur Drive, then left on West Jackson St. Right on South White Oak Rd then left on W. Maple St. Right on S. Marshall St./St. Hwy. A to location.



VINTAGE AND ANTIQUE TOYS

Marx toys, including: Sparkling Climbing Bulldozer and Tractor; Super Highway Service; Marx Service Center; Playset; 6 mm rifle BB gun; Mattel Fanner-50 Marshal Holster and Pistol set (with gun); Red Rider J.C. Higgins Cactus; Carbine BB rifle; Daisy Model 958 BB rifle; vintage alphabet blocks; vintage American Logs in original case; vintage Radio Flyer wagon; antique scooter; vintage American Flyer On Board train track; Lionel Talking Station with original box; 1950's Gilbert American Flyer 3/16 scale train set with engine in original packing and individual boxes; (282 C & N.W. Loco and Tender with smoke and Choo Choo); antique wooden rocking horse; vintage board games; marble shooters

GLASSWARE

Depression Glass; Carnival Glass; Fenton Glass

HOUSEWARES

Vintage "Puss and Boots" cookie jar and matching salt and pepper shakers; assorted silver-plate serving ware; vintage sandstone Native American lamps; antique hurricane lamp; multiple antique kerosene lamps; vintage enamel ware; Wagner cast iron pans; Corning ware; Pyrex

LAWN AND GARDEN

Garden tools, garden wagon; patio table and 4 chairs; approx. 5' tall concrete angel; Murray 10/30 riding lawn mower; 2 wooden step ladders; Marlin bird house and pole; Stihl Wood Boss 024 AV chainsaw; Craftsman electric chainsaw

FURNITURE

Howard Miller Grandfather Clock with Masonic-themed face; several Mid-Century items; several dressers; chests of drawers; coffee table; end tables; dining room table; China hutch; 2 Wing backed office chairs; wooden file cabinets



COLLECTIBLES

Collection of vintage Zippo lighters; military pins, insignia and patches; 1 lot of Golden and Silver Age Dell, Gold Key, Archie, Harvey, Marvel and DC comics; many vintage Roy Rogers items; 1 lot of vintage coloring books; vintage Santa Claus blow mold (working); vintage 7" crock; vintage #8 Diamond Brand 16" crock- no cracks; vintage Whitehall # 3 11" crock- with pressure cracks; large collection of vintage pennants including: 1962 Yankees World Champion picture pennant (with Mickey Mantle, Whitey Ford, Roger Maris, Yogi Berra), 1961 St. Louis Cardinals (with Stan Musial, Red Schoendienst, Bill White, Curt Flood and Ken Boyer), 1964 New York World's Fair pennant; multiple Sunshine brand coffee jars,

MUSICAL INSTRUMENTS

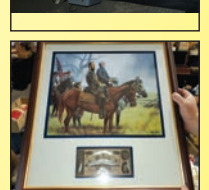
Marco Polo 6 String guitar; Yamaha 6 string guitar; vintage clarinet in case; vintage Buffet-Crampton tenor saxophone in case; vintage Martin saxophone in case

TOOLS

Craftsman wrenches; Craftsman sockets; hand tools; power tools; Felker tile cutter- made in Spain; tool boxes

MISCELLANEOUS

Antique Stromberg Crank phone; Vintage 60's Greek Goddess statue; set of large vintage Conquistador medallion wall hangings; 1 lot of vintage "You'll Die Laughing" cards; vintage Muesline chicken feeders; antique cattle yoke; antique pulleys; Kappa Alpha moonshine jug-Halloween 1969 Fraternity commemorative item; vintage Stewart-Warner electric radio; Play Station 1; western cowboy hat stand for 4 hats; cowboy hats; camping and fishing gear; National 25 lead (for making sinkers); "Stonewall Jackson and Robert E. Lee" by Matt Kunstler- framed print; baseball equipment including Catcher's gear and bats, balls, and gloves; DETECTO stand-up Dr's weight scale; antique Honeymoon treadle sewing machine; AND SO MUCH MORE!



All items sold as is - where is. Accepted Payment Forms: Cash, Good Check, Credit, or Debit (3% added for credit & debit transactions)

Check out our online listing at www.auctionzip.com — Auctioneer ID# 30607 or find us on Facebook!



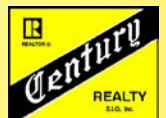
JON JOYCE Auctioneer, Licensed Agent | Lic. #200

Joyce

Auctioneering & Real Estate



(417) 859-2700 - Business | (417) 859-2724 - Fax
 (417) 207-5412 - Cell | jjoyce24.jj@gmail.com



December 3rd & 4th, 2020

We invite you to join us for two days of horses (indoor driving sale) Stallion presentation, and our Christmas Tack Auction.

-Formerly Seymour Driving Horse Sale



Missouri State Fairgrounds Sedalia, MO

Location Change

Due to tornado damage at the Kirkwood facility in Cedar Rapids, IA we had to make some changes. So we are having the sale in Sedalia, MO, same location as the Boone County Draft Horse & Mule Sale.



Lot #18

2 yr. old Mare by:
Dredd (Muscle Hill son)



Lot #30

6 yr. old Mare by:
Madison River



Lot #225

2 yr. old Stallion by:
Doaitson



Lot #35

3 yr. old Mare by:
Braggart



Lot #45

2 yr. old Mare by:
Swan for All

Credit Creation
Lot #21
8 yr. old Proven
Standardbred
Stallion
Record of 1:55.1
Earnings of \$129,051
By: Credit Winner
Dam by: Conway Hall
Tattoo #4K591
Take a look at his
remarkable pedigree
on the Dams side!

8 yr. old
Standardbred Stallion



Lot #241-242

5-6 yr. Gelding team of
Friesian-Halfinger cross



Lot #28

4 yr. old Mare by:
Explosive Matter

Sale Schedule

Thursday, December 3, 2020
8:00am - Driving of Sale Horses
10:00am - Sale of Standardbreds
4:30pm - Stallion Presentation
followed by Christmas Tack Auction

Friday, December 4, 2020
8:00am - Driving of Sale Horses
10:00am - Morgans & Friesians

All broke horses will sell in harnesses. Heated indoor arena with plenty of seating. Family, friends, lodging, great food, it's all here in Sedalia! Plan on spending several days. Also thanks to our consignors for bringing us a quality set of horses. If you need a catalog or have question feel free to call. God Bless, Joe & Lonnie.

Contacts: Lonnie Miller 260-350-4637 | Fax: 260-214-1978 | email: lmiller5717@yahoo.com
Joe Raber 719-431-3137 | Fax: 719-453-0907 | email: boonecountyhorseauction@safecommail.com

INCOME PRODUCING APARTMENTS 5 FOUR-PLEXES & VACANT LOTS

BUILDINGS BEING OFFERED INDIVIDUALLY OR IN COMBINATIONS

Inspection / Viewing Date:
 Tuesday, Dec. 1st, 12:00 to 1:30 p.m.
 (This Is The Only Time To View The Buildings)

- 20 Units Fully Leased
- Current Monthly Rental Income of \$14,400
- 3 Bedroom, 2 Bath Units
- Just Completed - Architectural Roofs & Exterior Painting
- Conveniently Located Near 63 & 1-70
- Vacant Lots




3016, 3102, 3110, 3116 & 3200 Alpine Dr., Columbia, MO

Online Bidding Ends:
 Tuesday, Dec. 15th at 12:30 p.m.

Atterberry Auction & Realty Company
 Your Real Estate At Auction Specialists
 Email: contactus@atterberryauction.com



DARDEN PROFESSIONAL TIMBER HARVESTING, BUYING STANDING TIMBER: Great prices, improve wildlife habitat and improve forest health. State Certified & Fully Insured! 573-247-4808 or 573-739-1122. Salem


AB ROLLER-SLIDER: Deluxe, stomach exercise machine, heavy duty, real 6 pack builder, detachable handles, for easy storage. \$60. Ava. 417-686-0032.

175 ORIGINAL VCR MOVIES: \$1/piece. 573-327-9068.

147 ACRES ABSOLUTE LAND AUCTION

Saturday, December 5th 10:00AM

Location: 5119 State Hwy. 248 Galena, Mo.
Directions: From: Galena take Hwy 248 west 5 miles to Property! *Watch for Signs*



Property Sells Absolute to the Highest Bidder Regardless of Price.
Beautiful 147 +/- Acres, 30 +/- acres open with the balance timber
Tract #1 is 12.7 Acres
Tract #2 is 135 Acres

Property will be offered in 2 tracts & as a whole. Many Outstanding Building Locations with outstanding views!! Lots & Lots of Deer, Turkey & Small Game. Land feels very Private & Secluded but is on very good state hwy. & only 15 minutes to Medical, Shopping, Schools & 10 minutes from Table Rock Lake. Property is line fenced with 1 pond and over 1 mile State Hwy. Frontage. This will make someone a great Home/Farm, Hunting Property or Private Retreat. Oak, Hickory, Pine, Cedar & Walnut Timber, some is Marketable Property like this doesn't come available very often. If you love the outdoors you won't want to miss the opportunity to own this property! It will take your breath away!

TERMS: 10% DOWN DAY OF SALE, BALANCE DUE 30 DAYS OR LESS AT CLOSING.
 See Our Website for Video & Pictures
 Call for more information or a private ride around the property!

ESTATE OF NORMA ESTES



Larry Foster
 Auctioneer
 Galena, Mo
 Phone: (417) 723-8329
 Cell: (417) 839-6860
www.fosterauctionservice.com
 Email: bidnowsold@aol.com


2012 FORD FOCUS: SEL, 142k, leather, bluetooth, good condition. \$5,200. Call 417-531-0545. Lebanon.

WANTED TO BUY ANTIQUE CARS: Convertible, Corvettes, unrestored, motors, parts considered. 870-324-1154.

ANTIQUK KEROSENE STOVE: 4 Burner w/oven. \$175. 573-438-2672.

HEAVY TRACTOR TIRE CHAINS: Good in mud and snow, fit 18.4"x30" tires. \$200. Hermann. 636-932-4429.

BUFFALO LIVESTOCK MARKET LLC



276 Hwy 32 West Buffalo, Missouri
Nov. 14th, 2020
Receipts: 819 Head

Feeders Steady to \$5 Higher on Light Stock & Heifers. Cows \$3-\$5 Lower.

Representative Steers

300-400 @ 163.00 to 184.00
 400-500 @ 150.00 to 172.00
 500-600 @ 137.00 to 156.00
 600-700 @ 132.00 to 147.00
 700-800 @ 130.00 to 134.00
 800-900 @ 124.00 to 132.00
 900-950 @ 112.00 to 120.00

Representative Heifers

300-400 @ 130.00 to 158.00
 400-500 @ 134.00 to 155.00
 500-600 @ 121.00 to 132.00
 600-700 @ 117.00 to 127.00
 700-800 @ 105.00 to 120.50
 800-900 @ 104.00 to 117.00

Feeder Bulls

400-500 @ 130.00 to 157.00
 500-600 @ 115.00 to 145.00
 600-700 @ 111.00 to 122.00
 700-800 @ 104.00 to 115.00
 800-900 @ 93.00 to 98.00

Stock Cows Bred
 \$700 to \$1175 young

Slaughter Cows
 Big Flesh 57.00 to 64.00
 Med Flesh 45.00 to 54.00
 Thin Cutter 35.00 to 47.00
 Light Carcass or X Thin 28.00 to 38.00

Slaughter Bulls
 High Dressing 80.00 to 83.00
 Med Dressing 72.00 to 80.00
 Low Dressing Thin Flesh 50.00 to 65.00

MON-WED MARKET REPORT
 Listen to KJEL 103.7FM • Lebanon or KY00 99FM • Bolivar

VIEW OUR SALES AT CATTLEUSA.COM
CALL FOR TRUCKING OR ON-FARM VISIT

Lyle Caselman • Owner-Manager
 417-345-7876 • mobile 417-533-2944
Leon Caselman • Owner
 417-345-4514 • mobile • 417-588-6185
Howard Miller • Owner 417-345-8122

HUGE

Estate Auction

Tuesday, November 24, 2020



STARTS @ 9:07 AM

Location: 1901 S 81st West Ave. • Tulsa, OK 74127

Directions: West of Tulsa, OK at the Jct Hwy 412 & 81st St W Ave, Take 81st St W Ave south, approx. 1/2 mile, auction on left.

For More Info & Pics

www.chuppsauction.com

EXCAVATORS, COPPER CHOPPER, ROLL OFF TRUCK, SKIDSTEER, FORKLIFTS, SEMI-TRAILERS, TRAILERS, INTIMIDATOR TRUCK, SCALES, DUMPSTERS, CLASSIC CARS & TRACTORS, METAL SHEARS, COMMERCIAL AIR COMPRESSORS, SHOP TOOLS, PIPE & METAL, TONS & TONS OF SCRAP METAL

ONLINE & ONSITE BIDDING ON LOTS 1 - 22 WILL BE OFFERED SIMULCAST AT 12:47 PM



ESTATE OF: Mike Mulcare OWNER: Melinda Mulcare

Auctioneer's Note: S&S Metal was a scrap yard and has been a family business for 55 years. They closed in 2015 due to the death of Mikal and now the family is selling everything. Lots of buried treasures! 2-3 AUCTION RINGS ALL DAY. Loader available day of auction, Wednesday Nov. 25, Friday Nov. 27 and Monday Nov. 30 9-4 PM. No loading available Thanksgiving Day. Please follow us on Facebook for updates or visit our website for pictures at www.chuppsauction.com.

TERMS: Cash - Credit Cards - Check with Proper ID - OK Sales Tax Applies unless exemption is shown. NOT RESPONSIBLE FOR ACCIDENTS. ANY ANNOUNCEMENTS DAY OF SALE SUPERSEDES PREVIOUS ADVERTISING.

CHUPPS AUCTION & REAL ESTATE

Stan Chupp
 (918) 638-1157

Dale Chupp, Realtor
 Coldwell Banker Neokla Select
 (918) 630-0495

E. J. Chupp

NOVEMBER ONLINE AUCTION
 BIDDING STARTS NOVEMBER 10, 2020

Selling Antiques & Collectibles to include:

Lionel Trains, Cars, Jim Shore Figurines, Christmas, etc, Budweiser & Coca Cola Items; Lenox Figurines & Christmas Ornaments, Hallmark Ornaments, Disney, M. J. Hummel, Spode, Comic Books, Barbie Dolls, Mardi Gras Framed Posters, Lots of Decorations for Halloween, Easter, July 4th & Christmas, Collectible Toys, DVD's & Video Games, Star War Lego Sets, Limited Edition Artwork, N Gauge Trains, Vintage Electronics - LaserDisc Players, Laser Movies, Vintage Film Equipment, Vintage Stereo Equipment & Speakers.

For Details and link to auction see www.moffatauction.com

RICHARD MOFFAT AUCTION SERVICE
 573-690-2823
 Jefferson City, MO
www.moffatauction.com



RHINELAND, MO. PICTORIAL HISTORY: "Winter in a Missouri River town," 190 pages, \$15.00. 417-532-2045. Lebanon. Leave phone number.

1994 CUTLESS CIERA: auto, air, 4-door, 174,xxx miles, runs great. \$800. 636-584-9476

ELECTRIC WINCH: 1200 lb, 12VDC, new-in-box. Everything included. \$200. Lebanon (417)664-2198.

QUALITY, FULL FACE PLASTIC SHIELDS: protective masks, reusable, brand new, direct splash protection, transparent, comfortable, 5 masks, \$20. Ava. 417-686-0032.

2 BIG CHRISTMAS WREATHS: 3ft in diameter. \$30 each obo 636-239-2695.

2020 KC CHIEFS MCDONALDS RED FRIDAY SUPERBOWL CHAMPS FLAGS: unopened, NIP \$15/each. Salem, 573-854-8132.

MYSTERIES OF THE OZARKS VOLUME III: A collection of stories compiled by Ellen Gray Massey, \$6.50. 417-532-2045, Lebanon. leave phone number.

MILLER-MATIC 210: 220V, Mig welder, excellent condition. \$1,500obo. Preston. 563-529-0612.

2020 KC CHIEFS SUPERBOWL COCA COLA CANS: unopened, mint condition. \$15/6pack. Salem, 573-854-8132.

WANTED STANDING TIMBER: Butler Logging, 417-448-9323.

SEARS CATALOGUE 1902 REPRINT. \$8.50. 417-532-2045. Leave message.

2004 VW BEETLE DIESEL: 164,000miles. \$6,500. 417-256-2561.

INGERSOLL RAND PORTABLE AIR COMPRESSOR: 85cfm, gas motor, on-trailer, works good. \$2,500. 417-543-5674.

2020 KC CHIEFS SUPERBOWL COCA COLA CANS: unopened, mint condition. \$15/6pack. Salem, 573-854-8132.

DREAM HOUSE -Online, chateauhomes.net
 Call Marla 573-657-7040

WINDHAM SRC308 AR10: with vortex scope, accessories, ammo, bought new, like new, \$1,595.00 417-844-4319.

WANTED 16.9X34 REAR TRACTOR TIRE: good condition, 75%+ tread. Union, 636-234-5269.

BAKER A RESAW: with return and turn around. \$7,500/obo. 417-327-6240.

DR ALL TERRAIN MOWER: 25 inch cut, Kawasaki 15.0 engine, 18 years old. \$1000. Lebanon (417)664-2198.

WANTED, TIMBER TO LOG ON SHARES: Honest, reliable, references. 417-533-4607, 417-664-1195.

BETTY CROCKER BAKING FOR TODAY COOKBOOK: Hardback. \$6.50. 417-532-2045. Lebanon. Leave message.

WEATHERED BARN WOOD SIDING: 8" & 10" wide. 573-729-7226. www.pineridgerustic.com

OZARKS COUNTRY PREACHER, THE LIFE OF PAUL WESLEY BUCHANON BOOK. Life, fun and religion in the Ozarks, \$5.00. 417-532-2045. Leave message.

BITTERSWEET COUNTRY BOOK: edited by Ellen Gray Massey, \$6.50. 417-532-2045, Lebanon. Leave phone number.

Starnes Auto LLC

**22115 Rt. 66
Lebanon, MO 65536**
417.718.2707 Cell • 417.588.3159 Office
www.starnesauto.com

1998 FORD ESCORT
BLUE, 2 DOOR, 224,XXX MI**\$1,000**

2002 CHEVY SILVERADO
BLACK, EXT. CAB, 2WD, 290,XXX MI**\$2,500**

2003 FORD F150
WHITE, REG CAB, 5 SPEED, 222,XXX MI. ...**\$3,200**

2003 GMC ENVOY SLT 2WD
SILVER, 110,XXX MI.....**\$4,250**

2006 CHRYSLER T&C
BLUE, 185,XXX MI.**\$2,850**

2011 FORD FUSION
SILVER, 114,XXX MI.....**\$5,800**

2012 CHEVY IMPALA LTZ
WHITE, 176,XXX MI.....**\$4,500**

2013 FORD EXPLORER
WHITE, LIMITED, 4WD, 104,XXX MI.....**\$12,950**

2013 GMC TERRAIN
GREEN/GRAY, 113,XXX MI.....**\$10,200**

2017 FORD FIESTA
SILVER, 26,XXX MI, GOOD TITLE.....**\$10,000**

DOYLE STAINLESS STEEL FERTILIZER BED: 15ft, Stainless catwalks, radar, one-owner, works good. \$6,500. 417-543-5674.

FIREARMS: Professional Repairs and Restorations. Baron's Gunsmithing. 573-363-5801, Camdenton.

POOL TABLES: Installations, moves, recoveries, repairs, accessories, etc. 573-646-1700.

PT CRUISER: Good condition, \$2,500. Marshfield, 417-859-4401.



CAROLINA CARPORTS • GARAGES • BARNs • RV COVERS

Starting At \$1095.00

Delivered & Installed

RENT TO OWN • NO CREDIT CHECK

Red Iron Building Special

60' x 80' x 16' Pre-Engineered Red Iron Building
2:12 pitch • 26ga Painted Metal on Roof and Walls
4-14'X14' Framed Openings (2 on each side)
1- 3'X7' Walk-In Doors
Materials Only **Now \$33,950** Plus Tax and Freight




METAL PANELS

29ga 40 Year Warranty, Painted Metal starting at **\$71.00 sq**
29ga 25Year Warranty, Galvalume Metal starting at **\$55.00 sq**
29ga Commodity, White starting at **\$63.00 sq**

VISIT US @ JENKINSBUILDINGS.COM

 <p>JENKINS Since 1964 BARNs & SUPPLIES</p>	<p>Showroom & Sales Office Bolivar, Missouri 65613 (417) 326-4228 Next to Smith's Restaurant Hwy. 13 & U</p>	<p>Corporate Office Polk, Missouri 65727 (417) 852-4228 2 Miles South of Pittsburg on Hwy. 64</p>
---	---	--

Prices Subject to Change

D&H OUTDOOR WOOD FURNACES
SINCE 1986: Forced air, 90% efficient, fire proof insulated, thermostat control. Complete Heating and Cooling Systems. 573-743-6943 or 573-247-5585, Salem.

KIDS LITTLE TYKES RED CAR BED: w/ mattress. \$150. Desloge, 573-327-9068.

GUARDIANWARE: 1930-1950's, Turkey roaster with lid. \$195. 573-364-7465.

BIRDS OF MISSOURI FIELD GUIDE, \$4.00. IDENTIFICATION BIRDS OF NORTH AMERICA BOOK, \$4.00. 417-532-2045, Lebanon. Leave message.

CHRISTMAS PUPPIES BLUE & RED HEELER PUPPIES: Good working stock, UTD. 417-664-5926.

1999 MERCURY GRAND MARQUIS: 88,000 miles, 1-owner, leather seats, excellent condition. \$4,500. 636-734-2693.

THE AMISH COOKBOOK: Recollections and recipes from an Old World Order, hard-back, \$8.50. 417-532-2045. Lebanon, leave phone number.

I BUY.....used mobile homes. Call or text 573-338-6250 or email GregS.CDH@outlook.com

OZZIE SMITH: Hall of Fame induction, Hartland figurine, new in box, \$14.00 573-854-8132.

LOG SPLITTER: 35 Ton, Tecumseh 10HP engine. 20 years old. \$1200. Lebanon (417)664-2198.

STORAGE UNIT AUCTION: Saturday November 28th @ 11am, 14549 Hwy 60 Cabool, contents of 4 units will be sold separately to the highest CASH BIDDER, winning bidders must present Government Issued picture Id, and must remove ALL contents day of sale, additional consignments will be offered following unit sale

HONEYWELL SPACE HEATER: digital readout, thermostat controlled, adjustable heat levels, high/low fan, ceramic tube. \$35. 573-364-7465.

WANTED TO BUY: John Deere diesel tractor in need of repair. 20-30-40 series. Call 573-768-0068.



MID MISSOURI STOCKYARDS

REGULAR SALE EVERY THURSDAY 11AM

SPECIAL COW SALE • DEC. 12TH • 6P.M.

For Farm Visits, Market Updates, or Trucking
Call **Zach Cox 417-777-1320**
Dan Romine 573-578-4939

Competitive Buyers!
Competitive Commission!
Competitive Market!

Baron: 417-532-9292 

I-44 • Exit 123 "just outside of Lebanon"
17505 Route 66, Phillipsburg, MO 65722

For weekly market updates, visit us at
www.midmostockyards.com

Offering the Area's LOWEST METAL PRICES!

Pole Barn Packages

CALL TODAY FOR A FREE QUOTE!

24'x32'x10' 30'x40'x10' 40'x60'x12' Sales Tax & Delivery not included.
 24'x40'x10' 30'x60'x10' **CALL TODAY!** Labor quotes available as well.

Compare Before You Buy.

We Use Only The **Highest Quality** Materials!



Custom Homes • Metal Roofs

29 Gauge

#1 PAINTED METAL

- ★ Lifetime Warranty - \$70.00 Sq.
- ★ 40 Year Warranty - \$67.00 Sq.
- ★ 20 Year Warranty - \$64.00 Sq.
- ★ 25 Year Galvalume - \$54.00 Sq.

Labor prices will be higher in locations over 75 miles from Marshfield, MO



- ALL MATERIAL PACKAGES INCLUDE...
- ✓ #1 Yellow Pine Lumber
 - ✓ #1-40 Yr. Painted
 - Metal w/Screws
 - ✓ 1-10' Overhead Door
 - ✓ 1-36" Entry Door

Fully Insured



PORTABLE BUILDINGS
 Rent to Own
 No Credit Check

1049 SCHOOLVIEW DR.
 Marshfield, MO



Marshfield
BUILDINGS

www.marshfieldbuildings.com



417-859-7744

AMERICAN MADE 9MM: Brass, ammo, not reloads, \$.40 per round. 417-844-4319.

BUYING PRE 1960 BEER SIGNS: FALSTAFF, LEMP, BUDWEISER, CAPITOL, HAMMS, STAG, ANYTHING. 573-680-5377.

NORDIC CROWN II HOT TUB: W/steps. \$2,250 obo, Washington. 636-239-2695.

FOR SALE OLD BARN: Bonne Terre, 573-358-2528

AMMUNITION: .223, 9mm, .45cal, bulk or box. 417-257-8385, pick-up or shipping available. www.cherokeeammunitions.com and on Facebook.

THE FIRST 100 YEARS OF SOUTHWEST MISSOURI STATE UNIVERSITY: in Springfield. Hardbook, \$12.50. 417-532-2045, Lebanon. leave phone number.

160 ACRES: For sale, 3 6x6 deer stands, lakes, CRP pays \$11,320 yearly, Sullivan County, Mo, 314-471-4069.

BEST OF THE BEST FROM MISSOURI COOKBOOK: \$6.50. 417-532-2045, Lebanon. leave phone number.

TUFFY SPECIAL -Volume Prices 573-657-2176 amegamobilehomes.com

2019/2020 4x5 ROUND BALES: plastic twine, always shedded, pay for now and will store until April. Delivery or pickup. St James, MO. 573-467-5043 or 573-699-4577.

NATURAL BOB-TAILED ENGLISH SHEPHERD PUPPIES: 573-663-7459, 573-760-5157.

PRIZE COUNTRY QUILTS BOOK: hardback, 230 pages, \$5.00. 417-532-2045. Lebanon. Leave phone number

Register to win the Weekly Trader Pedal Power Tractor!

(A \$260.00 value)



PERFECT GIFT FOR CHRISTMAS!

Register from November 6 to December 12 at these participating retailers:

- Boat Town Brewing • Falcon Floor Covering • S&S Recycling • Lindsay Ford
- C&C Farm & Home • Sakelaris of Lebanon • Lindsay Chevrolet Used Cars • Lindsay Chevrolet \$2500 Lot • Fairground Auto Plaza • Agri Enterprises • First Light Outfitters
- Neighborhood's Home Improvement Store • A Lane Tire • House of Ivey




417-532-9131 • www.myweeklytrader.com

LIVE**WORK****PLAY***We're***HIRING!****JOBS***are available in Lebanon!*

If you need a job, Lebanon, Mo.
has one that's just right for you.

Find the perfect job!

Laclede County employers are going above and beyond to detect and protect employees from the Covid-19 virus including distancing, face shields and temperature checks.

Many of the jobs have training programs available through Ozarks Technical College and other workforce development sources.

So, go to the website and check out all the opportunities Laclede County has for you.

Visit us online at
lacledecountymohasjobs.com
to see job openings and how you can apply!

**With over 1,000
jobs available,
you will find
employers ready
to offer:**

- **Good Starting Pay Rates**
- **Safe Work Environment**
- **Good Benefits**
- **Great Training**



12 FT. CARGO TRAILER: 12ft. utility flat-bed trailer, 573-999-7136. Camdenton.

16FT FLATBED TRAILER: King Wood Stove. 417-256-1627.

CUSTOM SAW MILLING: Lebanon. 417-533-4607, 417-664-1195.

CALL THE WEEKLY TRADER TO ADVERTISE: 417-532-9131

THE ULTIMATE WOOD HEAT

The most efficient, easiest-to-operate EPA Step 2 Certified Outdoor Wood Furnace



"It is so much more convenient than having to constantly load the indoor wood burner and I am using about half the wood. I am more at ease with the fire outside away from the house along with the dust, bugs and ash." – Lucas

- Top performing** - use up to 60% less wood compared to other methods of wood heating
- Built to last** - titanium-enhanced stainless steel firebox ensures zero corrosion inside firebox
- Peace of mind** - keep the fire and mess outside; safer, more convenient wood heat. See furnace performance and operation from anywhere with your smartphone (visit MyFireStar.com/demo to see a live demonstration)



More comfort for your entire home



CLASSIC EDGE
TITANIUM HDX

To learn more and to find your local Central Boiler Dealer:

CentralBoiler.com
800-248-4681

©2020 Central Boiler • ad7655

Call a Central Boiler dealer near you today!

Yarbrough Equipment.....	Stafford, MO.....	417-736-2303
Martin Plumbing, Heating & Cooling ...	Winona, MO	573-325-4385
Thermal Pro	Koeltztown, MO	573-694-1311
Huck Wood Heat	Sainte Genevieve, MO	573-883-0370

NEW HOLLAND TRACTOR: TS100, 1998, 100 HP, cab w/air/heat/radio; 2017 Westendorf Max420 front loader (inside disconnect/connect) /7' bucket/bale spikes, new rubber; all: \$24,900, or separate: tractor: \$19,900; loader and implements: \$6900. Lebanon (417)664-2198.

LOG SIDING SALE: 2X8 Western Cedar .99 ft/ Pine \$1.30 ft while supplies last. www.pineridgerustic.com 573-729-7226.

REGISTERED HEREFORD & ANGUS BULLS: Home raised, Some Show-Me Select Qualified. 573-701-7828. Belgrade

2017 JAYCO FLIGHT: 19.5ft pull-behind camper, excellent condition, queen bed, table converts to bunk, tub/shower, added- Tv, stabilizer/hitch bars, Price reduced. \$10,900. 417-293-3574, after 5pm or leave message.

CALUS LOGGING

20 YEARS EXPERIENCE

Buying Standing Timber
Walnut & Oak

Joe Calus, Owner
417-926-4606 • MTN. GROVE

CERTIFIED

2020 KC CHIEFS McDONALDS RED FRIDAY SUPERBOWL CHAMPS FLAGS: unopened, NIP \$15/each. Salem, 573-854-8132.

VILLA HOMES IN ROLLA: Has NEW and USED Mobile Homes. Call David for info: 573-578-8072.

TRUCK LOAD OF FLEA MARKET & AUCTION ITEMS: \$200 or trade. 573-327-9068

METAL DETECTOR: MineLab, new-in-box, Equinox 800 series, \$700. Lebanon (417)664-2198.

WANTED STANDING TIMBER: Butler Logging, 417-448-9323.

PAWfect Hunting Buddies!



5 Purebred Weimaraner puppies (Male) 8 weeks old!

Questions?
Please call or text 417-664-6267
Located in Lebanon, MO

Christmas Game Early

Jingle all the way with year-end savings through Christmas!



2017 Ford F-150 XLT Truck SuperCab
2.7L, V-6cyl EcoBoost, 4x4, Lightning Blue, 17/23 mpg City/Hwy, 40,972 Miles, Trailer Sway Control
SALE \$32,000
QP75957



2017 Lincoln MKX Reserve
3.7L, V-6cyl, AWD, Silver, 16/23 mpg City/Hwy, 28,451 Miles, Blind Spot Sensor, Leather Upholstery, Power Moonroof, Exterior Parking Camera Rear
SALE \$30,600
QP75908



2018 Ford Edge SEL
2.0L, I-4cyl, FWD, Silver, 10/29 mpg City/Hwy, 25,874 Miles, Parking Sensors, Exterior Parking Camera Rear
SALE \$21,700
QP75963



2017 Ford Escape SE
1.5L, I-4cyl, FWD, Lightning Blue, 23/30 mpg City/Hwy, 21,149 Miles, Exterior Parking Camera Rear, Steering Wheel Mounted Audio Controls
SALE \$16,500
QP75966



2019 Ford Escape Titanium
2.0L, I-4cyl, 4x4, White, 21/27 mpg City/Hwy, 16,892 Miles, Leather Upholstery, Parking Sensors, Exterior Parking Camera Rear
SALE \$24,500
QP75926



2017 Ford Focus SEL
2.0L, I-4cyl, FWD, Race Red, 26/36 mpg City/Hwy, 24,521 Miles, Power Moonroof, Parking Sensors, Exterior Parking Camera Rear
SALE \$13,900
QP75904



2018 Ford Explorer XLT
3.5L, V-6cyl, FWD, Blue Metallic, 17/24 mpg City/Hwy, 26,320 Miles, Exterior Parking Camera Rear, 3rd Row Seats, Rear Air Conditioning
SALE \$30,600
QP75964



2019 Ford Edge SEL
2.0L, I-4cyl, AWD, Ruby Red Metallic, 21/28 mpg City/Hwy, 19,419 Miles, Blind Spot Sensor, Lane Departure, Parking Sensors, Exterior Parking Camera Rear
SALE \$28,800
QP75927



2017 Ford Escape SE
1.5L, I-4cyl, 4x4, White, 22/28 mpg City/Hwy, 24,464 Miles, Exterior Parking Camera Rear, Steering Wheel Mounted Audio Controls
SALE \$17,700
QP75958



2020 Ford Escape SEL
1.5L, I-3cyl, FWD, Silver, 27/33 mpg City/Hwy, 7,272 Miles, Lane Departure, Parking Sensors, Exterior Parking Camera Rear
SALE \$23,000
QP75897



2017 Ford Mustang EcoBoost
2.3L, I-4cyl, RWD, Grabber Blue, 21/30 mpg City/Hwy, Exterior Parking Camera Rear, Perimeter/Approach Lights
SALE \$21,800
QP75906



2019 Ford Flex Limited
3.5L, V-6cyl, AWD, Magnetic, 16/22 mpg City/Hwy, 14,642 Miles, Blind Spot Sensor, Leather Upholstery, Premium Audio System, Exterior Parking Camera Rear
SALE \$28,600
QP75907



2017 Ford Escape SE
1.5L, I-4cyl, FWD, Ruby Red Metallic, 23/30 mpg City/Hwy, 20,252 Miles, Exterior Parking Camera Rear, Steering Wheel Mounted Audio Controls
SALE \$15,900
QP75965



2017 Ford Escape Titanium
1.5L, I-4cyl, 4x4, Ingot Silver, 22/28 mpg City/Hwy, 13,907 Miles, Blind Spot Sensor, Leather Upholstery, Exterior Parking Camera Rear
SALE \$19,800
QP75935



2020 Ford Escape SEL
1.5L, I-3cyl, FWD, Desert Gold, 27/33 mpg City/Hwy, 6,275 Miles, Lane Departure, Parking Sensors, Exterior Parking Camera Rear
SALE \$23,000
QP75934



LINDSAY FORD



260 W. Elm St. • Lebanon, MO • Mon. - Fri. 8am - 6:30pm • Sat 8am - 5pm • John Roper, Alex King, Amber Uder, Russell Hedges and Mike Baty

417-532-3146 • www.lindsayautogroup.com

**With approved credit. See dealer for details. Not responsible for typos. Actual vehicle may vary from photo.*

\$2,500 - \$11,000 LOT

Lindsay Chevrolet & Lindsay Ford

417-588-7995

West City Route 66
& South Monroe
Lebanon, MO

Mon.-Fri. 8 am - 7 pm
Sat. 8 am - 5 pm
Not responsible for typos.
* with approved credit

Bryan Sien, Manager • Aaron Wehner, Finance • Larry Davis, Ed Compton & James Skidmore, Sales

CARS

LC29259A	2009 CHEVROLET IMPALA LT GRAY, 3.5L, V6, AUTO, FWD, 166,000	\$5,900
QC76047	2013 BUICK REGAL 4D BLACK, 2.0L, 4CYL, T/C, ALLOY WHEELS, H/LEATHER, R/START, SUNROOF, 114,000 MILES	\$9,900
LC29012	2019 CHEVROLET SPARK LS HATCHBACK WHITE, 1.4L, 4CYL, AUTO, FWD, 26,000 MILES	\$9,800
QC75986	2016 CHEVROLET CRUZE LS BLUE, 1.4L, T/C, AUTO, FWD, 113,000 MILES	\$9,500
QC75922	2015 CHEVROLET SONIC LTZ SILVER, 1.4L, T/C, AUTO, 75,000 MILES	\$8,800
LC29343A	2015 CHEVROLET IMPALA LTZ BLACK, 3.6L, V6, AUTO, FWD, 149,000	\$10,900
QC76027	2014 CHEVROLET MALIBU LT GOLD, 2.5L, SUTO, FWD, BLACK CLOTH, REMOTE START, REAR CAMERA, 155,000 MILES	\$8,900
LC29382	2016 CHEVROLET CRUZE LT 4D RED, 1.4L, T/C, AUTO, FWD, 75,000 MILES	\$11,900
LC29375	2013 CHEVROLET MALIBU LTZ 4D PEARL WHITE, 2.5L, 4CYL, AUTO, 86,000 MILES	\$11,900
LC29374	2014 CHEVROLET CRUZE LS GOLD, 1.8L, AUTO, FWD, BLACK CLOTH, 66,000 MILES	\$9,900
QC76065A	2010 CHEVROLET IMPALA LTZ SILVER, 3.5L, V6, FWD, LEATHER, SUNROOF, BOSE STEREO, R/START, LOCAL TRADE, 54,000 MILES	\$8,900
LC29289A	2013 CHRYSLER 200 LIMITED BLACK, 3.6L, V6, AUTO, FWD, 102,000 MILES	\$9,500
LC29328A	2014 CHRYSLER 200 LX MAROON, 2.4L, 4CYL, AUTO, FWD, 125,000 MILES	\$6,900
LC29356A	2015 CHRYSLER 200 LIMITED 4D GRAY, 2.4L, 4CYL, AUTO, 85,000 MILES	\$10,900
LC29338	2013 DODGE DART RALLYE SXT ORANGE, 2.0L, 4CYL, AUTO, 112,000 MILES	\$8,800
QC75938	2016 FORD FOCUS SE MAROON, 2.0L, 4CYL, AUTO, FWD, 98,000 MILES	\$8,500
QC75946	2017 FORD FOCUS SE SILVER, 1.0L, T/C, ECOBOOST, 6SPD, MANUAL, 77,000 MILES	\$8,900
QC75924	2016 FORD FUSION SE SILVER, 1.5L, ECOBOOST, FWD, AUTO	\$7,900
LC29313	2013 FORD FUSION SE WHITE, 2.5L, 4CYL, FWD, 132,000 MILES	\$7,900
LC29285A	2011 FORD TAURUS SEL BLACK, 3.5L, V6, FWD, ALLOY WHEELS, LEATHER, 137,000 MILES	\$7,900
LC7822B	2011 FORD FOCUS SE SILVER, 2.0L, AUTO, FWD, BLACK CLOTH	\$4,800
QC76040	2012 FORD FOCUS SE H/B YELLOW, 2.0L, AUTO, FWD, BLACK INTERIOR, ALLOY WHEELS, SUNROOF, 105,000 MILES	\$6,900
LC29280A	2014 FORD FOCUS SE BLUE, 2.0L, AUTO, HEATED CLOTH SEATS, R/START, ALLOY WHEELS, 119,000 MILES	CALL!
QC57960D	2014 FORD TAURUS SEL WHITE, 3.5L, V6, FWD, H/LEATHER, NAVIGATION, R/START, R/CAMERA, 93,000 MILES	\$11,900
QC76012	HYUNDAI SONATA SE BURGANDY, 2.4L, 4CYL, AUTO, 133,000 MILES	\$9,900
QC75965A	2013 KIA FORTE EX H/B BLACK, 2.0L, CLOTH, LOCAL TRADE, 112,000 MILES	CALL!
QC76025	2011 MAZDA 3 S SPORT H/B RED, 2.5L, AUTO, FWD, ALLOY WHEELS, SUNROOF, 80,000 MILES	\$8,900
LC7821B	2010 MERCEDES C PEARL WHITE, 3.0L, V6, AUTO, RWD, H/LEATHER, SUNROOF, ALLOY WHEELS, 94,000 MILES	\$8,900
QC76011	2010 MERCURY MILAN PREMIER GRAY, 3.0L, V6, AUTO, FWD, 89,000 MILES, LEATHER, LOADED	\$7,900
QC76053	2014 MITSUBISHI ES H/B SILVER, 1.2L, AUTO, FWD, CLOTH, ALLOY WHEELS, 116,000 MILES	\$6,900

QC76024	2014 NISSAN ALTIMA S GRAY, 2.5L 4CYL, AUTO, FWD, 95,000 MILES	\$9,900
---------	--	---------

TRUCKS

QT75977	2008 CHEVROLET SILVERADO LT EXT-CAB WHITE, 5.3L, V8, AUTO, 2WD, REMOTE ENTRY, TOW, BED LINER	\$10,900
LT29376	2005 CHEVROLET SILVERADO 1500 W/T STD CAB SHORT BED BLACK, 4.3L, V6, AUTO, RUBBER FLOOR, TOW, 142,000 MILES	\$7,900
QT76028	2010 CHEVROLET SILVERADO W/T GRAY, 4.3L, V6, AUTO, 2WD, LONG BED, ALLOY WHEELS, BED LINER, TOW, 122,000 MILES	\$10,900
QT76063	2003 CHEVROLET SILVERADO 2500 EXT CAB Z71 PEWTER, 5.3L, V8, AUTO, GRAY CLOTH, BED LINER, TOW, 140,000 MILES	\$10,900
QT76050	2006 CHEVROLET SILVERADO 1500 LT EXT CAB GRAY, 5.3L, V8, AUTO, 4WD, HEATED LEATHER, SUNROOF, TOW, ALLOY WHEELS, 162,000 MILES	\$11,900
QT75966A	2005 CHEVROLET SILVERADO LT 2500 HD CREW CAB CHARCOAL GRAY, 6.6L, 2WD, DURAMAX DIESEL, ALLISON TRANS, LEATHER, H/SEATS, DUAL PW SEATS, DVD, 152,000 MILES	CALL!
QT75562C	2004 DODGE RAM SLT 1500 SILVER, 5.7L, V8, HEMI, AUTO 4WD	\$7,900
QT76036	2007 DODGE RAM ST 1500 SHORT BED SILVER, 3.7L, V6, MANUAL TRANS, 2WD, 20" ALLOY WHEELS, TOW	\$8,500
QT75972A	2004 FORD EXPLORER SPORT TRAC XLT TAN, 4.0L, V6, AUTO, 4WD, ALLOY WHEELS	\$6,500
QT58060B2	2006 FORD F150 SUPERCAB 4X4 RED, 5.4L, V8, AUTO, BED COVER, TOW, 156,000 MILES	\$9,900
QT76064	2007 FORD F150 STX SUPERCAB BLACK, 4.6L, V8, AUTO, 2WD, ALLOY WHEELS, RUNNING BOARDS, TOW, 137,000 MILES	\$8,500

SUVS

QT76009	2014 CHEVROLET EQUINOX LS GRAY, 2.4L, 4CYL, AUTO, FWD, ALLOY WHEELS, 111,000 MILES	\$9,900
QT75876A	2015 CHEVROLET EQUINOX LT GRAY, 2.4L, 4CYL, AUTO, FWD, ALLOY WHEELS	\$9,900
LT29344B	2015 CHEVROLET EQUINOX LT WHITE, 2.4L, FWD, ALLOY WHEELS, NEW TIRES, BLACK CLOTH, R/START, R/CAMERA, 117,000 MILES	\$10,900
LT7822A	2015 CHEVROLET EQUINOX LTZ GRAY, 2.4L, 4CYL, FWD, 95,000 MILES	\$12,900
LT29307	2006 CHEVROLET HHR SILVER, 2.2L, 4CYL, MANUAL, 72,000 MILES	\$7,800
QT57817A	2011 CHEVROLET TRAVERSE LS SILVER, 3.6L, V6, AUTO, FWD, 135,000 MILES, THIRD ROW SEATS	\$8,900
LT29317	2014 FORD ESCAPE TITANIUM DEEP IMPACT BLUE, 1.6L, ECOBOOST, AUTO, FWD, LEATHER, XM RADIO, 1102,000 MILES	\$12,900
QT76029	2014 FORD EXPLORER BASE SILVER, 3.5L, V6, AUTO, 4WD, THIRD ROW SEAT, TOW, 157,000 MILES	\$12,500
QT75889	2010 GMC TERRAIN SLT BURGANDY, 2.4L, 4CYL, AUTO, FWD, ALLOY WHEELS, LEATHER, HEATED SEATS, R/CAMERA, SUNROOF, 88,000 MILES	\$8,700
LT29362A	2016 JEEP COMPASS SPORT BLACK, 2.4L, 4CYL, AUTO, 4X4, ALLOY WHEELS, 142,000 MILES	\$9,500
QT58065B2	2012 JEEP PATRIOT SPORT WHITE, 3.7L, V6, AUTO, 4WD, ALLOY WHEELS, CLOTH, 105,000 MILES	\$11,900
QT76072	2012 JEEP LIBERTY ARTICAT GRAY, 3.7L, V6, AUTO, 4WD, H/CLOTH SEATS, 115,000 MILES	CALL!
QT76005	2011 KIA SOUL HATCHBACK RED, 2.0L, 4CYL, AUTO, FWD, 126,000 MILES	\$8,900

VANS

QT76013	2009 CHRYSLER TOWN & COUNTRY LIMITED LWB BLUE, 4.0L, V6, FWD, LEATHER, DVD, LOADED, 135,000 MILES	\$7,900
QT76069	2015 FORD TRANSIT XLT SILVER, 2.5L, AUTO, FWD, TAN CLOTH, 115,000 MILES	CALL!

MOTORCYCLE

LT29105A2	2014 HONDA CTX 700 MOTORCYCLE MAROON, 700CC, 2 OWNER, EXTREMELY NICE BIKE, AND ONLY 1,020 MILES	\$2,900
-----------	---	---------



**TASK.
TASK.
DONE.**

RB16 SERIES
 REAR BLADES
 20-40 HP 60", 74", 84" Widths
 • Cat. 1 hitch
 • 7 Forward angles; 3 Reverse angles
 • 5 Tilt positions
 • 12" Offset left or right
 • 14" Moldboard height
 • 1/4" Moldboard thickness
 • Landscape Rake adaptable

AGRI-ENTERPRISES
 For Outstanding Products & Service
 1-1/2 Miles South Of Licking, MO On Hwy 63
573-674-2203
1-800-653-7152

Land Pride
 www.landpride.com www.agri-enterprises.com

NEW MERCHANDISE & TOOL SALE: Saturday November 21st, 2020 6:00PM. Two miles North of St James on Hwy 68N @ Rolla Horse Auction. FOR INFO: 573-263-4232

SACAGAWEA GOLDEN DOLLARS: Face value \$1. Original issue 2000, uncirculated. In rolls of 5. \$30. 417-686-0032, Ava.

FRUEHAUF 71 MODEL CATTLE TRAILER: 45ft, aluminum, straight-deck, 90% tires. \$5,000. 417-543-5674.

STOCK TRAILER: 1983 Coose, goose-neck: 24', new floor. Four new 10 ply truck tires. \$2450. Lebanon (417)664-2198.

CAMPER WINDOWS: (2) 29 3/4 X 21 3/4, (1) 23 3/4 X 21 3/4, (1) 34 X 3/4, (1) 47 3/4 X 21 3/4. \$200 FOR ALL. 417-664-8823.

FIRESTONE MINI SPARE TIRE: Brand new, never used, 23" diameter, 5 hole, T125-70-R16, tubeless radial. \$85 firm. 417-686-0032. Ava

NO \$\$\$ DOWN MOBILE HOMES- Call for details 573-499-9993 columbiadis-counthomes.com

HIGH FLOW STANDARD TOILET: new-in-box; 1.6 gpf; white, round bowl. \$200. Lebanon (417)664-2198.

LIONEL TRAIN SET: Steam engine, tender, caboose and other car, track and transformer. \$195. 573-364-7465, Rolla.

PINNACLE RANCH: Red Angus and Red Balancer Heifers for sale. 417-679-4269.

WINCHESTER 150: round, steel, shellcase, 9mm, ammo \$50 per box. 417-844-4319.

2 BIG CHRISTMAS WREATHS: 3ft in diameter. \$30 each obo 636-239-2695.

DARDEN PROFESSIONAL TIMBER HARVESTING, BUYING STANDING TIMBER: Great prices, improve wildlife habitat and improve forest health. State Certified & Fully Insured! 573-247-4808 or 573-739-1122. Salem

AB ROLLER-SLIDER: Deluxe, stomach exercise machine, heavy duty, real 6 pack builder, detachable handles, for easy storage. \$60. Ava. 417-686-0032.

2012 FORD FOCUS: SEL, 142k, leather, bluetooth, good condition. \$5,200. Call 417-531-0545. Lebanon.



Happy Thanksgiving

Due to the upcoming holiday, the following deadlines will be observed:

Weekly Trader
Thursday, November 26
Display Advertising Deadline:
Thursday, November 19
 at 12pm

Classifieds Deadline:
Thursday, November 19 at 4pm


Delivery:
Tuesday & Wednesday

We appreciate your business.
Thank you for your continued support.

WEEKLY TRADER
 MAGAZINE
 417-532-9131
 www.myweeklytrader.com

ALL OF OUR FOREST RIVER VIKINGS ARE PRICED AT WHOLESALE!

764V	2020 Viking 175FQ	MSRP-\$19,510.....	\$14,911
763V	2020 Viking 175BH	MSRP-\$20,090.....	\$15,811
761V	2020 Viking 18RBSS	MSRP-\$23,811.....	\$18,963
766V	2020 Viking 21FQ	MSRP-\$24,256.....	\$19,860
768V	2020 Viking 21BHS	MSRP-\$25,742.....	\$19,975
767V	2020 Viking 24RBS	MSRP-\$29,466.....	\$21,880



WehrRVs
 11311 Bus. 60,
 Mtn. Grove, MO
1-800-288-6827
 www.wehrfordofmountaingrove.com

WANTED TO BUY ANTIQUE CARS: Convertible, Corvettes, unrestored, motors, parts considered. 870-324-1154.

RHINELAND, MO. PICTORIAL HISTORY: "Winter in a Missouri River town," 190 pages, \$15.00. 417-532-2045. Lebanon. Leave phone number.

EARNIE DEANE OZARKS COUNTRY BOOK: A collection of articles about folklore, places, people, customs, history. \$7.50. Lebanon. 417-532-2045, Lebanon. leave phone number.



YOUR AD GOES HERE!

Add YELLOW Color For An Additional \$3 Per Reader Ad

All ads will include Phone Number (unless requested to be deleted by advertiser) and City Or Town, Phone Number with Area Code counts as one word. City or Town counts as one word.

RATE: 80¢ Per Word. All Classified Ads Require Payment Before Print.

(1) 80¢	(2) \$1.60	(3) \$2.40	(4) \$3.20
(5) \$4.00	(6) \$4.80	(7) \$5.60	(8) \$6.40
(9) \$7.20	(10) \$8.00	(11) \$8.80	(12) \$9.60
(13) \$10.40	(14) \$11.20	(15) \$12.00	(16) \$12.80
(17) \$13.60	(18) \$14.40	(19) \$15.20	(20) \$16.00
(21) \$16.80	(22) \$17.60	(23) \$18.40	(24) \$19.20
(25) \$20.00	(26) \$20.80	(27) \$21.60	(28) \$22.40
(29) \$23.20	(30) \$24.00	(31) \$24.80	(32) \$25.60
(33) \$26.40	(34) \$27.20	(35) \$28.00	(36) \$28.80
(37) \$29.60	(38) \$30.40	(39) \$31.20	(40) \$32.00

Place your Classified Ad TODAY!

417-532-2800 • 800-665-8875

Fax: 417-532-8140

Or Mail To: P.O. Box 192 • Lebanon, MO 65536

For your convenience we accept MasterCard, Visa, Discover or American Express



DEADLINE FOR CLASSIFIED ADS: FRIDAY 4:00PM!

Name _____

Address _____

City _____ Email _____

State _____ Zip Code _____ Phone _____

Ad Total \$ _____ X # Weeks _____ = Amount Enclosed \$ _____



CHEVY CYBER SALES EVENT

\$500 CYBER CASH

ON MOST 2020/2021 SUV AND MALIBU MODELS¹

CLICK. CLAIM. GO.

VISIT CHEVYCYBERSALESEVENT.COM TO CLAIM YOUR CODE.



2020 TRAVERSE LT
STK. 33480

\$2,250 CASH ALLOWANCE
+ \$500 CYBER CASH

\$2,750 TOTAL CASH ALLOWANCE

ON MOST MODELS²



2020 BLAZER RS
STK. 33418

\$3,500 CASH ALLOWANCE
+ \$500 CYBER CASH

\$4,000 TOTAL CASH ALLOWANCE

ON MOST MODELS²



2020 EQUINOX LS
STK. 33526

\$4,750 CASH ALLOWANCE
+ \$500 CYBER CASH

\$5,250 TOTAL CASH ALLOWANCE

ON MOST MODELS²



2021 MALIBU LT
STK. 33327

\$2,750 CASH ALLOWANCE
+ \$500 CYBER CASH

\$3,250 TOTAL CASH ALLOWANCE

ON MOST MODELS²



2020 TRAX LS
STK. 33254

\$3,750 CASH ALLOWANCE
+ \$500 CYBER CASH

\$4,250 TOTAL CASH ALLOWANCE

ON MOST MODELS²



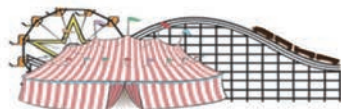
2021 TRAILBLAZER ACTIV
STK. 33460

\$750 CASH ALLOWANCE
+ \$500 CYBER CASH

\$1,250 TOTAL CASH ALLOWANCE

ON MOST MODELS²

FIND NEW ROADS[™]



FAIRGROUND

Auto Plaza

DRIVEN TO SERVE YOU BEST...

CHEVROLET

100 Fairgrounds Road
Rolla, Missouri
(573) 364-1002

www.FairgroundGM.com

¹ Available toward the purchase or lease of most 2020/2021 Blazer, Equinox, Malibu, Traverse, Trax and 2021 Trailblazer models. Excludes select base trims. Visit ChevyCyberSalesEvent.com to claim offer code. Not available with some other offers. Limit one online code per eligible vehicle transaction. Must provide code at time of purchase or lease. Take new retail delivery by 11/30/20. ² Excludes L models. Visit ChevyCyberSalesEvent.com to claim offer code. Limit one online code per eligible vehicle transaction. Must provide code at time of purchase. Not available with special financing, lease and some other offers. Take new retail delivery by 11/30/20. ©2020 General Motors. All rights reserved.