

FREE - TAKE ONE!

Vol. 27 No. 26

SEPTEMBER 24, 2020

800-543-8271 • 800-665-8875

WEEKLY TRADER MAGAZINE

Find us on Facebook

@myweeklytrader AUCTIONS PG. 13

VISIT OUR NEW WEBSITE! MYWEEKLYTRADER.COM

ADD ANOTHER CHEVY TO YOUR DRIVEWAY.



2020 TRAX

STK. #33426

15% OF MSRP CASH BACK¹

THAT'S

\$3,900 CASH BACK

ON THIS TRAX LT²

PLUS

CURRENT GM OWNERS GET AN ADDITIONAL \$750 CASH ALLOWANCE³



2020 EQUINOX

STK. #33363

15% OF MSRP CASH BACK ON MOST MODELS¹

THAT'S

\$4,611 CASH BACK

ON THIS EQUINOX LT²

PLUS

CURRENT GM OWNERS GET AN ADDITIONAL \$750 CASH ALLOWANCE³



2020 BLAZER

STK. #33391

12% OF MSRP CASH BACK ON MOST MODELS¹

THAT'S

\$4,240 CASH BACK

ON THIS BLAZER 1LT



2020 SILVERADO

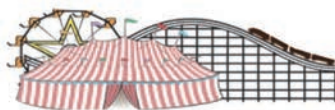
1500 LT CREW CAB

STK. #33444

\$5,000 CASH ALLOWANCE¹

ON THIS SILVERADO 1500²

FIND NEW ROADS™



CHEVROLET GMC WE ARE PROFESSIONAL GRADE Cadillac BUICK

FAIRGROUND

Auto Plaza

DRIVEN TO SERVE YOU BEST...

CHEVROLET

100 Fairgrounds Road

Rolla, Missouri

(573) 364-1002

www.FairgroundGM.com

¹ Excludes L models. Not available with special financing, lease and some other offers. Take new retail delivery by 9/30/20. ² 2020 Trax It based on \$25,995 MSRP. 2020 Equinox It based on \$30,740 MSRP. 2020 Blazer 1LT based on \$35,340 MSRP. Not available with special financing, lease and some other offers. Take new retail delivery by 9/30/20. ³ Excludes L models. Must be a current owner of a 2006 model year or newer GM vehicle for at least 30 days prior to the new vehicle sale. Not available with special financing, lease and some other offers. Residential restrictions apply. Take new retail delivery by 9/30/20. ©2020 General Motors. All rights reserved.

WE SELL LAND

PASSION DRIVEN EXPERTISE.

\$1.3 BILLION
344,000 ACRES
sold company wide
in 2019

**WE ARE A DIFFERENT KIND OF REAL ESTATE COMPANY.
IF YOU'RE LOOKING TO BUY AND SELL LAND, WE CAN HELP.
LAND IS ONE OF THE BEST INVESTMENTS YOU CAN MAKE.**

*MISSOURI'S TOP LAND SPECIALIST
2014, 2015, 2016, 2017, 2018 & 2019*

BRIAN W. UTECHT
Agent, Southwest Missouri Land Specialist
(417) 766-5595
brian.utecht@whitetailproperties.com



WHITETAIL PROPERTIES REAL ESTATE

HUNTING | RANCH | FARM | TIMBER

WHITETAILPROPERTIES.COM



Whitetail Properties Real Estate, LLC - DBA Whitetail Properties | In the States of Nebraska & North Dakota - DBA Whitetail Property Properties Real Estate LLC | Licensed in IL, MD, IA, KS, KY, NE & OK - Dan Perez, Broker | Licensed in AR, CO, GA, MN, ND, SD, TN & WI - Jeff Evans, Broker | Licensed in FL, OH & PA - Jefferson Kirk Gilbert, Broker | Licensed in TX & NM - Joey Bellington, Broker | Licensed in IN - John Boyken, Broker | Licensed in AL, GA, LA & MS - Sybil Stewart, Broker | Licensed in TN - Chris Wakefield, Broker | Licensed in TN - Bobby Powers, Broker | Licensed in AR - Anthony Ohnaco, Broker | Licensed in SC - Chip Camp, Broker | Licensed in NC - Rich Baugh, Broker | Licensed in MI - Edmund Joel Nogaski, Broker | Licensed in WV - Debbie S. Leax, Broker | Licensed in VT, ME, OR & WY - Aaron Milliken, Broker



TIME FOR PRECISION

Hustler's residential mowers are built stronger and perform faster, allowing you to quickly maneuver around obstacles with ease. Tackle your lawn in record time with unparalleled precision, and use the time you save to do the things you love.



For Outstanding Products & Service
AGRI-ENTERPRISES

1-1/2 Miles South Of Licking, MO On Hwy 63
573-674-2203 • 1-800-653-7152 • www.agri-enterprises.com

HAY SECOND CUTTING ROUND BALES: In field. \$35 each. 573-674-2592/417-217-8927.

VILLA HOMES IN ROLLA: Has NEW and USED Mobile Homes. Call David for info: 573-578-8072.

2 5FT PULL-TYPE BRUSHHOGS: 1-Side-winder. \$500, \$300 for other one. Rogersville, 417-766-1991.

BRED REGISTERED AKITA: 5yrs old, consistently has 11 puppies, due October-15. \$2,500. 660-287-3278/573-418-4788.

ANTIQUE BRASS KITCHEN CABINET HARDWARE: 1 set of 54. \$50 per set. 636-239-2695

LIONEL TRAIN SET: Steam engine, tender, caboose and other car, track and transformer. \$195. 573-364-7465, Rolla.

VOTED #1 BEST Preowned Car Dealership

TIM'S USED CARS

(573) 341-3828 • 1334 South Bishop (Hwy. 63) • Rolla, MO
Next to Hwy CC • www.tims-used-cars.com

<p>2017 CHEVY 1500 SILVERADO LS 4x4, 5.3 V-8, Power Equipped, 13,xxx Miles Priced to Sell!</p>	<p>2011 FORD F150 Crew Cab, 4x4, FX4, 3.5 Ecoboost, Power Equipped, 124,xxx Miles Only \$18,900</p>
<p>2010 NISSAN FRONTIER SE Crew Cab, 2WD, 4.0 V-6, Auto, Power Equipped Only \$8,500</p>	<p>2014 RAM 2500 2WD, Tradesman, 5.7 Hemi, Power Equipped, 151,xxx Miles Only \$9,800</p>

LARGE SELECTION OF CARS, TRUCKS, SUVs & VANS!

#1 Selling FARM TRACTOR IN THE WORLD

Come See Us For Your Mahindra
Financing available for those who qualify
www.agri-enterprises.com

AGRI-ENTERPRISES
1-1/2 Miles South Of Licking, MO On Hwy 63
573-674-2203 • 1-800-653-7152

HEAVY DUTY FACTORY TOWBAR: for cars or trucks. \$100 or trade. 573-734-2822.

GUARDIANWARE: 1930-1950's, Turkey roaster with lid. \$195. 573-364-7465.

Offering the Area's **LOWEST METAL PRICES!**

Pole Barn Packages

CALL TODAY FOR A FREE QUOTE!

24'x32'x10' 30'x40'x10' 40'x60'x12' Sales Tax & Delivery not included.
 24'x40'x10' 30'x60'x10' **CALL TODAY!** Labor quotes available as well.

Compare Before You Buy.

We Use Only The **Highest Quality** Materials!



Custom Homes • Metal Roofs

29 Gauge

#1 PAINTED METAL

- ★ Lifetime Warranty - \$70.00 Sq.
- ★ 40 Year Warranty - \$67.00 Sq.
- ★ 20 Year Warranty - \$64.00 Sq.
- ★ 25 Year Galvalume - \$54.00 Sq.

Labor prices will be higher in locations over 75 miles from Marshfield, MO



- ALL MATERIAL PACKAGES INCLUDE...
- ✓ #1 Yellow Pine Lumber
 - ✓ #1-40 Yr. Painted
 - Metal w/Screws
 - ✓ 1-10' Overhead Door
 - ✓ 1-36" Entry Door

Fully Insured



PORTABLE BUILDINGS
 Rent to Own
 No Credit Check

1049 SCHOOLVIEW DR.
 Marshfield, MO



Marshfield
BUILDINGS

www.marshfieldbuildings.com



417-859-7744

D&H OUTDOOR WOOD FURNACES SINCE 1986: Forced air, 90% efficient, fire proof insulated, thermostat control. Complete Heating and Cooling Systems. 573-743-6943 or 573-247-5585, Salem.

OLD IHC: tool box with oil can holder, \$50. Herman 636-932-4429.

CAPPER'S WEEKLY VINTAGE SEARCHLIGHT COOKBOOK: hardback \$10. 417-532-2045, Lebanon. Leave phone number.

2019/2020 4x5 ROUND BALES: plastic twine, always shedded, pay for now and will store until April. Delivery or pickup. St James, MO. 573-467-5043 or 573-699-4577.

A&L 500 BUSHEL GRAIN CART: Good condition. 417-646-8807

FINISH MOWER: Six foot in new condition, used 4 times. Pictures available. \$950. New was \$1,300. 573-241-1351.

TABLE ROCK LAKE FRONT: Lake View on Virgin Bluff Saint James River, Stone County, 3.4 acres. Pastoral gorgeous scenic views, excellent road frontage wooded, no restrictions, near boat launch, 9 miles to Branson West, 10 to Kimberling City. County Hwy YY. \$149,900 or Best Offer. 573-241-1351.

BETTY CROCKER BAKING FOR TODAY COOKBOOK: Hardback. \$6.50. 417-532-2045. Lebanon. Leave message.

MOSSBERG PATRIOT: 22 inch fluted, 6.5 Creedmoor, \$350. 417-844-8810.

RW BOWMAN HANDMADE RANCH SADDLE: \$1,500, BH Roping Saddle, \$800, Cherokee roping saddle, \$300, all saddles have 17" seat. 417-259-0396

JOHN DEERE 1008: 10ft. pull type, brush-cutter with cyl. \$2,950. 573-765-4406.

LANDPRIDE RCF3010: pull type brush hog, 10 foot, \$5450. 417-270-1505.

12 OPEN BLACK ANGUS HEIFERS. \$750 each. 573-714-2012.

WANTED: Bunk beds. 417-322-0161.

QUALITY CONSTRUCTION.
 HONEST SERVICE. GREAT VALUE.

FULLY INSURED

Roofing • Remodels • Decks • Siding
 • Concrete • New Construction

RAINBOW CONSTRUCTION CALL FOR FREE ESTIMATE
(417) 217-3572

Cheyenne Acres
 Horse & Tack

BUY - SELL - TRADE
 by Rolla, MO
 Call For Directions & Availability

Call Kip
573-368-9402

KUSTER LOGGING
BUYER of Standing Timber
 Oak and Walnut

Dozing Now Available

417-259-0047
 References Available

POOL TABLES: Installations, moves, recoveries, repairs, accessories, etc. 573-646-1700.

FOR SALE: Allis Chalmers D17, wide front, 3 point, \$1,350. 573-690-9406.

IHC 10FT WHEEL DISK: \$1,600. 573-765-4406.

FORD 300, 6 CYLINDER HEADERS: \$125. 417-683-7843.

BORDER COLLIE/BEAGLE CROSS PUPPIES: 3month old. \$100, 417-741-2154.

3PT KING KUTTER: 5FT box blade, like new. \$250. Bourbon, 573-732-5978.

THE ULTIMATE WOOD HEAT



The most efficient, easiest-to-operate EPA Step 2 Certified Outdoor Wood Furnace

"It is so much more convenient than having to constantly load the indoor wood burner and I am using about half the wood. I am more at ease with the fire outside away from the house along with the dust, bugs and ash." -- Lucas

- **Top performing** - use up to 60+% less wood compared to other methods of wood heating
- **Built to last** - titanium-enhanced stainless steel firebox ensures zero corrosion inside firebox burning any kind of firewood
- **Peace of mind** - keep the fire and mess outside, safer, more convenient wood heat. See furnace performance and operation from anywhere with your smartphone (visit MyFireStar.com/demo to see a live demonstration)



More comfort for your entire home



CLASSIC EDGE
TITANIUM HDX

To learn more and to find your local Central Boiler Dealer:

CentralBoiler.com
800-248-4681

©2020 Central Boiler • ad7650

Call a Central Boiler dealer near you today!

Yarbrough Equipment.....	Stafford, MO.....	417-736-2303
Martin Plumbing, Heating & Cooling ...	Winona, MO.....	573-325-4385
Thermal Pro	Koeltztown, MO	573-694-1311
Huck Wood Heat	Sainte Genevieve, MO	573-883-0370

HORSES ALL AGES: getting old, cutting back. 417-531-5707.

HORSE HAY: Square bales, TIMOTHY CLOVER AND GRASS MIX, HIGH PRO-TeiN \$5 bale, delivery available for 100 or more. 573-368-1794, Rolla.

WEATHERED BARN WOOD SIDING: 8" & 10" wide. 573-729-7226. www.pineridgerustic.com

AC 840 DIESEL ARTICULATING 4-WHEEL DRIVE LOADER: \$7,000. 573-765-4406.

Custom Gun Building & General Gunsmithing

Craig's **OUTDOOR Sports**

- Ammo
- Reloading Supplies
- Muzzleloaders & Supplies
- Hunting Supplies

417-926-0255
9435 Hwy N, Ste A, Mountain Grove
Mon.-Fri. 9am-5pm • Sat. 9am-12pm

FORD TRACTOR 2000 SERIES: good shape, \$3,250. 417-531-5300.

GELBIEH/ANGUS CROSS BULL: 3 years old, black, \$2,200. 573-859-3559.

JOHN DEERE 750 15FT NO-TILL DRILL: \$11,000, Bonnets Mill, 573-897-4724.

DARDEN PROFESSIONAL TIMBER HARVESTING, BUYING STANDING TIMBER: Great prices, improve wildlife habitat and improve forest health. State Certified & Fully Insured! 573-247-4808 or 573-739-1122. Salem

DUMPTRUCK BED: 16', Grain gate, needs TLC. \$1,000. 417-646-8807

NEW BIG TEX 22GN FLATBED TRAILER

JIM'S Motors

facebook

JIM'S Motors TRAILERS

I-44 at Exit 208 • Cuba, MO
www.jimsmotors.com
(573)885-2595
(800)897-9840

GREAT SERVICE!
1957-2018 GREAT PRICES!

2-21" PUSH MOWERS: Briggs& Stratton engine, 1runs, 1 for parts. Both \$75obo. 636-239-2695.

WANTED, TIMBER TO LOG ON SHARES: Honest, reliable, references. 417-533-4607, 417-664-1195.

JOHN DEERE UMBRELLA BRACKET: For old tractor. \$50. Hermann, 636-932-4429.

TAKEUH 135 DIESEL EXCAVATOR: & Hyd Thumb \$14,500. 573-765-4406.

BAIL BONDS



BAILMAN BONDING

I operate in the following counties: Greene, Christian, Dallas, Benton, Webster, Hickory and Polk.

(417) 501-JAIL

AGENT MICHAEL REEDER. LICENSE #304910

JOHN DEERE 2955: Diesel Cab Cold Air Tractor, 85HP with JD 720 loader. \$27,000. 573-765-4406.

BRUSHOG 8FT OFFSET DISK: \$2,500. 573-765-4406.

BLUE & RED HEELER PUPPIES: Good working stock, UTD. \$150. 417-664-5926.

8 TIRES: 9.50R16.5, Mounted on 8-hole Bud Wheels, with axles and airbrakes. \$500. 417-766-1991

THE BITTERSWEET OZARKS AT A GLANCE BOOK: New, in original package, hardback, \$15. 417-532-2045. Lebanon. Leave message.



MIDWEST CONSTRUCTION

Free Estimates!

- Pole Barn • Garages • Framing
- Remodels • Roofing • Concrete
- Decks & Porches

Contact Abner Glick
417-664-1794

TRACTORS: 880 Oliver, 350 Farmall. \$2,000 each. Cabool, 417-349-2908.

VERY LARGE RECORD ALBUM COLLECTION. 573-729-3297, make offer.

DREAM HOUSE -Online. chateauhomes.net Call Marla 573-657-7040

JOHN DEERE 6400: MFD Diesel Cab Cold Air Tractor, 85HP. \$22,000. 573-765-4406.

* A HERITAGE OF *

DOING SCORES OF CHORES



STAR SPANGLED PACKAGE

Includes 4044M, Loader and Rotary Cutter

\$2,950 off¹

GEAR UP FOR FALL PACKAGE

Includes 1025R Tractor, Loader and Broadcast Spreader

\$550 off¹

GATOR™ UTILITY VEHICLES

\$500 off²

* A HERITAGE OF *

YELLOW AND BLACK QUALITY



Legendary Products. Extraordinary Service.

Find your local Heritage Tractor location or request a quote at HeritageTractor.com




(1) Offer ends 10/31/2020. Subject to approved installment credit with John Deere Financial. Based on a 0% down payment and financing of 0% APR for 72 months. Taxes, freight, set up and delivery charges could increase the monthly payment. Prices above are available to customers in our area of responsibility, which include select counties in Kansas, Missouri, Arkansas, Oklahoma and Nebraska (2) Offer available on qualifying purchases made between 15 July 2020 and 30 October 2020. Offer available on the purchase of any model year 2020 & older Full-Size Utility Vehicles in the U.S. only. Prices and savings in U.S. dollars. See your participating dealer for details.

PINNACLE RANCH: Heifers, Red Angus, 1/8 Gelbvieh Balancer, 10 month old, for sale. 417-679-4269, Gainesville.

WINDAM AR10 SRC308: with Vortex Scope, accessories, ammo, bought new, like new. \$1595. 417-399-6687.

FIREARMS: Professional Repairs and Restorations. Baron's Gunsmithing. 573-363-5801, Camdenton.

COVERCRAFT CAR COVER: 3 layers, breathable, rain resistant, will not mildew, Fits 16'x17'6". \$125. 417-469-0325.

JOHN DEERE 467 ROUND BALER: monitor kicker, wide pickup, net wrap, 4 x 6, \$8,750. 573-765-4406.

2002 FORD DUALY XLT PACKAGE: Automatic, 2WD, gooseneck hitch. 636-234-7275

CAR DOLLY: Like new, spare tire, hold down straps. \$900. Rogersville. 417-766-1991

CUSTOM SAW MILLING: Lebanon. 417-533-4607, 417-664-1195.

LARGE TORPEDO HEATER: for garage, \$100 or trade. 573-734-2822.

WANTED: Store shelving/fixtures. 417-322-0161

SAVAGE: or-H&R 410-Gauge Single Shot \$150 Each. 573-756-1065.

I BUY.....used mobile homes. Call or text 573-338-6250 or email GregS.CDH@outlook.com

EXCITING & NEW

BUYING EXPERIENCE FOR SOUTH CENTRAL MISSOURI

OVER 100 BINS
FILLED WITH A HUGE VARIETY OF PRODUCTS, OVERSTOCK, RETURNS & LIQUIDATIONS.
PLUS A LARGE SELECTION OF NEW PRODUCTS.



Saturday & Sunday **\$7** *Monday* **\$4** *Tuesday* **\$3** *Wednesday* **\$2** *Thursday* **\$1** *Friday* **\$.50 GONE**

RESTOCK Going Going Going Going

189 EXIT OFF I44

11101 Old Highway 66, Rolla, MO 65401 • 573-364-6006

40FT TANDUM DUALY GOOSENECK FLAT BED TRAILER: \$6,000. 573-765-4406.

IHC 766 DIESEL TRACTOR: Cab & air, 80 hp, NEW ENGINE over-haul, \$8,500. 573-765-4406.

SWAP MEET: At Treasures, 1060 Tower Road, Lebanon, October 2nd & 3rd, Vendors Wanted, 417-532-6666.

DEBBIE MACOMBER - 64 paperback books, sell all together. \$100. 417-532-6561.

5 PIECE SET W/LIDS OF BLUE FLOWER CORNINGWARE: no chips, good condition. \$60. 417-532-2344.

ANTI FREEZE FULL STRENGTH: Name brand. \$9gal or 3 for \$25, Texaco, Prestone, Zerex. 573-364-7465

2017 JAYCO FLIGHT: 17ft pull-behind camper, excellent condition, queen bed, table converts to bunk, tub/shower, added- Tv, stabilizer/hitch bars, must SELL. \$15,000, firm. 417-293-3574, after 5pm.

MUSTANG 2040 DIESEL SKID STEER LOADER: \$8,500. 573-765-4406.

KITCHEN FAUCET MOEN: single lever, sprayer, new cartarage. \$70obo. 636-239-2695.

DINING ROOM TABLE: round, heavy duty, 4 chairs, like new, \$100 or trade. 573-734-2822

LOG SIDING SALE: 2X8 Western Cedar .99 ft/ Pine \$1.30 ft while supplies last. www.pineridgerustic.com 573-729-7226.

THREE HOUSES TO BE TAKEN DOWN: 1950's oak construction, steel siding. St.Robert area. \$500 each. 573-528-2821.

MOSSBERG: Model-500, 20or12 Gauge Pumps. \$200 each 573-756-1065.

REGISTERED HEREFORD & ANGUS BULLS: Home raised, Some Show-Me Select Qualified. 573-701-7828. Belgrade

USA GUIDE TO AMERICA'S HEARTLAND: A travel guide to the Backroads of Missouri, Kansas, Iowa, Indiana and Illinois, 528 pages, \$5.00. 417-532-2045, Lebanon. Leave phone number.

CISTERN PUMP WITH CAST IRON BASE: Made at Fayette. \$80. 636-932-4429.

WWW.MYWEEKLYTRADER.COM

Omar's Logging

⇒ Oak & Walnut
⇒ Excellent Prices
Amish Owned & Operated

LEAVE MESSAGE: 417-741-0440

Buildings • Hunter's Cabins • Lawn Furniture

JAMCO BUILDERS

JAMCO Portable Buildings
800-688-2064 • 307 Enterprise Dr. • Seymour, MO • www.jamcobuilders.com

Rent To Own Plan

SPECIALIZING IN STUD FRAME & POLE BARN BUILDINGS

30+ Years Experience

Broeckelman Metal Buildings

Allen Broeckelman • Lebanon, MO
417-650-5600

FOUR TIRES: Size 245-60 R18 Michelin. No patches. \$80 firm. 417-532-2344.

TUFFY SPECIAL -Volume Prices 573-657-2176 amegamobilehomes.com


WILBUR'S FISH BRANCH ANGUS: 18 month old bulls for sale, high performance and calving ease, also available spring bred registered heifers, synch AI'd, preg checked bred. Mexico MO, 573-473-6019, www.fishbranch.com

HEAVY DUTY FACTORY TOWBAR: for cars or trucks. \$100 or trade. 573-734-2822.

GUARDIANWARE: 1930-1950's, Turkey roaster with lid. \$195. 573-364-7465.

ALL OF OUR FOREST RIVER VIKINGS ARE PRICED AT WHOLESALE!

764V	2020 Viking 175FQ MSRP-\$19,510.....	\$14,911
763V	2020 Viking 175BH MSRP-\$20,090.....	\$15,811
761V	2020 Viking 18RBSS MSRP-\$23,811.....	\$18,963
766V	2020 Viking 21FQ MSRP-\$24,256.....	\$19,860
768V	2020 Viking 21BHS MSRP-\$25,742.....	\$19,975
767V	2020 Viking 24RBS MSRP-\$29,466.....	\$21,880



WehrRVs
11311 Bus. 60,
Mtn. Grove, MO
1-800-288-6827
www.wehrfordofmountaingrove.com

SPECIALIZING IN HEAVY DUTY GATES



Cow Country Gate Sales

Call Randy: 573-569-4754
or Home: 573-539-2528
Located at: Zimmerman Welding
16889 Hwy 52, Barnett, MO

MISSOURI GARDENER'S GUIDE: 421 pages, over 170 color photos, \$5.00 417-532-2045. Lebanon. Leave phone number.

NEW IDEA 5410 DISKMOWER: 10ft. \$4,450. 573-765-4406.

MISSOURI WILDFLOWERS BOOK: 286 pages, \$4. 417-532-2045, Lebanon. Leave phone number.

BETTY CROCKER'S PICTURE COOK-BOOK: Hardback. Excellent condition. \$6.75. 417-532-2045, Lebanon. Leave message.

WILD EDIBLES OF MISSOURI BOOK: \$4.50. 417-532-2045. Lebanon. Leave message

NEW HOLLAND: 256 Rake, \$1,300. 573-765-4406.

BRED REGISTERED AKITA: 5yrs old, consistently has 11 puppies, due October-15. \$2,500. 660-287-3278/573-418-4788.

VILLA HOMES IN ROLLA: Has NEW and USED Mobile Homes. Call David for info: 573-578-8072.

ANTIQUE BRASS KITCHEN CABINET HARDWARE: 1 set of 54. \$50 per set. 636-239-2695

2 5FT PULL-TYPE BRUSHOGS: 1-Side-winder. \$500, \$300 for other one. Rogersville, 417-766-1991.

D&H OUTDOOR WOOD FURNACES SINCE 1986: Forced air, 90% efficient, fire proof insulated, thermostat control. Complete Heating and Cooling Systems. 573-743-6943 or 573-247-5585, Salem.

Pine Ridge Rustic
Log Home Building Supplies

Services Offered!

- Installation
- Pre-finishing available on interior & exterior
- Dealer for exterior stains

www.pineridgerustic.com



- Log Siding
- Beveled Siding
- Car Siding • Red Cedar
- Western Cedar • Pine

523 CR 2410 • Salem, MO 65560 • Ph: 573-729-7226

INTERNATIONAL W-9 TRACTOR: Rare, original, straight, mechanically sound. \$3,200 OBO 417-848-8754 Brookline

NO \$\$\$ DOWN MOBILE HOMES- Call for details 573-499-9993 columbiadis-counthomes.com

LIONEL TRAIN SET: Steam engine, tender, caboose and other car, track and transformer. \$195. 573-364-7465, Rolla.

2012 FORD FOCUS SEL: 142,000miles, leather seats, runs great. \$5,500. Call 417-531-0545

HAY SECOND CUTTING ROUND BALES: In field. \$35 each. 573-674-2592/417-217-8927.

FINISH MOWER: Six foot in new condition, used 4 times. Pictures available. \$950. New was \$1,300. 573-241-1351.

HELLING 31ST ANNUAL FALL FARM MACHINERY CONSIGNMENT AUCTION SUNDAY SEPT. 27TH 2020 9:30 AM AUCTION HELD AT HELLING FARM 3548 HWY C LESLIE, MO 63056

LOCATION: FROM HERMANN MO TAKE HWY 100 15 MILES TO NEW HAVEN MO. THEN TURN RIGHT ON HWY C GO 8 MILES TO FARM ON LEFT HAND SIDE. FROM GERALD MO TAKE HWY C 4 MILES TO FARM ON RIGHT. FROM UNION MO TAKE HWY 50 WEST 17 MILES THEN TURN RIGHT ON HWY C GO 3 MILES TO FARM ON RIGHT HAND SIDE. THIS IS A PARTIAL LISTING WATCH FOR UPDATES AND PHOTOS

TRACTORS & INDUSTRIAL EQUIPMENT

JD 3010 TRACTOR N/F DIESEL 3PT
MF 165 TRACTOR GAS 3PT
JD TRACTOR 1520 DIESEL 3PT
1949 JD A TRACTOR RUNS
IH 444 TRACTOR GAS 3PT
1950 JD B TRACTOR RUNS
IH 344 TRACTOR GAS 3PT
JD SALVAGE TRACTOR FOR PARTS
8N FORD TRACTOR
JD A RUNS NEED SOME WORK
MM U302 SUPER DIESEL TRACTOR
GALION ROAD GRADER
54 FORD JUBILEE TRACTOR
IH 2404 TRACTOR GAS 3PT W/SIDE-
MOUNT SICKLE MOWER
AUCTION NOTE : SEVERAL MORE
TRACTORS BT SALE DAY COMPACT
TRACTORS WILL SELL IN LAWN
GARDEN
873 BOBCAT SKIDSTEER
LAWN & GARDEN
JD COMMERCIAL ZERO TURN 60'
2009 POLRRIS RANGER HD 700 SIDE
BY SIDE 4X4 W/DOORS
HOMEMADE BAND SAW ON TRAILER
1-LOT USED AND NEW 16FT GATES
14FT BOAT WITH TRAILER NO TITLE
PUSH LAWN MOWERS RUNS GOOD
2- GAS POWER WASHERS WORKS
GOOD

WEED EATERS
SEVERAL RIDING MOWERS
JD L110 RIDING MOWER
JD L130 RIDING MOWER
JD L150 RIDING MOWER
JD 155 C RIDING MOWER
AGRO A RIDING MOWER
SIMPLICITY RIDER NO DECK
LINHA SIDE BY SIDE 4X4
2013 900 RZR NICE RUNS GOOD
**FARM EQUIPMENT & HAY
EQUIPMENT**
6FT BRUSH HOG 3PT
6FT BOX BLADE 3PT
5FT BRUSH HOG 3PT
5FT DISC 3PT
8FT WHEEL DISC
8FT BRUSH HOG 3PT
LOT OF USED TRACTOR PARTS
SET OF JD TRACTOR TIRES ON SPOKE
WHEELS
USED JD TRACTOR TIRE RIMS
JD 3 BTM PLOW 3PT
GRAVITY WAGON WITH HOIST
7FT FORD DISC 3PT
GAIN BIN W/AUGER
4FT BRAND NEW BOX BLADE 3PT
NH HAY TEDDER
2 BTM PLOW
BALE SPIKE
HI-LIFT BALE STACKER
FRONT GRADER BLADE FITS IH

SUPER A
6FT BLADE 3PT
BRUSH HOG BRAND 8FT BUSH HOG 3PT
2014 HYD 4 BASKET NH 3417
TEDDER
JD WAGON GEAR
WOODS 6FT 3PT FINISH MOWER
JD 7FT 3PT STRAIGHT BLADE
NEW 5FT BOX BLADE
HOWARD 4FT 3PT TILLER
JD 2BTM PLOW 3PT
6FT 3PT MF DISC
5FT BUSHHOG 3PT
JD 15FT BATWING
3PT FORD POST HOLE DIGGER 9'-12
AUGER
3PT DEERBORN 8FT DISC
DANHUSER 3PT WOOD SPLITTER
JD 9 SHANK CHISEL PLOW
WW PORTABLE CATTLE CHUTE ON
WHEELS
COUPLE CATTLE HEAD GATES
3PT 1 BTM PLOW
GRAVITY WAGON ON RUNNING
GEARS
3PT 4FT BLADE
3PT 8FT BLADE HEAVY DUTY
3PT 2 BTM PLOW
3PT CARRY ALL
SET OF FORD PIE WEIGHTS W/
RACKETS
1-LOT BRAND NEW MISC ITEMS

CRAFTSMAN TOOLS ALL KINDS
NEW GENERATORS
SCAFFOLLAD DRYWALL HOIST
SAFE, CONCRETE MIXER, METAL
SIGNS
TOOLS, WELDERS, GAS AUGER,
GAS T-POST DRIVER, SOME
HOUSEHOLD ITEMS POTS
AND PANS, BLANKETS, YARD
DECORATION,
LOTS OF OTHER ITEMS ALL NEW
TRUCKS & CARS & TRAILERS
1979 CHEV GRAIN TRUCK W/16FT
BED HOLDS 400 BUSHELS 366
ENG ,GAS
16FT TRAILER BUMPER HITCH
1974 FORD PICKUP GAS
MISC ITEMS
TOPPER FOR SHORT BED PICKUP
W/KEY
SKIL POWER TOOLS USED WORKS
GOOD
SMALL DOG PEN
PICK UP TOOL BOXS
USED TOOLS
SEVERAL LOTS OF MISC ITEMS
ANTIQUE COLLECTOR ITEMS
MASSEY HARRIS SICKEY RAKE
WOODEN TYPE 2 ROW PULL
PLANTER
2 - 2 GALLON ENTERPRISE
SAUSAGE STUFFER

1- LOT OF GUNS • AUCTION NOTE: GUNS WILL SELL EARLY THAT MORNING

**DUE TO THE COVID -19 WE WILL BE FOLLOWING THE CDC GUIDELINES AND PRACTICING SOCIAL DISTANCING .
HAND SANITIZER WILL BE AVAILABLE AND ANY PPE YOU DESIRE TO WEAR IS OK.**

WE WILL BE GIVING OUT BUYERS BID CARDS THE WEEK OF THE AUCTION , FOR ANYONE WHO WOULD LIKE TO GET THEIR NUMBER EARLY THANK YOU

**RAIN OR SHINE • LUNCH WILL BE SERVED • MANY MORE ITEMS COMING YET SO CHECK WEBSITE FOR UPDATES
MANY MORE ITEMS BY SALE DAY • WATCH FOR UPDATES & PHOTOS ON WEBSITE**

AUCTION NOTE: WE WILL BE RUNNING TWO OR 3 AUCTION RINGS THAT DAY
SO COME EARLY!! LITTLE SOMETHING FOR EVERYONE.

THESE BILLS ARE MADE 2WKS IN ADVANCE OF AUCTION DATE& COULD HAVE DELETIONS & MANY MANY
MORE ITEMS BY AUCTION TIME. TERMS CASH OR GOOD CHECK WITH PROPER IDENTIFICATION. NO
OUT OF STATE CHECKS WITH OUT APPROVE BY OWNER OF AUCTION .NOTHING TO BE REMOVED UNTIL
SETTLE FOR MUST HAVE PAID TICKET BEFORE LOADING ITEMS!!!! NOT RESPONSIBLE FOR ACCIDENTS,
OR LOSSES. ANNOUNCEMENT ON SALE DAY.

COME WHERE YOUR MONEY COUNTS!!! COME EARLY SOMETHING FOR EVERYONE.

WILL TAKE CONSIGNMENTS UP TO SALE DAY BUT MUST BE CHECKED IN BEFORE 8:00 CLOCK THAT
MORNING, THANK YOU. ALL ITEMS MUST BE REMOVED IN 10 DAYS . NO HOUSEHOLD GLASS WARE
OR SINKS ,TOILETS OR BATH TUBS UNLESS STAINLESS STEEL , NO JUNK TIRE.

**FOR INFORMATION
CALL DEANNA HELLING 573-484-4183**

*As always we appreciate your business
Helling Farm Auction*

**WEBSITE: HELLINGSFARMAUCTION.COM
EMAIL ADDRESS: HELLINGSFARMAUCTION@YAHOO.COM**

6th Annual Prairie View School Consignment Auction

FREE coffee & donuts till 9 AM

Saturday, September 26, 2020 beginning at 9:00 AM.

Located at the Eli Gingerich farm at 11142 Ritchie Rd. Prairie Home MO 65068. Directions: From Boonville Hwy. 87 south 10 miles to Ritchie Rd. right 1/4 mile to auction site on right. From California Hwy. 87 north 25 miles to Ritchie Rd. left 1/4 mile to auction site on left. [Prairie Home sawmill]

HORSE DRAWN MACHINERY & EQUIPMENT

New Idea spreader—John Deere model E spreader, good condition—IH 3 ton grinder mixer Rebuild JD big #4 mower w/dolly wheel—2-JD Big #4 rebuilders—JD horse drawn corn binder 3ft, 4ft, 6ft, and 8ft cultimulchers, new—Round bale cart w/ extended wheels, new Standard forecart ,new—International 2 row corn planter, excellent condition 6' single disc—GM diesel power unit on gear—One horse forecart—6 ton wagon gear new JD 2 row walk behind cultivator—McCormick #200 manure spreader—6' double disc 9 ft New Holland disc mower—Allis Chalmers D17, 3pt, runs and starts good, new battery Better Build 1500 gal vacuum tank—12 ft JD plow disc hydraulic—6 ft side winder brush hog Cat 315 track hoe 70% undercarriage, like new bucket w/ new teeth, very good condition 500 gal field sprayer w/ 25ft beams—64 C 60 Chevy 292 6 cyl 5+/- 2 transmission dump truck 48" Swisher finish mower pull behind w/ Briggs motor—8' single disc



COINS AND GUNS

Morgan Dollars: 3-1880 —1878 —1890—1891 Peace Dollars: 2-1922—4-1923—1924—1927 Franklin halves 2-1964—1913 Barber half—1897 Indian head penny—1963 U.C. mint set 1990 Indian head penny—1945 Mercury dime—2-1986 United States proof set 1971 Eisenhower U.C. silver dollar—1967 United States special mint set Remington 243 model 770 bolt action **These coins listed below are all from one collector** 1803 Silver Peace medal W.H. Harrison & Eel Nation, Vincennes, IN w/ ornate collar & box 1863 Silver Peace Medal Andrew Johnson w/ ornate collar & box—**Morgan Silver Dollars** (44) 1879-O (F)—1880-S (UC)—1881-O (G)—1882 (G)—1883 (G), 1883-S (AU)—1884 (VG), 1884 (F), 1884 (F), 1884-S (VG), 1884-S (F), 1884-CC (G)—1886-O (G), 1886-O (G), 1886-S (F)—1887-O (G)—1889 (F), 1889-O (VG)—1891 (G)—1892 (F), 1892-O (F), 1892-O (F)—1894-O (VG)—1896-O (G), 1896-O (G)—1897 (EF, Toned), 1897-O (G), 1897-O (G), 1897-S (G)—1900-O (G), 1900-O (G), 1900-O (F)—1901-O (F), 1901-S (F)—1902 (G)—1903 (G), 1903-S (F)—1904 (F), 1904-O (F), 1904-S (F)—1921 (G), 1921 (G), 1921 (F), 1921 (UC) **Barber Silver Half Dollars** (20)—1897 (G), 1897 (G), 1897 (G) 1898-S (G)—1899 (G), 1899 (VG)—1900 (G), 1900 (VG)—1901 (VG) 1902 (G), 1902-O (G)—1903 (G)—1904 (F)—1905 (G)—1906 (G)—1908 (G)—1909 (G)—1910 (G)—1912 (G)—1913-S (G) **Barber Silver Quarters** (16)—1892 (G)—1893-O (VG/F)—1897 (VG)—1898 (G), 1898 (G)—1899 (G), 1899-O (G)—1903 (G)—1904 (G)—1906-O (VG)—1907-O (G)—1914 (G), 1914 (G)—1915-S (G)—1916 (G), 1916-D (G) **Seated Liberty Silver Half Dollar** (4)—1855-O (G) 1856-O (G/VG)—1861-S (G)—1877-S (G) **Seated Liberty Silver Quarter** 1853 (AG) — **Capped Bust Silver half dollar** 1831 (F) **Seated Liberty Silver Dime** 1873 (G) — **Large One Cent Liberty Head** 1838 (F/EF) **Two Cent** 1869 (F/EF)—**Silver Three Cent** 1862 (G) **Standing Liberty Silver Quarter** (14)—1917 (VG) Type 1 Bare Breast—1920 (G)—1926 (G)—1927 (G), 1927 (G), 1927 (Cleaned)—1928 (G), 1928 (VG)—1929 (AG), 1929 (G), 1929 (G)—1930 (G), 1930 (VG), 1930 (F/EF) **Franklin Silver Half Dollar** (12)—1952-S (UC), 1952-S (UC), 1952-S (BU), 1952-S (BU)—1953-D (BU)—1954 (Graded, PCGS MS64 FBL), 1954-S (Graded, NGC MS64)—1959 (BU)—1963-D (F), 1963-D (F), 1963-D (F) **Liberty Walking Silver Half Dollar** (79)—1916 (G)—1917 (VG), 1917 (F)—1918 (G), 1918 (G), 1918 (VG), 1918-D (G), 1918-S (AG), 1918-S (G), 1918-S (G), 1918-S (G), 1918-S (G)—1919-D (G/VG)—1920 (G/VG), 1920-D (AG), 1920-D (VG), 1920-S (VG) 1923-S (G)—1927-S (G), 1927-S (VG)—1928-S (G), 1928-S (VG)—1934 (VG), 1934 (VG), 1934 (F) 1935 (VG), 1935 (VG), 1935 (F), 1935-D (VG/F), 1935-D (F), 1935-S (F)—1936 (G), 1936 (G), 1936 (G), 1936 (VG), 1936 (VG), 1936 (VG/F), 1936 (F), 1936 (F)—1937 (VG/F)—1938 (AU/UC)—1939 (VG), 1939 (F), 1939 (AU), 1939-D (VG), 1939-D (F)—1940-D (VG)—1941 (G), 1941 (F), 1941 (BU)—1942 (F), 1942 (F), 1942 (EF), 1942 (UC), 1942-D (EF), 1942-S (VG), 1942-S (F)—1943 (VG), 1943 (VG), 1943 (VG), 1943 (EF), 1943 (EF), 1943 (EF/AU), 1943 (AU), 1943-S (EF)—1944 (G), 1944 (F), 1944-D (EF), 1944-D (BU)—1945 (EF), 1945 (BU), 1945-D (G), 1945-D (VG), 1945-S (F), 1945-S (EF)—1946-D (EF), 1946-S (VG) **Barber (Liberty Head) Silver Dimes** 1893-1916 (55) 24 in book plus 31 more duplicate dates **Mercury Head Silver Dimes** 1916-1945 (25) 20 in book plus 5 more duplicate dates **Washington Silver Quarters** (12) Bag of mixed dates 1943-1964 **Kennedy Silver Half Dollars** (3) 1964 (UC), 1964 (UC), 1964 (UC) **Kennedy 40% Silver Dollar** (60) **Three bags** of 20 mixed dates 1965-1970 **Buffalo Nickels** (250) **Five** Bags of 50 visible dates 20s-30s—1974 Silver \$10 Dollar Bahamas Anniversary Coin 42.3 grams, sterling—1987 US Constitution Silver Dollar, .90 pure, 26.7 grams—1982 George Washington 250th Anniversary Silver Half Dollar—Encased Silver coins of 1899 — Dollar, Half Dollar, Quarter, Dime, Nickel, & Penny—Encased Silver coins of 1900 — Dollar, Half Dollar, Quarter, Dime, Nickel, and Penny—Encased Silver coins of 1938 — Dollar, Half Dollar, Quarter, Dime, Nickel, & Penny—Encased Silver Nickel Mint Mark Collection — 1942-S, 1943, and 1945-D—Encased Portraits of Liberty Coins — 1926 Quarter, 1918-D Dime, & 1908 Nickel—Graded Eisenhower Dollars 1978, 1978-D (AACGS) MS63 (Grading of coins: AG = About Good, G = Good, VG = Very Good, F = Fine, EF = Extra Fine, AU = About Uncirculated, UC = Uncirculated, BU = Brilliant Uncirculated)

TOOLS AND MISC.

Brush mower on wheels—Grizzly oscillating sander—6x8 chicken house on skids Potato planter on steel wheels, good condition—Generator w/ Kohler engine 2 Potato plows—Top buggy, good condition—Open buggy—Lots corrugated metal 3-20 lb propane tanks—2 wheeled road cart—2 cycle generator—Irrigation filter system Approx. 600 sq. ft clay hardboard siding—Several hand push garden cultivators Lots of 1, 2, and 3 horse eveners—New neck yokes—5 ton portable feed bin—Socket set 15 ft Bass Tracker boat w/ 50 HP Johnson motor w/ boat trailer—4 round bale feeders Lots corral panels—144 ft dried cherry lumber—4 cattle feed trough—Lots steel T post Lots electrical fence post—Lots roll bard wire—Rear tire flir, like new—New chain hoist DeWalt drill & impact w/ 2 batteries and charger—Lots 3 prong forks—Manure forks Dirt shovels—Scoop shovels—Kid's sled w/ steel runners—Several good breast drills 2000 feet of red cedar lumber

ANTIQUES

1864 Fischer Stagecoach anvil—Set of 3 blue churns—1 red & 1 amber butter churn—Case sign Winchester sign—Egg sign—Shell sign—Furniture clamps—Mini anvils—2 Whisky barrels Blue jars—Egg scales—Cooper kettle—Lots oil lamps—Several set snow shoes Steer head w/ horns—G.A. Jegglin 2 gal. Calhoun MO 1890 nice—10 gal crock nice—Goat wagon W.H. Bock 1/2 gal 1890 nice—Beckham pottery 1 gal. 1860 rare pc— 6 gal redwing crock Lowell pottery 4 gal. crock Tonica IL 1910—Van Briggle cardlestick holders 1922-1926 Van Briggle 3 native faces 12" brown w/ green overs pray—6 gal Bentwood butter churn Amberina coin dot glassware: 1 lidded powder bowl, 1 lidded candy bowl, 1 glass pitcher, 1 vase 6", 1 footed vase five shell-shaped feet, 1 glass vase ruffled rim—#2 crock churn 1917 Boone County MO plat atlas—Walnut fire place mantel unique—5 gal redwing jug Perfection kerosene heater— Sears & Roebuck #22 wringer washer—2 door steam cooker Coffee grinder—Glass Sunbeam butter churn—Sugar bucket—Wooden butter churn Metal butter churn—Enterprise lard press—Hand crank co'n meal grinder—Lots of scales Wooden egg tray—Coleman gas lanterns—Fairbanks—Hid scales—Antique radios Old buggy parts—Old wine press



HORSES, ANIMALS & SADDLES

2 yr old 3/4 quarter 1/4 Belgium gray started sensible mare—Jersey cross 2 yr old milking 7 yr old jersey good milker—Jersey heifer calf—1 yr old Jersey bull—Ducks—Chickens 600 lb steer, non-gmo—15" saddle by M&K brand new, cushion seat 15 1/2" saddle by Johnny Scott Pilot Point Texas, excellent condition Saddle King of Texas saddle—Lots of good trail saddles—4 saddle racks Lots of new tack, leather headstalls, reins, breast collars, and halters **New Chupp Brothers items: Lifetime tables, folding benches and chairs, kids and large picnic tables, wooden drying racks, SS buckets, leather office chairs, rugs, door mats, coffee butlers, ratchet straps, Fire King fireproof safe, pony carts, camping grills, brooms, rakes, shovels, volleyballs, lots more**

HOUSEHOLDS & FURNITURE

3 burner new perfection oil stove—Several Maytag wringer washers, some rebuilders Kitchen dry sink—Finished oak bureau—Oak misc. cabinet doors—Copper kettle 3 all American pressure cookers—Singer treadle sewing machine—Hickory rockers Lots of glassware dishes etc—Charter oak wood stove—Kitchen queen cook stove China hutch w/ glass doors, nice—9 drawer bureau w/ gray elm wood new 2 bedroom sets made with burly rustic western lodge pine: queen size bed, 3 drawer night stand, 6 drawer dresser, brand new and very unique—Oak desk, new—Lawn furniture

Pancake breakfast till 9, Lunch available by ladies of local Amish community
Bake Sale all day: homemade pies, cookies, bread, donuts
 For information or to consign your items contact:

John Hostetler 573-796-3012	Jonas Hershberger 660-427-5012 660-621-0680	Eli E. Gingerich 11142 Ritchie Rd. Prairie Home MO 65068
--------------------------------	---	--

We are pleased to announce our 6th annual sale. As always there are many unlisted items, lots of good clean items. There will be 3 or more auction rings so be sure to bring friends and plan to spend the day. Special thanks to al our consigners and everyone involved. More consignments coming in daily. Hope to see you at the auction.

Jonas, Jofin, Eli and Larry

Auctioneers
Larry Martin & Loren Martin
Cody Martin 660-888-3460



MARTIN AUCTIONS

1-660-337-6471

For more auctions go to www.auctionzip.com ID # 47012



Auctioneers
Morris Yoder 620-899-6227
Mel Yoder 574-596-4482

Terms: Cash or check with ID. Not responsible for accidents. Statements made day of auction take precedence over printed material

**TOOLS • LAWN & GARDEN •
WELDING • FABRICATION •
WOOD WORKING**

Auction

Saturday, October 10, 2020 @ 10:00 AM

Owner: Chuck & Amy Jennings • Location: 2928 County Lane 120, Carthage, MO 64836

Directions: From I-44, turn North on I-49. Drive approx 1 mile, turn right onto Cedar Rd. Travel West approx 2 miles to County Lane 120. Watch for Cheyney Auction signs.

SHOP EQUIPMENT/ TOOLS



- Hypertherm Powermax 1000 G3 series, NEW IN BOX
- PlasmaCam Robotic Plasma cutting machine, NEW IN BOX
- Miller Syncrowave 180 Tig welder, NEW IN BOX
- ESAB MigMaster 250 - Welder, cart and bottle
- T30 Ingersoll-rand industrial air compressor
- ESAB PCM 1125 Plasma cutter
- Thermal Dynamics Pakmaster 38XL Plasma cutter
- 2 Coleman Powermate 5000 electric generator
- Rigid electric pipe threader
- Shop Task Mill lathe and drill combo Gold Series - serial #XMTc98861
- Piranha P360 Iron Worker w/ everything
- Miller Shop Master 300 AC/DC Welder combo - Mig, Tig, Stick, S 21E wire feeder, Spoolmatic 30A, w/ tanks and gauges
- Milwaukee cordless Powerplus Sawzall
- Craftsman router, NEW
- Wilton 4 1/2 inch heavy duty bench

- vise
- DeWalt 12" metal chop saw
- 50,000 btu shop heater and 30,000 btu shop heater
- Dayton electric chain hoist
- 9 electric motors - Lincoln and Baldor
- Generac G1000M generator
- Husqvarna 562XP chainsaw - NEW
- Craftsman 10" compound miter saw
- DeWalt worm drive saw
- Milwaukee 1/2 drill
- Craftsman 1/2" impact
- Craftsman router - NEW
- Craftsman 19.2 V drill
- Hitachi cordless drill set
- Craftsman tool set
- Everstart battery booster
- Milwaukee 12 V cordless drill set
- Gas cans
- Saw horses
- Weed eaters
- Earthway planter
- Handy man jack
- Craftsman chainsaw
- Battery chargers
- Electric heaters
- Extension cords

- 5 gal Thompson water sealer
- Werner alum ladders
- 16 gal shop vac
- Porter Cable 18" variable speed scroll saw - NEW
- Rigid metal bandsaw
- Craftsman 9" drill press - NEW
- Craftsman plunge router
- Delta Rockwell 10 inch radial arm saw
- Sears 10 inch table saw
- Pneumatic staple and nail guns
- Sears drum and belt sander
- Sears jointer planer
- DeWalt biscuit joiner - NEW
- Craftsman vertical belt sander
- Sump pump
- Sears 10" table saw
- 4 x 8 welding table
- 15 gal atv sprayer
- 2 100 lb propane bottles
- 6 jack stands
- Numerous log chains
- 2 3.5 ton floor jacks
- 30 lb Freon bottle
- Fire extinguishers
- Welding rod 7018, 6011, cast iron
- 2 Rigid pipe vices

- Bearing press
- 2 3500 lb trailer axles w/ leaf springs
- Large pipe wrenches
- 4" and 6" electric hand grinders
- Welding helmets
- 2 6" bench grinders
- Craftsman 1/2" drill
- DeWalt 6" hand grinder
- 4 x 6 welding table
- Craftsman 15" drill press
- Stanley tool set
- 200 amp breaker box
- Chain hoist
- 1.5 ton ball bearing trolley
- Pipe clamps
- Metal bender
- 5 x 10 portable welding table trailer
- 12" metal band saw
- 48 sheets of 3/8" OSB board
- 2 x 2 sq tubing, 9 pieces, 14' long
- Aluminum tread plate, expanded metal, square tubing, angle iron, I beam, channel, round stock and flat stock
- Large assortment of hand tools, nuts, bolts, and miscellaneous
- Craftsman transit and stand
- Cobalt 20 piece screw driver set

LAWN & GARDEN

- 6 x 8 portable building
- Galvanized stock tank
- Compost mixer
- Kubota ZD326 diesel 60" cut zero turn mower
- Kubota X900 RTV utility vehicle

- 2 18 x 20' car ports
- WOODS 6' 3 pt finish mower
- King Cutter 7' angle blade
- King Cutter single bottom plow
- Cub Cadet RT65 rear tire tiller
- Aluminum and poly stock tanks
- 6' t posts

- 1983 trailer house (MUST BE MOVED)
- Hypertough push lawn mower
- 2 Lifetime picnic tables
- 2 fiberglass ladders
- Wrought iron patio set
- 2 fish fryers

- Huffy 10 speed bike
- Metal shelving
- Shovels, rakes, post hole diggers
- 4 x 6' garden trailer, needs repaired
- Swing set, Basketball goal

HOUSEHOLD

- Electric fireplace
- 3 Box fans
- Couch
- Glider rocker
- Milk glass
- Lead crystal
- Miscellaneous patio furniture
- 2 patio swings

- Baby furniture
- Corner cabinet
- Native American wall art and decor
- Oak entertainment center
- Antique china hutch
- Frigidaire upright deep freeze
- GE refrigerator

- Hoosier cabinet
- Enamelware
- Cast iron - Lodge, S & K
- Oil lamps
- 1800s drop leaf table and 4 chairs
- Antique high chair and baby bed

- Antique loveseat
- Dresser and chest of drawers
- Proform exercise machine
- Leather sectional
- Glider rocker
- 12" cast iron dinner bell
- Wooden patio furniture
- Enamel top cabinet

FOR MORE PICTURES SEE WWW.CHEYNEYAUCTIONS.COM

Note: Most tools and equipment are in excellent shape. Many items still new in box. Too much miscellaneous to mention. We will be running 2 sale rings. Food and drinks will be available. Please come spend the day with us!

Cheyney Auction Company, LLC

**Real Estate • Livestock • Farm & Ranch • Equipment • Household • Antiques
Travis Cheyney, Auctioneer • 417-543-8751 • cheyneyauctions.com**

ANNOUNCEMENTS Made Day Of Sale By Auctioneer Take Precedence over any Printed Matter. Not Responsible For Accidents.



Coins * Bottles & Jars * Collectibles * Antiques * Metal Detectors



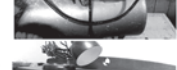
ESTATE AUCTION

9:00 AM * Saturday, September 26th, * 9:00 AM

Location: 1236 S. Oak Grove, Springfield, Mo. 65804

Parking: Across Street in Cherry Street Baptist Church Parking Lot

Watch for Signs Lunch & Restrooms Available



Antiques & Collectible: Old (Keep Your Eyes Wide Open Drink NEHI) Soda Sign; Several Old Radio's; Frisco RR Keys; Fairbanks Country Store Seed/Hardware Scales; (Clark) Buggy Foot Warmer; Antique Telephones & Parts; Box Old Marbles; Vintage Budweiser Clydesdale Wagon; Vintage Wyatt Earp Souvenir Brass Telescope; Several Old Barn Lanterns; Red Coleman Lantern; Few Cast Iron Skillets; Cast Iron Well Pulley; Perfection Kerosene Heaters; Singer Treadle Sewing Machine; Drop Leaf Secretary; Camel Back & Flat Top Trunks; Old School Desk; 3 Legged Metal Kitchen Stool; Old Metal Water Jug & Cooler; Antique Curling Irons; Old Iron Spurs; Cow Bells & Horse Hames; Old Wash Boards; Frisco & MOPAC 1/2 Pint Milk Bottles; Several Embossed & Printed Milk Bottles; Tiny Creamer Bottles; Several Old Fruit Jars; (2) Purple Fruit Jars; Misc. Bottles & Jars; Misc. Insulators; Vintage Croquet Set; Tonka Road Grader; Model Cars; Archie Comic Books; Few Misc. Older Dolls; Walt Disney VHS Movies; Board Games; Vintage 10spd. Bicycle; Lots & Lots of Antiques & Collectibles not Listed;

Coins (18) Morgan Silver Dollars; (2) Barber 1/2 Dollars; Few Silver Dimes; War Nickels; 1866 3 Cent piece; (2) 1864 2 Cent pieces; 1828, 1846, 1848 & 1851 Large Cents; (50+) Indian Head Pennies; (700+) Wheat Pennies; (25) 1943 Steel War Pennies; (4) Silver Rounds; 1874 10 cent Fractional Currency; Lot misc. Coins, Currency & Tokens; Misc. Old Stamps;

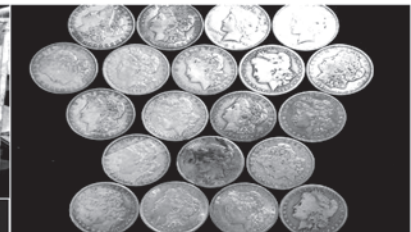
Metal Detecting: Whites Spectrum XLT; Older Metal Detectors; Misc. Metal Detecting Supplies;

Tools - Mower - Misc: Craftsman 10.5hp, 30 cut rear engine Riding Mower; Speedaire Portable Air Compressor; Few Misc. Hand & Power Tools; Misc. (2) 5 Gallon US Gas Cans; Table & Floor Lamps; Lots & Lots Not Listed

Auctioneers Note: Jim was an avid Collector & Dealer & had lots of Boxes in Attic, Basement & Shed that we weren't able to see so expect Surprises.

Be sure to see our website for more & 100's of pictures.

Please note early start time : YOU WON'T WANT TO MISS THIS SALE!!



Estate of Jim Griffin

Foster Auction & Appraisal Service

www.fosterauctionservice.com



Auctioneer: Larry Foster
Galena, Mo

Phone: (417) 723-8329

Cell: (417) 839-6860



Wheeler Livestock Auction, Inc.

Special Stock Cow Sale



SAT., SEP. 26, 2020 • 6:00 P.M.

Expecting 800 head of bred heifers, cows, cow/calf pairs & breeding bulls.

Denzil Morrow-

- 5 Red Bfmstr bull clvs., 9 mos., 700 lbs., Wallen breeding

Small Canyon Ranch-

- 1 Blk Sim-Ang Bull, 18 mos., 1,300 lbs., CE bull, Lucas breeding.

Powers-

- 1 Poll Herf Bull, 4 yrs., 1,500 lbs., good breeding bull

Breshears-

- 1 Blk Sim Bull, 3 yrs., 1,400 lbs., CE 14 good heifer bull

Sanders Ranch-

- 17 Ang Hfrs., 2 yrs., 1,100 lbs., w/ Ang clvs. 1 month old. 14 Ang & Brng X cows, 4-6 yrs., 1,300 lb. w/ clvs. This is a fancy set of cows & heifers w/ years of breeding & genetics. The steer mates to the heifers graded 100% choice, 57% prime. All pairs tagged to match & selling open.

Joe Faulkenberry-

- Complete Dispersal - 3 PB Ang bulls, 18 mos., 1,300 lbs., 2 Ang bulls, 3 yrs., 1,800 lbs., 1 Sim-Ang bull, 5 yrs., 1,800 lbs., 20 Fancy PB Ang cows, 4-6 yrs., 1,300 lbs., bred 3rd. 20 Fancy BWF cows, 4-6 yrs., 1,300 lbs., bred 2nd. 40 Ang & BWF cows 6-SS, 1,300 lbs., bred 2nd. The above 100 cows are bred to the above bulls. Every cow weaned a calf, they are gentle, complete vac program. Selling cows going to all row crops.

B.R. Wheeler-

- 28 Fancy Ang cows, 5-7 yrs., 1,350 lbs., w/ 13 Ang clvs. up to 400 lbs., cows bred back to Blk Ang or Char/Red Ang bull. All cows & calves worked & feed truck broke.

Hilltop Farm-

- 30 Char Ang X cows, 4-6 yrs., 1,300 lbs., bred 2nd & 3rd. 20 Blk cows, 4-6 yrs., 1,200 lbs., bred 2nd & 3rd. The above
- 50 cows have 2 babies now, more by sale day. Bred to Ang
- or Horn Herf bulls.

Strickland Cattle-

- 40 Fancy Ang cows, 3-4 yrs., 1,200 lbs., bred 2nd. 35 BWF Brng x cows, 3-5 yrs., 1,250 lbs., bred 2nd. 20 Red & Yel cows, 3-5 yrs., 1,200 lbs., bred 2nd. The above 95 cows are bred to Ang bulls, start calving Jan. 20th. 20 Blk & BWF cows, 3-5 yrs., w/ clvs. up to 300 lbs., 9 Red & RWF cows, 3-5 yrs., w/ clvs. up to 300 lbs. The above 122 cows are gentle & had all shots. Bred to good Ang. bulls.

Keel Farms-

- 25 Yel & Red Char X cows, 6-SS, w/ Char X clvs. up to 350 lbs., Cows bred back to Sim-Ang bull. 13 Yel & Red Char X cows, bred 3rd to Sim-Ang bull. 2 BWF Sim-Ang bulls, 5 yrs., 1,800 lbs.,

G & W Farm-

- 28 Blk cows, 4-6 yrs., 1,200 lbs., bred 3rd. 9 Red cows, 4-6 yrs., 1,200 lbs., bred 3rd. The above 37 cows bred to good bulls, complete vac program.

Braden Farm-

- 6 Red Char X cows, 1,250 lbs., 3-6 yrs., bred 3rd. 23 Blk cows, 1,250 lbs., 3-6 yrs., bred 3rd.

Mincks Farm-

- 13 Red cows, 3-5 yrs., 1,250 lbs., bred 3rd to Red or Blk Ang bulls.

Keller Farm-

- 15 Red cows, 3-5 yrs., 1,250 lbs., w/ clvs. up to 400 lbs., 7 Blk & Char X cows, 3-5 yrs., w/ clvs. up to 400 lbs.

D & E Farm-

- 39 Ang/Brng X cows, 4-6 yrs., 1,300 lbs., bred 2nd & 3rd to Ang or Horn Herf bulls, good gentle cows, bred to good bulls, sold calves off these cows here in August.

2nd Anniversary Customer Appreciation Lunch - October 1st
Special Wean Vac Sales - October 1st & 15th
October Cow Sale - October 31st

Wheeler Livestock Auction, Inc.

Osceola, MO • 685 SE 13 Hwy., PO Box 560 • BARN 417-646-8102

Byron Wheeler, 417-777-0897 • Austin Shelby, 417-309-1350 • Darwin Hearting, 417-296-1029

Charlie Proctor 417-326-9467 • Burleigh Wheeler, 417-840-6561 • Skyler Fisher, 417-298-9051

Jeff Shelenhamer, 417-326-9929 • Kevin Wade 660-492-3279 • Les Tennis, 417-466-8786

Office Manager: Weston Shelby, 417-298-1316

Bid online on CattleUSA • www.wheelerlivestock.com

Like us on Facebook-Wheeler Livestock Auction



CRAWFORD *Online* AUCTION

ROSE ROUTH REAL ESTATE AUCTION

13072 State Highway H • Weaubleau, MO 65774

Open house viewing Sunday, September 27th from 2 to 4 PM

Online Bidding Closes Sunday, October 4th at 7:00 PM



3 bedroom, 2 bath earth contact home selling at online auction. This beautiful 1,680 square foot home sits on 4.7+/- acres with great state highway road frontage. The heirs have decided to sell this beautiful home and are very serious sellers. The home was built by owner in 1981, and has been well cared for it's entire life. Includes a very nice wooded yard with well-maintained yard and a detached barn/garage. Central heat and air, fireplace with gas insert.

This home is in the Weaubleau school district, and the 2019 property taxes totaled \$445.82.

This is a great home for a small family wanting to enjoy peaceful country living and be in a great school district. Property has great highway frontage but is nicely secluded from road with lots of privacy. 15 minute drive to Lake Pomme de Terre and Lucas Oil Speedway, great access to Highway 13 and 54 for easy driving to Springfield and Kansas City. This property is a great place to call home.

Very motivated sellers. Private viewings available by appointment only.

For any questions or to schedule showing, please contact Chase Crawford by call or text at 417-399-1904

AUCTIONS ENDING EACH SUNDAY! BID ONLINE AT:

WWW.OZARKBID.COM

- Online
CRAWFORD
Auction Service

Register and bid online

@ **www.OzarkBid.com** *Ozarkbid*



Contact Chase Crawford, Crawford Auction Service for more info @ 417-399-1904

CRAWFORD *Online* AUCTION

MAPLE STREET GRILL ONLINE AUCTION



**In store item preview
Tuesday, September 29th
from 5PM to 7PM at
105 N. Maple, Buffalo, MO**

As the owners of the Maple Street Grill in Buffalo, Missouri have closed the Grill to pursue other business interests, they have decided to sell the contents of the Maple Street Grill at online auction to the highest bidder without reserve.



AUCTIONS ENDING EACH SUNDAY! BID ONLINE AT:

WWW.OZARKBID.COM

Online
CRAWFORD
Auction Service

Register and bid online
@ www.OzarkBid.com



Contact Chase Crawford, Crawford Auction Service for more info @ 417-399-1904



ONLINE ONLY ESTATE AUCTION

Estate of Elisabeth Fuller
Soft close begins at 8PM on Sunday, September 27th

Antiques, Furniture & Household:

Several Clocks including German Wall Clocks & Lauffer German Mantle Clock ~ Rabin Rex Record Player/Bar ~ Milano German Radio ~ German Kitchen Cabinet ~ Cedar Bedroom set ~ Collector Dolls including Schmider German Dolls ~ Doll Chair, High Chair, Crib, Rocker & Buggy ~ Small Cedar Chest ~ Several Sets of China including Bavaria ~ Collection of Spoons & Thimbles ~ German Steins ~ Table & 6 Chairs ~ Couch ~ Glider Rockers ~ Tables ~ Lamps ~ Twin Bed ~ Book Cases ~ Bedroom Set w/Night Stands, Dresser & Mirror, Chest & Armoire ~ Costume Jewelry ~ Hand Stitched Quilts ~ Lots Of Yarn & Misc Sewing ~ Lots of Books including German Books

Bid now at
[sellersauctionservice.hibid.com](https://www.sellersauctionservice.com)

Auctioneers Note: Mrs. Fuller was of German Descent and many of her items are from Germany, among them are her very nice old clocks. House is full so large online sale. Pick up will be at 213 S Adrain Ave. Rolla Missouri Two day pickup, Monday Sept 28th and Tuesday Sept 29th 10-4.



Sellers Auction Service
"We Were Born Sellers"

Complete Auction Service

www.sellersauctionservice.com

Terms: Cash or Check with proper I.D. Not responsible for accidents or losses. Items will be sold As Is/Where Is with No Guarantees. Nothing to be removed until paid for. Refreshments available. Announcements made on sale day take precedence over any printed materials.



GREGG SELLERS, AUCTIONEER
573-480-4400



AUCTION

We will sell the Estate of Mary Higginbotham on:

Saturday Oct. 3, 2020 @ 10AM

DIRECTIONS: FROM ROLLA travel Hwy O 15.4 miles to C Hwy, travel Hwy C 1.2 miles to a left on Dent County Rd DC 2360, travel 2360 1.3 miles to DC County Road 2200, travel 2200 1.6 miles to auction driveway on right. FROM SALEM travel Hwy H 7.2 miles to Dent County Road DC 2340, travel 2340 3.1 miles to auction driveway on left. Watch for Sellers Auction Signs on Sale Day.

Vehicles, Tractor & Equipment: John Deere 1010 Special Tractor ~ Chevrolet S10 4WD 4.3Vortex Manual 5 Speed ~ 1978 Honda Super Sport motorcycle 3338mi. 3pt Heavy Duty Blade ~ 5ft 3pt Carry All ~ 6ft 3pt Sidewinder Brush Hog



Furniture: 8) Antique Wardrobes, 4 with Mirrored Fronts ~ 3) Antique China Cabinets ~ Needlepoint Rocking Chair ~ Needlepoint Chairs & Benches ~ Chests ~ Dressing Mirror ~ 2) Pie Safes ~ Full Size Antique Bed ~ 2) Walnut Twin Beds ~ Book Case Secretary Desk ~ 6' Harvest Table ~ 6'7" Harvest Bench ~ 5 legged Round Table ~ Deacons Bench ~ 2) Lounge Chairs ~ Desks w/Mirrors ~ Wood & Leather Bench ~ Dresser w/Mirror ~ Dressing Table ~ Mahogany Kidney Shaped Vanity ~ Jewelry Armoire ~ Love seat ~ Oversized Chairs ~ Couches ~ CLOCKS: Stromberg Clock ~ Grandfather Clock ~ Geo:H.Cowie Aboyne Grandfather Clock ~ Waterbury Mantle Clock ~ Ansonia Wall & Mantle Clock ~ Regulator Clock ~ Seth Thomas Wall & Mantle Clocks



Antiques: Several Sewing Machines including Willcox & Gibbs, Singer & Davis ~ Singer Treadle Machine w/folding Cover ~ 17" Soapstone Vase ~ Several Handmade Quilts ~ Stained Glass Lamps ~ Several Mannequins ~ American Heritage Turn Table in Case ~ Plastic Kewpie Doll ~ Japan Tea Set ~ German Delph Blue Canister Set ~ Oriental Pictures ~ Pitcher & Bowl ~ Occupied Japan ~ Dresden ~ Doll Houses ~ #2 Crock ~ Whiskey Jugs ~ Kerosene Lamps including Aladdin ~ GE Metal Fan ~ Large Set of Blue Danube China ~ 2) Jim Shore Bird Feeders Printers/General Store Cabinet ~ Sylvan Red Cross Wood Stove ~ Charter Oak Hot Blast Stove



Persian Rugs: 11.3x2.1 Design-Kazak Origin-Afgan ~ 9.7x7.8 Design-Jaiper Origin-India ~ 12.9x9.8 Design-Kashan Origin Iran ~ 13.4x10.3 Design-Sarouk Origin-Iran ~ 16x2.6 Design-Sultanabad Origin-India ~ 10.2x2.6 Design-Persian Origin-India ~ 11.1x6.8 & 11.4x7.8 Design-Tabriz Origin-Iran ~ 10x8.2 Design-Bokara Origin Pakistan ~ 11.3x2.7 Design-Persian Origin-Pakistan ~ 10.4x3.9 Design-Sarouk Origin-Iran ~ 6.3x3 Design-Jaipur Origin-India ~ 6x4.2 Design-Sultanabad ~ 9.9x8.4 Design-Chobi Origin-Afgan ~ 10.10x3.6 Design-Hamadan Origin-Iran ~ 8.11x5.5 Design-Tabriz Origin-Iran



Auctioneer's Note: This list doesn't do this auction justice. A great collection of antique and primitive furniture. Lots of room for parking.

Sellers Auction Service
"We Were Born Sellers"

Complete Auction Service

www.sellersauctionservice.com

Terms: Cash or Check with proper I.D. Not responsible for accidents or losses. Items will be sold As Is/Where Is with No Guarantees. Nothing to be removed until paid for. Refreshments available. Announcements made on sale day take precedence over any printed materials.



GREGG SELLERS, AUCTIONEER
573-480-4400

Majestic on the North Fork River

Steel Framed Custom Log Home

Located in the gorgeous blue ribbon front area of the scenic North Fork River, in the Gated McKee Village

SATURDAY, SEPT. 26, 2020 • 10:00 AM

From West Plains travel west on Hwy. K, 11 miles to KK then right approx. 7 miles to McKee entry (Sawmill Road) travel approx. 1 mile to first left. (Don't enter mill area) then approx. 1 mile to McKee Village Gate, travel into village across bridge to second cabin on left. Watch for Gary Sexton Auction sign.



INSPECTION, OPEN HOUSE
Sundays, Sept. 6, 13, & 20
1:00 - 2:00pm

This is a chance-of-a-lifetime for a weekend of captivating views and entertaining weekends!



Located in the gorgeous blue ribbon front area of the scenic North Fork River, this outstanding steel framed log home offers luxury amenities with three decks overlooking the gleaming water. Stunning western cedar beams and spiral metal staircase to each level! It features 3-4 bedrooms, large bathrooms, updated kitchen cabinets with farmers sink and granite countertop! The home is wired for a generator and has central heat & air, oak wood doors and vaulted ceiling!



SEE WEBSITE FOR FULL LISTING & PICTURES: WWW.GARYSEXTON.COM

TERMS: 10% escrow day of auction. Creative financing available to qualified buyers – APPLY TODAY!
CONDITIONS: Highest bid to be submitted to officers of lending institution for acceptance or rejection.

OWNERS: WEST PLAINS SAVINGS & LOAN

Gary Sexton
Since 1978 Auctioneers, LLC

Gary Sexton - Auctioneer 417-255-7001

Tyler Sexton - Trucks/Heavy Equip. Eastern Mo. 417-372-0124



www.garysexton.com
1028 Porter Wagoner • West Plains, MO



Todd Hornback
Oregon Co. Rep

Gene Summers
Ozark Co. Rep



E-mail: gary@garysexton.com

AR Broker #PB00043890, AR License #1568

All announcements made day of sale supersede any written material. Not responsible for lost or stolen property or accidents.

COMPLETE FARM LIQUIDATION AUCTION

Charles L. Decker - Mary J. Decker Family Trust

SATURDAY, SEPTEMBER 26, 1:00 P.M.

Location: From West Plains, Mo. Travel west on Hwy. CC approx. 8.3 mile to CR 5130, then right approx. 1.3 miles to the farm. From Hwy. 14 South on 5130 approx. 3 miles. 7956 CR 5130, West Plains, Mo.
REASON FOR SALE: As we have sold our family farm "since 1964".



John Deere - Bushhog Danuser

- 2008 6430 John Deere Premium Cab Tractor, 1180 Hrs, Mfwd, Grill Guard, Moon Roof, Barn Kept With 673 Qwik Attach Front Loader
- 2950 John Deere Diesel Tractor, Open Station, Mfwd, 9112 Hrs, #Lo29504521729, Barn Kept
- 6310 John Deere Cab Tractor, 1696 Hrs #315156, 2Wd
- 2815 Brushhog 15' Batwing Cutter, Nice!
- 3210 Brushhog 10' Drag Type Brush Hog, Nice!
- 2002 Chevrolet 2500 Hd Regular Cab Pickup, 6.0 Liter, Gas, Tow Package, 5 Speed 4X4, 32,000 Actual One Owner Miles!
- Danuser Heavy Duty Post Auger
- Bumper Livestock Trailer; Farm Trailers
- 4 Bottom Plow, Old Breaking Disc
- Homemade Blade; Tractor Weights
- Hydraulic Hay Wagon, Several Old Horse Drawn Implements
- Poly Tank/Sprayer
- Cosmo 250 Broadcaster
- 4 Hp Craftsman Air Compressor
- Blackman - Hill - Mckee Old Large Shop Drill Press
- Miller Electric Welder; Air Tank
- Fuel Tanks On Stands
- Calf Feeder; Poly Troughs; Bale Rings
- 1966 Ford Country Squire Station Wagon

- Middle Buster; Jinny Pole; Hay Elevator
- Old Chainsaws; Pumps; Fence; Wire
- Barbed X Woven; Ladders; T-Posts
- Supplies; Wheels; Tires
- Bale Master Hay Spike
- Oxygen/Acetylene Tanks Torch Set
- Scrap Iron Pile
- Vise; Gates
- Hand Tools; Shop Tools

Antiques - Furniture Household

- Old John Deere Horse Drawn Wooden Wagon, Says Piggot, Ar On Side
- Old Porch Swing
- Cast Iron Kettle
- Old Cream Cans
- Old Metal Lawn Chairs
- Mason Jars
- Old Time Kids School Chairs/Desks
- Boxes Of Old Glassware
- Collections From Local Grocery Stores
- Old Bikes
- Old License Plates; Old Kitchen Cupboard
- Old Wash Tub; Old Tractor Seats
- Old Deer Horns; Kenmore Deep Freezer
- Washer & Dryer; Kitchen Items
- Living Room Furniture; Potspans
- Dining Table Chairs; Microwave
- Small Appliances; Recliners; Coffee Tables
- Maple Bdrm Suite; Lamps; Beds
- Blonde Bdrm Set; Old Games & Toys
- Dressers; Accumulation Since 1960S!

AUCTIONEERS NOTES: Very nice farm equipment. Lots of old barn finds. Home full of household. Thanks for attending.

Gary Sexton
 Since 1978 Auctioneers, LLC

Gary Sexton - Auctioneer 417-255-7001

Tyler Sexton - Trucks/Heavy Equip. Eastern Mo. 417-372-0124



www.garysexton.com

1028 Porter Wagoner • West Plains, MO



Todd Hornback
 Oregon Co. Rep

Gene Summers
 Ozark Co. Rep



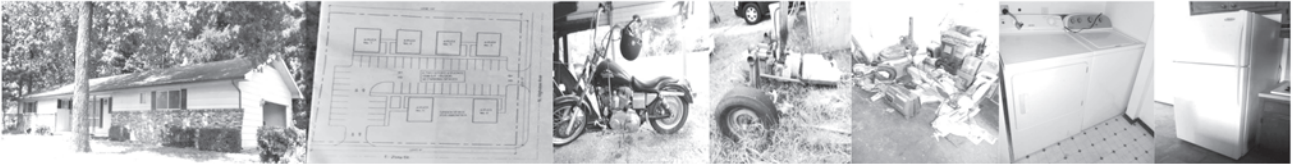
E-mail: gary@garysexton.com

AR Broker #PB00043890, AR License #1568

All announcements made day of sale supersede any written material. Not responsible for lost or stolen property or accidents.

REAL ESTATE & CONSTRUCTION ESTATE AUCTION

Saturday, September 26th, 2020 ~ 10:00 AM
LOCATION: 2919 East Zora, Joplin, MO (Watch For Signs)
Auction For TG&J Enterprise LLC



Real Estate Sells First At 10:00 AM

Tract 1: Consists Of A 3 Bedroom, 2 1/2 Bath Home That Has Kitchen, Dining, Living & Utility Rooms. Home Has Been Remodeled With Central Heat & Air, New Carpet, New Light Fixtures, New Paint & Is In Excellent Condition Setting On Large Corner Dual Lot With Large Garage/Work Shop, Has Concrete Dual Entrance Driveway.

Tract 2: Consists Of Open Lot With No Structures Only Scattered, Tall Trees That Could Be Logged & Removed With Oversized Lot.

Tract 3: Tract 3 Will Consist Of Combining Tract 1 & 2 Together To Consist Of The Home, Garage, Open Lot With Trees That Makes A Combination Of 1.32 Acres M/L. This Has Already Been Mapped Out To Be Able To Develop 6 Two Story 4 Plexes That Are 1200 Sq Ft/Floor With 48 Parking Spaces. If You Are A Duplex Developer This Is A Golden Opportunity To Purchase A Piece Of Real Estate That Is In A Prime Location As There Are Already Duplexes In This Block Area. To Preview Contact Travis At 417-483-4946 Or Bill At 417-214-0093.

Terms: 10% Down Day Of Sale With Signed Contract And Balance Due In 45 Days Or When Closing Date Set By Abstract Office. Seller Has The Right To Accept Or Reject Any And All Bids.

Construction Related Materials & Items

Lg Lot Of New & Used Interior & Exterior Doors, Lg Lot Of Cabinets, New Flooring Over 175 Sq Ft Worth, New & Used Windows, Lg Lot Of New & Used Light Fixtures & Globes, New & Used Sinks,

New & Used Toilets, New & Used Faucets, New Shingles, Lots Of New & Used House Trim, Lots Of New & Used Granite Of Different Sizes, Breaker Boxes, New & Used Electrical & Plumbing Supplies, Hundreds Of Other Construction House Related Items That Are New & Used

Appliances, Antique Furniture & Household Related Items

Refrigerator, Washer & Electric Dryer, Gas Cook Stove, New Microwaves, New & Used Hot Water Heaters, Commercial Steam Cleaner W/Heat, Vacuum Sweepers, Stereos, Ant Vanity, Ant Table, Ant Mirror, Some Sm Ant Pcs, Sm Square Safe, New Mirrors, Glassware Of All Kinds, Sm Kitchen Items, Other Items Not Listed

Harley Motorcycle, Large Portable Generator, Tools & Shop Related Items

1997 Harley 1200 Sportster Motorcycle In Excellent Shape, Portable Heavy Duty Construction Style Generator Sm Portable Generator, Portable Air Compressor, Shop Vac, Power Washer, Gas Powered Air Compressor, Chop Saws, Drill Press, Paint Sprayer, Portable Propane Heater, Sm Electric Tools, Air Tools, Pipe Threader, Sm Hand Tools, Saw Horses, Jump Start, Electric Push Mower, Leaf Blowers, Used Tires Of Various Sizes, Other Item Not Listed

Auctioneers Note: This Is An Outstanding Opportunity To Purchase Prime Location Real Estate In Joplin, MO. If You Are An Investor You Seriously Need To Look Into This Opportunity. Motorcycle Is In Excellent Condition Also If You Are A Contractor Or In A Construction Business You Do Not Want To Miss This Auction As Well As There Are Many New Supplies & Good Tools As Well. If You Are Looking For Appliances, Antiques & Households We Have Those As Well. Please Plan Now To Attend. **Sale Order: Real Estate Sells First Followed By Appliances, Furniture, Antiques, & Households Then Will Move Directly Into Construction, Tools & Supplies. At Approx 12:30 PM Will Offer Harley, Generator & Larger Items. Remainder Of Construction Tools & Supplies Will Finish Auction. See Ya There!!!**

Terms: Cash or check with proper ID. Now accepting most major credit cards. Nothing removed until settled for. Statements made the day of sale takes precedence over printed material. Everything sold as is where is. Not responsible for accidents. Restroom available. Concessions Provided. Check our website for upcoming auctions and for additional pictures!!!



NANCE AUCTION SERVICE

No Matter How BIG or small, We Do Them All!!!

Col. Bill Nance 417-214-0093

In God We Trust

Philippians 4:13

R&R AUCTION SERVICE

STORAGE UNIT AUCTION

SATURDAY, SEPTEMBER 26TH, 10AM

Buffalo Self Storage • 1658 South Ash Street, Buffalo, MO



Furniture, Boxes, Appliances, Tools, Toys ... Who knows what you will find after you have purchased a unit. Perimeter has not been broken so we don't know what treasures await the new owner.

Approximately 9 units will be sold to the highest Bidder. Units are locked and sealed until minutes prior to when they will be auctioned, you will have 2-5 minutes to look but cannot break perimeter.

Remember to bring CASH with you!!!

ALL PURCHASERS ARE REQUIRED TO PAY A \$50 CLEANING DEPOSIT WHICH WILL BE RETURNED UPON COMPLETION OF CLEAN OUT ONLY!

Terms: CASH ONLY NO EXCEPTIONS!! Nothing removed until settled for. Units purchased must be cleaned out within 7 days or you will lose your deposit. Any announcement made sale day will take precedence over any printed matter. Owners of unit have until sale time to pay in full so unit numbers are subject to change. Note: Service will take every precaution to prevent accidents, but will not be responsible should any occur.

OCTOBER CONSIGNMENT

FRIDAY NIGHT OCTOBER 2ND AT 6PM

R&R Auction House 1644 South Ash Street, Buffalo, MO

Several pieces of small Farm implements, Furniture, Several \$1 Silver Certificates, Silver Coins, Collectibles and so much More!



WATCH HTTP://WWW.RRAUCTIONSERVICE.COM FOR FULL DETAILS AND PICS.

TERMS: Cash, check, or credit card with proper I.D. nothing removed until settled for A 3% fee will be added to credit card purchases. Not responsible for errors in listing. Any announcement made sale night will take precedence over any printed matter. **Note:** Service will take every precaution to prevent accidents, but will not be responsible should any occur.



For more information contact Professional Auctioneer Russ Weeks at 417-576-7357 or check out www.rrauctionservice.com

Serving this area's auction needs since 1997 with honesty and professionalism.

www.rrauctionservice.com

(417) 576-7357 or (417) 345-4140





As we have sold our home and moving, will sell the following located from Preston, MO 1-1/2 miles West on Hwy. 54 to Co Rd 361, then North 1-1/2 miles to Co Rd 140, then West 1/4 mile to Co Rd 339, then North 6/10 miles. Watch for Crawford Auction signs.

Saturday, Oct.3, 2020 – 10 a.m.

GUNS – TOOLS– HOUSEHOLD – COLLECTIBLES – MISC.

Guns (Sells @ 10 a.m.)

- 6 Winchester 70 Feather Weights, 270-325-30/06-243
- 6.5x55 243 WSSM, stainless barrel, NIB
- Win 70 Coyote 325 24" barrel, stainless, brown laminate, NIB
- Win 70 25 WSSM, brown laminate, stainless, NIB
- Win 70 325 WSM black laminate, stainless, NIB
- Win 70 Classic Sporter III 325 WSM 24", blued, NIB
- Win 70 Classic DBM 284 24", #G60443, NIB
- Win 94 375 Bald Eagle Comm, NIB
- Win 70 243 WSSM F/W, blued, NIB
- Win 70 325 WSM F/W, blued, NIB
- 5 Remington 7600 pumps, 280-260-6mm-7mm-08, NIB
- Remington Game Master 35 Rem, like new w/box
- Rem 700 Classic 257 Roberts, like new w/box
- Rem 700 LS bolt 221 Fireball, laminate, NIB
- 2 Rem 70 BDL B/A 7mm mag, 24" stainless, NIB
- Savage 110 LWS 250-3000 limited, walnut, 22" blued, NIB
- Savage 110 300 walnut, 22" blued, Car Tech Comm., NIB
- Ruger MK II 77R 222 Rem, stainless, NIB

- Ruger MK II 77R 350 Rem mag, blued, NIB
- Ruger MK II 27R, 6.5 Rem mag, blued, like new w/ box
- Rem target master single shot, 22
- Rem 700 BDL (late 60s), 6mm, nice, rare
- Rem 722B 222 Rem w/scope, rare
- Rem 760 Game Master 223 (60s), nice, rare
- Rem 25 pump 2520, very clean, rare
- Sears 20 ga pump, 28", 2-3/4
- Kleinguenther 7mm Rem mag 26" barrel, misc
- Some ammo; Misc gun accessories

Household

- Asst. tables
- Small curio cabinet
- 2 Hutches
- Asst. dishes, pots & pans
- Clocks
- Lamps
- Wall hangings
- Some antique items
- Livingroom, bedroom, dining room furniture
- Lawn ornaments
- Other misc.
- 450 sq. ft. ceramic tile, 18" squares

Tools/Misc

- Asst. hand tools
- Some wrenches
- Long handle tools
- ATV 12V trailer sprayer
- Power washer
- Stihl chain saw
- Log chains
- Small tool boxes
- Asst. ext. cords
- Cutting torch, no tanks

Don't miss this great selection of guns!

Sam CRAWFORD Auction Service LLC
 Cross Timbers, Mo.
 CrawfordAuctionService.com
417-998-6629
 Chance • Sam • Chase

1944 CELEBRATING 76 YEARS 2020
 STARTING 76th YEAR OF SALES AND SERVICE

TERMS: Cash or good check. Nothing removed until settled for. Not responsible for accidents. Lunch available. Statements made day of sale take precedence over printed matter. All items sell as is. No warranties given or implied.

Sam 417-328-9137 Chase 417-399-1904 Chance, CAI 417-298-1751 Tom Poynter Jack Lancaster

Michael Schaefer



HARTVILLE LIONS CLUB

Consignment **SALE** Saturday, September 26th

Auction will start at 9:00AM • Registration starts at 8:00AM.

Vehicles / Trailers

- 2007 Thomas School Bus,
Cummins engine, Allison
trans
- 2000 Chevy 15 pass. Van
- 1996 Chevy Kodiak
- 2000 W.W. 20' Horse Trailer,
Heat & Air
- 1998 Ranger Alum. Boat, 17'
w/ trailer, 75HP Mercury &
trolling motors, depth finder
- Yamaha Big Boy ATV, 616 hours
- Yamaha Breeze ATV, auto
- 1993 International 4900
(bad trans)
- 2001 J.D. 670CH Grader
(bad motor)

- 2001 J.D. 670CH Grader
(parts machine)
- 2003 Chevy 2500
(not running)
- 2006 Chevy Trail Blazer
(not running)
- 2010 Ford Crown Vic.
(not running)

Outside/Shop/Garden Equipment

- Ariens 22 HP Lawn Tractor,
auto, 161 hours
- Stihl Chain Saws *(MS290, MS280,
MS250C, MS211)*
- Stihl Weed Trimmer FS45C
- New Saw Chain Sharpener
- Front Tine Tiller
- Sprayer *(15 gal, 12V)*

- Transit
- Hand Tools • Wood Toolbox
- Shovels
- Rakes • Gas Cans
- Cedar Bench
- 6' Park Bench
- Portable Air Tank
- Farm Equipment**
- H.D. Stock Racks
- Enorossi 9 wheel hayrake
(like new)
- Posthole Digger
- Portable Concrete Mixer

**Large quantity of
additional items will
arrive before sale day**

Vehicles, Heavy Equipment & Guns will sell at 12:00pm



PUBLIC AUCTION

SATURDAY, SEPTEMBER 26 @ 10:00 A.M.

Directions: SALEM, MO - From Salem take Hwy. 32 east 1.5 miles to P Hwy. Take P Hwy. 2 miles to sale on left. Watch for signs.
SOLD OUR PLACE, SO WE ARE SELLING THE FOLLOWING:

FARM & LAWN • HOUSEHOLD • TOOLS • MISC. ITEMS

Wood Picnic Table - 4-Wheel Cart
 Robin Powered 4000 Watt Generator, Kept Inside
 Fish Cooker & Pot - Maytag Washing Machine, Nice
 Visionware - Crock Pots - Canners - Roasters
 Blue Jars - Stereo - Oil Lamps - Clock
 Small Appliances - Camel Back Trunk
 Homelite 8400 6hp 31800 Lph Water Pump w/Hoses
 SKS 7.62x39, Great Shape - Fence Stretchers
 Lots of Chains - Lincoln AC/DC Arch Welder, Nice
 Lots of Nuts, Bolts & Repair Items
 Generator Cord - Sander, Electric - 2 Washboards
 2 Brown Crock Jugs - Table Lamps
 Neat Massage Chair Recliner - Dog Crate
 Pictures & Paintings - End Tables
 Bestone Victrola from St. Louis
 Coleman 5hp 25 Gallon Air Compressor
 Neat Metal Ford Peddle Tractor, Bought from
 Wisdom Farm Equipment in Salem, MO
 Ammo Boxes - Toolboxes
 Couch Table - High Back Recovered Old Chair
 2, 6-Drawer Dressers & Mirrors - Wheelbarrow
 Torybilt 27 Ton Horizontal Honda Wood Splitter
 1800 psi Craftsman Power Washer
 1949-50 Cub Farmall Tractor, Belly Mower (woods) &
 Cultivation, Runs Great, Good for Field or Collection
 Bench Drill Press - 1hp Bench Grinder
 Wood Bench - Sockets & Hand Tools
 Socket Set from 2 1/16 to 2 1/2
 Torch Cart & Gauges, No Tanks
 1-Ton Floor Jack - Some Scrap Iron
 Fishing Rods & Reels - Oil Pan - Tool Chests
 Bolt Bins - Single Bottom 3pt. Plow
 Like New C5 2250S Jonsered Chainsaw
 Axes - Shovels - Rakes - Wood Ladder

Aluminum Ladders - Yard Carts - Drag - 6x3 Trailer
 5' Pull-Type Disk - 6.5hp Rear Tine Tiller, Good Shape
 Yard Seeder - 3pt. 5' Reversible Blade
 55 Gallon Plastic Fuel Barrel & Pump
 2, 300 Gallon Plastic Water Tanks - Homemade Aerators
 Bumper - Partial Rolls of Woven Wire - 12' Gate
 3, 8' Gates - Used Barbedwire - Buckets
 1440 Cub Cadet Riding Mower, Good
 3pt. 7' Brush Cutter, Great Shape
 3rd Members Center Links - 3pt. Carry-All
 Ⓢ Long 560 Diesel Tractor, Great Tires,
 Always Shedded, Has Been Gone Through,
 Have Papers, Well Taken Care Of, App.
 60hp, Very Nice
 Ⓢ 2005 Ford F-150 4x4 Pickup, 46,000
 Miles, Great Shape, Body & Tires Very
 Clean, Super Nice

**AUCTIONEER'S NOTE: Many more
 items not listed. Don't miss it!
 See you there! - Tom**



OWNERS: JACK & MARION EDGAR

ANNOUNCEMENTS AT AUCTION TAKE PRECEDENCE OVER PRINTED MATTER

WULFF AUCTION

Auctioneers:

Col. Tom Wulff - Col. David Wulff
 498 Hwy. B, Salem, MO 65560
 573-729-8476

Clerk: Tracy Strange Cashier: Nancy Inman

See Wulff Auctions at www.thesalemnewsonline.com/auctions

TERMS: CASH OR
 APPROVED CHECK -
 I.D. REQUIRED
 NOTHING REMOVED
 UNTIL SETTLED FOR

Licensed
 Appraisals



RAIN OR SHINE
 OWNER & AUCTION
 PERSONNEL NOT
 RESPONSIBLE
 FOR ACCIDENTS AT
 SALE SITE

PUBLIC AUCTION

SUNDAY, SEPTEMBER 27 @ 11:30 A.M.

Directions: SAINT JAMES, MO - 12025 CORRAL DR.

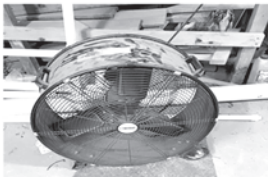
From Rolla at Love's Truck Stop, take Historic US 66 east (outer road) to 2170 (Turner Road) turn left. Follow 2170 to Corral Drive, turn right on Corral Drive. Sale on left. Watch for signs.

FURNITURE • HOUSEHOLD • TOOLS • LAWN & OUTDOORS • MISC. ITEMS

Lawn Table w/4 Chairs - Milk Can
 Samsung Front Load Washer & Dryer
 Sewing Machine in Cabinet
 Kitchen Table & 4 Chairs - Chest Freezer
 Pots - Pans - Dishes
 Brown Leather Couch, Loveseat, Recliners on Ends, Very Nice
 2 Over-sized Recliners
 Glass Display Cabinet
 52" Flat Screen TV - Several Disney Items
 King-size Sleep Number Bed
 Corner Cabinet - Pitcher & Bowl
 File Cabinets - 2 Office Chairs
 Queen-size Bed & Dresser
 Complete Collection of Home Repair Books
 Fans - End Tables - 5-Drawer Dresser
 Card Table - Plastic Shelving - Bedding
 Desk Fan - Table Lamps
 Wrought Iron Deck Table w/2 Chairs & Umbrella

Nice 13x4 Trailer, Tailgate, Very Nice
 Coolers - Christmas Items - Afghans
 Fountain - Yard Ornaments
 Dog Taxies - 2 Floor Fans - Live Traps
 30 Gallon Sprayer w/Boom on Trailer
 Spartan 54" Zero-Turn Mower, Heavy Duty, Very Nice, Well Kept
 Oil - Grease - 2 Folding Ramps
 Dog Fence, Nice - Shop Vac, 10 Gallon
 Craftsman 6.0 22" Trimmer
 Reese Aluminum Carrier - Yard Roller
 Large Craftsman Stackable Toolbox
 2 Yard Carts - Snapper Push Mower
 Canopy - Camping Items
 Craftsman Sawzall - Nikota Router
 Air Tools - Sanders - Shop Cabinets, Nice
 1-Ton Wench - Bolt Bins
 Reese Hitch - Battery Chargers
 24" Shop Fan - Bench Grinder
 Vice - Bench Drill Press
 PVC Pipe - 300 lb. ATV Mower Jack

Several Lots of Hand Tools
 Skil RAS900 Router & Table
 2-1211 Compound Miter Saw on Stand
 Ryobi 10" Portable Table Saw
 Nice B&W Companion 5th-Wheel Hook-up Set
 Sprayers - Lumber Pieces
AUCTIONEER'S NOTE: This sale is very clean, top quality items. Don't miss it!
See you there! - Tom



OWNERS: EVELYN & ART TAFT

ANNOUNCEMENTS AT AUCTION TAKE PRECEDENCE OVER PRINTED MATTER

WULFF AUCTION

Auctioneers:

Col. Tom Wulff - Col. David Wulff
 498 Hwy. B, Salem, MO 65560
 573-729-8476

Clerk: Tracy Strange Cashier: Nancy Inman

See Wulff Auctions at www.thesalemnewsonline.com/auctions

TERMS: CASH OR APPROVED CHECK - I.D. REQUIRED NOTHING REMOVED UNTIL SETTLED FOR

Licensed Appraisals



RAIN OR SHINE OWNER & AUCTION PERSONNEL NOT RESPONSIBLE FOR ACCIDENTS AT SALE SITE

PUBLIC AUCTION

Sunday September 27, 2020 9:00AM
940 S. Iron Mountain Rd Fordland, MO 65652

Directions: From Springfield Take Hwy 60 East 18 Miles To Iron Mtn. Rd. Turn North Across Hwy 60 Onto Iron Mnt. Rd. To Auction Watch For Signs.
-EQUIPMENT SELLS AROUND NOON-

Backhoe, Vehicles, Trailers & Farm Equipment

2001 580 Super L Case Backhoe, Extendaohoe, 4 in 1 Bucket, 4x4, 5, 100 Hrs. * 2016 Bobcat Skid Steer S650 Heat & Air Cab 1,000 Hrs. * Quick Attach Bucket * Quick Attach Brushhog * Quick Attach Forks * 24' Tiger Trailer, 14,000 lbs * Bumper Hitch 2020 * 8N Ford Tractor * 2019 Tiger 12' Utility Trailer With End Gate * Yard Roller * 1951 Ford Pick-up Truck * 1950 John Deere B Tractor * 2001 Lincoln Town Car, Leather Int. * 2002 Chevy S-10 Pick-up * 18' Wells Cargo Trailer * Semi Truck Flat Bed Trailer * 1999 Trails West 3 Horse Slant W/ Living Quarters That Need Renovation * Pull Behind Mobile Squeeze Chute W/ Palp Cage * 5' Brushhog * 97 Ford Flatbed Truck Cummins Diesel Engine 2 Ton * 16' Element Cargo Trailer * Kuhn 10 Wheel Hay Rake * 2 Steel Flat Beds Off Ford 1 Ton's * 1947 Mercury 8 Coup * Old 1951 Chevy Car * Old Case Tractor W/ Loader * Grain Elevator * 52 Ford Truck * 24' Cargo Trailer * 25 4x5 Net Wrapped Bales Of Grass Hay

Restaurant Equipment To Sell Approx. 11:00am

5 Commercial Hoods * 3 3-Compartment Sinks * 3 Deep Fryers 4' Grill * 6 Burner Stove * Food Warming Buffet Set-up * 5' Cast Iron Grill * Upright Refrigerated Food Storage Coolers Upright Warming Unit * 6' Stainless Steel Warming Station * 8' Stainless Steel Cooling Station * Ovens * Coffee & Tea Makers * 3 6' Glass Refrigerated Reach-In * High Chairs * Fryer Baskets Napkin Dispensers * Variety Of Metal Assorted Shelves * Fire Extinguisher System * Stainless Steel Inserts * Prep Dishes For Hot & Cold * Assortment Of Numerous Plates Cash Register, Printers, & Credit Card Machine * Several 8' Stainless Steel Work Stations * 2 Corner Booth Seats * 2 Corner Nook Tables 45" x 45" * 20 Wall Mount Tables 27" x 48" * 82 Black Dining Chairs * 11 Spider Stand Tables 36" x 36" * 7 Ceiling Fans * 17 School House Hanging Lights * 10 Double Sided Seats * 4 End Booth Seats * 9 Tables 3' x 3'

Furniture & Appliances

Oak King Size Bedroom Set * Kitchen Tables & Chairs * Coffee & End Tables * Chest Of Drawers * Desks & Chairs * Full Size Leather Sofa * Desk & Chair * Side By Side Refrigerator Chest Freezer * Book Cases * Shelves * Table W/ Benches Fireplace * Entertainment Center * GE Artica Side By Side

Oriental Furniture & Vases, Pictures, & Glassware

Large Oriental Glass Vases * Oriental Table & Server * Dishes Mother Of Pearl Geisha Girls Asian Art * Oil On Canvas Paintings

Antiques, Collectibles & Household

Beautiful Fireplace * Antique Coffee Grinder * Antique Fly Rod * Antique Horse Weather Vane * Antique Mini Cast Iron Stove Set * Antique Cast Iron Wagon * Antique Cast Iron Scale * Chandelier * Antique Train Set * 2 Pinball Machines * Hobnail Hanging Lamp * Wall Heater * Stand Alone Heater * Large Pressure Cookers * Rugs * Baby Grand Piano * Beer Signs * Stain-glass Pieces

Collectible Tonka Equipment, Tractors, Cars & Semi Trucks

Tonka Dump Truck * Tonka Heavy Equipment * Metal Toys * Old Collectible Classic Cars * Large Pedal Tractor * 100 Small Hotwheels & Other Brand Cars * John Deere Toys * Race Car Collectibles * Metal Tricycles

Fishing, Camping, Tools, Lawn & Garden

Assortment Of Work Lights * 2x2x3 Safe * Tap & Die Set * Bar Clamps * Craftsman Drill Press & Stand * Grinders * Drills * Variety Of Coleman Lanterns * Belt Sanders * Pipe Wrenches * Pancake Air Compressor * Upright Tool Box * 3" Framing Nailer * Brad Nailers * Craftsman Router * Small Drill Press * Come Alongs * 5 Hp Rear Tine Tiller * English Saddle * Horse Blankets & Pads * Custom Pleasure Saddle W/ Lots Of Silver Smithing * Farm Gates * Shop Fan * 40 Gal. Lp Hot Water Heater * Miter Saw * Chop Saw * Variety Of Pre Hung Interior Doors * Fishing Poles * Wading Boots * Variety Of Hand & Garden Tools * 220 Welder * Table Saw * Wrought Iron Patio Set Table & 4 Chairs, Lounger, 2 End Tables * Reese Hitches * Wrought Iron Table & 4 Chairs * Air Stapler Tackle * Lightning Rods * 30 Sheets Of 20' Tin

PLUS MORE ARRIVING DAILY! WWW.GLENWORTH.COM



Auction Conducted by:

Member of:

Glenworth

Auction Service & Realty
Glen Yutzy, Auctioneer/Broker

Missouri Professional
Auctioneers Association
Licensed in Missouri & Arkansas



Phone: (417) 767-4345

Fax: (417) 767-4222

Not responsible for accidents. Announcements made day of sale take precedence over any printed matter.
Terms: CASH or CHECK Visit our website for more information at www.glenworth.com Lunch available

PUBLIC AUCTION

Saturday, September 26, 2020 • 10:00A.M.

10070 Hwy C, Mokane, MO

Directions: Located on Hwy C directly across from the South Callaway Middle School. Watch for signs day of sale.

TRACTORS & EQUIPMENT

Case IH 695 Tractor, 2 wd, 3 pt, PTO, ROPS, w/ Case IH 2255 Loader, Smooth Bucket; John Deere 955 Tractor, 4 wd, ROPS, Turf Tires, 401 hrs, 3 pt, PTO, w/ weights; 8' 3 pt Bush Hog Cutter; 3 pt Spring Mount Field Cultivator; 3 pt Drag Harrow; 3 pt Carry All; 6' Bush Hog Finish Mower 3pt; Fimco Sprayer; 3 pt Danuser Post Hole Digger. 16" Utility Trailer.

BOATS

1988 265 Marlin, 26' Boat w/ Triple Axle Trailer, Diesel Motor, Cuddy Cabin 314 hrs; 18.5 Yahoo Off-shore Boat & Trailer, 237 hrs, 110 hp Outboard Motor.

GUNS & ACCESSORIES

Mossberg 16 ga bolt Action, Model 190 2 3/4 Shell; Savage Arms Double Barrel, 12 ga Mod B; W. Richards Double Barrel Hammer Gun 12 ga; Connecticut Valley Arms Black Powder, .50 Cal. w/ Tasco Scope Forrest Green Camo; Remington Arms 550 Mod .22 SL w/ Tasco Scope; Winchester Mod 70 Featherweight, 270, w/ BSA Scope; Sheridan Air Rifle, 5 mm Cal., Air Rifle; Connecticut Valley Arms, Optima Pro Magnum .50 Cal w/ Tasco Scope, Black Stock Caldwell Steady Rest (for shooting); Tasco Scopes; Lots of Misc Ammo; Fishing Equipment.

SHOP, TOOLS & EQUIPMENT

Troy Bilt Tiller; 8" Bench Grinder on Stand; Campbell Haus Feld 6 HPO Compressor, 60 gal; Schumacher Battery Charger; Dollies; Generac 4000 SXL Generator; Metal Band Saw; Air Hoses; Grizzly Spindle Shaper, Table Top; Stick Welder; Step Ladders; Trailer Ball Hitches; Fence Stretchers; Portable 110 Air Compressor; Furniture Clamps; 10" Craftsman Radial Arm Saw; Saw Horses; Floor Jacks; Extension Cords; C-Clamps; 5 Gallon Shop Vac; Heavy Steel Vice; Squares; Lot of Nails, Screws, Bolts; Gas Cans; Screwdrivers, Pliers & Hammers; Winch; Load Binders; Floor Jacks; Large Assortment of Sockets; DeWalt Miter Saw; Milwaukee Metal Chip Saw; Skill Worm Driver Saw; Skill Saws, Drills; Combination Belt/Disk Sander; Bolt Cutters; Sprayers; Metal Buckets; Hardware; Organizer Bins; Flood Lights; Metal Double Door Cabinets; Cut Off Blades; Wood Planes; Craftsman Upright Tool Box; Fuel Tank on Stand; Lot of Steel Traps; Water Hose.

ANTIQUES & COLLECTIBLES

True Hoosier Cabinet, Oak, Glass Spice, Sifter, Porcelain, Wonderful Piece; 2 Oak Crank Telephones; Oak Desk w/ Office Chair; Oak Child's Rocking Horse; Classic Victrola; Player Piano; Upright Piano; Glass Front Hutch Cabinet; Oak Bakers Cabinet,

Frosted Glass, Brass Pulls; 9 pc Emerald Green Depression Canister Set; Bee Hive Clear Aladdin Lamp; Solid Oak Table w/ 2 leaves & 6 Chairs; Lot of Homemade Quilts; Full Size Iron Bed; Oil Lamps; Ornate Oak Buffet w/ Bevel Mirror; Cast Iron Floor Lamps; 30's Kitchen Cabinet w/ Porcelain Top; Glove Box Dresser w/ Marble Insert & Mirror; Flat Top Trunk; Wing Back Chair; Lot of Books & Magazines; Wicker Desk & Chair; Milking Buckets; Metal Wash Tubs; "Sheffield Roses" by Marty Bell Picture in Oak Frame; Solid Oak Hand Carved Sitting Chair, Captain Chair; Mikasa Kitchen Set w/ Bowls, Cups, Saucers, etc; Pink Depression Bowls, Cups, Saucers, etc; Set of Mikasa China; Lead Glassware; Green Depression Coin Glass; Lot of Vases; Picture Frames; Milk Glass; Lot of Cut Glass; Figurines; Milk Bottles; Silverware; Kerosene Lamps; Cast Iron Bracket Lamp; Woods Evertz Stove Co. Cast Iron Stove; Old Barbie Dolls; Cast Iron Muffin Pans; Antique Hand Saws; Cream Cans; 4 Cast Iron Bar Stools; Thomas Kinkade Paintings; British Royalty Collectibles; Fitz & Floyd Collectibles; Presidential Collectibles; Hallmark Ornaments; Olympic Collectibles; Pattern Cabinet.

FURNITURE & HOUSEHOLD

Leather Lift Chair; Lamps; Oak Hutch w/ Lead Glass Doors; Vacuum Cleaners; Lot of Crystal Glassware; Decorated Plates/ Dishes; Cake Plates; Lots of Christmas Plates/Bowls/Pitchers; Spode Plates; Hamilton Beach Green Malt Mixer; Floor Lamps; Glass Top Coffee Table w/ Tops; 4 pc Bedroom set w/ Night Stands, Dressers & Chest of Drawers; Euro-Pro Iron System; Full Size Bed; Large Amount Sewing Supplies, Material, Quilting; Towels & Linens; Fancy Work; Costume Jewelry; Baby Crib; Plant Stands; Cook Books; Cookie Jars; Pots, Pans & Dishes; Sets of China; Magic Chef Mini Fridge; Kitchen Utensils; Salmon & White Pyrex; Halloween, Christmas & Easter Decorations; Deco Curio Cabinet; Maple Table w/ Chairs; Lot of Dehumidifiers; File Cabinets; Lot of 33 Records; Coolers; Step Stools; Iron Patio Set; Electric Grill.

Note: Outstanding lineup of tractors, farm machinery, antique furniture, collectibles, boats & much more. We will be running 2 auction rings most of the day. Plenty of shade. Plan on spending the day with us. Thanks - Rick, Nick & Kyle

Term: Cash or good check with proper identification. All sales are final. Everything sells as is, where is. Proper identification is necessary to obtain a buyer's number. Announcements day of sale supersede all printed material.

WE ARE EXCITED TO BE CONDUCTING THIS AUCTION WITH ALLEN AUCTION & REAL ESTATE.

636-236-2344 • WWW.ALLENAUCTION.NET

OWNERS: ESTATE OF WALTER "GLEN" MEYER

RICHARD MOFFAT AUCTION SERVICE

708 E. McCarty St., Jefferson City MO 65101 - Business Office



Auctioneer:
Richard Moffat
573-761-4293
Jefferson City, MO

The Moffat Center
573-897-4004
Linn, MO
www.moffatauction.com

Auctioneer:
Matt Michelson
573-680-6188
Jefferson City, MO

Firearms Auction

Saturday, October 3, 2020 • 10:00 a.m.

Sale Preview - Friday, October 2nd • 6-9 p.m.

The Red Shed
I-44 to exit 179 • 169 Truman St / Hwy T
Doolittle, MO 65550

SELLING OVER 300 FIREARMS

SOME OF THE HIGHLIGHTS TO INCLUDE:

Beautiful set of Krieghoff and Merkel Double Rifles and Shotguns

Blaser R93 Luxus Safari .375H&H Rifle

High Grade Shotguns by Browning, Boswell, Beretta, LC Smith, Laurona, Fox and Benelli

Colt Huntsman .22

Colt 1903 .32ACP

Colt 1877 Lightning

Colt Woodsman .22

Four Colt Commemorative Revolvers

Colt SAA .45LC

Winchester Model 70 Safari .375H&H

Winchester Model 70 Pre-64 .270

Two Winchester Model 74

Winchester 1892 25-20

Winchester Model 42 .410

Winchester 1890

Winchester Model 61

Marlin 1894s in .357, .41 Magnum,

.44 Magnum, .45 LC

Great selection of Ruger and Smith handguns



Lot 155 – Krieghoff Classic Big 5 Combo .470 NE caliber Double Rifle and 20 ga Shotgun barrels



FOR A COMPLETE LIST AND TO VIEW PICTURES OF EACH LOT,
GO TO AUCTIONZIP.COM AT THE BOTTOM OF THE PAGE, USE AUCTIONEER ID 28053

J & J Sales, LLC

jjsales@fidmail.com

573-341-5450
Office

573-465-4647
Julie Reagan

573-465-0642
JD Roach, Auctioneer

573-762-2227
Sale Day Number

Terms of Sale: Sale day announcements supercede any and all printed material. Photo I.D. required for buyer's number. No buyer's premium. Payment accepted by cash, check, debit/credit card. There is a 3% convenience fee unless paid by cash or check. Nothing removed until settled for. All state and federal firearms regulations will be followed. Not responsible for loss or accidents.

Auctioneer ID 28053

COMMERCIAL REAL ESTATE & BODY SHOP EQUIPMENT

AUCTION!

Owner: Phyllis Owens

Sat. September 26, 2020 - 9:30 A.M. SHARP!

LOCATION: 202 South Elm Street, Mountain Grove, MO. Watch for Kelly Auction Signs! Not responsible for accidents or loss of items. Two forms of I.D. Required.. Cash or Check only.

COMMERCIAL REAL ESTATE

- 100'x125' Lot at 202 South Elm Street, Mountain Grove, MO
- 2 buildings! A 40'x64' and a 28'x70', 12' walls, covered walk-way between buildings, all metal, concrete floors, 3 wood furnaces, 1 gas furnace, 2 paint rooms w/ air ducting and movement systems! Very clean and organized property! Excellent office area, 2 bathrooms, air system throughout.
- This would be a great on-going established business, or could be used for multiple purposes.
- Pre-Auction Purchase Opportunity! A buyer may present an offer for the Real Estate and all contents, or on the Real Estate alone, to be presented to the Auction Company before the Auction. If accepted, the Buyer must close on or before September 23, 2020.
- Terms on Real Estate Auction: 10% down day and location of the auction. Balance due at closing within 30 days (on or before October 23, 2020). Property sells "as is, where is", no contingencies.
- Call Reg Kelly at 417-257-8385 for more info or questions.



SHOP ITEMS & TOOLS

8'x12' Portable Building

Small Shop Vac – Metal File Cabinet – BUSKE Collision Frame Machine, 15' w/ 3 BUSKE PL-650 Posts – Huge assortment of Frame Straightening tools and accessories of every kind! (see photos) – Fire Extinguishers – (2) Hydraulic Shop Floor Jacks – Acetylene Torch Set – Enerpac Hushh-Pup – Chain Pullers, several lengths and sizes – Foot Pedal Air/Hydraulic Jacks – Hydraulic Jacks – Lots of Chain Boomers – Large Shop Air Compressor – Snap-On Air Power Machine on dolly – Electric Winch – Floor Jacks – Wheel Balancing Machine – Hydraulic Engine Block Jack – 10 drawer Tool Box – Large Roll new ¼ insulation – Parts Washer – Large Metal Shelving – Shop Fan – Shop Lights – Body Paint Accessories – Paint Can Shaker – Aluminum Step-up Platforms – Aluminum Step-up Ladders – Areins Riding Mower – (2) EZE Lift Air/Hydraulic Auto Lifts HD Shop – Motor/Block Jacks – HOBART HANDLER 120 Plasma Cutter w/ Argon Tank on Rolling Cage – A.R.C. Body Shop 3000 Welder – Floor Stand Jacks – Auto Body Air Frame Jacks and Accessories – Electronic Portable Spot Welder – 40/200 Starter Charger – Shop Vise – Shop Grinder – Viking Dustless Sanding System – Matco Tool Box, 9 drawer – Body & Frame Jacks – Craftsman Tool Box, 9 drawer – 4 Ton Hydraulic Power Master – Auto Meter Battery Tester – Electric/Air Jack – Older Snap-On Tool Chest – Several Large Wooden Shop Cabinets – Several Small Metal File Boxes – Excalibur Pneumatic Interior Glass Cut-out knife in case – 10 small metal parts cabinets – Large 8 Drawer Metal Parts Cabinet – (2) Robin Air Refrigerant Recovery and Recycling System Machines – (2) 3M Cabinets – Small Craftsman Tool Cabinet – Pro-Tech Cut Off Saw – Large Shop Vac – Delco Shop Cart – MB Century 16 drawer Tool Cabinet – Craftsman Sockets, Wrenches, Driver Ratchets, Pullers & Lots of various Hand Tools – 7-Up Pop Machine – Eye Wash Station – Air & Hand Sanders – Large Collection of Hammers & Body Tools – Dyes – Air Tools – Slide Sledge Precision Hammer – Grinders – Buffers – Paint – Stripper Tape & More – Firewood Racks, metal – Rolling Shop Lights – Air Caulking Guns – Metal Saw Horses – Extra Large V Cylinder Shop Air Compressor – Time Clock

Auctioneer Note!
Auction Order: Real Estate sells first at 9:30 a.m., followed by the contents of the buildings. Lots of small shop items not listed! See you at the Auction!!



AUCTION
 Company, L.L.C.
 417-257-8385
 Auctioneer: Reg Kelly

For more Pictures & Info VISIT:

www.KellyAuctionCo.com

MEYER FARM AUCTION

Vernell Meyer, having retired from farming, will sell personal property and farm equipment at public auction on:

Saturday, September 26th, Beginning at 9:00 AM

Location: 2398 Highway W Hermann Mo 65041 (Bay area)



Directions: From Interstate 44, take Exit #247-Highway 50, West approximately 40 miles, then turn right on Highway K, go 2 miles then right on Highway W to auction. Roads will be marked day of sale.

TRACTORS (will sell at 1:00 PM)



John Deere 5083E tractor-475 hours-shuttle shift-front wheel assist-radio-canopy-with 553 loader-self leveling bucket, Case IH 585 diesel tractor-901 actual hours-with 2250 Case loader-6' bucket-bale spears, (2) McCormick Farmall "C" tractors-12 volt-good rubber-restored, Farmall Super "C" tractor, **TRACTOR PARTS**; lot Farmall C parts, Super C parts, manifold, radiator, tractor wheel weights-front-rear, blade, IH new old stock parts, top links, draw bars, cylinders, baler wagon hitch

FARM/HAY EQUIPMENT/TRAILERS



New Holland 630 belt baler-round 4'x4' bales-electric tie, Vermeer TM600 8' hay mower-one owner-like new, Vortex Dura Bilt 5200 hydraulic 4 basket hay tedder, Ford 504 square baler, New Holland 256 side delivery hay rake, John Deere 660 hay rake, New Holland 185 tandem axle PTO manure spreader, Woods 84 7' brush hog, Bush Hog 7' blade, King Kutter 3 point roto tiller, 3 point carrybooms, 3 pt box carryalls, quick attach bale spears, Fergu

son 7' 3 pt disc-notch blades, 3 pt slip scoop, 3 pt bale spears, 7' front cut drag disc, 2 section drag harrow, AG Cutter 6' brush hog, Bush Hog 3 pt post hole digger-2 augers, Lintz mill, International mill, Herd 3 point broadcast spreader, David Bradley hammer mill, **TRAILERS**; PJ bumper hitch double axle 10' hydraulic dump trailer, 7'x 4' utility trailer w/sides-grain gate, 14' tandem axle WW stock trailer, dual axle 14' flatbed trailer, hay wagon, small hand trailer mover, diamond plate truck tool box, hub caps, pick up bed water tank, truck-trailer side rails



FARM/CATTLE SUPPLIES

(4) new bale feeders, Powder River head chutes, creep feeders, 6' wall hay rack, low feed bunks, homemade feed bunks, mineral feeders, large amount water tanks-large round metal and plastic 6'-8'-9', oblong water tanks- 2'x4'-Rubbermaid-2'x6' metal and plastic, large lot gates-all sizes 4'-14' pipe gates, panel gates, cattle panels, gate hinges, used and new T posts, wooden posts, woven wire, lot new rolls barbed wire-15 1/2 gauge-12 1/2 gauge Red Brand, barbed wire spacers, wire roller, T post driver, lot electric fence supplies-posts-wire-copper ground rods, large lot fences-some new, solar-battery, large liquid transport bins, grain auger, lot cattle vet supplies, calf puller, cattle oilers, bagged ice coolers-feed bins, lot steel pipe-tubes, lot lumber-oak-cedar, fuel oil tanks, barrels-large and small, lot of tarps, sheets tin

GUNS/TRAPPING/OUTDOOR (will sell at 12 Noon)

Remington Model 700 30/06 bolt action-Weatherby scope, (2)Marlin 30/30 lever action rifles-NIB, J Stevens A&T co .22 crackshot rifle, Crackshot 26 SVG rifle, Remington Fieldmaster 572 .22 caliber pump, Remington Wingmaster 870 12 ga pump, (2) Winchester Model 1897 16 ga pump, (3) Winchester Mod 1897 12 ga pump shotguns, Stevens Mod 9478 20 ga single shot, Nitro Special Stevens 12 ga single shot, Thompson .50 caliber black powder rifle, Winchester Model 12 12ga in original box-never shot **PISTOLS**; Ruger GP100 .357 Mag, Hi Standard Double Nine .22 revolver, **ARCHERY**; Mathews compound bow, Mountaineer compound bow, quivers, gun cases, bear skins, deer mounts, antlers, bear skull, gun cabinet, Daisy Red Ryder BB gun-NIB, gun scope, German Original Bowie knife, tomahawk head, **NEWHOUSE TRAPS**; Grizzley Bear #6 bear trap, huge lot all types-sizes leg traps-spring traps, live traps, Evinrude Sportwin 9.5 HP boat motor, deer feeder, deer stands, pop up blind, turkey decoy, goose decoy, deer bow target, camo clothes, frog gigs, dog box, purple martin house, bird houses, **PROCESSING**; large electric meat grinder, lot hand grinders, meat saws, butcher paper, BEE boxes, motorized honey spinner,

MOWERS/YARD TOOLS

Cub Cadet 129 Hydrostatic yard tractor, Craftsman 22" mulching push mower, power washer-2700 PSI-2.5 GPM, DR trimmer-mower, Earthquake gas drill-bit, water pump-hoses, pump sprayers, Blue Grass tiller, wheelbarrows, Lawn Boy mower, Sears 1250 Alte-nator, vintage Marvette pump, 12 volt sprayer-booms on cart, Fimco 12 volt sprayer, lot metal-wooden extension ladders, lot step ladders, extendable walk board, ladder jacks, down spouts-fittings, PVC pipe-fittings, hoes, rakes, shovels, grain shovels, brooms, pitch forks, post hole diggers, grub hoes, post maul, Witte Hardware double ax, shoulder seeders, silage fork, splitting maul, pry rods, concrete hand tools concrete mixer

TOOLS

Miller 135/175 welder-like new, 22 ton hydraulic press, Delta miter saw, Sears commercial air compressor, Ridgid portable band saw, Magnum X7 airless paint sprayer, Porta Cable Bammer nailer, International Harvester 30 amp-200 amp battery charger-booster, Ford Rotunda battery charger, jig saw, drills, 1" socket set, lot socket sets, sockets, ratchets, channel locks, pliers, hammers, pipe wrenches, circular saws, bench vise, pipe vise, bolt cutters, large C clamps, pipe clamps, bar clamps, corner clamps, machinist tool box-tools-calipers-mics, Starrett tools, end mills, 2" pipe threader, tap and die sets, lot wrenches, files, all types hardware-nuts-bolts-washers, O rings, lot threaded rods, rope, lot lineman strap, ratchet straps, ratchet binders, tow chains, wagon jack, tow balls, funnels, lot parts bins, tool boxes, Yale 1/2 ton chain hoist, Ingersol 1/2 ton chain hoist, 34 pc drill bit set, grease guns, work lights, saw blades, hack saws, hand saws, extension cords, electric wire, plumbing supplies, painting supplies, flashing, 1/2" x50" copper tubing-NIB, roll flashing, doors, kerosene heaters, shop fans, banding tools, motors, Briggs and Stratton Model A engine

ANTIQUES/COLLECTIBLES/HOUSEHOLD

Armitage anvil, blacksmith forges-tools, blacksmith drill press, CF Orvis glass minnow traps, Como chicken feeder tubes, Walter A Wood iron tractor seat, ice tongs, wooden block-tackle, Plumb hatchets, implement wheel, Graco Model CJ500 grease gun rack, Porta gas can, Hocking Valley corn sheller on stand, hand sheller, hand corn planters, Deere Mansur seeder cover, wood planes, galvanized buckets-wash tubs, Charter Oak wood stove with green enamel trim, Longwood wood stove, iron kettle, steel wheel wheelbarrow, pull plocs, shovel plow, hay hook, 4 door locker, old ornate fencing-gates, Polled Hereford round metal signs, wooden advertising boxes, wooden soda crates-Coke-Pepsi, wash board, cistern parts, wooden tool carrier, bicycles, table fans-Zero-Wizard-Gilbert, Howard Miller shelf clock, Hubby pistols, old padlocks, door hardware, numerous beam scales, Purina Feed Saver scale platform scales, 400 LB hanging Detecto scale, wooden grain boxes, wagon tongues, Hayres, single-double trees, wagon tongue, enamel blue coffee pot-pans-pots, crosscut saw, blue canning jars, Old Judge jars, milk bottles-Beale-Hogan-Hedigers-others, cream jars, Metal milk bottle coolers-Hogan, oil jar spouts-BOE man. Oil jar, Standard Oil co metal can, glass butter mold, local advertising-calenders-Bay Mercantile-Meyers Store-Drake-Becmont Fire Coop, sausage stuffers, paper roll dispenser, copper boiler, trunks, Keen Kutter file-box, apple peelers, Ramco lighted sign-clock, large lot feed-seed cloth bags, old bottles, gallon butter churn, crocks-#2 Western-#1 Blue Band-#3 Macomb-#2 Ruckels-#6 w handles -crock jug, SS milk can, wooden kerosene jug, 5 Lb Pork Brains tin, old cone top can, egg basket, **HOUSEHOLD**; folding tables, dining table-chairs, microwave, old parlor chairs, old dining chairs, benches, picnic table, glider, Brinkman smoker, dehumidifier, pots, stock pots, dishes, kerosene heater, desk, small chest freezer

We plan to abide by the CDC guidelines regarding the COVID distancing and PPE guidelines.

LUNCH WILL BE SERVED BY CAROL'S CATERING

VIEW OUR PHOTO GALLERY ON www.breheauction.com

BREHE AUCTIONEERING SERVICE, L.L.C.
 Union, MO: (636) 583-0841 Owensville, MO: (573) 437-3454
www.breheauction.com
 LICENSED AUCTIONEERS:
 Kerry Brehe 314.954.3798 Josh Brehe 314.603.3129 Harry Engelhart 636.399.3743
 Arrangements made day of sale supersede all printed material.
 TERMS: CASH, PERSONAL CHECKS WITH PROPER I.D., BUSINESS CHECKS WITH BANK LETTER AND NO OUT OF STATE CHECKS UNLESS APPROVED BY SELLER. Email Us At kkauction@sbcglobal.net
 Everything sells as is with no guarantee.

AUCTIONEERS NOTE

Auction will begin at 9 selling tools, second ring will begin at 10 selling household and antiques.

CRULL FARM AUCTION

Find us on Facebook



Jon and Steve Crull, Personal Representatives for the Lorraine Crull Estate, will sell personal property of the Estate at public auction on:

Saturday, October 3rd, 2020 Beginning at 9:00 AM

Location: 4001 Highway B, Bland Mo 65013 (Gasconade Co)

Directions: From Interstate 44, take Exit #247-Highway 50 West, go 30 miles, then left on Highway 28. Go on 28 13.6 miles through Owensville, then left on Highway B 1.6 miles to auction. Roads will be marked day of sale. Or from St. James/I-44 take Exit #195, North on 68, then right on Highway B 21 miles to auction.

TRACTORS / COMBINES / GRAIN BINS (will sell after cattle at 12:00 Noon)



John Deere 6110 diesel tractor-front wheel assist-65 HP-16 speed transmission-2690 hours-canopy-front fenders-cast wheels-radio-left hand shuttle-with 640 SL loader- 6'8" bucket-QT-one owner-sells as unit, John Deere 4020 diesel tractor Serial #T213R142750R-new rear tires 18-4-34-4430 wide front end-cab-12 volt-with Koyker K5 loader-7' bucket-spear-sells as unit, John Deere 4010 diesel tractor-Serial #21T3850-cab-15-5-38 rear tires 80%-w/4020 engine kit-12 volt, Farmall H Serial #329215X gas tractor-12-4-38 new rear tires-12 volt, Ford 8N-3 point-75% rear tires-12 volt, **COMBINES**; Gleaner F2 diesel 438A combine-4 row corn head and 15' grain head-other grain head for parts-separator 1269 hours-engine 2156 hours, New Holland 975 combine for parts-15' grain head, **GRAIN BINS**; (2) 6,000 bushel grain bins with floors-one grain dryer-60 days to remove, (2) home made header wagons

GUNS (will sell at 11:00 AM)



Savage 1899 .308 w/scope-lever action, CVA Bobcat .50 ca black powder, Savage Axis .243 w/scope, Thompson Center 30-06 w/scope, Winchester 70 .270 w/scope, Savage 110 .270 w/scope, Thompson Center 7 Mag w/scope, Stevens 325 30-30 bolt action, Marlin 99 .22 semi-auto, Maverick 88 12 ga pump, Browning MK .22 semi-auto, Smith & Wesson 10-5 .38 special w/holster, Ruger E9 9MM

FARM FRESH CATTLE (will sell at 12:00 Noon)



Approximately 70 head Angus & Angus cross cattle-35 Angus cows-35 Angus calves-nursing and weaning-some sold as pairs-weanlings sold separately, BULL; 3 year old pure bred Angus bull-no papers-KVK bull, **CATTLE WILL BE AGED AND PREGNANCY TESTED-BULL SEMEN AND TRICH TESTED**, by Tri County Veterinary prior to sale



HAY EQUIPMENT / TILLAGE

New Holland 688 belt round baler-auto wrap-5'X6'-bale monitor-electric tie-bale kicker, New Holland 616 3 pt 7' disc mower, Sitre H90V10 hydraulic 10 wheel hay rake, New Holland 351 2 ton grinder mixer, Bushhog 3008 8' pull type brush hog-3 gear boxes, JD 24T square baler, JD 894 side delivery rake, tandem axle round bale trailer, JD #9-7' sickle mower, **TILLAGE EQUIPMENT**; International 400-4 row air planter, International 153 4 row cultivator, John Deere 14' roto hoe, JD 8300 double disc grain drill, JD 8250 single disc grain drill, JD 4-16" semi-mounted plow, JD H1B1 16' wing disc w/front notch blades, Krause 3 pt 9 shank chisel plow, John Deere R manure spreader, JD 953 hay wagons-14'-16', JD 68 auger wagon, Huskee 200 bushel gravity flow wagon



CATTLE EQUIPMENT / HAY

Lil Kreeper creep feeder, (3) metal round bale feeder, (3) plastic round bale feeders, lot cattle-hog panels, (20) portable corral panels, (5) plastic trough feeders, (2) mineral feeders, calf creep feeder, T posts, barbed wire, gates, smooth wire, electric fence posts, fencers, lot 1/4" metal stock, **POULTRY**; lot chicken feeders, waterers, metal nesting boxes, heat lamps, chick feeders, chicken plucker, **HAY**; 300+ round bales 2020 grass hay-5'X6' bales-will have 30 days to remove

HAY EQUIPMENT / TILLAGE

Servis 8' heavy duty blade, 3 pt home-made carryall, 3 point Bushhog post hole digger-2 augers, 3 pt slip scoop, 3 pt 5' brush hog, 3 pt 2-12" Ferguson plow, 3 pt Ford 2 row cultivator, 3 pt JD 2-16" plow, 3 pt Dearborn sub soiler, 3 pt 6' disc, 3 pt 6' box blade, pull type manure spreader, MM 16 hole grain drill, JD 2-14" drag plow-disassembled, 3 point 200 ga sprayer, 2 sets of tractor duals-15-5-38, 2 metal running gears w/grain boxes, AC 305 wagon running gear, (2) 3 point bale forks, JD back hoe attachment for High Lift, JD power unit for wood splitter-needs work, home made PTO tractor wood splitter, JD 2 row pull type corn planter, top links, tractor parts

FURNITURE / HOUSEHOLD / ANTIQUES



Mission oak china cabinet, curved glass china cabinet, sofa, end tables, coffee table, rocker recliners, beveled wall mirror, TV stand, pair small chests, waterfall chest drawers, cedar chest, large sewing cabinet-side shelving, twin beds, dressers, 2 drawer file cabinet, sideboard-server, single bed, oak dining chairs, dinette table chair set, lot sewing supplies, bedding, heated throw, vacuum, toys, Kitchenaid counter mixer, blender, coffee maker, canisters, dishes, pots-pans, mugs, glass pie pans, Corning Ware dishes, utensils, flatware, towels, cookbooks, microwave, electric skillet, food processor, canning jars, table linens, old Christmas, table lamps, luggage, **APPLIANCES**; Frigidaire stove, Whirlpool refrigerator, washer-dryer, 2 chest freezers, treadmill, kerosene heaters, **COLLECTIBLES**; 2 man saws, #4 cast iron school bell-yoke, industrial lights, John Deere diecast tractor, JD snow globe, green depression cup-bowl-plate, pressed glass, S&P sets, mini oil lamps, oil lamps, art glass vase, Seiko wall clock, mirrored dresser plate, Hall ball pitcher, Hall nesting bowls, Pyrex bread pan, old Pepsi-Dr Pepper bottles, Wagner square skillet, kitchen scale, meat saw, old porcelain doll, galvanized bucket, **STERLING** silver flatware-more of pearl handles, small sterling spoons, painted plates, **YARD**; bird bath, yard figurines-chimes, bird feeders, 6' yard windmill, water hose, iron lawn chairs, BBQ grill, yard swing, picnic table

TOOLS

Craftsman radial arm saw, shop table saw on stand, 3,000 watt generator, rolling compressor, Lincoln arc welder, welding rods-helmet, acetylene gas tanks, 5 ton port-a-power, Chicago Electric wire feed welder-new, antique Forney CT-5 stick welder, gas powered air compressor-Honda motor, 3/4" socket set, bench grinder, tap-die set, tin snips, squares, C clamps, levels, pipe wrenches, lot wrenches, sockets set, allen wrenches, screwdrivers, vise grips, strippers, needle nose, 100' tape, sockets-ratchets, deep well sockets, grinder, circular saw, drills, screw gun, sanders, roto zip, pipe threader, pipe cutter, pipe vise, hammers, bottle jacks, Lincoln bottle jack, RR jacks, wagon jack, Reed bench vise, lot hardware-bolts, grease guns, tractor belts-new, single strand wire, fluids-oils, funnels, cotter pins, E clips, extension cords, bolt cutters, 2 wheel dollies, (50) 10' metal studs, **YARD TOOLS**; Troy Bilt Pony riding mower, Craftsman riding mower-15 HP-42" cut, Ahrens rear tine tiller, Yard Machine front tine tiller, 2 cycle cultivator, McCulloch pole saw, push mowers, Cub Cadet 782 riding mower hydro, gas weed eaters, hoes, splitting maul, double axes, chain saw sharpener, extension ladder, step ladders, binders, 12 volt sprayer, 3 ton floor jack, ATV ramps, sump pumps, **OUTDOOR**; Phantam Bantam trolling motor, deer feeder, live trap, sleeping bags, camping stove, lanterns, tents, yard screens, Little Still-home still, home brewing supplies, cases beer bottles

CLASSIC AUTO

1962 Chevy Impala-4 door-hardtop-6 cylinder-3 on tree, 69 Dodge 1 ton transfer case-transmission, car speakers. Motorcycle helmets, ATV tires-new 24x9x11, **TRAILER**; 1998 WW 16'box trailer-new tires

We plan to abide by the CDC guidelines regarding the COVID distancing and PPE guidelines.

AUCTIONEERS NOTE; Auction will begin at 9:00 AM selling tools, second ring will begin at 10:00 AM selling household and antiques.

LUNCH WILL BE SERVED BY CAROLS CATERING

VIEW OUR PHOTO GALLERY ON www.breheauction.com

BREHE AUCTIONEERING SERVICE, LLC
 Union, MO: (636) 583-0841 Owensville, MO: (573) 437-3454
www.breheauction.com
 LICENSED AUCTIONEERS:
 Kerry Brehe 314.954.3798 Josh Brehe 314.603.3129 Harry Engelhart 636.399.3743
 Announcements made day of sale supersede all printed material.
 TERMS: CASH, PERSONAL CHECKS WITH PROPER I.D., BUSINESS CHECKS WITH BANK LETTER AND NO OUT OF STATE CHECKS UNLESS APPROVED BY SELLER. Email Us At kkauction@sbcglobal.net
 Everything sells as is with no guarantees.

YOUR Real Estate Auction Specialist



Bob Kollmeier CAI, CAGA
Auctions/Appraisals/
Real Estate • 417-882-5664



U.S. BANKRUPTCY COURT ORDERED

(3) PETERBILT MOD 379 SEMI TRUCKS, PETERBILT DUMP TRUCK, TRAILERS, PICKUPS, EXCAVATOR, ROAD GRADER, LULL LIFT, TRACTORS & FARM EQUIPMENT

▶▶▶ AUCTION

SATURDAY, OCTOBER 3, 10:00 AM

5913 HWY 17 YUKON, MO DIRECTIONS: FROM HOUSTON, MO TAKE HWY 17 SOUTH TO AUCTION. AUCTION IS 1/2MI PAST BIG CREEK CHURCH. WATCH FOR SIGNS!



(3) PETERBILT (MOD 379) SEMI TRUCKS, (1) PETERBILT DUMP TRUCK, SEMI TRAILERS, PICKUPS, TRACTORS & FARM EQUIPMENT, EXCAVATOR, ROAD GRADER, LULL LIFT & HOUSEBOAT

2000 Peterbilt Semi Truck Mod 379! 2000 Peterbilt Semi Truck Mod 379! 1997 Peterbilt Semi Truck Mod 379 (rebuild 800,000 mi.!) 1984 Peterbilt Dump Truck 15' bed! 2000 Manac 48' flatbed equipment trailer! 2002 Train 48' flatbed equipment trailer! 1996 RGN gooseneck equipment trailer (Fontaine) (removable neck)! 2001 Ford F350 pickup diesel with 278,000 mi.! 2000 Ford F350 pickup diesel with 292,000 mi.! 1999 Ford F350 pickup diesel w/326,000 mi.! 1965 30' houseboat w/ inboard motor & trailer (needs work)! Galion T500 road grader! Lull 1044C-54 lift w/6,157 hrs.! Allis Chalmers Mod 7020 tractor! Allis Chalmers Mod 7030 w/loader! Vermeer Mod 605j baler (single tie 1000 pto)! John Deere Hay rake Mod 700! Top air dual axle boom sprayer (needs tank & pump work)! Batwing brush hog! (2) feed bins (3 ton & 8 ton)! Komatsu Mod PC 200 LC excavator approx. 12,000 hrs.! Corral system (20 panels, including gates & head gates)!

FOR LISTING & PHOTOS ON THE WEB BOBKAUCTIONS.COM OR AUCTIONZIP.COM
CALL OFFICE FOR MORE INFO: 417.882.5664

AUCTIONEER'S NOTE: The following listing is from court documents & there is a possibility that all items on that list will not be available at this auction. Check website for updates before auction day. No Misc. be on time! Equipment sells at 10AM sharp!

TERMS: CASH, credit w/3% convenience fee, personal or company checks accepted only if known by us or w/a bank letter made to RLK, Inc. No Exceptions, no out of state checks! All items paid for day of Auction! All items sold As Is Where Is.



Bob Kollmeier
AUCTIONS
APPRAISALS & REAL ESTATE
417.882.5664

SL-0000426478



RICHARD JEAN
AUCTIONEER
417.299.8401



RUSS SMITH
AUCTIONEER/SET UP MANAGER
417.844.0205

VISIT WEBSITE FOR PICTURES

AUCTION

• FARM EQUIP ~ FARM RELATED • SHOP ITEMS • OUTDOOR ~ MISC
 • ANTIQUES ~ COLLECTIBLES • HOUSEHOLD • VEHICLES • TRACTORS ~ TRAILER • GUNS

SATURDAY, SEPTEMBER 26th - 10:00 A.M.

Location: Rt. 1 Box 740, Vanzant, MO 65768

Directions: From Mtn Grove 4 way stop: Take Hwy 95 South 12 miles to 76 Hwy. Turn left go 5 miles to EE Hwy. Turn right go 2.5 miles to Auction on right.

Payment System: Cash • Debit Card • Credit Card (Debit / Credit Card Fee Will Apply)
 Checks approved if known by auction company.

Larry Ball & Carol (Clinton)

BALL

LARGE SCRAP METAL PILE

FARM EQUIPMENT ~ FARM RELATED

2400 QT Bushhog Loader w/ Bucket • International 6' 3pt Bushhog • Cow Lifts • Large Lots Cattle Rubs • 16' Hog Panels • Mineral Tubs • Electric Wire • Assorted Feeders • Poly Trough Feeders • Stock Tanks • 2 Wheel 4x6 Utility Trailer • Metal Creep Feeder (needs work) • 3pt 10" Post Hole Auger • Bale Spike • 6" Smoothing Disc • Cattle Water Heaters • (11) Hay Ring Feeders • Steel Posts • Calf Pullers • Windshield for early 70's GMC Pickup • Other

APPROX 30 SQUARE BALES OF HAY

TRACTORS ~ TRAILER

Allis Chalmer 185 w/595 Allied Loader Quick Detach Bucket 4spd hi lo 540 PTO Dual Hydraulics 2827hrs • (2) Deutz D6206 Diesel Air Cooled 4spd hi lo w/remotes 3641 hrs, 4886 hrs • 20' WB Gooseneck Flatbed Trailer



SHOP ITEMS

Lincoln AC 225 Welder • Metal Shelving • 2 Wheel Dolly • Stanley Shop Vac • Bottle Jack • Central Machinery 10" Table Saw • Wooden Tool Box • Com A Long • Grease Guns • Oil Cans • Drop Cords • B&D Router • Oils & Solvents • Skil Saw • Shop Lights • Other

OUTDOOR ~ MISC

6' Step Ladder • Roto-Hoe Pull Type Wood Chipper (gas) • Live Traps • Kids Toys • Minnow Traps • Fuel Cans • Stack Lawn Chairs • Coleman Cooler • Misc Oak Lumber • Wooden Ladder • Large Lot of Metal Clothes Racks • Sears Air Cooler • Alum 6' Step Ladder • Poulan Wood Sharp Chain saw • Poulan Predator Chain Saw • Weber BBQ Grill • Card Tables • Large Lot Electric Heaters • 9 Bags of Monarch Concrete • Wooden Shelving • Handicap Items • Concrete Bird Bath • Wrought Iron Patio Set • Wooden Storage Cabinet • Puzzles • Books • Bird Feeders • Sewing Notions • Leaf Blower • Duck Decoys • Picnic Table • Wind Chimes • Metal Guttering • Concrete Blocks • Fishing Tackle • 14' 4"x6" Wood Posts • Misc 2x4 lumber • Other

ANTIQUE ~ COLLECTIBLES

Galvanized Wash Tubs • Metal Lawn Chairs • Cross Cut Saw • Large School Bell #1 • Push Plow • Push Type Lawn Mower • Sad Irons • Bow Saw • Ball Oil Jar • Cream Cans • Cast Iron Platter • Wood Planes • Blue Mason Jars • Galvanized Buckets • Trunks • Kerosene Lanterns • Carnival Glass • Pink Depression • Crystal • Drum Table • Old Bread Box • Hand Stitched Quilts • Corn Knife • Wall Clock • Old Magazines • Old Records • Buttons • Granite • Bean Sacks • Feed Sacks • Wheat Dishes 2 Patterns • Coleman Lantern • Salt & Pepper Shaker Collection • 1930's Bedside Tables • Silver Spoon Collection • Costume Jewelry • 1930s Desk w/ Ink Well • Kerosene Lamps • Old Porcelain Door Knobs • Cast Iron Skillets (some Griswold) • Other



HOUSEHOLD

Bakers rack • Wooden Rocking Chair • Hall Tree • Sewing Machine Table • Oak Dining Table w/leaf & 6 Chairs • Assorted Dishes • Pyrex • Corning Ware • Entertainment Centers • Microwave • Couch • Love Seat • Sewing Machine • Wooden Desk • Cedar Chest • Pictures • Linen • Flatware • Toaster • Rice Cooker • Mirrors • Iron • Lamps • Night Stands • Office Chair • Pressure Cooker • Kerosene Heater • Glass Display Case • Washer & Dryer • China Cabinet • Other

VEHICLES

1977 Sierra Grande 1/2 ton 4x4 Automatic 80,xxx miles • 1979 f250 Ranger 2x4 Automatic 1ton Dually • 1998 s-10 Sonoma ext Cab Automatic 142,xxx miles

GUNS

Winchester 22 LR Model 190 Automatic Tube Fed • Brazil 3" Full Choke 410 • Deerfield 672 20 Gauge 3" Chamber Pistol Grip Pump



AUCTIONEER'S NOTE: This is just a generalized list as there are many unopened boxes they are still sorting through. *Thanks, Shawn*

DRIVER'S LICENSE OR PICTURE I.D. REQUIRED • TERMS: CASH OR APPROVED CHECK OR

Chadwell
 Auction Service, LLC
 www.chadwellauctions.com

Auctioneer: **SHAWN CHADWELL**
 417-746-4038 ~ Cell: 417-830-0209
 Ringmen: John Williams Jr. ~ 417-349-0480
 Weston Chadwell ~ 417-349-0727

Clerk: **SHELLY CHADWELL**
 Cell: 417-880-8449
 Cashiers: Shawn Irby ~ Maria Chadwell
 Kati Roberts ~ Emily Chadwell

PROFESSIONAL SALES MANAGEMENT
 LUNCH WAGON • APPRAISAL SERVICE • RAIN OR SHINE
 All announcements made day of sale take precedence over any printed matter.
 Not responsible for lost or stolen merchandise. Not responsible for accidents.

NOW TAKING CONSIGNMENTS FOR ANNUAL Leadmine Community Consignment AUCTION
Saturday, October 24 - 9:00AM

LOCATION: 839 Hwy T. Tunas, MO 65764 @The Leadmine Produce Auction Facility. **DIRECTIONS:** From Buffalo, MO, go North on Hwy. 73, Turn Right on Hwy. E (at Tunas, MO) Go 4 miles To Hwy. T, Turn Right and go South ½ mile to Auction Site on the right.

CONSIGNMENT UNLOADING WILL BE OCTOBER 21, 22, 23 - 9:00AM-5:00PM. FOR CONSIGNING CONTACT KENNETH WENGER AT 207 SCHOOL ROAD IN TUNAS, MO 65764 GUN CONSIGNMENTS CONTACT: STUART ZIMMERMAN AT 344 ST. RD. E, TUNAS, MO 65764 OR CALL: LARRY MARTIN @660-337-6471 OR HERMAN HOSTETLER@417-327-7720

CUT-OFF FOR YOUR CONSIGNMENT LISTING IN THE NEWSPAPER AD -OCTOBER 10, 2020

FARM MACHINERY, SUPPLIES & EQUIPMENT HORSE DRAWN EQUIPMENT, TOOLS, TRAILERS GUNS, HUNTING, BUILDING SUPPLIES FURNITURE, SMALL ANIMALS (IN CAGES) LAWN & GARDEN, SUPPLIES

MINIMUM \$2 PER TICKET
 \$2.01 to 100 = 20% • \$101 to 1,000 = 15%
 \$1,001 to 2,000 = 12% • GUNS 12%
 SINGLE ITEM OVER \$2,000 = 8% (\$450 CAP)

Terms & Conditions: Cash or check with valid I.D. Nothing removed until paid for. No smoking inside building. Announcements made day of sale take precedence over printed matter.

NO JUNK. NO TV'S OR RELATED ITEMS. WE RESERVE THE RIGHT TO REFUSE CONSIGNMENT.

HOSTETLER'S AUCTION SERVICE 417-327-7720
 4392 HWY. FF, HALFWAY, MO • HERMAN HOSTETLER, AUCTIONEER
MARTIN AUCTIONS 1-660-337-6471

OLD IHC: tool box with oil can holder, \$50.
 Herman 636-932-4429.

CAPPER'S WEEKLY VINTAGE SEARCHLIGHT COOKBOOK: hard-back \$10. 417-532-2045, Lebanon. Leave phone number.

MID MISSOURI STOCKYARDS

REGULAR SALE EVERY THURSDAY 11AM

SPECIAL COW SALE • OCT. 10TH • 6 P.M.

For Farm Visits, Market Updates, or Trucking
 Call **Zach Cox 417-777-1320**
Dan Romine 573-578-4939

**Competitive Buyers!
 Competitive Commission!
 Competitive Market!**

Barn: 417-532-9292
 I-44 • Exit 123 "just outside of Lebanon"
 17505 Route 66, Phillipsburg, MO 65722

For weekly market updates, visit us at
www.midmoststockyards.com

AUCTION

ONLINE ONLY BIDDING

THE KNIGHT AUCTION CENTER
 130 W FREMONT RD LEBANON, MO

SUNDAY AFTERNOON SEPT. 27 @ 1 PM

2 OR 3 BEDROOM 1 BATH HOME



located at 669 Bennett . This home is a fixer upper. All bidding is online only with closing bid beginning at 1 pm on the 27th. The home will be open Saturday the 26th and Sunday morning. You can also view by appointment. **Terms on this home is 10% down sale day with the balance due at closing.**

Also Selling...



The 27th from the Auction Center with online only bidding is this 2006 Fleetwood 3 bedroom 2 bath mobile home located at 2212 Allison in Lebanon. Selling to be moved. Payment if full sale day is required. The home will be open on Saturday the 26th and Sunday morning for viewing.


Go to www.knightauctionservice.com for complete list and pictures!

TERMS: Cash, Approved Check w/ID, Visa or Mastercard.

Sale By
KNIGHT AUCTION SERVICE, LLC
 417-532-7497 Lebanon, MO
 C omplete Sale Service"

www.knightauctionservice.com

BUFFALO LIVESTOCK MARKET LLC



276 Hwy 32 West Buffalo, Missouri

Sept. 19th, 2020
Receipts: 1123 Head

Heifer Calves \$3-\$10 Higher.
Cows & Bulls \$3 Lower.
Steers & Bulls Steady.

Representative Steers

300-400 @	160.00 to 186.00
400-500 @	147.00 to 170.00
500-600 @	135.00 to 158.00
600-700 @	133.00 to 140.00
700-800 @	130.00 to 139.00

Representative Heifers

300-400 @	130.00 to 164.00
400-500 @	134.00 to 156.00
500-600 @	126.00 to 144.00
600-700 @	123.00 to 133.00
700-800 @	116.00 to 132.00

Feeder Bulls

400-500 @	140.00 to 162.00
500-600 @	133.00 to 139.00
600-700 @	120.00 to 130.00
700-800 @	107.00 to 126.00
800-900 @	84.00 to 90.00

Stock Cows
 Bred \$700 to \$1075

Slaughter Cows

Big Fleshy	63.00 to 68.00
Boners	52.00 to 62.00
Thin	40.00 to 50.00
X Thin	40.00 Down

Slaughter Bulls

High Dressing	92.00 to 98.00
Med Dressing	83.00 to 91.00
Low Dressing	60.00 to 70.00

October Pre VAC Wean Oct. 10th

November Pre VAC Wean Nov. 7th
 (moved up 1 week due to Deer Season)

MON-WED MARKET REPORT
 Listen to KJEL 103.7FM • Lebanon or KY00 99FM • Bolivar

VIEW OUR SALES AT CATTLEUSA.COM

CALL FOR TRUCKING OR ON-FARM VISIT

Lyle Caselman • Owner-Manager
 417-345-7876 • mobile 417-533-2944
Leon Caselman • Owner
 417-345-4514 • mobile • 417-588-6185
Howard Miller • Owner 417-345-8122

SOUTHWEST AUCTION SERVICE
FALL EQUIPMENT & GUN CONSIGNMENT AUCTION!
 151 State Hwy 76 Rocky Comfort, MO 64861
 (just outside Wheaton)

SATURDAY, OCT. 3RD • 10:00 AM
 Firearms & Sporting Goods. Taking Consignments and will have over 100+ guns! (FFL Rules Apply)

SUNDAY, OCT. 4TH • 10:00 AM
 Taking consignments on Farm Machinery, Trucks, Trailers, Shop, Tools, Vehicles, Outdoor, etc...

SOME EARLY EQUIPMENT CONSIGNMENTS INCLUDE:
 Mahindra ML 265 Tractor w/ front-end loader, Big Generator on a trailer, Pick up bed gas tank, Bull BBQ, Horse Buggy, Large Bench Swing, Wagon, Pioneer Work Cart, Homemade Flat bed trailer, Ford 501 Sickle Bar Mower, Elevator., Rem. 20 ga Auto Model 1100, Browning Special 12, LHV-47, Mossberg Camo Model 535, Optima 50 cal Muzzle Loader, Mosin Nagant M91130 7.62x54R, New England 12ga single shot, H&R 12 ga single shot, Rem. 700-300 Ultra Mag, Rem. Model 788-.223 cal-target fire/custom trigger, New Savage Axis 6.5 Creedmore accutrigger w/ Weaver 3x9 scope, New Savage Axis 22-250 heavy barrel w/Bushnell 4x12 scope, Ruger Super Redhawk .44 mag dbl action, Ruger Super Blackhawk .44 mag-custom trigger work done. New Savage Axis 6.5 Creedmoor Accutrigger, Browning Grade V, AMT Backup .45 ACP, Winch. Model 53 .44 cal WCF, Kidd Custom 10-22 L.R. w/skeleton stock & scope, Rem Model 721 30-06, Rem Model 721-.270 w/ scope, Ruger 10-22 Sporter, Winch. Model 74's, Ruger Hawkeye 260 Rem w/ scope, Glock 41-longside gen. 4 .45 acp, Rem Model 1100 .12 ga, Uberti SAA .45 Long colt, Savage 220A hammerless single shot .410, Winch. 94 38-55, Marlin 1899-32-20, Colt light .22 and many more coming!

SEE FULL LISTING IN NEXT WEEK'S PAPER!

Call 417-652-7540 or email:
 kathy@swaauction.com

Early consignments will be photographed and advertised!

Call Southwest Auction Service for more info!
 417-652-7540 www.swaauction.com

Callaway Livestock Center, Inc.
 Kingdom City, MO
 Watch live or bid online thru D.V. Auctions
 www.CallawayLivestock.com

SPECIAL COW SALE
THURSDAY NIGHT
OCT. 1st, 2020 AT 6:00PM

Estimating 500 to 600 hd of Bred Cows, Cow/Calf Pairs & Breeding Bulls.
EARLY CONSIGNMENTS

Dispersal Williams
45 Blk or Blwf Cows. 4 to SS 1/2 of these Cows will have Big Spring Calves by side running back with Blk Bull. 1/2 of these Cows are Fall Calving Cows Calving Now.

Dispersal Popp
25 Big fancy Blk Cows. 6 -SS Cows bred Angus. Gentle. Be mostly 3rd period.

Dispersal Hostetler
10 Fancy 3 yrs. old Blk Cows with fancy Blk Calves by side. All shots up to date.
17 Fancy 3 yrs. old Pairs. There will be 11 of these Blk with fancy Calves by side. 2 of these will be Hereford Cows with Blk Calves. 4 Blk Cows 5 yrs. with 400LB Blk Calves. Been running with Sim Angus Bull.
15 Fancy Blk Cows. 3-6 yrs. old with fancy Blk Calves by side.
20 20 Blk or Blwf Cows. 3-6 yrs. old. Cows be 3rd period. Springing Heavy.
25 Blk or Blwf Cows. 4-7 yrs. old. Cows be Spring Calvers. Be showing. 2nd period.
42 Blk or Blwf Cows. 3-7 yrs. old. 2nd or 3rd period. Bred Angus.

This is an early listing, several more cows & bulls by sale day.

This ad was prepared 2 weeks before sale. Many more expected by sale day. All bulls sell at the start of the sale at 6:00pm.

For more information contact:
 Jack Harrison 573-999-7197 • John P. Harrison 573-220-1482
 Roger Temmen 573-680-4538 • Glenn Stagman 573-619-8495
 Claude Niemeyer 573-470-1017 • Justin Oberling 217-440-7724

CALLAWAY LIVESTOCK CENTER INC.
573-642-7486

URBANA STOCKYARDS
SMALL ANIMAL AUCTION

THURSDAY, SEPTEMBER 24 @ 5:00PM
 122 S. COLLEGE STREET • URBANA, MO • 417-993-5989

- 5PM we will start outside selling hay, posts, firewood, farm equipment, etc.
- Move inside selling a variety of poultry, fowl, rabbits, goats, sheep, pigs, cattle, horses, & exotics. All cages sell with animals.
- Accepting animals up until auction time on the 24th
- Cafe open at 2PM

For more information or consignments contact:
 Joe Webster: 573-280-9586 • Amy Knight: 417-594-1061
 Matt Whitney: 417-588-0594 • Brayden Whitney: 573-317-6340
 Jeff Knight (Auctioneer): 417-594-0050

LANDPRIDE RCF3010: pull type brush hog, 10 foot, \$5450. 417-270-1505.

POOL TABLES: Installations, moves, recoverers, repairs, accessories, etc. 573-646-1700.

CALUS LOGGING

20 YEARS EXPERIENCE

Buying Standing Timber
 Walnut & Oak

Joe Calus, Owner
417-926-4606 • MTN. GROVE

CERTIFIED

RW BOWMAN HANDMADE RANCH SADDLE: \$1,500, BH Roping Saddle, \$800, Cherokee roping saddle, \$300, all saddles have 17" seat. 417-259-0396

WANTED: Bunk beds. 417-322-0161.

2019/2020 4x5 ROUND BALES: plastic twine, always shedded, pay for now and will store until April. Delivery or pickup. St James, MO. 573-467-5043 or 573-699-4577.

A&L 500 BUSHEL GRAIN CART: Good condition. 417-646-8807

WEATHERED BARN WOOD SIDING: 8" & 10" wide. 573-729-7226. www.pineridgerustic.com

MOSSBERG PATRIOT: 22 inch fluted, 6.5 Creedmoor, \$350. 417-844-8810.

TABLE ROCK LAKE FRONT: Lake View on Virgin Bluff Saint James River, Stone County, 3.4 acres. Pastoral gorgeous scenic views, excellent road frontage wooded, no restrictions, near boat launch, 9 miles to Branson West, 10 to Kimberling City. County Hwy YY. \$149,900 or Best Offer. 573-241-1351.

BETTY CROCKER BAKING FOR TODAY COOKBOOK: Hardback. \$6.50. 417-532-2045. Lebanon. Leave message.

JOHN DEERE 1008: 10ft. pull type, brush-cutter with cyl. \$2,950. 573-765-4406.



Wright Spray Foam Insulators, LLC
 Commercial & Residential
 Call for FREE Estimates!

Ervin Gingerich 417-926-2052
B. Eli Yoder 417-746-4932

SMITH VALLEY **PRODUCTION** angus **SALE**

OCTOBER 9, 2020 - 1:00 PM

At the Smith Valley Angus Sale Facility - 2586 Highway HH - Salem, MO 65560
1.2 miles south of Salem, Missouri on Highway HH



**POWELL
ERICA 8030**

MGR Treasure x G A R Prophet

**CED 11 WW 98 YW 176
MARB 1.28 \$B 183 \$C 319**

SMITH VALLEY HERRIETTA 9269



**CED 12 WW 91 YW 163
MARB 0.47 \$B 178 \$C 300**

SMITH VALLEY HERCULES 9003



**CED 8 WW 89 YW 151
MARB 1.37 \$B 161 \$C 280**

**SMITH VALLEY
angus**



PARKER FRIEDRICH 254-413-2420



WES TIEMANN 816-244-4462

BRIAN AND KIM SMITH | Salem, Missouri

Brian: 573-247-7165 | Kim: 573-729-2910 | smithvalleyangus@yahoo.com

SMITHVALLEYANGUS.COM

Public Auction

Saturday, September 26, 2020

- 10:00 A.M.

Location: From Alton Missouri, take highway P west to CR 314. Go approximately five miles down CR 314 to the auction. Watch for Lawrence Auction signs.

Owners: Carolyn and the late John Nuwer

TRACTOR-MACHINERY-DOZIER

JD 2555 diesel tractor (one owner, nice), JD 1508 batwing brush cutter (nice), Case 580 Construction King backhoe, Dodge 500 dump truck, Bucyrus Erie Dozier, hay forks, cement mixer, 200 and 500 gallon sprayers, 100 gallon sprayer w/booms, two bottom plow, 5' bush hog, JD sickle mower, 6' blade, post hole digger, hay elevator, hay spike, Tuflin 5' box blade, 3pt wood splitter, 18' bumper hitch trailer, front end mount post driver, F250 4x4 truck (4 speed, flatbed), Gleener combine (as is), 10' rock roller, fuel tanks, hay wagons, JD suitcase weights, wheel weights, heavy duty press (good), heavy duty drill press (good), old lanterns, Craftsman 1/2hp grinder, tap and dye set, metal locker, Fairbanks Machine Tool metal lathe (good), Hercules Powder wood box, small cream cans, Stihl chain saws, tool box, large assortment of hand tools, battery charger, 30 amp auto former, Lincoln 225 amp welder, cutting torch set, heavy duty vise, socket sets, large assortment of nut/bolts, bottle jacks, power tools, new personal protection suites, ammo boxes, 50 gallon barrels, cow bells, wash tubs, yard tools, chicken waters and feeders, oil drums, fish gig, skid tongs, misc gates, old disk, two old station wagons (as is), large assortment of scrap iron, railroad ties, 500 plus wood posts, concrete blocks, Bucyrus Dozier (as is), misc lumber, culvert pipe, cable, floor jack, upright grain bin w/fan and many more small items not mentioned.

HOUSEHOLD-COINS-GUNS

Cookie jar collection, teapots, three chest of drawers, full size bed, Tupperware, dutch oven, meat grinder, fabric, Yamaha keyboard w/stand (nice), costume jewelry, sleeping bags, glass top patio table, canning jars, old lighters, old miniature Coke bottles, old locks, porcelain black dolls (nice), old bottles from Chicago. GUNS: Colt 32 semi-auto handgun, Colt model 1911 handgun, Colt 38 revolver, Colt 25 semi-auto handgun, Winchester XPR 6.5 Creedmore bolt action rifle, Uberti 1873 45 Colt Peacemaker (new in box), Cimarron El Malo single action 45 colt revolver, Marlin model 60W-22, Westpoint model 167 pump shotgun, Wards model 32A-22 COINS: 1834 bust dime, 1853 seated liberty half dime, 1854 large cent, 1907 barber dime, 1915 barber half dollar, silver Morgan and Peace dollars, silver half dollars, Indian head pennies, \$2 and 5 red letter notes, 1934 \$50 note, silver certificates, (huge coin collection of silver and clad coins).

Concessions will be available

Auctioneer's Note: We have been commissioned to offer the items listed above at public auction. Lifetime of accumulation. Very clean and well maintained items. Shop is full of new and used items. You won't want to miss this farm auction. Come prepared to stay all day with us. Thanks for attending, Jeff.

Jeff Lawrence Auctioneer, LLC

7598 E Highway - Couch, Mo. 65690
Home: 417-938-4394 • Cell: 417-331-5231

Drivers License Required - All announcements made day of sale take precedence over any printed material - Not responsible for accidents or stolen items.

Mo. Lic#1929 Ark. Lic#1929

BID NOW ESTATE AUCTION



Like New Camper • Quality Harley Bike • Newer Scooter • Chevy Truck • Flatbed Trailer • Tools • Train Collectibles • Antiques • Primitives & More!

18324 Monroe Road 1073
Madison, MO 65263

Bidding Ends: Tuesday, Sept. 29th
at 12:30 PM

Preview: Monday, Sept. 28th
from 4:00 PM to 6:00 PM

Payment & Pick-Up By Appointment:
Wednesday, Sept. 30th from
3:00 PM to 6:00 PM

Seller: Kevin Darst and the late Darrell Darst

BID ONLINE AT
Atterberryauction.com

Atterberry Auction & Realty Company
Your Real Estate At Auction Specialists
Email: contactus@atterberryauction.com



AC 840 DIESEL ARTICULATING 4-WHEEL DRIVE LOADER: \$7,000. 573-765-4406.

12 OPEN BLACK ANGUS HEIFERS. \$750 each. 573-714-2012.

2-21" PUSH MOWERS: Briggs & Stratton engine, 1 runs, 1 for parts. Both \$750obo. 636-239-2695.

2012 FORD FOCUS SEL: 142,000 miles, leather seats, runs great. \$5,500. Call 417-531-0545

ONLINE AUCTION

REAL ESTATE & PERSONAL PROPERTY

212 W. Smith St., Sturgeon, MO



Real Estate Previews:

Monday, Sept. 21st, 4:30 – 5:30 p.m.
& Sept. 28th, 12:00 – 1:30 p.m.

You Can Also Find Something For Every Room Of Your New Home!

Personal Property Preview:

Monday, Sept. 28th, 12:00 – 1:30 p.m.

- Well Cared For 1997 Southern Life Style Manufactured Home
- 3 Bedroom, 2 Full Bath
- Spacious Living Room Features Fireplace With Stone Hearth
- Newer Furnace, Central Air & Metal Roof
- Large Corner Lot
- One Block From Downtown

Online Bidding Ends:

Monday, October 5th

****Real Estate At 12:30 p.m.****

****Personal Property At 2:00 p.m.****

CHECK IT OUT & BID AT
Atterberrysells.com

Contact Your Real Estate Auction Specialists
Atterberry Auction & Realty Co. (573) 474-9295
Or Email: contactus@atterberryauction.com



DARDEN PROFESSIONAL TIMBER HARVESTING, BUYING STANDING TIMBER: Great prices, improve wildlife habitat and improve forest health. State Certified & Fully Insured! 573-247-4808 or 573-739-1122. Salem

FOR SALE: Allis Chalmers D17, wide front, 3 point, \$1,350. 573-690-9406.

WWW.MYWEEKLYTRADER.COM

HORSES ALL AGES: getting old, cutting back. 417-531-5707.

Starnes Auto LLC

417.718.2707 Cell
417.588.3159 Office
www.starnesauto.com
22115 Rt. 66
Lebanon, MO 65536

2003 FORD FOCUS

SILVER, 280,XXX MI. \$1,800

2003 FORD F150

WHITE, 166,XXX MI. \$5,800

2004 CHEVY TRAILBLAZER

BLACK, 207,XXX MI. \$2,650

2006 FORD TAURUS

SILVER, 78,XXX MI. \$3,450

2006 CHRYSLER T&C

BLUE, 185,XXX MI. \$2,850

2007 PONT GRAND PRIX

BLUE/GREEN, 160,XXX MI. \$2,65

2007 BUICK LUCERNE

WHITE, 103,XXX MI., GOOD TITLE. \$4,950

2008 GMC ACADIA

GOLD, 138,XXX MI. \$6,500

2009 CHEVY AVEO

RED, 142,XXX MI. \$2,200

2010 FORD FUSION

MAROON, 220,XXX MI. \$3,500

2012 CADILLAC SRX PERFORMANCE

BLACK, 123,XXX MI. \$8,250

2012 FORD FUSION SEL

WHITE, 120,XXX MI. \$5,950

2012 CADILLAC SRX

BLACK, 51,XXX MI. \$12,800

2014 CHEVY TRAVERSE

WHITE, 117,XXX MI. \$9,650

2014 FORD FOCUS

BLACK, 65,XXX MI. \$5,600

2015 GMCTERRAIN SLT

BLACK, LEATHER, 34,XXX MI. \$13,800

2017 FORD FIESTA

SILVER, 26,XXX MI., GOOD TITLE. \$10,000



**TASK.
TASK.
DONE.**

RB16 SERIES

REAR BLADES

- 20-40 HP 60", 74", 84" Widths
- Cat. 1 hitch
- 7 Forward angles; 3 Reverse angles
- 5 Tilt positions
- 12" Offset left or right
- 14" Moldboard height
- 1/4" Moldboard thickness
- Landscape Rake adaptable

AGRI ENTERPRISES

For Outstanding Products & Service

1-1/2 Miles South Of Licking, MO On Hwy 63

573-674-2203

1-800-653-7152



www.landpride.com

www.agri-enterprises.com

HORSE HAY: Square bales, TIMOTHY CLOVER AND GRASS MIX, HIGH PRO-TeiN \$5 bale, delivery available for 100 or more. 573-368-1794, Rolla.

IHC 10FT WHEEL DISK: \$1,600. 573-765-4406.

FORD 300, 6 CYLINDER HEADERS: \$125. 417-683-7843.

PINNACLE RANCH: Heifers, Red Angus, 1/8 Gelbvieh Balancer, 10 month old, for sale. 417-679-4269, Gainesville.

BORDER COLLIE/BEAGLE CROSS PUPPIES: 3month old. \$100, 417-741-2154.

3PT KING KUTTER: 5FT box blade, like new. \$250. Bourbon, 573-732-5978.

WANTED, TIMBER TO LOG ON SHARES: Honest, reliable, references. 417-533-4607, 417-664-1195.

FORD TRACTOR 2000 SERIES: good shape, \$3,250. 417-531-5300.

GELBIEH/ANGUS CROSS BULL: 3 years old, black, \$2,200. 573-859-3559.

JOHN DEERE 750 15FT NO-TILL DRILL: \$11,000, Bonnets Mill, 573-897-4724.

DUMPTRUCK BED: 16', Grain gate, needs TLC. \$1,000. 417-646-8807

JOHN DEERE UMBRELLA BRACKET: For old tractor. \$50. Hermann, 636-932-4429.

THE BITTERSWEET OZARKS AT A GLANCE BOOK: New, in original package, hardback, \$15. 417-532-2045. Lebanon. Leave message.

TAKEUH 135 DIESEL EXCAVATOR: & Hyd Thumb \$14,500. 573-765-4406.

WWW.MYWEEKLYTRADER.COM

Larry Heisel Rentals

We Rent!



Call Larry!

Rental Available in 636 or 573 Area Codes

573-779-1500

www.larryheiselequipment.com

WE BUY White Oak Logs!

- ✓ Top prices for your logs
- ✓ Experienced log buyers
- ✓ Professional service

Chad Cook | Salem Wood Products

417.718.2950

5 miles north of Salem, MO on Hwy 19



INDEPENDENT STAVE COMPANY
Log Procurement & Sales

www.independentstavecompany.com

VERY LARGE RECORD ALBUM COLLECTION. 573-729-3297, make offer.

JOHN DEERE 6400: MFD Diesel Cab Cold Air Tractor, 85HP. \$22,000. 573-765-4406.


BRUSHOG 8FT OFFSET DISK: \$2,500. 573-765-4406.

BLUE & RED HEELER PUPPIES: Good working stock, UTD. \$150. 417-664-5926.

CISTERN PUMP WITH CAST IRON BASE: Made at Fayette. \$80. 636-932-4429.

CAR DOLLY: Like new, spare tire, hold down straps. \$900. Rogersville. 417-766-1991

OFFICIAL TRACTOR OF TOUGH™



Marshfield Machinery Inc.

222 E. Madison • Marshfield, MO 65706
417-859-2117 • www.marshfieldmachinery.com

MahindraRTse.

NEW MAHINDRA TRACTORS

7085 4WD & LDR 85HP	IN STOCK
2655 4WD, BACKHOE 55HP	IN STOCK
2655 4WD & LDR 55HP	IN STOCK
4540 2WD & LDR 41HP	IN STOCK
2638 4WD & LDR 38HP	IN STOCK
1626 4WD & LDR 26HP	IN STOCK

USED TRACTORS

AGCO LT75A CAB LDR 100HP	27,500
MAHINDRA 3550 CAB 4WD 49HP	26,500
KIOTI RX7320 4WD LDR 73HP	24,500
MF 6170W/LDR 97HP	17,500
MF GC1723 BACKHOE 23HP	15,000
HESSTON 80-90 CAB LDR 70HP	11,500
CASE 1490 83 HP	7,500
MF 175 63HP	6,000
FORD 3550 LDR 50HP	5,500
CASE IH 235 W/ MOWER 18HP	3,500
MF 65 48HP	3,000

USED ROUND BALERS

MF 1745 4X5	8,500
NI 6254 4X5	7,500
VERMEER 505SI MESH	7,500
GEHL 2480 4X5	6,500
JD 435 4X6 MESH	6,500
VERMEER 554XL 4X5	5,500
HESSTON 560 5X6	3,000
HESSTON 550 4X6	3,500
HESSTON 530	3,500
HESSTON 5500 5X5	1,500
NH 850 5X5	1,500
VERMEER 605D 5X6	750

USED MOWER/CONDITIONERS

MF 1373 10FT	22,500
MF 1363 10FT	14,500

USED CUTTERS

RHINO SE15-4 15FT	6,500
BUSH HOG SQ84T 7FT	1,200
BUSH HOG 109 9FT 3PT	1,000
WOOD 4FT 3PT	750

USED MISC.

HAYBUSTER 107C DRILL	17,500
HAYBUSTER 107 DRILL	12,500
HAYBUSTER 107C DRILL	11,500
HAYBUSTER 107C DRILL	10,500
FRONTIER BALE PROCESSOR	8,500
BUSH HOG 417 TEDDER	3,500

Marshfield Machinery Inc.
222 E. Madison • Marshfield, MO 65706
417-859-2117
www.marshfieldmachinery.com

TAYLOR TRUCKS & EQUIPMENT

417-924-2026 • 2676 Hwy. 5
Mansfield, MO

New Mowers! Bush-Whacker, Big Bee
Storage Containers & Dry Vans - 20' - 53'
Farm Tires, PTO's & Parts for Rotary Mowers,
Farm Tractor Implements
Plows, Used 15" Bush-Whacker Now In Stock,
Discs, and More Skidsteer Attachments: Pallet
Forks, Buckets, Grapples, Hay Spears & Tree
Sheers - RR Ties

Bush-Whacker Heavy Duty Rotary Cutter



TRAILER PARTS & REPAIR
NEW SEMI TIRES- DRIVE & STEER

We Invite you To Come By & Look Us Over!
Located 2.5 Miles North Of
Mansfield, MO On Hwy 5

WINDAM AR10 SRC308: with Vortex Scope, accessories, ammo, bought new, like new. \$1595. 417-399-6687.

40FT TANDUM DUALY GOOSENECK FLAT BED TRAILER: \$6,000. 573-765-4406.

TRUSTED & THOROUGH SERVICE

Repairs • Rebuilds
Cast Iron & Steel Welding
Engines • Transmissions
Electrical • Hydraulics
PTO & Drivelines

VALLEY SHOP • 660-458-6747
38745 Molasses Mill Rd, Latham

JOHN DEERE 2955: Diesel Cab Cold Air Tractor, 85HP with JD 720 loader. \$27,000. 573-765-4406.

5 PIECE SET W/LIDS OF BLUE FLOWER CORNINGWARE: no chips, good condition. \$60. 417-532-2344.

8 TIRES: 9.50R16.5, Mounted on 8-hole Bud Wheels, with axles and airbrakes. \$500. 417-766-1991

DINING ROOM TABLE: round, heavy duty, 4 chairs, like new, \$100 or trade. 573-734-2822

Turn every job into a job well done.



QUARLES
SUPPLY COMPANY INC.

(417) 777-2391
quarleskubota.com

Come see the versatile, affordable new MX Series today.

- Spacious operator platform
- Comfortable climate-controlled cab with heat and air for year-round comfort
- Hydrostatic or gear transmission options
- Excellent loader lift capacity (2,275 lb.)

Together we do more.

New MX5400HST w/Loader Deal!

MX5400HST W/ Loader

\$36,385 Financing Price

- NEW Kubota MX5400HST
- 4wd, DIESEL, AG TIRES
 - KUBOTA LOADER

- 6' ROTARY CUTTER
- 6' BOX BLADE
- NEW 20' KODIAK TRAILER W/ RAMPS



KubotaUSA.com

© Kubota Tractor Corporation, 2020. This material is for descriptive purposes only. Kubota disclaims all representations and warranties, express or implied, or any liability from the use of this material. For complete warranty, safety, incentive offer and product information, consult your local dealer or go to KubotaUSA.com.