

FREE - TAKE ONE!

Vol. 27 No. 24

SEPTEMBER 10, 2020

800-543-8271 • 800-665-8875

WEEKLY TRADER MAGAZINE



Find us on Facebook

@myweeklytrader
AUCTIONS PG. 13

VISIT OUR NEW WEBSITE! MYWEEKLYTRADER.COM

**You pull it,
we sell it...**

CHEAP!



Lebanon, MO

22395 Rt. 66

417-588-3555

Fax 417-588-8955



U★PULL★IT

SELF-SERVICE AUTO PARTS

We also have a large inventory
of used tires and be sure to check
out our used car lot!

Mon.-Fri. 8:00am-6:00pm • Sat. 8:00am-4:30pm • Sun. 9:00am-4:00pm

WWW.SSUPULLIT.COM

Located next to S&S Recycling.



Roll-off, Trailer, and
Mobile Crushing
Services Available

For All Your Metal Recycling Needs

Lebanon, MO

22395 Rt. 66

417-588-3555

Fax 417-588-8955

Mtn. Grove, MO

8930 First Rd

417-926-3360

Fax 417-926-0180

Monday-Friday 8:00am-4:30pm (Closed 12pm-1pm Lunch)
Saturday 8:00am-Noon

email: contact@ss-recycling.com

Buyer of all types of scrap metal.

ADD ANOTHER CHEVY TO YOUR DRIVEWAY.



2020 TRAX

STK. #33426

15% OF MSRP
CASH
BACK¹

THAT'S

\$3,900 CASH
BACK

ON THIS TRAX LT²

PLUS

CURRENT GM OWNERS GET AN ADDITIONAL

\$750 CASH
ALLOWANCE³



2020 EQUINOX

STK. #33363

15% OF MSRP
CASH
BACK
ON MOST MODELS¹

THAT'S

\$4,611 CASH
BACK

ON THIS EQUINOX LT²

PLUS

CURRENT GM OWNERS GET AN ADDITIONAL

\$750 CASH
ALLOWANCE³



2020 BLAZER

STK. #33391

12% OF MSRP
CASH
BACK
ON MOST MODELS¹

THAT'S

\$4,240 CASH
BACK

ON THIS BLAZER 1LT



2020 SILVERADO

1500 LT
CREW CAB

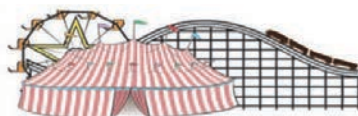
STK. #33444

\$5,000 CASH
BACK

ON THIS SILVERADO 1500²

FIND NEW ROADS™

CHEVROLET



FAIRGROUND

Auto Plaza

DRIVEN TO SERVE YOU BEST...

100 Fairgrounds Road
Rolla, Missouri
(573) 364-1002

www.FairgroundGM.com



1 Excludes L models. Not available with special financing, lease and some other offers. Take new retail delivery by 9/30/20. 2 2020 Trax It based on \$25,995 MSRP. 2020 Equinox It based on \$30,740 MSRP. 2020 Blazer 1LT based on \$35,340 MSRP. Not available with special financing, lease and some other offers. Take new retail delivery by 9/30/20. 3 Excludes L models. Must be a current owner of a 2006 model year or newer GM vehicle for at least 30 days prior to the new vehicle sale. Not available with special financing, lease and some other offers. Residential restrictions apply. Take new retail delivery by 9/30/20. ©2020 General Motors. All rights reserved.

TIME FOR PRECISION

Hustler's residential mowers are built stronger and perform faster, allowing you to quickly maneuver around obstacles with ease. Tackle your lawn in record time with unparalleled precision, and use the time you save to do the things you love.



For Outstanding Products & Service
AGRI-ENTERPRISES

1-1/2 Miles South Of Licking, MO On Hwy 63
573-674-2203 • 1-800-653-7152 • www.agri-enterprises.com

AC 2-BOTTOM PLOW: \$200. 417-766-1991.

TUFFY SPECIAL -Volume Prices 573-657-2176 amegamobilehomes.com

TRACTORS: 880 Oliver, 350 Farmall. \$2,000 each. Cabool, 417-349-2908.

HORSE HAY: Sq re bales, TIMOTHY CLOVER AND GRASS MIX, HIGH PRO-TeiN \$5 bale,delivery available for 100 or more. 573-368-1794, Rolla.





CAPPER'S WEEKLY VINTAGE SEARCHLIGHT COOKBOOK: hard-back \$10. 417-532-2045, Lebanon. Leave phone number.

BRUSH HOGGING: By the hour or by the job. Honest, reliable, newer equipment, good rates. 30 miles radius from Norwood. 417-349-0084.

VOTED #1 BEST Preowned Car Dealership

TIM'S USED CARS

(573) 341-3828 • 1334 South Bishop (Hwy. 63) • Rolla, MO
Next to Hwy CC • www.tims-used-cars.com

 <p>2011 CHEVY 1500 LT Crew Cab, 4x4, 6.2 V-8, Leather, 174,xxx Miles Only \$16,900</p>	 <p>2010 RAM 1500 SLT Quad Cab, 4x4, 5.7 V-8, Power Equipped 181,xxx Miles Only \$12,500</p>
 <p>2014 RAM 1500 TRADESMAN 5.7 V-8, 4x4, Crew Cab, Power Equipped, 106,xxx Miles Only \$18,900</p>	 <p>2006 DODGE 2500 Quad Cab, 4x4,SLT, 5.7 V-8, Power Equipped, Only \$9,500</p>

LARGE SELECTION OF CARS, TRUCKS, SUVs & VANS!

#1 Selling FARM TRACTOR IN THE WORLD



Mahindra

Come See Us For Your Mahindra
Financing available for those who qualify
www.agri-enterprises.com

AGRI-ENTERPRISES
For Outstanding Products & Service
1-1/2 Miles South Of Licking, MO On Hwy 63
573-674-2203 • 1-800-653-7152



USA GUIDE TO AMERICA'S HEARTLAND: A travel guide to the Backroads of Missouri, Kansas, Iowa, Indiana and Illinois, 528 pages, \$5.00. 417-532-2045, Lebanon. Leave phone number.

4 BRIDGESTONE TIRES: 225/65 R17 Sport A/S 9,000 miles. \$150. 417-934-6234.

FORD TRACTOR 2000 SERIES: good shape, \$3,250. 417-531-5300.

CASE 580C BACKHOE LOADER DIESEL: \$8,500. 573-765-4406.

DREAM HOUSE -Online, chateauhomes.net
Call Marla 573-657-7040

WANTED STANDING TIMBER: Butler Logging, 417-448-9323.

FOR SALE: Allis Chalmers D17, wide front, 3 point, \$1,350. 573-690-9406.

CALUS LOGGING

20 YEARS EXPERIENCE

Buying Standing Timber
Walnut & Oak

Joe Calus, Owner
417-926-4606 • MTN. GROVE

CERTIFIED

BRUSHOG 2715: 15 ft. Brushcutter, hyd fold brushcutter, heavy gear boxes. \$9,750. 573-765-4406.

TRUCK LOAD OF FLEA MARKET & AUCTION ITEMS: \$200 or trade. 573-327-9068

MISSOURI WILDFLOWERS BOOK: 286 pages, \$4. 417-532-2045, Lebanon. Leave phone number.

ANTIQU BRASS KITCHEN CABINET HARDWARE: 1 set of 54. \$50 per set. 636-239-2695

1965 FORD 1 TON TRUCK: 12' flatbed, runs well. \$3,600, 573-729-0272, Salem.

KIDS LITTLE TYKES RED CAR BED: w/ mattress. \$150. Desloge, 573-327-9068.



MIDWEST CONSTRUCTION

Free Estimates!

- Pole Barn • Garages • Framing
- Remodels • Roofing • Concrete
- Decks & Porches

Contact Abner Glick
417-664-1794

SECTIONAL SOFA WITH 4 ELECTRIC RECLINERS: like new, grayish. \$1,500. 417-926-7718.

REGISTERED HEREFORD & ANGUS BULLS: Home raised, Some Show-Me Select Qualified. 573-701-7828. Belgrade

THE ULTIMATE WOOD HEAT

The most efficient, easiest-to-operate EPA Step 2 Certified Outdoor Wood Furnace



"It is so much more convenient than having to constantly load the indoor wood burner and I am using about half the wood. I am more at ease with the fire outside away from the house along with the dust, bugs and ash." -- Lucas

- **Top performing** - use up to 60+% less wood compared to other methods of wood heating
- **Built to last** - titanium-enhanced stainless steel firebox ensures zero corrosion inside firebox burning any kind of firewood
- **Peace of mind** - keep the fire and mess outside, safer, more convenient wood heat. See furnace performance and operation from anywhere with your smartphone (visit MyFireStar.com/demo to see a live demonstration)



More comfort for your entire home

 **CLASSIC EDGE**
TITANIUM HDX

To learn more and to find your local Central Boiler Dealer:

CentralBoiler.com
800-248-4681

©2020 Central Boiler • ad7650

Call a Central Boiler dealer near you today!

Yarbrough Equipment..... Stafford, MO 417-736-2303
 Martin Plumbing, Heating & Cooling ... Winona, MO 573-325-4385
 Thermal Pro Koeltztown, MO 573-694-1311
 Huck Wood Heat Sainte Genevieve, MO 573-883-0370

1995 XLT FORD: F-150 automatic, 8 cylinder, 4x4, 184,000 mi, farm tractor, gooseneck, \$1,500 obo. 573-729-2874

2012 FORD FOCUS SEL: 142,000miles, leather seats, runs great. \$5,500. Call 417-531-0545

MASTERPIECE OF ORIENTAL MYSTERY BOOKS: 16 of them, Copyright 1913-1926, Sax Rohmer. \$60 417-457-1023.

KITCHEN FAUCET MOEN: single lever, sprayer, new cartage. \$70obo. 636-239-2695.

MISSOURI
LAND
COMPANY
 Farm, Home & Hunting Properties



www.MissouriLandCompany.com

Do You Have
HUNTING
LAND
that you're ready to sell?
 We've got buyers on the hunt,
 give us a call today to get
 your land sold!



**Also
 Welcoming
 Marcus
 Harms to
 Our Team!**

Toll FREE number for both locations 844-974-1850



YOUR AD GOES HERE!

Add YELLOW Color For An Additional \$3 Per Reader Ad

All ads will include Phone Number (unless requested to be deleted by advertiser) and City Or Town, Phone Number with Area Code counts as one word. City or Town counts as one word.

RATE: 80¢ Per Word. All Classified Ads Require Payment Before Print.

(1) 80¢	(2) \$1.60	(3) \$2.40	(4) \$3.20
(5) \$4.00	(6) \$4.80	(7) \$5.60	(8) \$6.40
(9) \$7.20	(10) \$8.00	(11) \$8.80	(12) \$9.60
(13) \$10.40	(14) \$11.20	(15) \$12.00	(16) \$12.80
(17) \$13.60	(18) \$14.40	(19) \$15.20	(20) \$16.00
(21) \$16.80	(22) \$17.60	(23) \$18.40	(24) \$19.20
(25) \$20.00	(26) \$20.80	(27) \$21.60	(28) \$22.40
(29) \$23.20	(30) \$24.00	(31) \$24.80	(32) \$25.60
(33) \$26.40	(34) \$27.20	(35) \$28.00	(36) \$28.80
(37) \$29.60	(38) \$30.40	(39) \$31.20	(40) \$32.00

Place your Classified Ad TODAY!

417-532-2800 • 800-665-8875

Fax: 417-532-8140

Or Mail To: P.O. Box 192 • Lebanon, MO 65536

For your convenience we accept MasterCard, Visa, Discover or American Express



DEADLINE FOR CLASSIFIED ADS: FRIDAY 4:00PM!

Name _____

Address _____

City _____ Email _____

State _____ Zip Code _____ Phone _____

Ad Total \$ _____ X # Weeks _____ = Amount Enclosed \$ _____

JOHN DEERE 750 15FT NO-TILL DRILL: \$11,000, Bonnets Mill, 573-897-4724.

BRUSHOG 3210 3PT: 10 ft. Brushcutter. \$3,150. 573-765-4406.

BRUSHOG 3008: 3PT, 8ft brushcutter, 1000 shaft. \$2,100. 573-765-4406

NEW HOLLAND 617 DISK MOWER: \$3,950. 573-765-4406.

1520 JOHN DEERE TRACTOR: Gas, 39 H.P., w/1,556 hours, \$8,500. 573-768-0068.

CLEAN 275 GALLON FLUID TOTES: Limited quantity. \$55. 417-349-1386.

WE BUY
White Oak Logs!

- ✓ Top prices for your logs
- ✓ Experienced log buyers
- ✓ Professional service

Chad Cook | Salem Wood Products
417.718.2950
5 miles north of Salem, MO on Hwy 19



INDEPENDENT STAVE COMPANY
Log Procurement & Sales

www.independentstavecompany.com

TRUSTED & THOROUGH SERVICE

Repairs • Rebuilds
Cast Iron & Steel Welding
Engines • Transmissions
Electrical • Hydraulics
PTO & Drivelines

VALLEY SHOP • 660-458-6747
38745 Molasses Mill Rd, Latham

DARDEN PROFESSIONAL TIMBER HARVESTING, BUYING STANDING TIMBER: Great prices, improve wildlife habitat and improve forest health. State Certified & Fully Insured! 573-247-4808 or 573-739-1122. Salem

FIREARMS: Professional Repairs and Restorations. Baron's Gunsmithing. 573-363-5801, Camdenton.

2-21" PUSH MOWERS: Briggs & Stratton engine, 1 runs, 1 for parts. Both \$75obo. 636-239-2695.

AC 7FT BLADE: \$200 417-766-1991.

PATRIOT 250 SMALL SKID STEER LOADER: \$4,600. 573-765-4406.

8 TIRES: 9.50R16.5, Mounted on 8-hole Bud Wheels, with axles and airbrakes. \$500. 417-766-1991

I BUY.....used mobile homes. Call or text 573-338-6250 or email GregS.CDH@outlook.com

AC 840 DIESEL ARTICULATING 4-WHEEL DRIVE LOADER: \$7,250. 573-765-4406.

235 SIX CYLINDER: engine, transmission and real axle from 1958 Chevrolet 1 ton truck. \$700 with more parts. 573-729-0272. Salem.

WEATHERED BARN WOOD SIDING: 8" & 10" wide. 573-729-7226. www.pineridgerustic.com

VERY LARGE RECORD ALBUM COLLECTION. 573-729-3297, make offer.

COVERCRAFT CAR COVER: 3 layers, breathable, rain resistant, will not mildew, Fits 16'x17'6". \$125. 417-469-0325.

FOOTBALL CARDS: Complete set of 28 players, on uncut sheets, 1979, 1980 & 1981. \$50/set. 573-689-2490.

FOUR TIRES: Size 245-60 R18 Michelin. No patches. \$80 firm. 417-532-2344.

JOHN DEERE 2955: Diesel Cab Cold Air Tractor, JD 720 loader, nice. \$27,000. 573-765-4406.

SPECIALIZING IN HEAVY DUTY GATES

Cow Country Gate Sales



Call Randy: 573-569-4754
or Home: 573-539-2528
Located at: Zimmerman Welding
16889 Hwy 52, Barnett, MO

Cheyenne Acres
Horse & Tack



BUY - SELL - TRADE
by Rolla, MO
Call For Directions & Availability

Call Kip
573-368-9402



Offering the Area's LOWEST METAL PRICES!

Pole Barn Packages

CALL TODAY FOR A FREE QUOTE!

24'x32'x10' 30'x40'x10' 40'x60'x12' Sales Tax & Delivery not included.
 24'x40'x10' 30'x60'x10' **CALL TODAY!** Labor quotes available as well.

Compare Before You Buy.

We Use Only The **Highest Quality** Materials!



Custom Homes • Metal Roofs



ALL MATERIAL PACKAGES INCLUDE...
 ✓ #1 Yellow Pine Lumber
 ✓ #1-40 Yr. Painted Metal w/Screws
 ✓ 1-10' Overhead Door
 ✓ 1-36" Entry Door

Fully Insured



PORTABLE BUILDINGS
 Rent to Own
 No Credit Check

29 Gauge
#1 PAINTED METAL

- ★ Lifetime Warranty - \$70.00 Sq.
- ★ 40 Year Warranty - \$67.00 Sq.
- ★ 20 Year Warranty - \$64.00 Sq.
- ★ 25 Year Galvalume - \$54.00 Sq.

Labor prices will be higher in locations over 75 miles from Marshfield, MO

1049 SCHOOLVIEW DR.
 Marshfield, MO



Marshfield
BUILDINGS

www.marshfieldbuildings.com



417-859-7744

JOHN DEERE PLOW: 3pt lift, 3 disk. \$200
 417-532-6561

FRIDGIDAIRE CHEST FREEZER:
 15cubft. \$100. Farmington, 573-701-0495.

GUARDIANWARE: 1930-1950's, Turkey
 roaster with lid. \$195. 573-364-7465.

LANDPRIDE RCF3010: pull type brush
 hog, 10 foot, \$5450. 417-270-1505.

6FT. BRUSH HOG: Offset disk, \$1,900.
 573-765-4406.

LOG SIDING SALE: 2X8 Western Cedar
 .99 ft/ Pine \$1.30 ft while supplies last. www.
 pioneeridgerustic.com 573-729-7226.

CUSTOM SAW MILLING: Lebanon. 417-
 533-4607, 417-664-1195.

METAL DETECTOR: \$125 or trade. De-
 slege, 573-327-9068.

LARGE REFRIGERATOR: with ice maker,
 freezer, (needs ice maker), 3 years old. Good
 Condition. \$200 OR TRADE. 573-734-2822.

BLUE & RED HEELER PUPPIES: Good
 working stock, UTD. \$150. 417-664-5926.

MILLER 10FT. OFFSET DISK: \$3,950.
 573-765-4006.

DESK AND OFFICE CHAIR: \$40. Moun-
 tain View. 417-934-6234.

**WANTED, TIMBER TO LOG ON
 SHARES:** Honest, reliable, references. 417-
 533-4607, 417-664-1195.

FORD 300, 6 CYLINDER HEADERS:
 \$125. 417-683-7843.

NO \$\$\$ DOWN MOBILE HOMES- Call
 for details 573-499-9993 columbiadis-
 counthomes.com

MISSOURI GARDENER'S GUIDE: 421
pages, over 170 color photos, \$5.00 417-532-
2045. Lebanon. Leave phone number.

2-600X16 NEW TIRES. \$55 EACH ALSO
SET OF LIFT ARMS FOR 8N FORD. \$65,
573-743-6416

Wright Spray Foam Insulators, LLC
 Commercial & Residential
 Call for FREE Estimates!

Ervin Gingerich 417-926-2052
 B. Eli Yoder 417-746-4932

~ Reliving the Past ~

OSAGE RIVER ANTIQUE POWER ASSOCIATION

(Branch No. 108)
 - Early Day Gas Engine & Tractor Association -

20TH ANNUAL SHOW SEPTEMBER 18 & 19, 2020

GATES OPEN AT 8AM \$5 ADMISSION • MILLER COUNTY FAIRGROUNDS • OLD HWY 54 & 8TH ST. ELDON, MO
 TRACTOR DRIVE SATURDAY 8AM • FEATURING CASE TRACTORS & EQUIPMENT
 All Makes & Models of Antique Tractors, Engines, Machinery, Cars Welcome!
 DAILY DEMONSTRATIONS • FOR MORE INFORMATION PLEASE VISIT OUR WEBSITE WWW.ORAPA.ORG

WILBUR'S FISH BRANCH ANGUS: 18 month old bulls for sale, high performance and calving ease, also available spring bred registered heifers, synch AI'd, preg checked bred. Mexico MO, 573-473-6019, www.fishbranch.com

VILLA HOMES IN ROLLA: Has NEW and USED Mobile Homes. Call David for info: 573-578-8072.

AC 2-BOTTOM PLOW: \$200. 417-766-1991.

TRUCK LOAD OF FLEA MARKET & AUCTION ITEMS: \$200 or trade. 573-327-9068

TRACTORS: 880 Oliver, 350 Farmall. \$2,000 each. Cabool, 417-349-2908.

EXCITING & NEW

BUYING EXPERIENCE FOR SOUTH CENTRAL MISSOURI

OVER 100 BINS
 FILLED WITH A HUGE VARIETY OF PRODUCTS, OVERSTOCK, RETURNS & LIQUIDATIONS.
 PLUS A LARGE SELECTION OF NEW PRODUCTS.



Saturday & Sunday **\$7** **RESTOCK**
Monday **\$4** **Going**
Tuesday **\$3** **Going**
Wednesday **\$2** **Going**
Thursday **\$1** **Going**
Friday **\$.50** **GONE**

189 EXIT OFF I44

11101 Old Highway 66, Rolla, MO 65401 • 573-364-6006

PUREBRED GUERNSEY BULL
22MONTHS: fertile, AI bred, sharp, ready to use. 573-263-1833\573-437-4017.

POOL TABLES: Installations, moves, repairs, accessories, etc. 573-646-1700.

IHC 1086 DIESEL TRACTOR: Cab & Air. \$8,750. 573-765-4406.

PUPPY/SMALL DOG CAGE:\$25, LARGE DOG CAGE, \$40. Silva 573-238-5262.

IHC 10FT WHEEL DISK: \$1,600. 573-765-4406.

TUFFY SPECIAL -Volume Prices 573-657-2176 amegamobilehomes.com

1997 DODGE GRAND CARAVAN: runs well, 239,xxx miles, good condition. \$2,100, 573-729-0272.

5 PIECE SET W/LIDS OF BLUE FLOWER CORNINGWARE: no chips, good condition. \$60. 417-532-2344.

HORSE HAY: Sq re bales, TIMOTHY CLOVER AND GRASS MIX, HIGH PRO-TeiN \$5 bale,delivery available for 100 or more. 573-368-1794, Rolla.

4 BRIDGESTONE TIRES: 225/65 R17 Sport A/S 9,000 miles. \$150. 417-934-6234.

FORD TRACTOR 2000 SERIES: good shape, \$3,250. 417-531-5300.

Larry Heisel Rentals

HEISEL 573-779-1500
 RENTAL SALES & SERVICE
 Larry's Cell 636-432-9460

We Deliver!

**Crawler Loaders
 Excavators, Backhoes**

Call Larry!
 Rental Available in 636 or 573 Area Codes

573-779-1500

BRUSH HOGGING: By the hour or by the job. Honest, reliable, newer equipment, good rates. 30 miles radius from Norwood. 417-349-0084.

USA GUIDE TO AMERICA'S HEARTLAND: A travel guide to the Backroads of Missouri, Kansas, Iowa, Indiana and Illinois, 528 pages, \$5.00. 417-532-2045, Lebanon. Leave phone number.

CAPPER'S WEEKLY VINTAGE SEARCHLIGHT COOKBOOK: hard-back \$10. 417-532-2045, Lebanon. Leave phone number.

BRUSHOG 2715: 15 ft. Brushcutter, hyd fold brushcutter, heavy gear boxes. \$9,750. 573-765-4406.

MISSOURI WILDFLOWERS BOOK: 286 pages, \$4. 417-532-2045, Lebanon. Leave phone number.

WANTED STANDING TIMBER: Butler Logging, 417-448-9323.

Pine Ridge Rustic
 Log Home Building Supplies

Services Offered!

- Installation
- Pre-finishing available on interior & exterior
- Dealer for exterior stains

www.pineridgerustic.com

523 CR 2410 • Salem, MO 65560 • Ph: 573-729-7226

- Log Siding
- Beveled Siding
- Car Siding • Red Cedar
- Western Cedar • Pine

KUSTER LOGGING

**BUYER of Standing Timber
 Oak and Walnut**

Dozing Now Available

417-259-0047

References Available

Bennett-Spring.com

Home Food Fun Fishing Floating Lodging Shopping Events Maps



It's OK to Peek!

Bennett Spring "Country's" ONLY website featuring the area's best fishing, floating, food, insightful articles, and Trout Talk!

Plan your next outing at

www.bennett-spring.com

brought to you by:

LC

RECORD

417-532-9131 • 100 E. Commercial, Lebanon • www.laclederecord.com

ANTIQUe BRASS KITCHEN CABINET HARDWARE: 1 set of 54. \$50 per set. 636-239-2695

1965 FORD 1 TON TRUCK: 12' flatbed, runs well. \$3,600, 573-729-0272, Salem.

KIDS LITTLE TYKES RED CAR BED: w/ mattress. \$150. Desloge, 573-327-9068.

CASE 580C BACKHOE LOADER DIESEL: \$8,500. 573-765-4406.

SECTIONAL SOFA WITH 4 ELECTRIC RECLINERS: like new, grayish. \$1,500. 417-926-7718.

REGISTERED HEREFORD & ANGUS BULLS: Home raised, Some Show-Me Select Qualified. 573-701-7828. Belgrade

DREAM HOUSE -Online, chateauhomes.net
Call Marla 573-657-7040

WWW.MYWEEKLYTRADER.COM

1995 XLT FORD: F-150 automatic, 8 cylinder, 4x4, 184,000 mi, farm tractor, gooseneck, \$1,500 obo. 573-729-2874

DARDEN PROFESSIONAL TIMBER HARVESTING, BUYING STANDING TIMBER: Great prices, improve wildlife habitat and improve forest health. State Certified & Fully Insured! 573-247-4808 or 573-739-1122. Salem

FACEBOOK.COM/WEEKLYTRADER

SUMMER SAVINGS

Starts Here!

**DELUXE BUILDING
PACKAGES AVAILABLE
CALL TODAY TO GET
YOUR QUOTE!
877-556-8855**



**24x40x10 • 24x32x10 • 30x40x10
30x40x12 • 40x60x12**

All Buildings Quoted Have #2 Lumber And #1 Galvalume Or Limited Lifetime Painted Metal

All Buildings Are Heavy 29 Ga. Metal, Three 2"x6" T&G Splashboards, All Poles 5"x5" Or Larger, CCA Treated, Fully Trimmed With One 3'x6' Walk-Through Door & One Large Sliding Door.

*Plus Tax. Labor & Delivery Available On All Building Packages.
Prices may vary due to local code restrictions.*

Metal Roofs Designed To Look Great On Your Home!

**HEAVY 29 Ga.
METAL # 1**

Limited LIFETIME WARRANTY

**29 Ga. & 26 Ga.
Painted**

CUT TO LENGTH PANELS

GALVALUME METAL UNPAINTED 25 YEAR WARRANTY
#1 Standard Panels, 29 Ga.

\$42.95



Ask About Our Quick Service.

Over **20** Colors and Several Styles To Choose!

Good quality, quick service

NEXT BUSINESS DAY SERVICE

Call for details.



BYLER BUILDING SUPPLY, LLC



2 1/2 MILES EAST OF SEYMOUR ON 60, 1/4 MILE NORTH AT AUTO SALVAGE WWW.BYLERSUPPLY.COM

877-556-8855 MON.-FRI. 7:30-5 SAT. 8-12 FAX NO. 417-935-2995 417-771-3100

VISIT US AT WWW.BYLERSUPPLY.COM

LARRY DRENON AUCTION

ABSOLUTE REAL ESTATE AUCTION

27595 Hwy 7 • Edwards, MO

Due to the death of our parents, we will sell the following at auction located from Warsaw, 6½ miles south on Hwy 65 to Hwy 7 South, then 7½ miles to sale (or 9½ miles north of Climax Springs) on

SATURDAY, SEPTEMBER 19TH • 10 AM

HOME ON 3.6 ACRES SELLS ABSOLUTE AT 11 AM!

Ranch style 2 bd 2 ba Home with a full walk-out Basement. Energy efficient, low maintenance steel roof was installed in 2017. The home has central gas heat and air, and auxiliary wood heat w/ductwork. Basement is plumbed and ready to finish if you desire to do so. The covered porch looks out over the wooded acreage where you can watch deer and other wildlife. Outside, there is a Garage/Shop with 220 electric service, and a double covered carport. The acreage has a good balance of open yard and wooded acreage with walking trails.

Terms: Remember this property sells **Absolute** to the highest bidder with **NO Reserve!**

Buyer will pay 20% down day of sale, to go in to escrow at the Title Company until closing, at which time the balance plus applicable closing costs will be due. Seller to furnish title insurance. Taxes prorated.

Call Auction Co for information or to view the property.



HOUSEHOLD Sofa, beige, double reclining * Kitchen table and 6 chairs * Amana 25 black front refrigerator * Kenmore 23 chest freezer * Rocker-recliner, blue * Wooden desk and office chair * Older Kenmore washer and dryer * Mediterranean style coffee and end tables * Entertainment center * Kenwood receiver and cassette deck * Magnavox dvd player * Sanyo 25" tv * Standard size bed frame, queen size waterbed frame * 8 Gun cabinet * Frog collection * Old metal desk * Filing cabinet

LAWNMOWER John Deere 330 diesel lawn tractor, had extensive maintenance work done in 2019

TOOLS 22 Ton Machine press * 28x42 Welding bench on rollers * Nut and bolt cabinets * Wilton vise * Chicago metal band saw * CI double wheel grinder, ½ hp * ACDC Welder * HD Metal bandsaw * 2 wheel dolly * IH 255 Power Washer * 50 gal sprayer, gas engine, on trailer * Cutting torch, bottles, gauges, cart * Scaffolding and walkboard * Handiman jack, Hydraulic floor jack, Chain hoist * Miter saw * Skil 180C chainsaw * 18' Aluminum ext. ladder * B&D drill, Box & Open End wrenches, Sockets & Ratchets, Hammers, other small hand tools * Tap and Die set, in box * Ridgid 10 ton Hydraulic Body frame Repair kit

PROPANE TANK 500 gallon Propane tank

TRAILERS 18' Homemade triple axle metal bed trailer Yard trailer made from pickup bed

MISCELLANEOUS Fishing rods and reels * Ski tube * Life jackets * Tackle * Camping items * Live traps * Porch swing * Patio table * Folding chairs * Other misc items not listed

CHILDREN OF SANDY AND EUGENE W. FRAME

LARRY
DRENON AUCTION

www.drenonauction.com

Since 1969

Larry
660-596-8515

Lacey
660-723-1104

Laramie
660-221-4386

660-547-2646

Terms: Cash, approved check, or debit/credit card

(convenience fee applied). Nothing to be removed until settled for. Not responsible for accidents. Statements made day of sale take precedence over printed material. Lunch served.

Majestic on the North Fork River

Steel Framed Custom Log Home

Located in the gorgeous blue ribbon front area of the scenic North Fork River, in the Gated McKee Village

SATURDAY, SEPT. 26, 2020 • 10:00 AM

From West Plains travel west on Hwy. K, 11 miles to KK then right approx. 7 miles to McKee entry (Sawmill Road) travel approx. 1 mile to first left. (Don't enter mill area) then approx. 1 mile to McKee Village Gate, travel into village across bridge to second cabin on left. Watch for Gary Sexton Auction sign.



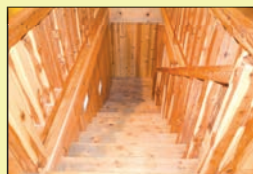
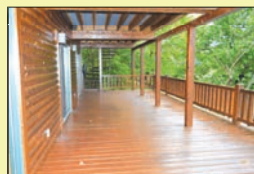
INSPECTION, OPEN HOUSE
Sundays, Sept. 6, 13, & 20
1:00 - 2:00pm

This is a chance-of-a-lifetime for a weekend of captivating views and entertaining weekends!



Located in the gorgeous blue ribbon front area of the scenic North Fork River, this outstanding steel framed log home offers luxury amenities with three decks overlooking the gleaming water. Stunning western cedar beams and spiral metal staircase to each level! It features 3-4

bedrooms, large bathrooms, updated kitchen cabinets with farmers sink and granite countertop! The home is wired for a generator and has central heat & air, oak wood doors and vaulted ceiling!



SEE WEBSITE FOR FULL LISTING & PICTURES: WWW.GARYSEXTON.COM

TERMS: 10% escrow day of auction. Creative financing available to qualified buyers – APPLY TODAY!

CONDITIONS: Highest bid to be submitted to officers of lending institution for acceptance or rejection.

OWNERS: WEST PLAINS SAVINGS & LOAN

Gary Sexton
Since 1978 Auctioneers, LLC

Gary Sexton - Auctioneer 417-255-7001

Tyler Sexton - Trucks/Heavy Equip. Eastern Mo. 417-372-0124



www.garysexton.com
1028 Porter Wagoner • West Plains, MO



Todd Hornback
Oregon Co. Rep

Gene Summers
Ozark Co. Rep



E-mail: gary@garysexton.com

AR Broker #PB00043890, AR License #1568

All announcements made day of sale supersede any written material. Not responsible for lost or stolen property or accidents.

AUCTION

RAIN OR SHINE

1365 RAMSEUR ROAD WEST PLAINS MO

SATURDAY SEPTEMBER 19TH 2020 10:00 AM

LOCATED IN SOUTHERN HILL SHOPPING CENTER BEHIND
JC PENNEYS AND BIG LOTS

COLLECTIBLES ANTIQUES

DIE CAST CARS, DEPRESSION GLASS, FIRE KING, PYREX, CAMERAS, CAST IRON

GLASS TOP DINING TABLE AND CHAIRS; PYREX; DEPRESSION GLASS; FIRE KING; MILK GLASS; PYREX FRIDGIES; CARNIVAL GLASS; FIREKING, PYREX GLASS MEASURING CUPS; FIREKING, ANCHOR HOCKING MEASURING PITCHERS; VINTAGE KITCHEN UTENSILS; VINTAGE HAT PINS; SHERBERT DISHES; TEXAS WARE BOWLS; GREEN PITCHERS AND GLASSES; GREEN BOWLS AND CANDY DISHES; BRASS SPITTOON; VINTAGE ALUMINUM COLINDER JUICER WITH PESTLE; ALUMINUM WATER PITCHER; ALUMINUM ICE SCOOP; ENAMELWARE; EGG PLATES WITH GOLD TRIM; CROWN VIC CHINA; BRASS CANDLESTICK HOLDERS, BELLS, TEA PITCHERS, DIPPER; STAR OF DAVID VASES AND BOWLS; KEROSCENE LAMPS; SAD IRONS; FIREKING GOLD TRIM BOWLS AND SAUCERS; TEXACO DYE CASE AIRPLANE; KITCHEN UTENSILS; SILVERWARE; CANISTER SETS; CASSEROLD DISHES; HARMONY HOUSE CHINA; VINTAGE SHOE SHINE KIT; OLD MILITARY HELMET; FIRE KING CASSEROLD DISHES WHEAT PATTERN; PIE PLATES; MSC HOUSEHOLD DISHES; MISC LIDS; CAST IRON SCHOOL BELL; HAIMES; INSULATED SHOTGUN SHELL THREMO; WRIGLEY'S SPEARMINT GUM TINS; LOOK ALIKE TIFFANY LAMP; LARGE CANVAS PRINTS; SEVERAL CAMERAS, LENSES, FILM AND CASES: MINOLTA X370, 110 ZOOM SLR, MAXXUM 400SI; RICOH XR6 WITH PENTAX 58 MM LENSE; KONOCIA FS1, AUTOREFLEX A3; OLYMPUS OS1; CANNON T70, EOX REBEL X; EOS REBEL; ARGUS 3; KODAK RITNA 2C; EXAKTA EDX3; PENTAX K1000 WITH SEARS ZOOM LENSE;GAF L-CX; YASHICA LYNX 5000E; LENSES: VIVITAR MC 70-150, CIMKO MT SERIES, TOYO OPTICS 75MM, OZUNANMC AUTOZOOM 35-70MM, FLASH VIVITAR ZOOM THYRISTOR 285; VIVITAR THYRISTOR 273; PROMASTER 1000, PROMASTER FA 1000; CAMERA CASES; LENSE CASES; HOWARD MILLER CLOCK VARWICK COLLECTION WITH CHIME; COKE GLASSES; RC CARS: JOHN DEERE TRACTOR, CABELAS 4 WHEELER, PETERBILT SEMI AND TRAILER, FORD NIKKO, ERTYL, CAT HAND OPERATED TRACKHOE, NEW HOLLAND BACKHOE,

NUMEROUS TOY CARS AND TRUCKS, HOT WHEELS CARS AND TRUCKS, 1999 SILVARADO DYE CAST TRUCK, 1958 CHEVROLET 2 DOOR CONVERTIBLE, 1965 PONTIAC GTO JOLLY GREEN GIANT, 1968 CHARGER, 197 PONTIAC TRANS AM, LAMBORGHINI, 1967 PLYMOUTH GTX HARDTOP, 1968 CHEVROLET IMPALA, 1969 DODGE DAYTONA CHARGER, 1969 CHEVROLET IMPALA COUPE, 124 SCALE 2003 LTD EDITION #21 RICKY RUDD, 1957 CHEVROLET BELLE AIR STREET MACHINE, 124 SCALE MERCEDEZ BENZG63 6X6, 1969 CAMERO SS 396 FRANKLIN MINT, ERTYL DUKES OF HAZZARD GENERAL LEE 125 SCALE, 1998 711 WRECKER, 1996 FORD FLATBED, COCA COLA #97 NASCAR RACING TIN, CORVETTER METAL THERMOMETER, PILLOWS AND BLANKETS, BOOKS, PICTURES, MISC LUGGAGE; LINENS; MISC NEW TOYS; NEW OURSES; NEW CAR FLOORMATS; GLIDER ROCKER; BROWN WICKER CHAIRS WITH RED CUSHIONS; BROWN WICKER SWIVEL CHAIR WITH RED CUSHION; WOODEN END TABLES WITH SLATE IN LAY; OAK SIDE TABLE; SIE TABLE WITH DRAWERS; BUFFET WITH 3 DRAWERS AND 2 ENDS; BROWN LEATHER ARMCHAIR WITH OTTOMAN; LEATHER CUCHIONED TOP WITH DRAWER COFFEETABLE/ OTTOMAN; OAK CHILDS 2'X DINING TABLE WITH 2 CHAIRS; EDINBURGH CLOCK WORKS CO LONDON ENGLND CLOCK; LARGE PICTURE; FULL SIZED WOODEN HEAD, FOOT AND RAILS; LARGE CAST IRON KETTLE WITH STAND; LARGE CAST IRON CRACKED FLOWERPOT; NUMEROUS BETTY BOOP DOLLS AND MISC; MLK CANS; CAST IRON CORNBREAD PANS; COKE 8 BOTTLE PLASTIC CADDY; CAST IRON BEAN POT; 1976 ROOT BEER CANDY JAR; TOLEDO FRUIT SCALE; HANSEN MODEL 1530 MAIL SCALE; VINTAGE ICE CUBE TRAYS; VS & M CO MEAT WRAPPER STATION; TRAIL TRACK 2 WHEEL METAL KID'S TRAILER; CAST IRON SMUDGE POT; CLAYTON & LAMBERT MFG CO LOUISVILLE KY SMELTING POT; OLD OFFICE LAMPS; ENAMEL CHAMBER POT; SILVERWARE NATIONAL SILVER CO; FILTERS ZPLEX 1 MICRON 3' LONG; SKYCHARGER B6AC; SEVERAL RC PARTS

NOTES: THIS WILL A NICE AUCTION WITH LOTS OF GOOD COLLECTIBLE AND ANTIQUE ITEMS. FOR PICTURES GO TO AUCTION ZIP .COM

Danahy Auction Service

For All Your Auction Needs • Terry Danahy, Auctioneer

417-256-9667 • Ark. License: #2269

Not Responsible For Accidents • Everything Sold As Is

COOPER PUBLIC AUCTION



James and Christy Cooper are selling their home and will sell personal property at public auction on:

Saturday, Sept. 19th 2020, Beginning at 9:00 AM

Location: 475 Marens Way Beaufort MO 63013

Directions: From Interstate 44, take Exit #247-Highway 50 West, 13 miles, then turn right on Woodberry Drive. Stay on main road approx. 1.5 miles to end of road and auction. Roads will be marked day of sale.

CADILLAC ESCALADE / RV

(vehicles and tractors will sell at 12:00 Noon)



2013 Cadillac Escalade-7 passenger-heated/cooled seating-sunroof-22" wheels-with optional DVD player headrests, RV; 2007 Keystone Cougar fifth wheel RV-2 slide outs-recliners-kitchenette-outside shower-sleeper sofa, boat cover, auto and boat parts

GUNS / OUTDOOR (guns will sell at 11:00 AM)



Savage 111 30-06 with scope, Ithaca 49 .22 single shot-lever action, Savage 64 .22 auto w/scope, Sears 200 12 ga pump, Ithaca 66 20 ga lever action, Fox B 12 ga side by side, Browning Buck MK .22 w/box, Ruger EC9 9MM-box, Springfield XD 9MM w/box-2 mags, Smith & Wesson 10 .38 special/box, Smith & Wesson 65 .357 mag/ox, Colt Python

.357 mag/box, **OUTDOOR**; electric meat grinder, Bradley electric smoker-wafers-3' tall-racks, Char Broil gas grill, Kountry Kitchen meat grinder/band saw, camp stove

FURNITURE / HOUSEHOLD / YARD TOYS



Mistlers Oak furniture-King bedroom set-bed-2 night stands-dresser-chest of drawers, full bed bedroom set-chest-night stand-dresser, dresser-night stand, large oak dining table-12 chairs-leaves, oak hall tree, oak bookshelf, painted hall bench w/storage, wooden storage cabinet, chest of drawers, wall mount book shelves, vanity and bench, leather couch-loveseat-side chair set-couch reclines, area rug, ladder blanket rack, leather couch-loveseat, side chair w/ottoman, large wooden lighted letter "C", wood serving cabinet, bar stools, **COLLECTIBLES**; wooden case wall clock, wooden case shelf clock, Coach wallet, (4) large Coach purses, 2 qt blue canning jar, **HOUSEHOLD**; large stoneware Food Network dish set, barware-stemware, thermos, vases, mugs, bar caddy, tea jugs, serving bowls, pressure cooker, SS pots, lot canning jars-jelly jars, food strainer, food mill, food sealer, **APPLIANCES**; GE glass top washer and electric dryer set-newer, DVD player, 50" Sanyo flat screen TV, 40" flat screen TV, portable DVD player, Movie Time stand up popcorn popper, **RECREATION**; trampoline with safety net, gymnastic balance beam, Little Tykes playhouse-benches, toy kitchen-shopping cart, oak doll cradle, dolls-clothes, playroom storage bins, Little Tykes picnic table, Little Tykes playhouse-slides, dog cage, wrought iron patio table-umbrella-chairs, wooden porch bench-glider, Tour Zone golf clubs

TRACTOR / TRAILER / DUMP TRUCK



2012 Kubota MX5100F tractor-350 hours-2 wheel drive-weights-upgraded seat-canopy-bumper, **TRAILER**; 2006 Load Trail equipment hauler trailer-2 7,000 axles-diamond plate deck-drop ramps-electric brakes, **DUMP TRUCK**; 2000 Kenworth T800 C-10 dump truck-aluminum bed-tri/axle-GW 60,000-air ride-newer 3rd member-(been wrecked-parts or salvage), hydraulic bed pump only

ZERO TURNMOWER / YARD TOOLS

(mower will sell at noon with vehicles)



Blazer 360Z Howard Price zero turn mower-deck raises-batwing arm-60" cut, Eager Beaver self-feeding chipper-shredder-gas powered-industrial Ford engine, push mowers, Husqvarna 155BT backpack blower, gas hedge trimmer, tow yard cart, Toro Z Master 150 zero turn mower 52" deck 20hp

CONSTRUCTION TOOLS / SUPPLIES



Coleman Powermate 3500 watt generator, Dewalt cordless angle drill, Dewalt electric drill, Milwaukee extended joist drill, bench top table saw, Craftsman shop table saw, Craftsman radial arm saw, hammer drill, Dewalt radio, Wright blade saw, tool chest, Paslode cordless finish nailer, Bostitch framing nailer, Paslode cordless framing nailer, Senco air roofing nailer, Dewalt 1/2" angle drill, Porter Cable reciprocating saw, Dewalt cordless tool set, metal cut off saw, Delta miter saw, angle grinder, airless paint sprayer, B&D belt sander, pad sander, Dewalt screw gun, T squares, 6' extendable level, tool boxes, tool bags, torpedo heater, router table, parts bin, caulk guns, Dewalt 18 ga flooring stapler kit-**CONCRETE**; Stone power trowel w/Honda engine, power screed, concrete floats, come-a-long, **SUPPLIES**; rolls water pipe, lot electrical-boxes-conduit parts-breakers-romex-switches-outlet boxes, track lights, can lights, other misc. supplies, metal storage shelves, **WINDOWS**; new vinyl windows-Ellison (8) 3.0x5.0 and (4) 3.0x3.0



VIEW OUR PHOTO GALLERY ON

www.breheauction.com



We plan to abide by the CDC guidelines regarding the COVID distancing and PPE guidelines.

BREHE AUCTIONEERING SERVICE, LLC
 Union, MO: (636) 583-0841 Owensville, MO: (573) 437-3454
www.breheauction.com
 LICENSED AUCTIONEERS:
 Kerry Brehe 314.954.3798 Josh Brehe 314.603.3129 Harry Engelhart 636.399.3743
 Announcements made day of sale supersede all printed material.
 TERMS: CASH, PERSONAL CHECKS WITH PROPER I.D., BUSINESS CHECKS WITH BANK LETTER AND NO OUT OF STATE CHECKS UNLESS APPROVED BY SELLER. Email Us At kkauction@sbcglobal.net
 Everything sells as is with no guarantees.

LUNCH WILL BE SERVED BY CAROLS CATERING

**VISIT
WEBSITE FOR
PICTURES**

FARM AUCTION

SATURDAY, SEPTEMBER 12th- 10:00 A.M.

Location: 4304 Nettleton Drive, Mountain Grove, MO **Directions:** From Mtn. Grove 4 way Take Hwy 95 North 4.8 miles to Nettleton Dr on Right. Watch for Auction signs.
WATCH FOR CHADWELL AUCTION SIGNS.
Payment System: Cash • Debit Card • Credit Card (Debit / Credit Card Fee Will Apply)
 Checks approved if known by auction company.

**Greg & Diana
LADA**

VEHICLES ~ TRAILERS

8' X 16' Tandem Axle Bumper Trailer • 7' X 20' Bumper Hitch Trailer w/ Dovetail & Ramps (like new) • 1982 ISUZU Pup Diesel Pickup • 1996 Ford F-150 4spd 4x4 135,xxx miles Straight 6 motor w/ Tommy Life Gate • 1991 Dodge Cummins 1 ton 5 spd 4x4 156,xxx miles w/ Gooseneck Ball • 1981 Chevrolet Butcher Truck w/ Wench 4spd 2wd • 1993 Chaparel 16' Gooseneck Stock Trailer • 1984 Isuzu (parts only) • 1985 Dodge Truck (parts only) • 8' X 12' SS Truck Bed w/ 5' Sides & Ramp Tail Gate (All SS)



TRACTOR



4 2 1 0 Case International w/ 2255 Case Quick Detach Loader & Canopy, 3pt, Dual Remote, 540 or 1000 PTO, Joystick Loader, 4spd, hi lo range, 3174hrs

OUTDOOR ~ MISC ~ LAWN & GARDEN

Husqvarna YTA22v46" Mower (like new) • Huaqvarna 41 Chainsaw • Husqvarna 257 Chainsaw • Husqvarna 455 Rancher Chainsaw • Aluminum Ramps • Garden Hose • 10' x 10' Chain Link Dog Pen • Werner 8' Fiberglass Ladder • Werner 24' Fiberglass Ext Ladder • Fimco Lawn Roller • Rubbermaid Trash Cans • Wheelbarrow • HD Eye Beams • Lawn & Garden Tools • Dog Crate • Fuel Cans • Lawn Seeder • Fish Cooker • 12' Fiberglass Step Ladder • 12' Aluminum V Bottom Boat • Large Lot of Cow Skulls • Coolers • Coleman Lanterns • Bicycles • Cable Stretchers • Stihl Weed Eater • Fishing Tackle • Hedge Trimmer • Troybilt 2 cycle Jet Pump • SS Koch 500lb Smoke House (needs repair) • Wooden Porch Gliders • Other



SADDLES ~ HORSE TACK

Large Lot of Horse Tack • Abetta Maker 16" Saddle • Pony Saddle • English Riding Saddle • Saddle Stands • Other

ANTIQUES ~ COLLECTIBLES

MW Cream Separator • Granite Ware • Cant Hook • Shoe Lasts • Wooden Tool Box • Minnow Trap • Other

HOUSEHOLD

Matching Sofa, Chair & Ottoman • 2 Recliners • Bar Stools • Oak Desk & Chair • Assorted Dishes • Assorted Cutlery • Small Kitchen Appliances • Assorted Pots & Pans • Wooden Rocker • Chest of Drawers • Oak TV Stand • Dresser • Dakota Safe Co Gun Safe • Red Head Gun Safe • Misc Wall Decor • Electric Roasters • Upright Piano • Other



SHOP ITEMS

Saw Horses • Single Pallet Jack • Top Link • 100# Propane Cylinder • Forney 300amp Battery charger • Extension Cords • Craftsman 125 PSI Air Compressor • Receiver Hitches • 6" Vise • 2 Wheel Dolly • Stand Light • Central Pneumatic 2.5hp 21 gallon Air Compressor • Oils & Solvents • Metal Halo Lights • Straps • DeWalt Power Tools • Skil Saw • Hand Tools • Electric Heaters • Craftsman Tool Boxes • Craftsman 10" Table Saw • Leg Vise • Files • Socket Sets • Levels • Nuts & Bolts • Bench Grinder • 2 Ton Floor Jack • Jumper Cables • Delta HD Drill Press • Karcher Industrial Steam Cleaner on Wheels • Mutiquip 3000 watt • Other

FARM EQUIPMENT ~ FARM ITEMS

256 Side Delivery Rake • 3pt Bale Unroller (like new) • 3pt HD Drag (like new) • 3pt 7' Box Blade • Howse HD 10' Pull Type Brushhog • Fimco ATV Sprayer • Elk River Creep Feeder • Priefert Head Gate • Bulldozer Solar Power Electric Fence Charger • Stock Tank • Blue Water Tank • Assorted Gates & Cattle Panels • Frost Freeze Water Hydrant • 3 Ton Upright Feed Bin • Fence Stretchers • Other



BUTCHER SUPPLIES & EQUIPMENT

8' X 24' Box Cooler • Large Lot of SS Tables • Single Grinders • 3 Phase Grinders • 5hp Single Phase Grinder • Biro Meat Tenderizer (like new) • Hollimatic 54 Patty Machine • Large SS Sink w/ Wash Wings • Meat Slicers • SS Commercial Hobart Meat Saw • Butcher Boy B-12 single Phase • (2) 444 Well Saws • SS Meat Trees • Long SS Hooks • 500+ Grey Meat Pans • Electric Meat Scales • Hanging Meat Scales • Ofal Wash Table • 8'x12' Portable Cooler (no unit) • 4'x4' SS Bins • 3'X5' SS Bins • SS Bucket • Much More

GUNS ~ NOT ON PREMISES

Mi 30 Carbine (new in box) • Weatherby 20 gauge Pump (new in box) • Winchester 4-10 Single Shot • Handy Rifle Single Shot 22-250 Bull Barrel • Handy Rifle Single Shot 20 gauge • Handy Rifle 4-10 • Sears Lever Action 22 • (2) Savage Model 99 • Other

AUCTIONEER'S NOTE: This will be a sale with over 40 years worth of accumulation. This is just a generalized list as there are too many items to list. Please join us for a fun day! **Thanks, Shawn**
DRIVER'S LICENSE OR PICTURE I.D. REQUIRED • TERMS: CASH OR APPROVED CHECK **OR**

Chadwell
 Auction Service, LLC
www.chadwellauctions.com

Auctioneer:
SHAWN CHADWELL
 417-746-4038 ~ Cell: 417-830-0209
 Ringmen:
 John Williams Jr. ~ 417-349-0480
 Weston Chadwell ~ 417-349-0727

Clerk:
SHELLY CHADWELL
 Cell: 417-880-8449
 Cashiers:
 Shawn Irby • Marla Chadwell
 Kati Roberts • Emily Chadwell

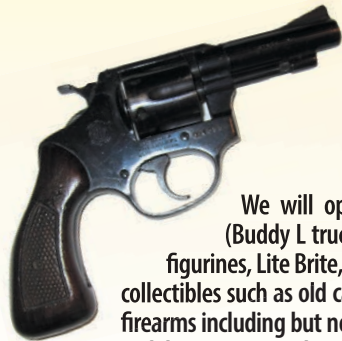
PROFESSIONAL SALES MANAGEMENT
 LUNCH WAGON • APPRAISAL SERVICE • RAIN OR SHINE
 All announcements made day of sale take precedence over any printed matter. Not responsible for lost or stolen merchandise. Not responsible for accidents.

R&R AUCTION SERVICE

2 DAY MEGA AUCTION

FRI., SEPT. 11 & SAT., SEPT. 12 • 9AM

544 Red Top Road • Buffalo, MO • Estate of Dan Taylor



The magnitude of this auction is hard to establish until you see it in person!

We will open Friday morning September 11 selling old toys such as (Buddy L truck and trailer from 1940's, Marx horse, Tonto and Lone Ranger figurines, Lite Brite, Hot Wheels cars and more) die cast trucks and banks, other old collectibles such as old cans, bottles, egg baskets etc... then we will move directly into firearms including but not limited to, Winchester Model 90 pump .22 short, Remington model 12 pump 22 short, long, and long rifle, 2 black powder revolvers, Vest pocket 22 short Roscoe, Rossi 32 revolver, Davis over and under 22 long rifle Derringer, Great Western Arms 38 over and under Derringer with holster, 2 Daisy Red Ryder BB guns. Other items selling on Friday include Buck hunting knife in sheath, Industrial fan on stand, monster maul, Igloo dog house, Artic Boy cooler, Fisher Lab metal detector, iron wheels, Commercial tire racks, old storage boxes, wood and metal, galvanized buckets, old leather doctors bag, BBQ grill tanks, (full), Stihl 028AV woods boss chain saw, Stihl F540 and F544 weed eaters, old Chevrolet car frames and bodies (no titles), an unbelievable amount of old Chevrolet parts, (doors, windows, fenders, trim, bumpers, hoods, hubcaps, beauty rings, wheels, blocks, pistons, transmissions, shifters, and most any other part you can think of) We will be selling van boxes for storage units on Friday as well. There is alot of scrap to be had at this 2 day event most of which will be sold on Friday. Saturday's auction will also open at 9am and we will be selling out an amazing shop of quality tools, (compact bender with scroll bending attachment, chain hoists, pliers, hammers, wrenches-fuller, snap on, rigid, proto, sk, crescent, craftsman and more, Sears 50/15 battery charger, industrial metal hack saw, Sioux valve grinder, small metal lathe, Huck pneudraulic 230, miller welder, Millermatic 200 cv dc wire feed welder, Eagle 22125B milling machine, Powermatic Drill press model 1200, Cincinnati lathe 17 x 30 hydra shift, and much much more) At noon we will stop to sell a 2017 Chevrolet Silverado 1/2 ton 2 wheel drive of showroom quality. It has only 42,000 miles and every extra available in mint condition. Other items being sold include oxygen/acetylene tanks, torches, rods, hoods, grinders, work benches, shelving, metal work table, floor jack, large hydraulic jack, A frame, presses, bits, pullers, clamps, commercial singer upholstery sewing machine and table, air tools, semi parts, bolt bins with bolts, nuts, washers etc...several shop tool boxes. **We can not stress enough the size of this auction and what is actually here. It is a must see to believe. Vintage car enthusiast, mechanics, garages, Truck repair shops, scrappers, hobbyist, collectors and more are sure to place this MEGA auction on there list of go to places in September.**



CHECK OUT OUR WEBSITE FOR MORE PICS!

TERMS: Cash, check, or credit card with proper I.D. nothing removed until settled for A 3% fee will be added to credit card purchases. Not responsible for errors in listing. Any announcement made sale night will take precedence over any printed matter. **Note:** Service will take every precaution to prevent accidents, but will not be responsible should any occur.



For more information contact Professional Auctioneer Russ Weeks at 417-576-7357 or check out www.rrauctionservice.com

Serving this area's auction needs since 1997 with honesty and professionalism.
www.rrauctionservice.com
 (417) 576-7357 or (417) 345-4140



TURNER AUCTION SERVICES

5TH ANNUAL CONSIGNMENT AUCTION



September 12, 2020 @ 10 A.M.



Valley Lions Club Belgrade, MO • Now Accepting Consignments

Accepting tractors, vehicles, trailers, farm machinery, implements, forestry equipment, lawn and garden equipment, firearms, ammo, new and used tools, and livestock equipment.

REASONABLE COMMISSION • 10% FIRST \$500 • 7% NEXT \$9500 • 2% AMOUNT ABOVE \$10,000
CONSIGNMENTS ACCEPTED UNTIL 9AM SALE DAY • NO FEE FOR NO-SALES • REASONABLE
HAULING AVAILABLE
TO CONSIGN CALL ANDREW AT 573-760-3755

TRACTORS

Case IH 1494 (diesel. Wide front, power steering, 3pt, remote) • Ford 3400 with loader • Allis Chalmers D14 • International 350 Utility (wide front, good rubber, 2pt) • Case 930 Comfort King with loader • John Deere 2010 (narrow front, loader)

VEHICLES/TRAILERS

2004 Ford F-250 with Deweze haybed (Cummins swapped, Deweze haybed, 4x4) • 1989 Dodge 2500 cummins with Hydrabed haybed (4x4, aftermarket wheels and tires) • Ponderosa 12ft gooseneck stock trailer with mats (CLEAN!) • Hay

HAY EQUIPMENT

New Holland 855 auto wrap round baler • John Deere 410 4x4 round baler • New Holland 851 5x5 round baler • John Deere 336 square baler with thrower • John Deere 24T square baler • John Deere 275 disc mower 9ft • John Deere dolly wheel side delivery rake • New Holland 55 side delivery rake • International side delivery rake • John Deere 3pt 350 side delivery rake • Several 3pt bale spikes • Several 3pt bale forks • Belly mount 5ft sickle mower • John Deere 3pt 350 sickle mower 7ft • New Holland 451 sickle mower • John Deere pto hay elevator • New Holland hay wagon

SKIDSTEER ATTACHMENTS

(New) Wolverine quick attach cone seeder • (New) Wolverine quick attach dozer blade • Several quick attach bale spikes • Quick Attach pallet forks

FARM EQUIPMENT

John Deere manure spreader pto • New Holland manure spreader pto • Case manure spreader ground drive • John Deere H manure spreader ground drive • Rhino 15ft bat wing brush hog • Howse 8ft pull type brush hog • Allis Chalmers 7ft pull type brush hog • Woods 7ft pull type brush hog • Heavy Duty 6ft pull type brush hog • 6ft Heavy Duty 3pt brush hog • Howse 5ft brush hog 3pt • King Kutter 5ft brush hog 3pt • 5ft brush hog 3pt • Caroni 6ft finish mower 3pt • Caroni 5ft finish mower 3pt • Big Ox 5ft finish mower 3pt • 5ft 3pt finish mower • Shaffer post driver • 3pt hydraulic steel post driver • (NEW) 3pt post auger • Ford 903 3pt post auger • Howse 3pt post auger with 12" auger • 3pt post auger with two bits • (NEW) Sunburst 5ft box blade • (NEW) Atlas 4ft box blade • Ford 6ft tilt and angle blade 3pt • 6ft blade 3pt • Ford reversible slip scoop 3pt • 3pt slip scoop • Ford 2 row planter • John Deere seed drill • Herd 3pt seeder • (2)3pt cyclone seeders • 3pt boom sprayer • (2) 15ft weed wipes • John Deere 10ft pull type disc • 8ft 3pt single row disc • Ford flex disc 7ft 3pt • 7ft 3pt disc • 6ft 3pt disc • 6ft drag disc • 5ft 3pt disc • Ford 4 bottom plow • 2 bottom disc plow 3pt • Ford 2 bottom plow 3pt • Case

2 bottom plow 3pt • Ford 2/16 spring trip 3pt plow • 2/14 3pt plow • 2/14 pull type plow • 8ft pull type chisel plow with cylinder • 3pt 6 shank chisel plow • 7ft cultivator 3pt • 7 shank cultivator 3pt • Rotary hoe 3pt • 3 section heavy duty harrow • Spring tooth harrow • Several harrow sections • 20' 6" portable grain auger • (2) 10' and 12' portable grain augers • (2) grain aerators • Antique corn sheller grinder • 6ft Loader bucket • Woods Hydroboost 3pt boom pole • Ford 3pt boom pole • 3pt carryall • (5) rolls of bale bonnets

LIVESTOCK EQUIPMENT

(2) Quick Catch automatic head catches • (2) head catches • Lot of NEW corral panels • Lot of NEW gates • Lot of used corral panels • Lot of electric fence wire • Lot of Wide belting • (NEW) livestock insecticide dust bag kit • (New Lot) 5ft Cow Life cattle rubs

LAWN AND GARDEN/SHOP/TOOLS/PARTS

Husky 16.5 hp 42" cut riding lawn mower • Husky 14.5hp 42" cut riding lawn mower • Sears 18/6 lawn mower with blade and snowblower • Woods 42" belly mower • MTD garden tiller • Lot of weed eaters (Stihl, Bolin, and Troybuilt) • Poulin 14" chainsaw • 3pt wood splitter • Set of front and rear 13.6x28 tractor tires • Lot of tractor wheels and tires • NEW boxes of roller chain • New disc blades • IH suitcase weights • Ford suitcase weights • MF suitcase weights • Slab tractor weights • Lot of wheel weights • Lot of harrows • Lot of plows • Lot of pulleys • Lot of sickles • Lot of Miloguards • Lot of combine parts • Lot of stabilizer bars • Lot of haybine sickles • V bottom aluminum boat • 300 gallon gas tank with electric pump • (2) NEW trailer light kits • Lot of grabbers • NEW jumper cables • Set of 235 60 r17 Bridgestone tires on 2017 Camero Sport edition wheels • Set of 235 55 r17 Bridgestone tires on Mustang Sport edition wheels • 2017 Camero muffler • 8ft pickup tool box • (3) pickup tool boxes • ¾ ton 8 hole wheels • Clark 10gal sandblaster • Paint sprayer • 5speed drill press • Antique drill presses • Lot of Tools

GUNS/SPORTING GOODS

PSE Drive X Force Pro Series compound bow (60-70lbs, PSE 4 pin sight, and stabilizer) • Titan 25cal semi auto pistol • New Smith and Wesson 1700LS 243 with bushnell scope • Remington 700 270 • Marlin XL7 270 with scope • Remington model 4 takedown 32cal • JGA Karabiner 6mm flowbant • Mossberg 702 plinkster 22 • Beretta single shot 12ga • Browning A5 12ga with poly choke • New Mossberg 930 12ga 3" • New In Box RIA single shot break down 12ga • Winchester 1300 12ga 3" • Winchester model 1897 trenchgun 12ga • Mossberg 835 camo 3 ½" 12ga • Mossberg Maverick 88 12ga • Lot of knives • Lot of Garth Brooks books and DVDs •

TA TURNER AUCTION SERVICES

For more information, call Andrew Turner at 573-760-3755

Auctioneer: Col Andrew Turner

Terms & Conditions: Cash or Good Check - proper ID required -
 Not Responsible for accidents or stolen articles.

All announcements made on sale day take precedence over printed material.
 "No Alcohol" Lunch Provided by Valley Lions Club

PUBLIC AUCTION



★ ★ ★ ★ ★
SATURDAY, SEPTEMBER 12, 10:00 A.M.

Location: From West Plains take 160 West 8 miles, turn left on E Highway at South Fork, travel approximately 2 miles to drive on right (watch for auction signs).

TRACTORS- FARM EQUIPMENT- TRAILER

Kubota M9960 Hydraulic shuttle ultra-grand cab LA 1353 loader 4x4 100 HP only 340 hours (like new), Massey Ferguson 4263 4x4 cab 100 HP 622 hours 6 cylinder Perkins diesel, Case 990 diesel power 58 HP 1100 hours (new rubber), Land Pride RC5615 Commander 15' Batwing Bushhog heavy duty, Bushhog brand 6' SQ172 3 pt bushhog, Shaver hydraulic post driver like new, 8' concrete filled culvert field roller, 6' swivel hitch heavy duty field roller, 4' field roller, Priefert head chute, 2- 3 pt rear bale spikes, 3 pt seeder, 16' Ray Trailers bumper hitch flatbed trailer.



HEAVY EQUIPMENT- TRUCKS- ZERO TURN

Caterpillar D7E high horse Dozer w/straight blade and angle blade 70% undercarriage, nice machine, Caterpillar 416B Backhoe w/16" and 2' buckets only 1150 hours new back tires, 7 D7 rollers and sprocket segments, 2001 Dodge 2500 V10 magnum ext. cab long bed 4x4 166,000 miles SLT Laramie, 2000 Ford F-150 4 door Lariat with sunroof Triton V8, Country Clipper Boulevard Joystick zero turn mower 54" cut with 23 HP motor 34 hours like new, 14' John boat, several CAT service manuals.



GUNS-TOOLS-SHOP

Mossberg model 702 Plinkster 22 cal, Remington Model 870 12 gauge pump action w/2 barrels, 100 gallon electric fuel tank, Husqvarna 460 Rancher chainsaw, Echo chainsaw, 3/4 inch socket sets, Stanley 18' extension ladder, Stanley 12' step ladder, Briggs and Stratton 4.5 horse power washer, Schauer 200 amp battery charger, Eagle gas powered air compressor, shop lights, several wheel dollies, Craftsman 19.2 volt 1/2 inch impact and grinder new in box, Makita cutoff saw, bench grinder, grease guns, several log chains, boomers, lots of misc. hand tools, several wrenches, pipe wrenches, shop creeper, nice hay clamp, 3 pt. top links, toolboxes, jacks, drawbars, clevises, submersible water pump, roll of 1/2 inch cable, 2- 20 gallon air compressors, 1/2 battery impact, 10 heavy duty dog panels and gates, battery charger, Reese hitches, jumper cables, propane heater, misc. wire, saw horses, Pioneer mini split heat and air unit, window AC unit.



OFFICE FURNITURE- HOUSEHOLD MISC.

Very nice executive office desk, entertainment center, hide-a-bed, recliner, leather office chairs, table and 4 chairs, buffet, Hotpoint refrigerator, coat rack, 2- bookshelves, cream cans, fish fryer, old horse harness, clay pigeon thrower, Anheuser-Busch wood box, BBQ grills, vintage wood egg crate, twisted leg table w/ball and claw feet, variety of concrete statues, wrought iron patio furniture, lots of misc. household items.



FOR MORE PHOTOS GO TO: WWW.SEXTONAUCTIONS.COM

Auctioneer Notes: Mr. Fite has sold his farm and relocating. All equipment has been stored inside, well maintained, and is excellent condition!



OWNER: JB FITE AND THE LATE CHERRY FITE

BILLY SEXTON AUCTIONEERS

683 Missouri Avenue, West Plains, MO • Office: 417-255-2744

Billy Sexton 417-257-4595 • Justin Kraft 417-274-0073

www.sextonauctions.com • Not Responsible For Accidents

See this auction at: www.westplainsdailyquill.net/auctions • Not Responsible For Accidents

8/25/20

GO TO THE AUCTION • GO TO THE AUCTION • GO TO THE AUCTION • GO TO THE AUCTION • GO TO THE AUCTION •

PUBLIC AUCTION

Saturday, September 12, 2020 • STARTING AT 9:30 a.m.

Location: 101 Davis Drive. Dixon, MO 65459

Directions: 15524 Hwy 28 W, Vienna, MO 65582 [Just north (east) of Hwy N on Hwy 28.]

Household

Quilts, Afghans
 2 Wooden Chests of Drawers
 Lot Games
 Framed Mirrors
 3 Cushion Sofa, Blue & Mauve, Dual Recliners
 Sofa & Love Seat, Ecru
 Lot Wreaths
 Metal File Cabinet
 Vanity w/Mirror
 Homemade Trunk
 Gossip Bench
 Beanie Babies
 Enamel Top Cabinet
 Small Oak Table w/4
 Gold Globe Lamp
 Full Bed
 Recliner

Antiques & Collectibles

1904 World's Fair Park Bench Frame (needs repair)
 Old Well Pump
 Dazey Churn 2 Qt.
 Keen Kutter Hand Saws
 Shapleigh Squares
 Shapleigh Knife
 Shapleigh Hedge Trimmer

Keen Kutter Saw Blade in Original Wrapper
 2 Old Tractor Seats
 Carbide Light
 Stanley Level
 Old Oil Cans
 John Deere Implement Lid
 Keen Kutter Hatchet, Hammer, Paint Scraper/
 Putty Knife, and Coping Saw
 Old Corn Popper
 Tube Repair Kit in Metal Box
 Ford Wrenches
 Ford Pipe Wrench
 '68 Chevy Truck Bumper
 Brass Boat Prop
 Bailey Plane
 2 Lanterns
 Royal Racer Sled
 Single Trees
 Well Bucket
 Milk Can
 Old Wooden Boxes
 Cookie Jars
 Dining Buffet
 Table w/Curio Top

Shop Equipment & Outdoor

John Deere LA115 Riding Mower 42" Cut

John Deere Garden Wagon
 10 HP Generator 5550 Watt
 Craftsman 10" Table Saw
 5'X8' Utility Trailer(clear title)
 Climbers
 Creeper
 Husqvarna 50 Chainsaw
 Grinder
 Bench Vise
 Lead Melting Pots
 Misc. Hardware
 Fire Hydrant
 Picnic Table
 Lot Outdoor Decor
 Patio Glider
 Patio Swing Frame
 Concrete Table w/3 Benches
 Park Bench
 Lot Yard/Garden Decor
 Large Plants in Pots
 Lot Gas Cans
 Live Trap
 Radio Flyer "Town & Country" Wooden Wagon
 Misc. Lumber
 Misc. Oak Lumber/Barn Boards
 Galvanized Wash Tubs
 Saw Horses
 Step Ladder
 Patio Umbrella

White Double Sink
 Poulan Pro Pruning Saw
 Splitting Maul
 Craftsman 5-in-1 Power Washer
 2 Bicycles
 Tie Downs
 Coolers
 Homelite String Trimmer
 Galvanized Watering Can
 Galvanized Ash Bucket
 Lot Hand Tools
 Lot Handle Tools
 Lawn Roller

Other items too numerous to mention



OWNERS: MR. BOB COPELAND

Sale Conducted By

WARDEN AUCTION SERVICE

(573) 336-2367 or (573) 528-0729

Ed Warden – Licensed Auctioneer/Real Estate Broker,
www.wardenauction.com



TERMS

Cash, Credit,
 Debit or Approved
 Check

ID Required for
 Bid Number

TERMS

Not Responsible
 For Accidents
 or Losses

Nothing Removed
 Until Settled For

GO TO THE AUCTION • GO TO THE AUCTION • GO TO THE AUCTION • GO TO THE AUCTION • GO TO THE AUCTION •

JIM & ROSEMARY HARRIS

AUCTION

September 12, 2020

3291 HWY 68 N (about 3.5 miles) Salem, MO - 9:30 AM

MOWERS and SHOP EQUIPMENT – Yazoo Kees ZT MX 48" zero turn, Ariens 30" riding lawn mower, Craftsman 46" riding lawn mower, White riding mower (needs belt), Bolen MTD mower (runs but needs work), Toro snow blower self-propelled, electric motors, lawn mower tires and wheels, chainsaws, Shop Smith table saw w/attachments, Carolina shop press 60,000, saw horses, 140K btu heater kerosene or #1 diesel, car ramps, chain hoist, Lincoln welder, wire welder, electric chain sharpener, 16 speed floor drill press, air compressors, bench grinders, shop tables, lawn mower jack, leaf blowers, weed eater, floor jack, waste oil barrel on stand, battery chargers, base board heaters, used lumber, multiple new/used small engine repair parts, electric motors.

FARM EQUIPMENT – Farmall C Tractor, cultivator, 3-point hitch, 7' mower, older brush hog, 3 section harrow, pull type disc, pull type breaking plows, small cultivators

ANTIQUES – Horse collars, single trees, double yoke, wash board, horse tounge to hanes hitch, old handheld washing machine, old metal insect dust sprayers, hand seeders, crosscut saws, handsaws, hand clippers

HOUSEHOLD and BEAUTY SHOP – Full bed and dresser, bunkbeds, oak table and chairs with matching hutch, electric organ, desks with chairs, old metal chairs, metal table and 5 chairs, electric heaters, electric furnace, recliners, large area rugs, floor rugs, wood shop stove, older chest deep freeze, storage cabinets, coffee tables, brown folding chairs, magazine rack, gas portable fireplace, gas wall heater, pictures, wash tub, wet work station with large mirror, hydro work chair with mat, 2 salon dryer chairs, roll around table, Natural Wonder portable dryer, work baskets.

GUNS – New England Firearms Partner model 15B1 3-1/2" 12 ga, Taurus Circuit Judge 45LC/410 ga, Mossberg International 715T 22 cal, Browning 12 ga 2-3/4" made in St. Louis, MO, Martin Ranger 22 5-L-LR Model 1039 bolt, Westenfield 12 ga, JC Higgins Model 583 bolt 12 ga 2-3/4", Meriden Firearms 12 ga triple steel, Marlin auto 22 tube model 99ml, Remington auto 22 tube L-L-LR, Marlin model 989G auto 22 w/clip, EH Lsac 1906 shile, Stevens model 56 bolt 22 5-L-LR, Harrington Richardson Topper model 88 12 ga 3" full, Marlin model 99ml auto tube 22 LR only with scope, Japanese gun, Greener black powder double barrel



Jim operated a small engine repair for many years a lot of inventory to be sold that isn't listed. Rosemary operated a beauty shop for several years. Guns will not be on site until day of sale. - See you there - Raymond

Follow us on Facebook: Quick Auction Service LLC

QUICK Auction Service

Col. Raymond Quick (573) 247-3834 ray_quick1964@yahoo.com – Col. Brady Hagler

TERMS: Cash or Approved check . Nothing removed until settled for. Not Responsible for accidents. Refreshments available

ANNOUNCEMENTS AT AUCTION TAKE PRECEDENCE OVER PRINTED MATTER



AUCTION

Due to having sold their property James and Glenda Duncan will sell the following personal property at auction on:

Saturday Sep. 12, 2020 @ 10AM

DIRECTIONS (13901 HWY 72 Rolla, MO): From the Jct. of Hwy 63 and 72 travel Hwy 72 5.3 miles to auction site. Watch for Sellers Auction Signs Sale Day

Furniture, Household and Antiques: Wicker Couch, chair, ottoman, and 2 end tables ~ Haier Mini refrigerator with freezer ~ 40's oak dining table with 4 chairs ~ 2 red occasional chairs ~ walnut hall table ~ antique makeup dresser ~ antique waterfall makeup dresser ~ singer treadle sewing machine ~ (2) 1958 dressers 1 with mirror ~ Oak lawyers book case (nice) ~ round Maple 2 shelf coffee table (rotates) ~ Frigidaire affinity front loading washing machine and dryer ~ Oak Desk ~ Black leather office chair Cheney talking machine company phonograph with records (works) ~ Antique wardrobe ~ Sears 22 cu.ft. Chest freezer older but working ~ Maytag electric ringer washer ~ Maytag manual washer ~ (2) Putnam fadeless dies tin boxes (1) full ~ several vintage suitcases ~ Forbes coffee tin ~ fishing poles and tackle some vintage ~ 18hp evinrude outboard (no title) ~ 1972 (11-71) Honda trail 70 (CT 70) complete, with title and original book ~ **a large lot of primitive and antique items will be at this auction**



Equipment and Tools: 2006 Troybilt zero turn 23hp. 50 in deck, well maintained ~ Brave 20 ton 5hp wood splitter ~ Stihl MS170 chainsaw ~ Stihl FS 55 Weed eater ~ Tailgater 2 cycle generator (new) ~ Oxygen & Acetylene torch set ~ Honda F401 tiller ~ Ariens 5 hp push mower ~ Super -125 Surface Planer ~ Buffalo wood lathe ~ Craftsman 2/3 hp laser trac drill press ~ Craftsman 1 hp 12 gallon air compressor ~ Craftsman 16 gallon shop vac Craftsman 12" electronic band saw ~ Craftsman 1 1/2 hp router and table ~ Ryobi 10" table top table saw ~ Ryobi 6 1/8" bench top jointer planer ~ large amount of electric wood working tools and other hand tools ~ 11ft. 2 wheel steel bed trailer with title ~ 6ft pull type bush hog ~ Dearborn 2 bottom plow ~ cultivator



Auctioneer's Note: More important than what's listed in this auction is what's not. The attic was full and none of the boxes or totes were opened from the shop. Mr. Duncan's father, Claude Duncan, ran the Lake Springs store from 1945 to 1979; many of the items we expect to find came from the store. Plan to attend, lots of parking and shade. May run 2 rings part of the day so plan accordingly.

Sellers Auction Service
"We Were Born Sellers"

Complete Auction Service

www.sellersauctionservice.com

Terms: Cash or Check with proper I.D. Not responsible for accidents or losses. Items will be sold As Is/Where Is with No Guarantees. Nothing to be removed until paid for. Refreshments available. Announcements made on sale day take precedence over any printed materials.

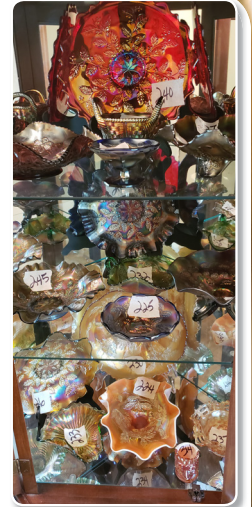


GREGG SELLERS, AUCTIONEER
573-480-4400



UPCOMING SEPTEMBER AUCTIONS

Sellers Auction is Now Conducting Weekly Online Auctions & Onsite Live Auctions



ONLINE ONLY AUCTION

THE ESTATE OF RONALD AND PHYLLIS PORO

**ONLINE BIDDING BEGINS:
Tuesday, September 8th**

**SOFT CLOSING BEGINS:
Sunday, September 13th @ 8PM**

**PREVIEW:
Friday, September 11 from 10-4**

**PICK UP: 1330 California Drive
Rolla, Mo. Monday, September 14th
from 10-5,**

**REGISTER TO BID AT
SELLERSAUCTIONSERVICE.HIBID.COM**



Sellers Auction Service
"We Were Born Sellers"
Complete Auction Service
www.sellersauctionservice.com

Terms: Cash or Check with proper I.D. Not responsible for accidents or losses. Items will be sold As Is/Where Is with No Guarantees. Nothing to be removed until paid for. Refreshments available. Announcements made on sale day take precedence over any printed materials.



GREGG SELLERS, AUCTIONEER
573-480-4400

Sam CRAWFORD AUCTION SERVICE LLC

Will sell the following located in Osceola, Mo. at 515 Second St., 1 block SW of the courthouse square.
Watch for Crawford Auction signs.

Saturday, Sept. 19, 2020 – 9:30 a.m.



"Baer House" 8 room house, 1 full & 2-1/2 bathrooms, approx. 2,600 sq. ft., central heat & air, fireplace, city water & sewer, new roof this summer, corner lot 107x123. Would make a good home or business (as the Naylor's did). 1 Block off the square, 1 block from Truman lake. Great location in a great town. Shown by appt. with auctioneers.



Walnut dish hutch; Sofa table; China hutch
8 Oak chairs (old Osceola school)
2 Oak school desks (old Osceola school)
Small buffet; Punch side pie safe
Duncan Phye dining table, 5 Rd back carved chairs, buffet
Rd table & 4 wood ice cream chairs
Rd table & 4 metal ice cream chairs
5-6 Cane bottom chairs; Asst. small tables
Small corner shelf; Oak wall telephone
Keen Kutter elec wall clock
Elec wall clock (Glen Tolson Ins.)
Keen Kutter elec power saw; Metal pie cutter
Utensils; 9 Crock jars, 1-6 gal.
2 Blue speckleware buckets; 3 Green granite pots
Approx. 20 cast iron skillet
Lg sad iron; 5-6 Wood rolling pins
Sq. gallon jar; Sev. qt & half gallon jars
Amity display case, Baltimore Hotel, KC, Mo 1931
National cash register (Brown/Scott Sundries Drug Store)
"Simpson Computing Scale" counter top scale (George Hardware)
4'x6' Chalk board (old Osceola school)
Small Meadow Gold metal sign
1954-55 Pharmacy Lic. (Brown/Scott Sundries Drug Store)

Crystal soda bottles (Osceola); Other bottles
12 "Coke" napkin holders; Sev cigar boxes
Framed Green River Whiskey Adv. picture, copyright 1936
Framed Kodak Adv. picture
Framed painting of Osceola dam
Framed paper flour sack, Weaubleau, Mo., Roller Miller (1920s)
2 Beam decanters, Mule & Elephant
2 Rolls brown wrapping paper (George Hardware)
Box of Western hardware, Adv & sacks
Rd. oak Stove Co. coffee cup, 1907
Metal Salem & Lucky Strike cigarette case
Small metal calendar 1940, Lowry City
Asst. Allis Chalmers lighters
Notepads, awards, pins, desk clock (George Hardware)
Lot paper fans; Asst calendars
Lot misc adv. items; Aspirin Tins
Asst. political pins (1 Dewey)
25+ Wood adv. yard sticks
Wood "M" system grocery sign, approx. 1'x6'
Model T windshield; Small Sinclair oil dinosaur
5 Pictures dogs playing poker
Lot other pictures; Spoon holder, old spoon
Lg. wooden Kellogg's spoon, used in grocery store

Really old picture albums
Sev. old ledgers (Brown/Scott Sundries Drug Store), from 1910 up
Pharmacy measuring items (Brown/Scott Sundries Drug Store)
Wire rack & 3-4 shelves (Brown/Scott Sundries Drug Store); Squibb vitamin display case
Lot asst small figurines, curios
RR lantern; 2-3 oil lamps, Toy wood train set
Norman Rockwell plates, pictures
2 Vintage ladies' hats w/boxes & 2 vintage mink stoles
Lots cookbooks; '76 St. Clair Co. plat map
Match holder, C.A.W Finlig store, Roscoe, Mo
Carpenter box; Glass wash board
Cream separator; Well bucket
Wood tool handles
2 Counter check holders w/checks from Osceola, Lowry City, Humansville, other
Sev. porcelain dolls; Lamps & shades
Gas light w/shade
Wooden shelf grabber (used for items on upper shelves in store)
Quilting frame; Snow skis (Tom Johnson)
Lg framed mirror; Malt mixer
3 Large framed pictures (Shorty Dukes)
Camel back trunk; Wood stair banister
Lot other items

6-7 Wood dining table w/4-6 chairs
Rd chrome table & 4 padded chairs
4 Knotty pine folding tables
Approx. 50 folding chairs, padded
Lot table cloths; Sev bread serving baskets
Service for 50 set of China, gold rim
Lot Carafes & water pitchers
Relish trays; Egg plates; Lg set stemware
Other glassware; Lot Pyrex, Corningware
Pie plates; Casserole dishes
Cuisinar & Kitchen Aid standing mixers
Asst small kitchen appliances, rollseries, bread makers
Lg Frigidaire refrigerator
Dorm size refrigerator
Speed Queen washer; Elec dryer
2-3 Metal storage cabinet
Sev large stainless bowls, strainers
Sev large stainless, copper bottom cooking pots
Sev chafing dishes; Other pots, pans, utensils
3 Large blue jars, 2 w/spigots

Large interesting auction with lots of history from Osceola & surrounding towns. The Scott & Naylor families had business roots in early Osceola, Iconium, Lowry City. Many items you have never seen or will see again. Possible 2 rings part of morning!

Sam CRAWFORD Auction Service LLC



Cross Timbers, Mo.
CrawfordAuctionService.com
417-998-6629



STARTING 76th YEAR OF SALES AND SERVICE

TERMS: Cash or good check. Nothing removed until settled for. Not responsible for accidents. Lunch available. Statements made day of sale take precedence over printed matter. All items sell as is. No warranties given or implied.



Jim Naylor Family

The Index, HERMITAGE, MISSOURI 65668

FARM & ESTATE AUCTION

Saturday, September 12th, 2020 ~ 10:00 AM

LOCATION: 14939 South 2875 Rd, El Dorado Springs, MO; Directions:
From Eldorado Springs Go West On 54 Hwy To 2875 Rd Then North To Sale
Site Parking Will Be Narrow & Tough
(Watch For Signs)

Auction For Larry & The Late Carol Gray Estate



Antique, Modern Furniture & Appliances

Ant Nut Pull Dresser W/Marble Top, Ant Table Top Victrola, Ant Wood Breakfast Table, Ant Sm Wood Tables, Ant 1 Room School House Chalk Board, Ant Oval Picture Frames, Old Quilt Rack, Prim Child's Table, Prim Wood Cabinet, Big Buck Cast Iron Wood Heat Stove, Also 2 Sm Cast Iron Pot Heat Stoves, Retro Bar Shelf, Retro Chairs, Bar Stools, Short Table W/Pull Out Stools, Iron & Glass Top Table, 2 Twin Hide A Bed Couches, Wood Shelves, 3 Cushion Couch, Prim Furniture Pcs, Wicker Furniture, Full Bed, Wood Chest Of Drawers, Ant Lamps, Ant Metal Yard Chairs, Gun Cabinet, Ant Stereo, Eden Pure Heaters, 2 Flat Screen TV's Exercise Equipment, Older Upright Deep Freeze, Other Items

Antiques, Collectibles & Households

Lg Lot Of Ant Coca Cola Collection Inc Ant Wood Cooler, Ant Metal Cooler W/Bottle Spinner & Other Unusual Coca Cola Pcs, Lg Ant Stamp Collection, Ant Anvil, Ant Horse Collars, Galv Wash Tubs, Ant Tractor Seat, Prim Tools, Old Advertising Signs, County Club Malt Liquor Sign, Old Metal Tinker Toy Set, Old Sled, Ant Violin, Prim Tools, Old License Plates, Ant Tongs, Ant Cross Cut Saw, Old Metal Baskets, Old Oil Lamps, Lighter Collection, Turtle Collection, Costume Jewelry, Ant Pitcher Pumps, Old Knife Sets, Old Jars & Bottles, Old Tins, Cast Iron BBQ Grill, Crock Watt Mixing Bowls, Ant Dishes & Various Kinds Of Glassware, Tea Pitcher Collection, Salt & Pepper Shakers, Beer Can Collection, Cowboy Hat & Ballcap Hat Collection, Cut Out Wood Barrel, Wilton Cake Decorating Items, Old Books, New In Box Sm Kitchen Appliances, Other Items Not Listed

Guns, Boat, Propane Tanks, Welders,

Tools & Outdoor Related Items

Witte HDWECO 12 Ga Double Barrel, Double Hammer, Double

Trigger Shotgun, Jamson ESORS 12 Ga Double Barrel, Double Hammer, Double Trigger Shotgun, Cresenit Rifle Arms 12 Ga Single Shot Shotgun, Paddle Boat, 500 & 1000 Gal Propane Tanks, Century Wire Fed Welder, AC25 Lincoln Welder, Welding Tables, Welding Supplies, Electric Rigid 300 Dye Machine, Torch Set, Cement Mixer, Pressure Washer, Table Saw, Drill Press, Grinder, Air Compressor, Surveyor Transit W/Pole, Shear Bender, Metal Shear Brake, Concrete Forms, 3 Riding Mowers, Alum Loading Ramps, Weed Eaters, Chainsaws, Battery Charger, Sm Electrical Tools, Sm Hand Tools, Socket Sets, Long Handle Tools, Set Of Pipe Wrenches, Log Chains, Come A Longs, Shop Shelves, Floor Jack, Other Items Not Listed

Tractors, Backhoe, Side By Side, Trailers, Equipment, Also Antique Horse Drawn Equipment & Farm Related Items

2007 Kawasaki 3010 Mule 4x4 Side By Side W/ Dump Bed, Ford 4400 Diesel Backhoe Tractor W/ Loader, Ford 5000 Diesel Tractor W/Great Bend 330 Loader, Wide Front End & Hydraulics, Ford 4000 Diesel Tractor W/Wide Front End & Hydraulics, Ford 3000 Diesel Tractor W/Wide Front End & Hydraulics, 18 Ft Flatbed Trailer W/ Ramps, 14 Ft Box Side Trailer, 16 Ft Bumper Hitch Stock Trailer, 20 Ft Gooseneck Stock Trailer That Has Been Wrecked, New Holland Square Baler, M&W 4x5 Round Baler For Parts, 2 Basket Tedder, Front End Loader Bale Spike, 3 Pt Bale Spike, 3 Pt 5 Ft Bush Hog, 3 Pt Heavy Duty Blade, 3 Pt Chisel Plow, 10 Ft Hydraulic Disc, 3 Bottom Plow, 3 Pt Slip Scoop, Drag Harr, 3 Pt Carry All, 6 Ft Hydraulic Disc, Wagon Trailer Frames, Wood Wagon, 2 Ant 2 Pot Planters, Sulky Rake, McCormick 5 Ft HD Mower On Steel, 3rd Arms, Wire Panels, Steel Posts, Hay Feeder, Electric Posts, Cable, Wood Highline Posts, New & Used Tires, Some Scrap Iron, Other Items Not Listed

Auctioneers Note: It Is An Honor To Be Conducting This Auction For Mr. Gray As He Has Decided At The Age Of 88 To Retire & Move To Town. This Is Literally Over 60 Years Of Collecting & Accumulation. Larry Is An Outstanding Gentleman With A Excellent Family! There Will Definitely Be Something Here For Everyone. Outstanding Coca Cola Collection Plus Great Antiques & Collectibles. Large Lot Of Tools & Equipment As Well. This Is An Auction You Do Not Want To Miss. Please Plan Now To Attend. **Sale Order: Furniture & Appliances Sell First Followed By Antiques, Collectibles & Households Then Move Into Small Tools & Outdoor. At Approx 1:00 PM Will Offer Tractors, Trailers, Mule, Equipment & Larger Farm Related Items. Reminder Of Tools & Outdoor Will Finish Auction. See Ya There!!!**
Terms: Cash or check with proper ID. Now accepting most major credit cards. Nothing removed until settled for. Statements made the day of sale takes precedence over printed material. Everything sold as is where is. Not responsible for accidents. Restroom available. Concessions Provided. Check our website for upcoming auctions and for additional pictures!!



NANCE AUCTION SERVICE

No Matter How BIG or small, We Do Them All!

www.nanceauctionservice.com

Col. Bill Nance 417-214-0093

In God We Trust

Philippians 4:13

EXCEPTIONAL LIVING ESTATE AUCTION

Indoor • Seating Available • Climate Controlled

Saturday, Sept. 12 - 10 a.m.

Auction Location: Houston Chamber of Commerce building, Texas County Fairgrounds, 1585 N. Hwy. 63, Houston, Mo. **Directions:** From Houston at Hwy. 63 & Hwy. 17 stoplight, go north on Hwy. 63 one mile to auction location.

Watch for Bruce Scheets auction signs. Visit www.brucescheetsauctions.com to view photos. **Payment System:** Cash • Checks accepted with proper identification. **MasterCard, Visa, Discover (3% fee applies)**

OWNER: CLEMMIE & THE LATE RAY MORTON

2018 John Deere X350 Riding Mower Only 108 Hours



Osagian 17 ft. Sq. Stern Aluminum canoe - Like new
Low 17 ft. Canoe



Honda 2500 Generator

Outdoor and Miscellaneous
Two 20 ft. alum. ext. ladders • Kingsford charcoal grill (new) • Weber grill • Murray push mower • Poulan Pro push mower • Lawn dump cart (nice) • live traps (large & small) • Lawn Boy push mower • 4 bicycles (Dyno, Roadmaster, Kent & Thunderroad) • Lawn seeder • Landscape rock • Alum. & plastic trash cans • Lawn ornaments • Worx elect. leaf blower • Lawn chairs • Wheelbarrow • Bird houses • Croquet set • Garden hose • Log chains • Cant hook • Plant stands • 3 bags fertilizer • Topsoil • Other

Camping Equipment
Fancy screen tent • Igloo 5 & 2 1/2 gal water coolers • Coleman lantern w/case • Double-burner chrome gas camp stove • Hammock • Coleman & Playmate coolers • Coleman camp stove • Travel trailer stabilizers • Small propane tank • Folding plastic picnic table (like new) • Child's plastic picnic table • 22 gal. Tote Along holding tank • Paddles • Fishing poles & tackle • Folding camp table & chair & more. All camping equipment is in extremely nice condition.

Guns
Remington mod. 7600 30-06 cal. • Revelation single shot 410 ga • Model 597 Remington 22 cal. auto • Three 50 cal. Knight black powder rifles • Other

Auctioneer's Note: Ray and Clemmie had a reputation of meticulously caring for their home and yard. This also extended to all of the merchandise that is listed. Ray's carpentry skills are showcased in some of the furniture that's listed. All merchandise is exceptionally clean and maintained. We look forward to seeing you on auction day! Bruce

DRIVER'S LICENSE OR PICTURE I.D. REQUIRED • TERMS: CASH OR APPROVED CHECK

BRUCE SCHEETS AUCTIONS
www.brucescheetsauctions.com • HOUSTON, MO • We Accept Mastercard, Visa & Discover

Auctioneers:
COL. BRUCE SCHEETS
417-967-2510
Cell: 417-260-2118
COL. TRAVIS TOOLEY
417-293-6909



All announcements made day of sale take precedence over any printed matter. Not responsible for lost or stolen merchandise. Not responsible for accidents.
• LUNCH WAGON • APPRAISAL SERVICE
• RAIN OR SHINE

Shop Equipment ~ Woodworking Tools
Small Craftsman air compressor • Skil 1/2" hammer drill • Power Kraft 10" radial arm saw • Schumacher battery charger • Metal car ramps • Hydraulic floor jack • 6 & 8 ft. step ladders • Hand tools • Large lot of carpenter tools • 10-gal. shop vac • Wood saw horses • Foley electric circle saw blade sharpener • Two wheeler • Craftsman 4" belt sander • Work benches on casters • Metal cabinets & shelving • Workbench w/vises • Router table • Large wood storage cabinets • Drillbits • Nut & bolt bins • Air hose • Extension cords • Mechanic creeper • Metal shelving • Other

Antiques and Collectibles
Galvanized double tub on stand • Washboards • White wood drop leaf table • White wood table • Wood bench • Glassware including carnival glass • Mushroom pattern dish set • Vintage children's toys (metal & plastic) • Radio Flyer 4/wheel wagon • Chrome dinette set • Metal implement wheels • Large lot of vintage hand tools • Wood boxes • Woven picnic basket • Metal kitchen cabinet • 5-gal. can of sea shells • 2 vintage BB guns • Metal minnow bucket • Vintage school desks • Other



Household
Matching Whirlpool H/D washer & dryer • Broyhill oak oval dining table w/6 padded chairs & matching lighted china hutch • Leather couch • Sectional couch • End tables • Coffee tables • Glider rocker w/ ottoman • 3-piece bedroom set • Wood desk • Janome sewing machine • Bedroom set: dresser, mirror, wardrobe, & bed • Oak round pedestal dining table w/2 leaves & 6 chairs (nice) • Flat screen tv • China hutch • Corner table & desk • Round dining table w/metal base & 4 padded chairs (nice) • 2 metal padded barstools • Upholstered couch • Coffee table & end tables • Foyer tables • Upholstered chairs • Harden dresser • Bar-style round table & 2 chairs • End tables • Coffee tables • Large tapestry • Elect. heater • Large lot of kitchen appliances • Other (all items like new)



Cashiers / Clerks:
Andi Scheets
Shelly Mutzebaugh, Suzanne Smith,
Shelly Cauldwell
Ringmen: Terry McCallister
and Vance Farmer

HUGE PUBLIC AUCTION

Saturday, Sept. 19, 2020 • 9:00 a.m.



SHOW-ME AUCTION CENTER

17829 Shadey Brook Dr. • Versailles, MO 65084



RING #1
9 am Antiques
Followed by Furniture & Household

RING #2
9 am Tools
Followed by Windows & Doors
12 Noon Outside

RING #3
9 am Furniture & Household



ANTIQUES

- Large Wooden Butter Churn on Stand
- Wood Frame Corn Sheller
- 2 - Hand Laundry Wringers
- 2 - Wood Pulleys
- 4 - Grinders
- 5-Gallon Crock Jug
- Brass Fire Extinguisher
- Laundry Plunger
- Blue Granite Bucket
- Wood Kraut Cutter
- Lard Press
- Wood Bushel Baskets
- Croquet Set
- Wooden Box
- Hand Saws
- 2-Man Saws
- Gas Cooker
- Sad Iron
- Pink Depression Glass
- Lot Brownie/ Hawkeye Cameras
- Pitcher Pump
- Lot Brass Bells
- Large Cast Iron Pot
- Large Lot Old Toys
- Old Baby Bottles
- Very Old Marbles
- Washboard
- Lot 1800s Barbed Wire
- Approx. 10 Sets Wooden Hames
- Lot Old Tools
- Lot Hand Forged Gate Hinges
- Straight Edge Razor
- Lot Old Bottles
- Glass Coffee Jars
- Jelly Jars
- Griswold Skillet
- Carnival Dishes
- Bookends
- Coca-Cola Cooler
- Butter Churn
- Childs Blue Willow & Dumbo Tea Sets
- Tins of Buttons & Spools
- Lot Old Gray Jar Lids
- Granite Bowls
- Flour Sifters
- Pyrex Bowls
- Blue Jars, Some Very Old
- Old Fisher Price Toys
- 3 - Fire King Dishes
- Wood Coffee Grinder
- Lot Lone Ranger & Indian Toys w/Horses & Accessories
- Buck Saw
- Metal Berry Carrier
- Porcelain Casters
- Corn Bread Pans
- Roseville Vase
- Peoria Pottery Jar
- Cracker Tin
- Old Dolls
- Old Ormate Vanity Dresser
- Wicker Rocker
- 2 Wing Tables
- Wood Office Desk
- Small Stand w/Glass Server
- 3 - Attached Old School Desks

SPORTING GOODS

- Riverside Arms 20-Ga
- 12 Ga. Shotgun
- PSE Compound Bow
- Lot Fishing Rods
- Black Lightning Compound Bow
- Tackle Box (Loaded)
- Kewpie Doll
- 10 - Old Suitcases, Some Leather Covered
- Milk Can, Painted
- Large Lot Quilts, Many Hand-Quilted
- Old Quilt Tops
- Brass Teacher's Bell
- Shaker Style Stand
- Roll-up Quilt Frame
- Waterfall Quilt Chest
- Treadle Sewing Machine
- Small Child's Rocker
- Kewpie Doll
- 10 - Old Suitcases, Some Leather Covered
- Milk Can, Painted
- Large Lot Quilts, Many Hand-Quilted
- Old Quilt Tops

LAWN & GARDEN

- John Deere LA145 Riding Mower - Only 15 Hours
- Simplicity Regent GX Riding Mower - 283 Hours
- Honda Push Mower - Like New
- Push Mower - Very Good
- Stihl SF45 Weedeater
- Cub Cadet Rear-Tine Tiller
- Hedge Trimmer
- Fertilizer & Weed Killers
- Grass Seed & Insecticide
- Hoe, Picks, Shovels
- Lot Garden Hoses
- Wheelbarrow
- 2 - Wheeler Dolleys
- Adapa Echlin Parts Cabinet
- 8x8 Mini Barn
- 10x12 Mini Barn

FURNITURE

- 2 Sewing Machines Singer & Riccar
- Wood Desk
- 4-Door Hutch, Nice
- White Settee
- Single Bed w/Box Springs & Mattress
- 3-Piece Blonde Regular Bedroom Set w/Mattress
- 4-Door Hutch, Tall Glass Doors
- 3-4-Drawer File Cabinets
- Several Misc Chairs
- Amana Matching Set - Front Load Washer on Drawer Base & Front Load Dryer on Drawer Base
- Speed Queen Matching Set - Washer & Dryer
- Hot Point Refrigerator
- Kenmore Electric Dryer
- 2-Pc Single Bed w/Headboard & Nightstand - Like New Mattress
- 3-Pc Blonde Bedroom Set
- 3-Pc Natural Finish, All Wood Full Bedroom Set, Dresser & Chest
- Queen Size Box Spring & Mattress w/Frame
- White Iron Bed w/Mattress & Box Spring
- Dark Cherry 3-Pc Bedroom Set Complete
- Brown Recliner
- End Tables & Stables, Coffee Table
- Glass-top Table & Chairs
- Table & Chairs
- Several Desks - Wood & Metal
- 2 Keyboards
- Lazy Boy Brown Recliner Rocker
- Like New Gray Electric Lift Recliner - Very Nice
- Decorative Bench Toy Box - Wooden
- Wicker Love Seat
- Green Rocker Recliner
- 2 Gold Cushioned Chairs
- Wood Rocker
- Pastel/Beige Lazy Boy Sofa & Love Seat Set
- 4 Bookcases
- 8 Display Cases w/Glass Top & Front
- Foot Stools
- Brunswick Slate-Top Pool Table
- Lazy Boy Large Rock Recliner

+50 Lots Old Coins
3 Pcs Gold & Nice Morgan Dollars

BUILDING MATERIALS

- 17 Old Doors from 1880s home in Mexico, MO Also Beautiful Fireplace, Door & Window Casings w/Rosettes, Crown Moulding, & Baseboards
- 10' x 17' Carpet (New)
- 31 Used Vinyl-Clad Windows-Very Nice
- 8 - Used Vinyl Clad Patio Doors - Very Nice
- 1 Mixed Bundle Lumber
- 49 - 2x6x16' Hi Line
- 23 - 5/4 Decking Boards
- 55 - 9' Precut Studs
- 90 - 2x4x9' Precut
- 77 - 2x4x9' Precut
- 1 Bundle 32 32x4x9' Studs
- 144 2x4x9' Precut
- 23 - 2x6x9' Precut
- 40 - 2x4x14"
- 40 - 2x4x12' Hi Line
- 56 - 2x4x12' Hi Line
- 60 - 2x4x14' Hi Line
- 16 - 2x6x10"
- 1 Bundle 2x6x12'

FARM, RANCH & TOOLS

- 16' Bumper Trailer
- Rissler Head Gate
- Rissler 2 1/4 T Bin
- 3 - Bextra Bale Rings
- 5 Concrete Feed Bunks
- 5hp 30-Gallon Air Compressor
- Wooden Mineral Feeder
- 35 - Chicken Feeders
- 11 - Homemade Roll-away Chicken Nests
- Clark Forklift 4 T (Works Good)
- Small Pony Wagon w/Spring Seat & Single & Double Shafts
- 5hp 30-Gallon Air Compressor
- Large Lot Hand Tools & Shop Supplies
- 2 - Bicycles - Nice
- Yard-Man Riding Mower
- 2 - Live 1
- Igloo Doghouse
- 3 - Pet Taxies
- 4 - Ladders
- Lot Gas Cans

HOUSEHOLD

- GE Electric Stand Mixer
- Pots & Pans
- Potato Riccar
- Glassware
- Granite Canner
- Large Asst of Table Lamps
- Humidifier
- Large Collection of Quilts - Some Hand Stitched & Quilted
- 4-Gal Western Jug, #10 Crock
- Red Glassware
- Green Depression Glass
- Old License Plates
- Lot Old Toys
- Roseville Vases, Fenton Covered Dish
- Huge Wood Pulley
- Granite Strainer
- Water Can
- Emerson Metal Fan
- Copper Canner
- Wooden Child's Ride-On Horse
- Large Cast Iron Dutch Oven
- Lead Glass Window
- 2 Hand Pumps
- Hump-Back Chest
- Old Pressure Cookers
- Harley Davidson Leather Chaps & Saddlebags
- Ornamental Weathervanes

Sale will be held indoors.
Loader is available.
Lunch will be served.

AUCTION NOTES:
There is a lot of nice furniture on this sale. This is just a small listing. There will be a lot more by sale day. See you Saturday! *Wilmer*



For more photos and information, see auctionarrows.com or auctionzip.com (ID# 30027)

Come Enjoy Wilmer & Annie's Food

Show-Me Auction Center Owners:

WILMER & ANNIE HOOVER
573-378-4908 • 573-789-2215

Auctioneers:

Col. Doug Dieckman - 660-287-1962
Col. Tony Stephens - 573-378-8803

For Information, Call

Earl Ray Zimmerman
573-378-4335

PUBLIC AUCTION

SATURDAY, SEPT. 12 • 10:00 A.M.

Directions: ROLLA, MO - From Rolla, take Hwy. 63 north to Co. Rd. 2110, take right at rock quarry. Follow Co. Rd. 2110 1/2 mile to Co. Rd. 2120, first place on left. The old Macedonia area. Watch for signs.

TOOLS • LAWN • HOUSEHOLD • FURNITURE • MISC. ITEMS

Queen Bedroom Suite w/2 Dressers,
1 w/Mirror
Winegard Carryout G2
Lots of Bedding, Pillows, Very Clean
Several Items Boxed, New
Regular Size Bedroom Set w/Dressers
4 Book Cases - Pictures & Wall Hangings
4 Wood TV Trays
Thomasville China Cabinet
Kitchen Table w/6 Chairs
3 La-Z-Boy Rocker Recliners
Table w/4 Chairs, Wood
Office Chair - Floor Mirror
Matching Hotpoint Washer & Dryer
Queen Bedroom Set, 2 Dressers,
1 w/Mirror, 2 Night Stands
Coffee Pots - Grills
Round Glass-top Table, Deck Table
Refrigerator & Deep Freezer Chest Type
Wire Wheeled Crates
RZ 5426 54" HV Zero-turn Mower, 200
Hours

Lots of Hand Tools
200+ Louis L' Amour Books
Floor Drill Press - Pots & Pans
Camping Items - Creeper - Water Hoses
Cooler - Lawn Roller - Ladders
30 Gallon Water Tote - Come-Alongs
Tiller - Push Mower - Life Jackets
Lawn Sweep - Old Mower Parts
Deer Rack - Lots of Lumber - Work Bench
Hatchets - Set of Cutting Torches on Cart
Planers - Concrete Fountain
Greenhouse - Sun Tents
20+ Fishing Rods & Reels
4-Drawer File Cabinet
Golf Clubs - Shopping Cart
Delta 12" x5.9" Planer
10 Windows - Radial Arm Saw
Propane Tanks, 25 lbs. - Band Saw
Stair Spindles - Mileta Sawzall
Delta Variable Speed Bench Joints
Table Saw - Throw Net
Lots of Electrician Tools

Battery Charger - Router Bits
Bar Clamps - T-squares - Floor Jacks
Welder Rods - 235 Welder
Lots of Gear Pullers
Tap & Dye Sets - Lead Blocker
Lush Couch & Oversize Chair
Rocker Glider - Couch Tables
Handles, Shovels & Rakes

See you there! - Tom



OWNERS: PATRICIA & THE LATE ROBERT BOWLIN

ANNOUNCEMENTS AT AUCTION TAKE PRECEDENCE OVER PRINTED MATTER

WULFF AUCTION

TERMS: CASH OR APPROVED CHECK - I.D. REQUIRED
NOTHING REMOVED UNTIL SETTLED FOR

Licensed Appraisals

Auctioneers:
Col. Tom Wulff - Col. David Wulff
498 Hwy. B, Salem, MO 65560
573-729-8476

Clerk: Tracy Strange Cashier: Nancy Inman

See Wulff Auctions at www.thesalemnewsonline.com/auctions



RAIN OR SHINE
OWNER & AUCTION
PERSONNEL NOT
RESPONSIBLE FOR
ACCIDENTS AT
SALE SITE



Saturday, September 12, 2020 • 9:00 a.m.

LOCATION: In Licking, Mo., at old Rawlings Building, 117 Cedar Street. Watch for signs.

EARLY START!!

Go to auctionzip.com to view photos. Auctioneer #28367

EARLY START!!

Furniture/Appliances/Collectibles

Shelving unit
 65" Projection TV Mitsubishi
 Flexsteel Recliner
 Sofa & Love Seat
 Coffee Table & 3 End Tables
 5 pc. Bedroom Set
 Antique Wardrobe
 Camelback Trunk
 Tan Couch
 Reclining Love Seat
 Cedar Post Headboard
 TV Stand
 Dresser
 Round Kitchen Table
 End Tables
 Plant Stands
 4 Oak Chairs
 Floor Lamp
 Table Lamp
 Lamps
 Frigidaire Upright Freezer
 (like new)
 Whirlpool Refrigerator
 Microwave
 Baker's Rack
 Twin Bed
 Brown Recliner
 Drop Leaf Table & 6 Chairs
 Hall Tree w/Marble Base
 Drop Leaf Table
 Pellet Stove
 Foot Stools
 Flowered Couch
 Trunk

Coffee & End Tables
 Wing Back Chairs
 Hanson Scales
 Dishes, Pots & Pans
 Set Dishes
 Small Kitchen Appliances
 3 Cast Iron Skillets (Lodge)
 Bread Box
 Old Tube Radio
 Sound Bar
 Outdoor Speakers
 White Metal Base Cabinet
 Pursuit Exerciser
 Gazelle Workout Machine
 Gaming Chair
 Area Rug
 Indian Figurines
 Southwest Home Décor
 Southwest Pottery
 Southwest Throws
 Africa Theme Pictures
 Africa Theme Pottery
 Africa Theme Statuary
 Africa Theme Photos
 NASCAR Framed Prints
 NASCAR Replica Cars
 NASCAR Coke Rug
 Borden's Crate (66)
 Cairn Gnome Collectibles
 Metal U.S. Army Dozer Toy
 Laurel & Hardy Dolls
 Barbie Keychains
 Dolls
 Cuckoo Clock
 Lighted Waterfall

Pictures
 Lots Picture Frames
 Old Jars & Milk Jars
 Wooden Spools
 Old Army Helmet
 Lot of Whatnots
 Puzzles
 Christmas Tree, 9'
 Christmas Ornaments
 Christmas Décor
 Records – 33 & 45
 Cassettes & CDs
 Books
 Wild West Books
 Native American Books
 Roy Clark Guitar Books
 Bird Book
 Book Ends
 Magazines
 Vases
 Silk Tree
 Floral Arrangements
 Baskets
 Wicker Baskets
 Small Wooden Bench
 Sharper Image
 Hummer Coin Bank
 Black Light
 Blue Jeans
 Shirts
 Hoodies
 Dress Pants
 Sweat Shirts
 Heaters
 Durafume Heater

RoI-A-Later

Tools/Outdoor
 Martin Houses
 Barrel
 Patio Set
 BBQ Grill
 Ladders
 Old Windows
 Beeman Dual Caliber Air Rifle
 John Deere 300 Lawn Tractor,
 hydraulic
 Chick Brooder
 Lawn Wagon
 Set of 4 Tires, 235/50R18 97W
 Weed Eater
 Brass
 Bird House
 Box of Leather
 Sockets
 Wrenches
 Sawzall
 Drill
 Gauges
 Drop Light
 4-Way Lug Wrench
 Jacks
 Air Tank
 C-Clamps
 Flaring Tool
 Fishing Poles
 Lanterns
 Lots more items not seen to list.

Gray, Haldeman, Hassell - Owners

Terms-Cash or Approved Check. Not Responsible For Accidents. Nothing Removed Until Settled For.
 Must show ID to get Buyers #. Announcements Made Day Of Sale Take Precedence Over Printed Matter.

Buckner & Gately Auction Service

Auctioneers

Steve Buckner 573-674-2686

Neal Gately 573-202-3132



MOVING ESTATE AUCTION!

**For Charlene Bennett of Monett, MO.
1373 FR 1090, Monett, MO 65708**



**DATE OF AUCTION:
TUESDAY, SEPT 15th @ 10:00 AM**
Rain or Shine! Porta Potties Available!
Call the SW Auction Office for more info: 417-652-7540

SELLER'S STATEMENT: After 55 years, Charlene has sold the house & property and is moving to town so she can have less daily upkeep. There are some collectible guns in this auction as well as some complete sets of Indiana & Fenton Glassware. There are also some Antique type items such as a Metal Pedal Tractor& old washer tub and some other misc items. There will be no concessions but we will have drinks available. Hope to see you here! *SW Auction Crew*

DIRECTIONS TO AUCTION SITE: 1373 FR 1090: Approx. 1/4 mile south of Angus Branch Restaurant. From Granby, MO: Take Hwy 60 East to Chapell Dr./FR 1090, just past Walmart. Turn Right (south) to auction site on right hand side. From Springfield, MO: Take Hwy 60 West to Chapell Dr / FR 1090 (just before Walmart) and turn Left (south) on Chapell Dr / FR 1090 to auction site on right hand side. **WATCH FOR SIGNS!**

FIREARMS:

RARE! 1969 Winchester Model 94 Theodore Roosevelt Rifle w/ 25" barrel. NEVER FIRED!
1966 Winchester Model 94 Centennial, NEVER FIRED!
1969 Winchester Model 94, Golden Spike, NEVER FIRED!
1969 Winchester Model 94; 30-30 caliber.
Wards Westernfield Model 30 pump shotgun

1969 Winchester Model 94 Theodore Roosevelt



TRACTOR, CAR & OUTDOOR/SHOP EQUIP:

Farmall 240, 2000 Buick Regal-transmission out, everything else works good. Troybilt Pony 7 speed riding mower-42". Pushmowers for parts, (2) Large Carports, Air Tank, Misc tin, Concrete benches & flower pots, Old Sickle Rake, Old plow, Stock Tanks, Old Wagon, Outdoor wooden swing, ladder, shingles, buckets, Glass top Patio Table & Chairs, McCullough Chainsaw, Delta Drill Press, Duracraft Bench Grinder, Delco motor, Campbell Hausfeld Air Compressor, Elec heater, Metal Cabinets, Wood Cabinet-air tight, Exercise equipment, Bicycle, Western Saddle & more!

1966 Winchester Model 94 Centennial



HOUSEHOLD:

Empire natural Gas Wood Stove-only 4 yrs old, Amana Dryer-elec, less than 5 yrs old, Centennial Washer-top load, Whirlpool Gas Dryer, Kitchen Rack, Slider Rocker, Entertainment Center, China Cabinet, Corner cabinet, Daybed, misc mugs & glasses, some household décor, frosty pitcher & glasses, drain snake & more misc!



MUSICAL INSTRUMENTS:

Samick Violin, Kalamazoo Mandolin, Glaesel Viola, Kalamazoo Banjo, Dulcimer.



COLLECTIBLES & GLASSWARE:

Full sets of Indiana & Fenton Glassware
Vintage LOMA Gold Gilt Teapot Set
Milk Glass Sets & Milk Glass Lamps
Copper Boiler Tub & Copper Pans
BBQ Knife Engraved from Germany
Red Hat Figurines
Old lead Crystal Set
Kerosene Lamps
Star of David dishes
Butter Churn
Ceramic Maple Jugs
Green Depression Glassware
Apple Dishes & Décor
Budweiser Horse Set
(12) Glass Corn holders-very old!
Silver pieces
Bobble heads
Miniature China Tea Set
Beer Signs / Union Made Emblem Busch
Metal Signs / Full sets of old spoke hubcaps
Old Toy Boxes
Zane Grey Books
Old Army Trunk
Old Pencil Sharpener & School Desk from the old Pleasant Dale School in Monett.
Old Singer Sewing Machine
Flexible Flyer III Sleds



TERMS & CONDITIONS ON BACK OF FLYER! MORE PICTURES ON BACK OF FLYER & WEBSITE!
www.swaauction.com



Bob Hughes
417-236-5888

OFFICE
417-652-7540



www.swaauction.com

417.652.7540

LAND & HOME AUCTION

30+/- Acres Offered In Tracts & The Entirety

Located Just 10 Miles East Of Moberly With Approx. 1,700 ft. of Hwy Frontage



ENDLESS POSSIBILITIES ON HWY. 24

Preview / Inspection:

Tuesday, Sept. 1st, 12:00 – 1:30 P.M. & Sept. 8th, 4:30 – 6:00 P.M.

Tract 1: 13.8 +/- Acres:

2,800+ Sq. Ft., 4 Bedroom Home | 29' x 37' Morton Workshop | 42' x 60' Morton Building – **Perfect Mother-In-Law Apartment or Home Business** | 54' x 135' Morton Building - **Possible Boat, RV, Farm Equipment Storage** | 40' x 42' Pole Barn – Hay or Equipment Storage

Tract 2: 16.7 +/- Acres:

Build Your Dream Home Overlooking 1 ½ Ac. Lake With Dock

18324 Monroe Rd. 1073, Madison, MO
Online Bidding Ends: Tuesday, September 15th at 12:30 P.M.

Check It Out & Bid At Atterberrysells.com

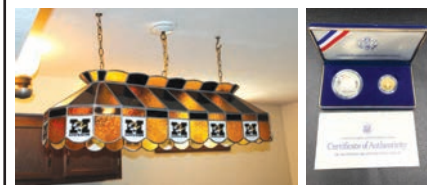
Atterberry Auction & Realty Co...Your Real Estate At Auction Specialists
 Email: contactus@atterberryauction.com



ATTERBERRY
 AUCTION & REALTY COMPANY
 We make buying and selling at auction easy!

www.atterberryauction.com
573-474-9295
 NAA MarkNet ALLIANCE

ONLINE ESTATE AUCTION



Outstanding Coin Collection • Unique & Hard To Find Antiques & Collectables • MU Bar Light • Sterling Silver • Don't Miss Out There Is Something For Everyone!

6221 E. Locust Grove Dr.,
 Columbia, MO

Bidding Ends: Tuesday, Sept. 15th at 12:30 PM

Check Out These Great Items & Bid at: Atterberrysells.com

Preview: Monday, Sept. 14th, from 4:00 PM to 6:00 PM

Payment & Pick-Up By Appointment: Wednesday, Sept. 16th

Seller: Janet E. & Donald E. Humphrey Trust

BID ONLINE AT Atterberrysells.com

Atterberry Auction & Realty Company
 Your Real Estate At Auction Specialists
 Email: contactus@atterberryauction.com



ATTERBERRY
 AUCTION & REALTY COMPANY
 We make buying and selling at auction easy!

www.atterberryauction.com
573-474-9295
 MarkNet ALLIANCE

2012 FORD FOCUS SEL: 142,000miles, leather seats, runs great. \$5,500. Call 417-531-0545

BRUSHOG 3210 3PT: 10 ft. Brushcutter. \$3,150. 573-765-4406.

MASTERPIECE OF ORIENTAL MYSTERY BOOKS: 16 of them, Copyright 1913-1926, Sax Rohmer. \$60 417-457-1023.

KITCHEN FAUCET MOEN: single lever, sprayer, new cartarage. \$70obo. 636-239-2695.

1520 JOHN DEERE TRACTOR: Gas, 39 H.P., w/1,556 hours, \$8,500. 573-768-0068.

FIREARMS: Professional Repairs and Restorations. Baron's Gunsmithing. 573-363-5801, Camdenton.

PATRIOT 250 SMALL SKID STEER LOADER: \$4,600. 573-765-4406.

FOR SALE: Allis Chalmers D17, wide front, 3 point, \$1,350. 573-690-9406.

AC 7FT BLADE: \$200 417-766-1991.

JOHN DEERE 750 15FT NO-TILL DRILL: \$11,000, Bonnets Mill, 573-897-4724.

NEW HOLLAND 617 DISK MOWER: \$3,950. 573-765-4406.

I BUY....used mobile homes. Call or text 573-338-6250 or email GregS.CDH@outlook.com

FRIDGIDAIRE CHEST FREEZER: 15cubft. \$100. Farmington, 573-701-0495.

GUARDIANWARE: 1930-1950's, Turkey roaster with lid. \$195. 573-364-7465.

YOUR Real Estate Auction Specialist

U.S. BANKRUPTCY COURT ORDERED
 Legacy Quartz Sand Company, LLC
 123.5 Acres m/l Vacant Land with Mineral Rights

Real Estate
AUCTION

Saturday, September 19, 1:00 P.M.
 Just South of 12628 Cadle Rd, Licking, MO

DIRECTIONS: From Hwys 63 & 32, in Licking, MO, go E. on Hwy 32 5.2mi. to Cadle Rd. then S. approx. 1.8mi on Left. Watch for signs!



For More Info Visit:
Bobkauctions.com or Auctionzip.com
 For Online Bidding: Walkerauctions.com

This property consists of 2 Tracts totaling approx. 123.5 acres m/l and is partially wooded with over 50% open pasture land. Property has road frontage on 2 sides and borders Pigeon Creek on the East end.

PARCEL#1: 17-3-0-07-0-00-002.000. ACRES: 81.30
2019 TAXES: \$ 1,230.00. SECTION 7/TOWNSHIP 32/RANGE 7

PARCEL#2: 17-3-0-06-0-00-005.000. ACRES: 42.20. 2019
TAXES: \$480.00. SECTION 6/TOWNSHIP 32/RANGE 7

**FEDERAL BANKRUPTCY TRUSTEE,
 FRED MOON**

AUCTIONEER'S NOTE: This property will be offered as on-site auction by Bob Kollmeier Auctions and will also be offered online with Walker Auctions LLC, Memphis, TN.

REAL ESTATE TERMS: 10% down auction day, balance due on or before 30 days after auction. REAL ESTATE SELLS "as is, where is".

	Bob Kollmeier AUCTIONS / REAL ESTATE CAI, CAGA 417.882.5664 Onsite/Online Auctions		RICHARD JEAN AUCTIONEER 417.299.8401		RUSS SMITH AUCTIONEER/SET UP MANAGER 417.844.0209
--	--	---	---	---	--

**ONLINE AUCTION -
 ONE LEVEL HOME
 SELLS TO HIGH BIDDER**



Open House / Inspection:
 Wednesday, Sept. 2nd & 9th,
 12:00 p.m. to 1:00 p.m.

- 1,600 +/- Sq. Ft. Ranch Home
- 3 Bedrooms, 2 Baths
- Kitchen / Dining Room Combination
- Rear Wood Deck & Two Car Garage
- Corner Lot Near Schools & Park

Note: This Home Is Move-In Ready & Perfect For Young Families, Retirees Or Investment Property.

**Bidding Ends: Wednesday,
 Sept. 16th at 12:30 p.m.**
 504 E. Southgate St.,
 Centralia, MO

*Make sure to shop the
 personal property auction
 ending the following Tuesday!*

**Check It Out & Bid At
 Atterberrysells.com**

Atterberry Auction & Realty Co.....
 Your Real Estate At Auction Specialists
 Email: contactus@atterberryauction.com

	ATTERBERRY AUCTION & REALTY COMPANY We make buying and selling at auction easy!	www.atterberryauction.com 573-474-9295 MarkNet ALLIANCE
---	--	--

**WELL CARED FOR
 ONE OWNER HOME
 SELLS TO HIGH BIDDER**



Open House / Inspection:
 Monday, Sept. 14th, 4:30 – 5:30 P.M.
 & Sept. 21st, 12:00 – 1:00 P.M.

406 Southeast Terrace, California, MO

- Brick 5 Bedroom, 4 Full & 2 Half Baths
- Spacious Master Suite with Private Patio
- Formal Dining & Living Room
- Finished Walkout Basement with Family & Recreational Room
- Private Rear Patio Perfect for Entertaining

Note: This Beautiful Well Built Home Is Ready For A New Family To Move-In And Enjoy, Just As The English Family Has For The Past 50 Years!!

Online Bidding Ends:
 Thursday, Sept. 24th at 12:30 P.M.

**CHECK IT OUT & BID AT
 Atterberrysells.com**

Atterberry Auction & Realty Co.....
 Your Real Estate At Auction Specialists
 Email: contactus@atterberryauction.com

	ATTERBERRY AUCTION & REALTY COMPANY We make buying and selling at auction easy!	www.atterberryauction.com 573-474-9295 MarkNet ALLIANCE
---	--	--

WEATHERED BARN WOOD SIDING:
 8" & 10" wide. 573-729-7226. www.pineridgerustic.com

FOOTBALL CARDS: Complete set of 28 players, on uncut sheets, 1979, 1980 & 1981. \$50/set. 573-689-2490.

AC 840 DIESEL ARTICULATING 4-WHEEL DRIVE LOADER: \$7,250. 573-765-4406.

VERY LARGE RECORD ALBUM COLLECTION. 573-729-3297, make offer.

FOUR TIRES: Size 245-60 R18 Michelin. No patches. \$80 firm. 417-532-2344.

JOHN DEERE 435 ROUND BALER: monitor, 4x6, net wrap. \$7,450. 573-765-4406.

BRUSHOG 3008: 3PT, 8ft brushcutter, 1000 shaft. \$2,100. 573-765-4406

CLEAN 275 GALLON FLUID TOTES: Limited quantity. \$55. 417-349-1386.

JOHN DEERE PLOW: 3pt lift, 3 disk. \$200 417-532-6561

2-21" PUSH MOWERS: Briggs & Stratton engine, 1 runs, 1 for parts. Both \$750bo. 636-239-2695.

8 TIRES: 9.50R16.5, Mounted on 8-hole Bud Wheels, with axles and airbrakes. \$500. 417-766-1991

235 SIX CYLINDER: engine, transmission and real axle from 1958 Chevrolet 1 ton truck. \$700 with more parts. 573-729-0272. Salem.

2-19" FRONT TRACTOR AND WHEELS 400X19. \$65EACH. 573-743-6416.

BUFFALO LIVESTOCK MARKET LLC 

276 Hwy 32 West Buffalo, Missouri
417-345-8122

SPECIAL STOCK COW & BULL SALE
Tuesday Sept. 15th 6:30pm
Early Consignments:

Covert Cattle Co. Buffalo MO. Lost Lease: 90 Fall Calving Blk/Bwt Balancer Cross Cows. 4 7yrs old all home-raised. 40-50 Calves by side balance 3rd stage. 1 Black Balancer Bull.

Harmon Farm Cabool, MO. Sold Farm: 29 Blk Cows 2nd and 3rd 3-6yrs old. 4 Calves. 3 Bred Heifers. 1 3yrs old Reg. Lim Flex Bull Top 2% of his breed for marble.

J and J Lebanon: 6 Blk Lim/Lim Flex Cows 4-7yrs 3rd Stage Bred Reg Lim Flex Bull.

More by Sale Day.

Bulls: 3 Reg. Angus Bulls 2yrs. 3 Reg. Charolais Bulls 2yrs. 1 Reg. Red Beefmaster 17 mo.

533-2944 | **588-6185**
Lyle Caselman | **Leon Caselman**

COVERCRAFT CAR COVER: 3 layers, breathable, rain resistant, will not mildew, Fits 16'x17'6". \$125. 417-469-0325.

JOHN DEERE 2955: Diesel Cab Cold Air Tractor, JD 720 loader, nice. \$27,000. 573-765-4406.

LIONEL TRAIN SET: Steam engine, tender, caboose and other car, track and transformer. \$195. 573-364-7465, Rolla.

LANDPRIDE RCF3010: pull type brush hog, 10 foot, \$5450. 417-270-1505.

LARGE REFRIGERATOR: with ice maker, freezer, (needs ice maker), 3 years old. Good Condition. \$200 OR TRADE. 573-734-2822.

6FT. BRUSH HOG: Offset disk, \$1,900. 573-765-4406.

LOG SIDING SALE: 2X8 Western Cedar .99 ft/ Pine \$1.30 ft while supplies last. www.pineridgerustic.com 573-729-7226.

CUSTOM SAW MILLING: Lebanon. 417-533-4607, 417-664-1195.

METAL DETECTOR: \$125 or trade. De-solve, 573-327-9068.

 **MID MISSOURI STOCKYARDS**

REGULAR SALE EVERY THURSDAY 11 AM

SPECIAL COW SALE • SEPT. 12TH • 6 P.M.

For Farm Visits, Market Updates, or Trucking
Call **Zach Cox 417-777-1320**
Dan Romine 573-578-4939

**Competitive Buyers!
Competitive Commission!
Competitive Market!**

Barn: 417-532-9292 
1-44 • Exit 123 "just outside of Lebanon"
17505 Route 66, Phillipsburg, MO 65722
For weekly market updates, visit us at www.midmostockyards.com

BLUE & RED HEELER PUPPIES: Good working stock, UTD. \$150. 417-664-5926.

MILLER 10FT. OFFSET DISK: \$3,950. 573-765-4006.

DESK AND OFFICE CHAIR: \$40. Mountain View. 417-934-6234.

WANTED, TIMBER TO LOG ON SHARES: Honest, reliable, references. 417-533-4607, 417-664-1195.

FORD 300, 6 CYLINDER HEADERS: \$125. 417-683-7843.

NO \$\$\$ DOWN MOBILE HOMES- Call for details 573-499-9993 columbiadis-counthomes.com

MISSOURI GARDENER'S GUIDE: 421 pages, over 170 color photos, \$5.00 417-532-2045. Lebanon. Leave phone number.

2-600X16 NEW TIRES. \$55 EACH ALSO SET OF LIFT ARMS FOR 8N FORD. \$65, 573-743-6416

Omar's Logging

⇒ Oak & Walnut
⇒ Excellent Prices
Amish Owned & Operated



LEAVE MESSAGE: 417-741-0440

 **HARTVILLE LIONS CLUB**
Consignment & Donation
15th Annual Auction

Saturday, September 26th

Good Consignments Needed
Low Fee Commissions
Donations Appreciated

To consign or donate items, contact:

Dan 531-3329	Lonnie 741-2095	Scott 741-0082	Charlie 464-8166
-----------------	--------------------	-------------------	---------------------

Consign early by Sept. 9th for sale bill listing

POOL TABLES: Installations, moves, recoverers, repairs, accessories, etc. 573-646-1700.

IHC 1086 DIESEL TRACTOR: Cab & Air. \$8,750. 573-765-4406.

WILBUR'S FISH BRANCH ANGUS: 18 month old bulls for sale, high performance and calving ease, also available spring bred registered heifers, synch AI'd, preg checked bred. Mexico MO, 573-473-6019, www.fishbranch.com

PUREBRED GUERNSEY BULL 22MONTHS: fertile, AI bred, sharp, ready to use. 573-263-1833\573-437-4017.

1997 DODGE GRAND CARAVAN: runs well, 239,xxx miles, good condition. \$2,100, 573-729-0272.

PUPPY/SMALL DOG CAGE:\$25, LARGE DOG CAGE, \$40. Silva 573-238-5262.

IHC 10FT WHEEL DISK: \$1,600. 573-765-4406.

VILLA HOMES IN ROLLA: Has NEW and USED Mobile Homes. Call David for info: 573-578-8072.

LANDPRIDE RCF3010: pull type brush hog, 10 foot, \$5450. 417-270-1505.

LARGE REFRIGERATOR: with ice maker, freezer, (needs ice maker), 3 years old. Good Condition. \$200 OR TRADE. 573-734-2822.

Custom Gun Building & General Gunsmithing

 **Craig's OUTDOOR Sports**

- Ammo
- Reloading Supplies
- Muzzleloaders & Supplies
- Hunting Supplies

417-926-0255
9435 Hwy N, Ste A, Mountain Grove
Mon.-Fri. 9am-5pm • Sat. 9am-12pm

WILBUR'S FISH BRANCH ANGUS: 18 month old bulls for sale, high performance and calving ease, also available spring bred registered heifers, synch AI'd, preg checked bred. Mexico MO, 573-473-6019, www.fishbranch.com

PUREBRED GUERNSEY BULL 22MONTHS: fertile, AI bred, sharp, ready to use. 573-263-1833\573-437-4017.

1997 DODGE GRAND CARAVAN: runs well, 239,xxx miles, good condition. \$2,100, 573-729-0272.

PUPPY/SMALL DOG CAGE:\$25, LARGE DOG CAGE, \$40. Silva 573-238-5262.

IHC 10FT WHEEL DISK: \$1,600. 573-765-4406.

VILLA HOMES IN ROLLA: Has NEW and USED Mobile Homes. Call David for info: 573-578-8072.

HORSE HAY: Sqa re bales, TIMOTHY CLOVER AND GRASS MIX, HIGH PRO-TeiN \$5 bale,delivery available for 100 or more. 573-368-1794, Rolla.

5 PIECE SET W/LIDS OF BLUE FLOWER CORNINGWARE: no chips, good condition. \$60. 417-532-2344.

CAPPER'S WEEKLY VINTAGE SEARCHLIGHT COOKBOOK: hard-back \$10. 417-532-2045, Lebanon. Leave phone number.

AC 2-BOTTOM PLOW: \$200. 417-766-1991.

TUFFY SPECIAL -Volume Prices 573-657-2176 amegamobilehomes.com

TAYLOR TRUCKS & EQUIPMENT

417-924-2026 • 2676 Hwy. 5
Mansfield, MO

New Mowers! Bush-Whacker, Big Bee Storage Containers & Dry Vans - 20' - 53' Farm Tires, PTO's & Parts for Rotary Mowers, Farm Tractor Implements
Plows, Used 15" Bush-Whacker Now In Stock, Discs, and More Skidsteer Attachments: Pallet Forks, Buckets, Grapples, Hay Spears & Tree Sheers - RR Ties

Bush-Whacker Heavy Duty Rotary Cutter



TRAILER PARTS & REPAIR

NEW SEMI TIRES- DRIVE & STEER

We Invite you To Come By & Look Us Over!
Located 2.5 Miles North Of Mansfield, MO On Hwy 5

TRACTORS: 880 Oliver, 350 Farnall. \$2,000 each. Cabool, 417-349-2908.

BRUSH HOGGING: By the hour or by the job. Honest, reliable, newer equipment, good rates. 30 miles radius from Norwood. 417-349-0084.

USA GUIDE TO AMERICA'S HEARTLAND: A travel guide to the Backroads of Missouri, Kansas, Iowa, Indiana and Illinois, 528 pages, \$5.00. 417-532-2045, Lebanon. Leave phone number.

4 BRIDGESTONE TIRES: 225/65 R17 Sport A/S 9,000 miles. \$150. 417-934-6234.

AC 7FT BLADE: \$200 417-766-1991.

QUALITY CONSTRUCTION. HONEST SERVICE. GREAT VALUE.

FULLY INSURED

Roofing • Remodels • Decks • Siding
• Concrete • New Construction



CALL FOR FREE ESTIMATE
(417) 217-3572

OFFICIAL TRACTOR OF TOUGH™



Marshfield Machinery Inc.

222 E. Madison • Marshfield, MO 65706

417-859-2117 • www.marshfieldmachinery.com

MahindraUSA.com © 2020 Mahindra USA Inc.

Mahindra Rise.

NEW MAHINDRA TRACTORS

7085 4WD & LDR 85HP	IN STOCK
2655 4WD, BACKHOE 55HP	IN STOCK
2655 4WD & LDR 55HP	IN STOCK
4540 2WD & LDR 41HP	IN STOCK
1626 4WD & LDR 26HP	IN STOCK
MAX26XL & LDR 26HP	IN STOCK

USED TRACTORS

MAHINDRA 3550 CAB 4WD 49HP	26,500
KIOTI RX7320 4WD LDR 73HP	24,500
KUBOTA MX5200 4WD LDR 52HP	23,500
MF 6170 W/ LDR 97HP	17,500
HESSTON 80-90 CAB LDR 70HP	11,500
KUBOTA B7510 4WD LDR 21HP	7,500
CASE 1490 83 HP	7,500
MF 175 63HP	6,000
FORD 3550 LDR 50HP	5,500
CASE IH 235 W/ MOWER 18HP	3,500
MF 65 48HP	3,000

USED ROUND BALERS

MF 1745 4X5	8,500
NI 6254 4X5	7,500
VERMEER 5055I MESH	7,500
GEHL 2480 4X5	6,500
JD 435 4X6 MESH	6,500
VERMEER 554XL 4X5	5,500
HESSTON 560 5X6	3,000
HESSTON 550 4X6	3,500
HESSTON 530	3,500
HESSTON 5500 5X5	1,500
NH 850 5X5	1,500
VERMEER 605D 5X6	750
MF 10 SQUARE BALER	750

USED MOWER/CONDITIONERS

MF 1373 10FT	22,500
MF 1363 10FT	14,500

USED MISC.

HAYBUSTER 107C DRILL	17,500
HAYBUSTER 107C DRILL	11,500
HAYBUSTER 107C DRILL	10,500
FRONTIER BALE PROCESSOR	8,500
BUSH HOG 417 TEDDER	3,500

Marshfield Machinery Inc.
222 E. Madison • Marshfield, MO 65706
417-859-2117
www.marshfieldmachinery.com

FORD TRACTOR 2000 SERIES: good shape, \$3,250. 417-531-5300.

BRUSHOG 2715: 15 ft. Brushcutter, hyd fold brushcutter, heavy gear boxes. \$9,750. 573-765-4406.

TRUCK LOAD OF FLEA MARKET & AUCTION ITEMS: \$200 or trade. 573-327-9068

MISSOURI WILDFLOWERS BOOK: 286 pages, \$4. 417-532-2045, Lebanon. Leave phone number.

ANTIQUE BRASS KITCHEN CABINET HARDWARE: 1 set of 54. \$50 per set. 636-239-2695

1965 FORD 1 TON TRUCK: 12' flatbed, runs well. \$3,600, 573-729-0272, Salem.

KIDS LITTLE TYKES RED CAR BED: w/mattress. \$150. Desloge, 573-327-9068.

235 SIX CYLINDER: engine, transmission and real axle from 1958 Chevrolet 1 ton truck. \$700 with more parts. 573-729-0272. Salem.

Starnes Auto LLC

417.718.2707 Cell
417.588.3159 Office
www.starnesauto.com

22115 Rt. 66
Lebanon, MO 65536

2003 FORD FOCUS SILVER, 280,XXX MI.	\$1,800
2003 FORD F150 WHITE, 166,XXX MI.	\$5,800
2003 FORD F150 BROWN, 151,XXX MI.	\$6,650
2006 CHRYSLER T&C BLUE, 185,XXX MI.	\$2,850
2006 FORD TAURUS SILVER, 78,XXX MI.	\$3,450
2007 PONT GRAND PRIX BLUE/GREEN, 160,XXX MI.	\$2,650
2007 FORD EDGE SEL BLACK, 143,XXX MI.	\$4,950
2007 BUICK LUCERNE WHITE, 103,XXX MI., GOOD TITLE.....	\$4,950
2008 CHEVY IMPALA GRAY, 32,XXX MI.	\$5,950
2008 GMC ACADLA GOLD, 138,XXX MI.	\$6,500
2010 FORD FUSION MAROON, 220,XXX MI.	\$3,500
2011 CHEVY EQUINOX MAROON, 87,XXX MI.	\$8,450
2012 CHEVY EQUINOX LT CHARCOAL, 117,XXX MI.	\$6,500
2012 CADILLAC SRX PERFORMANCE BLACK, 123,XXX MI.	\$8,250
2012 FORD FUSION BLUE, 101,XXX MI.	\$6,100
2012 FORD FUSION SEL WHITE, 120,XXX MI.	\$5,950
2012 FORD FUSION BLACK, 130,XXX MI.	\$3,500
2012 CADILLAC SRX BLACK, 51,XXX MI.	\$12,800
2014 BUICK LACROSSE RED, 68,XXX MI.	\$9,950
2014 CHEVY TRAVERSE GRAY, 112,XXX MI.	\$11,500
2015 GMC TERRAIN SLT BLACK, LEATHER, 34,XXX MI.	\$13,800
2015 CHEVY EQUINOX LT BLACK, 113,XXX MI.	\$7,850
2015 CHEVY MALIBU LS SILVER, 54,XXX MI.	\$9,750
2016 CHEVY TRAVERSE BLACK, 54,XXX MI.	\$16,800
2017 FORD FIESTA SILVER, 26,XXX MI, GOOD TITLE.	\$10,000

* A HERITAGE OF * DOING SCORES OF CHORES



STAR SPANGLED PACKAGE

Includes 4044M, Loader and Rotary Cutter

\$700 off¹

GEAR UP FOR FALL PACKAGE

Includes 1025R Tractor, Loader and Broadcast Spreader

\$550 off¹

GATOR™ UTILITY VEHICLES

\$500 off²

* A HERITAGE OF * YELLOW AND BLACK QUALITY



Legendary Products. Extraordinary Service.
Find your local Heritage Tractor location or request a quote at HeritageTractor.com



(1) Offer ends 10/31/2020. Subject to approved installment credit with John Deere Financial. Based on a 0% down payment and financing of 0% APR for 72 months. Taxes, freight, set up and delivery charges could increase the monthly payment. Prices above are available to customers in our area of responsibility, which include select counties in Kansas, Missouri, Arkansas, Oklahoma and Nebraska
(2) Offer available on qualifying purchases made between 15 July 2020 and 30 October 2020. Offer available on the purchase of any model year 2020 & older Full-Size Utility Vehicles in the U.S. only. Prices and savings in U.S. dollars. See your participating dealer for details.

SECTIONAL SOFA WITH 4 ELECTRIC RECLINERS: like new, grayish. \$1,500. 417-926-7718.

REGISTERED HEREFORD & ANGUS BULLS: Home raised, Some Show-Me Select Qualified. 573-701-7828. Belgrade

CASE 580C BACKHOE LOADER DIESEL: \$8,500. 573-765-4406.

2012 FORD FOCUS SEL: 142,000miles, leather seats, runs great. \$5,500. Call 417-531-0545

DREAM HOUSE -Online, chateauhomes.net
Call Marla 573-657-7040

1995 XLT FORD: F-150 automatic, 8 cylinder, 4x4, 184,000 mi, farm tractor, gooseneck, \$1,500 obo. 573-729-2874

WANTED STANDING TIMBER: Butler Logging, 417-448-9323.

FOR SALE: Allis Chalmers D17, wide front, 3 point, \$1,350. 573-690-9406.

WWW.MYWEEKLYTRADER.COM

MASTERPIECE OF ORIENTAL MYSTERY BOOKS: 16 of them, Copyright 1913-1926, Sax Rohmer. \$60 417-457-1023.

KITCHEN FAUCET MOEN: single lever, sprayer, new cartarage. \$70obo. 636-239-2695.

JOHN DEERE 750 15FT NO-TILL DRILL: \$11,000, Bonnets Mill, 573-897-4724.

2-21" PUSH MOWERS: Briggs & Stratton engine, 1runs, 1 for parts. Both \$75obo. 636-239-2695.

This is...

WEEKLY TRADER COUNTRY!

The Weekly
Trader
GETS
RESULTS!



WEEKLY TRADER MAGAZINE

Place Your Ad With Us Today!

417-532-9131 CHECK US OUT ONLINE AT: myweeklytrader.com

NEW HOLLAND 617 DISK MOWER: \$3,950. 573-765-4406.

CLEAN 275 GALLON FLUID TOTES: Limited quantity. \$55. 417-349-1386.

I BUY.....used mobile homes. Call or text 573-338-6250 or email GregS.CDH@outlook.com


WEATHERED BARN WOOD SIDING: 8" & 10" wide. 573-729-7226. www.pineridgerustic.com

VERY LARGE RECORD ALBUM COLLECTION. 573-729-3297, make offer.

COVERCRAFT CAR COVER: 3 layers, breathable, rain resistant, will not mildew, Fits 16'x17'6". \$125. 417-469-0325.

ALL OF OUR FOREST RIVER VIKINGS ARE PRICED AT WHOLESALE!

764V	2020 Viking 175FQ MSRP-\$19,510.....	\$14,911
763V	2020 Viking 175BH MSRP-\$20,090.....	\$15,811
761V	2020 Viking 18RBSS MSRP-\$23,811.....	\$18,963
766V	2020 Viking 21FQ MSRP-\$24,256.....	\$19,860
768V	2020 Viking 21BHS MSRP-\$25,742.....	\$19,975
767V	2020 Viking 24RBS MSRP-\$29,466.....	\$21,880



WehrRVs
11311 Bus. 60,
Mtn. Grove, MO
1-800-288-6827
www.wehrfordofmountaingrove.com



TASK. TASK. DONE.

RB16 SERIES
REAR BLADES
20-40 HP 60", 74", 84" Widths
• Cat. 1 hitch
• 7 Forward angles; 3 Reverse angles
• 5 Tilt positions
• 12" Offset left or right
• 14" Moldboard height
• 1/4" Moldboard thickness
• Landscape Rake adaptable

AGRI ENTERPRISES
For Outstanding Products & Service
1-1/2 Miles South Of Licking, MO On Hwy 63
573-674-2203
1-800-653-7152
www.landpride.com www.agri-enterprises.com

FOOTBALL CARDS: Complete set of 28 players, on uncut sheets, 1979, 1980 & 1981. \$50/set. 573-689-2490.

BRUSHOG 3210 3PT: 10 ft. Brushcutter. \$3,150. 573-765-4406.

1520 JOHN DEERE TRACTOR: Gas, 39 H.P., w/1,556 hours, \$8,500. 573-768-0068.

FIREARMS: Professional Repairs and Restorations. Baron's Gunsmithing. 573-363-5801, Camdenton.

8 TIRES: 9.50R16.5, Mounted on 8-hole Bud Wheels, with axles and airbrakes. \$500. 417-766-1991

FOUR TIRES: Size 245-60 R18 Michelin. No patches. \$80 firm. 417-532-2344.

JOHN DEERE 435 ROUND BALER: monitor, 4x6, net wrap. \$7,450. 573-765-4406.

BRUSHOG 3008: 3PT, 8ft brushcutter, 1000 shaft. \$2,100. 573-765-4406

JOHN DEERE 2955: Diesel Cab Cold Air Tractor, JD 720 loader, nice. \$27,000. 573-765-4406.

JOHN DEERE PLOW: 3pt lift, 3 disk. \$200 417-532-6561

FRIDGIDAIRE CHEST FREEZER: 15cubft. \$100. Farmington, 573-701-0495.

Buildings • Hunter's Cabins • Lawn Furniture



JAMCO BUILDERS

JAMCO Portable Buildings
800-688-2064 • 307 Enterprise Dr. • Seymour, MO • www.jamcobuilders.com

Rent To Own Plan

DARDEN PROFESSIONAL TIMBER HARVESTING, BUYING STANDING TIMBER: Great prices, improve wildlife habitat and improve forest health. State Certified & Fully Insured! 573-247-4808 or 573-739-1122. Salem

PATRIOT 250 SMALL SKID STEER LOADER: \$4,600. 573-765-4406.

AC 840 DIESEL ARTICULATING 4-WHEEL DRIVE LOADER: \$7,250. 573-765-4406.

LIONEL TRAIN SET: Steam engine, tender, caboose and other car, track and transformer. \$195. 573-364-7465, Rolla.

LOG SIDING SALE: 2X8 Western Cedar .99 ft/ Pine \$1.30 ft while supplies last. www.pineridgerustic.com 573-729-7226.

Built heavy duty, to make light work of any job.



L Series 24.1-47.3 HP Durable cast iron and steel design



(417) 777-2391
quarleskubota.com

Call today to schedule a demo on the #1 selling compact tractor in the U.S. for over 10 years.*

- Four affordable models to choose from
- Performance-matched Kubota front loader
- Kubota diesel engine and gear or HST transmission
- Easy-to-use controls

Together we do more.

New L2501DT w/Loader Deal!

**L2501DT
w/loader**

**\$19,995
Financing Price**

- NEW Kubota L2501DT
- 4wd, DIESEL, AG TIRES
- KUBOTA LOADER

- 5' ROTARY CUTTER
- 5' BOX BLADE
- NEW 18' KODIAK TRAILER W/RAMPS



KubotaUSA.com

*Based on EDA tractor sales data of under 40 horsepower models from 2009 to 2019.

© Kubota Tractor Corporation, 2020. This material is for descriptive purposes only. Kubota disclaims all representations and warranties, express or implied, or any liability from the use of this material. For complete warranty, disclaimer, safety, incentive offer and product information, consult your local Dealer or go to KubotaUSA.com.

Land

For Sale

Webster Co, MO | 810 Acres



\$2,000,000

- Top shelf farm currently running 146 mother cows with live water
- Farm has a very strong ROI on cattle and crop production
- 160 acres could be put back in crop production with class 2 soils
- Excellent fencing with 5 strand wire and 12 pastures for grazing.
- Water consists of 1.8 miles of Cantrell Creek, 3 wells, multiple springs and auto waterers
- Ten entrances to farm - great road frontage
- Two sets of covered and lighted working pens with chute and tub
- Excellent hunting and fishing in creeks and ponds
- Nice 3 bedroom, 2 bath farm home and two other older farm homes on property with one rented
- Very nice outbuildings
- Pastures have been soil tested and improved as needed
- Just 14 minutes to Marshfield
- Great location to Kansas City, St. Louis or Springfield



WHITETAIL PROPERTIES REAL ESTATE

HUNTING | RANCH | FARM | TIMBER

Brian Utecht | 417-766-5595

Brian.Utecht@whitetailproperties.com

WHITETAILPROPERTIES.COM



Missouri's Top Land Specialist in 2014,
2015, 2016, 2017, 2018 and 2019