

FREE - TAKE ONE!

Vol. 27 No. 22

AUGUST 27, 2020

800-543-8271 • 800-665-8875

WEEKLY TRADER MAGAZINE



Find us on Facebook

@myweeklytrader
AUCTIONS PG. 9

VISIT OUR NEW WEBSITE! MYWEEKLYTRADER.COM

A HELPING HAND TO HEROES.

NOW THROUGH SEPTEMBER 30, ELIGIBLE HEALTHCARE PROFESSIONALS GET THE CHEVROLET FIRST RESPONDER DISCOUNT.¹

LEARN MORE ABOUT OUR DISCOUNT PROGRAMS AT CHEVY.COM/DISCOUNTS



2020 SILVERADO
CREW CAB LT ALL STAR Z71
#33386

FOR ELIGIBLE FIRST RESPONDERS
\$5,000 CASH ALLOWANCE
+ \$2,904 FIRST RESPONDER DISCOUNT¹

\$7,904 BELOW MSRP²



2020 BLAZER
RS AWD
#33249

FOR ELIGIBLE FIRST RESPONDERS
\$5,993 CASH ALLOWANCE
+ \$2,174 FIRST RESPONDER DISCOUNT¹

\$8,167 BELOW MSRP²



2020 EQUINOX
LT FWD
#33399

FOR ELIGIBLE FIRST RESPONDERS
\$5045 CASH ALLOWANCE
+ \$1,300 FIRST RESPONDER DISCOUNT¹

\$6,345 BELOW MSRP²



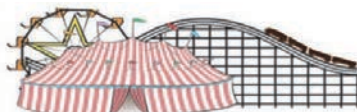
2020 TRAX
LT FWD
#33167

FOR ELIGIBLE FIRST RESPONDERS
\$4,446 CASH ALLOWANCE
+ \$576 FIRST RESPONDER DISCOUNT¹

\$5,022 BELOW MSRP²

FIND NEW ROADS™

CHEVROLET



CHEVROLET GMC WE ARE PROFESSIONAL GRADE Cadillac BUICK

FAIRGROUND

Auto Plaza

DRIVEN TO SERVE YOU BEST...

100 Fairgrounds Road
Rolla, Missouri
(573) 364-1002

www.FairgroundGM.com



¹ MUST BE A CURRENT FIREFIGHTER, POLICE, EMT/PARAMEDIC, OR 911 DISPATCHER OR HEALTHCARE PROFESSIONAL (AS DEFINED BY U.S. BUREAU OF LABOR STATISTICS). FIRST RESPONDERS EMPLOYED BY FEDERAL, STATE OR MUNICIPAL GOVERNMENTS MAY BE SUBJECT TO RESTRICTIONS THAT LIMIT THEIR ABILITY TO ACCEPT THIS OFFER. ACCORDINGLY, THIS OFFER IS VOID UNLESS PERMITTED BY APPLICABLE FEDERAL, STATE AND MUNICIPAL LAWS, REGULATIONS, RULES, ORDINANCES, POLICIES, CODES OF CONDUCT, AND OTHER DIRECTIVES OR STANDARDS REGARDING ETHICS AND GIFT ACCEPTANCE BY THE APPLICABLE FEDERAL, STATE OR MUNICIPAL EMPLOYEES. BY ACCEPTING THIS OFFER, YOU VERIFY THAT DOING SO COMPLIES WITH ALL LAWS, REGULATIONS, POLICIES OR OTHER RESTRICTIONS REGARDING ETHICS OR GIFT ACCEPTANCE THAT APPLY TO YOU. NOT AVAILABLE ON SELECT BASE TRIMS OR WITH SOME OTHER OFFERS. AT PARTICIPATING DEALERS. TAKE NEW RETAIL DELIVERY BY 9/30/20. ² 2020 SILVERADO CREW CAB LT ALL STAR Z71 BASED ON \$51,970 MSRP. 2020 BLAZER RS BASED ON \$49,945 MSRP. 2020 EQUINOX LT BASED ON \$33,635 MSRP. 2020 TRAX LT BASED ON \$24,645 MSRP. NOT AVAILABLE WITH SPECIAL FINANCING, LEASE AND SOME OTHER OFFERS. TAKE NEW RETAIL DELIVERY BY 8/31/20. ©2020 GENERAL MOTORS. ALL RIGHTS RESERVED.

Land

For Sale

Wright Co, MO | 315 Acres



\$825,000



- Beautiful 2,400 S/F home that is 3 bedrooms and 3 baths
- Blacktop road frontage with excellent access
- Amazing fertile bottom ground farm with excellent fence, pens and water
- Giant bucks abound on this secluded dream creek bottom property with perfect food plots, bedding areas, ridges and pinch points. Seriously, the huntability and quality of deer on this property is second to none. I absolutely love this farm for growing and holding whitetails
- Excellent trail system
- Property consists of 115 acres of hardwoods and 200 acres of rolling hills and bottom ground for pasture or crops estimated
- 3 ponds, 1 water well, 12 pastures, 5 fountains and springs
- Home has been updated in last 30 days
- Low taxes and utilities
- Owner financing available with 30% down
- Property is 35 miles to Lebanon, 215 miles to St. Louis, 20 miles from Mt. Grove, 70 miles to Springfield



Missouri's Top Land Specialist in 2014, 2015, 2016, 2017, 2018 and 2019

WHITETAIL PROPERTIES REAL ESTATE

HUNTING | RANCH | FARM | TIMBER

Brian Utecht | 417-766-5595

Brian.Utecht@whitetailproperties.com

WHITETAILPROPERTIES.COM



TIME FOR PRECISION

Hustler's residential mowers are built stronger and perform faster, allowing you to quickly maneuver around obstacles with ease. Tackle your lawn in record time with unparalleled precision, and use the time you save to do the things you love.



For Outstanding Products & Service
AGRI-ENTERPRISES

1-1/2 Miles South Of Licking, MO On Hwy 63
573-674-2203 • 1-800-653-7152 • www.agri-enterprises.com

TAKEUH DIESEL EXCAVATOR: & Hyd Thumb \$14,500. 573-765-4406.

IHC 1086 DIESEL TRACTOR: Cab & Air. \$8,750. 573-765-4406.

STANDARD BRED HARNESS SET: W/ Bridles. \$400. 417-844-7149.

NEW IDEA 5410 DISKMOWER: 10ft. \$4,450. 573-765-4406.

BRUSHOG 8FT OFFSET DISK: \$2,500. 573-765-4406.

WANTED STANDING TIMBER: Butler Logging, 417-448-9323.

VOTED #1 BEST Preowned Car Dealership

TIM'S USED CARS

(573) 341-3828 • 1334 South Bishop (Hwy. 63) • Rolla, MO
Next to Hwy CC • www.tims-used-cars.com

<p>2015 GMC SIERRA SLE Z71 Crew Cab, 4x4, 5.3 V8, Leather, Navigation, 83,xxx Miles Only \$29,500</p>	<p>2007 CHEVY 2500 CREW CAB 4X4 6.6 Diesel, Power Equipped, 252,xxx Miles Only \$13,900</p>
<p>2011 FORD F150 FX4 Crew Cab, 4x4, 3.5 EcoBoost, Power Equipped, 124,xxx Miles Only \$18,900</p>	<p>2008 FORD TAURUS X LIMITED AWD, Loaded with options, 140,xxx Miles Only \$5,800</p>

LARGE SELECTION OF CARS, TRUCKS, SUVs & VANS!

#1 Selling FARM TRACTOR IN THE WORLD

Mahindra

Come See Us For Your Mahindra
Financing available for those who qualify
www.agri-enterprises.com

AGRI-ENTERPRISES
1-1/2 Miles South Of Licking, MO On Hwy 63
573-674-2203 • 1-800-653-7152

TRACTOR TIRE: (14-9R-24) \$400. and Kubota Tractor Rim (24X) \$400. These items are new and never been on a tractor. 660-337-6311.

AC 2-BOTTOM PLOW: \$200. 417-766-1991.

Offering the Area's LOWEST METAL PRICES!



Custom Homes • Metal Roofs

Pole Barn Packages

24'x32'x10' materials only	\$5,425	30'x60'x10' materials only	\$9,150
24'x40'x10' materials only	\$6,200	40'x60'x12' materials only	\$12,325
30'x40'x10' materials only	\$6,975		

Plus Sales Tax And Delivery.
Labor available at additional cost.
Call for quote.

Compare Before You Buy.

We Use Only The **Highest Quality** Materials!



ALL MATERIAL PACKAGES INCLUDE...

- ✓ #1 Yellow Pine Lumber
- ✓ #1-40 Yr. Painted
- Metal w/Screws
- ✓ 1-10' Overhead Door
- ✓ 1-36" Entry Door

Fully Insured



PORTABLE BUILDINGS

Rent to Own
No Credit Check

29 Gauge
#1 PAINTED METAL

- ★ Lifetime Warranty - \$70.00 Sq.
- ★ 40 Year Warranty - \$67.00 Sq.
- ★ 20 Year Warranty - \$64.00 Sq.
- ★ 25 Year Galvalume - \$54.00 Sq.

Labor prices will be higher in locations over 75 miles from Marshfield, MO

1049 SCHOOLVIEW DR.
Marshfield, MO



Marshfield BUILDINGS

www.marshfieldbuildings.com



417-859-7744

DETROLA MUSIC MACHINE: Plays CD'S, Records, Cassettes, AM-FM Radio, excellent condition, 20x18x12, oak finish, antique look. \$65. 573-364-7465, Rolla.

AC 7FT BLADE: \$200 417-766-1991.

FOOTBALL CARDS: Complete set of 28 players, on uncut sheets, 1979, 1980 & 1981. \$50/set. 573-689-2490.

GUARDIANWARE: 1930-1950's, Turkey roaster with lid. \$195. 573-364-7465.

2004 DODGE TRUCK: 4Door, 4WD, 6-speed standard, white, 5.9 Cummins, 189,000 miles, shortbed, Michelin tires, Very clean \$12,500 417-588-1289.

PENN FISHING REEL W/HEAVY DUTY TRUE TEMPER ROD: Large, wire line. \$85. 417-457-1023.

23FT TRAVEL TRAILER: good shape, new tires, ready to go. \$1,500. 417-733-6141.

DARDEN PROFESSIONAL TIMBER HARVESTING, BUYING STANDING TIMBER: Great prices, improve wildlife habitat and improve forest health. State Certified & Fully Insured! 573-247-4808 or 573-739-1122. Salem

HORSE HAY: Square bales, TIMOTHY CLOVER AND GRASS MIX, HIGH PRO-TeiN \$5 bale, delivery available for 100 or more. 573-368-1794, Rolla.

CAPPER'S WEEKLY VINTAGE SEARCHLIGHT COOKBOOK: hard-back \$10. 417-532-2045, Lebanon. Leave phone number.

TRUCK LOAD OF FLEA MARKET & AUCTION ITEMS: \$200 or trade. 573-327-9068

FOR SALE: 25 jigsaw puzzles, bought new, worked one time, no missing pieces. \$4.00 each. 573-689-2490. Bunker.

DREAM HOUSE -Online, chateauhomes.net
Call Marla 573-657-7040

JOHN DEERE 566 ROUND BALER: monitor, kicker, net wrap. \$6,700. 573-765-4406.

Omar's Logging

- ⇒ Oak & Walnut
- ⇒ Excellent Prices
- Amish Owned & Operated



LEAVE MESSAGE: 417-741-0440

Buildings • Hunter's Cabins • Lawn Furniture



JAMCO Portable Buildings

800-688-2064 • 307 Enterprise Dr. • Seymour, MO • www.jamcobuilders.com

Rent To Own Plan

94 JEEP WRANGLER: Black, 98,000, Heat AC, Stereo, 5 speed, 4 wheel drive, sharp. \$5,600. Dixon. 573-422-9927.

PUPPY/SMALL DOG CAGE:\$25, **LARGE DOG CAGE,** \$40. Silva 573-238-5262.

4 BRIDGESTONE TIRES: 225/65 R17 Sport A/S 9,000 miles. \$150. 417-934-6234.

LOG SIDING SALE: 2X8 Western Cedar .99 ft/ Pine \$1.19 ft while supplies last. www.pineridgerustic.com 573-729-7226.

JOHN DEERE 2040 DIESEL TRACTOR: canopy \$4,950. 573-765-4406.

LARGE TORPEDO HEATER: for garage, \$100 or trade. 573-734-2822.

* A HERITAGE OF *
BEST-SELLING TRACTOR PACKAGES

Check out our specially priced John Deere compact tractor packages for any size land from backyards to the back 40.



SUMMER SIZZLER PACKAGE

Includes 1025R Tractor, Loader and Rotary Cutter

- Powerful Tier 4-compliant diesel engine
- Quik-Park™ stands for easy attachment and removal

CATTLEMAN PACKAGE

Includes 5075E Tractor, Cab and Loader

- MFWD
- 73 hp* engine
- Best-in-class visibility

SUNFLOWER PACKAGE

Includes 3025E Tractor, Loader and Box Blade

- Four-wheel drive for maximum traction
- Hydro transmission with Twin Touch™ pedals

0% FOR 50 MONTHS

on all skid steers and compact track loaders*



SKID STEERS

- Rated Operating Capacity starting at 704 kg (1,550 lb.)
- Gross Horsepower starting at 51 hp



COMPACT TRACK LOADERS

- Bucket breakout force up to 4,200 kg (9,250 lb.)
- Net Horsepower up to 96.9 hp

Legendary Products. Extraordinary Service.
Find your local Heritage Tractor location or request a quote at HeritageTractor.com



(*) Offer valid on qualifying purchases made between 01 March 2020 to 31 August 2020. Subject to approved installment credit with John Deere Financial, for commercial use only. Down payment may be required. Average down payment is 10%. Taxes, freight, setup and delivery charges could increase monthly payment. Available at participating U.S. dealers. Prices and models may vary by dealer. Offer available on new equipment and in the U.S. only. Prices and savings in U.S. dollars. *Manufacturer's estimate of power (ISO) per 97/68/EC

TRUSTED & THOROUGH SERVICE

Repairs • Rebuilds
Cast Iron & Steel Welding
Engines • Transmissions
Electrical • Hydraulics
PTO & Drivelines

VALLEY SHOP • 660-458-6747
38745 Molasses Mill Rd, Latham

INTERNATIONAL MODEL 10: 16X7 grain drill with clover seed. Good condition. \$500. 573-308-5884 Rolla

FIREARMS: Professional Repairs and Restorations. Baron's Gunsmithing. 573-363-5801, Camdenton.

REGISTERED HEREFORD & ANGUS BULLS: Home raised, Some Show-Me Select Qualified. 573-701-7828. Belgrade

BUYING PRE-1960 BEER SIGNS: FALSTAFF, HAMMS, LEMP, CAPITOL, STAG, ECT. 573-680-5377.

Larry Heisel Rentals
Crawler Loaders
Excavators
Backhoes

Call Larry! We Deliver!
Rental Available in 636 or 573 Area Codes
573-779-1500
www.larryheiselequipment.com

1998 DODGE RAM 4WD: extended cab, V8, low miles, good interior, has short to battery, asking \$1,500, after 2 pm, 417-718-3527.

KITCHEN FAUCET MOEN: single lever, sprayer, new cartarage. \$70obo. 636-239-2695.

FOR SALE: Outside forced air wood furnace with 16ft metal pipe chimney. \$600. 573-578-4265.

MASTERPIECE OF ORIENTAL MYS- TERY BOOKS: 16 of them, Copyright 1913-1926, Sax Rohmer. \$60 417-457-1023.

ANTIQUE BRASS KITCHEN CABINET HARDWARE: 1 set of 54. \$50 per set. 636-239-2695

40FT TANDUM DUALY GOOSENECK FLAT BED TRAILER: \$6,000. 573-765-4406.

EXCITING & NEW

BUYING EXPERIENCE FOR SOUTH CENTRAL MISSOURI



OVER 100 BINS

FILLED WITH A HUGE VARIETY OF PRODUCTS, OVERSTOCK, RETURNS & LIQUIDATIONS.
PLUS A LARGE SELECTION OF NEW PRODUCTS.



EVERYDAY
VALUE DEALS
\$1-\$5

OPENING AUGUST 29TH

Saturday & Sunday
\$7
RESTOCK

Monday
\$4
Going

Tuesday
\$3
Going

Wednesday
\$2
Going

Thursday
\$1
Going

Friday
\$50
GONE

189
EXIT
OFF I44

11101 Old Highway 66, Rolla, MO 65401 • 573-364-6006

WANTED: Small Pontoon houseboat, good working motor, reasonable, on Lake Ozark. 573-836-6216.

KIDS LITTLE TYKES RED CAR BED: w/ mattress. \$150. Desloge, 573-327-9068.

DESK AND OFFICE CHAIR: \$40. Mountain View. 417-934-6234.

REMINGTON MODEL-870 EXPRESS: 20-Gauge pump. \$250. 573-756-1065.

JOHN DEERE PLOW: 3pt lift, 3 disk. \$200 417-532-6561

MOSSBERG: Model-500, 20or12 Gauge Pumps. \$200 each 573-756-1065.

WILBUR'S FISH BRANCH ANGUS: 18 month old bulls for sale, high performance and calving ease, also available spring bred registered heifers, synch AI'd, preg checked bred. Mexico MO, 573-473-6019, www.fishbranch.com

BRUSH HOGGING: By the hour or by the job. Honest, reliable, newer equipment, good rates. 30 miles radius from Norwood. 417-349-0084.

8 BLACK/BLACK-WHITE FACE BRED HEIFERS: due to start calving in August, have been pelvic checked, pregnant checked, dewormed and shots, bred to registered, low birth weight black Angus bull. \$1,500each. 573-229-4636/573-301-7471.

JOHN DEERE 2940 DIESEL TRACTOR: Hy Reach GB900 Loader. \$11,000. 573-765-4406.

LIONEL TRAIN SET: Steam engine, tender, caboose and other car, track and transformer. \$195. 573-364-7465, Rolla.

IHC 10FT WHEEL DISK: \$1,600. 573-765-4406.

METAL DETECTOR: \$125 or trade. Desloge, 573-327-9068.

2019/2020 4x5 ROUND BALES: plastic twine, always shedded, pay for now and will store until April. Delivery or pickup. St James, MO. 573-467-5043 or 573-699-4577.



MIDWEST CONSTRUCTION
Free Estimates!

- Pole Barn • Garages • Framing
- Remodels • Roofing • Concrete
- Decks & Porches

Contact Abner Glick
417-664-1794

CALUS LOGGING

20 YEARS EXPERIENCE

Buying Standing Timber
Walnut & Oak

Joe Calus, Owner
417-926-4606 • MTN. GROVE

CERTIFIED



Cheyenne Acres
Horse & Tack

BUY - SELL - TRADE
by Rolla, MO
Call For Directions & Availability

Call Kip
573-368-9402



COLT .223: Heavy barrel, \$1,400. 573-832-9633. Stover.


TUFFY SPECIAL -Volume Prices 573-657-2176 amegamobilehomes.com

CLEAN 275 GALLON FLUID TOTES: Limited quantity. \$55. 417-349-1386.

I BUY.....used mobile homes. Call or text 573-338-6250 or email GregS.CDH@outlook.com

J.D. 750 DRILL: Small seed, dolly, marker's 24 row, 15' 1997. Updated closin wheels, adjusting wrench, good disc's, good carbide boots, good tires, 2 cylind, excellent shape. \$17,500. 573-378-5180.

OFFICIAL TRACTOR OF TOUGH™



Marshfield Machinery Inc.

222 E. Madison • Marshfield, MO 65706
417-859-2117 • www.marshfieldmachinery.com

Mahindra Rise.

NEW MAHINDRA TRACTORS

7085 4WD & LDR 85HP	IN STOCK
2655 4WD, BACKHOE 55HP	IN STOCK
2655 4WD & LDR 55HP	IN STOCK
1626 4WD & LDR 26HP	IN STOCK
MAX26XL & LDR 26HP	IN STOCK

USED TRACTORS

MAHINDRA 3550 CAB	
4WD 49HP	26,500
HESSTON 80-90 CAB LDR 70HP	11,500
MF 231S 42HP	7,500
KUBOTA B7510 4WD LDR	7,500
CASE 1490 83 HP	7,500
FORD 3550 LDR 50HP	5,500
MF 150 38HP	4,500
CASE IH 235 W/ MOWER 18HP	3,500
MF 65 48HP	3,000

USED ROUND BALERS

MF 1745 4XS	8,500
NI 6254 4XS	7,500
VERMEER 505SI MESH	7,500
GEHL 2480 4XS	6,500
JD 435 4X6 MESH	6,500
VERMEER 554XL 4XS	5,500
HESSTON 560 5X6	3,000
HESSTON 550 4X6	3,500
HESSTON 530	3,500
HESSTON 5500 5XS	1,500
NH 850 5XS	1,500
VERMEER 605D 5X6	750
MF 10 SQUARE BALER	750

USED RAKES

ROSSI 12 WHEEL	2,750
DURABUILT 10 WHEEL	2,000

USED MISC.

HAYBUSTER 107C DRILL	17,500
HAYBUSTER 107C DRILL	11,500
HAYBUSTER 107C DRILL	10,500
FRONTIER BALE PROCESSOR	8,500
BUSH HOG 417 TEDDER	3,500

Marshfield Machinery Inc.
222 E. Madison • Marshfield, MO 65706
417-859-2117
www.marshfieldmachinery.com

Starnes Auto LLC

22115 Rt. 66
Lebanon, MO 65536

417.718.2707 Cell
www.starnesauto.com 417.588.3159 Office

1994 FORD RANGER	
TAN, 106,XXX MI.....	\$2,750
1999 GMC TRUCK	
EXT CAB, 4X4, 182,XXX MI.....	CALL
2003 FORD FOCUS	
SILVER, 280,XXX MI.	\$1,800
2005 CHEVY SILVERADO 1500	
BLUE, 276,XXX MI.	\$3,750
2006 CHRYSLER T&C	
BLUE, 185,XXX MI.	\$2,850
2006 FORD TAURUS	
SILVER, 78,XXX MI.	\$3,450
2007 BUICK LUCERNE	
WHITE, 103,XXX MI., GOOD TITLE.....	\$4,950
2007 FORD EDGE SEL	
CREAM, 139,XXX MI.....	\$6,200
2011 BUICK ENCLAVE	
BROWN, 125,XXX MI.....	\$8,200
2011 CHEVY MALIBU	
BLACK, 117,XXX MI.....	\$5,200
2012 CHEVY EQUINOX LT	
CHARCOAL, 113,XXX MI.....	\$6,500
2012 GMC ACADIA DENALI	
CHARCOAL, 138,XXX MI.....	\$9,250
2012 CADILLAC SRX PERFORMANCE	
BLACK, 123,XXX MI.....	\$8,250
2014 GMC TERRAIN SL	
WHITE, 71,XXX MI.	\$11,500
2015 CADILLAC SRX PERFORMANCE	
BROWN, 40,XXX MI.....	\$18,500
2015 GMC TERRAIN SLT	
BLACK, LEATHER, 34,XXX MI.	\$13,800
2017 CHEVY EQUINOX	
BLUE, 50,XXX MI.....	\$12,250

PROJECTS 1948 DODGE PANEL: 1/2ton, 1940 Dodge 2dr, 1940 Dodge 4dr, 1961 T-Bird, 417-683-7843.

NO \$\$\$ DOWN MOBILE HOMES- Call for details 573-499-9993 columbiadis-counthomes.com

2 REGISTERED BLUE TICKS: Have treed before, 11 months old, to old to care for them, free to good homes. 573-247-7380

FARMALL SUPER M TRACTOR: 2 owner, wide front, 3-point, \$1,400 in new tires, asking \$3,600. 417-848-8754.

LARGE REFRIGERATOR: with ice maker, freezer, (needs ice maker), 3 years old. Good Condition. \$200 OR TRADE. 573-734-2822.

BOOK SHELVES: 6 Ft X 2 FT, WOOD FOUR SHELVES, 6 AVAILABLE. \$7 EACH. 417-646-8807.

1ST ANNUAL LICKING TRUCK & TRACTOR PULLS

September 19, 2020 - 7:00 P.M.

1/4 Mile North on Shafer Road (West of Highway 63. There will be signs)

6 and Under: Free
Ages 7 - 15: \$5
16 and Older: \$10

CONCESSIONS

Hamburgers, Hot Dogs, Chips
Candy, Funnel Cakes, Drinks

Benefit for Licking FFA

- No Coolers or Food Allowed (Concessions on Site)
- Bring Lawn Chairs
 - Limited Bleacher Seating
- Handicapped Parking

Mid-Missouri Truck & Tractor Pulling Association (MMTTPA)

Call (573) 368-9464 for Additional Information

In acceptance of CDC guidelines we have enhanced sanitation procedures and implemented measures for social distancing for COVID-19.

JOHN DEERE HX10 PULL TYPE BRUSH CUTTER: 10FT \$4,200. 573-765-4406.

WANTED, TIMBER TO LOG ON SHARES: Honest, reliable, references. 417-533-4607, 417-664-1195.

FORD DEXTRA 2000: 3cyl diesel, needs one rear tire, call for details. \$675. Walnut Grove, 417-840-0762.

SECTIONAL SOFA WITH 4 ELECTRIC RECLINERS: like new, grayish. \$1,500. 417-926-7718.

VILLA HOMES IN ROLLA: Has NEW and USED Mobile Homes. Call David for info: 573-578-8072.

HARDY 180,000 BTU: outside wood burning furnace. \$4,500. 417-588-7368.

JOHN DEERE 275: Disk mower. good. \$6,250. 573-765-4406.

FRIDGIDAIRE CHEST FREEZER: 15cubft. \$100. Farmington, 573-701-0495.

MISSOURI GARDENER'S GUIDE: 421 pages, over 170 color photos, \$5.00 417-532-2045. Lebanon. Leave phone number.

WINCHESTER: Model-190, 22-Caliber, Semiauto w/scope, \$175. 573-756-1065.

M&W 15 HYD. FOLD BRUSH CUTTER: \$2950, 573-765-4006

MENNONITE COUNTRY FAVORITES COOKBOOK: \$6.50. **AMISH COOKIN' Cookbook,** \$6.50. **MENNONITES OF N.E. MO., Memphis, Mo. Cookbook,** \$6.50. **CAPPER'S WEEKLY SEARCHLIGHT COOKBOOK,** hardback, \$10. 417-532-2045, Lebanon, Leave phone number.

JOHN DEERE 2955: Diesel Cab Cold Air Tractor, 85hr with JD 720 loader, nice. \$27,000. 573-765-4406.

WEATHERED BARN WOOD SIDING: 8" & 10" wide. 573-729-7226. www.pineridgerustic.com

CUSTOM SAW MILLING: Lebanon. 417-533-4607, 417-664-1195.

KUSTER LOGGING
BUYER of Standing Timber Oak and Walnut
Dozing Now Available
417-259-0047
 References Available



Pine Ridge Rustic
 Log Home Building Supplies

Services Offered!

- Installation
- Pre-finishing available on interior & exterior
- Dealer for exterior stains

www.pineridgerustic.com
523 CR 2410 • Salem, MO 65560 • Ph: 573-729-7226



- Log Siding
- Beveled Siding
- Car Siding • Red Cedar
- Western Cedar • Pine

Stan and Pat Scott will be liquidating the merchandise from the **Steelville Supply Store** on

Friday & Saturday, August 28 & 29, 2020 • 9:00 a.m.

For our buyers' convenience, the auction will be held at the Knights of Columbus Hall in Cuba, MO.
DIRECTIONS: From Cuba, MO, take I44 east to Rd. UU (Exit 210). Turn right at the top of the ramp, and right again on road to the KC Hall. Roads will be marked the day of sale.

AUCTIONEER'S NOTE:

The Steelville Supply Store has been owned and operated by members of the Scott family since 1905, most recently by Stan & Pat Scott and closed by them in 1989. In the mid 1980's they opened and operated Scott's True Value in St. James which was closed in 2000 and the unsold merchandise moved to the Steelville store. Much of the listing is new, in box items. Because of the volume of merchandise, we were unable to list everything or to designate exactly what items will be sold on which day. The variety and quantity of the inventory is amazing. We will be running two rings part of each day, so bring a friend. Don't miss this auction! See you there. (Note early starting time)

TO BE SOLD FRIDAY

Netindo Entertainment Center Action Set-New in box; Cavalier Imperial, porcelain ice box; **Signs:** "Endicott-Johnson Shoes", celluloid (?); "Vacuum Cup Tires", porcelain, double sided; "Federal Tires Tubes" metal w/wood frame; "True Value", apprx. 20', lighted; "Pat Summerall, True Value", cardboard, stand-up; "True Value" apprx. 9'; metal; "GE Soft White" double-sided, cardboard; "Tru-Test Paint", cardboard; "GE" blow-up light bulb; "Ray-O-Vac" battery display w/tester plate-I0B; "True Value" floor ash cans; (2) 1-gal. crock jugs; (3) small crock bowls; (6) crock, straight-sided bowls; (2) new, large crock bowls; Granite wash pans, bucket, chamber pots w/lids; Electric, Gone-With-the-Wind lamps; White Mountain, 6-qt. electric ice cream freezer; Schwinn Super Sport bicycle; Misc. bicycles; Unicycle; Gas powered, motorized bicycle w/light & Italian motor; Old forge; Multiple items suitable for flea market sales.

TO BE SOLD SATURDAY

(2) "Main" model F radio receivers I0B w/shipping box, new; Vacuum radio tubes; Crosley reproduction radios; 1930's & 1940's sewing patterns; Vintage shoes; Sewing notions; Buttons; "National" display boards; Paint sample display; Peg board racks & hooks; Tool racks; Lots & lots of shelving; Aladdin plastic lunch boxes w/thermos—Mickey Mouse, Transformers, Sesame St., Masters of the Universe, Popples, Visionaries, Nose Bears, Captain Powers; Toys: 1970's & '80's metal toys by Tonka, Nylint, Ertl—new, unopened; Games by Parker Bros., Tyco, Milton Bradley, Tyco, Mattel, NSI; Dart boards; Lawn Chief 440, 12.5 hp, 39" cut riding mower—like new; Craftsman 7.75 hp chipper/shredder—new; Craftsman pressure washer; Craftsman, 26", electric start snow blower; Lawn Chief, front-tine tiller; Homart electric cement mixer; Rockwell drill press w/stand; Rockwell scroll saw; Rockwell planer/joiner; Rockwell 10" radial arm saw; Rockwell-Delta band saw; Delta 10" table saw; Router w/table; Jet metal lathe; Jet wood lathe; Lathe tools; 12" planer; Jet dust collector; 5-drawer mechanic, roll-around tool boxes; (2) pipe crimping tools; 50'x6' and 50'x4' rolls, new galvanized chain link fencing; Posts, braces & top rail for chain link fence; Vinyl coated chain link fencing; (9) rolls misc. fencing; "T" posts; Chicken wire; Galvanized well pipe; Assort. lumber; Hand crank kerosene pump; Multiple items suitable for flea market sales.

OTHER MERCHANDISE TO BE SOLD FRIDAY OR SATURDAY

"Steelville Supply Store" yardsticks; "KC Baking Powder" pocket ledger; "Bear" sandpaper dispenser w/sandpaper; "Lightening" fire extinguisher; Oil measures; Ceramic fence insulators; Hay hooks; "Durham's Water Putty" can; "Meyer Bros. Owl Brand Coffee" scoop; Brass scoop; Long handled scoop; Wooden barrel spigots; Barrel bung drill; Wooden mallet; Hand crank corn grinder; Nail bin nail grabber; Kerosene lamps; Lipstick cases; Jewelry boxes; Cream can; Peck baskets w/metal bails; Bottle capper; Horse supplies; Ladders; Radio Flyer wagons; AMF, child's metal trailer; AMF Ranch Trac plastic pedal tractor; Puzzles; Metal sand bucket; F/P Discovery Globe; 12" world globe; Western Flyer runner sled; Misc. toys; Banks; Child's wooden rockers; Pez dispensers; Holliday decorations; Exercise weights; Hair supplies; Decorated mini figural candles I0B; Foster Grant sun glasses; Pocket knives in display case; Campbell-Hausfeld Power Pal; Maasdam Pow'r Pull—2,000# & 4,000#; 1/4" plunge router; Milwaukee Sawz-All; Wet wheel sharpening tool; Makita drill sander & disc grinder; B&D elect. buffer; Wood-working tools; Misc. hand tools; Screw drivers w/display; Work platforms; Plastic saw horses; Roller stands; Snow shovels; Wooden tool handles; Snow brushes; Coal buckets; Log tongs; Cant hook; Alligator steel belt lacing; 2-cycle engine oil; 10 qts. Mobil 10W40 motor oil; Weasel garden tool; Door knobs & locks; Nuts, screws & bolts; PVC guttering & fittings; Light bulbs; Tarps; Coolers & thermos's; Tasco binoculars; Daisy BB's (5,000 ct.) in wooden box; Camping gear; Weber Smokey Joe smoker; Assorted grills; "Havahart" live traps; Target arrows; B&D elect. trimmers; Lawn spreader; Hose reels; Food grade garden hose; Coleman patio hearth; First Alert fire escape; Fire ladder; Plumbing & electrical supplies; Misc. copper pipe; (2) attic exhaust fans; Crosley ceiling fans; Heaters; Fans; Automotive parts; Car luggage carrier; Bicycle parts; New gallon gas cans; Police Academy bull horn; Large roll of rope; Artist brushes in display case; Nail kegs; Wooden boxes & crates; Stove boards; Aquarium supplies; 17-pc. tool kit; Steel traps; Splitting wedges; Convection oven; Nesco, 6-qt. roaster; Presto pressure cooker; Kitchen Aid 5-speed blender; T-Fal cookware; Pyrex pieces; Corningware; Shallow castiron pan; 8- & 20-qt. stock pots; 20-pc. set stoneware dinnerware; Door mirrors; Outdoor door mats; Flower pots; Picture frame maker; Straw hats; Kid's felt cowboy hats.

Lunch will be served by the Knights of Columbus

SALE CONDUCTED BY:

GROSS

AUCTION

Members of
Missouri Professional
Auctioneers Association



Chas & Phyllis Gross
1863 Hwy 50
Owensville, MO 65066
573-437-3631

Jason Gross,
2839 Brinkman Rd.,
Owensville, MO 65066
573-437-6165

www.grossauction.com or www.auctionzip.com

Terms: Cash or "Approved" check. No out of state checks.
Announcements day of sale supercedes printed material.
Everything sells as is. No property to be removed until settled for.
Not responsible for accidents should any occur

PUBLIC AUCTION

Owner: Vern Penner

SATURDAY, SEPTEMBER 5th, 10:00 A.M.

Location: From Alton, Mo. Take Hwy. 19 North approx. 4 miles on left. Reason for sale: As I have sold my farm. Watch for Sexton or Hornback Auction Signs. Lunch: Rick Henson.

COMPLETE FARM DISPERSAL EQUIPMENT - TOOLS - HOUSEHOLD

AT PUBLIC AUCTION: 1968 3020 John Deere diesel tractor standard, 2WD, wide truck, very nice! John Deere CA25, Worksite Pro Skid steer auger with various bits, bale spike. New Holland 185 dry manure spreader; #82985 hydraulic end gate, black poly, Pintle link, barn kept; 1996 Featherlite 7'x24' aluminum stock trailer; 1984 S1900 IH dump truck; DT 460 engine; F21D Woods Mow-N-Machine Zero turn; 1432 New Holland Flail disc bine; center pinot, 13' cut, quick attach; 935 John Deere mower conditioner, 11'6" cut flail; H&S 14 wheel hydraulic V-rake, high capacity; 15' Shulte Batwing brush hog; Hydraulic bale unroller, nice! Lincoln 225 welder; large air compressor; old bale trailer; 500 gal. fuel trailer; JD snow bucket; large swivel utility blade; 7000KW diesel generator; pile 10' steel T-posts; pallets of T-posts; 3 pt. hitches; manure spreader wheels/tires; homemade log splitter; garden tools; lots of good tires; lumber; hydraulic press; oxygen/acetylene torch set; steel welding table; vise grinder; channel iron; chainsaw; chemicals; oils; wrenches; tools of all kinds; gates; skid steer metal tracks; farm supplies; few antique pieces; lifetime of furniture, appliances; household impossible to list it all! Find photos at www.garysexton.com.

AUCTIONEERS NOTES: Vern has sold his farm and will auction a long list of good equipment and his house items! For information contact Todd Hornback 417-270-0681 or Gary Sexton 417-255-7001.



Gary Sexton Auctioneers, LLC
Since 1978



www.garysexton.com
417-255-7001 • gary@garysexton.com
1028 Porter Wagoner • West Plains, MO



Todd Hornback - Oregon Co. Rep

Gene Summers - Ozark Co. Rep

Tyler G. Sexton
SE Missouri Rep - 417-372-0124

AR Broker #PB00043890 AR License #1568



All announcements made day of the sale supersede any written material. Not responsible for lost or stolen property or accidents.

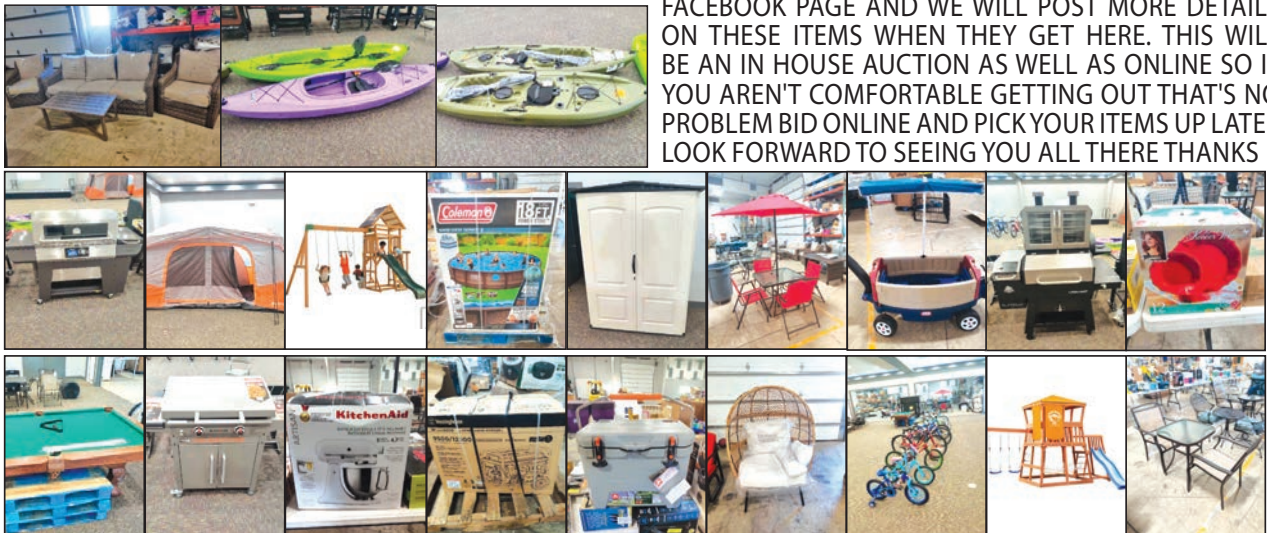
NEW MERCHANDISE AUCTION

Thursday, September 3rd • 5:30 pm

AUCTION TIME!!!

WE HAVE A VERY VERY NICE AUCTION PUT TOGETHER WITH SOME HARD TO FIND ITEMS! HERES A LIST ! AND KEEP IN MIND NOT NEARLY ALL THE ITEMS ARE LISTED! TONS OF GRILLS ! INCLUDING BLACKSTONE GRIDDLES 36", PITBOSS SMOKERS A VARIETY TO CHOOSE FROM, DYNA GLO GAS GRILL, CUISINART PELLET GRILL , EXPERT GRILL THIS IS HALF GAS HALF CHARCOAL, PITBOSS LOCKHART PLATINUM , AND MANY MORE , ALSO HAVE KAYAKS, LIFETIME DAYLITE, LIFETIME TAMARACK FISHING KAYAKS, LIFETIME CHARGER , WE HAVE BIKES AND RIDE ONS ALL SIZES AND SHAPES, TONS OF PATIO FURNITURE, OUTDOOR CHAIRS, OUTDOOR TABLES AND CHAIRS, OUTDOOR COUCHES, SOME NICE SETS HERE, ESPN PING PONG TABLE, CLASSIC SPORT POOL TABLE, RUBBERMAID STORAGE SHED, BEDROOM DRESSERS, CUBE SHELVES, ELECTRIC LAWN MOWERS, POWER SMART GAS LAWN MOWERS, LOTS OF STORAGE CONTAINERS, TENTS TENTS TENTS ALL SHAPES AND SIZES, OUTDOOR SHOWER HOUSE, GARDEN HOSES, STANLEY FATMAXS, OZARK TRAIL HIGH PERFORMANCE COOLER, BOUNTY HUNTER METAL DETECTOR, KEURIG COFFEE MACHINE, INSTAPOT AIR FRYER, KITCHEN AID MIXER, LODGE CAST IRON DUTCH OVEN, LODGE ENAMEL DUTCH OVER, LOTS OF PIONEER WOMEN ITEMS, ALLSWELL 10" QUEEN MATTRESS, KIDS TOYS INCLUDING BARBIE BRAND LEGOS FISHER PRICE, IGLOO LIGHT UP COOLER, AND A NICE VARIETY OF OTHER COOLERS, MICROWAVES. MICROWAVE OVENS, DIAPERS ALL SIZES, FISHING POLES, ALL SIZES OF AIR CONDITIONERS, TCL 5K BUT, TCL 12K BUT, LG 24K BTU, PORTABLE AIR CONDITIONER WITH HEAT MODE, CHAMPION DUEL DUEL GENERATOR 3500 W, WESTINGHOUSE GENERATOR 9500W BRAND NEW IN THE BOX, LITTLE TIKES REAL WOOD ADVENTURES PLAYSET, LAWNMEADOW PLAYSET, THESE ARE BIG SETS AND ARE VERY NICE, LET'S NOT FORGET THE POOLS, COLEMAN 18 FT POWER STEEL, BEST WAY 14 FT, COLMAN SALUSPA SPA, SONAMA HARDTOP GAZEBO, PET CARRIERS, DANBY COMPACT REFRIGERATOR, 7.5 CU. FT. RCR REFRIGERATOR. THIS IS JUST A LITTLE IDEA OF WHAT WE HAVE, WE HAVE 2 MORE TRUCKLOADS WE ARE HOPING MAKE IT IN TIME FOR THE AUCTION AND THEY SHOULD, BUT THERE WILL BE TOOLS AND ROLLING MILWAUKEE TOOLS BOXES, MIG WELDER, AND DISHWASHERS AND BIG SIDE BY SIDE REFRIGERATES ON THOSE LOADS, GO FOLLOW OUR

FACEBOOK PAGE AND WE WILL POST MORE DETAILS ON THESE ITEMS WHEN THEY GET HERE. THIS WILL BE AN IN HOUSE AUCTION AS WELL AS ONLINE SO IF YOU AREN'T COMFORTABLE GETTING OUT THAT'S NO PROBLEM BID ONLINE AND PICK YOUR ITEMS UP LATER LOOK FORWARD TO SEEING YOU ALL THERE THANKS



Auction terms: Cash, Good Check or Credit Card. Not responsible for accidents. Announcements day of sale take precedence over printed matter.



Check out www.shetlerauctions.com for more pictures



417-254-4090



shetlerauctions@gmail.com

www.shetlerauctions.com

Shetler Auctions LLC

3099 Hwy. 95

Mtn. Grove, MO 65711



Real Estate Auction

Owner: Mary Jolly

September 5, 2020 at 10:00 AM

Real Estate sells @ 12:00 Noon sharp

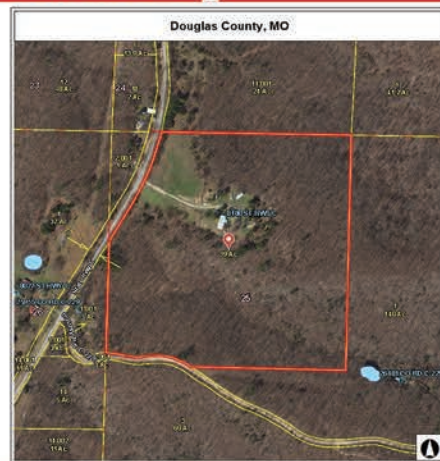
Location: RR 72 Box 347A Norwood, MO 65717

Directions: From Skyline school, travel C Hwy approx 5 miles south to auction on left. Watch for Cheyney Auction Company signs



2024 sq ft modular home with new metal roof, upgraded heating and air, concrete storm shelter, and newer well and septic system on 39

acres. Property offers a secluded setting with an abundance of wildlife. Mostly wooded with a small amount of pasture. Has a nice year round spring.



1998 Sundowner 3 horse slant



Nearly new Cub Cadet XT1 lawn mower, 42" cut, Kohler engine



1 ton dually, 2wd, 106,xxx miles, 454

Household, Antiques, Outdoors, and more

Kenmore washer & dryer, Antique settee, Full size bed, Chest freezer, horse paintings, Cherry China hutch, Antique Camel back trunk, Solid oak secretary desk, White sewing machine & cabinet, Vintage recliner, large mirror, Cedar belly chest, dining table & chairs, cedar chicken coop, #3 crock, stainless dog feeders and chicken



waterers, 2 8'X16' portable storage buildings, 2 small anvils, #3 USA bell with stand, JD weather vane, Antique scooter, sled, plow, Aluminum boat, motor, & trailer (parts only), Many more items not listed.



10% required day of Auction for Real Estate

For more pictures see www.cheyneyauctions.com

All items sold as is, where is, with no guarantee.

Cheyney Auction Company LLC.

at 417-543-8751 or cheyneyauctions.com

Terms of Sale:
Cash or Check with valid ID, Now accepting credit & debit cards
w/3% convenience fee.

ANNOUNCEMENTS
Made Day Of Sale By Auctioneer
Take Precedence over any
Printed Mater. Not Responsible For Accidents



PIOTRASCHKE AUCTION



James Kreidler, POA for Peggy Piotraschke, will sell personal property at public auction on:

Saturday, August 29th 2020, Beginning at 9:00 AM

Location: 7621 Highway 47 South Union Mo 63084

Directions: From Interstate 44, take Exit #240 and go North on Highway 47 towards Union. Go three miles to auction on left. From Union, go South on Highway 47 towards Saint Clair three miles to auction. Roads will be marked day of sale.

BOBCAT / KUBOTA (will sell at 12:00 Noon)



863 Turbo Bobcat Advantage Series skidsteer-2270 hours-hand controls-brand new Galaxy tires 12x16.5-has 6' bucket, **ATTACHMENTS:** sell separately, Brush Buster HD 60", 5' tooth bucket, hydraulic tree shear, Bobcat 42" pallet forks, 73" Hvy Duty Industrial grapple bucket, UTV; Kubota RTV X1100C-enclosed cab-AC-power steering-diesel-Extra Duty IRS suspension-4x4-hydraulic dump bed-270 miles



Double Park Cytech 4 post car lift, Craftsman 15" drill press on stand, Craftsman 8" bench grinder, rolling air compressor, portable air tank, upright Craftsman 25 gallon upright compressor on wheels, Lincoln electric welder-Weld Pak 100, welding helmet, gloves, welding tanks-cart, Craftsman belt-disc sander on stand, buffer on stand, Stack ON tool cabinet, Snap On tool chest, Snap On rolling tool cabinet-with top tool box, large anvil, large and small bench vises, work benches, pneumatic wrenches, pneumatic sockets, pneumatic grease guns, tap-die sets, Dremel Ultra saw, lot circular, hand grinder, Milwaukee Sawzall, pipe wrenches, sockets, ratchets, large wrench set, ratcheting wrenches, hand saws, screwdrivers, vise grips, pliers, nippers, soldergun, small torch sets, battery chargers, parts bins, large parts chest-drawers, bolt cutters, hand stapler, hammer stapler, lot extension cords, 4' wooden level, air nailers, Stanley wood plane, large-small C clamps, hammers-hand sledges, boxes new carpenter pencils, solder gun, sand paper, battery load tester, Craftsman SS 8 ga wet dry vac, dent repair kit, lot electrical, drill bits, **YARD TOOLS:** Stihl weed eaters, Stihl blower, Troy Bilt mower, 4 ton port-a-power, Worx limb trimmer, pole trimmers, 12 volt sprayer, heavy duty dumping yard wagons, ATV lift, electric hedge trimmer, shovels, rakes, hoes, single-dbl axes, sledge hammer, scoop shovels, 5' pry bars, 12 volt winch, new Yard Machine 26" snow blower-electric start, Remington and Poulan chain saws-like new, electric log splitter, oil changing pan-on stand, large chain-hook, jack stands, 5 gallon utility containers, car creeper, come-a-long, 3 ton floor jack, very heavy padlocks-NIB, metal extension ladders, step ladders



NEW IN BOX ITEMS

Sterlite footlockers, 4000 wat generator, 4 drawer Viper tool cabinet, Dewalt miter saw stand, 54" soccer table, portable driveway BB hoop, 7' billiard table, corrugated metal garden beds, modular raised bed gardens, Flower House Conservatory planting table, tactical flashlights, Smith & Wesson safety glasses, multiple fireplace heaters, multiple dual lock small safes, executive office chair, beanbag game, garden and table fountains, Tiffany style lamps, Bluetooth turntable, portable ice maker, portable air conditioner, Bachmann train sets, Kid Kraft Sparkle Mansion dollhouse, Kid Kraft doll house, Kid Kraft farm play set, Kid Kraft kitchen, Teeter-Go-Round playground toy, Hot Wheels, badminton set, drying rack, 700x70 telescope, 1 person inflatable kayak, pop up shade canopy, plastic dog houses, metal dog cage, Singer Simple sewing machine, sewing table, table lamps-floor lamps, pasta machine, Rubbermaid 150 qt Marine cooler, heavy bag stand-bag, Ironman inversion table, 1/2 HP garage door opener, foot locker, patio heater, craft room shelf-drawers unit, ice cream maker, red wagons-various sizes, Wellness mats, Rocking horse kit, bat house kit, Colt tactical vests, blow up movie screens, kitchen island cabinet, 8' inflatable pontoon boat, artist stool, plant stands, Jelly Belly dispenser, **PATRIOTIC;** very large amount red-white-blue items-NIB-solar lights, garage magnets, art glass items, wreaths, lot garden stones, gnomes, wind chimes, lot solar items-all types, rope lights, LED lights, lot wall signs-wall hangings, Trump stuffed bears, metal butterflips, bells, solar flowers

We plan to abide by the CDC guidelines regarding the COVID distancing and PPE guidelines.

ANTIQUES / COLLECTIBLES



Columbia Records porcelain sign 28"-Finks Music Union, Victrola cabinet, The Royce model car-clock in metal trunk, Ox yoke, galvanized wash tubs-buckets, metal gas can, Plumb hatchet, Fire Prevention hatchet, buggy seat, reel push mower, grain grinder, RR tools, meat grinders, old lures, wooden bobbers, ammo cans, vintage ammunition boxes, Marx train set, wooden cars, lot dolls, Raggedy Ann dolls, Native American dolls, Walking Pretty 3' doll, doll chairs, traffic lights, retro gas signs, Phillips 66 clock, wind up monkey toys, German tin Merry Go Round, old jars-bottles-soda-Old Judge jars, lot planters-couple McCoy, twig doll chairs, cast iron horse-wagon teams, cast iron bulldog, milk bottles-metal crate, plastic barber pole, Route 66 items, 1960's magazines-Kennedy, diecast car, motorcycles, unicycle, Lone Ranger toy guitar, barn doll house, horse collar, butter churn, wooden blasting boxes, bubble machine, crafty bird houses, plywood yard decorations, Felix the Cat clock, baseball cards, poker chips, glass brick tiles, brass bell, granite dishes-new, eggnog bowl-cups, enamel pots-buckets, Lego-Lego storage brick, cookie jars, colored aluminum glasses-pitchers, chicken art glass lamp, jars buttons, wooden sewing spoons, **CROCKS;** lot all size crocks, lot crock bowls-white-blue band-pink band, Fiestaaware bowl, **RIVERBOAT;** large lot Delta Queen-river boat items-pictures-books-all types souvenirs-pamphlets-medallions-pins

KITCHEN / COOKING

LOTS OF THE KITCHEN ITEMS ARE NIB-NEW IN BOX-THERE IS A LOT - NIB items-KitchenAid counter mixers (2), Hamilton Beach microwave, 3 tier servers, Hamilton Beach slow cooker, KitchenAid slow cooker, Tupperware-all types containers-dishes utensils, freezer containers all sizes to 1/2 gallon, **KITCHEN ITEMS;** griddle, Pampered Chef dishes, copper skillets-pots, copper bacon pan sets NIB, crepe maker, mini donut factory, bread maker, food processor, Pyrex portable dish-carriers, serving trays, paper-plastic plates-utensils-cups, lot Corning Ware dishes-coffee pots-plates-cooking dishes, Pyrex dishes, Pyrex 4 pc mixing bowl set, copper ladle-measuring cups, **COOKBOOKS;** huge lot cook books, all types, Star Wars cookbooks, huge lot utensils-all types-lot new, SS bowl set, granite roasters-canning pots, **CANNING;** dozens NIB Vintage style canning jars, lids, used canning jars, canning pots, Nu Wave fondue set, Nu Wave induction cooktop, apple peelers, stemware, dishes, flatware, **CAKE MOLDS;** Willet molds, all types cake molds-figural-lamb, all types muffin pans-molds, cookie sheets, lot cookie cutters-every type, vintage and new food choppers, cookie presses, waffle bowl maker, lot cast iron-Lodge skillets-griddles

FURNITURE / HOUSEHOLD / YARD

Tiger oak drop top table, china cabinet, Eastlake marble top lamp table, walnut live edge table, dining tables, wooden children's table-chairs, tall wooden shelf units, glass display counter, treadmill, Glider sport bench, exercise bike, area rugs, curio cabinet, curio shelf, lot framed art, lot art-craft accents, step stool, whicker cabinet-5 drawers, tall chest drawers, lot wall shelves, end tables, child's bench w/storage, **RESTAURANT;** commercial bread slicer-floor model-Doyon Ferretto, lot trash cans, LED OPEN signs, restaurant chairs, sneeze guards, bakers tray rack, bed frames, couch, **HOUSEHOLD;** 9" laminator, lots craft items-all types-beads-glitter, origami books-paper, craft punches, ink stamps, sewing-baskets-fabric, lot activity-coloring books, markers, crayons, dry erase boards, cork boards, Little Tykes toy box, lot toys, lot VHS Disney, lot DVDs, lot CDs, bingo spinner-game, lot books-Nancy Drew, bamboo shoe bench, heated foot massager, Scentys warmers-wax NIB, Himalayan salt lamps, Christmas ornaments, ornament storage containers, wreaths, light up houses, Santas, Halloween decorations, lot yard blowups, Music; Silvertone guitar-amp, bass guitar-toy, drum set, keyboard, rock tumbler, Soda Stream kit, **APPLIANCES,** refrigerators, small bar refrigerator, small Coke refrigerator, 5 CD Bluetooth player, motorized wheel chair, motorized scooter, wheelchair, shower-bath chairs, 4 wheel walkers, **YARD;** pair 5' concrete yard statues, collapsible hoses, metal detector, fish-small game cleaner, fishing rods-reels, telescoping rods, new fishing lures-holders-scales, lot golf clubs-Callaway set-others, Alinker R-Volution bike, Weber charcoal grill, PET; collars leashes, toys, litter pans, pet gates, Kitty Sill, vintage small bird cages, bird toys, dog cages, cat carrier, gazing ball

AUCTIONEERS NOTE: Auction will begin at 9:00 AM selling tools, will start second ring at 10 selling household. This really is an auction where there are items too numerous to list. There is really a large amount cooking-baking and a lot of these items are new.

VIEW OUR PHOTO GALLERY ON www.breheauction.com

BREHE AUCTIONEERING SERVICE, LLC
 Union, MO: (636) 583-0841 Owensville, MO: (573) 437-3454
www.breheauction.com
 LICENSED AUCTIONEERS:
 Kerry Brehe 314.954.3798 Josh Brehe 314.603.3129 Harry Engelhart 636.399.3743

Announcements made day of sale supersede all printed material.
 TERMS: CASH, PERSONAL CHECKS WITH PROPER I.D., BUSINESS CHECKS WITH BANK LETTER AND NO
 OUT OF STATE CHECKS UNLESS APPROVED BY SELLER. Email Us At kkauction@sbcglobal.net
 Everything sells as is with no guarantees.

LUNCH WILL BE SERVED BY CAROLS CATERING

ONLINE ONLY BUSINESS LIQUIDATION FOR STUDENT BOOK EXCHANGE

Starts Closing Wednesday, September 2, 2020 • 10:00AM

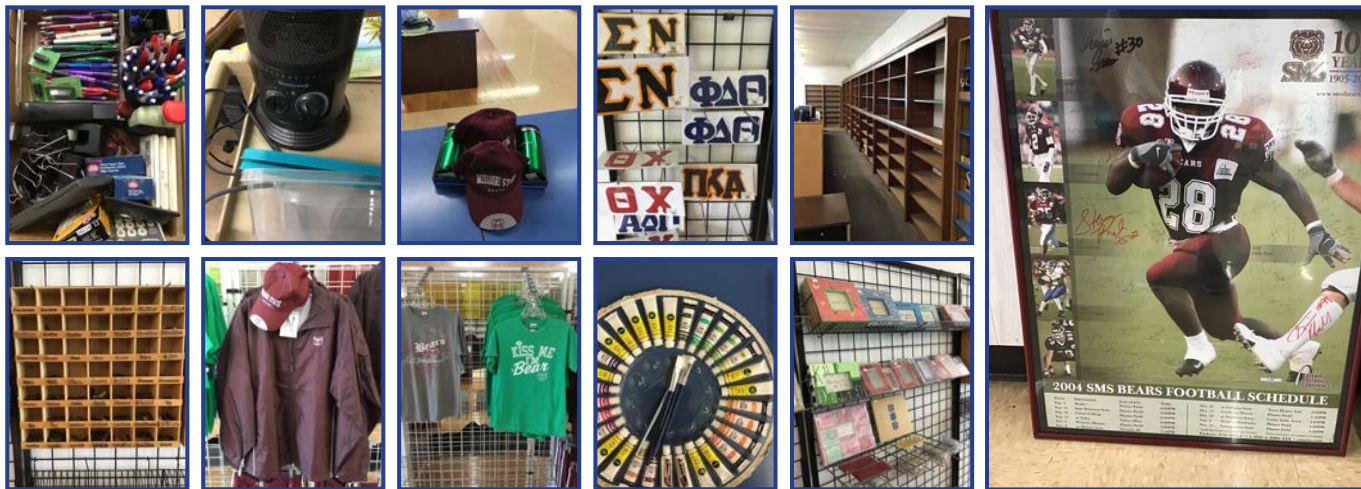
633 S. Kimbrough Ave. • Springfield, Missouri 65806

ONLINE BIDDING • SOFT STAGGERED CLOSING BEGINNING AT 10AM



BID NOW! 389 LOTS

OPEN PREVIEW SUNDAY AUGUST 30 FROM 2-4PM



FOR MORE INFORMATION GO TO WWW.EASTERLYAUCTIONCO.COM OR CALL EASTERLY'S AT 417-833-9494

EASTERLY AUCTION CO.

Mike Easterly Auctioneer • 417-833-9494

Not Responsible for accidents or theft. For more information call: Easterly Auction Company, Springfield, MO. Auction Terms: Bank Letter Of Credit Required. Visa, Mastercard, Cash, Cashier's check or checks with proper I.D. Announcements day of sale take precedence over printed material. Auction Notes: Although information is obtained from sources deemed reliable, auctioneer makes no warranty or guarantee expressed or implied. Buyers should themselves take the opportunity to make their own inspection prior to sale.

www.EasterlyAuction.com • auctionzip.com ID#14770

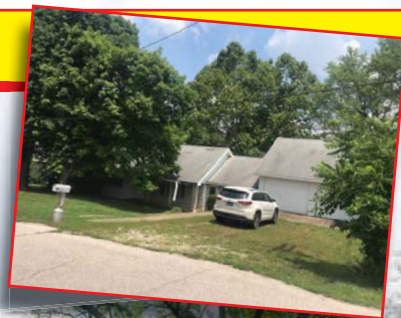


CRAWFORD *Online* AUCTION

HOME OF LINFORD AND PURLEY ASH

3 Bedroom home and 6 +/- acres 112 Township Rd., Camdenton, Missouri 65020

The Ash family will be selling the long time home of their parents Linford (Dub) and Purley Ash located on Township Road, in the heart of Camdenton, Missouri, sharing a southern board with Camdenton School.



**Online bidding
begins to close
Sunday, August 30th
at 7:00 PM**

AUCTIONS ENDING EACH SUNDAY! BID ONLINE AT:

WWW.OZARKBID.COM

- Online
CRAWFORD
Auction Service

Register and bid online
@ www.OzarkBid.com



Contact Chase Crawford, Crawford Auction Service for more info @ 417-399-1904



Missouri State Fair Grounds, Sedalia, Missouri
Fall Sale • September 9, 10, 11, 12, 2020

SALE SCHEDULE

Monday, Sept. 7 - Check in 12:00 to 6:30 / **Tuesday, Sept. 8** - Check in 8:00 to 6:30

Wednesday, September 9

8:00 Tack; **9:00** Field Sale, Outside Farm Machinery, Large Antiques, etc.; **10:00** Inside antiques
12:00 Carriages; **2:30** Harness, Collars, Saddles

Thursday, September 10

8:00 Tack (1 hour in horse ring); **9:00** Cataloged Drafts, Draft Crosses, and Halfingers, followed by Uncataloged

Friday, September 11

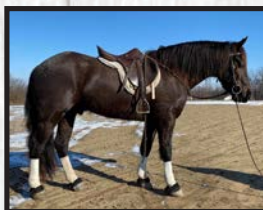
8:00 Tack (1 hour in horse ring); **9:00** Cataloged Standardbreds, Quarters, Gaited Horses, Light Teams and Ponies, followed by Uncataloged

Saturday, September 12

8:00 Tack (1 hour in mule ring); **9:00** Cataloged Mules, Donkeys and Mares in Foal to a Jacks, followed by Uncataloged



6 yr. Reg. Gypsy Stallion



4 yr Freisian Sport Geld.



4 yr Draft Cross Geld.



6 yr. Reg. Clyde Mare



4 yr Reg. Qtr. Geld.



4 yr Reg. Qtr. Geld.



4 yr Reg. Qtr. Geld.



7 yr Reg. Qtr. Geld.



12 yr Molly



14 & 15 yr Mollys



1990 Featherlite 7'x20'

We'd like to welcome everyone back to Sedalia for another 4 full, fun days of horses, Mules, Tack, Antiques, carriages, wagons, Equipment and much more. There's 728 head in the catalog plus uncataloged so come one, come all and thanks for your continuing support. God Bless, Joe & Lonnie



Hitch Wagon

For more information, call Joe Raber: 719-431-3137 or Lonnie Miller: 260-350-4637

Email: boonecountyhorseauction@safecomm.com

Website: BooneCountyDraftHorseandMules.com

PUBLIC AUCTION



HUGE LABOR DAY FARM AUCTION MONDAY, SEPTEMBER 7, 10:00 A.M.

Directions: From Doniphan take 160 E approx. 2 miles turn left on 21 N, travel 4.5 miles turn right on K Highway, 1.3 miles to right on county road, second driveway on right (woodentrance) watch for Billy Sexton Auction signs.

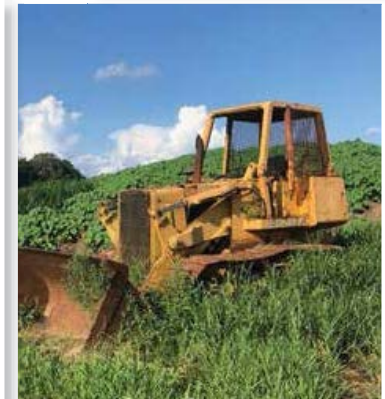
Tractors- Skidsteers- Equipment

John Deere 3040 4X4 cab loader, John Deere 6410 4X4 cab 640 loader, Bobcat 773 skidsteer (nice), Bobcat 753 skidsteer, 2004 24' X 6'8" Gooseneck brand stock trailer, John Deere 755 Track loader, 15' land plane tongue pull hydraulic lift, 10' land plane hydraulic lift tongue pull 3 blades, 10' hydraulic lift box blade, 10' AMCO finishing disk, 14' cultipacker, 20' hydraulic lift field roller, 15' batwing bushhog brand bushhog.



Hay Equipment- Panels- Farm

John Deere 569 mega-wide round baler w/net wrap, New Holland H7450 mower conditioner 13' cut, H&S X-rake 12 wheel high velocity V rake, Over 50 galvanized panels and misc bow gates, 2- complete working pens w/ squeeze chutes, 4- new 16' gates, over 300 new T-posts, 27 new rolls of gaucho barb wire, 100 used T-posts, several wood corner posts, 2- 3 ton upright feed bins, Winco pto driven generator, King Kutter 6' rear tine tiller, round bale hay rings, 250 gallon fuel tank.



Attachments- Hay- Misc

Skidsteer quick attach hydraulic post driver, skidsteer quick attach post haul auger w/3 augers, 180 5x6 round bales (barn kept), quick attach rock rake, 6' bushhog, creep feeder, 16' cattle guard, 42- Hog farrowing nursery pens w/auto feeders and plastic slats, Hog holding pens, 6-metal firewood racks, small box blade, Other misc items not listed.

Auctioneer Note: Owners have sold the farm and relocating. Plenty of trailer parking. Very clean items, well maintained equipment, everything has been kept under roof, make plans to attend this fine auction! For pictures few our website at sextonauctions.com or find us on Facebook at Billy Sexton Auction Service.

DONIPHAN, MO. FARM SALE - FOR MORE PICTURES GO TO: WWW.SEXTONAUCTIONS.COM

BILLY SEXTON AUCTIONEERS

683 Missouri Avenue, West Plains, MO • Office: 417-255-2744

Billy Sexton 417-257-4595 • Justin Kraft 417-274-0073

www.sextonauctions.com • Not Responsible For Accidents



ESTATE AUCTION

To settle the Estate of Mark Williams we will sell the following items on:

Saturday Aug. 29, 2020 @ 10AM

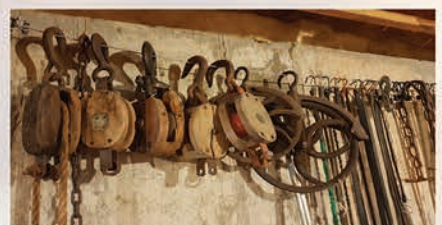
DIRECTIONS (10901 Larson Ln. Rolla, MO): From the 72 and 63 Jct. travel 72 East 1.7 miles to Pine Tree on left (across from O Rd.) then travel Pine Tree Rd 0.5 miles to a right on Soest Rd. and go 1.4 miles on Soest to a right on Larson Ln. 0.2 miles to auction site... Watch for Sellers Auction Signs on Sale Day

Guns: Traditions Cap & Ball Revolver ~ Fllipietta 44cal Black Powder/ made in Italy

Truck, Tractors, Equipment, & Tools: 1930 McCormick-Deering Steel Wheel Tractor ~ Case VAC Tractor ~ Farmall Cub Tractor ~ Farmall A Tractor w/Belly Mower ~ Zetor 4340 Diesel Front Wheel assist w/Zetor Loader 580.32hrs ~ 97 Ford F150XL 2wheel dr.V6 one owner interior is rough ~ New Holland Model 56 Rake ~ New Holland 311 Square Baler ~ Howse Mod 602S, 7ft lift type Brush hog ~ M & W 4 Basket Tedder ~ Ford 530 Square Baler ~ Land Pride 15ft Batwing Brush Hog ~ Long Agribusiness 7170 Disc Mower ~ DR Power Wagon ~ 4 Wheel Wagon ~ Modern AG Products 10ft Brush hog ~ Troy Bilt 7sp. Lawn Mower ~ Craftsman RER 1000 Riding Mower ~ Aluminum Ramps ~ Chicago Electric (Robbin Subaru Motor) 9hp. 4600wt Generator ~ 3 Ton Heavy Duty Floor Jack ~ 1999 100cc Kawasaki Motorcycle ~ Harbor Freight 1000lb Scale ~ 2) Furniture Jacks ~ 30,000 BTU Vent Free Heater/NIB ~ 14" Electric Chainsaw

Antiques & Collectibles: Collection of 2 man Crosscut Saws ~ Antique Coal Oil Tender ~ Collection of Antique Pullies ~ Pair of Tractor 4ft Steel Wheels ~ 6) Antique Woven Seat Chairs ~ Antique Wood Ladders ~ RC Victor No3 Philadelphia MFG Co. Pat July 20/98 ~ Hot Air Balloon Lamp ~ 2) Stained Glass Lamps ~ Several 5gal Glass jars 13Gal Glass Jar marked Mc Agsto 1943 ~ Collection of Marbles ~ Cast Iron Owl & Lighthouse Door Stops ~ Sugar Buckets ~ Rock-Ola 442 Juke Box ~ Sleigh Bells ~ Lots of Ship Pictures ~ 2) Rolla Train Station pictures ~ Madeline Sailing on the East River AJ Blake Signed & Numbered ~ Chief by Robert Bateman 1997 ~ John Korver Signed & Numbered Picture 36/300 ~ Large Lot of Brown Drip Pottery Marked McCoy & USA including Pitchers, Bowls, Soup Terrains, Cookie Jars, Platters, Plates & Misc Pieces ~ Old Bibles dated 1891 & 1895 ~ Zenith 2 Long Handled Ladle ~ Russian Clock marked Made in Russia Sovietski ~ 1930s Phelps County Road Map ~ Bayonets one marked Weyersberg Kirschbaum & C Solingen

Furniture: Hutch ~ Table w/ 8 Chairs ~ Wood Ladder Back Chair ~ Curved front China Cabinet ~ Several Chests ~ Desk ~ Couch ~ Chair ~ Bar Stools ~ Twin Bed ~ Dresser w/Mirror ~ Brass Lamps ~ Honeywell Hepa Air Machine ~ Many Many More Items too Numerous to Mention...



Auctioneer's Note: Mr. Williams had many interests which is obvious with his collection. Lots of unique items, good selection of farm machinery. Plan on two rings part of the day so bring someone with you.

Sellers Auction Service
"We Were Born Sellers"

Complete Auction Service

www.sellersauctionservice.com

Terms: Cash or Check with proper I.D. Not responsible for accidents or losses. Items will be sold As Is/Where Is with No Guarantees. Nothing to be removed until paid for. Refreshments available. Announcements made on sale day take precedence over any printed materials.



GREGG SELLERS, AUCTIONEER
573-480-4400

PERSONAL PROPERTY AUCTION SATURDAY, AUGUST 29 @ 10:00 A.M.

ADDRESS: 6724 SOUTH HIGHWAY 63, HOUSTON, MO 65483
DIRECTIONS FROM HOUSTON, TAKE HWY 63 SOUTH APPROXIMATELY ONE MILE.

OWNERS: DAVID ARTHUR & FAMILY



BACKHOE * TRACTOR * EQUIPMENT * VEHICLES

Case Super K Backhoe * John Deere 2440 Tractor with Front Loader * 12 Ft pull Type Bushhog * Dempster Fertilizer Buggy, good condition * 2009 Chevy Cargo Service Van * 2002 Ford Cargo Service Van * 2006 Ford Cargo Service Van * 2009 Ford Cargo Service Van * 2003 Chevy Tahoe, Loaded *

GUNS * COINS * HUNTING * FISHING

CZ-USA Mallard 104A - 20 Gauge Silver SN#1055777 in box * Marlin 30-30 Rifle * Remington 22 Rifle * Tri-Star 20 gauge Over/under NKGMO * Quail Forever Knife * Hunting Knives * Gun Cleaning Kit * Shell Holder * Dog Body Protector * Gun Scopes * Ammo * Evans Sport Rack * Gun Rack * Evans Wood Box * Hummingbird Fish Finder * Motor Guide Troller * Electric Boat Anchor * Fish Cooker * Camping Stove * Old Coins, Uncirculated * Foreign Coins * State Quarter Mint Sets * Coolers * Golf Clubs

TOOLS * FARM SUPPLIES * PUMP SUPPLIES * MISC

Dewalt 12 Volt Drill and Charger * Dewalt 1/4 Impact * Dewalt Radio * 1/4 t-Handle Socket Set * Socket Sets * Small Tool Bags * Chainsaw * Milwaukee Drill and Charger * Dewalt 9.6 Volt Charger

* Cutting Torch * Leather Welding Coat * Electric Fence Charger * Storm Door * 8-265/65 R18 tires * Misc Hand Tools * Wood Carving Set * Cattle Working Supplies * Gould's Shallow Well Pump * Pump Control Boxes * Conduit Bender & Fittings * 4 Ft Lights and Bulbs * 8 Ft Light Bulbs * Electrical Supplies * Pulleys * Bostitch 8D & 16D Nails * Coil Roof Nails * Work Weedeater

HOUSEHOLD * ANTIQUES * MISC

G.E. Washer & Dryer * Dishwasher * Electric Stove Top * Sewing Machine * Keyboard * Hand grain Grinder * Aladdin 23 Kerosene Lamp * Small Wood Desk * Antique Wall Bottle Opener * Lots of cookbooks * Vintage Decorated Oil Can * Pampered Chef * Gould's Collector Lamp New in Box * Shelf * Longaberger pottery, baskets, liners, purses, wallets, totes, coasters * Antique Salt & Pepper Shaker * Pitcher and Wash Bowl * Science Books * Kids books * Attic Fan * The Green Mile set of books * Over 100 Louis Lamor Books * Zane Grey Books * Vintage Cameras * Tekie from Hawaii * CD's, Eight Tracks * Cassettes * China * Cut Glass * Corelleware * Tupperware * DVDs * Lots of Christmas Decor * Bridge Card Sets * Transcriber Foot Pedal * Small Indoor Grill * Nascar Ticket & Hats * Marx Tin Toy * Charlie Weaver with Box * Pez Dispensers * Old Cowboy Action Figure * Several Filing Cabinets * Several 6 Sets of Office Desks- like new. * Old Magazines * Shark MiniVac * Dauphin Statue * Old Shoe Puller * Home Interior * Tens Unit * Old Baskets * Bird Feeders * Suit Cases * Car Seat * High Chair * Bunny Bench * Jars *

Auctioneers Note: Don't miss this good auction as there will be a lot of items not listed watch face book for updated list . Office equipment and desk are like new



Darren SCHEETS AUCTIONS

(417) 457-6638 • (417) 926-8575
www.scheetsauctions.com



TERMS OF AUCTION: Cash or check with picture ID. Nothing loaded or removed until paid for. Everything sells as is, where is. Not responsible for accidents, lost or stolen items. Auction day announcements take precedence over all previous advertisements.

ANTIQUe ESTATE AUCTION

Friday, August 28th, 2020 ~ 9:00 AM

LOCATION: 2323 North Miller, Joplin, MO (Watch For Signs)

Auction For Paul & Armella Kuehn Estate



Antique & Primitive Furniture

Several 1800's & 1900's Store Display Furniture Pcs Inc 4 Ft Keen Kutter Store Counter & Oak Curved Glass Candy Display, Several 1800's & 1900's Wall Clocks, 1800's & 1900's Floor & Table Lamps, Several Ant Spool Cabinets, Chicago Century Of Progress 1933 Oak High Boy Dresser (Very Rare), Oak Doctors Cabinet W/ Double Door, Oak Wall Phone, Four Stack & Other Oak Lawyer Bookcases, Ant Victrolas, Several 1800's & 1900's Ornate Buffets, Several Step Back Cabinets, Several Store Display Cabinets & Pcs, Lg Harvest Table, Very Lg Lot Of Original Paintings & Pictures From The 1800's & Early 1900's, Several Hoosier & Kitchen Cabinets, Several Wash Stands Many Oak & Ornate, Ant Armoire Cabinets Different Styles, Several Ant Medicine Cabinets Of Different Kinds & Styles, Several Ant Most Oak High Boy & Low Boy Dressers, Ant Pie Safes, Several Ant Quilt Or Cedar Chests, Several 1800's & 1900's Ant Chairs, Ant Ornate Lingerie Cabinets, Lg Lot Of Ant Masonic Pictures & Other Advertising Pcs Lots From 1800's, Ant Oak Treadle Sewing Machines, Lg Lot Of Ant Oval & Square Frames, Lots Of Sm Ant Tables, Ant Beds, Ant Kitchen Tables, Lg Lot Of Furniture Handles, Hardware & Furniture Parts & Pcs, Also Over 50 More Pcs Of Furniture Not Listed

Antiques, Primitives & Collectibles

Approx 50+ Crock & Crock Items Inc Rare Red Wing, Roosters, Bee Hive, Elephant Ear & Other Very Hard To Find Pcs, 1800's Stone Crock Bowls, Other 1800's & 1900's Crock Pcs, Ant Lighting Rods, 1800's Oil Lamps, Salt Glazed Pcs, Very Lg Lot Of Advertising Pcs Of Various Kinds Inc Railroad, Red Goose

Shoe Clock, Porcelain Prestone Antifreeze Thermometer, Grapette Thermometer, Pepsi & Coke Thermometers, Dr. Pepper Clock, & Others, Lg Lot Of Cast Iron Pcs Of Various Kinds Inc Skillets, Lard Presses, Griddles, & Other Pcs Most Griswold & Waggoner, Lots Of Old Toys, Lots Of Advertising Signs Inc Rare Anheuser Busch Prohibition Grape Bouquet, Markward's Bread, Caper's Farmer, & Prince Albert, Lots Of Advertising Metal & Wood Boxes, Speckle Ware Pcs, Tobacco & Indian Baskets, Lg Lot Of Old Advertising Tins Most Rare, Lots Of Keen Kutter Pcs, Rare Cookie Jars, Rare Fire Fighter Lantern, Rare Frisco Bell, Buggy Whip & Other Store Display Holders, Ant Tobacco Cutters, Ant Coffee Grinder, Keen Kutter Plane, 1800's Sugar Buckets, Kingman, KS 1947 Sign & License Plate, 6 Whole Seat Top From Original Kingman, KS One Room Schoolhouse Outhouse, Several Rare Jars & Bottles, Ant Store Counter Cheese Cutter, Porcelain Green Malt Mixer, Carnival Glass, Thousands Of Prim 1800 & Early 1900's Pcs Way To Much To List

This Is Not Even 1/4 Of Items Listed That Will Be Offered. This Is Auction Number 3 For The Kuehn Estate. They Say Pictures Are Worth A Thousand Words So Please Go To Website To See Over 100+ Pictures Of Items That Will Be Sold. We Will Have No Particular Order On Selling Items As We Will Sell Furniture, Crockery, Antiques & Primitives In Mixed Fashion. There Are Hundreds Of Very Rare & Unique Items. This Is 3 Generations Of Over 75+ Years Of Collecting. Rare Once In A Lifetime Opportunity To Purchase This Type Of Museum & Historical Items!!! Any Questions Call Auction Service.



Auctioneers Note: It Is A Very Heartfelt Honor To Be Conducting This Auction For The Kuehn Estate As All Of Us At Nance Auction Service Have Been Personal Lifelong Friends With This Family. Paul & Armella Were Just Like My Own Family As They Taught Me Many Things Through The Years. As Stated Above This Is A Once In A Lifetime Opportunity To Purchase More Rare Items At Auction That You Have Ever Seen In One Place. All Items Are 100% Real From The 1800's & Early 1900's. Please Plan To Attend. As Stated Above No Particular Sale Order As Items Are Mixed & Matched Throughout Sale. Thank You Again In Advance & Plan To See You Sale Day. See Ya There!!!
Terms: Cash or check with proper ID. Now accepting most major credit cards. Nothing removed until settled for. Statements made the day of sale takes precedence over printed material. Everything sold as is where is. Not responsible for accidents. Restroom available. Concessions Provided. Check our website for upcoming auctions and for additional pictures!!



NANCE AUCTION SERVICE

No Matter How BIG or small, We Do Them All!

www.nanceauctionservice.com

Col. Bill Nance 417-214-0093

In God We Trust

Philippians 4:13

ESTATE AUCTION

Sunday, August 30th, 2020 ~ 1:00 PM

LOCATION: 846 North State Hwy 39, Greenfield, MO; Directions: From Greenfield Go North Approx 8 Miles On 39 Hwy Or From Stockton Go 14 Miles South On 39 Hwy Or From Arcola Go 1.2 Miles South On 39 Hwy To Sale Site (Watch For Signs)

Auction For Bob Bennett



Appliances, Restaurant Type Items, Antiques, & Misc. Items

Like New Stainless Flat Top Electric Cook Stove, Like New Upright Deep Freeze, New Jacuzzi Tub, 2 Basket Deep Fryer, Industrial Hobart Meat Slicer, Lg Meat Grinder, Sm Ice Maker, Stainless Sink W/ Cedar Legs, Stainless Water Trough Style Cooler, Stainless Gas Grill, Folding Tables, Restaurant Display Shelf, Full Lady Mannequin, Retro Setting Chair, Galv Chicken Laying Nests, Galv Mop Bucket, Kerosene Heater, Patio Heater, Banjo, Some Sm Household & Sm Collector & Prim Pcs

Guns, Fishing, Hunting Related Items

Ruger Pierson Bolt Action 6.5 Creedmore Rifle W/ Zeiss Scope, Ruger Pierson Bolt Action 308 Rifle, DPMS Panther AR-15 Rifle, New Rem Model 700 Bolt Action 270 Stainless Rifle W/ Composite Stock, Rem Model A-Bolt Stainless 300WSM Win Short Mag W/Boss & Leopold Scope, Henry Model Government 45-70 Lever Action Rifle, Rem Model 700 Bolt Action 22-250 W/Bipod Stand & Burris Scope, Marlin Model 30A Lever Action 30-30 Rifle, Springfield Hawkins 50 Cal Black Powder Rifle, 2 BPI Connecticut Arms Mag Bolt 150 45 Cal Black Powder Rifles, BPI Connecticut Arms 50 Cal Black Powder Rifle, Benelli Nova Semi Auto 12 Ga Shotgun, Rem Premier 11-87 Semi Auto 12 Ga W/Gold Trigger & Engravings, Mossberg Model 835 Camo 12 Ga Pump Turkey Gun, Glock Model 43 Semi Auto 9mm Pistol, S&W M&P 40 Shield Semi Auto 40 Cal Pistol, Ruger Model SR1911 Stainless Semi Auto 45 Cal Pistol, Ruger LC9 Semi Auto 9mm Pistol, Sig Saur Model 1911 Semi Auto 45 Cal, Taurus Model P738 Semi Auto 38 Cal Pistol, New Zeiss Conquest 3-15x42 Scope, Acushot EZ Top 3-12x50 Scope, Lots Of Ammo

Of Various Kinds, Several Deer Stands, 4-Wheeler Gun Case, Turkey Decoys, Snow Gulley Suit, Coolers, Camping Outdoor Hot Shower Hook Up System, Other Camping Supplies, Fishing Guide Items Inc High Dollar Cannon Mag Lots Down Riggins, Lg Lto Of Fishing Poles, Lg Lot Of Fishing Tackle, Lg Lot Of Fishing Reels, Other Items Will Be Added Sale Day Not Listed 2 High End Compound Bows, Bow Hunting Accessories

Vehicles, Boat, Box & Flatbed Trailers,

Track Loader, Tractor, Equipment,

Large & Small Tools & Related Items

IH Drott 150 Diesel Track Loader (Runs Great), 1996 Stinger 18 Ft Sea Nymph Fishing Boat Has 115 HP Evenrude Motor, Trolling Motor, Canopy, 4 Swivel Fishing Seats, 2 Live Wells, Storage & Trailer, 16 Ft Box Utility Trailer, 16 Ft Flatbed Trailer, 2000 S10 4x4 Truck W/V6 Motor, Auto Trans & Approx 190,294 Miles, 1999 Chevy Cavalier LS 4 Door Car W/ Auto Trans, V6 Motor & Approx 124,691 Miles, 1994 Liberty Camp Trailer (Needs Some Work), 2000 S-10 Transmission, Massey 125 Diesel 4x4 Tractor W/1246 Loader, 3 Pt RZ160 Bush Hog Brand 5 Ft Bush Hog, 3 Pt 5 Ft Tractor Tiller, 3 Pt Rock Rake, 3 Pt 6 Ft Disc, 3 Pt Post Hole Digger, 3 Pt Ferguson 2 Bottom Plow, 3 Pt Chisel, 3 Pt Steel Carry All, Two 3 Pt Blades, Ant 2 Pot Corn Planter, Lg Spot Sprayer, Lg Water Transfer Tank, 2 Gates, 4-Wheeler Tires, Subaru Robin Generator, Gas Power Pressure Washer, Lincoln AC/DC Welder, Stihl 180 Chainsaw, Grass & Garden Seeders, Roll Around Battery Charger, Parts Washer, Engine Stand, Craftsman Roll Around Toolbox, Floor Jack, Air Bubble, Lots Of Sm Hand & Electric Tools, Router Table, Dove Tail, Alum Ladder, Other Items Not Listed, Pull Behind Lawn Sweep

Auctioneers Note: This Is One Of The Best Auctions We Will Conduct All Summer. Bob Has Been In The Fishing & Hunting Guide Business For Many Years & Is Downsizing His Inventory As Well As Downsizing His Farm Equipment. Excellent Track Loader & Trailers. Guns & Fishing Items Are Top Notch & Will Be Items Added Sale Day. Please Plan Now To Attend. **Sale Order: Household, Restaurant & Misc Items Sell First Then Move Into Smaller Tool Items. At Approx 3:00 PM Will Offer Guns, Ammo, Hunting & Fishing Items Then Will Move Directly Into Large Items Starting With Track Loader Then Tractor & Equipment. See Ya There!!!**
Terms: Cash or check with proper ID. Now accepting most major credit cards. Nothing removed until settled for. Statements made the day of sale takes precedence over printed material. Everything sold as is where is. Not responsible for accidents. Restroom available. Concessions Provided. Check our website for upcoming auctions and for additional pictures!!



NANCE AUCTION SERVICE

No Matter How BIG or small, We Do Them All!

www.nanceauctionservice.com

Col. Bill Nance 417-214-0093

In God We Trust

Philippians 4:13

PERSONAL PROPERTY AUCTION

Labor Day - Monday September 7, 2020 9:00AM

Estate Of James Rice • 4829 Sycamore St • Aldrich, MO 65601

Directions: From Hwy 215 Take Hwy 123 North Towards Aldrich Then West On Commercial St & Right On Sycamore St To Auction. Watch For Signs.

Antique Tools, Lawn & Garden

2 Riding Mowers * Cultivator * 100 Antique Adjustable Wrenches * 25 Antique Pipe Wrenches * Hay Spear * House Jacks * Oil Cans * Splitting Axe * Tool Box * 20 Pipe Wrenches * Crosscut Saw * Antique Ford Wrenches 75 Pc * Ford Jack * Steel Traps * 2 Stihl Chainsaws * Aluminum Ladder * Joiner Planer * Scaffolding * Dr Trimmer * Lawn Mower Trailer * Knives * Radial Arm Saw * Old Wire Stretcher * Oil & Kerosene Dispensers * Hanes * Levels * Black & Tackle * Brace & Bits * Fur Stretchers * IHC Toolbox * Cast Iron Dinner Bell * Cast Iron Kettles * 3 Concrete Lions * Sharpening Stone w/ Pedal * 2 Patio Tables * 12 Torches * Hand & Garden Tools * 100 Wagon Wrenches * Hand Drill * 20 Block & Molding Planes * Blacksmith Forge & Tools * C Clamps * Boxes Of Old Wrenches * 100 Pliers * Hammers * Organizers * Sockets & Wrenches * Ford Wrenches * Oliver Wrenches * Nash Champion Wrenches * Keen Kutter Wrenches * Hog Oiler * Cotton Scale * Hoof Nippers * Shoe Lasts * 50 Files * Hand Saw * 60 Plus Oil Cans * Antique Metal Lawn Chair * Wagon Wrenches * 3 Pc Wrought Iron Patio Set * Platform Scales

Outstanding Lifetime Collection Of Rare & Unusual Ford, Nash Champion, Keen Kutter & Oliver Wrenches

Furniture & Appliances

Upright Freezer * 1950's Refrigerator Still Works * Full Size Sofa * Sofa Table * Coffee Table * 48" Flat Screen Tv * Washer & Dryer * File Cabinets

Antiques, Collectibles & Household

Seth Thomas Mantle Clock * Oak Library Table * Oak Loveseat * Oak Morris Chair * Oak Mantle Clock * Antique Floor Lamps * Hanging Kerosene Lamp * Amber Lamp & Shade * Linens * Empire Drop Front Desk * Milk Glass * Carnival Glass * 2 Door Oak Bookcase * Porcelain Wind-up Clock * Mirror * Aladdin Model B. Lamp * Carved 1/2 Table * Cast Iron Bed * Silver Server * Antique Framed Pictures & Lithographs * Coke Box * Complete Mission Oak Bed * Og Weight Driven Wall Clock * Carved Bustle Chair * Antique High Chair * Antique Radio * Old Books * Mission Oak Bookcase * Oak Parlor * Shelf Clock * Lots Of Hand And Needle Work * Arts & Craft Table * Quilt Top * Oak High-Back Bed & Dresser * Electric Singer Sewing Machine * Marvels Cigarette Thermometer * 45 Metal Finished Planes * White Painted Victorian Desk * Graniteware * Old Kettle * Antique Cast Iron Stove * Wrought Iron Tea Cart * Lincoln Lamp * Wrought Iron Chairs * Oak Wash Stand * Carnival Glass Plates * Oak China Cabinet * Magazine Rack * Wicker Sofa & Chair * Glider Rockers * Antique Library Table * Wooden Box * Roaster * Jelly Cabinet * Grapette Thermometer * Empire Linen Press * Chest Of Drawers * Oak Princess Dresser * Metal Cash Register * Radio * Parlor Table * Coke Clock * Claw Foot Stick & Ball Table * Victorian Rocker * Carved Desk Chair * Aladdin Lamp * Drop Front Secretary Bookcase * Green Kerosene Lamp * Several Antique Tea Settings * Marble Top Parlor Table * Antique Console Stereo & Record * Victorian Parlor Table * 20" Decorated Vase * Marble Top Table * Player Piano * 8 Gal Stoneware Crock * Assorted China * Oak Side Sever * Art Nouveau Desk Chair * 4 Pc Teak Wood Nesting Tables * King Crowne Compote * Goofus Glass * 12" Carnival Glass Bowl * Iris Pottery Pitcher & Glass * Victorian Burrell Rosewood Sofa Lionel Electric Train Set In Box * Sheffield Cast Iron Caboose Stove

Plus More! www.glenworth.com



Auction Conducted by:

Glenworth

**Auction Service & Realty
Glen Yutzy, Auctioneer/Broker**

Member of:

Missouri Professional
Auctioneers Association
Licensed in Missouri & Arkansas



Phone: (417) 767-4345

Fax: (417) 767-4222

Not responsible for accidents. Announcements made day of sale take precedence over any printed matter.
Terms: CASH or CHECK Visit our website for more information at www.glenworth.com Lunch available



Wheeler Livestock Auction, Inc.

Special Stock Cow Sale



SAT., AUG. 29, 2020 • 6:00 P.M.

Expecting 800 head of bred heifers, cows, cow/calf pairs & breeding bulls.

Pine Ridge-

- 3 Blk Angus bulls, 18 mos. 1,450 lbs., BW 72-78 lbs., Very nice set of young bulls, Schaff Pioneer breeding.

M & C Cattle-

- 6 Red Gelv. hfrs., 2 yrs., 1,000 lbs., calve Sept. 20th for 60 days. 4 Red & Blk cows, 3-4 yrs., 1,250 lbs, bred 3rd. Bred to CE Seedstock Plus Red bulls, complete health program.

Campbell Farms-

- Selling Due to Health Reasons-14 Beefmaster hfrs., 1,000 lbs., bred 3rd to Red Bfmstr bull, 5 Red Bfmstr cows, 3-4 yrs., 1,300 lbs., w/ clvs. up to 300 lbs., 1 Red Bfmstr bull, 15 mos., 1,200 lbs., good gentle bull.

Heiserman Farms-

- 13 Red Ang hfrs., 2 yrs., 1,000 lbs., bred 3rd to CE Seedstock Plus red bulls, Aug. 15th for 60 days. Good heifers with excellent genetics.

Victor Miller-

- 20 Red Angus hfrs., 2 yrs., 1,000 lbs., bred 2nd to CE Red Angus bulls, start Dec. 15th for 60 days. Excellent RA genetics.

Kauffman Farm-

- 20 Lim cows, 6-8 yrs., 1,300 lbs., w/ 12 clvs. up to 300 lbs., rest bred 3rd to Lim bull. 1 Red Lim bull, 5 yrs., 1,900 lbs., 18 Lim/Red Ang X cows, 6-SS, 1,300 lbs., w/ 10 clvs., rest bred 3rd to Blk. Ang bull. 1 Blk Ang bull, 6 yrs., 2,000 lbs. 18 Lim/Red Ang x cows, 6-SS, 1,300 lbs., w/ 10 clvs. up to 300 lbs., Rest bred 3rd to Red Bfmstr bull. Cows were advertised last month but were not sold due to owner's health reasons.

Charley Steinmark Farm-

- Dispersal of Fall Calving Cows-20 Fancy Red cows, 2 yrs., 1,100 lbs., bred 3rd. 50 Fancy Red cows, 3-6 yrs., 1,400 lbs., bred 3rd. The above 70 cows are all home raised, bred to the best Saler bulls on the market. Charley has not bought a cow for 30 years. Cows have been worked twice a year by Dr. Howerton. All cows will calve Sept. 15th for 45 days.

Newberry Farm-

- 47 Fancy Red Ang cows, 3-5 yrs., 1,350 lbs., Bred 3rd to Red Ang bulls, calve Sept. 1st. 10 Blk Ang cows, 3-5 yrs., 1,250 lbs., Bred 3rd to Herf. bull.

Keith Tate Farms Dispersal-

- 15 Blk cows, 3-5 yrs., 1,150 lbs., w/ clvs. up to 300 lbs., bred back to Blk bulls. 5 Char X cows, 3-5 yrs., 1,200 lbs., w/ clvs. up to 300 lbs., bred back to Blk bulls. 12 Blk & Char cows, 6-SS, 1,250 lbs., bred 2nd & 3rd. All cows home raised & good calf raisers.

Mitch Grace-

- 12 Blk cows, 4 yrs., 1,300 lbs., bred 3rd to Blk Balancer bull, calve Oct. 2nd for 45 days. Good cows, all home raised, complete Vac program.

Miller Farm Dispersal-

- Sold Farm-50 Mix cows, 3-7 yrs., 1,200 lbs., Bred 2nd & 3rd to Ang. bulls. 2 Blk Ang bulls, 3 yrs., 1,600 lbs.,

Tennis Farm-

- 23 BWF cows, 3-5 yrs., 1,200 lbs., w/ 23 clvs. up to 250 lbs., Cows exposed back to Aschermann Char. bulls.

Billingsley Farm Dispersal-

- 30 Blk Ang cows, 5-7 yrs., 1,250 lbs., bred 3rd to Herf bulls. 20 Brng X cows, 5-7 yrs., 1,300 lbs., bred 3rd. 15 Char X cows, 5-7 yrs., 1,300 lbs., bred 3rd. 3 Horn Herf. bulls, 1,700 lbs.,

Cushman Farms-

- 11 Char cows, 5-6 yrs., 1,250 lbs., bred 3rd to Red Ang bulls.

Fulton Farms-

- 14 Char x cows, 4 yrs., 1,150 lbs., w/ 300 lb. Ang clvs. 9 Char X cows, 4 yrs., 1,200 lbs., bred 3rd. 32 Char & Ang X cows, 3-5 yrs., 1,200 lbs. w/ 22 Ang clvs., rest bred 3rd.

Burke Farms-

- 10 Red Ang cows, 3-5 yrs., 1,150 lbs., w/ clvs up to 400 lbs., cows bred back. 21 Red cows, 3-5 yrs., 1,300 lbs., bred 3rd.

Smith Farms-

- 20 Yel/Char cows, 5 yrs., 1,250 lbs., w/ clvs. or bred 3rd to Char bull. 25 Char cows, 3-5 yrs., 1,250 lbs., w/clvs. or bred 3rd to Char or Herf bulls.

Roger Case-

- 52 Blk cows, 3-7 yrs., 1,300 lbs., w/ Ang clvs. up to 350 lbs., Cows bred back to Ang bulls, good gentle cows.

S & W Farms-

- 40 Blk cows, 3-5 yrs., 1,100 lbs., bred 3rd to Lucas Sim-Ang bulls.

Special Wean Vac Feeder Calf Sales - Sept. 3rd & 17th
September Cow Sale - September 26th



Wheeler Livestock Auction, Inc.

Osceola, MO • 685 SE 13 Hwy., PO Box 560 • BARN 417-646-8102

Byron Wheeler, 417-777-0897 • Austin Shelby, 417-309-1350 • Darwin Hearting, 417-296-1029

Charlie Proctor 417-326-9467 • Burleigh Wheeler, 417-840-6561 • Skyler Fisher, 417-298-9051

Jeff Shelenhamer, 417-326-9929 • Kevin Wade 660-492-3279 • Les Tennis, 417-466-8786

Office Manager: Weston Shelby, 417-298-1316

Bid online on CattleUSA • www.wheelerlivestock.com

Like us on Facebook-Wheeler Livestock Auction

LARRY DRENON AUCTION

LIVING ESTATE AUCTION

17480 Hwy HH • Lincoln, MO

Due to the death of my husband, Junior, and I have sold my farm and am residing in a nursing facility, I will sell the following at auction located from Lincoln, MO north on Hwy 65 2 1/4 miles, then west 3 miles on HH Blacktop on

SATURDAY, SEPTEMBER 5TH • 10 AM

GUNS

Rifles: 2-Winchester Model 61 22 s,lr; Remington Mohawk 22 lr; Remington Model 121 22 s,lr; Remington Model 742 30-06 w/scope; Winchester Model 190 22 s,lr, w/scope; Winchester Model 77 22 lr; Ruger 10/22 22 lr w/scope; Marlin Glenfield Model 60 22 lr; Winchester Model 190 22 lr; Winchester Model 62A 22 s,lr; Winchester Model 61 22 s,lr; Remington Model 14 30 Rem.; Browning 22 lr; Winchester Model 77 22 lr; Winchester Model 74 22 lr; Remington 22 Rem. Spec.; Remington GameMaster Model 141 30 cal.; Remington Fieldmaster Model 121 22 s,lr; Remington Model 550-1 22 s,lr; Marlin Model 60 22 lr, gold trigger; Remington Fieldmaster Model 572 22s,lr; Remington Model 14 25 Rem.; Winchester Model 62 22 s,lr; Remington Speedmaster model 552 22 s,lr; Remington 572 22 s,lr; Remington Model 121 22 s,lr w/scope; Remington Model 121 22 s,lr; Remington Gamemaster Model 141 35 Rem; Remington Model 12 22 s,lr, hex barrel; Remington Model 141 35 rem. w/scope;
Hand guns: Smith & Wesson 32-20 32 cal; Charter Arms Police Bulldog 38 Spec.; Colt New Service 45; Colt New Service 38 Spec.; Colt New Frontier 22; 5-Smith & Wesson 38 Special; Colt 38 Special; Colt New Service 38 wcf; Trooper MKIII 357 Mag. CTG; High Standard Field King 22lr; High Standard Supermatic 22 lr; Ruger H&R 32 mag Single Six; 2-Colt Police Positive 38; Colt DA 45; Colt Police Positive 38 Spec.; Smith & Wesson Model 732 32; H&R Trapper Model 22; Colt 45, polished; Smith and Wesson 38; Colt Official Police 38 Spec.; High Standard 22; Colt Automatic 22; High Standard Sport King 22 semi-auto lr

GUN SAFES

Stack On gun safe, 36 long guns, plus pistol storage
 Sentry 12 gun safe

TRACTORS

1956 Farmall 200, #14373, like new rubber
 1957 John Deere 520 #5205410
 1957 Farmall 230, #6017, new rear rubber
 1957 Farmall 230, #1066, new rear rubber
 1975 Farmall 140, wide front, w/5' Woods belly mower, all new rubber
 1969 Massey 165 w/ loader, bucket, spike

1957 John Deere 520, partially restored, w/parts for completing restoration

TRAILERS

16' Bumper tandem axle flatbed trailer w/ equalizer axles 6x9 Box bed trailer w/electric lift
 2 Wheel utility trailer w/sides
 2 Pickup bed utility trailers Ventura
 4 wheel mobility scooter

TRUCK

International AC 160 truck, no title, for parts
 14' Wooden truck bed

EQUIPMENT

John Deere RG 4 row cultivator
 Kewanee 16' Field cultivator
 IHC Side Delivery rake
 John Deere Big Bale lift
 3 pt John Deere spear
 3 pt big bale lift
 20 Blade Pull type straight disk
 IHC 2-14 Fast hitch plow
 Water tank
 2-16.9x34 tractor tires
 Hydraulic cylinders, cultivator shanks

HOUSEHOLD

Antique twisted leg lamp table * Antique gate leg library table * Antique drop side gate leg table * Cedar 3 drawer chest, cedar lamp table, made by Rudy Rambow * Antique Cedar chest * 4 Antique oak dining chairs * C1940's dresser and chest * 2-4 drawer chests * Antique treadle sewing machine * Domestic sewing machine in cabinet * Older washer and dryer * Older Frigidaire refrigerator
 * Small chest freezer

COLLECTIBLES

Cunningham Pickett Violet dishes (from MFA)
 7 dinner plates, 7 bowls, 8 cups, 7 saucers, 11 dessert plates, 4 berry bowls 2 C&S sets * Pfaltzgraff Village pattern dishes: #3 C&S sets, 2 Butter, 21 dinner plates, 32 dessert plates, pitcher, batter bowl, serving bowls and platters, mugs, cups, berry bowls, etc * 1981 Mizzou Football glasses, Milk glass, Carnival glass, Peach Lustre, Anchor Early Am. Prescut snack set, Red glass, c50's Spice rack, etc * Pyrex bowl set, Jade green mixing bowl * Antique potty chair and high chair * KC Art Chalk dog bank, small train w/tracks * Early 1900's Dalton adding machine * Camel back trunk, steamer trunk * Old kitchen

utensils; Enamel water bucket and potty with lid; Cigar boxes; Granite ware; Washboard; Blue and clear canning jars w/glass lids; RB Rice lard buckets; Aluminum tea kettle, 2 metal sprinkler cans * Dazey #60 qt churn; Blackhawk corn sheller; JC Grant Chemical Wooden box; pop bottle tops; old eyeglasses; lightning rods; 5&10 gal. milk cans, etc * Kerosene heaters and lanterns * MFA Implement, IHC, Farmers Bank, and other local memorabilia

JOHN DEERE COLLECTIBLES AND OTHER TOYS

John Deere metal toy tractors inc: 1953 model D 1990 Spec. Edition; 1937 Model G 50th Anniversary 1937-1987 Series IV; 1935 Model BR 1988 Spec. Ed.; 1935 Model B 1935 B Collectors Ed. 1996; 1915 Waterloo Boy Spec. Ed. Model R 1915-1919; 1934 Model A 50th Anniversary 1934-1984; Model R Series II 1949-1954; 1957 Model 720 Hi Crop 2 cylinder Club Spec. Ed. 1990; 1953 Model 60 JD Orchard Spec. Ed. 1993; 1958 Model 630LP 1989 Spec. Ed. 630LP; Model M Dubuque 1947-1952 Model M Series III; 1960 Model 3010 diesel 1992 Spec. Ed. 1961 Model 4010 Spec. Ed 1994 JD 4010; Overtime Tractor 1990 Spec. Ed. * c1930's Poosh-M-Up Big 5 pinball game; Mini table top pool table, cues, and balls; Carom board; old firetruck, jeep and other metal toys; Tinker Toys in box; Vintage Monopoly; paper dolls; Old dolls

COINS

Silver Dollar: 1922-D Peace * Half Dollars: 1917, 1941, 1942, 1944, 1945, Liberty Walking; 1961, 1963 Ben Franklin *

Quarters: 1925, 1928, 1930 Standing Liberty; 1976 Washington * Dimes: 1894 Barber, 1917, 1923, 1929, 1936, 1939, 1942 Mercury * Nickels: Sev. 1920 thru 1937 Buffalo * Pennies: Sev. 1917 thru 1950 Wheat

FARM AND SHOP

Craftsman 2 1/2 ton wood splitter, v/h * 15 ton Wood splitter * 15 gal. ATV Sprayer * Magna Force 220 v 60 gal air compressor * 150 Gal Air Compressor * Forney model C-5 welder, welding rod, helmet, etc * 16 spd Floor drill press, Craftsman radial arm saw on stand, Milwaukee chop saw, 1/2 hp Double wheel grinder on stand, Skill saw, other power tools * Sickle grinder * 16' Aluminum ext. ladder * Wagon hoist * Blacksmith forge * Floor jack * Werner 6' Fiberglass step ladder * Rear wheel tractor weights; John Deere front weights * Cattle panels, Wood and metal gates * Roll of net wrap * Nuts, bolts, etc * Portable air tank * Mandrel saw * Echo Timberwolf 590 chainsaw, 20" bar * Stihl 009 chainsaw * Stihl FS66 weed trimmer * Push garden plow * 14' Wooden ladder

MISC

Evinrude 2 hp motor * Tires and wheels, diff sizes * Wooden porch swing * 2x6s, 2x12s and other lumber * Several sheets galvanized tin, corr & smooth * Some flat and channel iron * Lot of scrap metal



MRS. JUNIOR (HELEN) ORFIELD

Note: The guns will NOT be on premises until morning of sale; and they sell first thing at 10 o'clock. Junior and Helen were married over 50 years before his death, and have lived on this farm for many, many years. More items may be found as we are getting ready for the auction.

LARRY DRENON AUCTION



Larry 660-596-8515

Lacey 660-723-1104

Laramie 660-221-4386

660-547-2646

Terms: Cash, approved check, or debit/credit card

(convenience fee applied). Nothing to be removed until settled for. Not responsible for accidents. Statements made day of sale take precedence over printed material. Lunch served.



Will sell the following located 5 miles North of Cross Timbers, Mo. on Hwy. 65
Watch for Crawford Auction Service signs.

MONDAY, SEPT. 7, 2020 – 9:00 A.M.

★ COINS ★ GUNS ★ TRACTORS ★ TRUCKS ★ MACHINERY ★ TOOLS ★ MISC.



COINS/GUNS Sell @ 9:00 a.m.

1856 O seated qtr.
1826-28-29-30 Bust half dollars
1960 & 64 US proof sets
1878-82-90-91 CC silver dollars
Sev other silver dollars
1971-72 Silver blue pack like dollars
1912 & 15 \$2-1/2 gold Indian
1909 \$5 gold Indian

Guns
Mossberg 22LR, Brazil
Lithgow 1943
Savage 12ga, pump
Harpers Ferry, musket, black powder
Rossi 92 .45, lever action
Taurus 45/410
Marlin 1894 pump, 12ga
H&R Topper, 410
Remington 782, 6mm
Remington nylon 66, 22, black
Winchester 100, 284, pre 64
Winchester 70, 30-06 (1971)
Savage 24, 22/410, O/U
2 Remington 788, .308 w/scopes (1-1976)
Remington 552 Speedmaster 22
Remington 576 Fieldmaster 22 pump
Remington 870 Wingmaster 20ga, full w/
improved & skeet barrels
Winchester 97 12ga, 30" full
Remington 742, 243 auto, scope
Marlin 57, 22, lever action
Ruger 77, 270 Win, scope
Remington 1148, 20ga
Winchester 1300, 12ga
2 Remington 1110, 12ga & 16ga
Marlin 336, 30-30
Browning A5, 12ga, Japan
marlin 39A, 22LR, take down
Remington 552 Speedmaster, 22LR
Marlin 782, 22WMR

Winchester 94, 30-30
H&R 58, 410 single shot
Remington 1148, 28ga
CVA Haken 50cal, black powder
Browning 270; Franchise, 12 ga.
Springfield Armory, 45 cal, 1911, with box and
ex mags
Glock, 34, 9mm, with box and 4 mags and
hand grips
Kimber, 380 ACP Micro, with box
Smith and Wesson, M & P, 15 -22, rifle, with
tactile bag and ex mags
Stevens, Savage Arms, 94c, 16 ga.
Savage, 243, with scope
Savage, 25-06, Axis, with scope
Glock, 42, 380, with box
Newer gun safe, 60 guns

Pistols
Ruger Super Red Hawk 44 mag, stainless
Sig Sauer P938 9mm (We the People)
Colt semi auto 22LR, 5"
Colt 45, 1847 Italy, black powder
Colt 32 Police, pearl handle
H&R 22 rim fire
LLipietta 31 cal, black powder
Pocket pistol 1860s, 44-50 cal(?), 3-1/2"
Pocket pistol, 5 shot
Bulldog, British
2 Lyman .44, black powder, Italy
3 Jukar 44 & 45, black powder, Spain
British Enfield .38, 5"
Cobraent derringer .38, 4-1/2"
Bersa 22LR, auto; Titansuper 380, auto
Interarms 44 mag, single six
Colt commander 1911, 9mm
Ruger American 22LR, extra mag
Colt single six 22LR, extra mag
Jennings 22, auto; Italian 25, auto
Italian 44, black powder; Ruger single six, 357

Tractors/ Gator

Sell @ 12:15 p.m.

John Deere 5510 dsl 4x4 75hp w/JD 540
loader bucket & bale spike, folding ROPS,
12 spd & reverser, good
'95 John Deere 6400 4x4 cab, joystick, 12
spd, new brakes, 85hp, runs good
Ford 7710 4x4 cab w/loader
Allis Chalmers D-17, gas; IH 656 gas w/f
John Deere 4020 gas w/f
John Deere 2010 gas w/loader
MF2135 loader tractor, gas, 3pt PTO
'17 John Deere TS 4x2 615hrs, Kawasaki mtr,
windshield, bumper guard, shedded
Gator 625i, like new, used once

Trucks/ Trailers

'04 GMC 6500 CAT.3126 dsl, 6 spd, like new
22.5 rubber, single axle, 26' frame
'04 GN 16' stock trailer (Maxwell), good
shape
'06 PJ B/H flatbed w/dovetail, new winch
9000#
'96 Coose B/H 16' stock trailer, center gate,
side door, good trailer
'94 Chev. 6500 V8 gas, 5-2spd, flatbed &
hoist, good truck
'03 Ford 150 6cyl 5spd, 4x2 shortbed
'98 Dodge 3/4 4x4, V10 gas, auto, flatbed
Heartland 20' B/H utility flatbed w/dovetail,
new

Misc.

20-25 Used Priefert panels
3-4 Ploy feeders; 3-4 Bale rings
Other cattle equipment
Lowe 17' alum river boat & trailer, Johnson
3hp mtr, ex. good
Grapple bucket for skid steer
22TM wood splitter, Kohler 7hp
(2) MS250 Stihl chain saw
Troy Bilt 8hp tiller, good
Gravely 144Z 19hp ZTR mower, good
Misc. tools; Elec fence supplies

Machinery

2615 Bush hog 15' folding 6 rear wheels,
1000PTO
3pt Bush hog 5'; 3pt bale spike
Ford HD 3pt 7' blade
PTO manure spreader, front side discharge
3pt bush hog post hole digger, new
John Deere 1518 15' folding brush cutter, 6
rear wheels, 1000PTO

Consigned by Marlo Zeitler, Edwards, MO

Sold cattle & retiring from the farm

- '18 John Deere 5055E 4x4, cab w/JD 520M loader, 55hp
- '12 Spd reverser, 81 hrs, warranty left, same as new
- '19 John Deere MX10 brush hog, pull type, 540, as new
- '19 John Deere Gator XUV 590M, power steering, 4x4, windshield top, 86hrs, as new
- Load Trail Bumper hitch 20' HD flatbed w/dovetail & fold down ramps, ex. good.

Sells after 12 Noon

SAM CRAWFORD AUCTION SERVICE LLC



Cross Timbers, Mo.
CrawfordAuctionService.com

417 998-6629



Sam
417-328-9137

Chase
417-399-1904

Chance, CAI
417-298-1751



Tom Poynter
Jack Lancaster

TERMS: Cash or good check.
Nothing removed until settled for. Not responsible for accidents. Lunch available. Statements made day of sale take precedence over printed matter. All items sell as is. No warranties given or implied.



**SOUTHWEST AUCTION SERVICE
ESTATE LIQUIDATION
AUCTION**
MONDAY, SEPT. 7TH • 10:00 AM
 1045 FR 2155 • Exeter, MO

**SOME FARM EQUIPMENT,
SHOP, TOOLS, ETC.**

LS 160 New Holland Skid Steer, 35' Country Aire Travel Trailer, 18'x8' Concessions Trailer, 36' Wells Cargo Trailer w/ catering kitchen, 14' Wells Cargo Trailer, 24' WW Cargo Trailer, 30' Dry Box Trailer, Hog & Cattle Panels, Corral Panels, Lots of Misc Catering/Restaurant Equip, 12' Storage Containers, 40' Pony Carousel Top, Carnival Swing Ride, Horse Drawn plows, Antique Hay Rake, 14' Smoker Trailer, F350 Super Duty Flatbed Truck-Powerstroke V8 Diesel, 1952 8N Ford Tractor-ALL ORIGINAL! New overhaul, 6 bolt, good rubber, starts & runs great! Shop Tools, Elec/Plumbing & much more!! Full listing coming soon!

Call Southwest Auction Service for more info!
 417-652-7540 www.swaauction.com

Kilmer Farm Equipment
CONSIGNMENT AUCTION

SATURDAY, AUG. 29 • 10 A.M.
 14769 Cattle Lane, Versailles, MO 65084

Directions: At the Intersection of Hwy 5 and Hwy 52 in Versailles, go North on Hwy 5 for 1 mile to Cattle Ln then turn Right or East and go ¾ mile to Sale Site.



TRACTORS, PLANTERS AND SPRAYERS, CONSTRUCTION EQUIPMENT, TRUCKS AND TRAILERS, GRAIN CARTS AND WAGONS, MANURE SPREADERS, CUTTERS, TILLAGE, COMBINE AND HEADS, FEED MIXERS, MISC. EQUIPMENT, HAY EQUIPMENT, SILAGE EQUIPMENT

Wheeler AUCTIONS & REAL ESTATE
 2 Rings May Run Day Of Sale
 23189 HWY. 24, PARIS, MO 65272 | 468-327-5690
WWW.WHEELERAUCTIONS.COM

KILMER FARM EQUIPMENT, LLC
 14270 Hwy. 52, Versailles, MO 65084
(573) 378-6615

For more info and photos: www.wheelerauctions.com

TAYLOR TRUCKS & EQUIPMENT
**417-924-2026 • 2676 Hwy. 5
Mansfield, MO**

New Mowers! Bush-Whacker, Big Bee Storage Containers & Dry Vans - 20' - 53'
 Farm Tires, PTO's & Parts for Rotary Mowers, Farm Tractor Implements
 Plows, Used 15" Bush-Whacker Now In Stock, Discs, and More Skidsteer Attachments: Pallet Forks, Buckets, Grapples, Hay Spears & Tree Sheers - RR Ties

Bush-Whacker Heavy Duty Rotary Cutter



TRAILER PARTS & REPAIR | **NEW SEMI TIRES- DRIVE & STEER**

We Invite you To Come By & Look Us Over!
 Located 2.5 Miles North Of Mansfield, MO On Hwy 5

Salem Livestock Auction
 Hwy. 32 Salem, MO • 573-729-8880
 Over 40 Years in the Livestock Business

Pre-Vac Sale
Monday August 31
at 12 p.m.

Luke Peterson • 417-259-0036
Shawn Chadwell • 417-830-0209
Bryce Lauderdale • 417-255-5124

Field Representatives
 Wright & Surrounding Counties
 We Appreciate Your Business!

All Consignments Welcome Up Until Sale

Allen Thompson 417-932-4097
 Renee Lauderdale 417-926-2682
 Chuck Thompson 417-257-5610
 Brandon Barton 417-259-1597

Terms of Sale: Cash or Approved Check!



2-21" PUSH MOWERS: Briggs & Stratton engine, 1 runs, 1 for parts. Both \$75obo. 636-239-2695.

CRAFTSMAN 10HP CHIPPER/MULCHER: \$350. Farmington 573-701-0495

2018 363FL SPORTSMAN RV: \$1800 below NADA RV pricing. call for pics. \$26,000. Lebanon 309-678-0057.

ALLIS CHALMERS TRACTOR: Model CA, wide front, good back tires, 12 volt system, snap coupling hitch, new paint. \$1,900. 573-606-9474.

WWW.MYWEEKLYTRADER.COM

HARTVILLE LIONS CLUB
Consignment & Donation
15th Annual Auction

Saturday, September 26th

Good Consignments Needed
 Low Fee Commissions
 Donations Appreciated

To consign or donate items, contact:
 Dan 531-3329
 Lonnie 741-2095
 Scott 741-0082
 Charlie 464-8166

Consign early by Sept. 9th for sale bill listing

BUFFALO LIVESTOCK MARKET LLC



276 Hwy 32 West
Buffalo, Missouri

August 22nd, 2020
Receipts: 1090 Head

Feeders Steady \$3 Lower.
Cows \$2 Higher.

Representative Steers

- 300-400 @ 166.00 to 196.00
- 400-500 @ 156.00 to 180.50
- 500-600 @ 144.00 to 165.00
- 600-700 @ 142.00 to 153.00
- 700-800 @ 136.00 to 145.00
- 800-900 @ 125.00 to 132.00

Representative Heifers

- 300-400 @ 140.00 to 164.00
- 400-500 @ 138.00 to 152.00
- 500-600 @ 128.00 to 139.50
- 600-700 @ 120.00 to 136.50
- 700-800 @ 117.00 to 134.00
- 800-900 @ 110.00 to 121.00

Feeder Bulls

- 500-600 @ 130.00 to 149.00
- 600-700 @ 127.00 to 141.00
- 700-800 @ 110.00 to 136.00
- 800-900 @ 100.00 to 109.00

Slaughter Cows

- Breakers 67.00 to 71.50
- Boners 57.00 to 67.00
- Lean Cutter 55.00 to 60.00
- X Thin 45.00 to 52.00

Slaughter Bulls

- High Dressing 100.00 to 106.00
- Med Dressing 85.50 to 100.00

Bred Cows

875.00 to 1175.00

MON-WED MARKET REPORT

Listen to KJEL 103.7FM • Lebanon or KYOO 99FM • Bolivar

VIEW OUR SALES AT CATTLEUSA.COM

CALL FOR TRUCKING OR ON-FARM VISIT

Lyle Caselman • Owner-Manager
417-345-7876 • mobile 417-533-2944
Leon Caselman • Owner
417-345-4514 • mobile 417-588-6185
Howard Miller • Owner 417-345-8122

PUBLIC AUCTION

Sunday, August 30, 2020 10:00 A.M.

The Moffat Auction Center

467 County road 604, Linn, MO

Directions: From Linn, take Hwy. 50 west 1 1/2 mi. to Co. Rd. 604, turn left & go 1 mile to building on right, or from Jefferson City, take Hwy. 50 east approx. 18 mi. & turn right on Co. Rd. 604.

CLASSIC AUTO

1966 Ford Galaxy 500 Convertible 7 Liter, Good Condition.

ANTIQUES & COLLECTIBLES

1890 Oak China Cabinet Curved Glass w/ Columns & Mirror, Nice Piece; 2 Old Platform Rockers; Very Old Iron Garden Furniture Chairs, Table; Marble Top Commode; Old 3 Drawer Mable Top Dresser w/ Mirror; 1890 Walnut Bed; 3 Drawer Marble Top Dresser; Ornate Walnut Bed; Marble Top Dresser & Mirror; Hoosier Cabinet Bottom; Old Art Glass Lamp; Oak Wall Phone Double Box; Oak Murphy Bed; SQ Nail Bench From Evon Church; Grey Painted Bench; Old Christmas Ornaments & Decor; 2 Decor Benches; Found Chair; Old Pictures & Frames; Old Oil Paintings; Old Baskets; Several Old Quilts; Old Sheet Music & books; Oak Table & 6 Chairs; Old Postcards in Mint Condition; Old Marbles; Movie Projectors; Cameras; Several Old Clocks; Old Scales; Clock Shelf; OG Clock; Salt Glaze Crock Jug; Old Crocks & Jugs; Several Old Large Crocks, Some Western, Stoneware, Churn, Butter Mold; Cane Collection; Ice Cream Table & 2 Chairs; Old Jars; Old Fishing Rods, Nets, Fly Fishing; Sprint King Reel; Pflueger Summit Reel; South Bend Reel; 2 Duncan Phyfe Side Tub; Glassware; HP China; Pyrex; Granite Ware; Coffee Grinder; Claw Foot Piano Stool; Pitcher & Bowl Set; Books & Magazines; MO Books; Old Pepsi Clock, Works.

HOUSEHOLD

Sofa; Leather Love Seat, Reclining; Tan Recliner; Coffee & End Tables; 2 Leather Office Chairs; Kitchen Table & 4 Chairs; Large Drop-leaf Table w/ Several leaves & 6 Chairs; 2 Wheel Tea Cart; Needle Point Chair; Stand Tables; Pedestal Table; Large Leather Sofa; Lamps; Louis Lamour Books; Western Books; Religious Books; Fabric & Sewing; Children's Toys' Folding Chairs'; Treadmill; 2 Sets Silverware; Dishes, Pots, Pans; Small Kitchen Appliances; Model Air Plane Supplies; Drafting Tools; Deer Hides; Linens; 2 Futons; Lots of Household & Misc not listed.

TOOLS

List Coming

OWNERS: MARION & EULALA MILLER TRUST

Note: See website for pictures.

Terms: Cash or good check with proper identification. All sales are final. Everything sells as is, where is. Proper identification is necessary to obtain a buyer's number. Announcements day of sale supersede all printed material. Lunch on grounds.

RICHARD MOFFAT AUCTION SERVICE

573-690-2823
Jefferson City, MO
www.moffatauction.com



Callaway Livestock Center, Inc.

Kingdom City, MO

Watch live or bid online thru D.V. Auctions
www.CallawayLivestock.com

SPECIAL COW SALE

THURSDAY NIGHT
SEPT. 3rd, 2020 AT 6:00PM

Estimating 600 to 700 hd of Bred Cows,
Cow/Calf Pairs & Breeding Bulls.

Early Consignments

Tomacheck Dispersal

- 75 Blk or Char Cows. Cows will be 3 to 8 years old. Cows are fall calving. Cows will be in 3rd period bred Blk or Char.
- 7 Fancy 3 yr. old Red Angus Cows. Bred Red Angus Bulls, all shots. Start calving Sept. 15th.
- 11 Fancy 4-5 yr. old Red Angus Cows with 200 lbs. Red Angus Cows by side.

Dispersal

- 29 Blk Cows 3-8 yrs. old. Home raised cows with 250-400 lbs. Blk calves by side.
- 40 Fancy Blk or Blwf Cows. Cows will be 5-8 yrs. old. 20 will have Blk calves by side, remainder will be in 3rd period.
- 30 Fancy Blk or Blwf Cows. Cows will be 3-5 yrs. old. 3rd period bred Blk.
- 30 Fancy Blk or Blwf. Cows will be 3-6 yrs. old. Bred Blk be in 1st or 2nd period.
- 10 Fancy Blk 2-3 yr. old Angus Cows. Heavy 3rd period, bred Blk, very gentle.

This is an early listing, several more cows & bulls by sale day.

This ad was prepared 2 weeks before sale. Many more expected by sale day. All bulls sell at the start of the sale at 6:00pm.

For more information contact:
Jack Harrison 573-999-7197 • John P. Harrison 573-220-1482
Roger Temmen 573-680-4538 • Glenn Stagman 573-619-8495
Claude Niemeyer 573-470-1017 • Justin Oberling 217-440-7724

CALLAWAY LIVESTOCK CENTER INC.
573-642-7486

TAKEUH DIESEL EXCAVATOR: & Hyd Thumb \$14,500. 573-765-4406.

NEW IDEA 5410 DISKMOWER: 10ft. \$4,450. 573-765-4406.

IHC 1086 DIESEL TRACTOR: Cab & Air. \$8,750. 573-765-4406.

BRUSHOG 8FT OFFSET DISK: \$2,500. 573-765-4406.

STANDARD BRED HARNESS SET: W/ Bridles. \$400. 417-844-7149.

AUCTION

DIRECTIONS: travel 12 miles South of Lebanon MO on highway 5 then left on Hwy O 2 1/2 miles to 27104 Hwy O Lebanon, MO

SATURDAY AUGUST 29

Starting At 10:00AM

SELLING A LARGE TO INCLUDE:

IHC 3088 diesel tractor, Bushhog 3210 bush hog, Bushhog 176 hydraulic blade, Danuser post driver, PTO generator, Miller Thunderbolt welder, post auger, Front end Grapple bucket (like new), hay spikes and forks, plow, wagon, cultivator, disc, bale rings, creep feeder, stock tanks, power washer, fluids & oils, Kobalt air compressor, vise, chain, pulley, hand tools, lawn and garden tools, air tank, jacks, fencing, tubs, electric fencing, riding mower for parts, ladders, measuring wheel, lumber, Old school bell, misc household items, much much more!

**MR & MRS
CHARLES SCHNEIDER**

Go to www.knightauctionservice.com for complete list and pictures!

TERMS: Cash, Approved Check w/ID, Visa or Mastercard.



Sale By
**KNIGHT AUCTION
SERVICE, LLC**
417-532-7497 Lebanon, MO
"Complete Sale Service"

www.knightauctionservice.com

WANTED STANDING TIMBER: Butler Logging, 417-448-9323.

TRACTOR TIRE: (14-9R-24) \$400. and Kubota Tractor Rim (24X) \$400. These items are new and never been on a tractor. 660-337-6311.

AC 2-BOTTOM PLOW: \$200. 417-766-1991.

FOOTBALL CARDS: Complete set of 28 players, on uncut sheets, 1979, 1980 & 1981. \$50/set. 573-689-2490.

ONLINE AUCTION - ONE LEVEL HOME

SELLS TO HIGH BIDDER



Open House / Inspection:
Wednesday, Sept. 2nd & 9th,
12:00 p.m. to 1:00 p.m.

- 1,600 +/- Sq. Ft. Ranch Home
- 3 Bedrooms, 2 Baths
- Kitchen / Dining Room Combination
- Rear Wood Deck & Two Car Garage
- Corner Lot Near Schools & Park

Note: This Home Is Move-In Ready & Perfect For Young Families, Retirees Or Investment Property.

Bidding Ends: Wednesday,
Sept. 16th at 12:30 p.m.

504 E. Southgate St.,
Centralia, MO

*Make sure to shop the
personal property auction
ending the following Tuesday!*

**Check It Out & Bid At
Atterberrysells.com**

Atterberry Auction & Realty Co.....
Your Real Estate At Auction Specialists
Email: contactus@atterberryauction.com



ATTERBERRY
AUCTION & REALTY COMPANY
We make buying and selling at auction easy!

www.atterberryauction.com
573-474-9295
MarkNet ALLIANCE

Land & Home Auction

Endless Possibilities On Hwy. 24



**30+/- Acres Offered In
Tracts & The Entirety**

Located Just 10 Miles East Of Moberly
With Approx. 1,700 ft. of Hwy Frontage.

**Preview / Inspection: Tuesday,
Sept. 1st, 12:00 – 1:30 pm &
Sept. 8th, 4:30 – 6:00 pm**

Tract 1: 13.8 +/- Acres: 2,800+ Sq. Ft., 4 Bedroom Home | 29' x 37' Morton Workshop | 42' x 60' Morton Building – Perfect Mother-In-Law Apartment or Home Business | 54' x 135' Morton Building - Possible Boat, RV, Farm Equipment Storage | 40' x 42' Pole Barn – Hay or Equipment Storage

Tract 2: 16.7 +/- Acres:
Build Your Dream Home Overlooking
1 1/2 Ac. Lake With Dock

18324 Monroe Rd. 1073,
Madison, MO

**Online Bidding Ends: Tuesday,
September 15th at 12:30 p.m.**

**Check It Out & Bid At
Atterberrysells.com**

Atterberry Auction & Realty Co.....
Your Real Estate At Auction Specialists
Email: contactus@atterberryauction.com



ATTERBERRY
AUCTION & REALTY COMPANY
We make buying and selling at auction easy!

www.atterberryauction.com
573-474-9295
MarkNet ALLIANCE

**PENN FISHING REEL W/HEAVY DUTY
TRUE TEMPER ROD:** Large, wire line. \$85. 417-457-1023.

23FT TRAVEL TRAILER: good shape, new tires, ready to go. \$1,500. 417-733-6141.

**TRUCK LOAD OF FLEA MARKET &
AUCTION ITEMS:** \$200 or trade. 573-327-9068

1998 DODGE RAM 4WD: extended cab, V8, low miles, good interior, has short to battery, asking \$1,500, after 2 pm, 417-718-3527.

DETROLA MUSIC MACHINE: Plays CD'S, Records, Cassettes, AM-FM Radio, excellent condition, 20x18x12, oak finish, antique look. \$65. 573-364-7465, Rolla.

AC 7FT BLADE: \$200 417-766-1991.

GUARDIANWARE: 1930-1950's, Turkey roaster with lid. \$195. 573-364-7465.

2004 DODGE TRUCK: 4Door, 4WD, 6-speed standard, white, 5.9 Cummins, 189,000 miles, shortbed, Michelin tires, Very clean \$12,500 417-588-1289.



Horse Sale

1st Wednesday of each month
Sept. 2nd, 2020

Tack will start @ 6:00pm then
 Horses to follow
 Expecting Several Head of Horses.

**MARKET IS
 REALLY GOOD!**

All Consignments Welcome
 Buyers From All Across the U.S.

All Classes of Horses

For more information or
 consignments, please call:

Kip: (573) 368-9402

Isaac (417) 327-2355

Denver: (417) 399-2701

Steve: (417) 894-1070

Trucking Available

Restaurant Open @ 5:00 pm

"Celebrating our 61st year"

Roberts Bros. Sale Barn

1416 E. Hwy. 32 – Bolivar, MO
 (417) 326-5815
 Like Us On Facebook!

**DARDEN PROFESSIONAL TIMBER
 HARVESTING, BUYING STANDING
 TIMBER:** Great prices, improve wildlife
 habitat and improve forest health. State
 Certified & Fully Insured! 573-247-4808 or
 573-739-1122. Salem

HORSE HAY: Square bales, TIMOTHY
 CLOVER AND GRASS MIX, HIGH PRO-
 TeiN \$5 bale, delivery available for 100 or
 more. 573-368-1794, Rolla.

DREAM HOUSE -Online. chateauhomes.net
 Call Marla 573-657-7040

HUGE

Estate Auction

Friday, August 28, 2020



STARTS @ 9:16 AM

Location: 16814 N. 67th E Ave. • Collinsville OK, 74021

Directions: From the junction of Hwy 75 and Hwy 20 between Slatook & Collinsville, go one mile north on Hwy 75 to road 156, turn right (east) and go one mile. Turn left (north) onto N. Sheridan Rd go approx. 1.2 miles, then turn left (north) onto N 67th E. Ave. Auction will be on the left. **OR** From Collinsville OK, take Hwy 20 approximately 2 miles west to N. Memorial Dr, then turn right (north) go 2 miles to Rd E. 166th N. Turn left (west) go three quarters of a mile to N. 67 E. Ave turn right (north). Auction is the first place on the left. Lots of pasture parking.

For More Info & Pictures -
www.chuppsauction.com

**TRACTORS, TRAILERS, RTV, FARM EQUIP, GATES & PANELS,
 GUNS, AMMO & GUN ACCESSORIES, COIN COLLECTION,
 SHOP TOOLS, LOTS OF NAME BRAND TOOLS,
 ANTIQUES AND COLLECTIBLES, INDIAN PRINTS,
 VARIOUS FRAMED ART & MISC. PRINTS, HOME DÉCOR,
 HOUSEHOLD FURNITURE and GLASSWARE**

SIMULCAST BIDDING ON LOTS 1 - 88, STARTS @ 12:32 PM



ESTATE OF: Charles Woofter OWNER: Sarah Woofter

Auctioneer's Note: Charles worked at American Airlines for 40 years and due to the death of her husband, Sarah is selling their belongings and moving out of state to live with her son. Most equipment is like new, barely used and in great condition! Coins & guns sell at 11:21AM. Simulcast auction starts @ 12:32 PM. Please follow us on Facebook for updates or visit our website for pictures at www.chuppsauction.com.

TERMS: Cash – Pay Day of Auction – Most Credit Cards Accepted – Check with Proper ID – Concession NOT RESPONSIBLE FOR ACCIDENTS. ANY ANNOUNCEMENTS DAY OF SALE SUPERSEDES PREVIOUS ADVERTISING.

CHUPPS AUCTION & REAL ESTATE

Stan Chupp
 (918) 638-1157

Dale Chupp, Realtor
 Coldwell Banker Neokla Select
 (918) 630-0495

E. J. Chupp

**CAPPER'S WEEKLY VINTAGE
 SEARCHLIGHT COOKBOOK:** hard-
 back \$10. 417-532-2045, Lebanon. Leave
 phone number.

JOHN DEERE 566 ROUND BALER: mon-
 itor, kicker, net wrap. \$6,700. 573-765-4406.

FOR SALE: 25 jigsaw puzzles, bought
 new, worked one time, no missing pieces.
 \$4.00 each. 573-689-2490. Bunker.

94 JEEP WRANGLER: Black, 98,000,
 Heat AC, Stereo, 5 speed, 4 wheel drive,
 sharp. \$5,600. Dixon. 573-422-9927.

SOUTHWEST AUCTION SERVICE MOVING ESTATE AUCTION

for Charlene Bennett of Monett, MO
 Tuesday, Sept 15th @ 10:00 am

1373 FR 1090, Monett, MO
 (just south of Angus Branch restaurant)

Carpports, Antique pedal tractor, horse
 drawn plows, tools, metal signs, Farmall
 240 Tractor, crocks, musical instruments,
 Fenton & Indiana Carnival glass, Red head
 collectibles & more!

Call Southwest Auction Service
 for more info!
 417-652-7540 www.swaauction.com



**MID
 MISSOURI
 STOCKYARDS**
**REGULAR SALE EVERY
 THURSDAY 11 AM**

WATCH OUR WEEKLY SALE IN REAL
 TIME ON DVAUCTION.COM
 For Farm Visits, Market Updates, or Trucking
 Call Zach Cox 417-777-1320
 Dan Romine 573-578-4939

**Competitive Buyers!
 Competitive Commission!
 Competitive Market!**

Barn: 417-532-9292
 I-44 • Exit 123 "just outside of Lebanon"
 17505 Route 66, Phillipsburg, MO 65722

For weekly market updates, visit us at
www.midmostockyards.com

ALL OF OUR FOREST RIVER VIKINGS ARE PRICED AT WHOLESALE!

764V 2020 Viking 175FQ
MSRP-\$19,510..... **\$14,911**


763V 2020 Viking 175BH
MSRP-\$20,090..... **\$15,811**

761V 2020 Viking 18RBSS
MSRP-\$23,811..... **\$18,963**

766V 2020 Viking 21FQ
MSRP-\$24,256..... **\$19,860**

768V 2020 Viking 21BHS
MSRP-\$25,742..... **\$19,975**

767V 2020 Viking 24RBS
MSRP-\$29,466..... **\$21,880**



WehrRVs
11311 Bus. 60,
Mtn. Grove, MO
1-800-288-6827
www.wehrfordofmountaingrove.com

PUPPY/SMALL DOG CAGE: \$25, **LARGE DOG CAGE,** \$40. Silva 573-238-5262.

KITCHEN FAUCET MOEN: single lever, sprayer, new cartarage. \$70obo. 636-239-2695.

BRUSH HOGGING: By the hour or by the job. Honest, reliable, newer equipment, good rates. 30 miles radius from Norwood. 417-349-0084.

4 BRIDGESTONE TIRES: 225/65 R17 Sport A/S 9,000 miles. \$150. 417-934-6234.



TASK. TASK. DONE.

RB16 SERIES

- REAR BLADES
20-40 HP 60", 74", 84" Widths
• Cat. 1 hitch
• 7 Forward angles; 3 Reverse angles
• 5 Tilt positions
• 12" Offset left or right
• 14" Moldboard height
• 1/4" Moldboard thickness
• Landscape Rake adaptable

For Outstanding Products & Service
AGRI ENTERPRISES

1-1/2 Miles South Of Licking, MO On Hwy 63

573-674-2203
1-800-653-7152



www.landpride.com

www.agri-enterprises.com

LOG SIDING SALE: 2X8 Western Cedar .99 ft/ Pine \$1.19 ft while supplies last. www.pineridgerustic.com 573-729-7226.



Wright Spray Foam Insulators, LLC
Commercial & Residential
Call for FREE Estimates!

Ervin Gingerich 417-926-2052
B. Eli Yoder 417-746-4932

FOR SALE: Outside forced air wood furnace with 16ft metal pipe chimney. \$600. 573-578-4265.

LARGE TORPEDO HEATER: for garage, \$100 or trade. 573-734-2822.

MASTERPIECE OF ORIENTAL MYS- TERY BOOKS: 16 of them, Copyright 1913-1926, Sax Rohmer. \$60 417-457-1023.



Custom Gun Building & General Gunsmithing
Craig's OUTDOOR Sports

- Ammo
- Reloading Supplies
- Muzzleloaders & Supplies
- Hunting Supplies

417-926-0255
9435 Hwy N, Ste A, Mountain Grove
Mon.-Fri. 9am-5pm • Sat. 9am-12pm

JOHN DEERE 2040 DIESEL TRACTOR: canopy \$4,950. 573-765-4406.

INTERNATIONAL MODEL 10: 16X7 grain drill with clover seed. Good condition. \$500. 573-308-5884 Rolla



★ American Made Metal Roofing ★

40 Year Warranty Metal.....\$1.95 (\$60.94 Per Sq)

*29 Gauge 10 Year.....\$1.75 (\$54.69 Per Sq)

****WHILE SUPPLIES LASTS****

29 Gauge #1 Galvalume.....~~\$1.69~~.....\$1.39 (\$43.44 Per Sq)
26 Gauge 40 Year.....\$2.25 (\$70.31 Per Sq)



- ★ 17 Colors To Choose From
- ★ 21 Years In Business
- ★ We Manufacture Our Own Metal and Trusses



3 Locations To Serve You!

1239 W. Kingshighway Paragould, AR 870-810-2494
1100 Pace Rd. Pochahontas, AR. 870-609-1900
35 Killdeer Rd. Seymour, MO. 417-952-7143

*Possibly not American made. Prices always subject to change.

Build In A Box Stud Wall & Pole Barn Kits

	Non-Warranty Metal	10 Year Warranty	40 Year Warranty
24x30x8.....	\$3,350\$3,700\$3,850
30x40x10....	\$4,950\$5,350\$5,600
40x60x12....	\$9,300\$10,000\$10,200

• Precut Packages Also Available

WE BUY White Oak Logs!

- ✓ Top prices for your logs
- ✓ Experienced log buyers
- ✓ Professional service

Chad Cook | Salem Wood Products
417.718.2950
5 miles north of Salem, MO on Hwy 19



**INDEPENDENT
STAVE COMPANY**
Log Procurement & Sales

www.independentstavecompany.com

FIREARMS: Professional Repairs and Restorations. Baron's Gunsmithing. 573-363-5801, Camdenton.

REGISTERED HEREFORD & ANGUS BULLS: Home raised, Some Show-Me Select Qualified. 573-701-7828. Belgrade

BUYING PRE-1960 BEER SIGNS: FALSTAFF, HAMMS, LEMP, CAPITOL, STAG, ECT. 573-680-5377.

KIDS LITTLE TYKES RED CAR BED: w/ mattress. \$150. Desloge, 573-327-9068.

DESK AND OFFICE CHAIR: \$40. Moun-tain View. 417-934-6234.

ANTIQUE BRASS KITCHEN CABINET HARDWARE: 1 set of 54. \$50 per set. 636-239-2695

40FT TANDUM DUALY GOOSENECK FLAT BED TRAILER: \$6,000. 573-765-4406.

WANTED: Small Pontoon houseboat, good working motor, reasonable, on Lake Ozark. 573-836-6216.

REMINGTON MODEL-870 EXPRESS: 20-Gauge pump. \$250. 573-756-1065.

JOHN DEERE PLOW: 3pt lift, 3 disk. \$200 417-532-6561



CAROLINA CARPORTS

Carports • Garages • Barns • RV Covers

Starting At \$1095.00

Delivered & Installed

RENT TO OWN • NO CREDIT CHECK



METAL PANELS

29ga 40 Year Warranty, Painted Metal starting at \$68 sq

29ga 25Year Warranty, Galvalume Metal starting at \$50 sq

29ga Commodity, White starting at \$57.50 sq

Red Iron Building Special

60' x 80' x 16' Pre-Engineered Red Iron Building

2:12 pitch • 26ga Painted Metal on Roof and Walls

4-14'X14' Framed Openings (2 on each side)

3- 3'X7' Walk-In Doors

Materials Only **Now \$35,575** Plus Tax and Freight

VISIT US @ JENKINSBUILDINGS.COM



Showroom & Sales Office
Bolivar, Missouri 65613
(417) 326-4228
Next to Smith's Restaurant
Hwy. 13 & U

Corporate Office
Polk, Missouri 65727
(417) 852-4228
2 Miles South of Pittsburg
on Hwy. 64



Find us on
facebook

JenkinsBuildings.com
Prices Subject to Change

★ ★ ★ ★ ★ ★ ★ ★

Weekly Trader Labor Day Deadlines

★ ★ ★ ★ ★ ★ ★ ★

Due to the
upcoming
holiday, the
following
deadlines will
be observed:

Display Advertising:

Deadline Thursday,
September 3
at 12pm

Proofing Deadline
Friday, September 4
at 12pm

Reader/Line Advertising:

Deadline Thursday,
September 3 at 4pm

★ ★ ★ ★ ★ ★ ★ ★

WEEKLY TRADER MAGAZINE

417-532-9131
100 E. Commercial St.,
Lebanon, MO 65536
www.myweeklytrader.com

LS Tractor

**More Features Standard,
More Tractor for your Money!
Discover the LS Difference!**

**LOW RATE Financing Available
Zero Down for 84 Months**

(WAC, See Dealer for Details)

MT225E

Economy 25hp, 4wd, Diesel Tractor
w/QA Loader & Bucket

**ONLY
\$218
per month**



**6 YEAR
LIMITED
WARRANTY**



**6 YEAR
LIMITED
WARRANTY**

XU6158C

Utility 58hp, 4wd, Diesel Tractor w/Cab,
QA Loader & Bucket

**ONLY
\$486
per month**



**5 YEAR
LIMITED
WARRANTY**

XP8101CPS

101hp, 4wd, Diesel Tractor w/Cab,
QA Loader & Bucket

**ONLY
\$768
per month**



Check out our GREAT Prices
on LS Tractor Packages!

**LS PACKAGE
SPECIALS!**



WCT Farm & Lawn LLC

"Big enough to get what you need, small enough to know your name"

417-859-4311 • www.wctfarmandlawn.com

3299 E Evergreen Rd, Strafford, MO 65757