

FREE - TAKE ONE!

WEEKLY TRADER MAGAZINE

Vol. 27 No. 17

JULY 30, 2020

800-543-8271 • 800-665-8875



Find us on
Facebook

@myweeklytrader
AUCTIONS PG. 7

VISIT OUR NEW WEBSITE! MYWEEKLYTRADER.COM



CHEVY OPEN ROAD SALES EVENT



2020 TRAX

#33020

15% OF MSRP
CASH
BACK¹

THAT'S

\$3,696 CASH
BACK

ON THIS TRAX²



2020 EQUINOX

#33379

15% OF MSRP
CASH
BACK
ON MOST MODELS¹

THAT'S

\$4,670 CASH
BACK

ON THIS EQUINOX LT²



2020 BLAZER

#33249

12% OF MSRP
CASH
BACK
ON MOST MODELS¹

THAT'S

\$5,993 CASH
BACK

ON THIS BLAZER RS²



2020 SUBURBAN

#33131

10% OF MSRP
CASH
BACK¹

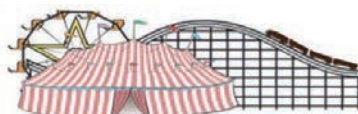
THAT'S

\$5,732 CASH
BACK

ON THIS SUBURBAN LS²

FIND NEW ROADS™

CHEVROLET



FAIRGROUND

Auto Plaza

DRIVEN TO SERVE YOU BEST...

100 Fairgrounds Road
Rolla, Missouri
(573) 364-1002

www.FairgroundGM.com



¹EXCLUDES L MODELS. NOT AVAILABLE WITH SPECIAL FINANCING, LEASE AND SOME OTHER OFFERS. TAKE NEW RETAIL DELIVERY BY 8/3/20. ² 2020 TRAX BASED ON \$24,645 MSRP. 2020 EQUINOX LT BASED ON \$31,135 MSRP. 2020 BLAZER RS BASED ON \$49,945 MSRP. 2020 SUBURBAN LS BASED ON \$57,325 MSRP. NOT AVAILABLE WITH SPECIAL FINANCING, LEASE AND SOME OTHER OFFERS. TAKE NEW RETAIL DELIVERY BY 8/3/20. ©2020 GENERAL MOTORS. ALL RIGHTS RESERVED.

Land

For Sale

Webster Co, MO | 110+ Acres



\$385,000

- 90% pasture consisting of fescue, timothy, orchard grass and brome grass
- 10% timber consisting of oak, hickory and walnut
- Property is fenced and cross fenced with shop-home, barn, water well and electricity all in place
- Property has breathtaking views and multiple home site locations to make this your dream property
- Fenced into 7 pastures with excellent grass
- Property is secluded, scenic with views to inspire
- The farm is just 16 miles to Marshfield, 30 miles to Lebanon and 45 miles to Springfield
- Underground utilities
- Multiple entrances into property
- Spring-fed pond



Missouri's Top Land Specialist in 2014,
2015, 2016, 2017, 2018 and 2019

WHITETAIL PROPERTIES REAL ESTATE

HUNTING | RANCH | FARM | TIMBER

Brian Utecht | 417-766-5595

Brian.Utecht@whitetailproperties.com

WHITETAILPROPERTIES.COM





\$500 OFF

FasTrak & FasTrak SDX
mowers. Available July 1
through July 31, 2020.

See Hustler dealer for complete details.
Valid at participating dealers only.
Not to be used with other offers.



For Outstanding Products & Service

AGRI-ENTERPRISES

1-1/2 Miles South Of Licking, MO On Hwy 63

573-674-2203 • 1-800-653-7152 • www.agri-enterprises.com

ANTIQUE BRASS KITCHEN CABINET
HARDWARE: 2 sets of 44. \$50 per set. 636-
239-2695

FERTRELL: ORGANIC FERTILIZER
AND MINERALS. Call for free catalog. 315-
796-4370.

FLAT BED WAGON: with good floor, needs
tires, \$150. Herman 636-932-4429.

CAPPER'S WEEKLY VINTAGE
SEARCHLIGHT COOKBOOK: hard-
back \$15. 417-532-2045, Lebanon. Leave
phone number.

BRUSH HOGGING: By the hour or by
the job. Honest, reliable, newer equipment,
good rates. 417-349-0084.

TORO WHEEL HORSE CLASSIC TRAC-
TOR AND DECK: Model 310, 8speed.
\$300obo. 573-308-5884.



TIM'S USED CARS

(573) 341-3828 • 1334 South Bishop (Hwy. 63) • Rolla, MO
Next to Hwy CC • www.tims-used-cars.com

	<p>2013 RAM 1500 2WD, 4.7 V8, Auto, Power Equipped, 96,xxx Miles Only \$12,900</p>		<p>2006 DODGE 2500 SLT Quad Cab, 4x4, 5.7 Hemi, Auto, Power Equipped Only \$9,500</p>
	<p>2010 NISSAN FRONTIER Crew Cab, SE, 2WD, 4.0 V6, Auto, Power Equipped Only \$8,500</p>		<p>2011 JEEP LIBERTY SPORT 4x4, V-6, Auto, Power Equipped 102,xxx Miles Only \$8,400</p>

LARGE SELECTION OF CARS, TRUCKS, SUVs & VANS!

#1 Selling FARM TRACTOR IN THE WORLD



Mahindra

Come See Us For Your Mahindra

Financing available for those who qualify

www.agri-enterprises.com

AGRI-ENTERPRISES
The Outstanding Products & Service

1-1/2 Miles South Of Licking, MO On Hwy 63
573-674-2203 • 1-800-653-7152

Mahindra
Rise

30/30: W/new scope/sling. \$450. 417-322-
0161.

WOOD STOVE: Glass front w/stainless
chimney. \$200. 417-322-0161.

SANBORN 5HP 60 GALLON AIR COMPRESSOR: Older unit. \$200 OBO 417-457-1023 Raymondville

80" PULL TYPE DISK: small. \$150. 417-753-2747.



Cheyenne Acres
Horse & Tack
BUY - SELL - TRADE
by Rolla, MO
Call For Directions & Availability
Call Kip
573-368-9402



VILLA HOMES IN ROLLA: Has NEW and USED Mobile Homes. Call David for info: 573-578-8072.

LOG SIDING SALE: 2X8 Western Cedar .99 ft/ Pine \$1.19 ft while supplies last. www.pineridgerustic.com 573-729-7226.

DRIVERS SIDE 2002 RANGER BUCKET SEAT: new foam, gray cloth, good condition, \$200. 636-297-1747

WANTED, TIMBER TO LOG ON SHARES: Honest, reliable, references. 417-533-4607, 417-664-1195.

DREAM HOUSE -Online, chateauhomes.net
Call Marla 573-657-7040



Larry Heisel Rentals
Have Rock?
How about 3,500 lbs. of Hammer
Call Larry!
573-779-1500
www.larryheiselequipment.com
Rental Available in 636 or 573 area code

THUNDERBIRD: Convertible, black, 2004 both tops, excellent \$14,500. 573-636-8000. JC

SWAP MEET: At Treasures, 1060 Tower Road, Lebanon, August 7th & 8th, Vendors Wanted, 417-532-6666.

ORCHID COACH PURSE: \$40, **VERA BRADLEY:** w/matching wallet. \$40. 573-263-9235.

BASS AMP: \$50. 6 string electric guitar for \$75. 636-297-1747

CLEAN 275 GALLON FLUID TOTES: Limited quantity. \$55. 417-349-1386.

OLD IHC: tool box with oil can holder and H Farmall operators manual, \$60. Herman 636-932-4429.

Heritage Tractor customers saved an average of

\$2,000

on their compact tractor purchase over other tractor brands¹



STAR-SPANGLED PACKAGE

Includes 4044M Tractor, Loader and Rotary Cutter

- Naturally aspirated diesel engine
- Standard 4-wheel-drive



A LOT FOR A LITTLE PACKAGE

Includes 1023E Tractor, Mower Deck and Loader

- Powerful Final Tier 4-compliant diesel engine
- New, easy-lift hood with dual gas-charged lift struts

0% FOR 50 MONTHS

on all skid steers and compact track loaders²



SKID STEERS

- Rated Operating Capacity starting at 704 kg (1,550 lb.)
- Gross Horsepower starting at 51 hp



COMPACT TRACK LOADERS

- Bucket breakout force up to 4,200 kg (9,250 lb.)
- Net Horsepower up to 96.9 hp

Legendary Products. Extraordinary Service.
Find your local Heritage Tractor location or request a quote at HeritageTractor.com




(1) Savings based upon Maritz January 2019 Customer Purchase Funnel Study. Some restrictions apply. See dealer for details. Offer good through 10/31/2020. (2) Offer valid on qualifying purchases made between 01 March 2020 to 31 August 2020. Subject to approved installment credit with John Deere Financial, for commercial use only. Down payment may be required. Average down payment is 10%. Taxes, freight, setup and delivery charges could increase monthly payment. Available at participating U.S. dealers. Prices and models may vary by dealer. Offer available on new equipment and in the U.S. only. Prices and savings in U.S. dollars.

PRESSBRAKE: W/light curtain, \$975, 9ft metal shear, \$1,000, 4ft press brake, \$500, Metal Turret Lathe. \$200. Hydraulic units. Call 417-322-0161.

NEW HARRINGTON ROUGH RYDER: 22 pistol. \$200. 573-327-9068.

TWO 6 HOLE: 16" implement wheels and one 4 hold wheel. All for \$25. Herman 636-932-4429.

TRUCK LOAD OF FLEA MARKET & AUCTION ITEMS: \$200 or trade. 573-327-9068

WHILE THEY LAST!

REMAINING INCENTIVES FROM COVID



BUILT FOR AMERICA

BUILT Ford PROUD

ON MOST NEW 2020 FORD MODELS

0% APR FINANCING*

72 MONTHS

QUALIFIED BUYERS FINANCING THROUGH FORD CREDIT*

BUILT FOR AMERICA | BUILT Ford PROUD

ON SELECT NEW 2019 FORD F150 MODELS

0% APR FINANCING*

84 MONTHS

QUALIFIED BUYERS FINANCING THROUGH FORD CREDIT*

Offer Ends 7/31/20

HURRY

OFFER ENDS

SOON

Come see us
at our NEW
location at
1621 Martin
Springs
Drive in
Rolla, MO.

**Sakelaris
Ford Lincoln
offers
Pick Up &
Delivery
Service for
all Sales &
Service!**

Register
NOW to
RESERVE
Your NEW
2021 Ford
Bronco!



2021 Bronco

Bronco Sport available late 2020. Bronco available beginning spring 2021. See dealer for details.

FORD PROMISE | 
AMERICA, WE WANT TO HELP
YOU GET BACK TO IT WITH
THE FORD PROMISE

FINANCE A NEW OR USED
VEHICLE THROUGH FORD
CREDIT AND IF YOU LOSE
YOUR JOB YOU CAN
RETURN IT UP TO ONE
YEAR FROM THE DAY YOU
BOUGHT IT**

*Available on select 2020 Ford vehicles. Must finance through Ford Credit Financing. Not all buyers will qualify for Ford Credit financing. Some restrictions may apply. Take new retail delivery from authorized Ford dealer's stock by 08/03/2020. See dealer for qualifications and complete details on all incentives.

BUILT Ford PROUD

SALES TEAM



Al Morgan



Jon Reed



Lance Lewis



Sara Myers



Brian Parker



Matt Jamish



Haley Meredith



Kelsey Mese



Grayson Madonna



Sales Hours:
Mon.-Fri. 8AM-6PM
Sat. 8AM-4PM

Sakelaris

Ford Lincoln Of Rolla

www.sakelarisfordrolla.com

573-364-1211 • 800-325-1211 • 1621 Martin Springs Drive, Rolla, MO 65404



LINCOLN
Service Hours:
Mon.-Fri. 8AM-6PM
Sat. 8AM-4PM

Built heavy duty, to make light work of any job.



L Series 24.1-47.3 HP Durable cast iron and steel design



QUARLES
SUPPLY COMPANY INC.

(417) 777-2391
quarleskubota.com

Call today to schedule a demo on the #1 selling compact tractor in the U.S. for over 10 years.*

- Four affordable models to choose from
- Performance-matched Kubota front loader
- Kubota diesel engine and gear or HST transmission
- Easy-to-use controls

Together we do more.

L2501DT w/loader

NEW Kubota L2501DT
• 4wd, DIESEL, AG TIRES
• KUBOTA LOADER

New L2501DT w/Loader Deal!

\$19,995
Financing Price

- 5' ROTARY CUTTER
- 5' BOX BLADE
- NEW 18' KODIAK TRAILER W/RAMPS



KubotaUSA.com

*Based on EDA tractor sales data of under 40 horsepower models from 2009 to 2019.

© Kubota Tractor Corporation, 2020. This material is for descriptive purposes only. Kubota disclaims all representations and warranties, express or implied, or any liability from the use of this material. For complete warranty, disclaimer, safety, incentive offer and product information, consult your local Dealer or go to KubotaUSA.com.

NEW IDEA #10 ONE ROW PULL-TYPE CORN PICKER: W/wagon, good condition. \$2,750. 573-678-2132.

CATAHOULA LEOPARD PUPS: blue eyed, natural bob tail. \$100. 417-543-4816.

ALL OF OUR FOREST RIVER VIKINGS ARE PRICED AT WHOLESALE!

764V 2020 Viking 17SFQ
MSRP-\$19,510..... **\$14,911**

763V 2020 Viking 175BH
MSRP-\$20,090..... **\$15,811**

761V 2020 Viking 18RBSS
MSRP-\$23,811..... **\$18,963**

766V 2020 Viking 21FQ
MSRP-\$24,256..... **\$19,860**

768V 2020 Viking 21BHS
MSRP-\$25,742..... **\$19,975**

767V 2020 Viking 24RBS
MSRP-\$29,466..... **\$21,880**



WehrRVs
11311 Bus. 60,
Mtn. Grove, MO
1-800-288-6827
www.wehrfordofmountaingrove.com

GRISWOLD REFERENCE PRICE GUIDE: \$7.50 417-532-2045. Lebanon. Leave phone number.

6'4"wide x12"long TRAILER: Heavy axles, has brakes, 10ply tires. \$1,400obo. 417-839-2196.

CUSTOM SAW MILLING: Lebanon. 417-533-4607, 417-664-1195.

PRIME KATAHDIN EWES: Parasite resistance/easy lambing/hof health, \$250. Breeding rams, \$250. 417-322-0161.

Buildings • Hunter's Cabins • Lawn Furniture

JAMCO Portable Buildings
800-688-2064 • 307 Enterprise Dr. • Seymour, MO • www.jamcobuilders.com

Rent To Own Plan

FURNITURE SET: Sleeper sofa, loveseat, matching chair, solid frame, needs cleaned~ or recovered. \$250 set. Misc accent tables also available.~ Norwood, 417-459-6313.

WEATHERED BARN WOOD SIDING: 8" & 10" wide. 573-729-7226. www.pineridgerustic.com

STAINED GLASS THEATRE COOKBOOK. \$6.50. **RESTAURANT RECIPES OF MISSOURI.** \$7.50. **THE CAKE DOCTOR COOKBOOK.** \$6.50. 417-532-2045, Lebanon. (Leave Phone Number).

HAMMERMILL: grind grain for your animals. \$900. 417-322-0161

DOUBLE RECLINER COUCH: 2 glass top end tables, one glass top coffee table. \$125. 573-431-9520.

Pine Ridge Rustic

Log Home Building Supplies

Services Offered!

- Installation
- Pre-finishing available on interior & exterior
- Dealer for exterior stains

www.pineridgerustic.com

523 CR 2410 • Salem, MO 65560 • Ph: 573-729-7226

- Log Siding
- Beveled Siding
- Car Siding • Red Cedar
- Western Cedar • Pine

3-6 YEAR OLD CALF/COW PAIRS: 200-400lb calves. 417-331-8284.

TRACTOR: Farmall H, wide front, very nice condition, call for details/pictures, \$2,500. 417-848-8754.

GRAY CHICCO INFANT CAR SEAT FOR SALE: From a smoke free home, 2 years before expiration, not been in a wreck. \$30 573-263-9235 St James

POOL TABLES: Installations, moves, recovery, repairs, accessories, etc. 573-646-1700.

DARDEN PROFESSIONAL TIMBER HARVESTING, BUYING STANDING TIMBER: Great prices, improve wildlife habitat and improve forest health. State Certified & Fully Insured! 573-247-4808 or 573-739-1122. Salem

JOHN DEERE 2940: 80HP, 148loader, runs good, good rubber. 417-286-3173.

8 GALLON AUTO LUBRICATED AIR COMPRESSOR: New, \$110. 417-457-1023. Raymondville.

SOUTHERN OVEN COOKBOOK: The Savories, The Sweets, by Jean Anderson, hardback, 272 pages. \$6.50 417-532-2045. Leave Message.

3 PUSH MOWERS: not running, \$35 for all. 636-297-1747.

THREADGILL'S - THE COOKBOOK, THE AUSTIN, TEXAS LANDMARK OF SOUTHERN COMFORT FOOD, HARD- BACK \$10. 417-532-2045. LEBANON. LEAVE MESSAGE AND PHONE NUMBER.

I BUY.....used mobile homes. Call or text 573-338-6250 or email GregS.CDH@outlook.com

FIREARMS: Professional Repairs and Restorations. Baron's Gunsmithing. 573-363-5801, Camdenton.



NH BR740A Baler
Like new!

MF108 with Canopy, Diesel.

Rt. 66 Tractor Repair
Old Hwy. 66, St. James, Mo.
(573) 263-2732

WANTED STANDING TIMBER: Butler Logging, 417-448-9323.

NO \$\$\$ DOWN MOBILE HOMES- Call for details 573-499-9993 columbiadis-counthomes.com



MIDWEST CONSTRUCTION
Free Estimates!

- Pole Barn • Garages • Framing
- Remodels • Roofing • Concrete
- Decks & Porches

Contact Abner Glick
417-664-1794

4 FIRESTONE TIRES: 235-50, 18", Like new, 11,000miles. \$200/might trade for gun Springfield, 417-833-8351/417-234-0629.

2005 JEEP LIBERTY: some minor body damage, \$2,200. 573-431-9520

KUSTER LOGGING
BUYER of Standing Timber
Oak and Walnut

Dozing Now Available

417-259-0047

References Available



1998 DODGE GRAND CARAVAN: 3.3 V6, 211,000miles, runs, good for parts, good tires. \$500 OBO. 417-733-0198. Buffalo

WE STOCK FENCE!!: High Tensile, woven, barbed, smooth, panels, fencers, t-posts +more!! Ozark Farm 417-322-0161.

SORGHUM PRESS: \$400. 573-308-7537, Edgar Springs

OLD LINN CREEK, HA HA TONKA & CAMDEN CO BOOK, "Before the Dam Waters", BY T. VICTOR JEFFRIES. \$5.50 each post paid. To order: 417-532-2045, Lebanon (leave message.)

NEW HAY BALE ARM BED SPINNERS: Allows large hay bales to spin while unrolling. 16". Shaft 1"x6" Camdenton area will travel to meet. \$75.00 816-803-1834.

2010 DODGE GRAND CARAVAN: SXT Wheelchair Accessible: Accommodation for 2 wheelchairs, excellent condition, only 78,000 miles, with all new tires \$18,000 (417) 473-6266 for additional information Niangua

1999 FORD TRUCK EXTENDED CAB: 4door, good paint, no rust, good interior, 4x4, P/W/L, needs 5.4Tritan V8 motor. \$1,400obo. 417-839-2196.

There's no better time to buy a do-it-all tractor.



Kubota Together we do more.

Save more on the hard-working B Series tractor. Easily switch out attachments. Simple maintenance. Easy-to-use controls. Stop in for a demo today.

\$0 DOWN 0% APR 60 MONTHS
PLUS
SAVE UP TO \$1,000

VISIT US TODAY FOR THIS LIMITED-TIME OFFER

EDGELLER AND HARPER FARM EQUIPMENT


Get Unmatched Kubota Quality!
Kubota Designed, Engineered & Built.
Visit Us In TWO Locations!

8665 Outer Road • Mtn Grove
417-926-5454 • 877-926-5458
4973 W. US Hwy 160 • West Plains
417-256-0420 • 800-766-0420

© Kubota Tractor Corporation, 2020. \$0 Down, 0% A.P.R. financing for up to 60 months on purchases of select new Kubota B Series equipment from participating dealers' in-stock inventory is available to qualified purchasers through Kubota Credit Corporation, U.S.A.; subject to credit approval. Example: 60 monthly payments of \$16.67 per \$1,000 financed. Customer instant rebates of \$300 are available on qualifying cash or finance purchases. Additional instant rebate of \$700 are available with purchase of two new qualifying implements. 1st implement \$500, 2nd implement \$200. Some exceptions apply. Offers expire 7/31/20. Terms subject to change. This material is for descriptive purposes only. Kubota disclaims all representations and warranties, express or implied, or any liability from the use of this material. For complete warranty, disclaimer, safety, incentive offer and product information, consult your local Dealer or go to KubotaUSA.com.

Kubota

KUBOTA BV SERIES
LESS WORK. BETTER BALES.



Unmatched dependability and efficiency is built in. Field after field these hard-working round balers create dense bales and tight outer layers with hassle-free engineering designed to help you have your best season yet.




Visit us to find out why the BV is the right baler for you.

EDGELLER AND HARPER FARM EQUIPMENT

Get Unmatched Kubota Quality!
Kubota Designed, Engineered & Built.
Visit Us In TWO Locations!

8665 Outer Road • Mtn Grove
417-926-5454 • 877-926-5458
4973 W. US Hwy 160 • West Plains
417-256-0420 • 800-766-0420

KubotaUSA.com
Optional equipment may be shown.

© Kubota Tractor Corporation, 2018

10" HEAVY DUTY ROCKWELL TABLE SAW: \$200. 417-322-0161

SQUARE BALES: New crop, second cutting, grass hay with some clover. Good quality. \$5/bale. Quantity discount. 573-378-4172.

STUMP GRINDER: DR Pro XL 11.7 HP with electric start. Never used. \$2100. Norwood 417-459-6313

TUFFY SPECIAL -Volume Prices 573-657-2176 amegamobilehomes.com

LOOKING TO BUY MALE PUG: 417-458-1424.

REGISTERED HEREFORD & ANGUS BULLS: Home raised, Some Show-Me Select Qualified. 573-701-7828. Belgrade



OFFICIAL TRACTOR OF TOUGH™



NEW MAHINDRA TRACTORS

7085 4WD & LDR 85HP IN STOCK
2655 4WD, BACKHOE 55HP IN STOCK
2655 4WD & LDR 55HP IN STOCK
1626 4WD & LDR 26HP IN STOCK
MAX26XL & LDR 26HP IN STOCK

USED TRACTORS

MF 4345 CAB LDR 80HP 27,500
MAHINDRA 2565 CAB 4WD 65HP 26,500
LSP 7010 CAB 4WD LDR 72HP 25,000
FORD 5610 LDR 66HP 9,000
CASE 1490 83 HP 7,500
MF 150 38HP 4,500
CASE IH 235 W/ MOWER 18HP 3,500
IHC 184 W/ MOWER 18HP 3,500

USED ROUND BALERS

MF 1745 4X5 8,500
NI 6254 4X5 7,500
VERMEER 5055I MESH 7,500
GEHL 2480 4X5 6,500
JD 435 4X6 MESH 6,500
VERMEER 554XL 4X5 5,500
HESSTON 560 5X6 4,000
HESSTON 550 4X6 3,500
HESSTON 530 3,500
HESSTON 5500 5X5 1,500
NH 850 5X5 1,500
VERMEER 605D 5X6 750
MF 10 SQUARE BALER 750

USED RAKES

BUSH HOG BSR 10 WHEEL 3,500
ROSSI 12 WHEEL 2,750

USED MISC.

HAYBUSTER 107C DRILL 17,500
HAYBUSTER 107C DRILL 11,500
HAYBUSTER 107C DRILL 10,500
FRONTIER BALE PROCESSOR 8,500
RHINO 12FT CUTTER 8,500

Marshfield Machinery Inc.
222 E. Madison • Marshfield, MO 65706
417-859-2117
www.marshfieldmachinery.com



**Custom Gun Building
& General Gunsmithing**
Craig's
OUTDOOR Sports

- Ammo
- Reloading Supplies
- Muzzleloaders & Supplies
- Hunting Supplies

417-926-0255
9435 Hwy N, Ste A, Mountain Grove
Mon.-Fri. 9am-5pm • Sat. 9am-12pm

QUALITY REPLACEMENT COWS: COW/CALF PAIRS, BRED HEIFERS AND BREEDING BULLS, TRUCKING AVAILABLE. Otterville, 660-619-5190 or 573-230-7700.

GARDEN TILLER- DR PRO: pull with ATV or mower, 36" wide, upto 7.5" deep. Power remote control, electric start. \$1500. Norwood, 417-459-6313.

12FT CHISEL PLOW: \$950. 417-322-0161.

DINING SET: Ethan Allen Vintage Old Tavern Pine Trestle table, 4 high back chairs, 2 high back captain chairs, matching hutch. Appraised value \$2650. Norwood, 417-459-6313.

NEW ENTERTAINMENT CENTER ON WHEELS. \$100. 573-327-9068.



Wright Spray Foam Insulators, LLC
Commercial & Residential
Call for FREE Estimates!

Ervin Gingerich
417-926-2052
B. Eli Yoder
417-746-4932

CHIPPER/ SHREDDER: Stanley 11 HP, 270cc engine. Like new \$700. Norwood, 417-459-6313.

KITCHEN FAUCET MOEN: single lever, sprayer, new cartarage. \$70obo. 636-239-2695.

FLATBED TRAILER: 4'X7.5', 700x16 tires. Heavy springs, 5 bolt wheel, no title. \$100. 573-308-5884.

2-21" PUSH MOWERS: Briggs& Stratton engine, 1runs, 1 for parts. Both \$75. 636-239-2695.

MISSOURI GARDENER'S GUIDE: 421 pages, over 170 color photos, 417-532-2045. Lebanon. Leave phone number.

ANTIQUE BRASS KITCHEN CABINET HARDWARE: 2 sets of 44. \$50 per set. 636-239-2695

R&R AUCTION SERVICE

PUBLIC AUCTION

SATURDAY AUGUST 1ST • 9AM

28 Foxtail Trail • Louisburg, MO

This is a **MEGA AUCTION**
YOU WON'T WANT TO MISS!!!!!!

We will start with guns selling at 9am sharp and includes but not limited to...

Savage model 110, 7mm Rem Mag, Marlin XL7 36-06, Winchester model 70 270 wsm short mag, Remington Model 770 win mag, Savage Model 16 7-08mm, Savage model 840 30-40 bolt action, 303 British 1942, Remington Game Master Model 760 308 pump, Savage Axis 308, Rossi with 3 barrels 223, 22 mag, 20 gauge, 45 cal black powder, Traditions 50 cal. black powder, Optima 45 cal. black powder, New England 280 cal. single shot, Browning 22 long rifle, Stevens model 15A 22 short/long or long rifle, Westernfield 22 short/long or long rifle, Springfield model 83 22 short/long or long rifle, Mossberg 835 12 ga, JC Higgins model 20 12 ga., Mitchell High standard 12 ga. pump, Tri star cobra 12 ga. pump, J Stevens 12 ga. pump, New England Pardner 20 ga, Wards Hercules model 10 20 ga., JC Higgins model 583.18 16 ga., Westernfield model XNH 565.C 12 ga., Springfield 100 20 ga., Diamond Arms 12 ga., Double Barrel Boito made in Brazil 12 ga., TK 35 410, Springfield XDS-45 ACP, Jennings Bryco 59 9mm auto, Thompson Center 7 x 30 waters, Rossi 357 mag, PSE stinger 3G bow, Parker Ultra lite 35 bow, Cast iron cookware crock jug, kraut cutter, old toys, other antiques and collectibles, lots of misc. and box lots., This auction has something for everyone. It is very large and there will be many items added that are not listed. There are alot of project pieces, if any item is marked no title, it is possible titles could be found by auction day. 2 Suzuki 250 four stroke dirt bikes, Polaris 2x4 Trail boss 330, Artic Cat 4 wheel drive 400, 1980 Chevy custom deluxe camper special 2 wheel drive with 454 motor and 4 speed, 2001 Yukon (locked motor), 1988 Chevy 2500 with tool bed and snow plow has original bed to go with truck, 1980 GMC 3/4 ton Sierra classic, automatic, no motor, 1977 GMC 1 ton dually, no motor or transmission, no title, 2002 Ford F150, no transmission, no title, 1998 Ford F150 runs and drives, 1976 El Camino classic, 1989 International dump truck Cummins diesel 9 speed, 15 foot bed, 1978 International semi Cummins diesel 13 speed with broken spindle back axle, 1984 953 Caterpillar track loader, 6300 hours missing front and side glass 800 hours on new motor then spun bearing, everything else is tight heat and air work, has 4 in 1 bucket plus original bucket, 26ft fifth wheel camper no title, 1999 Pup trailer 12ft box 28ft overall, 1990 28ft 3 axle ww stock trailer, 20ft 3 axle back hoe trailer no title, 1994 Wells Cargo 3 axle car hauler box trailer 36ft no title, 10ft tilt trailer no title, 1969 Ford pickup bed trailer no title, 1993 44ft semi flatbed no title, 53ft reefer trailer missing unit no title, log hauler trailer hydraulic detach 22ft well 10ft back no title, 15ft dump bed with cylinder, 1999 32ft dozer trailer 14ft well with dove tail and ramps, 1989 Aggressor 158 magnum 16ft fishing boat with 1980 model 85hp Johnson seahorse motor a motor guide Bill Dance 36 lb thrust trolling motor 2 fish finders new batteries trailer all in excellent condition, a Yamaha jet ski and homemade trailer, 14ft aluminum fishing boat with 9.9hp Evinrude and trolling motor on trailer no titles, two 17ft aluminum canoes, 14ft fiberglass canoe, 3horse slant horse trailer with living quarters, John Deere 5 wheel hay rake missing one wheel, 10ft disc, old cultivator, bale mvr pick up bale handler, hydraulic bale spike for pickup, roping chute, fireplace insert, homemade outdoor wood furnace, 8ft. garage door, 800 gallon fuel tank, Freightliner hood, two 1500 gallon concrete septic tanks, 350 turbo transmission, 9 speed Eaton transmission, large windmill with bent blades, propane bottles, tag axles, various tanks and tongues, semi truck transmission jack, a plethora of tires and wheels, lots and lots of scrap. Lots of giant decorative rocks. Remember there will be much more added day of sale.



Mike and Misty Daugherty (Circle M Trucking & Excavating) owners

This is a very large auction! Check out photos at www.rrauctionservice.com

TERMS: Cash, check, or credit card with proper I.D. nothing removed until settled for A 3% fee will be added to credit card purchases. Not responsible for errors in listing. Any announcement made sale night will take precedence over any printed matter. **Note:** Service will take every precaution to prevent accidents, but will not be responsible should any occur.



For more information contact Professional Auctioneer Russ Weeks at 417-576-7357 or check out www.rrauctionservice.com

Serving this area's auction needs since 1997 with honesty and professionalism.

www.rrauctionservice.com

(417) 576-7357 or (417) 345-4140



The Ridge of Country Club

Dengelegi Estate

Located in the Rolling Hills of the
Beautiful Bull Shoals Lake of the Ozark Mountains.
This Outstanding Brick Home is on the Auction Block!

SATURDAY, AUGUST 15, 2020 • 10:00 AM
902 Country Club Drive • Theodosia, MO. 65761

From Hwy 160: Turn South, approx. 1/2 mile down Country Club Drive. Property on Left. Watch for Gary Sexton Auction Signs



INSPECTION, OPEN HOUSE

Sunday, July 26 1:00 - 2:00
& August 2 & 9, 1:00 - 2:00pm
Or By Appointment

Contact Lorel Koplin 870-421-7266 at Le Mac C2
Mt. Home AR. Email: lorelkopline@hotmail.com

This Well Designed
Super Energy Efficient
Home Is Spray Foam
Insulated With Amazing
Low Energy Cost! Approx.
6,834 Sq. Ft. of Impeccable
Attention To Detail!



- **GOLF**
- **LAKE**
- **FISHING**
- **TROPHY HUNTING**

The Custom Built Home By Nay Allen - Offers An Array of Amenities! Including 4 Large Bedrooms, 3.5 Bathrooms With A Towering Stone Gas Fireplace Over Stunning Oak Floors With Walnut/Maple Inlays! You Will Be Amazed b The Custom Cabinets Detail Plus Granite/Corian Countertops Accented With Double Ovens Along With Oversized Refrigerator & Dual Dishwashers & Microwaves (All Stainless Steel) - The Entertainers Dream! This Magnificent Home Offers Safety & Dream Fulfillment In The Full Walk Out Basement With Wine Room- Fort Knox Safe Room-Plus Housing For Central Vacuum - Water Softener - Pressure Tanks - Security System! The Exterior Of Brick - Covered Decks - Garages - Andersen Windows - Recently Shingled Roof Creates Irresistible Curb Appeal! Other Amenities: Custom Moulding - Tile Travertine Floors - 505' Well System - Whirlpool - Central Lennox G51MP Series Double Unit HVAC System - Heat Pumps 4 Ton 14 Seer Each - LP Gas With 1000 Gal. Underground Tank!



HOUSEHOLD • FURNITURE • HUNTING ACCESSORIES • MOWER

SEE WEBSITE FOR FULL LISTING & PICTURES: WWW.GARYSEXTON.COM

TERMS: 10% Escrow Paid Day of Auction - Balance Due Upon Closing. **CONDITIONS:** Highest Bid To Be Submitted To Sellers For Acceptance or Rejection. Starting Bid \$100,000. Owners Are Moving Out of State. Any Fair Offer Will be Contracted Offered: As House & 15 Acres - 3-10 Acre Tracts.

Gary Sexton
Since 1978
Auctioneers, LLC

Gary Sexton - Auctioneer 417-255-7001

Tyler Sexton - Trucks/Heavy Equip. Eastern Mo. 417-372-0124



www.garysexton.com

1028 Porter Wagoner • West Plains, MO



Todd Hornback
Oregon Co. Rep

Gene Summers
Ozark Co. Rep



E-mail: gary@garysexton.com

AR Broker #PB00043890, AR License #1568

All announcements made day of sale supersede any written material. Not responsible for lost or stolen property or accidents.

AUCTION!

Owner: Estate of Ivon Ault

Sat. August 1, 2020 - 9:00 A.M. SHARP!

LOCATION: (8095 Gourley Road, Mountain Grove, MO) From Mtn. Grove, MO, go south on 95 Hwy to ZZ Hwy, then right 4 miles to Cherokee Road, turn right on Cherokee and go 3/4 mile to Gourley Road on the right, approx. 1.5 miles to Auction on the left. From Norwood, MO, go south on C Hwy south of edge of town and turn left on Art Kelley Road, stay on pavement (Art Kelley turns into Cherokee) approx. 4 miles to Gourley Road on left, go approx. 1.5 miles to Auction on left. Watch for signs! Lunch & Restrooms Available. Lunch Available. Two forms of I.D. Required. Cash or Check only.

ANTIQUES & COLLECTIBLES

Chore Time Metal Can – Wooden Stool – Small Old Tins – Chicken/Hen Dishes – Iron Skillets – Baskets, Lots! – Crock Churn – 2 Red Granite Wash Pans, old – Misc. Antique Metal Pieces – Rollman Miniature Meat Grinder, old – Meat Grinder Lamp – Old Donut Maker – White Mountain Apple Peeler & Corer w/ original box – Various Old Plates, Dishes, & Glassware – Painted Moose Horn – Old Meat Grinder – Old Small Covered Wagon Model – Leather Cased Hunters Meat Saw – Antique Horse Drawn 1 Bottom Plow Antique Push Plow – Antique (very unusual) Hand Push Yard Mower – Well Bucket – Antique Saddle – Ant. High Chair – Wash Board – Wheat Cradle – Large Wood Plane – Small Wood Plane – Black Hawk Corn Sheller – Ant. Popcorn Popper – Ice Tongs – Foot Pedal Grinding Stone – Sharpener w/ seat on stand – Black Smith Forge – Some Tongs – Ant. Enterprise Lard Press – C.S. Bell & Co, Hillsboro #2 – Bell w/ Yoke, 1886 – (2) Reading Apple Peeler – Cherry Pitter
 - Very Small Daisy Churn, Complete!
 - Quart Size Daisy Churn, Complete!
 - Glass Butter Mold, Cow, Old!
 - Wood Butter Mold, Old!
 - Shaving Mug & Brush Collection, 33 Mugs and Several old Brushes!
 - Several Old Straight Razors
 - 26 Antique Juicers, Juice Reamers (Sunkist!) several, clear, green, blue, pink, amber, white
 - Collection of Chicken/Rooster/Hen Glassware, various Kinds & Sizes along with several Hen on Nest pieces (16+).
 - Several Pieces of Graniteware – Old Kitchen Pans – Old Clabber Girl Can – (3) Hide-A-Books – Shoe Stretcher
 - Set of Windup Records, Classics, 17 Cases

SHOP ITEMS

Yard – Lots of Yard & Garden Hand Tools – Small Propane Bottle – LT 46" cut Cub Cadet Riding Mower, 14 months old, 12 hours! – Car Ramps – Gas Cans – Shop Grinder – Extension Ladder – Aluminum Saw Horses – Shop Vac – New Tub – Lawn Chairs – Jig Saw, Battery Drill, Hitachi, Ryobi – 4 Drawer Metal File Cabinet – Dolly – Sockets – Electric Saw-Zaw – Hand Saws – Sharpener – Several Small Organizer – Old Hospital Bed – Electric Chainsaw – Electric Drill – Extension Cords – Metal Cabinet – Weed Blower – Fishing Rods & Reels – Hammers – Pipe Wrenches – Shop Table – Shop Plastic Saw Horses – Lots of Various Tools – Old Bicycle – Metal Firepit – Wheel Barrow – Garden Hose – Large Tub – Tomato Stakes – Flower Pots

ANTIQUE FURNITURE

Hoosier Cabinet w/ bottom flour bin, old pulls. Nice! – Antique small wooden tables – V3ry Nice Old Hoosier Cabinet w/ Porcelain Top, Upper Flour Bin, Roll Down Door! – Antique Unusual Tin Can 2-3 gal. – Antique Wood Dining Table, thick top, has middle drawer, Nice! – Several Antique Chairs – Old Antique Oak Curved Glass China Cabinet – Crock Pieces, Pictures, Churns, Jugs, Etc. – Bottom Section of Old Hoosier Cabinet, Nice Piece! – Oak Wash Stand, good condition, old! – Antique Rocker – (2) Antique Trunks – Double Wedding Ring Quilt – Small Solid Oak Dresser – Newer Dresser – Solid Oak Antique Dresser – Wooden Book Shelf – Church Bench Headboard – Full Size Bed – Ceramic Carousel Horse Coat Rack – Antique Oval Dining Table w Hole in Center

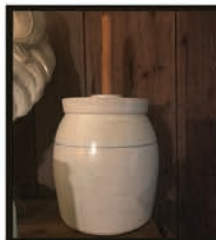
FURNITURE & MISC.

Lift Chair, excellent condition – Hide-A-Bed – (2-3) Fans on stands – 43" Flatscreen TV – Small Glass Door Bookcase – 200-300 DVD Movies, Lots of Westerns – Very old small rocker – Wicker stand Table – Kerosene Lamp – Wood Desk – Lots of Bird Figurines – Lots of Baskets – Set of "Little House" Books – Bamboo Bird Cage – Lots of Books – Christmas Décor – 4 Piece Wicker Set (Love Seat, 2 Chairs & Table) – Ceramic Grandpa & Grandma – Pictures, Frames – Hope Chest – Quilt Rack – Small Metal Table – Sanyo T.V. – Small Desk – Step Ladder – Various Men's & Women's Clothes, Coats, Some Hunting Apparel – Sheets, Bedding, Towels – Vacuum Cleaner – 11-12 "Shooter's Bibles", 1975-1980's – Collection of Western & Alaska Books, etc – Small Metal File Cabinet – Computer Desk & Chair – Floor Lamps – Corner Shelf – Camel Bunk Trunk – Grand Piano

KITCHEN ITEMS & APPLIANCES

Crosley Crosstop Refrigerator, White – Frigidaire Electric Cook Stove & Oven – Kenmore Dryer, electric – Maytag Washer – Frigidaire Crosstop Refrigerator, good – Utility Cabinet – 8 Piece Setting of Chicken Dinner Set, stoneware – Pots, Pans, Kitchen wares – Small Appliances, toaster, waffle maker, & more! – 8 piece China Set, Floral Design – Large Bowl & Pitcher – (2) Electric Meat Grinders

LOTS OF GOOD ANTIQUES!!!



AUCTION
Company, L.L.C.
417-257-8385
Auctioneer: Reg Kelly

For more Pictures & Info VISIT:

www.KellyAuctionCo.com

PEWITT FARM AUCTION



Wilma Pewitt will sell her and the late Bill Pewitt's personal property and farm equipment at public auction on:

Saturday, August 1st 2020 Beginning at 9:00 AM

Location: 7820 Rye Creek Road, Lonedell Mo 63060

Directions: From Interstate 44, take Exit #239 and go East on Highway 30 7 miles, then right on Highway 47. Go .64 miles, then right on Rye Creek to auction. Roads will be marked day of sale.

TRACTORS / UTILITY VEHICLES / FARM EQUIPMENT / HORSE DRAWN (will sell at 12:00 Noon)

FARM-LIVESTOCK SUPPLIES / SADDLES TACK / HAY



Ford 6600 diesel tractor-2025 hours-dual power-outlets-18-4-34 tires-QT Memo loader with 6' bucket-bale spear-sells as unit, MF 165 gas tractor-248 hours-dual outlets-multi power-one owner, UTV; Kawasaki Mule 4010-power steering-906 miles-3 cylinder diesel-dump bed-windshield-4 wheel drive, Yamaha Moto 4 4 wheeler-not running-no title EQUIPMENT; New Holland 472-7' haybine with stub guards, Massey Ferguson #12 square baler-very clean,

Hesston 5500 round baler-electric tie 5'x5' bales, 3 point 6' heavy duty brush hog, Woods BB700 7' 3 point blade, 3 point bale spear, 3 point carryall, Ford 3 pt 8' disc-good blades, MF 3 pt 3-14" bottom plow, 7' tandem drag disc, New Holland 451 7' sickle mower-lot blades, Leinbach big bale unroller, New Idea manure spreader, (2) pickup bed stock inserts, 12' hay wagon, 2 pt rear tractor weight, 3 pt seeder, bale carrier, Unicorn PTO log split-ter, HORSE DRAWN; Pioneer 4cart-Amish made, Horse drawn box wagon-rubber wheels, team mower on steel, HD Diamond plow, iron wheel cart, Minn Moline wagon tongue, lot used tires, 18-4-34 rear tractor tires, top links, draw bars, stabilizing bars

Portable corral panels, farm gates, lock stock watering tanks, horse round bale feeder, (2) round bale feeders, homemade panels, cattle oilers, creep feeder, hog chutes, cattle head gate, fuel tank on stand, mineral feeders, pig crates, pig wa-terer, lot chicken feeders and waterers, rabbit cages, hook over feed buckets, barrels, buckets, feed trough, calf puller, FENCING; electric fence posts, elec-tric fences, insulators, used T posts, scrap wire, chain link dog kennels, roll large cable, fence stretcher, T post driver, gate hinges, TACK; Western sad-dles-Circle Y-Big Horn-other, lot of bits, bridles, halters, leads, 3 tier saddle rack, lot of team-horse drawn tack-horse collars-reigns-halfinger sized, BLACKSMITH; 200 LB anvil, Buffalo forge, blacksmithing tools, vise, horse-shoeing tools, HAY; 30 - 4'x5' round bales 2020 hay



TOOLS / SHOP-YARD



Campbell Hausfeld 3 HP 60 gallon-135 PSI upright shop compressor, bench top drill press, bench sander, bench grinder, Lincoln arc welder-helmet-rods, acetylene tanks-gauges, pneumatic wrench-grinder, electric grinders, drills, circular saws, C clamps, large bar clamps, electric cement mixer, Dewalt reciprocating saw, Dewalt cordless drill, come-a-long, battery chargers, saw roller stands, chain hoist, air hose, steel storage rack, car creeper, grease guns, Craftsman vise, Craftsman wrenches, lot wrenches, crescent wrenches, pliers, wire strippers, pliers, vise grips, pipe wrenches, boring bits, drill bits, lot bench vises, 5' pry bars, tap-dies, ratchet wrenches, punches, solder, bottle jacks, 2 ton floor jack, bolt cutters, work lights, hammers, mallets, hand saws, squares, pry bars, sockets, ratchets, 1/2" drive sockets-large sockets, torque wrenches, blower, fan, nuts-bolts-screws-nails, lot parts bins-contents, YARD; 12 volt seeder, 12 volt sprayer, Troy Bilt Horse rear tine tiller-7HP, (3) Stihl MS251 chain saws, weed eaters, Homelite chain saw, Troy Bilt 2600 PSI-2.3 GPM power washer-Honda engine, hi wheel push mower, gas cans, wheelbarrow, tow spreader, loppers, hoes, rakes, shovels, pitch forks, potato fork, dbl axes, hatchet, fluids-oils, sewer snake, step-extension ladders, wooden ladders, rope, pole trimmer, log roller, splitting maul, Remington electric limb trimmer

ANTIQUES / COLLECTIBLES



Spring wagon benches, implement seat stools, lot implement steel wheels, cast iron implement tool boxes, metal IH implement tool boxes, wagon spoke table, cream separator yard pc, Ralston Pu-rina canvass pig castrator, push plow, wooden chicken coops, cow bells, copper bucket, wooden tool carrier, meat grinders, meat saw, meat cleaver, sausage stuffer, platform scale, UAW Safety Rep box, McCoy pitcher-bowl, crock cookie jar, small crocks, milk bottles, metal milk crate, milk can, hand crank water pump, wooden egg crate, tins, enamel pot-ladle, old jars, Old Judge jar, galvanized buckets-wash tub, Ertl tractor-wagon, steam iron, wooden boxes, tin roofing salesman sample trunk, red wagon, Avon, ANTIQUE FURNITURE; Eastlake style marble top dresser-candle shelves, Estate

Fresh Air oven-porcelain cook stove, woodburning stove, metal medical cabinet-beveled glass, metal warehouse desk, enamel table top only, primitive wood-working bench-vise

HOUSEHOLD / YARD

Quilt rack, trunks, gun cabinet, kerosene heater, gallon jugs, canning jars, pic-nic basket-dishes, blue glass bowls-pitcher, glass bowls, baking dishes, roaster, granite canning pot, dishes, canisters, toys, storage tubs, tins, folding chairs, al-bums, oak side chair, end tables, magazine table, YARD; umbrella patio table-chairs, Adirondack chairs, lawn chairs, antlers, tackle boxes, rods-reels, leg traps, camping lanterns, horse shoe game, sheath knives, binoculars

LUNCH WILL BE SERVED BY MEMORIAL BAPTIST CHURCH

VIEW OUR PHOTO GALLERY ON
www.breheauction.com



BREHE AUCTIONEERING SERVICE, LLC
Union, MO: (636) 583-0841 Owensville, MO: (573) 437-3454
www.breheauction.com
LICENSED AUCTIONEERS:
Kerry Brehe 314.954.3798 Josh Brehe 314.603.3129 Harry Engelhart 636.399.3743

Announcements made day of sale supersede all printed material.

TERMS: CASH, PERSONAL CHECKS WITH PROPER I.D., BUSINESS CHECKS WITH BANK LETTER AND NO OUT OF STATE CHECKS UNLESS APPROVED BY SELLER. Email Us At kkauction@sbcglobal.net
Everything sells as is with no guarantees.

We plan to abide by the CDC guidelines regarding the COVID distancing and PPE guidelines.

Osage County

PUBLIC AUCTION

SATURDAY, AUGUST 1 • 10 AM

890 COUNTY ROAD 602, LOOSE CREEK, MO 65054

Directions: From Linn, MO take Hwy. 50 west 5 miles to Osage County Road 602, turn left, go one mile south on Rd. 602 to sale OR from Loose Creek, MO take Hwy. 50 east 1 mile to Co. Road 602, turn right on Rd. 602 & continue 1 mile south to sale.

TRUCKS - CAR - TRAILERS: 2002 FORD F-250 SUPER DUTY PICKUP, POWER STROKE DIESEL, AUTO. TRANS., MANUAL LOCK-OUT HUBS, EXT. CAB, LONG BED W/ FUEL TANK & TOOLBOX, GOOSENECK HITCH, 237,916 MILES; 1995 FORD L 8000 TRUCK, CUMMINS DIESEL, 9 SPD. TRANS., TANDEM AXLE, TWIN SCREW, AIR BRAKES, 16' PARKHURST BED & HOIST, ROLL-OVER TARP; 1976 FORD 9000 TRUCK, CUMMINS ENG., 9 SPD., TANDEM AXLE W/ EQUALIZE TAG W/ 20' BED, CARGO DOOR, GRAIN GATE, ROLL-OVER TARP; 1975 FORD 700 TRUCK, GAS ENG., TANDEM AXLE W/ EQUALIZE TAG, 20' BED & HOIST, TARP, DOES NOT RUN, SALVAGE; 1989 FORD RANGER PICKUP, 4 CYL., 2WD, AUTO. TRANS., REG. CAB, LONG BED; 1995 CADILLAC SEDAN DEVILLE CAR, 4 DOOR, VINYL TOP, 200,000 MILES; 1991 COOSE GOOSENECK 20' X 6.5' STOCK TRAILER, TANDEM AXLE, CENTER GATE; 1976 GOOSENECK 20' FLATBED TRAILER, TANDEM AXLE TWO-WHEEL TRAILER

TRACTORS: CASE 1175 AGRI KING TRACTOR, 2WD, CAB, DUAL HYDS., 18.4 X 38 TIRES W/ HUB DUALS, HOURS UNKNOWN; CASE 1175 AGRI KING TRACTOR, 2WD, CAB, DUAL HYDS., 18.4 X 38 TIRES W/ HUB DUALS, HOURS UNKNOWN; CASE 630 TRICYCLE FRONT DIESEL TRACTOR, 3 PT., HYD. REMOTES

COMBINE - HEADS - WAGON: 1982 JD 6620 DIESEL COMBINE, 2WD, CHOPPER, HYDRO DRIVE, 0.5 X 32 TIRES; JD 220 GRAIN HEADER; JD 443 HIGH TIN CORN HEADER; MOVE MASTER HEADER WAGON W/ TELESCOPIC TONGUE

FARM EQUIPMENT: JD 750 DRILL 15', DOLLY WHEELS, HYD. MARKERS, LIGHT KIT, NO GRASS SEEDER; JD 7000 - 6 ROW 30" PLANTER, HYD. MARKERS, CORN & BEAN METERS; KEWANEE FLAT FOLD 24' DISK; JD BWR 15' TANDEM WHEEL DISK; 3 - CASE 5 X 14" BOTTOM PLOWS, SEMI MTD.; JD 1600 - 10 SHANK PULL TYPE CHISEL PLOW; JD 400 - 15' 3 PT. ROTARY HOE; THREE SECTION 15' ROLL-UP HARROW; JD 15' HYD. FOLD ROTARY CUTTER, 1000 RPM, SOLID TIRES; HESSTON PT 10 MOWER CONDITIONER; NH 256 SIDE DELIVERY HAY RAKE; NH GRINDER-MIXER W/ LOADING & UNLOADING AUGERS; DEARBORN 7' 3 PT. BLADE; HUTCHINSON 8" X 48' GRAIN AUGER, HYD. LIFT, PTO; 6" X 38' GRAIN AUGER

GUNS: REMINGTON 572 FIELDMASTER 22, S, L, LONG RIFLE; REMINGTON 870 WINGMASTER 12 GA.; REMINGTON 760 GAMEMASTER CARBINE, 280 RCM, W/TASCO SCOPE; STEVENS 22-410, 22 LONG RIFLE, 410 GA.; FRANCHI 48AL, 12 GA.; MARLIN 336 R.C. 30-30 RIFLE; 2 - IVER JOHNSON CHAMPION 12 GA.; WINCHESTER MODEL 12, 16 GA.; WINCHESTER MODEL 67, 22 S, L, LONG RIFLE; WINCHESTER G2A, 22 S, L, LONG RIFLE; BROWNING BAR 243 /W REDFIELD SCOPE; ITALIAN 50 CAL. BLACK POWDER RIFLE; GR DOUGLAS 50 CAL.; GUN CABINET

HOUSEHOLD: ANTIQUE CAST IRON STOVE; ANTIQUE DRESSER W/ MIRROR; DUNCAN PHYFE DROP-LEAF TABLE; UPRIGHT FREEZER; SMALL CHEST FREEZER; LOT OF VARIOUS HOUSEHOLD ITEMS; BUTCHER BLOCK TABLE



For full listing and photos visit wheelerauctions.com.

SELLER: RICHARD "DICK" GENTGES ESTATE • VICKI BINKLEY, PERSONAL REPRESENTATIVE

Wheeler 
AUCTIONS & REAL ESTATE
 23101 HWY. 24, PARIS, MO 65275 | 660-327-5890
WWW.WHEELERAUCTIONS.COM

For more information call Charlie Nordwald
 at 636-795-4552, wheelerauctions.com.

Gratz
 Real Estate
 Auctioneering

For more information call Bill Gratz
 573-635-4168
 5718 Wardsville Road, Jefferson City, MO

ESTATE AUCTION

Saturday, August 1st, 2020 ~ 9:00 AM

LOCATION: 18221 South 1441 Road, Nevada, MO; **Directions:** From Nevada At Austin Street Go South On Spring Street To Country Club Then Turns Into Pawhuska Rd Continue 1 Mile To 1441 Rd Then To Sale Site. Very Narrow Rd & Not Much Parking (Watch For Signs)

Auction For Danner Estate



Retro, Oak, Modern Furniture & Appliances

Justice Wall Hugger Adjustable & Massager Twin Bed (Very Expensive), Red Like New Maytag Front Load Washer & Dryer On Stands, Oak Pub Table, Oak Kitchen Table W/Leaf, Oak Dresser W/ Mirror, Lg Oak Headboard W/Shelf Units, Oak Display Cabinets & Shelves, 5 Pc Bedroom Suite Inc Queen Bed, Dresser W/Mirror, Armoire & 2 Nightstands, Oak Corner Curio Cabinet, Neat Western Style Armoire & Nightstand, Neat Carved Wood Bear Table & Carved Wood Bear Statue, Wood Pantry Cabinet, Bent Wood Child's Chair, 2 Tall Pub Table Stools, Other Bar Stools, 4 Leather Roll Around Chairs, Lg Sewing Machine In Wood Cabinet, Retro Look Couch, Retro Matching Chair & Side Table, Retro Soda Pop Shop Look Leather Bar Stools, Retro End Tables, Ornate Lamps, Record/Display Cabinet, Replica Ant Radio, Lots Of Custom Frames & Neat Pictures, Neat Drift Wood Fishing Ship Clock, Hide A Bed Couch, Hunter Green Lazy Boy Recliner & Other Recliners, Western, Buffalo, Wolf & Indian Décor Pes, Neat Coral Décor Pc, Full Bed, Neat Turtle Ottoman, Dyson Vacuum, Hoover Shampoo Vac, LG Wall TV, LG TV W/Stand, Computer Printer, Lg Lot Of Chair Cushions, Other Items Not Listed

Antiques, Collectibles & Households

Ant Desert Rose China, Ant Tea/Coffee Set, Lg Lot Of Red Glassware, Dishes, Utensils & Appliances (Red Was Her Color), Red Washington Drape Aladdin Oil Lamp & Other Old Oil Lamps, Ant Horse Collar Mirror, Wood RxR Car Music Box, Ant Lantern, Lg Pickle Jar, Copper Weathervane, Old Milk Cans, Triangle Dinner Bell, Horseshoe Coat Rack, Horseshoe Display Pes, Old Jars, Old Tins, Old Linens, Coca

Cola Collection Inc Thermometer, Wood White Mountain Ice Cream Maker, Old Knife Sets, Rooster & Chicken Collection (Some Unusual), Western Style Doll Playhouse, Winchester Wood Sign, Birdhouse Collection, Retro Red Luggage Set, Brass Décor Pes, Walking Sticks, Collection Of Stuffed Animals, New Ventilator Masks, Pyrex Dishes, Corning Ware, Sm Electrical Appliances Inc Ninjas & Other Major Brands Some Never Used, Christmas Décor, Like New Ladies Coats, Wine Collector Bottles Some Loaded, Ant Style Clay Bricking, Mike Rayburn Metal Squirrel Thermometer, Other Items Not Listed

Denali Car, JD Gator, Utility Trailer, Truck Topper, Gun Safe, Tools & Outdoor Related Items

2011 GMC Denali AWD 4 Door SUV, Fully Loaded W/Extras, Has Auto Trans, V8 Motor, Sunroof, & Less Than 8,000 Original Miles, 1 Owner Still Smells New, JD TE 4x2 Gator Has Gas Motor & Dump Bed (Nor Many Hours Just Like New), 4x10 Utility Trailer, Leer Truck Topper, Better Bilt Plated Truck Toolbox, Gargoyles Metal Gun Safe, NIB Leaf Shredder, Like New Mulcher, Stihl Electric Chainsaws, Big Wheel Yard Wagon, Craftsman Edger, Electric Weed Eater & Blower, Electric Shop Sweep, Craftsman Work Station Table, Shop Saw, Shop Vac, Alum Ladders, Battery Charger, Vise, Sm Hand Tools, Tape & Dye Sets, Organizers Full Of New Items, Sm Electrical Tools, Wheelbarrow, Metal Yard Chairs, Porch Swing, Iron Patio Furniture, Glider, Lg Lot Of Metal & Concrete Yard Décor, Other Items Not Listed

Auctioneers Note: It Is An Honor To Be Conducting This Auction For The Danner Estate As The Danners Had An Eye For The Neat, Retro & Unusual Items. We Will Offer An Outstanding & Very Clean Auction. If You Are Looking For A New Car & Like New Gator You Must Attend This Auction. Tools & Households Items Are Just Like New & In Well Kept Condition. Please Plan Now To Attend. **Sale Order: Furniture & Appliances Sell First Then Antiques, Collectibles & Households. At Approx 12:30 PM Will Offer Car, Gator, Trailer, & Large Related Items. Tools & Outdoor Related Items Will Finish Auction. See Ya There!!!**

Terms: Cash or check with proper ID. Now accepting most major credit cards. Nothing removed until settled for. Statements made the day of sale takes precedence over printed material. Everything sold as is where is. Not responsible for accidents. Restroom available. Concessions Provided. Check our website for upcoming auctions and for additional pictures!!



NANCE AUCTION SERVICE

No Matter How BIG or small, We Do Them All!

www.nanceauctionservice.com

Col. Bill Nance 417-214-0093

In God We Trust

Philippians 4:13

Public Auction

Saturday, August 8, 2020 - 9:00 A.M.

Location: From Thayer Missouri, take highway 142 east to EE highway. Turn left on EE highway and go approximately five miles to CR 232. Turn right on CR 232 and go approximately one mile to the auction.

Watch for Lawrence Auction signs.

Owners: Sharon and the late William A. "Bert" Frase

MACHINERY-TRACTORS-MACHINIST ITEMS

Kioti DK55 diesel tractor w/Kioti KL551 loader(one owner, 4x4, 388hrs), Landpride RCR 3596 brush cutter, 16' flatbed trailer, 8' utility trailer, 6' box blade, front end forks, Howse box blade, 6' brush cutter, Landpride LR1572 rock rake, 6' blade, 6' disk, two bottom plow, JD 1010 gas tractor, Case Comfort King diesel tractor w/canopy, NH haybine, NH 316 square baler, JD D140 riding mower w/48" cut, JD LA115 riding mower, Powermate Maxa 5000 generator, 2500lb pallet jack, pond scoop, carry all, canoe, heavy duty trailer tongues, concrete mixer, lawn mower trailer, 12' box utility trailer, Craftsman model 60 12" disc sander, Scotchman Iron Worker model A014C, South Bend model A precision Lathe, Arbor Press, Craftsman 18ga crown stapler, 4" vise w/stand, Saw Master #3144 power heck saw w/single phase motor, Army surplus generator, South Bend bench top lathe, Grob vertical band saw w/blade welder, Rockwell-Delta vertical band saw, Scotchman 10" cold saw, Craftsman 10" table saw, black & Decker 8" table saw, hydraulic lift, Bridgeport multi speed vertical end mill, Craftsman belt sander, Delta wood planer, cutting torch set, 4'x4' hydraulic table, 3 ton pulley, Hausfeld bender, popup camper, motorcycle trailer, Evinrude 15 boat motor, air compressors, 1993 Chevy Conversion van (125,xxx miles), Mercury Villager van (250,xxx miles), Super Skyrider model SX-28, heavy duty metal shelves, pressure washer, 4"x8' steel pipe, rebar, misc scrap, wiring, floor jack, chain saws, Stihl weed eater, 3hp motors, metal table, bottle jacks, nuts/bolts, socket sets, wrenches, engine lift, work benches, hand tools, yard tools, Presto Lift, angle iron, ladders and many more small items not mentioned.

HOUSEHOLD-ANTIQUES-GUNS

Antique dresser, old secretary, fridges, step ladders, RCA tubes, Weber grill, cast iron kettle, smoker, concrete planters, patio furniture, push mower, cast iron muffin pan, coolers, homemade metal windmill (nice), Litze microtone blades, cedar chest, whit stones, old radios, old scale, Denton 2500 linear amp, Denton 3000A antenna tuner, plus many more items to be sold. GUNS: Golden Boy 22 big loop, Ruger LCP 380, Marlin 30-30 model 336 w/scope, Remington 30-06 model 7600 pump, model 98 military rifle, Inner Arms take-down 22, TC Compas bolt action 243(new in b0x), Winchester 25-20 model 1892, Winchester 22 long rifle model 77, Remington Gallery Special 22 pump, Savage model 60 deluxe 22, large assortment of ammo and Colt magazines. Guns sell at noon.

Concessions will be available

Auctioneer's Note: We have been commissioned to offer the items listed above at public auction. Large auction come prepared to stay all day with us. Note early start time and always remember to be safe. Thanks for attending, Jeff.

Jeff Lawrence Auctioneer, LLC

7598 E Highway - Couch, Mo. 65690

Home: 417-938-4394

Cell: 417-331-5231

Drivers License Required - All announcements made day of sale take precedence over any printed material - Not responsible for accidents or stolen items.

Mo. Lic#1929

Ark. Lic#1929



Saturday, August 1, 2020 • 9:00 a.m.

LOCATION: From Doolittle – go east on Eisenhower Road (next to Dollar General) 1 mile, watch for signs.

EARLY START TIME! Go to auctionzip.com to view photos. Auctioneer #28367 EARLY START TIME!

Furniture

Couch & chair
Recliner
Kitchen table, hutch, 6 chairs, oak (nice)
Antique dresser
Antique small stand/table
Antique Singer sewing machine
Cast iron claw footed tub
Table and 2 chairs, wrought iron
Dresser & desk
5 piece cherry bedroom set, queen (nice)
Dresser & night stand, white bedroom set
Washer & dryer
Gas cook stove
Coffee table with raise up top
TV & stand
Book shelf
Round corner shelf
Bar stools
Table and chairs
End table
Lamp
Baby stroller
Baby bed mattress
Kids folding table & chairs
High chair
Baby walker
Folding table
2 wooden medicine cabinets
Twin bed
Large chest freezer
Card table & chairs
Old Desk/Secretary
Bench
File Cabinets
Metal kitchen cabinet
48" Hisense Flat Screen TV
Roll away bed

Household

Cast iron skillet
Cold packer
Presser cooker
Canning jars
Bell & Howell cameras
Milk glass carnival pattern
Limoges #23 gravy bowl

Fenton
Crystal dishes
Silverware
Utensils
Ice cream freezer
Crock pots
Roasters
Tupperware
Willow Tree
Pyrex bowls
Crock bowl
Pink metal canister set
Fire King
Juicer
Pots & pans
Pie plates
Corning ware
Dish sets
Metal grease can
Rolling pins
Slicer
Microwave
Kerosene lamps
Hurricane lamp
Recipe books
Lot linens
Fisher Price barn
Big Tinker Toy
Playskool cars & outdoor toys
Lot of sewing supplies
Electric typewriter
Picture frames
Christmas décor

Tools/Outdoor

10x6 Shed (nice)
5x10 Tilt trailer
Remington automatic .22, nickel plated (old)
Pellet gun
Craftsman rear tine tiller
Flat top propane camp stove
Small propane bottles
Small propane heat stove
Hand tools
Air compressor
Bench grinder
Vise

Hammers
Ammo cans
Jig saw
Sawzall
Oil cans
Drill bits
C-clamps
Craftsman wrenches
Screw drivers
Pipe wrenches
Crescent wrenches
Shears
Files
Floor jack
Tool boxes
Shop light
Creepers
Old kerosene can
Levels
Sockets
Drill
Gas can
Campfire tripod & pot
Fishing poles & tackle
24 volt trolling motor
3 – 12 volt trolling motors
Fish cooker stand
Life jackets
2 boat sets
Trout line hooks & supplies
Garden push plow
Tator fork
Mole traps
Iron wagon wheels
Metal shelves
2 sliding jacks
3 Igloo dog houses
Extension ladder
Purple martin house & pole
Picnic table
Glider swing
Wheel barrel
Small metal top table
Hose reel
Shop vac
Flower pots
Water can

• Very clean sale with nice things! Lots of boxes unopened. May run two rings to beat the heat. Bring your friends!

Thanks, Steve and Neal

Estate of James and Lucille Smith

Terms-Cash or Approved Check. Nothing Removed Until Settled For. Not Responsible For Accidents.
Must show ID to get Buyers #. Announcements Made Day Of Sale Take Precedence Over Printed Matter.

Buckner & Gately Auction Service

Auctioneers

Steve Buckner 573-674-2686

Neal Gately 573-202-3132

PUBLIC AUCTION

SATURDAY, AUGUST 1 • 10:00 A.M.

LOCATION/DIRECTIONS: 26402 State Hwy. C - POTOSI, MO • 14 miles west of Belgrade. 10 miles NE of Viburnum, 25 miles SW of Potosi, 5 miles east of intersection of Y Hwy., V Hwy., C Hwy. Crawford County on C Hwy. Watch for signs.

FARM • HOUSEHOLD • LAWN • GUNS & MORE!

2-Bottom 3pt. Plow w/Colers, Carry-All - 3pt. 6' Blade
3pt. Bushhog, 6' - Massey Ferguson 165 Diesel, Runs Well
1978 Chevy Frame Pickup, 1984 Body Ride And Drive
Long Wooden Ladders - Stihl 56 290 Chainsaw
2-Ton Floor Jack - Galvanized Buckets - Toolboxes - CB Radios
Fishing Tackle - Desk & Chair - Craftsman Roll-Around Toolbox
Craftsman Tools - Angle Grinder - Electric Drills
Electric Zipp Saw - Oils & Greases - Speakers
Plugs & Switches - Clark 25 Gallon Air Compressor
Diamond Plate - Rod & Reels - Organizers
5' & 3' Levels - Welding Helmet - Old Microphone
Metal Shelving - Heat Lamps - Oil Cans
Old Gumball Machines - Ryobi Drill - Electric Cords
Wooden Stool - Plumbing Supplies
Old Rocking Chairs - Wooden Step Ladders
Appliance Dolly - 10' Aluminum Step Ladder - Dollies
Rope & Pulleys - Handsaws
2 Bench Grinders, 1 On Stand - Big Bench Vise
Shop Broom - Old Craftsman Radial Arm Saw
Shop Fan - Wheelbarrows - Garden Hose
Wood Torch & Propane Tank
Generac 60 Kilowatt Surge, 30K Cont. Generator
350 Turbo Transmission - Orange Fence
Misc. Lumber - 25 Gallon Sprayer
Rear Tine Tiller - Yard Carts - Shovels, Rakes & Handles
Push Mower - Weedeaters - Grease Guns - Stihl MM55 Tiller
Chains - Boomers - Air Hose - Loppers
Cub Cadet 1800 Rider, Deck Needs Work
30' Aluminum Pipe, about 150', 4"
300 Gallon Fuel Tank, had Diesel in it
Jumper Cables - Lawn Chair - Tires, 16"
Small Bench - 2, 16' Cattle Panels - 3 Dog Houses
Picnic Table - 4 Spring Metal Patio Chairs
7' Aluminum Extension Ladder - Coolers
Generac 5500 Generator 5500-8500
Electric Leaf Blower - Pet Taxi - Powermate CX3500 Generator
Old Slate Chalkboard from Antioch School House from
Washington County
Bifold Doors - BBQ Grill - Christmas Items
10' Church Pew - 2 Wooden Rockers - Porch Swing
Blue Couch - Flowered Loveseat - Wingback Chair
Bolo Knife-Negritoblo, Hand Carved - Nice Gun Rack
Nice Costume Jewelry - Jewelry Box - Jpe Ponona Ca SKS 7.62
Nice Gun Rest - Gun Cleaning Kits
Several Lots of Ammo for Each Listed Gun
Banjo - Guitar - Piano - Piano Stool - Lots of Holsters

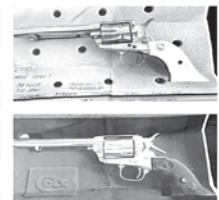
Lots of Knives, Folding & Sheath - Gun Stocks, SKS - Hat Boxes
Porcelain Christmas Houses - Advertising Smalls
Keychain Collection - Yardstick & Ruler Collection
LG Side-by-Side Refrigerator - 2 Old Cookie Jars
Roasters - Some Cast Iron - Several Sewing Boxes
Lots of Jars of Buttons - Camel Saddle - Old Cameras
Hide-a-Bed Couch - Music Table
Puzzles & Games - Trundle Bed - Lots of Books
School Desks - Lots of Feather Pillows - Pictures
Neat Collectible Bottles - Fireproof File Cabinet
Apple Baskets - Records - Milk Bottles - Table
Sideboard - Double Mattress - Cuckoo Clock from Germany
Spotting Scope - Old Horse & Wagon Toy

GUNS:

Glock 22 Gen 3, 40 2507680319
Nagant M1895 7.62x38 0794(8)
Kahr NIB CW4040 FE5167 - Ruger P89 30906300
Smith & Wesson 3953 9 - Charter Pathfinder 22 132203
Smith & Wesson Police Special 38
Ruger Super B/H 44 025158
High Point C9, 9 P120653 - High Point JCP 40 X79498
Ruger Mk2 CompetTarget 22 2187061
Beretta U22 NEO5/Red Dot 22 R13760
Navy Arms (Uberti) 1875 357 05317
Walther PPS 9 AC7808 - Kalcet PF9 9 REX11
Smith & Wesson Hand Eject 1 Frame 32
Smith & Wesson M&P Bodyshield C/T 380 KDR7485
Henry Classic S/LLR 22 F8000211
Marlin 917V 17HMR 95654767 Barska
Marlin Glenfield 60 22 22476182
Savage Mark II 22 2062206 Tasco
Savage Edge 308 11126193 Simmo
Remington 722 222 375807 Tasco
Remington 7400 30-06 8603459 Tasco
Parkerhale 1200 30-06 z40294 Universal
Mossberg 100ATR 270 BA018098 Tasco
Revelation 310ac Pump 12 H651609
Mossberg 183DB 410 - Stevens 620 Pump 20
Diamond Arms SS Break 12
Mossberg 715T 22 ELF341942
Mosin/Nagant M1938 7.62x54r M3800236
Russian Izhvsk HA1241 CAI Georgia Vt
Norinko SKS type 56 7.62x39 2903314
China 1958 Folding Stock, Spike Bayonet
Ariska Type 40 6.5 31278 - Japan Spike Bayonet
Beretta/Cardone 1840XVII 6.5 JF2977 - Italy Sporter

Ariska Type 99 Series 4 7.7 62729 - Japan Sporter 1939-1945
M1 Carbine 30 15622
Mosin/Nagant M1938 7.62x53r 85546
Russian Tula Dragoon 1933
British Enfield 303 1527
Krag/Jorgenson 1898 30-40 180118
Springfield Armory JH 1907
Mosin/Nagant M91 7.62x54r 91303327422
Norinko SK556 7.62x39 7033191
Schmidt/Ruben K1911 7.55x55 431303
Swiss Army GP11 ammo
TC ASFA Ankara 8mm 1938 Turkish - Marlin Glenfield 60 22
Marlin 783 HMR 22mag Tasco Scope
Mossberg 1445B Bull Barrel 22
Marlin Glenfield 60 22 Tasco Scope
Winchester 94 30-30 - Ruger 10/22 22 Scope
JW 2000 12ga 2-3/4 3" Double Barrel Coach Gun
Colt SAA Army 45 S11854A 5.5 Barrel
Colt 38 WCF 319660

AUCTIONEER'S NOTE: Very nice items.
See you there! - Tom



OWNER: BILL AND BONNIE (BARR) ZUCK

ANNOUNCEMENTS AT AUCTION TAKE PRECEDENCE OVER PRINTED MATTER

WULFF AUCTION

Auctioneers:

Col. Tom Wulff - Col. David Wulff

498 Hwy. B, Salem, MO 65560 • 573-729-8476

Clerk: Tracy Strange

Cashier: Nancy Inman

See Wulff Auctions at www.thesalemnewsonline.com/auctions

TERMS: CASH OR
APPROVED CHECK -
I.D. REQUIRED
NOTHING REMOVED
UNTIL SETTLED FOR

Licensed
Appraisals



RAIN OR SHINE
OWNER & AUCTION
PERSONNEL NOT
RESPONSIBLE
FOR ACCIDENTS AT
SALE SITE

Callaway Livestock Center, Inc.

Kingdom City, MO

Watch live or bid online thru D.V. Auctions www.CallawayLivestock.com

SPECIAL COW SALE

THURSDAY NIGHT AUGUST 6th, 2020 AT 6:00PM

Estimating 900 to 1000 hd of Bred Cows, Cow/Calf Pairs & Breeding Bulls.

EARLY CONSIGNMENTS

Bred Heifers:

- 23** Fancy Big Angus home raised Heifers, weigh 1100 lbs. Circle A genetics. For years Heifers bred to Sav Platinum Dale Sept. 5th or Oct. 10th. 2 rounds of ScourGuard Long Range Stay Bred.

Consigned from L&S Farms:

- 32** Fancy Blwf or Blk Heifers these Heifers are 1/4 Gelvieh. Weigh 1200 lbs. Very gentle. Bred to Black Balancer, easy calving bull. Start calving Sept. 6 for 65 days. These Heifers are the cow making kind.
- 48** Fancy SimAngus Blk or Blwf Heifers. Weigh 1050 up. Bred to Low BW SimAngus Bulls. All shot. New Fly Tags. Start calving August 15th for 70 days.
- 45** Big Fancy Blk Angus or Red Angus. Heifers weigh 1100 lbs. Lot of Sydgen Genetics. Blk Hfrs. Bred Blk Red Hfrs. Bred Red Angus. Start calving Sept. 1st.
- 14** Big Fancy Blk or Blwf Hfrs. These Heifers have had the white tag program on shots. Weigh 1100. Been pelvic measured, bred to low bw Angus Bulls, Sept. 15, 60 days.
- 40** Big Fancy Blk or Blwf Cows. All shots, running Angus Bulls. Cows will be 3-6 yrs. old. Spring calvers. 1st or 2nd period.
- 20** Big Angus Cows. Bred to Angus Bulls. 4 to 8 yrs. old, 3rd period.
- 17** Big Blk or Red Angus Cows. Very gentle. Bred Blk. 5-6 yr. old, 3rd period.
- 57** Blk or Blwf Cows. Big fancy cows, 3-6 yrs. old. Be 2nd or 3rd period.
- 15** Blk or Blwf Cows. Cows 3-6 yrs. old. Bred to Low BW Angus Bulls. Cows have had all shots and worming. Start calving August 15th for 70 days.
- 20** Blk or Blwf Cows. Cows 6-SS Cows in 3rd period. 5 Cows will have calves by side.
- 10** Big fancy Blk Cows. Cows 6-8 yrs. old. Some are A-I Bred to Niagra, rest bred to high growth Polled Hereford Bulls. Calve Sept. 4-Sept 16.
- 8** Char Cross Cows. 6-SS. Cows will be 3rd period, 4 Cows will have calves by side.

- 10** Blk or Blwf Cows. 4-6 yrs. old. Cows will be 3rd period, bred Blk.

Complete Dispersal:

- 55** Home raised Cows. 35 Cows will be Red Angus, 20 will be Blk hided Red Angus Cows. Fancy fancy, very gentle. Bred to a Red Angus or Blk hided Red Angus. All shots in June. Start calving August 20th for 60 days. There will be 4 spring pairs as well cows 3-6 yrs. old.
- 48** Big fancy Angus cows. Cows 6-SS. 10 of these cows have 400 lb. calves by side. Remainder will be 3rd period, bred Angus Bulls.

Herd Reduction

- 65** Blk or Blwf Cows. All shots. Bred to Sim Angus Bulls. Cows 3-6 yrs. old. Start August 15th for 75 days.

Herd Reduction

- 49** Blk or Blwf Cows. Big fancy cows. Lot of A-I Genetics. Cows have had all shot including Anaplas Vaccine & Long Range. Bred to Angus Bulls, start calving Sept. 1st for 60 days.
- 45** Big fancy Blk or Blwf Cows. All shots, running with Angus Bulls. 3rd period. 7 of these cows have calves by side. Cows will be 3-6 yrs. old.

Dispersal

- 28** Big fancy Blk or Blwf Cows. Home raised, all shots. Cows bred to Angus Bulls. Cows will be 4 to 7 yrs. old. Start calving Sept. 1st for 70 days.
- 1** 3 yr. old Reg. Sim Angus Bull. Trig & Semen Ready.
 - 1** 3 yr. old Blk hided Red Angus Bull.
 - 1** 5 yr. old Red Angus Bull.
 - 1** 5 yr. old Big Angus Bull.
 - 1** 1 1/2 Virgin Angus Bull.
 - 1** 1 1/2 Virgin Hereford Bull.

This is an early listing, several more cows & bulls by sale day.

This ad was prepared 2 weeks before sale. Many more expected by sale day. All bulls sell at the start of the sale at 6:00pm.

For more information contact: Jack Harrison 573-999-7197 • John P. Harrison 573-220-1482 • Roger Temmen 573-680-4538

Glenn Stagman 573-619-8495 • Claude Niemeyer 573-470-1017 • Justin Oberling 217-440-7724

CALLAWAY LIVESTOCK CENTER INC. 573-642-7486



MID MISSOURI STOCKYARDS

REGULAR SALE EVERY THURSDAY 11AM

WATCH OUR WEEKLY SALE IN REAL TIME ON DVAUCTION.COM

For Farm Visits, Market Updates, or Trucking
Call **Zach Cox 417-777-1320**
Dan Romine 573-578-4939

**Competitive Buyers!
Competitive Commission!
Competitive Market!**

Barn: 417-532-9292 
I-44 • Exit 123 "just outside of Lebanon"
17505 Route 66, Phillipsburg, MO 65722
For weekly market updates, visit us at
www.midmostockyards.com

FERTRELL: ORGANIC FERTILIZER AND MINERALS. Call for free catalog. 315-796-4370.

FLAT BED WAGON: with good floor, needs tires, \$150. Herman 636-932-4429.

CAPPER'S WEEKLY VINTAGE SEARCHLIGHT COOKBOOK: hard-back \$15. 417-532-2045, Lebanon. Leave phone number.

WOOD STOVE: Glass front w/stainless chimney. \$200. 417-322-0161.

SANBORN 5HP 60 GALLON AIR COMPRESSOR: Older unit. \$200 OBO 417-457-1023 Raymondville

80" PULL TYPE DISK: small. \$150. 417-753-2747.

VILLA HOMES IN ROLLA: Has NEW and USED Mobile Homes. Call David for info: 573-578-8072.

BRUSH HOGGING: By the hour or by the job. Honest, reliable, newer equipment, good rates. 417-349-0084.

TORO WHEEL HORSE CLASSIC TRACTOR AND DECK: Model 310, 8speed. \$300obo. 573-308-5884.

30/30: W/new scope/sling. \$450. 417-322-0161.

LOG SIDING SALE: 2X8 Western Cedar .99 ft/ Pine \$1.19 ft while supplies last. www.pineriderustic.com 573-729-7226.

Salem Livestock Auction
Hwy. 32 Salem, MO • 573-729-8880
Over 40 Years in the Livestock Business

Stock Cow Sale
Monday, August 3rd @ 6:00 pm

Following our regular feeder sale:

- 67 Black Cows running ages 63 with calves running back with black bulls, several 3 and 1 packages. Complete Sell Out
- 15 Mix Cows running ages, all with 200-300lb calves
- 26 Cows, mostly Blk and Bwfr, 5-7yrs, all 3rd stage, will start calving in Sept.
- 2 Black Bulls Registered but no papers
- 35 Black and Bwfr Cows running ages all with 300 - 450lb calves

Cows will be bred back to a Black Limousine Bull Sell Out
Goat Hog and Sheep Sale Tuesday Aug 11th @ 6pm

CATTLE SALE - EVERY MONDAY AT 12:00
Feeder Calves to sell at 12:00pm • Butcher & stock cows following

All Consignments Welcome Up Until Sale

Allen Thompson	Renee Lauderdale
417-932-4097	417-926-2682
Chuck Thompson	Brandon Barton
417-257-5610	417-259-1597

Terms of Sale: Cash or Approved Check!



DRIVERS SIDE 2002 RANGER BUCKET SEAT: new foam, gray cloth, good condition, \$200. 636-297-1747

WANTED, TIMBER TO LOG ON SHARES: Honest, reliable, references. 417-533-4607, 417-664-1195.

DREAM HOUSE -Online, chateauhomes.net
Call Marla 573-657-7040

THUNDERBIRD: Convertible, black, 2004 both tops, excellent \$14,500. 573-636-8000. JC

SWAP MEET: At Treasures, 1060 Tower Road, Lebanon, August 7th & 8th, Vendors Wanted, 417-532-6666.

ORCHID COACH PURSE: \$40, VERA BRADLEY: w/matching wallet. \$40. 573-263-9235.

BASS AMP: \$50. 6 string electric guitar for \$75. 636-297-1747

NEW HARRINGTON ROUGH RYDER: 22 pistol. \$200. 573-327-9068.

CLEAN 275 GALLON FLUID TOTES: Limited quantity. \$55. 417-349-1386.

KILMER FARM EQUIPMENT CONSIGNMENT AUCTION

SATURDAY, AUG. 29 • 10 AM
14769 Cattle Lane, Versailles, MO 65084

Directions: At the intersection of Hwy 5 and Hwy 52 in Versailles, go North on Hwy 5 for 1 mile to Cattle Ln then turn Right or East and go ¾ mile to Sale Site.

AD DEADLINE: FRIDAY, AUG. 7, 2020
ACCEPTING CONSIGNMENTS ON LOT
Monday, August 17 - Wednesday, August 26

CONTACT DANIEL OR MARK KILMER TO CONSIGN OR FOR MORE INFORMATION (573) 378-6615

TRACTORS, PLANTERS AND SPRAYERS, CONSTRUCTION EQUIPMENT, TRUCKS AND TRAILERS, GRAIN CARTS AND WAGONS, MANURE SPREADERS, CUTTERS, TILLAGE, COMBINE AND HEADS, FEED MIXERS, MISC. EQUIPMENT, HAY EQUIPMENT, SILAGE EQUIPMENT

2 RING MAY RUN DAY OF SALE

Wheeler AUCTIONS & REAL ESTATE
23101 HWY. 24, PARIS, MO 65275 | 660-327-5890
WWW.WHEELERAUCTIONS.COM



KILMER FARM EQUIPMENT, LLC • (573) 378-6615
14270 Hwy. 52, Versailles, MO 65084
For more info and photos: www.wheelerauctions.com

PRESSBRAKE: W/light curtain, \$975, 9ft metal shear, \$1,000, 4ft press brake, \$500, Metal Turret Lathe. \$200. Hydraulic units. Call 417-322-0161.

OLD IHC: tool box with oil can holder and H Farmall operators manual, \$60. Herman 636-932-4429.

TWO 6 HOLE: 16" implement wheels and one 4 hold wheel. All for \$25. Herman 636-932-4429.

TRUCK LOAD OF FLEA MARKET & AUCTION ITEMS: \$200 or trade. 573-327-9068

NEW IDEA #10 ONE ROW PULL-TYPE CORN PICKER: W/wagon, good condition. \$2,750. 573-678-2132.

CATAHOULA LEOPARD PUPS: blue eyed, natural bob tail. \$100. 417-543-4816.

GRISWOLD REFERENCE PRICE GUIDE: \$7.50 417-532-2045, Lebanon. Leave phone number.

6'4"wide x12'long TRAILER: Heavy axles, has brakes, 10ply tires. \$1,400obo. 417-839-2196.

BUFFALO LIVESTOCK MARKET LLC

276 Hwy 32 West • Buffalo, Missouri

July 25th, 2020
Receipts: 888 Head

Feeders Steady Cows \$4 higher.

Representative Steers

300-400 @ 160.00 to 180.00
400-500 @ 155.00 to 170.00
500-600 @ 142.00 to 159.00
600-700 @ 136.00 to 148.00
700-800 @ 120.00 to 140.00
800-900 @ 122.00 to 127.00

Representative Heifers

300-400 @ 137.00 to 168.00
400-500 @ 132.00 to 149.00
500-600 @ 127.00 to 140.00
600-700 @ 124.00 to 137.50
700-800 @ 112.00 to 120.00

Feeder Bulls

400-500 @ 146.00 to 162.00
500-600 @ 132.00 to 147.00
600-700 @ 120.00 to 136.00
700-800 @ 102.00 to 120.00
800-900 @ 80.00 to 110.00

Cow Calve Pairs

875.00 to 1100.00

Bred Cows

825.00 to 1100.00

Slaughter Cows

Breakers 63.00 to 69.00
Boners 60.00 to 78.50
Lean 55.00 to 65.00
X Thin 55.00 Down

Bulls

High Dressing 105.00 to 110.00
Medium Dressing 96.00 to 104.00
Low Dressers 88.00 to 95.00

MON-WED MARKET REPORT

Listen to KJEL 103.7FM • Lebanon or KYOO 99FM • Bolivar

VIEW OUR SALES AT CATTLEUSA.COM

CALL FOR TRUCKING OR ON-FARM VISIT

Lyle Caselman • Owner-Manager
417-345-7876 • mobile 417-533-2944
Leon Caselman • Owner
417-345-4514 • mobile 417-588-6185
Howard Miller • Owner 417-345-8122



Annual Fall

Equipment Consignment Auction

SATURDAY August 29, 2020

@ 9:00 a.m.

Allen Auction Sale's Lot, Hawk Point, MO

Directions: 1 ½ miles South of Hawk Point
on Hwy 47. Look for signs the day of sale.

ACCEPTING CONSIGNMENTS FOR

**Tractors, Trucks, Trailers,
Construction & Farm
Equipment, Cattle &
Hog Equipment by NOON
Friday, August 28, 2020.**

To have one of our auction
representatives meet with you to
look at your equipment, please
give us a call.

We look forward to hearing from you!

**To consign your items call, fax,
e-mail or stop by our office:**

ALLEN AUCTION & REAL ESTATE SERVICE LLC

(636) 338-4805 • Hawk Point, MO
Nick's Cell: (636) 358-2900 • Kyle's Cell: (636) 236-2344
Fax: 636 338 4823 • Email: sandy@allenauction.net

**For updates on list & photos check our
website www.allenauction.net**

CUSTOM SAW MILLING: Lebanon. 417-533-4607, 417-664-1195.

PRIME KATAHDIN EWES: Parasite resistance/easy lambing/hof health, \$250. Breeding rams, \$250. 417-322-0161.

FURNITURE SET: Sleeper sofa, loveseat, matching chair, solid frame, needs cleaned~ or recovered. \$250 set. Misc accent tables also available.~ Norwood, 417-459-6313.

HAMMERMILL: grind grain for your animals. \$900. 417-322-0161



Horse Sale

**1st Wednesday of each month
August 5th, 2020**

**Tack will start @ 6:00pm
then Horses to follow
Expecting Several
Head of Horses.**

MARKET IS STRONG!

**All Consignments Welcome
Buyers From All Across the U.S.
All Classes of Horses**

For more information or
consignments, please call:

Kip: (573) 368-9402

Isaac (417) 327-2355

Denver: (417) 399-2701

Steve: (417) 894-1070

Trucking Available

Restaurant Open @ 5:00 pm

"Celebrating our 6th year"

Roberts Bros. Sale Barn

1416 E. Hwy. 32 – Bolivar, MO
(417) 326-5815
Like Us On Facebook!

WEATHERED BARN WOOD SIDING:
8" & 10" wide. 573-729-7226. www.pineridgerustic.com

STAINED GLASS THEATRE COOK-BOOK. \$6.50. RESTAURANT RECIPES OF MISSOURI. \$7.50. THE CAKE DOCTOR COOKBOOK. \$6.50. 417-532-2045, Lebanon. (Leave Phone Number).

NEW HAY BALE ARM BED SPINNERS:
Allows large hay bales to spin while unrolling. 16". Shaft 1"x6" Camdenton area will travel to meet. \$75.00 816-803-1834.

JOHN DEERE 2940: 80HP, 148loader, runs good, good rubber. 417-286-3173.

I BUY.....used mobile homes. Call or text 573-338-6250 or email GregS.CDH@outlook.com

Starnes Auto LLC

22115 Rt. 66
Lebanon, MO 65536
417.588.3159 Office
417.718.2707 Cell
www.starnesauto.com

2001 FORD EXPLORER SPORT TRACK
MAROON, 107,XXX MILES..... **\$6,500**

2002 CHEVY S10
PEWTER, 260,XXX MILES, 5SPD.,
GOOD TITLE..... **\$2,600**

2003 CHEVY S10
WHITE, 72,XXX MILES..... **\$5,200**

2006 BUICK TERRAZA VAN
BLUE-GREEN, 88,XXX MILES..... **\$4,000**

2006 FORD TAURUS
SILVER, 78,XXX MILES..... **\$3,450**

2007 BUICK LUCERNE
WHITE, 103,XXX MILES, GOOD TITLE. **\$4,950**

2007 CHEVY EQUINOX
BLUE-PURPLE, GOOD TITLE,
149,XXX MILES..... **\$4,200**

2010 CHEVY MALIBU LS
BLUE, 97,XXX MILES..... **\$5,800**

2011 GMC TERRAIN
WHITE, 138,XXX MILES..... **\$7,450**

2011 FORD FUSION SEL
WHITE, 126,XXX MILES..... **\$5,600**

2011 CADILLAC SRX
GOLD, 66,XXX MILES..... **\$11,500**

2011 FORD EXPLORER
SILVER, 78,XXX MILES..... **\$10,800**

2012 GMC ACADIA DENALI
CHARCOAL, 138,XXX MILES..... **\$9,250**

2012 FORD FUSION SEL
CHARCOAL, 124,XXX MILES..... **\$5,200**

2012 CADILLAC SRX PERFORMANCE
WHITE, 87,XXX MILES..... **\$12,500**

2012 CADILLAC SRX PERFORMANCE
BLACK, 123,XXX MILES..... **\$8,250**

2014 GMC ACADIA
RED, 119,XXX MILES..... **\$9,750**

2015 CADILLAC SRX PERFORMANCE
BROWN, GOOD TITLE, 40,XXX MILES **\$18,500**

2015 CHEVY EQUINOX LTZ
BLACK, GOOD TITLE, 62,XXX MILES **\$13,200**

2016 FORD FIESTA SEDAN
SILVER, 59,XXX MILES..... **\$6,500**

DOUBLE RECLINER COUCH: 2 glass top end tables, one glass top coffee table. \$125. 573-431-9520.

TRACTOR: Farmall H, wide front, very nice condition, call for details/pictures, \$2,500. 417-848-8754.

POOL TABLES: Installations, moves, recoverers, repairs, accessories, etc. 573-646-1700.

FIREARMS: Professional Repairs and Restorations. Baron's Gunsmithing. 573-363-5801, Camdenton.



**TASK.
TASK.
DONE.**

RB16 SERIES

REAR BLADES
20-40 HP 60", 74", 84" Widths
• Cat. 1 hitch
• 7 Forward angles; 3 Reverse angles
• 5 Tilt positions
• 12" Offset left or right
• 14" Moldboard height
• 1/4" Moldboard thickness
• Landscape Rake adaptable

For Outstanding Products & Service
AGRI ENTERPRISES

1-1/2 Miles South Of Licking, MO On Hwy 63

573-674-2203
1-800-653-7152

www.landpride.com

www.agri-enterprises.com

SOUTHERN OVEN COOKBOOK: The Savories, The Sweets, by Jean Anderson, hardback, 272 pages. \$6.50 417-532-2045. Leave Message.

3 PUSH MOWERS: not running, \$35 for all. 636-297-1747.

3-6 YEAR OLD CALF/COW PAIRS: 200-400lb calves. 417-331-8284.

SORGHUM PRESS: \$400. 573-308-7537, Edgar Springs

WANTED STANDING TIMBER: Butler Logging, 417-448-9323.

GRAY CHICCO INFANT CAR SEAT FOR SALE: From a smoke free home, 2 years before expiration, not been in a wreck. \$30 573-263-9235 St James

DARDEN PROFESSIONAL TIMBER HARVESTING, BUYING STANDING TIMBER: Great prices, improve wildlife habitat and improve forest health. State Certified & Fully Insured! 573-247-4808 or 573-739-1122. Salem

1999 FORD TRUCK EXTENDED CAB: 4door, good paint, no rust, good interior, 4x4, P/W/L, needs 5.4Tritan V8 motor. \$1,400obo. 417-839-2196.



★ American Made Metal Roofing ★

40 Year Warranty Metal.....\$1.95 (\$60.94 Per Sq)

*29 Gauge 10 Year.....\$1.75 (\$54.69 Per Sq)



WHILE SUPPLIES LASTS

29 Gauge #1 Galvalume.....~~\$1.69~~.....\$1.39 (\$43.44 Per Sq)
26 Gauge 40 Year.....\$2.25 (\$70.31 Per Sq)

- ★ 17 Colors To Choose From
- ★ 21 Years In Business
- ★ We Manufacture Our Own Metal and Trusses



3 Locations To Serve You!

1239 W. Kingshighway Paragould, AR 870-810-2494	1100 Pace Rd. Pocahontas, AR. 870-609-1900	35 Killdeer Rd. Seymour, MO. 417-952-7143
---	--	---

*Possibly not American made. Prices always subject to change.

Build In A Box Stud Wall & Pole Barn Kits

Non-Warranty Metal	10 Year Warranty	40 Year Warranty
24x30x8.....\$3,350\$3,700\$3,850
30x40x10...\$4,950\$5,350\$5,600
40x60x12...\$9,300\$10,000\$10,200

• Precut Packages Also Available

**NEW BIG TEX
22GN FLATBED TRAILER**



facebook

JIM'S Motors
TRAILERS

I-44 at Exit 208 • Cuba, MO
www.jimsmotors.com
(573)885-2595
(800)897-9840

**GREAT SERVICE!
1957-2018 GREAT PRICES!**



**450 Case Crawler Loader
Runs Good & In Good Shape
Asking **\$9,500** Call Today
417-844-5483 • Osceola, Mo**

TRUSTED & THOROUGH SERVICE

Repairs • Rebuilds
Cast Iron & Steel Welding
Engines • Transmissions
Electrical • Hydraulics
PTO & Drivelines

**VALLEY SHOP • 660-458-6747
38745 Molasses Mill Rd, Latham**

**THREADGILL'S - THE COOKBOOK,
THE AUSTIN, TEXAS LANDMARK OF
SOUTHERN COMFORT FOOD, HARD-
BACK \$10. 417-532-2045. LEBANON.
LEAVE MESSAGE AND PHONE NUM-
BER.**

**10" HEAVY DUTY ROCKWELL TABLE
SAW: \$200. 417-322-0161**

**OLD LINN CREEK, HA HA TONKA &
CAMDEN CO BOOK, "Before the Dam
Waters", BY T. VICTOR JEFFRIES. \$5.50
each post paid. To order: 417-532-2045,
Lebanon (leave message.)**

**1998 DODGE GRAND CARAVAN: 3.3 V6,
211,000miles, runs, good for parts, good tires.
\$500 OBO. 417-733-0198. Buffalo**

WE STOCK FENCE!!: High Tensile, w-
oven, barbed, smooth, panels, fencers, t-posts
+more!! Ozark Farm 417-322-0161.

**NO \$\$\$ DOWN MOBILE HOMES- Call
for details 573-499-9993 columbiadis-
counthomes.com**

**4 FIRESTONE TIRES: 235-50, 18", Like
new, 11,000miles. \$200/might trade for gun
Springfield, 417-833-8351/417-234-0629.**

**2010 DODGE GRAND CARAVAN: SXT
Wheelchair Accessible: Accommodation for 2
wheelchairs, excellent condition, only 78,000
miles, with all new tires \$18,000 (417) 473-
6266 for additional information Niangua**

SQUARE BALES: New crop, second cut-
ting, grass hay with some clover. Good quali-
ty. \$5/bale. Quantity discount. 573-378-4172.

**QUALITY REPLACEMENT COWS:
COW/CALF PAIRS, BRED HEIFERS AND
BREEDING BULLS, TRUCKING AVAIL-
ABLE. Otterville, 660-619-5190 or 573-230-
7700.**



Which Kubota Is Right For You?



Kubota THE RIGHT EQUIPMENT IS RIGHT AROUND THE CORNER. Kubota

L2501 DT PACKAGE DEAL



25HP Kubota diesel engine***
4WD, Ag Tires, 18' Trailer,
5' Box Blade, Kubota Loader,
5' Land Pride Brush Hog.
6 Year Power Train Warranty****

**\$0 Down, 0% A.P.R.
for 60 months****

\$20,995

L3901 DT PACKAGE DEAL



39 Kubota diesel engine***, 4WD, Ag Tires, 18' Trailer, 5' Box Blade,
Kubota Loader, 5' Rotary Cutter.
6 Year Power Train Warranty****

**\$0 Down, 0% A.P.R.
for 60 months****

\$25,995

L3301 DT PACKAGE DEAL



33 Kubota diesel engine***
4WD, Ag Tires, 18' Trailer, 5'
Box Blade, Kubota Loader,
5' Land Pride Brush Hog.
6 Year Power Train Warranty****

**\$0 Down, 0% A.P.R.
for 60 months****

\$24,395

L4701 DT PACKAGE DEAL



47 Kubota diesel engine***, 4 cyl., 4WD, Ag Tires, 18' Trailer,
6' Box Blade, Kubota Loader, 6' Land Pride Rotary Cutter.

6 Year Power Train
Warranty****

**\$0 Down, 0% A.P.R.
for 60 months****

\$31,495

ALL-NEW GAS-POWERED RTV-XG850 SIDEKICK

POWER • PERFORMANCE • HANDLING • STYLE



48HP***, 40 mph transport speed, gasoline engine.
* Price per month does not include insurance and sales tax if applicable.
Includes \$1,000 rebate and 3.99% APR financing for 60 mo. with approved credit*
Other purchase and finance options available. See dealer for details.



**Get unmatched Kubota quality. Kubota designed,
engineered and built. More package deals available.**

Visit Us In TWO Locations!

**8665 Outer Road, Mtn. Grove
417-926-5454 • 877-926-5458**

**4973 W. US Hwy. 160, West Plains
417-256-0420 • 800-766-0420**

* \$0 Down, 0% A.P.R. for 48 months. Qualifying Equipment: RTV-XG850. \$0 Down, 0% A.P.R. financing for up to 48 months on purchases of select new Kubota RTV-XG850 equipment from participating dealers' in-stock inventory is available to qualified purchasers through Kubota Credit Corporation, U.S.A.; subject to credit approval. Some exceptions apply. Example: 48 monthly payments of \$20.83 per \$1,000 financed. Offer expires 07/31/20. See us or go to KubotaUSA.com for more information. ** \$0 Down, 0% A.P.R. for 60 months. Qualifying Equipment: BX, B, L, MX and M, MH(M7), RB, DMC, DM, RA and TE Series. \$0 Down, 0% A.P.R. financing for up to 60 months on purchases of select new Kubota L2501 DT, L3301 DT, L3901 DT or L4701 DT equipment from participating dealers' in-stock inventory is available to qualified purchasers through Kubota Credit Corporation, U.S.A.; subject to credit approval. Some exceptions apply. Example: 60 monthly payments of \$16.67 per \$1,000 financed. Offer expires 07/31/20. See us or go to KubotaUSA.com for more information. *** For complete warranty, safety and product information, consult your local Kubota dealer and the product operator's manual. Power (HP/KW) and other specifications are based on various standards or recommended practices. **** Only terms and conditions of Kubota's standard Limited Warranty apply. For warranty terms, see Kubota's Limited Warranty at www.KubotaUSA.com or authorized Kubota dealers.

LS Tractor

**More Features Standard,
More Tractor for your Money!
Discover the LS Difference!**

**LOW RATE Financing Available
Zero Down for 84 Months**

(WAC, See Dealer for Details)

MT240HE

40hp, Economy, Hydro, 4wd, Diesel
Tractor w/ QA Loader & QA Bucket

**ONLY
\$280
per month**

6 YEAR

LIMITED
WARRANTY



6 YEAR

LIMITED
WARRANTY

LS MT350E

Economy 50hp, 4wd, Diesel Tractor
with QA Loader & Bucket

**ONLY
\$322
per month**

6 YEAR

LIMITED
WARRANTY



LS MT573CPS

73hp, 4wd, Diesel Tractor with
Power Shuttle & QA Loader & QA Bucket

**ONLY
\$583
per month**



**Check out our GREAT Prices
on LS Tractor Packages!**

**LS PACKAGE
SPECIALS!**



WCT Farm & Lawn LLC

"Big enough to get what you need, small enough to know your name"

417-859-4311 • www.wctfarmandlawn.com

3299 E Evergreen Rd, Strafford, MO 65757