

FREE - TAKE ONE!

Vol. 27 No. 16

JULY 23, 2020

800-543-8271 • 800-665-8875

# WEEKLY TRADER MAGAZINE

Find us on Facebook

@myweeklytrader AUCTIONS PG. 7

VISIT OUR NEW WEBSITE! MYWEEKLYTRADER.COM

## Offering the Area's LOWEST METAL PRICES!

### Pole Barn Packages



24'x32'x10' materials only	\$5,425
24'x40'x10' materials only	\$6,200
30'x40'x10' materials only	\$6,975
30'x60'x10' materials only	\$9,150
40'x60'x12' materials only	\$12,325

Plus Sales Tax And Delivery. Labor available at additional cost. Call for quote.

Compare Before You Buy.

We Use Only The **Highest Quality** Materials!

Custom Homes  
Metal Roofs

29 Gauge

#1 PAINTED METAL

- ★ Lifetime Warranty - \$70.00 Sq.
- ★ 40 Year Warranty - \$67.00 Sq.
- ★ 20 Year Warranty - \$64.00 Sq.
- ★ 25 Year Galvalume - \$54.00 Sq.

Labor prices will be higher in locations over 75 miles from Marshfield, MO



### PORTABLE BUILDINGS

Rent to Own No Credit Check

ALL MATERIAL PACKAGES INCLUDE...

- ✓ #1 Yellow Pine Lumber
- ✓ #1-40 Yr. Painted Metal w/Screws
- ✓ 1-10' Overhead Door
- ✓ 1-36" Entry Door

Fully Insured



## Marshfield BUILDINGS

www.marshfieldbuildings.com

1049 SCHOOLVIEW DR.  
Marshfield, MO



417-859-7744

Toll Free 1-866-859-7733



# Land

For Sale

Marshfield, MO | 55 Acres



\$198,252

- Located in Marshfield School District
- Large shop with concrete floor
- Electric and septic in place
- Nice food plots and stand locations
- Excellent building sites



Missouri's Top Land Specialist in 2014,  
2015, 2016, 2017, 2018 and 2019

WHITETAIL PROPERTIES REAL ESTATE

HUNTING | RANCH | FARM | TIMBER

**Brian Utecht | 417-766-5595**

Brian.Utecht@whitetailproperties.com

WHITETAILPROPERTIES.COM







**\$500 OFF**

**FasTrak & FasTrak SDX**  
mowers. Available July 1  
through July 31, 2020.

See Hustler dealer for complete details.  
Valid at participating dealers only.  
Not to be used with other offers.



For Outstanding Products & Service  
**AGRI-ENTERPRISES**  
 1-1/2 Miles South Of Licking, MO On Hwy 63  
 573-674-2203 • 1-800-653-7152 • www.agri-enterprises.com

**80" PULL TYPE DISK:** small. \$150. 417-753-2747.

**VIRUS SALE - mobile home inventory, entire stock, first come basis, 3 & 4 bedroom, 2 bath, Hurry and call for info 573-499-9993 columbiadiscounthomes.com**

**GRISWOLD REFERENCE PRICE GUIDE:** \$7.50 417-532-2045. Lebanon. Leave phone number.

**MOBILE HOMES** .....shop on-line..... Call Tuff with questions 573-657-2176 amegamobilehomes.com





**SOUTHERN OVEN COOKBOOK:** The Savories, The Sweets, by Jean Anderson, hardback, 272 pages. \$6.50 417-532-2045. Leave Message.

**JOHN DEERE 435 ROUND BALER:** monitor, 4x6, net wrap. \$7,450. 573-765-4406.

**VOTED #1 BEST Preowned Car Dealership**

## TIM'S USED CARS

(573) 341-3828 • 1334 South Bishop (Hwy. 63) • Rolla, MO  
Next to Hwy CC • www.tims-used-cars.com

 <p><b>2014 RAM 2500 HD TRADESMAN,</b> 2WD, 5.7 Hemi, Auto, Power Equipped 151,xxx Miles <b>Only \$9,800</b></p>	 <p><b>2005 FORD F-150 STX</b> 4X4, 4.6 V-8, Auto, Power Equipped <b>Only \$4,900</b></p>
 <p><b>2014 GMC ACADIA SLT</b> FWD, Leather, Sunroof, 7 passenger 90,xxx Miles <b>Only \$14,900</b></p>	 <p><b>2011 JEEP LIBERTY SPORT</b> 4x4, V-6, Auto, Power Equipped 102,xxx Miles <b>Only \$8,400</b></p>

LARGE SELECTION OF CARS, TRUCKS, SUVs & VANS!

## #1 Selling FARM TRACTOR IN THE WORLD



Mahindra

Come See Us For Your Mahindra

Financing available for those who qualify  
www.agri-enterprises.com

**AGRI-ENTERPRISES**  
1-1/2 Miles South Of Licking, MO On Hwy 63  
573-674-2203 • 1-800-653-7152

**CASE 580C BACKHOE LOADER DIESEL:** \$8,500. 573-765-4406.

**3-6 YEAR OLD CALF/COW PAIRS:** 200-400lb calves. 417-331-8284.

**I BUY.....**used mobile homes. Call or text 573-338-6250 or email GregS.CDH@outlook.com

**INLINE 32 FT:** Hay trailer, \$3,750. 573-765-4406.

**IHC 1086 DIESEL TRACTOR:** Cab & Air. \$8,750. 573-765-4406.

**MUSTANG 2040 DIESEL SKID STEER DIESEL LOADER:** \$8,500. 573-765-4406.

**10 OPEN BLACK ANGUS HEIFERS.** \$750 each. 573-714-2012.

**JOHN DEERE HX10 PULL TYPE BRUSH CUTTER:** 10FT \$4,200. 573-765-4406.

**SPECIALIZING IN HEAVY DUTY GATES**

**JUNE SPECIAL**



**BUY 12 GATES GET 1 FREE!**

**Cow Country Gate Sales**

Call Randy: 573-569-4754  
or Home: 573-539-2528  
Located at: Zimmerman Welding  
16889 Hwy 52, Barnett, MO

**FURNITURE SET:** Sleeper sofa, loveseat, matching chair, solid frame, needs cleaned~ or recovered. \$250 set. Misc accent tables also available.~ Norwood, 417-459-6313.

**8 GALLON AUTO LUBRICATED AIR COMPRESSOR:** New, \$110. 417-457-1023. Raymondville.

**AC 840 DIESEL ARTICULATING 4-WHEEL DRIVE LOADER:** \$7,250. 573-765-4406.

**1951 8N FORD TRACTOR:** good shape, runs good. \$1,650. 573-468-7689.

**CUSTOM SAW MILLING:** Lebanon. 417-533-4607, 417-664-1195.



**450 Case Crawler Loader**  
Runs Good & In Good Shape  
Asking **\$9,500** Call Today  
417-844-5483 • Osceola, Mo

**FERTRELL:** O RGANIC FERTILIZER AND MINERALS. Call for free catalog. 315-796-4370.

**1998 DODGE GRAND CARAVAN:** 3.3 V6, 211,000miles, runs, good for parts, good tires. \$500 OBO. 417-733-0198. Buffalo

**GARDEN TILLER-~ DR PRO:** pull with ATV or mower, 36" wide, upto 7.5" deep.~ Power remote control, electric start . \$1500. Norwood, 417-459-6313.

**MILLER 10FT. OFFSET DISK:** \$4,400. 573-765-4006.

**JOHN DEERE 2940:** 80HP, 148loader, runs good, good rubber. 417-286-3173.

**WE'RE OPEN!**

**ANTIQUES / Gifts**  
*Collectibles Boutique*

Home Decor — Dixie Belle Paint & Product!!  
VENDOR SPACE AVAILABLE!

**63 MARKETPLACE**

f 573.364.1230 • 1380 Hwy 63 South, Rolla

**TAKUCHI 135 DIESEL EXCAVATOR:** with hyd thumb. \$15,000. 573-765-4406.

**NEW HAY BALE ARM BED SPINNERS:** Allows large hay bales to spin while unrolling. 16". Shaft 1"x6" Camdenton area will travel to meet. \$75.00 816-803-1834.

**CAPPER'S WEEKLY VINTAGE SEARCHLIGHT COOKBOOK:** hard-back \$15. 417-532-2045, Lebanon. Leave phone number.

**POOL TABLES:** Installations, moves, recover, repairs, accessories, etc. 573-646-1700.

**ALL OF OUR FOREST RIVER VIKINGS ARE PRICED AT WHOLESALE!**

764V	2020 Viking 175FQ	MSRP-\$19,510..... <b>\$14,911</b>
763V	2020 Viking 175BH	MSRP-\$20,090..... <b>\$15,811</b>
761V	2020 Viking 18RBSS	MSRP-\$23,811..... <b>\$18,963</b>
766V	2020 Viking 21FQ	MSRP-\$24,256..... <b>\$19,860</b>
768V	2020 Viking 21BHS	MSRP-\$25,742..... <b>\$19,975</b>
767V	2020 Viking 24RBS	MSRP-\$29,466..... <b>\$21,880</b>



**WehrRVs**

11311 Bus. 60,  
Mtn. Grove, MO

**1-800-288-6827**

www.wehrfordofmountaingrove.com

**SWAP MEET:** At Treasures, 1060 Tower Road, Lebanon, August 7th & 8th, Vendors Wanted, 417-532-6666.

**CHIPPER/ SHREDDER:** Stanley 11 HP, 270cc engine. Like new \$700. Norwood,~ 417-459-6313.




**JOHN DEERE 566 ROUND BALER:** mon-itor, kicker, net wrap. \$6,700. 573-765-4406.

**CHEVROLET MANUAL V-8 OR V-6** . 1962-74, 1954-1963. \$25 each. 417-457-1023.

**DINING SET:** Ethan Allen Vintage Old Taver-n Pine Trestle table, 4 high back chairs, 2 high back captain chairs, matching hutch . Appraised value \$2650. Norwood, 417-459-6313.

**2010 DODGE GRAND CARAVAN:** SXT Wheelchair Accessible: Accommodation for 2 wheelchairs, excellent condition, only 78,000 miles, with all new tires \$18,000 (417) 473-6266 for additional information Niangua

# OFFICIAL TRACTOR OF TOUGH™




**Marshfield Machinery Inc.**  
222 E. Madison • Marshfield, MO 65706  
417-859-2117 • [www.marshfieldmachinery.com](http://www.marshfieldmachinery.com)

MahindraUSA.com © 2020 Mahindra USA Inc.




<b>NEW MAHINDRA TRACTORS</b>	
7085 4WD & LDR 85HP	IN STOCK
2655 4WD, BACKHOE	55HP
	IN STOCK
2655 4WD & LDR 55HP	IN STOCK
1626 4WD & LDR 26HP	IN STOCK
MAX26XL & LDR 26HP	IN STOCK
<b>USED TRACTORS</b>	
MAHINDRA 2565 CAB	
4WD 65HP	26,500
LS P7010 CAB 4WD	
LDR 72HP	25,000
MAHINDRA 2555 4WD	
LDR 55HP	19,000
FORD 5610 LDR 66HP	9,000
CASE 1490 83 HP	7,500
MF 150 38HP	4,500
CASE IH 235 W/ MOWER	
18HP	3,500
IHC 184 W/ MOWER 18HP	3,500
<b>USED ROUND BALERS</b>	
MF 1745 4X5	8,500
NI 6254 4X5	7,500
VERMEER 5055I MESH	7,500
GEHL 2480 4X5	6,500
JD 435 4X6 MESH	6,500
VERMEER 554XL 4X5	5,500
HESSTON 560 5X6	4,000
HESSTON 550 4X6	3,500
HESSTON 530	3,500
HESSTON 5500 5X5	1,500
NH 850 5X5	1,500
VERMEER 605D 5X6	750
MF 10 SQUARE BALER	750
<b>USED RAKES</b>	
ROSSI 12 WHEEL	2,750
<b>USED MISC.</b>	
HAYBUSTER 107C DRILL	17,500
HAYBUSTER 107C DRILL	11,500
HAYBUSTER 107C DRILL	10,500
FRONTIER BALE	
PROCESSOR	8,500
RHINO 12FT CUTTER	8,500
Marshfield Machinery Inc. 222 E. Madison • Marshfield, MO 65706 417-859-2117 <a href="http://www.marshfieldmachinery.com">www.marshfieldmachinery.com</a>	

## Your Friend in the Field



Reliable equipment, fair prices and outstanding service you can count on season after season

Hay & Harvesting Repair  
 Hydraulic Hoses & Roller Chains  
 All Sizes and Lengths in chains  
  
 Save on Mulch, Buy in Bulk!  
 Now carrying Black, Red and  
 Brown Bulk Mulch  
  
 Pest Control  
 Herbicides • Pesticides  
  
 Bagged Seed & Feed • Dog and  
 Cat Food  
 T Posts • Vet Supplies • Fly Sprays  
  
 We Also Carry A Full Line of  
 Hardware • Electrical • Plumbing  
 Supplies



3710 Hwy-38, Hartville  
 2 Miles West of Hartville  
 (417) 741-6182

**1995 CHEVY PICK-UP:** 4X4, 3/4 ton, many new parts, some rust, trailer brake system. \$4,500. After 3pm Bourbon, 573-627-3729.

**FIREARMS:** Professional Repairs and Restorations. Baron's Gunsmithing. 573-363-5801, Camdenton.

**ANTIQUE BRASS KITCHEN CABINET HARDWARE:** 2 sets of 44. \$50 per set. 636-239-2695

**VILLA HOMES IN ROLLA:** Has NEW and USED Mobile Homes. Call David for info: 573-578-8072.

**1981 IH 1086 TRACTOR:** 130pto hp, good glass, new tires, never used oil. \$18,000. 2yr old virgin black Angus Bulls, 1,800/piece. 417-683-2637.

**FARMALL M:** New rear rims, tubes, tires, heavy duty 3pt. \$2,550. 417-848-8754.



**OLD LINN CREEK, HA HA TONKA & CAMDEN CO BOOK, "Before the Dam Waters", BY T. VICTOR JEFFRIES. \$5.50 each post paid. To order: 417-532-2045. Lebanon (leave message.)**

**0% for 4 Years**  
  
**HEATHMOR**  
**Outdoor Wood Furnace**  
 as low as **\$168** per month  
**HEATHMOR MIDWEST**  
 Licking, MO 65542 • 573-674-2962

**GARAGE SALE:** Thursday-Friday 7:30am-1pm 432 Ponderosa Ct Lebanon, MO Furniture, lawn mower, tools, clothing- children and adult, ceramics, household goods, home decor, holiday, assistive equipment

**NEW HOLLAND 617 DISK MOWER:** \$3,950. 573-765-4406.

**PATRIOT SMALL SKID STEER LOADER:** \$4,600. 573-765-4406.

  
**Cheyenne Acres**  
 Horse & Tack  
**BUY - SELL - TRADE**  
 by Rolla, MO  
 Call For Directions & Availability  
**Call Kip**  
**573-368-9402**




**8 BLACK/BLACK-WHITE FACE BRED HEIFERS:** due to start calving in August, have been pelvic checked, pregnant checked, dewormed and shots, bred to registered, low birth weight black Angus bull. \$1,500each. 573-229-4636/573-301-7471.

**SORGHUM PRESS:** \$400. 573-308-7537, Edgar Springs

**DARDEN PROFESSIONAL TIMBER HARVESTING, BUYING STANDING TIMBER:** Great prices, improve wildlife habitat and improve forest health. State Certified & Fully Insured! 573-247-4808 or 573-739-1122. Salem

**WEATHERED BARN WOOD SIDING:** 8" & 10" wide. 573-729-7226. www.pineridgerustic.com

**94 JEEP WRANGLER:** Black, 98,000, Heat AC, Stereo, 5 speed, 4 wheel drive, sharp. Dixon. 573-422-9927.

**01 53FT. UTILITY TRAILER:** Refrigerated, good tires, new airbags, \$4,500. 417-531-1225.

**SANBORN 5HP 60 GALLON AIR COMPRESSOR:** Older unit. \$200 OBO 417-457-1023 Raymondville

**REGISTERED HEREFORD & ANGUS BULLS:** Home raised, Some Show-Me Select Qualified. 573-701-7828. Belgrade

**WANTED:** Lightly used class D campervan. 636-583-4196. Union

**MISSOURI GARDENER'S GUIDE:** 421 pages, over 170 color photos, 417-532-2045. Lebanon. Leave phone number.

**FEED & FARM & so much more!**

**Get value, service and selection that stand out from the herd.**

Farm Equipment & Supplies  
 Power Equipment  
 Plus a Full Line of Parts,  
 Full Service & Repair

 **PURINA**  
 Feeds & Locally Milled, Too!

**Brown's**  
**Farm & Garden**  
 417-934-2000 • 417-934-6074  
 510 E. Industrial, Mountain View

**Is Your Log Home UGLY?**  
*Starting To Look*  
**Professional Staining & Repair**  
 (Log Homes & Wood Siding)

**Call Pine Ridge Rustic**  
 Log Home Building Supplies **573-729-7226**  
**www.pineridgerustic.com**



**DREAM HOUSE - Online, chateauhomes.net** Call Marla 573-657-7040

**GRAY CHICCO INFANT CAR SEAT FOR SALE:** From a smoke free home, 2 years before expiration, not been in a wreck. \$30 573-263-9235 St James

**FORD A66 DIESEL ARTICULATING 4-WHEEL DRIVE LOADER:** \$10,500. 573-765-4406.

**RIDING HORSES, MULES, DONKEYS:** saddles, harness, collars, enclosed Amish buggy, Pioneer four cart, & riding plow. 417-531-5707. Lebanon

**2000 FORD TRACTOR:** Nice, low hours, live power. \$4,650. 573-468-7689.

**STUMP GRINDER:** DR Pro XL 11.7 HP with electric start. Never used. \$2100. Norwood 417-459-6313



# WEEKLY TRADER MAGAZINE



# AUCTION DIRECTORY

## Thursday, July 23

11:00AM Mid Missouri Stockyards.....24

## Saturday, July 25

8:00AM Lorts Auction Service.....26

9:00AM Brehe Auctioneering Service .....10

9:00AM Darren Scheets Auctions .....12

9:00AM Wulff Auction.....17

9:00AM Wheeler Auctions & Real Estate...20

9:00AM Johnson Auction Service.....21

9:00AM Foster Auction Service .....22

10:00AM Danahy Auction Service .....8

10:00AM Chadwell Auction Service .....13

12:00PM Buffalo Livestock Market .....25

6:00PM Wheeler Livestock Auction.....14

## Sunday, July 26

10:00AM Richard Moffat Auction.....18

## Wednesday, July 29

Online Atterberry Auctions.....25

## Saturday, August 1

9:00AM Brehe Auctioneering Service .....11

9:00AM R&R Auction Service.....16

9:00AM Crawford Auction Service .....23

9:00AM Richard Moffat Auction.....25

10:00AM Easterly Auction Service .....15

10:00AM Wheeler Auctions & Real Estate...24

## Wednesday, August 5

Online Schneider Auctioneers LLC.....19

## Friday, August 7

7:00PM Richard Moffat Auction.....24

## Saturday, August 15

10:00AM Gary Sexton Auctioneers.....9

Saturday, August 29

10:00AM Wheeler Auction & Real Estate....24

**#1 Rural Shopper**  
in Central Missouri  
*Reader's Choice!*



Call 1-800-665-8875 to get your auction listed in the Weekly Trader.

# AUCTIONEERS

Did you know the WEEKLY TRADER covers more counties in rural Missouri than any other publication?

Firm deadline is 12:00 PM Friday, prior to next week's Thursday publication date.



# SURPLUS PROPERTY AUCTION

**RAIN OR SHINE**

1365 RAMSEUR ROAD WEST PLAINS MO. LOCATED BEHIND JC. PENNEY'S & BIG LOTS

**JULY 25TH 2020 • 10:00 AM**

## CAFE • OFFICE • CLASSROOM

NUMEROUS MODERN CAFE CHAIRS METAL WITH CUSHIONS; NUMEROUS SQUARE WOODEN CAFE STYLE TABLES; NUMEROUS SQUARE WOODEN HITOP CAFE STYLE TABLES; CHERRY CLIENT TABLE AND CHAIRS; 26 LONG RECTANGULAR CLASSROOM LECTURE TABLES; NUMEROUS CLOTH HIGHBACK CLASSROOM CHAIRS; NICE LEATHER WAITINGROOM CHAIRS ON CASTORS; TWO CLOTH CHAIRS WITH ARMS (LAV-ENDOR); TWO CLOTH CHAIRS WITH ARMS(RED); SEVERAL WOODEN BOOKSHELVES; WOODEN LATERAL FILE CABINETS; SEVERAL METAL LATERAL FILE CABINETS; NUMEROUS TWO DRAWER FILING CABINETS WITH CASTORS AND CUSHIONS WITH KEYS; MULTI FOLDING WOODEN PRINTER CABINET ON

WHEELS; SEVERAL WIRE SHELVES; TWO SIDED WHITE BOARD EASLES ON WHEELS; CLASSROOM EASEL WITH LARGE NOTEBOOK; CHALKBOARD; SCALLOPED EDGE TABLES; METAL CARD FILE CABINET TEN DRAWER; CHERRY OFFICE BOOKSHELVES; CHERRY TWO PIECE ENCLOSED BOOKSHELF/ CABINET; METAL SWIVEL OFFICE CHAIR; METAL SWIVEL OFFICE CHAIR ON CASTORS; COMPUTER DESK WITH ACCORDIAN STYLE FILE RACK; SEVERAL METAL HATRACKS; ROUND CONFERENCE TABLE; CORNER TABLE ON WHEELS; NUMEROUS ERGONOMIC OFFICE CHAIRS; RAFFLE TUMBLE BOX; NUMEROUS OFFICE CHAIRS; STAINLESS STEEL PUSH CARTS

**AUCTION NOTES:** AUCTION THIS WILL BE A LARGE AUCTION FILLED WITH HIGH END SUPER NICE HIGH QUALITY CAFE, OFFICE, AND CLASS ROOM FURNITURE.

**OWNER LEONARDO DRS**

## Danahy Auction Service

Terry Danahy, Auctioneer

417-256-9667 • Ark. License: #2269

Not Responsible For Accidents • Everything Sold As Is

# The Ridge of Country Club *DM*

## Dengelegi Estate

Located in the Rolling Hills of the Beautiful Bull Shoals Lake of the Ozark Mountains. This Outstanding Brick Home is on the Auction Block!

**SATURDAY, AUGUST 15, 2020 • 10:00 AM**

902 Country Club Drive • Theodosia, MO. 65761

From Hwy 160: Turn South, approx. 1/2 mile down Country Club Drive. Property on Left. Watch for Gary Sexton Auction Signs



### INSPECTION, OPEN HOUSE

Sunday, July 26 1:00 - 2:00  
& August 2 & 9, 1:00 - 2:00pm  
Or By Appointment

Contact Lorel Koplín 870-421-7266 at Le Mac C2  
Mt. Home AR. Email: lorelkopline@hotmail.com

This Well Designed Super Energy Efficient Home Is Spray Foam Insulated With Amazing Low Energy Cost! Approx. 6,834 Sq. Ft. of Impeccable Attention To Detail!



The Custom Built Home By Nay Allen - Offers An Array of Amenities! Including 4 Large Bedrooms, 3.5 Bathrooms With A Towering Stone Gas Fireplace Over Stunning Oak Floors With Walnut/Maple Inlays! You Will Be Amazed b The Custom Cabinets Detail Plus Granite/Corian Countertops Accented With Double Ovens Along With Oversized Refrigerator & Dual Dishwashers & Microwaves (All Stainless Steel) - The Entertainers Dream! This Magnificent Home Offers Safety & Dream Fulfillment In The Full Walk Out Basement With Wine Room- Fort Knox Safe Room-Plus Housing For Central Vacuum - Water Softener - Pressure Tanks - Security System! The Exterior Of Brick - Covered Decks - Garages - Andersen Windows - Recently Shingled Roof Creates Irresistible Curb Appeal! Other Amenities: Custom Moulding - Tile Travertine Floors - 505' Well System - Whirlpool - Central Lennox G51MP Series Double Unit HVAC System - Heat Pumps 4 Ton 14 Seer Each - LP Gas With 1000 Gal. Underground Tank!



- GOLF
- LAKE
- FISHING
- TROPHY HUNTING



### HOUSEHOLD • FURNITURE • HUNTING ACCESSORIES • MOWER

SEE WEBSITE FOR FULL LISTING & PICTURES: [WWW.GARYSEXTON.COM](http://WWW.GARYSEXTON.COM)

TERMS: 10% Escrow Paid Day of Auction - Balance Due Upon Closing. CONDITIONS: Highest Bid To Be Submitted To Sellers For Acceptance or Rejection. Starting Bid \$100,000. Owners Are Moving Out of State. Any Fair Offer Will be Contracted Offered: As House & 15 Acres - 3-10 Acre Tracts.

# Gary Sexton

Since 1978 Auctioneers, LLC

Gary Sexton - Auctioneer 417-255-7001

Tyler Sexton - Trucks/Heavy Equip. Eastern Mo. 417-372-0124



[www.garysexton.com](http://www.garysexton.com)

1028 Porter Wagoner • West Plains, MO



Todd Hornback  
Oregon Co. Rep

Gene Summers  
Ozark Co. Rep



E-mail: [gary@garysexton.com](mailto:gary@garysexton.com)

AR Broker #PB00043890, AR License #1568

All announcements made day of sale supersede any written material. Not responsible for lost or stolen property or accidents.



# STOCKWELL FARM AUCTION



Dick and Carol Stockwell, having sold their farm, will sell personal property and farm equipment at public auction on:

## Saturday, July 25th 2020, Beginning at 9:00 AM

Location: 7615 Antioch Road, Gerald Mo 63037

Directions: From Interstate 44, take Exit #247-Highway 50 West and go 25 miles to Gerald, turn left on Highway H. Go 2 miles, then left on Antioch Road 1.5 miles to auction. Roads will be marked day of sale.

### TRUCKS / CADILLAC CAR / GATORS (will sell at 1:00 PM)



2008 GMC Duramax Diesel pick up-2500HD- only 95,000 miles-4x4-crew cab-8' bed with carpeted slide out-camper shell-easy open tail-gate-Allison transmission-fold out running boards, 2001 Chevy 3500 1 ton flat-bed-4x4-59,000 miles-454 engine-Allison transmission-dual gas tanks-9' bed-Rhino lining-Escort radar-4 top boxes head set rack-turn over ball, CADILLAC; 2013 Cadillac-XTS Platinum top of the line package-loaded all the accessories-35,000 miles-3M protective sheathing front of car, GATORS;

John Deere Trail Gator-diesel-1234 hours-electric bed hoist-Rhino spray bed-canopy-6x4-new lower clutch, John Deere Gator-diesel-6x4-electric bed hoist-new upper/lower clutches



### ZERO TURN / MOWERS / YARD TOOLS



Gravely PM260Z zero turn mower-60" deck, Husqvarna YTH24K48 riding mower, John Deere 425 garden tractor-power steering front blade-3 pt w/accessory hydraulics-48" deck-hydrostatic, White gas log splitter, Stihl MS170 chainsaw, Stihl 034 chainsaw, Stihl 029 chain-saw, Oregon sharpener, Stihl gas pole saw, Stihl FS90R weed trimmer, Gas brush blade trimmer, 6 HP push weed trimmer, garden planter, Cy-clone tow leaf rake-vacuum, 2400 PSI 3 GPM power washer, Master Volt generator, Craftsman gas edger, Stihl

gas cultivator, electric hedge trimmers, aluminum extension ladders, step ladders, wooden ladders, adjustable ladders, pole trimmer, rakes, hoes, shovels, pitch forks, potato forks, post maul, sledge hammers, splitting maul, aluminum grain scoop, brush axe, pump sprayers

### TOOLS-SHOP/WOODWORKING

Delta commercial shaper, Grizzley 20" commercial planer, Grizzley shop dust collection system, Lincoln mig welder, Sears electric welder 30-230 amp, welding rods-helmet, torch tank-cart, Mil-waukee rotary hammer-bits, 25 ton hydraulic press, lot rolling battery chargers-starters-Sears-Die Hard, pneumatic nailers-staplers, Jamerco hand nailer, metal cut off saw, Delta miter saw on stand, 12 ton engine hoist, engine stand, Craftsman horizontal band saw, craftsman bench drill press, drill press clamps, machining bits, Sears 12" band saw, Grizzley 4x6 belt-disc sander, Craftsman 15" drill press, Craftsman joiner, Craftsman radial arm saw, small lathe on stand-knives, Dremel tool, circular saws, drills, worm drive saw, Sears Industrial shear, Milwaukee shear, sanders, profile sander, jig saw, solder gun-solder, heat gun, woodworking bench with vises, work tables, metal tables, machining bits, Wilton bench vise, other bench vises, Craftsman stackable tool boxes, Craftsman tool bench w/drawers, Snap On side chest, tool cabinets, storage cabinets, rolling tool stations, work stool, parts washer, paint sprayer, lot paint supplies, all types of hardware, lot parts bins, 4' tall hardware drawer cabinet, single strand electric wire, motor belts, parts, fluids, oils, 2 cycle oils, sanding discs, grinding wheels, boring bits, drill bits, pipe wrenches, screwdrivers, hammers, brass hammer, pipe wrenches, crescent wrenches, ratchet wrenches, swivel sockets, sockets, ratchets, vise grips, channel locks, lot Craftsman wrenches, crows foot wrenches, pipe cutters, plumbing supplies, lot air tools-chisels-ratchets-parts, pneumatic sockets, pry bars, nail pullers, rivet tool, tap-die, allen wrenches, pliers, strippers, tool boxes, jack stands, car creeper, lot rolling supports, C clamps, bar clamps, wood clamps, pipe clamps, chain hoist, work bench-anvil-vise, bench top grinders, levels, squares, work lights, spools of rope, retractable air hose, come-a-longs, bottle jacks, 2 ton floor jack, extension cords, work mate benches, lot shelving, heavy duty rolling ladder, 2 ton tripod stands, rolling tape measure, oil changing stands, pipe threader, large pipe cut-ter, bolt cutters, wood carving set, squares, bevel gauges, biscuit joiner, paint-stain supplies, saw blades, saw accessories, woodworking manuals-books, floor model drill press

### TRACTORS / SKIDSTEER / FARM IMPLEMENTS TRAILERS (will sell after trucks at 1:00 PM)



John Deere 6400 tractor-front wheel assist-4WD-90 HP-1100 hours-cab-AC-radio-shuttle shift-with 640 QT self-leveling loader-7' bucket-bale spear-front hydraulics-one owner, Ford 3600 diesel tractor-turf tires-2420 hours-power steering, extra front and rear tires for Ford tractor-13.6-28-slide out rims, SKID STEER; Case 1845C skid steer-295 hours-6' toothed bucket-one owner, IMPLEMENTS; skid steer attachments- 42" pallet forks, pallet fork extensions, Wichita hydraulic tree shear, skid steer 3 point hitch, Land Pride RCR3596 8' heavy duty brush hog-3 point-safety chains-3 gear boxes, 3 pt pasture renovator, 3 pt 5' brush hog, Schaefer post driver, Danhauser 3 pt post hole digger, Danhauser 3 pt 6' blade, QT 6' snow blade, 3 point bale spear, homemade pallet forks, Land Pride 5' finishing mower, 3 pt chipper-shredder, 3 pt seeder-spreader, 3 pt boom, 7' 14-92 Ford #501 sickle mower, Ford 3 pt 7" disc, TRAILERS; Bales Cus-tom Trailer 24' gooseneck-4' adjustable beaver tail-tandem axle-7000 LB axes, Stillwater 12' single axle flatbed trailer-easy lift ramp, receiver hitch carrier, 4'x8' yard trailer, plastic and aluminum truck tool boxes, hitch receivers, tow balls, binders, ratchet straps, tow straps, lot chains, stabilizer bars, draw bars, top links, tire changer, ATV ramps, jumper cables, motorcycle ramp, FARM SUPPLIES; Fencing supplies, barbed wire roller, spool cable, bale tarps, baler twine, fence stretchers, poultry netting, round 10'-12' water tank, 13" I beams30' long, LUMBER;walnut-hickory-ash-oak-cedar, treated fence posts

### ANTIQUES / HOUSEHOLD / OUTDOOR

Galvanized wash tubs on stand, galvanized sprinkling can, galvanized radiator bucket, enamel light hood, wooden Stanley box, Stanley 71 1/2 router plane, #92 plane, machinist tool box, draw knives, McDonald Douglas models-commercial-military-space rockets, antlers, keys, (2) plat-form scales, copper boiler, brass torch, brush scythes, Pepsi wood crate, 10' ash fire-place man-tle, Jenny Lind beds, #8 crock, wooden framed windows, wooden shutters, (5) 8' sections iron fencing, Soboba stained glass pool table light, HOUSEHOLD; glassware, bak-ers rack, rolling kitchen cart, table-chairs, dishes, baking dishes, utensils, fireplace ash vacuum, upright vacuum, roaster, canning pots, canning jars, pressure cooker, bread maker, CD rack, luggage, mop bucket, quilting mags, lot books, Christmas decorations, canes, tins, folding chairs, floral, FURNITURE; pair matching armchairs-foot stools, mahogany drop leaf table, stereo console, display cabinets, lot display shelves, lot bookcases, sewing table, clothes rack, whicker trunk, cedar trunk-bottom drawer, Thomas Monticello organ-bench-music, leather recliners, room screen, lamp table, table lamps, step back display shelf, studio couch, glass top coffee table, 2 side chairs, vintage couch, ottoman, end table, chest drawers, wooden chairs, 2 drawer file cabinet, APPLIANCES, refrigerators, upright freezers, 20" flat screen TV, Mitsubishi 60" TV, stereo speakers, air cleaning sys-tem, air purifier, OUTDOOR; Oklahoma Joe large smoker-multiple smoking chambers-gas start, Oklahoma Joes smoker-gas or charcoal-side burner-temp gauges, pop up canopy, lot yard statu-ary, greenhouse supplies-planting tables, planters, lawn seeders, wood hauling cart, dog ramps, dog self-feeders, dog crate, BOATS; 13' flat bottom jon boat, Seahawk 5 passenger paddle boat, lot fishing rods-reels, trolling motors, propane tank-top heaters, camping lanterns-stove, bicycle, horse shoe game, stick stools, lot lawn chairs, lot patio furniture, 2 sets patio table-chairs, Rub-bermaid deck storage cabinet, coolers, fish fryer, propane tanks, water hoses, bird feeders, sleep-ing bag

**AUCTIONEERS NOTE: The auction will start at 9:00 AM selling tools, second ring will start at 10:00 AM selling household and antiques.**

**LUNCH WILL BE SERVED BY ST. GERALD LADIES AUXILIARY**

**VIEW OUR PHOTO GALLERY ON**

[www.breheauction.com](http://www.breheauction.com)

**BREHE AUCTIONEERING SERVICE, LLC**  
 Union, MO: (636) 583-0841 Owensville, MO: (573) 437-3454  
[www.breheauction.com](http://www.breheauction.com)  
 LICENSED AUCTIONEERS:  
 Kerry Brehe 314.954.3798 Josh Brehe 314.603.3129 Harry Engelhart 636.399.3743  
 Announcements made day of sale supersede all printed material.  
 TERMS: CASH, PERSONAL CHECKS WITH PROPER I.D., BUSINESS CHECKS WITH BANK LETTER AND NO  
 OUT OF STATE CHECKS UNLESS APPROVED BY SELLER. Email Us At [kkauction@sbcglobal.net](mailto:kkauction@sbcglobal.net)  
 Everything sells as is with no guarantees.

**We plan to abide by the CDC guidelines regarding the COVID distancing and PPE guidelines.**



# PEWITT FARM AUCTION



Wilma Pewitt will sell her and the late Bill Pewitt's personal property and farm equipment at public auction on:

## Saturday, August 1st 2020 Beginning at 9:00 AM

Location: 7820 Rye Creek Road, Lonedell Mo 63060

**Directions:** From Interstate 44, take Exit #239 and go East on Highway 30 7 miles, then right on Highway 47. Go .64 miles, then right on Rye Creek to auction. Roads will be marked day of sale.

### TRACTORS / UTILITY VEHICLES / FARM EQUIPMENT / HORSE DRAWN (will sell at 12:00 Noon)

### FARM-LIVESTOCK SUPPLIES / SADDLES TACK / HAY



Ford 6600 diesel tractor-2025 hours-dual power-dual outlets-18-4-34 tires-QT Memo loader with 6' bucket-bale spear-sells as unit, MF 165 gas tractor-248 hours-dual outlets-multi power-one owner, UTV, Kawasaki Mule 4010-power steering-906 miles-3 cylinder diesel-dump bed-windshield-4 wheel drive, Yamaha Moto 4 4 wheeler-not running-no title EQUIPMENT; New Holland 472-7' haybine with stub guards, Massey Ferguson #12 square baler-very clean,

Portable corral panels, farm gates, lock stock watering tanks, horse round bale feeder, (2) round bale feeders, homemade panels, cattle oilers, creep feeder, hog chutes, cattle head gate, fuel tank on stand, mineral feeders, pig crates, pig wa-terer, lot chicken feeders and waterers, rabbit cages, hook over feed buckets, barrels, buckets, feed trough, calf puller, FENCING; electric fence posts, elec-tric fencers, insulators, used T posts, scrap wire, chain link dog kennels, roll large cable, fence stretcher, T post driver, gate hinges, TACK; Western sad-dles-Circle Y-Big Horn-other, lot of bits, bridles, halters, leads, 3 tier saddle rack, lot of team-horse drawn tack-horse collars-reigns-halffinger sized, BLACKSMITH; 200 LB anvil, Buffalo forge, blacksmithing tools, vise, horse-shoeing tools, HAY; 30 - 4'x5' round bales 2020 hay

Hesston 5500 round baler-electric tie 5'x5' bales, 3 point 6' heavy duty brush hog, Woods BB700 7' 3 point blade, 3 point bale spear, 3 point carryall, Ford 3 pt 8' disc-good blades, MF 3 pt 3-14" bottom plow, 7' tandem drag disc, New Holland 451 7' sickle mower-lot blades, Leinbach big bale unroller, New Idea manure spreader, (2) pickup bed stock inserts, 12' hay wagon, 2 pt rear tractor weight, 3 pt seeder, bale carrier, Unicorn PTO log split-ter, HORSE DRAWN; Pioneer 4cart-Amish made, Horse drawn box wagon-rubber wheels, team mower on steel, HD Diamond plow, iron wheel cart, Minn Moline wagon tongue, lot used tires, 18-4-34 rear tractor tires, top links, draw bars, stabilizing bars



### TOOLS / SHOP-YARD



Campbell Hausfeld 3 HP 60 gallon-135 PSI upright shop compressor, bench top drill press, bench sander, bench grinder, Lincoln arc welder-helmet-rods, acety-lene tanks-gauges, pneumatic wrench-grinder, electric grinders, drills, circular saws, C clamps, large bar clamps, electric cement mixer, Dewalt reciprocating saw, Dewalt cordless drill, come-a-long, battery chargers, saw roller stands, chain hoist, air hose, steel storage rack, car creeper, grease guns, Craftsman vise, Craftsman wrenches, lot wrenches, crescent wrenches, pliers, wire strippers, pli-ers, vise grips, pipe wrenches, boring bits, drill bits, lot bench vises, 5' pry bars, tap-dies, ratchet wrenches, punches, solder, bottle jacks, 2 ton floor jack, bolt cutters, work lights, hammers, mallets, hand saws, squares, pry bars, sockets, ratchets, 1/2" drive sockets-large sockets, torque wrenches, blower, fan, nuts-bolts-screws-nails, lot parts bins-contents, YARD; 12 volt seeder, 12 volt sprayer, Troy Bilt Horse rear tine tiller-7HP, (3) Stihl MS251 chain saws, weed eaters, Homelite chain saw, Troy Bilt 2600 PSI-2.3 GPM power washer-Honda engine, hi wheel push mower, gas cans, wheelbarrow, tow spreader, loppers, hoes, rakes, shovels, pitch forks, potato fork, dbl axes, hatchet, fluids-oils, sewer snake, step-extension ladders, wooden ladders, rope, pole trimmer, log roller, splitting maul, Remington electric limb trimmer

### ANTIQUES / COLLECTIBLES



Spring wagon benches, implement seat stools, lot implement steel wheels, cast iron implement tool boxes, metal IH implement tool boxes, wagon spoke table, cream separator yard pc, Ralston Pu-rina canvass pig castrator, push plow, wooden chicken coops, cow bells, copper bucket, wooden tool carrier, meat grinders, meat saw, meat cleaver, sausage stuffer, platform scale, UAW Safety Rep box, McCoy pitcher-bowl, crock cookie jar, small crocks, milk bottles, metal milk crate, milk can, hand crank water pump, wooden egg crate, tins, enamel pot-ladle, old jars, Old Judge jar, galvanized buck-ets-wash tub, Ertl tractor-wagon, steam iron, wooden boxes, tin roofing salesman sample trunk, red wagon, Avon, ANTIQUE FURNITURE; Eastlake style marble top dresser-candle shelves, Estate

Fresh Air oven-porcelain cook stove, woodburning stove, metal medical cabinet-beveled glass, metal warehouse desk, enamel table top only, primitive wood-working bench-vise

### HOUSEHOLD / YARD

Quilt rack, trunks, gun cabinet, kerosene heater, gallon jugs, canning jars, pic-nic basket-dishes, blue glass bowls-pitcher, glass bowls, baking dishes, roaster, granite canning pot, dishes, canisters, toys, storage tubs, tins, folding chairs, al-bums, oak side chair, end tables, magazine table, YARD; umbrella patio table-chairs, Adirondack chairs, lawn chairs, antlers, tackle boxes, rods-reels, leg traps, camping lanterns, horse shoe game, sheath knives, binoculars

LUNCH WILL BE SERVED BY MEMORIAL BAPTIST CHURCH

VIEW OUR PHOTO GALLERY ON [www.breheauction.com](http://www.breheauction.com)



We plan to abide by the CDC guidelines regarding the COVID distancing and PPE guidelines.

**BREHE AUCTIONEERING SERVICE, LLC**  
 Union, MO: (636) 583-0841 Owensville, MO: (573) 437-3454  
[www.breheauction.com](http://www.breheauction.com)  
 LICENSED AUCTIONEERS:  
 Kerry Brehe 314.954.3798 Josh Brehe 314.603.3129 Harry Engelhart 636.399.3743  
 Announcements made day of sale supersede all printed material.  
 TERMS: CASH, PERSONAL CHECKS WITH PROPER I.D., BUSINESS CHECKS WITH BANK LETTER AND NO OUT OF STATE CHECKS UNLESS APPROVED BY SELLER. Email Us At [kkauktion@sbcglobal.net](mailto:kkauktion@sbcglobal.net)  
 Everything sells as is with no guarantees.



# PERSONAL PROPERTY AUCTION

## Saturday, July 25th, - 9:00 A.M.

**Location: 14936 Malberg Road, Elk Creek, MO**

**DIRECTIONS:** From Cabool: Take Hwy 63 North to Malberg Road. Follow Malberg Road to Auction. **WATCH FOR SCHEETS SIGNS DAY OF SALE.** Good Parking Available.

### ANTIQUES \* FURNITURE \* HOUSEHOLD \* QUILTING FABRIC & SEWING SUPPLIES \* SPINNING WHEELS \* BISQUE DOLLS



Boxes of quilting fabric, buttons, notions \* Bisque Dolls, heads and complete \* Quilt Rack\* Beads \* Ribbon \* Crafting supplies \* New Singer Sewing Machine in Box \* Quilt Top from the 30's \* Antique Wooden folding chairs \* Antique wooden chairs for caning \* Edwardian Love Seat \* Mccaskey Antique Cash Register \* Underwood Standard Typewriter\* Antique Crock Jug \* Small Antique Baby Bed \* Child's Antique Rocker\* Pots & Pans \* Wagner Ware \* Footed Cast Iron Pot \* Marble Corner Sink\* Bake ware \* Cookbooks\* Oak Rocker\* White

Porch Rocker\* Two Old Trunks \* Wild Turkey Decanter\* R.R. Decanters\* Engine, Coal Car and two Box Cars\* R.R. H.O. Gauge Trains, Six boxes\* Roll Top Desk\* Bakers Rack\* Marble Topped Coffee Table\* Antique Sewing Machine - 1878 Chainstitch, with original instructions \* Antique Divan \* Jelly Belly Display Rack \* Wardrobe \* Metal Cookie Cutters\* Room Screen \* Metal Desk\* Folding Tables\* Domestic Treadle Sewing Cabinet\* Child's Baby Buggy 1930-1940s \* Antique Dining Room Table from England with four leaves and Chairs \* Skein Winder \* Complete Spinning Wheel \* Spinning Wheel complete with Flax \* 1848 Victorian Couch with Casters \* Shoe Lasts \* Sad Irons\* Marble Top Chest of Drawers\* Quality antique Gas and Wood Stove and Range\* Winery Lab Equipment\* Wine Press\* Baker's Rack with Tempered Glass \* Cake Plate Stands \* Barometers \* Wash Stand \* Propane Grill \* Smoker \* Wash Tub \* Metal Desk \* Freedom Crafting Drill\* Bookcase\* Other

### ANTIQUE GAS & STEAM ENGINES\* STEAM PUMP\* PUMPS

Rock Island Gas Engine\* Monitor Gas engine\* Alpha Gas Engine\* Cushman Gas Engine\* Sandow Gas Engine\* Benninghofen Gas Engine, VERY RARE \* Witte Gas engine \* Brunswick R Steam engine on trailer was licensed by the state in 2019 sits on a Double L Trailer\* #34 Kewanee Water Steam Engine with Pump on trailer\* Kewanee #25 Steam Pump \* #1 Hand Water Pump, Diming \* Steam Engine Famous Verticle by IH company on Trailer \* Antique Atlas Pump \* Lots of Misc Pumps and Parts \* Oil Spray Pump \* Old Gauges and Thermometers \* Lots of other pump parts.

### MODEL A\* TRAILERS \* RAILROAD CART

1931 Model A Pickup w/ Shell Emblem \* Model A Ford Engine and Transmission \* 16 foot Bumper Trailer\* Cargo Trailer 6x12 Doolittle \* Railroad Cart \* Other

### GUNS \* TACKLE BOX

Remington 870 12 gauge Shotgun \* Remington 550-1 22 rifle w/ scope \* Mull 1903 Rifle \* W. Moore London Double Barrel Shotgun \* Winchester 44-40 Model 1873 \* Tackle box and contents



### WOOD WORKING EQUIPMENT \* TOOLS \* ANTIQUE TOOLS

Central Machinery Oscillating Spindle Sander\* Walker Turner Wood Lathe \* Rockwell Delta Drill Press \* Grizzly Planer 20" \* Craftsman 1 0" Bench Table Saw \* Craftsman Planer\* Dewalt Compound Saw\* Dewalt Router\* Antique Scroll Saw\* Antique Chicago Heights #28 Drill Press\* Grizzly Industrial Drill Press\* Large Antique Gimlet Tool Collection \* Large Broad Axe \* Cotton Scale \* Black Hawk Corn Sheller \* Pony 1902 Corn Sheller \* Two Corn Grinders \* Buffalo Scale \* Bench Grinder \* Reliant 16" Band Saw \* Starett Transit in wooden Box \* Lots of Draw Knives \* Antique Levels \* Drafting Table \* Air Nailers \* Hand Sanders\* Oxy-Acetylene Torches\* Chain hoist \* Engine hoist \* Wooden Pulleys \* Rope Pulley \* Handy Man Jack \* Gouda Jack \* #32 Blue Grinder \* Hand Drill Presses \* McCormick Antique Sharpener \* Homemade Wine Press Antique Mill Manufactured by Red Cross, Bluffton Indiana\* Peeler P-25 Peease Co Large\* Lathe and Morse Improved Engine Lathe 6 foot x 16 inch Swing\* Black Smith Vise\* \* Old Smoker\* Lots of Brace and Bit\* Lots of Hans Saws\* 50 Plus Wood Planes\* Old Fro\* Shoulder Drills\* Several Wood Clamps\* Railroad Lantern\* Oil Cans\* Brass Funnel\* Iron Wheels\* Two Man Cross Cut Saw\* Antique Measuring Wheel by Wiley and Russell\* Other



**Auctioneer's Note:** This is an outstanding auction of several years of collecting and showing antique engines and pumps. Good Antique furniture and much more not listed. Possibility of running two rings. Please note early start time. Thanks, Darren

**OWNERS: David and Kinta Clark**

**TERMS OF AUCTION:** Cash or check with picture ID. Nothing loaded or removed until paid for. Everything sells as is, where is. Not responsible for accidents, lost or stolen items. Auction day announcements take precedence over all previous advertisements. LUNCH ON GROUNDS.

# Darren SCHEETS AUCTIONS

(417) 457-6638 • (417) 926-8575  
www.scheetsauctions.com



**VISIT WEBSITE FOR PICTURES**

# ESTATE AUCTION

REAL ESTATE ~ ANTIQUES & COLLECTIBLES ~ HOUSEHOLD ~ SHOP ITEMS ~ OUTDOOR ~ GUNS & AMMO

**SATURDAY, JULY 25<sup>TH</sup> - 10:00 A.M.**

**Location:** 18786 Hwy 64, Lebanon, MO **Directions:** From Lebanon High School take Hwy 64 West 6/10 mile to Auction on left. **WATCH FOR CHADWELL AUCTION SIGNS.**  
**Payment System:** Cash • Debit Card • Credit Card (Debit / Credit Card Fee Will Apply)  
 Checks approved if known by auction company. **VISIT: WWW.CHADWELLAUCTIONS.COM**

Estate of Steve  
**STEINMARK**

**REAL ESTATE**



3 Bedroom 1 Bath 1620 Sq ft home built in 2017 sitting on 6 acres m/1 just outside of town. The home has a nice open floor plan with a 2 car garage, metal roof and siding. Home offers an electric heat pump for Central Heat and Air Conditioning. Property also includes a large shop building and was formerly used as a business Steinmark Towing. **TERMS:** 10% down day of Auction, balance due at closing. Taxes prorated, closing costs split. Please have all financial arrangements made prior to Auction Day! Shown by appointment only! Call Shawn 417-830-0209.



**75th ANNIVERSARY SNAP ON TOOL BOX**

**2013 HONDA FOUR WHEELER  
 NEW HOLLAND SKID STEER**

**LARGE LOT OF TOWING ACCESSORIES INCLUDING STRAPS, CHAINS, ROOMERS & PULLEYS**

**TOW TRUCKS**



2005 Freightliner Rollback w/ 20' Bed, includes bed wench, power wheel lift, auto transmission, Mercedes Benz powered • Diesel (good rubber) 135,xxx miles • 2006 Chevrolet Duramax with Automatic Allison Transmission includes side wench, bed wench, wheel lift, & barlights 130,xxx miles W • 1999 Freightliner Semi Wrecker with Cummins Motor, 9 spd Trans., wheel lift, hydraulic dual wench, hydraulic telescope boom, 11 R 22.5 Tires 134,xxx miles

**ANTIQUES & COLLECTIBLES**

Galvanized Bucket • Fuel Cans • Military Shovel • Cast Iron Corn • Old Hatchets Large Meschede • Fox Pelt • Possum Pelt • Old Tin Signs • Tins • Cream Can • Old Soda Bottle Collection • Montana Silversmith Horse Statue • Radio Flyer 80 Wagon • Hercules Dynamite Box • Scale Model Tow Truck Collection • Large Lot Trail of Painted Ponies • Lanterns • Coleman Kerosene Lanterns • Zippo Lighters • Large Lot Deer Antlers • Galvanized Wash Tub • Large Wagon Wheel • Old Chicken Feeders • Milk Crates • Other

**SHOP ITEMS**

Blue Point YA 5550 Plasma Cutter on Wheels • Drill Bits • Tools • Tool Boxes • Oils & Solvents • Oil Drip Pan • Work Benches • Floor Jacks • Creepers • Snap On Tools • Aluminum Pipe Wrenches • Kobalt Socket Wrenches • Bottle Jacks • Pindle Hitches • Reese Hitches • Large Lot of Receiver Hitches • Aluminum Fuel Tank • Large Lot of Jumper Cables • Hitachi Miter Saw • Cherry Picker • Lug Wrenches • Wrecking Bars • Snap On 80 Gallon Air Compressor • Wilton 15" Drill Press • Chop Saw • Body Work Tools • Large Lot of Power Tools • Snap On Tool Boxes • Snap On Air Impact • Air Tools • Drill Press w/ Vise • Coats Rim Tire Changer Model 50 40A • Snap On Gear Puller Set • Tire Inflator • Wheel Weights • Com A Longs • Air Tanks • Tire Tools • Dollies • Snap On Battery Tester • Propane Cylinders • Socket Sets • Other

**GUNS & AMMO**

.204 H&R Dandy Rifle Single Shot • Mossberg 12 gauge 3" Pump • Marlin 22 Mag Bolt Action • Marlin 22 LR Semi Auto • Ruger 10-22 LR • Ruger 223 Mini Ranch Rifle Semi Auto • Mossberg 22 LR Semi Auto • CVA 45 cal Muzzle Loader • Mossberg 12 Gauge 3" Pump • Savage 17 HMR Bolt Action • Winchester 12 Gauge 3" Pump • Taurus 357 Six Shot Pistol • American Arms 22 LR Semi Auto Pistol • Large Lot of Knives • Large Lot of Ammo • Bushnell Binoculars • Tom Cat Bow w/ Accessories • Pro Line Bow w/ Accessories • Jaguar Cross

**AUCTIONEER'S NOTE:** This is a wonderful Business Opportunity as well as an Excellent Real Estate Property! **Thanks, Shawn**

**DRIVER'S LICENSE OR PICTURE I.D. REQUIRED • TERMS: CASH OR APPROVED CHECK** **OR**

**Auctioneer:**  
**SHAWN CHADWELL**  
 417-746-4038 ~ Cell: 417-830-0209

**Clerk:**  
**SHELLY CHADWELL**  
 Cell: 417-880-8449

**Ringmen:**  
 John Williams Jr. ~ 417-349-0480  
 Weston Chadwell ~ 417-349-0727

**Cashiers:**  
 Shawn Irby • Marla Chadwell  
 Kati Roberts • Emily Chadwell

**PROFESSIONAL SALES MANAGEMENT**  
 LUNCH WAGON • APPRAISAL SERVICE • RAIN OR SHINE  
 All announcements made day of sale take precedence over any printed matter.  
 Not responsible for lost or stolen merchandise. Not responsible for accidents.

**www.chadwellauctions.com**





# Wheeler Livestock Auction, Inc.

## Special Stock Cow Sale



# SAT., JULY 25, 2020 • 6:00 P.M.

**Expecting 800 head of bred heifers, cows, and cow/calf pairs**

### Freeman Farms-

- 100 Fancy Balancer-Red Angus-Gelbvieh Cross hfrs., 1,100 lbs., All home raised out of Judd Ranch Bulls. Hfrs. bred to Beckton Ranch Red Angus calving ease bulls, start calving Sept. 14th for 60 days. The Freeman's have not bought a cow in 20 yrs., they have raised their own hfrs., and have used Judd Ranch bulls for 20 plus yrs., excellent genetics here. All hfrs. are extremely gentle, had all shots & will work in any herd.

### Hearthing Farm-

- 25 Fancy Blk & BWF hfrs., 2 yrs., 1,150 lbs., Bred to Red Seedstock Plus CE bulls. All hfrs. pelvic measured, all shots, start calving Sept. 1st for 45 days.

### Dave Sikes-

- 15 Blk Gelv hfrs., 2 yrs., 1,100 lbs., 2 Red Gelv hfrs., 1,100 lbs., All hfrs., Judd Ranch genetics, All bred to LBW Judd Ranch bull, start calving Sept 1st for 45 days. All hfrs. pelvic measured and shots.

### Parker Ranch -

- 40 Fancy Ang hfrs., 1,150 lbs., bred 3rd to Diamond Peak LBW CE bulls, start calving Aug. 20th for 45 days. All hfrs. home raised, gentle, had all shots.

### Kemp Livestock -

- Dispersal of Fall Calving cows-80 Ang cows, 3 & 4 yrs., 1,250 lbs., bred 3rd to Tiedeman Ang bull, start Aug. 20th for 30 days. All cows born & raised together, gentle, complete Vac program.

### Ruhter Bros-

- 40 Ang cows, 3-5 yrs., 1,200 lbs., bred 3rd to Ang bull. Start calving Aug. 20th for 60 days. Fancy set of calf raising cows, gentle, had all shots.

### Essary Farm -

- 15 Red & Blk Ang cows, 3-5 yrs., 1,300 lbs., w/ 200 lb. clvs. 30 Blk Ang cows, 3-5 yrs., 1,300 lbs. 15 Red Ang cows, 1,300 lbs., 3-5 yrs., Good gentle cows & will be more clvs. by sale day.

### J & R Farm Dispersal-Sold Farm-

- 1 Char bull, 2 yrs., 1,500 lbs., CE 10.1 BW -3.0., 10 Char & Red Ang X cows, 4-6 yrs., w/ 10 clvs. up to 300 lbs. Cows bred back to Char bull. 23 Char & Red X cows, 3-7 yrs., Bred 2nd & 3rd to Char bull.

### Kauffman Farm -

- 20 Lim cows, 6-8 yrs., 1,300 lbs., w/ 12 clvs. up to 300 lbs., rest bred 3rd to Lim bull. 1 Red Lim bull, 5 yrs., 1,900 lbs., 18 Lim/Red Ang X cows, 6-SS, 1,300 lbs., w/ 10 clvs., rest bred 3rd to Blk. Ang bull. 1 Blk Ang bull, 6 yrs., 2,000 lbs. 18 Lim/Red Ang x cows, 6-SS, 1,300 lbs., w/ 10 clvs. up to 300 lbs., Rest bred 3rd to Red Bfmstr bull.

### Smith Farms -

- 27 Char/Red Ang cows, 5-6 yrs., 1,200 lbs., Bred to Char bulls, start calving Sept 1st. Good calf raising cows.

### Valley View Farms -

- 70 Blk cows, 4-SS, 1,200 lbs., Bred to Blk Sim-Ang bulls, start calving Sept 1st for 60 days.

### John McDowell -

- 4 Red Ang cows, 3 yrs., 1,200 lbs., w/ 4 Red Ang clvs. 250 lbs., 10 Red Ang hfrs., 2 yrs., 1,000 lbs., bred 3rd to Red Ang bull.

### Shaun Hesston -

- 20 Fancy Red Ang cows, 1,250 lbs., 3-5 yrs., Bred 3rd to Red Ang bull.

**MANY MORE CONSIGNMENTS PENDING AND EXPECTED BY SALE DAY**

**AUGUST COW SALE - AUGUST 29TH**

# Wheeler Livestock Auction, Inc.

Osceola, MO • 685 SE 13 Hwy., PO Box 560 • BARN 417-646-8102

Byron Wheeler, 417-777-0897 • Austin Shelby, 417-309-1350 • Darwin Hearthing, 417-296-1029

Charlie Proctor 417-326-9467 • Burleigh Wheeler, 417-840-6561 • Skyler Fisher, 417-298-9051

Jeff Shelenhamer, 417-326-9929 • Kevin Wade 660-492-3279 • Les Tennis, 417-466-8786

Office Manager: Weston Shelby, 417-298-1316

Bid online on CattleUSA • [www.wheelerlivestock.com](http://www.wheelerlivestock.com)

Like us on Facebook-Wheeler Livestock Auction



# PERSONAL PROPERTY AUCTION

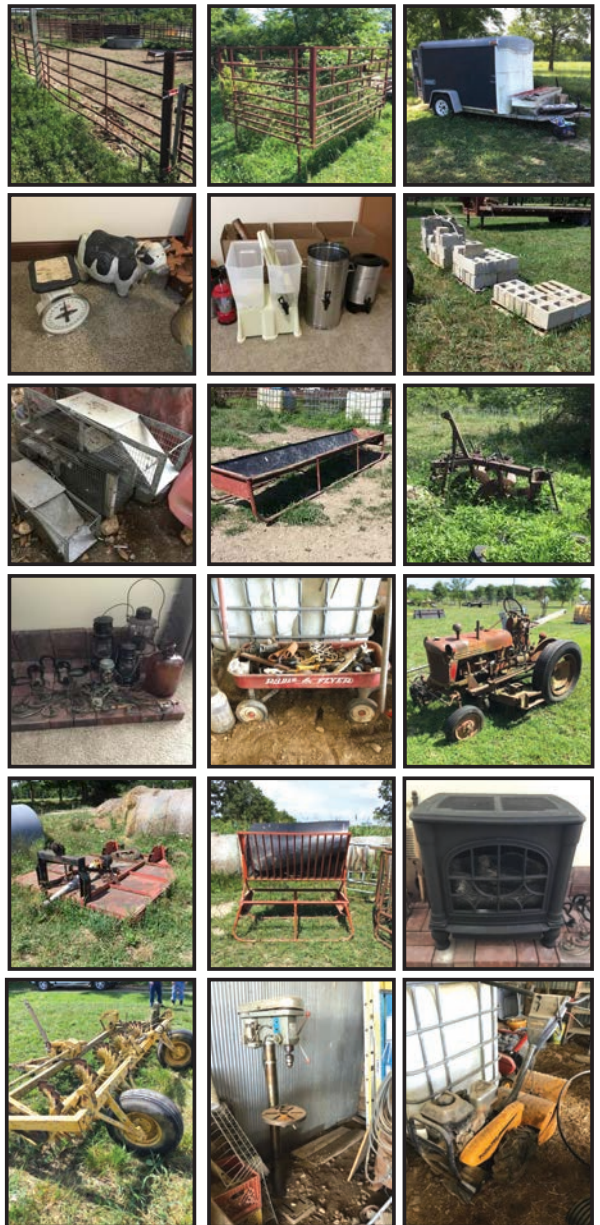
## SATURDAY AUGUST 1, 2020 @10:00AM

4774 Charity Rd • Elkland, MO 65644

Directions: From I44 E, merge onto US65/Exit 82B toward Sedalia. Turn right onto State Hwy 38/MO-38. Stay straight to go onto State Rd M/MO-M. Turn right on Charity Rd. Auction will be on the left.

### INVENTORY LIST

- 2017 HONDA HONDA FOREMAN  
4 X 4 ES POWER STEERING, 140  
HRS.
- JOHN DEERE MOWER D105  
AUTOMATIC WITH 200 HOURS  
42
- SUNEN12 SPEED HEAVY DUTY  
DRILL PRESS
- ANTIQUUE SWORDS
- AIR COMPRESSOR
- SPRAYERS
- A LOT OF ELECTRIC FENCE  
EQUIPMENT
- RADIO FLYER NUMBER 89
- STIHL TILLER
- POLAND PRO REAR TIME TILLER
- YARD MACHINE TILLER
- ECHO EXTENDABLE LIMB SALL
- 6 FOOT LADDERS
- SHOP FAN
- ALUMINUM RAMPS
- MULTIPLE FEED BUCKETS
- BARBWIRE
- TREATED 4 X 4 POST
- LOTS OF CORRAL PANELS  
SHOOTS AND GATES
- 5 X 8 WW SQUEEZE CHUTE
- BUSH HOGG DRILL WITH DOWN  
PRESSURE
- ROLLINS 6 FOOT BRUSH HOG
- FEED TROUGHES TWO OR THREE  
MORE PANELS AND GATES
- BOTTOM PLOW MULTIPLE  
WHEELS AND TIRES
- STOCK RACK
- 12 FOOT HOMEMADE TRAILER  
WILL STILL
- THREE-POINT CULTIVATOR
- LOT OF PIPE AND STEEL
- OLD DISC
- SCAFFOLDING
- RAILROAD IRON
- LOTS OF HEDGE POSTS
- DOG PEN
- HOMEMADE 4 X 12 TRAILER WITH  
RAMP NO TITLE
- ROCK BREAK THE BRAND IS  
ANDERSEN
- CONCRETE BLOCKS
- HAY FEEDERS ROUND BALE  
FEEDERS
- 12 X 12 WOODEN DECK
- INTERNATIONAL CLUB WITH  
WOODS BELLY MOWER
- HAND TOOLS
- SOME HOME DECORATIONS
- MJCH MORE NOT LISTED!**



We will be practicing social distancing as required.  
Bring face masks, hand sanitize stations onsite.



FOR MORE INFORMATION GO TO [WWW.EASTERLYAUCTIONCO.COM](http://WWW.EASTERLYAUCTIONCO.COM) OR CALL EASTERLY'S AT 417-833-9494



Mike Easterly Auctioneer • 417-833-9494

Not Responsible for accidents or theft. For more information call: Easterly Auction Company, Springfield, MO. Auction Terms: Bank Letter Of Credit Required. Visa, Mastercard, Cash, Cashier's check or checks with proper I.D. Announcements day of sale take precedence over printed material. Auction Notes: Although information is obtained from sources deemed reliable, auctioneer makes no warranty or guarantee expressed or implied. Buyers should themselves take the opportunity to make their own inspection prior to sale.

[www.EasterlyAuction.com](http://www.EasterlyAuction.com) • [auctionzip.com](http://auctionzip.com) ID#14770





# R&R AUCTION SERVICE

## PUBLIC AUCTION

### SATURDAY AUGUST 1ST • 9AM

28 Foxtail Trail • Louisburg, MO

# This is a MEGA AUCTION YOU WON'T WANT TO MISS!!!!!!

*We will start with guns selling at 9am sharp and includes but not limited to...*

Savage model 110, 7mm Rem Mag, Marlin XL7 36-06, Winchester model 70 270 wsm short mag, Remington Model 770 win mag, Savage Model 16 7-08mm, Savage model 840 30-40 bolt action, 303 British 1942, Remington Game Master Model 760 308 pump, Savage Axis 308, Rossi with 3 barrels 223, 22 mag, 20 gauge, 45 cal black powder, Traditions 50 cal. black powder, Optima 45 cal. black powder, New England 280 cal. single shot, Browning 22 long rifle, Stevens model 15A 22 short/long or long rifle, Westernfield 22 short/long or long rifle, Springfield model 83 22 short/long or long rifle, Mossberg 835 12 ga, JC Higgins model 20 12 ga., Mitchell High standard 12 ga. pump, Tri star cobra 12 ga. pump, J Stevens 12 ga. pump, New England Pardner 20 ga, Wards Hercules model 10 20 ga., JC Higgins model 583.18 16 ga., Westernfield model XNH 565.C 12 ga., Springfield 100 20 ga., Diamond Arms 12 ga., Double Barrel Boito made in Brazil 12 ga., TK 35 410, Springfield XDS-45 ACP, Jennings Bryco 59 9mm auto, Thompson Center 7 x 30 waters, Rossi 357 mag, PSE stinger 3G bow, Parker Ultra lite 35 bow, Cast iron cookware crock jug, kraut cutter, old toys, other antiques and collectibles, lots of misc. and box lots., This auction has something for everyone. It is very large and there will be many items added that are not listed. There are alot of project pieces, if any item is marked no title, it is possible titles could be found by auction day. 2 Suzuki 250 four stroke dirt bikes, Polaris 2x4 Trail boss 330, Artic Cat 4 wheel drive 400, 1980 Chevy custom deluxe camper special 2 wheel drive with 454 motor and 4 speed, 2001 Yukon (locked motor), 1988 Chevy 2500 with tool bed and snow plow has original bed to go with truck, 1980 GMC 3/4 ton Sierra classic, automatic, no motor, 1977 GMC 1 ton dually, no motor or transmission, no title, 2002 Ford F150, no transmission, no title, 1998 Ford F150 runs and drives, 1976 El Camino classic, 1989 International dump truck Cummins diesel 9 speed, 15 foot bed, 1978 International semi Cummins diesel 13 speed with broken spindle back axle, 1984 953 Caterpillar track loader, 6300 hours missing front and side glass 800 hours on new motor then spun bearing, everything else is tight heat and air work, has 4 in 1 bucket plus original bucket, 26ft fifth wheel camper no title, 1999 Pup trailer 12ft box 28ft overall, 1990 28ft 3 axle ww stock trailer, 20ft 3 axle back hoe trailer no title, 1994 Wells Cargo 3 axle car hauler box trailer 36ft no title, 10ft tilt trailer no title, 1969 Ford pickup bed trailer no title, 1993 44ft semi flatbed no title, 53ft reefer trailer missing unit no title, log hauler trailer hydraulic detach 22ft well 10ft back no title, 15ft dump bed with cylinder, 1999 32ft dozer trailer 14ft well with dove tail and ramps, 1989 Aggressor 158 magnum 16ft fishing boat with 1980 model 85hp Johnson seahorse motor a motor guide Bill Dance 36 lb thrust trolling motor 2 fish finders new batteries trailer all in excellent condition, a Yamaha jet ski and homemade trailer, 14ft aluminum fishing boat with 9.9hp Evinrude and trolling motor on trailer no titles, two 17ft aluminum canoes, 14ft fiberglass canoe, 3horse slant horse trailer with living quarters, John Deere 5 wheel hay rake missing one wheel, 10ft disc, old cultivator, bale movr pick up bale handler , hydraulic bale spike for pickup, roping chute, fireplace insert, homemade outdoor wood furnace, 8ft. garage door, 800 gallon fuel tank, Freightliner hood, two 1500 gallon concrete septic tanks, 350 turbo transmission, 9 speed Eaton transmission, large windmill with bent blades, propane bottles, tag axles, various tanks and tongues, semi truck transmission jack, a plethora of tires and wheels, lots and lots of scrap. Lots of giant decorative rocks. Remember there will be much more added day of sale.



Mike and Misty Daugherty (Circle M Trucking & Excavating) owners

**This is a very large auction! Check out photos at [www.rrauctionservice.com](http://www.rrauctionservice.com)**

**TERMS:** Cash, check, or credit card with proper I.D. nothing removed until settled for A 3% fee will be added to credit card purchases. Not responsible for errors in listing. Any announcement made sale night will take precedence over any printed matter. **Note:** Service will take every precaution to prevent accidents, but will not be responsible should any occur.

**GENERAL AUCTIONEERS**

**Auction & Appraisals**

**SERVICE**

For more information contact Professional Auctioneer Russ Weeks at 417-576-7357 or check out [www.rrauctionservice.com](http://www.rrauctionservice.com)

Serving this area's auction needs since 1997 with honesty and professionalism.

[www.rrauctionservice.com](http://www.rrauctionservice.com)

(417) 576-7357 or (417) 345-4140



# PUBLIC AUCTION

**SATURDAY, JULY 25 • 9:00 A.M.**

**Location:** 56 Maple Grove Road, Davisville, MO - DOWNSIZING DUE TO SALE OF FARM

**Directions:** From Viburnum go 2.5 miles on 49 to Maple Grove Road on the left.

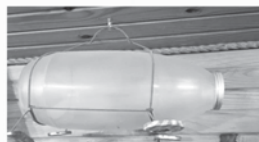
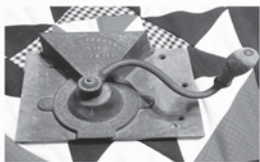
## FARM EQUIPMENT - TRACTOR - HOUSEHOLD - COLLECTIBLES - MISC

14' Bumper Pull Stock Trailer, Like New Tires  
 200 Gallon 3pt. Sprayer, Used this Spring  
 5' 3pt. Blade - 5' King Kutter Box Blade  
 3pt. 2-Bottom Ferguson Plow  
 3pt. Bale Spike - 3pt. 5' Disc  
 6' 3pt. King Kutter Brush Cutter  
 Ford 5610 Tractor w/Front Loader, 3000 Hours, Pretty Good Tires  
 Lincoln AC 225 Arc Welder  
 Welding Accessories  
 Pancake Air Compressor  
 5hp 20 Gallon Air Compressor  
 Cutting Torches - 20 Gallon Sprayer  
 Tire Chains - Chicken Waterers  
 2, 6' Aluminum Step Ladders - Iron Skillets  
 Deer Cart - Dip Net - Table Saw  
 Yard Tool Rack - Old Chipper - Shelving  
 Spindles - Plastic Lawn Chairs - Sink Basins  
 Cab Door Hinges - Tackle Box - Toolboxes  
 Come-Alongs - Chain Hoist - Axes - Wench  
 ® Old Spinning Loom - Glass Water Bottle  
 Nice Leather Couch, Chair & Ottoman  
 Hay Saw - 2 Sets of Louie LaMar Books  
 Shoe Lasts - Paperback Western Books  
 Several Old Kerosene Lanterns  
 New Ruger 10/22 \* BSA Scope  
 Remington Mod. 722 .222  
 Remington Mod. 572 .22 Pump

Glenfield Mod. 60 .22 w/Scope, Squirrel on Stock  
 H&R SB4 Mag. 10ga. 3 1/2 Full  
 Remington Mod. 1148 20ga.  
 ® Very Nice Old Oak Recliner  
 Large Iron Kettle End Table w/Deer Antlers, Unique  
 Electric Fireplace - Very Nice Couch  
 VHS Hunting & Western Tapes  
 Nice Old Bench & Chair - Magazine Rack  
 Exercise Bike - Nice Cedar China Hutch  
 Nice Cedar Table, 2 Chairs & Bench  
 Perfect #12 Crock - #8 Crock - Crock Bowl  
 #4 Crock Jug - Oil Lamp - Cross-Cut Saws  
 Old Oak Well Clock - Baskets  
 Old Kitchen Utensils - ® Old Salt Grinder  
 30+ Old Wood Planers - Cow Bell  
 2 School Bells - Lot of Small Bottles  
 Old Ideal Oak Box Cooker  
 Old Coffee Grinder  
 Wooden Egg Box - Kraut Kutter  
 E.C. Simmons Treadle Sewing Machine  
 Old Glass Minnow Trap - Old Armoire  
 Queen Bedroom Set; Bed, Dresser, Chest of Drawers  
 Set of Coke Dishes - Fire King Orange Dishes  
 Bunn Coffee Maker - End Table  
 Old Cast Iron Bed - Dry Sink

Vases - Leather Couch - Hammers  
 Body Champ Inversion Table - Saws  
 Pry Bars - Weedeater - Bench Grinder  
 Metal Cut-off Saw - 2.5 Ton Floor Jack  
 Decorative Wheelbarrow - Pipe Wrenches  
 Blackhawk Corn Sheller - Electric Scooter  
 Bench Vices - Gas Grill  
 School Bench Frame - Clamps  
 Can Am Outlander 4x4, 548 Miles  
 Brace & Bits - Broad Axe - Kant Hook  
 Log Chains - Incubators - Skihl Saw  
 Troybilt Rider, Pony, Needs Work  
 Push Mower - Shop Vac  
 2, 110 AC Window Units  
 Retro Kitchen Table - Sump Pump

**AUCTIONEER'S NOTE:** Very nice items. See you there! - Tom



**OWNERS: DAVE & JOY HEADRICK**

ANNOUNCEMENTS AT AUCTION TAKE PRECEDENCE OVER PRINTED MATTER

# WULFF AUCTION

TERMS: CASH OR APPROVED CHECK - I.D. REQUIRED  
 NOTHING REMOVED UNTIL SETTLED FOR

Licensed Appraisals

**Auctioneers:**  
**Col. Tom Wulff - Col. David Wulff**  
 498 Hwy. B, Salem, MO 65560  
 573-729-8476

Clerk: Tracy Strange Cashier: Nancy Inman



RAIN OR SHINE OWNER & AUCTION PERSONNEL NOT RESPONSIBLE FOR ACCIDENTS AT SALE SITE

See Wulff Auctions at [www.thesalemnewsonline.com/auctions](http://www.thesalemnewsonline.com/auctions)



# **PUBLIC AUCTION**

## **SUNDAY, JULY 26, 2020 • 10:00 A.M.**

### **THE MOFFAT AUCTION CENTER**

### **467 COUNTY ROAD 604, LINN, MO**

Directions: From Linn, take Hwy. 50 west 1 ½ mi. to Co. Rd. 604, turn left & go 1 mile to building on right, or from Jefferson City, take Hwy. 50 east approx. 18 mi. & turn right on Co. Rd. 604.

#### **\*GUNS\* - Sell @ 12:30**

Two Browning Pump Shotguns, Both 2&3/3. 3, And 3and 1/2 12 Gauge Invector Chokes , Both Mossy Oak Camo; Lever Action Marlin Model Golden 39 A - 22 With Leupold Scope; Remington Model Sportsman Auto Loader 12 Gauge , Browning Design A-5 With Muzzle Brake, (Rare); Winchester Model 67-22 Single Shot Bolt Action; Weatherby Ducks Unlimited Pump Shotgun 12 Gauge , Never Used With Box, Invector Chokes; CZ Upland Ultra light Over/ Under 12 Gauge Matte Finish , 5 Chokes , With Box New Condition; Mauser Automatic Pistol .380 Acp / .32 ACP Two Clips , Great Condition In Box , Made In Germany

#### **\*ANTIQUES & COLLECTIBLES\***

Early Empire Chest W/ Glove Box Drawers; White Chest; Hoosier Type Cabinet; Porcelain Top Cabinet; Wash Stand; Waterfall Chest; Decco Era Mirror; Stand Table; Cedar Chest; Round Dining Table; 1960's China Cabinet; Central Dairy Cream Top Milk Bottle; Store Candy Jar; Planters; Lanterns; Zinc Lids; Oil Lamps; Baskets; Washtubs; 1 Gal Western Jug; Seth Thomas Black Mantel Clock; Christmas Decor; Wagner & Griswold Skillets; Salt & Pepper Sets; Ruby Red Glass; Home Laughlin China; Eggshell China; Woodfield Steubenville; Green Depression Glass; Cake Stands; Roseville Bud Vase; Patten Glass Pitcher, 6 Tumblers, Butter Dish, Creamer & Sugar; HP China Pcs; Cobalt Blue Pcs; Blue Fire King Nest of Bowls; Blue & White Stone Ware Rolling Pin; Green Opalescent Footed Bowl; Cooke Jars; Carnival Glass Compote; HP China Cuspidor; Pattern & Press Glass; Tooth Pick Holders; Pink Depression Glass; Fenton Pcs; Pink Cherry Blossom Pit 6 Tumblers; Egg Plate; Kraut Cutter; Longaberger Baskets; Stella Mandolin; Old Coins Wheat Pennies, Silver 1/2 Dollars; 1950's 4 Pc Bedroom Set; Costume Jewelry; Pearl Ring; Watches; Parker Pin; 12 old Hand Stitched Quilts "Nice".

#### **\*HOUSEHOLD\***

Like New Frigidaire 21 cuft Upright Freezer; Kenmore 27 Side by Side Refrigerator; GE Roaster Oven; Pressure Cooker; Pots, Pans; Dishes; Small Kitchen Appliances; Coolers; Picnic Basket; Blankets, Bedding Linens; Quilt Frame; Quilting & Sewing Supplies; Sofa; End Tables; Lamps; Silver Plate Flatware; Holiday Decor; Air Fryer; Stainless Pots & Pans; Solid Oak Dining Table w/ 11 Leaves, 17' made by Ramer Bros, Like New; Kitchen Aid Mixer; RCA 32" Flat Screen TV; Maple Hutch; Leather Love Seat; Maple End Table; Lots Household Not Listed.

#### **\*TOOLS \* MISC\***

Atlas Drill press; Atlas Bench Grinder; Porter Cable; Belt Sander; Atlas Table Saw; Push Mower; BBQ; Fishing Rods; Craftsman 2 Pc Tool Box; Hand Tools; Garden Tools; File Cabinet; Hand & Power Tools; Lots of Misc Not Listed.

#### **OWNER: MARGARET LEE ALLEN**

**Note:** Margaret is 96 years old. She is selling her home & has moved to a retirement home. Her home is full of neat & clean antique & household furnishings to be sold. See you at the sale. — Thanks Rick.

**Terms:** Cash or good check with proper identification. All sales are final. Everything sells as is, where is. Proper identification is necessary to obtain a buyer's number. Announcements day of sale supersede all printed material. Lunch on grounds.

## **RICHARD MOFFAT AUCTION SERVICE**

**708 E. McCarty St., Jefferson City MO 65101 – Business Office**



**Auctioneer:**  
**Richard Moffat**  
 573-761-4293  
 Jefferson City, MO

**The Moffat Center**  
 573-897-4004  
 Linn, MO  
[www.moffatauction.com](http://www.moffatauction.com)

**Auctioneer:**  
**Matt Michelson**  
 573-680-6188  
 Jefferson City, MO



**BID NOW!**

# ONLINE AUCTION

**BID NOW! BIDDING CLOSES AUGUST 5**



**489 LOTS**



## Tractors, Combines, Dozers

- JD 4420 diesel combine w/ grain head
- Gleaner F combine w/grain head
- JD 720 diesel tractor w/ corn picker
- JD 730 diesel tractor
- AC 6140 diesel tractor
- AC 7045 diesel tractor
- JD 2640 diesel tractor w/ loader
- White 2-105 Field Boss tractor
- Oliver 1800 diesel tractor
- MF 1155 diesel tractor
- JD 4020 gas tractor
- JD 350C crawler loader
- IH 674 diesel tractor w/ loader
- IH 504 gas tractor
- JD 1020 gas tractor
- JD 430W tractor
- JD 420W tractor
- Ford 971 tractor
- Kubota B8200 tractor w/ mower
- 2-Ford 860 tractors
- Ford 601 tractor
- Ih 450 tractor
- Ih 300 tractor
- Case 311B tractor
- AC D14 tractor
- Oliver 77 tractor
- David Brown 880 tractor
- AC model B tractor
- AC CA tractor
- 11-salvage/parts tractors

## UTVs, ATVs, Motorcycle, Boat

- Kubota RTV X900 UTV w/ only 60 hours
- Land Pride 4410 Trekker UTV
- Tracker Torga 17' fishing boat
- Polaris Big Boss 500 6x6 ATV
- Yamaha Virago motorcycle
- Yamaha Moto 4 ATV

## Trucks, Cars, Trailers

- '73 Chevrolet C65 grain truck
- '74 Dodge D600 grain truck
- '11 Chevrolet 1500 extended cab
- '08 Ford F350 service truck
- '10 Impala LT sedan
- '09 Pontiac G6 sedan
- '88 Ford Thunderbird LX
- '99 Chevrolet 2500 4x4 extended cab

- '07 Ford F250 4x4 extended cab
- '01 Ford E350 15 passenger van
- '99 GMC Jimmy 4x4 SUV
- '99 Chevrolet S10 extended cab
- '02 Dodge Ram 1500 quad cab 4x4
- '95 Ford F250 extended cab 4x4
- '98 Chevrolet Astro AWD
- '99 Dodge Ram 2500 extended cab 4x4
- '95 Chevrolet 1500 4x4
- '99 Chevrolet 2500 extended cab 4x4
- '99 Oldsmobile Intrigue GLS sedan
- '89 Ford F150 extended cab 4x4
- Loadmaster 22' gooseneck flatbed
- Belshe 23' equipment trailer
- Flatbed utility trailers 6'-16'

## Farm Equipment

- Unused storage containers 8'-40'
- Unused portable bathroom/shower
- Enrossi 4 basket tedder
- Case IH 8450 round baler
- NH 846 round baler
- NH 55, 56 & 256 hay rakes
- 4-NH 7' haybines
- 5-NH square balers
- AC 110 front end manure spreader
- Ford pull type combine
- Unused 40'x80' & 20'x30' hoop shelters
- Discs 3.5'-20'
- Brush hogs 4'-9'
- 2,000 gallon water wagon
- JD 7000 4-row planter
- Several farm wagons
- 2-NH grinder mixers
- NH, NI Knight & JD manure spreaders
- Ford 1-row corn picker
- JD 4-row corn head
- 3 pt. post drivers
- JD & IH grain drills 6'-10'
- JD & NH lime spreaders
- JD fertilizer spreader
- Ditch Witch trencher attachment
- Frontier 8-wheel V-hay rake
- Dearborn 1 row corn picker
- 2 basket hay tedders
- 2 row 3-pt corn planter
- NH, IH, ME, Ford & Oliver sickle mowers

- 2 bottom 3-pt disc plows
- 5'-8' grader blades
- Pan scraper for tractor
- Kewanee 5-shank V-ripper
- Field cultivators 6'-20'
- Worksaver 3-pt cement mixers 2, 3 & 4 bottom plows
- Unused skid steer: mowers, roller, snow plow, hyd. breaker, brooms, seed/salt spreaders, augers, cement mixers, grapples, rotary tillers & trenchers
- Allied 590 front loader
- JD 46 front loader
- Chisel plows 6'-12'
- 3-pt finish mowers
- 7' 3-pt rock rake
- 110-gallon 3-pt sprayer
- Feed grinders & hammer mill
- Hay elevators
- Portable squeeze chute w/ head gate

## Lawn & Garden and Miscellaneous

- Toro zero turn mower
- Craftsman, Cub Cadet & JD riding mowers
- Bunton walk behind mower
- Unused toolbox workbenches
- 70 small square bales straw
- 40' semi trailer for storage
- Livestock feeders
- Cattle guards
- Gates
- 3-pt log splitters
- Pto & gas generators
- Unused 10' decorative gates
- Unused 10-12K trailer axles
- Steel truck flatbed
- Honda 2 outdoor motor
- Stihl & McCulloch chainsaws
- Unused chains & ratchet binders
- Unused LED equipment lights
- Unused 28" traffic cones
- Fuel tanks
- Fairbanks Morse stationary engine
- Chipper/shredders
- Pull type trail mowers
- Rear tine tillers
- Unused Westendorf QA to skid steer QA adapter
- Vintage scales & gas pumps
- Fimco ATV sprayer & Worksaver seeder

**Item Preview Dates:**  
 Friday, July 24 (4-7PM); Saturday, July 25 (8-11AM); Friday July 31 (4-7PM);  
 Saturday, August 1 (8-11AM); Wednesday, August 5 (2-5PM)

**Item Preview Location:**  
**4155 HWY V V, Berger, MO 63014**



All items sell regardless of price.  
 All items start at only \$1.

More items listed at  
[SchneiderAuctioneers.com](http://SchneiderAuctioneers.com)

**SCHNEIDER Auctioneers LLC**  
 573-834-2207 • 573-291-8075  
[www.SchneiderAuctioneers.com](http://www.SchneiderAuctioneers.com)



# ANNUAL JULY CONSIGNMENT AUCTION

Saturday, July 25 at 9 am  
WHEELER AUCTIONS LOT, PARIS, MO



**ACCEPTING CONSIGNMENTS**  
MONDAY, JULY 6 - THURSDAY, JULY 23 (UNTIL NOON)  
LOADING HOURS - MONDAY - FRIDAY, 8 AM TO 5 PM  
SATURDAY AND SUNDAY, 9 AM TO 3 PM

*Watch for full listing and photos at [wheelerauctions.com](http://wheelerauctions.com)!*

**Wheeler**   
**AUCTIONS & REAL ESTATE**

23101 HWY. 24, PARIS, MO 65275 | 660-327-5890  
[WWW.WHEELERAUCTIONS.COM](http://WWW.WHEELERAUCTIONS.COM)

**2000+ PIECES  
OF MACHINERY**

**BID  
LIVE**

Live Online Bidding Powered By:

**proxibid**

**Equipmentfacts**  
THE ONLINE MARKETPLACE FOR EQUIPMENT & TRUCKS

# Public Auction



**32741 Boonville Rd. • Smithton Mo. 65350**

**Directions:** From 50 & 65 hwy intersection in Sedalia go East on 50 hwy 10 Miles to 135 hwy turn Left (North) onto 135 hwy go 2 miles to Boonville Rd on Left go 1/2 mile to Auction on Right watch for signs on sale day.

**LARGE LOT OF GUNS!!!**

**Saturday, July 25th, 2020 • 9:00am**

## GUNS, PARTS & SUPPLIES

C93 HK 93 clone 5 magazines, PTR 91 HK 91 Clone 10 magazines, Springfield M1A EBR build 18 inch, Colt 6920 Knights Armament URX 3.1, Noveske AR15 block 2 build Socom Surplus barrel and Daniel Defense RIS II, Stag lower Colt upper Knights Armament MRE rail, Noveske .300 blackout upper with Centurion rail on PSA pistol lower, PSA premium 16" ML gas upper on PSA lower, Remington 700 308 McCree stock 18 inch night force base, Remington 870 12 gauge police trade in wood stock, Remington 870 18.5 12 gauge houg stock side saddle, \*\*\*Savage 93 17 HMR, Smith and Wesson Lady Smith .357 mag, Kahr CW9 9MM, 3 PSA AR15 lowers, 2 Anderson AR15 lowers, Remington .22cal model 514 bolt action, Winchester .22cal model 61 pump, Winchester .410 model 42 pump shotgun, Bushmaster AR-15 223-556 collapsible stock, scope, cammo, Winchester 30-30 "Centennial 66" octagonal barrel, lever action, in picture box (never fired), Large lot Parts, & Magazines (MUST SEE)

## 1987 BEAVER MOTOR HOME

"Classic Edition" 500ci. Detroit (Diesel), 106k miles, newer Michelin tires, 6.5 kw Onan LP generator, dual AC units, all real wood cabinets, queen size bed, this is a real MUST see.

## JIM LEEMHUIS

## HOUSEHOLD & MISC.

3 pc. oak King size bedroom set, Schrader fireplace insert, dual reclining sofa, Maytag wringer washer, upholstered chair & swivel rocker, pr. oak end tables, old metal glider, 2 - 8' antique pegged cedar store counters, wooden cupboard, 8+ vintage crock bowls, lard press, lot small crocks, 12 glass blocks, Anniversary clock, 8 - Aladdin electric Alacite lamps, Antique oak Kellogg wall phone, Black Forest Cuckoo clock, Nazi buckle w/Swastika, Meadow Gold clock & apron, 1931 Sedalia license plate, Cast iron spittoon, Whitney upright piano, 2 antique rocking chairs, 20" Emerson TV, occ tables, knee hole desk, Ladies petite wicker rocking chair, ornate wood chair w/needle point cushion, wing back chair, 2 stained glass lamps, lot misc. glass, set Franciscan "Apple" pottery, set Chatelaine china, Lot flat ware, salon sink, old General Electric fridge. (works), small safe, 3 - push plows, 2 - rear tine tillers, Lot vintage hats, nail kegs, lot rugs and runners, oil lanterns, HD engine stand, Pocket Rocket mini electric PR 200 Razor, 2 - 36" screen doors (NIB), Lot scrap metal & alum.

## Many More Items Too Numerous to Mention

**Auctioneer Note:** This is a very large Auction many more items yet to be discovered, we will be running TWO rings, one Firearms & supplies the other with household & Misc. Concessions provided by the Benton County Good Ole Gals.



# JOHNSON AUCTION SERVICE

"Third Generation Family Tradition since 1942"

Russell "Rusty" Johnson (660) 221-4067 • Phillip Yoder (660) 723-3389

For Full Listing, Pictures and Details [auctionzip.com](http://auctionzip.com) (ID# 20300)



# ABSOLUTE REAL ESTATE & ESTATE AUCTION

**9:00 A.M. \* Saturday, July 25th, \* 9:00 A.M.**

**Location: 24515 State Hwy. 265, Marionville, Mo. 65705**

**Directions: 1 Mile east of Marionville on Hwy 265. • Watch for Signs -- Breakfast & Lunch Available\***



**REAL ESTATE - 35 Acres** located just east Marionville city limits on Hwy 265. Great Farm Property or Ideal for Development. Farm It, Develop or Build on it, Sell the Top Soil. This Land truly has many good uses. Currently all planted in Corn, Easy access from Lawrence County Farm Road 1247 and fronts Highway 265. 35 Acres offered in 2 parcels & together. **Tract#1** is 17 Acres - **Tract #2** is 18 Acres & has 2 older Buildings on it. Property Sells Absolute to the Highest Bidder. Only 30 minutes to Springfield, Marionville Schools.

**Property Sells Absolute to the Highest Bidder.**

**Terms: 10% Down, Balance at closing 45 days or less. Take possession as soon as the Corn is Harvested Call for more Information or an appointment to see the Property.**

## TRACTORS - FARM EQUIPMENT - TOOLS - SADDLES - CANOE - OUTDOOR

White Field Boss 2-85 Cab Tractor with Koyker Quick Attach Loader, (5686 Hours) Good Rubber; International 454 Tractor, Gas, with Loader (shows 2615 hrs) Farmall Super C Tractor (running when parked); Vermeer 505 Super I Round Baler with Monitor (nice older baler); Woods R107-2.7ft. 3 pt. Brush Hog; Bush Hog 5ft. 3pt. Brush Hog; 7ft. 3pt. Cultivator; 6ft. 3 pt. Rock Rake & 6ft 3pt. Blade; Danhauser Post Hole Digger; 2 Bottom & 3 Bottom Plows; 3pt. Bale Spike; 4 Wheel Rubber Tire Farm Wagon; Horse Drawn Potato Plow; (50+) New 6ft. Steel Posts; 20+ Used Steel Posts; (2) Rolls New Oklahoma Barbed Wire; Few Bales Straw; Lots of Farm Related Items not Listed; Polaris Sportsman 400, 4x4 4 Wheeler; Aluminum Canoe; (2) 12v Coolers; Sm. Lot Fishing Tackle & Coleman Lantern; Ariens Rocket 8hp. Rear Tine Tiller; DR 2 Wheel String Trimmer; Craftsman 30 Gallon Air Compressor; Craftsman 3hp. 10" Table Saw; Black & Decker Radial Arm Saw; Delta TP300 12 in. Portable Planer; Power Kraft Home Shop Welder; 7" Angle Grinder, Belt Sander, Drills; Bench Vise, Lot C-Clamps; Lot Lawn & Garden Tools; Aluminum Extension Ladder; Lots Misc. Shop Related Items; 2 Nice 15" Saddles, Bridles & Blankets; Everlast Punching Bag; (2) Bicycles, Water Ski's; Nikon 8x40 Binoculars; Char Broil Gas Grill; 100 lb. Propane Tank; Bounty Hunter Metal Detector;

## CAST IRON - ANTIQUE - PRIMITIVE

Over 90 Pcs. Griswold & Wagner Cast Iron Cookware including Dutch Ovens, Skillets, Pans, Griddles, Ashtrays & Lids of all sizes, Rohm RG10, .22 short; S&W SD40 VE .40 cal. semi-auto, like new; V-Bernardelli .380, (missing clip); Cobra CA-380, .380 semi-auto, chrome, like new; ELG .22 4 Barrel Derringer (NO WAY TO LIST IT ALL); G.F. Filley #11 Gem Muffin Pan; N Waterman Cast Iron #11 Gem Muffin Pan; Ace Cloverleaf Cast Iron Donut Form; Stover Tall Base Waffle Iron; Wapak #8 Skillet; Miniature Water Kettle; Lamb Cake Mold; Tobacco Grinder; Sausage Stuffer; Cast Iron Spittoon; Oval Scaldier; Red Mountain Wood Cook Stove; Old Rugged Wesco Wood Heating Stove; Milk Cans & Strainers; Sad Irons; 8 Gallon & 3 Gallon Pittsburg Crock Jars; Sunshine & MFA Coffee Jars, Milk Bottles; Arcade Coffee Grinder; Old Fruit Jars including Mason Iron Cross; Coolwater Fountain Chicken Jar; Nice Old Crock Bowls up to 14"; Beater Bowl with Beater; Coffee & Tea Canister Jars; Range Shaker Set; Misc. Fire King; Few Fir King Pieces Jadeite Tomato Peelers; McCoy Bear Cookie Jar; Old Kitchen Items & Cookbooks; Well Bucket & Pulley; Potato Crates & Strawberry Carrier's; (2) Aladdin Lamps; Several Old Oil Lamps; Barn Lanterns; Antique Trunk & Sled; (4) Antique Metal Lawn Chairs; Broad Axe, Adze, Draw Knife; Hammarlund HQ-100 Ham Radio; Vintage Gray Instrument Co. #7547; Lot Vintage N.O.S. Diodes; Carnival Glass Dish; McCoy Pastel Daisy Tea

Set; Anchor Hocking Green Boopie Tumblers; Few Pieces Depression Glass; Fenton Basket; Lot Nice Glass not Listed; Anchor Hocking Green Boopie Tumblers; Few Pieces Depression Glass; Fenton Basket; Lot Nice Glass not Listed;

## RAILROAD COLLECTIBLE

(2) Antique Porcelain Railroad Crossing Signs with Cats Eye Reflectors (Very Nice & Original); Frisco Locks & Keys; MOPAC Lantern;

## FURNITURE HOUSEHOLD & MISC.

Nice Microsuede Dual Power Reclining Sofa; Microsuede Power Reclining Recliner; Leather Wingback Recliner; Glider Rocker; 47" Vizio Flatscreen TV; 1970's Dining Table & 6 Chairs; Nice Queen Bedroom Suite, Bed, Mattress, Chest & Dresser; Twin Bed, Mattress & Chest; Misc. Tables & Stands, Quilt Racks; Small Grandfather Clock; Small Kitchen Appliances; Lot Pots, Pans & Dishes; Sewing Machine & Linens; Lots of Deco & Household Items not Listed Fender Squire & First Act Electric Guitars; Wheel Chair Lift Jazzy Select 6 Ultra power wheelchair with Power Elevating Seat is a mid-wheel design (Works Good)

## MINK FARMING - REFRIGERATION ITEMS

400+ Good Mink/Rabbit Wire Cages with Boxes; 1000+ Metal J Pellet Feeders; Hundreds of Mink Stretching Boards; Mink Pelt Fleshing Machine; 8ft.x 6ft. Walk-in Freezer Door; 3 Ton Copeland Freezer Compressor; Bohn LET1601F Walk in Freezer Evaporator; Larkin Freezer Evaporator; A.

## Estate of Lawson & Artie Cox

**Auctioneers Note:** Personal Property starts at 9:00 A.M. Real Estate Sells At 12:00 P.M. Very Large All Day Sale, Bring a friend as we will sell 2 Rings part of the day. Real Estate sells absolute to the highest bidder!. See our website for a full listing and more information on Real Estate or call for Appointment.

**See our website for pictures and more info!**

**Auctioneer: Larry Foster Galena, Mo**

**Phone: (417) 723-8329 Cell: (417) 839-6860**

**www.fosterauctionservice.com Email: bidnowsold@aol.com**



# Sam CRAWFORD AUCTION SERVICE LLC

As we are moving and downsizing, will sell the following located from Preston, MO., 1-1/2 miles West on Hwy. 54 to Co. Rd. 361, then North 1-1/2 miles to R. Rd. 140, then West 1/4 mile to Co. Rd. 339, then North 6/10 mile. Watch for Crawford Auction Service signs.

## Saturday, Aug. 1, 2020 – 9:00 a.m.

### GUNS – TRACTOR & EQUIPMENT – TOOLS – ATVs – Misc.



### Real Estate Sell @ near 1 p.m.

10 Acres in the country with '96 26x52 3 bedroom, 2 bath manufactured home, all electric with fireplace, covered front porch, large rear deck, 26'x36' 1 bedroom, 1 bath apartment with attached 16'x36' shop/storage. Chicken house with attached open pen. Pond, well, septic with lagoon. Skyline school.

A good country property, make plans to be a buyer. Shown by appointment with auctioneer.

See website for more pictures!



Large auction with lots of good items. Will be running 2 rings. Guns are all on owner and not on site till sale day.

### Tractor Equipment-ATVs

Sell @ 12:30 p.m.

- '13 Cub Cadet Yanmar dsl, 4x4 w/loader, 103 hrs., 32 hp, ex. good
- Hustler Super ZZTR mower, 60" Kawasaki MTR, good shape
- Cub Cadet 1050 lawn tractor 50", good shape
- Polaris 700 side by side, 4x4
- Kawasaki 300 Bayou 4x4 4 wheeler, good, title
- Kawasaki 300 Z Master 52", 25hp, fair
- Hammerhead 150CC off road go cart, good
- Helix 150CC off road go cart w/new engine
- Lawn vac w/trailer; 3pt 6' rock rake
- 3pt Rhino finish mower, 6'
- 3pt post hole digger w/2 augers
- 3pt PTO seeder, 3pt Hyd wood splitter
- Loader forks for front loader
- 3pt trenching plow; Lawn trailer, new
- 2 Section spring harrow
- 5x8 single axle trailer, like new

### Geese-Ducks

- 8 Geese
- 8 Ducks

### Tools-Misc

- 2 Storage buildings, 12x18 & 12x16
- 1/2 & 3/4 socket set; 2 Refrigerator dollies
- Galv tubs, buckets; 2 Rustic cedar rockers
- Asst. lumber; 3-4 Wheelbarrows
- Cement mixer; Cutting torch set
- Miller 360 mig welder, never used
- Lincoln welder 225, very good
- Drill press, 1/2 chuck
- 3 Kennedy tool boxes, double & triple tall
- Ridgeway tool box; Rolling tool cabinets
- Smaller carrying tool boxes
- 10' Garage door, complete, like new
- Lot asst. rods & reels
- Sev. tackle boxes & asst. tackle
- 4-5 F/G step & ext. ladders
- Metal screw bin & bolt bin
- PR bucket seats for Chev. P/U, '03-'07
- Large pile used metal roofing, 25' long
- Pile of red iron beams for building
- 450 sq. ft 12" tile; 175 sq. ft laminate flooring
- Lot yard tools, lots of hand tools
- Wood working tools, hand saws, hammers
- Delta 10" table saw, works good
- Foley Belsaw 12" commercial planer
- 10" Milwaukee hand saw, elec., HD
- 10" Craftsman table saw
- 10" Miter saw; 10" Cut off saw
- Ryobi gas power drill, 1/2" chuck, good
- Craftsman router; Router bits
- Wood clamps, all sizes & makes
- C-clamps; Small fold up tables
- Old Delta table saw, table angles, rebuild
- Lot small elec. hand tools, Craftsman & Milwaukee
- 4-wheeler jack or mower jack
- Transmission jack; Miter saw table
- Floor jack; Small sand blaster
- Battery chargers; Sev. 2 wheel dollies
- John Deere kids wagon
- Lot ext. cords; Lots, lots misc.

### Guns Sell @ 9:00 a.m.

- Winchester 70 FW stainless barrel, 308
- Winchester 70 FW stainless, 6.5x5.5
- Winchester 70 FW stainless, 270 Win.
- Winchester 70 FW stainless, 25 WSM
- Winchester 70 FW stainless, 325 WSM
- Winchester 70 FW stainless, 270 WSM
- Winchester 70 FW blued, 243 WSSM
- Winchester 70 left hand blued, 300 WSM
- Winchester 70 right hand blued, 300 WSM
- Winchester 70 Coyote CRPF stainless laminate, 25 WSSM
- Winchester 70 Coyote CRPF stainless black laminate, 325 WSM
- Winchester 70 Classic ULT shadow stainless, 223 WSSM
- Winchester 9417 lever action traditional, 17 HMR 20-1/2" barrel
- Winchester 94 Legendary Frontiersman, 38-55
- Winchester 70 Classic left hand sporter LT, 7MM Mag, 26", all new in box
- Remington 592 bolt, 5 MMR Mag.
- Remington 700 Classic 221 Fireball, 24"
- Remington 673 Guide Rifle bolt, 6.5 Rem., 22"
- Remington 700 CDL-SF LTD fluted, 260 Rem. mag, 24"
- Remington 700 CDL-SF fluted, 17 Rem., 24"
- Remington 700 CDL-SF 75th Ann. 257 Roberts, Adj. trigger
- Remington 870 Express 410 pump, all new in box
- Marlin 410 lever action 22", walnut
- Savage 16 FHSS 250 Savage, NIB
- Savage 29 pump 22, short & long, Oct. barrel
- Savage Sporter 25-20 bolt
- Winchester 9422 Traditional, like new
- Winchester 9422 case color, 1 of 500, like new
- Winchester 70 FW bolt, 6.5x55
- Remington 700 left hand BDL, 7MM Mag. w/ scope
- Remington 7600 pump, 6MM Rem.
- Remington 870 Wingmaster left hand pump, 3" mag., 30" full, 12 ga.
- Remington Fieldmaster 121 pump, 22 short & long
- Remington 12C Oct. barrel, pump, 22 short & long
- Remington 1100 20 ga.
- Winchester 370 20 ga. single shot
- Belgium Flobert single shot 22 Oct. barrel

### Pistols

- Ruger revolver 22 & 22 Mag. cyl
- Taurus 357 Mag, stainless, black grips

### Gun Misc.

- Benjamin air pellet pistol
- Barrel for Rem. 1100, 20 ga.
- 2 Stocks for Winchester FW Mod. 70
- Lot asst. ammo, some collector
- Scopes, clips, rings, reloading Equip.
- Shooting table, bipod, knives
- Cleaning kits, asst. hunting clothes
- 6 Deer head mts (1 mule deer)

# Sam CRAWFORD Auction Service LLC



Cross Timbers, Mo.  
CrawfordAuctionService.com  
417-998-6629



TERMS: Cash or good check. Nothing removed until settled for. Not responsible for accidents. Lunch available. Statements made day of sale take precedence over printed matter. All items sell as is. No warranties given or implied.



Sam  
417-328-9137

Chase  
417-399-1904

Chance, CAI  
417-298-1751

Tom Poynter  
Jack Lancaster

# Michael Schaefer





**MID MISSOURI STOCKYARDS**

**REGULAR SALE EVERY THURSDAY 11 AM**

WATCH OUR WEEKLY SALE IN REAL TIME ON [DVAUCTION.COM](http://DVAUCTION.COM)

For Farm Visits, Market Updates, or Trucking  
Call **Zach Cox 417-777-1320**  
**Dan Romine 573-578-4939**

**Competitive Buyers!  
Competitive Commission!  
Competitive Market!**

Barn: 417-532-9292   
I-44 • Exit 123 "just outside of Lebanon"  
17505 Route 66, Phillipsburg, MO 65722  
For weekly market updates, visit us at [www.midmostockyards.com](http://www.midmostockyards.com)

**WANTED, TIMBER TO LOG ON SHARES:** Honest, reliable, references. 417-533-4607, 417-664-1195.

**NEW IDEA #10 ONE ROW PULL-TYPE CORN PICKER:** W/wagon, good condition. \$2,750. 573-678-2132.

**REAL ESTATE AUCTION**

**125 Bluebird Lane, Linn, MO**

**Friday, Aug 7, 2020 @ 7:00 P.M.**

*Note: Auction to be held at Moffat Auction Center  
467 County Road, Linn MO*

**Selling 3 Bedroom 2400 Square Feet Earth Contact home on 41 acres**  
Directions: From Hwy 50, take Hwy CC South approximately 3 miles to Bluebird Lane on right.

**OPEN HOUSES**  
Saturday, July 25, 1:00 pm - 2:00 pm  
Sunday, Aug 2, 1:00 pm - 2:30 pm

**For complete listing & terms visit us on the web @ [www.moffatauction.com](http://www.moffatauction.com).**

**OWNER: Gerald & Pauline Ploof Trust**

**RICHARD MOFFAT AUCTION SERVICE**  
573-690-2823  
[www.moffatauction.com](http://www.moffatauction.com)

**KILMER FARM EQUIPMENT CONSIGNMENT AUCTION**

**SATURDAY, AUG. 29 • 10 AM**  
14769 Cattle Lane, Versailles, MO 65084  
*Directions: At the intersection of Hwy 5 and Hwy 52 in Versailles, go North on Hwy 5 for 1 mile to Cattle Ln then turn Right or East and go ¼ mile to Sale Site.*

**AD DEADLINE: FRIDAY, AUG. 7, 2020**  
*ACCEPTING CONSIGNMENTS ON LOT*  
Monday, August 17 - Wednesday, August 26

**CONTACT DANIEL OR MARK KILMER TO CONSIGN OR FOR MORE INFORMATION (573) 378-6615**

TRACTORS, PLANTERS AND SPRAYERS, CONSTRUCTION EQUIPMENT, TRUCKS AND TRAILERS, GRAIN CARTS AND WAGONS, MANURE SPREADERS, CUTTERS, TILLAGE, COMBINE AND HEADS, FEED MIXERS, MISC. EQUIPMENT, HAY EQUIPMENT, SILAGE EQUIPMENT

**2 RING MAY RUN DAY OF SALE**

**Wheeler AUCTIONS & REAL ESTATE**  
23101 HWY. 24, PARIS, MO 65275 | 660-327-5890  
[WWW.WHEELERAUCTIONS.COM](http://WWW.WHEELERAUCTIONS.COM)



**KILMER FARM EQUIPMENT, LLC • (573) 378-6615**  
14270 Hwy. 52, Versailles, MO 65084  
For more info and photos: [www.wheelerauctions.com](http://www.wheelerauctions.com)

**WANTED PINBALL MACHINES.** 573-424-7200.

**2-21" PUSH MOWERS:** Briggs & Stratton engine, 1 runs, 1 for parts. Both \$75. 636-239-2695.

**LANDPRIDE RCF3010:** pull type brush hog, 10'. \$5,900. 417-270-1505.

**DR STUMP GRINDER:** Excellent condition. \$950. 573-855-7083.

**STAINED GLASS THEATRE COOK-BOOK. \$6.50. RESTAURANT RECIPES OF MISSOURI. \$7.50. THE CAKE DOCTOR COOKBOOK. \$6.50.** 417-532-2045, Lebanon. (Leave Phone Number).

**LOOKING TO BUY MALE PUG:** 417-458-1424.

**LOG SIDING SALE:** 2X8 Western Cedar .99 ft/ Pine \$1.19 ft while supplies last. [www.pineridgerustic.com](http://www.pineridgerustic.com) 573-729-7226.

**8N FORD TRACTOR:** Not running w/rear blade. \$500. 573-855-7083.

**CLEAN 275 GALLON FLUID TOTES:** Limited quantity. \$55. 417-349-1386.

**OSAGE COUNTY PUBLIC AUCTION**

**SATURDAY, AUG 1, AT 10 AM**

**AUCTION LOCATION:**  
890 COUNTY ROAD 602,  
LOOSE CREEK, MO 65054

**Directions:** From Linn, MO take Hwy. 50 west 5 miles to Osage County Road 602, turn left, go one mile south on Rd. 602 to sale OR from Loose Creek, MO take Hwy. 50 east 1 mile to Co. Road 602, turn right on Rd. 602 & continue 1 mile south to sale.



**TRUCKS, CAR & TRAILERS;  
TRACTORS; COMBINE, HEADS,  
WAGON; FARM EQUIPMENT;  
GUNS; HOUSEHOLD**

For full listing and photos visit [wheelerauctions.com](http://wheelerauctions.com).

**SELLER: RICHARD "DICK" GENTGES ESTATE  
VICKI BINKLEY,  
PERSONAL REPRESENTATIVE**

*Visit [wheelerauction.com](http://wheelerauction.com) for more information!*

**Wheeler AUCTIONS & REAL ESTATE**  
23101 HWY. 24, PARIS, MO 65275 | 660-327-5890  
[WWW.WHEELERAUCTIONS.COM](http://WWW.WHEELERAUCTIONS.COM)



For more information call Charlie Nordwald at 636-795-4552, [wheelerauctions.com](http://wheelerauctions.com).  
573-635-4168  
5718 Wardville Road, Jefferson City, MO

# BUFFALO LIVESTOCK MARKET LLC

276 Hwy 32 West • Buffalo, Missouri

**July 18<sup>th</sup>, 2020**  
**Receipts: 779 Head**

**Feeders Steady Cows \$2 lower.**

### Representative Steers

300-400 @ 150.00 to 179.00  
 400-500 @ 145.00 to 177.00  
 500-600 @ 142.00 to 158.00  
 600-700 @ 132.00 to 146.00  
 700-800 @ 128.00 to 137.00

### Representative Heifers

300-400 @ 130.00 to 151.00  
 400-500 @ 133.00 to 143.00  
 500-600 @ 126.00 to 137.00  
 600-700 @ 120.00 to 137.00  
 700-800 @ 112.00 to 117.00

### Feeder Bulls

300-400 @ 140.00 to 170.00  
 400-500 @ 130.00 to 158.00  
 500-600 @ 110.00 to 135.00  
 600-700 @ 110.00 to 128.00  
 700-800 @ 105.00 to 110.00  
 800-900 @ 75.00 to 90.00

### Cow Calve Pairs

1000.00 to 1400.00

### Bred Cows Young

2 & 6yr. 3rd stage 950.00 to 1000.00  
 6 to 55 3rd 700.00 to 850.00

### Slaughter Cows

Breakers 60.00 to 70.00  
 Boners 55.00 to 70.00  
 Lean 50.00 to 55.00

X Thin Light Carcass 45.00 Down

### Bulls

High Dressing 97.00 to 110.00  
 Low Dressers 90.00 to 97.00

### MON-WED MARKET REPORT

Listen to KJEL 103.7FM • Lebanon or KYOO 99FM • Bolivar

**VIEW OUR SALES AT CATTLEUSA.COM**

**CALL FOR TRUCKING OR ON-FARM VISIT**

Lyle Caselman • Owner-Manager  
 417-345-7876 • mobile 417-533-2944  
 Leon Caselman • Owner  
 417-345-4514 • mobile 417-588-6185  
 Howard Miller • Owner 417-345-8122

## CHRISTMAS IS COMING... IN JULY

### LARGE ONLINE ESTATE AUCTION

Ethan Allen Furniture • Mizou Collectibles • Antiques • Primitives • Vintage Tools • Toys • John Deere Riding Mower • Household • Very Extensive Collection of Hallmark, Spode, Willow Tree, Snow Babies, Jim Shore, Dept. 56, Fitz & Floyd, Hummel and many other Christmas Collectibles • Don't Miss Out There Is Something For Everyone!  
 So Much More Listed On Website!



3008 Greenridge Rd, Columbia, MO

**Bidding Ends Tuesday, July 28th & Wednesday July 29th at 12:30PM**  
**Bid Online At Atterberryauction.com**

**Preview:** Monday, July 27th  
 from 3:00PM to 6:00PM  
**Payment & Pick-Up By Appointment:**  
 Thursday, July 30th and Friday, July 31st.

Seller: Virginia Alden and the late Jack Alden



**For Terms, Details, Or Bidding Assistance, Call Your Real Estate At Auction Specialists:**  
**Atterberry Auction & Realty Co,**  
**573-474-9295 or**  
**Email: contactus@atterberryauction.com**

**KITCHEN FAUCET MOEN:** single lever, sprayer, new cartage. \$70obo. 636-239-2695.

**THREADGILL'S - THE COOKBOOK, THE AUSTIN, TEXAS LANDMARK OF SOUTHERN COMFORT FOOD, HARD-BACK \$10.** 417-532-2045. **LEBANON. LEAVE MESSAGE AND PHONE NUMBER.**

**4 FIRESTONE TIRES:** 235-50, 18", Like new, 11,000miles. \$200/might trade for gun Springfield, 417-833-8351/417-234-0629.

## EDWARD L. & NORMA J. HASSELMAN TRUST AUCTION

**Saturday, August 1, 2020 9:00 A.M.**  
**The Moffat Auction Center**  
**467 County road 604, Linn, MO**

Directions: From Linn, take Hwy. 50 west 1 1/2 mi. to Co. Rd. 604, turn left & go 1 mile to building on right, or from Jefferson City, take Hwy. 50 east approx. 18 mi. & turn right on Co. Rd. 604.

Tiffany Table Lamp Signed; Tiffany Studios New York; Tiffany Desk Lamp Signed; Tiffany Floor Lamp Signed- Some Repair on Shade; Quality Walnut & Oak Furniture; Victorian Marble Top; 3 Pc Marble Top Walnut Bedroom Set; Several Hanging & Desk Lamps; Quality Table Lamps; Gone With the Wind Lamps; Quality Glassware; RS Prussia; China; Porcelain; Old Sleepy Eyes Pcs; Roseville Carnival Glass; Cut Glass, Wave Crest Boxes; Victoria & Costume Jewelry; 50+ Clocks, Tall Case, Wall & Mantle, Statue, China & 3 Pcs Clock Sets.

**Visit [www.moffatauction.com](http://www.moffatauction.com) for pictures**

**Note:** This is a lifetime collection. Norma is 91 & has moved to a retirement center. She has only collected the best. We will have a preview on Friday, July 31 from 2:00 pm. to 5:00 pm. Make plans to attend. - Rick.

Terms: Cash or good check with proper identification. All sales are final. Everything sells as is, where is. Proper identification is necessary to obtain a buyer's number. Announcements day of sale supersede all printed material. Lunch on grounds.

**RICHARD MOFFAT AUCTION SERVICE**  
**573-690-2823**  
**[www.moffatauction.com](http://www.moffatauction.com)**

**FOR SALE TAPCO: 10 ft Aluminum Siding Brake \$700 417-924-8314**

**ORCHID COACH PURSE: \$40, VERA BRADLEY: w/matching wallet. \$40. 573-263-9235.**

**2014 MERCEDES E-350 4-MATIC: 100,000, 4WD, miles, pristine condition, \$13,000 Firm. 417-383-8200.**

**MX5100 KUBOTA:** 4wd tractor with loader, 52 HP, open station, low hours. \$20,000. 417-270-1505.



**SQUARE BALES:** New crop, second cutting, grass hay with some clover. Good quality. \$5/bale. Quantity discount. 573-378-4172.

**BRUSH HOGGING:** By the hour or by the job. Honest, reliable, newer equipment, good rates. 417-349-0084.

**80" PULL TYPE DISK:** small. \$150. 417-753-2747.

**VIRUS SALE - mobile home inventory, entire stock, first come basis, 3 & 4 bedroom, 2 bath, Hurry and call for info 573-499-9993 columbiadiscountshomes.com**

**GRISWOLD REFERENCE PRICE GUIDE:** \$7.50 417-532-2045, Lebanon. Leave phone number.

**MOBILE HOMES** .....shop online..... Call Tuff with questions 573-657-2176 amegamobilehomes.com

**AC 840 DIESEL ARTICULATING 4-WHEEL DRIVE LOADER:** \$7,250. 573-765-4406.

**1951 8N FORD TRACTOR:** good shape, runs good. \$1,650. 573-468-7689.



**Wright Spray Foam Insulators, LLC**  
Commercial & Residential  
Call for FREE Estimates!

**Ervin Gingerich** 417-926-2052  
**B. Eli Yoder** 417-746-4932

**SOUTHERN OVEN COOKBOOK:** The Savories, The Sweets, by Jean Anderson, hardback, 272 pages. \$6.50 417-532-2045. Leave Message.

**JOHN DEERE 435 ROUND BALER:** monitor, 4x6, net wrap. \$7,450. 573-765-4406.

**CASE 580C BACKHOE LOADER DIESEL:** \$8,500. 573-765-4406.

**3-6 YEAR OLD CALF/COW PAIRS:** 200-400lb calves. 417-331-8284.

**I BUY.....used mobile homes.** Call or text 573-338-6250 or email GregS.CDH@outlook.com

**INLINE 32 FT:** Hay trailer, \$3,750. 573-765-4406.

# TAYLOR TRUCKS & EQUIPMENT

**417-924-2026 • 2676 Hwy. 5 Mansfield, MO**

**New Mowers! Bush-Whacker, Big Bee Storage Containers & Dry Vans - 20' - 53' Farm Tires, PTO's & Parts for Rotary Mowers, Farm Tractor Implements**

Plows, Used 15" Bush-Whacker Now In Stock, Discs, and More Skidsteer Attachments: Pallet Forks, Buckets, Grapples, Hay Spears & Tree Sheers - RR Ties

## Bush-Whacker Heavy Duty Rotary Cutter



**TRAILER PARTS & REPAIR | NEW SEMI TIRES- DRIVE & STEER**

**We Invite you To Come By & Look Us Over! Located 2.5 Miles North Of Mansfield, MO On Hwy 5**

**FURNITURE SET:** Sleeper sofa, loveseat, matching chair, solid frame, needs cleaned~ or recovered. \$250 set. Misc accent tables also available.~ Norwood, 417-459-6313.

**8 GALLON AUTO LUBRICATED AIR COMPRESSOR:** New, \$110. 417-457-1023. Raymondville.

**CUSTOM SAW MILLING:** Lebanon. 417-533-4607, 417-664-1195.

**TAKUCHI 135 DIESEL EXCAVATOR:** with hyd thumb. \$15,000. 573-765-4406.

**NEW HAY BALE ARM BED SPINNERS:** Allows large hay bales to spin while unrolling. 16". Shaft 1"x6" Camdenton area will travel to meet. \$75.00 816-803-1834.

**IHC 1086 DIESEL TRACTOR:** Cab & Air. \$8,750. 573-765-4406.

**MUSTANG 2040 DIESEL SKID STEER DIESEL LOADER:** \$8,500. 573-765-4406.

**DINING SET:** Ethan Allen Vintage Old Tavern Pine Trestle table, 4 high back chairs, 2 high back captain chairs, matching~ hutch ~ Appraised value \$2650. Norwood, 417-459-6313.

# ESTATE AUCTION

Due to the death of the late Tom & Katie Pasley, we will sell the following personal property at auction located in Rolla, off Hwy. 72, at 20 Summit Avenue. Follow Lorts Auction Today signs on

**Sat., July 25, 2020 • 8 a.m.**

**Metal Lathes, Tools, Shop Related Items & Zero Turn Mower**

Metal Atlas lathe, 32 inch cut w/10 inch throw (disassembled) - Metal lathe (collet type) w/6 inch throw - Montgomery Ward metal lathe (model #04TLC-7008) 21 inch cut w/10 inch throw - Kennedy Machinist Box full of gunsmithing tools (mainly for 1911 Colts) - John Deere EZtrak zero turn lawn mower, model Z-255, 48 inch cut, 22 hp., B&S engine, 164 hours - Power-Matic 6 inch jointer (model #53) - 8 ft to 10 ft. dried wild cherry rough cut lumber (6 inch to 12 inch width) -

**Household, Furniture & Collectibles**

Antique secretary desk - Baskets - 3 piece brown reclining sectional - 3 piece dark maple full bedroom set - And More!

**Hunting & Fishing Items**

Vintage reels & poles - Fly making supplies (full cabinet) - Collection of trophy badges - Large assortment handmade wooden fishing plugs - 17 ft. pointed Grumman canoe - 19 ft. Grumman canoe (square stern, wide bottom) - 2 wheel canoe trailer (no title) - Flat bottom jon boat (14x32) - Canoe rudder control

**Real Estate**  
**20 Summit Ave, Rolla, MO 65401**  
**Sells at noon**



Owner has right to reject last and final bid. 3 bedroom, 1 bath home. Central air, natural gas furnace (5 years old), Color lock siding w/aluminum soffit, rock back patio, hardwood floors, 2 car garage w/opener, attic fans, 16x20 attached shop (heated) behind garage, 2 car carport. Nice level lot close to schools. Abstract of Title description~ All of lot twenty and the south half (5 1/2) of lot twenty one (21) in Sunset Hills Addition to the City of Rolla, Mo. Terms: 10% down day of sale with closing in 30 days or less.

**Many more articles too numerous to mention**

"like" us on Facebook - Lorts Auction Service or view this auction online at [www.threeriverspublishing.com](http://www.threeriverspublishing.com) or [auctionzip.com](http://auctionzip.com) (auctioneer ID #42353).

**AUCTIONEER'S NOTE:** This is a nice auction you won't want to miss. Lots of shop and woodworking tools. Plenty of shade. Real estate is in nice neighborhood. Mark your calendar for Saturday, July 25 and plan to attend! Lorts Auction Service

**Jim & Tom Pasley family**  
**20 Summit Ave, Rolla, MO 65401**

TERMS: Cash or check with photo I.D. • Not responsible for accidents or losses, should they occur. • Nothing removed until paid for. - No buyers fee. - Lunch Served - ALL ANNOUNCEMENTS MADE SALE DAY TAKE PRECEDENCE OVER ALL PRINTED MATERIALS -

SALE CONDUCTED BY LORTS AUCTION SERVICE  
ST. JAMES, MO 65559 • 573-699-4308 • 573-263-0243  
AUCTIONEERS: Larry W. Lorts & Gary R. Lorts  
Licensed and Bonded

*This is...*

# WEEKLY TRADER COUNTRY!

The Weekly  
Trader  
*GETS*  
*RESULTS!*



# WEEKLY TRADER MAGAZINE

**Place Your Ad With Us Today!**

**417-532-9131** CHECK US OUT ONLINE AT: [myweeklytrader.com](http://myweeklytrader.com)



**MILLER 10FT. OFFSET DISK:** \$4,400. 573-765-4006.

**JOHN DEERE 2940:** 80HP, 148loader, runs good, good rubber. 417-286-3173.

**10 OPEN BLACK ANGUS HEIFERS.** \$750 each. 573-714-2012.

**JOHN DEERE HX10 PULL TYPE BRUSH CUTTER:** 10FT \$4,200. 573-765-4406.

**2010 DODGE GRAND CARAVAN:** SXT Wheelchair Accessible: Accommodation for 2 wheelchairs, excellent condition, only 78,000 miles, with all new tires \$18,000 (417) 473-6266 for additional information Niangua

**Buildings • Hunter's Cabins • Lawn Furniture**

**JAMCO BUILDERS**

**JAMCO Portable Buildings**

800-688-2064 • 307 Enterprise Dr. • Seymour, MO • www.jamcobuilders.com

**Rent To Own Plan**

**FERTRELL:** ORGANIC FERTILIZER AND MINERALS. Call for free catalog. 315-796-4370.

**1998 DODGE GRAND CARAVAN:** 3.3 V6, 211,000miles, runs, good for parts, good tires. \$500 OBO. 417-733-0198. Buffalo

**GARDEN TILLER-~ DR PRO:** pull with ATV or mower, 36" wide, upto 7.5" deep.~ Power remote control, electric start . \$1500. Norwood, 417-459-6313.

**CAPPER'S WEEKLY VINTAGE SEARCHLIGHT COOKBOOK:** hard-back \$15. 417-532-2045, Lebanon. Leave phone number.

**VILLA HOMES IN ROLLA:** Has NEW and USED Mobile Homes. Call David for info: 573-578-8072.

**MIDWEST CONSTRUCTION**

Free Estimates!

- Pole Barn • Garages • Framing
- Remodels • Roofing • Concrete
- Decks & Porches

**Contact Abner Glick**  
417-664-1794

**SWAP MEET:** At Treasures, 1060 Tower Road, Lebanon, August 7th & 8th, Vendors Wanted, 417-532-6666.

**CHIPPER/ SHREDDER:** Stanley 11 HP, 270cc engine. Like new \$700. Norwood,~ 417-459-6313.

**JOHN DEERE 566 ROUND BALER:** monitor, kicker, net wrap. \$6,700. 573-765-4406.

**CHEVROLET MANUAL V-8 OR V-6** 1962-74, 1954-1963. \$25 each. 417-457-1023.

**1995 CHEVY PICK-UP:** 4X4, 3/4 ton, many new parts, some rust, trailer brake system. \$4,500. After 3pm Bourbon, 573-627-3729.

**FIREARMS:** Professional Repairs and Restorations. Baron's Gunsmithing. 573-363-5801, Camdenton.

**KUSTER LOGGING**

**BUYER of Standing Timber Oak and Walnut**

**Dozing Now Available**

**417-259-0047**

References Available

**Starnes Auto LLC**

22115 Rt. 66  
Lebanon, MO 65536  
417.588.3159 Office  
417.718.2707 Cell  
www.starnesauto.com

<b>2001 FORD EXPLORER SPORT TRACK MAROON, 107,XXX MILES.....</b>	<b>\$6,500</b>
<b>2002 CHEVY S10 PEWTER, 260,XXX MILES, 5SPD., GOOD TITLE.....</b>	<b>\$2,600</b>
<b>2003 CHEVY S10 WHITE, 72,XXX MILES.....</b>	<b>\$5,200</b>
<b>2006 BUICK TERRAZA VAN BLUE-GREEN, 88,XXX MILES.....</b>	<b>\$4,000</b>
<b>2006 FORD TAURUS SILVER, 78,XXX MILES.....</b>	<b>\$3,450</b>
<b>2007 BUICK LUCERNE WHITE, 103,XXX MILES, GOOD TITLE.</b>	<b>\$4,950</b>
<b>2007 CHEVY EQUINOX BLUE-PURPLE, GOOD TITLE, 149,XXX MILES.....</b>	<b>\$4,200</b>
<b>2010 CHEVY MALIBU LS BLUE, 97,XXX MILES.....</b>	<b>\$5,800</b>
<b>2011 GMC TERRAIN WHITE, 138,XXX MILES.....</b>	<b>\$7,450</b>
<b>2011 FORD FUSION SEL WHITE, 126,XXX MILES.....</b>	<b>\$5,600</b>
<b>2011 CADILLAC SRX GOLD, 66,XXX MILES.....</b>	<b>\$11,500</b>
<b>2011 FORD EXPLORER SILVER, 78,XXX MILES.....</b>	<b>\$10,800</b>
<b>2012 GMC ACADIA DENALI CHARCOAL, 138,XXX MILES.....</b>	<b>\$9,250</b>
<b>2012 FORD FUSION SEL CHARCOAL, 124,XXX MILES.....</b>	<b>\$5,200</b>
<b>2012 CADILLAC SRX PERFORMANCE WHITE, 87,XXX MILES.....</b>	<b>\$12,500</b>
<b>2012 CADILLAC SRX PERFORMANCE BLACK, 123,XXX MILES.....</b>	<b>\$8,250</b>
<b>2014 GMC ACADIA RED, 119,XXX MILES.....</b>	<b>\$9,750</b>
<b>2015 CADILLAC SRX PERFORMANCE BROWN, GOOD TITLE, 40,XXX MILES</b>	<b>\$18,500</b>
<b>2015 CHEVY EQUINOX LTZ BLACK, GOOD TITLE, 62,XXX MILES</b>	<b>\$13,200</b>
<b>2016 FORD FIESTA SEDAN SILVER, 59,XXX MILES.....</b>	<b>\$6,500</b>

**POOL TABLES:** Installations, moves, recover, repairs, accessories, etc. 573-646-1700.

**1981 IH 1086 TRACTOR:** 130pto hp, good glass, new tires, never used oil. \$18,000. 2yr old virgin black Angus Bulls, 1,800/piece. 417-683-2637.

**ANTIQUE BRASS KITCHEN CABINET HARDWARE:** 2 sets of 44. \$50 per set. 636-239-2695

**SANBORN 5HP 60 GALLON AIR COMPRESSOR:** Older unit. \$200 OBO 417-457-1023 Raymondville

**FARMALL M:** New rear rims, tubes, tires, heavy duty 3pt. \$2,550. 417-848-8754.

**RIDING HORSES, MULES, DONKEYS:** saddles, harness, collars, enclosed Amish buggy, Pioneer four cart, & riding plow. 417-531-5707. Lebanon

**OLD LINN CREEK, HA HA TONKA & CAMDEN CO BOOK, "Before the Dam Waters", BY T. VICTOR JEFFRIES. \$5.50 each post paid. To order: 417-532-2045, Lebanon (leave message.)**

**GARAGE SALE:** Thursday-Friday 7:30am-1pm **432 Ponderosa Ct Lebanon, MO** Furniture, lawn mower, tools, clothing- children and adult, ceramics, household goods, home decor, holiday, assistive equipment

**WANTED:** Lightly used class D campervan. 636-583-4196. Union

**SORGHUM PRESS:** \$400. 573-308-7537, Edgar Springs

Heritage Tractor customers saved an average of

**\$2,000**

on their compact tractor purchase over other tractor brands<sup>1</sup>



**STAR-SPANGLED PACKAGE**

Includes 4044M Tractor, Loader and Rotary Cutter

- Naturally aspirated diesel engine
- Standard 4-wheel-drive



**A LOT FOR A LITTLE PACKAGE**

Includes 1023E Tractor, Mower Deck and Loader

- Powerful Final Tier 4-compliant diesel engine
- New, easy-lift hood with dual gas-charged lift struts

**0% FOR 50 MONTHS**

on all skid steers and compact track loaders<sup>2</sup>



**SKID STEERS**

- Rated Operating Capacity starting at 704 kg (1,550 lb.)
- Gross Horsepower starting at 51 hp



**COMPACT TRACK LOADERS**

- Bucket breakout force up to 4,200 kg (9,250 lb.)
- Net Horsepower up to 96.9 hp

Legendary Products. Extraordinary Service.  
Find your local Heritage Tractor location or request a quote at [HeritageTractor.com](http://HeritageTractor.com)



**JOHN DEERE**



(1) Savings based upon Maritz January 2019 Customer Purchase Funnel Study. Some restrictions apply. See dealer for details. Offer good through 10/31/2020. (2) Offer valid on qualifying purchases made between 01 March 2020 to 31 August 2020. Subject to approved installment credit with John Deere Financial, for commercial use only. Down payment may be required. Average down payment is 10%. Taxes, freight, setup and delivery charges could increase monthly payment. Available at participating U.S. dealers. Prices and models may vary by dealer. Offer available on new equipment and in the U.S. only. Prices and savings in U.S. dollars.

**NEW 32' & 36' EZ HAUL HAY TRAILERS IN STOCK**

**32' \$4,895**  
**36' \$4,995**

Like Us On **facebook**

**JIM'S Motors TRAILERS**  
I-44 at Exit 208 • Cuba, MO  
[www.jimsmotors.com](http://www.jimsmotors.com)  
**TRUCKS and TRAILERS (800)897-9840**  
Great Service! Great Prices! Since 1957

**DARDEN PROFESSIONAL TIMBER HARVESTING, BUYING STANDING TIMBER:** Great prices, improve wildlife habitat and improve forest health. State Certified & Fully Insured! 573-247-4808 or 573-739-1122. Salem

**DREAM HOUSE - Online, [chateauhomes.net](http://chateauhomes.net)** Call Marla 573-657-7040

**LANDPRIDE RCF3010:** pull type brush hog, 10'. \$5,900. 417-270-1505.

**DR STUMP GRINDER:** Excellent condition. \$950. 573-855-7083.

**Larry Heisel Rentals**

**Crawler Loaders**  
**Excavators**  
**Backhoes**

Call Larry!  
We Deliver!  
Rental Available in 636 or 573 Area Codes  
**573-779-1500**  
[www.larryheiselequipment.com](http://www.larryheiselequipment.com)

**94 JEEP WRANGLER:** Black, 98,000, Heat AC, Stereo, 5 speed, 4 wheel drive, sharp. Dixon. 573-422-9927.

**WEATHERED BARN WOOD SIDING:** 8" & 10" wide. 573-729-7226. [www.pineridgerustic.com](http://www.pineridgerustic.com)

**8 BLACK/BLACK-WHITE FACE BRED HEIFERS:** due to start calving in August, have been pelvic checked, pregnant checked, dewormed and shots, bred to registered, low birth weight black Angus bull. \$1,500each. 573-229-4636/573-301-7471.

**01 53FT. UTILITY TRAILER:** Refrigerated, good tires, new airbags, \$4,500. 417-531-1225.

**REGISTERED HEREFORD & ANGUS BULLS:** Home raised, Some Show-Me Select Qualified. 573-701-7828. Belgrade



**MISSOURI GARDENER'S GUIDE: 421 pages, over 170 color photos, 417-532-2045. Lebanon. Leave phone number.**

**2-21" PUSH MOWERS:** Briggs & Stratton engine, 1 runs, 1 for parts. Both \$75. 636-239-2695.

**TRUSTED & THOROUGH SERVICE**

Repairs • Rebuilds  
Cast Iron & Steel Welding  
Engines • Transmissions  
Electrical • Hydraulics  
PTO & Drivelines

**VALLEY SHOP • 660-458-6747**  
38745 Molasses Mill Rd, Latham

**GRAY CHICCO INFANT CAR SEAT FOR SALE:** From a smoke free home, 2 years before expiration, not been in a wreck. \$30 573-2623-9235 St James

**2000 FORD TRACTOR:** Nice, low hours, live power. \$4,650. 573-468-7689.

**NEW HOLLAND 617 DISK MOWER:** \$3,950. 573-765-4406.

**PATRIOT SMALL SKID STEER LOADER:** \$4,600. 573-765-4406.

[WWW.MYWEEKLYTRADER.COM](http://WWW.MYWEEKLYTRADER.COM)

**Custom Gun Building & General Gunsmithing**

*Craig's* **OUTDOOR Sports**

- Ammo
- Reloading Supplies
- Muzzleloaders & Supplies
- Hunting Supplies

417-926-0255  
9435 Hwy N, Ste A, Mountain Grove  
Mon.-Fri. 9am-5pm • Sat. 9am-12pm

**FORD A66 DIESEL ARTICULATING 4-WHEEL DRIVE LOADER:** \$10,500. 573-765-4406.

**8N FORD TRACTOR:** Not running w/rear blade. \$500. 573-855-7083.

**CLEAN 275 GALLON FLUID TOTES:** Limited quantity. \$55. 417-349-1386.

**STUMP GRINDER:** DR Pro XL 11.7 HP with electric start. Never used. \$2100. Norwood 417-459-6313

**WANTED, TIMBER TO LOG ON SHARES:** Honest, reliable, references. 417-533-4607, 417-664-1195.



**TASK. TASK. DONE.**

**RB16 SERIES**

- REAR BLADES  
20-40 HP 60", 74", 84" Widths
- Cat. 1 hitch
  - 7 Forward angles; 3 Reverse angles
  - 5 Tilt positions
  - 12" Offset left or right
  - 14" Moldboard height
  - 1/4" Moldboard thickness
  - Landscape Rake adaptable

**AGRI ENTERPRISES**

For Outstanding Products & Service

1-1/2 Miles South Of Licking, MO On Hwy 63

**573-674-2203**  
**1-800-653-7152**



[www.landpride.com](http://www.landpride.com)

[www.agri-enterprises.com](http://www.agri-enterprises.com)

**NEW IDEA #10 ONE ROW PULL-TYPE CORN PICKER:** W/wagon, good condition. \$2,750. 573-678-2132.

**WANTED PINBALL MACHINES.** 573-424-7200.

**STAINED GLASS THEATRE COOKBOOK. \$6.50. RESTAURANT RECIPES OF MISSOURI. \$7.50. THE CAKE DOCTOR COOKBOOK. \$6.50.** 417-532-2045, Lebanon. (Leave Phone Number).

**LOOKING TO BUY MALE PUG:** 417-458-1424.

**THREADGILL'S - THE COOKBOOK, THE AUSTIN, TEXAS LANDMARK OF SOUTHERN COMFORT FOOD, HARD-BACK \$10.** 417-532-2045. LEBANON. LEAVE MESSAGE AND PHONE NUMBER.

**4 FIRESTONE TIRES:** 235-50, 18", Like new, 11,000miles. \$200/might trade for gun Springfield, 417-833-8351/417-234-0629.

**BRUSH HOGGING:** By the hour or by the job. Honest, reliable, newer equipment, good rates. 417-349-0084.

**American Made Metal Roofing**

40 Year Warranty Metal.....\$1.95 (\$60.94 Per Sq)

\*29 Gauge 10 Year.....\$1.75 (\$54.69 Per Sq)

**\*\*WHILE SUPPLIES LASTS\*\***

29 Gauge #1 Galvalume.....~~\$1.69~~.....\$1.39 (\$43.44 Per Sq)  
26 Gauge 40 Year.....\$2.25 (\$70.31 Per Sq)

★ 17 Colors To Choose From  
★ 21 Years In Business  
★ We Manufacture Our Own Metal and Trusses

**3 Locations To Serve You!**

1239 W. Kingshighway Paragould, AR 870-810-2494	1100 Pace Rd. Pocahontas, AR. 870-609-1900	35 Killdeer Rd. Seymour, MO. 417-952-7143
---	--	---

\*Possibly not American made. Prices always subject to change.

**Build In A Box**  
**Stud Wall & Pole Barn Kits**

	Non-Warranty Metal	10 Year Warranty	40 Year Warranty
24x30x8.....	\$3,350	.....\$3,700	.....\$3,850
30x40x10....	\$4,950	.....\$5,350	.....\$5,600
40x60x12....	\$9,300	.....\$10,000	.....\$10,200

• Precut Packages Also Available

**FORD A66 DIESEL ARTICULATING 4-WHEEL DRIVE LOADER:** \$10,500. 573-765-4406.

**8N FORD TRACTOR:** Not running w/rear blade. \$500. 573-855-7083.

**CLEAN 275 GALLON FLUID TOTES:** Limited quantity. \$55. 417-349-1386.



# YOUR AD GOES HERE!

**Add YELLOW Color For An Additional \$3 Per Reader Ad**

*All ads will include Phone Number (unless requested to be deleted by advertiser) and City Or Town, Phone Number with Area Code counts as one word. City or Town counts as one word.*

**RATE: 80¢ Per Word. All Classified Ads Require Payment Before Print.**

(1) 80¢	(2) \$1.60	(3) \$2.40	(4) \$3.20
(5) \$4.00	(6) \$4.80	(7) \$5.60	(8) \$6.40
(9) \$7.20	(10) \$8.00	(11) \$8.80	(12) \$9.60
(13) \$10.40	(14) \$11.20	(15) \$12.00	(16) \$12.80
(17) \$13.60	(18) \$14.40	(19) \$15.20	(20) \$16.00
(21) \$16.80	(22) \$17.60	(23) \$18.40	(24) \$19.20
(25) \$20.00	(26) \$20.80	(27) \$21.60	(28) \$22.40
(29) \$23.20	(30) \$24.00	(31) \$24.80	(32) \$25.60
(33) \$26.40	(34) \$27.20	(35) \$28.00	(36) \$28.80
(37) \$29.60	(38) \$30.40	(39) \$31.20	(40) \$32.00

## Place your Classified Ad TODAY!

**417-532-2800 • 800-665-8875**

**Fax: 417-532-8140**

**Or Mail To: P.O. Box 192 • Lebanon, MO 65536**

For your convenience we accept MasterCard, Visa, Discover or American Express



**DEADLINE FOR CLASSIFIED ADS: FRIDAY 4:00PM!**

Name \_\_\_\_\_

Address \_\_\_\_\_

City \_\_\_\_\_ Email \_\_\_\_\_

State \_\_\_\_\_ Zip Code \_\_\_\_\_ Phone \_\_\_\_\_

**Ad Total \$ \_\_\_\_\_ X # Weeks \_\_\_\_\_ = Amount Enclosed \$ \_\_\_\_\_**



# Built heavy duty, to make light work of any job.



L Series 24.1 - 47.3 HP Durable cast iron and steel design



**QUARLES**  
SUPPLY COMPANY INC.

**(417) 777-2391**  
quarleskubota.com

Call today to schedule a demo on the #1 selling compact tractor in the U.S. for over 10 years\*.

- Four affordable models to choose from
- Performance-matched Kubota front loader
- Kubota diesel engine and gear or HST transmission
- Easy-to-use controls

Together we do more.

## L2501DT w/loader

- NEW Kubota L2501DT
- 4wd, DIESEL, AG TIRES
- KUBOTA LOADER

## New L2501DT w/Loader Deal!

**\$20,995**  
Financing Price

- 5' ROTARY CUTTER
- 5' BOX BLADE
- NEW 18' KODIAK TRAILER W/RAMPS



KubotaUSA.com

\*Based on EDA tractor sales data of under 40 horsepower models from 2009 to 2019.

© Kubota Tractor Corporation, 2020. This material is for descriptive purposes only. Kubota disclaims all representations and warranties, express or implied, or any liability from the use of this material. For complete warranty, disclaimer, safety, incentive offer and product information, consult your local Dealer or go to KubotaUSA.com.