

FREE - TAKE ONE!

Vol. 27 No. 15

JULY 16, 2020

800-543-8271 • 800-665-8875

WEEKLY TRADER MAGAZINE



Find us on Facebook

@myweeklytrader AUCTIONS PG. 13

VISIT OUR NEW WEBSITE! MYWEEKLYTRADER.COM

Honda OF THE OZARKS

VERY LIMITED QUANTITIES!



2020 TRX420TM1 2X4

MSRP \$5,499
SAVE \$800



SALE
\$4,699

2020 TRX420FM1 4X4

MSRP \$6,499
SAVE \$800



SALE
\$5,699

2018 PIONEER 500
Phantom Camo

MSRP \$9,699
SAVE \$1,700



SALE
\$7,999

2020 PIONEER 700

MSRP \$10,999
SAVE \$1,000



SALE
\$9,999

OUR PRICE PROMISE: *If you find a better verified price in Missouri, WE WILL BEAT IT. GUARANTEED!*

(417)862-4686
2055 E. Kerr St.

HondaOfTheOzarks.com
I-44 & GLENSTONE EXIT 80

MSRP excludes destination charge. Visit Powersports.honda.com to view applicable destination charge amount. UTILITY ATVs ARE RECOMMENDED FOR RIDERS 16 YEARS OF AGE AND OLDER. ALL ATV RIDERS SHOULD TAKE A TRAINING COURSE AND READ THEIR OWNER'S MANUAL THOROUGHLY. MULTI-PURPOSE UTILITY VEHICLES CAN BE HAZARDOUS TO OPERATE. PIONEER IS ONLY FOR DRIVERS 16 YEARS AND OLDER. DRIVER AND PASSENGER MUST BE TALL ENOUGH FOR SEAT BELT TO FIT PROPERLY AND TO BRACE THEMSELVES WITH BOTH FEET FIRMLY ON THE FLOOR. PASSENGER MUST BE ABLE TO GRASP THE HANDHOLD. NEVER DRIVE WITH MORE THAN ONE PASSENGER. ALWAYS WEAR YOUR SEAT BELT, AND KEEP THE SIDE NETS AND DOORS CLOSED. ALL MUV USERS SHOULD WATCH THE SAFETY VIDEO "MULTIPURPOSE UTILITY VEHICLES: A GUIDE TO SAFE OPERATION" AND READ THE OWNER'S MANUAL BEFORE OPERATING THE VEHICLE. FOR BOTH TYPES OF VEHICLES, ALWAYS WEAR A HELMET, EYE PROTECTION AND APPROPRIATE CLOTHING. AVOID EXCESSIVE SPEEDS, AND BE CAREFUL ON DIFFICULT TERRAIN. FOR YOUR SAFETY BE RESPONSIBLE. NEVER DRIVE UNDER THE INFLUENCE OF DRUGS OR ALCOHOL, OR ON PUBLIC ROADS. RESPECT THE ENVIRONMENT WHEN DRIVING. ATV MSRP does not include \$400 in destination charges and \$189 Set-up/PDI charge. Pioneer 500 MSRP does not include \$660 in destination charges and \$229 Set-up/PDI charge. Pioneer 700 MSRP does not include \$760 in destination charges and \$229 Set-up/PDI charge.



CHEVY OPEN ROAD SALES EVENT



2020 BLAZER
12% OF MSRP
CASH
BACK

2020 EQUINOX
15% OF MSRP
CASH
BACK

2020 TRAX
15% OF MSRP
CASH
BACK

UP TO
15% OF MSRP
CASH
BACK
ON SELECT 2020 CHEVY MODELS*

FIND
NEW
ROADS™



*Not available on select base trims, with special financing, lease and some other offers. Take new delivery by 8/3/20.



FAIRGROUND

Auto Plaza
DRIVEN TO SERVE YOU BEST...

100 Fairgrounds Road
Rolla, Missouri
(573) 364-1002
www.FairgroundGM.com



TIME FOR PRECISION

Hustler's residential mowers are built stronger and perform faster, allowing you to quickly maneuver around obstacles with ease. Tackle your lawn in record time with unparalleled precision, and use the time you save to do the things you love.



For Outstanding Products & Service
AGRI-ENTERPRISES

1-1/2 Miles South Of Licking, MO On Hwy 63
573-674-2203 • 1-800-653-7152 • www.agri-enterprises.com

VIRUS SALE - mobile home inventory, entire stock, first come basis, 3 & 4 bedroom, 2 bath, Hurry and call for info 573-499-9993 columbiadiscounthomes.com

VINYL WINDOW: Double pane, 50x33. \$40. 417-322-4432.

SWAP MEET: At Treasures, 1060 Tower Road, Lebanon, August 7th & 8th, Vendors Wanted, 417-532-6666.

1956 FORD TRUCK SHOP MANUAL: \$20, Chiltons 1969-76 American cars \$30. Raymondville. 417-457-1023.

2008 POP-UP CAMPER: great condition, factory air, stove, fridge, 3-way hook-up, less than 300miles. \$3,500obo. 573-535-1067.

ORCHID COACH PURSE: \$40, VERA BRADLEY: w/matching wallet. \$40. 573-263-9235.

TIM'S USED CARS

(573) 341-3828 • 1334 South Bishop (Hwy. 63) • Rolla, MO
Next to Hwy CC • www.tims-used-cars.com

<p>2011 CHEVY 1500 LTZ Z71 Crew Cab, 4x4, 5.3 V8, Loaded with Options, 183,xxx Miles PRICED TO SELL!</p>	<p>2013 CHRYSLER TOWN & COUNTRY TOURING V6, 7 Passenger, DVD, 155,xxx Miles Only \$7,300</p>
<p>2015 RAM 3500 TRADESMAN 4x4, 6.4, V8, Auto, Power Equipped, 62,xxx Miles Only \$29,500</p>	<p>2017 CHEVY SPARK LS 4cyl., Auto, 25,xxx Miles Only \$9,900</p>

LARGE SELECTION OF CARS, TRUCKS, SUVs & VANS!

#1 Selling FARM TRACTOR IN THE WORLD

Mahindra

Come See Us For Your Mahindra

Financing available for those who qualify
www.agri-enterprises.com

AGRI-ENTERPRISES
1-1/2 Miles South Of Licking, MO On Hwy 63
573-674-2203 • 1-800-653-7152

I BUY.....used mobile homes. Call or text 573-338-6250 or email GregS.CDH@outlook.com

WANT TO BUY JOHN DEERE DIESEL TRACTOR: in need of repair. Call 573-768-0068.

Built heavy duty, to make light work of any job.



QUARLES
SUPPLY COMPANY INC.

(417) 777-2391
quarleskubota.com

Call today to schedule a demo on the #1 selling compact tractor in the U.S. for over 10 years.*

- Four affordable models to choose from
- Performance-matched Kubota front loader
- Kubota diesel engine and gear or HST transmission
- Easy-to-use controls

Together we do more.

New L2501DT w/Loader Deal!

**L2501DT
w/loader**

**\$20,995
Financing Price**

- NEW Kubota L2501DT
- 4wd, DIESEL, AG TIRES
 - KUBOTA LOADER

- 5' ROTARY CUTTER
- 5' BOX BLADE
- NEW 18' KODIAK TRAILER W/RAMPS



KubotaUSA.com

*Based on EDA tractor sales data of under 40 horsepower models from 2009 to 2019.

© Kubota Tractor Corporation, 2020. This material is for descriptive purposes only. Kubota disclaims all representations and warranties, express or implied, or any liability from the use of this material. For complete warranty, disclaimer, safety, incentive offer and product information, consult your local Dealer or go to KubotaUSA.com.

01 53FT. UTILITY TRAILER: Refrigerated, good tires, new airbags, \$4,500. 417-531-1225.

WANTED, TIMBER TO LOG ON SHARES: Honest, reliable, references. 417-533-4607, 417-664-1195.

DETROLA MUSIC MACHINE: Plays CD'S, Records, Cassettes, AM-FM Radio, excellent condition, 20x18x12, oak finish, antique look. \$65. 573-364-7465, Rolla.

2000 FORD TRACTOR: Nice, low hours, live power. \$4,650. 573-468-7689.

FIREARMS: Professional Repairs and Restorations. Baron's Gunsmithing. 573-363-5801, Camdenton.

ANTIQUE BRASS KITCHEN CABINET HARDWARE: 2 sets of 44. \$50 per set. 636-239-2695



★ **American Made Metal Roofing** ★

40 Year Warranty Metal.....\$1.95 (\$60.94 Per Sq)

*29 Gauge 10 Year.....\$1.75 (\$54.69 Per Sq)



****WHILE SUPPLIES LASTS****
 29 Gauge #1 Galvalume.....~~\$1.69~~.....\$1.39 (\$43.44 Per Sq)
 26 Gauge 40 Year.....\$2.25 (\$70.31 Per Sq)

- ★ 17 Colors To Choose From
- ★ 21 Years In Business
- ★ We Manufacture Our Own Metal and Trusses



3 Locations To Serve You!

1239 W. Kingshighway Paragould, AR 870-810-2494	1100 Pace Rd. Pocahontas, AR. 870-609-1900	35 Killdeer Rd. Seymour, MO. 417-952-7143
---	--	---

*Possibly not American made. Prices always subject to change.

Build In A Box
Stud Wall & Pole Barn Kits

	Non-Warranty Metal	10 Year Warranty	40 Year Warranty
24x30x8.....	\$3,350	\$3,700	\$3,850
30x40x10.....	\$4,950	\$5,350	\$5,600
40x60x12.....	\$9,300	\$10,000	\$10,200

•Precut Packages Also Available

NEW BIG TEX 22GN FLATBED TRAILER

JIM'S Motors
 TRAILERS
 GREAT SERVICE!
 1957-2018 GREAT PRICES!

I-44 at Exit 208 • Cuba, MO
 www.jimsmotors.com
(573)885-2595
(800)897-9840

RIDING HORSES, MULES, DONKEYS: saddles, harness, collars, enclosed Amish buggy, Pioneer four cart, & riding plow. 417-531-5707. Lebanon

INDIVIDUAL PURCHASER: Seeking house, near Lebanon, on pavement. Large lot, or few acres, send information. 29219 Highway AA Lebanon, 65536.

SUZUKI 500: 4x4 ATV, for parts or repair, nearly new tires, make offer. 608-792-8861.

LOOKING TO BUY: 2002 Chevy Trailblazer, any condition. 636-232-7480.

LAKE OF THE OZARKS-CAMPING LOT SPECIAL: Lots starting at \$2,020... \$59 down-\$49 month. Beautiful wooded areas, **GREAT FOR THE AVID FISHERMAN.** Lots are a short distance from the Lake of the Ozarks. Conservation handicapped accessible covered fishing dock with lighted and free lake access and area boat ramps. Owner financing, immediate possession or Own for investment. **Also;** Acreage tracts and Building lots available. Prices good through **July 20, 2020.** Hwy 135 South out of Stover MO. take Lake Road 135-12 follow the signs to Ivy Bend Office. **OPEN BY APPOINTMENT ONLY** Call (573) 372-6493 www.ivybendlandoffice.com

WE BUY
White Oak Logs!

- ✓ Top prices for your logs
- ✓ Experienced log buyers
- ✓ Professional service

Chad Cook | Salem Wood Products
417.718.2950
 5 miles north of Salem, MO on Hwy 19

INDEPENDENT STAVE COMPANY
 Log Procurement & Sales

www.independentstavecompany.com

STAINED GLASS THEATRE COOKBOOK. \$6.50. **RESTAURANT RECIPES OF MISSOURI.** \$7.50. **THE CAKE DOCTOR COOKBOOK.** \$6.50. 417-532-2045, Lebanon. (Leave Phone Number).

BoatAngel

FREE 4-NIGHT VACATION!
 Donate Car • Boat • RV • Motorcycle

1-800-CarAngel

www.boatangel.org

This is...

WEEKLY TRADER COUNTRY!

The Weekly Trader *GETS RESULTS!*



WEEKLY TRADER MAGAZINE

Place Your Ad With Us Today!

417-532-9131 CHECK US OUT ONLINE AT: myweeklytrader.com

YOUR LAND AND FARM EXPERTS!



Cass Co-160 Acres

\$ 1,200,000

This is a once in a lifetime farm that provides for avid hunters or cattle ranchers to have everything in one location! Located just east of Cleveland, Missouri with blacktop road frontage! Close by are two rock quarries which are great areas for producing trophy whitetail bucks! Large Ranch Style home for a family or an unbelievable hunting lodge for investors! Farm has it all from it's mature diverse timber, open hay pastures, bottom ground, live creek, amazing waterfowl, deer and turkey hunting, several ponds, multiple outbuildings for equipment, cattle working facility's, and cattle tight fence throughout! This is a turn key ranch for cattlemen, as it has several open acres of pasture, timber for wintering livestock, and live water! The Home Is made up of 4 large bedroom, 3 bathrooms, 2 large living room areas, open concept kitchen, 2 car attached garage, and a detached garage! The home has 2 fireplaces and central air! Contact **Trenton Scott @ 660-351-3201**.



Dent Co-30 Acres

\$80,000

Have you ever dreamed of owning land that borders a five hundred twenty acre Missouri Department of Conservation area, this thirty acre m/l tract is what you are looking for! Consisting of approximately eight areas of improved pasture and the remainder in oak, hickory, and other hardwoods, this property has all the ingredients for a homesite, weekend cabin, or recreational getaway place. The owner has created easy access throughout the property, and a new bottom ground food plot area has been recently cleared and is now waiting for buck forage oats or other wildlife food to be planted. Deer and Turkey are plentiful. The property provides about a quarter mile of State Route OO highway frontage, and two separate gates provide access to the property. The owner recently had the hay baled, has cleared new areas adjacent to the highway making many nice locations for a new home or cabin. Electric is available along State Route OO. The property is approximately fourteen miles from Rolla, seventeen miles from Salem, and thirty minutes from the east gate of Fort Leonard Wood. Lane Spring campground on the Little Piney River is only three miles away. Call **Danny L. Miller at 573-528-1489**



Dent Co-120 Acres

\$222,000

Extraordinary hunting property-located only 25 min. from Rolla, 15 min. from Lane Spring Campground on the Little Piney River, and 40 min. to Montauk State Park. State Hwy DD road frontage, a 1200 sq. ft home that will require repairs, but would make a very nice residence or weekend getaway. Home provides a drilled well & there is a storage shed for your tools. The property consists of appx 80 acres of hardwood forest with appx 40 acres of pasture/hay field. The large field is close to 30 acres & the owner normally has it baled for hay. 3 ponds provide watering holes for the livestock and wildlife. The largest pond is about 2/3 acre in size and has fish. I saw numerous turkey tracks in the mud holes and countless deer beds in the big hay field. Another bonus is the proximity to the R.F. Clement Conservation Area. A trail around the perimeter of the northwest 40 acres provides easy viewing on a side by side. Appx 5 acres lay on the north side of State Hwy DD & would make a nice site for your home or cabin. The SW corner of this acreage joins the NW corner of the 530 acre Conservation Land. Priced at fair market value, this one will not last long. Call **Danny Miller at 573-528-1489**



Henry Co-2 Acres

\$14,900

Here is a nice 2 acre building site or cabin location in the woods. Property lays very well with some very nice big timber. Paths through the property to get around. There is a recorded easement to get from SE 400th Rd up to property. Electric is close and county water is on the property. Fenced on three sides with a little open ground. Only 15 minutes from Clinton and 10 minutes to a boat ramp on Truman Lake . This wont last long call **Mike Stoner at 573-774-9775**



Hickory Co-80 Acres

\$128,000

Turn Key Hunters Paradise in Avery Missouri is every hunters dream from diverse timber, open bottom pasture, and established food plots! This property is known to have several deer and turkey all over it! Property has a nice easement road access off of a county road. Trails are made throughout the farm for ATV's and horse rides. This is a very demanding area for hunters and fisherman and is in a very nice community. You can drop your boat in right down the road at the Avery boat ramp! The open pasture has always been hayed off every year and would provide a good area for a small livestock heard as well. This is a very diversified farm that is a must see to appreciate! **Trenton Scott @ (660) 351-3201**



Morgan Co-39.2 Acres

\$59,000

If you're looking for the perfect, secluded hunting getaway, you've found it!! This property sits on a very nice, drivable easement road behind a locked gate. It is at the end of the easement and is extremely private and peaceful. There are more rubs on this property than I have ever seen before! I also found a turkey feather and turkey scratch as I was walking the land. You'll also be amazed by the enormous timber. It doesn't get much better than this, and at this price, it's sure to sell fast. So call **Pamela Dempsey today at 660-553-8677** for more information and to schedule a tour of the property!

MISSOURI
LAND
COMPANY

Farm, Home & Hunting Properties

Rolla Office:
12647 S. Hwy 63, Rolla
573-308-4868

Cole Camp Office:
14981 Centerline Ave.,
Cole Camp
660-668-4868



Toll FREE number for both locations
844-974-1850

WEEKLY TRADER MAGAZINE

by mail!



Delivering Deals Week To Week

Simply return this completed Subscription Form with check or money order to: **Weekly Trader, P.O. Box 192, Lebanon, MO 65536**



_____ 4 weeks	\$8.00
_____ 12 weeks	\$24.00
_____ 24 weeks	\$48.00
_____ 52 weeks	\$104.00

Name: _____

Address: _____

City, State, Zip: _____

Phone: _____

You may also call our office 417-532-2800 to subscribe with credit or debit card.

LANDPRIDE RCF3010: pull type brush hog, 10'. \$5,900. 417-270-1505.

ANTIQUE 12 GAUGE: Single barrel, shotgun. \$175. Desloge, 573-327-9068.

2003 FORD ESCORT ZX2: runs good, near new tires, 30mpg. \$1,500 firm, 573-437-3671.

CUSTOM SAW MILLING: Lebanon. 417-533-4607, 417-664-1195.

CHEVROLET MANUAL V-8 OR V-6 . 1962-74, 1954-1963. \$25 each. 417-457-1023.

LOOKING TO BUY MALE PUG: 417-458-1424.

Heritage Tractor customers saved an average of

\$2,000

on their compact tractor purchase over other tractor brands¹



STAR-SPANGLED PACKAGE

Includes 4044M Tractor, Loader and Rotary Cutter

- Naturally aspirated diesel engine
- Standard 4-wheel-drive



A LOT FOR A LITTLE PACKAGE

Includes 1023E Tractor, Mower Deck and Loader

- Powerful Final Tier 4-compliant diesel engine
- New, easy-lift hood with dual gas-charged lift struts

0% FOR 50 MONTHS

on all skid steers and compact track loaders²



SKID STEERS

- Rated Operating Capacity starting at 704 kg (1,550 lb.)
- Gross Horsepower starting at 51 hp



COMPACT TRACK LOADERS

- Bucket breakout force up to 4,200 kg (9,250 lb.)
- Net Horsepower up to 96.9 hp

Legendary Products. Extraordinary Service.
Find your local Heritage Tractor location or request a quote at HeritageTractor.com



JOHN DEERE

Heritage
TRACTOR

(1) Savings based upon Maritz January 2019 Customer Purchase Funnel Study. Some restrictions apply. See dealer for details. Offer good through 10/31/2020. (2) Offer valid on qualifying purchases made between 01 March 2020 to 31 August 2020. Subject to approved installment credit with John Deere Financial, for commercial use only. Down payment may be required. Average down payment is 10%. Taxes, freight, setup and delivery charges could increase monthly payment. Available at participating U.S. dealers. Prices and models may vary by dealer. Offer available on new equipment and in the U.S. only. Prices and savings in U.S. dollars.

Fishing Season is here!
We have a great supply of: Berkley Flicker Shads, Charlie Brewer's Slider Grubs, Swimming Minnows & Jig Heads!
Craig's OUTDOOR Sports
9435 HWY N. Suite A (417) 926-0255
Mtn. Grove, MO craigsooutdoorsports.com
Mon-Fri 9am-5pm • Sat 9am-Noon

DARDEN PROFESSIONAL TIMBER HARVESTING, BUYING STANDING TIMBER: Great prices, improve wildlife habitat and improve forest health. State Certified & Fully Insured! 573-247-4808 or 573-739-1122. Salem

WANTED PINBALL MACHINES. 573-424-7200.

SOUTHERN OVEN COOKBOOK: The Savories, The Sweets, by Jean Anderson, hardback, 272 pages. \$6.50 417-532-2045. Leave Message.

KUSTER LOGGING
BUYER of Standing Timber Oak and Walnut
Dozing Now Available
417-259-0047
References Available

THREADGILL'S - THE COOKBOOK, THE AUSTIN, TEXAS LANDMARK OF SOUTHERN COMFORT FOOD, HARD- BACK \$10. 417-532-2045. LEBANON. LEAVE MESSAGE AND PHONE NUMBER.

REGISTERED HEREFORD & ANGUS BULLS: Home raised, Some Show-Me Select Qualified. 573-701-7828. Belgrade

ALLIS CHALMERS D-15 Series 2: 43 horsepower, wide-front, 3 point, good tractor w/ 3 point blade \$3,300. 573-353-6317.

GRISWOLD REFERENCE PRICE GUIDE: \$7.50 417-532-2045. Lebanon. Leave phone number.

LIONEL TRAIN SET: Steam engine, tender, caboose and other car, track and transformer. \$195. 573-364-7465, Rolla.

MX5100 KUBOTA: 4wd tractor with loader, 52 HP, open station, low hours. \$20,000. 417-270-1505.

FERTRELL: ORGANIC FERTILIZER AND MINERALS. Call for free catalog. 315-796-4370.

We Need Your **TRADE IN!**

**PLEASE STOP BY TODAY AND LET US MAKE
A COMPETITIVE OFFER ON YOUR TRADE**

T-1460D	2016 Ram 1500 Crew Cab Laramie 5.7L V8 SMPI Hemi 52,056 miles	\$26,500	T-15248B	2017 Dodge Grand Caravan Wagon SXT 3.6L V6 MPI DOHC VVT Flex 78,223 miles	\$16,495
T-8227	2019 Ram 1500 Crew Cab 4WD SWB Big Horn 5.7L V8 SMPI Hemi 26,712 miles	\$36,995	T-8196	2019 Dodge Grand Caravan Wagon SXT 3.6L V6 MPI DOHC VVT Flex 26,285 miles	\$19,995
T-8246	2020 Ram 1500 Quad Cab 4WD SWB Big Horn 5.7L V8 SMPI Hemi 13,531 miles	\$35,495	T-8164	2019 Dodge Grand Caravan Wagon SXT 3.6L V6 MPI DOHC VVT Flex 43,601 miles	\$18,500
T-8249	2019 Ram 1500 DS Crew Cab 4WD SWB SLT 5.7L V8 SMPI Hemi 19,008 miles	\$31,995	T-8195A	2017 Dodge Grand Caravan Wagon SXT 3.6L V6 MPI DOHC VVT Flex 47,209 miles	\$16,995
T-8235	2019 Ram 1500 DS Crew Cab 4WD LWB SLT 5.7L V8 SMPI Hemi 39,654 miles	\$27,495	T-15165B	2011 Jeep Grand Cherokee 4D SUV 4WD Limited 5.7L V8 SFI Hemi 119,865 miles	\$12,495
T-8247	2019 Ram 2500 Crew Cab 4WD SWB Big Horn 6.4L V8 SMPI OHC 6,217 miles	\$42,495	T-8225	2020 Jeep Grand Cherokee 4D SUV 4WD Laredo 3.6L V6 MPI DOHC VVT Flex 18,103 miles	\$32,995
P-8202	2019 Chrysler 300 4D Sedan AWD Limited 3.6L V6 MPI DOHC VVT Flex 11,977 miles	\$27,495	T-8222	2019 Jeep Grand Cherokee 4D SUV 4WD Limited 3.6L V6 MPI DOHC VVT Flex 20,128 miles	\$32,995
P-8214	2019 Chrysler 300 4D Sedan AWD Limited 3.6L V6 MPI DOHC VVT Flex 14,266 miles	\$26,995	T-8223	2020 Jeep Grand Cherokee 4D SUV 4WD Laredo 3.6L V6 MPI DOHC VVT Flex 10,718 miles	\$35,995
P-15128B	2013 Fiat 500 2D Hatchback Pop 1.4L I-4 MPI 64,305 miles	\$7,495	T-8224	2020 Jeep Grand Cherokee 4D SUV 4WD Limited 3.6L V6 MPI DOHC VVT Flex 5,351 miles	\$35,995
T-15117C	2018 GMC Acadia 4D SUV FWD SLT1 3.6L V6 DI DOHC 55,839 miles	\$22,995	T-8210	2018 Dodge Journey 4D SUV FWD SE 2.4L I-4 SFI DOHC 51,821 miles	\$15,995
T-14913B	2015 GMC Acadia 4D SUV FWD SLE1 3.6L V6 DI DOHC 97,164 miles	\$12,995	T-8209	2018 Dodge Journey 4D SUV FWD SE 2.4L I-4 SFI DOHC 34,774 miles	\$16,995
P-15109A	2018 Hyundai Accent 4D Sedan at SE 1.6L I-4 DI DOHC CVT 7,095 miles	\$12,900	T-15001B	2010 Dodge Journey 4D SUV FWD SE 2.4L I-4 SFI DOHC 154,540 miles	\$7,495
P-15211A	2010 Honda Accord 2D Coupe V6 EX 3.5L V6 MPI SOHC VTEC 93,400 miles	\$9,800	T-8015A	2017 Dodge Journey 4D SUV FWD SE 2.4L I-4 SFI DOHC 39,003 miles	\$12,995
T-15257A	2018 Jeep All-New Wrangler 4D SUV 4WD Unlimited Sport 3.6L V6 MPI DOHC 30,817 miles	\$27,995	P-15267A	2018 Buick LaCrosse 4D Sedan FWD Essence 2.5L I-4 DI DOHC Assist 26,200 miles	\$19,495
T-8081A	2015 Jeep Cherokee 4D SUV 4WD Trailhawk 2.4L I-4 MPI SOHC 44,451 miles	\$18,800	P-8143	2017 Chevrolet Malibu 4D Sedan LT 1.5L I-4 DI DOHC T/C 28,459 miles	\$15,800
T-8151	2016 Jeep Cherokee 4D SUV 4WD Sport 2.4L I-4 MPI SOHC 67,636 miles	\$16,700	P-15165A	2014 Ford Mustang 2D Convertible GT 5.0L V8 SFI 40,535 miles	\$22,995
T-8232	2020 Jeep Cherokee 4D SUV 4WD Limited 3.2L V6 SMPI DOHC 13,579 miles	\$25,995	T-15201B	2010 Dodge Ram 1500 Quad Cab 4WD SLT 4.7L V8 SMPI SOHC Flex 141,980 miles	\$12,495
T-8231	2020 Jeep Cherokee 4D SUV FWD Limited 2.4L I-4 MPI SOHC 10,347 miles	\$25,995	T-8176	2018 Jeep Renegade 4D SUV 4WD Latitude 2.4L I-4 SMPI DOHC 19,601 miles	\$17,700
P-8004A	2017 Honda Civic 4D Sedan EX 2.0L I-4 MPI DOHC 51,801 miles	\$15,800	T-8175	2018 Jeep Renegade 4D SUV FWD Latitude 2.4L I-4 SMPI DOHC 20,612 miles	\$17,300
T-15182A	201 Jeep Compass 4D SUV 4WD Base 2.4L I-4 SFI DOHC 111,524 miles	\$7,995	T-8161	2019 Jeep Renegade 4D SUV FWD Latitude 2.4L I-4 SMPI SOHC 6,847 miles	\$19,800
T-8240	2019 Jeep Compass 4D SUV FWD Limited 2.4L I-4 MPI SOHC 34,088 miles	\$20,995	T-14967A	2018 Chevrolet Silverado 1500 Crew Cab 4WD LWB LT 5.3L V8 DI VVT Flex 50,643 miles	\$29,800
T-15143A	2018 Subaru Crosstrek 4D Wagon at Limited 2.0L H-4 DI DOHC 19,756 miles	\$24,900	T-8218	2019 Chevrolet Silverado 1500 LD Dbl Cab 4WD LT 5.3L V8 DI VVT Flex 37,831 miles	\$27,500
P-15170A	2015 Dodge Dart 4D Sedan Limited 2.4L I-4 SFI DOHC 80,636 miles	\$12,495	T-15212	2017 Kia Sorento 4D SUV AWD SX 3.3L V6 DI DOHC 53,213 miles	\$23,995
T-15247A	2019 Ford Edge 4D SUV FWD SE 2.0L I-4 DI EcoBoost 12,325 miles	\$22,495	T-8160	2019 Chevrolet Tahoe 4D SUV 4WD LT 5.3L V8 DI VVT Flex 26,789 miles	\$43,900
T-8141	2019 Buick Enclave 4D SUV AWD Essence 3.6L V6 DI DOHC 30,566 miles	\$31,500	T-8089	2018 GMC Terrain 4D SUV FWD SLE 1.5L I-4 DI DOHC T/C 18,034 miles	\$17,900
T-8145	2018 Chevrolet Equinox 4D SUV FWD 1.5T LT 1.5L I-4 DI DOHC T/C 29,945 miles	\$17,500	T-8071	2018 GMC Terrain 4D SUV FWD SLE 1.5L I-4 DI DOHC T/C 19,833 miles	\$17,900
T-8138	2019 Chevrolet Equinox 4D SUV FWD 1.5T LT 1.5L I-4 DI DOHC T/C 7,338 miles	\$20,800	T-8217A	2015 Chevrolet Traverse 4D SUV FWD LT 3.6L V6 DI DOHC 15,642 miles	\$11,495
T-15239A	2018 Ford Escape 4D SUV 4WD Titanium 2.0L I-4 DI T/C EcoBoost 36,785 miles	\$21,495	T-7990A	2017 Chevrolet Traverse 4D SUV AWD LT 3.6L V6 DI DOHC 23,268 miles	\$22,995
T-14993B	2015 Ford Escape 4D SUV FWD SE 2.5L I-4 SMPI DOHC 65,310 miles	\$11,995	T-8188A	2015 Chevrolet Traverse 4D SUV AWD LT 3.6L V6 DI DOHC 142,065 miles	\$10,495
T-8174	2017 Ford Escape 4D SUV 4WD SE 1.5L I-4 DI DOHC EcoBoost 49,090 miles	\$14,700	T-8142	2017 Chevrolet Trax 4D SUV FWD LS 1.4L I-4 MFI DOHC T/C 27,650 miles	\$14,400
T-8172	2019 Chevrolet Express Wagon LWB G3500 6.0L V8 SFI OHV Flex 20,007 miles	\$25,995	T-14693A	2020 Chevrolet Trax 4D SUV FWD LT 1.4L I-4 MFI DOHC T/C 946 miles	\$18,400
T-8207	2019 Dodge Grand Caravan Wagon SE 3.6L V6 MPI DOHC VVT Flex 19,515 miles	\$18,495	P-8228A	2018 Subaru WRX 4D Sedan Gsp Premium 2.0L H-4 DI DOHC T/C 57022 miles	\$22,495
T-8169	2019 Dodge Grand Caravan Wagon GT 3.6L V6 MPI DOHC VVT Flex 41,677 miles	\$19,500			

LINDSAY CHRYSLER/DODGE PREOWNED 573-336-2698

809 MISSOURI AVE., ST. ROBERT, MO • OPEN 8 A.M. - 6:30 P.M. MON.-FRI. & • SAT. - 9 A.M. - 5 P.M.

LINDSAY CHRYSLER/DODGE PRE-OWNED IN ST. ROBERT

WWW.LINDSAYCHRYSLERDODGE.COM

SUMMER SALES EVENT



T-15127

2020 RAM 1500 BIGHORN CREW 4X4



LEVEL 1, SPORT, 5.7, AUTO
3.92, ANTISPIN DIFF, BUCKETS

MSRP	\$50,405
CONSUMER REBATE	-\$2,000
NATIONAL REBATE	-\$2,000
TRUCK MONTH REBATE	-\$500
TRUCK CONQUEST	-\$1,000**
CHRYSLER CAPITAL BONUS	-\$1,500*

SALE PRICE **\$40,400**

2020 RAM 1500 BIGHORN NIGHT ED 4X4



LEVEL 2, 5.7 CREW

MSRP	\$50,910
CONSUMER REBATE	-\$2,000
NATIONAL REBATE	-\$2,000
MIDWEST BONUS CASH	-\$500
TRUCK CONQUEST	-\$1,000**
CHRYSLER CAPITAL BONUS	-\$1,500*

SALE PRICE **\$40,900**

2020 RAM 2500 TRADESMAN CREW 4X4



6.4, AUTO CHROME APP, TOW PREP GROUP
LEVEL 2, SPRAY BEDLINER, TOW MIRRORS

MSRP	\$47,655
ENGINE POWER ON THE JOB	-\$500
ON THE JOB REBATE	-\$500

SALE PRICE **\$43,800**

2020 RAM 3500 TRADESMAN CREW 4X4



6.7 DIESEL, 6SP AUTO, CHROME APP,
GOOSENECK PREP PKG, LEVEL 2, SPRAY
BEDLINER, 8.4 RADIO

MSRP	\$59,159
TRUCK CONQUEST	-\$500*
ON THE JOB REBATE	-\$500**

SALE PRICE **\$54,595**

NON PRIME
TAKE AN ADDITIONAL
\$2,250 OFF

T-15148

2020 JEEP RENEGADE 4X2



1.3L TURBO, 9 SPD AUTO
POPULAR EQUIP, COLD WEATHER

MSRP	\$28,800
CONSUMER REBATE	-\$3,000
CHRYSLER CAPITAL BONUS	-\$750*
MIDWEST BONUS CASH	-\$1,000*

SALE PRICE **\$23,995**

2020 JEEP WRANGLER SPORT



3.6L, 8SPD AUTO, 3 PIECE HARDTOP,
ANTISPIN DIFF

MSRP	\$37,795
VIN SELECT	-\$1,000

SALE PRICE **\$35,500**

T-15242

2020 JEEP CHEROKEE LATITUDE PLUS FWD



3.2 V-6, LEATHER CONFORT/CONV

MSRP	\$34,135
CONSUMER CASH	-\$2,500
CHRYSLER CAPITAL BONUS	-\$750*
BONUS	-\$500

SALE PRICE **\$29,550**

NON PRIME
TAKE AN ADDITIONAL
\$1,250 OFF

T-15242

2020 DODGE DURANGO GT AWD



3.6L 8 SPD AUTO, LEATHER, PREMIUM GROUP,
SECOND ROW CAP CHAIRS, PERFORMANCE
HOOD, BLINDSPOT & CROSSPATH DET

MSRP	\$48,920
CUSTOMER REBATE	-\$2,950
CHRYSLER CAPITAL BONUS	-\$750*

SALE PRICE **\$42,995**

T-15210

T-15244

2019 CHRYSLER VOYAGER LX



3.6L, 9 SPD, AUTO, SAFETY TEC
COLD WEATHER

MSRP	\$32,280
CUSTOMER REBATE	\$750

SALE PRICE **\$31,150**

T-15242

2019 CHRYSLER 300 TOURING



3.6L, AUTO, CHROME APP

MSRP	\$32,260
CUSTOMER REBATE	-\$4,250
MIDWEST BONUS CASH	-\$1,750*

SALE PRICE **\$23,900**

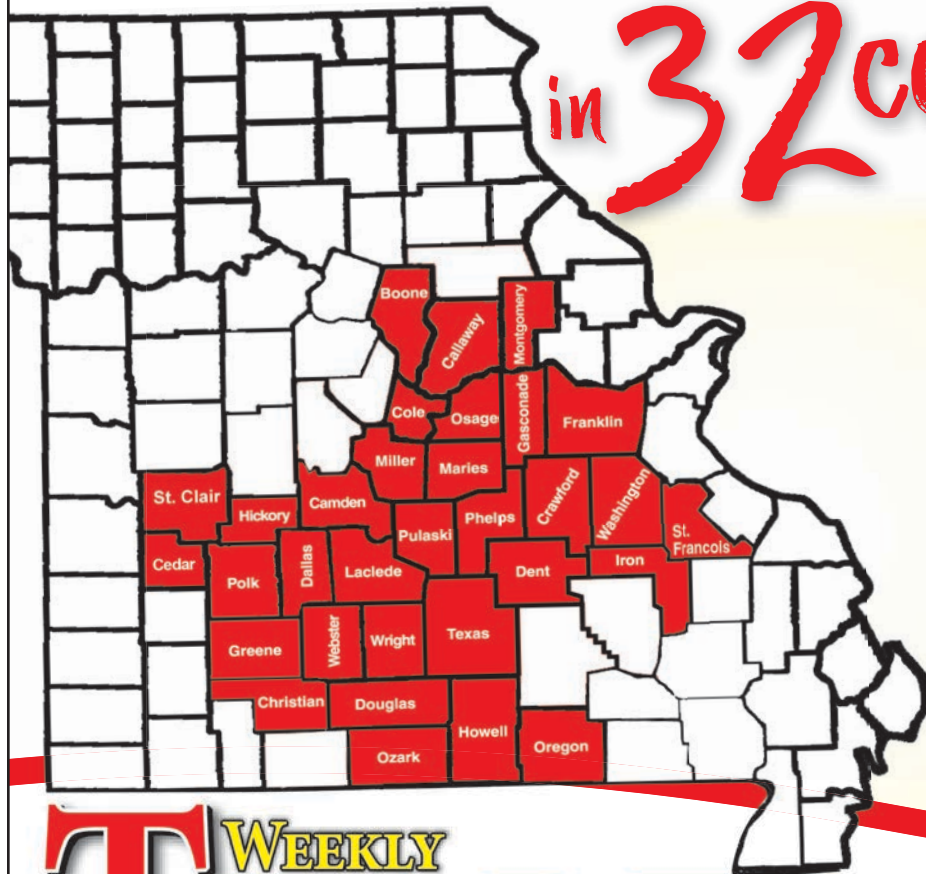
Also Available \$500 Military Rebate OR Up To \$1,000 USA Member Discount.**

*MUST FINANCE WITH CHRYSLER CAPITAL * MUST OWN A FCA GROUP VEHICLE ** MUST BE A NON FCA TRUCK OWNER ** MUST BE A BUSINESS OWNER, *** MUST HAVE A CREDIT SCORE OF 620 OR BELOW, ** OFFER'S CAN NOT BE COMBINED. MUST QUALIFY. SEE DEALER FOR DETAILS. OFFER EXPIRES 07/31/20. ACTUAL PHOTOS MAY NOT BE SHOWN.



Serving Central Missouri!

in 32 counties!



- Boone
- Callaway
- Camden
- Cedar
- Christian
- Cole
- Crawford
- Dallas
- Dent
- Douglas
- Franklin
- Gasconade
- Greene
- Hickory
- Howell
- Iron
- Laclede
- Maries
- Miller
- Montgomery
- Oregon
- Osage
- Ozark
- Phelps
- Polk
- Pulaski
- St. Clair
- St. Francois
- Texas
- Washington
- Webster
- Wright

WEEKLY TRADER MAGAZINE

417-532-2800
100 E. Commercial St.,
Lebanon, MO 65536

WWW.MYWEEKLYTRADER.COM

f @myweeklytrader

1995 CHEVY PICK-UP: 4X4, 3/4 ton, many new parts, some rust, trailer brake system. \$4,500. After 3pm Bourbon, 573-627-3729.

OLD LINN CREEK, HA HA TONKA & CAMDEN CO BOOK, "Before the Dam Waters", BY T. VICTOR JEFFRIES. \$5.50 each post paid. To order: 417-532-2045, Lebanon (leave message.)

WEATHERED BARN WOOD SIDING: 8" & 10" wide. 573-729-7226. www.pineridgerustic.com

DARDEN PROFESSIONAL TIMBER HARVESTING, BUYING STANDING TIMBER: Great prices, improve wildlife habitat and improve forest health. State Certified & Fully Insured! 573-247-4808 or 573-739-1122. Salem

FERTRELL: ORGANIC FERTILIZER AND MINERALS. Call for free catalog. 315-796-4370.

LOG SIDING SALE: 2X8 Western Cedar .99 ft/ Pine \$1.19 ft while supplies last. www.pineridgerustic.com 573-729-7226.

THREADGILL'S - THE COOKBOOK, THE AUSTIN, TEXAS LANDMARK OF SOUTHERN COMFORT FOOD, HARD-BACK \$10. 417-532-2045. LEBANON. LEAVE MESSAGE AND PHONE NUMBER.

MX5100 KUBOTA: 4wd tractor with loader, 52 HP, open station, low hours. \$20,000. 417-270-1505.

TRACTOR: Farmall H, wide front, very nice condition, call for details/pictures, \$2,500. 417-848-8754.

WEEKLY TRADER MAGAZINE



AUCTION DIRECTORY

Thursday, July 16

11:00am Mid Missouri Stockyards.....30

Saturday, July 18

9:00am Chadwell Auction Service19
 9:00am Warden Auction Service20
 9:00am Adams Auction.....28
 9:00am Buckner & Gatley Auction.....30
 9:30am Triple M. Auctions18
 10:00am Sellers Auction14
 10:00am Brehe Auctioneering Service24
 10:00am Danahy Auction Service26
 12:00pm Buffalo Livestock Market30

Tuesday, July 21

Online Atterberry Auction.....22

Wednesday, July 22

Online Purplewave Auction.....16
 Online Atterberry Auction.....22

Thursday, July 23

Online Warden Auction.....21

Saturday, July 25

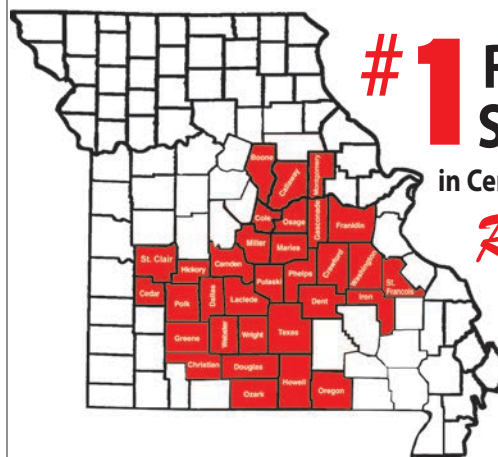
9:00am Drenon Auction23
 9:00am Brehe Auctioneering Service25
 9:00am Show-Me Auction Center.....29
 10:00am Glenworth Auction17
 10:00am Danahy Auction Service27

Saturday, August 15

10:00am Gary Sexton Auctioneers.....15

Saturday, August 29

10:00am Wheeler Auctions.....30



#1 Rural Shopper
 in Central Missouri
Reader's Choice!

Call 1-800-665-8875 to get your auction listed in the Weekly Trader.

AUCTIONEERS Did you know the WEEKLY TRADER covers more counties in rural Missouri than any other publication?

Firm deadline is 12:00 PM Friday, prior to next week's Thursday publication date.



AUCTION

Due to Selling their Farm Carl and Marilyn Lowery will sell the following items on:

Saturday July 18, 2020 @ 10AM

DIRECTIONS (497 Swinging Bridge Road, Montreal, MO): From Camdenton, MO, travel Hwy 54 East approx. 3.8 miles to Hwy A, then travel Hwy A 7.7 miles to Swinging Bridge Road, then approx. 0.5 miles to the auction site on the left. Follow Sellers Auction Signs on Sale Day

Machine, Equipment, & Tools: Allis-Chalmers D17 Series 4/5829hrs ~ Allis-Chalmers 185/2824hrs w/Bush hog brand Loader ~ John Deere 1018 Rotary Cutter ~ 16ft Flatbed Tandem Axel w/Wood Floor Trailer ~ Lincoln Ranger 8 Welder/2944hrs ~ Lincoln 225 Welder ~ 6ft 3pt Blade ~ 3pt Lift Type 5ft Brush Hog ~ Nu-Mark 10" Drill Press 1991 ~ Werner 20' Fiberglass Ladder ~ John Deere Yard Cart/Trailer ~ Stanley Bostitch Air Compressor ~ DeWalt Metal Cutoff Saw ~ Stihl HT101 Pole Saw ~ Husqvarna #51 Chainsaw ~ Craftsman Blower ~ High Lift Jack ~ Stihl MM56 Tiler/Weed Eater ~ Sears Air Compressor ~ 14' V Bottom Aluminum Boat w/Trailer w/9.5 Horse Johnson Motor ~ Oxygen & Acetylene Torch Set ~ 5.5 Hp Craftsman Pressure Washer ~ 25ga ATV Sprayer ~ 1949 MFA Cream Can ~ Schwinn Bike ~ Adventurer 3 Wheel Bike ~ Adventurer Small Bike ~ Pro Lift 12t Bottle Jack ~ 3/4dr Set ~ 6) 12ft Steel Cattle Panels ~ Assorted Fence Posts ~ 4ft Yard Roller ~ 3pt Loader & Bail Spike ~ Pickup Ladder Rack ~ 2 Bottom Pull Type Plow ~ 300ga Fuel Tank on Stand ~ Poulan Pro 6.5hp Rear Tine Tiller ~ Old Boat Oars ~ 2) 6ft Aluminum Ramps ~ Wilton Band saw ~ Craftsman Table Saw ~ Delta Scroll Saw ~ Werner Aluminum Ladder ~ Misc Woodworking Tools ~ Misc Long Handled Tools ~ 2) German Bayonets w/Scabbards ~ Antique Egg Baskets



Auctioneer's Note: Carl and Marilyn have lived at this location for almost 50 years. Lots of shade at this auction and plenty of room for social distancing. Please, if you're not feeling well send someone in your place. A lot of items not listed and more for us to find.

Sellers Auction Service
"We Were Born Sellers"

Complete Auction Service

www.sellersauctionservice.com

Terms: Cash or Check with proper I.D. Not responsible for accidents or losses. Items will be sold As Is/Where Is with No Guarantees. Nothing to be removed until paid for. Refreshments available. Announcements made on sale day take precedence over any printed materials.



GREGG SELLERS, AUCTIONEER
573-480-4400

The Ridge of Country Club *Dr.*

Dengelegi Estate

Located in the Rolling Hills of the Beautiful Bull Shoals Lake of the Ozark Mountains. This Outstanding Brick Home is on the Auction Block!

SATURDAY, AUGUST 15, 2020 • 10:00 AM

902 Country Club Drive • Theodosia, MO. 65761

From Hwy 160: Turn South, approx. 1/2 mile down Country Club Drive. Property on Left. Watch for Gary Sexton Auction Signs



INSPECTION, OPEN HOUSE

Sunday, July 26 1:00 - 2:00
& August 2 & 9, 1:00 - 2:00pm
Or By Appointment

Contact Lorel Koplin 870-421-7266 at Le Mac C2 Mt. Home AR. Email: lorelkopline@hotmail.com

This Well Designed Super Energy Efficient Home Is Spray Foam Insulated With Amazing Low Energy Cost! Approx. 6,834 Sq. Ft. of Impeccable Attention To Detail!



The Custom Built Home By Nay Allen - Offers An Array of Amenities! Including 4 Large Bedrooms, 3.5 Bathrooms With A Towering Stone Gas Fireplace Over Stunning Oak Floors With Walnut/Maple Inlays! You Will Be Amazed b The Custom Cabinets Detail Plus Granite/Corian Countertops Accented With Double Ovens Along With Oversized Refrigerator & Dual Dishwashers & Microwaves (All Stainless Steel) - The Entertainers Dream! This Magnificent Home Offers Safety & Dream Fulfillment In The Full Walk Out Basement With Wine Room- Fort Knox Safe Room-Plus Housing For Central Vacuum - Water Softener - Pressure Tanks - Security System! The Exterior Of Brick - Covered Decks - Garages - Andersen Windows - Recently Shingled Roof Creates Irresistible Curb Appeal! Other Amenities: Custom Moulding - Tile Travertine Floors - 505' Well System - Whirlpool - Central Lennox G51MP Series Double Unit HVAC System - Heat Pumps 4 Ton 14 Seer Each - LP Gas With 1000 Gal. Underground Tank!



- GOLF
- LAKE
- FISHING
- TROPHY HUNTING



HOUSEHOLD • FURNITURE • HUNTING ACCESSORIES • MOWER

SEE WEBSITE FOR FULL LISTING & PICTURES: WWW.GARYSEXTON.COM

TERMS: 10% Escrow Paid Day of Auction - Balance Due Upon Closing. CONDITIONS: Highest Bid To Be Submitted To Sellers For Acceptance or Rejection. Starting Bid \$100,000. Owners Are Moving Out of State. Any Fair Offer Will be Contracted Offered: As House & 15 Acres - 3-10 Acre Tracts.

Gary Sexton

Since 1978 Auctioneers, LLC

Gary Sexton - Auctioneer 417-255-7001

Tyler Sexton - Trucks/Heavy Equip. Eastern Mo. 417-372-0124



www.garysexton.com

1028 Porter Wagoner • West Plains, MO



Todd Hornback
Oregon Co. Rep

Gene Summers
Ozark Co. Rep



E-mail: gary@garysexton.com

AR Broker #PB00043890, AR License #1568

All announcements made day of sale supersede any written material. Not responsible for lost or stolen property or accidents.

VEHICLES & EQUIPMENT AUCTION

**550+ ITEMS SELL
NO RESERVE!**

**Straight. Simple. Sold.
866.608.9283**



WEDNESDAY, JULY 22

Bidding closes at 10 a.m. CDT



DD2543 '11 Chevy Silverado 2500HD Crew Cab pickup

DG1925 '17 Chevy Silverado 1500 Crew Cab



DE6965 '54 GMC pickup truck



DH1042 '16 Nissan NV3500HD van



EL9830 '12 Ford F550 Super Duty utility bed truck



AE9748 '04 Jeep Wrangler SUV



DG1939 '13 Forest River enclosed cargo trailer



DH1026 '07 Forest River Cedar Creek camper

INVENTORY INCLUDES: crane trucks, pickup trucks, SUVs, RVs, campers, classic vehicles, livestock trailers, service trucks, boats, flatbed trucks, backhoes, wheel loader, rollback trucks, passenger vehicles, motorcycles, vans, coach buses and more. *All items are sold "AS IS." 10% buyers premium applies.* **866.608.9283**

BID NOW!

purplewave.com

REAL ESTATE AUCTION

Saturday July 25, 2020 10:00AM • Pete & Sandra K Perry
3387 Spout Spring Rd Fordland, MO 65652

Directions: From Hwy 60 East Of Rogersville Take Hwy U South Then Left On Green Hill Rd & Right On Sprout Spring Rd To Auction. Watch For Signs. Real Estate Selling At 10:30AM Open House Sunday July 19, 2:00-4:00PM



Large Home On Up To 119 M/L Acres
 Tract 1: Large 5209 M/L Sq Ft Home Featuring Living Room w/ Tile Floor, Oversized Dining Room w/ Hardwood Floors & Fireplace, Large Family Room, Kitchen w/ Island, Propane Stove & Pantry, Large Sunroom w/ Fireplace, Bedroom, Office/Bedroom, Full Bathroom & 1/2 Bathroom On Main Level. Upstairs Has Master Suite w/ Kohler Artisan Painted Sink & Walk In Shower w/ Rain Head, Utility Room & Open Office/Living Area. Property Also Has Wrap Around Porch, Attached 2 Car Garage, Auto Start Generac Generator, 500gal Propane Tank, Large Bronze Boy & Girl Swinging & Garden Hose Statues, Cave Behind House, Springfed Pond, Carport, 41x43' Barn w/ Concrete Floor, 35x87 Machine Barn, 24x24' Shed & 60x40' w/ 2 20' Lean To's, Large Doors, Overhead Lift w/ Rails & Second Level All On 25 Acres M/L w/ Hay Field.
 Tract 2: 25 Acres M/L. Great For Building. Some Pasture, Mostly Wooded w/ Year Around Springfed Branch.
 Tract 3: 29 Acres M/L. Great For Building. Some Pasture w/ New Well.
 Tract 4: 40 Acres M/L. Mostly Hay w/ Well & Pond.
 Terms: 10% Down At Auction With Balance Due At Closing.



Farm Equipment & Misc

2013 JD 5101E Tractor 12spd w/ Left Hand Reverser, 6 Hyd Outlets, 8' QA HD Grapple Bucket w/ Teeth, Fluid Tires & 529hrs 2000 JD 4310 Tractor 4x4 w/ 1989hrs, QA Forks, QA Bucket & Foam Filled Front Tires 2013 HX15 Bushog w/ Soft Chains & Solid Tires- Always In Shed 16' Steel Flatbed Trailer Double Axle* 3pt Post Hole Digger 3pt 8' Keen Kutter Rock Rake* HD QA Tree Shear* 3pt 5' Bushog* 55gal 3pt Sprayer w/ 8' Boom* 3pt Bale Spike 3pt 6' Box Blade w/ Rippers* 2- 7' Blades & Brackets 7' 3pt Woods Bushog* Yard Dump Trailer* 2- 3pt Gooseneck Mover* Barbwire 110gal Fuel Tank w/ 12v Pump* Roll 3/8" Alum Cable 200' Roll 3/8" Cable* 3- 8'x63" Steel Gate Frames* 23 Rolls White Equine Fencing & Accessories* Feed Buckets* Tractor Seats* Electric Fence Posts* Wire Fence Electric Gate Opener- Like New* Tires & Rims* Trailer Tires Several Walk Through Galv Gates* Steel Posts* 2- Poly Water Tanks* 2- Poly Waterers* Variety Of Herbicide Water Tank Floats

Antiques, Collectibles & Household

Budweiser Clydesdale Globe* Hummel Clock* Hummels Hummel Village* 2 Hummel Dolls* Bonsai Tree* Antique Boxes Alice In Wonderland Metal Birds* Madam Alexander Dolls Dynasty Doll Collection* John Wayne Cut Out* Antique China* Llardo Carousel Horse* 12" Cybis Man & Woman* Eagle Clock Fenton Bride Baskets* Fenton Vase* Cut Glass Biscuit Jar* Bronze Boy & Girl Bookends* Cut Glass Pc* Pewter Servers Cybis Raccoon & Owl* Leaded Glass Lamp* Glassware Lowell Davis Original On Canvas* Cast Iron* Hummel Bell Pink Depression Glassware* Silverware* Pots & Pans* Crystal Wine Glass* Madam Alexander Wizard Of Oz 300+ Dolls Mostly Ashton Drake & Madam Alexander Wizard Of Oz Book* Several Antique Children's Books Several Madam Alexander 75th Anniversary Dolls* Wine Rack Antique Lamps* Amish Doll* Antique Window* Cross Stitch Supplies & Patterns* Cross Stitch Books* Doll Furniture* Painted Turkey Feathers* Teddy Bears Antique Jars & Bottles* Dick & Jane Books* Hummel Lamp Heaters* Collectible Book Sets* Samsung TV* DVD Player* Sound Bar* Entry Picture* Linens* Games* Baby Dolls* CD's Book Trails Set* Classic Of The Old West* HP Printer Crafting Supplies & Scrap Booking Items* Steelmaster Organizer Lots Of Christmas Decor*



Tools & Misc

Rigid 400 Pipe Threader w/ Dies* Acetylene Torch Outfits Electric Power Washer* Acetylene Gauges* 220 Lincoln Welder 110 90Amp Wire Feed Welder* 1/2hp Jet Pump* Trash Pumps Large Roll Copper Wire* Berger Transit Stand & Measure Sticks Lift* Digital Inspectors Camera* Transit Stands* Welding Rods Delta Table Saw* Polisher* Dewalt Chop Saw* Saw Stand Bench Grinder & Stand* Abrasive Chop Saw* SkilSaw* Jacks Drill Press* C-P Upright Compressor* Steel Table w/ Shop Vice 1/2" Impact & Sockets* New Sharpener* 4' Shop Fan* Drill Bits 6' Steel Work Bench* 110 Heat Tapes* 2- 220 Ext Cords Red Tool Chest* Chainsaw Sharpener* 6 Large Batteries* 8' Derrek Shop Ladder* Hyd Press* Jobox* Hyd Floor Jack Paint Ladder* Alum Ladders* Garage Door Opener 110 Blower* Battery Charger* Ext Cords* Grease Gun* Dolly Propane 40,000btu Salamander Heater* Car Ramps* Steel Fabrication Rack* Chain Hoist* Metal Shelves* Hyd Oil Log Chains* Come-A-Long* Hardware Bins* Dolly Wheels* Flower Pots* Nuts & Bolts Bin* Air Hose* Electric Wire New 12v Battery* Tow Straps* 6 Carts w/ Wheels* Load Leveler 6 Rolls Insulation 2x4x16* Tool Cart* Hand Tools* Paint Sprayer Power Tools* New Chain Hoist* 4' Roll Insulation* Storage Rack Propane Heater* Trailer Light Kit* Dewalt Tool Kit* Drawbars Hitch Pins* Reese Pintle Hook* Pallet Jacks* Scaffolding



Furniture & Appliances

Samsung Washer & Dryer* Samsung Refrigerator* Sauna* Frigidaire Upright Freezer* Cedar Trunk* School Desk* Shelves Cedar Cabinet* Settee* Day Bed* Primitive Cabinet* Bar Stools Dresser & Mirror* Bakers Racks* Porcelain Top Houser Cabinet Roll Around Server* White Clad TV Stand* China Buffet* Sofa Double Drop Leaf Table* Sofa w/ Chase Lounger* Bookshelves Oak Railroad Cart Book Shelf* Desk & Chair* Chest Of Drawers Dresser* Rocking Chair* Marble Top Sofa Table* End Tables Carved Side Table* Lift Chair- Like New* Antique Oak Dresser Glass Showcase Coffee Table* 2- Oversized Recliners* Large Tile Top Table & 6 Chairs* 2- Antique Ladder Back Chairs Locking Glass Showcase* Round Marble Top Lamp Table* Oak Dresser w/ Chest Of Drawers & 2 Night Stands Elephant End Tables* 4 Drawer File Cabinet* 2- Glider Rockers King Size Bed* Jewelry Chest* Office Chairs* Printer Stand* Storage Cabinets* Card Table & Chairs* Desks & Chairs 30- Stackable Chairs*



Lawn & Garden

Ferris Procut 25hp Zero Turn Mower w/ 60" Blade & 429hrs Wicker Loveseat, Chairs & Coffee Table* Rustic Yard Swing Wicker Rockers & Side Table* Mini Wood Wagon* Flag Pole Glasstop Patio Table & 4 Chairs* Rocking Chair* Park Bench 2- Stihl Weedeaters* 3- Stihl Chainsaws* Plastic Fencing 2



Guns

Anderson Arms AM15 556 w/ AR 223 Scope, Bipod & Grip AR7 Explorer 22LR* FIE 12g Single Shot Marlin Firearms Model 70P 22LR* H&R 22 Rimfire Revolver Joseph Manton London 28g SxS Black Powder w/ Gold Inlay 80- Rounds of 5.56*



Auction Conducted by:

Member of:
 Missouri Professional Auctioneers Association
 Licensed in Missouri & Arkansas

Auction Service & Realty
Glen Yutzy, Auctioneer/Broker

Phone: (417) 767-4345
 Fax: (417) 767-4222

Not responsible for accidents. Announcements made day of sale take precedence over any printed matter.
 Terms: CASH or CHECK Visit our website for more information at www.glenworth.com Lunch available

Plus More! www.glenworth.com

BUILDING SUPPLY AUCTION

SATURDAY, JULY 18TH *9:30 AM

22480 EAST 1750 Rd * FAIRPLAY, MO, 65649
 DIRECTIONS - 5 MILES WEST OF FAIRPLAY ON HWY 32
 WEST ON 1750 RD FOR ¼ MILE TO AUCTION SITE
AUCTION HELD INSIDE REGARDLESS OF WEATHER

HARDWOOD FLOORING: 6,000 plus sq. ft. of prefinished ¾ solid hardwood. Hickory, Oak, Maple, Pine - Great choices of colors and widths.

COMPOSITE DECKING: 3,000 plus Ln. ft. of moisture shield new composite color through super nice.

WHITE OAK 7" WIDE ENGINEERED WOOD FLOORING: 1900 sq. ft. of 7" wide beautiful wood flooring. Stain your color for that uptown desired look.

SUBWAY TILE: 3 styles of glass subway 3X6 tile. Fantastic look!

CEILING FANS: 10 plus 52" new ceiling fans With light kits.

SNAP AND LOCK LAMINATE: Good Selection of 12 mil laminate. Great colors to Choose from. Over 4,000 sq. ft. of one color.

FARMHOUSE SINKS: Single hole fire clay white reversible farmhouse sinks.

SS KITCHEN SINKS: Deep undermount SS sinks.

FAUCETS: Over 100 NIB kitchen and bath faucets.

INTERIOR DOOR UNITS: 70 - 80 units. Several Whole House of different styles.

HORIZONTAL RESAW BANDSAW: Like New - 12" G0503 *Grizzly* wood resaw-used less than 8 hrs. New \$10,195.00. 20 HP motor.

ENGINEERED FLOORING: 4,000 plus sq. ft. of 7" wide engineered flooring. Good colors & good quantities.

PINE CAR SIDING: 1X6X6 car siding/ beadboard. Several bundles.

DIMENSIONAL LUMBER: Several pallots of nice 2X6X12 & 16s

WOOD LOOK TILE: 4800 sq. ft. of wood look tile. 5 colors to choose from.

COMMODOES: New in box *Briggs* elongated white commodes.

LVT VINYL FLOORING: Large amount of super nice waterproof vinyl flooring.

UNFINISHED OAK FLOORING: 1500 sq. ft. of Oak hardwood.

SELECT S4S WALNUT: 700 sq. ft. of the Nicest select Walnut you will ever see.

VANITIES: 60" pre finished vanities.

WINDOWS: 40 plus high end vinyl windows of different styles and colors.

BIG STORE PRODUCTS: Large amount of Big Box Star products. Shop vacuums, sprayers, saws, knobs, etc.

TRIPLE M. AUCTIONS

FIND US ON FACEBOOK FOR MORE INFO AND PICTURES

CALL JAMES (417) 298-8888

OUTSTANDING AUCTION
ATV • FARM ITEMS • ANTIQUES • HOUSEHOLD
TRACTOR • TRAILER • LAWN & GARDEN • SHOP ITEMS

VISIT WEBSITE FOR PICTURES

EARLY START

SATURDAY, JULY 18TH - 9:00 A.M.

Location: 9070 Oak Way Drive, Mountain Grove, MO **Directions:** From 4 way stop: Take South 95 approx 1.3 miles to Wheeler Arch Rd on right go 4/10 mile to Top Rd on left go 8/10 of a mile to Oak Way Drive on right go 4/10 mile to auction. **WATCH FOR CHADWELL AUCTION SIGNS.** Payment System: Cash • Debit Card • Credit Card (Debit/ Credit Card Fee Will Apply) Checks approved if known by auction company. **VISIT: WWW.CHADWELLAUCTIONS.COM**

BILL & NANCY STEWART

FARM ITEMS

2007 Ford F250 Bed Shell • Large Tractor Weight • 5' 3pt Brush Hog • Other



1510 FORD TRACTOR W/ FORD 770A LOADER 4spd, hi low trans, joystick, 3pt (247 hrs)

ANTIQUES & COLLECTIBLES

Oak Table & 6 Chairs w/ 2 leaves • Mahogany Dresser • 4pc Century Mahogany Bed Room set w/ Queen Anne Mirrors • 2 White Clad End Tables • Gaffers & Sattler Cook Stove • Granite Ware • Ruby Red Dishes • Occupied Japan Figurines • Tea Cups & Saucers • Salt & Pepper Shakers • Comic & Baseball Cards • Other



2014 POLARIS PZR 570 EFI 135 HRS W/ ACCESSORIES (LIKE NEW)



LAWN & GARDEN - OUTDOOR

Misc Yard Ornaments • Limb Saw • Werner 6' Fiberglass Ladder • 16' Extension Ladder • Bag Chairs • B&D Hedge Trimmer • Trash Barrels • Fuel Cans • Lawn & Garden Tools • Hand Tools • 5' 3pt Brush Hog • Pond Bubbler • ATV Sprayer • Planters • Buckets • JD Yard Cart • Garden Hoses • Garden Items • Mantis • Wheel Barrow • Bee Hive • 2 Troybilt Self Propelled Lawn Mowers • Large Pull Type Yard Seeder • Bee Keeper Suits • 5' King Cutter 3pt Roto Tiller • Post Driver • Live Trap Stihl 028W6 Chain Saw • Window Screens • T Posts • Other

2017 VICOTRY INTERSTATE 5'X15' TRAILER W/ BRAKES, SIDE DOOR & FINGER LIFT RAMP (LIKE NEW)



2019 ZTX 52 GRAVELLY W/ KAWASAKI MOTOR 23 HP (16 HRS) INCL. MULCHING KIT

SHOP ITEMS

20 Ton Bottle Jack • Tool Cart on Casters • Shelving • Ammo Boxes • Dolly Carts • Saw Horses • Misc Tools • Work Bench on Castors • Propane Upright Heater • 20# Propane Cylinders • Vises • Stillgrip Bench Grinder • 40# Propane Cylinder • 2 Wheel Dolly • Oils & Solvents • Power Mate Generator • B&W 5th Wheel Companion Hitch • Log Chains • Oil Pans • Rockwell Jaw Horse w/ Attachments • Lug Wrench • Tile Saw • Stihl MS250 Chain Saw w/ Case • Dewalt Biscuit Cutter • HD Cable • Come A Long • Chain Boomers • Porta Cable Table Saw • Pancake Air Compressor • Extension & Power Cards • Ryobi 6" Bench Grinder • Metal Saw Horses • B&D Work Bench • Hitachi CW40 HD Scroll Saw • Hitachi Nail Guns • Pneumatic Framing Gun • Porta Cable Air Nailers • Assorted Bench Grinders • Ryobi Drill Press • Milwaukee HD Grinder • Belt Sanders • Bow Saws • Heat Lamps • 100# Propane Cylinder • Other

HOUSEHOLD

Leather Sectional w/ 3 Recliners • Leather Love Seat w/ 2 Recliners • Round End Tables • Oak Roll Top Desk • Shelving Occasional Reclining Bedroom Chair • Bathroom Cabinet • Cherry 3 Drawer Office Cabinet • Occasional Chair w/ Ottoman Futon Couch • Table • Book Shelf • Misc Figurines • Misc Glassware • Misc Wall Decor • Rival Roaster Oven • Food Dehydrators • Comfort Zone Heater (NIB) • Pressure Cookers • Stock Pots • Leather Reclining Love Seat • Sewing Machine & Cabinet • 2 Leather Recliners • Oak Drop Leaf Table w/ 4 Chairs • Queen Bedroom Set w/ Drawers • Other

AUCTIONEER'S NOTE: Fantastic Auction. High quality merchandise and in great condition. Come have a fun day. *Thanks, Shawn*
DRIVER'S LICENSE OR PICTURE I.D. REQUIRED. TERMS: CASH OR APPROVED CHECK

Auction Service, LLC

www.chadwellauctions.com

<p>Auctioneer: SHAWN CHADWELL 417-746-4038 ~ Cell: 417-830-0209</p> <p>Ringmen: John Williams Jr. ~ 417-349-0480 Weston Chadwell ~ 417-349-0727</p>	<p>Clerk: SHELLY CHADWELL Cell: 417-880-8449</p> <p>Cashiers: Shawn Irby • Marla Chadwell Kati Roberts • Emily Chadwell</p>
--	--

PROFESSIONAL SALES MANAGEMENT

LUNCH WAGON • APPRAISAL SERVICE • RAIN OR SHINE

All announcements made day of sale take precedence over any printed matter. Not responsible for lost or stolen merchandise. Not responsible for accidents.

GO TO THE AUCTION • GO TO THE AUCTION • GO TO THE AUCTION • GO TO THE AUCTION • GO TO THE AUCTION •

PUBLIC AUCTION

Saturday, July 18, 2020 • STARTING AT 9:00 a.m.

Location: 101 Davis Drive. Dixon, MO 65459

Directions: From Hwy 28 in Dixon, at the sharp curve turn north on Ellen St. Follow to Davis, to the sale site. (Limited Parking- consider carpooling.)

Household

- Roll Top Desk
- Toshiba TV
- Emerson SDTV, small
- Media Rack
- Electric Fireplace
- Buffet Top
- Dk. Red Recliner/Rocker
- Drop Leaf Desk
- Green Swivel Rocker
- Beige Swivel Rocker
- Blue 2 Seat Sofa/Hide a Bed
- Metal Magnifying Light
- Lamps, Brass, Ceramic etc.
- Floral Sofa, 3 cushion
- Dining Table w/4
- Microwave Cart
- Oscillating Fans
- Cabinet w/Glass Doors
- Night Stand/End Table
- Table w/Magazine Rack
- Fireplace Tools
- O.K. Collection Angel Lamp
- Small Drop Leaf Table
- Marble Top Table (small)
- Lot Wall Decor, mirrors, framed prints, sconces, etc.
- Wooden Bread Box
- Tater Bin
- Kitchen Base Cabinet
- 3 Cedar Chests
- Old Style Crank Phones (Repro)
- White Wooden Plant Stand
- Collectible Plates

- Lot Figurines
- 2 Oak Bar Stools
- Some Depression Glass
- Some Blue Carnival Glass
- Rolling Kitchen Island (Butcher Block style)
- Some Baskets, some Longaberger

Motorized Adjustable Queen Bed w/ Tempur Pedic Mattress

- Dresser w/Tri-mirror, Chest, Nightstand
- Small Desk w/1 Drawer
- Glass/Metal Computer Desk
- Small Rocker, folds
- Comfort Zone Ceramic Heater
- Dirt Devil Upright
- Book shelves
- VHS, DVD'S, CD'S
- Ornate Clock
- Linens, Curtains, Towels, Doilies
- Lot Books
- Full Bed, Dresser w/Mirror, Chest
- Telephone Stand
- Stand Fan, Osc. w/Remote
- Lot Floral Arrangements
- File Cabinets, 2 Drawer
- File Cabinet, 1 Drawer
- Pole Lamp w/arm
- Honeywell Stand Fan
- Dining Buffet

- Drop Leaf Table w/Tuck away Chairs
- 4 High Back Dining Chairs
- Lot Kitchenware, Bakeware
- Some Tupperware
- Brother Sewing Machine,
- Whirlpool Washer & Dryer (white)
- Pressure Canner
- Waterbath Canner
- Wicker Bathroom Étagère
- Eureka Upright Vac
- Shark Navigator Vac
- Bissell Powerforce Vac
- Salad Master Food Chopper
- Kenmore Chest Freezer

Shop and Outdoor

- 5 pc. Wicker Patio Set
- Round Poly Table
- Park Bench & Chair
- 2 Step Stools
- Suncast Garden Cabinet
- Aluminum & Fiberglass Ladders
- Yard Ornaments & Bird Houses
- 4 White Poly Folding Chairs
- Work Table
- Chair Cushions
- 2 Wooden Lawn Chairs
- Covered Swing
- 3 pk. Cedar Trim
- 2 Metal Lawn Chairs
- Tool Shop Miter Saw
- WORX String Trimmer

- Belt Sander
- Ryobi Gas Leaf Blower
- 2 Plastic Organizers
- Lot Nails, Screws, Nuts, Bolts in plastic coffee cans
- Porter Cable Pancake Compressor
- Air hose & reel
- Metal Trash Cans
- Roll Light Duty Wire
- 2 Ton Floor Jack
- Wheel Barrow
- DR 2 Wheel String Trimmer, elec. start/pull start (needs battery)
- B&D 2 Wheel String Trimmer
- Craftsman 22" Walk Behind Trimmer
- Craftsman 4 in 1 Plus, Leaf Vacuum
- Craftsman 21" Self Propelled Push Mower w/Bagger
- Generac Generator 5000 Watt
- 2018 Chevrolet Impala LT Sedan, 22,XXX miles**
- Musical**
- "Grand" Console Piano
- Fender Acoustic/Electric Cut-away Guitar w/hard case
- Peavey Ecoustic 112 Amplifier
- 10'x12' Storage Building (Nearly New)**
- Other Items too numerous to mention.

Owners: Howard & Emma Jones

WARDEN AUCTION & MORE

(573) 336-2367 or (573) 528-0729

Ed Warden - Lead Auctioneer,

Chad Ray & Jacob Boucher - Associates

www.wardenauction.com

TERMS

Cash, Credit,
Debit or Approved
Check

ID Required for
Bid Number



TERMS

Not Responsible
For Accidents
or Losses

Nothing Removed
Until Settled For



GO TO THE AUCTION • GO TO THE AUCTION • GO TO THE AUCTION • GO TO THE AUCTION • GO TO THE AUCTION •

ONLINE AUCTION • ONLINE AUCTION • ONLINE AUCTION • ONLINE AUCTION • ONLINE AUCTION • ONLINE AUCTION

ONLINE ONLY AUCTION

Bidding Open (NOW) 14 July.

INSPECTION/PREVIEW is Tuesday Evening,
 July 21st, 2020, from 4:00 PM - 7:00 PM ONLY!
 AUCTION WILL CLOSE, Thursday, 23 July starting at
 6:30pm.
PICK UP TIME Saturday, July 25th between
 11:00 a.m. & 4:00 p.m.
 at 99 North Point Camdenton, Missouri 65020.



Household Furnishings from 3500 sq ft lake
 home, appliances, lots of
 crafts, decor, lawn & garden.

www.wardenauction.bid



TERMS
 Cash, Credit,
 Debit or Approved
 Check
 10% Buyers
 Premium in
 effect.



WARDEN AUCTION & MORE

(573) 336-2367 OR (573) 528-0729

Ed Warden - Lead Auctioneer/Broker

www.wardenauction.com



TERMS
 Not Responsible
 For Accidents
 or Losses
 Nothing Removed
 Until Settled For

ONLINE AUCTION • ONLINE AUCTION • ONLINE AUCTION • ONLINE AUCTION • ONLINE AUCTION • ONLINE AUCTION

Two Homes In California, MO Both Sell To High Bidder



Open House / Inspection:

Wednesday, July 8th 4:00 p.m. to 5:30 p.m.

- 307 W. Barry Ave.:** 3 Bedroom, 1 ½ Bath Brick Ranch
- Unfinished Walkout & Up Basement • Large Eat-In Kitchen
 - Family Room w/ Woodstove Insert • 2 Car Garage
 - Spacious Covered Rear Porch & Newer Metal Roof

611 Cooper: 3 Bedroom, 1 ½ Bath Brick Ranch • Mostly Unfinished Basement • Updated Roof • 2 Car Garage • Corner Lot

Note: These Very Well Cared For Homes Could Use Some Updating, But Would Be Great Starter Homes Or Income Properties!!

Online Bidding Ends – Tuesday, July 21st at 12:30PM
www.atterberrysells.com

For Terms, Details, Or Bidding Assistance, Call Your Real Estate At Auction Specialists:
Atterberry Auction & Realty Co.



ATTERBERRY
— AUCTION & REALTY COMPANY —
We make buying and selling at auction easy!

www.atterberryauction.com

573-474-9295



MarkNet 
ALLIANCE

REAL ESTATE & ESTATE AUCTION

30344 Clare Lane • Green Ridge, MO

As we are moving out of state, we will sell the following at auction located from Sedalia southwest on Green Ridge Rd/ B Blacktop approx. 5 1/2 miles (or from Green Ridge northeast on B Blacktop approx. 5 1/2 miles) to Clare Lane, then 1/8 mile on Clare Lane to sale on:

SATURDAY, JULY 25TH • 9 AM NOTE STARTING TIME!!!

BEAUTIFUL HOME ON 6 ACRES Sells at 11:00 am

Take a look at this immaculate well-maintained home located just a few miles from the conveniences and services of Sedalia, yet with the serenity of country living! The main level living area has over 2300 sq ft; here you will find 3 bedrooms, 2 baths, a spacious kitchen/dining room combo, and a living room, all with 9' ceilings to give that open-air feeling. The loft area upstairs has another bedroom, bathroom and large storage room. Also, for extra storage, there is a partial basement. Quality can be seen throughout the home in such things as the custom-made cedar kitchen cabinets and solid 6 panel doors throughout the home, to name a few. Located at the front of the house is a wonderful sunroom, and the back sports a covered 40 x 8' porch. The new steel roof covering the home is not only pleasing to the eye, but also to the pocketbook with its energy-efficient and low-maintenance qualities. Need a place to work on equipment or store the big toys? The 54 x 70' Morton building is ready for you! Approx 2/3 of the area has a concrete floor; and there is an office and half-bath that have central air and heat. Also, for equipment storage, there is a 24 x 62' steel three-sided utility building. The spacious yard and landscaping give this home great curb appeal, yet there is room on the acreage if you want a few animals.



Terms: Sells subject to owner confirmation; however, come prepared to buy as they are ready to move on to the next chapter of their life! The successful buyer will place 10% down as escrow until closing, at which time the balance plus applicable closing costs will be due. Home sells as-is with no contingencies, so get your finances in order prior to sale day. For viewing, contact auctioneers.

MACK TRUCK 2005 Mack CH613 truck, Eaton Fuller 13 spd, 380 Mack engine, 3.90 Ratio, 421k miles, air ride suspension cab & seat. **GRAIN TRAILER** 2013 Wilson 43' x 96" w x 78" h hopper bottom grain trailer, all alum wheels, matched radial tires, rollover tarp, ag hoppers w/ strap traps, very good. **TRACTORS** John Deere 4440 Quad Range, cab w/ air, Exc rubber, new interior, tach shows 5000hrs * John Deere 3010 gas tractor, tach shows 4287 hrs, has Memo model@ML7500 loader, quicktach bucket and bale spike. **HAY EQUIPMENT** John Deere 567 megawide baler w/cover edge and chain oiler * John Deere 920 MoCo 9.9' Mower conditioner * Claas Volto 52T tedder * Frontier WR1212C Rake w/center skirts. **FARM EQUIPMENT** John Deere (FB-B w/original bill of sale) 13 hole drill * Bush Hog post hole digger, 18" bit * JD MX8 Brush cutter * JD 3 pt 2 Bottom 14 plow * JD 514 semi-mount plow * 8' Blade, angle and pivot * 3 pt Big Bale Spike. **STORAGE VAN** 48' box trailer w/ 96' of pallet racks. **FARM ITEMS** 3 JD Quick Hitchers: Cat. 1, Cat. 2, Cat. 2/3 * 14 JD rear wheel weights *Set starter weights, brackets, and 4 front weights for 3010,3020 * 8 JD suitcase weights w/bracket * 2 Black JD Hyd. Cylinders.* Approx 100 used 6' steel posts * Stihl 011 AV chainsaw * Sev. John Deere manuals * John Deere sickle and guard repair tool * Steel post driver, other tools. **ANTIQUE AND MODERN FURNITURE** Ant. Eastlake dresser w/teardrop pulls and marble top * Ant. Washstand w/teardrop pulls * Ant. Walnut bed w/carving/finials * Beautiful Ant. church organ * Ant. Eastlake red velvet fainting couch * Antique Eastlake armchair * Ant. Pie safe w/punched tin sides * Ant. 45" pedestal oak table * Queen size brass plate bed * c60's Walnut china cabinet * Ant. side chair with finials * 2 Antiques oak dining chairs * Office chair * 2 Mantle oak case clocks * Oak entertainment cabinet * Heavy oak rocker * Lazyboy rocker-recliner, blue * Child's play school desk. **PRESTIGE COLLECTIBLES** School desk from Sedalia Business College * Dr's Vintage traveling medical kit * Canvas Army Air Corps medical bag * Mo-Kan-Tex Sedalia Hospital medicine bottle, Thomas Edison battery oil bottle, perfume bottles, other old bottles * Bread rack from Leeton grocery store * Ant. wall telephone * Copper wash boiler w/lid * 1928 Amsterdam Olympics Map * Czech, Occ. Japan & other Toby Mugs * Charles Dickens Toby jugs: Mr. Pickwick, Peggotty, Fagin, Mr. Micawber * Glass figure candy holders * China cracker jar * Wooden raisin drying box * Cast iron 4 burner wood cook stove w/ towel rack and coffee pot shelf * Pepsi sign for grocery store screen door * Cast iron Bulldog door stop, 2 Hitching posts, Cauldrons, Rendering kettle on stand, French iron, Sad irons * Lot old hat boxes, hats and hat pins * Edwards & Minish jug and other crocks * Tin candle molds * Political buttons * Child's tea set in wicker case * Ant. Kerosene stove * 1909 Sedalia Queen of Prairies coin, Harold Bell Wright books "Their Yesterdays", "A Son of His Father", "Eyes of the World", Winston Churchill books and many others * 4 Red tumblers with frosted glass depictions of Kansas City landmarks * Sedalia Covered bridge paper weight * Firkin sugar buckets * Sev. Early 1900's Ruby Flash pitchers * Double sided gravy boat * Creamer collection * Freeze Dairy bottles w/carrier * Sev. Baskets * New Perfection Jr. kerosene stove * State pennants * Child's Enamelware potty, enamelware and glass male and female urinals * C50's Viewmaster, reels and holder * Handmade quilts * 3 KC Landmark framed pictures * Bird cage w/stand * Neck yokes, Double trees * 1925 Moorish print * Ant. Ball type fire extinguisher * Haviland Limoge ash tray * Germany, Bavaria, and other hand-painted plates * Child's spats, good cond. * Wooden butter mold. w/pattern * Strohs and Pabst lighted beer signs * John Deere collectibles inc: Lamp, Ertle 530 tractor, Ertle A wagon, Charles Freitag plate set, other metal toys, decor and more. **GUN SAFE AND GUNS** Remington Magnum model 870 20 ga. 3" full choke and extra 2 3/4" rib barrel imp. choke * Weatherby Mark V 30-06, bolt, w/Weatherby 3-9x44 scope * Centurion 8 gun safe w/ ammo storage. **HOUSEHOLD** Wicker fern stand * Novelty whatnot shelf * Bookshelf * Portable ice maker * NEC disc player, Pioneer receiver, Sony double cassette player * Farm scene queen size quilt and bolsters * Haier dorm refrigerator * Lazyboy rocker-recliner, blue * Small wooden desk * Sharp microwave * Doggy bed steps. **SHOP** Wisdom 12 ton Hydraulic press * Power Washer w/8hp B&S * 6'x3'x4'h Workbench w/110,220 outlets * Marvel Power #2 Hacksaw * Millermatic 210 welder on wheels * Acetylene/Oxygen cutting torch set w/gauges, welding tips, on dolly * Parts washer * Craftsman 10" table saw * 2 Lg shop fans * Craftsman 12" band saw * Craftsman 10" radial arm saw * 5 Gal Cheetah bead seater * Cabinet sand blaster * Porter Cable 14" chop saw * Acme anvil * Woodworking tools * Ryobi miter saw * Axle slide hammer set * Surface level * Porter Cable hammer drill * Craftsman buffer/polisher * 2- 8' Metal shop shelving units * Small welding table * 3 1/2 ton Floor jack, 22 ton Air-over-hydraulic tractor jack. Jack stands, house, bottle, and handiman jacks * 1" Impact wrench w/33mm socket * 110# Spring scale * Metal 80 bin parts cabinet * 34x30x53" h stand up desk * Sears 17" 16 spd floor drill press * Wood shop cabinet * B&D jig saw * Skil 4hp sander * Rockwell 7" circular sander * Craftsman 7" skill saw * Central Pneumatic hammer * 3 Warehouse dolly carts * 20' Alum, 28' fiberglass ext. ladders * 80 gal. Quincy 5 hp air compressor * steel desk * 6' Wooden work bench w/Columbian vise * Propane torch set * Battery chargers * Starrett 2-6" micrometer in box * Paslode air framing nailer * 3/8" air drill * 2-Legacy air hoses in self-winding reels * 2 1/16th-2 1/2 sockets * 3n1 Service set for changing ball joints * Robin Air 2 stage AC vacuum pump * Macro Tools suction gun vac * Log chains and boomers * Small tube bender * Craftsman 1 hp router * PVC pipe cutter * **ENGINE CRANE AND OTHER AUTOMOTIVE** 4000# Gantry crane * 2- 2 ton Engine hoists * 80 gal propane tank for pickup * Aluminum fold-up ramps * Blind bearing puller * BF Goodrich 15.5x38 tires * 2-221/2" Alum truck wheels * 3 Big truck rims * car & tire tools * Sev. Gear pullers * Pully remover and installer set * Semi truck seat, Air bags, governors, U-bolts, and other parts * Engine stand * Hitchers & Receivers * Steering wheel writing tray * Flex mechanics light * Roughneck 12 volt oil changer cart * 2 RV rug mats * Old truck radios. **LAWN, GARDEN AND PATIO** JD 332 diesel lawn tractor w/rear wheel & 3 pt weights * 64" front blade for 332 * FirCo 15 gal trailer sprayer * Stihl F552 weed trimmer * Stihl BG61AV leaf blower * Push edger * Weber Genesis grill * Patio table and chairs * Break-down picnic table * Yard trailer * Garden tools. **MISC** 11- 4x8 Dog pen panels, 4x6 gate * 1 1/2" pipe * Deer shoulder mount * Fishing rods and reels * Pr Thompson wooden water skis



LOREN & BETTY SUE VITERNA

Note: It is obvious the items offered on this sale have been cared for and maintained very well. Most of the equipment has been kept under shed and is in excellent condition. We will start on the bigger equipment and truck around noon. There is literally something for everyone at this sale; and we will be running two rings most of the day. A lot of it will be sold inside the Morton building, so bring a friend and plan to enjoy the day at this fantastic auction!

LARRY
DRENON AUCTION
www.drenonauction.com
Since 1969
Larry 660-596-8515 Lacey 660-723-1104 Laramie 660-221-4386 660-547-2646

Terms: Cash, approved check, debit/credit card (4% convenience fee applied). Nothing to be removed until settled for. Not responsible for accidents. Statements made day of sale take precedence over printed material. Lunch served.

WRECKER SERVICE ABSOLUTE AUCTION



Mike's Wrecker Service LLC owner Mike O'Dell is retiring and will sell business equipment at absolute public auction on:

Saturday, July 18th 2020, Beginning at 10:00 AM

Location: 408 Parmentier Estates Drive, Washington Mo 63090

Directions: From Interstate 44, take Exit #251, Highway 100 and go West on 100 through Washington 11.5 miles. Turn left on Pottery Road, go ¼ mile, then right on Holtgrewe Road, then after 1 mile turn left on Parmentier Estates Road ½ mile to auction. Roads will be marked day of sale.

WRECKERS / TOW TRUCKS

(will sell at 12:00 Noon)



NOTE; all wreckers come with chains-snatch blocks-creepers-wheel lifts-air for pneumatic tools-complete and ready to roll on calls. 1985 Freightliner tow truck-350 HP 350 Big Cam Cummins engine-15 speed transmission-35 ton wrecker bed-(2) 35,000 LB winches-30,000LB drag winch-L arm bus and truck lift-112,583 miles, 1998 International 4700-DT 466 E engine-7 speed transmission-16 ton Century bed with (2) 16,000 LB winches-Timbren spring supports on rear axles-new clutch (2019)-152,000 miles, 2001 Chevy 6500 truck-3126 Caterpillar engine-engine resealed w/new gaskets (2020)-6 speed-21' long Century steel flatbed rollback with 8,000 LB winch, 2001 Chevy 6500 w/3126 Cat engine-4 speed automatic transmission-19' steel Century roll back flatbed w/8,000 LB winch, 1999 Chevy 3500 HD wrecker-454 engine-rebuilt 5 speed transmission-new clutch-Century wrecker bed with 8,000 LB winch and 4,000 LB wheel lift-all new AC parts (2019)



VEHICLES / FORKLIFT / ENGINES

TRANSMISSIONS / AUTO LIFT



1993 Chevy ¾ ton pickup-4X4-8 lug wheels-350 engine-4 speed automatic transmission-with 7.5' Meyer snow plow-salt spreader-runs and drives good, scooter, motorcycle frame-parts, **FORKLIFT;** 5,000 LB propane fork lift with tanks, **PARTS;** Chevy 350 engines-(5) throttle body engines-(1) Chevy 350 Vortex engine, (1)-1995 Chevy 4.3 V6 Vortex motor w/automatic transmission-125,000 miles, Chevy 350 transmission-2 wheel drive, Chevy 700R4 transmission-2 wheel drive-torque converters, lot Chevy engine parts 350-327, Chevy 4 wheel drive axles, road tractor adjustable 5th wheel hitch plate, Chevy aluminum 6-hole wheels w/mounted tires, **AUTO LIFT;** 9,000 LB asymmetrical power auto lift

SHOP TOOLS / SUPPLIES

Coats 2020 complete tire changing machine, Lincoln 3,000 LB pneumatic bumper jack, Robinair Cooltech 700 AC machine, 30,000 LB hydraulic press, 8,000 hydraulic press, Branick spring strut compressor, 6' tall jack stand, engine stands, Napa 3.5 ton floor jack, rolling shop service cart, rolling service stand, 55 gallon drum hydraulic oil (new), oil drain unit, Snap On heavy duty jack stands, 8' metal workbench, Milwaukee 14" cut off saw-new, (4) Dewalt 18 volt reciprocating saws, (4) Dewalt ½" 18 volt impact wrenches, large Rock Island bench vise, 2 drawer Mac tool box, Craftsman 3 drawer tool box, Sun Service Equipment tool cabinet, vise grips, gear puller, ratchets, wrenches, sockets, pneumatic sockets, adjustable pliers, snap ring pliers, hammers, pipe wrenches, offset wrenches, deep sockets, angle grinder, tool box, bench vise, funnels, pneumatic impact wrenches, screwdrivers, 2 office desks, (3) four drawer file cabinets, Chilton service manuals 1967-2000

LUNCH WILL BE SERVED BY CAROLS CATERING

VIEW OUR PHOTO GALLERY ON www.breheauction.com

We plan to abide by the CDC guidelines regarding the COVID distancing and PPE guidelines.

BREHE AUCTIONEERING SERVICE, LLC
 Union, MO: (636) 583-0841 Owensville, MO: (573) 437-3454
www.breheauction.com
 LICENSED AUCTIONEERS:
 Kerry Brehe 314.954.3798 Josh Brehe 314.603.3129 Harry Engelhart 636.399.3743
 Announcements made day of sale supersede all printed material.
 TERMS: CASH, PERSONAL CHECKS WITH PROPER I.D., BUSINESS CHECKS WITH BANK LETTER AND NO OUT OF STATE CHECKS UNLESS APPROVED BY SELLER. Email Us At kkauction@sbcglobal.net
 Everything sells as is with no guarantees.

STOCKWELL FARM AUCTION



Dick and Carol Stockwell, having sold their farm, will sell personal property and farm equipment at public auction on:

Saturday, July 25th 2020, Beginning at 9:00 AM

Location: 7615 Antioch Road, Gerald Mo 63037

Directions: From Interstate 44, take Exit #247-Highway 50 West and go 25 miles to Gerald, turn left on Highway H. Go 2 miles, then left on Antioch Road 1.5 miles to auction. Roads will be marked day of sale.

TRUCKS / CADILLAC CAR / GATORS (will sell at 1:00 PM)



2008 GMC Duramax Diesel pick up-2500HD- only 95,000 miles-4x4-crew cab-8' bed with carpeted slide out-camper shell-easy open tail-gate-Allison transmission-fold out running boards, 2001 Chevy 3500 1 ton flat-bed-4x4-59,000 miles-454 engine-Allison transmission-dual gas tanks-9' bed-Rhino lining-Escort radar-4 top boxes head set rack-turn over ball, CADILLAC; 2013 Cadillac-XTS Platinum top of the line package-loaded all the accessories-35,000 miles-3M protective sheathing front of car, GATORS;

John Deere Trail Gator-diesel-1234 hours-electric bed hoist-Rhino spray bed-canopy-6x4-new lower clutch, John Deere Gator-diesel-6x4-electric bed hoist-new upper/lower clutches



ZERO TURN / MOWERS / YARD TOOLS



Gravely PM260Z zero turn mower-60" deck, Husqvarna YTH24K48 riding mower, John Deere 425 garden tractor-power steering front blade-3 pt w/accessory hydraulics-48" deck-hydrostatic, White gas log splitter, Stihl MS170 chainsaw, Stihl 034 chainsaw, Stihl 029 chain-saw, Oregon sharpener, Stihl gas pole saw, Stihl FS90R weed trimmer, Gas brush blade trimmer, 6 HP push weed trimmer, garden planter, Cy-clone tow leaf rake-vacuum, 2400 PSI 3 GPM power washer, Master Volt generator, Craftsman gas edger, Stihl

gas cultivator, electric hedge trimmers, aluminum extension ladders, step ladders, wooden ladders, adjustable ladders, pole trimmer, rakes, hoes, shovels, pitch forks, potato forks, post maul, sledge hammers, splitting maul, aluminum grain scoop, brush axe, pump sprayers

TOOLS-SHOP/WOODWORKING

Delta commercial shaper, Grizzley 20" commercial planer, Grizzley shop dust collection system, Lincoln mil welder, Sears electric welder 30-230 amp, welding rods-helmet, torch tank-cart, Mil-waukee rotary hammer-bits, 25 ton hydraulic press, lot rolling battery chargers-starters-Sears-Die Hard, pneumatic nailers-staplers, Jamerco hand nailer, metal cut off saw, Delta miter saw on stand, 12 ton engine hoist, engine stand, Craftsman horizontal band saw, craftsman bench drill press, drill press clamps, machining bits, Sears 12" band saw, Grizzley 4x6 belt-disc sander, Craftsman 15" drill press, Craftsman joiner, Craftsman radial arm saw, small lathe on stand-knives, Dremel tool, circular saws, drills, worm drive saw, Sears Industrial shear, Milwaukee shear, sanders, profile sander, jig saw, solder gun-solder, heat gun, woodworking bench with vises, work tables, metal tables, machining bits, Wilton bench vise, other bench vises, Craftsman stackable tool boxes, Craftsman tool bench w/drawers, Snap On side chest, tool cabinets, storage cabinets, rolling tool stations, work stool, parts washer, paint sprayer, lot paint supplies, all types of hardware, lot parts bins, 4' tall hardware drawer cabinet, single strand electric wire, motor belts, parts, fluids, oils, 2 cycle oils, sanding discs, grinding wheels, boring bits, drill bits, pipe wrenches, screwdrivers, hammers, brass hammer, pipe wrenches, crescent wrenches, ratchet wrenches, swivel sockets, sockets, ratchets, vise grips, channel locks, lot Craftsman wrenches, crows foot wrenches, pipe cutters, plumbing supplies, lot air tools-chisels-ratchets-parts, pneumatic sockets, pry bars, nail pullers, rivet tool, tap-die, allen wrenches, pliers, strippers, tool boxes, jack stands, car creeper, lot rolling supports, C clamps, bar clamps, wood clamps, pipe clamps, chain hoist, work bench-anvil-vise, bench top grinders, levels, squares, work lights, spools of rope, retractable air hose, come-a-longs, bottle jacks, 2 ton floor jack, extension cords, work mate benches, lot shelving, heavy duty rolling ladder, 2 ton tripod stands, rolling tape measure, oil changing stands, pipe threader, large pipe cut-ter, bolt cutters, wood carving set, squares, bevel gauges, biscuit joiner, paint-stain supplies, saw blades, saw accessories, woodworking manuals-books, floor model drill press

TRACTORS / SKIDSTEER / FARM IMPLEMENTS TRAILERS (will sell after trucks at 1:00 PM)



John Deere 6400 tractor-front wheel assist-4WD-90 HP-1100 hours-cab-AC-radio-shuttle shift-with 640 QT self-leveling loader-7' bucket-bale spear-front hydraulics-one owner, Ford 3600 diesel tractor-turf tires-2420 hours-power steering, extra front and rear tires for Ford tractor-13.6-28-slide out rims, SKID STEER; Case 1845C skid steer-295 hours-6' toothed bucket-one owner, IMPLEMENTS; skid steer attachments- 42" pallet forks, pallet fork extensions, Wichita hydraulic tree shear, skid steer 3 point hitch, Land Pride RCR3596 8' heavy duty brush hog-3 point-safety chains-3 gear boxes, 3 pt pasture renovator, 3 pt 5' brush hog, Schaefer post driver, Danhauser 3 pt post hole digger, Danhauser 3 pt 6' blade, QT 6' snow blade, 3 point bale spear, homemade pallet forks, Land Pride 5' finishing mower, 3 pt chipper-shredder, 3 pt seeder-spreader, 3 pt boom, 7' 14-92 Ford #501 sickle mower, Ford 3 pt 7" disc, TRAILERS; Bales Cus-tom Trailer 24' gooseneck-4' adjustable beaver tail-tandem axle-7000 LB axes, Stillwater 12' single axle flatbed trailer-easy lift ramp, receiver hitch carrier, 4'x8' yard trailer, plastic and aluminum truck tool boxes, hitch receivers, tow balls, binders, ratchet straps, tow straps, lot chains, stabilizer bars, draw bars, top links, tire changer, ATV ramps, jumper cables, motorcycle ramp, FARM SUPPLIES; Fencing supplies, barbed wire roller, spool cable, bale tarps, baler twine, fence stretchers, poultry netting, round 10'-12' water tank, 13" I beams-30' long, LUMBER;walnut-hickory-ash-oak-cedar, treated fence posts

ANTIQUES / HOUSEHOLD / OUTDOOR

Galvanized wash tubs on stand, galvanized sprinkling can, galvanized radiator bucket, enamel light hood, wooden Stanley box, Stanley 71 1/2 router plane, #92 plane, machinist tool box, draw knives, McDonald Douglas models-commercial-military-space rockets, antlers, keys, (2) plat-form scales, copper boiler, brass torch, brush scythes, Pepsi wood crate, 10' ash fire-place man-tle, Jenny Lind beds, #8 crock, wooden framed windows, wooden shutters, (5) 8' sections iron fencing, Soboba stained glass pool table light, HOUSEHOLD; glassware, bakers rack, rolling kitchen cart, table-chairs, dishes, baking dishes, utensils, fireplace ash vacuum, upright vacuum, roaster, canning pots, canning jars, pressure cooker, bread maker, CD rack, luggage, mop bucket, quilting mags, lot books, Christmas decorations, canes, tins, folding chairs, floral, FURNITURE; pair matching armchairs-foot stools, mahogany drop leaf table, stereo console, display cabinets, lot display shelves, lot bookcases, sewing table, clothes rack, whicker trunk, cedar trunk-bottom drawer, Thomas Monticello organ-bench-music, leather recliners, room screen, lamp table, table lamps, step back display shelf, studio couch, glass top coffee table, 2 side chairs, vintage couch, ottoman, end table, chest drawers, wooden chairs, 2 drawer file cabinet, APPLIANCES, refrigerators, upright freezers, 20" flat screen TV, Mitsubishi 60" TV, stereo speakers, air cleaning sys-tem, air purifier, OUTDOOR; Oklahoma Joe large smoker-multiple smoking chambers-gas start, Oklahoma Joes smoker-gas or charcoal-side burner-temp gauges, pop up canopy, lot yard statu-ary, greenhouse supplies-planting tables, planters, lawn seeders, wood hauling cart, dog ramps, dog self-feeders, dog crate, BOATS; 13' flat bottom jon boat, Seahawk 5 passenger paddle boat, lot fishing rods-reels, trolling motors, propane tank-top heaters, camping lanterns-stove, bicycle, horse shoe game, stick stools, lot lawn chairs, lot patio furniture, 2 sets patio table-chairs, Rub-bermaid deck storage cabinet, coolers, fish fryer, propane tanks, water hoses, bird feeders, sleep-ing bag

AUCTIONEERS NOTE: The auction will start at 9:00 AM selling tools, second ring will start at 10:00 AM selling household and antiques.

LUNCH WILL BE SERVED BY ST. GERALD LADIES AUXILIARY

VIEW OUR PHOTO GALLERY ON

www.breheauction.com

BREHE AUCTIONEERING SERVICE, LLC
 Union, MO: (636) 583-0841 Owensville, MO: (573) 437-3454
www.breheauction.com
 LICENSED AUCTIONEERS:
 Kerry Brehe 314.954.3798 Josh Brehe 314.603.3129 Harry Engelhart 636.399.3743

Announcements made day of sale supersede all printed material.
 TERMS: CASH, PERSONAL CHECKS WITH PROPER I.D., BUSINESS CHECKS WITH BANK LETTER AND NO OUT OF STATE CHECKS UNLESS APPROVED BY SELLER. Email Us At kkauction@sbcglobal.net
 Everything sells as is with no guarantees.

We plan to abide by the CDC guidelines regarding the COVID distancing and PPE guidelines.

AUCTION

RAIN OR SHINE

4162 COUNTY ROAD 7200 • WEST PLAINS, MO

JULY 18TH 2020 10:00 AM

DIRECTIONS TO AUCTION FROM WEST PLAINS MO. WEST ON HWY 160 FOR 3 MILES THEN LEFT JJ HWY FOR 6 MILES TO CHINA CHURCH THEN RIGHT ON COUNTY ROAD 7200 FOR 1 AND HALF MILES TO AUCTION LEFT . WATCH FOR AND FOLLOW DANAHY AUCTION SIGNS

TRACTOR • EQUIPMENT • TRUCK

2010 JOHN DEERE 5055D WITH 512 JOHN DEERE LOADER GOOD TIRES 756 HOURS; JOHN DEERE BALE SPIKE FOR FRONT END LOADER; ALOMI GRAPPLER; FRONTIER RC2072 72" BRUSHCUTTER; 7' DISC MOWER FRONTIER VM1160; JOHN DEERE GATOR 825I NO AIR, POWER STEERING, GAS MOTOR, HEAT, ALL INCLOSED, 12 HOURS, ALL DIGITAL REMOVABLE HELICOPTER CAB; QUICK ATTACH TOOL HOLDER; 2006 FORD F150 STX 92,XXX MI 4.2 L ; JOHN DEERE 64 HAYRAKE; JOHN DEERE MANURE SPREADER; 2010 JOHN DEERE LAWMOWER EZTRAK 425I 23 HOURS; 3 1/2 H MURRAY PUSHMOWER; MISC LAWN HAND TOOLS; 7' STEEL FENCEPOSTS; AXE; SCOOP SHOVEL; POST HOLE DIGGER; WOOD SPLITTERS; FENCE STRETCHER; STEEL POST DRIVER; SLEDGEHAMMER; PROPANE WOOD BURNER; 30 USED STEEL FENCE POSTS; METAL SHELVING; PORCELAIN INSULATORS; 175W MERCURY VAPOR BULB; SINK FAUCET WRENCH; BRASS AND GALVANIZED AND PLASTIC FITTINGS; 6 BAGS ROCK SALT; SMALL CHAINS; RYOBI PLASTIC CONTAINER; BENCH VICE 516 FRENTISS BULLDOG; BAILEY BLOCK PLANES; TRUE TEMPER METAL WHEELBARROW; ANTIQUE TWISTED HANDLE PIPE WRENCH; SEVERAL FITTED RASP; ALMUMINUM PIPE WRENCH; RYOBI MIDER SAW; HAMMERS AND MISC; ENAMEL WASH PAN; CRAFTSMAN TOOLBOX WITH MISC TOOLS; DISSTON HAND SAW; SQUARES; SHEET ROCK SQUARE; WOODEN CLAMPS; TORQUE WRENCH; FENCE PLIERS; DIS-

STAN MITER SAW AND BOX; 4 1/2" SKILL ANGLE GRINDER; SHEETROCK PUTTY KNIVES; BRACE AND BIT FOR SOIL SAMPLES; CALF WEANER; MISC NUTS, BOLTS, SCREWS, AND WASHERS TOOL BIN; GALVANIZED WASH TUBS; OIL DRAIN PAN; BUCKET WITH TOOL BAG; JACK STANDS; 4 LIGHT OLD WOODEN WINDOW; GATE HINGES; AIR COMPRESSOR 8 GAL HUSKEY; ARMY STYLE JERRY CAN 5 GAL GAS CAN; WRECKING BARS; JUMPER CABLES; 3' GALV CHAIN LINK GATE; MILWALKEE GRINDER; 2 WHEELED DOLLY; WOODEN LADDER; WOODEN BENCH; WODDEN SAW HORSES; METAL MOP BUCKET; AIR TANK; KEROSENE LAMP; OLD TRUNK; GALVANIZED TRASH CAAN; PECK BASKET; HANDHELD SHOP LIGHT; BOX FAN; GRAPPLE HOOK; METAL OIL CANS; 3/8" HYDRAULIC LINES; LOGAN VALLEY 50 GALLON GALVANIZED STOCK TANK; GALVANIZED BUCKET; WOODEN BENCH;

WASHER • DRYER • HOUSEHOLD

GE WASHER AND DRYER; BLACK WICKER ROCKERS; PINE DINNING ROOM TABLE TIH 4 CHAIRS MATCHING CHINA HUTCH; PINE COUCH AND LOVESEAT; PINE COFFEE TABLE AND MATCHING END TABLES; MISC LAMPS; WOODEN BOOKSHELVES; ROCKER CLOTH AND LEATHER; WOODEN SIDE TABLE; DESK AND CHAIR; PINE DRESSER, CHEST OF DRAWERS, NIGHT STAND; PINE GUNRACK; BATH CHAIR; METAL LINEN TOWEL RACK; FIREKING DISHES; MISC KITCHENWARE; OLD SCISSORS7 DECORATIVE CANDLE HOLDERS

THE ESTATE OF THE LATE RAY CHERRY

Danahy Auction Service

For All Your Auction Needs • Terry Danahy, Auctioneer

417-256-9667 • Ark. License: #2269

Not Responsible Fir Accidents • Everything Sold As Is

SURPLUS PROPERTY AUCTION

RAIN OR SHINE

1365 RAMSEUR ROAD WEST PLAINS MO. LOCATED BEHIND JC. PENNEY'S & BIG LOTS

JULY 25TH 2020 • 10:00 AM

CAFE • OFFICE • CLASSROOM

NUMEROUS MODERN CAFE CHAIRS METAL WITH CUSHIONS; NUMEROUS SQUARE WOODEN CAFE STYLE TABLES; NUMEROUS SQUARE WOODEN HITOP CAFE STYLE TABLES; CHERRY CLIENT TABLE AND CHAIRS; 26 LONG RECTANGULAR CLASSROOM LECTURE TABLES; NUMEROUS CLOTH HIGHBACK CLASSROOM CHAIRS; NICE LEATHER WAITINGROOM CHAIRS ON CASTORS; TWO CLOTH CHAIRS WITH ARMS (LAV-ENDOR); TWO CLOTH CHAIRS WITH ARMS(RED); SEVERAL WOODEN BOOKSHELVES; WOODEN LATERAL FILE CABINETS; SEVERAL METAL LATERAL FILE CABINETS; NUMEROUS TWO DRAWER FILING CABINETS WITH CASTORS AND CUSHIONS WITH KEYS; MULTI FOLDING WOODEN PRINTER CABINET ON

WHEELS; SEVERAL WIRE SHELVES; TWO SIDED WHITE BOARD EASLES ON WHEELS; CLASSROOM EASEL WITH LARGE NOTEBOOK; CHALKBOARD; SCALLOPED EDGE TABLES; METAL CARD FILE CABINET TEN DRAWER; CHERRY OFFICE BOOKSHELVES; CHERRY TWO PIECE ENCLOSED BOOKSHELF/ CABINET; METAL SWIVEL OFFICE CHAIR; METAL SWIVEL OFFICE CHAIR ON CASTORS; COMPUTER DESK WITH ACCORDIAN STYLE FILE RACK; SEVERAL METAL HATRACKS; ROUND CONFERENCE TABLE; CORNER TABLE ON WHEELS; NUMEROUS ERGONOMIC OFFICE CHAIRS; RAFFLE TUMBLE BOX; NUMEROUS OFFICE CHAIRS; STAINLESS STEEL PUSH CARTS

AUCTION NOTES: AUCTION THIS WILL BE A LARGE AUCTION FILLED WITH HIGH END SUPER NICE HIGH QUALITY CAFE, OFFICE, AND CLASS ROOM FURNITURE.

OWNER LEONARDO DRS

Danahy Auction Service

Terry Danahy, Auctioneer

417-256-9667 • Ark. License: #2269

Not Responsible For Accidents • Everything Sold As Is



When You Want It SOLD!!

**Commercial • Residential • Industrial
Real Estate • Farmland • Liquidations**

Over 30 Years in the Auction & Real Estate Business

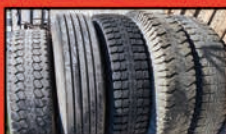
MULTIPLE ESTATE AUCTION

Equipment, Tools, Guns, & Vehicles

Saturday, July 18th

at the **St. Clair County Event Center**
1550 E State Route 15, **Belleville, IL**

**Bid Online
or Onsite**



Trailer loads of new and used **TOOLS**,
Heavy **EQUIPMENT** for the garage or warehouse,
Over 12 estate **VEHICLES**,
Nearly 30 long **GUNS** and hand guns.

Cafe opens at 7:30 AM.
Auction begins at 9 AM.
Vehicles start at 12 Noon.
Gun auction after.

NATIONWIDE AUCTION SERVICES

Real Estate
Personal Property
Retirements
Business Closing
Surplus

We Come to YOU

ADAM JOKISH

Auctioneer / Real Estate Broker

Cell 618/530-8751

Office 618/234-8751

www.adamsauctions.com

Call us to Sell YOUR Property — 618-234-8751

HUGE PUBLIC AUCTION

Saturday, July 25, 2020 • 9:00 a.m.



SHOW-ME AUCTION CENTER

17829 Shadey Brook Dr. • Versailles, MO 65084

				<p>RING #1</p> <p>9 am Antiques 10:30 am Housewares 12 Noon Furniture</p> <p>RING #2</p> <p>9 am Tools 11 am Sporting Goods 12 Noon Building Materials Outside</p> <p>RING #3</p> <p>12 Noon Coins</p>			
--	--	--	--	---	--	--	--

- ### ANTIQUES
- 3 - Mantle Clocks (1- Cuckoo Clock, 2 Little Ben Alarm Clocks)
 - Wood Case for Singer Sewing Machine
 - Hand Crank, Brunswick Record Player, In Case w/Records
 - Large Lot Records
 - Oil Lamps, Some Aladdin
 - Large Lot Graniteware Pictures, Pails, Pans, Cookware, Bedpans, Chamber Pots & More
 - Milk Strainer (Complete)
 - Lot Aluminum, Granite Roaster
 - Crocks, Bowls, #10 Crock Buckeye Pottery, Nice
 - Sad Irons, Coke Trays, Match Holders, Choppers, Mixers, Popcorn Popper
 - Old Viewmasters w/Slides
 - Very Large Collection Elephant Decor
 - Large Square Aluminum Dutch Oven
 - 20" Iron Skillet, 15" Lodge Skillet w/Lid
 - Sausage Stuffer
 - Grinding Wheel w/Seat
 - Buck Saw
 - #8 Griswold Pan w/Lid, Cornbread Pan
 - #4 & #5 Griswolds/Griddle
 - Large Lot Guardian Ware
 - Large Collection Kitchen Utensils, Rug Beater
 - Collection of Wild Turkey Decanters
 - Lot Ruby Red Avon Glassware
 - Large Lot Avon Cologne Bottle Collection
 - Oven Dehydrator
 - Pink & Green Depression Glassware
 - Several Pairs White Glove
 - Several Tins of Buttons
 - Lot of Assorted Jewelry & Costume Jewelry
 - Lot Blue Canning Jars & Lids
 - 5 L. Mini Beer Keg (Sealed)
 - Electric Budweiser Clock (Lighted)
 - Lot Nice Old Quilts (Some Hand-Quilted)
 - 12 - Quilt Tops
 - Lot Old Silverware (Some w/Bone Handles)
 - 3 - Electrolux Vacuums
 - Old Toys
 - 12-Ga Gun (Display Only)
 - Old Children Books
 - Fishing Rods
 - Pocket Knives

- ### COINS
- 1837 Large Cent
 - 1842 Large Cent
 - 1849 Large Cent, Choice
 - 1853 Large Cent
 - 1854 Large Cent
 - 1934-P Lincoln Cent, Nice BU, R/B
 - 1876-S Seated Dime, Full Liberty
 - 1945-P Mercury Dime, BU
 - 1875-S Twenty Cent Piece
 - 1857 Sealed Quarter
 - 1832 Bust Half Dollar, Nice+
 - 1906-0 Barber Half Dollar
 - 1913-0 Barber Half Dollar
 - 1914-S Barber Half Dollar
 - 1959 Silver US Proof Set
 - 1960 Silver US Proof Set
 - 2006 Silver Proof Set
 - 1990 Prestige Set
 - 1899 Black Hawk Series One Dollar Silver Certificate
 - 1914 Series Five Dollar Federal Reserve Note
 - 1928 Series Ten Dollar Gold Note
 - 2010 Gem Proof Silver Eagle
 - 2019 Silver Eagle
 - 2019 Silver Eagle
 - 2020 Silver Eagle
 - 2020 Silver Eagle
 - 2020 Silver Eagle
 - Morgan Dollar Silver Round
 - Quarter Silver Round
 - Eagle Silver Round
 - St. Gaudens Silver Round
 - Buffalo Silver Round
 - Sunshine Silver Round
 - 1916-L Liberty Half Dollar
 - 1920-L Liberty Half Dollar
 - 1921-8 Liberty Half Dollar, Key
 - 1928-8 Liberty Half Dollar, Choice
 - 1939-P Liberty Half Dollar, Nice
 - 1942-0 Liberty Half Dollar
 - 1860-0 Seated Silver Dollar
 - 1878-CC Silver Dollar
 - 1879-CC Silver Dollar, Tough Date
 - 1881-8 Silver Dollar, Nice Bu
 - 1883-0 Silver Dollar, Bu
 - 1886-P Silver Dollar, Bu
 - 1886-P Silver Dollar, Bu
 - 1890-CC Silver Dollar
 - 1900-0 Silver Dollar
 - 1901-0 Silver Dollar
 - 1925-P Peace Dollar
 - 1/10 Oz Gold Pearl Harbor 2016
 - Seventy-Fifth Anniversary 1908 Five Dollar Indian Gold, Very Nice

- ### SPORTING GOODS
- Reloading Equipment
 - Shell Casings & More
 - Browning Compound Bow
 - Lots of Arrows, Etc.
 - Hunting Book & Pictures
 - Lot Hunting Cloth
 - Turkey Calls
 - Turkey Decoys
 - Clay Pigeon Thrower
 - 20-Plus Knives
 - 7 - Tackle Boxes Loaded
 - Fish Fryer w/Tank
 - Old Gas Stove
 - Coleman Heater
 - Yamaha Boat Motor
 - 2 - Tree Stands
 - Lead Pot 1/2 Full
 - 2 - Coleman Lanterns
 - Gun Racks
 - Gun Scopes
 - 14 - Fishing Rods
 - Boat Oars
 - 3 - CBs
 - Table Full of Golden Eagle Ham Radio Equipment
 - Old Wooden Work Table (Nice)
 - Fishing Net
- There are items we haven't unpacked yet. Many more items...*

- ### TOOLS
- Forage
 - Tongues & Hammers
 - 2 - Homemade Anvils
 - 4 - Homemade Handy
 - Vector Torch Set w/Bottles
 - 295-Amp Ward Welder
 - Sears Wire Welder w/Bottle
 - Large Lot Welding Rods
 - Welding Helmet & Gloves
 - 2 - Chain Hoists
 - Master Force Bench Grinder
 - Sentry Fire Extinguisher
 - Cummins 6" Vise
 - Log Chains
 - 2 - Small Vises
 - 1-Hp Sears 15" Drill Press
 - 4 - Black & Decker Angle Grinder
 - Makita 3/4 Impact Wrench
 - 3 - Heavy Metal Shop Cabinets
 - Heavy 220-Amp Cord
 - Napa 200-Amp Charger
 - Small Shop Heater - Propane
 - 2 - Squirrel Cage Fans
 - Creeper
 - Chainsaw & Lots of Chains
 - Lot Ropes
 - Pole Climbers & Belts
 - Keller Step Ladder
 - 2 - Little Giant Ladders
 - Delta 10" Table Saw
 - Delta Band Saw (12")
 - Tradesman 10" Table Saw
 - Delta Miter Saw
 - Dewalt Saw
 - Rockwell Delta Shaper
 - Sears 2-Hp Planer
 - Forte Planer Jointer
 - 2 - Black & Decker Work Molds
 - Sear Rotor w/Table
 - Skil Sander Belt & Disc
 - Porter Cable Hammer Drill
 - Sear Rotor
 - 3 - Axes
 - Lot Shovels & Rakes
 - Lot Cords & Air Hoses
 - 3 - Sanders
 - 2 - Walnut Pickers
 - Lots of Wrenches & Sockets
 - Many Hand Tools
 - Nails & Screws
 - Large Lots of Bolts (Assorted Sizes)
 - Many more items. This is a complete shop clean-out.



- ### ANTIQU FURNITURE
- Ornate Chair
 - Several Small Stands
 - Wash Stand
 - Lawyer Bookcase
 - Glass Shelf Curio
 - 4-Drawer Dresser w/Mirror
 - 2 - Oak Dressers
 - 2 - Singer Treadle Sewing Machines w/Cabinet
 - Round Top Trunk
 - Foot Locker
 - Old Wooden Storage Box
 - Library Table
 - Oak Chest of Drawers
 - Oak Chamber Pot Chair
 - Oak Harvest Table
 - Child's Chair
 - Glider Rocker

- ### FURNITURE
- 5-Pc NEW Oak Bedroom Set
 - Cherry Armoire & 2 Night Stands (4-Drawer) w/ Brass Headboard
 - Small 2-Drawer Entertainment Center
 - Navy Rocker w/Footstool
 - 4 - Vinyl Chairs
 - Magazine Rack
 - Wicker Chest of Drawers
 - Oak Entertainment Center (Nice)
 - 4-Pc Iron & Slate Living Room Set w/Glass Top
 - Blue Recliner & Reclining Sofa Set
 - Blue Plaid Hide-A-Bed Sofa
 - 3-Door Entertainment Center w/Bottom Drawer
 - 2-Drawer Wood File Cabinet
 - 4-Drawer Blue Chest of Drawers
 - Oak Bed & Dresser w/Mirror
 - Red Metal Full & Single Bunk Bed w/Mattress
 - Several Floor Lamps
 - Assorted Lamps
 - Several Bookcases
 - Podium w/Mic & Speakers
 - Vinyl Office Chair
 - White Metal Picnic Table & 5 Plastic Chairs
 - 2 - Bedroom Sets (No Mattress on Box Springs)
 - 4-Drawer File Cabinet
 - 4 - Living Room Chairs
 - Hutch, Table & 6 Chairs
 - White Bedroom Set
 - Cedar Chest
 - Oak Claw-Foot Table w/Large Leaf
 - Rustic Lawn Furniture
 - Cedar Table w/Benches
 - Folding Tables

- ### BUILDING SUPPLIES
- 75 - 4x8 3/8" Plywood New
 - 26 - 4x8 5/8" Plywood New
 - 39 - 4x8 1/2" Plywood New
 - 280 - 2x4 Pre-Cuts, New
 - 1 Bundle Furniture Lumber
 - Lot 6" Baseboard, New
 - Huge Lot Vinyl Siding & Trim
 - 18 - Doors, New & Used
 - Lot of Windows
 - 2 - Overhead Doors (Incomplete)
 - 6 - Bundles Used Tin
 - 3 - Big Windows
 - 9 - 4" Lights
 - Wood Stove
 - Large Lot Stove Pipe & Elbows
 - Lot Metal Sheffing
 - Lot of Vinyl Spindles
 - Concrete Anchors
 - Lot of Misc. Hardware
 - Wall Heater (Propane)
 - 2 - Ceiling Fans
 - 2 - Stainless Steel Kitchen Sinks (Double)

AUCTION NOTES: This is a small listing. There are many more items than listed. Don't miss this sale! There is a lot of good quality merchandise. See you Saturday!

Wilmer

- ### HOUSEWARES
- Stainless Steel Pots & Pans
 - Large Stainless Steel Mixing Bowls
 - 12 Serving Bavarian China Set
 - Crystal Vases, Cake Stands, Bowls
 - Lot Cookbooks
 - Pressure Cooker
 - Lot Nice Lamps
 - Coffee Pots
 - 36-Cup Coffee Maker
 - Tupperware
 - Hot Office Printer
 - Lot Canning Jars
 - Kirby Vacuum
 - Hoover Shampooer
 - Electric Ice Cream Freezer
 - 8-Pc Silverware Set (Nice)
 - Wooden & Marble Rolling Pins
 - Large Collection Misc. Wooden Boxes
 - Wood Stove Insert
 - 4-Pc Black Wicker Patio Set

APPLIANCES

- Kenmore Electric Dryer
- Whirlpool Electric Dryer
- Refrigerator (White)
- Electric Dryer

Sale will be held indoors. Lunch will be served. Loader is available.

Lunch Served Pork Steak Dinner



For more photos and information, see auctionarrows.com or auctionzip.com (ID# 30027)

<p>Show-Me Auction Center Owners:</p> <p>WILMER & ANNIE HOOVER</p> <p>573-378-4908 • 573-789-2215</p>	<p>Auctioneers:</p> <p>Col. Doug Dieckman - 660-287-1962</p> <p>Col. Tony Stephens</p>	<p>For Information, Call</p> <p>Earl Ray Zimmerman</p> <p>573-378-4335</p>
--	--	--

Not responsible for accidents. TERMS: Cash or Check with Proper I.D. • All statements made date of sale take precedence over printed material.

KILMER FARM EQUIPMENT CONSIGNMENT AUCTION

SATURDAY, AUG. 29 • 10 AM
14769 Cattle Lane, Versailles, MO 65084

Directions: At the intersection of Hwy 5 and Hwy 52 in Versailles, go North on Hwy 5 for 1 mile to Cattle Ln then turn Right or East and go ¾ mile to Sale Site.

AD DEADLINE: FRIDAY, AUG. 7, 2020

ACCEPTING CONSIGNMENTS ON LOT

Monday, August 17 - Wednesday, August 26

CONTACT DANIEL OR MARK KILMER TO CONSIGN OR FOR MORE INFORMATION (573) 378-6615

TRACTORS, PLANTERS AND SPRAYERS, CONSTRUCTION EQUIPMENT, TRUCKS AND TRAILERS, GRAIN CARTS AND WAGONS, MANURE SPREADERS, CUTTERS, TILLAGE, COMBINE AND HEADS, FEED MIXERS, MISC. EQUIPMENT, HAY EQUIPMENT, SILAGE EQUIPMENT

2 RING MAY RUN DAY OF SALE



23101 HWY. 24, PARIS, MO 65275 | 660-327-5890
 WWW.WHEELERAUCTIONS.COM



KILMER FARM EQUIPMENT, LLC • (573) 378-6615
14270 Hwy. 52, Versailles, MO 65084
 For more info and photos: www.wheelerauctions.com

10 FOLDING TABLES: for yard sale maybe. \$100. 573-327-9068.

2008 CAN-AM SPYDER: Premier SC Edition, anti-lock brakes, traction control, cruise control, emergency brake, new battery and tires, excellent condition. \$5,200. 573-338-0368.

8 BLACK/BLACK-WHITE FACE BRED HEIFERS: due to start calving in August, have been pelvic checked, pregnant checked, dewormed and shots, bred to registered, low birth weight black Angus bull. \$1,500 each. 573-229-4636/573-301-7471.

OLD BARN: to be torn down, Preston area. 563-529-0612.

Wright Spray Foam Insulators, LLC
 Commercial & Residential
 Call for **FREE** Estimates!

Ervin Gingerich
 417-926-2052
B. Eli Yoder
 417-746-4932



Saturday, JULY 18, 2020 • 9:00 a.m.

LOCATION: In Licking, Mo., take North Main Street to Sherrill Street. Auction at 103 Sherrill St. Watch for signs. Go to auctionzip.com to view photos and listing. Auctioneer #28367

REAL ESTATE TO BE OFFERED
 2 Bedroom, 1-1/2-Bath, range, refrigerator, washer and dryer included, additional room had been a beauty salon, attached garage. Well-kept home on .25 acre lot. Seller is very motivated. Would make a great starter home or rental.

To view property, call Steve 573-674-2686 or Neal 573-202-3132. Real Estate sells as is.

HOUSEHOLD ITEMS
 Furniture, dishes, collectibles will also be selling.

Esther Robertson - Owners

Terms - Cash or Approved Check. Nothing Removed Until Settled For. Not Responsible For Accidents. Must show ID to get Buyers #. Announcements Made Day Of Sale Take Precedence Over Printed Matter.

Buckner & Gately Auction Service Auctioneers
 Steve Buckner 573-674-2686
 Neal Gately 573-202-3132

2-21" PUSH MOWERS: Briggs & Stratton engine, 1 runs, 1 for parts. Both \$75. 636-239-2695.

MISSOURI GARDENER'S GUIDE: 421 pages, over 170 color photos, 417-532-2045. Lebanon. Leave phone number.



REGULAR SALE EVERY THURSDAY 11AM

WATCH OUR WEEKLY SALE IN REAL TIME ON DVAUCTION.COM

For Farm Visits, Market Updates, or Trucking

Call **Zach Cox 417-777-1320**
Dan Romine 573-578-4939

**Competitive Buyers!
 Competitive Commission!
 Competitive Market!**

Barn: 417-532-9292
 I-44 • Exit 123 "just outside of Lebanon"
17505 Route 66, Philllipsburg, MO 65722

For weekly market updates, visit us at www.midmostockyards.com



276 Hwy 32 West • Buffalo, Missouri

July 11th, 2020

Receipts: 1369 Head

Steady market to \$2 lower.

Representative Steers

300-400 @ 155.00 to 177.00
 400-500 @ 145.00 to 172.50
 500-600 @ 142.00 to 159.75
 600-700 @ 137.00 to 150.00
 700-800 @ 120.00 to 132.00

Representative Heifers

300-400 @ 130.00 to 148.00
 400-500 @ 125.00 to 147.50
 500-600 @ 130.00 to 143.00
 600-700 @ 120.00 to 135.00
 700-800 @ 110.00 to 123.00

Feeder Bulls

400-500 @ 130.00 to 157.00
 500-600 @ 118.00 to 137.00
 600-700 @ 110.00 to 127.00
 700-800 @ 95.00 to 108.00

Bred Cows

800.00 to 1000.00

Slaughter Cows

Breakers 60.00 to 69.00
 Boners 65.00 to 76.50 Top
 Cutters 60.00 to 65.00
 X Thin 55.00 Down

Bulls

High Dressing 100.00 to 106.00
 Med Dressing 90.00 to 99.00
 Low Dressers 80.00 to 85.00

MON-WED MARKET REPORT

Listen to KJEL 103.7FM • Lebanon or KYOO 99FM • Bolivar

VIEW OUR SALES AT CATTLEUSA.COM

CALL FOR TRUCKING OR ON-FARM VISIT

Lyle Caselman • Owner-Manager
 417-345-7876 • mobile 417-533-2944
Leon Caselman • Owner
 417-345-4514 • mobile • 417-588-6185
Howard Miller • Owner 417-345-8122

Which Kubota Is Right For You?

Kubota THE RIGHT EQUIPMENT IS RIGHT AROUND THE CORNER. Kubota

L2501 DT PACKAGE DEAL

25HP Kubota diesel engine***
4WD, Ag Tires, 18' Trailer,
5' Box Blade, Kubota Loader,
5' Land Pride Brush Hog,
6 Year Power Train Warranty***
\$0 Down, 0% A.P.R.
for 60 months**
\$20,995

L3901 DT PACKAGE DEAL

39 Kubota diesel engine***, 4WD, Ag Tires, 18' Trailer, 5' Box Blade, Kubota Loader, 5' Rotary Cutter.
6 Year Power Train Warranty***
\$0 Down, 0% A.P.R.
for 60 months**
\$25,995

L3301 DT PACKAGE DEAL

33 Kubota diesel engine***
4WD, Ag Tires, 18' Trailer, 5' Box Blade, Kubota Loader,
5' Land Pride Brush Hog,
6 Year Power Train Warranty***
\$0 Down, 0% A.P.R.
for 60 months**
\$24,395

ALL-NEW GAS-POWERED RTV-XG850 SIDEKICK

POWER • PERFORMANCE • HANDLING • STYLE

48HP***, 40 mph transport speed, gasoline engine.
* Price per month does not include insurance and sales tax if applicable.
Includes \$1,000 rebate and 3.99% APR financing for 60 mo. with approved credit**
Other purchase and finance options available. See dealer for details.

L4701 DT PACKAGE DEAL

47 Kubota diesel engine***, 4 cyl., 4WD, Ag Tires, 18' Trailer, 6' Box Blade, Kubota Loader, 6' Land Pride Rotary Cutter.
6 Year Power Train Warranty***
\$0 Down, 0% A.P.R.
for 60 months**
\$31,495

Get unmatched Kubota quality. Kubota designed, engineered and built. More package deals available.

Visit Us In TWO Locations!

8665 Outer Road, Mtn. Grove
417-926-5454 • 877-926-5458

4973 W. US Hwy. 160, West Plains
417-256-0420 • 800-766-0420

* \$0 Down, 0% A.P.R. for 48 months. Qualifying Equipment: RTV-XG850. \$0 Down, 0% A.P.R. financing for up to 48 months on purchases of select new Kubota RTV-XG850 equipment from participating dealers' in-stock inventory is available to qualified purchasers through Kubota Credit Corporation, U.S.A.; subject to credit approval. Some exceptions apply. Example: 48 monthly payments of \$20.83 per \$1,000 financed. Offer expires 07/31/20 See us or go to KubotaUSA.com for more information. ** \$0 Down, 0% A.P.R. for 60 months. Qualifying Equipment: BX, B, L, MX and M, MH(M7), RB, DMC, DM, RA and TE Series. \$0 Down, 0% A.P.R. financing for up to 60 months on purchases of select new Kubota L2501 DT, L3301 DT, L3901 DT or L4701 DT equipment from participating dealers' in-stock inventory is available to qualified purchasers through Kubota Credit Corporation, U.S.A.; subject to credit approval. Some exceptions apply. Example: 60 monthly payments of \$16.67 per \$1,000 financed. Offer expires 07/31/20 See us or go to KubotaUSA.com for more information. *** For complete warranty, safety and product information, consult your local Kubota dealer and the product operator's manual. Power (HP/KW) and other specifications are based on various standards or recommended practices. **** Only terms and conditions of Kubota's standard Limited Warranty apply. For warranty terms, see Kubota's Limited Warranty at www.KubotaUSA.com or authorized Kubota dealers.

DREAM HOUSE - Online, chateauhomes.net Call Marla 573-657-7040

FARMALL M: New rear rims, tubes, tires, heavy duty 3pt. \$2,550. 417-848-8754.

2014 MERCEDES E-350 4-MATIC: 100,000 miles, new condition, \$13,000 Firm. 417-383-8200.

BIG ROUND BALES: from Field or barn, 573-759-6885.

POOL TABLES: Installations, moves, repairs, accessories, etc. 573-646-1700.

LOG SIDING SALE: 2X8 Western Cedar .99 ft/ Pine \$1.19 ft while supplies last. www.pinneridgerustic.com 573-729-7226.

TRACTOR: Farmall H, wide front, very nice condition, call for details/pictures, \$2,500. 417-848-8754.

1951 8N FORD TRACTOR: good shape, runs good. \$1,650. 573-468-7689.

3-6 YEAR OLD CALF/COW PAIRS: 200-400lb calves. 417-331-8284.

Buildings • Hunter's Cabins • Lawn Furniture

JAMCO Portable Buildings

800-688-2064 • 307 Enterprise Dr. • Seymour, MO • www.jamcobuilders.com

Rent To Own Plan

MIDWEST CONSTRUCTION

Free Estimates!

- Pole Barn • Garages • Framing
- Remodels • Roofing • Concrete
- Decks & Porches

Contact Abner Glick
417-664-1794

KITCHEN FAUCET MOEN: single lever, sprayer, new cartarage. \$70obo. 636-239-2695.

VILLA HOMES IN ROLLA: Has NEW and USED Mobile Homes. Call David for info: 573-578-8072.

CAPPER'S WEEKLY VINTAGE SEARCHLIGHT COOKBOOK: hardback \$15. 417-532-2045, Lebanon. Leave phone number.

2012 GMC TERRAIN: 120,000miles. \$9,250. 573-732-5588

MOBILE HOMESshop on-line..... Call Tuff with questions 573-657-2176 amegamobilehomes.com

SMALL SQUARE HAY BALES: Alfalfa, clover, Grass mixed. \$5.50/bale. Long Lane, 417-345-5634



We Are OPEN!

Our Showroom Has
Reopened

Load Out and Delivery
Service Available

Sale Ends July 31, 2020
Seymour, Missouri 417-935-4201

Call for free quote, brochure & color chart.
Other sizes also available.

Pole Barns & Post Framed Buildings!



23'x32'x10' \$4,199 Material Only \$5,419 Labor Included	23'x40'x10' \$4,899 Material Only \$6,429 Labor Included	30'x40'x10' \$5,849 Material Only \$7,849 Labor Included	40'x60'x12' \$10,299 Material Only \$14,559 Labor Included
---	---	---	---

NOBODY, BUT NOBODY BEATS OUR PRICES!!!

10 ft. Slider • Engineered Trusses 8' O.C. • 2x6 Treated Bottom Wrap • Screws • 2x10 Top Wrap • 2x4 Purlins • Full 29 Gauge Steel • Plus 3 ft. Entry Door with Lock

OPTIONS: Sidewall Heights on all Buildings 10', 12', 14' & 16'. Overhead Garage Door, Skylights, Insulation, Wainscoting, Insulated Vinyl Windows, Cupolas, Labor Rates Slightly Higher over 50 Miles from Seymour. Call for YOUR FREE QUOTE TODAY!!!

PAINTED WHITE, GREEN OR TAN METAL	\$69.99
10' - \$22.10 12' - \$26.52 16' - \$35.36	
MIX & MATCH METAL	\$39.99
8' - \$10.13 10' - \$12.67 12' - \$15.21	
GALVALUME METAL	\$52.50
10' - \$16.60 12' - \$19.92 16' - \$26.56	
GALVANIZED CORRUGATED METAL	\$56.75
8' - \$9.84 10' - \$12.30 12' - \$14.75 16' - \$19.67	

IN STOCK

40yr Painted Metal
\$69.99

KNOTTY PINE DOORS
Starting at
\$109.99

LP SMARTSIDE T-5 LAP B GRADE \$43.59/SQ

Car Siding!

1x6 White Pine Siding	43¢ In ft
1x8 White Pine Siding	54¢ In ft

* 4 Profiles to choose from!
Broken Bundles Add 10¢ Per Ft.

4x8 Sheeting
Less than full units Add \$1 per sheet

3/8" Beaded Panelling	\$15.99
5/8" T111 Siding	\$19.99
Panelling	\$9.99
1/2" Plywood	\$19.99
3/4" Plywood	\$23.99
3/16 Pegboard	\$12.99

LOTS OF MATERIAL AVAILABLE
FOR THOSE IN HOME PROJECTS!

REAL WOOD SIDING

2x6 Log Siding - 1.09¢ In ft
1x8 Beveled Cedar from- 64¢ In ft
5/8 T1-11 Siding from \$19.99

NEW PACKAGE HOMES

2x6—16" on center-Exterior Stud Walls
Residential Roof Trusses-2' on center
4/12 pitch with 1' over hang
40 year Painted Metal roofing in 20 Different Colors
Profile Ridge Vent - Ventilated Ridge Cap
Vinyl Center Vent Soffit
Color Matched Metal Fascia & Gable Trim
2 - 3' 6 Panel Entry Doors
4 - 3'x4' Vinyl Insulated Windows

Shown with Available Options
Your Choice of either:
Stock 5/8" T111 Wood Siding w/1x4 Pine Window & Door Trim - or -
7/16" OSB & House Wrap ready for other finish options

ALL FIGURED FOR SUITABLE CUSTOMER SUPPLIED SLAB OR SUB-FLOOR

Price for Basic Materials Package & Labor

20x24(480 sq. ft.)	20x32(640 sq. ft.)	20x40(800 sq. ft.)	26x40(1120 sq. ft.)	28x48(1344 sq. ft.)
\$9,050	\$10,615	\$12,119	\$15,242	\$17,075

DECK PACKAGES
Materials Only
SOLD OUT!

QUAKER Now Stocking Quaker Vinyl Windows

2030 \$99.99	3030 \$119.99
3040 \$129.99	3052 \$145.99
3040Twin \$279.99	3052Twin \$314.99



LUCKY DISCOUNT LUMBER
417-935-4201
455 State Hwy C • Seymour MO 65746
www.luckydiscountlumber.com



*Some restrictions apply see store for details

OFFICIAL TRACTOR OF TOUGH™



Marshfield Machinery Inc.

222 E. Madison • Marshfield, MO 65706
417-859-2117 • www.marshfieldmachinery.com

MahindraUSA.com © 2020 Mahindra USA Inc.



NEW MAHINDRA TRACTORS	
7085 4WD & LDR 85HP	IN STOCK
2655 4WD, BACKHOE 55HP	IN STOCK
2655 4WD & LDR 55HP	IN STOCK
1626 4WD & LDR 26HP	IN STOCK
MAX26XL & LDR 26HP	IN STOCK
USED TRACTORS	
MF 4609 CAB 4WD LDR 90HP	32,500
MAHINDRA 2555 4WD LDR 55HP	19,000
FORD 5610 LDR 66HP	9,000
CASE 1490 83 HP	7,500
FORD 1910 4WD LDR 39 HP	6,500
MF 150 38HP	4,500
CASE IH 235 W/ MOWER 18HP	3,500
IHC 184 W/ MOWER 18HP	3,500
FORD 8N	1,250
USED ROUND BALERS	
MF 1745 4X5	8,500
NI 6254 4X5	7,500
VERMEER 505SI MESH	7,500
GEHL 2480 4X5	6,500
JD 435 4X6 MESH	6,500
VERMEER 554XL 4X5	5,500
HESSTON 560 5X6	4,000
HESSTON 550 4X6	3,500
HESSTON 530	3,500
HESSTON 5500 5X5	1,500
NH 850 5X5	1,500
USED RAKES	
M&W 8 WHEEL	1,500
USED MISC.	
HAYBUSTER 107C DRILL	17,500
HAYBUSTER 107C DRILL	11,500
HAYBUSTER 107C DRILL	10,500
FRONTIER BALE PROCESSOR	8,500
RHINO 12FT CUTTER	8,500

Marshfield Machinery Inc.
222 E. Madison • Marshfield, MO 65706
417-859-2117
www.marshfieldmachinery.com



QUALITY

SALES & SERVICE

**One-Stop
Shopping & Service
For Your Vehicle**

- Paint & Body Repair
- Glass & Rock Chip Repair
- Diagnostic Testing
- Alignment Specialists

We File Insurance!

Starnes

Auto Body

588-7939 • 588-3159
2215 RT. 66 • LEBANON, MO



WE DO ALIGNMENTS!

7 FT. 3 POINT HARROW: \$150. 417-766-1991.

4 FIRESTONE TIRES: 235-50, 18", Like new, 11,000miles. \$200/might trade for gun Springfield, 417-833-8351/417-234-0629.

MURRAY RIDING MOWER: Good tires, deck, blades, 5-speed, needs motor. \$150-gun trade. 573-364-7465.

94 JEEP WRANGLER: Black, 98,000, Heat AC, Stereo, 5 speed, 4 wheel drive, sharp. Dixon. 573-422-9927.

OLD LINN CREEK, HA HA TONKA & CAMDEN CO BOOK, "Before the Dam Waters", BY T. VICTOR JEFFRIES. \$5.50 each post paid. To order: 417-532-2045, Lebanon (leave message.)

1995 CHEVY PICK-UP: 4X4, 3/4 ton, many new parts, some rust, trailer brake system. \$4,500. After 3pm Bourbon, 573-627-3729.

WEATHERED BARN WOOD SIDING: 8" & 10" wide. 573-729-7226. www.pineridgerustic.com

VIRUS SALE - mobile home inventory, entire stock, first come basis, 3 & 4 bedroom, 2 bath, Hurry and call for info 573-499-9993 columbiadiscounthomes.com

VINYL WINDOW: Double pane, 50x33. \$40. 417-322-4432.

SWAP MEET: At Treasures, 1060 Tower Road, Lebanon, August 7th & 8th, Vendors Wanted, 417-532-6666.

CUSTOM SAW MILLING: Lebanon. 417-533-4607, 417-664-1195.

MOBILE HOMESshop on-line..... Call Tuff with questions 573-657-2176 amegamobilehomes.com

SMALL SQUARE HAY BALES: Alfalfa, clover, Grass mixed. \$5.50/bale. Long Lane, 417-345-5634

4 FIRESTONE TIRES: 235-50, 18", Like new, 11,000miles. \$200/might trade for gun Springfield, 417-833-8351/417-234-0629.

VINYL WINDOW: Double pane, 50x33. \$40. 417-322-4432.

MURRAY RIDING MOWER: Good tires, deck, blades, 5-speed, needs motor. \$150-gun trade. 573-364-7465.

VIRUS SALE - mobile home inventory, entire stock, first come basis, 3 & 4 bedroom, 2 bath. Hurry and call for info 573-499-9993 columbiadiscountshomes.com

I BUY.....used mobile homes. Call or text 573-338-6250 or email GregS.CDH@outlook.com

LANDPRIDE RCF3010: pull type brush hog, 10'. \$5,900. 417-270-1505.

SWAP MEET: At Treasures, 1060 Tower Road, Lebanon, August 7th & 8th, Vendors Wanted, 417-532-6666.

1956 FORD TRUCK SHOP MANUAL: \$20, Chiltons 1969-76 American cars \$30. Raymondville. 417-457-1023.

2008 POP-UP CAMPER: great condition, factory air, stove, fridge, 3-way hook-up, less than 300miles. \$3,500obo. 573-535-1067.

2003 FORD ESCORT ZX2: runs good, near new tires, 30mpg. \$1,500firm, 573-437-3671.

The image shows a Facebook page for 'Weekly Trader Magazine'. The page header includes a search bar for 'Email or Phone' and 'Password', with a 'Log In' button and a 'Forgot account?' link. The profile picture is a yellow square with 'WT' and 'WEEKLY TRADER MAGAZINE'. The cover photo is a large image of the magazine cover, which features a farm scene with a red barn and silos, and the text 'WEEKLY TRADER MAGAZINE'. A red hand icon with a pointing finger is overlaid on the cover photo. The page has a navigation menu on the left with options: Home, About, Photos, Reviews, issuu, Posts, Community, and Info and Ads. There is a 'Create a Page' button. The main content area shows a post from 'KEN & KATHLEEN ARD AUCTION' dated August 11, 2018, at 9:30am, located at HWY 19 S to CR 6250, Gladden, MO. The post lists various items for sale, including vehicles, outdoor equipment, tools, guns, and household items. There are also advertisements for 'ABSOLUTE REAL ESTATE AUCTION' and 'ING ESTATE AUCTION'. The right sidebar shows a search bar, a 'Send Message' button, and information about the page's activity, including '324 people like this' and '333 people follow this'. At the bottom, there is a map showing the location in Lebanon, Missouri, and a large 'WEEKLY TRADER MAGAZINE' logo.



YOUR AD GOES HERE!

Add YELLOW Color For An Additional \$3 Per Reader Ad

All ads will include Phone Number (unless requested to be deleted by advertiser) and City Or Town, Phone Number with Area Code counts as one word. City or Town counts as one word.

RATE: 80¢ Per Word. All Classified Ads Require Payment Before Print.

(1) 80¢	(2) \$1.60	(3) \$2.40	(4) \$3.20
(5) \$4.00	(6) \$4.80	(7) \$5.60	(8) \$6.40
(9) \$7.20	(10) \$8.00	(11) \$8.80	(12) \$9.60
(13) \$10.40	(14) \$11.20	(15) \$12.00	(16) \$12.80
(17) \$13.60	(18) \$14.40	(19) \$15.20	(20) \$16.00
(21) \$16.80	(22) \$17.60	(23) \$18.40	(24) \$19.20
(25) \$20.00	(26) \$20.80	(27) \$21.60	(28) \$22.40
(29) \$23.20	(30) \$24.00	(31) \$24.80	(32) \$25.60
(33) \$26.40	(34) \$27.20	(35) \$28.00	(36) \$28.80
(37) \$29.60	(38) \$30.40	(39) \$31.20	(40) \$32.00

Place your Classified Ad TODAY!

417-532-2800 • 800-665-8875

Fax: 417-532-8140

Or Mail To: P.O. Box 192 • Lebanon, MO 65536

For your convenience we accept MasterCard, Visa, Discover or American Express



DEADLINE FOR CLASSIFIED ADS: FRIDAY 4:00PM!

Name _____

Address _____

City _____ Email _____

State _____ Zip Code _____ Phone _____

Ad Total \$ _____ X # Weeks _____ = Amount Enclosed \$ _____

2000 FORD TRACTOR: Nice, low hours, live power. \$4,650. 573-468-7689.

SUZUKI 500: 4x4 ATV, for parts or repair, nearly new tires, make offer. 608-792-8861.

2003 FORD ESCORT ZX2: runs good, near new tires, 30mpg. \$1,500firm, 573-437-3671.

LOOKING TO BUY: 2002 Chevy Trailblazer, any condition. 636-232-7480.

CHEVROLET MANUAL V-8 OR V-6 . 1962-74, 1954-1963. \$25 each. 417-457-1023.

LOOKING TO BUY MALE PUG: 417-458-1424.



Cheyenne Acres
Horse & Tack
BUY - SELL - TRADE
by Rolla, MO
Call For Directions & Availability
Call Kip
573-368-9402



Pine Ridge Rustic
Log Home Building Supplies
Services Offered!
• Installation
• Pre-finishing available on interior & exterior
• Dealer for exterior stains
www.pineridgerustic.com
523 CR 2410 • Salem, MO 65560 • Ph: 573-729-7226

- Log Siding
- Beveled Siding
- Car Siding • Red Cedar
- Western Cedar • Pine

1956 FORD TRUCK SHOP MANUAL: \$20, Chiltons 1969-76 American cars \$30. Raymondville. 417-457-1023.

2008 POP-UP CAMPER: great condition, factory air, stove, fridge, 3-way hook-up, less than 300miles. \$3,500obo. 573-535-1067.

I BUY.....used mobile homes. Call or text 573-338-6250 or email GregS.CDH@outlook.com

ORCHID COACH PURSE: \$40, VERA BRADLEY: w/matching wallet. \$40. 573-263-9235.

WANT TO BUY JOHN DEERE DIESEL TRACTOR: in need of repair. Call 573-768-0068.

ANTIQUE 12 GAUGE: Single barrel, shotgun. \$175. Desloge, 573-327-9068.

01 53FT. UTILITY TRAILER: Refrigerated, good tires, new airbags, \$4,500. 417-531-1225.

WANTED, TIMBER TO LOG ON SHARES: Honest, reliable, references. 417-533-4607, 417-664-1195.

10 FOLDING TABLES: for yard sale maybe. \$100. 573-327-9068.



There's no better time to buy a do-it-all tractor.

Kubota Together we do more.

Save more on the hard-working B Series tractor. Easily switch out attachments. Simple maintenance. Easy-to-use controls. Stop in for a demo today.

\$0 DOWN 0% APR 60 MONTHS
PLUS
SAVE UP TO \$1,000

VISIT US TODAY FOR THIS LIMITED-TIME OFFER

EDGELLER AND HARPER FARM EQUIPMENT

Get Unmatched Kubota Quality!
Kubota Designed, Engineered & Built.
Visit Us In TWO Locations!

8665 Outer Road • Mtn Grove
417-926-5454 • 877-926-5458
4973 W. US Hwy 160 • West Plains
417-256-0420 • 800-766-0420

© Kubota Tractor Corporation, 2020. \$0 Down, 0% A.P.R. financing for up to 60 months on purchases of select new Kubota B Series equipment from participating dealers' in-stock inventory is available to qualified purchasers through Kubota Credit Corporation, U.S.A.; subject to credit approval. Example: 60 monthly payments of \$16.67 per \$1,000 financed. Customer instant rebates of \$300 are available on qualifying cash or finance purchases. Additional instant rebate of \$700 are available with purchase of two new qualifying implements. 1st implement \$500, 2nd implement \$200. Some exceptions apply. Offers expire 7/31/20. Terms subject to change. This material is for descriptive purposes only. Kubota disclaims all representations and warranties, express or implied, or any liability from the use of this material. For complete warranty, disclaimer, safety, incentive offer and product information, consult your local Dealer or go to KubotaUSA.com.



Kubota

KUBOTA BV SERIES
LESS WORK. BETTER BALES.

Unmatched dependability and efficiency is built in. Field after field these hard-working round balers create dense bales and tight outer layers with hassle-free engineering designed to help you have your best season yet.

Visit us to find out why the BV is the right baler for you.

EDGELLER AND HARPER FARM EQUIPMENT

Get Unmatched Kubota Quality!
Kubota Designed, Engineered & Built.
Visit Us In TWO Locations!

8665 Outer Road • Mtn Grove
417-926-5454 • 877-926-5458
4973 W. US Hwy 160 • West Plains
417-256-0420 • 800-766-0420

KubotaUSA.com
Optional equipment may be shown.

© Kubota Tractor Corporation, 2018

STAINED GLASS THEATRE COOK-BOOK. \$6.50. RESTAURANT RECIPES OF MISSOURI. \$7.50. THE CAKE DOCTOR COOKBOOK. \$6.50. 417-532-2045, Lebanon. (Leave Phone Number).

ALL OF OUR FOREST RIVER VIKINGS ARE PRICED AT WHOLESALE!

764V	2020 Viking 175FQ	MSRP-\$19,510.....	\$14,911
763V	2020 Viking 175BH	MSRP-\$20,090.....	\$15,811
761V	2020 Viking 18RBSS	MSRP-\$23,811.....	\$18,963
766V	2020 Viking 21FQ	MSRP-\$24,256.....	\$19,860
768V	2020 Viking 21BHS	MSRP-\$25,742.....	\$19,975
767V	2020 Viking 24RBS	MSRP-\$29,466.....	\$21,880



WehrRVs
11311 Bus. 60,
Mtn. Grove, MO
1-800-288-6827
www.wehrfordofmountaingrove.com

RIDING HORSES, MULES, DONKEYS: saddles, harness, collars, enclosed Amish buggy, Pioneer four cart, & riding plow. 417-531-5707. Lebanon

LANDPRIDE RCF3010: pull type brush hog, 10'. \$5,900. 417-270-1505.

SPECIALIZING IN HEAVY DUTY GATES

JUNE SPECIAL

BUY 12 GATES GET 1 FREE!

Cow Country Gate Sales

Call Randy: 573-569-4754
or Home: 573-539-2528
Located at: Zimmerman Welding
16889 Hwy 52, Barnett, MO

OLD BARN: to be torn down, Preston area. 563-529-0612.

USED EQUIPMENT

- New Holland Baler, BR740, like new
- MWRJ456 Wheel Rake, good condition **\$1,900**
- MF35, looks like new **\$2,495**
- Farm Trac 535, nearly new **\$13,500**
- 1080 Massey **\$4,700**

Rt. 66 Tractor Repair
Old Hwy. 66. St. James, Mo.
(573) 263-2732

WWW.MYWEEKLYTRADER.COM

2008 CAN-AM SPYDER: Premier SC Edition, anti-lock brakes, traction control, cruise control, emergency brake, new battery and tires, excellent condition. \$5,200. 573-338-0368.

DETROLA MUSIC MACHINE: Plays CD'S, Records, Cassettes, AM-FM Radio, excellent condition, 20x18x12, oak finish, antique look. \$65. 573-364-7465, Rolla.

WANTED PINBALL MACHINES. 573-424-7200.

BIG ROUND BALES: from Field or barn, 573-759-6885.



CAROLINA CARPORTS

- Carports • Garages
- Barns • RV Covers

Starting At \$1095.00
Delivered & Installed

RENT TO OWN • NO CREDIT CHECK

METAL PANELS

29ga 40 Year Warranty, Painted Metal starting at **\$68 sq**
29ga 25Year Warranty, Galvalume Metal starting at **\$50 sq**

JENKINS BUILDINGS, LLC
Since 1964
BUILDINGS & SUPPLIES

Showroom & Sales Office
Bolivar, Missouri 65613
(417) 326-4228
Next to Smith's Restaurant
Hwy. 13 & U

Corporate Office
Polk, Missouri 65727
(417) 852-4228
2 Miles South of Pittsburg
on Hwy. 64

Find us on facebook
JenkinsBuildings.com
Prices Subject to Change

VISIT US @ JENKINSBUILDINGS.COM

DREAM HOUSE - Online. chateauhomes.net Call Marla 573-657-7040

INDIVIDUAL PURCHASER: Seeking house, near Lebanon, on pavement. Large lot, or few acres, send information. 29219 Highway AA Lebanon, 65536.

POOL TABLES: Installations, moves, recoverers, repairs, accessories, etc. 573-646-1700.

FIREARMS: Professional Repairs and Restorations. Baron's Gunsmithing. 573-363-5801, Camdenton.

ANTIQUE BRASS KITCHEN CABINET HARDWARE: 2 sets of 44. \$50 per set. 636-239-2695

Larry Heisel Rentals

We Rent!



Call Larry!

Rental Available in 636 or 573 Area Codes

573-779-1500

www.larryheiselequipment.com

GRISWOLD REFERENCE PRICE GUIDE: \$7.50 417-532-2045. Lebanon. Leave phone number.



Land Pride

www.landpride.com

LIONEL TRAIN SET: Steam engine, tender, caboose and other car, track and transformer. \$195. 573-364-7465, Rolla.

RTR12 SERIES ROTARY TILLERS

15-60 HP 42", 50", 58", 66", 74"

- Reverse rotation
- Offset capabilities
- Lower clevis hitch for easy hook-up
- Steel plate upper hitch
- Seven position skid shoes
- 15" Rotor swing
- 4 'C' shaped blades per flange

Getting Chores Done **LAND PRIDE** does that.

3 YEAR Warranty

AGRI-ENTERPRISES
1-1/2 Miles South Of Licking, MO On Hwy 63
573-674-2203 • 1-800-653-7152
www.agri-enterprises.com

2nd Generation Products & Service

FARMALL M: New rear rims, tubes, tires, heavy duty 3pt. \$2,550. 417-848-8754.

REGISTERED HEREFORD & ANGUS BULLS: Home raised, Some Show-Me Select Qualified. 573-701-7828. Belgrade

ALLIS CHALMERS D-15 Series 2: 43 horsepower, wide-front, 3 point, good tractor w/ 3 point blade \$3,300. 573-353-6317.

SOUTHERN OVEN COOKBOOK: The Savories, The Sweets, by Jean Anderson, hardback, 272 pages. \$6.50 417-532-2045. Leave Message.

2012 GMC TERRAIN: 120,000miles. \$9,250. 573-732-5588

1951 8N FORD TRACTOR: good shape, runs good. \$1,650. 573-468-7689.

CAPPER'S WEEKLY VINTAGE SEARCHLIGHT COOKBOOK: hardback \$15. 417-532-2045, Lebanon. Leave phone number.

3-6 YEAR OLD CALF/COW PAIRS: 200-400lb calves. 417-331-8284.

7 FT. 3 POINT HARROW: \$150. 417-766-1991.

HOT SUMMER SAVINGS



2017 Jeep Patriot High Altitude

STK P1228
2.0L 4cyl,
FWD
40,003 miles

\$16,100



Certified Pre-owned
CHRYSLER DODGE JEEP RAM

2018 Jeep Grand Cherokee Overland

STK P1195
3.2L V-6,
4WD, Auto
9 Speed
17,574 miles

\$30,450



Certified Pre-owned
CHRYSLER DODGE JEEP RAM

2018 Dodge Journey Crossroad

STK P1221
3.6L V-6,
4WD, Auto
6 Speed
48,731 miles

\$18,900



Certified Pre-owned
CHRYSLER DODGE JEEP RAM

2016 Ford Focus SE

STK P20111B
2.0L 4cyl,
Auto
6 Speed
34,362 miles

\$10,950



2017 Ford Focus SE

STK P20110B
2.0L 4cyl, FWD,
6 Speed Powershift
Auto
91,430 miles

\$9,500



2014 Chevy Equinox LTZ

STK 18148A
3.6L V-6, AWD,
Auto 6 Speed
93,704 miles

\$16,950





TAYLOR

CHRYSLER DODGE // Jeep RAM

www.taylorchryslerrolla.com

705 Highway 63 South
Rolla, MO 65401
573-364-1233

Visit Us On Facebook

Land

For Sale

Wright Co, MO | 150 Acres



\$357,500



- Huge pine trees, views and bottom ground
- Excellent access to town, farm, area rivers and lakes
- 7 ponds, Live water creek and water well
- Large ponds, cattle pasture and excellent hunting
- Great deer hunting on ranch and world class turkey hunting
- Conveniently located by two larger size communities--Lebanon, Mo. is 22 miles away and Marshfield is 22 miles away
- Dream home sites on property with over 1/2 mile of road frontage



Missouri's Top Land Specialist in 2014,
2015, 2016, 2017, 2018 and 2019

WHITETAIL PROPERTIES REAL ESTATE

HUNTING | RANCH | FARM | TIMBER

Brian Utecht | 417-766-5595

Brian.Utecht@whitetailproperties.com

WHITETAILPROPERTIES.COM





HUSTLER®

\$500 OFF

**FasTrak &
FasTrak SDX**
mowers. Available
July 1 through
July 31, 2020



See Hustler dealer for complete details.
Valid at participating dealers only.
Not to be used with other offers.

For Outstanding Products & Service
AGRI-ENTERPRISES

1-1/2 Miles South Of Licking, MO On Hwy 63

573-674-2203 • 1-800-653-7152 • www.agri-enterprises.com