

FREE - TAKE ONE!

Vol. 27 No. 09

JUNE 4, 2020

800-543-8271 • 800-665-8875

WEEKLY **TRADER** MAGAZINE



Find us on
Facebook

@myweeklytrader

VISIT OUR NEW WEBSITE! MYWEEKLYTRADER.COM

**You pull it,
we sell it...**

CHEAP!



Lebanon, MO

22395 Rt. 66

417-588-3555

Fax 417-588-8955



**Roll-off, Trailer, and
Mobile Crushing
Services Available**



U★PULL★IT

SELF-SERVICE AUTO PARTS

**We also have a large inventory
of used tires and be sure to check
out our used car lot!**

Mon.-Fri. 8:00am-6:00pm • Sat. 8:00am-4:30pm • Sun. 9:00am-4:00pm

WWW.SSUPULLIT.COM

Located next to S&S Recycling.

For All Your Metal Recycling Needs

Lebanon, MO

22395 Rt. 66

417-588-3555

Fax 417-588-8955

Mtn. Grove, MO

8930 First Rd

417-926-3360

Fax 417-926-0180

Monday-Friday 8:00am-4:30pm (Closed 12pm-1pm Lunch)
Saturday 8:00am-Noon

email: contact@ss-recycling.com

Buyer of all types of scrap metal.

Land

For Sale

Marshfield, MO | 40 Acres

Call today for your private tour!

\$96,600

- Live springs provide year-round water for wildlife
- Easy walking terrain and an ATV can maneuver throughout the property with ease if you'd rather
- Fenced on 3 sides
- White oak, red oak, and hickory dominate the woods with just enough cedars for rubs
- Fantastic understory so wildlife does not lack for food
- Deeded $\frac{3}{4}$ mile easement



Missouri's Top Land Specialist in 2014,
2015, 2016, 2017, 2018 and 2019

WHITETAIL PROPERTIES REAL ESTATE

HUNTING | RANCH | FARM | TIMBER

Brian Utecht | 417-766-5595

Brian.Utecht@whitetailproperties.com

WHITETAILPROPERTIES.COM





\$100 OFF

Raptor Family mowers.
Available June 1 through
June 30, 2020.

See Hustler dealer for complete details.
Valid at participating dealers only.
Not to be used with other offers.



AGRI-ENTERPRISES
For Outstanding Products & Service
1-1/2 Miles South Of Licking, MO On Hwy 63
573-674-2203 • 1-800-653-7152 • www.agri-enterprises.com

USED EQUIPMENT

4' Brush Cutter • JD 10' Cultipacker
Gehl Silage Chopper • 3pt. 3 bottom plow
12' Spring Tooth Harrow 3pt. 2 Disc Disc Plow
Plus Other Misc Equipment Not Listed

TRACTORS

Mahindra 6075 w/loader, Cab,
4WD, Remainder 5 -1/2 Year Powertrain
Warranty. Low Hours

For Outstanding Products & Service
AGRI-ENTERPRISES
1-1/2 Miles South Of Licking, MO On Hwy 63
573-674-2203 • 1-800-653-7152
www.agri-enterprises.com

REMINGTON MODEL-870 WINGMASTER: Military, 16 or 12 gauge pumps. \$275 each. 573-756-1065.

JOHN DEERE 4240: Diesel Tractor, cab, cold air, power shift, low hours, nice. \$29,500 573-765-4406.

WANTED STANDING TIMBER: Butler Logging, 417-448-9323.

NEW SHEEP/GOAT PANELS: \$44. 417-322-0161

FENCE! WE STOCK ELECTRIC FENCE SUPPLIES: High-Powered fencers! Unbeatable Prices! Ozark Farm, 417-322-0161

JOHN DEERE HX10 PULL TYPE BRUSH CUTTER: \$4,200. 573-765-4406. Richland.

NEW IDEA: 5410 Disk Mower, 10 ft. \$4,450. 573-765-4406.

SOUTHERN OVEN COOKBOOK: The Savories, The Sweets, by Jean Anderson, hardback, 272 pages. \$6.50 417-532-2045. Leave Message.

BEEF HEIFER: Approx/500#, partially blind. \$450. 417-322-0161

BUSHWHACKER BELLES BOOK THE SISTERS, WIVES AND GIRLFRIENDS OF THE MISSION GUERRILLAS BY LARRY WOOD, \$12.50. 417-532-2045. LEBANON. LEAVE MESSAGE AND PHONE NUMBER.

FENCE! WE STOCK FIXED KNOT10% Off! High tensile, woven, barbed, smooth. Cattle/Sheep panels! Unbeatable Prices!! Ozark Farm, 417-322-0161.

AUNT JEMIMA COLLECTION. \$200 All. 573-327-9068.

QUALITY BONUS AVAILABLE
Increase your profit by 4¢ per lb.

Kentucky-31 Tall Fescue Producers

ADD PROFIT TO YOUR OPERATION

40¢ per lb., Dry Seed

With over 30 buying stations, there's a station near you!
CALL for the Pennington Seed Fescue Buying Station nearest you

417-456-3338

PENNINGTON
THE GRASS SEED PEOPLE®

THE PREFERRED FESCUE SEED BUYER since 1972

Toll Free 1-800-658-0410, 303 S. Grand Street, Greenfield, MO 65661

Wright Spray Foam Insulators, LLC
Commercial & Residential
Call for FREE Estimates!

Ervin Gingerich 417-926-2052
B. Eli Yoder 417-746-4932

FIREARMS: Professional Repairs and Restorations. Baron's Gunsmithing. 573-363-5801, Camdenton.

MINIATURE DONKEYS: For sale, call or text for details 417-531-2386.

MX5100 KUBOTA: 4wd tractor with loader, 52 HP, open station, low hours. \$20,000. 417-270-1505.

REDUCED!! 140 WOODED ACRES: 4/ bedroom, 2/bath home, borders live creek and corp, 30'x40' shop, 2nd building 26'x60', year round spring, 7/10 of a mile from Lake Norfolk. \$189,000. Tecumseh. 417-284-3727.

L4400 KUBOTA: 4wd tractor with loader and 3rd function valve, Low hours. \$21,500. 417-270-1505.

SAVAGE: or-H&R 410-Gauge Single Shot \$150 Each. 573-756-1065.

CUSTOM SAW MILLING: Lebanon. 417-533-4607, 417-664-1195.

HUGE NEW SKIDSTEER TRAILER, TIRE WHEEL COMBO SALE: Skid-steer, 12-16-5, 12 ply tire, 16-5, 8-Hole, Steel Wheel, Metal V-Stem, Combo \$240 EACH. PLUS 1/2 gallon H.D. Tire Sealant Installed \$275. Trailer ,225-75-15, 10-ply, Tire, 15-inch, 5-Hole Wheel, V-Stem, Combo \$115 Each. D-sizes. Free Warranty, Delivery, CALL 417-955-2103 Anytime.

HAROLD BELL WRIGHT BOOKS FOR SALE. The Eyes of the World, The Calling of Dan Matthews and Their Yesterdays. \$15 each. 417-532-2045, Lebanon. Leave message.

KITCHEN FAUCET MOEN: single lever, sprayer, new cartarage. \$70obo. 636-239-2695.

LIONEL TRAIN SET: Steam engine, tender, caboose and other car, track and transformer. \$195. 573-364-7465, Rolla.

LUCKY DISCOUNT LUMBER
NOBODY BEATS OUR PRICES

Sale Ends June 30, 2020
Seymour, Missouri 417-935-4201

Pole Barns & Post Framed Buildings!

23'x32'x10' \$4,199 Material Only \$5,419 Labor Included	23'x40'x10' \$4,899 Material Only \$6,429 Labor Included	30'x40'x10' \$5,849 Material Only \$7,849 Labor Included	40'x60'x12' \$10,299 Material Only \$14,559 Labor Included
---	---	---	---

NOBODY, BUT NOBODY BEATS OUR PRICES!!!

10 ft. Slider • Engineered Trusses 8' O.C. • 2x6 Treated Bottom Wrap • Screws • 2x10 Top Wrap • 2x4 Purlins • Full 29 Gauge Steel • Plus 3 ft. Entry Door with Lock

OPTIONS: Sidewall Heights on all Buildings 10', 12', 14' & 16'. Overhead Garage Door, Skylights, Insulation, Wainscoting, Insulated Vinyl Windows, Cupolas, Labor Rates Slightly Higher over 50 Miles from Seymour. Call for YOUR FREE QUOTE TODAY!!!!

PAINTED WHITE, GREEN OR TAN METAL\$69.99

10' - \$22.10 12' - \$26.52 16' - \$35.36

MIX & MATCH METAL\$39.99

8' - \$10.13 10' - \$12.67 12' - \$15.21

GALVALUME METAL\$52.50

10' - \$16.60 12' - \$19.92 16' - \$26.56

GALVANIZED CORRUGATED METAL.....\$56.75

8' - \$9.84 10' - \$12.30 12' - \$14.75 16' - \$19.67

IN STOCK

LOTS OF MATERIAL AVAILABLE FOR THOSE IN HOME PROJECTS!

NEW PACKAGE HOMES

2x6—16" on center-Exterior Stud Walls
Residential Roof Trusses-2' on center
4/12 pitch with 1' over hang
40 year Painted Metal roofing in 20 Different Colors
Profile Ridge Vent - Ventilated Ridge Cap
Vinyl Center Vent Soffit
Color Matched Metal Fascia & Gable Trim
2 - 3' 6 Panel Entry Doors
4 - 3'x4' Vinyl Insulated Windows

Shown with Available Options
Your Choice of either:
Stock 5/8" T111 Wood Siding w/1x4 Pine Window & Door Trim - or -
7/16" OSB & House Wrap ready for other finish options

ALL FIGURED FOR SUITABLE CUSTOMER SUPPLIED SLAB OR SUB-FLOOR

Price for Basic Materials Package & Labor

20x24(480 sq. ft.)	20x32(640 sq. ft.)	20x40(800 sq. ft.)	28x40(1120 sq. ft.)	28x48(1344 sq. ft.)
\$9,050	\$10,615	\$12,119	\$15,242	\$17,075

We Are OPEN!

Our Showroom Has Reopened

Load Out and Delivery Service Available

Call for free quote, brochure & color chart. Other sizes also available.



40yr Painted Metal
\$69.99

KNOTTY PINE DOORS
Starting at **\$109.99**

LP SMARTSIDE T-5 LAP B GRADE \$43.59/SQ

Car Siding!
1x6 White Pine Siding **43¢** in ft
1x8 White Pine Siding **54¢** in ft
* 4 Profiles to choose from!
Broken Bundles Add 10¢ Per Ft.

4x8 Sheeting
Less than full units Add \$1 per sheet

3/8" Beaded Paneling	\$15.99
5/8" T111 Siding	\$19.99
Paneling	\$9.99
1/2" Plywood	\$19.99
3/4" Plywood	\$23.99
3/16 Pegboard	\$12.99

REAL WOOD SIDING

2x6 Log Siding - 1.09¢ in ft
1x8 Beveled Cedar from- 64¢ in ft
5/8 T1-11 Siding from \$19.99

DECK PACKAGES

Materials Only

8x6	\$219.99	10x12	\$454.99
8x8	\$259.99	10x16	\$599.99
10x10	\$354.99	12x12	\$549.99
12x16	\$699.99		

QUAKER Now Stocking Quaker Vinyl Windows

2030 \$ 99.99	3030 \$119.99
3040 \$129.99	3052 \$145.99
3040Twin \$279.99	3052Twin \$314.99

LUCKY DISCOUNT LUMBER
417-935-4201
455 State Hwy C • Seymour MO 65746
www.luckydiscountlumber.com

*Some restrictions apply see store for details

Big Plans? Bring Em' On!

We can make it happen!

CAROLINA CARPORTS
Carports • Garages • Barns • RV Covers
Starting At \$1095.00
Delivered & Installed



Limited Time Sale on Carports & Garages!
10% OFF \$2,000-\$4,999 | 12% Off Over \$5,000

**RENT TO OWN
NO CREDIT CHECK**



Red Iron Building

40' x 60' x 14' Pre-Engineered Red Iron Building
2:12 pitch • 26ga Painted Metal on Roof and Walls
2-12'X12' Framed Openings (1 on Each End)
1- 3'X7' Walk-In Doors

Materials Only **Now \$15,495** Plus Tax and Freight



Showroom & Sales Office
Bolivar, Missouri 65613
(417) 326-4228
Next to Smith's Restaurant
Hwy. 13 & U

Corporate Office
Polk, Missouri 65727
(417) 852-4228
2 Miles South of Pittsburg
on Hwy. 64



JenkinsBuildings.com
Prices Subject to Change

VISIT US @ JENKINSBUILDINGS.COM

VOTED #1 BEST Preowned Car Dealership

TIM'S USED CARS

(573) 341-3828 • 1334 South Bishop (Hwy. 63) • Rolla, MO
Next to Hwy CC • www.tims-used-cars.com



2006 DODGE 1500
Quad Cab, 4x4, 4.7 V8,
Auto, Power Equipped,
103,xxx Miles
ONLY \$7,900



2006 DODGE DAKOTA SLT
Quad Cab, 4x4, 4.7 V8,
Auto, 159,xxx Miles
ONLY \$7,900



2014 CHEVY 1500 LT
Crew Cab, 4x4, 5.3 V8,
Leather, Power Equipped,
100,xxx Miles
Only \$23,900



2014 CHEVY 1500 LT 271
Crew Cab, 4x4, 5.3 V8,
Power Equipped,
149,xxx Miles
Only \$20,500

LARGE SELECTION OF CARS, TRUCKS, SUVs & VANS!

Is Your Log Home **UGLY?**
Starting To Look

Professional Staining & Repair
(Log Homes & Wood Siding)

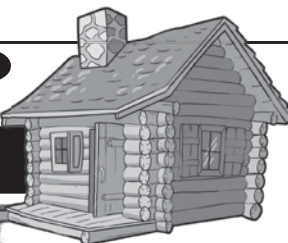
Call

Pine Ridge Rustic

Log Home Building Supplies

573-729-7226

www.pineridgerustic.com



Buildings • Hunter's Cabins • Lawn Furniture

JAMCO BUILDERS

JAMCO Portable Buildings

800-688-2064 • 307 Enterprise Dr. • Seymour, MO • www.jamcobuilders.com

Rent To Own Plan



Which Kubota Is Right For You?



Kubota THE RIGHT EQUIPMENT IS RIGHT AROUND THE CORNER. Kubota

L2501 DT PACKAGE DEAL



25HP Kubota diesel engine***
4WD, Ag Tires, 18' Trailer,
5' Box Blade, Kubota Loader,
5' Land Pride Brush Hog,
6 Year Power Train Warranty****

**\$0 Down, 0% A.P.R.
for 60 months****

\$20,995



ALL-NEW GAS-POWERED RTV-XG850 SIDEKICK

POWER • PERFORMANCE • HANDLING • STYLE

48HP***, 40 mph transport speed, gasoline engine.
* Price per month does not include insurance and sales tax if applicable.
Includes \$1,000 rebate and 3.99% APR financing for 60 mo. with approved credit**
Other purchase and finance options available. See dealer for details.

L3901 DT PACKAGE DEAL

39 Kubota diesel engine***, 4WD, Ag Tires, 18' Trailer, 5' Box Blade,
Kubota Loader, 5' Rotary Cutter,
6 Year Power Train Warranty****

**\$0 Down, 0% A.P.R.
for 60 months****

\$25,995



L3301 DT PACKAGE DEAL



33 Kubota diesel engine***
4WD, Ag Tires, 18' Trailer, 5'
Box Blade, Kubota Loader,
5' Land Pride Brush Hog,
6 Year Power Train Warranty****

**\$0 Down, 0% A.P.R.
for 60 months****

\$24,395

L4701 DT PACKAGE DEAL

47 Kubota diesel engine***, 4 cyl., 4WD, Ag Tires, 18' Trailer,
6' Box Blade, Kubota Loader, 6' Land Pride Rotary Cutter.

6 Year Power Train
Warranty****

**\$0 Down, 0% A.P.R.
for 60 months****

\$31,495



**EDGELLER
AND
HARPER
FARM EQUIPMENT**

Get unmatched Kubota quality. Kubota designed,
engineered and built. More package deals available.

Visit Us In **TWO Locations!**

8665 Outer Road, Mtn. Grove
417-926-5454 • 877-926-5458

4973 W. US Hwy. 160, West Plains
417-256-0420 • 800-766-0420



* \$0 Down, 0% A.P.R. for 48 months. Qualifying Equipment: RTV-XG850. \$0 Down, 0% A.P.R. financing for up to 48 months on purchases of select new Kubota RTV-XG850 equipment from participating dealers' in-stock inventory is available to qualified purchasers through Kubota Credit Corporation, U.S.A.; subject to credit approval. Some exceptions apply. Example: 48 monthly payments of \$20.83 per \$1,000 financed. Offer expires 06/30/20. See us or go to KubotaUSA.com for more information. ** \$0 Down, 0% A.P.R. for 60 months. Qualifying Equipment: BX, B, L, MX and M, MH(M7), RB, DMC, DM, RA and TE Series. \$0 Down, 0% A.P.R. financing for up to 60 months on purchases of select new Kubota L2501 DT, L3301 DT, L3901 DT or L4701 DT equipment from participating dealers' in-stock inventory is available to qualified purchasers through Kubota Credit Corporation, U.S.A.; subject to credit approval. Some exceptions apply. Example: 60 monthly payments of \$16.67 per \$1,000 financed. Offer expires 06/30/20. See us or go to KubotaUSA.com for more information. *** For complete warranty, safety and product information, consult your local Kubota dealer and the product operator's manual. Power (HP/KW) and other specifications are based on various standards or recommended practices. **** Only terms and conditions of Kubota's standard Limited Warranty apply. For warranty terms, see Kubota's Limited Warranty at www.KubotaUSA.com or authorized Kubota dealers.

DG LUMBER LLC: Top-Quality Building Materials, Lumber, Plywood, OSB, Car-siding, Insulation, Nails/Screws, Doors, Windows, DeWalt tools. Also complete building packages. Call for Quotes 417-259-0994, 2440 S Hwy E, Norwood.

FENCING SUPPLIES - UNBEATABLE PRICES!! Ozark Farm, 417-322-0161

CASH FOR COMIC BOOKS: From 1935-1985 and comic related toys and vintage sports cards. 636-390-2043. Washington, Mo.

VINYL WINDOW: Double pane, 50x33. \$40. 417-322-4432.

DREAM HOUSE - Online, chateauhomes.net Call Marla 573-657-7040

FOR SALE: 2000 Ford Tractor, good shape, \$3,250. 417-531-5300.

REMINGTON: Model-41 Targetmaster, Bolt Action, 22-Caliber Single Shot, 1937 Model, \$250. 573-756-1065

JUNE 4, 2020 | THE WEEKLY TRADER

Fishing Season is here!
 We have a great supply of: Berkley Flicker Shads
 Charlie Brewers Slider Grubs
 Swimming Minnows & Jig Heads!

Craig's OUTDOOR Sports

9435 HWY N. Suite A (417) 926-0255
 Mtn. Grove, MO craigsoutdoorsports.com

Mon-Fri 9am-5pm • Sat 9am-Noon

KIDS LITTLE TYKES RED CAR BED:
 w/mattress. \$150. Desloge, 573-327-9068.

SWAP MEET: At Treasures, 1060 Tower Road, Lebanon, June 5th & 6th, Vendors Wanted, 417-532-6666.

OLD LINN CREEK, HA HA TONKA & CAMDEN CO BOOK, "Before the Dam Waters", BY T. VICTOR JEFFRIES. \$5.50 each post paid. To order: 417-532-2045, Lebanon (leave message.)

2-21" PUSH MOWERS: Briggs & Stratton engine, 1 runs, 1 for parts. Both \$75. 636-239-2695.

DETROLA MUSIC MACHINE: Plays CD'S, Records, Cassettes, AM-FM Radio, excellent condition, 20x18x12, oak finish, antique look. \$65. 573-364-7465, Rolla.

9" FORD REAR-END: Oval, set-up for stock car, 542 gear ratio, good rearend. \$250. 573-732-5170.

MF 550 COMBINE: RWA hydro, 1,923 hours. \$15,000. 636-278-6065.

ANTIQUE BRASS KITCHEN CABINET HARDWARE: 2 sets of 44. \$50 per set. 636-239-2695

JOHN DEERE 925 DISKBINE: \$6750. 573-765-4406.

FOUR TIRES: Size 245-60 R18 Michelin. No patches. \$85 firm. 417-532-2344.

IHC 1066 DIESEL TRACTOR: Open station, Nice. \$9,500. 573-765-4406.

HANTZ DRYWALL: 35yrs, add-ons and repairs, references. 417-322-0014.

LARGE PLASTIC HOSE REEL ON WHEELS: \$25. 417-457-1023.

IHC 10FT WHEEL DISK: \$1,600. 573-765-4406.

R&R AUCTION SERVICE

CONSIGNMENT AUCTION FRIDAY NIGHT JUNE 5TH AT 6 P.M.

R&R Auction House • 1644 South Ash • Buffalo, MO

Our June consignment auction is another epic auction!

Large number of silver coins including but not limited to...walking liberty halves, 64 Kennedy's, silver dimes and more, Hundreds of old marbles in many different styles and sizes, Several large round bales of net wrapped hay, Rubber stock tanks, feeder, cages, antique decorative glass bottles, pocket knives, tools, school desks, fine furniture (including antique dining table with 6 chairs and 4 extra leaves), heaters, cast iron skillets, motorized 2 wheel skate board scooter, Marlboro poker set, collectibles, miscellaneous and more coming in daily!



We've lost our marbles, this sale is insane!



BID ON SELECT ITEMS ABSENTEE ONLINE AT [HTTP://WWW.RRAUCTIONSERVICE.COM](http://www.rrauctionservice.com)

TERMS: Cash, check, or credit card with proper I.D. nothing removed until settled for A 3% fee will be added to credit card purchases. Not responsible for errors in listing. Any announcement made sale night will take precedence over any printed matter. **Note:** Service will take every precaution to prevent accidents, but will not be responsible should any occur.



For more information contact Professional Auctioneer Russ Weeks at 417-576-7357 or check out www.rrauctionservice.com

Serving this area's auction needs since 1997 with honesty and professionalism.
www.rrauctionservice.com

(417) 576-7357 or (417) 345-4140



R&R AUCTION SERVICE

REAL ESTATE & PERSONAL PROPERTY AUCTION

SATURDAY, JUNE 6 • 9:00AM

26289 Maine Dr.,
Lebanon, MO



Finding Added Treasures Daily!

This auction is absolutely mind blowing with the amount of collectible merchandise that is available. Please take a look at our website for examples of items pictured. There is no way we can even start to uncover everything at this point, but here is a starting list.

A 4,000 + square foot house on just over 3 acres with chicken house and pen, barn and a setting that is the exemplification of country living will be offered at 12noon sharp and sold subject to seller approval. Park West pictures, Antique barber sterilization table, Multiple Sclerosis chair, EZ 3 no baste quilt frame, Antique hope chest, foos ball table, 2 Life smart infrared quartz heaters, wooden rocking horse, several wood chairs, large amount of Longaberger baskets, dining table and 4 chairs, wicker doll chairs and table, dolls, children's books, antique foot stool, wood school desks, side table, cabinet with pie tin front, entry table and mirrors, handmade cloth dolls, oil lamps, oak table, antique oak dresser, lots of picture frames, antique upholstered love seat, Schuerman Piano, wooden high chairs, sock monkeys, old stereo equipment, large metal office desk, office chair, antique oak and glass showcase, trunk, box fan, hide-a-bed, gallon jars, sad iron, Vintage Squirt sign, originally had thermometer but has been broken out, crock nesting bowls, Ovenware USA, old monopoly game, lots of old books, old lamp, Pyrex, brass lamps, Lazy Boy Sofa, Barnwood coffee table, stuffed bears, wood rocker, CA raisins, Disney, PEZ, Vintage credenza, woven rugs, wood grenade box, wooden crate, Hisense Flat Screen TV, quilts, quilt tops, old doors, mail basket, treadle sewing machine, organ stools, rocker recliner, metal milk crates, lots of yarn, fabric, thread, French Provincial furniture, granite pans, old medicine bottles, doilies, Speed Queen washer and dryer, full size bed set, 2 night stands, chest of drawers, dresser with mirror, Dr. Pepper wood crate, kids wood rocker, vintage ladies hats, canes, brass quilt rack, wooden cheese boxes, chalkboards, primitive décor items, antique oak secretary, pie safe cabinet, large rolling pin collection, weather vane, glass milk bottles, antique kitchen utensils, Fireking Jadite cream pitcher, Fireking Jadite mixing bowl, Fireking Jadite Coffee mug, several crocks from 1 to 11, 14 piece Crown Victoria Love Lace pattern china, pitchers, rooster décor, cookbooks, crock water jugs, 8 piece Mikasa Garden club china, crock cookie jar, Veribest dried beef wooden box, blue jars, antique metal skates, child's wagon, cookie cutters, Old monopoly board, ceramic geese, picnic basket, old top, kraut cutter, old tins, salt and pepper shakers, small metal picnic basket, chicken canister set, old coffee pot, toys, aluminum pitcher and cups, glass washboard, small metal fan, marbles, old pop bottles, table and chairs, Kenmore washer and dryer, swag lamp, book shelves, apothecary display cabinet, antique wardrobe, hi-boy, chest of drawers, night tables and bed, window, dresser and hutch, old wooden ladder, huge antique dining table, Kelvinator refrigerator, fruit jars, bell, cast iron kettle, cast iron Lodge skillet, Lodge covered pot, Rigid 16, 6.5 shop vac, AC Delco floor jack, wash tubs, Milwaukee screw gun, metal folding chairs, Troy Bilt power washer, log chains, Stihl chainsaw MSC180C, Stihl weed eater FS40C, Snapper BB44 backpack blower, buck saw, propane heater, chrome dinette, crosscut saw, wheel barrel, saddle bags, Murray push mower, propane tanks, Rigid gas compressor, Honda Husqvarna dual rotating tines tiller, well pulley, haymes, single tree, yard tools, hand tools, multi ladder, several ladders, lumber, plastic barrels, John Deere mower LA150, wood splitter, sink, porch swing, 2 Troy Bilt tillers for parts, 32ft aluminum ladder, Allis Chalmers D-17 tractor, Cub Cadet AGS2140, Troy Bilt push mower, Weedeater push mower, camper topper, Rigid 18hp, 4.5gallon tank air compressor, wooden spools, pickup bed trailer, patio sets, plastic lawn chairs, old ice skates, old wooden toboggan, drywall stilts, restaurant equipment, power climber mountain bike, roadmaster mountain sport bike, child's picnic set, coke trays, blocks, picnic table, bird bath, fire pit, metal chairs, well bucket, decorative birdhouses, large stamp collection, and if you can believe it, much much more.

VISIT WWW.RRAUCTIONSERVICE.COM FOR MORE PICTURES & INFO!

TERMS: Cash, check, or credit card with proper I.D. nothing removed until settled for A 3% fee will be added to credit card purchases. Not responsible for errors in listing. Any announcement made sale night will take precedence over any printed matter. **Note:** Service will take every precaution to prevent accidents, but will not be responsible should any occur.

GENERAL AUCTIONEERS

Auction & Appraisals



AUCTION For more information contact Professional Auctioneer Russ Weeks at 417-576-7357 or check out www.rrauctionservice.com

Serving this area's auction needs since 1997 with honesty and professionalism.
www.rrauctionservice.com

(417) 576-7357 or (417) 345-4140



Omar's Logging

⇒ Oak & Walnut
⇒ Excellent Prices
Amish Owned & Operated



LEAVE MESSAGE: 417-741-0440

WANTED, TIMBER TO LOG ON SHARES: Honest, reliable, references. 417-533-4607, 417-664-1195.

NEW/USED STEEL!! GOOD PRICES!! Lebanon, 417-322-0161.

JOHN DEERE 567 ROUND BALER: monitor, kicker, wide pick-up, cover, net wrap. \$9,650. 573-765-4406.

MOBILE HOMESshop on-line..... Call Tuff with questions 573-657-2176 amegamobilehomes.com

AUSTRALIAN SHEPHERD PUPPIES: out of working parents, shots-first round. 573-663-7459.

HAMMERMILL W/ELECTRIC MOTOR: grind your own grain !! \$900. 417-322-0161.

PYRENEES/ANATOLIAN PUPPIES: parents are excellent sheep/chicken/guard dogs Ready June 10th. \$250. 417-322-0161.

2004 DODGE RAM 3500 DUALY: 4wd, auto, double cab, 5.9 Cummins, 58K miles. \$26,500. 417-270-1505.

GAS POWERED CONCRETE POWER TROWEL: Wisconsin Robin engine. \$150. 417-533-0779.

HOLLYWOOD 4-BIKE HITCH MOUNT RACK: Excellent condition, Includes (2) Allen Stabilizer tension bars and keyed alike locking hitch pin and cable. \$175. Conway, 417-718-5347.

FOR SALE: 3 1950's baseball mitts, \$60. 417-457-1023.

OLD BARN TIN: 417-741-2186

WANTED PINBALL MACHINES. 573-424-7200.

JOHN DEERE 275: Disk mower. 9FT Nice. \$6,250. 573-765-4406.



MIDWEST CONSTRUCTION

Free Estimates!

- Pole Barn • Garages • Framing
- Remodels • Roofing • Concrete
- Decks & Porches

Contact Abner Glick
417-664-1794

FORD TRACTOR: For Sale, 4610, 4x4, with loader, Call 417-349-5550 or 349-5555 or 554-2719.

RED CEDAR FENCE POST: 6 1/2 feet long, 10 for \$49. Cedar Hill, 314-303-7857.

DARDEN PROFESSIONAL TIMBER HARVESTING, BUYING STANDING TIMBER: Great prices, improve wildlife habitat and improve forest health. State Certified & Fully Insured! 573-247-4808 or 573-739-1122. Salem

NEW HERITAGE ROUGH RIDER 22 PISTOL: \$200. 573-327-9068.

VILLA HOMES IN ROLLA: Has NEW and USED Mobile Homes. Call David for info: 573-578-8072.

JOHN DEERE 2940 DIESEL TRACTOR: 80HP, High Reach, GB900 Loader. \$11,000. 573-765-4406. Richland.

WANTED: Walk behind commercial lawn mowers needing repair. 314-550-9314

MOTOR HOME: 1996 Pace Arrow, 34' long, wide body, new tires, 460 Ford engine, generator, awnings, cameras, 2 AC, 2 TV's, everything works, 119,418 miles. \$9,700. Rogersville, 417-766-1991, 417-753-2747.

5000 BTU WINDOW AIR CONDITIONER: \$25. 417-533-0779.

DUMP TRAILER: 6"x12". Twin hydraulic cylinder, good rubber, \$2,200. 417-848-8754.

2017 FOREST RIVER RV: 26ft, queen bed, fold down couch and bunk beds. \$16,000. 417-741-9523.

JOHN DEERE 2040 DIESEL TRACTOR: Canopy \$4,950. 573-765-4406.

SINGER SEWING MACHINE: Touch Tronic 210 Memory machine, like new, all there. \$200. 573-205-9401.

ATTENTION RANCHERS & HUNTERS

220 +/- Acres Offered In Combinations & The Entirety

Located Just South of
I-44, Approx. 30 Mi.
East of Joplin or 45 Mi.
West of Springfield



ONLINE AUCTION - SELLS TO HIGH BIDDER

Preview/Inspection: Saturday, June 6th, 11:00 - 1:00 p.m.

Tract 1: 20 +/- Acres:

With A Newer 30' x 40' Workshop
With Concrete Floor, Electric & Lean
To; Two Poultry Barns & A Post
Framed Building; Older 2 Bedroom,
1 Bath Home - Needs Repair

Tract 2: 120 +/- Acres:

With 1,000 Sq. Ft. Cabin In The
Woods With Electric, Well Water
& Outbuilding Overlooking 90+
Ac. Pasture & Lake; 28' x 70' Post
Framed Building Open To South

Tract 3: 80 +/- Acres:

With Harvestable Timber & Beautiful Spring Fed Center Creek!!

1642 Lawrence 2165, Wentworth, MO

Online Bidding Ends: Thursday, June 18th @ 12:30 p.m.

**Note: This Is A Beautiful Property With Tons Of Possibilities! Entire Property Has
Hard Surface Road Frontage & Endless Building Sites!!**

For Information On How To Buy This Property At Auction Or Other Questions, Call Your Real Estate At Auction
Specialists: Atterberry Auction & Realty Co. 573-474-9295 Or Email: contactus@atterberryauction.com



ATTERBERRY

— AUCTION & REALTY COMPANY —

We make buying and selling at auction easy!

www.atterberryauction.com

573-474-9295



Farm Auction

Freeburg, MO

Due to selling the farm and retiring, we will sell all equipment to the highest bidder. From Freeburg, Go North on Hwy. 63 to Co. Rd. 634. Go 1 mile to farm entrance. Road will be marked on:

Saturday, June 13, 2020
Starting at 10:00 a.m.

TRACTORS

N.H. TL 90A w/546 Busch 06 Loader Cab w/Air & Heat, 50% Rubber, 90 H.P., only 2626 Hrs. TL 90A w/Great Bend Loader, Cab Air & Heat, only 958 Hrs. LIKE NEW - Dual Hy. N.H. 5610 S w/Canopy - Dual Hy - 1929 Hrs. - 16-9-30 Tires & 50% Rubber. 6610 Ford Tractor, 4 Wheel Drive w/7410 H.D. Loader, Canopy, w/2725 Hrs. 5600 Ford Tractor w/Loader, Dual Hy, w/4634 Hrs.

EQUIPMENT

N.H. BR 7060 Silage Special - Xtra Sweep - 4x5 Bales, Net or Twine • N.H. Pro Tedder 3417 - 4 Basket • N.H. Duravee 1020 5 Wheel Rake • N.H. H72220 Discbine w/Rollers, 9 Ft. • N.H. 311 Hay Baler • N.H. 55 Manure Spreader P.T.O. w/ Rubber Bottom • 2001 • 20 Ft. Gooseneck Trailer w/Hy. Brakes • Ogden 24 Ft. Pasture Drag on Wheels • 2-Hay Wagons • 3209 Bush Hog 9 Ft. • Kewanee 8 Ft. 3-Pt. Blade • 2 Bale Spikes • Tri-L Bale Unroller • 200 Gal. 3-Pt. Sprayer w/27 Ft. Boom • 3-Pt. Field Cultivator • 3-Pt. Carry All • 46 Ft. 6 in Grain Auger on Wheels • Brillion Sure Stand 6 Ft. Seeder • Oliver 3-Pt. 3-14 Plow w/D. Wheels • Danhuser Post Hole Digger, w/12 in. Auger • 8-Tooth Field Cultivator 3-Pt. • N.H. Running Gear • Shaver Post Driver • A.C. Suitcase Weights 7.

FARM RELATED

2 Small Creep Feeder • 4,000 lb. Creep Feeder on Wheels • 2 Metal Feed Bunks • 4x10 Ft. Concrete Trough • 1 Lot Hay Tarps • 3 Rubber Feed Troughs • 10 Gal. Sprayer • 1 Lot Gates 12x14 Ft. • 1 Lot Tin • 1 Lot Lumber Oak & Pine • 1 Lot Scrap • 1/2 in. Hammer Drill • 1 Lot Hand Tools • Drill Press • Acct. Cutting Torch • 1 Lot Hand Tools • Large Kettle w/Stand • Calf Puller • Transit.

OTHER ITEMS

2000 Honda Rancher, 4 Wheel Drive • A.C. 46" Cut Lawn Mower, All Wheel Steer • Troy Bilt Tiller • Other Items Not Mentioned.

Owner: Ed Grellner
Freeburg, MO 573-694-0642

AUCTIONEER'S NOTE:

All tractors and equipment was bought new, well cared for and always shedded!

EVERYTHING SELLS AS IS, WHERE IS. NOTHING TO BE REMOVED UNTIL SETTLED FOR.
NOT RESPONSIBLE FOR ACCIDENTS.

Welschmeyer Auction Service
573-308-6656

RUSTY ROOSTER MARKET PLACE

208 W Commercial, Lebanon, MO
417-718-9136

Opening June 1st

**Booth's
Available
Vendors Wanted!!**



2007 DODGE RAM 3500 DUALY: 4wd, double cab, 6-speed manual, 6.7 Cummins, 140K miles. \$22,500. 417-255-1823, Leave message.

NEW CATTLE PANELS: \$22. 5417-322-0161.

LOG SIDING SALE: 2X8 Western Cedar .99 ft/ Pine \$1.19 ft while supplies last. www.pineridgerustic.com 573-729-7226.

3 STORAGE TRAILERS: 1-48' and 2-53'. \$2,000 a piece, delivery within 60 miles of zip 63630. 573-438-2622.

41 DRILL BITS FOR BIT AND BRACE: \$50 417-457-1023.

98 MUSTANG MOTOR 3.8 V6: runs good, over 100,000 miles. \$150. Call 417-531-3605.

STAINED GLASS THEATRE COOK-BOOK. \$6.50. RESTAURANT RECIPES OF MISSOURI. \$7.50. THE CAKE DOCTOR COOKBOOK. \$6.50. 417-532-2045, Lebanon. (Leave Phone Number).

MURRAY RIDING MOWER: Good tires, deck, blades, 5-speed, needs motor. \$150-gun trade. 573-364-7465.

LANDPRIDE RCF3010: pull type brush hog, 10'. \$5,900. 417-270-1505.

FOR SALE: 2 row corn planter, field ready, Big bales, wheat, straw for mulch. Grass renovator 3 point. 573-834-5456.

ONE PIECE: 70'S desk/chair for young student. \$15 G.C. Cedar Hill, 314-303-7857

VEERMER 4 BASKET HYD FOLD TEDDER: Good \$4,700. 573-765-4406. Richland.

QUALITY REPLACEMENT COWS: COW/CALF PAIRS, BRED HEIFERS AND BREEDING BULLS, TRUCKING AVAILABLE. Otterville, 660-619-5190.

2nd Generation Painting

For Free Estimates Call • JOEL SKINNER
(417) 345-4566 • (417) 733-0900

FREE
ESTIMATES!

WE STOP
THE RUST!



WEATHERED BARN WOOD SIDING:
8" & 10" wide. 573-729-7226. www.pineridgerustic.com

5 BORDER COLLIE PUPS: born 4/9/20
up-to-date shots, working parents, farm
raised, \$150 each, Mansfield, 417-830-8374.

IHC 766 DIESEL TRACTOR: Cab & Air
New engine, Over haul, 80HP, \$8,500. 573-
765-4406. Richland.

REMINGTON BAIKAL: 410-gauge, dou-
ble barrel, silver receiver. \$500. 573-756-
1065.

MILLER: 10 ft. Offset Disk, \$4,400. 573-
765-4406

MEN'S SIZE 11: Rollar blades, skates. G.C.
Cedar Hill 314-303-7857.

CHISEL PLOW: 12FT, Pull-type. \$950 417-
322-0161

NEW HOLLAND 7230 DISKBINE: Nice.
\$14,500. 573-765-4406.



Saturday, June 13, 2020

Cross Timbers, Mo.

• TRUCKS • TRACTORS • MACHINERY • GUNS • TOOLS

Several items
already
consigned!



CALL NOW

Crawford Auction Service, LLC

Sam 417-328-9137 Chase 417-399-1904 Chance 417-298-1751

Proper
social
distancing
should be
observed at
six (6) feet.

FARM AUCTION

Due to selling our farm and moving out of state, we will sell the following personal property, located from Rolla, MO, take Hwy. 63 north 6 miles to CR 8400 on left. Continue 1 mile to farm. Follow Lorts Auction Today signs on

Sat., June 6, 2020

TRACTORS • FARM MACHINERY • TOOLS • HOUSEHOLD

Morning Sale — Sale to start 9 a.m. — Morning Sale

Farm Machinery, Shop Tools & Farm Related Items

John Deere 3020 diesel tractor
w/148 JD loader, good rubber,
wide front
Kobota tractor BX-24D w/LA 240
loader & backhoe attachment,
3 pt., diesel
3 pt. 8 ft. box blade w/rippers
3 pt. 6 ft. bushhog cutter
8 ft. tilt bed trailer (no title)
2 wheel farm trailer
320 New Holland hay baler
w/bale thrower
467 New Holland conditioner
56 New Holland hay rake
3 pt. 2 bale carrier
Farendlose 3 pt. hay tedder
Fimco 3 pt. sprayer w/booms &
PTO pump
Troy-Bilt 27 ton log splitter w/Honda
engine on wheels
3 pt. 5 ft. tractor blade
3 pt. International post hole digger
3 pt. Land Pride post hole digger
John Deere #38 pull type hay mower
Front loader hay spike
6 ft. pull type drag disc
PJ gooseneck 7x24 trailer
w/7000 lb. axles
Animal trap — Bar clamps
Approx. 3 cords firewood
Chainlink gates & fence
2 wheel wheelbarrows
Rubbermaid wheelbarrow

Frame for Army tent
Steel fence posts
Wire cattle panels
10 ft. x 12 ft. lofting shed on skids
(8 ft. tall)
Chicken house on skids
w/6 ft. x 8 ft. solar panel door
4 ft. x 4 ft. garden shed — Rake
Feed troughs — Nut Wizard tools
Frame type garden sheds
Aluminum flag pole
Water tank in steel frame
Husqvarna gas powered blower
Fertilizer spreader
Troy-Bilt push mower
Craftsman self-propelled push mower
Igloo type dog house
Dog supplies — Vinyl tarp (new)
Fencing supplies — Workmate
Blue Hawk lawn trailer
3 ft. aluminum saw horses
Power Kraft 6 inch grinder
6 ft. x 8 ft. canvas storage shed
(6 ft. tall)
Work benches — Shop fans
Craftsman sawzall
Schumacher battery charger
Earthway garden planter
Delta 10 inch miter saw
Bee hives & equipment
13 hp. gas generator
(model AEG6500XE)
Grease guns — Log turner

4 wheel lawn cart — Barn tin
Livestock water bowl
Lot hardware — Cordless drills
Bar clamps — Skill saws
Ryobi 4 inch x 36 inch belt sander
Sears Craftsman 12 inch bandsaw
Shop Smith w/equipment
Delta 10 inch table saw — Bars
Portable dog pens — Barn forks
Garden hoses — Roll-around seat
Stock waterer w/heater
6 ft. 4 wheeler ramp — Barbwire
Rabbit cages — Reese hitchers
2 1/2 ton Larin floor jack
Come-a-longs — Hydraulic jack
Troy-Bilt weeder — Shovels
Poulan chainsaws — Hudson jack
Rubbermaid garden shed
Chicken equipment — Pitch fork
Goat fences & electric poles

Horse Equipment

Electric horse groom vac
w/booster power (like new)
Horse tack & supplies
Shop vac
Lot of wood shaving/bedding
(approx. 30 bags)
Square bales of hay

Household & Furniture

Raised garden beds
Metal racks — Computer desk
Master Built electric smoker
Swimming pool w/pump & frame
Garden cans & supplies
Coffee table & end tables
Table & floor lamps — Stock pots
Lot canning jars — Steel fire pit
Western wall decoration
Lay-Z-Spa round hot tub
Dressing mirror — Storage totes
Dark wood dresser — Picnic tables

Wooden stools — Twin bed
Cowboy Living baker's rack
B&D apartment size refrigerator
Barnwood table w/benches
Dishes and cookware — Milk bucket
Rolling kitchen cart — Pots & pans
Holiday decorations
Maple top dining room table
w/6 chairs
2 chest type freezers — Cookbooks
Several plastic shelves
Propane heater w/tank

GI Joe collection
Hand crank cream separator
Patio table w/4 chairs
Nesco food dehydrator

Many more articles too numerous to mention

AUCTIONEER'S NOTE: Lots of nice
clean items. Field parking so bring
your truck or SUV (cars not recom-
mended due to steep hill). In case of
bad weather, sale will be held inside
shop building. Social distancing prac-
tices will be observed.
Larry & Gary Lorts

"like" us on facebook - Lorts Auction Service or view this auction online at
www.threeriverspublishing.com or auctionzip.com (auctioneer ID #42353).

Owners: **Mike & Barbara Todd**

18268 Maries Road 530, Rolla, MO

TERMS: Cash or check with photo I.D. • Not responsible for accidents or losses, should they occur. • Nothing removed until paid for.
Lunch Served — ALL ANNOUNCEMENTS MADE SALE DAY TAKE PRECEDENCE OVER ALL PRINTED MATERIALS —

SALE CONDUCTED BY **LORTS AUCTION SERVICE** • ST. JAMES, MO 65559 • 573-699-4308 • 573-263-0243
AUCTIONEERS: Larry W. Lorts & Gary R. Lorts Licensed and Bonded

PUBLIC AUCTION

HUMANSVILLE, MO

AUCTION

As we are moving we will sell the following Household, Collectibles, Guns, Shop Tools, Pickup and Misc. at the Home located 3 miles North of Humansville, Mo. On 13 Hwy to F.R. 1300 go west to the Auction on

Sat. June 13, 2020 at 9:00 a.m.

WATCH FOR AUCTION COMPANY SIGNS • LUNCH SERVED

FOR MORE PICTURES GO TO: WWW.BRUCEANDLEANAUCTION.COM



HOUSEHOLD-COLLECTIBLES

- Maytag Performa Automatic Washer & Dryer
- Whirlpool Automatic Washer & Dryer
- GE Large Chest Freezer
- 41" Vizio Flat Screen TV
- 40" Sony Flat Screen TV
- Lrg. 3 Section Entertainment Center
- Metal Flat Screen TV Stand
- Refinished Pie Safe Cabinet
- Rocker Recliner
- Divan
- King Water Bed
- 2 Oak Bar Stools
- Book Shelves
- Buffet Cabinet
- Lrg. Sewing Cabinet (loaded)
- 2 Dry Sinks
- Toy Box W/Several Metal Toys & Trucks
- Lrg. Stamp Collection
- Collectible Dolls
- Lrg. Hall Mark Collection
- One lot Bedding
- Quilts
- Lrg. Lot Crafts Items & Supplies
- Upright Vacc.
- Sev. 100 VCR & DVD Movies
- Metal File Cabinet
- Drafting Table
- Fan on Stand
- Milk Can
- Pots, Pans & Dishes

GUNS

- Smith & Wesson 12 Ga Model 3000 Pump Shotgun 3" W/Rib
- Winchester 20 Ga Model 120 Pump Shotgun 3" W/Rib
- Winchester 30-06 Model 70 Bolt Action Rifle W/Leupold Scope
- Winchester 30-30 Model 94 Lever Action Rifle
- Winchester 30-30 Model 94 Lever Action Rifle
- Ruger Single Six 22 Revolver Pistol W/Western Holster
- Smith & Wesson 357 Mag 6 Shot Revolver Pistol
- Smith & Wesson Model 659 Stainless 9mm Semi-Automatic Pistol
- B-B Gun(Pistol & Rifle)
- One Lot of Ammunition

PICKUP

- 1990 Nissan Pickup 4 Cyl. Motor, 5 Speed Trans. Good Rubber, 85,000 miles (Has been used on the Farm)

SHOP TOOLS & MISC.

- Mac MB-1700 Roll Around 31 Drawer Tool Box W/ Back Storage Cabinet 7' 6" Long, 2' Deep, 4' Tall
- 2 Covered Top Matco Tool Carts
- 2 Snapon Tool Carts
- 5" Swivel Bench Vise
- Body Shop Frame Gauges
- Oil Less Paint Oil Pump
- Air Paint Guns
- Paint Hot Pot
- Gallon Paint Shaker
- Car Wheel Dollies
- 5 HP 80 Gallon 220v Commerical Air Compressor
- 2 Masking Tape Body Shop Machines
- Lot of Hand Body Shop Tools
- Lot of Snap-on, Mac and Other Brand Hand Tools, Sockets, Screw Drivers & Wrenches
- Double Stone Grinder
- Makita Chop Saw
- Craftsman 5600 Watt Generator W/Cords (Used Once)
- 8-4 Drawer Metal Organizer Cabinets (Loaded)
- 3 Open Bin Metal Organizer Cabinets
- One Lot of Automotive Wiring
- Craftsman DLT 3000 Riding Mower 18.5 HP (needs work)
- Craftsman 6 1/4 HP 2550 PSI Pressure Washer
- Stihl MS 250c Chain Saw
- Stihl HS 80 Gas Hedge Trimmer
- Stihl Gas Trimmer
- Foley Belsaw Planner/Molder 12" Wide 6" Thick
- Delta Shaper 220v Lot of Bits and Cutters
- Delta 6" DJ-20 Planer 220v
- Delta 10" Unisaw Fence Table Saw 2 HP 220v
- Delta Floor Model Drill Press
- Double Drill Press Vise
- 2-Delta 10" Contractor Seris Table Saws 110v
- Delta 16" Band Saw

SHOP TOOLS & MISC. Cont.

- Delta 18" Scroll Saw Variable Speed
- Grizzly 18" Band Saw
- Grizzly 36" Wood Lathe W/Disc. Sander
- Lot of Knives & Cutters
- 2-18v Makita Drills & Skill Saws
- Lrg. Makita Router
- Paslode & Porter Cable Air Nailers
- Several Hand Power Tools
- Lot of Nails for air nailer
- 2 Sections 3' X 5' Roll Around Scaffold
- Makita Miter Saw on Stand
- 2-8' Roll Around Work Tables
- 16' Werner Poly Ext. Ladder (like new)
- Werner Alum. Folding Ladder (like new)
- Alum & Wood Ladders
- Sev. Bar Clamps (2'-10')
- Lot of C Clamps
- Seasoned Lumber Oak, Walnut & Others
- Misc. Plywood
- Air Staplers & Lot of Staples
- Lot of Cabinet Hardware
- 2 Shop Vaccs.
- Several Log Chains
- 3 Wood Racks
- 6-10' & 12' Gates & Panels
- Sev. Steel Post
- Chicken Wire
- New 110v Stock Tank Heater
- 6-55 Gallon Barrels
- Propane Bottles
- Loading Ramps
- 2 Wheel Dollies
- 2 Cord of Seasoned Wood
- One lot Misc.

AUCTIONEERS NOTE:

Bob ran a Automobile Body Shop Business for many years and has a lot of nice shop tools, he also done a lot with wood working and has a lot of nice power tools for this Business.

OWNER: MR. & MRS. BOB REYNOLDS

TERMS: Everything sells as is, where is. Nothing is to be removed until settled for. Payment of Cash, Check with Proper ID, or Credit Cards. Auction Company or the Owners will not be responsible for loss of items or accidents. Statements made the Day of the Auction take Precedence over Printed Matter.

SALE CONDUCTED BY **BRUCE & Le'AN AUCTION & APPRAISAL, LLC**
THE AUCTION COMPANY THAT APPRECIATES YOUR BUSINESS

For more information and pictures go to our website at www.bruceandleanauction.com

RONNIE BRUCE - Fair Play, MO
417-777-1685 or 417-654-2214
colronbruce@gmail.com

BRANDON BRUCE
Fair Play, MO

BILLY BRUCE - Stockton, MO
417-399-4800
colbbruce@gmail.com



Cheyenne Acres

Horse & Tack

BUY - SELL - TRADE

by Rolla, MO

Call For Directions & Availability

Call Kip

573-368-9402



THREADGILL'S - THE COOKBOOK, THE AUSTIN, TEXAS LANDMARK OF SOUTHERN COMFORT FOOD, HARD-BACK \$10. 417-532-2045. LEBANON. LEAVE MESSAGE AND PHONE NUMBER.

I BUY....used mobile homes. Call or text 573-338-6250 or email GregS.CDH@outlook.com

NEW HOLLAND 472 HAYBINE: field ready. \$1,800. Linn. 573-897-2772.

FERTRELL: ORGANIC FERTILIZER AND MINERALS. Call for free catalog. 315-796-4370.

VIRUS SALE - mobile home inventory, en-tire stock, first come basis, 3 & 4 bedroom, 2 bath, Hurry and call for info 573-499-9993 columbiadiscountshomes.com

OLDER DRYWALL JACK: for putting sheetrock on ceiling. \$25. Text 417-533-0779

VISIT OUR RE-DESIGNED WEBSITE AT WWW.MYWEEKLYTRADER.COM

REAL ESTATE AUCTION

Cody & Mykal Whitney Ranch
Preston, MO • 1/2 mile South of Hwy. 65/54
Jct. on Hwy. 65. Watch for auction signs.

SATURDAY, JUNE 6 • 1PM

309 +/- Acres
Selling in 4 Tracts

Improved grassland, hay, tillable, fenced and cross fenced, wells, ponds, highway frontage.

See website for photos!
crawfordauctionservice.com

Sam Crawford Auction Service
Cross Timbers, MO • 417-998-6629

Larry Heisel Rentals
LARGE or SMALL...
We Rent!
 Crawler Loaders • Excavators • Backhoes
Call Larry! **We Deliver!**
573-779-1500
 www.larryheiselequipment.com
 Rental Available in 636 or 573 area code

2018 KZ SPORTSMAN 363FL :Text for pics/details- \$27,000. Lebanon. 309-678-0057.

REGISTERED HEREFORD & ANGUS BULLS: Home raised, Some Show-Me Select Qualified. 573-701-7828. Belgrade

REMINGTON MODEL-870 WINGMASTER: Military, 16 or 12 gauge pumps. \$275 each. 573-756-1065.

JOHN DEERE 4240: Diesel Tractor, cab, cold air, power shift, low hours, nice. \$29,500 573-765-4406.

WANTED STANDING TIMBER: Butler Logging, 417-448-9323.

NEW SHEEP/GOAT PANELS: \$44. 417-322-0161

FENCE! WE STOCK ELECTRIC FENCE SUPPLIES: High-Powered fencers! Unbeatable Prices! Ozark Farm, 417-322-0161

JOHN DEERE HX10 PULL TYPE BRUSH CUTTER: \$4,200. 573-765-4406. Richland.

NEW IDEA: 5410 Disk Mower, 10 ft. \$4,450. 573-765-4406.

BEEF HEIFER: Approx/500#, partially blind. \$450. 417-322-0161

KUSTER LOGGING

BUYER of Standing Timber
Oak and Walnut

Dozing Now Available

417-259-0047

References Available



2020 SPRING CONSIGNMENT SALE

SATURDAY, JUNE 6 @ 10:00 A.M.

Location: Texas County Fairgrounds (One mile north of Houston)



TRACTORS * FARM EQUIPMENT FARM SUPPLIES

John Deere 6300 Cab Tractor with 620 JD Loader, 1650 Oliver with Front End Loader, John Deere 4040 with 158 John Deere Loader, Haymaster Hay Accumulator, John Deere 14 Ft. Grain Drill, John Deere 350 Sickle Mower, 6 ft. Sidewinder HD 3-Pt. Bushhog, NH Side Delivery Rake, 3 Pt. 7 Ft Bushhog, 3 Pt. Post Auger, 3Pt. six ft. disc- like new, 5 X 10 ft. Trailer, 8 Ft. Disc, 8 Ft. Chain Harrow, 8 Ft. Blade, 3 Pt. Seeder, 1000# Culta-Packer on Wheels, ATV Trailer, Lawn Trailer, Drum Tipper with Wheels, 2 Cattle Head Gates, Round Bale Feeder, LED Grow Lights, Two Bottom Plow, 5 Ft Sidewinder Bushhog, 6ft Sidewinder Bushhog Pull-Type, Trailer Load of Steel including 2 inch to 12 in. Pipe and large I-Beam, ATV Disc, Priefert 3 Pt. Tiller-like new, Two Bottom Plow, Pond Scoop, 3 Pt. Disc, Pull-type Sickle Mower, 3 Pt. Sprayer, 3 Pt. Hyd. Post Driver, 3 Pt. Post Auger * Oregon 28 Ton Log Splitter * Generator 9500 Watt * T-Posts * 20 Corral Panels * Round Pen* 3 Pt. Four Wheel Hay Rake

TRUCKS * TRAILERS * HORSE WAGON UTV* BOAT

2005 Chevy 3500 LT Crewcab 4x4, Duramax Loaded, 1985 Chevy ¾ ton 4 x4 with 454, 4 speed- complete rebuild only 4,000 miles, 1990 Ford F-250 4x4 with Flatbed, 1990 Toyota 4X4 Extended Cab Pickup, Horse Drawn Parade Wagon, 16 Ft. Stock Trailer, Two Horse Trailer * 2012 Polaris Ranger 800 XP Camo * 16 Ft. Flatbed Trailer*1999 Lowe All Weld with 90 Horse Johnson and 24 Volt Trolling Motor, 1974 Volkswagon Thing with less than 400 miles

TOOLS * LAWN * GARDEN

Craftsman Front Tine Tiller, Mantis Type Tiller, Yard Machine Tiller, Speed Cleaner Pressure Washer, String Trimmer -like new, 5hp 80 gallon Air Compressor, Job Box, ATD Toolbox, Snap-On and Expert Impact Sockets, Craftsman Tools, New MAC Wrenches, Air Wrenches, Snap-On Tools, Grizzly Table Saw G0715P, Kobalt 20 gallon Air Compressor, Load Jacks, Battery Charger, Furniture Clamps, Craftsman Miter Saw, 21 piece ¾ in. drive Socket Set, Hitachi Saw, 2-Porter Cable Belt Sanders, Craftsman Radial Arm Saw, Dewalt Drill, 110 Air Conditioner, Huffly Bicycle, Scroll Saw, Graco 170 Painter, 2-300 gallon Diesel Tanks on Stand, Drill Doctor, Ryobi Tiller, Composting Bin, 10 ft. TV Antenna, Ashley Wood Stove like-new, 3 sections of Double Wall Insulated Flu Sections-new, Weedeater *Pedestal Wood Stove *

GUNS * COINS

Ruger 10/22 w/3 clips, S&W 637-2, Browning Challenger 3 with 4 clips, Taurus PT 1911, Glock 40 cal. Model 22, Remington 243 Win. Model 770 with scope-new, Spartan 410 Shotgun-new, Smith Wesson 22 Mod. 22A-1 semi auto, Henry Lever Action 22 rifle, Remington 1100 tactical 12 gauge shotgun, Remington 700 7mm mag, Savage 22LR mod. 64, 32 Cal. Iver-Johnson, 22 Cal. H&R, Old Cannonball, Silver Half Dollars, Morgan Silver Dollars, Peace Silver Dollars, American Silver Eagles, \$20 Gold Piece, \$10 Gold Piece, \$5 Gold Piece

CAMPING TRAILER * CAMPING SUPPLIES

2012 Victory Cargo Trailer- One Owner, New Eight Person Tent, Sleeping Bags, Army Cots, Camping Stove, Coolers, Water Buckets, Lantern, Flashlights



AUCTIONEER'S NOTE: Expecting several more consignments. Good quality vehicles and equipment consigned from complete sell outs.

Darren SCHEETS AUCTIONS

(417) 457-6638 • (417) 926-8575
www.scheetsauctions.com



TERMS OF AUCTION: Cash or check with picture ID. Nothing loaded or removed until paid for. Everything sells as is, where is. Not responsible for accidents, lost or stolen items. Auction day announcements take precedence over all previous advertisements.

REAL ESTATE & PERSONAL PROPERTY AUCTION

SUNDAY, JUNE 7 • 1:00 PM

Location: 419 King Street, Houston, MO 65483

Real Estate to be auctioned at 1:00 at location. Personal Property Auction will start at 1:30 at the Texas County Fairgrounds.



REAL ESTATE

Historic home on large lot. Could fix up home or make room for new duplexes or homes. Several options for this real estate.

FARM ANTIQUES * RELICS

Old Hames * Neck Yoke * Old Wooden Levels * Galvanized Milk Pails * Camp Tables * Old Cross Cut Saw * Cream Cans * Wood Clamps * Oils Cans * Square Wash Tubs * Corn Sheller * Cotton Scales * Misc Tools * Wooden tool boxes * Nail Kegs * Old Scythe * T-Posts * Horse Drawn Wooden Tongue Plow * Metal Funnel * Gas Jugs * Pony Collar * Wire Cages * Car Ramps * Metal Tool Boxes * Tomato Cages * Large Hand Drill Press * Snatch Block and Tackle * Old Metal Spoked Wheel * Rees Hitch Carrier * Metal Lawn Bench Ends * Standard Oil CO Pail Five Gallon * Bolt Bins * Toledo Scales * Hay Fork * #80 Stanley Planer *

GUNS* COINS

Winchester Model 64 30-30 with Box * Coins



MOTORCYCLE * CARGO TRAILER * BICYCLES

1993 Cargo Trailer 6' x 12' * 1973 Honda CT90 Motorcycle * Folding Bicycles Workmen Brand *

ANTIQUES * COLLECTIBLES * CAST IRON * BRASS * BEER ADVERTISING

Tonka Toys * Johnny West Horse * Genuine Flexible Flyer Sled, old * Old Marbles * Hobart Grocery Scales * Apple Peeler * Lots of Cast Iron cookware, Wagner Ware and Griswold including small cornbread molds, skillets, lids, dutch ovens * Old BB Guns * Shoe Last * Blue Jars * Old Judge Coffee Jars * Larken Meat Grinder * Iron Beds * Coke and Pepsi Crates * Croquet Sets * Hurrican Stove * Camp Tables * Antique Metal Lawn Chairs * Metal Acorn Cake Cover * Blue Enamelware * Meat Grinders * Antique Sweeper * Cabbage Patch Kids Walker * Milk Bottles * Singer Sewing Machines in Wooden Boxes * Bedpan * Five Gallon Crock * Crock Bowls * Large Cast Iron Cauldron * Big Wooden Trunk



AUCTIONEER'S NOTE: Auction is much larger than appears, over 50% was already packed or boxed before auction was booked.

Darren SCHEETS AUCTIONS

(417) 457-6638 • (417) 926-8575

www.scheetsauctions.com



TERMS OF AUCTION: Cash or check with picture ID. Nothing loaded or removed until paid for. Everything sells as is, where is. Not responsible for accidents, lost or stolen items. Auction day announcements take precedence over all previous advertisements.

SUMMER VACATION

IS JUST AROUND THE CORNER!

- 691J 2019 Jayco SLX 232RB
MSRP-\$23,511 **\$15,230**
- 659J 2019 Jayco SLX 195RB
MSRP-\$19,131 **\$12,995**
- 711D 2020 Dutchmen Astoria
2503 RLF MSRP-\$49,714 **\$36,611**
- 714D 2020 Dutchmen Astoria
3273 MBF MSRP-\$57,850 ... **\$57,850**
- 719D 2020 Dutchmen Aspen Trail
1760BH MSRP-\$15,994 **\$12,778**
- 709D 2020 Dutchmen Aspen Trail
2850 BHS MSRP-\$28,736 **\$21,282**
- 729D 2020 Dutchmen Kodiak
248BHS MSRP-\$31,570 **\$22,851**
- 732D 2020 Dutchmen Kodiak Cub
185 MSRP-\$24,994 **\$18,791**

WehrRVs
11311 Bus. 60,
Mtn. Grove, MO
1-800-288-6827
www.wehrfordofmountaingrove.com

SOUTHERN OVEN COOKBOOK: The Savories, The Sweets, by Jean Anderson, hardback, 272 pages. \$6.50 417-532-2045. Leave Message.

FIREARMS: Professional Repairs and Restorations. Baron's Gunsmithing. 573-363-5801, Camdenton.

VINYL WINDOW: Double pane, 50x33. \$40. 417-322-4432.

DREAM HOUSE - Online. chateauhomes.net Call Marla 573-657-7040

Starnes Auto LLC

22115 Rt. 66

Lebanon, MO 65536

417.588.3159 Office

417.718.2707 Cell

www.starnesauto.com

2003 CHEVY S-10

WHITE, 4X4, 4 DOOR, 134,XXX MI **\$4,500**

2005 CHEVY SUBURBAN

BLUE, 4X4, 202,XXX MILES **\$4,200**

2006 CHEVY SILVERADO

WHITE, 4X4, 141,XXX MI

2012 FORD FUSION

BLUE, 100,XXX MI **\$6,200**

2013 CHEVY IMPALA LTZ

SILVER, 119,XXX MILES **\$5,450**

2014 GMC TERRAIN

GOLD, 79,XXX MI..... **\$9,200**

2014 CHEVY EQUINOX LTZ

GOLD, 35,XXX MI..... **\$13,850**

2015 CHEVY EQUINOX LT

RED, 92,XXX MI **\$7,650**

WE DO ALIGNMENTS!

FENCE! WE STOCK FIXED KNOT10% Off! High tensile, woven, barbed, smooth. Cattle/Sheep panels! Unbeatable Prices!! Ozark Farm, 417-322-0161.

L4400 KUBOTA: 4wd tractor with loader and 3rd function valve, Low hours. \$21,500. 417-270-1505.

AUNT JEMIMA COLLECTION. \$200 All. 573-327-9068.

MINIATURE DONKEYS: For sale, call or text for details 417-531-2386.

PUBLIC AUCTION

SATURDAY, JUNE 6 • 10AM

Location: From West Plains, take Southwest 160 to JJ Hwy. 60 approx. 1 mile to CR 8945 1st Arrowhead Lake Entrance go to CR 8948 Left then to CR 8947, left follow to sale. Watch for Parker Auction Signs.

SELLING LOTS OF NEW & USED GOOD CARPENTRY & CONSTRUCTION TOOLS ACCESSORIES

Fixtures - Supplies - Dried Lumbers Rockwell Blade Runner Table Saw, Ridgid Oscillating Edge Belt/Spindle Sander, New In Case Dewalt Cutoff Saw, New In Case Bosch Hand Plane, 2 - Rotozip Drills, New Ridgid ½ Elec. Drill, Dremel, New Senco Duraspin Cordless Cutter, New In Case Paslode Impulse Angle Finish Nailer, Wolfcraft Dowel Pro Kit, Remington Power Activated Nail Shooter, New In Case Milwaukee Cordless Drill W/ Charger, Porter Cable 3 ¼ Hp 5 Speed Router, Heavy Duty Portac Router, Bosch Router Plunger, 2 Rockwell Sonicrafters W/ Cases, Husky Brad Nailer, Crain #795 Toe Kick Saw, Milwaukee Heavy Duty Circular Saw, Pora Cable Hand Grinder, Portacable Cordless Drills In Case, Portacable Air Nailer, New In Case Platum Rotorazor Saw, 2 Bostitch Brad Air Nailer, Milwaukee Heavy Duty Super Sawzall, Several Boxes & Packets Of Brad Nails & Angled Finish Nails, New In Case Grex Brad Nailer, Stanley Bostitch Heavy Duty Nailer, Stanley 4" Plane, Jet Drum Sander Model 16-32 Plus, ½ Electric Impact Drill, 3" Air High Speed Cutter, Ricon Bel/Disc Sander, 18" Delta Drill Press W/ Lasers, Ridgid Planer, Ricon Upright Bandsaw, Portacable Plunge Router 7529, Portacable 12" Dovetail, Bench Grinder, Shop Fox Mortising Machine W1671, 2 Ridgid Shop Vacs, Jmcr Router Table W/ Bosch Plunger Router, Ridgid Shaper, Portacable Plate Jointer Biscuit Cutter, Simpson 4000Psi Pressure Washer W/ Honda Motor, Portable Belt Sander, Pronto Zip Mate, Ryobi Cordless Drill, New Spc. Ball Pin Hammer Set, 3 ½" Louver Template Set, Rockwell Hand Sander, Dewalt Siding Sheers, Kreg Jig Ks, Portacable No Spin Shand Cutters, Power Double Work Light On Stand, 30" Floor Fan, Milwaukee Drill, Concrete Vibrator, 2-Mk Wet Tile Saws, 2 New Heatalator Inserts W/ Controls, New & Good Used Saw Blades, Sets Of Impact Socket, Sets Of Open & Box End Wrenches, 2 Sets Of Wire Pullers, Several Staple Guns & Staples, Grinder & Saw Blades, Lots Of Drill Bits (Some Milwaukee), Pipe Wrenches & Sink Wrenches, Nut Drivers, Several Sets Of Hold Cutting Bits, New Tripod For Transit, Sets Of Wood Chisels, All Kinds Of Hand Sanders, Buck Bros. 14" Jack Plane, Rockwell Veracut, Ryobi Sawzall, Dewalt Heavy Duty Jig Saw, Super Drive Grabber, Boxes Of 3" Cutoff Wheels, Boxes Of Brad Nails, Screws, Bolts, Nuts, Nails, Etc. Red Head Concrete Anchors, All Kinds Of Hammers, Hack Saws Coping Saws, Sockets & Sets, Wrenches, Creasants, Pipe Wrenches Of Several Kinds, Visegrips, Pliers, Tin Snips, Lots Of New In Box & Utility Knives & Blades, Sets Of Chisels, Cotter Pin Assortment Package, Rockwell Stand, Tenoning Jig, Universal Work Table, Bench Wood Vise, Rockier Wood Clamps, Sea & Bar Clamps, Wood Sea Clamps, Box Of Mitre Corner Clamps, Several Good Tape Measures, Chalklines, Freud Box Joint Cutter Set, Lots Of Crimping, Stripping Pliers, Lots Of Nail Prybars, Screwdrivers, Several Rivet & Caulking Guns, Sets Of Hobby Knives, Pull Me Saws, Squares & Speed Squares, Handy Man Stud & Nail Finder, Levels & Laser Levels, Miks Gauges, Mmd Moisture Meter, Kreg Drill Tooling Sommerfield's 3 Pc. Face Beaded Frame Set, Dole Drawer Making Set, Drill Vise Stand, Welding Visegrips, Box Of Honing Counter Sinks, Sommerfield Hinge Boring Jig, Wonderwood Brad Point Drill Set, Tool Boxes, Lots Of Sanding Belts & Paper, Chain & Hooks, 2 Ton Chain Hoist, 5 Heavy Duty Adjustable Storage Shelving, New Sandpaper Spindles, Breathing Masks, New In Box 3 Ton Hydraulic Jack, Dado Blades, Brazing & Welding Rods, Brass Air Firring, Cain Hook, Hand Tools Post Hole Diggers, Shovels, Rakes, Etc. Cans Of New Pipe Glue, Pvc Cutters, 2 Rockwell Clamp Saw Horses & Portable Saw Horses, Bucket Of New Chain, Several Good Extension Cords, Folup Massage Table.

LUMBER - BUILDING ITEMS - BUILDING MATERIALS

Dried Lumber, Red Cedar, Approx. .. 400' Walnut, 650' Cherry, 400' Hickory, 200' Oak, Other Plywood & Boards, Etc. Stack Of Lumber For Concrete Forms, 2 -24" Solid Doors, Like New Ceiling Fans, New 15'X20' Berber Carpet, Flush Style Ceiling Lights, Boxes Of Ceiling Lights & Chandeliers, 2 New In Box Hampton Baynove Chandeliers, New In Box Muea Sink Faucets, Boxes Of New Gun Locks, Several Good Locks W/ Keys, New Rockier Shutter System W/ All Wood, Rolls Of Electric Wiring, 12/2 Wiring, Electric Wall Boxes, Lots Of Electrical Accessories, Receptacles & Switches, Covers, Plastic & Brass Plumbing & Water Shutoffs, Lots Of Concrete & Sheetrock Grouting & Mud & Lots Of Tubs, Trials, Etc. Copper Tubing Cutters, Angle Wall Brackets, Floor Vents (In Box), New Large Mud & Paint Stirrers, Welding & Lots Of Other Gloves, 20" Floor Tile, New Shop Light & Sink, Bathroom Towel Holders, Tie Down Buckles, Gallons New Paint, Sheet Rock Mud, Bucket Of Dura Spin Drywall Screws, New Under Counter Trash Tack, New Wire Storage Baskets, Lots Of Rebar, Water Hoses, Game Feeder, Shooter Stand, New 6' Countertops, Stainless Shelf On Casters, Car Ramps, Portable Air Tank, Straps W/ Ratchets, Rope, Conduit Pipe, Carpet Padding, Round Wood Handrails, 3 Tier Water Fountain.

HOUSEHOLD

Oak Clawfoot Dining Table W/ 4 Chairs, Drop Leaf Table W/ Chairs, Dining Chairs W/ Casters, China Cabinet, Oval China Cabinet, Kitchen Hutch, Microwave Cabinet & Microwave, Kenmore Self Cleaning Glasstop Electric Range, Maytag Washer & Dryer, Octagon Clawfoot Dining Table W/ Chairs, Couch Table, 2 Rocker Recliners (Large), Spc. Queen Cannon Ball Bedroom Suite, New Hollywood Bed Frame, Queen Size Bed W/ Dresser & Chest Of Drawers, Full Size Bed W/ Head & Footboard, Dresser, Tv Stand, Bookcase, Good Futon, Brass Pole Lamp, 2 Nice Sets Of China (Large Set), Stoneware Dishes Coralware Dishes, Pots & Pans, Carnival & Milk Glassware Waffle Grill, Coffee Makers, Etc. Box Of Specialty Baseball Cards, Diabetic & Blood Pressure Meters, Lots & Lots More Household & Other Misc. Too Numerous To Mention. Nice Clean Sale.

OWNER SELMA TAYLOR

PARKER AUCTION SERVICE

Real Estate - Farm - Personal - Auto - Machinery

For Any Kind Of Auction Call:

417-293-3215



MARVIN PARKER AUCTIONEER



Ark. License 2278

CRAWFORD *Online* AUCTION

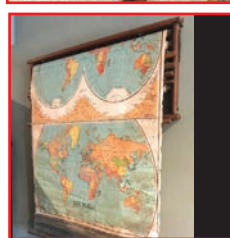
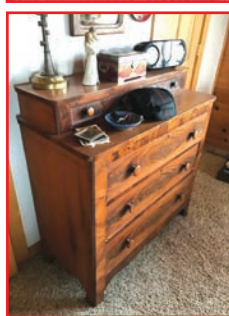
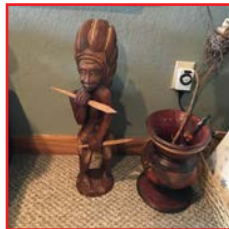
BIDDING ENDS JUNE 14TH AT 7:00 PM CST.



**ONE OF OUR
Fanciest
AUCTIONS EVER!**

AUCTIONS ENDING EACH SUNDAY! BID ONLINE AT:

WWW.OZARKBID.COM



**SHIPPING ON
AVAILABLE ON
MOST ITEMS**

**SELL YOUR ITEMS
NATIONWIDE**

**SAVE TIME, SAVE
MONEY, SHOP AT
ONLINE AUCTION**

- Online -
CRAWFORD
Auction Service

Register and bid online
@ **www.OzarkBid.com** *Ozarkbid*

Contact Chase Crawford, Crawford Auction Service for more info @ 417-399-1904

BRYANT
AUCTION.COM *celebrating over 50 yrs of Auctions*

**WEEKLY AUCTION
THUR., JUNE 4 • 5PM**

335 NORTH FRONTAGE RD., OSAGE BEACH



VEHICLES, TRAILERS, & EQUIPMENT

2018 Caterpillar 236D Skidsteer w/ Bucket 130 Hrs! Sold Sep. Extra Bucket (New), Steel Tracks, Forks, Selling June 4TH; 2018 Caterpillar 305E2 CR Excavator, 24" Bucket, 35 Hrs! 16" Bucket Sold Separately, Selling June 4TH; Cat Rock Hammer H65E, Like New, Selling June 4TH; John Deere JD570 Grader, possibly 1987, New Batteries, Runs, With Front Ripper, Selling June 4TH; 2005 D & S 24' Goose Neck Trailer, GVW 12,000; 20ft Horse Trailer With Living Area and Tack Room; 2017 Jaguar XE - Low Miles - 43,000 Miles. Runs Perfectly! Upgraded Tires, Red Sport Caliper Covers, Two TVs in Back of Headrest, Black Suede Headliner! Beautiful Car - Must See! 2014 Cadillac ATS, 65,000 Perfect Shape! Mature Couple Owned and Serviced! 2011 Chevy Tahoe, Camden County Sheriff Vehicle \$4,000; 2015 Ford F-150 Crew Cab, 4X4 Clean & Nice Starting bid: \$14,000! 2005 Honda Rincon ATV; Classic Cars!

TAXIDERMY MOUNTS

(Client Was An Avid International Hunter Bringing Back Some Great Mounts) Cape Buffalo, Buffalo, Elk, Cinnamon Brown Bears Scenery Mount, Brown Bear Wall Mount, Bobcat, Black Bear Scenery Mount, Black Bear Wall Mount, And More

FURNITURE & MORE

Full Line Up of Furniture Every Week - BUY NOW! 23"x36" Granite Counter w/ Kohler Sink; Metal Storage Unit w/ Top Slide Out

GUNS

We Can Order It! Buy Your Conceal Carry Here! At Cost Several Handguns, Rifles, & Shotguns - Nice Selection Every Week; Smith And Wesson Ultralight 38 Spl Revolvers; North American Arms, 22LR Pink With Pearl Handles ; Ruger ARs; Ruger LCP And LCR; Several Gun Styles On Hand Come Take A Look

GREAT SELECTION OF HIGH END DECOR

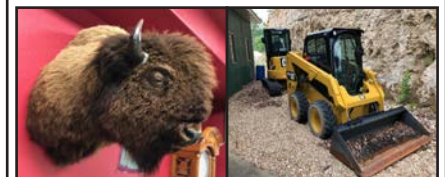
Large Truck of High End Furniture This Week; Beds & Bedding - Several Mattress Sets

JEWELRY

Any Carat Size! Diamonds, Emeralds, Sapphires, Rings, Necklaces, Ear Rings, & More!

OUTDOOR ITEMS & EQUIPMENT

500 FT 2 1/4" Thick Rope; Craftsman Snow Plow; Particle Board for the Home Improver! McCulloch Generator FG 7000MA; Generac GP5500 Generator; Electric Spray Gun; Solar Animal Repellers; Electric Heaters



BRYANT
AUCTION.COM

573 346-4777

sold@BryantAuction.com

ANGELA SCHEJBAL | OFFICE MANAGER sold@bryantauction.com

RICK BRYANT | PRESIDENT/AUCTIONEER rick@bryantauction.com

573-346-4777 Office • 573-346-4068 Fax

Facebook Bryant Auction - Mail to: 335 North Frontage Rd., Osage Beach, MO 65065



Missouri Show-Me-Select

Replacement Heifer Sale
140 Fall Calving Bred Heifers

Friday, June 12, 2020
7:00 PM

Farmington Regional Stockyards
1600 Woodlawn Dr., Farmington, MO 63640

Crossbred & Purebred Heifers Available

Registered Angus, Purebred Angus, Angus Cross, SimAngus & Herford/Angus

- Mostly black, few black-baldies, two red
- Many AI BRED & selling with known FETAL SEX
- Few REGISTERED - Angus
- Due to calve from August 14 to November 28, 2020
- Sorted into uniform lots and guaranteed bred
- Tier II daughters out of Angus sires
- All bred to INDUSTRY LEADING bulls

Consignors:

Morgan Clark Farmington	Shadow Lane Farms Mill Spring
Ben & Julie Davis Farmington	Schulte Brothers Meta
Flieg's Farm Ste. Genevieve	Mike Steinman, Argyle
David Gann Steelville	Strope Angus Westphalia
Graham Family Farm Farmington	Greg Tharp Naylor
Grellner Farms Owensville	Turner Farms Belgrade
Kranjec Valley Angus Marquand	Dean & Dallas Wilson Ditmer

For Information or Catalog Contact:

Kendra Graham • 573-756-4539

grahamkk@missouri.edu

Facebook:

Show Me Select Bred Heifer Sale: Farmington

BUSHWHACKER BELLES BOOK THE SISTERS, WIVES AND GIRLFRIENDS OF THE MISSION GUERRILLAS BY LARRY WOOD, \$12.50. 417-532-2045. LEBANON. LEAVE MESSAGE AND PHONE NUMBER.

CASH FOR COMIC BOOKS: From 1935-1985 and comic related toys and vintage sports cards. 636-390-2043. Washington, Mo.

SAVAGE: or-H&R 410-Gauge Single Shot \$150 Each. 573-756-1065.

LARRY DRENON AUCTION

ESTATE AUCTION
194 NW 221 Rd • Clinton, MO

As I am retiring and have sold my home, I will sell the following at auction from Clinton north on Hwy 7 approx. 3 miles to NW 221 Rd, then 1/2 mile north on 221 Rd to sale on:

SATURDAY, JUNE 13TH • 10 AM

PICKUP

99 Ford F250 XLT Super Duty V-10, 4x4, ext. cab, only 53,400 miles Sharp truck!

PARADE TRAIN

Known as Grandpa's Purple People Eater Train, this parade favorite has 2-12 hp B&S engines pulling 8 cars and a caboose. The caboose is rigged with a cd player and PA system. Very rare to have a chance to purchase something like this! Brightly colored and ready to go!

TRACTOR

Massey Ferguson 255 diesel w/ MF loader

STOCK TRAILERS

18' Gooseneck stock trailer
16' bumper type Stock trailer, new floor

BOAT

Tracker Sweet 16 Aluminum V-bottom boat w/Evinrude 25 hp motor and Trailstar Trailer, good cond.

FARM

6' brush cutter • 7' Blade
Gold Star pst hole digger, 12" auger
Poly water tank
2 Hay and feed bunks
Horse big bale ring
Poulan Pro 42 cc chainsaw
Poulan 2000 chainsaw
Several 7' light pole posts
Vermeer hay bale temperature gauge
Syntax implant gun, cattle tattoo, various other vet supplies
50 gal barrels
Several propane bottles
Roll of 7' woven wire
FarmCo 15 gal sprayer

HOUSEHOLD & ANTIQUES

Unique Antique high chair converts into chair
Double pedestal dining table, 6 pressed back chairs Sectional sofa ensemble, several pieces, brown

Note: Cash, approved check, credit/debit card (convenience fee applied). Nothing to be removed until settled for. Not responsible for accidents. Statements made day of sale take precedence over printed material.

HOUSEHOLD & ANTIQUES

Sleep Number mattress, king size, dual controls
Metal hospital bed with pillow top mattress
Antique Singer treadle sewing machine
Antique electric petite wringer washer
3 Wicker bottom bar stools
6 gun cabinet • 2 curio cabinets
Older SxS refrigerator
Older 30" gas stove
Portable electric fireplace
Misc household and kitchen items
Sound bar • Collection of angels
Enterprise food grinder
Stained glass hanging light
6 stack chairs

SHOP TOOLS

Coleman Powermate 5000 generator, 11 hp, on dolly
Hobart 175 welder
Cutting torch set, bottles, dolly, gauges
Central Pneumatic sand blaster
Milwaukee grinder
Wagner paint sprayer
Chicago 10" table saw
Ryobi miter saw • Skilsaw
Central Pneumatic paint sprayer
Wagner power steamer
Excell 2400 psi pressure washer
Roto Rebel spiral saw
Central Pneumatic air nail gun
Chicago reciprocal cut off saw
Craftsman air hammer
Chicago cut-off saw, 14"
Craftsman router
Aluminum concrete smoother, 36"
10" polisher/buffer
Central Pneumatic 2 1/2 hp 21 gal 125 psi air compressor
Bolts, nuts, screws and cabinets
Letter stencils, 8&12"
1/2" and 3/8" electric drills
Large c-clamps, Pipe wrenches, files, rivet gun, screwdrivers, drill bits, other small hand tools

0-TURN MOWER

Cub Cadet 60" 0-turn mower, only 2 years old, like new

LAWN, GARDEN, PATIO

MTD 5 hp garden tiller
New Braunfel smoker
Handmade fryer/grill for large batches of fish
36" Lawn sweep
Push garden seeder
Patio table, 6 chairs and glider rocker

SADDLES AND TACK

16" Frontier Equestrian saddle, made in Jasper, MO
Youth saddle #3910 15" roping saddle
Bridles, Halters, lead ropes, breast collars, etc
Grooming tools
2 Aluminum saddle racks

MISCELLANEOUS

Johnson guitar in case
Weslo treadmill • Metal detector
Clay pigeon thrower
Leather, camo and other good men's coats, L&XL
40 watt PA system
Old video cameras
Pet Safe dog training collar
Food steam table
Camp chairs • Car hauler dolly
20 Amp breaker box and breakers
Falcon tow bar • Metal dog crate
Brush guard for 2000 Dodge Dakota
Car Towing Frame for tractor trailer
2 chest type freezers made into minnow tanks

Many other items too numerous to mention!



JAMES (RONNIE) COX

Terms: Cash, approved check, credit/debit card (convenience fee applied). Nothing to be removed until settled for. Not responsible for accidents. Statements made day of sale take precedence over printed material.

LARRY DRENON AUCTION



Larry
660-596-8515

Lacey
660-723-1104

Laramie
660-221-4386

660-547-2646

SPRING EQUIPMENT CONSIGNMENT AUCTION!

Featuring a Living Estate Sellout for Ann Lord of Stark City, Mo.

151 Ste Hwy 76, Rocky Comfort, MO (SW Auction pavilion)

SUNDAY, June 7th @ 10:00 AM

Rain or Shine! Concessions Available! Taking Consignments up to 9:00 am Auction Day!

SALE DIRECTIONS: FROM WHEATON, MO: Take Hwy 86 one mile South to Hwy 76, turn West, go 1/4 mile to sale on south side of road. Look for 3 green barns. **FROM CASSVILLE, MO:** Take Hwy 86/76 West 14 miles, stay West on Hwy 76, go 1/2 mile to sale on south side. **FROM ANDERSON, MO:** Take Hwy 76 East approx. 25 to 30 miles to Rocky Comfort, Mo. Go 3 miles on Hwy 76 to sale on south side of road. **FROM MONETT, MO:** Take Hwy 37 South, go 10 miles to Purdy, Mo. Turn West on Hwy B, go 10 miles to Hwy 86, turn South. Go 4 miles to Wheaton (follow Wheaton directions). **FROM NEOSHO, MO:** Take Hwy 60 North/East 4 miles to Hwy 86. Turn East, go 25 miles to Wheaton. SW Auction Physical Address is: 151 State Hwy 76, Rocky Comfort, MO 64861 (Just outside of Wheaton). OFFICE: (417) 652-7540 OR EMAIL: Kathy@swaauction.com Website: www.swaauction.com

Early Consigned Items: '14 Freightliner Semi Truck, '97 Chevy 3500 ext cab dually-454 gas, '04 Interstate Gooseneck Trailer 24'x 8', '98 Wells Cargo Trailer-12'x 6', '01 PJ Flatbed Trailer 24'x 8', 05-29' Sprinter Copper Canyon Fifth Wheel w/ gooseneck adapter, New Round Bale Haulers, 45' Dry Box Trailer, Bob Cat Skid Steer, 16' Pull type Trailer, 14' Dump Trailer, 7' 3pt Bushhog, 8' 3pt Bushhog, Set of Semi Trailer jacks, 100 gal "L" Fuel Tank w/ 12v pump, Preifert Skid Steer litter Blade, Set of VTS Skid steer Tracks-fits Case 430, Komatsu 25 Forklift, New Holland G6035 4wd Zero turn Mower, ExMark Standup Mower, Yard Machine 742 RL-42" cut Riding Mower, ExMark Lazer Z Mower 27hp, Grasshopper 618 SL 52 Zero turn Mower, Craftsman Lawn Tractor, Murray Lawn Mower-742 RL-7 speed on the go-42" twin blade-good shape, runs great! Troybilt Storm 2620 Tiller, Honda EU 3000 Generator, Pow-ermate 3000/3750 Generator, Emergency Power Generator 5250w, Swisher 765 Exl Weedeater, Ranch Hand Brush Guard, Reese 5th wheel RV Hitch, Tool Bench, Yard Wagons, PTO Adapter for Trac-tor, Bumper Hitch pickup, Tool boxes, Welders, Misc hand tools, Clocks, Rolling carts, Fimco sprayer, Grizzly Scroll saw, Goodman A/C Unit, Vanguard HP pressure washer 16hp, Water Wheeler Pad-dle Boat, Sportsman III Jon Boat, New Trolling Motor, Misc shop tools, Semi truck wheels and parts, Washer & Dryer, Lots of plumb-ing & electrical supplies, shop cabinets, display cases, small refrig-erators, Stackable storage totes, step stools, hoses, shop vac's, gas cans, trash cans-large & small, shelving, pegboard, Scaffolding, House doors, mop buckets, cleaning equip, hand sanitizer units, Commercial Coffee Pot, LOTS of Office Furniture & Supplies, Painting supplies, Drinking water unit & much more!

SPORTING GOODS: Estate of Guns: Taurus .44 mag w/ 6 1/2" ported barrel-satin finish, Very Nice Taurus 'The Judge' 45/410 Satin finish- 3" barrel, Nice Rem. Model 597 Camo .22 LR w/ Optima Scope, Like New in Box-SCCY-CPX-1 (9mm) 10 shot., Sidekick #3 Camo chest Holster, Sidekick #4 chest Holster (black), Pachman Handgun grips, Uncle Mikes #3 inside pocket Holster (New), "Ambi" Nylon Blackhawk #3 Holster (New), "Ambi" Nylon Blackhawk #4 Holster (New), Taurus 92F-30 rd 9mm clips, Sev. boxes of shells, Several Antique pistols, Collectible Coins and more! Wooden stor-age boxes, water container pallets, Sears Chainsaw, Outdoor furniture & décor, Camping supplies, Assorted New Oil & Air Filters, (3) Trailer House Axles, Tires/Wheels, Band Saw 9", Wire Welder & cart, Table Saw 10", Tool Boxes, Seeder, Exercise Bike, Wood Splitter, Pfaltzgraff Flowered Pichers, Vases, Heavy primitive bowl, Lawn ornaments, work gloves, Coleman Lanterns & lots more!

Ann Lord Estate Items: Bushhog 3 pt 8' blade, 6' Bushhog 3pt, 6' Box Blade, King Cutter 3pt blade, King Cutter 3pt Slip, Bale spikes, Ottawa Loader forks, 5' pull type busshog 5' 3pt bushhog, Campbell Hausfeld 220v 7.5 hp 80 gal. Iron Force series Air Compressor, Jet Table saw, Craftsman Radial Arm Saw, Delta Miter Saw 10", Bosch Router, Makita Router, Stihl Router, Porta Cable Router, Porta Cable Finish Nailer, Dewalt Cutout Tool, Rotozip Cutout Saw, Lincoln Welder AC/DC, Jet Sander 2 wheel, Delta Spindle Sander, Acetylene Torch & bottles, Welding helmets & rods, Stand roller, Jett Planer, Stihl Chainsaws-MS 250C, MS192T-017, Shopline Jet BandsawDust blower & filter, 4' Industrial Floor fan, Rockwell Miter Station, Router table, Log chains & boomers, shop lights, Husqvarna Zero turn mower 38", Jenn Air SS Gas grill, pry bars, buffer, sump pump, misc sanders, Hedge trimmer, Sprayer for ATV, Lots of hvy ext cords. FULL SETS OF WOODWORKING TOOLS! Lots of Cherry, Oak, Persiman & misc wood, Dovetail Woodwork-ing Jig, Full Set of Columbian Router Bits, Passload Frame & Air Nailer, Lots of different sizes of wood clamps, Veritas Twin screw Vise w/ 8' Work Table, Dovetail Leigh, Gerstner Wood Carving Tools, Jorgensen Wood clamps, Air sanders, Dewalt Bench Grinder, Tormek Super Grinder 2000, B&D Bench Grinder, Jet 13" Wood Planer & Molder, Tradesman 14" 6 speed Floor drill, Shopline Jet Drill Press, Woodcarving Books & saw horses. Folding Ramps, Calf Puller, Trailer dolly, Alum ladders, step ladders, saddles, blankets & saddle tree, Stock Tank, 12' Gate, 4' Gate in 8' frame, 300 gal Fuel Tank, Alum Toolbox, Mower Trailer, Steel Cart, Old Antique Wagon Wheels, Old Plows & much more misc!



24'x 45' x12' pole barn (disassembled)

'97 Chevy Dually 3500

Bob Hughes
417-236-5888

Chadd Hughes
417-236-5487

SOUTHWEST AUCTION SERVICE & MARKETING
www.swaauction.com
417.652.7540

PICTURES AVAILABLE ON OUR WEBSITE!
www.swaauction.com

TAKING CONSIGNMENTS UP TO 9:00 AM AUCTION DAY!
CALL (417) 652-7540 or email: Kathy@swaauction.com WEBSITE: www.swaauction.com

TERMS OF THIS AUCTION: At this auction, we accept CASH & GOOD CHECK with PROPER ID & Visa or MasterCard (5% Convenience fee for credit cards). We are not responsible for accidents to man, woman, child or animal. We are not responsible for lost, stolen or damaged articles or prop-erty! All accounts must be settled prior to removal of auction item! Please remove your items as soon as possible. Any items left over 30 days will become property of SW Auction. Statements made day of auction take precedence over all printed material. For more information & pictures, visit our website: www.swaauction.com.

Salem Livestock Auction

Hwy. 32 Salem, MO • 573-729-8880

Over 40 Years in the Livestock Business

Pre-Vac Sale
Friday, June 12
at 1 p.m.

Goat, Sheep & Hog Sale

Tuesday, June 9 • 6 pm

Luke Peterson • 417-259-0036

Shawn Chadwell • 417-830-0209

Bryce Lauderdale • 417-255-5124

Field Representatives

Wright & Surrounding Counties

We Appreciate Your Business!

All Consignments Welcome Up Until Sale

Allen Thompson Renee Lauderdale
417-932-4097 417-926-2682

Chuck Thompson Brandon Barton
417-257-5610 417-259-1597

Terms of Sale: Cash or Approved Check!

REDUCED!! 140 WOODED ACRES: 4/ bedroom, 2/bath home, borders live creek and corp, 30'x40' shop, 2nd building 26'x60', year round spring, 7/10 of a mile from Lake Norfork. \$189,000. Tecumseh. 417-284-3727.

MX5100 KUBOTA: 4wd tractor with loader, 52 HP, open station, low hours. \$20,000. 417-270-1505.

CUSTOM SAW MILLING: Lebanon. 417-533-4607, 417-664-1195.

HUGE NEW SKIDSTEER TRAILER, TIRE WHEEL COMBO SALE: Skid-steer, 12-16-5, 12 ply tire, 16-5, 8-Hole, Steel Wheel, Metal V-Stem, Combo \$240 EACH. PLUS 1/2 gallon H.D. Tire Sealant Installed \$275. Trailer ,225-75-15, 10-ply, Tire, 15-inch, 5-Hole Wheel, V-Stem, Combo \$115 Each. D-sizes. Free Warranty, Delivery, CALL 417-955-2103 Anytime.

HAROLD BELL WRIGHT BOOKS FOR SALE. The Eyes of the World, The Calling of Dan Matthews and Their Yesterdays. \$15 each. 417-532-2045, Lebanon. Leave message.

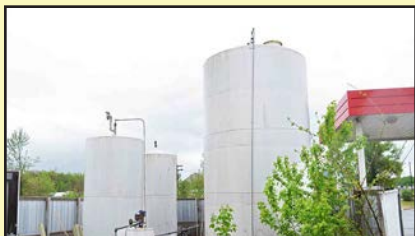
FENCING SUPPLIES - UNBEATABLE PRICES!! Ozark Farm, 417-322-0161

YOUR Real Estate Auction SpecialistBank Owned, Commercial Real Estate
Former C-Store on 1 Acre**Real Estate
AUCTION**Friday, June 12, 12:00NOON
222 St. Hwy C, Seymour, MODIRECTIONS: Property is located North side of Hwy 60
at intersection of Hwy 60 & State Rd. C, Seymour, MO.

With some TLC this former C store with Hwy 60 visibility and access could be reopened, remodeled to fit your business venture or used as investment leasing property! Property currently consists of a 3,586 sq.ft. former C store building with large open retail area, small kitchen area and 2 restrooms. Property also has 2 separate fuel stations areas with canopies and above ground fuel tanks.

FR. BUILT: 1999. SQ.FT.: 3,586. 2019 TAXES: \$2,028.

REAL ESTATE TERMS: 10% down auction day, balance due on or before 30 days after auction. REAL ESTATE SELLS "as is, where is". If buyer desires home inspection prior to auction call office at 417-882-5664.



Bob Kollmeier
AUCTIONS / REAL ESTATE
CAI, CAGA
417.882.5664
Onsite/Online Auctions

RICHARD JEAN
AUCTIONEER
417.299.8401

RUSS SMITH
AUCTIONEER / MEMBER
417.848.0205
IL-000042330

PUBLIC AUCTION

SATURDAY, JUNE 6 • 9:30 A.M.

Directions: **CHERRYVILLE, MO. • SELLING ITEMS DUE TO HEALTH FROM SALEM** - Take Hwy. 19 north to Hwy. 49, take Hwy. 49 to Hobo Rd.
FROM STEELVILLE - Take Hwy. 19 south to Hwy. 49, take Hwy. 49 to Hobo Rd. Watch for sign

TOOLS • FARM • TRACTORS • VEHICLES • MOWERS • MISC.

Chain Hoist, 2-Ton - Old Air Compressor
Chain - Draw Knife - Bow Saw
Chimney Brush - Truck Hitch
- Old Lanterns Corn Straw Broom
16" Truck Tire & 8-Hole Wheel
111- 228 Tractor Tire - Nuts & Bolts Organizers - Hammer Handles
Beer Buckets - 2 Kraut Cutters
600- 16 Tractor Tires w/Tubes
Old Oak Desk & Chair from Steelville Electric Co. Key Wrenches - Square Skillet - Alternators Radio - Ridgid Tap & Die Set - Skilsaw
Clock Roll-Around Tool Box - Tin Snips
Hooks - Various Pipe Wrenches
Cross-Cut Saw - Chain Breaker for Chainsaws Old Buffet - Pony Harness - Draw Bars
Top Links - Stabilizer Bars - Corn Knife
Small Chain Hoist - Hanes
- Wooden Saw Vise New
2-Wheel Yard Cart
Round & Square Lewis & Clark Skillet
Small Bench Vise - Gear Pullers
- Ice Tongs Sad Irons - Well Pulley - Lot Snips - Buck Saw
Splitting Hammer - 036 Stihl Chainsaw
Old Wall Clock - Granite Pitcher
Lineman's Belt - Boomers - Wheat Light
Ball Bats - Creeper - Sand Blaster
Tractor Tire Tubes - Air Impacts

Tire Bead Breaker - SS Double Sinks
80 gal. 175 psi 220 Volt Ind. Air Compressor 25 gal. Brush Sprayer - Battery Charger
1973 VW Super Beetle, Runs, Needs Gas Tank John Deere, 42" Mower Deck - Hose & Reel Iron Wheels - GMC Tailgate - Iron Rims
Fire Pit - Old Cistern Pump - Gas Cans
10' Pipe Gate - 30 plus T-Posts - Well Pump
3, 50 lb. Propane Tanks - Old Chainsaws
Roll Smooth Wire - Chevy Tailgate
Torch Tank - Metal Buckets
- Planter Plates Drill Press on Stand - Alum. Doors & Windows Oil Lamps - Box of #8 Nails
5.5 hp 2" Water Pump, New
212 cc Gas Engine, New,
Horizontal Shaft HD Cutting Torch Set, New - Dry Cedar Lumber 3 Troy-Bilt Rear Tine Tillers - Feed Scales Tractor Seat - Older Edger - Table Saw Mantis Tiller - Wood Cook Stove
Metal Cabinet - Old Chevy Hubcaps
Shovels - Post Hammer - Torque Wrench Extra Parts for '72 Chevy Pickup
Old Salem Coke Bottle
John Deere Molasses Mill - 350 Chevy Engine Round
Tubs - 72 Chevy Pickup, Bad

Floor David Bradley Garden Tractor - Trailer Frame 6' Ford 3 pt. Disc - Disc Plow
2-Bottom Ferguson
3 pt. Corn Cultivator
Field Aerator - Boat Trailer
3 pt. Spring Tooth Cultivator, Complete
2-Section Harrow
Truck Bed Trailer - Dump Rake
John Deere Corn Planter,
2-Row Grader Blades - Gin Pole
Western Auto Rear Tine Tiller
Patio Set, Project
John Deer Corn Planter, Nice
Rock Screen - Old 2-Bottom
Plow Old Tractor Parts - Heavy Drain Pipe Glass Insulators - Tater Plow
Old Iron Wheelbarrow
Old Iron Car Wheels
2- 3 pt. 5' Howse Brush Cutters
3 pt. Bale Mover - 3 pt. 7' Blade
5 Old Riding Mowers - Lot Scrap - 9" Auger Lincoln
225 Stick Welder - Model A Rear End @1929 Ford Model A - Coal Cart Frame 12" Danuser Auger, Good - Tire Changer Big Battery Charger - Dog Crate
Extension Cords - Grinding Stone
2, 1020 Ferguson Tractor Engines
Wooden Ironing Board - Concrete Wall Cover Wood Chipper, Needs Works - Disc Blades



OWNER: HENRY MARTIN

ANNOUNCEMENTS AT AUCTION TAKE PRECEDENCE OVER PRINTED MATTER

WULFF AUCTION

Auctioneers:

Col. Tom Wulff - Col. David Wulff
498 Hwy. B, Salem, MO 65560
573-729-8476

Clerk: Tracy Strange Cashier: Nancy Inman

See Wulff Auctions at www.thesalemnews.com/auctions

TERMS: CASH OR APPROVED CHECK - I.D. REQUIRED
NOTHING REMOVED UNTIL SETTLED FOR

Licensed Appraisals



RAIN OR SHINE
OWNER & AUCTION
PERSONNEL NOT
RESPONSIBLE
FOR ACCIDENTS AT
SALE SITE

ESTATE AUCTION

SATURDAY, JUNE 13 • 9:00 A.M.

Directions: SALEM - From Salem take Hwy. 19 south 23 mile to Shannon Co. Rd. #19-261. Watch for signs.

PROPERTY • FARM EQUIP. • TOOLS • HOUSEHOLD • GUNS • MISC.

6x6 Polaris AWD Sportsman, 6-Wheel Drive, Great Shape, Good Tires
Creep Feeders - Side Bar Rack
TV 1360 1991 - Vermeer 60s Super J, String Tie Baler
Dearborn Gram Grill, 13 Hole Drill
3pt 2-Row Corn Planter
532 Ford Square Baler & Parts - 2 Cross-Cut Saws
Old Birch Wood Stove - Old Mill
Yard Fence - Tractor Fendes - Wire Stretchers
Old Lumber - Roll of Woven Wire
JD Front End Weights & Baskets
Cultipacker - 3pt. Post Hole Auger
Old JD HD Cycle Mower - 10, 6" New T-post Handles, Pitch Forks, Shovels, & Scoop Shovels
7' Wooden Step Ladder - Wooden Step Ladders
Dehomers - Bumper Jacks - Old Metal Stone Wheel
Lot of Old Chairs - 2 Hay Syths - Beaver Traps
Come-Alongs - Old Wringer Washer
Wood Pot Belly Stove - Old Buggy Seat
Old Rail Road Lamps - Hyd. Cylinder
Old Double Trees - Old Trolling Motor - Barn Lumber
Old Guttering - 20' Ext. Ladder - Steel Wheel Plow
Apple Baskets - Rope - Water Hoses - Canning Jars
Blue Jars - Berry Crates - Aluminum Windows
Live Traps - Egg Basket - Metal Milk Crates
Yard Wagon - Wheelbarrow - Heavy Rome Disk
Hay Ring - Ford 3-Bottom 3pt. Plow
8' Roam Disk - 2-Bottom Brush Plow
Cross-Cut Saws - Minnow Traps - Brown Jug
Hay Scales - 3-Legged Cast Iron
Wooden Pulley - Old Horse Shoes - Old Separator
Pile of Stones - Ford Tractor Weights
Flower Stand - Old Granite - Front End Bale Spike
3pt. Rear Spike - 7' Side Winder Brush Cutter
2, 2-Ton Chevrolet Trucks, Don't Run
3pt. Blade - Sub Soiler
5' 3pt. Brush Hog, Brand Brush Hog
125A Michigan Front Loader
3210 Pull-Type Brush Hog, Great Shape
Blacksmith Tools, Furnace, Vice
7 Good 12' Steel Panels - V Wheel Rake
Ford 5000 Diesel - Ford 3000 Gas
Car Ramps - 100# Anvil - Corn Grinder
Bench Grinder - Cant Hook
Polaris Trail Boss, 2x4 4-Wheeler, Needs Work

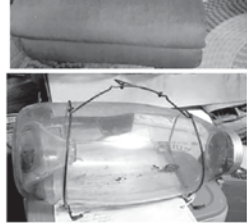
Polaris 6-Wheeler 500 Sports Unit
Gun Cases - Fishing Poles
Crafting/Scrapbook Toolboxes
Fishing Supplies - Grills - Coolers - Christmas Items
Old School Desk from Timber School - Old Saddle
Small Appliances - Kenmore Refrigerator
Pepsi Cooler - Cross BoFlex Welder
B&B 35 Gallon Sprayer - Small Air Compressor
Fish Cooler & Tanks - Troybilt Edger - Floor Jack
Portable Air Tank - Underwood Typewriter
Cow Sling - Cake Covers - Kitchen Towels
Kitchen Table & 6 Chairs w/Matching Hutch
Comingware Bowls - Depression, Green & Pink
Very Nice Set of Johann Haviland
Kenmore Side-by-Side Refrigerator - Correll Dishes
Keigh Bowls, Lots of Dishes - Baking Pans
Electric Skillet - Microwave - Pots & Pans
Cast Iron #8 Chicken Fryer, #6 & 2, #5 - Wagner 0
10 1/4" Skillet - #8 Skillet
#6 Cast Iron - Corn Bread Skillet
#8 Pancake Skillet - Texasware - Flat Pans
KitchenAid Mixer - Records
Couch, Reclining - Fender Guitar
Blue Recliner - Stereo
Lamp Tables - Heated Blanket
Glider - End Tables - Old Games
Area Rugs - RCA 46" Flat Screen
Wood Step Ladder - Old Kirby Vac
Towels - Metal Trash Can
4 Pc. Full-Size Bedroom Set
Twin Bed - Some Old Quilts
Sewing Machine in Cabinet
Glass Water Bottle
Full-Size Bedroom Set & 2
Matching Dressers
Lots of Sheets - Daisy BB Gun
Atlas Safety Welder Model 160T
#2 Crock & #1 Crock
7, Hen-on-Nests - 4 Dutch Ovens
Old Butter Mold
Maytag Washer & Dryer
Lots of Blue Jars - Gallon Jars
Floor Screen - Old Luggage
Orvis Glass Minnow Trap
Old Fly Rod

Cigarette Rolling Machine - Radial Saw - Large Vice
Several Chanel Bed Covers, Different Colors
GUNS: Savage Model 99E-243; Browning Made in
Belgium 22 Semi-Automatic; Winchester Model
97 12ga; Remington Model 592M 5MM; Win-
chester Model 67A 22; Remington Model 870
Magnum Wingmaster 12ga 3" Shell; Glenfield
Model 60 22LR

**TO BE OFFERED IN CONJUNCTION WITH
CENTURY 21 South Central Realty:**
Preapproval letter or proof of funds letter
needed. For more info, go to www.century21scrc.com, MLS# 18078840. Hard to find
578+/- farm w/approximately 125 acres of
good pasture, 453 acres of harvestable tim-
ber. Barren Fork Creek runs through it, a
spring that feeds into the creek, 3 ponds, 2
hay barns, a couple sheds, perimeter fenced,
a small amount of cross fencing. 3 BR Ranch
home, 1.5 BA, 2-car attached garage.



AUCTIONEER'S NOTE: This is a very large sale
and will take most of the day. Guns and
large equipment will sell at noon.
See you there! - Tom



**BUFFALO
LIVESTOCK MARKET LLC**

276 Hwy 32 West • Buffalo, Missouri

May 30th, 2020

Receipts: 1439 Head

Steady Market 5 wt. Steers \$5-\$8 higher

Representative Steers

300-400 @ 160.00 to 197.00

400-500 @ 150.00 to 169.00

500-600 @ 140.00 to 168.00

600-700 @ 130.00 to 146.50

700-800 @ 125.00 to 135.00

700-800 @ 118.00 to 126.00

Representative Heifers

300-400 @ 135.00 to 158.00

400-500 @ 135.00 to 152.00

500-600 @ 130.00 to 144.00

600-700 @ 120.00 to 133.00

700-800 @ 116.00 to 130.50

800-900 @ 105.00 to 114.00

Feeder Bulls

300-400 @ 135.00 to 178.00

400-500 @ 140.00 to 161.00

500-600 @ 125.00 to 142.00

600-700 @ 110.00 to 130.00

400-500 @ 106.00 to 115.00

Dairy Steers

500-600 @ 77.00 to 87.00

Bred Cows

Young 2 & 3 Stages 850.00 to 1075

SS 2nd & 3rd 525 to 775

Slaughter Cows

Fleshy 65.00 to 73.00

Med Fleshy 55.00 to 68.00

Thin Flesh 42.00 to 52.00

Slaughter Bulls

High Dressing 99.00 to 106.50

Med Dressers 85.00 to 94.00

Low Dressing 80.00 to 85.00

MON-WED MARKET REPORT

Listen to KJEL 103.7FM • Lebanon or KYOO 99FM • Bolivar

VIEW OUR SALES AT CATTLEUSA.COM

CALL FOR TRUCKING OR ON-FARM VISIT

Lyle Caselman • Owner-Manager
417-345-7876 • mobile 417-533-2944
Leon Caselman • Owner
417-345-4514 • mobile • 417-588-6185
Howard Miller • Owner 417-345-8122

ESTATE OF: IRMA BAKER

ANNOUNCEMENTS AT AUCTION TAKE PRECEDENCE OVER PRINTED MATTER

WULFF AUCTION

TERMS: CASH OR
APPROVED CHECK -
I.D. REQUIRED
NOTHING REMOVED
UNTIL SETTLED FOR

Licensed
Appraisals

Auctioneers:

Col. Tom Wulff - Col. David Wulff

498 Hwy. B, Salem, MO 65560 • 573-729-8476

Clerk: Tracy Strange Cashier: Nancy Inman

See Wulff Auctions at www.thesalemnewsline.com/auctions



RAIN OR SHINE
OWNER & AUCTION
PERSONNEL NOT
RESPONSIBLE
FOR ACCIDENTS AT
SALE SITE

Prime Development Land Auction

11:00 AM Saturday, June 13th

Location: 4760 E. F.R. 144,
Springfield, Mo. 65809
Directions: 2 miles East of
Jct. Hwy. 65 & Sunshine (D Hwy)



94.3 Acres Prime Residential and/or Commercial Development Land.

Offered in 5 parcels from 5.2 to 25.5 acres.
Offered Individually, in any Combination & it's entirety.
This Property is located in the Fastest Growth Area
in Greene County, just outside Springfield City Limit
on East Sunshine!

Tract #1 - 25 Acres. Tract #2 - 24.6 Acres.

Tract #3 - 25.5 Acres. Tract #4 - 5.2 Acres.

Tract #5 - 14 Acres w/ 1630 ft. Of James River Frontage.



Auctioneer: Larry Foster Galena, Mo
Phone: (417) 723-8329 Cell: (417) 839-6860
www.fosterauctionservice.com
Email: bidnewsold@aol.com

KITCHEN FAUCET MOEN: single lever,
sprayer, new cartage. \$70obo. 636-239-
2695.

LIONEL TRAIN SET: Steam engine, tender,
caboose and other car, track and transformer.
\$195. 573-364-7465, Rolla.

**DG LUMBER LLC: Top-Quality Building
Materials, Lumber, Plywood, OSB,
Carsiding, Insulation, Nails/Screws, Doors,
Windows, DeWalt tools. Also complete
building packages. Call for Quotes 417-
259-0994, 2440 S Hwy E, Norwood.**

DETROLA MUSIC MACHINE: Plays
CD'S, Records, Cassettes, AM-FM Radio,
excellent condition, 20x18x12, oak finish, an-
tique look. \$65. 573-364-7465, Rolla.

FOR SALE: 2000 Ford Tractor, good shape,
\$3,250. 417-531-5300.

REMINGTON: Model-41 Targetmaster,
Bolt Action, 22-Caliber Single Shot, 1937
Model, \$250. 573-756-1065

2007 DODGE RAM 3500 DUALY: 4wd,
double cab, 6-speed manual, 6.7 Cummins,
140K miles. \$22,500. 417-255-1823, Leave
message.

ESTATE AUCTION

10:00 A.M. * Saturday, June 6th. * 10:00 A.M.

Location: 4760 E. Farm Rd. 144, Springfield Mo. 65809 Directions: From Hwy. 65 & Sunshine take Sunshine (D Hwy) east 2 mi. then left on Royal Dr. to Sale.*Watch for Signs -- Breakfast & Lunch Available*



TRACTORS - MACHINERY

1988 John Deere 4450, 140hp. Tractor, 15spd. Powershift Transmission., Duals, Good Rubber, Cold Air (79xx hrs.); 1984 John Deere 4040, 100hp. Tractor with Loader, Quad Range Transmission, Good Rubber, Cold Air, (75xx hrs); 1973 John Deere 4030, 80hp. Tractor, Quad Range Transmission, Good Rubber, Cold Air (11xxx hrs., but only 3000 hrs. on Fresh Motor); 1985 John Deere 2950 4x4, 85hp. Tractor w/Loader, 8 spd. Transmission, (only 36xx hrs.); Allis-Chalmers CA, narrow Front, w/ Belly Mower; New Holland H7230 Discbine, 10ft.; New Holland 320 Square Baler; New Holland 679 Manure Spreader with Slop Gate, Perfect Chains & Floor; Donahue 16ft. Elec/Hyd., Tri Axle Dump Grain Trailer, Good Box & Floor, (works perfect); J&M model 250 Gravity Feed/Seed Wagon with Hydraulic Auger; (2) John Deere 5 Bottom Hydraulic Reset Plows; Krause 3948W 21ft. Flex Wing Disc; John Deere 950 14' culti-Packer/Mulcher with Crow Foot Wheels; John Deere 1010 Field Cultivator; 4 Row 36" Cultivator; (2) Rhino 15ft. Batwing Bushhog's; 3pt. Bale Unroller; Rhino 8ft. Angle/Tilt Blade; (5) Older Silage Wagons on Good Running Gears; 1000 gal. Diesel & 500 gal Gas Tanks (Good); Misc. Farm Related Items

not Mentioned; Lots & Lots Old Farm Equipment for Scrap

CATTLE EQUIPMENT HORSES - WAGONS - TACK

Wilson Portable Corral; Big Valley Silencer Deluxe Hydraulic Ranch Chute; Palco Sweep Tub; (2) Head Gates; (19) 10 ft. Corral Panels; (12) 8 ft. Concrete Feed Bunks; (2) Hanging Horse Hay/Feed Mangers; 12 ft. Concrete Cattle Guard; Large Butler Grain Bin to be Moved (Good); Dairy Barn Feed Bin; Misc. Grain Augers; (4) Older Foxtrotter Geldings & Mares (Registered); Wood Wheel Hack Wagon; Rubber Tired Horse Drawn Wagon w/ Brake; Old Monroe Veach Saddle; 1 Set Old Spurs; Full Set Leather Harness & Collars (Standard); Lots of old Misc. Horse Tack

TOOLS

Speedaire 60 Gal. Air Compressor; Forney CB Stick Welder; 8" Bench Grinder; Heavy Vise; Welding Table & Vise; Come-A-Longs; Lawn, Garden & Chore Tools; Lots of Older Farm Related Items not Listed

ANTIQUE - COLLECTIBLE

1950's A.O. Smith Gas Pump; 1970's Gas Pump; Old Wood 32 Drawer

Cabinet; 8 & 6 Gallon Crock Jars; Crock Jugs; Few Pcs. Cast Iron; Colored Refrigerator Dishes & Mixing Bowls; Wood Butter Molds; Metlox Poppytrail "Red Rooster" Dinnerware; Misc. Old Kitchen Items; (2) Cast Iron Kettle's (hole); Misc. Glassware & Silverplate; Cast Iron Claw Foot Bathtub; White Granite Water Pitcher; Iron & Wood Barn Pulley; Antique Chain & Cup Cistern Hand Pump; 10 Gallon Milk Can; Old Tubs & Buckets; Old Wood Doors; Old Farm & Barn Items; Lots not Listed

FURNITURE- APPLIANCES- HOUSEHOLD

Gas Cook Stove; Kenmore Washer & Dryer; (2) Refrigerators; Polar Water Cooler; Kitchenaide Stand Mixer; Edempure Infrared Heater; (2) Lift Chairs; (2) Sofa's & Misc. Occasional Chairs; (2) Wood Rocking Chairs; Coffee, End & Occasional Tables; Queen Bed; Dressers & Chest; Old Wood China Cabinet; Table & 4 Chairs; (4) Ladder Back Chairs; Drop Leaf Seretary; Wash Stand; Waterfall Cedar Chest; Panasonic 32" Flatscreen TV; Window AC; Mobility Chair; Misc. Furniture & Household not Listed

ESTATE OF : ROBERT & BLANCHE WEBB

Auctioneers Note: This Farm has been in the Webb Family for over 100 years & no way to list it all. Tractors, Machinery & Vehicles sell at 12:00 Noon. We will sell 2 rings part of the Day. See our website fosterauctionservice.com for 100's of Pictures & a Full List



See our website for pictures and more info!

Auctioneer: Larry Foster Galena, Mo

Phone: (417) 723-8329 Cell: (417) 839-6860

www.fosterauctionservice.com Email: bidnewsold@aol.com





MATCHING EXCEPTIONAL PROPERTIES with EXTRAORDINARY PEOPLE!

MEET YOUR LAND SPECIALIST
JERRY HUNTER



NORTHSHORE RESORT
7.9+/- ACRES | MILLER COUNTY, MISSOURI



LITTLE PINEY CREEK HAVEN
510+/- ACRES | PHELPS COUNTY, MISSOURI

SPECIALIZING IN

- RANCHES • FARMS
- HUNTING LAND
- WATERFRONT PROPERTIES
- RECREATIONAL

MARKETING

- PROPERTY SYNDICATION TO 1400+ WEBSITES
- \$35 BILLION IN COLLECTIVE SALES SINCE 2014
- NATIONAL TV SHOW ON RFD TV REACHING 48+ MILLION PEOPLE
- PROFESSIONAL PHOTOGRAPHY AND VIDEO TO SHOWCASE YOUR PROPERTY

EXCLUSIVE PARTNER OF



livingthedreamland.com
(855) BUY-DIRT

Call
Jerry Hunter
(573) 578-0717 Cell
yourlandhunter@gmail.com



MID MISSOURI STOCKYARDS
REGULAR SALE EVERY THURSDAY 11AM

WATCH OUR WEEKLY SALE IN REAL TIME ON DVAUCTION.COM

For Farm Visits, Market Updates, or Trucking

Call **Zach Cox 417-777-1320**
Dan Romine 573-578-4939

Competitive Buyers!
Competitive Commission!
Competitive Market!

Barn: 417-532-9292
I-44 • Exit 123 "just outside of Lebanon"
17505 Route 66, Phillipsburg, MO 65722

For weekly market updates, visit us at
www.midmostockyards.com

KIDS LITTLE TYKES RED CAR BED: w/ mattress. \$150. Desloge, 573-327-9068.

SWAP MEET: At Treasures, 1060 Tower Road, Lebanon, June 5th & 6th, Vendors Wanted, 417-532-6666.

OLD LINN CREEK, HA HA TONKA & CAMDEN CO BOOK, "Before the Dam Waters", BY T. VICTOR JEFFRIES. \$5.50 each post paid. To order: 417-532-2045, Lebanon (leave message.)

2-21" PUSH MOWERS: Briggs & Stratton engine, 1 runs, 1 for parts. Both \$75. 636-239-2695.

9" FORD REAR-END: Oval, set-up for stock car, 542 gear ratio, good rearend. \$250. 573-732-5170.

MF 550 COMBINE: RWA hydro, 1,923 hours. \$15,000. 636-278-6065.

ANTIQUE BRASS KITCHEN CABINET HARDWARE: 2 sets of 44. \$50 per set. 636-239-2695

FORD TRACTOR: For Sale, 4610, 4x4, with loader, Call 417-349-5550 or 349-5555 or 554-2719.

JOHN DEERE 925 DISKBINE: \$6750. 573-765-4406.

FOUR TIRES: Size 245-60 R18 Michelin. No patches. \$85 firm. 417-532-2344.

IHC 1066 DIESEL TRACTOR: Open station, Nice. \$9,500. 573-765-4406.

HANTZ DRYWALL: 35yrs, add-ons and repairs, references. 417-322-0014.

LARGE PLASTIC HOSE REEL ON WHEELS: \$25. 417-457-1023.

IHC 10FT WHEEL DISK: \$1,600. 573-765-4406.

WANTED, TIMBER TO LOG ON SHARES: Honest, reliable, references. 417-533-4607, 417-664-1195.

NEW/USED STEEL!! GOOD PRICES!!: Lebanon, 417-322-0161.

JOHN DEERE 567 ROUND BALER: monitor, kicker, wide pick-up, cover, net wrap. \$9,650. 573-765-4406.

FOR SALE: 3 1950's baseball mitts, \$60. 417-457-1023.

MOBILE HOMESshop on-line..... Call Tuff with questions 573-657-2176 amegamobilehomes.com

AUSTRALIAN SHEPHERD PUPPIES: out of working parents, shots-first round. 573-663-7459.

HAMMERMILL W/ELECTRIC MOTOR: grind your own grain !! \$900. 417-322-0161.

QUALITY REPLACEMENT COWS: COW/CALF PAIRS, BRED HEIFERS AND BREEDING BULLS, TRUCKING AVAILABLE. Otterville, 660-619-5190.

There's no better time to buy a do-it-all tractor



Kubota Together we do more.

Save more on the hard-working B Series tractor. Easily switch out attachments. Simple maintenance. Easy-to-use controls. Stop in for a demo today.

\$0 DOWN 0% APR 60 MONTHS
PLUS
SAVE UP TO \$1,000

VISIT US TODAY FOR THIS LIMITED-TIME OFFER

EDGELLER AND HARPER
FARM EQUIPMENT

Get Unmatched Kubota Quality!
Kubota Designed, Engineered & Built.
Visit Us In TWO Locations!

8665 Outer Road • Mtn Grove
417-926-5454 • 877-926-5458
4973 W. US Hwy 160 • West Plains
417-256-0420 • 800-766-0420

KubotaUSA.com

© Kubota Tractor Corporation, 2020. \$0 Down, 0% A.P.R. financing for up to 60 months on purchases of select new Kubota B Series equipment from participating dealers' in-stock inventory is available to qualified purchasers through Kubota Credit Corporation, U.S.A., subject to credit approval. Example: 60 monthly payments of \$16.67 per \$1,000 financed. Customer instant rebates of \$300 are available on qualifying cash or finance purchases. Additional instant rebate of \$700 are available with purchase of two new qualifying implements. 1st implement \$500, 2nd implement \$200. Some exceptions apply. Offers expire 6/30/20. Terms subject to change. This material is for descriptive purposes only. Kubota disclaims all representations and warranties, express or implied, or any liability from the use of this material. For complete warranty, disclaimer, safety, incentive offer and product information, consult your local Dealer or go to KubotaUSA.com.

HEROES OF THE JOBSITE.



The precision engineered, ruggedly designed Kubota machines. Built upon a single-minded truth understood by operators on jobsites all over the world. Reliability comes in just one color.

\$0 DOWN 0% APR FOR UP TO 60 MONTHS*

EDGELLER AND HARPER
FARM EQUIPMENT

Get Unmatched Kubota Quality!
Kubota Designed, Engineered & Built.
Visit Us In TWO Locations!

8665 Outer Road • Mtn Grove
417-926-5454 • 877-926-5458
4973 W. US Hwy 160 • West Plains
417-256-0420 • 800-766-0420

KubotaUSA.com

*\$0 Down, 0% A.P.R. financing for up to 60 months on purchases of select new Kubota K068, K07, U, R, SCL, SVA, S84, T4B Series equipment from participating dealers' in-stock inventory is available to qualified purchasers through Kubota Credit Corporation, U.S.A., subject to credit approval. Some exceptions apply. Example: 60 monthly payments of \$16.67 per \$1,000 financed. Offer expires 6/30/20. Terms subject to change. This material is for descriptive purposes only. Kubota disclaims all representations and warranties, express or implied, or any liability from the use of this material. For complete warranty, disclaimer, safety, incentive offer and product information, consult your local Dealer or go to KubotaUSA.com. © Kubota Tractor Corporation, 2020.

PYRENEES/ANATOLIAN PUPPIES: parents are excellent sheep/chicken/guard dogs Ready June 10th. \$250. 417-322-0161.

2004 DODGE RAM 3500 DUALY: 4wd, auto, double cab, 5.9 Cummins, 58K miles. \$26,500. 417-270-1505.

SPECIALIZING IN HEAVY DUTY GATES

JUNE SPECIAL

BUY 12 GATES GET 1 FREE!

Cow Country Gate Sales

Call Randy: 573-569-4754
or Home: 573-539-2528
Located at: Zimmerman Welding
16889 Hwy 52, Barnett, MO

WE BUY White Oak Logs!

- ✓ Top prices for your logs
- ✓ Experienced log buyers
- ✓ Professional service

Chad Cook | Salem Wood Products
417.718.2950
5 miles north of Salem, MO on Hwy 19

INDEPENDENT STAVE COMPANY
Log Procurement & Sales

www.independentstavecompany.com

American Made Metal Roofing

40 Year Warranty Metal.....\$1.95 (\$60.94 Per Sq)

*29 Gauge 10 Year.....\$1.75 (\$54.69 Per Sq)

****WHILE SUPPLIES LASTS****

29 Gauge #1 Galvalume.....\$1.69.....\$1.39 (\$43.44 Per Sq)
26 Gauge 40 Year.....\$2.25 (\$70.31 Per Sq)

Build In A Box
Stud Wall & Pole Barn Kits

	Non-Warranty Metal	10 Year Warranty	40 Year Warranty
24x30x8.....	\$3,350\$3,700\$3,850
30x40x10....	\$4,950\$5,350\$5,600
40x60x12....	\$9,300\$10,000\$10,200

*Precut Packages Also Available

★ 17 Colors To Choose From
★ 21 Years In Business
★ We Manufacture Our Own Metal and Trusses

3 Locations To Serve You!

1239 W. Kingshighway Paragould, AR 870-810-2494	1100 Pace Rd. Pocahontas, AR. 870-609-1900	35 Killdeer Rd. Seymour, MO. 417-952-7143
---	--	---

*Possibly not American made. Prices always subject to change.

GET YOUR WORK DONE, AMERICA

FOR JUST
\$261 PER MONTH*



Mahindra
TOUGHEST
TRACTORS
ON EARTH

4540 2WD

- ✓ SIMPLE to operate
- ✓ ECO-FRIENDLY, NO DPF engine
- ✓ HEAVY-DUTY steel construction not plastic

MAHINDRA 4540 41HP, 2WD, TRACTOR AND LOADER.

Marshfield Machinery Inc.

222 E. Madison • Marshfield, MO 65706
417-859-2117 • www.marshfieldmachinery.com



*Payment is for tractor and loader only and is calculated at 10% down and 84 months financing. With approved credit. Program restrictions may apply. See dealer for details. All offers expire June 30, 2020.

WORLD'S #1 SELLING TRACTOR

Mahindra
Tractors

NEW MAHINDRA TRACTORS

7085 4WD & LDR 85HP	IN STOCK
6075 4WD & LDR 71HP	IN STOCK
6065 4WD & LDR 63HP	IN STOCK
2655 4WD, BACKHOE 55HP	IN STOCK
2655 4WD & LDR 55HP	IN STOCK
4540 4WD & LDR 41HP	IN STOCK
4540 2WD & LDR 41HP	IN STOCK
1635 4WD & LDR 36HP	IN STOCK
1626 4WD & LDR 26HP	IN STOCK
MAX26XL & LDR 26HP	IN STOCK

USED TRACTORS

MAHINDRA EMAX22	
LDR 22HP	10,000
MF 231S 45HP	7,500
MF 150 38HP	4,500
CASE IH 235 W/ MOWER 18HP	3,500
IHC 184 W/ MOWER 18HP	3,500
FORD 8N	1,250

USED ROUND BALERS

MF 2745 4X5 MESH	12,500
VERMEER 505SI MESH	7,500
HESSTON 745 4X5	7,500
GEHL 2480 4X5	6,500
JD 435 4X6 MESH	6,500
HESSTON 560 5X6	4,000
HESSTON 550 4X6	3,500
HESSTON 530	3,500
HESSTON 5500 5X5	1,500
NH 850 5X5	1,500
MF 224 SQUARE BALER	2,500

USED RAKES

SITREX 12WHEEL	3,500
M&W 8 WHEEL	1,500
GEHL 418 8WHEEL	1,500

USED HAY MOWERS

NH H6750 9FT 3PT	6,500
MF 1329 9FT 3PT	5,500
LELY 270 9FT 3PT	3,500

USED MISC.

HAYBUSTER 107C DRILL	17,500
HAYBUSTER 107C DRILL	10,500
FRONTIER BALE PROCESSOR	8,500
RHINO 12FT CUTTER	8,500
BUSH HOG 3008 8FT 3PT	2,500

Marshfield Machinery Inc.

222 E. Madison • Marshfield, MO 65706
417-859-2117
www.marshfieldmachinery.com

* A HERITAGE OF *

REDEFINING YOUR WORKDAY NO PAYMENTS, NO INTEREST FOR 90 DAYS¹

ON ALL 1-6 SERIES COMPACT UTILITY TRACTORS

ASK ABOUT OUR BEST-SELLING PACKAGES



0% FOR 50 MONTHS²

ON ALL SKID STEERS & COMPACT TRACK LOADERS



SKID STEERS



COMPACT TRACK LOADERS

- Rated Operating Capacity starting at 1,552 lb. (704 kg)
- Gross Horsepower starting at 51 hp
- Lift height up to 11 ft

- Net Horsepower up to 97 hp
- Lift height starting at 10 ft
- Bucket breakout force up to 9,250 lb. (4,200 kg)

Legendary Products. Extraordinary Service.
Find your local Heritage Tractor location
or request a quote at HeritageTractor.com



JOHN DEERE

Heritage
TRACTOR

(1) Offer valid on qualifying purchases made between 15 April 2020 to 06 July 2020. Subject to approved installment credit with John Deere Financial, for consumer use only. Down payment may be required. Average down payment is 10%. \$17.24 per month for every \$1,000 financed. No payments, no interest for 90 days, followed by 0% APR for 58 months only. Taxes, freight, setup and delivery charges could increase monthly payment. Available at participating U.S. dealers. Prices and models may vary by dealer. Offer available on new equipment and in the U.S. only. Prices and savings in U.S. dollars. (2) Offer valid on qualifying purchases made between 01 March 2020 to 31 August 2020. Subject to approved installment credit with John Deere Financial, for commercial use only. Down payment may be required. Average down payment is 10%. Taxes, freight, setup and delivery charges could increase monthly payment. Available at participating U.S. dealers. Prices and models may vary by dealer. Offer available on new equipment and in the U.S. only. Prices and savings in U.S. dollars.

NEW 32' & 36' EZ HAUL HAY TRAILERS IN STOCK



32' \$4,895
36' \$4,995

Like Us On facebook

JIM'S Motors
TRAILERS

I-44 at Exit 208 • Cuba, MO
www.jimsmotors.com

TRUCKS and TRAILERS (800)897-9840
Great Service! Great Prices! Since 1957

97 Freightliner, Cabover, M11 Cummins Engine, 21ft. Steel Bed, Tandem, FM13 Ditch Witch Pump & Tanks \$7,200

John Deere 420, Wide Front, Recent Overhaul, Good Paint & Tires \$4,000

David Brown 1212 Diesel QA Loader, 2 Sets of Remotes, 65 HP \$5,000

Ford 8N Sherman Transmission, Good Condition \$1,800

Steel Flatbed 7.7"x9' \$400

5ft. Ballymore AC-C C Model \$300

3.8 Ft. Disc \$900

DU-AL Loader QA \$1,400

STARR TRACTOR • ROGERSVILLE
417-753-2747 • 417-766-1991



Land Pride

www.landpride.com

RTR12 SERIES

ROTARY TILLERS

15-60 HP 42", 50", 58", 66", 74"

- Reverse rotation
- Offset capabilities
- Lower clevis hitch for easy hook-up
- Steel plate upper hitch
- Seven position skid shoes
- 15" Rotor swing
- 4 'C' shaped blades per flange

Getting Chores Done
LAND PRIDE
does that.

3 YEAR
Warranty

AGRI-ENTERPRISES
The Outstanding Products & Service
1-1/2 Miles South Of Licking, MO On Hwy 63
573-674-2203 • 1-800-653-7152
www.agri-enterprises.com

AS CLOSE TO INVINCIBLE AS MERE MORTALS GET.



\$0 DOWN 0% APR 60 MONTHS

PLUS

NO PAYMENTS FOR 90 DAYS

The proven 96.4 HP[†] Kubota engine powers the beast with 7,961 pounds of breakout force. A wider cab entrance, optimized AC and full-suspension seat provide all-day comfort. And an integrated mainframe and undercarriage handles any terrain, making the Kubota SVL95-2s seem almost unstoppable.

\$0 DOWN 0% APR FOR UP TO 60 MONTHS*

 KubotaUSA.com

* For complete warranty, safety and product information, consult your local Kubota dealer and the product operator's manual. Power (HP/KW) and other specifications are based on various standards or recommended practices. *\$0 Down, 0% A.P.R. financing for up to 60 months on purchases of select new Kubota K006, KX, U, R, SCL, SVL, SSV, TLB Series equipment from participating dealers' in-stock inventory is available to qualified purchasers through Kubota Credit Corporation, U.S.A.; subject to credit approval. Some exceptions apply. Example: 60 monthly payments of \$16.67 per \$1,000 financed. Offer expires 6/30/20. Terms subject to change. This material is for descriptive purposes only. Kubota disclaims all representations and warranties, express or implied, or any liability from the use of this material. For complete warranty, disclaimer, safety, incentive offer and product information, consult your local Dealer or go to KubotaUSA.com. © Kubota Tractor Corporation, 2020.



New L2501DT w/Loader Deal!



L2501DT w/loader **\$19,995**
Financing Price

- NEW Kubota L2501DT
- 4wd, DIESEL, AG TIRES
- KUBOTA LOADER
- 5' ROTARY CUTTER
- 5' BOX BLADE
- NEW 18' KODIAK TRAILER W/RAMPS

KEEP IT SIMPLE WITH QUARLES SUPPLY

\$0 DOWN 0% APR 60 MONTHS

PLUS

NO PAYMENTS FOR 90 DAYS

QUARLES
SUPPLY COMPANY INC.

(417) 777-2391

quarleskubota.com
Just off Business 13 in Bolivar, MO
Open 8:00-5:00 Monday-Friday
Saturday 8:00-12:00

Keep It Simple With Quarles Supply

0% Financing and No Payments for 90 Days*

Disclaimer:
© Kubota Tractor Corporation 2020. *0% APR financing on purchases of select new equipment from participating dealers' in-stock inventory is available to qualified purchasers through Kubota Credit Corporation, U.S.A.; subject to credit approval. Monthly terms may vary. Some exceptions apply. Offer expires 6/30/20. Contract term begins from the date of first payment which is due 90 days from the contract date. Example: Purchase made on 4/1/20, first monthly payment is due 7/1/20. 90 day no payment offer expires 5/31/20. Terms subject to change. This material is for descriptive purposes only. Kubota disclaims all representations and warranties, express or implied, or any liability from the use of this material. For complete warranty, disclaimer, safety, incentive offer and product information, consult your local Dealer or KubotaUSA.com.