

FREE - TAKE ONE!

Vol. 27 No. 08

MAY 28, 2020

800-543-8271 • 800-665-8875

# WEEKLY TRADER MAGAZINE



Find us on  
Facebook

@myweeklytrader

VISIT OUR NEW WEBSITE! MYWEEKLYTRADER.COM

AS CLOSE TO INVINCIBLE AS MERE MORTALS GET.



\$0 DOWN 0% APR 60 MONTHS

PLUS

NO PAYMENTS FOR 90 DAYS

The proven 96.4 HP\* Kubota engine powers the beast with 7,961 pounds of breakout force. A wider cab entrance, optimized AC and full-suspension seat provide all-day comfort. And an integrated mainframe and undercarriage handles any terrain, making the Kubota SVL95-2s seem almost unstoppable.

\$0 DOWN 0% APR FOR UP TO 60 MONTHS\*

   KubotaUSA.com

\*For complete warranty, safety and product information, consult your local Kubota dealer and the product operator's manual. Power (HP/KW) and other specifications are based on various standards or recommended practices. \*\$0 Down, 0% A.P.R. financing for up to 60 months on purchases of select new Kubota K00B, K01, R, SCL, SVL, SSV, TLE Series equipment from participating dealers' in-stock inventory is available to qualified purchasers through Kubota Credit Corporation, U.S.A., subject to credit approval. Some exceptions apply. Example: 60 monthly payments of \$16.67 per \$1,000 financed. Offer expires 6/30/20. Terms subject to change. This material is for descriptive purposes only. Kubota disclaims all representations and warranties, express or implied, or any liability from the use of this material. For complete warranty, disclaimer, safety, incentive offer and product information, consult your local Dealer or go to KubotaUSA.com. © Kubota Tractor Corporation, 2020.



New L2501DT w/Loader Deal!



L2501DT \$19,995  
w/loader Financing Price

- NEW Kubota L2501DT
- 4wd, DIESEL, AG TIRES
- KUBOTA LOADER
- 5' ROTARY CUTTER
- 5' BOX BLADE
- NEW 18' KODIAK TRAILER W/RAMPS

KEEP IT SIMPLE  
WITH QUARLES SUPPLY

\$0 DOWN 0% APR 60 MONTHS

PLUS

NO PAYMENTS FOR 90 DAYS

QUARLES  
SUPPLY COMPANY INC.

(417) 777-2391

quarleskubota.com  
Just off Business 13 in Bolivar, MO  
Open 8:00-5:00 Monday-Friday  
Saturday 8:00-12:00

Keep It Simple  
With Quarles Supply

0% Financing and No Payments for 90 Days\*

Disclaimer:  
© Kubota Tractor Corporation 2020. \*0% APR financing on purchases of select new equipment from participating dealers' in-stock inventory is available to qualified purchasers through Kubota Credit Corporation, U.S.A., subject to credit approval. Monthly terms may vary. Some exceptions apply. Offer expires 6/30/20. Contract term begins from the date of first payment which is due 90 days from the contract date. Example: Purchase made on 4/1/20, first monthly payment is due 7/1/20. 90 day no payment offer expires 5/31/20. Terms subject to change. This material is for descriptive purposes only. Kubota disclaims all representations and warranties, express or implied, or any liability from the use of this material. For complete warranty, disclaimer, safety, incentive offer and product information, consult your local Dealer or KubotaUSA.com.



# Land

For Sale

Seymour, MO | 98 Acres



\$184,500

- Nice timber stand
- Good deer and turkey numbers in the area with a few bears as well
- Approximately 1 acre open field for a food plot and a couple small areas in the timber that have been open in the past for food plots
- 2 good trails on the interior of the property
- Access will need to be created off State Highway BB
- Seymour Schools
- 50 minutes to Springfield



WHITETAIL PROPERTIES REAL ESTATE

HUNTING | RANCH | FARM | TIMBER

**Brian Utecht | 417-766-5595**

[Brian.Utecht@whitetailproperties.com](mailto:Brian.Utecht@whitetailproperties.com)

[WHITETAILPROPERTIES.COM](http://WHITETAILPROPERTIES.COM)

*Missouri's Top Land Specialist in 2014,  
2015, 2016, 2017, 2018 and 2019*







# \$100 OFF

**Raptor Family** mowers.  
Available June 1 through  
June 30, 2020.

See Hustler dealer for complete details.  
Valid at participating dealers only.  
Not to be used with other offers.



For Outstanding Products & Service  
**AGRI-ENTERPRISES**  
1-1/2 Miles South Of Licking, MO On Hwy 63  
573-674-2203 • 1-800-653-7152 • www.agri-enterprises.com

**JOHN DEERE 4240:** Diesel Tractor, cab, cold air, power shift, low hours, nice. \$29,500 573-765-4406.

**ANTIQUE BRASS KITCHEN CABINET HARDWARE:** 2 sets of 44. \$50 per set. 636-239-2695

**2007 DODGE RAM 3500 DUALY:** 4wd, double cab, 6-speed manual, 6.7 Cummins, 140K miles. \$22,500. 417-255-1823, Leave message.

**KIDS LITTLE TYKES RED CAR BED:** w/ mattress. \$150. Desloge, 573-327-9068.

**SOUTHERN OVEN COOKBOOK: The Savories, The Sweets,** by Jean Anderson, hardback, 272 pages. \$6.50 417-532-2045. Leave Message.

**FENCING SUPPLIES-UNBEATABLE PRICES!!** Ozark Farm, 417-322-0161

## USED EQUIPMENT

4' Brush Cutter • JD 10' Cultipackerr  
Gehl Silage Chopper • 3pt. 3 bottom plow  
12' Spring Tooth Harrow 3pt. 2 Disc Disc Plow  
Plus Other Misc Equipment Not Listed

\*\*\*TRACTORS\*\*\*

Mahindra 6075 w/loader, Cab,  
4WD, Remainder 5 -1/2 Year Powertrain  
Warranty. Low Hours

For Outstanding Products & Service  
**AGRI-ENTERPRISES**  
1-1/2 Miles South Of Licking, MO On Hwy 63  
573-674-2203 • 1-800-653-7152  
www.agri-enterprises.com

**OLDER DRYWALL JACK:** for putting sheetrock on ceiling. \$25. Text 417-533-0779

**FERTRELL:** ORGANIC FERTILIZER AND MINERALS. Call for free catalog. 315-796-4370.

**DARDEN PROFESSIONAL TIMBER HARVESTING, BUYING STANDING TIMBER:** Great prices, improve wildlife habitat and improve forest health. State Certified & Fully Insured! 573-247-4808 or 573-739-1122. Salem

**PYRENEES/ANATOLIAN PUPPIES:** parents are excellent sheep/chicken/guard dogs Ready June 10th. \$250. 417-322-0161.

**KITCHEN FAUCET MOEN:** single lever, sprayer, new cartage. \$70. 636-239-2695.

**JOHN DEERE 925 DISKBINE:** \$6750. 573-765-4406.

**VOTED #1 BEST Preowned Car Dealership**

## TIM'S USED CARS

(573) 341-3828 • 1334 South Bishop (Hwy. 63) • Rolla, MO  
Next to Hwy CC • www.tims-used-cars.com

	<b>2012 CHEVY 1500 SILVERADO LT</b> X-Cab, 4x4, 5.3 V8, Power Equipped, 155,xxx Miles <b>ONLY \$13,900</b>		<b>2011 CADILLAC ESCALADE ESV</b> AWD, Loaded w/ Options <b>Only \$15,900</b>
	<b>2011 FORD RANGER SPORT</b> Ext. Cab, 4x4, 4.0 V6, 5 Speed, Power Equipped, 57,xxx Miles <b>Only \$16,500</b>		<b>2012 TOYOTA CAMRY SE</b> V6, Auto, Leather, Sunroof, 130,xxx Miles <b>Only \$10,500</b>

**LARGE SELECTION OF CARS, TRUCKS, SUVs & VANS!**

	<b>5' Pull Type Brush Hog</b>		<b>6' 3pt. Landpride Brush Hog</b>
	<b>Farm Pro w/ Loader, 4WD</b>		<b>7' 3pt. House Brush Hog</b>
	<b>8N Ford with 5' Brush Hog</b>	<b>573-263-2732</b>	

**ALLIS CHALMERS D-15 Series 2:** 43 horsepower, wide-front, 3 point, good tractor w/ 3 point blade \$3,750. 573-353-6317.

**FOUR TIRES:** Size 245-60 R18 Michelin. No patches. \$85 firm. 417-532-2344.

**BIG TEX 140T**  
OVER THE AXEL, POWER TILT,  
8.5 FOOT WIDE, 24 FOOT LONG, 7K AXELS.

Like Us On facebook

**JIM'S Motors TRAILERS**  
I-44 at Exit 208 • Cuba, MO  
www.jimsmotors.com  
**TRUCKS and TRAILERS (800) 897-9840**  
Great Service! Great Prices! Since 1957

**FORD 2010:** F-150XL, longbed, V8, Automatic. \$5,400. Call for details. 417-848-8754.

**BEEF HEIFER:** Approx/500#, partially blind. \$450. 417-322-0161



**Fishing Season is here!**  
 We have a great supply of: Berkley Flicker Shads  
 Charlie Brewers Slider Grubs  
 Swimming Minnows & Jig Heads!

**Craig's OUTDOOR Sports**

9435 HWY N, Suite A (417) 926-0255  
 Mtn. Grove, MO craigsoutdoorsports.com

Mon-Fri 9am-5pm • Sat 9am-Noon

**SWAP MEET:** At Treasures, 1060 Tower Road, Lebanon, June 5th & 6th, Vendors Wanted, 417-532-6666.

**2000 S-10 PICK-UP:** 169,000 miles. bedliner, automatic, 4 cylender \$2,800. 417-532-4108.

**KITCHEN FAUCET MOEN:** single lever, sprayer, new cartage. \$70obo. 636-239-2695.

**MIDWEST CONSTRUCTION**  
 Free Estimates!

- Pole Barn • Garages • Framing
- Remodels • Roofing • Concrete
- Decks & Porches

Contact Abner Glick  
 417-664-1794

**FOR SALE:** 3 1950's baseball mitts, \$60. 417-457-1023.

**MURRAY RIDING MOWER:** Good tires, deck, blades, 5-speed, needs motor. \$150-gun trade. 573-364-7465.

**WANTED, TIMBER TO LOG ON SHARES:** Honest, reliable, references. 417-533-4607, 417-664-1195.

**0% for 4 Years**  
**HEATMOR**  
 Outdoor Wood Furnace  
 as low as **\$168** per month

**HEATMOR MIDWEST**  
 Licking, MO 65542 • 573-674-2962

**Sakelaris Ford Lincoln,**  
**Where the Customer is Always #1!**

**Come See Us at Our NEW LOCATION!**



**ALL NEW Super Clean, Safe Facility at 1621 Martin Springs Drive in Rolla, MO**

**Get COVID-19 Relief On A New Ford Vehicle!**

BUILT TO LEND A HAND | BUILT Ford PROUD

**NEW VEHICLE PURCHASES**

**3 MONTHS\* DEFERRED** | **3 MONTHS PAID\*** | **6 MONTHS**

**RELIEF FOR PEACE OF MIND**  
 (Qualified Buyers Financed with Ford Credit)

**ON SELECT NEW 2019, 2020 & 2021 FORD VEHICLES.**

\*Excludes leases. Available on select 2019/2020/2021 Ford vehicles. Must finance through Ford Credit Financing. Not all buyers will qualify for Ford Credit financing. Customer can defer first payment up to 120 days. Some restrictions may apply. Take new retail delivery from authorized Ford dealer's stock by 06/01/2020. See dealer for qualifications and complete details on all incentives.

**SALES TEAM**



Al Morgan | Caleb White | Jon Reed | Lance Lewis | Sara Myers | Brian Parker | Jordan Earker

**Sakelaris**  
 Ford Lincoln Of Rolla  
 www.sakelarisfordrolla.com

Sales Hours:  
 Mon.-Fri. 8 AM-6 PM  
 Sat. 8 AM-4 PM

Service Hours:  
 Mon.-Fri. 8 AM-6 PM  
 Saturday 8 AM-4 PM

573-364-1211 • 800-325-1211 • 1621 Martin Springs Drive, Rolla, MO 65401

Limited Supply...  
 Limited Time...  
 Don't Miss Out On This Opportunity!!

**0% APR for 72 mos.\***  
 Ford Credit Financing for Qualified Buyers  
**PLUS: Defer Three Payments\*** on Select New 2020 Ford Vehicles

**ALSO Available on Select New Ford Vehicles:**  
 \$500 Bonus Cash of MSRP\*

**0% APR for 84 mos.\***  
 Ford Credit Financing for Qualified Buyers  
**PLUS: Defer Three Payments\*** on Select New 2019 Ford Vehicles

**PICK UP & Delivery Service Available on ALL Sales, Trade-ins & Service Vehicles!**



**Mahindra**  
Rise.

**#1 SELLING  
FARM TRACTOR  
IN THE WORLD**

**7 Year Powertrain Warranty  
On Select Models**



**Mahindra  
1626 Shuttle  
\$17,750  
Package Deal  
\$21,350**

26hp, 4WD, Shuttle shift transmission, Quick attach loader & skid steer bucket, 1560lb loader lift capacity



**Mahindra  
1626 Hydrostat  
\$18,750  
Package Deal  
\$22,350**

26hp, 4WD, Shuttle shift transmission, Quick attach loader & skid steer bucket, 1560lb loader lift capacity



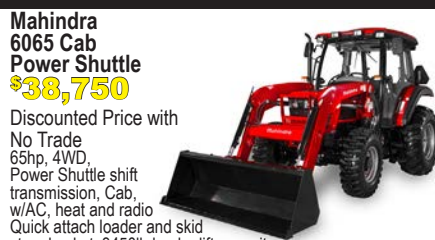
**Mahindra  
2638 Hydrostat  
\$22,500  
Package Deal  
\$26,400**

38hp, 4WD, Hydrostat Transmission, Quick attach loader and skid steer bucket, 1664lb loader lift capacity



**Mahindra  
2645 Shuttle  
\$24,750  
Package Deal  
\$28,650**

45hp, 4WD, Shuttle shift transmission, Quick attach loader and skid steer bucket, 2041 lb loader lift capacity



**Mahindra  
6065 Cab  
Power Shuttle  
\$38,750**

Discounted Price with No Trade 65hp, 4WD, Power Shuttle shift transmission, Cab, w/AC, heat and radio Quick attach loader and skid steer bucket, 3450lb loader lift capacity



**Mahindra  
6075 Cab  
Power Shuttle  
\$39,999**

Discounted Price with No Trade 4WD, Power Shuttle shift transmission, Cab, w/AC, heat and radio Quick attach loader and skid steer bucket, 3450lb loader lift capacity



**Mahindra  
eMax 25  
Hydrostat  
\$16,950**

**0% for 84 months\***  
25hp, 4WD Hydrostat transmission, Quick attach loader, 900lb loader lift capacity

\*Must qualify and finance with Mahindra. Not all will qualify. Limited time offer. See dealer for details.



**Mahindra 8100  
Cab Power Shuttle  
\$55,500**

101hp, 4WD, Power Shuttle shift transmission, Quick attach loader and skid steer bucket, 4200lb loader lift capacity, air ride seat

**We Service All Your Mahindra Needs**

**DIAMOND R EQUIPMENT**

Just 6 Miles North Of Freeburg On Hwy 63 • 573-455-2617

19677 N Outer Rd. Higginsville • 660-584-8757

[www.diamondequipment.com](http://www.diamondequipment.com)

**BARN WOOD SIDING: 8" & 10" wide.**  
573-729-7226. [www.pineridgerustic.com](http://www.pineridgerustic.com)

**FENCE! WE STOCK FIXED KNOT10% Off!** High tensile, woven, barbed, smooth. Cattle/Sheep panels! Unbeatable Prices!! Ozark Farm, 417-322-0161.

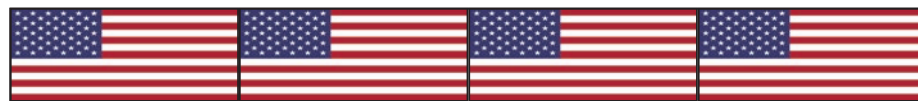
**GLEANER: L 22 FT RIDGED HEADER**  
\$750, NEEDS TLC. 417-646-8807.

**WANTED:** Walk behind commercial lawn mowers needing repair. 314-550-9314

**HAROLD BELL WRIGHT BOOKS FOR SALE.** The Eyes of the World, The Calling of Dan Matthews and Their Yesterdays. \$15 each. 417-532-2045, Lebanon. Leave message.

**HAMMERMILL W/ELECTRIC MOTOR:** grind your own grain !! \$900. 417-322-0161.

**AUCTION REMINDER:** Real Estate Auction, Saturday, June 6th @ 1pm. Sam Crawford Auction. Please see our Auction Directory for more information.



**★ American Made Metal Roofing ★**

40 Year Warranty Metal.....\$1.95 (\$60.94 Per Sq)



\*29 Gauge 10 Year.....\$1.75 (\$54.69 Per Sq)

**\*\*WHILE SUPPLIES LASTS\*\***

29 Gauge #1 Galvalume.....~~\$1.69~~.....\$1.39 (\$43.44 Per Sq)

26 Gauge 40 Year.....\$2.25 (\$70.31 Per Sq)

- ★ 17 Colors To Choose From
- ★ 21 Years In Business
- ★ We Manufacture Our Own Metal and Trusses



**3 Locations To Serve You!**

1239 W. Kingshighway Paragould, AR 870-810-2494	1100 Pace Rd. Pocahontas, AR. 870-609-1900	35 Killdeer Rd. Seymour, MO. 417-952-7143
---	--	---

\*Possibly not American made. Prices always subject to change.

**Build In A Box  
Stud Wall & Pole Barn Kits**

Non-Warranty Metal	10 Year Warranty	40 Year Warranty
24x30x8.....\$3,350	.....\$3,700	.....\$3,850
30x40x10...\$4,950	.....\$5,350	.....\$5,600
40x60x12...\$9,300	.....\$10,000	.....\$10,200

*\*Precut Packages Also Available*

**BUSHWHACKER BELLES BOOK THE SISTERS, WIVES AND GIRLFRIENDS OF THE MISSION GUERRILLAS BY LARRY WOOD, \$12.50. 417-532-2045. LEBANON. LEAVE MESSAGE AND PHONE NUMBER.**

**I BUY.....used mobile homes.** Call or text 573-338-6250 or email GregS.CDH@outlook.com

**IHC 766 DIESEL TRACTOR:** Cab & Air New engine, Over haul, 80HP, \$8,500. 573-765-4406. Richland.

**98 MUSTANG MOTOR 3.8 V6:** runs good, over 100,000 miles. \$150. Call 417-531-3605.

**JOHN DEERE 567 ROUND BALER:** monitor, kicker, wide pick-up, cover, net wrap. \$9,650. 573-765-4406.

**MOTORCYCLE FOR SALE:** 2007 Suzuki Boulevard G50T 800cc, Low mileage, \$20,800 Cash only. Excellent Condition. 417-532-4946.

**MX5100 KUBOTA:** 4wd tractor with loader, 52 HP, open station, low hours. \$20,000. 417-270-1505.

**LANDPRIDE RCF3010:** pull type brush hog, 10'. \$5,900. 417-270-1505.

**IHC 1066 DIESEL TRACTOR:** Open station, Nice. \$9,500. 573-765-4406.

**JOHN DEERE 2940 DIESEL TRACTOR:** 80HP, High Reach, GB900 Loader. \$11,000. 573-765-4406. Richland.

**LARGE PLASTIC HOSE REEL ON WHEELS:** \$25. 417-457-1023.

**WANTED STANDING TIMBER:** Butler Logging, 417-448-9323.

**REGISTERED HEREFORD & ANGUS BULLS:** Home raised, Some Show-Me Select Qualified. 573-701-7828. Belgrade

**WANTED PINBALL MACHINES.** 573-424-7200.

**Buildings • Hunter's Cabins • Lawn Furniture**

**JAMCO Portable Buildings**  
800-688-2064 • 307 Enterprise Dr. • Seymour, MO • [www.jamcobuilders.com](http://www.jamcobuilders.com)

**Rent To Own Plan**

MAY 28, 2020 | THE WEEKLY TRADER

5



## RUSTY ROOSTER MARKET PLACE

208 W Commercial, Lebanon, MO  
417-718-9136  
Opening June 1<sup>st</sup>

**Booth's  
Available  
Vendors Wanted!!**



**VILLA HOMES IN ROLLA:** Has NEW and USED Mobile Homes. Call David for info: 573-578-8072.

**SINGER SEWING MACHINE:** Touch Tronic 210 Memory machine, like new, all there. \$200. 573-205-9401.

**NEW HERITAGE ROUGH RIDER 22 PISTOL:** \$200. 573-327-9068.

**MOTOR HOME:** 1996 Pace Arrow, 34' long, wide body, new tires, 460 Ford engine, generator, awnings, cameras, 2 AC, 2 TV's, everything works, 119,418 miles. \$9,700. Rogersville, 417-766-1991, 417-753-2747.

**FENCE! WE STOCK ELECTRIC FENCE SUPPLIES:** High-Powered fencers! Unbeatable Prices! Ozark Farm, 417-322-0161

**9" FORD REAR-END:** Oval, set-up for stock car, 542 gear ratio, good rearend. \$250. 573-732-5170.

**VINYL WINDOW:** Double pane, 50x33. \$40. 417-322-4432.

**VIRUS SALE** - mobile home inventory, entire stock, first come basis, 3 & 4 bedroom, 2 bath, Hurry and call for info 573-499-9993 [columbiadiscountshomes.com](http://columbiadiscountshomes.com)

**PINE LOG SIDING.** [www.pineridgerustic.com](http://www.pineridgerustic.com) 573-729-7226.

**JOHN DEERE 2040 DIESEL TRACTOR:** Canopy \$4,950. 573-765-4406.

**L4400 KUBOTA:** 4wd tractor with loader and 3rd function valve, Low hours. \$21,500. 417-270-1505.

**VEERMER 4 BASKET HYD FOLD TEDDER:** Good \$4,700. 573-765-4406. Richland.

**FIREARMS:** Professional Repairs and Restorations. Baron's Gunsmithing. 573-363-5801, Camdenton.

# Online FAT HOG SALE

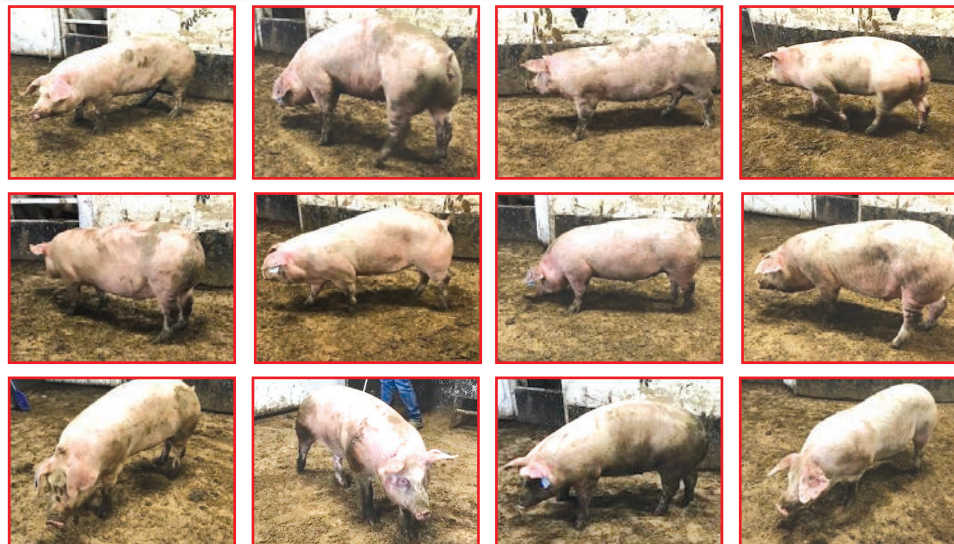
**BIDDING ENDS  
FRIDAY, MAY 29<sup>TH</sup>  
AT 7:00 PM CST.**

**CALL CHASE FOR MORE INFO 417-399-1904**



**AUCTIONS ENDING EACH SUNDAY! BID ONLINE AT:**

# WWW.OZARKBID.COM



**SHIPPING ON  
AVAILABLE ON  
MOST ITEMS**

**SELL YOUR ITEMS  
NATIONWIDE**

**SAVE TIME, SAVE  
MONEY, SHOP AT  
ONLINE AUCTION**

*Online*  
**CRAWFORD**  
Auction Service LLC

Register and bid online  
@ [www.OzarkBid.com](http://www.OzarkBid.com) **Ozarkbid**

Contact Chase Crawford, Crawford Auction Service for more info @ 417-399-1904





**Eric & Delores Mueller (Lifetime Cast Iron Collection)**  
**Allen Auction Sale's Lot, Hawk Point, MO 63349**  
**Saturday, May 30, 2020 @ 10:00 AM**

**Due to the Covid19 Virus, PLEASE bring your own PPE and maintain the 6' social distancing rule.**

Directions: Allen Auction Sale's Lot. From Hawk Point, MO, Take Hwy 47 South 2.5 miles, Auction on Left Side, Watch for signs day of auction.

**CAST IRON (Over 500 Pieces)**

Griswold, The Griswold Mfg. Erie PA USA, Erie, Wagner Ware Skillets, Wagner Anniversary Wagner's 1891 Original Cast Iron Cookware, Sidney Vollrath Ware, "MY PET" Western Foundry Co. Chicago Keeps Food Tasty, Trivets, Molds, Victor, Advertisement Skillets, Novelties, Accessories, Miniatures, Misc. (For complete of cast iron check out the list on our website @ allenauction.net

**ANTIQUES**

Plant Stand, Miniature Spinning Wheel, Tables, Shelves, Hand painted Bowls, Vase,  
 Lot – School desk, Platform scale w/weights, Step ladder

Wooden egg crates, Kerosene lanterns, Wooden chicken crates, Kraut Kutter  
 Crocks, Milk Cans, Toys, Trunk, Wooden dough bowl, Metal wash tub on stand

Wooden small keg, Metal patio chairs, PP Mast corn grinder, Wood Box  
 Iron Wheel wooden wheel barrow, Horse drawn walking plow Goat wagon, Walking plow

**GUNS**

Franchi Limited Editions (only 100 made) 28 ga. semi-auto, never been shot  
 Remington 700 .22-250 Bolt action, never been shot

Baretta Ducks Unlimited magnum, 20 ga., semi-auto, never been shot

Winchester 1400 12 ga., semi-auto, Remington 1100 12 ga. w/full choke & full choke extra  
 barrels, Marlin model 60, 22L w/tasco scope, Remington model 7400, 30.6 w/scope,

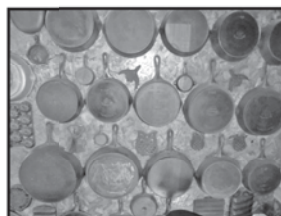
Winchester model 1200, 16 gauge, Remington model 110, 12 gauge,  
 Springfield model 87A, 22 caliber, The Pioneer BB gun model BB76

Stoeger Condor 12 gauge over/under, Stoeger Uplander 12-gauge side by side

Marlin Stainless D.U. model 60 SS, 22 caliber, Henry Lever Action 22 LR rifle, never fired,  
 new in box, Ruger 10/22 rifle w/Weaver scope, new in Ruger case and metal target set,  
 Remington 870 Wingmaster 16 gauge shotgun, Ted Williams model 200-20 gauge w/vent rib,  
 manufactured by Winchester, Springfield model 188 H 22, S.L. LR rifle

**LAWN & GARDEN**

Kubota ZG 1235-48 ZT mower, Porter lawn sweeper



**Special Note: This is just the highlights of Eric & Delores' collection of cast iron. We are expecting 500+ pieces.**

**CHECK OUR WEBSITE FOR PHOTOS AND COMPLETE LIST**

**Auctioneer's Note:** Talk about an auction! Eric & Delores have traveled all across the Midwest collecting cast iron for years. These types of auctions rarely come up with this amount of quality items. Please note the start time & plan on spending the day with us. Thanks, Nick & Kyle.

**ALLEN AUCTION & REAL ESTATE SERVICE LLC**

**(636) 338-4805 • Hawk Point, MO • www.allenauction.net**

The Auctioneers, Nick Allen (636) 358-2900 • Kyle Allen (636) 236-2344 • Tec Parr (636) 661-5775 • Elden Foster (573) 239-6745

**Starnes  
Auto LLC**

22115 Rt. 66

Lebanon, MO 65536

417.588.3159 Office

417.718.2707 Cell

www.starnesauto.com

<b>1996 GMC SIERRA</b> GREEN, EXT. CAB, 2WD, 222,XXX MI .....	<b>\$1,750</b>
<b>2000 CHEVY S-10</b> WHITE, 4X4, 144,XXX MILES.....	<b>\$4,200</b>
<b>2003 CHEVY S-10</b> WHITE, 4X4, 4 DOOR, 134,XXX MI .....	<b>\$4,500</b>
<b>2005 CHEVY SUBURBAN</b> BLUE, 4X4, 202,XXX MILES .....	<b>\$4,200</b>
<b>2006 GMC YUKON</b> WHITE, 4X4, 202,XXX MI .....	<b>\$4,200</b>
<b>2008 SATURN VUE</b> MAROON, 78,XXX MI .....	<b>\$6,250</b>
<b>2008 TOYOTA SCION XB</b> BLUE, 132,XXX MI.....	<b>\$4,200</b>
<b>2009 CHEVY MALIBU 2 LT</b> SILVER, 113,XXX MI .....	<b>\$4,750</b>
<b>2012 CHEVY MALIBU</b> SILVER, 65,XXX MI .....	<b>\$6,500</b>
<b>2012 GMC ACADIA SLE</b> BROWN, 72,XXX MI.....	<b>\$8,450</b>
<b>2013 CHEVY EQUINOX</b> BLUE, 54,XXX MI .....	<b>\$9,450</b>
<b>2013 CHEVY IMPALA LTZ</b> SILVER, 119,XXX MILES.....	<b>\$5,450</b>
<b>2014 GMC TERRAIN</b> GOLD, 79,XXX MI.....	<b>\$9,200</b>
<b>2015 CHEVY EQUINOX LT</b> RED, 92,XXX MI .....	<b>\$7,650</b>
<b>2016 GMC TERRAIN</b> BLACK, 67,XXX MI.....	<b>\$14,200</b>
<b>2019 DODGE CREW CAB</b> RED, 5,XXX MI.....	<b>\$26,500</b>

**WE DO ALIGNMENTS!**

**DAVIDSON:** aluminum 16' extension ladder. Model 554-16 \$20 txt 417-533-0779.

**RED CEDAR FENCE POST:** 6 1/2 feet long, 10 for \$49. Cedar Hill, 314-303-7857.

**NEW HOLLAND 472 HAYBINE:** field ready. \$1,800. Linn. 573-897-2772.

**MILLER:** 10 ft. Offset Disk, \$4,400. 573-765-4406

**5000 BTU WINDOW AIR CONDITIONER:** \$25. 417-533-0779.



**H&M STORAGE  
in Owensville, MO**

will sell by public auction unclaimed  
property in unpaid storage units on

**Saturday, May 30, 2020**  
beginning at 10:00 a.m.

The first auction site will be on  
L & D Drive behind Orscheln's.

**Directions:** In Owensville, take Hwy. 28 west to L & D Drive.  
Go one block south to first site.

**Auctioneer services provided by  
Gross Auction 573-437-3631**

**WANTED TO BUY:** front splitting stand for  
splitting tractor at clutch housing. Call 573-  
768-0068.

**REDUCED!! 140 WOODED ACRES:** 4/  
bedroom, 2/bath home, borders live creek  
and corp, 30'x40' shop, 2nd building 26'x60',  
year round spring, 7/10 of a mile from Lake  
Norfolk. \$189,000. Tecumseh. 417-284-3727.

**41 DRILL BITS FOR BIT AND BRACE:**  
\$50 417-457-1023.

**NEW CATTLE PANELS:** \$22. 5417-322-  
0161.

**HOLLYWOOD 4-BIKE HITCH MOUNT  
RACK:** Excellent condition, Includes (2)  
Allen Stabilizer tension bars and keyed alike  
locking hitch pin and cable. \$175. Conway,  
417-718-5347.

**NEW IDEA:** 5410 Disk Mower, 10 ft.  
\$4,450. 573-765-4406.

**WERNER:** aluminum 24' extension ladder.  
Model D1124-2 \$50 txt 417-533-0779.

**ONE PIECE:** 70'S desk/chair for young stu-  
dent. \$15 G.C. Cedar Hill, 314-303-7857

**2-21" PUSH MOWERS:** Briggs & Stratton  
engine, 1 runs, 1 for parts. Both \$75. 636-239-  
2695.

**Larry Heisel Rentals**



**HEISEL 573-779-1500**  
Larry's Call  
RENTAL, SALES & SERVICE 636-432-9460

**We Deliver!**

**Crawler Loaders  
Excavators, Backhoes**

Call Larry!  
Rental Available in 636 or 573 Area Codes  
**573-779-1500**

# PUBLIC AUCTION

SATURDAY, JUNE 6, 2020 @ 10:00 A.M.

677 JEFFERIES ROAD, MONTREAL MO

Directions: From Montreal & Hwy 7, take Hwy E for 1 mile. Turn left onto Jefferies Road 1/2 mile to home on left. Watch for signs day of sale.

Due to the COVID-19, we will be practicing social distancing.  
There will be hand sanitizer available. Any PPE you desire to wear is welcome.

## \*RTV & LAWN & GARDEN\*

2012 Kubota RTV 900 XT, Diesel Power Steering Hyd Dump Bed, 4WD 189 hours, 1 owner, like new; Grasshopper 722 D Mower, Diesel 61" Deck, 550 hrs, Excellent Condition; Husqvarna GTH 2548 Riding Mower, 25 hp, 48" Cut, Hydro 389 hrs, Good Condition; DR Clipper 194P Electric Start; Shindaiwa Back Pack Sprayer; 2 Wheel Lawn Trailer; Lawn Roller; Line Trimmers; Compost Tumbler; Husqvarna 450X Chainsaw; Garden Tools; Toro 2450 Snow Blower; 24v Pole Saw.

**\*\*Note: RTV & Mower sell @ 12:30\*\***

## \*TOOLS\*

Waterloo Trax 25 Drawer Tool Box; Snap-On 1/4 3/8 1/2 Driver Sockets; Snap-On Ratchets & Extensions; Snap-On Swivel Sockets; Langline Ratchet Wrenches; Wright 1/2" Impact Sockets; Craftsman Box End Wrenches; Craftsman Open End Wrenches; Other Snap-On & Craftsman Tools; Bostich Air Compressor; Bostich Air Nailers; Craftsman Tap & Die Set; Shop Lights; Craftsman Table Saw; Craftsman Miter Saw; Delta Drill Press Floor Model; Come Alongs; Load Binders; Skill Saw; Sanders; Pipe Clamps; C-Clamps; Milwaukee Sawz All; Milwaukee 1/2" Impact; Shop Vac; Lumber; Misc Hardware; Several Fishing Tackle Boxes Full; Fish Fryer; Extension Cords; Chains; Coleman 1750 Generator; Dremel Scroll Saw; Craftsman Router; 20' & 28' Aluminum Ladders; Step Ladders; Metal Cabinets; Work Bench; Vice; Shelves.

## \*GUNS\* Sell @ 12:30

Remington 870 Exp, 28 Gauge Pump; Savage 12 Gauge Auto; Stevens Mod 56 Bolt 22; Stevens 820B 12 Pump w/ Polly; Rug 10-22 Auto; Misc Ammo.

## \*ANTIQUUE TOYS\*

Aurora Model 1505 10B Racing Set in original box w/ Cars & Track; Doepke Metal Fire Ladder Truck; Nyling Adams Travel Loader; Lumar Dump Truck; Strueto Steam Shovel; Tonka Snorkel; Gilbert Erector Set;

## \*HOUSEHOLD ANTIQUES & COLLECTIBLES\*

14 Drawer Watch Makers Bench; 2 Door Bookcase; Old Wood Wagon w/ Metal Wheels; Copper Fire Extinguisher; Crock Bowls; 2 5 gal Crocks; Wood Shoes; Wood Adv Box; Baskets; Wood Rolling Pin; Glass Water Bottle; Horse Hames; Tea Kettle; 2 Child's Sleds; 2 Door Oak Wardrobe; Old Raised Panel Cabinet; Blue Bench; Wood Porch Swing; 1 Drawer Table; 1950's Blue Schwinn Bike; 2 Chest of Drawers; Twin Bed; Full Size Bed; Dresser & Double Mirror; Book Shelves; Desk; Sony Stereo Equipment; Coleman Coolers; Canning Jars & Supplies; Pressure Cooker; Cold Packer; Dishes, Pots & Pans; Light Tan Sofa; Pine Coffee & End Tables; Westing House Large Upright Freezer; Westing House Refrigerator; Metal Blade Fans.

## OWNER: VALERIE HURBIS

**Note:** Most of Val's personal property is neat & clean. She is selling her home & downsizing to move closer to family. Lots of shade. Make plans to attend. Thanks — Rick

**Terms:** Cash or good check with proper identification. All sales are final. Everything sells as is, where is. Proper identification is necessary to obtain a buyer's number. Announcements day of sale supersede all printed material. Lunch on grounds.

## RICHARD MOFFAT AUCTION SERVICE

708 E. McCarty St., Jefferson City, MO 65101 – Business Office



Auctioneer:  
Richard Moffat  
573-690-2823  
Jefferson City, MO

The Moffat Center  
Linn, MO  
[www.moffatauction.com](http://www.moffatauction.com)

Auctioneer:  
Matt Michelson  
573-680-6188  
Jefferson City, MO





# Wheeler Livestock Auction, Inc.

## Special Stock Cow Sale



### SAT., MAY 30, 2020 • 6:00 P.M.

**Expecting 1,000 head of fancy young cows & cow/calf pairs**

#### Bulls-

- 1 PB Santa Gertrudis, 2 yrs., 1,300 lbs., 2 PB Blk Herf. 2 & 4 yrs., 1,400 lbs.
- 1 Blk Bal. Bull, 18 mos. 1,400 lbs.
- 1 Blk Gelv. bull, 5 yrs., 1,800 lbs.

#### Matlock-

- 15 PB Red Ang Hfrs., 825 lbs., open had all shots & gentle, 10 Red Ang Herf X hfrs., 800 lbs. 20 Blk Ang hfrs., 850 lbs.,

#### Tim Logan-

- 14 Red Ang hfrs., 2 yrs., 1,150 lbs., w/ 250 lb. clvs., All home raised, outstanding set of heifer pairs.

#### Mitch Grace-

- 10 Fancy Ang hfrs., 2 yrs., w/clvs. 12 Blk cows, 4 yrs., 1,200 lbs. w/ clvs. 7 Blk cows, 5 yrs., 1,200 lbs. w/ clvs. The above 29 cows all home raised, every cow PI tested, calves tagged to match. Complete health program, calves all born in April, cows selling open.

#### Greg Carrol Dispersal of Spring Pairs-

- 7 Blk hfrs., 2 yrs., 1,050 lbs., w/ 250 lb. clvs., 25 Fancy Blk cows, 5 yrs., 1,300 lbs., w/ 250 lb. clvs. All cows home raised, cows & calves worked, tagged to match & selling open.

#### Roberts Farm-

- 21 Red Ang & Gelv. X cows, 4-7 yrs., 1,200 lbs., w/ 5 clvs. 250 lbs., Remainder of cows bred 2nd & 3rd to Red Bull. 4 Blk Gelv X cows, 5 yrs., 1,200 lbs., bred 2nd & 3rd.

#### Mills Farm Complete Dispersal-

- 100 Fancy Blk Ang cows, 1,250 lbs., 60 Blk Brng X cows, 4-6 yrs., 1,200 lbs, 40 BWF cows, 4-6 yrs., 1,250 lbs., 20 Red Ang cows, 4-6 yrs., 1,050 lbs. The above 220 cows have 150 calves all born in Feb. & Mar. rest of cows bred 2nd & 3rd to good bulls. All cows are gentle & good calf raisers. Owner changing operation

#### J. Schwartz-

- 34 Blk & BWF cows, 4-7 yrs., 1,300 lbs., Bred 2nd to Ang bull. Sold calves 1st of May weighing 600 lbs.

#### Tom Cooper Dispersal of Aged Cows-

- 85 Blk Ang/Gelv X cows, 7-10 yrs., 1,350 lbs., w/ 40 Ang sired clvs up to 350 lbs, cows bred back to Ang bull. These cows are calf raisers, age not hurting them, kept heifers and selling older cows.

#### G & H Farm Dispersal-

- 30 Ang/Brng X cows, 3-6 yrs., 1,200 lbs. w/ 30 Ang clvs., 200 lbs., 40 Ang/Brng X cows, 7-BM, 1,300 lbs., w/ 40 Ang clvs. up to 500 lbs., 20 Ang X cows, 7-BM, 1,300 lbs., bred 2nd & 3rd to Ang bulls. Dissolving partnership due to death.

#### Burch Farm-

- 30 Fancy Red Ang Simbra X home raised Red cows, 6-SS, 1,300 lbs., Bred 2nd to Red Ang bulls, Cows are gentle & good. Sold calves May 1st weighing 650 lbs

#### Mays Farms-

- 40 Blk & BWF cows, 4-7 yrs., 1,200 lbs., w/ 20 clvs, rest bred 2nd & 3rd.

#### Sac River Farms-

- 20 Red cows, 5-7 yrs., 1,200 lbs., bred 2nd & 3rd to Blk bulls, 30 Blk cows, 3-7 yrs., 1,200 lbs., bred 2nd & 3rd to Blk bulls.

#### Clinton Miller-

- 2 Reg. Red Ang Cows, 4 yrs., 1,200 lbs. Bred 2nd, Mushrush genetics.

#### Moore Farms-

- 40 Red/Char X cows, 4-7 yrs., 1,250 lbs., w/ 30 clvs., rest bred 2nd & 3rd

#### John Ramer-

- 12 Mix hfrs., 2 yrs., 1,200 lbs., w/ clvs and running back w/ Blk bull, 4 mix hfrs., 2 yrs., bred 3rd.

#### Todd Spangler-

- 10 Blk cows, 4-6 yrs., 1,200 lbs., bred 2nd to Judd Ranch Bal. bulls. Home raised gentle cows.

#### Warren Williams-

- 6 Blk cows, 3-6 yrs., w/ 200 lb. clvs., running back w/ blk bull.

**MANY MORE CONSIGNMENTS PENDING AND EXPECTED BY SALE DAY**

### JUNE SPECIAL COW SALE: JUNE 27th



# Wheeler Livestock Auction, Inc.

Osceola, MO • 685 SE 13 Hwy., PO Box 560 • BARN 417-646-8102

Byron Wheeler, 417-777-0897 • Austin Shelby, 417-309-1350 • Darwin Hearting, 417-296-1029

Charlie Proctor 417-326-9467 • Burleigh Wheeler, 417-840-6561 • Skyler Fisher, 417-298-9051

Jeff Shelenhamer, 417-326-9929 • Kevin Wade 660-492-3279 • Les Tennis, 417-466-8786

**Office Manager: Weston Shelby, 417-298-1316**

**Bid online on CattleUSA • www.wheelerlivestock.com**

**Like us on Facebook-Wheeler Livestock Auction**



## MID MISSOURI STOCKYARDS

### REGULAR SALE EVERY THURSDAY 11AM

WATCH OUR WEEKLY SALE IN REAL TIME ON [DVAUCTION.COM](http://DVAUCTION.COM)

For Farm Visits, Market Updates, or Trucking

Call **Zach Cox 417-777-1320**

**Dan Romine 573-578-4939**

**Competitive Buyers!  
Competitive Commission!  
Competitive Market!**

Barn: 417-532-9292

**I-44 • Exit 123 "just outside of Lebanon"**

**17505 Route 66, Phillipsburg, MO 65722**

For weekly market updates, visit us at [www.midmostockyards.com](http://www.midmostockyards.com)

**STAINED GLASS THEATRE COOK-BOOK. \$6.50. RESTAURANT RECIPES OF MISSOURI. \$7.50. THE CAKE DOCTOR COOKBOOK. \$6.50. 417-532-2045, Lebanon. (Leave Phone Number).**

**FOR SALE:** In Missouri, fishing cabin on private owned lot at family oriented, gated campground at beautiful Lake Hanna, off Hwy 221, only 4 miles from shopping and fine dining. Year round boating, fishing and ATV accessibility. INTERESTED? Call or Text Wayne@ 573-707-3152.

**CASH FOR COMIC BOOKS: From 1935-1985 and comic related toys and vintage sports cards. 636-390-2043. Washington, Mo.**

**NEW SHEEP/GOAT PANELS: \$44. 417-322-0161**

**OLD LINN CREEK, HA HA TONKA & CAMDEN CO BOOK, "Before the Dam Waters", BY T. VICTOR JEFFRIES. \$5.50 each post paid. To order: 417-532-2045, Lebanon (leave message.)**



**Wright Spray Foam Insulators, LLC**  
Commercial & Residential  
Call for FREE Estimates!

**Ervin Gingerich**  
417-926-2052  
**B. Eli Yoder**  
417-746-4932



## Callaway Livestock Center, Inc.

Kingdom City, MO  
Watch live or bid online thru D.V. Auctions  
[www.CallawayLivestock.com](http://www.CallawayLivestock.com)

# SPECIAL COW SALE

THURSDAY NIGHT  
JUNE 4<sup>th</sup>, 2020 AT 6:00PM  
Estimating 600 to 800 hd Cows.

200 Are Pairs.  
Several Bulls and Lots  
of Nice Cows In The Lineup.

This is an early listing, several  
more cows & bulls by sale day.

This ad was prepared 2 weeks before sale. Many  
more expected by sale day. All bulls sell at the start  
of the sale at 6:00pm.

For more information contact:  
Jack Harrison 573-999-7197 - John P. Harrison 573-220-1482  
Roger Temmen 573-680-4538 - Glenn Stagman 573-619-8495  
Claude Niemeyer 573-470-1017 - Justin Oberling 217-440-7724

CALLAWAY LIVESTOCK CENTER INC.  
573-642-7486

84 CORVETTE: High Compression, 350,  
600 Holley Headers, new exhaust, oil change,  
tune-up. \$4,500obo. 563-529-4359.

JOHN DEERE 275: Disk mower. 9FT Nice.  
\$6,250. 573-765-4406.

HANTZ DRYWALL: 35yrs, add-ons and  
repairs, references. 417-322-0014.

AUSTRALIAN SHEPHERD PUPPIES:  
out of working parents, shots-first round.  
573-663-7459.

QUALITY REPLACEMENT COWS:  
COW/CALF PAIRS, BRED HEIFERS AND  
BREEDING BULLS, TRUCKING AVAIL-  
ABLE. Otterville, 660-619-5190.

JOHN DEERE 148 LOADER: Good condi-  
tion, open station. \$2,800. 573-732-3915.

DG LUMBER LLC: Top-Quality Build-  
ing Materials, Lumber, Plywood, OSB,  
Carsiding, Insulation, Nails/Screws, Doors,  
Windows, DeWalt tools. Also complete  
building packages. Call for Quotes 417-  
259-0994, 2440 S Hwy E, Norwood.

CHISEL PLOW: 12FT, Pull-type. \$950 417-  
322-0161

# REAL ESTATE & PERSONAL PROPERTY AUCTION

## HOME & RANCH DÉCOR • HERITAGE REGALIA

### *The Ranch at Two Rivers*

Friday, June 26 11:00 AM

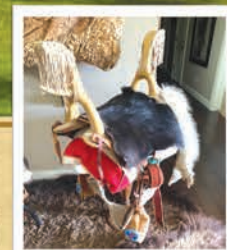
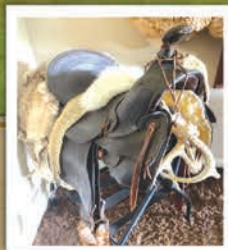
4065 S Horse Haven Lane

ROGERSVILLE, MO



Bid Online: [BARIGBY.hibid.com](http://BARIGBY.hibid.com)

4 BR - 2.5 BA with 5 Stall Barn on 10 to 20 Pristine Acres  
2,400 Sq Ft Custom Ranch - Hickory Hardwoods - Fireplace - Granite Countertops



Only 1 Mile North of Hwy 60 on FR 170 - Rogersville Schools!  
Shown by Appointment - Available Prior to Live Auction  
**BARIGBY.com** **417.753.7653**



Sam  
**CRAWFORD AUCTION SERVICE** LLC

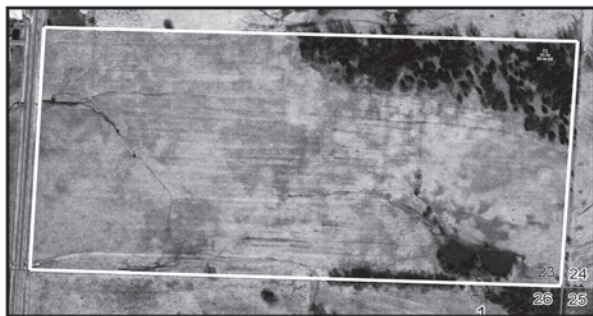
# Real Estate Auction

## Cody & Mykal Whitney Ranch

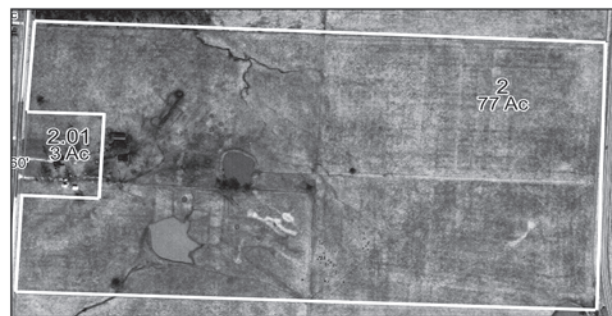
Preston, Mo • 1/2 mile South of Hwy. 65/54 Jct. on Hwy. 65. Watch for auction signs.

### Saturday, June 6, 2020 – 1 p.m.

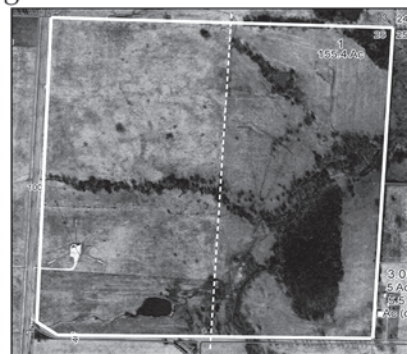
### 305 Acres +/- Ranch/Farm • Selling in 4 tracts



**Tract 1:** 77 acres. Pasture/hayland/tillable, mostly open, newer well & auto waterer. 3 sides, newer fence, pond. 1/4 Mile frontage on Hwy. 65. South edge of Preston.



**Tract 4:** 73 Acres all open and tillable. Pasture/hayland, mostly level, good fences, newer well. 1/4 Mile Hwy. 65 frontage and 1/4 mile frontage on State Hwy. D



**Tract 2:** 81 Acres mostly all open. Approx. half tillable pasture/hayland. 3 Sides newer fence, pond, spring. 1/2 Mile frontage on Hwy. 65.

**Tract 3:** 74 Acres approx. 60% open, some tillable, pasture/hayland, timber, 3 sides newer fence, newer well. Spring fed creek. County road frontage.

**Auction Location:** on site at Tract 1, located South edge of Preston, Mo on Hwy. 65, East side of Hwy. **Auction Procedure:** Tracts will be offered in order separately...will not be put back together as one unit. Inspection by appointment with auctioneer. Starting bid on each tract will be \$1,750 per acre. Terms: 10% of purchase price paid day of auction. Balance due at closing in 45 days or less. Possession at closing. Buyer must have their financial arrangements made prior to auction. No contingencies!

Great property - Great location - Great time to buy! Farm it - Graze it - Build on it...you can do it all with this good property.

For more information, contact the auctioneers. See you at the auction!

Sam  
**CRAWFORD** Auction Service LLC  
Cross Timbers, Mo.  
CrawfordAuctionService.com  
Chance • Sam • Chase  
**417-998-6629**



TERMS: Cash or good check. Nothing removed until settled for. Not responsible for accidents. Lunch available. Statements made day of sale take precedence over printed matter. All items sell as is. No warranties given or implied.



Sam 417-328-9137 Chase 417-399-1904 Chance, CAI 417-298-1751 Tom Poynter Jack Lancaster

**SOUTHWEST AUCTION SERVICE**  
**SPRING EQUIPMENT**  
**CONSIGNMENT AUCTION!**  
**SUNDAY, JUNE 7TH • 10:00 AM**  
151 Ste Hwy 76, Rocky Comfort, Mo 64861

**Taking consignments on Farm Machinery, Shop, Tools, Trucks, Trailers, Outdoor, Sporting Goods, etc...**

**SOME EARLY CONSIGNMENTS INCLUDE:** Komatsu 25 forklift, Twister Safe skid steer, 7' & 8' 3pt. Brush Hogs, 14' dump trailer, JD Z425 54" zero turn mower, Exmark stand-up mower, Exmark Lazer zero turn mower, Grasshopper 618 SL52 zero turn mower, full set of woodworking tools & supplies, lot of shop tools & equip, generators, pressure washers, farm implements, scaffolding, '05 Sprinter Copper Canyon Camper-29' 5th wheel w/gooseneck adapter. Semi Truck parts, Harley Davidson accessories, Lots of Plumbing & Electrical, Skid Steer attachments, Lots of Office Supplies & furniture, Paddle Boat, Jon Boat, Craftsman Lawn Tractor, Yard Machine riding mower, 45' Dry Box Trailer, NEW Bale Hauler Trailers, Misc garden equip & more!

**Full sale flyer coming soon!**

Call 417-652-7540 or email: [kathy@swaauction.com](mailto:kathy@swaauction.com)

Website: [www.swaauction.com](http://www.swaauction.com)

Early consignments will be photographed & advertised!

**DREAM HOUSE** - Online. [chateauhomes.net](http://chateauhomes.net) Call Marla 573-657-7040

**NEW/USED STEEL!! GOOD PRICES!!!**  
Lebanon, 417-322-0161.

**JOHN DEERE HX10 PULL TYPE BRUSH CUTTER:** \$4,200. 573-765-4406. Richland.

**LIONEL TRAIN SET:** Steam engine, tender, caboose and other car, track and transformer. \$195. 573-364-7465, Rolla.

**THREADGILL'S - THE COOKBOOK, THE AUSTIN, TEXAS LANDMARK OF SOUTHERN COMFORT FOOD, HARD-BACK \$10.** 417-532-2045. LEBANON. LEAVE MESSAGE AND PHONE NUMBER.

**IHC 10FT WHEEL DISK:** \$1,600. 573-765-4406.

**2004 DODGE RAM 3500 DUALY:** 4wd, auto, double cab, 5.9 Cummins, 58K miles. \$26,500. 417-270-1505.

**DETROLA MUSIC MACHINE:** Plays CD'S, Records, Cassettes, AM-FM Radio, excellent condition, 20x18x12, oak finish, antique look. \$65. 573-364-7465, Rolla.





## Horse Sale

1st Wednesday of each month  
**June 3<sup>rd</sup>, 2020**

Tack will start @ 6:00pm  
then Horses to follow  
Expecting Several  
Head of Horses.

**MARKET IS STRONG!**

All Consignments Welcome  
Buyers From All Across the U.S.  
All Classes of Horses

For more information or  
consignments, please call:

Kip: (573) 368-9402

Isaac (417) 327-2355

Denver: (417) 399-2701

Steve: (417) 894-1070

Trucking Available

Restaurant Open @ 5:00 pm

*"Celebrating our 6<sup>th</sup> year"*

## Roberts Bros. Sale Barn

1416 E. Hwy. 32 – Bolivar, MO  
(417) 326-5815

Like Us On Facebook!

**SALE EVERY SATURDAY @ 10 AM**  
Hay, Wood, Chickens, Ducks,  
Rabbits, Goats, Pigs, Cattle

MOBILE HOMES .....shop on-  
line..... Call Tuff with questions  
573-657-2176 amegamobilehomes.com

2018 KZ SPORTSMAN 363FL :Text for  
pics/details- \$27,000. Lebanon. 309-678-  
0057.

WERNER: fiberglass 20' extension ladder.  
Model D5920-2 \$50 txt 417-533-0779.

GAS POWERED CONCRETE POWER  
TROWEL: Wisconsin Robin engine. \$150.  
417-533-0779.

# CRAWFORD *Online* AUCTION

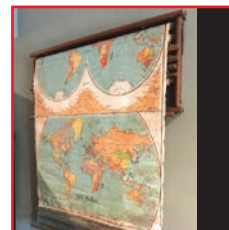
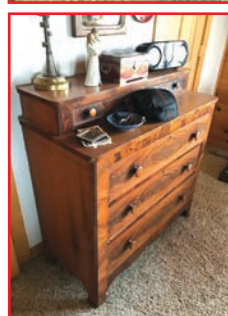
**BIDDING ENDS JUNE 14<sup>TH</sup> AT 7:00 PM CST.**



ONE OF OUR  
*Fanciest*  
AUCTIONS EVER!

AUCTIONS ENDING EACH SUNDAY! BID ONLINE AT:

**WWW.OZARKBID.COM**



SHIPPING ON  
AVAILABLE ON  
MOST ITEMS

SELL YOUR ITEMS  
NATIONWIDE

SAVE TIME, SAVE  
MONEY, SHOP AT  
ONLINE AUCTION

- *Online*

**CRAWFORD**  
Auction Service LLC

Register and bid online

@ **www.OzarkBid.com** *Ozarkbid*

Contact Chase Crawford, Crawford Auction Service for more info @ 417-399-1904



# ATTENTION RANCHERS & HUNTERS

## 220 +/- Acres Offered In Combinations & The Entirety

Located Just South of  
I-44, Approx. 30 Mi.  
East of Joplin or 45 Mi.  
West of Springfield



## ONLINE AUCTION - SELLS TO HIGH BIDDER

**Preview/Inspection:** Saturday, June 6th, 11:00 - 1:00 p.m.

### Tract 1: 20 +/- Acres:

With A Newer 30' x 40' Workshop  
With Concrete Floor, Electric & Lean  
To; Two Poultry Barns & A Post  
Framed Building; Older 2 Bedroom,  
1 Bath Home – Needs Repair

### Tract 2: 120 +/- Acres:

With 1,000 Sq. Ft. Cabin In The  
Woods With Electric, Well Water  
& Outbuilding Overlooking 90+  
Ac. Pasture & Lake; 28' x 70' Post  
Framed Building Open To South

### Tract 3: 80 +/- Acres:

With Harvestable Timber & Beautiful Spring Fed Center Creek!!

1642 Lawrence 2165, Wentworth, MO

**Online Bidding Ends:** Thursday, June 18th @ 12:30 p.m.

**Note:** This Is A Beautiful Property With Tons Of Possibilities! Entire Property Has  
Hard Surface Road Frontage & Endless Building Sites!!

For Information On How To Buy This Property At Auction Or Other Questions, Call Your Real Estate At Auction  
Specialists: Atterberry Auction & Realty Co. 573-474-9295 Or Email: [contactus@atterberryauction.com](mailto:contactus@atterberryauction.com)



**ATTERBERRY**  
— AUCTION & REALTY COMPANY —  
We make buying and selling at auction easy!

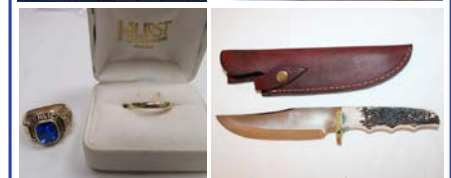
[www.atterberryauction.com](http://www.atterberryauction.com)

**573-474-9295**



## ONLINE ESTATE AUCTION GOLD COIN • HANDGUNS & LONG GUNS • MOTORCYCLES COLLECTIBLES • FURNITURE HOUSEHOLD & MORE

1947 Gold Franc • 28 Name Brand Long Guns  
and Handguns • Vintage Motorcycles, need  
restored • Artifacts • Collectibles • Antiques  
• Furniture • Appliances • Tools • Much More  
Listed On The Website!



1211 Frances Dr. Columbia, Mo.  
Bidding Ends Tuesday June 2, 12:30 PM  
Bid Online At [Atterberryauction.com](http://Atterberryauction.com)

**Preview:** Monday June 1, from  
3:00 PM to 5:30 PM

**By Appointment Payment & Pickup on  
June 3rd**

For complete terms, listing,  
catalog, pictures & bidding, visit  
[atterberryauction.com](http://atterberryauction.com), email  
[contactus@atterberryauction.com](mailto:contactus@atterberryauction.com), or  
call (573) 474-9295. Please contact our  
office if you need assistance with the  
online bidding process.



**NEW HOLLAND 7230 DISKBINE:** Nice.  
\$14,500. 573-765-4406.

**MEN'S SIZE 11:** Rollar blades, skates. G.C.  
Cedar Hill 314-303-7857.

**AUNT JEMIMA COLLECTION.** \$200 All.  
573-327-9068.

**CUSTOM SAW MILLING:** Lebanon. 417-  
533-4607, 417-664-1195.

VISIT US ONLINE AT  
[WWW.MYWEEKLYTRADER.COM](http://WWW.MYWEEKLYTRADER.COM)



# AUCTION

**DIRECTIONS:** Take Exit 135 @ Sleeper, MO off of I-44, travel on highway F 1 mile to Sleeper, then left on Idaho Rd 200 yds, then left on Pacific Dr 2 miles, then Left on Horizon Rd 1/2 mile to 23379 Horizon Rd. Watch for signs

## SATURDAY MAY 30

Starting At 10:00AM

### SELLING A LARGE TO INCLUDE:

10 cattle panels, flex harrow, fencing supplies, wheel barrows, garden plow, small manure spreader, lawn cart, Earthway lawn seeder, galv buckets, feed tubs, pipe threader, pipe cutter, wire feed welder, tank heater, bolt bin full, air compressor, Kennedy stack tool cabinet, Craftsman stack tool cabinet, stomp Shear, primitive tools, power tools, hand tools, copper tubing, 6" vise, bench grinder, jointer, gas powered wood splitter, bandsaw, string trimmer, Craftsman rear tine tiller, antique drill press, radial arm saw, scroll saw, power miter saw, corn sheller, antique upright grinding mill (really nice!), refrigerators, metal cabinets, gossip bench, wrought iron patio set, file cabinets, English saddle, cedar chest, step ladder, fishing supplies, large safe, quilts, beds, twin beds, dressers, chest of drawers, recliner, shop vac, desk, shelf's, metal desk, sofa's, dish and cookware, iron skillet, antique ice box, 5 pc dinette, hutch, coffee table, side chairs, roll top desk, figurines, serving cart, much much more!

**No internet bidding, onsite only!**

### THE WILSON TRUST

Go to [www.knightauctionservice.com](http://www.knightauctionservice.com)  
for complete list and pictures!

TERMS: Cash, Approved Check w/ID, Visa or Mastercard.

Sale By



**KNIGHT AUCTION  
SERVICE, LLC**

417-532-7497 Lebanon, MO  
"Complete Sale Service"

[www.knightauctionservice.com](http://www.knightauctionservice.com)

**AUCTION REMINDER:** Special Stock Cow Sale Saturday, May 30th @ 6 PM. Please see our Auction Directory for more information.

### ITALIAN MAREMMA GUARD DOGS:

9 male pups, 8 to 14 weeks old, raised with sheep, very beautiful, quite friendly. \$200 each. 417-682-1746.

### 1 NEW HOLLAND H-6750 MOWERS:

field ready, new teeth, new canopy, good operating mowers. \$5,400 OBO. 573-674-2592.



Mickey Duckett  
CAL, MPPA, AARE, CES

## Mickey Duckett Professional Auctioneer

P.O. Box 1575, Ozark, MO 65721

(417) 353-2768

[www.mickeyduckettproauction.com](http://www.mickeyduckettproauction.com)



# AWESOME BUILDINGS, EQUESTERIAN & AUTOBODY EQUIPMENT AUCTION

Preview: Sat., May 30th, 10-12

Online Bidding Ends Fri., June 5th @ 1:07

MULTIPLE LOCATIONS: 402 Pleasant Grove Rd., Fordland

1477 Bell Ford Rd., Marshfield 21206 Hwy 13, Reeds Spring

(2) NEW "Future Building" metal buildings: Model XA45-19 measures 45' x 51' & Model XA30-18 measures 30' x 49' includes engineered drawings & manuals. Assorted vintage wrought iron hand-rail sections. John Deere ground driven manure spreader. Uebler engine driven manure spreader. 1960 Ford Thunderbird 2-door hardtop with custom Port Hole top and a Continental Tire Kit with 96,307 actual miles. 1969 Oldsmobile Toronado 2-door Deluxe Coup. Approx. 101,737 miles-Runs good-needs restored. 2001 WW 3 horse slant trailer. 2013 Genie TZ-34/20 man lift. Sets of assorted equestrian jump stands & training equip.. Large assortment of reclaimed oak barn wood. Ford 8N tractor, 72" finish mower. TR3 3 point arena drag on wheels. STREET LEGAL single horse carriage with electric lights velour seats. leather canopy w/velour lining. Field Deployable Environmental Control Unit Model FDECU-4 military grade heating & cooling unit. Strongway 48" belt drive fan, Central Machinery mini 1.25cu. ft. cement mixer, 30+ landscaping timbers, ventless fireplace with oak wall cabinet-Works!. Craftsman 6hp 17" rear-tine tiller, Proline 2.5 hp 10" professional tile saw w/stand. (6) vintage metal carriage lights with glass enclosures. Collectible Lolita martini glasses, LIKE NEW Margaritaville frozen margarita machine and other small appliances, Ascot International 17" English saddle w/ matching bridle, 16" Western saddle w/ silver accents, 15" Western saddle, 15" western saddle w/ silver accents, Ground Hog model HD99 gas powered auger w/ Honda engine. New in Box Landmann 26" fire pit, John Deere 42" L115 automatic lawn mower, John Deere 48" L120 automatic lawn tractor, Kar Grabber Model GW18 Winner Series drive on frame rack. Champion Model VR7F-8 Advantage two stage/ two cylinder air compressor-LIKE NEW!. Ryobi 1/2 hp heavy duty bench grinder-NEVER USED!. NEWER Fuzor seam sealer-Only used once!. Devilbiss HVLP paint guns. Miller Millermatic 212 auto set 220v MIG welder-LIKE NEW!!. Hutchins Industrial & National Detroit pneumatic speed sanders/polishers w/vacuum assist. Mr. Heater 125-175,000 btu. propane heater LIKE NEW!. Walker 1 1/2 T air jack, Craftsman professional 6.5 hp 33 gal twin cylinder air compressor, and lots more! 240+ Items to Bid On!!

**Auctioneer Note:** Lots of great HIGH-VALUED items to bid on at multiple locations! Check out our Online Catalog!! For more auction terms, photos and register to bid, go to our website at [www.mickeyduckettproauction.com](http://www.mickeyduckettproauction.com)!!





# R&R AUCTION SERVICE

## MONTHLY CONSIGNMENT AUCTION

Saturday, June 5th at 6pm at the R&R Auction House.

Great furniture, collectibles, lots of cages, full size camper shell, lots of miscellaneous.

## REAL ESTATE & PERSONAL PROPERTY AUCTION

### SATURDAY, JUNE 6 • 9:00AM 26289 Maine Dr., Lebanon, MO



This auction is absolutely mind blowing with the amount of collectible merchandise that is available. Please take a look at our website for examples of items pictured. There is no way we can even start to uncover everything at this point, but here is a starting list.

A 4,000 + square foot house on just over 3 acres with chicken house and pen, barn and a setting that is the exemplification of country living will be offered at 12noon sharp and sold subject to seller approval. Park West pictures, Antique barber sterilization table, Multiple Sclerosis chair, EZ 3 no baste quilt frame, Antique hope chest, foom ball table, 2 Life smart infrared quartz heaters, wooden rocking horse, several wood chairs, large amount of Longaberger baskets, dining table and 4 chairs, wicker doll chairs and table, dolls, children's books, antique foot stool, wood school desks, side table, cabinet with pie tin front, entry table and mirrors, handmade cloth dolls, oil lamps, oak table, antique oak dresser, lots of picture frames, antique upholstered love seat, Schuerman Piano, wooden high chairs, sock monkeys, old stereo equipment, large metal office desk, office chair, antique oak and glass showcase, trunk, box fan, hide-a-bed, gallon jars, sad iron, Vintage Squirt sign, originally had thermometer but has been broken out, crock nesting bowls, Ovenware USA, old monopoly game, lots of old books, old lamp, Pyrex, brass lamps, Lazy Boy Sofa, Barnwood coffee table, stuffed bears, wood rocker, CA raisins, Disney, PEZ, Vintage credenza, woven rugs, wood grenade box, wooden crate, Hisense Flat Screen TV, quilts, quilt tops, old doors, mail basket, treadle sewing machine, organ stools, rocker recliner, metal milk crates, lots of yarn, fabric, thread, French Provincial furniture, granite



pans, old medicine bottles, doilies, Speed Queen washer and dryer, full size bed set, 2 night stands, chest of drawers, dresser with mirror, Dr. Pepper wood crate, kids wood rocker, vintage ladies hats, canes, brass quilt rack, wooden cheese boxes, chalkboards, primitive décor items, antique oak secretary, pie safe cabinet, large rolling pin collection, weather vane, glass milk bottles, antique kitchen utensils, Fireking Jadite cream pitcher, Fireking Jadite mixing bowl, Fireking Jadite Coffee mug, several crocks from 1 to 11, 14 piece Crown Victoria Love Lace pattern china, pitchers, rooster décor, cookbooks, crock water jugs, 8 piece Mikasa Garden club china, crock cookie jar, Veribest dried beef wooden box, blue jars, antique metal skates, child's wagon, cookie cutters, Old monopoly board, ceramic geese, picnic basket, old top, kraut cutter, old tins, salt and pepper shakers, small metal picnic basket, chicken canister set, old coffee pot, toys, aluminum pitcher and cups, glass washboard, small metal fan, marbles, old pop bottles, table and chairs, Kenmore washer and dryer, swag lamp, book shelves, apothecary display cabinet, antique wardrobe, hi-boy, chest of drawers, night tables and bed, window, dresser and hutch, old wooden ladder, huge antique dining table, Kelvinator refrigerator, fruit jars, bell, cast iron kettle, cast iron Lodge skillet, Lodge covered pot, Rigid 16, 6.5 shop vac, AC Delco floor jack, wash tubs, Milwaukee screw gun, metal folding chairs, Troy Bilt power washer, log chains, Stihl chainsaw MSC180C, Stihl weed eater FS40C, Snapper BB44 backpack blower, buck saw, propane heater, chrome dinette, crosscut saw, wheel barrel, saddle bags, Murray push mower, propane tanks, Rigid gas compressor, Honda Husqvarna dual rotating tines tiller, well pulley, haymes, single tree, yard tools, hand tools, multi ladder, several ladders, lumber, plastic barrels, John Deere mower LA150, wood splitter, sink, porch swing, 2 Troy Bilt tillers for parts, 32ft aluminum ladder, Allis Chalmers D-17 tractor, Cub Cadet AGS2140, Troy Bilt push mower, Weedeater push mower, camper top, Rigid 18hp, 4.5gallon tank air compressor, wooden spools, pickup bed trailer, patio sets, plastic lawn chairs, old ice skates, old wooden toboggan, drywall stilts, restaurant equipment, power climber mountain bike, roadmaster mountain sport bike, child's picnic set, coke trays, blocks, picnic table, bird bath, fire pit, metal chairs, well bucket, decorative birdhouses, and if you can believe it, much much more.

VISIT [WWW.RRAUCTIONSERVICE.COM](http://WWW.RRAUCTIONSERVICE.COM) FOR MORE PICTURES & INFO!

**TERMS:** Cash, check, or credit card with proper I.D. nothing removed until settled for A 3% fee will be added to credit card purchases. Not responsible for errors in listing. Any announcement made sale night will take precedence over any printed matter. **Note:** Service will take every precaution to prevent accidents, but will not be responsible should any occur.

**GENERAL AUCTIONEERS**  
Auction & Appraisals

**AUCTION SERVICE**

For more information contact Professional Auctioneer Russ Weeks at 417-576-7357 or check out [www.rrauctionservice.com](http://www.rrauctionservice.com)

Serving this area's auction needs since 1997 with honesty and professionalism.  
[www.rrauctionservice.com](http://www.rrauctionservice.com)  
(417) 576-7357 or (417) 345-4140



### YOUR Real Estate Auction Specialist

Bank Owned, Commercial Real Estate  
Former C-Store on 1 Acre

Real Estate  
AUCTION

Friday, June 12, 12:00NOON  
222 St. Hwy C, Seymour, MO

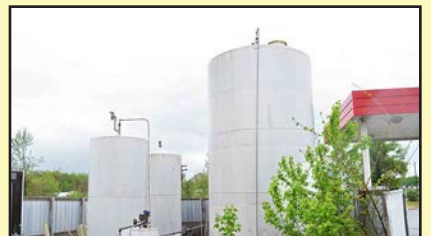
DIRECTIONS: Property is located North side of Hwy 60 at intersection of Hwy 60 & State Rd. C, Seymour, MO.



With some TLC this former C store with Hwy 60 visibility and access could be reopened, remodeled to fit your business venture or used as investment leasing property! Property currently consists of a 3,586 sq.ft. former C store building with large open retail area, small kitchen area and 2 restrooms. Property also has 2 separate fuel stations areas with canopies and above ground fuel tanks.

YR. BUILT: 1999. SQ.FT.: 3,586. 2019 TAXES: \$2,028.

**REAL ESTATE TERMS:** 10% down auction day, balance due on or before 30 days after auction. REAL ESTATE SELLS "as is, where is". If buyer desires home inspection prior to auction call office at 417-882-5664.



**Bob Kollmeier**  
AUCTIONS / REAL ESTATE  
CAL, CAGA  
417.882.5664  
Onsite/Online Auctions

**RICHARD JEAN**  
AUCTIONEER  
417.299.6401

**RUSS SMITH**  
AUCTIONEER  
417.884.0235



## Prime Development Land Auction

11:00 AM Saturday, June 13th

Location: 4760 E. F.R. 144,  
Springfield, Mo. 65809  
Directions: 2 miles East of  
Jct. Hwy. 65 & Sunshine (D Hwy)



### 94.3 Acres Prime Residential and/or Commercial Development Land.

Offered in 5 parcels from 5.2 to 25.5 acres.  
Offered Individually, in any Combination & it's entirety.  
This Property is located in the Fastest Growth Area  
in Greene County, just outside Springfield City Limit  
on East Sunshine!

Tract #1 - 25 Acres. Tract #2 - 24.6 Acres.

Tract #3 - 25.5 Acres. Tract #4 - 5.2 Acres.

Tract #5 - 14 Acres w/ 1630 ft. Of James River Frontage.



Auctioneer: Larry Foster Galena, Mo  
Phone: (417) 723-8329 Cell: (417) 839-6860  
[www.fosterauctionservice.com](http://www.fosterauctionservice.com)  
Email: [bidnowsold@aol.com](mailto:bidnowsold@aol.com)

**JOHN DEERE 4240:** Diesel Tractor, cab,  
cold air, power shift, low hours, nice. \$29,500  
573-765-4406.

**ANTIQU BRASS KITCHEN CABINET  
HARDWARE:** 2 sets of 44. \$50 per set. 636-  
239-2695

**2007 DODGE RAM 3500 DUALY:** 4wd,  
double cab, 6-speed manual, 6.7 Cummins,  
140K miles. \$22,500. 417-255-1823, Leave  
message.

**KIDS LITTLE TYKES RED CAR BED:**  
w/mattress. \$150. Desloge, 573-327-9068.

**SOUTHERN OVEN COOKBOOK: The  
Savories, The Sweets, by Jean Anderson,  
hardback, 272 pages. \$6.50 417-532-2045.  
Leave Message.**

**FENCING SUPPLIES-UNBEATABLE  
PRICES!!** Ozark Farm, 417-322-0161

**ALLIS CHALMERS D-15 Series 2:** 43  
horsepower, wide-front, 3 point, good tractor  
w/ 3 point blade \$3,750. 573-353-6317.

**FERTRELL: O RGANIC FERTILIZER  
AND MINERALS.** Call for free catalog. 315-  
796-4370.

# FARM & ESTATE AUCTION

## Saturday, May 30th, 2020 ~ 10:00 AM

LOCATION: 92 East Dade 126, Greenfield, MO; Directions: From Greenfield Go  
South On 39 Hwy Approx 1/2 Mile To East Dade 126 Then East Approx 1 Mile To  
Sale Site (Watch For Signs)

## Auction For The Late George W. "Macky" & June Davis



### Antique, Modern Furniture Also

### Antiques, Collectibles & Households

Ant Hardware Store Pigeon Hole Shelves, Ant Toy Box, Ant Chairs,  
Old Rocker, Quilt Rack, Wood Gun Cabinet, Singer Sewing  
Machine, Dressers, Side Table, Glass Top Table, Setting Chairs,  
Several Shelves, Daybed, Sewing Table, Folding Table & Chair Set,  
Footstools, 2 Desks, Office Chairs, King Size Bed Frame, Blow Up  
Bed, Child's Safety Items, Microwave, 2 Heaters, Fans, Vacuum  
Sweeper, Ant Coffee Grinder, Cast Iron Heat Stove, Ant Hay Forks,  
Ant Push Reel Mowers, Old Crocks, Ant Cattle Scale Head, Ant Iron  
Wheel Wheelbarrow, Old Grinding Wheel, Nail Kegs, Galvanized  
Pcs, Ant Covered Wagon Hoops, Ant Tricycle, Little Red Wagon, Old  
Jars & Bottles, Lots Of Old Toys Several Metal, Old Buttons, Old Oil  
Lamp, Old Paper Machete Pcs, Old Quilts, Old Luggage, Ant Glass  
Frogs Of Various Kinds, Glass Vases, Collector Plates, Old glassware,  
Old Baskets, Bell Collection, Christmas Décor, Old Knick Knacks, Lg  
Lot Of Sewing Supplies & Patterns, Crafting Supplies, Lg Lot Of  
Artificial Flowers & Related Items, Sm Kitchen Appliances, Pots,  
Pans & Dishes, Other Items Not Listed

### Truck, Motorcycle, Boats, Golf Cart,

### Tools & Outdoor Related Items

1 Owner 2001 Dodge Ram 1500 Truck W/5.69 V8 Motor, Auto  
Trans & Approx 134,000 Miles, 2012 Honda 1800 Goldwing, EZ Go  
Electric Golf Cart, 1968 Fiberglass Boat W/Trailer & Marke 65



**Auctioneers Note:** It Is An Honor To Be Conducting this Auction For The Davis Family. This Auction Will Be Much Larger Than Appears With  
Several Items That Will Be Added Sale Day. This Is A Very Nice All Around Auction With Something Here For Everyone From Outstanding  
Furniture, Antiques, Collectibles, Tools, & Farm Related Items. Tractor, Skidsteer, Gator, Truck, Motorcycle, Golf Cart, Equipment &  
Attachments Are All Excellent & In Working Order. This Is An Auction You Do Not Want To Miss. Please Plan Now To Attend. **Sale Order:**  
**Furniture, Antiques & Households Will Start Auction Then Move Into Small Tools & Related Items. At Approx 12:30**  
**PM Will Offer Truck, Motorcycle, golf Cart, Gator, Tractor, Skidsteer & Attachments Also Large Equipment. Remainder Of Small**  
**Tools & Outdoor Will Finish Auction. See Ya There!!**

Terms: Cash or check with proper ID. Now accepting most major credit cards. Nothing removed until settled for. Statements made the day of sale  
takes precedence over printed material. Everything sold as is where is. Not responsible for accidents. Restroom available. Concessions Provided.  
Check our website for upcoming auctions and for additional pictures!!



## NANCE AUCTION SERVICE

No Matter How BIG or small, We Do Them All!

[www.nanceauctionservice.com](http://www.nanceauctionservice.com)

Col. Bill Nance 417-214-0093

In God We Trust

Philippians 4:13



# ESTATE AUCTION

Sunday, May 31st, 2020 ~ 1:00 PM

LOCATION: 1100 South Jackson, El Dorado Springs, MO (Watch For Signs)  
**Auction For Ramona & The Late Gaylord Vanwey**



## Antique, Modern Furniture & Appliances

Ant Oak Drop Front Secretary W/Carvings, Ant Tiger Oak Queen Anne Leg Library Table W/Drawer, Ant Oak Lo Boy Dresser, Ant Oak Buffet, Ant Hoosier Kitchen Cabinet, Ant School Desk, Ant Grandma Rocker, Lg Ant Steamer Trunk, Ant Oak Lingerie Cabinet, Ant Oak Wall Clock, Round Oak Kitchen Table W/Lg Leaf, 4 Oak Kitchen Chairs, Oak Sofa Table, Oak Replica Ice Box End Table, Prim Waterfall Style Bedroom Suite, Prim Windows, Prim Furniture Pcs, Bamboo Sitting Chair, Lawyer Style Glass Front Bookcase, Ant & Neat Modern Pictures, Retro Pheasant Pattern Setting Chair, 5 Pc Wood Bedroom Suite Inc Queen Bed, Dresser W/Mirror, Chest Of Drawers, 2 Nightstands, Area Rugs, 2 Retro Chairs, 2 Lane Recliners, Suede 2 Cushion Couch, Queen Bed, Best Lift Chair, Hospital Bed, Fireplace Stand Table, Barstool, File Cabinet, Computer Desk, Light Fixtures, Kenmore Washer & GE Electric Dryer (Both Like New), Sm Kenmore Upright Deep Freeze, Portable Propane Heater, Sm Vizio Flat Screen TV, Flat Screen HP Computer, HP Printer, 2 Fans, Like New Clean Away Bissel Vacuum Sweeper, Other Items Not Listed

## Antiques, Collectibles & Households

Old Crock Jugs, Over 25 Very Old Collector Canning Jars Most Are Blue Some Green & Have Lids, Old Prim Kitchen Utensils, Pyrex Dishes, Carnival Glass, Weller Vase, Brush Pitcher, Story Time Knick Knacks, Graniteware, Prim Feed Box, Prim Wood Fencing, Ant Wood Beer Box, Old Kraut Cutter & Grater, 2 Sets Of Steer Horns Inc One 48", Ant Milk Bottles, Ant Metal Funnel &

Metal Gas Can, Ant Heat Stove Pots, Ant Glass Sprayers, Cigarette Roller, Old Watches, Old Pocket Knife, Old Baskets & Bushel Baskets, Old Glassware Of Various Kinds, Lg Lot Of Picture Frames & Canvases, Also Art Supplies, Cast Iron Pcs, Wheat Dishes, Some Linens, Luggage, Storage Containers, Sm Kitchen Appliances, Pots, Pans & Dishes, Coveralls & Leather Jacket, Nikon & Fuji Cameras, Handicap Supplies Inc Walker & Lift Chair, Other Items Not Listed

## Collector & Silver Coins

Silver Coins To Inc Silver Dollars, Half Dollars, Quarters, & Dimes, Several Wheat & Indian Head Pennies, Type Coins Inc 1856 Seated Half Dime, 1876S Seated Dime, 1835, 1839 & 1840 Large Cents & Others, 1911S & Other Lincoln Cents, Buffalo & V Nickels Inc 1912, This Is Only A Partial Listing Of Coins As There Will Be More Added Sale Day, See Website For Complete List

## Lawn Mower, Gorilla Wagon, Tools & Outdoor Related Items

Husky Push Mower, Gorilla Yard Cart, Work Battery Operated Leaf Blower & Weed Eater, Portable Air Compressor, Like New Battery Charger, Cordless Drills, Roll Around Work Table W/Vis, Lg & Sm Plastic Work Boxes, Sm Hand Tools, Sockets, Long Handle Tools, Regulator Valves, Electric Cords, Log Chains, Ladders, Toolbox, Ratchet Straps, RV Levelers & Tire Chalks, Gas Cans, Propane Tanks, Grass Seeder, BBQ Grill & Charcoal, Metal Patio Set, Wind Chimes, Fold Up Yard Chairs, Garden Hoses, Bird Feeders & Prim Bird Houses, Yard Décor & Plants, Planting Pot Supplies, Yard Mulch, Trash Cans, Fire Extinguishers, Other Items Not Listed

**Auctioneers Note:** As Mrs. Vanwey Is Selling Her Home & Moving Closer To Be With Family & Needing To Settle Part Of Her Late Husbands Estate We Will Offer A Very Clean & Outstanding Auction That Will Be Loaded With Something For Everyone From Antiques, Tools, & Coins. Mr. & Mrs. Vanwey Have Attended Our Auctions For Many Years & Have An Eye For The Goods. It Is An Honor To Be Conducting The Auction For This Outstanding Family. Please Plan Now To Attend This Outstanding Auction. **Sale Order: Antique, Modern Furniture & Appliances Will Sell First Then Move Directly Into Antiques, Collectibles & Households Then Move To Mower, Gorilla Cart, Tools & Outdoor Items. At Approx 4:30 PM Will Offer Coins. See Ya There!!!**

Terms: Cash or check with proper ID. Now accepting most major credit cards. Nothing removed until settled for. Statements made the day of sale takes precedence over printed material. Everything sold as is where is. Not responsible for accidents. Restroom available. Concessions Provided. Check our website for upcoming auctions and for additional pictures!!



## NANCE AUCTION SERVICE

No Matter How BIG or small, We Do Them All!!!

Col. Bill Nance 417-214-0093



Sale will be broadcast on DVAuction

140 Replacement Heifer Sale  
Fall Calving Bred Heifers

Friday, June 12, 2020  
7:00 PM

## Farmington Regional Stockyards

1600 Woodlawn Dr., Farmington, MO 63640

## Crossbred & Purebred Heifers Available Registered Angus, Purebred Angus, Angus Cross, SimAngus & Herford/Angus

- Mostly black, few black-baldies, two red
- Many AI BRED & selling with known FETAL SEX
- Few REGISTERED - Angus
- Due to calve from August 14 to November 28, 2020
- Sorted into uniform lots and guaranteed bred
- Tier II daughters out of Angus sires
- All bred to INDUSTRY LEADING bulls

## Consignors:

Morgan Clark Farmington	Shadow Lane Farms Mill Spring
Ben & Julie Davis Farmington	Schulte Brothers Meta
Flieg's Farm Ste. Genevieve	Mike Steinman, Argyle
David Gann Steeville	Strope Angus Westphalia
Graham Family Farm Farmington	Greg Tharp Naylor
Grellner Farms Owensville	Turner Farms Belgrade
Kranjec Valley Angus Marquand	Dean & Dallas Wilson Ditmer

## For Information or Catalog Contact:

Kendra Graham • 573-756-4539

grahamkk@missouri.edu

Facebook:

Show Me Select Bred Heifer Sale: Farmington

**FOUR TIRES:** Size 245-60 R18 Michelin. No patches. \$85 firm. 417-532-2344.

**OLDER DRYWALL JACK:** for putting sheetrock on ceiling. \$25. Text 417-533-0779

**JOHN DEERE 925 DISKBINE:** \$6750. 573-765-4406.

**FORD 2010:** F-150XL, longbed, V8, Automatic. \$5,400. Call for details. 417-848-8754.

**BEEF HEIFER:** Approx/500#, partially blind. \$450. 417-322-0161



**R-FAB BINS**  
(660)281-3078

**Bucket Bins**  
Stationary or Portable

**Overhead Bins**  
Located in Warsaw, MO

**DARDEN PROFESSIONAL TIMBER HARVESTING, BUYING STANDING TIMBER:** Great prices, improve wildlife habitat and improve forest health. State Certified & Fully Insured! 573-247-4808 or 573-739-1122. Salem

**PYRENEES/ANATOLIAN PUPPIES:** parents are excellent sheep/chicken/guard dogs Ready June 10th. \$250. 417-322-0161.

**KITCHEN FAUCET MOEN:** single lever, sprayer, new cartarage. \$70. 636-239-2695.

**SWAP MEET:** At Treasures, 1060 Tower Road, Lebanon, June 5th & 6th, Vendors Wanted, 417-532-6666.

**2000 S-10 PICK-UP:** 169,000 miles. bedliner, automatic, 4 cyclender \$2,800. 417-532-4108.

**KITCHEN FAUCET MOEN:** single lever, sprayer, new cartarage. \$70obo. 636-239-2695.

**FOR SALE:** 3 1950's baseball mitts, \$60. 417-457-1023.

**MURRAY RIDING MOWER:** Good tires, deck, blades, 5-speed, needs motor. \$150-gun trade. 573-364-7465.

**FENCE! WE STOCK FIXED KNOT10% Off!** High tensile, woven, barbed, smooth. Cattle/Sheep panels! Unbeatable Prices!! Ozark Farm, 417-322-0161.

**Omar's Logging**

⇒ Oak & Walnut  
⇒ Excellent Prices  
Amish Owned & Operated

**LEAVE MESSAGE: 417-741-0440**

**2 DAY EVENT!!**

# 10th Annual Spring

## Prairie Grove Amish Mennonite School

# CONSIGNMENT AUCTION

**TUESDAY, WEDNESDAY, JUNE 2<sup>ND</sup> & 3<sup>RD</sup>**  
STARTING AT 3PM TUESDAY, 9AM WEDNESDAY  
12 WINDING CREEK DR. | BUFFALO, MO | 65622

**Join Us for Homemade Amish Mennonite Food!**  
Breakfast • Steaks • Burgers • BBQ Chicken • Pies & More!

**OVER 40 QUILTS!**

**TUESDAY STARTING AT 7PM**

**Guns:**

- Rem Mod 700 25-06 w/ Leopold 3x9 Vari-X11 Scope
- More consignments expected at sale day

**Misc. Tools:**

- More consignments expected at sale day

**WEDNESDAY STARTING AT 9AM**

**Cattle Handling:**

- 20' Adjustable Double Feed Alley w/ No Back
- 13' Adjustable Single Alley w/ No Back
- Foremost Squeeze 450 w/ Palp Cage
- True Test 10' Alley Scales w/ Digital Readout
- Sheep Panels
- 2 Calf tell Calf Huts with Pens

**Tractors:**

- JD 6130 R FWD w/ 620R Loader 1,343 hrs.
- JD 5400 FWD w/ Loader w/ Bale Spike/Bucket
- JD 2640 Diesel New Clutch
- JD 50 2 Cylinder Gas

**Farm Equipment:**

- JD 567 Baler Net Wrap 8500 Bales Good Condition
- JD 568 Baler Net Wrap 16,000 Bales Good Condition
- 13 Kuhn 3550 Disc Mower 11.5' Nice
- JD 630 22' Disc w/ Harrow Field Ready
- 10' Food Plot Disc
- JD 30' Rotary Hoe Hydraulic Fold
- JD 20' Rotary Hoe
- JD 15' Rotary Hoe
- 2 EZ Trail Gravity Wagon 200 Bushel Nice
- Kill Bros Gravity Wagon w/ Auger
- 2 Heider 300 bu. Galvanized Gravity Flows Nice
- JD 5 belt Pick Up Header
- New Walk Through Pallet Forks
- 1985 Int. Dump Truck Detroit Eng.

**Vehicles:**

- 17 Chevy HD 3500 1 Owner LT Leather 100,000 Miles
- 15 Chevy HD 2500 LTZ 122,000 Miles
- 1990 International 9200, Big Cam 400 CUMMINS, 9 Speed Twin Screw w/ Nice Chandler Litter Bed, Ready to Spread.

**Trailers:**

- 06 WW Gooseneck 16' 2 Slant Horse Trailer
- 2001 CM 2 Horse Trailer w/ Tack Room Nice
- 24' Enclosed Insulated Gooseneck Trailer w/ 2 Air Conditioners in Roof

**ATV's:**

- 18 Honda Rancher 420
- 15 Polaris Ranger 570cc
- 06 Honda Rancher 350
- 17 Polaris Ranger Low Miles

**Lawn Mowers:**

- Hustler X-One 60" Deck Flex Forks w/ Grammer Seat 82 hrs. Like New
- 52" Hustler Mower

**Boats & RV:**

- 1986 Bass Tracker w/ 40 HP Mercury and Trolling Motor
- 2006 Gulf Stream 23' Travel Trailer, 1 Slide Out

**Lawn and Garden:**

- XL Green Egg Good Condition
- Mini Max Green Egg with Table
- 2 Steel Swing Sets
- 2 Powder Coated Steel Swing Sets

**Used Daniel Boone Green Mountain Pellet Grill**

- 7.5' Lighted Light House
- Large Barn Bird Feeder
- Wooden Flower Pots
- Poly Furniture, Rockers, Gliders, Swings, Picnic Tables
- Wagon Wheel Porch Swing Stand alone
- Playhouse with Dormers
- Mini Storage Building

**Furniture & Household:**

**Trailer load of new Amish made furniture includes:**

- 5 Piece Queen Bedroom set w/ Bookcase Bed, Cherry
- 5 Piece Queen Bedroom set Live Edge & Light Distressed, Rustic History
- 5 Piece Log Queen Bedroom Set, Rustic Aspen
- 48x72 Double Pedestal Table w/ 4 Leaves, Gray Elm w/ 5 Chairs
- 44x66 Leg Extension Table w/ 7 Leaves, Red Oak w/ 6 Chairs
- 60" Flat Top Desk Red Oak
- Variety of Bookcases
- Sewing Cabinets Gray Elm/Rustic Hickory
- Full/Twin Bunkbeds Rustic Pine and Red Oak
- Children's Furniture
- Poly Martin House
- Gourd Racks w/ Gourds
- 40 Martin Gourds
- Hickory Rockers
- Magazine Stands on Turn Table with Drawers and Trash Can
- Wind Chimes

**Misc. Furniture:**

- Small Benches
- Puzzle Boards
- Wooden Mottos
- 2 Oak End Tables w/ Leather Tops 28" x 16" w/ Drawer and Shelf
- Cutco Knives
- Princess House Glassware
- Home Made Crafts, Blankets, Dollies, and Pillows, Mottos etc.

**Quilts - Starting Approx. 1:30PM**

- Religious Throw 56x61 Tan
- Crib 39x65 Purple
- Aurora 111x123 Purple/Charcoal
- Swag Bargello 104x125 Purple/Black
- Bargello Diamond 110x118 Wines
- Bargello Southwest 110x116 Purple/Brown
- Fan Stack & Whack 96x112 Blue/White
- Double Irish Chain 94x101 Blue/White
- My Scrap Heart 103x111 Wine/Gray/Black
- Boston Common 104x106 Pastel Earth Tones
- Island Sunrise 112x114 Wine/Gray/Black
- Boston Common 108x109 Plum/Gray/Black
- Star Watch 110x110 Tan/Black
- Argyle Bargello 111x113 Teal/Gray/Black
- Diamond Jubilee 110x110 Tan/Black
- Polly's Bargello 102x109 Multi/Blue
- Peacock Applique 98x114 Multicolor
- Malinda's Heart 99x110 Eli Lapp
- Flame Bargello 99x109 Wine/Black

**MORE CONSIGNMENTS EXPECTED BY SALE DAY TERMS:**

Cash or check. No items will be removed until settled for. Sellers or auction company are not responsible for accidents, errors in listing or lost items. Announcements made day of sale take precedence over any printed matter. When registering for a buyer number proper I.D. will be required. All Guarantees are between the Buyer and Seller.

**All Commissions & Donations for Meals go to Prairie Grove Amish Mennonite School**

**For more information or to consign, call:**  
Dennis Blosser 417-326-9788  
Vernon Kropf 417-733-2600  
Delbert Blosser 417-733-2914  
Lyndal Hostetler 417-733-2560



# ESTATE AUCTION

**SATURDAY, MAY 30 • 10:00 A.M.**

Directions: OLD SEARS BUILDING IN SALEM, MO - (Inside Sale) Located between Parts Tek and Town & Country Bank on Scenic Rivers Blvd. Watch for signs.

## MOWER • SHOP TOOLS • TRACTOR • MISC.

Small Lot of Scaffolding  
Aluminum Truck Box - Loppers  
Lots of Good Dry Lumber  
Rough Cut Miter Saw - Firewood  
Rack Homemade Outdoor Shower  
Lattice  
16' Utility Trailer, Title  
Power King 24-18 Tractor w/  
Implements  
Sawhorses - Table  
Load Master 8x5 Dump Trailer  
Title Generac X68000 E Generator  
Hitch Haul Carrier  
Rigid Tile Cutter  
Gravely 2548 XL Zero-Turn Mower  
Cyclone Rake Leaf Vacuum  
Wooden Boxes - 2 Shop Vacs  
Standup Coleman Cooler  
Lawn Seeder - Lots Clay Flower Pots  
Receiver Hitch - Small LP Stove  
Small Custom Cabinet - Handsaws  
Extension Cords - Rope  
6 Full Pcs. Drywall - Wooden Bench  
DeWalt Miter Saw - Lot Chains  
Boomers - Rigid Table Saw  
Grizzly 10" Wet Sander  
Grizzly Spindle Sander  
Grizzly 12.5" Portable Planer Shop  
Fan - Grain Scale - Levels Grizzly  
10" Drum Sander  
Grizzly Table Router  
Lot Roofing Paper - Lot Sandpaper  
Craftsman Jointer Planer  
Some Scrap - Stihl Leaf Blower  
Lot Screws & Nails - Oil Cans  
Dip Nets - Lot of Drill Bits  
Chimney Brush - Belt Sander Delta  
Shopmaster Vacuum System  
Penn State Dust Collection System  
24qt. SS Pot w/Lid - Wrenches

Berger Transit Level - Transit  
DeWalt Drills - Ratchet Straps  
Delta Grinder on Stand  
Some Harley Davidson Collectibles  
Wood Clamps - Small Anvil  
Welding Supplies  
Hobart 135 Welder - Bar Clamps  
Husqvarna Weed Trimmer  
Copper Tubing - 20# Propane  
Bottles Bottle Jack - Router -  
Electric Stapler Grinder  
Concrete Tools - Paint  
Handmade Bathroom Cabinet  
Rockwell 3/8 Drill Press  
Craftsman Belt, Disc Sander  
Grease Gun - Bench Vise  
Machete - Nuts & Bolts  
Pocket Knives - Clevis'  
Splitting Wedges - Toolboxes  
Hitch Mounted Deer Hoist  
Gas Cans - Buckets  
10" & 12" DeWalt Cutoff Blades  
4 David Plank Pictures  
Towels & Linens  
Commercial Series Char-broil Gas  
Grill w/Tank Glass Door  
5 New Pella Windows, 4, 29x53,  
Brown Highchair  
Cast Iron Dinner Bell  
Nice Small Wood Stove w/Blower  
Blankets - Cowhide Blanket  
Custom-Made Closet

**AUCTIONEER'S NOTE:**  
Several lots of nice furniture  
and other items added to sale!  
*See you there! - Tom*



## SALE OF: LATE MARK JANSON

ANNOUNCEMENTS AT AUCTION TAKE PRECEDENCE OVER PRINTED MATTER

# WULFF AUCTION

TERMS: CASH OR  
APPROVED CHECK -  
I.D. REQUIRED  
NOTHING REMOVED  
UNTIL SETTLED FOR

Licensed  
Appraisals

Auctioneers:  
Col. Tom Wulff - Col. David Wulff  
498 Hwy. B, Salem, MO 65560  
573-729-8476

Clerk: Tracy Strange Cashier: Nancy Inman

See Wulff Auctions at [www.thesalemnewsonline.com/auctions](http://www.thesalemnewsonline.com/auctions)



RAIN OR SHINE  
OWNER & AUCTION  
PERSONNEL NOT  
RESPONSIBLE  
FOR ACCIDENTS AT  
SALE SITE

97 Freightliner, Cabover, M11 Cummins  
Engine, 21ft. Steel Bed, Tandem, FM13 Ditch  
Witch Pump & Tanks \$7,200  
John Deere 420, Wide Front, Recent  
Overhaul, Good Paint & Tires \$4,000  
David Brown 1212 Diesel QA Loader,  
2 Sets of Remotes, 65 HP \$5,000  
Ford 8N Sherman Transmission,  
Good Condition \$1,800  
Steel Flatbed 7.7"x9' \$400  
5ft. Ballymore AC-C C Model \$300  
3.8 Ft. Disc \$900  
DU-AL Loader QA \$1,400

**STARR TRACTOR • ROGERSVILLE**  
**417-753-2747 • 417-766-1991**

**WANTED, TIMBER TO LOG ON  
SHARES:** Honest, reliable, references. 417-  
533-4607, 417-664-1195.

**BARN WOOD SIDING: 8" & 10" wide.**  
**573-729-7226. [www.pineridgerustic.com](http://www.pineridgerustic.com)**

**JOHN DEERE 2940 DIESEL TRACTOR:**  
80HP, High Reach, GB900 Loader. \$11,000.  
573-765-4406. Richland.

## 2nd Generation Painting

For Free Estimates Call • JOEL SKINNER  
(417) 345-4566 • (417) 733-0900

FREE  
ESTIMATES!

WE STOP  
THE RUST!



**GLENER: L 22 FT RIDGED HEADER**  
\$750, NEEDS TLC. 417-646-8807.

**WANTED:** Walk behind commercial lawn  
mowers needing repair. 314-550-9314

**SINGER SEWING MACHINE:** Touch  
Tronic 210 Memory machine, like new, all  
there. \$200. 573-205-9401.

## KUSTER LOGGING

**BUYER of Standing  
Timber  
Oak and Walnut**

Dozing Now Available

**417-259-0047**

References Available





# FARM EQUIPMENT, TOOL AND MUCH MORE AUCTION

**SATURDAY, MAY 30, 2020 @ 10:00 AM**

**1642 Lawrence 2165 • Wentworth, MO 64873**

Directions: Take I 44 West toward Joplin, take exit 33 toward county road 1010, turn left of Lawrence 1010, turn sharp left on county road 2165 which becomes Lawrence 2165 auction will be on left



## INVENTORY LIST:

FORD, FARMALL, ALLIS  
CHALMERS TRACTORS  
BOBCAT  
ELECTRIC MALL SAW  
DRILL DOCTOR  
BOSCH ELECTRIC DRILL  
AIR COMPRESSOR  
HONDA LIMITED  
ADDITION HELMETS  
BUSHNELL TELESCOPE  
HILTI PISTON DRIVE TOOL  
TURTLE WAX ORBITAL  
WAXER  
SWIFT MICROSCOPE  
POWER TOOLS  
CRESCENT GUITAR

PAN AMERICAN TRUMPET  
OIL LAMPS  
WASH BOARD  
MAID-RITE WASHBOARD  
CUPS  
HAND WARMER  
BUSHNELL INSTA-FOCUS  
BINOCULARS  
MARINE SIGNAL KIT  
(FLARE GUN)  
LG TV  
LABEL MAKER  
ASH TRAY  
PULLY  
TRAIN TRACK SET  
CRAFTSMAN ARC  
WELDER  
BATTERY CHARGERS

HOMELITE 140 GPM 2"  
PUMP  
RESUSCI JUNIOR (CPR  
DUMMY)  
PORT HOLE MIRROR  
GRINDER  
WASHER AND DRYER  
SOLAR POWERED  
SECURITY LIGHT  
TRAFFIC LIGHT  
TROY BUILT GENERATOR  
DVFK FAN KIT  
BELLS  
ANTIQUE SAFE  
SENTRY GUN SAFE  
SEWING MACHINE  
CRAFTSMAN MITER SAW  
KEROSENE HEATER

ELECTRIC STOVE TOP  
SKILSAW 6 1/2" CIRCULAR  
SAW  
COINMASTER METAL  
LOCATOR  
CAST IRON SKILLETS  
YARD TOOLS  
CORN BREAD CAST IRON  
BAUSCH & LOMB OPTICAL  
CO. MICROSCOPE  
BEACON RAY  
SWIFT MICROSCOPE  
SPENCER MICROSCOPE  
FIRE SUITS

**This Will  
Be An All  
Day Sale!**

**TOO MUCH TO LIST WITH A HOUSE AND 3 BARNES FULL OF ITEMS!!**

We will be practicing social distancing as required, bring face masks, hand sanitize stations onsite.



FOR MORE INFORMATION GO TO [WWW.EASTERLYAUCTIONCO.COM](http://WWW.EASTERLYAUCTIONCO.COM) OR CALL EASTERLY'S AT 417-833-9494

# EASTERLY AUCTION CO.

**Mike Easterly Auctioneer • 417-833-9494**

Not Responsible for accidents or theft. For more information call: Easterly Auction Company, Springfield, MO. Auction Terms: Bank Letter Of Credit Required. Visa, Mastercard, Cash, Cashier's check or checks with proper I.D. Announcements day of sale take precedence over printed material. Auction Notes: Although information is obtained from sources deemed reliable, auctioneer makes no warranty or guarantee expressed or implied. Buyers should themselves take the opportunity to make their own inspection prior to sale.

[www.EasterlyAuction.com](http://www.EasterlyAuction.com) • [auctionzip.com](http://auctionzip.com) ID#14770



**VISIT OUR NEW WEBSITE!**  
**MY WEEKLY TRADER.COM**





**SPECIALIZING IN HEAVY DUTY GATES**

**JUNE SPECIAL**

**BUY 12 GATES GET 1 FREE!**

**Cow Country Gate Sales**

Call Randy: 573-569-4754  
or Home: 573-539-2528

Located at: Zimmerman Welding  
16889 Hwy 52, Barnett, MO

**TAYLOR TRUCKS & EQUIPMENT**

417-924-2026 • 2676 Hwy. 5, Mansfield, MO

**Bush-Whacker Heavy Duty Rotary Cutter**

**New Mowers! Bush-Whacker, Big Bee Storage Containers & Dry Vans - 20' - 53'**

Farm Tires, PTO's, & Parts for Rotary Mowers  
Farm Tractor Implements  
Plows, Discs, and More Skidsteer Attachments: Pallet Forks, Buckets, Grapples, Hay Spears & Tree Sheers - RR Ties

**TRAILER PARTS & REPAIR** | **NEW SEMI TIRES - DRIVE & STEER**

We Invite You To Come By & Look Us Over! Located 2.5 Miles North Of Mansfield, MO On Hwy 5

**HAROLD BELL WRIGHT BOOKS FOR SALE.** The Eyes of the World, The Calling of Dan Matthews and Their Yesterdays. \$15 each. 417-532-2045, Lebanon. Leave message.

**HAMMERMILL W/ELECTRIC MOTOR:** grind your own grain !! \$900. 417-322-0161.

**AUCTION REMINDER:** Real Estate Auction, Saturday, June 6th@ 1pm. Sam Crawford Auction. Please see our Auction Directory for more information.

**IHC 1066 DIESEL TRACTOR:** Open station, Nice. \$9,500. 573-765-4406.

**BUSHWHACKER BELLES BOOK THE SISTERS, WIVES AND GIRLFRIENDS OF THE MISSION GUERRILLAS BY LARRY WOOD, \$12.50. 417-532-2045. LEBANON. LEAVE MESSAGE AND PHONE NUMBER.**

**I BUY....used mobile homes.** Call or text 573-338-6250 or email GregS.CDH@outlook.com

**IHC 766 DIESEL TRACTOR:** Cab & Air New engine, Over haul, 80HP, \$8,500. 573-765-4406. Richland.

**LANDPRIDE RCF3010:** pull type brush hog, 10'. \$5,900. 417-270-1505.

**98 MUSTANG MOTOR 3.8 V6:** runs good, over 100,000 miles. \$150. Call 417-531-3605.

**JOHN DEERE 567 ROUND BALER:** monitor, kicker, wide pick-up, cover, net wrap. \$9,650. 573-765-4406.

**MOTORCYCLE FOR SALE:** 2007 Suzuki Boulevard G50T 800cc, Low mileage, \$20,800 Cash only. Excellent Condition. 417-532-4946.

**VIRUS SALE - mobile home inventory, entire stock, first come basis, 3 & 4 bedroom, 2 bath. Hurry and call for info 573-499-9993 columbiadiscountshomes.com**

**MX5100 KUBOTA:** 4wd tractor with loader, 52 HP, open station, low hours. \$20,000. 417-270-1505.

**LARGE PLASTIC HOSE REEL ON WHEELS:** \$25. 417-457-1023.

**WANTED STANDING TIMBER:** Butler Logging, 417-448-9323.

**REGISTERED HEREFORD & ANGUS BULLS:** Home raised, Some Show-Me Select Qualified. 573-701-7828. Belgrade

**9" FORD REAR-END:** Oval, set-up for stock car, 542 gear ratio, good rearend. \$250. 573-732-5170.

**SUMMER VACATION IS JUST AROUND THE CORNER!**

691J **2019 Jayco SLX 232RB**  
MSRP-\$23,511..... **\$15,230**

659J **2019 Jayco SLX 195RB**  
MSRP-\$19,131..... **\$12,995**

711D **2020 Dutchmen Astoria**  
2503 RLF MSRP-\$49,714 .. **\$36,611**

714D **2020 Dutchmen Astoria**  
3273 MBF MSRP-\$57,850 .. **\$45,866**

719D **2020 Dutchmen Aspen Trail**  
1760BH MSRP-\$15,994..... **\$12,778**

709D **2020 Dutchmen Aspen Trail**  
2850 BHS MSRP-\$28,736 .. **\$21,282**

729D **2020 Dutchmen Kodiak**  
248BHS MSRP-\$31,570 .... **\$22,851**

732D **2020 Dutchmen Kodiak Cub**  
185 MSRP-\$24,994..... **\$18,791**

**WehrRVs**  
11311 Bus. 60, Mtn. Grove, MO  
**1-800-288-6827**  
www.wehfordofmountaingrove.com

**Offering the Area's LOWEST METAL PRICES!**

*Pole Barn Packages*

24'x32'x10' materials only	\$5,425	30'x60'x10' materials only	\$9,150
24'x40'x10' materials only	\$6,200	40'x60'x12' materials only	\$12,325
30'x40'x10' materials only	\$6,975		

Plus Sales Tax And Delivery.  
Labor available at additional cost.  
Call for quote.

**Compare Before You Buy.**  
We Use Only The **Highest Quality** Materials!

ALL MATERIAL PACKAGES INCLUDE...

- ✓ #1 Yellow Pine Lumber
- ✓ #1-40 Yr. Painted
- Metal w/Screws
- ✓ 1-10' Overhead Door
- ✓ 1-36" Entry Door

**Fully Insured**

**PORTABLE BUILDINGS**  
Rent to Own  
No Credit Check

**Marshfield BUILDINGS**  
www.marshfieldbuildings.com

1049 SCHOOLVIEW DR. Marshfield, MO

417-859-7744

Labor prices will be higher in locations over 75 miles from Marshfield, MO



# GET YOUR WORK DONE, AMERICA

FOR JUST  
**\$261** PER MONTH\*



## 4540 2WD

- SIMPLE to operate
- ECO-FRIENDLY, NO DPF engine
- HEAVY-DUTY steel construction not plastic

MAHINDRA 4540 41HP, 2WD, TRACTOR AND LOADER.

## Marshfield Machinery Inc.

222 E. Madison • Marshfield, MO 65706  
417-859-2117 • www.marshfieldmachinery.com



\*Payment is for tractor and loader only and is calculated at 10% down and 84 months financing. With approved credit. Program restrictions may apply. See dealer for details. All offers expire May 31, 2020.

WORLD'S #1 SELLING TRACTOR

**Mahindra**  
Tractors

### NEW MAHINDRA TRACTORS

7085 4WD & LDR 85HP	IN STOCK
6075 4WD & LDR 71HP	IN STOCK
6065 4WD & LDR 63HP	IN STOCK
2655 4WD, BACKHOE 55HP	IN STOCK
2655 4WD & LDR 55HP	IN STOCK
4540 4WD & LDR 41HP	IN STOCK
4540 2WD & LDR 41HP	IN STOCK
1635 4WD & LDR 36HP	IN STOCK
1626 4WD & LDR 26HP	IN STOCK
MAX26XL & LDR 26HP	IN STOCK

### USED TRACTORS

MAHINDRA EMAX22 LDR 22HP	10,000
MF 2315 45HP	7,500
MF 150 38HP	4,500
CASE IH 235 W/ MOWER 18HP	3,500
IHC 184 W/ MOWER 18HP	3,500

### USED ROUND BALERS

MF 2745 4X5 MESH	12,500
VERMEER 505SI MESH	7,500
HESSTON 745 4X5	7,500
GEHL 2480 4X5	6,500
JD 435 4X6 MESH	6,500
HESSTON 555 4X6	4,500
HESSTON 560 5X6	4,000
HESSTON 550 4X6	3,500
HESSTON 530	3,500
HESSTON 5500 5X5	1,500
NH 850 5X5	1,500
MF 224 SQUARE BALER	2,500

### USED RAKES

SITREX 12WHEEL	3,500
VERMEER WR20 8 WHEEL	1,950
M&W 8 WHEEL	1,500
GEHL 418 8WHEEL	1,500

### USED HAY MOWERS

NH 1409 9FT	7,000
NH H6750 9FT 3PT	6,500
MF 1329 9FT 3PT	5,500
LELY 270 9FT 3PT	3,500

Marshfield Machinery Inc.  
222 E. Madison • Marshfield, MO 65706  
417-859-2117  
www.marshfieldmachinery.com

Is Your Log Home Starting To Look **UGLY?**

Professional Staining & Repair  
(Log Homes & Wood Siding)

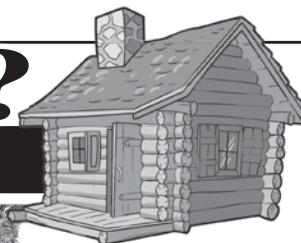
Call

**Pine Ridge Rustic**

Log Home Building Supplies

573-729-7226

www.pineridgerustic.com



**CASH FOR COMIC BOOKS:** From 1935-1985 and comic related toys and vintage sports cards. 636-390-2043. Washington, Mo.

**NEW SHEEP/GOAT PANELS:** \$44. 417-322-0161

**OLD LINN CREEK, HA HA TONKA & CAMDEN CO BOOK, "Before the Dam Waters", BY T. VICTOR JEFFRIES. \$5.50 each post paid. To order: 417-532-2045, Lebanon (leave message.)**

**DETROLA MUSIC MACHINE:** Plays CD'S, Records, Cassettes, AM-FM Radio, excellent condition, 20x18x12, oak finish, antique look. \$65. 573-364-7465, Rolla.

**HANTZ DRYWALL:** 35yrs, add-ons and repairs, references. 417-322-0014.

**CHISEL PLOW:** 12FT, Pull-type. \$950 417-322-0161

**DREAM HOUSE - Online, chateauhomes.net** Call Marla 573-657-7040

**NEW/USED STEEL!! GOOD PRICES!!** Lebanon, 417-322-0161.

**JOHN DEERE HX10 PULL TYPE BRUSH CUTTER:** \$4,200. 573-765-4406. Richland.

**LIONEL TRAIN SET:** Steam engine, tender, caboose and other car, track and transformer. \$195. 573-364-7465, Rolla.

**Land Pride**  
www.landpride.com

### RTR12 SERIES

**ROTARY TILLERS**  
15-60 HP 42", 50", 58", 66", 74"

- Reverse rotation
- Offset capabilities
- Lower clevis hitch for easy hook-up
- Steel plate upper hitch
- Seven position skid shoes
- 15" Rotor swing
- 4 'C' shaped blades per flange

Getting Chores Done  
**LAND PRIDE**  
does that.

**3 YEAR** Limited Dealer Warranty

**AGRI-ENTERPRISES**  
The Outstanding Products & Service  
1-1/2 Miles South Of Licking, MO On Hwy 63  
573-674-2203 • 1-800-653-7152  
www.agri-enterprises.com

**HOLLYWOOD 4-BIKE HITCH MOUNT RACK:** Excellent condition, Includes (2) Allen Stabilizer tension bars and keyed alike locking hitch pin and cable. \$175. Conway, 417-718-5347.

**NEW IDEA:** 5410 Disk Mower, 10 ft. \$4,450. 573-765-4406.

**WERNER:** aluminum 24' extension ladder. Model D1124-2 \$50 txt 417-533-0779.

**ONE PIECE:** 70'S desk/chair for young student. \$15 G.C. Cedar Hill, 314-303-7857

**2-21" PUSH MOWERS:** Briggs & Stratton engine, 1 runs, 1 for parts. Both \$75. 636-239-2695.

**FOR SALE:** In Missouri, fishing cabin on private owned lot at family oriented, gated campground at beautiful Lake Hanna, off Hwy 221, only 4 miles from shopping and fine dining. Year round boating, fishing and ATV accessibility. INTERESTED? Call or Text Wayne@ 573-707-3152.

**IHC 10FT WHEEL DISK:** \$1,600. 573-765-4406.

**84 CORVETTE:** High Compression, 350, 600 Holley Headers, new exhaust, oil change, tune-up. \$4,500obo. 563-529-4359.

**JOHN DEERE 275:** Disk mower. 9FT Nice. \$6,250. 573-765-4406.

**2004 DODGE RAM 3500 DUALY:** 4wd, auto, double cab, 5.9 Cummins, 58K miles. \$26,500. 417-270-1505.

**MOBILE HOMES** .....shop on-line..... Call Tuff with questions 573-657-2176 amegamobilehomes.com

**THREADGILL'S - THE COOKBOOK, THE AUSTIN, TEXAS LANDMARK OF SOUTHERN COMFORT FOOD, HARD-BACK \$10. 417-532-2045. LEBANON. LEAVE MESSAGE AND PHONE NUMBER.**

**2018 KZ SPORTSMAN 363FL :**Text for pics/details- \$27,000. Lebanon. 309-678-0057.

**GAS POWERED CONCRETE POWER TROWEL:** Wisconsin Robin engine. \$150. 417-533-0779.





**Pt405  
Tedder**

**\$5,450**



**\$9,950**

**TS10 Brush Hog**



**\$5,750**

**Acumma Grapple**



**RHINO EQUIPMENT  
IN STOCK**

**RAKES**

Vr8..... \$6,950.00  
Vr10.....\$7,350.00

**BRUSH HOGS**

Tw15 - Standard Duty, 3 Pt, 5'.....\$1,675.00  
Tw16 - Standard Duty, 3 Pt, 6'.....\$1,825.00  
Tw26 - Medium Duty, 3 Pt, 6'.....\$3,250.00  
Tw27 - Medium Duty, 3 Pt, 7'.....\$4,200.00  
Tr208 - Heavy Duty, Pull Type, 8'.....\$7,250.00  
Ts10 - Standard Duty Batwing, 10'.....\$9,950.00  
3150-4 - Heavy Duty Batwing, 15'.....\$16,500.00

**DIAMOND R EQUIPMENT**

**573-455-2617**

**660-584-8757**

4 Miles South Of Westphalia On Hwy. 63  
On I-70 Next To Klienschidt's, Higginsville Exit  
[www.diamondequipment.com](http://www.diamondequipment.com)

**\$1000 SIGN ON BONUS**

**ASPLUNDH**

**TREE EXPERT, LLC**

Is seeking **EXPERIENCED** Line Clearance Tree Trimmers,  
**Bucket Operator and Forepersons**

For work in the Lebanon and surrounding areas. **Excellent Benefits:**  
401K, Health, Dental, Vision Paid Vacations and Holidays.  
Must be a safe and productive worker pass a pre-employment  
drug test, and have valid driver's license.

**\$21-\$24 per hour**

Call 636-583-1175 or apply online • [Asplundh.ourcareerpages.com](http://Asplundh.ourcareerpages.com)

**PINE LOG SIDING.** [www.pineridgerustic.com](http://www.pineridgerustic.com) 573-729-7226.

**JOHN DEERE 2040 DIESEL TRACTOR:**  
Canopy \$4,950. 573-765-4406.

**MILLER:** 10 ft. Offset Disk, \$4,400. 573-765-4406

**5000 BTU WINDOW AIR CONDITIONER:** \$25. 417-533-0779.

**RED CEDAR FENCE POST:** 6 1/2 feet long, 10 for \$49. Cedar Hill, 314-303-7857.

**NEW HOLLAND 472 HAYBINE:** field ready. \$1,800. Linn. 573-897-2772.

**41 DRILL BITS FOR BIT AND BRACE:** \$50 417-457-1023.

**NEW CATTLE PANELS:** \$22. 5417-322-0161.

**VALLEY SHOP**

**Repairs, Rebuilt  
Tractors & Equipment**

**660-458-6747**

Latham, Mo



**Cheyenne  
Acres**

Horse & Tack

**BUY - SELL - TRADE**

by Rolla, MO

Call For Directions & Availability

**Call Kip**

**573-368-9402**



**WANTED PINBALL MACHINES.** 573-424-7200.

**VILLA HOMES IN ROLLA:** Has NEW and USED Mobile Homes. Call David for info: 573-578-8072.

**NEW HERITAGE ROUGH RIDER 22 PISTOL:** \$200. 573-327-9068.

**FENCE! WE STOCK ELECTRIC FENCE SUPPLIES:** High-Powered fencers! Unbeatable Prices! Ozark Farm, 417-322-0161

**MOTOR HOME:** 1996 Pace Arrow, 34' long, wide body, new tires, 460 Ford engine, generator, awnings, cameras, 2 AC, 2 TV's, everything works, 119,418 miles. \$9,700. Rogersville, 417-766-1991, 417-753-2747.

**VINYL WINDOW:** Double pane, 50x33. \$40. 417-322-4432.

**QUALITY REPLACEMENT COWS:** COW/CALF PAIRS, BRED HEIFERS AND BREEDING BULLS, TRUCKING AVAILABLE. Otterville, 660-619-5190.

**L4400 KUBOTA:** 4wd tractor with loader and 3rd function valve, Low hours. \$21,500. 417-270-1505.

**VEERMER 4 BASKET HYD FOLD TEDDER:** Good \$4,700. 573-765-4406. Richland.

**FIREARMS:** Professional Repairs and Restorations. Baron's Gunsmithing. 573-363-5801, Camdenton.

**DAVIDSON:** aluminum 16' extension ladder. Model 554-16 \$20 txt 417-533-0779.

**WANTED TO BUY:** front splitting stand for splitting tractor at clutch housing. Call 573-768-0068.

**REDUCED!! 140 WOODED ACRES:** 4/ bedroom, 2/bath home, borders live creek and corp, 30'x40' shop, 2nd building 26'x60', year round spring, 7/10 of a mile from Lake Norfork. \$189,000. Tecumseh. 417-284-3727.

**AUSTRALIAN SHEPHERD PUPPIES:** out of working parents, shots-first round. 573-663-7459.



# LS Tractor

**More Features Standard,  
More Tractor for your Money!  
Discover the LS Difference!**

**ZERO Down  
0% for 84 months!**

(WAC, See Dealer  
for Details)

## LS MT240E

Economy, 40hp, 4wd, Diesel Tractor  
w/ QA Loader & Bucket

**ONLY  
\$256  
per month**

**6 YEAR  
LIMITED  
WARRANTY**



**6 YEAR  
LIMITED  
WARRANTY**



## LS MT350E

Economy 50hp, 4wd, Diesel Tractor  
with QA Loader & Bucket

**ONLY  
\$307  
per month**

**6 YEAR  
LIMITED  
WARRANTY**



## LS MT573CPS

73hp, 4wd, Diesel Tractor with  
Power Shuttle & QA Loader & QA Bucket

**ONLY  
\$547  
per month**



Check out our  
GREAT Prices  
on LS Tractor  
Packages!



## WCT Farm & Lawn LLC

"Big enough to get what you need, small enough to know your name"

417-859-4311 • [www.wctfarmandlawn.com](http://www.wctfarmandlawn.com)

3299 E Evergreen Rd, Strafford, MO 65757